

F  
899  
.S7B3



Class \_\_\_\_\_

Book \_\_\_\_\_

COPYRIGHT DEPOSIT







SPANISH BAYONET.

# Beauties of Spokane





Beauties of

# SPOKANE



Photo-Gravures

COPYRIGHT, 1895, BY  
JOHN W. GRAHAM & Co.,  
BOOKSELLERS AND STATIONERS,  
SPOKANE, WASHINGTON  
THE ALBERTYPE CO., N. Y.

17099  
23 LS.

3

1-RC-1472





COURT HOUSE.



REVIEW BLDG.  
COURT HOUSE.

FIRST M. E. CHURCH.



BIRD'S EYE VIEW FROM HILLSIDE, LOOKING NORTH.



First National Bank Building, NW Corner  
Howard and  
Riverside Ave



City  
Hall.



HOWARD ST., LOOKING NORTH.

PACIFIC HOTEL.



CITY HALL.

AUDITORIUM.



VIEW FROM COURT HOUSE TOWER, LOOKING EAST.







HIGH SCHOOL.



AUDITORIUM.





UPPER FALLS.

1  
2  
3  
4  
5  
6  
7  
8  
9  
10





REVIEW BUILDING.



GRANITE BLOCK.





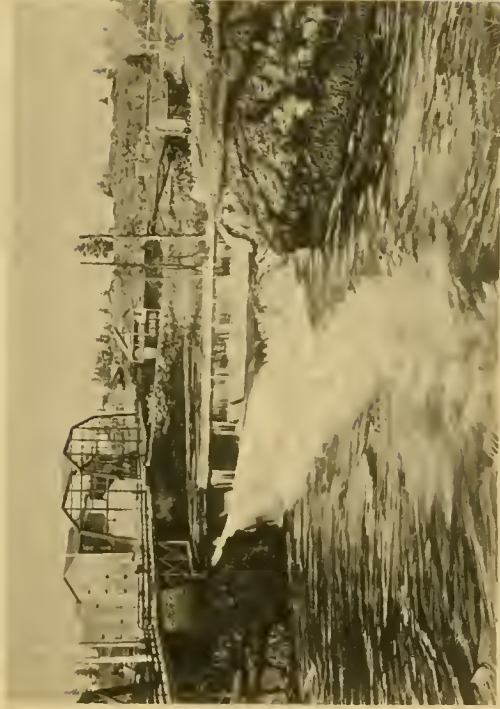
VIEW OF THE LOWER FALLS AND POST STREET BRIDGE.







COURT HOUSE, FROM HOWARD STREET BRIDGE



FALLS ABOVE HOWARD STREET BRIDGE





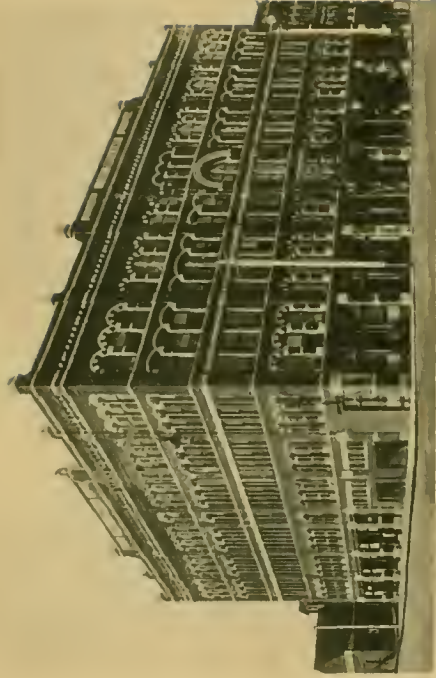
RIVERSIDE AVENUE, LOOKING EAST.





MIDDLE FALLS.





HOTEL SPOKANE.



GREAT EASTERN BLOCK.

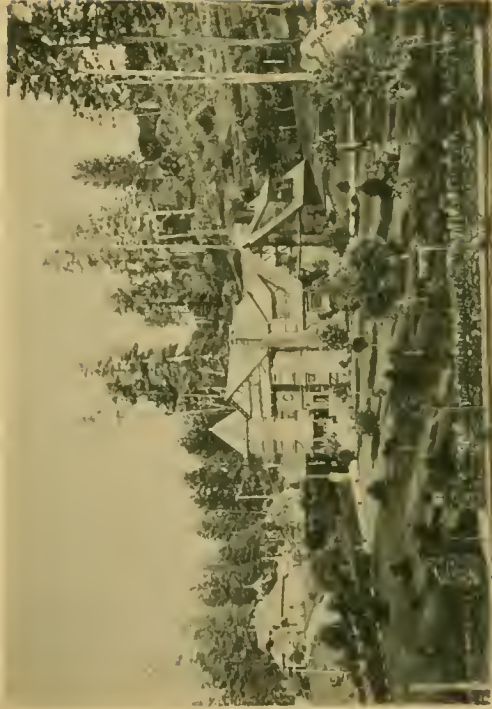






MONROE STREET BRIDGE.



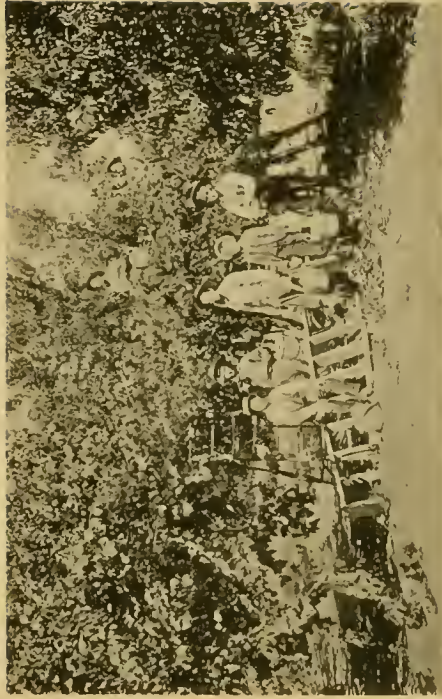


RESIDENCE OF F. ROCKWOOD MOORE.



RESIDENCE OF SIMON OPPENHEIMER,  
PRESIDENT OF NORTHWESTERN MILLING & POWER CO.





ORCHARD SCENE NEAR SPOKANE.



FIRST M. E. CHURCH.





VIEW COEUR D'ALENE PARK.

1  
309259

6512

105









LIBRARY OF CONGRESS



0 017 188 424 A ●