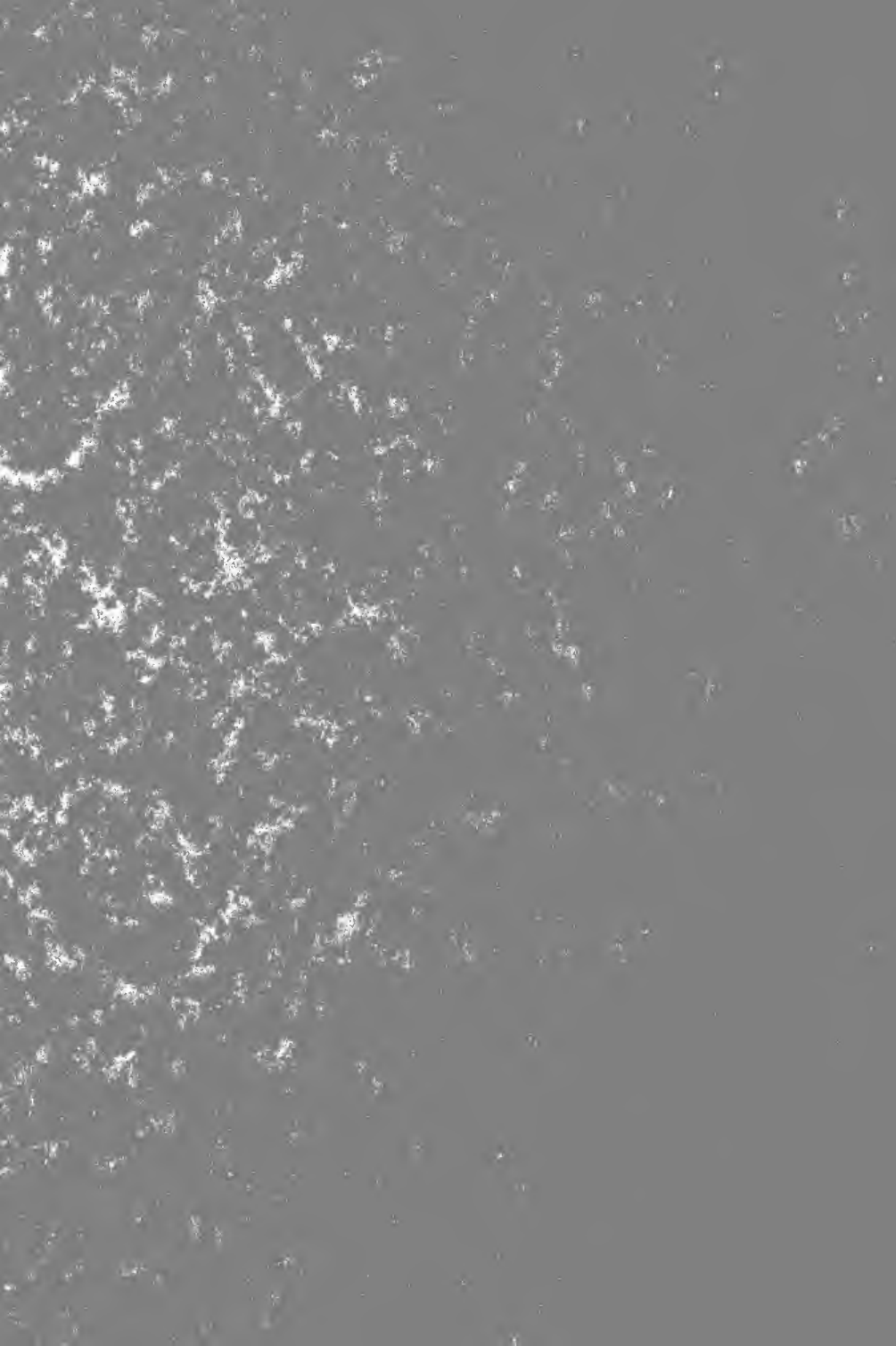
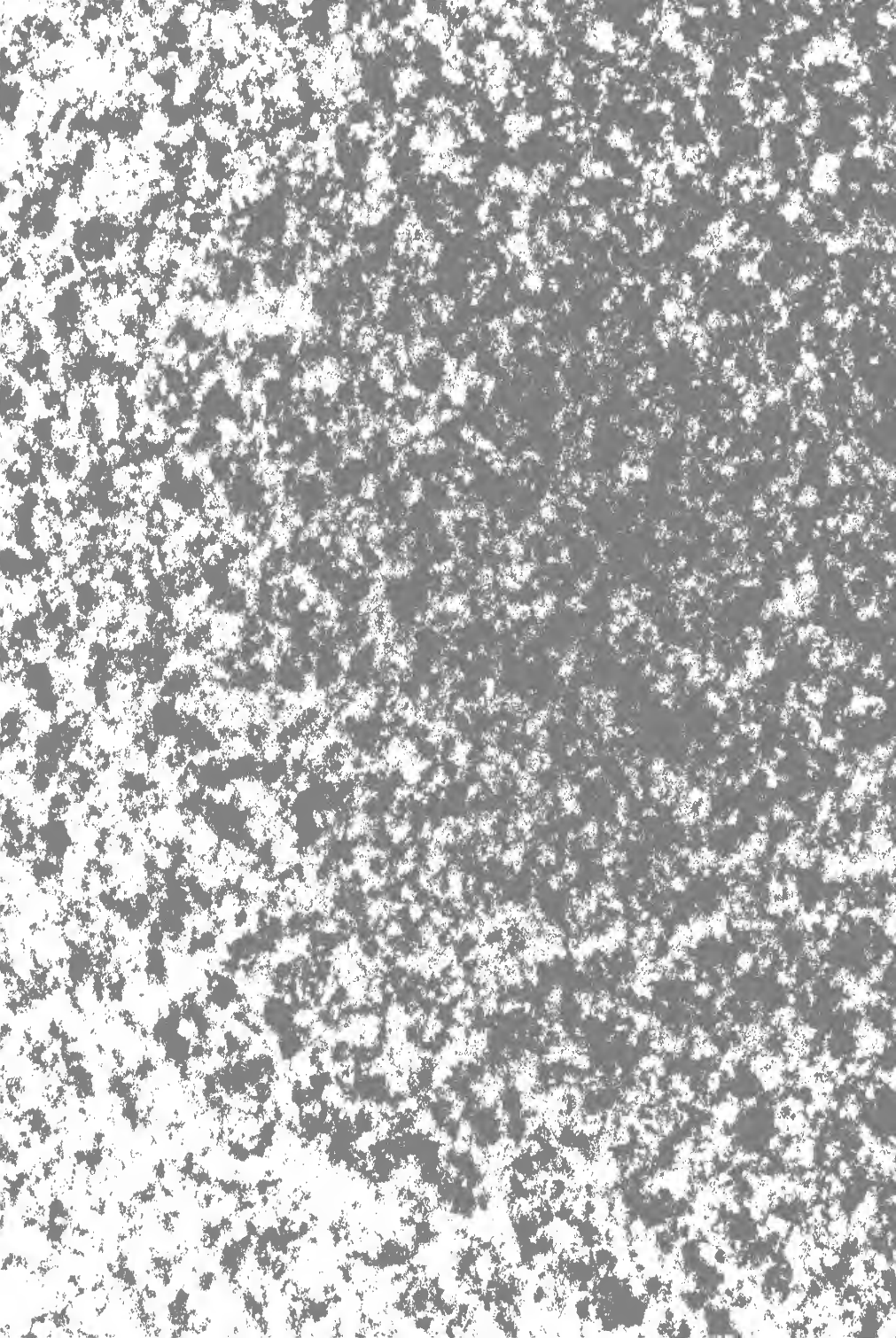
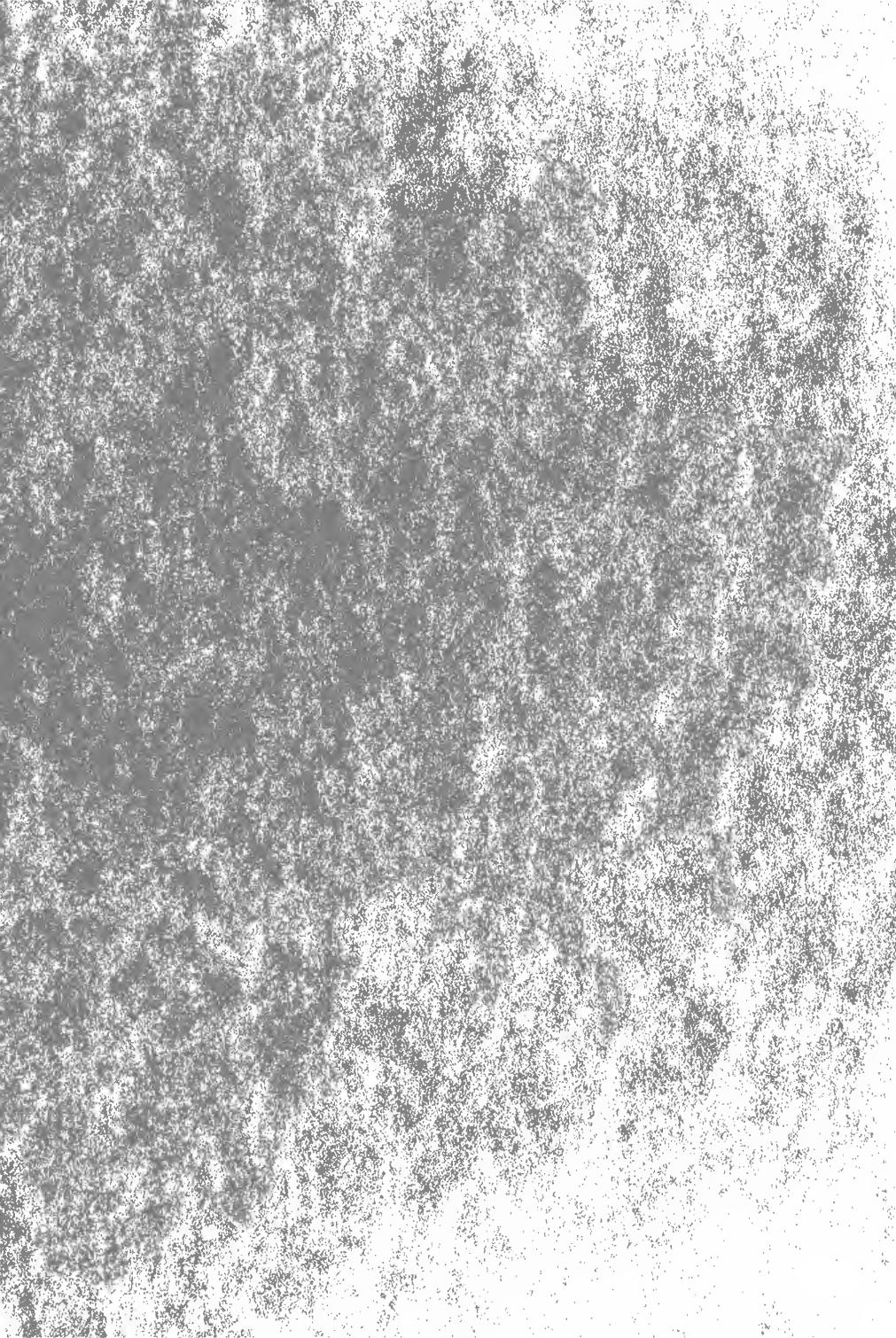




*The* BETHANIAN  
NINETEEN · TWENTY · FOUR







Pearl Mahaffey.

Digitized by the Internet Archive  
in 2011 with funding from  
LYRASIS Members and Sloan Foundation

<http://www.archive.org/details/bethanian1924beth>

---

THE BETHANIAN  
NINETEEN HUNDRED AND TWENTY-FOUR

OF

BETHANY COLLEGE

PUBLISHED BY

The Senior and Junior Classes

DONOVAN L. HART, Editor-in-Chief  
FRANCIS G. LOVE, Business Manager

---

To  
WILLIAM CAMPBELL PENDLETON,  
WHOSE CHARACTER, STANDARDS, AND IDEALS  
BROUGHT HIM THE LOVE OF ALL AND WHOSE  
LIFE WILL SERVE AS A GUIDING STAR FOR  
THE GENERATIONS TO COME WE  
RESPECTFULLY DEDICATE THIS  
VOLUME OF THE  
BETHANIAN.





W. K. PENDLETON

William Campbell Pendleton was born in Bethany, W. Va., May 3, 1849. He died in Warren, Ohio, October 7, 1922. He was the son of Mrs. Lavinia Campbell Pendleton and Mr. W. K. Pendleton.

His early life was spent in Bethany, his father then being President of Bethany College. Even in his youth he was a great lover of nature and spent much of his time in the open.

After graduating from Bethany College he spent several years traveling in the west. After a time he settled in Warren, Ohio, and was united in marriage with Miss Nellie Austin of that city.

His practical and inventive mind brought him increasing success as a manufacturer and he remained throughout his life the ideal type of Christian business man.

In spirit he was ever with Bethany, and he hoped to live to see Bethany a leading institution of learning, inspiring young men and women to higher standards of living.

His love for Bethany was manifested in his gift for the restoration of the "Commencement Hall." For a number of years prior to his death he was a Trustee, and visited his birthplace every spring.

# Table of Contents

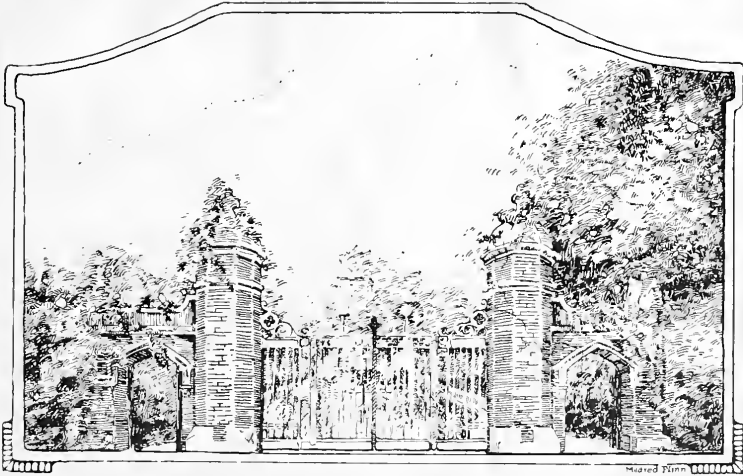
INTRODUCTION
DEDICATION
THE COLLEGE
THE FACULTY
CLASSES
ATHLETICS
ORGANIZATIONS
FRATERNITIES
CALENDAR
ADVERTISEMENTS

## Foreword

It has been the sincere purpose of the staff to portray within the following pages the noble traditions, ideals and achievements of Bethany College. These are pictured with the hope that our hearts may be drawn ever closer to our Alma Mater.

It is our hope that this volume may be a source of inspiration and pleasure to both those who will follow us, and those who have already passed from Bethany's historic walls. If we succeed in this respect, we will have accomplished our purpose.

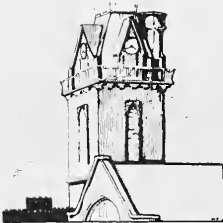
THE EDITORS.



BEAUTIES  
of OLD BETHANY



The Gates





The Lower Campus





Oglebay Hall







The Commencement Hall





The Carnegie Library





Westward View of the Campus





The Heights



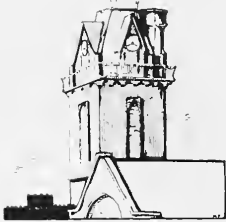


The Upper Campus





The Drive





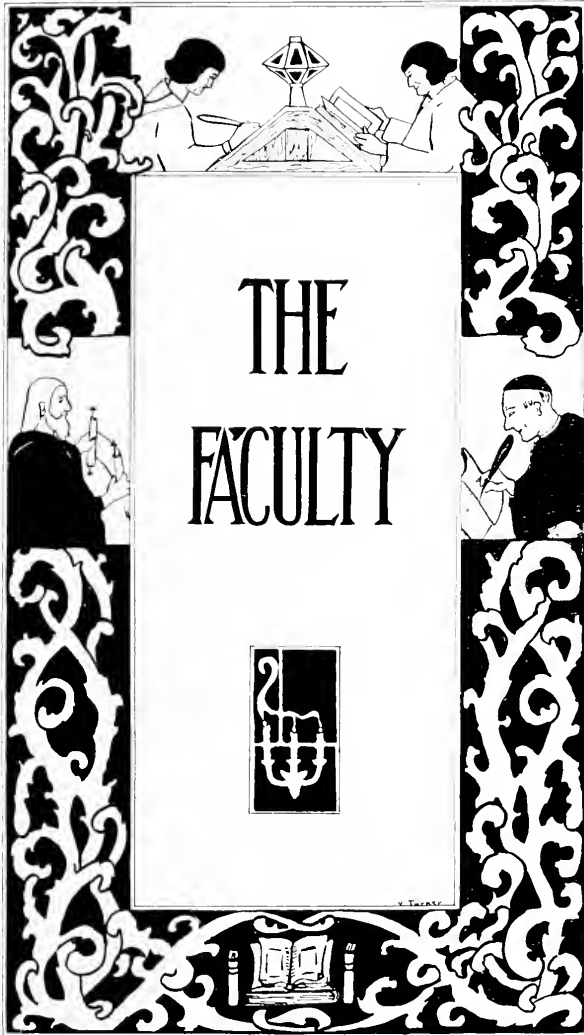
The Cemetery





The Main Walk







PRESIDENT CLOYD GOODNIGHT, D. D.

# The Board of Trustees

## EXECUTIVE COMMITTEE

M. M. COCHRAN, *Chairman*

HON. THOMAS W. PHILLIPS, JR.	SAM J. RENO, JR.	BEN JOHNSON
W. J. HERBSTER	L. D. MERCER	*R. M. ADDLEMAN
A. E. McBEE	W. D. TURNER	

## OFFICERS OF THE BOARD

CLOYD GOODNIGHT, *President*

W. H. CRAMBLET, <i>Treasurer</i>	M. V. DASTGIRD, <i>Secretary</i>
----------------------------------	----------------------------------

TERM EXPIRES JUNE, 1926

W. H. FIELDS	- - - - -	Wheeling, W. Va.
W. J. HERBSTER	- - - - -	Pittsburgh, Pa.
HON. OLIVER S. MARSHALL	- - - - -	New Cumberland, W. Va.
SAMUEL GEORGE	- - - - -	Wellsburg, W. Va.
A. E. McBEE	- - - - -	New York, N. Y.
W. W. VANHORN	- - - - -	Shelby, Ohio
W. D. TURNER	- - - - -	Cleveland, Ohio
W. F. FREDERICK	- - - - -	Uniontown, Pa.
L. D. MERCER	- - - - -	Bowling Green, Ohio
CAMPBELL JOBS	- - - - -	Wheeling, W. Va.

TERM EXPIRES JUNE, 1925

*J. E. CURTIS	- - - - -	Lexington, Ky.
HON. M. M. COCHRAN, LL.D.	- - - - -	Uniontown, Pa.
FRANK H. MAIN	- - - - -	Philadelphia, Pa.
JUDGE L. T. FARR	- - - - -	Lisbon, Ohio
J. L. KENDALL	- - - - -	Pittsburgh, Pa.
BENJAMIN IRVIN	- - - - -	Big Run, Pa.
Z. TAYLOR VINSON	- - - - -	Huntington, W. Va.
S. J. RENO, JR.	- - - - -	Pittsburgh, Pa.
JUDGE J. B. SOMMERVILLE	- - - - -	Wheeling, W. Va.
*JUDGE R. M. ADDLEMAN	- - - - -	Wheeling, W. V.

TERM EXPIRES JUNE, 1924

HON. THOMAS W. PHILLIPS, JR.	- - - - -	Butler, Pa.
W. E. PIERCE	- - - - -	Cameron, W. Va.
EARL WILFLEY, LL.D.	- - - - -	Washington, D. C.
OLIVER C. VODREY	- - - - -	East Liverpool, Ohio
WYLLIE W. BEALL	- - - - -	Wellsburg, W. Va.
EARL W. OGLEBAY, LL.D.	- - - - -	Cleveland, Ohio
BEN S. JOHNSON	- - - - -	Stuebenville, Ohio
F. C. McMILLAN	- - - - -	New York, N. Y.
*L. T. MORLAN	- - - - -	Beaver, Pa.
R. A. BALDERSON	- - - - -	Pittsburgh, Pa.

\*Deceased



JEAN CORRODI MOOS, Mus.D.

*Director of the Department of Music*

College of Music, Zurich; Royal Conservatory of Music, Leipzig; Director of Music, Kidder Institute; Rippen College; Depaw; Professor, Bethany, 1897—.



ANNA R. BOURNE, A.M.

*Professor of English*

A.B., Bethany; A.M., Columbia; Special student abroad, English; One year in London lectures, research in library of British Museum; Summer School Oxford University, French; Two summers, Paris; General lecture courses; Summer School, Touring Italy and Greece under direction of "The Bureau of University Travel", Boston.

A A E A Φ E



ALBERT CLINTON WORKMAN, A.M., M.S.

*Professor of Chemistry*

Ph.B., Hiram College; A.M., Hiram; Graduate student, University of Wisconsin, summer sessions; M.Sc., Ohio State University; Professor of Chemistry, Bethany College, 1906-1918; Instructor in Agricultural Chemistry, Ohio State; Professor of Chemistry, Bethany College, 1919; Dean of Bethany College, 1923—.

EBENEZER LEE PERRY, A.M.

*Professor of Latin*

A.B., Bethany College; A.M., *ibid*; Yale University, Columbia University; Professor of Latin, Bethany College, 1908—.



PEARL MAHAFFEY, A.M.

*Professor of Modern Languages*

A.B., Miami University; Student Alliance Francaise, Paris; A.M., Columbia University.



FRANK ROY GAY, A.M.

*Professor of Greek Language and Literature*

A.B., Drake University; A.M., *ibid*; Instructor in Latin, Drake University; Professor of Greek, Virginia Christian College; A.M., University of Chicago; Professor of Greek, Bethany College, 1910—.   Φ B K





HENRY NEWTON MILLER, A.M., B.D.

*Moninger Professor of Bible School Pedagogy*

A.B., Bethany College; A.M., B.D., Yale University;  
 Professor of Bible School Pedagogy, Bethany College,  
 1914—.

Β Θ Η Τ Κ Α



WILBUR H. CRAMBLET, A.M., Ph.D.

*Professor of Mathematics  
 Treasurer of College*

A.B., Bethany College; A.M., *ibid.*; A.M., Yale University; Ph.D., *ibid.*; Instructor in Mathematics, Rochester University; Professor of Mathematics, Phillips University; Professor of Mathematics, Bethany College, 1917—.

Α Δ Φ



HALL LAURIE CALHOUN, B.D., Ph.D.

*T. W. Phillips Professor of  
 Old Testament Language and Literature*

A.B., Kentucky University; College of the Bible Diploma; B.D., Yale University; Williams Fellow, Harvard University; Ph.D., Harvard University; Professor Lexington College of the Bible; Dean, *ibid.*; Professor of Old Testament Language and Literature, Bethany College, 1917—.

Α Φ Ε

WILLIAM KIRK WOOLERY, A.M.

*Professor of History and Economics*

A.B., Bethany College, A.M., University of California,  
 Professor of History and Economics, Bethany College,  
 1921—      Β Θ Π Φ Κ Δ Α Λ Ε



ANDREW LEITCH, A.M., B.D., Ph.D.

*Sarah B. Cochran Professor of Philosophy*

A.B., Butler College; A.M., *ibid.*; B.D., Yale University,  
 Hooker Dwight Fellow; Currier Fellow; Ph.D.,  
 Yale University; Reader in Philosophy, Yale; Professor  
 of Philosophy, Bethany College, 1920—.



JOSHUA ALLEN HUNTER, A.M., Ph.D.

*Professor of Education*

A.B., Pennsylvania State College, A.M., *ibid.*; Ph.D.,  
 Kansas City University; Graduate student Yale, Clark  
 and Columbia Universities; Teacher in Millersville (Pa.)  
 State Normal School; State District Superintendent in  
 Vermont; Supervising Agent in Connecticut; Professor  
 of Education, Bethany College, 1919—      Φ Κ Φ





J. WALTER CARPENTER, A.M., B.D.

*Professor of New Testament and Christian Doctrine*

A.B., Butler College; A.M., *ibid.*; A.M., Yale University; B.D., Yale University; Professor of Missions, Drake University; Professor of New Testament and Christian Doctrine, Bethany College, 1917—.



JESSIE ELIZABETH ACKER, B.S.

*Professor of Home Economics*

B.S., University of Kentucky; Head of Home Economics Department, Kentucky College for Women; Professor of Home Economics, Bethany College, 1918—.

K Δ



IRVIN T. GREEN, B.D., A.M.

*Assistant Professor of Biblical Doctrine*

Pennsylvania College; Bethany College; University of Chicago. Assistant Professor of Biblical Doctrine, Bethany College, 1921—.



BERNAL R. WEIMER, A.M.

*Professor of Biology*

A.B., University of West Virginia; A.M., *ibid.*; Professor of Biology, Bethany College, 1921— Φ Β Κ



VISTA CLAYTON, A.B., A.M.

*Assistant Professor of English*

A.B., University of Indiana; A.M., *ibid.*; Assistant Professor of English, Bethany College, 1921— Α Α Ε



ARTHUR YANEY, A.B., M.Sc.

*Assistant Professor of Chemistry*

A.B., Ohio Wesleyan; M.Sc., Ohio State University, University of Chicago; Assistant Professor of Chemistry, Bethany College, 1921— Σ Φ Ε





RALPH WINFIELD GARRETT, A.M.

*Assistant Professor of History*

A.B., Milligan College; A.M., Columbia University,  
Milligan College; Assistant Professor of History,  
Bethany College, 1921—.



MILDRED FLINN

*Art Instructor*

Franklin College; St. Louis School of Fine Arts; John  
Herron Art Institute; Art Teacher, Bethany College,  
1923—.      Δ Δ Δ



RUDOLPH LEOPOLD HERING, Ph.B.

*Professor of Modern Languages*

Ph.B., University of Chicago; Purdue University;  
University of Munich; University of Grenoble; Uni-  
versity of Michigan; Professor of Modern Languages,  
Bethany College, 1921—.

ROLLA VERGIL COOK, A.B., A.M.

*Professor of Physics*

A.B., Indiana University; A.M., ibid. Instructor of Physics, Indiana University; Professor of Physics, Bethany College, 1923— Φ Β Κ, Σ Ξ, Φ Δ Κ



MARY ELFAH CALHOUN

*Professor of Expression*

Tennessee College for Women; School of Expression in Yale University; Curry School of Expression; Professor of Expression, Bethany College, 1923—



R. STANLEY MARSH, A.M.

*Professor of Agriculture*

B.S., in Agriculture; University of Missouri, 1921; A.M., University of Missouri, 1922; Member of Acacia Fraternity (Purdue Chapter); Gamma Alpha and Sigma Xi (Missouri Chapters)





HARRIETT PEARL MORRIS, B.L.

*Dean of Women*

B.L., Bethany College; University of Southern California; Dean of Women, Bethany College, 1923—.



ANNA MARY KEMP, A.B.

*Librarian*

A.B., Bethany College; Mus.B., *ibid*; Chautauqua Library School; Assistant Librarian, Mansfield (Ohio) Public Library; Librarian, Bethany College, 1922—.

Α Ξ Δ



ROY ALEXANDER EASTERDAY, D.D.S.

*Head Coach*

D.D.S., University of Pittsburgh; Head Coach, Bethany College, 1921—.

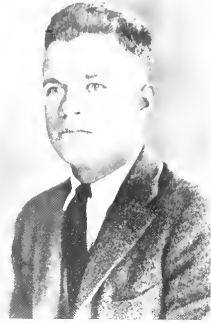
Φ Κ Ψ

WILLIAM LATTO, BS

*Director of Physical Education*

B.S., Bethany College; Director of Physical Education,  
Bethany College, 1923—

B O H



BETHANIAN



1924









## Class History

The Class of Nineteen Hundred and Twenty-four entered Bethany determined to excel. We have fought battles here, have excelled and are going out into the world now, with the same determination that has been with us in the past.

The men of the class broke into notoriety in that momentous day of the corridor fight. Lest we again be fined for broken doors or trespassing, we will refrain from giving the details. Less glorious for that Freshman class were the tug-of-war and flag rush. True to form the Sophomores were victorious. A new style of hair-cutting was instituted and several of our class suffered the jeers and cold winds that only bald-headed men can.

Nothing daunted, the class found new fields of action. Athletics, debating, literary societies, dramatic club, religious organizations and class work were open doors entered by the class of 1924. That is the reason it has been dubbed the "most all round" group in Bethany's history. That is the reason professors say that the class as a whole has maintained the highest scholastic average. Inter-class sports as well as varsity brought forth a large number of athletes. Indeed, we may say that the class, individually and collectively, had responded to all calls for service in Bethany and for Bethany. The women with the aid of Miss Butzer organized a Woman's Athletic Association which has been functioning ever since.

Because we have worked for Bethany, her traditions and spirit have grown dear to us. Pausing for a minute to gaze back on those four years of work with fondest affection in our hearts for Bethany. Truly we may say that now we must leave thee "with hearts overflowing." But as we look forward to the years that are ahead, and know that Bethany has prepared us for a field of action and service, we add "God speed Alma Mater and Old Bethany."

# The Class of Nineteen Hundred and Twenty-Four

*Colors:* Orange and Black.

## OFFICERS

<i>President</i>	- - - - -	ROBERT HURL
<i>Vice-President</i>	- - - - -	GLENN CARPENTER
<i>Secretary-Treasurer</i>	- - - - -	SARA BAKER
<i>Historian</i>	- - - - -	JULIA WARREN

## MEMBERS OF STUDENT COUNCIL

ARLAN KELLY	MARY LOVE	JULIA WARREN
EARL ZOOK	ALLAN WILHELM	

## RALPH CHARLES LANKLER, A.B.

BUFFALO, NEW YORK

Sigma Nu; Tau Kappa Alpha; Moo Moo Merry Masquers Dramatic Club, President (4); A. L. S.; Debating Team (3); Glee Club (2); Ministerial Association; Y. M. C. A., Cabinet (4); Chairman of Pep Committee (4); Harbinger Staff (4).



## JULIA WARREN, A.B.

ST. LOUIS, MISSOURI

Alpha Xi Delta; Alpha Phi Epsilon; Alpha Alpha Epsilon; Class Basketball (2) (3) (4); Y. W. C. A., Cabinet (4); Student Council (3) (4); Assistant Art Editor of Bethanian (3); Art Editor (4); Associate Editor of Collegian (3) (4); Merry Masquers Dramatic Club; Student Volunteer; Class Historian (4); N. L. S. (1) (2) (3); Current History Club; Athletic Association.



## EARL B. ZOOK, A.B.

FAIRBURY, ILLINOIS

Phi Gamma Delta; Illinois Wesleyan University (1); Alpha Alpha Epsilon; Class Vice-President (3); Football (2) (3) (4); Basketball (2) (3) (4); All Tri-State Center (4); Track (2) (3) (4); Baseball (2) (3) (4); Captain (3); Athletic Board of Control (3) (4); Y. M. C. A., Cabinet (3); Student Council (3) (4); Associate Editor of Harbinger (2) (3), Editor (4).





EDWIN LEE WELLS, B.S.

ASHLAND, OHIO

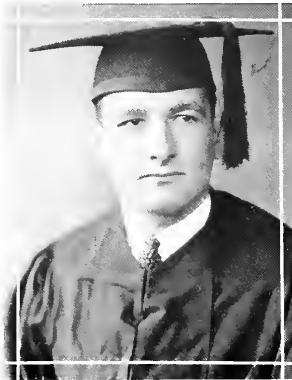
Beta Theta Pi; Baseball (1) (2) (3); Basketball (1) (2) (3); Football (1) (2); Y. M. C. A.



SARA MARY CANNON, A.B.

MT. VERNON, OHIO

Alpha Xi Delta; Alpha Phi Epsilon; Alpha Alpha Epsilon; Y. W. C. A.; N. L. S., Secretary (3); Social Editor of Collegian (2) (3) (4); Assistant Literary Editor of Bethanian (3), Literary Editor (4); Merry Masquers, Treasurer (4); Homecoming Play (1) (2) (3); Commencement Play (2) (3); Class Secretary and Treasurer (3).



DONOVAN L. HART, A.B.

ST. CLAIRSVILLE, OHIO

Sigma Nu; Alpha Alpha Epsilon; Moo Moo; College Band (2); Class Basketball (1) (2); News Editor Collegian (2); Editor-in-Chief Collegian (3); Editor Bethanian (4).

STEPHEN E. MURRAY, B.S.

PHILADELPHIA, PA.

Sigma Nu; Moo Moo, A. I. L., President (4); Y. M. C. A., Cabinet (3), Vice-President (4); Cochran Hall Senate President (3); Track (3); Class Basketball (2) (3) (4).



RUTH I. MCKINNIS, A.B.

STOCKTON, KANSAS

Alpha Xi Delta; Student Volunteer, President (3) (4); Y. W. C. A., Cabinet (4); A. L. S., Secretary (2); Current History Club; May Day Play (4); Woman's Athletic Association Vice-President (4); Basketball (1) (2) (3) (4); Baseball (2) (3) (4); Girls' Circle.



ESTANIS A. JARAS, A.B.

WASHINGTON, PA.

A. I. S.; Y. M. C. A.; Ministerial Association; Student Volunteer Band.





FRANK D. DORNBUSH, A.B.

STUEBENVILLE, OHIO

Phi Kappa Tau; A. L. I.; Bird Club (3); Football (1) (2) (3) (4); Y. M. C. A.; Assistant Athletic Editor of Bethanian (3); Athletic Editor (4); Class Basketball (1) (2) (3); Baseball (3).



XANTHEA COOK, A.B.

FREDERICKTOWN, OHIO

Lappa Delta; Alpha Phi Epsilon; Y. W. C. A.; A. L. S., Secretary (2) (3).



EMMITT FITZGERALD, A.B.

PARKERSBURG, W. VA

Beta Theta Pi; Football (3) (4); Basketball, Manager (4); Class Basketball (1) (2) (3); Campus Leader (1).

S. MAYNARD SHIPLEY

BALTIMORE, MD

Ministerial Association; A. L. S. (1) (2); De-  
bating Team (4).



ROSE-MARY GILLETTE, B.S.

BRIDGEPORT, OHIO

Alpha Xi Delta; Alpha Phi Epsilon, Secre-  
tary (2); N. L. S., Secretary (1); Y. W. C. A.;  
Commencement Play (1) (2); Home Coming  
Play (2).



SIDNEY H. GEPFORD, A.B.

DECATUR, ILLINOIS

Beta Theta Pi; James Millikin University  
(1); Football (3) (4); Basketball (2) (3) (4),  
Captain (3).





ALLAN R. WILHELM, B.S.

CAMERON, W. VA.

Sigma Nu, Merry Masquers, Student Council (4); Band (2) (3) (4), Manager (4); Orchestra (2) (3) (4), Manager (4); Track (1) (2) (3) (4), Track Manager (3); Commencement Play (2); A. L. S.; Y. M. C. A.; Class Basketball (2) (3).



IRENE E. McDERMOTT, B.S.

PITTSBURGH, PA.

Alpha Xi Delta; Alpha Phi Epsilon, Vice-President (3); Y. W. C. A.; N. L. S., Secretary (2).



FREDERIC METZE, A.B.

LOWELL, OHIO

Y. M. C. A.; A. L. S.; No Tobacco League, President (4); Agricultural Society (1); Agriculture Club (1) (2); College Band (4).



## SARA CAULIERINE BAKER, A B

MANNINGTON, W. VA.

Zeta Tau Alpha, Alpha Phi Epsilon; N. E. S., Treasurer (2); Y. W. C. A., Cabinet (2) (3); Girls' Basketball Team (1) (2) (3) (4), Captain (3); Woman's Athletic Association, President (2) (3); Athletic Board of Control (3) (4); Swimming Manager (3); Basketball Manager (4); Class Secretary and Treasurer (2) (4); Debating Team (2) (3); Student Council (3); Merry Masquers Dramatic Club, Secretary (4); Forensic Association, Secretary (4), Social Committee, Chairman (3).



## GEORGE MASSEY, A B

CARROLLTON, OHIO

Sigma Nu; Basketball (1); A. L. L., Vice-President (4); Y. M. C. A., President (4); Ministerial Association.



## EVELYN ULRICH, A B

WHEELING, W. VA.

Y. W. C. A.; A. L. S.; Current History Club; French Club; Girls' Glee Club (2); Class Basketball, Captain (2); Girls' Hiking Club, Manager (4).





FRANCIS J. LOVE, A.B.

CADIZ, OHIO

Kappa Alpha; Tau Kappa Alpha; Y. M. C. A.; A. L. S. (1) (2); Merry Masquers Dramatic Club (3) (4); College Band; Debating Team (3) (4); Delegate to W. Va. Forensic Association (4); Treasurer, Student Board of Publications (4); Business Manager of Bethanian (4); Track (3) (4); Tournament Treasurer (4); Manager of Varsity Baseball (4).



MARY JANE MILLER, A.B.

BETHANY, W. VA.

Y. W. C. A.; Agricultural Society (1); A. L. S.; Hiking Club (2); Bird Club (3).



ARLAN S. KELLEY, A.B.

PARRERSBURG, W. VA.

Beta Theta Pi; Football (1) (2) (3), Captain (4); Basketball (1) (2) (3); Track (1) (2); Tennis (3); Student Council (2) (3) (4), President (4); Secretary of Athletic Board of Control (3) (4); Assistant Editor of Bethanian (3); Class President (3).

RAY M. WOLFORD, A.B.

BETHANY, W. VA.

A. L. S., Secretary and Treasurer (3); Alpha Phi Epsilon; Ministerial Association, Secretary (4); Y. M. C. A.



FLORENCE FARABEE, B.S.

WASHINGTON, PA.

Kappa Delta; Y. W. C. A.; A. L. S., Assistant Kodak Editor of Bethanian (3); Kodak Editor (4).



ROY S. ADKINS, A.B.

DECATUR, ILLINOIS

Beta Theta Pi; James Millikin University (1); Football (2) (3) (4); Class Basketball (2) (3).





MINNIE E. HEASLETT, A.B.

HOLLIDAYS COVE, W. VA.

Ohio State University (1); A. L. S., Chairman of Program Committee (4); Y. W. C. A.; Executive Committee of Phillips Hall, Secretary (4).



ROBERT HURL, B.S.

FOLLANSBEE, W. VA.

Beta Theta Pi; N. L. S., (1) (2); Student Council (2); Glee Club (2); Class President (4); Football Manager (4); Manager Basketball Tournament (4); Y. M. C. A., Secretary (3).



THELMA BATES, A.B.

PARKERSBURG, W. VA.

Zeta Tau Alpha; Y. W. C. A.; College Band (2) (3) (4); College Orchestra (2) (3) (4); Merry Masquers Dramatic Club (2) (3) (4); A. L. S., Secretary (4); Women's Athletic Association.

LEONARD B. STEVENSON, A.B.

BETHANY, W. VA.

Ministerial Association, President (4); Cochran Hall Senate, President (3).



MARY ESTELLENE LOVE, A.B.

CADIZ, OHIO

Kappa Delta; Y. W. C. A., Cabinet (4); Student Council (4); A. L. S. (1) (2).



BERNARDO NEGRON, A.B.

BAYAMON, PORTO RICO

Adelphian; Y. M. C. A.





MARY HARDY LIGON, A.B.

HICKMAN, KENTUCKY

Alpha Xi Delta; University of Kentucky (1);  
Bethany College (2); University of Wisconsin  
(3); Merry Masquers Dramatic Club; Y. W.  
C. A.; N. L. S.; Christmas Play (1); May Day  
Play (1).



WILLIAM TURNBULL, A.B.

PATTERSON, NEW JERSEY

Phi Kappa Tau; Alpha Phi Epsilon, Vice-  
President (4); Alpha Alpha Epsilon; A. L. L.  
President (4); Ministerial Association; Student  
Volunteer Band (2) (3) (4); Collegian Staff  
(1) (2) (3), Editor-in-Chief (4); Y. M. C. A.



VERLA M. ROSS, A.B.

TAYLORSTOWN, PA.

Indiana State Normal School (1) (2); A. L.  
S.; Y. W. C. A.; Girls Hiking Club.

CLARENCE MURKIN, A.B.

LANCASTER, OHIO

Glee Club, Accompanist and Soloist (1) (2);  
Ministerial Association (1) (2) (3); A. L. S.;  
Y. M. C. A.



ELIZABETH HUTCHINSON

WEST HUNTINGTON, W. VA.

Kappa Delta; Marshall College (1); Y. W.  
C. A. (2) (3) (4); Electa Club (2); Y. W.  
Cabinet (3) (4); A. L. S. (2) (3) (4); Wo-  
man's Athletic Association (3) (4).



KENNETH J. REED, A.B.

ELMORE, OHIO

Ottawa County Normal (1); Ministerial  
Association; A. L. S.; Y. M. C. A.; Cochran  
Hall Senate (3) (4).





FLORENCE HALL, A.B.

STEBENVILLE, OHIO

Indiana State Normal School; Ohio State University; Y. W. C. A.; Girls' Glee Club



H. GLENN CARPENTER, A.B.

LORAIN, OHIO

Kappa Alpha; Student Council (1) (2); Class President (2), Vice-President (4); Ministerial Association, Vice-President (4); Y. M. C. A., Secretary (4), Vice-President (4), Cabinet (2) (3) (4); College Band (2) (3) (4); Student Board of Publications, Assistant Manager (2), Manager of Collegian and Harbinger (3), President (4); A. L. S., President (2); Manager College Lyceum Course (4).



EMILY WOODS WOLFORD, A.B.

BETHANY, W. VA.

Electa Club; A. L. S., Secretary (1); Girls' Circle; Y. W. C. A.; Merry Masquers Dramatic Club (1); Student Volunteer Group, President (3).



HENRY GOLDSMITH GOFHING, AB  
WEST NEWTON, PA.

Phi Kappa Psi, Penn State (1), Baseball (2) (4); Class Basketball (3); Cochran Hall Senate (3) (4); Vice-President (3); Y. M. C. A., Cabinet (4); French Club.



MARTHA M. SLEE, AB  
PHILLIPSBURG, PA.

Alpha Xi Delta; Alpha Phi Epsilon; Alpha Alpha Epsilon; Y. W. C. A., Cabinet (2) (3) (4); Athletic Association; Collegian Staff, Contributing Editor (3) (4); Harbinger Staff (3); Class Basketball (1) (2) (3), Captain (4); Current History Club; Merry Masquers Dramatic Club; N. L. S. (1) (2) (3), Christmas Play (3); May Day Play (2).



ERNEST F. KENDLE, AB  
PADEN CITY, W. VA.

A. L. S.; Alpha Phi Epsilon; Ministerial Association; Y. M. C. A.; College Band; Glee Club (1) (2).





D. ERVIN SHEETS, A.B.

PITTSBURGH, PA.

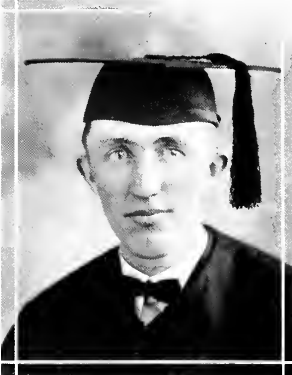
Sigma Nu; Alpha Phi Epsilon; Y. M. C. A.;  
N. L. S.; Merry Masquers Dramatic Club;  
College Band (2) (3) (4); College Orchestra  
(2) (3) (4); Glee Club (2) (3) (4); Glee Club  
(2) (3); College Quartet; Commencement Play  
(1) (2); Ministerial Association (1) (2) (3)  
(4); Social Committee (4).



HARRIETT E. MORRIS, B.S.

SHELBY, OHIO

Alpha Xi Delta; Lake Erie College (1); N.  
L. S.; Y. W. C. A.; Home Coming Play (2) (3).



FERDINAND L. KENDLE, A.B.

PADEN CITY, W. VA.

Ohio University, (1); A. L. S.; Ministerial  
Association; Y. M. C. A., Secretary (4).

HERBERT M. STAUFFER, A.B.

WOOSTER, OHIO

Wooster College (1) (2); Phillips Institute  
(3); A. L. S.



JEAN WHITNEY

PARKERSBURG, W. VA.

Kappa Delta; Y. W. C. A.; A. L. I.; Class  
Basketball; Class Baseball; Treble Clef Club;  
Chorister of A. L. I.

ATHANASIJUS G. BOYADJIS, A.B.

EZINE, ASIA MINOR

Greek High School; West Virginia Wesleyan  
College (1) (2).





## Class History

Like the mountain climber, as he looks back over the rocky crags and dangerous passes, with a sense of satisfaction at having conquered these natural impediments, we, the class of 1925 have reached one of the high points in our college career, and are now able to look back over some of the familiar spots, when we, as a class met stern difficulties and triumphed.

As we look back we see that we are quite fortunate in having three-fourths of our original band with us. We have put forth every effort to do our part in college activities and have been rewarded by having the satisfaction of knowing that we have not only upheld our share, but have actually surpassed and become leaders in many branches of these activities.

The Junior Class of this year has always made itself conspicuous. As Freshmen, we gave the Sophomores untold difficulties because we had some ideas of our own about the proper conduct and importance of our class. As Sophomores, we compelled the Freshmen in a very definite manner to obey such rules and regulations as we saw fit to impose; and as Juniors we have commanded the admiration and respect of the remaining student body and the faculty because of our loyalty and interest in every phase of College life. It is with pride that we say that the class of 1925 is represented in every organization upon the campus.

Our aim is to be a credit to our Alma Mater and although we feel a justifiable pride in the history we have made in three years of college life, we are not satisfied to lean on the past, but intend to strive for higher and nobler things, and we look forward with supreme faith to a time in the future when the members of the class of 1925 will be prominent men and women in the work of the world.

# The Class of Nineteen Hundred and Twenty-Five

*Colors* - Gold and White.

<i>President</i>	-	-	-	-	-	-	-	GEORGE ELLIOT
<i>Vice-President</i>	-	-	-	-	-	-	-	LAWRENCE MURRAY
<i>Secretary</i>	-	-	-	-	-	-	-	MARGARET CALHOUN
<i>Treasurer</i>	-	-	-	-	-	-	-	LYLE McWHORTER
<i>Historian</i>	-	-	-	-	-	-	-	LOIS SPRINGER

## MEMBERS OF STUDENT COUNCIL

LOIS SPRINGER

HAROLD IDLEMAN

JANE LUCE

GEORGE M. ELLIOTT

George is a demon around the home plate and the consistency with which he hits the "pail" is marvelous. He is one of our most consistent "bizzers" and wherever Gladys is to be found you'll usually find Elliott there, too. A regular "he" man who follows the styles and has wavy hair, is hard to beat and it is not surprising that George was selected for Class President. He is also interested in aquatic sports and even has some renown as a candy maker.



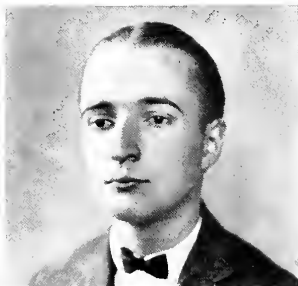
JEANNETTE CREW

Last year Jeannette spent in "crewsing" about in the clouds. This year, however, since she is with us we have learned a very interesting fact about her—Jeannette can draw,—both pictures and affection. Her clever posters have delighted us from time to time, and also her work on this Bethanian. In the second place, there is a truly remarkable amount of brotherly affection surrounding her most of the time. At Christmas Santa found it necessary to present her with a mail box for her private use.



GEORGE DARSIE

Darsie has always been a familiar name on the campus at Bethany and George bids fair to follow in the footsteps of his predecessors. George says he came from the land of "nigga' gin", but since coming to Bethany his attentions have been changed to that which made "Milwaukee famous."



DOROTHY DAVIS

Dorothy is one of our busy girls who always takes time to do one thing more. In the laboratory or out of it she lends a helping hand wherever she can. We're all glad she has someone to carry her 'cello for her because we hate to see her over-loaded. "Dot's" bright smile and cheery "Hello" have won, for her, many friends. In fact we have decided that she is what made "Milwaukee famous."





FANNY LEVINGS

Fanny grew up with the famous peaches of the Blue Ridge Mountains—that explains her. She is quite independent and has satisfactorily proved herself so by leaving college a year to teach. Since her return she has devoted herself to the "bizness" of study, especially in chemistry, which is her major.



CLYDE M. GEHRING

"Chief" always was a ladies' man, but for the last two years he has been especially interested in a new kind of "Jane." Clyde represents the class in both football and baseball and plays a forward in class basketball. His ambition is to become a professor in Spanish or a stage hand in the Ziegfeld Follies.



OLIVE HUFFORD

Olive seems to be the embodiment of all that is cheerful and light-hearted. At times, however, she has a wistful expression which seems to point to high ambitions which she is striving to realize. She takes pleasure in her work as in every thing else she does. Her most distinctive characteristic is her indomitable cheerfulness. She is like a flash of sunshine.



DANIEL HELPHREY

"Dan", like the famous Calvin, is a man of few words, but then, like Mr. C., too, that trait only gives him more time to do some clear, deep thinking. That is by far the most important thing about "Dan", but we might also add in an undertone that his perfect Marcelle is the envy of every girl on the campus.



CLARENCE TERRILL

"Crip" is one of the best-liked men on the campus. He is one of those people who without any seeming effort on their own part make friends wherever they go. "Crip's" specialties are eight o'clock classes and German,—though he also plays football. Altogether it would be hard to imagine a more likable personality than his.



GLADYS SNYDER

Gladys is one of our most dependable Juniors. She is president of the Y. W. C. A. this year and we're all proud of her. "Happy" was one of the Bethany delegates to the Student Volunteer Convention at Indianapolis. She is an all-round girl, having many campus activities. "Happy" is as her nickname implies—always sympathetic and always joyful. She's a real girl and we all love her for it.



WILBUR SUMPSTINE

"Sumpy's" popularity is in due proportion to his rotundity, and also in the same ratio are his capabilities. He is quite a scientist, having been assistant in Biology this year and having done creditable work in the assembling of our museum. He can sing, too, and does so willingly. In both orchestra and band he is an instrumental soloist.



LOIS SPRINGER

If Lois was suddenly to leave us, Bethany committees would be lost. For Lois might easily lay claim to the committee championship. That is because she is such a capable girl. She has been on Student Council since her Freshman year and played no small part in its business. She is also one of the best girl athletes in college. She is a splendid student and a popular girl.





LOIS WHITE

With her golden hair, her dignified stature and her classic features, Lois reminds us of a Greek goddess and she surely has a host of friends at her shrine. She is kept quite busy with all her campus activities, but she is never so engrossed in them that she cannot stop to give a smile, a greeting, or a bit of aid where it is needed. We love Lois' poetry and we expect great things from her some day in this line for, "Beautiful thoughts spring from a beautiful character."



RALPH WHITEHEAD

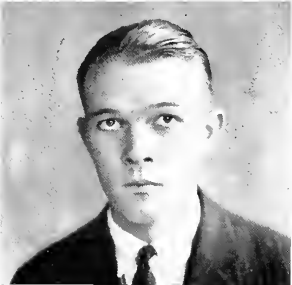
If there is any hope of greatness for anyone of our class that hope must be for "Boots." He has been pronounced an artist of even talent. He can write, too, though few of even his best friends know it. We all can testify as to his ability as an actor—as "Scrooge" in "The Christmas Carol," or when at another time when he played three roles in one evening, and played them well. For three years he has been college cheer-leader and he was the star of the now extinct tumbling team. As an actor or an artist he will go far.



BYRON W. TOWNSEND

Townsend came to Bethany from Cleveland and incidentally he believes there is no place its equal. He is a good, steady fellow and always holds the good of his college first. Besides being an exceptional student he has much athletic ability; for the past three years he has fought valiantly for old Bethany.

Lavoiser and Boyles had better arise from their graves or "By" will outdistance them in the run for scientific knowledge. We admit that Euclid will have to figure up more math to keep "Townsie" busy. Last but not least he is Kappa Delta's "Ace".



NOEL D. WELLS

That anyone could be a native of Bethany and at the same time be a language shark is ample proof that miracles still happen. Yet that is where "Noge" shines and we have even heard reports about his work in chemistry. It naturally follows that his chief activity should be in publications and so it is but he is also an athlete of no mean ability and manages to get in both varsity basketball and baseball games. Student, athlete, and greatest of all a gentleman he combines the qualities necessary for an ideal student and will leave college well prepared to cope with life's problems.

## HARRY HESS

Harry is from that village in Ohio known as Billbrooke. He is known everywhere on the campus by his ever-cheerful smile and salutation. Harry is a football player of ability but due to an unfortunate sickness this fall he was not able to play a single game. He intends to take up engineering later and we all wish him success in his ambition.



## MARGARET HUNTER

Dear, dainty and demure—these are our favorite adjectives when it comes to describing "Peg". Her grace and charm have endeared her to us. She is the girl to whom the timid Freshman turns for friendship and cheer during those first hard days in the fall. And always she gives them the assurance and encouragement they seek. Lucky indeed was Bethany when fate brought "Peg" to us, and we are mighty glad her lot is with us another year.



## HAROLD IDLEMAN

Will Shakespeare says there is nothing in a man and here is Harold to help him prove it. "Idleman" indeed! "Pope" is busier than almost any other man in the class. His brothers explain the fact that he is never at home by two things. The first is that he's a member of more committees than any other man in college—and the second has something to do with the campus walks.



## JANE LUCE

You can always tell when Jane has been into mischief by the sparkle in her black eyes. Jane is one of our athletes—being a star at basketball and baseball. She is on the Y. W. C. A. Cabinet and takes an active interest in A. L. E. and the orchestra. The fact is—you'll find Jane just everywhere. She surely has "pep." We might add that in "bizzing" we find her "Chief" interest.





LAWRENCE MURRAY

"Bud" is one of the extremely popular Murray brothers. Even if "Steve" was here a year before him he is making up for the disadvantage. He has the sincere respect and admiration of every one on the campus. As a class we have shown our estimation of him by making him Vice-President.



EDNA DEEMER

"Peck" is just the best sport possible. When we talk of her we always use superlatives. In dancing for instance—time after time we have marveled at her grace. Then, too, her clever ideas have helped all of us. Way back when we were Freshmen it was "Peck" who composed the song for us to sing to spite the "Sophs", and just this year "Peck" helped plan the most amusing vaudeville, and supplied some popular dances of her own composition.



HUGH M. MCGUIRE

"Mac" must have taken to heart the saying that the best way to learn to do a thing is to do it. At any rate he is the most industrious person in this locality. He applies his interest in Economics so well that he usually has most of the spare cash in Bethany, and his success seems certain in the larger fields to come. In addition to carrying work, studies, and activities that would keep three students of less capacity overworked, he has managed to acquire renown as a public speaker, and his brain, voice and enthusiasm have kept Bethany at the top in three debate campaigns. If the world ever needs another "Hamilton" it will find him here, and ready to serve in a way that no one else could.

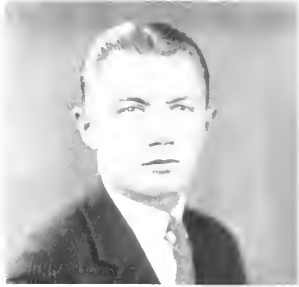


MILDRED MCCOLLAM

"Mil" is the last of the McCollam sisters and she surely lives up to the rest of that line of splendid Bethanians. She is just as fine and sympathetic as a gracious woman always is. In her Sophomore year she made quite a success of the mother in the Spanish play. This year she has been an enthusiastic worker for Merry Masquers. She is a mighty fine girl to have as a friend.

## JOSEPH R. POUR

"Joe" does not easily get angry, but it is very unsafe for one of his opponents to pull a dirty play for they will surely suffer for it. Whatever "Joe" goes into he neither does it half-heartedly, nor for selfish personal glory, but puts his whole power, physical and mental, into bringing a clean earned victory to our college. A fine pal and a good sport, he always manages to rank high in his studies. The fact that he is never without a Cleveland time-table probably explains why he seems to avoid the Bethany damsels.



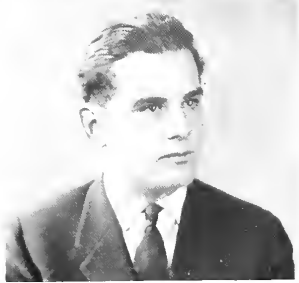
## MARGARET CALHOUN

Any class would be proud to have Margaret's name on its roll. Genius is given to few of us and Margaret is one of the few. Whoever has sat under the spell of her music can never forget this little lady of the South. Besides her music she has found time to take an active interest in class affairs and has served two years as class secretary.



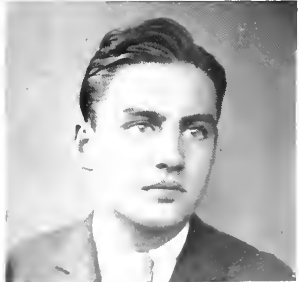
## MELVIN MACKAY

"Mac" is the biggest man in the class. He plays tackle on the varsity football team. During the Butler game his tackling prevented two sure Butler touchdowns. "Mac" comes from Cameron and is very quiet and unassuming. His ambition is to become a physician and he is already well-versed in astronomy and anatomy.



## EDWIN L. MILLER

Bull dog tenacity, brains, and a good nature makes a formidable combination. That "Eddie" will make a success of whatever he takes up, seems assured. His quiet and efficient way gets things done quickly and easily. When he lets himself go he seems actually brilliant. His foremost activity is publications but he has many others. If prophecy is permissible, we see in "Eddie" a future college president of prominence and renown.





MARJORY McCLEUR

Marjory was one of the first pilgrims to come down from Dayton to Bethany. She had barely arrived when we put her to work, and she has been working ever since. She is capable and willing and has done commendable work on the Collegian. Lately she has enlarged her list of activities to include dramatics and has been as successful there as in everything else she has undertaken. As for Marjory herself—there is a spiritual quality about her blondness that even a "pope" might well admire.



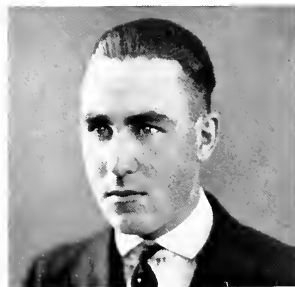
LAWRENCE A. HAMILTON

This is "Ham's" first year with us but he has well lived up to his reputation as "The Decatur Flash." "Ham" has many abilities but what we like most is his pleasing personality. After one becomes acquainted he proves most sociable and can swap stories with the best of them. Football is his principal sport and bridge his chief recreation. So far he has not succumbed to the charms of any of our co-eds but we feel sure he will not evade them long.



MAURICE MARLING

Maurice is a rare combination of business man and minister. He is one of the student preachers and fills a pulpit regularly. As for business he is Prof. Perry's indispensable assistant in the book store and has proved himself a good business man. He filled the office of news editor on the Collegian staff until his other duties gave him no time for it. All his work, whether business, journalistic or ministerial, he does well.

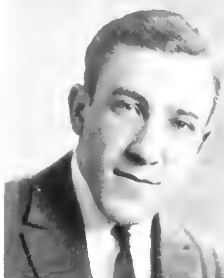


HAROLD SMITH

Harold is an earnest student and a tireless worker. He is that early bird who leaves the milk. The natural bloom of his cheeks is the envy of all the co-eds. He is always good-natured and willing "to give one a lift." The Green Bug is his delight and other people's terror. He is a ministerial student, possessing originality and good judgment.

## ROBERT I. PATTERSON

When we think of "Patty", pictures rise before us of "Patty", ball in arms, tearing down the field for a touchdown, or of "Patty" cleverly outwitting the opposing quintet by some skillful bit of play, or again "Patty" with one arm extended high above him catching a swift ball. For "Pat" is no mean athlete and has made his letter in three sports. We would like to award him another letter, too, maybe an O for his optimism or a C for cheer.



## VIRGINIA TURNER

Virginia is a girl of unusually varied interests. Being artistically inclined she is the Junior representative on the art staff of the Bethanian. She is also quite athletic, especially interested in aquatic sports. Last summer she surprised us all by doing welfare work in the slums of her home city. Last and perhaps most important is her interest in international affairs. Throughout the year she has spent a great portion of her time considering the Irish question.



## LAWRENCE PATTERSON

Coming from the metropolis of Hopedale, what else could "Pat" be, but success? He is aiming at medicine and is so interested in his career that he braved the storm of Biology. "Patty's" sidelines are women, pole-vaulting and basketball. His permanent wave is natural and greatly to be desired. If you don't believe it, ask the girl who is not as fortunate as he.



## HOLLIS TURLEY

In a most unobtrusive way Hollis has quietly but surely proved his sterling worth to us and won our friendship and admiration. He is dependability personified. As a worker he is efficient and willing but so self-effacing that he seldom receives the credit due him. He has the qualities which go to make a successful man no matter what his vocation.

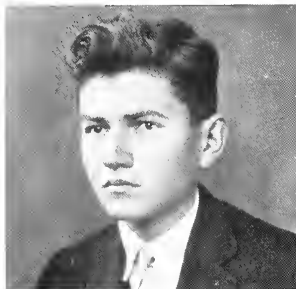




LILLIAN RAY

This young lady is forever receiving letters addressed to "Punk", Bethany, W. Va. Of course there is no question as to whom they belong for never before has there been anyone like her. As to quantity, there isn't much to her but she has warmth of affection and generosity in due proportion to the color of her hair. By the same sign, too, she is rather peppery of disposition and wit. After all she is what her friends have nicknamed her—

"Little Ray of Sunshine."



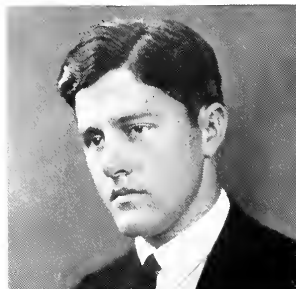
PAUL ALLEN

Paul is one of our quiet, reserved and modest men who says little but does much. He is quite an English student and his hobby is writing poetry. Much is expected of Paul before he leaves Bethany.



E. PEARL SCHWINGER

Mrs. Schwinger needs no introduction for all know her. Her genial smile and ever-readiness to lend a helping hand has won for her an enviable place in the class of 1925. Judging from her grades in English, we predict a brilliant literary career for her.



NORMAL WARD

Huntington, W. Va., sends Normal to our midst. He is an all-around man, taking part in all student activities. He indulges moderately in athletics and has a natural bent toward presidencies of campus organizations. In the springtime he looks forward to the coming of "Mae." Normal is going to devote his life to missionary work and he will surely make good in his chosen field.



## JOHN N. ADAMS

"Jack" combines all the artistic qualities that we know of. He is a cartoonist of the highest order and at the same time is our foremost jokester. Of even greater importance in Bethany life is his ability as an actor. He not only plays the leading roles but writes the sketches as well. In studies he is most interested in economics and we understand that he means to become the Morgan of Perryopolis. At any rate he is bound to make life more interesting and enjoyable for all who come in contact with him. For particulars ask "Lois".



## CHARLINE BEBOUT

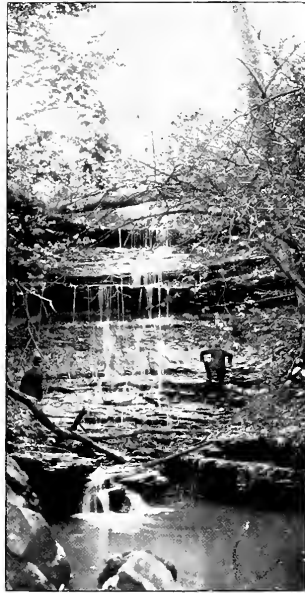
Demure and quiet, but with sparkling eyes and a winning smile—that's Charline as some people know her, chatting and giggling, full of pep and fun—that's as some others know her. But always she is sweet and kind, and always she is serving someone else. For Charline life is one adventure after another. Just ask her about the auction sale or the two cents. She has been away from Bethany for two years and we are mighty glad to have her back with us as a member of the Class of '25.



## O. E. BENNET

"Oh will old Bethany be the same" when Bennet is here no more? No. There is sure to be a vacant place which will be hard to fill. For he has spent so much time near his Alma Mater that one can not help feel how much a part of him the true Bethany spirit has become. He has chosen to serve as a "gentleman of the cloth" and has already proved his ability.







## Class<sup>3</sup>History

In the office of the registrar, you will find this entry—Freshmen class of September, 1922, one hundred and six students enrolled. This is the first recognition of our class in Bethany but we are glad to say that it was not the last. Early in the annals of the class, our representatives were found in all branches of college activities,—athletics, dramatics, publications, band, orchestra, Glee Club, and literary work. But with all these organizations, we did not forget good grades and "bizz."

We accepted our proper training from the Sophs' gentle hands and became in due time respectable college students. However, when our turn came as instructors of the green Freshies, we practiced moral rather than physical force, setting good examples before them which we are glad to say, they have profited by.

Our Freshman year passed quickly and with many joyous greetings we met again, this time as Sophomores, in the fall of 1923—only to find, however, that thirty members of the class were not there to help with the enthusiastic plans of '26. We have worked hard and willingly to make our class a credit to our Alma Mater, striving not for individual honor and glory but to uphold the standards of those who have gone before us.

So in the course of events two years of the history of the class of 1926 have been recorded. They have been years of mingled joys and trials, of triumphs and disappointments, of all the ups and downs of college life. We have now finished half of our college days, and are ready to start on the shorter half with a love for our school and a resolve to be graduated as the best class that ever left Bethany's halls.

# The Class of Nineteen Hundred and Twenty-Six

*Colors* Red and Black.

<i>President</i>	- - - - -	HOWARD HUESTON
<i>Vice-President</i>	- - - - -	GLADYS CRAIG
<i>Secretary and Treasurer</i>	- - - - -	WILLIAM HILL
<i>Historian</i>	- - - - -	EDNA WELTING

## MEMBERS OF STUDENT COUNCIL.

SHEIDA TUCK

BAYARD SALER

ALLAN DEVITT



## Sophomore Class Roll

PAUL ALLEN  
 MARIAN LOUISE BAKER  
 MARIAN BEIGHLEY  
 FANNIE BENNETT  
 JOHN C. BLAIR  
 LOUISE BLOOMFIELD  
 ROSS W. BUCK  
 LELA BURDETTE  
 GIRTON H. CARLE  
 DONALD CASHMAN  
 CHARLES G. CLARK  
 THEODOSIA RIGGS

ELIZABETH RODEFER  
 JOHN L. RUSSELL  
 BENJAMIN STIMMEL  
 SHELDON CONARD  
 PAUL CORLEY  
 RUTH COUNSELMAN  
 FLETCHER WALTHER  
 GLADYS C. CRAIG  
 RONALD E. CRAWFORD  
 DONALD WARD  
 EDGAR WARREN  
 EUGENE W. CURRENCE

EDNA WELLING  
 DOROTHY E. DARSIE  
 EDEANOR WHARTON  
 ALLAN H. DEVITT  
 GRACE C. FARABEE  
 MAURICE FOGLE  
 GERTRUDE WISLEY  
 JOHN R. SALA  
 BAYARD W. SALER  
 DEE YOHO  
 INEZ SAYRE  
 CAROLINE SWALLOW



## Sophomore Class Roll

HOWARD FORDYCE  
 FRED I. GARDNER  
 JOHN V. HARRISON  
 CONLEY HARSH  
 ESTHER HASBROUCK  
 RUTH HAYDEN  
 OWEN S. HEDDEN  
 DAVID HEMINGTON  
 FRANCIS HIBLER  
 WILLIAM R. HILL  
 HOWARD A. HUESTON

BEATRICE KANE  
 PAUL SCHAEFFER  
 DONALD SCHELL  
 HAZEL I. SCOTT  
 VINA ADAMS  
 DANIEL J. LAPORTE  
 JOSEPH LITTERDALE  
 EVERETT LOPPACKER  
 MATTHEW MADDEN  
 WILMA MONINGER  
 ANNA MANNING

FRED MILLER  
 DOROTHY MORRIS  
 MILDRED MYERS  
 KARL NATIONS  
 DELORA NEWMAN  
 GENEVA TARR  
 SHELDA TUCK  
 LILLIAN TRAUTMAN  
 THEODORE OLSEY  
 PAUL NEEL  
 WILMA MONINGER



## Class History

Hardly had Janus summoned forth September to launch out on her yearly voyage, when we, the class of 1927, gathered from near and far into the out-stretched arms of Old Bethany. Like a hare that has suddenly run out of a dark forest into the circle of a woodsmans fire, we were dazed and bewildered for a brief period by the newness of our surroundings, having been separated from all with which we were familiar to be plunged into the midst of a strang community with its new customs and ideas. Those were days of discouragement and dread. Constantly we were under the eagle eye of Sophomores, who took great delight in subjecting us to their merciless will. Soon the horizon began to brighten however, as we slowly adjusted ourselves and blended into the life of the college.

Having once found itself the class of 1927 has developed rapidly and taken an active part in the various campus activities. Not only in athletics but in social affairs the class has taken a prominent part.

As we stand now on the threshold of the future we hope to do great things for our Alma Mater in the succeeding years and trust that she will find us a valuable addition to her group.

# The Class of Nineteen Hundred and Twenty-Seven

*Colors:* Blue and Gold.

<i>President</i>	- - - - -	JOHN PAUL PACK
<i>Vice-President</i>	- - - - -	GEORGE KIRBY
<i>Secretary-Treasurer</i>	- - - - -	EMILY DOOLEY
<i>Historian</i>	- - - - -	HERMAN PATTON

## MEMBERS OF STUDENT COUNCIL.

GORDON HANNA

ROBERT SCHENCK





## Freshman Class Roll

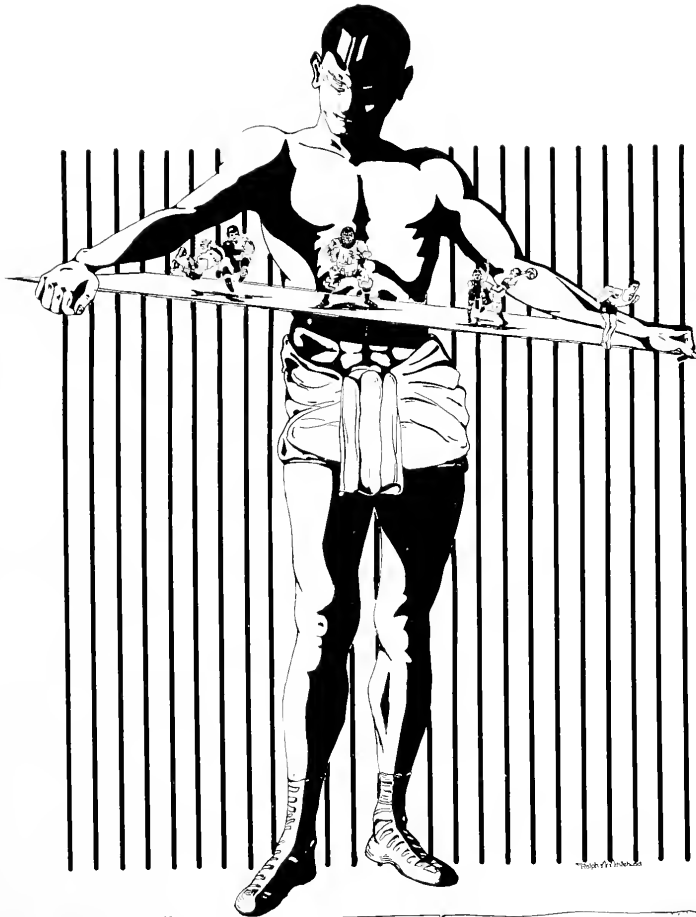
EMMA ALLEMAN  
EUGENE ARNOLD  
PAUL BAIRD  
EUSTACE BANE  
EARL BARLOW  
RONALD BARR  
ELEANOR BEIGHLEY  
KENNETH BEIGHT  
MARGARET BERGER  
JOHN CALDERWOOD  
EDWIN CANAN  
ALFRED CAREY  
JOSEPHINE CARPENTER  
CHARLES CARTER  
MABEL CHAMBERS  
CHARLES CLARK  
J. LEE CLARK  
MARY COOPER  
THELMA CORNISH  
HELEN COTTON  
GRACE DENNIS  
ALLEN DOOLEY  
EMILY DOOLEY  
EMILY JONES  
SHELLA JONES  
EDWARD KEMP  
EARL KINSEY

GEORGE KIRBY  
FORREST KIRKPATRICK  
ELMER LEWIS  
RUTH LIGON  
OLIVER LORE  
MARY LOWRY  
HOWARD MACKAY  
JOSEPH MOFFETT  
RICHARD DUNGAN  
EDWARD EISAMAN  
CHARLES ELDRIDGE  
CLARO FIZER  
FAY GARDNER  
DORA GRIFFITH  
ELIZABETH HAHN  
GORDON HANNA  
CHARLES HARTMAN  
GLENN HADDEN  
BLISS HAZARD  
RUTH HEAMINGTON  
SAM HERRMAN  
KNOWLES HOBBS  
MARY HOBBS  
FRANK HIBBARD  
WILLIAM HOUSTON  
HELEN HUDDLESTON

RUTH HUKILL  
ELMER JACKSON  
MARY JAMISON  
THELMA JOHNSON  
THORLEY JOHNSON  
WADE MAHAN  
DOROTHY MANLEY  
VICTOR MARTIN  
LOUISE MILLER  
RUTH MILLER  
CELIA MOHNEY  
EDWARD MORELAND  
HARRIETTE MYCRANTZ  
EARL MCCORD  
GRACE MCCrackEN  
RAYMOND McCLAIN  
WARREN McCLAIN  
BYRON MAHAN  
DOROTHY O'ROKE  
JOHN PAUL PACK  
HOWARD PANNDAUER  
HERMAN PATTON  
Hazel PEARLS  
HAROLD PHELPS  
WILLIAM REAGER  
WILLIAM ROBINSON

ELEANOR ROSENBERG  
GLADYS RUST  
EDWARD RYAN  
DONALD SALMON  
ROBERT SCHENCK  
REYNOLD SCOTT  
BAXTER SHAFER  
HAROLD SHAFER  
JOHN SHIVES  
WILLIS SIFTER  
SARAH STEWART  
FRANK STUCK  
KARL STONEBURNER  
WILLIAM SUMMERS  
FRANK TARR  
GEORGE TAYLOR  
MELVIN THAYER  
URSULA THOMPSON  
LETA WAINRIGHT  
RAYMOND WELCH  
HENRY WEST  
ADEL WHITE  
ARTHUR WILLIAMS  
LUCILE WORKMAN  
FRED WRIGHT  
ALBERTIS YOUNG





# ATHLETICS





## "B" MEN

### COACH EASTERDAY

Coach Easterday has held a distinctive place in the world of football. Fans will remember the days when "Katy" hit the line or made such spectacular end runs for Pitt. His tutor was the well known "Pop" Warner. For three years now "Katy" has successfully coached the Bethany team. He is well liked by the men. During the last season he was severely handicapped by injuries to the squad but nevertheless he produced a highly creditable team.

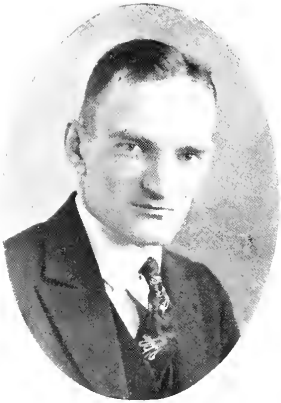


### ASSISTANT COACH KELLEY

Although this was Coach Kelley's first year in Bethany he was regarded with esteem by the members of the squad. Like Easterday, he is a protegee of "Pop" Warner's school. At Pitt he was a lineman and with that experience he was able to develop a good offensive and defensive line.



## "B" MEN



ELDER

This is "Doc's" first year as Athletic Director in Bethany. The efficient manner in which he has served Bethany in this capacity is beyond reproach. He is a Bethany man himself and has been closely connected with the athletic situation for a number of years and is thus well qualified to fill the office he now holds.



HURL

It is usually impossible for a manager to satisfy the entire team, but all the football squad had nothing but praise for "Bob" for the way he looked after their wants during the football season. He was constantly on the job and was worthy of no little praise for the efficient manner in which he performed his duties.



KELLY

PARKERSBURG, W. VA.    5 FEET, 8 INCHES    150 POUNDS

For four years Kelly has played excellent ball for Bethany. His clean sportsmanship upon the field as well as his spectacular playing have made him a great favorite of all football fans who have seen him in action. Exceptional speed and clever broken field running are notable features of his playing. Kelly has been a successful captain this season. Unfortunately his collar-bone was broken in the Wesleyan game so he could not play in the final games of his collegiate career.

"B" MEN

SHOE, MAKE

OSKALOOSA, IOWA      6 FEET, 6 INCHES      195 POUNDS

"Shoe" is probably the hardest hitting man on the squad and a mighty fighter. His being selected as all-state tackle signifies how he fills his position. He does the punting for Bethany. He makes long distances and places his punts most accurately. He is a real leader. Much success is predicted for him as captain of the Bison team next fall.



GEPFORD

DECATUR, ILL.      5 FEET, 6 INCHES      152 POUNDS

The game that "Gep" played at Butler this year may be taken as an example of his grit and spirit on the gridiron. He was knocked out twice but still he played for all that was in him to the finish of the game. "Sid" possesses in full measure those qualities necessary to a successful quarter-back—a thorough knowledge of the game and an ability to direct.



ADKINS

DECATUR, ILL.      5 FEET, 7 INCHES      180 POUNDS

While not a spectacular player, Roy is a consistent guard and has filled his place on the team admirably. He can always be relied upon to carry out his part in a play. He possesses great endurance and is a clean player. Adkins, too, graduates this June.



"B" MEN



MINGO, O

PATTERSON

5 FEET, 5 INCHES

154 POUNDS

"Patty" is one of Bethany's all around athletes. He is a three letter man and was captain of the basketball team. He always plays a consistent game at a half back position. His speediness makes up for his rather diminutive size. "Pat" was a valuable asset to the Bison team.



FAIRCHANCE, EARL

ZOOK

6 FEET

162 POUNDS

Soon after arriving this fall Earl became sick and was prevented from taking part in the pre-season training and the first few games of football. His initial appearance was in the Geneva game when he received a forward pass which resulted in a touchdown for Bethany giving Bethany the victory. "Zookie" is the first student to win his letter in each of the four major sports, football, basketball, baseball and track. He has been a great athlete and his loss will be keenly felt.



PARKERSBURG, W. VA.

FITZGERALD

5 FEET, 5 INCHES

135 POUNDS

Although small of stature, his remarkably clear head work makes "Fitz" powerful on the field. He is fine at calling signals. His pep is unconquerable. He has the ability to make men playing under his direction put their best into the game. "Fitz" graduates this year. He will certainly be missed from the squad next fall.



"B" MEN

CRANEH

FORT WORTH, TEX.      6 FEET, 1 INCH      218 POUNDS

"Cranny" would plunge through the line with irresistible force, throwing all of his two hundred and eighteen pounds into the action. He gained ground invariably. When a few yards were needed it was "Cranny" that was called upon to make them. His strong defensive work in backing up the line was also a strong feature of his playing.



MACKAY

CAMERON, W. VA.      6 FEET, 1 INCH      193 POUNDS

By persistent effort and hard work, Mackey has won himself a worthy place on the team. He attends strictly to his own part in a play and it is hard to break through his defense. His huge stature and fighting spirit make him a difficult man to stop on the offense. Mackey has another year to play and will be part of the nucleus around which next year's team will be built.



PRITCHARD

LEISENRING, PA.      5 FEET, 8 INCHES      170 POUNDS

None of them snap the ball to the backfield more accurately than Bethany's center, "Ted" Pritchard. His fighting spirit and high class defensive work also ably fit him for that position. The way in which "Ted" intercepted forward passes and got down the field under punts made Bethany a more formidable opponent for any team to meet.



## "B" MEN



## MAYER

EAST LIVERPOOL, O.      5 FEET, 11 INCHES      170 POUNDS

"Fuss" has brought fame to the Bisons. It was he who made the touchdown against the Army. Moreover he was chosen as All-State end. His equal at skillful defensive work and tackling would be difficult to find. Mayer is a man who always plays for all that is in him.



## LIDDERDALE

SANTA CRUZ, CAL.      5 FEET, 11 INCHES      175 POUNDS

Lidderdale is a stellar end. He surely can grab in the passes in great shape. His ability to break up interference is remarkable. Moreover, "Joe's" tackles are hard and effective. His spirit is indomitable. Lidderdale is capable of playing still better football than his work this year indicated, for he was handicapped the greater part of the season with an injured knee.



## TOWNSEND

CLEVELAND, O.      5 FEET, 10 INCHES      175 POUNDS

At the first of the season Townsend made a rather mediocre showing, but by his persistent effort he won for himself a solid place on the team. He is a skillful guard and has the real fighting spirit, always playing a worth-while game. He will greatly strengthen the Bethany team next fall.

## "B" MEN

## LOPPACKER

BLOOMFIELD, N. J.      5 FEET, 10 INCHES      170 POUNDS

"Loppy" always plays a good brand of football. His spectacular end runs delight Bethany rooters. He is also an excellent defensive man and tackles well. This year his back field work was much improved over last season. "Loppy" has two years yet to play. It is expected that he will bring fame to the Green and White.



## BARR

WELLSBURG, W. VA.      5 FEET, 9 INCHES      180 POUNDS

"Tubby", our left guard, has more than played the game this year. He played a worthy brand of ball during the whole season but the manner in which he finished up brought out his real football ability. Early in the season he was injured but despite his crippled condition he played brilliant football. He will be a strong man around which the team will be built next year.



## DORNBUSH

STEUBENVILLE, O.      5 FEET, 8 INCHES      185 POUNDS

If ever a man deserves commendation for persistent effort it is "Doc". For four years he has worked faithfully, and now he is a most worthy wearer of the "B". His hard playing in scrimmage and game have been a great asset in producing winning teams. "Doc" graduates this June and his cheery presence will be missed from the squad next fall.



"B" MEN



LA PORTE

ADELAIDE, PA.      5 FEET, 7 INCHES      168 POUNDS

"Dan" LaPorte showed excellent form this year. He played an exceptionally good game at Grove City. Although good on the offense he was still better on the defense. His tackles were spectacular. LaPorte has another year to play and next season he will be one of our strongest men.



CAREY

FOLLANSBEE, W. VA.      5 FEET, 11 INCHES      156 POUNDS

Although in his Freshman year at Bethany, "Al" made his letter in football. His accurate passing made him a most valuable man to the team. Carey played an exceptionally fine game at West Point. The showing that he has made this season, coupled with the fact that he has three years of football ahead of him, indicates that he should develop into a real star before leaving Bethany.



MCWHORTER

DECATUR, ILL.      5 FEET, 8 INCHES      208 POUNDS

Another of those corn-fed boys from Illinois who came East to put Bethany on the map. "Mac", because of his weight and speed, started the season at fullback. Later he was shifted to his regular position as guard. There he played a very commendable game throughout the season.

## "B" MEN

## HAMIL

WHEELING, W. VA.    5 FEET, 10 INCHES    170 POUNDS

Hamil came from Linsly Institute with an enviable record which he upheld at Bethany. He is a favorite with football enthusiasts of the Ohio Valley. His spectacular backfield work indicates that he will develop into a player of the first magnitude.



## The Season

On September fourth a squad of thirty-five candidates, some of whom were later sent to the Freshman squad for further development, reported to Coaches Easterday and Kelley to prepare themselves for one of the most difficult schedules any Bethany College football team ever faced. Their success in the undertaking may not be judged by the number of games won but by the heavy odds they overcame.

## BETHANY 0—WASHINGTON AND JEFFERSON 21

Bethany lost their opening game to W. & J. Injuries and over eagerness on the part of the new men caused the Bisons to take their worst defeat in three years.

West, the W. & J. halfback, was again the cause of Bethany's downfall. He made several long runs which resulted in touchdowns.

Captain Kelly and Shoemake played the best game for the losers, although neither finished the game. W. & J. pointed for "Shoe" and he was forced to retire late in the second quarter. Kelly was injured also and had to be carried from the field.

Two long runs, the fatal and unfortunate fumble that placed Bethany on the defensive from the very first, and the injury of several of the players reveals the tragedy of the first game of the season.

## BETHANY 6—DAVIS AND ELKINS 7

In the second game of the season, the crippled Bisons were defeated by the D & E. aggregation. Shoemake (Adkins, Kelly, Patterson and Cranfil had injuries obtained in the W. & J. game the week before and were either unable to play at all or else were severely handicapped on the field. Davis-Elkins had a fighting team and was well coached so it was not a disgrace to lose to that team by any means.

## BETHANY 7—GENEVA 0

The Bisons won their first game from Geneva. Bethany started a forward passing game in the closing minutes of the second quarter which could not be stopped by the Covenanters. A long pass to Zook, a short one to Hamil and a line buck by Cranfil gave the Green and White their victory.

The Bisons were on Geneva's goal line several times and would have had at least two more touchdowns but for fumbles. "Tom" Davies pupils constantly threatened but Bethany was able to brace herself at the critical moments.

BETHANY 0—BUTLER 16

Before a Home-Coming crowd of seven thousand people at Indianapolis, Butler avenged their last year's defeat by scoring two touchdowns and a placement kick in the final period of the game.

The Bisons held the Westerners for the first three quarters, but soon after the opening of the fourth period, Butler scored a touchdown which overthrew the morale of Easterday's men and "Pat" Page's eleven had no trouble from then on to the end of the game.

BETHANY 6—GROVE CITY 16

The Grove City eleven succeeded in forcing the Bisons down to a defeat in the annual clash and incidentally won from us for the first time in four years.

The visitors presented a fine passing team and both of their touchdowns were scored on forward passes. Bethany's only score came in the third play of the game when Mayer intercepted a forward pass and ran twenty yards for a touchdown.

BETHANY 0—WESLEYAN 0

On November 10th, Bethany played a scoreless tie with W. Va. Wesleyan. This was the first time that the Green had played a tie game for six years. The teams were very evenly matched, the Bobcats making several first downs to the Bisons five. The Bethany goal was never in danger but several times it looked like the Bisons were almost certain to score. They lacked the punch at critical times. Loppacker, Hamil, and Cranfil played the best for the Bisons. This was Captain Kelly's last game for his shoulder was injured when he was tackled while running back a punt.

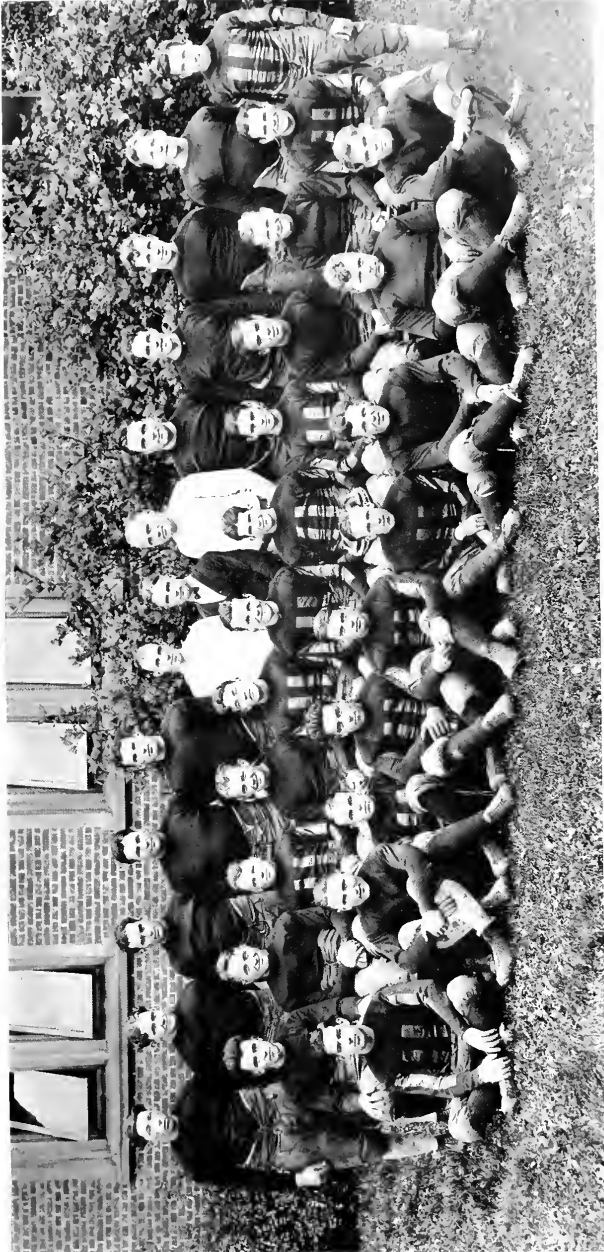
BETHANY 6—ARMY 20

If it had not been for stage fright the Army mule would now be grazing on the banks of the old Buffalo. Two touchdowns were scored in the first three minutes by the Army and from then on the Bethany crew outclassed the Cadets in every department of the game. Bethany scored seven first downs to the Army's five. Bethany scored in the second period on a blocked punt by Lidderdale which was picked up by Mayer, who ran for a touchdown. Shoemake played well for Bethany and his punting was a sensation. Carey, a Freshman, received his chance in this game and made good at the quarterback position.

BETHANY 0—WAYNESBURG 0

Bethany, in the last game of the season was held to her second scoreless tie of the season by Waynesburg. The game was played on a very heavy field and both teams were prevented from really showing anything. The Bisons were dangerous at several times but it was not until the final period that they seriously threatened to score. Here again they failed because of a lack of punch. Cranfil, Carey, Hamil and Loppacker were the outstanding stars for Bethany.

	<i>Touchdowns</i>	<i>Goals</i>	<i>Points</i>
Mayer .....	2		12
Kelly .....	1		6
Cranfil .....	1		6
Shoemake .....		1	1
Opponents' Total Score, 79		Total.....	25



1923 FOOTBALL SQUAD

## 1923 Football Record

Wash.-Jeff.	21—Bethany.	0
Davis-Elkins	7—Bethany.	6
Geneva	0—Bethany.	7
Butler	16—Bethany.	0
Grove City	16—Bethany.	6
Wesleyan	0—Bethany.	0
Army	20—Bethany.	6
Waynesburg	0—Bethany.	0





## The Season

The past winter saw Bethany starting out her Basketball season with a poor showing but as the season progressed the team staged a great come-back. At the call for candidates by Coach Easterday twenty men responded, among them four lettermen from the 1922-23 floor team. The difficulty from the beginning was to find a fifth man who would fit into the combination. By careful coaching Carl Hamil was prepared for this place but as soon as he began to work smoothly, he withdrew from college. Next Sam Herman was tried and at the beginning of the second semester Roark, a former varsity man, returned to college and he was immediately pressed into service.

Misfortune came again when Zook, star center, broke his finger in a practice game and was forced to remain out of the line-up at the end of the season. His absence was keenly felt by the team.

Although Bethany lost a majority of her games, no team ever had easy sailing with her as an opponent. Among the teams which were defeated were Waynesburg, Geneva, Duquesne, W. Va. Wesleyan and Thiel. Juniata, John Carrol, Pitt and W. and J. only nosed out Bethany by a small margin.

In the Tri-State conference, Bethany finished fourth. Captain Patterson and Zook were among the leaders in individual scoring in the district.

Credit must be given to Coach Easterday for the way he handled the team. Several times he was backed against the wall due to ineligibility and injuries but each time he managed to come through.

Next year the team will be without Zook and Gepford due to their graduation, but five letter men will be back and these men, with the aid of several members of this year's Freshmen team, should develop into a winning aggregation.

## "B" MEN



FITZGERALD

Athletic managers seldom get as much credit as they deserve for their work. Even so, we feel that "Fitz" management cannot be too highly praised. He was constantly on the job and filled his position in a most efficient manner.



PATTERSON

Captain Patterson well upheld Bethany's basketball standards by his fast and clean playing. Although formerly a guard this season he proved himself a consistent forward. His shooting has pulled the team out of many a tight place; in fact, we defeated Duquesne 29-28 because of a long shot caged by "Patty". He is also a reliable foul shooter. As captain, Patterson has shown his ability as a leader.



ZOOK

In game after game Zook showed rare ability. He dropped in almost impossible shots repeatedly. He seemed to be everywhere on the floor at once, yet with all his speed his passing was most accurate. Rarely he jumped against a player whom he could not out-tip. Earl's superb work won for him the much coveted position of All Tri-State center.

"B" MEN

GEPFORD

Though small for a guard "Gep" surely sticks to them. His remarkable quickness overcomes any advantage of large physique. He continually dropped in spectacular field goals. "Sid's" skillful dribbling is a delight to the Bethany rooters. His perfect sportsmanship makes him respected and admired by opponents as well as team-mates. Again this year Gepford was chosen for the second Tri-State team.



SHOEMAKE

"Shoe" is unequalled in breaking up the opponent's attack. He handles the ball with a grace and ease seldom seen on any basketball floor. Although he played standing guard, he often brought spectators to their feet in admiration by the perfect shots which he dropped in from behind the center of the floor.



ROARK

After being out for a year Roark entered school at the beginning of the second semester. Although the season was well under way Roark quickly adapted himself to the plays and soon was one of the strongest men on the team. A noteworthy feature of his playing was his quick and accurate shooting. His hard fighting spirit and clean sportsmanship proved him at all times a worthy wearer of the Green and White.



"B" MEN



HANNA

Hanna was one of the two Freshmen to win his "B". His playing was clean and fast. He showed remarkable ability in his guarding. Although he did not often try shooting, when he did he was usually successful. Hanna will be fine material for the team next year. Bethany expects Hanna to make a name for himself and for his Alma Mater.



HERMAN

"Sam" showed great ability in his playing this season. His shooting was remarkable, especially his long shots. Moreover, in his floor work he was fast and reliable. As this is his first year at Bethany Herman should prove a great asset to the team in the future. Surely such a man should do great things for Bethany.

# Individual Scoring

## BASKETBALL 1924

	<i>Field Goals</i>	<i>Foul Goals</i>	<i>Total</i>
Zook .....	43 .....	19 .....	105
Patterson .....	42 .....	19 .....	103
Herman .....	33 .....	21 .....	87
Shoemaker .....	15 .....	18 .....	48
Gepford .....	16 .....	9 .....	41
Roark .....	13 .....	6 .....	32
Hanna .....	4 .....	3 .....	11
Carey .....	3 .....	.....	6
Barlow .....	2 .....	1 .....	5
Loppacker .....	1 .....	2 .....	4
Neel .....	.....	1 .....	1



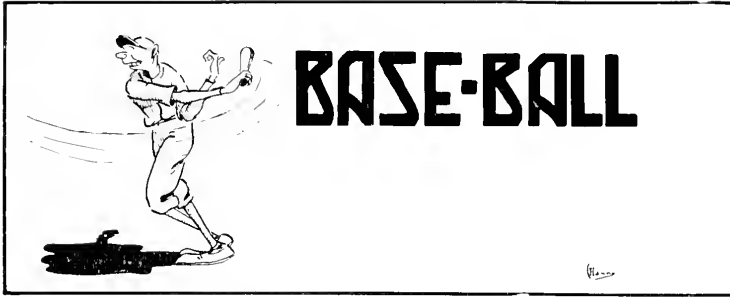
1923 BASKETBALL SQUAD

*Upper Row:* Coach Easterday, Neel, Carey, Ioppacker, Roark, Barlow, and Mgr. Fitzgerald.  
*Lower Row:* Shoemake, Zook, Capt. Patterson, Gepford, Hanna, and Herman.

## 1924 Basketball Record

Waynesburg	30—Bethany	20
Wash.-Jeff.	33—Bethany	13
Pitt	43—Bethany	32
Waynesburg	20—Bethany	29
Wash.—Jeff.	24—Bethany	18
Westminster	25—Bethany	15
Wesleyan	28—Bethany	12
Fairmont	14—Bethany	37
Duquesne	26—Bethany	22
Wesleyan	24—Bethany	28
Allegheny	31—Bethany	23
Duquesne	28—Bethany	20
Geneva	34—Bethany	14
Thiel	15—Bethany	37
John Carroll	28—Bethany	23
Juniata	26—Bethany	24
	—	—
Total	429	Total 366

Games Lost, 11—Games Won, 5



## The Season of Nineteen Hundred and Twenty-Three

When Coach Easterday issued the call for baseball candidates about thirty men reported. Ten of this group were of the previous year's squad. The new recruits furnished good material. Due to cold weather early practice was impossible; however the battery men worked out in the gymnasium in advance of the regular practice. The team made rapid progress and was soon prepared for a successful season.

The schedule undertaken was a stiff one. The most notable victories of the year were two over Penn State and one over West Virginia. In the first game with Penn State they were defeated 9-6, and the next day we absolutely shut them out, the score being 5-0. Duquesne, St. Vincent, and Juniata were among the teams who fell before the strong Bethany nine. Pitt defeated us in Wheeling by a small score. The success of the season was capped by the overcoming of the Pittsburgh Collegians at Commencement.

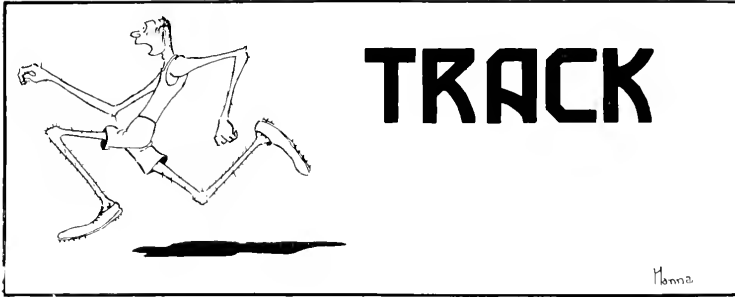
Zook, as captain, was an able leader. The Pitching staff was really remarkable; including Wells, Randolph, Pour and Fizer. It was a sensation to see Wells in action. "Randy" won the title of "Bethany's Babe Ruth", for he hit a large number of home runs. Elliott and Mathews handled the receiving end of the battery. Zook, Brown, LaPorte, and Patterson played in the infield, while "Chief" Gehring, Gill, Booth, Clark and Crawford pulled in the flies in the outfield. Much credit also goes to Jacobs, the efficient manager of the Bison team.

## 1923 Baseball Record

Bethany.....	9—W. Va. U.....	15
Bethany.....	12—W. Va. U.....	1
Bethany.....	14—Fairmont.....	1
Bethany.....	5—U. of Pitt.....	7
Bethany.....	8—Juniata.....	1
Bethany.....	9—Penn State.....	6
Bethany.....	5—Penn State.....	0
Bethany.....	2—Grove City.....	3
Bethany.....	3—Duquesne.....	2
Bethany.....	15—Grove City.....	6
Bethany.....	5—Grove City.....	6
Bethany.....	3—Pittsburgh Collegians	4
Bethany.....	8—Pittsburgh Collegians	6

Games Won, 8—Games Lost, 4





## 1923 Season

Last year Bethany put forth her first effort to produce a worthy track team. A cinder path was built around the baseball diamond and jumping pits were made. Equipment was purchased for the team and a schedule was arranged.

A dual meet was held with Morgantown. Bethany was easily defeated, but this was due to the small number of men who made the trip; in some of the events the Green and White was not even entered. The outstanding men for Bethany were: Zook, who took first place in the 220 yard dash and second in the 100 yard dash; Gill, who tied for first place in the pole vault; and Lidderdale, who performed well in the hurdles.

In the Tri-State Collegiate Meet held at W. & J., Bethany took fourth place. Zook, Helme, Wilhelm and Neel placing in various events. At the meet at the University of Pittsburgh, Neel and Gill were the outstanding men for Bethany.

The track team consisted of the following men: Zook, who performed in the hurdles and dashes; Neel, in the dashes; Moore, in the hurdles. In the middle distance runs were Idleman and Devitt. Wilhelm and Helme were the long distance runners. Gill did the pole vaulting while Pour and Allen specialized in the jumping events. Hess, Lidderdale and Kelly handled the weights and javelin.



## Woman's Athletic Association

<i>President</i>	- - - - -	LOIS SPRINGER
<i>Treasurer</i>	- - - - -	JULIA WARREN
<i>Secretary</i>	- - - - -	JANE LUCE

SARA BAKER  
MARTHA SLEE

EDNA WELLING  
ELIZABETH HUTCHINSON  
RUTH MCKINNIS

On January 7, 1922, a small group of women from the student body met to organize an athletic association for the women of Bethany College. Under the direction of Miss Sara Baker and Miss Butzer, Director of Physical Education, a constitution was drawn up.

The Association stresses scholarship as well as physical fitness and aims to develop initiative, personality and executive ability to its members.

Under the direction of the Association, tennis meets, inter-mural basketball tournaments, baseball games and swimming meets have been held.

Although young, the association holds ever greater success than formerly. The high principle of better womanhood involving physical, mental and spiritual fitness attracts girls who are interested in "Better America".







## STUDENT COUNCIL

The Student Council took up its work at the beginning of the college year with four members of the previous council in its midst. No time was wasted in getting under way. In order to have intimate contact with all phases of the life of the student body, the council was divided into three main committees, as follows: The Educational Welfare Committee, The Social Welfare Committee and The Physical Welfare Committee.

The Educational Committee successfully initiated a new chapel system whereby the president was relieved of the rather small but annoying duty of making student announcements. One day a week was given to the leadership of one of the various student activities and one day to student meetings. The work of the previous council was continued in an effort to bring Phi Beta Kappa to Bethany and it is felt that the occasion of its installation has been brought very close. Student activities were systematically arranged throughout the year on a college calendar.

The Social Committee undertook and carried through the Opening Social, Home-coming and the activities of Decoration Day, as well as assisting in various other campus social functions.

The Physical Welfare Committee practically settled the annual dissension concerning the Freshman-Sophomore scrap by discontinuing hazing and substituting a friendly supervised struggle between the classes.

To the average student who sees little of the work of the Student Council the above limited account of its activities will bring a slight appreciation of the thousand and one little ways in which it touches the life of the student body.



## The Student Council

*President* - - - - - ARLAN KELLY  
*Vice-President* - - - - - HAROLD IDLEMAN  
*Secretary* - - - - - SHELDA TUCK

EARL ZOOK	ALLAN DEVITT
MARY LOVE	BAYARD SALER
JULIA WARREN	BYRON TOWNSEND
ALLAN WILHELM	LOIS SPRINGER
ALBERT SCHENCK	HARRY HESS
GORDON HANNA	

## PUBLICATIONS.

This year has seen a growth in all lines of the publication work of the college. This has, in a large measure, been due to the efficient management of the Student Board of Publication which controls all of the student publications. Throughout the year it has been the effort of every individual connected with the business department to operate his division with efficiency and economy. The result has been a noted improvement in the type of work done. The result of this efficient organization is shown by the fact that for the first time in the five years of the board's existence it is entirely free of debt.

The student publications are the Bethanian, the Collegian and the Harbinger.

The Bethanian is the college year book and is edited to adequately portray Bethany life; to keep ever fresh in our minds the memories of college days; and to perpetuate to those, who will follow, the traditions, ideals and customs of Old Bethany.

The Collegian is the news-giving publication of the campus. It is published semi-monthly and its circulation extends to not only the student body and faculty but to many of the alumni as well.

The Harbinger was originally an alumni publication, but it has now been taken over almost entirely by the students. It is published four times during the college year and contains articles about Bethany of interest to both students and alumni.



## Student Board of Publications

<i>President</i>	- - - - -	H. GLENN CARPENTER
<i>Faculty Advisor</i>	- - - - -	PROF. R. W. GARRETT
<i>Business Manager (Bethanian)</i>	- - - - -	FRANCIS G. LOVE
<i>Business Manager (Harbinger and Collegian)</i>	- - - - -	EDWIN S. MILLER
<i>Advertising Manager</i>	- - - - -	HUGH M. McGUIRE
<i>Circulation Manager</i>	- - - - -	EDGAR L. WARREN





## The Bethanian

<i>Editor</i>	- - - - -	DONOVAN HART
<i>Business Manager</i>	- - - - -	FRANCIS LOVE
<i>Literary</i>	- - - - -	SARA CANNON
<i>Art</i>	- - - - -	JULIA WARREN
<i>Athletic</i>	- - - - -	FRANK DORN BUSH
<i>Kodak</i>	- - - - -	FLORENCE FARABEE
<i>Jokes</i>	- - - - -	JOHN ADAMS
<i>Assistant Editor</i>	- - - - -	HUGH MCGUIRE
<i>Assistant Literary</i>	- - - - -	LOIS WHITE
<i>Assistant Art</i>	- - - - -	VIRGINIA TURNER
<i>Assistant Athletic</i>	- - - - -	EDWIN MILLER
<i>Assistant Kodak</i>	- - - - -	CHARLES HALL
<i>Assistant Jokes</i>	- - - - -	MILDRED MCCOLLUM



## The Collegian

<i>Editor-in-Chief</i>	- - - - -	WILLIAM TURNBULL
<i>Associate Editor</i>	- - - - -	JULIA WARREN
<i>Associate Editor</i>	- - - - -	JOHN ADAMS
<i>News Editor</i>	- - - - -	MAURICE MARLING
<i>Assistant</i>	- - - - -	EDNA WELLING
<i>Assistant</i>	- - - - -	HAZEL PEAIRS
<i>Assistant</i>	- - - - -	BAYARD SAYLOR
<i>Sport Editor</i>	- - - - -	ROBERT SALA
<i>Assistant</i>	- - - - -	NOEL WELLS
<i>Assistant</i>	- - - - -	GEORGE KIRBY
<i>Society Editor</i>	- - - - -	SARA CANNON
<i>Assistant</i>	- - - - -	MARJORIE McCLUER
<i>Contributing Editor</i>	- - - - -	MARTHA SLEE
<i>Alumni Editor</i>	- - - - -	MISS ANNA MARY KEMP
<i>Reporters</i>	- ROSS BUCK, RICHARD DUNGAN, PAUL ALLEN, JOHN BLAIR, DOROTHY MORRIS, MAURICE FOGLE, RUTH HAYDEN, FORREST KIRKPATRICK, LOIS WHITE, MRS. E. C. SCHWINGER, REYNOLDS SCOTT.	



## The Harbinger

<i>Editor-in-Chief</i>	- - - - -	EARL B. ZOOK
<i>Faculty Associates</i>	- - - - -	MRS. A. R. BOURNE MISS VISTA CLAYTON W. KIRK WOOLERY
<i>Associate Editors</i>	- - - - -	WILLIAM HILL HUGH MCGUIRE RALPH C. LANKLER
<i>Business Manager</i>	- - - - -	EDWIN MILLER
<i>Circulation Manager</i>	- - - - -	E. L. WARREN

The Editors desire to extend our thanks to all those who have aided in the publication of this volume of the Bethanian. We are especially indebted to those merchants whose advertisements have made the annual financially possible. We are exceedingly grateful to the art department of the college for the invaluable aid and service which it has rendered in the editing of this volume.

## Y. W. C. A.

The Young Woman's Christian Association is a vital element of the religious life of the college. It is the only general woman's organization on the campus. Every Thursday the girls gather in Phillips Hall to discuss questions that are of importance to them here and in the cities from which they came. It is the purpose of the organization to live a well rounded life—spiritually, mentally, physically and socially. It is their aim to train girls to use their vote wisely and well. It keeps them in touch with national and international affairs of interest to Christian women in all nations.

A point of contact is created between upper classmen and Freshmen by the "Big Sister" plan. The interest of the older girls develops a sisterly feeling that makes the new girl know that she is a part of Bethany.

Delegates sent every year to the National Convention at Eaglesmere and the state conventions at Morgantown have kept the college in touch with national and international activities. This year a delegate was sent to the quadrennial convention held at New York City. An interesting phase in the local work is along the line of Industrial Y. W. C. A. Conventions held in Wheeling and Bethany. These meetings give the college girl an insight into the life of the working girl and best of all a knowledge of purposed legislation that is beneficial to the industrial woman.

The Y. W. C. A. stands for progress and Christian fellowship with all nations.



## Young Women's Christian Association

### OFFICERS

<i>President</i>	- - - - -	GLADYS SNYDER
<i>Vice-President</i>	- - - - -	MARTHA SLEE
<i>Treasurer</i>	- - - - -	ZELLA JENKINS
<i>Secretary</i>	- - - - -	ELIZABETH RODEFER

### CABINET CHAIRMEN

<i>Social</i>	- - - - -	JANE LUCE, CHARLINE BEBOUT
<i>Missionary</i>	- - - - -	EDNA WELLING, VINA ADAMS
<i>Prayer Meeting</i>	- - - - -	JULIA WARREN, MARY LOVE
<i>Conference</i>	- - - - -	DOROTHY DAVIS, SHELDA TUCK
<i>Membership</i>	- - - - -	MARTHA SLEE
<i>Program</i>	- - - - -	RUTH MCKINNIS
<i>Undergraduate Representative</i>	- - - - -	ELIZABETH HUTCHINSON

## Y. M. C. A.

The past college year has been one of growth and development for the Bethany Y. M. C. A. It has seen the transformation from a loose campus organization, to a well organized unit in the religious group. There has been throughout the year a constant effort put forth to interest Bethany men in a larger program for the Association.

The year's program started out with the usual opening program held in the basement of the library. From time to time throughout the year there have been called meetings of the Association.

As usual the Y. M. C. A. sponsored the Lyceum course during the past year. The Redpath Company furnished the talent, and the general opinion is that the course was a great improvement over those held heretofore.

The Association rooms in the basement of Cochran Hall have proven to be extremely popular with the men of the college. Once during the year the rooms were thrown open for the ladies of the college and they availed themselves of the opportunity to use the pool table, and the various games which have been provided for the rooms.

The Bethany Association was ably represented at the Student Convention held at Indianapolis, Ind., during the past year. President Massey was selected as the Bethany delegate, and he brought back a splendid report of the proceedings.

The outlook for the ensuing year is very bright, and the new year should see a great improvement over the work of former years. We hope that more and more the Association will make its influence felt for the upbuilding of young manhood.



## Young Men's Christian Association

<i>President</i>	- - - - -	GEORGE MASSEY
<i>Vice-President</i>	- - - - -	STEVEN MURRAY
<i>Secretary</i>	- - - - -	HAROLD S. SMITH
<i>Treasurer</i>	- - - - -	HARRY HESS

### CABINET

GEORGE MASSEY	FERDINAND KENDALL
HOLLIS TURLEY	RALPH LANKLER
FRED MILLER	NORMAN CRAWFORD
HAROLD SMITH	GERGE DARSIE
GLENN CARPENTER	CASSEL PENDLETON
HARRY HESS	





## STUDENT VOLUNTEER BAND

The Student Volunteer Band was organized May 25, 1906, with a three-fold purpose—(1) to study matters pertaining to our future work as missionaries in the foreign field, (2) to aid spiritual and intellectual growth, (3) to create and foster missionary spirit among fellow students.

The group is made up of those who have declared it their purpose to be a foreign missionary if God permits.

Three of our members attended the International Convention at Indianapolis held December 29-January 1. Bethany was represented at the annual conference of West Virginia Student Volunteer Union by five delegates, representing the Student Volunteer group, Y. W. C. A., and Christian Endeavor. The president and the secretary of the State Union were elected from our group. We learned at the conference that Bethany has seventeen out of the forty volunteers of the state. The other volunteers of the state accepted the invitation of Bethany College to hold the conference at Bethany next year.

Our meetings are held every Thursday evening at Phillips Hall. The programs have been so arranged that some time has been given to the study of foreign countries (practically Africa and India).

During the year we enjoyed two visits from Mr. Warfield, the field secretary of the Student Volunteers, Miss Lela Taylor, Student Volunteer secretary of the Church of Christ, and Mr. Johnson, one of our missionaries to Africa.



## Student Volunteer Band

*President* - - - - - NORMAL WARD  
*Secretary-Treasurer* - - - - - BEATRICE KANE  
*Chairman Program Committee* - - - GERTRUDE WISELEY

ELIZABETH HUTCHINSON	JULIA WARREN
PAUL SCHAEFER	RUTH MCKINNIS
FREDERICK METZE	PAUL ALLEN
FANNY BENNETT	ESTANIS JARAS
DEE YOH	MRS. RAY WOLFORD

Hazel Scott



## MINISTERIAL ASSOCIATION.

The Ministerial Association holds a very vital place in the student life of Bethany College. It has a membership of about sixty, including faculty members. The regular bi-weekly meetings have been especially interesting this year because of the general program that has been carried out. Several members of the faculty and other men familiar with the place have addressed the association on themes regarding the origin and history of the Restoration Movement, which centered largely in and around Bethany. Every one of these addresses brought out a number of very interesting and valuable facts, the most of which came from persons who knew intimately the founders of the institution. It was data such as can not be found anywhere in book form. Besides this series of addresses, several prominent ministers, such as W. H. Fields, of Wheeling; B. S. Johnson, of Steubenville; W. B. Taylor, of Wellsburg, and other men who are now on the field in nearby cities, have given us some real practical information on the problems which confront a young man entering his field of service.

Among other interesting and helpful activities of the association was a pilgrimage to the site of the Brush Run church, and also to the scene of Alexander Campbell's baptism. On this occasion, Prof. Carpenter addressed the group, relating many of the historical events connected with these places.

About sixteen of our student members hold regular pulpits now and several more are waiting for a call to serve. We are expecting great things for our association in the years to come.

The association worked with the faculty in planning a post-graduate course leading to the B. D. degree. This will enable the ministerial students to equip themselves in a much more thorough way, and will make it possible to reach many more churches in the surrounding communities with a great deal higher type of work than was ever before possible.



## Ministerial Association

*President* - - - - - J. B. STEVENSON  
*Vice-President* - - - - - GLENN CARPENTER  
*Secretary* - - - - - RAY M. WOLFORD

PRESIDENT CLOYD GOODNIGHT      PROFESSOR H. N. MILLER  
 PROFESSOR H. L. CALHOUN      PROFESSOR E. L. PERRY  
 PROFESSOR J. W. CARPENTER      PROFESSOR I. T. GREEN  
 PROFESSOR F. R. GAY

GLENN CARPENTER  
 E. A. JARAS  
 E. F. KENDLE  
 F. L. KENDLE  
 RALPH C. LANKLER  
 GEORGE MASSEY  
 CLARENCE MULKIN  
 KENNETH J. REED  
 D. E. SHEETS  
 S. M. SHIPPLY  
 L. B. STEVENSON  
 WILLIAM TURNBULL  
 RAY M. WOLFORD  
 O. E. BENNETT  
 M. L. MARLING  
 HAROLD SMITH  
 HOLLIS L. TURLEY

NORMAL WARD  
 HARRY WHEATON  
 PAUL ALLEN  
 GIRTON H. CARLE  
 C. S. CONARD  
 MAURICE FOGLE  
 OWEN HEDDEN  
 MATTHEW MADDEN  
 PAUL E. SCHAEFER  
 A. C. PENDLETON  
 DONALD WARD  
 FRED I. GARDNER  
 FRED MILLER  
 NORMAN G. CRAWFORD  
 E. A. GARDNER  
 THORLEY JOHNSON

JOSEPH MOFFETT  
 RAYMOND McLAIN  
 EDWARD S. MORELAND  
 JOHN PAUL PACK  
 FRANK L. STUCK  
 HERMAN M. PATTON  
 WILLIS SLITER  
 DONALD M. SALMON  
 W. A. YOUNG  
 BYRON R. MAHAN  
 THEODORE OLSEY  
 J. W. BURROWS  
 CLAYTON W. GOE  
 DAVID NEILSON  
 ELMER C. LEWIS  
 HOWARD MACKAY  
 WADE MAHAN

## LITERARY.

The history of Literary Societies in Bethany begins in 1841, the year of the college's first session. In that year the American Literary Institute and Neotrophian Literary Society were first chartered and began work on the campus. The societies were very eager and carried on a very high type of work. Rivalry was keen and this helped to hold up standards and encouraged social life at Bethany.

Shortly before young ladies were admitted to the college there was a need felt for a forensic society of ministers. The outcome was the establishment of Adelpian Literary Society. Then when the college became co-educational, the young ladies formed a society of their own, the Ossolian. For a while it flourished but there were sessions when it ceased to perform. The Adelpian Literary Society which had heretofore been somewhat of a sermonette society, now became a real literary society and admitted young ladies. The American Literary Institute followed its example and several years later Neotrophian Literary Society did also.

For several years the American Literary Institute became extinct, but three years ago it was revived and is now flourishing. This year Neotrophian is not represented on the campus and the American Literary Institute now occupies its hall.

The societies have rendered real service to the cultural life of the college. They have sent out such men as the Lamars, Champ Clark, E. O. Lovett and A. McClain. They have a wealth of tradition behind them, especially the two older societies, and a no less glorious future before them.



## Adelpian Literary Society

### OFFICERS

#### FIRST SEMESTER

<i>President</i>	-	-	-	-	-	-	-	NORMAL WARD
<i>Vice-President</i>	-	-	-	-	-	-	-	DONALD WARD
<i>Secretary</i>	-	-	-	-	-	-	-	THELMA BATES
<i>Treasurer</i>	-	-	-	-	-	-	-	INEZ SAYRE

#### SECOND SEMESTER

<i>President</i>	-	-	-	-	-	-	-	HAROLD SMITH
<i>Vice-President</i>	-	-	-	-	-	-	-	PAUL SCHAEFER
<i>Secretary</i>	-	-	-	-	-	-	-	EDNA WELLING
<i>Treasurer</i>	-	-	-	-	-	-	-	INEZ SAYRE



## American Literary Institute

### OFFICERS

#### FIRST SEMESTER

<i>President</i>	-	-	-	-	-	WILLIAM TURNBULL
<i>Vice-President</i>	-	-	-	-	-	GEORGE MASSEY
<i>Secretary</i>	-	-	-	-	-	LOIS WHITE
<i>Treasurer</i>	-	-	-	-	-	EDWIN MILLER

#### SECOND SEMESTER

<i>President</i>	-	-	-	-	-	STEPHEN MURRAY
<i>Vice-President</i>	-	-	-	-	-	FRANK DORNBUSH
<i>Secretary</i>	-	-	-	-	-	MILDRED MCCOLLUM
<i>Treasurer</i>	-	-	-	-	-	OLIVE HUFFORD

## Senior Class Song

*When in the years before us,  
Far from our dear college home;  
Memories throng around us,  
That's of our dear friendships come:—  
When we are met together,  
Recalling the scenes so bright;  
Bethany, dear Bethany, we love you,  
We love you, the Green and the White.*





# MERRY MASQUERS

Previous to the fall of nineteen hundred fourteen, the English Department of Bethany College had very successfully produced the old miracle play of "Everyman," and Shakespeare's "Midsummer Night's Dream." It was at this time then that Mrs. Bourne decided to organize a dramatic club.

In the fall of nineteen hundred fourteen she called the members of the English Department together and they organized what has become known as the "Merry Masquers Dramatic Club." The organization is one of the most outstanding on the campus, and every year gives a Shakespearean play at Commencement time. Certain places on the campus afford natural amphitheatres, and the beautiful setting with the background of hills, has been the scene of many spectacular plays.

One of the best productions given by the club was the "Tempest," played in the spring of nineteen twenty. Other plays deserving mention for the splendid acting and picturesque settings are "Ralph Royster Doyster (the first English comedy), "The Second Shepherds Play," Milton's "Marque of Comus," and Loves Labour Lost," and "As You Like It."

At Christmas time the Merry Masquers have always endeavored to give the Bethany students some pleasant attraction, before they leave school for the holiday vacation. Plays such as "An Old English Christmas" and Dicken's "Christmas Carol" have been given at this time.

The club meets regularly each month and at these meetings there is usually a modern one act play enacted and there are discussions of plays and players of today. Some of the best plays provided at this time were "Facing Reality," "Miss Civilization," "Jack o' Hearts," "Food," "The Ghost Story," and "Doris and the Dinasaure."

The new Commencement Hall will afford a better stage and the Merry Masquers expect to help buy stage equipment.

Much of the success of the club is due to the tireless efforts of Mrs. Bourne who has faithfully aided it in all its undertakings.

<i>President</i>	-	-	-	-	RALPH LANKLER
<i>Secretary</i>	-	-	-	-	SARA BAKER
<i>Treasurer</i>	-	-	-	-	SARA CANNON

## FACULTY MEMBERS

MRS. A. R. BOURNE                      MISS VISTA CLAYTON  
 MRS. H. L. CALHOUN



MERRY MASQUERS



## DEBATE.

The adoption of a heavy schedule marked a significant advance of debating in Bethany. The question for debate was, Resolved: The United States should join the League of Nations as it is now constituted.

Handicapped by a late start and a noticeable lack of experienced debaters, Professor Calhoun succeeded in moulding teams that were a credit to the school in all of the seven debates in which they participated. Next year with a large number of experienced debaters and a more favorable start even greater success is anticipated. Professor Calhoun has arranged a class in debate on the college schedule and will be a prerequisite for participation in inter-collegiate competition. This class will insure well trained, experienced debaters for the future.

The record of last year's team is enviable. On February 14, Bethany participated in a triangular debate with West Virginia Wesleyan and Salem. The negative team defeated Salem by a two to one decision and the affirmative lost to Wesleyan 3-0. On February 28, Bethany participated in another triangular debate with Marietta and Wittenburg. The negative team lost to Marietta 2-1. No decision was rendered in the debate with Wittenburg owing to a misunderstanding in the selection of judges. March 21, Bethany debated in a dual contest with Hiram College. The negative team lost and the affirmative won, both by a 2-1 decision. On March 20, Bethany sent a negative team to Waynesburg and won 2-1. The subject for debate was, Resolved: The United States should enter the Permanent Court of International Justice as it is now constituted.

### MEMBERS OF THE TEAM

HUGH MCGUIRE	THEODORE OLSEY
FRANCIS LOVE	JOHN RUSSELL
HARRY WHEATON	ELIZABETH RODEFER
PAUL CORLEY	DONALD SALMON
MAYNARD SHIPLEY	MAURICE FOGEL

EDWARD MORELAND



## The Forensic Association

The organization of the Forensic Association for the State of West Virginia has been a significant event in Bethany. This association has joined all the colleges of West Virginia into a compact efficient organization for the promotion of debate and oratory. It was organized in April, 1923, largely by Mr. Buchanan at that time professor of public speaking in Bethany.

The officers of the Bethany Chapter are:

<i>President</i>	- - - -	HUGH MCGUIRE
<i>Vice-President</i>	- - - -	RALPH LANKLER
<i>Secretary-Treasurer</i>	- - - -	SARA BAKER

# COLLEGE BAND.

Of the three years the College Band has existed, it can truthfully be said that the band this year has been the best of all. There was anything but a favorable outlook for the organization when graduation left the band minus a number of players, but the influx of new material saved the day. Due to the added strength a much better grade of music was furnished for all functions where in the band participated.

The unceasing efforts of the director, Prof. Bernal R. Weomer, are in a large measure responsible for the success of the organization. Too much credit cannot be given him.

Throughout the football and baseball seasons Bethany's athletic teams have had the support in music and cheers from these musicians. As an entertaining company they have had great success, both in formal and informal concerts. The following program will illustrate to some extent the type of music rendered:

## Program

- March—Fairest of the Fair - - - - - *Sousa*
- Overture—The Golden Sceptre - - - - - *Schlepegrell*
- Selection—Southern Melodies - - - - - *Mackie-Beyer*
- Violin Solo—
  - a Indian Lament - - - - - *Dvorak-Kreisler*
  - b Regeda Mignonette - - - - - *Friml*

### RUTH MOON MARCH

- Intermezzo—The Whistlers from the Opera Fruhlungsluft - *Reiterer*

### INTERMISSION

- March—Independencia - - - - - *Hall*
  - Selection—The Fortune Teller - - - - - *V. Herbert*
  - Volin Solo—Son of the Puzta - - - - - *Keler-Bela*
- RUTH MOON MARCH
- Waltz—Danube Waves - - - - - *J. Ivanovici*
  - Characteristic Selection—A Day in the Cotton Field - *Smith-Zublin*



## Bethany College Band

BERNAL WEIMER	- - - - -	Director
WILBUR SUMPSTINE	- - - - -	Assistant Director
ALLAN WILHELM	- - - - -	Manager

*Cornets*

ALLAN R. WILHELM	HAROLD SMITH
GLENN CARPENTER	LOUISE MILLER
KARL STONEBURNER	GRACE FARABEE
RAYMOND WELCH	WALTER CARPENTER

*Clarinets*

BENJAMIN STIMMEL	THURLOW BOOKER
THELMA BATES	JOHN GOODNIGHT
FRANCIS HIBLER	EWING WORKMAN
THORLEY JOHNSON	ROY GARY

*Flute and Piccolo*

JOSEPHINE CARPENTER

*Saxophone*

W. K. WOOLERY	PAUL BAIRD
HAROLD IDLEMAN	ELMER JACKSON

*Trombones*

W. J. SUMPSTINE	DANIEL HELPHREY
FREDERICK METZE	ERNEST KENDLE

*Basses*

BAYARD SAILER	OLIVER LOER
MATTHEW MADDEN	

*Bartone*

EUGENE ARNOLD

*Drums*

D. ERVIN SHEETS	JOHN V. HARRISON
CLAYTON GOE	

*Melophones*

HOLLIS TURLEY	EDWARD RYAN
OWEN HEDDON	RICHARD DUNGAN
WILLIAM SUMMERS	

MOO•MOO



*Colors:* Light Brown, Medium Brown, Dark Brown.

*Flour:* Buckwheat.

*Song:* "Merrily We Throw the Bull, Throw the Bull, etc."

*Coat of Arms:* None (we use a vest).

*Emblem:* Clothespin.

What did the serpent whisper in Eve's ear? What did the dove bring back to Noah to show that the flood had receded? What did Moses say to the Red Sea? How did Jonah escape from the whale's belly? Who gave Bethany their pep during football season? The answer to these questions is found in those magic words, Moo Moo Moo.

Founded upon the principle of that "pep" is the best cure for dissension, quibbling, knocking, losing teams and feeling that all men were given red blood to express it in their enthusiastic demonstrations at all college activities, the Moo Moo Moos have announced a warning "beware to those who fail to live as college men."

We have secrets so that we can tell them. We hold meetings so that we can miss them. We don't charge dues because we don't have them. We have rules so that we can break them. We have a bunch of hoodlums who'll provide the old "pep" when the others are worn out.

## On the Banks of the Old Buffalo

*My father sent me to old Bethany,  
And resolved that I should be a man,  
And so I settled down,  
In that quiet little town,  
On the Banks of the Old Buffalo.*

*On the Banks of the Old Buffalo, my boys,  
Where Bethany ever more shall stand,  
For has she not stood,  
Since the time of the flood,  
On the Banks of the Old Buffalo.*

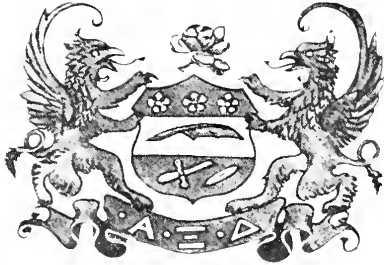
*As fresh they used me rather roughly,  
But I the fearful gauntlet ran,  
Oh, they shook me so about  
That they turned me inside out,  
On the Banks of the Old Buffalo.*

*I then sing aloud for Alma Mater,  
The green and white be ever in the van,  
With her banner raised on high,  
Bethany's name shall never die,  
On the Banks of the Old Buffalo.*





# FRATERNITIES



# Alpha Xi Delta

*Founded 1893*

*LOMBARD COLLEGE*

*Colors: Double Blue and Gold.*

*Flower: Pink Rose.*

*Official Organ: Alpha Xi Delta Journal.*

*Delta Chapter: Established 1903.*

## SORORES IN URBE

MARGARET HURT  
GARDA BACHEL

## SORORES IN FACULTATE

ANNA MARY KEMP  
HAZEL MERCER

## CHAPTER ROLL

### *Seniors—*

RUTH MCKINNIS  
JULIA WARREN  
SARA CANNON  
ROSEMARY GILLETTE  
IRENE McDERMOTT  
HARRIETT MORRIS  
MARTHA SLEE  
MARY HARDY LIGON

### *Juniors—*

LOIS WHITE  
MARGARET CALHOUN  
MARJORIE McCLUER  
JEANETTE CREW  
VIRGINIA TURNER  
LILLIAN RAY

### *Sophomores—*

INEZ SAYER  
ESTHER HASBROUCK  
DOROTHY DARSIE  
MILDRED MYERS

### *Freshmen—*

LOUISE MILLER  
ELEANOR ROSENBERG  
LUCILE WORKMAN  
ELIZBETH MYKRANTZ

### *Pledge—*

ADELE WHITE







## Zeta Tau Alpha

*Founded 1898*

*VIRGINIA STATE NORMAL*

*Colors: Turquoise Blue and Steel Gray.*

*Flower: White Violet.*

*Official Organ: Themis.*

*Theta Chapter: Established 1905.*

### SORORES IN URBE

MARGARET RYAN

### CHAPTER ROLL

#### *Seniors—*

SARA BAKER  
THELMA BATES

#### *Juniors—*

LOIS SPRINGER  
KATHERINE YOCUM  
FANNY LEVINGS  
EDNAH DEEMER  
MARGARET HUNTER  
OLIVE HUFFORD

#### *Sophomores—*

RUTH COUNSELMAN  
GLADYS CRAIG  
MARIAN BEIGHLEY  
MARIAN BAKER  
LOUISE BLOOMFIELD  
SHELDIA TUCK  
DEE YOHO  
ELEANOR WHARTON  
DOROTHY MORRIS

#### *Freshmen—*

THELMA JOHNSON  
ELIZABETH HAHN  
EMMA ALMANN  
ELEANOR BEIGHLEY  
RUTH HUKIL  
HELEN HUDDLESTON







# Kappa Delta

Founded 1897

VIRGINIA STATE NORMAL

Colors: Olive Green and White.

Flower: White Rose.

Official Organ: Angelas.

Sigma Xi Chapter: Established 1923.

## SORORES IN FACULTATE

JESSIE ACKER

## CHAPTER ROLL

### Seniors—

XANTHA COOK  
 FLORENCE FARABEE  
 MARY LOVE  
 ELIZABETH HUTCHINSON

### Juniors—

DOROTHY DAVIS  
 JANE LUCE  
 GLADYS SNYDER  
 JEAN WHITNEY  
 CHARLINE BEBOUT

### Sophomores—

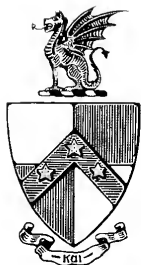
LILLIAN TRAUTMAN  
 CAROLYN SWALLOW  
 VINA ADAMS  
 GRACE FARABEE  
 RUTH HAYDEN  
 BEATRICE KANE  
 ELIZABETH RODETER  
 EDNA WELLING

### Freshmen—

GRACE DENNIS  
 HELEN COTTON  
 JOSEPHINE CARPENTER  
 MARGARET BERGER







# Beta Theta Pi

Founded 1893

MIAMI

Colors: Pink and Blue.

Flower: American Beauty Rose.

Official Organ: The Beta Theta Pi.

Psi Chapter: Established 1860.

## FRATRES IN FACULTATE

W. K. WOOLERY  
C. V. ELDER

H. N. MILLER  
WILLIAM LATTO

## CHAPTER ROLL

### Seniors—

ARLAN KELLEY  
EMMITT FITZGERALD  
ROBERT HURL  
EDWIN WELLS  
SIDNEY GEPFORD  
ROY ADKINS  
LAWRENCE HAMILTON

### Pledges—

HOWARD PANNEBAKER  
WARREN MCLEAN  
EDWARD KEMP

### Juniors—

JOHN ADAMS  
GEORGE ELLIOTT  
JOSEPH POUR  
BYRON TOWNSEND  
HUGH MCGUIRE  
A. C. PENDLETON  
EDWIN MILLER  
KYLE McWHARTER  
NOEL WELLS  
D. J. LAPORTE

### Sophomores—

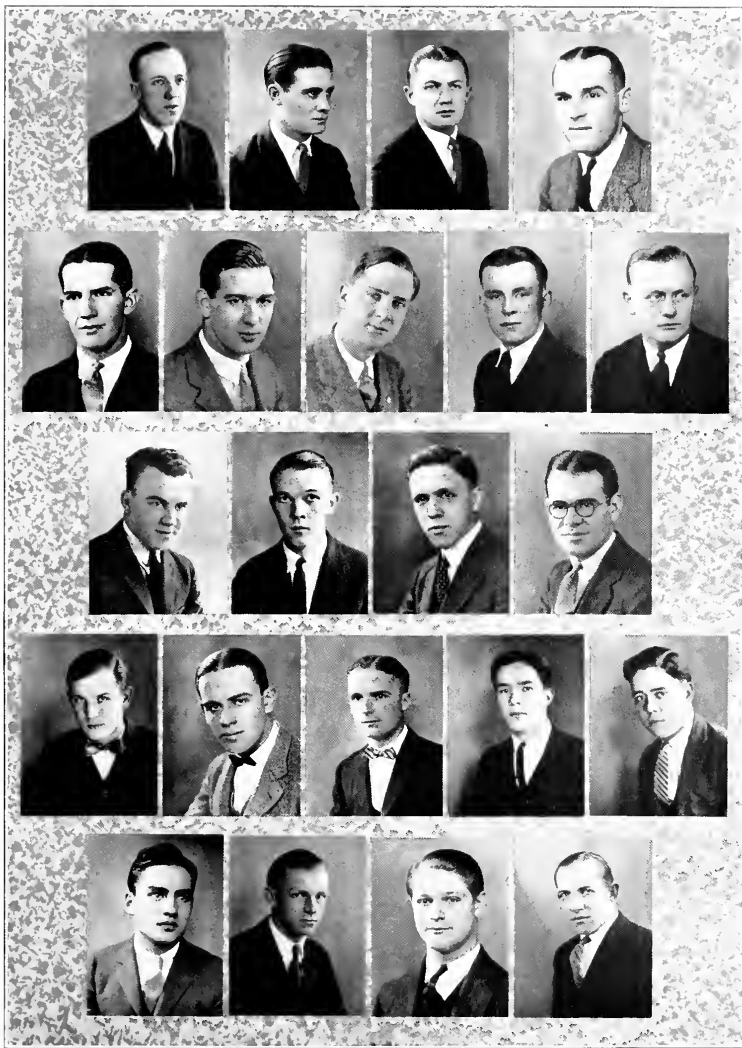
JOSEPH LIDDERDALE  
EVERETT LOPPACKER  
NORMAN CRAWFORD  
EDGAR L. WARREN  
E. C. CURRENCE  
GEORGE ROARKE

### Freshmen—

FORREST KIRKPATRICK  
RAYMOND McLAIN  
REYNOLDS SCOTT  
EARLE BARLOWE









## Sigma Nu

*Founded 1869*

*VIRGINIA MILITARY INSTITUTE*

*Colors: Black, White, and Gold.*

*Flower: White Rose.*

*Official Organ: The Delta.*

*Epsilon Chapter: Established 1883.*

FRATRES IN URBE

MAC RYAN      J. F. RYAN

CHAPTER ROLL

*Seniors—*

GEORGE MASSEY  
RALPH LANKLER  
DON HART  
ALLAN WILHELM  
STEPHEN MURRAY  
ERVIN SHEETS

*Pledges—*

FRANK TARR  
WILLIAM HAMIL  
KNOWLES HOBBS

*Juniors—*

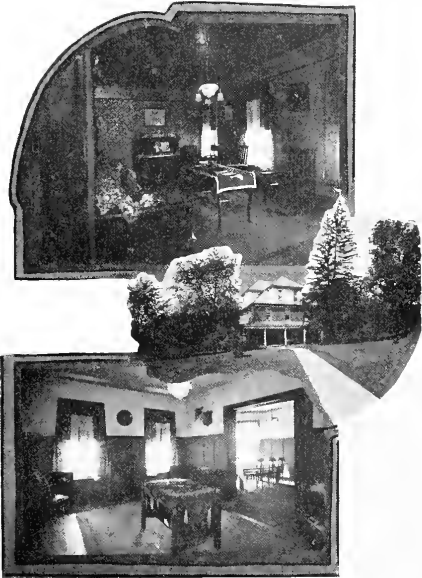
HAROLD IDLEMAN  
LAWRENCE MURRAY  
WILBUR SUMPSTINE  
DANIEL HELPHREY  
ROBERT PATTERSON  
CLARENCE TERRILL

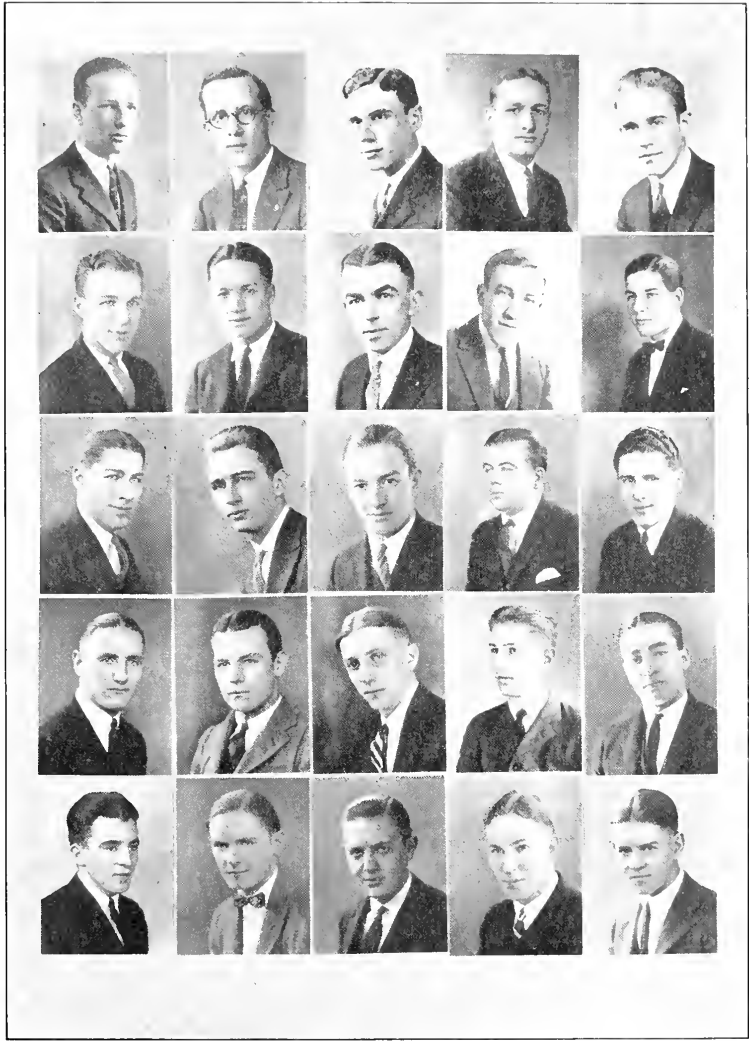
*Sophomores—*

ROBERT SALA  
DAVID HEMMINGTON  
WILLIAM HILL  
JOHN HARRISON  
NELSON BURNS  
THEODORE OLSEY

*Freshmen—*

GORDON HANNA  
PAUL NEEL  
ALFRED CAREY  
DONALD SALMON  
GEORGE KIRBY  
EDWARD MORELAND  
JOHN PACK  
HAROLD SHAFER  
J. LEE CLARK







# Kappa Alpha

Founded 1865

WASHINGTON AND LEE  
UNIVERSITY

Colors: Crimson and Old Gold.

Flowers: Old Rose and Magnolia.

Official Organ: Kappa Alpha Journal.

Beta Beta Chapter: Established 1903.

## CHAPTER ROLL

### Seniors—

FRANCIS LOVE  
GLENN CARPENTER

### Juniors—

CLYDE GEHRING  
DONALD SCHELL  
MELVIN MACKEY  
CHARLES HALL  
HAROLD SMITH  
NORMAN WARD

### Sophomores—

BAYARD SALER  
PAUL SCHAEFER  
DONALD CASHMAN  
DONALD WARD  
FLETCHER WALTHERS  
KARL NATIONS  
BENJAMIN STIMMEL  
FRANCIS HIBLER  
JOHN RUSSELL

### Freshmen—

CARLO FIZER  
WILLIAM THAYER

### Pledges—

KARL STONEBURNER  
RAYMOND WELSH  
SAMUEL HERRMAN  
JOHN CALDERWOOD  
KARL McCORD  
WILLIAM SUMMERS







# Phi Kappa Tau

*Founded 1906*

*MIAMI UNIVERSITY*

*Colors: Harvard Red and Old Gold.*

*Flower: Red Carnation and Old Gold.*

*Official Organ: Side Lights.*

*Phi Chapter: Established 1923.*

## FRATRES IN URBE

ELTON SCHWINGER  
CARL C. FRANCIS

## CHAPTER ROLL

### *Seniors—*

FRANK DORN BUSH  
WILLIAM TURNBULL

### *Juniors—*

LAWRENCE PATTERSON  
HARRY HESS  
HOLLIS TURLEY  
GEORGE DARSIE

### *Sophomores—*

JOHN BLAIR  
CHARLES CLARK  
RONALD CRAWFORD  
ALLEN DEWITT  
CONLEY HARSH  
HOWARD HUESTON

### *Freshmen—*

PAUL BAIRD  
WILLIAM HOUSTON  
ELMER JACKSON  
EARL KINSEY  
CHAUNCEY SHIVES  
HAROLD PHELPS

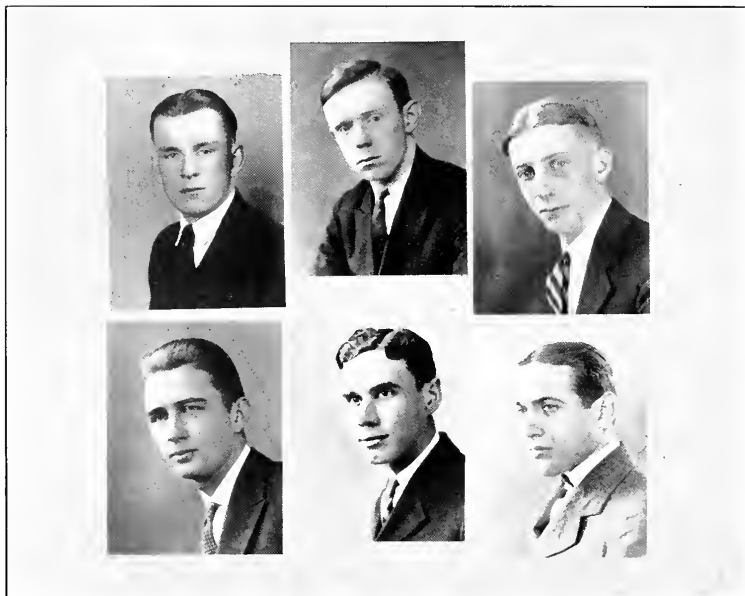
### *Pledges—*

EUGENE ARNOLD  
EDWIN CANAS  
RICHARD DUNGAN  
HERMAN PATTON  
ROBERT SCHENCK  
GEORGE TAYLOR



BETHANIAN





## Tau Kappa Alpha

(ORATORS AND DEBATERS)

*Founded May 13, 1908, at Indianapolis, Ind.*

Eligibility to membership requires active participation in Inter-Collegiate Forensics.

*Colors:* Light and Dark Purple

*Official Periodical:* The Speaker

*Number of Active Chapters:* 45

*Bethany Chapter:* Established 1917

### FACULTY MEMBERS

PROF. H. N. MILLER

PROF. J. W. CARPENTER

### MEMBERS

RALPH LANKLER

THEODORE OLSEY

HUGH MCGUIRE

EDWARD MORELAND

FRANCIS LOVE

DONALD SALMON

JOHN RUSSELL



# Alpha Phi Epsilon

HONORARY LITERARY FRATERNITY

*Established 1917, at University of Tennessee, Knoxville, Tenn.  
Rho Chapter established at Bethany 1921.*

## FACULTY MEMBERS

PROF. A. R. BOURNE

PROF. H. L. CALHOUN

## MEMBERS

D. IRVIN SHELTS	WILLIAM TURNBULL
ROSEMARY GILLETTE	XANTHA COOK
MARTHA SLEE	RAY WOLFORD
SARA CANNON	DOROTHY DAVIS
IRENE McDERMOTT	LOIS WHITE
JULIA WARREN	HOLLIS TURLEY
SARA BAKER	EDWIN MILLER

HAROLD SMITH

# Alpha Alpha Epsilon

*Established May 9, 1921, at Bethany College, W. Va.*

Eligibility to membership requires at least one year upon the staff of one of the student publications and the appointment to an editorship.

## FACULTY MEMBERS

MRS. A. R. BOURNE

MISS VISTA CLAYTON

PROF. W. KIRK WOOLERY

## STUDENT MEMBERS

DONOVAN HART

MARTHA SLEE

JULIA WARREN

WILLIAM TURNBULL

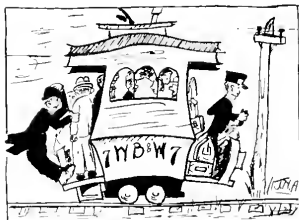
SARA CANNON

JOHN ADAMS

EARL ZOOK



SEPTEMBER

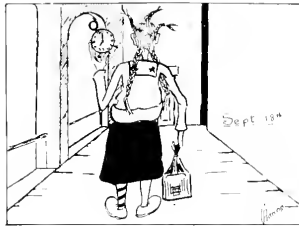


- 11—On to Bethany via Toonerville (speed) limited.  
 12—We matriculate with many misgivings.  
 13—Hurrah, nothing but work for another nine months.  
 14—Weimer's horn tooters have their first workout.  
 15—Business picking up. Gibson's rejoice.  
 16—Church day—Bizzing in season once more.  
 18—Four locks with a grip on time. (Reverse English).  
 20—Cheer leader try-outs.  
 23—Upper classmen *rush* around.



- 24—Miss Morris says light eating and good table manners are necessary qualifications this year.  
 25—"Red" Turnbull gets the Collegian started.  
 27—"Doc" Cramblet says we "gotta" have lots of pep.  
 28—Z. T. A. pajama parade.  
 29—W. & J. 21-Bethany 0. First moral victory.  
 30—Sunday. Everyone lies in bed and rejoices at being away from home where church attendance was compulsory.

OCTOBER

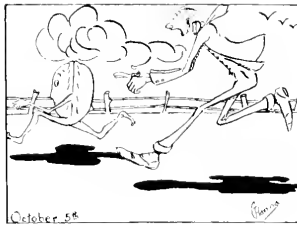


- 1—Prof. Weimer's Freshmen hunt botany specimens for next June.
- 4—We get back to normalcy. Rushing and pledging all over.
- 5—The squirrels of the college urged to carry their nuts away in bags. (Chapel talk). "Doc" says we "gotta" have the old pep.
- 6—Bethany drops a heartbreaker to D. & E. 7-0.
- 9—Prexy orders dogs out of chapel.
- 10—"Sheets" and "Peck" reorganize
- 12—"Doc" says we "gotta" have lots of pep. Gallagher and Sheen in chapel.
- 13—Bethany beats Geneva 7-0.

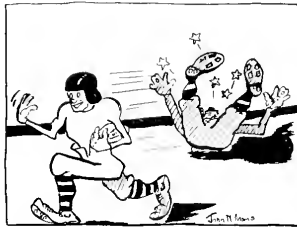


- 16—Prof. Miller gives his penitentiary experiences in class.
- 18—The Butler pilgrimage begins. Hart goes by way of Columbus. There's a reason. "Doc" says we "gotta" have lots of pep.
- 20—Bethany cracks in the last quarter. Butler wins 20-0.
- 23—Collegian meeting. Turnbull there.
- 27—Phi Kappa Tau installation.

NOVEMBER



- 1—McClain and Russell disagree.
- 2—McClain presents Russell with a pair of socks.
- 3—Peace.
- 5—Bungling Bros. Circus.
- 8—"Doc" says we "gotta" have lots of pep.
- 9—Home-coming. Many back. Bethany 0-Wesleyan 0.
- 12—Bill Latto starts a harem.
- 16—Alpha Alpha Epsilon initiation.
- 18—C. E.'s put on dramatic production.
- 23—"Doc" says we "gotta" have lots of pep.



- 24—Not enough pep. 0-0 tie with Waynesburg.
- 26—Neotrophian gives one last kick and dies.
- 28—Prexy again asks dogs to stay out of chapel.
- 30—"To Have and To Hold" at the Palace. Lois and Jack-By. and Grace occupy choice seats.

DECEMBER



- 1—Bethany goes to see "The Fool."
- 2—Mary Hardy has a bridge party. Bethany is shocked.
- 6—Lankler stops history class to tell what a pretty baby he was.
- 8—Pack and Hanna begin stepping out with the ladies.
- 10—Twenty-five degrees about outside and ten below in the chapel.
- 11—Thermometer taken outside to keep it from freezing.



- 15—We leave for home with many Christmas visions.

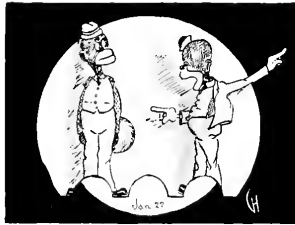
JANUARY

- 2—Back to Bethany amid the usual downpour.
- 3—How grand it is to go to classes again.
- 4—Denton McCormick comes to spend a week at the Alpha Xi House.
- 5—Denton and Jeannette stroll.
- 6—Six below zero. Jeannette strolls with Denton.
- 7—Same story only colder than ever.

- 9—The annual Bethanian staff meeting is held.
- 11—(At the movie)—"Crip Terrill's Nose" running all week.
- 13—Gladys Craig returns. Elliott much in evidence at the Z. T. A. House.
- 15—Jack Harrison gives his philosophy of "If I'm one you are to."



- 16—Be careful Prof.—Cats carry tales.
- 18—Rosemary comes to breakfast for the first time this year.
- 21—Crawford takes Mykrantz skating. She falls for him. Bud looks on.



- 22—"Clarence" Lankler and "Clyde" Hill—on the black list.
- 24—New rooks, blue looks and blue books.
- 26—Cramming begins.

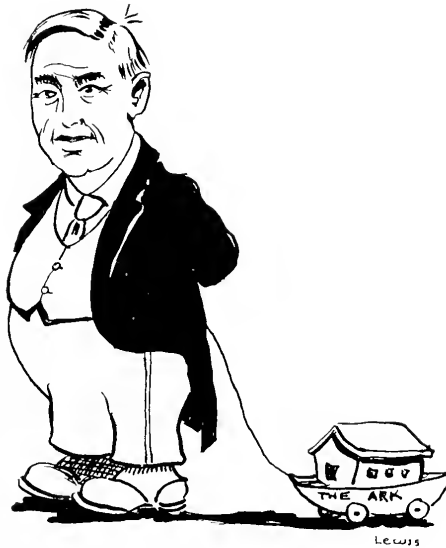


- 29—Exams today. Ministerial students study to beat Hell.



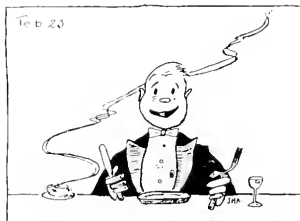
FEBRUARY

- 2—We shudder as the grades go home to Dad.
- 3—Joe Flunk'em Out bats 500%.
- 4—Adele White arrives. Great commotion.
- 5—Registration Day. Unready for another grind. Bill Hill meets cars and qualifies as the best "baggage smasher."



- 10—Calhoun—"Now Mr. Hamil, who built the ark?" "Don't you Noah?"
- 11—Annual masquerade. "Judy" captures first prize.
- 16—Adele says she has to wear gloves to keep the chaps away.
- 22—George Birthington's Wash-day. Frats cut classes to celebrate Gen. George Delaware's Washing the Crossing.
- 23—Home-coming. Vaudeville, Band Concert, Initiation and an alumnus returns.

## MARCH



- 1—We begin counting the weeks until Easter.
- 2—Adele takes Terrill to church. His first trip in two years.
- 5—Prof. Green cuts chapel. Senior attendance below par.
- 6—Basketball tourney begins.
- 7—Annual fraternity house parties are held.
- 8—Follansbee and Alf Carey win the tourney.
- 10—Olive Hufford orders Dan to keep his hands in his pockets.
- 12—Eddie Wells talks about "me and Ty Cob."



- 18—Strong March winds and we have Ladies' Day on the campus.
- 20—"Betty" too young. "Bud" limited to one date a week. Curses!
- 24—Rosemary arranges hand shaking party. Guests (Prof. Hering and sister) fail to appear.
- 25—Prof. Gay gives out several links of sausage.
- 28—More links.

APRIL

- 1—Prof. Perry discourses on Phoenix sox, Phoenix underwear, Phoenix, Arizona, Phoenix, etc. All Fool's Day.



- 2—Prexy bootlegs a lecture on the art of bootlegging.  
 3—Dog catchers out. Gibson's offer specials in hamburgers.  
 5—The oldest living fossil talks on fossils and incidentally pulls some more stale jokes.  
 6—Rev. Robertson visits chapel and digs up the family skeleton of some of our professors.  
 10—Mrs. Bourne decides the new Commencement Hall stage is too small for the Merry Masquers. Prof. Cramblet asks who ever asked them to give a play there.  
 14—Hair bobbing epidemic—"Bicky" Kane first victim. Paul Shae'er weeps.  
 15—We wait for Easter Vacation to arrive.  
 18—The day finally arrives. Bethany about deserted.



# Advertisements

The business houses represented in this section have thus indicated their interest in Bethany College. This interest should be mutual between students and merchants. Support Bethany publications by patronizing these advertisers.

THE EDITORS.

# The Bethany Hairbringer

Vol. I

No. 1

E. B. ZISC, *Editor*

*Associate Editors*

HILL BILLY

U. MUD MIRE

*Circulation Manager*

E. LOVEST WARM

## TABLE OF CONTENTS

BEGINNING HALL

BETHANY MOVIES

THE FOURTH ANNUAL TORMENT

WHY IS ATHLETICS

COLLEGE SQUINTS

SENIOR CLASS PRESENTS FLAG POLE

TROPHY ROOM

CURRENT HISTORY CLUB

CHAPEL NOTES

WAISTS AND STAYS

JOKES

## SUBSCRIBE NOW

This is a paper with a growing future. It has struggled valiantly since the time of Alex I. but in the past, due to the existence of so few bald heads and so many powdered wigs, it has had a bitter fight to keep a-head. However, under the present college administration we are urged to keep as much in, as on our heads.

So come on, gang, and let's supporter so we can have another spasm next year.



## COMMENCEMENT HALL

As Cicero was dated up for the whole month of June, our administration had a hard time seeking some other alumnus, prominent in public life, to administer the solemn advice to our senior "goofs". It was fortunate, however, in securing Dr. O. L. Lovem, president of Lice Institute, Hugen, Laxes.

He administered his oration in the new Beginning Hall, which, after twelve years of ceaseless and untiring effort has been completed. Besides being an edifice of magnificence and everlasting durability, the structure is modern in every respect.

The lobby is spacious and very appealing. The walls are beautifully decorated in a tobacco brown and two elevators will run continuously from the first to the third floor.

An orchestra pit should be of special advantage to any musical programs which are given. A concrete barrier four feet high is being placed so it will separate the audience from the howling crowd. Prof. Weimer ordered this done so that there would never be another turnip throwing contest such as occurred during the last band concert when several of the so-called musicians narrowly escaped permanent injury.

The auditorium, being large and spacious, will offer special inducements for the bizz couples who will now flock to the movies rather than—stay in their rooms and study.

The stage is very large and will offer a splendid place where all entertainments may be given. It is reported that the stage is too small for any productions of the Merry Masquers but the use of the hall is to be limited to only worth-while productions anyway.

The completion of this work will fill a long felt need in Bethany and it will no doubt add considerably to our campus.

\* \* \* \* \*

## BETHANY MOVIES

Anyone who has gone through Bethany College and has never attended one of her movies really can't imagine how much of their education has been sadly neglected.

Bethany movies serve several purposes. For instance, the educational purpose due to highly educational pictures, such as "The Nut." It is plain to all that there are many helpful points in a picture like this for those of Bethany. Then the movies serve the purpose of a weekly current event publication on "Bizzness" for it's there you see whose with whom; why he brought her instead of the other one; why she is with it and not him, etc., etc. Really such knowledge is necessary for

one wanting to keep up to date. Then, of course, there's another purpose which the movies serve—but—well—we'll let the Dean find out for herself.

If you were ever able to pull your attention away from the picture long enough to notice the people about you, didn't you recognize these characters?

Behind you sat Miss Flinn, Miss Acker, and Miss Kemp, who always just "live right in the picture." You are startled by the squeals and clutchings at the back of your chair as the hero rescues his lady love from a watery grave, or amused in a superior way at the amorous sighs at the final embrace. Well, leap year isn't even half over yet.

In front of you sits Prof. Leitch and daughter Katharine. Of course having been raised on Psychology it is perfectly natural for her to loudly demand "Why did that villain's cerebrum fail to function sanely when he saw the doll in the embrace of the hero?" Of course the response sounded like some kind of initiation.

Beside you sit Dorothy O'Roke and Beatrice who are having raptures over the hero's eyes. You cannot help but overhear bits of their conversation which consists mainly in criticisms on the acting of the heroine, and what they would do in her place. It is unanimously agreed that "She is a perfect dumbbell, and he, too sweet for words."

The remainder of the crowd is composed of couples who of course do not bother you except for a fair damsel's occasional call for the chaperon.

\* \* \* \* \*

#### FOURTH ANNUAL TORMENT

Bethany's Fourth Annual Torment was held in the Irvin Gym March 6-8, and the usual discomfort was enjoyed by all. The High School kiddies flocked in from miles around and were safely tucked in on the gym floor bed every night, that is those that got tucked in. The rest? Well, according to "Prexy", (and we would like to know how he found out) went carousing and singing about THE STREET all night, either accompanied or unaccompanied and as a result the "Follansbee Aggregation" was the victor, and copped all the spoils. (N. B. There wasn't anything but spoils left.) For days before the Torment started the cry, "Perry's in," was heard all over the campus. They must have expected to take the prizes home before the crowd got here, but the vigilant "Shiek Elliott" was too clever for the boys for he kept his eagle eye on the silverware constantly.

Idleman managed the sales booths to perfection and made the bookstore profits look like a child's savings account, but still he was not satisfied with the graft game and even got so bold as to state that he could have gotten away with twice as much. Several of the youngsters were also heard to remark that they had spent all the cash they had been saving since last year on one bottle of pop.

The crowd was the biggest ever seen in this part of the state and packed the gym so full that the players couldn't even get on the floor. It was a struggle for



the survival of the fittest and some of the coaches, former stars of college teams, were bettered by the mob and were lucky to get on the bench to say nothing of the tattered condition of their suits.

Kirkpatrick made himself a general nuisance trying to sell programs that could not even be given away, while other students made themselves as conspicuous as possible.

Saturday night after the prizes were awarded and an inventory was taken it was discovered that some of the students in Bethany were the only losers.

\* \* \* \* \*

### WHY IS ATHLETICS?

BY AN OLD CRAB

Only he who has never participated in Athletics has any right to lay in bed till ten o'clock in the morning and figure out a way to get these sport kings "Out of sight and out of mind." Athletics are all right in their place, but there is no place for them. Prexy says we should have no problems when we leave these "Classic Halls," but I say we should and the first problem of every he man should be, "How can we, as men, get rid of this abominable nuisance, viz Athletics."

Sports of all kinds will soon run all us good men out of business. Take any athlete for an example and compare his grades with ours and in almost every instance you will find he has as high grades if not higher than we and yet he has not nearly as much time to sit around the fire and roast his shins and the other fellow as we have. I ask you what are we to do?

When the Preachers leave on Saturday, you never see a group of enthusiastic students down at the car line to yell for them. Why is it? Again I ask you, why is it?

\* \* \* \* \*

### THE SENIORS YEAR BY YEAR

Freshmen—"In order to expedite matters."

Sophomore—"Get the import, export, and purport." (puff)

Junior—"In the parlance of the street."

Senior—"It will be necessary to revamp."



## COLLEGE SQUINTS

## SENIOR CLASS PRESENTS FLAG POLE

While the Seniors were in a deadlock as to whether a barbed wire fence around the sun dial or a gilt weather vane on Pendleton Heights was the most practical gift to their Alma Mater, President Goodnight rushed to the rescue and stated that they must give a Flagpole as a suitable memorial to the Institution and one that the plodding students of Bethany can look on with admiration for all the years to come, and furthermore it would serve as a reminder of the fact that we are still within the realm of the grand old U. S. A., though he does not deem it necessary to give a holiday while the rest of the Nation pays tribute to her great men or celebrates important events in her history.

However, "It is altogether fitting and proper, "that a stick of some description should adorn our beautiful campus and a flag pole is something of long-felt necessity as it is so hard to get a flag without a pole to go with it. Had it not been for this last fact a flag could easily have been purchased for one of the eight poles that adorn our campus already, two of which have rusted out, while the rest have lost their rope and the flags have been lost. The only time the flag ever fluttered in the breeze from these poles was the day they were put up and allowed to stay up until they blew down. However, as Prexy has stated on all previous occasions, "The old order of things are bound to change from now on and the new pole will be in constant use as long as the flag will stand the test of time."

\* \* \* \* \*

## WHAT WE SEE DAILY

*First we see Adele and "Cup",  
Sure proof that love is blind;  
For "big nose" walks six feet in front,  
And Adele is a little behind.*

*Now Joe and Eleanor love to stroll,  
Among the hills and dales;  
We often wonder if she does  
The dance of seven veils.*

*But Genie is old Cupid's slave,  
Most all have some good hearts;  
And so he loves to trot around  
With little "Baby" Bates.*

# Prevent Fires!



## CLEAN UP RUBBISH INSTALL EFFICIENT FIRE PROTECTION

Fires are always apt to start in heaps of rubbish. Do your share to prevent fire loss by disposing of them.

Most fires can be stopped in their early stages by fire extinguishers and chemical engines.

We are agents for American-LaFrance Extinguishers and Chemical Engines. Built by the world's largest manufacturers of fire apparatus. Let us tell you how it will help reduce your fire hazard.

B. E. ADAMS & SON



## "Crone is Known"

FOR

YOUNG MEN'S CLOTHES AND FURNISHINGS  
OF QUALITY

# MAX CRONE & CO.

1312 MARKET STREET

WHEELING, W. VA.

### TROPHY ROOM

At last the trophy room in the Irvin Gymnasium is to be used to keep trophies in. This startling announcement was made by "Doc" Helder in columns of our contemporary publication, "The Collision," the issue of February 30. The announcement as it appeared in that paper is as follows:

"The trophy room in the Irvin gym will be used henceforth as such, but as we have no trophies we are asking all the students having medals, loving cups, old toys, or cuspidors, to bring the same to the Athletic Director's office so that a complete collection may be made by Commencement week. Remember that this is your school and you cannot do too much for your Alma Mater's honor and glory. If you have none of the above mentioned articles, bring anything you can get your hands on or may be ready to dispose of. A good, old suit would be greatly appreciated if it is not too old for the use of any of the men connected with the college, but don't delay for we will accept anything from old sweat jerseys to empty olive bottles. Above all, remember that anything you can give will be a constant reminder to future generations of your love and devotion to your Alma Mater.

So far the collection consists of a gridiron, a baseball diamond, an old basketball and an endowed chair for the relief of Ministerial students, and Prof. Hunter's gray suit.

\* \* \* \* \*

### WE HAVE LEARNED WHY THE CORN IS SHOCKED IN OCTOBER

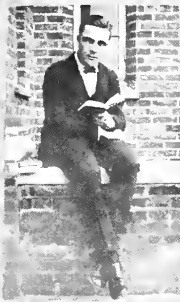
*The hills lie naked in the breeze,  
The meadows are unfrocked;  
Bare are the limbs on all the trees,  
No wonder the corn is shocked.*

\* \* \* \* \*

### A REVISED ECHO OF THE TOURNAMENT

*Rinky, dinky, shady town.  
W'hat can keep "Fat" Eisaman down?  
Diet, diet, diet.*





"Buffalo"



"Sheiks" ..



## CURRENT HISTORY CLUB

In the early part of November, Prof. Wooley made the startling announcement in chapel that a Current History Club would be formed for the purpose of discussing all the mighty problems of the day, thereby being of invaluable worth to the present governmental administration; and all who wished to join should enroll as soon as possible.

It was then that Prof. Wooley and Rev. Barkall formed the nucleus around which the present successful organization started.

The first meeting was held in February with a total of four present, Miss Snee, Miss Clayton being the new additions. Later Prof. Attie joined and swelled the attendance enormously.

The topic for the first meeting was, "Why is a Sheik?" with the minister leading. After an interesting meeting they adjourned to meet again the next week. Miss Clayton is to lead with the topic for discussion, "What is a leap-year leap?"

# McLURE HOTEL

WHEELING,

WEST VIRGINIA

100 Additional Rooms  
with Bath Just Opened



LARGEST HOTEL IN THE STATE OF WEST VIRGINIA



# Distinctive Millinery

FOR THE

Bethany Girl

# Will H. Colvig

1056 MAIN STREET

WHEELING, W. VA.

THE STUDENT BODY OF BETHANY COLLEGE WOULD LIKE:—

- Prexy to stop crabbing.
- Cramblet to stop grinning.
- Madame Bourne to stop winking.
- Prof. Weimer to stop telling stale jokes.
- Miss Clayton to stop blushing.
- Prof. Hering to stop flunking.
- Prof. Garrett to stop ranting.
- Prof. Calhoun to stop doting.
- Prof. Perry to stop grafting.
- Prof. Leitch to stop curving.
- Prof. Moos to stop practicing.
- Prof. Carpenter to stop smoking.
- Prof. Woolery to stop catching.
- Prof. Workman to stop writing.

## THE SILVER SHOP

# W. J. LUKENS COMPANY

DIAMONDS, GOLD AND SILVERSMITHS

ENGRAVED SOCIAL STATIONERY

WHEELING, W. VA.

## THE MEL R GARDEN

LUNCHEON  
DINNER  
REFRESH-  
MENTS

WHEELING STEEL CORPORATION  
BUILDING

*"Down the Marble Stairs"*

PARTIES  
HOME-MADE  
CAKES & PIES

The Delightful Atmosphere of the Mel R Appeals to College Students

## CHAPEL NOTES

## THE JOLLY TRIO

What college has a President more interested in the welfare of its inmates than our own beloved institution? Our prexy holds our every pleasure first in mind and that he believes in the true psychological principle of variety. These extraordinary astounding facts were revealed to us one morning when we all trudged into chapel with long faces on us, and our mouths turned down at the corners, expecting another raving from Prof Weinder on plemioharmicotharmias, plesosaur-crautios, men or some other partially extinct brainless animals such as we had had the day before. But lo and behold, there on the stage sat three entertainers who called themselves "The Revival Serenaders," whom President had engaged just to entertain us with a lively program. One man sang some little ditties for us; the other one gave a reading, but the lady was the biggest hit of all,—except for the piano. It was hit just about once too often.

But to sum it all up, one of the "frosh" said she sure could "jazz." Many thanks for these peppy programs.

## MRS. CLARK

Another one of our interesting chapel programs was given by Mrs. Clark, a very good-looking, charming, bobbed-haired lady, known to all her friends as "Aunt Mary." Mrs. Clark is a very popular and widely known woman for her success along religious, economical, social, musical, educational, theoretical, hypothetical and political lines.

She sang for us some amusing but heart-rendering mountain songs, and told us thrilling mountain stories, as we guess she thought we looked like mountaineers. To illustrate how touching her songs and stories of the lonesome girls up in the mountains were, after the program was over, Mr. Bennett and Jack Adams went up to her and offered their services as missionaries to the mountains. Generous of them.

We were indeed fortunate to have such a wonderful and talented woman with us.

\* \* \* \* \*

*Nice fat girl,  
Windy day,  
Skirts blown up  
About half way;  
Prodigal son  
Began to laugh  
Because he saw  
The fatted calf.*

# PARKE'S

*Unmatchable Canned Goods*

NO. 10 TINS

FRUITS AND VEGETABLES

*Every Variety*

*Finest Quality*

*Tins Full to the Brim*

## L. H. Parke Company

TEAS

SPICES

COFFEES

CANNED GOODS

FLAVORING EXTRACTS

PHILADELPHIA

PITTSBURGH

*Meet and Eat*

AT

# AREYS CAFETERIA

A PARTICULAR PLACE FOR PARTICULAR PEOPLE

1221 MARKET STREET

WHEELING, W. VA.

## WAISTS AND STAYS

### THEIR SAY

Mrs. Bourne says that all the poems she assigns are sublime.

Miss Clayton says that leap year doesn't mean anything.

Prof. Weimer says he can remember when evolution was a pup.

Sumpstine says an audience bothers him when he sings to Wilma.

Jack Harrison says a good improvement for Bethany would be a golf course so he could teach Prexy how to reduce.

HICKEY-  
FREEMAN  
CUSTOMISED  
CLOTHES

**The Hub**  
  
 Market and Gasoline Streets at Fourteenth, Wheeling

SOCIETY  
BRAND  
FINE  
CLOTHES

THE STAR LAUNDRY  
*Does Dry Cleaning*

STUEBENVILLE, OHIO



"Buffalo Shiekesses"



MODERN  
FIRE PROOF  
RIVER VIEW  
RESTAURANT

POPULAR PRICED QUICK  
SERVICE COFFEE ROOM

H. B. MASON, *President*

CURTIS E. ELKINS, *Manager*



Prof. Weimer—"The London Lancet says that the progeny of a 'single' fly during the summer months often amounts to 1,427,694."

Betty Mykrantz—"Merciful heavens! Suppose it got married."

\* \* \* \* \*

A MISERABLE MISUNDERSTANDING

Marjorie—"Do you believe in betting?"

Harold—"Petting?"

Mary—"No, betting."

Harold—"Oh, yes, I bet."

Mary—"You pet!"

Harold—"You bet."

OWENS BROTHERS

DEALERS IN

GROCERIES, OILS, GAS, AUTO SUPPLIES AND REPAIRING

*If Satisfied Tell Your Friends, If Not Tell Us.*



# AMERICAN RESTAURANT

*The Acme of the Cleanest and Quality*

*Worth the Name*

# Wellsburg Banking & Trust Co.

WELLSBURG, W. VA.

CAPITAL	- - - - -	\$100,000.00
SURPLUS AND PROFITS	- - - - -	\$140,000.00

Gertrude Wiseley to Adele—"Would you care to join us in the new missionary movement?"

Adele (a preacher's daughter)—"I'm crazy to try it. Is it anything like the fox trot?"

\* \* \* \* \*

Ralph—"Teacher's pet!"

Irene—"No. Do they?"

\* \* \* \* \*

Eddie Wells—"I would like to see a pair of shoes that would fit me."

Salesman—"So would I."

# BETHANY COLLEGE BOOK STORE

BOOKS, STATIONERY AND COLLEGE SUPPLIES, COLLEGE  
 JEWELRY, PENNANTS, JEWELRY, ETC., ATHLETIC  
 GOODS, KODAKS AND SUPPLIES.

## OUR FACULTY IN THE SCRIPTURES

## BIBLICALLY SPEAKING

Job. 37—"He thundereth in the voice of his excellency."	.....	<i>Pres. Goodnight</i>
Psa. 102—"Thou shalt endure forever."	.....	<i>Mrs. Bourne</i>
Rom. 22—"An instructor of the foolish and a teacher of babes."	.....	<i>Prof. Calhoun</i>
Tim. 6—"She is proud, knowing nothing."	.....	<i>Miss Kemp</i>
Cor. 11—"Would that ye could bear with me a little foolishness."	.....	<i>Prof. Campbell</i>
Job 20—"And I caused the widow's heart to sing for joy."	.....	<i>Prof. Woolery</i>
Pro. 6—"Exalt her and she will promote thee."	.....	<i>Miss Mahaffey</i>
1 Thess. 5—"Who gave him a charge over the earth."	.....	<i>Prof. Cramblet</i>
Job 34—"She is swift as the waters."	.....	<i>Miss Clayton</i>
Psa. 22—"All my bones are out of joint."	.....	<i>Prof. Marsh</i>
Pro. 7—"Let not thy heart decline in her ways, go not astray in her paths."	.....	<i>Miss Flinn</i>
1 Cor. 11—"Neither was man created for woman."	.....	<i>Prof. Cook</i>
Pro. 3—"My son forget not my law."	.....	<i>Prof. Green</i>
Psa. 19—"Who can understand his errors?"	.....	<i>Prof. Hunter</i>
Job. 41—"Out of his nostrils goeth smoke."	.....	<i>Prof. Gay</i>
Job 42—"I abhor myself."	.....	<i>Prof. Weimer</i>
Psa. 55—"The words of his mouth are smoother than butter."	.....	<i>Prof. Miller</i>
Rom. 7—"God forbid."	.....	<i>Prof. Hering</i>
Job 41—"Upon earth there is not his like."	.....	<i>Prof. Leitch</i>
Pro. 31—"She perceiveth that her merchandise is good."	.....	<i>Miss Acker</i>
Sam. 9—"A choice young man and a goodly."	.....	<i>Mr. Latta</i>
Psa. 102—"My heart is smitten."	.....	<i>Prof. Yaney</i>
Ezek. 44—"And ye shall give unto him the first of your dough."	.....	<i>Mr. Danford</i>
Prov. 25—"When he speaketh fair, believeth him not."	.....	<i>Prof. Perry</i>
Heb. 13-8—"Look this one up for yourself."	.....	<i>Miss Morris</i>
Prov. 27—"Be thou diligent to know the state of thy flock."	.....	<i>Prof. Workman</i>
11 Cor. 11—"I say again, let no man think me a fool."	.....	<i>Doc. Elder</i>

\* \* \* \* \*

*Friend Allen's tall,  
But where he'd reach;  
It sometimes makes us wonder,  
If what now constitutes his feet,  
Had never been turned under.*

# Photographs

- IN -

1924 Bethanian

MADE BY

Photo-Crafters Co.

40 TWELFTH STREET, WHEELING, W. VA.

221 PLEASANT STREET, MORGANTOWN, W. VA.

*Official Photographers Bethany and W. Va. University*

WHEN YOU EAT ICE CREAM YOU WANT THE BEST—NATURALLY

## SCOTT'S DELICIOUS ICE CREAM

GIBSON'S CONFECTIONERY HANDLES OUR CREAM

706 CHARLES STREET

WELLSBURG, W. VA.

### A TALE OF THE FLUNKER

Registration  
Initiation  
Participation  
Jollification  
Intoxication  
Procrastination  
Compilation  
Investigation  
Disintegration  
Evaporation

\* \* \* \* \*

Jack Harrison (in an expensive restaurant)—“Do you serve fish here?”  
Hard-boiled waiter—“Sit down, we serve anybody.”

\* \* \* \* \*

Prof. Miller (to whispering stude in the rear row)—“Zook, what am I talking about?”

Zook—“That’s just what I was asking Gertrude.”

SPORTING GOODS, TENNIS RACKETS, SHOES,  
BALIS, SPORT SWEATERS, BATHING SUITS,  
FISHING TACKLE, CAMPING SUPPLIES

## SHEPPARD AND CLOUSE

No. 30 TWELFTH STREET

WHEELING, W. VA.



"Old Mother Hubbard."



"Flaming Youth."



"The Tomboy."



"The Legacy."



"Wild Flower."



"Hearts Aflame."



"Talips."



"Virtuous Women."



"The Bat."



"Innocence"



"Foolish Women."



"The Unknown Lady."



"Thy Name is Woman."

## The Home of Good Shoes and Hose

WHEELING SHOES for young men deserve high honors every time; 36 styles from which to choose—a style for every taste and a last for every foot. \$8.00 a pair.

Alexander Good Shoes for Women are always just a step ahead of the rest in style; and by virtue of our method of fitting, they are certain to be comfortable at the same time.



*The Sign of  
Fine Footwear*

Select your hose at the same time and at the same place that you buy your shoes. Then you'll be sure that they will be of the same high quality and will harmonize perfectly with the "tout ensemble."

### ALEXANDER'S

1040 MAIN STREET

Mary Jane—"College days are the happiest days of your life."

Joe—"How about college nights?"

\* \* \* \* \*

"How is it that I find you kissing my daughter, sir?"

Jack Adams—"I don't know, sir, unless it's that you wear rubber heels."

*"Better Clothes for Less"*

### G. W. GREIG

*Clothing Specialist*

1052-54 MAIN STREET

WHEELING, W. VA.

M. M. DEIGHTON

H. B. GLASS

### WELLSBURG TAXI AND AUTO COMPANY

GENERAL TAXI AND AUTO SERVICE

*Reasonable Rates*

PHONE WELLSBURG 300

OFFICE AND GARAGE 419 COMMERCE ST.

CALL FOR RESERVATIONS

PHONE 4041

*Let's Meet and Eat at the*

## WASHINGTON RESTAURANT

*Finest Restaurant in the State*

1429 MARKET STREET

WHEELING, W. VA.

## EMIG BROTHERS

Tailors, Clothiers and Gents' Furnishers  
LOCAL HEADQUARTERS FOR STYLEPLUS CLOTHES

611 CHARLES STREET

WELLSBURG, W. VA.

"Here's one place I won't shine," sighed the flapper as she powdered her nose.

\* \* \* \* \*

Patient (in a whisper)—"Is the doctor in?"

Nurse (in a whisper)—"No, come on in."

## *Do You Bank by Mail?*

There are many of our customers whom we rarely ever see. Some of them we never have seen.

These customers make frequent deposits, but send them by mail. They may live many, many miles from Wellsburg, but Uncle Sam's postal service makes it convenient for them to bank with us.

We promptly acknowledge receipt of all deposits received by mail, and render periodical statements, thus enabling depositors to keep close check on their accounts.

If it is not convenient for you to call on us regularly, why not try banking-by-mail? You will be pleased with our service.

## Wellsburg National Bank

ESTABLISHED 1832

WELLSBURG, W. VA.

WE KNOW THE STYLE AND COLOR YOU SHOULD WEAR  
*"That's our Business"*

ALLEN AND HUNTER  
 HATTERS  
 WHEELING, WEST VA.

COULD YOU IMAGINE

Jeannette without her daily letters?  
 Zook without a smile?  
 Phillips Hall on Sunday without the trombone concerts?  
 Adele without a man?  
 Glenn Carpenter not in a hurry?  
 Scotty with his French lesson?  
 Louise Miller without pep?  
 Jack Harrison on time?  
 Mary Jane without her Pour?  
 Eddie Wells wearing a No. 4 shoe?  
 Judy with nothing to do?  
 Olive and Dan on peaceful terms?  
 Florence Larabee without an after dinner date?  
 Dave Hemmington in a congenial mood?  
 Vina with her hair curled?  
 Steve Murray without his cane?  
 The back parlor on biz night without Grace and By?  
 Rosemary not on biz?  
 The K. D. house without the Gehrings?  
 Miss Clayton rushing?  
 Bicky without Paul?  
 Miss Morris with her hair bobbed?

\* \* \* \* \*

"A man on first and third," said he. "Here's where we work the squeeze play."  
 "Oh, Shu dear not right out here, please."

\* \* \* \* \*

Adele—"Do you believe in free love."  
 Crip—"If you knew how broke I am you wouldn't have to ask that."

\* \* \* \* \*

Jane Luce—"I wonder how the tradition of kissing was handed down?"  
 Chief—"From mouth to mouth I suppose."



A GOOD PLACE TO MEET, A GOOD PLACE TO EAT, IS AT

## HOG-DAVIS SODA FOUNTAIN

The best of everything, and the price no higher. Send us your mail orders for Drugs and Sundries.

## THE HOG-DAVIS DRUG CO.

Six Progressive Drug Stores,

WHEELING

BELLAIRE

MARTINS FERRY

### IN SPAIN

*It never rains in Spain, they say,  
If the sun does shine, do they make hay?  
The water runs ev'ry fourteenth day,  
Spain's a beluga country, hey!*

## B. J. NEUHARDT

### High Grade Haberdashery

AGENT FOR DUNLAP, STETSON AND BORSALINO HATS

1305-1307 MARKET STREET

WHEELING, W. VA.

## W. L. CHAMBERS

DEALER IN

### General Merchandise

BELL PHONE 17

BETHANY, W. VA.

## H. G. FRIEDRICHS

EVERYTHING IN SPORTING GOODS  
 BASEBALL UNIFORMS, OLD TOWN CANOES, FISHING  
 TACKLE, GOLF AND TENNIS GOODS.

1523 MARKET STREET

WHEELING, W. VA.

*"Whether it's cold or whether it's hot,  
 We'll have weather, whether or not."*

## HUSCROFT'S FLORAL SHOP

*Cut Flowers for all Occasions*

173 N. FOURTH STREET

STUEBENVILLE, OHIO

## FARMERS STATE BANK

WELLSBURG, W. VA.

THE CONVENIENT BANK FOR BETHANY FRIENDS

*Make this your headquarters when in Wellsburg*

W. B. TAYLOR, *President.*

J. F. THOMPSON, *Cashier.*

IT'S A WELL KNOWN FACT THAT GIBSON SERVICE  
 IS THE BEST

## J. Sherman Gibson

## ROBINSON MUSIC COMPANY

EVERYTHING IN MUSIC FROM A  
 STEINWAY TO A MOUTH-ORGAN

141 NORTH STREET

STUEBENVILLE, OHIO



"Sinner or Saint".



"Among Those Present."



"Two Strangers".



"Little Jack Horn(er)".



"Torment".



"Grandma's Boy".



"The Idle Class".



"For The Ladies".



"Abie's Irish Rose".



"The Spoilers".



"Big Brothers".



"A Chapter In Her Life."



"For Keeps."



"The Borrowed Husband"



"A Society Scandal."



"Beside The Bonnie Briar Bush."



"The Cat And The Canary."



"In Search Of A Thrill."



"Bygone Days."



"Every Day Love"



"The French Doll."



"Twenty-One."



"The Love Master."



"Which Shall It Be."



"Don't Call It Love."

# BETHANY COLLEGE

FOUNDED BY ALEXANDER CAMPBELL IN 1840

## A STANDARD COLLEGE

LITERARY SOCIETIES  
ATHLETICS

CLOYD GOODNIGHT, President

# R. C. DANCER, Inc.

Floor Coverings, Rugs, Draperies, Etc.

1121 MARKET STREET, WHEELING, W. VA.

WALL PAPER

TOYS

# Wheeling News Lithograph Co.

PRINTERS AND BOOK BINDERS

DESIGNERS AND LITHOGRAPHERS

WHEELING, W. VA.

# C. F. WHITE

DEALER IN

GENERAL MERCHANDISE  
FRESH FRUIT AND VEGETABLES

PHONE 16

MAIN STREET, BETHANY

# WEST PACKING CO.

Home Dressed Meats

IF QUALITY IS WHAT YOU WANT, WE HAVE IT



"The Nut".



"The Four Horsemen".



"The Shriek".



"Three Weeks".



"One Exciting Night".



"Good Morning, Dearie".



"The Paper Hander".



"Intolerance".



"Why Worry?"



"Come Out of the Kitchen".



"American Beauties".



"Trifling Women".



"To Have and to Hold".



"Why Men Leave Home".

*Donated*



# Sheppard & Company

CERTIFIED PUBLIC ACCOUNTANTS

MEMBERS, AMERICAN INSTITUTE OF ACCOUNTANTS

MEMBERS, NATIONAL ASSOCIATION OF COST ACCOUNTANTS

OLIVER BUILDING, PITTSBURGH, PA.

480 FIFTH AVENUE, NEW YORK

305 CITIZENS MUTUAL BANK BUILDING, WHEELING, W. VA.

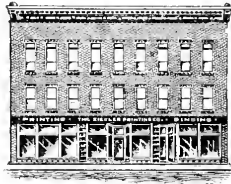
## HEART BROKEN

*I woke to look upon a face  
Silent, white and cold,  
Oh, friend, the agony I felt  
Can never half be told.  
We'd lived together but a year,  
Too soon, it seemed to see,  
Those gentle hands outstretched and still,  
That toiled for me,  
My waking thoughts had been of one  
Who now to sleep had dropped;  
T'was to realize, oh friend,  
My Ingersoll had stopped.*

\* \* \* \* \*

Eddie Miller—"What is a mushroom?"

Roy Adkins—"The Parlor."



This Book is the Product of the  
Plant of

The Ziegler Printing Co., Inc.  
Printers and Binders  
Butler, Pa

School Department  
GEORGE I. DONER, Manager

# Autographs

# Autographs

