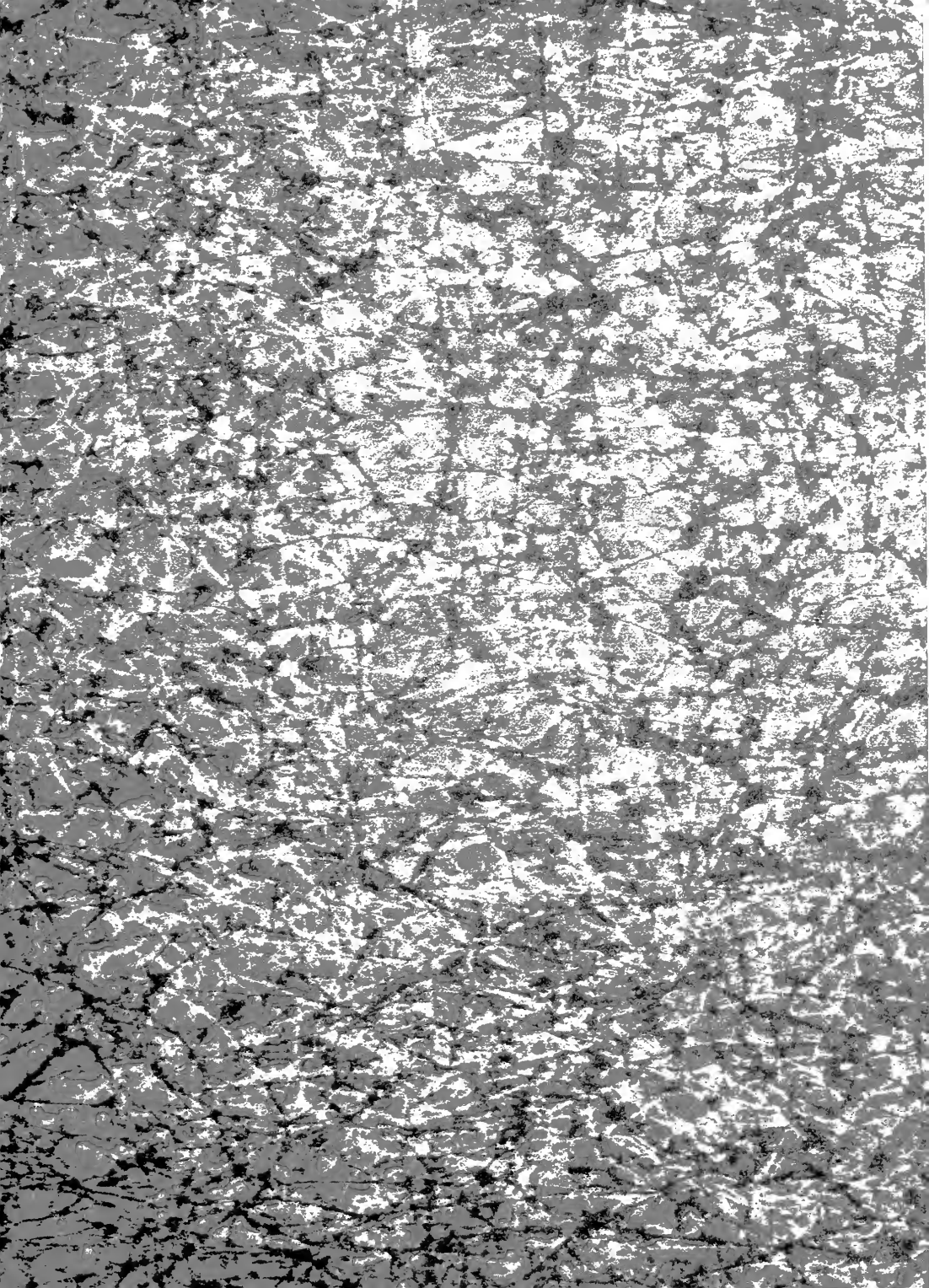


The
Bethonian
1928















THE
BETHANIAN

VOLUME XXVII

A View of the Life
of Bethany College
in the Year 1927-28

PUBLISHED BY
THE CLASS OF '28
BETHANY, W. VA.

To

Andrew Leitch.

As a meagre but heartfelt tribute to his zealous scholarship, his earnest and constant efforts in behalf of his students, his exemplary moral bearing and ennobling Christian character,

this book is
respectfully
dedicated.



Foreword

To recount and reflect briefly, simply, and interestingly Bethany's life for the past year has been the earnest intent of the staff. Joy and bitterness have mingled to close another chapter of incidents in our lives. In those after years, when recollection (bless'd jovial spirit!) shall turn his face to none save the gladsome scene, may these pages, kind reader, conjure up soft remembrances of the delectable associations and imperishable ties which shall serve to bring us oft into rapport with the spirit of the college among the hills.



CONTENTS

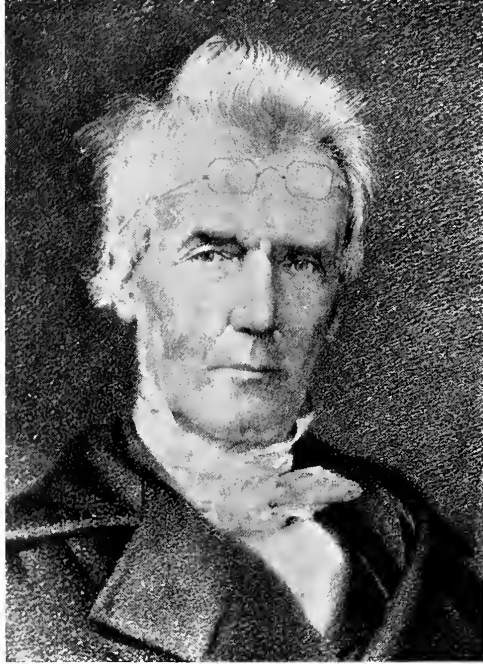
Chapter I
COLLEGE

Chapter II
CLASSES

Chapter III
ACTIVITIES

Chapter IV
ATHLETICS

Chapter V
COLLEGE LIFE



"All that lies between barbarism and the highest civilization; all that distinguishes the rude American Indian from the most polished citizen, the barbarian and the Christian, has been achieved by the learning, science and arts, the religion and the morals, which colleges have nourished, cherished, and imparted to the world."

—Alexander Campbell.



COLLEGE



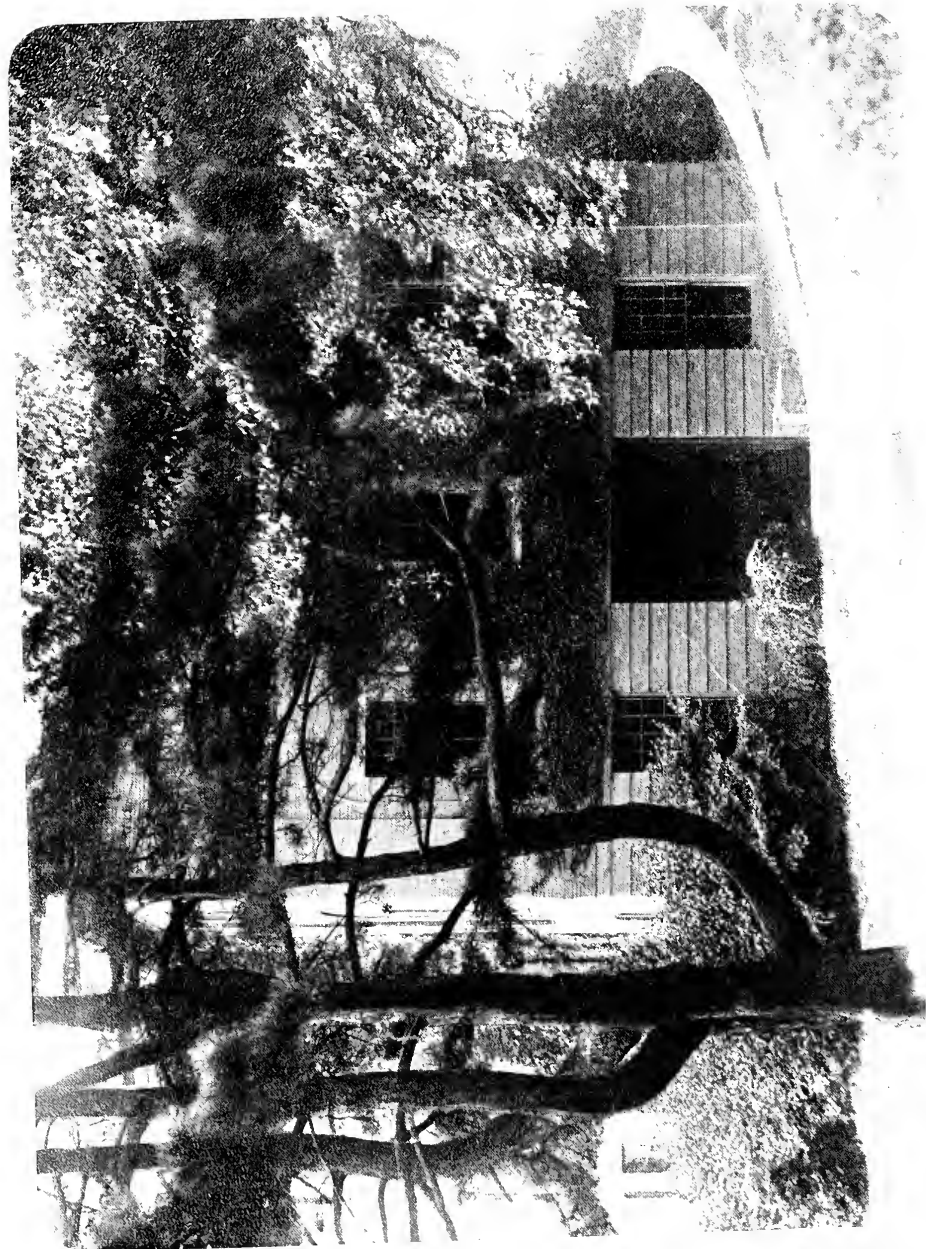
*"Blest with each grace of nature
and of art."*

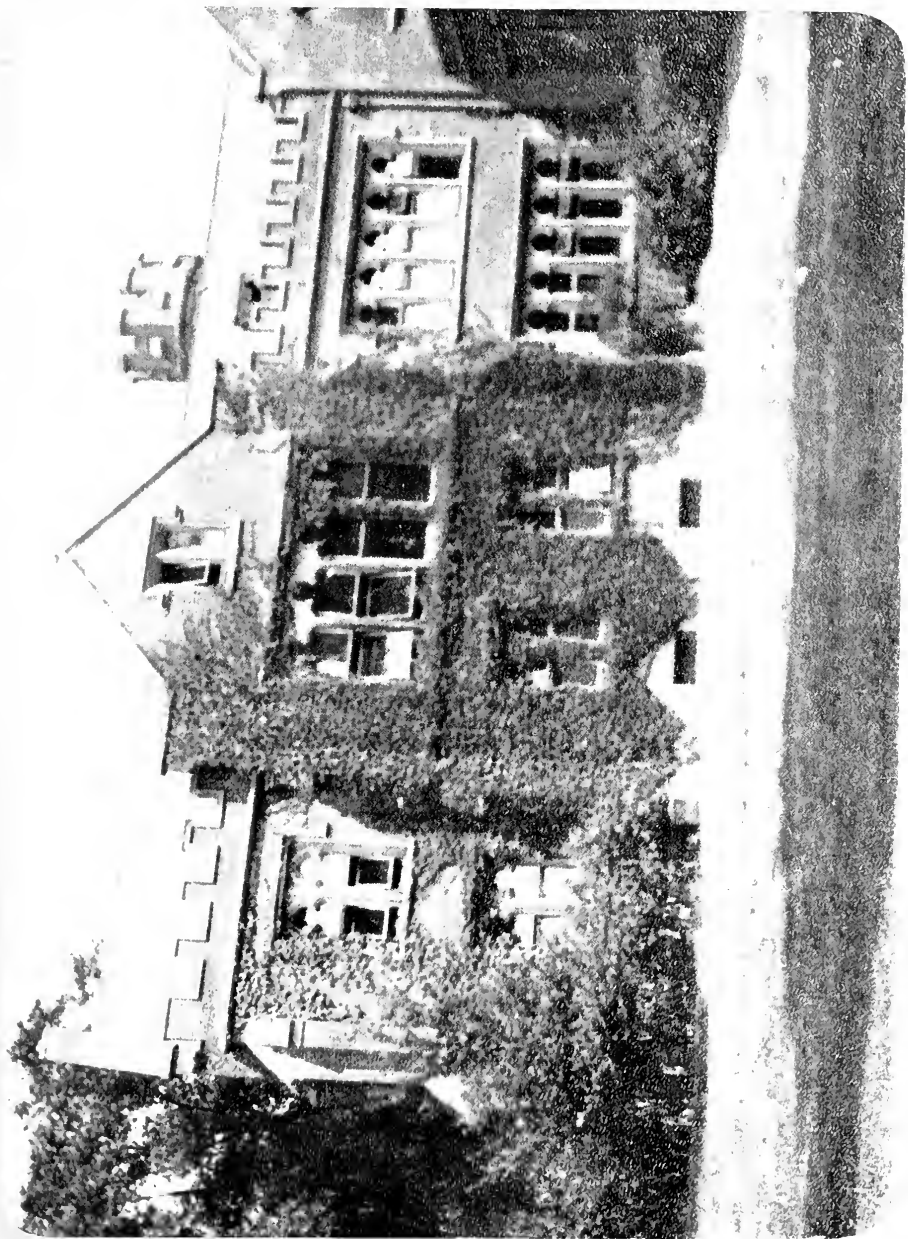
—POPE.

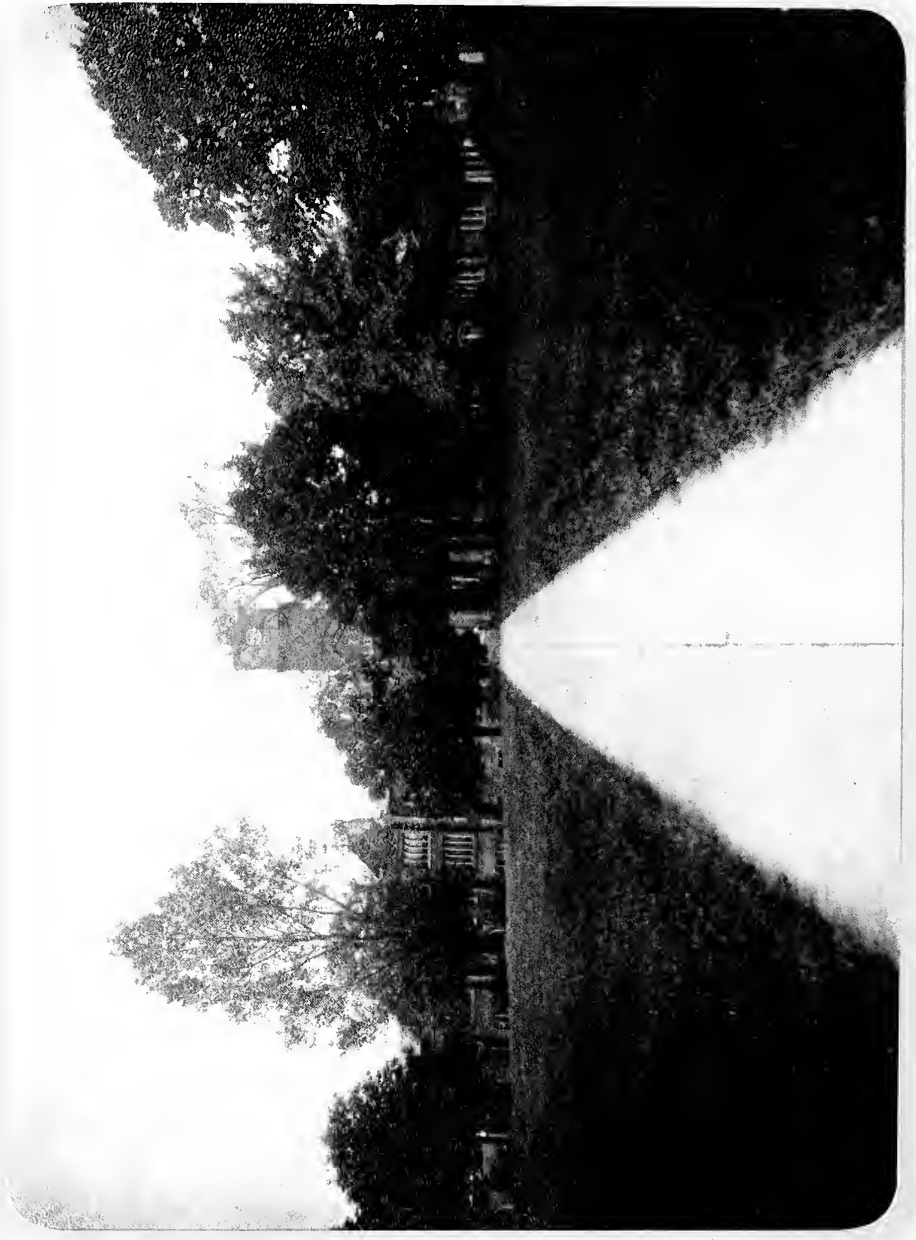


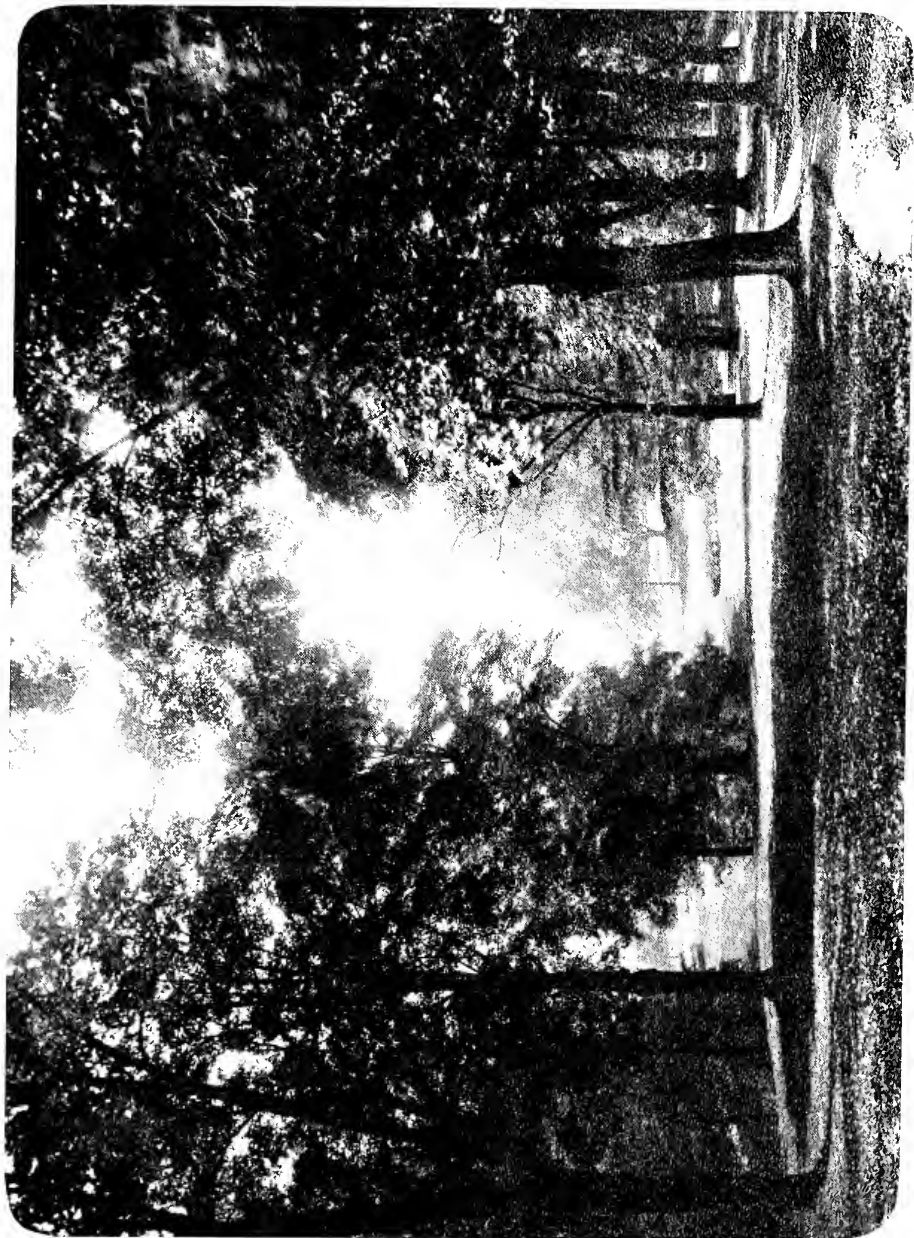














Administration

President's Message



NCE more I am glad to greet Bethany friends through this page of the BETHANIAN. Those of us who are privileged to be about the campus each day take a special pride in the appearance and contents of the college annual. In these days when a bigger and better Bethany is being planned—better in that it is to be equipped for more thorough service to those who come this way for their college course—it affords me real pleasure to extend greetings to all interested alumni, students, and friends.

The norm of a good strong college has been changing; hence, Bethany is face to face with the need for added and adequate living quarters that will accommodate one hundred and fifty additional students. This demand explains our effort to secure more dormitory space which we hope to make modern, comfortable, and attractive.

"Brick and mortar" cannot produce a college; they simply house one. Certain recognized equipment must be at the disposal of a keen, well-trained faculty and a thoroughly interested student body. Personnel will ever remain the outstanding equation in a college of liberal arts. Men and women, therefore, both in faculty and student body, must remain our first concern.

It is believed that this issue of the BETHANIAN indicates one feature of the merit of Bethany College.

—*Cloud Goodnight.*



CLOYD GOODNIGHT, A.M., D.D.
President of the College

The Board of Trustees

EXECUTIVE COMMITTEE

	M. M. COCHRAN, <i>Chairman</i>	
W. J. HERBSTER	SAM J. RENO, JR.	W. W. VAN HORN
FRANK J. KENT	W. S. WILKIN	A. E. WRIGHT

OFFICERS OF THE BOARD

CLOYD GOODNIGHT	<i>President</i>
M. V. DANFORD	<i>Secretary</i>
W. H. CRAMBLETT	<i>Treasurer</i>

Term Expires 1930

THOMAS W. PHILLIPS, JR.	Butler, Pennsylvania
W. E. PIERCE	Cameron, West Virginia
EARL WILFLEY, LL.D.	Washington, D. C.
OLIVER C. VODREY	East Liverpool, Ohio
C. F. NETTROW	Pittsburgh, Pennsylvania
BEN S. JOHNSON	Steubenville, Ohio
R. A. BALDERSON	Pittsburgh, Pennsylvania
JOHN MARSHALL	Parkersburg, West Virginia
FRANK J. KENT	New York, N. Y.
DR. GUY D. LOVETT	Cleveland, Ohio

Term Expires June, 1929

W. H. FIELDS	Wheeling, West Virginia
W. J. HERBSTER	Pittsburgh, Pennsylvania
HON. OLIVER S. MARSHALL	New Cumberland, West Virginia
W. W. VAN HORN	Shelby, Ohio
W. F. FREDERICK	Uniontown, Pennsylvania
L. D. MERCER	Bowling Green, Ohio
CAMPBELL JOBES	Bethany, West Virginia
W. S. WILKIN	Wellsburg, West Virginia
GEORGE C. HETTLER	Altoona, Pennsylvania
SAMUEL GEORGE	Wellsburg, West Virginia

Term Expires June, 1928

JESSIE A. SMITH	Wilmington, Ohio
HON. M. M. COCHRAN, LL.D.	Uniontown, Pennsylvania
JUDGE L. T. FARR	Lisbon, Ohio
J. L. KENDALL	Pittsburgh, Pennsylvania
BENJAMIN IRVIN	Big Run, Pennsylvania
Z. TAYLOR VINSON	Huntington, West Virginia
S. J. RENO, JR.	Pittsburgh, Pennsylvania
JUDGE J. B. SOMMERVILLE	Wheeling, West Virginia
JEFFRA C. MORRIS	Shelby, Ohio
ALFRED E. WRIGHT	Uniontown, Pennsylvania



ALBERT C. WORKMAN, A.M., M.Sc.
Dean of the College

ALBERT C. WORKMAN, A.M., M.Sc. Dean of the College



The Student Board of Governors

Founded in 1926, the Student Board of Governors has become an efficiently functioning organization which has earned the recognition and co-operation of the student body.

The Board is of vital importance to "student life, student welfare, and student activities". Its efforts to administer successfully these phases of our college program command the commendation of all.

OFFICERS

ELBERT W. STARN *President*
 MABEL METZE *Secretary*
 ELLIOTT BRANDON *Vice-President*

MEMBERS

ELLIOTT BRANDON	ISABELLE ADAMS	ELLSWORTH RICHARDSON
RUTH DYE	ELBERT STARN	ELIZABETH GREEN
RIST STIMMELL		CLEO MUMPER
MABEL METZE		CARL BENTON
	RAY THOMAS	



Faculty

1. The Faculty of the University of the Pacific, Stockton, California, is pleased to announce the following:

Officers of Administration

CLOYD GOODNIGHT	<i>President of the College</i>
ALBERT CLINTON WORKMAN	<i>Dean of the College</i>
HARRIETTE PEARL MORRIS	<i>Dean of Women</i>
FORREST H. KIRKPATRICK	<i>Executive Secretary to the President</i>
WILBUR H. CRAMBLETT	<i>Treasurer</i>
MILETUS VESPASIAN DANFORD	<i>Bursar</i>
VELMA FRANCES RODEFLER	<i>Registrar</i>
ANNA MARY KEMP	<i>Librarian</i>

Standing Committees of the Faculty

EXECUTIVE		
MR. GOODNIGHT	MR. WORKMAN	MR. LEITCH
REGISTRATION		
<i>For Freshmen</i>		
MR. WOOLERY	MR. BENNETT	MR. MCKINNEY
<i>For Upper Classmen</i>		
MR. WORKMAN	MR. GARRETT	MR. LEITCH
MR. GREEN	MISS MAHAFFEY	MR. GAY
	MR. COOK	
DEGREES AND HONORS		
MR. WORKMAN	MR. WOOLERY	MR. BENNETT
LIBRARY		
MR. LEITCH	MR. WORKMAN	MR. GAY
ATHLETICS		
MR. WOOLERY	MR. CRAMBLETT	MR. WEIMER
	MR. NUSS	
COLLEGE FUNCTIONS		
MR. WEIMER	MR. BENNETT	MISS MORRIS
MR. LATTO		MISS SCHMALHAUSEN
CATALOG AND SCHEDULE		ORATORY AND DEBATE
MR. GOODNIGHT	MR. WORKMAN	MR. BENNETT
		MR. PERRY
		MR. GARRETT
MINISTERIAL EDUCATION		STUDENT PUBLICATIONS
MR. GREEN	MR. BENNETT	MR. WOOLERY
	MR. MILLER	MR. HICKMAN
		MRS. BOURNE
APPOINTMENTS		
MR. GOODNIGHT	MR. WORKMAN	MR. GREEN
		MR. MCKINNEY



JEAN CORRODI MOOS, A.M., Mus.D.

Director of Music and Professor of Piano, Pipe Organ, and Theory
College of Music, Zurich; Royal Conservatory of Music, Leipzig; A. M., Mus. D., Bethany College;
Columbia University. (1897)

ANNA RUTH BOURNE, A.M., AAE, AΦE

Professor of English
King's College, London; Oxford University; A. B., Bethany College; A. M., Columbia University. (1903)

ALBERT CLINTON WORKMAN, A.M., M.Sc.

Dean of the College and Professor of Chemistry
Ph. B., A. M., Hiram College; M. Sc., Ohio State University; University of Wisconsin. (1906)

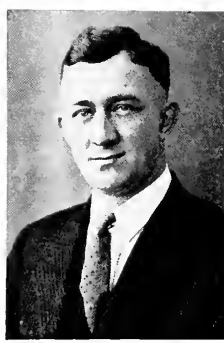
EBENEZER LEE PERRY, A.M.

Professor of Latin
A. B., A. M., Bethany College; Yale University; A. M., Columbia University. (1908)

PEARL MAHAFFEY, A.M.

Professor of French
A. B., Miami University; University of California; A. M., Columbia University; Graduate Study in France.
(1908)





FRANK ROY GAY, A.M., Ph.D., *ΦBK*

Professor of Greek

A. B., A. M., Drake University; University of Virginia; A. M., Ph. D., University of Chicago. (1910)

HENRY NEWTON MILLER, A.M., *TKJ*

Professor of Religious Education and Sociology

A. B., A. M., Bethany College; Yale University. (1914)

WILBUR HAVERFIELD CRAMBLETT, A.M., Ph.D.

Treasurer of the College and Professor of Mathematics

A. B., Bethany College; A. M., Ph. D., Yale University. (1917)

ANDREW LEITCH, A.M., B.D., Ph.D., *ΦKΦ*

Professor of Philosophy and Psychology

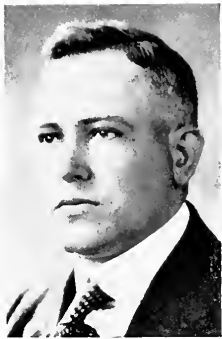
A. B., A. M., Butler College; B. D., Ph. D., Yale University; Columbia University. (1920)

WILLIAM KIRK WOOLERY, A.M., Ph.D., *ΦΓM, AΦE, ΦKJ, AAE*

Professor of American History and Economics

A. B., Bethany College; A. M., University of California; Ph. D., Johns Hopkins University. (1921)





BERNAL ROBINSON WEIMER, A.M., Ph.D., *ΦBK*, *ΣΞ*

Professor of Biology

A. B., A. M., West Virginia University; Ph. D., University of Chicago (1921)

IRVIN TAYLOR GREEN, A.M., B.D.

Professor of New Testament and Church History

A. B., Transylvania College; A. M., B. D., Bethany College; University of Chicago. (1921)

RALPH WINFIELD GARRETT, A.M.

Professor of European History

A. B., Milligan College; A. M., Columbia University; Indiana University. (1921) On Leave of Absence
1927-28

ROLLA VERGIL COOK, A.M., *ΦBK*, *ΣΞ*, *ΦΔΚ*

Professor of Physics

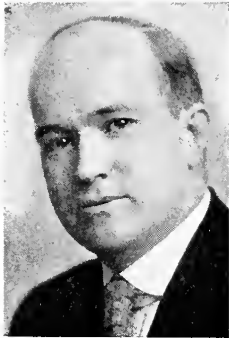
A. B., A. M., Indiana University. (1923)

GERSHON SAMUEL BENNETT, A.M., *TKA*

Professor of Old Testament

A. B., Hiram College; A. M., Columbia University; Union Theological Seminary. (1925)





HENRY THEODORE MCKINNEY, A.M., Ph.D.

Professor of Education

A. B., A. M., Ph. D., University of Illinois; University of Chicago. (1925)

REINHOLD EUGENE SALESKI, A.M., Ph.D.

Professor of German

A. B., A. M., Harvard University; Ph. D., University of Freiberg. (1926)

LUCIEN GROVER HICKMAN, A.M.

Professor of English

A. B., A. M., Indiana University; Yale University. (1926)

RAYMOND WRIGHT JOHNSON, A.M.

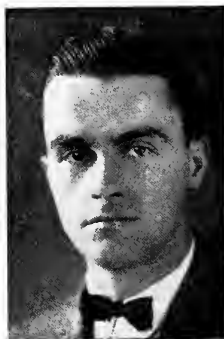
Assistant Professor of Chemistry

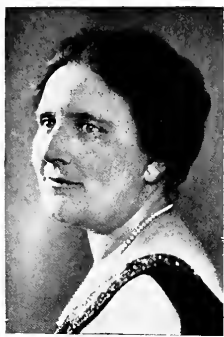
A. B., A. M., Oberlin College; Princeton University; University of Chicago. (1924)

HARVEY D. MILLER, A.M.

Assistant Professor of English

A. B., Bowdoin College; A. M., University of Maine. (1927)





ANNA MARY KEMP, A.B.

Librarian and Instructor in Libraru Science

A. B., Bethany College; Chautauqua Library School; Columbia University. (1922)

HARRIETTE PEARL MORRIS, B.L.

Dean of Women

B. L., Bethany College; University of Southern California. (1923)

WILBUR J. SUMPSTINE, B.Sc.

Instructor in Biology and Geology

B. Sc., Bethany College; University of Chicago. (1925)

FURMAN LEON NUSS, B.Sc.

Director and Coach of Athletics

B. Sc., Washington and Jefferson. (1925)

VELMA FRANCES RODEFER, A.B.

Registrar and Instructor in French

A. B., Bethany College; West Virginia University; University of Wisconsin. (1926)





FORREST HUNTER KIRKPATRICK, A.B.

Executive Secretary to President

A. B., Bethany College; University of Dijon. (1927)

RUTH SCHMALHAUSEN, Ph.B.

Instructor in Home Economics

Ph. B., University of Chicago. (1927)

MARGARET JOBES ADDLEMAN, B.L.

Hostess at Phillips Hall

B. L., Bethany College. (1925)



Education does not mean teaching people what they do not know. It means teaching them to behave as they do not behave. It is not teaching the youth the shape of letters and the trick of numbers, and then leaving them to turn their arithmetic to roguery, and their literature to lust. It means, on the contrary, training them into the perfect exercise and kingly continence of their bodies and souls. It is a painful, continual, and difficult work, to be done by kindness, by watching, by warning, by precept, by praise, but above all—by example.

—John Ruskin.



Crusade

1870-1871. The first part of the year was spent in the East. The second part was spent in the West. The third part was spent in the South. The fourth part was spent in the North. The fifth part was spent in the West. The sixth part was spent in the East. The seventh part was spent in the South. The eighth part was spent in the North. The ninth part was spent in the West. The tenth part was spent in the East. The eleventh part was spent in the South. The twelfth part was spent in the North. The thirteenth part was spent in the West. The fourteenth part was spent in the East. The fifteenth part was spent in the South. The sixteenth part was spent in the North. The seventeenth part was spent in the West. The eighteenth part was spent in the East. The nineteenth part was spent in the South. The twentieth part was spent in the North. The twenty-first part was spent in the West. The twenty-second part was spent in the East. The twenty-third part was spent in the South. The twenty-fourth part was spent in the North. The twenty-fifth part was spent in the West. The twenty-sixth part was spent in the East. The twenty-seventh part was spent in the South. The twenty-eighth part was spent in the North. The twenty-ninth part was spent in the West. The thirtieth part was spent in the East. The thirty-first part was spent in the South. The thirty-second part was spent in the North. The thirty-third part was spent in the West. The thirty-fourth part was spent in the East. The thirty-fifth part was spent in the South. The thirty-sixth part was spent in the North. The thirty-seventh part was spent in the West. The thirty-eighth part was spent in the East. The thirty-ninth part was spent in the South. The fortieth part was spent in the North. The forty-first part was spent in the West. The forty-second part was spent in the East. The forty-third part was spent in the South. The forty-fourth part was spent in the North. The forty-fifth part was spent in the West. The forty-sixth part was spent in the East. The forty-seventh part was spent in the South. The forty-eighth part was spent in the North. The forty-ninth part was spent in the West. The fiftieth part was spent in the East. The fifty-first part was spent in the South. The fifty-second part was spent in the North. The fifty-third part was spent in the West. The fifty-fourth part was spent in the East. The fifty-fifth part was spent in the South. The fifty-sixth part was spent in the North. The fifty-seventh part was spent in the West. The fifty-eighth part was spent in the East. The fifty-ninth part was spent in the South. The sixtieth part was spent in the North. The sixty-first part was spent in the West. The sixty-second part was spent in the East. The sixty-third part was spent in the South. The sixty-fourth part was spent in the North. The sixty-fifth part was spent in the West. The sixty-sixth part was spent in the East. The sixty-seventh part was spent in the South. The sixty-eighth part was spent in the North. The sixty-ninth part was spent in the West. The seventieth part was spent in the East. The seventy-first part was spent in the South. The seventy-second part was spent in the North. The seventy-third part was spent in the West. The seventy-fourth part was spent in the East. The seventy-fifth part was spent in the South. The seventy-sixth part was spent in the North. The seventy-seventh part was spent in the West. The seventy-eighth part was spent in the East. The seventy-ninth part was spent in the South. The eightieth part was spent in the North. The eighty-first part was spent in the West. The eighty-second part was spent in the East. The eighty-third part was spent in the South. The eighty-fourth part was spent in the North. The eighty-fifth part was spent in the West. The eighty-sixth part was spent in the East. The eighty-seventh part was spent in the South. The eighty-eighth part was spent in the North. The eighty-ninth part was spent in the West. The ninetieth part was spent in the East. The ninety-first part was spent in the South. The ninety-second part was spent in the North. The ninety-third part was spent in the West. The ninety-fourth part was spent in the East. The ninety-fifth part was spent in the South. The ninety-sixth part was spent in the North. The ninety-seventh part was spent in the West. The ninety-eighth part was spent in the East. The ninety-ninth part was spent in the South. The hundredth part was spent in the North.



PHILLIPS HALL WITH PROPOSED ADDITION

The Bethany College Crusade

EXECUTIVE COMMITTEE

DR. CLOYD GOODNIGHT	<i>President</i>
T. W. PHILLIPS	Butler, Pa.
W. J. HERBSTER	Pittsburgh, Pa.
A. E. WRIGHT	Uniontown, Pa.
W. S. WILKINS	Wellsburg, W. Va.

God wills it. Come!—This, the cry of the Crusaders of old, rings out to the friends of Bethany College to-day. A Crusade for \$1,000,000 is now under way. Its success will make possible the hope of years. All this is a part of a gigantic program for the building of a greater and finer Bethany.

The crusade grew out of a direct and urgent need for new dormitory facilities here, and when the matter was presented to the Board of Trustees in a special meeting last August 11, it was decided that the program should be undertaken and the goal set at \$1,000,000. Expressing their confidence in President Goodnight, the Board of Trustees selected him to head the Crusade Executive Committee.

The work of the Crusade was turned over to the Department of Promotion of the Board of Education of the Disciples of Christ. Dr. H. H. Harmon, who heads that department, was named director of the Crusade. He selected as his associate director, S. R. Bradley of Lincoln, Nebraska. A staff of Crusaders has been employed and for the past several months the machinery has been in motion.

(Continued on the next page)

Bethany College Crusade

(Continued from previous page)

It is the plan of the Crusaders to present this great program for Bethany to all of the churches of the Disciples of Christ in our area of West Virginia, Pennsylvania, and southwestern Ohio. It is also planned to present the program to the alumni and former students of the College as they can be gathered together in strategic geographical centers. All of this work is already well under way.

The actual Crusade Headquarters is in Pittsburgh, where the College has opened an office on the sixth floor of the First National Bank Building. The statistics, records, and reports are all filed there. At Bethany the main task is to supply information and material to the Pittsburgh office and to the Crusade staff.

President Goodnight is giving unceasingly and tirelessly of his time and energy to this important task. His presence at the various places where set-up meetings are held is almost essential to their success. He carries the message of Bethany direct and is thus able to command the confidence and respect of those who hear him.

When the Crusade moves into a new section, the first step is to have a fellowship dinner. Here the people join in singing Bethany songs. The purpose and the program for Bethany is presented. If possible the Crusade Booster Girls are present to sing. This type of gathering is intended to atmosphere those present and to prepare them for a personal visit of one of the Crusaders which follows in a few days after. As soon as the work in one section has been completed, the Crusade team moves on.

The sedulous efforts of the directors and workers assure ultimate success to their endeavors and a glowing future for Bethany.



THE MEN'S DORMITORY

The Bethany College Crusade On the Campus

Pledge total from students and faculty \$31,000

The unexpected success attending the drive for student and faculty pledges is traceable to the skillfully devised program of "propaganda" preceding the receiving of pledges. This campaign, conducted under the direction of the Student Board of Governors, succeeded, as is obvious, in generating a full measure of enthusiasm for the crusade.

CHAPEL PROGRAMS

Four Minute Speakers

KATHARINE COPE	DOROTHY CORNWELL	MICHAEL KASARDA
ELLSWORTH RICHARDSON	WILLIAM STARN	JOHN BERRY

Long Chapel Day

BAND	Pep Girls
MALE QUARTETTE—Peene, Morris, Starn, Elliott	
TWO BLACK CROWS (alias Canon and Rush)	
"BETTER BETHANY": a sketch	
CORRIDOR SING	PARADE

Entertainers

F. H. KIRKPATRICK (presenting the "Scandals")
WILBUR AND WILBUR (professors artistic)

FOUNDERS' DAY BANQUET

December 13, at Bethany Memorial Church

F. H. KIRKPATRICK Toastmaster
BETHANY PEP GIRLS Crusade Songs
GROUP SINGING Led by Prof. Weimer

ADDRESSES

H. O. Pritchard	Elizabeth Green	Virgil Elliott
Dr. Cramblett	S. R. Bradley	President Goodnight

BRIEF REMARKS

Ward Stalnaker	James "Happy" Taylor	Cleo Mumper
George Dice	Ray Thomas	Helen Thompson
Prof. Hickman	Mrs. Bourne	Prof. Moos
Frank Tarr		Edgar Bell



BETHANY PEP GIRLS



CLASSES





Seniors

Officers of the Senior Class

VIRGIL ELLIOTT *President*
RUTH NETTING *Secretary*
GLENN GRIFFITH *Treasurer*
JOHN BERRY *Class Historian*
FRED TUCK *Representative to Athletic Board*

ISABELLE ADAMS, A.B., $\Lambda \Xi \Delta$

Class Vice-President, 1; Y. W. C. A., 1, 2, 3, 4; Cabinet, 2, 3, 4; Eaglesome Representative, 2; Merry Masques, 1, 2, 3, 4; Commencement Play, 2; Homecoming Revue, 1, 2, 3, 4; Homecoming Committee, 1; Treble Clef, 1, 2; Home Economics Club, 2, 3; French Club, 2, 3, Secretary, 2; Pan-Hellenic, 2, 3, 4; President, 4; Collegian Staff, 2, 3, News Editor, 3; Current History, 3, 4; Student Board of Governors, 1; Crusade Pep Chorus, 1.

JACK ADDY, A.B., $\Sigma \chi$

Freshman Football, Freshman Basketball, A. L. L., 1; Basketball, 2, 3, 4; Baseball, 1, 2; Tennis, 3, 4; Student Council, 1, 2; Interscholastic Baseball, 4.



LENA BALSINGER, A.B., $\Lambda \Xi \Delta$

Y. W. C. A., 1, 2, 3, 4; Basketball, 1, 2, 3, 4, Capt., 3; W. A. A., 2, 3, 4; Orchestra, 1, 2; Homecoming Revue, 2; Homecoming Committee, 2.

HOWARD BARNES, A.B., $K \Lambda$

Football, 3, 4; Track, 3, 4; Wilmington College, 1, 2.

JOHN BERRY, A.B., K A, T K A

Debate, 1, 2, 3, 4; Vice-President Tau Kappa Alpha, 2; President, 3, 4; Track, 1, 2, 3, 4; Class Historian, 1, 4; Chemistry Assistant, 2, 3, 4; Moo Moo Moo, 3, 4; Merry Masquers, 4

FLORENCE BEVELHYMER, A.B.,

A E I

Class Secretary, 1; Y. W. C. A. L., 2, 3, 4; Calinet, 3, 4; Merry Masquers, 4; Commencement Play, 2; Homecoming Revue, 3, 4; Treble Clef, 1, 2, 4; Bethanian Staff, 3, 4; Art Editor, 4; Crusade Pop Chorus, 4; Current History, 4; A. L. 1, 1.



DOROTHY BEYER, A.B., A Φ E

A. L. S., 2, 3, 4; President, 4; Alpha Phi Epsilon, 3, 4; Secretary-Treasurer, 4; Y. W. C. A., 1, 2, 4; Treble Clef, 1, 2, 4; French Club, 2, 3; Library Assistant, 2, 3, 4.

JAMES ELLIOTT BRANDON, A.B.,

B Θ Π

Student Board of Governors, 4; Vice-President; Interfraternity Council, 4; Bethanian Staff, 3, 4; Athletic Editor, 4; Collegian Staff, 1, 2, 3, 4; Sports Editor, 2, 3, 4; Football, 2, 3; French Club, 2, 4.

WAYNE CANON, A.B., ϕ K Γ

Moo Moo Moo, 3, 4; College Band, 1, 2, 3, 4;
Freshman Basketball, 1; Freshman Football, 1.

GENE CARPENTER, A.B., K Δ

Pan-Hellenic, 2, 3, 4; French Club, 3, 4; Home
Economics Club, 2, 3; Y. W. C. A., 1, 2, 3, 4; A. L.
S., 1, 2, 3, 4, Secretary, 1; Current History, 4.



ROBERT J. CASHMAN, B.S., K Δ

Student Board of Governors, 3; Interfraternity
Council, 3, 4, Secretary, 3; Moo Moo Moo, 3, 4;
Movie Committee, 2, 3, 4; Movie Operator, 2, 3, 4;
Homecoming Committee, 3; Assistant in Physics, 3;
Instructor in Freshman Mathematics, 4.

MABEL CHAMBERS, A.B., Γ X

Y. W. C. A., 1, 2, 3; Class Basketball, 1, 2, 3, 4;
Current History.

MARGARET CLEVELAND, A.B., $\Lambda \Xi \Delta, \Phi B$

Merry Masquers, 4; Homecoming Revue, 3; Orchestra, 3, 4; Class Basketball, 4; Current History, 3, 4; Y. W. C. A., 3, 4; Stetson University, 1, 2.

KATHARINE COPE, A.B., $\Lambda \Xi \Delta$

A. L. 1, 1; Treble Clef Club, 2, 3, 4; Merry Masquers, 2, 3, 4; President, 4; Y. W. C. A., 1, 2, 3; Collegian Staff, 2, 3; Bethanian Staff, 3, 4; Feature Editor, 4; Homecoming Committee, 4; Class Basketball, 1, 2, 3, 4; Homecoming Revue, 2, 3; Commencement Play, 2, 3; French Club, 2, 3; Harbinger Staff, 2; Crusade Pep Chorus, 4; Women's Athletic Association, 3, 4.



VIRGIL ELLIOTT, A.B., $K \Lambda, T K \Lambda$

A. L. 8, 1, 2; Freshman Basketball, 1; Campus Captain, 2; Glee Club, 2; Merry Masquers, 1, 2, 3, 4; Debating, 3, 4; Athletic Board, President, 2; Class Basketball, 1, 2, 3, 4; Tau Kappa Alpha, 3, 4; Male Quartette, 4; Interfraternity Council, President, 4; Moo Moo Moo, 2; 3, 4; Homecoming Revue, 2, 3, 4; Homecoming Committee, 4; Track, 1, 2, 3, 4; Captain, 2, 3; President Senior Class, 4; Ministerial Association, 1, 2, 3, 4.

RUTH ERSKINE, A.B., $\Lambda \Xi \Delta$

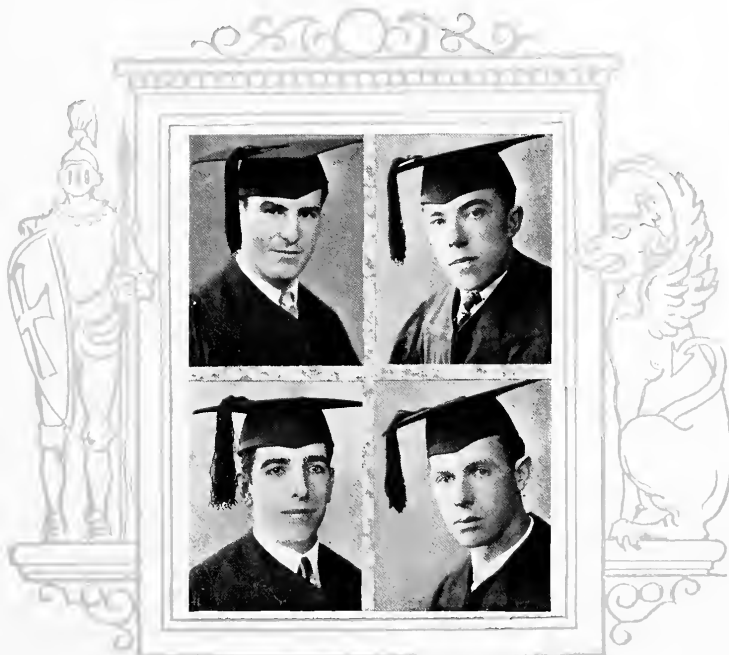
French Club, 1, 2; Y. W. C. A., 1, 2, 3, 4; President, 3; Englemero Representative, 3; Y. W. Cabinet, 2, 3, 4; Treasurer, 2; Secretary, 4; A. L. 8, 1, 2, 3, 4; Women's Athletic Association, 3, 4; Current History, 3, 4.

RALPH FASICK, A.B., *A H A*

Football, 1; Track, 1, 2, 3; Track Manager, 1;
Current History Club; Class Basketball, 3, 4.

CECIL FETTERS, A.B., *Φ K T, A Φ E*

Alpha Phi Epsilon, 3, 4; French Club, 2; A. L.
S., 1, 2, 3, 4, President, 3; Student Volunteers, 1, 2,
3, 4; President, 4; Collegian Staff, 1, 2, 3, 4.



CLAYTON GOE, A.B., *K A*

Ministerial Association, 1, 2, 3, 4; A. L. S., 1,
2, 3, 4; Band, Orchestra, 1, 2, 3, 4.

GLENN GRIFFITH, A.B., *Φ K T*

Football, 2, 3, 4; Fraternity Basketball, 2; Class
Basketball, 3; Class Treasurer, 4; Fraternity Base-
ball, 4; California Normal, 1.

VIRGINIA HEMINGTON, A.B., A E J

Student Council, 1; French Club, 1, 2, 3, 4; Collegian Staff, 2, 3; Bethanian Staff, 3, 4; Literary Editor, 4; A. L. L., 1; Merry Masquers, 3, 4; Basketball, 1, 2, 3, 4; Orchestra, 4; Homecoming Committee, 4; Homecoming Revue, 3, 4; Y. W. C. A., 1, 2, 3, 4; Treble Clef, 1, 2, 3; Chairman Social Committee, 4; Harbinger Staff, 2; W. A. A., 2, 3, 4; Crusade Pop Chorus, 4.

GOLDA LA SITIS, A.B., I X

Y. W. C. A., 1, 2; Ministerial Wives Association, President, 3.



JOSEPH LA SITIS, A.B., A II A

Ministerial Association, 1, 2, 3; Board of Publication, President, 3, 4; Circulation Manager, 2, 3; Student Board of Governors, 4; Collegian Contributor, 1, 2, 3, 4.

OLIVER K. LOER, A.B., A II A

Band, 1, 2, 3, 4; Freshman Track, 1, Varsity Track, 1, 2; A. L. S., 1, 2; Current History, 1, 2; Church Choir, 1, 2, 3, 4; Homecoming Revue Orchestra, 1.

DOROTHY MANLEY, A.B.

Y. W. C. A., 1, 2, 3, 4; French Club, 1, 2; Bird Club; Hiking Club; Treble Clef, 3.

MABEL METZE, A.B., *A Φ E*

A. L. S., 1, 2, 3, 4, Program Committee, 3; Y. W. C. A., 1, 2, 3, 4, Secretary, 3, President, 4; Collegian Staff, 2, 3, 4, Society Editor, 4; Student Board of Governors, 3, 4, Secretary, 3, 4; Treble Clef, 2, 4; Phillips Hall President, 3; Eaglesmore Representative; French Club, 2, 3.



RUTH MILLER, A.B., *F X*

Home Economics Club, 1, 2; A. L. S., 1, 2, 3; Y. W. C. A., 1, 2, 3; Current History, 2, 3.

HELEN MORSS, A.B.

Y. W. C. A., 1, 2, 3, 4; Cabinet, 4; A. L. S., 3, 4; French Club, 1, 2, 3, 4; Secretary, 4; Assistant Librarian, 3, 4; Eaglesmore Representative.

NANCY MCCOLLAM, A.B., *K Δ*

Basketball, 1, 2, 3; Homecoming Committee, 3, 4; Homecoming Review, 2, 3, 4; Y. W. C. A., 1, 2, 3, 4; W. A. A., 1, 2, 3, 4, Vice-President, 3; Athletic Board of Control, 4; Treble Clef, 2, 4; College Social Committee, 3; Home-Economics Club, 2, 3; Treasurer, 2; Crusade Pop Chorus, 4; A. L. S., 1, 2.

RUTH NETTING, A.B., *A Ξ J*

Current History Club, 3, 4; Y. W. C. A., 3, 4; French Club, 4; Literary Editor Collegian, 4; A. L. S., 3, 4; Merry Masquers, 4; Secretary Senior Class, 4; Treble Clef Reader, 4; Orchestra Reader, 3; "The Patsy", 4.



LORENA K. PEASE, A.B.

Y. W. C. A., 1, 2, 3, 4; A. L. S., 1, 2, 3, 4; Orchestra, 1, 2, 3, 4; Basketball, 1, 2, 3, 4; Home-Economics Club, 2, 3.

EUGENE PECKMAN, B.S., *B Θ II*

Football, 1; Baseball, 1, 2; Physics Lab. Ass't, 4.

ELLA PERRY. A.B.

Y. W. C. A., 1, 2, 3, 4; Y. W. Cabinet, 3, 4; Student Volunteer Group, 1, 2, 3, 4; McKinleyville S. S., 3; Secretary W. Va. and W. Pa. Student Volunteer Union, 4; Delegate Student Volunteer Convention, Detroit, 4.

HELEN PIERCE. A.B., K 1

Band, 1; Orchestra, 1; Y. W. C. A., 1, 2, 3, 4; Y. W. Cabinet, 4; Treble Clef, 1, 2, 1; Vice-President Class, 2.



ALLEN E. REED. A.B., K 1

Merry Masquers, 1, 2, 3, 4; Glee Club, 1, 2; Class Treasurer, 1; A. L. S., 1, 2, 3, 4; Ass't Track Manager, 1, 2; Ministerial Association, 1, 2, 3; "The Wonder Hat", 2; "A Winter's Tale", 3.

HOPE REID. A.B., I X

Y. W. C. A., 1, 2, 3, 4; A. L. S., 1, 2, 3, 4; French Club, 2; W. A. A., 3, 4; Pan-Hellenic, 3, 4; Class Basketball, 2, 3, 4; Current History.

ARCHY SCHROCK, A.B., *B Φ II*

Hiram, 1; Penn State, 2; Oberlin, 3; Commencement Play, 3; Collegian Staff, 3, 4.

WARD STALNAKER, A.B.,

K Δ, T K Δ

Fort Scott Jr. College, 1, 2; Merry Masquers, 3, 4; "Stone Lady", 3; Debate, 3, 4; Associate Editor, *Bethanian*, 3; Editor, 4; Tennis, 3; Board of Publications, 4; Current History.



W. ELBERT STARN, A.B., *K Δ*

Ministerial Association, 1, 2, 3, 4, President, 4; Merry Masquers, 1, 2, 3, 4; "The Wonder Hat", "A Winter's Tale", "The Arrival of Kitty"; Junior Class President, 3; Glee Club, 1, 2; Homecoming, *Revue*, 3, 4.

EFFIE STICKLEY, A.B., *K Δ, Δ Φ E*

Y. W. C. A., 1, 2, 3, 4; Treble Clef, 1, 2, 4; Home Economics, 2, 3; A. L. S., 1, 2, 3, 4; French Club, 2, 4.

FRANK J. TARR, B.S., $\Sigma \Lambda$

Merry Masquers, 4; Track, 1; Varsity track, 2, 3, 4; Baseball, Varsity, 1, 2; Football Squad, 1; Football Varsity, 2, 3; Class Basketball, 2, 3; Basketball Manager, 4; Homecoming Revue, 4; Chairman Homecoming Program Committee, 1; Chairman Commencement Program Committee, 1.

FRED TUCK, A.B., $\Sigma \Psi$

Moo Moo Moo, 3, 4; Merry Masquers, 2, 3, 4; Class President, 1; Freshman Football; Homecoming Revue, 1, 2, 3; Committee 4; Interfraternity Council, Athletic Board Control, 1, President, 4; Manager Baseball, 1, 2; Manager Tennis, 1.



CELIA VERMILLION, A.B., $Z T \Lambda$

Homecoming Revue, 1, 2, 3, 4; Homecoming Committee, 3, 4; Home Economics Club, 3; Current History, 4; Y. W. C. A., 1, 2, 3, 4; ASCT Kodak Editor Bethanian, 3; Kodak Editor, 4; A. L. S., 1.

FRANCES F. WHITE, A.B., $\Lambda \Xi \Gamma$

Current History Club, 3, 4; Merry Masquers, 3; Secretary, 1; Pan-Hellenic, 3, 4; Homecoming Revue, 2, 4; Y. W. C. A., 1, 2, 3, 4; A. L. S., 1; Class Basketball, 3, 4; Collegian Staff, 3, 4; "A Winter's Tale", 2.



PAUL E. WHITE, B.S., *B Θ II*

Football Squad, 2, 3; Freshman Football;
Class Basketball, 1, 2, 3, 4; Collegian
Staff, 1, 2, Editor, 3, 4; French Club, 1, 2;
Bethanian Staff, 3; Board of Publications, 3, 4;
Assistant Basketball Manager, 1, 2, 3.

PAUL NEEL, A.B., *Σ Ν*

Football, 1, 2, 3, 4;
Basketball, 1, 2, 3, 4; Track 1, 2, 3, 4;
A. L. I.; Interfraternity Baseball 1, 2, 4.



Juniors

Officers of the Junior Class

ELLSWORTH RICHARDSON *President*
DWIGHT STEVENSON *Vice-President*
MARTHA MCCORKLE *Secretary-Treasurer*

ELLSWORTH RICHARDSON
New Haven, Connecticut
Sigma Nu



THOMAS J. ADDLEMAN
Clarksville, Pennsylvania
Alpha Pi Alpha



WALTER D. BROCK
Bethany, West Virginia
Alpha Pi Alpha



MARGARET BEIGHLEY
Connellsville, Pennsylvania
Zeta Tau Alpha



LARUE Z. BROWN
Bloomsburg, Pennsylvania
Kappa Alpha



EDGAR L. BELL
Sanborn, New York
Delta Tau Delta



FRANCES COOPER
Pittsburgh, Pennsylvania
Alpha Xi Delta



FRANCES BORDEN
Steubenville, Ohio
Zeta Tau Alpha



RUTH ANN DYE
Hundred, West Virginia
Zeta Tau Alpha



LOUISE BROOKES
Water Valley, Mississippi



MABEL ARNOLD
New Holland, Ohio
Zeta Tau Alpha



LAURA CATHON
Pittsburgh, Pennsylvania
Kappa Delta



FANNIBELLE ARMSTRONG
Wheeling, West Virginia
Zeta Tau Alpha



EMMA COOK
Perryopolis, Pennsylvania
Kappa Delta



LEVAUGHN DENNISON
Wellsburg, West Virginia
Alpha Xi Delta



GARNET HELMEY
Uniontown, Pennsylvania
Gamma Chi



DALE FIERS
West Palm Beach, Florida
Beta Theta Pi



ETHEL HOUSTON
St. Clairsville, Ohio
Kappa Delta



KATHRYN GILLETTE
Bridgeport, Ohio
Alpha Xi Delta



WILLIAM KELLY
Bethany, West Virginia
Beta Theta Pi



LUCILLE ALLESHOUSE
Miami, Florida
Zeta Tau Alpha



WILLIAM BARBER
New Castle, Pennsylvania
Alpha Pi Alpha



MILDRED BOGCESS
West Liberty, West Virginia



MAURICE BETTS
Shelby, Ohio
Phi Kappa Tau



AUSTIN T. COCHRAN
Pittsburgh, Pennsylvania
Sigma Nu



LEONARD CONWAY
Cleveland Heights, Ohio
Beta Theta Pi



ELIZABETH GILLETTE
Bridgeport, Ohio
Alpha Xi Delta



EDWIN ELWELL
Buffalo, New York
Alpha Pi Alpha



ELIZABETH GREEN
Owosso, Michigan
Kappa Delta



WILLIAM R. MORRIS
Shelby, Ohio
Beta Theta Pi



ELLEN KINSEY
Uhrichsville, Ohio
Kappa Delta



MARTHA MCCORKLE
Warren, Ohio
Kappa Delta



HUGH MUTCHLER
Rutland, Ohio
Beta Theta Pi



E. MORTON MILLER
Barnesville, Ohio
Kappa Alpha



CLEO MUMPER
Taylorstown, Pennsylvania
Gamma Chi



ARTHUR J. MARKLEY
Washington, Pennsylvania
Alpha Pi Alpha



WILLIAM SIGWALT
Republic, Pennsylvania
Phi Kappa Tau



ARTHUR RUSH
Hanoverton, Ohio
Phi Kappa Tau



MARK R. RIEGARD
McKeesport, Pennsylvania
Alpha Pi Alpha



THELMA E. SMITH
Wheeling, West Virginia
Gamma Chi



ALICE LEE SWIGER
West Union, West Virginia
Gamma Chi



PHILIP PIERSON
Buffalo, New York

RAYMOND C. THOMAS
Buffalo, New York
Alpha Pi Alpha



ERRETT SCOTT
East Liverpool, Ohio
Phi Kappa Tau

JOHN TINSON
Follansbee, West Virginia
Sigma Nu



DWIGHT STEVENSON
Canton, Illinois
Phi Kappa Tau

HELEN ULRICH
Wheeling, West Virginia
Alpha Xi Delta



MARGARET SNIDER
Wheeling, West Virginia
Kappa Delta

FLOYD YOCUM
Steubenville, Ohio
Sigma Nu



J. RIST STIMMEL
Connellsville, Pennsylvania
Phi Kappa Tau



VIRGINIA MCFADDEN
Bethany, West Virginia
Alpha Xi Delta



BLANCHE MCGEARY
Butler, Pennsylvania
Kappa Delta



HOPE REID
Cameron, West Virginia
Gamma Chi



GEORGE PHELPS
New Castle, Pennsylvania
Phi Kappa Tau



VERA SOMERS
Fremont, Michigan
Gamma Chi



HELEN THOMPSON
Lorain, Ohio
Kappa Delta



ELIZABETH VODREY
East Liverpool, Ohio
Alpha Xi Delta



SARA THOMAS
Chester, West Virginia
Gamma Chi



HANNAH WOLLASTON
Dayton, Ohio
Alpha Xi Delta



TOM WALKER
Buffalo, New York
Alpha Pi Alpha





Sophomores

Officers of the Sophomore Class

EDWARD GREEN *President*
JACK HAMILL *Vice-President*
ROSALIE STUTZMAN *Secretary-Treasurer*

EDWARD J. GREEN
Owosso, Mich.

RUTH SMITH
Corbin, Ky.

KENNETH BAKER
Warwood, W. Va.



MARGARET WASHINGTON
Greensburg, Pa.

W. HOWARD HORNER
Clarksville, Pa.

EDNA HILLING
Uniontown, Pa.



ROMAYNE MILLER
Washington, Pa.

ROBERT J. NETTING
Pittsburgh, Pa.

ARTHUR ORNER
Cleveland, Ohio



CATHERINE MAY
Follansbee, W. Va.

LONNIE C. FURBAY
Urichville, W. Va.

HELEN ADRIAN
Pittsburgh, Pa.



W. CARL BENTON
Worthington, Pa.

RUTH MOOS
Bethany, W. Va.

ROBERT JOHN THOMPSON
Wayne, W. Va.



MARIEN LATTIMER
Sharon, Pa.

IRA SAYRE
East Liverpool, Ohio

VIRGINIA PILCHARD
Bethany, W. Va.



FRANCES CONN
Mansfield, Ohio

FLORENCE CONN
Mansfield, Ohio

ORIN DICE
Pittsburgh, Pa.



AMELIA HALL
New Haven, Conn.

ELMER GREVE
Cleveland Heights, Ohio

ROBERT ROE
Warwood, W. Va.





EDGAR FREEHLING
Pittsburgh, Pa.

PAULINEBELLE WYSS
Bridgeport, Ohio

JOHN T. GOODNIGHT
Bethany, W. Va.



MARGARET CUNNINGHAM
Uniontown, Pa.

DEANE LOVELAND
Uniontown, Pa.

HELEN MILLER
Bethany, W. Va.



JOHN M. GRAHAM
New Cumberland, W. Va.

R. STANTON HEDDEN
Fairhope, Ala.

GLENN W. BROCK
Moundsville, W. Va.



MARTHA QUICK
Atlanta, Ga.

EVABELLE VIETS
Cleveland, Ohio

MARTHA QUINLAN
Bellaire, Ohio



JAMES J. HARRIS
Millsboro, Pa.

ROSALIE STUTZMAN
Johnstown, Pa.

ENNIS BAILEY
Prosperity, W. Va.



BEATRICE McMILLEN
New Cumberland, W. Va.

PAUL WADDELL
Follansbee, W. Va.

CAROLYN WATKINS
Republic, Pa.



ANGELO MASSO
Republic, Pa.

ANNA BARNETT
Ocean View, Del.

KENNETH TITUS
Point Marion, Pa.



JAMES E. McDONALD
Elm Grove, W. Va.

ELIZABETH NEILLEY
Cambridge, Ohio

LORENZO G. RUNK, JR.
Altoona, Pa.

ELTON BEHM
Madison, Ohio

ROY PRICE
Shelby, Ohio

JAMES HAMILL
Wheeling, W. Va.

HARRY SPARKS
Mt. Vernon, Ky.

ALTON BEHM
Madison, Ohio

DOROTHY VAN TRESS
Wheeling, W. Va.

GEORGE A. SMITH
Wood River, Ill.

F. GARDNER PEENE
Yonkers, N. Y.

PHILIP BERGNER
East Liverpool, Ohio

NORMAN E. ALLEN
Fredericksburg, Va.

OLIVET HEDDEN
Fairhope, Ala.

LUCILLE BALL
Indianapolis, Ind.

C. HUBER BURKE
Jollytown, Pa.

LILLIAN TARR
Brilliant, Ohio

RANDOLPH FOSTER
Rochester, Pa.

IRVIN T. GREEN, JR.
Bethany, W. Va.

OTIS G. DENNISON
Buffalo, N. Y.

CHARLOTTE RAMSEY
Follansbee, W. Va.

CLARENCE SCHNARS
Hawk Run, Pa.

GEORGE R. BRITAIN
Tazewell, Va.

BEULAH JONES
Moundsville, W. Va.

JOHN C. BULLARD
West Alexander, Pa.

ALDEN CONGRAVE
Bethany, W. Va.

EARL EPLLING
Montgomery, W. Va.





WALTER EVANS
Follansbee, W. Va.

MARGARET LAUGHREY
Scottsdale, Pa.

KATHERINE HELPHREY
Utica, Ohio

DONALD HERVEY
Condit, Ohio

HUGH ERSKINE
Bethany, W. Va.

JAMES N. IMEL, JR.
Cleveland, Ohio

EWING WORKMAN
Bethany, W. Va.

GEORGE BURWELL
Rayland, Ohio

BALLARD DAMSCHRODER
Elmore, Ohio

FRANK DOLE
Buffalo, N. Y.

JOSE RODRIGUEZ
Bayamon, Porto Rico

CROMWELL CLEVELAND
Paris, Ky.

FRANK DOLE
Buffalo, N. Y.

HARRIETT MUMPER
Taylorstown, Pa.

W. ARTHUR RUSH
Hanoverton, Ohio

IRVING TITTLER
Brooklyn, N. Y.

ELIZABETH WEEDA
Follansbee, W. Va.



Freshmen

Freshman Class Roll

ADAMS, ANN H.	HOBBS, JEAN	OWEN, EARLE
APPLEGATE, FRED W.	HOCH, ROBERT	OWENS, BARBARA
ARNOLD, MARGUERITE	HODGSON, RONALD	PARKS, CLIFFORD
ASH, HERBERT	HOLT, CHARLOTTE	PEHONSKY, IMEL
BERRY, GLADYS	HOPKINS, FRANCIS	PHILLIPS, ROBT. LEE
BEHNKE, ROBERT	IRVIN, MURIEL	PORTER, MARY
BELT, ELIZABETH	JENKINS, WAYNE	PRICE, FRED
BIELEFIELD, HELEN	JOHN, RUTH	PROBST, ROBERT
BRAMHALL, FRANK W.	JOHNSON, EVELYN	RINEHART, ROBERT
BRANDON, BETTY	JOHNSTON, ELDRER	RITTER, GEORGE
BROCK, ESTA JONES	JONES, CHARLES F.	RODGERS, ELIZABETH
BRYAN, NED, JR.	JONES, ROWLAND	RODMAN, ROBERT
BULLARD, RUTH	JULIER, J. ALLEN	ROGERS, FRANK
BUNN, R. RALPH	KASARDA, MICHAEL	ROSE, CHARLES
BUSTON, HARRY	KEARNS, MICHAEL G.	ROSSER, MRS. SYLVIA
CARROL, SARA	LATTO, JOHN B.	RUSH, MALCOLM
CARSON, THOS. E., JR.	LEWIS, JOHN RUSSELL	RYLAND, VIRGIL
CHRISTY, CHARLES	LOUGHRY, JOHN	SCHENCK, HARRY
CONSTANTINE, FRANK	MADDEN, GRACE	SHEETS, ELIZABETH
CORNWELL, DOROTHY	MARSHALL, JOHN, JR.	SIGWALT, JOHN
CRUMM, OSCAR	MASSENGILL, ALLEN	SIMPSON, BLANCHE
CULP, RUTH	MATTHEWS, CHARLES	SMITH, LEONARD K.
DAILEY, THOMAS S.	MATTHEWS, OLIVER	STANTON, MABEL
DARR, RICHARD K.	MILLER, ANNA I.	STARN, PAULINE
DARSIE, VIRGINIA	MONROE, HAROLD B.	STEINDORF, ELEANOR
DAVIDSON, CLINTON, JR.	MOORE, GUY H.	STIMMEL, HENRY
ERSKINE, WILLIAM	MORRIS, JOHN J.	SUTTON, EVANGEL
DETMAN, HAROLD	MYERS, FRED A.	SWEITZER, JOHN
DICE, GEORGE	MCBRIDE, CHARLES	TELFAIR, PEYTON
ELLIOTT, HAZEL KING	MCCLAY, JAMES	TOWNSEND, YVONNE
ESPEY, KERMIT	MCCLEARY, SAMUEL B.	TYRRELL, GERTRUDE
FLEGAL, FOSTER	MCCONNELL, W. CARTER	VAUGHN, CECIL
FORTUNE, WALTER	MCGEARY, MELISSA	VAUGHN, KATHERINE
FOX, MICHAEL	MCGOUGH, JAMES WYLIE	WALLACE, MAUDE
GALLEHER, XANTHA	MCQUOWN, BRYANT	WALTERS, NELSON
GOOD, HELEN	NEELY, WILMA	WILLIAMS, RACHEL
HARRIS, RICHARD	NELSON, ARTHUR	WOODBURY, RICHARD S.
HARSH, WALTER	NEWCOMER, JESSE	WRIGHT, FLOYD
HARTLEY, ROBERT	NEWELL, GEORGE N.	YAW, CLARENCE O.
HENDERSON, GLENN	OLESKI, HENRY	YOCUM, CYRUS
HERBSTER, GRACE	ORLANDO, JOSEPHINE	



Officers of the Freshman Class

MICHAEL KASARDA	<i>President</i>
FRANK ROGERS	<i>Vice-President</i>
WILLIAM ERSKINE	<i>Secretary-Treasurer</i>





ACTIVITIES



Student Board of Publication

The Board has been confronted with the problem of wiping out a deficit which has accumulated since the past few years. Through careful accounting of all expenditures and the slicing of the output for the yearbook, the greater portion of the \$1700 debt will be discharged.

MEMBERS

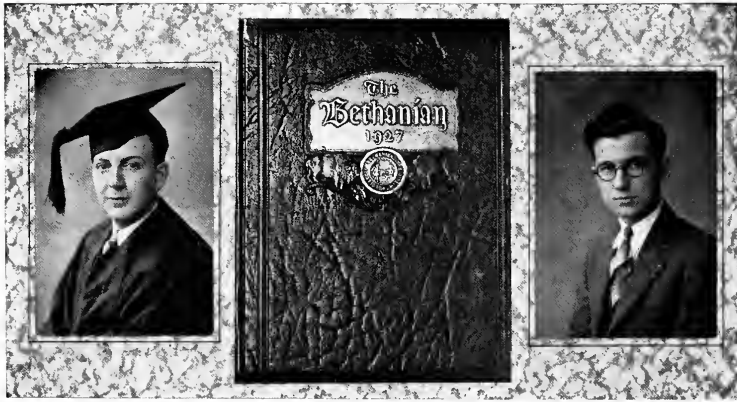
JOSEPH LA SITIS	<i>President</i>
WARD STALNAKER	<i>Editor of Bethanian</i>
DWIGHT STEVENSON	<i>Business Manager</i>
PAUL WHITE	<i>Editor of Collegian</i>
OTTIE COCHRAN	<i>Advertising Manager</i>
MARK REIGARD	<i>Circulation Manager</i>

FACULTY ADVISORS

MR. HICKMAN

MRS. BOURNE

MR. WOOLERY



The 1928 Bethanian

Volume XXVII

THE "Bethanian" of 1928 is presented by the staff with a sense of its incompleteness. We now keenly realize that so elusive is the spirit of college life that it can never be mirrored satisfactorily within the pages of a mere book. It has, however, been the aim of the staff to suggest as accurately as our finances, time, and powers have allowed, the main currents of Bethany's multi-varied activity. We have thought pictures the most effective of all media in realizing our aim, and thus have endeavored to gather for the book a larger collection of snaps and photos than has ever appeared in a Bethany annual.

We shall not enumerate our handicaps, financial and otherwise, in an attempt to rationalize our myriad mistakes. These errors, unfortunately, cannot be retrieved and you, kind reader, must needs suffer them.

Though the experience has seemed painful many times, the editors now feel that their work has been a great education. Too, the nature of our position has drawn us into close contact with the entire student body and has led us to a broadening of our associations not likely to have been gained otherwise.

The expression of deep appreciation will be the final word from the editors. Beside the fine aid from the regular department editors, invaluable aid has been lent by Guy Moore who spent great time and painstaking care in his mounting of our snaps and photos; by Ned Bryan who likewise expended this time and practical powers freely. The closing token of appreciation we pay to that perfect gentleman, Mr. Danford, who throughout the period of compilation gave willing assistance so constantly that truly it seems he has been the "sine qua non" of this year's book.



Bethanian Staff

WARD STALNAKER	Editor-in-Chief
DWIGHT STEVENSON	Business Manager
MORTON MILLER	Associate Editor
FLORENCE BEVELHYMER	Art Editor
VIRGINIA HEMINGTON	Organization Editor
KATHARINE COPE	Feature Editor
ELLIOTT BRANDON	Athletic Editor
CELIA VERMILLION	Snap Editor

ASSISTANT EDITORS

FLOYD YOCUM	Art Editor
HELEN ULRICH, ELIZABETH GREEN	Organization Editors
RUTH DYE, ELLSWORTH RICHARDSON	Feature Editors
RIST STIMMEL, WILLIAM KELLY	Athletic Editors
MARTHA MCCORKLE, HELEN THOMPSON	Snap Editors



Collegian Staff

PAUL WHITE	<i>Editor-in-Chief</i>
WILLIAM KELLY	<i>Associate Editor</i>
CECIL FETTERS	<i>News Editor</i>
ELLIOTT BRANDON	<i>Sports Editor</i>
F. H. KIRKPATRICK	<i>Columnist</i>
MABEL METZE	<i>Society Editor</i>
RUTH NETTING	<i>Contributing Editor</i>





1928 Homecoming Committee

The mid-year homecoming was again enlivened by a stage revue which commendably adds itself to the previous homecoming presentations. Its program was such that it must surely have recalled to our alumni fond and pleasant reminiscences. The whole effect was enhanced by the two special features of the program: the staging of sorority tableaux posed in response to fraternity serenaders, and the introduction of the "Bell Song" whose rendering was so beautifully aided by the projected slide of our beloved tower.

COMMITTEE

W. H. CRAMBLETT	<i>Faculty Chairman and Director</i>	
WILLIAM MORRIS	<i>Student Chairman</i>	
B. R. WEIMER	<i>Musical Director</i>	
FORREST H. KIRKPATRICK	<i>Publicity</i>	
GARDNER PEENE	FANNIBELLE ARMSTRONG	CLEO MUMPER
KATHARINE COPE	NANCY MCCOLLAM	VIRGINIA HEMINGTON
MABEL METZE	ARCHIE SCHROCK	ARTHUR RUSH
DOROTHY VAN TRESS	ISABELLE ADAMS	RIST STIMMEL
HELEN THOMPSON	CELIA VERMILLION	FRED TUCK
	RAYMOND THOMAS	

SCENERY AND LIGHTING:

JOHN GOODNIGHT	HUGH ERSKINE	ROBERT CASHMAN
ALLEN JULIER	HOWARD BARNES	FRANK ROGERS





Merry Masquers

Through a series of try-outs held at the beginning of school, the dramatic club greatly increased its membership. During last Commencement week it presented "Twelfth Night" and this fall the popular and delightful comedy, "The Patsy." This spring it intends to give Tarkington's "The Trysting Place" as well as a commencement play.

The club has been most generous with donations to worth-while college projects. It gained the honor of being the first organization to make a contribution to the Crusade fund. It further evinced its liberality by making a gift of one hundred and fifty dollars to aid in the purchase of tracks for the new cyclorama which so effectively enhances our stage possibilities.

OFFICERS

KATHARINE ELSIE COPE *President*
 FRANCES WHITE *Secretary*
 WARD STALNAKER *Treasurer*

MEMBERS

ISABELLE ADAMS	VIRGINIA HEMINGTON	ELLSWORTH RICHARDSON
FANNIBELLE ARMSTRONG	ALLEN JULIER	WARD STALNAKER
HELEN ADRIAN	ELLEN KINSEY	FRANK TARR
FLORENCE BEVELHYMER	JOHN MARSHALL	HELEN THOMPSON
KATHARINE COPE	HELEN MILLER	KENNETH TITUS
MARGARET CLEVELAND	GUY MOORE	YVONNE TOWNSEND
RUTH CULP	WILLIAM MORRIS	FRED TUCK
JOHN GOODNIGHT	ROBERT NETTING	HELEN ULRICH
ELIZABETH GREEN	RUTH NETTING	FRANCES WHITE
KATHERINE HELPHREY	GARDNER PEENE	EWING WORKMAN

The Merry Masquers

Present

"Twelfth Night"

Dramatis Personae

DUKE ORSINE	<i>John Paul Pack</i>
VALENTINE	<i>Archie T. Schrock</i>
SIR TOBY BELCH	<i>Gardner Peene</i>
SIR ANDREW OGNACHEEK	<i>William Morris</i>
SABASTIAN	<i>Helen Ulrich</i>
ANTONIO	<i>Frank Tarr</i>
FRIAR	<i>Edgar Bell</i>
MALVOLIO	<i>Ellsworth Richardson</i>
CLOWN	<i>Ralph Whitehead</i>
PAGE	<i>Martha Quinlin</i>
VIOLA	<i>Miriam Madsen</i>
OLIVIA	<i>Adele White</i>
MARIA	<i>Katherine Cope</i>

"The Patsy"

PATRICIA HARRINGTON	<i>Helen Thompson</i>
TONY ANDERSON	<i>Ellsworth Richardson</i>
MRS. HARRINGTON	<i>Ruth Netting</i>
MR. HARRINGTON	<i>John Berry</i>
GRACE HARRINGTON	<i>Frances White</i>
BILLY CALDWELL	<i>Fred Tuck</i>
THE TAXI DRIVER	<i>Earl Epling</i>





Boys' Debating

Largely due to the coaching of Professor G. S. Bennett, this was the most successful season in the debating history of Bethany. The home debates were much better attended than those at any of the other schools; commendation is due the college for its unprecedented support of these forensic programs.

The question for boys' debates was chosen by the newly formed Tri-State Debating Conference, consisting of Geneva, Waynesburg, Grove City, Westminster, and Bethany colleges: "Resolved that the United States government, except after formal declaration of war, should refrain from the use of armed force for the protection of the foreign investments of our nationals."

The schedule consisted of seven debates as follows:

March 1	Geneva, dual
March 8	Waynesburg, dual
March 12	Western Reserve
March 15	Westminster, dual

Following is the roster of those active throughout the season:

Affirmative

JOHN BERRY
 DWIGHT STEVENSON
 MICHAEL KASARDA
 ENNIS BAILEY
 CLINTON DAVIDSON
 HOWARD HORNER

Negative

VIRGIL ELLIOTT
 WARD STALNAKER
 CLARENCE SCHNARS
 ELTON BEHM
 HENRY SHALLENBERGER

The team loses Berry, Elliott, and Stalaker by graduation, but an adequate number of able men remain to carry on. Those who have debated this year are sensible of the value of their training and practice, and feel themselves indebted to the college and students for this invaluable privilege.



Girls' Debating

The long attempts to inaugurate debating for girls in Bethany College culminated in the formation this year of two teams whose work, in view of their lack of previous experience, has elicited the enthusiastic commendation of all who have heard them.

The question debated is one that has confronted students of government as a problem for years, namely, "Resolved: that the direct primary method of nominating state and national officers should be abolished."

In the dual debates with Geneva, Waynesburg, and Westminster Colleges, our girls' teams were unusually successful, winning all but two of their contests. At home, our student body evinced its hearty appreciation by its splendid turn-outs for all debates.

The fine showing made by this year's teams points to the success and permanency of girls' debating in Bethany.

MEMBERS OF THE TEAMS

Affirmative

ROSALIE STUTZMAN
 JOSEPHINE ORLANDO
 ETHEL HOUSTON

Negative

AMELIA HALL
 RUTH CULP
 MARGUERITE ARNOLD

PROF. G. S. BENNETT, *Coach*



Adelpian Literary Society

A. L. S. alone yet survives the attacks of the virus which put the several flourishing literary societies of Bethany's history out of existence. The society is an elective organization purposing to be a medium for the developing and the expression of literary, musical, and forensic ability, especially for freshmen and sophomores. Close adherence to its motto, "Neglect not the gift that is within thee," would signify the worth of Adelpian's intent.

OFFICERS

First Semester

DWIGHT STEVENSON	President
DOROTHY BEYER	Vice-President
GENE CARPENTER	Secretary
MORTON MILLER	Program Chairman
CLINTON DAVIDSON	Treasurer

Second Semester

MORTON MILLER	President
LAURA CATHON	Vice-President and Program Chairman
PAULINE STARN	Secretary
CLINTON DAVIDSON	Treasurer
HENRY SHALLENBERGER	Marshal

Current History Club

Founded in 1922

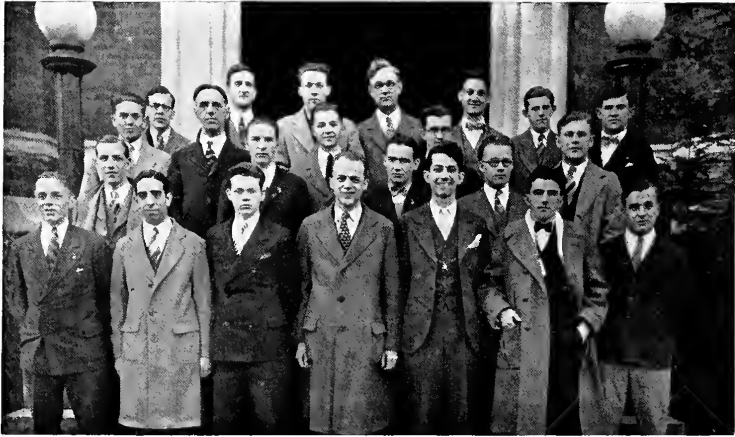


WITH the completion of a series of studies on foreign developments, the Current History Club turned to American cultural development and national political affairs for its subjects during the second semester. On Monday evening, March 26, the presidential possibilities were assayed and angles of the campaign from a personal standpoint were viewed. A straw vote by the members present resulted in an overwhelming preference for Secretary Herbert Hoover.

Issues of the coming political campaign formed the chief subjects until the end of the college year. The problem of farm relief was taken first, on April 16. Unusual interest was discovered on the part of students in the economic basis of politics, and attendance at the club's meeting mounted with each session. To a great degree the problems selected for discussion are the same as those of the World's Youth Conventions and are met in the same free, democratic style of open forum examination.

On Wednesday, March 28, the club placed before the Student Board of Governors the proposition of taking a vote of the entire student body on presidential favorites. This suggestion was adopted and a poll was made, with preliminary short talks on candidates, during the chapel hour.

The Current History Club meetings are serving not only to introduce subjects of practical importance in the affairs of nations, but as well, to draw out student opinion. There is a prevailing tendency on the part of the average undergraduate to depreciate his information, to hesitate in advancing his views, and the opportunity to overcome this backwardness is made available in these informal discussions. Knowledge gained in courses in the class room is given an application, and views which otherwise might remain bottled up are expressed and defended.



Ministerial Association

OFFICERS

W. ELBERT STARN *President*
 A. DALE FIERS *Vice-President*
 DWIGHT STEVENSON *Secretary-Treasurer*

MEMBERS

PRESIDENT CLOYD GOODNIGHT	CLAYTON GOE
PROFESSOR G. S. BENNETT	RONALD HODGSON
PROFESSOR F. R. GAY	HOWARD HORNER
PROFESSOR I. T. GREEN	ELDRED JOHNSTON
PROFESSOR H. N. MILLER	ARTHUR MARKLEY
PROFESSOR E. L. PERRY	EDGAR McDONALD
NORMAN ALLEN	JOSEPH LA SITIS
WILLIAM BARBER	HAROLD MONROE
EDGAR BELL	EARLE OWEN
W. D. BROCK	ROBERT PROBST
LARUE BROWN	ELLSWORTH RICHARDSON
CLINTON DAVIDSON	MALCOM RUSH
ORIN DICE	CLARENCE SCHNARS
VIRGIL ELLIOTT	ERRETT SCOTT
EARL EPPLING	HARRY SPARKS
CECIL FETTERS	ELBERT STARN
DALE FIERS	DWIGHT STEVENSON
ELMER GREVE	TOM WALKER



Student Volunteers

Founded May 25, 1906

The Student Volunteer Group at Bethany has been making a very definite study during the past year of "Christian Voices Around the World". Quite an extensive program of deputation work has been carried on in the churches of neighboring towns. One of the members attended the Student Volunteer Quadrennial Convention at Detroit in December, and two attended the Student Volunteer Conference at Geneva the week end of March 2, at which time Ann Barnett was elected Vice-President of the Student Volunteer Union of West Virginia and Western Pennsylvania. Ella Perry has been Secretary of this Union for the past two years. With two members this year, bigger and better accomplishments in His name are anticipated.

OFFICERS

CECIL FETTERS *President*
 ELLA PERRY *Secretary-Treasurer*

MEMBERS

ANN BARNETT
 ELLA PERRY
 CAROLINE WATKINS
 CECIL FETTERS
 DALE FIERS

Orchestra

First Violins—

WILLIAM PILCHARD
LORENA PEASE
MARGARET CLEVELAND
HELEN ULRICH
HENRY OLEXA
OTTIE COCIRAN

Second Violins—

MORTON MILLER
MURIEL IRVIN
VIRGINIA DARSIE
ELEANOR STEINDORF
EMILY GREEN
ROSALIE STUTZMAN

Viola—

ALDEN CONGRAVE

Violincello—

PAUL WADDELL
WILMA SUMPSTINE

Bass—

OLIVER LOER

Flute—

IRVIN GREEN

Horns—

PHILIP BERGNER
RICHARD OWEN

Trombone—

WILBUR SUMPSTINE

Banjo—

LEONARD CONWAY

Drums—

CLAYTON GOE

Saxophone—

JOHN GRAHAM

Piano—

VIRGINIA HEMINGTON

Band

Cornet—

HUGH MUTCHLER
PHILIP BERGNER
VIRGINIA PILCHARD
PAUL BIELEFIELD
ROBERT HOCH

Clarinet—

LORENZO RUNK
EWING WORKMAN
RICHARD DARR
ORIN DICE
JOHN GOODNIGHT

Piccolo—

IRVIN GREEN

Saxophones—

JOHN GRAHAM
PAULINEBELLE WYSS
JAMES MCGOUGH
ELTON BEHM

Drums—

GARDNER PEENE
CLAYTON GOE
ROBERT PROBST
GEORGE NEWELL

Horns—

LEONARD CONWAY
WAYNE CANON
RICHARD OWEN
LEONARD SMITH

Baritone—

PAUL WADDELL

Bass—

ALTON BEHM
WILLIAM ERSKINE
OLIVER LOER



The Purpose of the Y. W. C. A.

We unite in the desire to realize a full and creative life through a growing knowledge of God.

We determine to have a part in making this life possible for all people.

In this task we seek to understand Jesus and follow Him.

.

To make for better fellowship and understanding among girls, and so to help them toward a more complete mastery of the art of living sympathetically and helpfully with all people—this is the aim of the Young Women's Christian Association of Bethany College.



Y. W. C. A. Cabinet

OFFICERS

MABEL METZE *President*
 ANNE BARNETT *Vice-President*
 RUTH ERSKINE *Secretary*
 LAURA CATHON *Treasurer*



COMMITTEE CHAIRMEN

ISABELLE ADAMS *Social Service*
 MARTHA MCCORKLE *Membership*
 CLEO MUMPER *Music*
 FLORENCE BEVELHYMER *Publicity*
 HELEN PIERCE *World Fellowship*
 HELEN MORSS *Conference*
 RUTH DYE *Social Chairman*
 HELEN ULRICH *Social Assistant*
 ELIZABETH GREEN *Program*
 AMELIA HALL *Assistant Program*
 ELLA PERRY *Alumni*



Fraternities



Women's Pan-Hellenic Council

Organized for the purpose of engendering a better feeling among the various sororities in the college.

OFFICERS

ISABELLE ADAMS	<i>President</i>
KATHERINE HELPHREY	<i>Secretary</i>
GENE CARPENTER	<i>Treasurer</i>

MEMBERS

ISABELLE ADAMS	<i>Alpha Xi Delta</i>
FRANCES WHITE	<i>Alpha Xi Delta</i>
LA VAUGHN DENNISON	<i>Alpha Xi Delta</i>
RUTH DYE	<i>Zeta Tau Alpha</i>
FRANCES BORDEN	<i>Zeta Tau Alpha</i>
KATHERINE HELPHREY	<i>Zeta Tau Alpha</i>
ELIZABETH GREEN	<i>Kappa Delta</i>
GENE CARPENTER	<i>Kappa Delta</i>
MARTHA QUINLIN	<i>Kappa Delta</i>
CLEO MUMPER	<i>Gamma Chi</i>
HOPE REID	<i>Gamma Chi</i>
EDNA HILLING	<i>Gamma Chi</i>





Interfraternity Council

Decisions are made in this body upon matters which concern the groups collectively. Several smokers have been held within the past year; these have had a wholesome effect in engendering the proper spirit among the men of the college. They have also, by including the men of the faculty, been made the instrument of bringing the instructor and student into fellowship. These "get-to-gethers" have also served as a media of working up pep for our intercollegiate contests.

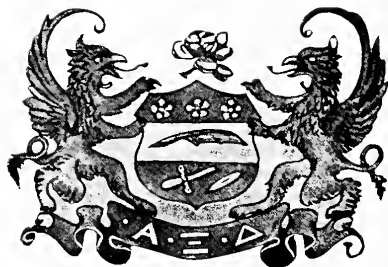
OFFICERS

VIRGIL ELLIOTT	<i>President</i>
ELLSWORTH RICHARDSON	<i>Vice-President</i>
MAURICE BETTS	<i>Secretary and Treasurer</i>

MEMBERS

ELLIOTT BRANDON	<i>Beta Theta Pi</i>
WILLIAM MORRIS	<i>Beta Theta Pi</i>
FREDERICK TUCK	<i>Sigma Nu</i>
ELLSWORTH RICHARDSON	<i>Sigma Nu</i>
ROBERT CASHMAN	<i>Kappa Alpha</i>
VIRGIL ELLIOTT	<i>Kappa Alpha</i>
MAURICE BETTS	<i>Phi Kappa Tau</i>
RIST STIMMEL	<i>Phi Kappa Tau</i>





Alpha Xi Delta

Founded at Lombard College in 1893

Forty-five Active Chapters

Colors: Double Blue and Gold

Flowers: Pink Rose

Publication: "The Alpha Xi Delta"

Delta Chapter

Established 1903

President

ISABELL ADAMS

Pan-Hellenic Representatives

ISABELLE ADAMS

FRANCES WHITE

LAVAUGHN DENNISON

FOUNDERS

VIRGINIA STEWART ERSKINE
ANNA MARY KEMP
PEARL SAYLER WATSON

ELIZABETH CARSON BROWN
MARGARET CURTIS PIERCE
MURIEL SCOTT

JULIA JOHNSON



Alpha Xi Delta

MEMBERS IN CITY

GARDA BACHELL
MARGARET HURT

MIRIAM NETTING
LUCILLE WORKMAN

LOUISE MILLER
VIRGINIA STEWART ERSKINE

MEMBERS IN FACULTY

VELMA RODEFFER

ANNA MARY KEMP

Class of 1928

ISABELLE ADAMS
MARGARET CLEVELAND
VIRGINIA HEMINGTON

LENA BALSINGER
KATHARINE COPE
RUTH NETTING

FLORENCE BEVELHYMER
RUTH ERSKINE
FRANCES WHITE

Class of 1929

FRANCES COOPER
VIRGINIA MCFADDEN
JANE WHITE

ELIZABETH GILLETTE
HELEN ULRICH

KATHRYN GILLETTE
ELIZABETH VODREY
HANNAH WOLLASTON

Class of 1930

FLORENCE CONN
HELEN MILLER

FRANCES CONN

LAVAUGHN DENNISON
AMELIA HALL

Class of 1931

ANN ADAMS
MURIEL IRVIN

ELIZABETH BRANDON

GRACE HERBSTER
BLANCHE SIMPSON



Irvin, A. Adams, Herbster, Conn, Conn
Hall, Dennison, Brandon, Simpson, Miller
Ulrich, McFadden, Vodrey, J. White, K. Gillette, E. Gillette, Wollaston, Cooper
Hemington, Balsinger, Netting, Cleveland, I. Adams, F. White, Bevelhymer, Erskine, Cope



Zeta Tau Alpha

Founded at Virginia State Normal in 1898

Fifty-five Active Chapters

Colors: Turquoise Blue and Steel Gray

Flower: White Violet

Publication: The Themis

Theta Chapter

Established in 1905

President

RUTH ANN DYE

Pan-Hellenic Representatives

RUTH DYE

FRANCES BORDEN

KATHERINE HELPHREY

FOUNDERS

LAURA ASH
MAUD JENNINGS
LILLIAN SMITH
MARY GRANGER
ORPHA BURDINE

MARIE ANDERSON
NELL EDWARDS
GERTRUDE PHILLIPS
FLORENCE CAVENDER
KATHRYN MILLER



Zeta Tau Alpha

MEMBERS IN CITY

RUTH COUNSELMAN

MARY CARMEN

Class of 1928

CELIA VERMILLION

Class of 1929

LUCILLE ALLESHOUSE
MARGARET BEIGHLEY

FANNIBELLE ARMSTRONG
FRANCES BORDEN

MABEL ARNOLD
RUTH DYE

Class of 1930

HELEN ADRIAN
KATHERINE HELPHREY
LILLIAN TARR

LUCILLE BALL
CATHERINE MAY

ANN BARNETT
ROSALIE STUTZMAN
MARGARET WASHINGTON

Class of 1931

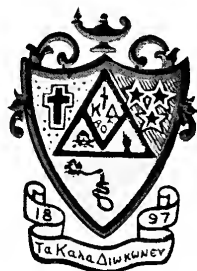
RUTH CULP

RUTH BULLARD
ELIZABETH SHEETS

MARY PORTER



Ball, Culp, Barnett, Holt, Bullard, Porter
Stutzman, Washington, Townsend, Helphrey, Sheets, Tarr, Adrian, May
Arnold, Vermillion, Alleshouse, Dye, Beighley, Armstrong, Borden



Kappa Delta

Founded at Virginia State Normal in 1897

Sixty-one Active Chapters

Colors: Olive Green and White

Flower: White Rose

Publication: "The Angeloo"

Sigma Xi Chapter

Established in 1923

President

ELIZABETH GREEN

Pan-Hellenic Representatives

ELIZABETH GREEN

GENE CARPENTER

MARTHA QUINLIN

FOUNDERS

SUE WACHTEL
MARIAN HIBLER

GRACE KAGARISE
NELLE MOSER



Kappa Delta

MEMBERS IN CITY

EDNA K. WOOLERY

Class of 1928

GENE CARPENTER

NANCY MCCOLLAM

HELEN PIERCE

EFFIE STICKLEY

Class of 1929

LAURA CATHON

ETHEL HOUSTON

MARGARET SNIDER

EMMA COOK

ELEN KINSEY

HELEN THOMPSON

BLANCHIE MCGEARY

ELIZABETH GREEN

MARTHA MCCORKLE

DOROTHY VAN TRESS

Class of 1930

MARIAN LATIMER

RUTH SMITH

MARTHA QUINLIN

EVA BELLE VEITS

ELIZABETH NEILLEY

Class of 1931

MARGUERITE ARNOLD

VIRGINIA DARSIE

DOROTHY CORNWELL

MELISSA MCGEARY

ELIZABETH BELT

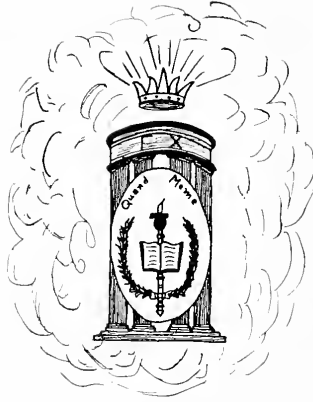
EVELYN JOHNSON

JEAN HOBBS

ELEANOR STEINDORF



Darsie, Johnson, Cornwell, Belt
Viets, Hobbs, McGeary, Arnold, Steindorf
Van Tress, McCorkle, Smith, Latimer, Quinlin, Cathon
Thompson, Cook, Snyder, Kinsey, Houston
Carpenter, Stickley, Green, McCollam, Pierce



Gamma Chi

Founded at Bethany College in 1924

Colors: Old Rose and Silver

Flower: White Carnation

President

CLEO MUMPER

Pan-Hellenic Representatives

CLEO MUMPER

EDNA HILLING

HOPE REID

FOUNDERS

EMILY JONES
GLADYS RUST
URSULA THOMPSON
RACHEL WILSON

JULIA WOODSON

RUTH E. MILLER
HAZEL SCOTT
LETA WAINWRIGHT
TUDELLE WILSON



Gamma Chi

MEMBERS IN CITY

FANNIE BENNETT

Class of 1928

HOPE REID

MABEL CHAMBERS
GOLDA LASITIS

E. RUTH MILLER

Class of 1929

OLIVET HEDDEN
THELMA SMITH

GARNET HELMEY
LEE SWIGER

CLEO MUMPER
SARA THOMAS

Class of 1930

MARGARET CUNNINGHAM

EDNA HILLING
HARRIETTE MUMPER

MARGARET LAUGHREY

Class of 1931

XANTHA GALLEHER

ANNA MILLER
BARBARA OWENS

JOSEPHINE ORLANDO
VERA SOMERS



Cunningham, A. Miller, Laughrey, Swiger, Galleher
Hilling, Thomas, Smith, Hedden, Somers, Orlando
R. Miller, Chambers, C. Mumper, Reid, LaSitis, Helmey



Beta Theta Pi

Founded at Miami University in 1839

Eighty-six Active Chapters

Colors: Pink and Blue

Flower: American Beauty Rose

Publication: "The Beta Theta Pi"

Psi Chapter

Established in 1860

President

JAMES BRANDON

Inter-Fraternity Representatives

JAMES E. BRANDON

WILLIAM MORRIS

FOUNDERS

ALFRED THURSTON POPE

THOMAS T. HOLTON

JAMES H. BATE

BENJAMIN S. KEENE

ERASMUS FRAZIER

CLAUDIUS M. B. THURMOND



Beta Theta Pi

MEMBERS IN CITY

M. STANLEY MILLER

FOREST CARMEN

MEMBERS IN FACULTY

H. N. MILLER

W. K. WOOLERY

FORREST H. KIRKPATRICK

Class of 1928

JAMES E. BRANDON

EUGENE PECKMAN

ARCHIBALD SCHROCK

NOEL WELLS

PAUL WHITE

Class of 1929

LEONARD CONWAY

CARL HAMILL

WILLIAM MORRIS

DALE FIERS

WILLIAM KELLY

ROY PRICE

Class of 1930

GEORGE BRITAIN

JOHN GOODNIGHT

JAMES IMEL

ORIN DICE

JAMES HAMILL

ROBERT NETTING

LORENZO RUNK

JOHN THOMPSON

EWING WORKMAN

Class of 1931

GEORGE DICE

KERMIT ESPEY

JOHN MARSHALL

ALLEN MASSENGILL

JAMES MCCLAY



Jones, Nelson, Netting, Marshall, Latto, Telfair, Bramball
Phillips, Buston, McClay, Massengill, Espey, G. Dice
Goodnight, Runk, O. Dice, Thompson, Brittain, Workman
Kelly, Morris, Conway, Fiers, Mutchler, Price, Imel, Titus, J. Hamill
White, Schrock, Brandon, C. Hamill, Peckman



Sigma Nu

Founded at Virginia Military Institute in 1869

Ninety Active Chapters

Colors: Old Gold, Black and White

Flower: White Rose

Publication: "The Delta"

Epsilon Chapter

Established in 1883

President

ELLSWORTH RICHARDSON

Inter-Fraternity Representatives

ELLSWORTH RICHARDSON

FRED TUCK

FOUNDERS

FRED MARSH GORDON
JESSE ELMORE MARTIN
WILLIAM HENRY FIELDS
VICTOR HAYS MILLER

GEORGE ALONZO WADDLE
JOHN FRED SCHRONTZ
ALBERT GARFIELD ISRAEL
ROBERT RODMAN GREEN



Sigma Nu

MEMBER IN FACULTY

W. J. SUMPSTINE

Class of 1928

JOHN ADDY

PAUL NEEL
FRANKLIN J. TARR

FRED TUCK

Class of 1929

AUSTIN T. COCHRAN

ELLSWORTH RICHARDSON
FLOYD YOCUM

JOHN TINSON

Class of 1930

ENNIS BAILEY
PHILIP BERGNER
CHARLES H. BURKE

OTIS T. DENNISON
EDGAR FREHLING
LONNIE FURBAY

RICHARD HERVEY
RICHARD HARRIS
ROWLAND T. JONES

Class of 1931

ROBERT BEHNKE
ROBERT R. BUNN
THOMAS E. CARSON
RICHARD K. DARR

J. ALLEN JULIER
WILLIAM C. MCCONNEL
ROBERT K. RODMAN
JOHN T. LATTO
HAROLD DETMAN

FRANK B. ROGERS
RICHARD S. WOODBURY
CYRUS F. YOCUM III
GEORGE NEWELL



Davidson, Harris, Bunn, C. Yocum
Rodman, Darr, Woodbury
Behnke, Carson, Jones, Hervey, McConnell, Rogers
Cochran, Furbay, Peene, Frehling, Bailey, Dennison, Burke, Bergner, F. Yocum, Julier
Tinson, Addy, Richardson, Tuck, Tarr



Kappa Alpha

Founded at Washington and Lee in 1865
Sixty-five Active Chapters

Colors: Crimson and Gold Flowers: Magnolia, Crimson Rose
Publication: "The Kappa Alpha Journal"

Beta Beta Chapter

Established in 1903

President

ROBT. J. CASHMAN

Inter-Fraternity Representatives

ROBERT CASHMAN

VIRGIL ELLIOTT

FOUNDERS

HARRY COCHRAN
ANDREW C. SHAW

GERALD H. CULBERSON
WILBUR V. SHANNON



Kappa Alpha

MEMBERS IN CITY

LINLEY WELLS
WILLIAM MCFADDEN

MARK LEWIS
CYRUS UNDERWOOD

Class of 1928

HOWARD BARNES
JOHN BERRY
WARD STALNAKER

ROBERT CASHMAN
VIRGIL ELLIOTT

CLAYTON GOE
ALLEN REED
ELBERT STARN

Class of 1929

LARUE BROWN

MORTON MILLER

HENRY SHALLENBERGER

Class of 1930

KENNETH BAKER
GEORGE BURWELL
IRA SAYRE

JOHN GRAHAM
DEANE LOVELAND

EDGAR McDONALD
ROBERT ROE
CLARENCE SCHNARS

Class of 1931

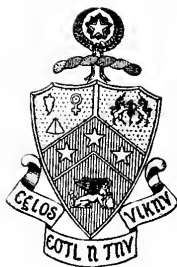
HERBERT ASH
J. NED BRYAN
WILLIAM ERSKINE
JOHN MORRIS

HARRY SPARKS
ROBERT HARTLEY
WAYNE JENKINS

ELDRED JOHNSTON
CECIL VAUGHN
SAMUEL MCCLEARY
FREDERICK PRICE



Bryan, Burwell, Hartley, Roe, Baker, McQuown, Price
Johnston, Miller, Ash, Erskine, Probst
Jenkins, Loveland, Vaughn, Sayre, Brown, Graham, Schnars, McDonald, Newell,
Detman, Morris
Barnes, Goe, Berry, Cashman, Elliott, Stalaker, Starn



Phi Kappa Tau

Founded at Miami University in 1906

Thirty-seven Active Chapters

Colors: Harvard Red and Old Gold

Flower: Red Carnation

Publication: "Phi Kappa Tau Laurel"

Phi Chapter

Established in 1923

President

J. RIST STIMMEL

Inter-Fraternity Representatives

RIST STIMMEL

MAURICE BETTS

FOUNDERS

CARL FRANCIS

W. K. MCKINNEY

FRANK DONALDSON

WILLIAM TURNBULL

ALBERT WILSON



Phi Kappa Tau

MEMBER IN CITY

RONALD CRAWFORD

Class of 1928

WAYNE CANON

CECIL FETTERS

GLENN GRIFFITH

Class of 1929

MAURICE BETTS

ARTHUR RUSH

J. RIST STIMMEL

GEORGE PHELPS

ERRETT SCOTT

WILLIAM SIGWALT

DWIGHT STEVENSON

Class of 1930

ALTON BEHM

RANDOLPH FOSTER

ARTHUR ORNER

ELTON BEHM

EDWARD GREEN

HENRY STIMMEL

NELSON WARD

Class of 1931

OSCAR CRUM

JAMES MCGOUGH

JOHN SIGWALT

THOMAS DAILEY

ROBERT RINEHART

LEONARD SMITH

WALTER HARSH

MALCOM RUSH

FLOYD WRIGHT

MICHAEL KASARDA

HARRY SCHENCK

CLARENCE YAW



Evans, Green, Rush, A. Rush, Crum, Dailey, McGough
Sigwalt, Wallace, J. Sigwalt, Schenck, Smith, Betts, Wright
Rinehart, Orner, A. Behm, E. Behm, Kasarda, H. Stimmel, Foster, Fox, Harsh, Ward
Smith, Griffith, Stimml, Fetters, Scott, Stevenson



Alpha Pi Alpha

Founded at Bethany in 1925

Colors: Crimson and White

Flower: White Rose

President

RAY THOMAS

FOUNDERS

FRANK STUCK
WILLIAM SLITER
EMMETT STEIN
OLIVER LOER

FRED WRIGHT
JOSEPH LA SITIS
OWEN HEDDEN
THORLEY JOHNSON

WILLIAM BARBER
HERBERT HESLEP
RALPH FASICK
GLENN CAMERON



Alpha Pi Alpha

MEMBER IN FACULTY

PROFESSOR F. R. GAY

Class of 1928

WILLIAM D. BARBER

RALPH FASICK
JOSEPH LA SITIS

OLIVER LOER

Class of 1929

THOMAS ADDLEMAN
W. D. BROCK

FRANK A. DOLE
EDWIN H. ELWELL

ARTHUR MARKLEY
MARK REIGARD

RAYMOND THOMAS

THOMAS WALKER

Class of 1930

GLENN BROCK
BALLARD DAMSCHRODER

EARL EPPLING
JAMES HARRIS
STEWART WALLACE

STANTON HEDDEN
HOWARD HORNER

Class of 1931

ROBERT HOCH
EARL OWEN

RONALD HODGSON

HAROLD MONROE
VIRGIL RYLAND



Ryland, Markley, Hodgson, Henderson, W. D. Brock
Damschroder, Hoch, Sliter, C. Brock, Owens
Wallace, Eppling
Horner, Monroe, Walker
Elwell, Harris, Hedden, Dole
Addleman, Barber, Thomas, Loer, La Sitis, Reigard



Tau Kappa Alpha

National Forensic Fraternity
 Founded at Indianapolis, Indiana, in 1908
 Publication: "The Speaker"

Bethany Chapter

Established in 1917

OFFICERS

JOHN BERRY	<i>President</i>
DWIGHT STEVENSON	<i>Vice-President</i>
VIRGIL ELLIOTT	<i>Secretary-Treasurer</i>

FRATRES IN FACULTATE

G. S. BENNETT	H. N. MILLER
---------------	--------------

FRATRES IN COLLEGIO

ELLSWORTH RICHARDSON	WARD STALNAKER	VIRGIL ELLIOTT
ENNIS BAILEY	MIKE KASARDA	CLARENCE SCHNARS
DWIGHT STEVENSON	ELTON BEHM	JOHN BERRY

ORATORICAL CONTEST

Last year T. K. A. sponsored the oratorical contest, an innovation in modern Bethany activities. The contest was participated in by six persons, one girl and five boys. First prize, a valuable gold medal, was given to Herman Patton; second prize, a fine set of books, to Don Saimon.



Alpha Phi Epsilon

Honorary Literary Fraternity

Established in 1917, University of Tennessee

Publication: "The Garnet and Green"

Rho Chapter

Established in 1921

OFFICERS

DWIGHT STEVENSON	President
MABEL METZE	Vice-President
DOROTHY BEYER	Secretary-Treasurer

FRATRES IN FACULTATE

PROFESSOR ANNA R. BOURNE PROFESSOR W. K. WOOLERY

FRATRES IN COLLEGIO

MABEL METZE	DOROTHY BEYER	EFFIE STICKLEY
CECIL FETTERS	DWIGHT STEVENSON	





Moo Moo Moo

Honorary Pep Organization

Color: Cream

Flower: Bull Rush

Publication: "The Fly-Tox"

BULLS

JOHN BERRY
WAYNE CANNON
ROBERT CASHMAN

OTTIE COCHRAN
VIRGIL ELLIOTT
WILLIAM MORRIS
HUGH MUTCHLER

GEORGE PHELPS
MICKY TITUS
FRED TUCK

MOOS

W. K. WOOLERY

W. H. CRAMBLETT
M. S. MILLER

B. R. WEINER



ATHLETICS





The Athletic Board of Control

The Athletic Board of Control is composed of four alumni, four members of the faculty, and four representatives from the student body. As the governing athletic body of the college, it approves appointments, determines athletic policy, and is the final court of appeal in all athletic matters.

OFFICERS

FRED TUCK	<i>President</i>
DALE FIERS	<i>Vice-President</i>
NANCY MCCOLLAM	<i>Secretary</i>
KENNETH BAKER	<i>Treasurer</i>

FACULTY MEMBERS

WOOLERY
 CRAMBLETT
 WEIMER

ALUMNI MEMBERS

McMULLEN
 WILKIN
 MILLER

The Fourth "R" at Bethany



FURMAN L. NUSS
Coach, Director of Athletics

"R"—Ruggedness

A quality college must have every department in such a condition that no excuses are offered for the lack of equipment or adequate instruction. With this in mind we are working to reconstruct the department of physical education at Bethany.

To train both athlete and student by physical education is only one of the important duties of our institution. The lessons there learned by the athlete and student are, we believe, just as important and needful as the other knowledge imparted by the various heads of our college. A strong body gives the individual an additional lever for his present and future work. For this reason, we aim to make our exercises and care of the body habit forming, that they may be used in after years by those who take our courses.

We hope to teach the players and student body to place the game and sportsmanship above the "win at any price" attitude. The win and lost column means nothing unless you *deserve* to win. The Athletic Department should instill in our teams and student body that "never say die" spirit; should create a more enthusiastic atmosphere which makes participants in the games give their utmost; should develop an *Esprit de corps*, if you please, to be used in every phase of our academic, social, and civic endeavors. In fact, we want each player, each team to 'play to win' not 'pray to win'. We must also learn to live if we expect to learn to play.

We will feel we have accomplished very little unless we leave those with whom we come in contact better than we found them. After all we are only in a great inventive process of making the future American men and women better physically, morally, and religiously.

Furman L. Nuss, Coach and Director of Athletics.

Athletic Managers



KELLY,
Football

TITUS,
Asst. Football

THOMAS,
Track

FASICK,
Track

TUCK,
Tennis

TARR,
Basketball

Tri-State Honorary Athletic Board



ALFRED CAREY, '27

Every year, to one senior of each college represented in the Tri-State Conference, a gold medal is presented as a token of superior achievement both in the class room and on the athletic field. Upon Alfred Carey, of last year's graduating class, was bestowed this enviable honor for 1927. "Alf" has thus become third in the lineage of the Honorary Athletes of Bethany College; Hubbard Shoemake and Ronald Crawford are his noble predecessors.

"Alf" left, upon his departure from his alma mater, an imperishable record as an outstanding all-round athlete and as an excellent student. In all three major sports: football, basketball, and baseball he earned the Bison "B". His wonderful ability as captain and end of the football team elicited, probably, the greatest admiration, but the same athletic prowess was evinced in his performances as running guard and as second baseman. In track, too, he displayed unusual talent, particularly in the pole vault, broad jump, and high jump.

Besides touching success in matters matrimonial, "Alf" is progressing in great shape as coach of high school athletics in glorious Florida.

COACH NUSS: An Appreciation

The *Bethanan* staff has wishes to express an appreciation of the influence and accomplishments of Coach Nuss during his three years' incumbency as the leader of athletics in Bethany.

Finding his department in a rather serious degree of disorganization, he has since placed it upon a stable basis, and has successfully revived and maintained an interest in the sports which was once dying.

During the present year, he has served as athletic director as well as coach of all sports. In spite of the illimitable duties which have devolved upon him in the discharge of his capacities, he has proved his efficiency by managing finances in such a way that there has already been made possible a considerable reduction in the troublesome athletic debt.

As a builder of Bethany teams, he has stressed clean play and Bethany spirit as more essential than the winning of victories. And while the victories have not been scarce, these finer qualities have not been lacking even in defeat.



Women's Athletic Association

The Women's Athletic Association has found its field of activities wide and varied. Last spring three rummage sales were held at McKinleyville and a Mardi Gras at Bethany; from the proceeds a sum of one hundred dollars was donated to spring sports. A tennis tournament for the girls sponsored by the club was enthusiastically participated in by the lovers of this game. An interclass basketball tournament likewise found support in this association.

Aside from these more definite accomplishments it is felt that this organization does promote among Bethany students a real interest in the "all-round girl". Though limited to a membership of fifteen, all the co-eds are enthusiastic about its work and welcome whatever sports it promotes.

OFFICERS

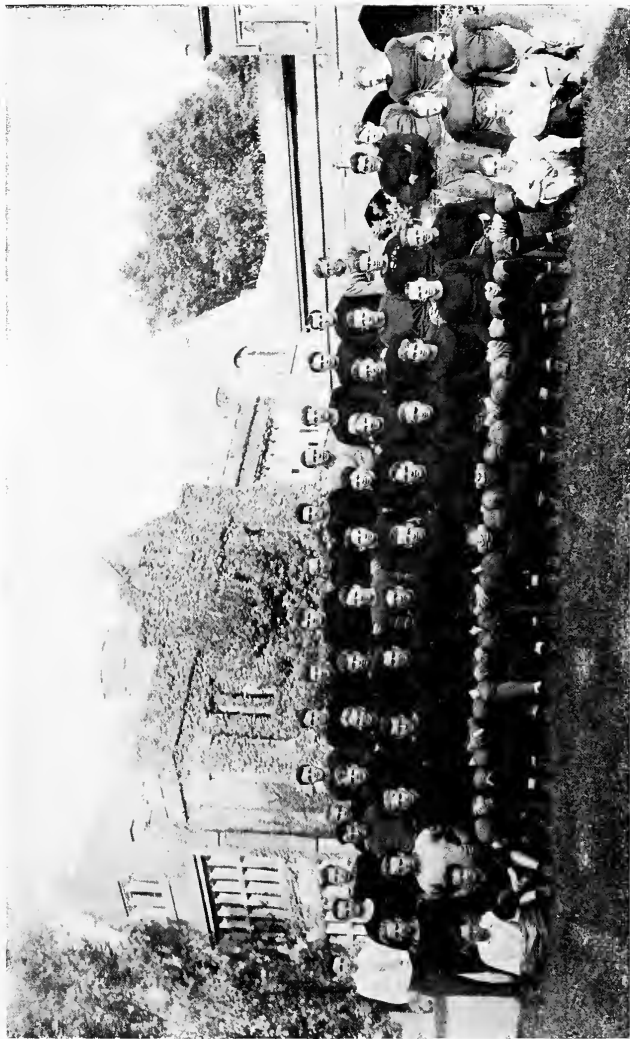
HELEN THOMPSON	<i>President</i>
HELEN ULRICH	<i>Secretary</i>
HOPE REID	<i>Treasurer</i>
NANCY MCCOLLAM	<i>Representative to Athletic Board</i>

MEMBERS

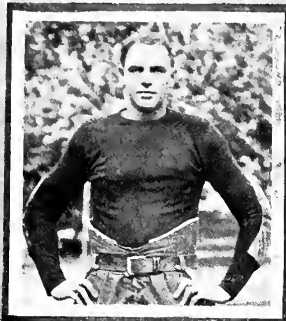
LENA BALSINGER	NANCY MCCOLLAM
KATHARINE COPE	HOPE REID
RUTH DYE	SARA THOMAS
RUTH ERSKINE	HELEN THOMPSON
VIRGINIA HEMINGTON	HELEN ULRICH



Football



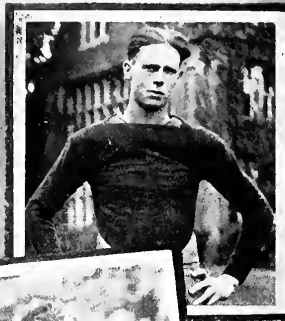
FOOTBALL SQUAD, 1927



JOHN TINSON



HOWARD BARNs



GLENN GRIFFITH



CARL HAMILL (Captain)

FRANK TARR



Senior

Jack is not an unknown quantity on a Bethany football team. He played his usual bang-up game this year and left no doubts in the minds of the fans that here will be a hole to plug up at tackle next year.

Senior

"Jeff" came to Bethany from Wilmington College where he received his early football training. Jeff played a consistent game while in there, and we are sorry to see him leave us after one year on the team.

Senior

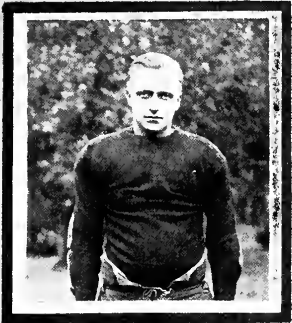
Griffith has finished his third and last year as a Bison athlete. "Griff" was always in the thick of the fray and could be depended upon to tear 'em down when the team was in a hole.

Senior

Captain Hamill, although kept out of several games due to injuries, was outstanding in the backfield of the Bison grid machine. Carl's defensive work was of very high calibre.

Senior

"Wid" returned to the Bison squad after an absence of two years and was playing fine football until injured in the W. & J. game. Tarr's absence was a loss to the team for there was a scarcity of experienced ends in camp last fall.



ROY PRICE

Junior

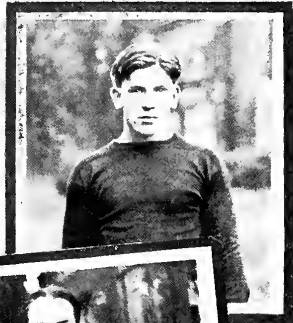
Roy is an old timer in a Bothany uniform. This season found him the same dependable, fighting center that he has always been.



KENNETH BAKER

Sophomore

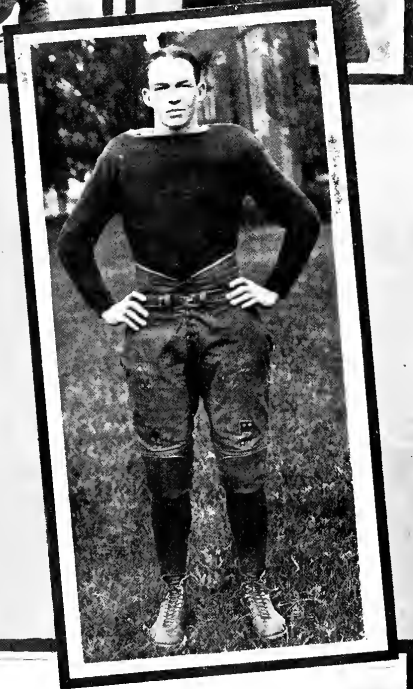
This elusive half-back's play was the cause of many thrills to the spectators and more tears to opponents. His powerful speed adapts him well for the great skitter of ends that he is.



ROBERT ROE

Sophomore

Roe drifted in from Warwood last year with Baker. No back in the Conference can hit the line with more destructive force than Bob. In the Impasse game especially he demonstrated what his drive is capable of doing to an opponent's line.



DALE FIERS (Captain-Elect)

Junior

The "Plunging Parson" was the team's most consistent ground gainer and an all around threat to the opponent. His passing and line plunging were great. As captain next year, and playing his last college football, Dale should experience his best season.

GARDNER PEENE

Sophomore

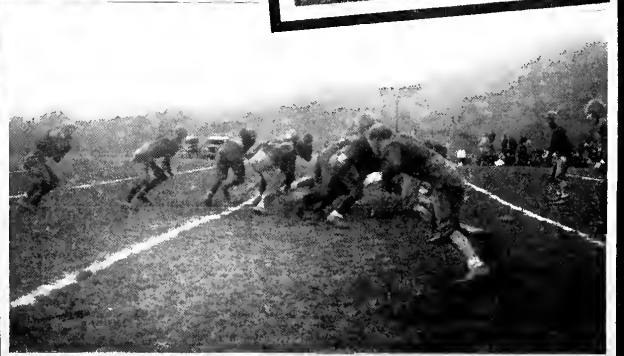
Peene played his first season as end on a Bison team. In spite of the newness of the position to him, he made an unusual record for himself. With another year's experience, Gardner should be able to hold his own against all opposition.

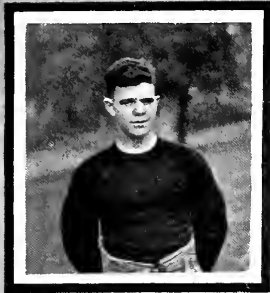
JOHN LATTO

Freshman

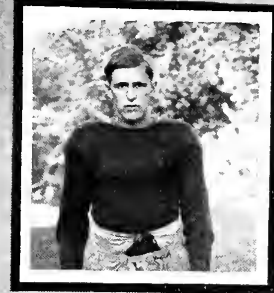
CHARLES JONES

Freshman

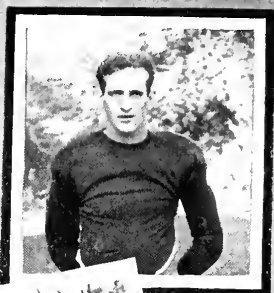




GEORGE BURWELL



Sophomore



This stocky center proved by his stellar playing of last fall that he was the outstanding center of the Tri-State Conference. Burwell was an important cog in the Bison machine, and since he has two more years of football ahead of him, we are expecting the center to be well fortified.

MALCOLM RUSH

Freshman

Rush came to Bethany heralded as a great basketball player, but he also demonstrated his ability to hold down an end position on the football team. Mal broke into the line-up for the first time in the W. & J. game and retained this position until forced out by illness late in the season.

CARL LUND

Sophomore

Lund comes to Bethany from West Liberty, where he was captain of the grid team. Carl is nothing less than swift, and proved to be an excellent open field runner.

MICHAEL KASARDA

Freshman

Mike comes to Bethany from Follansbee, the home of many of Bethany's gridders. He is an elusive open field runner and was outstanding in interference, his hard hitting and his deadly tackling.

FRANK ROGERS

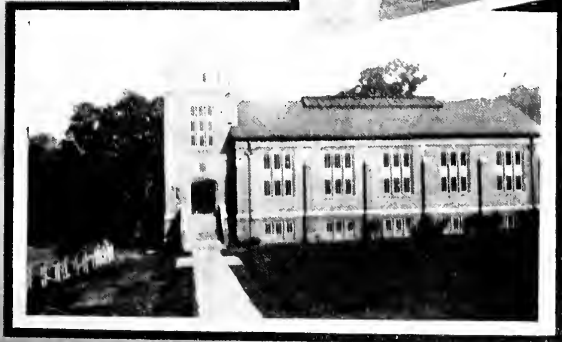
Freshman

This husky tackle came down from New York with Peene. Frank was one of the few freshmen to grab a varsity job. He came through in fine style and, doubtless, will prove a valuable man to the squad next year.

CHARLES MCBRIDE

Sophomore

Mae comes to us from Follansbee and West Liberty, and showed that he had the stuff that makes a good player.





CHEER LEADERS
 NETTING ASH SCHENCK THOMAS

Football Record, 1927

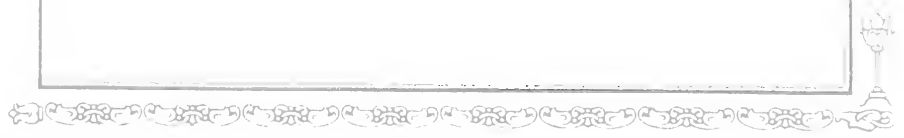
Sept. 24.	at New York	Bethany 0	Fordham 34
Oct. 1.	at Bethany	Bethany 0	St. Francis 3
Oct. 8.	at Washington, Pa.	Bethany 0	W. and J. 31
Oct. 15.	at Bethany	Bethany 7	Duquesne 7
Oct. 22.	at Buffalo	Bethany 6	Canisius 26
Oct. 29.	at Beaver Falls.	Bethany 6	Geneva 46
Nov. 5.	at Springfield, Ohio	Bethany 0	Wittenberg 3
Nov. 19.	at Bethany	Bethany 7	Waynesburg 0

Tri-State Conference Standing

	Won	Lost	Tied
Geneva	4	0	0
Duquesne	2	2	1
Bethany	1	1	1
Westminster	1	1	1
Waynesburg	1	2	2
Thiel	0	3	1



Basketball





TINSON HAMILL

CARL HAMILL (*Captain*) *Guard*
Senior

Carl was captain of the Bison quintet as well as the football team. He proved to be a very fine and capable leader, and played a great game at running guard. His floorwork and ability to pass have seldom been excelled by a Bethany basketballer. Carl was second in scoring honors for the season.

JOHN TINSON *Guard*
(*Joint Captain*)
Junior

Tinson was not able to play with the team this year due to an injury which kept him out of the game for the entire season. He will be available for service next winter, and from past experience we know that he will be a valuable man to the team.

KENNETH BAKER (*Captain-Elect*) *Forward*
Sophomore

Ken played his first year as a regular on the Bethany five and proved that he is capable of holding a berth on the best of teams. Swiftiness, accuracy, team work, and determination are all combined in this one man's floor performance.

MALCOM RUSH *Forward*
Freshman

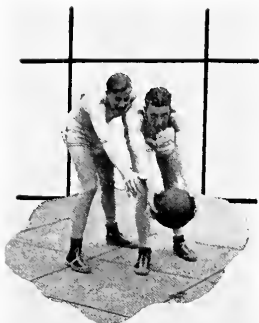
Rush came to Bethany with a reputation as an excellent basketball player. His record for this, his first season in collegiate basketball, more than justifies the good reports that heralded him. Though measuring high as a willing team worker, he managed to top individual honors in scoring. This is a rare record for a freshman—may his tribe increase!

OSCAR CRUMM *Guard*
Freshman

Oscar did not see action until late in the season, but enough of his playing was viewed to realize that a man who knew the game was on the floor. His knowledge of the game combined with his eagerness to mix assure him a promising college career as a basketballer.



RUSH BAKER CRUMM



DAMSCHRODER TELFAIR

PEYTON TELFAIR Center

Freshman

Telfair is another freshman who stepped into a varsity berth and held it down in a very creditable manner. "Too-tall" showed a little shyness at the beginning of the season, but ere the schedule advanced far, he had won the admiration of all by his clean, hard, and stellar brand of basketball.

BALLARD DAMSCHRODER Guard

Sophomore

Though Dammie has been in Bethany since a year ago, nothing very certain had been known of his prowess on the court. It took but a short time, however, for this tall blond to convince the coach that there was a place for him on the team. His adversaries found in him a man who was well able to keep them covered and to snatch from the very back board, it seemed, their erring shots.

WALTER HARSH Forward

Freshman

Another freshman. With so many displaying excellence in this sport, the golden age in Bethany's basketball seems approaching.

Pete always gave the opposition plenty to worry about when he became one of the quintet. Pete is forbidden by heredity to offer size to the team, but any gap here was more than bridged by his speed and spirit.

WAYNE JENKINS Forward

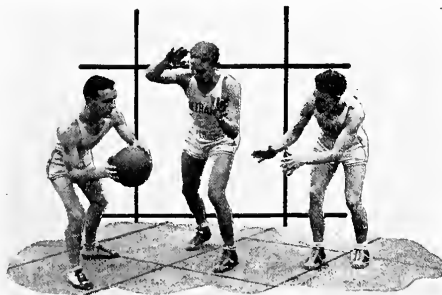
Freshman

Jenkins is another freshman who shows promise of becoming a valued varsity man before he leaves the college. Wayne was seen in action several times and each time gave an excellent account of himself.

JACK ADDY *Forward*

Senior

Jack has always been a faithful member of the squad, and this year has been no exception. He has demonstrated enough ability to make the regulars work hard for their positions.



ADDY

JENKINS

HARSH

Interclass Basketball



HE interclass basketball league of this past season was, probably, more strongly and closely contested than at any other time since class competition was made a part of the mid-winter athletic program. The complete schedule called for twelve games and was divided into two halves in order that teams not getting off to a good start might revamp their line-ups and thus make competition stronger during the second half of the season.

The Sophs found little opposition during the first half except from the Freshmen and romped off with the championship. The Juniors, although not winning a single game during the first half, completely re-arranged their line-up and lost but one game in the second half, thereby cinching highest honors. In the play-off for the league championship the Juniors defeated the Sophomores 22-14.

George Dice, freshman, won individual scoring honors with a total of 32 points. He was closely followed, however, by Ottie Cochran and Bill Kelly with 31 each, and Jim Imel who had 30. Kermit Espy with 28 and Ennis Bailey with 25 complete the list of the league's leading scorers.

Two all-star teams were chosen, representing the best performers of the league:

First Team		Second Team	
Kelly (C) F.	Buston (C) G. Dice
Imel F.	 Espy
Fiers C.	 A. Behm
Tinson G.	 G. Behm.
J. Sigwalt G.		
Fresh	Sophs	Juniors	Seniors
Buston, C	A. Behm, C.	Cochran, C.	Addy, C.
Espy	E. Behm	Fiers	Barns
Erskine	Imel	Kelly	Neel
Sigwalt	Thompson	Morris	White
Bramhall	Bailey	Tinson	Elliott
Ash	Brittain	Mutchler	Fasick
	Sigwalt	Addleman	
<i>Coach</i>	<i>Coach</i>	<i>Coach</i>	<i>Coach</i>
M. Rush	Markley	Tinson	C. Hamill



TROPHY ROOM

Interfraternity Baseball

The overwhelming success of the interclass basketball league brought forth the announcement from Athletic Director Nuss that either interclass or interfraternity baseball would be instituted at Bethany this spring. With baseball material more equally divided among the fraternities than among the four classes, it was decided to have interfraternity baseball.

At a meeting of the Interfraternity Council the following committee was appointed as director of the league:

OTTIE COCHRAN	<i>Chairman, Sigma Nu</i>
CARL HAMILL	<i>Beta Theta Pi</i>
ROBERT ROE	<i>Kappa Alpha</i>
MALCOLM RUSH	<i>Phi Kappa Tau</i>
ARTHUR MARKLEY	<i>Alpha Pi Alpha</i>
CARL BENTON	<i>Non-fraternity Group</i>



Track, 1927

RESULTS OF THE SEASON

Ohio Relays

Second in 440 yard sprint relay. Time $43\frac{1}{8}$ seconds.
 Second in 880 yard sprint relay. Time 1:34.

Penn Relays

Virgil Elliott third in the Decathlon: 6712 points.

W. and J.-Bethany, Dual Meet

Bethany $83\frac{1}{2}$ W. and J. $51\frac{1}{2}$

Tri-State Conference Meet

Bethany second place with 34 points.

Interclass Meet

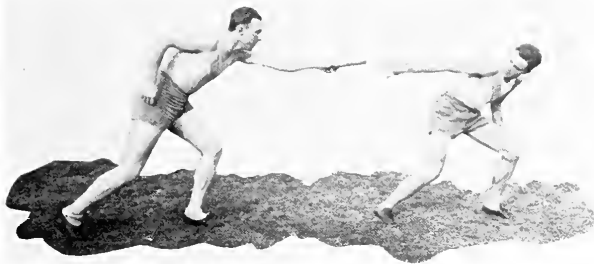
Juniors won first place.

Interfraternity Meet

Kappa Alphas first with 70 points.

NEW RECORDS

<i>Holder</i>	<i>Event</i>	<i>Mark</i>	<i>Meet</i>
Fiers	High Jump	5 ft. $9\frac{1}{2}$ in.	Interclass
Jaycox	Javelin	175 ft.	Interclass
Shives	Discuss	121 ft.	Interclass
Elliott	Pole Vault	11 ft. 6 in. (<i>Confer. Record</i>)	Tri-State
Elliott	120-yd. High Hurdles	15 $\frac{4}{5}$ sec.	Tri-State
Elliott	220-yd. Low Hurdles	25 $\frac{1}{5}$ sec	Tri-State



ELLIOTT
MORRIS

Track, 1927

RELAY TEAM

Although Bethany's relay team had only two real opportunities to "show its stuff" last year, it did not need more to demonstrate that it ranked with the best in the country in the sprint relays. Handicapped by injuries at the time it went to the annual relay carnival at Ohio State, the team, nevertheless, made a distinctive showing. Their marks of $43 \frac{4}{5}$ seconds for the 440 and 1 minute 34 seconds in the 880 are seldom surpassed by any college team. In both events they won second place.

The team, which is together again this year, is composed of Elliott, Neel, Morris, and Tarr, four of the fastest men ever to represent Bethany on the track. Shives, the fifth man, was able to fill in a creditable manner when needed. Any future Bison relay team that can better the record of this team will demand extraordinary attention in college relay circles.

INDIVIDUAL PERFORMERS

Javelin—Jaycox, Huber, Thompson, Elliott; *Weights*—Cameron, Barns, Shives, Elliott.

Dashes—Neel, Tarr, Morris, Shives, Elliott, Loveland; *Hurdles*—Loveland, Morris, Elliott.

High Jump—Fiers, Morris, Berry, Elliott; *Broad Jump*—Elliott, Kelly, Baker, Carey.

Pole Vault—Cashman, Kelly, Elliott, Carey; *Mile*—Markley.

Two Mile—Probst; *Half-Mile*—Markley, Stephens, Berry.



NEEL
TARR

Virgil Elliott, National Decathlon Star

3rd place in Nat. Decathlon Contest (6672 points)—1926
3rd place with 6712 points—1927

"So did Virgil Elliott, of Bethany College, the institution that lies on the mountainside of West Virginia, battle like a Titan. Indeed, he swept to victory so early and so easily that those less intrepid might have been conquered and wilted in the first flush of the mountaineer's mammoth efforts"—thus ran the account, in the *Phila. d'elphia Inquirer* of the performances at the Penn Relays of Bethany's most scintillating athletic star. Similar words could be borrowed from the lines of any large daily from New York to San Francisco. Into every portion of the country, the name of Elliott has carried with it that of Bethany. Newspapers, magazines, news reels—all have been the organs through which these associated names have been proclaimed.

Virgil has been the most prolific scorer of any track performer ever to don a Bethany uniform. During his period of participation in track at Bethany, he has averaged a sum of twenty-seven points for all dual meets in which he has been a contestant. In the meet with Carnegie Tech in 1926, he scored thirty-two of Bethany's sixty-five points. It is accurately ascribed when this "pacing Parson" is designated as a "one-man track team."

It is a fitting climax to his college career that he becomes the first man of Bethany to try for a position on the Olympic team.

RECORDS HELD

Decathlon

100 Metre . . . 11 2/5 sec.
Broad Jump . . . 22' 8 3/4"

Tri-State Conference

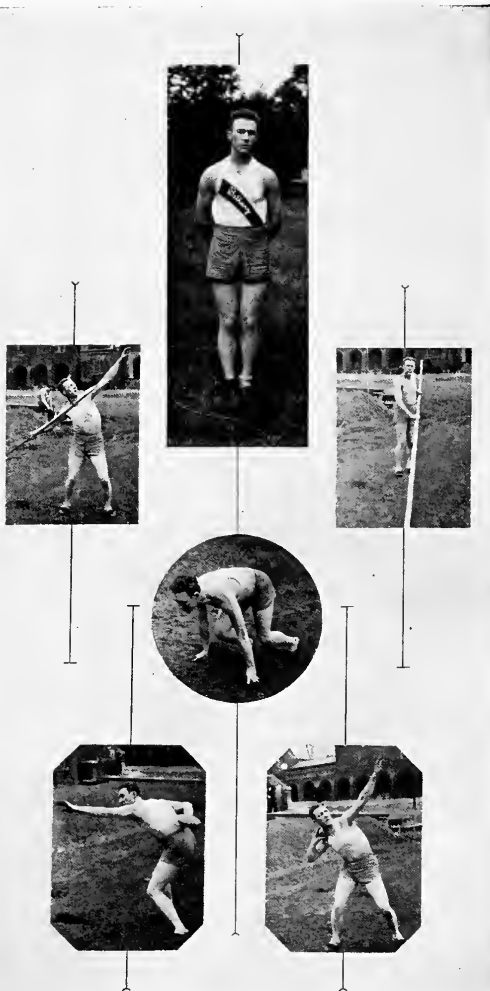
Pole Vault . . . 11' 6"
Broad Jump . . . 22' 6 3/4"

Tri-State Intercollegiate

Broad Jump . . . 23' 7 3/4"

Bethany College

100-yd. Dash 10 sec.
Broad Jump . . . 23' 7 3/4"
Pole Vault . . . 11' 9"
Shot Put . . . 39' 9 3/4"
High Hurdles 15 4/5 sec.
Low Hurdles . . . 25.1 sec.





Tennis



Tennis, 1927

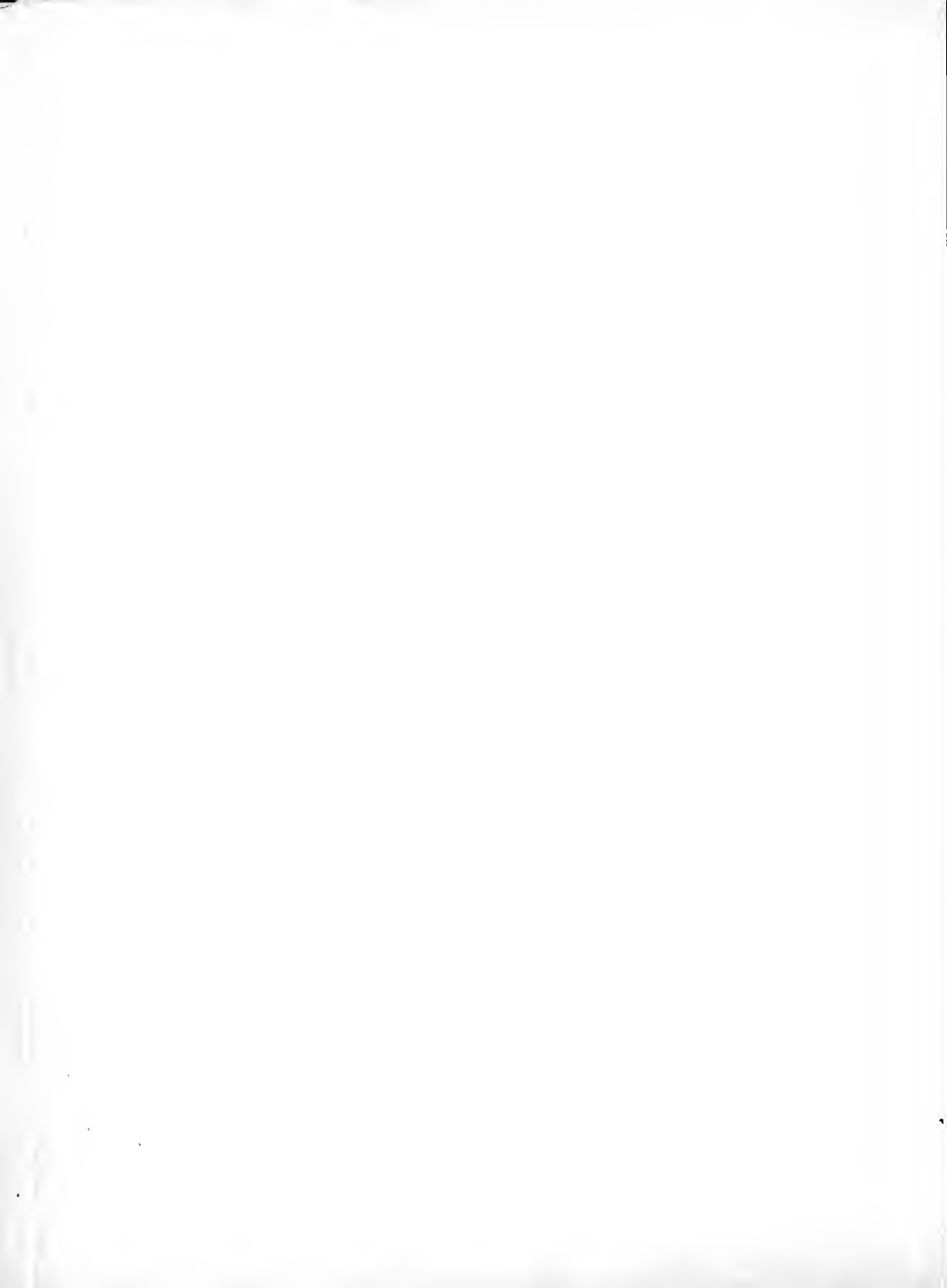
The Bison tennis team last year was not as successful as Coach Cramblett expected it to be. Regardless of the fact that every match was lost, the Bethany men fought nip and tuck battles and were always in the running. Meets were lost to W. & J., Westminster, Carnegie Tech, Duquesne (2), and Geneva. Return engagements with Westminster, Theil, and W. & J. were cancelled on account of rain.

Last year's squad included Captain Ryan, George Kirby, Hugh Mutchler, Jack Addy, Ottie Cochran, Ren Runk, Ward Stalnaker, and Nelson Ward. The graduation of Kirby and Ryan left Coach Cramblett with only a small nucleus around which to build his team for this year. However, the ability of Clinton Davidson, William Erskine, and Arthur Nelson, freshmen, considerably strengthened the Bison chances in the Tri-State competition.





COLLEGE LIFE



Calendar

September

- 19—Bethany invaded by ambitious throng. Everybody in high spirits.
- 20—Spectacular movie season opens. Old regulars seek their favorite pews.
- 21—Freshmen get acquainted with Prexy in the basement of the library.
- 23—Gamma Chi girls shows their hospitality to some of the new girls.
- 24—Bethany dinner in New York City. Football team sees "Rio Rita" after going down to defeat before Fordham.
—Alpha Xi Deltas put on the dog for the benefit of Freshwomen.
- 31—The sod-busters finally stage their annual orgy. Tuxedos are seen in Bethany!

October

- 1—Zeta and K. D's. rush the rushed Freshmen girls.
- 2—"Mr. Schrock is home sick", saith Miss Mahaffey.
- 5—There comes a time in all little girls' lives to decide between the good and better sorority—Sorority bids.
- 8—W. and J. again and yet prove too strong for the Bethany Bisons.
—Mrs. B. stays out on a very very wild party.
- 9—Usual Sunday evening rush for seats in the back row of church.
- 15—Peene makes first touchdown of football season against Duquesne.
- 19—Bill Morris disguises himself as a pledge and goes to Zeta pledge tea.
- 20—Such a terrible looking lot! This Freshman class.
- 22—Canisius beats Bethany at Buffalo. Jack Tinson and "Biff" Imel, like the poor babes in the woods, get lost.
- 25—Freshmen show undue attention to flagpole. These Fresh and Sophomore boys are becoming quite rough, don't you know.
- 26—The Betas and Phi Taus entertain their lady friends.
- 29—Alpha Xi Deltas play "Santa Claus" and travel to Geneva.
—Phi Kappa Taus give the girls chance to put on their old rags.
- 30—Mutchler and Peenie fall before the "Pro and Con" of the campus. Thank Heavens! we can now answer that year-old mystery of identity—by a mere glance at a jewel we can tell the one from t'other.

November

- 3—Lecture course season opens. "Here I am, Duke".
- 4—Prexy has a dream.
- 5—Bisons show their teeth at Wittenberg College.
- 6—Some Sigma Nus get first glimpse of the interior of Bethany Memorial Church.
- 7—Ghost stories entertain Sophomore class for the evening.
- 8—The "Terrible Clef" club decides to get together and warble for another season.
- 11—Phillips Hall turned loose in the moonlight.
- 12—Yes, Sir! Phandangoes take their girls to court. Judge Kirkpatrick presiding.
- 13—Anna Mary Kemp entertains evening church crowd.
- 14—French wine and frolic for the French club. Explain yourselves. wine-bibbers!
—The mammoth "Crusade" formally opens.
- 15—Dr. McKinney uses sandman tactics in chapel.
- 18—"Woog" does a toe dance before Dr. Fulton.
- 19—"Mas" and "Pas" entertained in Bethany. Everyone eats with his fork.
—Waynesburg succumbs to the Bisons. Let us thank the kind Lord for sending us one team we could beat.
- 27—Quiet week-end in Bethany.
- 29—Kirk treads on thin ice. He sets a vogue of prefacing chapel speeches with a joke section.

December

- 1—Kate Cope's brilliant address causes Prexy to lose his spectacles.
- 2—"Happy birthday, dear Prexy."
- 5—Amelia Hall featured in "La Lettre Chargee"
- 6—Phandangoes put splotches of orange around the campus.
—Were those orators Freshmen? Nice speeching, Dorothy and Mike.
- 7—The "Blue Bird" almost lost its plumes.
- 8—Crusade Pep Girls prove an uproarious success in their tennis dresses—temperature hovering around the nothing mark.
- 10—Football squad is royally dined.
- 12—The jolly preacher-men throw a feed for the lady friends.
- 13—First Annual Founder's Day dinner. Kirk introduces his "Scandals (maybe he said sandals) of 1927".
- 14—We go way over the top in Crusade drive—\$22,000 (if it ever gets paid). Hurrah for us and for no school Saturday.
- 15—Back to whence we came.

January

- 3—Back amongst the books. Santa Claus came through in very fine shape.
- 4—Santa delivers football sweaters at last. On account of deep snows, he says earlier delivery was just impossible.
- 9—Basketball season opens with W. & J. game. Well, since you ask, we didn't quite win.
- 11—All young ladies given chance to work their wiles and guiles at Co-Ed dinner.
- 14—No struggle at all to beat Waynesburg.
- 19—Pep girls cut loose in Moundville at the "Grand Theater".
- 22—Who would ever guess that Dr. Priest could be a Chinaman.
- 25—First sign of misery on campus—exam schedule posted.
- 30—Silence brooks the college place while the "Ponies" enter Oglebay Gates.

February.

- 8—A real and genteel semester party. Madame Malecot steps the light fantastic.
- 9—Hard to get down to business but "eventually, why not now?"
- 14—Some dirty digs from old Saint Val and Cupid.
- 17—Pledges start on nocturnal journeys in search of graveyards, mice, deserted cabins, etc.
 - The rough over, pledges take solemn vows.
 - Well, we won the homecoming basketball game!
- 18—The spectacular Revue. Dr. Cramblett still breathing after the wind blows through the capes.
 - One of those teas for alumni.
- 20—St. Valentine almost forgets Christian Endeavor, or rather the latter forgot the old saint.
- 24—Big double bill at movie! No advance in prices—wonderful values we're getting in the theatrical world of Bethany.

March

- 6—This is no beauty contest but a debate.
- 3—Kappa Deltas entertain for Miss Leslie.
 - Prof. Bennett speaks on "Genever".
- 7—Too bad, Sophomores, but the Juniors can play basketball!
- 8—Waynesburg debate team made up of one Christian and two heathens.
- 13—Prof. Weimer expounds on "The New Wrinkle in Physical Education." "No swim, no sheep skin" is motto of administration.
- 15—John Berry discloses suspicious intimacy between Prof. Bennett and Cleveland police force.
- 16—Prexy's right hand man makes himself popular with faculty in his chapel address.
 - Big celebration at movie. Faculty out on wild (did I say mild?) party.

Program of
Eighty-fifth Commencement Week
BETHANY COLLEGE



SATURDAY, JUNE 9

- 7:00 P. M. Sorority Banquets.
- 8:00 P. M. Sigma Nu Dedication Banquet

SUNDAY, JUNE 10

- 10:45 A. M. Baccalaureate Service
Sermon by President Cloyd Goodnight.
- 3:00 P. M. Sigma Nu Open House Tea
- 4:00 P. M. Sacred Concert
Bethany College Band.
- 7:45 P. M. Annual Association Service
Sermon by W. H. Erskine, '02.

MONDAY, JUNE 11

- 9:30 A. M. Annual Meeting of Board of Trustees.
- 9:30 A. M. Inter-fraternity Track Meet.
- 10:00 A. M. Tennis Match—Alumni vs. Varsity.
- 2:00 P. M. Annual Meeting of Board of Trustees,
(Cont'd.).
- 2:30 P. M. Class Day Exercises. In charge of Class of
1928.
- 3:30 P. M. Corridor Sing.
- 8:00 P. M. Commencement Play.

TUESDAY, JUNE 12

- 10:30 A. M. Formal Commencement
Address by Dr. F. W. Shepardson.
- 12:30 P. M. Alumni Luncheon,
Bethany Memorial Church.
- 3:00-5:00 P. M. President's Reception, Pendleton
Heights.
- 8:00 P. M. Fraternity Banquets.



Representative Students

... ..



MISS ISABELLE ADAMS



JOHN M. BERRY



VIGIL L. ELLIOTT



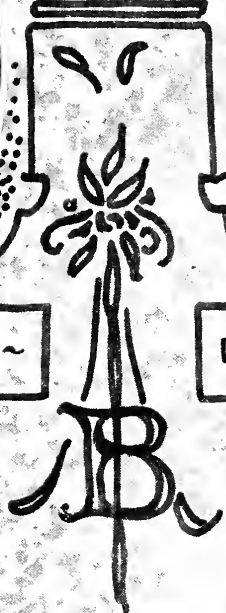
MISS ELIZABETH GREEN



MISS MABEL METZE ~



E. MORTON MILLER



WARD B. STALAKER



W. ELBERT STARN

Bethany's Representative Students



ARRIVING at the conviction that beauty in itself is but a hollow commendation of its possessor, a feature intending to honor the more worth-while attributes of personality and to replace the beauty section of last year was sought. In pursuit of the determination of such a feature, it was thought that a few pages should be devoted to those students who have most contributed to the realization of the true aim and spirit of our school—the progress of man through those channels which elevate and dignify him.

The selections appearing on the preceding pages were made by a faculty committee, the members of whom have, more than any others, daily opportunity to come into contact with practically all students; members, too, of trusted judgment. The committee made a thorough and conscientious study of every student on the college roster, measuring each with respect to his compatibility with the bases of selection enumerated below. Its decision is not, could not be in view of the intangible nature of their task, perfect and entirely satisfactory; but it does represent an honest conviction shared unanimously by the members.

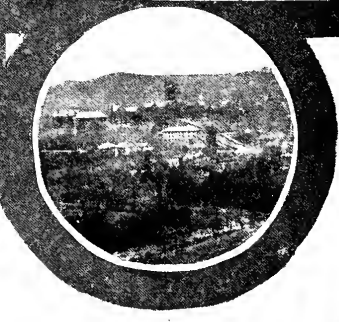
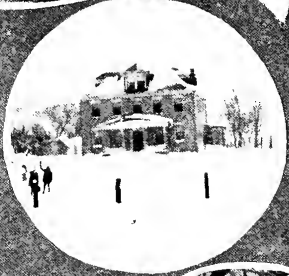
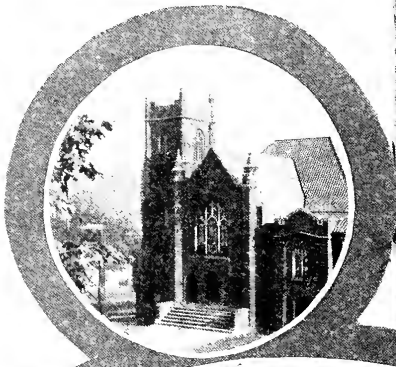
It is the hope of the committee and the editors that this section will be continued in the next volume of the yearbook, thereby honoring those younger students whose worth shall have more fully evinced itself with the passing of another year.

BASES OF SELECTION

1. Character.
2. Constructive Contribution to the College.
 - a. Leadership of organizations.
 - b. Participation in debating, dramatics, publications, athletics, control organizations, etc.
 - c. Contribution to the realization of the college program through influence exerted in a fraternity.
 - d. Evincing of school spirit and co-operation.
 - e. Any other constructive contribution to the social, religious, intellectual, or physical life of the college.
3. Scholarship—emphasis to be placed upon original and creative thinking.
4. Lack of Destructive Influence.
Examples of destructive influence:
 - a. Insincerity.
 - b. Lack of school spirit.
 - c. Self centeredness.
 - d. Unreliability.
 - e. Conscious effort to gain popularity.



Bethany Days





The "Campbell
Mansion"

The
Hills
of
W.Va.



Beautiful
Bethany



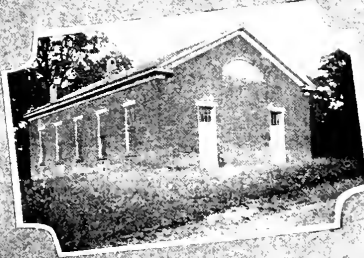
Remains



The Burning
of the
"Sig" House



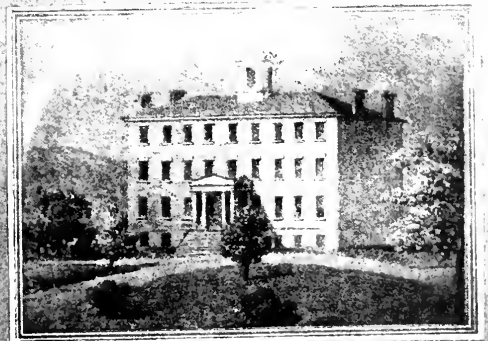
In The Making



The "Old Church"

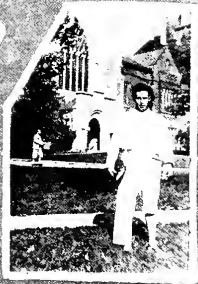
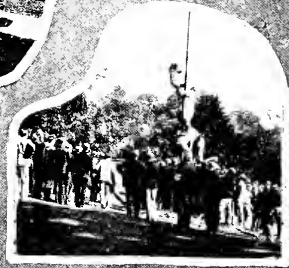


Bethany — 1894

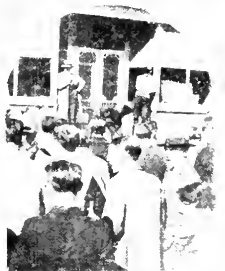
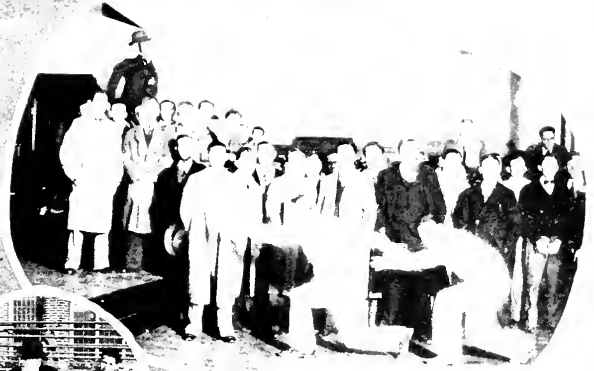


Bethany's 1st College Bldg.

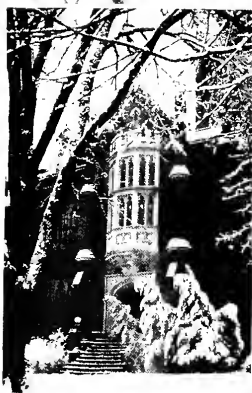
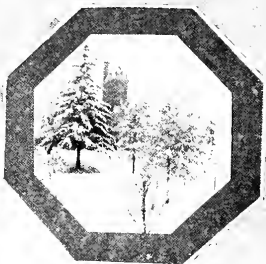
Freshman Day



Pep



"Mid Year"



Dramatics

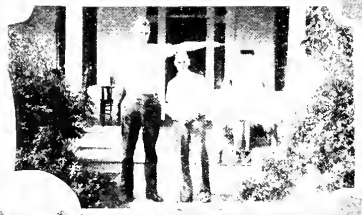




"Bob."



"Another Duty"
of the Executive Secretary



"Bob"
The furthest fly



"Strong Men."



"Ed Understudy"

"Hic"



He dont "Squeak"



"Clowning John"

they were
"Such Sweet Children"



"Happy Bear"



"Coach
Thompson"



"Henman" - Big Leaver



"Carl"



"Max"



"Rich"
the "Theolog-Contradictorist"



Ride 'em cowboy



"Big Buxom
Bathory Boys"



**BOB'S
UNDER
IT**



FRENCH PEASANTS



**THEIR MAJESTIES
THE GOVERNORS**

LORD WHITEHEAD



**A
SUNNY SUNDAY
SHUNTER**



**IT WAS A
FELT NEED**



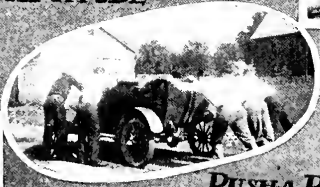
**DECORATION DAY
THAT
PROBLEM SOLVING
ATTITUDE**



SERENADING



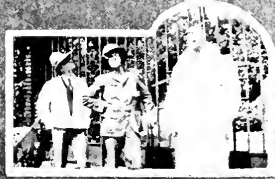
M-ANNUAL LABOR



PUSHA PUSHA PUSH



**FEMALES—
AFTER THE MAIL**



STRAW HAT DAY



MOCK CHAPEL



The one hundred years old



ADVERTISEMENTS

BETHANY COLLEGE

An institution where a
high grade work and a
Christian culture are
combined to build men
and women.



F O U N D E D I N 1 8 4 0

PARKE'S CANNED FOODS

The World's Finest

FRUITS *and* VEGETABLES

No. 10 Tins

—••—

L. H. PARKE COMPANY

COFFEES

TEAS

SPICES

CANNED FOODS

FLAVORING EXTRACTS

PHILADELPHIA

PITTSBURGH

McLure Hotel

Wheeling, W. Va.

—

*West Virginia's
Largest and
Finest Hotel*

—

Where Lodging is a
Luxury

SCOTT'S

Delicious Ice Cream

—

It is Always Delicious

—

Quality Always the Saver

—

Served in Bethany at
HUFF'S CONFECTIONERY
BACHELL'S TEA ROOM

*"Better Clothes
For Less"*



G. W. GRIEG

Clothing Specialists

Wheeling, W. Va.
1052-54 Main Street

*The Store Where
Thrifty
Men and Women Shop*



L. S. GOOD & CO.

Wheeling,
West Virginia

Phone 98

Stuebenville, Ohio

STAR LAUNDRY

The Home of Energin Cleaning

We do your Laundry Work with Ivory Soap.

Give us a Trial

Call Students Service Company.

Compliments of
Wellsburg
Banking & Trust
Company
Wellsburg, W. Va.

Eat
STORCK'S
Bread

It's as good as the best

Rolls and Cakes

The Friendly Store

HANCHER'S reputation for unswerving honesty is its greatest asset. This reputation, together with the competent and experienced judgment used in the selection of every bit of merchandise is your protection when you buy at Hancher's. If it is the unusual you seek in gift things, Hancher's is the place it should be sought. And, in keeping with all other Hancher policies, the price of an article never exceeds its true worth.



CHARLES N. HANCHER CO.

The Diamond Shop

1223 Market Street

Wheeling, W. Va.

“IF—

there is any one reason, more than another, for the lack of success, it is the very human tendency to let things drift.”

*Accept the
Congratulations of*

The Hub
(Market and Chapline Streets at Fourteenth
Wheeling, West Virginia)

WELLSBURG
NATIONAL
BANK

Established 1832

Wellsburg, W. Va.

After all is said and done—

AFTER all is said and done The Owl Print Shop is one of the best equipped printing plants in the Upper Ohio Valley. Your orders, large or small, will always receive careful attention



THE OWL PRINT SHOP

Better Printers for Fifteen Years

917 Market Street

Wheeling, W. Va.

LAUNDERERS

CLEANERS

"You'll be pleased"

*§ The Laundry
does it best*

BUTTE LAUNDRY COMPANY

STEUBENVILLE, OHIO

Compliments of
H. E. LAUPP
Wheeling, W. Va.

DONATED

PHOTOGRAPHS
in
1828 BETHANIAN

Made by

Photo Crafters

40 Twelfth Street, Wheeling, West Virginia
221 Pleasant Street, Morgantown, West Virginia



OFFICIAL PHOTOGRAPHERS

Bethany College

West Virginia University



*The satisfaction of a service well performed
is the only lasting recompense of industry.*

*The Canton Engraving and Electrotype Co.
Canton, Ohio
Producers of the Engravings in this Book.*

*The above illustration is the McKinley Memorial erected at Canton,
Nineteen hundred six.*

*Another step forward toward
your goal of Life has been
reached by your Graduation.*

Accept our Congratulations.

*Achievement of Success is
attained by a series of forward
steps. Our achievement has
consisted of a series of forward
steps in Quality Printing.*



**WHEELING NEWS
LITHOGRAPH CO.**

WHEELING, W. VA.



FINIS







