




935

BETHANY  
COLLEGE  
LIBRARY

BEYHANY  
COLLEGE  
LIBRARY







Digitized by the Internet Archive  
in 2011 with funding from  
LYRASIS Members and Sloan Foundation

<http://www.archive.org/details/bethanian1935beth>

R  
378,754  
B46  
1935

35482

---

JAMES HERBOLD, *Editor*

JOHN COWAN, *Business Manager*

---





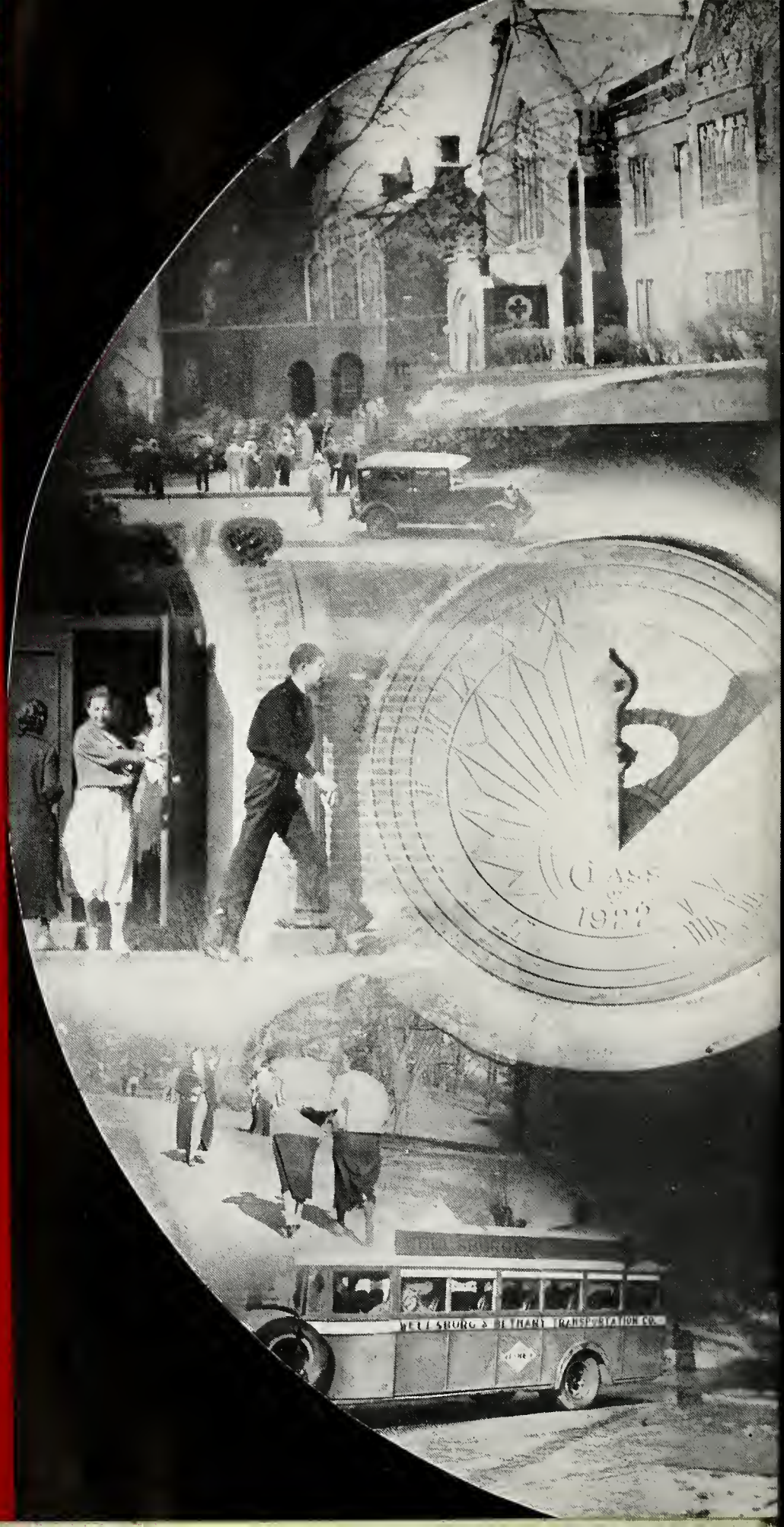
the

# BETHANIAN

1935

A TIMELY RECORD OF A  
YEAR AT BETHANY  
COLLEGE, BETHANY  
WEST VIRGINIA  
GAUGED BY THE  
MOVING HANDS  
AND RINGING BELL OF  
THE TOWER CLOCK

In these pages of the  
Bethany we have at-  
tempted to capture a  
few of those precious  
seconds so dear to the  
heart of the Bethany  
student.





The increasing  
pace of life in the world  
today is the greatest  
challenge to our  
civilization and to our  
individual and social  
well-being. It is  
essential that we  
maintain a sense of  
balance in our lives.

“Let us then be up and doing.....”







"Quaint old town of toil and traffic, quaint old town of art and song,  
memories haunt thy pointed gables, like the rooks that round them throng."

"Here are mingled scenes of work and pleasure. Here the Co-ed cavorts."



“ T h e e t e r n a l q u e s t f o r k n o w l e d g e ”





A new day dawned in Bethany's history with the installation of Wilbur Haverfield Cramblet as eleventh president of the college. President Cramblet has been a member of the faculty since 1917, treasurer of the college since 1919, and secretary of the Board of Trustees for several years.

Dr. Cramblet possesses a personality that is warm and friendly, a man beloved by all who know him.

President Cramblet is aided ably in his administrative work by Miss Christine Burleson, Dean of Women; Forrest H. Kirkpatrick, Dean of Personnel, and Freshman men, and by Dr. W. K. Woolery, Dean of the college.

A new spirit of optimism prevails on Bethany's campus. It is felt by students and faculty alike that Bethany's future is in capable hands. The Bethanian wishes the new administration every possible success.

## ADMINISTRATION

*President*

W. H. CRAMBLET



DEAN BURLESON



DEAN KIRKPATRICK



DEAN WOOLERY



THE WELLSBURG BAND  
LEADS THE PROCESSION



GRANTING OF DEGREES



SENIORS STAND AT  
ATTENTION

The inauguration of President Cramblet on December 5, 1935, proved to be one of the gala days in Bethany's history.

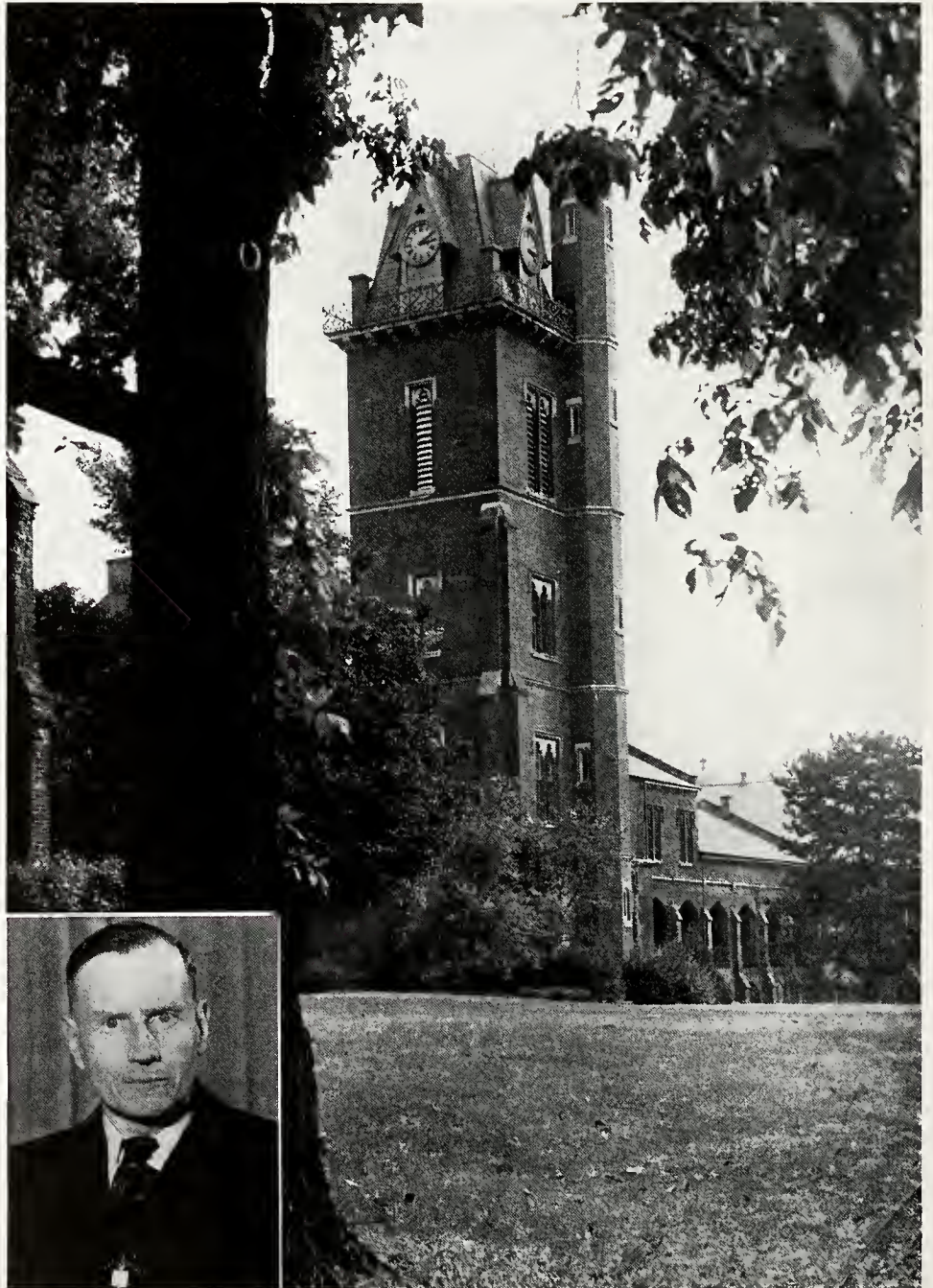
The inaugural procession led by the Wellsburg Band, and followed by students and faculty, started at the church and wended its way to Commencement Hall.

The program in the Hall was in charge of Dean W. K. Woolery. Dr. Lovett, class of '89, President of Rice Institute, delivered the principal address. W. S. Wilkin, president of the board of Trustees, made the charge to the President. Following President Cramblet's reply, degrees were given to Wm. Robinson Warren, D.Lit.; John Perdue Sala, D.D.; Bert Redwine Johnson, D.D.; Edgar O'Dell Lovett, D.Lit.

PRES. CRAMBLET



LANGUAGE  
LITERATURE  
FINE ARTS





MRS. BOURNE



MISS STONE

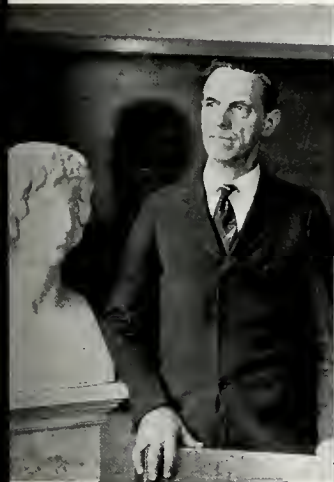


MISS MAHAFFEY

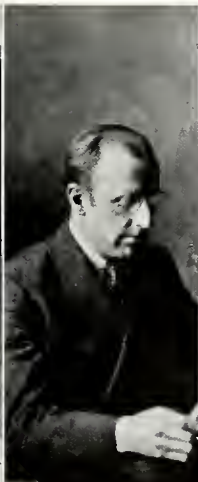


MISS KEMP

MISS FLACK



MR. PERRY



MR. CARTER



MR. ROBERTS

The Department of Language, Literature, and Fine Arts is the largest in the school. Mr. Gay is chairman of the division. Courses are so arranged that students may major in and teach the subjects studied in the department.

Mrs. Bourne and Miss Burleson teach courses in Drama and English Literature. Mr. Gay teaches courses in Greek and American Literature, and Mr. Roberts teaches courses in Journalism and Speech.

Miss Mahaffey teaches French Language and Literature, and Miss Stone teaches French and German. Mr. Perry teaches Latin, and Mr. Carter teaches Music and directs the various glee clubs and orchestras connected with the department of music.

Under the direction of Mr. Carter the department of music has been greatly rejuvenated and the extra-curricular activities of the school have been measurably strengthened. An instructor in voice and an instructor in stringed instruments have already been selected for the coming year. A full major and a related minor in journalism have been added under the supervision of Mr. Roberts. This work has been organized to comply with the requirements set down by the Association of Journalistic Schools.

Librarian, Miss Kemp, and assistant librarian, Miss Flack, give courses in Library Science that are at once practical and admit graduates to full standing in graduate schools of library training.

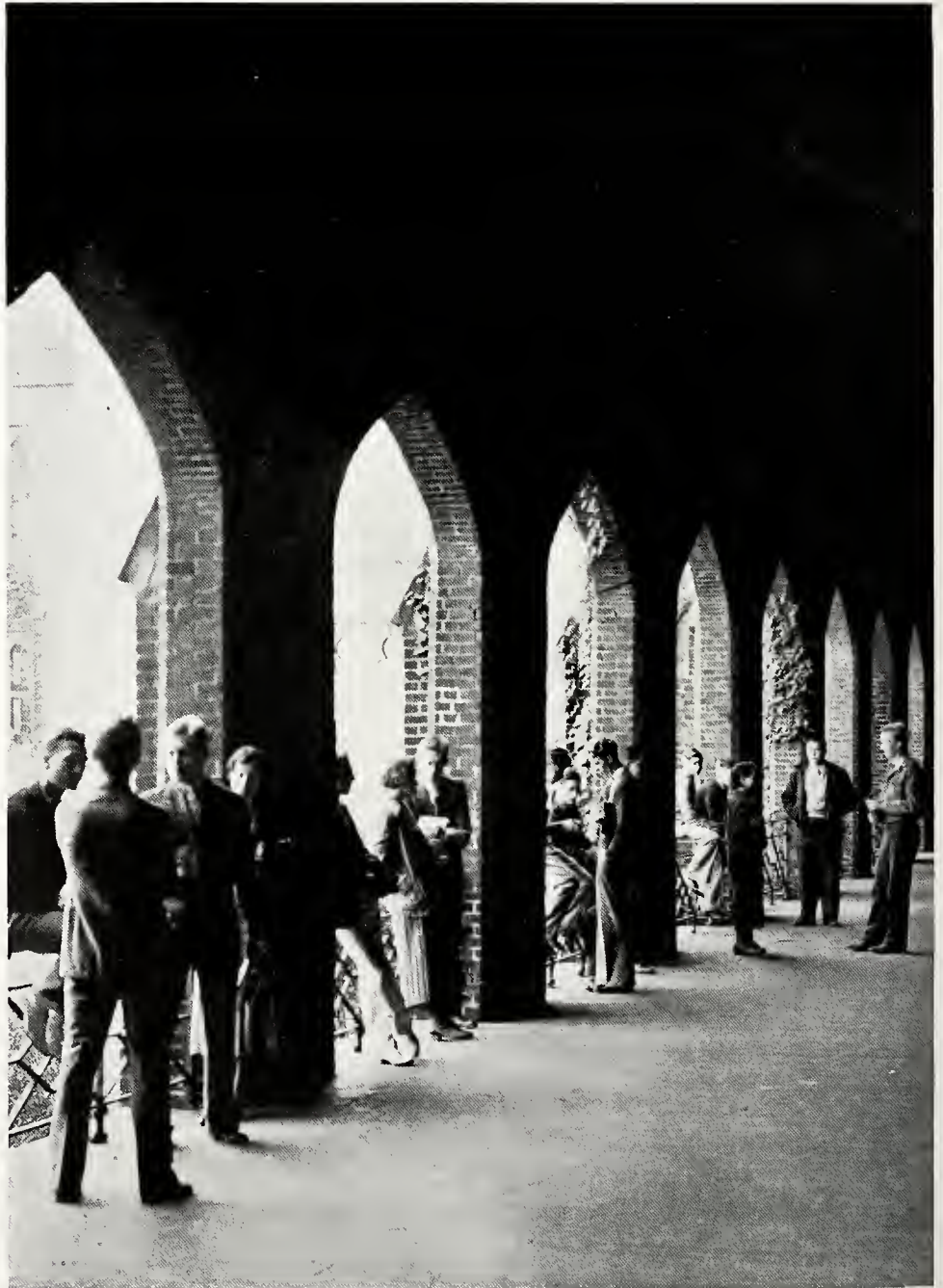


MISS BURLESON

“The Eternal quest for Knowledge goes on”



PRECIOUS SECONDS





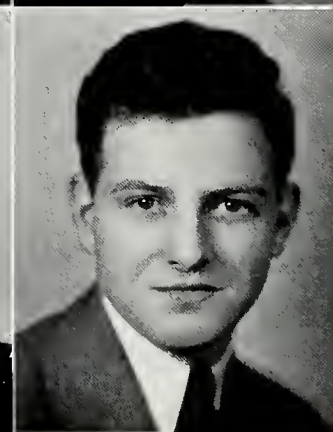
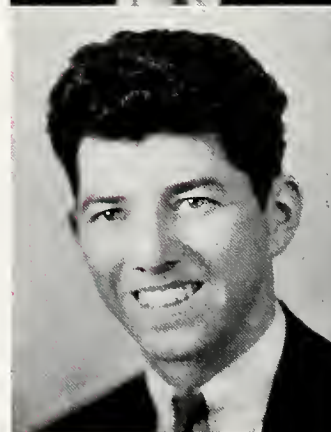
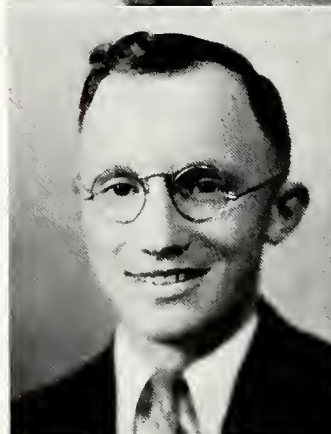


Ten o'clock, Tuesday to Friday inclusive, finds the four classes of the college gathered with the faculty in Commencement Hall for the Chapel Exercises. Attendance is compulsory and "woe be unto him who cutteth much and exceedeth 10." Though some have agitated for a voluntary Chapel, none can deny the values that a well rounded program affords, even though compulsory.

One week a year—Religious Emphasis Week—exercises in Commencement Hall are foregone and held in the Church. This year's services were in charge of Rev. Nelson of Clarksburg, West Virginia, and proved to be stimulating spiritual thought.



# SENIORS



### DAGNE ANDERSEN (Deceased)

Zeta Tau Alpha, A. B.; Y. W. C. A. 1, 2, 3, 4, Vice-Pres. 4;  
Y. W. C. A. Cabinet 2, 3, 4; C. W. C. C. 2, 3, 4, Sec. 3,  
Pres. 4; Alpha Psi Omega 3, 4, Sec. 4; Basketball 1, 2, 3;  
Choir 1, 2, 3; Glee Club 1, 2, 3.

### REGINA BOURG

A. B.; W. A. A. 3, 4, Pres.; French Club 4, vice pres., program  
chairman; Treble Clef Club 4; Phillips Hall Pres. 3; Athletic  
Board of Control Sec. 4; Gamma Sigma Kappa.



### MARJORIE BUCKHOLZ

A. B.; Collegian I; Y. W. A. A. 1, 2, 3, 4; Y. W. C. A.  
Cabinet 1, 4, Treas. 4, Vice-Pres. 3; C. W. C. C. 3, 4;  
W. A. A. 3, 4; International Relations Club Sec. 4; Social  
Science Club 3, 4; Gamma Sigma Kappa.

### ANNE WELDY CASTATOR

Zeta Tau Alpha; A. B.; Y. W. C. A. 3; Cabinet 4; W. A. A.  
Cabinet 3, 4; Church Choir 3, 4; Treble Clef Club 4; Triple  
Trio 4; Social Science Club 3, 4; Student Board of Governors  
3, 4; Panhellenic 4.



### FRANK CHAPMAN

A. B.; Social Science Club; Men's Debate.

### MARY CAROLINE COCHRAN

Alpha Xi Delta; A. B.; Social Science Club; Y. W. C. A.



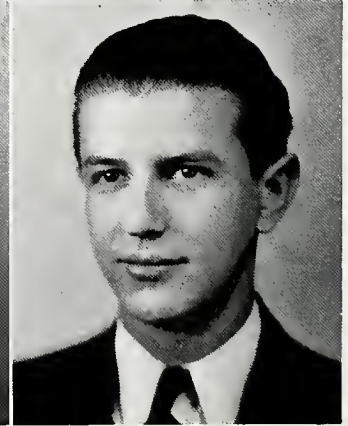
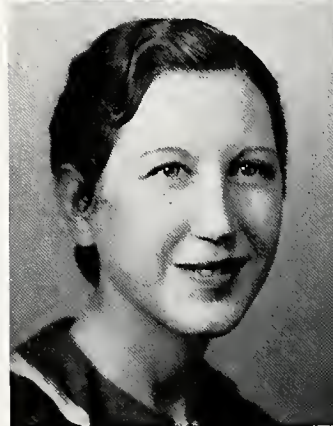
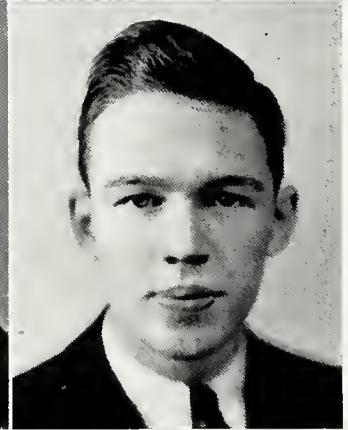
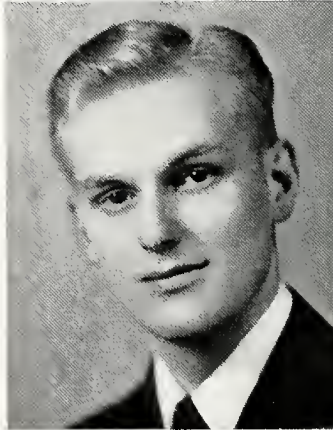
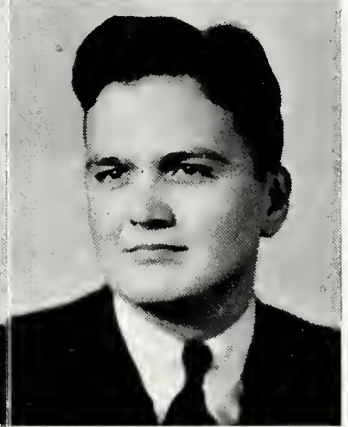
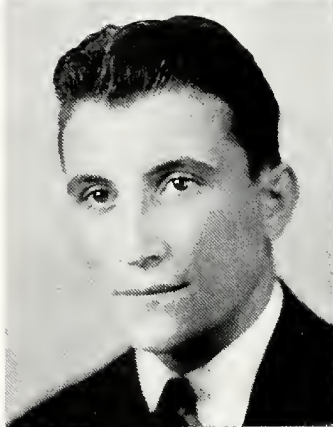
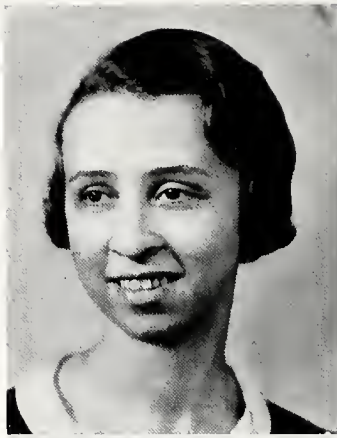
### JOHN COCHRAN

Non-Frat., Pres. 4; A. B.; Band 1, 2, 3, 4; French Club 3, 4;  
"Night Over Taos," French Play; Collegian Staff 4; Gamma  
Sigma Kappa; Bethespians.

### JOHN COWAN

Sigma Nu; A. B.; Interfraternity Council 3, 4; Class President  
1, 4; Business Mgr. of Bethanian; Business Mgr. of Student  
Board of Publications; College Social Committee; Physical  
Science Club Pres. 4; Gamma Sigma Kappa; President Sigma  
Nu.

*"The curtain is falling on the fourth  
act.  
Sadness mingled with gladness over-  
comes us."*



SENIORS

MARY ELIZABETH CUTLIP

A. B.; Student Board of Governors 3, 4; C. W. C. C. 4, Vice-Pres.

*We now realize that our happy college days are ended and that the battle for sustenance is now beginning.*

MARTHA DARSIE

Kappa Delta; A. B.; W. A. A. Sec. 4; Bethanian Staff 4; French Club 4; Physical Science Club 3, 4; Social Science 3, 4; Y. W. C. A. 3, 4; Collegian Staff 3, 4; American Liberty League 4.



NATHANIEL E. DAVIS

Phi Kappa Tau; B. S.; Football 1, 4; Track 1, 4; French Play 3, 4; Interfrat Basketball; Track; Mushball 1, 2, 3, 4.

FREDERICK ASHLEY DOWDY

Sigma Nu; A. B.; Glee Club 3, 4; Church Choir 1, 2, 3; Varsity Male Quartet 2, 3, 4; Hippocratean Club 4; Physical Science Club 4.



JOHN MEYERS DRILL

A. B.; Glee Club 1, 2, 3, 4; Choir 1, 2, 3; Sophomore Comprehensive Honors; Bethesian Club 3, 4.

WILLIAM NELSON GARNER

Alpha Kappa Pi; B. S.



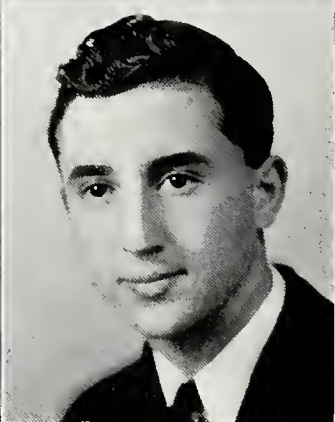
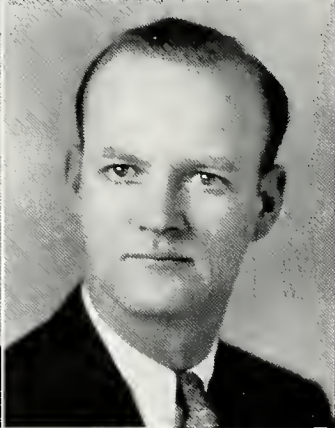
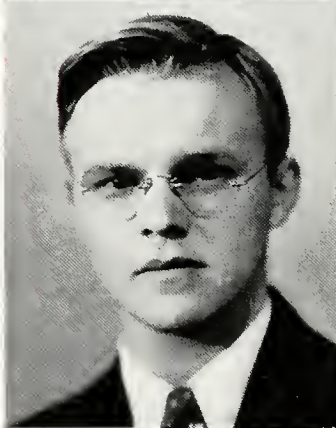
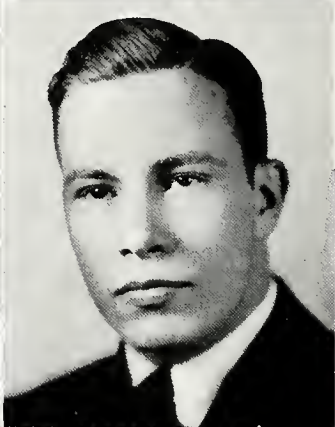
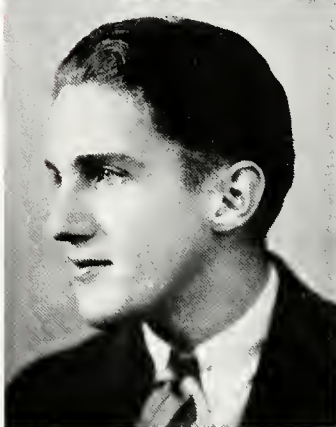
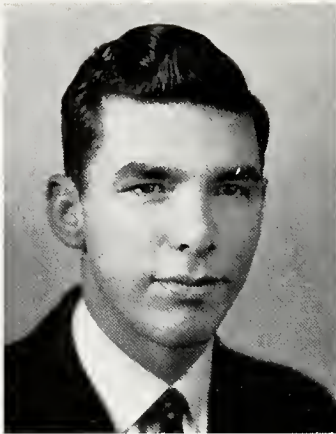
JANE GAY

Alpha X. Delta; A. B.; Y. W. C. A.; Treble Clef Club; Choir; French Club; Double Quartet.

WILLIAM C. GOTTFRIED

B. S.; Hippocrates Club; Band 3, 4; Tennis Mgr. 4; Sec. Non-Frats.

# SENIORS



## CHESTER GREEN

Phi Kappa Tau; A. B.; Collegian Staff 1, 2; Bethanian Staff 1, 2; Basketball Manager 1, 2, 3; Glee Club Mgr. 3, 4; Interfraternity Council 3, 4, Sec. and Treas. 3; Student Board of Governors 3, 4; Pres. Phi Kappa Tau.

## EMILY GREEN

Kappa Delta; A. B.; Student Board of Governors 3, 4; Gamma Sigma Kappa; College Orchestra 2; Treble Clef Club 1, 2, 4; Collegian Staff 3; W. A. A. 3, 4; Y. W. C. A. 2, 3.



## ARDENNE HANES

Alpha Kappa Pi; A. B.; Orchestra 1, 2, 3, 4; Band 1, 2, 3, 4; Glee Club 2, 3, 4; Choir 3, 4; Varsity Male Quartet 4.

## JAMES HERBOLD

Kappa Alpha; A. B.; Student Board of Deacons 3, 4, Pres. 4; Student Board of Governors 3, 4; Interfrat Council 3, 4; Bethespian Club 1, 2, 3, 4; Alpha Psi Omega 3, 4; Varsity "B" Club 2, 3, 4, Pres. 3; Varsity Football 2, 3, 4; "Night Over Taos," "Duty," "The Ivory Door"; Interfrat Athletics; International Relations Club; Student Board of Publications; Athletic Board of Control, Pres. 4; Class Day Chairman; Social Science Club; Pres. Kappa Alpha.



## WILLIAM JONES

A. B.; Debate Team 2, 3, 4; Tau Kappa Alpha; Student Board of Governors; Vice-Pres. Class 3; Ministerial Association; Gamma Sigma Kappa.

## MICHAEL KEARNS

Beta Theta Pi; A. B.



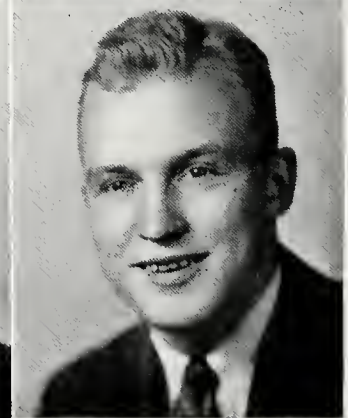
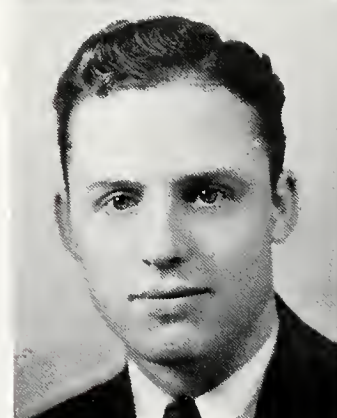
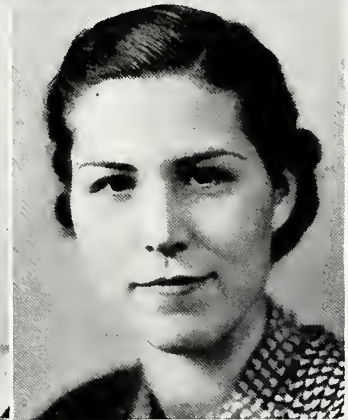
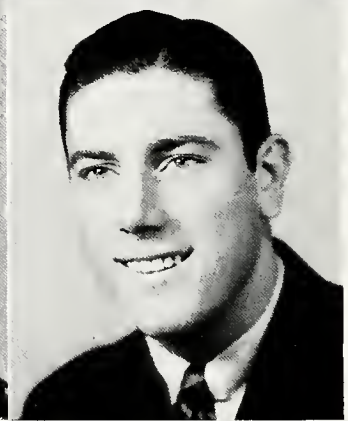
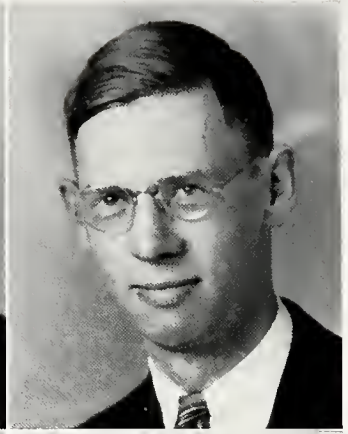
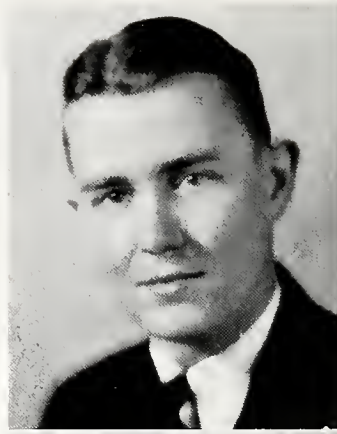
## ESTHER LEWIS

A. B.; W. A. A. 3, 4; Y. W. C. A. 1, 2, 3; Y. W. C. A. Cabinet 3; Church Choir 1, 2; Girls' Glee Club 1, 2, 4; College Band 2, 4; French Club 4; Class Sec.-Treas 3; Gamma Sigma Kappa 4.

## ANTHONY MARION

Alpha Kappa Pi; A. B.; Social Science Club; Class Pres. 2, 3; Student Board of Governors 3, 4; Interfrat Council 3, 4; Debate 1, 2; Student Board of Deacons 3, 4; College Social Committee; Social Science Club; International Relations Club Pres. 4; Pres. of Alpha Kappa Pi.

*The road we have traveled was rough,  
yet we found our places and played  
our parts well*



SENIORS



LLOYD MATSON

Beta Theta Pi; A. B.; Glee Club 2, 3, 4; Varsity Male Quartet 3, 4; Tennis Team 2, 3, 4.

*Four years of father time's ravages have slowly but surely taken from us our most happy days.*

DAVID McCORMICK

Beta Theta Pi; A. B.; Pres. of Alpha Psi Omega 4; Bus. Mgr. "Loose Ankles"; Bus. Mgr. Commence Play, "Distant Drums" 3; Bethespian Club; College Social Committee 3, 4.



DOROTHY MENZIES

A. B.; Treble Clef Club; International Relations Club; Y. W. C. A.; Church Choir.

EUGENE VICTOR MOFFETT

Kappa Alpha; A. B.; Football 1, 2, 3, 4; Basketball 1, 2; Track 4; Varsity "B" Club 1, 2, 3, 4; Interfrat Basketball 1, 3, 4; Interfrat Mushball 1, 2, 3, 4; Interfrat Council 4; Kappa Alpha Vice-Pres. 4; College Social Committee 4.



VICTORIA MOGHTADER

B. S.; Physical Science Club; Treble Clef Club; W. A. A.; Y. W. C. A.

JANE MORROW

Alpha X. Delta; A. B.; Y. W. C. A.



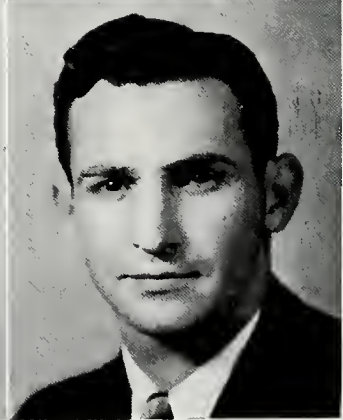
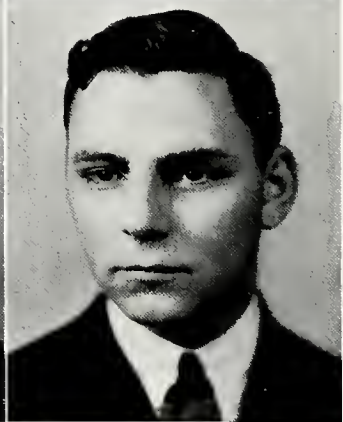
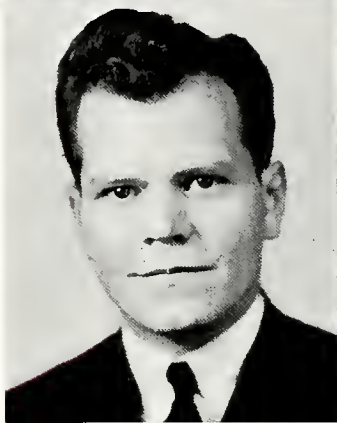
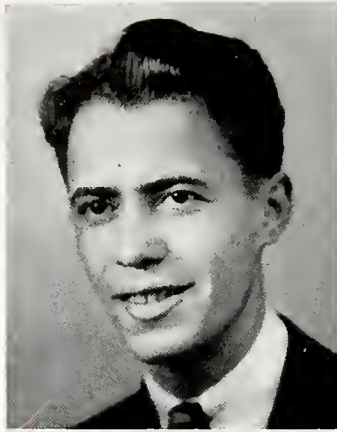
SETH MORROW

Beta Theta Pi; A. B.; Bethespian Club Pres. 3; Alpha Psi Omega; Social Science Club; Debate 3; "The Ivory Door," "The Enemy."

SAYLOR McGHEE

Sigma Nu; A. B.; Football 3, 4; Basketball 3; Social Science Club 3, 4; Pres. Bethany American Liberty League 4; International Relations.

# SENIORS



### WILLIAM J. McILROY

A. B.; Orchestra 1, 2, 3, 4; Glee Club 2, 3, 4; Varsity Male Quartette 3; Bethespia 2, 3, 4, Sec.-Treas 4; Alpha Psi Omega 4; Band, 1, 2, 3, 4; Alpha Kappa Pi.

### ROBERT McMAHON

Sigma Nu; A. B.; Orchestra 2; Band 2, 3, 4; Collegian 4.



### WILLIAM NEE

Beta Theta Pi; B. S.; Student Board of Governors 3, 4, Vice-Pres. 4; Physical Science Club; Football 1, 2, 3, 4, Captain 4; Varsity "B" Club 1, 2, 3, 4, President 4.

### ESTHER POWER

A. B.; Treble Clef Glee Club 1, 2, 4; College Social Committee 2, 3, 4; Church Choir 1, 2, 3, 4; Y. W. C. A. 1, 2; Social Science Club 2, 3, 4; Triple Trio 4; Panhellenic 3, 4; Zet Tau Alpha, Vice-Pres. 4, Social Chairman 3, 4.



### FRANCES QUINLIN

A. B.; Y. W. C. A. 1, 2, 3, 4; Y. W. Cabinet 2, 3, 4, Pres. 4; Panhellenic 3, 4, Sec. 4, Treas. 3; C. W. C. C.; Social Science Club 4, Sec. 4; Class Sec.-Treas. 4; College Social Com. 3; Class Social Com. 1, 2, 3, 4; Kappa Delta Pres. 4.

### ROBERT SCOTT

Sigma Nu; A. B.; Bethespian Club 2, 3, 4; Alpha Psi Omega 3, 4; "Night Over Taos," "Duty," "The Ivory Door."



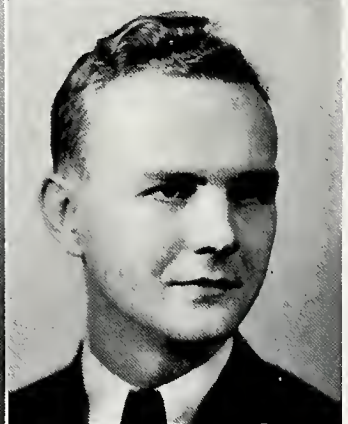
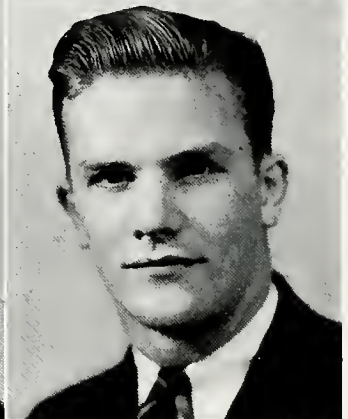
### MARY MARTHA SHADDICK

A. B.; Y. W. C. A. 1, 2, 3; Student Board of Governors 3, 4; Social Science Club 1, 2, 3; Treble Clef 1, 2, 3, 4; Collegian Staff 1, 2, 3, 4; Bethespian 2, 3, 4; Alpha Xi Delta Vice-Pres. 4, Rushing Chairman 4.

### CLARENCE S. TAMPLIN

Sigma Nu; A. B.; Student Board of Governors 3, 4, President 4; Editor of Collegian; Football 1, 2, 3; Moo Moo Moo.

*As the hour-glass of college days empties itself for the fourth and final time.*



SENIORS

ROBERT THOMAS

A. B.; Ministerial Association; Interclass and Interfrat; Athletics.

*How poorly we now render our homage and our love for that dear alma mater of ours—Bethany.*

EDITH TRELOGAN

Alpha Xi Delta; A. B.; French Club; Sec. Student Board of Governors.



CHARLES B. WAGNER

Alpha Kappi Pi; B. S.; Physical Science Club; German Club; Chemistry Assistant.

CHARLES L. WELLS

Alpha Kappa Pi; A. B.; Football 1, 2, 3, 4; Interfraternity Basketball 3, 4; President Ministerial Association; Varsity "B" Club.



ADA E. WILLIAMS

Zeta Tau Alpha; A. B.; Student Board of Governors 3, 4. Treas. 4; Panhellenic 3, 4. Vice-Pres. 4; Bethespian; Social Committee 1, 3; Y. W. C. A. 1, 3; C. W. C. C. 4; Pres. Zeta Tau Alpha.

KARL WILSON

Sigma Nu; A. B.; Interfrat Council 3; Gamma Sigma Kappa Pres. 4; Student Board of Governors 3.



ELEANOR JEANNE ZINK

Alpha Xi Delta; Y. W. C. A. 1, 2, 3, 4; Orchestra 1, 2, 3; Social Committee 1, 2, 3; French Club 4. Sec. 4; Treble Clef 1, 2, 4; Alpha Xi Delta, Treas. 3, 4.



DAGNE ANDERSEN *"I Love Bethany College"*

# I N M E M O R I A M

"Some flowers bloom for a long time, and others burst from buds and are in flowering only a short time. They are gone almost before we are sensitive of their presence. There is no way to measure their fragrance, but each, in its own way, fills our hearts with rapture and charms us. So with this young life. Only yesterday in full bloom—but unlike the flower the fragrance has not escaped us. We have captured some of her radiance, we have learned from her character, and we reflect—perhaps imperfectly—the glow of her happy life among us."—Y. W. C. A. Memorial Service, April 11, 1935.

One of Dagne Andersen's last thoughts was of Bethany. On a letter written only two days before her death, she wrote, "I love Bethany College. Nothing would please me more than I be chosen Representative Student of Bethany."

In accordance with her fondest desire, it is the Bethanian's honor to name Miss Dagne Andersen, class of '35, Representative Student of Bethany College.

# JUNIORS



Above—Shingleton goes educational—  
Hassig peers intently—Sotus gives us the per-  
sonality smile—Castellano shows the best in  
zippers—Mary Bergner and Naomi Wolf  
seem to be fast friends. On the left we see  
McQuown and Kemp and Brandon, three  
Beta's, enjoying a joke on someone. Below,  
McGuffie smiles like she knew the answer—  
Mrs. Allen relaxes between "A's"—Ginny  
and Betty appear to be very alert—Fran  
Goodnight is amused at something.



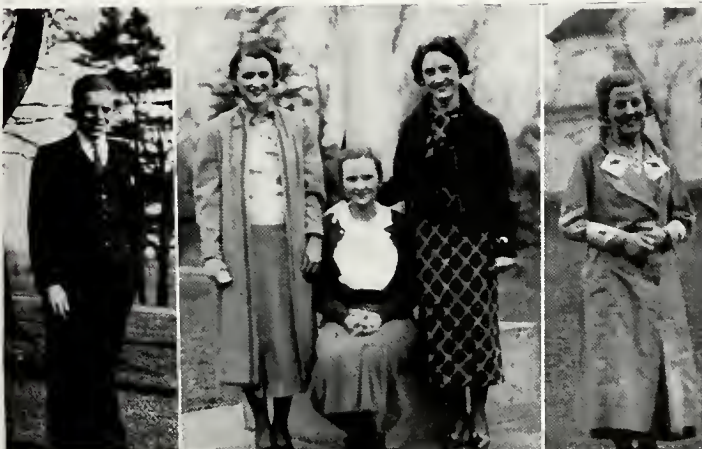
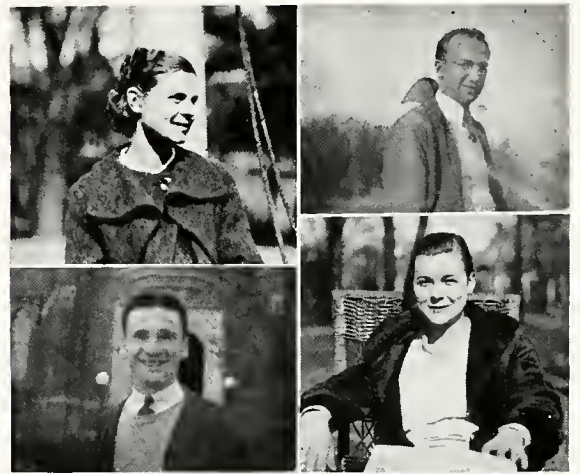




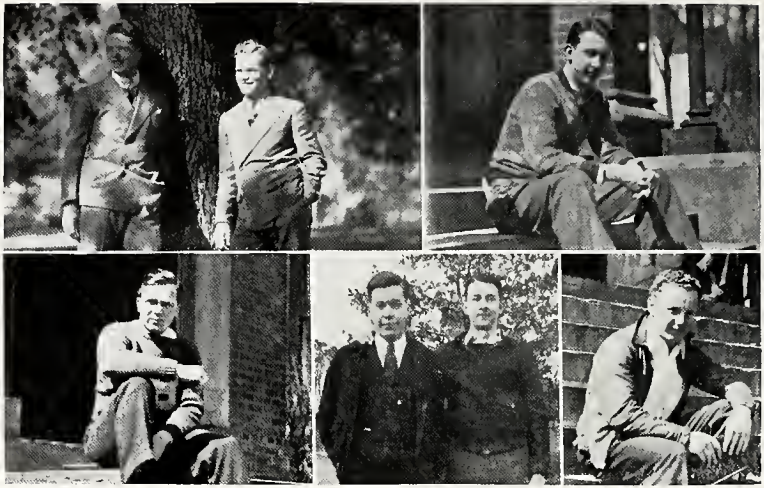
Above—Hedges waits for Hickman—Ed and Martha Jean as usual together—Worthen and Vodrey the motorcycle twins.

Right—Buzzy looks for Mac—Moyer says hello—Marconi, always smiling—Lane at rest.

Below—Niekamp, Bethany's one man band—Sammons, Glass, and Ziesloft smiling for the birdie—Joe Sheets—"Countess" of the Biology Laboratory.



# JUNIORS

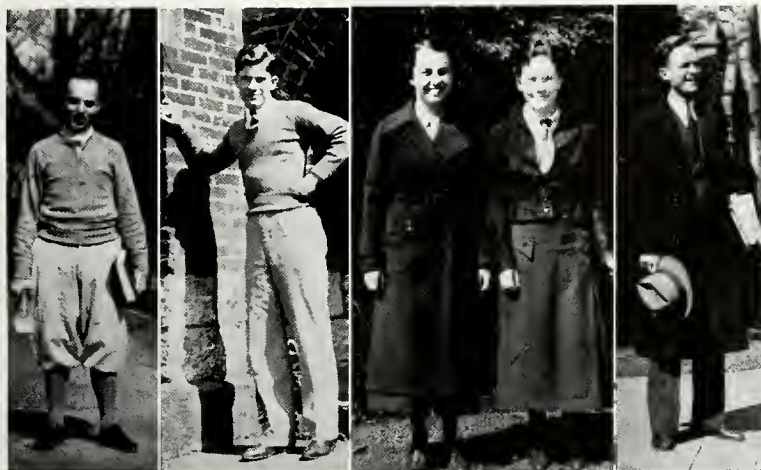


—Hess and Cochran amused—Leitch Mourning—Mumper Dreams of Taylors-town—Babcock brings Leitch back into the picture—McDonnell, just restin'—on the left, Biologists Montagna and DeGarmo display their talents. The women come in for their share—Hittenberger, Zbiec and Wiles stand at attention while Ramsay practices for Bill, Zbiec brings Fietz along this time—





—Conner and Maxwell give us an “Alph” smile—Sigs Johnson and Robinson keep the doctor away—Virgil, Arch and Wayne hold down the Beta stone seat—to the right—“Buzzy” Adams looks sweet as usual—Bill Moyer grins—it’s catching, so does Marconi—and Lane too.—Below we find Saxman with his microbes—Doepkin holding up the wall—while La Masters and Niel pal along—Arch greets the ladies as a gentleman should.

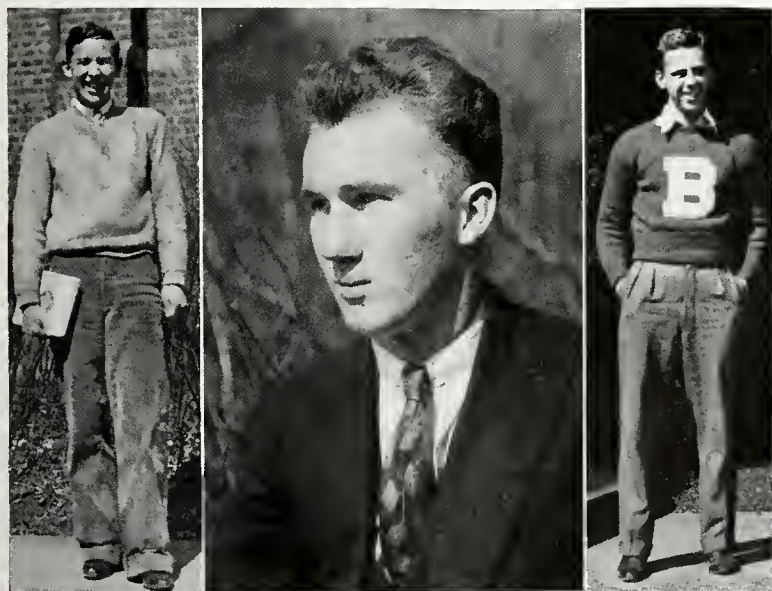
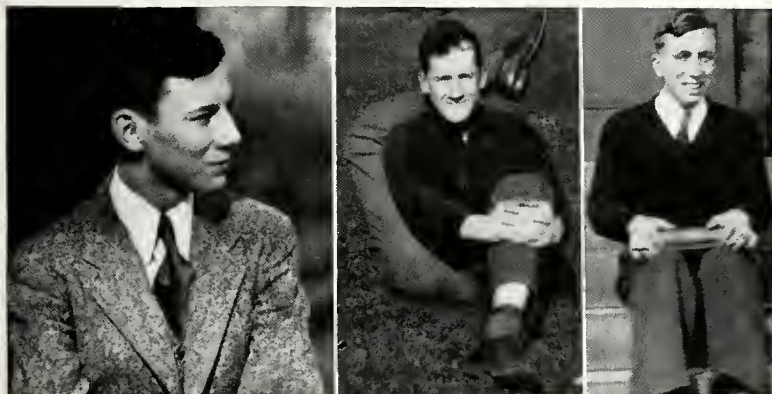


# SOPHOMORES

Joe Pendleton goes scientific  
 —Marion Bode shouldn't be  
 alone—Nestmann smiling—  
 King and Hanna hold hands—  
 Knox and Partridge together as  
 usual—Is Glada Warstler smil-  
 ing at Arden? — Helen Fife  
 doesn't look so cynical—Good-  
 win and Cluss playboys wot?  
 —Zimmerman and Howe in a  
 fraternal pose.

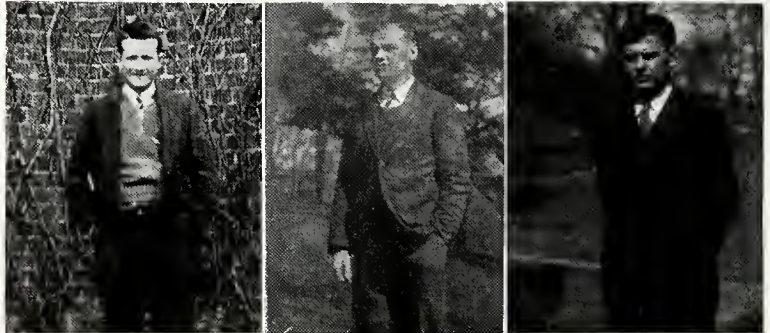


—Zimmerman and Howe in a fraternal pose.



## SOPHOMORES

Irvin Fink "a sittin' on a log"  
 — "Mailman" Pat Ruggieri  
 — Ruth Huffman in a serious  
 moment — "Panther Carmody of  
 Pitt fame" — Darsie looking like  
 something that comes up after a  
 rain — Byron Baer having a  
 laugh on someone — Horner  
 laughs too — Neth thinking?  
 — Baldwin displays the "B."



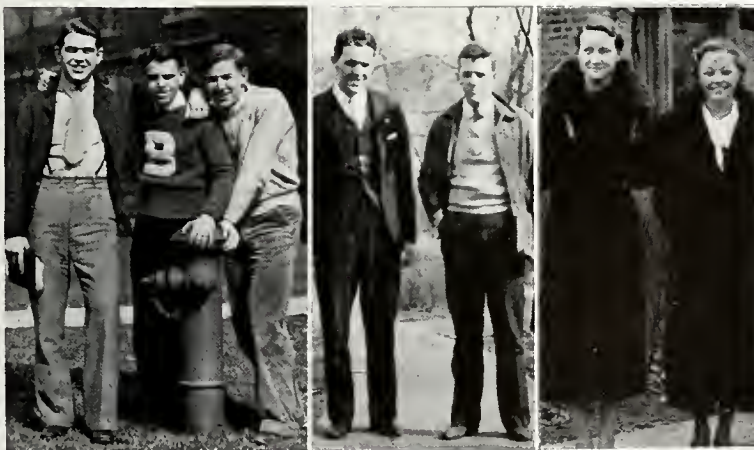
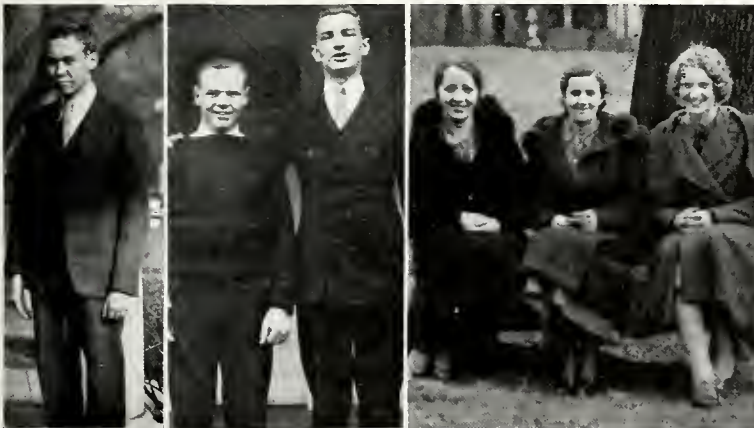
# SOPHOMORES

"Preacher Bob" Sheller—  
 "Piccolo Pete" Burkhardt—  
 Schneil looking poetic—Jur-  
 gens of Russia—Dunning look-  
 ing for someone—Shoaf frown-  
 ing—Cluss again—"Sully"  
 Elwell goes Zebra!—"Roomy"  
 Sipe—Jack Walters with an  
 educat'on under his arm—  
 Andy McDonald looks at the  
 camera — Carnahan debates  
 whether to smile or not.

# SOPHOMORES



"Pop" Bates pushing someone out of the picture—Bupka bluffing —Ross and Florence Manley just pals—The New Castle twins Snyder and Howe —"St. Mary's Gluck"—James Harrison III —Wiley hides the sun dial—Dunning and Schnell chisel in again and Oh well! —Three girls—Maffett, Pease and White smiles for the camera—Zimmerman, Esky and Horner hold each other up —Pick up your feet, Ward and Hemington get together—Sarah Weston and Warstler greet the lens.



# FRESHMEN



This year's Freshman class proved to be the largest ever enrolled by Bethany College. This class seems to be representative of the "new spirit" in Bethany. Beauty and intelligence are the attributes of the feminine half of the group. While we can't say that the males are particularly beautiful, they do have intelligence. The Freshmen gave several letter-men to the Bison football team, one member to the varsity basketball team, and the Freshmen on the relay team need not be named, they are known. In brief, the present Freshman class was a godsend to Bethany athletics.



# FRESHMEN

As a group they possess an industry that has placed their men and women in every school activity—dramatics, religion, clubs, fraternity and sorority offices.

The 1935 Bethanian takes off its hat to the Freshmen. May they continue to be as illustrious in the years to come.



*J u s t    A    L i t t l e    S e v e n    M i n u t e    Q u i z ! !*



EDUCATION  
PHILOSOPHY  
PSYCHOLOGY



FRESHMAN  
ALLEY



ANDREW LEITCH



THOMAS V. CALKINS

### ANDREW LEITCH

A.M., B.D., Ph.D., Sarah B. Cochran Professor of Philosophy and Psychology.  
A.B., A.M., Butler College; B.D., Ph.D., Yale University; Columbia University; University of Chicago; University of Pennsylvania (1920).

### THOMAS V. CALKINS

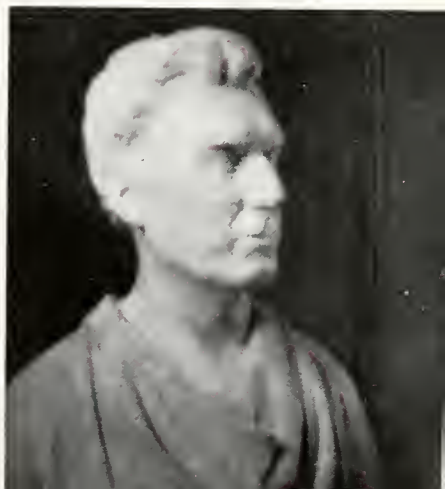
A.M., Ph.D., Professor of Education.  
A.B., University of New Mexico; Columbia University; A.M., Ph.D., Yale University (1932).

The department of Education, Philosophy and Psychology, under the direction of Professor Leitch offers the student some of the best and most fundamental courses in the curriculum.

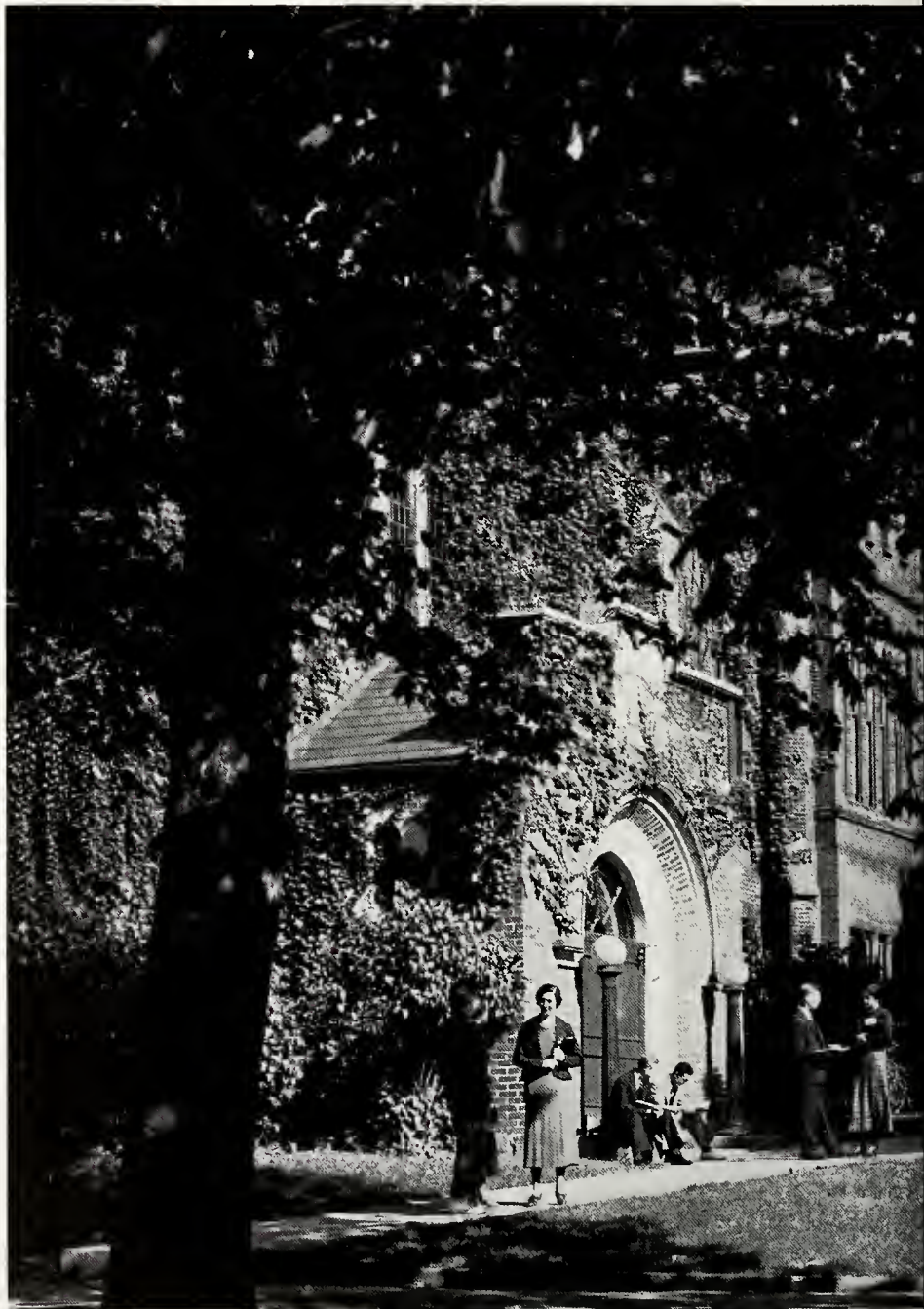
It is the aim and plan of the department of education to give the necessary professional training for teaching in secondary schools. It also offers background for guidance and personnel work, and training students who are not teacher candidates to become effective members in their home communities. Mr. Calkins, Mr. Kirkpatrick and Miss Flack teach courses in this department.

Philosophy aims at a study of the problems of life, especially the more persistent problems of reality, knowledge, morality, religion and social life, that the student may develop habits of thinking clearly and thinking complete thoughts which integrate his knowledge from different fields into a unified whole thus affording him "vision in the light of the whole." Mr. Leitch teaches all the courses in this department.

The courses in Psychology aim to lead the student to acquire a broad understanding of human behavior, physical and mental, normal and abnormal. The purpose is two-fold: first, that the student with this increased knowledge may be better able to develop a wholesome personality and to make better social adjustments, second, that in his social contacts with others in everyday life, in the professions, business, industry, etc., he may attain to more successful living. The courses are planned for the general student, for those who desire pre-vocational training, and as a foundation for those who expect to become professional psychologists.



ENTRANCE •  
COMMENCEMENT HALL





MR. GARRETT



MR. B. FOX



MR. EVANS

The Social Science division is divided into four groups.—Economics, History, Political Science, and Sociology. Dean Woolery is chairman of the division.

Mr. Woolery teaches courses in Economics and American History, Mr. B. Fox teaches courses in Economics and Sociology, and Mr. Garrett teaches courses in Ancient, World, and European History.

Mr. Evans, Mr. Kirkpatrick, and Mr. Miller, whose work lies chiefly in other departments, also teach courses in this division.

A new major in Secretarial work has been added to this division. Another instructor will be added in September '35 to complete a four year unit in Secretarial work and Business Administration.



MR. KIRKPATRICK



MR. WOOLERY

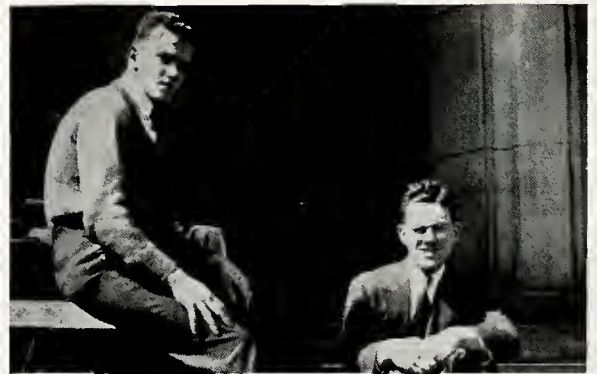
*The clash of knife, fork, and spoon usher in the meal at noon.*







Leisure time in Bethany  
—hurried conversations  
between classes—cram-  
ming before the Quiz—  
happy, never to be forgot-  
ten moments. Informality  
timed by a tower bell that  
adds rhythm and a degree  
of precision to our life on  
“the hill.”



Other unforgettable moments—  
pictures that bring us memories—  
Sumpstine's Duck Dinner—The  
Nature Trail—Some of us take the  
girl with us when we leave, others of  
us take only a memory that will never  
die—Bethany—the perfect ex-  
istence!



# PHILLIPS HALL



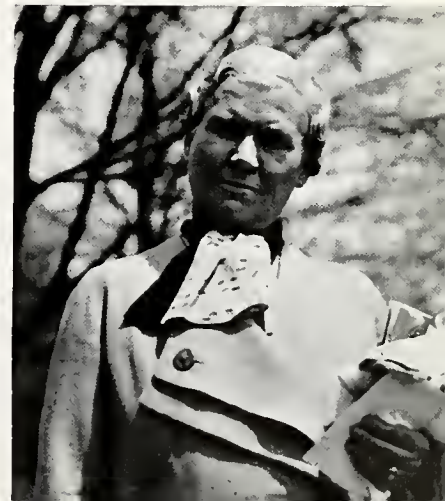
Phillips Hall affords a truly elegant home for Bethany's truly lovely freshmen girls and their mentors, Miss Burleson, Mrs. Morris, and Miss Ball.

The beautiful dining room is as inviting as it is essential; the splendid drawing room is as popular as it is spacious; and the open fires are as cheerful as they are unnecessary.

Phillips Hall is really a home—a home for work, for rest, and for play. Lights burn into the wee small hours . . . sometimes for study . . . sometimes for feeds . . . sometimes for idle gossip . . . and sometimes they—just burn.

The "Hall" is one of the finest dormitories in the United States. It is new, cleverly planned, useful, convenient, beautiful. From the starling's nests under the eaves to the great soup kettle in the basement, it is "late 20th century" throughout. It is one of the logical, modern reasons why girls leave home, and stay away from home for four years—once they have left.

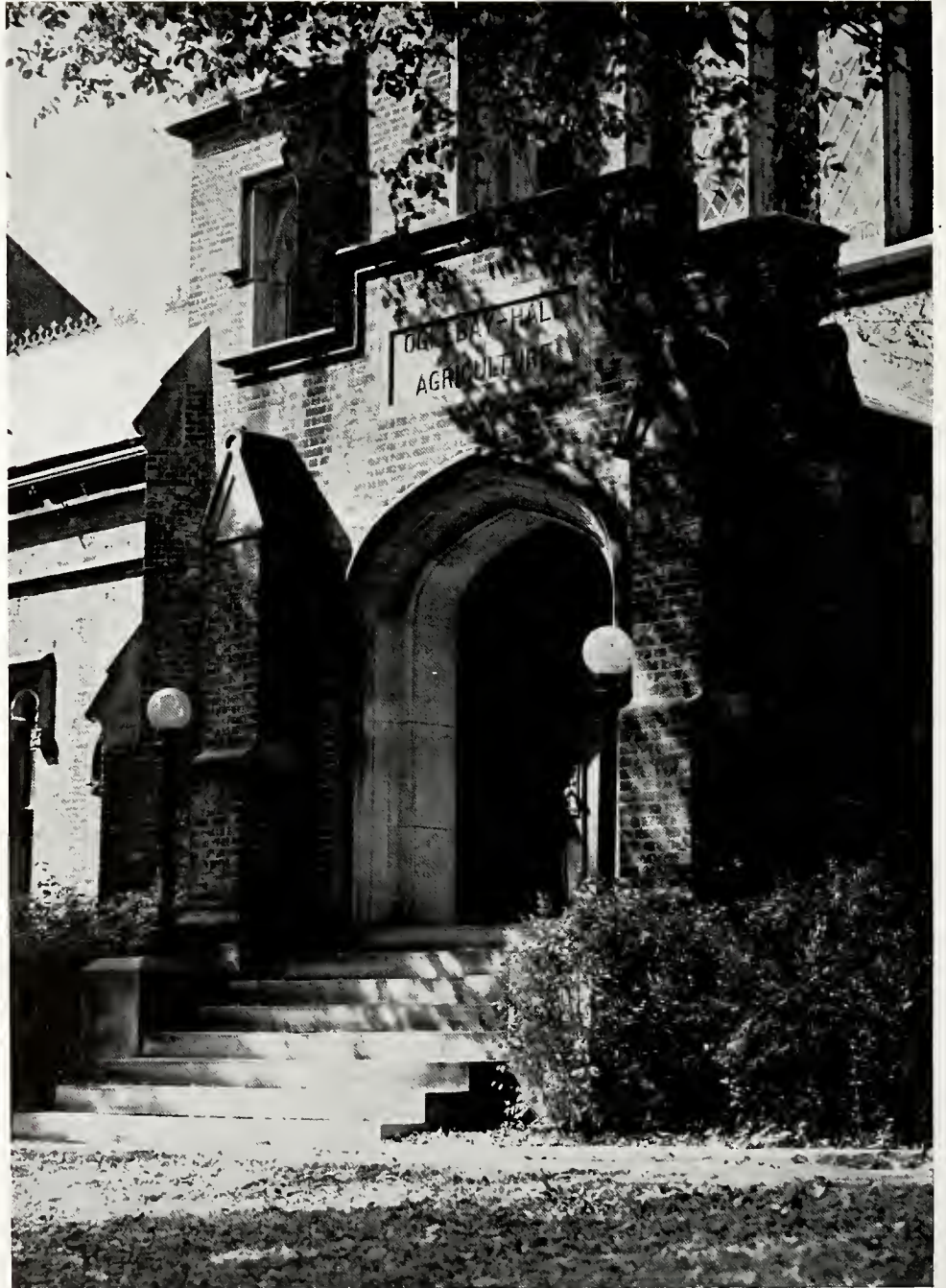
MISS MORRIS



*A circle of friendship---faculty and student find time to chat---*



# SCIENCE AND MATHEMATICS



ENTRANCE TO  
SCIENCE  
BUILDING





MR. ALLEN

MR. SUMPSTINE

MR. DAWSON MR. R. FOX

The Division of Science and Mathematics includes the work in Biology, Chemistry, Geology, Mathematics, and Physics. Mr. Weimer is division chairman.

Students in this division have a wide range of selection including bacteriology, zoology, embryology, botany, industrial chemistry, chemical research, medicine, surveying, light, heat, electricity, and many other variations, each leading to numerous possible technical vocations.

Mr. Weimer is in charge of the work in Biology; Mr. Sumpstine, the work in Botany and Geology; Mr. Dawson and Mr. R. Fox, the work in Chemistry; Mr. Cramblet, the work in Mathematics; and Mr. Allen, the work in Physics.

Many students from this division go on into graduate work, and almost without exception they succeed. Bethany's pre-medical work has been outstanding for years.

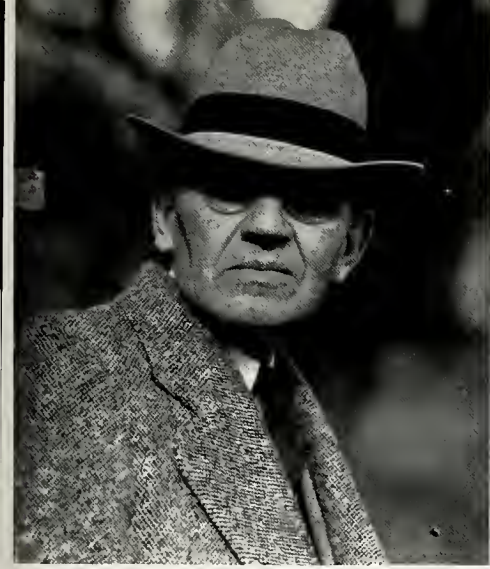


MR. WEIMER

# RELIGION



CAMPUS VIEW



MR. MILLER



MR. BOOTH

The general purposes of the courses offered in the department of Religion are: to acquaint the student majoring in other departments with the English Bible; to give a more complete knowledge of the content of the English Bible and other religious subjects to students planning for graduate study in the Christian ministry; and to supplant this knowledge of the Bible with enough professional courses to enable the student to preach until such a time as graduate study may be possible for him.

It is necessary for every student to pass six hours of work in this department in order to fulfill his requirements for graduation.

Mr. Booth is chairman of the division and teaches courses in Old Testament and Literature of the Bible; Mr. Green teaches courses in New Testament, Church History, and Homiletics; and Mr. Miller teaches courses in New Testament and Religious Education.

The Christian Church as well as the foreign mission field receives a great number of its leaders from Bethany, graduates of this department.



MR. GREEN

*“If at first you don’t succeed -- try, try again.”*



IRVIN GYMNASIUM





COACH KNIGHT

ASSISTANT COACH STUMP

Bethany is pledged to a physical education program for the many rather than an athletic program for the few. Yet, despite the emphasis on physical education, Bethany's basketball team is always a threat in the Tri-State District, her football team is being built up, and her relay team is very highly respected—even in the fastest company.

Coach Knight is athletic director, and Miss Fleming is head of Physical Education for Women. During the past year the staff also included Professors Allen, R. Fox, and Green, student assistant Seth Morrow, swimming instructor Beverly Ann Castator, and line coach Eddie Stump.

A wide range of courses is offered such as—coaching of football, basketball, baseball, track, and swimming,—and the study of—school and community hygiene, recreation, first aid and massage, tap and character dancing, camping and camp craft, and the theory and practice of sports.

Many Bethany graduates have attained high places in the fields of Coaching and Physical Education.



MISS FLEMING

# ATHLETIC BOARD OF CONTROL



BOURG, McQUOWN, ESKEY, HERBOLD

The Athletic Board of Control is an organization of faculty members and students working together for the best interests of the athletic program. The students' representatives, one from each of the three upper classes, are James Herbold, senior; Harry McQuown, junior; and Richard Eskey, sophomore. The Women's Athletic Association is represented by Regina Bourg. The faculty members are Professors Weimer, Knight, Dawson, and Booth.

The Board determines to a large extent the athletic program of the college by approving schedules, advising in matters pertaining to athletics, awarding letters to varsity men with the recommendation of the Coach, supervising the distribution of athletic funds, and selecting the student managers for all sports. Such an organization is invaluable because it combines faculty and student opinions and tends to stimulate and create a well managed athletic program.



# V A R S I T Y ' ' B ' ' C L U B



WHITEHEAD, JOE CRABTREE, KINSEY, NEE, ROBINSON, BALDWIN, MOFFETT, MUMPER, DOTSON, HAUNER, MARCONI, McDONNELL, ESKEY, JACK CRABTREE, DOEPKEN, SYKES, HERBOLD, WROBLESKI, PAUL, GREEN, HORNER, EVERHART, BLISTAN

The Varsity B Club, this year, was one of the largest organizations on the campus. Football furnished most of the new lettermen, while track furnished the second largest number.

The club is strictly an honorary group, membership coming automatically with a varsity letter award.

It is the aim of the club to develop and maintain a school spirit in inter-collegiate contests. The group also endeavors to tender hospitality to visiting athletic teams, and to maintain order during athletic contests.

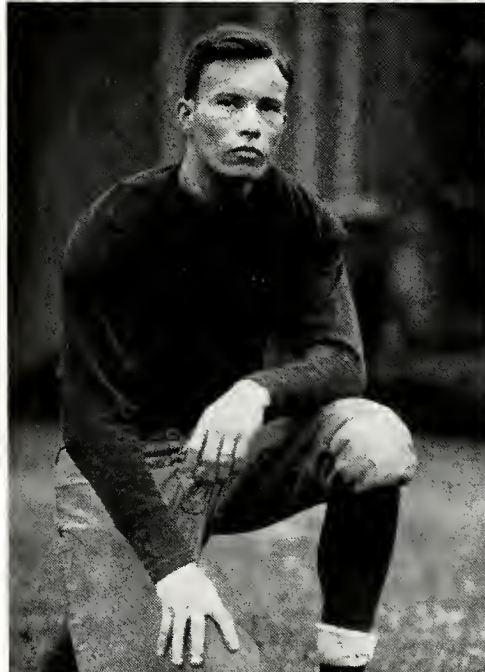
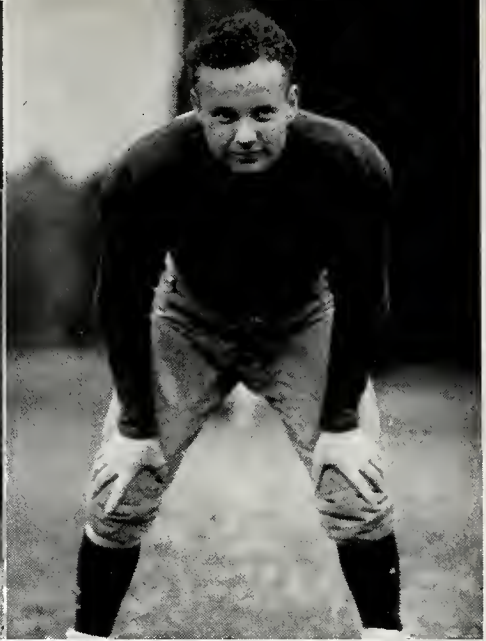
The club in co-operation with the coach and the Board of Athletic Control, makes certificate letter awards to men receiving the "B."

The president of the club this year was William Nee.



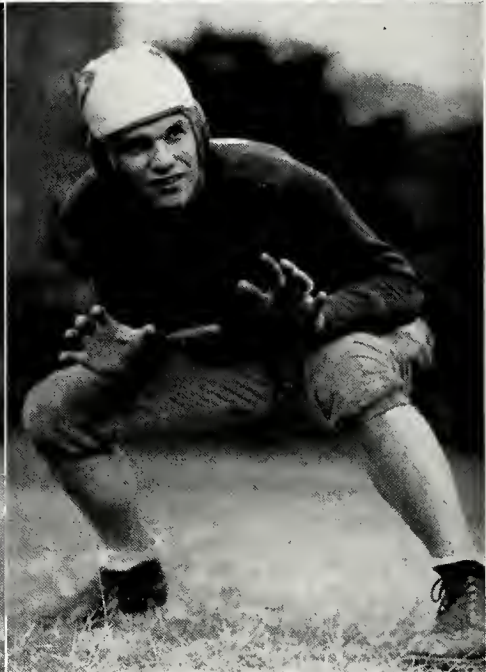
MARLIN LUDWIG—TACKLE

RED McDONNELL—BACK



HERBOLD—BACK

WELLS—TACKLE



# T H E F O O T B A L L

BILL NEE  
HONORARY CAPTAIN



NAT DAVIS—BACK

JOE HAUNER—END



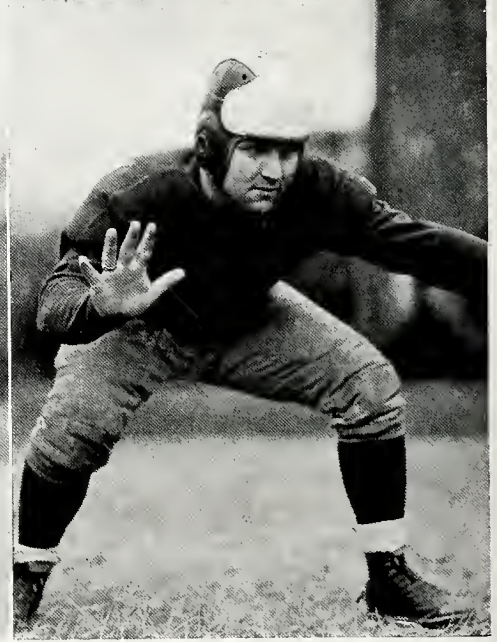
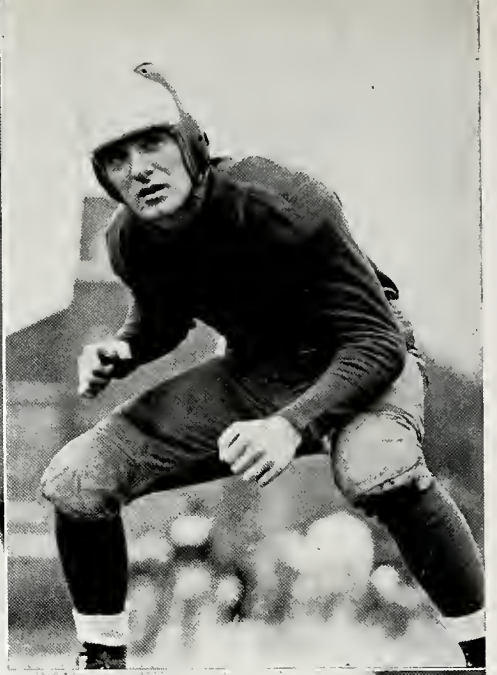
TONY BUPKA—END

MILAN BLISTAN—CENTER

# GREATS AT BETHANY

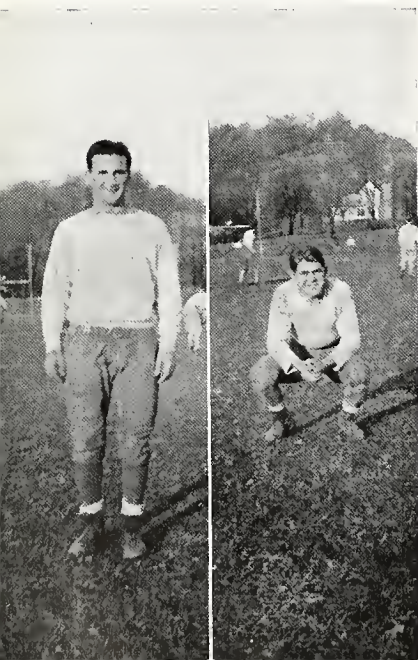


GENE MOFFETT—TACKLE



HARRY SYKES—TACKLE  
EARL WHITEHEAD—GUARD

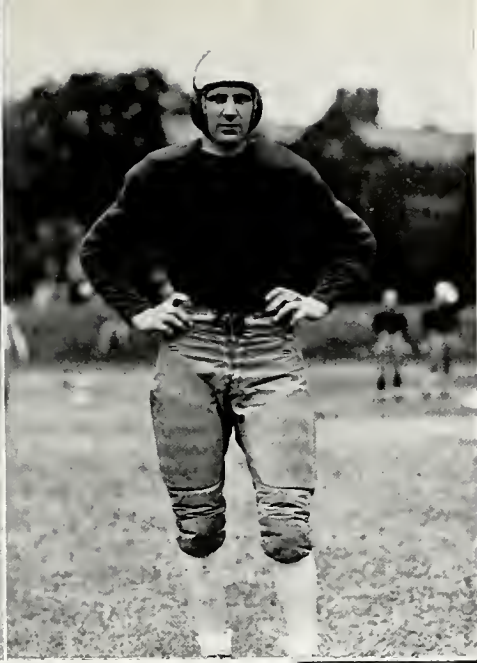
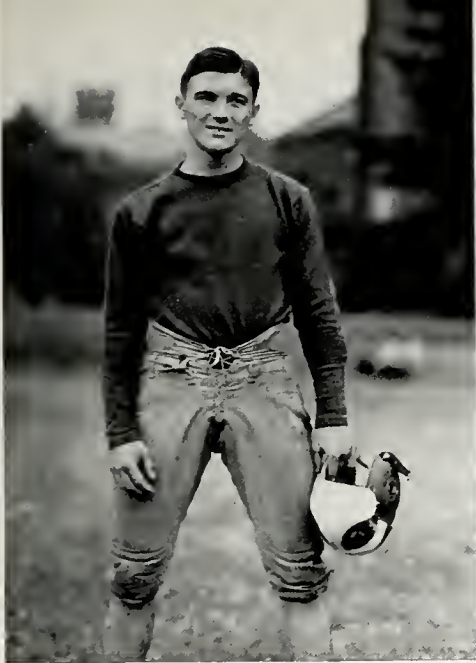
THOMAS McKINNEY—CENTER  
ALBERT WROBLESKI—GUARD



# T H E G R E E N A N D

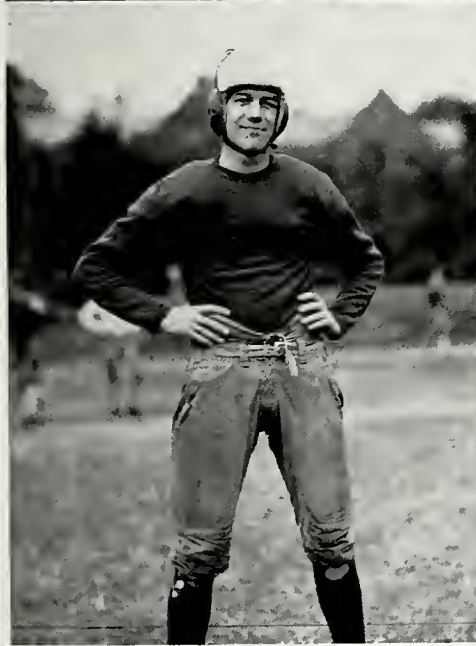
VIC MARCONI—BACK

RAY ZIMMERMAN—BACK



JACK CRABTREE—BACK

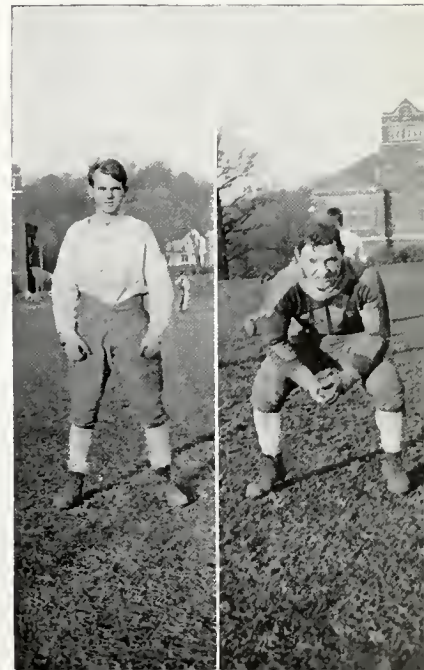
EARL KLEVINS—END



JOE CRABTREE—END

JIM SOTUS—BACK

# WHITE 1934 EDITION



KINSEY—BACK

HANNA—BACK



## SEASON'S

The Bisons, handicapped by a young and inexperienced team, opened the football season at Marshall College. They held Marshall scoreless for the first quarter of the game, but Zontini, Marshall flash half, finally careened through the Bisons for goal after goal. Bethany opened the last quarter with a strong passing attack but the Marshall line was too strong for our backs and the final score found Bethany scoreless and Marshall with 39.

Bethany's first home game found the Waynesburg, Orange and Black to be their Waterloo. In the first quarter of the game the Bisons drove the ball to Waynesburg's seven-yard line, but a fumble recovered by the opponents caused Bethany to lose her chance of scoring. The opponents came back with two touchdowns and a safety to make the final score 15-0.

A light Bethany team faced the big Grove City Grovers for the third game of the season and although the Bisons played hard and fast, the heavy, hard driving giant backfield of the opponents left Bethany the loser, and scoreless, by thirty points. The team returned to Bethany with many bruises and cuts to bear out the hard driving of the Grovers.





## RESULTS

On a mud-soaked field the Bisons met the Thiel team in one of the most spectacular and exciting games of the season. The Bisons scored early in the first quarter of the game and, during the rest of the first half, completely outplayed the Thiel team. Snyder, an elusive and fast back of Thiel, slipped away twice during the game for a 65 and a 45 yard run which left Bethany outscored 16 to 6 but, by no means outplayed.

At the beginning of the last quarter of the Geneva-Bethany game the score was tied 6-6 and it looked as though the tide had turned, but they could not compete with the fresh team sent into the game by Geneva in the last quarter and were overwhelmed. The final score was 26-6.

Bethany, in good old Bison fashion, thundered down on the Fairmont Teachers to end the 1934 football schedule with a decisive victory. Although it was predicted that the Teachers would be victorious it was evident from the very first that the Bisons would not be stopped. With a strong defensive and a fast offensive the determined Bisons led by Captain Bill Nee, flashed to the front in the last game of the season with a victory to the tune of 14-12.



# F O O T B A L L S Q U A D



GRESKOVICH, SOTUS, McGHEE, MUMPER, HANNA, McKINNEY, MOFFETT, WELLS,  
BLISTAN, ZIMMERMAN, ROBINSON  
WROBLESKI, McDONNELL, SHOAF, KINSEY, DOUGLAS, LUDWIG, HAUNER, CRABTREE,  
DAVIS, LEWTON, WHITEHEAD  
COACH STUMP, PICKETT, DAVIS, KLEVINS, BROWN, SYKES, BEANY, HARDESTY, PAUL,  
BLAHUT, CRABTREE, COACH KNIGHT  
SKEWS, WHITEMAN, MUMPER, BUPKA, DOTSON, HERBOLD

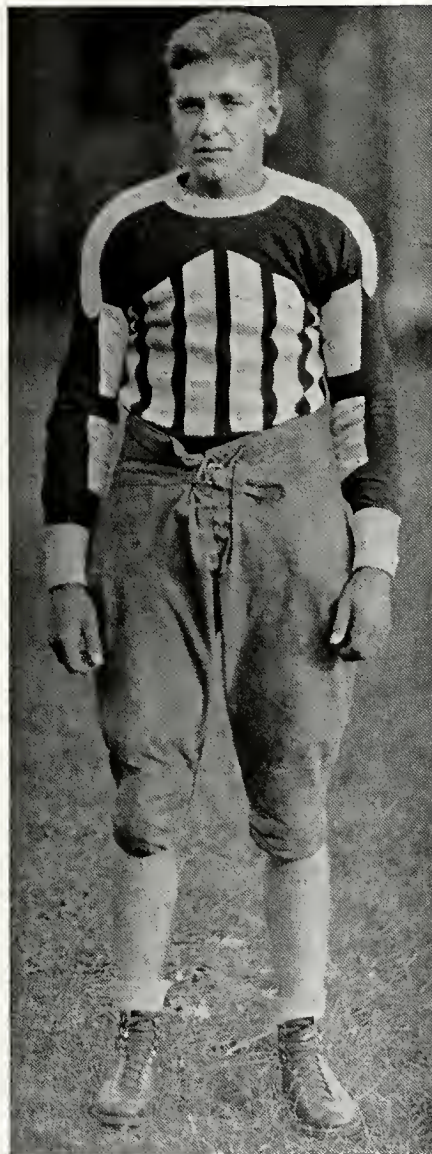
The 1934 Bison football squad was one of the largest in the history of Bethany athletics. Over forty responded to the call of coaches Knight and Stump when school opened last fall. Ludwig, Moffett, Wells, and Wrobleski returned to bolster and give experience to the guard and tackle positions. Tony Bupka was the only end available with varsity experience, but the freshman class came thru with two of the most promising men in years, Joe Hauner of Dillonvale and Earn Klevins of Warwood. Shoaf proved himself valuable as substitute center and Miles Blistan, a newcomer, gained a varsity berth. McKinney, also a freshman, played part time at center. Other men who made successful bids for line positions were Harry Sykes of Reynoldsville, Charles Lewton of Bethany, and Joe Crabtree of Wellsburg.

The backfield was well supplied with experienced men: Herbold, varsity halfback; Mumper, varsity fullback; Hanna and Marconi, varsity halfbacks; and McDonald and Zimmerman returned to school to give the coaches a nucleus around which to build the '34 running attack. These backs though hard running men lacked speed. This lack of speed was partly compensated by the additions of Jack Crabtree, former Valley star. Other backs to see service were Kinsey, at quarter; Paul, at full; and Sotus at half.

The squad possessed talent, the finest talent in ten years, and with the experience of last season under its belt and another freshman class like that of '34 to draw from Bethany's football fortunes are bound to change, and the whole world knows what a "change" in Bethany's "football fortunes" has to mean.



# TRI-STATE AWARD

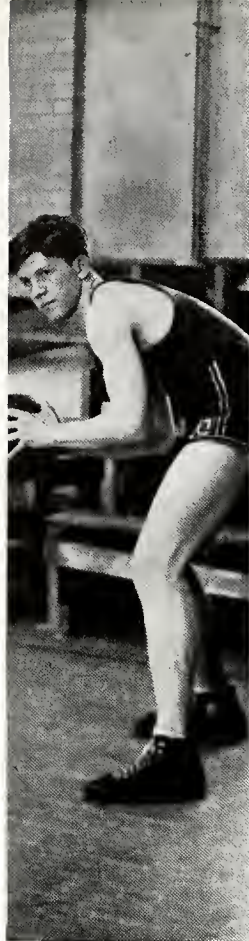


MALVERN STILL

Each year the Tri-State Conference makes an award to some members of the Senior Class of Bethany College. This award is made to the person who has excelled not only in athletic performance, but also in scholastic achievements. The person who receives this honor must be not only an athlete, but a student and leader as well.

In 1934 at the ninety-first commencement of Bethany College, Malvern Still was awarded the medal as the outstanding athlete and all-around student of his class.

Mal well deserved the honor given him. He held down a varsity end on the Bison Eleven and proved to be a dependable varsity basketball man. Mal was a better than average student and a "fellow well met."



DOEPKEN



PICKETT

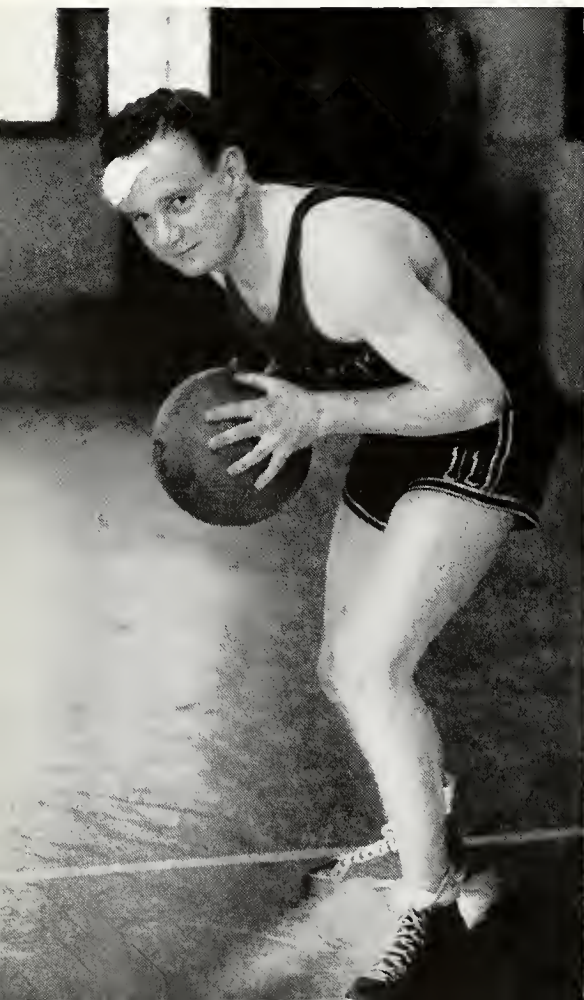


ESKEY



KLEVINS

CAPTAIN  
ANTHONY (RED)  
McDONNELL



## BASKETBALL SCHEDULE 1935

### January, 1935—

11—W. and J. at Washington.....	57—27
15—Salem at Bethany.....	38—49
22—Glenville at Bethany.....	55—39
26—Fairmont at Bethany.....	57—33
31—Geneva at Bethany.....	33—32

### February, 1935

4—Westminster at New Wilmington.....	33—51
5—Grove City at Grove City.....	49—35
6—Thiel at Greenville.....	31—27
15—Grove City at Bethany.....	47—46



MUMPER



MARCONI



BALDWIN



SYKES



FUNK

# BASKETBALL SCHEDULE 1935

WON 9  
LOST 9

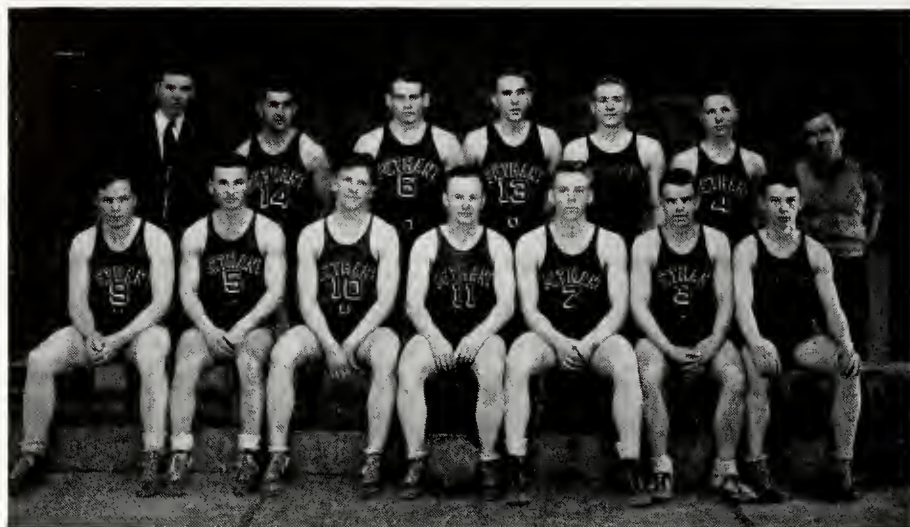
## February, 1935—

18—Geneva at Beaver Falls.....	26—33
23—Thiel at Bethany.....	50—43
28—Westminster at Bethany.....	36—37

## March, 1935

4—Fairmont at Fairmont.....	54—51
5—Salem at Salem.....	45—52
6—Glenville at Glenville.....	52—62
11—Waynesburg at Bethany.....	43—47
13—Waynesburg at Waynesburg.....	36—40
15—W. and J. at Bethany.....	58—36

# BASKETBALL SQUAD



MUMPER, MARCONI, DOEPKEN, McDONNELL, BALDWIN, ESKEY, ROGERS, GREEN, BLISTAN, PAUL, SYKES, CHORPENNING, FUNK, WROBLESKI

The squad reporting to Coach Knight in January of this year was the strongest and most experienced group to greet Coach in four years. The Bisons faced one of the toughest schedules in years, but from the first game of the season to the last the entire team displayed excellent basketball with the highest degree of sportsmanship and co-operation. Although the team did not go through the season undefeated it was ranked as one of the best in the district.

Anthony Red McDonnell, of McKeesport, Pa., as captain of the team, and the only senior to maintain his position on the varsity four straight years, played good consistent ball throughout the season. Red maintained a splendid spirit of co-operation and teamwork on the club. Red is a brainy player, and his shoes will be hard to fill when the whistle blows for practice next season.

Gene Pickett of Moundsville, a forward, played brilliant basketball, scoring consistently in every game. Gene was high point man for the Bisons and one of the East's leading scorers, averaging better than fourteen points per game. Gene is only a sophomore and has his best years ahead of him.

In Bill Doepken of Wheeling, Bethany has one of the best centers in the district. Bill though not an exceptionally tall man was never out-jumped this year. He has been designated "the man with springs in his legs." Bill was second high scorer. He is a junior and we are expecting great things of him next year.

Earl Klevins, former Warwood star, was the only freshman to break into the varsity five. Earl played at a forward, but owing to his uncanny ability to score from the pivot position, he shifted to that position after a tip-off. Earl, too, has his best year before him and in all probability he will develop into one of the best "basketeers" in the east.

Richard Eskey, of Wellsburg, though lacking in physical stature, played a game at guard that earned him respect and recognition. Many times during the season it was Dick who retrieved the ball from opponents larger than himself, to give Bethany a chance to score.

# T R A C K



RELAY TEAM—WHITEHEAD, CUNNINGHAM, EVERHART, WOLFF, HORNER

This spring saw track back in Bethany's athletic program after an absence of three years. The men mostly responsible for the renewed interest are the young men pictured above. These men, all newcomers to Bethany, began indoor practice in the Irvin Gym during the winter months.

The first opportunity to show their wares came with the indoor meet at West Virginia University. There, among the best competition in the east, the relay team captured third place. Then for the first time since 1927, Bethany entered a track team in the Penn Relays at Philadelphia. A mile relay team composed of Whitehead, Wolff, Horner, and Cunningham, placed third in the relay held for colleges of Bethany's class.

Later in the year the coach sent out a call for track candidates and a meet was held with Waynesburg at Waynesburg. Though Bethany was defeated in this meet, it was valuable experience for the new men.

The track prospects look bright for Bethany in the years to come. The spirit among these new men is more than commendable. It means that the nucleus for a better team will return next year, and with any luck at all in the next freshman class to be enrolled, Bethany should once more take her place as one of the leaders in the district in this particular sport.

The inter-fraternity meet showed that latent talent is rife in the school. Next year with an earlier beginning and the renewed interest should see Bethany with a well rounded team.

# WOMEN'S ATHLETIC ASSOCIATION

The Women's Athletic Association is now a definite part of Bethany life. The membership has grown in spite of the fact that it is necessary to earn two hundred points to be admitted to the association.

Under the leadership of Miss Fleming the activities and interest in sports have been greatly advanced. A new sport, deck tennis, was recently added to the list of women's activities which already included volleyball, mushball, basketball, tennis, hiking, and archery. Class tournaments and color tournaments decide the winning teams in each sport. The association held its second annual Play Day on May 4 and entertained a number of high school students from neighboring cities. The final event of the year is always a banquet at which letters are presented to those who have earned them.

## W. A. A. CABINET

### Officers

President.....	Regina Bourg
Vice President.....	Sarah Weston
Secretary.....	Martha Darsie
Treasurer.....	Wanda Zbiec

### Sport Leaders

Archery.....	Betty Aull
Baseball.....	Gertrude Ross
Basketball.....	Marion Partridge
Croquet.....	Sarah Weston
Deck Tennis.....	Sarah Weston
Hiking.....	Velma Pease
Hockey.....	Wanda Zbiec
Horseshoes.....	Marjorie Packard
Swimming.....	Beverly Ann Castator
Tennis.....	Marion Lane
Volleyball.....	Mary K. Stroman



GOODNIGHT, PEASE, ZBIEC, BOURG, CONNER, DARSIE, CASTATOR, LANE, BUCKHOLZ, WHITE, WARSTLER, GREEN, RAMSEY, SCHUPPENER, HITTENBERGER, MCGUFFIE, HUFFMAN, HEDGES, BAMFORD, LEWIS, WILES, GRIMM

# WOMEN'S ATHLETICS



Many opportunities are afforded the Bethany co-ed in the line of physical recreation. The program is so arranged that every young woman becomes a participant in some form of athletic endeavor.

The list of sports is many and varied. The activities engaged in by the co-ed include archery, swimming, field hockey, tennis, croquet, softball, basketball, volleyball, hiking. During the winter skiing and skating take up a part of the students' time.

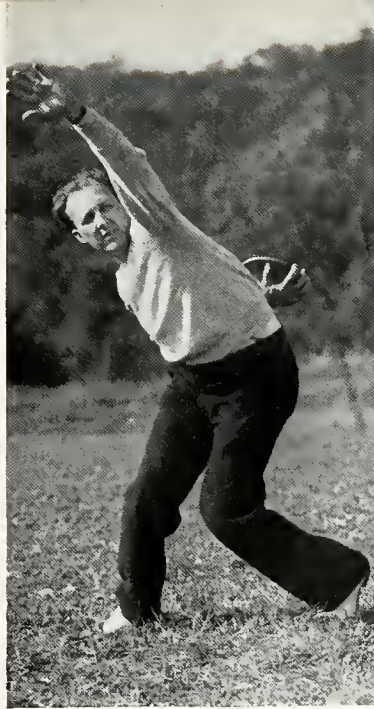
The clean, wholesome, healthful atmosphere of Bethany, with its beautiful location among the West Virginia hills, aided by the well-rounded sports program in charge of Miss Fleming and student leaders, tend to keep the Bethany co-ed refreshingly alive.

“And the night shall be filled with music.  
And the cares that infest the day,  
Will fold their tents like the Arabs  
and silently teal away.”









Students, faculty, and alumni work and play in Bethany. Sunshiny days keep the tennis courts busy with hopeful Wills and Tildens. Students keep odd pets, even faculty members. Wintertime means ice on the "old Buffalo," and ice means skating, or is it? Virg returns to give a few pointers to the track team.

Arbor Day! Faculty and students unite to spend an afternoon beautifying Bethany's campus, rounding the golf course into shape, maintaining Nature Trail. It is this willing and spontaneous spirit that makes Bethany, Bethany!



“Hours of gladness, free from sadness——.”  
The gatherin’ o’ the clan.



# INTERFRATERNITY COUNCIL



WILSON, HERBOLD, COCHRAN, HOCKENSMITH, McILROY  
MOFFETT, COWAN, GREEN, MARION, DOEPKEN

The Interfraternity Council was established in 1925 to create and promote co-operative interfraternity feeling.

The council expresses the will and policy of the fraternity groups in any discussions needing that expression. The council promotes intra-mural athletics, mushball, basketball, and track. During the past three years the Interfraternity Council in co-operation with the Panhellenic Association has taken charge of the Spring Formal at Commencement.

The Council is also responsible for the annual fall program of rushing rules.

The body was presided over this year by Luke Cochran. John Cowan served as vice president, and Steed Hockensmith as secretary-treasurer.

## Members

Lucas Cochran.....	Beta Theta Pi
William Doepken.....	Beta Theta Pi
John Cowan.....	Sigma Nu
Joe Gluck.....	Sigma Nu
James Herbold.....	Kappa Alpha
Eugene Moffett.....	Kappa Alpha
Chester Green.....	Phi Kappa Tau
Steed Hockensmith.....	Phi Kappa Tau
Anthony Marion.....	Alpha Kappa Pi
William McIlroy.....	Alpha Kappa Pi

# P A N - H E L L E N I C



PARTRIDGE, McGUFFIE, QUINLIN, LaMASTER, MORROW, WILLIAMS,  
SHEETS, POWER, CASTATOR, FIETZ, MAXWELL

The Pan-Hellenic Association of Bethany College is a medium of co-operation established to foster more harmonious relationships among the four national sororities on the campus and to unify the interests of the sorority and non-sorority women.

The local association includes four national sororities and is composed of twelve members, three from each chapter. The offices are held in rotation in the order of the founding of each local chapter on the campus.

Among its activities are: formation of "rushing" rules and policies, sponsoring of a Pan-Hellenic Tea for the freshmen women in the fall, and inter-fraternity sings.

## Officers

President ..... Nancy LaMaster  
 Vice President ..... Ada Williams  
 Secretary ..... Francis Quinlin  
 Treasurer ..... Helen L. McGuffie

## Members

Alpha Xi Delta	Kappa Delta
Nancy LaMaster	Francis Quinlin
Jane Morrow	Gractia Parsons
Betty Maxwell	Josephine Sheets
Zeta Tau Alpha	Alpha Delta Theta
Ada Williams	Helen L. McGuffie
Esther Power	Marion Partridge
Beverly Ann Castator	Bertha Fietz



# B E T A   T H E T A   P I

Seniors: Seth Morrow, William Nee, Gabe Kearns, David McCormick, Lloyd Matson.

Juniors: Arch Dorsey, Luke Cochran, Harry McQuown, Emerson, Hess, William Kent, Edward Addy, Wayne Thompson.

Sophomores: Edward Hemington, Paul Ward, Jack Walters, James Schnell, William Doepken, Howard Dunning, Dal Jenkins, Joe Pendleton, Joseph Wylie.

Freshmen: William Allison, Albert Brandon, Jack Chorpensing, Hunter Cully, John Dickson, Joseph Funk, Arch Kinsey, Alvin Pollock, Robert Rogers, John Stahl, John Watts, Ardenne White, George Whitehead.

FOUNDED AT MIAMI UNIVERSITY, OXFORD, OHIO IN 1883

CULLY, KINSEY,  
WATTS, FUNK,  
WHITE, ROGERS.







NEE, McCORMICK,  
MATSON, MORROW,  
KEARNS.



COCHRAN,  
W. THOMPSON,  
HESS, R. BRANDON,  
V. THOMPSON,  
McQUOWN



WYLIE, HEMINGTON,  
WALTERS, WARD,  
DOEPKEN, SCHNELL,  
DUNNING.

## PSI CHAPTER ESTABLISHED IN BETHANY 1860

Faculty: H. N. Miller, W. K. Woolery, F. H. Kirkpatrick.



# ALPHA XI DELTA



Delta chapter of Alpha Xi Delta has recently closed its 32nd year of its history on Bethany's campus. This year proved a highly successful one, twelve pledges were added and a large percentage was initiated into the active chapter.

Mrs. Workman has served the "Alph's" as house mother during the past few years.

Alumni living in town are: Margaret Hurt Roberts, Garda Bachell, Sally Britain Lewis, Anna Mary Kemp, Virginia McFadden, Miriam Netting.

FOUNDED AT LOMBARD COLLEGE IN 1893

"Alph" Seniors are: Edith Trelogan, Jane Morrow, Mary Martha Shaddick, Dorothy Menzies, Jane Gay, Eleanor Zink and Mary Carolin Cochran.

Juniors: Alice Conner, Dorothy Niel, Betty Maxwell, Betty Schuppener, Virginia Ramsey, Mary Glass, Nancy LaMaster, and Mary Louise Bergner.

Sophomores: Ruth Huffman, Grace Sammons, Mary Lou Zeisloft and Anita Coleman.

Freshmen: Betty Aull, Jane Aull, Margaret Baab, Audrey Bennett, Eileen Dennison, Sarah Dittmar, Dorothy Hardesty, Jane Paisley, Anne Reznor, Jean Roscher, Mary K. Stroman, Jean Porter.

DELTA CHAPTER ESTABLISHED IN BETHANY 1903





## SIGMA NU



Seniors: John Cowan, Karl Wilson, Robert Scott, Ashley Dowdy, Clarence Tamplin, Saylor McGhee, Robert McMahon.

Juniors: Roy Leitch, Oliver Vodrey, Pete Johnson, William Worthen, Don Robinson.

FOUNDED AT VIRGINIA MILITARY INSTITUTE 1869



Sophomores: William Hanna, Earl King, Robert Howe, Ernest Snyder, Jack Baldwin, Robert Knox, William Juergens, Edmund Goodwin, Joe Gluck, Richard Darsie, John Cluss, Joe Burke, James Sotus, George Wehner, Harvey Werkheiser, Charles Hurford, Ray Zimmerman.

Freshmen: Jack Brown, John Brown, Joseph Crabtree, Thomas Cramblet, George Darr, George Davis, Gardener Gre-million, C. J. Harrison III, John Kroll, Harold, Hutchinson, Wayne Squires, Ira Paul.

EPSILON CHAPTER ESTABLISHED IN BETHANY 1883





# ZETA TAU ALPHA



SMITH      POWER      CASTATOR      WILLIAMS

## FOUNDED AT VIRGINIA STATE NORMAL IN 1898

Zeta Tau Alpha has held a high place on Bethany's Campus for the past thirty years. Returning to school this year with a small active chapter the Zeta's succeeded in recruiting a pledge group from the freshman class that assures the continued success and customary high standing of Theta Chapter.

The entire school mourned with Zeta Tau when it was announced that Miss Dagny Andersen, one of the best loved of her active members, had passed away.

Miss Mary Carman, an alumnus, served as house-mother during the past year.

The ranks of the Zeta's were somewhat depleted this year, and among the Seniors we find that Esther Powers, Beverly Ann Castator, and Ada Williams are the graduating members.

Margaret Smith is the only member of the Junior class.

From the freshman class the Zetas pledged a fine group of young women. They are: Ruth Gremillion, Loris Grimm, Amy Hettler, Olga Hoagland, Rose Keim, Ada Lee Rogers, Jane Schenck, Eleanor Webb, and Ruth Fisher.

Though the Zeta Chapter was small this year, it has a fine group with which to enter next year's rushing season and should be successful.

## THETA CHAPTER ESTABLISHED IN BETHANY 1905





# K A P P A     A L P H A



Beta Beta Chapter of Kappa Alpha (Southern) has the distinction of being the northernmost of Kappa Alpha chapters; the only one north of the Mason-Dixon line.

The chapter in its thirty-second year on the Bethany campus enjoyed one of its most successful years.

FOUNDED AT WASHINGTON AND LEE IN 1895



Seniors: JAMES HERBOLD AND EUGENE MOFFETT.

Juniors: RONALD HASSIG, LAWRENCE SHINGLETON, IRWIN ZIDERS, MELVIN MUMPER.

Sophomores: MILAN BLISTAN, CLARENCE DAVIS, GENE PICKETT, LUTHER BATES, LAYTON HORNER.

Freshmen: JACK CRABTREE, PAUL MERIAGE, NORMAN LEWIS, DAN MORFORD, DONALD EMERICK, FRED WESTWOOD, ROBERT WOLFF, HARRY SYKES, PAUL STECKLA, EARL KLEVINS, JOSEPH HAUNER, GERALD PATTERSON, DONALD HASSIG, KENNETH CUNNINGHAM, GEORGE MUMPER, RAY STAHL.

Faculty: E. E. ROBERTS.

BETA BETA CHAPTER ESTABLISHED IN BETHANY, 1903





# K A P P A   D E L T A



## FOUNDED AT FARMVILLE TEACHERS COLLEGE, FARMVILLE, VA., 1897

The Kappa Deltas have concluded their twelfth year on the Bethany campus. The K. D. House is located at the extreme eastern end of town, and gives its name to the well known and world famous K. D. Bridge. Miss Margaret Saunders served as house chaperone during the school year, this being her first in that capacity in Bethany.

The Kappa's came into a fortune and spent it in refurnishing their living room this year.

Seniors: FRANCES QUINLIN, EMILY GREEN, MARTHA DARSIE.

Juniors: FRANCES GOODNIGHT, JOSEPHINE SHEETS, MARTHA JEAN MILLER, GRACIA PARSONS, FAY HEDGES, DOROTHY ADAMS.

Sophomores: MARIAN BODE, HELEN FIFE, NAOMI WOLF.

Freshmen: LA VERNE WOOLLENWEBER, DOROTHY KINDELBERGER, GOLDYE WENTZEL, MARTHA WEBB, MARY K. GABLER, MARJORIE PACKARD, BETTY PLACKETT, ELLEN WYLIE, LEVAUN LYONS, MARIAN BERGLAND, HANNAH COPE, BETTY STAATS, MARY HUTCHINSON, RUTH SEIDEL, MARY MARTHA SCHRAMM, DOROTHY SATTERLEE.

## SIGMA XI CHAPTER ESTABLISHED IN BETHANY, 1923





# PHI KAPPA TAU



Phi Chapter of Phi Kappa Tau has completed its twelfth year on the Bethany campus.

The Phi Taus have as their chapter house one of the historically famous houses in Bethany; in their house the Millennial Harbinger was printed.

FOUNDED AT MIAMI UNIVERSITY, OXFORD, OHIO, IN 1906

Seniors: VICTOR MARCONI, CHESTER GREEN,  
NATHANIEL DAVIS.



Juniors: MERLE COE, STEED, HOCKENSMITH.

Sophomores: RICHARD ESKEY, ANDY McDONALD, WALDO CARNAHAN, WILSON, SHOAFF, BLAIR, BURKHART.

Freshmen: THOMAS ROGERS, FRANK HAUBER, ROBERT KING, JOHN PAYNE.

## PSI CHAPTER ESTABLISHED IN BETHANY, 1923



# ALPHA DELTA THETA



FOUNDED AT TRANSYLVANIA COLLEGE IN 1919

The Alpha Delta Theta's formerly occupied a house on the main street of Bethany. They found, owing to financial conditions, that it would be more economical to move into Phillips Hall, so in accordance with that plan the chapter gave up its house, moved into the hall last year, and continued there this year. It is the only sorority on the campus to hold its meetings in the Hall.

The Alpha Delta Theta's are easily the smallest group on the campus, having but seven members in their group. Owing to the small expense incurred by the chapter the smallness of the group in no way affects its stability.

Members are:

Bertha Fietz .....	Junior
Martha Maffett .....	Sophomore
Velma Pease.....	Sophomore
Helen Stein.....	Freshman
Geneva Bamford.....	Freshman
Irene Martin.....	Freshman
Edna Woods.....	Freshman

## OMEGA CHAPTER ESTABLISHED IN BETHANY IN 1932

Alpha Delta Theta is comparatively a small national sorority because of its youth. Yet it has twenty-four active chapters and eleven active alumnae chapters.

The Alpha Delta Theta girls have set up a high standard of scholarship and set a difficult mark for the fraternities and sororities to shoot at. They have maintained this high standard of scholarship for the past several years.



# ALPHA KAPPA PI



Seniors: ANTHONY MARION, CHARLES WAGNER, CHARLES WELLS, WILLIAM GARNER, WILLIAM McILROY, ARDEN HANES, WILLIAM MOYER.

Juniors: RAYMOND HENTHORNE, WILLIAM CASTELLANO, WELLMAN DIETZ, BLAIR SAXMAN.

FOUNDED AT NEWARD COLLEGE OF ENGINEERING IN 1921





Sophomores: CRAIG SIPE, TONY BUPKA, ROBERT SELLER,  
RALPH NESTMANN, FRANCIS ELWELL.

Freshmen: JAMES MILLER, ORRIN STORM, DONALD McILROY,  
ELMER GRESKOVICH, CHARLES PHILLIPS, WALTER HARDESTY,  
FRANK WOLTZ, HERBERT GROSICK, EARL WHITEMAN, NELLO  
TROTTER, ALBERT KUTI, RAYMOND WALLS.

LAMBA CHAPTER ESTABLISHED IN BETHANY, 1924



# STUDENT BOARD OF GOVERNORS



The Student Board of Governors is wholly a student organization. It is composed of two representatives each from the fraternity, the sorority, the non-fraternity, and non-sorority groups on the campus.

This body of students has charge of all student activities that occur during the year. It finances the school dances and any other special functions that may be planned such as Homecoming programs and May Day. Every Thursday in Chapel, the board has charge of the student program.

Headed by the vice president, a committee budgets the student fund for the various organizations. A calendar designating the time of meeting of the different clubs is annually worked out by the members of the board.

Every year the senior members of the Student Board receive keys as rewards for their services.

The S. B. O. G. serves as a caldron in which the mass of student thought is boiled down to a student policy.

## Officers:

President .....	Clarence Tamplin
Vice President.....	William Nee
Treasurer.....	Ada Williams
Secretary.....	Edith Trelogan

# GAMMA SIGMA KAPPA



BOURG, GREEN, JONES, BUCKHOLZ, COCHRANE, COWAN

Gamma Sigma Kappa has recently completed its third year on the Bethany campus. During this time it has grown to command a real place among Bethany organizations. It is the honorary scholastic organization, a student to become a member must achieve a 2.5 average for five consecutive semesters. The purpose of this society is to recognize and foster scholastic attainment upon the part of the student body.

Members: Regina Bourg, Emily Green, Marjorie Buckholz, John Cochrane, Karl Wilson, John Cowan, William Jones.



# THE BETHANIAN

This year's Bethanian staff attempted something different in the way of Bethany annuals. The informal atmosphere of life in Bethany prompted the staff to portray this cross section of college life in an "informal book." Towering high above all else is the Tower clock; and, with this thought in mind, "Time" was chosen as the theme of the 1935 Bethanian.

The staff encountered new and difficult problems in working out this type of book. We take this space to thank the student body for infinite patience and wonderful co-operation. We trust that the book may serve as a concrete and accurate picture of one happy year spent on Bethany's beautiful campus.

(Note: Last minute additions and changes; the intensive work required of the editor as General Montoya in the commencement play, *Night Over Taos*; and his immediate shift from the role of General Montoya to that of "leading man" in the much longer drama *Matrimony*—all contributed to the delay in publication. But . . .

"time marches on," and here is your annual. Congratulations Jim! What's a year that is past compared with the many and better years that are to come? E. E. R.)

James Herbold	.....	Editor
Ronald Hassig	.....	Junior Editor
Lawrence Shingleton	.....	Associate Editor
Wanda Zbiec	.....	Society Editor
Martha Darsie	.....	Women's Sports
Edward Hemington	.....	Sports Editor

Photography: Daniel Morford, Fred Westwood, Robert Wolf, Professor Sumpstine, Dorothy Adams, Dagne Anderson, Bertha Fietz, Mary K. Gabler, Helen Louise McGuffie.

# COLLEGIAN STAFF

The Collegian is the bi-monthly publication of the student body. The 1934-35 Collegian under the able direction of Editor Clarence Tamplin proved itself an interesting and well planned paper.

The Collegian is an uncensored publication and serves as the mouthpiece of student opinion. The editorials express an appreciation of Bethany and her high ideals and purposes. The paper strives to keep aflame those ideals, and to bring constructive criticism to the eyes of the readers.

Sixteen issues of the paper appeared on the Bethany campus this year, among them a special home-coming edition, and one prepared by the freshman English classes.



Clarence Tamplin.....	Editor
Wayne Thompson.....	Society Editor
Francis Goodnight.....	Society Editor
Robert Scott.....	Sports Editor
Joseph Gluck.....	Exchange Editor
F. H. Kirkpatrick.....	Columnist

Reporters: John Cochrane, Edward Addy, William Montagna, Helen Fife, Harold Dickson, Martha Darsie, Velma Pease, Albert Wroblewski, La Verne Woollenweber, Helen Stein, Ray Stahl, John Stahl, Elizabeth Hittenberger, Joseph Pendleton.

# STUDENT BOARD OF PUBLICATIONS



HASSIG, HERBOLD, COWAN, TAMPLIN, GOODNIGHT

The Student Board of Publications, as the name implies, is a group of students in charge of all student publications.

The board was increased in size this year to include the assistants to each of the three original members namely, Business Manager, Editor of the Collegian, and the Editor of the Bethanian.

Dr. Cramblet has acted in the capacity of faculty advisor to this group and continued as such this year.

It is this body that determines the policies and handles the business dealings of the various publications.

Membership: John Cowan, Clarence Tamplin, James Herbold, Don Robinson, Wayne Thompson, Frances Goodnight, Ronald Hassig.

# BUSINESS STAFF



SNYDER, ROBINSON, CLUSS

This year's Business Staff under the direction of John Cowan, business manager, closed a successful year.

The Staff is an organization of the candidates for the position of Business Manager on the Student Board of Publications and is responsible for the financing, circulation, and soliciting of advertising for the student publications.

The business end of the Student Publications has been cared for more efficiently than ever before. More advertising space has been secured in both the Collegian and the Bethanian. Circulation of both publications has been increased.

The men under the tutelage of John Cowan have received invaluable experience that will aid in solving future publication problems.

# Y. W. C. A. CABINET



BUCKHOLZ, QUINLIN, ANDERSEN, MAXWELL  
NIEL, LANE, LaMASTER, MANLEY, ZEISLOFT, CASTATOR

In order to facilitate the work of the Y. W. C. A. the cabinet consisting of ten members is chosen annually. This body serves as the executive board of the association. It plans the general program of the activities for the year and then carries them out. The money received from dues and appropriations is carefully budgeted so that the most benefit can be obtained from it.

Every spring the old and new members of the cabinet go to Oglebay for a Retreat. This retreat is for the purpose of planning the program for the coming year. The beautiful natural surroundings of Oglebay inspires the best in the girls and the programs that result are always indicative of it.

The membership of the cabinet consists of the officers, program chairman and her assistant, conference chairman, music chairman, social chairman, membership chairman, and advisor.

Members — President, Frances Quinlin; vice president, Dagne Andersen; secretary, Betty Maxwell; treasurer, Marjorie Buckholz; program chairman, Josephine Sheets; assistant, Mary Lou Zeisloft; conference chairman, Dorothy Niel; music chairman, Florence Manley; social chairman, Nancy LaMaster; membership chairman, Beverly Castator; faculty advisor, Miss Pearl Mahaffey.



# Y. W. C. A.

The Young Women's Christian Association is the largest organization on the campus. The membership is open to all the women students of the college and many avail themselves of the opportunity to join this helpful association.

The Y. W. C. A. has many different kinds of useful and entertaining programs for its members during the year. In September it holds a Big and Little Sister party for the upper class girls and the little sisters that have been assigned to them in the summer. This function helps the old and the new girls to become acquainted. Later in the year dances are held for the members and their guests. Discussions of various subjects are held at some meetings. These oftentimes tend to strengthen ties of understanding among the girls.

The association, however, does not limit its services to its members alone. It procures chapel speakers and holds some discussions open to all the student body. The Student Christian Movement Conference held here on March 8, 9, and 10, was under the direction of the local Y. W. C. A.

This organization is one of the most necessary to the progress and well-being of the campus.



# BETHESPIAN CLUB

The Bethespian Club is the organized dramatic society on the campus. Each year it presents a number of three-act plays and shorter plays. This year the club proved to be normally successful, nine new members being admitted to this organization. In conjunction with Alpha Psi Omega the club sponsors all the dramatic productions which are presented throughout the year.

This past year the student body had the pleasure of seeing presented "Once In a Lifetime," "Swamp Spirit," "Half My Goods," and many others.

President.....Joseph Gluck  
Vice President.....Dorothy Adams  
Secretary-Treasurer.....Will McIlroy  
Sponsor.....Prof. T. V. Calkins

MEMBERSHIP—Dagney Andersen, Frank Chapman, John Cochran, James Herbold, Anthony Marion, Seth Morrow, Mary Shaddick, Dorothy Adams, Luke Cochran, Alice Connor, Frances Goodnight, Emerson Hess, Nancy LaMaster, Martha Jean Miller, Nancy Row, David McCormick, William McIlroy, James Sotus, Robert Scott, Ada Holmes, Wayne Thompson, Joseph Gluck, William Kent, Andrew McDonald, Marian Bode, Marian Partridge, William Castellano, Grace Sammons, Paul Ward, Jack Walters, Mary Lou Zeisloft, Eileen Dennison, Mary Glass, Goldye Wentzel, Mary K. Stroman.



HERBOLD, ZEISLOFT, McILROY, GLUCK, ADAMS, HESS  
DENNISON, SOTUS, SAMMONS, WILLIAMS, CHAPMAN, BODE,  
PARTRIDGE, WALTERS, HARDESTY, HOLMES, WARD  
THOMPSON, CONNER, SUTTON, GLASS, STROMAN, ROW, MORROW  
SCOTT, MILLER, ANDERSEN, LAMASTER, COCHRAN

# ALPHA PSI OMEGA



STANDING—GLUCK, ADAMS, LAMASTER  
SITTING—ANDERSEN, MORROW, CONNER, SCOTT

Although Beta Gamma cast of Alpha Psi Omega was chartered at Bethany College many years ago, it may be considered practically a new organization, being active only the last three and one-half years when the charter was renewed.

Alpha Psi Omega undertakes to stimulate interest in dramatics and to train the talent in the student body besides performing the usual functions of an honorary fraternity. The fraternity sponsors the productions of the local Bethespian Club, thereby seeking to perpetuate itself by admitting the people who have met certain qualifications for membership..

President.....David McCormick  
Vice President.....Robert Scott  
Secretary.....Dagney Andersen  
Sponsor.....Prof. E. E. Roberts

Dorothy Adams, David McCormick, Nancy LaMaster, Joseph Gluck, Seth Morrow, Alice Conner, William McIlroy, Robert Scott, Dagney Andersen, Jack Walters, Paul Ward, Mary K. Stroman.

# M E N ' S                      D E B A T E



KUTI, WOLTZ, RUGGIERI, HARRISON, BOOTH, JONES, PHILLIPS, JUERGENS  
CARNAHAN, HESS, HASSIG, CHAPMAN, HAUBER, HANEY, BREAKIRON,  
MILLER, NETTING

Four victories, three defeats, and six non-decision debates brought this year's debate season to a close.

The subject debated this year was "Resolved that the International Shipment of Arms and Munitions be Abolished."

The most successful trip taken was to Pittsburgh to participate in the Delta Sigma Rho tournament, with victories over Pitt University, Grove City, and Thiel. The team losing only to Western Reserve. This creditable showing netted Bethany's debate squad a tie for first place. Their other victory was achieved on the team's trip to Westminster.

Lost—To Westminster here, Western Reserve at Pittsburgh, and Waynesburg at Waynesburg.

Non-Decision Debates were: Hiram, Fairmont State Teachers College, Shepherds-town, Waynesburg, Mt. Union College, Penn State Girls Debate Team.

# TAU KAPPA ALPHA

Tau Kappa Alpha is the honorary intercollegiate debating fraternity. This fraternity has the distinction of being one of the few organizations on the campus wholly restricted to men.

No special activities are sponsored by this fraternity. It functions as a distinct honorary fraternity holding meetings only for initiation of new members and the election of officers.

Seventy-four other chapters function in the same manner in the leading colleges and universities of the country.

The membership at the present time consists only of William Jones, president, and Waldo Carnahan, vice president and secretary.

Professors Booth and Miller are active members of the fraternity.



CARNAHAN, BOOTH, JONES, MILLER

# PHYSICAL SCIENCE CLUB

The Physical Science Club is composed of majors and minors in the fields of Mathematics, Physics, Chemistry, and Biology. The purpose of the club is to allow the students from one branch of science to become interested in and have their knowledge extended to other branches of science.

Lectures are given almost wholly by students of the college who have specialized in some particular phase of their field. Occasionally outside speakers are brought in to lecture to the club, but it is mainly a club for students with lectures by students.

Some of the various subjects used this year for lectures were mathematical instruments, and the making of telescopes.

## OFFICER

President..... John Cowan



FIRST—HITTENBERGER, DARCIE, JOHNSON, WILES, ZBIEC, COWAN,  
FIETZ, MAFFETT, DEVIS

SECOND—ALDRICH, CIARROCHI, CLUSS, CARNAHAN, ADDY,  
MONTAGNA, DEGARMO, BROWN

THIRD—DARCIE, DOWDY, MAXWELL, MOGHTADER, HEDGES  
COE, ZIDERS

# SOCIAL SCIENCE CLUB



FIRST—HAUBER, MORROW, JUERGENS, CARNAHAN  
SECOND—BAAB, REZNOR, COCHRAN, HUFFMAN  
THIRD—POWERS, HASSIG, GOODNIGHT, WARD, BUCKHOLTZ, ROW,  
CASTATOR, AULL, SHEETS  
FOURTH—WALTERS, HARRISON, DETTLING, PAISLEY, DARCIE,  
MATSON, FOX, THOMPSON, QUINLIN, AULL, CHAPMAN, SAMMONS,  
HERBOLD, HENTHORNE

Majors and minors in the field of Social Sciences compose the Social Science Club. The club was organized for the purpose of studying important problems in the field. Most of the meetings are conducted by students who present the facts of the subject and then lead a discussion among the members of the group.

Many different topics were studied, some of these being "Russia," "Socialism," "Is Socialism the Way Out?" "Youth and the Depression," and many other subjects of political, social, and economic aspects. The meetings of the club have been well-attended this year and have caused much interest among the students.

## OFFICERS

President.....Frances Goodnight  
Vice President.....Paul Ward  
Secretary.....Frances Quinlin

# COLLEGE WOMEN'S CHURCH COUNCIL



NIEL, QUINLIN, CUTLIP, MCGUFFIE, MILLER  
ANDERSEN, LAMASTER, BUCKHOLZ, WILLIAMS

The College Women's Church Council has served as an effective link between the church and student body during the past year. The members are chosen from the women of the college and hold semi-monthly meetings.

The council has been very active this year. One of the outstanding contributions was the presentation of a play, "The Half of My Goods," at a Sunday evening service. The play was coached by Professor Roberts and Professor Calkins. The Council sponsored some very interesting discussions among the girls. Several Sunday evening services and several chapel programs were conducted by the Council.

Officers—President, Dagne Andersen; vice president, Mary Cutlip; secretary, Helen Louise McGuffie; treasurer, Martha Jean Miller.



## STUDENT BOARD OF DEACONS

Christian character and leadership are the qualifications for membership in this select organization that serves as a link between the church and student body.

During Religious Emphasis Week this body with the co-operation of the College Women's Church Council took charge of the program. These programs were held at noon, in place of the 10 o'clock Chapel service.

Every Sunday at the regular Communion service two members of this group serve with the regular church board.

Meetings are held every first and fourth Thursdays of the month, the purpose is to work out programs for a closer association of the student body and the church.

This unique organization, strange to say, does not allow ministerial students to become deacons, but rather tries to have a working unit of men interested in Church problems.



JOHNSON, HASSIG, COE  
LEITCH, MARION, HERBOLD, COCHRAN

# MEN'S GLEE CLUB

The Men's Glee Club, under the direction of Professor Carter, has enjoyed one of the most successful years since its organization on the Bethany campus.

The club is composed of twenty voices, Charles Hurford as accompanist and the director. Chester Green served the club as business manager, and arranged trips that took the club to Buffalo, Erie, and Indianapolis. Other stops were included on these tours. The club also presented a broadcast program from radio station KDKA in Pittsburgh featuring the Varsity Male Quartet.

First Tenors: Dowdy, Gottfried, Gremillion, Hanna. Second Tenors: Matson, Darsie, Drill, Neikamp, Worthen. First Basses: Hanes, Jenkins, Sheller, White, Camp, Brown, Cochran, Kroll. Second basses: Thompson, Washington, McIlroy, MacDonald, Stahl, Sheller, Miller. Director: Rush Carter. Accompanist: Charles Hurford.



WASHINGTON, HANES, MATSON, DOWDY



STANDING—MACDONALD, STAHL, McILROY, PROF., CARTER, MATSON, DARSIE, BURKHART, SQUIRES  
SITTING—WHITE, WASHINGTON, MILLER, BROWN, SHELLER, HANES, THOMPSON, DRILL, WORTHEN, GREMILLION, COCHRAN, KROLL

# CHURCH CHOIR



HETTLER, BODE, LAMASTER, WESTON, ZBIEC, POWERS, CONNER, GAY,  
KIME, MENZIES, WARSTLER, CASTATOR  
SHELLER, COCHRAN, HAINES, DARSIE, WHITE, CARTER, WASHINGTON,  
BROWN, NIEKAMP, FUNK, MILLER

The Bethany Memorial Church choir is one of the most useful organizations of the college. This year, under the direction of Professor Rush Carter, it has completed one of its most successful seasons.

During the year it not only supplied the church with music every Sunday, but also gave several special programs. A group of negro spirituals, a concert with the college orchestra, some chapel music, and two cantatas were presented. The Easter cantata was sung in the Scottish Rite Cathedral in Wheeling and in the Christian Church in Greensburg after being given in Bethany.

A large part of the success is due to the fact that the members of the choir are interested in music; almost all of them are members of the men's or women's glee clubs. They all expect to do much more next year.

Sopranos: Marion Bode, Nancy LaMaster, Amy Hettler, Martha Jean Miller, Esther Power, Sarah Weston, Wanda Zbiec. Tenors: Thomas Calkins, Lucas Cochran, Richard Darsie, Ardenne White. Altos: Beverly Ann Castator, Alice Conner, Jane Gay, Rose Keim, Dorothy Menzies, Glada Warstler. Basses: Jack Brown, Joseph Funk, Arden Hanes, James Miller, Robert Sheller, Alfred Washington.

# FRENCH CLUB



LaMASTER, MAHAFFEY, NIEL, BOURG, McGUFFIE, ZINK, WILES, STONE,  
HOLMES

WOLF, PARSONS, HUFFMAN, TRELOGAN, ZIESLOFT, RAMSEY,  
SCHUPPENER, COCHRANE, LANE, ZBIEC, WESTON, HITTENBERGER,  
MANLEY

The French Club, with Miss E. Louise Stone as sponsor, was reorganized this year after having been dormant on the campus for several years. Membership in the club is limited to those students above freshman rank who are majors or minors in the French Department. The meetings of the club are conducted entirely in French. The club attempts to foster and encourage a knowledge not only of the French language, but of the French people, their history, literature, and civilization. The club has functioned actively throughout the year. In addition to its regular monthly meetings, the club has sponsored the presentation of a French play, and entertained the Alliance Francaise of Wheeling, W. Va. The club has been fortunate in having Mlle. Gwen Weill, Foreign Exchange Student from Paris, France, as an honorary member. The officers of the club are: President, Helen Louise McGuffie; vice president, Regina Bourg; secretary, Eleanor Zink; treasurer, Esther Lewis.

# COLLEGE ORCHESTRA

Under the able direction of Professor Rush Carter, the Bethany College Orchestra has steadily improved during the past year. Chapel programs have proved to be unusually successful as well as the concerts given in the church. Two of the best programs were given away from the college. One was in Wheeling for a notable convention and the other, the orchestra had the honor to be on the program with Henry Ford at the McGuffie Memorial dedication in West Alexander. Commencement was as usual, an important engagement for the orchestra with an added entertainment afforded by a delightful lawn concert given during Commencement week. The orchestra is looking forward to an equally interesting and profitable year and is anticipating playing symphonic selections.

## PERSONNEL

FIRST VIOLINS—Adriana DeMattia, Merle Coe, Dal Jenkins, Harold Knight.

SECOND VIOLINS—Ralph Nestmann, Ruth Garner, Harold Hutchison, Gwen Weill.

VIOLA—Charles Phillips, Mildred Fowler.

CELLO—Karl Niekamp, William Garner, Mary Hutchison.

BASS—Barton Murray, Luther Bates.

PIANIST—Mary Kathryn Gabler.

FLUTE—Blair Burkhart.

OBOE—Amelio Montagna.

CLARINET—Wayne Squires, Dorothy Fowler.

TRUMPET — William McIlroy, Arden Hanes.

FRENCH HORN—William Montagna.

TYMPANI—Donald McIlroy..



# M O O M O O M O O

The Moo Moo Moo's returned to the campus after an absence of more than a year. It was reorganized by ex-Bull Bruhn, and chose for its personnel those worthy sons of the Bovine, Calves Tamplin, Doepkin, Baldwin, Herbold, Moyer, Marconi, Hockensmith, Hemington, Nee, and Ruggieri. Later in the year these said Calves became Bulls by dint of their violent initiation into the sanctities and mysteries of Bulldom. Remember the little party between the halves——?

The activities of this great organization are clothed in blankets of darkest secrecy. 'Tis rumored that devilish yet playful pranks can be laid to the doors of the Moo's. Who blew the safe in the Bursar's office? Who sent anonymous letters? Who scares little children? Could it have been the Moos?

The picture below we snapped of a gathering of the clan in a peaceful moment. Think they are a little bit crazy? But it's a fine organization, no meetings, no dues, and no assessments—and oh what times they have. Fun? Sure. At the same time they hold the welfare of Bethany closest to their hearts and make an honest endeavor to promote an active school spirit.

HERBOLD, BALDWIN,  
NEE, MARCONI,  
HEMINGTON,  
ROGGIERI, MOYER,  
HOCKENSMITH,  
TAMPLIN



# MINISTERIAL ASSOCIATION



Standing: COVER, NETTING, WOLTZ, THOMAS, JONES, HANEY,  
MILLER, SHELLER.

Sitting: BOOTH, GREEN, FOX, WELLS, HENTHORNE, MURRAY,  
BREAKIRON

This year the Ministerial Association has shown real vitality. The past several years the organization has been largely dormant. A large group of excellent men from the freshman class has caused a real revival in the spirit of the Association. Realizing the opportunities for mutual benefit which can best be supplied by the Association, they determined a well defined program for extensive activity in the future. A program destined to restore the organization to its fullest significance.

The high ideals and purposes of the founders of Bethany can well be perpetuated by the Ministerial Association. The resolve of the re-vitalized group is that the charge will be ably accomplished.

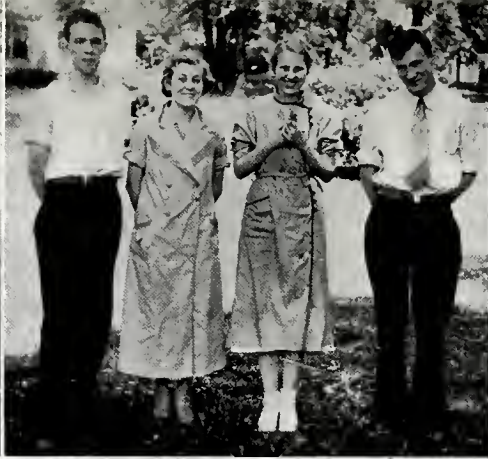
A formal banquet was held at the end of the year with Rev. Donald Ward, '28, as guest speaker. His address, with its message of common sense and sturdy advice, carefully outlined ministerial duties in such a way that his words rank among the most worthwhile ever given to this body.

Charles Wells served as president of the body, William Jones as vice president, and Robert Sheller as secretary.

The beauty of the night, brings a welcome calm delight.









THE YULETIDE SPIRIT—THE LIGHTS OF BETHANY—THE CURTAINS OF NIGHT DRAW CLOSE—"GOODNIGHT SWEETHEART"—AND AS THE SHADES OF NIGHT DESCEND, FLEETING SECONDS OF THE DAY, PASS BEFORE OUR EYES.



ALICE CONNER

1910  
1911  
1912





FRANCES QUINLIN

1911

1912

1913

GRACE SAMMONS

MISS SAMMONS  
OF  
BOSTON





SARAH DITTMAR

PRODUCTION  
BY ALL  
STUDIO





# ADDRESSES OF STUDENTS

---

## Class of 1935

Andersen, Dagney	8 Highland Street, Cranston, R. I.
Bourg, Regina	Box 96, Cuddy, Pa.
Buckholz, Marjorie	9309 Kempton Avenue, Cleveland, Ohio
Castator, Beverly Ann	298 Newburn Drive, Mt. Lebanon, Pittsburgh, Pa.
Chapman, Frank	Hope Farm, Wellsburg, W. Va.
Cochran, Mary Carolin	510 S. Pittsburgh Street, Connellsville, Pa.
Cochrane, John	1456 Pleasant Avenue, Wellsburg, W. Va.
Cowan, John	155 Second Avenue, Waynesburg, Pa.
Cutlip, Mary Elizabeth	534 March Street, Shillington, Pa.
Darsie, Martha	504 Parker Avenue, Scottdale, Pa.
Davis, Nathaniel	Star Junction, Pa.
DeMattia, Adriana	317 Mears Avenue, Steubenville, Ohio
Dowdy, Ashley	4800 E. 85th Street, Cleveland, Ohio
Garner, William	Bethany, W. Va.
Gay, Jane	Bethany, W. Va.
Gottfried, William	365 Fairview Avenue, Fairview, N. J.
Green, Chester	319 Main Street, Battle Creek, Mich.
Green, Emily	Bethany, W. Va.
Hanes, Arden	526 Second Street, South Brownsville, Pa.
Herbold, James	412½ East Euclid Avenue, New Castle, Pa.
Jones, William	North 8th Street, Martins Ferry, Ohio
Kearns, Michael	Bethany, W. Va.
Lewis, Esther	848 Neville Street, Follansbee, W. Va.
Ludwig, Marlin	Ebensburg, Pa.
Marion, Anthony	Jefferson, Pa.
Matson, Lloyd	1333 Main Street, Wellsburg, W. Va.
Menzies, Dorothy	55 Bruce Avenue, Westmount, Montreal, Canada
Moffett, Eugene	705 Linden Street, Monaca, Pa.
Moghtader, Victoria	Teheran, Persia
Morrow, Seth	Wampum, Pa.
McGhee, Saylor	214 W. Main Street, Lock Haven, Pa.
McIlroy, William	129 Wynoka Street, Pittsburgh, Pa.
McMahon, Robert	1430 Main Street, Wellsburg, W. Va.
Nee, William	529 Coursin Street, McKeesport, Pa.
Power, Esther	1055 Virginia Avenue, Follansbee, W. Va.
Quinlin, Frances	Bellaire, Ohio
Shaddick, Mary Martha	1501 Main Street, Wellsburg, W. Va.
Tamplin, Clarence	Racine, W. Va.
Trelogan, Edith	416 Chicora Street, East McKeesport, Pa.
Wagner, Charles	Bethany, W. Va.
Wells, Charles	315 West 40th Street, Shadyside, Ohio
Williams, Ada	142 Arlington Avenue, Niles, Ohio
Wilson, Karl	Box 152, Utica, Ohio
Zink, Eleanor	855 Lawson Avenue, Steubenville, Ohio

### Class of 1936

Adams, Dorothy	232 Chelsea Street, Sistersville, W. Va.
Addy, Edward	1121 Winterton Street, Pittsburgh, Pa.
Allen, Wilma	Bethany, W. Va.
Bergner, Mary Louise	1048 Bradshaw Avenue, East Liverpool, Ohio
Brandon, Richard	New Cumberland, W. Va.
Carlin, Milton	36 E. Oakwood Place, Buffalo, N. Y.
Castellano, William	25 Lemon Street, Uniontown, Pa.
Cochran, Lucas	402 Chester Avenue, Pittsburgh, Pa.
Coe, Merle	2109 Eoff Street, Wheeling, W. Va.
Conner, Alice	129 Jamaica Avenue, West View, Pa.
DeGarmo, Russell	R. D. No. 3, Wellsburg, W. Va.
Dietz, Wellman	834 8th Street N. E., Massillon, Ohio
Dorsey, Arch	Howard Place, Wheeling, W. Va.
Drill, John	R. D. No. 1, Dunbar, Pa.
Fietz, Bertha	57 N. Third Street, Martins Ferry, Ohio
Goodnight, Frances	Bethany, W. Va.
Hassig, Ronald	Third Avenue, Paden City, W. Va.
Hedges, Fay	Bethany, W. Va.
Henthorne, Ray	Porters Fall, W. Va.
Hess, Emerson	6549 Bartlett Street, Pittsburgh, Pa.
Hockensmith, Steed	651 Highland Street, Johnstown, Pa.
Johnson, Paul	5871 Lowell Avenue, Indianapolis, Ind.
Kent, William	24 Melrose Place, Montclair, N. J.
LaMaster, Nancy	1224 Fulton Road, N. W., Canton, Ohio
Lane, Marion	33 Quarry Street, Newton Falls, Ohio
Leitch, Roy	Bethany, W. Va.
Lewton, Charles	225 E. High Street, Lisbon, Ohio
Manley, Florence	Cardale, Pa.
Marconi, Victor	366 McGowan Street, Akron, Ohio
Maxwell, Betty	900 Jefferson Avenue, Washington, Pa.
Miller, Martha Jean	926 Everett Drive, Dayton, Ohio
Montagna, Amelio	128 Lincoln Street, Uniontown, Pa.
Montagna, William	128 Lincoln Street, Uniontown, Pa.
Morrow, Jane	Wampum, Pa.
Moyer, William	Mifflintown, Pa.
McCormick, David	New Salem, Pa.
McGuffie, Helen Louise	47 W. Hallam Avenue, Washington, Pa.
McQuown, Harry	Big Run, Pa.
Niel, Dorothy	Hamilton, Pa.
Ramsey, Virginia	Cairo, W. Va.
Row, Nancy	1266 National Road, Wheeling, W. Va.
Saxman, Blair	R. D. No. 3, Dayton, Pa.
Schuppener, Betty Jane	25 Greenwood Avenue, Wheeling, W. Va.
Scott, Robert	2226 Sherman Avenue, Evanston, Ill.
Sheets, Josephine	Brownsville, Pa.
Shingleton, Lawrence	Fairmont, W. Va.
Thomas, Robert	70 Virginia Avenue, Chester, W. Va.
Thompson, Virgil	330 Keyser Street, Wayne, W. Va.
Vodrey, Oliver	Box 438, East Liverpool, Ohio
Worthen, William	1804 Main Street, Wellsburg, W. Va.
Wrobleski, Albert	Jefferson, Pa.
Zbiec, Wanda	320 Thompson Street, Latrobe, Pa.
Ziders, Irwin	Laughlintown, Pa.

Class of 1937

Babcock, Joseph	1345 Marlboro Avenue, Wilkinsburg, Pa.
Baer, Byron	R. D. No. 3, Wellsburg, W. Va.
Baldwin, Jack	547 Locust Street, Greensburg, Pa.
Bates, Luther	Tiltonsville, Ohio
Blistan, Milan	1012 Marshall Road, Monaca, Pa.
Bupka, Tony	Mather, Pa.
Burke, Joseph	Bethany, W. Va.
Burkhart, Blair	201 Fairfield Avenue, Johnstown, Pa.
Carnahan, Waldo	Lincoln Heights, Steubenville, Ohio
Cluss, John	15 Eggleston, Avenue, Uniontown, Pa.
Coleman, Anita	263 Mentor Avenue, Painesville, Ohio
Darsie, Richard	504 Parker Avenue, Scottsdale, Pa.
Devis, Clarence	411 Seneca Street, Massillon, Ohio
Doepken, William	6 Forest Road, Wheeling, W. Va.
Dowden, Homer	Bethany, W. Va.
Dunning, Howard	301 N. Front Street, Wheeling, W. Va.
Ehrenfeld, Ward	c/o 103 Andover Street, Atlantic City, N. J.
Elwell, Francis	24 Hill View Avenue, Hamburg, N. Y.
Eskey, Richard	Power, W. Va.
Fife, Helen	220 Grace Avenue, Canonsburg, Pa.
Fink, Irving	320 44th Street Union City, N. J.
Glass, Mary	McDonald, Pa.
Gluck, Joseph	Auburn, W. Va.
Goodwin, Edmund	435 Evans Street, Uniontown, Pa.
Hanna, William	325 Rochelle Street, Pittsburgh, Pa.
Harrison, Leonard	290 Summit Avenue, Union City, N. J.
Hemington, Edward	315 Morgantown Street, Uniontown, Pa.
Hittenberger, Elizabeth	579 Wengler Avenue, Sharon, Pa.
Holmes, Ada	77 S. Goodwin Avenue, Kingston, Pa.
Horner, Layton	640 Center Avenue, Avalon, Pa.
Howe, Robert	434 Winter Avenue, New Castle, Pa.
Huffman, Ruth	1235 Allison Avenue, Washington, Pa.
Hurford, Charles	375 Sherman Avenue, Sharon, Pa.
Jenkins, Dal	78 Tioga Street, Canton, Pa.
Juergens, William	39 Poplar Avenue, Wheeling, W. Va.
King, Earl	Waynesburg, Pa.
Maffett, Martha	219 Second Street, S. W., Carrollton, Ohio
Merlini, Rose	Lafferty, Ohio
Mumper, Melvin	Taylorstown, Pa.
McDonald, Andrew	Cadiz, Ohio
McDonnell, Anthony	1605 Sixth Avenue, McKeesport, Pa.
Niekamp, Karl	Tulsa, Okla.
Parsons, Gratia	709 Corneile Avenue, Flint, Mich.
Partridge, Marion	11401 Lorain Avenue, Cleveland, Ohio
Pease, Velma	R. D. No. 1, Eighty Four, Pa.
Pendleton, Joe	Box 324, Ft. Meyers, Fla.
Pickett, Gene	211 Elm Avenue, Moundsville, W. Va.
Robinson, Don	Bellaire, Ohio
Rodgers, Mary	Wellsburg, W. Va.
Ross, Gertrude	Taylorstown, Pa.
Ruggieri, Arthur	414 Almond Street, Vineland, N. J.
Sammons, Grace	136 McDowell Avenue, Steubenville, Ohio
Schnell, James	217 Lehigh Street, Edgewood, Pittsburgh, Pa.
Shoaff, Wilson	1817 Lampson Road, Cleveland, Ohio

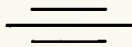
Sipe, Craig	R. D. No. 3, St. Clairsville, Ohio
Skews, Richard	R. D. No. 2, Adena, Ohio
Smith, Margaret Lenore	Bethany, W. Va.
Sotus, James	130 Leasure Avenue, New Castle, Pa.
Thompson, Wayne	330 Keyser Street, Wayne, W. Va.
Walters, Jack	19 Maryland Avenue, Wheeling, W. Va.
Ward, Paul	203 North Street, Steubenville, Ohio
Warstler, Glada	1015 Main Avenue, W., Massillon, Ohio
Wehner, George	220 Carolina Avenue, Chester, W. Va.
Werkheiser, Harvey	163 Plutus Avenue, Chester, W. Va.
Weston, Sarah	702 S. Central Avenue, Canonsburg, Pa.
White, Mary E.	120 S. Jefferson Street, Canonsburg, Pa.
Wiles, Esther	2402 Hess Avenue, Wheeling, W. Va.
Wolf, Naomi	112 Marion Street, Ebensburg, Pa.
Wylie, Joseph	518 W. Madison Avenue, New Castle, Pa.
Zeisloft, Mary Lou	Mt. Vernon, Ohio

#### Class of 1938

Aldrich, Marjorie	Clarksville, Pa.
Allison, William	438 W. Swissvale Avenue, Edgewood, Pa.
Aull, Betty	403 Union Avenue, Ingram, Pa.
Aull, Jane	403 Union Avenue, Ingram, Pa.
Baab, Margaret	525 Perry Avenue, Greensburg, Pa.
Bamford, Geneva	Midway, Pa.
Beany, Orville	Smithfield, Ohio
Bennett, Audrey	88 E. Steuben Street, Crafton, Pa.
Bergland, Marian	329 Laurel Boulevard, New Castle, Pa.
Blahut, Stephen	Vestaburg, Pa.
Bode, Marian	134 Hemphill Street, N. S., Pittsburgh, Pa.
Bovan, Michael	1308 Jawett Street, N. S., Pittsburgh, Pa.
Brandon, Albert	New Cumberland, W. Va.
Breakiron, John	Republic, Pa.
Brown, Jack	142 Riverside Court, Elyria, Ohio
Brown, John	450 Maple Avenue, Edgewood, Pa.
Camp, Richard	604 Orchard Avenue, Barberton, Ohio
Carmody, Henry	Box 532, Hollidays Cove, W. Va.
Chorpenning, Jack	107 Pennsylvania Avenue, Uniontown, Pa.
Church, Edith	727 Municipal Street, Pittsburgh, Pa.
Ciarrochi, Marguerite	River Avenue, Masontown, Pa.
Cope, Hannah	262 W. Main Street, Uniontown, Pa.
Cover, Donald	Republic, Pa.
Cox, Thomas	53 18th Street, Wellsburg, W. Va.
Crabtree, Jack	Wellsburg, W. Va.
Crabtree, Joseph	Wellsburg, W. Va.
Cramblet, Thomas	Bethany, W. Va.
Culley, Hunter	Brookside Farms, Pittsburgh (16) Pa.
Cunningham, Kenneth	West Market Street, Steubenville, Ohio
Darr, George	West Main Street, Somerset, Pa.
Davis, Ewing	Greensboro, Pa.
Davis, George	36 Wengler, Avenue, Sharon, Pa.
Dennison, Eileen	2102 Pleasant Avenue, Wellsburg, W. Va.
Dickson, John	227 Oakview Avenue, Edgewood, Pa.
Dittmar, Sarah	254 Parkway Drive, Mt. Lebanon, Pa.
Dotson, Harold	390 McKinley Avenue, Washington, Pa.
Douglas, John	Adena, Ohio

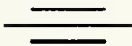
Emerick, Donald	R. D. No. 6, Washington, Pa.
Evans, Ruth	Bethany, W. Va.
Everhart, James	16 Murray Avenue, Uniontown, Pa.
Ferrero, John	Box 407, Vestaburg, Pa.
Fisher, Ruth	2578 Beechwood Boulevard, Pittsburgh, Pa.
Fowler, Mildred	Bethany, W. Va.
Funk, Joseph	Bethany, W. Va.
Gabler, Mary K.	67 Kerr Street, Uniontown, Pa.
Garner, Ruth	Bethany, W. Va.
Gay, Max	Bethany, W. Va.
Given, Edwin	731 Somerset Street, Johnstown, Pa.
Gremillion, Gardner	135 Logan Street, Bedford, Ohio
Gremillion, Ruth	135 Logan Street, Bedford, Ohio
Greskovich, Elmer	Fredericktown, Pa.
Grimm, Loris	5806 Morrowfield Avenue, Pittsburgh, Pa.
Grosick, Herbert	Box, 98, Ingomar, Pa.
Haddock, John	443 S. Graham Street, Pittsburgh, Pa.
Haney, Wilbur	R. D. No. 1, Tippecanoe, Ohio
Hardesty, Dorothy	Grove Road, Castle Shannon, Pa.
Hardesty, Walter	Grove Road, Castle Shannon, Pa.
Harrison, C. J., III	137 E. Church Street, Somerset, Pa.
Hassig, Donald	Paden City, W. Va.
Hauber, Frank	342 Walnut Street, Johnstown, Pa.
Hauner, Joseph	Box 242, Dillonvale, Ohio
Hettler, Amy	106 Coleridge Avenue, Altoona, Pa.
Hoagland, Olga	107 S. Main Street, Washington, Pa.
Hobbs, Wesley	304 Indiana Avenue, Chester, W. Va.
Hutchison, Harold	West Alexander, Pa.
Hutchison, Mary	West Alexander, Pa.
Keim, Rose	3006 Maple Avenue, Altoona, Pa.
Kelley, Roy	1219 River Avenue, Toronto, Ohio
Kindelberger, Dorothy	542 Warwood Avenue, Wheeling, W. Va.
King, Robert	6 Linden Park, Buffalo, N. Y.
Kinsey, Arch	310 Maple Avenue, Edgewood, Pa.
Klevins, Earl	91 Main Street, Wheeling, W. Va.
Knight, Harold	726 Maple Avenue, Grafton, W. Va.
Knox, Robert	Main Street, Claysville, Pa.
Koppel, Bertram	60 Garrison Avenue, Jersey City, N. J.
Kramer, Sarah	709 Isabella Road, Connellsville, Pa.
Kroll, John	143 N. Chestnut Street, Mt. Carmel, Pa.
Kuti, Albert	726 Cedar Avenue, Sharon, Pa.
Lewis, Norman	212 E. Long Avenue, New Castle, Pa.
Lyons, Levaun	151 Smithfield Street, Canonsburg, Pa.
Martin, Irene	616 N. Huron Street, Wheeling, W. Va.
Meriage, Paul	R. D. No. 3, McDonald, Pa.
Miller, James	231 Newark Road, Mt. Vernon, Ohio
Morford, Daniel	3 Grove Street, Washington, Pa.
Mumper, George	Taylorstown, Pa.
Murray, Barton	2922 Van Wye Street, Warren, Ohio
McIlroy, Donald	129 Wynoka Street, Pittsburgh, Pa.
McKinney, Thomas	62 Lemon Street, Uniontown, Pa.
Nestmann, Ralph	118 N. 18th Street, Wheeling, W. Va.
Neth, John	217 Tyrol Pass, Monessen, Pa.
Netting, Park	1360 Margaret Avenue, S. W., Canton, Ohio
O'Neil, Harold	879 9th Street, N. E., Massillon, Ohio
Packard, Marjorie	208 Main Street, Canton, Ohio

Paisley, Jane	285 Belleview Boulevard, Steubenville, Ohio
Patterson, Gerald	403 Warwood Avenue, Wheeling, W. Va.
Paul, Ira	297 Fairfield Avenue, Johnstown, Pa.
Payne, John	Mansfield Road, Shelby, Ohio
Phillips, Charles	216 S. Myers Avenue, Sharon, Pa.
Pigozzi, Louis	216 Pittsburgh Street, Columbiana, Ohio
Plackett, Betty	30 Shady Drive, West, Pittsburgh, Pa.
Pollock, Alvin	147 Center Avenue, Emsworth, Pa.
Porter, Jean	1386 W. First Avenue, Columbus, Ohio
Reznor, Anne	37 Stambaugh Avenue, Sharon, Pa.
Rodgers, Robert	229 Center Avenue, Greensburg, Pa.
Rogers, Ada Lee	134 Maple Avenue, Monongah, W. Va.
Rogers, Thomas	Seward, Pa.
Roscher, Jean	61 Roycroft Avenue, Mt. Lebanon, Pa.
Rosser, Helen	Bethany, W. Va.
Satterlee, Dorothie	327 N. Myers Avenue, Sharon, Pa.
Schenck, Jane	100 Murray Avenue, Uniontown, Pa.
Schramm, Mary Martha	3486 Franklin Street, Bellaire, Ohio
Seidel, Ruth	8 Lebanon Hills Drive, Mt. Lebanon, Pa.
Smith, Jane	Beaver Dam, Ky.
Smith, Margaret S.	720 Water Street, S. Brownsville, Pa.
Snoke, Helen	185 E. Katherine Avenue, Washington, Pa.
Snyder, Ernest	301 Winter Avenue, New Castle, Pa.
Squires, Wayne	R. D. No. 2, South Zanesville, Ohio
Staats, Betty	R. D. No. 1, Mt. Vernon, Ohio
Stahl, John	316 South Avenue, Wilkinsburg, Pa.
Stahl, Ray	R. D. No. 1, Box 149, Latrobe, Pa.
Steckla, Paul	1314 Indiana Avenue, Monaca, Pa.
Stein, Helen	1130 Pennsylvania Avenue, Monaca, Pa.
Stewart, Robert	Nitro, W. Va.
Storm, Orrin	417 College Avenue, Wadsworth, Ohio
Stroman, Mary K.	155 Washington Street, Edgewood, Pa.
Sutton, Marian	R. D. No. 1, Mingo Junction, Ohio
Swanger, George	98 N. Broadway, Shelby, Ohio
Sykes, Harry	323 Jackson Street, Reynoldsville, Pa.
Taylor, James	Canton, Pa.
Trotter, Nellie	Fredericktown, Pa.
Trotter, Nello	Fredericktown, Pa.
Walls, Raymond	Republic, Pa.
Washington, Alfred	719 Greene Street, Greensburg, Pa.
Watts, John	609 N. Park Street, Owosso, Mich.
Webb, Eleanor	1416 Marlboro Avenue, Wilkinsburg, Pa.
Webb, Martha	1705 Warwood Avenue, Wheeling, W. Va.
Wentzel, Goldye	217 Connellsville, Street, Uniontown, Pa.
Westwood, Fred	Westminster Avenue, Greensburg, Pa.
White, Ardenne	Hopwood, Pa.
Whitehead, George	900 Commerce Street, Wellsburg, W. Va.
Whiteman, Earl	Nu Mine, Pa.
Wolff, Robert	527 Euclid Avenue, Greensburg, Pa.
Woltz, Frank	201 Fairlawn Avenue, Elyria, Ohio
Woods, Edna	1016 S. Irvine Avenue, Sharon, Pa.
Woollenweber, LaVerne	1108 Warwood Avenue, Wheeling, W. Va.
Wylie, Ellen	518 W. Madison Avenue, New Castle, Pa.
Zimmerman, Ray	Beech Bottom, W. Va.



*We take this opportunity to thank  
our advertisers for their part in the 1935  
Bethanian.*

—EDITOR





# PROGRESS

There are few fields where the necessity for progress—the demand for new ideas, is as pronounced as in the production of School Annuals. ✧ Here in Canton we take pride in not only keeping pace, but in setting the pace for innovations and changes in this highly progressive field. ✧ When you work with Canton you are hand in hand with experienced people, constantly on the alert to sense the wants of Annual publishers, and quick to change from the old order, and offer new and unusual ideas to progressive editors.

**THE CANTON ENGRAVING & ELECTROTYPE CO., CANTON, OHIO**  
ATTRACTIVE ANNUALS • WITHIN THEIR BUDGETS



# BETHANY COLLEGE

An Institution where high grade academic  
work and a Christian culture  
combine for affective  
living

Compliments

**BUTTES**

Launderers-Dry Cleaners

Steubenville, Ohio

---

**Klieves Lumber Co.**

Thirty-first and Eoff Streets

Wheeling, W. Va.

---

Royal Portable Typewriters

**BORDEN**

Office Equipment Co.

122 N. Fifth Street  
Steubenville, Ohio

**Geo. Cook  
Distributing Co.**

Distributors of the New

**NUCOA**

Park View Road

Phone: Elm Grove 118 Elm Grove, W. Va.

---

**Sterling  
Crystal Green  
Gasoline**

**Quaker State Motor Oils**

*Compliments of*

WEIRTON  
STEEL  
CO.

WEIRTON, WEST VA.

O. L. HADORN

MOTOR EXPRESS

*Direct Daily Service to*

Wheeling — Parkersburg  
Pittsburgh

---

*Compliments*

CLARKE PAPER CO.

1210 Main St.

Phone Wheeling 285

BEST WISHES

*to*

BETHANY COLLEGE

*from*

ELM GROVE MINING CO.

WHEELING, WEST VIRGINIA

BRUCE H.  
SEABRIGHT

---

SIMON WHITE SONS

MONUMENTS

*and*

MARKERS

1133 Main St.      Wheeling

---

HAMMOND  
BAG & PAPER CO.

Paper Bags . . . for . . .

Flour, Hydrate Lime and  
all Rock Products

WELLSBURG, W. VA.

*Compliments of the*

BLUE RIBBON  
PAINT CO.

---

2321 Main St.      Wheeling

---

EVERYTHING  
TO WEAR

The  Hub

Market and Chapline Streets at Fourteenth  
Wheeling, West Virginia.

---

MILL    MINE    FACTORY  
Plumbing Supplies

TRIMBLE & LUTZ  
SUPPLY CO.

112 to 122 19th Street  
WHEELIN, W. VA.

BEST WISHES

from

ROBERT L. RAMSAY

Congressman

---

Compliments

MONONGAHELA SYSTEM

MONONGAHELA AND WEST PENN PUBLIC

PUBLIC SERVICE COMPANY

# Wellsburg Banking & Trust Company

Established 1902

Wellsburg, W. Va.

---

Compliments of

## Griest Cut Rate

1125 Market Street  
Wheeling, W. Va.

303 Jefferson Street  
Moundsville, W. Va.

734 Charles Street  
Wellsburg, W. Va.

---

### INVESTIGATE

Our interest rate  
before borrowing  
money elsewhere.

## Community Savings and Loan Company

Corner  
Market at Sixteenth Street

# Ohio Valley Dairy

---

300 N. Fifth Street  
Martins Ferry, Ohio

---

Compliments

## Hitchman Coal & Coke Co.

---

BENWOOD, W. VA.

---

Compliments of

## WHEELING BELMONT BRIDGE CO.

## Cooey-Bentz Co.

FURNITURE

3601 Jacob St. Whg. 4810

---

## OHIO VALLEY DRUG CO.

WHOLESALE DRUGGISTS

1305 Main Street Wheeling, W. Va.

---

Electrical Supplies for Power and Light  
Household Appliances  
Lighting Fixtures — Lamps

## SANDS ELECTRIC CO.

WHOLESALE

57 Eighteenth Street Phone 146  
Wheeling, W. Va.

---

## The Warden Heating & Supply Co.

BUILDERS' SUPPLIES

ROOFING AND FURNACE WORK

No. 521 Main Street Bell Phone 198  
Wellsburg, W. Va.

---

## OLMSTEAD BROS. CO. PAPER

1413-1415 MAIN STREET  
Wheeling, W. Va.

Best Wishes

## Kennedy Hardware Co.

SPORTING GOODS

1063 Main Street Wheeling, W. Va.

---

Compliments

## Union Bus Terminal

Sixteenth and Market Streets

---

## White Swan Laundry

Best Equipped LAUNDRY  
in West Virginia

Woodsdale 1300

---

## Hygrade Food Products Corp.

SCHENK DIVISION

Wheeling, W. Va.

---

## Windsor Hotel

FIREPROOF

EXCELLENT RESTAURANT

Open All Year

Compliments

## The Sherwin-Williams Co.

22 Twelfth Street

Wheeling, W. Va.

Compliments

### McLURE HOTEL

J. C. Burkhart

CHIEF OF POLICE

Wheeling, W. Va.

Compliments of

### A FRIEND

The Two Best Places to Eat

“Here and Home”

Our Sodas and Sundaes are Unexcelled

Try our Tasty Sandwiches

You'll Enjoy our Coffee

HENDERSON'S

Opposite Postoffice

Twelfth and Chapline Streets

Wheeling

Steering Gear  
Specialist

Phone Wds.  
686

### NATIONAL AUTO SERVICE

506 National Road

Wheeling

We Specialize in  
Straightening Axles and Frames

Wheel Alignment—Brake Service

Compliments

### HORNES WEARING APPAREL

Misses—Women's

Eleventh and Main Streets Wheeling, W. Va.

### National Mattress Co.

Manufacturers  
of

Sleepytime Products

FREDERIC FARIS

Registered Architect

PHILIP V. FARIS

Construction Supt.

1117 Chapline St.

Phone: Whg. 76

"The Kitchen-Mark  
of Good Taste"

## SHELVADOR



More Conveniences

50% More Usable Space

See Your Shelvador Dealer

Compliments of

## WHEELING ELECTRIC COMPANY

Wheeling, W. Va.

JOSEPH **FAHEY** INC.

FLOWERS

31 TWELFTH STREET • CALL WHEELING 5300

"WHEELING'S DISTINCTIVE FLORIST"

When in Wheeling  
EAT and MEET  
With your Friends at the

**Hoge-Davis Drug Co.**

Wheeling, W. Va.

**W. A. Wilson & Sons Co.**

Headquarters for

Paints and Roofing

Mirrors, Art Glass, Window Glass

Wheeling, W. Va.

**McCAUSLENS**

FLORISTS

STEUBENVILLE, OHIO

Compliments

**Fulton**

**Bank & Trust Co.**

**Kyle Supply Co.**

Hardware, Furniture,  
Carpets, Rugs and Bedding

Phone 41

98-112 Seventh Street

Wellsburg, W. Va.



## McCLASKEY

CLEANING and DYEING

836 National Road

Woodsdale 865

---

## Felsing Electric Co.

Engineers and Contractors

1408 Market Street Phone: Whg. 4051

Wheeling, W. Va.

If It Is Electrical We Have It

---

## REICHART'S FURNITURE STORE.....

1115 Main Street

Wheeling, W. Va.

---

## Groux Motor Sales Co.

FORD SALES-SERVICE

27 S. Zane Highway

Martins Ferry, Ohio

---

Compliments

## Kindelberger-Wood Funeral Home

148 Sixteenth Street

Whg. 970

## BLAKES

Pure Ice Cream

In Fancy Forms  
For Special Affairs

93 Sixteenth Street

Whg. 1746

---

## WEIMER PACKING CO.

MEATS

Wheeling, W. Va.

---

Complimentary  
to the

BETHANIAN

From a Well Wisher

---

Compliments

## AMBROSE HABIG

---

Courtesy

## Lane Furniture Co.

16 Sixteenth Street

# This College Annual Was Printed by . . .

## THE WHEELING NEWS LITHOGRAPH COMPANY

**A** BOOK, magazine, car card, window display, container, label, catalog, circulars, letter heads—for that matter anything that is printed on paper—designed and executed by us portrays our 44 years' experience.

With all these years of practical experience in creating good printing, we know the possibilities of paper, ink, plates and presses. We make our designs with the finished product in mind. We think not only in terms of designing—but of the finished product. That is why successful business men like to discuss their problems with us—for they know that the job will be as they want it.

Production is carried out in our modern plant with the best of equipment, and a personnel of long experience.

Why not call on us, and get the benefit of our 44 years' experience. Our representative can be in your office within twenty-four hours. Communications regarding your problems are invited.

# Wheeling News Lithograph Co.

PRODUCERS OF QUALITY PRINTING SINCE 1890

Telephone Whg. 5480

15th AT MAIN ST.

WHEELING, W. VA.

*Many reasons have been given for the lateness of the 1935 Bethanian. We, who have been closest to the work for the past few weeks, know least about the delay and its cause—or so it would seem.*

*Be that as it may, the delay is ended, and we ask your pardon for any errors that may appear.*

—COMMITTEE ON PUBLICATIONS















BEYHANY  
COLLEGE  
LIBRARY

MEYHANT  
COLLEGE  
LIBRARY

R  
378.754  
B46  
1935  
35482

