

Property of
Bethany College
Library

Digitized by the Internet Archive
in 2011 with funding from
LYRASIS Members and Sloan Foundation

<http://www.archive.org/details/bethanian1936beth>

10-13-36



As a rule Man's a fool,
When its hot, he wants it cool.
When its cool, he wants it hot.
Always wanting, what is not.



25615

COPYRIGHT BY RONALD HASTIS, EDITOR, DON ROBINSON, BUSINESS MANAGER



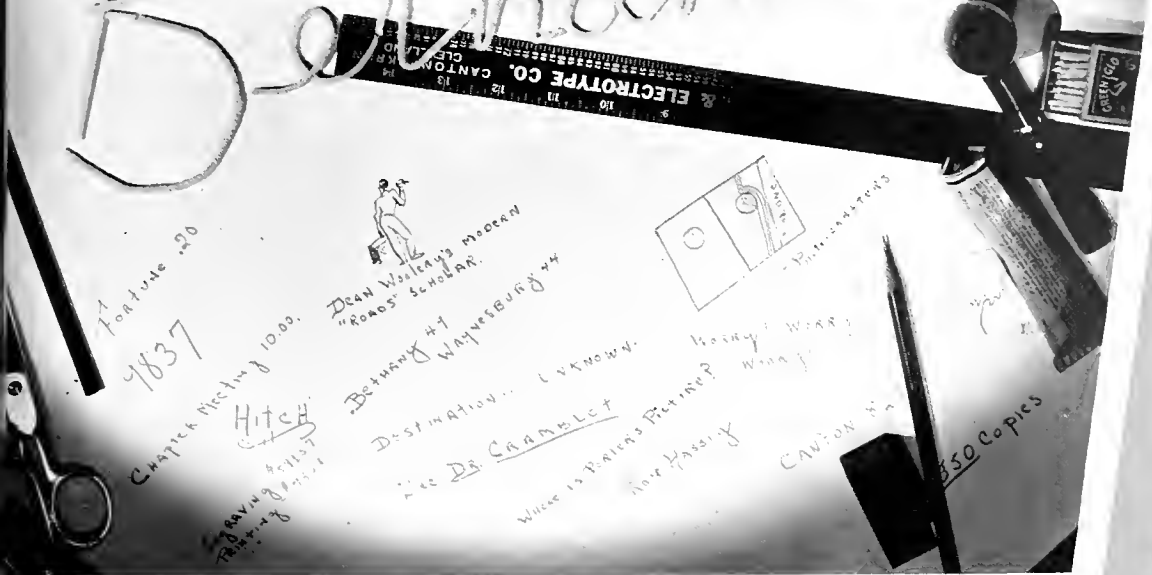


ELECTROTYPE CO.
CANT

COPYRIGHT BY RONALD HABSIG EDITOR, DON ROBINSON BUSINESS MANAGER



The 1936 Bethanian



THIS book was made possible by demand of student body
voiced through the Student Board of Governors. We have
no particular theme, it is as near as possible the book
that we the Bethanian Staff believe the Student Body
desired.

A PHOTOGRAPHIC RECORD OF A YEAR AT BETHANY COLLEGE, BETHANY, W. VA.



WE RESPECTFULLY DEDICATE THIS

To a true lady who has by her
Untiring efforts won a place in
The hearts of each and every
Student here at Bethany College.
Luck and Prosperity to her always.

BOOK TO MISS PEARL MAHAFFEY



OGLEBAY GATES



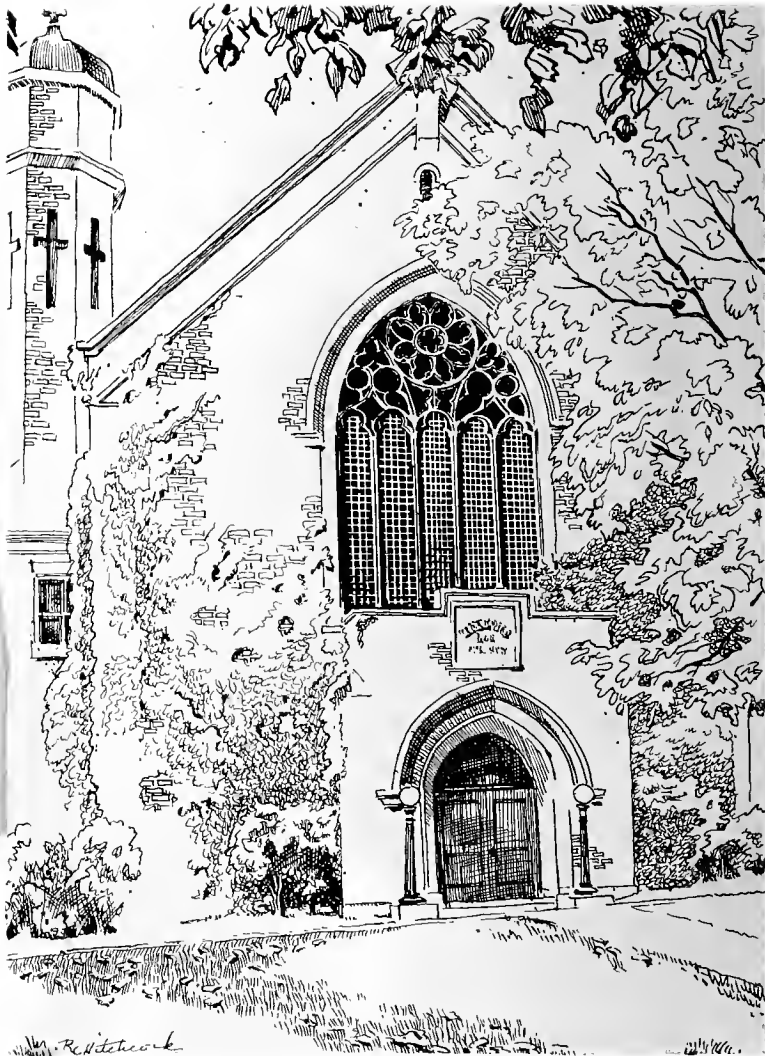
THE TOWER



CAMPUS ABOVE COCHRAN HALL



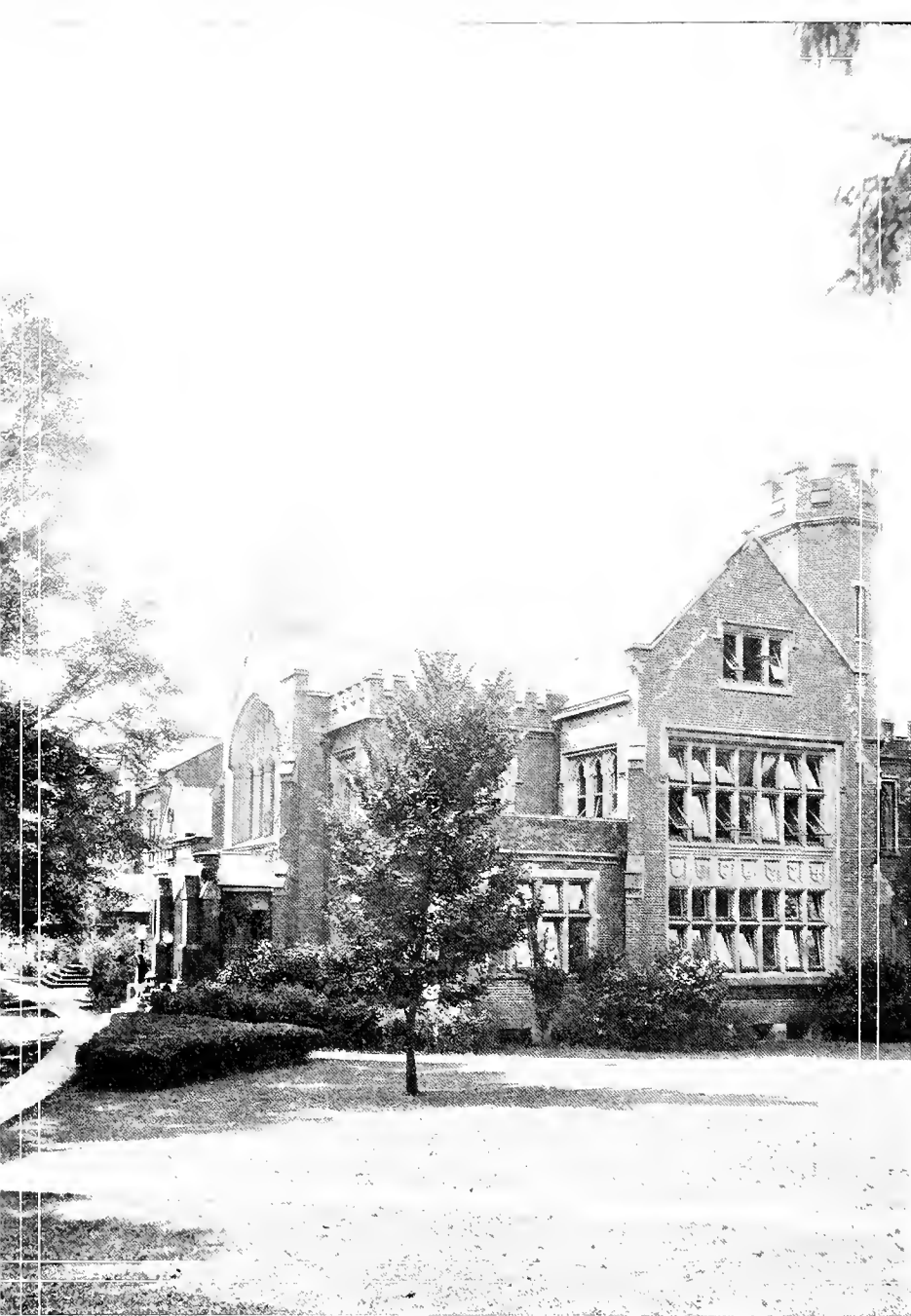
MAIN BUILDING .. ENTRANCE



COMMENCEMENT HALL



**BETHANY COLLEGE
CARNEGIE LIBRARY**



WHEN YEARS
“LEST WE

Oglebay Hall
Quizzes, Labs, Puns
and Lectures.

Walk leading to Main Entrance
Path to Knowledge.





View of Main Building

"Old Bethany, we love thee".

**View of Campus
from Pendleton Heights**

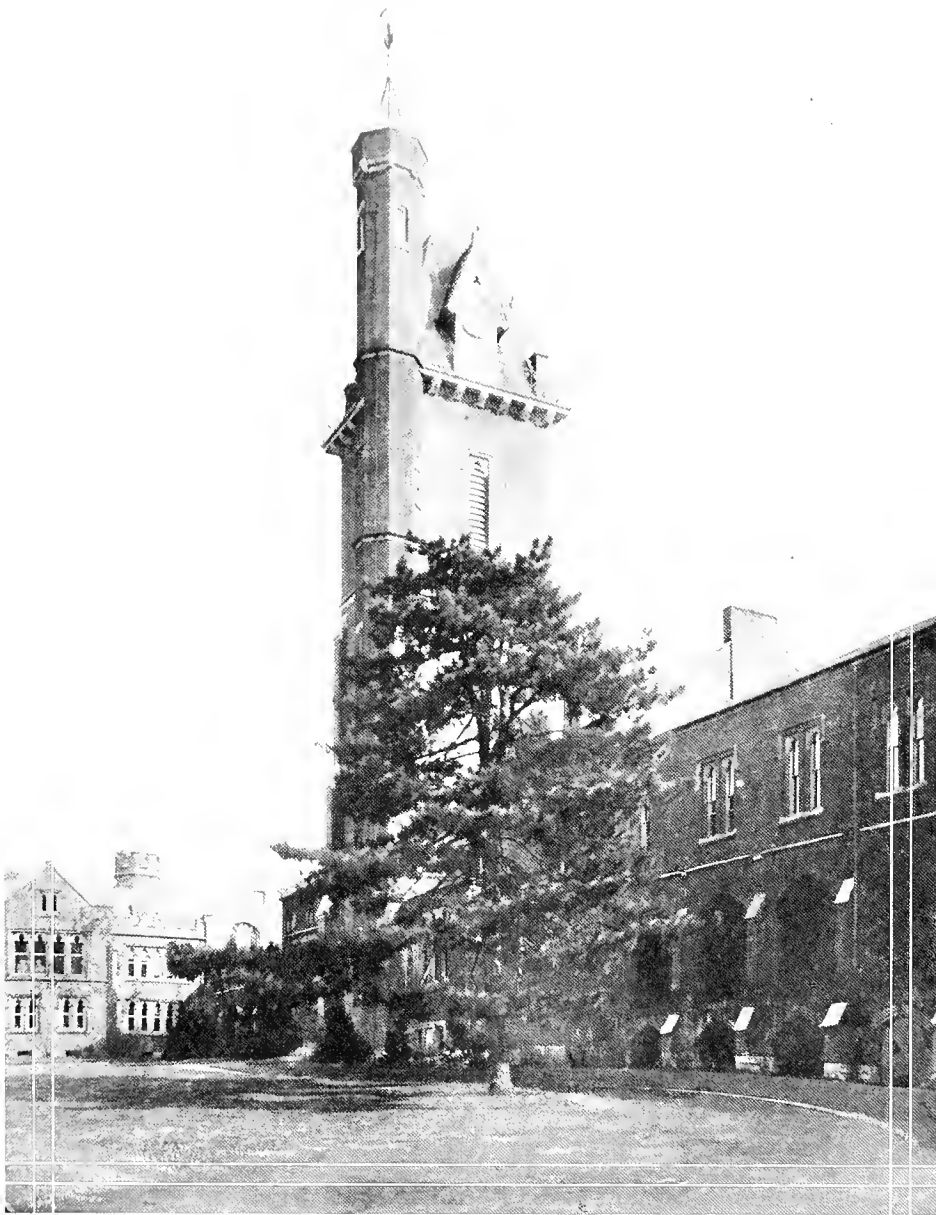
Nature in her glory.

**HAVE FLOWN
FORGET''**



Bridge on Nature Trail

How pleasant on lazy spring
afternoons—Remember?



SPOTS THAT

Tower and Clock

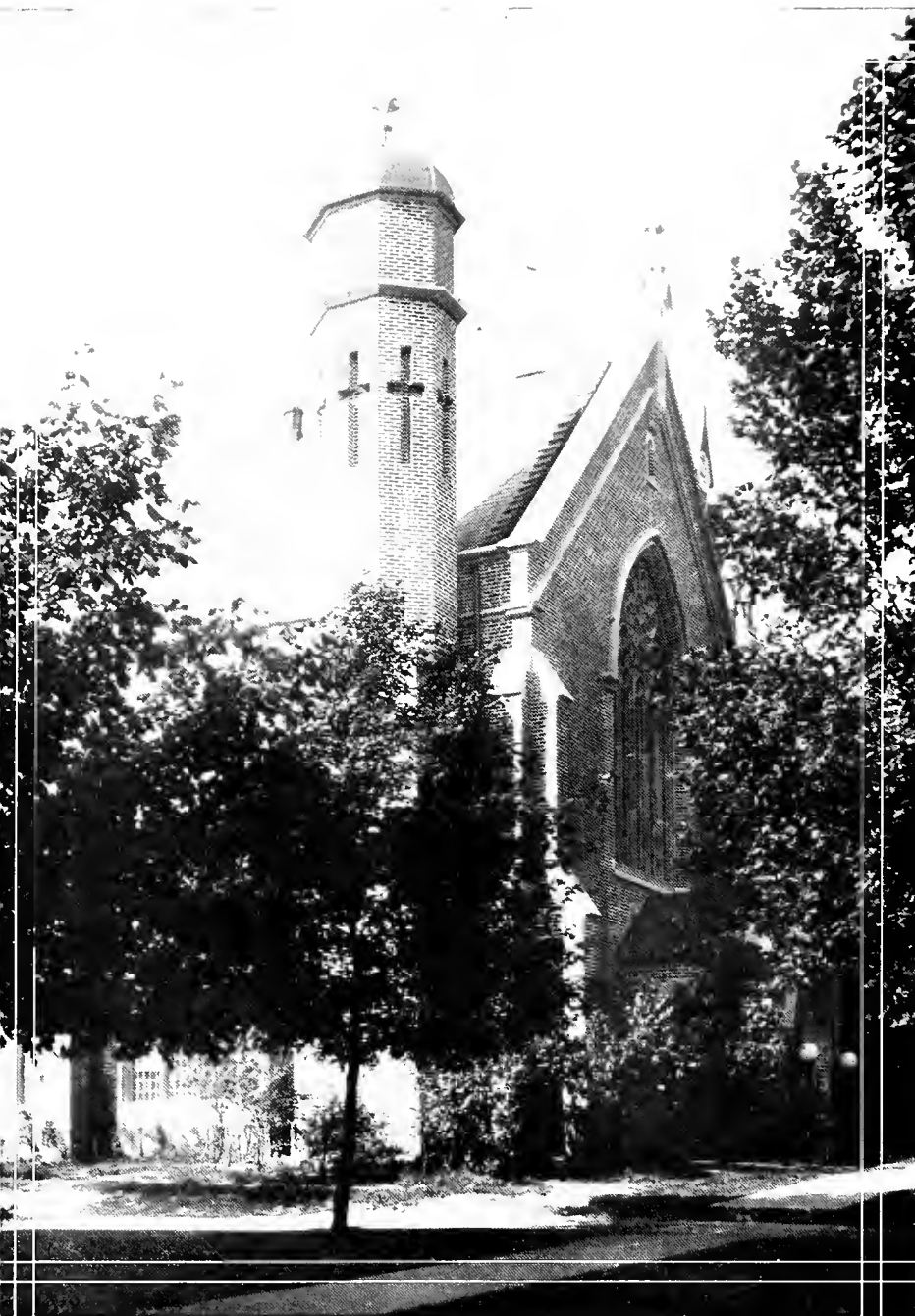
How many times a day did
you look at this?



ARE DEAR TO BETHANY COUPLES . . .



Drawing room at Phillips Hall
Life, love, and laughter.



PLEASANT

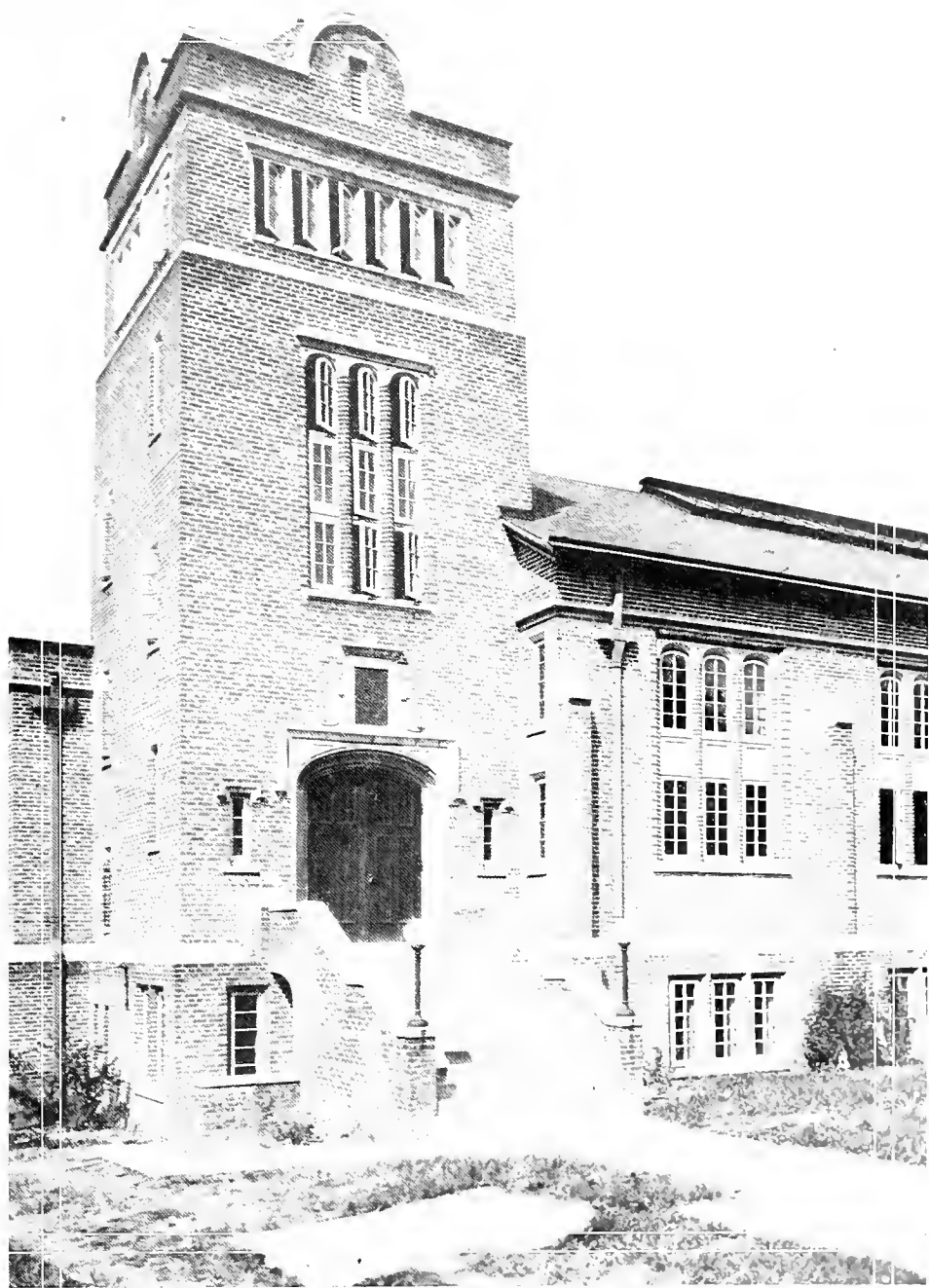
Commencement Hall

The Beginning and the end of
our student days at Bethany.

Irvin Gymnasium

Center of Bethany's
athletic activities.

MEMORIES







BOOK ONE ADMINISTRATION





BOOK ONE ADMINISTRATION



DR. CRAMBLETT

GREETINGS:

I am pleased to have this opportunity to greet the friends and readers of the Bethanian of 1936, in behalf of the administration and faculty of Bethany College. For more than a quarter of a century, the record of student life at Bethany has been recorded in successive editions of this publication.

Those of us who are privileged to live and work for a little while among the hills and valleys that surround "old Bethany" learn to love her—to love her vine-clad walls, her Gothic arches, and her stately tower—her shady campus and her corridor. But beyond these and above these, we learn to treasure friendship formed, lessons learned, ideals acquired through precept and example in these cloistered halls.

As the years pass, may the memories of days spent in Bethany grow more precious and the history recorded in this book come to have an ever deeper meaning.

MESSAGE



FACULTY . .

ANNA RUTH BOURNE, A. M., Litt. D., Professor Emeritus of English Literature, King's College, London; Oxford University; A. B., Bethany College; A. M., Columbia University; University of Poitiers; Litt. D., Bethany College. (1903).

EBENEZER LEE PERRY, A. M., Professor of Latin, A. B., A. M., Bethany College; Yale University; A. M., Columbia University. (1908).



HARRY NEWTON MILLER, A. M., Herbert Moninger Professor of Bible School Pedagogy A. B., A. M., Bethany College; Yale University. (1914)

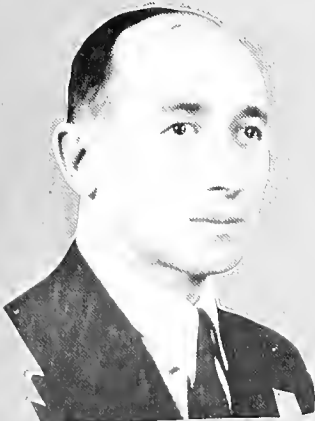
FRANK ROY GAY, A. M., Ph. D. Professor of Greek and English; A. B., A. M., Drake University; University of Virginia; A. M., Ph. D., University of Chicago. (1910)

PEARL MAHAFFEY, A. M., Professor of Modern Languages; A. B., Miami University; University of California; A. M., Columbia University; Graduate Study in France; McGill University. (1908)

ANDREW LEITCH, A. M., B. D., Ph. D., Sarah B. Cochran, Professor of Philosophy and Psychology; Secretary of the Faculty; A. B., A. M., Butler College; B. D., Ph. D., Yale University; Columbia University; University of Chicago; University of Pennsylvania. (1920)

WILLIAM KIRK WOOLERY, A. M., Ph. D., Dean of the Faculty and George T. Oliver, Professor of History and Economics; A. B., Bethany College; A. M., University of California; Ph. D., Johns Hopkins University. (1921)

BERNAL ROBINSON WEIMER, A. M., Ph. D., Professor of Biology and Curator of the Museum; A. B., A. M., West Virginia University; Ph. D., University of Chicago. (1921)



FACIALS . . .

IRVIN TAYLOR GREEN, A. M., B. D., Professor of New Testament and Church History; A. B., Transylvania College; A. M., B. D., Bethany College; University of Chicago. (1921)

ANNA MARY KEMP, A. B., Librarian and Instructor in Library Science; A. B., Bethany College; Chautauqua Library School; Columbia University. (1922)

WILBUR JOHN SUMPSTINE, M. Sc., Assistant Professor of Biology and Geology; B. Sc., Bethany College; M. Sc., University of Chicago. (1925)

FORREST HUNTER KIRKPATRICK, A. M., Dean of Personnel and Professor of Education; A. B., Bethany College; University of Dijon; A. M., Columbia University; University of Pittsburgh. (1927)

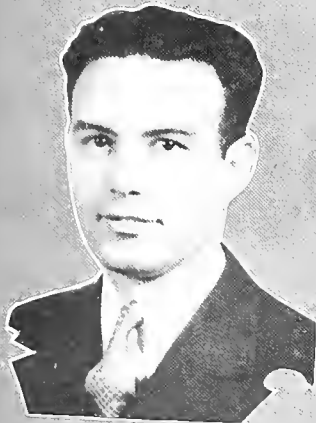
EMMET EPHRAIM ROBERTS, A. M., Professor of English; A. B., Ohio University; A. M., Ohio State University; George Peabody School for Teachers, Stanford University. (1928)

OSBORNE BOOTH, B. D., T. W. Phillips, Professor of Old Testament; A. B., Hiram College; B. D., Yale University; University of Chicago. (1929)

HAROLD DONALD DAWSON, A. M., Professor of Chemistry; A. B., Denison University; A. M., Ohio State University. (1930)

JOHN J. KNIGHT, A. B., Professor of Physical Education; A. B., West Virginia Wesleyan College. (1930)





FACULTY . . .

CHRISTINE BURLESON, A. B., A. M., Dean of Women and Professor of English; A. B., University of Tenn.; A. B., Vassar College; A. M., Columbia University; B. A., with honours, Oxford University. (1932)

THOMAS VINCENT CALKINS, A. M., Ph. D., Professor of Education; A. B., University of New Mexico; Columbia University; A. M., Ph. D., Yale University. (1932)

BYRON LESTER FOX, A. M., Assistant Professor of Economics and Sociology; A. B., B. Sc. in Education, A. M., Ohio State University. (1932)

ROBERT KRIEGBAUM FOX, A. B., A. M., Assistant Professor of Chemistry; A. B., A. M., Ph. D., Ohio State University. (1932)

JOHN STANLEY VALENTINE ALLEN, M. Sc., Ph. D., Instructor in Physics and Mathematics; B. Eng., M. Sc., Ph. D., Ohio State University. (1933)

NEWTON WALLACE EVANS, Associate in Economics-Accounting, Bethany College. (1931)

RUSH CARTER, A. M., Assistant Professor of Music and Acting Head of the Department; Combs Conservatory; Temple University; B. Sc. in Ed., M. A., New York University. (1934)

EDITH LOUISE STONE, A. M., Instructor in Modern Languages; Ph. D., A. M., University of Chicago; Certificate de la Sorbonne; Universities of Tours and Grenoble; Middlebury College; University of Berlin. (1934)

WILLIAM HENRY ERSKINE, Ph. D., Instructor in Mathematics; A. B., Bethany College; Ph. D., Johns Hopkins University. (1935)

FACULTY . . .

RUTH MCKINNIS, A. B., Assistant Dean of Women; A. B., Bethany College; University of Kentucky. (1935)

CHANDLER SHAW, Ph. D., Instructor in History; A. B., Rollins College; A. M., Ph. D., University of North Carolina; American Academy in Rome; Regia University per Stranieri, Perugia, Italy. (1935)

MARGARET SPARKS, A. M., Instructor in Secretarial Science; A. B., Marshall College; A. M., West Virginia University. (1935)

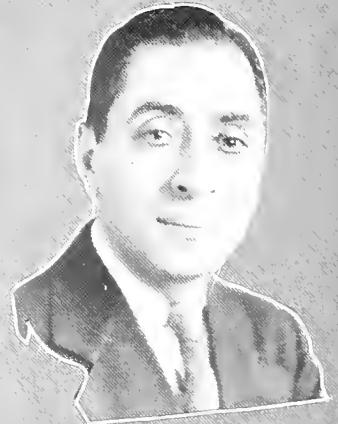
LUCILLE BALL, A. B., A. B., Bethany College; University of Pennsylvania; Degree in Dietetics.

DAVID DANIELS, Associate in Music--Violin, Graduate, Warsaw Conservatory, Poland; Concertmaster, Wheeling Symphony Orchestra. (1935)

THELMA JEAN THOMPSON, A. B., Recorder and Associate in Mathematics; A. B., Bethany College. (1933)

MARY ELIZABETH CUTLIP, A. B., Assistant Librarian A. B., Bethany College; University of North Carolina. (1935)

DWIGHT ESHELMAN STEVENSON, B. D., Associate in Religion; A. B., Bethany College; B. D., Yale University. (1933)







BOOK TWO CLASSES





BOOK TWO CLASSES

SENIOR CLASS OFFICERS

It hasn't seemed that long, but it must have been four years ago that one hundred and seven freshmen enrolled at Bethany, determined to outwit the depression and have a college education. Well, forty-two of that original group are still around, although not all are seniors because some dropped out and re-entered later.

Those freshman days are the ones we like to linger over, remembering the many little events of our pledgship in college. Four new professors, Dean Burleson, Dr. Calkins, and the Fox brothers were "green" too—they ought to write this history. That was the year that someone set fire to the Bethany House, and the whole student body assembled **endishabile** to watch the flames and to join with George Arner's band. Later, tragedy overtook us when we lost a favorite class-mate, Chris Graham, in an automobile accident. Winter came on, and with it the winning of the inter-class basketball championship. Just once, some sophomores had to eat their words. Commencement time brought **Distant Drums**. Remember how Nature Trail looked with a campfire and covered wagons?

Then suddenly we were sophomores, with a new president, Dr. Serena, but less than half of us remained. This year isn't one of the fondest of our memories, depression and unrest disturbed every-



AND HISTORY . . .

one. We saw Professor Moos, the longest in service of the faculty, leave. In spite of everything, though we did succeed in improving our last year's loafing record at the Inn; it was a bridge and puzzle year. We helped with the **Ivory Door** in spare moments, and managed to hang another inter-class championship scalp on our belt.

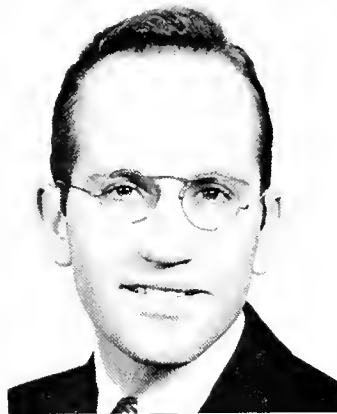
Could we have become juniors so rapidly? Nearly half a hundred strong, too. Of course the first thing to remember is that our football team won its first game in—too many years. Another is how the MOO MOO MOO'S came out of the brush and reorganized their paddles. President Cramblet was inaugurated and Bethany had a President's Ball. In fact it was a swell year, even to the stealing of the lock.

Do we have to sit down now and accept the fact that we are those alumni creatures? How can we after knowing the creation of a marvellous Pendleton Heights, the West Penn "electrocution," the song recitals of Al and Martha Jean — the musical mainstays of the campus since their Freshman Week together — the senior stars in **She Stoops to Conquer**, and above all the Great Flood of '36?

Well, we still remember.

Officers—President, Lucas Cochran; Vice-president, Frances Goodnight; Treasurer, Paul Johnson; Secretary, Dorothy Adams.





DOROTHY ADAMS **A. B.** **PSYCHOLOGY**
Kappa Delta

French Club 3; Class Secretary 2,3,4; Bethespian Club 1,2,3,4; Alpha Psi Omega 2,3,4; "Defeat," "This Way Out", "Loose Ankles", "Mazie", and "Night Over Taos".

EDWARD ADDY **B. S.** **BIOLOGY**
Beta Theta Pi

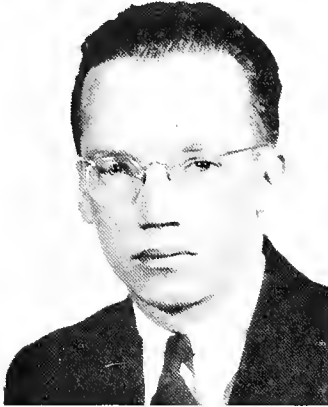
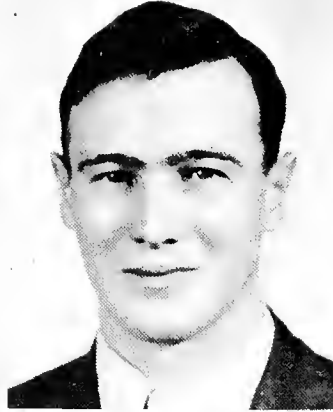
Physical Science Club 2,3,4; Pre-Medical Club 3,4; Collegian Staff 1,3,4.

MARY LOUISE BERGNER **A. B.** **ENGLISH**
Alpha Xi Delta

Y. W. C. A.; French Club.

BETTY BRANDON **A. B.** **FRENCH**
Alpha Xi Delta

Pennsylvania College for Women 1, 2, 3; French Club; Y. W. C. A.; Women's Athletic Association.



ALICE CONNER

A. B.

MUSIC

Alpha Xi Delta

Pres. Alpha Xi Delta 4; Y. W. C. A. 2, 3, 4; W. A. A. 2, 3, 4; Treble Cleff 3, 4; Bethespian 1, 2, 3, 4; Alpha Psi Omega 2, 3, 4; Student Board Governors 2, 3, 4; French Club 3; Choir 1, 2, 3, 4; Mixed Quartet 3, 4; Woman's Trio 4; Pan-Hellenic 4; "Distant Drums" "Loose Ankles", "This Way Out", "Duty" "Firefly".

RUSSEL DE GARMO

A. B.

BIOLOGY

Commencement Play "Night Over Taos".

WELLMAN DEITZ

B. S.

CHEMISTRY

Alpha Kappa Pi

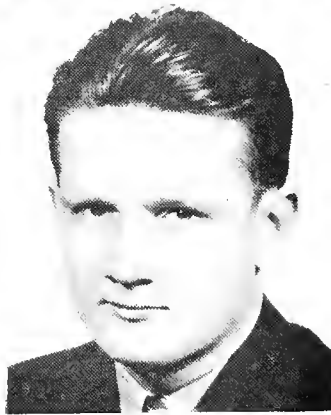
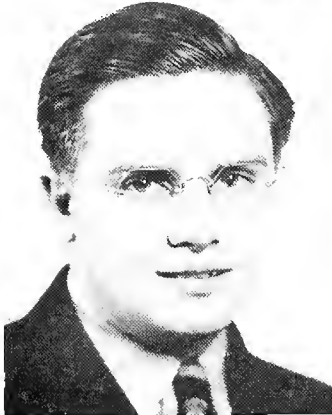
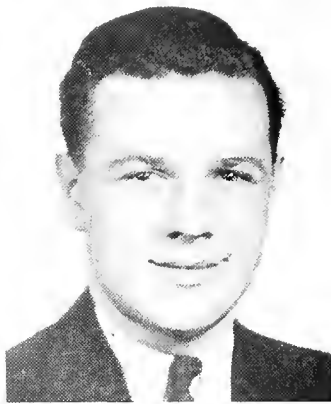
BERTHA FEITZ

B. S.

CHEMISTRY

Alpha Delta Theta

Alpha Delta Theta Pres. 4; Gamma Sigma Kappa; Physical Science Club 1, 2, 3, 4; Social Science Club 2, 3; Der Deutschs Vereen 3, 4; Y. W. C. A. 1, 2, 3; Student Board of Governors 2, 3, 4; Pan-Hellenic.



EMERSON G. HESS

A. B.

ECONOMICS

Beta Theta Pi

Collegian 1, 2; Bethanian 1; Tennis 1, 2, 3, 4; Captain Tennis Team, 2, 3, 4; Debate 1, 2, 3, 4; Tau Kappa Alpha 3, 4; Alpha Psi Omega 3, 4; Bethespian 1, 2, 3, 4; Student Board Governors; Student Board Deacons; Inter-class Basketball; Inter-Frat Basketball; Inter-Frat Softball. International Relations Club, Assistant in Economics; Plays, "What Happened to Jones" "Once in a Lifetime".

STEED HOCKENSMITH

B. S.

BIOLOGY

Phi Kappa Tau

Pres. Phi Kappa Tau 4; Pres. Student Board Governors 4; Moo Moo Moo; Inter-Frat Council; Student Board Deacons; Class Basketball; Inter-Frat Basketball; Liberty League; Ass't. Mgr. Men's Glee Club.

PAUL H. JOHNSON

A. B.

CHEMISTRY

Sigma Nu

Pres. Sigma Nu 4; Student Board Deacons; Moo Moo Moo; Physical Science Club; Chemistry Assistant; Liberty League.

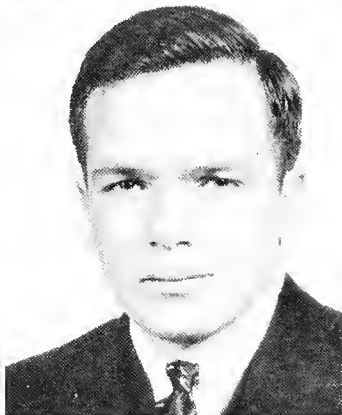
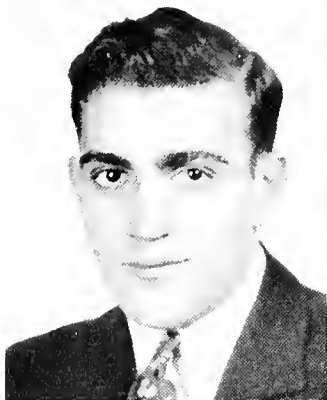
WILLIAM J. JUERGENS

A. B.

ECONOMICS

Sigma Nu

Social Science Club; Inter-Frat Basketball.

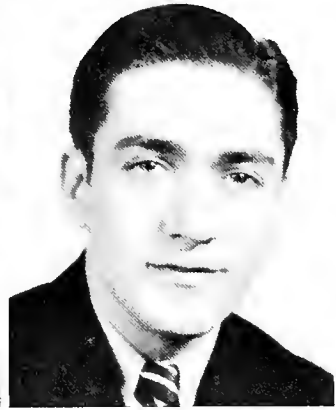
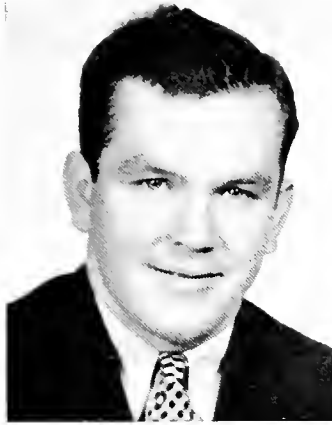


AMELIO MONTAGNA **B. S.** **MATHEMATICS**
 Band and Orchestra 1, 2, 3, 4; Physical Science Club; Mathematics Assistant 3, 4; Astronomy Club; Inter-Frat Basketball 2, 3, 4.

HELEN LOUISE MCGUFFIE **A. B.** **ENGLISH**
Alpha Delta Theta
 Y. W. C. A. 1, 2, 3, 4; C. W. C. C. 3, 4; Pan-Hellenic 2, 3; Gamma Sigma Kappa; Collegian 3, 4; Student Board Governors; W. A. A. 2, 3, 4; Social Committee 3.

HARRY McQUOWN **B. S.** **CHEMISTRY**
Beta Theta Pi
 Moo Moo Moo; Student Board Deacons; Student Board Athletic Control; Football Manager; Inter-Frat Athletics; Inter-Class Basketball.

MELVIN CHESTER MUMPER **A. B.** **HISTORY**
Kappa Alpha
 Penn State 1; Football 1, 2, 3, Captain 4; Basketball 3; Inter-Frat Basketball 1, 2, 4; Student Board Governors 3, 4; Varsity "B" Club 2, 3, 4; Inter-Frat Softball 2, 3, 4; Vice-Pres. Kappa Alpha 4.



ALBERT L. WROBLESKI **A. B.** **HISTORY**
Kappa Alpha

Football 1, 2, 3, 4; Basketball Mgr. 1, 2, 3, 4; Assistant in Physical Education; Liberty League; Inter-Frat Basketball, Track, Softball; Varsity "B" Club; Collegian; Inter-Class Basketball; Track Mgr. 1, 4; Social Science Club.

WILLIAM H. WORTHEN **B. S.** **BIOLOGY**
Sigma Nu

Glee Club 3, 4; Physical Science Club 3; Rifle Team 4; Swimming Team 3.

WANDA ZBIEC **A. B.**

Y. W. C. A. 1, 2, 3, 4; W. A. A.; Pres. 4; French Club 3; German Club; Student Board Athletic Control; Student Board Governors; Treble Cleff 1, 3, 4; Choir 1, 2, 3, 4; Science Club 3, 4; Triple Trio 3; "Night Over Taos."

IRWIN R. ZIDERS **A. B.** **CHEMISTRY**
Kappa Alpha

Physical Science Club; Inter-Frat Softball 1, 2, 3, 4; Kappa Alpha Sec. 4.

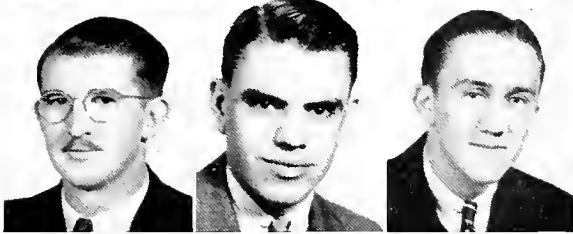
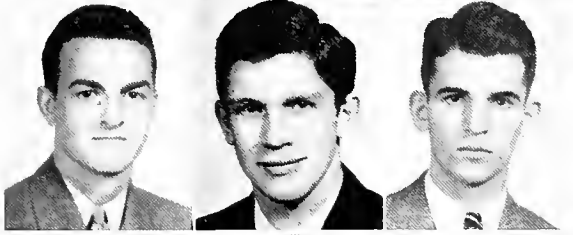
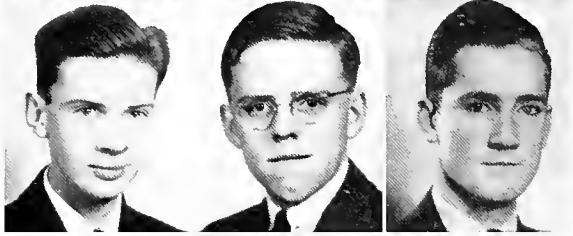
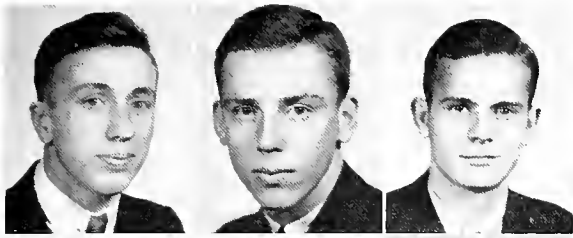


JUNIOR CLASS HISTORY

We the Juniors of Bethany College, do not care to expostulate upon our virtues as students and intellectual giants of the age as our Worthy Seniors, Sophomores, and Freshmen have. We merely wish to say to you, look us over (we mean look at our pictures on the following pages) draw your own conclusion, and we will show you when years have flown that he who does and brags not is the one who will certainly succeed.

We thank you.



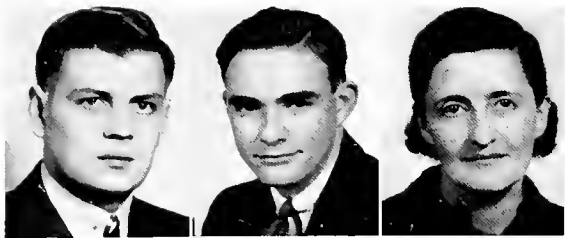


Eyron Baer, Jack Baldwin, Ashley Booth. Blair Burkhart, John Cluss. Richard Darsie, Clarence Devis, William Doepken, Ward Ehrenfeld. Francis Elwell, Richard Eskey, Irving Fink.





Edmund Goodwin, William Hanna, Edward Hemington. Elizabeth Hittenberger, Robert Howe, Ruth Huffman. Charles Hurford, Lois Mayne, Andrew McDonald, James McKinney, Marion Partridge, Velma Pease. Gertrude Ross.



Wilson Shoaff, Craig Sipe, Margaret L. Smith, James Sotus, Paula Strain, Jack Walters, Glada Warstler, Sarah Weston, Mary E. White, Esther Wiles, Naomi Wolf, Joseph Wylie, Mary Lou Zeisloft.

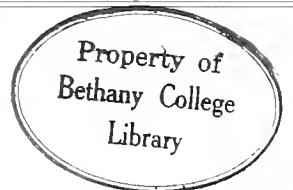
It was in September, '34, that we one hundred forty-one would be students wandered down over the hills and through the valleys of West Virginia to become one of the largest classes of Bethany Freshmen. We had hardly unpacked our trunks when the call came to be tested for the things we should know but did not. Then the days of pledging and being treated as Kings and Queens (well Crown Princes anyway) until the Sophomores decided to bully us into being the traditional laughing stocks.

Marjorie Aldrich
 Thomas Andrews
 Betty Aull
 Jane Aull
 Margaret Baab
 Geneva Bamford
 Audrey Bennett
 Milar Blistan
 Marian Bode
 Michael Bovan
 Albert Brandon
 John Brown
 John A. Brown
 Richard Camp
 Marian Chapman
 Jack Chorpenning
 Edith Church
 Marguerite Ciarrochi
 Hanna Cope
 Donald Cover
 Hunter Culley
 George Darr
 George Davis
 John Dickson
 Howard Dunning
 Donald Emerick
 Helen Fife
 Ruth Fisher
 Alberta Foster
 Joseph Funk
 Mary K. Gobler
 Gardner Gremillion
 Ruth Gremillion
 Elmer Greskovich
 Loris Grimm
 Walter Hardesty
 C. J. Harrison
 Donald Hassig
 Frank Hauber
 Joseph Hauner
 Amy Hettler
 Phyllis Hite
 Wesley Hobbs
 Layton Horner
 Ann Jones
 Rose Keim
 Robert King





Earl Klevias
 Harold Knight
 Robert Knox
 Albert Kuti
 Mildred Leach
 Irene Martin
 Paul Meriage
 Rose Merlini
 James Miller
 Barton Murray
 Donald McIlroy
 Edward McVeigh
 Ralph Nestmann
 John Neth
 Marjorie Packard
 Gerald Patterson
 Charles Phillips
 Betty Plackett
 Alvin Pollock
 Jean Porter
 Robert Rodgers
 Thomas Rogers
 Helen Rosser
 Jane Schenck
 James Sharp
 Margaret S. Smith
 Ernest Snyder
 John Stahl
 Ray Stahl
 Helen Stein
 Mary K. Stroman
 Harry Sykes
 Albert Washington
 Eleanor Webb
 George Wehner
 Goldye Wentzel
 Harvey Werkheiser
 Fred Westwood
 Ardenne White
 George Whitehead
 Earl Whiteman
 Robert Wolff
 Frank Woltz
 Edna Woods
 LaVerne Woolenweber
 Susan Werthen
 Ellen Wylie



Presto! we were sophomores. Kirk's office was moved over to the flag pole where the college calf played secretary (Moo-Moo) With Professor Garrett gone we missed our classes under the chestnut tree. Then came winter and N-o-o heat. Do you remember the flood? How the boys brought home more clothes than they gave away, and Murray clacked away at his key. In spring our thoughts — yea man! The Seniors marched out for the last time and we fore-saw vaguely that this would probably, someday, happen to us.

FRESHMAN CLASS . . .

Memories of a Freshman

To a casual bystander Bethany, on September 15th might have appeared to be Saint Patricks Day. More than the foliage was green.

Remember our first dinner? Potato salad . . . the tags we wore . . . and the tests during Freshman Week, how did we live through it all? Then one bright fall morning a painting appeared on the Gym roof, much to the displeasure of the Administration. Their taking us for a hike out Nature Trail was a grave mistake. Then had it not proved for the nimble mind and trained hands of one of our number, our hare and hounds chase might have proved disastrous.



FIRST ROW—Adamson, Alderman, Angle, Anderson, Barnett, Barnhart, Beck, Bentley. SECOND ROW—Berger, Bowman, Burger, Campbell, Carson, Chalfant, Chew, Cluss. THIRD ROW—Cohn, Crawford, Davies, Dornan, Elkin, Elwell, Erskine, Fair. FOURTH ROW—Forsythe, Galley, Graham, Griffin, Grimm, Hack, Heckel, Houdensfield. FIFTH ROW—Herbert, Hettler, Hoffman, Horst, Hough, John, Johnson, Johnston. SIXTH ROW—D. Johnson, J. Johnston, Kantner, Klinck, Kauffman, J. Lancaster, W. Lancaster, Lasch, Mallory.



FIRST ROW—Mullen, McAdams, McAfee, Maynard, McCrory, McKenna, Miller, Moore. SECOND ROW—Morrow, McAllister, Mullman, McCann, McGinty, Nee, Noland, Pearson. THIRD ROW—Phillips, Porter, Ramsey, Rodman, Rutter, Sant, Schafits, Shenk. FOURTH ROW—Schuppener, Smith, Sparks, Spray, Springer, Sprowls, Steele, Sweeney. FIFTH ROW—Taylor, Tidwell, Thomas, Thomas, Tomlinson, Tremaine, Vopel, Vetter. SIXTH ROW—Manley, Weaver, Wedd, Wickham, Wicks, Williamson, Wentworth, Werner, Williams.



Came time for class elections, and at a heated meeting, Edgar Carson was chosen to lead us through our turbulent transitional period.

When it came time for Athletics, our class contributed its share of Athletes. The seasons were very satisfactory.

After a few water battles at the dorm, we found ourselves confronted with exams and, oh jammer, we found that all work and no study did not produce quality points. However, we have since settled down to the books — (our best friends?)

Now, as we look back over the fading year, we can truly count it the happiest and fullest of our lives, and of Bethany.





BOOK THREE ATHLETICS





BOOK THREE ATHLETICS

FOOTBALL

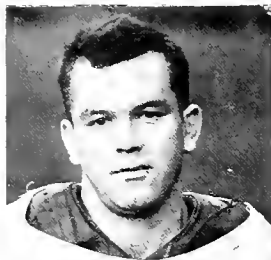


Coaches John J. Knight and Edward Stumpp

These two men have been able to show their true worth this year as coaches of the Bethany Bison. They obtained material, raw material yes, but by their constant, patient work were able to turn out Bethany's first good football team in recent years. In the next few pages you will be able to gather their fine work from the record of a season past in games, but, not in memory.

Co-Captains Mumper and Albert Wrobleski, played their last football season for Bethany this year, as they are seniors, they had the honor of captaining the Bisons through a successful season, Wrobleski's playing was of the good solid type that counts in ball games, while Mumper playing the same type of football was able to convince authorities that he would be a good all-state quarterback.

The Student Athletic Board of Control is a body composed of four students and four faculty members who decide the appropriations for the various sports and are really the pulse of Bethany's athletics.



Co-Captains
Mumper,
Wrobleski



(left to right)
Robinson, Kinsey,
Zbiec, McQuoun.

MILAN BLISTAN Center
 "The fighting barber"



JOSEPH HAUNER End
 "Lug"



ALBERT WROBLESKI Guard
 "Wrobel"



HARRY SYKES Utility lineman
 "Eric"



EARL KLEVINS End
 "Lou"



THOMAS BOYD Tackle
 "Farmer"

ANTHONY BUPKA End
 "Tony"



WILLIAM HANNA Quarterback
 "Bill"

RAYMOND MOORE Center
 "Ray"



JOSEPH CRABTREE End
 "Joe"

LUTHER BATES Guard
 "Pop"

EARL WHITEMAN Halfback
 "Racehorse"





R E S U L T S O F . .

In looking back over the past season we find that it was the most successful of the last decade. Coach Knight had several lettermen from the 1934 season and with these men and a wealth of freshmen material succeeded in building a very formidable machine which was a distinct threat to all district opposition. At the close of the season the team had five games on the right side of the ledger as against three defeats.

The Bisons won their opening game for the first time in ten years travelling to Hiram and eking out a 13-6 victory. Kinsey scored both touchdowns with Hauner adding the extra point.

The second game was an entirely different story as the team lost a night game to a powerful Geneva team to the tune of 39-7. Doepken plunged over for Bethany's only touchdown and "Educated Toe" Hauner added the seventh point.

However the next week-end found the boys completely recovered from this defeat as they travelled to Allegheny and trounced the "Gators" by a 13-0 score. Mumper and Wickham figured in the scoring.

Things did not go so well the next week-end as Thiel continued to hold a "jinx" over Bethany. The Bisons were outscored 19-7, but by no means outplayed.



THE GREEN WAVE again started moving in its first home game against Rio Grande. The Ohioans were swamped under a 32-0 score. "Al" Rodman started the scoring by intercepting a pass and galloping 50 yards to score. Baldwin scored two touchdowns and Doepken and Kinsey each added one before hostilities ceased.

The Bisons avenged a 1934 defeat when they met Grove City and defeated the Grovers 18-0. The outcome of the game was never in doubt. Wroblewski, Klevins and Kinsey accounted for Bethany's tallies.

The last defeat of the season was sustained at the hands of a Waynesburg team which had held Pitt to a 14-0 score. The Jackets won 13-0 but the game was so close throughout that had the Bisons gotten the "breaks" they might have won.

The 1935 season was climaxed when Fairmont was defeated 26-6 on a muddy field at Warwood. Mumper, Kinsey, Klevins and Hanna scored touchdowns while Hauner put two between the crossbars to account for Bethany's 26 points.

In viewing the season it would be difficult to point out individual stars. The men who scored have been cited here, but one must remember that ten others were also responsible for that score. The 1935 edition of the Bethany Bisons was successful because of cooperation among the men. Individual glory was sacrificed for the good of the team as a whole.

. . . THE SEASON



FIRST ROW—Sotus, Shoaff, Wickham, Croushore, Wroblewski, Mumper, Robinson, Klevins, Kinsey, Baldwin. SECOND ROW—Blistan, Greskovich, Cohn, Hanna, Pearson, Sykes, Moore, Whitehead, Bates, Hauner. THIRD ROW—Coach Stumpff, Phillips, Whiteman, Johnston, Hack, Bupka, Ernstein, Crabtree, Rodman, Bowman, Boyd, Coach Knight.

BASKETBALL

THE BISON floormen opened their season. The first game to be placed on the record book was against Waynesburg, played at Irvin gymnasium. It was a close contest, which ended during a Yellow Jacket rally, stopped short by the final whistle, giving the Bisons a 49-44 victory.

The next game was against a highly publicized Salem team. The two teams met on the local floor, staging one of the most exciting battles ever witnessed here. Salem finally came out on top with the score reading 44-42, leaving the Bisons rather dejected over their first set-back.

The following two games, the first with Geneva at Beaver Falls, and the second with Westminister at Bethany added to the already dampened spirits. Geneva took a 46-21 decision, while Westminister gathered 51 as against 21 for the Bisons. With three losses so early in the season, it began to look as if the Bisons would have one of the poorest seasons in their history.

However, John Knight's "surprise team" broke their losing streak on January 25 by taking over the Fairmont Teachers 44-38 on the local court. Taking advantage of their regained confidence, they soundly trounced the Glenville cagers in another home game. The final score read 47-33.

With three victories and as many losses, the Bisons again met the Westminister Titans; this time at New Wilmington. Again the "giant-jinx" held. The Bisons were so much cannon-fodder, as the Titans breezed to a 54-30 victory. Continuing on their three day road trip, the Bisons met Grove City and Thiel on successive nights. Much to the surprise of local rooters, the Knightmen forgot about their recent defeat and downed Grove City 48-37; repeating the following night against Thiel, 54-40. By this time it was realized by most Bison fans that they were supporting an unpredictable team.

STARTING the second half of their campaign the Bisons again met the Geneva Covenanters, and again took it on the chin, 54-41. This game once more set the Bisons back in the .500 class, giving them five victories and as many losses.

W. and J. proved too strong for the locals in the next contest, setting the Bisons down, 58-38. This was the first contest to go the Prexies in several years. Next in order the Bethany quintet played Thiel for their second meeting of the season. Bethany 43—Thiel 28.

On February 24 the Bisons traveled to Waynesburg for a return game with the Jackets. Although the game was tied at the half, the Jackets managed to pull away from the Knightmen in the last few minutes of play, giving them a 53-46 decision.

Another long road trip began on March 2. Starting at Fairmont the Bisons played what was probably their hardest game of the season. It took an extra period for the Bisons to prove their superiority, but this they did. The final outcome read, 56-51. On the second night out the Bisons took the Salem quint into camp by the score of 52-35, thus avenging their early season defeat. The final game of this road trip went to Glenville, 45-44.

The Bisons drew the curtain on their 1936 campaign by losing against W. and J. for the second time and by the identical score of 58-38.

Summarizing, the Bisons broke even by winning nine games out of eighteen starts. They scored 788 points, while opponents scored 803. The whole season showed the Bisons to be inconsistent . . . even erratic at times. No individual player was outstanding throughout the season, although each member of the team had his sparkling moments.

RICHARD ESKEY
"Dick"

Guard

RALPH BURGER
"Berg"

Forward

JACK CHORPENNING
"Chorp"

Guard

THOMAS BOYD
"Tom"

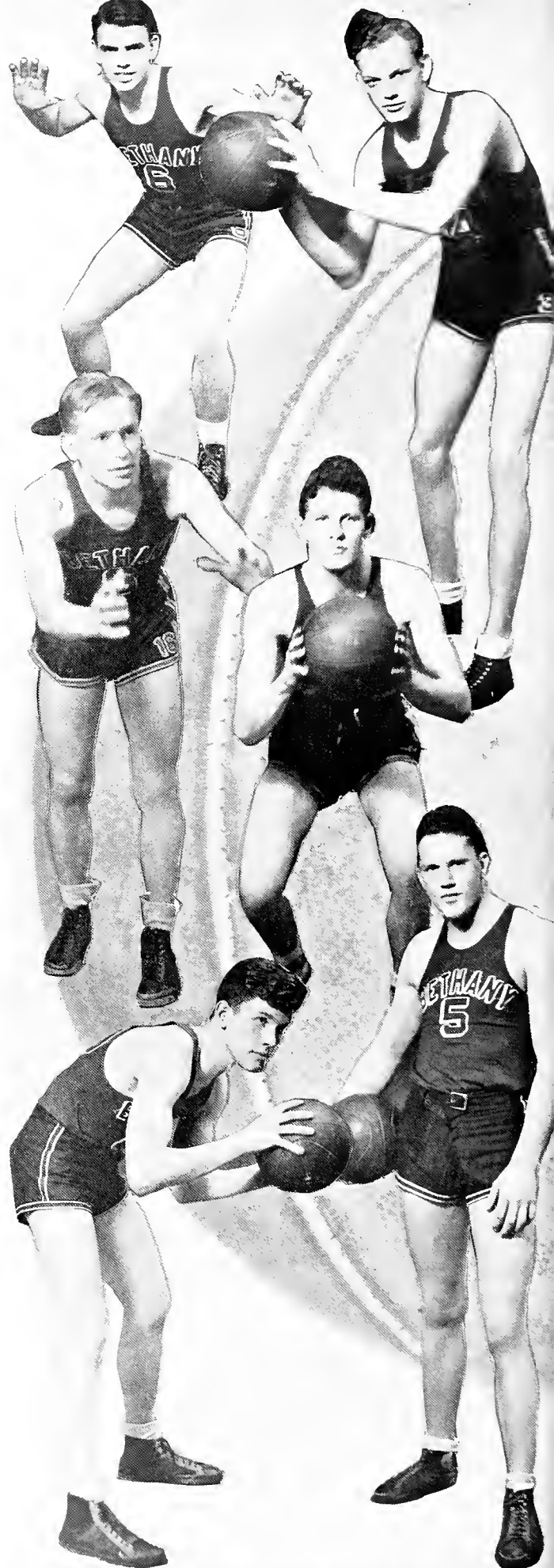
Center

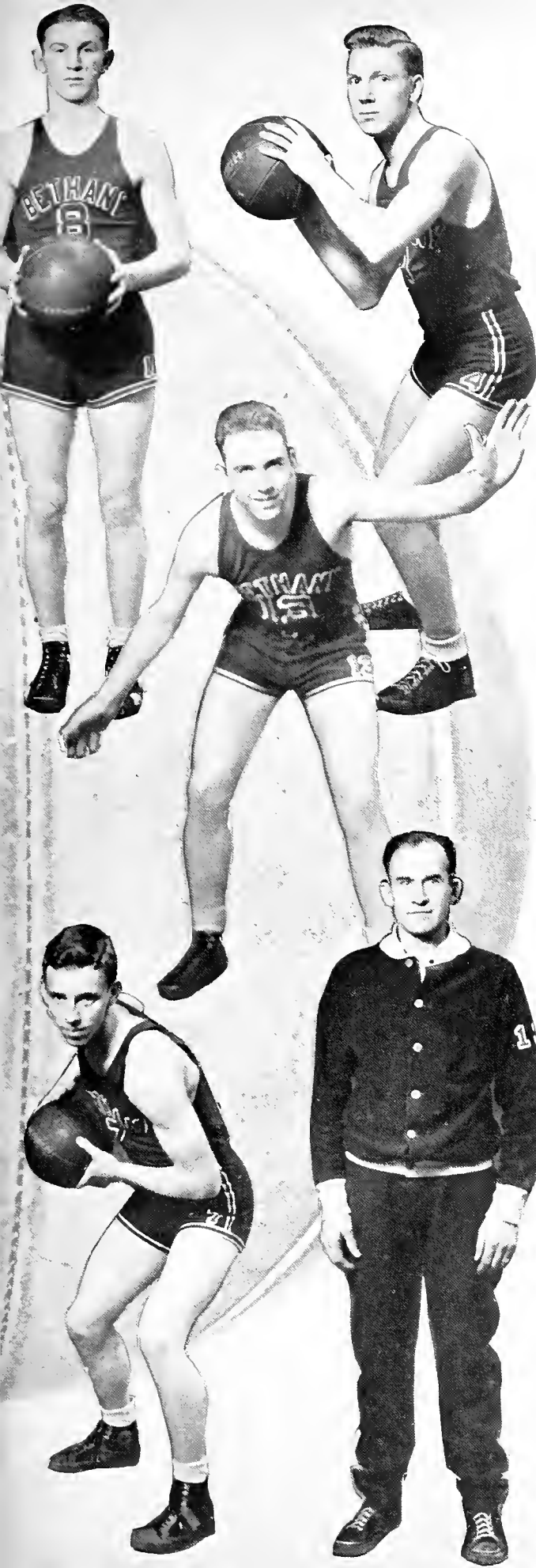
WILLIAM DOEPKEN
"Bill"

Center

AL RODMAN
"Al"

Guard





EARL KLEVINS "Lou" Forward

JOSEPH FUNK "Joe" Forward

HARRY SYKES "Eric" Guard

JACK BALDWIN "Baldy" Guard

J. J. KNIGHT "Coach" Coach

TRACK

This year's track team shows the best material on Bethany's track since 1928. The team will show its worth Saturday, April 25, in the Penn Relays. We are confident that the team will show up well as they did last year thus giving Bethany the foundation for an all time good track team.

(left to right)

Shingleton—880 yd.

Wolff—100 and 220 yd. dash.

Bliston—1 and 2 mile.

Brown—1 and 2 mile.

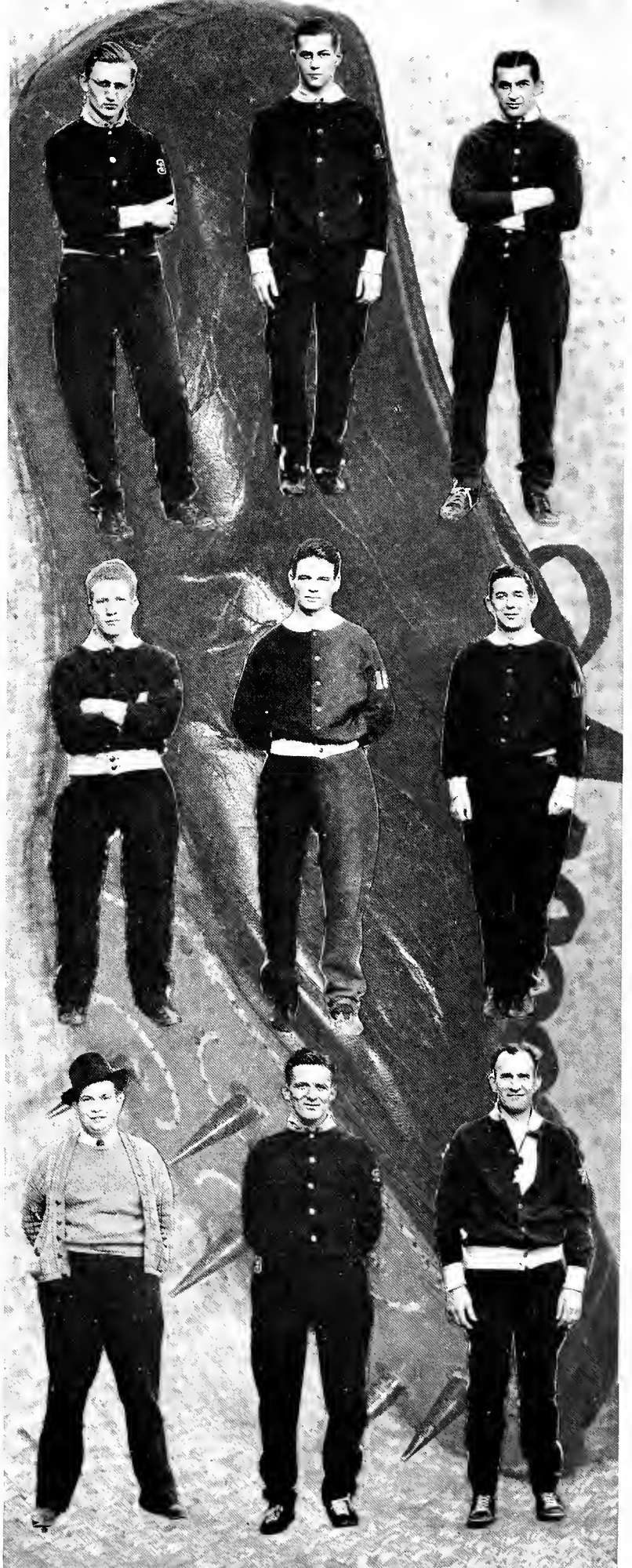
Everhart—low hurdles.

Horner—440 yd. dash.

Hardesty—Manager.

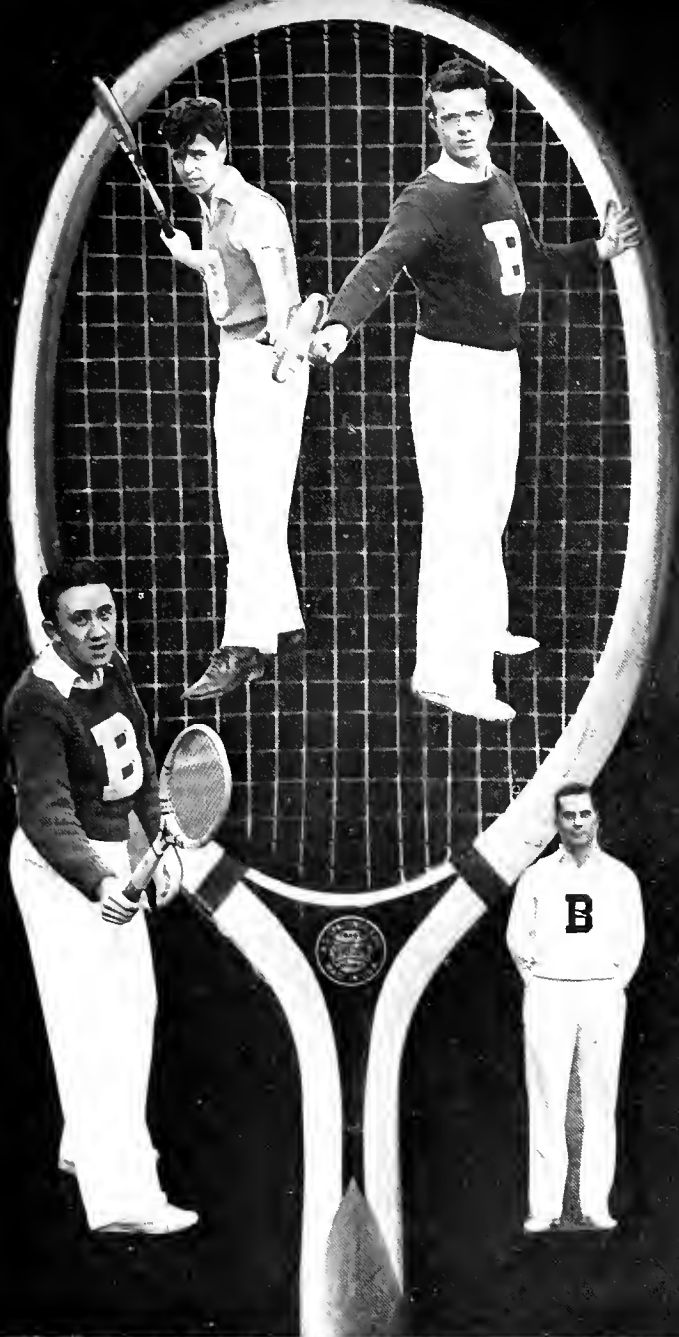
Whitehead—100 and 220 yd. dash.

Coach—J. Knight.



TENNIS

The tennis team opens at Pitt this season with little hope of winning due to the unfinished re-conditioning of the tennis courts. With a small amount of practice we do not expect much from the team this season.



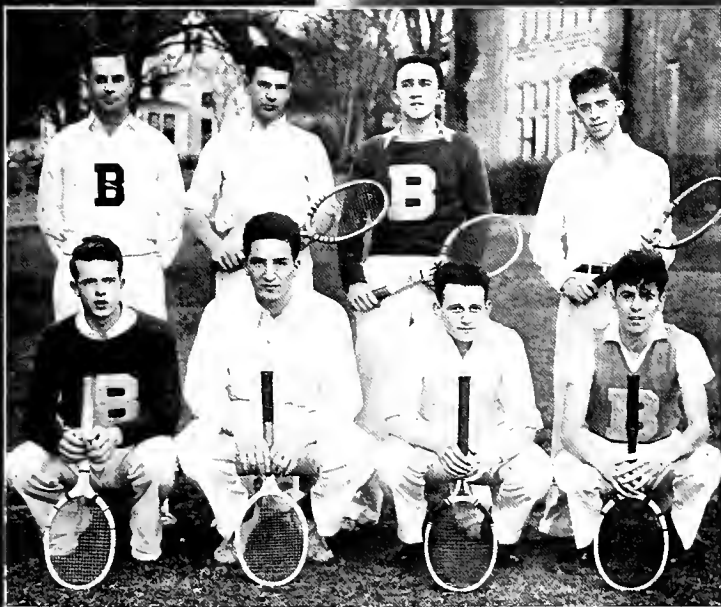
(left to right)

D. McIlroy

Hess, Captain

Fink

Coach, Wm. Erskine

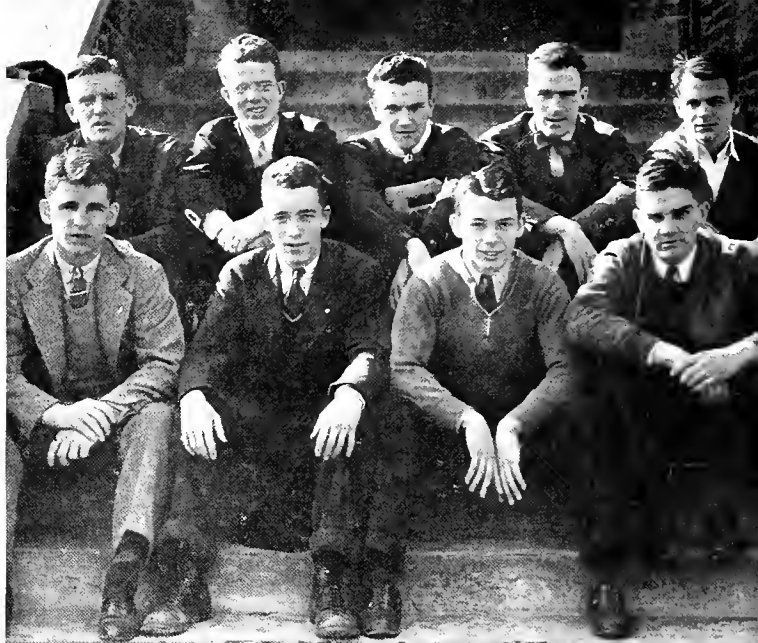


(left to right)

Coach Erskine, Carson, Fink, John Erskine, Captain Hess, Cohn, Cully, D. McIlroy.

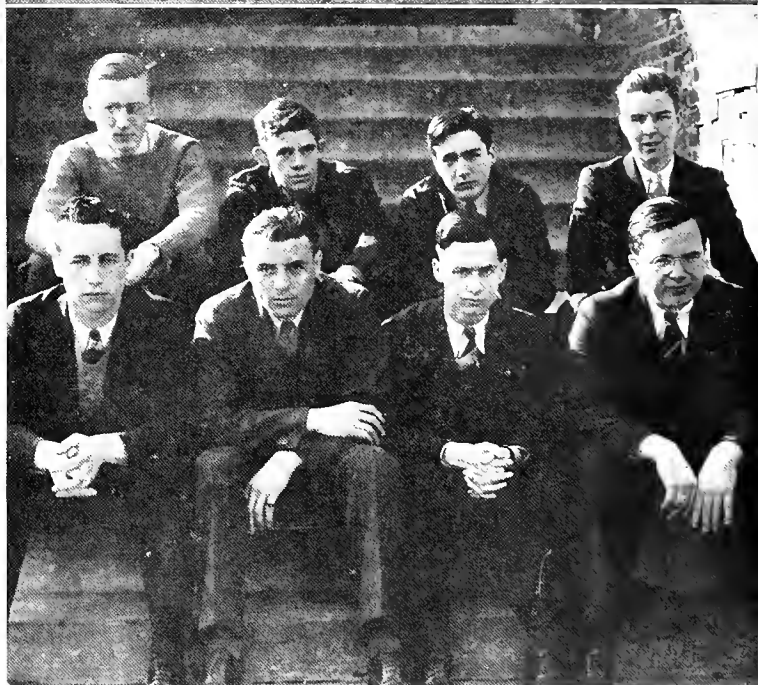
BETA THETA PI, winner of both halves of the Interfraternity Basketball League. Their outstanding player was Pollock.

Whitehead, Hess, McQuawn, Stahl, Kinsey, Ehrenfeld, Phillips, Rodgers, Pollock.



KAPPA ALPHA, having won the Interfraternity Basketball League for three years straight, the K. A's. turned out to be a dangerous contender this time, but the Betas were able to defeat them.

Shingleton, Emerick, Ziders, Patterson, Hassig, Hauner, Darnan, Mumper.



Non-Fraternity were strong bidders for the first half championship, but again the Betas outplayed them. Even so, this team turned out to be the chief headache of the various contestants.

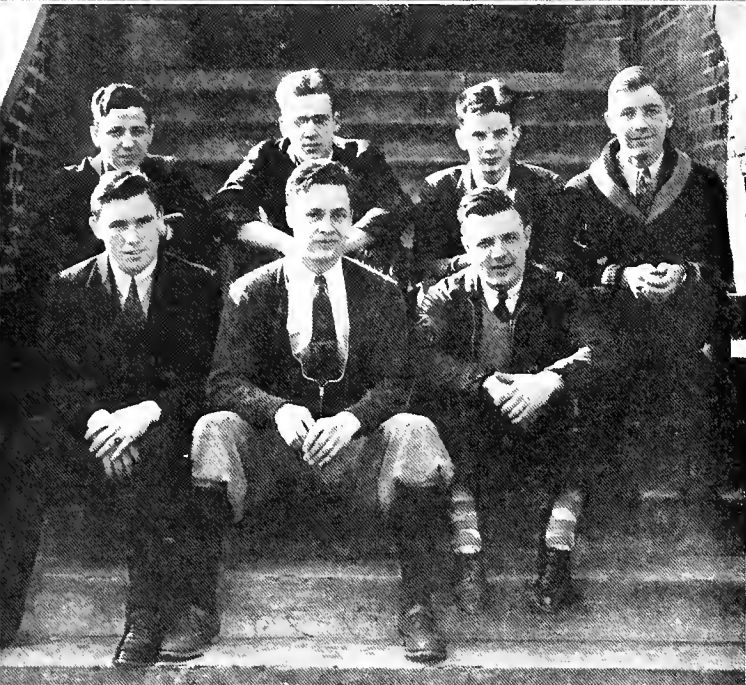
Cohen, Carlin, A. Montagna, Lancaster, Mullan, Baber, Fink.





SIGMA NU, holder of fourth place in the Inter-Fraternity competition, have always had a strong team, but again failed to come through to win the championship.

Juergens, Camp, Hurford, Rutter, Baldwin, Spray, Thomas, Erskine, Moore, Davis.



PHI KAPPA TAU, holder of sixth place, again held the cellar position.

Minnesalle, Carnahan, Burkhart, C. Andrews, McVeigh, Coe, Hockensmith.



ALPHA KAPPA PI, were able to stay in fifth place by defeating Phi Kappa Tau. A good team, but outclassed by the rest of the league.

Greskovitch, Thomas, Hardesty, Kuti, Whiteman, D. McElroy.





BOOK FOUR ORGANIZATIONS





BOOK FOUR ORGANIZATIONS

INTERFRATERNITY COUNCIL

THIS organization was established in 1925 to forward and create cooperation between the Men's Fraternities. Each Fraternity is represented in this group by two members, whose duty it is to settle all disputes and promote projects for the good of the Fraternities, college and individual members of the Fraternities. They sponsor such projects as Arbor Day, The Interfraternity Dance, Interfraternity Basketball, Interfraternity Softball, and Interfraternity Track. This body has proven itself effective in bringing the various groups into a closer harmony and appreciation of the worth of each group. This body selected William Doepkin as President and Steed Hockinsmith as Secretary.

PANHELLENIC ASSOCIATION

THE Panhellenic Association attempts to foster sympathy and understanding among the four national sororities represented on the Bethany campus. Each sorority is represented by three members. Offices are held in rotation according to the date of founding of each group.

The Association's most important work is the formulation of rushing rules and the supervision of formal rushing at the beginning of the college year. It also sponsors a tea for freshman girls during rushing. The officers of the Association are: Amy Hettler, Zeta Tau Alpha, President; Martha Jean Miller, Kappa Delta, Vice-President; Alice Conner, Alpha Xi Delta, Treasurer; Betha Fietz, Alpha Delta Theta, Secretary.

SEATED—Wylie, Johnson, Doepken, Baldwin, Hockensmith.
STANDING—McIlroy, Hassig, Stahl, Henthorne, Coe.

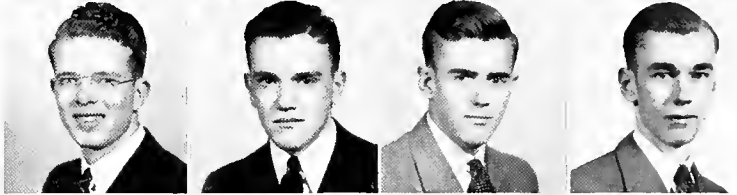


SEATED—Miller, Hettler, Conner.
STANDING—Partridge, Gremillion, Smith, Fife, Ramsey, Bamford, Fietz, La
Masters.

William Doepken
Edward Addy
Richard Brandon
Lucas Cochran



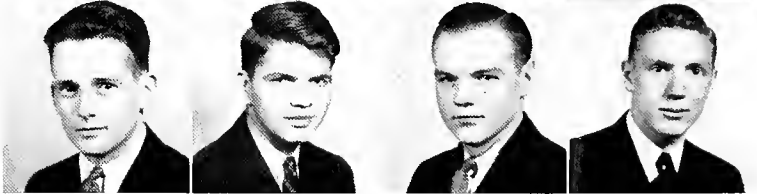
Emerson Hess
Harry McQuown
Edward Hemington
Jack Walters



Joe Wylie
Charles Andrews
Albert Brandon
Jack Chorpenning



Hunter Culley
John Dickson
Howard Dunning
Joseph Funk



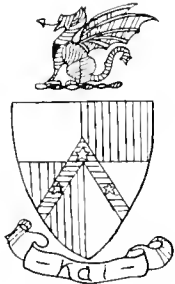
BETA THETA

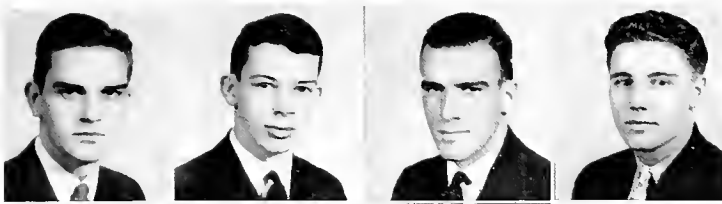
BETA THETA PI was founded in 1839 at Miami University. There are at present eighty seven active chapters and eighty five alumni organizations scattered over the country. Psi Chapter was established at Bethany in 1860.

The colors are pink and blue. The flower is the American Beauty rose. The publication is called the "Beta Theta Pi."

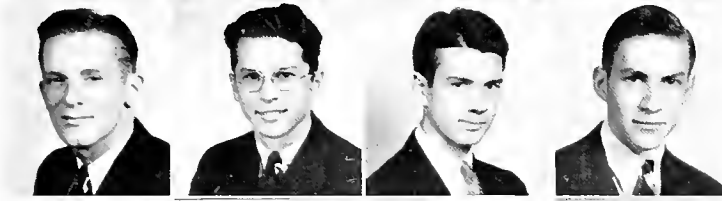
The president for the 1935-36 school term is William Doepken.

Beta Theta Pi is represented on the faculty by H. N. Miller, W. K. Woolery, and F. H. Kirkpatrick.





Alvin Pollock
Robert Rodgers
John Stahl
Arden White



George Whitehead
Kenneth Barnett
Edward Carson
Reed Chalfante



Kemp Griffin
Lindel Chew
William Hettler
Victor Herbert



James Lancaster
James McGinty
Donald Nee
John Phillips
George Vaupel

PI . . .

Seniors—Edward Addy, Richard Brandon, Lucas Cochrane, Harry McQuown, Emerson Hess, Edward Hemington.

Juniors—Jack Walters, Joseph Wylie.

Sophomores — Charles Andrews, Howard Dunning, Albert Brandon, Jack Chorpenning, Hunter Culley, John Dickson, Joseph Funk, Alvin Pollock, Robert Rodgers, John Stahl, Arden White, George Whitehead.

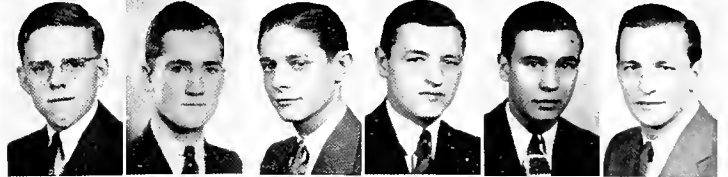
Freshmen—Kenneth Barnett, Edward Carson, Reed Chalfante, Kemp Griffin, Lindel Chew, William Hettler, Victor Herbert, James Lancaster, James McGinty, Donald Nee, John Phillips, George Vaupel.



Paul Johnson
 William Juergens
 Oliver Vodrey
 William Worthen
 Jack Baldwin



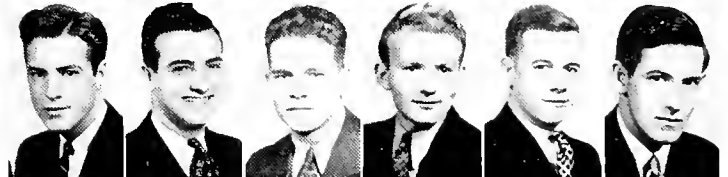
John Cluss
 Richard Darsie
 Edmund Goodwin
 William Hanna
 Robert Howe
 James Sotus



Charles Hurford
 George Wehner
 Harvey Werkheiser
 John Brown
 Jack Brown
 George Darr



George Davis
 Richard Camp
 Gardner Gremillion
 Charles Harrison
 Robert Knox
 Ernest Snyder



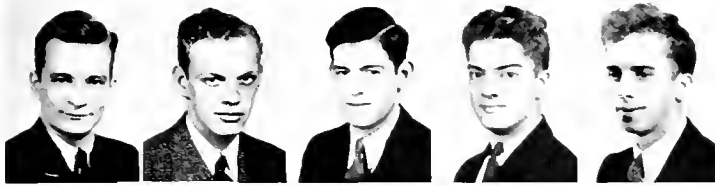
S I G M A

SIGMA NU was founded in 1869 at Virginia Military Institute. There are at present ninety eight active chapters and seventy one alumni organizations scattered over the country. Epsilon Chapter was founded at Bethany in 1883.

The colors are old gold, black and white. The flower is the white rose. The publication is called the Delta.

The president for the 1935-36 school term is Paul Johnson. Sigma Nu is represented on the faculty by W. J. Sumpstine.





Albert Washington
Ralph Burger
Kenneth Crawford
Hildreth Elwell
John Erskine



John Haudenshield
Theodore Johnson
Horace Kaufman
Warren Lancaster
Raymond McAllister
Paul Miller



Raymond Moore
Richard Porter
Goff Ramsey
Al Rodman
Claud Rutter
Richard Sant



Charles Shenk
Robert Spray
James Steele
Joseph Thomas
Victor Wicks
Charles Williams

N U . . .

Seniors—Paul Johnson, Roy Leitch, William Worthen, William Juergens, James Sotus, Oliver Vodrey.

Juniors — Donald Robinson, Robert Howe, Charles Hurford, Richard Darsie, Jack Baldwin, William Hanna, George Wehner, Joseph Gluck, Harvey Werkheiser, Robert Knox, John Cluss, Edmund Goodwin.

Sophomores—Charles Harrison, John Brown, George Davis, Gardner Gremillion, Richard Camp, Thomas Cramblett, James Sharp, Victor Wicks, John Kroll.

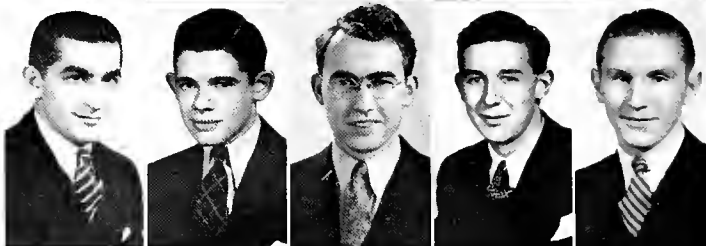
Freshmen—James Steele, John Erskine, Ralph Burger, Kenneth Crawford, Hildreth Elwell, John Haundenshield, Warren Lancaster, Raymond Moore, Richard Porter, Goff Ramsay, Claud Rutter, Robert Spray, Joseph Thomas, Charles Williams, Charles Shenk, George Belding, Paul Miller.



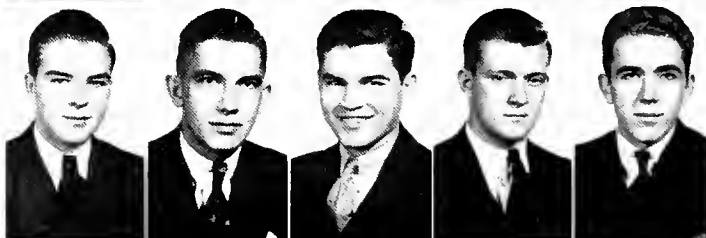
Ronald R. Hassig
 Melvin Mumper
 Lawrence Shingleton
 Irwin Ziders
 Clarence Devis



Milian Blistan
 Donald Emerick
 Donald Hassig
 Layton Horner
 Earl Klevins



Gerald Patterson
 Harold Knight
 Paul Meriage
 Raymond Stahl
 Harry Sykes



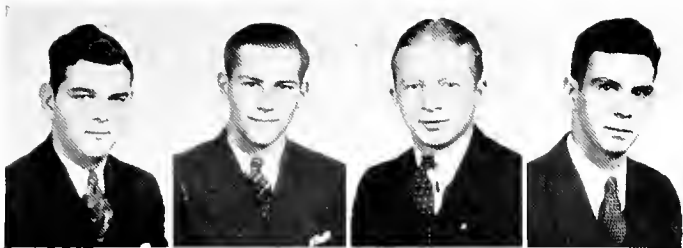
K A P P A

KAPPA ALPHA was founded in 1865 at Washington and Lee University. There are at present seventy active chapters, and eighty five alumni organizations scattered over the country.

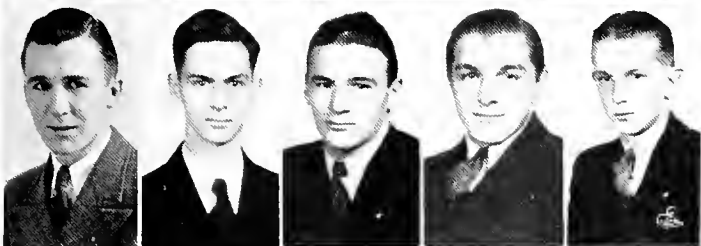
Beta Beta Chapter was founded at Bethany in 1903.

The colors are crimson and old gold. The flowers are the magnolia and the crimson rose. The publication is called the Kappa Alpha Journal. The president for the 1935-36 school term is Ronald R. Hassig. Kappa Alpha is represented on the faculty by E. E. Roberts, and W. H. Erskine.

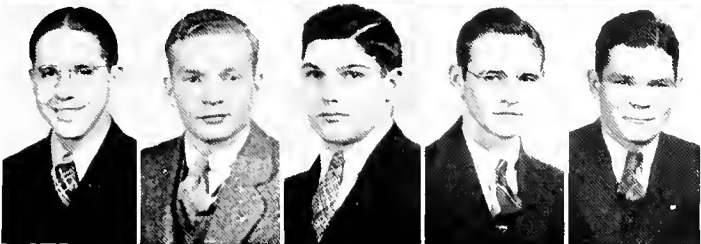




Fred Westwood
 Robert Wolff
 Joseph Angle
 John Bowman



Robert Campbell
 Joseph Dornan
 Raymond Hack
 Robert Lasch
 Frank McCann



Robert Morrow
 A. B. Noland
 William Pearson
 Harold Springer
 Doran Wickham

A L P H A

Seniors—Ronald Hassig, Lawrence Shingleton, Melvin Mumper, Irwin Ziders.

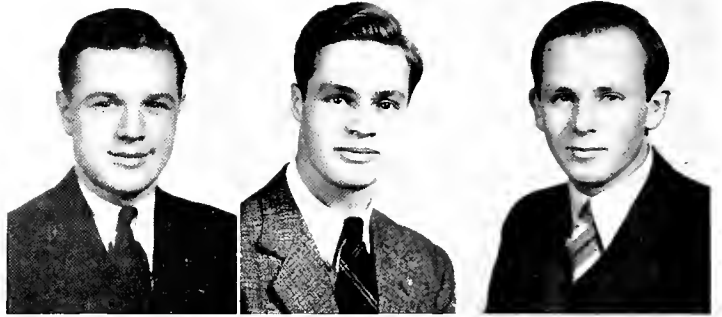
Juniors—Clarence Devis.

Sophomores—Milian Blistan, Donald Emereck, Donald Hassig, Layton Horner, Earl Klevins, Gerald Patterson, Harold Knight, Paul Meriage, Raymond Stahl, Harry Sykes, Fred Westwood, Robert Wolff.

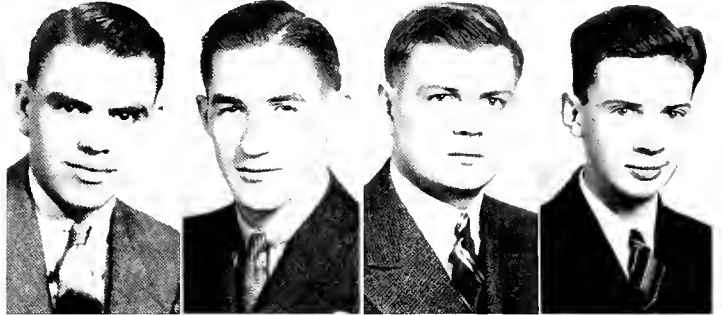
Freshmen—Joseph Angle, John Bowman, Robert Campbell, Joseph Dornan, Raymond Hack, William Lasch, Frank McCann, Robert Morrow, A. B. Noland, William Pearson, Harold Springer, Doran Wickham.



Steed Hockensmith
Merle Coe
Bruno Weber



Richard Eskey
Andrew McDonald
Wilson Shoaff
Blair Burkhart



PHI KAPPA

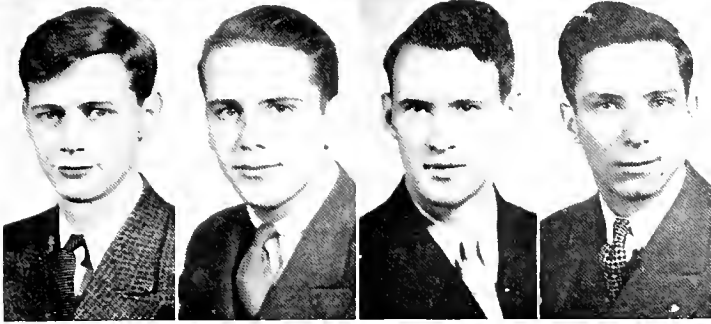
PHI KAPPA TAU was founded in 1906 at Miami University. There are at present Forty four active chapters and twenty eight alumni scattered over the country. Phi Chapter was founded at Bethany in 1923.

The colors are Harvard red and old gold. The flower is the red carnation. The publication is called "Phi Kappa Tau Laurel." The president for the 1935-36 school term is Steed Hockensmith. Phi Kappa Tau is represented on the faculty by Osborne Booth, and D. E. Stevenson.





Frank Hauber
 Robert King
 James McKinney
 Edward McVeigh



Thomas Rogers
 Clayton John
 Paul Johnston
 Robert Taylor

TAU

Seniors—Merle Coe, Steed Hockensmith, Victor Marconi, Bruno Weber.

Juniors — Richard Eskey, Wilson Shoaff, Andrew McDonald, Joseph Babcock, Waldo Carnahan, James McKinney, Blair Burkhart, Arthur Ruggieri.

Sophomores—Frank Hauber, Edward McVeigh, Thomas Rogers, Robert King, James Minissole.

Freshmen—Donald Hagerman, Clayton John, Robert Taylor, Roy Penn, Robert McKenzie.



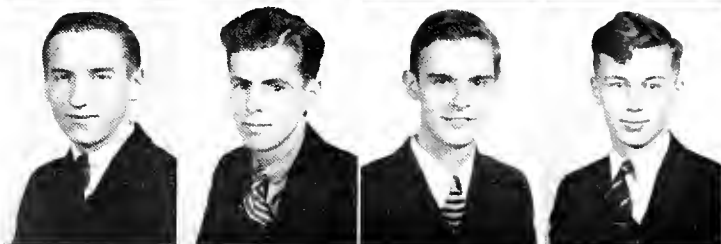
Blair Saxman
Wellman Dietz
Raymond Henthorne
Ashley Booth



Francis Elwell
Michael Bovan
Elmer Greskovich
Walter Hardesty



Albert Kuti
Donald McIlroy
James Miller
Barton Murray

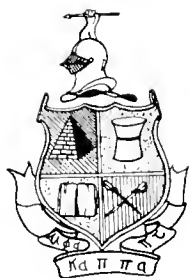


A L P H A

ALPHA KAPPA PI was founded in 1921 at Newark College of Engineering. There are at present twenty three active chapters, with one alumni organization.

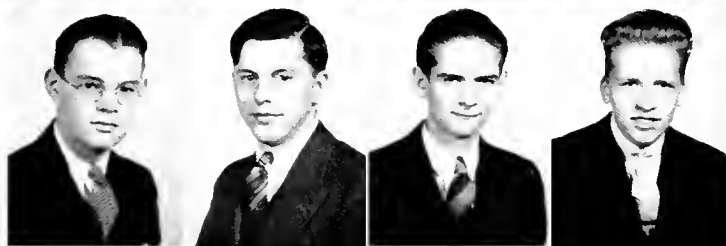
Lambda Chapter was founded at Bethany in 1924. The colors are dartmouth green and white. The flower is the yellow rose. The publication is called "The Alpha."

The president for the 1935-36 school term is Blair Saxman. Alpha Kappa Pi is represented on the faculty by Rush Carter, N. W. Evans, and F. R. Gay.

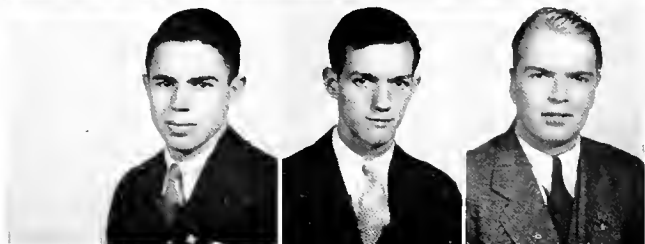




Ralph Nestmann
Charles Phillips
Craig Sipe
Earl Whiteman



Frank Woltz
Spencer Adamson
Robert Berger
Edward Sparks



Earl Smith
Clifford Thomas
Benjamin Wedd

KAPPA PI

Seniors—Blair Saxman, Raymond Henthorne, Wellman Dietz, William Castalano.

Juniors—Francis Elwell, Craig Sipe, Ralph Nestmann.

Sophomores—Elmer Greskovich, Earl Whiteman, Michael Bovan, Paul Miller, Charles Phillips, Barton Murray, Donald McIlroy, Walter Hardesty, Albert Kuti, Frank Woltz.

Freshmen — Earl Smith, Spencer Adamson, Benjamin Wedd, Edward Sparks, Robert Berger, Clifford Thomas.

Post Graduates—Arden Hanes, William McIlroy.



Amy Hettler
 Margaret L. Smith
 Ruth Fisher
 Ruth Gremillion



Loris Grimm
 Phyllis Hite
 Ann Jones
 Rose Keim
 Jane Schenck



Eleanor Webb
 Susan Worthen
 Edna Woods
 Regina Beck



ZETA TAU

ZETA TAU ALPHA was founded in 1898 at Virginia State Normal. There are at present sixty five active chapters and eighty one alumni organizations scattered over the country.

Theta Chapter was founded at Bethany in 1905. The colors are turquoise blue and steel gray. The flower is a white violet. The publication is called "Themis."

The president for the 1935-36 school term is Amy Hettler. Zeta Tau Alpha is represented on the faculty by Lucile Ball.





Betty Hough
 Jeannette Johnston
 Dorothy Johnston
 Mary Martha McAfee



Gale Davies
 Anne Bentley
 Winifred Graham
 Miriam Grimm
 Marguerite Hoffman



Lillian Kathryn Mallory
 Irene McCrory
 Jeanne Tremaine
 Delle Williams

A L P H A

Junior—Margaret I. Smith.

Sophomores—Ruth Gremillion, Amy Hettler, Rose Keim, Eleanor Webb, Edna Woods, Susan Worthen, Ann Jones, Phyllis Hite, Loris Grimm, Ruth Fisher, Jane Schenck.

Freshmen—Winifred Graham, Irene McCrory, Helen Hervey, Marguerite Hoffman, Anne Bentley, Betty Hough, Jeannette Johnston, Mary Margaret McAfee, Dorothy Johnson, Regina Beck, Miriam Grimm.



Alice Conner
 Jane Gay
 Mary Louise Bergner
 Betty Brandon
 Nancy La Master



Dorothy Niel
 Virginia Ramsey
 Betty Jane Schuppener
 Ruth Huffman
 Mary Stroman



Mary Lou Zeisloff
 Jane Aull
 Betty Aull
 Margaret Baab
 Audrey Bennett



ALPHA XI

ALPHA XI DELTA was founded in 1893 at Longbard College. There are at present fifty four active chapters and forty eight alumni organizations scattered over the country.

Delta Chapter was founded at Bethany in 1903. The colors are double blue and gold. The flower is the pink rose. The publication is called the "Alpha Xi Delta. The president for the 1935-36 school term is Alice Conner, Alpha Xi Delta is represented on the faculty by Anna Mary Kemp and Ruth McKinnis.





Marian Chapman
 Mildred Leach
 Alberta Foster
 Betty Alderman
 Jane Cluss



Louise Elkin
 Virginia Forsythe
 June Galley
 Jean Klinck
 Jean McKenna



Doris Schuppener
 Dorothy Sprowls
 Virginia Tidwell
 Betty Wentworth
 Betty Werner

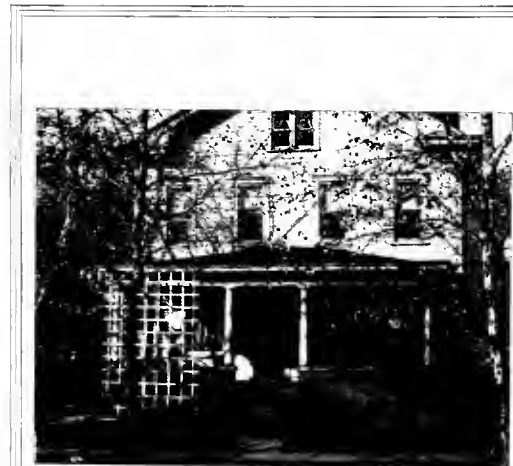
DELTA

Seniors—Mary Louise Bergner, Dorothy Neil, Alice Conner, Virginia Ramsey, Nancy La Master, Betty Jane Schuppener.

Juniors—Ruth Huffman, Mary Lou Zeisloft.

Sophomores—Betty Aull, Jane Aull, Margaret Baab, Marian Chapman, Mildred Leach, Jean Porter, Mary Stroman.

Freshmen — Betty Alderman, Jane Cluss, Louise Elkin, Alberta Foster, Virginia Forsythe, June Galley, Jean Klinck, Jean McKenna, Doris Schuppener, Dorothy Sprowls, Virginia Tidwell, Betty Wentworth, Betty Werner.



Martha Jean Miller
Dorothy Adams
Fay Hedges



Frances Goodnight
Gracia Parsons
Josephine Sheets
Helen Fife



Marian Bode
Hanah Cope
Naomi Wolf

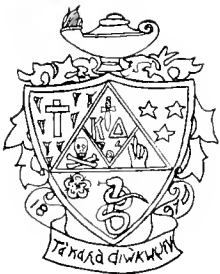


K A P P A

KAPPA DELTA was founded in 1897 at Farmville Teachers College. There are at present sixty two active chapters, and ninety alumni organizations scattered over the country.

Sigma XI Chapter was founded at Bethany in 1923. The colors are olive green and white. The flower is the white rose. The publication is called the "Anglees."

The president for the 1935-36 school term is Martha Jean Miller. Kappa Delta is represented on the faculty by Thelma Thompson.





Margaret Sweeney

Marjorie Packard

Betty Plackett



Goldye Wentzel

La Verne Woollenweber

Dorothy McAdams

Betty Horst



Nancy Kantner

Betty Mullens

Mary K. Gabler

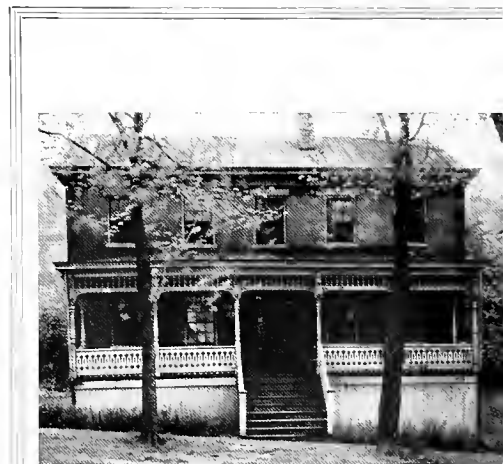
DELTA

Seniors — Dorothy Adams, Frances Goodnight, Fay Hedges, Martha Jean Miller, Gractia Parsons, Josephine Sheets.

Juniors—Marian Bode, Helen Fife, Naomi Wolf.

Sophomores—Marjorie Packard, Betty Plackett, La Verne Woollenweber.

Freshmen—Margaret Sweeney, Betty Horst, Nancy Kantner, Ruth Knowles, Betty Mullen, Norma McAdams, Marie Simca.



Bertha Fietz
Lois Mayne
Velma Pease



Marian Partridge
Paula Strain
Esther Wiles



Marjorie Aldrich
Geneva Bamford
Edith Church



ALPHA DELTA

ALPHA DELTA THETA was founded in 1919 at Transylvania College. There are twenty four active chapters and eleven alumni chapters scattered over this country.

Omega Chapter was founded at Bethany in 1932. The colors are turquoise blue, crimson and silver. The flower is the sweet pea. The publication is called "The Portals."

The president for the 1935-36 school term is Bertha Fietz.





Irene Martin
Rose Merlini
Margaret S. Smith



Helen Stein
Marjorie Heckel



Isabell Tomlinson
Jean Vetter

THETA . . .

Seniors—Bertha Fietz.

Juniors—Lois Mayne, Velma Pease, Marian Partridge, Esther Wiles, Paula Strain.

Sophomores—Marjorie Aldrich, Geneva Bamford, Edith Church, Irene Martin, Rose Merlini, Margaret S. Smith, Helen Stein.

Freshmen—Marjorie Heckel, Isabell Tomlinson, Jean Vetter.

STUDENT BOARD OF GOVERNORS

THE Student Board of Governors, composed of a junior and senior from each fraternity, sorority; non-fraternity and non-sorority group, is maintained by the student body to define, direct and represent student opinion.

This body acts as an intermediary between the College Administration and the student body. It also supervises and finances student publications, athletics, social activities, debates and matters of general student interest.



GAMMA SIGMA KAPPA

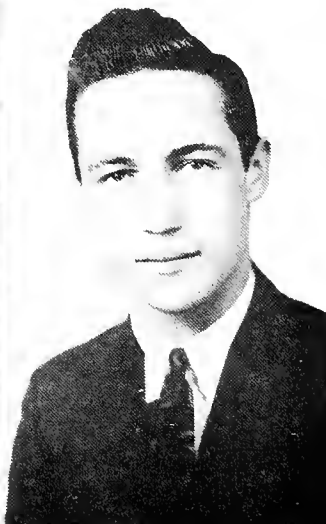
THESE three greek letters stand for "Knowledge, Wisdom, and Power." This name was chosen by the eleven charter members who established this local honorary scholastic fraternity Feb. 10, 1933. This fraternity was established for the sole purpose of recognition for scholastic achievements at Bethany College. In order to join this circle of "intellects" the applicant must have acquired and maintained a scholarship average of 2.5 for five consecutive semesters.

SEATED—Maffet, Keim, Warstler, Hockensmith, Bode, Conner, Fietz. STAND-
ING—Saxman, Hassig, Hettler, Shoaff, Zeisloft, Carlin, Fink, Hess, Horner,
Hanna, Zbiec, Nestmann, Huffman, Chorpenning, Parsons.



SEATED—Fietz, Goodnight, McGuffie. STANDING—Castellano, Brandon.

THIS year's Bethanian staff has found it trying to put out a book of a caliber which is expected of a Bethany College Year Book, with a budget quite a few hundred dollars under former years. Not only this, but an annual was in great doubt for quite a time, but in the end we were given permission to edit it. No particular theme was chosen, we have just tried to give the student body a book that can be treasured and help to recall those pleasant days spent on Bethany's hill. We make no apologies for the book, for we believe it a good book, but you are the judge, the only thing the Staff can say is, "We hope it pleases you".



- Ronald R. Hassig
Editor
- Donald G. Hassig
Soph. Editor
- Lawrence Shingleton
Associate Editor
- Wando Zbiec
Society Editor and Women
Sports
- Milton Carlin
Sports Editor
- Irwin Ziders
Sports Editor
- Cohn, E. G. Hess
Photography
- Robert Wolff
Art
- Morrow and Klevins
Copy writers

FIRST ROW—D. Hassig, W. Zbiec, R. Hassig, Gabler, Wolff. SECOND ROW—Sotus, Wentworth, Kantner, Sweeney, Morrow. THIRD ROW—Pollock, Hess. INDIVIDUAL—Ronald R. Hassig, Editor-in-Chief.

THE BETHANIAN

Since the fifteenth of March, 1883, the BETHANY COLLEGIAN has been bringing the students of the college the news of their little community. Before that time, the paper had existed under different titles, but for fifty-three years, it has been the COLLEGIAN to whom the students have turned for a record of happening at Bethany.

That half-century has seen immense change, both in the college itself and in the outside world. It is the desire of the COLLEGIAN to advance with this progress, for a bi-weekly newspaper such as we have, becomes virtually dead if it prints nothing but cut-and-dried accounts of events. Since COLLEGIAN editors are necessarily handicapped in the field of news, it has been their aim this year to stimulate some thought and action on the part of their fellow students. Perhaps it will take another student generation to realize this purpose, but if it takes ten more, the result will be worth all spent in time and effort.

With hope for that achievement, we who inherited the COLLEGIAN this year, pass its guidance on to our successors.



Francis Goodnight..... Editor

(back to front)

FIRST LINE—Taylor, Forsythe, Pease, Hittenberger, Johnson. SECOND LINE—Wroblewski, Zbiec, McCann, Penn, Wiles, Wolff. THIRD LINE—McAfee, Wentworth, Sotus, R. Stahl, King, Stein, Bentley, Zeisloft, Cluss, Sprowls, McGuffey. FRONT ROW—Carlin, Gluck, Goodnight, J. Cluss, Woolenweber.

THE COLLEGIAN

THE VARSITY "B" CLUB

THE VARSITY "B" CLUB is composed of men who have participated in interscholastic athletics to the satisfaction of the coaches and have thus obtained the right to wear a "B". Last year the Varsity "B" Club voted for a standard letter and Sweater in preference to the many different shades and sizes of former years.

Men in this club are those who obtain joy and pleasure from participation in sports, because Bethany does not subsidize its players, thus it is easily gathered that this Club is composed of men who have the same ideals, etc. toward Athletics rather than those paid athletes, and from this the Club obtains its strength and unity.

M O O M O O M O O . . .

BETHANY'S original pep fraternity raised enough hullabaloo this year to make both students and faculty members realize that even the humble cow must have its place on the Bethany campus. During the football season the Tri-Moo's responded cheerfully to the call of their leader, and when the clock in the tower struck twelve, sundry activities would begin, resulting in all sorts of laugh provoking antics. The most cherished interest of the cow-lovers was to keep the student body full of pep and spirit during the football and basketball seasons.

The calves prove their ability to take it, when the bulls who give them a liberal helping of pine splinters from their weighty paddles, but they love it, just as long as they can support the athletic teams and urge them on to victory.

SEATED—Hanna, Robinson, Baldwin. KNEELING—Fink, Funk, Hess, Doepken, Eskey, Horner, Whitehead, McQuown, Bupka. STANDING—Mumper, Wroblecki, Blistan, Hauner, Rodman, Wolf, Sykes, Pearson, Croushore.



ON FLOOR—Hockensmith, Ehrenfeld, Johnson, Carlin, Hemmington, Marconi, Davis, Rodgers. STANDING—Hanna, Doepkin, McQuown, Baldwin.

W O M E N ' S A T H L E T I C A S S O C I A T I O N . . .

THE Women's Athletic Association was organized three years ago to encourage athletics for the women of the campus. By awarding various cups, letters, and the letter "B," the association holds the interest of its members and continues to grow rapidly.

To gain and retain membership, each girl is required to earn two hundred points in some sport, one hundred additional points per semester, and maintain a satisfactory academic standing. A "B" is earned with one thousand points. With these incentives the organization has become one of the strongest on the campus.

W . A . A . C A B I N E T . . .

THE W.A.A. Cabinet which consists of the physical education instructor for women, the officers of W. A. A. and leaders of the different sports on the campus, is the executive body of the W.A.A.

All the committees in charge of W.A.A. activities are headed by members of this body. The leaders, chosen because of their interest in their respective sport, have full charge of the practices, tournaments, and the awarding of letters to the winning participants. The members of the Cabinet are the officers of the W.A.A. and the following leaders:

Archery — Betty Aull; Basketball — Gertrude Ross; Croquet — Mary Stroman; Deck Tennis — Ruth Fisher; Hiking — Ruth Huffman; Hockey — Glada Warstler; Horseshoes — Ruth Huffman; Swimming — Betty Plackett; Tennis — Betty Jane Schuppener; Volleyball — Esther Wiles.

FIRST ROW—Packard, Partridge, Miss Burrows, Zbiec, Warstler, Wiles. SECOND ROW—White, Grimm, Ramsey, Hettler, Rosser, Stein, Hedges, Schuppener, Ross, Lane, Plackett. THIRD ROW—Weston, Garner, Strain, Hittenberger, Pease, Wylie. FOURTH ROW—Woods, Church, Hoffman, McGuffie. FIFTH ROW—Keim, Fisher, Stroman, Conner.



SEATED—Packard, Partridge, Miss Burrows, Zbiec, Stroman. STANDING—Ross, Huffman, Plackett, Schuppener, Wiles, Warstler.

Y . W . C . A

THE Y. W. C. A. is one of the largest organizations on the campus. All women students of the college are eligible for membership. The Y. W. C. A. has many kinds of different and useful programs for its members during the year. The Big and Little Sister party for the upper-class girls and the little sisters that have been assigned to them during the summer helps to acquaint the Freshmen with the upper class girls. Dances are held for the members and their guests. Discussions are held on various subjects at the meetings. The association procures chapel speakers and holds services for the whole student body.

Y . W . C . A . C A B I N E T

THE group which plans the activities and handles the executive part of Y. W. C. A. is the cabinet.

In the Fall the members of the Cabinet held a retreat at Oglebay Park. Miss Ann Graybill was present to conduct discussions and lead devotions. The purpose of the retreat was to study the function of the Y. W. C. A. and to plan a program by which it would be possible to carry out this purpose.

Members of the cabinet are Jo Sheets, president; Mary Lou Zeisloft, program chairman; Dorothy Niel, secretary; Amy Hettler, treasurer; Mary Stroman, social chairman; Nancy La Master, devotional chairman; Geneva Bamford, membership chairman; Jean Porter, publicity chairman; and Rose Keim, conference chairman; Florence Manley, music chairman.

FIRST ROW—Ramsey, Davies, Cluss, Sprawls, McKenna, Heckel, Warstler, D. Manley, Zbiec, M. Grimm. SECOND ROW—Hough, Bamfort, Zeisloft, Keim, Niel, La Master, Sheets, Stroman, F. Manley, Porter, Hettler. THIRD ROW—L. Grimm, White, Plackett, Johnson, Church, Bentley, Tomlinson, Allen, Partridge, Webb, M. S. Smith, B. Schuppener, Wylie, MacAfee, Horst, Elkins, Fisher, Bergner, Hoffman, Strain, Schenck, D. Johnson. FOURTH ROW—Conner, Huffman, Packard, Wentworth, Tidwell, Werner, Foster, Aldrich, Baab, Forsythe. FIFTH ROW—Hittenberger, Alderman, Wiles, D. Schuppener, Klinck. UNDER ARCH—Gremillion, Jones, Galley, Hite, Woods, McCory, Leach, McGuffie, Chapman.



SEATED—Hettler, Niel, Sheets, La Master, Stroman. STANDING—Keim, Zeisloft, Bamfort, Manley, Porter.

C . W . C . C

THE College Women's Church Council is one of Bethany's most important religious associations. The members are chosen from the women of the college and hold semi-monthly meetings. The Council takes charge of various church programs and sponsors the kindergarten.

The purpose of the Council is two-fold: To give students of the college a voice in the life and program of the church, and to widen and strengthen the appeal of the church among students.

The officers of this year's College Women's Church Council were: President—Nancy La Master; Vice-president — Dorothy Niel; Secretary — Martha Jean Miller, and Treasurer—Esther Wiles.

S T U D E N T B O A R D O F D E A C O N S

THE Student Board of Deacons is a body of eleven members chosen by the Church Board, the Student Board of Governors, and the previous Student Deacons from the junior and senior classes. It is the purpose of this body to take an active part in church affairs, serving communion, taking charge of various services and interesting the College student body in the Church. It is the aim of the Board to make the students church-conscious by personal participation.

This organization is one of the few in existence in the United States today, having its origin at Yale University.

SEATED—Pease, Miller, La Master, McGuffie, Sheets. STANDING—Keim, Hettler, Niel, Manley, Wiles.



SEATED—Hess, McQuown, Coe, Sipe. STANDING—Hassig, Johnson, Cochran, Hockensmith.

MEN'S GLEE CLUB .

THE MEN'S GLEE CLUB has always been one of Bethany's greatest assets. This year, besides the usual vocal arrangements, some instrumental music by the members has been introduced into the program. The Trumpet Trio and the Flute and Clarinet Duet gave variety to the program which was given in many cities as well as on the campus.

The male quartet which is another feature of the Glee Club, appeared in public independently several times. It also appeared on the program given by the club.

President — William Hanna; Manager — Ward Ehrenfeld; Quartet — First tenor — Gardner Gremillion, Second tenor—Ardenne White, First bass—Arden Hanes, Second bass — Alfred Washington. Trumpet Trio — William McIlroy, Arden Hanes and Clayton John.

Duet — Flute — Blair Burkhart, Clarinet — Richard Camp.

TREBLE CLEF

TREBLE CLEF is the organized girls' glee club on the campus. It is under the direction of Professor Rush Carter, and it has greatly improved this year. The club is composed of thirty girls with Jean McKenna as accompanist.

Treble Clef and the Men's Glee Club combined presented a program of Christmas music before the holidays. The club presented a chapel program of several numbers by the club, a solo, and a number by the trio. The trio composed of Martha Jean Miller, Alberta Foster, and Alice Conner appeared several times in chapel programs during the year. A cantata has been presented each Spring since the re-organization of the club.

Officers: President—Alice Conner; Vice-president—Sarah Weston; Secretary—Martha Jean Miller; Business Manager—Nancy La Master.

FIRST ROW—Ehrenfeld, King, Washington, Hanes, Miller, Burkhort, Camp White, Niekamp, Sant. SECOND ROW—McIlroy, Thomas, Baber, McDonald, Brown, Prof. Carter, Herford, Nestmann, Cochran, Johnson, Darsie.



FIRST ROW—Beck, Ramsey, Vetter, La Masters, Miller, Conner, Keim, Mallory, Webb, Huffman, Heckel. SECOND ROW—Hough, McKenna, Wentworth, Alderman, Foster, Wiles, Zbiec, Warstler, Manley, Hite, Fair. THIRD ROW—McCrary, Forsythe, Kantner, Wentzel, Aldrich, Wills.

THE BETHESPIAN CLUB

THE BETHESPIAN CLUB is the dramatic society on the campus. It was reorganized this year, and a new constitution was drawn up. The requirements were raised, and membership is granted only upon a definite amount of satisfactory work done in dramatics, either by acting or by doing stage work of any kind. Each year the club presents a number of three-act plays and shorter plays. The Bethespian Club works in conjunction with Alpha Psi Omega in presenting and sponsoring dramatic productions. Officers: President—Dorothy Adams, Vice-president James Sotus, Secretary—Martha Jean Miller, Treasurer — Jack Walters, Sponsor — Dr. T. V. Calkins.

ALPHA PSI OMEGA .

ALPHA PSI OMEGA is the national honorary dramatic fraternity. Beta Gamma Cast of Alpha Psi Omega has endeavored to sponsor all dramatic productions at Bethany and to encourage and stimulate students dramatically inclined. Membership in Alpha Psi Omega is obtained only after fulfilling certain requirements of dramatic activity. Students are elected into the fraternity as a reward for their worthy efforts in participating in dramatic productions.

The fraternity assists the local Bethespian Club in sponsoring plays throughout the year. Officers: President—Nancy La Master, Vice-president—Jack Walters, Secretary-Treasurer—Mary Stroman, Sponsors — Prof. E. E. Roberts and Dr. T. V. Calkins.

SEATED—Walters, Adams, Miller, Sotus. STANDING—La Master, Partridge, Stroman, Zeisloft, Conner, Hess, McIlroy, Don. W. McIlroy, Zbiec, Stein, Wentzel, Bode, Parsons.



SEATED—Conner, Adams, La Master, Stroman. STANDING—Walters, Hess, McIlroy, Hemington, Sotus.

M E N ' S D E B A T E

THE subject dealing with the discussion of granting the Congress power to override the decisions of the Supreme Court has brought Bethany's debate team more success than ever before. Of all its decision debates, the team won eighty per cent, also tying for second place in the tournament at Westminster.

As part of their program the team debated before high schools. They were guests at Bethany, Minerva, Warwood, and Wellsburg.

This year Bethany has become a charter member of the New Allegheny Mountain Congress organized for the purpose of dealing with social problems of today.

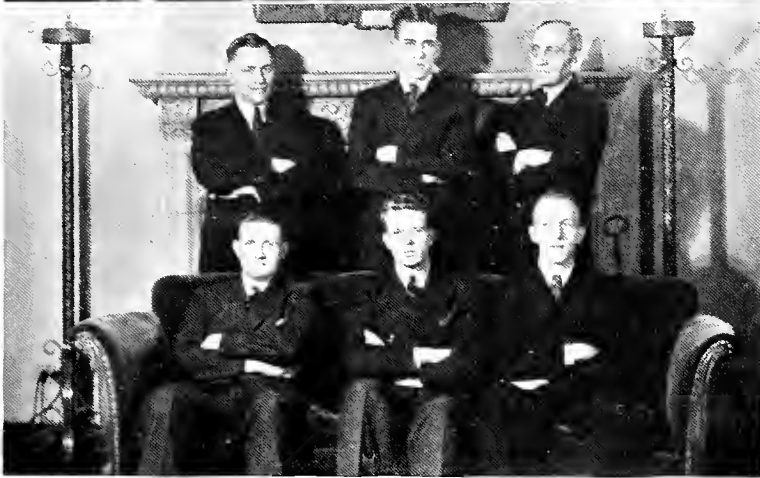
The members of the team are: P. Netting, E. G. Hess, W. Jeurgens, C. Phillips, W. Carnahan, R. Stever, R. Stahl, E. Smith, L. Pugh, C. Johnson, Prof. Booth, Coach.

T A U K A P P A A L P H A .

TAU KAPPA ALPHA is the national debating fraternity. On Bethany's campus it is entirely inactive but it is the prize that every member of the college's debate squad tries to earn. Having a very limited membership, and since all debates are taken care of by the debate team, it can serve only as an incentive for the squad.

It is composed of those who have engaged in inter-scholastic debates. There are two faculty members in the fraternity. Professor Osborne Booth and Professor Miller. The student members are: Waldo Carnahan, Joseph Gluck, Emerson Hess, William Jeurgens, and Charles Phillips.

SEATED—Stahl, Smith, Pugh, Johnson. STANDING—Netting, Hess, Juergens, Phillips, Carnahan, Stever.



SEATED—Juergens, Hess, Phillips. STANDING—Prof. Booth, Carnahan, Prof. Miller.

STUDENT BOARD OF PUBLICATIONS . . .

THE STUDENT BOARD of Publications has this year faced a very grave problem, to make the Bethanian and Collegian pay, thus making up the deficit contracted by these publications in former years.

The Board of Publications has made its aim, to have these publications on time and they have succeeded.

This organization is composed of: Business manager, Donald Robinson; Publicity agent, Joseph Gluck; Editor of the Collegian, Frances Goodnight; Editor of the Bethanian, Ronald R. Hassig.

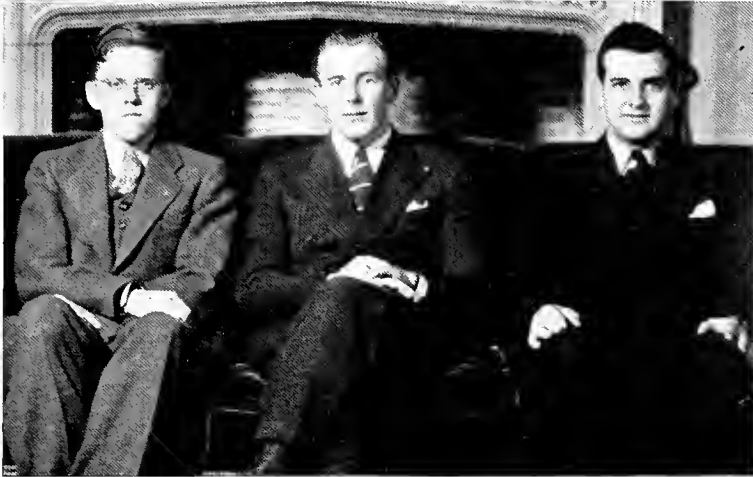
BUSINESS STAFF . . .

DONALD ROBINSON, Business Manager of the Bethanian and Collegian, has done an excellent job in directing the financial affairs of these two publications. By his untiring efforts he was able to obtain enough advertising for both the Bethanian and the Collegian, to make them a paying proposition.

Robinson has not only done a good job as Business Manager but is one of our football players and holder of an important office in the Sigma Nu Fraternity.

The Business Staff is composed of: Assistants, John Cluss, and Richard Camp.

SEATED—Goodnight, Hassig. STANDING—Robinson, Gluck.



Cluss, Robinson, Camp.

FRENCH CLUB . . .

THE FRENCH CLUB was founded in 1935 and is under the general supervision of the French Department. The club provides for those who are interested in the French language and people beyond the ordinary classroom work. Members are able to use their knowledge of French through conversation, songs, games and dramatic productions. The meetings are conducted in French.

Membership in the club is limited to students who are majoring or minoring in the department; freshmen are not eligible.

The club has had as an honorary member this year MLE. Françoise Cusin, the French Exchange Student.

The officers of the club are: Helen Louise McGuffie, President; Mary Lou Zeisloft, Vice-president; Helen Stein, Secretary; Wanda Zbiec, Treasurer; Sponsor—Miss Mahaffey.

GERMAN CLUB . . .

THE GERMAN CLUB has functioned actively this year. Miss Louise E. Stone is sponsor. Membership in the club is open to all German students above freshman rank and to freshman students after the first semester. Its aim is to promote interest in the knowledge of the German people, their language, history, literature, and civilization. The club has, in addition to its regular monthly meetings, sponsored the presentation of a German play. The club has an honorary member, Herr Bruno Weber, German Exchange Student. The officers are: President—Frank Hauber, Vice-president—Charles Phillips, Secretary—Wanda Zbiec, Treasurer—Blair Saxman.

SEATED—Stein, Miss Mahaffey, McGuffie, Miss Stone, Zeisloft. FIRST ROW
 STANDING—Wentzel, Wolf, Bergner, Conner, Zbiec, Huffman, Schuppener,
 Ciarrochi, Wylie. SECOND ROW STANDING—Bamford, Smith, Wiles, Keim,
 Hittenberger, Baab, Manley.



FIRST ROW—Bentley, Zbiec, Phillips, Hauber, Miss Stone, Saxman.—SECOND
 ROW—Sotus, Pease, Garner, Gremillion, Weber, Wolf, Fietz, Netting. THIRD
 ROW—Kinsey, W. Garner, Davis, Horst, Kuti, Elwell. FOURTH ROW—Snyder,
 Kroll, Baldwin, Dietz.

THE MINISTERIAL ASSOCIATION . . .

THE MINISTERIAL ASSOCIATION is one of the oldest groups on Bethany's Campus.

The Association is organized by and for the Ministerial Students. Ordained faculty members and other interested people attend its meetings. It is to provide a closer and a better fellowship among those students preparing to preach.

It holds a stag-dinner and a Co-ed banquet. The other programs are social affairs, followed either by a speaker from the faculty or a guest speaker, with one of the ministerial students having charge of the meeting. These programs are planned in view of helping and orienting the future ministers.

Officers are: President—Ray L. Henthorne; Vice-president — Donald Cover; Secretary-Treasurer — James Miller.

PHYSICAL SCIENCE CLUB

THE PHYSICAL SCIENCE CLUB was newly formed this year under the efforts of several students and the heads of the various science departments. This year the Membership is limited and admission is gained only by invitations of the members of the club. The Club has for its purpose the stimulation of scientific interest on the campus and the programs are planned to carry out this idea. The programs consist mainly of scientific topics of an extra-curricular nature delivered by the students. This club is one of the outstanding organizations on the campus and is noted for its discussions on topics of interest to all physical science men.

The Officers are: President — Waldo Carnahan, Vice-president — Paul Johnson, Secretary — Fay Hedges, Publicity agent—John Cluss.

SEATED—Maynard, Cover, Henthorne, Miller, Booth, Prof. Miller. STANDING--
Adamson, Pugh, Taylor, Johnson, Thomas, Murray, Netting, Horner, Stever.



SEATED—Hockensmith, Prof. Erskine, Cope, Zbiec, Cluss, Hedges, Carnahan,
Johnson, Sheets, Packard, Montagna. STANDING—Prof. Dawson, Prof. Allen,
McDonald, Elwell, Maffett, Phillips, Meriage, Sipe, Coe, Brandon, Shoaff, Woltz,
Fietz, Darsie, Baer, Hauber.

COLLEGE ORCHESTRA

FOR the first time a definite program has been arranged for the college orchestra to give at various occasions. This program was capably rendered by the members of the orchestra, twenty-eight in number and members of all the classes.

Even though the orchestra is not one of the most important organizations on the campus, it provides a pleasurable and useful passing of time to those interested in music.

Under the direction of Professor Rush Carter, the orchestra has developed into an integral part of the aesthetic part of the student life in Bethany.

CHURCH CHOIR . . .

THE BETHANY MEMORIAL CHURCH CHOIR is one of the most useful organizations of the college. It is under the direction of Professor Rush Carter, and once again, it has had a most successful year.

During the year it supplied the church with music every Sunday, and also gave several special programs. One Sunday evening the choir gave a recital of selections by Mendelssohn. Several chapel programs of music by the choir were presented. The Christmas cantata, "Bethlehem", was presented in the First Christian Church at Wellsburg before being presented at Bethany. The cantata was considered the best musical presentation of the year. An Easter cantata was also given.

A large part of the success of the choir is due to the fact that almost all of them are members of the men's or women's glee clubs and that Professor Carter is an unusually fine director.

FIRST ROW—Minnesale, Coe, Alderman, Sparks, Niekamp, Prof. Carter, Phillips, Pearson, Barnhart, Mallory, Manley. SECOND ROW—Camp, Baber, Burkhardt, McIlroy, Murray, John, Hanes, Ramsey.



FIRST ROW—Bode, Zbiec, M. Miller, Conner, Keim, Mallory, Warstler. SECOND ROW—Prof. Calkins, La Masters, Hettler, Vetter, Worthen, Hite, Manley, Hanes. THIRD ROW—Darsie, Johnson, Maynard, White, Prof. Carter, Washington, McIlroy, Funk.





BOOK FIVE FEATURES





BOOK FIVE FEATURES



Doris Schuppener Enjoys Winter.

Library—Scene of Toil and Trouble.



Baab Contemplates Being a Fish.

Wylie and Betty Jane Schuppener Smile Happily.



Just Child's Play.



Sweeney Smiles for the Boys.

Ye Bethany Convent.



View of Bethany's Campus.

Oglebay Hall of Agriculture
Lures Two Students.

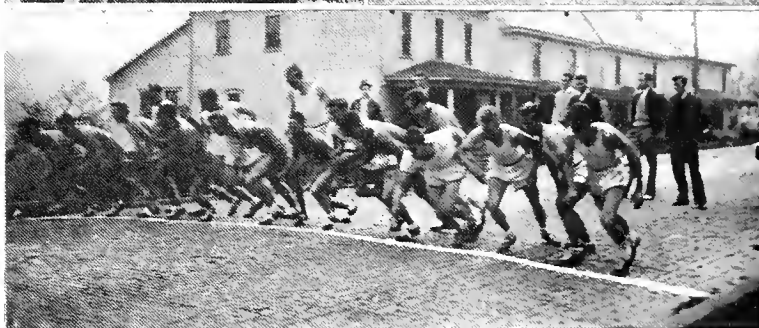


The Plague.

Chorpenning, Washington,
Andrews and Wanda Zbiec
just had to be in the Annual.



Campus Decorations—By
Freshmen.



Horner's Cross Country Team
Starts.

McKenna—Freshman Heart
Throb.



Pat and Mary Kay—Where's
Goldye?

Class is over.





Bethany Pike—Plus Ice.



Berger Studies Too Late.

Cohn Photographer Supreme.



Sue and Dude with—Dr. Erskine Onlooker.

More Ice From Buffalo.

Lillian and Buzzy Cool Off With Ice Cream.

View of Bethany With Church Dominating the Picture.



Shenk Poses.

Freshmen out in force for foot-
ball game.



Nature trail beauty.



Sykes, Croushore, Boyd,
Campbell, and Wickham,
Before Class.

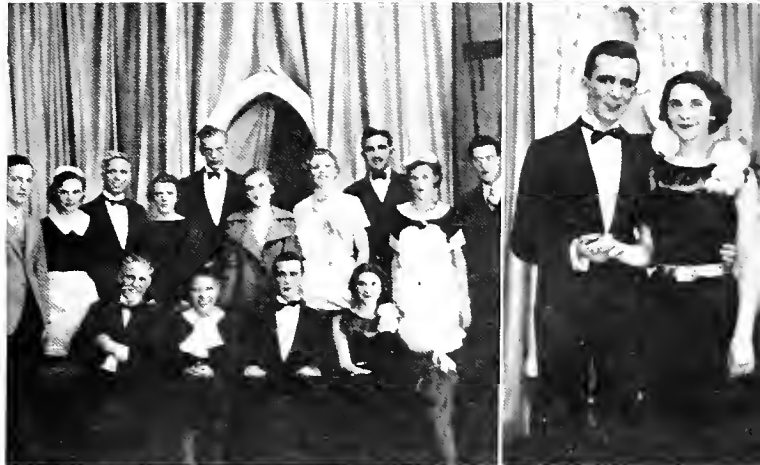


Kaufman and Washington try
to impress the Prof.



Freshman Play (cast)

Campbell and McAdams—
Leading role in Freshman
Play.



Ye Olde Bonfire.

Seven Minutes Gone—
Class Cuts.



WE TAKE THIS OPPORTUNITY
TO THANK OUR ADVERTISERS
FOR THEIR PART IN
THE 1936 BETHANIAN

BUSINESS MANAGER



Bethany College

WHERE PROGRESSIVE PROCEDURES, HIGH
STANDARDS, AND A CHRISTIAN
CULTURE ARE COMBINED FOR THE
EDUCATION OF YOUTH





STUDY under the right light is a pleasure. No strained, puckered forehead. No "wish I didn't have to" expression. With certified I. E. S. lamps light falls properly upon the book.

Avoid eye strain by using ample light. Our expert's advice on lighting costs you nothing. Ask for his services.

MONONGAHELA SYSTEM

Eastern Ohio's Greatest Store



THE HUB

STEUBENVILLE, OHIO

Everything for every
need — under one roof

Compliments of

A. POLLACK

"CROWN STOGIES"

Joe P. FAHEY, Inc.

FLOWERS

31 Twelfth Street Call Wheeling 5300

JOHNNIE'S MARKET

Yours I. G. A. Store

Phone 60 Wellsburg

Compliments of

THE FORD GARAGE

801 Main St.

Wellsburg, W. Va.

KENNEDY HARDWARE CO.

SPORTING GOODS

1063 Main St.

Wheeling

Compliments of

KEYSTONE SHOE STORE

"If its Keystone, its the Best"

7th and Charles Sts.

Wellsburg

Phone 87

24 Hour Service

Wellsburg Auto Wreckers

New and used parts for all cars and trucks

Tires — Batteries — Glass — Springs

2nd and Charles Sts.

Wellsburg

REPAIRING AND TOWING

OLMSTEAD BROS. CO.

PAPER

1413-1415 Main Street

Wheeling, W. Va.

COMPLIMENTS OF
WEIRTON STEEL COMPANY
WEIRTON, WEST VA.

Compliments
to
BETHANY COLLEGE
from
AMBROSE
HABIG

SPEARS BROS. INC.

Phone Wheeling 345

PENZOIL GAS

FIRESTONE TIRES

15 Independent Service Stations in the

WHEELING DISTRICT

Photo Crafters

40 Twelfth Street
Wheeling, W. Va.

Compliments of

**SCIO CHINA
COMPANY**

PHONE
WHEELING
9946

POTTERY
CHINAWARE
GLASSWARE
DINNERWARE

1002 Main Street

BEST WISHES

TO

BETHANY COLLEGE

COMPLIMENTS OF

**WHEELING BOOK SALES
AND NOVELTY CO.**

WHEELING, WEST VIRGINIA

Compliments

CONNER ELECTRIC CO.

**ELECTRICAL
APPLIANCES**

11th and Market St.

Wheeling

**THE
CLOVERDALE DAIRY
COMPANY**

**Perfectly Pasteurized
Milk and Cream**

"Delivered to your door"

Wheeling

Phone 2860

Compliments of

OTT-HEISKELL CO.

Distributors of

Crosley Shelvador

and

Tri-Shelvador Refrigerators

"The Kitchen Mark of Good Taste"

86-19th St.

Wheeling, W. Va.

Compliments

**STONE and
THOMAS**

DEPARTMENT STORE

1030 Main St.

Wheeling

Compliments of

**HOLDERMAN
MOTOR SALES**

When Buying see the

NEW NASH

53 Marshall St.

Wheeling, W. Va.

GEO. E. STIFEL CO.

1156 Main Street

Wheeling

Phone 5044



Compliments

THE SHERWIN-WILLIAMS CO.

1018-20 Market St.

Wheeling, W. Va.

Phone Wheeling 4044

PAINTS, WALL PAPER AND BRUSHES
PAINTERS AND PAPER HANGER SUPPLIES

EVERYTHING TO WEAR **THE HUB**

Market and Chapline Streets at Fourteenth
Wheeling, West Virginia

BRUCE H. SEABRIGHT

THE FRONT COMPANY

ELECTRICAL SUPPLIES

1117 Main St.

Wheeling 278

CAPITOL GARAGE

Hawley Bldg. Wheeling, W. Va.

A modern fireproof garage, offering
service of the highest type.

STORAGE - WASHING - REPAIRING
SERVICE TO HOTELS

CRESCENT ICE CO.

ICE and COAL

3007 Chapline St.
WHEELING 3050

COOEY-BENTZ CO.

FURNITURE

3601 Jacob St.

Wheeling

Compliments of
**COSTANZO
COAL MINING
COMPANY**

**BEST GRADE
DOMESTIC
COAL
DUSTLESS**

Phone Warwood 12 or 13

BEST WISHES
to
BETHANY COLLEGE
from
THE STERLING OIL CO

Refiners of
**Sterling Chrystal Green
Gasoline**
A Quaker State Product
and
Super Fine Lubricants

BEST WISHES
to
BETHANY COLLEGE
from
ROBERT L. RAMSAY
CONGRESSMAN

THE TWO BEST PLACES TO EAT
HERE and HOME
TRY OUR TASTY SANDWICHES
YOU'LL ENJOY OUR COFFEE

HENDERSON'S

12th and Chapline St. Wheeling

TAXI

WHEELING CAB CO.

25c Zone Rates
5 can Ride for the Price of 1

Phone Wheeling 722

TRAUBERT BAKERY

Grade "A" Bread

Wellsburg Follansbee

The Well Dressed
College Man
Buys It From



BOOKS SCHOOL SUPPLIES
CONFECTIONS

COLLEGE BOOK STORE

Main Building
BETHANY COLLEGE

BROZKA & WELLS

J. WIETHE

We supply Fruit and
Produce to Bethany

FELSING ELECTRIC CO.

Engineers and Contractors

1408 Market St. Phone Wheeling 4051
WHEELING, W. VA.
If It's Electrical We Have It

WELLSBURG GREENHOUSE CO.

FLORIST'S

Wellsburg, W. Va.

Phone 162

Compliments of
**THE
ELM GROVE MINING
COMPANY**
WHEELING, WEST VIRGINIA

Compliments of
ACKER'S RESTAURANT

1222 Market Street
Wheeling, W. Va.

REXALL STORES

Wellsburg, W. Va.
CARSON AND SCOTT

Eagle Manufacturing Co.

Manufacture of lamps and specialties
for your room decoration
WELLSBURG, W. VA.

**GLASS' GARAGE
AND SERVICE STATION**

H. B. Glass, Gen. Mgr.
201 Charles St. Wellsburg
Phone 300

Day and Night Taxi Service
General Overhauling and Repairing
Reasonable Rates
All Work Guaranteed

BETHANY MINE

Prepares Its

COAL to suit the TRADE

You will be pleased with it.
Try ordering your next load from us.

PHONE 87

C. J. DICKMAN

MOVING

"No Job Too Small—
No Job Too Big"

Also Heavy Hauling
and Storage

Phone Wheeling 370

PURE FOOD MEAT MARKET, INC.

WALTER ZOGG, Mgr.
All Meat U. S. Gov't. Inspected

Phone 18

701 Charles St.

Wellsburg

Compliments of

WHEELING

BELMONT

BRIDGE CO.

TAXI

Call Wheeling
476

24 Hour Service Since 1889
GENERAL TRANSFER
Lowest Rates in the City

BURNS & CHURCH

SAMPSON'S TRANSFER

BETHANY—WEST LIBERTY
CLINTON—WHEELING
DAILY SERVICE
Phone Whg. 5091

KYLE SUPPLY CO.

HARDWARE, FURNITURE, RUGS
GARDEN SEEDS A SPECIALTY

Wellsburg

Phone 41

Compliments of
THE OWL PRINT SHOP
Wheeling, W. Va.

When you need drugs or toiletries
When there is a gift to purchase
When you want good food and a homey
place to meet friends

THINK OF
Hoge-Davis Drug Stores
Eight Cut Rate Stores
Home-owned and Dependable

Compliments
McLURE HOTEL

HORNES
MISSES—WOMEN'S
WEARING APPAREL

11th and Main Sts.

Wheeling

E. L. TAYLOR
Contractor
28th and Wood Sts. Wheeling

Compliments
**SNYDER HARDWARE
COMPANY**

Elm Grove

Phone 205

Compliments
**FULTON
BANK & TRUST CO.**

**WARWOOD TRANSFER
COMPANY**

Phone—Warwood 236
MOVING—STORAGE

Compliments of
**COCA COLA
BOTTLING COMPANY**
"Soft Drinks"

Wheeling

Phone 921

ELM GROVE MILLING CO.

314 Natl. Road
Phone Elm Grove 81

H. KALBITZER & SON

Dealers in
Stoves, Hardware and House
Furnishing Goods

1050-1052 Market St. Wheeling

It Beautifies—

A clear, healthful complexion
is easy if you use

LILY CREAM

Regular nightly applications
Keep the skin clear and smooth—well protected against
the ravages of weather **AT YOUR DRUGGIST**

THE MCGOWAN BROTHERS COMPANY

Distributors
Fort Steuben Food Products
Town Crier Flour
STEBENVILLE, OHIO

Let us prove the many
advantages of Electric
Cooking with a 10 day
Free Trial—

WHEELING ELECTRIC

KELVINATOR

ELECTRIC REFRIGERATORS
BOSCH RADIO

EARLE ROGERS CO.

12th and Main St. Wheeling

UNION BUS TERMINAL

16th and Market Street

BARRELED SUNLIGHT

PRATT LAMBERT

MARTIN SENOUR

The Finest of Paint Products

W. A. WILSON & SON

GRIEST CUT RATE DRUG STORE

You save on prescriptions, too

1125 Market St.

Wheeling, W. Va.

Other Stores:

734 Charles Street

Wellsburg

303 Jefferson Avenue

Moundsville

May you have as many pleasant
hours reading this book as have
been spent in its preparation.

Ron. Hassig, Editor



25615

cf 1



