

The

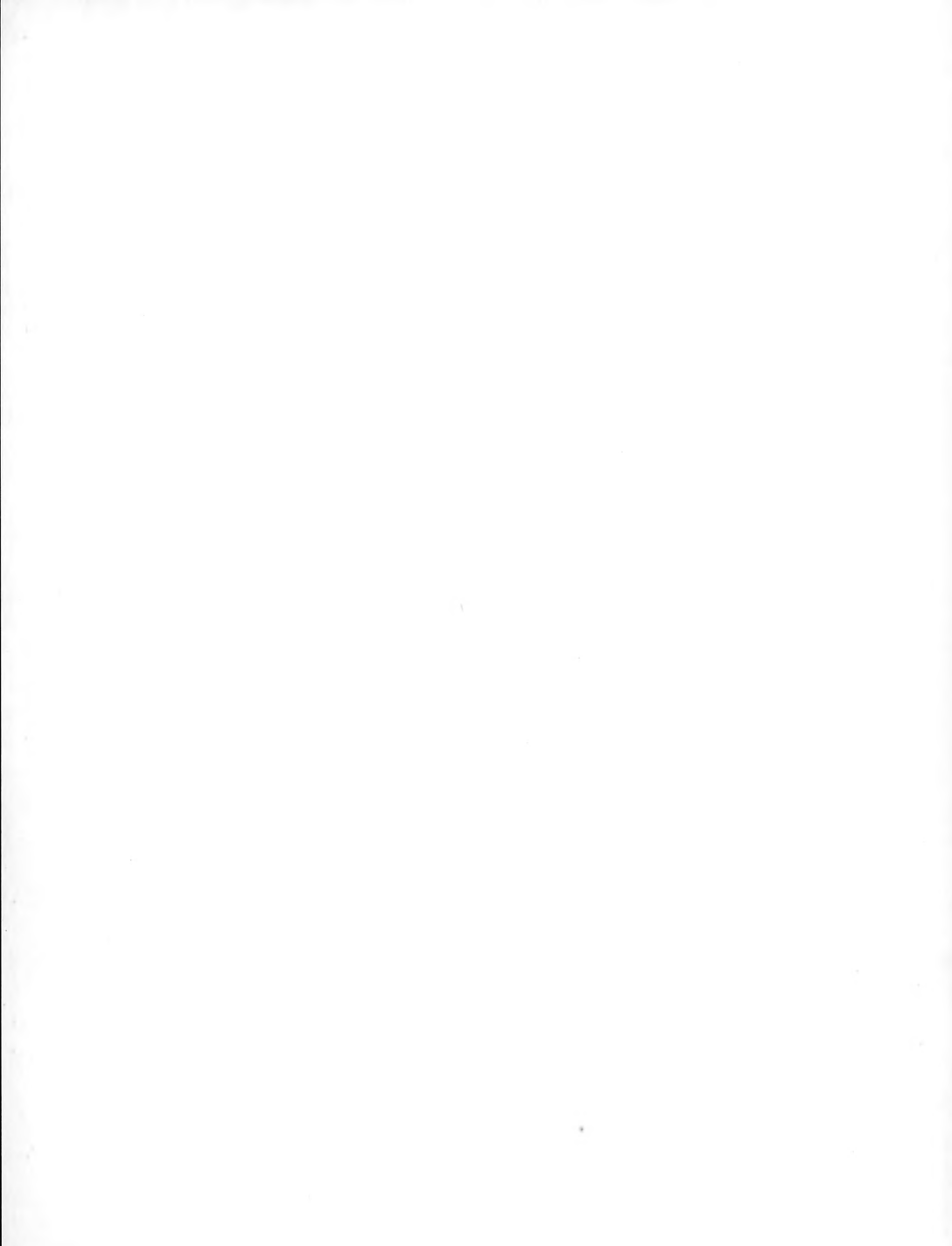
Bethanlian



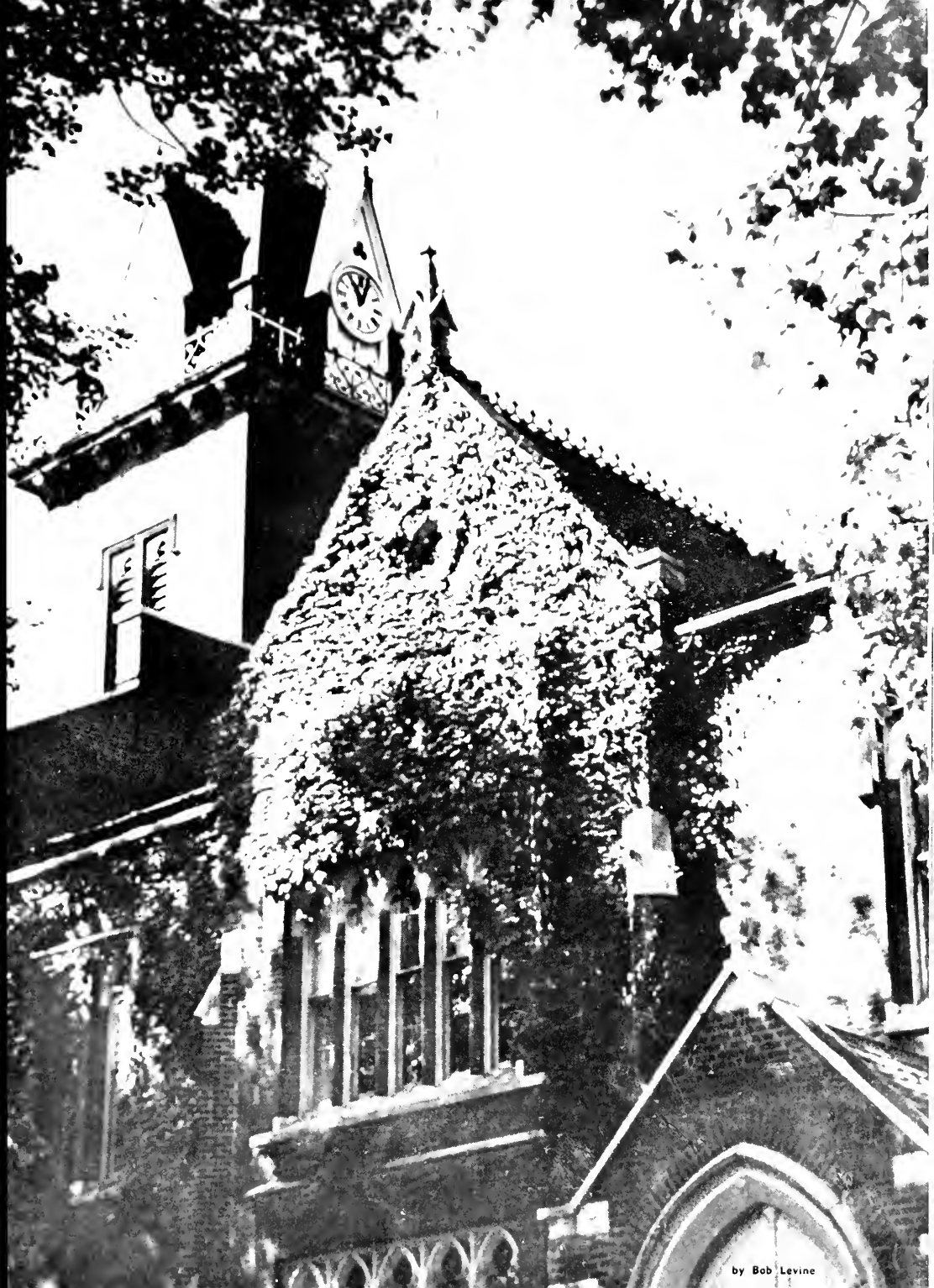
1 9 4 9

Digitized by the Internet Archive
in 2011 with funding from
LYRASIS Members and Sloan Foundation

<http://www.archive.org/details/bethanian1949beth>









1949

BETH



ANIAN

BETHANY COLLEGE, W.VA.



EBENEZER LEE PERRY

In Memoriam

WE, the editors of the Bethanian, feel that recognition should be made of the contribution made by Ebenezer Lee Perry, Professor-Emeritus, better known to us all as "Prof" Perry. A graduate of Bethany, he returned to his Alma Mater to teach after graduate study at Yale and Columbia. He served the college as a professor from 1908 to his retirement in 1939. Watching Bethany grow, he was always eager to help the students in any way he could. Some time after his retirement, he reentered active duty at the college as operator of the Bookstore. It was then that most of us got to know him. The loss of his presence and familiar smile has been felt by us all.

SENIORS FACULTY STUDENTS





W. H. CRAMBLET
A. B., A. M., Ph. D., LL. D.
President



BERNAL R. WEIMER
A. B., A. M., Ph. D.
Dean of Faculty
Professor of Biology



FORREST H. KIRKPATRICK
A. B., A. M.
Dean of Students
Professor of Personnel
Administration

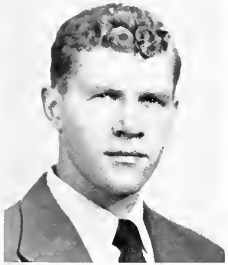
Administration

THE purpose of the administration is to administer the business of the college, and it does just that as efficiently and with as few difficulties in the smooth running as possible. Under the presidency of Dr. Wilbur Cramblet, Dean Bernal R. Weimer is Dean of Faculty, Dean Forrest H. Kirkpatrick is Dean of Students, Mr. John Gerald Patterson is Director of Admissions and Alumni Secretary, Mr. Carroll B. Fitch is Business Manager, Mr. Newton W. Evans is Bursar, and Mr. E. Hugh Behymer is Librarian. The Board of Trustees, one-third of which is elected annually, guides the policies and procedures of the college.

Faculty



JOHN S. V. ALLEN
B.S. in E., M.S., Ph.D.
Physics



HOWARD L. BEAMS
A.B., A.M.
Psychology



ALFONZO BERRIOS
A.B., A.M.
Modern Languages



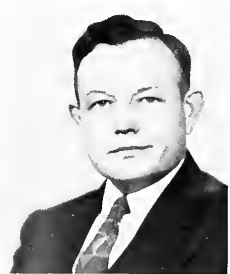
LOWELL E. BINKLEY
A.B., A.M.
Biology



OSBORNE BOOTH
A.B., B.D., Ph.D.
Religion



MARY E. BREWER
A.B.
Sociology



CHARLES F. BROWN
A.B., M.S., Ph.D.
Chemistry



GLADWIN CHAFFIN
A.B., A.M.
Music



LESLIE W. COUGHANOUR
B.S., Sc.D.
Chemistry



JANE E. DINGLELINE
B.S., A.M.
Education



REUBEN H. ELIASSEN
A.B., A.M., Ph.D.
Education



VIRGINIA GOODWIN
A.B., A.M.
History and Political Science



LILLIAN L. GRAY
B.S., A.M.
Economics and Business
Administration



GEORGE K. HAUPTFUEHRER
A.B., B.M., A.M.
Music



BENJAMIN R. HONECKER
B.S.
Economics and Business
Administration



ROBERT L. HUESTON
A.B., M.B.A.
Economics and Business
Administration



HARRY L. ICE
A.B., A.M., Ph.D.
Religion and Philosophy



W. HAROLD KESSELRING
A.B., M.S.
Biology



RUDOLPH H. KYLER
D.J.U.
Economics and Business
Administration



ANDREW LEITCH
A.B., A.M., B.D., Ph.D.
Psychology



PEARL MAHAFFEY
A.B., A.M., Litt.D.
Modern Languages



GEORGE MICHAEL
B.M., M.M.
Music



CATHERINE E. MOSER
B.S., M.S.
Mathematics



HELEN LOUISE MCGUFFIE
A.B., A.M.
English



EARL D. MCKENZIE
A.B., A.M., M.L.
Modern Languages



AUDREY M. PARKER
A.B., A.M.
Associate Dean of Students



M. JOAN PARRY
A.B., A.M.
Modern Languages



ERWIN C. PAUSTIAN
A.B., A.M., Ph.D.
Sociology



S. ELIZABETH REED
A.B., M.Ed.
Physical Education



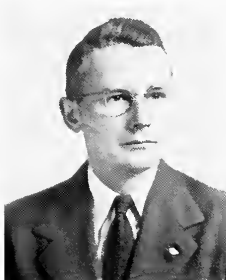
EMMETT E. ROBERTS
A.B., A.M.
Journalism



DONNA SHAVER
B.S.
Physical Education



CHANDLER SHAW
A.B., A.M., Ph.D.
History and Political Science



HOMER G. SIMS
A.B., A.M.
History and Political Science



RALPH L. SMITH
B.S., A.M.
English



BRADFORD TYE
B.S., M.S.
Mathematics



MARY VUKOVICH
A.B., A.M.
Music



MARGARET R. WOODS
A.B., A.M.
Modern Languages



H. ROBERT AFFLERBACH

"Bob" . . . Highland Park, New Jersey . . . Economics Club; Sociology Club . . . Future, Teaching . . . Major, Business Administration . . . Minor, Psychology.



KENNETH B. ARMITAGE

"Ken" . . . Steubenville, Ohio . . . Kalon; Student Christian Association; International Relations Club; Outdoors Club, President; Dean's List; Assistant in Biology; Senior Fellow in Biology . . . Future, Graduate School . . . Major, Biology . . . Minor, Chemistry.



HELEN CANFIELD AVERY

Caldwell, New Jersey . . . Zeta Tau Alpha . . . Student Christian Association 3, 4; International Relations Club 3, 4; French Club 2; Economics Club 4 . . . Future, Macy's Training Squad . . . Major, Psychology . . . Minor, Mathematics.

LAURA JEANNE AYERS

"Jeanie" . . . Leonia, New Jersey . . . Kappa Delta, Treasurer 4 . . . Women's Athletic Association 2, 3, 4; Association of Women Students President 4; Bethanian 4; Student Christian Association 3; International Relations Club 1, 2; Spanish Club 1; Future Teachers of America 4; Y W C A 1; Second Class Honors 1 . . . Future, Education . . . Major, Biology . . . Minor, Education.





MARY ROSE BARNWELL

"Barney" . . . Great Neck, New York . . . Kappa Delta, Treasurer 3, President 4 . . . Tower 3, 4; Bethanian 4; International Relations Club 1, 2, 3, 4; French Club 2; Sociology Club 3, 4; Panhellenic Council, Secretary 4; Assistant in History . . . Future, Librarian . . . Major, History . . . Minor, Sociology.



KENNETH BARTH

"Ken" . . . Montville, New Jersey . . . Phi Kappa Tau . . . Varsity B 2, 3, 4; Football Manager 2, 3; Basketball Manager 2; Economics Club 4 . . . Future, Business . . . Major, Economics . . . Minor, French.



GEORGE C. BARTRUM

Houston, Pennsylvania . . . Phi Kappa Tau, Vice President 4 . . . Future, Business . . . Major, Economics . . . Minor, Sociology.

DONALD R. BEARD

"Bob" . . . Wheeling, West Virginia . . . Phi Kappa Tau, Treasurer 2, President 3 . . . Student Board of Governors 2; Kalon, President 3, 4; Interfraternity Council 2; Economics Club 3, 4; Student Host Bethany House 3 . . . Future, Personnel . . . Major, Economics . . . Minor, Business Administration.





BEATRICA BIERAU

"Turk" . . . Scarsdale and Niskayuona, New York . . . Alpha Xi Delta . . . Student Board of Governors 2, 3; Association of Women Students 3; French Club 1, 2, 4; Psychology Club 3, 4; Secretary 2; Sociology Club 1, 2, Secretary 2 . . . Major, Psychology . . . Minor, Sociology.



BARBARA DEANE BOETTCHER

Bethany, West Virginia . . . Zeta Tau Alpha . . . Student Christian Association 4; Women's Athletic Association 1; International Relations Club 2; French Club 1; German Club 2, 3; Psychology Club 4; Senior Assistant in Psychology . . . Future, Graduate School . . . Major, Psychology . . . Minor, English, French.



ROBERT STEPHEN BOYD

"Scoop" . . . Bethany, West Virginia . . . Sigma Nu . . . Pi Delta Epsilon 4 . . . Student Board of Governors; Tower, Advertising Director 2; Bethanian, Editor 3; Radio Station, Program Manager 4; International Relations Club, President 3 . . . Future, Public Relations . . . Major, Journalism . . . Minor, History.



CLAIRE MARIE BREWER

Huntington, West Virginia . . . Sigma Sigma Sigma . . . Women's Athletic Association 4; Student Board of Governors 4; Social Committee 3, 4; Student Christian Association 3, 4; Tower 3, 4; Ministerial Association 3, 4; Phillips Hall President 4; Homecoming Queen 4; Scout Troop 3 . . . Future, Foreign Missionary . . . Major, Religion . . . Minor, Psychology.



FRANCIS E. BROWN, JR.

"Hank" . . . Chester, Pennsylvania . . . Beta Theta Pi, Treasurer 2, 3, 4 . . . Gamma Sigma Kappa; Basketball 1, 2, 3; Cross-country Team 1, Captain 3; Kalon; German Club, Vice President 3; Economics Club, Vice President 4; Future Teachers of America; Tower 4; Student Church Board; Student Deacon; Dean's List; Assistant in Mathematics 3; Assistant in Economics 4 . . . Future, Statistician . . . Major, Mathematics and Economics . . . Minor, Education.



WILLIAM BURTON

"Bill" . . . Moundsville, West Virginia . . . Kappa Alpha . . . International Relations Club 3, 4; German Club 1, 2; Future Teachers of America 3, 4; Student Church Board 4 . . . Future, College Professor . . . Major, History . . . Minor, Education.



ALICE BUSH

"Abie" . . . Grafton, Massachusetts . . . Kappa Delta . . . Women's Athletic Association 2, 3; Bethanian 4; Student Christian Association 3; French Club 1; Psychology Club 2, 3, Secretary-Treasurer 4; Sociology Club 3, 4; Dean's List 3 . . . Future, Personnel Administration . . . Major, Psychology . . . Minor, Sociology.



ROBERT EDGAR BUTZ

"Uncle Bob" . . . McKeesport, Pennsylvania . . . Sigma Nu, Rush Chairman 3 . . . Bethanian, Advertising Manager 3; German Club 3; Psychology Club; Economics Club . . . Future, Advertising . . . Major, Psychology . . . Minor, Economics.



JOHN CASEY

"Casey" . . . Pittsburgh, Pennsylvania . . . Sigma Nu . . . Student Board of Governors 2, 3; Student Christian Association 3; International Relations Club; Spanish Club; Economics Club . . . Major, Economics . . . Minor, Spanish.



EDWIN CAMPBELL CHURCHMAN

Wellsburg, West Virginia . . . Gamma Sigma Kappa; Dean's List . . . Major, Economics . . . Minor, Psychology.



EVELYN PATRICIA CLARK

"Pat" . . . Columbus, Ohio . . . Student Christian Association 3, 4; Ministerial Association 2, 3, 4, Secretary; French Club 2; Future Teachers of America 3, 4; Student Church Board 2, 3, 4, President; Y W C A 2 . . . Future, Religious Education . . . Major, Religion . . . Minor, English.

JAMES B. CLEMENS

"Clem" . . . Oakdale, Pennsylvania . . . Band; Orchestra . . . Future, Graduate School . . . Major, Biology . . . Minor, Psychology.





AUSTIN COE

Wilkesburg, Pennsylvania . . . Ministerial Association, President 1, 2, 3, 4; Choir 1; Spanish Club 1, 2; Sociology Club 4 . . . Future, Graduate School, Minister . . . Major, Religion . . . Minor, Psychology.



LESLIE PARKER COLE

Maywood, New Jersey . . . Radio Club 3, 4; Future Teachers of America 3 . . . Major, Physics . . . Minor, Education.



JAMES L. COLLINS

"Fox" . . . Wheeling, West Virginia . . . Phi Kappa Tau . . . Football 2, 3, Captain 4; Varsity "B" 2, 3, 4, President 3; Kalon 3, 4; Economics Club 3, 4 . . . Future, Business . . . Major, Economics . . . Minor, Psychology.

THOMAS WILLIAM COOK, JR.

"Cookie" . . . Pittsburgh, Pennsylvania . . . Sigma Nu . . . Football 1; Student Christian Association; Spanish Club 1, 2; Sociology Club 3, 4; American Chemical Society 3, 4 . . . Future, Medicine . . . Major, Chemistry . . . Minor, Sociology.





WILLIAM H. CORBA

"Corb" . . . Carnegie, Pennsylvania . . . Beta Theta Pi . . . Basketball 1, 2; Varsity "B" 1, 2, 3, 4; Student Board of Governors 1; Future Teachers of America 2, 4; Interfraternity Council 2; Assistant in Physics . . . Future, Teaching or Industry . . . Major, Physics . . . Minor, Mathematics.



DAVID CUMMING

"Dave" . . . Avalon, Pennsylvania . . . Phi Kappa Sigma . . . Major, Mathematics . . . Minor, Physics.



HOWARD T. DIMMIT

"Howie" . . . Follansbee, West Virginia . . . Phi Kappa Tau . . . Student Board of Governors 3, Vice President 4; Social Committee 4; Economics Club 3, 4; Future Teachers of America 4 . . . Future, Business . . . Major, Economics . . . Minor, History.



CAROL DRAKE

"Lump" . . . Long Island City, New York . . . Phi Mu, President 3 . . . Women's Athletic Association 1, 2, 3, 4; Student Christian Association 3, 4; International Relations Club 2, 3, 4; Spanish Club 1, 2, 3, 4; Future Teachers of America 2, 3, 4 . . . Future, High School Teacher . . . Major, History . . . Minor, Spanish.



PAUL EAGAN

Wheeling, West Virginia . . . Future, Personnel Administration . . . Major, Economics . . . Minor, Psychology.



VIRGINIA EDMONDS

"Ginny" . . . Verona, Pennsylvania . . . Phi Mu . . . Women's Athletic Association 1, 2; Student Christian Association 3, 4; Y W C A 1; Student Church Board 4; Psychology Club 3, 4; Sociology Club 2, 3, Vice President 4; Assistant in Bible . . . Future, Student Guidance Work . . . Major, Psychology . . . Minor, Sociology, Religious Education.



SAMUEL LEROY ENGEL

"Sam Spade" . . . Weirton, West Virginia . . . Phi Kappa Tau, Song Leader 3, 4 . . . Football 2, 3; Baseball 2, 3, 4; Basketball 1; Varsity "B"; Band and Orchestra 1, 2, 3, 4; Dance Band Leader 3, 4; American Chemical Society 4; President of Freshman Class . . . Major, Chemistry . . . Minor, Music.



ESTHER ESAIAS

Canton, Pennsylvania . . . Ministerial Association 1, 2, 3, 4; Student Christian Association 3, 4; College Church Council 1, 2, 3; Student Church Board 4; Sociology Club 1, 2, 3; Future, Religious Education Director . . . Major, Religion . . . Minor, Sociology.



RICHARD E. FAIR

"Dick" . . . Bethany, West Virginia . . .
Economics Club . . . Major, Economics . . .
Minor, History.



MARY FALLON

San Francisco, California . . . Alpha Xi Delta
. . . French Club 2; Psychology Club 3;
Sociology Club 2 . . . Future, Marriage . . .
Major, English . . . Minor, History.



DONALD R. FANNIN

"King" . . . Steubenville, Ohio . . . Beta
Theta Pi, Secretary 1, President 2 . . . Chem-
istry Club 1 . . . Future, Graduate School . . .
Major, Biology . . . Minor, Chemistry.

ALONZO FARMER

"Lon" . . . Wellsburg, West Virginia . . .
Beta Theta Pi . . . Student Board of Govern-
ors 3; Interfraternity Council 2; Sophomore
Class President . . . Future, Technical Sales
. . . Major, Chemistry . . . Minor, Psychology.





D. ROBERT FERGUSON, III

"Ferg" . . . Mt. Lebanon, Pennsylvania . . .
Beta Theta Pi . . . Cheerleader 1, 2, 3; Social
Committee 4 . . . Future, Engineering School
. . . Major, Mathematics . . . Minor,
Chemistry.



NORMA H. FINK

"Norm" . . . Baldwin, New York . . . Zeta
Tau Alpha . . . Bethanian 3, 4; Student
Christian Association 1, 2, 3, 4; Theatre
Guild 1; French Club 1; Sociology Club
1, 2, 3; Economics Club 4; Art Club 4 . . .
Future, Importing Business . . . Major, Eco-
nomics . . . Minor, Art.



ROBERT JAMES FITHIAN

"Fith" . . . Youngstown, Ohio . . . Sigma Nu,
Song Leader 2, 3, 4 . . . Student Board of
Governors; Moo Moo Moo; Student Christian
Association; Choir; Spanish Club; Director
Student Chorus . . . Future, Contracting Busi-
ness . . . Major, Mathematics . . . Minor,
Economics.

RUTH ELLEN FLEMING

Uniontown, Pennsylvania . . . Kappa Delta,
Editor 3 . . . Women's Athletic Association
1; Tower 2, Society Editor 3; Spanish Club
1, 2; Future Teachers of America 3, 4;
Y W C A 1; Junior Class Secretary . . . Fu-
ture, Marriage . . . Major, English . . . Minor,
Journalism.





DONALD ALAN GOLBEY

"Don" . . . Brooklyn, New York . . . Sigma Nu . . . Student Christian Association; Spanish Club 1; Psychology Club 2, 3, 4 . . . Future, Medicine . . . Major, Psychology . . . Minor, Chemistry.



CAROLYN JANE GOODSPEED

"Billie" . . . Detroit, Michigan . . . Alpha Xi Delta, President 4 . . . Choir 2, 3; Psychology Club 2, 3, 4; Panhellenic Council, President 4 . . . Future, Marriage . . . Major, Psychology . . . Minor, Music.



LOIS E. GREEN

Bridgeport, Connecticut . . . Kappa Delta . . . Radio Club, Vice President 1, 2; Radio Station, Secretary 3, 4, Station Manager 4; International Relations Club 3, 4 . . . Future, Radio Advertising . . . Major, English . . . Minor, Journalism.



KARL EDWARD GRIZZELL

"Griz" . . . Toronto, Ohio . . . Beta Theta Pi . . . Basketball 1, 2, 3, 4; Varsity "B" 2, 3, 4; Kalon 3, 4, Vice President . . . Future, Medical School . . . Major, Biology . . . Minor, Chemistry.



KAROLYN GRIZZELL

"Key" . . . Toronto, Ohio . . . Phi Mu, Vice President 4 . . . Student Board of Governors, Treasurer 3; Women's Athletic Association 1, 2, 3, 4; Association of Women Students 4; Psychology Club 3, 4; German Club 1, 2; Y. W. C. A. 1 . . . Future, Nursing . . . Major, Biology . . . Minor, Psychology.



CAROLYN HALL

"C-Hall" . . . Rahway, New Jersey . . . Alpha Xi Delta . . . Women's Athletic Association; French Club . . . Major, English . . . Minor, French.



WILLIAM CARROLL HANDLAN, IV

"Sonny" . . . Wheeling, West Virginia . . . Beta Theta Pi . . . Football 1; Basketball 2, 4; Varsity "B" 2, 3, 4; Tower 3, Sports Editor 4; Spanish Club 4; Athletic Council Chairman 3; Interfraternity Council 3 . . . Future, Advertising . . . Major, Journalism . . . Minor, History.



DANIEL HEATHERINGTON

"Jost Danny" . . . Bellaire, Ohio . . . Phi Kappa Tau . . . Football 1, 2, 3; Baseball 2, 3, 4; Varsity "B"; Student Board of Governors; Kalon; Athletic Board of Control; Dean's List; Assistant in Biology . . . Future, Research . . . Major, Biology . . . Minor, German.



BETTY HILE

"Bets" . . . Baltimore, Maryland . . . Student Christian Association; Ministerial Association; Girls' Chorus . . . Future, Religious Education, Social Work . . . Major, Religion . . . Minor, Sociology.



JOHN STEWART HOAGLAND

"Stu" . . . Bethany . . . Student Board of Governors 2; Student Christian Association 3; Radio Club 2, 3; Moo Moo Moo 2; Kalon 2, 3 . . . Future, Graduate School . . . Major, English . . . Minor, Psychology.



GEORGE HOAK

Niagara Falls, New York . . . Beta Theta Pi . . . International Relations Club 3, 4; Psychology Club 3, 4; Sociology Club 2, 3, 4 . . . Major, Psychology . . . Minor, English.

LYDIA HUESTON

"Bebe" . . . Coraopolis, Pennsylvania . . . Phi Mu . . . Women's Athletic Association, Treasurer; Social Committee; Student Christian Association; French Club; Sociology Club; Physical Education Club, Vice President . . . Future, teach Physical Education . . . Major, Physical Education . . . Minor, Biology.





ROSE MARIE IMBURGIA

Merrick, New York . . . Kappa Delta, Secretary 4 . . . Women's Athletic Association 1, 2; Association of Women Students 1, 3; Tower 4; Bethanian 4; WWBN 4; Theatre Guild 1, 2; French Club 1; Spanish Club 1, 2, 3; Future Teachers Association 2, 3, 4, Secretary 4 . . . Future, Graduate School (Child Guidance) . . . Major, Psychology . . . Minor, Education.



EDWARD JACKFERT

"Ed" . . . Wellsburg, West Virginia . . . Economics Club . . . Future, Graduate work at Ohio State . . . Major, Economics . . . Minor, Psychology.



ARTHUR F. JAGOE, JR.

"Art" . . . Teaneck, New Jersey . . . Sigma Nu . . . Psychology Club; Sociology Club . . . Future, Present plans consist of taking family to Graduate School . . . Major, Psychology . . . Minor, Sociology.

WILLARD J. JONES

"Bill" . . . Bayonne, New Jersey . . . Phi Kappa Tau . . . American Chemical Society . . . Future, Graduate School . . . Major, Chemistry . . . Minor, Mathematics.





RALPH KAMHI

New York, New York . . . Social Committee; Tower, News Editor; Student Christian Association; International Relations Club; Literary Discussion Club; Dean's List . . . Future, Medicine . . . Major, Biology . . . Minor, English.



BETTY KEHN

"Miss Cobalt" . . . Williston Park, New York . . . Alpha Xi Delta, Vice President . . . Women's Athletic Association; Spanish Club; Future Teachers of America . . . Major, English . . . Minor, Physical Education and Education.



JANE KEITH

"Janie" . . . Staten Island, New York . . . Zeta Tau Alpha . . . Student Christian Association 3, 4; International Relations Club 1, 2; French Club 2, 3, 4; German Club 1; Economics Club 3, 4; Psychology Club 2, 3 . . . Future, Teach English . . . Major, English . . . Minor, French and Psychology.



ROBERT KLEESATTEL

Dayton, Ohio . . . Kappa Alpha . . . Ministerial Association; Psychology Club; Photography Club; College Youth Council . . . Future, Minister . . . Major, Religion . . . Minor, Psychology.



DOROTHY KOSOVEC

"Kossy" . . . Burgettstown, Pennsylvania . . . Phi Mu . . . Women's Athletic Association; Choir; Chorus; French Club; Future Teachers of America . . . Future, Teaching . . . Major, English . . . Minor, French.



ROBERT MUSSER KREBS

"Bob" . . . Fort Erie, Ontario . . . Kappa Alpha, President . . . Student Board of Governors, Treasurer; Social Committee, Chairman; Kalon; Economics Club; Interfraternity Council, President; Dean's List . . . Major, Economics . . . Minor, Mathematics.



KENNETH FRANKLIN LAWRENCE

"Hook" . . . Secaucus, New Jersey . . . Phi Kappa Tau . . . Baseball; Varsity "B" Club, Treasurer; Interfraternity Council . . . Major, Business Administration . . . Minor, Chemistry.



ROBERT MICHAEL LEVINE

"Bob" . . . Bronx, New York . . . Alpha Psi Omega . . . Pi Delta Epsilon 3, President 4; Kalon; Student Board of Governors 1, Vice President 2; Tower, Business Manager 2, 3, 4; Bethanian, Business Manager 4; Tennis Team Coach 4; Theatre Guild 1, 2, 3, 4; Band 1, 2, 3, 4; Orchestra 1, 2, 3, 4; Spanish Club 1, 2, 3, 4; Economics Club 4; Freshman Class President . . . Future, Business . . . Major, Economics . . . Minor, History.



DORIS CATHERINE LUDEWIG

Maywood, New Jersey . . . Alpha Xi Delta . . . Student Board of Governors; Association of Women Students; Cheerleader; French Club; Psychology Club . . . Future, Personnel Work . . . Major, Psychology . . . Minor, Music.



CRES MANDAKAS

Weirton, West Virginia . . . Zeta Tau Alpha . . . Student Christian Association 4; Sociology Club 1; Psychology Club 3 . . . Future, Social Worker . . . Major, Sociology . . . Minor, Psychology.



ELEFThERIA MANDAKAS

"Terry" . . . Weirton, West Virginia . . . Orchestra; Band; Girls' Chorus; Future Teachers of America; Art Club . . . Future, Music Supervision in Public Schools . . . Major, Music . . . Minor, Education.

GEORGINA MARTIN

"Georgie" . . . Tenafly, New Jersey . . . Kappa Delta . . . Sociology Club . . . Future, Social Work . . . Major, Sociology . . . Minor, Psychology.





F. VICTOR MC ANALLEN

"Vic" . . . Butler, Pennsylvania . . . Ministerial Association, President 1; Choir . . . Future, Christian Ministry . . . Major, Religion . . . Minor, Music.



C. HOWARD MC CLOY

"Hy" . . . Perryopolis, Pennsylvania . . . Ministerial Association, President 1 . . . Future, Christian Ministry . . . Major, Religion . . . Minor, Psychology.



EUGENE R. MC FADDEN

"Mac" . . . Brockway, Pennsylvania . . . Phi Kappa Tau . . . Football; Varsity "B", Vice President 3, President 4 . . . Future, Physicist . . . Major, Physics . . . Minor, Mathematics.

EVELYN CALVARESE MC KENNA

"Vee" . . . Follansbee, West Virginia . . . Kappa Delta . . . Theatre Guild 1; Choir 1, 2; French Club 2, Secretary 3, 4; Spanish Club 3, 4; German Club 1, 2, 3, 4; Future Teachers of America 4; Assistant in Modern Languages . . . Future, Education . . . Major, Modern Languages . . . Minor, Education.





MAVIS MEIXELL

"Mike" . . . Buffalo, New York . . . Phi Mu . . . Radio Club; Theatre Guild; German Club; Psychology Club; American Chemical Association; Student Christian Association . . . Future, Clinical Work . . . Major, Psychology . . . Minor, Biology, Chemistry.



RODERICK I. MITCHELL

"Rod" . . . Cranston, Rhode Island . . . Kappa Alpha, Treasurer 2, 3 . . . Economics Club . . . Future, Lawyer . . . Major, Economics . . . Minor, Psychology.



JUNE WILLIDEE MORRIS

"Woodie" . . . Los Angeles, California . . . Kappa Delta, Rush Chairman 4 . . . Association of Women Students, Vice President 3; Kalon 3, Secretary 4; Dean's List 3; Outstanding Junior Girl . . . Future, Retail Merchandising . . . Major, Economics . . . Minor, Art.



CAROLINE RUTH MOYERS

"Carrie" . . . Norton, West Virginia . . . Alpha Xi Delta . . . Band; Orchestra; Choir; Girls' Trio; Swing Band; Psychology Club . . . Major, Music . . . Minor, Psychology.



DONALD L. MULGREW

"Don" . . . Steubenville, Ohio . . . Beta Theta Pi . . . Kalon; Interfraternity Council, Vice President; Sophomore Class Vice President . . . Future, Manufacturing . . . Major, Mathematics . . . Minor, Physics, Chemistry.



WARREN LEWIS MULSTEIN

Stratford, Connecticut . . . Phi Kappa Tau, President 3 . . . Future, Bacteriology . . . Major, Biology . . . Minor, Chemistry.



JOSEPH H. NEWMAN

"Joe" . . . Bronx, New York . . . Orchestra; Band; Dance Band; Spanish Club; Economics Club; International Relations Club . . . Future, Personnel Administration . . . Major, Economics . . . Minor, Psychology, History.



DONALD O. NIXON

"Nick" . . . Connellsville, Pennsylvania . . . Beta Theta Pi . . . Major, Economics . . . Minor, Psychology.



DONALD W. NORTON

"Don" . . . Chicago, Illinois . . . Alpha Sigma Phi, Vice President 3 . . . Alpha Psi Omega, Vice President 4; Tower, Circulation Manager 2; Student Christian Association 4; Radio Club 4; Theatre Guild, Vice President 4; Sociology Club 2, 3; Interfraternity Council 3; Assistant in Speech and Dramatics . . . Future, Business . . . Major, Economics . . . Minor, English.



WILLIAM JESS NOTTINGHAM

"Bill" . . . Sharon, Pennsylvania . . . Kappa Alpha, Vice President . . . Gamma Sigma Kappa; Student Board of Governors, Vice President 3; Kalon; Ministerial Association, President; Dean's List . . . Future, Minister . . . Major, Religion . . . Minor, English.



WILLIAM ORR

"Bill" . . . McKeesport, Pennsylvania . . . Future, Aeronautics . . . Major, Mathematics . . . Minor, Physics.

ALICE EUGENIA ORTHEY

"Gene" . . . Rutherford, New Jersey . . . Gamma Sigma Kappa . . . Student Christian Association 3, 4; Ministerial Association 3, 4; Band 1; Choir 3; German Club 1; Chemistry Club; Y W C A Cabinet 1, 2; Assistant Biology Department; Dean's List . . . Future, Veterinarian . . . Major, Biology . . . Minor, Chemistry.





RALPH DONALD PERRIN

"Tex" . . . Kenmore, New York . . . Beta Theta Pi . . . Football 1; American Chemical Society, Vice President 3, President 4; Assistant in Chemistry . . . Major, Chemistry . . . Minor, Mathematics, Economics.



CLIFFORD E. PETERSEN

"Clif" . . . Hillsdale, New Jersey . . . American Chemical Society . . . Future, Chemical Advertising . . . Major, Chemistry . . . Minor, Mathematics.



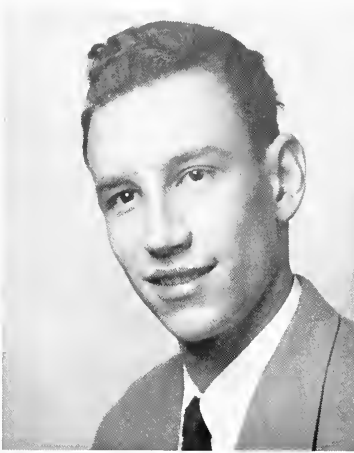
MARY ALICE PHILLIPS

"Map" . . . Hopwood, Pennsylvania . . . Kappa Delta . . . Bethanian 4; Radio Club 4; Band 2, 3, 4; Orchestra 3; Choir 1, 2, 3; Chorus 1, 2; German Club 1; Future Teachers of America 3, 4; YWCA 1 . . . Future, Teacher . . . Major, Music . . . Minor, Education.

HENRY PIETRZNIAK

"Petch" . . . Bethany, West Virginia . . . Phi Kappa Tau . . . Physical Education Club 4 . . . Future, Coaching and Teaching . . . Major, Physical Education . . . Minor, Biology.





GEORGE EDMUND POHLE

"Hor-Hay" . . . Scarsdale, New York . . .
Sigma Nu . . . Student Board of Governors 4;
Moo Moo Moo 2, 3, 4; Student Christian
Association 4; Spanish Club 3; Economics
Club 4; Psychology Club 2, 3, President 4;
Sociology Club 2; Theatre Guild . . . Future,
Personnel Work . . . Major, Psychology . . .
Minor, Economics.



MARGARET JEAN POOLE

"Archie" . . . Little Neck, New York . . .
Phi Mu . . . Women's Athletic Association;
Band 3; Orchestra 3, 4; Choir 2, 3, 4;
Chorus 2, 3; French Club; Future Teachers
Association; Student Guide . . . Future, Pub-
lic School Music Teacher . . . Major, Music
. . . Minor, Education.



MARGARET ETHEL QUILLEN

"Marge" . . . Ocean View, Delaware . . . Phi
Mu . . . Student Board of Governors; Sociol-
ogy Club; Future Teachers Association . . .
Future, Teacher or Social Worker . . . Major,
Sociology . . . Minor, Psychology, Education.



DONN RAMSDELL

"Brow" . . . Columbus, Ohio . . . Kappa
Alpha, Secretary 3, President 4 . . . Minis-
terial Association 1, Vice President 2, 3, 4;
College Youth Council 1, 2, 3; Interfrater-
nity Council, Vice President 3, President 4
. . . Future, Minister . . . Major, Religion
. . . Minor, English.



EDWARD REDGATE

"Ned" . . . Sea Girt, New Jersey . . . Social Committee; Student Christian Association 3; Choir 2, 3, 4; French Club 3; American Chemical Association 3, 4; . . . Future, Graduate School . . . Major, Chemistry . . . Minor, Mathematics.



RENEE RICHARDS

Rochester, New York . . . Tower 2, 3, 4; Bethanian 4; Student Christian Association; Theatre Guild 1, 2; Band 3, 4; International Relations Club 1, 2, 3; German Club 1, 2, 3, 4; Psychology Club 1, 2, 3 . . . Major, Psychology . . . Minor, History.



VIRGINIA A. RITHNER

"Ginny" . . . Wellsburg, West Virginia . . . Zeta Tau Alpha, Treasurer 3, President 4 . . . Student Christian Association 4; International Relations Club, Secretary 4; French Club 1; Y W C A 1; Assistant in Economics 3, 4 . . . Future, Teacher or Business . . . Major, Economics . . . Minor, Mathematics.



HAROLD E. RUCK

"Hal" . . . Connellsville, Pennsylvania . . . Alpha Sigma Phi . . . Student Board of Governors 4; Theatre Guild 3, 4; German Club 3, 4; Assistant in Mathematics and Physics . . . Future, Graduate School, Statistician . . . Major, Mathematics . . . Minor, Physics.



PAUL WILLIAM RUKSHA

"Rook" . . . Steubenville, Ohio . . . Men's Chorus 4; Choir 4; Sociology Club 4 . . . Future, Medicine . . . Major, Biology . . . Minor, Chemistry.



BARBARA JEAN SEL

"Bar" . . . Leonia, New Jersey . . . Alpha Psi Omega 3, 4; Theatre Guild 1, 2, 3, 4; Chorus 1, 2; Spanish Club 2; Psychology Club 4; Y W C A 1 . . . Future, Business . . . Major, Psychology . . . Minor, English.



FRED H. SIEGEL

Brooklyn, New York . . . Economics Club . . . Future, Accounting . . . Major, Economics . . . Minor, History.

JORDAN JESS SKLAR

"Jordy" . . . Bronx, New York . . . Gamma Sigma Kappa; Radio Club; International Relations Club; German Club, Secretary-Treasurer; Psychology Club, Vice President; Sociology Club; American Chemical Society; Dean's List; Assistant in Biology . . . Future, Physician . . . Major, Biology . . . Minor, Chemistry, English, Psychology.





ROBERT B. SMITH

"Smitty" . . . Bedford Hills, New York . . .
Beta Theta Pi . . . Economics Club; Future
Teachers of America, Treasurer; Sophomore
Class Treasurer . . . Future, Insurance . . .
Major, Economics . . . Minor, English.



SHIRLEY ANN SMITH

"Sassy" . . . Marion, Ohio . . . Alpha Xi
Delta . . . Cheerleader; Women's Athletic
Association; Future Teachers of America . . .
Future, Teaching . . . Major, Music . . .
Minor, Education.



LUCILLE SOLKIEWICZ

"Lucia" . . . Cleveland, Ohio . . . Phi Mu
. . . Women's Athletic Association; German
Club; Psychology Club . . . Future, Doctor
. . . Major, Biology . . . Minor, Psychology.

MARY RUTH STEAR

"M. R." . . . Independence, Montana . . .
Gamma Sigma Kappa; Student Board of
Governors; Student Christian Association;
Radio Club; Orchestra; Chorus; German
Club; American Chemical Society; Dean's
List . . . Future, Analyst or X-Ray Technician
. . . Major, Chemistry . . . Minor, Biology.





STANLEY ALAN STECKLER

"Stasch" . . . New York, New York . . . Alpha Sigma Phi . . . German Club; Assistant in Biology; Dean's List . . . Future Medicine . . . Major, Biology . . . Minor, Chemistry.



THOMAS C. STIMMEL

"Stim" . . . Hughson, California . . . Phi Kappa Tau, Treasurer 3, 4 . . . Tell; Tower; Bethanian; News Bureau, Manager 3; House-mother, Opera House . . . Future, Writing and Wronging—Free-Lance, Salary, or Otherwise . . . Major, Journalism . . . Minor, Psychology.



CHARLES D. TAYLOR

"Chuck" . . . Chester, West Virginia . . . Economics Club; Future Teachers of America . . . Future, Business Field . . . Major, Economics . . . Minor, Psychology.



MARGARET M. WALLACE

"Margy" . . . Rochester, Pennsylvania . . . Zeta Tau Alpha, Secretary, Song Leader . . . Women's Athletic Association 4; Student Christian Association; Choir 3, 4; International Relations Club; Spanish Club 1; Economics Club 4; Future Teachers Association, President; Student Church Board 4 . . . Future, Teacher . . . Major, English . . . Minor, Education.



JEROME WARSHAW

"Jerry" . . . Brooklyn, New York . . . Dean's List . . . Future, Industry . . . Major, Psychology . . . Minor, Political Science.



BETTY JANE WESTER

"B. J." . . . Maplewood, New Jersey . . . Zeta Tau Alpha . . . Student Board of Governors 4; Social Committee 2; Association of Women Students 3; Student Christian Association 3, 4; Theatre Guild 1; Spanish Club 2; Psychology Club 3; Sociology Club 1; Y W C A 2; Tell 1; Sophomore Class Vice President . . . Major, English . . . Minor, Psychology.



JAMES STANLEY WILLIAMS

"Whitey" . . . Levittstown, New York . . . Kappa Alpha . . . Moo Moo Moo; Radio Club; Assistant in Physics . . . Future, Radio Designer . . . Major, Physics . . . Minor, Chemistry.



NICHOLAS WINOWICH

"Nick" . . . Pittsburgh, Pennsylvania . . . Beta Theta Pi . . . International Relations Club; Future Teachers of America, President . . . Future, Teaching . . . Major, History . . . Minor, Economics.



JAMES N. WINSKI

Wellsburg, West Virginia . . . Future, Public Accounting . . . Major, Economics . . . Minor, Sociology.



HARRY WOLFE

"Pat" . . . New Kensington, Pennsylvania . . . Beta Theta Pi, President . . . Varsity B . . . Future, Teacher, Coach . . . Major, Mathematics . . . Minor, English, Physical Education.



NANCY E. WOOLERY

"Wool" . . . Bethany, West Virginia . . . Kappa Delta . . . Women's Athletic Association 1, 2, 3, 4; International Relations Club 1, 2; French Club 1; Assistant in Biology 2, 3, 4 . . . Future, Marriage . . . Major, Biology . . . Minor, Physical Education.

CECILY WORTHINGTON

"Cis" . . . Amsterdam, Ohio . . . Student Christian Association; Girls' Chorus; Spanish Club; Future Teachers of America, Secretary; Assistant in Spanish . . . Future, Teacher . . . Major, English . . . Minor, Spanish.





JOYCE P. YANEY

Teaneck, New Jersey . . . Zeta Tau Alpha, Vice President . . . Women's Athletic Association 1, 2, 3, 4; Association of Women Students 1, 2; Theatre Guild 1, 2, 3; Phillips Hall President . . . Future, Medical School . . . Major, Biology . . . Minor, Psychology.



NANCY YOCHER

"Yo-Yo" . . . Wheeling, West Virginia . . . Kappa Delta, Rush Chairman 3 . . . Spanish Club 1, 2, 3; Psychology Club 1, 2, 3, 4; Fencing 2; Assistant in English 4 . . . Major, Psychology . . . Minor, English.



MARVIN B. ZUCKERMAN

Atlantic City, New Jersey . . . Alpha Sigma Phi, Secretary . . . Sports Editor of Tower 2; Assistant in Biology; Dean's List . . . Future, Medical School . . . Major, Biology . . . Minor, Chemistry.

Camera Shy

WILLIAM N. FERRIS

"Shaky" . . . Niagara Falls, Ontario . . . Kappa Alpha . . . Major, French . . . Minor, German.

JAMES STEPHEN GALLAS

"Zeus" . . . Wheeling, West Virginia . . . Kappa Alpha . . . International Relations Club; Theatre Guild; Dance Band . . . Future, Law School . . . Major, History . . . Minor, Economics.

ANDREW E. HARE

"Andy" . . . West Alexander, Pennsylvania . . . Beta Theta Pi . . . Football 1, 2, 4; Varsity "B"; Tribunal Judge 3, 4 . . . Future, Hanging in the balance . . . Major, Physics . . . Minor, Economics.

WILLIAM J. HERVEY, JR.

"Jud" . . . Wellsburg, West Virginia . . . Future, Medicine . . . Major, Biology . . . Minor, Chemistry.

HARRY FRED STAFFILENO

"Freddie" . . . Wellsburg, West Virginia . . . Beta Theta Pi . . . Student Board of Governors 4, Economics Club 3, 4 . . . Future, Banking . . . Major, Economics . . . Minor, Sociology



Front Row: J. Smith, F. Bush, S. Erdman, M. Turley, A. McClelland, P. Bards, M. Young, A. Lefkowitz. Second Row: P. Vanderwood, B. Zenakis, T. Ramsey, V. Ludington, R. Buchanan, H. Pratt, R. Haering, R. Larson, F. Berriman. Back Row: B. J. Hannon, H. Martens, G. Bado, R. Fuhrman, E. Roper, G. Märko, C. Arnold, J. Verwer, J. Norbury.

Junior Class



THIS is the class that was Bethany's biggest in her biggest year . . . the class that found most of the veterans home from overseas and started them on their college life. It was a new class to mark a new era for Bethany. The barracks made their appearance, like new, insurgent specks beneath the tall dignity of the tower . . . the Bethany House was slowly fashioned into reality . . . the Beehive was Scrapy's den, terminus of many a midnight run from the barracks on the hill. Football was hopefully resumed, and the basketball team boasted a new, fresh squad. Bethany had given this class a new beginning, and this class has given Bethany a freshness it has seldom known.

Time has worn by and the class and the school are one, as it always is and always must be. But there is little time remaining. One small year will find the class gone from Bethany, and the union will be broken. One year that must be crammed with the most vital and most desired experiences, one year to fulfill the dreams centered about college life. Then, as surely as the clock will strike the hours, the class will move down the corridor of time, only to look back upon the college on the hill. .

Officers

President ROBERT HANKEY
 Vice President EUGENE WINSKI
 Secretary-Treasurer PETER PECORA

Allen, Vilas
 Arnold, Charles J.
 Ashbaugh, George A.
 Ashley, Joan
 Avery, Charles Jr.
 Bado, George
 Balling, Wayne
 Barrows, Norma
 Bartholomew, Laura
 Bates, Jack H.
 Bedford, Charles
 Beers, Marilyn N.
 Bell, Robert D.
 Berriman, Fred
 Black, Martha
 Blankenship, Vernon
 Boden, Donald
 Bonville, William
 Bowden, Perry H.
 Bradley, John
 Broberg, Harry R.
 Brown, Shannon
 Bruhn, Robert
 Burch, Nancy
 Burlingame, Anita M.
 Burt, Chester A. III
 Bush, Frank
 Capp, Michael L.
 Carman, James W.
 Carroll, Betty L.
 Carter, Reed
 Coble, Robert
 Collin, James R.
 Cooney, Joan
 Culver, Perry
 Daniels, E. Louise
 Davis, Robert H.
 Dewey, Helen L.
 Dole, Virginia
 Dunkle, Ralph
 Dynow, Walter
 Ely, Robert M.
 Ertle, Walter
 Fernschild, Sheila
 Ferrell, James E.
 Fink, John
 Fitch, Lucille
 Flanagan, Paul
 Flucke, Barbara
 France, Carl G.
 France, Dorothy
 Furst, Kenneth W.
 Gabia, Leon A.
 Garlick, Charles E.
 Garnick, Joseph
 Gephardt, Randall, Jr.
 Gilchrist, Warren
 Glassman, Mervin B.
 Greaver, William
 Green, Marshall
 Griffith, Benjamin
 Guist, Gordon
 Gwennap, Jack R.
 Haering, Ruth M.
 Halley, Robert W.
 Hankey, Robert
 Hannig, Ernest J.
 Hannon, Billy
 Hinchman, Leah
 Hite, Raymond
 Hoyt, Donald
 Hueston, Lydia
 Irish, John
 Jagoe, Bud James
 Janssen, Richard
 Kaiser, Robert C.
 Kalbfleisch, Gertrude
 Kearney, Thomas
 Kelley, William
 Kelly, David
 Kercksmar, John
 Kindig, Kenneth
 Kinsey, Jack
 Klug, John
 Knoepfel, Joan
 Kraus, Ralph
 Kruse, Martin
 Kulawiec, Edwin
 Lambert, Herbert
 Langstine, Theodore J.
 LaTourette, Harvey
 Lawyer, John
 Leach, Frank J.
 Leeson, Paul
 Lefkowitz, Alan H.
 Lowton, Virginia
 Ludington, Victor
 Markle, Erwin J.
 Martens, Harry
 Martin, Harold E.
 Massay, George
 Mayer, Stewart
 McClelland, Ardythe
 McKenna, Richard
 McKinney, Julia
 Messer, Barbara
 Messing, Irwin
 Metz, Betty
 Mewhirter, James
 Novatt, Melvyn
 O'Connor, John
 Oehmler, Edward
 Orr, Jeanne
 Palmer, Francis
 Pecora, Peter
 Phillips, William O.
 Porter, Dorothy
 Pratt, Helen
 Ritter, Robert
 Roper, Earl N.
 Rosecrans, Winona
 Ryan, William S.
 Schreiber, Sally
 Seywert, Roberta
 Shea, John J.
 Shumar, Nick
 Siedenburg, Sarah L.
 Smith, Gloria
 Smith, Jane M.
 Smith, Mary Jo
 Staffileno, Fred
 Steinbruck, Lucille A.
 Stickel, Robert
 Thieroff, Ruth E.
 Townsend, Betty
 Turley, Marjorie
 Ulman, Ralph
 Unterzuber, Gene
 Vanderwood, Paul J.
 Van Horn, Henry
 Verwer, Johannes
 Walker, Elizabeth
 Watkins, Harold R.
 Weigele, Walter L.
 White, Robert L.
 Wilson, Robert F.
 Winski, Leonard E.
 Wyckoff, Frances
 Xenakis, Barbara
 Young, Marjorie
 Zillweger, William



Front Row: A. Crook, N. Knowles, R. Kruse, N. Daniell, M. Myers, C. Wieser, P. Fay, J. Seiler, J. Johnston. Second Row: C. Brown, C. Whitson, R. Regney, R. Steinbrunn, H. Sandwen, P. Baylor, A. Bucy, J. Sydnor, D. Crawford, B. Scott. Back Row: J. Filson, R. Steele, P. Hutchett, B. Barnett, B. Watson, S. Fortunato, D. Shearer, A. Patterson, J. McDonald, R. Lamborn.

Sophomore Class

"REMEMBER the tribunals they held for our benefit in the old chapel? The first ones they had for years."

"Yeah, and remember the night Moppy Myers put Judge Hare back in place, and he put her on the street in a monkey suit!"

"And Grula was pushing peanuts up the walk!"

"And Hunt, who can forget Hunt! Remember the night he and Aimsie sat in their headquarters at Cochran directing the war against W & J while all the rest were down on the bridge slugging it out!" . . .

"Ours was the last year they played basketball games in the matchbox, when Marty broke the all-time scoring record against Marietta." . . . "And again in that overtime thriller with D & E." . . . "But that football season—oh, my head!" . . . "I'll never forget the chow lines down at the Bethany House."

"No, boy, didn't we have a good time the week everybody in Cochran took off for home because Hank got sick. Everybody appreciated that but Hank."

"Boy, that was some class. It just doesn't seem like we've been here two years."

"And next year we'll be upperclassmen—big wheels on campus!"

"Yep. Then just watch our smoke."

Officers

President HERBERT SANDWEN
 Vice President ROBERT COOK
 Secretary-Treasurer WILLIAM GROVE



Ackelson, Rolland
 Adlam, Joseph D.
 Amesbury, Richard
 Amsie, Eleanor
 Amsie, William A.
 Antila, Eric
 Antila, Jack
 Arison, Roberta R.
 Atkins, John O.
 Atkinson, Jean C.
 Baird, Jeanne
 Barnett, William A.
 Barr, Nancy
 Beall, Charles
 Behrendt, Jack
 Belgrade, Joseph
 Berg, Joseph R.
 Bernhardt, Daniel
 Beyer, Marion
 Blair, Nancy V.
 Boggs, Richard L.
 Bohlmann, Robert C.
 Boyd, Richard
 Bradley, Edwin
 Bramwell, Phyllis C.
 Brandt, Raymond D.
 Bromwich, Vinny L.
 Brown, Charles
 Brown, M. Audrey
 Brown, Rodger E.
 Bruhn, Philip H.
 Bruno, Anthony
 Buchanan, Joyce
 Buchanan, Robert C.
 Bucy, Ann
 Bunda, Andrew
 Burghard, Bruce
 Carbonaro, D. Edward
 Carey, Alfred M.
 Cochran, Susan E.
 Collins, Warren E.
 Cook, Robert
 Cottingham, Malcolm
 Crane, Donald
 Crawford, Diana
 Crook, Alice
 Cullis, John F.
 Culp, Robert
 Curtis, Paul
 D'Anci, Michael
 Daniell, Natalie
 Deardorff, Ona
 Deflin, Ralph A.
 deSciara, Edward
 Dexheimer, Elwood J.
 Dilmetin, Anthony
 DiPaolo, Mario
 Dodder, Grover C.
 Dreyer, Carol H.
 Durbin, Donovan B.
 Durig, Nancy M.
 Eames, Weston W.
 Ely, John B.
 Erdman, Martha Sue
 Esposito, Frank P.
 Feinstein, Neil
 Ferguson, Charles
 Ferrell, Frank C.
 Fiederlein, Frederick
 Filson, John B.
 Fischer, Robert R.
 Foose, Harry E.
 Fortunato, Stephen M.
 Fraim, Betty A.
 Fuhrman, Robert J.
 Gaither, Shirley M.
 Geise, Darald A.
 Germon, Patricia A.
 Gordon, Roy
 Green, Charles
 Grove, William
 Grubel, John
 Gula, Edward A.
 Hall, Nancy A.
 Hare, Robert
 Harris, Donald
 Haskins, Robert J.
 Helfer, Katharine
 Henthorne, Ivan D.
 Hesse, Doris K.
 Higinbotham, Webb
 Hilgeman, Janet
 Hissrich, William
 Hoff, Enid M.
 Hogan, Donald
 Holder, Bonnie
 Huchette, Paul
 Hudson, Barbara
 Huffman, Jean
 Huhn, Ross
 Hurford, Robert
 Hyde, Harold R.
 Johnston, Jeanne
 Jones, Clara Joy
 Jorgensen, Evelyn
 Kamerer, Roland
 Kanrich, Andrew
 Kearney, James
 Kennedy, William
 Kern, Betty
 Knowles, Nancy
 Koleszar, John W.
 Koperek, Bernard
 Krizmanich, Cleora K.
 Kruse, Rhoda
 Kurtz, Joanne
 Lamborn, Robert
 Lansill, Frederick
 Larson, Robert W.
 Laughner, Dale
 Lee, William
 Leigh, William
 Levy, Gerald
 Levy, Theodore
 Libertini, Frank
 Liedke, Thomas
 Lohman, Robert C.
 Lowder, Mary C.
 Lucas, Elmer D. Jr.
 MacDonald, John F.
 MacNicholas, Grant
 Madden, A. Beverly
 Makris, William F.
 Marko, Andrew
 Marko, George
 Marshall, Edmund
 Maruca, Anthony
 McGavran, Malcolm
 McKenzie, Carol
 McKinney, Ann
 McKinney, John F.
 McMullen, Park
 Medcalf, David
 Meess, Richard J.
 Metts, Donald A.
 Millang, Audrey
 Millett, Joan
 Morrison, James G.
 Myers, Marylou
 Nast, Robert
 Naylor, Mary Lou
 Nicholas, George
 Norbury, James
 Oberlander, Melvyn
 Oberman, John
 Orlowski, Arthur
 Patterson, Albert E.
 Patton, Pauline
 Perry, William E.
 Pollock, Edward
 Poss, Richard
 Pound, Donald
 Quortrup, Richmond
 Racho, Ilene
 Ramsey, Edward
 Raney, Dana
 Redding, Amos E. Jr.
 Regney, Robert M.
 Reith, Harold F.
 Renner, John
 Rhodes, Russell L.
 Richmond, Roland W.
 Ritter, Jean L.
 Rogers, Richard
 Romano, Helen E.
 Roth, William S.
 Sandwen, Arthur H.
 Sarokon, Daniel
 Saxton, Patricia A.
 Scheller, Jean Ann
 Schreiber, Glenn R.
 Scott, Barbara E.
 Seiler, Jane
 Shaffer, Carrollton
 Sheldon, Louise
 Shillinger, Leslie
 Simon, Patricia J.
 Slavin, Richard
 Smith, James
 Stedry, Carolyn P.
 Steel, Robert N.
 Stein, Alexander
 Steinbrunn, Richard L.
 Stepanian, George
 Stewart, Odelle
 Straitiff, Richard F.
 Streicher, William
 Summers, Nancy Lou
 Switzer, Robert E.
 Taylor, Richard
 Telfer, Dorothy
 Thomas, Curtis J.
 Townsend, Jean
 Umbel, Forrest K.
 Varlas, Mike
 Vujnovic, John
 Wagner, Marjorie
 Watson, William C.
 Weeks, Emyrus R.
 Weser, Carolyn
 Wicha, Renee
 Wiggin, Neil C.
 Wilkin, Ann
 Wilkins, Dudley C.
 Wilson, Stanley
 Wolf, William F.
 Woodyard, William H.
 Yakim, Andrew J.
 Young, Wyatt M.
 Zumpe, Laura



Front Row: R. Bramel, B. Aronson, P. Sheldon, N. Keller, M. Berseth, L. Passanant, J. Yunt, J. Parker, H. McMahan, J. Dunn, J. Eberle, G. Epstein, L. Sel, B. Johnson. Second Row: B. J. Moore, S. Arbelitel, J. Lallone, D. Schumacher, M. Kokornik, C. Boettcher, D. Forrie, D. Grooms, S. Elder, P. Bogelmann, J. DuPont, E. Ries, R. Stubbs, B. Thompson, E. Eugene, B. Hettinger. Third Row: A. Brandenburger, S. Rosie, K. Rice, R. Wilcox, M. Shellenberger, A. Szelowski, F. Oglebay, M. Fitch, E. Hillman, S. Southall, L. Ward, K. Cobb, D. DeVenere, E. Loerch, B. Abbott, L. Kimball. Back Row: P. Romanoli, K. Mullins, R. Rozman, L. Weiser, F. Chowenhill, D. Schultz, G. Bishop, S. Elliott, J. Kelley, W. Lacock, T. J. Mervin, W. Dameron, K. Lasham.

Freshmen

THIS year has been the first—but there will be more to follow. True, for some there will be no return, for some Bethany must ever remain a memory, but for many—for most—there will be other years.

It is this first year that is most important—important to those that leave, for it will be their one impression of school; important to those that stay, as a pattern for future semesters.

New friends were found here—kids from other schools in other parts of the country, all equally bewildered that first week—but kids that so soon have become important friends. There was the friendliness about the village that at first seemed so strange—almost insincere—but has now become a habit, the sine qua non of life in Bethany.

Other things were new. The hill, the huge, insurmountable hill that faces every one every day—and cannot be avoided. The town, now with two grocery stores, and so different from home that it did not seem possible. The classes unlike those in high school, professors that were new, and activities that lead to and from studies.

The dorms—there is really no school without dorms. Fights and feeds, excitement and despair—all are parts of dorm life, where you meet people, perhaps for the first time, and you like them or you fail, you live with them, or you cannot live at all.

Fraternities and sororities have been met—the gift-bearing Greeks who knew you so well you were startled. The feeds, the jokes, the business of the



Front Row: R. Phillips, R. Morris, N. Tanks, W. Richey, R. Talbot, D. Everetts, W. Weaver, E. Comminellis, J. Heikkenen, G. Murphy. Second Row: J. Zekith, R. Slade, T. J. Mervin, L. Davis, R. Fendergast, D. LeVine, J. Sturges, C. Schadle, C. Coltmer, D. Collins, R. Stubbs. Back Row: S. Porter, R. Gilliland, F. Long, R. Heger, R. Hurlid, R. Lacey, S. Wright, M. Voit, G. Denzer, T. Wampler, F. Niep, R. Hunt, R. Robinson, R. McGugh.

“cold war”, and then rush week and the decisions. Now past with time.

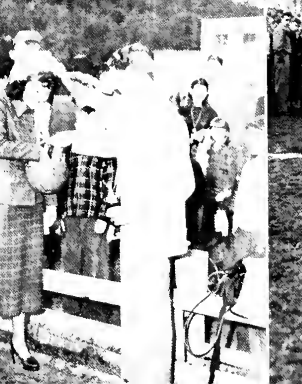
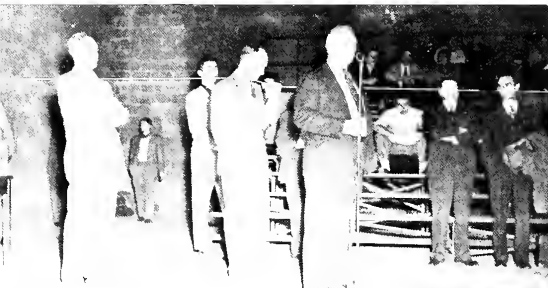
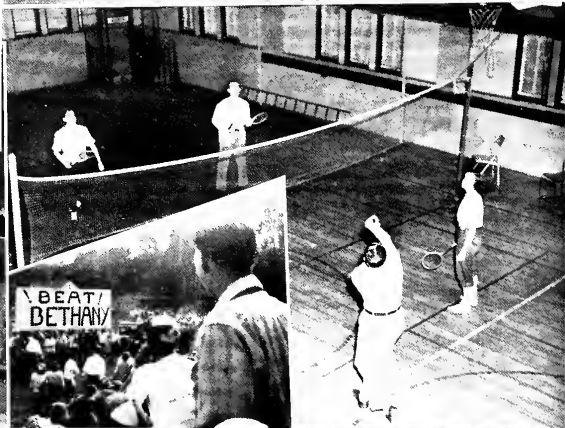
Ball games, movies, dates, classmates—these too are Bethany, as much as the faithful bus connecting civilization, and the almost unerring peals from the clock in the tower.

So now you have met them, and you are departing. But whether you return in the fall, or never again seek the college on the hill, those first, exciting days—those freshman days—will remain with you forever.



Officers

- President ELMER FREESE
- Vice President C. W. WRIGHT
- Secretary PAT SHELDON
- Treasurer WILLIAM DAMRON





Sports



Seated or Reclining: R. Larson, R. Buchanon, C. Ferguson, F. Bush, L. Gabia, T. Kearney. Standing: E. Lucas, R. Streicher, J. Behrendt, G. Pohle, J. Antila, J. Norbury, C. Burt, D. Weikle, R. Bohmann, J. Kearney.

Moo Moo Moo

THE Moo Moo Moos are a pep organization whose members are distinguished by a costume of bathrobe, clothes pin, hat, and signs. They stimulate campus spirit at pep rallies and games, and perpetuate some of the traditional feuds with other colleges.





Cheerleaders

COLOR and school spirit are personified in Bethany's cheerleaders. Sporting the green and white, these energetic girls lead the student body in cheers at all varsity games no matter what the weather. Headed by Sassy Smith, the squad includes Peggy Bogelmann, Joan Lallone, Lois Fair, Shirley Gaiter, and Doris Ludewig.





Front Row: P. Cessna, J. Fircak, D. Raney, M. Cottington, R. McKenna, E. Martin, J. Collins, E. Roper, R. Manuel, C. Garlick, J. Kinsey, E. Antila. Second Row: C. Coltman, Donald E. Fuoss, G. Bado, D. LeVine, R. Sturges, B. Leigh, E. Marshall, D. Pound, F. LaBella, R. Kinder, E. Murphy, W. Makris, Glenn A. Johnson, J. Mullin. Back Row: R. Switzer, B. Oakes, P. Leeson, M. Voit, C. Wattik, J. Ferrell, R. Nast, T. Rozansky, R. Kamerer, A. Hare, D. Harris.



GLENN E. JOHNSON

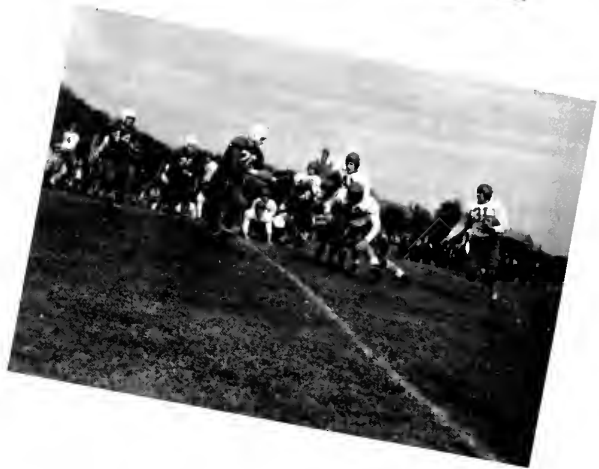
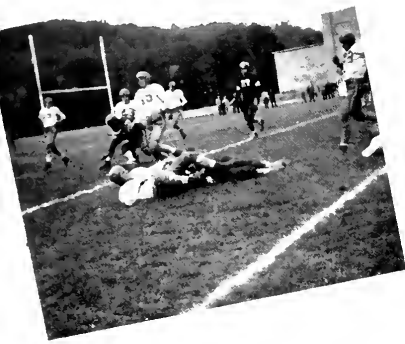
Football



DONALD A. FUOSS

BETHANY'S grid team, despite an unfortunate losing season, made a good showing on the field in their weekly encounters. The traditional W & J game was hotly contested, and some of the decisions were close and lost only in the last few minutes of the game.

Bethany		Opponents
0	Sept. 25 Bethany vs. Davis & Elkins.....	32
0	Oct. 2 Bethany vs. W & J at Washington.....	40
7	Oct. 9 Bethany vs. Salem	6
7	Oct. 16 Bethany vs. Fairmont at Fairmont.....	27
7	Oct. 23 Bethany vs. Westminster	20
0	Oct. 30 Bethany vs. W. Virginia Wesleyan at Buckhannon	20
6	Nov. 13 Bethany vs. Geneva at Geneva.....	12



EARL ROPER



ERIC ANTILA



BILL MAKRIS



Front Row. E. Martin, D. Harris, B. Makris, J. Vujnovic, T. Meyer, P. Wolfe. Back Row: Donald E. Fuoss, H. Pietrzniak, J. Mewhirter, W. Dynow, P. Bowden, J. Hettler, K. Grizzeli, Coach Glenn A. Johnson, J. Mollin.

Basketball

ALTHOUGH the Bethany hoopsters also suffered from a lack of victories, their games were usually tight and close, with flashes of outstanding ball playing. The return of several pre-war members of the team did much to replace the loss of letter men through graduation. A winning streak toward the end of the season was climaxed by a sensational victory over W & J, which was celebrated by calling off classes and a sock-hop at the Field House.



Bethany		Opponents
48	Dec. 1	Bethany vs. West Virginia University at Morgantown 71
60	Dec. 7	Bethany vs. California at California 61
64	Dec. 11	Bethany vs. Pitt at Pittsburgh 65
66	Dec. 15	Bethany vs. Carnegie 61
57	Dec. 17	Bethany vs. Alderson-Broadus at Broadus 64
63	Dec. 18	Bethany vs. Fairmont at Fairmont 72
65	Jan. 4	Bethany vs. West Virginia Wesleyan 44
60	Jan. 6	Bethany vs. Geneva at Beaver Falls 69
56	Jan. 8	Bethany vs. Washington-Jefferson at Washington 57
48	Jan. 15	Bethany vs. Westminster at New Wilmington 46
41	Jan. 19	Bethany vs. Geneva 63
43	Jan. 22	Bethany vs. Alderson-Broadus 63
72	Jan. 31	Bethany vs. Davis and Elkins 93
73	Feb. 1	Bethany vs. Glenville at Glenville 82
74	Feb. 2	Bethany vs. West Virginia Wesleyan at Buckhannon 62
66	Feb. 8	Bethany vs. Westminster 70
71	Feb. 12	Bethany vs. Fairmont 66
83	Feb. 15	Bethany vs. California 68
56	Feb. 17	Bethany vs. Marietta at Marietta 77
70	Feb. 23	Bethany vs. Beckley 62
48	Mar. 1	Bethany vs. Washington-Jefferson 44



JIM MEWHIRTER



JOHN VUJNOVIC



EDGAR MARTIN

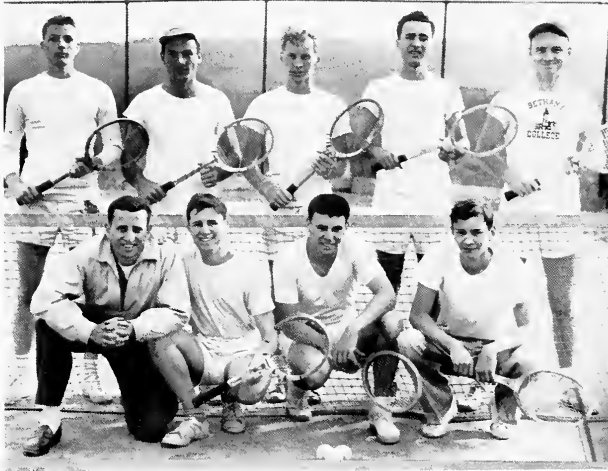


KARL GRIZZELL



DON HARRIS





Front Row: R. Levine, D. Lehrer, N. Feinstein, P. Hutchett.
 Back Row: D. Fannin, J. McKinney, E. Kulawiec, J. Warsaw, K. Wassman.

Tennis

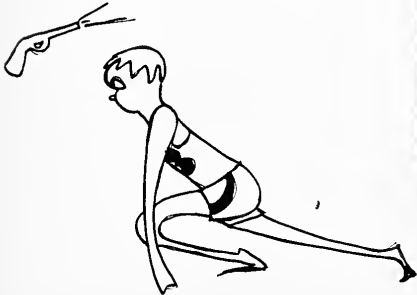
LED by Karl Wassman and coached by Bob Levine, the tennis team made a good showing for Bethany College in the matches played by them. Winning several encounters, their losses were hotly contested decisions. This year's team suffered from the loss of several veteran players.

Cross Country

BETHANY'S track team produced two wins in five starts, defeating Westminster and Mount Union, 20-35 and 27-28, respectively. Marshall College handed out the first defeat of the fall season, 25-30, and Morgantown and Geneva followed up with scores of 24-31 and 25-30, to complete the trio of losses.



Kneeling: H. LaTourette, T. Hamilton, T. Liedke.
 Standing: C. Johnson, J. Hettler, R. Huhn.

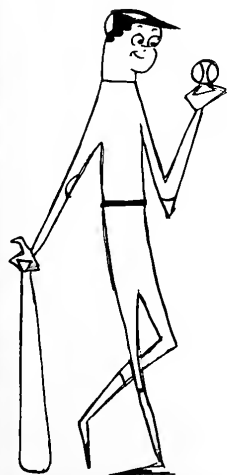




Front Row: S. Engel, D. Heatherington, W. Makris, K. Lawrence, P. Silcock, J. Kinsey, S. Stitt, E. Roper, R. Hurford. Second Row: J. Mewnrter, R. Carey, W. Bender, D. Blair, B. McGhee, B. Young, R. Van Sickle, J. Renner. Back Row: John J. Knight, E. Markle, J. McDonald, R. Huhn, R. Hunt.

Baseball

WITH the advantage of last year's lettermen and many new recruits among the freshmen, the Bison team played an interesting brand of ball throughout the two-month season.



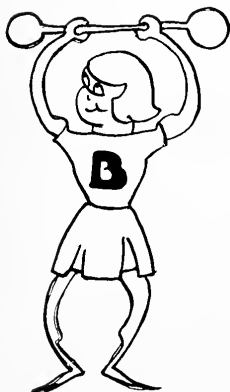
- April 8—Salem at Salem, Ohio
- April 20—W & J at Washington, Pa.
- April 22—Marietta at Bethany
- April 23—Pitt at Pittsburgh, Pa.
- April 25—West Virginia University at Morgantown
- April 27—Geneva at Beaver Falls, Pa.
- April 30—Fairmont at Bethany
- May 5—Muskingum at New Concord, Ohio
- May 9—Salem at Bethany
- May 11—W & J at Bethany
- May 14—Marietta at Marietta, Ohio
- May 17—West Virginia University at Bethany
- May 19—Geneva at Bethany
- May 21—Fairmont at Fairmont, West Virginia





Front Row: S. Gaither, V. Dole, L. Daniels, J. Scheller, M. Turley, C. Krizmanich, L. Bartholomew, S. Smith, D. Porter. Second Row: J. Ayers, M. Beyer, M. Black, B. Metz, N. Barrows, M. Lowder, K. Grizzell, J. Johnston, M. Wagner, D. Kosovec. Back Row: Miss Elizabeth Reed, M. Wallace, B. Kehn, S. Schreiver, L. Hueston, V. Edmonds, J. Yaney, M. Young, L. Fitch, L. Solkiewicz, Miss Donna Shaver.

Women's Athletic Association



BUZZING activity often emerges from the Irvin Gym when the Women's Athletic Association holds its monthly meetings. In connection with the Physical Education Department, the W. A. A. promotes good sportsmanship and knowledge of many women's sports as well as physical skill and efficiency. Such team games as basketball, volleyball, swimming, and baseball are featured along with the individual sports of tennis, badminton, and ping-pong. The meetings, however, are only partly taken up by these activities. Films, speakers and business discussions also contribute to the organization, and at the end of the year, a banquet is held at which awards are presented to the outstanding athletes who have earned over four hundred points in sports events.

Aside from their own activities, the W. A. A. sponsors a play day in May of each year for the high schools in the surrounding vicinity.

Officers

President	MARGE TURLEY
Vice President	BETTY METZ
Secretary	MARGE WAGNER
Treasurer	LYDIA HUESTON



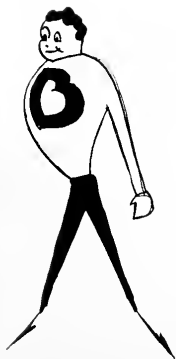
Front Row: S. Engel, T. Liedke, D. Nixon, T. Carey, E. Antila, J. Collins, R. Hite. Second Row: E. Murphy, H. LaTourette, T. Hamilton, C. Johnson, R. Huhn, T. Rozansky, R. Kamerer, G. Schreiber. Third Row: T. Mayer, W. Makris, D. Harris, E. Lucas, J. Kinsey, K. Lawrence, J. Ferrell. Fourth Row: R. Sturges, P. Wolfe, J. Raney, R. Hurford, J. Vujnovic, W. Leigh, R. McKenna. Fifth Row: G. Bado, K. Grizzell, J. Mewhirter, J. O'Connor, D. LeVine, F. Leach, B. Oakes, E. Marshall, E. Garlick. Back Row: C. Thomas, W. Corba, P. Bowden, G. Nicholas.

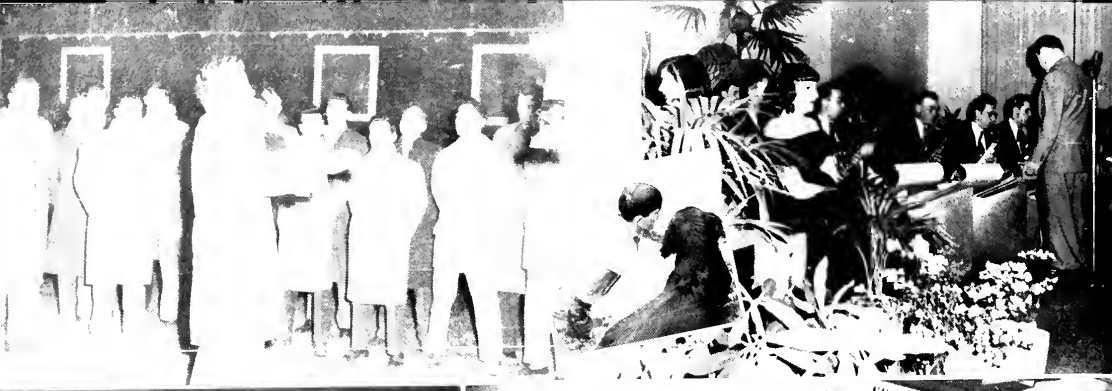
Varsity B

THE Varsity B Club's membership is selected from those who have earned their "B" in some varsity sport. The club promotes sports on campus and to further that end, sells candy and coke at all home games.

Officers

President EARL ROPER
 Vice President TED CAREY
 Secretary ERIC ANTILA







G
R
E
E
K
S



Front Row: K. Lawrence, R. Hankey, D. Ramsdell, E. Winski. Second Row: J. Verwer, R. Krebs, E. Carbonara, A. Redding, J. McKinney.

Interfraternity Council

THE Interfraternity Council promotes cooperation among the fraternities on campus and regulates all inter-fraternity sports programs. Rushing rules are also laid down by this group. The Council sponsors the Interfraternity Dance each year which is one of the high spots on the social calendar.

Officers

President	DONN RAMMSDELL
Vice President	DON MULGREW
Secretary-Treasurer	GENE WINSKI



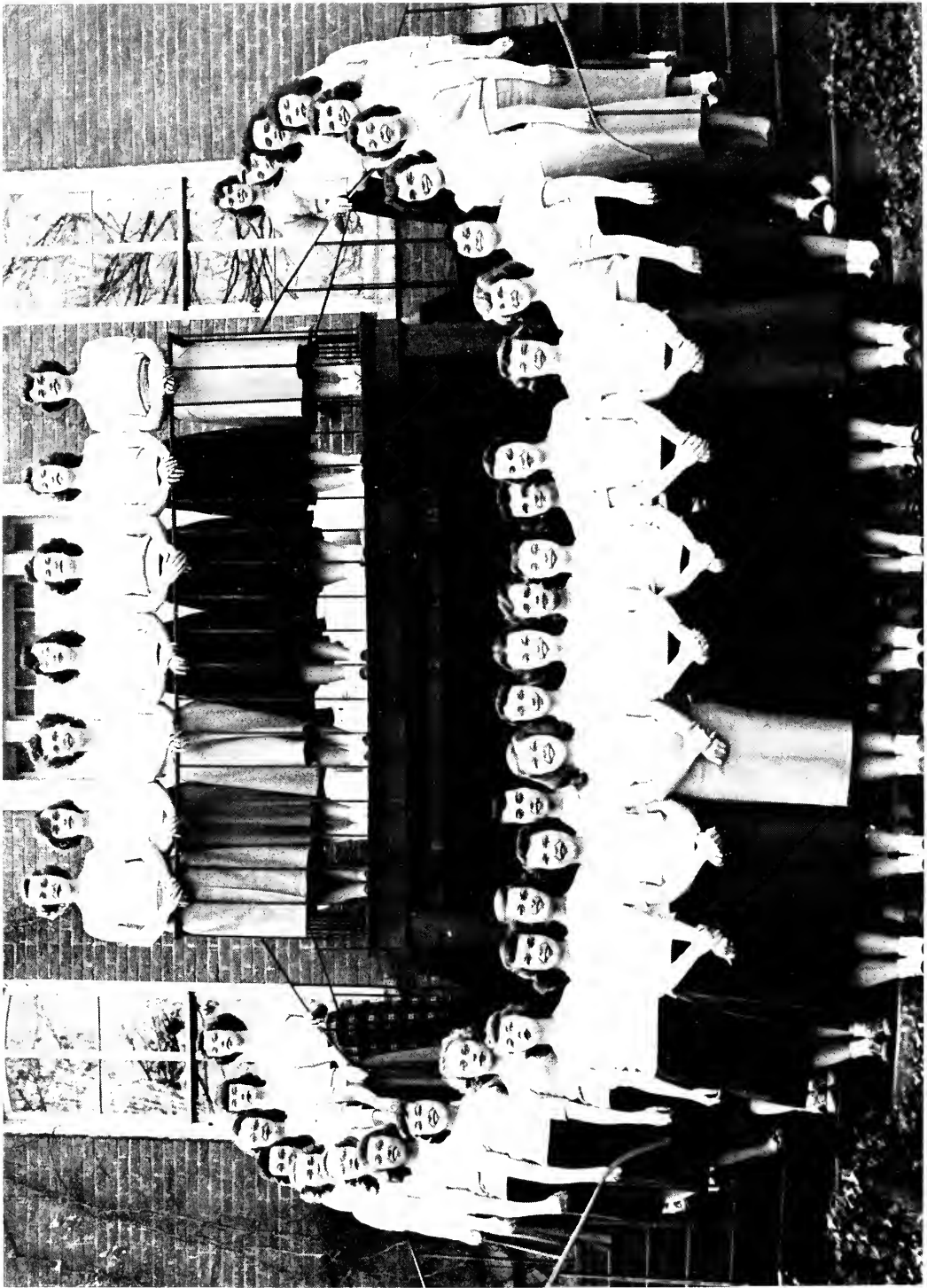
Front Row: M. Barnwell, C. Goodspeed, V. Rithner, M. Turley. Back Row: J. Johnston, D. Ludwig, M. Lowder, J. Morris.

Panhellenic Council

THE Panhellenic Council is primarily concerned with rushing rules and pledging of women students to Greek letter organizations. The Council published a handbook for freshmen and transfer women stating the details of founding and organization, financial obligations, and other pertinent information concerning the four sororities, Alpha Xi Delta, Kappa Delta, Phi Mu, and Zeta Tau Alpha.

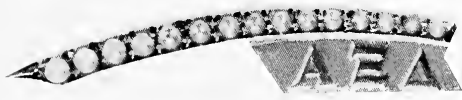
Officers

President	CAROLYN GOODSPEED
Vice President	VIRGINIA RITHNER
Secretary	MARY BARNWELL
Treasurer	MARJORIE TURLEY





Α Ξ Δ

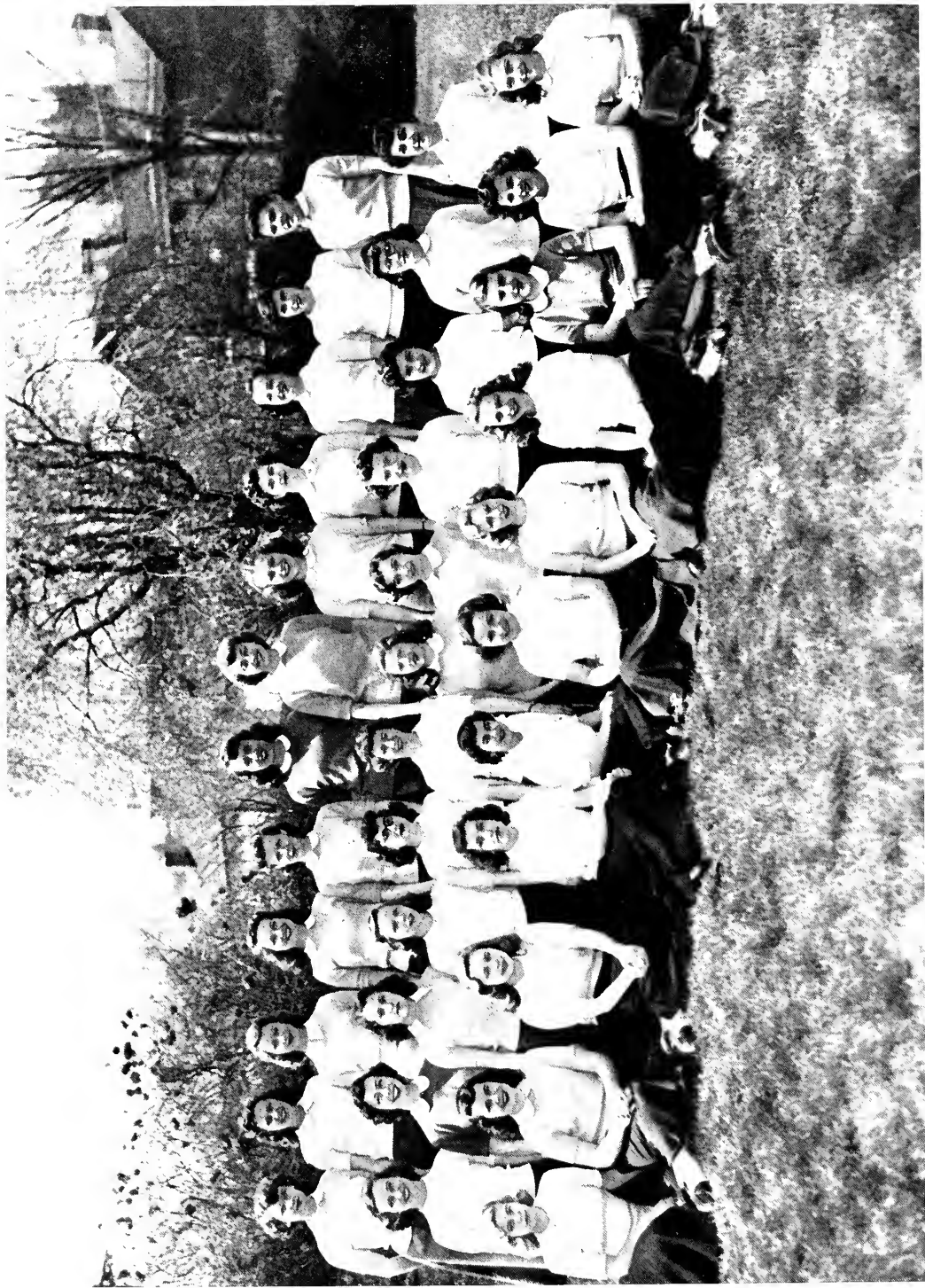


Officers

- President ELIZABETH WALKER
- Vice President CAROL McKENZIE
- Secretary NANCY BURCH
- Treasurer JOANNE BAIRD

Porch: Carolyn Hall, Joanne Smith, Judy McKinney, Betty Kehn, Nancy Leswing, Eileen Hillman, Doris Ludewig. Left to Right: Beatricia Bierau, Mary Fallon, Ruth Thieroff, Virginia Lowton, Sue Thieroff, Nancy Hall, Bonnie Holder, Madelyn Piccirilli, Carolyn Moyers, Shirley Smith, Joanne Baird, Nancy Barr, Ona Dearnorff, Shirley Elliott, Carol McKenzie, Winona Rosecranz, Betty Walker, Trudy Kalbfleisch, Nancy Burch, Nancy Blair, Nancy Durig, Joan Greany, Lois Fair, Joan Lallone, Carol Schott, Jane Parker, Kay Helfer, Florence Oglebay, Ann McKinney, Jean Atkinson, Jane Kelly.







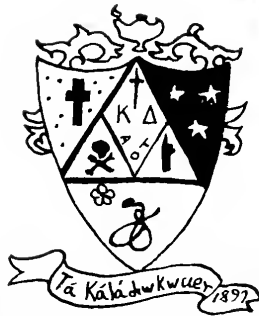
K Δ



Officers

- President ANITA BURLINGAME
- Vice President NORMA BARROWS
- Secretary JANE SMITH
- Treasurer HELEN PRATT

Front Row: Ronnie Wicha, Ro Bramel, Joanne Eberle, Ethel Tiberg, Mary Alice Phillips, Pat Sheldon, Jane Smith, Ruth Flemming, Jean Ann Scheller, Ethel Montiegel, Roberta Seywert. Second Row: Mary Barnwell, Phyllis Bramwell, Betty Townsend, Pat Saxton, Helen Pratt, Anita Burlingame, Narka Keller, Vinny Bromwich, Joan DuPont, Rose Imburgia, Norma Barrows, Evelyn McKenna. Third Row: Claire Clark, Eleanor Loerch, Leslie Shillinger, Alice Bush, Frances Wyckoff, June Morris, Joan Knoepfel, Peggy Bogelmann, Joy Jones, Ann Woolery, Georgina Martin, Jeanne Ayers.





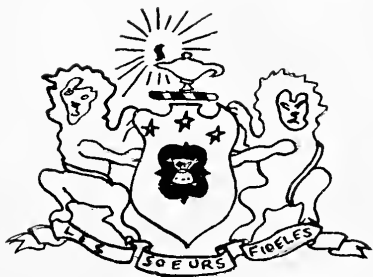


ΦΜ



Officers

- President MARJORIE TURLEY
- Vice President MARYLOU MYERS
- Secretary JOANNE KURTZ
- Treasurer RUTH HAERING



Front Row: Helen Romano, Ruth Haering, Jeanne Jordan, Marjorie Turley, Joanne Kurtz, Doris Hesse, Laura Bartholomew. Second Row: Leslie Kimball, Dorothy Kosovec, Doris Forie, Betty Johnson, Dorothy Porter, Helen Dewey. Back Row: Mavis Meixall, Marjorie Quillen, Alice Crook, Barbara Scott, Marjorie Young, Sharleen Southall, Lydia Hueston, Virginia Edmonds, Shirley Rosie.





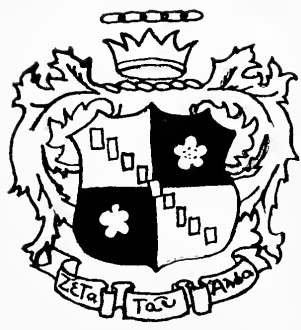
ZTA



Officers

- President BARBARA FLUCKE
- Vice President SALLY SCHREIVER
- Secretary MARJORIE WAGNER
- Treasurer GLORIA SMITH

Front Row: Betty Metz, Ginny Rithner, Ilene Racho, Marion Beyers, Joan Millett, Joyce Buchanan, Ann Keckley, Bobby Curtis, Ginny Dole, Jean Campbell, Helen Avery, Joan Brown, Jeanne Orr, Gloria Smith, Sue Erdmann, Shirley Gaither, Marjorie Wagner, Martha Black, Barbara Flucke. Second Row: Mim Fitch, Sally Schreiber, Barbara Albrecht, Lynn Beers, Janet Hilgeman, Pat Simon, Joyce Yaney, Mary Catherine Lowder, Betty Jane Wester, Cres Mandakas, Dorothy Telfer, Helen Wolfe, Jean Ritter, Ann Wilkin, Evelyn Jorgensen, Florence Oltmer, Norma Fink, Alice Davidson, Jane Keith, Marjorie Wallace, Miss Marybelle Carmen.







ΑΣΦ



Officers

- President PAUL FLANAGAN
 Vice President BOB HANKEY
 Secretary CHARLES GARLICK
 Treasurer JOSEPH BERG



Front Row: Bill Bonville, Charles Garlick, Roy Weeks, Bud Wiggin, Herbert Sandwen, Paul Flanagan, Joseph Berg, Dick Poss, Stephen Fortunato, Harold Ruck. Second Row: Tony Dilimetin, Richard Steinbrunn, Arthur Orlaski, Russell Rhodes, Frank Palmer, Bix Durbin, Louis Gallo, Thomas Kearney, Carl France, James Kearny, William Hissrich. Back Row: Dan Saroken, William Grove, Jack Bates, Bud Allison, Bill Barnett, Bob Lamborn, George Stepanian, Tony Marucca, Paul Hutchett.





BO II

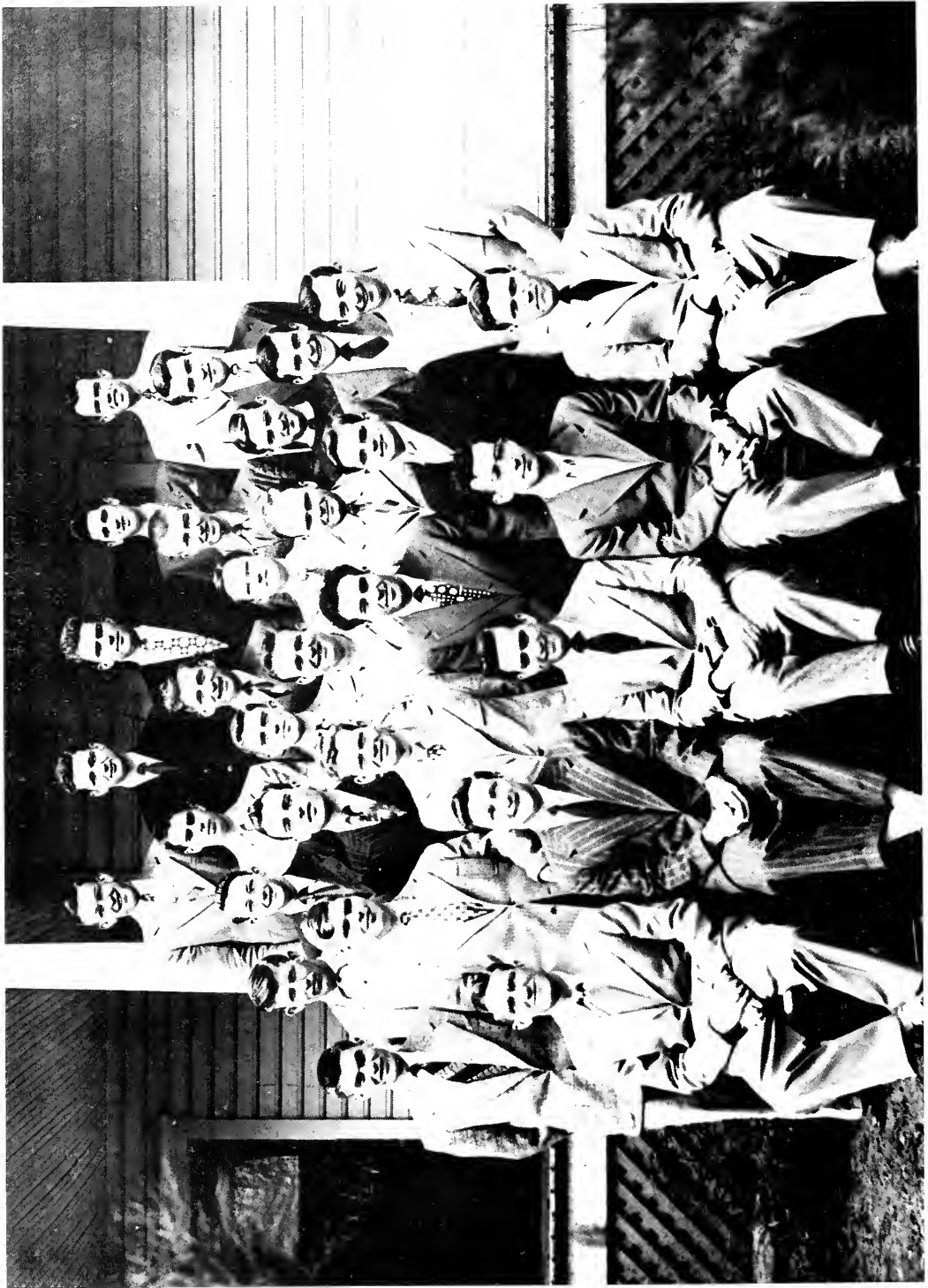


Officers

- President JOHN MCKINNEY
 Vice President HAROLD WATKINS
 Secretary WILLIAM KELLEY
 Treasurer WARREN GILCHRIST



Front Row: Dick Boyd, Bob Pendergast, Don LeVine, Bill Watson, Bill Handlan, Reed Carter, Bob Coble, Bill Lee, Bob Morris, Bill Weaver. Second Row: Ron Phillips, Dick Janssen, Bob Bohimann, Ed Carbonara, Bill Kelly, Hal Watkins, John McKinney, Mal Coddington, Warren Gilchrist, Bill Ryan, Dick McKenna, T. J. Mervin. Third Row: Dick Wilcox, Ray Hite, Bob Leigh, Charles Ferguson, Don Harris, John Vujnovic, Charles Johnson, Harry Broberg, Fred Staffileno, Jerry Levy, Nick Rompapas, Jack Regney. Fourth Row: Bill Corba, Sam Wright, Lon Farmer, Hank Wrubleski, Hank Brown. Bill Dameron, Tex Perrin, Dayton Pryor, Ed Marshall, Pat Wolfe. Back Row: Ed Oehmler, George Hoak, Andy Hare, Bob Halley, Dudley Wilkins, Bill Lacock, Grant Bishop, Charles Coltman, Jack Scott, Jack Morrison.





KA

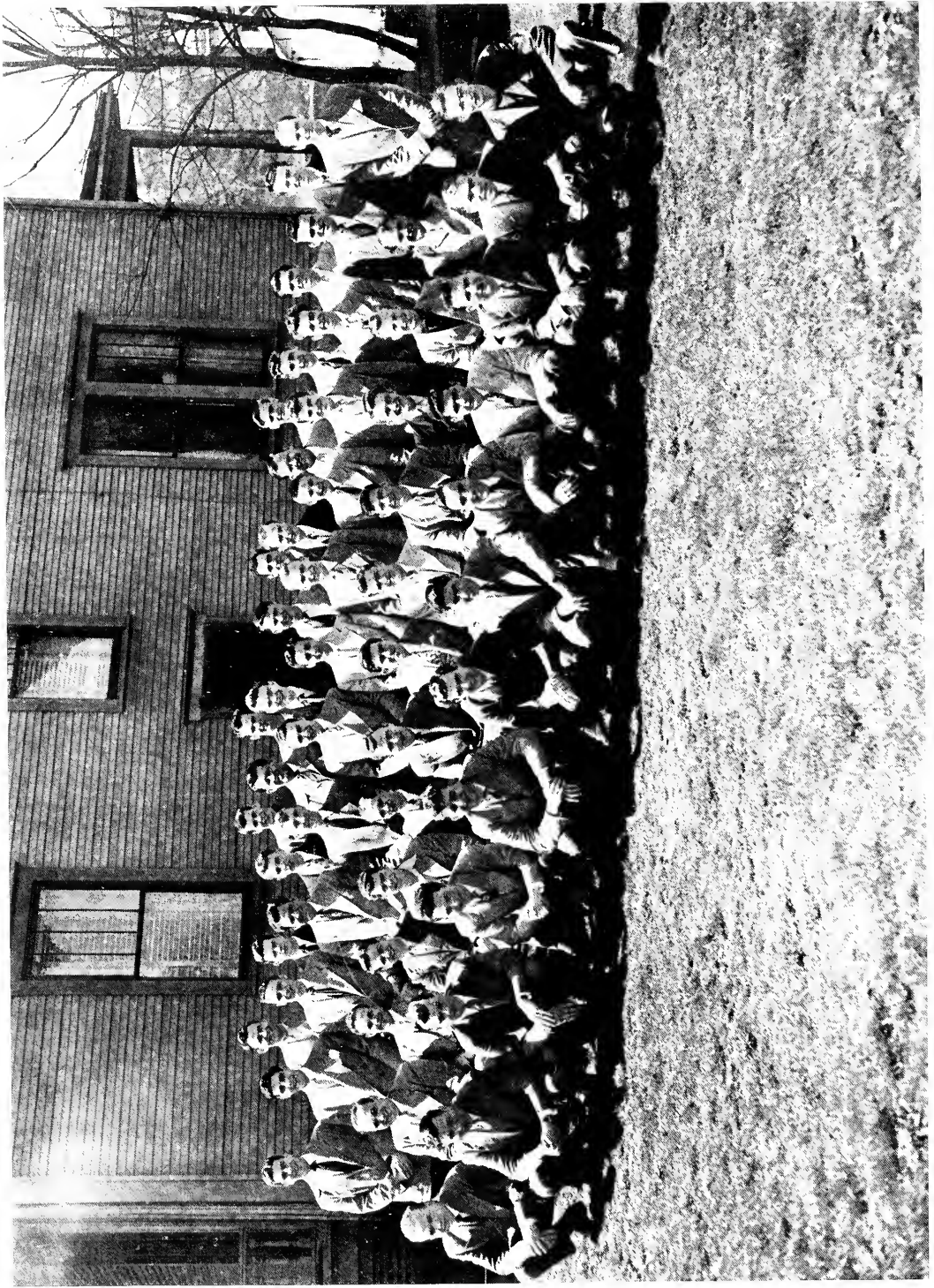


Officers

- President LEON GABIA
- Vice President ROBERT COOK
- Secretary MICHAEL VARLAS



Front Row: Elmer Lucas, Bob Cook, Leon Gabia, Mike Varlas, Roger Brown. Second Row: Bill Ferris, Jack Sydnor, David Medcalf, Jack Behrendt, Bob Kleesattle, Walter Ertle. Third Row: Jim Ferrell, Clifford Petersen, Martin Kruse, Grant MacNichols, Bob Nast. Fourth Row: Bill Bonar, Lloyd Davis, Bernard Stubbs, Bill Burton. Fifth Row: Russell McGregor, Alfred Wentworth, Ronald Slade, Jack Shea. Back Row: Bob Krebs, Jim Gallas, Bernard Oakes, Lloyd Weisner, Stacey Porter.





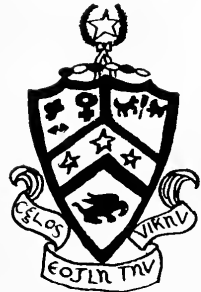
ΦΚΤ

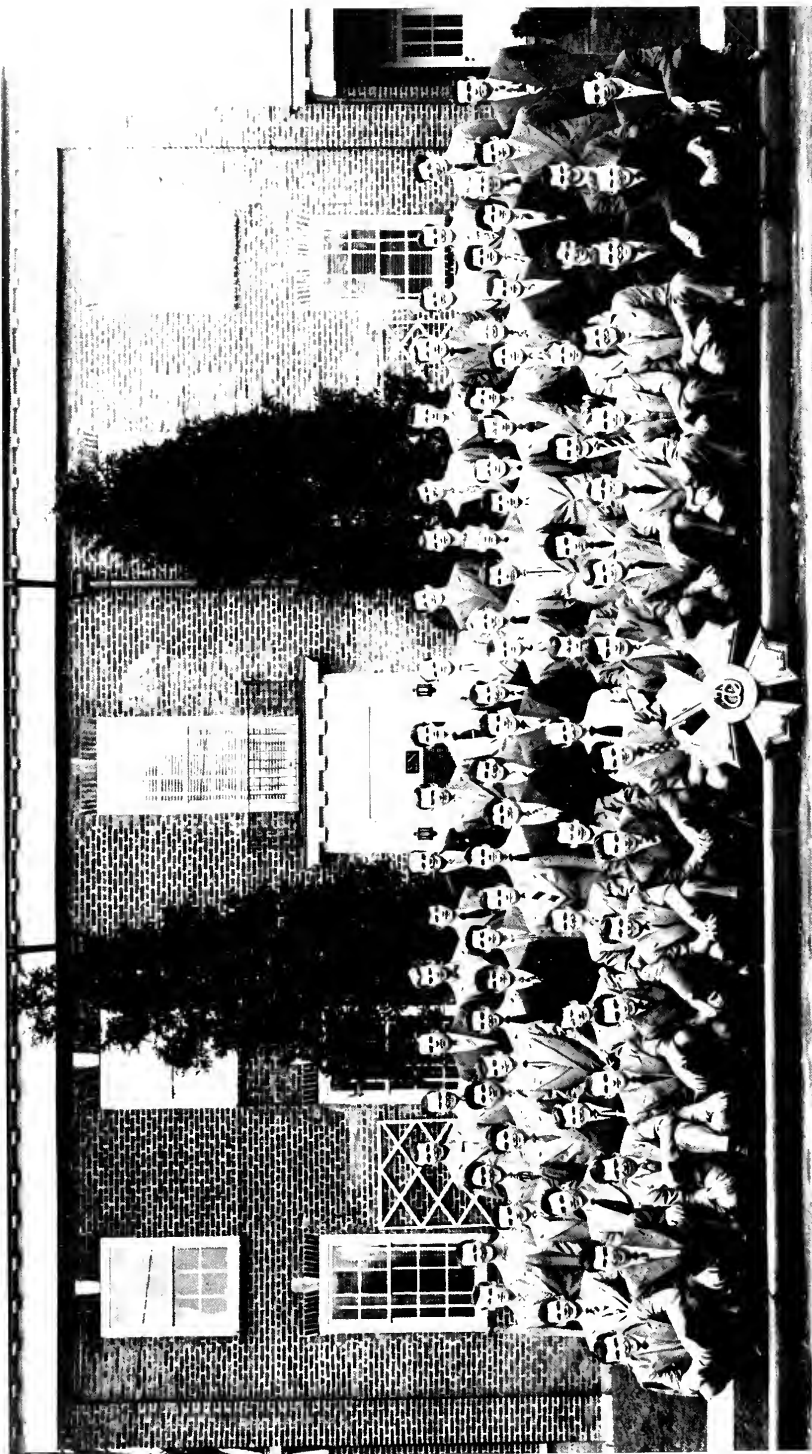


Officers

- President FRANK LEACH
- Vice President JIM MEWHIRTER
- Secretary ELWOOD DEXHEIMER
- Treasurer RICHARD MEESE

Front Row: John Kerckmar, Richard Meese, Jerry Scheer, John MacDonald, Bill Makris, Ashby Hoover, Bob Bell, Jack Grubel, Ralph Deflin, Bill Jones, Ross Huhn, Harvey Latourette. Second Row: Pete Pecora, Dale Laughner, Bob Haskins, Frank Leach, George Bartrum, Warren Mulstein, Elwood Dexheimer, Tom Stimmel, Earl Roper, Sam Engel, Frank Bush, Roland Kamerer. Third Row: James Collins, Frank LaBella, Jerry McConn, Mike D'Anci, Ken Lawrence, Dick Williams, Ted Levy, Bob Switzer, Bob Tatlock, Danny Heatherington, Bob Regney, Bob Rozman, Bob Beard. Fourth Row: Dick Rogers, Bud Schadle, Dick Phelps, George Nicholas, George Green, Jack Lawyer, George Bado, Howard Dimmit, Amos Redding, Jack Kinsey, Bill Streicher. Back Row: Perry Bowden, Curt Thomas, Elmer Freeze, Ron Topp.





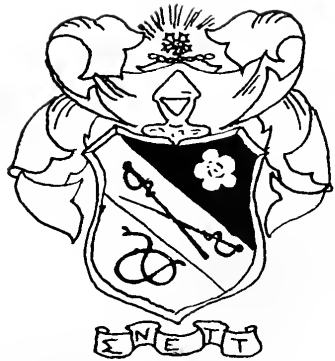


ΣΝ

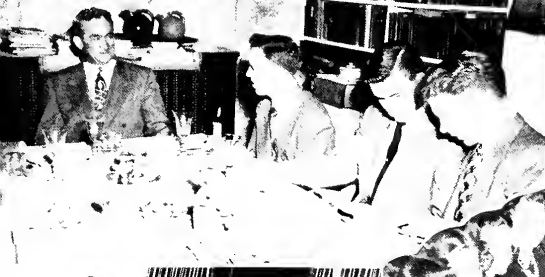
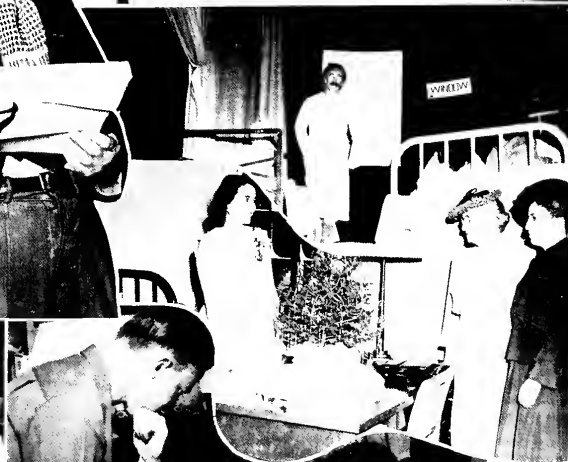


Officers

- Commander ROBERT HURFORD
- Vice Commander BERNARD KOPEREK
- Recorder WILLIAM ROTH
- Treasurer FRED BERRIMAN



Front Row: Tom Miller, George Denzer, Bill Gilliland, Tom Rozansky, Jim Collin, Warren Collins, John Sturges, Mario DiPaolo, Richard Slaviv, Ted Carey, Rick Lansell, Weston Eames, Bix Young, Bill Campbell, Frank Long, Paul Vanderwood. Second Row: Ben Griffith, George Pohle, Bob Buchanan, Wayne Bailing, Billy Jo Hanna, Gene Winski, Jo Verwer, Fred Berriman, Don Golbey, Ed Pollock, Bob Fithian, Ted Ramsey, Bob Butz. Third Row: Tom Hamilton, John Hoerr, John Cullis, Carl Dreyer, Fred Niep, Dan Everts, Bill Coggins, Bill Buchanan, Jim Kemple, Doug Collins, Sid Tamburin, Bill Reisdorf, John Pazzelli, Paul Kaiser, Keith Rice, Dick Kinder. Fourth Row: Max Voit, Dave Weigele, Anthony Cavalle, Harry Martens, Bill Roth, Frampton Chowenhill, Bob Wilson, Charles Brown, Stan Wilson, Bill Cook, Paul Leeson, Bill Perry, Don Hoyt, Bernard Koperek, Jim Norbury, John Atkins. Back Row: Bob Hunt, Ed Schultz, Don Hogan, Ed Kulawiec, Ed DeSciora, Jack Filson, Ed Bradley, Stu Butz, Don Pound, Bob Hurford, Bob Larsen, Jerry Schreiber, Bud Jagoe, Tom Wampler, Jim Zeka, Stan Franzell, Don Boden.



CLUBS



Student Board of Governors



HAROLD WATKINS

Constitution and By-Laws

PREAMBLE

THE students of Bethany College, Bethany, West Virginia, hereby adopt this constitution and by-laws which are intended to meet the practical needs for the organization of the students of Bethany College; to provide for the proper administration of student government, activities, and affairs; to provide for the codification and maintenance of all existing customs and traditions of this College; to provide for the fullest practical measure of popular participation in, and control of, student government, activities, and affairs; and to provide a guide to, and a means for the perpetuation of, a strong, effective, and unwavering program of administering those things which lawfully and ethically belong to the students' rights . . .

ARTICLE II

Section 1. The membership of the Student Board of Governors shall consist of two persons elected annually from each social group . . .

ARTICLE VI

Section 1. The permanent officers of the Student Board of Governors shall be:

- A. The President, who shall hold office from November of the election year to the following November.
- B. The Vice President, Treasurer, Executive Secretary, Corresponding Secretary who shall hold office from the first meeting in May until the first meeting in May of the following year . . .

Section 3. Duties of the Student Board of Governors

- A. Relative to the College Administration and Students.

To discuss and undertake a program relating to student welfare and activities at Bethany College. To discuss matters which concern the students and the college administration mutually. To act as the sole apportioning agency of the student activities fund. To have the right to exercise its authority over student publications as is provided for. To make rules and regulations and take all actions necessary for the execution of the duties herein mentioned and for those not provided for or prohibited by this constitution. To have the right to grant permission, if deemed proper, to students to organize any new groups wishing to formulate and schedule meetings on the college calendar and have an official campus status, or to refuse any new groups the privileged status of recognition by the Board of Governors. To inform the college administration of the amount needed to run student activities . . .

Section 7. Permanent Committees and Boards of Control.

- A. The Financial Committee

This committee shall consist of three or five members . . . It shall be the duty of this committee to notify all organizations seeking grants that their requests must be in prior to the second meeting of the Board of Governors and to receive all requests for appropriations . . . The committee shall present to the Board of Governors the budget that they recommend together with the statement of the previous year's budget and comments on whether it was satisfactory . . .

- B. The College Relations Committee

It is the duty of this committee to act as a connecting link between the students and the faculty and/or the administration . . .



Front Row: S. Schreiber, R. Deflin, H. Dimmit, H. Watkins, J. McKinney, C. Brewer. Second Row: R. Kamerer, W. Balling, F. Staffileno, H. Pratt, N. Barrows, M. Quillen, B. J. Wester, H. Dewey. Back Row: D. Ludwig, R. Carter, J. Carman, K. Armitage, G. Pohle, M. Voit, R. Quortrup, K. Furst, H. Ruck.

C. The Social Committee

This committee is to be composed of fourteen members . . . They shall serve as student representatives on the committee to plan the college social events and allot the money for these events . . . This committee shall act as the connecting link between the college and the Student Board of Governors on all social matters.

D. The Athletic Board of Control

This committee shall . . . represent the student body on this Board and . . . all recommendations of the Student Board of Governors with respect to athletics, shall be presented to the Athletic Board of Control through this committee . . .

E. The Student Welfare Committee

Duties of the committee—To investigate complaints of students against the operation of the dining halls . . . of the Bee Hive . . . of college living quarters and dormitories . . . conditions of student employment or other extra-academic relations with the college . . .

ARTICLE VIII

Section 1. Election of the President of the Student Board of Governors

A. Nomination

All names of prospective candidates applying for petitions must be posted on the Main Bulletin Board no later than October 15. Nominations must be made by a written petition of not less than one hundred or more than one hundred twenty-five students . . . No first semester freshman may sign a nomination petition or be nominated. No person may sign more than two petitions. Signing of petitions must end one week before elections . . .

B. Election

Voting will be on an official written ballot and will take place at a polling place provided by the Election Committee . . .

Section 3. Election of Board Members

The Board of Governors members shall be elected by the social groups designated . . . from their respective membership . . .

ARTICLE IX

Section 1. The Board shall provide for the encouragement and perpetuation of all the customs and traditions of this student body . . .



Seated: A. Davidson, R. Haering, E. DeSciора, W. Rosecrans. Standing: B. Flucke, G. Bishop, E. Redgate, C. Krizmanich, T. Kearney, R. Quortrup, J. Scheller.

Social Committee

REMEMBER the Bunny Hop? The Snowball Formal? Or the dates you had Reverse Weekend? Each of these occasions was sponsored by the Social Committee, one of the more actively important groups on campus. Ed DeSciора, the chairman, arranges a varied form of entertainment for the entire student body for each weekend of the academic year with the committee. This organization is composed of one representative from each sorority and fraternity, a Phillips Hall representative, an independent man and woman, and a freshman. Meeting every Monday afternoon at four o'clock, the Social Committee carefully discusses and plans every weekend with the provision of entertainment as the sole purpose. The group has succeeded, having offered many new ideas and activities. Miss Audrey Parker is the faculty adviser.



Seated: G. Kalbfleisch, J. Ayers, J. Smith, P. Bramwell. Standing: N. Burch, S. Thieroff, A. Woolery, D. Crawford, Miss Audrey Parker, N. Daniell, K. Grizzell, V. Dole.

Association of Women Students

THE Board of the Association of Women Students is composed of four elected officers chosen by all of the women on campus and two representatives of every women's dormitory and sorority. Jurisdiction over penalties given to the students, such as campuses and black marks, is given to this Board. An important part of student government at Bethany, the Board meets weekly to pass on decisions and to discuss problems concerning the rules and regulations for women.



Officers

- President JEANNE AYERS
- Vice President TRUDY KALBFLEISCH
- Secretary PHYLLIS BRAMWELL
- Treasurer JANE SMITH



Front Row: K. Grizzell, S. Hoagland, R. Levine, J. Collins, S. Engel.
 Second Row: K. Armitage, D. Beard, J. Morris, R. Krebs, F. Brown.

Kalon

KALON is Bethany's honorary society composed of campus leaders who have maintained a scholarship index of 2.5 for four semesters and have been approved by faculty and member boards. The meetings of this society are spent in discussing campus problems. At this time members submit suggestions for improvement to various campus organizations.

Officers

President BOB BEARD
 Vice President KARL GRIZZELL
 Secretary JUNE MORRIS



Front Row: H. Pratt, R. Levine, J. Knoepfel.
 Back Row: R. Boyd, E. Markie, P. Flanagan, E. Winski

Pi Delta Epsilon

FORMED in May of 1947, the Bethany Chapter of Pi Delta Epsilon, national journalism fraternity, has since been active in supervising and regulating student publications. Under the direction of this fraternity, the "Bethany Tower" was founded and the "Bethanian" resumed publication after a dormancy of several years.

Although the group is under the Student Board of Governors' Constitution with top editorial positions subject to S.B.O.G. approval, Pi Delta is given a free hand in appointing publication staffs. Eligibility to this fraternity is based upon service on the staffs of the "Tower" or "Bethanian" and leadership in an editorial capacity.

Officers

President JOAN KNOEPFEL
 Secretary-Treasurer SALLY SCHREIVER



D. Norton, D. Norton, M. Myers, B. Sel, R. Hankey.

Alpha Psi Omega

ADMISSION to the dramatic honorary fraternity, Alpha Psi Omega, is based upon a minimum of two hundred hours work in various stages of dramatic production. The members must have experience in all phases of stage work. The group acts as a governing board for the activities of campus thespians, passing upon the casts and plays to be produced.

Officers

President BOB HANKEY
Secretary-Treasurer WINONA ROSECRANS



Front Row: E. Roper, C. F. Brown, R. Perrin, V. Ludington. Second Row: C. Petersen, S. Engel, W. Collins, C. Avery. Third Row: P. Pecora, M. Stear, N. Burch, R. Ritter. Fourth Row: J. Behrendt, F. Fiederlein, P. Geron, M. Black. Fifth Row: R. Poss, J. Kearney, T. Kearney, D. Oberman. Back Row: R. Stickel, E. Unterzuber, C. Arnold, W. Cook, E. Dexheimer, A. Patterson.

American Chemical Society

THE American Chemical Society meetings supplement classes in supplying additional information in the field. Speakers are often present at the meetings or movies may be shown. Membership is limited to those with eight hours in chemistry.

Officers

President TEX PERRIN
 Vice President VIC McANALLEN
 Secretary-Treasurer EARL ROPER



Bethanian

Editor-in-Chief HELEN PRATT
Managing Editor FRANK LEACH
Literary Editor BETTY JOHNSON
Art Editor VINNY BROMWICH
Circulation Editor GENE WINSKI
Circulation Editor RICHARD SLAVIN
Business Manager BOB LEVINE



Front Row: E. Winski, R. Levine, H. Pratt, B. Johnson, V. Bromwich. Second Row: C. Burt,



Advertising Staff:

Robert Butz
William Cook
Frank Bush
Winona Rosecrans
Renee Richards





M. Phillips, R. Imburgia, J. Seiler, W. Collins
 Back Row: M. Barnwell, L. Green, J. Ayers.



Literary Staff:

- | | |
|------------------|---------------------|
| Phyllis Bramwell | Betty Townsend |
| Ronnie Wicha | Anita Burlingame |
| Nancy Yochem | Jeanne Ayers |
| Jane Seiler | Rhoda Kruse |
| Natalie Daniell | Frances Wyckoff |
| Pat Saxton | Mary Alice Phillips |
| Claire Clark | Alice Bush |
| Jane Smith | Mary Barnwell |
| Georgina Martin | Rose Imburgia |
| Lois Green | Warren Collins |

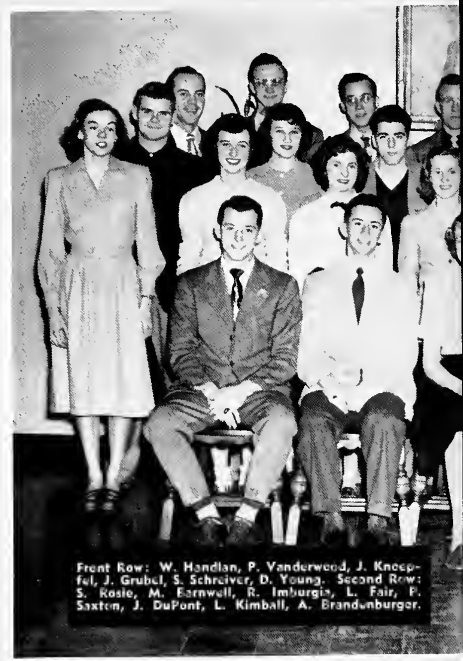
**Student Vote on Urgent Matters,
Honor System, Part of Platform**

**Station Opening
Features Guests
Socialist Party Chairman Hoopes
Talks to Special Student Session**

**Commuting Ex-GI Music Major
Disappears From College Campus**

**Dr. Alpenfels to Lecture Dec. 8th
On Topic "Race and Prejudice"**

*Fraternities Finish
Upperclass Pledging*



Front Row: W. Handlan, P. Vanderwood, J. Knoepfel, J. Grubel, S. Schreiber, D. Young. Second Row: S. Kosto, M. Barnwell, R. Imburgis, L. Fair, F. Saxton, J. DuPont, L. Kimball, A. Brandwamburger.

**Watkins Victor In SBOG President
Man Hunt Ends As Jepson**

*Stassen Reviews
"Public Affairs"*

**Theatre Guild to Present Show
"Two on an Island" Dec. 2, 3**

*Last Nite Plans
Include Carols,
Play and Dinner*

Extends Town Limits

**Snow Ball Semi-Formal
Feature Bowman Band
mit as Pro-Tem
Is SBOG Action**

First Semester Staff:	Second Semester Staff:
Joan Knoepfel . . . Editor-in-Chief . . .	Sally Schreiber
Jack Grubel . . . Managing Editor . . .	Jack Grubel
Paul Flanagan . . . Business Manager . . .	Paul Flanagan
Paul Vanderwood . . . News Editor . . .	Paul Vanderwood
Bill Handlan . . . Sports Editor . . .	Bill Handlan
Sally Schreiber . . . Features Editor . . .	Tom Stimmel
Bob Wilson . . . Copy Editor . . .	Bob Wilson
Bix Young . . . Advertising Manager . . .	Bix Young
Jack Filson . . . Circulation Manager . . .	Jack Filson

**SBOG
Revisio**

oming Weekend

Alumni Gymnasium Opens With Carnegie Tech Game

*Medieval Production
Relates Xmas Story*

**Recorder Presented to WWBN;
Plans Made for Soundproofing**

*WWBN Quiz Show
Draws Two Winners*

**Death Motive Still Mute Question
As Search Ends After 30 Days**

*Site of Season Play
Shifts to Rine Field*

**Thursday Marks Station
WWBN Initial Broadcast**

Election

*Heikkinen Lectures
in Finland at I.R.C.*

Body Is Found

**Schedule Prepared for Pictures,
Circulation of 1949 'Bethanian'**

Field House Now In Use

oves Smash Success

**Homecoming Plans Game,
Crowning of Queen, Alums**

*Freshman-Sophomore Tug Across Buffalo
Represent Traditional, Inter-Class Rivalry*

*Ramsdell Explains I.F.C.
To Freshmen at Smoker*

*Xmas Pantomime
Supported by Choir*

*New Library Equipment
Arrives Ready For Use*



**Hallowe'en Parade
Friday**



Third Row: T. Carey, C. Brower, S. Tamburin, J. Hoerr, R. Gilliland, R. Striobech, S. Southall. Back Row: J. Filson, B. J. Hannon, E. Winski, F. Bush, A. Szekowski, F. Leach, F. Brown.



Front Row: Mr. C. B. Fitch, A. Millang, Miss Pearl Mahaffey, J. McKinney, R. Lohman, G. Massay, Miss Jane Dingleline, E. Holl, R. Hankey. Second Row: A. Cook, J. Hoagland, L. Fraim, L. Fair, C. Worthington, F. Owens, J. Kurtz, M. Myers. Third Row: K. Armitage, N. Knowles, S. Southall, E. Esaias, A. McClelland, M. R. Stear, R. Kruse. Fourth Row: D. Crawford, A. Bucy, A. McKinney, J. Cooney, E. Tiberg. Fifth Row: P. Fay, M. L. Naylor, L. Hinchmann, W. Richey, E. Ries, B. Abbott. Sixth Row: G. Bishop, L. Sheldon, B. Xenakis, M. Meixall, D. Schumacher, B. Madden. Back Row: M. Lowder, A. Woolery, C. Boettcher, K. Irving, P. Baylor, S. Cochran, K. Furst.

Student Christian Association

THE Student Christian Association is divided into four main fields of interest, Christian Heritage, World Relations, Personal and Campus Life, and Social Responsibility. These four groups hold meetings to discuss the various phases of the subject and mass meetings are held occasionally to present the overall picture to the student body. The organization sponsors the World Student Service Fund drive and United Nations Week on campus and helps with Christian Living Emphasis Week, and noonday devotions before Easter.

Officers

President	JUDY McKINNEY
Vice President	GEORGE MASSAY
Secretary	ODELLE STEWART
Treasurer	KENNETH FURST



Front Row: Harry L. Ice, A. Crook, N. Summers, N. Knowles, D. France, E. Esaias, A. McClelland, O. Stewart. Second Row: D. Crawford, E. Holl, P. Baylor, S. Southall, E. Ries, G. Massay. Third Row: P. Clark, B. Hile, M. L. Naylor, A. Bucy, C. M. Brewer, D. Rammsdell, M. McGavran. Fourth Row: R. Hite, L. Davis, W. Richey, C. France, V. McAnallen, Osborne Booth, James B. Miller. Fifth Row: D. King, H. Lambert, B. Burkhardt, Irvin Green, J. Smith, R. Cook. Sixth Row: K. Lashen, V. Blankenship, J. Kindig, R. Kleesattle, R. Wilcox, R. Kunzelman. Seventh Row: R. Carter, D. Behrnhardt, R. Talbot, A. Allen, K. Kershaw, H. Watkins. Eighth Row: G. Murphy, R. Lohman, M. McCloy, A. Coe, F. Ferrell, W. Nottingham, W. Grove. Ninth Row: B. Oakes, J. Sullivan, J. Stafford, R. Taylor, C. Dodder, M. Bedford, D. Pound. Back Row: J. Atkins, D. Hoyt, D. Hogan, B. J. Hannon, R. Kasbaum, J. Lacey, W. Ryan.

Ministerial Association

MINISTERIAL students at Bethany have formed a group through which their views on religion and related fields can be discussed. The Ministerial Association has had an imposing list of speakers from all parts of the world, and it gives an annual banquet which is eagerly awaited by its members. This organization has grown considerably during the past few years and now boasts a membership of seventy-two.

Officers

President	GEORGE MASSAY
Vice President	REED CARTER
Secretary	PAT CLARK
Treasurer	BOB COOK





Front Row: C. Stedry, A. Brown, L. Green, M. Phillips. Second Row: J. Kearney, W. Weaver, A. Szelgowski, R. Amesbury, S. Tamboven, C. Burt. Back Row: R. MacGregor, J. Shea, R. Bartow, B. Thomas, J. MacDonald, P. Burig.

Radio Station WWBN



WWBN had its grand opening this past fall which had been awaited for some time by the students. Advised by Dr. John Allen, members of the student body write the scripts for, act in, announce, and engineer all of the programs. The schedule of presentations varies widely from political speeches to "disc-jockey" offerings.

Officers

President	BOB FUHRMAN
Secretary	LOIS GREEN
Station Manager	ED GRULA



BUSINESS STAFF

Seated: Dr. John Allen, R. Fuhrman.
Standing: E. Grula, F. Leach.





Front Row: A. Szelgowski, L. Sel, S. Thieroff, L. Passanant, M. Myers, B. Sel, P. Fay, R. Hankey, L. Gallo. Second Row: J. Casey, A. Millang, A. Dilmetin, N. Barrows, L. Sheldon, D. Norton, V. Proper, R. Kruse, B. Xenakis. Back Row: R. Slade, D. Norton, E. Hillman, R. Kasbaum, Ralph L. Smith.

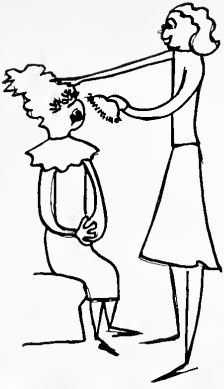
Theatre Guild

DRAMATICALLY yours, Bethany's Theatre Guild has offered a varied bill of entertainment for the student's enjoyment and appreciation during the past year. Among the plays presented, "Two on an Island" highlighted their activities. For the Disciples of Christ State Convention, "Abraham and Isaac" was performed. Under the direction of Mr. Ralph Smith, speech instructor and Theatre Guild adviser, the Bethespians' dramatic efforts also included the Christmas Pageant and the one-act play, "Night Club".



Officers

President	BOB HANKEY
Vice President	DON NORTON
Secretary-Treasurer	AUDREY MILLANG





Male Chorus

ORGANIZED a year ago, the Male Chorus has grown to twenty-seven members. The group practices weekly for future concerts given both at Bethany and in the surrounding area.

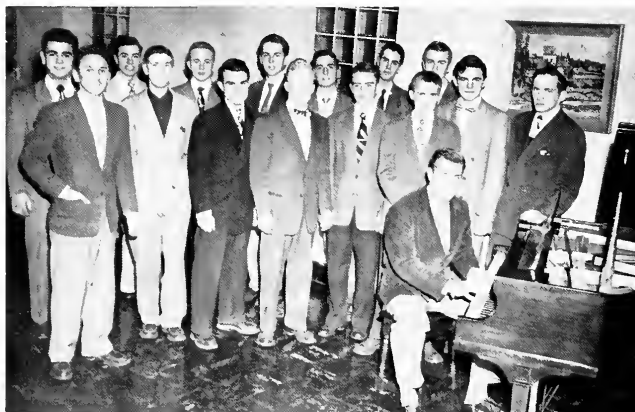
Officers

BOB COOK
President

MR. GEORGE K. HAUPTFUEHRER
Adviser

Choir

PERHAPS the largest choral group is the Bethany College Choir under the direction of Miss Mary Vukovich. Church musical arrangements are provided each Sunday by this mixed choir which practices twice weekly. The choir sings for many occasions at Bethany including the Christmas pageant, the Armistice Day program, and the special concerts at Easter.



Male Quartets

ORGANIZED this year, the male quartets are composed of students unaffiliated with Greek letter group who have an interest in barber shop singing. They practice regularly for their enjoyment and plan a concert.



Band

THE College Band under the direction of Mr. George Michael has approximately twenty-five members who meet twice a week to practice for future engagements. This ensemble furnishes the spirit and entertainment at many college functions and, as an exchange gesture, the Band has scheduled concerts at other schools in this area.



Orchestra

ALSO in the instrumental department we have the College Orchestra which provides entertainment similar to that of the band. Last Christmas a group of students from the orchestra worked in conjunction with the dramatic department to produce the Christmas pageant. Mr. Michael advises and directs this group.



Front Row: Miss Pearl Mahaffey, R. Kruse, J. Warshaw, J. Keith, Miss Joan Parry. Second Row: Miss Margaret Woods, J. Lallone, H. Bloquet, M. Bogelmann, F. Oglebay, A. McKinney, E. Bierau. Back Row: P. Bardis, M. DiPaolo, W. Streicher, J. O'Connor, J. DuPont, L. Sheldon.

French Club



LOCAL color and gayety are keynotes of French Club meetings at Bethany. With its able adviser, Miss Pearl Mahaffey, the club has long been instrumental in promoting student interest in French art, language, and culture, and has endeavored to bring France closer to the students in an informative and entertaining way. As well as receiving benefits from French games, songs, and lectures, club members have, in the past, presented plays for the enjoyment of the entire school. During the Christmas season, a French Crèche was constructed through the efforts of the club, and displayed in the Cochran Hall lounge.

Officers

President JERRY WARSHAW
 Secretary RHODA KRUSE



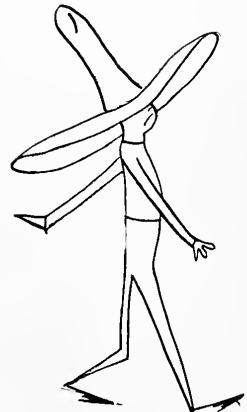
Front Row: C. Worthington, D. Forrie, C. McKenzie, R. Seywert, J. Kurtz, Miss Margaret Woods. Second Row: Alphonso Berrios, E. Tiberg, K. Cobb, P. Patton, D. Schumacher, J. Casey. Third Row: N. Feinstein, M. Kokornik, V. Proper, N. Keller, M. Myers, P. Baylor. Fourth Row: M. D'Anci, Marko, R. Regney, C. Dreyer, R. Steinbrunn. Back Row: W. Handlan, W. Weigle, W. Barnett, P. Vanderwood, Marko

Spanish Club

SPANISH CLUB meetings are highlighted by entertainment and speakers. The membership is open to those interested in Spanish culture. A serenade of Spanish carols is given at Christmas by the members of the club, and the Spanish Fiesta given annually is always a success. The group is guided by Miss Margaret Woods.

Officers

President JOANNE KURTZ
 Secretary MARY LOU MYERS





Front Row: Mr. Bohlen, Dean Bernal Weimer, Mrs. Bohlen, R. Bell, Lowell Binkley, D. Heatherington. Second Row: W. Harold Kesselring, J. Sklar, A. Marko, E. Antila, M. Coddington, K. Grizzell, D. Henthorne. Back Row: K. Armitage, G. Marko, J. Bates, A. McKinney, D. Porter, W. Mulstein.

Beta Beta Beta

NEWLY formed on Bethany's campus, Beta Beta Beta, under the faculty guidance of Mr. Lowell Binkley, is a nationally affiliated honorary biology fraternity. The group was officially installed April 1. Qualifications for membership include an interest in biology, at least ten hours in the department, a research project, and an overall 2.5 scholarship index. The fraternity's purpose is to improve the facilities of the biology department and to stimulate interest in this field of science.

Officers

President	BOB BELL
Vice President	MAL CODDINGTON
Secretary-Treasurer	DOROTHY PORTER
Historian	ERIC ANTILA



Front Row: W. Dynow, V. Rithner, J. Verwer, F. Brown, J. Heikkenen, Second Row: J. Cooney, L. Bartholomew, V. Dole, M. Beyer, Third Row: F. Siegel, E. Jorgensen, R. Haering, J. Keith, J. Jordan, R. Buchanan, Fourth Row: R. Slavin, J. Newman, E. DeSciora, J. Cullis, H. Afflerbach, R. Fair, Fifth Row: F. Berriman, R. Deflin, M. Kruse, J. Collin, W. Eames, B. Jagoe, Back Row: W. Roth, J. Filson, R. Butz, F. Lansill, G. Pohle, C. Taylor.

Economics Club

THE Economics Club is one of the more active groups on campus. Meetings are highlighted by speakers which include Dr. Rudolph Kyler and Dean F. H. Kirkpatrick, in addition to outside speakers on many varied topics relating to economics, and by movies which deal with some phase of the subject. Field trips to supplement class work are also planned by the club.

Officers

President	JOHANNES VERWER
Vice President	FRANCIS BROWN
Secretary	VIRGINIA RITHNER
Treasurer	WALTER DYNOW

International Relations Club



THE International Relations Club is an active campus group which sponsors many debates on problems in the modern world. Outside speakers and an occasional movie enliven the meetings. Delegates of the membership attend the national convention of the International Relations Clubs of the colleges in this country.

Officers

BOB HALLEY
President

BEN GRIFFITH
Vice President

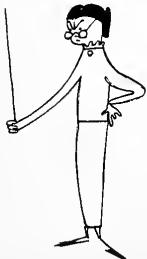
GINNY RITHNER
Secretary



Front Row: Chandler Shaw, P. Fay, R. Halley, G. Kalbfleisch, B. Griffith.
Second Row: N. Winowich, E. Oehmler, J. Heikkonen, E. Lindveit. Back Row:
G. Hoak, A. Stein, R. Wilson, S. Wright.

STUDENTS planning to follow careers in educational fields, have, for the past ten years, been organized here at Bethany under the advisership of Dr. R. H. Eliassen, head of the Department of Education. The original Education Club, formed by the students in 1938, later affiliated with the Future Teachers of America as its H. T. McKinney Chapter, in honor of a deceased member of the Bethany College faculty. A branch of the National Educational Association, the Future Teachers of America gives prospective teachers an opportunity to discuss problems pertinent to the lives of young teachers as well as receive benefits from the experiences of outside speakers.

Future Teachers of America



Officers

NICK WINOWICH
President

LEO GABIA
Vice President

RHODA KRUSE
Secretary

BILL BURTON
Treasurer



Front Row: R. H. Eliassen, N. Winowich, L. Gabia, B. Burton. Second Row: C. Werthington, M. Phillips, D. France, C. Drake, R. Imburgia. Third Row: M. Quillen, D. Kosovec, R. Flemming, A. McClelland, J. Ayers. Fourth Row: R. Kruse, M. Poole, B. Zenakis, G. Ashbaugh. Back Row: F. Brown, W. Greaver, Marko, N. Tanks.

Psychology Club

MEETING regularly, the Psychology Club endeavors to present the subjects of hypnosis, insanity, applied psychology, and the like in an interesting and enlightening manner to its large membership body. The topics are arranged by the Program Chairman who is assisted by Dr. Leitch and Mr. Beams, faculty advisers.



Officers

GEORGE POHLE
President

LYNNE BEERS
Vice President

ALICE BUSH
Secretary-Treasurer

Front Row: Andrew Leitch, A. Bush, L. Beers, G. Pohle, C. Goodspeed, D. Golbey. Second Row: A. Jagoe, Howard L. Beams, S. Erdmann, H. Avery, V. Lowton, R. Imburgia, B. Sel, J. Cooney. Third Row: B. Bierau, N. Yochem, L. Hilgemann, R. Richards, M. Veccione, P. Patton. Fourth Row: J. Smith, D. Ludwig, B. Xenakis, V. Edmonds, M. Mexall, L. Solciewicz. Fifth Row: R. Buchanan, D. Stephens, S. Wright, P. Curtis, J. Sklar, R. Kleesattle. Sixth Row: G. Bishop, R. Keiser, E. Lucas, N. Feinstein, G. Hoak. Back Row: R. Butz, W. Roth, A. Stein, J. Warshaw, F. Chowenhill, J. Norbury.

Sociology Club



Front Row: V. Lowton, N. Barr, J. Cooney, V. Edmonds, D. France, Miss Mary E. Brewer
Second Row: M. Naylor, N. Blair, H. Dewey, M. Quillen, C. Franco, P. Bardsis, V. Allen, G. Hoak. Back Row: W. Grove, W. Cook, B. Jagoe.

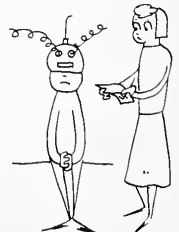
PROBLEMS of everyday living are discussed every second Sunday when the Sociology Club swings into action. Students interested in the field of sociology have this opportunity to participate in these informal meetings and gain new slants and views on sociological problems. Some meetings are highlighted by the appearance of featured speakers who give further enlightenment in this field. Dr. Erwin Paustian, head of the Sociology Department, is the faculty adviser of the group.

Officers

DOROTHY FRANCE
President

VIRGINIA EDMONDS
Vice President

VILAS ALLEN
Secretary-Treasurer



Outdoors Club



Seated: B. Hettinger, J. McKinney, K. Armitage, G. McNichols, W. Harold Kesselring. Standing: E. Tiberg, L. Fair, B. Fraim, D. Schumacher, N. Tanks, P. Curtis, R. Tarr, T. J. Mervin, G. Hoak, Marko.

THOUGH comparatively new in organization, the Outdoors Club has been very active on the Bethany campus during the past year in establishing bird feeding stations, planting trees, and forming hiking expeditions to observe plant and animal life. Not only students of biology, but any interested individual is eligible to join this club whose monthly meetings feature movies, lectures and topics pertaining to nature.

Officers

PAUL CURTIS
President

GRANT MacNICHOLS
Vice President

GEORGE MARKO
Secretary-Treasurer

Physical Education Club

NEWLY organized this year, membership in the Physical Education Club is limited to physical education major students. They promote the sports activities on campus, and discuss the problems arising in physical education.

Officers

JACK KINSEY
President

LYDIA HUESTON
Vice President

JEANNE JOHNSTON
Secretary-Treasurer



Front Row: L. Hueston, J. Kinsey, J. Johnston. Back Row: R. Kamerer, L. Hinchman, G. Bado, Marko, M. Young, G. Schreiber.



Exchange Students

THREE European countries sent us four students who, while absorbing some of what is known as the "American way of life", gave the students of Bethany a clearer picture of conditions abroad. They enriched club meetings and lectures with their views.

Panos Bardis of Recouni Tripolis, Greece, plans to get a doctor's degree in Political Science in the United States and then return to Greece to teach. Panos was impressed scholastically by the friendly relations between student and professor. He was also amazed at the widespread participation in athletics which prevails in this country.

Eustratios Comminellis of Limnos Island, Greece, is better known to the student body as "Stratis". He, like Panos, plans to complete his studies here as a civil engineer and return to Greece. Stratis liked particularly the educational system, and the student-faculty relations were a surprise to him. Both Stratis and Panos were given house privileges by Alpha Sigma Phi.

Jorma Heikkinen of Helsinki, Finland, is here for only one year to acquaint himself with English and the customs of the country in preparation for his goal of the Ministry of Foreign Affairs. Also a political science major, he finds that the main difference between the two countries lies again in the educational system.

Henriette Bloquet, of Paris, France, has studied at the University of Paris. After working for two years in the Ministry of Foreign Affairs, she came to Bethany to major in English Literature so that she might return to France in June to teach English.





C
A
M
P
U
S

BAUMS

BETA WALK

KΔ BRIDGE

CASSELMAN'S RUN

BUFFALO RIVER
→

RESERVOIR HILL

POINT BREEZE

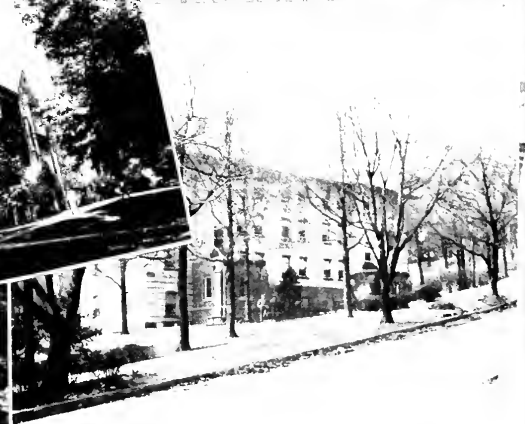
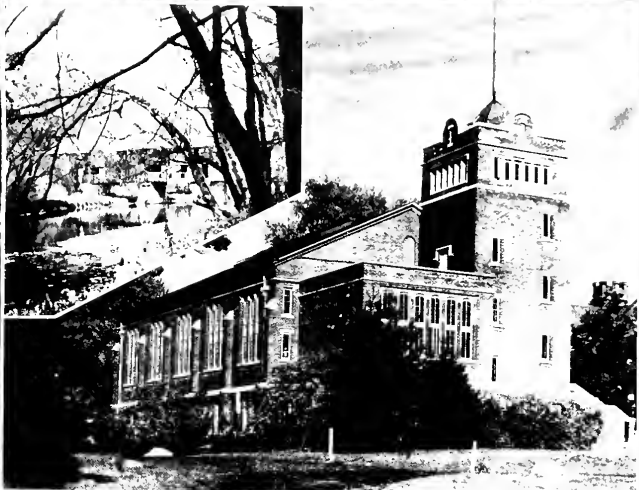
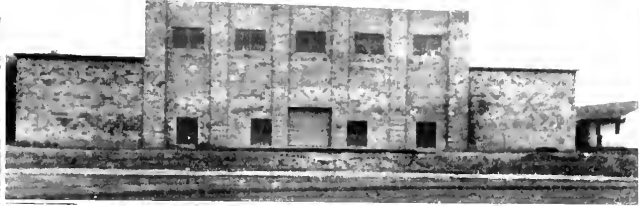
QM BRIDGE

CHAMBERS

WAUGH'S BARN

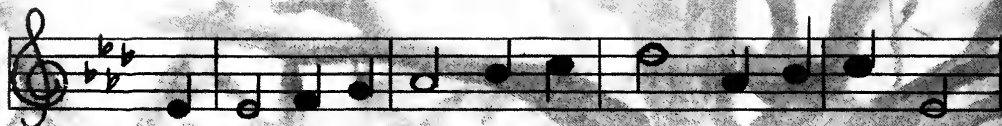
WATER TAILS

BETHANY PIKE









All Hail to Thee Hail to Thee Bright Al-ma Ma-ter.
High up on the Scroll of Hon-or and Fa-me.



Our Hearts' True Af-fec-tion Twines Close-ly to
Thy Sons Strong and Man-ly Have Writ-ten Thy



Thee. How Dear to Our Hearts Are the Scenes of Old
Name. But Now We Must Leave Thee with Hearts o-ver



Beth'ny. God Speed Al-ma Ma-ter and Dear Old
Flow-ing. Fare-well Al-ma Ma-ter and Dear Old



Beth-a-ny. God Speed Al-ma Ma-ter and Old Beth-a-ny.
Beth-a-ny. Fare-well Al-ma Ma-ter and Old Beth-a-ny.



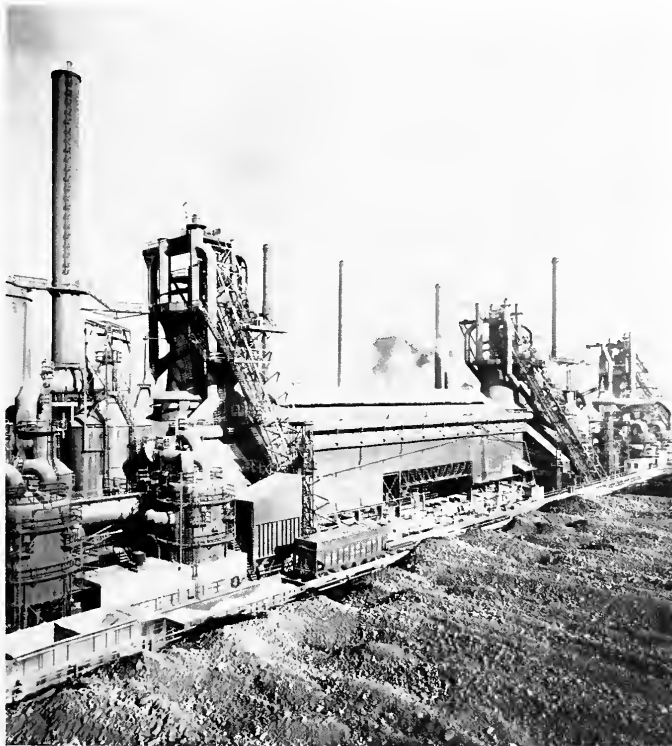
BETHANY COLLEGE ALUMNI ASSOCIATION

*"Though 'round the girdled earth they roam,
Her spell on them remains."*

- Student years are rich years. Student years at Bethany College are priceless years.
- The contribution that Alma Mater makes does not end with graduation. Through the Alumni Association a personal relationship is maintained between the college and its graduates.
- Through the Alumni Association an opportunity is presented to serve the college in its educational program.
- Through the Alumni Association an opportunity is presented to maintain old friendships and to create many new ones.
- The Alumni issue of the college bulletin will keep you in touch with alumni activities as well as campus news.
- Keep the Alumni Secretary advised of your changes of address, new positions, and other information that will be of interest to your friends.

BETHANY COLLEGE ALUMNI ASSOCIATION
BETHANY, W. VA.

WEIRTON - *Symbol of America at Work*



Weirton's battery of three big blast furnaces which produce
1,240,000 tons of pig iron annually.

WEIRTON STEEL COMPANY

THOMAS E. MILLSOP, President

Weirton, West Virginia

Steubenville, Ohio

CONGRATULATIONS

TO
THE CLASS OF '49

L. S. GOOD & CO.



A NEAT APPEARANCE COMMANDS RESPECT

For That Best-Dressed Look

ZANE CLEANERS

AT YOUR SERVICE

711 Charles Street

Wellsburg, W. Va.

TRIAD MOTORS, INC.

HUDSON SALES AND SERVICE

Pleasant Avenue at 27th Street
Wellsburg, West Virginia

COMPLIMENTS

OF

THE HUB

EASTERN OHIO'S
GREATEST STORE

STUBENVILLE, OHIO

"everything for every need"

HARRAH'S ESSO STATION

10th and Charles Streets
Wellsburg, West Virginia

Best Wishes to

BETHANY COLLEGE

VIRGINIA

89 - 8th

Wellsburg, W. Va.

Best Wishes to the Class of '49

Hammond Bag and Paper Co.



WELLSBURG, WEST VIRGINIA

"JIM" THE BARBER

FOR THAT NEAT APPEARANCE

Bethany, West Virginia

MEET AND EAT

AT

THE COLLEGE INN

Owned and operated by
Mrs. J. S. Gibson

CHAMBERS GENERAL STORE

Bethany, West Virginia

GROCERIES HARDWARE

FROZEN FOODS

PAINTS

TOILET ARTICLES DRY GOODS

FROZEN FOOD LOCKER

Compliments of

BETHANY HOUSE

at

BETHANY COLLEGE

COMPLIMENTS

OF

**WELLSBURG
NATIONAL BANK**



WELLSBURG, WEST VIRGINIA

COMPLIMENTS

OF

KERHER FLORISTS



MARTINS FERRY, OHIO

**CRESCENT
GLASS COMPANY
INCORPORATED**



WELLSBURG, WEST VIRGINIA

**BORDEN
OFFICE EQUIPMENT CO.**

Steubenville, Ohio

Phone 3771

QUEEN CHEVROLET

10th and Commerce St. Wellsburg, W. Va.
Intersection Routes 2 and 27

SHOP AT WHEELING'S BEST KNOWN

DEPARTMENT STORE

FOR AMERICA'S

BEST KNOWN BRANDS



STONE & THOMAS

**BETHANY COLLEGE
BOOKSTORE**

**BOOKS AND STATIONERY
AND
COLLEGE SUPPLIES**

Compliments of

THE VALLEY PRESS

Wellsburg, West Virginia

Compliments of

C & B TERMINAL

Wellsburg, West Virginia

Phone Wheeling 3868

THE OWL PRINT SHOP

PRINTERS AND OFFICE OUTFITTERS

1913—Over 1/3 of a Century of Service—1949

917 Market Street

TRAUBERT BAKERY

GRADE "A" BREAD

Rolls - Cookies - Cakes

Wellsburg

Follansbee

Phone Wheeling 1353

Horne's

Main at Eleventh Streets
Wheeling, West Virginia

Compliments of

M & K MOTOR CO.

Wellsburg, West Virginia

NAPLES SPAGHETTI HOUSE

Steubenville, Ohio

Z & L ELECTRIC CO.

KELVINATOR APPLIANCES

59 Seventh Street

Wellsburg, W. Va.

**JACK WINSKI & SON
MARKET**

622 Charles Street
Wellsburg, West Virginia

Compliments of

GALLAGHER PRINTING SHOP

Wheeling, West Virginia

Phone 3751

FUNK'S FLOWERS

Wellsburg, West Virginia

KEYSTONE SHOE STORE

Wellsburg, West Virginia

WORTHAN AUTO PARTS

Wellsburg, West Virginia

Ohio Valley Transit, Inc.



CORNER 22nd AND CHARLES STREETS

WELLSBURG, WEST VIRGINIA

WE ARE PROUD OF OUR BETHANY COLLEGE

JOHNNIE'S MARKET

Wellsburg, West Virginia

WATZMAN'S

MEN'S WEAR

- Arrow Shirts
- Jarman—Florsheim Shoes
- Hickok Jewelry and Accessories
 - Formals for Rent

Charles Street

Wellsburg, W. Va.

FOR YOUR HOME BUILDING NEEDS

CAROLINA BUILDERS, INC.

LUMBER AND BUILDERS' SUPPLIES

Wellsburg, W. Va.

Phone 27391

L. Bruce Roberts

PLUMBING AND HEATING

WELLSBURG, WEST VIRGINIA

Compliments of

Chambers Funeral Home

COMPLIMENTS

OF

**WELLSBURG BANK
and
TRUST COMPANY**

•

WELLSBURG, WEST VIRGINIA

Congratulations

Class of '49

GEO. E. STIFEL CO.

Wheeling's Friendly Department Store

Q. DE FRANCES

CUSTOM MADE SUITS

AND

DRESS SUIT RENTAL

209 N. 5th Street

Steubenville, Ohio

**EAGLE
MANUFACTURING
COMPANY**

•

WELLSBURG, WEST VIRGINIA

Compliments of

CARSON-SCOTTS DRUGS

Wellsburg, West Virginia

NAY'S

COLLEGE SHOES

Wheeling, West Virginia

Radio Station

W W B N

The Voice of Bethany

"600"

ON YOUR DIAL



Completing it's Second Year
of Successful Operation

