

BETHANIAN

'57





THE 1957 BETHANIAN

Presented by THE SENIOR CLASS
BETHANY COLLEGE, Bethany, W. Va.

Business Manager, TONY FURMAN

Editor, GARY GAYDICK

**IN HONOR OF THOSE WHO HAVE GIVEN
OVER A QUARTER OF A CENTURY OF THEIR
LIVES TO THE STUDENTS OF BETHANY.**

**THIS BETHANIAN IS DEDICATED TO THE
25 YEAR CLUB OF BETHANY COLLEGE.**



E. E. ROBERTS



OSBORNE BOOTH



FORREST H. KIRKPATRICK



PEARL MAHAFFEY



ANDREW LEITCH



BERNAL WEIMER



JOHN J. KNIGHT



THE BETHANIAN 1957

Bethany College, Bethany, W. Va.

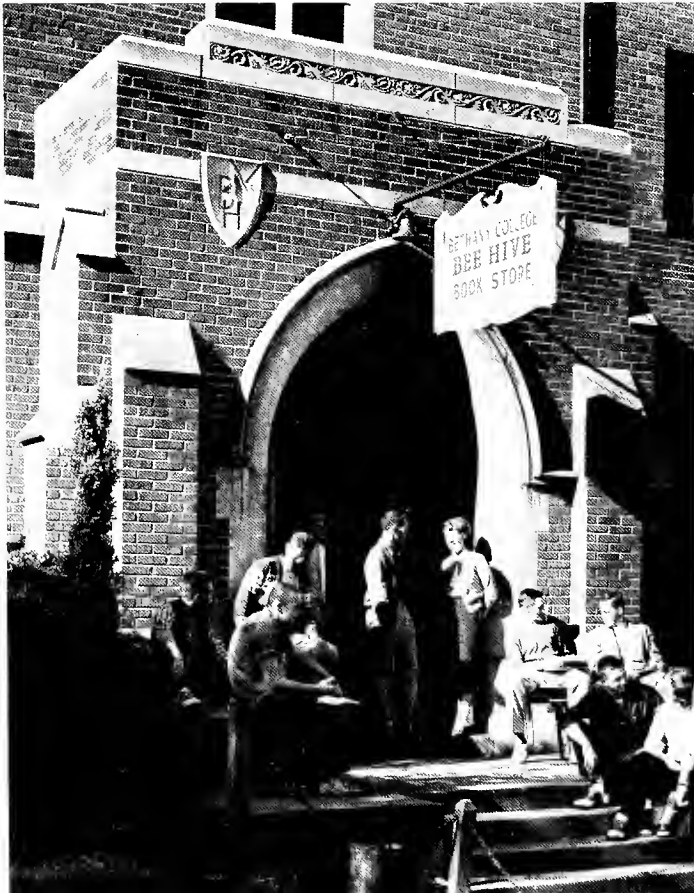
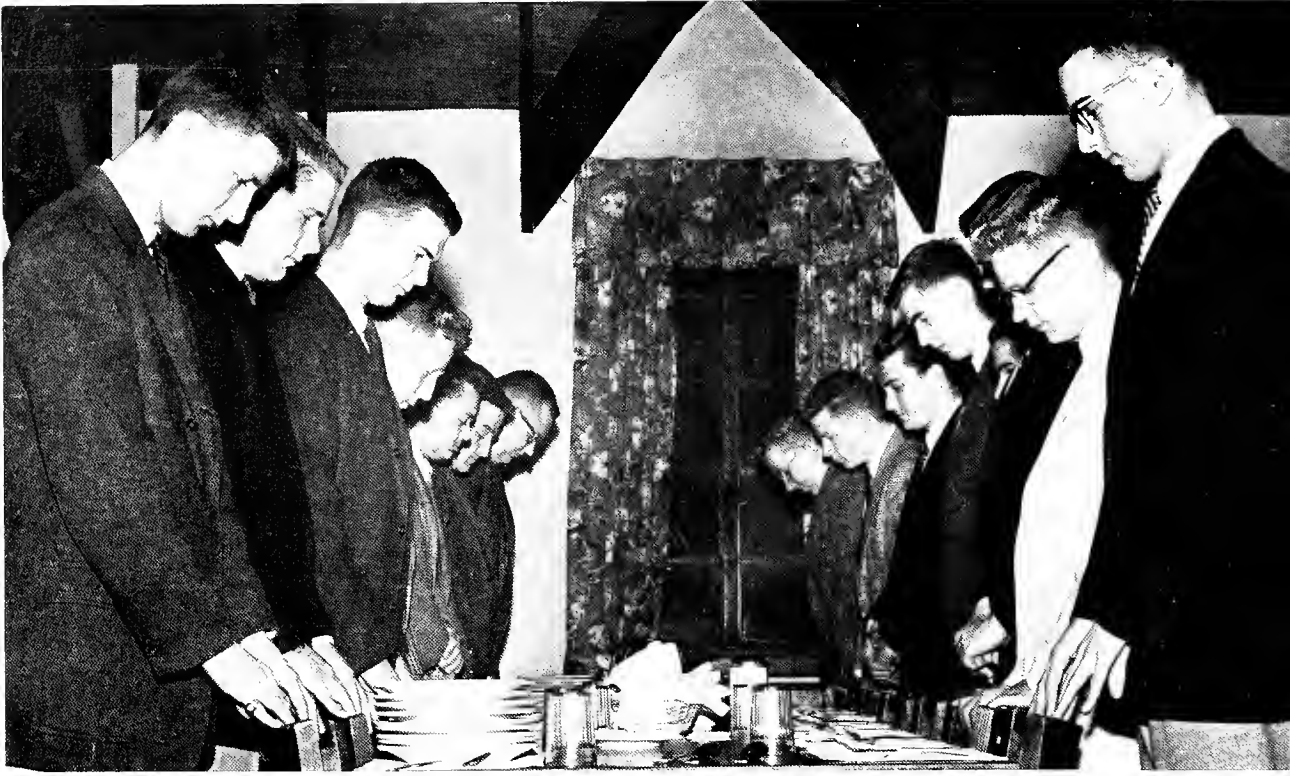
CONTENTS

Activities	Page 82
Dedication	Page 3
Faculty	Page 14
Features	Page 100
Fraternities	Page 58
Freshman	Page 52
Juniors	Page 44
Nurses	Page 56
Seniors	Page 26
Sophomores	Page 48
Sports	Page 110



A college is more than just buildings. Its true beauty transcends the mere bounds of brick structure and green ivy upon a wall. It is the sun through the leaves upon the walks where hundreds have trod before. It is the moon in the eyes of a young girl in love, trusting with all her heart. It is fall and winter and spring, the chance to study and read and play in a quietly beautiful corner of creation, a heritage deep and rich with meaning waiting under every silent tree, in each page-worn book, in every peaceful walk into the soft twilight, with each stroke of the church chimes in the coolness of early evening on the way to supper.







It is time to pause and be thankful, a time to gather with a friend and laugh, a time to study and learn. It is a time to fall in love, unmindful of the rain and the snow and the sun, the world exciting and alive, fresh with all the promise of the wind and the stars and the night, hands linking tight, eyes shining true.



It is a time of old mixing with new, youth meeting age, generations passing in between, sons following in fathers' footsteps. It is a time of great minds being reborn, speaking out to any who will listen all it is that they have to say, then retiring softly to dusty shelves, waiting patiently until they are called upon to speak again.





It is a time of guidance, growth and slow appreciation, realization of basic truths born first from doubts, cradled in the womb of uncertainties, brought thrillingly to life by the coress of culture. It is professors and the council they give. It is life and the doors now suddenly open.





It is exams and cramming and homework, patterns and activities and play, sun and sky and trees and walking, the Tower and the Gates and the President's home on the hill, friends and classes graduating and the memories they take with them, football games and dances and chapel at ten in the morning on Tuesday and Thursday. It is all this, four or five buildings of brick, an Old Main where hundreds have walked, a Tower sticking up high enough to be seen for miles around, a tiny town and 116 years of tradition. It is all this . . .

A segment of eternity, a part of your life you will never forget, a part of your life you will forever remember and love.









FACULTY

President

Dr. Perry Epler Gresham



Treasurer and Business Manager

Warner Peterson



Provost of External Affairs

Dr. Lester McAllister





Dean of the Faculty

Dr. Bernal Weimer



Dean of the Students

Robert Preston



Dean of Women

Winifred Webster

Administration



Andrew Leitch
Registrar



Robert Sykes
Assistant to the Publicity Director



Harry Myers
Accountant



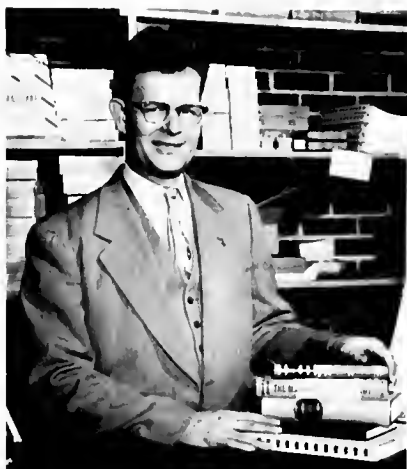
Perry Bowden
Director of Admissions



Lucile Shaw
Assistant Librarian

Edna W. Woolery
Librarian

Paul White
Manager of the College Store



Harley Dunham
Director of Buildings and Grounds



Mildred Williams
Manager of the Slotter System



Catherine Springer
College Nurse

College Secretaries



Mrs. Milhorn, Mrs. Jenkins, Bettie Beck, Mrs. Martin, Lais Cox, Mary Brady, Mrs. Fields, Jean Smith, Kathleen Brown, Mrs. Belanus, Mrs. Nolte.

Department of Modern Language

Pearl Mahaffey
Professor-Emeritus of Modern
Languages
Margaret Woods
Associate Professor of Modern
Languages
William Ferris
Instructor in Modern Languages
Earl McKenzie
Professor of Modern Languages and
Head of the Department



Daniel Draper
Professor of Chemistry and Head of
the Department
Bernal Weimer
Professor of Biology and Head of
the Department
James E. Drummond
Assistant Professor of Biology
Foster Brown
Instructor in Biology
Don K. Marchand
Instructor in Chemistry
William Clark
Assistant Professor of Chemistry

Departments of Biology and Chemistry

Department of Religion



Osbarne Booth
Professor of Religion and Head of
the Department

Harry Ice
Director of Ministerial Training and
Professor of Religion

Lester McAllister
Assistant Professor of Religion

Robert Prestan
Instructor in Religion

Robert Lemon
Minister, Bethany Memorial Church

Helen McGuffie
Professor of English and Head of the
Department

Winifred Webster
Instructor in English

Mary McKenzie
Instructor in English

Woodrow Halbein
Instructor in English

Robert Sykes
Instructor in English

John Taylor
Assistant Professor of English



Department of English



Department of Fine Arts

Lyle True

Instructor in Art

Robert Yarbrough

Associate Professor of Speech and
Dramatics and Coordinator of the
Fine Arts Department

George Hauptfuehrer
Associate Professor of Music and
Head of the Department
Robert Currier
Instructor in Music
Robert LaPella
Instructor in Music



Department of History

B. Chandler Shaw

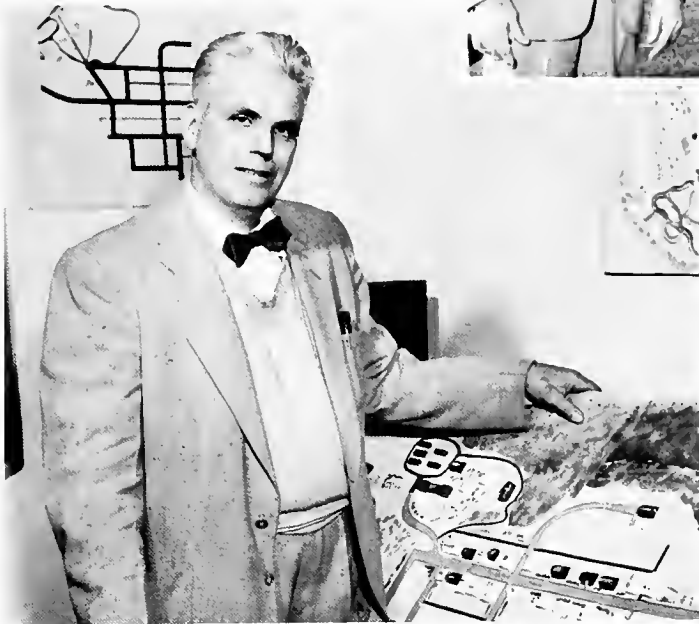
Professor of History and Political
Science and Head of the
Department

William Young

Assistant Professor of History and
Political Science

Department of Education

Jahn J. Knight
Professor of Physical Education and
Head of the Department
S. Elizabeth Reed
Associate Professor of Physical
Education
Edgar Martin
Instructor of Physical Education



Department of Sociology

Richard L. Schanck
Professor of Sociology and Head of
the Department

Department of Physical Education

Margaret Mathison
Assistant Professor of Education
Gene D. Phillips
Professor of Education and Head of
the Department





Department of Economics

Rudolph Kyler
Professor of Economics and Business Administration and Head of the Department
Richard Slavin
Instructor in Economics and Business Administration

Department of Secretarial Training

Mayme Yarbrough
Part-time Instructor in Secretarial Training



Department of Personnel Management

Forrest H. Kirkpatrick
Adjunct Professor of Personnel Management

Department of Physics and Mathematics

John S. Allen
Professor of Physics and Head of
the Department
Bradford Tye
Associate Professor of Mathematics
and Head of the Department



Department of Journalism

E. E. Roberts
Professor of Journalism and Head
of the Department

Department of Psychology

Wilbert Roy
Professor of Psychology and Head
of the Department
Scott McDonald
Instructor in Psychology







SENIORS

ANITA ALFORD

Sharon, Pa.

Elementary Education

Kappa Delta, Social Chairman, Secretary; S.C.A., Publicity Chairman, Secretary; F.T.A., Secretary; C.L.E.W.; A.W.S.; W.U.S., Treasurer, Co-Chairman; Kalan, President; Who's Who in American Colleges and Universities; Concert Choir; Church Chair; Messiah Choir.



NICHOLAS DIONYSIOS ALIVIZATOS

Syros, Greece

Chemistry

American Chemical Society; Chemistry Club; I.R.C.; Independent Men's Association, Secretary-Treasurer; Swimming Team.



SHIRLEY ALLEN

South Wales, N. Y.

History

Phi Mu, Rush Chairman, House Manager; S.B.O.G.; A.W.S, Treasurer; F.T.A., Corresponding Secretary; Panhellenic Council; Language Club; I.R.C.; Assistant in History Department.



DONALD R. ARNOLD

Buffalo, N. Y.

Chemistry and Mathematics

Sigma Nu; Male Chorus; Chemistry Club; Career Conference; Assistant in Mathematics and Chemistry Departments; Pittsburgh Consolidation Coal Company Scholarship.

ALBERT CONRAD BAKER

Steubenville, Ohio

Public Relations

Sigma Nu, Recorder; Track, Co-Captain; Varsity "B," Secretary; S.B.O.G., Vice-President; Economics Club; Men's Dining Hall, Vice-Chairman.

MARGUERITE BALSINGER

Bridgeville, Pa.

Physical Education

Zeta Tau Alpha, Pledge Trainer; A.W.S., Board Representative; W.A.A., Secretary; F.T.A.; Language Club; C.L.E.W., Warship Committee; Career Conference, Chairman of Secondary Education; Gamma Sigma Kappa.



Future Doctors of America.

No mail Seymour?



AILEEN BOOTH

Bethany, W. Va.

Elementary Education

Zeta Tau Alpha, Social Chairman, President, Vice-President; F.T.A.; Ministerial Association; A.W.S.; Language Club; S.C.A.

HARRY T. BOWMAN, JR.

Follansbee, W. Va.

Biology

Independent Men's Association; Beta Beta Beta, Vice-President, President; Gamma Sigma Kappa; West Virginia Academy of Science; Assistant in Biology Department; Senior Class Play; Band; Intra-Mural Basketball, Football, Softball.

THOMAS BUERGENTHAL

Paterson, N. J.

History and Political Science

Independent Men's Association, President; S.B.O.G.; S.B.P.; I.R.C., President; Gamma Sigma Kappa, President; Senior Class, Vice-President; Washington Semester Student; Kalon; Tower; Who's Who in American Colleges and Universities; Debating Society.



GAREE K. BUTTERMORE

Perryopolis, Pa.

Physics

Kappa Alpha (House Privilege); Male Chorus; Intra-Mural Sports; Band; Assistant in Physics Department.

MALCOLM DUANE CAMPBELL

Pittsburgh, Pa.

Physics

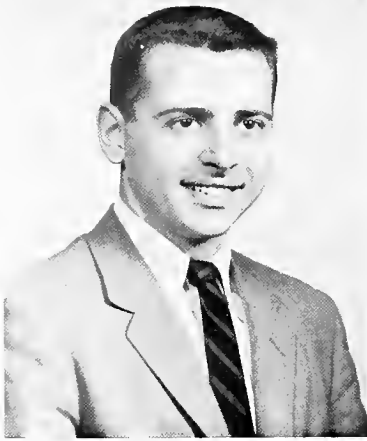
Kappa Alpha, Alumni Secretary, President; Male Chorus; Triple Quartet; Concert Choir; Church Choir; Band, President; Kalon; Gamma Sigma Kappa, Vice-President; Alpha Psi Omega, President; Social Committee; I.F.C., Treasurer; Best Male Actor Award; Chairman of Men's Dining Halls.

MARGARET JOAN CAMPBELL

Benson, Arizona

English

Phi Mu, Treasurer; Messiah Choir; Church Choir; W.A.A.; S.C.A.; Gamma Sigma Kappa, Secretary-Treasurer; Alpha Psi Omega, Treasurer.



PHILIP S. CHASE, JR.
Mantclair, N. J.
Psychology
Sigma Nu, House Manager; Track, Manager; Psychology Club; Church Choir.



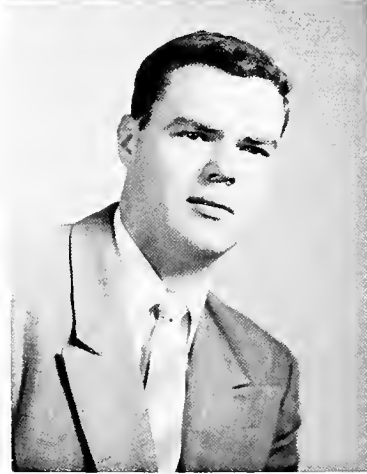
PATRICIA ANN CHESNUT
Floral Park, N. Y.
Elementary Education
Kappa Delta; F.T.A.; Spanish Club; S.B.O.G., Corresponding Secretary; Career Conference; C.L.E.W.; A.W.S.; Messiah.



RONALD DENNIS DALY
Nutley, N. J.
Sociology
Sigma Nu, Social Chairman; Baseball; Basketball; Economics Club.



RICHARD FRED DICKINSON
Alhambra, Calif.
English Literature
Sigma Nu, Chaplain; Outstanding Junior Man Award; Male Chorus; Concert Chair; Messiah; Alpha Psi Omega; Ministerial Association; C.L.E.W., Co-Chairman; Debating Society; Student Minister; Kalan; National President Disciples Student Fellowship; Intra-Mural Tennis, Football, Softball.



DONALD LAWRENCE DUBOIS
Newburgh, N. Y.
Elementary Education
Alpha Sigma Phi; S.B.O.G.; College Band.



BARBARA EINICKE
Jamaica, N. Y.
Personnel Management
Alpha Xi Delta, Recording Secretary; A.W.S., President; S.B.O.G., Secretary; Kalan, Vice-President; Gamma Sigma Kappa; Economics Club, Secretary; Social Committee; Tower; Career Conference, Student Chairman; Who's Who in American Colleges and Universities; Assistant in Personnel Management Department.



SEYMOUR EISENMAN
Brooklyn, N. Y.
Biology
I.R.C.; Gamma Sigma Kappa; Beta Beta Beta; West Virginia Academy of Science.



Nothing like a good coffee break.



Dennis backed the wrong man.

ELIZABETH ELLEN EKAS

Rochester, N. Y.

Psychology

Alpha Xi Delta; S.B.O.G.; A.W.S.; Messiah Choir; Cheerleading, Captain; Dining Hall Committee; W.A.A.; Homecoming Queen; C.L.E.W.; W.U.S.; Committee Chairman; Career Conference, Committee Chairman; President Phillips Hall.



WILLIAM EDWIN ELWELL

East Aurora, N. Y.

Modern Languages

Ministerial Association; I.R.C.; S.C.A.; Language Club; Chess Club; C.L.E.W.; College Choir; Rodio Club; Canterbury Club; Gamma Sigma Koppo; Assistant in Modern Language Department.

DONALD BRUCE FARRINGTON

Paterson, N. J.

Personnel Management

Beta Theta Pi; S.B.O.G., Treasurer; Economics Club; S.C.A.; Career Conference; Baseball; Basketball; Bethonian Staff; Kalon.



LAURA HALDT FARRINGTON

Swarthmore, Pa.

English

Kappa Delta; Alpha Psi Omega; Literary Harbinger, Associate Editor; Phillips Hall President.

RICHARD SPRINGER FRANCIS

Uniontown, Pa.

History and Political Science

Sigma Nu, Social Chairman, Chaplain; Bethonian, Associate Editor; I.R.C.; Economics Club; S.B.O.G.; S.C.A.; Football; Golf; Intra-Mural Football, Basketball, Softball, Volleyball.



GEORGE W. FRICK

Mount Lebanon, Pa.

Modern Languages

Kappa Alpha, Recording Secretary, Corresponding Secretary; Language Club, President; S.C.A.; C.L.E.W.; Social Committee; Mole Chorus; Concert Choir; Madrigals; Messiah; College Choir; Assistant in Modern Languages Department.

ANTHONY MICHAEL FURMAN

New York, N. Y.

Public Relations

Beta Theta Pi, (Social Privilege); Kalon; Bethonian, Business Manager; Swim Team, Captain; Literary Harbinger, Art Editor; Career Conference, Group Chairman; Economics Club; German Club; Tower, Exchange Editor, Art Editor; Student Board of Publications.

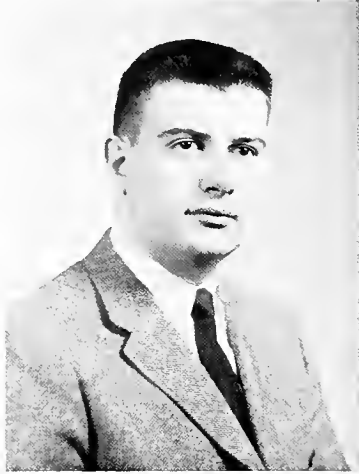


JOEL GANZ

Brooklyn, N. Y.

Biology

Beta Beta Beta; International Relations Club; Baseball Manager; Chess Club; West Virginia Academy of Science, Vice-President.



GARY FRANK GAYDICK

Verona, N. J.

Public Relations

Beta Theta Pi; Football; Junior Class, Vice-President; Varsity "B" Club; Bethanian, Assistant Editor, Editor; Campus Weekends, Chairman; Kalon; Who's Who in American Colleges and Universities; S.B.O.G.



CLYDE THOMAS GEORGE

Wheeling, W. Va.

Sociology

Phi Kappa Tau, Vice-President, Rush Chairman, Athletic Chairman; Varsity "B" Club, President, Sergeant-at-Arms; Football.

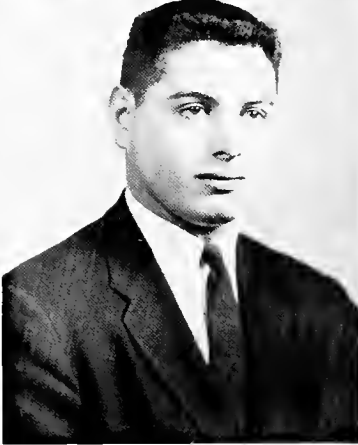


JANET MARIE GLERUM

Caldwell Township, N. J.

English

Kappa Delta, Vice-President, House Manager; Concert Choir; Messiah Choir; Cheerleading; W.A.A.; F.T.A.; C.L.E.W., Committee Co-Chairman, Co-Secretary; Universal Day of Prayer, Co-Secretary; Dining Hall Committee; A.W.S., Corresponding Secretary, Recording Secretary; Kalon, Secretary; Gamma Sigma Kappa; Assistant in English Department; Who's Who in American Colleges and Universities; Outstanding Junior Woman Award.



ROBERT LOUIS GOULD

Brooklyn, N. Y.

History and Political Science

Sigma Nu, Historian; I.R.C., French Club; Intra-Mural Sports; Youth Leader.

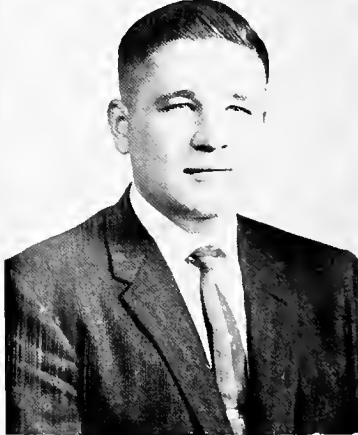


JOHN ROBERT GROVE

Connelsville, Indiana

Religion

Kappa Alpha; Ministerial Association; S.C.A.; Student Minister.



JOHN R. HARE

West Alexander, Pa.

Psychology

Intramural Sports, Official; Psychology Club; Commuters Club.

Senior Class Officers.





Time out for a hand of bridge.

THOMAS J. HAWK
Willoughby, Ohio
Pre-Med

Beta Theta Pi, President, Social Chairman; Kalan; Gamma Sigma Kappa; I.F.C., Vice-President; Maa Maa Maa; Freshman Class, President; Fourth year in absentia, Ohio State Medical School.



GLENN H. HELME
Rushville, Indiana
Physics

Kappa Alpha, Vice-President, Treasurer, S.C.A., Treasurer, S.B.O.G.; C.L.E.W.; Male Chorus; Concert Chair; Messiah Choir; Church Choir; Bethany House, Song Leader; Junior Class, Treasurer; Assistant in the Physics Department.

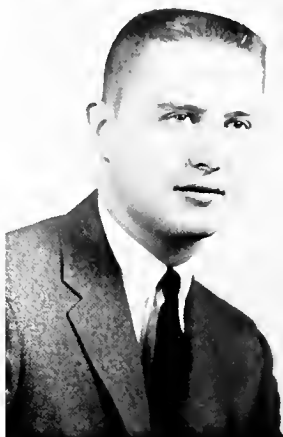


CURTIS R. HENRY, JR.
Youngstown, Ohio

Public Relations
Beta Theta Pi, Historian, Social Grace; Economics Club; Bethanian Staff; C.L.E.W.; Intra-Mural Sports; Tower, Sports Editor.

RICHARD THOMAS HERRINGTON
Cleveland, Ohio
History

Alpha Sigma Phi; Ministerial Association; I.R.C.; Church Choir; S.B.O.G.; C.L.E.W.; Social Committee.



BARBARA ANN HEYEL
Plandome, N. Y.

Elementary Education
Phi Mu; Bethanian Staff; Tower Staff; Literary Harbinger, Co-Editor; Ministerial Association; F.T.A.; French Club; Gamma Sigma Kappa; C.L.E.W., Publicity Chairman.



ROBERT HOFFMAN
Mantclair, N. J.

History
Sigma Nu; German Club; I.R.C.; Intra-Mural Sports.



S. MICHAEL JOHN
Uniontown, Pa.

Chemistry
Sigma Nu, Commander; Chemistry Club, President, Vice-President; Newman Club; Maa Maa Maa, Big Bull, Little Bull; I.F.C.; Basketball; Intra-Mural Sports; Assistant in the Chemistry Department; Varsity "B" Club.

BAXTER EDWIN JOHNSON, JR.
McMurray, Pa.

Biology

Beta Theta Pi, Rush Chairman, Song-leader, Pledge Master; Basketball, Co-Captain; S.B.O.G., President; Sophomore Class President; Outstanding Junior Man; Kalan; Beta Beta Beta; West Virginia Academy of Science; Male Chorus; C.L.E.W.; Who's Who in American Colleges and Universities; Church Choir; Moo Maa Maa; Varsity "B" Club.

WAYNE ERIC JOHNSON

Norwalk, Conn.

Biology

Theta Chi; Male Chorus, Librarian; Concert Choir; Chapel Choir; Triple Quartet; Messiah Chorus; Beta Theta Pi, House Privilege; Career Conference; West Virginia Academy of Science, Secretary, President; Beta Beta Beta, Historian; C.L.E.W.

RICHARD A. KIRCHNER

Oceanside, N. Y.

Economics and

Business Administration

Beta Theta Pi, Social Chairman; Male Chorus; Economics Club; Tennis; Social Committee; I.R.C.; Chess Club; Career Conference.



NANCY ANN KLIEVES

Wheeling, W. Va.

Biology

Phi Mu, Vice-President, Secretary; French Club; Church Choir; Messiah Choir; Beta Beta Beta; Ministerial Association; Band.

ELLIE KNAPP

St. Louis, Mo.

Religion

Alpha Xi Delta, Scholarship Chairman; A.W.S.; S.C.A.; Secretary of Senior Class; Church Choir; K.A. Rase; Homecoming Court; Ministerial Association, Secretary; C.L.E.W.

HELEN LOUISE KRALL

Maspeth, N. Y.

History

Alpha Xi Delta, Vice-President; F.T.A., Vice-President; Synchronized Swimming; I.R.C.; Debating Society; A.W.S.



Senior play committee in action.

That famous trip babies.



JAMES SABIN KRATZ

Fresno, Calif.

Religion and Philosophy

Sigma Nu, Lt. Commander, Choplain, Scholarship Chairman; Ministerial Association, President; Inter-Froternity Council, Treasurer; Gomma Sigma Kappa; S.C.A.; Intra-Mural Tennis, Cross Country, Basketball, Volleyball.

DENNIS G. KUBY

Cleveland, Ohio

History and Political Science

German Club, President; I.R.C.; Mambo Club, Vice-President; Personal Assistant to President and Mrs. Gresham; Democratic Party of Bethany, President; Language Club; Assistant in German Department; Kolon; C.L.E.W.

ELIZABETH JANE LaPELLA

Wopello, Iowa

Music Education

Alpha Xi Delta; F.T.A.; Concert Choir; Madrigal Singers; Church Choir; "Messiah" Chorus.



RICHARD PHILIP LASH

Warwood, W. Va.

Personnel Management

Phi Kappa Tau, Choplain, Rush Chairman; Football; Basketball; Baseball, Co-Captain; Kalon; Varsity "B" Club; Noon-Day Devotions, Co-Chairman.

EDWIN JOHN MATTESON

Youngstown, Ohio

Public Relations

Alpha Sigma Chi; Veteran Club; Tower.

JOYCE McELHANEY

Butler, Pa.

Elementary Education

Zeta Tau Alpha; S.B.O.G.; I.R.C., Secretary; F.T.A., Vice-President; Gomma Sigma Kappa; Alpha Psi Omega Award Outstanding Supporting Actress, play "The Whole Town's Talking."



WILLIAM MERIKLE

Tenafly, N. J.

Economics and

Business Administration

Phi Kappa Tau, President, Secretary, Social Chairman; Business Manager of Concert Choir and Male Chorus; Supervisor of Library; Economics Club; I.F.C.; Social Committee; C.L.E.W.; Career Conference; Intra-Mural Sports.

GEORGE DALE MILHORN

Tiltsville, O.

Mathematics

Beta Theta Pi, Vice-President; Economics Club, President; Intra-Mural Football, Softball, Golf; Tower Staff.



JUDITH ANNE MILLER

Pittsburgh, Pa.

Music Education

Kappa Delta, Song Leader, Treasurer; Concert Choir; Chapel Organist; Church Choir; Messiah Choir; Dining Hall Committee, Chairman; Madrigal Singers; A.W.S.

PATRICIA RUTH MILLER

East Orange, N. J.

Elementary Education

Kappa Delta, Rush Chairman, Social Chairman; Tower; Social Committee; Intra-Mural Basketball, Volleyball; A.W.S.; W.A.A.; Pan-Hellenic Council; C.L.E.W., Committee Chairman; F.T.A.; Career Conference.



HELEN MONEZIS

Weirton, W. Va.

Economics

Phi Mu, Rush Chairman, Treasurer, Pledge Director; Economics Club, President; A.W.S., Corresponding Secretary; Pan-Hellenic Council; C.L.E.W.; Messiah Choir; Dining Hall Committee; Assistant in Economics Department.

BARBARA MULLANEY

Woodcliff Lake, N. J.

Economics and

Business Administration

Zeta Tau Alpha, Treasurer, Social Chairman; Yearbook, Associate Editor; Concert Choir; Canterbury Club, Secretary; Economics Club; A.W.S.; W.A.A.; Social Committee; C.L.E.W., Committee Co-Chairman; Career Conference; Tower Staff, Circulation.



ANNE MYERS

Windsor, Ill.

Religious Education

Ministerial Association; Phillips Hall Dining Hall Committee, Chairman; C.L.E.W., Co-Secretary; S.C.A.; S.B.O.G.; Easter Noon-Day Devotions Committee, Co-Chairman.



Outstanding Senior Athlete, Dick Lash.



This picture was posed.

DONALD ALFRED NEUBERT

Bloomfield, N. J.

**Economics and
Business Administration**

Sigma Nu, Treasurer; Varsity Track, Captain; Intra-Mural Sports; Varsity "B" Club; Economics Club; C.I.E.W.; Career Conference Committee; Table Host in Men's Dining Hall; Assistant in Economics Department.



KARL C. QUINN, JR.

Carnegie, Pa.

**Personnel Management
Kappa Alpha.**

THOMAS MANFORD RICHARDSON

Wheeling, W. Va.

Religion



DONALD L. SLOAN

Baldwin, N. Y.

**Personnel Management
Sigma Nu.**

RICHARD LEE SNYDER

Madison, N. J.

**Economics and
Business Administration**

Beta Theta Pi, President, Social Chairman; Senior Class President; I.F.C., Secretary; Economics Club, Vice-President, Program Chairman; Assistant Head Waiter at Bethany House; Proctor of Bethany House; C.I.E.W., Committee Co-Chairman; Kolon; Who's Who in American Colleges and Universities; Career Conference, Committee Chairman; Social Committee; Homecoming Parade Chairman, Newman Club, Treasurer.



HERBERT STEIN

Ambridge, Pa.

Biology

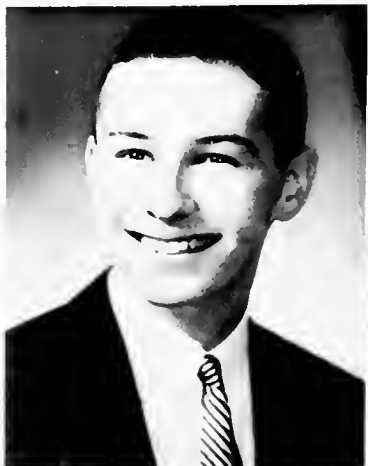
Beta Theta Pi, Secretary; S.B.O.G., Treasurer; Beta Beta Beta; Gamma Sigma Kappa; Chess Team.

JOHN GILBERT SUTTON, JR.

White Plains, N. Y.

English

Tennis; Intra-Mural Softball



KENNETH TERAMOTO

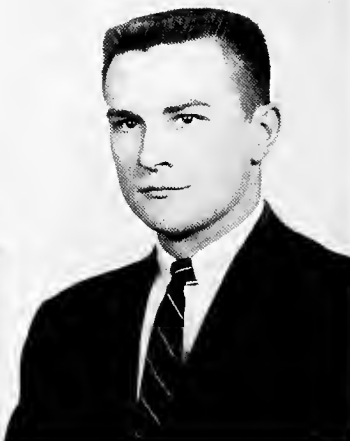
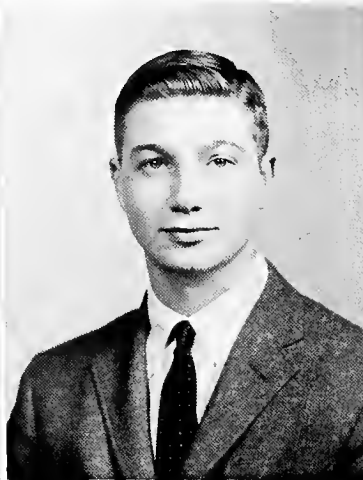
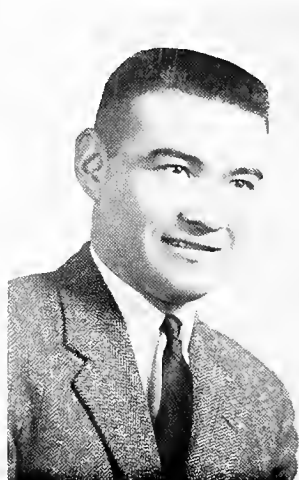
Madison, N. J.
Personnel Management
Beta Theta Pi; Basketball; Tennis; Economics Club; Tower; Bethanian; Church Chair; Messiah Chair; S.B.O.G.

BARBARA THOMPSON

Lyndhurst, Ohio
Physical Education
Alpha Xi Delta, President; Pan-Hellenic Council, President; Kalan; Who's Who Among Students in American Colleges and Universities; W.A.A.; Concert Chair; Madrigals.

JOSEPH LEONARD VINCI

Cleveland, Ohio
Biology
Sigma Nu, Lt. Commander, Sentinel, Song Leader, Reporter; Newman Club; German Club; Chemistry Club; I.R.C.; Male Chorus; Varsity "B"; Golf Team; Laboratory Assistant, Biology Department; Intra-Mural Football, Basketball, Softball; Youth Leader, Wierton Christian Center.



FREDERICK SHERWIN VINES

Beckley, W. Va.
Chemistry
Beta Theta Pi, House Manager, Scholarship Chairman, Athletic Chairman; Beta Beta Beta, Vice-President; Football; West Virginia Academy of Science; Chemistry Club; Intra-Mural Football, Basketball, Softball; Assistant in Biology Department.

PHILIP LYLE WAGNER

Wheeling, W. Va.
Chemistry
Phi Kappa Tau, Treasurer, Pledge Master, Scholarship Chairman; Moo Mao Mao; Kalan; Gamma Sigma Kappa; Chemistry Club; West Virginia Academy of Science; C.I.E.W.; W.U.S.; Intra-Mural Sports; I.F.C.



SHIRLEY JANE WALKER

McKenzie, Tennessee
Sociology
Phi Mu, Social Chairman, Song Leader, Chaplain; Concert Choir; Madrigals; Church Choir; W.A.A., Vice-President; W.U.S.; C.I.E.W.; Ministerial Association; S.C.A.; Noon Day Devotions; Department Assistant; Social Committee; Career Conference.



SUSAN ANN WATSON

Teneffy, N. J.
Biology
Zeta Tau Alpha, Historian, Secretary; F.T.A., Treasurer; S.B.O.G.; C.I.E.W.; A.W.S., Tower.

Glenn gets set for comps.



JAMES WILLIAM WEBER

Brilliant, Ohio

English

Alpha Sigma Phi; Alpha Psi Omega; Male Chorus; Band; Ministerial Association; S.C.A.; Student Pastor.



MARLENE JOY WILSON

Johnstown, Pa.

Elementary Education

Phi Mu; Concert Choir; Chapel Choir; Messiah Choir; F.T.A.; I.R.C.; Ministerial Association; S.C.A.



ROBERT CHARLES WILSON

Uniontown, Pa.

English

Kappa Alpha, Corresponding Secretary; Ministerial Association, President; Male Chorus, Secretary; Concert Choir; Church Choir; Alpha Psi Omega; C.L.E.W.; Triple Quartet; Assistant in English Department; Career Conference; Student Pastor.



JAMES WRATTEN

Snyder, N. Y.

Physical Education

Beta Theta Pi, Sergeant-at-Arms, Athletic Coordinator; Basketball; Track; Sophomore Class Treasurer; Moo Moo Moo; Head Waiter, Bethany House; Assistant in Biology Department; Student Director; Intra-Mural Sports; Proctor, Cochran Hall.



JUDITH ANN WRIGHT

Saddle River, N. J.

Elementary Education

Kappa Delta, President, Secretary; Pan-Hellenic Council, Secretary; Junior Class Secretary; Social Committee; S.B.O.G.; S.B.P.; C.L.E.W.; Career Conference; Tower; Kalon; F.T.A.; A.W.S.; Homecoming Court; Queen of Hearts.



CHARLES J. ZURCHER

Pittsburgh, Pa.

Personnel Management

Phi Kappa Tau; Economics Club; C.L.E.W.; Veterans Club; Intra-Mural Sports.

SENIORS NOT PICTURED

RICHARD STORM BACA

Brooklyn, N. Y.

Psychology

Alpha Sigma Phi, Secretary; Psychology Club; Tower Staff; I.R.C.; Canterbury Club; Beta Beta Beta; Career Conference; S.B.O.G.

JAMES PATRICK BREEN

Mt. Lebanon, Pa.

Sociology

Tennis, Captain; Football; Varsity "B"; I.R.C.; F.T.A.

ROBERT HOFFMAN

Mantclair, N. J.

History

Sigma Nu; Language Club; I.R.C.; Intra-Mural softball.

CLEMENT H. KREIDER, JR.

Harrisburg, Pa.

Mathematics

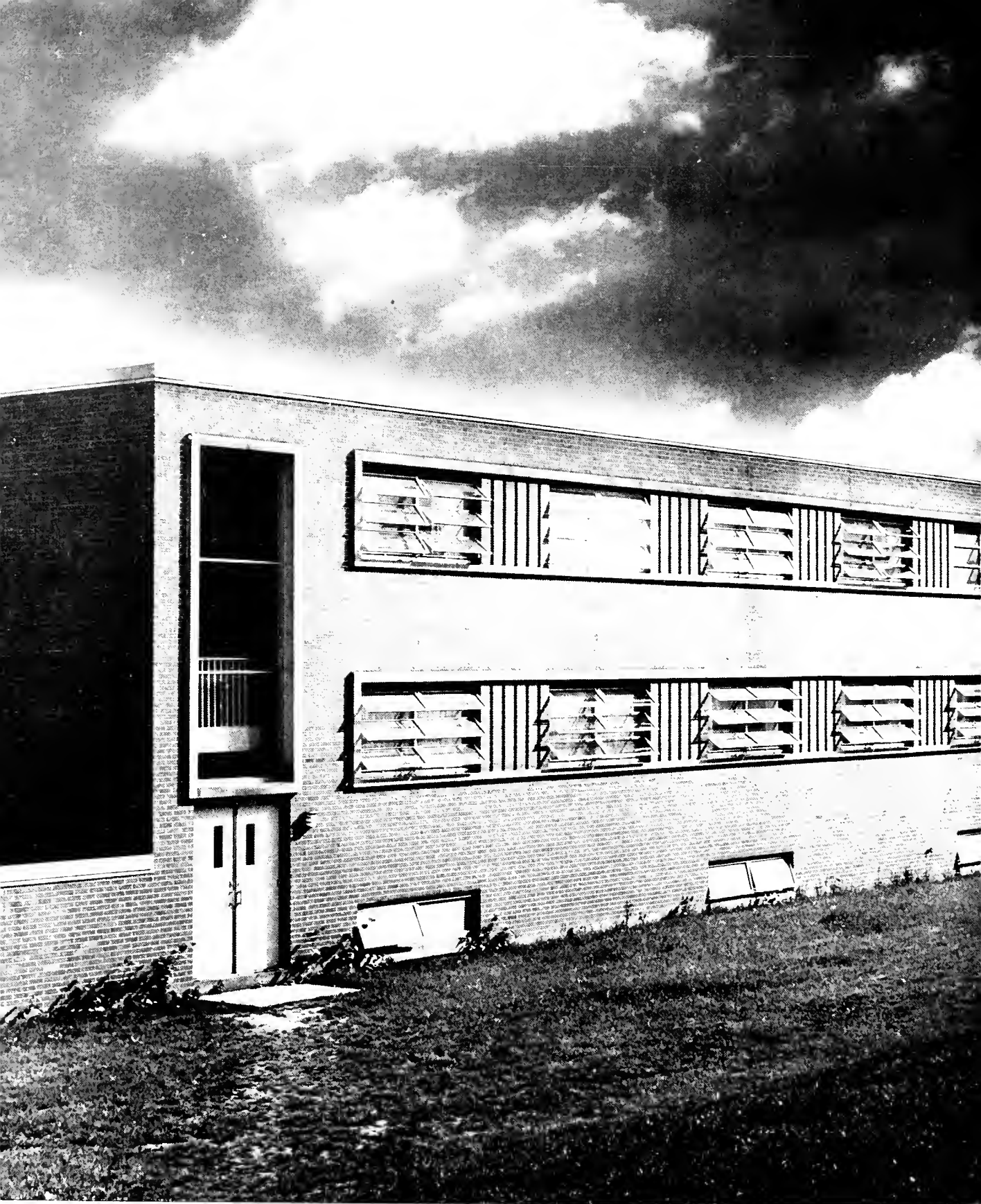
Beta Theta Pi, Social Privilege; Bethany Debating Society, President; Tower Staff.

ROBERT STANLEY SPENSKI

Stuebenville, Ohio

History

Sigma Nu, Marshal; Football, Co-Captain; Varsity "B"; I.R.C.





J U N I O R S

The "Great Class of 58" is anxiously looking towards their senior year as they return to the Bethany campus this year. Jim Reabe was chosen by the class to lead them in their activities. They will undoubtedly reach greater heights as they are being groomed for the title of "upperclassmen."



First row—S. Hagler, B. Rose, B. Rosenblum, R. Whitt, B. Weber, D. Keib. Second row—B. Fiers, D. Blue, J. Watson, P. Fallott, S. Hubocher, B. Gould, J. Bentz, P. May. Third row—M. McCracken, J. Falkenholm, J. Stewart, V. Walliser, D. EnDean, A. Lenohan, C. Kimball. Fourth row—H. Steinbom, B. Schwibner, B. Lewis, E. Joyce, N. Schroeder, M. Rush, C. Lowe, T. Curreri.



These Saturday night pep rallies.



Adam Smith had nothing on this trio.



Officers: J. Reabe, K. Misiak, C. Nelson, J. Milligan.





**S
O
P
H
O
M
O
R
E
S**

The class of '59 is back once again having passed through their first year as lowly freshmen with flying colors. The students chose Mike Berg as president. Remembering the hardships they suffered in the previous year, the members of the sophomore class did their best to make sure the new freshmen were put through the ropes also.



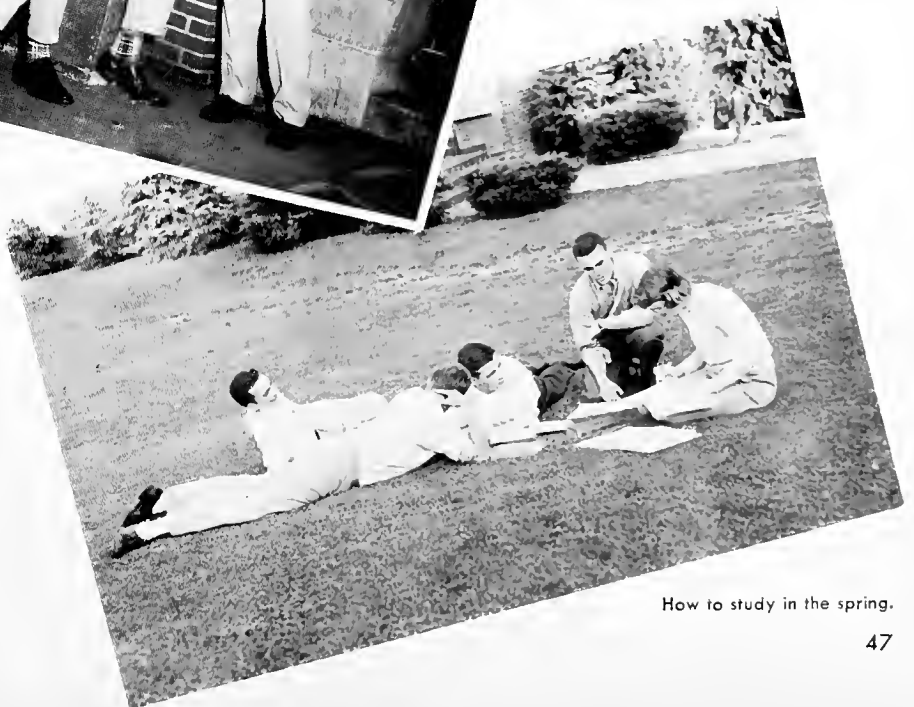
First row—R. Blum, D. Ciripompa, R. Straight, T. Wetzel, D. Butz, J. Kress, P. Levin, B. Jaynes. **Second row**—J. Updegraff, B. Hanna, C. Dreher, B. Young, K. Runk, A. Faris, L. Stevens, L. Palmer, J. Arnold, L. Mitchell. **Third row**—R. Nesi, S. Stengel, J. Hallandsworth, L. Burger, K. Jahns, R. Thompson, H. Riker, P. Henkel, P. Nesbitt, M. Schrode, P. Armstrong, C. Schlottman, A. Glickstein. **Fourth row**—C. Petrapoulos, T. Blowers, J. Hillman, F. Huffman, M. Berg, S. Harbison, J. Urling, R. Hill, R. Runk, K. Woolery, C. Barimani, S. Hirsch, A. Dilg.



Officers: P. Levin, M. Berg, F. Burr.



Tony tells a good after dinner story.



How to study in the spring.



MERCY'S HOSPITAL



F R E S H M E N

The Class of 1960, having survived hazing are fast making their mark on the Bethany campus. The talent show sponsored by the class was one of the highlights of the year. The class chose Darry Henneman to lead them as president. Great things are expected from this group as they progress through their college days.



First row—B. Pressell, H. EnDeon, F. Marinuccio, S. Merselis, D. Rattiner, A. Miltz, S. Rosenberg. Second row—B. Hurley, B. Wolfe, C. Jenkins, B. Friedlund, D. O'Konski, P. Losh, S. Kelly, S. Stevick, F. Doutresme. Third row—M. Baran, J. Preston, M. Riveros, C. Miller, J. Taylor, E. Hammond, J. Winter, S. Guttormsen, L. Wheelock, J. Cerstvik. Fourth row—S. Vittorio, C. Lopushansky, A. Speer, A. Anderson, S. Burnett, J. Mann, D. Dole, J. Blechinger, R. Delaney.



Officers: B. Clark, D. Henneman, R. Dennis.



First row—D. Altieri, D. Rolland, E. Ihle, D. Henneman, B. Ult, C. Henson, D. Thomas. Second row—C. Nelson, D. Secrest, J. Eller, K. Wilcox, M. Cunningham, E. Eakin, J. Young, J. Jones, B. Adams. Third row—B. Queern, W. Teemer, M. Massey, R. Dennis, N. Metcalfe, C. Cory, N. Davis, E. England. Fourth row—R. Knestrick, J. Hartfield, W. Alexander, M. Kavalgian, D. Pavony, R. Pfile, A. Mower, T. Riesner, R. Lipton.



Officers: J. Bucey, K. Harton, E. Douglas, B. Stefan, A. Weber.



"Singing is good medicine."

A few minutes between classes.



OHIO VALLEY HOSPITAL NURSES



First row—E. O'Brien, A. Weber, P. Smith, J. Loy, K. Campbell, N. Matthews, L. Tassej, P. Frey, M. Flint. Second row—G. Nepa, N. Ditty, G. Myers, A. Baxter, E. Barrett, T. Norington, J. Collin, J. Kocsis, L. Trimmer, J. Bucey. Third row—L. Hibbets, M. Visyak, C. Heilman, B. Gilday, S. Linn, B. Mechling, B. Wrikman, D. Melvin, H. Mudron, B. Stefan, E. Douglas.

We the future nurses of '59, were guests at Bethany College last fall.

The mental nourishment consisted of a menu that maintained a weekly diet of Chemistry, Anatomy, Physiology, Microbiology, and Psychology. The class activities and well planned lectures added toward our professional foundation.

The seeds have been planted and we hope the effecting harvest will be a sample of gratitude to you—our hosts.



FRATERNITIES



SORORITIES



Pan-Hellenic Council



First row—S. Hubacher, H. Monezis, B. Fiers. Second row—J. Wright, B. Thompson, H. Hay, V. Walliser.

Rushing of the freshman women is supervised by the Pan-Hellenic Council. The Council establishes the rules for rushing, and any infraction of these is referred to the council. Under the leadership of Becky Thompson, the Council planned a successful "help week" for the pledges of the sororities and at the end of "help week" they held a dance in honor of the pledges.



What's this, a revolt?

Inter-Fraternity Council

The Inter-Fraternity Council is the central governing body of Bethany's five fraternities. Their primary concern is the establishment and enforcement of rushing policies, but they are also called upon to rule on any other inter-fraternity problems. The president of the I. F. C. for the past year was Ken Misiak.



President Ken Misiak.

First row—J. Kratz, K. Misiak, D. Morrison, D. Snyder. Second row—B. Merikle, J. Milligan, D. Vance, D. Snelsire, M. Rush.



Alpha Sigma Phi



Ken tests the newest thing in fishing.



Time out for a minute of study.



Bliss models the latest collegiate fashion.



Wyatt Earp must be in trouble.



First row—E. Evonszyk, R. Bragg, S. Sciortino, M. Nichalas, T. Farronto, R. Delaney, J. De Filippo. Second row—R. Maize, R. Stermer, R. Bacco, R. Harrington, D. Hastings, W. Hempstead. Third row—J. Milligan, J. Hudoc, P. Hoffman, D. Carnival, H. Schrader, G. Vukelja, K. Misiak, R. Wuester, B. Bargefrede, M. Wood, L. Starr, J. Rodgers. Fourth row—L. Larch, M. Herurt, T. Ruthven, R. Hostings, D. Bliss.

Officers: Jock Milligan, Robert Bragg, Richard Harrington.



The Alpha Sigs out at their Point Breeze Manor had a very busy year. Working closely together in a tightly knit group they re-decorated the second and third floors in addition to putting up a new front porch.

Under the leadership of Jack Milligan, president, and Richard Herrington, social chairman, the chapter presented their annual Winter Breeze Formal, Spring Sweetheart Formal, open house, pledge "ranch dance," and numerous Friday evening informal parties.

Ken Misiak was elected to the presidency of the Inter-Fraternity Council and Jack Milligan was chosen president of the Junior Class bringing honor to the chapter.

The Alpha Sigs were well represented in athletics. On the football field were Paul Hoffman, Jack DeFlippo, Del Carneval, and Donald Bliss; while Ken Misiak represented us on the basketball court.

Alpha Xi Delta

Early in the school year, the Homecoming Queen's crown was awarded to Betty Ekas. After rushing, the actives honored the ten new pledges at a dinner in Wheeling. Led by the president, Becky Thompson, the activities sponsored by the chapter were an open house, a serenade, the pledge's Snow Man slumber party, and the pledge dance. The Traditional winter formal was changed some what and held in April. Delta members held offices in many campus organizations—A.W.S., Pan-Hellenic Council, I.R.C., F.T.A. W.A.A., Language Club, S.C.A., and in the Freshman and Sophomore Classes.



Officers: C. Kimbal, B. Einicke, G. Ekerson, B. Thompson.

First row—R. Thompson, S. McConnell, D. Carder, B. Einicke, A. Salkeld. Second row—C. Kimbal, B. Bunting, L. Stevens, B. Clark, D. Bates, J. Dressler, S. Kelly, K. Runk, C. Jenkins, P. Lash, B. Young, P. Nelson, M. Knight, S. Stevick, B. Hurley, B. Friedland, B. Thompson, J. Updegraff, B. Ekas, S. Stengle, D. O'Konski, B. Hanna, E. Knapp, S. Hubaucker. Third row—H. Ricker, B. Wolff, J. Hollandsworth, G. Ekerson.





Plop!



Watch that waistline Audrey.



"I love the rose of Alpha Xi."



Surprise Becky!



First row—H. EnDean, R. Saunders, B. Sutton, B. Pressell, E. Ihle, A. Dilge, K. Avery, T. Wetzel, G. Wratten, W. Adkins. Second row—R. Garner, J. Tompson, P. Levin, G. Gaydick, K. Teramoto, C. Henry, R. Snyder, T. Furman, R. Kirchner, F. Vines, K. Dunlap. Third row—J. Probst, R. Richards, R. Runk, R. Hill, M. Rush, S. Merselis, J. Sauer, S. Horbison, B. Johnson, B. Ringler, W. Krogss, C. Krieder, N. Berry. Fourth row—K. Woolery, D. Dunham, P. Stevens, J. Schriver, R. Miller, J. Schoen, V. Block, G. Booth, D. Butz, L. Fuchs, T. Giesey, D. Evans, W. Lucas.

Beta Theta Pi

During the past year Psi Chapter of Beta Theta Pi has prospered under the direction of its President, Richard Snyder. Trophies have been captured in intramural softball, football, and golf. The Homecoming Float award was also won by the Betas. Grades for the spring semester placed Beta Theta Pi first among all Greek letter organizations on campus. Ed Johnson was President of SBOG and was Co-Captain of the Basketball team while Gary Gaydick was a key figure in a successful Bethany football season. Mal Rush was elected President for the coming year.





Kirk puts his talent to work.



"In the evening, by the fireside."



Buz makes like a hard nose.



An open-house means a flower for the pin-girl.

Kappa Delta

Sigma Xi of Kappa Delta under the capable leadership of Judy Wright, completed a successful year. Eleven new pledges gave a pledge slumber party and a dance for the actives in February. December found the KD's serenading the campus and giving a party for their patronesses. Their open house and their annual spring formal were the outstanding events of the spring.

The chapter was represented by Anita Alford, president of Kalon; Carol Bush, president of FTA; and Joan Bentz, president of WAA. Anita Alford and Judy Wright were members of the Homecoming Court. Judy also represented the chapter as Sweetheart Queen at the annual Queen of Hearts Ball.



Officers: J. Miller, A. Alford, J. Bentz, J. Wright.

First row—C. Nelson, B. Queern, J. Falkenholm, J. Watson, J. Winter, J. Taylor, S. Guttormsen, E. Hommone. Second row—G. Marsh, B. Fiers, J. Miller, J. Glerum, J. Wright, C. Nelson, C. Bush, P. Chesnut, P. Miller, D. Blue, J. Bentz. Third row—R. Stoner, E. Folley, B. Loftus, D. Seocrest, J. Mitchell, J. Hagemeyer, L. Burger, M. Cavalovitch, F. Fiess, K. Johns, J. Preston, B. Gould, J. McCloin, A. Faris, C. Miller.





Emma and Jackie look over the past years.



The night of the formal.

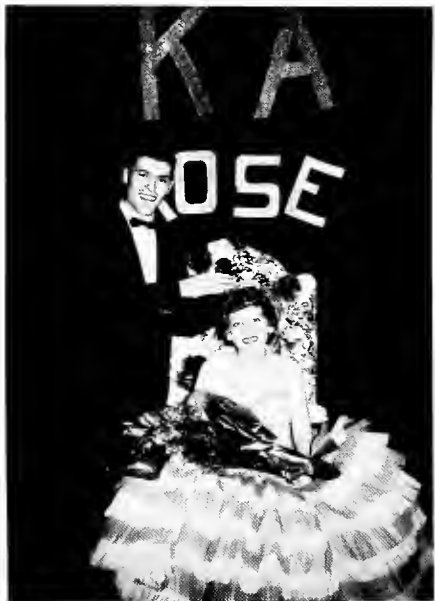


Cold, isn't it?



Remember those rush parties?

Kappa Alpha



The rose of Kappa Alpha.



This seems like fun?



Another Greek Sing trophy for the K. A.



Cappy has learned how to study.



Officers: G. Todd, G. Helm, D. Morrison, G. Erick.

As the present school year approaches conclusion, so a noteworthy year for the Grand Old Gang of Kappa Alpha under the very able leadership of Don Morrison draws to an end. During the Fall our informal parties for the freshman girls were enjoyed a great deal by both the guys and girls. The annual Dixie Ball held at the Pine Room at Oglebay Park and Convivium Banquet were the highlights of this year's activities. In an expansion movement, the Jenkins' property was secured, now permitting housing for thirty one. For the second consecutive year the trophy for the Greek Letter Sing on Mothers' Day was won. The chapter was also honored by having Clay Lowe elected as President of the Student Board of Governors. The president for this year is Dick Snelsire who has already shown he possesses fine qualities of leadership.

First row—B. Jaynes, L. Riley, D. Gold, B. Warmuth, R. Hayes, A. Laney, D. Kreger, C. Henson, B. Tinsley, W. Campbell, G. Todd, R. Knestrick. Second row—M. Berg, R. Kindleburger, T. Blowers, C. Parkins, J. Terdiman, J. Castina, P. Warburton, J. Lloyd. Third row—A. Prince, P. Costello, H. Pence, M. Campbell, W. Alexander, D. Morrison. Fourth row—T. Marshall, K. Quinn, J. Urling, D. Snelsire, G. Buttermore, B. Brown, J. Grove, C. Lowe, R. Pfile, G. Helm, E. Pierce, B. Wilson, R. Addis, G. Frick, W. Houston, C. Kiss.





First row—F. Flouhouse, J. Stewart, V. Walliser, M. Wilson, B. Heyel, A. Hoehn, S. Walker, S. Allen, N. Klieves, J. Snyder. Second row—P. Henkel, B. Aberli, J. Bange, D. Rosselet, N. Metcalf, J. Allen, R. Harvey, B. Stanhagen, S. Upperman, M. Massey, C. Kelley, K. Wilcox, N. Davis, R. Dennis, L. Hamlin, M. Armstrong, W. Tenor, J. Favreau, J. Eller, J. Beege, P. Nesbitt, M. Cunningham.

Phi Mu

The Phi Mu's, under the leadership of their president, Lois Bernabo, polished up the scholarship cup and began the year with the initiation of four new members, Joni Bonge, Patsy Henkel, Peggy Sue Nesbitt, and Doris Rosselet. Phi Mu Doll Land and a Southern Garden marked the themes for their rush parties, and on October 19, fourteen pledges joined the ranks of Phi Mu. During the Christmas season, the Phi Mu's serenaded the campus and the Solowjow family. On December 15, Lois Bernabo became the happy bride of Bill Gardei at the Bethany Memorial Church. Other highlights of the year were the Hoedown and the Phi Mu Formal.



Officers: V. Walliser, J. Stewart, N. Klieves.



Just one more practice girls.



Lois puts finishing touches on decorations for the rush party.



Ginny packs for the long trip home.



Who's winning girls?

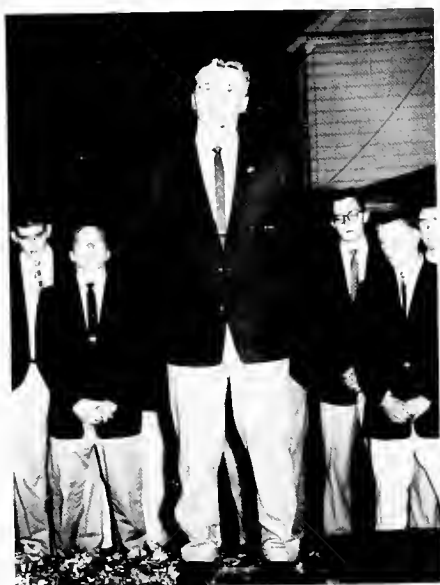
Phi Kappa Tau



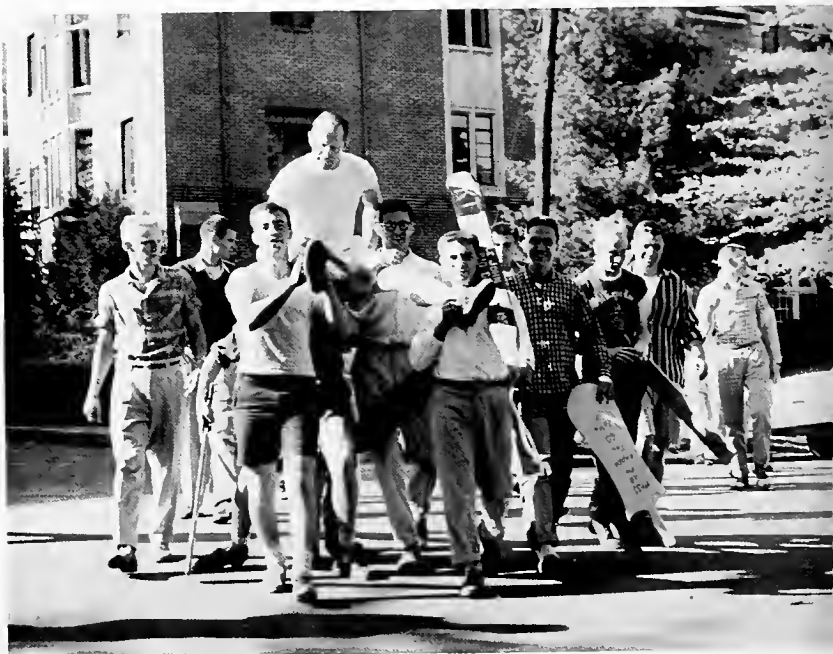
The best time of day.



Getting the cor reddy for o big dote boys?



"I love you truly."



The day the Deon went swimming.



First row—R. Goin, J. Perkins, S. Winoker, W. Gerdson, D. Cirapompo, W. Lindley, P. Cocco. Second row—P. Wagner, C. George, W. Merikle, A. Drobik, T. Rackie, R. Phillips. Third row—D. McCreedy, R. Stroight, R. Franz, A. Lasso, W. Coruthamel, S. Catanese, V. Barbetto, D. Kieb, J. Goodwin. Fourth row—J. Finn, E. Freshnock, D. Kustaboader, C. Otey, J. Raytas, R. Schillinger, C. Zurcher, A. Urbanic, J. Stetsko, R. Whitt, R. Yaksick, D. Voluska, C. Donaldson, D. Forgiene, N. Davis.

The Phi Taus enjoyed another highly successful year. Once again they were well represented in all sports, particularly on the gridiron, Dick Lash co-captained the football and basketball teams, and many other members were in the starting line up with him. C. T. George also represented us as president of the Varsity "B" Club. Socially, the highlights were the first annual Phi Tau Weekend and the spring Novelty Dance. Other important functions included sweater parties, informal parties for the freshman women, and a series of Pin Serenades followed by an all campus serenade. The president for this year was William Merikle.



Officers: A. Drobik, W. Merikle, C. George, P. Wagner.

Zeta Tau Alpha

In the big white house on Main Street the Zetas experienced another successful year led by Helen Hay. Beginning the new school year, they initiated two members, Dottie Coleman and Claudia Dreher. A pledge class of twelve members was acquired, which was headed by its president, Clare Cory. Nancy Abbott was named Editor of the Tower and a member of Who's Who in American Colleges and Universities. Stefanie Jones was elected president of the AWS.

The outstanding social events were the Christmas Open House, the pledge dance, and the Stardust Formal.



Officers: M. Fallot, I. Booth, H. Hay, S. Watson.

First row—M. Hausechild, J. Horigan, K. Marchall, N. Raberts, C. Balyersen, P. May, C. Dreher. Second row—M. McCracken, C. Cory, M. Heady, M. Maloney, M. Balsinger, I. Booth, S. Watson, B. Mullaney, M. Michaelson, M. Fallat, S. Janes. Third row—B. Scott, A. Eakin, D. Coleman, J. Janes, H. Hay, J. Woodward, J. Yarbrough, J. Arnold, J. Barthwick.





Some people just can't get up in the morning.



Goodnight Marge.



It must be reverse weekend.



A lot of fun under the big top.



First row—P. Lotruglio, T. Collins, R. Cogley, D. Dole, S. Pastor, D. Lipton, H. Brown, D. Rattner. Second row—R. McClain, E. Joyce, P. Chose, A. Baker, J. Garcy, R. Gould, J. Vinci, M. John, D. Nuebert, D. McConnel. Third row—M. Boran, A. Kullis, P. Perry, A. Mowrer, R. Moore, E. Wright, R. Chew, D. Altieri, A. Anderson, K. Johns, D. Greenburg, F. Burr, J. Brown, T. Potuch, D. Vonce, J. Reabe, W. Pollock, J. Shine, J. Barnes.



Officers: Albert Baker, Michael John, Don Neubert, Joseph Vinci.

Sigma Nu

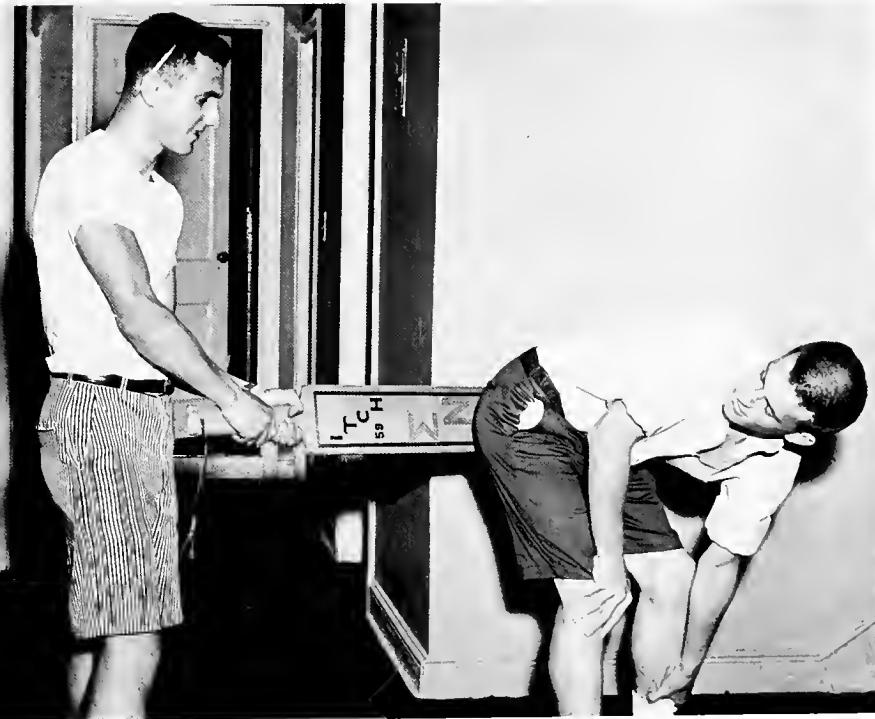
The past year was highly successful for the Sigma Nus. Only four men were lost due to graduation, but five returning veterans made up for the loss and left us with the largest group on campus. The social events for the year were highlighted by the annual Bowery Brawl and the White Rose Formal which was held off campus for the first time. For the past year Mike John has been Commander.



Latest fashions from New York.



A good time was had by everyone.



Itch assumes the position.



Getting ready for that Saturday night date.



First row—A. Riesner, D. Kuby, T. Buergenthal, G. Seminara. Second row—R. Jacobs, A. Glickstein, W. Elwell, C. Barimani, R. Nesi, R. Gottlieb, D. Tamer, S. Burnett. Third row—D. Hillmon, A. Speer, M. Friedmon, H. Steinbaum, T. Boff, J. Kress, F. Huffman, R. Rose,

Independent Men

Under the outstanding leadership of their president, Tom Buergenthal, the Independent Men have become a well organized group and quite active. Besides their regular business meetings, they have sponsored several very successful social events.

A fine job, the cup stows far another semester.



Officers: A. Glickstein, G. Seminara, T. Buergenthal, R. Gottlieb.





First row—E. England, C. Langfitt, J. Dunbar, C. Schlottman. Second row—L. Palmer, L. Furberger. Third row—L. Wheelock, J. Adams. Fourth row—M. Riveros.

Independent Women

The Independent Women together with the Independent Men took over the arrangements for a Bohemian Dance. Under the direction of Carol Schlottman, president, a party was held for all freshman women at the close of formal rush week.

Officers: L. Palmer, C. Schlottman



Carol and Jerry relax in the lounge.







A C T I V I T I E S

Kalon

Kalon is Bethany's honor society which recognizes the student's leadership in campus activities. New members are selected by the faculty and members of Kalon on the basis of leadership, character, and citizenship. Led by the president, Anita Alford, Kalon has become a more active group on campus this year.



First row—K. Avery, S. Jones, J. Glerum, A. Alford, B. Einicke, R. Snyder. Second row—G. Goydick, H. Monezis, B. Thompson, C. Bush, M. Knight, J. Wright, T. Burgenthal. Third row—D. Dickinson, R. Hayes, D. Forrington, H. Roberts. Fourth row—D. Kuby, E. Johnson, W. Lukas.



First row—P. May, M. Michaelson, P. Chestnut, P. Campbell, M. Bolsinger, G. Marsh, B. Gould, J. Glerum, G. Crimm. Second row—T. Burgenthol, M. Campbell, H. Spar, Dr. McKenzie, L. Krausz, T. Forbes, K. Avery.

Gamma Sigma Kappa

Students who excel in scholarship at Bethany are honored by admittance to Gamma Sigma Kappa. In order to be accepted in this society a student must attain a cumulative scholarship index of 3.25 or better for four consecutive semesters, never going below a 3 point during that period.



Alpha Psi Omega

Alpha Psi Omega is Bethany's National dramatic fraternity. Its eight members are lead by President, Malcolm Campbell, Secretary, Nancy Abbott, and Treasurer, Margaret Campbell. Admission into the fraternity is achieved by obtaining points in both acting and participation in play production. This year Alpha Psi Omega helped to sponsor three one-act plays; *The Valiant*, *Moony's Kid Don't Cry*, and *Red Carnation*.

First row—Dr. Yorbrough, D. EnDeon, M. Campbell. Second row—R. Dickinson, H. Pence, S. Horbison, R. Wilson.

Who's Who Among Students in American Universities and Colleges

Bethanians have always shown great potential for the future by ranking high on the list of not only fine scholars but also active participants in academic and extracurricular activities. This year eleven of our fellow students have been selected from the campus nominating committee's list to have their names entered upon the roll of Who's Who. Our most sincere congratulations to you all.



First row—T. Burgenthal, A. Alford, B. Einicke, E. Johnson. Second row—B. Thompson, G. Goydick, J. Glerum, D. Snyder.

Student Board of Governors



The S.B.O.G. is the student government composed of two representatives from each fraternal organization and the independent associations. It is the most important organization on campus for coordinating student and faculty thought, and promoting mutual cooperation between the two. It serves as the link, letting one know the other's activities. This year under the leadership of Ed Johnson they became a member of the USNSA, a step in the direction of better and more independent governing.

Seated—C. Lowe, R. Hays, D. Greenburg, S. Guttormsen, J. Preston, P. Hinkel, C. Kelley, P. Chestnut, C. Nelson, R. Miller, D. Carneval, M. Herwitt, N. Berry, A. Drobik. **Standing**—N. Roberts, G. Eckerson, E. Ehle, L. Wheelock, M. Berg, S. Hirsch, D. Farrington, E. Johnson, E. Baker, A. Salkeld, H. Steinbaum, D. Ciripompo, M. Cavalovitch, D. Thomas, D. En-Dean, J. Jones.



Ed hands gavel to Cloy.



S. Hirsch, Corr. Sec., D. Farrington, Treas., E. Johnson, Pres., A. Baker, V. Pres., A. Salkeld, Rec. Sec.

Social Committee

"All-college" functions are created to give all the students on Bethany's campus a chance to fill out their social calendar. Behind these parties, dances, and other social events are the members of the school social committee. Composed of representatives from each sorority, fraternity, and independent group on campus, this organization, under the leadership of Nick Berry, has helped make the social world of Bethany College something to be remembered by all.



First row—M. Shrode, I. Mallas, M. Knight, N. Berry, P. Miller, D. Curder, S. Jones. Second row—D. Bliss, B. Schwibner, J. Finn, D. Hill, B. Gattlieb, K. Quinn, T. Rackie, A. Pagliuca.



Chairman—N. Berry
Secretary—M. Knight

Student Board of Publications

Under the presidency of Kirk Avery this year, the S. B. P. selects the editors of campus publications with the approval of the S. B. O. G., and controls and coordinates those publications. The board, composed of the past and present editors of the three college publications also handles any criticisms or gripes which may be directed against these publications.



First row—G. Gaydick, K. Avery, N. Abbott, D. Farrington. Second row—C. Lowe, T. Furman, H. Roberts.

Women's Athletic Board

The W. A. A. provides intramural sport competition for all women students. Basketball, softball, tennis, swimming, hockey, volleyball formed the athletic curriculum.

Joan Bentz, president of this organization, with the help of the board, planned a dinner at which time awards were given to seniors who had obtained the specified number of points.



First row—M. Cavalovitch, E. Foley, J. Bentz, M. Balsinger. Second row—J. Dressler, B. Hanna, K. Jahns, R. Thampson, J. Beebe.

Association of Women Students Board



Seated—H. Manezis, S. Allen, B. Einicki, S. Jones, C. Dreher, S. McConnell. Second row—E. Foley, D. Seacrest, L. Mitchell, J. Dressler.

The A. W. S. stands for Association of Women Students and includes in its membership all women students at Bethany College. A board, made up of chosen people from its membership, form the laws and type of government to be followed on this campus. This year, under the leadership of Barbara Einicke, the board put into effect the social honor system. A varied social program was carried on this year beginning with the party for freshman women. In the spring a carnival was held for the philanthropy. In May A. W. S. honored its senior members with a breakfast.

So that we may better our system of government and see what other schools are doing, delegates were sent to I. W. A. S.

Varsity "B"



First row—R. Phillips, R. Hays, C. Donaldson, M. Baran, D. Ciripompa, E. Joyce, B. Gain, P. Chase, P. Zinter. Second row—I. Goldwasser, G. Gaydick, G. Duffee, E. Baker, C. George, D. Snelsire, F. Yarusi, J. Vinci, D. Lash, T. Rockie. Third row—E. Johnson, W. Fields, R. Yaksich, L. Leonetti, D. McCreody, L. Irvine, A. Urbanic, R. Whitt, B. Lindley, C. Otey, M. Rush. Fourth row—J. DeFillipo, D. Hastings, M. Wood, K. Misiak, J. Roytos, D. Carneval, P. Coco, J. Goodwin, E. Pierce, J. Schafer, D. Neubert.

"Where's your beanie, freshman?" "What's on page 27, freshman?" These are only two of the multitude of questions asked by the Varsity B of the new "rookies" to Bethany's campus. Besides grooming freshmen for an intelligent and responsible position as a Bethany student, this group also aids in the boosting of school spirit both as participants and spectators, in sports. The group was headed this year by C. T. George.



C. George, E. Boker, G. Duffee, D. Snelsire.



Oh! Those poor Freshmen.

International Relations Club

Programs headlined by foreign students and debating on current events are only two of the many events slated by this group. Presided over by Tom Buerghenthal, with Dr. Shaw and Mr. Young acting as faculty advisors, they also receive periodicals from the Carnegie Institute of International Peace, and send representatives to the annual regional conference. Time magazine contributes to this organization by sending them quarterly current events tests, and offering prizes to the winners.



First row—C. Petrapaulas, Dr. Shaw, P. Henkel, D. Coleman, T. Buerghenthal, B. Hanna, L. Furberger, R. Nesi, W. Rasenblum. Second row—D. Rasselet, J. Watson, J. Cerstvik, R. Gattlieb, D. Kuby, M. Rush, S. Harbisan, W. Elwell, S. Hagler, T. Blawers, S. Rosenberg, M. Fallot, M. Schrade.

Economics Club



First row—J. Falkenhalm, C. Schlattman, D. Snyder, H. Monezis, S. Harbisan, L. Palmer, B. Einicke. Second row—D. Keib, H. Weber, S. McMahan, W. Merikle, M. Rush, Dr. Kyler, N. Schroder, P. Castella, A. Furman, K. Henry.

As one of the more active clubs of the campus, the Economics Club was presided over by Helen Monezis this year with Dr. Kyler as the faculty advisor. Its many activities such as field trips to industrial plants and business establishments throughout the valley draw many students who have never taken an Economics course to the club. Approximately fifty members participate in the club.

Future Teachers of America



First row—B. Hanna, K. Runk, B. Heyel, S. Stengel, S. Watson. Second row—A. Glickstein, C. Dreher, D. Blue, J. Hollandsworth, J. Bentz. Third row—C. Nelson, B. Queern, K. Johns, E. Booth, P. Chesnut. Fourth row—P. Miller, L. Mitchell, L. Burger, L. Furberger, M. Cavolovitch, M. Fallot.

The F. T. A. strives to give each member a more definite background for the teaching profession. The 45 education majors achieved their goal this year through varied and interesting monthly programs. Lectures were given by professional leaders around this part of the country. The student teachers themselves furnished programs. Related movies were shown and parties were held.

As a conclusion to another successful year, the F. T. A. held a picnic at Oglebay Park.

Language Club

The purpose of the Language Club is to further interest in French, German, and Spanish culture. The club held a Christmas serenade and a most successful European type dance. George Frick served as president, and Miss Margaret Woods and Mr. Ferris were the advisors.



First row—L. Mitchell, F. Dautresme, B. Queern, Miss Woods, C. Nelson, D. Rosselet, R. Nesi. Second row—C. Petrapoulos, R. Jacobs, W. Rosenblum, R. Gottlieb, D. Kuby, S. Horbison, S. Burnett, W. Elwell, G. Seminori, C. Borimani.



First row—V. Walliser, C. Balyersen, P. Nesbitt, T. Bates, B. Aberli. Second row—H. Roberts, J. Updegraff, H. Hay, N. Abbott, K. Avery, A. Eakin, P. Armstrong. Third row—A. Riesner, S. Hirsch, R. Saunders, A. Spear, N. Berry, S. Stevick, C. Kreider, N. Davis, L. Leonetti, C. Henry, L. Lee, P. Zinter, S. Rosenberg.

Tower Staff

Bethany's Tower, published ten times each semester, kept the students up-to-date on campus activities. The newspaper represents the students and is run by them with no faculty interference. This year's editor, Nancy Abbott, was assisted by News Editors, Helen Hay and Linda Vose, Features Editor, Gay Marsh, Sports Editors, Curt Henry and Stan Harbison, Business Manager, Homer Roberts, and Circulation Manager, Peggy Armstrong.

Assistant Editors



S. Stevick, H. Roberts, N. Abbott, H. Hay, Kirk Avery.

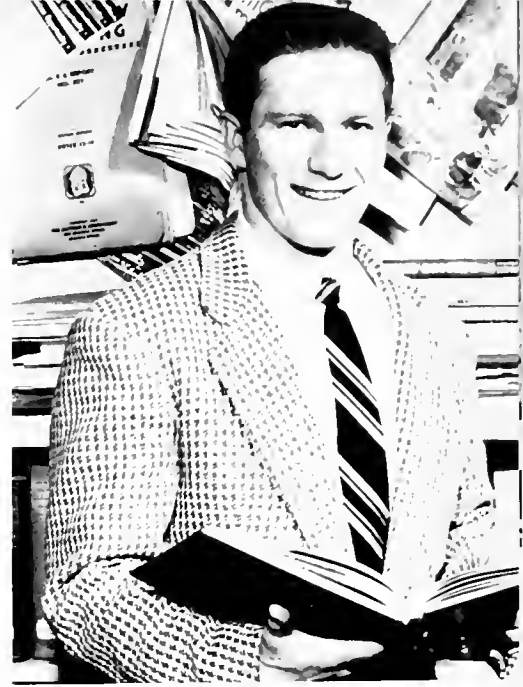


Nancy Abbott
Editor-in-Chief

Bethanian Staff



First row—B. Friedland, B. Young, K. Runk, P. Fallatt, C. Balyersen, P. Lash, C. Henry, D. O'Konki. Second row—D. Hill, D. Ciripompa, J. Dressler, L. Burger, R. Straight, H. Hoy. Third row—C. Nelson, C. Dreher, J. Drummond, J. Hollondsworth, B. Hanna, B. Wolff, L. Stevens, D. Holt, P. Levin, S. Hirsch, D. Ferrington.



Gary Gaydick
Editor-in-Chief

Assistant Editors

The Bethanian staff hope that this yearbook has captured the true feeling and spirit of Bethany's campus and its people. Gary Gaydick has served as Editor-in-Chief and, along with the other members of the staff, has worked hard to bring to Bethany's students a book to treasure in future years.



First row—B. Laftus, G. Gaydick, T. Furman. Second row—K. Avery, Mr. Evans, B. Mullaney.



G. Helme, G. Frick, D. Henneman, J. LoPello, M. Michaelsen, D. Carter, B. Thompson, C. Marshall, J. Lloyd, P. Warburton, Mr. LaPello.

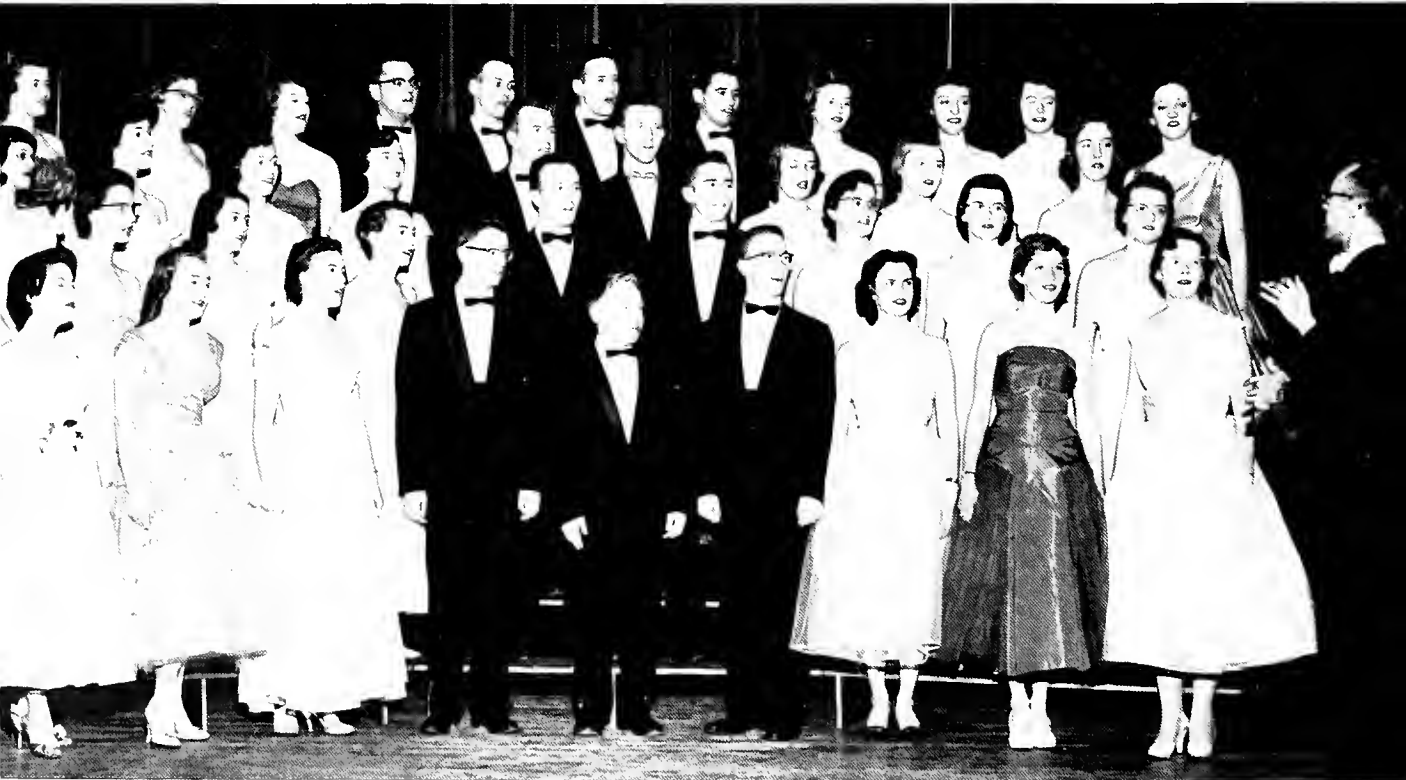
Madrigal Singers

The Concert Choir, under the experienced baton of Mr. George Hauptfuehrer, is the finest chorol group on compus. They provide the college with choral music on the highest level and give each member a chance to develop his voice. They are scheduled to go on tour next year.



Mr. Hauptfuehrer talks things over with Becky and Glen.

Concert Choir



First row—C. Marshall, G. Marsh, J. Bonge, J. Lloyd, E. Dietrick, P. Warburton, B. Aberli, J. McCloin, W. Tener. Second row—J. Miller, A. Alford, J. LaPella, R. LaPella, G. Wagner, B. Thompson, M. Massey, S. Horvey. Third row—G. Young, L. Forbes, C. Bush, M. Michaelson, R. Hays, C. Lowe, D. Carder, S. Guttormsen, N. Davis. Fourth row—L. Hamlen, R. Dennis, J. Yarbrough, B. Wilson, G. Frick, G. Helme, D. Henneman, J. Preston, J. Glerum, K. Wilcox, C. Kelley.



First row—A. Riesner, W. Johnson, W. Compbell, M. Campbell, P. Warburton, Mr. Hauptfuehrer, W. Alexander, A. Dilg, R. Knestrick, E. Dietrich. **Second row**—B. Pressel, W. Houston, J. Grey, G. Wagner, P. Stevens, V. McGregor, S. Kavalgian, R. Brown, J. Mann. **Third row**—J. Meriwether, J. Cerstvik, R. Gray, C. Parkins, R. Hays, G. Booth, E. Joyce, J. Bleckinger, G. Thornburg, C. Otey. **Fourth row**—G. Frick, W. Lukas, G. Buttermare, R. Runk, M. Berg, J. Urling, G. Helme, J. Probst, W. Fields, R. Wilson, D. Henneman.

Male Chorus

Under the superior direction of Mr. George Hauptfuehrer Bethany's Male Chorus has offered some of the finest choral music to be heard anywhere. With an outstanding repertoire, ranging from songs on the saucy side to those which are deeply religious,—Bethany's campus, as well as the surrounding area, has been presented with enjoyable music throughout the year. This year the group went on tour, serving as the musical emissary for Bethany College.

Triple Quartet



Officers: R. Wilson, R. Hays.



P. Warburton, R. LaPella, R. Hays, G. Helme, G. Frick, D. Henneman, G. Booth, V. MacBregor.

Student Church Board

The Student Church Board is headed by Bill Lucas. Its other officers are Vice-President, Steffanie Jones; Secretary, Anita Alford; and Treasurer, Barbara Gould. Its members are made of the officers of the Student Christian Association. They act as a committee to plan for the Easter Week Devotionals and help plan the World University Service projects to raise money here on campus.



A. Dilg, B. Gould, B. Lucas, A. Alford, P. Hinkel.

Ministerial Association

The Ministerial Association is for all pre-ministerial students. It is a source of spiritual aspiration for the religion majors. It sends out representatives to Disciple Churches to lead Sunday morning devotional services. It is headed by its officers President Jim Kratz, Vice-President Leon Riley, Secretary Ellie Knapp, and Treasurer Dick Hill.



First row—R. Wilson, R. Dennis, A. Hoehn, A. Myers, E. Dietrich, E. Knopp, F. Flouhouse, A. Loney. Second row—R. Miller, C. Bush, J. Snyder, R. Dickinson, M. Dickinson, M. Schrode, B. Gould, C. Longfitt, Dr. McAllister, D. Hill. Third row—B. Pressell, C. Lowe, J. Kratz, K. Dunlap, D. Henniman.

Canterbury Club



The Canterbury Club is under the sponsorship of Miss Woods and Mr. Taylor. Its members meet bi-monthly to create a unity and fellowship for the Episcopal youth of the campus. Under the direction of their devotional leader, Reverend Thorne of Wheeling they hold communion and travel to Wheeling during significant religious festivals. Nancy Roberts presides over the club.

First row—B. Aberli, M. Michaelson, N. Roberts, Miss Woods, S. Stengle, B. Mullaney, M. Cunningham. Second row—B. Elwell, Mr. Taylor, Rev. Thorne, D. McCready, R. Phillips.

Newman Club

The Newman Club, whose main purpose is to unite the Catholic students of Bethany, is a member of a national organization that has similar groups on campuses of non-sectarian colleges all over the country. Father Kerwin from Wheeling discusses with the members the latest doctrines of Catholicism and how the Catholic students are affected by them.



First row—A. Drabik, J. Vinci, P. Lotruglio. Second row—J. Custina, G. Seminari, R. Nesi, A. Pogliuca, G. Duffee.

Chemistry Club



The Chemistry Club, an organization in which students interested in extra curricular activities in chemistry may take part, was headed this year by Mike John. Its activities included banquets which had as its guest speakers noted chemists from local industries. The group was advised by Dr. D. Draper, head of the chemistry department.

First row—L. Krausz, R. Finnerty, M. Johns, D. Arnold, F. Vines. Second row—J. Meriwether, A. Prince, H. Pence, T. Marshall, Dr. Draper, H. Spar.

West Virginia Academy of Science

The West Virginia Academy of Science is composed of those students who are majoring in one of the various fields of science. Wayne Johnson headed the organization in its activities during the past year. The activities of the club centered around the presentation of movies and talks concerned with scientific fields.



First row—F. Vines, P. Levin, V. Walliser, I. Goldwasser, H. Bowman, L. Krausz. Second row—R. Finnerty, R. Blum, J. Shein, D. Roland, J. Terdiman, H. Pence, J. Meriwether, T. Wetzel. Third row—H. Steinbaum, A. Prince, T. Boff, T. Marshall. Fourth row—H. Spar, S. Hagler, B. Schwibner.

Beta Beta Beta



The local Tri-Beta is an affiliate of the national Beta Beta Biological Society. Its members are required to have a "B" average in biology. Harry Bowman, president, led the organization in its activities which included lectures and movies concerning biology. The group was ably advised by Dr. B. Weimer the notional president.

First row—J. Hollandsworth, B. Hanna, V. Walliser, I. Goldwasser, P. Levin, N. Klieves.
Second row—H. Spar, R. Finnerty, M. Heady, F. Yarussi, W. Hempstead, F. Vines, R. Blum, J. Shein. **Third row**—H. Steinbaum, B. Schwibner, L. Runk, H. Bowman, J. Terdiman, P. Stephens.

Chess Club

This year's Chess Club, with Tom Liden as president, has contributed to the Bethany scene by sponsoring a highly competitive chess tournament. The winner received a personal trophy and his name engraved on another permanent trophy belonging to the school. The organization meets twice a month and has a membership of 15. The chess team, which should go into competition next year, is composed of members of the Chess Club and anyone else proficient enough to enter. Mr. Brown served as advisor for the group.



First row—A. Prince, T. Liden, Mr. Brown, D. Kuby. **Second row**—J. Castina, H. Pence, M. Berg, G. Seminori.





F E A T U R E S

COMMENCEMENT





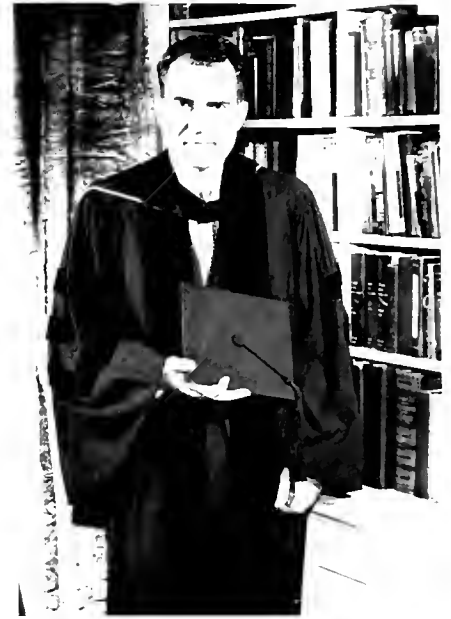
West Virginia Governor Cecil H. Underwood addresses Bethany's 116th commencement.



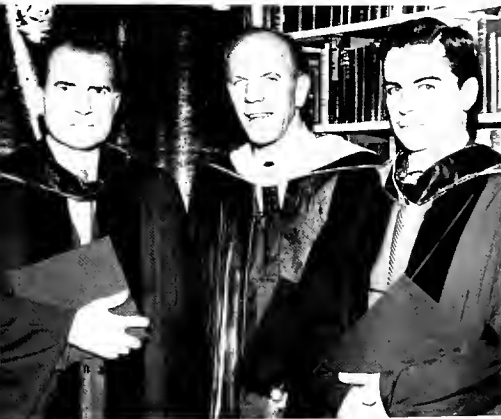
Congratulations Ellie.



Vice President Richard M. Nixon becomes a Bethanian.



Vice President Richard M. Nixon



Vice President Richard M. Nixon, Bethany's President Perry E. Gresham, Governor Cecil H. Underwood.

A wonderful day to remember.





BARBARA HANNA



PHYLLIS MAY



DOTTY O'KONSKI

A.W.S.



CAROL KIMBALL

Carnival

SANDY STEVICK



JANET HOLLANDSWORTH





ARNE WRIGHT



PIXIE



CHUCK HUBACHER

Varsity "B"



STEFFANIE LASH

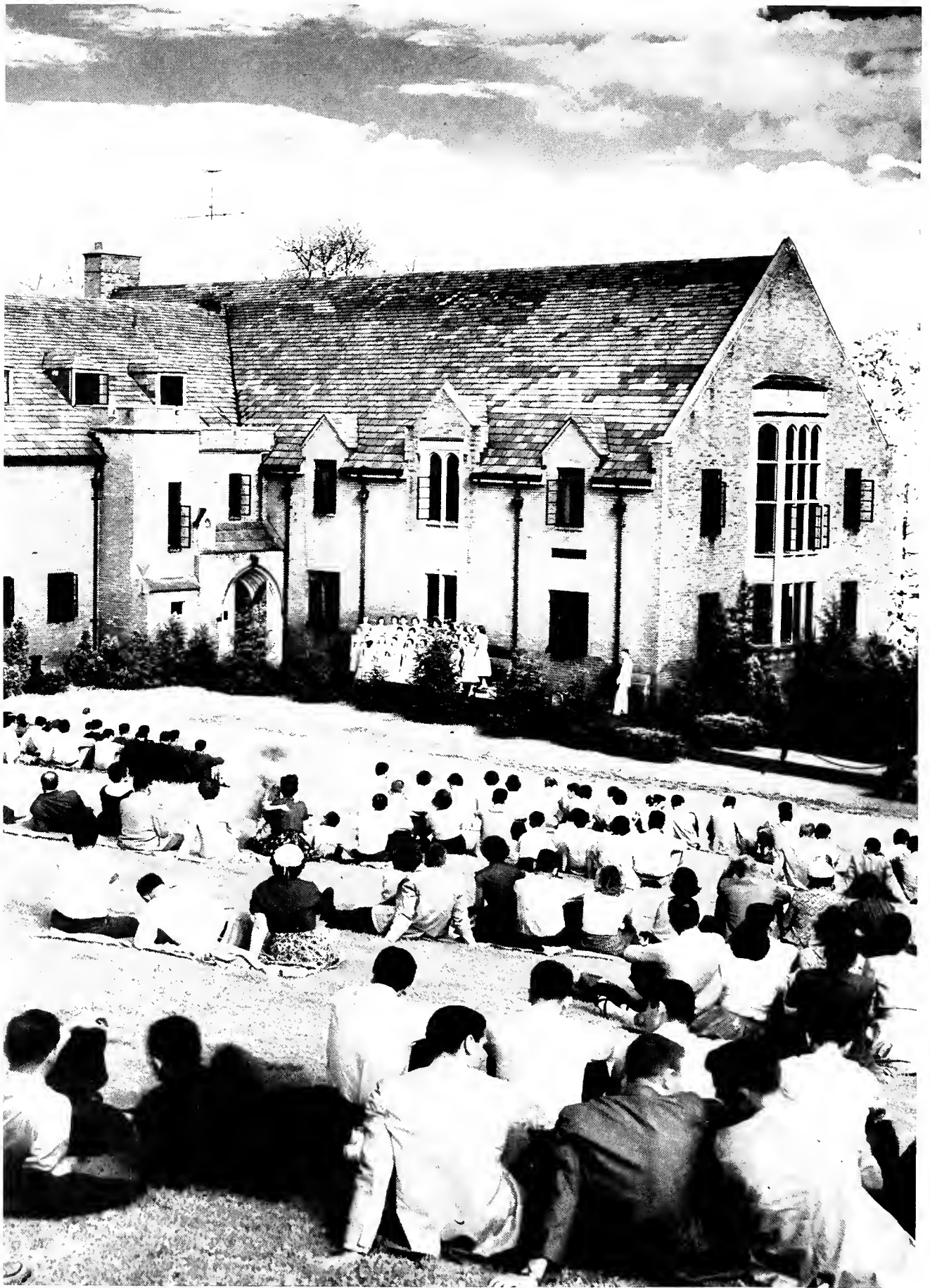
Show



THE GIRLS WITH THE GUNS



THE NOODNIKS





Looking at the art exhibit.



Dr. Gresham picks out a scenic view.

MOTHERS DAY



A flower for Mom.

Dinner at Phillips Hall.



Families together in church.





HOMECOMING QUEEN



BETTY EAKAS

1957

QUEENS

A. W. S. QUEEN



PAM MAY

QUEEN OF HEARTS



JUDY WRIGHT

BETHANIAN QUEEN



SANDY McCONNELL





S P O R T S



First row—C. George, R. Whitt, R. Spenski, A. Rackie, G. Gaydick, R. Lash, L. Irvine, D. Bliss, J. DeFilippo, R. Cripompa, F. Yarussi. Second row—Coach Martin, Mgr. T. Wetzal, J. Saire, D. Valuska, R. Moore, C. Donaldson, R. Gold, M. Baran, P. Forgione, S. Sabo, Cooch Hanna, Coach Knight. Third row—N. Davis, W. Prysock, J. Goodwin, M. Wood, D. Rattiner, R. Gray, P. Hoffmon, R. Phillips, W. Lindley, J. Grey.

FOOTBALL

With five faces gone from last year's starting eleven which led the '55 squad to Bethany's best win and last record in the school's history, the Green and White faced a big rebuilding job to put together a team that would compare favorably with the previous one. The '56 Bisans accomplished their task and turned in six wins against only two losses compared to last year's 6-1 showing.

The Big Green forward wall was comparatively young but was not lacking in experience or determination. Gerald Duffee, C. T. George, Lee Irvine, Ed "Tiger" Jayce, Abbie Urbanic, and Ron Whitt were the regular starters with Arne Anderson, Del Carneval, and Bill Lindley alternating at right end.

Co-Captains Bob and Dick, talk things over with C. T. and Gary.

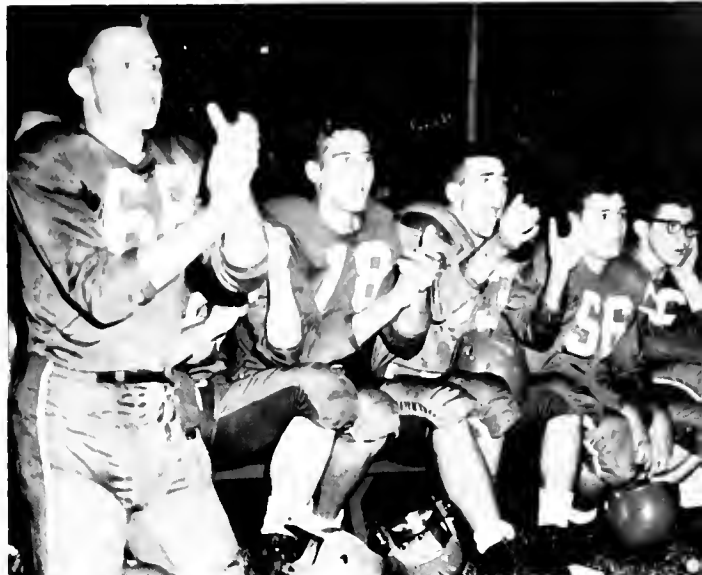


Bison Mentors: W. Hanna, J. J. Knight, Edgar Martin.





Franky goes for extra yardage.



The Bisons score ogoin.

Gary Gaydick and Dick Lash were the regular Bison half-backs again while another senior, Bob Spenski, and a sophomore, Paul Hoffman, filled the big shoes at full ond quarter-back exceedingly well. Bob Goin did a very capable job as number two quarterback and freshman Spike Baran and shifty little sophomore Frank Yarussi did some fine running from the halves.

The Big Green started the season impressively by trouncing W. VA. Wesleyan 27-6 at Buckhannon with Gaydick scoring three T-D's. Bethony squared off against Thiel on Homecoming Day determined to avenge the one defeat they suffered last year. They did so in fine style with a 31-6 rout of the Tomcats.

Ronald Whitt, Center

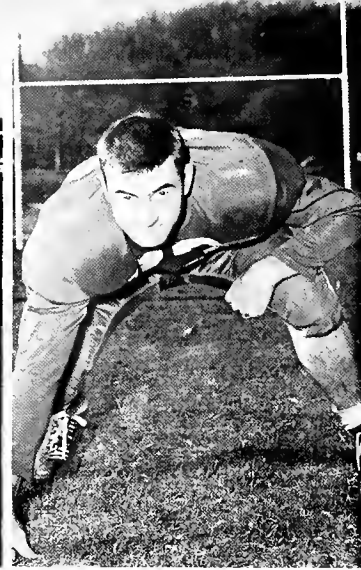


Bob Spenski, Fullback



Lee Irvine, Tackle





Abbey Urbanic, End

Gerald Duffee, Tackle

C. T. George, Guard

Ed Joyce, Guard

A very highly rated Westminster team was almost upset by the Green, who led 16-13 going into the last quarter. But the Titans had the reserves, the breaks, and the victory—40 to 16. On the next Saturday the Bisons rolled over Davis and Elkins 34-7, but they were upset by Allegheny 33-19 one week later at Meadville. Bethany won their first game at Hiram in twenty-one years when they came from behind to score a 19-7 victory over the Terriors with two fourth period touchdowns. The Big Green put on a real show Dad's Day, smearing Marietta 53-0 with eight players, including 240 lb. tackle Sam McMahom, scoring T-D's. Grove City was the Bison's final victim, bowing 40-34 at Grove City.

Bethany certainly had its stars this year. Quarterback Hoffman ranked fourth in the nation among small

First row—W. Lindley, L. Irvine, H. Joyce, R. Whitt, C. George, J. Duffee, A. Urbanic. Second row—G. Gaydick, R. Spenski, P. Haffman, R. Lash.





Bill Lindley, End



Paul Hoffman, Quarterback



Dick Lash, and Gary Gaydick, Halfbacks

college leaders in total offence. He gained 365 yards rushing and 881 passing for a total of 1,246. In the passing department he was number seven with 50 completions in 93 tries for a 53.7 percentage. His favorite target, Abbie Urbanic, was unsurpassed as a pass receiver in the country's small colleges. He gained 675 yards on 36 catches, six for touchdowns. Gary Gaydick was the team's rushing leader with 544 yards and top scorer with 42 points. Every member of the team would insist, though, that it was teamwork and an indomitable spirit that accounted for the Bisons' success.

Thomas Davies, a past All-American, spoke at the annual Football Banquet in honor of the team, and next year's captain, Lee Irvine, was introduced.

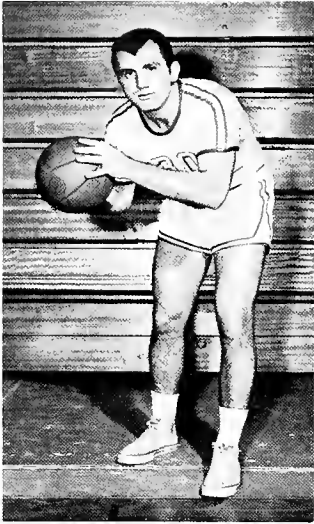
Abbey goes over for six points.



It must be another touchdown for the Bisons.



BASKETBALL



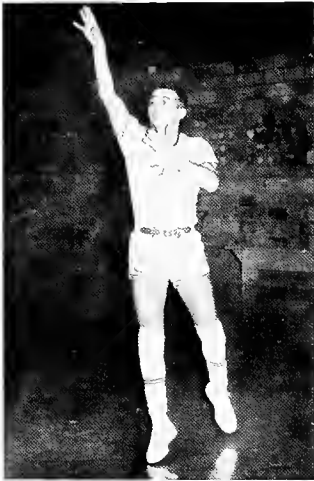
Bob Goin



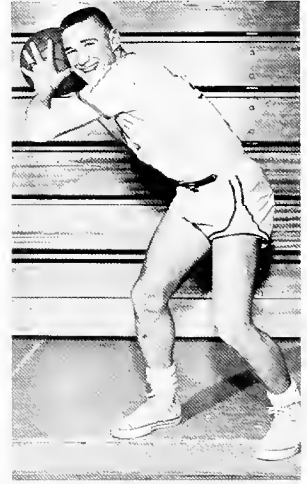
Co-Captain Dick Lash



Rudy Yaksich



Jim Wratten



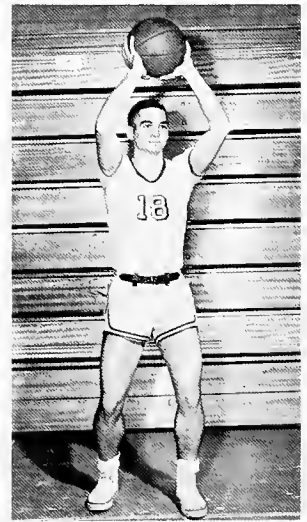
Auggie Losso



Dave Reidenouer



Co-Captain Ed Johnson



Bob Melott



First row—Jr. Mgr. J. Honna, Mgr. R. Flickenger, A. Losso, R. Lash, R. Goin, M. Rush, B. Johnson, R. Yaksich, K. Misiak, R. Mellot, D. Reidenouer. Second row—J. Wratten, K. Dunlap, R. Kindelberger, R. Hill, B. Ringler, A. Anderson, J. Brown, J. Stetsko, J. Shoen, Coach Madtin.

The Bison cagers showed much improvement over last year despite its 10 win and 10 loss record. They won their first three games before losing a tough one to A. B. C. 65-63. The best of the year was undoubtedly down at Marietta where the Bisons buffaladed the Pioneers 101-81 with seven men hitting in the double figures.

Three men are leaving the team this year. They are: Ed Johnson and Dick Lash (Co-captains), and Jimmy Wratten.

Rudy Yaksich, captain elect for next year, again led the Bethany scoring attack with a total of 490 points, an average of 24.5 points per game.

Another of the reasons for the Bison's improvement was its depth. Bob Melott and Dave Reidenouer added strength to the starting five while freshmen John Brown, John Stetska, Bruce Ringler, and sophomore Dick Hill put some potential on the bench. Auggie Losso and Bob Goin also continued to add strength to the squad.

The season next year looks very optimistic even with such additions to the schedule as Western Reserve and Wayne University.



E. Johnson, Coach E. Martin, R. Losh.



"Let's take this one boys."



Auggie goes high for the tap.

Buck hits on a jump shot.





Sleepy chalks up two.



Jeff Hanna, a future Bison.



What is up there Stets?



Rudy shows record breaking form.



Ralf Hays, First Baseman



Frank Yarussi, Second Baseman

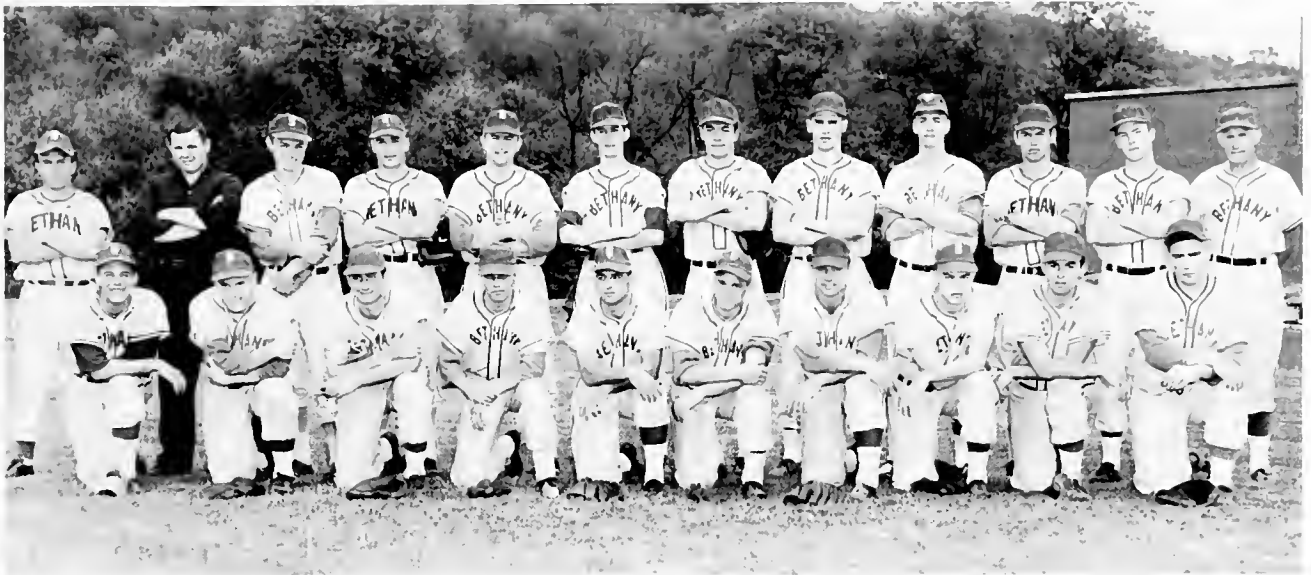


Dan McCready, Outfielder



Dick Lash, Outfielder

BASEBALL

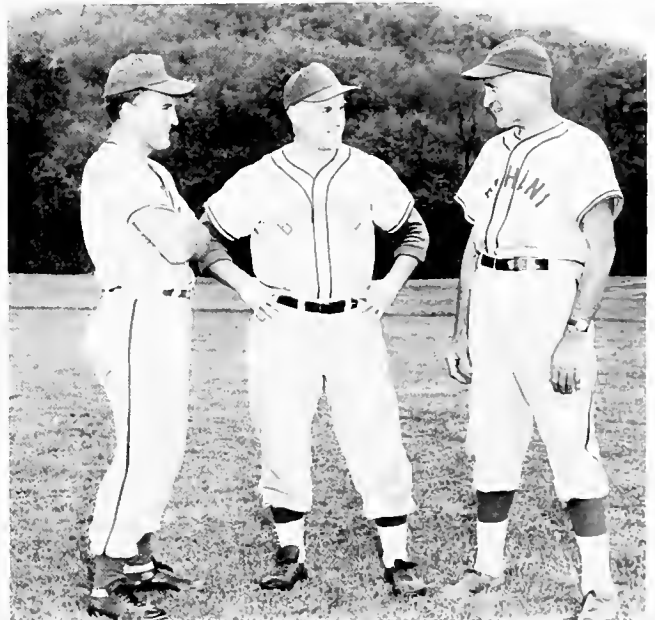


First row—D. Reidenouer, R. Lash, D. Carneval, R. Jacobs, F. Yarussi, A. Losso, V. Black, D. Kustaborder, P. Cocco, J. Goodwin.
Second row—Coach Martin, Mgr. D. Bliss, C. Otey, D. McCreedy, R. Hays, J. Stetska, C. Donaldson, A. Urbanic, A. Mawrer, P. Hoffman, W. Lindley, Coach Knight.

Improving on last year's 2-7 record the Bisons managed to compile a 4-5 record this year. Auggie Losso proved to be the club's leading hitter while sparkling at second base. Losso, hitting .346 was closely followed by Urbanic and Lash with .343 and .310 respectively. Hays, Hoffman, and Carneval also came through with some fine clutch hitting and fielding.

Pitchers Otey and Reidenouer chalked up the four Bethany victories, backed up strongly behind the plate by Phil Cocco.

Coach Knight has high hopes for next year as Dick Lash is his only senior on the club. He feels that the team has progressed tremendously over last year's showing and should be a real tough ball club, come next spring.



Coach E. Martin, Captain R. Lash, Coach J. J. Knight.

The Bison track squad did not fair as well as expected in preseason analysis but nevertheless the Bethany thinclads were able to gain third place in the state meet. Injuries and cold weather were the toughest opponents the team encountered.

There were several bright spots however on the squad coached by Tom Hill. One of these was distance man John Schaffer who in the state meet broke his own record in the 880 yard run. Another encouraging factor concerns the number of freshmen who will be returning next year with a year of experience under their belt.

The co-captains of this year's team were Elmo Baker and Donald Neubert. These two men will be the only men lost to the team via graduation.



Co-Captain D. Neubert, Coach Hill, Co-Captain E. Baker.

TRACK



First row—L. Krausz, L. Tomater, R. Straight, E. Baker, D. Hastings, E. Ihle, P. Perry, G. Duffee. Second row—Mgr. P. Chase, D. Neubert, J. Shafer, W. Butterwick, A. Anderson, E. Pierce, J. Bleckinger, S. Merselis.



Jerry adds strength to the Bison field events.



Ed strains for that extra inch.



Ron shows good form and speed in early season practice.



Elmo and Don warm up for the State meet.



First row—L. Leonetti, J. Breen, I. Goldwasser, S. Janes. Second row—
Coach Peterson, P. Zinter, D. Dunham, K. Teramoto, R. Saunders, Mgr. L. Lee.

The Bethany College tennis team hit a new high in 1957 as it was the first team in history to make a clean sweep of all titles in the West Virginia State Intercollegiate Championships. Les Leonetti took the singles crown, Captain Jim Breen and Russ Saunders the doubles and the squad scored 24 points to six for its nearest competitor to take the team trophy.

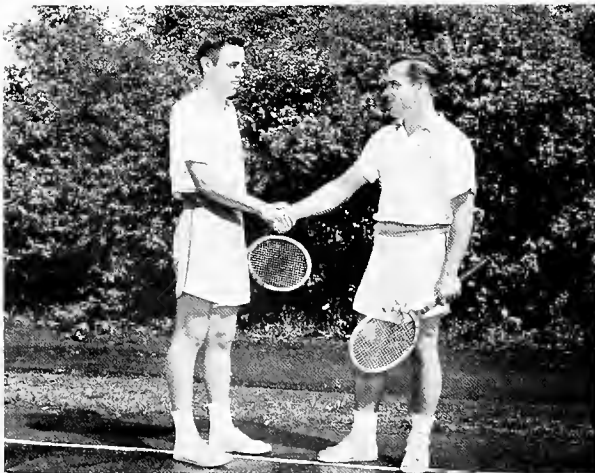
As four top men were lost from the 1956 squad the team lacked experience and started slowly, but developed fast. The addition of two freshmen, Russ Saunders and Dave Dunham, helped fill the gaps and the team climaxed a seven win-four loss season with its third consecutive State Championship.

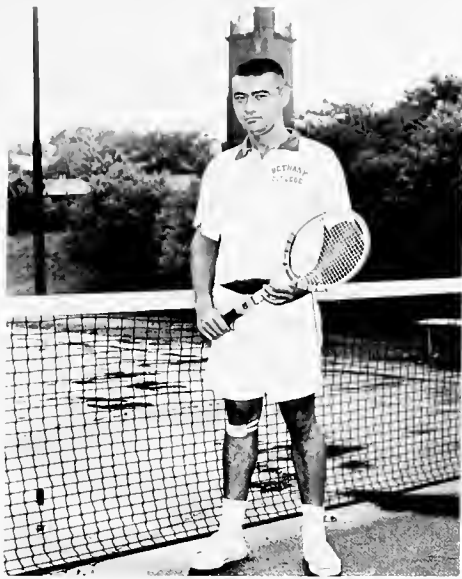


Coach Peterson gives last minute instructions.

State doubles winners, Jim and Russ.

State singles champion, Les Leonetti.





Kenny Teramoto



Captain Jim Breen

TENNIS



Dave Dunham



Steffanie Jones

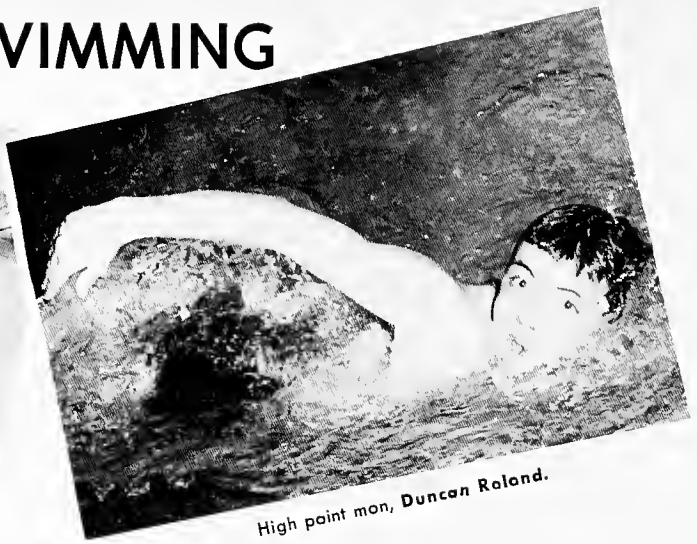


Ira Galdwasser

SWIMMING



Captain Tony Furman



High point man, Duncan Roland.

Cooch and sponsor Mr. Robert Preston had six veterans returning from Bethany's first swimming team which was formed last year. The team swam a five meet schedule which was terminated by a commendable performance in the state at Fairmont. With the loss of only one member, Tony Furman, a senior, the team is looking to an even better season in varsity competition next year.



First row—R. Stermer, D. Evans, D. Roland, R. Hastings, A. Reisner, J. Haffman, R. Saunders, G. Baath, K. Woolery, W. Sutton.
Second row—G. Burghard, L. Starr, R. Kroos, J. Sauer, T. Furman. Third row—Mgr. J. Finn, Coach R. Preston.

GOLF



Cooch McAllister congrotulotes Tom upon winning the state golf tournament.



Captain Frnk Payne

At the close of the season Bethany's golf team entered the W.V.I.A.C. tournament at Oglebay with a 6-6-1 record, including a win over the defending champion West Liberty. The Hilltoppers retained their title, however, with Bethany finishing third despite freshman Tom Giesey's individual low score of 147. The members of the team, coached by Dr. McAllister, were: Captain Frank Payne, Bob Golumb, Joe Vinci, Dennis Evans, Ron Chew, and Bob O'Konski.



R. O'Konski, R. Gollomb, D. Evans, T. Giesey.



Betty Ekas, Captain



Janet Glerum

Cheerleaders

The six cheerleaders, under the leadership of captain Betty Ekas, provided enthusiastic spirit for the 1956-57 football and basketball seasons. These six boosted the morale of the students and teams, winning or losing, with their peppy Bethany fight cheers, songs, and chants.

On the social calendar, the cheerleaders sponsored a reverse weekend, participated in convocation programs, held pep rollies in the Bee Hive and bonfired in the Coal Bowl.



Steffanie Janes



Sandy Hubacher



Harry Lane Riker



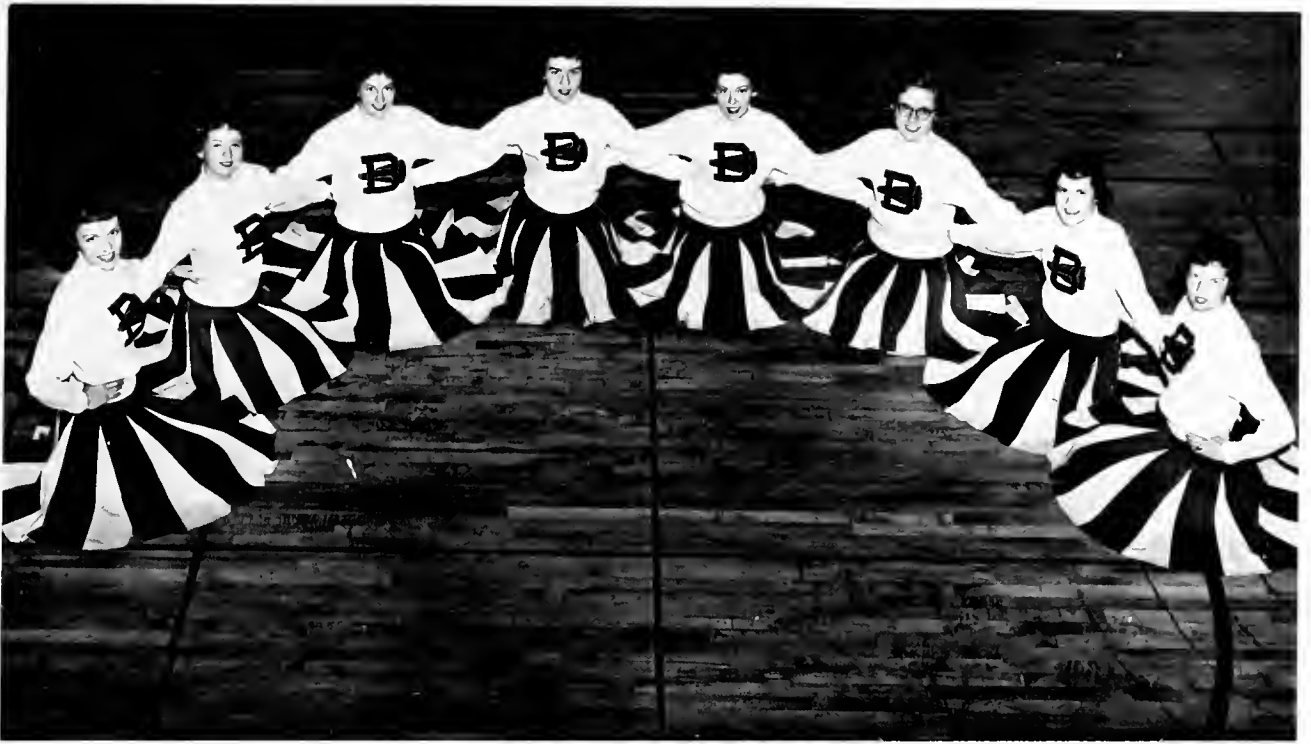
Carol Jenkins



Barbara Walff



Charlotte Nelsan



J. Glerum, S. Jones, C. Nelson, H. Riker, B. Wolff, C. Jenkins, B. Ekas, S. Hubacher.

Majorettes

These four girls twirled for the football games, making the half-time interesting for the student body. Jackie Winter and Bobby Thompson also twirled on television programs for the college.



L. Stevens, B. Thompson, J. Winter, J. Dressler.

Intramurals



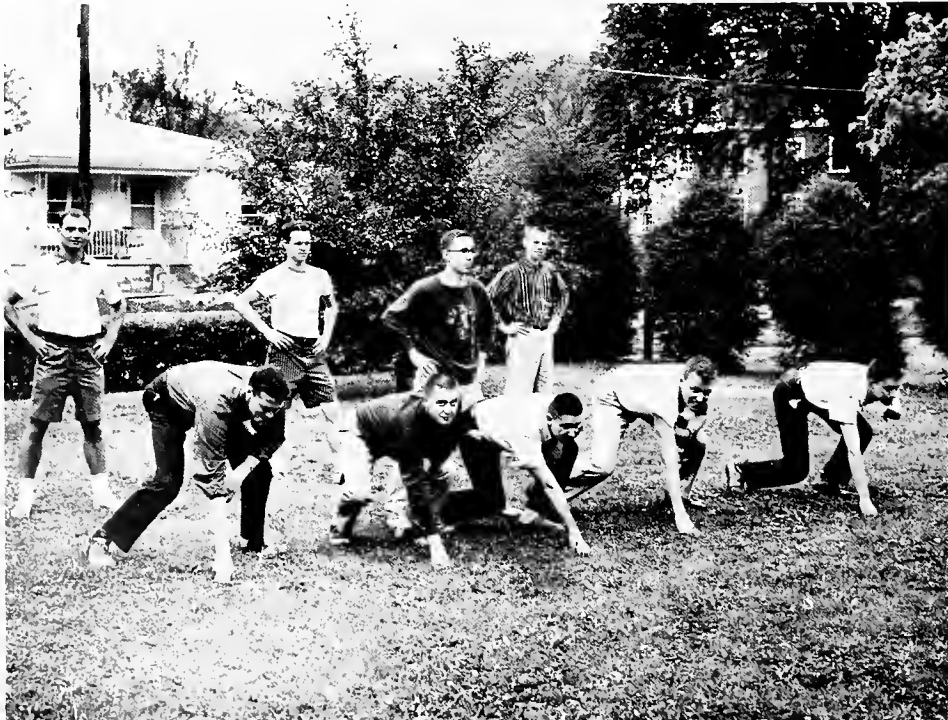
BASKETBALL: First row—F. Yarussi, A. Rackie, R. Cripompa.
Second row—D. Kustaborder, P. Wagner, C. Donaldson.

Competition and spirit dominated the boys and girls intramural program this year. Boys intramural sparts have expanded with the addition of new contests and a final trophy, to be presented to the fraternity having accumulated the most paints throughout the year. The Phi Tau's lost their football crown to the Beta's but went on to win the majarity of the remaining contests and the new trophy. Bath basketball and volleyball laurels changed hands, with the K.D.'s winning basketball, and the Alpha Xi's champions in volleyball.



BASKETBALL: E. Foley, P. Miller, J. Hogemeyer, M. Covalovitch,
B. Queern, C. Nelson, J. Glerum.

FOOTBALL: First row—B. Johnson, C. Henery, D. Kirshner, M. Rush.
Second row—L. Leonetti, F. Vines, J. Thompson, T. Wetzel.



Moo Moo Moo

The Moo Moo Moo was organized to raise school spirit by enhancing the humor of the game with mimicry and gymnastic stunts. The Moos were headed this year by Mike John, the big bull. They worked and performed untiringly at the football and basketball games. They deserve a lot of credit for their contributions to the college's athletic program.



First row—M. Jahn, F. Burr, D. Keit, K. Masiak. Second row—J. Milligan, E. Freshnock, P. Wagner, B. Head.



Big Bull Mike John

"Telephone Time"



THE FRATERNITIES

BETA GAMMA
OF
ALPHA SIGMA PHI

PSI
OF
BETA THETA PI

BETA BETA
OF
KAPPA ALPHA

PHI
OF
PHI KAPPA TAU

EPSILON
OF
SIGMA NU

THE SORORITIES

DELTA
OF
ALPHA XI DELTA

SIGMA XI
OF
KAPPA DELTA

BETA NU
OF
PHI MU

THETA
OF
ZETA TAU ALPHA

The High Cost of Learning

Bethany College Spends for Educational
Purposes Per Student Each Year \$1,020.

Each Student Pays 550.

Friends, Alumni and Churches Provide
Through Gifts and Endowments 470.

*WHEN A STUDENT HAS A SCHOLARSHIP
THE SUBSIDY FROM FRIENDS IS
INCREASED BY THAT AMOUNT*

THE TRUSTEES OF THE COLLEGE WISH SUCCESS TO EACH SENIOR.
WE INVITE YOU TO JOIN WITH THE OTHER GENEROUS FRIENDS OF
LEARNING TO HELP MAKE AN EDUCATION POSSIBLE FOR OTHER
STUDENTS YET TO COME.

SIDNEY C. PORTER

CHAIRMAN OF THE BOARD OF TRUSTEES

**PENN-OHIO COAT, APRON &
TOWEL SUPPLY CO.**

310-316 North Avenue
Youngstown, Ohio

"Penn-Ohio Unit Service
serves the student body of
Bethany College"

Compliments of
CANTEEN VENDING SERVICE

Steubenville, Ohio

"Good Luck to the Seniors"

WEIRTON DAILY TIMES

Weirton, West Virginia

RULAND FORD CO.

FORD-MERCURY

801 Main St. Wellsburg, W. Va.
Phone RE-7-3011

BEST WISHES TO THE
CLASS OF 1957

**Wellsburg Banking
and
Trust Company**

Compliments of

CARSON-SCOTT DRUGS

Wellsburg, W. Va.

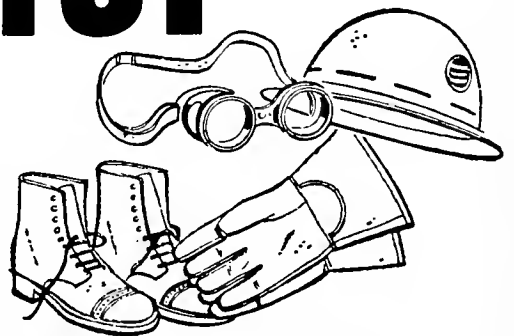
Wellsburg, W. Va.

Member of the F.D.I.C.

A Friendly Place to Work



SAFETY Comes First in WEIRTON



WEIRTON STEEL COMPANY

WEIRTON, W. VA. • STEUBENVILLE, OHIO

E. O. BURGHAM, *President*

PATRONS

R. Aberli, Jr.

Ray S. Adkins

D. Altieri

Mr. & Mrs. B. Baca

A. M. Baker

D. Baff

D. L. Boyd

Mr. & Mrs. F. M. Bunting

C. Burton

T. E. Butz

M. J. Davies

Mr. and Mrs. R. G. Einicke

Dr. & Mrs. W. L. Ekas

A. Dale Fiers

Mr. C. M. Friendland

Mr. & Mrs. L. S. Furman

R. Ganz

K. Glerum

Mr. & Mrs. H. Gould

D. T. Hastings

M. Heyel

I. L. Hillman

J. Haffman

J. Hudoc
A. H. Hunt
R. D. Hurl
L. Irvine
Mr. and Mrs. E. H. Johnson
H. Jonsson
M. J. Kasarda
P. J. LoTruglio
J. Marshall
M. Miltz
Mr. & Mrs. M. Neubert
C. E. Palmer
M. L. Patton
S. C. Porter
Potter-McCune Company
T. Rackie, Jr.
B. E. Rowland
A. Rush
A. J. Sauer
H. Schroder, Jr.
W. Scott
M. Silverman
O. Snider
G. O. Todd, Sr.
Rev. H. L. Turley
Mr. & Mrs. D. Warburton
F. L. Weigand, Jr.
Mr. E. S. Wright
H. Wyckoff
Mr. & Mrs. Young

United Dairy

—that's
the *milk*

CONGRATULATIONS TO
THE CLASS OF 1957

EAGLE MFG. CO.

Wellsburg, W. Va.

Oilers, Safety, Oil, and Gasoline Cans;
and Containers.

Compliments of

CHAMBERS' GENERAL STORE

Bethany, W. Va.

BANK OF WEIRTON

1640 Main Street
WEIRTON, W. VA.

THE PEOPLES BANK

3383 Main Street
WEIRTON, W. VA.

Members of Federal Deposit Insurance Corporation

Compliments of

**FOLLANSBEE
STEEL CORPORATION**

FOLLANSBEE, W. VA.

The
KUSIC-HAINES MANUFACTURING CO., INC.



4040 MAIN ST., COVE STATION WEIRTON, WEST VIRGINIA

Compliments of

QUEEN CHEVROLET

10th and Commerce Sts.
Phone RE-7-3771

FOR

BOOKS — GIFTS

COLLEGE INSIGNA

OF

ALL KINDS

The Book Store

Compliments and Best Wishes

**PITTSBURG CONSOLIDATION
COAL CO.**

Koppers Building

Pittsburgh, Pa.

PHOTOGRAPHS OF DISTINCTION



By Your

BETHANIAN PHOTOGRAPHER

Evans Studio Washington, Pa.

"It has been, and will continue to be,
a pleasure to serve the students of
Bethany College"

"Pop" Gary, *Manager*

FIELDS LAUNDROMAT

Compliments

HAMILTON'S GARAGE

12th Street

Wellsburg, W. Va.

"Good luck Seniors!"

JIM THE BARBER

NICK'S ROYAL PASTRY SHOP

3972 Main Street

Weirton, West Virginia



...Disciples of Christ and the Christian Churches

- Bibles and Religious Books from all publishers
 - Curriculum Materials
- Audio-Visual Aids and Equipment
 - Program Helps
- Worship and News Bulletin Services
- Church and Church School Supplies

Write your publishing house for catalogs!

CHRISTIAN BOARD OF PUBLICATION
The Bethany Press - St. Louis 3, Mo.

IN HONOR OF OUR . . . FOUNDING FATHERS:

1. "Pop" Crouch
2. Larry Hummel
3. Johnny "hic" Williams
4. Joe Pasco

Learning Never STOPS Among Telephone People

Ever since the first telephone was installed in West Virginia 75 years ago, your telephone company has been growing constantly. And telephone people have been growing, too. They never stop learning how to serve customers better.

This emphasis on learning is important to telephone people as well as their customers. Executives of your telephone company, traditionally, have learned and earned their way to the top.

Invariably, executive positions go to people inside the company who merit a chance for greater responsibility.

The assurance of recognition for superior performance in individual jobs keeps the management of your telephone company young and progressive in spirit. It keeps all telephone people alert to the changing needs and desires of the customers they serve.

The Chesapeake and Potomac
TELEPHONE COMPANY OF WEST VIRGINIA

CONGRATULATIONS

BREEZY HEIGHTS

Route 31 Avella, Pa.

Phone Luther 7-6261

Your Hosts Dom and Alice

SALENA BROS.

Wholesale Fruits and Vegetables

Main and 20th St.
Wheeling, W. Va.

“Eat fresh fruits and vegetables every day;
get your vitamins the natural way.”

CLARKE PAPER CO.

1210 Main Street
Wheeling, W. Va.

Phone CE. 2-3470

Paper for Every Purpose

Compliments of

JULES RIVLEN SPORTING GOODS

Wheeling, W. Va.

Compliments of

THE BUFFALO GARDENS

“A Home Away From Home”

Emily McConn

MEET YOUR FRIENDS AT

MURPHY'S

THE STORES OF

“SERVICE WITH A SMILE”



704 CHARLES ST.

WELLSBURG, W. VA.



1115-17 MARKET ST.

WHEELING, W. VA.

Compliments of



P. J. GAST & SONS

BAKERY



Wheeling, W. Va.

COMPLIMENTS OF . . .

Follansbee Review

Figaretti's

C. H. Griest Co., Inc.

Hanna's Pure Service

Hotel McLure

Marlinn's Shoe Store

Royal Crown Cola

Tri-State Cleaners

W. A. Wilson & Sons

Wellsburg National Bank

Wilkin Flower Shop



**Ever been
snowbound by
yearbook problems?**



*The Keller yearbook team will dig you out fast.
Keller's experienced art department is always
ready with apt solutions to yearbook problems.
Another big reason why so many customers come
back year after year—and why they seem to get
into the habit of winning top national awards.*

Wm. J. Keller Inc.

Publishers of Finer Yearbooks

33 Clarence Avenue Buffalo 15, New York





