

IH-64
812

PRICE, 35 CENTS

"THE EVERGREEN CITY OF ILLINOIS"

BLOOMINGTON AND NORMAL

Past and Present—Progress and Prosperity

SPRING SOUVENIR
1905



BALDWIN PUBLISHING CO.

H. E. BALDWIN
Business Manager

L. M. BALDWIN
Editor

C. L. FREEMAN
Circulation Manager

UNIVERSITY HISTORICAL SURVEY

BLOOMINGTON

ILLINOIS

A MODEL CITY
Its Industrial, Commercial and Social Interests
Remarkable Growth and Prosperity



POST OFFICE



THE city of Bloomington, Illinois, widely known as The Evergreen City of Illinois, is situated almost on a direct line between Chicago and St. Louis, being 126 miles from Chicago and 157 miles from St. Louis.

The most important historical information relating to the business interests of Bloomington is not to be learned from written books. It is found in the geologic or pre-historic records of the coal measures of the drift period, and of those later ages when nature so richly endowed our prairie surface with its deep covering of unsurpassed black soil.

An unsuccessful search for coal in 1863 and 1864, when the city appropriated two thousand dollars, which was expended in boring six hundred feet, passing through a coal vein mistaken for black slate, was followed by a successful boring in 1867, and Bloomington then read aright the great historical fact that unknown ages had carefully stored away, over five hundred feet below our prairie surface, millions of tons of valuable fuel for the people of the future.

Then in 1874 it was demonstrated that in some remote time in the distant past, probably during the so-called drift period, a water course or water reservoir had been prepared containing a remarkably valuable supply of water, and the following year our water works were put in operation.

History, not of our own locality, but general history of the Northwest, informs us that for many centuries the Red Men occupied the groves and prairies of this region. It tells us these tribes or races were continually at war, annihilating and exterminating each other, making no permanent improvements, and not even leaving a trace of their occupation within a dozen miles of this city. It leaves us to infer that, during all these centuries, kind mother nature was continually at work, dissolving the clay, mixing the material, preparing the vegetable mould, and covering the clay and the gravel with a deep deposit of the finest soil in the world, feeding the buffalo, elk, deer and other animals and game on which the Indians subsisted, and gradually fitting a place for the grandest civilization of the world.

It is quite possible we have not as yet fully read the geologic history of this locality. In addition to our valuable



SCENE AT C. & A. DEPOT, JULY 4, 1894, DURING A. R. U. STRIKE

coal, water, and deep rich soil, the three grand historical developments of the distant past,—we have strong evidences of an underlying supply of gas, it having frequently been found here in large quantities, and it is deemed a possibility the future may demonstrate that this, and perhaps other mineral deposits, exist in our immediate neighborhood. These allusions to what may well be called the "Business History" of our beautiful city, are of quite as much importance as the better known historical information that in 1822 the first white settler arrived; that a few years later our grand old Blooming Grove was trembling in good earnest under the woodman's ax; that in 1833 the Legislature passed an act incorporating McLean county, and that Bloomington was founded in 1831. It is not, however, very generally understood that Mr. James Allin, to whom we are mainly indebted for the location and name of Bloomington, carefully noted its natural advantages before purchasing the claim of William Evans, or maturing his plans for the organization of a new county whose county-seat we hoped to locate at the "north edge of Blooming Grove." He saw that the great north and south line of travel between the Galena lead mines and the well-settled parts of Southern Illinois passed either through or near Blooming Grove. The main emigrant road between the East and the West followed the dry land along a ridge between Danville and Peoria, and went directly by Blooming Grove. The trail between Lake Michigan and St. Louis was also in this vicinity, and Mr. Allin foresaw that lines of stage and emigrant travel could easily be induced to pass through this point; and it is highly interesting to note that four great lines of railway—the Illinois Central, the Chicago and Alton, the Lake Erie and Western, and the Cleveland, Cincinnati, Chicago and St. Louis—all follow these old lines of travel, and all cross each other at Bloomington.

A very important community of farmers was living at Blooming Grove and in the surrounding country in 1831. At the latter date our present city began its career in a humble manner. Its subsequent growth has been solid and permanent, and, like its earliest growth, dependent on our neighboring agricultural resources. Its historical development can be followed with sufficient accuracy by a careful study of the information which follows, and we will not detain the reader by the customary details of dry uninteresting statements. It is enough for our present purpose if we assert that from New England, from the Middle and Southern States, from England, Scotland, Ireland, Germany and other European lands, a remarkably fine population has migrated thither, and that this cosmopolitan mixture, with descendants to the manor born, now constitutes the very best material out of which to build one of the most energetic, most ambitious and most prosperous cities between the Atlantic and Pacific oceans.

EDUCATIONAL ADVANTAGES.

The business value of schools and educational institutions is very difficult to estimate. We all know that colleges and schools tend to build up a town, but statistics will not show to what extent the wealth and population of a city may be based on these very valuable institutions.

It is well known that in cities like Ann Arbor, Michigan, and Jacksonville, Illinois, the largest portion of the inhabitants make these cities their homes on account of the educational advantages to be enjoyed there. In like manner, we know that a very large proportion of the inhabitants of Bloomington and Normal have come thither because of the State Normal University, the model school attached thereto, the Illinois Wesleyan College, our splendid public schools, our business colleges and other private schools. The public school system of Bloomington is unexcelled anywhere, and its schools and teachers take rank with the largest and most intelligently governed cities of the state. The school buildings are models of comfort, beauty and sanitary provisions. Special teachers are employed in the schools for music, drawing, cabinet making, domestic science and nature study, and excellent evening schools are also maintained. The citizens



SECOND PRESBYTERIAN CHURCH



NEW CITY HIGH SCHOOL

take great pride in their excellent school system and the appropriations for carrying on the important work are large and freely made.

Bloomington is well supplied with churches and almost every religious denomination is represented. The church edifices are for the most part modern and of architectural

and constructive beauty. The church societies are flourishing and their pastors men of ability and learning. The Congregationalists, Baptists, Free Baptists, Methodists, Episcopal, Presbyterians, Catholics, Unitarians, Salvation Army, Universalists, and Adventists are all prominent. There is also a Hebrew church, several independent churches, various



OLD CITY HIGH SCHOOL



OLD McLEAN COUNTY COURT HOUSE

missions and reform clubs, Christian Science and Spiritualistic meetings.

The fraternal societies of Bloomington include representations of all the best known and most important orders, and they are generally of large and constantly growing membership. The Masons and Odd Fellows are exceedingly strong, and other important organizations are: Knights of Pythias, Elks, Ancient Order of Hibernians, Court of Honor, Catholic Order of Foresters, Knights of the Maccabees, Loyal Americans, Modern Woodmen of America, National Union, Red Men, Royal Arcanum, Royal Neighbors of America, Yeomen of America, Ancient Order United Workmen, Union Veterans Union, Sons of Veterans, Spanish American War Veterans, Knights of the Globe, Grand Army of the Republic, Woman's Relief Corps, German Benevolent Society, Brotherhood of American Yeomen, and Eagles. There are various temperance societies, womens clubs and charitable associations. Literary, social and musical clubs are also numerous, the Illinois and Bloomington Clubs being most prominent.

Wither's Free Public Library and Reading Room is one of the best conducted and finely equipped in the state, noted for its efficient public libraries. The library occupies spacious and attractive quarters in its own building and contains about 30,000 volumes. The books have been carefully selected and the demand for them is large, constant and constantly increasing. A reference room contains standard works on every conceivable subject. The reading room is furnished with the best of current periodical literature, and leading newspapers of the United States.

There are two modern and well-equipped hospitals in Bloomington, the Brokaw Hospital and St. Joseph's Hospital, and the Kelso Sanitarium.

Bloomington has one of the best managed street railway systems in the state and also a line connecting it with Normal. In the last year two new lines have been built in the city.

The fire and police departments of the city are adequate and under careful and progressive management. The streets are well lighted by electricity, and for the most part wide, well shaded by fine trees and kept clean, and the sewerage system is modeled after the most successful of other cities.

Visitors to Bloomington are always impressed by the fine business blocks, public buildings and modern residences.

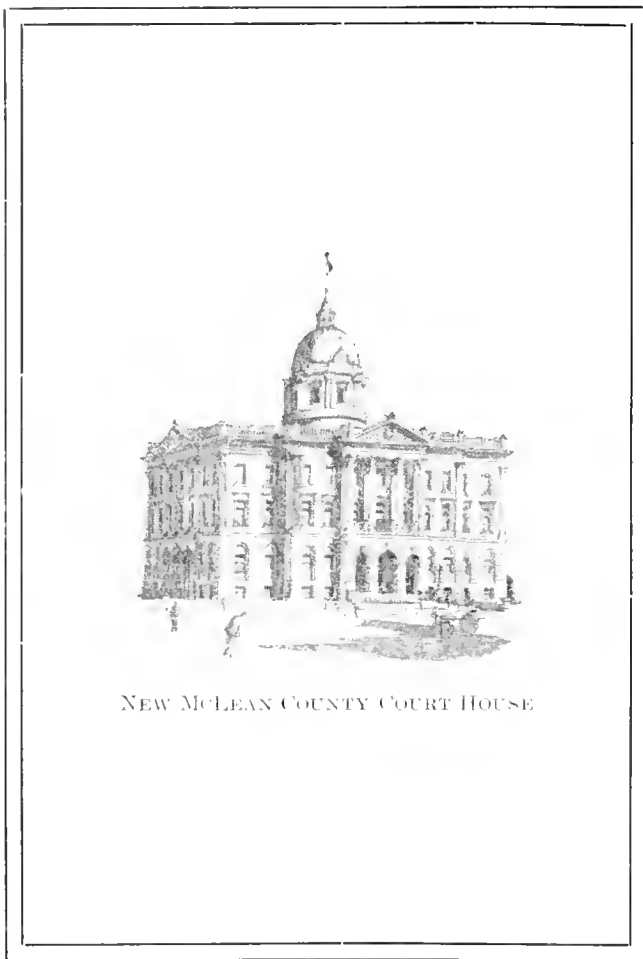
Among the most prominent is the Court House, Postoffice, Second Presbyterian Church, various bank and school buildings. The Court House is one of the finest structures to be seen anywhere and is the special pride of the citizens.

Bloomington is well equipped with banks, newspapers, and various institutions that go to make up the successful carrying on of a populous community. The advantages for home seekers are many and opportunities for manufacturers unsurpassed. The retail stores are well conducted, many of them marvels of elegance, and generally contain large and up-to-date stocks of goods. Prices are as low as elsewhere and merchants alert to the demands of the times.

Unlike many similar organizations throughout the country, which have been enthusiastically started and subsequently fallen into decline, the Bloomington Business Men's Association has kept everlastingly at it and, as stated in its constitution, been active "to promote the industrial, mercantile and municipal welfare of the city of Bloomington." It was organized in January, 1900, and was incorporated the same year and has ever since been of material assistance to the upbuilding of the city. In this work its committees have been of value in promoting more favorable locations for existing industries, the introduction of new industries, the establishment of reasonable freight rates and by other efforts to enhance by all modern and legitimate methods the mutual welfare of business men and wage earners. The association is officered by Sam'l R. White, Prest.; John Eddy, 1st Vice-Prest.; Theo. A. Braley, 2nd Vice-Prest.; R. E. Evans, Treas.; Harry B. Harwood, Secy.; R. E. Barry, Corresponding Secy., and is known as one of the most up-to-date associations of its kind in the middle west.

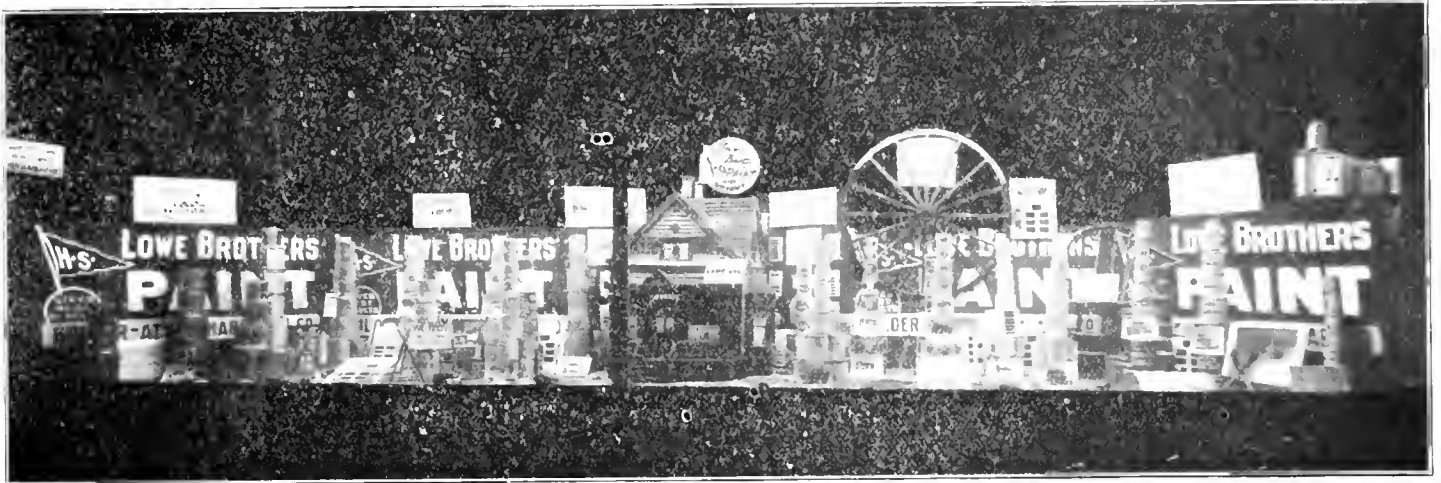
Bloomington became incorporated as a town in 1843, and in 1850 received its first charter as a city, and in 1897 was reorganized under what is known as General laws for villages, towns and cities.

In the pages following will be found accurate and interesting sketches of various industrial and business concerns, representative merchants and leading professional men, those who stand foremost in thought and action in the Evergreen City.



NEW McLEAN COUNTY COURT HOUSE

Mercantile and Industrial



HOLDER-ATHEY HARDWARE CO., INCORPORATED

THE HOLDER-ATHEY HARDWARE CO., INC.

Carrying an immense and varied stock, doing a large volume of business annually, and employing modern and progressive methods, the widely known Holder-Athey Hardware Co., 395-397, N. Main street, occupies a leading position of similar concerns of this state. Hardware of every description is carried, fine cutlery, paints, oils and varnishes, silverware, farming tools, poultry supplies,

stoves and ranges. A speciality is made of Lowe Bros. paint and Majestic ranges. Both a wholesale and retail business is carried on and from thirty to forty skilled workmen are employed, and 25,000 square feet of floor space is occupied, which includes a large shop where sheet metal and furnace work is carried on. The company is officered by Dan Holder, president, was born in Tazewell county in 1844 and educated in Bloomington, and since 1860 has been connected with this business. He is a member of the Masons, Bloomington and Country Clubs. Howard

Humphreys is vice-president, but is not actively engaged in the business. Sam Holder, secretary and treasurer, was born, raised and educated in Bloomington and since leaving school has been identified with this firm and is a member of the Country Club. The business was first established in 1854 and incorporated in 1898, and at the present time have several salesmen on the road. The above named men are among our most sagacious and energetic merchants, alert to the advancement of the times.

BLOOMINGTON RUG AND CARPET COMPANY

One of the most important industries of Bloomington, and one whose products are sold in almost every state in the Union, is the Bloomington Rug & Carpet Co. The plant was established in 1899 and has the reputation of being the largest and best equipped rug factory in the country. Floor space of 8,000 square feet is occupied and much of the machinery used is of the company's invention and is designed especially for the manufacture of their Superior Rugs and their works are in operation the entire year. Rugs are manufactured from old carpets that are more beautiful than the original carpet and all work sent out is guaranteed to be just what is claimed by the company. A speciality is made of cleaning, renovating and resizing rugs and carpets. Special attention is also given all orders and correspondence is promptly attended to. The immense factory and office, located at the corner Division street and Franklin avenue, is directly on the Normal street car line, and the factory is fitted with the most modern and up-to-date machinery, which makes this the best equipped factory of its kind in the United States. Mr. J. M. Elder, the efficient manager is a native of McLean county, born in 1818 and received his education in the public schools. Formerly for seven years he was engaged in the manufacture of brick and was also in the milling business. He is thoroughly up-to-date in his methods and system of

running this factory and through his careful and painstaking management its success is largely due. He is a valued member of the Odd Fellows and K. of P. and is highly esteemed by all who knew him.

FRANK SUPPLE

Among the diversified industries of Bloomington, none is more interesting than that carried on by Frank Supple, with spacious and well equipped grain

elevator at 596 S. Main street, where the latest and most modern methods of loading and unloading grain of all kinds are used. The marvelous machines, with almost human intelligence, takes the grain from the cars to any bin in the elevator at the will of the man in charge, and up-to-date methods mark all operations. Coal is extensively dealt in also. Mr. Supple was born in 1865 in Virginia, and there educated, and since entering into the business world has followed the grain business and became established in 1882. He is one of Bloomington's leading citizens and is popular in financial and social circles and is a member of the Masonic bodies, including the Shrine.



WINTER & COOPER

Among the best people of Bloomington to those who take pride in their appearance the store of Messrs Winter & Cooper merchant tailors, located at 218 West Jefferson street, is headquarters. This handsome store which occupies 1,800 sq. feet of floor space is fitted with every modern convenience and a fine stock of imported and domestic woollens and flannels of the latest patterns and styles is carried, from which the most fastidious customer can make his selection. Perfect fit and the highest grade of workmanship and materials is always guaranteed. The members of this firm are expert and experienced tailors and have served many years at the trade. A speciality is made of \$5

trousers and up and \$18 suits and up. Mr. J. Winter was born and educated in France. He is a member of the Masons, M. W. A. and Court of Honor. Mr. S. H. Cooper is a native of Indiana and was educated in Illinois and is a member of F. R. K. of P. Modern Woodmen National Union and I. C. M. A. Both gentlemen are of unquestioned integrity, and wide popularity and highly esteemed in our city.

THE SILL PNEUMATIC HORSE COLLAR CO

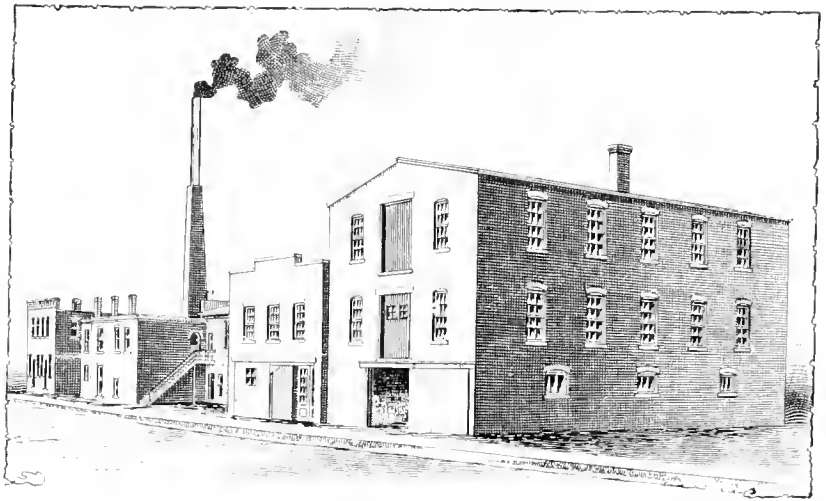
The jerk on a horse's shoulder in a raw collar when starting a load and the jar of the wagon running against bumps and obstructions in the street, is not only liable to lamine or strain, but it injures the general health of the horse. This is easily prevented by the use of the Sill Pneumatic Horse Collar. These famous high-class collars are put out in chromium, oxidized, silver or nickel plate, brass and gold finish. The widely known Sill Pneumatic Horse Collar Co., located at 333-335 E. Front street, will supply demands as fast as possible in the order of their application. The Sill Pneumatic Horse Collar is favorably known and in constant use in every country in the world and every state in the union. In fact the sun never sets on this famous collar, and was awarded high honors at the Louisiana Purchase Exposition at St. Louis, Mo. It is built on strictly human principles and will adjust itself to any shoulder. At the spacious, modern and complete equipped plant a large force of workmen are employed and 11,500 square feet of floor space is occupied. The offices of the firm are: E. L. Sill, president; W. B. Sill, vice-president; Samuel Fesler, treasurer, and D. M. Sill, secretary and general manager. All members of the firm are actively engaged in the business and are incorporated with a capital stock of \$100,000. The gentlemen are all natives of Illinois and their reputation as progressive, substantial, enterprising business men and representative, influential citizens is an enviable one.

A. D. SCHEWE

In every community a high-class meat market is a necessity. One of the leading houses in Bloomington in this line of business is that located at 812 E. Grove street and conducted by Mr. A. D. Schewe. He deals in all kinds of fresh, salt and smoked meats and fresh butter, eggs, poultry and country produce. A specialty is made of fine fancy meats that are unexcelled by any similar concern in this section of the state. All goods are fresh and of highest quality and everything is kept in scrupulously clean and neat order. Four courteous assistants are employed and a floor space of 1,800 square feet is occupied. Mr. Schewe was born in Germany in 1862 and educated in Bloomington's German schools. He has been engaged in this line of business for over twenty years and has worked in all its branches from a bone trimmer to the highest branch. He is one of Bloomington's most enterprising and progressive businessmen and is a member of some of the best fraternal organizations in the city.

H. S. McCURDY

Reliability of service, excellence of goods and systematic low prices have placed the hardware store of H. S. McCurdy, 1-3 W. Front street, in the front ranks of similar concerns in this section of the state. All that is reliable and desirable in fine stoves, tin, granite ware, fine cutlery and hardware of every de-



JOHN W. EVANS SONS COMPANY

JOHN W. EVANS SONS CO.

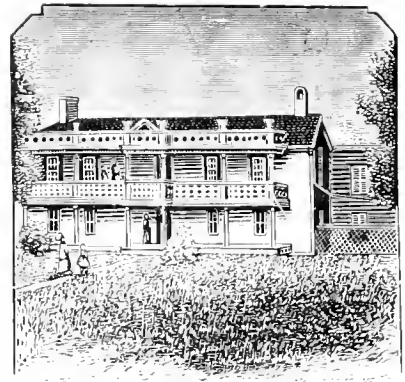
Bloomington boasts of a company of the finest contractors in the state, that of John W. Evans' Sons, who are known throughout the country and have built some of the finest buildings on the square and in fact all over Bloomington, including the High school, Lincoln and Franklin schools, the handsome Livingston building, First National and State National banks and the First and Second Presbyterian churches and the A. E. DeMange residence, which are the most magnificent in the city and are unexcelled anywhere in this section of the State. This company's territory is unlimited, being widely and favorably known, and having a reputation for reliability and excellence of service unsurpassed. They do contracting all through the middle West, and have established an extensive and high class trade. The John W. Evans' Sons Co. are also manufacturers of mill work

and dealers in lumber and coal. Their finely equipped office is located at 511-517 North Center street. The firm was originally established by Hayes and Evans in 1859 and came under the present proprietorship and was incorporated with a capital stock of \$75,000, paid up, in 1895, the entire stock being held by the Evans family. The enormous factory and plant occupies about ten acres of ground and affords employment for 150 men during the busy season. The officers of the John W. Evans' Sons Co. are: J. F. Evans, President; R. W. Evans, Vice-President; W. V. Evans, Secretary, and F. R. Evans, Treasurer. Each of the four gentlemen are members of the Bloomington and Country Clubs, highly prominent in commercial and social circles, and their standing as substantial, enterprising business men and representative citizens is of the highest.

scription can be obtained at this finely equipped store. A specialty is made of the highest grades of stoves. Competition on all lines of goods is met, including quality and price. Four floors 25x150 feet, are occupied, and five capable clerks are employed. Mr. McCurdy was born in Mexico City, Penn., in 1825 and educated in Tusculum Academy, Penn. He has been in business in McLean county since 1851 and has always been known as a business man of integrity and a citizen of public spirit and progressive ideas.

R. M. CALDWELL & SON

The people of Bloomington are to be congratulated on the fact that in the grocery and produce store of R. M. Caldwell and Son, 419 N. Main street, they have a store that is unexcelled for high grade, reliable goods, sold at the lowest market prices. Carefully selected lines of staple and fancy groceries are carried, embracing standard brands of flour, superior canned goods, popular table delicacies, choice teas, coffee and breakfast cereals are carried, their specialty being The Best of Everything at the Right Price. Six competent clerks are employed and a floor space 22x100 is occupied. Mr. Charles B. Caldwell who is now sole proprietor was born in Shirley, Ill., in 1865 and educated in Bloomington. Since first entering into the business world he has been connected with the grocery business and is considered one of our most successful and up-to-date business men.



HISTORIC STIPP PROPERTY

B. F. HOOPS & SON

The wholesale handling of foodstuffs is a matter of great importance in a city the size of Bloomington. More particularly so when, as here, the people are discriminating and competition is alert. A local concern that stands among the foremost of produce houses in this section of the state is that of B. F. Hoopes & Son, 105-111 W. Monroe street. Established in 1885, this widely known and

fully equipped house has constantly maintained an unrivaled reputation for the reliability and general excellence of goods. A specialty is made of produce and fine fruits. Twenty capable assistants are employed and floor space of 15,000 square feet is occupied. Mr. A. H. Hoopes, president and treasurer of the firm, was born in Springfield, Ill., in 1870 and educated in Bloomington. Mr. J. C. Cragger, who is secretary of the firm, was born in Tullon, Ohio, in 1846 and there educated. Previous to his present business, he was proprietor of a general merchandise store at Tullon. He was a member of the board of education and was also township treasurer at Tullon. Both gentlemen are highly esteemed in the community for their business integrity and estimable citizenship.

GRABLE, THE TAILOR

Gentlemen's custom tailoring executed in the highest style of the art, with prices moderate, is the special feature of the establishment of George B. Grable, 101 N. Main street. His creations are noted for their fashionable appearance and correct shape, and are always perfect in fit. Mr. Grable caters to the best trade and, moreover, secures it. Many of the most particular people in our city



and his patrons. It is a union shop and two expert workmen are employed. He was born at Farmer City, Ill., in 1858, and was there educated, and when a young man spent four and one-half years in the printing business, and aside from that his life has been spent in the tailoring business. He became established here in 1899 and has won the esteem of the public. He is a member of the Red Men, M. W. A., North American Union, and Masons.

FUNK BROS SEED CO

Known far and near and without boundary is the Funk Bros' Seed Co., extensive dealers in seeds and grain of every description, including pedigree seed corn, eighty varieties of oats and a full line of farm and field seeds of standard varieties. The Funk Bros. also control some 25,000 acres of the richest soil in McLean county, where their grain and seeds are bred. They are also producers of the highest grade of cattle, hogs and sheep. The very best specimens of live stock that years of study and careful breeding can produce, are being bred, raised, and fed on their farms every year. On these farms there are from 150 to 200 hands employed. At the finely equipped store of the Funk Bros' Seed Co., located at 103 N. East street, every variety of seeds and grain are sold at prices positively as low as is consistent with the superiority

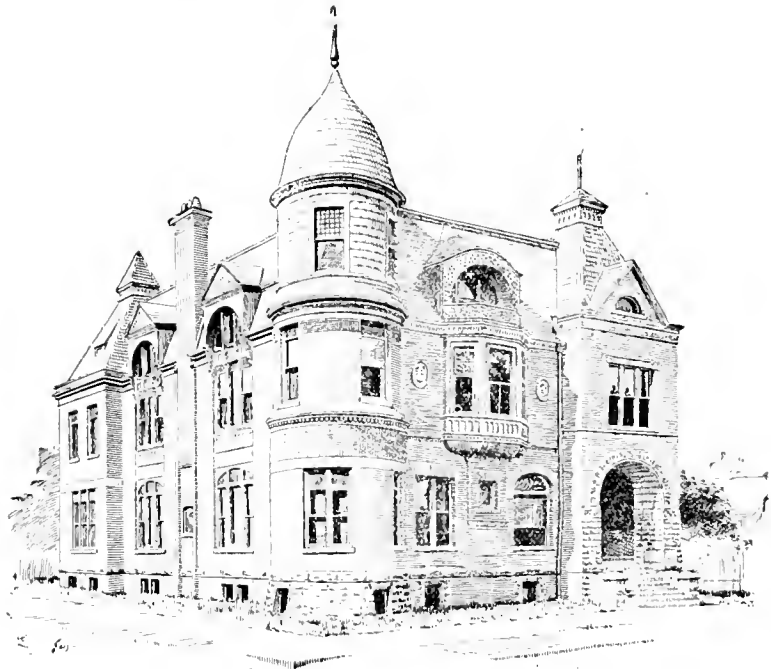
THE APARTMENT HOTEL

Bloomington's spacious, well equipped and carefully conducted hostelry. The Apartment Hotel was established in 1902 and has proven one of the hotel successes of Illinois. The house is operated on the American plan and contains all modern improvements. There are forty finely equipped rooms and several apartments. In summing it up it may be said that the Apartment Hotel is a model of its class and its chief success lies in the fact that those things ordinarily neglected, receive careful attention and it has the reputation of being the cleanest

hotel in Bloomington. Mr. J. U. Savage, the efficient proprietor and manager was born in Ohio in 1846 and there educated. Previous to hotel business he was engaged in the dry goods and also grocery business. He has been proprietor of a hotel for twenty years and is a careful and painstaking manager, even to the minute details; and personally looks after the comfort of his guests. The house is widely known among the commercial men and has a reputation for quietness and good order that is rare. Mr. Savage is a highly esteemed citizen in our community and is a valued member of the G. A. R.



APARTMENT HOTEL



WITHERS PUBLIC LIBRARY

of goods, and all business is done on a metropolitan system. Their territory is unlimited and are known throughout the country as the greatest seed corn growers in the world. The officers of the company are all natives of Bloomington and members of the Bloomington Club, and are also members of the Masonic lodges including the Shrine. The officers are: E. D. Funk, president, a graduate of Yale College in 1891s; L. H. Kerick, vice-president, graduate of the Illinois Wesleyan University; Frank H. Funk, general manager and treasurer, a graduate of Yale College in 1891s; Dean N. Funk, secretary, a graduate of Yale, 1888s, and J. Dwight Funk, agronomist, a graduate of the Illinois Wesleyan University. The gentlemen are among Bloomington's most enterprising and representative business men and thoroughly practical.

CON R. MUELLER

Since its establishment in 1890 the widely known dye house of Con R. Mueller, 105 W. Market street, has been headquarters in Bloomington and vicinity for all dyeing, cleansing and pressing of garments. All modern and progressive methods are employed and patrons never disappointed as to results. Three capable assistants are employed and a branch house is also maintained at 316 N. Center street. Mr. Mueller was born in Steubin, Germany in 1865 and there educated. Since leaving school he has followed this one line of business and is thoroughly conversant with all that pertains to it. He is one of our leading business men and is a member of the Eagles, Red Men, and Mutual Aid.



NIERGARTH

F. W. NIERGARTH

A grocery and meat market widely known for the excellence of its goods and always reasonable prices is that of F. W. Niergarth, 609-11-13 North Main street.

Large and carefully selected lines of groceries, meats, feeds, fruits, confections and provisions of every description are carried, including choice teas, coffees, and spices. A specialty is made of the highest grades of apples and potatoes.

The heavily stocked salesroom of 10,000 square feet, rivals in appearance an up-

to-date food fair, and clever, courteous and capable clerks are employed.

The business was established in 1833. Mr. Niergarth was born in Bloomington 1866, his birthplace covering the same ground where his store is now established. He was also educated in Bloomington.

Formerly for five years, he was traveling salesman for a furnishing goods house and was also in the shoe business for five years. Mr. Niergarth is a business man of progressive ideas, and thoroughly believing in modern methods. He is a member of the Modern Woodmen and National Union.

DR. PRICE & CO

One of Bloomington's most important manufactories is that of Dr. Price & Co., successors to Drs. Price & Price, and manufacturers of medicine, flavoring extracts and baking powder. The trade it controls reaches throughout the Middle West and as far west as Montana, being the most widely and favorably known manufactories of medicines in the country. Dr. Price's flavoring extracts and baking powder are unexcelled. They also manufacture Dr. Price's famous My Cream, Mullen Salve, Minute Relief, Bile Bitters, Headache Cure and Bronchial Troches, which are unsurpassed for public speakers and singers. All goods are made of only the purest ingredients and a specialty is made of "the right article at the right price." The plant was originally established by Drs. Price & Price in 1883 and came under the present proprietorship in 1904. A large force of factory men and traveling salesmen are employed. Dr. D. E. Price was born in Rutland City, Vt. in 1852, and received his medical education at Ann Arbor University, Ann Arbor, Mich., and Cincinnati, O. He has practiced medicine and followed this line all his life. Mr. John C. Allen was born in Hoyworth, Ill., in 1871 and there educated. He has served as constable, town tax collector and was also school director. He is a valued member of the I. O. O. F. and M. W. A. Both gentlemen are of marked ability and thorough experience, and to their care and practical judgment the success of the business is largely due.

MADAM SARAH

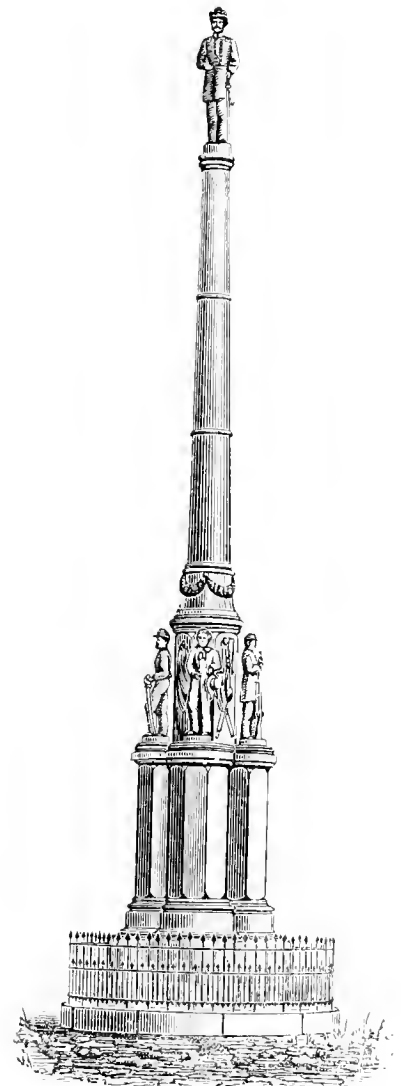
Madam Sara, the prominent and widely known clairvoyant and palmist, of 414 N. Center street, has made herself popular in Bloomington and vicinity through the merits of her work. She is a natural born clairvoyant and carries out just what she claims to do, and the best of attention is paid to all of her patrons. She also carries an extensive correspondence work which is given special attention. Advice is given on matrimony, business, health, speculation, etc., and all business is strictly confidential. Madam Sara became established here in 1899 and has built up a sterling reputation for herself, and her patrons consist of many of the best people of our city.

C. S. BROWN

Prominent among the leading stores of Bloomington is the sterling grocery of C. S. Brown, established in 1901 and located at 104 S. East street. The stock carried is one of the largest and most carefully selected to be found in the city, embracing the choicest fancy and staple groceries and canned goods. An ample force of courteous clerks is employed and a floor space of 1,500 square feet is occupied. Mr. Brown is a native of Ohio, born in 1841 and since becoming a citizen of Bloomington, he has gained the esteem of the community and is known as a progressive, practical and enterprising business man.

W. E. PATTON

Being one of the largest concerns of its kind in the state, and having a wide-spread reputation for the reliability of its products, the poultry house of Mr. N. E. Patton, 512 S. Main street, is considered one of the leading of similar concerns in the country. The business was originally established under the name of Patton Bros. in 1890 and later came under the present proprietorship. Mr. Patton has materially improved the stock and greatly increased the patronage. Poultry, eggs, butter, hides and wool, and everything that is required to make up a complete poultry house, is carried. Only wholesale business is done and a large shipping trade is carried on, car loads of poultry being shipped to New York City. Twenty assistants are employed and a floor space of 6,000 square feet is occupied. Mr. Patton was born and educated in Indiana. He has followed this line of business for a number of years and is thoroughly experienced. He has the merited reputation of being a business man of integrity and a citizen of public spirit and progressive ideas, and is highly esteemed in our city.



SOLDIERS' MONUMENT AT FRANKLIN PARK



HOLY TRINITY CHURCH

LEWIS & SMITH

One of the oldest established of similar concerns in this section of the state is the well equipped grain elevator, which was first established about fifty years ago at 901 E. Front street and conducted by Messrs. Lewis and Smith. Feed of all kinds, flour, meal, hominy, grain, hay and straw and all kinds of baled goods are handled and the spacious elevator has a capacity of 20,000 bushels of grain and five car loads of baled goods. All milling is done within their own plant except the flour, and six experienced workmen are employed. Mr. G. E. Lewis was born in Indiana in 1862 and educated in Iowa. Previously he was engaged in the grain and lumber business in Keota, Iowa, where he served two terms as alderman. He is a member of the I. O. O. F. and M. W. A. Mr. O. E. Smith was born in Wisconsin and educated in Iowa and was engaged in farming for a few years and later taught school in Iowa. Both gentlemen are highly popular, and the enterprise of which they are the head is one of which Bloomington is proud.

HOME RESTAURANT

Among the many restaurants and quick lunch houses of Bloomington, none have a better reputation for good food served and excellence of service than the Home Restaurant at 316 N. Center street. A specialty is made of meals cooked on short order and for quick lunches or substantial meal there is no better place in the city. The food is well cooked, the help which numbers eight are attentive and prices moderate. A fine line of choice cigars and tobacco are also kept. Floor space of 1,600 sq feet is occupied and everything is kept in scrupulously clean and neat order. Mr. John S. Dugger the efficient proprietor was born in Arkansas, in 1873 and educated in Pennsylvania. He has been in this line of business for five years and was previously engaged in farming. He became established here in 1903 and has built up a successful business and is highly regarded by all who know him.

H. A. RIESE

The wholesale handling of fruits and produce in a city the size of Bloomington is a matter of great importance. More particularly so when, as here, the people are discriminating and competition is alert. A local dealer who stands among the foremost of similar competitors is H. A. Riese, 107 E. Front street. Established in 1897 this widely known and timely equipped house has constantly maintained an unrivaled reputation for the reliability and general excellence of its goods. A specialty is made of fresh oysters, oranges, apples, lemons, bananas, and cabbage, and 10,000 square feet of floor space is occupied. Courtous assistants to the number of seven are employed. Mr. Riese was born in Peekin, Ill., in 1859 and there educated. Twenty-six years of his life has been devoted to this one line of business, five years of which was in Denver. He is one of our leading citizens and is a member of the K. of P.

PORTABLE ELEVATOR MANUFACTURING CO.

The success and progress which follows enterprise and merit is ably presented in the Portable Elevator Manufacturing Co., one of Bloomington's most important industries. This concern was originally established in 1900 and was incorporated in 1902. They manufacture portable elevators, which are known throughout the country and used in every grain growing state in the Union. The large plant, located at the corner of McClun and E. Grove streets, occupies a floor space of 20,000 square feet and furnishes employment for fifty hands, each of whom are thoroughly experienced and skilled workmen. The officers of the company are Messrs. J. E. White, President, and G. B. Read, Secretary and General Manager. Mr. Read is a native of Bloomington, born in 1868, and educated in the public schools. Formerly he was in the retail hardware business with G. H. Read & Bro., Messrs. White and Read are enterprising and eminently practical and thoroughly identified with all matters pertaining to the city's welfare and are highly esteemed by all who know them.

L. L. WIEGAND

High grade groceries, both fine and staple produce and provisions are carried in complete and carefully selected lines at the well equipped and popular store of Mr. L. L. Wiegand, at 812 West Market street. Superior canned goods, table delicacies, farm and dairy products, and smoked meats are leading features and a specialty is made of country produce and fresh eggs. The lowest market prices are quoted, fully as low as is consistent with reliable and satisfactory goods, such as is found at this store. The business was established in 1893, and has constantly increased in public approval and patronage. This building is the oldest store building in the city, but has been improved from time to time and is now modern in every way. Five competent clerks are employed and two floors 75x25 feet are occupied. Mr. Wiegand was born and educated in Bloomington. He is a butcher by trade and was formerly engaged in that line of business. He is known as a progressive and enterprising merchant and estimable citizen, highly esteemed and is a member of the Business Men's Association and Catholic Order of Foresters.

H. W. VINCENT

In no branch of applied science has there been so marked an advancement and so many improvements as in that of photography. The photographer of today must be a skilled artist and a close student in order to become a leader, and his apparatus must be the most modern. In Mr. H. W. Vincent, Bloomington possesses a thorough artist. Years of practical experience and close study have



given him the reputation of being one of the best photographers in the state. For the past ten years he has been established in Bloomington and conducts a handsome studio at 401 N. Main street. Mr. Vincent is a gentleman of pleasing personality, genial and courteous manners. He is a native of Toledo, Ill., but has been for a number of years a valued citizen of Bloomington.

WELCH & NEWTON

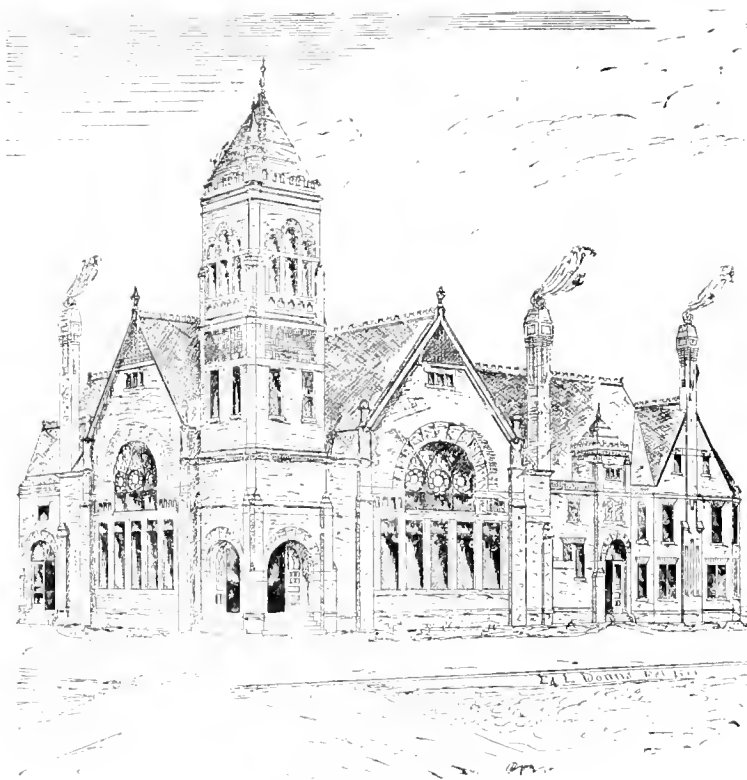
In the upbuilding of Bloomington as a residential city the sterling firm of Messrs. Welch & Newton has been an important factor. This is one of Bloomington's oldest and most reputable real estate and insurance agencies and is widely known. They have fine offices in rooms No. 16-17 in the magnificent Durley building, where they do a large business in fire and life insurance, as well as negotiating loans, and buying, selling, exchanging and renting of property. They are sole agents for a number of the soundest companies in the country, prominent among them Glen Falls, United Underwriters, Reliance and Prussian National companies. Messrs. Welch & Newton are both natives of Illinois, the former being born in 1817 and the latter in 1838. Mr. Welch has been engaged in this business for over 13 years and formerly was engaged in farming. He is a member of the I. O. O. F., Court of Honor and M. W. A. and served two terms as alderman in the Sixth ward. Mr. Newton was county recorder eight years and county clerk for four years and then became engaged in his present business. He is a member of the K. of P. and I. O. O. F. Both gentlemen are of the utmost reliability and are closely identified with all the matters pertaining to the city's welfare.

WALTER ARMBRUSTER

Among the many and varied tonsorial parlors of Bloomington none rival in excellence of work, cleanliness and prompt service, the fully equipped shop of Walter Armbuster, 110 E. Front street. Particular men patronize this fine resort for tonsorial work exclusively and in large numbers. Special attention is paid to artistic hair cutting, massaging and shampooing, the famous Armbuster egg shampoo only being used, and entire satisfaction assured patrons on all work



performed. Four chairs are operated, tedious waits avoided and every workman a master of the art. Mr. Armbuster was born in Bloomington and educated in the public schools. He has been engaged in this business for over nine years and became established as at present in 1901 and is special agent for the Ess Tee Dee hair tonic. He is highly regarded in Bloomington and is a member of the German Benevolent Society, Modern Woodmen, Royal Circle and K. of C.



FIRST BAPTIST CHURCH

ED. LOGAN

Carrying a large and carefully selected line of fresh, smoked and salt meats, and having an unvarnished reputation for reliability and the quotation of lowest market prices, the meat market of Ed. Logan, 606 S. Lee street stands among the leading concerns in this section of the city. High-grade meats of every description are carried and a specialty is made of home-made sausage. Competition is closely met and no concern quotes lower prices for goods equal in quality. Mr. Logan became established in his present business in 1904 and employs two courteous assistants. He was born in Bloomington in 1858 and was also educated here and since leaving school has practically spent his life in this line of business, and has been employed by some of the largest concerns in this section of the state. He is known as a progressive business man and estimable citizen.

J. A. MUELLER

High-grade groceries, both fancy and staple, provisions, fine canned goods, pure confectionery, cigars and tobacco are carried in complete and carefully selected lines at the well equipped and popular store of Mr. J. A. Mueller, at 802 W. Front street. A specialty is made of fancy groceries and notions and bakery goods. Superior canned goods, table delicacies, breakfast foods and farm and dairy products are leading features. The lowest market prices are quoted, fully as low as is consistent with reliability and satisfactory goods. An ample force of courteous clerks are employed and all orders are promptly attended to. The business was established in 1879, and constantly increased in public approval and patronage. Mr. Mueller was born in New York city in 1855 and educated in the Bloomington public schools. He is known as a progressive and enterprising merchant and estimable citizen, highly esteemed in our city.

ROBERT FLINSPACH

Metropolitan up-to-date methods, good goods and low prices are the distinctive features of the grocery and provision house of Robert Flinspach, 503 S. Allin street. Carefully selected lines of general groceries, high-class provisions, canned goods, teas, coffees and spices are carried. A specialty is made of fresh country butter and eggs, and in this he is decidedly a leader. Competition on all lines of goods is met in every particular and the store is never undersold. The help numbers three and 2000 square feet of floor space is occupied. Mr. Flinspach was born in Bloomington in 1867 and here educated, and previous to his present business, which was established in 1901, he was a painter and paperhanger. He is a member of the C. O. O. F. and is highly esteemed in both business and social circles.

A. MATULLE

One of the most attractive stores in Bloomington is that conducted by Mr. A. Matulle and located at 1312 S. Main street. It occupies 3000 square feet of floor space and the stock carried is one of the largest in this section in the line of general merchandise, staple and fancy groceries, canned goods, choice teas and coffee and a specialty is made of fine country butters and eggs. Also a high-class meat market is conducted in connection with this well equipped store. Mr. Matulle is one of the old established and successful merchants of this city, becoming established here in 1893. He also owns another fine store at 1310 S. Main street. An ample force of courteous clerks is employed and all orders are promptly attended to. Mr. Matulle was born and educated in Germany and since becoming a citizen of Bloomington he has gained the highest esteem of the community and is known as one of our most enterprising and successful business men.



A. N. RINEHART

In every community the high class pharmacy is an important factor, both to the physician who relies on it for the accuracy of the prescriptions given by him and by the public, who look to it for purity and freshness of the drugs and chemicals used. The pharmacy of which Mr. A. N. Rinehart is proprietor, located at No. 720 W. Chestnut street is one of the two oldest in the city, being established in 1879. Drugs, paints, oils and varnishes

are dealt in and a specialty is made of the filling of physicians prescriptions, the purest ingredients only being used. Floor space of 1,440 square feet is occupied and three courteous assistants are employed. Mr. Rinehart is a native of Virginia, born in 1843 and educated in Bloomington and has been in the drug business here for thirty-seven years. He is a thoroughly experienced pharmacist, enterprising and believing in modern methods and is a highly esteemed citizen of our city and is a member of the Masonic fraternity.

MARTENS-LEARY CO. BRANCH

One of the most successful and largely patronized concerns of its kind in the city is the well-known farm implement house of the Martens-Leary Co. Branch, 112 W. Front street. The business was established several years ago by John T. Walton, who was succeeded by the Martens-Leary Co. this year. The latter materially improved the service and greatly increased the patronage. A full line of high-grade farm implements of all kinds is carried. A repository of the finest carriages and buggies in the city, including harness of up-to-date patterns, are also carried. A specialty is made of stock fencing, Moline wagons, Rock Island buggies, Deere and Black Hawk planters, John Deere plows and cultivators, gasoline and steam engines, and a full line of McCormick harvesting machinery. Three competent salesmen are employed and 3750 square feet of floor space is occupied. Mr. J. M. Cusey, the efficient manager, was born and raised on a farm and the past twenty years has been in the employ of the McCormick Harvester Co., which has kept him in direct touch with farming and farming interests, and is known as one of the best implement men in the country.

MINTER MANUFACTURING CO

In the manufacture of high-grade job work, hand-sawing, brackets, screens, gable ornaments, balusters, window frames, tanks of all kinds, etc., the Minter Manufacturing Co., corner Grove and McClun streets, ranks among the leaders, and the reputation of their products stands high with the builders and contractors of the state. They also manufacture pickets, fence posts, pilaster finish and blocks, newel posts and hitching posts, and make a specialty of wood novelties. The plant was established in 1889 and occupies a floor space of 12,720 square feet. Mr. W. P. Minter was born in 1832 and educated in Kentucky. Previous to his present business he was engaged in wood carding and the manufacturing of wool carding machinery. He served with distinction in the army for three years and six months and is a member of the G. A. R. He also served as city tax collector. Mr. E. P. Minter was born in Bloomington in 1869 and also educated here. He has always been in this business and is a novelty manufacturer and model maker. Both gentlemen are prominent in commercial and financial circles and are men who are closely identified with the best interests of the city.

EAGLE MACHINE WORKS

This firm was established about thirty-six years ago at 620 and 622 N. Main street and has ever since maintained a merited reputation for the general excellence of its products. They being steam and hot water house heating, en-



gines and boilers, engine supplies, hose, belting, packing, iron pipe, fittings, high and low pressure steam work, and sanitary plumbing and sewerage. A specialty is made of engine and machine repairing. A large stock of gas and electric light fixtures are constantly on hand. Robert London the energetic proprietor was born in 1833 in the land made famous



by Bobby Burns. He has devoted the greater part of his life to this business, and at the present time employs from 12 to 18 skilled workmen, and the floor space occupied covers 20,675 square feet. Mr. London is one of the pioneer machine workers of McLean County, an estimable citizen and a member of the Masonic fraternity.

MRS. C. L. DUGGER

The favorably known restaurant of Mrs. C. L. Dugger, 210 W. Front street, was established in 1901, and ever since maintained an unsurpassed reputation for the excellence of its cooking and efficiency of service. That fact is significant, showing as it does that patrons come away satisfied and only to return

WELCH & NEWTON

In the upbuilding of Bloomington as a residential city the sterling firm of Messrs. Welch & Newton has been an important factor. This is one of Bloomington's oldest and most reputable real estate and insurance agencies and is widely known. They have fine offices in rooms No. 16-17 in the magnificent Durbey building, where they do a large business in fire and life insurance, as well as negotiating loans, and buying, selling, exchanging and renting of property. They are sole agents for a number of the soundest companies in the country, prominent among them Glen Falls, United Underwriters, Reliance and Prussian National companies, Messrs. Welch & Newton are both natives of Illinois, the former being born in 1847 and the latter in 1838. Mr. Welch has been engaged in this business for over 13 years and formerly was engaged in farming. He is a member of the I. O. O. F., Court of Honor and M. W. A. and served two terms as alderman in the Sixth ward. Mr. Newton was county recorder eight years and county clerk for four years and then became engaged in his present business. He is a member of the K. of P. and I. O. O. F. Both gentlemen are of the utmost reliability and are closely identified with all the matters pertaining to the city's welfare.

WALTER ARMBRUSTER

Among the many and varied tonsorial parlors of Bloomington none rival in excellence of work, cleanliness and prompt service, the finely equipped shop of Walter Armbuster, 110 E. Front street. Particular men patronize this fine resort for tonsorial work exclusively and in large numbers. Special attention is paid to artistic hair cutting, massaging and shampooing, the famous Armbuster egg shampoo only being used, and entire satisfaction assured patrons on all work



performed. Four chairs are operated, tedious waits avoided and every workman a master of the art. Mr. Armbuster was born in Bloomington and educated in the public schools. He has been engaged in this business for over nine years and became established as at present in 1901 and is special agent for the Ess-Tee-Lee hair tonic. He is highly regarded in Bloomington and is a member of the German Benevolent Society, Modern Woodmen Royal Circle and K. of C.



FIRST BAPTIST CHURCH

ED. LOGAN

Carrying a large and carefully selected line of fresh, smoked and salt meats, and having an unrivaled reputation for reliability and the quotation of lowest market prices, the meat market of Ed. Logan, 606 S. Lee street, stands among the leading concerns in this section of the city. High-grade meats of every description are carried and a specialty is made of home-made sausage. Competition is closely met and no concern quotes lower prices for goods equal in quality. Mr. Logan became established in his present business in 1904 and employs two courteous assistants. He was born in Bloomington in 1858 and was also educated here and since leaving school has practically spent his life in this line of business, and has been employed by some of the largest concerns in this section of the state. He is known as a progressive business man and estimable citizen.

J. A. MUELLER

High-grade groceries, both fancy and staple, provisions, fine canned goods, pure confectionery, cigars and tobacco are carried in complete and carefully selected lines at the well equipped and popular store of Mr. J. A. Mueller, at 802 W. Front street. A specialty is made of fancy groceries and notions and bakery goods. Superior canned goods, table delicacies, breakfast foods and farm and dairy products are leading features. The lowest market prices are quoted, fully as low as is consistent with reliability and satisfactory goods. An ample force of courteous clerks are employed and all orders are promptly attended to. The business was established in 1879, and constantly increased in public approval and patronage. Mr. Mueller was born in New York city in 1855 and educated in the Bloomington public schools. He is known as a progressive and enterprising merchant and estimable citizen, highly esteemed in our city.

ROBERT FLINSPACH

Metropolitan up-to-date methods, good goods and low prices are the distinctive features of the grocery and provision house of Robert Flinspach, 503 S. Allin street. Carefully selected lines of general groceries, high-class provisions, canned goods, teas, coffees and spices are carried. A specialty is made of fresh country butter and eggs, and in this he is decidedly a leader. Competition on all lines of goods is met in every particular and the store is never undersold. The help numbers three and 2000 square feet of floor space is occupied. Mr. Flinspach was born in Bloomington in 1867 and here educated, and previous to his present business, which was established in 1904, he was a painter and paperhanger. He is a member of the C. O. O. F. and is highly esteemed in both business and social circles.

A. MATULLE

One of the most attractive stores in Bloomington is that conducted by Mr. A. Matulle and located at 1312 S. Main street. It occupies 2000 square feet of floor space and the stock carried is one of the largest in this section in the line of general merchandise, staple and fancy groceries, canned goods, choice teas and coffee and a specialty is made of fine country butters and eggs. Also a high-class meat market is conducted in connection with this well equipped store. Mr. Matulle is one of the old established and successful merchants of this city, becoming established here in 1893. He also owns another fine store at 1310 S. Main street. An ample force of courteous clerks is employed and all orders are promptly attended to. Mr. Matulle was born and educated in Germany and since becoming a citizen of Bloomington he has gained the highest esteem of the community and is known as one of our most enterprising and successful business men.



A. N. RINEHART

In every community the high class pharmacy is an important factor, both to the physician who relies on it for the accuracy of the prescriptions given by him and by the public, who look to it for purity and freshness of the drugs and chemicals used. The pharmacy of which Mr. A. N. Rinehart is proprietor, located at No. 720 W. Chestnut street is one of the two oldest in the city, being established in 1879. Drugs, paints, oils and varnishes

are dealt in and a specialty is made of the filling of physicians prescriptions, the purest ingredients only being used. Floor space of 1,440 square feet is occupied and three courteous assistants are employed. Mr. Rinehart is a native of Virginia, born in 1843 and educated in Bloomington and has been in the drug business here for thirty-seven years. He is a thoroughly experienced pharmacist, enterprising and believing in modern methods and is a highly esteemed citizen of our city and is a member of the Masonic fraternity.

MARTENS-LEARY CO. BRANCH

One of the most successful and largely patronized concerns of its kind in the city is the well-known farm implement house of the Martens-Leary Co. Branch, 112 W. Front street. The business was established several years ago by John T. Walton, who was succeeded by the Martens-Leary Co. this year. The latter materially improved the service and greatly increased the patronage. A full line of high-grade farm implements of all kinds is carried. A repository of the finest carriages and buggies in the city, including harness of up-to-date patterns, are also carried. A specialty is made of stock fencing, Moline wagons, Rock Island buggies, Deere and Black Hawk planters, John Deere plows and cultivators, gasoline and steam engines, and a full line of McCormick harvesting machinery. Three competent salesmen are employed and 3750 square feet of floor space is occupied. Mr. J. M. Cusey, the efficient manager, was born and raised on a farm, and the past twenty years has been in the employ of the McCormick Harvester Co., which has kept him in direct touch with farming and farming interests, and is known as one of the best implement men in the country.

MINTER MANUFACTURING CO

In the manufacture of high-grade job work, band-sawing, brackets, screens, gable ornaments, balusters, window frames, tanks of all kinds, etc., the Minter Manufacturing Co., corner Grove and McClun streets, ranks among the leaders, and the reputation of their products stands high with the builders and contractors of the state. They also manufacture pickets, fence posts, pilaster finish and blocks, newel posts and hitching posts, and make a specialty of wood novelties. The plant was established in 1889 and occupies a floor space of 12,720 square feet. Mr. W. P. Minter was born in 1832 and educated in Kentucky. Previous to his present business he was engaged in wool carding and the manufacturing of wool carding machinery. He served with distinction in the army for three years and six months and is a member of the G. A. R. He also served as city tax collector. Mr. E. P. Minter was born in Bloomington in 1869 and also educated here. He has always been in his business and is a novelty manufacturer and model maker. Both gentlemen are prominent in commercial and financial circles and are men who are closely identified with the best interests of the city.

EAGLE MACHINE WORKS

This firm was established about thirty years ago at 620 and 622 N. Main Street and has ever since maintained a merited reputation for the general excellence of its products. They being steam and hot water home heating, en-



gine and boilers, engine supplies, hose, belting, packing, iron pipe, fittings, high and low pressure steam work, and sanitary plumbing and sewerage. A specialty is made of engine and machine repairing. A large stock of gas and electric light fixtures are constantly on hand. Robert London the energetic proprietor was born in 1833 in the land made famous



by Bobby Burns. He has devoted the greater part of his life to this business, and at the present time employs from 12 to 18 skilled workmen, and the floor space occupied covers 20,675 square feet. Mr. London is one of the pioneer machine workers of McLean County, an estimable citizen and a member of the Masonic fraternity.

MRS. C. L. DUGGER

The favorably known restaurant of Mrs. C. L. Dugger, 210 W. Front Street, was established in 1901, and ever since maintained an unsurpassed reputation for the excellence of its cooking and efficiency of service. That fact is significant, showing as it does that patrons come away satisfied and only to return

for the next square meal. The food is well cooked, the service neat and quick, and prices moderate. A specialty is made of short orders. Seven assistants are employed and the best of service assured. The restaurant was established in 1903 and is managed by Mr. J. A. Bossert, who is a native of Bloomington and has followed this line of business for a number of years, in fact has devoted most of his life to it. Mrs. Dugger is a native of Illinois. She is a woman of charming personality and eminently progressive.

AMERICAN HOTEL

The historic and famous American Hotel, one of the first class hostleries in Bloomington, was established in 1865 and came under the present proprietorship in 1903. Finely located at 218 W. Front street, within easy distance of the business center and points of interest, this finely equipped house stands among the foremost of hotels in McLean County. There are 52 spacious and well furnished sleeping rooms with steam heat and electric lights and a large dining room and connected are reading, writing and bath rooms. The table being furnished with the



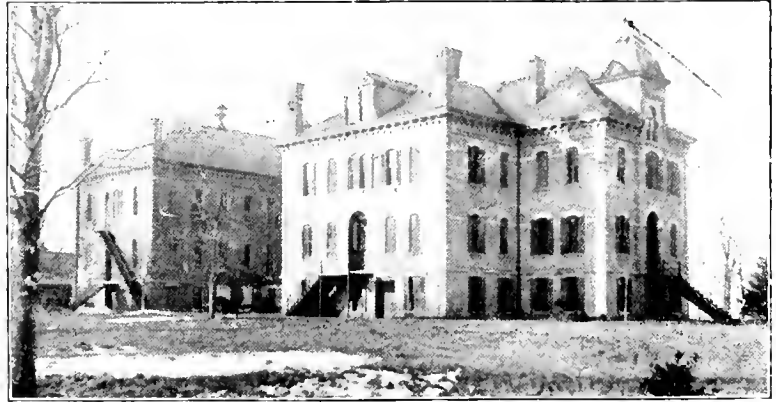
best products of the markets. Commercial and professional trade is specially catered to and advantageous terms given. A specialty is also made of fine Sunday dinners which are unsurpassed anywhere in the city. Help to the number of 17 is employed. Mr. J. N. Scogin, the efficient proprietor is a native of Illinois, born in 1853 and received his education in the public schools. Previous to his present business he was engaged in railroading. Mr. Scogin is prominent in both business and social circles, highly esteemed in the community and is a valued member of the I. O. O. F., Red Men and Business Men's Association.

C. H. PINGREY

To men having large property interests in the shape of dwelling houses, factories, mills, warehouses, business blocks, farm buildings, etc., the assistance of the insurance agent is indispensable.

By his careful discrimination in the acceptance of business and distribution of risks the experienced underwriter becomes the intermediary who guards the interests of the companies and property owners alike. Above all he knows how to draw up a contract so definite and comprehensive that if a loss occurs the insured can count with certainty upon a prompt adjustment and settlement of his claims.

An insurance agency that has well earned the implicit confidence of a clientele embracing many of the leading merchants manufacturers and property owners of Bloomington, and of many of the prosperous farmers throughout the surrounding country, is that conducted by



MCLEAN COUNTY POOR FARM BUILDING

C. H. Pingrey, with offices in the Eddy building.

Mr. Pingrey issues policies on fire, life, tornado, health, elevator, plate glass, steam boiler, rent, accident, employers' liability, burglary, typhoid, accident ticket use and occupancy, surety bonds, and, in short, on all the risks now covered by modern insurance contracts.

His list of companies embraces the following strong organizations:

Royal Insurance Co., of England; Aachen and Munich Fire Insurance Co., of Germany; Scottish Union and National Insurance Co., of Scotland; Queen Insurance Co., of America; Michigan Fire and Marine Insurance Co., of Detroit; Indianapolis Fire Insurance Co., of Indianapolis; American Surety Co., of New York; Fidelity and Casualty Co., of New York; Accident and Liability Department of the Aetna Life Insurance Co., of Hartford.

From the above it will be seen that Mr. Pingrey provides facilities for placing more distinctive kinds of specialized risks than is often found in one underwriting office, and it will also be noted that his list of companies is an exceptionally strong one.

We are informed by Mr. Pingrey that since the rebuilding of the business section of Bloomington that was destroyed in the memorable conflagration of June 19, 1900, fire losses in this city have been small, giving the companies doing an agency business here no cause for complaint.

In this connection it may be remarked that the judgement and discrimination exercised by Mr. Pingrey in the acceptance of business has always redounded to the advantage of his companies. He has been no less insistent, however, in guarding the rights of the insured, to which end his policies are models of terse, intelligible English, containing no ambiguities or loop holes, whereby any portion of the insurance intended to inure to the benefit of the assured may be ineffectually lost. Where proper care is not observed in this respect it may happen that an owner who has insured his property will find out after a fire that the policy does not cover the loss as he had intended.

Mr. Pingrey always endeavors to have his contracts read so that no trouble or misunderstanding can possibly arise when a loss occurs and he has never had an instance in the entire history of his business where the companies have not fulfilled their part of the contract to the entire expectation and satisfaction of his clients.

Furthermore, the long experience and expert knowledge of underwriting possessed by Mr. Pingrey is always exercised not only to provide certain and absolute protection for the policyholder, but to procure for him the most as well as the best insurance for his money.

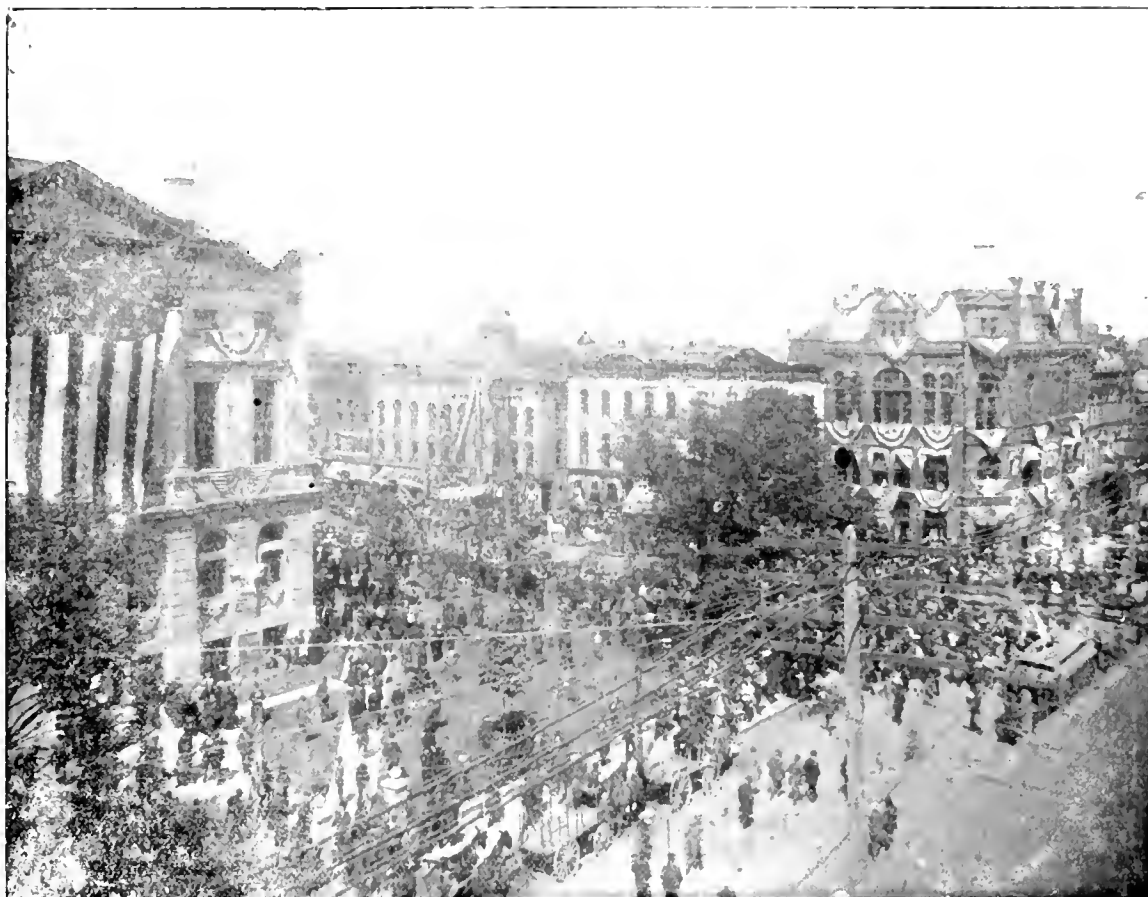
The number and high standing of the companies represented by Mr. Pingrey, and the high position which he holds in underwriting circles, commend his agency as a particularly good one to rely upon while the large business which it does clearly demonstrates that this reliance has made it a notable success in the insurance interests of the city it serves.

HEBERLING MEDICINE AND EXTRACT CO.

Although comparatively a recent addition to the ranks of the manufacturing industries of Bloomington the Heberling Medicine and Extract Co. is one of the most important. The trade reached by them is almost a National affair as their goods are sold in many states in the union. They are manufacturers of a full line of extracts and medicines and make a specialty of selling goods on their merits. The firm was established in 1902 and its reputation for reliability and general excellence of goods is an enviable one. This firm employs twenty skilled workmen and fifteen traveling salesmen. A floor space of 2,300 square feet is occupied. The company is composed of J. G. Heberling an expert Pharmacologist who is thoroughly conversant with all that pertains to the milling of spices and drugs and the compounding of medicines and extracts, and has had many years experience with the largest firms in the country in this line and with this experience are enabled to manufacture and place upon the market a line of goods which have no superior. G. C. Heberling. The latter is a graduate of the Business College at Valparaiso, Ind., and an expert stenographer. Both gentlemen are prominent in commercial and financial circles, thoroughly practical and familiar with every detail of the business.

H. A. PIERCE

One of the largest and most important transient and boarding stables in the city is that conducted by Mr. H. A. Pierce at 124 N. East street. This stable was established here in 1901 and occupies a handsome structure with 10,710 square feet of floor space. The box and open stalls are comfortable and always kept in the most scrupulously clean and orderly condition, and none but the most reliable and experienced stablemen are employed. Mr. Pierce was born in Athens, Ill., in 1857 and there educated. Previous to his present business he was engaged in farming. He is experienced in his business, enterprising, progressive and up-to-date, and one of Bloomington's public-spirited and influential citizens.



SCENE ON THE SQUARE BEFORE THE CONFLAGRATION OF JUNE 19, 1900

H. W. ULBRICH

High grade, correct style of heavy and lightweight harness is a specialty at the well-known house of Mr. H. W. Ulbrich, 106 W. Front street. He also deals in saddlery, horse clothing, trunks and suit cases, etc., and goods are sold at prices positively as low as is consistent with the superiority of goods, a fact widely known to owners of horses in Bloomington and vicinity, many of whom patronize this concern exclusively. Four capable assistants are employed and special attention is given to all orders. The store occupies a floor space of 3000 square feet. Mr. Ulbrich was born in Germany in 1845 and educated in Illinois. He has followed this line of business for many years, becoming established here in 1882, and is a thorough business man and enjoys the highest reputation among his associates and all who know him. He is the abler man of the Third ward and is one of the most popular citizens in that section.

C. J. McELWAIN

The widely known paint store of C. J. McElwain, 205 E. Front street, was established in 1877 and has ever since maintained an unexcelled reputation for reliability of its goods. Everything that is reliable and desirable in paints, oils, varnishes, brushes, etc., is handled and a specialty is made of general contracting and house painting. Floor space to the amount of 1700 feet is occupied and seven skilled workmen are employed. Mr. McElwain is a native of Illinois and he has always followed the painting business. He is known as one of our leading business men.

W. F. COSTIGAN

Metropolitan up-to-date methods, good goods and low prices are the distinctive features of the sterling grocery, meat and provision house of W. F. Costigan, located at 812 W. Locust street. Carefully selected lines of staple and fancy groceries, fresh, smoked and salt meats, all kinds of produce in season, bakery goods and notions, and a specialty is made of fresh butter and eggs. Competition on all lines of goods is met in every particular and the store never undersold, taking in consideration quality of goods. Five courteous assistants are employed and 2880 square feet of floor space is occu-



pled. Mr. Costigan was born in Elgin, Ill., in 1863 and received his education there at the public schools. He became established in his present business in 1900 and previous to that was an engineer on the C. & A. and in all was with them 14 years. He is an estimable citizen and is a member of the Business Men's Association, Butchers' Union, K. of C., C. O. O. F., Bankers' Life Association, Knights of Father Matthews and B. of L. E.

EXCELSIOR BOTTLING WORKS

The manufacture of carbonated or soft drinks is an industry which has grown to large proportions, and their use as a beverage has to a great extent superseded that of spirituous liquors. In Bloomington one of the best known manufacturers is W. F. Schuck proprietor of the Excelsior Bottling works located at 106 South Low street. The business was first established in 1882 and has ever since maintained a sterling reputation for the purity and excellence of its products which are soda water, ginger ale, seltzer water and other delightful beverages, which serve as a tonic to the stomach as well as a refreshing drink. They are also agents for the famous Anderson Spring Co. Water of Waukesha Wisconsin. The plant is fitted and equipped throughout with special machinery designed exclusively for this line of goods. Mr. Schuck was born in New York City in 1857 and educated at El Paso, Ill. where he learned his trade, which business he has followed ever since. He is one of Bloomington's most enterprising citizens and is a member of the M. W. A., I. O. O. F., Foresters, K. of L., Grange, Independent Society and Turners.

O'NEIL BROS.

One of the most popular and largest patronized groceries and provision stores in the city is that located at 1,102 West Chestnut street and conducted by the O'Neil Bros. High grade groceries, both fancy and staple, produce and provisions are carried in complete and carefully selected lines. The store occupies 1800 sq. feet of floor space and is heavily stocked with none but the purest and best of goods. The lowest market prices are quoted and five courteous clerks are employed. This store is one of our city's oldest established mercantile houses, being established in 1869. Both Messrs. Wm. O'Neil and Daniel O'Neil are natives of Ireland and were there educated. The former was previously employed at the C. & A. R. R. shops and the latter was also employed as engineer on the C. & A. for sixteen years, ten of which he was passenger engineer. He is now serving his second term as alderman. Both gentlemen are highly esteemed for their business integrity and estimable qualifications and are prominent in business circles.

MUTUAL LIFE INSURANCE CO. OF NEW YORK

In the list of life insurance companies in the United States there is none which enjoys a higher reputation for solidity, reliability and extent of business done than the Mutual Life Insurance Co. of New York. It has the largest income and the largest number of policyholders, and does the largest amount of business, a broad statement, yet fully substantiated by solid facts. This company has an office in Bloomington, which is under the efficient management of Mr. Chas. J. Monckton, whose handsome offices are in rooms 311-315-316 Eddy Building. Mr. Monckton was born in Keokuk, Ia., in 1860 and educated in Hannibal, Mo., attending Hannibal College. He has been engaged in this business for fifteen years and formerly was a traveling salesman. Mr. Monckton is one of Bloomington's best known life underwriters and is a gentleman of pleasing personality, and possessing the faculty of making and keeping friends, of whom he has a host.

BROWN'S MARKET

The spacious, finely and heavily stocked store of M. A. Brown, 601 North Main street shows decidedly, what enterprise and progressive methods, combined with original ideas and careful management, can do in the twentieth century. The market's motto we might say is "if it swims we have it." Everything that is desirable in fruits, vegetables, fish, oysters, poultry, and game, is to be obtained here at the lowest market price. The wholesale commission business is a specialty and five courteous assistants are employed, and three teams kept in constant service. The business was established in 1888 and in 1901 moved to its present quarters where 4,000 square feet of floor space is occupied. Mr. Brown was born at Botetourt Springs, Roanoke Co., Va., in 1859 and received his education at the common schools of Minonk, Ill. Previous to his present business he was a tiller of the soil, he has served as postmaster at Normal, Ill., five years under Ex-President Cleveland. Mr. Brown is a member of the Court of Honor and M. W. A.

JAMES McELLROY

High-grade goods, reliability of service and the quotation of lowest market prices are the distinctive features of the finely stocked and largely patronized grocery

house of James McEllroy, 605 W. Chestnut street, and making a specialty of the famous McLaughlin's coffees, which are known the world over for their purity and general excellence. Three capable assistants are employed and 1500 square feet of floor space is occupied. Mr. McEllroy is a native of the Emerald Isle, born in 1842, and educated in Scotland, and previous to his present business, which he established in 1888, he was an engineer on the C. & A. for 23 years. He is highly esteemed both in social and business circles and is a member of the B. of L. E. and K. of L.

W. F. ROEDIGER

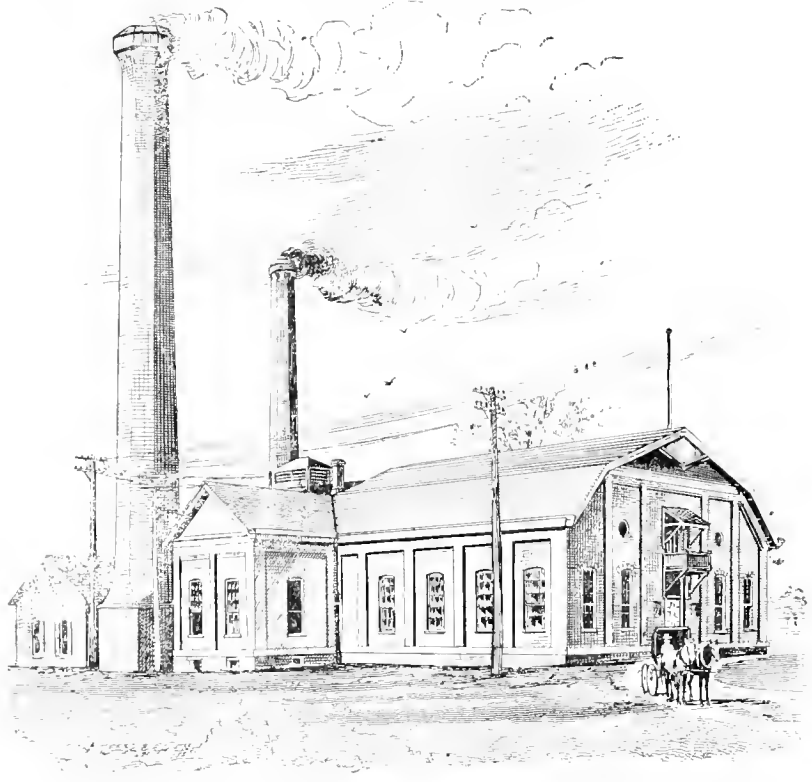
Bloomington is well supplied with fine markets, but none excel in excellence of goods, efficiency of service and systematic low prices the finely equipped grocery and meat market of Mr. W. F. Roediger at 1107-1109 N. Main street. Here is to be found everything that is reliable and desirable in the provision line, including choice fresh, salt and smoked meats, fancy and staple groceries, leading brands of canned goods, breakfast cereals and bottled delicacies. This store occupies a floor space of 7500 square feet and is one of the most heavily stocked groceries in the city. It shows decidedly what enterprise and progressive methods, combined with original ideas and careful management, can do in the twentieth century. A specialty is made of catering to the best trade and eight courteous and capable clerks are employed. The business was first established by F. E. Roediger about 35 years ago and came under the present name in 1897. Mr. Roediger was born in Bloomington and educated in the public schools. He has always followed this line of business and that he learned the system practically is evinced in his store.

BLOOMINGTON CANNING CO.

Among our unique as well as important industries must be mentioned the Bloomington Canning Co., with well equipped plant, established in 1888, Cor. Division and East streets. The concern cans all kinds of vegetables and makes a specialty of corn. From 125 to 150 skilled workmen are employed and the average output each year is 80,000 cases of corn and 60,000 cases of various other vegetables and this year the firm have 4,200 acres devoted to raising corn only. The products of the Bloomington Canning Co. are known in nearly every state in the Union and two other factories are also controlled by the concern at Leroy and Chenoa Illinois, whose output is fully as large as the Bloomington factory. The officers of the incorporation are F. Whitmer, Pres., R. E. Evans, Vice Pres., and Ira S. Whitmer Secy., and Treas., all of whom have devoted many years to this one line of business and are thoroughly conversant with every detail of it. They are known as progressive business men alert to the advancement of the times and employing modern and improved methods in every way possible.

A. L. SWARTZ

Among the various restaurants of Bloomington, none have a superior reputation for good food served and excellence of service than that of Mr. A. L. Swartz, located at 810 E. Grove street. Business is done here on a metropolitan system, which means the best of cooking, prompt attention to patrons and moderate charges. A side line of pure confectionery, cigars and tobacco is carried and a specialty is made of serving ice cream and also a soda fountain is operated. Two courteous assistants are employed. Mr. Swartz was born and educated in Bloomington. He is an expert baker and is thoroughly experienced, having followed that line of business for twenty-five years. He became established here in 1903 building up a successful business and gaining the approval of the public and is highly regarded by all who know him.



BLOOMINGTON WATERWORKS AND ELECTRIC LIGHT STATION

GEORGE ARMBRUSTER

Handling vast quantities of groceries and produce, and having a widespread reputation for reliability, superior goods and the quotation of lowest market prices, the grocery of Mr. George Armbruster at 1009 N. Park street, stands among the foremost pure food supply houses in the city. Large and carefully selected lines of groceries, produce, bakery goods, fruits, fancy table delicacies, canned goods, and choice teas and coffees, are carried and specialties are made of butter and eggs and fine oranges and bananas. The store occupies two floors 39x10 feet and three courteous and experienced clerks are employed. Mr. Armbruster is a native of Bloomington, born in 1869, and educated in the public schools. He is a blacksmith by trade and previous to his present business he served on the Bloomington fire department for six and one-half years. He is one of our most enterprising business men, highly esteemed and is a member of the Modern Woodmen, K of C and German Benevolent Society.

CARL HAUG

Standing among the most important shoe houses and repairing shops of the city and having a reputation for reliability and excellence of goods handled unsurpassed, is the finely equipped concern of Carl Haug, 206 South Center street. A complete line of men's and children's shoes, both second hand and new are kept and a specialty is made of fine shoe repairing of every description. Mr. Haug



was born in Bloomington in 1870 and educated in the public schools. He began his life work in the shoe business and was employed later as a laster in a shoe factory in Seattle Washington. He became established in his present business 1903 and through fair dealing has built up a large business and gained the confidence and esteem of the people. Mr. Haug has been Noble Grand in the Odd Fellows and is also a member of the Knights of the Globe, K of P, and Maccabees.

F. M. SNYDER & SON

Among the varied industries of Bloomington and one which leads in its line, is the feed and grist mill at 417 S. Center street and run by F. M. Snyder. A large stock of feed, meal, hay, straw, wood and graham is constantly on hand and a specialty is made of all kinds of grist grinding. The business was established in 1900. Four skilled workmen are employed

and 3000 square feet of floor space is occupied. Mr. Snyder was born in Ohio in 1811 and there educated, and previous to his present line was a grain dealer. He is known as a merchant of integrity and highly esteemed and is a member of the M. W. A.

BLOOMINGTON DRAY AND BAGGAGE LINE

The widely and favorably known Bloomington Dray and Luggage Line of which Messrs H. R. Plue and H. R. Plue Jr. are proprietors was established by H. R. Plue Sr. in 1885 and later his son became a partner. Teaming of all kinds is done, including drayage, baggage, household goods, and pianos. In this great care and attention is given all articles and six careful and experienced assistants are employed, also four teams are kept in constant service. Both gentlemen are natives of Illinois and were educated in the public schools. Mr. Plue, Sr., was formerly engaged in farming. They are members of the Team Drivers Union and their reputation as teamsters and contractors for teaming is not only merited, but unsurpassed in this section of the State.

INTERNATIONAL CORRESPONDENCE SCHOOL

The Business Correspondence schools have become a most important educational factor and the origin and location in Scranton, Pa., of the schools are due to the demand by the miners of Pennsylvania for special education to help them pass the mine-law examinations. To-day the International Correspondence Schools of Scranton, Pa., are known throughout the country and have branch offices in almost every city in the United States. A branch office of these schools became established in Bloomington several years ago and now there are over 700 enrolled. Any business course desired will be taught through correspondence with these schools and terms are reasonable and graduates are fitted for any situation in business life and are to be found in the leading offices in this and other cities. The Bloomington branch office is located at 208 N. Madison street, which controls all the territory surrounding the city for a radius of several miles.

G. A. SCHINDLER

With a merited and firmly established reputation for reliability and excellence of work performed, the finely equipped barber shop of Mr. G. A. Schindler, located at the corner of Main and Front streets, stands among the foremost of similar concerns in the city. Quick, clean shaving and correct stylish hair cutting

is accomplished and three chairs are operated, and the patronage is among the most particular class of men in the city. This shop is one of the pioneer shops of Bloomington which became established about thirty years ago and came under the proprietorship of Mr. Schindler in 1890. Mr. Schindler is a native of this city and educated in the public schools. He is a thorough experienced barber, having followed the trade for twenty-five years and is popular with all his patrons and highly esteemed by all who know him. He is a member of the M. W. A. and Maccabees.

H. F. GOLDMAN

For richness of stock and excellence of goods shown no jewelry house in the city surpasses that of H. F. Goldman, 701 N. Main street. The business was established in 1885 and has steadily maintained a merited reputation for reliability of goods and reasonable prices second to none. Carefully selected and modern lines of watches, diamonds, clocks, optical



goods and plated and solid silverware are carried. A specialty is made of fine watch repairing. An expert jeweler is employed and satisfactory service being considered of utmost importance. Mr. Goldman was born in Hanover, Germany, in 1857. He has been in the jewelry business since 1871 and has always been known as a sagacious business man and a highly esteemed citizen.



ILLINOIS CENTRAL RAILROAD STATION

C. H. FREEMAN

For richness of stock and general excellence of goods shown, the sterling jewelry house of Mr. C. H. Freeman, 103 N. Main street, stands among the best of similar concerns in the city. He carries a large line of watches, jewelry, silverware, talking machines and records. A specialty is made of fine watch repairing and for general excellence of work performed this reliable establishment is unsurpassed. Four expert assistants are employed and satisfaction is assured. Mr. Freeman is a native of Iowa. He has followed this line of business for many years and became established here in 1890. He is known as an energetic and progressive business man, alert to the demands of the public and is highly esteemed in the community.

G. P. AYERS

Headquarters in Bloomington for pumps, wind-mills, water tanks, tank heaters and everything in this line is the fully equipped store of G. P. Ayers, 210 E. Front street. The business was established in 1897 and has ever since maintained an unexcelled reputation for reliability of goods unsurpassed anywhere in this section of the state. The sales-room is filled with the finest line of goods, embracing everything to be found in an up-to-date establishment of its kind. From three to six assistants are employed and a floor space of 3,000 sq. feet is occupied. Mr. Ayers was born in Virginia in 1865 and educated in Bloomington. Previous to his present business Mr. Ayers was a rail-roader for seven years. He is known as one of our most vigorous and energetic business men and is a member of the Red Men, K. of P., M. W. A. and Order of Farmers.

F. D. CORNMAN

Standing among the foremost of the high-class shoe houses of this city and having a reputation for the reliability and excellence of goods unsurpassed, is the shoe store of F. D. Cornman, 205 S. Main street. Although only established in 1901 it has sprung into immediate popularity, 2,200 square feet of floor space is occupied and a general line of medium and high-grade boots and shoes carried. Mr. Cornman is a native of Pennsylvania, born in 1874, and was there educated. Previous to embarking in business for himself, he has always been a salesman. He is known as an enterprising and courteous business man and an estimable citizen, and is a member of the I. O. O. F. and M. W. A.



CITY HALL



FIRST METHODIST EPISCOPAL CHURCH

J. G. LARSON

Among the many and varied stores of Bloomington, is the store of J. G. Larson, 304 S. Main street, where tin roofing, spouting and sheet metal is extensively dealt in and a specialty is made of spouting and thoroughly reliable furnace work. Skilled help to the number of four is employed and floor space to the amount of 1,200 sq. feet is occupied. Mr. Larson was born in Bloomington in 1886 and educated in the public schools. Since first entering into the business world has been in this same business and is known as a reliable and capable business and estimable citizen.

A. W. H. WOIZESKI

Although only established during the present year, the blacksmith and carriage shop of A. W. H. Woizeski, 111 S. Center street, has sprung into immediate popularity and is headquarters for all kinds of wagon, carriage and wood work. A specialty is made of carriage and plow work. Two skilled workmen are employed and all work guaranteed. Mr. Woizeski was born in Bloomington in 1872 and received his education in the public schools and since learning his trade has followed the one line of work, and previous to his present line of business was with Martens-Leary Co. nine years. He is known as a thorough business man and popular with all who know him.

F. F. SIEBERT

Among the most successful and largest patronized variety stores in the city is that of F. F. Siebert, 109 W. Front street. All that is reliable and desirable in dry goods, notions and toys are carried; also complete lines of tin and galvanized ware, kitchen utensils, fine oil cloth and linoleum are extensively dealt in. Four courteous and capable assistants are employed and floor space of 2000 square feet is occupied. Mr. Siebert was born in Bloomington in 1863 and educated in the public schools. He became established here in 1897 and by fair dealing and reliability has made many friends by whom he is held in highest esteem.

D. F. DELLAHAUNTY

Artistic and prompt printing for particular people aptly applies to D. F. Dellahaunty, located at 112 N. East street. The business was established in 1897 and in its particular lines of endeavor—commercial and society printing and book binding, is unexcelled by any similar concern in this section of the state. The office is fitted with the latest and most stylish faces of type, and has the facilities for high grade work of every description, including book and catalogue printing. Three skilled workmen are employed and a floor space of 3000 square

feet is occupied. Mr. Dellabaumty is a native of Bloomington, born in 1868, and received his education in the parochial schools. He has devoted his life to this line of business and has won for himself an enviable reputation as an energetic, capable manager of his business, courteous and popular, and one who takes a live interest in the welfare and advancement of the city.

SELLMAN AND BATSON

Owners of good horses in this city and vicinity are familiar with the famous horse-shoers, Messrs. Sellman & Batson of 214 W. Monroe street. When work is done at this reliable shop, the patron is assured of first-class, correct work. This shop has a reputation for reliability and efficiency of service unexcelled by anyone in this county. Five skilled assistants are employed and all work is properly and promptly attended to. Mr. W. E. Sellman was born in New Jersey in 1862 and educated in Illinois. He has followed this trade for twenty-five years. He is a member of the Odd Fellows, Red Men, Masons and Modern Woodmen. Mr. W. T. Batson is a native of Indiana, born in 1868 and received his education in Illinois. He has worked at this trade since 1883 and the greater part of this time has been spent in business for himself. He is a member of the Modern Woodmen and Red Men. Both gentlemen are thoroughly experienced and are expert horse-shoers. They are among Bloomington's most enterprising and highly esteemed citizens.

B. HEMMELE & SON

Carrying carefully selected lines of groceries and produce and having a reputation for reliability and moderate prices second to no similar dealer, the finely stocked grocery of B. Hemmele & Son, located at 918 W. Market street, is one of the most advantageous places in the city at which to trade. They handle only high-grade goods, the finest of groceries and produce; also fresh, smoked and salted meats and all kinds of fruits. Specialties are made of fresh eggs and butter. This store is one of Bloomington's oldest established and most favorably known groceries, being first established in 1872, and came under the present name in 1904. Mr. B. Hemmele was born in Pennsylvania in 1837, and is what we term a self-educated man. He came here in 1862 and was engaged in farming for about one year and has worked at various positions. He is a member of the A. O. U. W. Mr. Albert Hemmele is a native of Bloomington, born in 1883, and educated in the public schools. Both gentlemen are highly esteemed for their business integrity and capability and have won the patronage and highest regard of the people.

FRED BEHR

One of Bloomington's mercantile houses which stands high in public favor is the sterling dry goods and notion store located at 1101 West Chestnut street and conducted by Mr. Fred Behr. It is one of the oldest and most reliable of Bloomington's business houses, being established in 1869. Complete lines of dry goods, notions, men's, women's and children's boots and shoes are carried, the lines being unexcelled by any similar concern in the city. Prices are always reasonable, positively as low as is consistent with superiority of goods. Three courteous clerks are employed and a floor space of 2000 square feet is occupied. Mr. Behr

is a native of Germany, born in 1842, where he was educated. He has followed this line of business for many years and is familiar with every detail pertaining to it. He is highly regarded in commercial circles and by all who know him.



ODD FELLOWS' TEMPLE

M. L. MOORE CO.

Every article required in the line of leather goods is made at the sterling house of M. L. Moore Co., manufacturers and retailers of leather goods of all kinds, harness and stable fittings, trunks and suit cases, in fact a fine line of leather goods that is unsurpassed anywhere in this section of the state. This firm was established in 1851, and has built up a most extensive trade, a trade based on the high-grade of goods carried and fair and honorable treatment accorded every patron. The handsome store located opposite the Post Office, occupies 1,950 sq. feet of floor space, and is heavily stocked. Eight capable assistants are employed and special attention is given to all orders. Mr. M. L. Moore is a native of Illinois, born in 1829 and received his education in Jacksonville. He served with distinction three years in the U. S. Army in the Civil War. Mr. J. W. Moore was born in Bloomington in 1866. He has devoted the greater part of his life to this one line of business being thoroughly experienced and is a valued member of the K. of P. Mr. Wm. Schmidt, who was a workman in the shop for twenty-five years and has been a member of their firm for four years, was born in Bloomington in 1866 and educated in the public schools and Normal University. He is a member of the Court of Honor, of which he has the distinction of being a Supreme Director, there being only seven in the United States. He is also Captain of the Uniform Rank K. of P., and a member of the Modern Woodmen. The three gentlemen are each members of the Business Men's Association and are noted for their enterprise, ability and progressive business policy, and are highly esteemed in the community.

WELLS PANTATORUM

Unique in its name though very important and located in The Odd Fellows Temple is the popular Wells Pantatorium. Though only established in 1901 it has sprung into immediate popularity through the general excellence of its work which is cleaning and pressing your clothes and shining your shoes for the nominal sum of \$1 per month. This concern not only caters to the best class of trade, but, moreover, secures it. Two skilled workmen are employed and 1,320 square feet of floor space is occupied. C. T. Wells the energetic proprietor was born at Winchester, Ill., in 1881 and then educated and previous to his present business was

connected with some of the best hotels in the country and is known as one of Bloomington's most progressive young business men.

PEOPLES BOWLING ALLEYS

Bowling is a new amusement for Bloomington and one that is bound to catch the enthusiasm of all pleasure seekers. Just as it has where ever it is introduced, it not only affords unbounded amusement, but strengthens the muscles of every part of the body and improves the health. As President Roosevelt would say, it is strenuous, and strenuousity is just what Americans require. The Peoples bowling alleys located in the Odd Fellows Temple are the most popular in Central Ill. The alleys number three and are of the finest type manufactured, pins and balls the same. The alleys were established in 1902 and 2,500 square feet of floor space is occupied. The help numbers five and expert pin setters only are employed. The alleys are controlled by a stock company whose motto is the Peoples Amusement is our Pleasure. Match games are frequently held through the week and the management has organized a team of the best players of the city to represent the city at the International Bowling tournaments. Mr. Chas. Wells, one of the stockholders and business manager personally looks after the pleasure of the customers and is thoroughly conversant with all that pertains to it.

L. H. DEPEW

Since its establishment in 1887 the widely known dye house of L. H. DePew 103 E. Front street, has been headquarters in Bloomington and vicinity for all costuming dyeing, cleansing, repairing and pressing of garments. All modern and progressive methods are employed and patrons never disappointed as to results. Four capable assistants are em-



ployed, and 900 square feet of floor space is occupied. Mr. DePew was born in Bloomington in 1856 and there educated and since leaving school has followed this one line of work, and is considered an expert in all that pertains to it. He is a member of the Uniform Rank K. of P., and M. W. A. He is hearty in accord with anything that tends to the advancement of our city.

J. H. KELLY

Among the varied barber shops of Bloomington none rival in excellence of work, cleanliness and prompt service the finely equipped hair dressing room of J. H. Kelly, corner Howard and Chestnut streets. Particular men patronize this fine resort for tonsorial work exclusively and in large numbers. Special attention

is paid to artistic hair cutting, shampooing and massage work, and entire satisfaction assured patrons on all work performed. The railroad trade is catered to especially. Three chairs are operated, tedious waits avoided and every workman a master of his trade. Mr. Kelly was born in Bloomington in 1878 and educated in the public schools. He has been engaged in this business since leaving school and became established in 1895. He runs a union shop and is highly esteemed in the community and is a member of the K. of C.

THE BAZAR

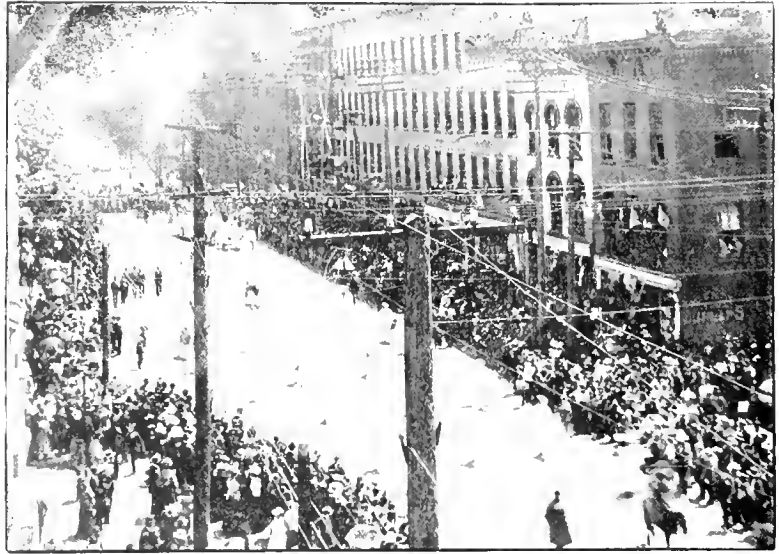
Standing pre-eminent as a department store, carrying an immense stock and having a reputation for reliability of service and excellence of goods unsurpassed in this city. The Bazar, located at 424 N. Main street is decidedly one of the institutions of Bloomington. Fine trunks, traveling bags, toys of all kinds, granite ware and every description of general merchandise are carried in complete lines and a specialty is made of household goods and fine china ware. Floor space to the amount of 2,080 square feet is occupied and six courteous clerks are employed. Mr. Sam Waldman, the efficient proprietor was born in Hungary in 1873 and there educated. He has always followed this line of business and became established here in 1901, and is known as a careful and painstaking manager, highly esteemed for his business integrity and estimable citizenship and is a member of the Modern Woodmen and Masonic fraternity.

JOHN HAUG

Carrying carefully selected lines of footwear, and having a reputation for reliability and moderate prices second to no similar dealer, the finely stocked shoe store of John Haug, 525 North Main street, is one of the most advantageous places in the city at which to trade. Medium and high-grade men's and boys shoes, carefully selected for their style, fitting and wearing qualities, are carried. A specialty is made of fine shoe repairing and prices are positively as low as is consistent with good goods satisfactory service being considered of utmost importance. Mr. Haug is the Pioneer Shoeman of Bloomington and was established in 1868 and was born in Germany in 1838 and there educated. He has always been in the shoe business and is known as a business man of integrity and progressive methods and a citizen held in highest esteem.

JAMES GRAY

Among the leading concerns in Bloomington which is worthy of special notice in this edition is the house of Mr. James Gray, 210 E. Front street. He is an electrical contractor and also deals in a complete line of electrical supplies, and does all kinds of electrical work, electric wiring, etc. A specialty is made of contracting. Three skilled assistants are employed and the work performed by these people is unsurpassed, and patrons are assured of no after trouble. Mr. Gray is a native of Bloomington, born in 1880 and educated in the public schools. He is an electrician by trade, but previous to his present business he was engaged in bridge erecting and became established here in 1902. Mr. Gray is one of Bloomington's most prominent business men enterprising and progressive, and is highly esteemed in business and social circles, being a valued member of United Order of Foresters and Illinois Club.



WASHINGTON STREET, LOOKING EAST FROM CENTER

GEO. BRAND & SONS

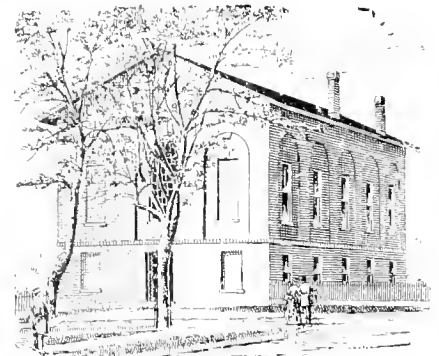
It is rarely that such a spacious and heavily stocked furniture house as that of Geo. Brand & Sons, 319 N. Main street, is to be found outside of the largest cities. This finely equipped store is metropolitan in every respect, carrying immense and complete lines of high grade furniture unsurpassed anywhere in this section of the state. Fine bed room suites, brass and iron beds, sideboards, buffets, china closets, fine leather upholstered furniture of every description are carried. A specialty is made of fine antique furniture. Floor space of 21,000 sq. feet is occupied and a contract is now let to build a large warehouse which will be completed this summer. Nine courteous and capable assistants are employed. The business was originally established by Geo. Brand in 1867 and later came under the partnership of the sons. When first established they were manufacturers of all they sold. Geo. F. Brand was born in Bloomington in 1856 and also Harry L. Brand in 1866 and both were educated in the public schools. Both gentlemen began their life work in the furniture business, and are known as business men of integrity and progressive methods, and are highly esteemed in the community.

THE HUB FURNITURE COMPANY

Metropolitan and modern methods are marked features of The Hub Furniture Co., No. 223 E. Front street. The firm was originally established in Owensboro, KY., in 1885 and became established in Bloomington this year. It has continuously carried out the policy of handling only reliable, thoroughly serviceable furniture and general house furnishing goods, sold at the lowest margin of profit. The handling of second hand furniture is also an important part of the business, and will exchange new goods for old or rent anything in stock, also a special 5 per cent discount is given to newly married people. Courteous assistants to the number of 6 are employed and 5,000 square feet of floor space are occupied and filled to repletion with medium and high-grade goods. T. W. Sanders the enterprising proprietor is a native of Tennessee born in 1819. He has always followed this one line of business and is a member of the Knights of Honor, and although only in Bloomington a short time he has proven him self an able and able business man of integrity.

H. P. HAZLE CO.

Among the leading real estate dealers in Bloomington, and one which has been largely interested in the welfare of the city is the H. P. Hazle Co., whose well appointed office is located at 101 S. Front street, and who for the past twenty-five years have handled some valuable pieces of property. This company also deals in loans and makes exchanges of property. Mr. H. P. Hazle was born in Ohio in 1849 and came to Bloomington when it was only a village with a population of 800 people. He is a graduate of Wesleyan and Normal Universities and also of the Bryant and Stratton Business college of Chicago. Mr. Hazle taught school in McLean county for twelve years previous to his present business and is widely and favorably known. He is one of Bloomington's influential business men, and representative of her best citizenship and by his genial courteous manners has won deserved popularity with all classes.



OLD FIRST CHRISTIAN CHURCH

MRS. DR. STEIN

In the list of mercantile houses which are deserving of more than passing mention is that of Mrs. Dr. Stein, dealer of dry goods and drugs, and located at 1002 S. Main. This is probably one of the oldest establishments in the city and is known far and near for the reliability and excellence of goods handled. A specialty is made of patent medicines and a complete line of the purest, freshest drugs are carried. The fine line of dry goods is unexcelled for style and quality. Mrs. Stein was born in Germany and was edu-

cated in St. Louis, Mo. She has followed this line of business for a number of years and became established here in 1880. She has had a wide experience in her business and is progressive, up-to-date and practical, and to fair and honorable dealing her success is due.



NEW FIRST CHRISTIAN CHURCH

W. G. ANDRUS

Headquarters in Bloomington for the famous Indian motorcycles, bicycles of various makes and repairing of the same is the widely known store of Mr. W. G. Andrus, located at 501 N. East street. A specialty is made of fine repairing and all work is promptly done by skilled mechanics, assuring patrons of the best possible service. Only machines of standard make and the best and most reliable manufacture are handled by this reliable concern. Three capable assistants are employed and 800 square feet of floor space is occupied. Mr. Andrus was born in London, Canada, in 1867 and there educated. He is an expert machinist and has a firmly established reputation for reliability and integrity, is thoroughly practical, progressive and up-to-date and is a valued member of the Masonic bodies, including the Shrine.

SPRINGER, DIBELL & SIMON

The widely known carriage factory and repairing shop of Springer, Dibell & Simon, 396-398 W. Front street, though only established in 1905 has rapidly gained a reputation for reliability and excellence of work performed. Carriages and wagons are manufactured complete and a specialty is made of general repair work and painting promptly executed. From six to seven skilled mechanics are employed and floor space of 8125 square feet is occupied. Wm. A. Springer was born in Pennsylvania in 1860 and was educated in Illinois. A. J. Dibell was born in Kingsville, O., in 1863 and there educated. He has been in this line of business for six years and was formerly a carpenter. He is a member of the M. W. A. and Yeomen of America. Leo H. Simon was born in McLean county in 1878 and educated in the public schools. He is a skilled blacksmith, which trade he followed for eight years previous to his present business. Mr. Simon is a member of the Odd Fellows. The three gentlemen are highly esteemed for their business integrity and estimable citizenship.

E. N. HODGE

One of the largest and finest appointed livery and sale stables in Bloomington is that of Mr. E. N. Hodge, located at No. 196-198 N. Center street. This stable was



MAIN STREET, LOOKING NORTH FROM JEFFERSON

established here about fourteen years ago and occupies a neat structure with a floor space of 1752 square feet. The box and open stalls are comfortable and always kept in the most scrupulously clean and orderly condition, and none but the most reliable and experienced stablemen are employed. Mr. Hodge is a large dealer in horses and makes a specialty of sales. He is a native of California, born in 1863, and was educated in the public schools, also attended the Bloomington schools. He is experienced in his business, enterprising, progressive and up-to-date and one of our city's public-spirited and influential citizens.

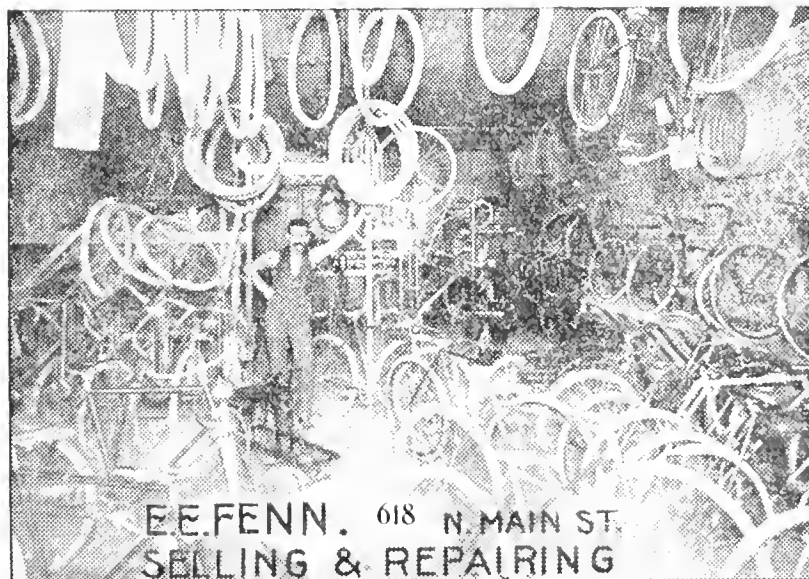
E. E. FENN

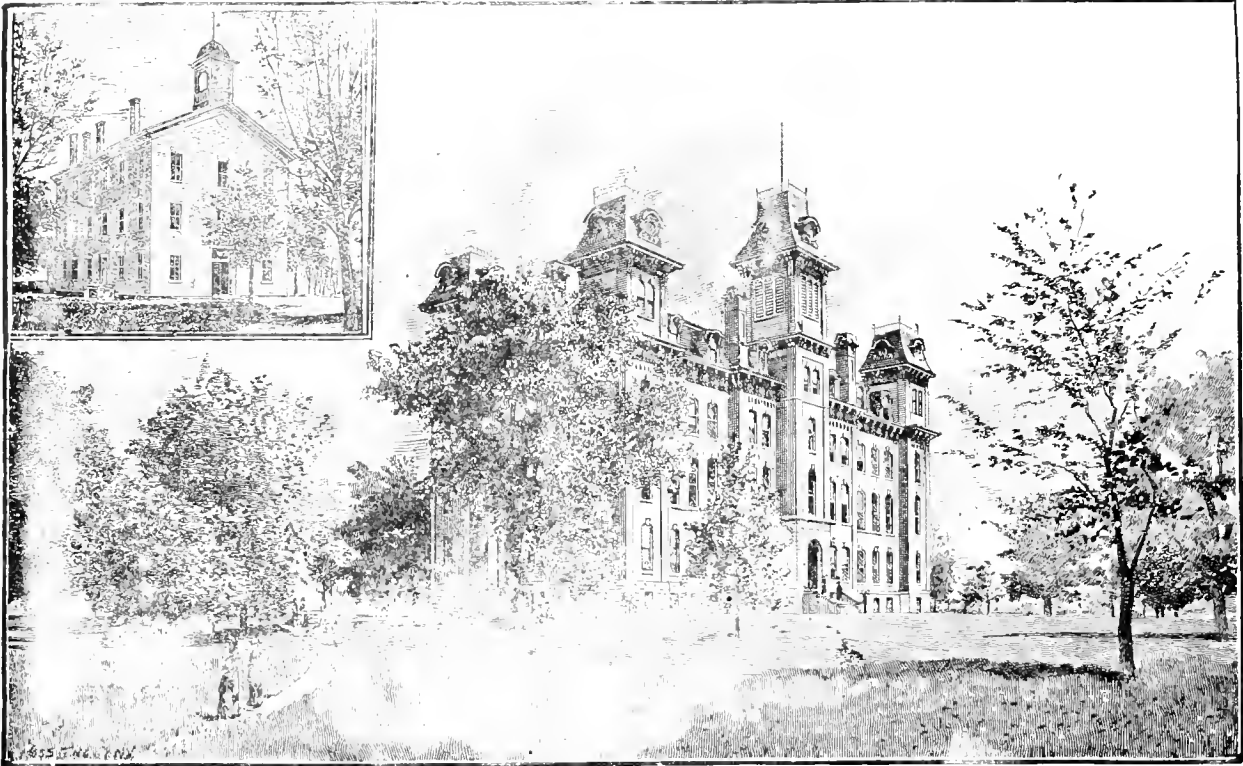
Headquarters in Bloomington for bicycles and motorcycles and general repairing of the same, is the widely known house of E. E. Fenn, 618 N. Main street. Only machines of standard make and the best and most reliable manufacture are handled, the famous Monarch, Rambler, and Imperial, both in bicycles and motorcycles, are extensively dealt in, also the Cleveland and National bicycles and the great Merkel motorcycles. A specialty is made of repair work and brazing, all work being promptly done by skilled mechanics, assuring patrons of the best possible service. This finely equipped store has a frontage of 25 feet and is heavily

stocked with a fine and reliable line of goods unsurpassed anywhere in the state. Mr. E. E. Fenn is a native of Illinois, born in 1867 and educated at Dwight, Ill., attending the Dwight High School. Previous to his present business, he was in the grocery, confectionery and fruit business, and was also a wholesale fruit dealer in Chicago. Mr. Fenn became established here in 1896 and ranks among Bloomington's most influential, representative, substantial citizens and progressive business men.

FRANK GUNN

Gentlemen's custom tailoring executed in the highest style of art with prices moderate, is the special feature of the establishment of Frank Gunn, 309 N. Main street. His creations are noted for their fashionable appearance and correct shape, and are always perfect in fit. Many of the most particular people in our city are patrons of Mr. Gunn's. The business was established in 1886 and sprang into immediate popularity. Five expert and experienced workmen are employed. Mr. Gunn is a native of Ireland, born in 1857 and educated in his own country. He has always been engaged in the tailoring business and is considered a practical and painstaking tailor and an estimable citizen. He is a member of the K. of C. and C. O. O. F.





ILLINOIS WESLEYAN UNIVERSITY AND AME CHAPEL

SUTER'S MARKET

High-grade goods, metropolitan business methods and fair prices have placed Suter's market, 1099½ N. Park street, decidedly in the lead of high-class meat markets in the city. Poultry, fresh, cured and salted meats of superior quality are kept and a specialty is made of fine fancy meats. All meats handled are of the highest quality and the store is kept in clean and neat order, which accounts for the large patronage among the best people on the North Side. Two courteous assistants are employed and all orders are given special attention. Mr. Phil D. Suter, the efficient proprietor, was born in Pennsylvania in 1889 and educated in Illinois. He has worked in all of the branches of the butcher business and is thoroughly conversant with all that pertains to it. He is one of our progressive and practical business men and is a member of the Modern Woodmen and Butchers' Union.

WM. B. MYERS

In the list of leading manufacturers who have contributed materially to the prosperity of Bloomington, Mr. Wm. B. Myers, 218 S. Main street, stands prominently. He manufactures fine bank and office fixtures and also makes a specialty repairing pianos and musical instruments and packing household goods for shipment. For general excellence of goods and high class work this house ranks second to no similar concern in this section of the state. Mr. Myers was born in Manchester, York county, Pa., in 1846, and there educated. He is an expert cabinet maker and has devoted most of his life to this line of work. He came to Bloomington in 1866 and became established in his present business in 1889. Mr. Myers is a gentleman of ability and practical experience and is a valued member of the K. of P., Red Men and Masonic Society.

W. A. GERKEN BAKERY CO., INC.

The domestic and fancy bakery of W. A. Gerken Co., 118 E. Front street, has long been the resort of particular and discriminating people who desire only the best of bakery products made from pure food supplies. Superior bread, fine pastry, and cake of every description, freshly made, is always to be found here. Fancy baking is a speciality, and cakes for weddings and parties supplied at short notice. Prices are reasonable, fully as low as good reliable bakery goods can be sold for. Twenty skilled assistants are employed and 3600 square feet of floor space is occupied, and a large out-of-town business is done annually. The business was established in 1870 by W. A. Gerken and came under the present proprietorship and was incorporated in 1903, and is officered as follows: Mrs. W. A. Gerken, president; Charles Schalk, vice-president, and J. C. Steege, secretary and manager.

MRS. BELLER

Mrs. Beller, the eminent and favorably known Clairvoyant, 221 E. Front street, has made herself popular in Bloomington and vicinity through no other source than the merits of her work. She is a natural born clairvoyant medium and makes a specialty of readings, and special attention is given her correspondence work. Advice is given on business, matrimony, speculation, health, and troubles of the heart. She does what others claim to do but don't. A special suite of private parlors for ladies and gentlemen are maintained and all business is strictly confidential. Unlike most people of her profession who only stay in a city but a few weeks, Mrs. Beller became established in 1899 and has built up a enviable reputation for herself, and her patrons consist of some of the best people of our city.

BLOOMINGTON RUBBER STAMP WORKS

One of Bloomington's most important industries is the manufacturing of rubber stamps carried on by Mr. T. M. Clarke, 207 W. Washington street. Printing wheels, self-inkers, pocket stamps, cutary and coporation seals, dates, metal-body and solid rubber type, and steel stamps are also manufactured, but a specialty is made of rubber stamps. Mr. Clarke is a publisher of Robb's Bill Register and Clarke's "Pass Report" form of remittance and the products of his factory are used in almost every state in the Union. His reputation as a stamp maker is unsurpassed as he is thoroughly experienced in the business. Mr. Clarke was born in the historic city of Kenilworth, Warwickshire, England, in 1843, his boyhood playground being that surrounding the castle of Queen Elizabeth. He came to America at the age of 27 and found employment as salesman in a dry goods store and later became established in his present business. He is a member of the National Union and M. W. A. and was its clerk for seven years. He is one of Bloomington's representative citizens and is highly esteemed.

T. ISENMAN

Among the leading mercantile houses which contribute in marked degree to the commercial standing of Bloomington there is none which enjoys higher reputation, both in point of superiority of the goods handled and trade enjoyed, than the grocery and meat market of Mr. T. Isenman, at 409 S. Allin street. This store was established in 1901 and has built up an extensive and high-class trade. The stock carried is one of the largest and finest in this section and embraces the choicest fancy and staple groceries and a complete line of fresh and

salted meats. A specialty is made of home-made sausage. An ample force of courteous assistants are employed and a floor space of 1750 square feet is occupied. Mr. Isenman was born in Germany in 1863 and there educated. He is a gentleman of pleasing personality, genial and courteous, always ready to oblige his patrons and careful to satisfy all their demands, he has made for himself a host of friends in all classes.

W. A. FISCHBECK

With a merited and firmly established reputation for reliability, superiority of goods and moderate prices, the two finely equipped drug stores of W. A. Fischbeck, 121 S. Center street and 129 S. Main street, stand among the foremost of the pharmacies of central Illinois. The business was established twenty-six years ago and has ever since been headquarters for drugs, chemicals, toilet articles, rubber and leather goods, perfumes, stationery, paints, oils and varnishes. A side line of violins, mandolins, guitars and accordians are carried, a specialty being made of physicians' prescriptions, only pure ingredients being used. The help numbers four, three of which are registered pharmacists, and 3495 square feet of floor space being occupied. W. A. Fischbeck was born in Germany in 1860 and educated in America, graduating from the pharmaceutical branch of the Northwestern University of Chicago, Ill. He has devoted his life to the drug business and is one of Bloomington's leading business men.

J. F. NAVE

Established in 1901, and now having an enviable reputation for handling reliable, high-grade, staple and fancy groceries, the store of J. F. Nave, 1020 W. Front street, stands among the foremost of similar concerns in this section. A specialty is made of country produce in season, and a fine line of superior canned goods, table delicacies, and choice teas, coffees and spices are carried including a line of smoked meats. The lowest market prices are quoted and competition fully met. Three courteous assistants are employed and 1,500 square feet of floor space is occupied. Mr. Nave the energetic proprietor is a native of Illinois born in 1877 and received his education in the public schools, and previous to his present line was engaged in the commission business. He is considered one of our leading merchants, progressive and alert to modern methods, and is a member of the M. W. A. and K. of P.

ED. HURST

Although established but a short time, the studio conducted by Mr. Ed Hurst at 305 W. Washington street has achieved most gratifying propositions. Mr. Hurst enlarges portraits and carries a line of high-class framed pictures. His creations display the work of a skilled artist and his best work is performed on every picture. He also deals in the famous Edison phonograph and a full line of records. Several salesmen and agents are em-

ployed in towns surrounding Bloomington. Mr. Hurst was born and educated in Lockhaven, Pa. Previous to his present business he was employed as bookkeeper for J. R. Stevenson for about nineteen years and in his earlier life he was engaged in the grocery business. He is thoroughly experienced in his business and is highly popular with all classes.

C. F. FLEISCHER

Carrying one of the largest and choicest stocks of imported and fancy groceries in the city, complete lines of staple groceries and provisions of every description, everything in fresh and smoked meats, oysters and fish, and having an univalued reputation for efficiency of service, quotation of moderate prices and metropolitan business methods, the store of Mr. C. F. Fleischer, 1013 N. Park street occupies a foremost position among similar concerns. Standard brands of flour, superior canned goods, table condiments, bottled delicacies, farm products, select teas and coffees are kept. Four capable and courteous clerks are employed. Mr. Fleischer was born in Bloomington in 1872 and educated in the public schools. He became established in 1899 and is a business man of progressive ideas, thoroughly believing in modern methods. He is a member of the I. O. O. F. and Modern Woodmen.



Brant Illustrat. Co.



SCENE IN MILLER PARK

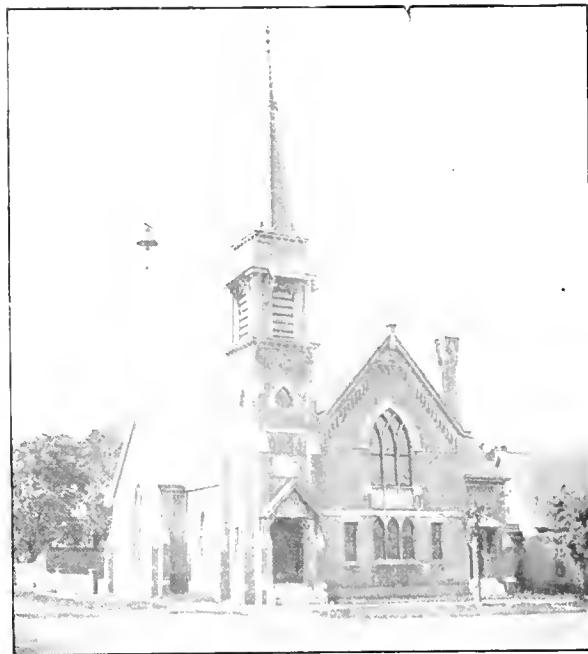
THE CO-OPERATIVE STORE

About one year ago a representative of a trade journal issued under the auspices of a wholesale co-operative mercantile society interested a number of persons, largely Chicago & Alton shop people, in laying the foundation for a co-operative mercantile store in Bloomington. The organizers and first commissioners appointed to take subscriptions for stock were H. Keating, G. L. Eldridge, H. A. Lloyd, Wm. Poy, John Coupe and Otto Wallace, who succeeded in getting subscriptions for stock to the amount of \$5,000, after which a stock company was incorporated and the following officers were elected: H. Keating Pres., J. P. Tulley Vice-Pres., June Crandall Secy., C. F. Koch Treas. and Business Manager, and the board of directors as follows: H. Keating, June Crandall, John H. Coupe, Carl Jaeger, J. P. Tulley and Mrs. Alice Gardner. The prime object of the organization being the establishing and carrying on of a general merchandise business, including groceries and general family supplies, as also a general line of shop and railroad men's supplies, making a specialty of doing a strictly cash business. The board of directors decided to tender C. F. Koch the position of treasurer and business manager, which offer he finally accepted. It was then decided to find a location on North Main street, but finally deemed more practical to locate nearer the square if a location could be secured, or as soon as it became possible to find one. Their efforts in that respect finally resulted in leasing a building at the corner of Madison and Washington streets, which place they got July 1, 1905, and until then they will remain at Mr. Koch's place where he has been in the grocery business for 20 years. The business opened Nov. 5, 1904, and has been constantly on the increase ever since. The plan adopted is called the Rochdale system, originating in England, where it is very popular, as also in Germany. Of late years it has been introduced and is gaining a strong foothold

in America. The idea was met with favor here and is now being given a thorough trial, already resulting in a liberal support, not only by the membership but also by a great many people all over the city, and so far the outside patronage amounts to as much as the membership itself and the business has fully met the expectation of the organization. Mr. Koch, the efficient manager, is not only a practical man and thoroughly conversant with all that pertains to the business, but is an influential citizen and has served our city with honor as mayor two terms.

JOHN G. WELCH

The people of the North Side are to be congratulated upon having one of the best and finest equipped grocery and provision houses in the city, that of Mr. John G. Welch, located at 405 E. Locust street. Large and carefully selected lines of staple and fancy groceries are carried, choice meats, superior provisions, leading brands of canned goods, table delicacies, fruits, bakery supplies, select teas and coffees, also leading brands of flour, in fact every thing that is required to make a complete store of this kind, and the line carried is one of the finest to



GERMAN METHODIST EPISCOPAL CHURCH

be found in the city and the stores motto is "good things to eat." Five competent clerks are employed and all orders are given special attention. Mr. Welch is a native of Bloomington and was educated in the public schools. He became established here in 1900 and is known as a business man of integrity and progressive ideas, and has served as alderman and supervisor and is highly esteemed.

E. R. DARLINGTON LUMBER CO.

One of the old established and widely known concerns in Bloomington devoted to the handling of lumber of all kinds, coal and coke, tile capping, cement, lime, wire fence and everything in builders supplies, sash doors, blinds, tar and roofing papers, mouldings, etc., is the E. R. Darlington Lumber Co., located at 393 S. Lee street. The yards and building cover a territory of several acres. The business was established in 1898 and during every year of its time has conducted an extensive business, not only in Illinois, but their territory is unlimited. This company also has branch offices in Arrowsmith, Raymond, Taylorville, Virden, Girard, Auburn, Havana, Golden and three in St. Louis, their main office being in St. Louis. Mr. H. C. Schwulst, the efficient manager and stockholder, is a native of Bloomington, born in 1860, and also received his education here. He has been employed in the lumber business for eighteen years and formerly for two years was in the grocery business. He is highly esteemed for his business integrity and is a valued member of the German Benevolent Society, of which he is treasurer, and is a stockholder in the German-American Bank and Bloomington Stove Works.

PALACE LIVERY STABLE

The largest, finest and best equipped livery in Bloomington, and one which for the past sixteen years has controlled the best class of trade in this city and county is the Palace Livery and Boarding Stable, located at 113-119 S. Madison street, and of which Mr. F. M. Maurer is the proprietor. The stables occupy 17,500 square feet of floor space and has a capacity of



1000 tons of hay and stable room for 175 head of horses. It is fitted with every convenience and has a ladies' waiting room almost equal to the parlors in some of our best homes. Mr. Maurer deals in fancy horses and was in this line of business about fifteen years in Indianapolis, Ind. He was born and educated in Kentucky and became established here in 1889 and is now the oldest liveryman in the city. He is a gentleman of marked personality and is one of the city's prominent and popular business men with a large circle of friends.

C. W. COLLISON

Among the recent additions to the ranks of Bloomington's business houses, and one which has already attained high position and enjoys a large trade, is the well equipped grocery and confectionery store of Mr. C. W. Collison located at Cor. Allin & Wood streets and established in 1901. A complete line of high-grade groceries, fresh meats, pure confectionery, and cigars and tobacco is carried, also hot and



cold drinks, ice-cream soda, and mixed drinks are served in season. Mr. Collison also has privileges for serving refreshments in Miller Park. He employs five capable assistants in his store and fourteen at the Park during the summer season. His store occupies a floor space of 1,200 sq. feet and is heavily stocked with one of the finest lines of goods in the city. Mr. Collison is a native of England born in 1866 and educated in Michigan. He is one of Bloomington's most progressive business men and substantial, influential citizens. He is a valued member of the National Union.

A. E. WAITE

Knowing that the eye is the most delicate and in many respects most important organ of the body, it is necessary in procuring glasses for defective eyesight to consult only an experienced and graduate optician. A Bloomington ocular refractonist who stands high in his profession is A. E. Waite, located at 229 N. Center street, and during his few years of public service has constantly maintained a reputation for reliability unsurpassed. Mr. Waite furnishes everything in glasses and frames and grinds his own lenses. The business was established in 1901 and to-day is among the foremost of its kind in Central Illinois. Mr. Waite was born in Bloomington in 1870 and was here educated and graduated from the Northern Illinois School of Ophthalmology. He is an estimable citizen and is highly regarded in our city.

E. J. LIERMAN

One of the most prominent of the leading stores in Bloomington is the sterling grocery of Mr. E. J. Lierman, located at 608 S. Lee street. A complete line of groceries, provisions and a fine line of canned goods of every description is carried. Specialties are made of country butter, fresh-laid eggs and farm and garden produce in season. Two competent and capable assistants are employed and a floor space of 1,700 square feet is occupied. Mr. Lierman was born in Illinois in 1877 and there educated.

Previously he was engaged in the dry goods business and his reputation as a progressive, substantial, enterprising business man and a representative, influential citizen is an enviable one. Mr. Lierman is an honored member of the Modern Woodmen.

SNOW & PALMER CO., INC.

One of the advantages which the people of Bloomington and vicinity have which are not possessed by every city is pure milk. The Snow & Palmer Co., to whom the credit for this is due, is one of the most important of this city's industries. It was established in 1880 and incorporated under the laws of Illinois in 1901. Milk, cream and butter and dairy products of every description are sold at wholesale and retail, 900 gallons of milk and 200 gallons of cream being sold daily. The products of this dairy are distributed to all parts of the city. Their large dairy farm at McLean, Ill., covers an area of 400 acres and the plant located at the corner of Oak and Jefferson streets, where the milk is made ready to be distributed, occupies 7350 square feet of floor space. Twenty careful and experienced workmen are employed. Mr. W. D. Snow, president of the firm, was born in Massachusetts in 1876 and obtained his education in Illinois. He is a member of the Masons. Mr. H. M. Palmer, secretary and treasurer, is a native of Illinois, and educated in the public schools. He is also a Mason. Both gentlemen are thoroughly experienced dairymen, careful painstaking managers and enjoy the highest reputation among their many friends and patrons. Snow & Palmer are patentees of a bottle filler that is being manufactured under a royalty by a creamery package manufacturing company, which is the largest in the world of that line. Quite a number of them have been sold and give good satisfaction. One of its merits is its rapid work and low price, and being very simple.

COL. D. L. BROWN

A prominent Col. D. L. Brown, the widely known auctioneer, is that he enters to the auctioneering of live stock and farm sales. He became established here in 1895, and through fair dealing has won his way to the front ranks of people in his line. Col. Brown was born in Illi-



nois in 1874, where he also received his education, and is considered one of our most up-to-date and progressive business men. He is widely and favorably known and is a member of the National Union. His office is located in the Headquarters Building.

THE LIVINGSTON BARBER SHOP

Clean shaves and up-to-date hair cutting are the leading features of the Livingston barber shop, located in the Livingston building, and although only established in 1903 it is today one of the most popular shops in central Illinois. Five chairs are operated and in connection with the shop are large bath rooms and a private parlor for ladies and children and Mrs. J. H. Mantle personally looks after the lady patrons. A specialty is made of facial massage, shampooing and scalp treatment. Mr. J. H. Mantle, the energetic proprietor is a native of Illinois and since entering into the business world has followed this line of work. He is considered one of Bloomington's progressive business men and is highly esteemed in the community, and is a member of the I. O. O. F., M. W. A. and Court of Honor.



IKE LIVINGSTON & SONS

It is rarely that such a spacious and heavily stocked clothing house as that of Ike Livingston & Sons is to be found outside the largest cities. Every department is a complete store in itself, including the children's department, where the lines of goods shown are unsurpassed anywhere. Several thousand square feet of floor space is occupied and a large force of capable and courteous salesmen are employed. Established in 1865, this mammoth house has long been pre-eminent for its outfitting capabilities, and has a merited reputation for reliability and efficiency of service. This concern makes a specialty of the world-famous W. L. Douglas shoes, also the Stein-Bloch and Hart, Shaffner & Marx clothing.

BLOOMINGTON PRESSED BRICK CO., INC.

Among the diversified industries of Bloomington none is more interesting than that carried on by the Bloomington Pressed Brick Co., with spacious and well equipped plant and yards at corner of Monroe and Western avenue. The products of the concern are pressed, paving and common brick, and makes a specialty of furnishing brick suitable for residences. The firm was incorporated in 1893 and employs fifty skilled workmen and the resources for obtaining material are among the best in the state. The concern is officered by Henry Keiser, president; L. M. Graham, secretary, and G. W. Dunlap, treasurer and manager. Mr. Dunlap is a native of Bloomington, born in 1866, and educated in our public schools, and since entering into the business world has followed this line of business. He is a member of the I. O. O. F. and K. of P. The three officers of the firm are among Bloomington's influential citizens and are highly esteemed in our city.

PAUL F. BEICH

Confectionery is recommended by many eminent physicians, both in Europe and America, and advocate the eating of same as being healthful. For this reason the United States war department furnishes its soldiers in the Philippines with tons of candy annually. It is generally agreed, however, that the confectionery must be pure. Pure confectionery is extensively wholesaled and manufactured by Paul F. Beich, 109 E. Front street, a specialty being made of Beich's Fanny chocolates, which are sold by all leading dealers. The floor space consumed is 17,250 square feet; seventy-five skilled assistants are employed. Mr. Beich is also proprietor of the Bloomington Caramel Co., whose output is caramels of various and assorted kinds. The factory here numbers 250, and 65,000 square feet of floor space is occupied. The products of both factories are shipped to various parts of the country and a number of traveling salesmen are constantly kept on the road. Mr. Beich has spent twenty-five years in this business and has made every branch a scientific study, which enabled him to bring it to this high standard and his motto is "cleanliness and purity of goods."

L. B. THOMAS & SON

The value of insurance in all its legitimate branches as an investment is no longer a mooted question. The only question which calls for deliberation is the soundness of the insurance company, the reliability of the agency through which the risk is issued. In Bloomington these conditions exist in satisfactory manner in the sterling agency of L. B. Thomas & Son, whose office is located at No. 107 N. Main street, and became established in 1858. At this office some of the strongest fire and life insurance companies are represented, also Hartford Steam Boilers and Lloyd's Plate Glass Insurance companies. Mr. Thomas' office has a front-



age of 25 feet and three courteous and experienced assistants are employed. He was born in Bloomington in 1838 and was educated here and at Antioch College in Ohio and other places, and since entering into the business world has followed this line of business and served for fourteen years on the board of education and was mayor of our city for six years. He is considered one of our most enterprising, public-spirited citizens, thoroughly in accord with all that pertains to the welfare of the city, and is a member of the Masons and Elks.

STEAM BOTTLING WORKS

The purity and excellence of its products, the Steam Bottling Works, located at 712 E. Taylor street, and conducted by Mr. Henry H. Quosiek, are unexcelled by any similar concern in the country. Carbonated drinks, mineral and soda waters, ginger ale, pear cider, root beer, raspberry cream, wild cherry, sarsaparilla, carbonic gas, etc., are manufactured and bottled, only the best of materials being used. Mr. Quosiek manufactures all his flavoring extracts, which are unsurpassed for their purity and excellence. The factory is a model of its kind, fitted with the most modern improved machinery and everything is kept in scrupulously clean and neat order. One of the machines used in this model plant was made in Germany. Three skilled workmen are employed and from 150 to 500 cases are filled daily. This concern was first established by Mr. H. H. Quosiek in 1881 and came under the present proprietorship in 1900. Mr. Quosiek was born in Germany in 1874 and came to America when but a small boy. He has been engaged in this business for sixteen years and formerly for two years he was foreman for the Virginia Brewing Co., at Roanoke, Va. He is the only union bottler in Bloomington. Mr. Quosiek is a skilled acrobat of much note, has won several diplomas in gymnastic work and has organized three athletic clubs in this city. He is a member of the M. W. A., 1021, White Cross, Turners and Musicians' Union.

FREESE BROS.

Carrying one of the largest and choicest stocks of imported and fancy groceries in the city, complete lines of staple groceries and provisions of every description, and having an unrivalled reputation for efficiency of service, quotation of moderate prices and metropolitan business methods, the Freese Bros., 608-610 W. Monroe street, occupies a foremost position among similar concerns. Superior canned goods, table condiments, bottled delicacies, breakfast foods and select teas and coffees are kept, also a fine line of fresh, smoked and salted meats, poultry and oysters. A specialty is made of fresh butter and eggs. The heavily stocked salesroom occupies 6000 square feet of floor space and six capable clerks are employed. Messrs. William and George Freese are both natives of Bloomington, born in 1863 and 1869, and educated in the public schools. Formerly, for six years, they were in the green-house business. Mr. William Freese is a member of the Retail Merchants' Association and K. of P. and Mr. George Freese is a member of the Elks and U. R. K. of P., of which he is major, and has also been alderman for three years. Both gentlemen are members of the Business Men's Association and are among Bloomington's most progressive and enterprising merchants.

DEWENTER & CO.

The finely equipped, heavily stocked men's furnishing goods house of Dewenter & Co., 118 W. Washington street, was established in 1870. Today this store stands pre-eminent in its line, containing large lines of furnishing goods, hats and caps. The line of goods carried is one of the finest in the state and is unexcelled for quality and reliability. The spacious and heavily stocked store occupies floor space of 1700 square feet and four competent clerks are employed. Mr. Dewenter has been in this business all his life and is considered one of our most progressive and alert merchants.

THE BLOOMINGTON STORE FIXTURE COMPANY

The Bloomington Store Fixture Co., Corner of Douglas and Prairie Streets, is headquarters in Bloomington for tin, Drug and Jewelry Fixtures, Bank furniture, and up-to-date store and office fixtures.

In addition to its General catalogue of store and office fixtures this firm issues special Bank, Drug and Jewelry catalogues, which they send to any address on application.

This plant was originally established in 1866, by H. A. Miner, and in 1894 was incorporated as the Bloomington Store Fixture Co. Their building consists of five floors and basement, 70x115 ft. and they employ from forty to forty-five men.

Mr. S. R. White, the President of this Company, is also the proprietor of White's Place, a most beautiful, comfortable, and healthful section in the Northeastern part of the city. Here you will see beautiful shade trees, shrubbery, private parks, lakes, and numerous other modern improvements, and it is the only place in Bloomington set apart for light driving, and where everything is made to insure the pleasure and comfort of its inhabitants. Mr. White was born in Huntington, Indiana, in 1846, and educated in the public schools there. He is well known as a most sagacious and energetic business man and is a valued member of the Bloomington Business Men's Association, of which he is President.

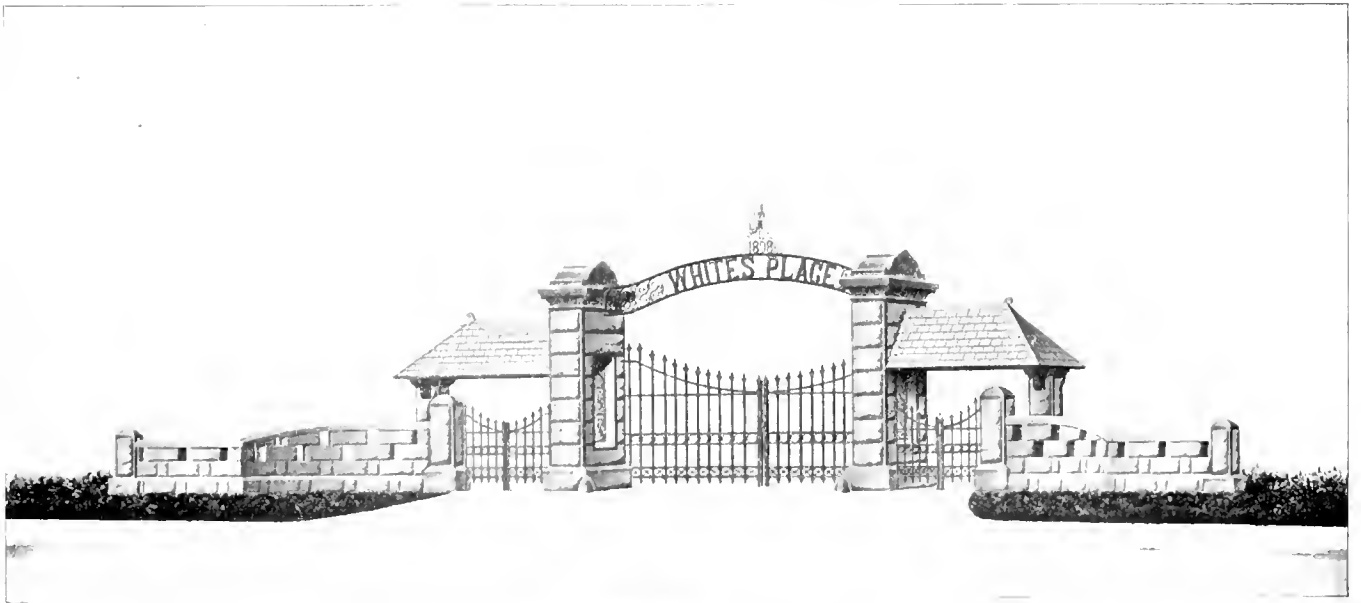


BLOOMINGTON STORE FIXTURE COMPANY

ROBERTSON MANUFACTURING CO.

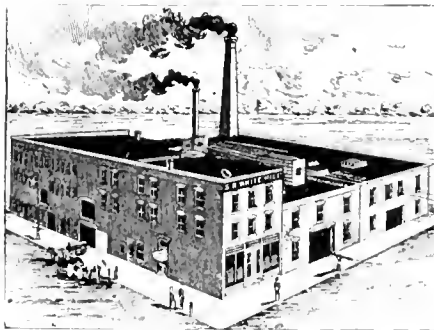
None of the industries of Bloomington enjoy a better reputation and no name better known than that of the Robertson Manufacturing Co. They manufacture sunbonnets, hose supporters and infants' and children's flannel-ware. For high grade trade and for reliability of service this sterling establishment is unsurpassed by any similar concern in the country. The firm was originally established and incorporated in Decatur in 1897 and moved to Bloomington in 1902. It im-

mediately sprang into popularity and today is known throughout the country; it is not only known but their goods are sold in every state in the union. The factory, which is located at 217-223 Douglas street, is finely equipped and occupies 9000 square feet of floor space. Sixty skilled operators are employed and each garment is a masterpiece of their art. The machinery is of the most modern type, thus enabling them to compete with any concern of its kind in the country in quality and artistic finish.



S. R. WHITE MANUFACTURING CO.

One of the largest and finest equipped of similar concerns in Central Illinois is the S. R. White Manufacturing Co., corner Douglas and Prairie streets, manufacturers of and dealers in lumber, coal, porch work and interior house work of all kinds. This reliable factory was established in 1879 by Samuel R. White, and with its immense plant and unrivaled facilities is one of the most complete establishments of its kind in this section of the state. The factory is 296x250 feet in area, a substantial two and three-story brick structure, equipped with every valuable machine for handling woodwork to the best advantage. The employes number from forty to fifty. Ora E. White, the efficient manager, was born in Bloomington in 1871 and graduated from the Pe-



schools. He has been with the White Manufacturing Co. for a number of years and is highly esteemed in business circles for his integrity and estimable citizenship.

HERRICK & ECKART CO., INC.

Unrivaled in immensity of stock, progressive methods of business and reputation for moderate prices, the clothing house of Herrick & Eckart Co. stands pre-eminent in its class in this section of the state. This finely equipped store, located at the corner of Jefferson and Center streets, is metropolitan in every respect, and carries immense and complete lines of goods of medium and high grade ready-to-wear clothing, hats, caps and furnishing goods for men, youths and boys; also trunks, bags and dress suit cases. Every department is a complete store in itself, including the children's department, where the lines of goods shown are unsurpassed anywhere. Systematic low prices rule on all goods handled and competition successfully met in every particular. The floor space over 100,000

5000 square feet and an ample force of courteous and capable clerks are employed. Established and incorporated in 1901, this sterling house has been foremost for its outfitting capabilities, and has a merited reputation for reliability and efficiency of service second to no similar concern, and a speciality is made of Rogers, Best & Co's clothing. D. C. Herrick was born in New York, where he was educated, and H. S. Eckart was born in Illinois and there educated. Both gentlemen have followed this line of business most of their lives and are considered among our most astute and prominent business men, thoroughly in accord with anything pertaining to the welfare of the city.

GRAY BROTHERS

The spacious, finely and heavily stocked store of the Gray Bros., 428-30 N. Main street, shows decidedly what enterprise combined with original ideas can do in the 20th century. In brief, this finely equipped store is a model bakery, grocery and provision house combined. Staple and fancy groceries of every description are carried, including leading brands of canned goods, table delicacies, pure food supplies, breakfast foods, choice teas and coffees. The bakery is complete and modern, and the products masterpieces of the baker's art. The courteous and capable employees number fourteen and four teams are in commission. The firm was established in 1875. The Gray Bros. also own another fine grocery store at 113 W. Front street. J. W. Gray was born in New York City in 1849 and there educated. He has devoted the greater part of his life to the grocery business and formerly owned a bakery and confectionery store at Farmer City, Ill. He is a member of the Odd Fellows and Royal Arcanum. George T. Gray was born in Johnstown, N. Y., in 1853 and educated in Bloomington. He is a member of the National Union. Dewitt Gray was born in Fort Plain, N.Y. in 1851 and also educated in Bloomington. The gentlemen are known as business men of integrity and progressive methods and highly esteemed in the community.



HILLS HOTEL

A. BUTEL

With a merited and firmly established reputation for reliability and excellence of work and moderate prices, the finely equipped shoe repairing shop of Mr. A. Beutel, 813 W. Chestnut street, stands among the foremost of similar concerns in this section of the state. Shoe repairing of all kinds is done and a speciality is made of fine repairing. He is also a custom shoe maker, having learned the trade in Vienna many years ago and became established here in 1884. Mr. Beutel is a native of Austria, born in 1861, where he also received his education. Since becoming a citizen of Bloomington he has built up an extensive and high class trade, his patronage being among the best people of our city, and in matters pertaining to the city's welfare he is always active. He is a member of the McClain Co. Gun Club.

THE OLD RELIABLE EMPLOYMENT AND MATRIMONIAL BUREAU

Probably the only concern of its kind in the city is the Old Reliable Employment & Matrimonial Bureau, located over 414 N. Main street and conducted by Mrs. R. Houghton. All kinds of help and those wishing help will find assistance at this Employment Bureau, the best and most reliable of help will be secured free of charge. Special attention is given to the Matrimonial Bureau and those so inclined will receive careful attention at all times. In connection with this Mr. R. Houghton & Co., is one of the leading firms engaged in real estate loan and insurance business and have been largely instrumental in the building up of our city. Mr. Houghton & Co., are also pro-



MRS. R. HOUGHTON

rietors of the only strictly European hotel in the city, which contains all modern improvements, with electric lights and electric bell in each room. Rooms 75 cents per night and up and meals 75 cents and up. This is one of Bloomington's most spacious, well equipped and carefully conducted hosteleries and became established in 1896. Mr. R. Houghton is a native of Bloomington, born in 1853 and received his education in the public schools. He owned a butcher shop on E. Front street for about 20 years and previous to his present business was engaged in the real estate business. Mr. Houghton is a genial, courteous host, and an experienced hotel man and of wide experience in catering to the requirements of the general public.

FRANK BOLING

One of the best known and most popular men in Bloomington, and one whose friends are legion, is Mr. Frank Boling. Mr. Boling is one of the busy men of the city. He has for several years been the leading sign maker and decorator and does fine work in frescoing and furnishes the latest and most artistic designs for frescoing. He has done work in this line for some of the leading concerns and finest buildings in the state and gives for reference E. M. Kuhn, German-American Bank, S. R. White and State National Bank of Bloomington and Bank of Annawan, Annawan, Ill., Harry Taggart, Mr. Burgess and George Monser of Wenona, Ill., and many others. Mr. Boling is an artist of more than average merit, a skilled, conscientious workman and always prompt in fulfilling all obligations.

LEE ROBERTS

Purity and excellence, high grade and low prices have been the qualities which have always marked the goods sold by Mr. Lee Roberts, and which have made his handsome, well stocked grocery the headquarters for the best people of the East Side. This standard grocery house became established many years ago, but came under the present proprietorship March 1, 1905. The store is located at 1002 East Grove street and has a frontage of 21 feet. The stock carried is large and carefully selected and a speciality is made of the Wedding Ring and Wishbone brands of canned goods. Mr. Roberts was born and educated in Philadelphia, Pa. Formerly, for five years, he was engaged in general merchandise and grocery business and was employed with the C. & A. R. R. as ticket agent at Croft, Ill., where he was also postmaster. He is a member of the Loyal American society and is one of Bloomington's progressive business men and representative of her best citizenship.

JUDGE HENDRYX

Probably no other man in the city is better known than Judge Hendryx, and probably no other justice of the peace can boast of having married 3,000 couples in the past twenty years, as can Judge Hendryx, whose offices are located in the Stephen Smith building. He has finely equipped parlors, apart from his public court rooms, where wedding ceremonies may be performed. An organ is kept in the parlors on which wedding marches may be played when so desired. Mr. Hendryx is a native of Illinois, born in 1844, and spent his early life on a farm. He became established in Bloomington in 1885. He served with distinction five years in the army and was deputy sheriff for five years, and is a member of the G. A. R.

A. LOPIN

Among the well known mercantile houses of Bloomington there is none which enjoys a greater meed of popularity than that of Mr. A. Lopin, 119 S. Center street. Though only established in 1904, this sterling importation has gained a reputation for reliability and excellence of goods unsurpassed by any similar concern in the city. While money to loan on personal property etc., is the principle business, a full line gents' furnishings, shoes, trunks, suit cases, and jewelry is kept. Mr. Lopin is a native of Europe born in 1881 and received his education in America. Previous to his present business he was in the same line of business in Champagne, Ill. Mr. Lopin is one of Bloomington's progressive, public-spirited citizens and successful business men and is a member of the K. of P.

FRANK MOEWS

High grade groceries, both staple and fancy, produce and smoked meats are carried in complete and carefully selected lines at the well equipped and popular store of Frank Moews, 731 W. Jackson street. A speciality is made of fresh butter and eggs and the famous McLaughlin's coffees. The lowest market prices are quoted, fully as low as is consistent with reliability and satisfactory goods. Four capable clerks are employed and 1500 square feet of floor space is occupied. The business was established in 1895. Mr. Moews was born in Germany in 1861 and was there educated and has always followed this line of business. He is one of our city's best citizens and is a member of the M. W. A. and German Benevolent Society.



GRAND OPERA HOUSE

Bloomington, widely and favorably known among the leading theatrical companies of the country as one of the best show towns in the state, possesses a handsome and finely equipped Opera House, the Grand, located at the corner of Market and East streets. The list of attractions presented here is a credit to the practical business management of Mr. Fred Wolkau, Jr., and some of the best companies in the country have occupied its stage. The house was built in 1892 and has a seating capacity of 1100 and an excellent orchestra. Mr. Wolkau is also manager of the Coliseum, a handsome brick structure, located at the corner of West and Front streets, and devoted to indoor circuses, roller skating, conventions and large gatherings of all kinds, and large balls, such as charity balls, etc. The house can seat 2,500 to 3,000 people and has 12,000 square feet of floor space. It was built about eight years ago and is one of the best equipped coliseums in this section. Mr. Wolkau is a native of Bloomington, born in 1871 and educated in the public schools, and also attended Brown's Business College. He has always followed the theatrical business in some line and has been man-

ager of the opera house for five years and the Coliseum for seven years. He is thoroughly experienced in this business, alert to the demands of a discriminating public and highly regarded by all who know him.

J. O. KILLION & CO.

Carefully selected lines of staple and fancy groceries are carried at the well-known and largely patronized store of J. O. Killion & Co., located at 104 S. State street. A specialty is made of fine fancy groceries, produce of every description, leading brands of flour, canned goods, select teas and coffees, table delicacies, bottled goods and breakfast foods are also carried. None but the freshest and best goods are handled and prices are as low as is consistent with the superior quality of goods sold. Three competent assistants are employed and floor space of 1728 square feet is occupied. The members of this company are Messrs. J. O. Killion and H. A. Welch. Mr. Killion is a native of Indiana, born in 1863, and educated in McLean county. Formerly for thirteen years he was in the general merchandise business. He is a member of the K. of P. and M. W. A. Mr. Welch

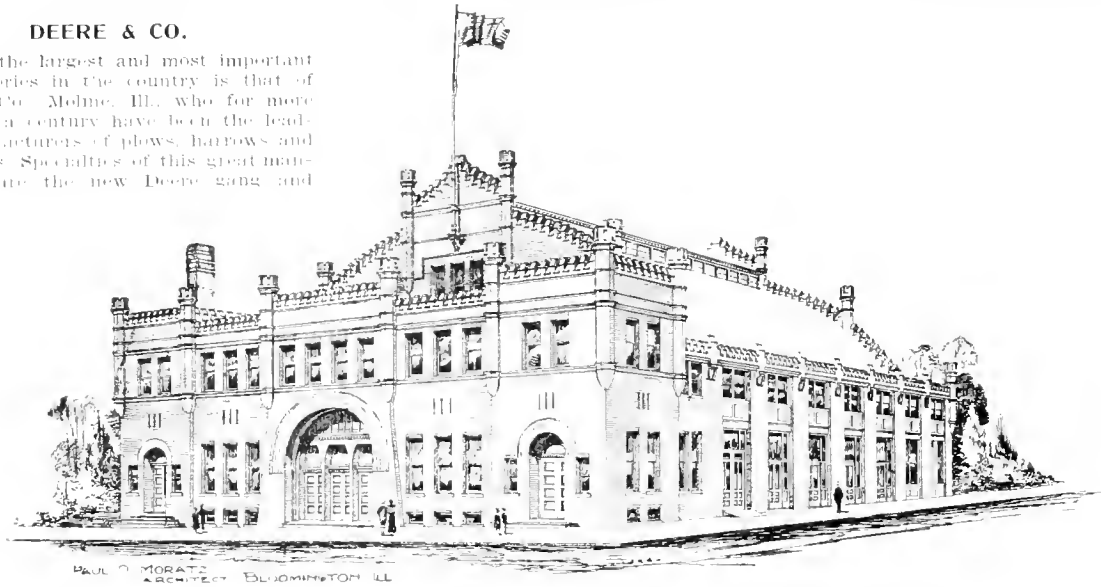
is a native of this county, born in 1872, and educated in the schools of his native town; also attended Bereka College. Previous to his present business he was engaged in farming. He is a member of the Masons and K. of P. Both gentlemen are thorough business men, employing modern methods, and are highly regarded by their many friends and patrons.

JACKSON BROTHERS

One of the most recent livery and stable stables in Bloomington is that located at 407 W. Front street and conducted by the Jackson Brothers. This stable was established in 1901 and during the brief period of its establishment has gained a high-class reputation. Everything is kept in the cleanest and neatest order and the stalls are comfortable. Special attention is given to boarders and rates are always reasonable. A floor space of 11,000 square feet is occupied and four experienced stablemen are employed. The Jackson brothers, whom are twins, were born in Laurel county, Kentucky, in 1811. They were engaged in farming until they became established in their present business. Both gentlemen are members of the Masonic fraternity and are highly esteemed in our city.

DEERE & CO.

One of the largest and most important manufactories in the country is that of Deere & Co., Moline, Ill., who for more than half a century have been the leading manufacturers of plows, harrows and cultivators. Specialties of this great manufactory are the new Deere gang and



THE COLISEUM

sulky plows, which are known the world over. This world-famous manufactory was established in 1847 by John Deere, who gave the world the steel plow, and now this establishment covers an area of 13 acres and furnishes employment for 1500 workmen. Mr. A. T. Freeman, general agent for Deere & Co. in central Illinois, is a native of this state, born in 1849, and obtained his education in the public schools. His early life was spent on a farm and later was connected with the hardware business and has been with Deere & Co. since 1895. He established a transfer house and opened an office here in 1900. Mr. Freeman is representative of the highest class of citizenship, thoroughly experienced and capable business man, highly regarded by all who know him and is a valued member of the I. O. O. F. and Elks.

S. R. POWELL

Mr. S. R. Powell, located at 211 Douglas street, is probably the only one in the city who makes a profession of educating saddle horses. He has been engaged in the business since the age of nine years and is without a doubt one of the finest horsemen in the state. Some of the finest saddle horses in the city are results of Mr. Powell's work. He was born in Richmond, Ky., in 1849 and received his education in Lexington, Ky. He became established here in 1894 and has always been considered a gentleman of utmost reliability, prompt in fulfilling all his promises, fair and honorable in all his dealings, genial, courteous and obliging. In all matters pertaining to the welfare of the city he has always been closely identified.

J. ROSS CLARK GROCERY CO.

Among the leading mercantile establishments of the busy South Side, there is none which ranks higher than the J. Ross Clark Grocery Co., whose well stocked store is located at No. 522 S. Lee street. The stock carried is large, complete and of the highest quality and three courteous clerks are employed. Aside from the groceries, they carry a choice line of confectionery and cigars and tobacco. A specialty is made of groceries and provisions and prices are uniformly reasonable. This business was originally established by the late Mr. J. Ross Clark in 1896 and is now conducted by Mrs. Clark and Son, who are natives of Illinois. They are noted for their enterprise, ability and progressive business policy and are highly esteemed in our city.



JULIUS DIETRICH

BLOOMINGTON JOURNAL

In Bloomington today there is but one German paper it is The Bloomington Journal. Editorially the Journal has made a marked success for itself, inasmuch as it is thoroughly independent, being free from entangling alliances of any sort. The self-evident fact that the Journal is read and has the largest local circulation of any German paper in Central Illinois, which shows conclusively that the people demand a free press, an independent

press and an unbiased press, which the Journal is and will continue to be. Connected with the Journal is a first-class job printing plant. The business was first established in 1879 and has its office at 311 S. Main street. Julius Dietrich, proprietor and editor, was born in Hainichen, Germany, in 1858 and was there educated. He has always followed newspaper work, and is thoroughly conversant with all that pertains to the business, and is known as a business man of integrity and highly esteemed in the community.



LOOKING SOUTHWEST FROM THE DOME OF THE McLEAN COUNTY COURT HOUSE

LAWRENCE & LAWRENCE

In the work of building up the city of Bloomington there is no one who has been more active than Messrs. Lawrence & Lawrence, the well-known real estate and fire insurance agents, whose up-to-date office is located at 203 in the Eddy building. The business was first established in 1903. They handle a large amount of valuable property and represent the J. B. McKinney Land Investment Co., of the famous Yazoo Valley, Memphis, Tenn., and Northwestern Land Co., of Minneapolis, Minn., and do an extensive fire insurance business, representing as special agents the Mercantile of Boston; Assurance of America, of New York; Newark, of Newark, and Pelican, of New York. Mr. F. C. Lawrence was born in Ohio and educated in Bloomington public schools. Previous to his present business he was employed by Uncle Sam as mail carrier. A. B. Lawrence was born in Bloomington in 1882 and was here educated, and since leaving school has worked at civil engineering some, and then went into his present line. Both gentlemen are enterprising and influential citizens and successful business men and by genial, courteous manners, have won deserved popularity with all classes.

JUDY & TYLER

Among the leading real estate dealers in Bloomington, there is none who have been more active in the work of building the city than Messrs. Judy & Tyler, the widely and favorably known real estate and loan agents and insurance underwriters, whose office is located in the Hanna Building. They handle a large amount of valuable and most desirable property and are also emigration agents for the Illinois Central R. R., and make a specialty of lands adjacent to it, and do an extensive business, representing as special agents the Milwaukee Mechanics' Fire Insurance Co. Mr. J. H. Judy was born in Logan county in 1846 and educated in the public schools, subsequently attending law school at Chicago. Mr. W. B. Tyler was born in El Paso, Ill., in 1867 and there educated. He is also a member of the Illinois Club and Court of Honor, of which he was state deputy for four years. Both gentlemen are influential citizens and successful business men and highly esteemed by all who know them.

JEWEL TEA COMPANY

Purity and excellence in all goods handled have always been the watchwords of the widely and favorably known Jewel Tea Co., established in 1901 and located at 511-12 W. Front street. Choice teas and coffees, spices, flavoring extracts and pure baking powder are dealt in and for reliability and general excellence of goods handled this concern is unsurpassed in this section of the state. The motto of the Jewel Tea Co., "Good goods at reasonable prices are better than poor goods at any price," is by no means unsupported by fact. Three courteous assistants are employed and all orders promptly attended to. Mr. H. H. Espenship, the efficient manager, is a native of Pennsylvania, born in 1875. Previous to his present business he was engaged in railroading. Mr. Espenship is a gentleman of pleasing personality, enterprising, progressive and up-to-date and is one of Bloomington's representative citizens.

R. A. WIELATZ

It is in keeping with a city like Bloomington with its many music stores that it likewise must have music studios and none surpasses in reputation that of R. A. Wielatz, 518 N. Main street, where piano and violin are taught at specialty being made of piano. Mr. Wielatz is a native of Bloomington born in 1871 and grad-



PROFESSIONAL MEN

DR. EDWIN P. SLOAN

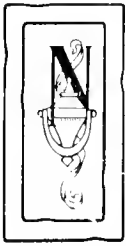
Dr. Edwin P. Sloan, prominent as physician and surgeon, was born in Kosciusko, Mo., in 1876. His early education was obtained in the public schools of his native town and subsequently studied medicine at the University Medical College, Kansas City, Polyclinic Post-Graduate College of New York, Polyclinic Post-Graduate College of Chicago and the University of Berlin, Germany. He came to McLean county in 1898 and became established in Bloomington in 1904, and although but a short time has elapsed since his establishment in our city, Dr. Sloan is steadily becoming widely and favorably known and gaining the confidence and esteem of our citizens. He makes a specialty of surgery and female diseases and has his well appointed offices in rooms 612-614 in the Gresham building. He is a member of the American Medical Association, Illinois State Medical Society and McLean County Medical Society.

uated from the University of Neb. in 1892, he is one of the popular teachers of central Ill., having followed the musical profession all his life, he is popular in both business and social circles.

F. J. WELCH, M. D.

Dr. F. J. Welch, one of Bloomington's most prominent general practitioners, was born in Morrow, O., in 1859. His early education was obtained in the schools of his native town. Subsequently he studied at the Chickering Institute of Cincinnati and also at the Ohio Medical Institute. He was at one time health officer in Bloomington and became established here in 1884. Among his fellow citizens of Bloomington, Dr. Welch is held in highest esteem and is a member of the McLean County Medical Society of which he was secretary 1893-94-95 and is also a member of the State Medical Society and is also a member of the K. of P. and Red Men. His well appointed office is located at Cor. Front and Main streets.

Normal: The Past Linked With the Present



NORMAL was founded by Jesse W. Fell, and incorporated into a town April 6, 1858.

May 7, 1857, the Normal University was located here, (the town at that time being called North Bloomington) which marks an epoch in the growth of the town.

It has since enjoyed a steady increase in population, and is now one of the most flourishing of the smaller towns in the state.

The schools of Normal, including a fine high school, rank with those of the larger towns, being well managed and housed in spacious and modern buildings.

Normal is well supplied with churches and the organizations are prosperous, and several of the houses of worship are very handsome and modern in every respect.

Fraternal organizations are well represented and are

strong in numbers, especially so considering the population of the town.

The Illinois Soldiers' Orphan Home is also located at Normal. This great charitable institution was dedicated on the 17th of June, 1869, and stands today as a monument to its originators. Four hundred children are happy and contented there, and are being educated to become useful men and women.

The town is governed economically and generally to the satisfaction of the citizens. It has excellent water service. The railroad service is good and the electric car facilities unusually excellent.

Normal is widely known for the fine nurseries located there and its famous horses.

The stores are generally largely stocked, the merchants enterprising and progressive. Some of the representative merchants are more particularly spoken of in the following pages.



MAIN BUILDING STATE NORMAL SCHOOL

DENNIS & KEADY

Contemplative purchasers of real estate are doubtless aware of the constant rise of desirable property in Normal and vicinity, but to become thoroughly informed as to the exact conditions of the real estate market they must consult a man who makes it a business to study the situation from all points of view. Such are Messrs. Dennis & Keady, the oldest established firm and the widely known general land and immigration agents, whose well appointed office is located at 119 North street. They have listed twenty thousand acres of Iowa lands and 100,000 acres of Canada lands and also have lands for sale or exchange in Missouri and the Dakotas. They also do an extensive business underwriting fire, life, tornado, plate glass and accident insurance and surety bonds and rentals. Messrs. C. A. Dennis and Alex Keady are both natives of Illinois and received their education in the public schools. Mr. Dennis is a member of the Yeomen and Mr. Keady is a member of the Masons and G. A. R. Both gentle-

men were previously engaged in farming and are energetic, enterprising and progressive business men and are highly esteemed citizens.

FRANK WARD

Carefully selected lines of general groceries, including the best makes of flour, unexcelled canned goods, bottled delicacies, and choice teas and coffees, are carried at the well stocked store of Mr. Frank Ward, at 112 North street. A specialty is made of the famous Chase & Sanborn's coffees and Wingold flour. Low prices always rule here, and no competitor excels either as to price or quality of goods. Floor space of 1,700 square feet is occupied, and four capable clerks are employed and careful attention given all patrons. Mr. Ward is a native of Illinois, born in 1872, and was educated in the public schools. He is known as a merchant of integrity and thorough reliability, and became established here in 1902. He is a member of the I. O. O. F., Modern Woodmen and Rebekahs and is highly esteemed by all who know him.

JAMES MILLER

Standing among the foremost of similar concerns in the city, and having a reputation for reliability and excellence of service unsurpassed, is the finely equipped barber shop and bath rooms conducted by Mr. James Miller, located in North street. Nothing is done here unless it is done properly, which accounts for the large patronage among a particular and discriminating class of men. Quick, clean shaving and cleansing shampooing is accomplished. Three chairs are operated and tedious waits avoided. The finely equipped bath rooms operated in connection are the finest in the city. Mr. Miller was born and educated in Indiana and was engaged in farming until ten years ago. He became established in Normal this year and is rapidly gaining a merited reputation for reliability and excellence of work performed. He is considered one of our most progressive business men, highly esteemed and is popular with his many patrons.



GEO. CHAMPION

Carrying an immense and varied stock, doing a large volume of business annually and employing modern and progressive methods, the widely known hardware house of Mr. Geo. Champion, corner Ash and Linden streets, occupies a leading position among similar concerns in this section of the state. Hardware of every description is carried, stoves and ranges, cutlery, paints, oils, varnishes, also garden, flower and field seeds of every description. A specialty is made of the Bloomington Stove Co's heaters and cook stoves. A well equipped sheet metal shop is also operated in connection with the store, where all kinds of tin and sheet metal work is performed. The business was established in 1867, and ever since

JAMES H. WILLIAMS

For richness of stock and general excellence of goods shown, no jewelry house in Normal surpasses that of Mr. James H. Williams, located at 121 North street. The business became established in 1888 and has steadily maintained a merited reputation for reliability of goods and reasonable prices, second to none. Carefully selected and modern lines watches, clocks and jewelry of every description are carried and a side line of cigars, stationery and choice confectionery. A specialty is made of fine watch and clock repairing and Mr. Williams does all the clock repairing for the schools and Soldier's Home. He was born in Lincoln, Ill., in 1868 and was educated in the Normal public schools. Previous to his present business he was employed as traveling salesman and is known as an energetic and progressive business man, alert to the demands of the public, and is representative of Normal's best citizenship.

J. F. CRICHFIELD

Well located in Beaufort street, there is no more popular place in the city at which to get boot and shoe repairing done than at the well equipped shop of Mr. J. F. Crichfield. Nothing is done at this shop unless it is done properly, and this accounts for the large patronage among a discriminating and particular class of people. Shoes are also made to order and every patron is assured satisfaction in every particular. Two experienced assistants are employed. Mr. Crichfield is a native of Indiana, born in 1877, and obtained his education in the public schools. He was formerly engaged in farming and became established as at present in 1901 and has built up an extensive and high class business. He is one of Normal's most highly esteemed citizens and is a member of the Yeomen of America.

AUGUSTINE & CO., NURSERY

Widely and favorably known throughout the United States, for the reliability and genuineness of its products, is the Augustine & Co. Nursery at Normal, Ill. The firm was established in 1867 and incorporated in 1902 with a capital stock of \$50,000. The office and packing grounds are located at the junction of the I. C. and C. & A. railroads and a large shipping trade is carried on, the products of this nursery being shipped to every state in the Union. Each year the business increases in patronage. A specialty is made of the famous Sudduth pear, of which this company are exclusive propagators. Fruit trees of all kinds are dealt in, also small fruits, such as berries of every description, ornamental shrubs and bulbs, roses, climbing shrubs and vines, weeping trees, evergreens, and every kind of nursery stock. The orchards and packing grounds cover an area of between 100 and 500 acres and from 25 to 50 thoroughly experienced men are employed. The nurseries and grounds are inspected annually and a certificate of inspection accompanies every shipment. Mr. Henry Augustine, president and manager of the firm, was born in Pennsylvania and went to Fulton county in 1857. He served with distinction four years in the army as captain of Company A, 55th Illinois. He was at one time in the drug business in Canton and came to Normal about thirty years ago and later became established in his present business. Mr. Augustine is prominent in commercial and financial circles and is closely identified with the best welfare of Normal and a firm believer in her future.

O. R. ERNST

Carrying the largest and choicest stock of imported and fancy groceries in the county, complete lines of staple groceries and provisions of every description, and having an unrivaled reputation for efficiency of service, quotation of moderate prices and metropolitan business methods, the store of O. R. Ernst, 118 North street, occupies a foremost position among similar concerns. Standard brands of canned goods, such as the Royal Blue line, superior table condiments, home-made jellies and bottled delicacies, farm and orchard products, breakfast foods, and select teas, coffees and spices are kept. A specialty is made of Spurr's Revere coffees, which are known the world over, and also Marshall's Best Flour, which is bought in car load lots, thus enabling him to compete with the largest concerns in the state. The heavily stocked salesroom rivals in appearance an up-to-date food fair, and six courteous and capable clerks are employed. The business was established as at present in 1901 by Mr. Ernst and has constantly increased in patronage and public approval. Mr. Ernst was born in Carlisle, Pa., in 1889 and was there educated, and since leaving school has spent three years in a wholesale notion house in Pennsylvania and three years in the grocery business in Iowa. He is considered one of Normal's most progressive business men, highly esteemed by all who know him, and is a member of the M. W. A.

WALTER H. CLARK

Mr. Walter H. Clark, our widely and favorably known Justice of the Peace, is a native of McLean county, born in 1844 and here educated and also attended Abingdon College at Abingdon, Ill. He became established here in 1900 and has well appointed offices in room 1, Headquarters building. Mr. Clark is one of our public-spirited citizens, always interested in the city's welfare, and previous to his present vocation was com-

stable for four years. He also served with distinction three and one-half years in the civil war in Company E, 52nd Illinois. He is prominent in financial and social circles and is a member of the G. A. R., having been commander of Post 116 in 1898.

McKNIGHT & McKNIGHT

One of the most popular as well as one of the most attractive stores in Normal is that of Messrs. McKnight & McKnight, which is located at the southeast corner of North street and Broadway, and which is headquarters for books and fine stationery. Fine confectionery is also carried and a handsome soda fountain is operated in connection. A specialty is made of school books and stationery. The store occupies 1320 square feet of floor space and is heavily stocked with high-grade goods. Three competent assistants are employed. The proprietors of this institution are Mr. McKnight and his sister, both of whom are natives of Illinois. Mr. McKnight has been agent for the Daily Pantagraph newspaper of Bloomington for fourteen years, having entire charge of their subscription list, advertising and correspondence and other business in Normal. The paper has 539 regular subscribers within the incorporate limits of the town. Mr. McKnight and his sister are of pleasing personality, courteous and liberal and enjoy the highest esteem of their many friends and patrons.

JESSE BLACKBURN

One of the old established and widely known concerns in Normal devoted to the handling of coal, lumber and builders' hardware and supplies, is the house of Mr. Jesse Blackburn, whose office and yards are located at the corner of N. Linden and Ash streets. The business was established in 1866 and he has ever since conducted business at this location. A specialty is made of coal, both hard and soft, and prices are kept down within the reach of all. Three capable assistants are employed. Mr. Blackburn has been in this business a number of years and thoroughly understands every detail of the business. He was born in Pennsylvania in 1829 and there educated. He was a member of the city board for five years and a member of the school board for three years, and is progressive and enterprising and highly regarded both as a business man and citizen.



H. E. BALDWIN
Business Manager Bloomington Souvenir

S. MOOTS

High grade, correct style harness, made to order, is a specialty at the well-known house of Mr. S. Moots, located at the corner of Linden and Beauford streets, manufacturer of harness and dealer in saddles, collars and stable furnishings. Carefully selected lines of tobes, whips, blankets, mats, etc., are carried and sold at the lowest possible prices, a fact widely known to owners of horses in Normal and vicinity, many of whom patronize this concern exclusively. Two skilled workmen are employed and floor space of 2200 square feet is occupied. Mr. Moots was born in Ohio in 1827 and there educated. He was formerly engaged in farming. Mr. William Hasslinger, the efficient manager, is a native of Illinois and has been employed with Mr. Moots for two years. He is thoroughly experienced and has built up a successful business and merited and received the approval of the people. Both gentlemen are known as business men of integrity and are highly esteemed in the community.

E. M. GREGORY

Scientific plumbing is now an essential and one of the most important features of all modern building operations a fact duly recognized by state authorities and boards of health. A local plumber who follows all modern methods and progressive ideas respecting sanitary plumbing is Mr. E. M. Gregory, whose finely equipped supply house is located on E. Beauford street. Steam, gas and water piping of every description is executed and general plumbing is done. Four skilled workmen are employed and floor space of 1250 square feet is occupied. Mr. Gregory is a native of Bloomington, born in 1877, and educated in the public schools. He has followed the plumbing business a number of years and became established here in 1899. He is known as one of Normal's most up-to-date business men and is a member of the Modern Woodmen and K. of C.

WILLIAM BRUSCH

With the well-dressed men of Normal there is no more popular house than that of Mr. William Brusch, whose well equipped store is located at 318 E. Beauford street. Mr. Brusch established his business in 1898 and has ever maintained a merited reputation for the excellence of his work and style and fit of his creations. Cleaning, pressing and repairing is a specialty and patrons rest assured that the work will be thoroughly satisfactory. Floor space of 750 square feet is occupied and one experienced assistant is employed. Mr. Brusch was born and educated in Germany. He is a thoroughly experienced tailor, having been engaged in the business for thirty-three years. He is a well-known and highly respected citizen and substantial business man and is a valued member of the Modern Woodmen of America.

Makers of the Bloomington Souvenir

FRANK I. MILLER

Established in 1898, the printing office of Mr. Frank I. Miller, 318 N. Center street, in its particular lines of endeavor—commercial and society printing is unexcelled. The office is fitted with the latest and most stylish faces of type, modern and fast presses driven by electricity, and has facilities for high grade work of every description, including book and catalogue work, fancy calling cards, wedding invitations, etc. The motto of this reliable establishment is, "Good work at the right price is better than poor work at any price." In order to accommodate more trade Mr. Miller is preparing to remove his office to No. 220 West Jefferson street, where it will occupy 2300 sq. feet of floor space.

A. E. STOUT

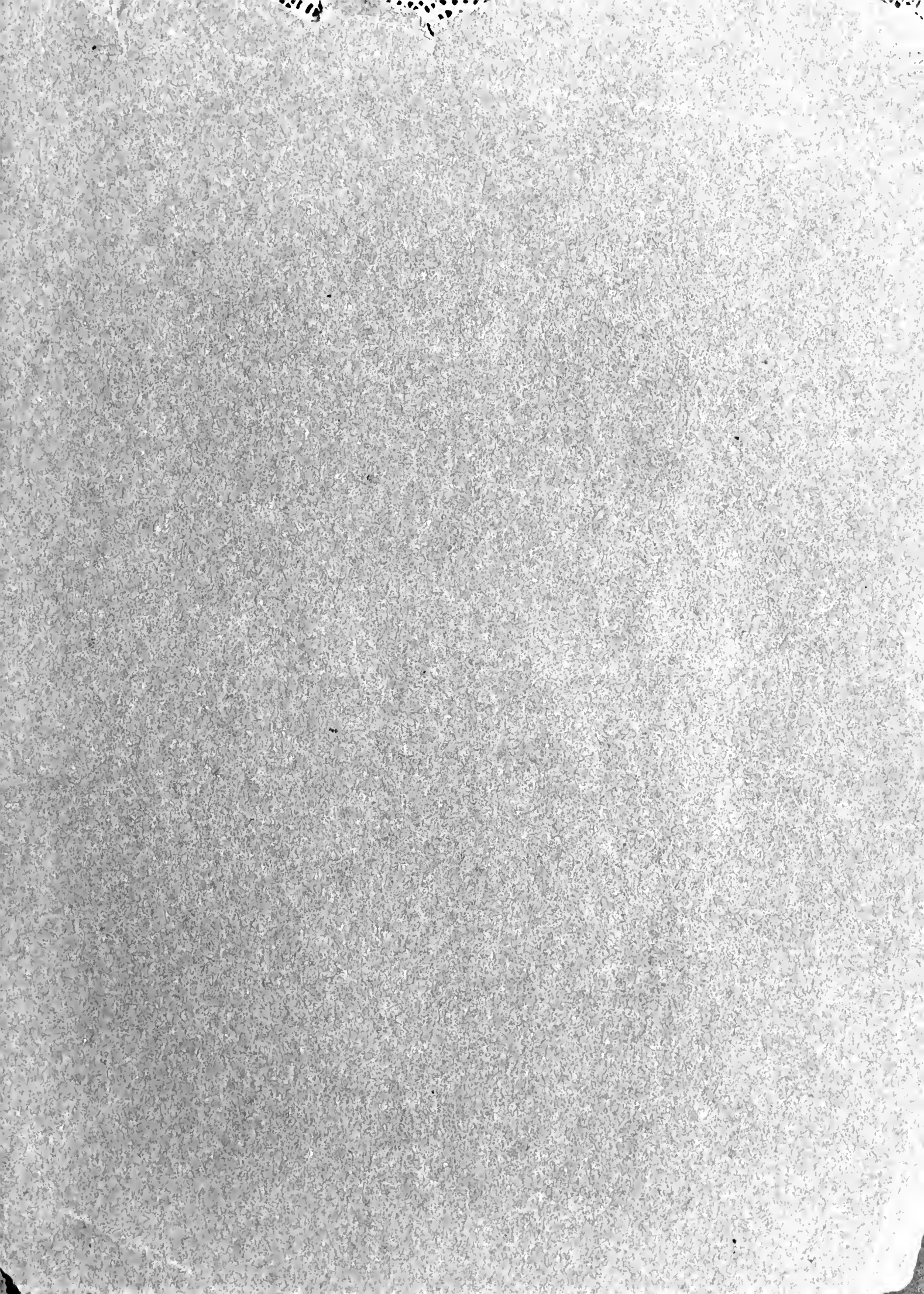
In every community the well-ordered pharmacy is a necessity, and the skilled pharmacist a most important factor. But in order to be of the greatest value the stock carried in the pharmacy must be of the highest quality and the skill and honesty of the pharmacist unquestioned. Normal is fortunate in possessing both in that of Mr. A. E. Stout, located at the southeast corner of North street and Broadway. Pure drugs and chemicals, rubber goods, toilet articles, perfumes are carried; also a nice line of jewelry, fine imported and domestic cigars, bicycles, supplies and cameras and supplies. A specialty is made of physicians' prescriptions, the purest drugs and chemicals only being used. The store was first established in 1895 and as at present in 1900 and occupies 1360 square feet of floor space. Mr. Stout is a native of Illinois, born in 1871, and educated in the public schools. He has been engaged in the drug business for nearly thirteen years and is considered a skillful and painstaking pharmacist and is a highly esteemed citizen. He is a member of the K. of P., Yeomen, Maccabees and M. W. A., of which he has been clerk for three years.

AUGUST FISSEL & SON

The well stocked grocery store of Messrs. August Fissel & Son, at 107 Beauford street, is one of the most popular in the city, carrying as it does high-grade goods sold at the lowest market prices. Staple and fancy groceries, including leading brands of flour, superior canned goods, choice teas and coffees are carried, also a fine line of cigars and tobacco. A specialty is made of feed. This is one of Normal's oldest mercantile establishments, being established in 1874. Three capable clerks are employed and floor space of 5000 square feet is occupied. Mr. August Fissel was born in Germany in 1841 and there educated. He is an experienced groceryman, having followed this line for many years. Mr. Fred Fissel is a native of Illinois, born in 1881, and educated in the public schools. Since leaving school he has been engaged in the grocery business with his father. He is a member of the Modern Maccabees. Both father and son are known as progressive business men and since the establishment of their store in 1874 have steadily gained in reputation for the reliability and excellence of goods carried, and are representative of the city's best citizenship.



C. L. FREEMAN
Circulation Manager Bloomington Souvenir





THE ILLINOIS