

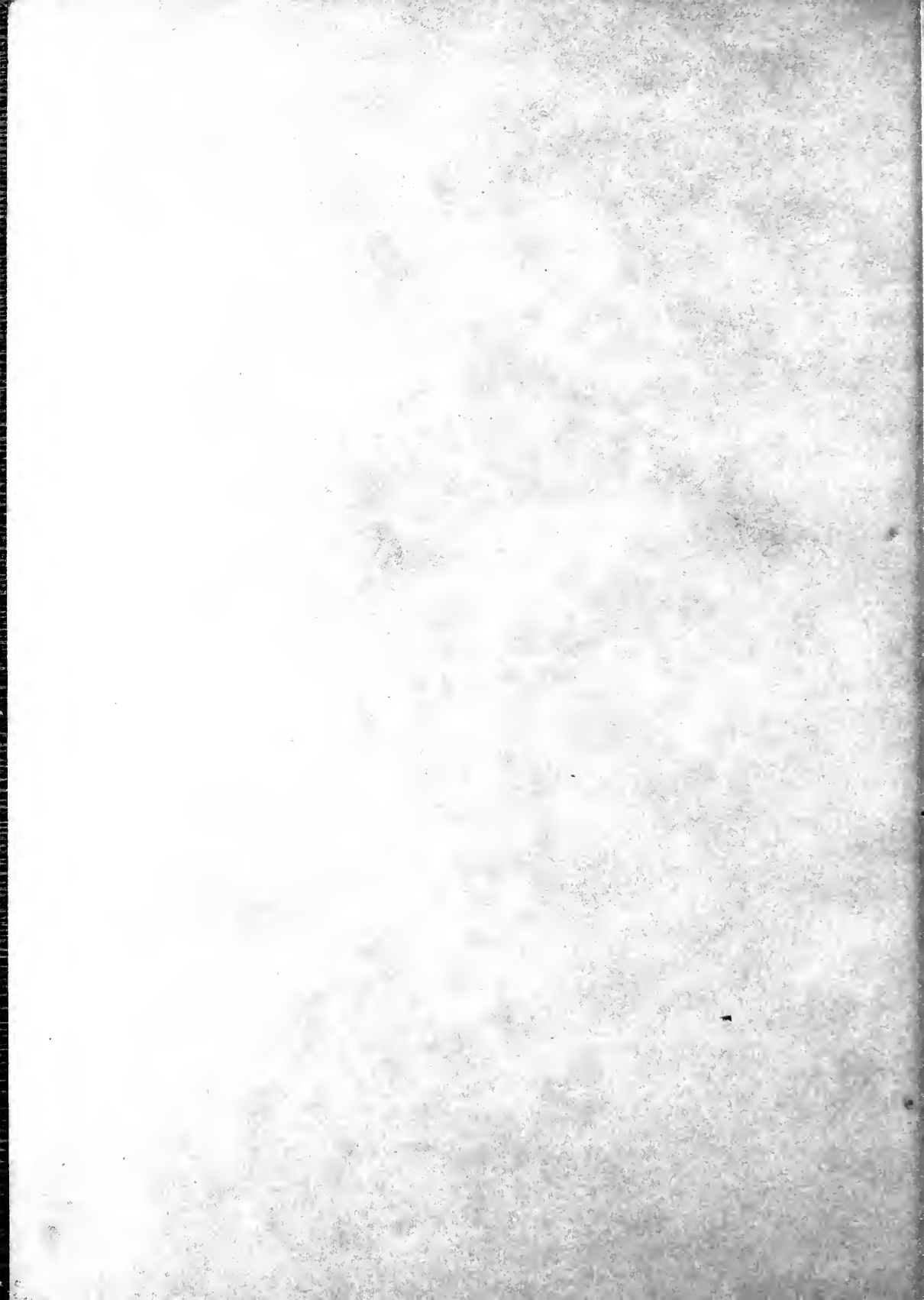


BOBASHELA

1925









## Alma Mater

*Alma Mater, dear old Millsaps,  
Loyal sons are we;  
Our fond hearts are thine alone,  
And ever more shall be.  
Proud art thou in classic beauty  
Of thy noble past.  
With thy watchword, Honor, Duty,  
Thy high fame shall last.*

*Ev'ry student, man and maiden,  
Swell the glad refrain,  
Till the breezes, music-laden,  
Waft it back again.  
Proud art thou in classic beauty  
Of thy noble past.  
With thy watchword, Honor, Duty,  
Thy high fame shall last*

# THE BOBASHELA

NINETEEN  
TWENTY-FIVE



*Published by Senior Class  
of  
Millsaps College  
Jackson, Miss.*







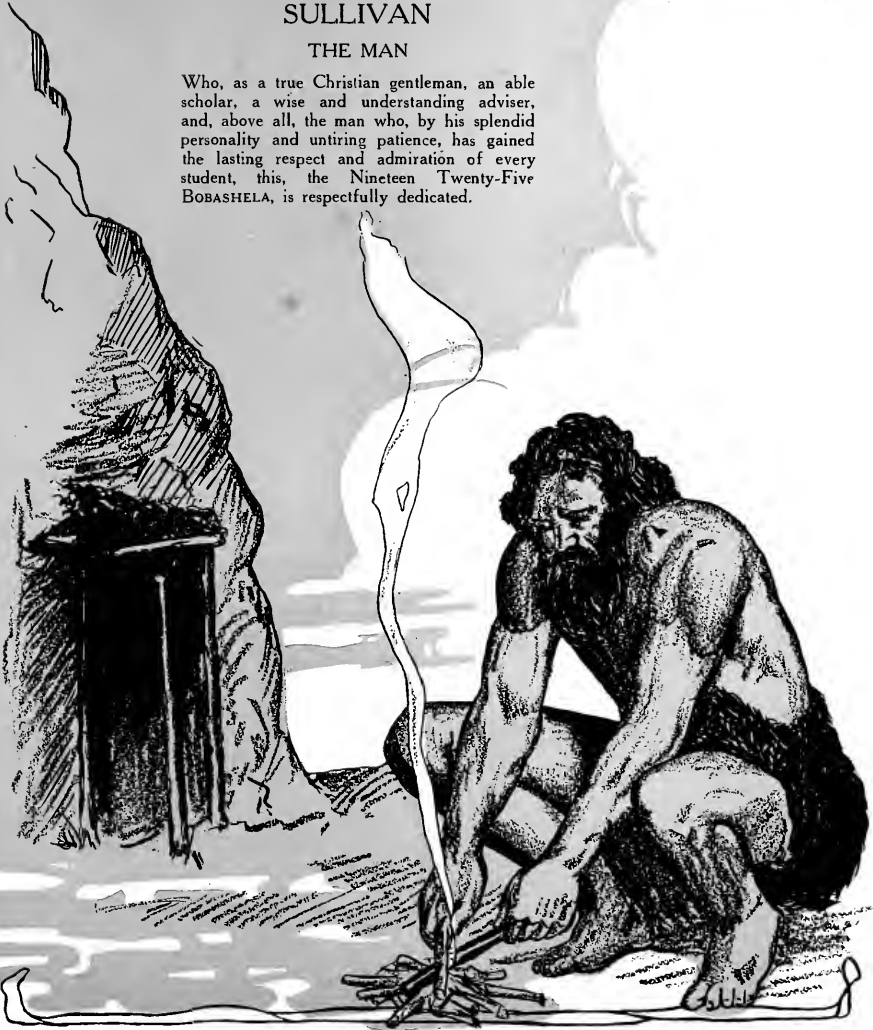
# DEDICATION

To

DR. JOHN MAGRUDER  
SULLIVAN

THE MAN

Who, as a true Christian gentleman, an able scholar, a wise and understanding adviser, and, above all, the man who, by his splendid personality and untiring patience, has gained the lasting respect and admiration of every student, this, the Nineteen Twenty-Five BOBASHELA, is respectfully dedicated.





### The Bobashela Staff, 1925

- |                              |                                   |
|------------------------------|-----------------------------------|
| H. G. SIMPSON . . . . .      | <i>Editor-in-Chief</i>            |
| WALTER SPIVA, JR. . . . .    | <i>Associate Editor</i>           |
| BETHANY SWEARINGEN . . . . . | <i>Class Editor</i>               |
| R. H. BENNETT . . . . .      | <i>Sport Editor</i>               |
| J. C. SATTERFIELD . . . . .  | <i>Sport Editor</i>               |
| EMILY PLUMMER . . . . .      | <i>Feature Editor</i>             |
| GEORGE JONES . . . . .       | <i>Photographic Editor</i>        |
| W. W. LESTER . . . . .       | <i>Business Manager</i>           |
| H. L. JONES . . . . .        | <i>Assistant Business Manager</i> |

# FOREWORD

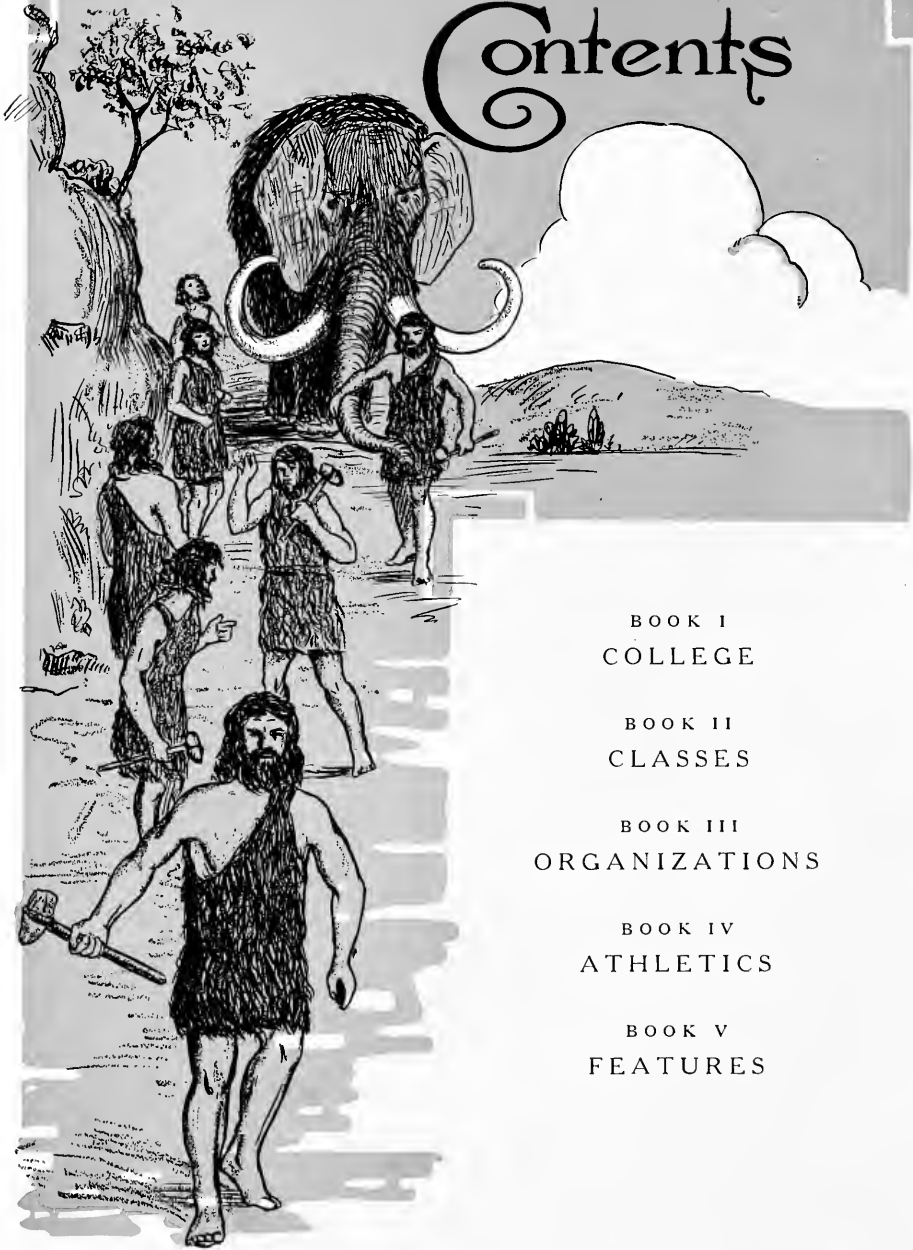
Our happiness cannot always be satisfied by lingering within college walls and dreamily looking forward to the future into which we must pass.

And after we have been encompassed with that galaxy of problems which await us, and as the evening time of life draws on, it should be as the sight of land to a ship-wrecked sailor to take from the shelf a copy of the Nineteen Twenty-Five BOBASHELA, imperfect in its make-up and crude in its form, and, forgetting the errors of the book, be able to spend a few hours living over, as it were, those days spent in Majordom.

For no other purpose have we made this book.



# Contents



BOOK I  
COLLEGE

BOOK II  
CLASSES

BOOK III  
ORGANIZATIONS

BOOK IV  
ATHLETICS

BOOK V  
FEATURES

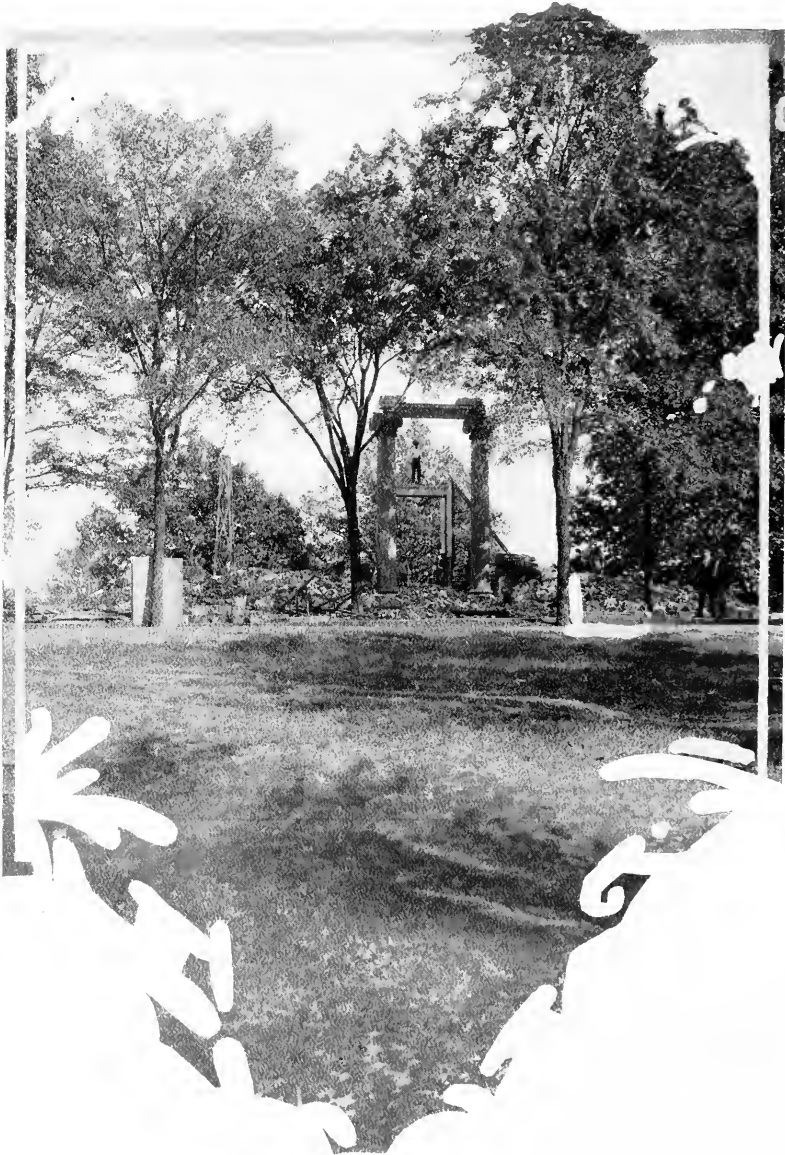


College





ADMINISTRATION BUILDING



PORTALS OF THE PAST





DORMITORY



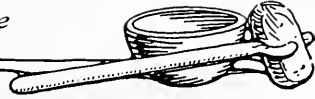
#### LOVER'S LANE

On Sabbath evening, once again,  
The Angelus is tolling;  
While down our leaf-strewn Lover's-lane,  
Young jads and maids go strolling.

I try to tell, but all in vain,  
How much my heart has missed you  
Since that last day down Lover's-lane,  
When first I held and kissed you.

How sweet the thrush upon the hill  
When lips met lips caressing,  
But sweet as that and sweeter still,  
Were your soft lips confessing.

No balm has come to still the pain,  
Though still the thrush is singing;  
And, 'midst the peace of Lover's-lane,  
The Angelus is ringing. R. W. T.



8:30 A.M.



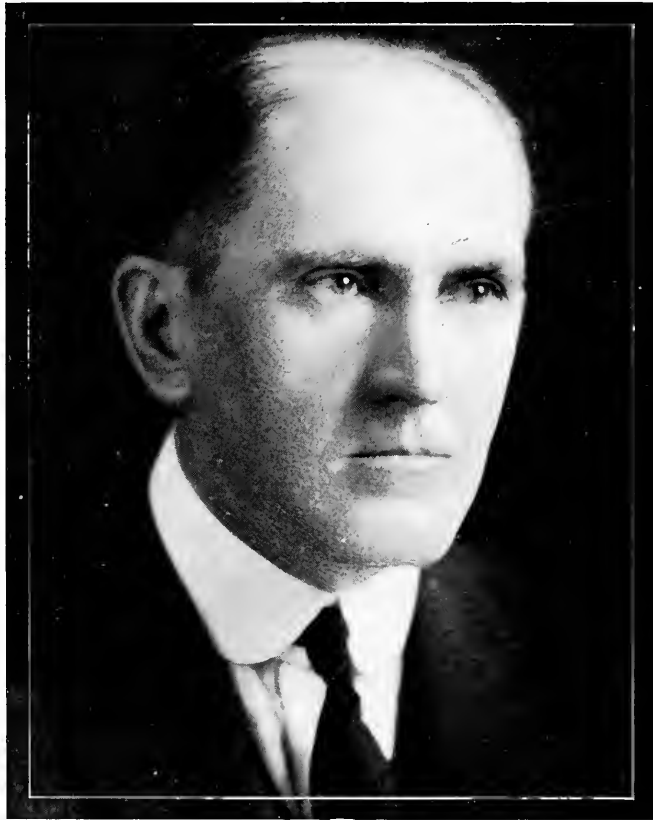
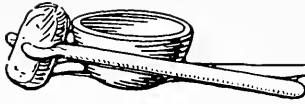
14½ MINUTES LATER.



9 A.M.

F.V. VAUGHAN '26.





DAVID MARTIN KEY, Ph.D.  
*President*





## Faculty

ALBERT GODFREY SANDERS, A.B., A.M.

*Professor of Romance Languages*

A.B., Southwestern, 1904; Professor, Peacock School, Atlanta, Ga., 1905-06; Yale Graduate School, 1907; Oxford, 1908-09; Lit. Hum., Oxford, 1910; A.M., Yale, 1912; Professor, Emory College, 1912-13; A.M., Oxford, 1914; Professor of Languages, Emory and Henry, 1913-19; Professor of Romance Languages, Millsaps College, since 1919. Sigma Upsilon.

BENJAMIN ERNEST MITCHELL, A.M., Ph.D.

*Professor of Mathematics*

A.B., Scarritt-Morrisville, Missouri, 1900; Scholastic Fellow, Vanderbilt, 1906-07; Teaching Fellow, Vanderbilt, 1907-08; A.M., Vanderbilt, 1908; Professor of Mathematics, Scarritt-Morrisville, 1908-12; College of the City of New York, 1912-13; Instructor, Columbia Extension Teaching, 1913-14; Professor of Mathematics, Millsaps College, since 1914; Ph.D., Columbia University, 1916; On Leave, Army Y. M. C. A. Work, Director of Athletics at Camp Oglethorpe, Ga., 1918. Alpha Tau Omega.

JOHN MAGRUDER SULLIVAN, A.M., Ph.D.

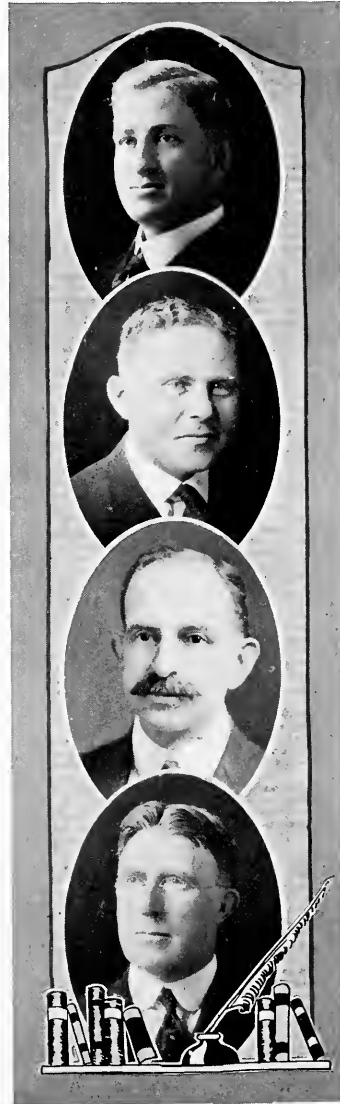
*Professor of Chemistry and Geology*

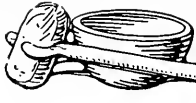
Assistant Astronomy, Vanderbilt, 1886-87; A.B., Central College, 1888; Professor of Natural Science, Centenary, 1889-1902; A.M., Vanderbilt, 1896; Ph.D., Vanderbilt, 1900; Professor of Chemistry and Geology, Millsaps College, since 1902; Graduate Student, Chemistry and Geology, University of Chicago, Summers 1907-11; Member Chemical Society; American Association for the Advancement of Science; National Geographic Society; Methodist Historical Society of Mississippi. Delta Tau Delta.

GEORGE LOTT HARRELL, B.S., M.S.

*Professor of Astronomy and Physics*

B.S., Millsaps College, 1899; Professor of Science, Whitworth College, 1899-1900; Professor of Physics and Chemistry, Hendrix College, 1900-02; M.S., Millsaps, 1901; Professor of Physics and Chemistry, Centenary College, 1902-04; Professor of Mathematics, Epworth University, 1904-08; Professor of Mathematics, Centenary College, 1908-09; President, Mansfield Female College, 1909-10; Professor of Science, Winfield High School, 1910-11; Professor of Mathematics, L. S. U., Summer 1911; Professor of Astronomy and Physics, Millsaps College, since 1911; Member of American Association for Advancement of Science; Member of Astronomical Society. Kappa Sigma.





## Faculty

DAVID MARTIN KEY, A.M., Ph.D.

*Professor of Ancient Languages*

A.B., Central College, 1898; Professor, Ancient Languages, Pacific Methodist College, 1900-02; Professor, Ancient Languages, Morrisville College, 1903-05; Fellow and Assistant, Latin and Greek, Vanderbilt, 1906-07; A.M., Vanderbilt, 1907; Professor of Ancient Languages, Southern University, 1907-15; Graduate Student University of Chicago, 1913-14; Professor of Ancient Languages, Millsaps, since 1915; Ph.D., University of Chicago, 1916; Vice-President, Millsaps, 1923; President, Millsaps, since 1924.

MILTON CHRISTIAN WHITE, A.B., A.M.

*Professor of English*

A.B., Southern University, 1910; A.M., Harvard, 1914; Professor of English, Alabama Presbyterian College, 1915-18; Professor of History and Political Science, Austin College, 1918-20; Professor of English, Millsaps, since 1920. Kappa Alpha; Sigma Upsilon.

ALFRED PORTER HAMILTON, A.M., Ph.D.

*Professor of Greek and German*

A.B., Southern University, 1908; Assistant Professor of Ancient Languages, Southern University, 1908-09; Graduate Student, University of Leipzig, 1909-10; Harrison Fellow in Latin, University of Pennsylvania, 1910-11; Harrison Fellow in Indo-European Comparative Philology, University of Pennsylvania, 1911-12; Professor of Latin and German, Woman's College of Alabama, 1912-17; Student University of Chicago, Summer 1914; Professor of Greek and German, Millsaps, since 1917; Ph.D., University of Pennsylvania, 1923. Kappa Alpha.

GEORGE W. HUDDLESTON, A.B., A.M.

*Associate Professor of Latin and Greek*

A.B., Hiwassee College, 1883; Professor of Greek, Hiwassee College, 1884-91; A.M., Hiwassee College, 1886; Professor, Harperville College, 1891-93; Professor of Ancient Languages, Millsaps Preparatory School, 1900-22; Associate Professor of Latin and Greek, Millsaps College, since 1922. President of Mississippi State Board of Teachers' Examiners.





## Faculty

JOHN FRANKLIN WALKER, A.M., Ph.D.

*Professor of Education*

A.B., Albion College, Michigan, 1896; A.M., University of Arizona, 1916; Instructor, Northern Arizona Normal Schools, 1916-23; Graduate Student, Stanford University, 1922-23; Graduate Student, University of California, 1923-24; Ph.D., University of California, 1924; Professor of Education, Millsaps, since 1924. Phi Delta Kappa; Tau Psi Epsilon.

JAMES REESE LIN, A.B., A.M.

*Professor of Philosophy and History*

A.B., Emory College; Fellow, Vanderbilt, 1894-96; A.M., Vanderbilt University; Professor of Philosophy and Education, Central College, Missouri, 1909-10; Sage Fellow, Cornell University, 1910-12; Instructor in English Literature and Philosophy, Tulane, Summer 1909; Summer Terms, Columbia University, 1908-10. Kappa Alpha. Square and Compass.

JACOB THOMAS HOOKER, A.B., M. R. E.

*Associate Professor of Religious Education*

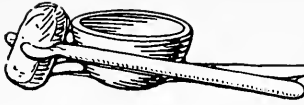
A.B., Wofford College, 1918; M.Re., Boston University, 1924; Associate Professor of Religious Education, Millsaps, since 1924.

ROSS HENDERSON MOORE, B.S., M.S.

*Assistant Professor of Chemistry and History*

B.S., Millsaps, 1923; M.S., Millsaps, 1924; Assistant in Chemistry, Millsaps, 1923-24; Summer Quarter Graduate School, University of Chicago, 1924; Assistant Professor in Chemistry and History, Millsaps, since 1924. Sigma Upsilon.





## Faculty

MRS. FADRA HOLMES WILSON, A.B., A.M.

*Dean of Women*

Student, Columbia University, 1911-12; Critic, English Department, State Normal, Natchitoches, La., 1912-13; Supervisor Training School, Carbondale, Ill., 1913-20; A.B., Tulane, 1921; A.M., University of Mississippi, 1924; Dean of Women and Associate Professor of English, Millsaps, since 1924.

MRS. C. A. BOWEN, A.B.

*Assistant Professor of French*

A.B., Woman's College of Alabama, 1919.

VERNON BURKETT HATHORN, B.S.

*Bursar*

B.S., Millsaps, 1915; Professor of Science and Athletic Coach, Missouri Military Academy, 1914-16; Graduate Student, University of Missouri, 1915-16; Instructor and Athletic Coach, Sea Shore Camp Ground, 1916-17; Mississippi Educational Association, Shriner; Kappa Sigma.

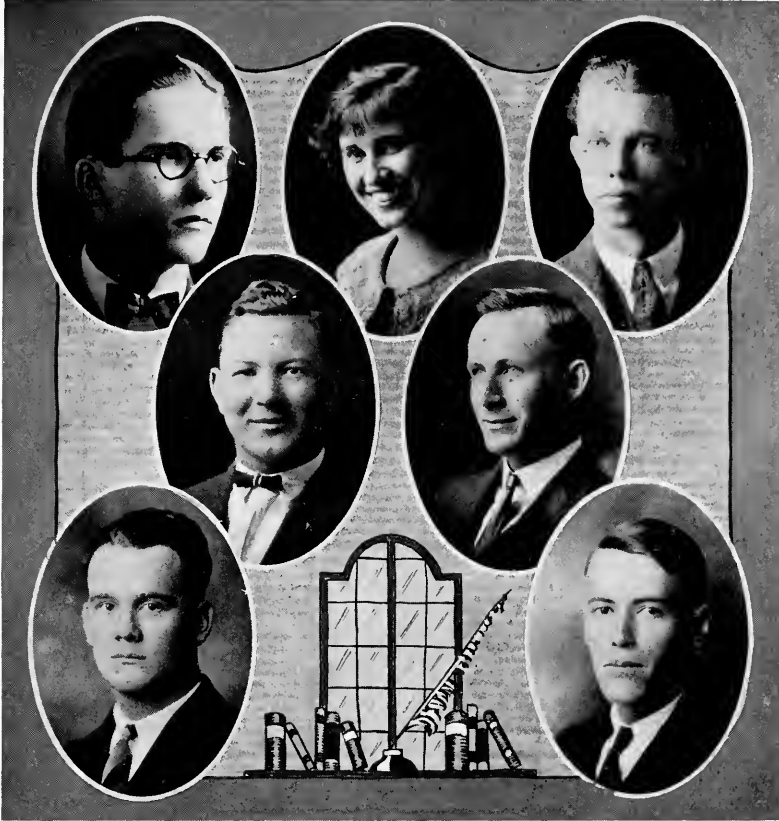
MRS. MARY BOWEN CLARK, A.B.

*Librarian*

A.B., Millsaps College; Coaching Latin and French. Phi Mu.



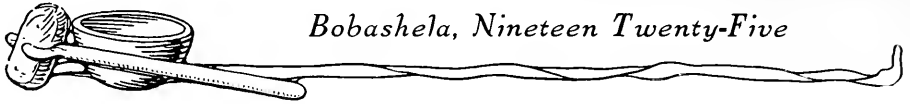




### Student Assistants

THELMA TOLLES . . . . .	Latin
H. G. SIMPSON . . . . .	Chemistry
A. L. WEEMS . . . . .	Mathematics
M. S. WATSON . . . . .	Bible
J. B. PRICE . . . . .	Chemistry
C. A. TATUM . . . . .	Mathematics
M. B. SWAYZE . . . . .	Mathematics





# Board of Trustees of Millsaps College

## OFFICERS

- BISHOP W. B. MURRAH . . . . . *President*
- J. B. STREATER . . . . . *Secretary*
- W. M. BUIE . . . . . *Treasurer*

## TERM EXPIRES IN 1926

- REV. R. E. ALFORD . . . . . Newton
- REV. W. W. WOOLARD . . . . . Starkville
- J. T. CALHOUN . . . . . Jackson
- W. B. KRETSCHMAER . . . . . Greenville
- REV. M. L. BURTON . . . . . Jackson
- REV. J. R. COUNTISS . . . . . Granada
- W. M. BUIE . . . . . Jackson
- W. T. ROGERS . . . . . New Albany

## TERM EXPIRES IN 1929

- REV. M. M. BLACK . . . . . Richton
- M. S. ENOCHS . . . . . Jackson
- J. LEM SEAWRIGHT . . . . . Ackerman
- REV. O. S. LEWIS . . . . . Laurel
- REV. L. P. WASSON . . . . . Water Valley
- REV. J. T. LEWIS . . . . . Sardis
- T. B. LAMPTON . . . . . Jackson
- J. B. STREATER . . . . . Black Hawk

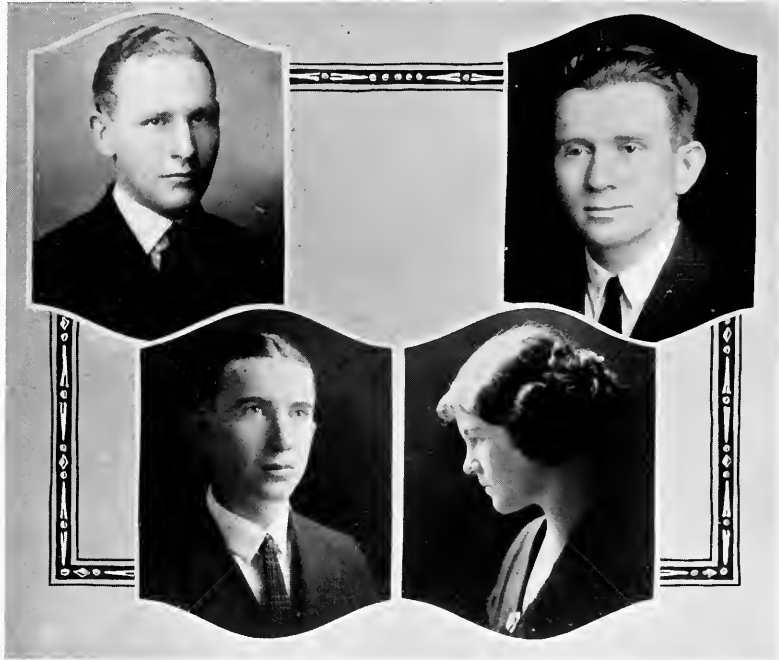
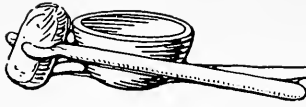




*Classez*





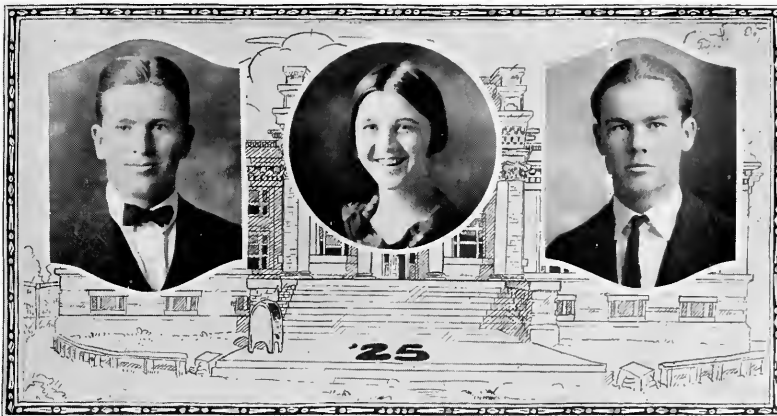
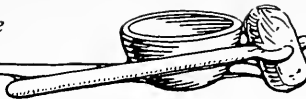


Senior Class

OFFICERS

- |                          |                       |
|--------------------------|-----------------------|
| M. L. BRANCH . . . . .   | <i>President</i>      |
| W. P. WOOLLEY . . . . .  | <i>Vice-President</i> |
| MARY DAVENPORT . . . . . | <i>Secretary</i>      |
| W. H. PHILLIPS . . . . . | <i>Treasurer</i>      |





SHELLIE MARSHALL BAILEY, B.S.,  $\Theta$  K N . . . . . Harpersville, Miss.

Basketball, '23, '24, '25; Captain Freshmen, '23; Manager Varsity, '24; Captain Varsity, '25; Football, '24, '25; Base-ball, '23, '24, '25; Captain Freshmen, '23; Track, '23, '24, '25; Student Government Board, '25; All One Club; Square and Compass; Three-Year Student.

The ever-ready smile and wit of "Senor," with his record as a four-letter man and on the All-One list at least once, make this Harpersville product one of the most popular men in school. His favorite indoor sport is reading English parallels before breakfast.

BESSIE D. BOWLING, B.S. . . . . Harpersville, Miss.

Freshman Commission, '23; Girls' Glee Club, '24; Y. W. C. A.

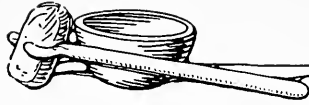
Bessie D. has made herself known and heard from her first day in school. The good part about it is that she is the kind of person you like to know, and who says things that are good to hear and are delightful to remember. We will always recall our "little classmate" with pleasure. Keep on being and saying, Bessie D.

ROBERT H. BENNETT, B.S. . . . . Durant, Miss.

L. L. S.; Right Royal Ramblers; Bobashela Staff, '25; after two years' trying, passed Chemistry I.

An ineradicable grin, especially for the ladies, has gone a long way in winning friends for "Bob" at Millsaps. Friendliness and optimism, balanced by study and college spirit, have made his Millsaps record an enviable one.





## Bobashela, Nineteen Twenty-Five



MARION L. BRANCH, A.B.,  $\Sigma Y$  . . . . . Winona, Miss.

L. L. S.; Freshman Debater, '23; Mid-Session Debater, '24; Mississippi Debater, '25; Vice-President, '25; Y. M. C. A.; Delegate to Blue Ridge, '24; Cabinet, '25; P. & W. Staff, '25; Right Royal Ramblers; Alpha Pi Sigma; President Senior Class.

When you say of a man that he is good to look upon and Senior Class president, you have said more than is good for him to hear. But in this well-balanced branch of mankind it seems safe to commit ourselves further by acknowledging that his honors were actually won.

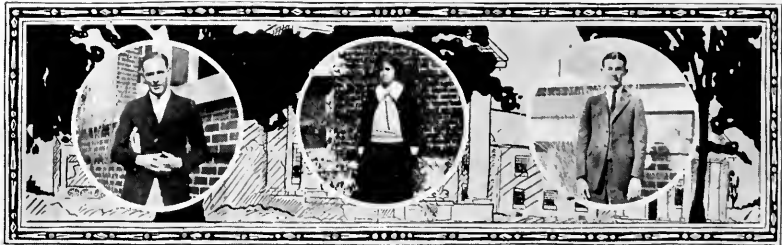
KATHLEEN CARMICHAEL, B.S. . . . . Utica, Miss.

Kathleen sits calmly and takes in everything and then when she gets ready to speak out, it would be well for everyone to stop and hear. Her geniality and outstanding scholarship make her a much-liked and highly valued member of the Nineteen Twenty-five Class.

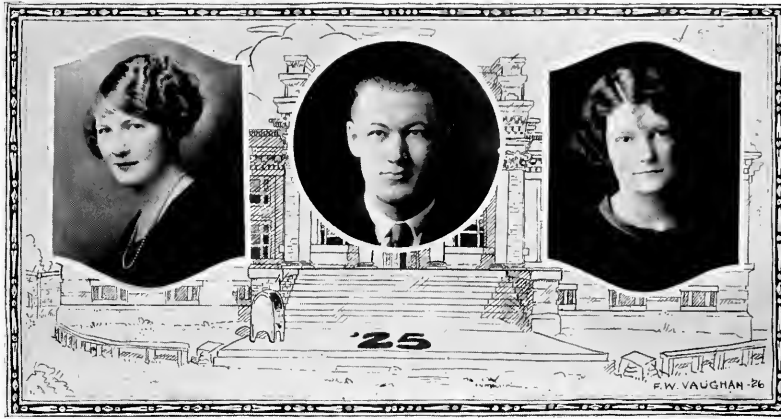
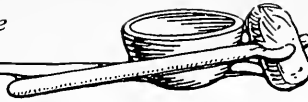
MARCUS L. BURKS, B.S. . . . . Blue Mountain, Miss.

G. L. S.; Track Team, '22, '23, '24, '25; "M" Club; Student Government Board, '23, '25.

Burks has gained, through practice, the reputation of a quiet, companionable fellow who knows his friends and likes them. They are numbered by the student body of Millsaps. He plays a nice game of basketball and was one of the Millsaps representatives at Atlanta in S. I. A. A., 1922.







CORALIE MAY COTTON, A.B. . . . . Jackson, Miss.

Girls' Glee Club, '23, '24, '25; Vice-President, '23; Business Manager, '24; Basketball, '22, '23; Y. W. C. A.; Eastern Star, Chy Kia.

Coralie dares to do what she pleases. Why shouldn't she, since she pleases to do such interesting and attractive things? Nothing commonplace, anyway! And, above all, she has done college in three years. We predict an eventful and useful future for you, Coralie.

ROBERT ABBOTT FORD, B.S. . . . . Jackson, Miss.

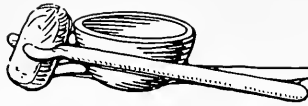
Robert started off his college career at Millsaps and has returned, after two years at Massachusetts Institute of Technology, to finish things up. When we think of his personality and ability to do many things well, we are glad to have him again in our ranks. We are sorry, Robert, that your senior year had to be somewhat spoiled by the study of such a subject as Latin.

JESSIE GRACE CRAIG, A.B., K Δ . . . . . Omaha, Neb.

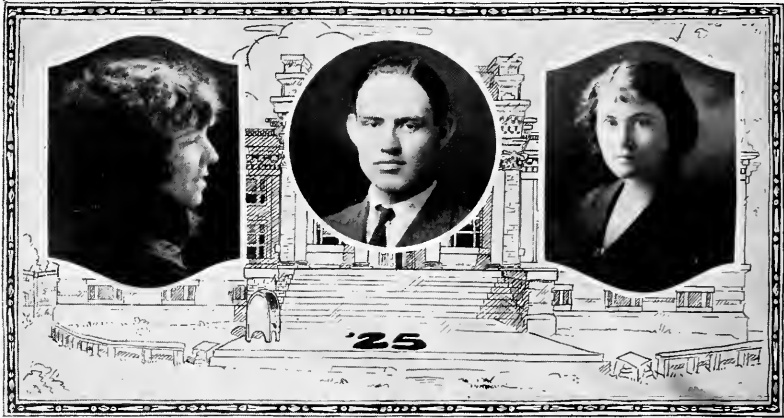
Vice-President Y. W. C. A., '23, '24; Girls' Glee Club, '23; Pan-Hellenic Council, '23; P. & W. Staff, '23.

Jessie is right there when it comes to brains, beauty, and beaux. What she has done in college (and she has done lots) has been done well, and, oh, so earnestly! Jessie closely approaches the "model college girl."





# Bobashela, Nineteen Twenty-Five



MARTHA JANE CRISLER, A.B., *K* . . . . . Flora, Miss.

Basketball, '24; Science Club.

Martha seems to be very temperamental about attending college—that is, she is very irregular about it. However, in being that way, she gives the rest of us a running start that we really need in order to keep up with her. Her manner and attitude towards things generally enable one to guess correctly that her label is "landed gentry."

JOHN LEE GAINEY, A.B., *K* . . . . . Jackson, Miss.

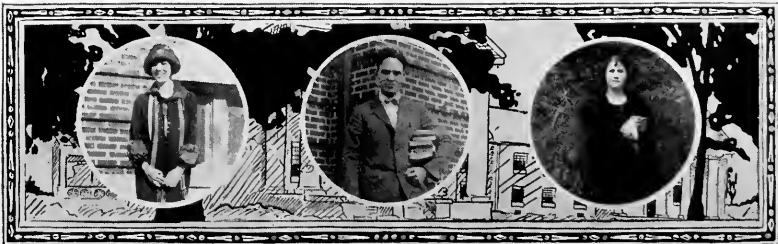
L. L. S.; Glee Club, '24, '25; Y. M. C. A. Cabinet, '24; P. & W. Staff, '24.

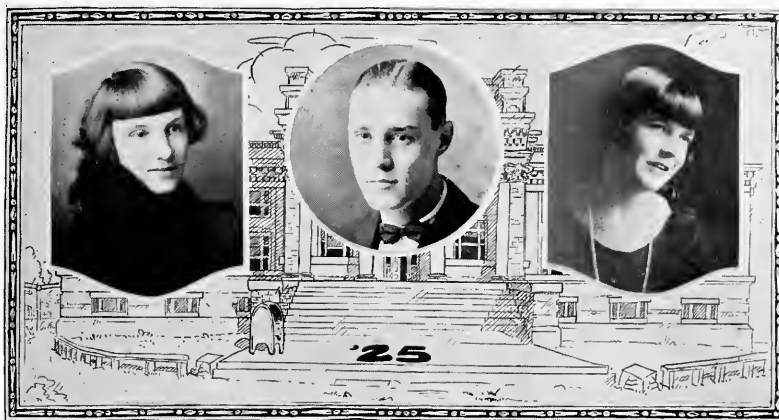
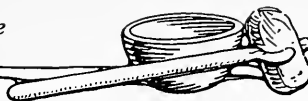
Lee is always "up and doing, with a heart for any fate." That in itself would be enough to make him liked and admired, but in order to fortify himself against all kinds of folks he has added unto his most striking characteristic an unusual sociability, an excellent voice, and the trait of a hail-fellow-well-met that satisfies.

MARY ELLA DAVENPORT, A.B. . . . . Forest, Miss.

Bourgeois Medal, '22; All-One Club; Secretary Senior Class.

Mary showed her good judgment when she combined in herself the charm and sweetness of an old-fashioned pink and the brilliance and the intellectuality of an ultra modern. One in a hundred!





PAT ELKINS, A.B., K Δ . . . . . Jackson, Miss.

A breeze, a rush, and then, of course, Pat. She begins to relate rapidly the uncommonly good luck which has overtaken her, or the veritable disaster. Either fortune entertains you and you rejoice or wait with her, as the case may be. She lives as much as the average person in just half the time, and always will.

WALTER MELLEN GALLOWAY, B.S., K Δ . . . . . McComb, Miss.

L. L. S.; Football, '22, '24; Right Royal Ramblers; "M" Club.

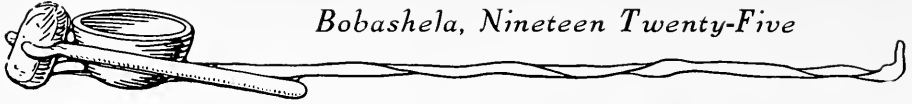
Walter is a life-size picture of many a freshman's ambition. He is an athlete and a ladies' man, and stars equally in both roles. Notwithstanding all this, his literary side of college life has not been neglected.

JOELLA EVANS, B.S. . . . . Jackson, Miss.

Capital City Club; Chy Kia.

Everyone who knows Joella wishes that they had just half as much capability as she. We wouldn't mind being able to specialize in Chemistry with her ease or to have her unusual knack for selecting friends. We are rather jealous of the nonchalant way in which she takes college work and college play, and her success in both.





ALBERT NOTTLEY GORE, A.B. . . . . Walthall, Miss.

G. L. S. Treasurer, '23; Auditor, '24; Square and Compass.

The earnest way in which Gore has done his work has certainly commended him to the student body and the faculty, and bespeaks a useful and successful career in the ministry, his chosen profession.

EVELYN MAE FLOWERS, B.S., *Phi Mu* . . . . . Jackson, Miss.

Y. W. C. A. Cabinet, '22; Pan-Hellenic Council, '23; Tennis Club, '21; Science Club.

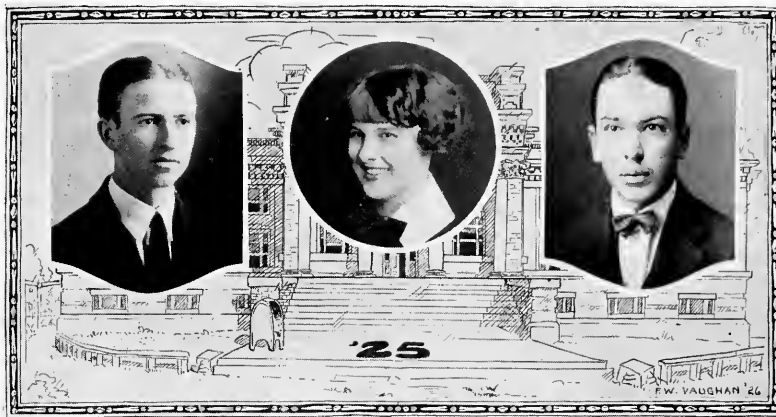
Evelyn is always where she ought to be, and usually doing what she ought to do. At least she is very decid-d about whatever it is, of which characteristic we are envious. Strange—but she is pretty and fastidious with it all.

CLYDE H. GUNN, A.B. . . . . Hattiesburg, Miss.

Track, '23; Preachers' League; Y. M. C. A. Cabinet, '24, '25; L. L. S.; Freshman Debater, '22; Mid-Session Debater, '23; Commencement Debater, '25; Secretary, '23, '24; Vice-President, '24; President, '25.

A ministerial student with a sunny disposition, Clyde has, by hard work, native ability, broad-mindedness, and a pleasing personality, proven to us that he will make good in his chosen work. As he goes to Emory next year to finish his training for the greatest of all professions, the sincere good wishes of '25 go with him.





JAMES OWEN HARRIS, A.B. . . . . Shannon, Miss.

L. L. S.; Science Club; Manager Tennis Team, '25.

J. O. Harris, better known as "Peanut," has affected a carefree and easy-going manner and has attained somewhat of a reputation as a wit and a jolly good fellow. Underneath this rather casual exterior we all like to believe he is just as serious-minded and thoughtful as it is well for one to be.

MAGGIE MAY JONES, A.B. . . . . Jackson, Miss.

Freshman Commission, '23; Y. W. C. A. Cabinet, '23, '24, '25; Delegate to Cabinet Training Council, '22, '23; Delegate to Southern Student Conference, '24; Winner Silver Cup Montreat Song Contest, '24; P. & W. Staff, '25; M. I. P. A., '25; Literary Council, '23, '24, '25; Girls' Glee Club, '23, '24, '25; Secretary Girls' A. A., '24; Chy Kia.

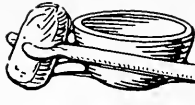
The college hat is off to Maggie May. She is a satisfactory student, right hand of the Y. M. C. A., fairer half of the P. & W. Staff, and is outstanding for her all-roundness and all-oneness.

CARL LOTTERHOS HUBER, A.B. . . . . Crystal Springs, Miss.

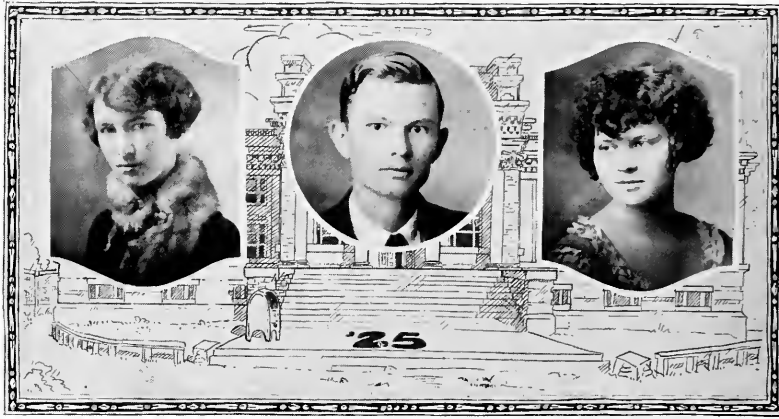
L. L. S.; Science Club.

Carl has taken a most interesting part in college life during the past four years, and has gained distinction as one of the most dependable rooters and athletic fans. His literary work has not been neglected for all that. He has had judgment enough to mix them about half and half—a most satisfactory combination.





# Bobashela, Nineteen Twenty-Five



LIDA MARGARET LACKEY, A.B. . . . . Forest, Miss.

Lida came to Millsaps in her junior year, but adapted herself to our ways and interests so quickly that she soon became an indispensable part of our class. She has helped to keep the scholarship record of the school high and was one of the pioneers in girls' basketball, and thus has taken her part in the two most important phases of college life.

WILEY RUFUS HUDDLESTON, B.S. . . . . Harpersville, Miss.

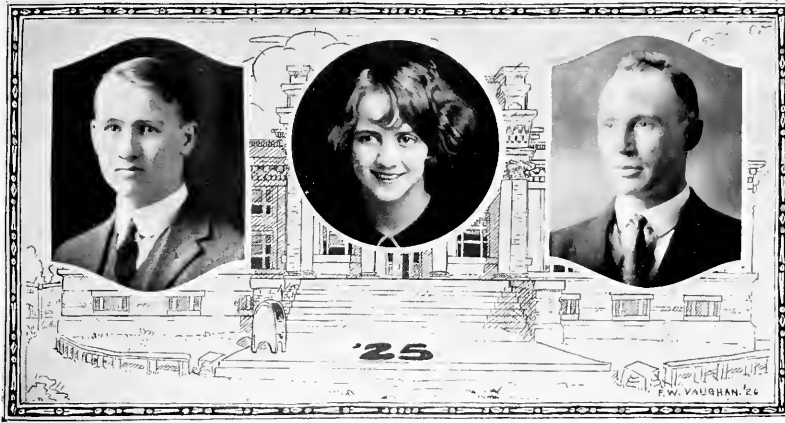
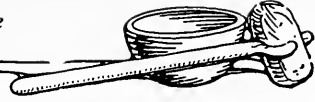
G. L. S. President, '25; Mississippi College Debater, '25; Science Club.

Ladies and gentlemen, it is with pleasure that we present one of Millsaps' ablest orators. Persuasiveness as a speaker has done much to win popularity for Huddleston, and his oratorical ability has a firm basis of learning, common-sense, sound judgment, and keen humor.

DORIS ELENA LAUCHLEY, B.S. . . . . Jackson, Miss.

Doris has kept us guessing all the while—we don't know whether she is really interested in the people about her as she sometimes seems, or whether her indifference is a carefully studied pose. In any case, the veil of mystery about her is quite attractive, and if it isn't genuine, she's the smartest girl we know.





GEORGE HAWKINS JONES, A.B.,  $K \Sigma$  . . . . . Vicksburg, Miss.

G. L. S. Vice-President, '24; President, '25; Freshman Debater; Mid-Session Debater, '23; "Ole Miss" Debater, '24; Commencement Debater, '25; Y. M. C. A. Cabinet, '24, '25; Vice-President, '25; Blue Ridge Delegate, '24; Regional Council Y. M. C. A., '25; Executive Committee, '25; Student Volunteer Band; President State Band, '25; National Council Member, '25; Preachers' League; Literary Council; Science Club; Right Royal Ramblers; Bobashela Staff, '25.

George has the enviable, yet rather troublesome, trait of having the courage of his convictions. It has afforded him a great deal of excitement and developed in him the ability to take his stand on a question and argue it with ease and good results.

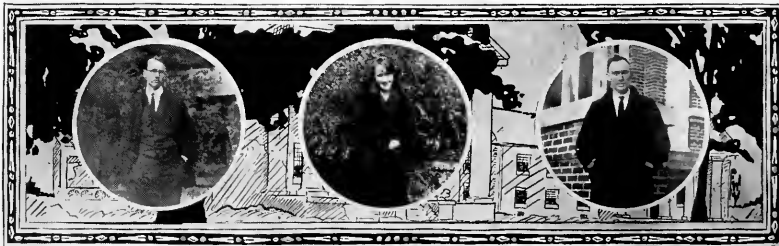
GLADYS ROSALIE LOWE, B.S. . . . . Jackson, Miss.

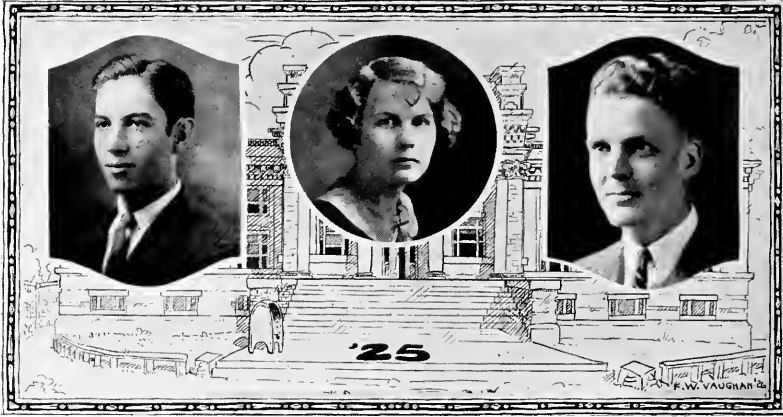
Science Club, '25; Chy Kia.

"Kitty's" diminutive size and prettiness make her the coy member of the class. The adjective used in regard to her size by no means holds good in regard to her mentality and pep—one wonders where she keeps her supply of both.

HENRY LEWIS JONES, B.S. . . . . Jackson, Miss.

"Big Jones" came back to Millsaps after the World War with a good record and a wife, and joined the ranks of '25 to finish his college course. In no one could there be found more friendliness, a bigger heart, and greater readiness to help solve the problems about them. He has proven a loyal and worth-while member of our class, with an unusual ability to prolong class discussions.





ROBERT JAMES LANDIS, B.S. . . . . Jackson, Miss.

Capital City Club; Science Club; DeMolay.

The Class of '25 owns Landis gladly in spite of his divided allegiance. He has from time to time taken about an equal interest in an educational institution just over the hill as he has shown in his Alma Mater. Cheated as we have been, we don't hold it against you, "R. J." We trust you will have as good success there as you have here.

ETHEL NAOMI MARLEY, A.B., *Phi M* . . . . . Jackson, Miss.

Y. W. C. A. Cabinet, '23, '23, '24; Treasurer, '23, '24, '25; Delegate to Training Cabinet, '23; Secretary Junior Class, '24; Accompanist Girls' Glee Club, '23, '24, '25; All-One Club.

Ethel is a most satisfactory combination of the practical and artistic. Officially, she is grand high maker of the grand high grades and player of the pianoforte at chapel and on other ceremonious occasions. But she doesn't let little things like that come between her and her friends, who are many.

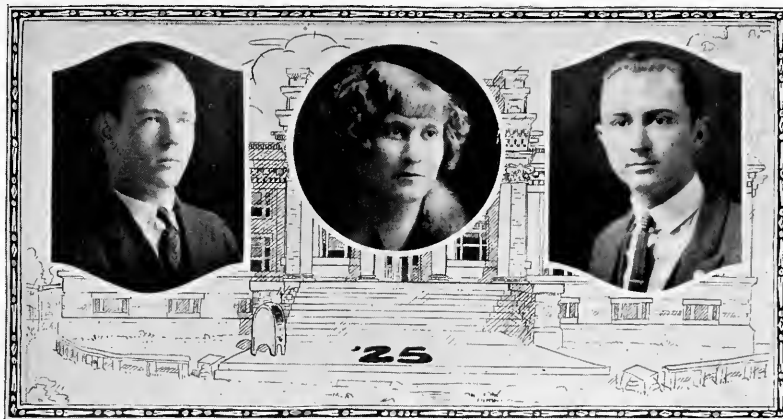
WILLIAM WALLACE LESTER, B.S., *Pi K A* . . . . . Jackson, Miss.

Secretary Freshman Class; All-One Club; President Sophomore Class; Honor Council, '24; Bobashela Staff, '24; Business Manager, '25.

Wallace started our class off right in its beginning and has ever since helped to steer its course. His hard-down ability enabled him to sway his fellow students—and, well, it must be his classic profile as much as anything else with the co-eds.







ROBERT GILL LILLY, B.S.,  $K \Sigma$  . . . . . Greenfield, Miss.  
 Baseball, '22, '23, '24; Science Club; Right Royal Ramblers; "M" Club.

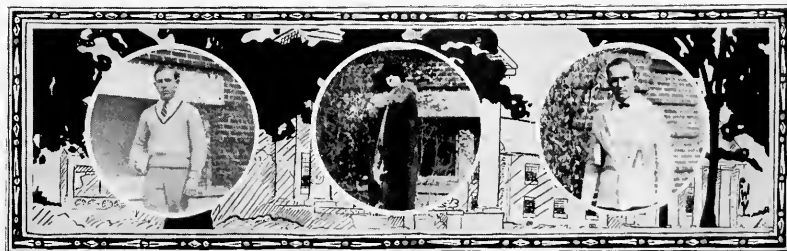
If "Bob's" success at Millsaps can be used as a criterion as to what his success in life will be, we may be sure that he will rise to eminence. Quiet, unassuming, and friendly, he has lived life to the full in college and seems to have found it good.

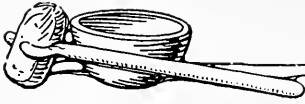
BESSIE MISTERFELDT, A.B. . . . . Florence, Miss.  
 Y. W. C. A.; Chy Kia.

Though Bessie didn't join us until our junior year, she has in the two years gained the friendship of the class. Those who really know "Bess" love her most—and what more could anyone desire? She is a lady by nature, a student by choice, and a loyal Millsapian, with a big interest in Mississippi College.

QUINNIE McCORMICK, B.S. . . . . Summit, Miss.  
 G. L. S.; Y. M. C. A.; Glee Club, '23, '24, '25; Baseball, '22, '23, '24, '25; Basketball, '22, '25; Alpha Pi Sigma.

When Quinnie came back for his sophomore year he had an added incentive to make good. The "Q" in his name stands for quality of the best kind in school work, college activities, and character.





WILLIE FORREST McCORMICK, B.S. . . . . Rose Hill, Miss.  
 Science Club; All-One Club.

"Mac" is rather quiet and entirely self-effacing—except at one time—in class. Then he becomes about the most outstanding man to be found. Millsaps has many "sharks" in their especial line, but "Mac" is a shark in all of his. He is a three-year man, also.

LORINE McMULLAN, A.B. . . . . Jackson, Miss.

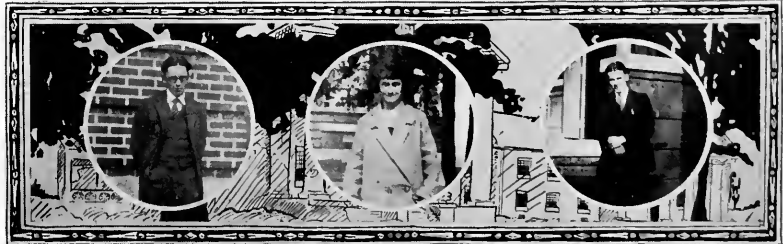
Y. W. C. A. Cabinet, '24, '25; Blue Ridge Delegate, '24; Basketball, '23; Girls' Glee Club, '24, '25; Secretary, '25.

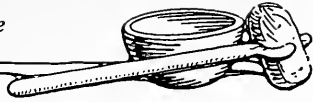
"Music hath charms" for Lorine far more than have books. Her good alto and excellency as a pianist have made her invaluable to the Glee Club; her ability as a leader has kept her close to the top in "Y. W."; and her charm, both of face and personality, has won for her many friends.

THOMAS H. NAYLOR, JR., B.S.,  $\Theta K N$  . . . . . Lauderdale, Miss.

Basketball, '23, '25; Baseball, '23, '24, '25.

Finishing a college course in three years, "Tommy" has had plenty of time to win for himself the friendship of every student and faculty member. His friendly manner and pleasant appearance have won for him a place in the friendship of the co-eds that is rivaled only by his own place among the "Eds."





HOUSTON PHILLIPS, B.S. . . . . Laurel, Miss.

G. L. S. Treasurer, '23, '24; President, '24, '25; Critic, '25; Birmingham-Southern Debater, '24, '25; Y. M. C. A. Cabinet, '25; Science Club; Right Royal Ramblers.

In the Millsaps cross-word puzzle, when the name Houston Phillips is listed, we all acclaim in one accord its synonyms—quiet, level-headed, acute.

EMILY BLANTON PLUMMER, A.B., K Δ . . . . . Jackson, Miss.

Glee Club, '25; Bobashela, '25.

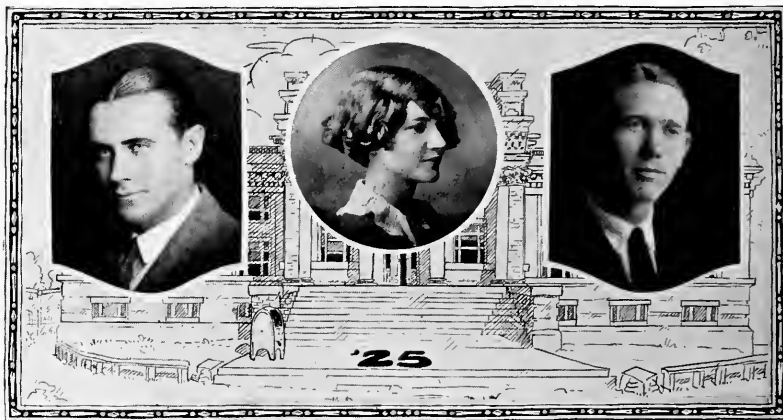
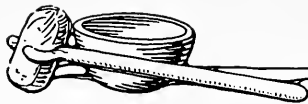
Emily's return to the Class after two years' absence renewed our interest in graduation and caused us to consider seriously trying for our diplomas. There's just no telling what a good personality can do for a class: one that wears stylish clothes, writes fair verse, paints with a touch, and is entertaining wherever she alights.

JAMES PLUMMER, A.B. . . . . Bogalusa, La.

G. L. S.; Football, '23, '24, '25; Basketball, '24, '25; Track, '24, '25; Y. M. C. A.; Blue Ridge Delegate, '23; Vice-President A. A., '25.

James' red hair, freckles, fertile brain, and brute force have caused him to have a rather checkered career in college. He has doubtless been educated in a number of ways, for which he should be glad. The class is certainly behind him and thinks it has in him a man.





CURTIS W. PULLEN, A.B. . . . . Vaiden, Miss.

G. L. S. Vice-President, '24; A. and M. Debater, '25; D. A. R. Medal, '24; Football Manager, '25; Science Club; Right Royal Ramblers.

Curtis has fitted well into the scheme of things at Millsaps. He has done what was expected of him and a great many unexpected things, also. The college and class regret to lose Pullen—they are so used to liking and depending upon him.

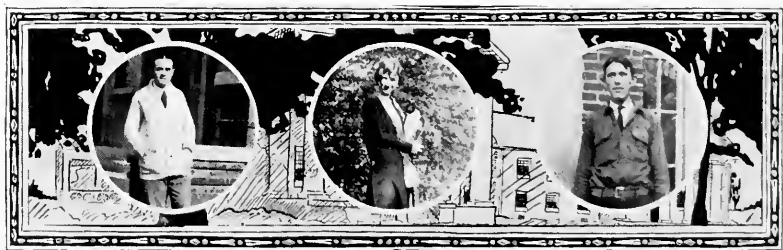
ELIZABETH SHACKELFORD, A.B., K Δ . . . . . Eden, Miss.

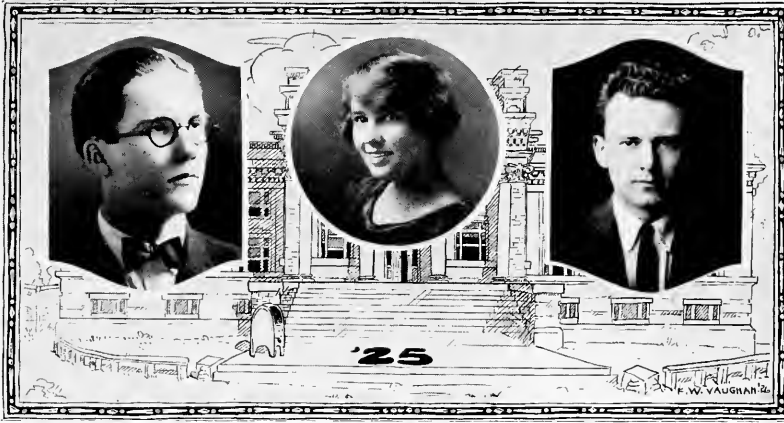
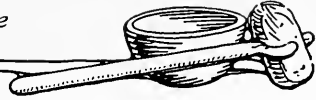
Have you ever heard Elizabeth "speak a piece"? That's just one of her many accomplishments that make her quite an interesting character. Her deep, soft voice is unusual, her ability to read "Juvenal," and her calm manner. In short, a person in whom the artistic and practical are combined in a delightful proportion.

JESSE WILLIAM SHANKS, A.B. . . . . Sumrall, Miss.

G. L. S. Secretary, '22; Vice-President, '25; Freshman Debater; Mississippi College Debater, '23; "Ole Miss" Debater, '25; Y. M. C. A.; Preachers' League; Student Volunteer; Student Government Board, '23; Alpha Pi Sigma.

Shanks plays his various roles of professional entertainer and serious-minded student with equal proficiency and conviction. When he combines them all, as he doubtless will soon do, he will become a personage indeed.





**HILARY G. SIMPSON, B.S.** . . . . . Pickens, Miss.

L. L. S. Treasurer, '25; Vice-President, '25; President Science Club, '25; Student Assistant Chemistry, '25; Bobashela Staff, '25; Right Royal Ramblers; DeMolay.

Hilary is one of whom we stand in awe. He has a calm way of telling us what to do and the rest of us have a calm way of doing it. His rather serious disposition, his ability to reason, the efficient way he does things, and the noticeable check he has upon himself—all these qualities make us feel that when he does turn loose he will do great things.

**BESSIE SUNRALL, A.B., K Δ** . . . . . Jackson, Miss.

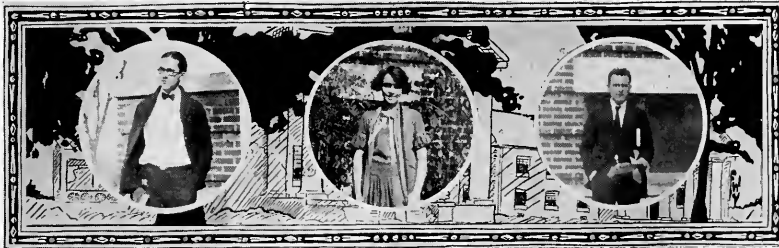
Freshman Commission, '24; Girls' Glee Club, '24, '25; Vice-President Junior Class.

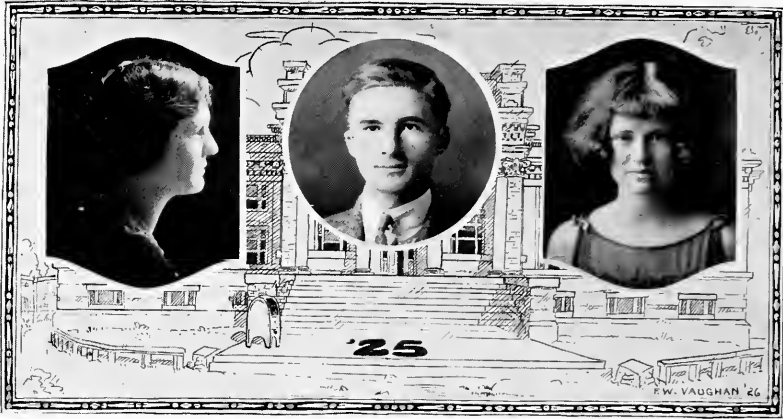
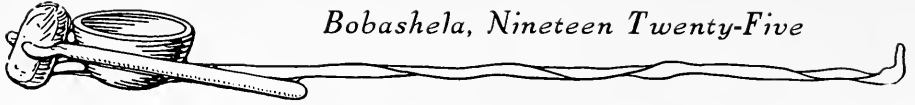
Coming to Millsaps as a junior after two years at Whitworth College, Bessie's sweetness and charm gave her instant popularity with both girls and boys. One of the best singers of the Glee Club, her favorite song has been, "My Heart's at A. and M. My Heart Is Not Here."

**WALTER SPIVA, JR., A.B., K A** . . . . . Louisville, Miss.

L. L. S. President, '25; A. and M. Debater, '25; Track Team, Manager, '25; Bobashela Staff, '25; Cheer Leader, '25.

Here is Walter, with his confident step and detached air. When he appears you instinctively look for a coat of mail, a coach-and-four, a long scroll, or anything that suggests the gallant and the intellectual. The class owns this three-year man with pleasure.





BETHANY CRAFT SWEARINGEN, A.B.,  $\Phi M, X \Delta \Phi$  . . . . . Jackson, Miss.

Y. W. C. A. Cabinet, '23; Delegate National Convention, '22; P. and W. Staff, '22, '23, '24; Honor Council, '23, '25; Vice-President Freshman Class; Bobashela Staff, '23, '24, '25.

You have simply to prove yourself properly enthusiastic on the subjects of English royalty, the legitimate stage, and horsemanship, and "sis" is your friend forever. She's a friend worth having—in fact, is our proudest example of that well-nigh impossible combination—beauty, charm, and brains.

H. WALTER FEATHERSTUN VAUGHAN, A.B. . . . . Madison, Miss.

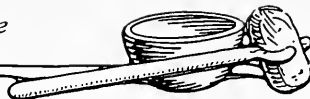
L. L. S.; Tennis, '25; Science Club; Right Royal Ramblers.

Vaughan—"H. W. F.," as he is usually called—has allowed his personality and disposition to crop out in several ways. First, we know him by his car, a temperamental-looking machine that evidently requires the personal attention of its owner. Then his green sweater and love of drama make us believe that he is something of an aesthete as well as a mechanical genius.

ALBERTA TAYLOR, A.B.,  $K \Delta$  . . . . . Jackson, Miss.

Alberta is whimsical—at least, when she gives you a rather penetrating smile, as if she knows something on you and it's funny, and she isn't going to tell you what it is—ever! She takes everything with about the comfortable degree of seriousness and gets on admirably in both the musical and literary world.





JOHN SHARP WARREN, A.B. . . . . Sun, Miss.

G. L. S. Vice-President, '24; Freshman Debater; Commencement Debater, '24; Y. M. C. A. Cabinet, '23, '24, '25; Preachers' League; Science Club; Alpha Pi Sigma.

There is a lot of and lot to "J. S." His good disposition and steady way of living make him a most stable and well-liked member of the class. He is a faithful athlete and an all-round man.

CYNTHIA JANE THOMPSON, B.S., K Δ . . . . . Jackson, Miss.

Basketball, '23, '24, '25; Captain, '25; Pan-Hellenic Council; Girls' Glee Club, '23, '24.

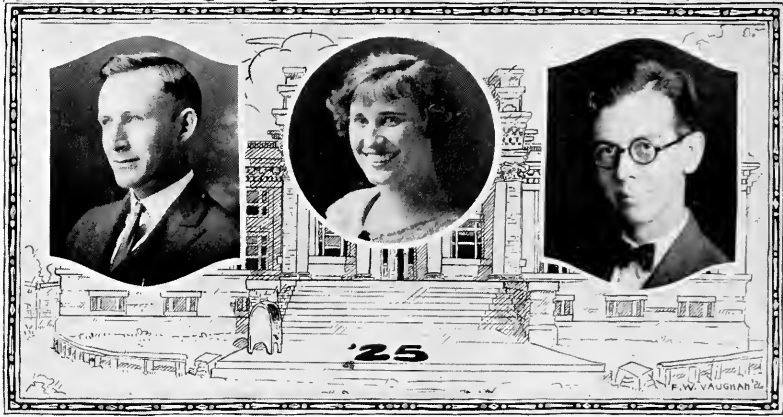
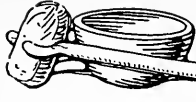
One good look at Cynthia and you are certainly refreshed. There's nothing strange about that when you stop to analyze her—pretty, whole-hearted, independent. She has our recommendation.

MACMILLAN S. WATSON, A.B. . . . . Crystal Springs, Miss.

G. L. S. Secretary, '22; Freshman Debater; Y. M. C. A.; Student Volunteer; Delegate to Mississippi Missionary Convention; Student Assistant, History, '24; Bible, '24, '25; All-One Club; Alpha Pi Sigma.

"Mac's" diploma should be a source of great pride and pleasure to him. He has worked steadily for it and made an enviable scholastic record. In no instance has his school work been neglected. The good wishes of '25 go with you, "Mac."





ALVIN LAMAR WEEMS, A.B. . . . . Sun, Miss.  
L. L. S. Vice-President, '25; President, '25; Honor Council, '25; Tribbett Fellowship.

Here we have a high-powered rifle with a Maxim silencer. Alvin's exemplary achievements speak for themselves. He combines perfectly the attributes of intense student and practical man. These, with his friendly address, make him an honored member of our class.

THELMA TOLLES, A.B. . . . . Jackson, Miss.  
Freshman Commission; Honor Council, '25; Student Assistant, Latin, '25.

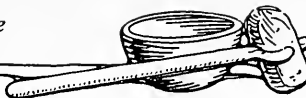
Thelma seemingly worries a great deal, but everybody knows, as she really does, too, that she's going to come out on top. One summit she attained was the place of assistant in Latin. In connection with worthy enterprises, we may say of her in the language she loves so well, "Dux femina Facti."

ROBERT LEWIS WILLIAMS, A.B., *II K A, Σ Y* . . . . . McComb, Miss.  
L. L. S.; P. and W. Staff, '22, '23, '24; Business Manager, '25; Y. W. C. A. Cabinet, '24; President Preachers' League, '25; Honor Council, '25; DeMolay; All-One Club.

Robert is the kind of person that has real stuff in him. He is a preacher who does not consider himself holier than the rest of us, one who doesn't try to mix his theology with mathematics or French drama. He is thoroughly up-to-date. We are proud to graduate with him.







EUGENE M. TATE, B.S., *K A* . . . . . McComb, Miss.

L. L. S.; Mid-Session Debater, '23; Mississippi College Debater, '24; "Ole Miss" Debater, '25; Football, '22.

"Hezi" is merely a misnomer which emphasizes the fact that Eugene is anything else but one who hesitates. He has creditably mixed business with college and has gained much from both. The class wishes for him a big success.

LUCIE WATKINS, A.B., *Φ M, X Δ Φ* . . . . . Meridian, Miss.

Tennis, '22; P. and W. Staff, '22, '23; Y. W. C. A. Cabinet, '23; Tucker Essay Medal, '22; All-One Club.

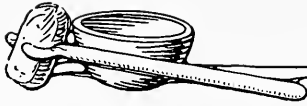
We have just one like Lucie. She is always thinking about something which usually proves interesting to her friends. If it is a new dress, we know it will be stylish; a book, it's just off the press; a date, it's with a hero; a lesson, it's prepared in an A-plus way.

WILLIAM PRENTISS WOOLLEY, A.B., *Θ K N* . . . . . Union Church, Miss.

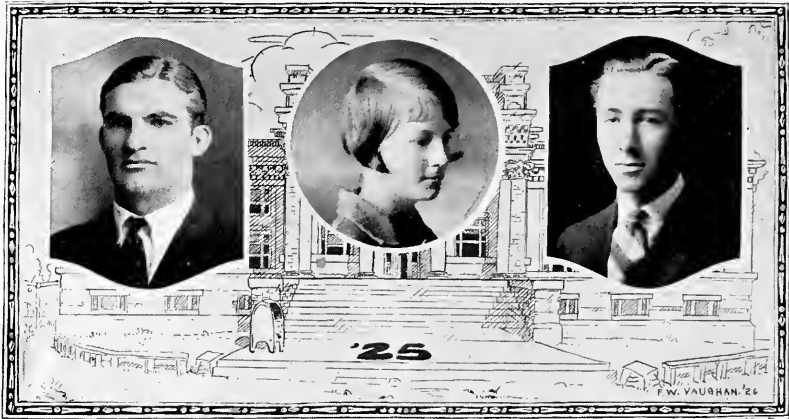
L. L. S.; Y. M. C. A.; House Governing Board, '24; Honor Council, '24; Vice-President Senior Class; Right Royal Ramblers.

Woolley has the knack, rather uncommon nowadays, of getting on with people gracefully. He is in every sense a thrice-balanced man—ability, proven by his grades; endurance, twelve hours under Professor Lin; experience, very little more will be necessary for his success in the business world.





## Bobashela, Nineteen Twenty-Five



### JOHN WILSON YOUNG, B.S. . . . . Noxapater, Miss.

Student Government Board, '22; Secretary Sophomore Class; President Junior Class; "M" Club; Football, '22, '23, '24, '25; Captain, '25; Manager Basketball, '25; Square and Compass.

In order that the college might continue to exist, we trust "J. W." has trained some worthy successors to his numerous offices. He has gained a place, unequaled by others, in the thoughts and affections of the student body. He is a man—yea, more—an athlete!

### IRENE SIMPSON, A.B. . . . . Jackson, Miss.

Basketball, '23, '24; Manager, '24; Girls' Glee Club, '24, '25; President, '24; Business Manager, '25; Y. W. C. A. Cabinet, '23, '24, '25.

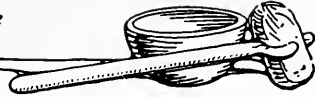
Irene gives you a quizzical smile and a penetrating gaze and then sizes you up. You usually land in the right category, too. There is a permanence and stability about her that is rare and most attractive. She is in every sense a success.

### NEWTON CLIFFORD YOUNG, B.S. . . . . Noxapater, Miss.

L. L. S.; Football, '22, '23, '24, '25; Basketball, '22, '23, '24, '25; Captain, '24; Track, '22, '23, '24, '25; Captain, '24; Student Assistant, Athletics, '25.

"N. C." in a calm and philosophical way, manages his own affairs. However, he has enough of his very own to keep him well occupied—the head of a family, a valued athlete, and a steady acquirer of knowledge. His popularity is both general and genuine.

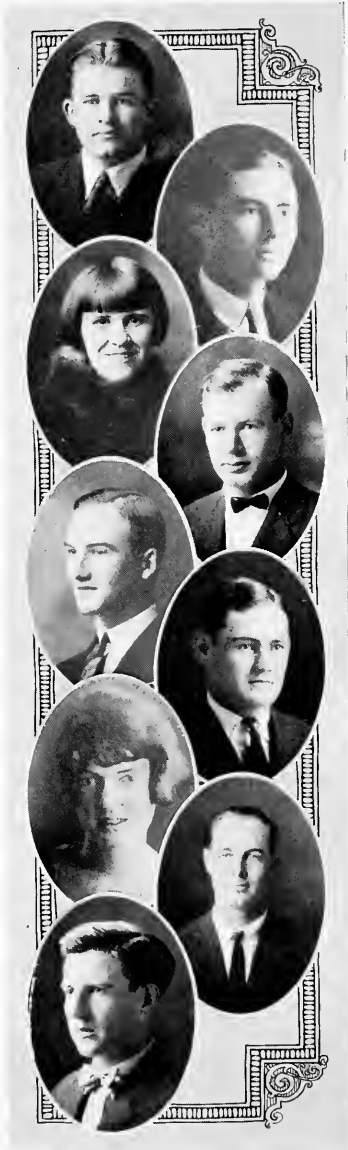
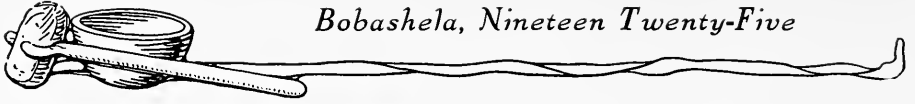




OFFICERS

- W. A. BEALLE . . . . . *President*  
WILLIAM W. FORD . . . . . *Vice-President*  
PEARL CRAWFORD . . . . . *Secretary*  
VERNON E. CHALFANT . . . . . *Treasurer*  
MARTHA B. MARSHALL . . . *Honor Council*





## Junior Class

C. L. ATKINS  
COLUMBUS, MISSISSIPPI

JAMES BAXTER  
LUMBERTON, MISSISSIPPI

MARY BRENT  
JACKSON, MISSISSIPPI

W. A. BEALLE  
GREENWOOD, MISSISSIPPI

R. E. BELL  
STAR, MISSISSIPPI

LEROY BROOKS  
CARTHAGE, MISSISSIPPI

NORMA LEE CALDWELL  
JACKSON, MISSISSIPPI

C. R. BUSH, JR.  
MACON, MISSISSIPPI

W. D. CALHOUN  
MT. OLIVE, MISSISSIPPI





**Junior Class**

V. E. CHALFANT  
AUGUSTA, ARKANSAS

C. C. COMBS  
BIRMINGHAM, ALABAMA

ELEANOR COUGHLIN  
JACKSON, MISSISSIPPI

J. W. COKER  
YAZOO CITY, MISSISSIPPI

W. W. FORD  
JACKSON, MISSISSIPPI

W. A. GATHWRIGHT  
VICKSBURG, MISSISSIPPI

PEARL CRAWFORD  
JACKSON, MISSISSIPPI

L. C. GUNTER  
JACKSON, MISSISSIPPI

J. R. HIGHTOWER  
ITTA BENA, MISSISSIPPI





**Junior Class**

EPHRAIM P. JONES  
JACKSON, MISSISSIPPI

LETHA LACKEY  
FORREST, MISSISSIPPI

W. C. MARRY  
NEWTON, MISSISSIPPI

MARTHA BELLE MARSHALL  
JACKSON, MISSISSIPPI

D. D. MARTIN  
WOODLAND, MISSISSIPPI

ELISE McCALLUM  
JACKSON, MISSISSIPPI

V. P. MOORHEAD  
GOODMAN, MISSISSIPPI

LUCIE MAE McMULLEN  
JACKSON, MISSISSIPPI

W. E. McQUAIG  
WAYNESBORO, MISSISSIPPI





**Junior Class**

R. T. PICKETT, JR.  
SIBLEY, LOUISIANA

MARY NELL NEWELL  
JACKSON, MISSISSIPPI

J. B. PRICE  
QUITMAN, MISSISSIPPI

MARGARET POWER  
JACKSON, MISSISSIPPI

J. C. SATTERFIELD  
PORT GIBSON, MISSISSIPPI

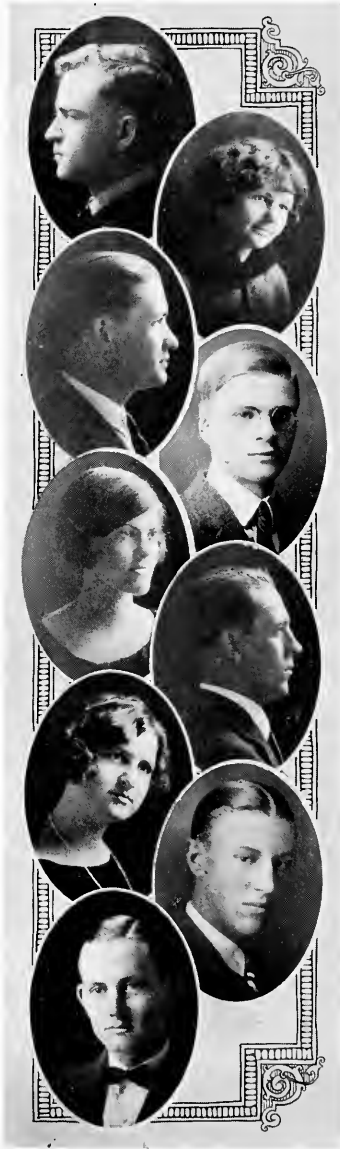
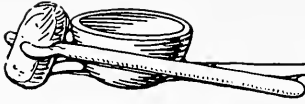
EURANIA PYRON  
JACKSON, MISSISSIPPI

M. B. SWAYZE  
BENTON, MISSISSIPPI

VIRGINIA TERRELL  
MEMPHIS, TENNESSEE

C. A. TATUM  
GREENVILLE, MISSISSIPPI





## Junior Class

R. W. TERRAL  
QUITMAN, MISSISSIPPI

D'VOE TOMLINSON  
MADISON, MISSISSIPPI

R. E. THOMPSON  
JACKSON, MISSISSIPPI

F. W. VAUGHAN  
MADISON, MISSISSIPPI

GEORGIA WATKINS  
JACKSON, MISSISSIPPI

J. H. WEBB  
NOXAPATER, MISSISSIPPI

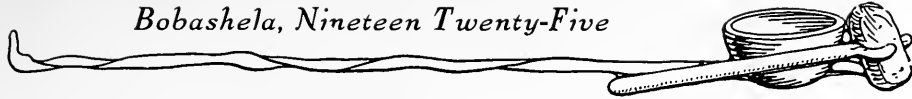
MARYNELL WILLIAMS  
JACKSON, MISSISSIPPI

R. C. WEST, JR.  
WINONA, MISSISSIPPI

L. W. WILLEY  
GOSHEN SPRINGS, MISSISSIPPI





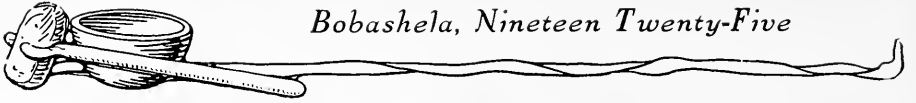


OFFICERS

- C. B. ALFORD . . . . . *President*  
DOROTHY SKINNER . . . . . *Vice-President*  
GEORGE A. WILSON . . . . . *Secretary-Treasurer*  
AMANDA LOWTHER . . . . . *Honor Council*



*Bobashela, Nineteen Twenty-Five*





## Sophomore Class

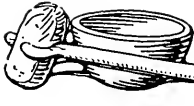
### MEMBERS

T. B. ABNEY  
C. B. ALFORD  
MAYBELLE ALFORD  
MIRIAM ALLEN  
J. L. BARNES  
B. D. BENSON  
R. R. BENTON  
D. L. BLACKWELL  
R. R. BRANTON  
G. T. BRITT  
P. L. BYRD  
R. L. CALHOUN  
W. H. CHATONEY  
E. T. CHRISLER  
ROBBY DEARMAN  
W. H. EWING, JR.  
H. H. FAIRCHILD

R. E. FLEMING  
O. A. FRENCH  
J. L. GRAHAM  
G. E. GREENWAY  
R. A. GRISHAM  
ERNIE HENDRICKS  
C. F. HENLEY  
LORINE HERRING  
LORENE HILL  
MAY HITCH  
W. D. HOWARD  
GLADYS HOWIE  
AGNES HOWIE  
S. D. G. HUTTON  
E. P. JONES, JR.  
A. B. JONES, JR.  
W. C. KENNINGTON  
J. T. LEWIS, JR.  
HELEN LOTTERHOS  
EMMIE LOWE  
AMANDA LOWTHER  
DOROTHY MILLER  
BERNICE MILLER  
TEXAS MITCHELL  
ELIZABETH MITCHELL  
H. H. MOSS  
J. D. MCNAIR  
W. J. NELSON, JR.  
HAZEL NEVILLE  
CATHERINE POWER  
E. E. PRICE  
M. L. PRICE  
ERIE PRISOCK  
EDITH ROSE  
A. L. ROUSE  
E. M. SHARP  
DOROTHY SKINNER  
J. R. SMITH  
ELLEN SMITH

J. M. STEVENS  
W. H. STOKES, JR.  
LAURA DAY STOVALL  
C. M. SWANGO  
O. H. SWAYZE  
KATHERINE TATOM  
H. M. THOMPSON  
RUTH TUCKER  
V. L. VANCE  
ELIZABETH VOIGHT  
A. G. WARD  
E. G. WHITEHEAD  
J. C. WILLIAMS  
E. B. WHITTEN  
N. D. WILLS  
G. A. WILSON  
LOUISE YOUNG





## The Free Soul

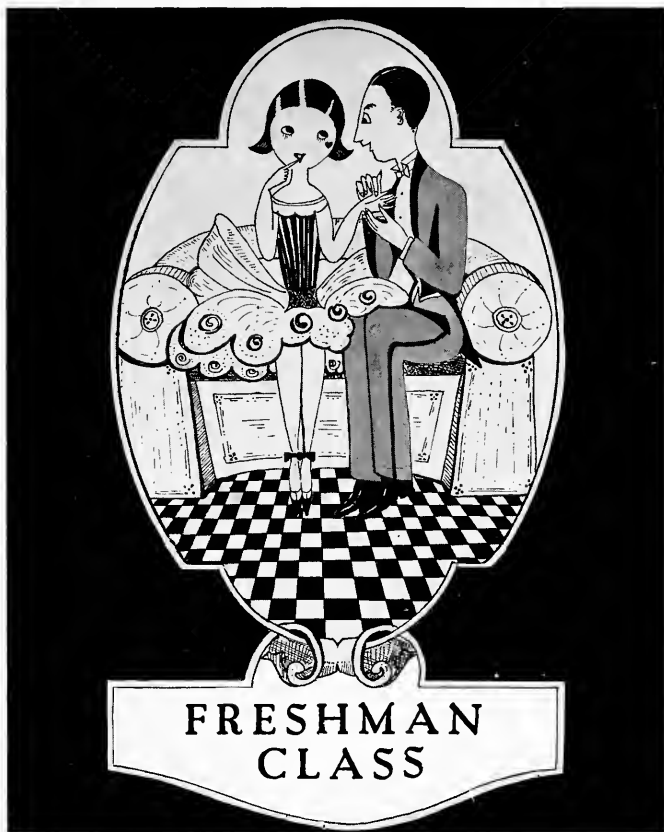
By G. E. GREENWAY

*Where shall I wander, whither shall I go?  
My house has left me, joined its kindred earth.  
I do not know  
The meaning of this strange rebirth.  
And I am lost as winds of night that blow.  
My freedom only brings  
A homesick longing for familiar things.*

*Like dawning sun  
Upon a silver morn,  
A pilgrimage it has not yet begun,  
I tremble, weak, new-born,  
Before eternity;  
And, all forlorn,  
I cry, "Where is the self that used to be?"*

*For where are all the things that I have loved—  
The sights, the fragrances, the sounds,  
The love to which my being moved,  
Are they beyond my bounds?  
Far-roved,  
My love is still upon that vanished world  
That outward to infinity has whirled.  
In vain I struggle to forget,  
And only  
Find that I all the more my fate regret.  
I am star-free, and should not thus be lonely!  
And yet—  
The breath of morning to my being clings.  
And I am homesick for familiar things.*



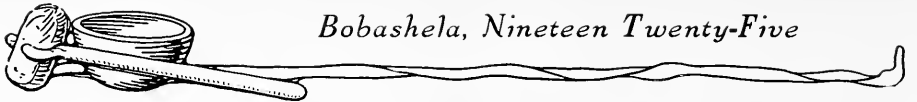


OFFICERS

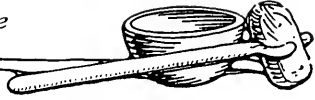
- W. F. BOONE . . . . . *President*  
RUTH BUCK . . . . . *Vice-President*  
S. M. BUTTS . . . . . *Secretary*  
ELISE HERRING . . . . . *Treasurer*  
W. T. HANKINS . . . . . *Honor Council*

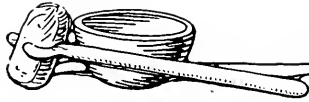


*Bobashela, Nineteen Twenty-Five*



*Bobashela, Nineteen Twenty-Five*





## Freshman Class

### MEMBERS

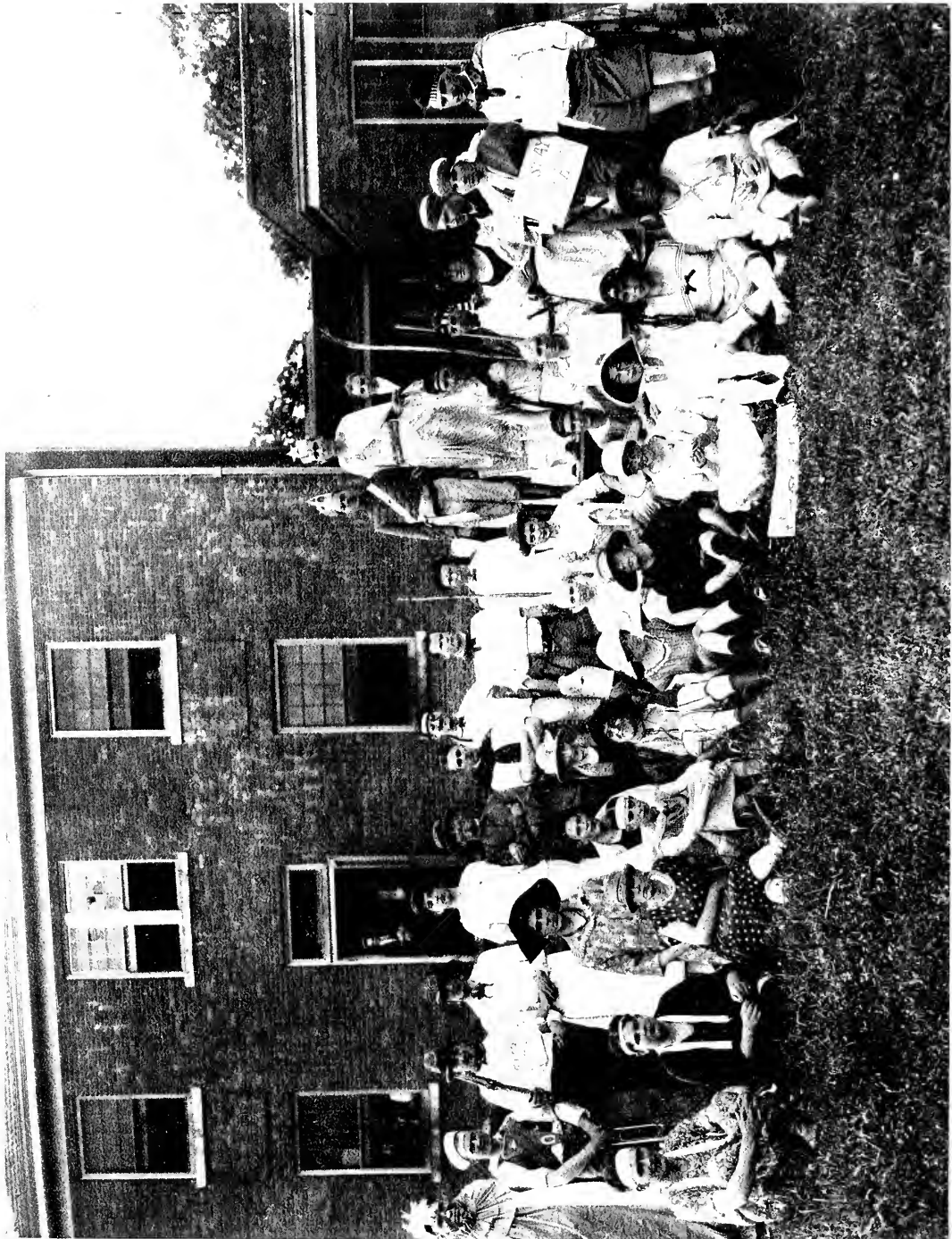
DOROTHY ALFORD  
V. L. ALFORD  
W. L. ATKINS  
EMILY ATKINSON  
IDA LEE AUSTIN  
THERESA BARKSDALE  
W. K. BARNES  
C. M. BARRIER  
RICHARD BAXTER  
A. V. BEACHAM  
R. E. BLOUNT  
W. F. BOONE  
R. B. BRADLEY  
H. BRADLEY  
SIDNEY BRAME  
O. L. BROOKS  
M. H. BROOKS  
ANNIE BROWN  
RUTH BUCK  
J. M. BUTCHEE  
S. M. BUTTS  
JOHN CADWALLADER  
ALBERTA CAMPBELL  
W. S. CAMERON  
A. F. CARRAWAY  
H. CHADWICK, JR.  
A. L. CHAPMAN  
MARY CHISLUM  
CECIL CLEMENTS  
RUTH CONERLY  
PEARL COOPER  
H. B. COTTRELL  
N. M. CRAFT  
A. W. CRAWFORD  
A. G. CRAWFORD  
HUNTER DENSON  
H. G. DETERLY  
EVELYN DONALD  
P. V. DORSETT  
B. W. DOWNING  
J. C. DUNLAP  
J. C. DABNEY  
M. C. DEAR  
LILIAN EDWARDS  
V. R. ELLIS  
H. EVERETT  
J. H. FAVARA  
MARGARET FLOWERS  
MARY FOSTER  
J. S. FRANCIS  
VERNON FRANKLIN  
R. E. FREDRICKSON

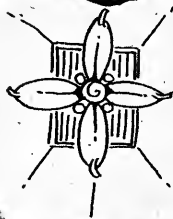
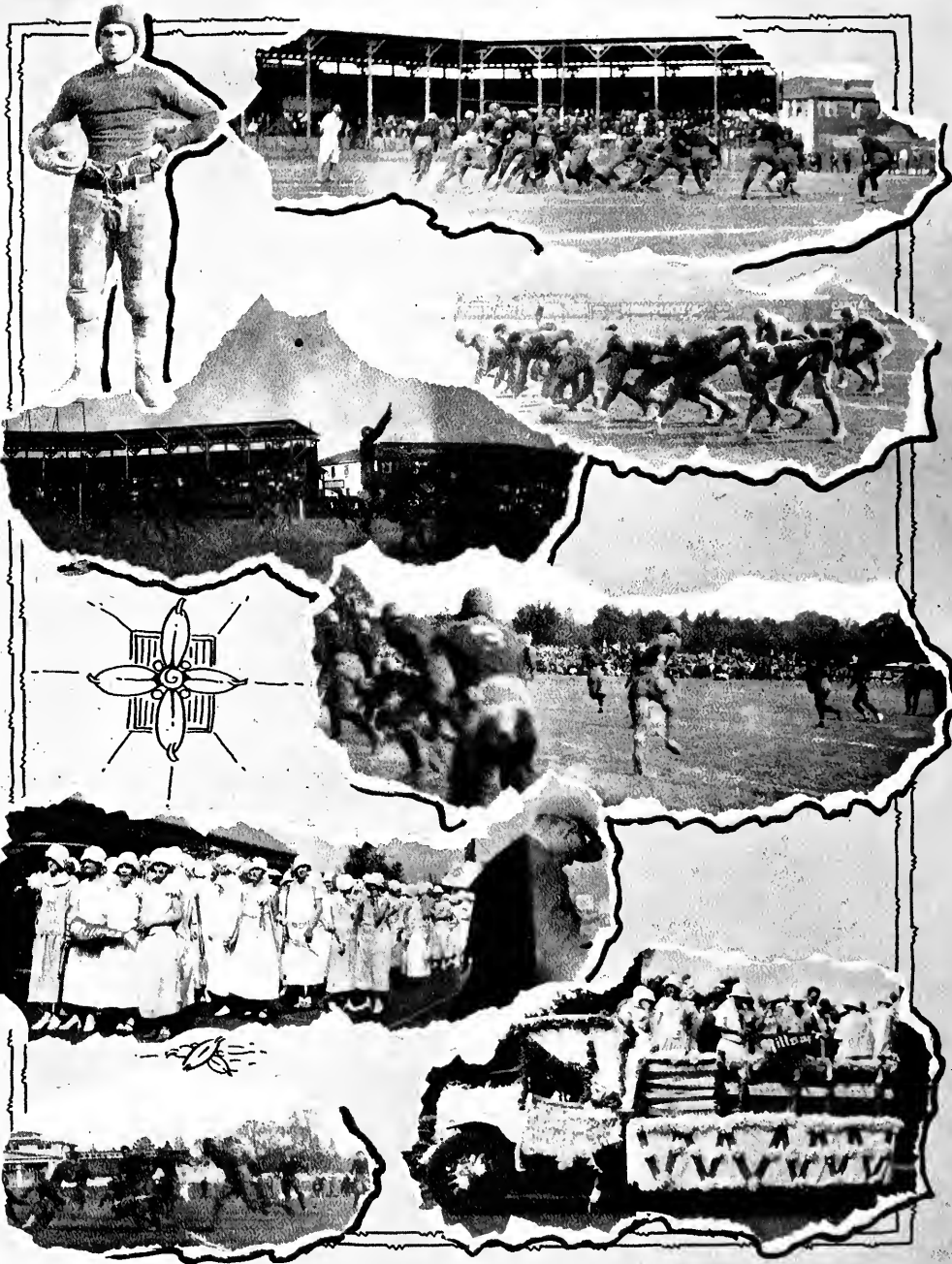
H. B. GAMMON  
A. L. GOOCH  
JULIA GOODWIN  
W. O. GOUDELICK  
PAULINE GRAHAM  
M. C. GREEN  
R. E. GRYDER  
LILIAN GRAVES  
G. J. GRIFFIN  
NONA HALL  
L. M. HAMBERLIN  
W. T. HANKINS  
MAGGIE LEE HARRELL  
W. O. HARRELL  
HELLEN HENDERSON  
ELISE HERRING  
MARY BELLE HOWIE  
ANNIE HEUCK  
D. S. HOWELL  
M. S. HESTER  
R. E. HOPGOOD  
ANNIE HODGES  
W. O. HOOD  
R. R. HUDSON  
F. H. INGRAM  
R. K. JAYNE, JR.  
M. D. JONES  
H. E. JONES  
R. J. JONES  
N. F. KENDALL  
JACK KENDRICK  
FRANCES KENNEDY  
MILDRED KERSH  
H. Y. KIM  
J. R. KIRKPATRICK  
SHIRLEY KNOWLES  
OLIVIA KNOX  
A. W. LANDIG  
R. I. LAWRENCE  
HESTER LEGG  
D. O. LEE  
LYNN LITTLE  
D. F. LOFLIN  
DORÉE MAJORS  
L. F. MARS  
WINNIE MARTIN  
L. L. MATHENY  
ELIZABETH MIAZZA  
LAURA MIDDLETON  
S. R. MOODY  
S. P. MORRIS  
ZELLA MOSS  
D. M. MOUNGER  
J. A. MYERS, JR.  
E. W. McCLELLAN  
W. H. McCULLEY

FRANCIS MCNAIR  
J. M. MACLACHLAN  
W. D. NEAL  
L. M. NORTON  
MABEL PARKER  
J. R. PAYNE, JR.  
VIRGINIA PEEBLES  
CYNTHIA PENN  
RUTH PICKETT  
P. N. PROPST  
T. D. RAPE  
HUGH REEVES  
EDDIE RICHARDSON  
GERTRUDE RILEY  
S. F. RILEY  
G. O. ROBINSON  
MARGUERITE RUSH  
J. L. SEAWRIGHT, JR.  
WINIFRED SCOTT  
DULCINA SCOTT  
ELIZABETH SETZLER  
DOROTHY SHARP  
J. H. SHARP  
S. K. SHIELDS  
W. D. SABINE  
ANNIE SANDERSON  
MARJORIE SMITH  
M. C. STAPP  
MEADE SWAYZE  
H. Y. SWAYZE  
ARLETE TALBERT  
W. W. TATUM  
M. P. TAYLOR  
SARA THOMPSON  
CAROLINE TOWNES  
IRBY TURNER  
W. A. TURNIPSEED  
CATHERINE TOMLINSON  
MAURINE WARBURTON  
CORNELIA WARMACK  
J. T. WATSON  
J. S. WEISINGER  
V. L. WHARTON  
MRS. CLARA WHITEHEAD  
LOUISE WILKINSON  
LOU ADA WILLIAMS  
J. E. WILLIAMS  
DICK WILLS  
S. W. WINN  
W. R. WORD  
C. H. WRIGHT  
R. L. WALTON

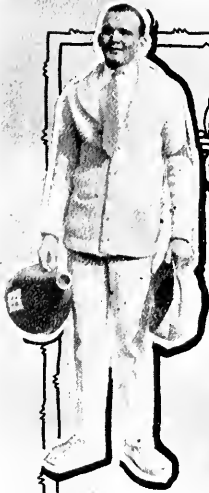














*Organizations*

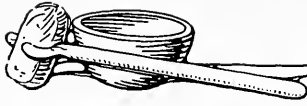




Seven members of the student body are elected annually and, composing the executive head of the honor system, are known as the Honor Council. Under the honor system the student pledges his word of honor that he will neither give nor receive help on an examination or a recitation. Violations of the honor system are reported to the Honor Council, before whom the accused may appear.

- |                                 |                                |
|---------------------------------|--------------------------------|
| R. L. WILLIAMS, <i>Chairman</i> | Senior Class Representative    |
| THELMA TOLLES                   | Senior Class Representative    |
| MARTHA BELLE MARSHALL           | Junior Class Representative    |
| AMANDA LOWTHER                  | Sophomore Class Representative |
| W. T. HANKINS                   | Freshman Class Representative  |
| BETHANY SWEARINGEN              | College-at-large               |
| A. L. WEEMS                     | College-at-large               |





### The Preachers' League

The ministerial students of the college bring themselves together through the Preachers' League for the purpose of studying the problems which confront the church. It is their hope to fit themselves to solve these problems and that they may truly dedicate themselves to the service of God.

#### OFFICERS

- R. L. WILLIAMS . . . . . *President*
- J. H. SHARP . . . . . *Vice-President*
- C. H. GUNN . . . . . *Secretary*

#### MEMBERS

- |                 |               |                  |
|-----------------|---------------|------------------|
| J. L. BARNES    | B. W. DOWNING | P. N. PROPS      |
| W. A. BEALLE    | A. N. GORE    | J. W. SHANKS     |
| B. D. BENSON    | R. A. GRISHAM | E. M. SHARP      |
| D. L. BLACKWELL | E. HENDRICKS  | R. E. THOMPSON   |
| R. B. BRADLEY   | F. H. INGRAM  | H. M. THOMPSON   |
| R. R. BRANTON   | G. H. JONES   | J. E. TUMLIN     |
| S. M. BUTTS     | W. Y. KIMM    | H. W. F. VAUGHAN |
| W. S. CAMERON   | L. L. MATHENY | J. S. WARREN     |
| V. E. CHALFANT  | W. D. NEAL    | M. S. WATSON     |
|                 | R. W. OAKEY   |                  |
|                 | E. E. PRICE   |                  |







## Eta Sigma

Here's a fraternity in which the faculty allows only a few to become members, although anyone wishing to may enter if they can stand the test. The entrance requirements are that one must make 90 per cent or above in each of his subjects. We have quite a number of those who are sharks in their lines, but only a limited number of sharks in all lines.

The following are those making all ones at least one term during their stay here:

DOROTHY ALFORD  
S. M. BAILEY  
ELIZABETH BRAME  
RUTH BUCK  
PEARL CRAWFORD  
MARY CHISHOLM  
J. C. DABNEY

MARY DAVENPORT  
JOELLA EVANS  
A. O. FRENCH  
J. L. GAINY  
C. M. GREEN  
ERNIE HENDRICKS  
HELEN HOWIE

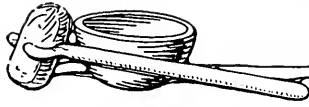
OLIVIA KONX  
W. W. LESTER  
ETHEL MARLEY  
TEXAS MITCHELL  
HAZEL NEVILLE  
MARGARET POWER  
EMILY PLUMMER

CATHERINE POWER  
S. F. REILLY  
C. M. SWANGO  
M. B. SWAYZE  
BETHANY SWEARINGEN  
C. M. STAPP

ANNIE SANDERSON  
ALBERTA TAYLOR  
THELMA TOLLES  
RUTH TUCKER  
A. L. WEEMS  
G. A. WILSON

A. G. WARD  
M. S. WATSON  
R. L. WILLIAMS  
LUCY WATKINS  
V. L. WHARTON  
MAURINE WARBARTON  
LOUISE YOUNG  
J. C. SATTERFIELD





### Y. M. C. A. Cabinet



- |                   |       |                       |
|-------------------|-------|-----------------------|
| V. E. Chalfant    | ..... | President             |
| G. H. Jones       | ..... | Vice-President        |
| C. H. Gunn        | ..... | Secretary-Treasurer   |
| J. S. Warren      | ..... | Bible Study Committee |
| H. H. Fairchild   | ..... | Advertising Committee |
| R. R. Branton     | ..... | Music Committee       |
| R. L. Calhoun     | ..... | Music Committee       |
| C. B. Alford      | ..... | Social Committee      |
| O. A. French      | ..... | Social Committee      |
| J. C. Satterfield | ..... | Program Committee     |
| M. L. Branch      | ..... | Program Committee     |
| W. H. Phillips    | ..... | Program Committee     |





## Y. W. C. A. Cabinet



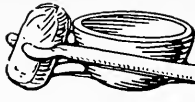
### OFFICERS

Martha Belle Marshall.....President  
Jessie Craig.....Vice-President  
Pearl Crawford.....Secretary  
Ethel Marley.....Treasurer  
Lorine McMullen.....Undergraduate Representative

### COMMITTEE CHAIRMEN

Maggie May Jones, Program; Irene Simpson, Finance; Amanda Lowther, Social Service; Catherine Power, Music; Dorothy Sharp, Arts; Lorene Hill, Social; Norma Lee Caldwell, World Fellowship; Evalina Allen, Freshman Commission; Lucy Mae McMullen, Rest Room.





### Galloway Literary Society

In order to fit the young men of Millsaps for public speaking, two debating societies have functioned at the college since its beginning. One of these is the Galloway, which is named for Bishop Charles B. Galloway.

*Presidents*

G. H. JONES

W. H. PHILLIPS  
W. R. HUDDLESTON

J. C. SATTERFIELD

*Vice-Presidents*

J. D. McNAIR

M. L. VANCE  
J. D. McNAIR

J. W. SHANKS

*Secretaries*

C. W. PULLEN

R. A. GRISHAM  
A. W. CRAWFORD

R. E. BAXTER

*Treasurer*

E. B. WHITTEN

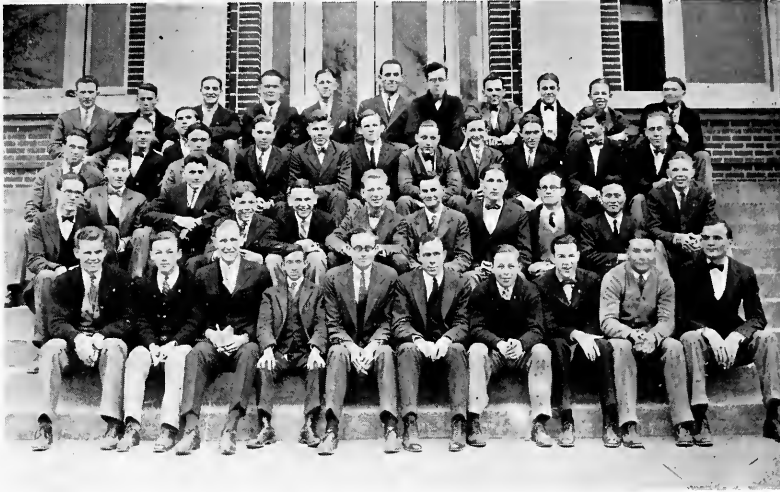
*Debaters*

J. W. SHANKS .....University of Mississippi  
C. W. PULLEN.....Mississippi A. & M.  
G. H. JONES } ...Commencement Debaters  
E. B. WHITTEN }

W. R. HUDDLESTON.....Mississippi College  
W. H. PHILLIPS.....Birmingham-Southern  
H. H. MOSS }  
J. C. SATTERFIELD } .....Mid-Session Debaters

W. D. NEAL }  
V. L. WHARTON } .....Freshman Debaters





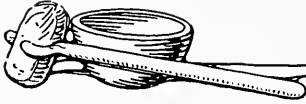
## Lamar Literary Society

The other Millsaps debating society, the Lamar, is named for one of Mississippi's greatest statesman, L. Q. C. Lamar.

	<i>Presidents</i>	
C. H. GUNN	A. L. WEEMS	WALTER SPIVA, JR.
	<i>Vice-Presidents</i>	
A. L. WEEMS	M. L. BRANCH	H. G. SIMPSON
	<i>Secretaries</i>	
J. B. PRICE	R. E. BELL	W. P. WOOLLEY
	<i>Treasurers</i>	
	H. G. SIMPSON	A. O. FRENCH

<i>Debaters</i>	
M. L. BRANCH.....Mississippi College	E. M. TATE.....University of Mississippi
WALTER SPIVA, JR.....Mississippi A. & M.	M. B. SWAYZE.....Birmingham-Southern
O. H. SWAYZE } ..Commencement Debaters	A. V. BEACHAM } .....Freshman Debaters
C. H. GUNN } ..Commencement Debaters	M. GREENE } .....Freshman Debaters
R. R. BRANTON } .....Mid-Session Debaters	S. M. BUTTS } .....Freshman Debaters
J. L. GAINNEY } .....Mid-Session Debaters	R. K. JAYNE } .....Freshman Debaters





# The Purple and White

Vol. XVII

MILLSAPS COLLEGE, JACKSON, MISSISSIPPI, FRIDAY, JAN. 16, 1925.

No. 11

### HAZING BANNED BY SOPHOMOR

Supponor Commission Outlines Rules of Freshman and Status Given Hazing

A freshman who has never felt the short, snappy slap of the staff, booming in on that part of the body, yet retains the complexion of a

SATTERFIELD WILL REPRESENT MILLSAPS AT NATIONAL FRATERNITY

MILLSAPS HAS NEW NATIONAL FRATERNITY

SCIENCE CLUB AND ORGANIZE CLUB

### CO-EDS TO PLAY ON HOME COURT TONIGHT

Misses Come with Unbroken String of Victories to Play Millsaps Girls; Come Out and Root

### SUNDAY IS SPEAKER AT CHAPEL

Famous Base-Ball Star and Evangelist Gives Students Good Advice in Speech Wednesday

### COLLEGE NIGHT PROVIDES MUCH ENTERTAINMENT

Student Leaders Tell Patrons and Freshmen of the College Organizations

### MILLSAPS GOLFERS HOLD FIRST MEETING

Enthusiasts Meet in Tuesday and Organize

### MILLSAPS DEFEATS CLARK COLLEGE

FERGUSON COMES BACK TO SUGGEST POWER ON FACULTY

### JONES IS ELECTED GALLOWAY

### MAJORETTES WIN OVER OLE MISS IN FAST GAME FRIDAY



STAFF	
Editor	R. W. Terrell
Business Manager	M. L. Branch
Assistant Editor	Miss Lorene Hill
Editor	W. E. Greenway
Editor	Miss Maggie Ray Jones
Editor	J. E. Price
Editor	J. C. Satterfield
Editor	R. H. Moore
Associate Editors	J. R. Hightower, Miss Jessie Craig, Miss May Hinch, Miss Dorothy Alton
BUSINESS MANAGEMENT	
Business Manager	R. I. Williams
Assistant Business Manager	J. E. Lewis
Circulation Department	G. Revere, R. E. Holcomb, J. E. Williams

MEMBER MISSISSIPPI INTERCOLLEGIATE PRESS ASSOCIATION



F. VAUGHAN-26.





## The Purple and White

### STAFF

R. W. TERRAL . . . . .	Editor
M. L. BRANCH . . . . .	Assistant Editor
LORENE HILL . . . . .	Faculty Editor
G. E. GREENWAY . . . . .	Poetry Editor
MAGGIE MAY JONES . . . . .	Co-ed Editor
J. B. PRICE . . . . .	Local Editor
J. C. SATTERFIELD . . . . .	Sports Editor
R. H. MOORE . . . . .	Alumni Editor.....

### Associate Editors

J. R. HIGHTOWER	MAY HITCH
JESSIE CRAIG	DOROTHY ALFORD

### Management

R. L. WILLIAMS . . . . .	Business Manager
J. T. LEWIS . . . . .	Assistant Business Manager





### High Royal Seekers

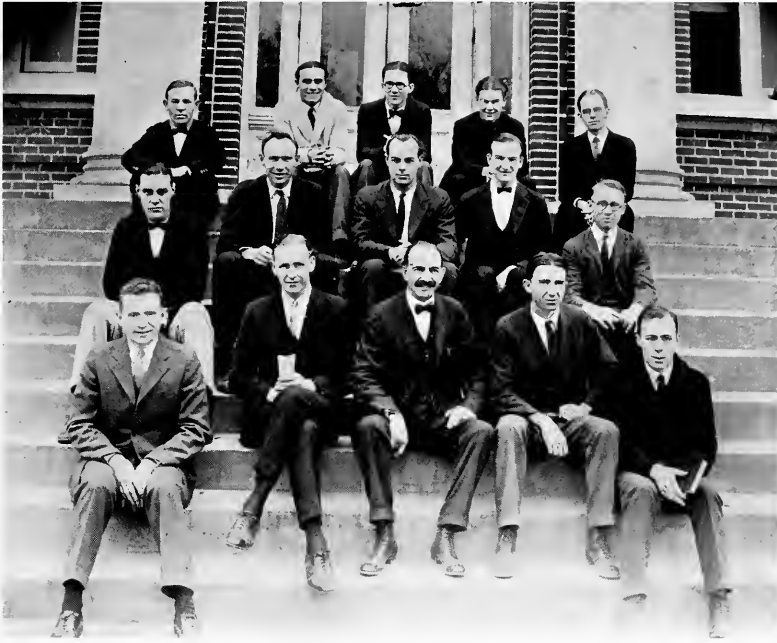
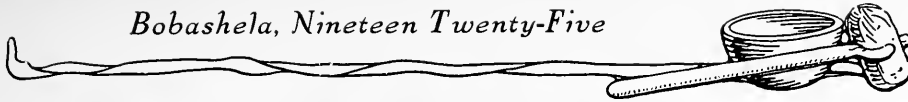
The Millsaps Astronomy Class was organized for the first time this year. The year was unusually favorable, due to the fact that the class had the opportunity to observe a partial eclipse of the sun.

#### OFFICERS

PROFESSOR G. L. HARRELL . . . . .	<i>Grand High Seeker</i>
Q. MCCORMICK . . . . .	<i>Astronomy "Two"</i>
W. F. MCCORMICK . . . . .	<i>Grand High Investigator</i>
C. A. TATUM . . . . .	<i>High Keeper of Implements</i>
W. W. LESTER . . . . .	<i>Grand High Greaser</i>
V. P. MOREHEAD . . . . .	<i>Grand High Smoker</i>
H. L. JONES . . . . .	<i>Grand High Shark</i>
G. H. JONES . . . . .	<i>Grand High Placer of Ladder</i>
J. T. LEWIS . . . . .	<i>Grand High Recorder</i>
O. H. SWAYZE . . . . .	<i>Grand High Questionnaire</i>
H. W. F. VAUGHAN . . . . .	<i>Grand High Pursuer</i>
H. G. SIMPSON . . . . .	<i>Grand High Light Fixer</i>







### Right Royal Ramblers

Here's Dr. Sullivan's geology class, known as the Right Royal Ramblers. They are ardent students of the Atmosphere, Hydrosphere, and Lithosphere. Before becoming fossils, they hope to know if the dikellocephalus pepinensis came from the Archeozoic, Proterozoic, Paleozoic, Meozoic, or Cenozoic periods.

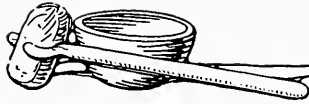
#### OFFICERS

- DR. J. M. SULLIVAN . . . . . *High Royal Rambler*
- G. H. JONES . . . . . *President*
- C. W. PULLEN . . . . . *Vice-President*
- J. C. SATTERFIELD . . . . . *Secretary*
- C. R. BUSH, JR. . . . . *Treasurer*

#### MEMBERS

- |               |                |                  |
|---------------|----------------|------------------|
| M. L. BRANCH  | W. M. GALLOWAY | T. F. REID       |
| R. H. BENNETT | C. H. GUNN     | H. G. SIMPSON    |
| R. E. BELL    | R. G. LILLY    | H. W. F. VAUGHAN |
|               | W. H. PHILLIPS |                  |





### Boys' Glee Club

#### OFFICERS

A. P. HAMILTON . . . . .	<i>Director</i>
O. H. SWAYZE . . . . .	<i>President</i>
W. H. EWING . . . . .	<i>Secretary</i>

#### *First Tenor*

O. H. SWAYZE	A. L. ROUSE	E. M. SHARP
	VERNON FRANKLIN	

#### *Second Tenor*

S. F. RILEY	J. L. GAINY	H. H. FAIRCHILD
	E. T. CRISLER	

#### *First Bass*

J. L. SEAWRIGHT	C. H. GUNN	WALTER SPIVA, JR.
	W. H. EWING	

#### *Second Bass*

S. W. WINN	R. J. JONES	R. S. THOMPSON
	R. L. CALHOUN	

CATHERINE POWER, *Accompanist*





### Girls' Glee Club

#### OFFICERS

- B. E. MITCHELL . . . . . *Director*  
 EURANIA PYRON . . . . . *President*  
 LORINE McMULLEN . . . . . *Secretary*  
 IRENE SIMPSON . . . . . *Business Manager*

#### Sopranos

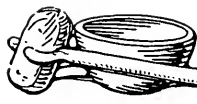
- |                   |                    |                       |
|-------------------|--------------------|-----------------------|
| FRANCES McNAIR    | MARY LOUISE FOSTER | FANNIE MOSS           |
| OLIVIA KNOX       | MAGGIE MAY JONES   | SARAH THOMPSON        |
| ELISE HERRING     | RUTH PICKETT       | SIDNEY BRAME          |
| EURANIA PYRON     | WINNIE MARTIN      | EMILY PLUMMER         |
| LAURA DAY SIOVALL | LUCIE MAE McMULLEN | GERTRUDE RILEY        |
| MARYNELL WILLIAMS | IRENE SIMPSON      | MARTHA BELLE MARSHALL |
|                   | BESSIE SUMRALL     |                       |

#### Altos

- |                  |                   |                |
|------------------|-------------------|----------------|
| MARGARET FLOWERS | JESSIE CRAIG      | CORALIE COTTON |
| LORINE McMULLEN  | THERESA BARKSDALE | EMMIE LOWE     |
|                  | MARY CHISHOLM     |                |

ETHEL MARLEY, *Accompanist*





## Unfinished Work

Unfinished work is left by all,  
That to some unborn one shall fall;  
Though work be hard, or work be sweet,  
The hours all too swiftly meet,  
And not a one we may recall.

We place a few stones on the wall,  
A few lines on our pages scrawl—  
But 'tis—though men may praise our feat—  
Unfinished work.

We gild our bit of life's gay ball  
Before we hear the evening call;  
But art is long and time is fleet;  
The best we do is incomplete;  
The most that we may do is small:  
Unfinished work.

G. E. G.

## Toy Ships

One by one, with quiet glee,  
I launched my ships on the boundless sea;  
One by one, their white sails filled,  
And they followed where the breezes willed.

Long I watched each tiny boat  
Cross the bar and outward float,  
Till it vanished in the distance far,  
With its sail aglow like a morning star.

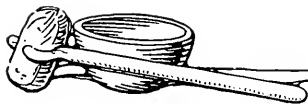
I may not guide their restless way;  
Where they may drift I cannot say.  
The shifting wind, the drifting tide,  
The wandering wave must be their guide.

One by one, with quiet glee,  
I launched my ships on the boundless sea;  
Ah, long the day and far the way  
Till my ships return to me.

G. E. G.







## Kappa Alpha

Founded at Washington and Lee University in 1865

*Colors:* Crimson and Gold

*Flowers:* Magnolia and Red Rose

*Publication:* "Kappa Alpha Journal"

## Alpha Mu Chapter

### FRATRES IN FACULTATE

MILTON C. WHITE

J. REESE LIN

A. P. HAMILTON

### FRATRES IN COLLEGIO

#### *Class of 1925*

E. M. TATE

W. M. GALLOWAY

J. L. GAINES

WALTER SPIVA, JR.

#### *Class of 1926*

WATKINS FORD

V. P. MOOREHEAD

#### *Class of 1927*

O. H. SWAYZE

J. W. COKER

W. C. KENNINGTON

J. L. GRAHAM

E. G. WHITEHEAD

J. M. STEVENS

#### *Class of 1928*

N. F. KENDALL

M. C. GREEN

L. M. SEAWRIGHT

IRBY TURNER

W. O. HOOD

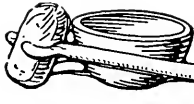
G. O. ROBINSON

\*S. M. BUTTS

\*Pledged







## Kappa Sigma

Founded at the University of Bologna in 1400  
Founded in America at the University of Virginia in 1867

Colors: Scarlet, White and Emerald

Flower: Lily-of-the-Valley

Publications: "The Caduceus," and "The Star and Crescent"

## Alpha Upsilon Chapter

### FRATRES IN FACULTATE

G. L. HARRELL  
C. A. BOWEN

### FRATRES IN COLLEGIO

#### *Class of 1925*

G. H. JONES  
R. G. LILLY

#### *Class of 1926*

J. S. HAMILTON	T. B. HOLLOMAN
M. B. SWAYZE	T. E. MOTLOW
J. R. COUNTISS	J. R. HIGHTOWER
S. G. HUTTON	C. R. BUSH, JR.
J. R. HARRIS	R. E. THOMPSON

#### *Class of 1927*

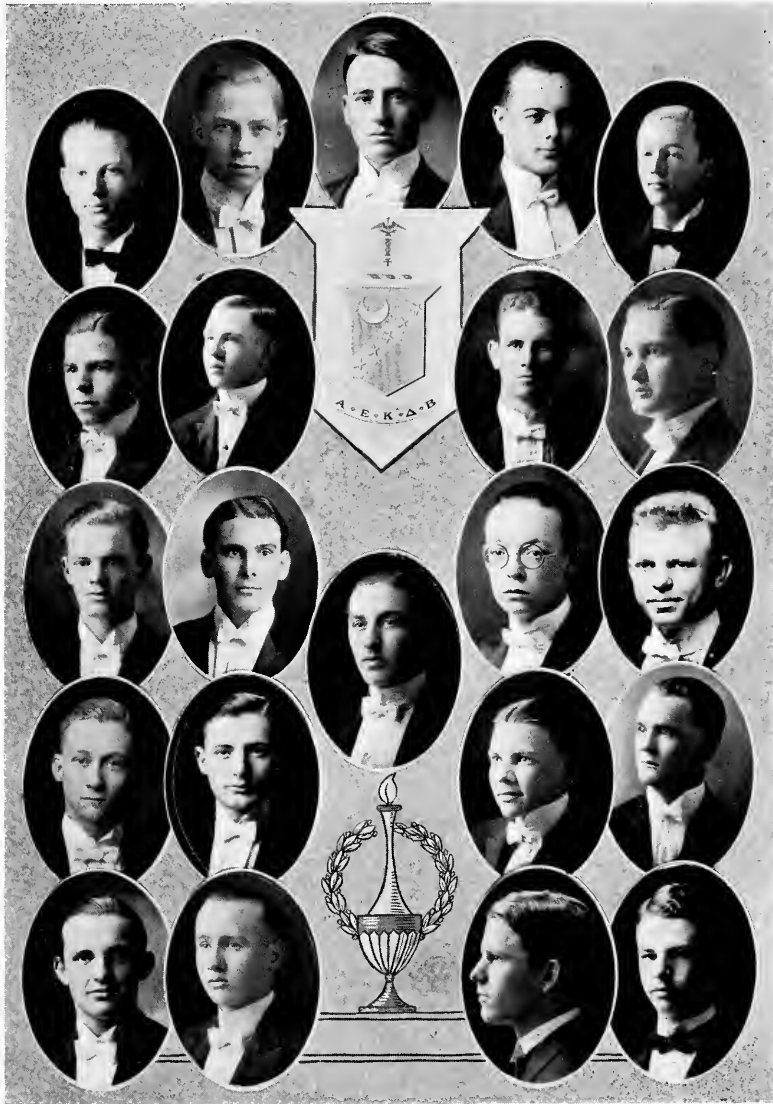
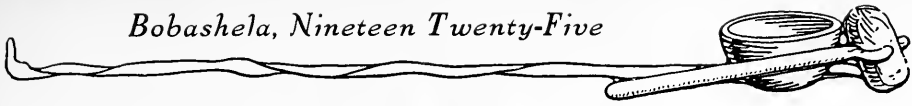
A. L. ROUSE	C. M. SWANGO
NORVAL WILLS	W. J. NELSON, JR.
J. R. SMITH	E. T. CRISLER
H. Y. SWAYZE	W. H. EWING
G. A. WILSON	GEORGE BRITT

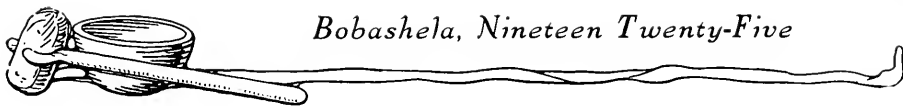
#### *Class of 1928*

DICK WILLS	S. F. RILEY
D. M. MOUNGER	









## Pi Kappa Alpha

Founded at the University of Virginia in 1868

*Colors:* Garnet and Gold

*Flower:* Lily-of-the-Valley

*Publication:* "The Shield and Diamond"

### Alpha Iota Chapter

#### FRATRES IN COLLEGIO

##### *Class of 1925*

R. L. WILLIAMS  
W. W. LESTER

##### *Class of 1926*

V. E. CHALFANT                      W. A. BEALLE  
W. D. CALHOUN

##### *Class of 1927*

J. E. SKINNER	H. H. FAIRCHILD
J. T. LEWIS	D. L. BLACKWELL
L. M. NORTON	W. H. STOKES, JR.
J. C. WILLIAMS	A. G. WARD
E. P. JONES, JR.	P. L. BYRD

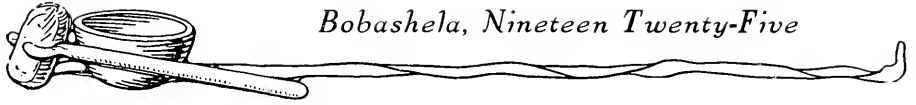
##### *Class of 1928*

R. E. BLOUNT	*J. S. FRANCIS
*W. F. BOONE	HUGH REEVES
T. B. COTTRELL	*H. E. JONES
L. F. MARS	

\_\_\_\_\_  
\*Pledged







# Theta Kappa Nu

Organized 1921. Nationalized 1924.

Founded at Drury College in 1924

Colors: Black, Crimson and Silver

Flower: American Beauty Rose

Publication: "Theta News"

## Mississippi Alpha Chapter

FRATRES IN COLLEGIO

*Class of 1925*

W. P. WOOLLEY

S. M. BAILEY

T. H. NAYLOR

*Class of 1926*

J. E. BAXTER  
LEROY BROOKS

J. H. FAVARA  
W. C. MABRY

J. H. WEBB

*Class of 1927*

C. B. ALFORD

O. L. BROOKS

*Class of 1928*

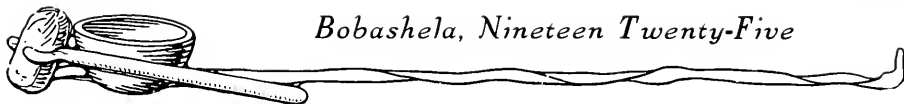
R. H. BAXTER  
W. K. BARNES  
\*M. H. BROOKS

A. F. CARRAWAY  
\*A. G. CRAWFORD  
\*R. R. HUDSON

\*Pledged







## *Bobashela, Nineteen Twenty-Five*

# Phi Mu

Founded at Wesleyan College in 1852

Colors: Rose and White

Flower: Rose Carnation

Publication: "Aglaiia"

## Epsilon Chapter

SORORES IN COLLEGIO

### *Class of 1925*

EVELYN FLOWERS	BETHANY SWEARINGEN
ETHEL MARLEY	LUCY WATKINS

### *Class of 1926*

NORMA LEE CALDWELL	MARGARET POWER
FRANCES MIDDLETON	VIRGINIA TERRELL
GEORGIA WATKINS	

### *Class of 1927*

*EVELYN DONALD	FRANCES KENNEDY
MEADE SWAYZE	CATHERINE POWER
HELEN LOTTERHOS	ELLEN SMITH

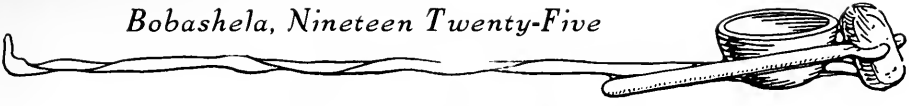
### *Class of 1928*

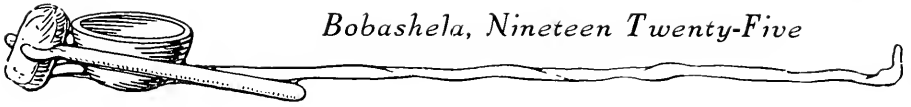
THERESA BARKSDALE	LAURA MIDDLETON
MARGARET FLOWERS	FRANCES MCNAIR
MARY LOUISE FOSTER	DOROTHY SHARP

\*CAROLINE TOWNES  
OLIVIA KNOX

\*Pledged







## Kappa Delta

Founded at Virginia State Normal College in 1897

*Colors:* Olive Green and White

*Flower:* White Rose

*Publication:* "Angelos"

## Mu Chapter

SORORES IN COLLEGIO

*Class of 1925*

JESSIE CRAIG	CYNTHIA THOMPSON
MARTHA CRISLER	PAT ELKINS
BESSIE SUMRALL	ELIZABETH SHACKLEFORD
EMILY PLUMMER	ALBERTA TAYLOR

*Class of 1926*

MARYNELLE WILLIAMS

*Class of 1927*

HAZEL NEVILLE	LAURA DAY STOVALL
DOROTHY MILLER	MAYBELLE ALFORD
DOROTHY SKINNER	AMANDA LOWTHER
TEXAS MITCHELL	

*Class of 1928*

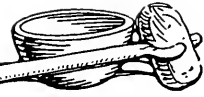
ELISE HERRING	SARA SUMMERS THOMPSON
RUTH BUCK	ELIZABETH MIAZZA
*REBA TULL	LOC ADA WILLIAMS
*DULCINA SCOTT	MAURINE WARBURTON
SHIRLEY KNOWLES	GERTRUDE RILEY

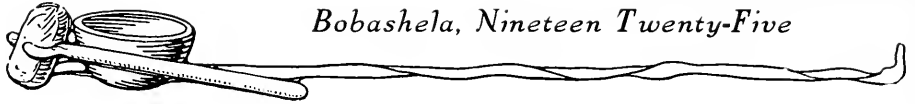
\*Pledged





*Bobashela, Nineteen Twenty-Five*





# Sigma Upsilon

R. W. TERRAL, *Secretary*

## FRATRES IN COLLEGIO

R. W. TERRAL

M. L. BRANCH

R. L. WILLIAMS

M. B. SWAYZE

## FRATRES IN FACULTATE

M. C. WHITE

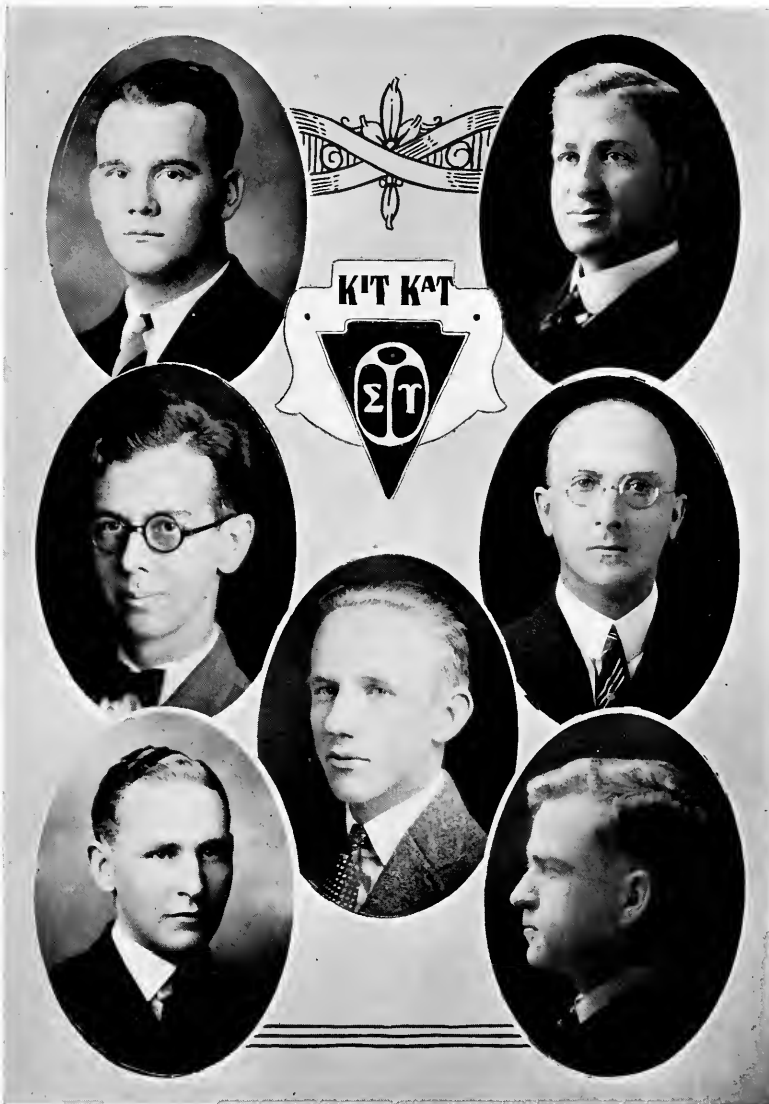
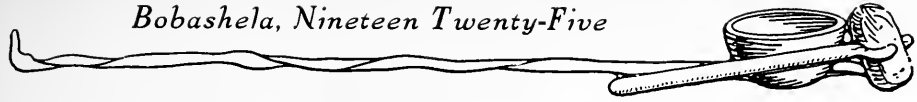
A. G. SANDERS

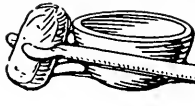
R. H. MOORE

## FRATERNITY ROLL

<i>Sopherin</i> . . . . .	Sewanee
<i>Calumet</i> . . . . .	Vanderbilt
<i>Osiris</i> . . . . .	Randolph-Macon
<i>Senior Round Table</i> . . . . .	University of Georgia
<i>Odd Number Club</i> . . . . .	University of North Carolina
<i>Boar's Head</i> . . . . .	Transylvania
<i>Scribblers</i> . . . . .	University of Mississippi
<i>Kit Kat</i> . . . . .	Millsaps
<i>Scarabs</i> . . . . .	University of Texas
<i>Scribes</i> . . . . .	University of South Carolina
<i>Coffee House</i> . . . . .	Emory University
<i>Fortnightly</i> . . . . .	Trinity
<i>Attic</i> . . . . .	University of Alabama
<i>Grub Street</i> . . . . .	University of Washington
<i>Gordon-Hope</i> . . . . .	William and Mary
<i>Blue Pencil</i> . . . . .	Davidson
<i>Sphinx</i> . . . . .	Hampden-Sidney
<i>Ye Tabard Inn</i> . . . . .	University of Oregon
<i>Ye Mermaid Inn</i> . . . . .	University of Montana
<i>Utah Scribblers</i> . . . . .	University of Utah
<i>Rotunda</i> . . . . .	University of Virginia
<i>Lanier</i> . . . . .	University of Tennessee
<i>Sesame</i> . . . . .	Washington and Lee University
<i>Stilus</i> . . . . .	Southwestern Presbyterian University
<i>Lanthorne</i> . . . . .	University of Akron
<i>Gamma Phi Psi</i> . . . . .	University of Missouri
<i>Writers</i> . . . . .	University of Richmond
<i>Purple Gown</i> . . . . .	Johns Hopkins University
<i>Beowulf</i> . . . . .	Montana State College
<i>Florian</i> . . . . .	Washington University
<i>Pelican's Quill</i> . . . . .	Tulane University







## Les Precieuses

*Prettiest Girl*—Catherine Power beat Jessie Craig one vote. Twenty in race.

*Best Sport*—J. W. Young. "His epitaph, in letters of yellow, here lie the bones of a good fellow!"

*Most Handsome Man*—French, Holleman, and Motlow tied. Bill Ewing got a vote.

*Most Studious*—Hendricks. Earthquake, waterspout, landslide for Ernie.

*Freshest Freshman*—Hopgood. Won in a walk.

*Biggest Lady Fusser*—Jonie Hamilton. Vote was co-ed enrollment, plus one.

*Most Unsophisticated*—Gladys Howie.

*Best Athlete*—Leroy Brooks. Like Spark Plug, "Sonny" says little, but, like Billy Sunday, he "looks at no man's back."

*Best Natured*—"Yokohama Hongkong" Kim. By virtue of jui jitsui.

*Most Absent-Minded*—"Mistuh Orang" Swazes, from Bintum.

*Best All-Round Girl*—Dorothy Miller. "Over the top" ahead of eighteen anxious candidates.

*Most Stylish Girl*—Olivia Knox. As she stepped from Vogue, in her Paris clothes, Olivia won over a score barely by a yard of lace.

*Most Original*—C. C. Combs. Originality is a first-class passage ticket to success. C. C. is originality itself. Therefore—Q. E. D.

*Neatest Student*—John Countiss. With a clothes brush, some Sta-comb, a touch of Shinola there, John sets the style with a Beau Brummel air.

*Wittiest Student*—Ephraim P. Jones. Falstaff, doff your shako!

*Most Thorough-going*—W. P. Woolley. He's early to bed, early to rise—works like a Trojan, and tells no lies?"

*Biggest Mexican Athlete*—Shelley Bailey. "Now, boys, I swear *this* is so."





## The Spirit of Bobashela

By ELIZABETH BRAME



ILHOUETTED against the hot blue Mississippi sky stood the Indian maiden, Bobashela, laughing sweetly, her strange fay eyes a mixture of fire and dew. She let her gaze drift slowly upon the panorama which stretched about her. Toward the south, she watched the smoke arise fantastically and silently from the spot which marked the white man's town of Les Fleurs Bluff. Only the house roof could be seen from her position on the small hill, but she watched the smoke arise and take mystic shapes against the autumn sky, and smiled whimsically to herself. From the east she could hear very dimly and spasmodically echoes of the Indian boy's guttural whoops from across the Pearl River, where her own people, a tribe of Choctaws, had their cone-shaped dwellings in a rough circle which touched the river bank. They were merry-making, for it was nearing the full moon, when she, Bobashela, the only daughter of their wise Great Chief, was to be given in marriage to Berry Child, a young brave of the tribe, after which all the strong warriors would go on the warpath. Towards the north and west stretched the forest—the forest she knew and loved so well; the forest of sweet-smelling pines—brown, bare, slim, and golden as her own golden flesh amid the golden blaze of autumn leaves; the forest where she had spent her young life among the wild things, whose every secret she knew.

Glimpsed through the deep woodland, she looked as an elfin child, elusive and in rhythm with the world about her. For a moment she gazed toward the south, and her eyes became alluring with the soft depth of dreams. Expectantly, she stood and watched the slender, almost imperceptible trail which led down the hill to Les Fleurs Bluff. Then, with the swift, graceful movement of a fawn, she glided noiselessly through the woods in the direction of the rising sun.

Entering her camp, she disappeared within her father's lodge. Presently she reappeared, carrying a wooden dish, and walked toward the lodge of the father of Mina Pokau, the very brave young warrior with whom her father had engaged for her to marry. All the people whom she passed sitting or standing about the camp looked curiously at her as she went by them, and some of the young people whispered together, but the girl held her head proudly until she reached the lodge. Turning to the left, she sat down for a moment on the women's side, and was glad when she found that the only people within were Mina Pokau, who was at work smoothing arrow shafts between two stones, and his sister, who was sewing moccasins. When Bobashela saw that these were the only people within the lodge, she arose, and, going where Mina Pokau sat, offered the dish to him. He took it and ate, and the girl





## *Bobashela, Nineteen Twenty-Five*

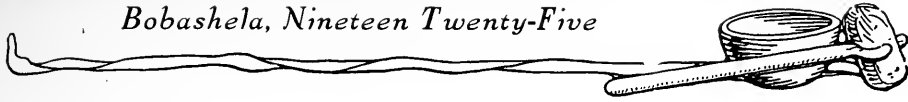
returned to her place and sat down. After the boy had eaten, he put the dish on the ground before him and went on with his work, and the girl, again arising, took the dish and left the lodge. Each day during the engagement, which had been arranged between her father's family and the family of Mina Pokau, she served him thus, and she must continue this trial until the day of the marriage ceremony.

The Indian maiden was much beloved by the members of her tribe. She was always kind and gentle and willing to take care of the little brown babies or play with young striplings of brown lads. It was to Bobashela that the women came with their troubles, and the old men who were no longer able to go on the warpath liked to have her talk to them. It was thus that she was called Bobashela—meaning "Good Friend." Even the birds and squirrels came to her as they did to none other of the Indian maidens. She was a good friend to all the wild things of the forest. And the most treasured of her woodland friends was the big, vivid red tanager, with the wonderful ribbon-red color over his breast, all flaming exquisite red save the circles of darkness which were his eyes. He lived on the top of the tallest pine tree on the small hill, and although the cardinal is the most shy and timid of birds, he flamed around Bobashela, or, perched on the tip-top branch of the tall pine, would swing his vivid body against the tall sky and thrill with sheer ecstasy, "Pretty! Pretty! Pretty!" And again, "So dear! So dear! So dear!" or, "Come here! Come here! Come here!" It was a strange coincidence that the cardinal chose, as his home, the target tree of Mina Pokau.

The target tree of Mina Pokau stood on the top of the hill, exactly in the middle of the very narrow trail which led straight from the hill to the river bank. Mina Pokau, who could send an arrow straighter and farther than any other brave, came often to the trail to practice. So far from the target tree that he could scarcely see the tall pine, he would silently raise his bow, and with neat precision send the arrow straightly, swiftly, through the narrow opening in the woods. And always the arrow winged its way to the tall pine target tree.

Busy with the preparation for her marriage, many moons passed before Bobashela again left the camp, but on the day before the ceremony she slipped away and glided to the hill at the north of Les Fleurs Bluff. Almost reaching its summit, she stopped suddenly and, with alluring grace, poised for flight, her strange fay eyes gleaming with a strange softness, watching the scene before her. At the top of the tall pine sat the scarlet tanager, thrilling and whistling until it seemed that he would actually tear his throat asunder. At the foot of the tall pine stood, motionless, a white boy, his face lit up with beautiful joy as he listened to the song of the cardinal. Many times Bobashela had watched the lovely white boy come up the trail from Les Fleurs Bluff and try to catch the redbird in song. But always her friend had become shy and flown away. But now the cardinal sang with all the ecstasy of his being, and the boy listened in glorious wonder and adoration. And the eyes of Bobashela became soft with wanton laughter and alluring with the depth of uncaught dreams.



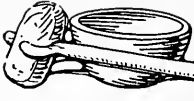


Then suddenly from down the trail between the brown and golden leaves, she caught one swift glimpse of a bit of Choctaw red. It was Mina Pokau, she knew, who had come to practice and whose arrow would come straight and silently to the tall pine target tree. Swift as an arrow she swung her body into the trail, posed for one scant second, and fell at the feet of the white boy with an arrow through her heart. As in a dream, the boy gazed at the quivering form at his feet, while the cardinal rent the air with his thrills of "Good friend! Good friend! Good friend!" The boy bent over the form of the Indian girl and thought her the loveliest thing he had ever seen. She slowly opened her eyelids and raised her eyes to the singing cardinal. Then she looked into the boy's worried eyes and smiled contentedly, and, calling the cardinal to her, "I give you the fire bird," she said, "the fire bird who brought the flame of living fire to the earth." And then, smiling dreamily, she added: "The red bird of love. Worry not, great white boy, for though I die, my spirit will live in this hill forever. For down through many moons will come a time when Les Fleurs Bluff shall be Les Fleurs Bluff no longer; but your people shall have built a great city here, and my people shall be here no more, but broken as the winds break the reeds on the river bank. But always the spirit of Bobashela shall dwell upon this hill and in the hearts of men who tread upon it."

Slowly her eyelids closed, and the white boy gently kissed the smiling lips, then arose and went down the trail toward Les Fleurs Bluff. And the cardinal trilled, "Pretty! Pretty! Pretty! Bobashela!"

Almost a century has passed, and the stragging little village of Les Fleurs Bluff has changed to our growing city. The Indians are, indeed, broken and gone. The tall pine tree has long since been cut down, and in its place stands the white man's building of learning. But ever the spirit of Bobashela dwells upon the hill.









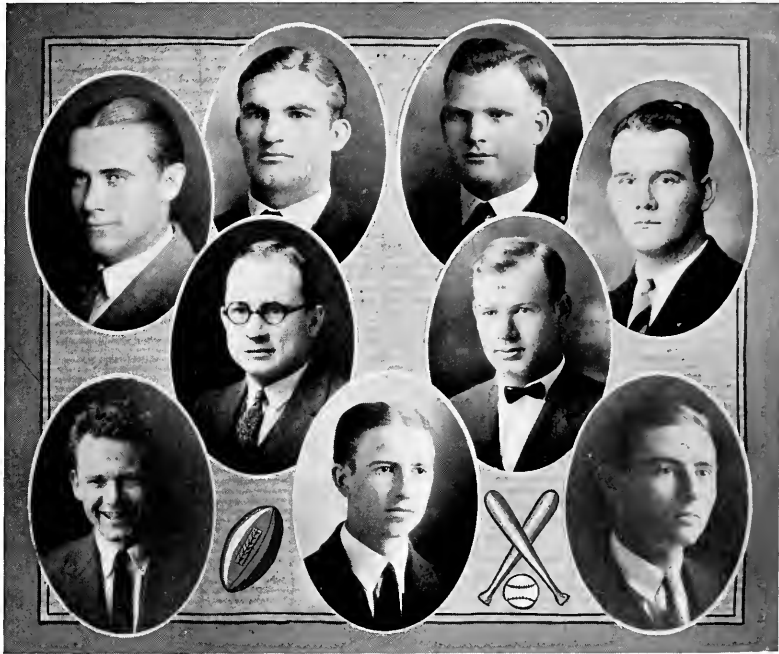
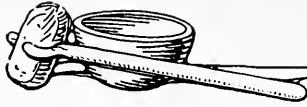
*Athletics*





COACH ZIMOSKI



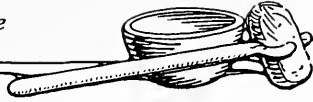


### Boys' Athletic Association

#### OFFICERS

- |                           |                                     |
|---------------------------|-------------------------------------|
| V. E. CHALFANT . . . . .  | <i>President</i>                    |
| JAMES PLUMMER . . . . .   | <i>Vice-President</i>               |
| J. E. BAXTER . . . . .    | <i>Secretary</i>                    |
| M. B. SWAYZE . . . . .    | <i>Student Manager</i>              |
| C. W. PULLEN . . . . .    | <i>Assistant Manager Football</i>   |
| J. W. YOUNG . . . . .     | <i>Assistant Manager Basketball</i> |
| W. A. BEALLE . . . . .    | <i>Assistant Manager Baseball</i>   |
| WALTER SPIVA, JR. . . . . | <i>Assistant Manager Track</i>      |
| J. O. HARRIS . . . . .    | <i>Assistant Manager Tennis</i>     |





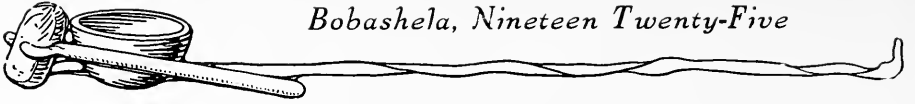
## Girls' Athletic Association

### OFFICERS

PEARL CRAWFORD . . . . .	<i>President</i>
EURANIA PYRON . . . . .	<i>Vice-President</i>
EMMIE LOWE . . . . .	<i>Business Manager</i>

The co-eds have not been at Millsaps many years in large enough numbers to take part in intercollegiate athletics. But since their entrance into that field the interest has steadily increased and their records are becoming better each year. This season they are making a strong bid for the state championship in basketball.



A large, stylized graphic with a central circle containing the letter 'M'. Above and below the 'M' are the words 'AT THE' and 'CLUB' respectively, rendered in a decorative, blocky font. The entire graphic is set within a rectangular frame with vertical lines. Below the 'M' is a list of members under the heading 'WEARERS OF THE "M"'.

**AT THE**

**M**

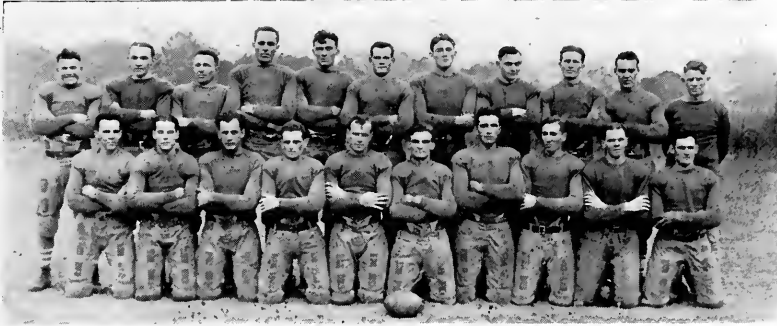
**CLUB**

**WEARERS OF THE "M"**

Clyde Atkins	J. R. Hightower
J. E. Baxter	R. G. Lilly
W. A. Bealle	Q. McCormick
Leroy Brooks	T. E. Motlow
M. L. Burks	R. W. Oakley
Shelley Bailey	James Plummer
V. E. Chalfant	A. L. Rouse
W. M. Galloway	J. H. Webb
C. H. Henley	N. C. Young
J. R. Harris	J. W. Young
T. B. Holloman	Levon Brooks
C. B. Alford	W. C. Mabry

J. D. MULLEN





## Football Review

The '24 Majors have accomplished something which has been the aim of Millsaps' elevens since football opened here five years ago, and that is to place Millsaps football on a par with that of the other colleges of the state. Five years of steady work brings Millsaps up to the other colleges which have had it for years.

But when the season closed they woke up to find that their record stood five defeats, three victories, and one tie. Again it seemed as if there was indeed a "jinx" on their trail, for their record shows that they made 45 more first downs than their opponents. Such a record is seldom made, even by the teams which are the most consistent winners.

The Majors who fought for the Purple and White this year were men who fought to the end, whether the odds were against them or not. No matter what the score, every militant Major was in his position fighting his best for Millsaps.

That '24 line, made of huskies who would not yield, will long be remembered in Millsaps' annals. Said to be the strongest in the state, only twice did it give more first downs than was won by the Majors—the Bulldogs from A. & M. and the Birmingham-Southern Panthers being the only teams which could accomplish this feat.

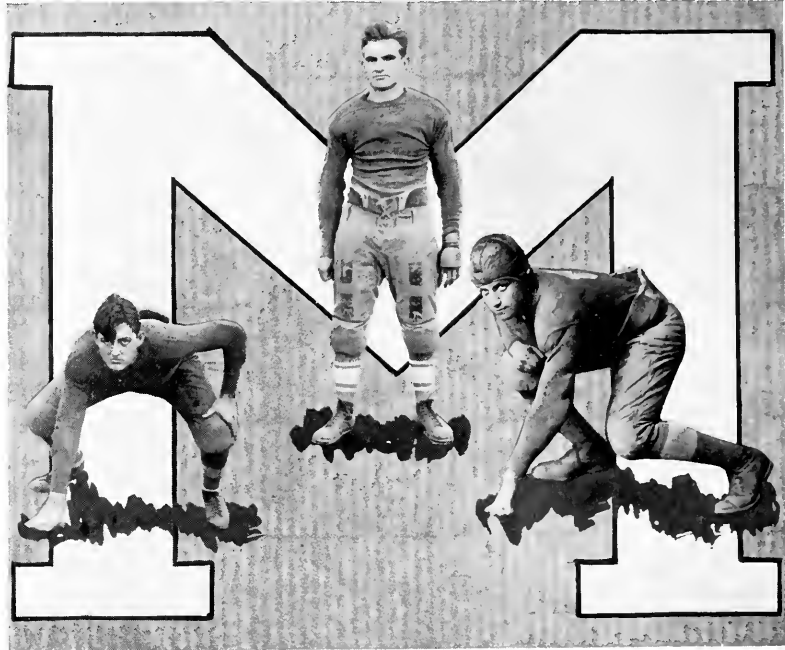
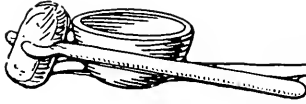
One game stands out above all others, a game when, with their opponents outclassed and outfought, the Majors still could not win. The Choctaws were seemingly not in the Majors' class for the first time in football history, as they could register only one-fifth as many downs as the Majors won, but when the dust of battle cleared, the Purple and White was drooping in defeat.

Here's to the team! The team which fought a hard, clean game, no matter whether in victory or defeat; a team which, almost as a whole, will be back at their Alma Mater next year to make the greatest football eleven ever produced by Millsaps College.

And here's to Coach Zimoski, who made that team possible, and who was willing to sacrifice in order to stay with Millsaps another year and give them the strongest team in the state!

Clarke . . . . .	0;	Millsaps . . . . .	14
A. & M. . . . .	28;	Millsaps . . . . .	7
Birmingham-Southern . . . . .	6;	Millsaps . . . . .	0
Mississippi College . . . . .	14;	Millsaps . . . . .	0
Hendrix College . . . . .	7;	Millsaps . . . . .	0
S. P. U. . . . .	0;	Millsaps . . . . .	6
Spring Hill . . . . .	20;	Millsaps . . . . .	20
Howard College . . . . .	0;	Millsaps . . . . .	14
Ole Miss . . . . .	7;	Millsaps . . . . .	0





LEVON BROOKS . . . . . *Left Tackle*

"Tiny" Brooks had only to set himself, and any plunge was spilled against his shoulders. The heaviest man of the '24 Majors, "Tiny" handled his weight in a way which promises great things for the succeeding years. Here is one of the reasons that a line plunge was seldom called by the Millsaps opponents.

J. W. YOUNG, *Captain* . . . . . *Halfback*

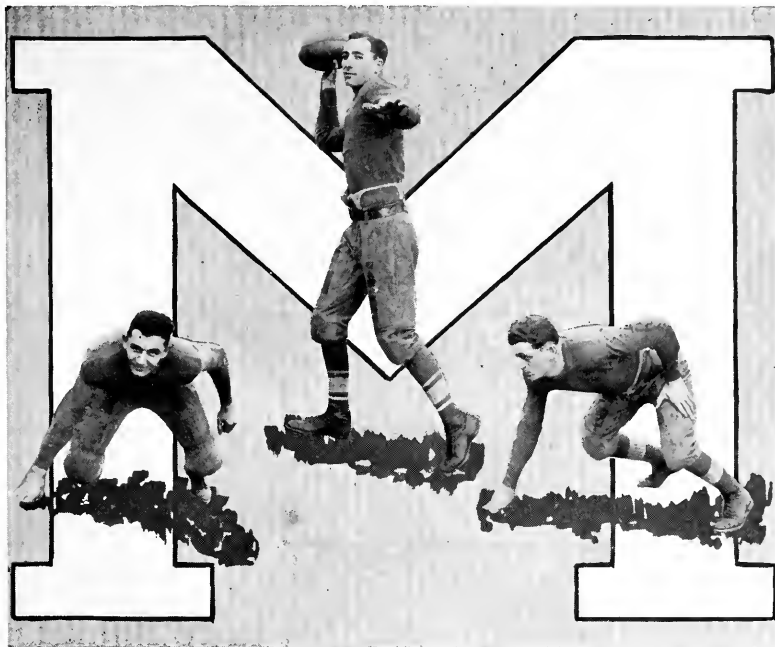
"Stump" was handed a cruel dose by Dame Fortune in the first thirty minutes of play, breaking his hand in a manner which kept him out of most of the season's battles. "Stump" could not boast size, but he was a great broken-field runner, and could pick holes in a way that meant steady gains for the Majors. It was "Stump's" fighting spirit that put across the winning touchdown in the last fifty seconds of the S. P. U. contest.

C. B. ALFORD . . . . . *Halfback*

Charlie Alford came from the '23 Minors and, quiescent during the first part of the season, came out with a rush in the S. P. U. battle. Playing hardly half the time, he rolled up gains totaling seventy-three yards. With two more years to play for the Purple and White, Alford has a great football future before him.







T. E. MOTLOW . . . . . *Tackle and End*

"Mot" was probably the most versatile player on the squad, performing well as tackle, end, and half during the season. Wherever he appeared, "Mot" was not to be denied, and when a weak place appears on the team, he may be counted on to plug it.

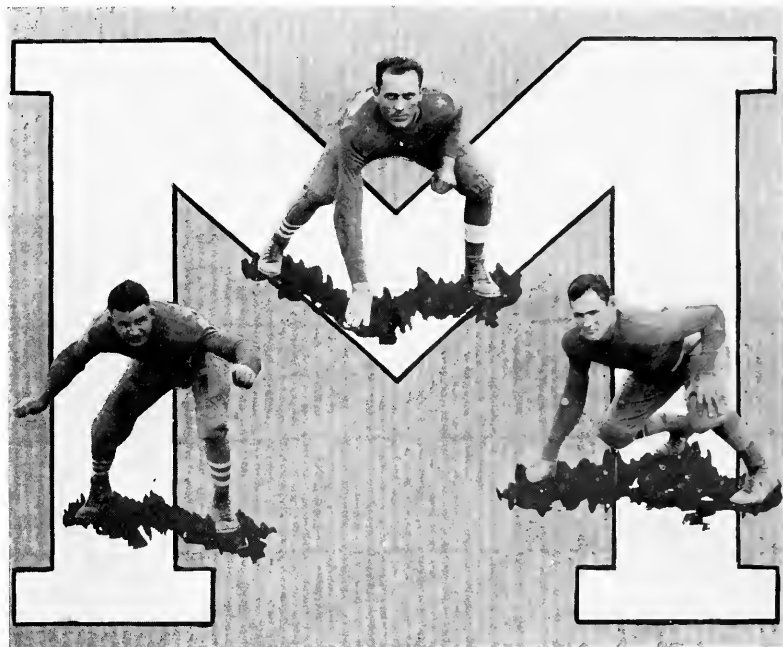
N. C. YOUNG . . . . . *Halfback*

"Slim" leaves the Purple and White this year, and his presence in the backfield will be sadly missed. He is quick to pick a hole, but the way he snagged passes from the air was equaled by no other man on the Millsaps eleven. More than once the combination, Harris to "Slim," paved the way for a Major touchdown.

J. R. HARRIS . . . . . *Halfback*

"Jobie" was the man whose brilliant forward passing and long punting was always a constant quantity upon which the Majors could draw for offense or defense. "Jobie's" toe uncorked many a fifty-yard punt which sent the opponents scrambling back into their own territory. His specialty was sweeps around the ends or a come-flaged dash ending in a pass.





CLYDE L. ATKINS . . . . . *Right End*

"At" was the speediest man on the Major eleven, and there was not a man on the field who could leave him behind. A hard fighter, lightning for quickness, and sure of his play, Atkins was in the game every second. When a forward pass was called, Atkins seemed to be down the field almost before the back received the ball.

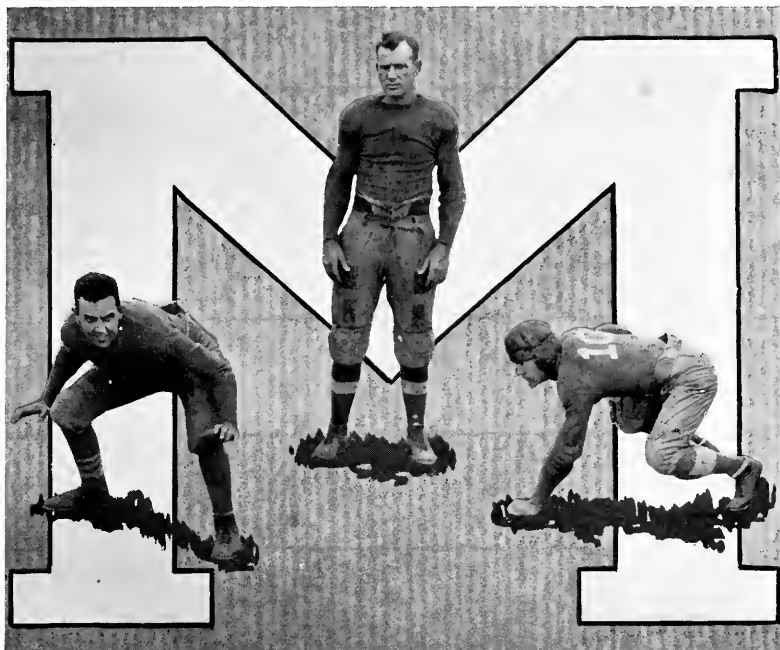
J. HAROLD WEBB . . . . . *Tackle*

"Pole," the old reliable of the Majors, was a tower of strength in every game, and many were the plays that came to grief opposite his position. Never once did "Pole" falter, and his quiet assurance was felt by his teammates. Playing his last year with the Purple and White in '25, he is a man who will be heard from, and that "with no uncertain sound."

LEREY BROOKS . . . . . *Left End*

"Sonny's" uncanny ability to stop a play that came near his territory, as well as the way he sped down under passes and punts, earned the respect of his teammates to such a degree that he was chosen captain of the '25 eleven. Captain Brooks was an All-Stater in '22, and will push someone hard for his old position next season.





RUFUS W. OAKEY . . . . . *Tackle*

Oakey's brilliant defensive work, with his power to smash holes in the opposing line when the backs needed it, caused him to get into every game after his late start. Belonging to the '22 team, Oakey came back with a vengeance after being out of the game for a year, and he is looked to to fill an important place in the '25 eleven.

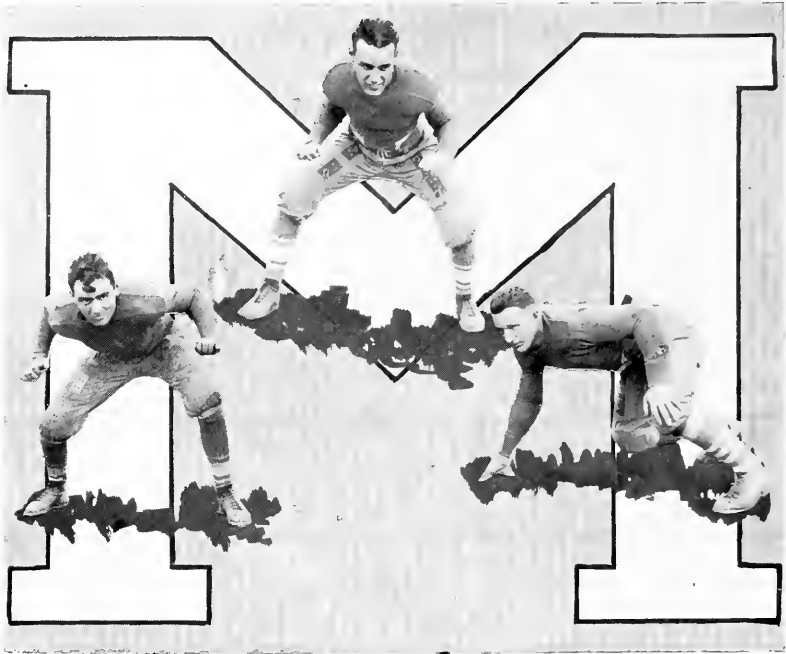
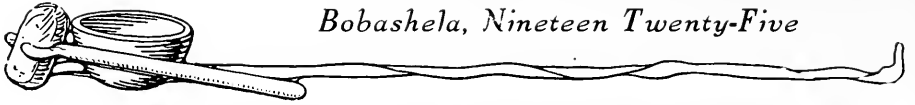
W. A. BEALLE . . . . . *Fullback*

"Cyrus" is a man respected by all his teammates and feared by his opponents. When a gain was badly needed, "Cyrus" was called on to hit that line, and hit it he did, with the momentum of a through express. Bealle drives hopes from the hearts of the opposing linesmen by his fierce driving plunges. As relief quarter, Bealle never failed to lead his team with his skill.

AUTHOR L. ROUSE . . . . . *Fullback*

"Speedy" ended the season as the supreme line plunger of the eleven, and when he tucked the ball under his arm and ducked his head it spelled a good gain for Millsaps. When he set his weight in motion, he seldom knew what it meant to be stopped without a gain.





JAMES E. BAXTER . . . . . *Center*

Placed at center the second game of the season, Baxter performed in a manner which kept him there every game this season. At guard last year, this season Baxter developed into one of the best centers in the state. Rangy, but heavy, the yardage made over his position could be counted on the fingers of one hand, if counted at all. He was the main cog in the line that was considered by some to be the best in the State.

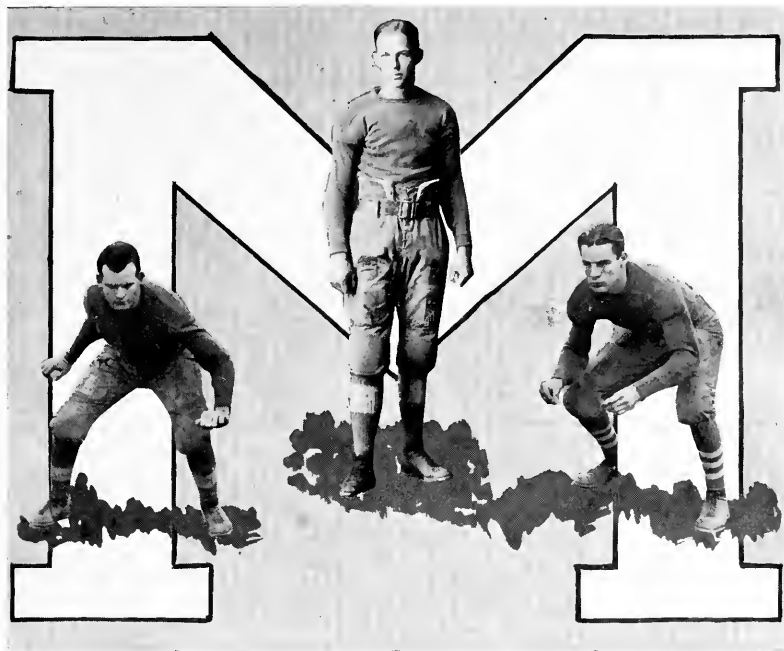
WALTER M. GALLOWAY . . . . . *End*

"Hank" was one of the Majors who failed to chum with Lady Luck, for he was thought ineligible for all Conference games, only to have found after the season was over that he could have played in all. But in spite of this, Galloway trained consistently, and was in every non-Conference game played by the Major eleven.

CHARLES F. HENLEY . . . . . *Right Guard*

"Bigun" stood across from "Red," and these two are a pair who lived up to the watchword, "They shall not pass." Not only did he stop line plunges, but when a pass was attempted his way, he could be counted on to knock it down. Henley, playing his second year with the Purple and White, made the All-State Eleven, a record which speaks for itself. We expect still greater things from "Bigun" next season.





JAMES PLUMMER . . . . . *Guard*

"Red" is a fighting guard who adds to his fight the ability acquired by several years with the Millsaps squad. He earned his first varsity letter year before last, and reached football heights in his final appearance for his Alma Mater by being proclaimed All-State guard this year. In "Red" we lose a mainstay of the great '24 eleven.

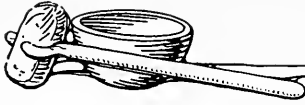
T. B. HOLLEMAN . . . . . *Quarterback*

"Bo" is a molecule in size, but a mammoth in ability. On him also Lady Luck frowned, for with less than half the season completed, he was injured at Hendricks and was out for the rest of the season. In spite of playing only half time, however, "Bo" made the second All-State eleven. Speedy and gritty, with plenty of football strategy up his sleeve, he will certainly enroll his name in the annals of football fame before his two more years at Millsaps are completed.

PAUL BYRD . . . . . *Half*

Paul came from last season's Minors, of whom he was one of the best backs. All he lacks is experience, and in the games in which he played he showed that he is fast securing that. Quick on his feet and able to pick a hole, he is counted on to be one of the regular backs next season.





W. C. MABRY . . . . . *Guard*

"Hot" made his first appearance on the Millsaps grid this year, but his consistent, steady playing made him a linesman to be feared. With a year's training behind him, Mabry should make his mark as a gridster, and we predict a great future for him in the football world.

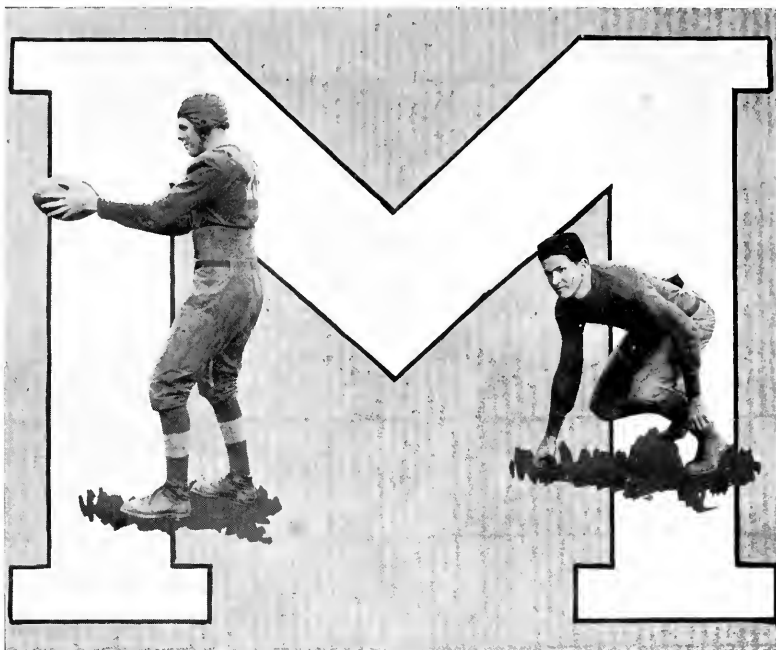
V. E. CHALFANT . . . . . *Half*

Injuries claimed another man from among the Majors, and this was Chalfant. Starting what promised to be his greatest year, Chalfant was put out for almost the entire season at A. and M., and his hopes of making a great record this year were spoiled. The way he tears through the opposing wall with every ounce of strength and fight that is in him carries him to success where others might fail.

J. S. WARREN . . . . . *Guard*

Warren was a man who, although he did not make a varsity letter, was one of the causes of the development of the Majors team. Rain or shine, Warren was on the field without fail, ready to do his part toward getting the team into shape. This was his first year out for football, but his last at Millsaps, as he finishes this spring.





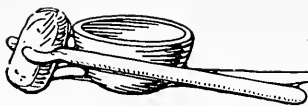
J. C. WILLIAMS . . . . . *Half*

Jack is a last year's freshman who has been showing up well in the scrimmage, and should be one of the '25 team. He is light but fast, and willing to stick to it through thick and thin. Against S. P. U. and Howard College, he showed that he is developing into a speedy back.

S. M. BAILEY . . . . . *End*

"Senior," an All-Stater in basketball, went out for football this year for his first time, but his ability was not to be denied, and he soon assured himself of a position. Hurt near the end of the season, Bailey was kept out of the last few contests. But while playing, his speed and headwork made him a dangerous man to the opponents on both offense and defense.





## Basketball Review

The major basketeers are hard at work and are determined to beat all past records. No brilliant record is marked up for last season, but the fighting spirit the majors showed in spite of defeat is due consideration. After defeating A. & M. once and losing to them once, the majors lost a two-game series to Ole Miss. The Choctaws managed to win the next series, as the majors only defeated them once in a hard fought game.

Undaunted by these defeats, Coach Zimmie and the majors went to the S. I. A. A. tournament at Macon, Ga., determined to bring back laurels. The usual major luck prevailed, and they drew Mercer, one of the strongest teams at the tournament, for the first game. Mercer won, 21 to 18, but she also won the championship.

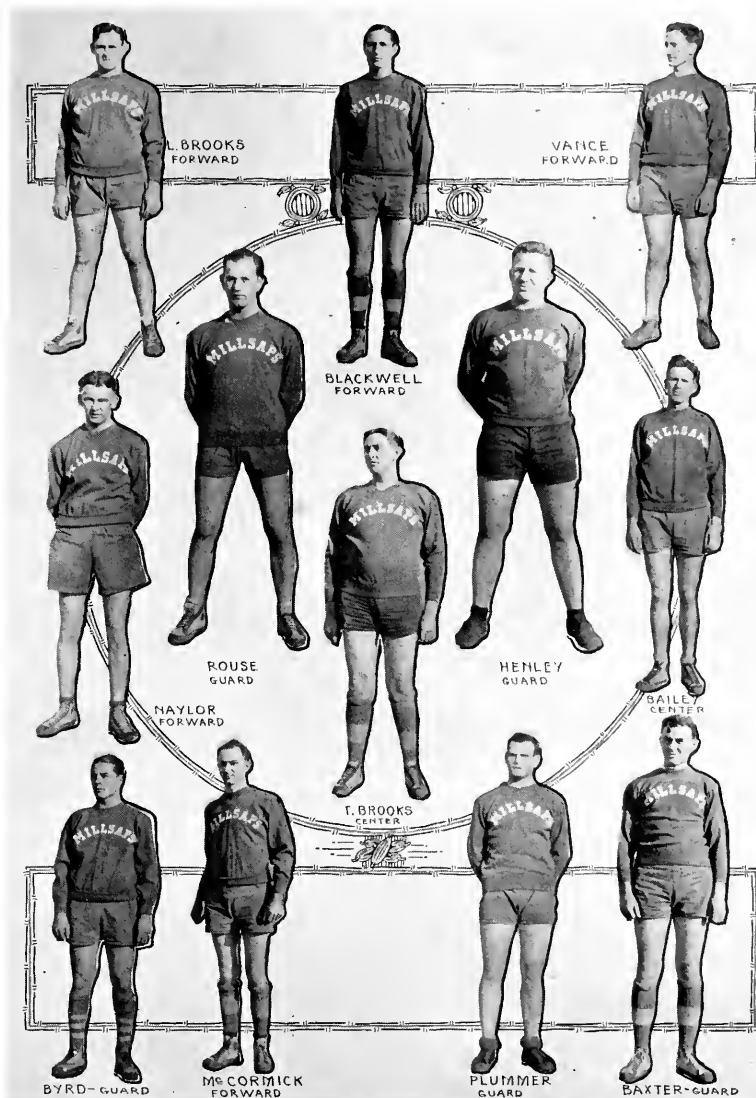
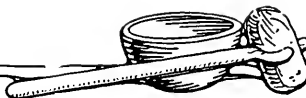
This season's team should develop into an even better team than last, as most of the letter men are back, and several of last season's freshmen are working hard for regular positions.

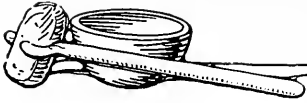
With wins over the local Y. M. C. A., Clarke College, Hattiesburg Y. M. C. A., and defeats by Centenary, Mississippi College and the State Teacher's College, as a starter, the majors have gone into a strenuous training that bids fair to bring results.

In addition to the above-mentioned games, the majors are scheduled to meet Ole Miss, Miss. A. & M., and Mississippi College several times, with possibly a few games not in the regular schedule.









## Freshman Basketball

This year's freshman team shows prospects of a successful season. With plenty of material and several former high school stars from different parts of the state, the minors have a good chance to turn out a perfect machine.

The minors showed up well in games with the Deaf and Dumb Institute and Mississippi College Papposes. Coach Zimoski is watching the freshmen eagerly, and no doubt sees good material for next season's varsity in several of them.

Rouse, freshman coach, has the following from which he'll pick a winning team: Crawford, Francis, Moody, Butts, Blount, Bouche, Everett, M. Brooks, Frederickson, Rape, Loflin.





## Girls' Basketball Review

The co-ed majors have begun activities on the basketball court for this season, and are making rapid progress under the able coaching of Mrs. Calvin Barbour, athletic director. Mrs. Barbour, after finishing a course at the University of Michigan, held the position of athletic director of the girls at the University of Mississippi for the past two years. She has already demonstrated her ability as a coach, and it is easily seen that she means business by the stiff practice the team has been put through since this season's opening.

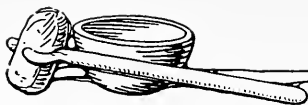
Winning two games and losing two, one an exhibition game, is a very encouraging beginning, and with the old Major fighting spirit prevailing, this year bids fair to be a winner and a strong contestant for state championship laurels.

Last year was the co-ed Majors' first attempt at inter-collegiate basketball, but despite this fact, they made a creditable showing.

Games this season are scheduled with Ole Miss, Mississippi Woman's College, Belhaven, Hillman, Grenada, and the Mississippi Normal, and the co-eds are determined to win a majority of these games.

This year's team is composed of Cynthia Thompson (captain), and Evalena Allen, guards; Louise Young and Emmie Lowe, centers; Elizabeth Setzler and Elise McCallum, forwards; with Alberta Campbell, Maggie Lee Harrel, Eurania Pyron, Helen Henderson, Arlete Tarlbert, Ruth Connerly, Cynthia Penn, Agnes Howie, and Gladys Howie, as substitutes.





## Baseball Review

Spring football was engaged in by the Majors, much to the detriment of baseball in '24. All of Coach Zimoski's time was given to the training of the football squad, and no regular schedule was arranged for the nine, who played only five games, winning three of these.

The State Teachers' College at Hattiesburg was played a two-game series, with Millsaps making a clean sweep of the series.

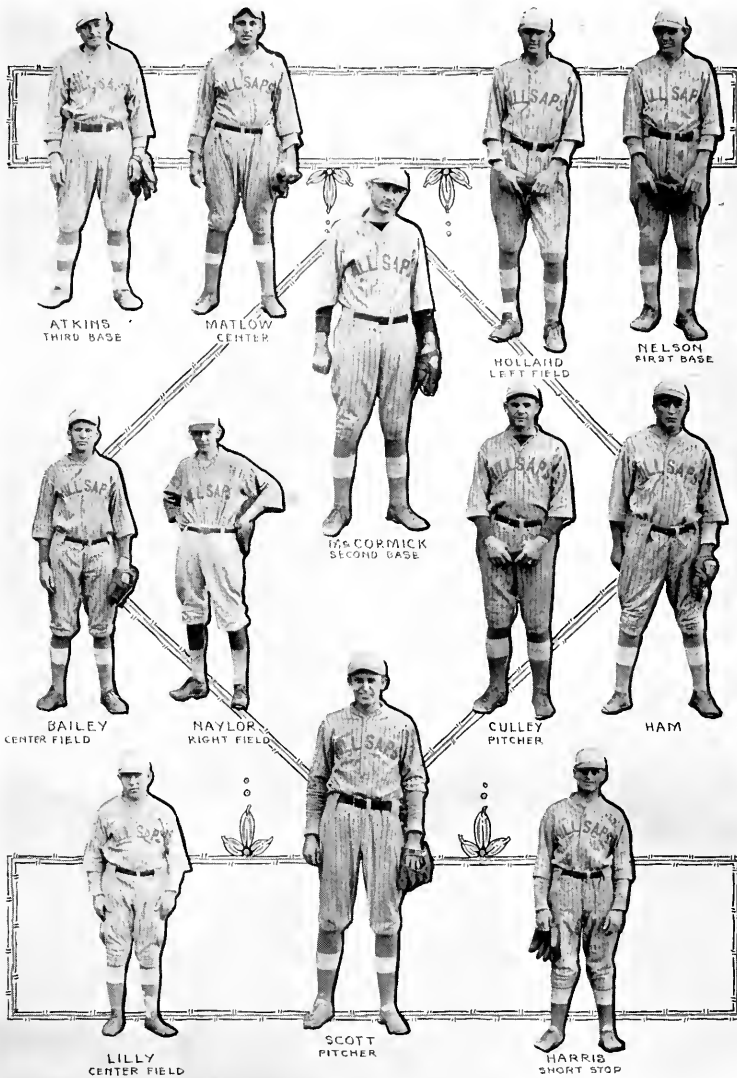
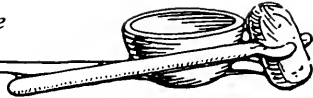
Although the Majors lost two out of three games played with Mississippi College, they accomplished a feat which only one other team was able to do last season, and that was to shut out the Choctaws.

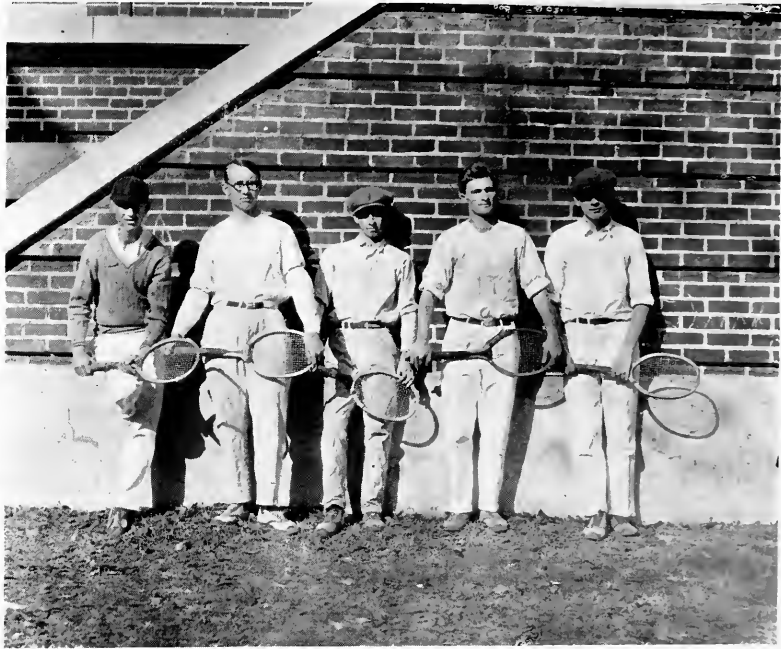
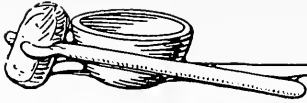
Playing the first game of the series in the Jackson League park, they humbled the Choctaws, holding them scoreless and putting two runs across the plate. Dudley Culley hurled a splendid game, making his last appearance before Jackson fans as a Major.

This season there is an abundance of good material, and if Coach Zimoski decides to develop a team, a rattling good nine should be formed.



Bobashela, Nineteen Twenty-Five





## Tennis

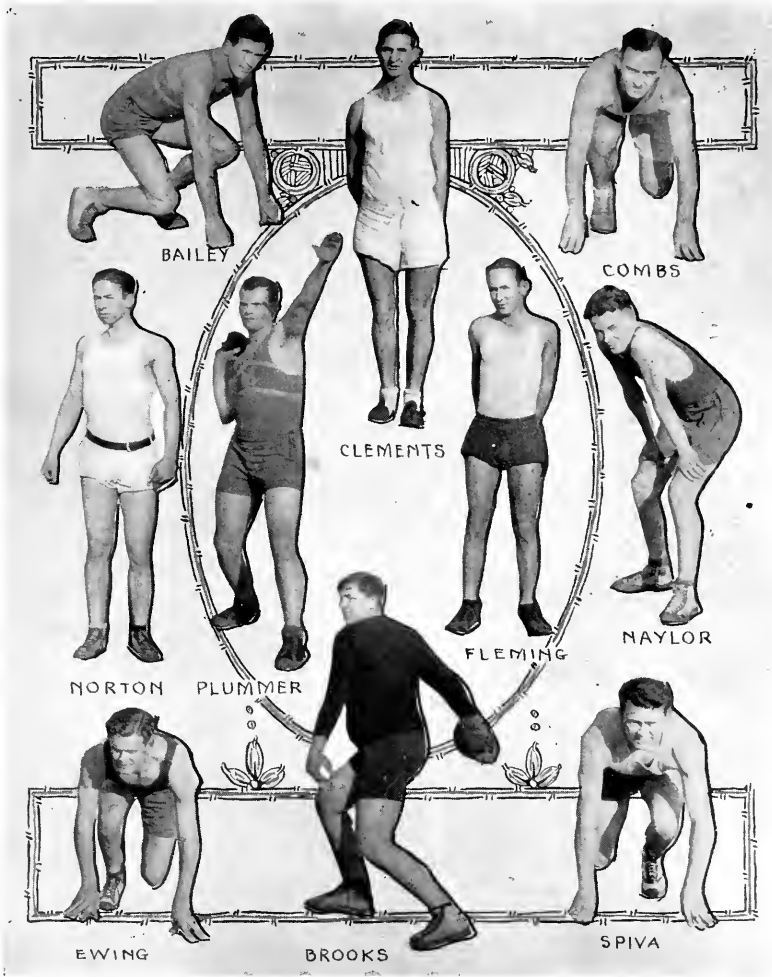
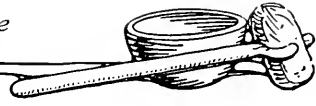
Millsaps is again looking forward to a successful season on the tennis courts. The team of 1924, composed of R. L. Hunt and E. M. Chatoney, made a record of which Millsaps is indeed proud. In the state tournament held on the campus last spring, they defeated the Choctaws with ease in the semi-finals, and by brilliant playing won out over A. & M. in the finals, thus bringing state championship laurels to Millsaps. Hunt, in spite of a severe attack of nausea, put up a fight worthy of praise against Chapman of A. & M., who won the singles laurels.

After easily defeating the Choctaws in several matches, Hunt, Chatoney, and Prof. White, the tennis coach, went to McComb, where they won both singles and doubles matches over amateur title contenders. Prof. White annexed some honors himself in a singles match.

Aspirants for honors on the courts this year are: J. O. Harris, manager; G. H. Jones, G. E. Greenway, H. W. F. Vaughan, and R. C. West.

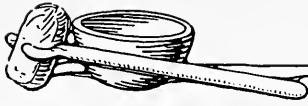
Arrangements are being made for several matches with the Choctaws during the spring of this year.





TRACK TEAM





THE JAMES OBSERVATORY

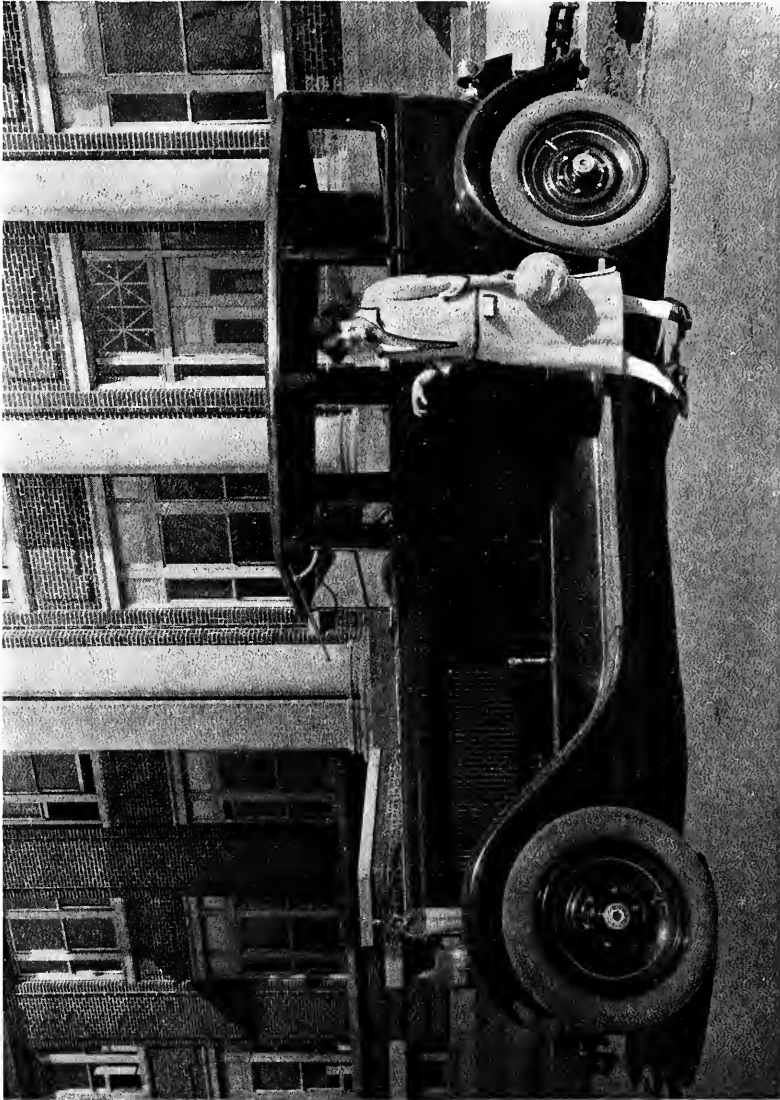






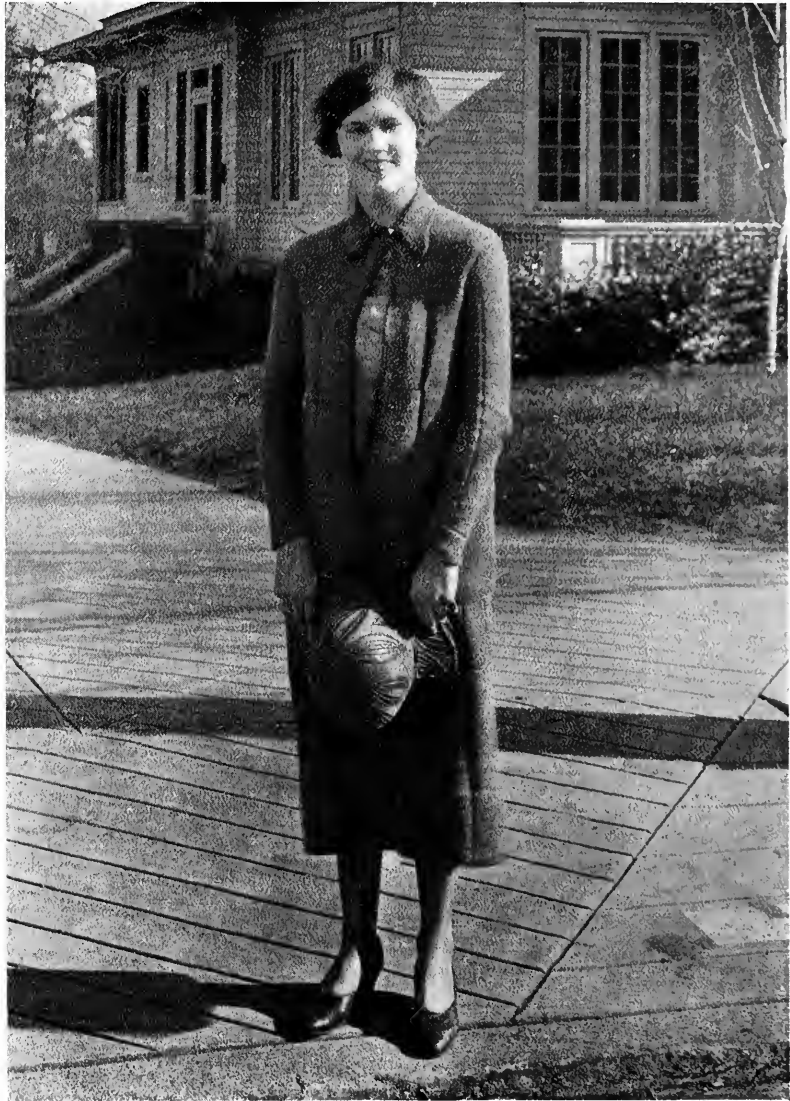
*Features*





MISS BESSIE SUMRALL  
*Sponsor Football*





MISS LAURA DAY STOVALL  
*Sponsor Basketball*





MISS MARY LOUISE FOSTER  
*Sponsor Track*





MISS RUTH BUCK  
*Sponsor Baseball*





## The Picture That Spoke

By G. E. GREENWAY



IT IS a big mistake to study all night before an exam. Larry Envers realized this as, with bleared eyes, he watched the professor chalk the examination questions on the board. He had needed the preparation bad enough, of course. He just had to pass this exam—near enough to flunking, as it was.

The first three years of college had been easy. He had studied hard, and had made some excellent grades. This year, as a senior, it was different. He was, to use his own words, "getting the rest of his education"—athletics, girls, and a very pleasant round of other college activities. Perhaps he had carried it too far. It wouldn't do to miss his degree by a flunk on the last examination. Hence the studious vigil of the night before.

The figures on the blackboard seemed to elude his eyes, and shaped themselves before his mind only at enormous intervals. Almost mechanically he began his paper. He knew the subject fairly well, but the expression came with difficulty. As he wrote, his mind seemed to be clear; and he finished the first two answers with some degree of ease, and at the same time the caution of one who wrote with a college degree at stake.

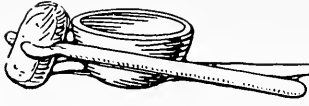
And then came the third question, brief, specific, and, worst of all, on a subject that he had entirely ignored in review. He remembered the very page of the book from which the question was taken; but for the life of him, he couldn't recall the answer.

"Um, um—let's see." The answer seemed at his finger tips; but still it eluded him. He thought and thought till the figures appeared to dance before his eyes, and the waiting paper blurred and swam in his gaze. Yet no answer came. As if to distract his mind still more, a new flock of wholly foreign ideas perched themselves at the edge of his consciousness; the queer figure of the slitted sunlight on the floor, a bird that had seen fit to poise himself outside the window, the indolent buzz of a bee. And through it all he felt the dull pain of reality. Miss this question—flunk the exam—a year's work wasted. Darn it all, anyhow! He just had to pass!

And then his eyes caught the gleam of white paper glistening in front of him. That was Cairnsley Dodd's paper, of course. Old Cairnsley didn't know what it meant to flunk an exam. He glanced about him cautiously—no professor in sight, and the rest of the seniors were in front.

Almost before he was conscious of his action, he was peering over the shoulder of the unsuspecting Dodd, and his pencil was racing over the paper, copying the third answer.





But wait a moment! There was one of the professors. He would have to wait a while. His eyes lifted a vacant stare into space. As he did so, he gave a sudden start. His gaze was centered on a large picture on the wall, the portrait of a man to whom greatness had brought success and remembrance as the founder of the college.

In some way that picture had always held a peculiar interest for Larry. He remembered how, as a freshman, he had been attracted by that noble countenance and the ghostlike reflection of the student body in the glass of the frame. As the years had passed on he had come to understand better the man of the portrait, and to see how eminently fitting was the illusion of the picture—the ghost-students against the kindly background of the portrait.

That grave and noble face, those kindly, searching eyes, the personality of the man, all these had influenced him before, but never so much as now. The wise eyes seemed to pierce him with their scrutiny, and the calm face appeared suddenly severe and stern. The Major had fought the battle squarely, and here he, Larry Envers, was cheating to win his.

For a moment Larry dropped his gaze. Then, with what was almost a sob, he snatched the shameful page from his tablet, tearing the stolen answer in pieces.

In a minute he was back to work with a new vigor. The mists had cleared from his brain and he seemed to feel about him the presence of the Major himself. Quickly and surely he finished the paper, leaving a blank space for the omitted question. With a firm step he strode to the front and deposited his answers.

The professor in charge noticed a peculiar glow in Larry's eyes. "Well, Envers, how do you think you made it? Passed all right, I suppose?"

The glow faded. "I'm afraid not, professor. That third question hit me pretty hard. Could you let me know my grade tomorrow night, if I called you up? I'll be rather worried, you know."

The professor smiled sympathetically. "I guess so. About nine o'clock will do. Hope it will be good news."

But Larry knew better. Hour by hour his anxiety increased. On returning to his room he found a letter from a well-known firm offering him a very desirable position for the next year. And he cursed himself for an impressionable fool, losing a chance like that. Another year's work wasted, and probably his chance at the job, as well.

After an almost sleepless night and an equally restless day, he found himself unaccountably drawn once more to the college chapel—to the picture of the Major.

The chapel was uncannily quiet, and he entered almost on tiptoe. The setting sun glowed in narrow slits through the high windows, and the slightest sounds came back twisted into weird echoes. Up in the gloom the Major's picture seemed to smile down on him and Larry was sure that the serious eyes were kindlier than usual.

Then the thing seemed different to Larry Envers. Somehow his worry had left him, and he felt glad and happy. What was a little defeat? He had done the right thing, after all.





## *Bobashela, Nineteen Twenty-Five*



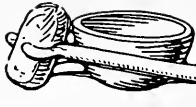
As he left the chapel he turned, and for one glorious moment smiled up through the gathering darkness to the *other* man who had played a square game with life.

Three hours later he telephoned the professor. With hardly a quiver in his voice he asked his grade of the day before.

And back to his astonished ears the answer came: "Why, yes, you passed. Pretty narrow squeeze, though. An exact seventy." And then in a lower and rather peculiar tone, "I don't know to this minute why I gave you that extra point."

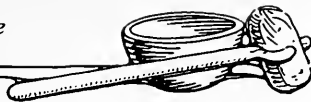
But, up in the darkness of the chapel, the Major smiled wisely and happily as he kept his nightly vigil over the college and its men.





COLLEGE OAKS



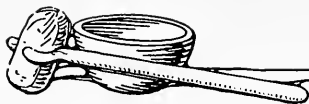


The Editor wishes to thank all those who aided in making the '25 *Bobashela* what it is. We have done our best and have no excuses to make. We have undoubtedly made mistakes, and hope the staff of next year may profit by them.

We call your attention to the ADS. and ask that you PATRONIZE OUR ADVERTISERS, without whose aid our efforts would have been for naught.

**TURN OVER**





*Bobashela, Nineteen Twenty-Five*

*We Must Make This Store Interesting to You—  
We Must Make It Serve You Well*

That is its only reason for existence—

That is the only basis on which it can prosper and grow.

That is why we constantly scour the world's best sources of supply to secure the newest and best merchandise for your use and comfort and supply them to you in best and most wanted grades at the most moderate prices.

And besides, we are being constantly told that our store Service is better than ever.

## DOWNING LOCKE CO.

JACKSON'S SHOPPING CENTER

## THE CAPITAL NATIONAL BANK

JACKSON, MISS.

CAPITAL, \$200,000.00

STOCKHOLDERS' LIABILITIES, \$200,000.00

SURPLUS EARNED, \$250,000.00

Designated Depository of the United States, State of Mississippi,  
Hinds County, and the City of Jackson

THAD B. LAMPTON, *President*  
W. M. BUIE, *Vice-President and Trust Officer*  
EDWARD W. FREEMAN, *Vice-President*  
W. C. ALLEN, *Assistant Cashier*  
AMOS R. JOHNSTON, *Vice-President*  
J. CLYDE MCGEE, *Vice-President and Assistant Trust Officer*

### DIRECTORS

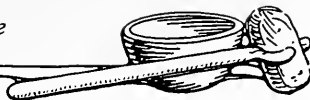
S. C. HART	CARL FAUST	J. C. MCGEE	W. B. JONES
JAS. A. ALEXANDER	W. E. GUILD	THAD B. LAMPTON	W. M. BUIE
LOGAN PHILLIPS	T. M. HEDERMAN	E. W. FREEMAN	F. T. SCOTT
J. H. MORRIS, JR.			

YOUR ACCOUNT SOLICITED

*Trust Department Under Supervision Federal Reserve System*



*Bobashela, Nineteen Twenty-Five*



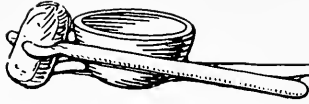
*Pride of the South*

**LAMAR LIFE INSURANCE COMPANY**

Home Office

JACKSON, MISSISSIPPI





VIEW SECTION IN THIS ANNUAL

Made by

**HOLLENSBE**

JACKSON, MISS.

All Kinds of Photographic Work

*Except the Poor Kind*

*Quality—Accuracy—Service*

That Famous Bowser Dry Cleaning  
New Way Family Laundry Service

**Wright's Laundry**

Phones 593-594 and 1030

**UNITED  
LADIES SHOPS**

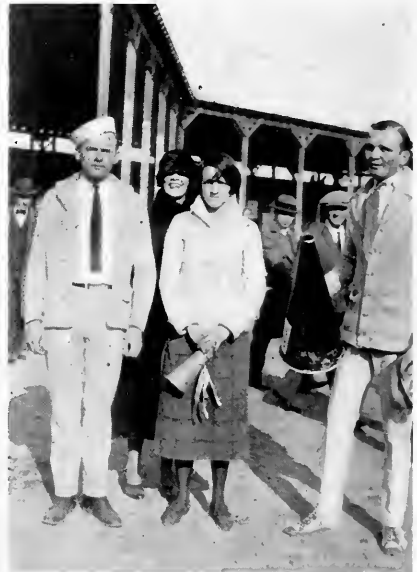
*Fashion Center*

All Your Wants Moderately  
Priced

*When Clothes Are Dirty  
Ring Seven-Thirty*

**Jackson Steam  
Laundry**

French Dry Cleaners



**VISIT US**

*At*

**WARD DRUG  
COMPANY**

Cor. South State and Pearl

Fishing Tackle      Athletic Goods

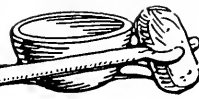
**JACKSON SPORTING  
GOODS STORE**

CARL W. HANDLIN

Shotguns, Rifles, Peter's Shells and Cartridges,  
Waterproof Hunting Clothing, Bathing Suits,  
Bicycle Repairing, Gun Repairing.

165 E. Capitol St.      Phone 3464  
JACKSON, MISS.





“JACKSON’S BEST STORE”

**KENNINGTON’S**

EVERYTHING FOR COLLEGE MEN  
TO WEAR

Hart Schaffner & Marx Clothes  
Hanan and Walk-Over Shoes

**UNION  
DEPARTMENT  
STORE**

**College Togs**

For Men  
Who Appreciate

**GOOD CLOTHES**

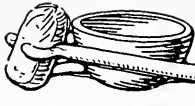
**MAJESTIC  
THEATRE**

*Mississippi’s Finest*

**ISTRIONE  
THEATRE**

*The Cozy Theater*





*Bobasha, Nineteen Twenty-Five*

Eatmor Bread Eatmor Bread

**ACME BAKERY  
COMPANY**

North Farish Street  
JACKSON, MISS.

*Truly Delicious*

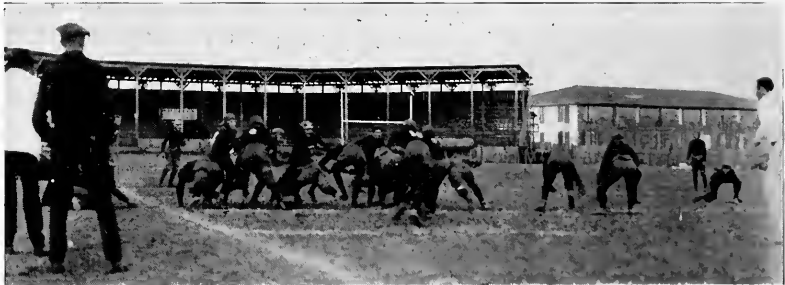
**MacGOWAN'S  
BEST COFFEE**

MACGOWAN COFFEE Co.  
JACKSON, MISS.

**SPECIAL MILLWORK—HIGH GRADE**

Our specialty is manufactured millwork, to fit any architect's requirements in any wood desired. Veneered doors and all other items of millwork manufactured in our own plant. A full mechanical equipment and experienced organization enables us to guarantee prompt service and accurate workmanship and material of good quality. Send us plans for estimate. "Our new plant, replacing old one destroyed by fire November 1, 1923, is now in full operation."

**ENOCHS LUMBER & MANUFACTURING CO.**  
JACKSON, MISSISSIPPI



**Dr. E. H. Galloway**

PRACTICE LIMITED  
TO SURGERY

Lamar Life Building

TELEPHONES  
Office 597—Residence 628

**WATKINS, WATKINS  
& EAGER**

ATTORNEYS AND COUNSELORS  
AT LAW

Watkins-Easterling Building  
JACKSON, MISS.







D. M. KEY, M.A., Ph.D.  
*President*

J. REESE LIN, B.A., M.A.  
*Secretary*

## MILLSAPS COLLEGE

JACKSON, MISSISSIPPI

FOUNDED 1891

### An A-Grade College of Arts and Sciences

Beautifully located in North Jackson, on two car lines. Campus of more than one hundred acres, on which are located Main Building, Science Hall, Library, College Dormitories, Founder's Hall, the President's Home.

AN ENDOWMENT of more than \$600,000.00. Conditions healthful and attractive; influences calculated to promote Christian character. Standard high; discipline good; faculty of fourteen competent professors. Honor System under the direct management of student Honor Council; active Y. M. C. A. Millsaps College is a member of the Southern Association of Colleges and Secondary Schools, and the Southern Intercollegiate Athletic Association.

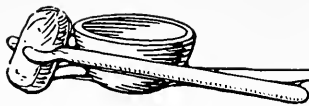
ADMISSION BY CERTIFICATE from affiliated high schools. For admission to the Freshmen Class the candidate must offer fifteen units as specified on page 26 of the catalogue.

PRE-MEDICAL AND PRE-DENTAL courses are provided in Chemistry, Physics, Bacteriology and other subjects.

EMPLOYMENT is found for many students desiring work as a means of self-support. Seven scholarships and several loan funds are available.

For catalogue and special information, address either of the above-mentioned officers.





**PALACE  
SANDWICH SHOP**

*Everything Sanitary*

Our Motto: Service and Quality

161 East Capitol Street  
JACKSON, MISS.

**BAPTIST BOOK STORE**

Books, Stationery, Bibles, Theological Helps, Fountain Pens, Eversharp Pencils, and Fiction. Mail orders filled by return mail.

Corner President and Capitol  
Phone 2703  
JACKSON, MISS.



**TUCKER  
PRINTING HOUSE**

JACKSON, MISS.

Engraved Wedding Invitations  
Crests, Cards, Announcements

*Only Engraving Plant in State*

Boys, Bring Your Girls In  
And We Will Tickle  
Their Palates

**The College Grill**

The Meeting Place of College  
Boys and Girls

**WANTED**

Young men and young women to take specialized training that will qualify them for positions in business or civil service at salaries of from \$100.00 to \$150.00 a month to begin.

For full information, call, write, or telephone for a copy of our large illustrated catalogue.

**DRAUGHON'S PRACTICAL  
BUSINESS COLLEGE**

JACKSON, MISSISSIPPI





# BELHAVEN COLLEGE

*School of Character*

COLLEGE OF LIBERAL ARTS  
CONSERVATORY OF FINE ARTS

Offers to Young Women of Mississippi and Adjoining States Unexcelled Opportunity for a College Education and the Finest Artistic and Vocational Training

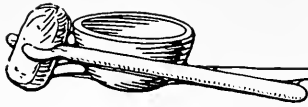
1. Standard Four-Year College Curriculum.
2. Special Emphasis on Home Economics.
3. Conservatory of Music—Piano, Voice and Violin.
4. Superior Schools of Art and Expression.
5. Excellent Commercial and Secretarial Courses.
6. Religious and Recreational Activities in charge of Student Secretary.
7. Skilled Instructor in Athletics and Swimming.
8. A Home Atmosphere which seeks to blend the Christian Graces with the Finest Culture of the Old South.

Fifteenth Session Opens September 23, 1925

G. T. GILLESPIE, *President*

JACKSON, MISSISSIPPI





*Bobashela, Nineteen Twenty-Five*

# THE DANIEL STUDIO

The New Daniel Building

## PHOTOGRAPHS



### LIFE IS SERVICE

The One Who Progresses is the One Who Gives His  
Fellow-Beings a Little More—a Little Better



### TAYLOR FURNITURE CO.

109-111-113 South State St.

JACKSON, MISS.

Furniture of a Better Grade

ALEX GORDON, *Owner*

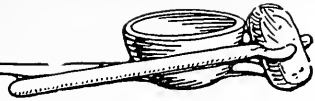
Nu Grape

Lake's Celery

*and*

Orange Crush





ASK FOR

**Seale-Lily**  
ICE CREAM  
*YOU EAT IT WITH A SMILE*

A Health Food  
Always in Season

R. H. GREEN

Wholesale Grocer  
Feed Manufacturer  
Cold Storage

PHONE 3290

606-615 South Gallatin St.  
JACKSON, MISS.



*"Invite Us to Your Next Blowout"*

**JOHNSON VULCANIZING CO.**

TELEPHONE 200

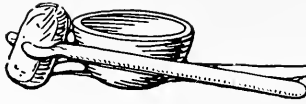
123 ROACH STREET

**JACKSON INFIRMARY**

117-121 NORTH PRESIDENT STREET, JACKSON, MISS.

Equipped for Medical and Surgical Cases, maintaining complete X-Ray, Radium, Bacteriological Laboratory Department. Open to all reputable physicians. Nurses furnished on application.





Bobasha, Nineteen Twenty-Five

THE HOME OF  
SOCIETY BRAND CLOTHES

*For Men and Young Men*

A standard of quality that you will find prevails throughout our entire stocks—only the best always at a moderate cost.

Stetson Hats, Clapp Shoes  
Manhattan Shirts

*The* JACKSONS' GREATEST STORE *Emporium*



DRINK CARBONATED

*Coca-Cola*

*Five Cents in Bottles*

Jackson Coca-Cola Bottling Co.

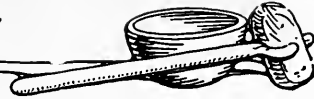
P. L. BORDEN, *Sole Owner*

JACKSON, MISS.

Palace Billiard  
Hall

The Meeting Place for  
All Gentlemen





**JACKSON PAPER  
COMPANY**

H. T. NEWELL, Pres. and Mgr.

**WHOLESALE**

"Mississippi's Paper House"

JACKSON, MISS.

**MAGNOLIA**

Wrapping Paper, Paper Bags, Toilet Paper  
School Supplies

**Sheet Metal Work  
and Roofing**

222-226 SOUTH STATE STREET

PHONE 1005

**RAY WRIGHT**

**W. T. Nichols  
& Co.**

Incorporated

**WHOLESALE GROCERS, FRUITS  
AND PRODUCE**

JACKSON, MISS.

Distributors of Dainty and Pippin  
Flours

**BRANNON COAL  
COMPANY**

COAL, WOOD AND KINDLING

It's a Black Business. But We Treat  
You White

PHONES 1394 AND 1395

JACKSON, MISS.

**SICK ROOM OR SCHOOL  
SUPPLIES**



Quick Service

Students' Expense  
Considered



**KEY DRUG COMPANY**



**THE HUB**

**FREE LANCE**

*Mississippi's Greatest  
Newspaper*

Promotes a Better State. Spiritually,  
Socially and Economically

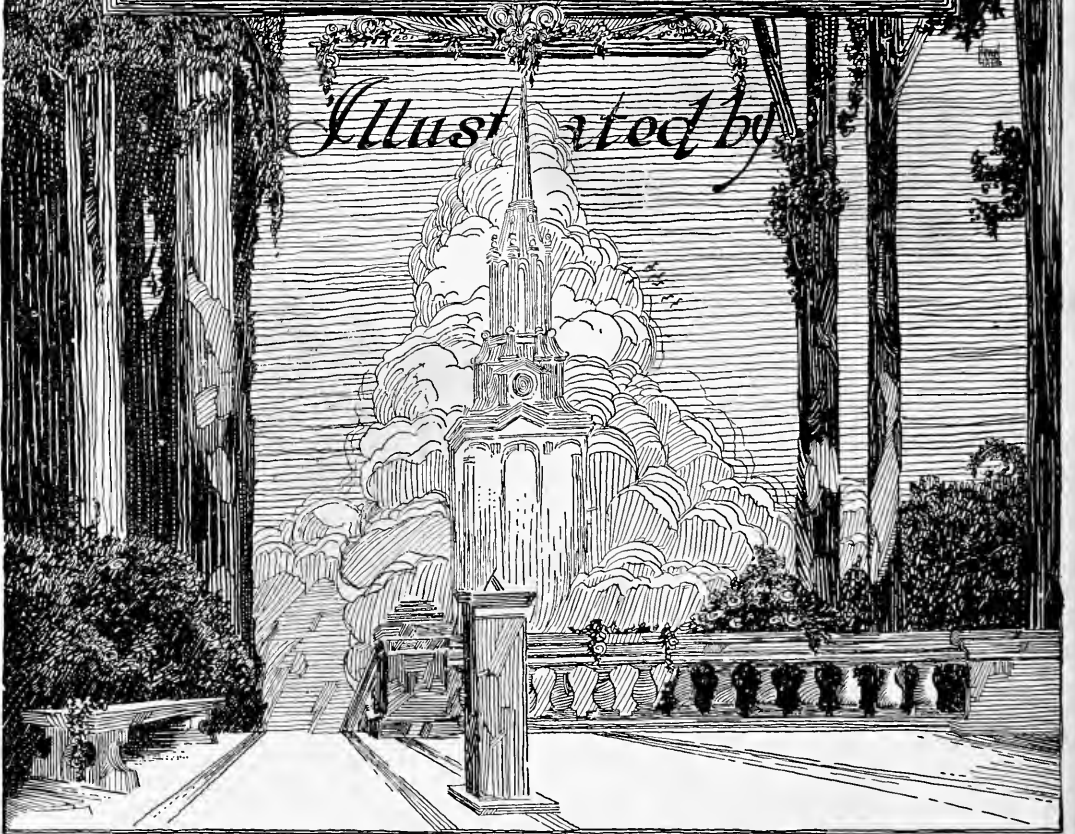
PUBLISHED AT

JACKSON, MISSISSIPPI



# Another Annual

*Illustrated by*



*The* ALABAMA ENGRAVING & CO.

BIRMINGHAM

*For 21 years - COLLEGE & HIGH SCHOOL ANNUAL SPECIALISTS.*





THIS BOOK PRINTED BY BENSON



LARGEST COLLEGE ANNUAL  
PUBLISHERS IN THE WORLD

HIGHEST QUALITY WORKMANSHIP  
SUPERIOR EXTENSIVE SERVICE



COLLEGE ANNUAL HEADQUARTERS







