



# Bobashela

NINETEEN  
TWENTY  
EIGHT



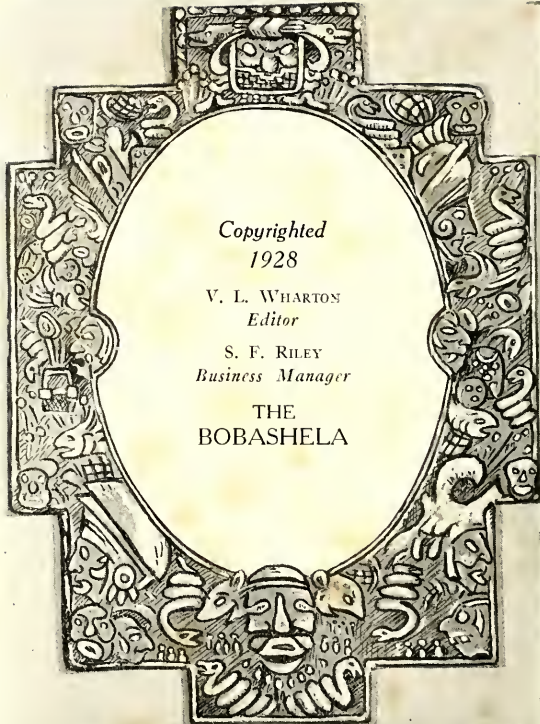
8. W. 180° 000000





R. W. (Ted) Campbell

R. W. "TED" CAMPBELL



*Copyrighted*  
1928

V. L. WHARTON  
*Editor*

S. F. RILEY  
*Business Manager*

THE  
BOBASHELA



THE  
BOBASHELA  
1928



MILLSAPS  
COLLEGE

JACKSON  
MISSISSIPPI

VOLUME XXII



# DEDICATION

To

**Prof. M. C. White**

Head of the Department of English, chairman of the faculty committees on athletics and literary activities, organizer and director of the Millsaps Players, coach of debating and tennis, and mainstay of the student activities of the College,  
this the

**1928 Bobashela**

is respectfully dedicated by  
the staff.







# FOREWORD

**I** TOO have lived," the old grad says; "and in my day life abounded with things that were beautiful and joyous and clever." If, then, in that new and strange future that is before us, we of the old guard can find in these pages something that will bring back for a moment the light of youth to the eye almost grown dim, something that will assure us that "we too have lived," the aim of those who now present this volume will have been realized.



CONTENTS

BOOK I  
COLLEGE

BOOK II  
CLASSES

BOOK III  
ATHLETICS

BOOK IV  
ORGANIZATIONS

BOOK V  
FRATERNITIES

BOOK VI  
TO THE LADIES



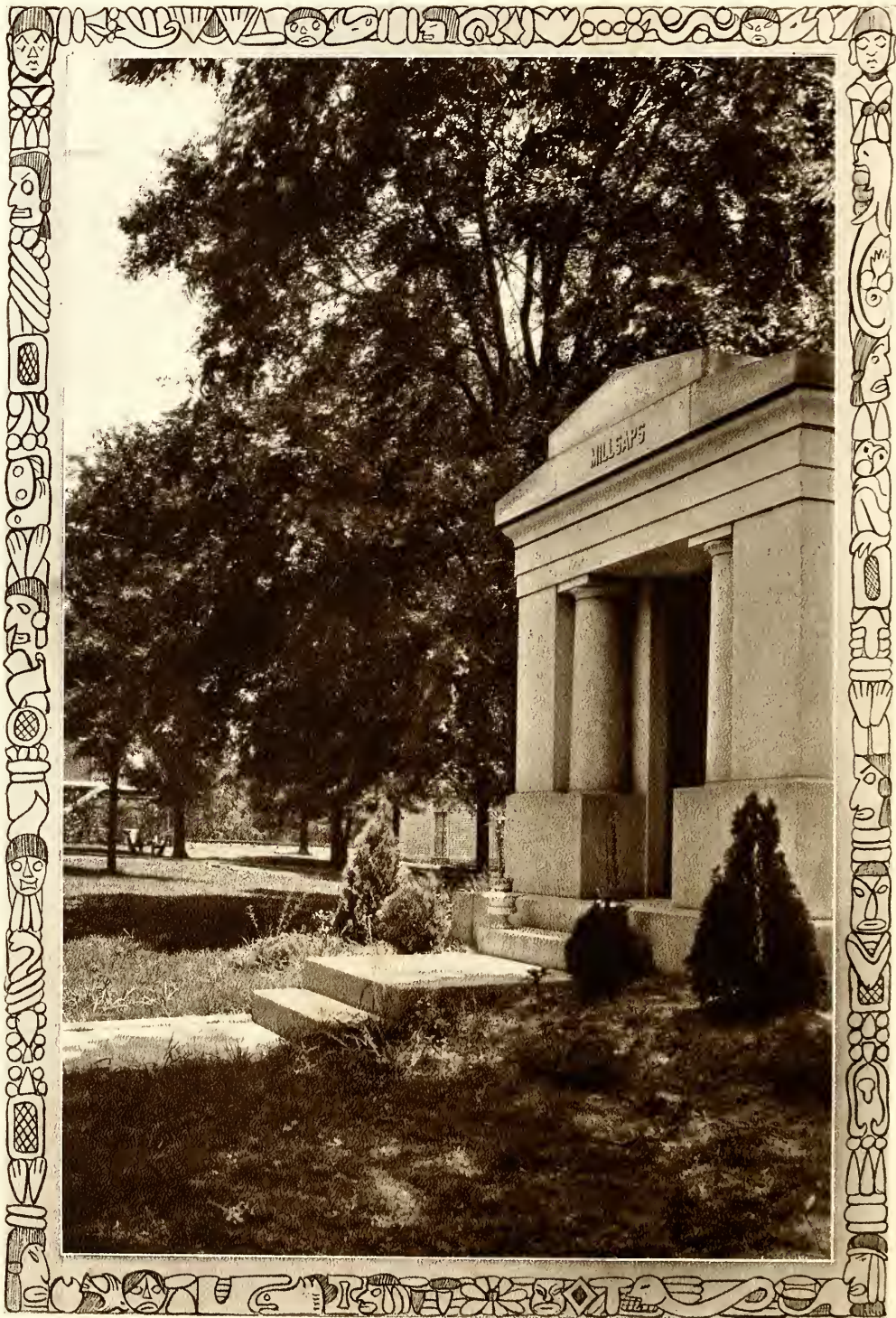
## Alma Mater

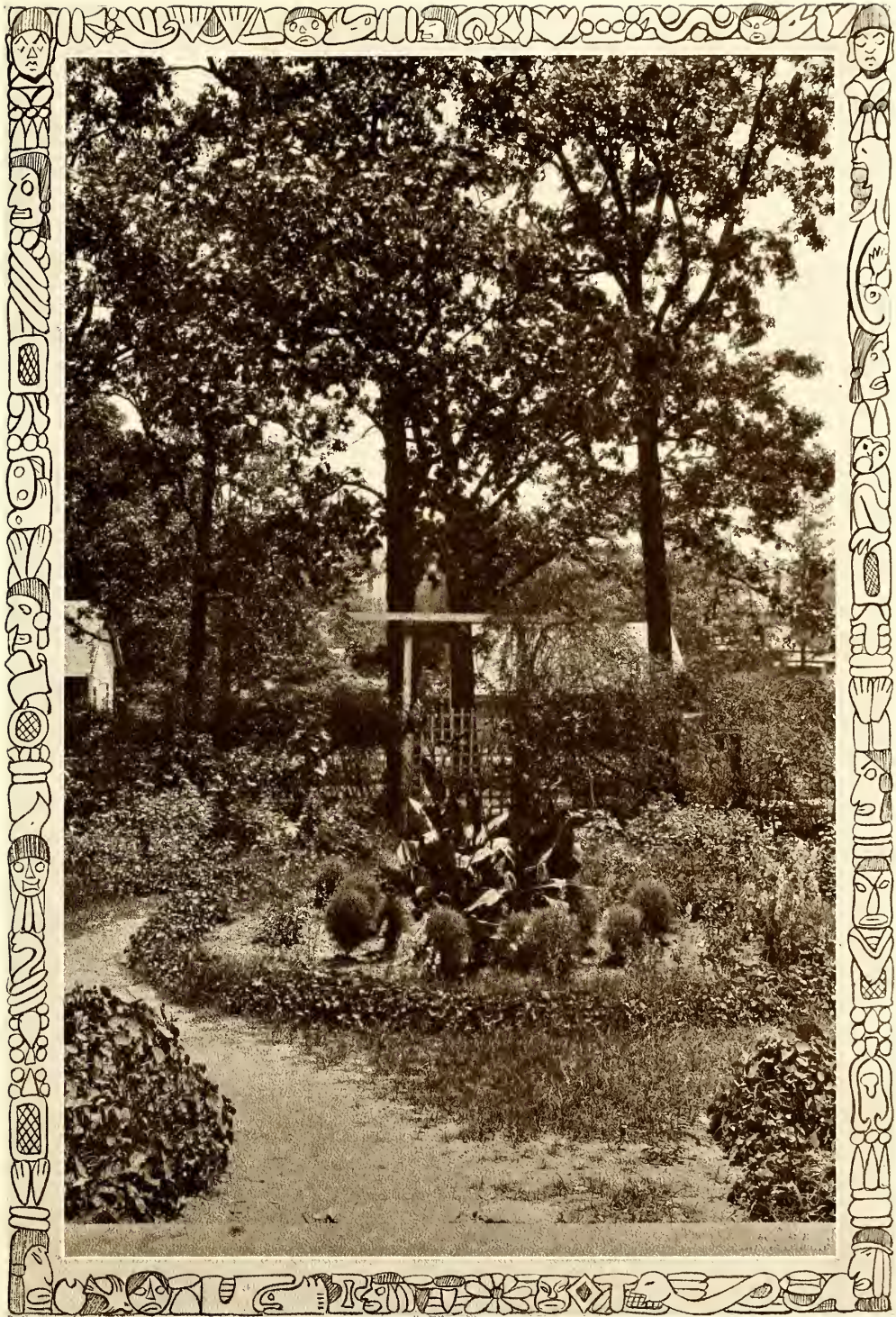
*Alma Mater, dear old Millsaps,  
Loyal sons are we;  
Our fond hearts are thine alone  
And evermore shall be.  
Proud art thou in classic beauty  
Of thy noble past,  
With thy watchword, Honor, Duty,  
Thy high fame shall last.*

*Ev'ry student, man and maiden,  
Swell the glad refrain,  
Till the breezes, music laden,  
Waft it back again.  
Proud art thou in classic beauty  
Of thy noble past,  
With thy watchword, Honor, Duty,  
Thy high fame shall last.*

# COLLEGE

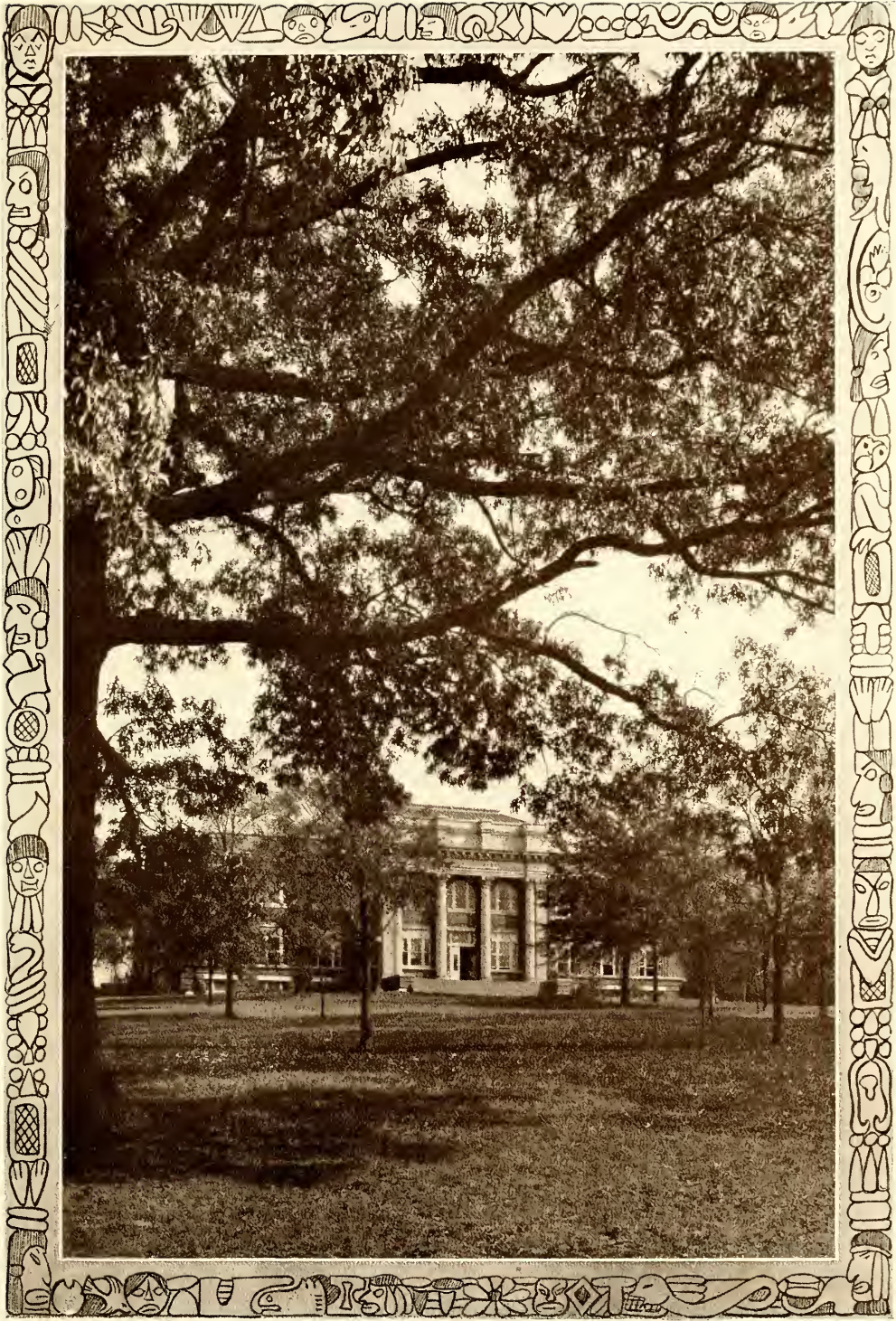






















DAVID MARTIN KEY, A.M., Ph.D., LL.D.  
*President*

A.B., Central College; A.M., Vanderbilt; Ph.D., University of Chicago; LL.D., Emory University; Omicron Delta Kappa

## The Faculty

JOHN MAGRUDER SULLIVAN  
A.M., Ph.D.

Senior Member of Faculty  
*Professor of Chemistry and Geology*

A.B., Central College; A.M., Vanderbilt University; Ph.D., Vanderbilt University; Delta Tau Delta.

GEORGE LOTT HARRELL, B.S., M.S.

Registrar of College  
*Professor of Astronomy and Physics*

B.S., Millsaps College; M.S., Millsaps College; Kappa Sigma.

J. REESE LIN, B.A., M.A.

Secretary of College  
*Professor of Philosophy and History*

A.B., Emory College; A.M., Vanderbilt University; Kappa Alpha.

BENJAMIN ERNEST MITCHELL  
A.M., Ph.D.

Dean of Men

*Professor of Mathematics*

A.B., Scarritt-Morrisville; A.M., Vanderbilt University; Ph.D., Columbia University; Alpha Tau Omega; Omicron Delta Kappa.

ALBERT GODFREY SANDERS, A.B., A.M.

*Professor of Romance Languages*

A.B., Southwestern; A.B., Yale University; A.B., University of Oxford; A.M., University of Oxford; Sigma Upsilon; Alpha Phi Epsilon.



## The Faculty

ALFRED PORTER HAMILTON  
A.M., Ph.D.

*Professor of Ancient Languages*

A.B., Southern University; A.M., University of Pennsylvania; Ph.D., University of Pennsylvania; Kappa Alpha; Omicron Delta Kappa.

ELIZABETH CRAIG, A.B.

*Instructor in French*

A.B., Barnard College; Columbia University.

MRS. W. O. BRUMFIELD, A.B.

*Instructor in Spanish*

A.B., Cumberland University.

JOHN ELLETT STEPHENS, A.B., A.M.

*Professor of Religious Education*

A.B., University of Mississippi; A.M., Northwestern University.

CHARLES FRANKLIN NESBITT  
A.B., B.D.

*Associate Professor of Religious Education*

A.B., Wofford College; B.D., Emory University.





## The Faculty

MILTON CHRISTIAN WHITE  
A.B., A.M.

*Professor of English*

A.B., Southern University; A.M., Harvard;  
Kappa Alpha; Sigma Upsilon; Omicron Delta  
Kappa; Alpha Phi Epsilon.

ADELINE COURTNEY BARTLETT  
A.B., A.M.

*Dean of Women*

*Assistant Professor of English*

A.B., Vanderbilt University; A.M., Vanderbilt  
University; A.M., Columbia University; Delta  
Delta Delta; Phi Beta Kappa.

MAGNOLIA C. SIMPSON, A.B., A.M.

*Instructor in English and Latin*

A.B., Millsaps College; A.M., University of  
Pennsylvania.

GEORGE W. HUDDLESTON  
A.B., A.M., Litt.D.

*Associate Professor of Latin and Greek*

A.B., Hiwassee College; A.M., Hiwassee College;  
Litt.D., Millsaps College.

CLINTON LYLE BAKER, B.S., M.S.

*Professor of Biology*

B.S., Emory University; M.S., Emory Univer-  
sity; Sigma Chi; Chi Beta Phi; Pi Sigma.



## The Faculty



GROVER CLEVELAND HOOKER  
A.B., B.E., A.M.  
*Professor of Education*

A.B., University of Colorado; B.E., University of Colorado; A.M., University of Colorado.

MACK BUCKLEY SWEARINGEN  
B.A., M.A.  
*Assistant Professor of History*

B.A., Millsaps College; M.A., University of Chicago; Rhodes Scholar, 1924-27.

BENJAMIN ORMAND VAN HOOK  
A.B., M.A.  
*Assistant Professor of Mathematics*

A.B., Millsaps College; A.M., Vanderbilt University; Kappa Sigma.

EDWIN W. HALE  
*Professor of Physical Education*



Wheless Blount Tarbutton Riley  
 Cunly Myers O'Neal  
 Howell LaFranche Wingfield Betterworth  
 Mounger Ladner Bishop

### Faculty Assistants

#### CHEMISTRY

GRADY TARBUTTON

MARGARET O'NEAL  
 LINNIE LINGLE

CURTIS ALFORD

#### MATHEMATICS

S. F. RILEY

L. L. WHEELLESS

#### RELIGIOUS EDUCATION

JOSEPHINE WINGFIELD

W. F. HOWELL

(Continued)

Faculty Assistants

(Continued)

ENGLISH  
OLGA LABRANCHE                      J. K. BETTERS WORTH                      DORIS COMLY

BIOLOGY  
R. E. BLOUNT                                      J. A. MYERS

EDUCATION  
AETNA HOLLOWAY

HISTORY  
BETHANY SWEARINGEN

Administrative Assistants

LIBRARY  
D. M. MOUNGER                      AUDIE BISHOP                      C. E. LOCKETT  
ELIZABETH SETZLER

PRESIDENT'S OFFICE  
MELVIN SIMPSON

SECRETARY'S OFFICE  
SARAH SHANKS                                      CHARLINE VETTER

STUDY HALL  
MALCOLM PEEVEY

BURSAR'S OFFICE  
H. A. LADNER                                      W. B. DRIBBEN



NORTH STATE STREET ENTRANCE

# CLASSES







Bobashela, 1928



EDWINA CALHOUN  
Candidate for M.A.  
Φ M  
JACKSON, MISS.

B.A., Millsaps College; Y. W. C. A. Cabinet (1); Glee Club (1, 5); President Chi Delta Phi (4); "Purple and White" Staff (2); "Bobashela" Staff (3); All-One Club.

ROBERT ESTES BLOUNT, B.S.  
Π K Α  
BASSFIELD, MISS.

Football (1, 2, 3, 4); Basketball (1, 2, 3, 4); Baseball (1, 2, 3, 4); Treasurer Golf Club (4); President Senior Class; Right Royal Ramblers; Secretary Athletic Association (4); L. L. S.; Honor Graduate; Winner Posey Prize (3); Royal High Seekers.

ELIZABETH TEAT, B.S.  
K Δ  
JACKSON, MISS.

Freshman Commission (1); Ole Miss (2).

MARY GEORGE NOBLES, B.A.  
K Δ

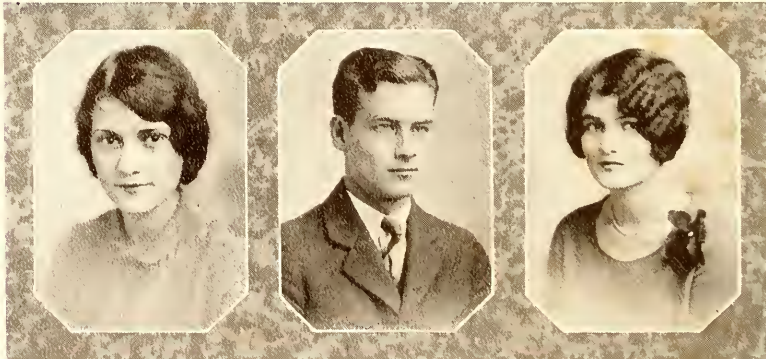
JACKSON, MISS.  
Belhaven College (1); All-One Club.

JAMES LEMUEL SEAWRIGHT, B.A.  
K A, Σ T, O Δ K  
ACKERMAN, MISS.

Glee Club (1, 2, 3, 4); President Glee Club (4); Freshman Editor "Purple and White"; President Junior Class; Millsaps Players (1, 2, 3, 4); "Bobashela" Staff (2); Art Editor "Bobashela" (3); "Purple and White" Staff (2, 3); Associate Editor "Purple and White" (4); Editor "Jazz Baby" (3); Pan-Hellenic Council (4); Student Executive Board (4); Band (4).

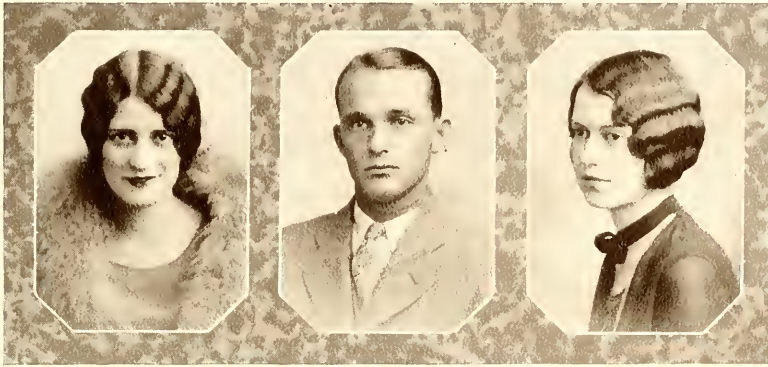
RUTH CRAVEN BUCK, B.A.  
K Δ  
JACKSON, MISS.

Freshman Commission (1); Baseball Sponsor (1); Eta Sigma (1, 2, 3, 4); Vice-President Freshman Class; Secretary Sophomore Class; Science Club (2); Chi Delta Phi (1, 2, 3, 4); Pan-Hellenic Council (2, 3, 4); "The Autumn Lady" (2); Elected Prettiest Girl (3); "Purple and White" Staff (4); President Pan-Hellenic Council (4); Football Sponsor (4).





Bobashela, 1928



OLIVE COKER WILLIAMS, B.A.

Φ M

JACKSON, MISS.

Gulf Park (1, 2); Most Stylish Girl (3, 4).

JESSE ROBERT HIGHTOWER, B.A.

K Σ

ITTA BENA, MISS.

"Purple and White" Staff (3, 4); Track (1, 2).

OLIVIA MAY KNOX, B.A.

Φ M

JACKSON, MISS.

Girls Glee Club (1, 2, 3, 4); Y. W. C. A. Cabinet (3); Assistant Business Manager "Bobashela" (4); Secretary-Treasurer Senior Class.

WILLIAM KUYKENDALL EARNES, B.S.

O K N

LAUDERDALE, MISS.

L. L. S.; Y. M. C. A. Cabinet (2, 3, 4); Pan-Hellenic Council (3); Fraternity Football (3); Astronomy Club (3, 4).

VIRGINIA EDWARDS, B.A.

JACKSON, MISS.

Fr. shman Commission; Girls' Glee Club (3).

AUBREY V. BEACHAM, B.A.

O Δ K, Σ T, Λ Φ E, Π Σ

HATTIESBURG, MISS.

Freshman Debater (1); Vice-President L. L. S. (2); President L. L. S. (3, 4); Intercollegiate Debater (2, 3, 4); Debate Council (4); President Alpha Phi Epsilon (3); "Purple and White" Staff (2, 3); Mississippi Intercollegiate Press Association (2, 3, 4); Winner M. I. P. A. News Story Award (2); Editor "Mississippi Intercollegiate Magazine" (4); Vice-President Y. M. C. A. (3); President Y. M. C. A. (4); President State "Y" Council (3, 4); Member Southern Regional Council (4); President Sophomore Class; Secretary Student Body (3); President Student Body (4); President O. D. K. (4); Student Assistant (2); Millsaps Applicant Rhodes Scholarship (4); Literary Council (2, 3, 4); House Governing Board (3); Athletic Association Council (3); Student Executive Board (3, 4); Editor "Student's Handbook" (3, 4).





SARA SUMMERS THOMPSON, B.A.  
K Δ

JACKSON, MISS.

Freshman Commission; Girls' Glee Club (1);  
Pan-Hellenic Council (3).

VERNON LANE WHARTON, B.A.  
Σ Τ, Ο Δ Κ, Α Φ Ε, Η Σ

SLIDELL, LA.

G. L. S.; Vice-President (1); Constitution Com-  
mittee (3); President (2, 3); Critic (4); Fresh-  
man Debater (1); Intercollegiate Debater (2,  
3, 4); Debating Council (4); Administrative  
Assistant (2); Faculty Assistant (3); Vice-  
President Junior Class (3); Vice-President O.  
D. K. (4); Honor Council (2); Student Execu-  
tive Board (3); Literary Council (1, 2); "Purple  
and White" Staff (2, 3); Editor "Bobasha"  
(4); All-One Club; Honor Graduate.

PEGGY MERLE O'NEAL, B.S.

SAUCIER, MISS.

All-One Club (3); Science Club; Glee Club (3,  
4); Millsaps Players (3, 4); Reporter Science  
Club (3); Student Assistant Chemistry; Sec-  
retary Glee Club (4); Secretary Millsaps Players  
(4).

RANSOM J. JONES, B.S.

MERIDIAN, MISS.

G. L. S.; Glee Club (2, 4); Band (3, 4).

ELISE LANGDON HERRING, B.A.

K Δ

JACKSON, MISS.

Secretary Freshman Class.

WILLIAM OSCAR HOOD, JR., B.S.

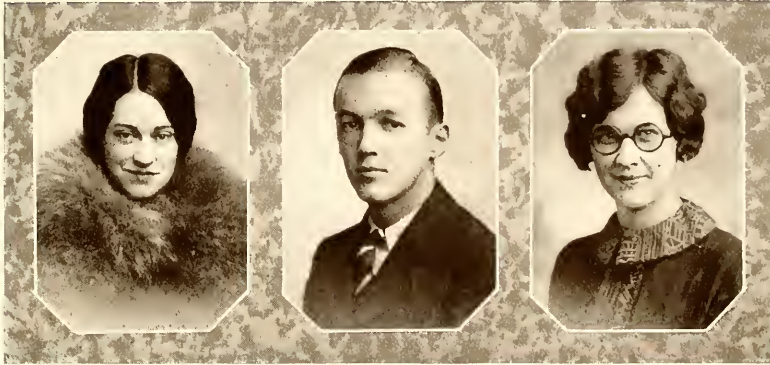
K Α

FOREST, MISS.

Golf Club (3, 4); Right Royal Ramblers; High  
Royal Seekers.



Bobashela, 1928



DOREE MAJORS, B.A.  
X Δ Φ

JACKSON, MISS.

Freshman Commission; Vice-President Y. W. C. A. (2); Pianist Men's Glee Club (4).

LEROY LAFAYETTE MATHENY, B.A.  
WAYNEBORO, MISS.

L. L. S.; Preacher's League; Vice-President Preacher's League (4).

SOLON FUQUA RILEY, B.A.  
K Σ, O Δ K, Λ Φ E

JACKSON, MISS.

Secretary L. L. S. (2); Secretary and Vice-President L. L. S. (3); Vice-President L. L. S. (4); Commencement Debater (2); Intercollegiate Debater (3, 4); Student Instructor (3, 4); Glee Club (1, 2, 3); Millsaps Players (3, 4); Assistant Cheer Leader (2, 3); Cheer Leader (4); Pan-Hellenic Council (4); "Purple and White" Staff (3); Business Manager "Bobashela" (4); Eta Sigma; Honor Graduate; Debating Council (4).

HELEN LUCILLE NEWELL, B.A.  
B Σ O

JACKSON, MISS.

Freshman Commission (1); Blue Ridge Delegate (2); Y. W. C. A. Cabinet (3, 4); Basketball (2, 3, 4); Captain Basketball (4); Vice-President Co-Ed Athletic Association (3).

GEORGE OSCAR ROBINSON, JR., B.A.  
K A, Σ T, O Δ K

TUNICA, MISS.

Class Baseball (1); "Purple and White" Staff (2); Editor "Purple and White" (3); Mississippi Intercollegiate Press Association (2, 3); Chairman Honor Council (4); Pan-Hellenic Council (4); Student Executive Board (4); Assistant Editor "Bobashela" (4); Fraternity Football, Basketball (3, 4); Literary Council (3, 4).

CLAIRE SISTRUNK, B.A.  
Δ Z

GREENVILLE, MISS.

President Girl's Glee Club (2, 3); Y. W. C. A. Cabinet (2); Secretary-Treasurer Student Body (3).



Bobashela, 1928



JAMES A. MYERS, JR., B.A.  
JACKSON, MISS.

Right Royal Ramblers (2); Golf Club (2, 3, 4);  
Student Assistant (4).

MERNELLE HEUCK, B.A.  
Δ Z

JACKSON, MISS.  
Girls' Glee Club (3, 4); Y. W. C. A.

ELIZABETH HAYNES WHITE, B.A.  
Δ Z

LAKE, MISS.

PAUL NELSON PROPST, B.A.  
COLUMBUS, MISS.

Y. M. C. A. Cabinet (3, 4); G. L. S.; Secretary  
G. L. S. (4); Band (3, 4); "Purple and  
White" Staff (3, 4); Ministerial League; Secretary  
Ministerial League (4); Honor Council (4).

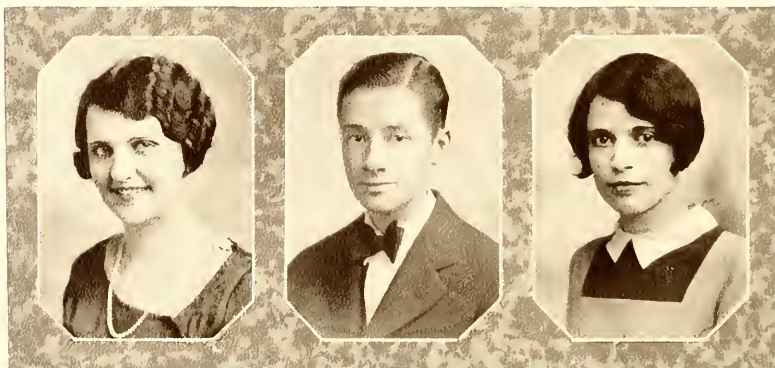
LAWRENCE M. HAMBERLIN, B.S.  
JACKSON, MISS.

Lamar Literary Society; Science Club (3).

ESSIE WILL GILLILAND, B.A.  
B Σ O

JACKSON, MISS.

Freshman Commission; Eta Sigma (3, 4); Y.  
W. C. A. Cabinet (4); Glee Club (4); Three-  
Year Club; Pan-Hellenic Council (3, 4).



Bobashela, 1928



ROY ARNOLD GRISHAM, B.A.  
BOONEVILLE, MISS.

Secretary G. L. S. (1, 2); Treasurer G. L. S. (3); Secretary-Treasurer Y. M. C. A. (3); Member Honor Council (3); Preacher's League; Y. M. C. A. Cabinet (3, 4).

DORIS COMLY, B.A.  
Δ Z, X Δ Φ  
JACKSON, MISS.

Freshman Commission (2); Honor Council (3); All-One Club; Glee Club Accompanist (4); Faculty Assistant (4).

RICHARD HOWARD BAXTER, B.S.  
Θ K N  
LUMBERTON, MISS.

G. L. S.; Football (1, 2, 3, 4); Basketball (1, 2, 3, 4); Baseball (1, 2, 3, 4).

MARY ELLEN WILCOX, B.A.  
B Σ O

JACKSON, MISS.

Freshman Commission; Y. W. C. A. Cabinet (3, 4); Blue Ridge Delegate (3); Member Southern Y. W. C. A. Council (3); General Y. W. C. A. Secretary Mississippi (3); Chairman State Y. W. C. A. Convention (3); Three-Year Club.

JOHN MILLER MACLACHLAN, B.A.  
Σ T

JACKSON, MISS.

Intra-Mural Singles Tennis Champion (1); Commencement Debater (1); Clark Essay Medal (1); Winner M. I. P. A. Short Story Medal (2); Winner M. I. P. A. Feature Article Award (2); "Purple and White" Staff (1, 2, 3); Winner I. C. Essay Contest (2); Editor "Purple and White" (3); President G. L. S. (2); Associate Editor "Jazz Baby" (2); Spanish Instructor Summer School (2).

EULA SWEARINGEN MCCLESKY, B.A.  
K Δ

JACKSON, MISS.

Three-Year Club; Millsaps Players (3, 4); Glee Club (4).



Bobashela, 1928



THOMAS DAVIS RAPE, B.S.  
FOREST, MISS.

Football (1, 2, 3, 4); Galloway Literary Society.

HATTIE REBECCA LEWIS, B.S.  
TYLERTOWN, MISS.  
Whitworth Club.

GRADY TARBUTTON, B.S.  
JACKSON, MISS.

Freshman Debating Team (1); Science Club (1, 2, 3, 4); President Science Club (3, 4); All-One Club; Assistant in Chemistry (3); Chemistry Instructor (4).

MARTHA PURVIS WATKINS, B.A.  
Φ M  
JACKSON, MISS.

Freshman Commission; Blue Ridge Delegate (2); Y. W. C. A. Cabinet (3); Secretary-Treasurer Sophomore Class; Three-Year Club.

JAMES MARVIN METCALE, B.A.  
BRENTON, ALA.

Ministerial League; Galloway Literary Society.

ANNE MCNAIR, B.A.  
FRIAR POINT, MISS.

Three-Year Club; Girls' Glee Club (4).



Bobashela, 1928



ELIZABETH MARION SETZLER, B.S.  
JACKSON, MISS.

Basketball (1, 2, 3, 4); Captain Basketball (2);  
Business Manager Basketball (4).

HARRIS GRANT DETERLY, B.S.  
JACKSON, MISS.

Science Club.

MALCOLM A. PEEVEY, B.S.  
BOGUE CHITTO, MISS.

Football (3, 4); Basketball (2, 3, 4).

EDITH STRAIT, B.A.  
B Σ O  
MEADVILLE, MISS.

Whitworth (1, 2); Y. W. C. A. (4); Basketball  
(4); Three-Year Club.

JOSEPHINE WINGFIELD, B.A.  
JACKSON, MISS.

Freshman Commission (1); Y. W. C. A.  
Cabinet (4).

Y. H. KIM, B.S.  
WAN SAN CITY, KOREA  
Ministerial Association.



Bobashela, 1928



ELTON BARBER WHITTEN, B.A.  
RIPLEY, MISS.

Freshman Debater; Commencement Debater (2); Treasurer G. L. S. (3); President G. L. S. (3); Winner Medal Most Valuable Member G. L. S.; Intercollegiate Debater (4); "Purple and White" Staff (4); Secretary Debating Council (4).

BERNICE MILLER, B.A.  
HERMANVILLE, MISS.

Three-Year Club; Basketball (1); Freshman Commission.

JENNIE BETH SWAYZE, B.A.  
Φ M  
BENTON, MISS.

Whitworth (1, 2); Basketball (4).

EULA LACKEY, B.A.  
B Σ O  
FOREST, MISS.

MARTHA BURTON, B.A.  
K Δ  
ALLIGATOR, MISS.

J. R. KIRKPATRICK, B.S.  
NOXAPATER, MISS.

Football (2, 3, 4); Track Manager (4).





Bobashela, 1928



WESLEY MERLE MANN, B.S.

II K A

AUGUSTA, ARK.

President Freshman Class (1); Glee Club (1, 2, 3); Quartet (1, 2, 3); Business Manager Glee Club (2); Secretary L. L. S. (2); Commencement Debater (2); Pan-Hellenic Council (4); Business Manager "Purple and White" (4); Three-Year Club; Science Club (3).

FRANCES WORTMAN, B.A.

Φ M

JACKSON, MISS.

Belhaven Club.

DWYN MILTON MOUNGER, B.A.

K Σ

COLLINS, MISS.

G. L. S.; Freshman Debater; Mid-Session Debater (2, 3); Secretary Junior Class; Secretary Y. M. C. A. (4); Honor Council (3, 4); "Bobashela" Staff (4); Preacher's League.

BESSIE GIVENS, B.A.

Δ Z

WESTONIA, MISS.

Treasurer Y. W. C. A. (4).

ELDON LANGSTON BOLTON, B.S.

BILOXI, MISS.

Football (1); Baseball (1); L. L. S.; Assistant Cheer Leader (4); "Purple and White" Staff (4); "Bobashela" Staff (4); Leader Harmony Hounds (3); Three-Year Club.

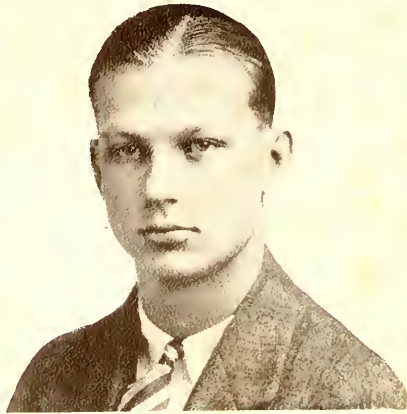
MARY BURTON, B.A.

K Δ

ALLIGATOR, MISS.

Grenada (1, 2).





**In Memoriam**

---

**Dick Wills**

Class of 1928

Died October 22, 1927



Junior Class



L. L. WHEELLESS  
PORT GIBSON

C. H. CARRUTH  
Π Κ Α  
MCCOMB

WILLANNA BUCK  
Κ Δ  
JACKSON

VIRGINIA VANCE  
Κ Δ  
JACKSON

GEORGE T. KURTS  
Θ Κ Ν  
COVINGTON, TENN.

GEORGE E. REVES  
Θ Κ Ν  
MOORHEAD

MARGUERITE CRULL  
Κ Δ  
GREENWOOD

ALICE RIDGEWAY  
Β Σ Ο  
JACKSON

WILLIAM A. BILBO, JR.  
Κ Σ  
HATTIESBURG

MORRIS M. CAVER  
Κ Σ  
MERIDIAN

## Junior Class

RICHARD W. FOWLER  
K A  
COLDWATER

SEXTON McMANUS  
II K A  
HAZLEHURST

MARY FLOWERS JACKSON  
K Δ  
JACKSON

EMILY WHITE STEVENS  
K Δ  
JACKSON

ELDON ROUSE  
K Σ  
LUMBERTON

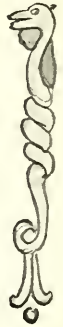
HAROLD GRAVES  
JACKSON

WILLIE SULLIVAN  
Φ M  
JACKSON

ELIZABETH HEIDELBERG  
K Δ  
JACKSON

JOHN CADWALLADER  
JACKSON

P. PATTON PERRITT  
WESSON



## Junior Class



RUTH GAINNEY  
K Δ  
JACKSON

BARNETT DRIBBEN  
Ø K N  
GREENWOOD

H. D. CARMICHAEL  
BRAXTON

FRED GRAHAM  
MERIDIAN

FLORA LEMLY  
JACKSON

IRENE BREELAND  
LEAKESVILLE

W. K. JONES  
Ø K N  
INDIANOLA

JAMES R. PRESTON  
K Σ  
JACKSON

J. T. IDOM  
COLLINS

ELIZABETH PARSONS  
JACKSON

Junior Class

GEORGE L. BOUNDS  
OVETT

MARY OLIPHANT  
Φ M  
JACKSON

HEBER A. LADNER  
LUMBERTON

C. W. BALEY  
Θ K X  
SHERMAN

NELLIE GRAY FINCH  
JACKSON

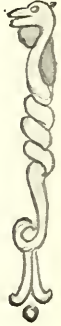
TOMMYE HALL  
BAY SPRINGS

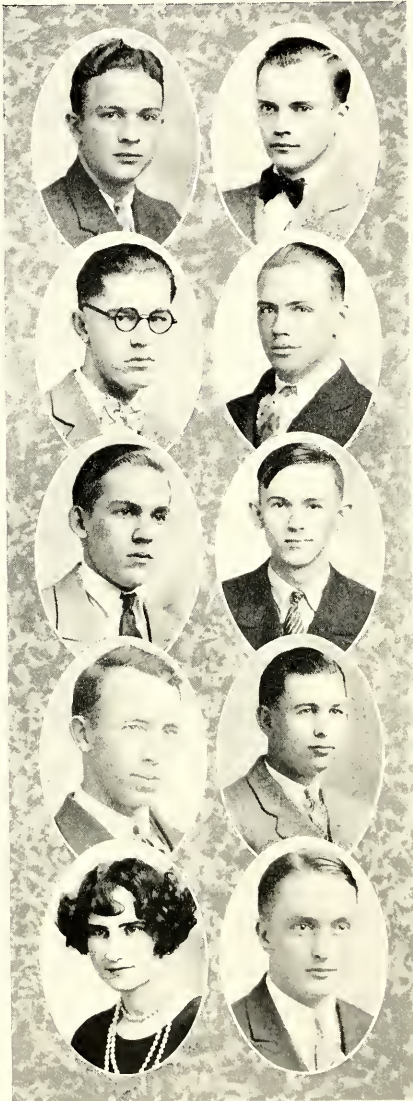
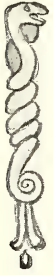
W. I. PEELER  
CENTER

CURTIS ALFORD  
MERIDIAN

JANE POWER  
Φ M  
JACKSON

R. R. HUDSON  
Θ K X  
SUMKALL





## Junior Class

EUGENE COUNTISS  
K Σ  
GRENADA

JOHN G. HAND  
BARTH

MAURICE PRICE  
JACKSON

CHARLES COLTHARP  
MYRTLE

W. E. LYON  
DURANT

HARRY PHILLIPS  
JACKSON

JOHN W. FINCH  
JACKSON

W. F. HOWELL  
CLEVELAND

MARY L. PEARSON  
JACKSON

C. G. SHOWS  
OVETT





# SOPHOMORES





## Sophomores

### CLASS OFFICERS

C. C. HOLLOMAN  
*President*

JOHN BEALLE  
*Vice-President*

J. W. ALFORD  
*Secretary-Treasurer*

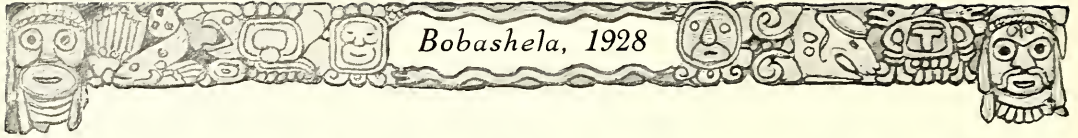
J. W. ALFORD, K A . . . . . McComb  
 MARY LYNN GOULD, Φ M . . . . . Bogalusa, La.  
 MATTIE MAE BOSWELL . . . . . Jackson  
 ELIZABETH BROOKS . . . . . Clarksdale  
 ✓ SADIE VEE WATKINS, Φ M . . . . . Jackson  
 R. W. CAMPBELL, K A . . . . . Macon  
 RUBY K. FIELDS, Φ M . . . . . Anguilla  
 HERBIE SIMMONS, O K N . . . . . Greenwood  
 AUDIE BISHOP . . . . . Harpersville  
 C. U. MOUNGER . . . . . Collins  
 R. C. JONES, O K N . . . . . Indianola  
 DORIS DRAPER, Δ Z . . . . . Jackson

FRANCES VAN HOOK . . . . . Port Gibson  
 R. J. HINSON . . . . . Crystal Springs  
 C. A. SULLIVAN . . . . . Tyertown  
 EDWARD MARBLE . . . . . Jackson  
 ERNEST MANGUM . . . . . Magee  
 OLGA LA BRANCHE, Δ Z . . . . . Jackson  
 T. G. LOWRY . . . . . Winona  
 VERA SHELTON . . . . . Jackson  
 MILDRED HORNE . . . . . Jackson  
 GLADYS JONES . . . . . Jackson  
 AETNA HOLLOWAY . . . . . Jackson  
 W. T. MOBLEY, H K A . . . . . Richton



### Sophomores

JOHN BEALLE, II, K A . . . . .	Greenwood	MILDRED WILLIAMS . . . . .	Jackson
LELA MAYE TERRY, B Σ O . . . . .	Jackson	FRANK LACEY, O K X . . . . .	Kosciusko
GLADYS BOND, Δ Z . . . . .	Jackson	R. S. SIMPSON . . . . .	Ackerman
OCTAVIA SYKES, K Δ . . . . .	Jackson	J. K. BETTERS WORTH . . . . .	Jackson
ROSEMARY ADAMS, K Δ . . . . .	Jackson	GILMER McLAURIN, K Σ . . . . .	Canton
C. C. HOLLOMAN, K Σ . . . . .	Itta Bena	CLARA LEE HINES, Φ M . . . . .	Jackson
CORLEY WILLIAMS . . . . .	Crystal Springs	W. M. HORTON . . . . .	Union
MARIE FLINK . . . . .	Lexington	RUTH OLIPHANT . . . . .	Jackson
BROWN POWLETT . . . . .	Selma	MARGARET WHISENHUNT . . . . .	Jackson
CARLYLE TOUCHSTONE . . . . .	Georgetown	ROSA LEE McKEITHEN, B Σ O . . . . .	Jackson
A. J. STEVENS . . . . .	West	THELMA ROBERTS . . . . .	Canton
SARA K. HUGHES, Φ M . . . . .	Jackson	WARREN BLACK, K A . . . . .	Richton



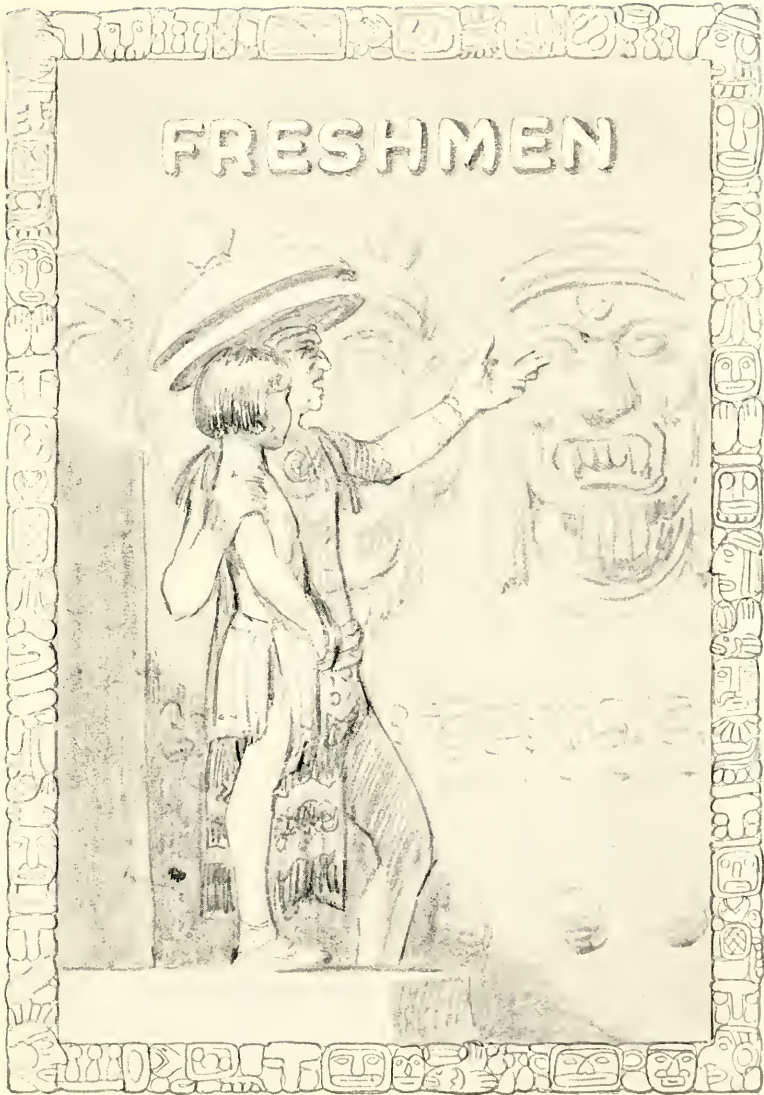
### Sophomores

RALPH WELSH, II K A . . . . . Bogalusa, La.  
 BESSIE COOK, K Δ . . . . . Jackson  
 JOHN STOKES, II K A . . . . . Greenwood  
 MARY FRANCES HORNE, K Δ . . . . . Jackson  
 J. D. BRABHAM, II K A . . . . . McComb  
 GEORGE BUTLER, K Σ . . . . . Jonestown  
 EDWIN CALHOUN, K A . . . . . Jackson  
 LEONE SHOTWELL, K Δ . . . . . Jackson  
 CHALMERS ALEXANDER, K Σ . . . . . Jackson  
 M. H. McCORMACK . . . . . Clinton

CYRUS AVERY, K A . . . . . Jonestown  
 JOE WALTON, K Σ . . . . . Jackson  
 MARGARET BYNUM, K Δ . . . . . Jackson  
 HOYLE BYRD . . . . . Lumberton  
 THEO K. SCOTT . . . . . Lambert  
 B. Y. RUFF . . . . . Chester  
 MILDRED NOBLES, K Δ . . . . . Jackson  
 EMMETT WARD, II K A . . . . . Jackson  
 BESSIE GEORGE DONALD, Φ M . . . . . Jackson  
 JACK CATLETT . . . . . Canton



# FRESHMEN

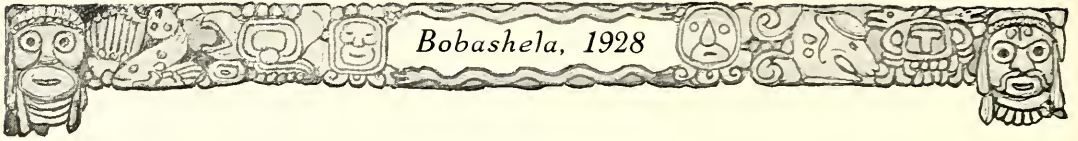




MAYNOR, POWER, LIVINGSTONE, BELL, BUE, BALL  
NEYLAND, PRICE, DOBYNS, KNOX, KETTLER, CASTON  
GREEN, JOHNSON, WEAVER, HENNINGTON, BRADLEY, RUSSELL  
LYELL, RUFF, MOORE, GORDON, GRIFFITH, CULVER  
TATUM, ROBINSON, ASH, BELL, CLARK, FLOWERS



LEWIS, PHILLIPS, NEBLITT, KEY, ALLEN, BRUMFIELD  
REEVES, GORDON, HOLLIDAY, HARRELL, WHEELLESS, LEMASTUS  
FITZHUGH, GOLDMAN, HUTCHINSON, FISHER, DOSS, FETTERMAN  
MCMULLIN, WHATLEY, JORDAN, WARD, JOHNSTONE, JOHNSON  
MARTIN, LIGHTCAP, BOONE, HAYS, BEARDSLEY, HAINING



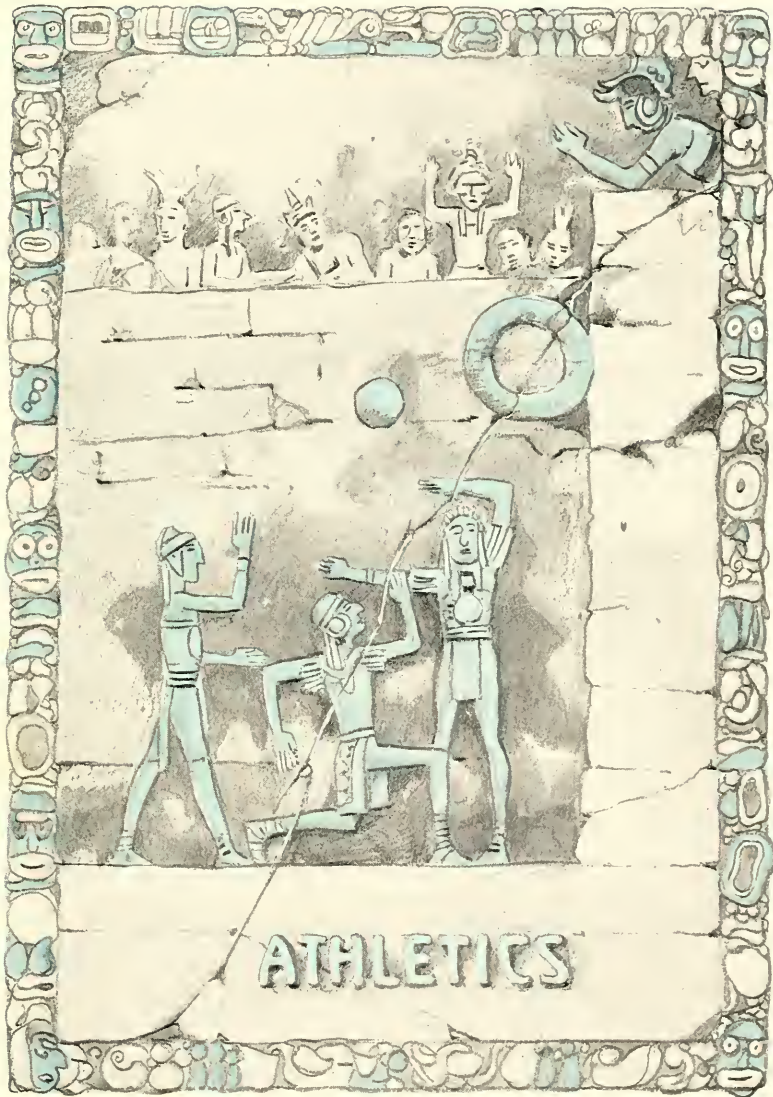
Bobasha, 1928



ROBERTSON, LITTLE, PATON, WILLIAMS, MYERS, PAXTON  
LOONEY, HORTON, GARDER, PEEVEY, COKER, MCKEE  
HUNTER, ALLRED, LOGAN, ARMOUR, DEAR, GRIFFITH.









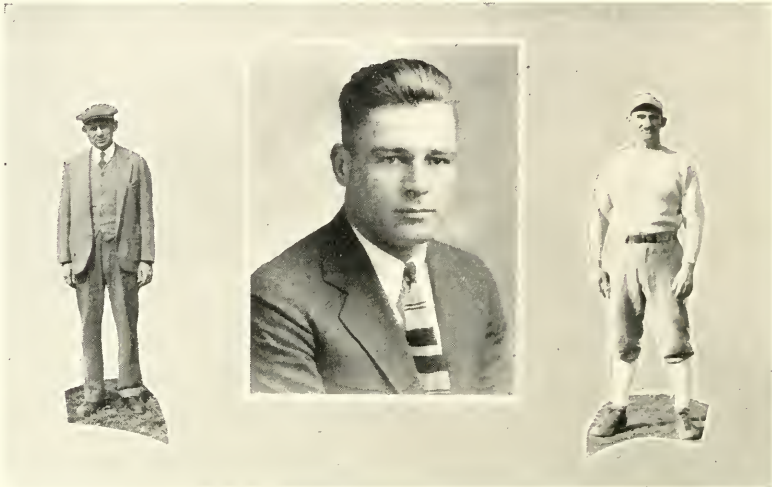


CRAWFORD, BLOUNT, McMANUS  
WHEELLESS, IDOM, FOWLER, KIRKPATRICK, DRIBBEN

## Men's Athletic Association

### OFFICERS

A. G. CRAWFORD . . . . .	<i>President</i>
SEXTON McMANUS . . . . .	<i>Vice-President</i>
R. E. BLOUNT . . . . .	<i>Secretary</i>
L. L. WHEELLESS . . . . .	<i>Student Manager</i>
W. B. DRIBBEN . . . . .	<i>Football Manager</i>
W. P. BOSWELL . . . . .	<i>Basketball Manager</i>
J. T. IDOM . . . . .	<i>Baseball Manager</i>
J. R. KIRKPATRICK . . . . .	<i>Track Manager</i>
R. W. FOWLER . . . . .	<i>Tennis Manager</i>



ZIMOSKI

HALE

VAN HOOK

## Coaches

Coach "Jimmy," serving his last year as a Purple mentor, continued to produce lines that even the best that the mighty Alabamians hurled against it could not penetrate for many appreciable gains. Coach Zimoski has turned out some mighty good players since he took over the reins of the athletic squads here. He came here as a stranger, and was the first full-time coach that the college boasted. Wherever he is, we bet that he has a good line and that he will give Howard a good fight, if not beat them.

"Goat" Hale, he of the wide-spread football and baseball ability, has worked himself into the hearts of all students and players. His coming brought a spirit of self-confidence that was noticeably lacking, to the players. Next year he will be head football coach, and baseball coach.

Coach Van Hook had the freshmen this year, and what a freshman bunch he did have! Look at the records. He got promoted though, and next year he will be there helping the varsity. Ask a freshman who is the most liked instructor on the campus and he will readily tell you that Van is.



GAINES CRAWFORD

SEXTON McMANUS

### All-State

Captain Crawford ended his three years of starring on the Purple eleven in a burst of glory. Those three years he has been picked as first choice on All-State teams. It is the consensus of opinion that he is one of the very best triple threat men to ever cavort on a state gridiron. Always fighting and trying to win, Crawford made scintillating plays in every game and against the best teams that the Purple fought. "Windy" will sure be missed next year.

McManus, the "big little man" of the Major squad, was pronounced by football critics of four states as the best center, regardless of size, seen in action this year in their respective states. "Mac" is captain-elect of next year, winner of the Brannon Trophy for general football ability, and was placed first on all All-State teams. Weighing only one hundred and fifty pounds, McManus was one of the lightest men on the team and was the lightweight of the line. Lack of weight could not overcome a strong heart, a quick brain and speed, so Mac was one of the really good football players on the squad.



WRIGHT

MOODY

WELSH

BILBO

"GOOFY" WRIGHT, after a late start on account of injuries, rapidly rounded into good form and was one of the most consistent ground gainers on the squad. Watch him go in the fall.

S. R. MOODY, diminutive, but heady and fast quarter, made many sparkling plays. He fought all the time and will be missed next year.

"KID" WELSH, the boy from Bogalusa, is counted on by the coaches as being one of the mainsprings of next fall's team. Heavy and fast, Welsh is a football player.

"GOV" BILBO. In his second year of varsity experience, "Gov" started most of the games and in each one acquitted himself well. Many a man was snared by Bilbo when a touchdown seemed certain.





ROUSE

JOHNSON

CAMPBELL ✓

PEEVEY

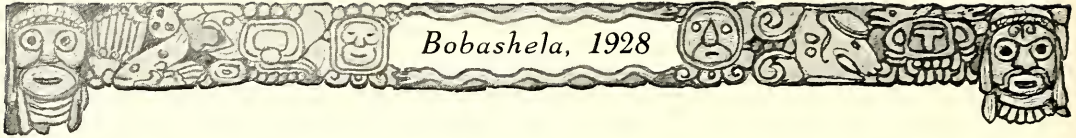
"PAT" ROUSE was the line backer par excellence. He plugged up holes, he stopped charging backs, he played his position with adeptness. Pat will be here next year.

JESSE JOHNSON earned the monicker "Seven Yards" Johnson. Give him the ball; then move the line seven yards. Jesse's first year on the varsity, and he will be back next year.

"TED" CAMPBELL has the requisites of a consistent performer, and in all probability will have an opportunity to display them this fall. ✓

"MR." PEEVEY leaned this way and that way and down came two men. In his last year for the Purple, Peevey lent valuable assistance to holding opposing teams to minimum downs.





Bobashela, 1928



BAXTER

BROOKS

McLAURIN

BOSWELL

"DICK" BAXTER, playing his third year on the varsity, displayed all the fight, speed and ability that marked him as a fresh star of '24.

"PUNY" BROOKS, big and brawny, played this season handicapped by injuries. He stayed in the game though.

GILMER McLAURIN did not play frosh football, but he came out this year and made the varsity. "Mac" starred in several encounters and promises to be a mainstay of the line next year.

"POTTS" BOSWELL's claim to fame was gained when the Purple played Miami. The Florida sports editors tacked this to him, so we will use it too—"that lumbering tackle."







BENNETT

BLOUNT

DRANE

BEALLE

"LON CHANEY" BENNETT, in his first varsity year, played stellar ball and is counted a bright prospect for next fall's team.

"RUBE" BLOUNT has played four years of ball for the purple and it will not be easy to forget Rube's cutting in and grabbing a pass from Crawford. Rube was right there.

"RED" DRANE had a hard job being understudy for McManus. McManus will graduate some day and then "Red" will get to play.

JOHN BEALLE, a sophomore, gave the two regular ends a run for their money. He played a consistent game and starred on breaking up punts.





HOLCOMB

RAPE

BOUNDS

KURTS

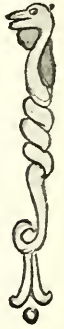
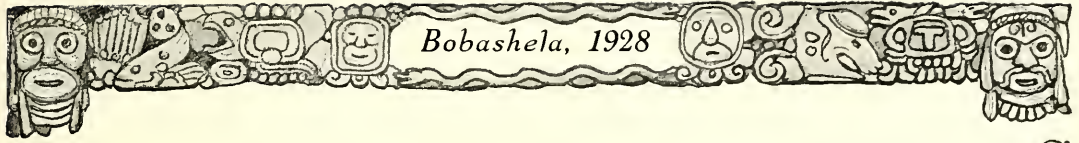
ROBERT HOLCOMB, playing his second year on the varsity, was a linesman of proven ability. Great things are expected of him.

"TUBBY" RAPE, after playing for two years on the varsity, slowed up a bit and he fought against youth and speed for his place in the line. His play at Miami was one of the high points of the game.

GEORGE BOUNDS was always there scrimmaging, fighting, and is a strong candidate for a berth next fall.

GEORGE KURTS punted his team out of danger many times, but was handicapped by injuries received early in the season.





## Varsity Football

The Major gridders of '27 were a fighting group of players who played a good brand of football, though the record is not of the impressive variety. Crawford and McManus furnished the thorns for the opposition. Crawford, always a threat, got away in almost every game for a brilliant end run, while McManus was showing about three opposing linesmen how to play their positions. The Purple, for the first time, played a post season game. They journeyed to Miami and played the University there on the golden sands. Beat them, too.

### SCORES

Alabama . . . . .	46; Majors . . . . .	0
Centenary . . . . .	26; Majors . . . . .	0
Howard . . . . .	6; Majors . . . . .	13
Clarke . . . . .	0; Majors . . . . .	33
Mississippi . . . . .	12; Majors . . . . .	0
Union . . . . .	6; Majors . . . . .	0
Birmingham-Southern . . . . .	13; Majors . . . . .	0
S. L. I. . . . .	12; Majors . . . . .	6
Mississippi A. & M. . . . .	6; Majors . . . . .	0
Southwestern . . . . .	19; Majors . . . . .	6
Miami University . . . . .	0; Majors . . . . .	31





CRAWFORD

BAXTER

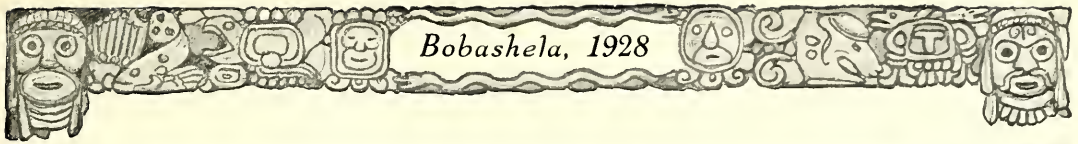
BLOUNT

CARRUTH

BROOKS

## Varsity Basketball

Millsaps experienced a mediocre basketball season in 1928. Failure of the team to show consistent winning form was attributed to the lack of goal shooting ability. Windy Crawford was a bright light, with Goober Carruth starring in every game.



ROUSE

MOODY

McMANUS

PEEVEY

## Varsity Basketball

### SCORES

D'Lo Y . . . . .	27; Majors . . . . .	58
D'Lo Y . . . . .	40; Majors . . . . .	45
L. P. I. . . . .	35; Majors . . . . .	37
L. P. I. . . . .	50; Majors . . . . .	38
Mississippi . . . . .	37; Majors . . . . .	22
Mississippi . . . . .	61; Majors . . . . .	23
L. P. I. . . . .	53; Majors . . . . .	28
L. P. I. . . . .	31; Majors . . . . .	26
Centenary . . . . .	35; Majors . . . . .	21
Centenary . . . . .	27; Majors . . . . .	24
Union . . . . .	32; Majors . . . . .	46
Centenary . . . . .	29; Majors . . . . .	49
Centenary . . . . .	32; Majors . . . . .	38





MOUNGER	MEIGS	HARRIS	WRIGHT	KURTS	ELLISON	SMITH
	HALE (Coach)	BAXTER	BLOUNT	LADNER	ROUSE	CAVER
McMANUS	CADWALLADER	BILBO	SCOTT	HOLLOMAN	MOODY	

## Varsity Baseball

Baseball at Millsaps with "Goat" Hale coaching it, promises to wage a bitter fight to regain some of its lost prestige. This year there is a noticeable lack of pitching talent, but the Freshmen have some to spare and the experience of this year promises to help in the building of a team for next year.



HALE	BELL	BRANTLEY	LEWIS	STRAIT
BRANNON	MARTIN	MAPP	STEVENS	
HARALA	WALL	COACH VAN HOOK	MILLER	MEIGS

### Freshman Basketball

A well-rounded court delegation was developed by Coach Van Hook this year. The outfit showed good form and teamwork in all of the contests played, and there were quite a number of them. Several excellent prospects were polished for future varsity service. A number of local prep combinations were trimmed during the season, and but seldom did the Minors taste defeat; then it was never by any overwhelming score. Austin Brantley was the brightest individual star of the lot, closely followed by Marion Hale. The high light of the season was the 115 to 19 victory over the Canton Y. M. C. A.



SETZLER

LINGLE

NEWELL

STEEN

LOTT

## Girls' Basketball

One of Millsap's most colorful and successful athletic organizations is the Co-ed basketball team. Always fighting to win, always ready to fight, and most of the time winning, the Co-eds lost the State Championship in a heart-breaking game to Delta State. Of the regulars, Newell, Lingle and Setzler will not return next year. Lingle and Setzler were two of the best forwards seen on the local court. Their shooting and their team work was little short of marvelous. Strait (not in panel), did good work at guard.





WEAVER

SIMPSON

JONES

HUGHES

SWAYZE

VAN HOOK

## Girls' Basketball

### CO-ED SCORES

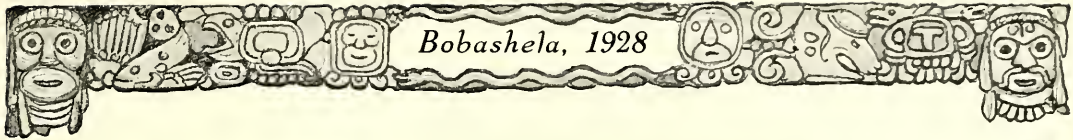
Grenada College . . . 19;	Millsaps Co-Eds . . . 23
Whitworth College . . . 6;	Millsaps Co-Eds . . . 56
State Teachers . . . 3;	Millsaps Co-Eds . . . 47
Grenada College . . . 18;	Millsaps Co-Eds . . . 28
Delta State . . . . 39;	Millsaps Co-Eds . . . 30
Hillman College . . . 10;	Millsaps Co-Eds . . . 28
Raymond . . . . . 22;	Millsaps Co-Eds . . . 24
Woman's College . . . 23;	Millsaps Co-Eds . . . 21
Hillman College . . . 8;	Millsaps Co-Eds . . . 58
Woman's College . . . 27;	Millsaps Co-Eds . . . 17
Belhaven College . . . 7;	Millsaps Co-Eds . . . 80
Delta State . . . . . 30;	Millsaps Co-Eds . . . 28



MCDANIEL, HARALA, HALE, PRICE, McMULLIN, WALKER, N. MILLER, J. MILLER, VAN HOOK  
BRANTLEY, HAINING, BELL, ADAMS, MAYNOR, FRALEIGH, VINING, STRAIT  
BRANNON, HASSEL, STEVENS, COTTEN, SHARP, RAY, MAPP, WILLIAMS

## Minor Football

The Minor football machine was the most powerful in the history of the institution. Playing through an unusually hard schedule, the frosh came out on the long end of the score every time but once. Clarke College was the team that turned the trick and they did it by the margin of one touchdown. The team, fast and heavy, was with such an array of talent that it would be hard to pick a really individual star, rather we would say the team was the star. Jake Miller with dazzling end runs, bullet-like or loop passes, was, if anyone was, the best individual performer of the bunch. The team, of course, pointed to Mississippi College's Papooses. The baby Chocs were completely snowed under, 32 to 0, by an avalanche of line bucks, passes and perfect team work.



Bobashela, 1928



MILLER      HALE      WALKER      McDANIEL      COTIEN  
 BELL      MAYNOR      HAINING      McMULLIN      FRALEIGH      MAPP  
 (SELMAN, Vining and RAY not in panel).

### Minor Football

#### SCORES

Port Gibson College . . . . .	6; Minors . . . . .	56
Dummies . . . . .	0; Minors . . . . .	51
Holmes Junior College . . . . .	12; Minors . . . . .	66
Clarke College . . . . .	12; Minors . . . . .	6
Hinds Junior College . . . . .	6; Minors . . . . .	32
Sunflower Junior College . . . . .	6; Minors . . . . .	57
Mississippi Papooses . . . . .	0; Minors . . . . .	32

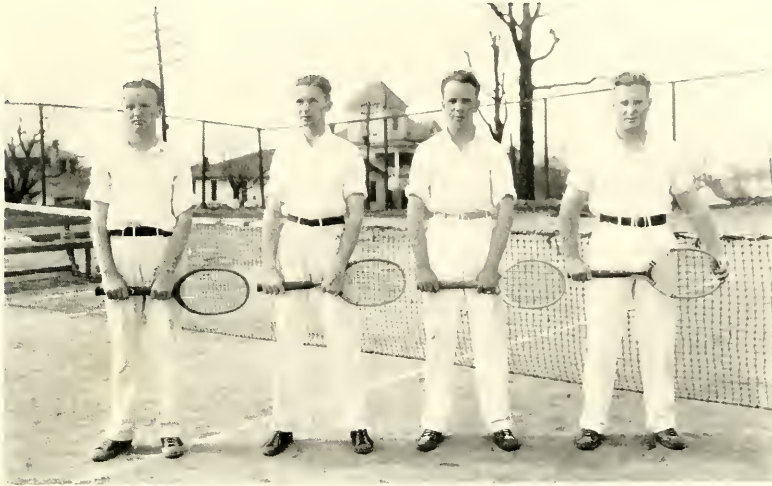




BENNETT, ALFORD, MILSTEAD, BYNUM, R. BYRD (President), SHOTWELL, H. BYRD, CARMICHAEL, RUSSELL

## Millsaps Golf Club

Golf is the one sport that has taken the campus by storm. Almost any hour of the lighted ones, some poor nut can be seen knocking the deuce out of the little white pellet; then with a happy smile lighting his countenance, plod over the hill after the elusive pill. The club was organized this year with R. E. Byrd as president and Hoyle Byrd as secretary. A tournament with a representative entry from the student body was played, and judging from its success and the enthusiasm displayed there, it promises to be an annual feature of the Golf Club.



SESSIONS

FORD

FOWLER

BOSWELL

## Tennis

Only one match has been played by the Major racquetees this season. In that match at Southwestern Louisiana Institute, the team of Fowler and Boswell won the doubles sets but lost both singles contests after a hard fight. In the Mississippi Intercollegiate tournament to be played on the Millsaps College courts, Boswell and Captain Fowler, with Sessions and Ford as capable reserves, should go far towards winning the coveted championship. The team is made up of three juniors and one sophomore, Boswell, who will all be back next year to fight, fight hard, to win.



### The Choctaws Win

In the feature contest of the year, Millsaps' utter inability to break up anybody's forward passing attack proved to be the margin of victory for the Choctaws from Mississippi College. The Majors fought hard but Hitt threw passes in, over, and around our men to the mournful tune of two touchdowns. The Majors were within striking distance of the Choctaws' goal line, but the needed punch was not there. It was by Crawford's consistently good punting that the Braves' score was held down. It was our game in the first and third quarters, then the Chocs took things into their hands in the second and fourth rounds. Wait until next year! That is not a threat, it is a prayer.



ORGANIZATIONS







CRAWFORD, WHEELLESS, GAINNEY, RILEY, BEACHAM  
SEAWRIGHT, CARMICHAEL, BISHOP, MACLACHLAN, ROBINSON

### Student Executive Board

- |                            |                         |
|----------------------------|-------------------------|
| A. V. BEACHAM . . . . .    | President, Student Body |
| A. G. CRAWFORD . . . . .   | Athletic Association    |
| L. L. WHEELLESS . . . . .  | Y. M. C. A.             |
| RUTH GAINNEY . . . . .     | Y. W. C. A.             |
| S. F. RILEY . . . . .      | Literary Societies      |
| J. M. MACLACHLAN . . . . . | Publications            |
| J. LEM SEAWRIGHT . . . . . | Glee Club               |
| H. D. CARMICHAEL . . . . . | Band                    |
| A. C. BISHOP . . . . .     | Ministerial Association |
| G. O. ROBINSON . . . . .   | Honor Council           |



WHITE  
WHARTON

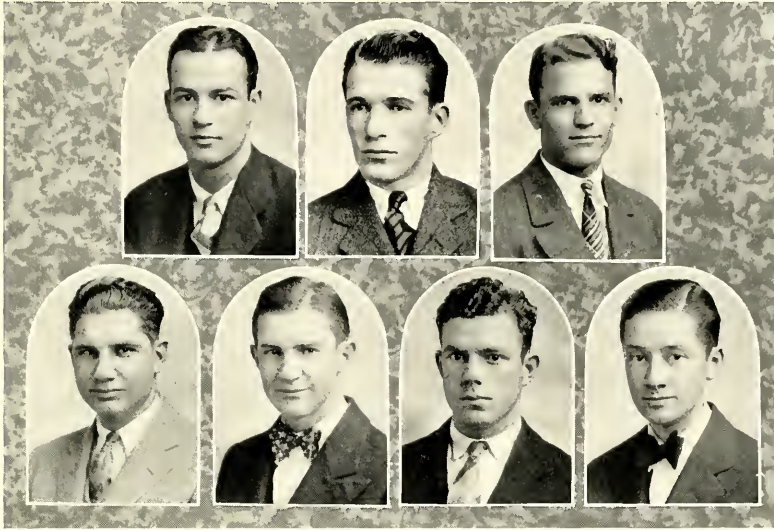
WHITTEN  
FINCH

BOUNDS  
RILEY

SANDERS  
BEACHAM

### Debating Council

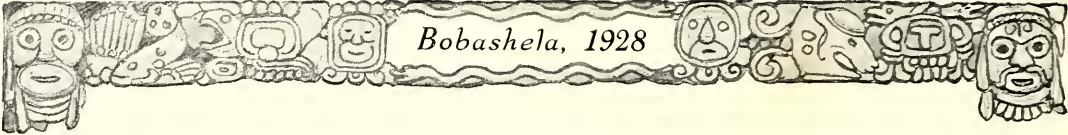
PROFESSOR M. C. WHITE . . . . .	Faculty Representative
PROFESSOR A. G. SANDERS . . . . .	Faculty Representative
JOHN W. FINCH . . . . .	Galloway Literary Society
V. L. WHARTON . . . . .	Galloway Literary Society
E. B. WHITTEN . . . . .	Galloway Literary Society
A. V. BEACHAM . . . . .	Lamar Literary Society
G. L. BOUNDS . . . . .	Lamar Literary Society
S. F. RILEY . . . . .	Lamar Literary Society



ROBINSON                      CARRUTH                      MOUNGER  
 BOUNDS                      LEWIS                      DRANE                      PROPST

### Honor Council

- C. H. CARRUTH . . . . . *Student Body Representative*
- D. M. MOUNGER . . . . . *Student Body Representative*
- P. N. PROPST . . . . . *Senior Class*
- G. O. ROBINSON . . . . . *Senior Class*
- G. L. BOUNDS . . . . . *Junior Class*
- J. A. DRANE . . . . . *Sophomore Class*
- HOWARD LEWIS . . . . . *Freshman Class*



WHEELIS, BARNES, MOUNGER, WHITTEN, BEACHAM  
 McLAURIN, GRISHAM, BOUNDS, REVES, PROPST  
 McMANUS, CARRUTH, CAMPBELL, BISHOP, DRIBBEN

### Y. M. C. A. Cabinet

- |                          |                     |
|--------------------------|---------------------|
| A. V. BEACHAM . . . . .  | President           |
| L. L. WHEELISS . . . . . | Vice-President      |
| D. M. MOUNGER . . . . .  | Secretary-Treasurer |

#### COMMITTEE CHAIRMEN

- |                           |                |                          |              |
|---------------------------|----------------|--------------------------|--------------|
| E. B. WHITTEN . . . . .   | Program        | GORDON WILSON . . . . .  | Extension    |
| W. K. BARNES . . . . .    | Program        | G. E. REVES . . . . .    | Extension    |
| G. L. BOUNDS . . . . .    | Vesper Service | A. C. BISHOP . . . . .   | Bible Study  |
| R. W. CAMPBELL . . . . .  | Social         | SEXTON McMANUS . . . . . | Athletics    |
| FRANK GRIFFIN . . . . .   | Membership     | C. H. CARRUTH . . . . .  | Athletics    |
| GILMER McLAURIN . . . . . | Freshman Work  | W. B. DRIBBEN . . . . .  | Foreign Work |
| R. A. GRISHAM . . . . .   | Church Work    | E. C. LOCKETT . . . . .  | Publicity    |
| P. N. PROPST . . . . .    | Music          | J. A. DRANE . . . . .    | Conferences  |





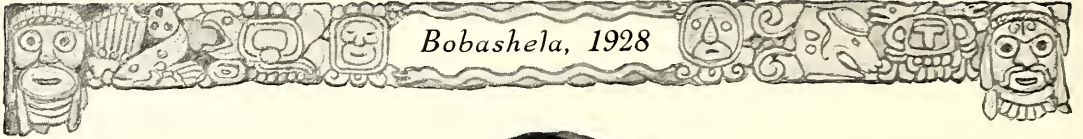
GAINNEY, RIDGEWAY, GIVENS  
 NEWELL, STEVENS, SULLIVAN, WINGFIELD, WILCOX  
 NOBLES, VANCE, JACKSON, GILLILAND, POWER

### Y. W. C. A. Cabinet

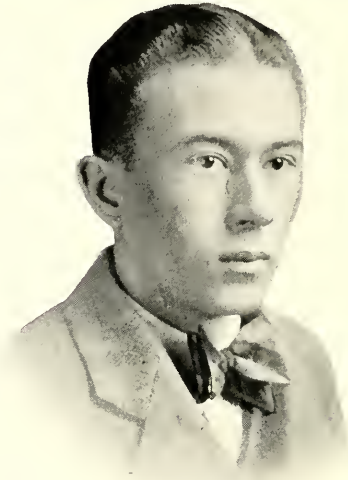
RUTH GAINNEY . . . . . <i>President</i>	BESSIE GIVENS . . . . . <i>Treasurer</i>
ALICE RIDGEWAY . . . . . <i>Vice-President</i>	DOROTHY MOORE . . . . . <i>Secretary</i>

#### COMMITTEE CHAIRMEN

JANE POWER . . . . . <i>Social Service</i>	MARY ELLEN WILCOX . . . . . <i>Librarian</i>
VIRGINIA VANCE . . . . . <i>Music</i>	EMILY WHITE STEVENS . . . . . <i>Program</i>
MARY FLOWERS JACKSON <i>World Fellowship</i>	JOSEPHINE WINGFIELD . . . . . <i>Finance</i>
WILLIE SULLIVAN . . . . . <i>Social</i>	HELEN NEWELL <i>Undergraduate Representative</i>
BESSIE WILL GILLILAND . . . . . <i>Rest Room</i>	MILDRED NOBLES <i>Undergraduate Representative</i>



Bobashela, 1928



V. L. WHARTON, *Editor-in-Chief*  
SLIDELL, LA.

The 1928 Bobashela

EDITORIAL STAFF  
*Associate Editors*

*Classes*

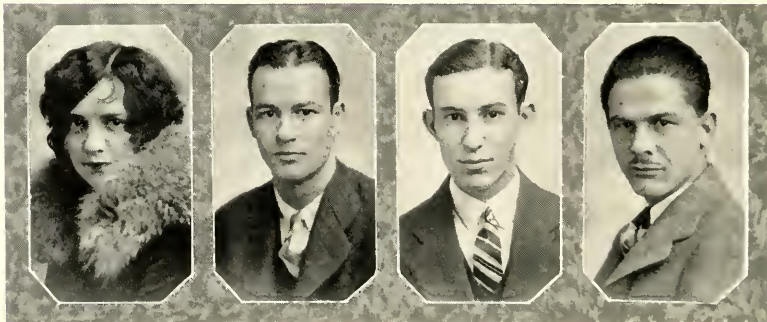
G. O. ROBINSON

*Organizations Editor*  
ELIZABETH HEIDELBERG

*Sports and Features*

DAVID LONGINOTTI

*Who's Who Contest*  
P. PATTON PERRITT



HEIDELBERG

ROBINSON

LONGINOTTI

PERRITT





S. F. RILEY, *Business Manager*  
JACKSON, MISS.

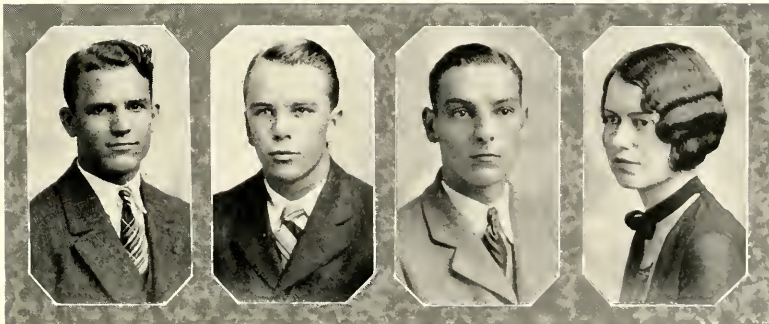
### The 1928 Bobashela

#### BUSINESS STAFF

#### *Assistant Business Managers*

OLIVIA KNOX  
*Photographic Editor*  
E. L. BOLTON

D. M. MOUNGER  
*Distribution*  
R. W. FOWLER



MOUNGER

FOWLER

BOLTON

KNOX



MAKLACHLAN  
 SEAWRIGHT, BOLTON, FOWLER, PROPST, CATLETT  
 STEVENS, HIGHTOWER, BUCK  
 MANN  
 BILBO, LONGINOTTI, WHITTEN, FINCH, PERRITT

### The Purple and White Staff

JOHN MAKLACHLAN . . . . .	Editor	J. R. HIGHTOWER . . . . .	News
J. L. SEAWRIGHT . . . . .	Associate Editor	J. L. SEAWRIGHT . . . . .	Weekly Report
W. M. MANN . . . . .	Business Manager	WILLIAM BILBO . . . . .	News
P. N. PROPST . . . . .	Assistant Business Manager	EMILY WHITE STEVENS . . . . .	The Co-Ed
JAMES BYRD . . . . .	Advertising Manager	W. P. BOSWELL . . . . .	News
P. PATTON PERRITT . . . . .	News Editor	E. L. BOLTON . . . . .	Locals
RUTH BUCK . . . . .	Society Editor	DAVID LONGINOTTI . . . . .	Locals
JACK CATLETT . . . . .	Sports Editor	RICHARD FOWLER . . . . .	The Gas Line
RICHARD FOWLER . . . . .	Feature Editor	E. B. WHITTEN . . . . .	News
JOHN FINCH . . . . .	Locals		





SEAWRIGHT      WHITE      POWER  
 FINCH      BYNUM      SYKES  
 ALFORD      CRULL      McCLESKEY      RILEY  
                  O'NEAL      PERRITT

The Millsaps Players

PRESENTING

NOTHING BUT THE TRUTH

*A Comedy in Three Acts*

BY JAMES MONTGOMERY

THE CAST

Robert Bennett	J. LEM SEAWRIGHT
E. M. Ralston	JOHN FINCH
Dick Donnelly	J. W. ALFORD
Clarence Van Dusen	P. PATTON PERRITT
Bishop Doran	S. F. RILEY
Gwendolyn Ralston	JO JEFF POWER
Mrs. E. M. Ralston	OCTAVIA SYKES
Ethel Clark	MARGUERITE CRULL
Mable Jackson	PEGGY O'NEAL
Sable Jackson	EULA McCLESKEY
Martha	MARGARET BYNUM
<i>Business Manager</i>	W. B. DRIBBEN
<i>Costumes</i>	MARIE FLINK
<i>Property</i>	C. L. BAKER

## Galloway Literary Society

### PRESIDENTS

L. L. WHEELLESS      JOHN FINCH      W. I. PEELER      G. E. REVES

### VICE-PRESIDENTS

G. E. REVES      E. B. WHITTEN      K. E. MILSTEAD      JOHN FINCH

### SECRETARIES

P. N. PROPST      EMMETT HAINING      HAROLD GRAVES      W. C. ALFORD

### TREASURERS

W. I. PEELER      W. T. WRENN

### DEBATING COUNCIL REPRESENTATIVES

V. L. WHARTON      E. B. WHITTEN      JOHN FINCH

### INTERCOLLEGIATE DEBATERS

E. B. WHITTEN      V. L. WHARTON      JOHN FINCH      P. P. PERRITT  
L. L. WHEELLESS

### INTERSOCIETY DEBATERS

T. K. SCOTT      B. Y. RUFF      K. E. MILSTEAD      W. I. PEELER  
J. B. PATRICK      S. J. RUFF

### MEMBERS

G. W. BOREN	W. F. HOWELL	J. B. PATRICK	J. G. WILSON
B. F. CAMMACK	R. C. JONES	W. I. PEELER	V. L. WHARTON
H. D. CARMICHAEL	W. K. JONES	M. A. PEEVEY	B. E. MEIGS
EDWARD COKER	JOHN KETTLER	P. P. PERRITT	L. L. WHEELLESS
H. C. CURRIE	E. LIVINGSTON	P. N. PROPST	J. M. MACLACHLAN
B. EICHELBERGER	F. L. LOONEY	W. PIGOTT	R. J. HINSON
A. M. ELLISON	J. R. LOVE	E. H. RANDALL	M. L. BYNUM
A. W. ERICKSON	E. McMANUS	T. D. RAPE	BRUCE GIBSON
JOHN FINCH	S. McMANUS	B. Y. RUFF	G. E. REVES
H. G. FLOWERS	J. M. METCALF	S. J. RUFF	W. T. WRENN
MALCOLM GLAZE	K. E. MILSTEAD	C. SILLS	D. G. PATTON
HAROLD GRAVES	F. M. MORRIS	P. M. CATCHING	W. C. ALFORD
R. A. GRISLIAM	E. T. MANGUM	T. K. SCOTT	M. R. REED
EMMETT HAINING	C. MOUNGER	L. P. STAGG	HERBERT KING
W. H. HAY	D. M. MOUNGER	JOHN STARK	E. B. WHITTEN



WHITTEN, MOUNGER, WHEELLESS, GRISHAM  
WHARTON, PROPST, MACLACHLAN, MCMANUS, PERRITT  
FINCH, REVES, GRAVES, METCALF  
CARMICHAEL, JONES, CADWALLADER, PEELER, SCOTT  
LOWRY, BRUMFIELD, RUFF, HAINING  
WILLIAMS, MOUNGER, KETTLER, HINSON, MANGUM

## Lamar Literary Society

### PRESIDENTS

A. V. BEACHAM

S. F. RILEY

G. L. BOUNDS

### VICE-PRESIDENTS

S. F. RILEY

J. W. ALFORD

J. A. DRANE

### SECRETARIES

J. W. ALFORD

G. L. BOUNDS

L. L. MATHENY

### TREASURERS

J. A. DRANE

CHARLES LOCKETT

### DEBATING COUNCIL REPRESENTATIVES

A. V. BEACHAM

S. F. RILEY

G. L. BOUNDS

### INTERCOLLEGIATE DEBATERS

A. V. BEACHAM

S. F. RILEY

J. A. DRANE

J. W. ALFORD

### MEMBERS

G. ADAIR

J. W. ALFORD

A. B. BEACHAM

A. C. BISHOP

HOWARD BOONE

J. H. BLAKEMORE

EDWIN BELL

R. E. BLOUNT

K. BRADLEY

W. P. BOSWELL

G. L. BOUNDS

T. M. BROWN

R. D. CASEBURN

JOHN CULVER

J. A. DRANE

A. K. DOSS

E. F. GRIFFIN

G. GRIFFITH

H. GILLIS

M. HALE

F. M. JOHNSON

R. W. JOHNSON

T. I. JOHNSON

C. E. LOCKETT

C. F. LACEY

L. P. B. LIPSCOMB

ED LEMASTUS

J. N. FRENCH

DAVID KEY

H. LEWIS

M. MANN

L. L. MATHENY

D. G. McLAURIN

PAT McMULLIN

WILLIAM McCLUNEY

WILLIAM McMURTRY

RALPH NALL

R. P. NEBLITT

W. M. PRICE

S. F. RILEY

CHARLES RAY

B. C. RICKETTS

H. L. SIMMONS

R. S. SIMPSON

C. A. SULLIVAN

T. C. VINING

J. V. WRIGHT

S. S. WALL

H. A. BYRD

L. M. HAMBERLIN

R. B. SMITH

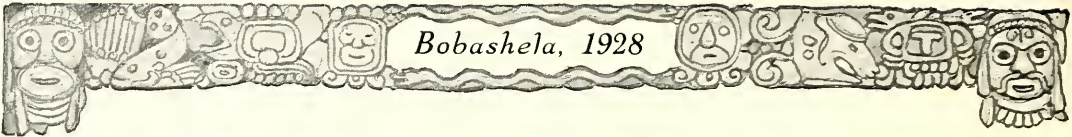
R. F. SHARP

J. H. WILLIAMSON

Bobasha, 1928



BOUNDS, RILEY, ALFORD, MANN, BEACHAM  
MATHENY, BLOUNT, CATLETT, PRICE, SULLIVAN  
WILLIAMSON, COUNTISS, BOLTON, SIMMONS, BYRD  
BLACK, BISHOP, BOONE, BRADLEY, JOHNSON  
CULVER, GRIFFITH, BELL, NEBLETT, LEWIS



SEAWRIGHT	BLAKEMORE	CAVER	PRICE
LONGINOTTI	KURTS	MAJORS	CULVER
	CAMPBELL	BRUMFIELD	HAMILTON

### Boys' Glee Club

- |                    |       |                  |
|--------------------|-------|------------------|
| DR. A. P. HAMILTON | ..... | Director         |
| J. L. SEAWRIGHT    | ..... | President        |
| H. A. LADNER       | ..... | Business Manager |
| MISS DORÉE MAJORS  | ..... | Accompanist      |

- |                    |                     |                   |                    |
|--------------------|---------------------|-------------------|--------------------|
| <i>First Tenor</i> | <i>Second Tenor</i> | <i>First Bass</i> | <i>Second Bass</i> |
| R. W. CAMPBELL     | DAVID LONGINOTTI    | J. L. SEAWRIGHT   | JAKE IDOM          |
| CRUCE STARK        | N. T. MOBLEY        | M. M. CAVER       | SISSON SIMPSON     |
| SETH HARRIS        | CARL BRUMFIELD      | WARREN BLACK      | R. J. JONES        |
| GEORGE KURTS       | JOHN CULVER         | J. H. BLAKEMORE   |                    |
|                    | L. E. PRICE         | J. L. GORDON      |                    |

*Quartette*

- |                 |                 |
|-----------------|-----------------|
| L. E. PRICE     | J. H. BLAKEMORE |
| J. L. SEAWRIGHT | M. M. CAVER     |





O'NEAL  
JONES  
RIDGEWAY

FIELDS  
EDWARDS  
POWER

MITCHELL  
CALHOUN  
ADAMS

HOLLOWAY  
SISTRUNK  
SULLIVAN

KNOX  
HEUCK  
HALL

### Girls' Glee Club

DR. B. E. MITCHELL . . . . . *Director*  
DORIS COMLY . . . . . *Accompanist*

*First Soprano*

- MELVIN SIMPSON
- TOMMYE HALL
- MARY OLIPHANT
- WILLIE SULLIVAN
- OLIVIA KNOX
- JANE POWER

*Second Soprano*

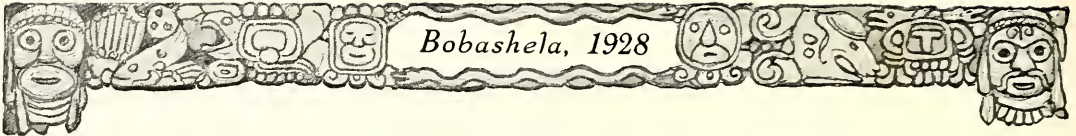
- MERNELLE HEUCK
- GLADYS JONES
- RUBY KATHRYN FIELDS
- MARY LYNN GOULD
- PEGGY O'NEAL

*First Alto*

- ALICE RIDGEWAY
- ELIZABETH BROOKS
- CLAIRE SISTRUNK
- AETNA HOLLOWAY
- EDWINA CALHOUN

*Second Alto*

- GLADYS BOND
- ELIZABETH SETZLER
- MARJORIE SMITH



BISHOP, MATHENY, MOUNGER, METCALF, GRISHAM  
McCORMACK, REEVES, RUFF, HOWELL, PROPST

## Ministerial Association

### OFFICERS

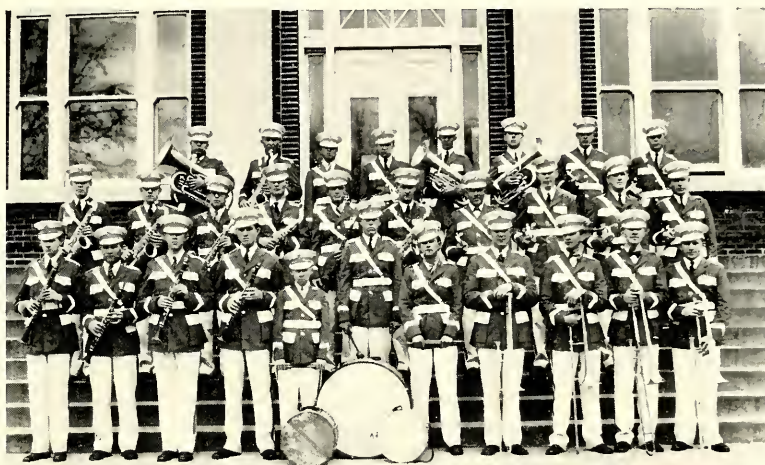
AUDIE C. BISHOP . . . . .	President
L. L. MATHENY . . . . .	Vice-President
PAUL PROPST . . . . .	Secretary-Treasurer
D. M. MOUNGER . . . . .	Program Committee
R. A. GRISHAM . . . . .	Program Committee
W. T. WRENN . . . . .	Program Committee
T. G. LOWRY . . . . .	Membership Committee
G. L. PERKINS . . . . .	Membership Committee
L. L. MATHENY . . . . .	Membership Committee

### MEMBERS

E. C. ABERNATHY	FLOYD LOONEY	P. N. PROPST
G. ADAIR	T. G. LOWRY	B. Y. RUFF
A. C. BISHOP	L. L. MATHENY	J. L. REEVES
A. M. ELLISON	EARL MEIGS	R. E. WASSON
R. A. GRISHAM	J. M. METCALF	L. A. WASSON
D. R. HOLT	D. M. MOUNGER	W. T. WRENN
W. F. HOWELL	R. M. NALL	ROY WOLF
Y. H. KIM	G. L. PERKINS	M. H. McCORMACK
E. A. KELLEY	I. A. PREWITT	H. C. CURRIE







First Row: PROPST, JONES, CATLETT, FLOYD, SIMMONS, BARNES, WOODS, KURTS, NEYLAND, SHARP, SCOTT  
 Second Row: MCCLOONEY, NEBLETT, JONES, CAMPBELL, WILLIAMS, SEAWRIGHT, LEONARD, BLACK, MCLAURIN, RUSSELL  
 Third Row: SILLS, EICHELBERGER, LOCKETT, CULVER, KENDRICK, MOBLEY, CARMICHAEL, HASSELL

## The College Band

PROF. J. G. LEONARD . . . . . Director  
 H. D. CARMICHAEL . . . . . Manager  
 R. E. TATUM . . . . . Drum Major

### Cornets

GILMER MCLAURIN	WARREN BLACK	H. D. CARMICHAEL
GORDON RUSSELL	ROBERT HASSELL	FLOYD LOONEY

### Saxophones

RALPH CAMPBELL	J. L. SEAWRIGHT	R. J. JONES
	HAYS WILLIAMS	

### Trombones

W. D. SHARP	THEO K. SCOTT	SWAYZE NEYLAND
	GEORGE KURTS	

### Horns

CHARLES LOCKETT	JOHN CULVER
-----------------	-------------

### Baritones

JACK KENDRICK	W. T. MOBLEY
---------------	--------------

### Basses

CARL SILLS	MALCOLM FRALEIGH
------------	------------------

### Drums

W. K. BARNES	L. H. SIMMONS	HARRY WOODS
--------------	---------------	-------------



TARBUTTON, O'NEAL, LACEY  
 WILLIAMSON, BUTLER, GRAVES, MANGUM  
 BAKER, BOLTON, MANN, CADWALLADER

### Science Club

GRADY TARBUTTON . . . . . *President*  
 PEGGY O'NEAL . . . . . *Vice-President*  
 LINNIE LINGLE . . . . . *Secretary-Treasurer*

#### MEMBERS

DOROTHY MOORE  
 MYRILE STEEN  
 SALLY HORNE  
 GLADYS JONES  
 EVIE LEE GILLIS  
 NELLIE GRAY FINCH  
 HATTIE RAY LEWIS  
 H. G. DETERLY

C. H. GRAVES  
 A. K. DOSS  
 FRANK LACEY  
 JACK WILLIAMSON  
 BRUCE GIBSON  
 ERNEST MANGUM  
 CHARLES COLTHARP  
 JOHN STOKES

R. L. WALTON  
 HAROLD GRAVES  
 JOHN CADWALLADER  
 CARLYLE TOUCHSTONE  
 E. L. BOLTON  
 PROFESSOR BAKER  
 PROFESSOR HARRELL  
 DOCTOR SULLIVAN

# Philomathean Literary Society

## OFFICERS

PEGGY O'NEAL . . . . .	<i>President</i>
MARIE FLINK . . . . .	<i>Vice-President</i>
DOROTHY MOORE . . . . .	<i>Secretary</i>
ALICE RIDGEWAY . . . . .	<i>Treasurer</i>
LINNIE LINGLE . . . . .	<i>Critic</i>
DORIS BASS . . . . .	<i>Sergeant-at-Arms</i>
MILDRED WILLIAMS . . . . .	<i>Chaplain</i>
NELL FINCH . . . . .	<i>Reporter</i>
MYRTLE STEEN . . . . .	<i>Publicity</i>

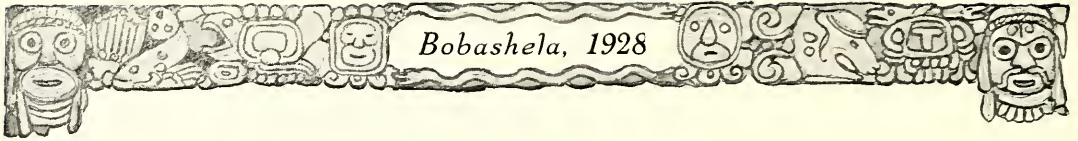
## THE ORGANIZATION

The Philomathean Literary Society of Millsaps College was organized January 16, 1928. At this time only a temporary organization was effected, the only two officers elected being Peggy O'Neal, temporary chairman, and Bessie George Donald, temporary secretary. It was not until February 14, 1928, that a permanent organization was set up and the officers named above were elected to serve for the remainder of the current session. The constitution and by-laws of the society were also permanently adopted at this meeting. The regular meeting time was set as Tuesday afternoon at four o'clock. The general plan of the programs is the same at those of the Galloway and Lamar Societies, although some variations have been made from time to time. The major aim is to train the women students of Millsaps for excellence in debating and public speaking.

During the latter part of the last term the Philomatheans plan to participate in the Inter-Society Debates of the college, debating both the Lamars and the Galloways. They have also arranged for an intercollegiate debate with Belhaven College and have arrangements under way with several other colleges. Outstanding during this session have been: Dorothy Moore, Linnie Lingle, Nell Finch, Ruth Gainey, Hattie Ray Lewis and Marie Flink.

## MEMBERS

DORIS BASS	DOROTHY MOORE
IRENE BREELAND	PEGGY O'NEAL
ELIZABETH DEAR	ALICE RIDGEWAY
BESSIE GEORGE DONALD	THELMA ROBERTS
NELLIE GRAY FINCH	ELIZABETH SETZLER
MARIE FLINK	MYRTLE STEEN
RUTH GAINEY	EMILY WHITE STEVENS
EVIE LEE GILLIS	EDITH STRAIT
EDNA EARLE HENNINGTON	JENNIE BETH SWAYZE
CLARA LEE HINES	FRANCES VAN HOOK
CLARIBEL HUNT	JANIE WATKINS
GLADYS JONES	SADIE VEE WATKINS
HATTIE RAY LEWIS	ELIZABETH WHITE
LINNIE LINGLE	MARGARET WHISENHUNT
ANNE MCNAIR	MILDRED WILLIAMS



## Resolved

We will love in a new way  
In this new year,  
With quiet, sacred tenderness,  
Which needs no vulgar, cheap caress,  
Devoid of kisses . . . none the less  
Sincere.

We will love in a new way  
In this new year,  
But resolutions amorous,  
Like kisses platitudinous,  
Should all be celebrated . . . thus . . .  
My dear.

G. E. GREENWAY





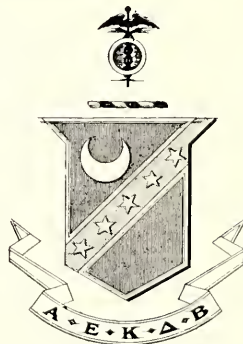
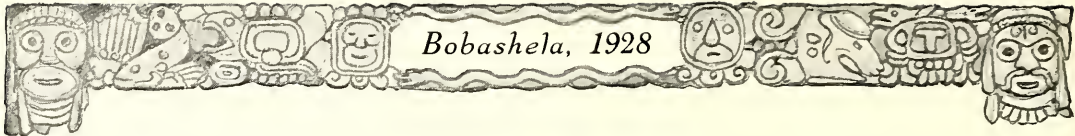




SEAWRIGHT, MANN, RILEY  
LACEY, MOODY  
CAVER, CARRUTH, ROBINSON

### Men's Pan-Hellenic Council

- |                 |                |
|-----------------|----------------|
| KAPPA SIGMA     |                |
| S. F. RILEY     | M. M. CAVER    |
| KAPPA ALPHA     |                |
| J. L. SEAWRIGHT | G. O. ROBINSON |
| PI KAPPA ALPHA  |                |
| C. H. CARRUTH   | W. M. MANN     |
| THETA KAPPA NU  |                |
| S. R. MOODY     | FRANK LACEY    |



# Kappa Sigma

Founded at the University of Bologna in 1400  
Founded in America at the University of Virginia in 1867

Colors: Scar'et, White and Emerald

Flower: Lily-of-the-Valley

Publications: "The Caduceus" and "The Star and Crescent"

## ALPHA UPSILON CHAPTER

### FRATRES IN FACULTATE

G. L. HARRELL

B. O. VAN HOOK

V. B. HATHORNE

### FRATRES IN COLLEGIO

*Class of 1928*

S. F. RILEY

D. M. MOUNGER

J. R. HIGHTOWER

*Class of 1929*

W. A. BILBO  
J. A. WASCOM

M. M. CAVER  
ELDON ROUSE

J. R. PRESTON  
E. H. COUNTISS

*Class of 1930*

G. W. BUTLER  
G. M. MCLAURIN, JR.

C. C. HOLLOMAN

JOE WALTON  
C. W. ALEXANDER

*Class of 1931*

I. W. BALL  
CARL BRUMFIELD  
WILLIAM CASTON  
CHARLES RAY

A. K. DOSS  
ROBERT TATUM  
CHARLES PAXTON  
JOHN CULVER

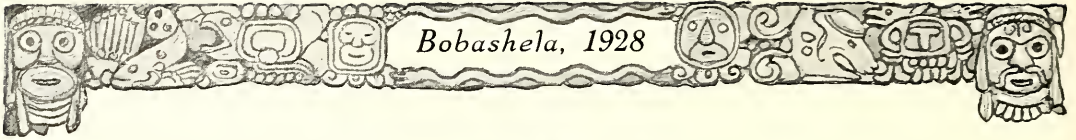
H. M. SELMAN  
BARRON RICKETTS  
P. T. FITZHUGH  
FRANK LYELL







MOUNGER, RILEY, CAVER  
WASCOM, BILBO, COUNTISS, PRESTON, HOLLOMAN  
MCLAURIN, ALEXANDER, WALTON, BUTLER, ROUSE  
CASTON, BRUMFIELD, LYELL, RICKETTS, BALL  
TATUM, DOSS, CULVER, FITZHUGH, RAY



# Kappa Alpha

Founded at Washington and Lee University in 1865

Colors: Crimson and Gold

Flowers: Magnolia and Red Rose

Publication: "Kappa Alpha Journal"

## ALPHA MU CHAPTER

### FRATRES IN FACULTATE

J. REESE LIN

A. P. HAMILTON

M. C. WHITE

### FRATRES IN COLLEGIO

*Class of 1928*

J. L. SEAWRIGHT

W. O. HOOD

G. O. ROBINSON, JR.

*Class of 1929*

R. W. FOWLER

J. F. FORD

*Class of 1930*

↓  
R. W. CAMPBELL

EDWIN CALHOUN

J. W. ALFORD

C. H. AVERY

*Class of 1931*

WARREN BLACK

FRANK CLARK

\*WILLIAM BELL

\*WILLIAM McCLUNY

ALLEN FETTERMAN

\*LUTHER FLOWERS

\*KENNETH BRADLEY

DAVID KEY

GARNER GREEN

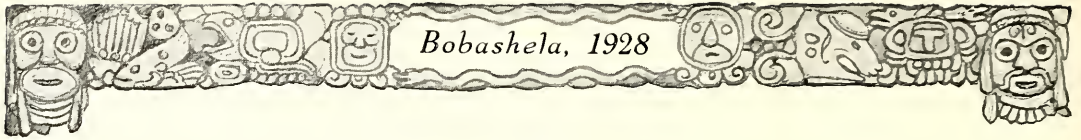
REYNOLDS CHEENEY

\*Pledges

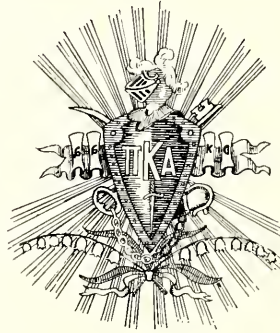




SEAWRIGHT, HOOD, ROBINSON  
FOWLER, FORD, AVERY, CAMPBELL, ALFORD  
CALHOUN, BLACK, FLOWERS, GREEN, BELL  
KEY, McCLUNEY, FETTERMAN, CLARK, CHEENEY



Bobasha, 1928



# Pi Kappa Alpha

Founded at the University of Virginia in 1869

Colors: Garnet and Gold

Flower: Lily-of-the-Valley

## ALPHA IOTA CHAPTER

FRATRES IN COLLEGIO

*Class of 1928*

W. M. MANN

R. E. BLOUNT

*Class of 1929*

C. H. CARRUTH

SEXTON McMANUS  
LESTER STAGG

J. J. STAGG

*Class of 1930*

JAMES BYRD  
M. E. WARD  
W. T. MOBLEY

JOHN BEALE  
J. D. STOKES  
R. P. WELSH  
\*DAVID LONGINOTTI

J. D. BRABHAM  
SIDNEY SELVIDGE  
E. F. GRIFFIN, JR.

*Class of 1931*

\*ERBY McMANUS

WYATT SHARP  
A. W. ERICKSON

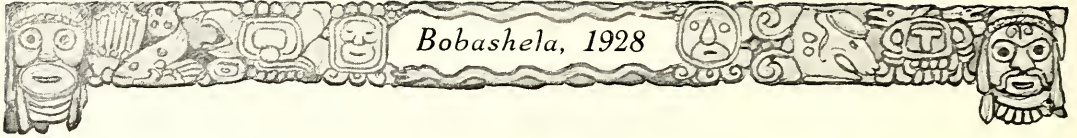
HOWARD BOONE

\*Pledges





MANN, BLOUNT  
CARRUTH, McMANUS, STAGG, WARD  
STOKES, BRABHAM, SELVIDGE, BEALE  
WELSH, MOBLEY, BELL, BOONE



Bobasha, 1928



# Theta Kappa Nu

Founded at Drury College in 1924

Colors: Black, Crimson and Silver

Flower: American Beauty Rose

Publication: "Theta News"

## MISSISSIPPI ALPHA CHAPTER

### FRATRES IN COLLEGIO

#### Class of 1928

S. R. MOODY  
R. H. BAXTER

W. K. BARNES  
R. R. HUDSON

A. G. CRAWFORD  
A. F. CARRAWAY

#### Class of 1929

M. H. BROOKS  
W. B. DRIBBEN  
W. W. FLOYD

W. K. JONES  
G. E. REVES

GEORGE KURTS  
C. W. BAILEY  
\*CHARLES COLTHORP

#### Class of 1930

J. D. BENNETT  
J. A. DRANE

W. P. BOSWELL  
R. C. JONES

C. F. LACEY  
H. L. SIMMONS

#### Class of 1931

\*HARRY WOODS  
\*IRWIN JOHNSON  
\*WILLIAM MCMURTRY  
\*DELPHIN MILLER

\*WARREN BARRIER  
\*PAT McMULLEN  
\*JAMES WRIGHT  
R. P. NEBLETT  
CLAYTON MAYNER

MARION HALE  
HOWARD LEWIS  
R. P. B. LIPSCOMB  
J. B. LOGAN

\*Pledges





CRAWFORD, BAXTER, CARRAWAY, BARNES, MOODY  
BROOKS, KURTS, HUDSON, W. JONES, DRIBBEN  
REVES, FLOYD, BOSWELL, R. JONES, LACEY, SIMMONS  
MCMURTRY, LOGAN, HALE, LEWIS, BARRIER, MAYNER  
JOHNSON, McMULLEN, NEBLETT, LIPSCOMB, WOODS







RIDGEWAY, BUCK, WATKINS  
BOND, GILLILAND  
HUTCHINSON, HUGHES, GAINNEY

### Women's Pan-Hellenic Council

#### KAPPA DELTA

RUTH BUCK RUTH GAINNEY

#### PHI MU

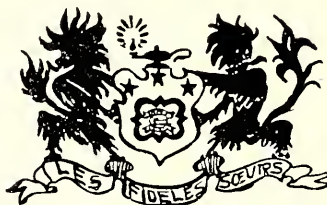
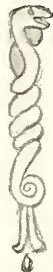
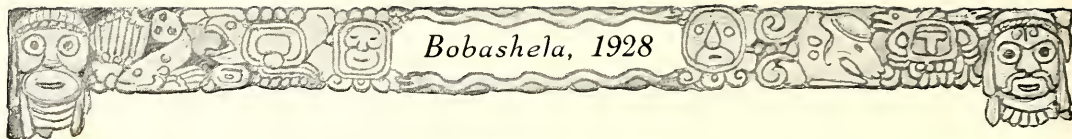
EMILY WATKINS SARAH K. HUGHES

#### BETA SIGMA OMICRON

ALICE RIDGEWAY BESSIE W. GILLILAND

#### DELTA ZETA

ELLA BESS HUTCHINSON GLADYS BOND



# Phi Mu

Founded at Wesleyan College in 1852

*Colors:* Rose and White

*Flower:* Rose Carnation

*Publication:* "Aglaiia"

## EPSILON CHAPTER

### SORES IN COLLEGIO

#### *Class of 1928*

EMILY WATKINS  
OLIVIA KNOX

MARTHA WATKINS

FRANCES WORTMAN  
OLIVE WILLIAMS

#### *Class of 1929*

MARY OLIPHANT

JANE POWER  
WILLIE SULLIVAN

JENNIE BETH SWAYZE

#### *Class of 1930*

CLARA LEE HINES  
SARA KATHERINE HUGHES  
MARY LYNN GOULD

JANIE WATKINS  
SADIE VEE WATKINS

RUTH OLIPHANT  
RUBY KATHERINE FIELDS  
BESSIE GEORGE DONALD

#### *Class of 1931*

ELIZABETH KNOX  
JO JEFF POWER

MARTHA LOUISE HOLLIDAY  
EMMA CLARK  
\*JO ELLIS BUIE

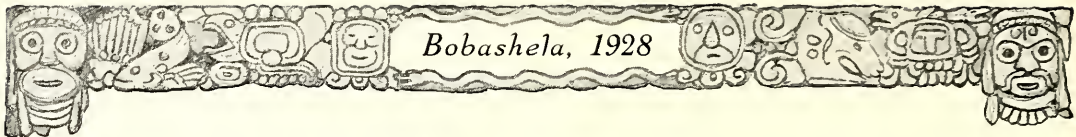
MARY AGNES DOBYNS  
MOP PHILLIPS

\*Pledges

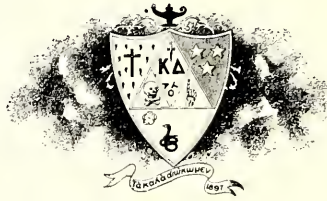




CALHOUN, E. WATKINS, WILLIAMS, KNOX  
WORTMAN, SULLIVAN, POWER, HUGHES, M. WATKINS  
DONALD, GOULD, HINES, S. V. WATKINS, M. OLIPHANT  
FIELDS, R. OLIPHANT, SWAYZE, DOBYNS, PHILLIPS  
POWER, HOLLIDAY, CLARK, KNOX, BUIE



Bobasha, 1928



# Kappa Delta

Founded at the Virginia State Normal College in 1897

Colors: Olive Green and White

Flower: White Rose

Publication: "Angelos"

## MU CHAPTER

### SORES IN COLLEGIO

*Class of 1928*

RUTH BUCK  
ELISE HERRING

EULA MCCLESKEY  
MARY GEORGE NOBLES

MARY BURTON  
MARTHA BURTON

*Class of 1929*

ELIZABETH HEIDLEBURG  
EMILY WHITE STEVENS  
MARGUERITE CRULL

WILLANNA BUCK  
MARY FLOWERS JACKSON  
VIRGINIA VANCE

ELIZABETH TEAT  
RUTH GAINY  
MARY FRANCES HORNE

*Class of 1930*

MARGARET BYNUM  
MILDRED NOBLES

LEONE SHOTWELL

BESSIE COOK  
OCTAVIA SYKES

*Class of 1931*

LAURA LIGHTCAP  
ELINOR BEARDSLEE

\*ROSE MARY ADAMS  
ELIZABETH HARRELL  
ANNABELLE ROBINSON

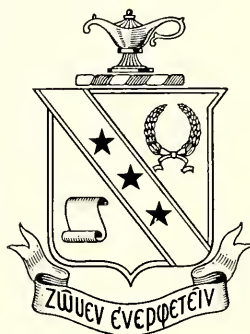
\*LUCIA WEAVER  
ELIZABETH ALLEN

\*Pledges





RUTH BUCK, THOMPSON, BURTON, M. G. NOBLES  
BURTON, McCLESKEY, VANCE, CRULL, GAINNEY  
JACKSON, STEVENS, HEIDELBURG, W. BUCK, SYKES, HORNE  
SHOTWELL, COOK, BYNUM, M. NOBLES, ALLEN, BEARDSLEE  
WEAVER, ADAMS, ROBINSON, LIGHTCAP, HARRELL



## Beta Sigma Omicron

Founded at the University of Missouri in 1888

*Colors:* Ruby and Pink

*Flowers:* Richmond and Killarney Rose

*Publication:* "The Urn"

### ALPHA ZETA CHAPTER

SORORES IN COLLEGIO

*Class of 1928*

MARY ELLEN WILCOX  
EDITH STRAIT

HELEN NEWELL

BESSIE WILL GILLILAND  
EULA LACKEY

*Class of 1929*

ALICE RIDGEWAY

*Class of 1930*

ANNELLE JORDAN

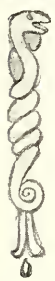
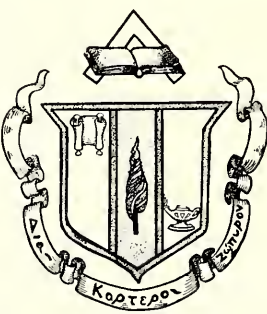
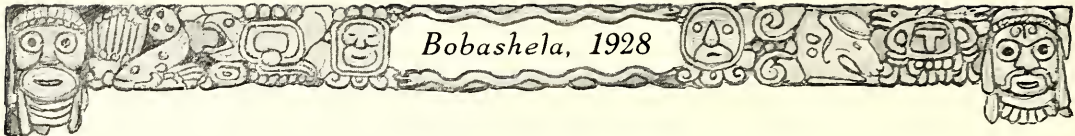
ROSALEE McKEITHEN  
\*LELA MAY TERRY

DORIS BASS

\*Pledges



NEWELL, LACKEY  
RIDGWAY, TERRY, GILLILAND, WILCOX  
JORDAN, McKEITHEN, STRAIT, BASS



# Delta Zeta

Founded at Miami University in 1902

*Colors:* Nile Green and Killarney Rose

*Flower:* Killarney Rose

*Publication:* "The Lamp"

## ALPHA OMEGA CHAPTER

### SORORES IN COLLEGIO

#### *Class of 1928*

CLAIRE SISTRUNK  
ELLA BESS HUTCHINSON

MERNELLE HEUCK  
ELIZABETH WHITE

DORIS COMLY  
BESSIE GIVENS

#### *Class of 1929*

\*JOSEPHINE COTTON

\*MARY GREER

DORIS DRAPER

#### *Class of 1930*

GLADYS BOND

OLGA LA BRANCH

#### *Class of 1931*

GLENNA MOORE

FRED ALMA HUTCHINSON

\*Pledges







COMLY, SISTRUNK, HEUCK, WHITE  
GIVENS, LA BRANCH, E. B. HUTCHINSON  
F. A. HUTCHINSON, BOND, MOORE, DRAPER

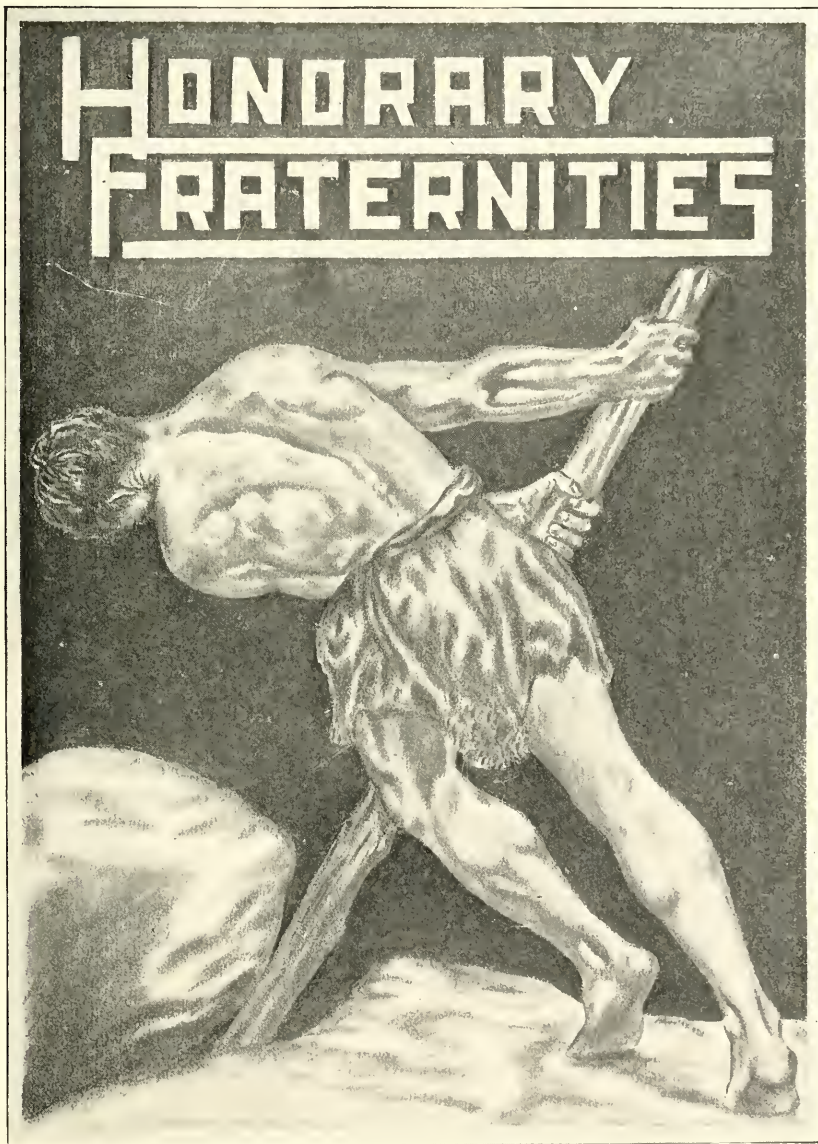
## Fires

G. E. GREENWAY

I did not think that I could strike a spark  
To kindle you from your serene restraint,  
With hopeless hands I sought you in the dark,  
Resigned to your caprice without complaint.  
But unto me you yielded, you complied  
With fire which to all others was denied.

Dear lighter, can all this be really true  
That I can get a decent light from you?  
—*New York Times*

# HONORARY FRATERNITIES





# Sigma Upsilon

Founded at the University of the South

Colors: Green and Gold

Publication: "News Letter"

## KIT KAT CHAPTER

FRATRES IN FACULTATE

M. C. WHITE

A. G. SANDERS

MACK SWEARINGEN

FRATRES IN COLLEGIO

A. V. BEACHAM  
J. M. MACLACHLAN

G. O. ROBINSON, JR.  
J. LEM SEAWRIGHT

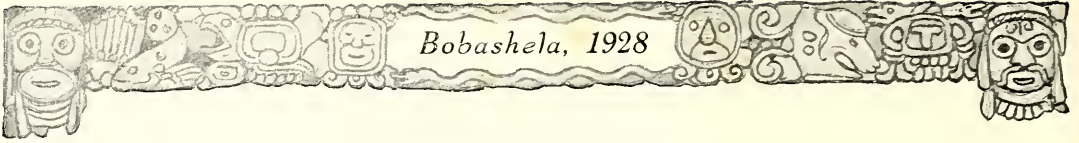
V. L. WHARTON  
R. W. FOWLER

### CHAPTER ROLL

<i>Sopherim</i> . . . . .	University of the South
<i>Osiris</i> . . . . .	Randolph-Macon College
<i>Calumet</i> . . . . .	Vanderbilt University
<i>Senior Round Table</i> . . . . .	University of Georgia
<i>Odd Number</i> . . . . .	University of North Carolina
<i>Boar's Head</i> . . . . .	Transylvania College
<i>Scribblers</i> . . . . .	University of Mississippi
<i>Kit Kat</i> . . . . .	Millsaps College
<i>Coffee House</i> . . . . .	Emory University
<i>Fortnightly</i> . . . . .	Trinity College
<i>Attic</i> . . . . .	University of Alabama
<i>Gordon Hope</i> . . . . .	William and Mary College
<i>Grab Street</i> . . . . .	University of Washington
<i>Blue Pencil</i> . . . . .	Davidson College
<i>Ye Tabard Inn</i> . . . . .	University of Oregon
<i>Sphinx</i> . . . . .	Hampden-Sidney College
<i>Utah Scribblers</i> . . . . .	University of Utah
<i>Rotunda</i> . . . . .	University of Virginia
<i>Lanier</i> . . . . .	University of Tennessee
<i>Sesame</i> . . . . .	Washington and Lee University
<i>Stylus</i> . . . . .	Southwestern Presbyterian University
<i>Lanthorne</i> . . . . .	University of Akron
<i>Gamma Phi Psi</i> . . . . .	University of Missouri
<i>Writers</i> . . . . .	University of Richmond
<i>Florian</i> . . . . .	Washington University
<i>Pelican Quill</i> . . . . .	Tulane University
<i>Kappa Lambda Alpha</i> . . . . .	Iowa State College
<i>Omega Epsilon</i> . . . . .	University of Kentucky
<i>Beta Psi</i> . . . . .	University of Illinois
<i>Canterbury</i> . . . . .	Wofford College
<i>Isis</i> . . . . .	Presbyterian College of South Carolina
<i>Elsevirs</i> . . . . .	Birmingham Southern University
<i>Alpha Gamma Epsilon</i> . . . . .	Howard College
<i>Gamma Gamma Sigma</i> . . . . .	University of Louisville
<i>The Wordsmiths</i> . . . . .	University of Nebraska



WHARTON, ROBINSON, BEACHAM  
MACLACHLAN, SEAWRIGHT, FOWLER  
WHITE, SWEARINGEN, SANDERS



# Omicron Delta Kappa

Founded at Washington and Lee University in 1914

Colors: Blue and White

Publication: "The Circle"

## PI CIRCLE

### FRATRES IN FACULTATE

D. M. KEY

B. E. MITCHELL

M. C. WHITE

A. P. HAMILTON

### FRATRES IN COLLEGIO

A. V. BEACHAM  
V. L. WHARTON

S. F. RILEY  
G. O. ROBINSON  
J. LEM SEAWRIGHT

SEXTON McMANUS  
L. L. WHEELLESS

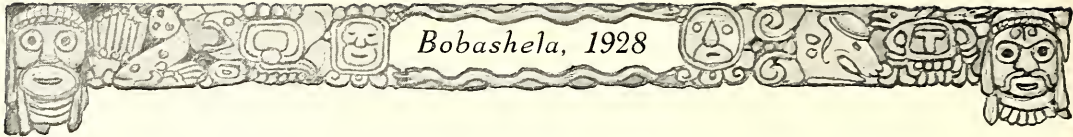
### ROLL OF CIRCLES

<i>Alpha</i> . . . . .	Washington and Lee University
<i>Beta</i> . . . . .	Johns Hopkins University
<i>Gamma</i> . . . . .	University of Pittsburg
<i>Delta</i> . . . . .	Davidson College
<i>Epsilon</i> . . . . .	University of Richmond
<i>Zeta</i> . . . . .	Centre College
<i>Eta</i> . . . . .	William and Mary College
<i>Theta</i> . . . . .	University of Akron
<i>Iota</i> . . . . .	University of Alabama
<i>Kappa</i> . . . . .	Birmingham-Southern University
<i>Lambda</i> . . . . .	Hampden-Sidney College
<i>Mu</i> . . . . .	Emory University
<i>Nu</i> . . . . .	University of Kentucky
<i>Xi</i> . . . . .	Lehigh University
<i>Omicron</i> . . . . .	University of Virginia
<i>Pi</i> . . . . .	Millsaps College
<i>Rho</i> . . . . .	Duke University
<i>Sigma</i> . . . . .	University of Maryland





WHARTON, ROBINSON, RILEY, BEACHAM  
WHEELLESS, MCMANUS, SEAWRIGHT  
WHITE, HAMILTON, KEY, MITCHELL



# Alpha Phi Epsilon

Colors: Garnet and Green

Publication: "The Garnet and Green"

## NU CHAPTER

### FRATRES IN FACULTATE

M. C. WHITE

J. REESE LIN

A. G. SANDERS

### FRATRES IN COLLEGIO

A. V. BEACHAM

S. F. RILEY

V. L. WHARTON

P. PATTON PERRITT

L. L. WHEELLESS

## CHAPTER ROLL

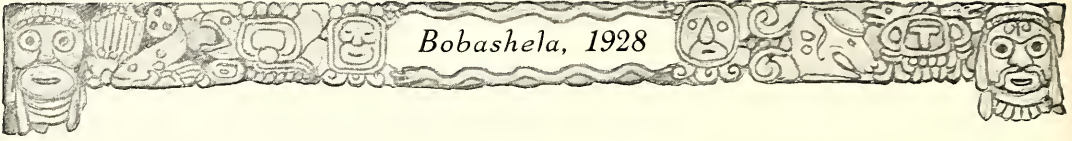
Alpha . . . . .	University of Alabama
Beta . . . . .	Alabama Polytechnic Institute
Gamma . . . . .	Emory University
Epsilon . . . . .	University of Mississippi
Eta . . . . .	Southwestern Presbyterian University
Iota . . . . .	Stetson University
Kappa . . . . .	University of Tennessee
Nu . . . . .	Millsaps College
Omicron . . . . .	University of Florida
Pi . . . . .	University of Texas
Rho . . . . .	Bethany College
Sigma . . . . .	University of Southern California
Tau . . . . .	Rollins College
Upsilon . . . . .	Colorado Agricultural College
Phi . . . . .	Davidson College
Chi . . . . .	University of California
Psi . . . . .	Vanderbilt University







WHARTON, RILEY, BEACHAM  
WHITTEN, WHEELLESS, PERRITT  
LIN, WHITE, SANDERS



# Chi Delta Phi

Founded at the University of Tennessee in 1919

Colors: Blue and Gold

Publication: "Litterateur"

## IOTA CHAPTER

### SORES IN COLLEGIO

EMILY WHITE STEVENS  
EDWINA CALHOUN  
RUTH BUCK

DORIS COMLY  
DORÉE MAJORS

WILLANNA BUCK  
ELLA BESS HUTCHINSON  
OCTAVIA SYKES

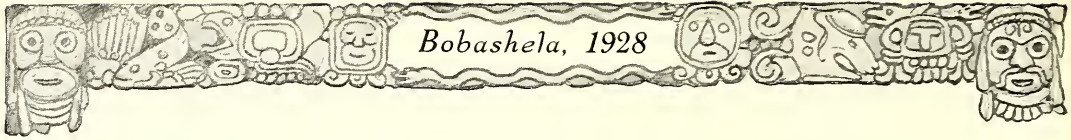
### CHAPTER ROLL

Alpha . . . . .	University of Tennessee
Beta . . . . .	Hamilton College
Gamma . . . . .	University of Nebraska
Delta . . . . .	University of Alabama
Epsilon . . . . .	University of Utah
Zeta . . . . .	Duke University
Eta . . . . .	University of Georgia
Theta . . . . .	William and Mary College
Iota . . . . .	Millsaps College
Kappa . . . . .	Vanderbilt University
Lambda . . . . .	Georgetown College
Mu . . . . .	Howard College
Nu . . . . .	Akron University
Xi . . . . .	University of Kentucky
Omicron . . . . .	Shorter College
Pi . . . . .	Florida State College for Women
Rho . . . . .	Oklahoma A. and M.
Sigma . . . . .	Andrew College
Tau . . . . .	University of North Carolina
Upsilon . . . . .	University of Missouri
Phi . . . . .	Oklahoma City University





STEVENS, CALHOUN  
MAJORS, BUCK, COMLY  
HUTCHINSON, BUCK, SYKES



## Concerning Certain Martyrs and a Bit of History

### BEHEADED

- 1652 SAINT VERONICA . . . . . France
- 1793 MADAME ROLAND . . . . . France

### HANGED

- 1700—VARIOUS WITCHES . . . . . New England

### BOILED IN OIL

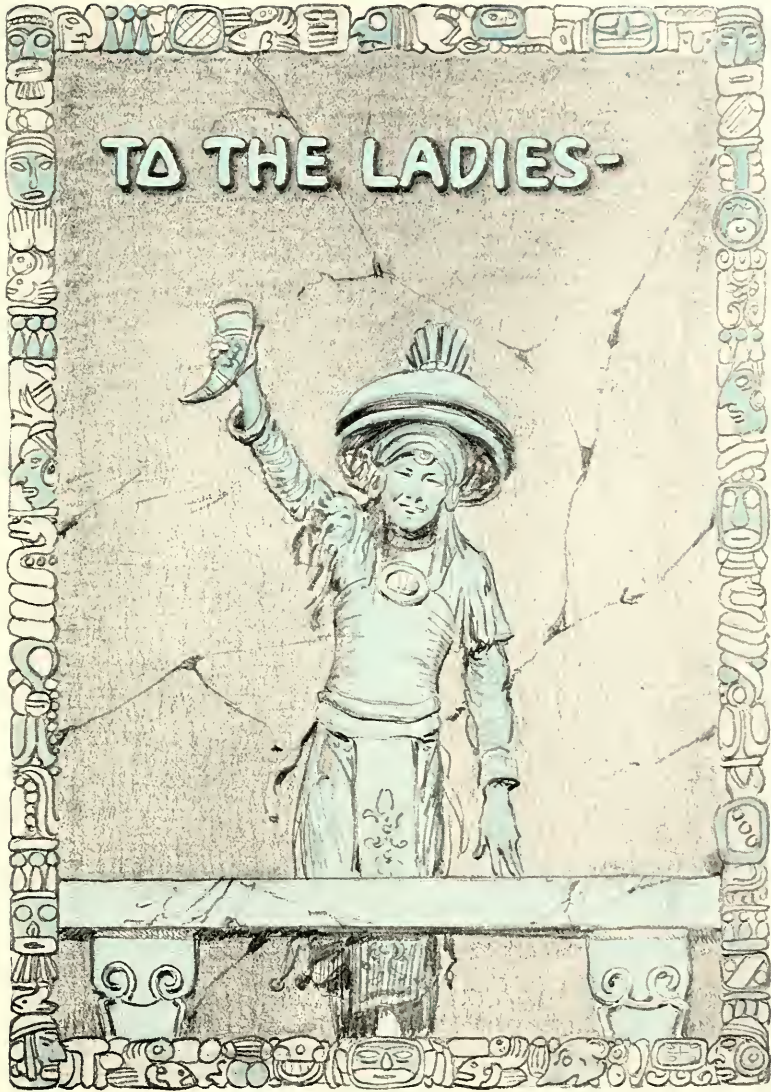
- 70 SAINT JASPER . . . . . Rome
- 1928—REPUBLICAN PARTY . . . . . United States

### EDITED BOBASHELA

- 1905—Vol. 1. ALBERT POWE HAND . . . . . Shubuta, Miss.
- 1906—Vol. 2. LUTHER EMMETT PRICE . . . . . Carpenter, Miss.
- 1907—Vol. 3. ARTHUR LEON ROGERS . . . . . New Albany, Miss.
- 1908—Vol. 4. JOHN CUDE ROUSSEAU . . . . . Logtown, Miss.
- 1909—Vol. 5. THOMAS LOWRY BAILEY . . . . . Mathiston, Miss.
- 1910—Vol. 6. EDWARD CAGE BREWER . . . . . Black Hawk, Miss.
- 1911—Vol. 7. JAMES SHOFFNER SAVAGE . . . . . Ruleville, Miss.
- 1912—Vol. 8. JAMES WESLEY BROOM . . . . . Daisy, Miss.
- 1913—Vol. 9. FRANK TOMKEYS SCOTT . . . . . Jackson, Miss.
- 1914—Vol. 10. JOHN BUFORD CAIN . . . . . Dead Lake, Miss.
- 1915—No Issue
- 1916—Vol. 11. WILLIAM BLACK MOORE . . . . . Oakland, Miss.
- 1917—Vol. 12. DAN MCKINNON WHITE . . . . . Rose Hill, Miss.
- 1918—No Issue
- 1919—Vol. 13. CLARENCE C. NORTON . . . . . Meridian, Miss.
- 1920—Vol. 14. JOHN ROY BANE . . . . . Eupora, Miss.
- 1921—Vol. 15. BRUNNER MARION HUNT . . . . . Port Gibson, Miss.
- 1922—Vol. 16. MACK B. SWEARINGEN . . . . . Jackson, Miss.
- 1923—Vol. 17. LEIGH WATKINS, JR. . . . . Jackson, Miss.
- 1924—Vol. 18. JAMES B. HUTTON, JR. . . . . Jackson, Miss.
- 1925—Vol. 19. HILARY G. SIMPSON . . . . . Pickens, Miss.
- 1926—Vol. 20. CHARLES CECIL COMBS . . . . . Birmingham, Ala.
- 1927—Vol. 21. SARAH HESTER LEGG . . . . . Moss, Miss.
- 1928—Vol. 22. VERNON L. WHARTON . . . . . Slidell, La.



TO THE LADIES-







MISS RUTH BUCK



MISS OLIVE WILLIAMS





MISS JANE POWER



MISS WILLANNA BUCK



MISS ELIZABETH HEIDELBERG



MISS ELIZABETH KNOX



MISS WILLIE SULLIVAN



MISS OLIVIA KNOX



MASTER MAJOR  
MOST COLLEGE SPIRIT  
S. F. RILEY "78" "137"



REPRESENTATIVE  
CO-ED RUTH BUCK  
"76"



MOST INTELLIGENT  
V. L. WHARTON  
"95"



BEST-LIKED  
PROFESSOR  
DR. HUDDLESTON "117"



FACULTY GRIPE  
MACK SWEARINGEN  
"87"



THAT DAMN FRESHMAN  
W. M. HORTON  
"128"



HIS LADYSHIP  
"231"



THE LOVE-SICK PAIR  
SIMMONS & WATKINS  
"164"



MOST STYLISH  
OLIVE WILLIAMS  
"189"



MOST ACCOMPLISHED  
LEM SEAWRIGHT  
"147"



MOST POPULAR  
MARIE FLINK  
"58"



HANDSOMEST  
GENE COUNTISS  
"49"



MOST  
SOPHISTICATED  
ELISE HERRING  
"53"



BEST-DRESSED MAN  
MORRIS  
CAVER  
"110"



BIGGEST HORSE  
W. I. PEELER "30"

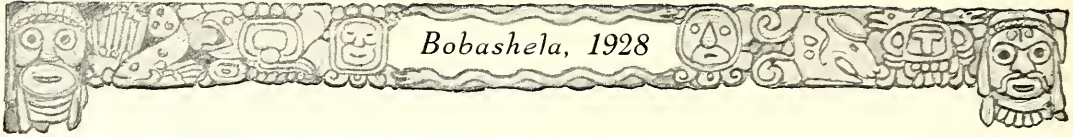


MISS "IT"  
MILDRED NOBLES  
"27"



MY DEAR GASTON  
BILL GASTON  
"18"

WHO'S WHO AND WHAT'S WHAT



## Who's Who and How!




1. MASTER MAJOR—Riley had a comfortable margin for this highest honor over McManus' 30 and Blount's 26.  
MOST COLLEGIATE SPIRIT—Riley's victory over Lingle with 25 votes, and Beacham with 20, was never in doubt.
2. REPRESENTATIVE CO-ED—Miss Ruth Buck was an easy winner; Olivia Knox, 30; Peggy O'Neal, 28, also ran.
3. MOST INTELLIGENT—Wharton's intelligence was slightly above Beacham's 79, and S. F. Riley's 9.
4. BEST LIKED PROFESSOR—Dr. Huddleston repeated his victory of last year over Professor Stevens with 26 votes, and Professors White and Van Hook with 23 each.
5. FACULTY GRIPE—Professor Swearingen started on his career all o. k. by taking this coveted honor away from the more experienced profs. He easily captured the prize with his closest opponents, Hooker and Hamilton, far behind with 38 and 36 votes respectively. Rah Boom! Faculty Gripe!
6. THAT DAMN FRESHMAN—Horton led the pack. "Skeeter" Golden and Bill Caston with 49 and 46 votes fighting it out for second place.
7. HIS LADYSHIP—Blank got "231" votes, leading the entire ticket. Did you vote?
8. LOVESICKEST COUPLE—Watkins and Simmons got some hot competition from Crull and Stackhouse with 107 votes. Wortman and Mann dragged in with 24 votes.
9. MOST STYLISH—Olive Williams' retained her title won last year with ease over Elise Herring, 10, and Joe Ellis Buie, with 6 votes.
10. MOST ACCOMPLISHED—Seawright, naturally, went in with a large majority of votes trailed by Beacham with 18, and Riley with 12.
11. MOST POPULAR STUDENT—Miss Flink doubled her closest opponent's vote, Miss Heidelberg, 27; Riley and McManus tied for third with 20 each.
12. HANDSOMEST—Countess, Robinson, 37, and Mounger, 26, pulled off a three cornered race with Gene just far enough ahead to win.
13. MOST SOPHISTICATED CO-ED—Jane Power, 43; Leone Shotwell and Olive Williams, 30 each, furnished the competition for Miss Herring.
14. BEST DRESSED MAN—Caver was much better dressed than Fowler, 36, and Seawright, 22.
15. MISS "IT"—A closely bunched race with Elizabeth Heidelberg, 21, and Jo Jeff Power, 20, pushing Miss Nobles.
16. MY DEAR GASTON—Closest race of them all; Wharton, 12, and J. W. Alford, 10.
17. BIGGEST HORSE—Doc Bolton was a good second; Mobley, a poor third, 10. Neigh! Neigh!









## A Collegiate Dictionary

*Athlete:* A wood-chopper on winter vacation; big cheese and exalted ruler over freshmen and co-eds.

*Bull:* Little calf's papa; member of the faculty; landscape artist.

*Bull Party:* A gab-fest; a rag-chewing race; gathering of fat-chewing idlers.

*Bull Feast:* Dormitory dinner.

*Chapel:* Grim relic of the Spanish Inquisition; thirty minutes of physical and mental lapse daily; a certain professor's favorite nap time.

*Cheer Leader:* Amateur magician; contortionist; first cousin to a goat; latest edition of mediaeval Punch and Judy show.

*Co-Eds:* The amusement for our idle moments; blessings in disguise (cosmetics); sometimes used synonymously with students, for they do come to school, every now and then, to study.

*Dean:* Diplomat; fence straddler; partisan, non-partisan, or bi-partisan.

*Faculty:* The original Roman Forum; a variegated assortment of eye-glasses and moustaches; see fossils.

*Fraternity:* A group of men held together by common ties, shirts, collars, etc.; college edition of the Chinese Tong wars; see rushing season.

*Freshman:* The rabble; the plebians; the common herd; advanced high school class.

*Fossils:* See Faculty.

*Gym:* Pardner Ben's idea of heaven; stomping ground for athletes.

*Glee Club:* A gang of boys whose voices cracked guzzling, siphoning, and yodeling soup; fog-horns out of the fog; imitations of the various noises heard in a boiler factory, shipyards, and the zoo.

*Holiday:* A make-up day for sleeping; a day without classes; i. e., December 25.

*Line* (noun): The act of lyin'; tactics used by either sex to string the other sex; see co-ed.

*Players:* Slapstick comedians in the make; young Barrymores and Greta Garbos.

*Rushing Season:* Open season on goats; period during which the goat is lord of all creation; period just preceding the metamorphosis from the incarnation of all virtues to the oblivion of commonplace goatship; the illusionment preceding the disillusionment.

*Millsaps College:* Only institution in the United States combining the prison systems of Sing Sing and Leavenworth in which inmates are required to pay for admittance.



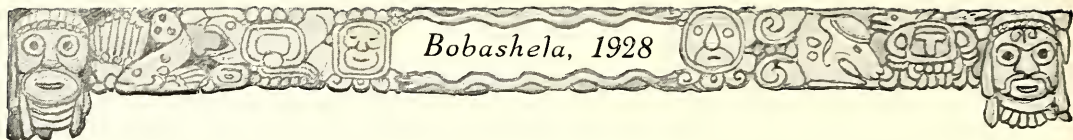
*Above:* Beauty Queens of former campuses.

*Left:* Mr. Ash's latest and most up-to-date interpretation of Delilah, husky charmer, who worked her wicked wiles on poor old Sampson.

*Right:* A whorl of wispy draperies and a hint of shy romance; that's Sadii, favorite decoration of the elaborate harem of old Hassan Ben Sed, the brute. Notice the soulful eyes, said by our model, Mr. Wilson, to be Sadii's chief charm.

*And Center:* Our own Mr. Golden's idea of that terrible little charmer, Helen of Troy. Mr. Golden declares that he has made a close study of this type, and warns all future freshmen that they are to be touched with care.

*And below:* Four popular co-eds—and why?



Bobashela, 1928



NOW, WHAT IN THE WORLD—??




## Big Show in Town

EVERYONE INVITED—FREE!

Right this way, folks. Buy your tickets now. The show is ready to begin. Absolutely the greatest side show ever to be presented in the city of Jackson. Right this way. First we have the honor of explaining to you that this is the freshman class of Millsaps College, Jackson, Mississippi, for the year of 1924-25. There is no other class in existence that can be compared to this one. The only one of its kind in the world. Look! There on the top row, Carraway, Blount, Wharton, Matheny and that Paul Propst. That is a good line. Next—we have the Apollian Tommy Rape; look at Hudson, Sara Summers Thompson, Ruth Buck and Elise Herring. Then there is Mrs. Fadra Holmes Wilson, very prominently displayed in the front row. She is supported on the right by one Legg, and on the left by—well, you look.

Your attention this way, please. We have given away all the pamphlets that describe in detail all the curiosities that are offered in this section of the photograph, but we trust that the intelligence of the readers will supply all details. On the top row again we have Robinson, Riley, Mounger, Baxter, Seawright, Hood and Moody. Second row presents for your approval Freshman Beacham and Brooks—surrounded by several fellows that deserted the class. You will notice that "Goat" Hudson tried to be a hog and had his mug stuck in both sections. (This picture did not cost those frosh any money, you must know). There is Marjorie Smith and John Cadwallader. On the bottom row, look at Olivia Knox, do not let those books fool you! Again, do you see Fadra Holmes Wilson? Have you noticed and despised the really long skirts the damsels are wearing? Frosh of '24. Rah boom!



## By These You Shall Know Them Anytime, Anywhere

DR. SULLIVAN: "Uh uh uh uh, uh uh! Uh uh uh uh?  
Uh uh uh uh uh uh uh uh."

PROF. WHITE: "Isn't that true?"

DR. KEY: (Smack) "That will do."

PROF. SANDERS: "No es verdad?"

DR. MITCHELL (Clasps left hand against right hand):  
"Let's have your attention, please."

PROF. SWEARINGEN: "—and what not."

DR. HAMILTON: "Uh?"

PROF. HARRELL: "It's the little things that count."

PROF. BARTLETT: "That was Professor Baldwin's  
favorite."

PROF. LIN: "Hah-hah, George Washington leaped  
twenty feet backwards, hah-hah."

DR. HUDDLESTON: "W-e-l-l, that's a-l-l."

PROF. VAN HOOK: "If the Freshmen had won that  
game—"

PROF. HOOKER: "According to Watson."

PROF. NESBIT: "Your papers must be handed to me be-  
fore the fifteenth."

BURSAR HATHORN: "Well, u z boys, I've just got to  
have the money."

MATRON OWEN: "You boys get on out of this dining-  
room."

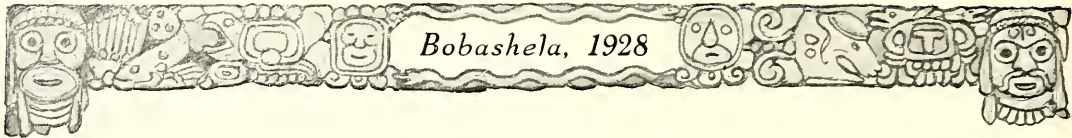
PROF. BRUMFIELD: "HA&)S&\*\$ ;% 'g"&\*\$(, \$\$\$(  
\*\$\$\*%\*% \*\$\$-&\*("()?"

## Official Financial Report of the Bursar of Millsaps College for 1927-28

College Book Store.....	\$1,833,708.05
Dining Hall .....	788,306.01
Fraternities and Sororities (cash collected) .....	.06
Alumni Donations.....	
Student Fees .....	599,785.03
	<hr/>
Total .....	\$3,111,799.15

### EXPENSES

Heating System .....	\$ 6.50
Electric Lights .....	8.01½
Hot Ladner, office boy.....	.04
Barnett Dribben, assistant office boy.....	.03¼
Gum for Faculty .....	5,500.00
Bursar Hathorn .....	68,000.00
Banquet for Alumni.....	71,234.00
Little Hathornes (Board, etc.).....	126,085.03¾
Faculty Bootlegger .....	1,134,537.01
Groceries, meat, and milk for students....	6.50
Cinder walks .....	983,912.00
College Publicity .....	.02
Salary for Faculty.....	722,510.00
	<hr/>
Total .....	\$3,111,799.15



## Heaven Will Receive Us—

When Mernelle Heuck teaches school.  
 When "Egg" White gets a suit pressed.  
 When you see Sadie V. without Herbie.  
 When Mobley stops asking questions.  
 When "231" wears a pink gingham dress.  
 When members of different sororities speak cordially.  
 When dollars sell for ten cents.  
 When Dr. Mitchell ceases to gripe.  
 When the varsity beats Mississippi College.

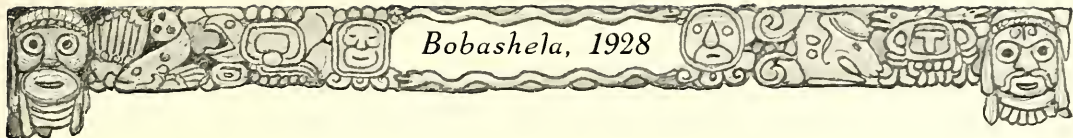
## The Popularity Contest

(Editor's note. Ladies and gentlemen, lads and lasses, knowing as I do that Who's Who Contest is full of petti-coat plotting, that the facts are not always quoted, and that you are desirous of, and should have, the truth, I herewith present for your benefit the correct Who's Who Contest results.

Best Athlete (boy or girl)	Frank Lyell
Biggest Man-Hater	Mildred Nobles
Biggest Woman-Hater	Herbie Simmons
Jazziest	Frosh Adair
Most Sociable	Wayne Floyd
Most Dignified	S. F. Riley
Biggest Loafer	A. V. Beacham
Most Graceful	Tommy Rape
Most Conceited	Pinkey Blakemore
Most Intellectual	Skeeter Golden







## Freshman Intelligence Test

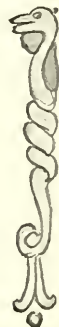
W—ASCOM  
H—OOD  
Y—OO HOO KIM

G—ILIS  
I—DOM  
R—OBINSON  
L—ADNER  
S—TAGG

G—OLDEN  
O—'BRIANT

A—LFORD  
S—EAWRIGHT  
T—OUCHSTONE  
R—ILEY  
A—VERY  
Y—OU

What did Sir Robert—Peel?  
Why did Julius—Caesar?  
What did William—Tell?  
Why is Mildred—Noble?  
What did Coach an—Hook?  
What can Bessie—Cook?  
What makes Lem—Seawright?  
What stream did Henry—Ford?  
Why is Ben—Ruff?  
Isn't Wyatt—Sharpe?



## Jokes

W. I. Peeler  
The chapel clock.  
Founders Hall Dormitory.  
Track Team.  
Steam heat (or any other brand).  
Dormitory governing board.  
The gym.  
Girls' Glee Club.  
\$75,000 President's home.  
Total annual expenses, \$350.00 (from catalogue!)  
Honor system.  
Most of the professors.  
W. I. Peeler.





# CALENDAR of EVENTS

## SEPTEMBER

14. College opens with inspiring talk; by some citizens of the state. Much handshaking on the part of the old students. They say things they do not mean.
15. We get a good look at the faculty and discover several new curiosities.
17. First edition of the Purple and White under the editorship of Maclachlan. Coach Zimoski says that the Majors are showing real form in practice.
20. Annual College Night. Faculty and frosh are the performers, particularly the faculty. Dr. Hamilton tells his German joke for the nth time. Editor has funny idea that the annual will be out on April 1.
21. Coach Van Hook says that the frosh eleven is fast and heavy.
22. Y. W. C. A. and Y. M. C. A. plan for a big year.
24. Purple battle with the Crimson Tide in Tuscaloosa.
26. Fraternities hold "open house" and try to make the most of their three weeks rushing season. Many hearts flutter in anticipation of a bid.
28. Co-eds have a little publicity. Purple and White has added a co-ed column.

## OCTOBER

1. Majors go to Shreveport to meet the Centenary Gentlemen.
3. Right Royal Ramblers start their ramblings and ravings.
4. Parties galore as rush season comes to close. Varsity girls receive sweaters for their services in '26-'27.
7. Colonel Charles Lindbergh lands in Jackson and we get a little minute off.
8. Majors win over Howard, 13 to 6. Shame on Howard. Fraternities have pledge day.
12. Ziegfeld Follies take Jackson and the Frosh by storm. No lessons next day.
14. Goating time is here. Crazy clothes and crazier upper classmen is the order of the day.
15. Majors 33; Clarke o.
18. The fair is in full swing. There is a great day coming.
19. Freshman declares the two-headed cow a fake.
20. Tomorrow!
21. Students of Whitworth and Millsaps parade to the fair grounds. Score, Mississippi College 12; Millsaps o. Heart-rending, but we sang in the twilight the glories that are Millsaps'.
22. Out of human sympathy three-fourths of the faculty force themselves to not meet their interesting classes. L. S. U. wins over A. and M.
28. Student teachers entertain pupils from the Methodist Orphanage with a Hallowe'en party.
29. Union 12; Millsaps o.
31. Annual "Y" get-together at Galloway Hall. Miss Unknown is the social light of the occasion.



## Bobashela, 1928

### NOVEMBER

1. New fraternity starts, locally known as Alpha Pi Sigma. Kit Kats meet with Professor White.
2. Girls' Glee Club has first trioling practice of the year. There was much warbling and wailing.
4. Birmingham-Southern 13; Millsaps 0.
10. Millsaps leaders open annual Methodist Conference. Long and solemn countenances are quite in vogue.
11. Armistice Day! Never a holiday. Gridiron clash between Kappa Delta and Phi Mu sororities. Something new under the sun. No serious casualties.
14. Intercollegiate magazine known as "Hoi Pol'oi" takes campus by storm. Our Avie Beacham is the editor.
20. The Majorettes take the score all the time. Thanksgiving we lost to Southwestern, but we got our thrill from the Major Band boys strutting in their new purple and white uniforms.

### DECEMBER

1. Exams galore. Need I say more? Students keep such late hours it is not good for their health.
6. Second term begins. Gee, but these sentences that Tsar Key metes out to us are getting, so soon, monotonous as flu.
10. Millsaps was host to the Rhodes Scholarship Selection Committee.
11. It is officially announced that before 1930 we will have a concrete stadium with 8,000 seats erected on our famous bowl.
12. "The End of the Rainbow Called Happiness" was the Little Minister's, Reverend Gaines Lynch, subject of a laughable chapel talk.
14. Members of Southern Methodist Press Association were guests of Galloway Hall for lunch. Board goes up.
15. Professors are cutting right and left.
16. Majorettes open home season by defeating the Grenada Misses.
20. Majors fight their last battle of the season on the gridiron at Miami. They bring home the oranges, or whatever Florida has to correspond with bacon.
22. Christmas holidays! Mrs. Idom wrote a letter to Santa.

### JANUARY

2. Holidays are over. 'Tis supposed to be business from now on.
4. Senior committees are appointed, and they begin to look dignified.
8. Pledges endure many hardships and humiliations, but it won't be long now.
10. Who's Who contest. Many are called but few are chosen.
11. "Nothing But The Truth" presented by the Millsaps Players. The presentation is assured of a long run as several nearby cities are clamoring for it already.
13. Major cagers are working hard. Majorettes score over Whitworth Kaydets.
14. Goat season comes to an end after a long struggle. "231" appears on the scene in a flash of glory and a pink gingham dress.
15. Officers for the Golf Club are elected.
18. Varsity defeats the telephone poles from L. P. I. Freshmen have a good team.
24. Co-eds organize Philomathean Literary Society.
26. Doc Bolton and P. P. Perrit still have a monopoly on the Purple and White locals section. Perrit even made the Co-ed column.
27. Majorettes lose state championship to Delta State by two points. Collapse of gym demoralizes "Bull" McKeithan's Delta cheering section.

### FEBRUARY


2. Varsity football banquet. McManus chosen captain. Sweaters awarded to twenty.
4. In response to public demand, the Millsaps Players present "Nothing But the Truth" for a second time to a Jackson audience.
6. Dr. George Stoves arrives to conduct a week's revival on the campus. Somebody says he's one of those modernist fellows.
11. Millsaps Glee Club makes its initial appearance in Jackson at the college chapel.
31. Calendar Editor, who also has other things to do, threatens Editor with mayhem and goes on strike. Editor goes on drunk and mails calendar to printers incomplete.



YOUNG BARRY MORE  
*Sometimes Playfully Called Puffessor More*  
Posed exclusively for the 1928 BOBASHELA.

## Directory of Advertisers

### 1928 Bobashela



KENNINGTON'S	HEIDELBERG CAFE
THE EMPORIUM	JACKSON BAKING COMPANY
DIXIE MOTOR SALES COMPANY	CORR-WILLIAMS TOBACCO COMPANY
UNION DEPOT SERVICE STATION	JACKSON STEAM LAUNDRY
EDWARDS HOTEL	WATKINS, WATKINS AND EAGER
MISSISSIPPI POWER AND LIGHT COMPANY	S. P. McRAE
CAPITAL NATIONAL BANK	SELLERS MOTOR COMPANY
DOWNING-LOCKE COMPANY	J. L. ALBRITTON
PILOT LIFE INSURANCE COMPANY	TUCKER PRINTING HOUSE
JOHNSON CLEANERS	CENTRAL BATTERY COMPANY
J. M. BLACK GROCERY COMPANY	JACKSON SHOE HOSPITAL
WRIGHT'S LAUNDRY	E. H. GALLOWAY
CAPITAL CHEVROLET COMPANY	J. C. CARTER
NORTH END GROCERY	McCARTY-HOLMAN COMPANY
HERFF-JONES COMPANY	GORDON'S
WILLIAMS STORES	TAYLOR FURNITURE COMPANY
SMITH'S RECREATION PARLOR	FAIR DEPARTMENT STORE
LOGAN PHILLIPS	STAR STEAM LAUNDRY
R. H. GREEN	PARIS DRESS SHOP
ENOCHS LUMBER COMPANY	LAKE'S CELERY
THE HUB	RICE'S
R. E. LANGLEY	THE PARISIAN
IMPERIAL DRUG COMPANY	SEALE-LILY
SCOTT-KELLY	555
ACME BAKERY	W. T. NICHOLS AND COMPANY
LEE'S CLOTHING STORE	HEIDELBERG'S
DUKE & LASETER	WARBURTON-BEACHAM
UNITED LADIES' SHOP	JACKSON SPORTING GOODS
ECHO OF SWEETS	HOLLENSBE'S
WELLS, STEVENS AND JONES	MILLSAPS COLLEGE
MISSISSIPPI SCHOOL SUPPLY COMPANY	ALABAMA ENGRAVING COMPANY
	BENSON PRINTING COMPANY



Bobasha, 1928



*"Mississippi's Best Store"*

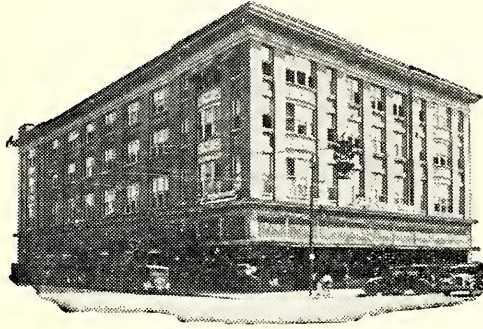
## KENNINGTON'S

JACKSON

Enjoying the Good Will and Patronage  
of Millsaps Students

Because of Our High Standard of Qual-  
ity, Moderate Prices and  
Authentic Styles

Bobashela, 1928



## JACKSON'S GREATEST STORE

—A Store That Fills Effectively and Continuously Every  
Qualification of the Modern and Up-to-Date  
Department Store

If you are not familiar with the service that is being rendered day in and day out to the thousands of satisfied patrons in Jackson and surrounding vicinity by "Jackson's Best Store," you are missing one of the greatest services Jackson has to offer. Equipped and managed to give you a modern day Department Store service that is second to none in the South.

JACKSON'S GREATEST STORE  
*The Emporium*



*Bobashela, 1928*



**DIXIE MOTOR SALES CO.**

INCORPORATED

DODGE BROTHERS  
MOTOR VEHICLES  
GRAHAM BROTHERS TRUCKS

PHONE 1562

120-22 East Pearl Street

JACKSON, MISS.

MICHELIN TIRES AND RING TUBES

**UNION DEPOT SERVICE STATION**

CORNER MILL AND AMITE STREETS


JACKSON, MISSISSIPPI

GAS, OILS AND ACCESSORIES

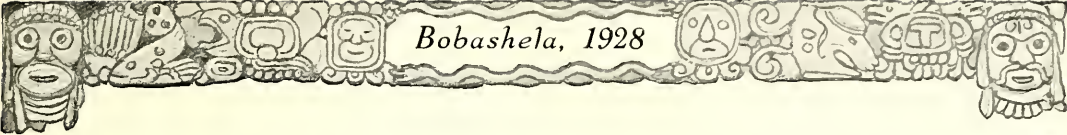
PHONE 840

Free Road Service

J. B. WALKER, *Manager*







Bobashela, 1928

## EDWARDS HOTEL

300 ROOMS

300 BATHS

Rates: \$2.50 to \$4.50

JOHN L. WARE

*Manager*

## PROGRESS FOLLOWS POWER


That the people of America enjoy greater prosperity, more comforts and larger earning capacity is due largely to the great use of electric power machinery.

Electricity today is doing the work of 170,000,000 men in the United States. The availability of power from interconnected systems has resulted in tremendous development, particularly in some of the Southern States.

The Mississippi Power & Light Company's transmission lines are interconnected with some of the largest electric generating stations in the world, and electric power in abundance is available in over 117 different communities in our State.

## Mississippi Power & Light Co.

*"Helping Build Mississippi"*



1868

1928

# CAPITAL NATIONAL BANK

JACKSON, MISS.

*"Oldest Bank in Jackson"*

CAPITAL AND SURPLUS, \$600,000.00

FOUR PER CENT PAID ON SAVINGS DEPOSITS

### OFFICERS

THAD B. LAMPTON .....	President
W. M. BUIE .....	Vice-President and Trust Officer
EDWARD W. FREEMAN .....	Vice-President
JAMES R. JOHNSTON .....	Vice-President and Cashier
J. BLAKE LOWE .....	Vice-President
S. C. HART .....	Vice-President and Assistant Trust Officer
W. C. ALLEN .....	Assistant Cashier
W. H. EARBEE .....	Assistant Cashier

### DIRECTORS

JAS. A. ALEXANDER	S. C. HART	T. M. HEDERMAN
E. W. FREEMAN	J. CLYDE MC GEE	FRANK T. SCOTT
JNO. W. ROBINSON	THAD B. LAMPTON	W. E. GUILD
W. M. BUIE	CARL FAUST	C. E. KLUMB
LOGAN PHILLIPS	JOS. H. MORRIS, JR.	E. W. GIBBENS

## SERVICE TO YOU SERVICE OF THE HIGHEST ORDER

The motto of this store during its reception and through its years of growth, as well as now, has been "Service to Our Customers," and this service of the highest order. At this store you will find at all times merchandise of the highest possible quality at the lowest possible price, arranged for your convenient choosing.

## DOWNING LOCKE CO.

*Jackson's Shopping Center"*

### Opportunity May Await You in Life Insurance

Have you determined your life work? Investigate well the possibilities presented one who becomes a life underwriter.

Remember, too, the time has arrived for you to secure personal insurance. Let it be Pilot Protection.

T. D. DAVIS  
Superintendent of Agencies  
515-517 State Lampton Building  
JACKSON, MISSISSIPPI

### Pilot Life Insurance Company

GREENSBORO, N. C.



"A Quarter Century of Success"

### We Clean and Press the Daintiest Ready-to-Wear



FOR SPECIALLY PREPARED FOOD  
FOR YOUR PARTIES  
Phone 2500

AND YOU WILL BE SURE TO  
GET WHAT YOU WANT

J. M. BLACK  
GROCERY COMPANY  
Capitol at Lamar St.

### QUALITY. ACCURACY SERVICE

That Famous Bowser Dry Cleaning  
New-Way Family Laundry Service

### Wright's Laundry

Telephones 593, 594 and 1030

### Capital Chevrolet Co.

Incorporated  
Corner South and South President Streets

Bigger and Better Service  
FOR THE

Bigger and Better  
CHEVROLET

PARTS

ACCESSORIES

Phone 4900

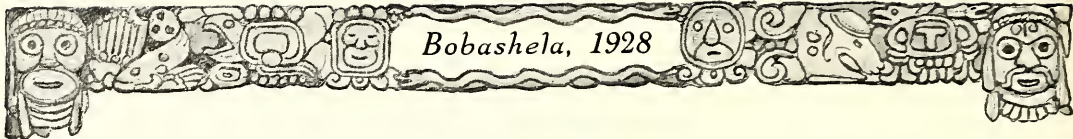
For Anything in Groceries  
Fresh Vegetables and Meats

CALL

### North End Grocery

1806 N. STATE STREET

Member I. G. A.



Bobashela, 1928



*Quality Above All*

## HERFF-JONES COMPANY

Designers and Manufacturers  
OF  
School and College  
Jewelry

INDIANAPOLIS

OFFICIAL JEWELERS  
TO  
MILLSAPS COLLEGE

## Williams Stores

INCORPORATED

5—STORES—5

JACKSON, MISS.

II

DRUG DEPARTMENT  
STORES

PHONE 233

134 EAST CAPITOL STREET

## SMITH'S RECREATION

E. C. SMITH, Prop.

*South's Finest Billiard Hall*

JACKSON, MISS.

HOME OF

## Hart Schaffner & Marx Clothes

## LOGAN PHILLIPS

Hatters, Clothiers  
Furnishers

*Quality Since 1894*



**R. H. GREEN**

*Wholesale Grocer*

**Feed Manufacturer  
Cold Storage**

PHONE 3290

606-615 South Gallatin St.  
JACKSON, MISS.

**Special Millwork**

HIGH GRADE

Our specialty is manufactured millwork, to fit any architect's requirements in any wood desired. Veneered doors and all other items of millwork manufactured in our own plant. A full mechanical equipment and experienced organization enables us to guarantee prompt service and accurate workmanship and material of good quality. Send us plans for estimates.

**Enochs Lumber &  
Manufacturing Co.**

JACKSON, MISS.

**THE HUB**

THE HOME  
OF

**Leabury Clothes**

FOR

**COLLEGE MEN**

SPECIAL DISCOUNT TO  
STUDENTS

**R. E. LANGLEY**


NURSERYMAN  
AND  
FLORIST

Flowers for Each and Every  
Occasion

TELEPHONE 1017-1389

828 WELLS ST.





**Imperial Drug Co.**

*Opposite Post Office*

Drugs, Stationery, Candy  
Cigars

Everything Usually Carried in a  
First-class Drug Store

PHONE 1184-1185

**SCOTT-KELLY  
COMPANY**

Furniture  
Rugs and Draperies

222 N. FARISH ST.

Eatmor Bread Eatmor Bread

*Served in Millsaps Dormitories*

**ACME BAKERY  
COMPANY**

NORTH FARISH STREET  
JACKSON, MISSISSIPPI

Men and Boys' Clothing

*"Pay Cash and Pay Less"*

**Lee's Clothing Store**

INCORPORATED

Opposite Rice Furniture Co.  
JACKSON, MISS.

**Duke and Laseter**

*Clothing, Haberdashery  
Hats and Shoes for  
Men*

JACKSON, MISSISSIPPI

**UNITED LADIES'  
SHOP**

110 W. CAPITOL STREET

*Sell Always for Less*

**The Echo of Sweets**

CONFECTIONERY

Home-Made Candies and Ice Cream  
*Everything for Parties Made to Order*

French Ice Cream Our Specialty

138 E. CAPITOL ST. TELEPHONE 3316  
JACKSON, MISS.

**Wells, Stevens  
& Jones**

*Lawyers*

LAMAR LIFE BUILDING  
JACKSON, MISSISSIPPI



**Mississippi  
School Supply Co.**

*Serving Mississippi Schools*

School Furniture and  
Equipment

JACKSON, MISSISSIPPI

**THE HEIDELBERG  
CAFE**

BETWEEN THE HEIDELBERG AND  
ROYAL HOTELS

"AFTER THE THEATER"

ASK FOR  
**BARKER BREAD**  
*It's Best*

Your Local Grocer Sells It

**Jackson Baking Co.**

*Mississippi's Largest Baking Business*

*Seven Years of Continuous Growth*

**JACKSON  
PAPER COMPANY**

H. T. NEWELL, *President*

WHOLESALE  
"MAGNOLIA BRANDS"

JACKSON, MISS.

*Smoke*

OSMUNDO  
ROI TAN  
LA FRUTA  
TAMPA NUGGET

*High Grade Cigars*

*"When Clothes Are Dirty Ring  
Seven-Thirty"*

Laundering, Dry Cleaning

**JACKSON STEAM  
LAUNDRY**

**Watkins, Watkins  
& Eager**

ATTORNEYS AND COUNSELORS  
AT LAW

Watkins Easterling Building  
JACKSON, MISSISSIPPI

**S. P. McRAE CO.**

200-202 WEST CAPITOL STREET

PHONE 170-1267

JACKSON, MISSISSIPPI

*For the Best*

*To Keep You Warm*  
FLORSHEIM SHOES  
STYLEPLUS CLOTHES

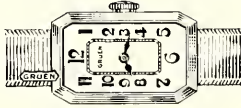




*Compliments of*  
**Sellers Motor Co.**  
DISTRIBUTORS OF  
Cadillac and LaSalle

ENGRAVED  
WEDDING INVITATIONS  
**TUCKER  
PRINTING HOUSE**  
JACKSON, MISS.

**J. L. Albritton**



*The Jeweler*

**CENTRAL BATTERY  
COMPANY**

WILLIARD BATTERIES

We Recharge or Repair Any Make

CORNER PEARL AND FARISH

Phone 385

**JACKSON  
SHOE HOSPITAL**

*"Repair Shoes Better"*

WM. KAROW, *Manager*

PHONE 336 412 E. CAPITOL ST.

**E. H. GALLOWAY**

MD., F.A.C.S.

*Surgeon*

LAMAR LIFE BUILDING

JACKSON, MISS.



*Compliments of*

**McCarty Holman  
Company**

**WHOLESALE GROCERS**





**Gordon's**  
LADIES' READY TO WEAR

Exclusive But Not Expensive  
126 W. Capitol Street  
JACKSON, MISSISSIPPI

Taylor Furniture  
Company

109, 111, 113 South State Street  
JACKSON, MISS.  
Furniture of a Better Grade  
ALEX GORDON, Owner

The Fair  
Department Store

*Same Goods for Less  
Money*

Star  
Steam Laundry

*We Solicit Your  
Patronage*

*"A New Place for College Girls"*  
Jackson's Leading Dress Shop  
**Paris Dress Shop**  
Ladies' Wear and Millinery  
212 W. Capitol Street  
Exclusive But Not Expensive  
10% Discount to All College Students

DRINK  
**Lake's Celery**  
AND  
**Orange Crush**

*Where Most Folks Trade*

**RICE'S**

Central Capitol St.

Vicksburg JACKSON Meridian

**PARISIAN**  
STORE FOR WOMEN

CAPITOL AT LAMAR



COTTAGE ROW



*Seale-Lily*  
ICE CREAM CO.

A HEALTH FOOD—ALWAYS IN SEASON

THE NAME TO REMEMBER

**555** THE NUMBER TO CALL—  
FOR FIRESTONE TIRES  
AND BETTER SERVICE

Pearl at Lamar Street

JOE T. DEHMER, *Manager*



COLLEGE BAND

**W. T. NICHOLS &  
COMPANY, Inc.**

WHOLESALE GROCERS  
FRUITS AND PRODUCE  
JACKSON, MISSISSIPPI

DISTRIBUTORS OF  
DAINTY AND PIPPIN FLOURS

**HEIDELBERG'S**

*Where Furniture is Sold for Less*

Popular Prices—Easy Payments

Low Rent District

118 N. Farish St. JACKSON, MISS.

**Warburton-Beacham  
Supply Company**

Plumbing, Heating, Roofing  
and Sheet Metal Supplies

Office: 105 W. Capitol Street  
OFFICE PHONE 1235

Warehouse: Bailey Ave. and A. and V. R. R.  
WAREHOUSE PHONE 3878

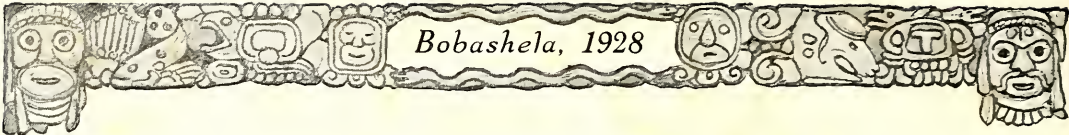
**Jackson Sporting Goods  
Company, Inc.**

165 East Capitol Street  
JACKSON, MISS.

State Distributors

**A. J. REACH, WRIGHT  
DITSON CO.**

*Athletic Equipment*



Bobashela, 1928



PHOTOGRAPHIC WORK IN  
THIS ANNUAL


*Made by*

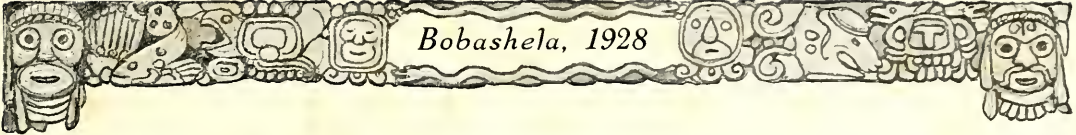
**HOLLENSBEE**

JACKSON, MISSISSIPPI



ALL KINDS OF  
PHOTOGRAPHIC WORK  
EXCEPT THE POOR KIND





Bobashela, 1928

D. M. KEY, Ph.D., LL.D., *President*  
J. REESE LIN, B.A., M.A., *Secretary*

## MILLSAPS COLLEGE

JACKSON, MISSISSIPPI


Founded 1891

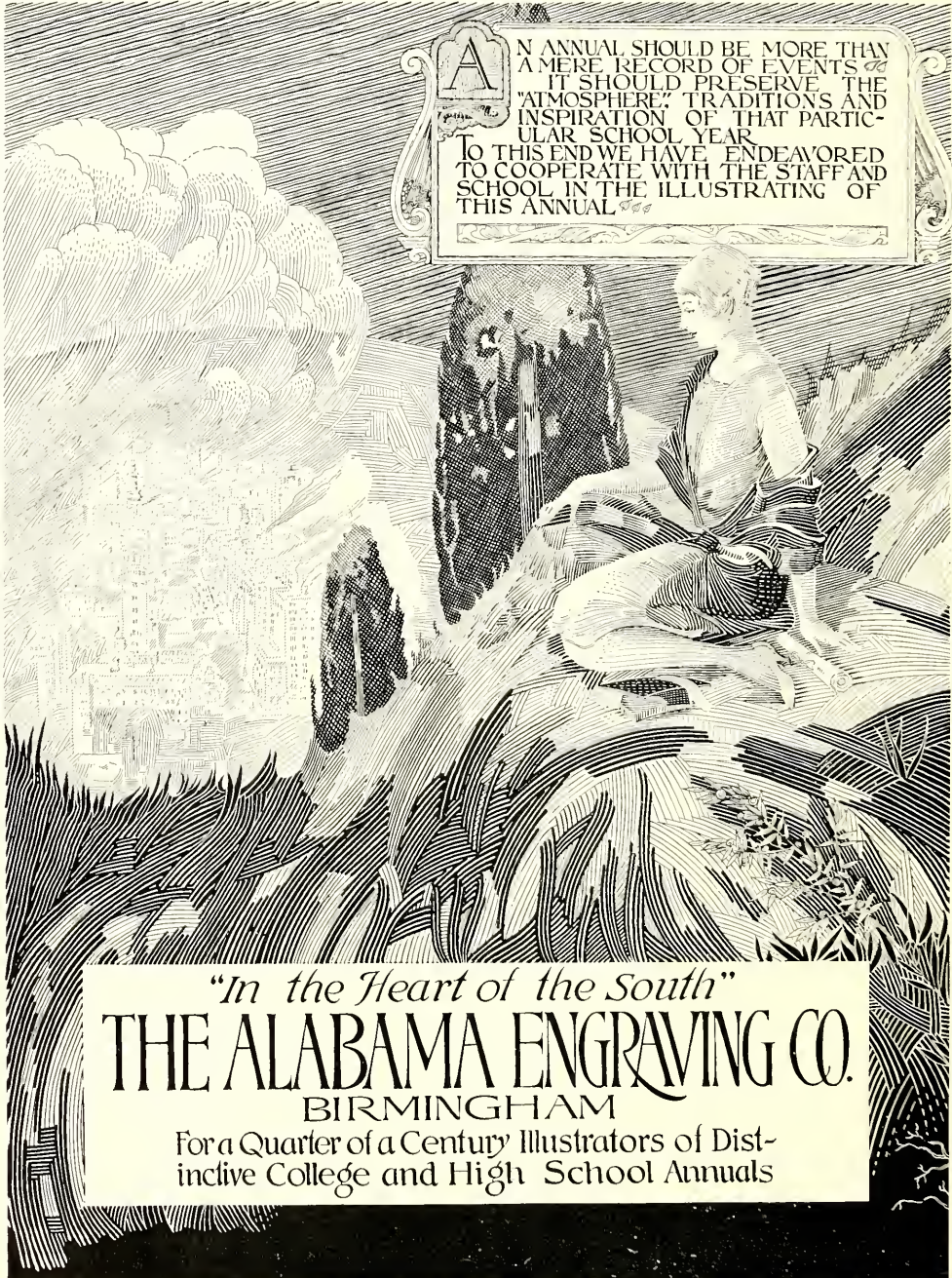
### An A-Grade College of Arts and Sciences

Beautifully located in North Jackson, on two car lines. Campus of more than one hundred acres, on which are located Main Building, Science Hall, Library, College Dormitories, Founder's Hall, the President's Home.

An ENDOWMENT of more than \$900,000.00. Conditions healthful and attractive; influences calculated to promote Christian character. Standard high; discipline good; faculty of twenty-one competent professors. Honor System under the direct management of student Honor Council; active Y. M. C. A. Millsaps College is a member of the Southern Association of Colleges and Secondary Schools, and the Southern Intercollegiate Athletic Association, and the Association of American Colleges.

For Catalog and special information, address either of the above-mentioned officers.





**A**N ANNUAL SHOULD BE MORE THAN  
A MERE RECORD OF EVENTS. IT  
SHOULD PRESERVE THE  
"ATMOSPHERE," TRADITIONS AND  
INSPIRATION OF THAT PARTIC-  
ULAR SCHOOL YEAR.  
TO THIS END WE HAVE ENDEAVORED  
TO COOPERATE WITH THE STAFF AND  
SCHOOL IN THE ILLUSTRATING OF  
THIS ANNUAL.

*"In the Heart of the South"*  
**THE ALABAMA ENGRAVING CO.**  
BIRMINGHAM

For a Quarter of a Century Illustrators of Dist-  
inctive College and High School Annuals

THIS BOOK PRINTED BY BENSON



LARGEST COLLEGE ANNUAL  
PUBLISHERS IN THE WORLD

HIGHEST QUALITY WORKMANSHIP  
SUPERIOR EXTENSIVE SERVICE



COLLEGE ANNUAL HEADQUARTERS

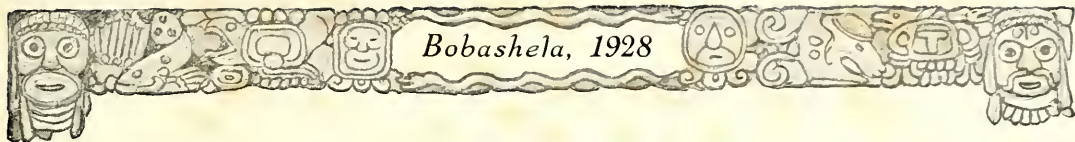
*Bobashela, 1928*



**FINIS**







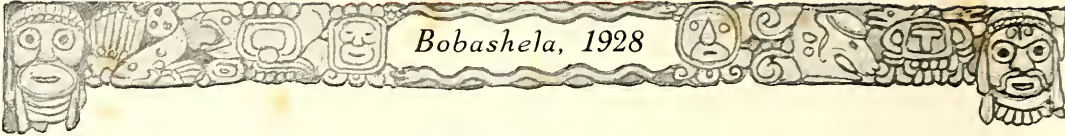
*Bobashela, 1928*

Autographs

---



R. W. "TED" CAMPBELL



*Bobashela, 1928*

## Autographs

---

R. W. "TED" CAMPBELL









