

1932



JOSE BOBASHELA







ex
Libris



THE BOBASHELA



1932

COPYRIGHT 1932



THERESA McDILL
EDITOR-IN-CHIEF

EDWARD A. KHAYAT
BUSINESS MANAGER

• THE •
BOBASHELA
1932



**PUBLISHED ANNUALLY BY
THE SENIOR CLASS OF
MILLSAPS COLLEGE
JACKSON, MISSISSIPPI**



**ORDER
OF
BOOKS**

**THE CLASSES
ORGANIZATIONS
FRATERNITIES
ATHLETICS
FEATURES**



FOREWORD

CIVILIZATION, ART, EDUCATION NEVER STAND STILL. ALWAYS WE GO FORWARD, EXPERIMENTING, SUCCEEDING, FAILING. THE THEME OF THIS BOOK IS THAT NEW SPIRIT OF PROGRESS, OF RECEPTIVENESS TO NEW THOUGHT. WE MAY NOT SUCCEED IN OUR PURPOSE, BUT AT LEAST WE ARE NOT STAGNATING IN A POOL OF OLD IDEAS. WE MOVE ON. . . .



DEDICATION

THE DEDICATION OF AN ANNUAL HAS BEEN A PERPLEXING PROBLEM TO STAFFS OF FORMER YEARS. THIS YEAR, HOWEVER, THE PRESENCE OF A MAN WHOSE OUTSTANDING INTEREST IN ALL COLLEGIATE AFFAIRS HAS MADE OUR CHOICE AN EASY ONE. HIS UNFAILING GOOD HUMOR AND DILIGENCE IN HIS WORK HAS WON FOR HIM WITH THE RESPECT AND ADMIRATION OF THE STUDENTS THE AFFECTIONATE TITLE, "U.Z."

FOR HIS UNSTINTED COURAGE, OPTIMISM, AND SUCCESSFUL WORK IN THESE TRYING TIMES, WE, THE 1932 STAFF RESPECTFULLY DEDICATE THIS VOLUME OF THE BOBASHELA TO THE BURSAR OF MILLSAPS COLLEGE

MR. VERNON BURKETT HATHORN





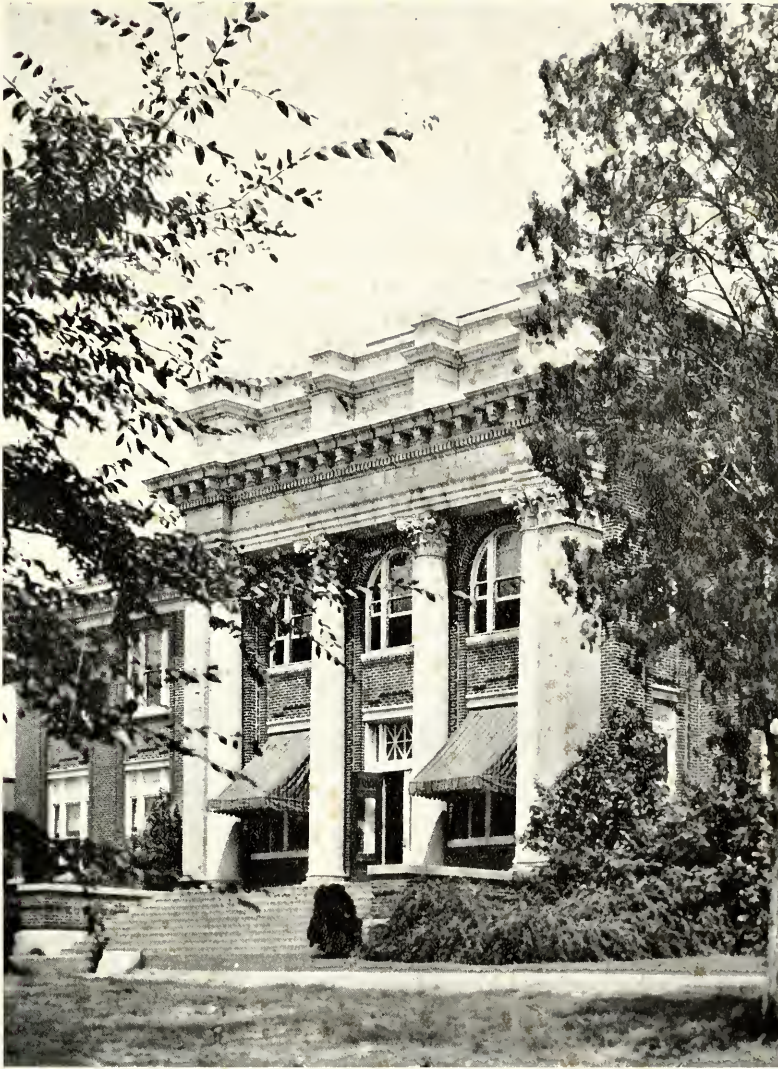
VERNON BURKETT HATHORN

IN MEMORIAM

Commie H.
Smith

Student

Died
Nov. 13, 1931



ADMINISTRATION BUILDING



SULLIVAN-HARRELL HALL



MAJOR MILLSAPS' TOMB



BURTON HALL



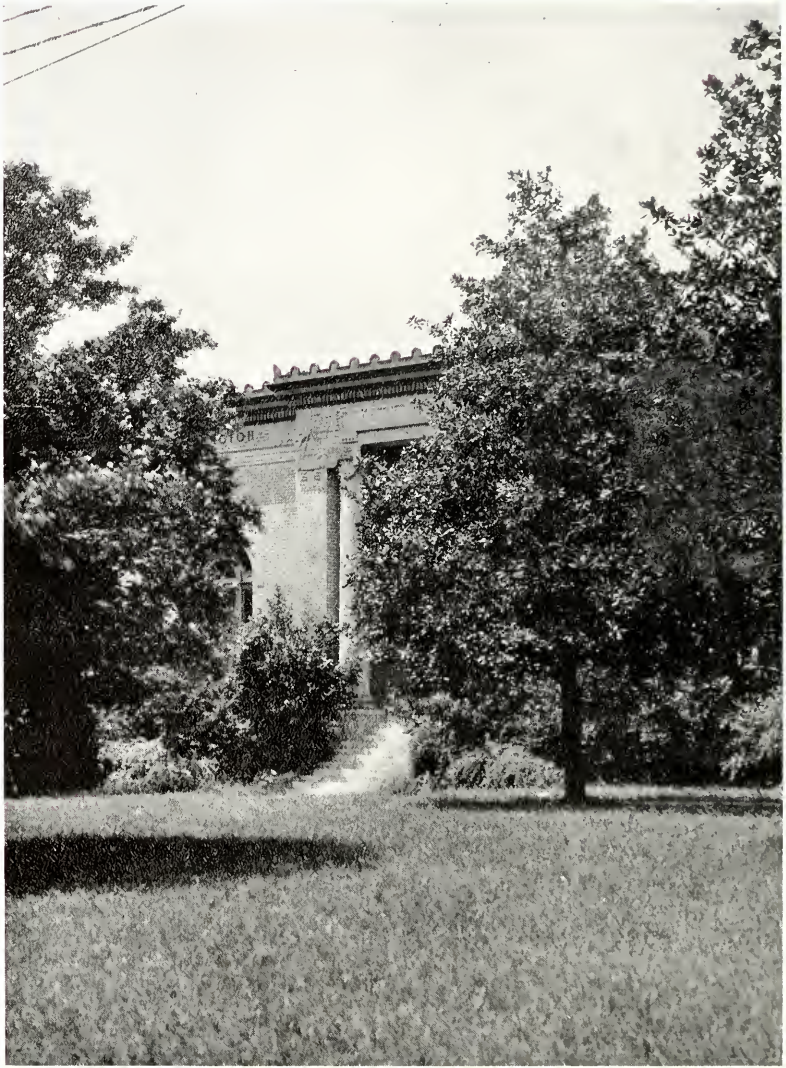
GALLOWAY HALL



THE NEW GAS WELL



FOUNDER'S HALL



LIBRARY



DR. D. M. KEY, A.M., Ph.D., LL.D.
President of Millsaps College



Faculty

DR. J. M. SULLIVAN, A.M., Ph.D.

*Senior Member of the Faculty
Professor of Chemistry and Geology*

A.B., Central College; A.M., Vanderbilt University; Ph.D., Vanderbilt University; Delta
Tau Delta.

PROFESSOR G. L. HARRELL, B.S., M.S.

*Registrar of the College
Professor of Physics and Astronomy*

B.S., Millsaps College; M.S., Millsaps College; Kappa Sigma.

PROFESSOR J. REESE LIN, B.A., M.A.

*Secretary of the College
Professor of Philosophy and History*

A.B., Emory College; M.A., Vanderbilt University; Kappa Alpha; Alpha Phi Epsilon;
Phi Beta Kappa.



Faculty

DR. B. E. MITCHELL, A.M., Ph.D.

Dean of Men
Professor of Mathematics

A.B., Scarritt-Morrisville; A.M., Vanderbilt University; Ph.D., Columbia University;
Alpha Tau Omega; Omicron Delta Kappa.

DR. D. H. BISHOP, M.A., LL.D.

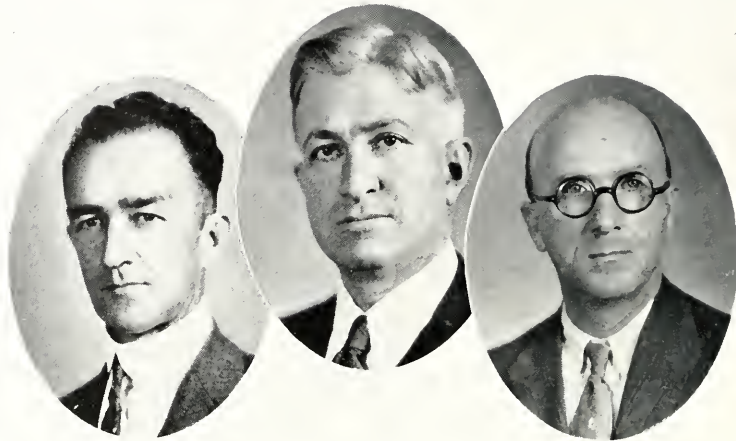
Professor of English

B.A., Emory and Henry College; M.A., Vanderbilt University; LL.D., Emory and Henry
College; Sigma Upsilon.

DR. A. P. HAMILTON, A.M., Ph.D.

Dean of Freshmen
Professor of Ancient Languages

A.B., Southern University; A.M., University of Pennsylvania; Ph.D., *ibid.*; Kappa Alpha;
Omicron Delta Kappa.



Faculty

PROFESSOR F. C. JENKINS, B.S., A.M.

Professor of Education

B.S., University of Mississippi; A.M., Peabody College; Phi Delta Kappa.

PROFESSOR A. G. SANDERS, A.B., A.M.

Professor of Romance Languages

A.B., Southwestern; A.B., Yale University; A.B., University of Oxford; A.M., *ibid.*;
Sigma Upsilon; Alpha Phi Epsilon.

PROFESSOR M. C. WHITE, A.B., A.M.

Professor of English

A.B., Southern University; A.M., Harvard University; Kappa Alpha; Sigma Upsilon;
Omicron Delta Kappa; Alpha Phi Epsilon; Alpha Psi Omega.



Faculty

PROFESSOR H. C. BLACKWELL, A.B., A.M.

Associate Professor of Religious Education

A.B., Emory University; A.M., Duke University; Candler School of Theology of Emory University; Tau Kappa Alpha; Gamma Mu.

MRS. HENRY W. COBB, A.B.

Assistant Professor of Spanish

A.B., St. Lawrence University; Phi Beta Kappa.

ELIZABETH CRAIG, A.B., A.M.

Assistant Professor of French

A.B., Barnard College, Columbia University; A.M., Columbia University.



Faculty

PROFESSOR ROSS H. MOORE, A.B., A.M.

Associate Professor of History

A.B., Millsaps College; A.M., *ibid.*; Alpha Phi Epsilon; Kappa Alpha; Alpha Psi Omega;
Sigma Upsilon; Omicron Delta Kappa.

MRS. MARY B. STONE, A.B., A.M.

Dean of Women
Assistant Professor of English

A.B., Randolph-Macon Woman's College; A.M., George Peabody College for Teachers.

PROFESSOR B. O. VAN HOOK, A.B., A.M.

Associate Professor of Mathematics
Director of Athletics

A.B., Millsaps College; A.M., Vanderbilt University; Kappa Sigma.



Faculty

PROFESSOR R. H. HAYNES, A.B., A.M.

Assistant Professor of History

A.B., University of Tennessee; M.A., George Peabody College.

MRS. MARY BOWEN CLARK, A.B.

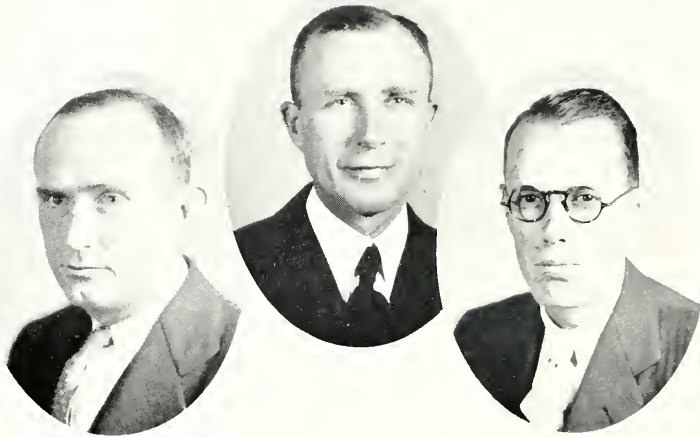
Assistant Librarian

A.B., Millisaps College; Phi Mu.

TRANNY LEE GADDY, B.S.

*Head Coach
Professor of Physical Education*

B.S., Mississippi A. and M. College.



Faculty

PROFESSOR N. F. WILKERSON, A.B., A.M.

Assistant Professor of Biology

A.B., Duke University; A.M., *ibid.*

VERNON BURKETT HATHORN, B.S.

Bursar

B.S., Millsaps College; Kappa Sigma.

PROFESSOR J. B. PRICE, B.S., M.S.

Assistant Professor of Mathematics and Chemistry

B.S., Millsaps College; M.S., University of Mississippi.



Faculty

A. I. REXINGER
Freshman Coach

FLORENCE LEECH, B.S.
Assistant Librarian
Head of Catalogue Department

B.S., George Peabody College; Certificate in Library Science, George Peabody College.

BENJAMIN S. HARRELL, B.S.
Assistant in Mathematics
B.S., Millsaps College.

MRS. W. O. BRUMFIELD, A.B.
Director of Women's Physical Education
A.B., Cumberland University.



Faculty

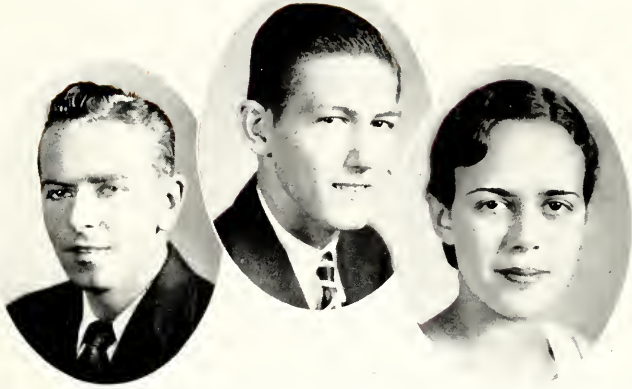
MRS. FANNY J. OWEN
Matron Men's Dormitory

MRS. C. F. COOPER
Matron Women's Dormitory

CARRIE OLIVIA SISTRUNK
Secretary to the President

MRS. SUE V. CLEMENTS
Matron Women's Dormitory





Class Officers

- DAVID DUBARD *President*
T. A. GILBERT, JR. *Vice-President*
FRANCES RUSH *Secretary-Treasurer*



SENIORS

Senior Class

ROSE FULGHAM WELLS, B.A.

Κ Δ
JACKSON, MISS.

Freshman Commission (1); Y. W. C. A. Cabinet (3, 4); Social Chairman Women's Association (4); Glee Club (1, 2, 3); President Glee Club (3); Philomathean Literary Society (2, 3); Beethoven Club (3); Student Executive Board (3).

CLAUDE WILLIAM PASSO, JR., B.S.

Κ Σ
MOBILE, ALA.

Football (1, 2, 3, 4); Basketball (1, 2, 3, 4); Baseball (1, 2, 3, 4); "M" Club (2, 3, 4).

PONG HYUN KIM, B.S.

SONGDO, KOREA

Ramblers Club (4); Science Club (4); Ministerial League (2, 3, 4); Y. M. C. A. (2, 3, 4).

THOMAS A. GILBERT, B.S.

Κ Σ
MERIDIAN, MISS.

Omicron Delta Kappa; Catella Club; Band (1, 2, 3); Assistant Bursar (1, 2, 3, 4); Student Executive Board (2); President Class (2); Vice-President Class (4); President Band (2); President Omicron Delta Kappa (4); Secretary Catella Club (4); Y. M. C. A. (3, 4).

ALLIE BELLE CORLEY, B.A.

RALEIGH, MISS.

Whitworth College (1, 2); Glee Club (3, 4); Y. W. C. A. (3, 4).

J. F. MUNSTERMAN, B.S.

PELAHATCHIE, MISS.

Freshman Baseball; Ramblers Club (4); Science Club (4); Track (3, 4).

Senior Class

HAL WILSON DALE, B.S.

JACKSON, MISS.

Alpha Psi Omega; Galloway Literary Society (1); Band (2, 3, 4); Millsaps Players (2, 3, 4); Vice-President Band (4); Science Club (4); Treasurer Ramblers Club (4); *Purple and White Staff* (4); BOBASHELA Staff (4).



FRANCES DECELL, B.A.

K Δ

JACKSON, MISS.

Whitworth College (1, 2); Alabama Woman's College (3); Assistant Cheerleader (4).

G. E. MURPHY, B.S.

JACKSON, MISS.

Band (1, 2, 3, 4); Lamar Literary Society (1); Ramblers Club (4).



MARY VELMA SIMPSON, B.A.

B Σ O

PICKENS, MISS.

Vice-President Freshman Commission (1); President Y. W. C. A. (2); Y. W. C. A. Cabinet (3); Treasurer Y. W. C. A. (4); Blue Ridge Delegate (1); Girls' Glee Club (1); Accompanist Girls' Glee Club (2, 3); Piano Scholarship (2); Vice-President Beethoven Club (3); President Beethoven Club (4); Student Executive Board (2); Literary Society (1, 2); English Assistant (2); Classical Club; Secretary-Treasurer Student Body (4).



MATHIS ARMSTRONG, B.S.

GREENWOOD, MISS.

Sunflower Junior College (1, 2); Glee Club (3); Band (3, 4); Y. M. C. A. Cabinet (3, 4); Ministerial League (3, 4); President Ministerial League (4); Winner Vocal Scholarship (3).

BETTY BUHRMAN, B.S.

K Δ

TUPELO, MISS.

Basketball (3, 4); Secretary-Treasurer of Glee Club (3); Y. W. C. A. Cabinet (4); *Purple and White Staff* (4); Southern College (1, 2); Ramblers Club (3).

Senior Class



KENNETH WILLS, B.A.

K Σ
JACKSON, MISS.
Pan-Hellenic Council; Catella Club (4).

WILNA RIGBY, B.A.

JACKSON, MISS.
Classical Club (3, 4); Basketball (3, 4); Philomathean Literary Society (3); Secretary Y. W. C. A. (4); Treasurer Woman's Association (4).

EDWARD ASSAD KHAYAT, B.A.

Σ P X
BILOXI, MISS.
Sigma Rho Chi; Omicron Delta Kappa; Sigma Upsilon; Eta Sigma; Football (1, 2, 3, 4); Tennis (1, 2, 3, 4); Captain Tennis Team (4); Freshman Debater; Glee Club (1, 2, 3, 4); Galloway Literary Society; President, Millsaps Classical Club; Business Manager Men's Glee Club; Business Manager BOBASHELA; Library Assistant (2, 3, 4); Assistant, Spanish and French (4); International Relations Club; "M" Club; Honor Graduate.

SARAH STEVENS, B.A.

Δ Z
JACKSON, MISS.

FRANK BUFKIN PADGETT, B.S.

PHILADELPHIA, MISS.
Football (3, 4); Baseball (3, 4); "M" Club.

GLENNA EMILY MOORE, B.A.

Δ Z
JACKSON, MISS.
Pan-Hellenic (3, 4); Freshman Commission; Y. W. C. A. Cabinet (2, 3); Delegate to Methodist Students' Conference (2).

Senior Class

DOUGLAS BANKS, B.A.

Δ Z

JACKSON, MISS.

Basketball (1); Glee Club (1, 3); Hinds Junior College (2); Y. W. C. A. Cabinet (3, 4); President Y. W. C. A. (4); Student Executive Board (4); Philomathean Literary Society (3); Beethoven Club (3, 4); Latin Club (3, 4).

LEE TRAVIS, B.S.

Ο K N

CANTON, MISS.

Science Club (4); Football (2, 3, 4); Track; Lamar Literary Society; "M" Club; Pre-Medical Club (1, 2, 4); Baseball (4).

MARY WOODLIFF, B.A.

Φ M

JACKSON, MISS.

WALTER BIVINS, B.S.

Ο K N

JACKSON, MISS.

Pi Kappa Delta; Omicron Delta Kappa; Frehman Debating Team; Lamar Literary Society (1, 2, 3, 4); Buie Declamation (2); Member Debating Council (1, 2, 3); Intercollegiate Debater (2, 3, 4); Secretary-Treasurer Pi Kappa Delta (2, 3); President Pi Kappa Delta (3); President Lamar Literary Society (3); International Relations Club (4); BOBASHELA Staff (3); President Class (3); President Student Body (4); President Student Executive Board; Ramblers Club (4).

D. V. HERLONG, B.S.

Π K A

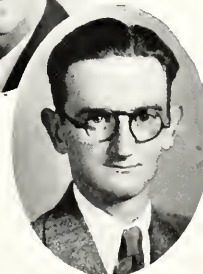
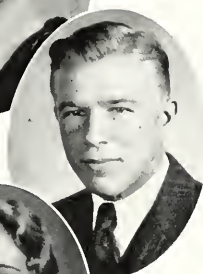
HERMANVILLE, MISS.

Basketball (1); Baseball (1).

VARDAMAN L. OWEN, B.S.

FAYETTE, MISS.

Y. M. C. A. Cabinet (3, 4); President Y. M. C. A. (4); Galloway Literary Society (1, 2, 3, 4); Ramblers Club (3); Assistant in Mathematics (3); Assistant in Chemistry (4); Science Club (4); Debate Council (4); Student Executive Board (4); Vice-President Galloway Literary Society (4); Treasurer Galloway Literary Society (4); Editor Hand Book (3).



Senior Class

SAM JOE RUFF, B.S.

Θ K X
BOONEVILLE, MISS.

Pi Kappa Delta; Business Manager *Purple and White* (4); Intercollegiate Debater (3, 4); Freshman Debater; Debate Council (3, 4); Secretary Debate Council (4); Science Club (4); Galloway Literary Society; President Galloway Literary Society (3); Student Executive Board (4); Y. M. C. A. Cabinet (4); Basketball (3, 4).

LOYCE CADE, B.S.

JACKSON, MISS.

Grenada College (1, 2).

CLINTON W. WALKER, B.S.

Σ P X
LUCEDALE, MISS.

Sigma Rho Chi; Eta Sigma; Football (1, 2, 3, 4); Track (1); Baseball (1, 2, 3, 4); Basketball (1); Track Manager (3); Study Hall Monitor (2); Undergraduate Secretary of Alumni Association (3, 4); BOBASHELA Staff (4); International Relations Club (4); "M" Club; Secretary-Treasurer "M" Club (4); Honor Graduate.

J. C. PATTERSON, B.S.

Θ K X
NESBITT, MISS.

Ramblers Club (4); Science Club (4); Galloway Literary Society (1, 2, 3, 4).

MILDRED CLARK, B.S.

B Σ O
JACKSON, MISS.

EDWARD MARSHALL LANE, B.A.

FOREST, MISS.

Clark College (2); Ministerial League (3, 4); Lamar Literary Society (1).

Senior Class

DAVID M. KEY, JR., B.S.

K A
JACKSON, MISS.

Tennis Team (1, 3); Lamar Literary Society;
Millsaps Players; Ramblers Club (4).



MARY LOUISE ELLIOTT, B.S.

TCHULA, MISS.

DAVID Y. DUBARD, B.A.

Θ K X
GRENADA, MISS.

Omicron Delta Kappa; President Catella Club
(4); Band (1, 2, 3, 4); Business Manager Band
(4); Glee Club (1, 2, 3, 4); Business Manager
Glee Club (3); President Glee Club (4); Sec-
retary Class (1); Vice-President Class (2);
President Class (4); Lamar Literary Society (1,
2, 3, 4); Y. M. C. A. Cabinet (2, 3, 4); Dra-
matic Club (3); Ramblers Club (3, 4); Tennis
(3, 4).



BILL JACOBS, B.S.

Θ K X
JACKSON, MISS.

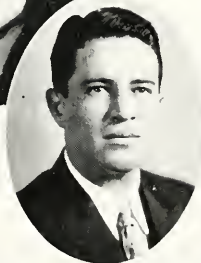
Football (1, 2, 3, 4); Baseball (1, 2, 3, 4);
Catella Club; Ramblers Club (4).



DOROTHY LOFLIN, B.A.

JACKSON, MISS.

Basketball (1, 2, 3, 4); Captain Basketball (3);
Classical Club (3, 4); Treasurer Classical Club
(4); Y. W. C. A.

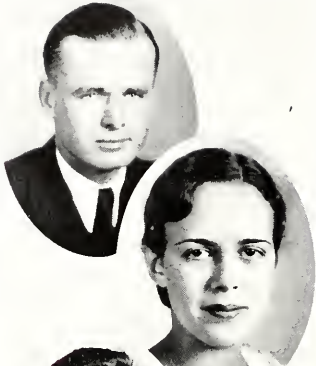


WILLIAM L. ERVIN, B.S.

Θ K X
INVERNESS, MISS.

Football (1, 2, 3, 4); Baseball (1, 2, 3, 4);
Basketball (1).

Senior Class



WALTER PERMENTER, B.S.

K Σ
JACKSON, MISS.

Omicron Delta Kappa; Catella Club; Football (1, 2, 3, 4); Captain Football Team (4); Basketball (1, 2, 3); Baseball (1, 2, 3, 4); Library Assistant (3); "M" Club (2, 3, 4); President "M" Club (4); Vice-President Junior Class; *P. & H.* Staff (2); Student Executive Board (4).

FRANCES RUSH, B.S.

K Δ
BROOKHAVEN, MISS.

M. S. C. W. (1, 2, 3); Secretary-Treasurer Senior Class.



SPURGEON P. GASKIN, B.S.

JACKSON, MISS.

President Ramblers Club (4); Business Manager Millsaps Players (4); Glee Club (3, 4); Band (4); Science Club (4); Galloway Literary Society (1); *P. & H.* Staff (4).

SARA SMITH, B.A.

B Σ O
JACKSON, MISS.

Glee Club (2, 3); Philomathean Literary Society (3); Beethoven Club; Latin Club.



FRED HOLLADAY, B.S.

UNION, MISS.

MARY WACASTER, B.A.

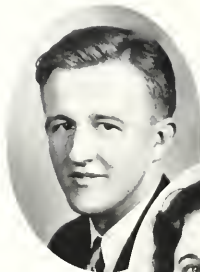
Δ Z
JACKSON, MISS.

Chi Delta Phi; Eta Sigma; Freshman Commission; Freshman Staff, *P. & H.*; Y. W. C. A. Cabinet (3, 4); President Eta Sigma (4); Student Assistant (2, 3, 4); Pan-Hellenic Council (3, 4); Woman's Association Council (3); High Honor Graduate.

Senior Class

BARCLAY DONALDSON, B.S.

K A
JACKSON, MISS.



HADENIA BUCK, B.A.

K Δ
JACKSON, MISS.



HOWARD KENT WILLIFORD, B.S.

CARROLLTON, MISS.

Alpha Psi Omega; Sigma Upsilon; Galloway Literary Society (1, 2, 3, 4); Glee Club (1, 2); Library Assistant (4); Ramblers Club (4).



SARA KING, B.A.

K Δ
JACKSON, MISS.

Eta Sigma; Secretary-Treasurer Class (2); Y. W. C. A. Cabinet (2, 3, 4); Glee Club (3); Sponsor Football Team (2); Feature Section BOBASHELA (2, 3); Vice-President Y. W. C. A. (3); Treasurer Woman's Association (2); Secretary Woman's Association (3); Latin Club (3); English Assistant (3); Philomathean Literary Society (2, 3); Woman's Pan-Hellenic Council (3).



L. F. McDANIEL, B.S.

LUCEDALE, MISS.

Football (1, 2, 3, 4); Alternate Captain Football (4); Basketball (1); Manager Basketball (3); Track (1); Baseball (1, 2, 3, 4); Vice-President "M" Club (4).



RUTH FORMAN, B.A.

Δ Z
JACKSON, MISS.



Senior Class

LUCIEN FERRIS, B.S.

K A

JACKSON, MISS.

Catella Club (3, 4); Assistant Cheer Leader (3, 4); Lamar Literary Society (3, 4); Pre-Medical Club (4); Science Club (4); Glee Club (3); Millsaps Players (3); Vice-President Catella Club (4); Treasurer Lamar Literary Society (3); BOBASHELA Staff (4); Track (3, 4); Pan-Hellenic Council.



HELEN RIPLEY, B.S.

K Δ

BROOKHAVEN, MISS.



CHARLES B. GALLOWAY, B.S.

K Σ

JACKSON, MISS.

Ramblers Club (3); Science Club (3); Physics Assistant (4).



MEREDITH OWENS, B.A.

Φ M

JACKSON, MISS.

DAVID LIVINGSTON, B.S.

Σ P X

PRENTISS, MISS.

Baseball (1, 2, 3, 4).

MOZELLE HEARON, B.S.

JACKSON, MISS.

Ramblers Club (4); Three-Year Club.

Senior Class

HENRY GEORGE WARREN, B.A.

Θ Κ Ν

BENTON, MISS.

Galloway Literary Society (1, 2, 3, 4); Vice-President Galloway Literary Society (2); Ramblers Club (4); Classical Club (3, 4); Science Club (4); Y. M. C. A. (1, 2, 3, 4).



BETTY PARKER, B.S.

Δ Ζ

JACKSON, MISS.

Belhaven College (1, 2, 3).



JOHN HENRY NOBLIN, B.S.

Π Κ Α

PELAHATCHIE, MISS.

Basketball (1, 2, 3, 4); Manager Basketball (3, 4); Ramblers Club (4); "M" Club.



HELEN FURLOW, B.A.

Κ Δ

BROOKHAVEN, MISS.

Newcomb College (1, 2); Glee Club (3); Classical Club (3).



FELIX J. UNDERWOOD, JR., B.S.

Θ Κ Ν

JACKSON, MISS.

Ole Miss (2); Pre-Medical Club; Science Club (4).



MARGUERITE DETERLY, B.A., B.M.

JACKSON, MISS.

Beethoven Club.



Senior Class

VIRGINIA YOUNGBLOOD, B.S.

K Δ

BROOKHAVEN, MISS.

Whitworth (1, 2); International Relations Club (4).

M. FRANKLIN WILLIAMS, B.S.

Π K Α

INVERNESS, MISS.

Galloway Literary Society; "M" Club; Manager Varsity Baseball (2, 3, 4).

MARY ORMOND HEALD, B.A.

Φ M

JACKSON, MISS.

Newcomb (1); Glee Club (1, 2); Woman's Council (2); Y. W. C. A. Cabinet (2); Women's Pan-Hellenic (2, 3); BOBASHELA Staff (2, 3); President Y. W. C. A. (3); Student Executive Board (3); Philomathean Literary Society; Classical Club (3, 4); Education Assistant (3, 4); President Woman's Association (4).

JOHN SHARPE MOON, B.S.

Σ P X

LUMBERTON, MISS.

Football (1, 2, 3, 4); Baseball (1, 2, 3, 4); Basketball (2, 3); "M" Club; Assistant in Physical Education.

JULIA B. LOCKHART, B.A.

JACKSON, MISS.

Classical Club; Basketball (1, 2); Y. W. C. A. (1, 2, 3, 4).

THERESA McDILL, B.A.

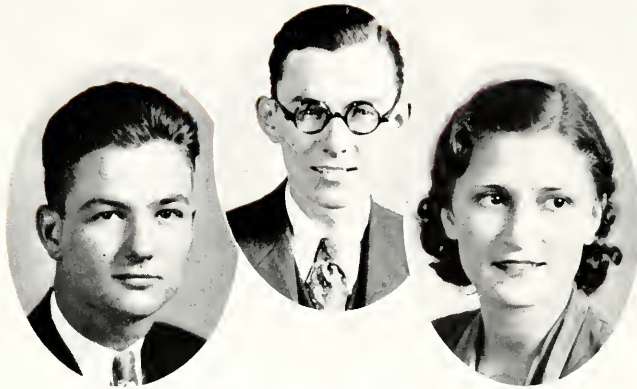
K Δ

JACKSON, MISS.

Editor BOBASHELA (4); Alpha Psi Omega; Chi Delta Phi; *Purple and White* Staff (1, 2); Woman's Pan-Hellenic (3); Student Executive Board (4).

MRS. DEVOE TOMLINSON SHURLEY
B.S.

JACKSON, MISS.



Class Officers

STOKES V. ROBERTSON, JR. *President*
H. T. NEWELL, JR. *Vice-President*
MARY SUE BURNHAM *Secretary-Treasurer*

•

JUNIORS

Junior Class

JAMES H. NEWCOMB, JR.
K Σ
RICHTON, MISS.

ALBERT COLLINS
FOREST, MISS.

WINIFRED GREEN
Φ M
JACKSON, MISS.

EMILIO ROMANO
Θ K N
NEW ORLEANS, LA.

FRANK CASEY
MCCOMB, MISS.

JOHN R. ENOCHS
K A
JACKSON, MISS.

W. E. HESTER, JR.
K Σ
HAZLEHURST, MISS.

ADAMAE PARTIN
Δ Z
MERIDIAN, MISS.

CARL M. CUTRER
Σ P X
CARTHAGE, MISS.

ETOILE EATON
TAYLORSVILLE, MISS.

PHILIP GRICE
MADISON, MISS.

ALLEN LINDSEY
PELAHATCHIE, MISS.

Junior Class

T. F. NEBLETT
 Θ Κ Ν
 BATESVILLE, MISS.

H. T. NEWELL, JR.
 Π Κ Α
 JACKSON, MISS.

JOHN B. HOWELL
 Κ Σ
 CANTON, MISS.

LILLIAN POLK
 Β Σ Ο
 LAUREL, MISS.

RAYMOND MCGINNIS
 LOUISVILLE, MISS.

ALEXANDER BAINES
 JACKSON, MISS.

ROBERT VINCENT
 Κ Α
 JACKSON, MISS.

KATHERINE JACOBS
 Β Σ Ο
 JACKSON, MISS.

FLOYD ODOM
 Σ Ρ Χ
 GULFPORT, MISS.

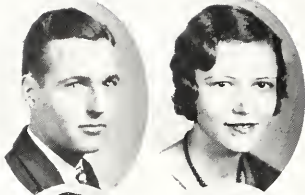
HENRY VARNER
 ROME, MISS.

MACON PHILLIPS
 JACKSON, MISS.

L. B. JONES
 Θ Κ Ν
 JACKSON, MISS.

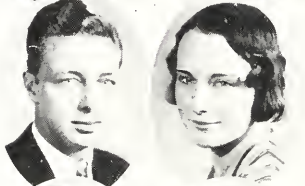


Junior Class



PAUL GRIFFITH
K A
WAYNESBORO, MISS.

MARGUERITE GAINAY
K Δ
JACKSON, MISS.



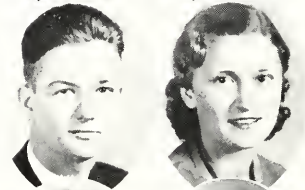
RABIAN DALE LANE
Θ K X
RALEIGH, MISS.

ELIZABETH HEITMAN
Δ Z
BOLTON, MISS.



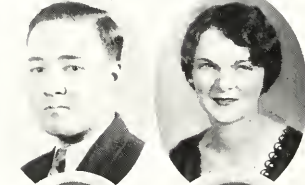
GYCELLE TYNES
Σ P X
GLOSTER, MISS.

MARY ELEANOR ALFORD
K Δ
VICKSBURG, MISS.



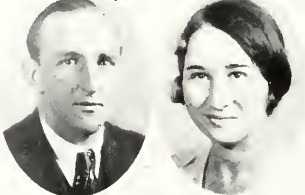
STOKES V. ROBERTSON, JR.
K A
JACKSON, MISS.

MARY SUE BURNHAM
K Δ
MAGEE, MISS.



CLINTON MOORE
K Σ
ITTA BENA, MISS.

CATHERINE PEETS
Φ M
BROOKHAVEN, MISS.



JIMMY GUESS
Π K A
JACKSON, MISS.

LOUISE DOOLEY
LESSLEY, MISS.

Junior Class

THYRZA BRANTON
Δ Z
PETTIT, MISS.

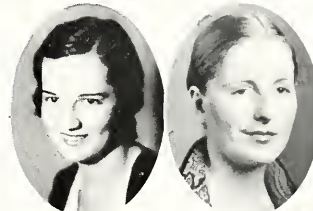


MARTHA HAMILTON
Φ M
JACKSON, MISS.

ANN STEVENS LEWIS
Δ Z
CANTON, MISS.



EVELYN MYERS
Δ Z
MORTON, MISS.



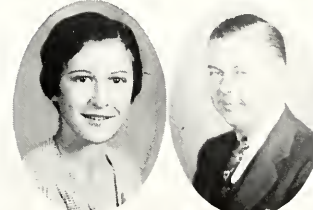
CARL LEE SWAYZE
K Δ
BENTON, MISS.

CLEO WARREN
CANTON, MISS.



JUANITA WINSTEAD
Δ Z
DEKALB, MISS.

ONEITA WINSTEAD
Δ Z
DEKALB, MISS.

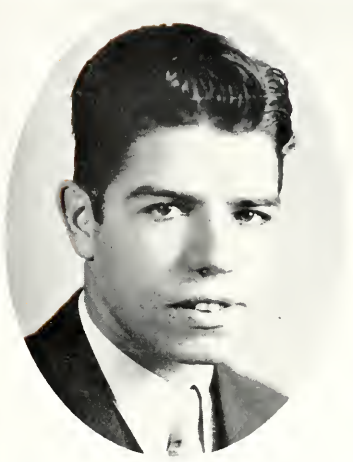
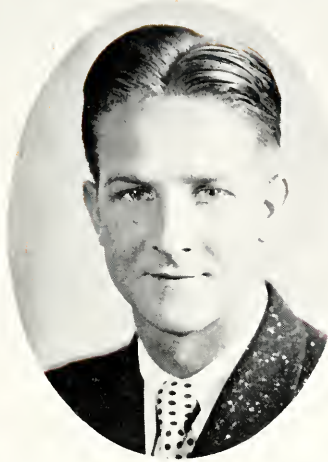


KATHRYN HERBERT
Φ M
JACKSON, MISS.

WILLIAM R. ARNOLD
K A
JACKSON, MISS.



MARGUERITE DETERLY, *Senior in Piano*



Class Officers

GARLAND HOLLOMAN *President*
HORACE DAVISSON *Vice-President*



SOPHOMORES

Sophomore Class



W. J. TREMAINE
K A
JACKSON, MISS.

ARCHIE HALEY
K A
JACKSON, MISS.

FRANCES ALLRED
JACKSON, MISS.

SPURGEON BUCKLEY
II K A
NEWTON, MISS.

DAN HEIDELBERG
K Σ
HATTIESBURG, MISS.

GORDON GRANTHAM
K A
TERRY, MISS.

MARY GILLESPIE
Φ M
RAYMOND, MISS.

GARLAND HOLLOMAN
K Σ
TITA BENA, MISS.

CONNIE HOZENDORF
MENDENHALL, MISS.

JOE PICKETT
MELVILLE, LA.

W. HOLMES COOK
II K A
LOUISVILLE, MISS.

JUANITA LANE
Δ Z
FOREST, MISS.

JOHN T. KIMBALL
Σ P X
DEQUINCY, LA.

JOHN CRESAP
CANTON, MISS.

MARGARET FLOWERS
Φ M
JACKSON, MISS.

M. A. RIGGS
JACKSON, MISS.

MELVIN RICHARDSON
K Σ
BOLTON, MISS.

NORMAN BRADLEY
K A
JACKSON, MISS.

Sophomore Class

NORMAN BOONE
CHUNKY, MISS.

BEVERLY BRISCOE
II K A
JACKSON, MISS.

JOHN CHAMBERS
K A
JACKSON, MISS.

J. B. MORRISON
K Σ
BILOXI, MISS.

CATHERINE JONES
Φ M
JACKSON, MISS.

HORACE DAVISSON
Θ K N
RULEVILLE, MISS.

ROBERT MAYO
JACKSON, MISS.

FLOYD LEWIS
LOUISE, MISS.

BAYLIS SHANKS
SUMRALL, MISS.

JOE M. HINDS
Σ P X
GULFPORT, MISS.

OUIDA MAE LUTER
JACKSON, MISS.

LUTHER BENNETT
SMITHVILLE, MISS.

ALTON BARNETTE
SUMMITT, MISS.

ELIZABETH WARREN
Φ M
JACKSON, MISS.

BLANTON DYE
II K A
CLARKSDALE, MISS.

BASIL MOORE
AMORY, MISS.

J. WILTON DEES
K Σ
HAZLEHURST, MISS.

AUDREY BRISCOE
JACKSON, MISS.





Sophomores

SAM LACKEY
Θ K X
FOREST, MISS.

VIOLET ALLEN
JACKSON, MISS.

FRANKLIN HEARD
K Σ
ITTA BENA, MISS.

GORDON ROGERS
BELZONI, MISS.

ANN PULLEN
Φ M
JACKSON, MISS.

EARL GRAVES
RAYMOND, MISS.

H. V. WATKINS, JR.
K A
JACKSON, MISS.

JEANETTE GULLEDGE
JACKSON, MISS.

N. P. LIGHTCAP, JR.
K Σ
JACKSON, MISS.

JAMES MOORE
K Σ
ITTA BENA, MISS.

HARRIET CAROTHERS
JACKSON, MISS.

JACK McDILL
K A
JACKSON, MISS.

DOROTHY DEAN
K Δ
JACKSON, MISS.

GALLOWAY AUSTIN
JACKSON, MISS.

TOMMY GOODWIN
K A
JACKSON, MISS.

MARY VIRGINIA WELLS
K Δ
JACKSON, MISS.

M. S. BRANTLEY
KILMICHAEL, MISS.

HILERY WHATLEY
JACKSON, MISS.
K Σ

Sophomores

MARGARET BERZETTE
JACKSON, MISS.

W. M. CAMPBELL
TUTWILER, MISS.

CHARLOTTE CAPERS
Φ M
JACKSON, MISS.

DACE DAVIS
O K N
JACKSON, MISS.

JULIA DELOACH
K Δ
JACKSON, MISS.

HARRIETTE HEIDELBERG
K Δ
JACKSON, MISS.

SARA HEIDELBERG
K Δ
JACKSON, MISS.

CORRINE HOLLOMAN
JACKSON, MISS.

ROBERT HOUGH
JACKSON, MISS.

BERRY IVEY
MERIDIAN, MISS.

RICHARD KINNAIRD
II K A
JACKSON, MISS.

CATHERINE LAMKIN
Δ Z
JACKSON, MISS.

ELLEN MACKAY
JACKSON, MISS.

HAZEL MCPHAIL
Δ Z
JACKSON, MISS.

DIXON PYLES
JACKSON, MISS.

ARTHUR ROGERS
K A
NEW ALBANY, MISS.

THOMAS ROSS
II K A
PELAHATCHIE, MISS.

LORENA SMITH
JACKSON, MISS.



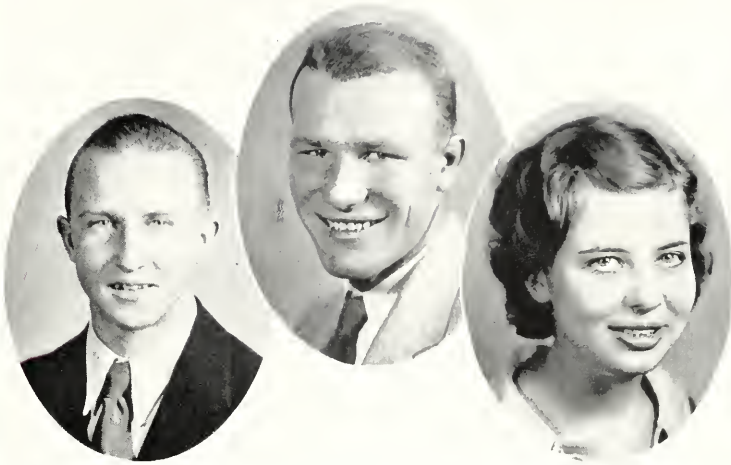


Alma Mater

*Alma Mater, dear old Millsaps,
Loyal sons are we;
Our fond hearts are thine alone
And evermore shall be.*

*Proud art thou in classic beauty
Of thy noble past;
With thy watch-word honor, duty,
Thy high fame shall last.*

*Every student, man and maiden,
Swell the glad refrain
'Til the breezes, music-laden,
Waft it back again.*



Class Officers

GABRIEL FELDER *President*
ROBERT WOMACK *Vice-President*
GRACE MASON *Secretary-Treasurer*



FRESHMEN

Freshmen



JESSE MAGEE Bogalusa, La.
 EDMOND RICKETTS Jackson, Miss.
 GORDON COOPER Purvis, Miss.
 MARGARET BARTON Jackson, Miss.
 T. M. DICKSON Jackson, Miss.
 W. F. SUBER Belzoni, Miss.
 MANLEY GREGORY Okolona, Miss.
 MAL ANDERSON Batesville, Miss.
 CHAUNCEY GODWIN Jackson, Miss.
 DOROTHY COWEN Jackson, Miss.
 OSWALD SCHWING Magnolia, Miss.
 ARTHUR PIERCE Jackson, Miss.
 AYRLENE MCGAHEY Jackson, Miss.
 MILLER E. MARETT Potts Camp, Miss.
 WALTER WENTZELL Biloxi, Miss.
 DWIGHT TAYLOR Jackson, Miss.
 ALLEN T. EDWARDS Mendenhall, Miss.
 JOHN HOWARD Durant, Miss.
 WARREN JONES Philadelphia, Miss.
 ELLIS LATIMER Okolona, Miss.
 MARY LEILA MILNER Jackson, Miss.
 CLARENCE McCORMICK Hickory, Miss.
 PAUL RAMSAY Meridian, Miss.
 MILDRED LAIRD Jackson, Miss.
 JOHN GILLASPY Monticello, Miss.
 LLOYD CAILLAVET Biloxi, Miss.
 CHESTER JUANICO Biloxi, Miss.
 BONNIE MCCARLEY Guntown, Miss.
 JOHN CASTLEN Greenville, Miss.
 LYNELLE WOOTEN Jackson, Miss.
 ARMAND KAROW Jackson, Miss.
 JULIUS FRANK DeQuincey, La.
 WILLIAM FULGHAM Jackson, Miss.
 FRANK REA DARDEN Jackson, Miss.
 KYLE PHILLIPS Laurel, Miss.

Freshmen

JULIA COX Jackson, Miss.
 OTHO MONROE Canton, Miss.
 DAISY KATE BROWN Jackson, Miss.
 MOSBY ALFORD Hazlehurst, Miss.
 MALCOLM CARTER Gulfport, Miss.
 KENNETH GILBERT Meridian, Miss.
 CHARLES HANNA Jackson, Miss.
 MARGARET BERZETTE Jackson, Miss.
 JAMES CRUTCHER Clarksdale, Miss.
 BUREN AKERS Pontotoc, Miss.
 LAURENS KENNEDY Natchez, Miss.
 NORVELLE BEARD Jackson, Miss.
 JAMES S. NOBLIN Forrest, Miss.
 LEONARD HOLMES Tylertown, Miss.
 ROBERT BRENT Crystal Springs, Miss.
 THOMAS BOSWELL Jackson, Miss.
 MARTHA DONALDSON Jackson, Miss.
 GABRIEL FELDER Magnolia, Miss.
 W. BRUMFIELD McComb, Miss.
 THOMAS McDONNELL Okolona, Miss.
 JOE WILLIAMS Columbus, Miss.
 MARZINE CALLAHAN Noxapater, Miss.
 JOHN NEBLETT Bateville, Miss.
 JAMES FISHER Belzoni, Miss.
 BERNICE CROSBY Jackson, Miss.
 CURTIS GALIE Biloxi, Miss.
 ROBERT WOMECK Bogalusa, La.
 JULIAN LOCKETT Grenada, Miss.
 MYNELLE CORLEY Raleigh, Miss.
 DACE DAVIS Jackson, Miss.
 PAUL HARDIN Magnolia, Miss.
 ROBERT REAGAN Magnolia, Miss.
 EMMA HEALD Jackson, Miss.
 JOHN MELVIN Camden, Miss.
 RAY HOLDER Lucedale, Miss.
 WEBB OVERSTREET Jackson, Miss.



Freshmen

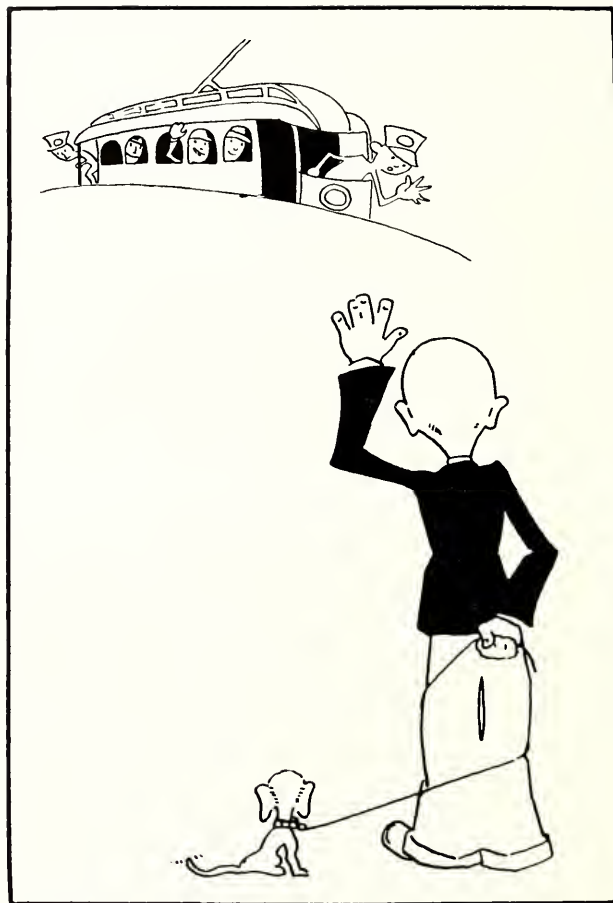


CHARLES COLE Drew, Miss.
 CHARLES NEILL Jackson, Miss.
 FRED WARD Tutwiler, Miss.
 JOE GUESS Jackson, Miss.
 JOHN FARMER Forest, Miss.
 ETHEL McMURRAY Jackson, Miss.
 GORDON REEVES McComb, Miss.
 JOHN NEBLETT Batesville, Miss.
 CHARLES ALEXANDER Forest, Miss.
 JOHN R. LOFLIN Jackson, Miss.
 ROBERT STOCKETT Jackson, Miss.
 ELISE ENOCHS Jackson, Miss.
 BILLY SOURS Jackson, Miss.
 RAS MANSELL Camden, Miss.
 HUGO NEWCOMB Richton, Miss.
 MORRISON MASSEY Bay Springs, Miss.
 MAURICE JONES Greenwood, Miss.
 DOROTHY THOMPSON Jackson, Miss.
 MILTON ABRAMS Natchez, Miss.
 MARVIN SMITH Tehula, Miss.
 LOUIS DECELL Brookhaven, Miss.
 SMITH McDUGAL Jackson, Miss.
 ARTHUR TODD Jackson, Miss.
 LOIS BARROW Jackson, Miss.
 SHERRAL COLEMAN Fayette, Miss.
 CHARLES ADAMS Macon, Miss.
 LOUIS HALLAM Jackson, Miss.
 EDWARD FLOWERS Jackson, Miss.
 O. C. MOFFETT Bogalusa, La.
 VIRGINIA WATERHOUSE Jackson, Miss.
 LEE STOKES Meridian, Miss.
 JAMES BUNYARD Camden, Miss.
 CURTIS KNIGHT Hattiesburg, Miss.
 EDWIN UNDERWOOD Terry, Miss.
 RALPH JONES Greenwood, Miss.
 RUTH SARRETT Jackson, Miss.

Freshmen

FRED BASS Long Beach, Miss.
 FRANCIS BRADSHAW Bontonia, Miss.
 ROBERT CUNNINGHAM Jackson, Miss.
 JACK DORRIS Jackson, Miss.
 L. E. GERELD McComb, Miss.
 BEN HARPOLE Calhoun City, Miss.
 HAZEL HARRISON Jackson, Miss.
 WARFIELD HESTER Terry, Miss.
 ROBERT KOENIG Jackson, Miss.
 JAMES I. LUNDY Greenwood, Miss.
 GRACE MASON Jackson, Miss.
 HADEN MCKAY Jackson, Miss.
 JUDSON PALMER Jackson, Miss.
 GEORGE PRESTRIDGE Bogalusa, La.
 ROBERT RIDGEWAY Jackson, Miss.
 RICHARD KING Jackson, Miss.
 HAYS SNEED Jackson, Miss.
 KENNETH TERRELL Prentiss, Miss.
 WILLIAM SHUTT Jackson, Miss.
 BILL TYSON Jackson, Miss.
 DOYLE MATTOX Swifttown, Miss.
 ELLIS WRIGHT Jackson, Miss.
 GEORGE YEAGER Stringer, Miss.
 RUTH WARD Terry, Miss.
 MARION GIDDENS Jackson, Miss.
 CANDLER LEGGETT Jackson, Miss.
 KATHERINE HEIDELBERG Jackson, Miss.
 JAMES VANCE Jackson, Miss.
 MARSHALL McCORMICK Forest, Miss.
 EDWARD McDONNELL Jackson, Miss.
 HUGH NICHOLS Lexington, Miss.
 JACK SPICELAND Lucedale, Miss.
 JOHN STEPHENS Lexington, Miss.
 WANDA TREMAINE Jackson, Miss.
 SARA ANDERSON Jackson, Miss.
 SHIRLEY MAGEE Jackson, Miss.
 DICK BARRETT Lexington, Miss.
 N. R. CURRIE, JR. Jackson, Miss.
 LAVERNE DENSON Jackson, Miss.
 JAMES DOWNING Jackson, Miss.
 ELIJAH FLEMING Jackson, Miss.
 JACK GATES Jackson, Miss.





GOOD-BYE CLASSES





BIVINS, OWEN, BANKS, RUFF, NEWELL
 McDILL, NEBLETT, DUBARD, KING, PERMENTER

Student Executive Board

- WALTER BIVINS *President Student Body*
 VARDAMAN L. OWEN *Y. M. C. J.*
 DOUGLAS BANKS *Y. W. C. A.*
 SAM JOE RUFF *Literary Societies*
 HARVEY T. NEWELL, JR. *Publications*
 THERESA McDILL *Publications*
 T. F. NEBLETT *Band*
 DAVID DUBARD *Glee Clubs*
 SARA KING *Women's Pan-Hellenic Council*
 WALTER PERMENTER *Athletics*



Classical Club

FACULTY ADVISORS

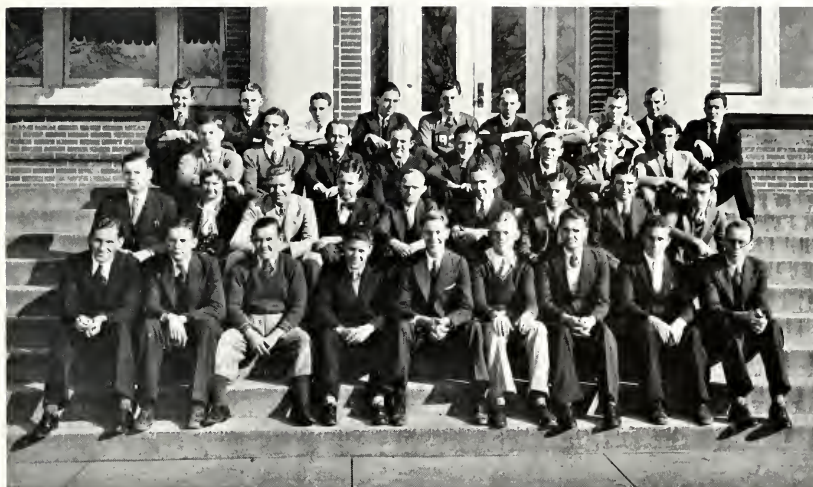
MISS MAGNOLIA SIMPSON DR. A. P. HAMILTON

OFFICERS

EDWARD A. KHAYAT *President*
 RABIAN LANE *Vice-President*
 THYRZA BRANTON *Secretary*
 DOROTHY LOFLIN *Treasurer*

LECTURERS

DR. D. M. KEY	MISS MAGNOLIA SIMPSON
PROF. A. G. SANDERS	DR. GEO. C. SWEARINGEN
DR. A. P. HAMILTON	DR. M. W. SWARTZ



Science Club

Purpose: To promote interest in, and knowledge of, Science among the students of Millsaps College.

FACULTY MEMBERS

DR. J. M. SULLIVAN	PROF. J. B. PRICE
PROF. G. L. HARRELL	PROF. N. WILKERSON

OFFICERS

ROY H. BAILEY	<i>President</i>
ALEXANDER BAINES	<i>Vice-President</i>
RICHARD KINNAIRD	<i>Secretary</i>
GORDON ROGERS	<i>Treasurer</i>
YARDAMAN L. OWEN	<i>Librarian</i>
CHARLES B. GALLOWAY	<i>Bibliographer</i>

Y. M. C. A. Cabinet

OFFICERS OF THE Y. M. C. A.

VARDAMAN L. OWEN *President*
JOHN B. HOWELL *Vice-President*
PAUL GRIFFITH *Secretary-Treasurer*
PROF. H. CONRAD BLACKWELL *Faculty Advisor*

COMMITTEES

Program

S. J. RUFF
T. A. GILBERT

Vespers

DAN HEIDELBERG
BASIL MOORE

Extension Work

JOHN T. VICKERS
T. F. NEBLETT

Church Work

ALBERT COLLINS
LUTHER BENNETT

Publicity

NORMAN BOONE
CONNIE HOZENDORF

Freshman Work

JOHN T. KIMBALL
DAVID DUBARD

Social

RABIAN LANE
JOHN CRESAP

Music

ARTHUR CROSS
MATHIS ARMSTRONG



Y. M. C. A.

Neblett, Howell, Dubard, Griffith
 Gilbert, Moore, Heidelberg, Cresop
 Lane, Hozendorf, Boone, Bennett
 Collins, Ruff, Blackwell, Kimball
 Armstrong, Owen

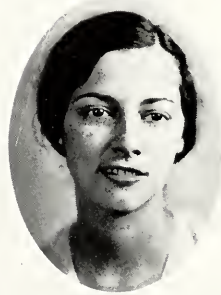
Y. W. C. A. Cabinet

OFFICERS OF THE Y. W. C. A.

DOUGLAS BANKS	<i>President</i>
SARA OWEN KING	<i>Vice-President</i>
WILNA RIGBY	<i>Secretary</i>
MARY VELMA SIMPSON	<i>Treasurer</i>

COMMITTEE CHAIRMEN

ANN STEVENS LEWIS	<i>Program</i>
ELIZABETH BUHRMAN	<i>Social</i>
HARRIET CAROTHERS	<i>World Fellowship</i>
ROSE FULGHAM WELLS	<i>Finance</i>
MARY WACASTER	<i>Publicity</i>
VIVIAN CONE	<i>Social Service</i>
EMMA MAUDE SLAUGHTER	<i>Music</i>
MARY HEALD	<i>Industrial</i>



Y. W. C. A.
Wells, Banks, Lewis
Simpson, Wacaster, Buhrman, King
Carothers, Rigby, Heald



Theresa McDill, *Editor* Edward Khayat, *Business Manager*

The 1932 Bobashela

- HAL WILSON DALE *Class Editor*
 T. F. NEBLETT *Photograph Editor*
 CLINTON W. WALKER *Sports Editor*
 DOROTHY DEAN *Art Editor*
 LUCIAN FERRIS *Feature Editor*
 EWING HESTER *Organizations Editor*
 BLANTON DYE *Assistant Business Manager*



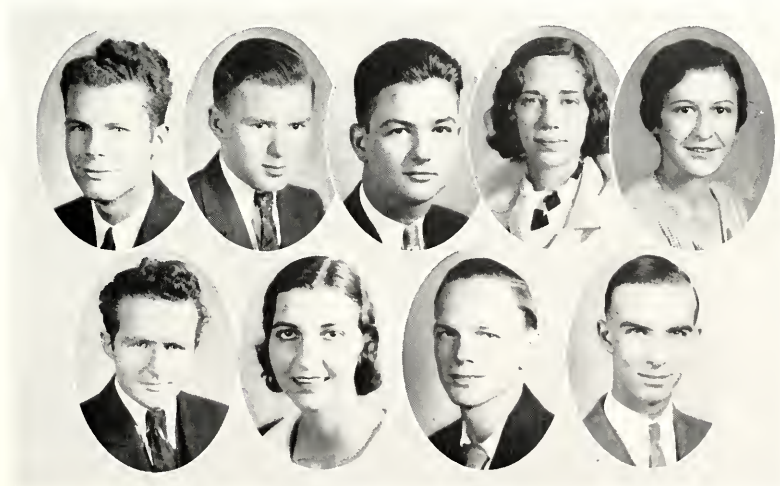


HARVEY T. NEWELL, JR., *Editor* SAM JOE RUFF, *Business Manager*

The Purple and White

THE STAFF

BLANTON DYE	<i>Managing Editor</i>	KATHERINE JACOBS	<i>Social Editor</i>
NORMAN BRADLEY	<i>Feature Editor</i>	CHARLOTTE CAPERS	<i>Columnist</i>
GEORGE STEPHENSON	<i>Sports Editor</i>	RAYMOND MCGINNIS	<i>Columnist</i>
STOKES ROBERTSON	<i>Organizations</i>	HAL DALE	<i>Locals Editor</i>
ROY BAILEY	<i>Organizations</i>	KATHRYN HERBERT	<i>Book Review Editor</i>
SPURGEON BUCKLEY		<i>Circulation Manager</i>	



Galloway Literary Society

OFFICERS

ROBERT HOUGH *President*
ALBERT COLLINS *Vice-President*
BASIL E. MOORE *Secretary*
VARDAMAN OWEN *Treasurer*

MEMBERS

CHARLIE ADAMS	PHILIP GRICE
LUTHER BENNETT	FRED HOLLADAY
NORMAN BOONE	RAY HOLDER
M. S. BRANTLEY	NOEL HINSON
SPURGEON BUCKLEY	PAUL HARDIN
ROY BAILEY	WARFIELD HESTER
JOE CARGILE	RABIAN LANE
FRANK CASEY	JAMES LUNDY
GORDON COOPER	BASIL MOORE
ALBERT COLLINS	SWOPE NOBLIN
BOB ENOCHS	JOE PICKETT
ALLAN EDWARDS	V. L. OWEN
GABRIEL FELDER	J. C. PATTERSON

PAUL RAMSEY
SAM JOE RUFF
MARVIN RIGGS
BAYLIS SHANKS
JACK SPICELAND
GEORGE STEPHENSON
JAMES SWEIZER
DWIGHT TAYLOR
EDWIN UNDERWOOD
PAUL GRIFFITH
GLADEN CALDWELL
CHARLES NEILL
ROBERT HOUGH



GALLOWAY LITERARY SOCIETY

Hough
Bennett
Cooper
Holder
Lundy
Ruff
Underwood

Collins
Boone
Edwards
Hinson
Noblin
Riggs
Griffith

Moore
Brantley
Felder
Hardin
Pickett
Shanks
Neill

Owen
Bailey
Grice
Hester
Patterson
Spiceland

Adams
Casey
Holladay
Lane
Ramsey
Taylor

Lamar Literary Society

OFFICERS

B. G. AUSTIN *President*
GEORGE McMURRAY *Vice-President*
JACK DORRIS *Secretary*
STOKES V. ROBERTSON, JR. *Treasurer*
WALTER BIVINS *Critic*

MEMBERS

B. G. AUSTIN	LUCIEN FERRIS
WALTER BIVINS	D. M. KEY, JR.
NORMAN BRADLEY	DAVID A. LIVINGSTON
JACK BRIDGES	RAYMOND MCGINNIS
JOHN CASTLEN	GEORGE McMURRAY
W. HOLMES COOK	T. F. NEBLETT
ROBERT CUNNINGHAM	FLOYD ODOM
DASE DAVIS	ROBERT RIDGEWAY
HORACE DAVISON	EDMUND RICKETTS
JACK DORRIS	STOKES V. ROBERTSON, JR.
JAMES DOWNING	LEE STOKES
DAVID DUBARD	VAUGHAN WATKINS
BLANTON DYE	DAN WILLIAMS
H. D. GILLIS	JOE WILLIAMS
	KENNETH WILLS



LAMAR LITERARY SOCIETY

Austin
 Castlen
 Davisson
 Dye
 McGinnis
 Ricketts
 Williams

Bivins
 Cook
 Dorris
 Ferris
 Neblett
 Robertson
 Wills

Bradley
 Cunningham
 Downing
 Key
 O'Dom
 Stokes

Bridges
 Davis
 Dubard
 Livingston
 Ridgeway
 Watkins



Men's Glee Club

DR. A. P. HAMILTON, *Director*

MISS MAGNOLIA SIMPSON, *Accompanist*

OFFICERS

DAVID DUBARD *President* T. NEBLETT *Assistant Business Manager*
 EDWARD KHAYAT *Business Manager* JOHN KIMBALL *Librarian*

PERSONNEL

First Tenor

LUTHER BENNETT
 M. S. BRANTLEY
 T. F. NEBLETT
 ROWAN CREWS

T. M. DICKSON
 RAY HOLDER
 JOHN NEBLETT
 KYLE PHILLIPS
 SHELBY ROBERTS

CHARLES SCHWEIZER
 WILLIAM TYSON
 MARION GIDDENS
 JAMES TAYLOR

Second Tenor

JOHN CRESAP
 PAUL GRIFFITH
 FRED BASS
 RUSSELL CAROTHERS

JOHN CASTLEN
 GABRIEL FELDER
 JESSE MAGEE
 VIRGIL SKIPPER
 ROBERT WOMACK

DAVID WALLEY
 MARZINE CALLAHAN
 JOE GUESS
 EMILIO ROMANO

First Bass

SPURGEON GASKIN
 EDWARD KHAYAT
 BEVERLY BRISCOE

JOHN CHAMBERS
 LOUIS DECELL
 JAMES FISHER
 MANLEY GREGORY

LEE STOKES
 JAMES LUNDY
 RICHARD KING

Second Bass

JOHN CAMPBELL
 DAVID DUBARD
 JOHN KIMBALL

CHARLES COLE
 WILLIAM FULGHAM

RAS MANSFELL
 SMITH MCDUGAL
 WILLIAM SHUTT

Quartet

GIDDENS, KING, FULGHAM, SHUTT



Ramblers Club

(Geology)

FACULTY ADVISOR

DR. J. M. SULLIVAN

OFFICERS

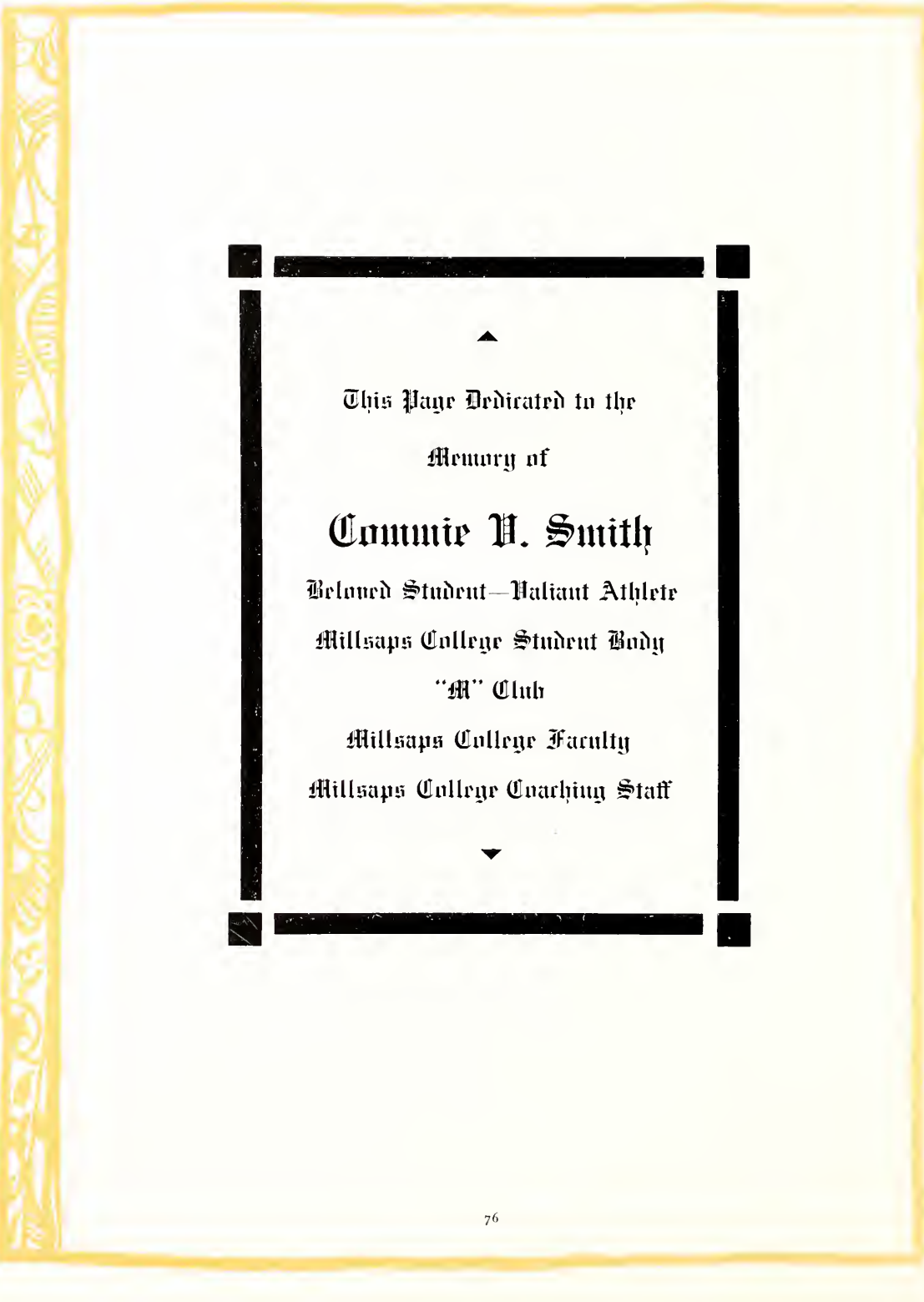
SPURGEON GASKIN *President*
 R. P. VINCENT *Vice-President*
 HAL DALE *Treasurer*
 THERESA MCDILL *Secretary*
 HOWARD K. WILLIFORD *Reporter*
 MACON PHILLIPS *Photographer*

MEMBERS

DOUGLAS BANKS
 WINIFRED GREEN
 MOZELLE HEARON
 BILLY ARNOLD
 WALTER BIVINS
 CHARLTON HUTTON

BILL JACOBS
 P. H. KIM
 ALLEN LINDSEY
 JOHN MUNSTERMAN
 GEORGE MURPHY
 T. F. NEBLETT

CLAUDE PASSEAU
 JOHN PATTERSON
 J. T. VICKERS
 VAUGHAN WATKINS
 T. O. PREWITT
 HENRY WARREN



▲

This Page Dedicated to the
Memory of

Commie H. Smith

Beloved Student—Valiant Athlete
Millsaps College Student Body
“M” Club

Millsaps College Faculty
Millsaps College Coaching Staff

▼



Ministerial League

OFFICERS

MATHIS ARMSTRONG *President*
 NORMAN BOONE *Vice-President*
 BASIL E. MOORE *Secretary-Treasurer*

MEMBERS

MATHIS ARMSTRONG	P. H. KIM
LUTHER BENNETT	MARSHALL LANE
M. S. BRANTLEY	SAM MOODY
NORMAN BOONE	BASIL E. MOORE
FRANK CASEY	FLOYD ODOM
ALBERT COLLINS	LEE STOKES
SHERRELL COLEMAN	HENRY VARNER
GABRIEL FELDER	ROBERT YOUNG
NOEL HINSON	SWOPE NOBLIN
CONNIE HOZENDORF	BUREN AKERS



International Relations Club

FACULTY MEMBERS

PROFESSOR ROSS H. MOORE DR. A. P. HAMILTON
MISS FLORENCE LEECH

STUDENT MEMBERS

VIRGINIA YOUNGBLOOD	NORMAN BRADLEY
KATHRYN HERBERT	EDWARD KHAYAT
MARY WACASTER	JOHN KIMBALL
HELEN RIPLEY	CARL CUTRER
MARGARET FLOWERS	PAUL GRIFFITH
ROBERT HOUGH	WALTER BIVINS
HARVEY T. NEWELL, JR.	STOKES V. ROBERTSON, JR.
CHARLES WALKER	GYCELLE TYNES



The Woman's Association

Organized October, 1930

Purpose: To represent and to further the best interests of the student body; to strengthen the spirit of unity and sense of individual responsibility among the women of Millsaps College.

OFFICERS

MARY ORMOND HEALD	<i>President</i>
MARY VELMA SIMPSON	<i>Vice-President</i>
SARA OWEN KING	<i>Secretary</i>
WILNA ALINE RIGBY	<i>Treasurer</i>
HARRIET BYRD CAROTHERS	<i>Program Chairman</i>
ROSE FULGHAM WELLS	<i>Social Chairman</i>
DOROTHY COWEN	<i>Reporter</i>
MRS. MARY H. STONE	<i>Faculty Advisor</i>



KING, CAPERS, JACOBS, MOORE
SMITH, WACASTER, HEIDELBERG, HERBERT

Women's Pan-Hellenic Council

REPRESENTATIVES

Kappa Delta

SARA KING

HARRIETT HEIDELBERG

Delta Zeta

MARY WACASTER

GLENNA MOORE

Phi Mu

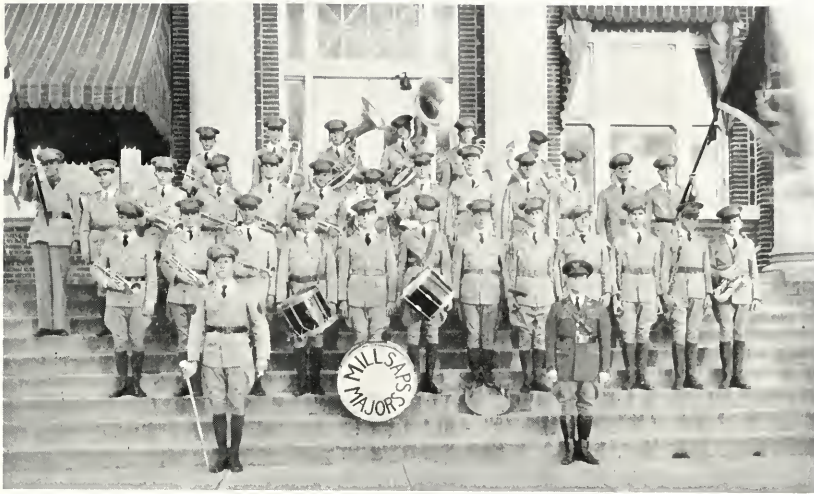
KATHRYN HERBERT

CHARLOTTE CAPERS

Beta Sigma Omicron

SARA SMITH

KATHERINE JACOBS



Millsaps 106th Engineers Band

FRANK SLATER *Warrant Officer*
 THOMAS F. NEBLETT *Staff Sergeant*

Sergeants

HAL W. DALE STOKES V. ROBERTSON, JR. DAVID Y. DUBARD

Corporals

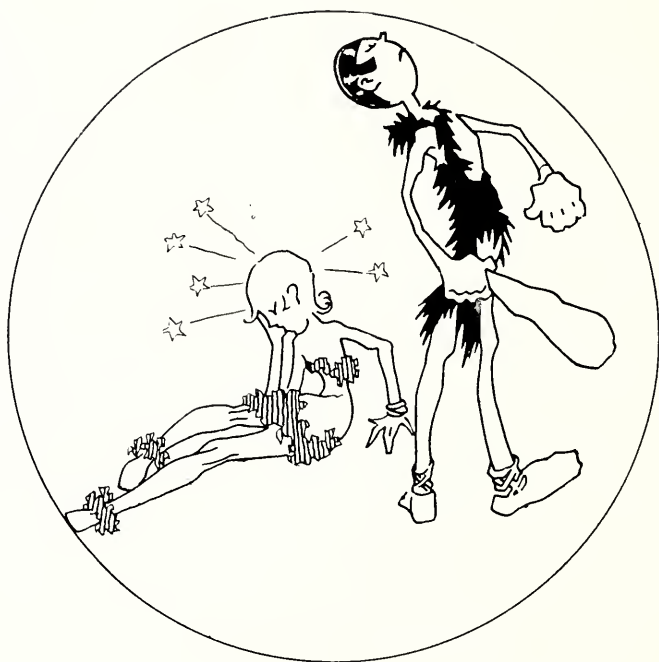
SPURGEON P. GASKIN JOE F. GUESS FRANKLIN C. HEARD B. SMITH MCDUGAL

First Class Privates

ALTON E. BARNETTE JAMES S. FISHER R. GORDON GRANTHAM JOHN F. NEBLETT
 JOHN C. CHAMBERS ELIJAH H. FLEMING ARMAND M. KAROW HUGH L. NICHOLS

Privates

MATHIS E. ARMSTRONG	JAMES K. GILBERT	GEORGE E. MURPHY
THOMAS S. BOSWELL	RAY HOLDER	KYLE PHILLIPS
JOHN C. CASTLEN	JESSE L. HOLMES	GORDON K. ROGERS
CHARLES W. COLE	JAMES I. LUNDY	LEE T. STOKES
JAMES Y. DOWNING	JOHN E. MELVIN	HENRY VARNER
PHILIP H. GRICE	HADEN E. MCKAY	JOHN HOWARD







HAMILTON, MITCHELL, JENKINS
 MOORE, KEY, WHITE, VAN HOOK
 HOWELL, GILBERT, ROBERTSON
 PERMENTER, BIVINS, KHAYAT, NEWELL, DUBARD

Omicron Delta Kappa

(Student Leadership)

Founded at Washington and Lee University in 1914

Colors: Blue and White

Publication: "The Circle"

PI CIRCLE

FACULTY MEMBERS

A. P. HAMILTON
 B. E. MITCHELL

F. C. JENKINS
 ROSS H. MOORE
 D. M. KEY

M. C. WHITE
 B. O. VAN HOOK

STUDENT MEMBERS

JOHN B. HOWELL
 STOKES V. ROBERTSON, JR.

T. A. GILBERT, JR.
 WALTER PERMENTER
 HARVEY T. NEWELL, JR.

WALTER BIVINS
 EDWARD A. KHAYAT



WACASTER, McDILL
GREEN, HERBERT, RIPLEY

Chi Delta Phi (Literary)

Founded at the University of Tennessee in 1910

Colors: Blue and Gold

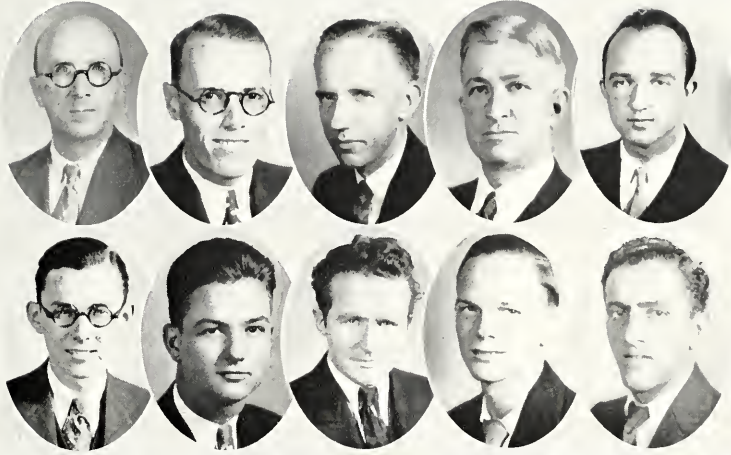
Publication: "Litterateur"

IOTA CHAPTER

MARY WACASTER

THIRESA McDILL
WINIFRED GREEN

KATHRYN HERBERT
HELEN RIPLEY



WHITE, PRICE, MOORE, SANDERS, WILLIFORD
 NEWELL, ROBERTSON, MCGINNIS, BRADLEY, KHAYAT

Sigma Upsilon

(Literary)

Founded at the University of the South

Colors: Green and Gold

Publication: "News Letter"

KIT KAT CHAPTER

FACULTY MEMBERS

D. H. BISHOP

J. B. PRICE

M. C. WHITE

ROSS H. MOORE

A. G. SANDERS

STUDENT MEMBERS

HOWARD K. WILLIFORD

STOKES V. ROBERTSON, JR.

RAEBURN CASBURN

HARVEY T. NEWELL, JR.

RAYMOND MCGINNIS

NORMAN BRADLEY

EDWARD A. KHAYAT



WALKER, NEWELL, HERBERT, LINDSEY, BAINES
 GREEN, KING, MOORE, WACASTER, KHAYAT

Eta Sigma

(Scholarship)

Founded Locally at Millsaps College in 1923

FACULTY MEMBER

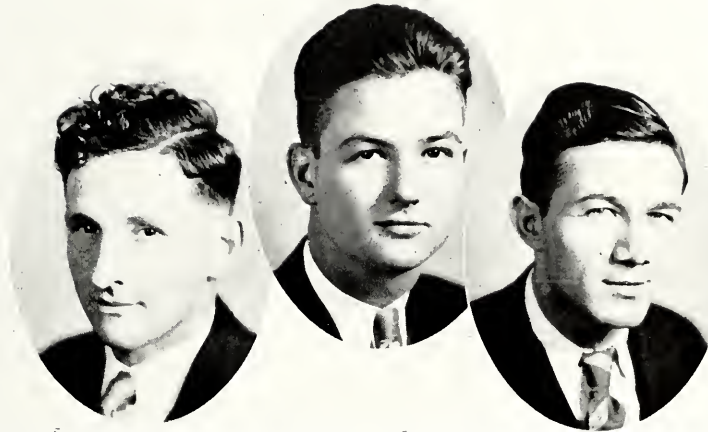
ROSS H. MOORE

STUDENT MEMBERS

CLINTON W. WALKER
 HARVEY T. NEWELL, JR.
 KATHRYN HERBERT

ALLAN LINDSEY
 ALEXANDER BAINES
 WINIFRED GREEN

SARA KING
 MARY WACASTER
 EDWARD KHAYAT



SAM JOE RUFF, STOKES V. ROBERTSON, JR.
BIVENS

Pi Kappa Delta *(Forensic)*

Publication: "The Forensic"

MISSISSIPPI ALPHA CHAPTER

FACULTY MEMBER

CHARLES F. NESBITT

STUDENT MEMBERS

SAM JOE RUFF WALTER BIVENS
STOKES V. ROBERTSON, JR.



WHITE, DALE, GULLEDGE, MOORE
 HESTER, McDILL, HOWELL, WILLIFORD

Alpha Psi Omega

(Dramatic)

Founded at West Virginia State College

Colors: Blue and Gold

Publication: "The Playbill"

ALPHA PI CAST

FACULTY MEMBERS

M. C. WHITE

ROSS H. MOORE

STUDENT MEMBERS

THERESA McDILL

JEANNETTE GULLEDGE

HAL WILSON DALE

W. E. HESTER, JR.

HOWARD K. WILLIFORD

JOHN B. HOWELL

UNDERSTUDIES

GORDON GRANTHAM

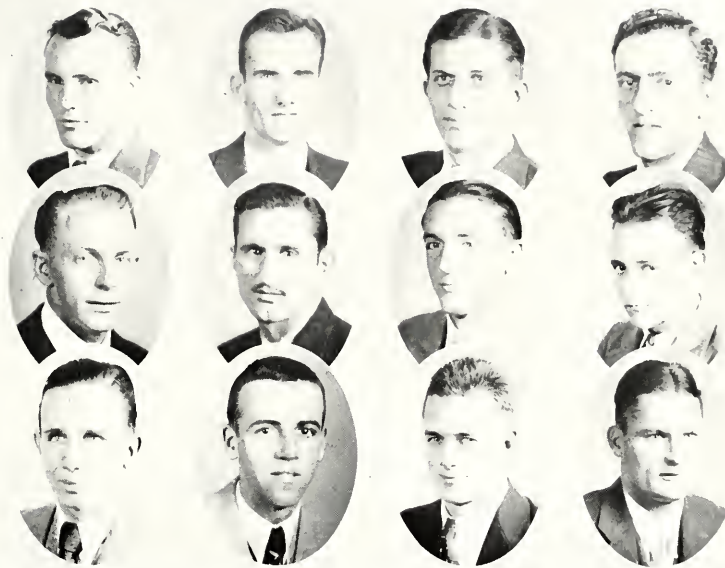
T. F. NEBLETT

DOROTHY DEAN

KATHRYN HERBERT

HARVEY T. NEWELL, JR.

DAVID DUBARD



WALKER, LIVINGSTON, RIGBY, KHAYAT, ODOM, CUTRER
 TYNES, KIMBALL, HINDS, BRADSHAW, CARTER, DUNAWAY

Sigma Rho Chi

Founded Locally at Millsaps College in 1930

Colors: Scarlet and Cream

Flower: Carnation

CLASS OF 1932

CLINTON W. WALKER	D. A. LIVINGSTON
JOHN S. MOON	LAWSON RIGSBY
EDWARD A. KHAYAT	

CLASS OF 1933

PAT DUNAWAY	VIRGIL SKIPPER
FLOYD ODOM	GYCELLE TYNES
C. M. CUTRER	

CLASS OF 1934

JOHN KIMBALL	JOE M. HINDS
WALTER BACKSTROM	JAMES CAMPBELL

CLASS OF 1935

FRANCIS BRADSHAW	MALCOLM CARTER
------------------	----------------



Kappa Alpha

Founded at Washington and Lee University in 1865

Colors: Crimson and Gold

Flowers: Magnolia and Red Rose

Publication: "Kappa Alpha Journal"

ALPHA MU CHAPTER

CLASS OF 1932

BARCLAY DONALDSON DAVID M. KEY, JR.
LUCIAN FERRIS

CLASS OF 1933

BILLY ARNOLD JOHN ENOCHS
ROY BAILEY STOKES V. ROBERTSON, JR.
PAUL GRIFFITH ROBERT P. VINCENT

CLASS OF 1934

NORMAN BRADLEY W. J. TREMAINE*
GORDON GRANTHAM REX MOODY*
JACK McDILL TOMMIE GOODWIN*
H. V. WATKINS, JR. JOHN CHAMBERS*
ARTHUR ROGERS CANDLER LEGGETT*

CLASS OF 1935

JIMMY DOWNING* JUDSON PALMER† BILLY SOURS*
LUTHER CRULL* ROBERT RIDGEWAY* LOUIS HALLAM*
BOB CUNNINGHAM* WARFIELD HESTER† ARCHIE HALEY*
JOE CARGILE* CHARLIE ADAMS* EDMOND RICKETTS*
ARTHUR TODD* EDWARD FLOWERS, JR.*

*Pledges.



KAPPA ALPHA

Rogers, Vincent, Robertson Bradley, Grantham
Todd, Cumingham, Hester, Ridgway, Flowers
Haley, Tremaine, Palmer, Watkins, Griffith
Key, Goodwin, Chambers, Leggett, Enochs
Downing, Ferris, Hallam, Sours, Donaldson
Arnold, Ricketts, Adams, McDill



Kappa Sigma

Founded at the University of Bologna in 1400

Founded at the University of Virginia in 1867

Colors: Scarlet, White, Emerald

Flower: Lily-of-the-Valley

Publications: "The Caduceus" and "The Star and Crescent"

ALPHA UPSILON CHAPTER

CLASS OF 1932

T. A. GILBERT, JR.
CHARLES B. GALLOWAY

W. R. FERRIS
WALTER PERMENTER

CLAUDE W. PASSEAC, JR.
KENNETH WILLS

CLASS OF 1933

JOHN B. HOWELL

W. E. HESTER, JR.

HENRY NEWCOMB*

CLASS OF 1934

WILTON DEES
DAN HEIDELBERG
E. C. HEARD

JOE H. STONE
J. B. MORRISON
JAMES MOORE*
HILERY WHALLEY*

GENE BRISTER
GARLAND HOLLOMAN
MELVIN RICHARDSON*

CLASS OF 1935

JAMES VANCE*
ED McDONNELL*
JACK GATES*
N. R. CURRIE*
SMITH McDUGAL*
MAL ANDERSON*
HUGO NEWCOMB*
JAMES BUNYARD*

HUGH NICHOLS*
JOHN STEPHENS*
DICK BARRETT*
GILLIAM GWIN*
MARVIN SMITH*
LOUIS DECELL*
KENNETH GILBERT*
CURTISS KNIGHT*
PUGH LIGHTCAP*

THOMAS McDONNELL*
E. H. LATIMER*
MANLEY GREGORY*
BILL TYSON*
RUSSELL CAROTHERS*
MOSEY ALFORD*
T. J. INGRAM*
CLAUDE MOORE*

*Pledges.



KAPPA SIGMA

Galloway, Heidelberg, Stephens, Passeur, Permenter, Barret
 Gates, Smith, McDonnell, Newcomb, Howell
 Hester, Knight, Morrison, Newcomb, Moore, Heard
 Vance, Holloman, Gilbert, McDougal, Nichols
 Wills, Moore, Whatley, Gilbert, Decell, Gwin
 Curry, McDonnell, Tyson, Gregory, Lightcap
 Latimer, Bunyard, Richardson, Anderson, Alford, Dees



Pi Kappa Alpha

Founded at the University of Virginia in 1860

Colors: Garnet and Gold

Flower: Lily-of-the-Valley

Publication: "Shield and Diamond"

CLASS OF 1932

D. V. HERLONG, JR. M. FRANKLIN WILLIAMS
J. H. NOBLIN

CLASS OF 1933

JAMES GUESS V. D. TOWNSEND*
HARVEY T. NEWELL, JR.

CLASS OF 1934

BLANTON DYE THOMAS ROSS
WALTER BOONE RICHARD KINNAIRD
SPURGEON BUCKLEY BEVERLY BRISCOE*
HOLMES COOK*

CLASS OF 1935

PAUL HARDIN*	ELIJAH FLEMING*	LAURENS KENNEDY*
DWIGHT TAYLOR*	JOE F. GUESS*	JESSE MAGEE*
HAYDEN MCKAY*	CHARLES COLE*	SHELBY ROBERTS*
CLARENCE MCCORMICK*	FRITZ MELVIN*	ELLIS WRIGHT*
JAMES CRUTCHER*	KYLE PHILLIPS*	ROBERT BRENT*
JOHN CASTLEN*	CHARLES NEILL*	ROBERT STOCKETT*

*Pledges.



PI KAPPA ALPHA

Herlong, Williams, Noblin, Guess, Townsend
 Newell, Dye, Boone, Buckley, Ross
 Kinnaird, Briscoe, Cook, Hardin, Taylor
 McKay, McCormick, Crutcher, Castlen, Fleming
 Guess, Cole, Melvin Phillips, Neill
 Kennedy, Magee, Wright, Brent, Stockett



Theta Kappa Nu

Founded at Drury College in 1924

Colors: Black, Crimson, Silver

Flower: American Beauty Rose

Publication: "Theta News"

MISSISSIPPI ALPHA CHAPTER

CLASS OF 1932

DAVID DUBARD	BILL JACOBS
WILLIAM ERVIN	JOHN PATTERSON
LEE TRAVIS	WALTER BIVENS
H. G. WARREN	SAM JOE RUFF*

CLASS OF 1933

RABIAN LANE	FELIX UNDERWOOD
T. F. NEBLETT	L. B. JONES
	EMILIO ROMANO*

CLASS OF 1934

HORACE DAVISSON	HOWARD NEYLAND*
GEORGE MCMURRY	JACK BRIDGES*
	SAM LACKEY

CLASS OF 1935

MARZINE CALLAHAN ⁺	RALPH JONES*	WEBB OVERSTREET*
JOHN GILLASPEY*	JAMES LUNDY ⁺	ARTHUR PIERCE*
CHARLES HANNA*	O. C. MOFFETT ⁺	LEE STOKES*
MAURICE JONES*	JOHN NEBLETT ⁺	W. A. SUBER*
	JOE WILLIAMS*	

⁺Pledges.



THETA KAPPA NU

Dubard, Ervin, Travis, Warren, Jacobs
 Patterson, Bivins, Ruff, Lane, Neblett
 Underwood, Jones, Romano, Davisson, Bridges
 Lackey, Callahan, Gillaspay, Hanna, Jones
 Jones Lundy, Moffett, Neblett, Williams
 Overstreet, Pierce, Stokes, Suber



Phi Mu

Founded at Wesleyan College in 1852

Colors: Rose and White

Publication: "Aglaiia"

Flower: Rose Carnation

CLASS OF 1932

KATHRYN HERBERT	MARY WOODLIFF
MARY HEALD	MEREDITH OWENS

CLASS OF 1933

WINIFRED GREEN	MARTHA HAMILTON
CATHERINE PEETS*	

CLASS OF 1934

CATHERINE JONES	ANN PULLÉN
MAUDE MCLEAN	ELIZABETH WARREN
MARY GILLESPIE	CHARLOTTE CAPERS
MARGARET FLOWERS*	

CLASS OF 1935

KATHERINE HEIDELBERG*	SARA W. ANDERSON*
WANDA TREMAINE*	MARTHA DONALDSON*
NORVELLE BEARD*	EMMA HEALD*

IN FACULTY

FLORENCE LEECH*

*Pledges.



PHI MU

Herbert, Heald, Woodliff, Owens
Green, Handlton, Peets, Jones
McLean, Gillespie, Pullen, Warren
Capers, Heidelberg, Tremaine, Beard
Anderson, Donaldson, Heald



Kappa Delta

Founded at Virginia State Normal College in 1897

Colors: Olive Green and White

Flower: White Rose

Publication: "Ange'os"

MU CHAPTER

CLASS OF 1932

SARA KING	ROSE WELLS
VIRGINIA YOUNGBLOOD	CAMILLE PENIX*
HADENIA BUCK	THERESA MCDILL
HELEN RIPLEY	FRANCES RUSH*
FRANCES DECELL*	BETTY BUHRMAN*

CLASS OF 1933

MARY SUE BURNHAM*	MARGUERITE GAINNEY*
CARL LEE SWAYZE*	HELEN FURLOW
MARY ELEANOR ALFORD*	

CLASS OF 1934

HARRIETTE HEIDELBERG	MARY VIRGINIA WELLS
JULIA DELOACH	SARA HEIDELBERG
DOROTHY DEAN	

CLASS OF 1935

LYNELL WOOTEN*

*Pledges.



KAPPA DELTA

King, Youngblood, Buck, Ripley
 Decell, Wells, McDill, Rush
 Buhrman, Burnham, Swayze, Gainey
 Furlow, Alford, Heidelberg, DeLoach
 Wells, Heidelberg, Dean, Wooten



Delta Zeta

Founded at Miami University in 1902

Colors: Nile Green and Killarney Rose

Flower: Killarney Rose

Publication: "The Lamp"

CLASS OF 1932

GLENNA MOORE
MARY WACASTER
DOUGLAS BANKS

BETTY PARKER*
RUTH FORMAN*
SARAH STEVENS*

CLASS OF 1933

EVELYN MYERS
JUANITA WINSTEAD*
ADAMAE PARTIN*
ONEITA WINSTEAD*

JUANITA LANE*
ANN STEVENS LEWIS*
THYRZA BRANTON*
ELIZABETH HEITMAN*

CLASS OF 1934

CATHERINE LAMKIN*

HAZEL MCPHAIL*

CLASS OF 1935

DOT THOMPSON*
RUTH SARRETT*

LOIS CAMPBELL*
JULIA COX*

*Pledges.



DELTA ZETA

Moore, Wacaster, Banks, Parker
Forman, Stevens, Myers, Winstead
Winstead, Lane, Partin, Lewis
Branton, Heitman, Lamkin, McPhail
Thompson, Sarrett, Campbell, Cox



Beta Sigma Omicron

Founded at the University of Missouri in 1888

Colors: Ruby and Pink

Flowers: Richmond and Killarney Rose

Publication: "The Urn"

ALPHA ZETA CHAPTER

CLASS OF 1932

SARA SMITH

MILDRED CLARK

MARY VELMA SIMPSON

CLASS OF 1933

KATHERINE JACOBS

LILLIAN POLK

CLASS OF 1935

DOROTHY COWEN*

MARY LEILA MILNER*

GRACE MASON*

FRANK RAE DARDEN*

DAISY KATE BROWN*

ELISE ENOCHS*

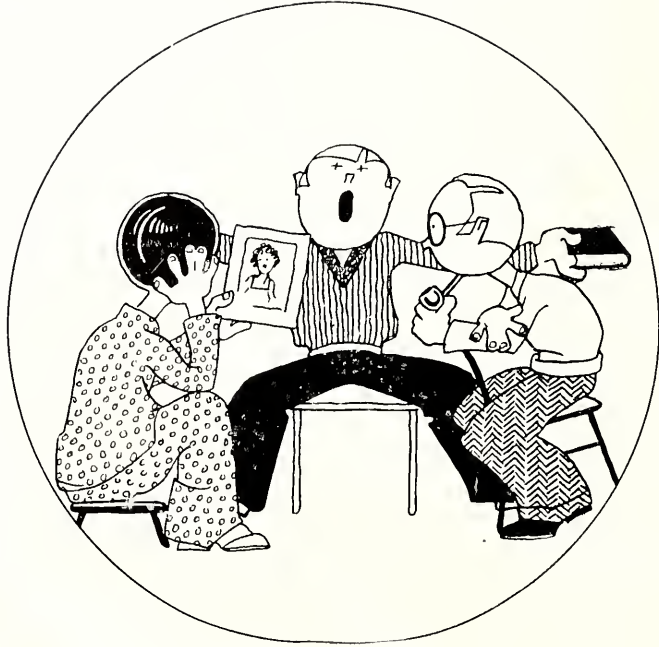
FRANCES McMULLAN*

*Pledges.



BETA SIGMA OMICRON

Smith, Clark, Simpson
Jacobs, Polk, Cowan
Mason, Brown, Milner
Darden, Enochs







VAN HOOK



GADDY



REXINGER

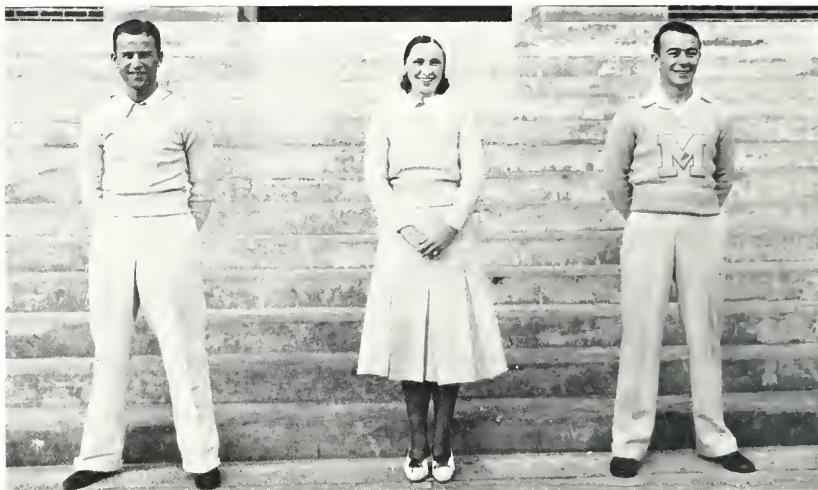
The Coaches

Coach Tranny Lee Gaddy, head football coach, came to us highly recommended as a coach and a man. That he has fulfilled all expectations goes without saying. Genial and gentlemanly in his manner, he has won the admiration, respect, and love of those who have worked with him. On the football field he has builded soundly and successfully, and we predict for his future teams a success that will overreach the past brilliance of Major teams.

Director of Athletics B. O. Van Hook is also assistant football coach, head basketball coach, and freshman baseball coach. In addition to these duties, he finds time to win every student at Millsaps through his cheerful friendliness. Van is invaluable to the Major gridlers, his varsity basketball and freshman baseball teams are always among the best, and he always works hard for the success of athletics at Millsaps.

A. I. Rexinger was the man behind the gun for the sensational freshman football team. Rex is a quiet, unassuming fellow, but he knows what he is about. He was an inspiration as well as an advisor and coach. More power to you, Coach Rexinger; may your freshman teams all be of the same caliber as your first one.





LUCIEN FERRIS
Assistant

FRANCES DECELL
Assistant

JOHN B. HOWELL
Head Cheerleader

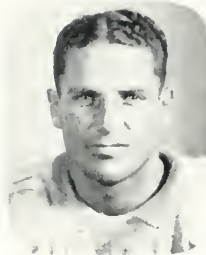
The Cheerleaders

The Millsaps Majors were very fortunate this year to have so fine a corps of cheerleaders. Head Cheerleader John B. Howell and his assistants, Lucien Ferris and Frances Decell, were right there with the old pep all the time, and even when things were looking black for the Majors they never allowed the enthusiasm of the student body to wane. The team was inspired to fight still harder because of the wonderful encouragement and co-operation given them by the students and this efficient group of leaders.

THE MANAGER

John Henry "Legs" Noblin is the boy who handled the water bottles and the countless other duties of manager. He is due much credit for the work he did in the care of the team.

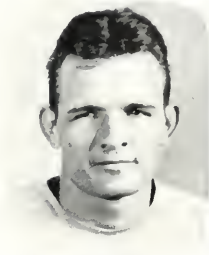




STONESTREET



PERMENTER



PASSO

Football

WALTER PERMENTER, *Captain and Quarterback*

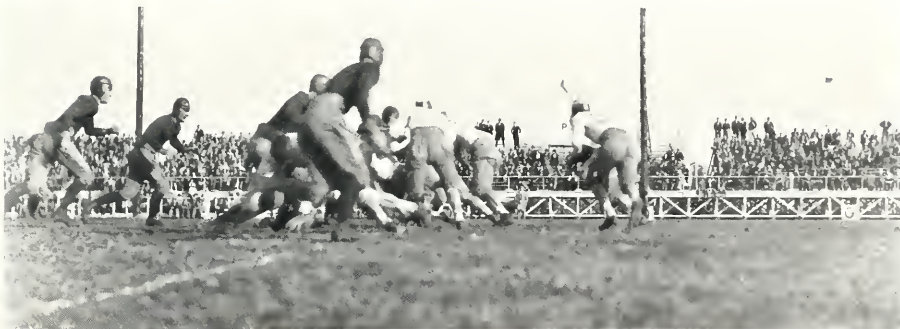
Walter "Pep" Permenter was captain and quarterback of the Majors of 1931. Cool and collected in a pinch, "Pep" had the ideal temperament for a leader. Permenter was a true triple-threat of the first order and he will be sadly missed next year.

LEONARD STONESTREET, *Halfback*

Leonard Stonestreet, one of the most elusive half-backs in the conference, had another good year. His running and passing helped the Majors on their way many times. "Stone" leaves a big gap in the Militant fold.

CLAUDE PASSO, *Fullback*

"Joe Gum" Passo closed a brilliant football career when he left the field Thanksgiving day. Passo divided his time between end and fullback, and was a star at both positions. His hard drive and sturdy defense featured his play.

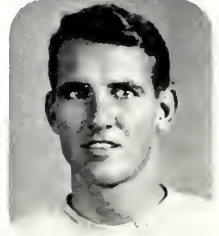




McDANIEL



PADGETT



JACOBS

Football

L. F. McDANIEL, *Fullback*

"Punch" McDaniel, alternate captain, is another senior who has played his last game for the Majors. "Punch" will long be remembered as a dashing, driving fullback and a defensive gem who fought hard at all times for victory.

FRANK PADGETT, *Guard*

"Papa" Padgett was one of the flock of good guards that the Majors boasted of this season. Padgett is a senior whose speed and scrap will be hard to replace.

BILL JACOBS, *End*

Bill Jacobs is the big end who was always so fast down the field under punts or leaping high in the air to grab a pass that spelled a long gain. On the defense his powerful charge and fight spilled many an opposing back for a loss. Bill was the winner of the "most valuable player" award.

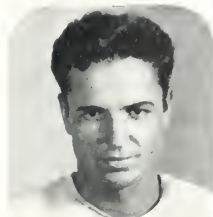




DUNAWAY



CUTRER



D. DAVIS

Football

PAT DUNAWAY, *Center*

"Pat" Dunaway, the lanky boy who plays center, is one of the reasons for the bright prospects of Millsaps football in 1932. Pat is an old head, a hard-driving defensive and offensive player, and a leader as well.

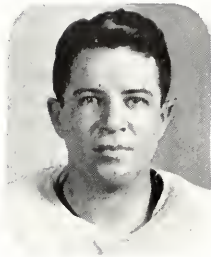
C. M. CUTRER, *Guard*

Carl Cutrer is a scrapping guard who will answer the first call for practice next September. Carl is a good man to have around in a pinch, and we are glad he is to be back.

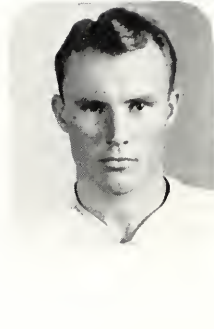
DACE DAVIS, *Quarterback*

Dace Davis is the sophomore who stepped up and made for himself a place in the first string backfield. Dace was a triple-threat, and played excellently at either quarter or half.

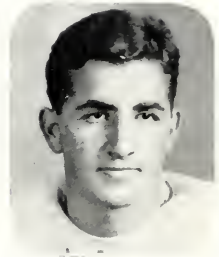




ERVIN



WALKER



ENOCHS

Football

WILLIAM ERVIN, *Tackle*

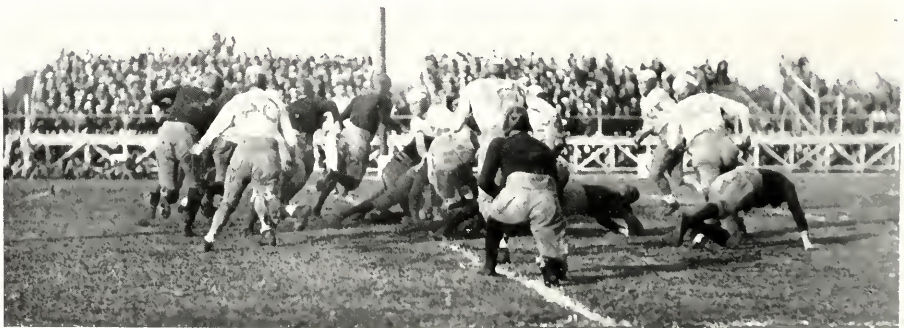
Bill Ervin is another of the seniors who is leaving the Militants this spring. Big "Mamie" will be sorely missed from his tackle position, where his charge and fighting spirit made him a valuable man.

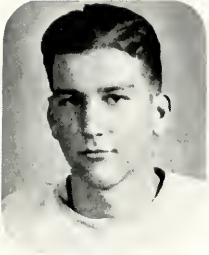
CLINTON W. WALKER, *Halfback*

Charlie Walker played his third varsity year as one of the most dependable and consistent ground gainers on the squad. He tapered off his career with a fine exhibition of ball carrying against the Choctaws Thanksgiving day.

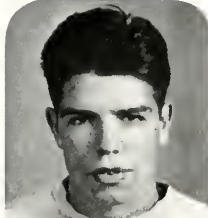
JOHN ENOCHS, *Guard*

John Enochs is a big boy who played guard. A little more experience will find him a formidable candidate for a guard position.





STONE



DAVISSON



KHAYAT

Football

JOE STONE, *Tackle*

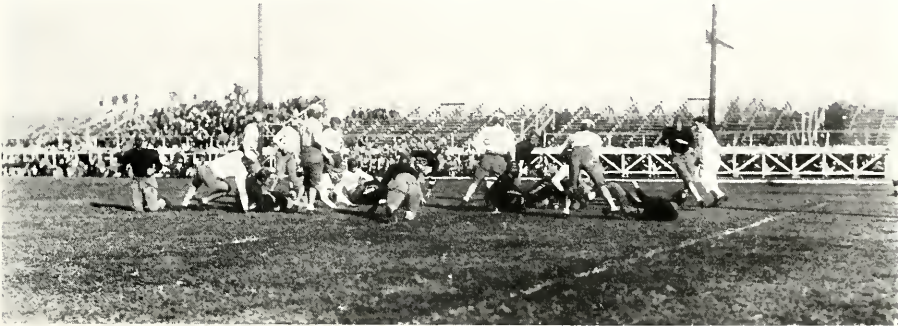
Stone is a boy, who, when he gets a little more experience, will make trouble for the regular tackles. He showed fine fight when he got in a game this year. He is a sophomore, and will be back next year.

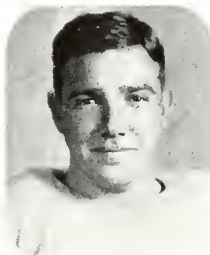
HORACE DAVISSON, *Halfback*

"Demp" Davisson is one who worked hard and never quit in order that the team might succeed. He has two more years in which to show his worth.

EDWARD KHAYAT, *Halfback*

"Eddie" Khayat gained fame as a blocking back and came into his own this year. He was also a good quarterback as well as half. Eddie's spirit and fight will stand him in good stead in life as it has done on the athletic field.





MORRISON



RICHARDSON



F. DAVIS

Football

J. B. MORRISON, *Guard*

Jimmy Morrison was one of the lightest of the linemen, but he was also one of the scrappiest. Jimmy is only a sophomore, and the coming two years should see him become a guard to be remembered.

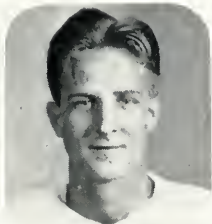
MELVIN RICHARDSON, *Tackle*

Melvin Richardson came to us from a junior college and soon won the hearts of fans and players with his hard fight and masterful playing. Big "Rich" played tackle on offense and roving center on defense. He will be back next year.

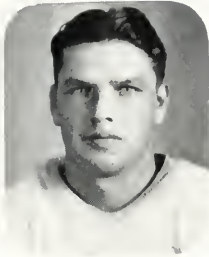
FRANK DAVIS, *End*

Frank Davis, end, is a product of East Central Junior College. Frank has a bright future in athletics ahead of him. He is a sound wingman, being an All-State selection, and should go good next season.

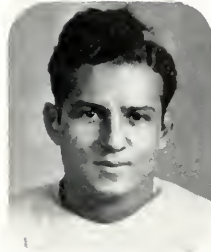




HOLLOMAN



GORDON



ROMANO

Football

GARLAND HOLLOMAN, *Quarterback*

"Bo" Holloman, the third of the family to play at Millsaps, and a quarterback also, is one of the hard workers who is expected to come through for the Majors.

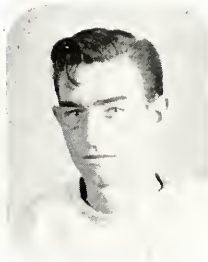
LOUIE GORDON, *Tackle*

Louie Gordon, hefty tackle, plugged up holes in the line when he was sorely needed. A graduate of East Central Junior College, he lived up to all advance notices and is counted on for future work.

EMILIO ROMANO, *Fulback*

"Joe" Romano returned to school after a year's vacation and brought back with him the same drive that featured his play as a sophomore fullback. "Little Dag" played brilliantly this year and will be back.

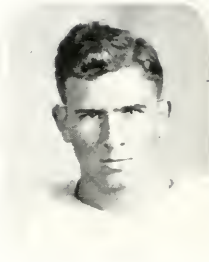




BRIDGES



LACKEY



HOZENDORF

Football

JACK BRIDGES, *End*

Jack Bridges, a sophomore, came forward with a rush the first of the year and soon established himself as an end to be reckoned with. Great things are expected of him.

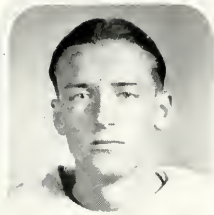
SAM LACKEY, *Tackle*

Sam Lackey is an up-and-coming tackle whom the coaches are counting on to come through in 1932.

CONNIE HOZENDORF, *Guard*

"Hozey" Hozendorf, a hard rock who played guard, is a never-say-die scrapper who will be heard from.





TYNES



MOON



TRAVIS

Football

GYCELLE TYNES, *Guard*

Gycelle Tynes was another junior college product who made good his first year as a Major. Tynes played a guard and his speed made him a valuable man in the interference. On the defense he was always knifing into the opposing backfield.

JOHN MOON, *Center*

"Dago" Moon, the big forkhander from Lumberton, was converted into a first-class center and filled the bill to perfection. He was a tower of strength from his defensive tackle position and will be missed when the Majors take the field next year.

LEE TRAVIS, *Guard*

"Whitey" Travis completes the quintette of fine guards. Travis had experience, fight, and strength as assets and we are sorry to lose him.

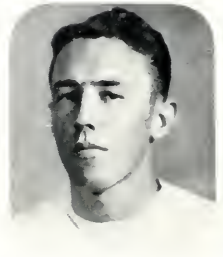




JONES



MCGINNIS



CAMPBELL

Football

L. B. JONES, *Halfback*

L. B. Jones is a speedster who will bear watching in the future. "Tapey" has plenty of experience and is a versatile back of whom much is expected.

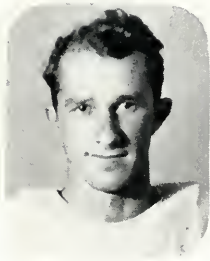
R. M. MCGINNIS, *Center*

"Red" McGinnis is the red-headed six-footer who played center, and whose spirit was as flaming as his hair. He has one more year to play.

CAMPBELL, *End and Guard*

"Rosedale" Campbell, end and guard, is a charging youngster who was in his first year of varsity competition this year.

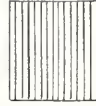




VICKERS



COOPER



ROGERS

Football

J. T. VICKERS, *End*

John T. "Teasen" Vickers entered his first football competition for Millsaps. John was an adept at catching passes from his end and was a barrier on defense.

ALONZO COOPER, *Halfback*

Alonzo Cooper is a hard-running back who is destined to develop into a valuable man in his two remaining years.

ROGERS, *Quarterback*

"Skinny" Rogers is another of the faithful sophomore backs who will make things hot for other backs for two more years.



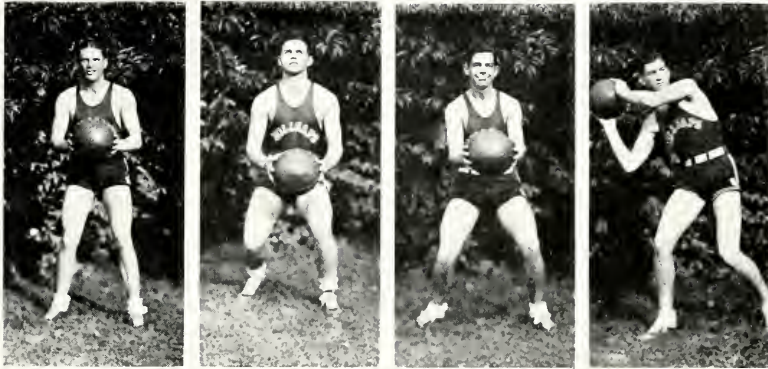


Freshman Football

The Freshman Football Team of 1931 was without doubt the most sensational aggregation that has ever assembled as a first-year team at Millsaps, surpassing in all-round power and ability the now famous squad of 1927. Under the able tutelage of Coach Rexinger the fresh team-roller amassed the amazing total of 210 points in five games; meanwhile their own goal line was untouched by enemy cleats. Picking individual stars from such a collection would be next to impossible. Suffice it to say that it was an all-star squad whose power will be felt in the future in S. I. A. A. and Dixie Conference circles.

SCORES

Minors	86; Southwest Junior College	0
Minors	27; Hinds Junior College	0
Minors	14; Loyola Freshmen	0
Minors	45; Spring Hill Freshmen	0
Minors	38; Mississippi College Freshmen	0
Totals	210; Opponents	0



Varsity Basketball

Leonard Stonestreet, captain of the fast-traveling Major quintet, was the most improved player on the court of the last year crop. A letterman at a forward position last season, he became a first class guard when needed at that post. In addition, he was probably the best floorman of the lot and scored with great consistency.

Rich Richardson was another football man to show versatility in capturing a place on the first string. Rich moves with amazing, cat-like agility for a man of his size, and his smooth, fast floor work was a great factor in the work of the militant machine and a ponent reason why the Majors led the Dixie and S. I. A. A. Conferences.

Frank Davis is the third of the trio of football lettermen to step into the first five on the hardwood floor. Frank was the high scorer of the team and, together with Richardson, provided a fast-breaking, high-scoring combination at forwards for the Majors. Frank had an uncanny eye for the basket and earned a reputation as a hard man to cover. The fact that he and Richardson will be back next year gives an optimistic outlook for the next Major machine.

Joe Stone was the fifth member of the combination that worked so effectively for the Majors. Joe is one of those rarities—a Sophomore regular. He was the back guard and the backbone of the defense. Joe is a fine floor man and can score when needed. Much is expected of him before he is through as a Major.



Varsity Basketball

Rabian "Lupino" Lane, the sensational Sophomore guard of last year's team, was transformed into a center where his height and reach were very valuable. He continued his fine work as a dependable offensive and defensive man, scoring often and shining at securing the rebound off the backboard. Lane will also return next season.

Claude Passeau, center and letterman for two years on Major quints, was a hard and effective worker who was used often without weakening the work of the team. Few were the centers who could beat him to the tip-off, and he was a constant threat to score. His work at retrieving rebounds was good.

John Henry Noblin played either forward or guard. He was another letterman and six-footer who was called into action often and delivered to the satisfaction of all concerned.

John T. Vickers, forward, was another letterman whose experience and versatility stood the Majors in good stead numerous times. Tall, rangy, and fast, Vick scored consistently and could take the tip-off at center when needed.



Varsity Basketball

Thomas Ross, forward, was a member of the Sophomore combination to come up this year. Thomas is rangy and fast, with a good eye for the basket, and plays the floor well.

Dace Davis, forward, was a Sophomore that was kept down only by the brilliance and experience of the other forwards. He was used frequently with good results, and we predict for him a bright future as a Major basketeer.

Pat Dunnaway developed into a forward of surprising ability this season. Pat is tall and fast, playing a fine floor game and fighting in for numerous crisp shots. Pat will return next year and should go good.

Elmo Gerald came to us as one of the best products turned out by the Junior Colleges of Mississippi. He convinced us of his reputation by some brilliant playing.



Varsity Basketball

Walter Backstrom was another Sophomore whose versatility was noticeable. Tall and fast, with a good eye, he can play either center or forward, and has a fine future on the hardwood.

Ike Lindsey, forward, is the little man who does big things with the basketball. He makes up for lack of height by speed and cleverness. He has another year.

Gycelle Tynes was another of the many football men to deliver as a court star. Tynes is a guard, and a good one, who has another year to show his wares. His defensive play is of high calibre and he scores often.

Jimmy Morrison was the manager of the team and had plenty of work as his share in the success of Major basketball. Jimmy was also the efficient chauffeur of the bus that hauled the basketeers to the Armory each afternoon.



Back row: RIGBY, ALFORD, BURNHAM, COACH BRUMFIELD, PARTIN, EATON, HULL
Kneeling: BARROW, BUIRMAN, WARREN, COWAN
Sitting: ABERCROMBIE, LUTER, JACOBS, CAPTAIN LOFLIN, SWAYZE

Woman's Athletic Department

Millsaps College, along with the other co-ed schools of the nation, has realized the importance of athletics as an extra-curricular for women. Through the efficient direction and diligent coaching of Mrs. W. O. Brumfield, the Majorettes have had formidable teams that have brought Millsaps College to the front in feminine athletic circles.

Girls' Basketball

During the past few years the Millsaps Majorettes have come through with flying colors in the field of basketball. Coach Brumfield, working tirelessly, has put on the floor teams that have shown ability, good teamwork, and a fine spirit of sportsmanship. Above is pictured the 1932 representatives of the girls' basketball team. These girls joined together in practice periods throughout each week during the season and under tutelage of Coach Brumfield and splendid captaincy of Dot Loflin formed a team worthy of wearing the colors of purple and white.



Gymnastics

This department of girls' athletics is rather young at Millsaps. Due to the fact that there is no gym, the girls have to resort to the use of the old Science Hall to hold their practices. In this department Coach Brumfield had the assistance of Mrs. B. O. Van Hook. These two ladies taught the girls various exercises that required grace and ability. The photos shown above and the following page indicate the success that Coach Brumfield and Assistant Coach Van Hook have had in inaugurating the gymnastic classes at Millsaps College.



THE GYMNASTIC CLASSES PERFORMING VARIOUS EXERCISES



*Back row: McDONNELL, TYSON, MCNEECE, INGRAM, PHILLIPS, COACH REXINGER
Front row: LATIMER, MAGEE, GODWIN, JUANICO, GREGORY, LOFLIN*

Freshman Basketball

The Minor basketball team, coached by A. I. Rexinger, showed much ability and experience that have made them good varsity material. It is from the Freshman ranks that Coach B. O. Van Hook has drawn his best men to form the nucleus of the teams that have won fame in the S. I. A. A. basketball circles. McNeese, McDonnell, Godwin, Juanico, Magee, and Caillavet, who is not shown in the picture, are men whom Coach Van Hook can count on to come through in forming a 1933 championship basketball team. The Freshmen won the majority of their games and the work of Coach Rexinger is commendable.



DUBARD, KHAYAT, COACH WHITE, KEY, RODGERS, HESTER

Tennis

Tennis is a popular sport at Millsaps and will continue to be as long as teams of high calibre, such as the 1931 and 1932 teams, represent us. Each year the team makes an extensive tour, playing the better teams of the S. I. A. A. and the S. I. C. conference, and they always make a creditable showing. Captain Eddie Khayat, who is at his best under the fire of competition, leads a varsity composed of himself as ranking No. 1, David Dubard, No. 2, Baylis Shanks, No. 3, and Ewing Hester, No. 4. Khayat and Dubard teamed together as the No. 1 doubles pair, and Robert Higdon and David Key paired together as the No. 2 team. Gordon Rogers played the role of substitute which he handled well, as was seen by his play against Southwestern of Memphis.



BRIDGES, HOLLOWAN, DAVIS, CAMPBELL, KOENIG
STONESTREET, COACH VAN HOOK, VICKERS, HOWELL, MOORE

Track

Track at Millsaps is rather young. The truth being that 1932 was the inaugural year for an official representative team. And it was really a good team, its major accomplishment being a complete whitewashing of the Choctaws, who have had some of the best track teams in the S. I. A. A. Conference. Through the efficient coaching of A. I. Rexinger the Major track team was able to produce such stars as Richardson, Neblett, Moon, Boone, Travis, Stonestreet, Howell, Casey, Vickers, whose brilliant running in the relay made our victory over the Choctaws all the more decisive.





SARA KING





MARY SUE BURNHAM





MARY GILLESPIE



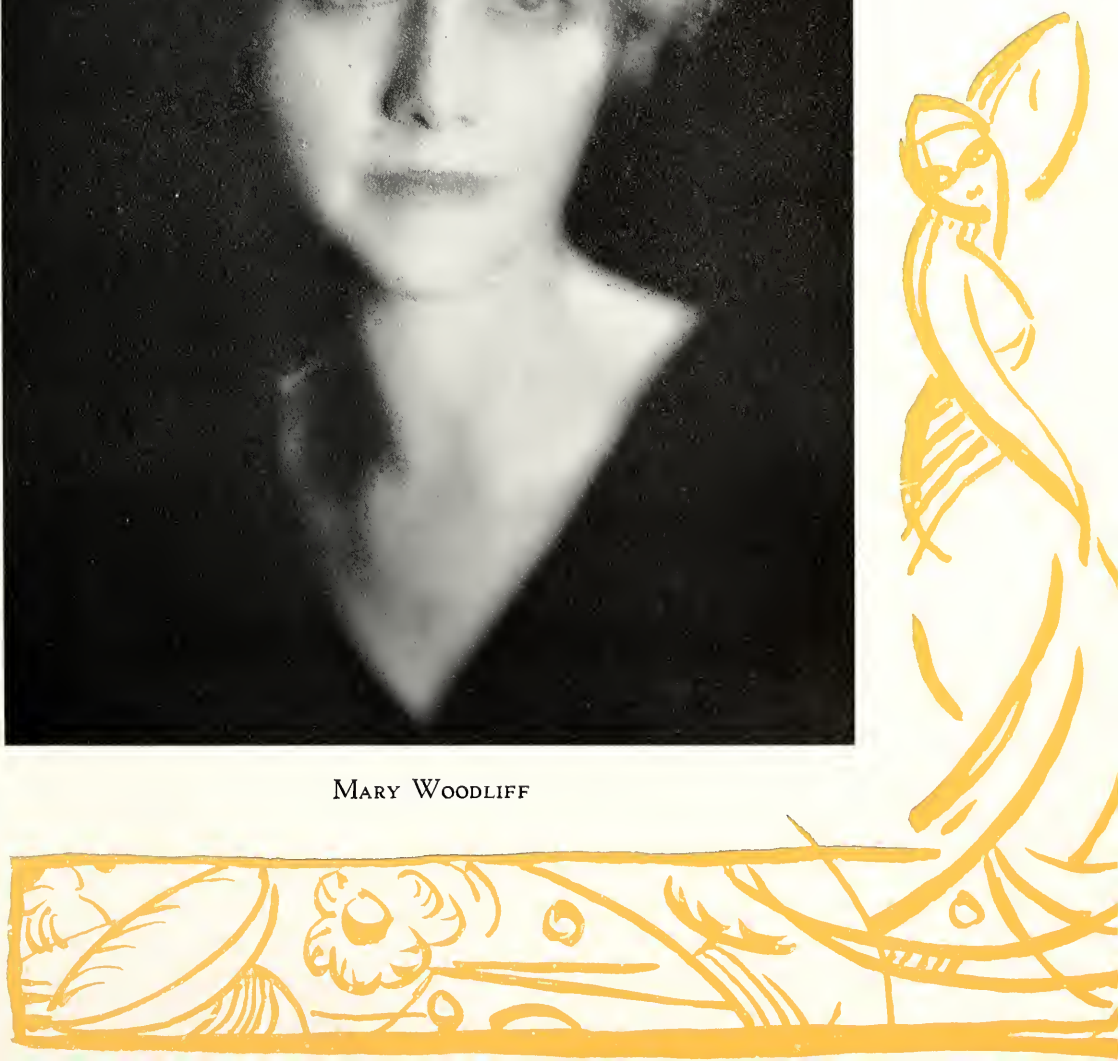


MAUDE MCLEAN





MARY WOODLIFF





EDWARD ASSAD KHAYAT, *Master Major*

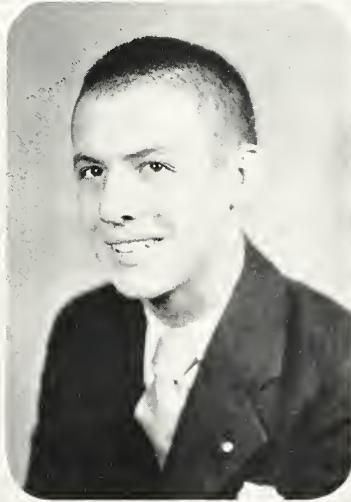


MARY HEALD, *Representative Co-ed*





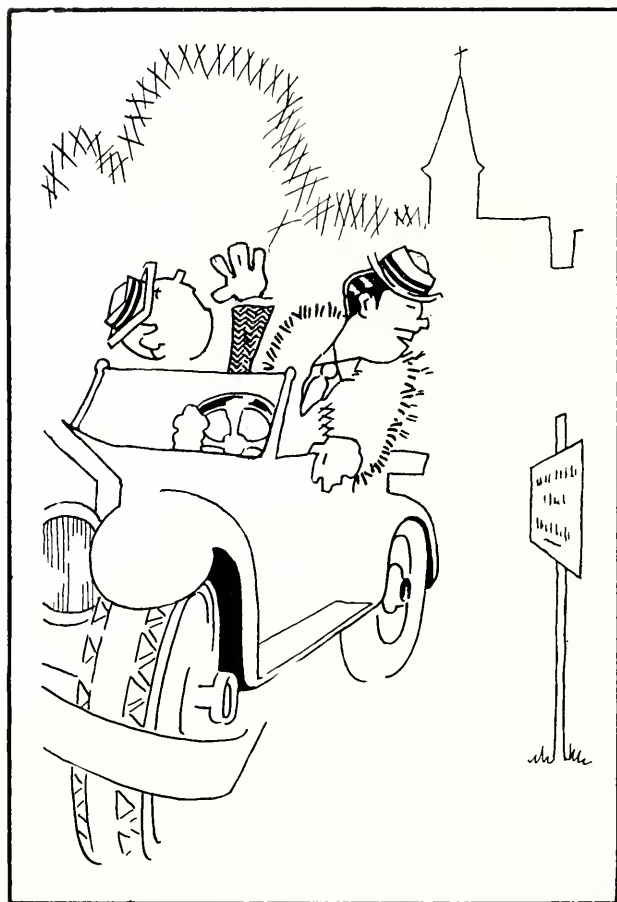
DR. J. M. SULLIVAN, *Best Liked Professor*



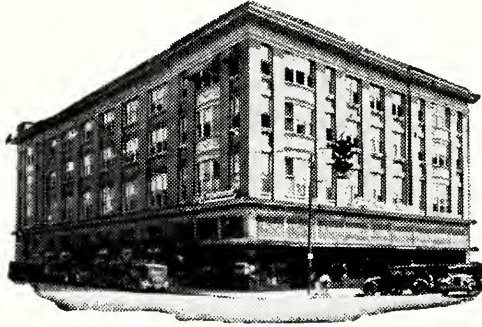
BEST LIKED BOY

BEST LIKED GIRL

"THAT FRESHMAN"



READ THE ADS



JACKSON'S GREATEST STORE

*A store that fills effectively and continuously
every qualification of the modern and
up-to-date department store*

Equipped and managed to give you a service that is second to
none in the South

*The JACKSON'S GREATEST STORE
Emporium*

"Mississippi's Best Store"

KENNINGTON'S

JACKSON

Enjoying the good will and patronage of
Millsaps students

Because of our high standard of quality, moderate prices and
authentic styles

Service of the Highest Order

The motto of this store through its years of growth, as well as now, has been, "Service to Our Customers." For your choice there is conveniently arranged merchandise of the highest possible quality at the lowest possible price.

DOWNING-LOCKE COMPANY

"Jackson's Shopping Center"

McClaren Autocrat Tires and Tubes

UNION DEPOT SERVICE STATION

"At Your Service"

One Block North of Edwards Hotel
JACKSON, MISSISSIPPI

Texaco Gasoline, Alemite and Galenol
Accessories, Willard Batteries
Washing, Polishing, Alemite-ing

Telephone 840

FREE ROAD SERVICE

J. B. WALKER, *Manager*

R. H. GREEN

Wholesale Grocer

DISTRIBUTORS
OF

PLEEZING

JACKSON, MISSISSIPPI
North Gallatin Street

LEADERSHIP

A bank that stands for good, safe,
sound banking principles will always
have the support of its customers and
friends.

"Grow With Us"

4% Paid On
Savings

Deposit Guaranty Bank & Trust Co.

*Member National
Credit Association*

STEVENS



HART SCHAFFNER & MARKS CLOTHES

Capitol Floral Co.

"Say It With Flowers"

24-Hour Service

LINDSEY CABINESS, *Manager*

Lamar and Amite Streets
Nite Phone 287 Phones 511-512

Drink

Lake's Celery

AND

Orange Crush

Ward Drug Co.

Corner Pearl and
State Street

JACKSON, MISSISSIPPI

THE BUILDING & LOAN ASSOCIATION

OF JACKSON, MISS.

Loans Made on Improved Real Estate.
Liberal Dividends Paid on Investment
Shares.

W. O. REA, *President*
212 EAST CAPITOL

ENGRAVED WEDDING INVITATIONS

Tucker Printing House

JACKSON, MISSISSIPPI

Dr. H. F. Magee

*Physician and
Surgeon*

Lamar Life Building Jackson, Miss.

ALFRED MITCHELL'S

MEN'S WEAR

Michaels Stern Clothing

Mallory Hats

Manhattan Shirts

LAMAR LIFE BUILDING



Seale-Lily

YOU EAT IT WITH A SMILE

ICE
CREAM

A Health Food—Always in Season

VISIT US AT

The College Grill

*Our Aim:
To Please Millsaps Students*

MR. AND MRS. T. B. WEBB, *Mgrs.*
Next to the "Pike" House

KEY DRUG COMPANY

Capitol and President Streets

R

WE KNOW HOW

Phone 1399

Hederman Brothers

Printers, Blank Book
Makers, Stationers
and Lithographers

329-31-35 East Pearl Street
JACKSON, MISSISSIPPI

Alfred Bourgeois

Jeweler

DIAMONDS SILVER

220 East Capitol

Chief Watch Inspector for the
N. O. G. N.

Official Watch Inspector for the I. C.,
Y. & M. V., A. & V., and
G. & S. I. Railroads.

Compliments

JITNEY-JUNGLE

McCARTY-HOLMAN

Save a Nickel on a Quarter

MEET YOUR FRIENDS
AT THE

ECHO OF SWEETS TEA ROOM

Sodas, Sweets, Luncheons

241 E. Capital St. Tel. 3316
Jackson, Mississippi

Covers for
THE 1932 BOBASHELA
Made By

The S. K. Smith Co.

213 Institute Place
CHICAGO. ILL.

The

Unglaub Studios

VICKSBURG, MISS.

*Specially Equipped for Col-
lege Annual Work*

BELHAVEN COLLEGE

School of Character

COLLEGE OF LIBERAL ARTS CONSERVATORY OF FINE ARTS

A Modern College for Young Women With Courses Leading to A.B. and
B.S. Degrees

BELHAVEN CONSERVATORY OF MUSIC

With Faculty of Artist Teachers Offering Courses in Piano, Voice, Pipe Organ
and Public School Music leading to Bachelor of Music Degree.

A Safe School for Southern Girls

G. T. GILLESPIE, *President*

Jackson, Miss.

JACKSON DAILY NEWS

Jackson, Mississippi

Circulation Exceeds All Other State Papers

65c PER MONTH
\$7.80 PER YEAR

Publishes Best Copyrighted Features

WOODS-WILLIAMS DRUG STORE, Inc.

A Drug Store With a Reliable
Reputation of Serving the Peo-
ple of Its Community

Corner Capitol and State St.

The Talk of the Town
OUR HAMBURGERS AND
SANDWICHES

Coney Island No. 1
North Farish Street

Coney Island No. 2
North Lamar Street
"CHRIS," Manager

JACKSON SHOE HOSPITAL

"Repair Shoes Better"

WM. KAROW, Manager
Phone 336 412 E. Capitol

Watkins, Watkins & Eager

*Attorneys and Counsellors
at Law*

Standard Life Building
Jackson, Mississippi

Mississippi School Supply Co.

Serving Mississippi Schools

School Furniture and
Equipment

JACKSON, MISSISSIPPI

CORR-WILLIAMS TOBACCO CO.

Wholesale Distributors of

Roi Tan, Osmundo,
Hav-A-Tampa

Tampa Nugget, Cremo
GOOD CIGARS

S. P. McRae Co.

BETTER VALUES



Florsheim and Friendly Fives
No-Name and Stetson Hats

COMPLIMENTS
OF
MANGEL'S

Smart Apparel for the Smart
Dresser

*"Prices That Make Friends"
"Quality That Holds Them"*

FIELD'S
WOMEN'S WEAR

146 EAST CAPITOL

Jackson
Printing Company

116 Roach Street
Jackson, Mississippi

All Kinds of
Commercial and Publication
Printing

Telephone 43

J. A. HUBER
SHOE REBUILDING

"A Friend of the College"

170 East Capitol
JACKSON, MISSISSIPPI

Twin States Athletic
Supply Co.

Athletic Supplies for
Every Sport

111 Roach St. Jackson, Miss.
J. E. (Jew) BURGHARD, Manager

Baptist Book Store

"We Supply Any Book"

Phone 2703

502 E. Capitol Jackson, Miss.
W. G. MIZE, Manager

"EATMOR" BREAD

*Served in Millsaps
Dormitories*

Acme Bakery Co.

North Farish Street
JACKSON, MISSISSIPPI

The Majestic and
Istrione
Theatres

Jackson's Publix Theatres

Electric Power and Service

MISSISSIPPI
POWER AND LIGHT
COMPANY

"Helping Build Mississippi"

Help us remove homelessness, neglect, cruelty, disease, poverty, vice, crime, ignorance, and death among the little, helpless, and needy children in Mississippi by giving a good home to one or by giving a check to feed and clothe them until we can find a home for these little ones.

The Mississippi Children's
Home Society

Daniels Bldg. Jackson, Miss.

DR. JOHN L. SUTTON, *Supt.*

MILLSAPS COLLEGE

JACKSON, MISS.

A COLLEGE OF ARTS AND SCIENCES

Founded in 1892

Member of { Association of Colleges and Secondary Schools of the Southern States.
Association of American Colleges.
American Council on Education.

Offers to Young Men and Women of Character, Ambition, and Ability the Following Advantages:

1. Rigorous Academic Training and Scholastic Prestige.
2. Alert Intellectual and Cultural Life of the Student Community Expressed in Literary, Athletic, and Religious Organizations.
3. Moderate Expense and Excellent Opportunity for Loans and Employment.

For Catalogue and Special Information, Address

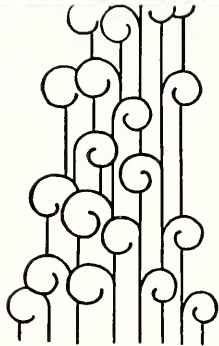
D. M. KEY, *President*

Jackson, Miss.

CAPITAL NATIONAL BANK

JACKSON, MISSISSIPPI

bright pages



that reflect those happy,
carefree days has been our
goal

COLLEGE ANNUAL DIVISION

ALABAMA
ENGRAVING
COMPANY
BIRMINGHAM

"IN THE HEART OF THE SOUTH"

THIS BOOK PRINTED BY.....



THE
WORLD'S
LARGEST
PUBLISHERS
OF
COLLEGE
ANNUALS



COLLEGE ANNUAL HEADQUARTERS

Highest Quality Workmanship Superior Extensive Service





THE END





