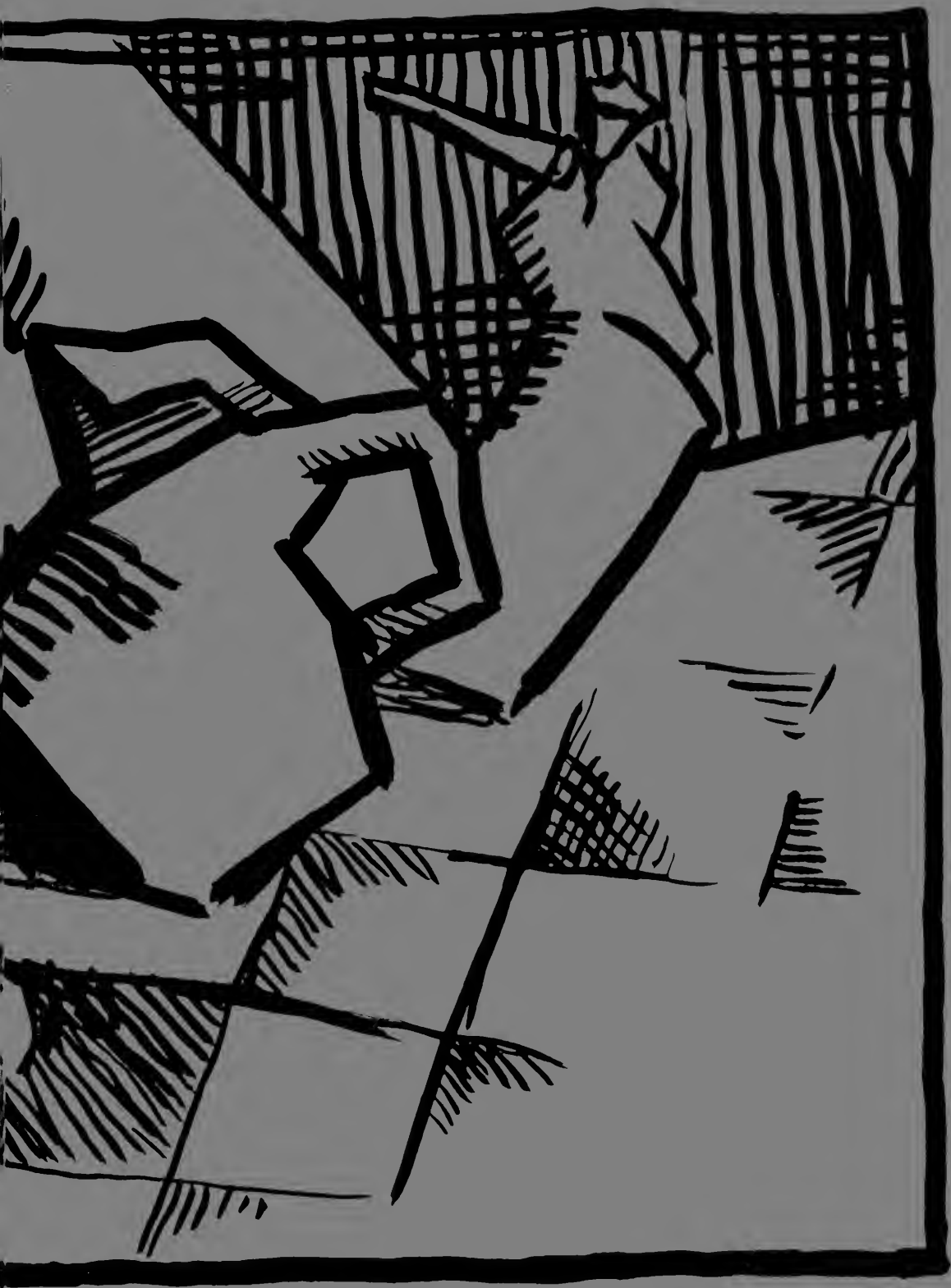


1932



JOHN ROBASFELA







ex  
Libris



# THE BOBASHELA



1932

**COPYRIGHT 1932**



**THERESA McDILL**  
**EDITOR-IN-CHIEF**

**EDWARD A. KHAYAT**  
**BUSINESS MANAGER**

• THE •  
**BOBASHELA**  
1932



**PUBLISHED ANNUALLY BY  
THE SENIOR CLASS OF  
MILLSAPS COLLEGE  
JACKSON, MISSISSIPPI**



ORDER  
OF  
BOOKS

**THE CLASSES**  
**ORGANIZATIONS**  
**FRATERNITIES**  
**ATHLETICS**  
**FEATURES**





# FOREWORD

**CIVILIZATION, ART, EDUCATION NEVER STAND STILL. ALWAYS WE GO FORWARD, EXPERIMENTING, SUCCEEDING, FAILING. THE THEME OF THIS BOOK IS THAT NEW SPIRIT OF PROGRESS, OF RECEPTIVENESS TO NEW THOUGHT. WE MAY NOT SUCCEED IN OUR PURPOSE, BUT AT LEAST WE ARE NOT STAGNATING IN A POOL OF OLD IDEAS. WE MOVE ON. . . .**



# DEDICATION

THE DEDICATION OF AN ANNUAL HAS BEEN A PERPLEXING PROBLEM TO STAFFS OF FORMER YEARS. THIS YEAR, HOWEVER, THE PRESENCE OF A MAN WHOSE OUTSTANDING INTEREST IN ALL COLLEGIATE AFFAIRS HAS MADE OUR CHOICE AN EASY ONE. HIS UNFAILING GOOD HUMOR AND DILIGENCE IN HIS WORK HAS WON FOR HIM WITH THE RESPECT AND ADMIRATION OF THE STUDENTS THE AFFECTIONATE TITLE, "U.Z." . . . . .

FOR HIS UNSTINTED COURAGE, OPTIMISM, AND SUCCESSFUL WORK IN THESE TRYING TIMES, WE, THE 1932 STAFF RESPECTFULLY DEDICATE THIS VOLUME OF THE BOBASHELA TO THE BURSAR OF MILLSAPS COLLEGE . . . . .

MR. VERNON BURKETT HATHORN





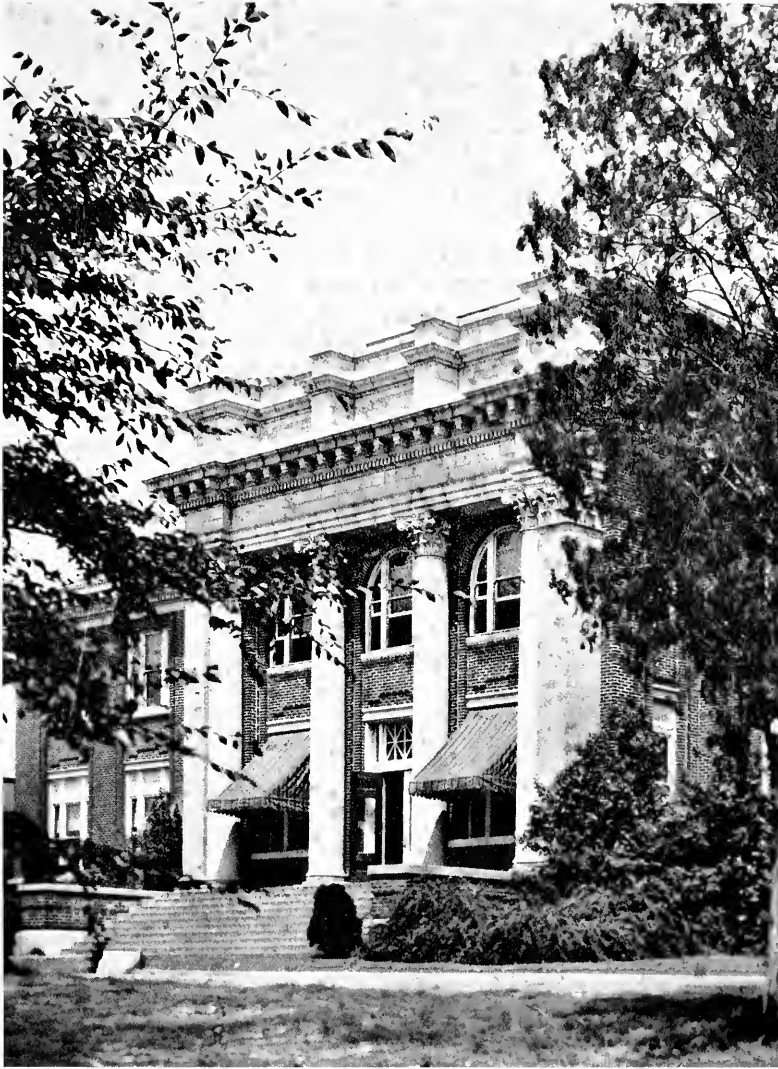
**VERNON BURKETT HATHORN**

**IN MEMORIAM**

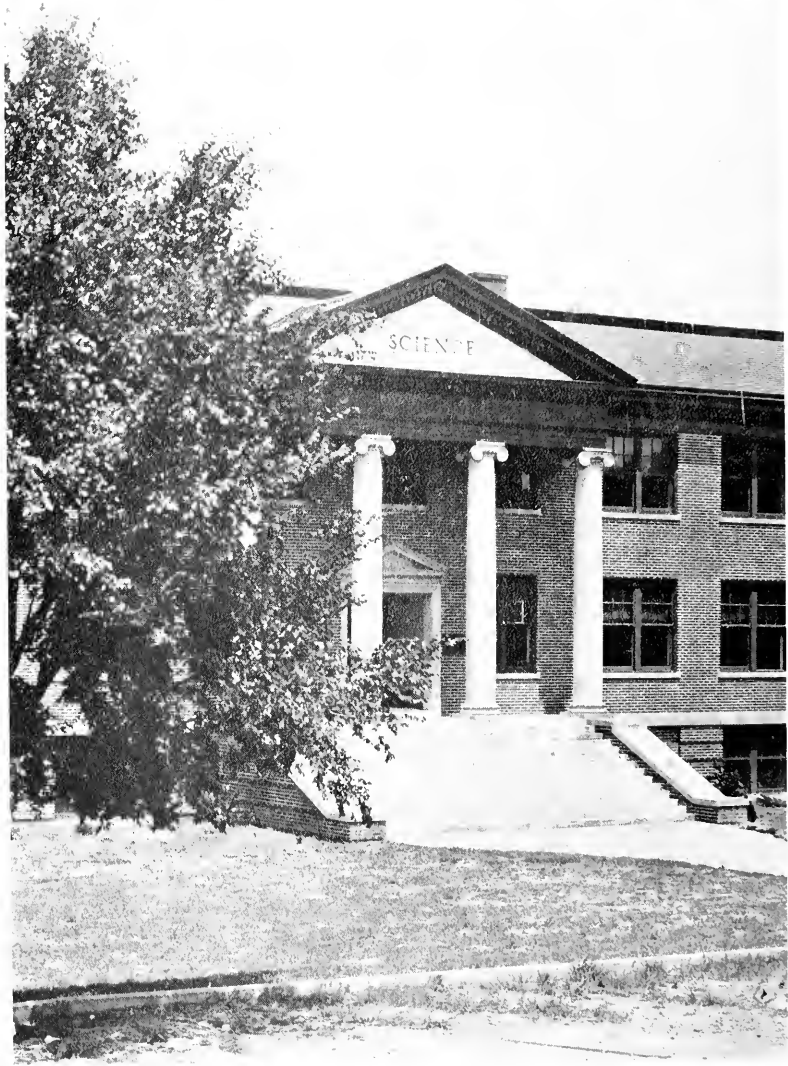
**Commie H.  
Smith**

**Student**

**Died  
Nov. 13, 1931**



ADMINISTRATION BUILDING



**SULLIVAN-HARRELL HALL**



MAJOR MILLSAPS' TOMB



**BURTON HALL**





GALLOWAY HALL



THE NEW GAS WELL



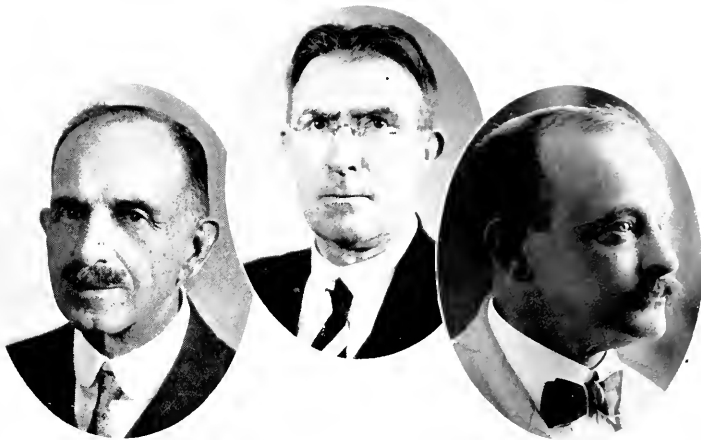
**FOUNDER'S HALL**



**LIBRARY**



DR. D. M. KEY, A.M., Ph.D., LL.D.  
*President of Millsaps College*



## Faculty

DR. J. M. SULLIVAN, A.M., Ph.D.

*Senior Member of the Faculty*  
*Professor of Chemistry and Geology*

A.B., Central College; A.M., Vanderbilt University; Ph.D., Vanderbilt University; Delta  
Tau Delta.

PROFESSOR G. L. HARRELL, B.S., M.S.

*Registrar of the College*  
*Professor of Physics and Astronomy*

B.S., Millsaps College; M.S., Millsaps College; Kappa Sigma.

PROFESSOR J. REESE LIN, B.A., M.A.

*Secretary of the College*  
*Professor of Philosophy and History*

A.B., Emory College; M.A., Vanderbilt University; Kappa Alpha; Alpha Phi Epsilon;  
Phi Beta Kappa.



## Faculty

DR. B. E. MITCHELL, A.M., Ph.D.

*Dean of Men*  
*Professor of Mathematics*

A.B., Scarritt-Morrisville; A.M., Vanderbilt University; Ph.D., Columbia University;  
Alpha Tau Omega; Omicron Delta Kappa.

DR. D. H. BISHOP, M.A., LL.D.

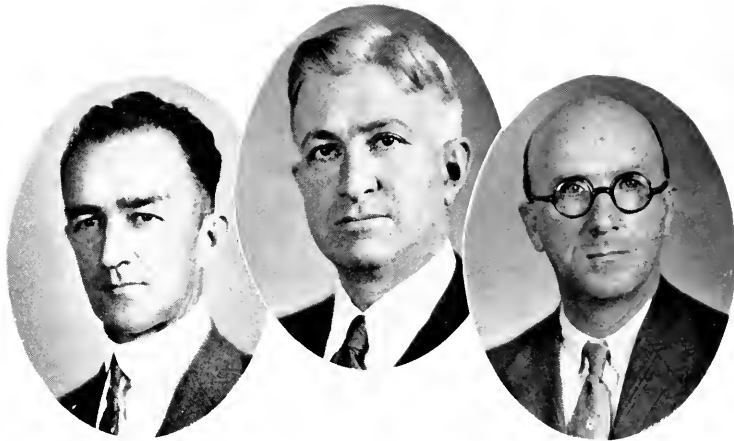
*Professor of English*

B.A., Emory and Henry College; M.A., Vanderbilt University; LL.D., Emory and Henry  
College; Sigma Upsilon.

DR. A. P. HAMILTON, A.M., Ph.D.

*Dean of Freshmen*  
*Professor of Ancient Languages*

A.B., Southern University; A.M., University of Pennsylvania; Ph.D., *ibid.*; Kappa Alpha;  
Omicron Delta Kappa.



## Faculty

PROFESSOR F. C. JENKINS, B.S., A.M.

*Professor of Education*

B.S., University of Mississippi; A.M., Peabody College; Phi Delta Kappa.

PROFESSOR A. G. SANDERS, A.B., A.M.

*Professor of Romance Languages*

A.B., Southwestern; A.B., Yale University; A.B., University of Oxford; A.M., *ibid.*;  
Sigma Upsilon; Alpha Phi Epsilon.

PROFESSOR M. C. WHITE, A.B., A.M.

*Professor of English*

A.B., Southern University; A.M., Harvard University; Kappa Alpha; Sigma Upsilon;  
Omicron Delta Kappa; Alpha Phi Epsilon; Alpha Psi Omega.





## Faculty

PROFESSOR H. C. BLACKWELL, A.B., A.M.

*Associate Professor of Religious Education*

A.B., Emory University; A.M., Duke University; Candler School of Theology of Emory University; Tau Kappa Alpha; Gamma Mu.

MRS. HENRY W. COBB, A.B.

*Assistant Professor of Spanish*

A.B., St. Lawrence University; Phi Beta Kappa.

ELIZABETH CRAIG, A.B., A.M.

*Assistant Professor of French*

A.B., Barnard College, Columbia University; A.M., Columbia University.



## Faculty

PROFESSOR ROSS H. MOORE, A.B., A.M.

*Associate Professor of History*

A.B., Millsaps College; A.M., *ibid.*; Alpha Phi Epsilon; Kappa Alpha; Alpha Psi Omega;  
Sigma Upsilon; Omicron Delta Kappa.

MRS. MARY B. STONE, A.B., A.M.

*Dean of Women*  
*Assistant Professor of English*

A.B., Randolph-Macon Woman's College; A.M., George Peabody College for Teachers.

PROFESSOR B. O. VAN HOOK, A.B., A.M.

*Associate Professor of Mathematics*  
*Director of Athletics*

A.B., Millsaps College; A.M., Vanderbilt University; Kappa Sigma.



## Faculty

PROFESSOR R. H. HAYNES, A.B., A.M.

*Assistant Professor of History*

A.B., University of Tennessee; M.A., George Peabody College.

MRS. MARY BOWEN CLARK, A.B.

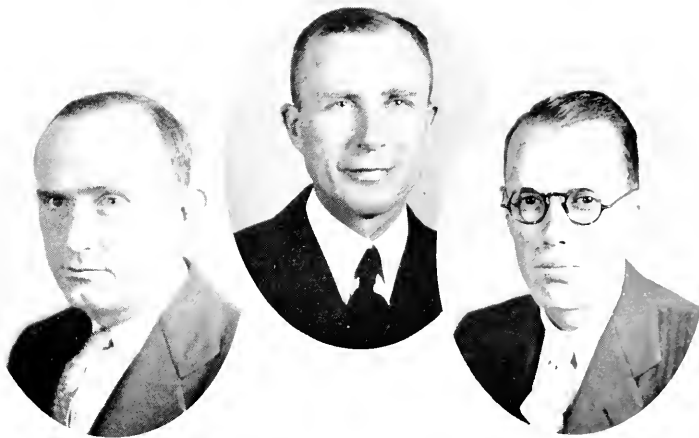
*Assistant Librarian*

A.B., Millisaps College; Phi Mu.

TRANNY LEE GADDY, B.S.

*Head Coach  
Professor of Physical Education*

B.S., Mississippi A. and M. College.



## Faculty

PROFESSOR N. F. WILKERSON, A.B., A.M.

*Assistant Professor of Biology*

A.B., Duke University; A.M., *ibid.*

VERNON BURKETT HATHORN, B.S.

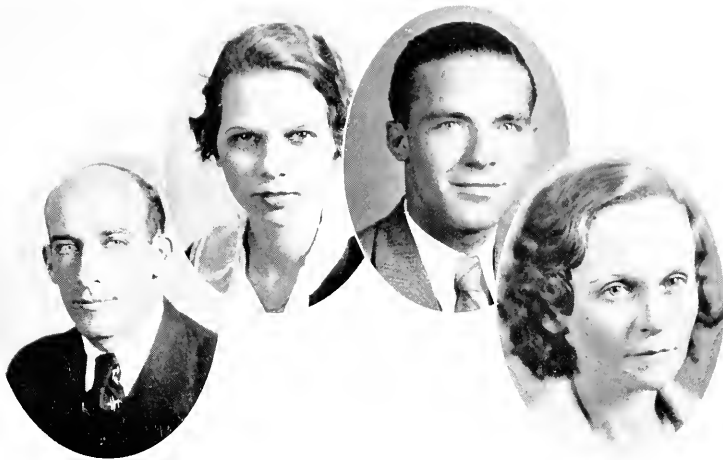
*Bursar*

B.S., Millsaps College; Kappa Sigma.

PROFESSOR J. B. PRICE, B.S., M.S.

*Assistant Professor of Mathematics and Chemistry*

B.S., Millsaps College; M.S., University of Mississippi.



## Faculty

A. I. REXINGER  
*Freshman Coach*

FLORENCE LEECH, B.S.  
*Assistant Librarian*  
*Head of Catalogue Department*

B.S., George Peabody College; Certificate in Library Science, George Peabody College.

BENJAMIN S. HARRELL, B.S.  
*Assistant in Mathematics*  
B.S., Millsaps College.

MRS. W. O. BRUMFIELD, A.B.  
*Director of Women's Physical Education*  
A.B., Cumberland University.



## Faculty

MRS. FANNY J. OWEN  
*Matron Men's Dormitory*

MRS. C. F. COOPER  
*Matron Women's Dormitory*

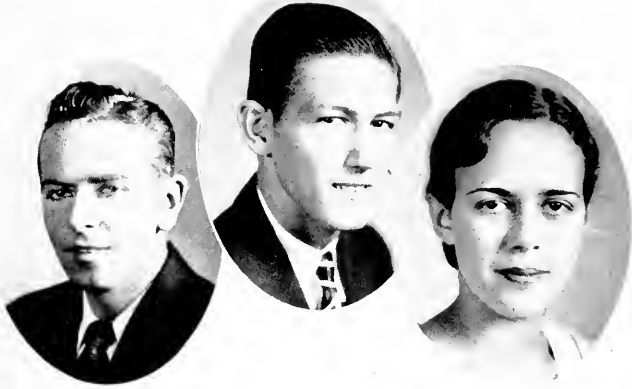
CARRIE OLIVIA SISTRUNK  
*Secretary to the President*

MRS. SUE V. CLEMENTS  
*Matron Women's Dormitory*









Class Officers

- DAVID DUBARD . . . . . *President*  
T. A. GILBERT, JR. . . . . *Vice-President*  
FRANCES RUSH . . . . . *Secretary-Treasurer*



**SENIORS**

## Senior Class

### ROSE FULGHAM WELLS, B.A.

Κ Δ  
JACKSON, MISS.

Freshman Commission (1); Y. W. C. A. Cabinet (3, 4); Social Chairman Women's Association (4); Glee Club (1, 2, 3); President Glee Club (3); Philomathean Literary Society (2, 3); Beethoven Club (3); Student Executive Board (3).

### CLAUDE WILLIAM PASSO, JR., B.S.

Κ Σ  
MOBILE, ALA.

Football (1, 2, 3, 4); Basketball (1, 2, 3, 4); Baseball (1, 2, 3, 4); "M" Club (2, 3, 4).

### PONG HYUN KIM, B.S.

SONGDO, KOREA

Ramblers Club (4); Science Club (4); Ministerial League (2, 3, 4); Y. M. C. A. (2, 3, 4).

### THOMAS A. GILBERT, B.S.

Κ Σ  
MERIDIAN, MISS.

Omicron Delta Kappa; Catella Club; Band (1, 2, 3); Assistant Bursar (1, 2, 3, 4); Student Executive Board (2); President Class (2); Vice-President Class (4); President Band (2); President Omicron Delta Kappa (4); Secretary Catella Club (4); Y. M. C. A. (3, 4).

### ALLIE BELLE CORLEY, B.A.

RALEIGH, MISS.

Whitworth College (1, 2); Glee Club (3, 4); Y. W. C. A. (3, 4).

### J. F. MUNSTERMAN, B.S.

PELAHATCHIE, MISS.

Freshman Baseball; Ramblers Club (4); Science Club (4); Track (3, 4).

## Senior Class

### HAL WILSON DALE, B.S.

JACKSON, MISS.

Alpha Psi Omega; Galloway Literary Society (1); Band (2, 3, 4); Millsaps Players (2, 3, 4); Vice-President Band (4); Science Club (4); Treasurer Ramblers Club (4); *Purple and White Staff* (4); BOBASHELA Staff (4).

### FRANCES DECELL, B.A.

K Δ

JACKSON, MISS.

Whitworth College (1, 2); Alabama Woman's College (3); Assistant Cheerleader (4).

### G. E. MURPHY, B.S.

JACKSON, MISS.

Band (1, 2, 3, 4); Lamar Literary Society (1); Ramblers Club (4).

### MARY VELMA SIMPSON, B.A.

B Σ O

PICKENS, MISS.

Vice-President Freshman Commission (1); Pre-ident Y. W. C. A. (2); Y. W. C. A. Cabinet (3); Treasurer Y. W. C. A. (4); Blue Ridge Delegate (1); Girls' Glee Club (1); Accompanist Girls' Glee Club (2, 3); Piano Scholarship (2); Vice-President Beethoven Club (3); President Beethoven Club (4); Student Executive Board (2); Literary Society (1, 2); English Assistant (2); Classical Club; Secretary-Treasurer Student Body (4).

### MATHIS ARMSTRONG, B.S.

GREENWOOD, MISS.

Sunflower Junior College (1, 2); Glee Club (3); Band (3, 4); Y. M. C. A. Cabinet (3, 4); Ministerial League (3, 4); President Ministerial League (4); Winner Vocal Scholarship (3).

### BETTY BUHRMAN, B.S.

K Δ

TUPELO, MISS.

Basketball (3, 4); Secretary-Treasurer of Glee Club (3); Y. W. C. A. Cabinet (4); *Purple and White Staff* (4); Southern College (1, 2); Ramblers Club (3).



## Senior Class

### KENNETH WILLS, B.A.

K  $\Sigma$   
JACKSON, MISS.

Pan-Hellenic Council; Catella Club (4).

### WILNA RIGBY, B.A.

JACKSON, MISS.

Classical Club (3, 4); Basketball (3, 4); Philomathean Literary Society (3); Secretary Y. W. C. A. (4); Treasurer Woman's Association (4).

### EDWARD ASSAD KHAYAT, B.A.

$\Sigma$  P X  
BILOXI, MISS.

Sigma Rho Chi; Omicron Delta Kappa; Sigma Upsilon; Eta Sigma; Football (1, 2, 3, 4); Tennis (1, 2, 3, 4); Captain Tennis Team (4); Freshman Debater; Glee Club (1, 2, 3, 4); Gallopway Literary Society; President, Millsaps Classical Club; Business Manager Men's Glee Club; Business Manager BOBASHELA; Library Assistant (2, 3, 4); Assistant, Spanish and French (4); International Relations Club; "M" Club; Honor Graduate.

### SARAH STEVENS, B.A.

$\Delta$  Z  
JACKSON, MISS.

### FRANK BUFKIN PADGETT, B.S.

PHILADELPHIA, MISS.

Football (3, 4); Baseball (3, 4); "M" Club.

### GLENNA EMILY MOORE, B.A.

$\Delta$  Z  
JACKSON, MISS.

Pan-Hellenic (3, 4); Freshman Commission; Y. W. C. A. Cabinet (2, 3); Delegate to Methodist Students' Conference (2).

## Senior Class

### DOUGLAS BANKS, B.A.

Δ Z

JACKSON, MISS.

Basketball (1); Glee Club (1, 3); Hinds Junior College (2); Y. W. C. A. Cabinet (3, 4); President Y. W. C. A. (4); Student Executive Board (4); Philomathean Literary Society (3); Beethoven Club (3, 4); Latin Club (3, 4).

### LEE TRAVIS, B.S.

Ο K N

CANTON, MISS.

Science Club (4); Football (2, 3, 4); Track; Lamar Literary Society; "M" Club; Pre-Medical Club (1, 2, 4); Baseball (4).

### MARY WOODLIFF, B.A.

Φ M

JACKSON, MISS.

### WALTER BIVINS, B.S.

Ο K N

JACKSON, MISS.

Pi Kappa Delta; Omicron Delta Kappa; Frehman Debating Team; Lamar Literary Society (1, 2, 3, 4); Buie Declamation (2); Member Debating Council (1, 2, 3); Intercollegiate Debater (2, 3, 4); Secretary-Treasurer Pi Kappa Delta (2, 3); President Pi Kappa Delta (3); President Lamar Literary Society (3); International Relations Club (4); BOBASHELA Staff (3); President Class (3); President Student Body (4); President Student Executive Board; Ramblers Club (4).

### D. V. HERLONG, B.S.

Π K A

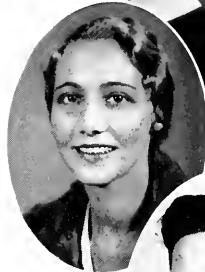
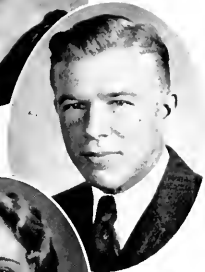
HERMANVILLE, MISS.

Basketball (1); Baseball (1).

### VARDAMAN L. OWEN, B.S.

FAYETTE, MISS.

Y. M. C. A. Cabinet (3, 4); President Y. M. C. A. (4); Galloway Literary Society (1, 2, 3, 4); Ramblers Club (3); Assistant in Mathematics (3); Assistant in Chemistry (4); Science Club (4); Debate Council (4); Student Executive Board (4); Vice-President Galloway Literary Society (4); Treasurer Galloway Literary Society (4); Editor Hand Book (3).



## Senior Class

### SAM JOE RUFF, B.S.

Θ K X

BOONEVILLE, MISS.

Pi Kappa Delta; Business Manager *Purple and White* (4); Intercollegiate Debater (3, 4); Freshman Debater; Debate Council (3, 4); Secretary Debate Council (4); Science Club (4); Galloway Literary Society; President Galloway Literary Society (3); Student Executive Board (4); Y. M. C. A. Cabinet (4); Basketball (3, 4).

### LOYCE CADE, B.S.

JACKSON, MISS.

Grenada College (1, 2).

### CLINTON W. WALKER, B.S.

Σ P X

LUCEDALE, MISS.

Sigma Rho Chi; Eta Sigma; Football (1, 2, 3, 4); Track (1); Baseball (1, 2, 3, 4); Basketball (1); Track Manager (3); Study Hall Monitor (2); Undergraduate Secretary of Alumni Association (3, 4); BOBASHELA Staff (4); International Relations Club (4); "M" Club; Secretary-Treasurer "M" Club (4); Honor Graduate.

### J. C. PATTERSON, B.S.

Θ K X

NESBITT, MISS.

Ramblers Club (4); Science Club (4); Galloway Literary Society (1, 2, 3, 4).

### MILDRED CLARK, B.S.

B Σ O

JACKSON, MISS.

### EDWARD MARSHALL LANE, B.A.

FOREST, MISS.

Clark College (2); Ministerial League (3, 4); Lamar Literary Society (1).

## Senior Class

DAVID M. KEY, JR., B.S.

K A  
JACKSON, MISS.

Tennis Team (1, 3); Lamar Literary Society;  
Millsaps Players; Ramblers Club (4).

MARY LOUISE ELLIOTT, B.S.

TCHULA, MISS.

DAVID Y. DUBARD, B.A.

Ø K N  
GRENADA, MISS.

Omicron Delta Kappa; President Catella Club  
(4); Band (1, 2, 3, 4); Business Manager Band  
(4); Glee Club (1, 2, 3, 4); Business Manager  
Glee Club (3); President Glee Club (4); Sec-  
retary Class (1); Vice-President Class (2);  
President Class (4); Lamar Literary Society (1,  
2, 3, 4); Y. M. C. A. Cabinet (2, 3, 4); Dra-  
matic Club (3); Ramblers Club (3, 4); Tennis  
(3, 4).

BILL JACOBS, B.S.

Ø K N  
JACKSON, MISS.

Football (1, 2, 3, 4); Baseball (1, 2, 3, 4);  
Catella Club; Ramblers Club (4).

DOROTHY LOFLIN, B.A.

JACKSON, MISS.

Basketball (1, 2, 3, 4); Captain Basketball (3);  
Classical Club (3, 4); Treasurer Classical Club  
(4); Y. W. C. A.

WILLIAM L. ERVIN, B.S.

Ø K N  
INVERNESS, MISS.

Football (1, 2, 3, 4); Baseball (1, 2, 3, 4);  
Basketball (1).



## Senior Class



WALTER PERMENTER, B.S.

K  $\Sigma$   
JACKSON, MISS.

Omicron Delta Kappa; Catella Club; Football (1, 2, 3, 4); Captain Football Team (4); Basketball (1, 2, 3); Baseball (1, 2, 3, 4); Library Assistant (3); "M" Club (2, 3, 4); President "M" Club (4); Vice-President Junior Class; *P. & H.* Staff (2); Student Executive Board (4).

FRANCES RUSH, B.S.

K  $\Delta$   
BROOKHAVEN, MISS.

M. S. C. W. (1, 2, 3); Secretary-Treasurer Senior Class.



SPURGEON P. GASKIN, B.S.

JACKSON, MISS.

President Ramblers Club (4); Business Manager Millsaps Players (4); Glee Club (3, 4); Band (4); Science Club (4); Galloway Literary Society (1); *P. & H.* Staff (4).

SARA SMITH, B.A.

B  $\Sigma$  O  
JACKSON, MISS.

Glee Club (2, 3); Philomathean Literary Society (3); Beethoven Club; Latin Club.



FRED HOLLADAY, B.S.

UNION, MISS.

MARY WACASTER, B.A.

$\Delta$  Z  
JACKSON, MISS.

Chi Delta Phi; Eta Sigma; Freshman Commission; Freshman Staff, *P. & H.*; Y. W. C. A. Cabinet (3, 4); President Eta Sigma (4); Student Assistant (2, 3, 4); Pan-Hellenic Council (3, 4); Woman's Association Council (3); High Honor Graduate.



## Senior Class

BARCLAY DONALDSON, B.S.

K A  
JACKSON, MISS.



HADENIA BUCK, B.A.

K Δ  
JACKSON, MISS.



HOWARD KENT WILLIFORD, B.S.

CARROLLTON, MISS.

Alpha Psi Omega; Sigma Upsilon; Galloway Literary Society (1, 2, 3, 4); Glee Club (1, 2); Library Assistant (4); Ramblers Club (4).



SARA KING, B.A.

K Δ  
JACKSON, MISS.



Eta Sigma; Secretary-Treasurer Class (2); Y. W. C. A. Cabinet (2, 3, 4); Glee Club (3); Sponsor Football Team (2); Feature Section BOBASHELA (2, 3); Vice-President Y. W. C. A. (3); Treasurer Woman's Association (2); Secretary Woman's Association (3); Latin Club (3); English Assistant (3); Philomathean Literary Society (2, 3); Woman's Pan-Hellenic Council (3).



L. F. McDANIEL, B.S.

LUCEDALE, MISS.

Football (1, 2, 3, 4); Alternate Captain Football (4); Basketball (1); Manager Basketball (3); Track (1); Baseball (1, 2, 3, 4); Vice-President "M" Club (4).



RUTH FORMAN, B.A.

Δ Z  
JACKSON, MISS.

## Senior Class



LUCIEN FERRIS, B.S.

K A

JACKSON, MISS.

Catella Club (3, 4); Assistant Cheer Leader (3, 4); Lamar Literary Society (3, 4); Pre-Medical Club (4); Science Club (4); Glee Club (3); Millsaps Players (3); Vice-President Catella Club (4); Treasurer Lamar Literary Society (3); BOBASHELA Staff (4); Track (3, 4); Pan-Hellenic Council.



HELEN RIPLEY, B.S.

K Δ

BROOKHAVEN, MISS.

CHARLES B. GALLOWAY, B.S.

K Σ

JACKSON, MISS.

Ramblers Club (3); Science Club (3); Physics Assistant (4).



MEREDITH OWENS, B.A.

Φ M

JACKSON, MISS.

DAVID LIVINGSTON, B.S.

Σ P X

PRENTISS, MISS.

Baseball (1, 2, 3, 4).

MOZELLE HEARON, B.S.

JACKSON, MISS.

Ramblers Club (4); Three-Year Club.

## Senior Class

HENRY GEORGE WARREN, B.A.

Θ Κ Ν

BENTON, MISS.

Galloway Literary Society (1, 2, 3, 4); Vice-President Galloway Literary Society (2); Ramblers Club (4); Classical Club (3, 4); Science Club (4); Y. M. C. A. (1, 2, 3, 4).



BETTY PARKER, B.S.

Δ Ζ

JACKSON, MISS.

Belhaven College (1, 2, 3).



JOHN HENRY NOBLIN, B.S.

Π Κ Α

PELAHATCHIE, MISS.

Basketball (1, 2, 3, 4); Manager Basketball (3, 4); Ramblers Club (4); "M" Club.



HELEN FURLOW, B.A.

Κ Δ

BROOKHAVEN, MISS.

Newcomb College (1, 2); Glee Club (3); Classical Club (3).



FELIX J. UNDERWOOD, JR., B.S.

Θ Κ Ν

JACKSON, MISS.

Ole Miss (2); Pre-Medical Club; Science Club (4).



MARGUERITE DETERLY, B.A., B.M.

JACKSON, MISS.

Beethoven Club.



## Senior Class

VIRGINIA YOUNGBLOOD, B.S.

K Δ

BROOKHAVEN, MISS.

Whitworth (1, 2); International Relations Club (4).

M. FRANKLIN WILLIAMS, B.S.

Π K Α

INVERNESS, MISS.

Galloway Literary Society; "M" Club; Manager Varsity Baseball (2, 3, 4).

MARY ORMOND HEALD, B.A.

Φ M

JACKSON, MISS.

Newcomb (1); Glee Club (1, 2); Woman's Council (2); Y. W. C. A. Cabinet (2); Women's Pan-Hellenic (2, 3); BOBASHELA Staff (2, 3); Pre ident Y. W. C. A. (3); Student Executive Board (3); Philomathean Literary Society; Classical Club (3, 4); Education Assistant (3, 4); President Woman's Association (4).

JOHN SHARPE MOON, B.S.

Σ P X

LUMBERTON, MISS.

Football (1, 2, 3, 4); Baseball (1, 2, 3, 4); Basketball (2, 3); "M" Club; Assistant in Physical Education.

JULIA B. LOCKHART, B.A.

JACKSON, MISS.

Classical Club; Basketball (1, 2); Y. W. C. A. (1, 2, 3, 4).

THERESA McDILL, B.A.

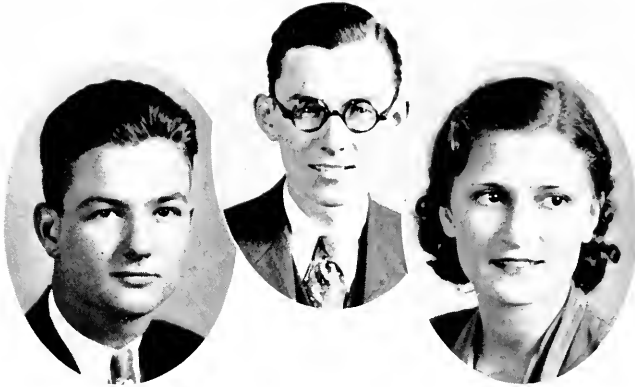
K Δ

JACKSON, MISS.

Editor BOBASHELA (4); Alpha Psi Omega; Chi De'ta Phi; *Purple and White* Staff (1, 2); Woman's Pan-Hellenic (3); Student Executive Board (4).

MRS. DEVOE TOMLINSON SHURLEY  
B.S.

JACKSON, MISS.



### Class Officers

STOKES V. ROBERTSON, JR. . . . . *President*  
H. T. NEWELL, JR. . . . . *Vice-President*  
MARY SUE BURNHAM . . . . . *Secretary-Treasurer*



# JUNIORS

## Junior Class

JAMES H. NEWCOMB, JR.  
K Σ  
RICHTON, MISS.

ALBERT COLLINS  
FOREST, MISS.

WINIFRED GREEN  
Φ M  
JACKSON, MISS.

EMILIO ROMANO  
Θ K X  
NEW ORLEANS, LA.

FRANK CASEY  
MCCOMB, MISS.

JOHN R. ENOCHS  
K A  
JACKSON, MISS.

W. E. HESTER, JR.  
K Σ  
HAZLEHURST, MISS.

ADAMAE PARTIN  
Δ Z  
MERIDIAN, MISS.

CARL M. CUTRER  
Σ P X  
CARTHAGE, MISS.

ETOILE EATON  
TAYLORSVILLE, MISS.

PHILIP GRICE  
MADISON, MISS.

ALLEN LINDSEY  
PELAHATCHIE, MISS.



## Junior Class

T. F. NEBLETT  
Θ Κ Ν  
BATESVILLE, MISS.

H. T. NEWELL, JR.  
Π Κ Α  
JACKSON, MISS.

JOHN B. HOWELL  
Κ Σ  
CANTON, MISS.

LILLIAN POLK  
Β Σ Ο  
LAUREL, MISS.

RAYMOND MCGINNIS  
LOUISVILLE, MISS.

ALEXANDER BAINES  
JACKSON, MISS.

ROBERT VINCENT  
Κ Α  
JACKSON, MISS.

KATHERINE JACOBS  
Β Σ Ο  
JACKSON, MISS.

FLOYD ODOM  
Σ Ρ Χ  
GULFPORT, MISS.

HENRY VARNER  
ROME, MISS.

MACON PHILLIPS  
JACKSON, MISS.

L. B. JONES  
Θ Κ Ν  
JACKSON, MISS.



## Junior Class



PAUL GRIFFITH  
K A  
WAYNESBORO, MISS.



MARGUERITE GAINAY  
K Δ  
JACKSON, MISS.



RABIAN DALE LANE  
Θ K X  
RALEIGH, MISS.



ELIZABETH HEITMAN  
Δ Z  
BOLTON, MISS.



GYCELLE TYNES  
Σ P X  
GLOSTER, MISS.



MARY ELEANOR ALFORD  
K Δ  
VICKSBURG, MISS.



STOKES V. ROBERTSON, JR.  
K A  
JACKSON, MISS.



MARY SUE BURNHAM  
K Δ  
MAGEE, MISS.



CLINTON MOORE  
K Σ  
HITA BENA, MISS.



CATHERINE PEETS  
Φ M  
BROOKHAVEN, MISS.



JIMMY GUESS  
Π K A  
JACKSON, MISS.



LOUISE DOOLEY  
LESSLEY, MISS.



## Junior Class

THYRZA BRANTON  
 $\Delta Z$   
 PETTIT, MISS.



MARTHA HAMILTON  
 $\Phi M$   
 JACKSON, MISS.

ANN STEVENS LEWIS  
 $\Delta Z$   
 CANTON, MISS.



EVELYN MYERS  
 $\Delta Z$   
 MORTON, MISS.



CARL LEE SWAYZE  
 $K \Delta$   
 BENTON, MISS.

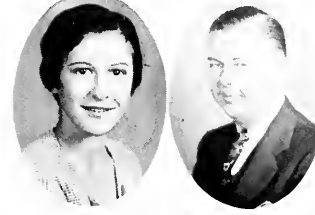
CLEO WARREN  
 CANTON, MISS.

JUANITA WINSTEAD  
 $\Delta Z$   
 DEKALB, MISS.



ONEITA WINSTEAD  
 $\Delta Z$   
 DEKALB, MISS.

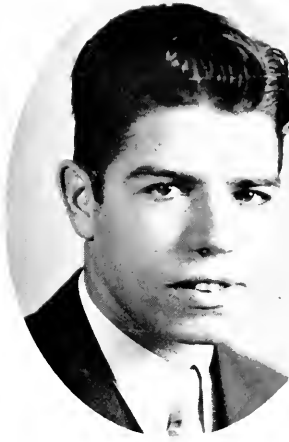
KATHRYN HERBERT  
 $\Phi M$   
 JACKSON, MISS.



WILLIAM R. ARNOLD  
 $K A$   
 JACKSON, MISS.



MARGUERITE DETERLY, *Senior in Piano*



Class Officers

GARLAND HOLLOMAN . . . . . *President*  
HORACE DAVISSON . . . . . *Vice-President*



**SOPHOMORES**

## Sophomore Class



W. J. TREMAINE  
K A  
JACKSON, MISS.

ARCHIE HALEY  
K A  
JACKSON, MISS.

FRANCES ALLRED  
JACKSON, MISS.

SPURGEON BUCKLEY  
II K A  
NEWTON, MISS.

DAN HEIDELBERG  
K Σ  
HATTIESBURG, MISS.

GORDON GRANTHAM  
K A  
TERRY, MISS.

MARY GILLESPIE  
Φ M  
RAYMOND, MISS.

GARLAND HOLLOMAN  
K Σ  
TITA BENA, MISS.

CONNIE HOZENDORF  
MENDENHALL, MISS.

JOE PICKETT  
MELVILLE, LA.

W. HOLMES COOK  
II K A  
LOUISVILLE, MISS.

JUANITA LANE  
Δ Z  
FOREST, MISS.

JOHN T. KIMBALL  
Σ P X  
DEQUINCY, LA.

JOHN CRESAP  
CANTON, MISS.

MARGARET FLOWERS  
Φ M  
JACKSON, MISS.

M. A. RIGGS  
JACKSON, MISS.

MELVIN RICHARDSON  
K Σ  
BOLTON, MISS.

NORMAN BRADLEY  
K A  
JACKSON, MISS.

## Sophomore Class

NORMAN BOONE  
CHUNKY, MISS.

BEVERLY BRISCOE  
II K A  
JACKSON, MISS.

JOHN CHAMBERS  
K A  
JACKSON, MISS.

J. B. MORRISON  
K Σ  
BILOXI, MISS.

CATHERINE JONES  
Φ M  
JACKSON, MISS.

HORACE DAVISSON  
Θ K N  
RULEVILLE, MISS.

ROBERT MAYO  
JACKSON, MISS.

FLOYD LEWIS  
LOUISE, MISS.

BAYLIS SHANKS  
SUMRALL, MISS.

JOE M. HINDS  
Σ P X  
GULFPORT, MISS.

OUIDA MAE LUTER  
JACKSON, MISS.

LUTHER BENNETT  
SMITHVILLE, MISS.

ALTON BARNETTE  
SUMMITT, MISS.

ELIZABETH WARREN  
Φ M  
JACKSON, MISS.

BLANTON DYE  
II K A  
CLARKSDALE, MISS.

BASIL MOORE  
AMORY, MISS.

J. WILTON DEES  
K Σ  
HAZLEHURST, MISS.

AUDREY BRISCOE  
JACKSON, MISS.



## Sophomores



SAM LACKEY  
Θ K Ν  
FOREST, MISS.

VIOLET ALLEN  
JACKSON, MISS.

FRANKLIN HEARD  
K Σ  
ITTA BENA, MISS.

GORDON ROGERS  
BELZONI, MISS.

ANN PULLEN  
Φ M  
JACKSON, MISS.

EARL GRAVES  
RAYMOND, MISS.

H. V. WATKINS, JR.  
K Α  
JACKSON, MISS.

JEANETTE GULLEDGE  
JACKSON, MISS.

N. P. LIGHTCAP, JR.  
K Σ  
JACKSON, MISS.

JAMES MOORE  
K Σ  
ITTA BENA, MISS.

HARRIET CAROTHERS  
JACKSON, MISS.

JACK McDILL  
K Α  
JACKSON, MISS.

DOROTHY DEAN  
K Δ  
JACKSON, MISS.

GALLOWAY AUSTIN  
JACKSON, MISS.

TOMMY GOODWIN  
K Α  
JACKSON, MISS.

MARY VIRGINIA WELLS  
K Δ  
JACKSON, MISS.

M. S. BRANTLEY  
KILMICHAEL, MISS.

HILERY WHATLEY  
JACKSON, MISS.  
K Σ

## Sophomores

MARGARET BERZETTE  
JACKSON, MISS.

W. M. CAMPBELL  
TUTWILER, MISS.

CHARLOTTE CAPERS  
Φ M  
JACKSON, MISS.

DACE DAVIS  
O K N  
JACKSON, MISS.

JULIA DELOACH  
K Δ  
JACKSON, MISS.

HARRIETTE HEIDELBERG  
K Δ  
JACKSON, MISS.

SARA HEIDELBERG  
K Δ  
JACKSON, MISS.

CORRINE HOLLoman  
JACKSON, MISS.

ROBERT HOUGH  
JACKSON, MISS.

BERRY IVEY  
MERIDIAN, MISS.

RICHARD KINNAIRD  
II K A  
JACKSON, MISS.

CATHERINE LAMKIN  
Δ Z  
JACKSON, MISS.

ELLEN MACKAY  
JACKSON, MISS.

HAZEL McPHAIL  
Δ Z  
JACKSON, MISS.

DIXON PYLES  
JACKSON, MISS.

ARTHUR ROGERS  
K A  
NEW ALBANY, MISS.

THOMAS ROSS  
II K A  
PELAHATCHIE, MISS.

LORENA SMITH  
JACKSON, MISS.





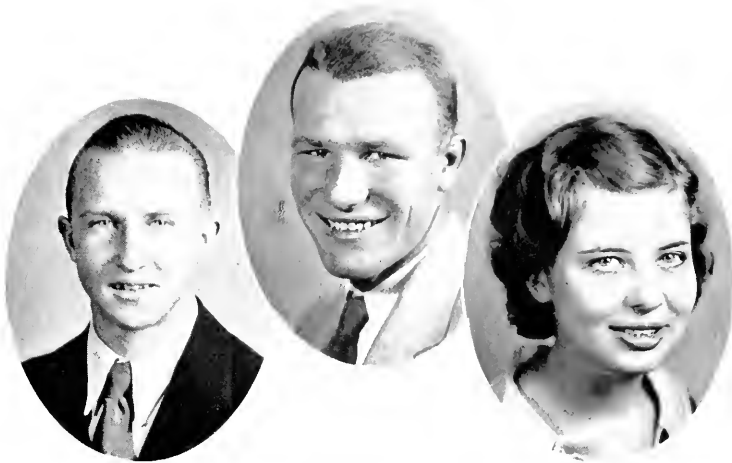
## *Alma Mater*

*Alma Mater, dear old Millsaps,  
Loyal sons are we;  
Our fond hearts are thine alone  
And evermore shall be.*

*Proud art thou in classic beauty  
Of thy noble past;  
With thy watch-word honor, duty,  
Thy high fame shall last.*

*Every student, man and maiden,  
Swell the glad refrain  
'Til the breezes, music-laden,  
Waft it back again.*





Class Officers

GABRIEL FELDER . . . . . *President*  
ROBERT WOMACK . . . . . *Vice-President*  
GRACE MASON . . . . . *Secretary-Treasurer*



**FRESHMEN**

## Freshmen



JESSE MAGEE . . . . . Bogalusa, La.  
 EDMOND RICKETTS . . . . . Jackson, Miss.  
 GORDON COOPER . . . . . Purvis, Miss.  
 MARGARET BARTON . . . . . Jackson, Miss.  
 T. M. DICKSON . . . . . Jackson, Miss.  
 W. F. SUBER . . . . . Belzoni, Miss.  
 MANLEY GREGORY . . . . . Okolona, Miss.  
 MAL ANDERSON . . . . . Batesville, Miss.  
 CHAUNCEY GODWIN . . . . . Jackson, Miss.  
 DOROTHY COWEN . . . . . Jackson, Miss.  
 OSWALD SCHWING . . . . . Magnolia, Miss.  
 ARTHUR PIERCE . . . . . Jackson, Miss.  
 AYRLENE MCGAHEY . . . . . Jackson, Miss.  
 MILLER E. MARETT . . . . . Potts Camp, Miss.  
 WALTER WENTZELL . . . . . Biloxi, Miss.  
 DWIGHT TAYLOR . . . . . Jackson, Miss.  
 ALLEN T. EDWARDS . . . . . Mendenhall, Miss.  
 JOHN HOWARD . . . . . Durant, Miss.  
 WARREN JONES . . . . . Philadelphia, Miss.  
 ELLIS LATIMER . . . . . Okolona, Miss.  
 MARY LEILA MILNER . . . . . Jackson, Miss.  
 CLARENCE McCORMICK . . . . . Hickory, Miss.  
 PAUL RAMSAY . . . . . Meridian, Miss.  
 MILDRED LAIRD . . . . . Jackson, Miss.  
 JOHN GILLASPY . . . . . Monticello, Miss.  
 LLOYD CAILLAVET . . . . . Biloxi, Miss.  
 CHESTER JUANICO . . . . . Biloxi, Miss.  
 BONNIE McCARLEY . . . . . Guntown, Miss.  
 JOHN CASTLEN . . . . . Greenville, Miss.  
 LYNELLE WOOTEN . . . . . Jackson, Miss.  
 ARMAND KAROW . . . . . Jackson, Miss.  
 JULIUS FRANK . . . . . DeQuincey, La.  
 WILLIAM FULGHAM . . . . . Jackson, Miss.  
 FRANK REA DARDEN . . . . . Jackson, Miss.  
 KYLE PHILLIPS . . . . . Laurel, Miss.

## Freshmen

JULIA COX . . . . . Jackson, Miss.  
 OTHO MONROE . . . . . Canton, Miss.  
 DAISY KATE BROWN . . . . . Jackson, Miss.  
 MOSBY ALFORD . . . . . Hazlehurst, Miss.  
 MALCOLM CARTER . . . . . Gulfport, Miss.  
 KENNETH GILBERT . . . . . Meridian, Miss.  
 CHARLES HANNA . . . . . Jackson, Miss.  
 MARGARET BERZETTE . . . . . Jackson, Miss.  
 JAMES CRUTCHER . . . . . Clarksdale, Miss.  
 BUREN AKERS . . . . . Pontotoc, Miss.  
 LAURENS KENNEDY . . . . . Natchez, Miss.  
 NORVELLE BEARD . . . . . Jackson, Miss.  
 JAMES S. NOBLIN . . . . . Forrest, Miss.  
 LEONARD HOLMES . . . . . Tylertown, Miss.  
 ROBERT BRENT . . . . . Crystal Springs, Miss.  
 THOMAS BOSWELL . . . . . Jackson, Miss.  
 MARTHA DONALDSON . . . . . Jackson, Miss.  
 GABRIEL FELDER . . . . . Magnolia, Miss.  
 W. BRUMFIELD . . . . . McComb, Miss.  
 THOMAS McDONNELL . . . . . Okolona, Miss.  
 JOE WILLIAMS . . . . . Columbus, Miss.  
 MARZINE CALLAHAN . . . . . Noxapater, Miss.  
 JOHN NEBLETT . . . . . Bateville, Miss.  
 JAMES FISHER . . . . . Belzoni, Miss.  
 BERNICE CROSBY . . . . . Jackson, Miss.  
 CURTIS GALLE . . . . . Biloxi, Miss.  
 ROBERT WOMECK . . . . . Bogalusa, La.  
 JULIAN LOCKETT . . . . . Grenada, Miss.  
 MYNELLE CORLEY . . . . . Raleigh, Miss.  
 DACE DAVIS . . . . . Jackson, Miss.  
 PAUL HARDIN . . . . . Magnolia, Miss.  
 ROBERT REAGAN . . . . . Magnolia, Miss.  
 EMMA HEALD . . . . . Jackson, Miss.  
 JOHN MELVIN . . . . . Camden, Miss.  
 RAY HOLDER . . . . . Lucedale, Miss.  
 WEBB OVERSTREET . . . . . Jackson, Miss.



## Freshmen

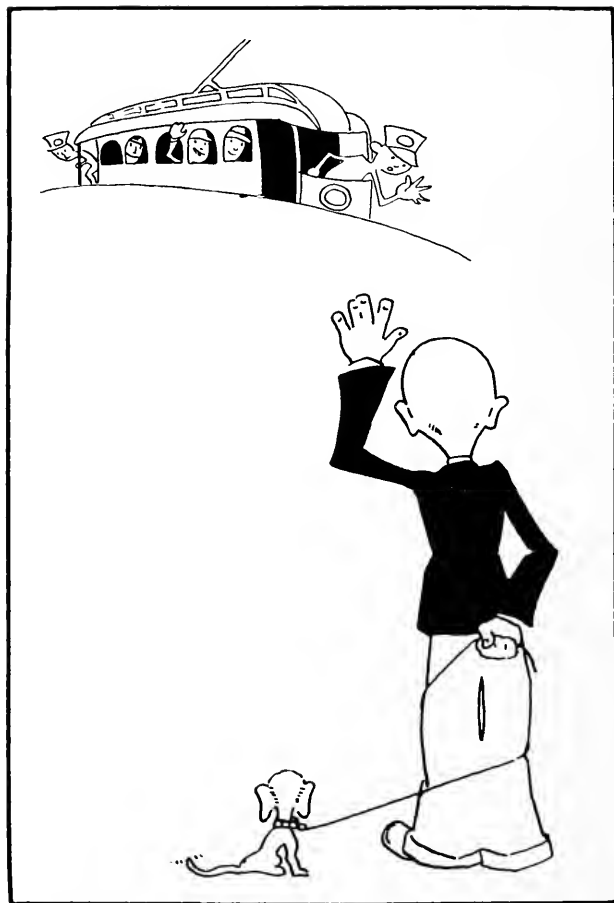


CHARLES COLE . . . . . Drew, Miss.  
 CHARLES NEILL . . . . . Jackson, Miss.  
 FRED WARD . . . . . Tutwiler, Miss.  
 JOE GUESS . . . . . Jack-on, Miss.  
 JOHN FARMER . . . . . Forest, Miss.  
 ETHEL McMURRAY . . . . . Jackson, Miss.  
 GORDON REEVES . . . . . McComb, Miss.  
 JOHN NEBLETT . . . . . Batesville, Miss.  
 CHARLES ALEXANDER . . . . . Forest, Miss.  
 JOHN R. LOFLIN . . . . . Jackson, Miss.  
 ROBERT STOCKETT . . . . . Jackson, Miss.  
 ELISE ENOCHS . . . . . Jackson, Miss.  
 BILLY SOURS . . . . . Jackson, Miss.  
 RAS MANSELL . . . . . Camden, Miss.  
 HUGO NEWCOMB . . . . . Richton, Miss.  
 MORRISON MASSEY . . . . . Bay Springs, Miss.  
 MAURICE JONES . . . . . Greenwood, Miss.  
 DOROTHY THOMPSON . . . . . Jackson, Miss.  
 MILTON ABRAMS . . . . . Natchez, Miss.  
 MARVIN SMITH . . . . . Tehula, Miss.  
 LOUIS DECELL . . . . . Brookhaven, Miss.  
 SMITH McDUGAL . . . . . Jackson, Miss.  
 ARTHUR TODD . . . . . Jackson, Miss.  
 LOIS BARROW . . . . . Jackson, Miss.  
 SHERRAL COLEMAN . . . . . Fayette, Miss.  
 CHARLES ADAMS . . . . . Macon, Miss.  
 LOUIS HALLAM . . . . . Jack-on, Miss.  
 EDWARD FLOWERS . . . . . Jackson, Miss.  
 O. C. MOFFETT . . . . . Bogalusa, La.  
 VIRGINIA WATERHOUSE . . . . . Jackson, Miss.  
 LEE STOKES . . . . . Meridian, Miss.  
 JAMES BUNYARD . . . . . Camden, Miss.  
 CURTIS KNIGHT . . . . . Hattiesburg, Miss.  
 EDWIN UNDERWOOD . . . . . Terry, Miss.  
 RALPH JONES . . . . . Greenwood, Miss.  
 RUTH SARRETT . . . . . Jackson, Miss.

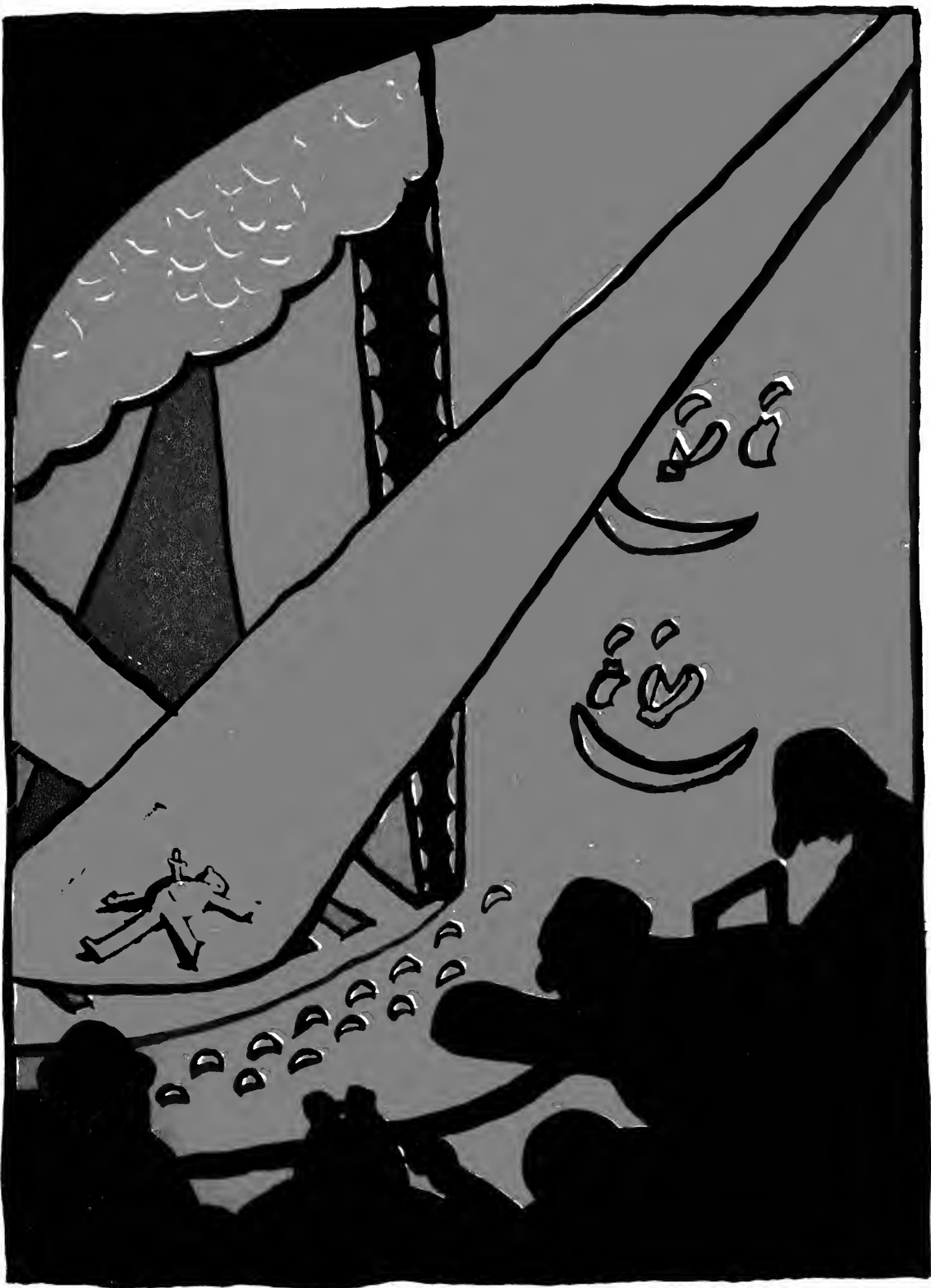
## Freshmen

FRED BASS . . . . . Long Beach, Miss.  
 FRANCIS BRADSHAW . . . . . Bontonia, Miss.  
 ROBERT CUNNINGHAM . . . . . Jackson, Miss.  
 JACK DORRIS . . . . . Jackson, Miss.  
 L. E. GERELD . . . . . McComb, Miss.  
 BEN HARPOLE . . . . . Calhoun City, Miss.  
 HAZEL HARRISON . . . . . Jackson, Miss.  
 WARFIELD HESTER . . . . . Terry, Miss.  
 ROBERT KOENIG . . . . . Jackson, Miss.  
 JAMES I. LUNDY . . . . . Greenwood, Miss.  
 GRACE MASON . . . . . Jackson, Miss.  
 HADEN MCKAY . . . . . Jackson, Miss.  
 JUDSON PALMER . . . . . Jackson, Miss.  
 GEORGE PRESTRIDGE . . . . . Bogalusa, La.  
 ROBERT RIDGEWAY . . . . . Jackson, Miss.  
 RICHARD KING . . . . . Jackson, Miss.  
 HAYS SNEED . . . . . Jackson, Miss.  
 KENNETH TERRELL . . . . . Prentiss, Miss.  
 WILLIAM SHUTT . . . . . Jackson, Miss.  
 BILL TYSON . . . . . Jackson, Miss.  
 DOYLE MATTOX . . . . . Swifttown, Miss.  
 ELLIS WRIGHT . . . . . Jackson, Miss.  
 GEORGE YEAGER . . . . . Stringer, Miss.  
 RUTH WARD . . . . . Terry, Miss.  
 MARION GIDDENS . . . . . Jackson, Miss.  
 CANDLER LEGGETT . . . . . Jackson, Miss.  
 KATHERINE HEIDELBERG . . . . . Jackson, Miss.  
 JAMES VANCE . . . . . Jackson, Miss.  
 MARSHALL McCORMICK . . . . . Forest, Miss.  
 EDWARD McDONNELL . . . . . Jackson, Miss.  
 HUGH NICHOLS . . . . . Lexington, Miss.  
 JACK SPICELAND . . . . . Lucedale, Miss.  
 JOHN STEPHENS . . . . . Lexington, Miss.  
 WANDA TREMAINE . . . . . Jackson, Miss.  
 SARA ANDERSON . . . . . Jackson, Miss.  
 SHIRLEY MAGEE . . . . . Jackson, Miss.  
 DICK BARRETT . . . . . Lexington, Miss.  
 N. R. CURRIE, JR. . . . . Jackson, Miss.  
 LAVARNE DENSON . . . . . Jackson, Miss.  
 JAMES DOWNING . . . . . Jackson, Miss.  
 ELIJAH FLEMING . . . . . Jackson, Miss.  
 JACK GATES . . . . . Jackson, Miss.





## **GOOD-BYE CLASSES**









BIVINS, OWEN, BANKS, RUFF, NEWELL  
 McDILL, NEBLETT, DUBARD, KING, PERMENTER

## Student Executive Board

WALTER BIVINS . . . . .	<i>President Student Body</i>
VARDAMAN L. OWEN . . . . .	<i>Y. M. C. A.</i>
DOUGLAS BANKS . . . . .	<i>Y. W. C. A.</i>
SAM JOE RUFF . . . . .	<i>Literary Societies</i>
HARVEY T. NEWELL, JR. . . . .	<i>Publications</i>
THERESA McDILL . . . . .	<i>Publications</i>
T. F. NEBLETT . . . . .	<i>Band</i>
DAVID DUBARD . . . . .	<i>Glee Clubs</i>
SARA KING . . . . .	<i>Women's Pan-Hellenic Council</i>
WALTER PERMENTER . . . . .	<i>Athletics</i>



## Classical Club

### FACULTY ADVISORS

MISS MAGNOLIA SIMPSON                      DR. A. P. HAMILTON

### OFFICERS

EDWARD A. KHAYAT . . . . . *President*  
 RABIAN LANE . . . . . *Vice-President*  
 THYRZA BRANTON . . . . . *Secretary*  
 DOROTHY LOFLIN . . . . . *Treasurer*

### LECTURERS

DR. D. M. KEY	MISS MAGNOLIA SIMPSON
PROF. A. G. SANDERS	DR. GEO. C. SWEARINGEN
DR. A. P. HAMILTON	DR. M. W. SWARTZ



## Science Club

*Purpose:* To promote interest in, and knowledge of, Science among the students of Millsaps College.

### FACULTY MEMBERS

DR. J. M. SULLIVAN  
 PROF. G. L. HARRELL

PROF. J. B. PRICE  
 PROF. N. WILKERSON

### OFFICERS

ROY H. BAILEY . . . . . *President*  
 ALEXANDER BAINES . . . . . *Vice-President*  
 RICHARD KINNAIRD . . . . . *Secretary*  
 GORDON ROGERS . . . . . *Treasurer*  
 YARDAMAN L. OWEN . . . . . *Librarian*  
 CHARLES B. GALLOWAY . . . . . *Bibliographer*

# Y. M. C. A. Cabinet

## OFFICERS OF THE Y. M. C. A.

VARDAMAN L. OWEN . . . . . *President*  
JOHN B. HOWELL . . . . . *Vice-President*  
PAUL GRIFFITH . . . . . *Secretary-Treasurer*  
PROF. H. CONRAD BLACKWELL . . . . . *Faculty Advisor*

## COMMITTEES

### *Program*

S. J. RUFF  
T. A. GILBERT

### *Extension Work*

JOHN T. VICKERS  
T. F. NEBLETT

### *Publicity*

NORMAN BOONE  
CONNIE HOZENDORF

### *Social*

RABIAN LANE  
JOHN CRESAP

### *Vespers*

DAN HEIDELBERG  
BASIL MOORE

### *Church Work*

ALBERT COLLINS  
LUTHER BENNETT

### *Freshman Work*

JOHN T. KIMBALL  
DAVID DUBARD

### *Music*

ARTHUR CROSS  
MATHIS ARMSTRONG



**Y. M. C. A.**

Neblett, Howell, Dubard, Griffith  
 Gilbert, Moore, Heidelberg, Cresop  
 Lane, Hozendorf, Boone, Bennett  
 Collins, Ruff, Blackwell, Kimball  
 Armstrong, Owen

# Y. W. C. A. Cabinet

## OFFICERS OF THE Y. W. C. A.

DOUGLAS BANKS . . . . . *President*  
SARA OWEN KING . . . . . *Vice-President*  
WILNA RIGBY . . . . . *Secretary*  
MARY VELMA SIMPSON . . . . . *Treasurer*

## COMMITTEE CHAIRMEN

ANN STEVENS LEWIS . . . . . *Program*  
ELIZABETH BUHRMAN . . . . . *Social*  
HARRIET CAROTHERS . . . . . *World Fellowship*  
ROSE FULGHAM WELLS . . . . . *Finance*  
MARY WACASTER . . . . . *Publicity*  
VIVIAN CONE . . . . . *Social Service*  
EMMA MAUDE SLAUGHTER . . . . . *Music*  
MARY HEALD . . . . . *Industrial*



**Y. W. C. A.**  
Wells, Banks, Lewis  
Simpson, Wacaster, Buhrman, King  
Carothers, Rigby, Heald



Theresa McDill, *Editor*

Edward Khayat, *Business Manager*

### The 1932 Bobashela

- HAL WILSON DALE . . . . . *Class Editor*
- T. F. NEBLETT . . . . . *Photograph Editor*
- CLINTON W. WALKER . . . . . *Sports Editor*
- DOROTHY DEAN . . . . . *Art Editor*
- LUCIAN FERRIS . . . . . *Feature Editor*
- EWING HESTER . . . . . *Organizations Editor*
- BLANTON DYE . . . . . *Assistant Business Manager*







HARVEY T. NEWELL, JR., *Editor* SAM JOE RUFÉ, *Business Manager*

## The Purple and White

### THE STAFF

- |                             |                        |                            |                           |
|-----------------------------|------------------------|----------------------------|---------------------------|
| BLANTON DYE . . . . .       | <i>Managing Editor</i> | KATHERINE JACOBS . . . . . | <i>Social Editor</i>      |
| NORMAN BRADLEY . . . . .    | <i>Feature Editor</i>  | CHARLOTTE CAPERS . . . . . | <i>Columnist</i>          |
| GEORGE STEPHENSON . . . . . | <i>Sports Editor</i>   | RAYMOND MCGINNIS . . . . . | <i>Columnist</i>          |
| STOKES ROBERTSON . . . . .  | <i>Organizations</i>   | HAL DALE . . . . .         | <i>Locals Editor</i>      |
| ROY BAILEY . . . . .        | <i>Organizations</i>   | KATHRYN HERBERT . . . . .  | <i>Book Review Editor</i> |
| SPURGEON BUCKLEY . . . . .  |                        | <i>Circulation Manager</i> |                           |



# Galloway Literary Society

## OFFICERS

ROBERT HOUGH . . . . . *President*  
ALBERT COLLINS . . . . . *Vice-President*  
BASIL E. MOORE . . . . . *Secretary*  
VARDAMAN OWEN . . . . . *Treasurer*

## MEMBERS

CHARLIE ADAMS	PHILIP GRICE
LUTHER BENNETT	FRED HOLLADAY
NORMAN BOONE	RAY HOLDER
M. S. BRANTLEY	NOEL HINSON
SPURGEON BUCKLEY	PAUL HARDIN
ROY BAILEY	WARFIELD HESTER
JOE CARGILE	RABIAN LANE
FRANK CASEY	JAMES LUNDY
GORDON COOPER	BASIL MOORE
ALBERT COLLINS	SWOPE NOBLIN
BOB ENOCHS	JOE PICKETT
ALLAN EDWARDS	V. L. OWEN
GABRIEL FELDER	J. C. PATTERSON

PAUL RAMSEY  
SAM JOE RUFF  
MARVIN RIGGS  
BAYLIS SHANKS  
JACK SPICELAND  
GEORGE STEPHENSON  
JAMES SWFIZER  
DWIGHT TAYLOR  
EDWIN UNDERWOOD  
PAUL GRIFFITH  
GLADEN CALDWELL  
CHARLES NEILL  
ROBERT HOUGH



GALLOWAY LITERARY SOCIETY

Hough  
Bennett  
Cooper  
Hohler  
Lundy  
Ruff  
Underwood

Collins  
Boone  
Edwards  
Hinson  
Noblin  
Riggs  
Griffith

Moore  
Brantley  
Felder  
Hardin  
Pickett  
Shanks  
Neill

Owen  
Bailey  
Grice  
Hester  
Patterson  
Spiceland

Adams  
Casey  
Holladay  
Lane  
Ramsay  
Taylor

# Lamar Literary Society

## OFFICERS

B. G. AUSTIN . . . . . *President*  
GEORGE McMURRAY . . . . . *Vice-President*  
JACK DORRIS . . . . . *Secretary*  
STOKES V. ROBERTSON, JR. . . . . *Treasurer*  
WALTER BIVINS . . . . . *Critic*

## MEMBERS

B. G. AUSTIN	LUCIEN FERRIS
WALTER BIVINS	D. M. KEY, JR.
NORMAN BRADLEY	DAVID A. LIVINGSTON
JACK BRIDGES	RAYMOND MCGINNIS
JOHN CASTLEN	GEORGE McMURRAY
W. HOLMES COOK	T. F. NEBLETT
ROBERT CUNNINGHAM	FLOYD ODOM
DASE DAVIS	ROBERT RIDGEWAY
HORACE DAVISSON	EDMUND RICKETTS
JACK DORRIS	STOKES V. ROBERTSON, JR.
JAMES DOWNING	LEE STOKES
DAVID DUBARD	VAUGHAN WATKINS
BLANXON DYE	DAN WILLIAMS
H. D. GILLIS	JOE WILLIAMS

KENNETH WILLS



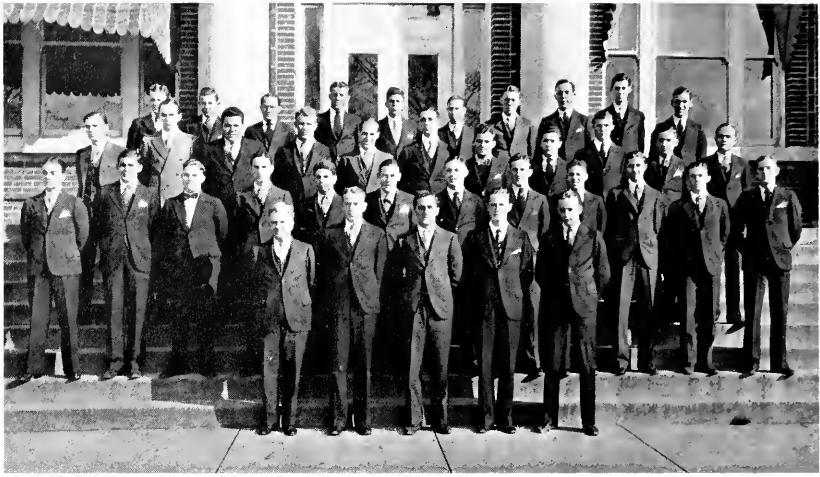
LAMAR LITERARY SOCIETY

Austin  
 Castlen  
 Davisson  
 Dye  
 McGinnis  
 Ricketts  
 Williams

Bivins  
 Cook  
 Dorris  
 Ferris  
 Neblett  
 Robertson  
 Wills

Bradley  
 Cunningham  
 Downing  
 Key  
 O'Dom  
 Stokes

Bridges  
 Davis  
 Dubard  
 Livingston  
 Ridge-way  
 Watkins



## Men's Glee Club

DR. A. P. HAMILTON, *Director*

MISS MAGNOLIA SIMPSON, *Accompanist*

### OFFICERS

DAVID DUBARD . . . . . <i>President</i>	T. NEBLETT . . . . . <i>Assistant Business Manager</i>
EDWARD KHAYAT . . . . . <i>Business Manager</i>	JOHN KIMBALL . . . . . <i>Librarian</i>

### PERSONNEL

#### *First Tenor*

LUTHER BENNETT  
M. S. BRANTLEY  
T. F. NEBLETT  
ROWAN CREWS

T. M. DICKSON  
RAY HOLDER  
JOHN NEBLETT  
KYLE PHILLIPS  
SHELBY ROBERTS

CHARLES SCHWEIZER  
WILLIAM TYSON  
MARION GIDDENS  
JAMES TAYLOR

#### *Second Tenor*

JOHN CRESAP  
PAUL GRIFFITH  
FRED BASS  
RUSSELL CAROTHERS

JOHN CASTLEN  
GABRIEL FELDER  
JESSE MAGEE  
VIRGIL SKIPPER  
ROBERT WOMACK

DAVID WALLEY  
MARZINE CALLAHAN  
JOE GUESS  
EMILIO ROMANO

#### *First Bass*

SPURGEON GASKIN  
EDWARD KHAYAT  
BEVERLY BRISCOE

JOHN CHAMBERS  
LOUIS DECELL  
JAMES FISHER  
MANLEY GREGORY

LEE STOKES  
JAMES LUNDY  
RICHARD KING

#### *Second Bass*

JOHN CAMPBELL  
DAVID DUBARD  
JOHN KIMBALL

CHARLES COLE  
WILLIAM FULGHAM

RAS MANSELL  
SMITH McDUGAL  
WILLIAM SHUTT

#### *Quartet*

GIDDENS, KING, FULGHAM, SHUTT



## Ramblers Club

*(Geology)*

FACULTY ADVISOR

DR. J. M. SULLIVAN

### OFFICERS


SPURGEON GASKIN . . . . . *President*  
 R. P. VINCENT . . . . . *Vice-President*  
 HAL DALE . . . . . *Treasurer*  
 THERESA MCDILL . . . . . *Secretary*  
 HOWARD K. WILLIFORD . . . . . *Reporter*  
 MACON PHILLIPS . . . . . *Photographer*

### MEMBERS

DOUGLAS BANKS  
 WINIFRED GREEN  
 MOZELLE HEARON  
 BILLY ARNOLD  
 WALTER BIVINS  
 CHARLTON HUTTON

BILL JACOBS  
 P. H. KIM  
 ALLEN LINDSEY  
 JOHN MUNSTERMAN  
 GEORGE MURPHY  
 T. F. NEBLETT

CLAUDE PASSEAU  
 JOHN PATTERSON  
 J. T. VICKERS  
 VAUGHAN WATKINS  
 T. O. PREWITT  
 HENRY WARREN



▲

This Page Dedicated to the  
Memory of

**Commie H. Smith**

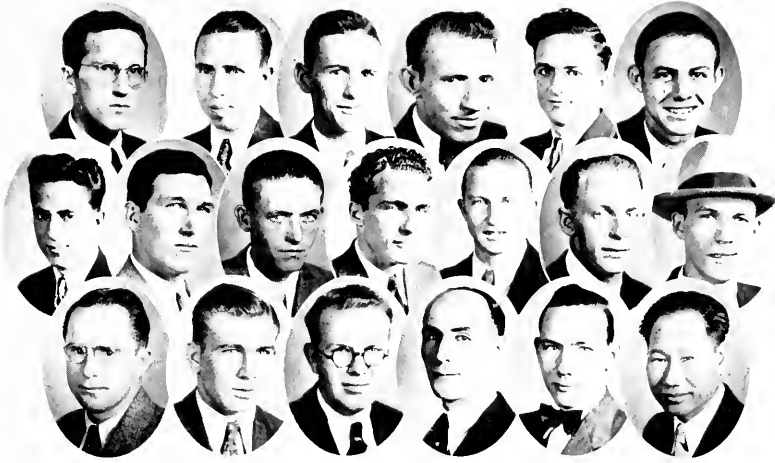
Beloved Student—Valiant Athlete  
Millsaps College Student Body

“M” Club

Millsaps College Faculty  
Millsaps College Coaching Staff

▼





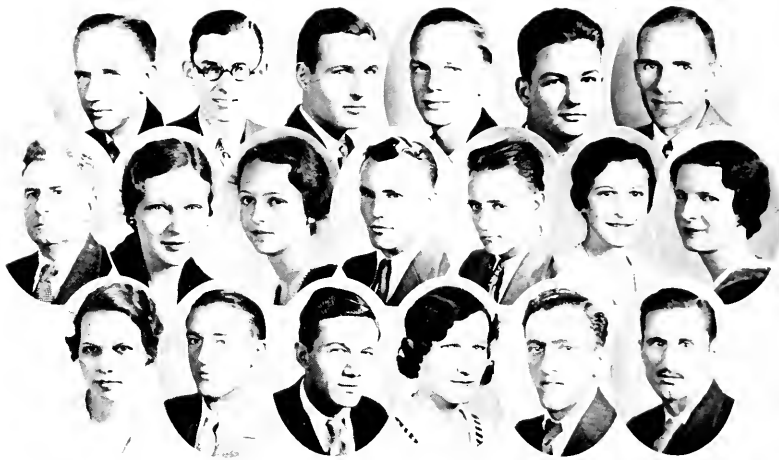
## Ministerial League

### OFFICERS

MATHIS ARMSTRONG . . . . . *President*  
 NORMAN BOONE . . . . . *Vice-President*  
 BASIL E. MOORE . . . . . *Secretary-Treasurer*

### MEMBERS

MATHIS ARMSTRONG	P. H. KIM
LUTHER BENNETT	MARSHALL LANE
M. S. BRANTLEY	SAM MOODY
NORMAN BOONE	BASIL E. MOORE
FRANK CASEY	FLOYD ODOM
ALBERT COLLINS	LEE STOKES
SHERRELL COLEMAN	HENRY VARNER
GABRIEL FELDER	ROBERT YOUNG
NOEL HINSON	SWOPE NOBLIN
CONNIE HOZENDORF	BUREN AKERS



## International Relations Club

### FACULTY MEMBERS

PROFESSOR ROSS H. MOORE      DR. A. P. HAMILTON  
 MISS FLORENCE LEECH

### STUDENT MEMBERS

VIRGINIA YOUNGBLOOD	NORMAN BRADLEY
KATHRYN HERBERT	EDWARD KHAYAT
MARY WACASTER	JOHN KIMBALL
HELEN RIPLEY	CARL CUTFR
MARGARET FLOWERS	PAUL GRIFFITH
ROBERT HOUGH	WALTER BIVINS
HARVEY T. NEWELL, JR.	STOKES V. ROBERTSON, JR.
CHARLES WALKER	GYCYLLE TYNES



## The Woman's Association

*Organized October, 1930*

*Purpose:* To represent and to further the best interests of the student body; to strengthen the spirit of unity and sense of individual responsibility among the women of Millsaps College.

### OFFICERS

MARY ORMOND HEALD . . . . .	<i>President</i>
MARY VELMA SIMPSON . . . . .	<i>Vice-President</i>
SARA OWEN KING . . . . .	<i>Secretary</i>
WILNA ALINE RIGBY . . . . .	<i>Treasurer</i>
HARRIET BYRD CAROTHERS . . . . .	<i>Program Chairman</i>
ROSE FULGHAM WELLS . . . . .	<i>Social Chairman</i>
DOROTHY COWEN . . . . .	<i>Reporter</i>
MRS. MARY H. STONE . . . . .	<i>Faculty Advisor</i>



KING, CAPERS, JACOBS, MOORE  
SMITH, WACASTER, HEIDELBERG, HERBERT

## Women's Pan-Hellenic Council

### REPRESENTATIVES

#### *Kappa Delta*

SARA KING

HARRIETT HEIDELBERG

#### *Delta Zeta*

MARY WACASTER

GLENNA MOORE

#### *Phi Mu*

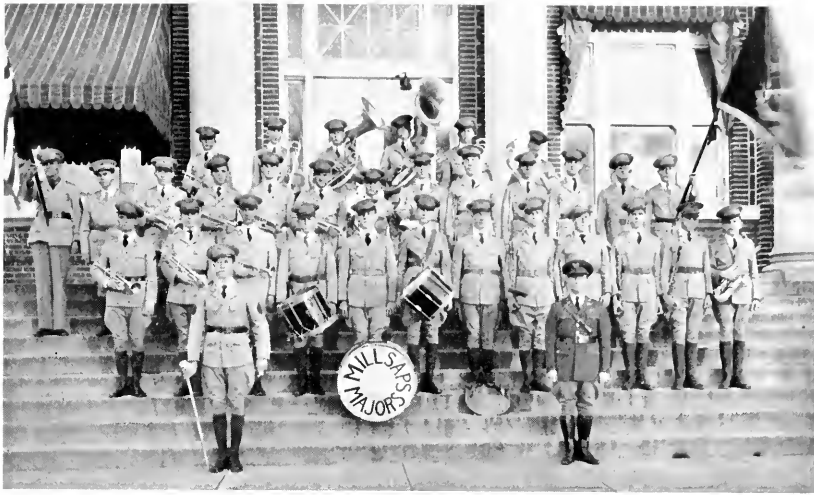
KATHRYN HERBERT

CHARLOTTE CAPERS

#### *Beta Sigma Omicron*

SARA SMITH

KATHERINE JACOBS



## Millsaps 106th Engineers Band

FRANK SLATER . . . . . *Warrant Officer*  
 THOMAS F. NEBLETT . . . . . *Staff Sergeant*

### *Sergeants*

HAL W. DALE                      STOKES V. ROBERTSON, JR.                      DAVID Y. DUBARD

### *Corporals*

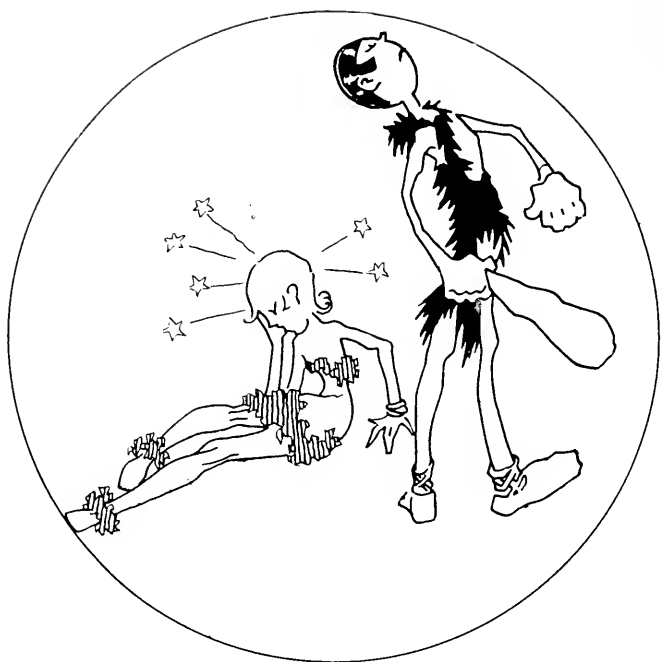
SPURGEON P. GASKIN      JOE F. GUESS                      FRANKLIN C. HEARD      B. SMITH McDUGAL

### *First Class Privates*

ALTON E. BARNETTE      JAMES S. FISHER                      R. GORDON GRANTHAM      JOHN F. NEBLETT  
 JOHN C. CHAMBERS      ELIJAH H. FLEMING                      ARMAND M. KAROW      HUGH L. NICHOLS

### *Privates*

MATHIS E. ARMSTRONG	JAMES K. GILBERT	GEORGE E. MURPHY
THOMAS S. BOSWELL	RAY HOLDER	KYLE PHILLIPS
JOHN C. CASTLEN	JESSE L. HOLMES	GORDON K. ROGERS
CHARLES W. COLE	JAMES I. LUNDY	LEE T. STOKES
JAMES Y. DOWNING	JOHN E. MELVIN	HENRY VARNER
PHILIP H. GRICE	HADEN E. MCKAY	JOHN HOWARD











HAMILTON, MITCHELL, JENKINS  
 MOORE, KEY, WHITE, VAN HOOK  
 HOWELL, GILBERT, ROBERTSON  
 PERMENTER, BIVINS, KHAYAT, NEWELL, DUBARD

## Omicron Delta Kappa

(Student Leadership)

*Founded at Washington and Lee University in 1914*

*Colors: Blue and White*

*Publication: "The Circle"*

### PI CIRCLE

#### FACULTY MEMBERS

A. P. HAMILTON  
 B. E. MITCHELL

F. C. JENKINS  
 ROSS H. MOORE  
 D. M. KEY

M. C. WHITE  
 B. O. VAN HOOK

#### STUDENT MEMBERS

JOHN B. HOWELL  
 STOKES V. ROBERTSON, JR.

T. A. GILBERT, JR.  
 WALTER PERMENTER  
 HARVEY T. NEWELL, JR.

WALTER BIVINS  
 EDWARD A. KHAYAT



WACASTER, McDILL  
GREEN, HERBERT, RIPLEY

## Chi Delta Phi *(Literary)*

*Founded at the University of Tennessee in 1910*

*Colors: Blue and Gold*

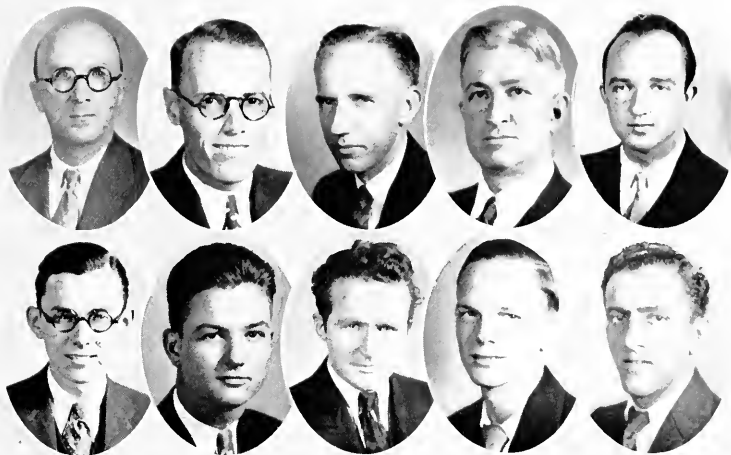
*Publication: "Litterateur"*

### IOTA CHAPTER

MARY WACASTER

THELMA McDILL  
WINIFRED GREEN

KATHRYN HERBERT  
HELEN RIPLEY



WHITE, PRICE, MOORE, SANDERS, WILLIFORD  
 NEWELL, ROBERTSON, MCGINNIS, BRADLEY, KHAYAT

## Sigma Upsilon

(Literary)

*Founded at the University of the South*

*Colors: Green and Gold*

*Publication: "News Letter"*

### KIT KAT CHAPTER

#### FACULTY MEMBERS

D. H. BISHOP

J. B. PRICE

M. C. WHITE

ROSS H. MOORE

A. G. SANDERS

#### STUDENT MEMBERS

HOWARD K. WILLIFORD

STOKES V. ROBERTSON, JR.

RAEBURN CASBURN

HARVEY T. NEWELL, JR.

RAYMOND MCGINNIS

NORMAN BRADLEY

EDWARD A. KHAYAT



WALKER, NEWELL, HERBERT, LINDSEY, BAINES  
 GREEN, KING, MOORE, WACASTER, KHAYAT

## Eta Sigma

*(Scholarship)*

*Founded Locally at Millsaps College in 1923*

### FACULTY MEMBER

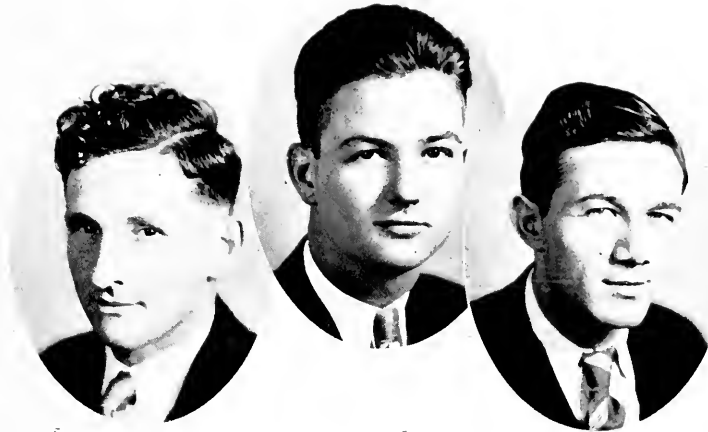
ROSS H. MOORE

### STUDENT MEMBERS

CLINTON W. WALKER  
 HARVEY T. NEWELL, JR.  
 KATHRYN HERBERT

ALLAN LINDSEY  
 ALEXANDER BAINES  
 WINIFRED GREEN

SARA KING  
 MARY WACASTER  
 EDWARD KHAYAT



SAM JOE RUFF, STOKES V. ROBERTSON, JR.  
BIVENS

## Pi Kappa Delta *(Forensic)*

*Publication:* "The Forensic"

### MISSISSIPPI ALPHA CHAPTER

#### FACULTY MEMBER

CHARLES F. NESBITT

#### STUDENT MEMBERS

SAM JOE RUFF

WALTER BIVENS

STOKES V. ROBERTSON, JR.



WHITE, DALE, GULLEDGE, MOORE  
 HESTER, MCDILL, HOWELL, WILLIFORD

## Alpha Psi Omega

(Dramatic)

*Founded at West Virginia State College*

*Colors: Blue and Gold*

*Publication: "The Playbill"*

### ALPHA PI CAST

#### FACULTY MEMBERS

M. C. WHITE

ROSS H. MOORE

#### STUDENT MEMBERS

THERESA MCDILL

JEANNETTE GULLEDGE

HAL WILSON DALE

W. E. HESTER, JR.

HOWARD K. WILLIFORD

JOHN B. HOWELL

#### UNDERSTUDIES

GORDON GRANTHAM

T. F. NEBLETT

DOROTHY DEAN

KATHRYN HERBERT

HARVEY T. NEWELL, JR.

DAVID DUBARD



WALKER, LIVINGSTON, RIGBY, KHAYAT, ODOM, CUTRER  
 TYNES, KIMBALL, HINDS, BRADSHAW, CARTER, DUNAWAY

## Sigma Rho Chi

*Founded Locally at Millsaps College in 1930*

*Colors: Scarlet and Cream*

*Flower: Carnation*

### CLASS OF 1932

CLINTON W. WALKER	D. A. LIVINGSTON
JOHN S. MOON	LAWSON RIGSBY
EDWARD A. KHAYAT	

### CLASS OF 1933

PAT DUNAWAY	VIRGIL SKIPPER
FLOYD ODOM	GYCELLE TYNES
C. M. CUTRER	

### CLASS OF 1934

JOHN KIMBALL	JOE M. HINDS
WALTER BACKSTROM	JAMES CAMPBELL

### CLASS OF 1935

FRANCIS BRADSHAW	MALCOLM CARTER
------------------	----------------



# Kappa Alpha

*Founded at Washington and Lee University in 1865*

*Colors:* Crimson and Gold

*Flowers:* Magnolia and Red Rose

*Publication:* "Kappa Alpha Journal"

## ALPHA MU CHAPTER

### CLASS OF 1932

BARCLAY DONALDSON	DAVID M. KEY, JR.
	LUCIAN FERRIS

### CLASS OF 1933

BILLY ARNOLD	JOHN ENOCHS
ROY BAILEY	STOKES V. ROBERTSON, JR.
PAUL GRIFFITH	ROBERT P. VINCENT

### CLASS OF 1934

NORMAN BRADLEY	W. J. TREMAINE*
GORDON GRANTHAM	REX MOODY*
JACK McDILL	TOMMIE GOODWIN*
H. V. WATKINS, JR.	JOHN CHAMBERS*
ARTHUR ROGERS	CANDLER LEGGETT*

### CLASS OF 1935

JIMMY DOWNING*	JUDSON PALMER†	BILLY SOURS*
LUTHER CRULL*	ROBERT RIDGEWAY*	LOUIS HALLAM*
BOB CUNNINGHAM*	WARFIELD HESTER†	ARCHIE HALEY*
JOE CARGILE*	CHARLIE ADAMS†	EDMOND RICKETTS*
	ARTHUR TODD*	EDWARD FLOWERS, JR.†

\*Pledges.





**KAPPA ALPHA**

Rogers, Vincent, Robertson Bradley, Grantham  
Todd, Cunningham, Hester, Ridgway, Flowers  
Haley, Tremaine, Palmer, Watkins, Griffith  
Key, Goodwin, Chambers, Leggett, Enochs  
Downing, Ferris, Hallam, Sours, Donaldson  
Arnold, Ricketts, Adams, McDill



# Kappa Sigma

*Founded at the University of Bologna in 1400  
Founded at the University of Virginia in 1867*

*Colors:* Scarlet, White, Emerald

*Flower:* Lily-of-the-Valley

*Publications:* "The Caduceus" and "The Star and Crescent"

## ALPHA UPSILON CHAPTER

### CLASS OF 1932

T. A. GILBERT, JR.  
CHARLES B. GALLOWAY

W. R. FERRIS  
WALTER PERMENTER

CLAUDE W. PASSEAC, JR.  
KENNETH WILLS

### CLASS OF 1933

JOHN B. HOWELL

W. E. HESTER, JR.

HENRY NEWCOMB\*

### CLASS OF 1934

WILTON DEES  
DAN HEIDELBERG  
E. C. HEARD

JOE H. STONE  
J. B. MORRISON  
JAMES MOORE\*  
HILERY WHALLEY\*

GENE BRISTER  
GARLAND HOLLOMAN  
MELVIN RICHARDSON\*

### CLASS OF 1935

JAMES VANCE\*  
ED McDONNELL\*  
JACK GAYES\*  
N. R. CURRIE\*  
SMITH McDUGAL\*  
MAL ANDERSON\*  
HUGO NEWCOMB\*  
JAMES BUZYARD\*

HUGH NICHOLS\*  
JOHN STEPHENS\*  
DICK BARRETT\*  
GILLIAM GWIN\*  
MARVIN SMITH\*  
LOUIS DECELL\*  
KENNETH GILBERT\*  
CURTISS KNIGHT\*  
PUGH LIGHTCAP\*

THOMAS McDONNELL\*  
E. H. LATIMER\*  
MANLEY GREGORY\*  
BILL TYSON\*  
RUSSELL CAROTHERS\*  
MOSEBY ALFORD\*  
T. J. INGRAM\*  
CLAUDE MOORE\*

\*Pledges.



**KAPPA SIGMA**

Galloway, Heidelberg, Stephens, Passeur, Permenter, Barret  
 Gates, Smith, McDonnell, Newcomb, Howell  
 Hester, Knight, Morrison, Newcomb, Moore, Heard  
 Vance, Holloman, Gilbert, McDougal, Nichols  
 Wills, Moore, Whatley, Gilbert, Decell, Gwin  
 Curry, McDonnell, Tyson, Gregory, Lightcap  
 Latimer, Bunyard, Richardson, Anderson, Alford, Dees



# Pi Kappa Alpha

*Founded at the University of Virginia in 1860*

*Colors:* Garnet and Gold

*Flower:* Lily-of-the-Valley

*Publication:* "Shield and Diamond"

## CLASS OF 1932

D. V. HERLONG, JR.	M. FRANKLIN WILLIAMS
J. H. NOBLIN	

## CLASS OF 1933

JAMES GUESS	V. D. TOWNSEND*
HARVEY T. NEWELL, JR.	

## CLASS OF 1934

BLANTON DYE	THOMAS ROSS
WALTER BOONE	RICHARD KINNAIRD
SPURGEON BUCKLEY	BEVERLY BRISCOE*
HOLMES COOK†	

## CLASS OF 1935

PAUL HARDIN*	ELIJAH FLEMING*	LAURENS KENNEDY*
DWIGHT TAYLOR*	JOE F. GUESS*	JESSE MAGEE*
HAYDEN MCKAY*	CHARLES COLE*	SHELBY ROBERTS*
CLARENCE McCORMICK*	FRITZ MELVIN*	ELLIS WRIGHT*
JAMES CRUTCHER*	KYLE PHILLIPS†	ROBERT BRENT*
JOHN CASTLEN*	CHARLES NEILL*	ROBERT STOCKETT*

\*Pledges.



**PI KAPPA ALPHA**

Herlong, Williams, Noblin, Guess, Townsend  
 Newell, Dye, Boone, Buckley, Ross  
 Kinnaird, Briscoe, Cook, Hardin, Taylor  
 McKay, McCormick, Crutcher, Castlen, Fleming  
 Guess, Cole, Melvin, Phillips, Neill  
 Kennedy, Magee, Wright, Brent, Stockett



# Theta Kappa Nu

*Founded at Drury College in 1924*

*Colors:* Black, Crimson, Silver

*Flower:* American Beauty Rose

*Publication:* "Theta News"

## MISSISSIPPI ALPHA CHAPTER

### CLASS OF 1932

DAVID DUBARD	BILL JACOBS
WILLIAM ERVIN	JOHN PATTERSON
LEE TRAVIS	WALTER BIVENS
H. G. WARREN	SAM JOE RUFF*

### CLASS OF 1933

RABIAN LANE	FELIX UNDERWOOD
T. F. NEBLETT	L. B. JONES
	EMILIO ROMANO*

### CLASS OF 1934

HORACE DAVISSON	HOWARD NEYLAND*
GEORGE McMURRY	JACK BRIDGES*
	SAM LACKY

### CLASS OF 1935

MARZINE CALLAHAN*	RALPH JONES*	WEBB OVERSTREET*
JOHN GILLASPEY*	JAMES LUNDY*	ARTHUR PIERCE*
CHARLES HANNA*	O. C. MOFFETT*	LEE STOKES*
MAURICE JONES*	JOHN NEBLETT*	W. A. SUBER*
	JOE WILLIAMS*	

\*Pledges.



**THETA KAPPA NU**

Dubard, Ervin, Travis, Warren, Jacobs  
 Patterson, Bivins, Ruff, Lane, Neblett  
 Underwood, Jones, Romano, Davisson, Bridges  
 Lackey, Callahan, Gillaspay, Hanna, Jones  
 Jones, Lundy, Moffett, Neblett, Williams  
 Overstreet, Pierce, Stokes, Suber



# Phi Mu

*Founded at Wesleyan College in 1852*

*Colors:* Rose and White

*Publication:* "Aglaiia"

*Flower:* Rose Carnation

## CLASS OF 1932

KATHRYN HERBERT	MARY WOODLIFF
MARY HEALD	MEREDITH OWENS

## CLASS OF 1933

WINIFRED GREEN	MARTHA HAMILTON
CATHERINE PEETS*	

## CLASS OF 1934

CATHERINE JONES	ANN PULLEN
MAUDE MCLEAN	ELIZABETH WARREN
MARY GILLESPIE	CHARLOTTE CAPERS
MARGARET FLOWERS*	

## CLASS OF 1935

KATHERINE HEIDELBERG*	SARA W. ANDERSON*
WANDA TREMAINE*	MARTHA DONALDSON*
NORVELLE BEARD*	EMMA HEALD*

## IN FACULTY

FLORENCE LEECH\*

\*Pledges.





**PHI MU**

Herbert, Heald, Woodliff, Owens  
 Green, Handlton, Peets, Jones  
 McLean, Gillespie, Pullen, Warren  
 Capers, Heidelberg, Tremaine, Beard  
 Anderson, Donaldson, Heald



# Kappa Delta

*Founded at Virginia State Normal College in 1897*

*Colors: Olive Green and White*

*Flower: White Rose*

*Publication: "Angel's"*

## MU CHAPTER

### CLASS OF 1932

SARA KING	ROSE WELLS
VIRGINIA YOUNGBLOOD	CAMILLE PENIX*
HADENIA BUCK	THERESA MCDILL
HELEN RIPLEY	FRANCES RUSH*
FRANCES DECELL*	BETTY BURMAN*

### CLASS OF 1933

MARY SUE BURNHAM*	MARGUERITE GAINNEY*
CARL LEE SWAYZE*	HELEN FURLOW
MARY ELEANOR ALFORD*	

### CLASS OF 1934

HARRIETTE HEIDELBERG	MARY VIRGINIA WELLS
JULIA DELOACH	SARA HEIDELBERG
DOROTHY DEAN	

### CLASS OF 1935

LYNELL WOOLEN\*

\*Pledges.



**KAPPA DELTA**

King, Youngblood, Buck, Ripley  
 Decell, Wells, McDill, Rush  
 Buhrman, Burnham, Swayze, Gainey  
 Furlow, Alford, Heidelberg, DeLoach  
 Wells, Heidelberg, Dean, Wooten





# Delta Zeta

*Founded at Miami University in 1902*

*Colors:* Nile Green and Killarney Rose

*Flower:* Killarney Rose

*Publication:* "The Lamp"

## CLASS OF 1932

GLENNA MOORE  
MARY WACASTER  
DOUGLAS BANKS

BETTY PARKER\*  
RUTH FORMAN\*  
SARAH STEVENS\*

## CLASS OF 1933

EVELYN MYERS  
JUANITA WINSTEAD\*  
ADAMAE PARTIN\*  
ONEITA WINSTEAD\*

JUANITA LANE\*  
ANN STEVENS LEWIS\*  
THYRZA BRANTON\*  
ELIZABETH HEITMAN\*

## CLASS OF 1934

CATHERINE LAMKIN\*

HAZEL MCPHAIL\*

## CLASS OF 1935

DOT THOMPSON\*  
RUTH SARRETT\*

LOIS CAMPBELL\*  
JULIA COX\*

\*Pledges.



**DELTA ZETA**

Moore, Wacaster, Banks, Parker  
Forman, Stevens, Myers, Winstead  
Winstead, Lane, Partin, Lewis  
Branton, Heitman, Lamkin, McPhail  
Thompson, Sarrett, Campbell, Cox



# Beta Sigma Omicron

*Founded at the University of Missouri in 1888*

*Colors:* Ruby and Pink

*Flowers:* Richmond and Killarney Rose

*Publication:* "The Urn"

## ALPHA ZETA CHAPTER

### CLASS OF 1932

SARA SMITH

MILDRED CLARK

MARY VELMA SIMPSON

### CLASS OF 1933

KATHERINE JACOBS

LILLIAN POLK

### CLASS OF 1935

DOROTHY COWEN\*

MARY LEILA MILNER\*

GRACE MASON\*

FRANK RAE DARDEN\*

DAISY KATE BROWN\*

ELISE ENOCHS\*

FRANCES McMULLAN†

\*Pledges.



**BETA SIGMA OMICRON**

Smith, Clark, Simpson  
Jacobs, Polk, Cowan  
Mason, Brown, Milner  
Darden, Enochs











VAN HOOK



GADDY



REXINGER

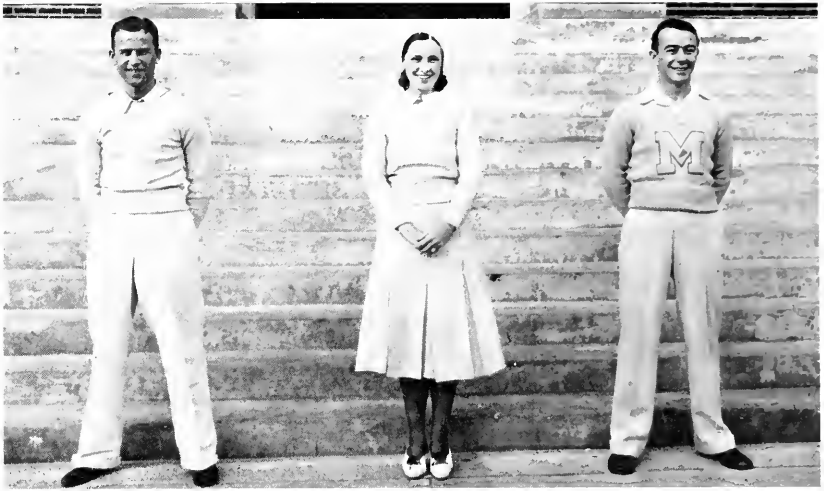
## The Coaches

Coach Franny Lee Gaddy, head football coach, came to us highly recommended as a coach and a man. That he has fulfilled all expectations goes without saying. Genial and gentlemanly in his manner, he has won the admiration, respect, and love of those who have worked with him. On the football field he has builded soundly and successfully, and we predict for his future teams a success that will overreach the past brilliance of Major teams.

Director of Athletics B. O. Van Hook is also assistant football coach, head basketball coach, and freshman baseball coach. In addition to these duties, he finds time to win every student at Millsaps through his cheerful friendliness. Van is invaluable to the Major gridgers, his varsity basketball and freshman baseball teams are always among the best, and he always works hard for the success of athletics at Millsaps.

A. I. Rexinger was the man behind the gun for the sensational freshman football team. Rex is a quiet, unassuming fellow, but he knows what he is about. He was an inspiration as well as an advisor and coach. More power to you, Coach Rexinger; may your freshman teams all be of the same caliber as your first one.





LUCIEN FERRIS  
*Assistant*

FRANCES DECELL  
*Assistant*

JOHN B. HOWELL  
*Head Cheerleader*

## The Cheerleaders

The Millsaps Majors were very fortunate this year to have so fine a corps of cheerleaders. Head Cheerleader John B. Howell and his assistants, Lucian Ferris and Frances Decell, were right there with the old pep all the time, and even when things were looking black for the Majors they never allowed the enthusiasm of the student body to wane. The team was inspired to fight still harder because of the wonderful encouragement and co-operation given them by the students and this efficient group of leaders.

### THE MANAGER

John Henry "Legs" Noblin is the boy who handled the water bottles and the countless other duties of manager. He is due much credit for the work he did in the care of the team.





STONESTREET



PERMENTER



PASSO

## Football

### WALTER PERMENTER, *Captain and Quarterback*

Walter "Pep" Permenter was captain and quarterback of the Majors of 1931. Cool and collected in a pinch, "Pep" had the ideal temperament for a leader. Permenter was a true triple-threat of the first order and he will be sadly missed next year.

### LEONARD STONESTREET, *Halfback*

Leonard Stonestreet, one of the most elusive half-backs in the conference, had another good year. His running and passing helped the Majors on their way many times. "Stone" leaves a big gap in the Militant fold.

### CLAUDE PASSO, *Fullback*

"Joe Gum" Passo closed a brilliant football career when he left the field Thanksgiving day. Passo divided his time between end and fullback, and was a star at both positions. His hard drive and sturdy defense featured his play.





McDANIEL



PADGETT



JACOBS

## Football

### L. F. McDANIEL, *Fullback*

"Punch" McDaniel, alternate captain, is another senior who has played his last game for the Majors. "Punch" will long be remembered as a dashing, driving fullback and a defensive gem who fought hard at all times for victory.

### FRANK PADGETT, *Guard*

"Papa" Padgett was one of the flock of good guards that the Majors boasted of this season. Padgett is a senior whose speed and scrap will be hard to replace.

### BILL JACOBS, *End*

Bill Jacobs is the big end who was always so fast down the field under punts or leaping high in the air to grab a pass that spelled a long gain. On the defense his powerful charge and fight spilled many an opposing back for a loss. Bill was the winner of the "most valuable player" award.





DUNAWAY



CUTRER



D. DAVIS

## Football

### PAT DUNAWAY, *Center*

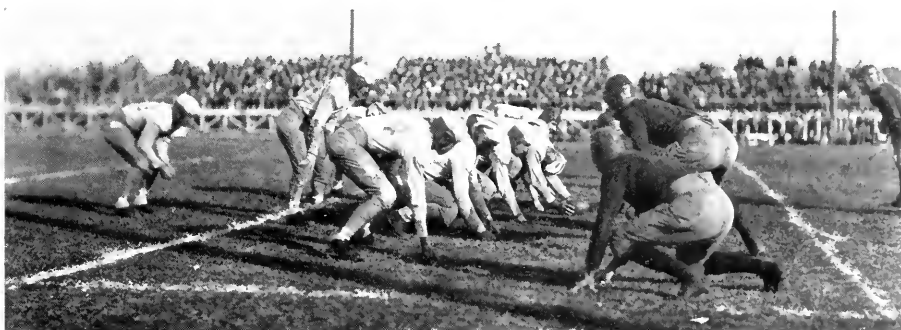
"Pat" Dunaway, the lanky boy who plays center, is one of the reasons for the bright prospects of Millsaps football in 1932. Pat is an old head, a hard-driving defensive and offensive player, and a leader as well.

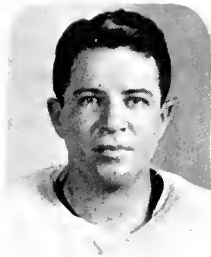
### C. M. CUTRER, *Guard*

Carl Cutrer is a scrapping guard who will answer the first call for practice next September. Carl is a good man to have around in a pinch, and we are glad he is to be back.

### DACE DAVIS, *Quarterback*

Dace Davis is the sophomore who stepped up and made for himself a place in the first string backfield. Dace was a triple-threat, and played excellently at either quarter or half.





ERVIN



WALKER



ENOCHS

## Football

### WILLIAM ERVIN, *Tackle*

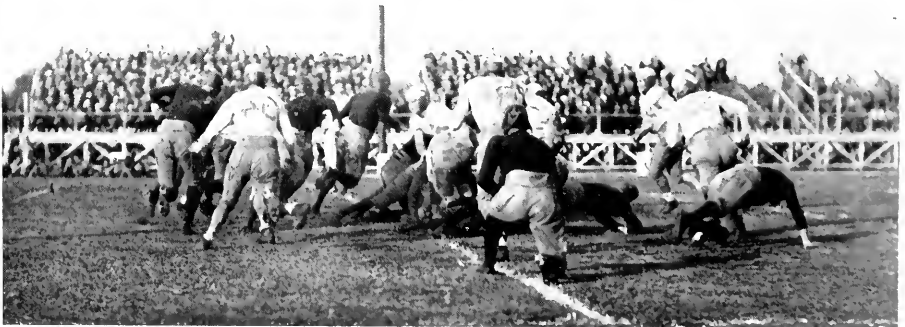
Bill Ervin is another of the seniors who is leaving the Militants this spring. Big "Mamie" will be sorely missed from his tackle position, where his charge and fighting spirit made him a valuable man.

### CLINTON W. WALKER, *Halfback*

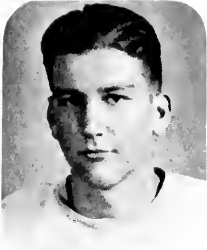
Charlie Walker played his third varsity year as one of the most dependable and consistent ground gainers on the squad. He tapered off his career with a fine exhibition of ball carrying against the Choctaws Thanksgiving day.

### JOHN ENOCHS, *Guard*

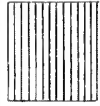
John Enochs is a big boy who played guard. A little more experience will find him a formidable candidate for a guard position.







STONE



DAVISSON



KHAYAT

## Football

### JOE STONE, *Tackle*

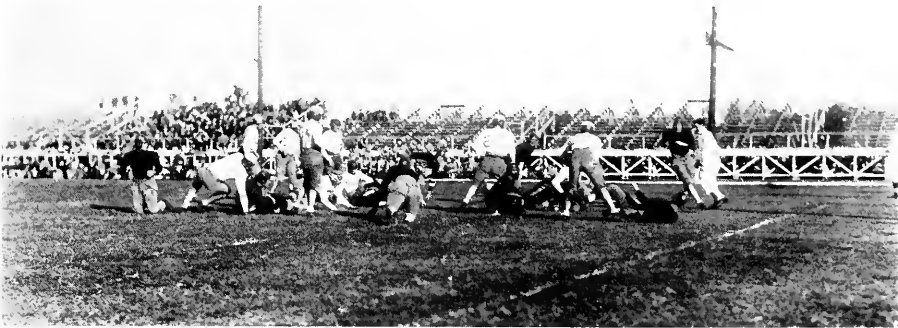
Stone is a boy, who, when he gets a little more experience, will make trouble for the regular tackles. He showed fine fight when he got in a game this year. He is a sophomore, and will be back next year.

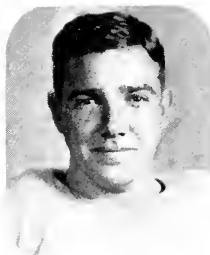
### HORACE DAVISSON, *Halfback*

"Demp" Davisson is one who worked hard and never quit in order that the team might succeed. He has two more years in which to show his worth.

### EDWARD KHAYAT, *Halfback*

"Eddie" Khayat gained fame as a blocking back and came into his own this year. He was also a good quarterback as well as half. Eddie's spirit and fight will stand him in good stead in life as it has done on the athletic field.





MORRISON



RICHARDSON



F. DAVIS

## Football

### J. B. MORRISON, *Guard*

Jimmy Morrison was one of the lightest of the linemen, but he was also one of the scrappiest. Jimmy is only a sophomore, and the coming two years should see him become a guard to be remembered.

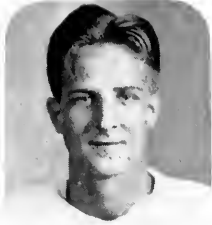
### MELVIN RICHARDSON, *Tackle*

Melvin Richardson came to us from a junior college and soon won the hearts of fans and players with his hard fight and masterful playing. Big "Rich" played tackle on offense and roving center on defense. He will be back next year.

### FRANK DAVIS, *End*

Frank Davis, end, is a product of East Central Junior College. Frank has a bright future in athletics ahead of him. He is a sound wingman, being an All-State selection, and should go good next season.





HOLLOMAN



GORDON



ROMANO

## Football

### GARLAND HOLLOMAN, *Quarterback*

"Bo" Holloman, the third of the family to play at Millsaps, and a quarterback also, is one of the hard workers who is expected to come through for the Majors.

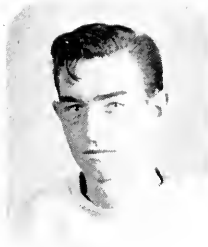
### LOUIE GORDON, *Tackle*

Louie Gordon, hefty tackle, plugged up holes in the line when he was sorely needed. A graduate of East Central Junior College, he lived up to all advance notices and is counted on for future work.

### EMILIO ROMANO, *Fullback*

"Joe" Romano returned to school after a year's vacation and brought back with him the same drive that featured his play as a sophomore fullback. "Little Dag" played brilliantly this year and will be back.





BRIDGES



LACKEY



HOZENDORF

## Football

### JACK BRIDGES, *End*

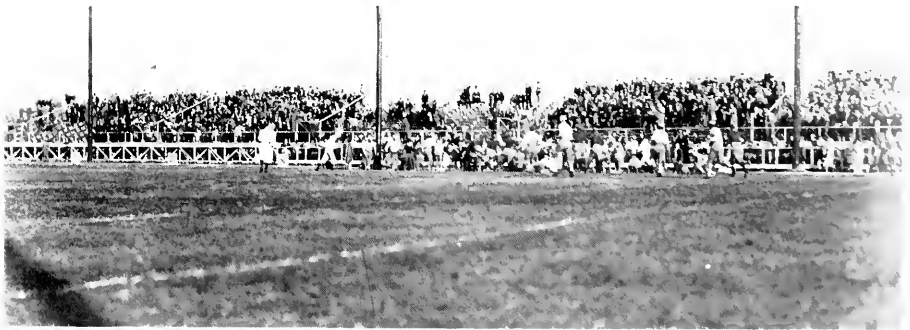
Jack Bridges, a sophomore, came forward with a rush the first of the year and soon established himself as an end to be reckoned with. Great things are expected of him.

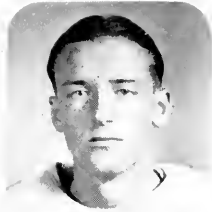
### SAM LACKEY, *Tackle*

Sam Lackey is an up-and-coming tackle whom the coaches are counting on to come through in 1932.

### CONNIE HOZENDORF, *Guard*

"Hozey" Hozendorf, a hard rock who played guard, is a never-say-die scrapper who will be heard from.





TYNES



MOON



TRAVIS

## Football

### GYCELLE TYNES, *Guard*

Gycelle Tynes was another junior college product who made good his first year as a Major. Tynes played a guard and his speed made him a valuable man in the interference. On the defense he was always knifing into the opposing backfield.

### JOHN MOON, *Center*

"Dago" Moon, the big forkhander from Lumberton, was converted into a first-class center and filled the bill to perfection. He was a tower of strength from his defensive tackle position and will be missed when the Majors take the field next year.

### LEE TRAVIS, *Guard*

"Whitey" Travis completes the quintette of fine guards. Travis had experience, fight, and strength as assets and we are sorry to lose him.

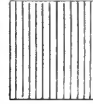




JONES



McGINNIS



CAMPBELL

## Football

### L. B. JONES, *Halfback*

L. B. Jones is a speedster who will bear watching in the future. "Tapey" has plenty of experience and is a versatile back of whom much is expected.

### R. M. McGINNIS, *Center*

"Red" McGinnis is the red-headed six-footer who played center, and whose spirit was as flaming as his hair. He has one more year to play.

### CAMPBELL, *End and Guard*

"Rosedale" Campbell, end and guard, is a charging youngster who was in his first year of varsity competition this year.

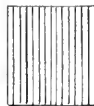




VICKERS



COOPER



ROGERS

## Football

### J. T. VICKERS, *End*

John T. "Teasen" Vickers entered his first football competition for Millsaps. John was an adept at catching passes from his end and was a barrier on defense.

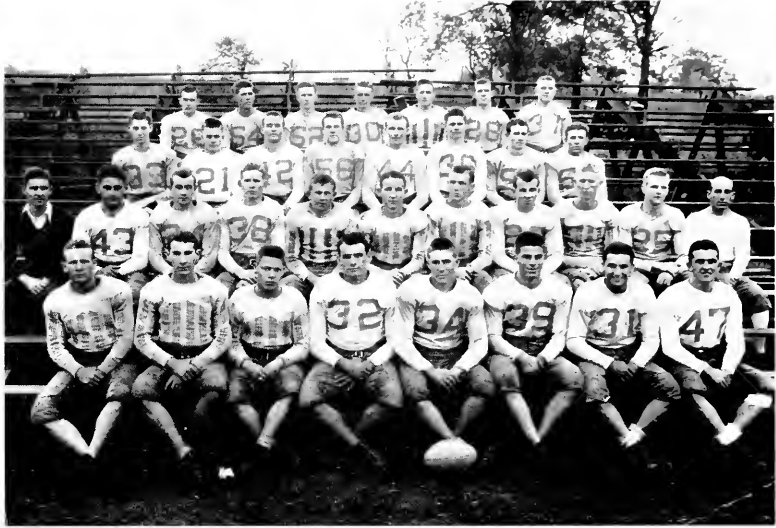
### ALONZO COOPER, *Halfback*

Alonzo Cooper is a hard-running back who is destined to develop into a valuable man in his two remaining years.

### ROGERS, *Quarterback*

"Skinny" Rogers is another of the faithful sophomore backs who will make things hot for other backs for two more years.





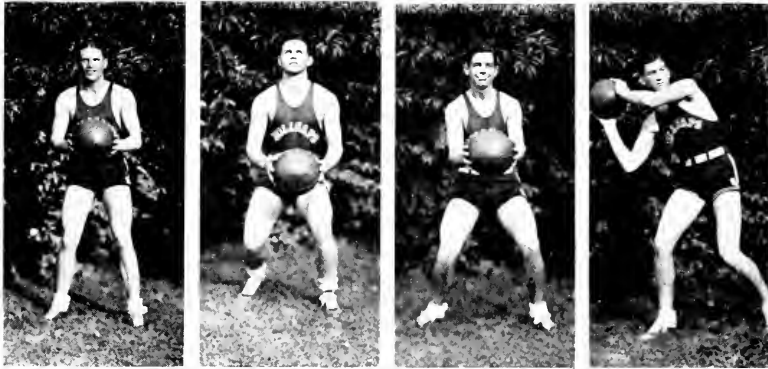
## Freshman Football

The Freshman Football Team of 1931 was without doubt the most sensational aggregation that has ever assembled as a first-year team at Millsaps, surpassing in all-round power and ability the now famous squad of 1927. Under the able tutelage of Coach Rexinger the frosh team-roller amassed the amazing total of 210 points in five games; meanwhile their own goal line was untouched by enemy cleats. Picking individual stars from such a collection would be next to impossible. Suffice it to say that it was an all-star squad whose power will be felt in the future in S. I. A. A. and Dixie Conference circles.

### SCORES

Minors . . . . .	86; Southwest Junior College . . . . .	0
Minors . . . . .	27; Hinds Junior College . . . . .	0
Minors . . . . .	14; Loyola Freshmen . . . . .	0
Minors . . . . .	45; Spring Hill Freshmen . . . . .	0
Minors . . . . .	38; Mississippi College Freshmen . . . . .	0
Totals . . . . .	210; Opponents . . . . .	0





## Varsity Basketball

Leonard Stonestreet, captain of the fast-traveling Major quintet, was the most improved player on the court of the last year crop. A letterman at a forward position last season, he became a first class guard when needed at that post. In addition, he was probably the best floorman of the lot and scored with great consistency.

Rich Richardson was another football man to show versatility in capturing a place on the first string. Rich moves with amazing, cat-like agility for a man of his size, and his smooth, fast floor work was a great factor in the work of the militant machine and a ponent reason why the Majors led the Dixie and S. I. A. A. Conferences.

Frank Davis is the third of the trio of football lettermen to step into the first five on the hardwood floor. Frank was the high scorer of the team and, together with Richardson, provided a fast-breaking, high-scoring combination at forwards for the Majors. Frank had an uncanny eye for the basket and earned a reputation as a hard man to cover. The fact that he and Richardson will be back next year gives an optimistic outlook for the next Major machine.

Joe Stone was the fifth member of the combination that worked so effectively for the Majors. Joe is one of those rarities—a Sophomore regular. He was the back guard and the backbone of the defense. Joe is a fine floor man and can score when needed. Much is expected of him before he is through as a Major.



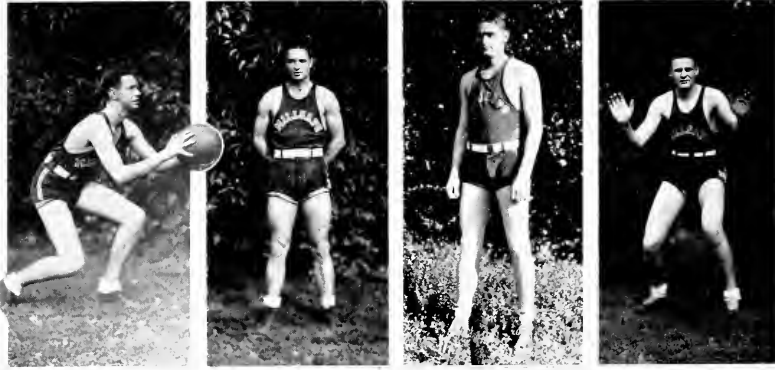
## Varsity Basketball

Rabian "Lupino" Lane, the sensational Sophomore guard of last year's team, was transformed into a center where his height and reach were very valuable. He continued his fine work as a dependable offensive and defensive man, scoring often and shining at securing the rebound off the backboard. Lane will also return next season.

Claude Passeur, center and letterman for two years on Major quints, was a hard and effective worker who was used often without weakening the work of the team. Few were the centers who could beat him to the tip-off, and he was a constant threat to score. His work at retrieving rebounds was good.

John Henry Noblin played either forward or guard. He was another letterman and six-footer who was called into action often and delivered to the satisfaction of all concerned.

John T. Vickers, forward, was another letterman whose experience and versatility stood the Majors in good stead numerous times. Tall, rangy, and fast, Vick scored consistently and could take the tip-off at center when needed.



## Varsity Basketball

Thomas Ross, forward, was a member of the Sophomore combination to come up this year. Thomas is rangy and fast, with a good eye for the basket, and plays the floor well.

Dace Davis, forward, was a Sophomore that was kept down only by the brilliance and experience of the other forwards. He was used frequently with good results, and we predict for him a bright future as a Major basketeer.

Pat Dunnaway developed into a forward of surprising ability this season. Pat is tall and fast, playing a fine floor game and fighting in for numerous crisp shots. Pat will return next year and should go good.

Elmo Gerald came to us as one of the best products turned out by the Junior Colleges of Mississippi. He convinced us of his reputation by some brilliant playing.



## Varsity Basketball

Walter Backstrom was another Sophomore whose versatility was noticeable. Tall and fast, with a good eye, he can play either center or forward, and has a fine future on the hardwood.

Ike Lindsey, forward, is the little man who does big things with the basketball. He makes up for lack of height by speed and cleverness. He has another year.

Gycelle Tynes was another of the many football men to deliver as a court star. Tynes is a guard, and a good one, who has another year to show his wares. His defensive play is of high calibre and he scores often.

Jimmy Morrison was the manager of the team and had plenty of work as his share in the success of Major basketball. Jimmy was also the efficient chauffeur of the bus that hauled the basketeers to the Armory each afternoon.



*Back row:* RIGBY, ALFORD, BURNHAM, COACH BRUMFIELD, PARTIN, EATON, HULL  
*Kneeling:* BARROW, BUIRMAN, WARREN, COWAN  
*Sitting:* ABERCROMBIE, LUTER, JACOBS, CAPTAIN LOFLIN, SWAYZE

## Woman's Athletic Department

Millsaps College, along with the other co-ed schools of the nation, has realized the importance of athletics as an extra-curricular for women. Through the efficient direction and diligent coaching of Mrs. W. O. Brumfield, the Majorettes have had formidable teams that have brought Millsaps College to the front in feminine athletic circles.

## Girls' Basketball

During the past few years the Millsaps Majorettes have come through with flying colors in the field of basketball. Coach Brumfield, working tirelessly, has put on the floor teams that have shown ability, good teamwork, and a fine spirit of sportsmanship. Above is pictured the 1932 representatives of the girls' basketball team. These girls joined together in practice periods throughout each week during the season and under tutelage of Coach Brumfield and splendid captaincy of Dot Loflin formed a team worthy of wearing the colors of purple and white.



## Gymnastics

This department of girls' athletics is rather young at Millsaps. Due to the fact that there is no gym, the girls have to resort to the use of the old Science Hall to hold their practices. In this department Coach Brumfield had the assistance of Mrs. B. O. Van Hook. These two ladies taught the girls various exercises that required grace and ability. The photos shown above and the following page indicate the success that Coach Brumfield and Assistant Coach Van Hook have had in inaugurating the gymnastic classes at Millsaps College.



THE GYMNASTIC CLASSES PERFORMING VARIOUS EXERCISES



*Back row:* McDONNELL, TYSON, MCNEECE, INGRAM, PHILLIPS, COACH REXINGER  
*Front row:* LATIMER, MAGEE, GODWIN, JUANICO, GREGORY, LOFLIN

## Freshman Basketball

The Minor basketball team, coached by A. I. Rexinger, showed much ability and experience that have made them good varsity material. It is from the Freshman ranks that Coach B. O. Van Hook has drawn his best men to form the nucleus of the teams that have won fame in the S. I. A. A. basketball circles. McNeese, McDonnell, Godwin, Juanico, Magee, and Caillavet, who is not shown in the picture, are men whom Coach Van Hook can count on to come through in forming a 1933 championship basketball team. The Freshmen won the majority of their games and the work of Coach Rexinger is commendable.





DUBARD, KHAYAT, COACH WHITE, KEY, RODGERS, HESTER

## Tennis

Tennis is a popular sport at Millsaps and will continue to be as long as teams of high calibre, such as the 1931 and 1932 teams, represent us. Each year the team makes an extensive tour, playing the better teams of the S. I. A. A. and the S. I. C. conference, and they always make a creditable showing. Captain Eddie Khayat, who is at his best under the fire of competition, leads a varsity composed of himself as ranking No. 1, David Dubard, No. 2, Baylis Shanks, No. 3, and Ewing Hester, No. 4. Khayat and Dubard teamed together as the No. 1 doubles pair, and Robert Higdon and David Key paired together as the No. 2 team. Gordon Rogers played the role of substitute which he handled well, as was seen by his play against Southwestern of Memphis.



BRIDGES, HOLLOWMAN, DAVIS, CAMPBELL, KOENIG  
STONESTREET, COACH VAN HOOK, VICKERS, HOWELL, MOORE

## Track

Track at Millsaps is rather young. The truth being that 1932 was the inaugural year for an official representative team. And it was really a good team, its major accomplishment being a complete whitewashing of the Choctaws, who have had some of the best track teams in the S. I. A. A. Conference. Through the efficient coaching of A. I. Rexinger the Major track team was able to produce such stars as Richardson, Neblett, Moon, Boone, Travis, Stonestreet, Howell, Casey, Vickers, whose brilliant running in the relay made our victory over the Choctaws all the more decisive.







SARA KING





MARY SUE BURNHAM





MARY GILLESPIE





MAUDE MCLEAN







MARY WOODLIFF





EDWARD ASSAD KHAYAT, *Master Major*

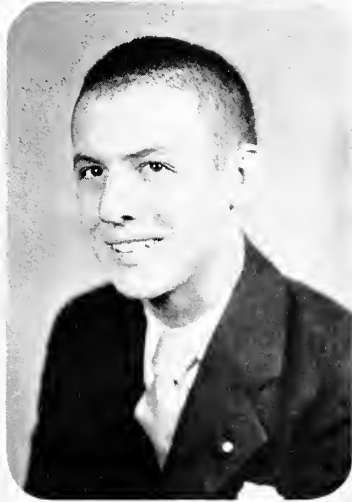


MARY HEALD, *Representative Co-ed*





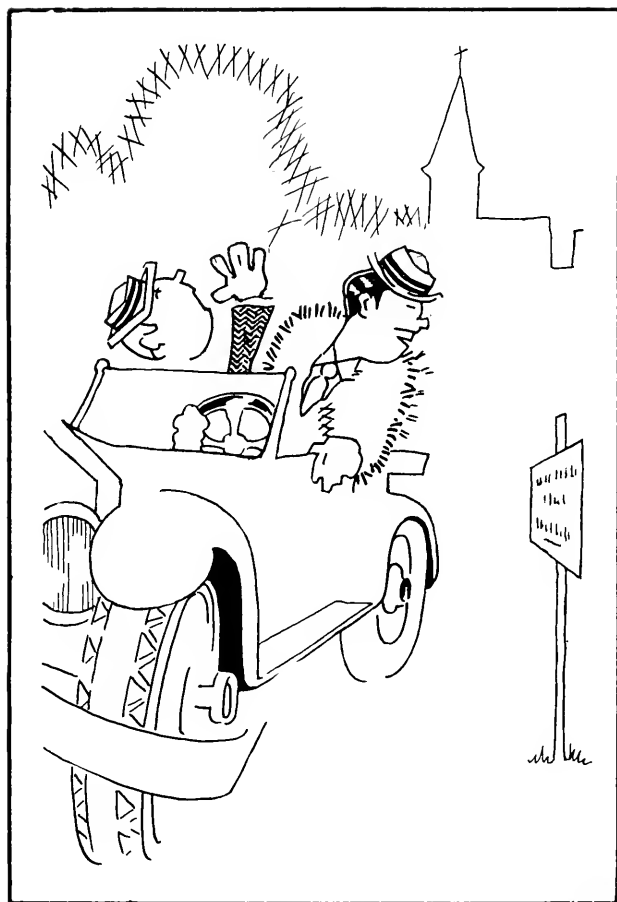
DR. J. M. SULLIVAN, *Best Liked Professor*



BEST LIKED BOY

BEST LIKED GIRL

"THAT FRESHMAN"



**READ THE ADS**




*JACKSON'S GREATEST STORE*

*A store that fills effectively and continuously  
every qualification of the modern and  
up-to-date department store*

Equipped and managed to give you a service that is second to  
none in the South

*The JACKSON'S GREATEST STORE  
Emporium*



*"Mississippi's Best Store"*

# KENNINGTON'S

JACKSON

Enjoying the good will and patronage of  
Millsaps students

Because of our high standard of quality, moderate prices and  
authentic styles

## *Service of the Highest Order*

The motto of this store through its years of growth, as well as  
now, has been, "Service to Our Customers." For your choice  
there is conveniently arranged merchandise of the highest possible  
quality at the lowest possible price.

**DOWNING-LOCKE COMPANY**

*"Jackson's Shopping Center"*



*McClaren Autocrat Tires and Tubes*

## UNION DEPOT SERVICE STATION

*"At Your Service"*

One Block North of Edwards Hotel  
JACKSON, MISSISSIPPI

Texaco Gasoline, Alemite and Galenol  
Accessories, Willard Batteries  
Washing, Polishing, Alemite-ing

Telephone 840

FREE ROAD SERVICE

J. B. WALKER, *Manager*

## R. H. GREEN

*Wholesale Grocer*

DISTRIBUTORS  
OF

## PLEEZING

JACKSON, MISSISSIPPI  
North Gallatin Street

### LEADERSHIP

A bank that stands for good, safe,  
sound banking principles will always  
have the support of its customers and  
friends.

*"Grow With Us"*

4% Paid On  
Savings

### Deposit Guaranty Bank & Trust Co.

*Member National  
Credit Association*

# STEVENS



HART SCHAFFNER & MARKS CLOTHES

## Capitol Floral Co.

*"Say It With Flowers"*

24-Hour Service

LINDSEY CABINESS, *Manager*

Lamar and Amite Streets

Nite Phone 287      Phones 511-512

*Drink*

## Lake's Celery

AND

## Orange Crush

## Ward Drug Co.

Corner Pearl and  
State Street

JACKSON, MISSISSIPPI

## THE BUILDING & LOAN ASSOCIATION

OF JACKSON, MISS.

Loans Made on Improved Real Estate.  
Liberal Dividends Paid on Investment  
Shares.

W. O. REA, *President*

212 EAST CAPITOL

## ENGRAVED WEDDING INVITATIONS

## Tucker Printing House

JACKSON, MISSISSIPPI

## Dr. H. F. Magee

*Physician and  
Surgeon*

Lamar Life Building Jackson, Miss.

## ALFRED MITCHELL'S

MEN'S WEAR

Michaels Stern Clothing

Mallory Hats

Manhattan Shirts

LAMAR LIFE BUILDING



# Seale-Lily

ICE  
CREAM

*YOU EAT IT WITH A SMILE*

*A Health Food—Always in Season*

VISIT US AT

## The College Grill

*Our Aim:  
To Please Millsaps Students*

MR. AND MRS. T. B. WEBB, *Mgrs.*  
Next to the "Pike" House

## KEY DRUG COMPANY

Capitol and President Streets

R

WE KNOW HOW

Phone 1399

## Hederman Brothers

Printers, Blank Book  
Makers, Stationers  
and Lithographers

329-31-35 East Pearl Street  
JACKSON, MISSISSIPPI

## Alfred Bourgeois *Jeweler*

DIAMONDS SILVER

220 East Capitol

Chief Watch Inspector for the  
N. O. G. N.

Official Watch Inspector for the I. C.,  
Y. & M. V., A. & V., and  
G. & S. I. Railroads.

*Compliments*

## JITNEY-JUNGLE

McCARTY-HOLMAN

*Save a Nickel on a Quarter*

MEET YOUR FRIENDS  
AT THE

## ECHO OF SWEETS TEA ROOM

Sodas, Sweets, Luncheons

241 E. Capital St. Tel. 3316  
Jackson, Mississippi

Covers for  
THE 1932 BOBASHELA  
Made By

## The S. K. Smith Co.

213 Institute Place  
CHICAGO. ILL.

The

## Unglaub Studios

VICKSBURG, MISS.

*Specially Equipped for Col-  
lege Annual Work*

# BELHAVEN COLLEGE

School of Character

## COLLEGE OF LIBERAL ARTS CONSERVATORY OF FINE ARTS

A Modern College for Young Women With Courses Leading to A.B. and  
B.S. Degrees

## BELHAVEN CONSERVATORY OF MUSIC

With Faculty of Artist Teachers Offering Courses in Piano, Voice, Pipe Organ  
and Public School Music leading to Bachelor of Music Degree.

*A Safe School for Southern Girls*

G. T. GILLESPIE, *President*

Jackson, Miss.

## JACKSON DAILY NEWS

Jackson, Mississippi

*Circulation Exceeds All Other State Papers*

65c PER MONTH  
\$7.80 PER YEAR

Publishes Best Copyrighted Features

## WOODS-WILLIAMS DRUG STORE, Inc.

A Drug Store With a Reliable  
Reputation of Serving the Peo-  
ple of Its Community

Corner Capitol and State St.

*The Talk of the Town*  
OUR HAMBURGERS AND  
SANDWICHES

Coney Island No. 1  
North Farish Street

Coney Island No. 2  
North Lamar Street  
"CHRIS," Manager

## JACKSON SHOE HOSPITAL

*"Repair Shoes Better"*

WM. KAROW, Manager  
Phone 336 412 E. Capitol

## Watkins, Watkins & Eager

*Attorneys and Counsellors  
at Law*

Standard Life Building  
Jackson, Mississippi

## Mississippi School Supply Co.

*Serving Mississippi Schools*

School Furniture and  
Equipment

JACKSON, MISSISSIPPI

## CORR-WILLIAMS TOBACCO CO.

Wholesale Distributors of  
Roi Tan, Osmundo,  
Hav-A-Tampa  
Tampa Nugget, Cremo  
GOOD CIGARS

## S. P. McRae Co.

BETTER VALUES



Florsheim and Friendly Fives  
No-Name and Stetson Hats

COMPLIMENTS  
OF  
MANGEL'S

Smart Apparel for the Smart  
Dresser

*"Prices That Make Friends"  
"Quality That Holds Them"*

FIELD'S  
WOMEN'S WEAR

146 EAST CAPITOL

Jackson  
Printing Company

116 Roach Street  
Jackson, Mississippi

*All Kinds of*  
Commercial and Publication  
Printing

Telephone 43

J. A. HUBER  
SHOE REBUILDING

*"A Friend of the College"*

170 East Capitol  
JACKSON, MISSISSIPPI

Twin States Athletic  
Supply Co.

Athletic Supplies for  
Every Sport

111 Roach St. Jackson, Miss.  
J. E. (Jew) BURGHARD, Manager

Baptist Book Store

*"We Supply Any Book"*

Phone 2703

502 E. Capitol Jackson, Miss.  
W. G. MIZE, Manager

"EATMOR" BREAD

*Served in Millsaps  
Dormitories*

Acme Bakery Co.

North Farish Street  
JACKSON, MISSISSIPPI

The Majestic and  
Istrione  
Theatres

*Jackson's Publix Theatres*

Electric Power and Service

MISSISSIPPI  
POWER AND LIGHT  
COMPANY

*"Helping Build Mississippi"*

Help us remove homelessness, neglect, cruelty, disease, poverty, vice, crime, ignorance, and death among the little, helpless, and needy children in Mississippi by giving a good home to one or by giving a check to feed and clothe them until we can find a home for these little ones.

The Mississippi Children's  
Home Society

Daniels Bldg. Jackson, Miss.

DR. JOHN L. SUTTON, *Supt.*

MILLSAPS COLLEGE

JACKSON, MISS.

A COLLEGE OF ARTS AND SCIENCES

*Founded in 1892*

Member of { Association of Colleges and Secondary Schools of the Southern States.  
Association of American Colleges.  
American Council on Education.

*Offers to Young Men and Women of Character, Ambition, and Ability the Following Advantages:*

1. Rigorous Academic Training and Scholastic Prestige.
2. Alert Intellectual and Cultural Life of the Student Community Expressed in Literary, Athletic, and Religious Organizations.
3. Moderate Expense and Excellent Opportunity for Loans and Employment.

*For Catalogue and Special Information, Address*

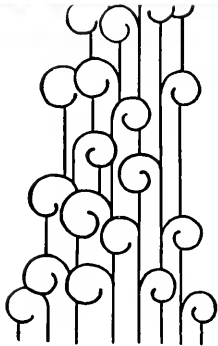
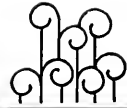
D. M. KEY, *President*

Jackson, Miss.

CAPITAL NATIONAL BANK

JACKSON, MISSISSIPPI

bright pages . . . . .



. . . . . that reflect those happy,  
carefree days has been our  
goal . . . . .

: COLLEGE : ANNUAL : DIVISION :

ALABAMA  
ENGRAVING  
COMPANY  
BIRMINGHAM

"IN THE HEART OF THE SOUTH"



THIS BOOK PRINTED BY.....



THE  
WORLD'S  
LARGEST  
PUBLISHERS  
OF  
COLLEGE  
ANNUALS



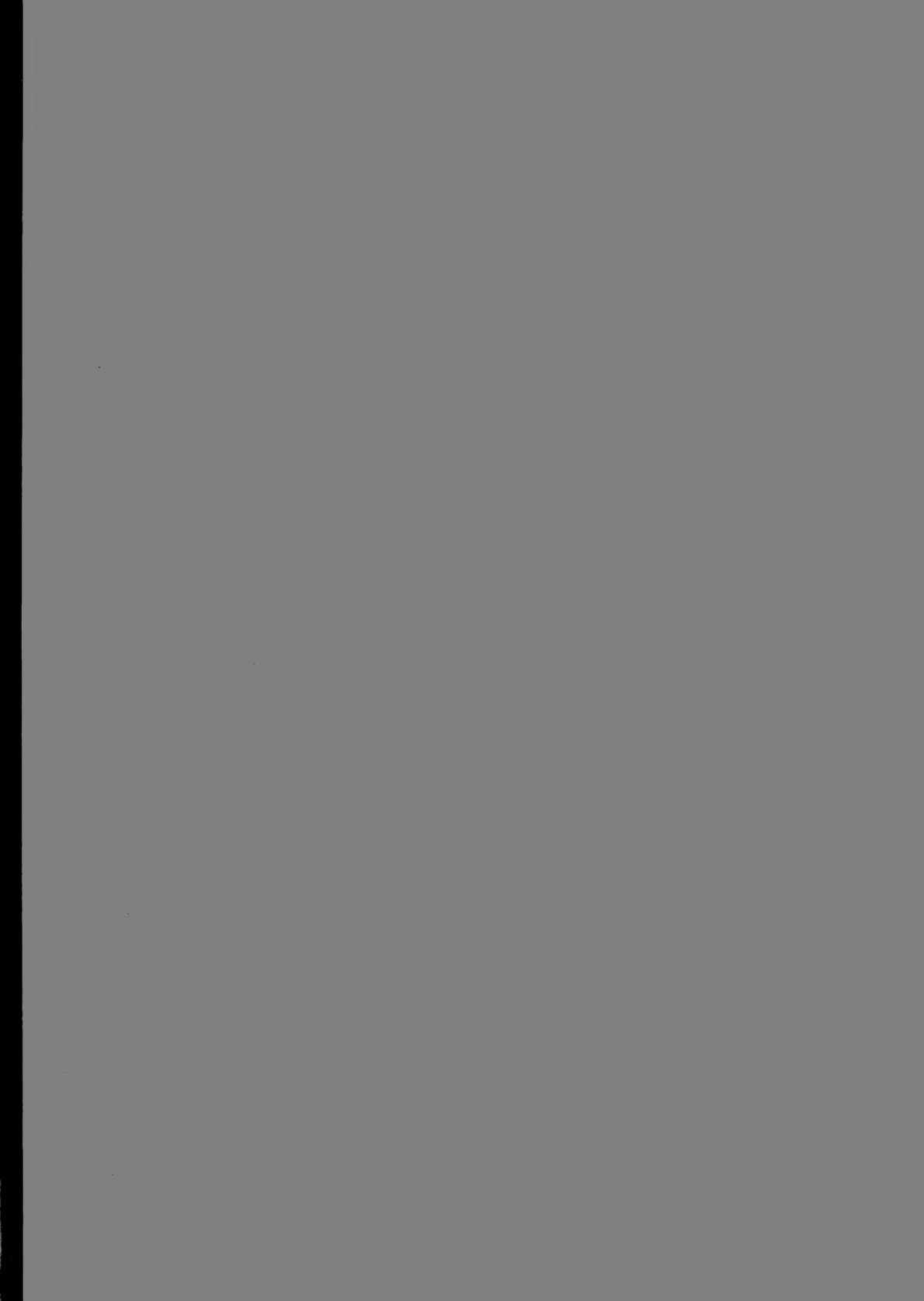
**COLLEGE ANNUAL HEADQUARTERS**

*Highest Quality Workmanship Superior Extensive Service*





**THE END**









EMOTEC  
CANTO  
MILANO