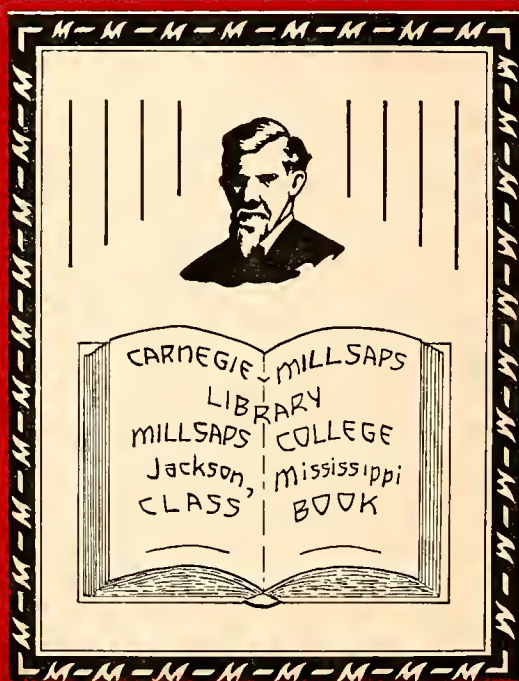




The 1938

BOBASHIELA



The first part of the document discusses the importance of maintaining accurate records of all transactions. It emphasizes that every entry, no matter how small, should be recorded to ensure the integrity of the financial statements. This includes not only sales and purchases but also expenses, income, and transfers between accounts.

The second part of the document provides a detailed breakdown of the accounting cycle. It outlines the ten steps involved in the process, from identifying the accounting entity to preparing financial statements. Each step is explained in detail, with examples provided to illustrate the concepts.

The third part of the document discusses the various types of accounts used in accounting. It distinguishes between assets, liabilities, equity, revenue, and expense accounts, and explains how they are classified and balanced. It also covers the concept of debits and credits, and how they are used to record transactions.

The fourth part of the document discusses the importance of adjusting entries. It explains how these entries are used to ensure that the financial statements reflect the true financial position of the company at the end of the accounting period. Examples are provided to show how adjusting entries are prepared and recorded.

The fifth part of the document discusses the preparation of financial statements. It outlines the steps involved in preparing the balance sheet, income statement, and statement of owner's equity. It also discusses the importance of comparing the financial statements to the company's performance and the industry as a whole.

The sixth part of the document discusses the importance of internal controls. It explains how these controls are used to prevent and detect errors and fraud, and to ensure the accuracy and reliability of the financial information. Examples are provided to show how internal controls are implemented in a company.

The seventh part of the document discusses the importance of ethics in accounting. It explains how accountants are expected to adhere to a code of ethics, and how this code is used to guide their professional conduct. Examples are provided to show how ethical decisions are made in the accounting profession.

The eighth part of the document discusses the importance of communication in accounting. It explains how accountants are expected to communicate effectively with their clients, colleagues, and the public. Examples are provided to show how communication is used in the accounting profession.

The ninth part of the document discusses the importance of technology in accounting. It explains how technology is used to automate accounting processes, and how this technology is used to improve the accuracy and efficiency of the accounting system. Examples are provided to show how technology is used in the accounting profession.

The tenth part of the document discusses the importance of continuous learning in accounting. It explains how accountants are expected to stay up-to-date on the latest developments in the field, and how this learning is used to improve their professional skills. Examples are provided to show how continuous learning is used in the accounting profession.



Millsaps College  
Library

MILLSAPS COLLEGE ARCHIVES

*"At LONG LAST  
We give you . . ."*

*The* 1938 *B*



# O B A S H E L A . .

A Y E A R B O O K

*Published by*

T H E S E N I O R C L A S S  
M I L L S A P S C O L L E G E

*at*

J A C K S O N , M I S S I S S I P P I

*Copyright*

---

J E F F H E S T E R—E D I T O R

F A G A N S C O T T—B U S I N E S S M A N A G E R

# Portraying





# I N W O R D *and* P I C T U R E

Life at Millsaps as we have been able to record it. If, in any respect, the contents of this volume are indicative of the colorful, exciting, and inspiring atmosphere of our collegiate surroundings—if this book offers pleasure in the reading—if our manner of presentation serves to recall pleasant associations, to bring back happy memories of undergraduate life, or to afford a retrospective glance of days gone by, then we feel that our efforts have not been in vain and are duly grateful.

## C O N T E N T S

- THE COLLEGE
- THE CLASSES
- THE ATHLETICS
- THE FEATURES
- THE GREEKS
- THE ORGANIZATIONS
- OUR PATRONS

---

*Just Waiting* ● *Palsie-Walsies*  
*Grilling* ● *Leaving class*  
*Chatting* ● *Time out*

A N D

# Speaking



*The co-ed marches  
on ● Miss Millsaps ●  
Miss Most Beautiful ●  
Playing.*

# *of Millsaps*

There comes to mind the realization of the great progress our college has made during past decades and the many factors that have contributed toward this success. With the advent of co-education at the turn of the century, women students have played a great part in the growth of our institution. Honorary societies have been created to offer recognition for outstanding achievements on the part of co-eds; an extensive athletic program has been inaugurated for their benefit; and numerous activities have been modified to encourage their participation. It is significant that one of the first points in the drive toward a greater Millsaps is the erection of a new dormitory for women. It is these factors and the influence that co-education has had in making a more outstanding Millsaps that motivates us to dedicate this volume to --- the Millsaps co-ed.

---

# The C O

- *Carnegie-Millsaps Library*
- *Millsaps parades*
- *The tomb of Major Millsaps*



# COLLEGE

Once upon a time a man had a dream of an institution where the youth of Mississippi could glean an insight into that by which men scale the heights—education. This institution was to offer to Mississippi students unexcelled opportunities. That man was Major Millsaps, and his dream has come true. Millsaps College stands today a symbol of culture and presents a program of learning unhampered by political trends or other factors which tend to hamper freedom of thought. Millsaps is now a great center of learning—in the future it will be even greater.





## ADMINISTRATION BUILDING

*Classes • Dramatic and  
Glee Club Presentations  
• Recitals • Assemblies*



## *The* MILLSAPS

SEPTEMBER — and the campus hums with a new spirit — the excitement of going to school again pervades the atmosphere. We see new faces mingled with old ones. There is gay and carefree laughter — textbooks are bargained for—campus romances are in the making. A slight tinge of autumn is in the air. Football season is speculated upon—fraternities are seeking pledges—academic pursuits are discussed—but not seriously—yet.

“Br-r-r-ing”. — sounds the gong. Crowds disperse—a hurried joke is told—notebooks are gathered up—a pencil is borrowed — a short greeting is made to an old friend seen for the first time this year—and then the nine-months trek to classes is begun. Another year of education is under way.

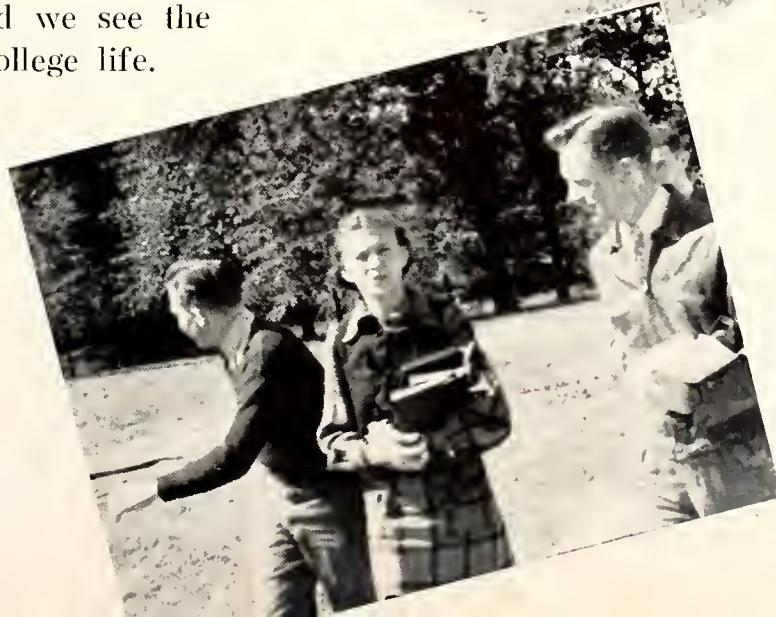


*Science Hall, classes are out • It's on to the next class or, maybe the Grill, or, perhaps for a stroll about the campus.*



## CAMPUS

This delegation seems to be headed toward the Grill—where the nickelodeon blares forth—where we get our mail—or read the morning paper. Here also that last minute studying for a test is done—we buy our best girl a drink—politics are discussed—a game of pool is indulged in—late-risers grab a cup of java—and we see the lighter side of college life.





SULLIVAN-  
HARRELL HALL  
*Chemistry • Geology*  
*Zoology • Physies*  
*Botany*

BUIE MEMORIAL  
GYMNASIUM  
*Basketball • The Grill*  
*Physical Education*

#### SCIENCE HALL NOTES

Dr. Sullivan: (to student coming in late)  
"Ah, Good morning."

Prof. Harrell: "Now let us pay attention to  
the roll call."

Dr. Riecken: "By George, if you want to  
pass, you'll have to study."

Prof. Price: "By jacks, you just don't ever  
meet lab anymore."

#### AT THE GYM

Coach Van: "Yeah, we're gonna have a good  
ball club this year."

Coach Gaddy: "If Red wasn't so lazy, he  
might make a good ball-player."

Duke: "'Ja ever hear the one about the two  
little kids that had a nickel apiece - - - ?"

Bo: "Now, Y'all be out there tonight and  
holler."



REMEMBER—?

Hoping it doesn't rain today—staying up all night to study for an exam to be taken tomorrow—saying Prof. is certainly a nice fellow—being broke most of the time—screaming your lungs out at the ball-game—how glad you were when tests were over—resolving to study next semester—what a cute girl she was—sleeping through a class—that all-important letter arriving from home—waiting for the Purple and White to be issued—being told that the classroom isn't the place to read it—and deciding that Millsaps is a pretty swell place after all . . . ?



*Proving that freshmen  
do study • Going to  
classes • Co-eds.*

Millsaps College  
Library



*Founders Hall* ●  
● *Galloway Hall*

### IN THE DORMITORIES—

A gab-fest in the next room—no heat today—hot-water all used up—tooth-paste all gone—feast on a box from home—can't find that book — that afternoon nap — borrowing money to go to the picture-show — a round of favorite jokes—alarm clocks going off at the same time—and everybody is just one big happy family.

JUNE—'tis a beautiful day  
—the bright sunshine  
sheds its warmth on the  
campus and fills one with ex-  
uberance and a glad-to-be alive  
feeling. Nevertheless there is a  
sort of quiet melancholy sur-  
rounding all—a sort of intangi-  
ble something that is only felt  
when one is going away. It  
makes us forget some of the  
petty jealousies we have har-  
bored—the fits of anger that  
came over us when everything  
was not as we felt it should be.  
This same feeling dispenses  
memories of bad moments and  
disappointments. Everything  
that happened has been covered  
in our minds by a net of mel-  
low sentiment that embraces  
all recollections and softens  
them. Yes, we have come to  
the parting of the ways—and  
we regret it—so, it's . . . good-  
bye, Millsaps.

*Kids again • talking it  
over • chapel time*





DAVID MARTIN KEY, President of Millsaps College

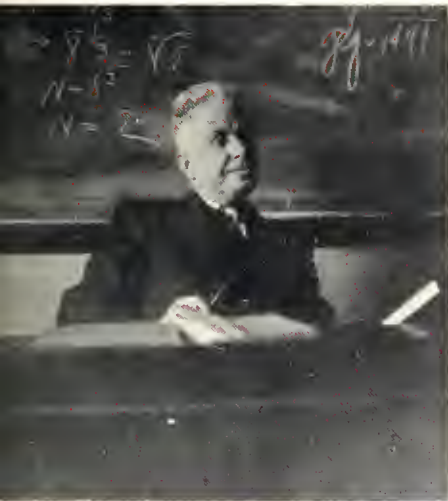
A learned scholar, a liberal educator, and a true gentleman, David Martin Key has served Millsaps not in vain. During his tenure of office, and under his guidance, old traditions have been hallowed, and new ones have come into being. Instrumental in the growth and development of our Alma Mater, he has learned to love Millsaps as Millsaps has learned to love him. It is with the deepest feeling and profoundest respect that we pay tribute to him. Possessed of an unusual wit, congenial personality, liberal thoughts, and a warm heart, he takes his place among other notables whose first thought was to give and not to take, and in the fulfillment of his task has left a mark which time will not erase but enlarge.

---

●

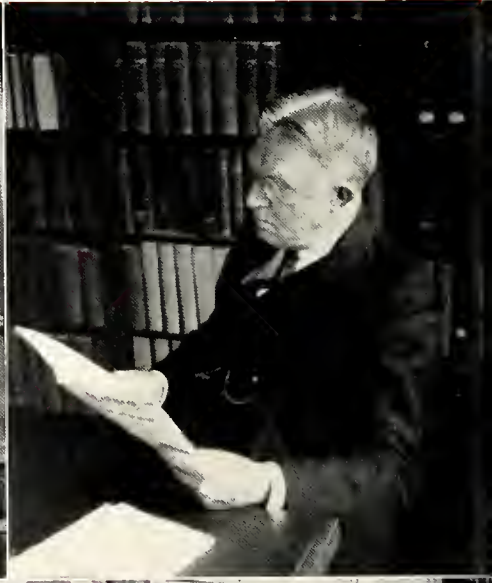
# The FACULTY

DR. A. P. HAMILTON - - - - - Dean of Freshmen, Latin, German  
 PROF. B. O. VAN HOOK - - - - - Mathematics  
 MRS. MARY CLARK - - - - - Librarian  
 MRS. MARGUERITE GOODMAN - - - - - English  
 PROF. A. G. SANDERS - - - - - Romance Languages  
 DR. J. M. SULLIVAN - - - - - Chemistry, Geology  
 PROF. RALPH G. JONES - - - - - Journalism, Political Science



# The F A C

PROF. J. B. PRICE - - - - - Mathematics, Chemistry  
MRS. HENRY COBB - - - - - Spanish  
PROF. G. L. HARRELL - - - - - Registrar, Physics, Astronomy  
MISS VIRGINIA THOMAS - - - - - Religion  
MRS. ARMAND COULET - - - - - Latin  
DR. HENRY M. BULLOCK - - - - - Religion  
PROF. PAUL RAMSEY - - - - - History, Sociology



# U L T Y

DR. WILLIAM E. RIECKEN - - - - - Biology  
V. B. HATHORN - - - - - Bursar  
DR. B. E. MITCHELL - - - - - Dean of Men, Mathematics  
PROF. ROSS H. MOORE - - - - - History  
PROF. R. R. HAYNES - - - - - Education  
PROF. J. REESE LIN - - - - - Philosophy  
DR. M. C. WHITE - - - - - English

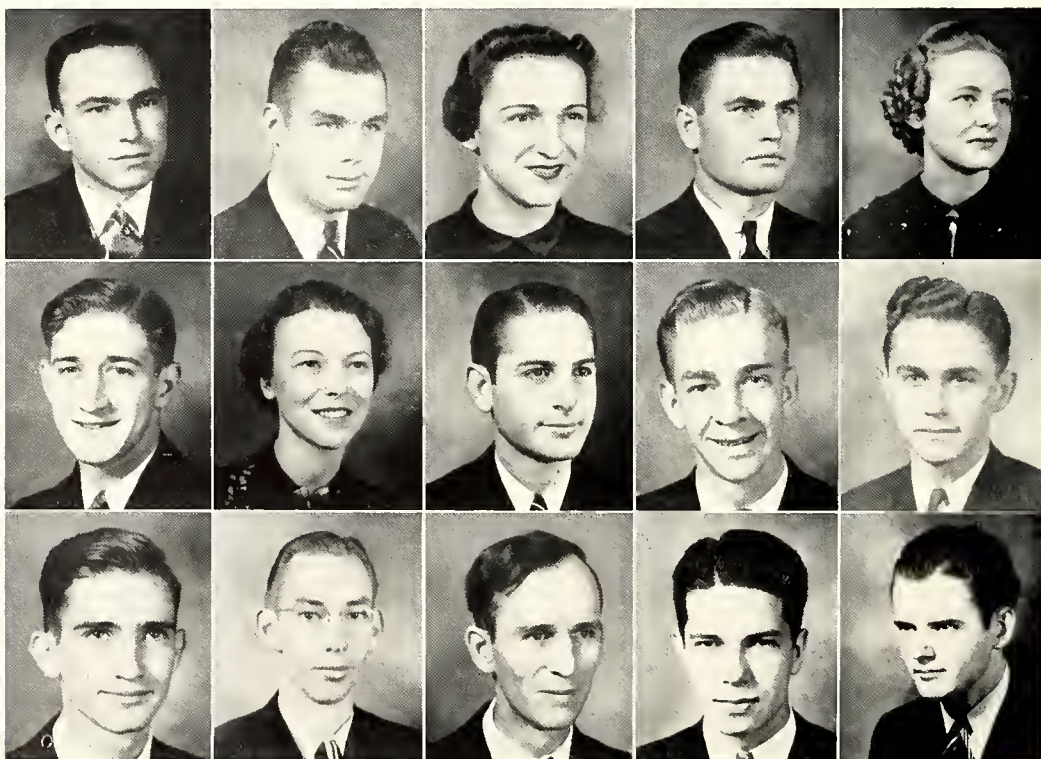
---



# STUDENT EXECUTIVE BOARD

This Board is composed of representatives from major phases of campus activities. Its primary purpose is to allot funds for student activities and compose legislation to govern and regulate student affairs.

BILLY FORD	President of Student Body
EDWIN EDWARDS	Vice Pres. of Student Body
LOLA DAVIS	Sec'y. Treas. of Student Body
G. C. CLARK	"M" Club
MILDRED CLEGG	Y. W. C. A.
WILEY CRITZ	Y. M. C. A.
SARA GORDON	Pan-Hellenic and Woman's Ass'n.
JEFF HESTER	Bobashela
FIELDING HOLLOMAN	Head Cheerleader
STACY KELLUM	Men's Pan-Hellenic
CHESTER MCKENZIE	Millsaps Singers
JOHN MCRAE	Millsaps Band
W. R. MURRAY	Ministerial League
VICTOR ROBY	Purple and White
FAGAN SCOTT	Debate



FORD, EDWARDS, DAVIS, CLARK, CLEGG,  
CRITZ, GORDON, HESTER, HOLLOMAN, KELLUM,  
MCKENZIE, MCRAE, MURRAY, ROBY, SCOTT





GORDON, CHICHESTER, BLOUNT, KINNAIRD, WATKINS

## WOMAN'S ASSOCIATION

An organization which includes all the women students, this association meets twice-monthly to hear programs of especial interest to co-eds. This year a new constitution was drawn up which materially strengthened the group and advanced further the ideals of this organization.

### OFFICERS

SARA GORDON	- - - - -	President
MAY ELLEN CHICHESTER	- - - - -	Vice President
IMOGENE BLOUNT	- - - - -	Program Chairman
JEAN KINNAIRD	- - - - -	Secretary
BERT WATKINS	- - - - -	Treasurer

# BOB ASHELA

## EDITORIAL STAFF

JEFF HESTER - - - - - Editor  
FOSTER COLLINS - - - - - Assistant Editor  
BILLY HOFFPAUIR - - - - - Assistant Editor  
LUCILE STRAHAN - - - - - Class Editor  
BERKLEY MUH - - - - - Organizations Editor  
GLENN PHIFER - - - - - Assistant Organizations Editor  
HAYS FLEMING - - - - - Sports  
INA BELL FITTS - - - - - Greeks  
SAM BIRDSONG - - - - - Snapshots  
JIMMY CAVETT - - - - - Snapshots

MUH, FITTS, BIRDSONG, CAVETT, PHIFER,  
STRAHAN, HOFFPAUIR, HESTER, COLLINS,  
FLEMING



# STAFF ..

## BUSINESS STAFF

FAGAN SCOTT - - - - - Business Manager  
JOHN GODBOLD - - - - - Associate Business Manager  
WILLIAM BRADSHAW - - - - - Advertising Manager  
FLOY THOMPSON - - - - - Circulation Manager  
WILBOURN WASSON - - - - - Publicity  
ANNIE LOU HEIDELBERG - - - - - Assistant  
ANNIE K. DEMENT - - - - - Assistant  
VIRGINIA GADDY - - - - - Assistant  
ERNEST FELTS - - - - - Assistant

HEIDELBERG, WASSON, THOMPSON,  
BRADSHAW, DEMENT, GADDY, SCOTT,  
GODBOLD





NOWELL, ROBY, DAVIS, DELAMOTTE,  
TUCKER, O'CONNOR

# *The* PURPLE

## EDITORIAL STAFF

VICTOR M. ROBY - - - - - Editor-in-Chief

TOM TUCKER - - - - - Copy Editor

BOB LEDBETTER - - - - - Proof Reader

WILBOURN WASSON - - - Exchange Editor and Bulletin Board Manager

NEWS—DONALD O'CONNOR, Editor; ERLON NOWELL, FOSTER COLLINS,  
JEAN KINNAIRD, JAMES CONNER, ESS WHITE, ELLIS PARKER,  
JIM LIVESAY, ROY CLARK, NAT ROGERS, EVELYN BROOKS, JOHN  
RUNDLE, DOROTHY REEVES, ALBERT PIPPEN.

FEATURES—ROY DELAMOTTE, Editor; FRED BUSH, CARSON HILTON,  
CARL MILLER, THOMAS ROBERTSON, CATHERINE DAVIS,  
DAVID HILL, JOHN GODBOLD, MARGUERITE DARDEN.

SPORTS—JAMIE EWING, JOE BROOKS.

# BUSINESS STAFF

JAMES C. DUNN - - - - - Business Manager

HUGH B. LANDRUM - - - - - Assistant Business Manager

LEWIS THAMES - - - - - Assistant

INA BELL FITTS - - - - - Assistant

ED BRENT - - - - - Assistant

JACK BAIN - - - - - Circulation

BILL ESTES - - - - - Circulation

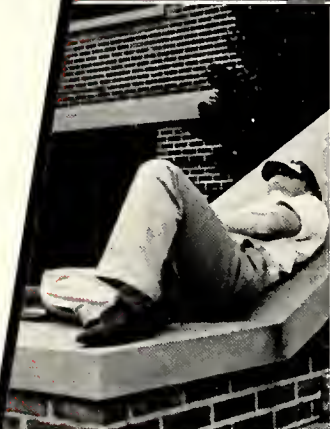
*and* WHITE..

BAIN, THAMES, FITTS, LANDRUM, ESTES,  
DUNN



# Snap SHOTS

Faculty on parade. "A Servant in the House." "Down with the Choes." The last locks. Ho-Hum. "So that's the way it is." A tense moment. Go get 'em. "Have you heard?" Registration day. "We must face the situation." Just standing around. Jovial Tom. Coach tells 'em. KD float. Well, Carolyn? Sponsoring around. Hold 'em, Majors. Eugene is curious.



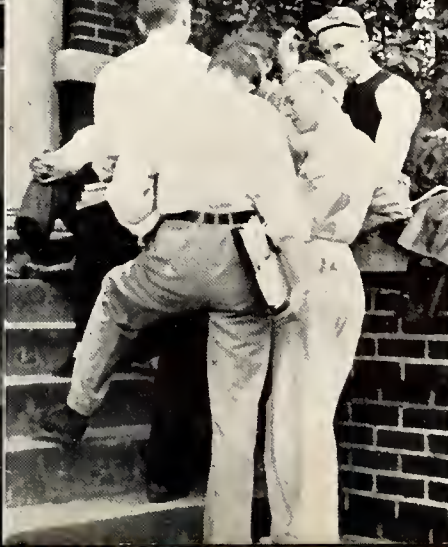


# Snap SHOTS

Kappa Sigs. Sponsors. Sarah and  
Blackie. It looks like Glenn. KA  
float. NYAing. Majors toot 'em up.  
Intelligence Tests. Lucile tells one.  
Between classes. To classes. After  
the accident. All over. "On, boys,  
on". A good view. Just pals. Making  
up. "Is that the way you worked it?"  
Up the avenue.







# The C L

*Classroom • Lab  
Library • Auditorium  
Pleasant Interlude*

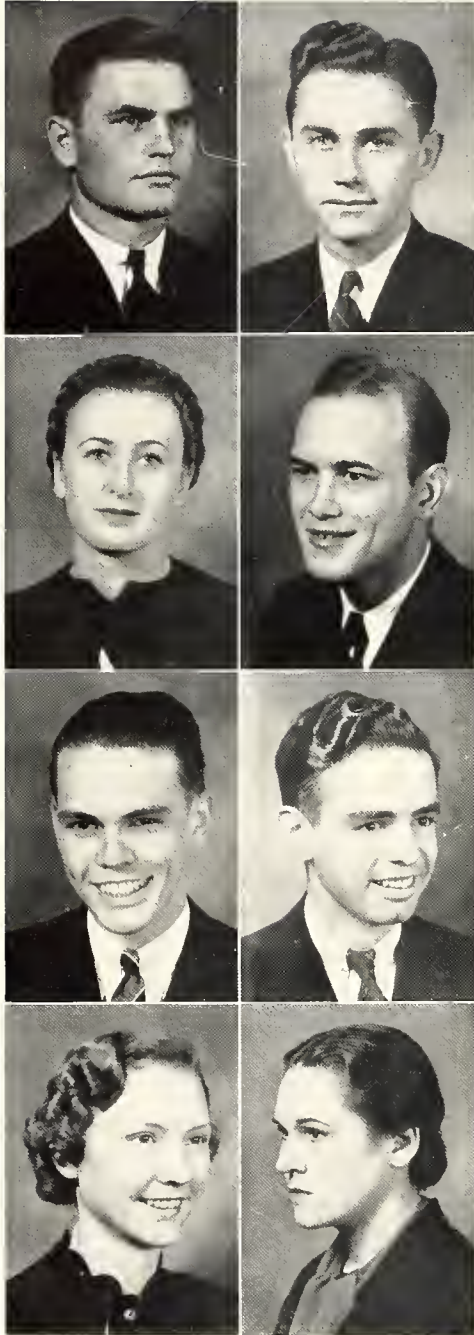


# A S S E S

Since the dawn of educational institutions, students have been divided into sections for classification purposes. Passing from one class to another is passing from one educational milestone to the next until the completion of the journey. A freshman enters college with eyes cast toward the future. For four years he studies, and grows in body, mind, and character. As a senior, he leaves behind the integrated community where he has worked and played—a finished product with a determination to carve his niche in the wall of life with the tools with which he has been practicing.



★  
S E N I O R



G. C. CLARK, JR., B. S.  
President of Senior Class  
*Waynesboro, Miss.*  
SIGMA RHO CHI

Omicron Delta Kappa; Baseball 1; Track 1, 4; Basketball 1, 2, 3, 4; Football 1, 2, 3, 4; Capt. Football 4; Most valuable football player award 4; "M" Club 2, 3, 4; Pres. "M" Club 4; Science Club 3; Ramblers Club 4; Student Assistant 2, 3, 4; Student Executive Board 4.

WILLIAM STACY KELLUM, B. S.  
Vice Pres. of Senior Class  
*Shaw, Miss.*  
KAPPA SIGMA

Omicron Delta Kappa; Y. M. C. A. Cabinet 3, 4; Pan-Hellenic 3, 4; Pres. Pan-Hellenic 4; I. R. C. 3, 4; Student Ex. Bd. 4.

NELL LOUISE PERMENTER, B. A.  
Sec'y.-Treas. Senior Class  
*Jackson, Miss.*  
KAPPA DELTA

Most beautiful Co-ed 4; Millsaps Players 1, 2, 4; Classical Club 1, 2, 3; Feature Section Bobashela 3; Sec'y.-Treas. Class 3; Pan-Hellenic 2, 3; Sec'y. Woman's Ass'n. 2.

AUBREY ADAMS, B. S.  
*Longview, Wash.*  
PI KAPPA ALPHA

Copiah-Lincoln Jr. College 1, 2; Football 3; Pre-Med. Club 3, 4; Science Club 3, 4; Student Assistant 4; Alpha Epsilon Delta 4.

MOUNGER FAVRE ADAMS, B. A.  
*Lumberton, Miss.*  
KAPPA ALPHA

Classical Club 1, 2; Eta Sigma Phi 3, 4; Pres. Eta Sigma Phi 4; Millsaps Singers 2, 3, 4; Millsaps Players 2, 3, 4; Beethoven Club 3; Student Assistant 3, 4; Ramblers Club 4.

GENE BINGHAM, B. S.  
*Shreveport, La.*  
SIGMA RHO CHI

Football 1; Track 1; Science Club 1, 2

IMOGENE BLOUNT  
*Bassfield, Miss.*  
KAPPA DELTA

Sigma Lambda; Whitworth College 1, 2; Y. W. C. A. 3, 4; Y. W. C. A. Cabinet 4; Blue Ridge Delegate 3; Blue Ridge Scholarship 4; Millsaps Singers 3, 4; Alpha Psi Omega 3, 4; Sec'y. of Woman's Association 4.

OTTOMESE CASSELS  
*Gloster, Miss.*  
Millsaps Barbarians

Millsaps Singers 1, 2, 3, 4; Y. W. C. A. 1, 2, 3, 4; Classical Club 1, 2, 3; Basketball 2, 3; Majorette Club 3.

B O B A S

1 9

# C L A S S

SELLA CASSELS, B. A.  
*Gloster, Miss.*

MILLSAPS BARBARIANS

Y. W. C. A. 1, 2, 3, 4; Classical Club 1, 2, 3;  
Sec'y. Classical Club 3; Millsaps Singers 1, 2, 3, 4;  
Majorette Club 3, 4; Vice Pres. Majorettes 4;  
Student Assistant 4.

NEAL WADE CIRLOT, B. S.  
*Moss Point, Miss.*

SIGMA RHO CHI

Y. M. C. A. 1; Basketball 1, 2; Baseball 1, 2;  
Track 1, 4; Football 1, 2, 3, 4; Millsaps Players  
2, 3; Millsaps Singers 1, 2, 3; P & W Staff 3;  
Intramural Director 3; Pan-Hellenic 4; "M"  
Club 4; Publicity Officer "M" Club 4.

LEONARD ELLIS CLARK, B. S.  
*Jackson, Miss.*

THETA KAPPA NU

Hinds County Junior College 1; Spanish Club 4.

MILDRED CLEGG, B. A.  
*Brookhaven, Miss.*

BETA SIGMA OMICRON

Whitworth College 1, 2; Sigma Lambda 4;  
Treasurer Y. W. C. A. 3; Pres. Y. W. C. A. 4;  
Editor Co-ed Edition Purple & White 3; Winner  
Women's Oratorical Contest 3; Chi Delta 4;  
Eta Sigma Phi 4; Alpha Psi Omega 4; Le Cercle  
Francais 4; Christian Council 4; Student Execu-  
tive Board 4; "Who's Who in American Colleges  
and Universities" 4.

FOSTER COLLINS, B. S.  
*Yazoo City, Miss.*

KAPPA ALPHA

Omicron Delta Kappa; Student Assistant 2, 3;  
S. I. M. A. Contestant 2; Purple and White  
Staff 2, 3; I. R. C. 3; Bobashela Staff 3; Dean's  
List 3.

VIRGINIA COLLINS, B. A.  
*Jackson, Miss.*

BETA SIGMA OMICRON

Louisiana College 1, 2, 3; Y. W. C. A. 4; Eta  
Sigma Phi 4.

MARGUERITE COLTHARP, B. A.  
*New Albany, Miss.*

KAPPA DELTA

Grenada College 1, 2; Y. W. C. A. 3, 4; Football  
Sponsor 4; Beethoven Club 3, 4; Millsaps Singers  
3, 4.

WILLIAM MARCUS COMMANDER, B. S.  
*Philadelphia, Miss.*

East Central Junior College 1, 2; Y. M. C. A.  
3, 4; Science Club 3, 4; Pre-Med. Club 3, 4;  
Alpha Epsilon Delta 3, 4; Dean's List 3, 4;  
Pres. Rambler's Club 4; D. A. R. Scholarship 4.

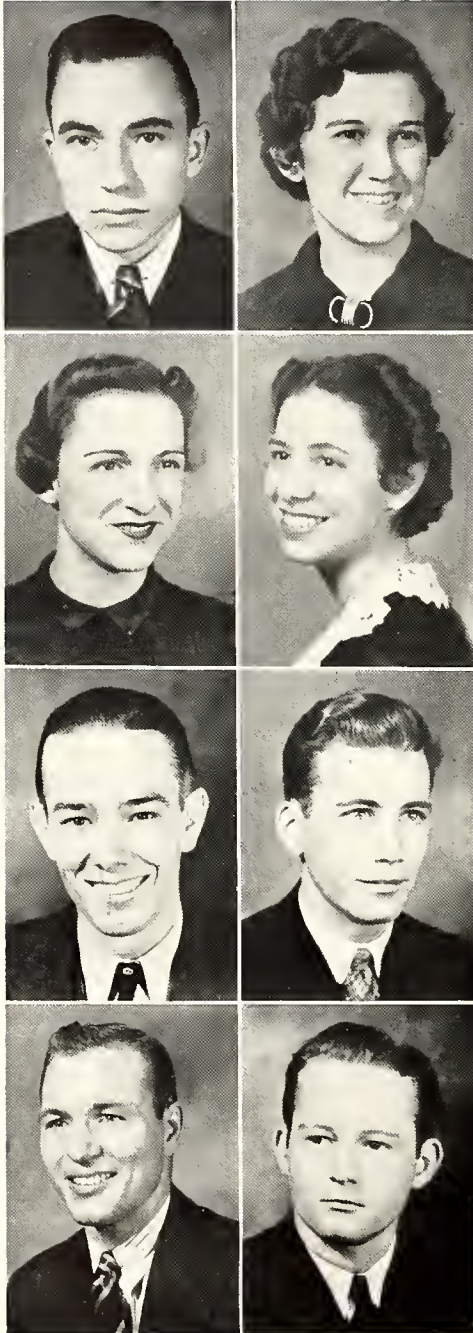


H E L A

3 8



# SENIOR



JAMES CONNER, B. A.  
*Hattiesburg, Miss.*

MILLSAPS BARBARIANS

Y. M. C. A. 1, 2, 3, 4; Y. M. C. A. Cabinet 4; Beethoven Club 1, 2, 3, 4; Jackson Intercollegiate Council 2, 3, 4; I. R. C. 4; Purple and White 4; Kit Kat 4; Millsaps Singers 4.

CATHERINE DAVIS, B. S.  
*Brookhaven, Miss.*

CHI OMEGA

Sigma Lambda: Hinds County Junior College 1, 2; Y. W. C. A. 3, 4; Millsaps Singers 3, 4; Purple and White 4; Editor Co-Ed Edition 4.

LOLA DAVIS, B. S.  
*Jackson, Miss.*

KAPPA DELTA

Sigma Lambda; Pi Kappa Delta 1, 2, 3, 4; Vice Pres. Pi Kappa Delta 3, 4; Chi Delta 1, 2, 3, 4; Pres. Chi Delta 2, 3; Millsaps Singers 1, 2, 3, 4; Purple and White 1; Sec'y. Major Club 2; Treas. Y. W. C. A. 2; Student Assistant 2; Vice Pres. Sigma Lambda 3; Pres. Sigma Lambda 4; Treas. Woman's Pan-Hellenic 3; Sec'y. Woman's Pan-Hellenic 4; La Tertulia 3; Sec'y.-Treas. Student Body 4; Student Exec. Bd. 4; Rambler's Club 4; "Who's Who in American Universities and Colleges" 4.

ANNIE KATHERINE DEMENT, B. A.  
*Jackson, Miss.*

KAPPA DELTA

Randolph-Macon 1, 2; Le Cercle Francais 4; Eta Sigma Phi 4; Bobashela Staff 4.

GEORGE THOMAS DORRIS, B. S.  
*Jackson, Miss.*

SIGMA RHO CHI

Baseball 1; Track 1; Science Club 2, 3, 4; Rambler's Club 3; Bobashela Staff 3.

JAMES CAMMACK DUNN, B. S.  
*Greenville, Miss.*

PI KAPPA ALPHA

Omicron Delta Kappa; Band 1, 2; Tennis 1, 3; Purple and White 1, 2, 3, 4; Business Manager Purple and White 3, 4; Blue Ridge Scholarship 2, 3; Kit Kat 2, 3, 4; Pan-Hellenic 3; I. R. C. 3, 4.

RALPH JERRY ELFERT, JR., B. S.  
*Seminary, Miss.*

SIGMA RHO CHI

Jones County Jr. College 1, 2; Spanish Club 4; Football 3, 4; Y. M. C. A. Cabinet 3, 4; Science Club 3, 4; Dean's List 3, 4; Student Assistant 4; Baseball 3; "M" Club 4.

SAMUEL AUBREY ELLIS, B. S.  
*Lauderdale, Miss.*

THETA KAPPA NU

Basketball 1; Basketball Manager 2; Baseball 1, 2, 3, 4; Millsaps Singers 1, 3, 4; "M" Club 2, 3, 4; Sec'y. "M" Club 4; Science Club 3; Vice Pres. Rambler's Club 4.

B O B A S

1 9

# C L A S S

MILDRED ENOCHS, B. A.  
*Jackson, Miss.*  
CHI OMEGA

Belhaven College 1; Millsaps Singers 1; Classical Club 2, 3; Y. W. C. A. 2, 4; Le Cercle Francais 3, 4.

WILLIAM R. FORD, B. A.  
*Taylorsville, Miss.*  
KAPPA ALPHA

Omicron Delta Kappa; Buie Declamation Medal 2; Varsity Debater 2, 3, 4; Pi Kappa Delta 2, 3, 4; Pres. Pi Kappa Delta 3, 4; Winner Miss. Oratorical Contest 3, 4; Carter Oratorical Medal 3, 4; Bobashela Staff 3; Vice Pres. Class 3; Eta Sigma Phi 3, 4; I. R. C. 3, 4; Vice Pres. I. R. C. 4; Y. M. C. A. Cabinet 3, 4; Pres. Student Body 4; Student Executive Board 4; Master Major 4; Christian Council 4; Student Assistant 3, 4; Dean's List 4; Who's Who in American Universities and Colleges 4.

LUCIEN R. FREEMAN, B. A.  
*Kansas City, Missouri*

MILLSAPS BARBARIANS  
Junior College of K. C. 1; Ministerial League 2, 3, 4.

MAUD LYLE GOLDEN, B. A.  
*Laurel, Miss.*  
CHI OMEGA

Whitworth College 1, 2; Classical Club 3; Y. W. C. A. 3, 4.

ALEX GORDON, JR., B. S.  
*Jackson, Miss.*  
KAPPA ALPHA

Millsaps Players 3, 4; Vice Pres. Science Club 3; Assistant Boxing Manager 4.

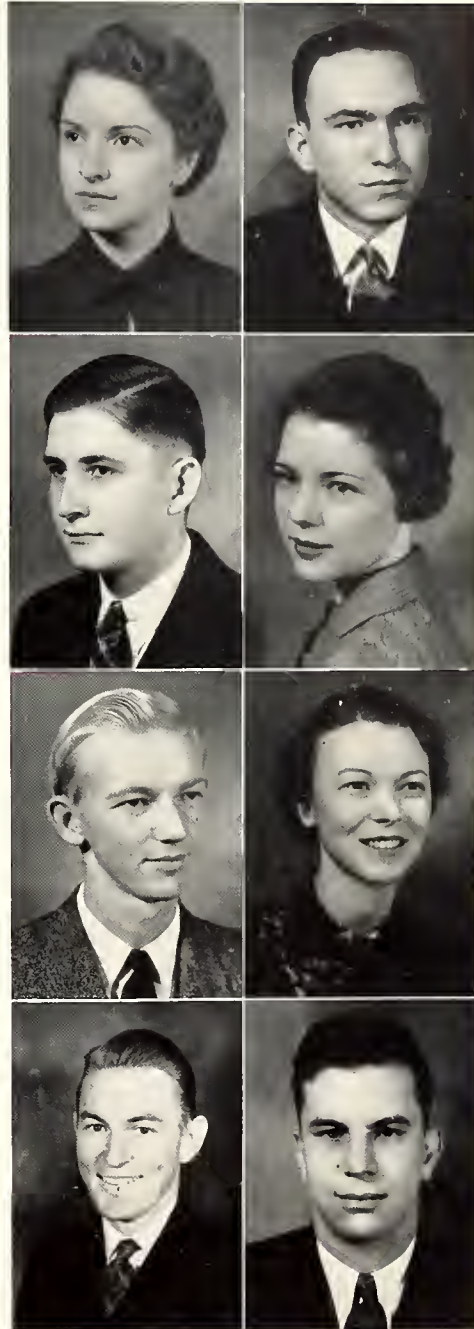
SARA GORDON, B. S.  
*Vaiden, Miss.*

BETA SIGMA OMICRON  
Sigma Lambda 4; Vice Pres. Sigma Lambda 4; Grenada College 1, 2; Millsaps Singers 3, 4; Y. W. C. A. 3, 4; Y. W. C. A. Cabinet 4; Feature Section Bobashela 3, 4; Blue Ridge Delegate 3; Pres. Woman's Ass'n. 4; Pres. Woman's Pan-Hellenic 4; Vice Pres. Classical Club 4; Vice Pres. Christian Council 4; Student Ex. Bd. 4; Dean's List 4; "Who's Who in American Universities and Colleges" 4.

FRANCIS HAMILTON, B. A.  
*Jackson, Miss.*  
PI KAPPA ALPHA  
Tennis 1, 2, 3, 4.

WILLIAM GILES HARDIN, B. S.  
*Jackson, Miss.*

PI KAPPA ALPHA  
Millsaps Players 1; Boxing 2, 3, 4; Capt. Boxing 2, 3, 4; Pre-Med. Club 3, 4; Science Club 4.

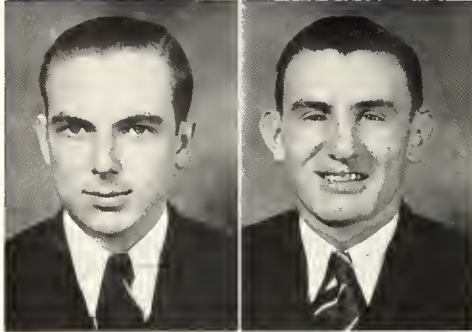


H E L A

3 8



# SENIOR



WIRT TURNER HARVEY, B. S.

*Water Valley, Miss.*

PI KAPPA ALPHA

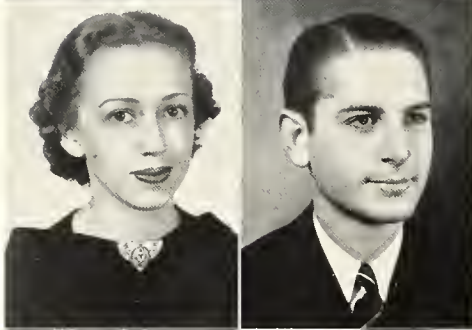
Beethoven Club 1, 2, 3, 4; Pres. Beethoven Club 2, 3, 4; Y. M. C. A.; Dean's List 3, 4.

CHARLES HEGWOOD, B. S.

*Pineville, Miss.*

SIGMA RHO CHI

Jones County Jr. College 1, 2; Football 3, 4; Basketball 3, 4; Capt. Basketball 4; Baseball 4; "M" Club 3, 4; Ramblers' Club 4; Track 4.



ANNIE LOU HEIDELBERG, B. S.

*Jackson, Miss.*

CHI OMEGA

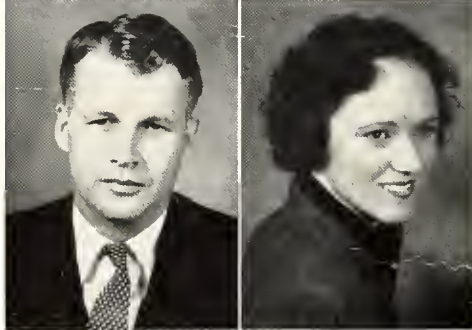
Y. W. C. A. 1, 2, 3, 4; Millsaps Singers I; Science Club 3; Majorette Club 3, 4; Vice Pres. Majorette Club 3.

JEFFERSON MOORE HESTER, B. S.

*Laurel, Miss.*

KAPPA SIGMA

Y. M. C. A. 1, 2, 3; Y. M. C. A. Cabinet 2, 3; Millsaps Singers 3; Bobashela Staff 2, 3, 4; Editor Bobashela 4; Student Executive Bd. 4; Le Cercle Francais 4.



JOHN HAROLD HETRICK, B. S.

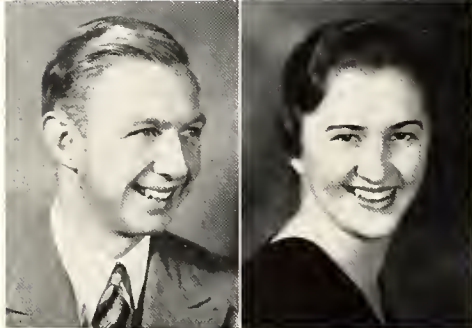
*Jackson, Miss.*

SYBLE HINSON, B. S.

*Lumberton, Miss.*

BETA SIGMA OMICRON

Pearl River Jr. College 1, 2; Y. W. C. A. 3, 4; Major Club 3; Ramblers' Club 4; Dean's List 4.



WILLIAM IVY HOFFPAUR, B. S.

*Jackson, Miss.*

THETA KAPPA NU

Millsaps Singers 1, 2, 3, 4; Millsaps Players 1, 2, 3, 4; Alpha Psi Omega 2, 3, 4; Tennis 1, 3, 4; Purple and White 1, 3; SIMA Contestant 2, 3, 4; Eta Sigma 3, 4; Student Assistant 4; Bobashela Staff 4.

MARJORIE HOGUE, B. S.

*Natchez, Miss.*

PHI MU

M. S. C. W. 1, 2.

B O B A S

1 9



# C L A S S

MARY LOUISE HOLLOMAN, B. S.  
*Jackson, Miss.*

KAPPA DELTA  
Delta State Teachers College 1, 2; Y. W. C. A.  
2, 3, 4; Millsaps Singers 2, 3, 4; Major Club 3.

JAMES KELLY, B. A.  
*Raleigh, Miss.*

MILLSAPS BARBARIANS  
Clarke College 1; Ministerial League 2, 3, 4;  
Y. M. C. A. 2, 3, 4; Y. M. C. A. Cabinet 4;  
Jackson Interracial Council 2, 3, 4; Pres. Inter-  
racial Council 4; Le Cercle Francais 3, 4; Eta  
Sigma Phi 3, 4; Christian Council 3, 4; Pres.  
Christian Council 4.

WILLIAM GILLON KIMBRELL, B. A.  
*Jackson, Miss.*

PI KAPPA ALPHA  
Omicron Delta Kappa; Millsaps Singers 1, 2, 3, 4;  
Business Manager Singers 3; Tennis 1, 2, 3;  
Millsaps Players 1, 2, 3, 4; Alpha Psi Omega  
1, 2, 3, 4; Eta Sigma Phi 2, 3, 4; Eta Sigma 3, 4;  
Y. M. C. A.; Pres. Alpha Psi Omega 4; Travelli  
Scholarship 3, 4.

JEAN KINNAIRD, B. A.  
*Jackson, Miss.*

Sigma Lambda; Historian Sigma Lambda 4;  
Classical Club 1; Purple and White 2, 3, 4;  
Y. W. C. A. 3, 4; Y. W. C. A. Cabinet 4; Chi  
Delta 3, 4; Sec'y.-Treas. Chi Delta 3; Pres.  
Chi Delta 4; Sec'y. Woman's Ass'n. 3; Program  
Chairman Woman's Ass'n. 4; Majorette Club  
3, 4; Blue Ridge Delegate 3; Le Cercle Francais 4.

MARY SUE LAMB, B. S.  
*Laurel, Miss.*

BETA SIGMA OMICRON  
Whitworth College 1, 2; French Club 3;  
Y. W. C. A. 3, 4; Y. W. C. A. Cabinet 4.

WILLIAM MOORE LAUDERDALE, B. S.  
*Jackson, Miss.*

KAPPA ALPHA  
Omicron Delta Kappa; Pres. Omicron Delta  
Kappa 4; Band 1, 2, 3, 4; Staff Sergeant 3;  
Technical Sergeant 4; Band Publicity Officer  
3; Purple and White 1, 2; Clark Essay Medal  
2; Kit Kat 2, 3, 4; Student Assistant 3, 4; Pan-  
Hellenic 4; Sec'y. Pan-Hellenic 4; "Who's Who  
in American Universities and Colleges" 4.

RUBY LITTON, B. A.  
*Shaw, Miss.*

KAPPA DELTA  
Grenada College 1, 2; Y. W. C. A. 3, 4; Classical  
Club 3; Beethoven Club 3, 4; Vice Pres.  
Beethoven Club 3, 4.

CLIFFORD MACGOWAN, JR.  
*Jackson, Miss.*

KAPPA ALPHA  
Science Club 2, 3; Ramblers' Club 4.

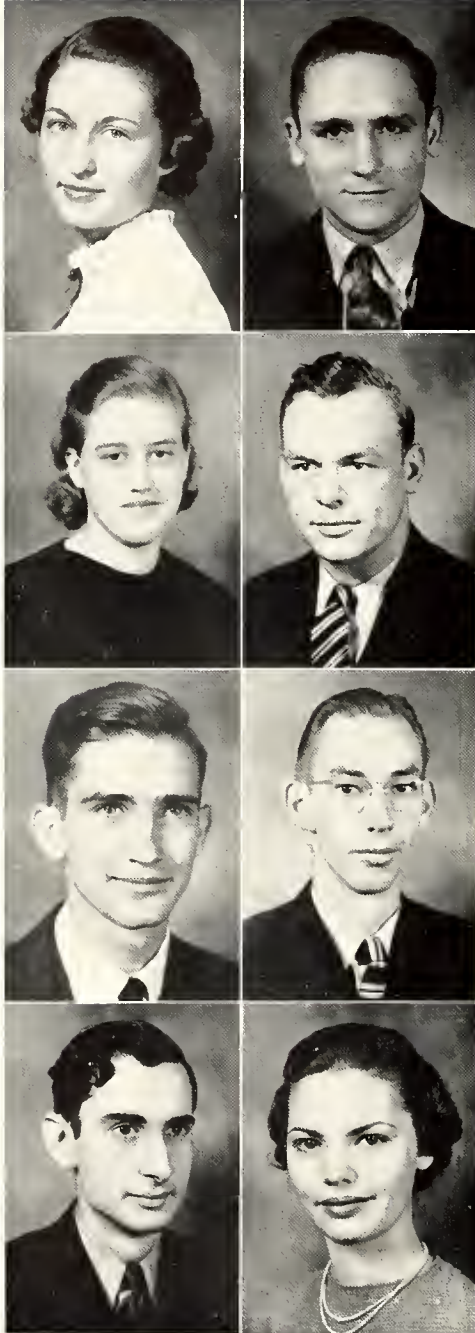


H E L A

3 8



# SENIOR



RUTH MARTIN, B. S.

*Midnight, Miss.*

KAPPA DELTA

M. S. C. W. 1, 2; Y. W. C. A. 3, 4.

ROBERT MINOR MATHENY, B. A.

*Waynesboro, Miss.*

SIGMA RHO CHI

Ministerial League 1, 2, 3, 4; Millsaps Singers 1; Y. M. C. A. 1, 2, 3, 4; Y. M. C. A. Cabinet 3, 4; Track 1; Basketball 1, 2; Basketball Manager 3; Football Manager 3, 4; "M" Club 3, 4; Classical Club 2; I. R. C. 3, 4.

EFFIE EUGENIA MAULDIN, B. A.

*Baldwyn, Miss.*

Grenada College, 1, 2; Classical Club 3; Millsaps Singers 3, 4; Y. W. C. A. 3, 4.

ALTON McALILLY, B. S.

*Louisville, Miss.*

SIGMA RHO CHI

Sunflower Junior College 1, 2; Football 3, 4; "M" Club 3, 4.

CHESTER MCKENZIE, B. S.

*Memphis, Tenn.*

THETA KAPPA NU

W. T. S. T. C. 1, 2; Band 2, 3; Millsaps Singers 2, 3, 4; Librarian 2, 3; Pres. Singers 4; Millsaps Players 3, 4; Alpha Psi Omega 3, 4; Voice Scholarship 2, 3, 4; Science Club 3, 4; Y. M. C. A. Cabinet 3, 4.

JOHN M. McRAE, B. S.

*Jackson, Miss.*

KAPPA ALPHA

Band 1, 2, 3, 4; Drum-Major 2, 3, 4; Vice Pres. and Business Mgr.-Elect 2; Staff Sergeant 4; Assistant Director Band 3, 4; Pres. Band 3, 4; Science Club 1; Y. M. C. A. 1, 2; Student Exec. Bd. 3, 4.

CONAN HIMBER MILLSTEIN, B. S.

*Jackson, Miss.*

Pre-Med. Club 1, 2, 3, 4; Science Club 1, 2, 3, 4.

JOSEPHINE BERKLEY MUH, B. S.

*Jackson, Miss.*

CHI OMEGA

Miss Millsaps; Sigma Lambda; Millsaps Singers 1, 2, 3, 4; Vice Pres. Singers 3; Purple and White 1, 2; Treas. Beethoven Club 2; Y. W. C. A. 1, 2, 3; Sec'y. Y. W. C. A. 2, 3; Pan-Hellenic 3, 4; Pres. Pan-Hellenic 3; Chi Delta 2, 3, 4; Vice Pres. Chi Delta 4; I. R. C. 3, 4; Student Assistant 4; Bobashela Staff 4.

# B O B A

# C L A S S

LEE ROY MURPHREE, B. S.  
*Okolona, Miss.*  
THETA KAPPA NU

Commonwealth Scholarship 3; Pre-Med. Club 1, 2, 3; Pres. Pre-Med. Club 2, 3; Science Club 1, 2, 3; Pres. Science Club 3; Alpha Epsilon Delta 2, 3; Vice Pres. Alpha Epsilon Delta 3; Student Assistant 2, 3; Pan-Hellenic 3; Dean's List 3.

WILLIAM RICHARD MURRAY, B. A.  
*Harrisville, Miss.*  
MILLSAPS BARBARIANS

Ministerial League 2, 3, 4; Pres. Ministerial League 4; French Club 3, 4; Y. M. C. A. Student Executive Board 4.

CARL RAY NEWSOM, B. S.  
*Madison, Miss.*

Band 1, 2, 3; Y. M. C. A. 1, 2, 3; Science Club 1, 2, 3; Pre-Med. Club 1, 2, 3; Alpha Epsilon Delta 2, 3; Dean's List 2, 3; Ramblers' Club 3; Le Cercle Francais 3; Student Assistant 3.

MILTON PEDEN, B. S.  
*Schlater, Miss.*  
MILLSAPS BARBARIANS

Sunflower Jr. College 1, 2; Ministerial League 3, 4.

JOHN RIMMER, B. S.  
*Camden, Miss.*  
SIGMA RHO CHI

Band 1, 2, 3; Track 1; Science Club; Pre-Med. Club, Pan-Hellenic 3, 4; Y. M. C. A.; Alpha Epsilon Delta 3, 4; Pres. Alpha Epsilon Delta 4; Student Assistant 4.

VICTOR MILLS ROBY, B. S.  
*Jackson, Miss.*  
PI KAPPA ALPHA

Omicron Delta Kappa; Vice Pres. Omicron Delta Kappa 4; Debate 1; Band 1; Purple and White 1, 2, 3, 4; Freshman Editor Purple and White 1; Editor Purple and White 3, 4; Millsaps Singers 1, 2, 3, 4; Y. M. C. A.; Millsaps Players 1, 3; College Publicity 2; Classical Club 2; I. R. C. 3; Kit Kat 3, 4; Student Exec. Bd. 3, 4.

LEE ROGERS, JR.  
*New Albany, Miss.*  
KAPPA ALPHA

Freshman Y. M. C. A. Cabinet; Millsaps Singers 1; Purple and White 1; Ramblers' Club 2; Science Club 1, 2, 3, 4; Pre-Med. Club 2, 3, 4.

AVA SANDERS, B. S.  
*Glen Allen, Miss.*  
CHI OMEGA

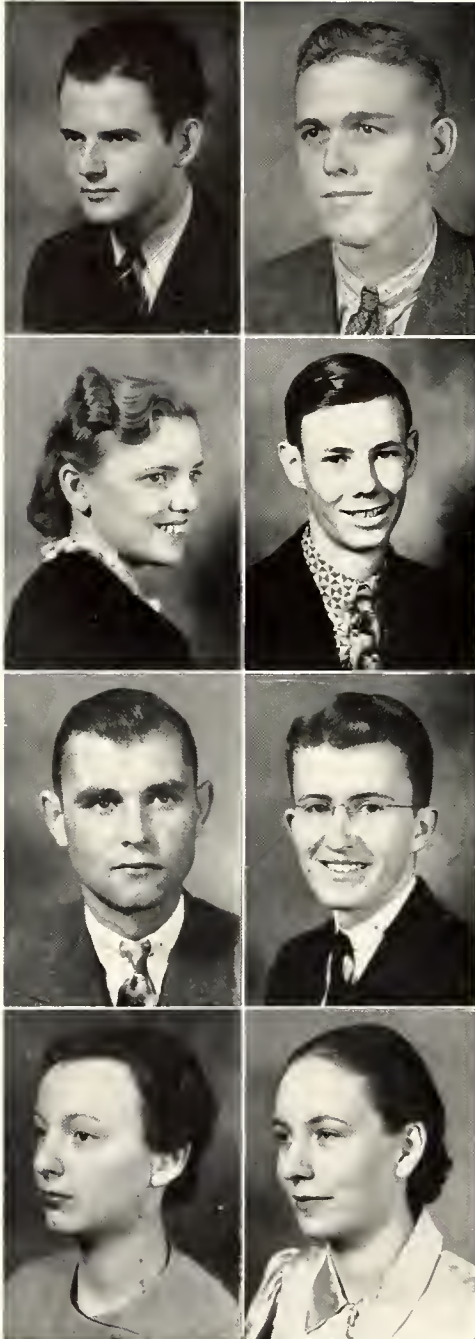
Delta State Teachers College 1, 2; Alpha Psi Omega 3, 4; Pre-Med. Club 3, 4; Alpha Epsilon Delta 3, 4; Feature Section Bobashela 3, 4.



# E L A



# SENIOR



FAGAN SCOTT, B. A.

*Jackson, Miss.*

PI KAPPA ALPHA

Omicron Delta Kappa; Varsity Debater 2, 3; Eta Sigma Phi 2, 3, 4; Associate Editor "Nuntius" 3; Spanish Club 3; Millsaps Singers 3, 4; Bus. Mgr. Singers 4; Pi Kappa Delta 3, 4; I. R. C. 3, 4; Pres. I. R. C. 4; Student Exec. Bd. 4; Y. M. C. A. Cabinet 4; Student Assistant 4; Bus. Mgr. Bobashela 4; "Who's Who among Students in American Universities and Colleges" 4.

EUGENE BAYLIS SHANKS, B. A.

*Sumrall, Miss.*

Football 1; Galloway Lit. Society 1, 2; Classical Club 1, 2; Tennis 1, 2, 3; Science Club 2; Student Assistant 2; Debate Club 4; Pre-Law Club 4; Eta Sigma 4; Pi Kappa Delta 4.

LAURA MAE SHRADER, B. S.

*Hazlehurst, Miss.*

MILLSAPS BARBARIANS

Copiah-Lincoln Jr. College 1, 2; Y. W. C. A. 3, 4; Ramblers' Club 4; Student Assistant 4.

LAVELLE SIMS, B. S.

*Jackson, Miss.*

SIGMA RHO CHI

Basketball 1, 2, 3; Manager Basketball 4; S. I. M. A. Contestant 2, 3, 4; "M" Club 4; Eta Sigma 3, 4; Dean's List 3, 4; Student Assistant 3, 4.

J. D. SMITH, B. S.

*Madison, Miss.*

SIGMA RHO CHI

Y. M. C. A.; Pres. Spanish Club 4; Science Club; Freshman Football; Bourgeois Medal 3; Graduate Assistantship Georgia School of Technology.

A. C. SPINKS, B. S.

*Decatur, Miss.*

THETA KAPPA NU

Decatur Junior College 1, 2; Kit Kat.

LUCILE STRAHAN, B. S.

*Jackson, Miss.*

KAPPA DELTA

Millsaps Singers 1, 2, 3, 4; Y. W. C. A. 1, 2, 3, 4; Millsaps Players 1, 2, 3, 4; Alpha Psi Omega 2, 3, 4; Sec'y. Treas. Alpha Psi Omega 2, 3, 4; Classical Club 2, 3; Purple and White 3; Vice Pres. Woman's Association 3; Bobashela Staff 4.

ELIZABETH SUTTLE, B. S.

*Edwards, Miss.*

KAPPA DELTA

Hinds County Jr. College 1, 2; Dean's List 3, 4; Student Assistant 4.

B O B A S

1 9

# C L A S S

FLOY DENTON THOMPSON, B. S.

*Jackson, Miss.*

CHI OMEGA

Y. W. C. A. 1, 2; Millsaps Players 1, 2, 3; Alpha Psi Omega 2; Science Club 3; Pre-Law Club 4; Bobashela Staff 4; Le Cercle Francais 4; Feature Section Bobashela 4.

CARROLL VARNER, JR. B. A.

*Jackson, Miss.*

SIGMA ALPHA EPSILON

Southwestern 1, 2; Northwestern 3.

RODNEY WALKER, B. S.

*Lauderdale, Miss.*

THETA KAPPA NU

Y. M. C. A. 1; Basketball 1, 2; Football 1, 2, 3, 4; Boxing 3; "M" Club 2, 3, 4; Vice Pres. "M" Club 4; Dean's List 3, 4; Alternate Capt. Football 4; Student Assistant 4.

HUBERT GILL WALLACE, B. S.

*Shelby, Miss.*

MILLSAPS BARBARIANS

Sunflower Junior College 1, 2; Ministerial League.

MARJORIE AGNES WALTERS, B. S.

*Jackson, Miss.*

Purple and White 1; Chi Delta 1, 2, 3, 4; Vice Pres. Chi Delta 3; Sec'y.-Treas. Chi Delta 4; Majorette Club 3, 4; Sec'y.-Treas. Majorette Club 4; Spanish Club 3; Intramural Class Manager 3, 4.

WILBOURN WASSON, B. S.

*Columbus, Miss.*

PI KAPPA ALPHA

Classical Club 1, 2; Eta Sigma Phi 2, 3, 4; Purple and White 2, 3, 4; Millsaps Singers 3; Spanish Club 3, 4; Kit Kat 4; Bobashela Staff 4; Y. M. C. A. Cabinet 3, 4.

JAMES WILLIAMS, B. S.

*Brandon, Miss.*

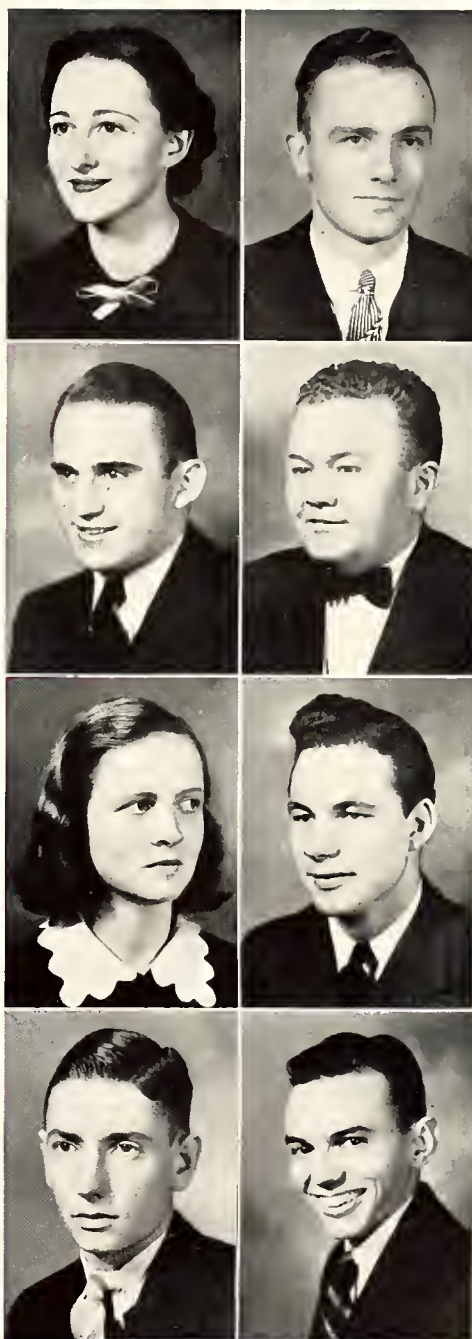
SIGMA RHO CHI

Pearl River Junior College 1, 2.

THOMAS MARVIN WILLIAMS, B. S.

*Lexington, Miss.*

Holmes Jr. College 1, 2; Debate Club 3, 4; Varsity Debater 4; Pi Kappa Delta 4; Band 3, 4; Pres. Pre-Law Club 4.

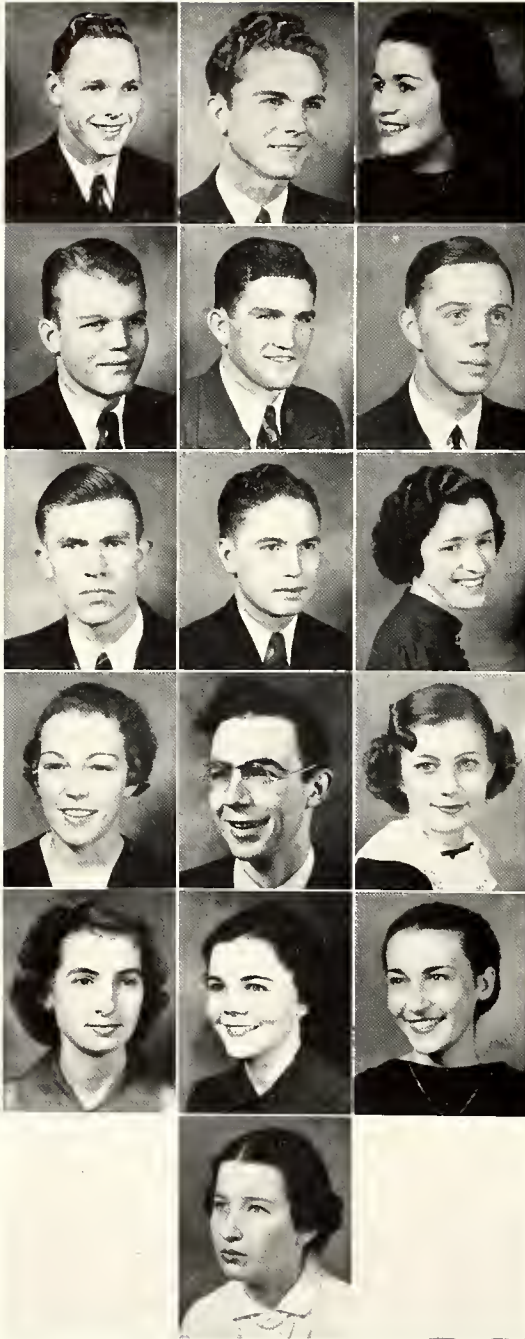


H E L A

3 8

# The

# J U N I O R



T. M. HARDY.....Natchez  
President of Junior Class  
*Kappa Sigma*

JOE AINSWORTH.....Raymond  
Vice-President of Junior Class  
*Kappa Alpha*

JANE HYDE WEST.....Shaw  
Sec'y.-Treas. of Junior Class  
*Kappa Delta*

BILL AINSWORTH.....Bay Springs  
*Pi Kappa Alpha*

HAMPTON BALLARD.....Shaw

WIRT ADAMS BEARD.....Jackson  
*Kappa Alpha*

BILL BIZZELL.....Pace  
*Pi Kappa Alpha*

DAVID BLOUGH.....Okolona

EVELYN BROOKS.....Carthage  
*Beta Sigma Omicron*

SARA BUIE.....Jackson  
*Phi Mu*

FRED BUSH.....Brookhaven  
*Pi Kappa Alpha*

ROMA FERN CHAMPENOIS.....Hattiesburg  
*Kappa Delta*

MYRTLE CHATHAM.....Rose Hill  
*Beta Sigma Omicron*

MAY ELLEN CHICHESTER.....Jackson  
*Chi Omega*

MARGARET CONN.....Monticello  
*Kappa Delta*

CHARITY CRISLER.....Jackson  
*Phi Mu*

B O B A  
I 9

# C L A S S

WILEY CRITZ.....Clarksdale  
*Sigma Alpha Epsilon*  
 GRACE CUNNINGHAM.....Corinth  
*Chi Omega*  
 ROY DELAMOTTE.....Moss Point  
*Theta Kappa Nu*

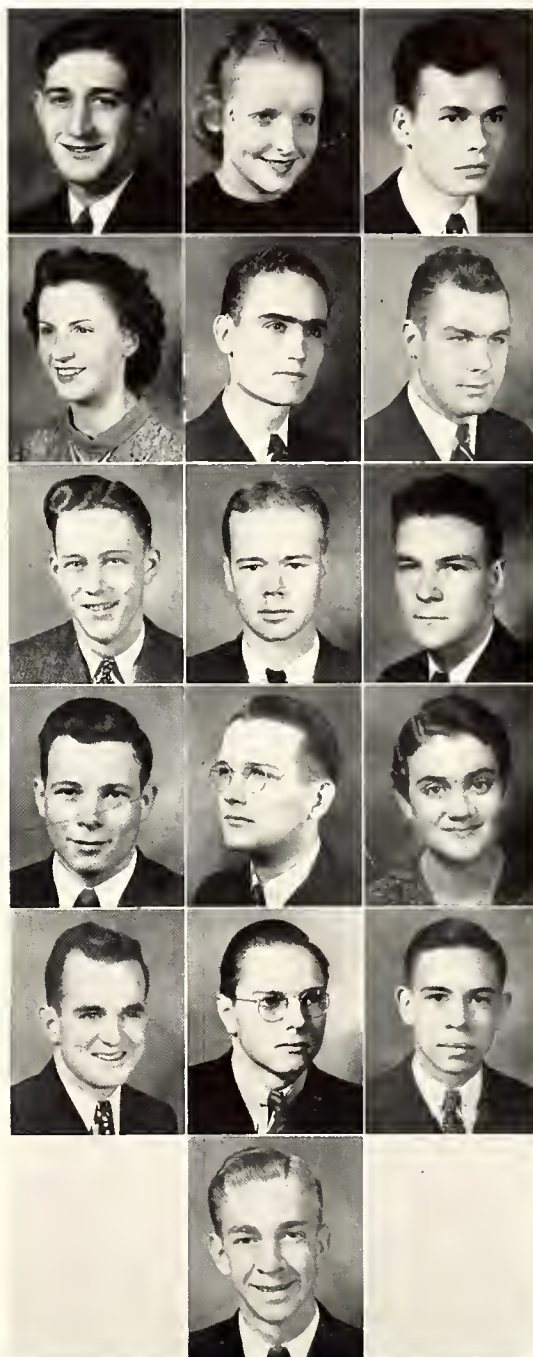
CLARA FRANCES DENT.....Jackson  
*Phi Mu*  
 BLANTON DOGGETT.....Kossuth  
*Pi Kappa Alpha*  
 EDWIN EDWARDS.....Gulfport  
*Kappa Sigma*

BEN EVANS.....Water Valley  
*Kappa Alpha*  
 JAMIE EWING.....Vaughan  
*Kappa Sigma*  
 ERNEST FELTS.....Batesville  
*Kappa Sigma*

HAYS FLEMING.....Minter City  
*Kappa Sigma*  
 JOHN GODBOLD.....Jackson  
*Pi Kappa Alpha*  
 OLLIE MAY GRAY.....Burnsville

JAMES HAMILTON.....Tutwiler  
*Kappa Sigma*  
 EARL HARPER.....Brandon  
 CHARLES HICKS.....Minter City

FIELDING HOLLOMAN.....Jackson  
*Kappa Sigma*

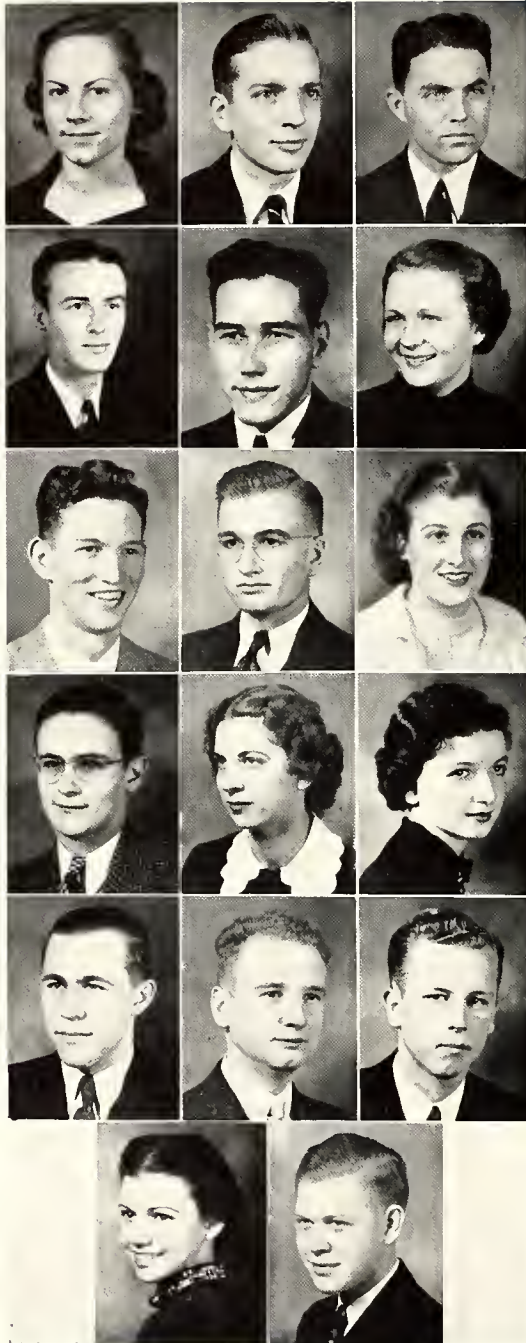
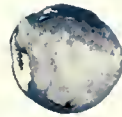


# S H E L A

3 8

# The

# J U N I O R



MARJORIE HULL.....Lawrence  
*Beta Sigma Omicron*

ROBERT IVY..... Jackson  
*Kappa Alpha*

HUGH LANDRUM..... Jackson  
*Pi Kappa Alpha*

BERNARD LUKE..... Jackson  
*Theta Kappa Nu*

W. T. MANGUM..... Jackson

RUBY MARTIN.....Midnight  
*Kappa Delta*

ALBERT MAY..... Jackson  
*Pi Kappa Alpha*

TORRANCE MAXEY..... Noxapater

DOT MCGEE..... Collins  
*Beta Sigma Omicron*

M. L. MCKINNON.....Lauderdale  
*Kappa Sigma*

CORINNE MITCHELL.....Plantersville  
*Kappa Delta*

PEARL NOBLES..... Jackson  
*Chi Omega*

DONALD O'CONNOR.....Vicksburg  
*Millsaps Barbarians*

BILL PALMER..... Brookhaven  
*Pi Kappa Alpha*

ELLIS PARKER.....Laurel

VIRGINIA PETTIT..... Jackson  
*Kappa Delta*

CECIL PITARD..... Jackson  
*Kappa Sigma*

# B O B A

1 9



# C L A S S



MARY ELEANOR SHAUGHNESSY..... Jackson  
*Kappa Delta*

PAUL SHEFFIELD..... Jackson  
*Pi Kappa Alpha*

JOE SIMPSON..... Ackerman  
*Sigma Rho Chi*

GRANT STEWART..... New Hebron  
*Sigma Rho Chi*

MARY LOU STRAIT..... Gloster

LILLIAN DOUGLAS SWAYZE..... Yazoo City  
*Kappa Delta*

BEN SYKES..... Jackson  
*Kappa Sigma*

KATHERYNE TERRELL..... Prentiss  
*Kappa Delta*

LEWIS THAMES..... Sanatorium  
*Kappa Sigma*

JOHN THOMPSON..... Bassfield

CECIL TRIPLET..... Mashulaville  
*Sigma Rho Chi*

TOM TUCKER..... Kosciusko  
*Pi Kappa Alpha*

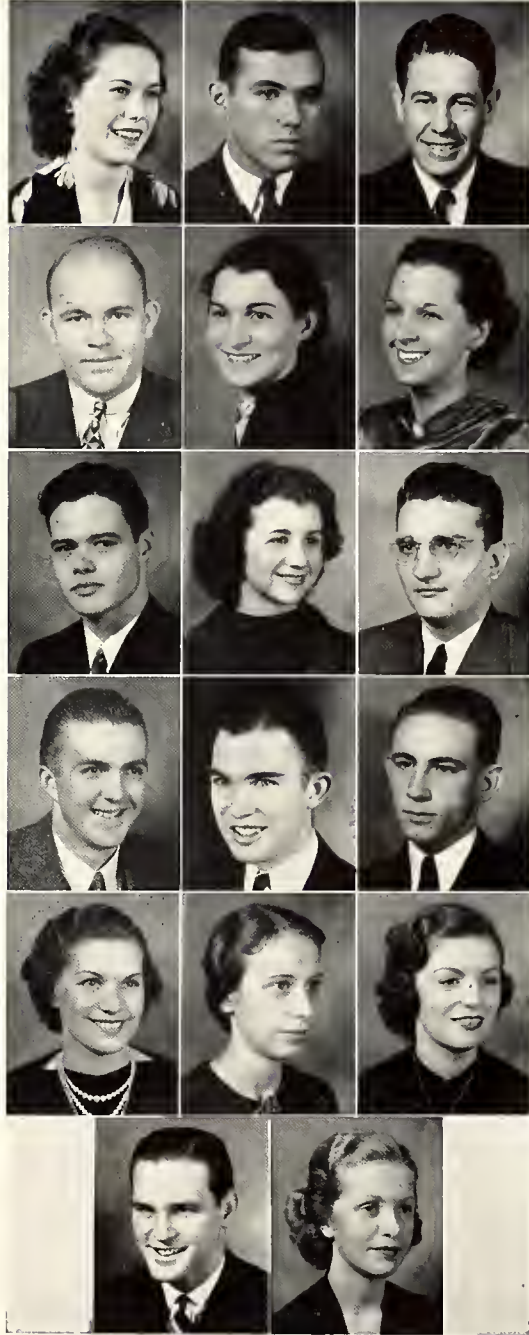
JEANNETTE VAN ZANDT..... Jackson  
*Chi Omega*

SUE FRANCES WATKINS..... Grenada

ELIZABETH WILSON..... Pelahatchie  
*Kappa Delta*

CHARLES WRIGHT..... Jackson  
*Pi Kappa Alpha*

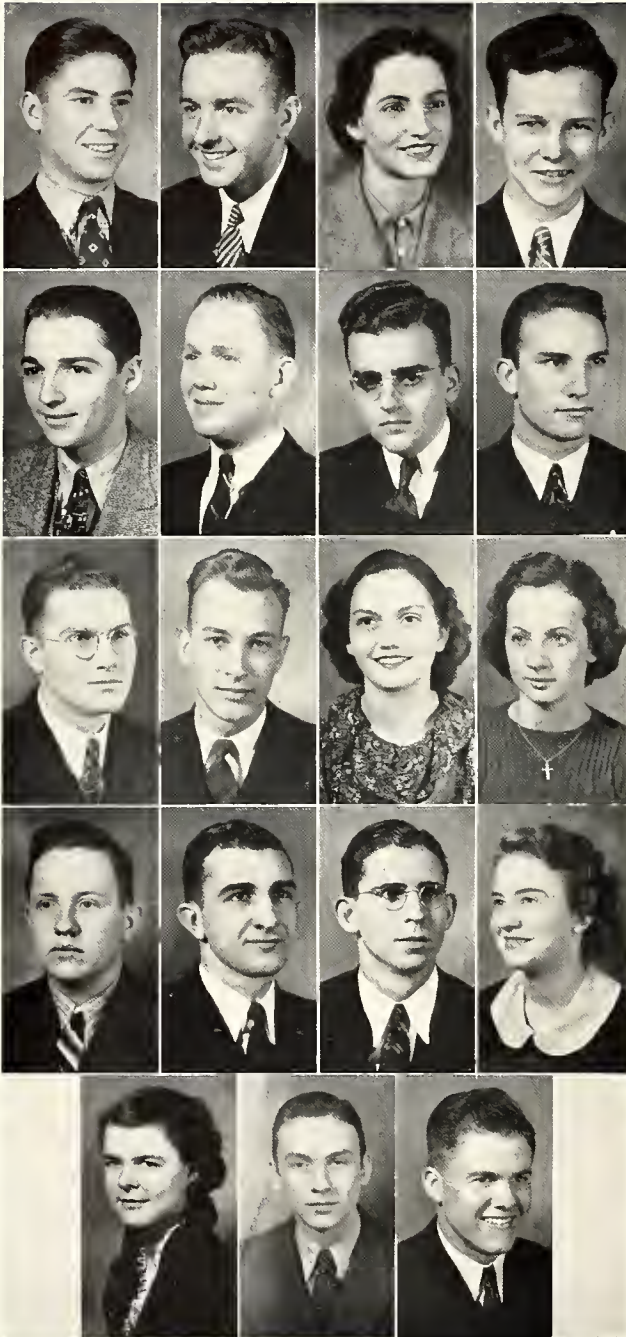
RUTH WROTEN..... Corinth  
*Phi Mu*



# S H E L A

8 8

S O P H O



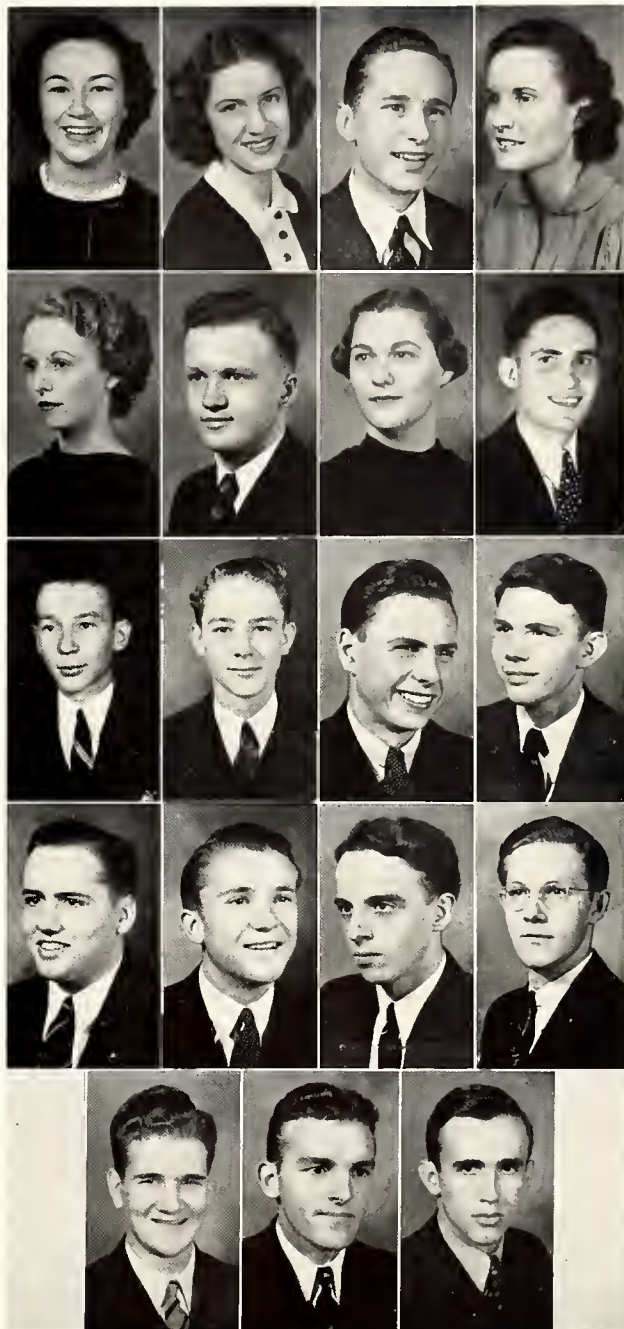
- JOHN BATTE.....Jackson  
 President of Sophomore Class  
*Kappa Alpha*
- JAMES WILSON.....Natchez  
 Vice-President of Sophomore Class  
*Kappa Sigma*
- MARTHA DEES.....Jackson  
 Sec'y.-Treas. of Sophomore Class  
*Kappa Delta*
- JACK BAIN.....Jackson  
*Theta Kappa Nu*
- JAMES BOOTH.....Jackson  
*Pi Kappa Alpha*
- WILLARD BOURNE.....Monticello
- WILLIAM BRADSHAW.....Bentonla
- EDWIN BRENT.....Crystal Springs  
*Pi Kappa Alpha*
- NASH BROYLES.....Columbus  
*Pi Kappa Alpha*
- COOPER BRYANT.....Jackson  
*Kappa Sigma*
- CAROLYN BUCK.....Jackson  
*Phi Mu*
- VERA BURKHEAD.....Jackson  
*Chi Omega*
- VERNON BURKHEAD.....Jackson  
*Kappa Sigma*
- ROY BYARS.....Cascilla  
*Kappa Alpha*
- CHARLES CLARK.....Jackson  
*Theta Kappa Nu*
- MARTHA CONNER.....Hattiesburg  
*Beta Sigma Omicron*
- MARGUERITE DARDEN.....Jackson  
*Phi Mu*
- JOEL DENTON.....Jackson  
*Pi Kappa Alpha*
- TOM DICKERSON.....Sumrall  
*Kappa Sigma*

B O B A  
 1 9



# M O R E S

- ELIZABETH DURLEY.....Drew  
*Kappa Delta*
- DELORES DYE..... Jackson
- JACK FERRIS..... Yazoo City  
*Kappa Sigma*
- INA BELL FITTS..... Jackson  
*Chi Omega*
- EDWINA FLOWERS..... Jackson  
*Phi Mu*
- GERALD GABLE..... Eastabuchie
- VIRGINIA GADDY..... Jackson  
*Phi Mu*
- A. G. GAINEY..... Meridian  
*Pi Kappa Alpha*
- GEORGE F. HALL..... West Palm Beach, Florida  
*Kappa Alpha*
- LONGSTREET HAMILTON..... Jackson  
*Sigma Chi*
- DALE HARPER..... Brandon
- VERNON HATHORN..... Jackson
- WALTER HELUMS..... Jackson  
*Kappa Sigma*
- RAY HENDERSON..... Carthage  
*Pi Kappa Alpha*
- CARSON HILTON..... Jackson  
*Pi Kappa Alpha*
- EUGENE HOPPER..... Corinth
- CARL HORN..... Magee  
*Kappa Sigma*
- HOOPER HORNE..... Carriere  
*Pi Kappa Alpha*
- MANNING HUDSON..... New Albany  
*Kappa Alpha*



# S H E L A

# 3 8

# The

# S O P H O



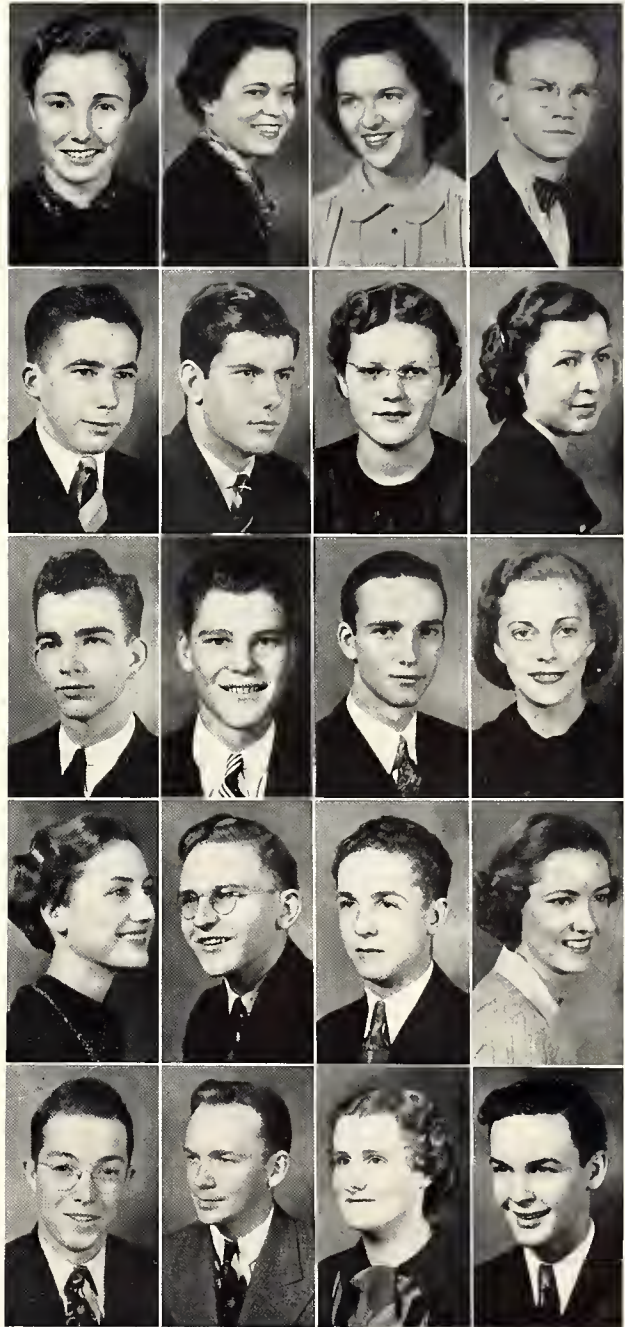
- SYLVIAN KERNAGHAN.....Hattiesburg  
*Kappa Sigma*
- GRADY KERSH.....Jackson  
*Kappa Sigma*
- BETTY LARSEN.....Council Bluffs, Iowa  
*Kappa Delta*
- DELIA RAY LIDDELL.....Shaw
- THAMES LLOYD.....Jackson  
*Kappa Alpha*
- DICK LORD.....Tunica  
*Pi Kappa Alpha*
- BESS McCAFFERTY.....Lexington  
*Phi Mu*
- EVELYN MCGAHEY.....Jackson  
*Kappa Delta*
- CLYDE MCKEE.....Jackson  
*Pi Kappa Alpha*
- JOHN McMULLAN.....Lake  
*Kappa Alpha*
- LOUISE MOORER.....Jackson  
*Chi Omega*
- MYRT NAYLOR.....Jackson  
*Chi Omega*
- EDWINA NICHOLS.....Jackson  
*Beta Sigma Omicron*
- ED DAVIS NOBLE.....Fayette  
*Kappa Sigma*
- FRANCES OGDEN.....Hattiesburg  
*Beta Sigma Omicron*
- GLENN PHIFER.....Jackson  
*Chi Omega*
- TOM PHILLIPS.....Holly Bluff  
*Kappa Alpha*
- LEM PHILLIPS.....Holly Bluff  
*Kappa Alpha*
- ANNIE BELL PIERCE.....McComb

# B O B A

19

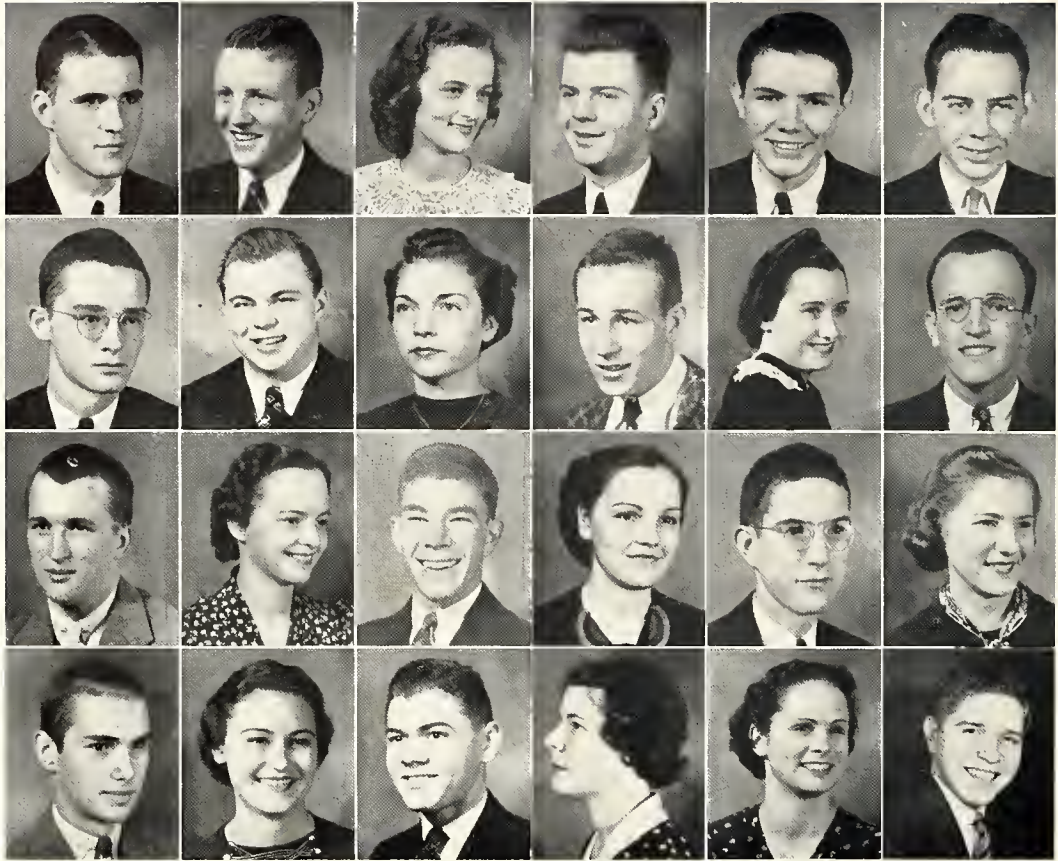
# M O R E S

- MARGARET PORTER.....Jackson  
*Beta Sigma Omicron*
- DOROTHY REEVES.....Jackson  
*Phi Mu*
- SARAH RHYMES.....Monticello  
*Phi Mu*
- CAPPY RICKS.....Jackson  
*Kappa Alpha*
- BRYANT RIDGEWAY.....Jackson  
*Kappa Alpha*
- EDWIN ROBERTS.....Prentiss  
*Sigma Rho Chi*
- JEAN ROBERTS.....Jackson  
*Beta Sigma Omicron*
- MARY MUNGER ROBERT.....Jackson  
*Chi Omega*
- GEORGE ROBERTSON.....Jackson  
*Kappa Alpha*
- JAMES SALASSI.....Slidell, La.  
*Kappa Sigma*
- HERBERT SELMAN.....Monticello  
*Kappa Sigma*
- RUTH STOKES.....Corinth  
*Phi Mu*
- ANN STONE.....Jackson  
*Chi Omega*
- J. S. Vandiver.....Jackson  
*Kappa Alpha*
- BIN WALKER.....Magee  
*Kappa Sigma*
- BERT WATKINS.....Jackson  
*Phi Mu*
- EUGENE WATTS.....Camden  
*Theta Kappa Nu*
- PAUL WHITSETT.....Mobile, Alabama  
*Pi Kappa Alpha*
- FLORENCE WORTHINGTON.....Jackson
- JOHN WRIGHT.....Jackson  
*Pi Kappa Alpha*



# S H E L A

3 8



CARL MILLER, Pi Kappa Alpha. . . . . Moss Point  
*President of Freshman Class*

DWIGHT JAMES, Theta Kappa Nu . . . . . Stratton  
*Vice President of Freshman Class*

MARTHA MCLWAIN, Phi Mu . . . . . Greenwood  
*Sec'y.-Treas. of Freshman Class*

DORSEY BALL, Kappa Sigma. . . . . Jackson

EDMUND BARNES, Kappa Alpha. . . . . Jackson

WALTER BEARD, Theta Kappa Nu. . . . . Jackson

SAM BIRDSONG, Kappa Sigma . . . . . Jackson

JAMES BOUTWELL, Kappa Sigma. . . . . Laurel

FRANCES BRENT, Chi Omega. . . . . Jackson

JOE BROOKS, Theta Kappa Nu. Washington, D.C.

DINAH BROWN, Kappa Delta. . . . . Lauderdale

JOHN BURWELL, Kappa Sigma. . . . . Jackson

JACK CALDWELL, Millsaps Barbarians. . . . . Canton

MARY CARRAWAY, Chi Omega. . . . . Jackson

*The*  
 F R E S

JIMMY CAVETT, Kappa Sigma . . . . . Jackson

SHIRLEY CHICHESTER, Chi Omega . . . . . Jackson

ROY CLARK, Pi Kappa Alpha. . . . . Meridian

MILDRED CRAIG, Kappa Delta . . . . . Memphis, Tenn.

LEWIS CROUCH, Kappa Sigma . . . . . Artesia

DIXIE DELL CROUT, Beta Sigma Omicron-Raleigh

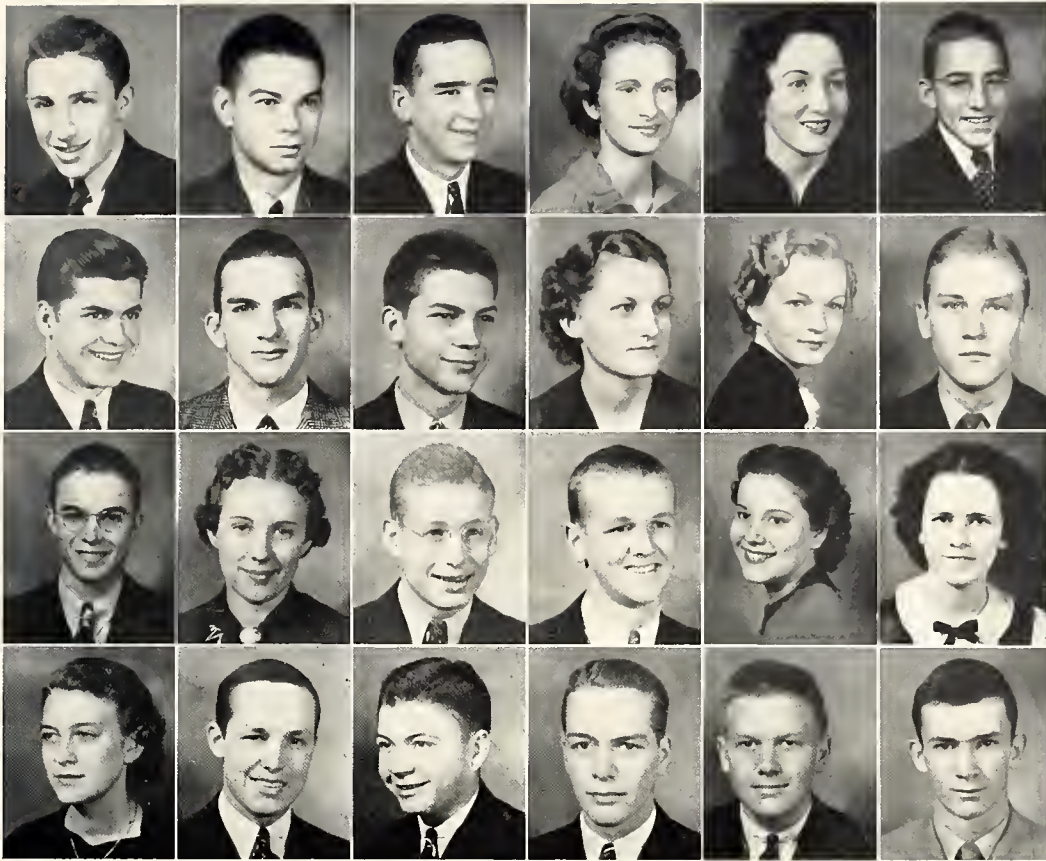
BARNEY DAVIS, Kappa Sigma. . . . . Jackson

MARY CRAWFORD DENNIS, Chi Omega . . . . . Jackson

GAYLE DOGGETT, Chi Omega. . . . . Kossuth

DICK DORMAN, Pi Kappa Alpha. . . . . Jackson

B O B A  
 I 9



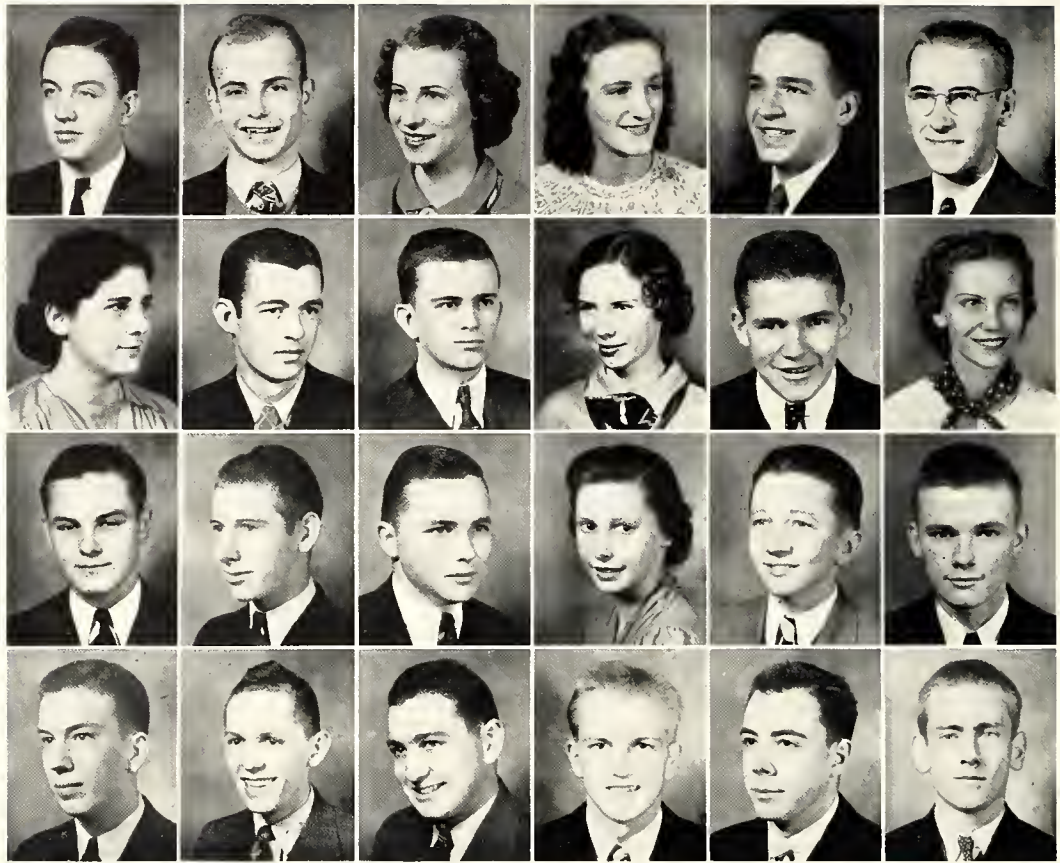
# H M E N

BILLY ESTES, Theta Kappa Nu..... Hattiesburg  
 EDWIN FARMER, Kappa Sigma.....Shaw  
 PEMBLE FIELD, Kappa Sigma.....Magee  
 UNA B. FITTS, Chi Omega.....Jackson  
 ELAINE GARRETT, Kappa Delta.....Jackson  
 CLINTON GLASER, Millsaps Barbarians Greenwood  
 CLIFFORD GODWIN, Theta Kappa Nu.....Jackson  
 GRADY GRAHAM, Kappa Sigma.....Jackson  
 FRANK HAYS, Kappa Alpha.....Grenada  
 MAE BLACK HEIDELBERG, Kappa Delta..Jackson

MARY SYLVIA HERON, Kappa Delta.....Jackson  
 DWIGHT HICKMAN, Kappa Alpha.....Noxapater  
 DAVID HILL, Pi Kappa Alpha.....Corinth  
 MARGUERITE HOLMES, Chi Omega.....Vaiden  
 KENNY HOLYFIELD, Pi Kappa Alpha.....Summit  
 EDGAR HORN, Kappa Sigma.....Magee  
 MYRTLE RUTH HOWARD, Chi Omega.....Jackson  
 EVELYN JONES, Kappa Delta..... Jackson  
 MARTHA KENDRICK, Beta Sigma Omicron Jackson  
 CHARLES KILGORE, Kappa Alpha.....Jackson  
 GEORGE KLEE.....Memphis, Tenn.  
 PAUL LACKEY, Kappa Sigma.....Jackson  
 BILL LAMPARD, Kappa Alpha.....Cleveland  
 BOB LEDBETTER, Theta Kappa Nu.....Utica

# S H E L A

3 8



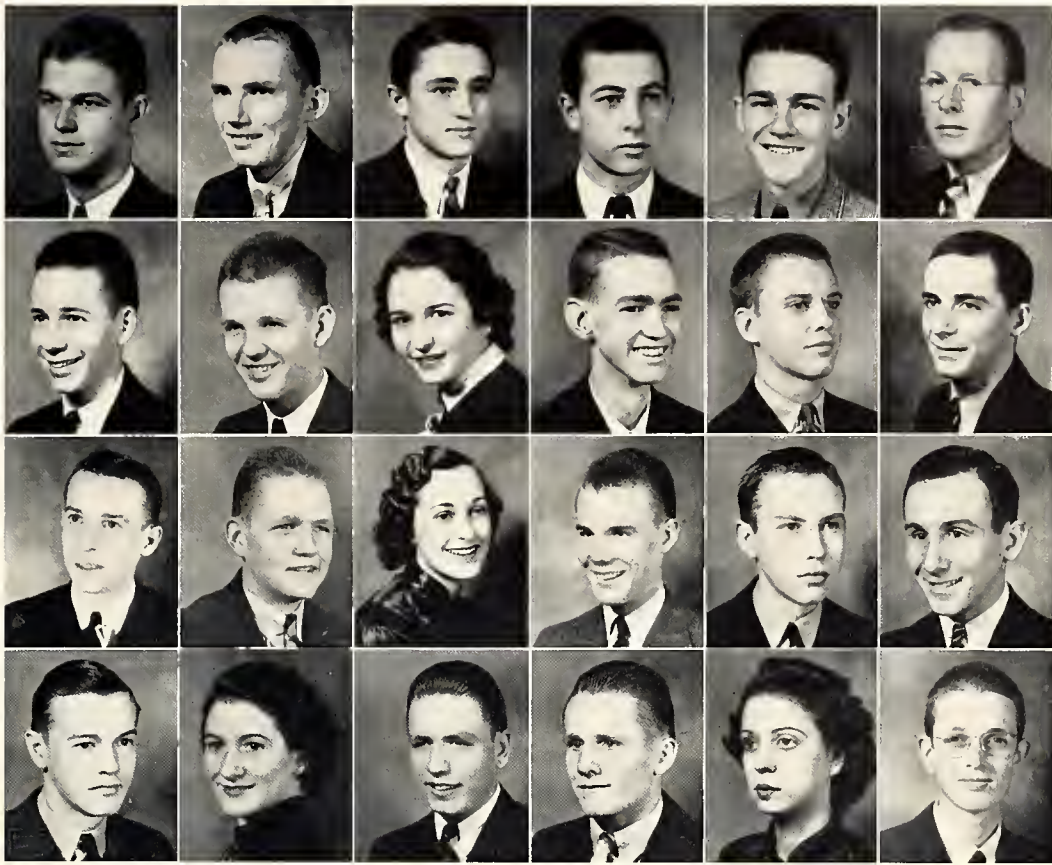
JIM LIVESAY, Kappa Alpha.....Jackson  
 KELTON LOWERY, Pi Kappa Alpha.....Jackson  
 MARGARET McDOUGALL, Kappa Delta....Jackson  
 MARY McILWAIN, Phi Mu.....Greenwood  
 LEELAND MORGAN, Kappa Sigma.....Vicksburg  
 CHARLES MURRY, Pi Kappa Alpha.....Ripley  
 CHARLOTTE NICHOLS, Chi Omega.....Jackson  
 BILL NORTHINGTON, Pi Kappa Alpha...Verona  
 ERLON NOWELL, Pi Kappa Alpha.....Kosciusko  
 PATRICIA O'BRIEN, Chi Omega .....Jackson  
 DAVID PEARSON, Pi Kappa Alpha...Sweetwater  
 INAZELL PIERCE, Chi Omega.....Jackson  
 ALBERT PIPPEN, Kappa Alpha.....Columbus  
 HAROLD RANKIN, Kappa Sigma.....Corinth  
 MILAN RICHARDSON.....Jackson

*The*  
 F R E S

KATHERINE RIDDELL, Phi Mu.....Jackson  
 JAMES RIMMER, Pi Kappa Alpha.....Camden  
 NAT ROGERS, Kappa Alpha.....New Albany  
 JOHN RUNDLE, Kappa Alpha.....Grenada  
 NORRIS RUSSELL, Kappa Sigma...Stanford, Tex.  
 SAM SAMPLE, Kappa Sigma.....Jackson  
 WILLARD SAMUELS, Kappa Sigma...Clarksdale  
 JAMES SIMMONS.....Columbia  
 JOE BOB SNYDER, Millsaps Barbarians.....  
 Montgomery, Ala.

B O B A  
 I 9





# H M E N

HENRY SPANN, Pi Kappa Alpha.....Pelahatchie  
 BURCH STROUD, Theta Kappa Nu.....Louise  
 BERT SUMRALL, Kappa Sigma.....Jackson  
 NORVILLE SUTHOFF.....Moss Point  
 JIM THOMPSON, Kappa Sigma.....Jackson  
 BERDYNE TURNER, Theta Kappa Nu.....Hattiesburg  
 LAMAR VENTERS.....Montgomery, Ala.  
 PAUL VINING.....Greenwood  
 JEAN WALKER, Chi Omega.....Jackson  
 RALPH WALKER, Theta Kappa Nu.....McComb

JAMES WALL, Pi Kappa Alpha.....Rosedale  
 JAMES WARD, Theta Kappa Nu.....Montrose  
 MARTIN WILLIAMSON, Pi Kappa Alpha.....  
 Union Springs, Ala.  
 LOUIS WILSON, Pi Kappa Alpha.....Brandon  
 VIRGINIA WILSON, Phi Mu.....Clarksdale  
 ROBERT C. WINGATE, Kappa Alpha.....Greenville  
 ESS WHITE, Pi Kappa Alpha.....Jackson  
 MILTON WHITE, Kappa Alpha.....Jackson  
 S. R. WHITEN, JR., Kappa Alpha.....Jackson  
 ANNIE LOIS WHYTE.....Jackson  
 SCHOOLAR WILLIAMS, Sigma Rho Chi.....Macon  
 GORDON WORTHINGTON, Pi Kappa Alpha.....Brandon  
 MILDRED WRIGHT, Kappa Delta.....Jackson  
 JAMES D. WROTEN, Kappa Sigma.....Corinth

# S H E L A

3 8

# The ATH

*Pepping it up • Around  
the end • On the offense  
Frosh day • The squad*



# LETICS

The sound of the whistle, the roar of the crowd, and another Millsaps team takes the field. A scrapping football varsity, a fast-moving basketball team, a fighting bunch of mittmen, a hustling baseball squad, a skilled tennis team, and a fast crew of trackmen provided an excellent year of athletic activity. The Frosh football and basketball teams gave vent to the athletic inclination of Minor students. Receiving unusually good student body support, Major teams turned in good performances to justify the wearing of the purple and white and to uphold the standards of our Alma Mater.



# We CHEER

To "Bo" Holloman, head cheerleader, and his assistants, George Robertson, Sarah Rhymes, and Blackie Shaughnessy, goes much of the credit of stirring up school spirit, inspiring gentlemanly feeling toward our opponents, and spurring student body support of the teams. Clad in white costumes and wearing purple M's, these whirlwinds of action and stunting contortionists displayed a skill of enticing yells from bashful throats that was astonishing. So—

THREE CHEERS FOR THE CHEERLEADERS!!

They deserve it.

ROBERTSON, SHAUGHNESSY,  
HOLLOMAN, RHYMES



the WEARERS of the . .

M

The M Club

This organization is composed of men who have earned letters in varsity sports, and is one of the top clubs on the campus.

OFFICERS

G. C. CLARK - - - - - President  
RODNEY WALKER - - - - - Vice-President  
SAM ELLIS - - - - - Secretary-Treasurer  
NEAL CIRLOT - - - - - Reporter

WALKER, MCALILLY,  
GREEN, SIMPSON,  
BLOUGH, PRICE,  
HERRON, SIMS,  
HEGWOOD, MATHENY,  
CLARKE, ROGER ELFERT,  
FELTS, SHELTON,  
COOPER, WRIGHT,  
COX, R. J. ELFERT,  
THOMPSON, LITTON,  
MELTON, BALLARD, ELLIS





# Our COA

B. O. VAN HOOK  
*Director of Athletics*

TRANNY LEE GADDY  
*Coach of Football*

G. C. CLARK  
*Captain of Football*

Football season saw a light Major team take the field against ten tough opponents, and despite a record of three wins, two ties, and five losses, showed an efficient defense and an occasional spark of brilliant offense.

The first game of the season ended in a scoreless tie with Union University at Union. In the first home game, the Pensacola flyers were brought down with a Major victory of 7—0. Traveling to Memphis next, our boys battled in several inches of mud to lose a hard-fought game to Southwestern 14—0.

A trip to Rustin, La. resulted in dropping a game to Louisiana Tech 12—0. At the fair day classic here, the Purple-clad gridmen held the Choc redskins

● ●

# C H I N G   S T A F F *and* S Q U A D

to a 0—0 tie. In Birmingham the next week-end the team played Birmingham-Southern to come out on the little end of a 12—7 score.

Venturing to Southwestern Louisiana Institute, the losing streak still held, and the Majors suffered a 7—0 loss. The tide turned in the homecoming game, however, and the boys took Spring Hill for a 7—0 cleaning. A trek to Rollins College in Florida netted another win by a score of 13—12. The season closed with the traditional game with Mississippi College and bad breaks at the wrong time resulted in Millsaps losing 12—0.

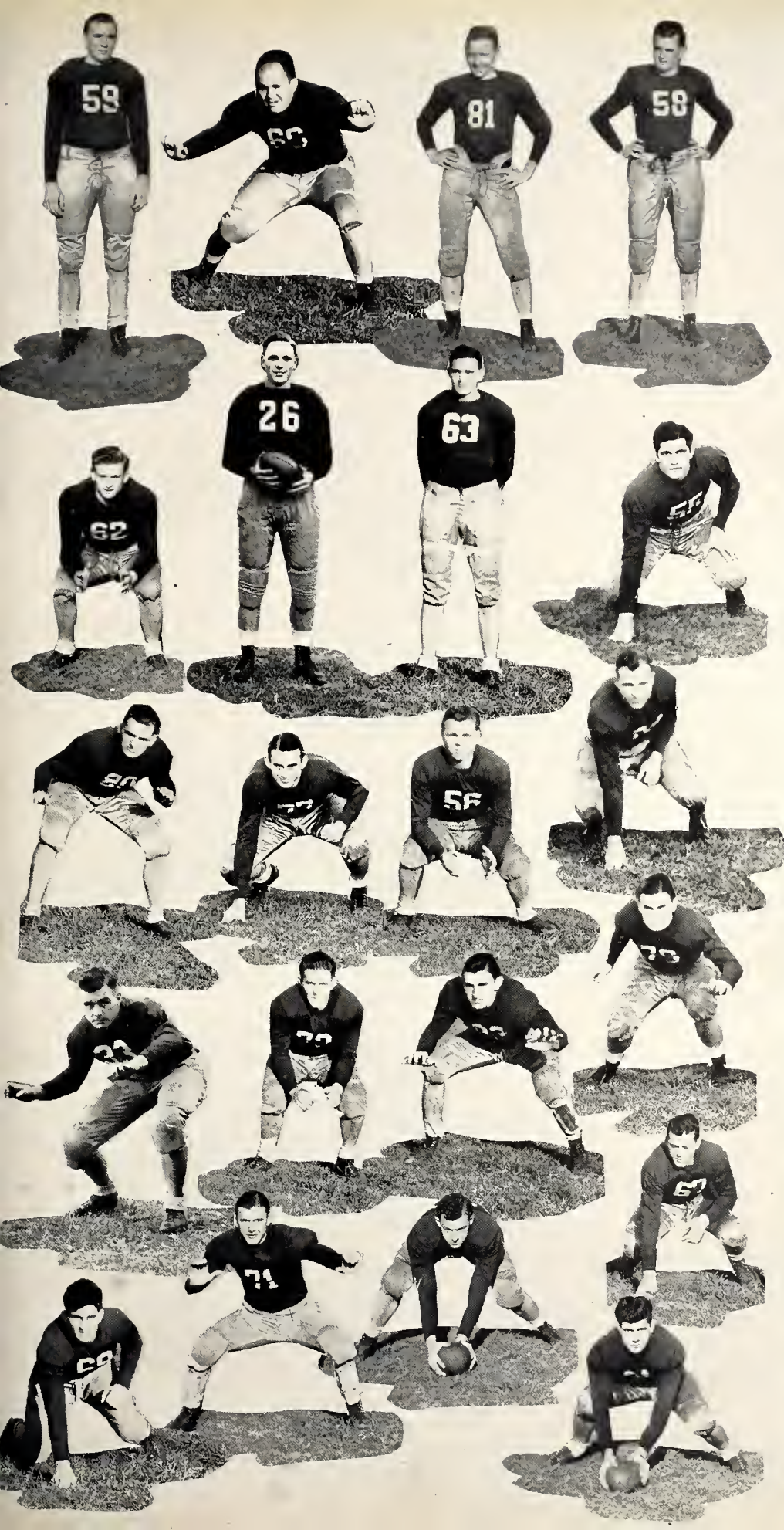


# The VARSITY PLAYERS

ALTON McALILLY	- - - - -	Tackle
EDWIN LOWTHER	- - - - -	End
GRANT STEWART	- - - - -	Tackle
RED WILSON	- - - - -	Back
"DOC" HAMILTON	- - - - -	Back
WILLIAM GREEN	- - - - -	End
TOM DICKERSON	- - - - -	End
BERTRAND MELTON	- - - - -	Back
T. M. HARDY	- - - - -	Back
ROSS SHELTON	- - - - -	Back
NEAL CIRLOT	- - - - -	Center
JOE SIMPSON	- - - - -	Center
DEWITT HOLLIDAY	- - - - -	Guard
RODNEY WALKER	- - - - -	Guard
ROGER ELFERT	- - - - -	Back
R. J. ELFERT	- - - - -	Tackle
GERALD CARMICHAEL	- - - - -	Guard
EBBIE EDWARDS	- - - - -	End
ROBERT COX	- - - - -	Back
CHARLES HEGWOOD	- - - - -	Tackle
G. C. CLARK	- - - - -	Tackle
DAVID BLOUGH	- - - - -	Center
HAMPTON BALLARD	- - - - -	End
FRED BLEDSOE	- - - - -	Tackle
JOHN BAIN	- - - - -	Center
EUAL COOPER	- - - - -	Guard
EDWIN ROBERTS	- - - - -	Center
WILEY CRITZ	- - - - -	Back







*Managers:*

ROBERT MATHENY

CECIL TRIPLETT

VERNON HATHORN

# BASKET BALL

Coach Van Hook placed one of the South's fastest basketball teams into Dixie Conference competition this year. Decidedly "Box-office", the squad turned in the best playing that the Majors have seen for some time. With fast competition, the cagemen displayed in games a brand of play that was hard to beat. "Shot-gun" Herron's eye for the basket, the Curries' spectacular work, Blakeney's superb floor work, Hegwood's ace shots, Thompson's swell defense and all backed up by good work by Clarke, Ballard, Shelton, and Price produced a successful basketball season.

---

## THE SQUAD



● SIMS, HERRON, HEGWOOD, BLAKENEY, CLARKE, THOMPSON, J. CURRIE, BALLARD, SHELTON, PRICE, K. CURRIE.



*The*  
**VARSITY**

J. CURRIE  
 HEGWOOD  
 BALLARD  
 THOMPSON  
 K. CURRIE  
 PRICE  
 BLAKENEY  
 HERRON  
*Manager:*  
 LAVELLE SIMS



# BASEBALL

Not very successful in number of games won and lost—won 4, lost 12, Coach Gaddy's baseballers nevertheless turned in some good games. Composed of mostly sophomores and juniors, good material that will probably be whipped in to first-class shape next year will make up for this year's losses. Sehan, Litton, Hamilton, and Felts handled most of the hurling assignments, while Salassi and Wilson worked behind the plate. Infielders were Ballard, Cox, Green, Ellis, and Critz. Covering the outfield were Price, Cooper, and Hathorn. Capable reserves were Hegwood, Stewart, and McAllily.

---



# B O X I N G

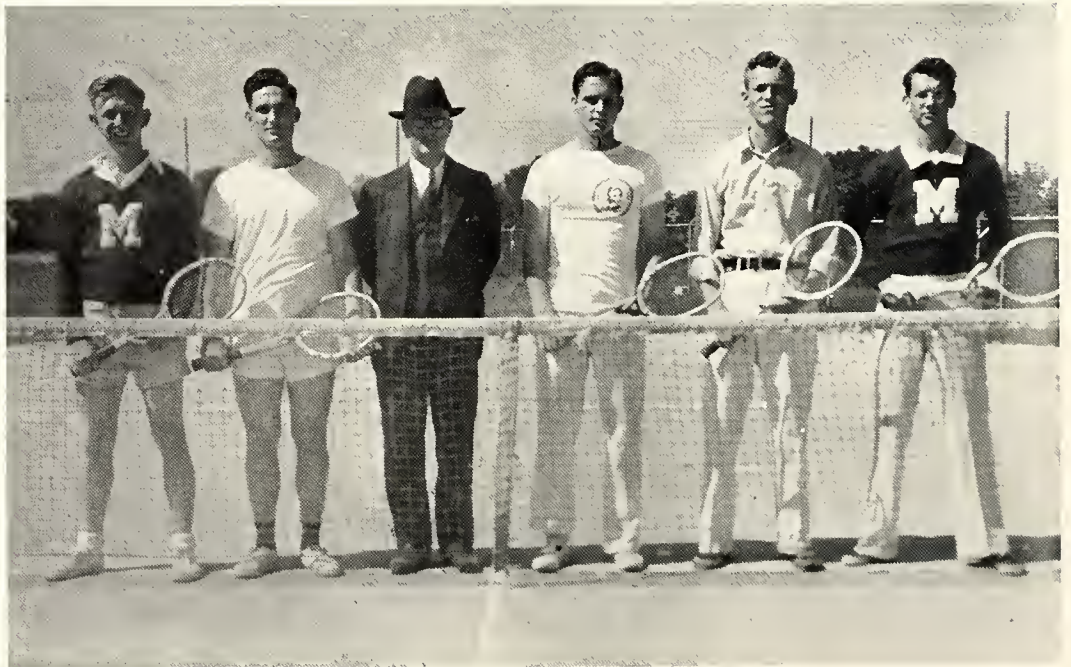
With boxing this year under the direction of Sam Bowers, devoting full time to developing prospective pugilists, several inter-collegiate matches were held. In a match with Raymond, the Major mittmen came out on the top of a 6-0 score. In his bout, Nash Broyles scored a knockout. Louisiana Tech's punchers won the next match here 5-3. In a return match there our boxers lost again 7-1, Holliday alone winning his match. Bouts with Centenary resulted in another loss 7-0. The season closed out with a 5-3 win over Raymond. Taking part in boxing were Bill Hardin, captain of the team, Jim Thompson, Bin Walker, Wilfred Saxton, Bob Cox, Nash Broyles, Bryant Ridgeway, Dewitt Holliday, Tom Tucker, and David Pearson.

With this same material next year, and a year's added experience, the Majors should have a team that will show up advantageously in the bouts.

Managers were Johnny Batte and Alex Gordon.

# T E N N I S

The tennis team engaged Illinois, Ole Miss, Spring Hill, Louisiana Tech, Mississippi College, and Loyola. Unfortunately, Major netmen came out on the small end of the score of matches, securing only one victory, defeating Louisiana Tech five matches to two. Individually scoring the matches, the netmen won fifteen and lost thirty. Hoffpauir led the Millsaps team in winning matches. The team will suffer the loss of Shanks, Kimbrell, Hoffpauir, and Hamilton next year.



HOFFPAUIR, GAINNEY, DR. M. C. WHITE (*coach*), WRIGHT, SHANKS, KIMBRELL.

# T R A C K

The first track team in a number of years made its debut on the ciuder path this spring under the guiding hand of Coach Van Hook. A ruling permitting the eligibility of freshmen proved a boon to the squad's performances. The first meet was with Birmingham-Southern and resulted in a close decision of 72-64 with the home boys trailing. Subsequent meets with Raymond, Goodman, Moorhead, Southwestern, Ole Miss, and Mississippi found Millsaps piling up points if not always winning. High scorers for the Majors were Beard, Payne, Worthington, Carmichael, Melton, and Herron.



# FRESHMAN FOOTBALL

The Freshmen played two home games and made two trips. In the first, the Minors were held scoreless while Pearl River Junior College made three touchdowns. A game with Hinds County Junior College here resulted in a loss for the home team by a score of 13—8. A trip to Perkinston found the Minors behind 6—0. The final game was with the Choctaw frosh. In spite of losses, the Millsaps freshmen showed some good promise, and the varsity next season should be able to use many of this year's frosh.

*Sitting:* MCELHANEY, SPANN, TAYLOR, PEARSON, RICHARDSON, LEDBETTER, MCKEITHEN.

*Kneeling:* CAMERON, CARROLL, BOUTWELL, DORMAN, S. WILLIAMS, SAXON, SUMRALL, SAMUELS.

*Standing:* MANAGER WILSON, W. WILLIAMS, BRAME, TYNES, GODWIN, PAYNE, LIPSCOMB, DEAR, MILES, WORTHINGTON, MOORE, COACH RICHARDSON.





# WOMAN'S ATHLETICS

An extensive intramural program was set forth this year with Miss Elizabeth Taylor as director. Points are awarded for creditable work in the athletic activities. These points are applied toward other awards until finally a plaque is presented to those who have been outstanding.

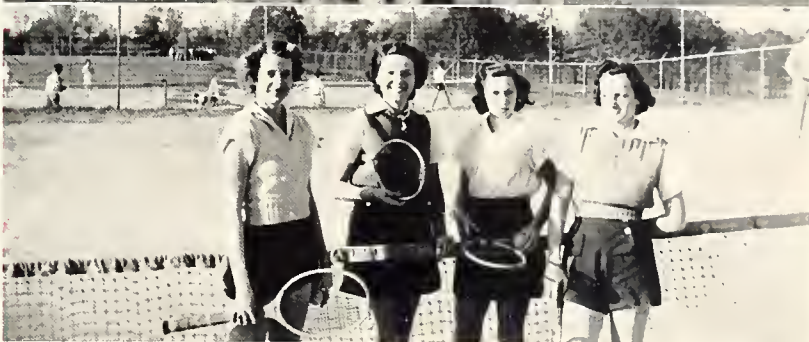


*BASEBALL*

*BASKETBALL*

*TENNIS*

*A HIT!*



# The F E A

Glenn • Nell • Sarah  
Myrtle Ruth • Blackie  
Jeannette



# T U R E S

The feature section of our book is devoted to those among us who are conspicuous—either because of their personal charm or by their attainments in campus activity. In the beauty section are the most beautiful girls as chosen by the student body. Included also in the features are Master Major and Miss Millsaps—by popular vote the most outstanding people on the campus. In the “Big-Shot” section are others who have won laurels in campus achievements. To those in this section we should like to add four other names whose possessors we feel worthy of the honor—Sara Gordon, Billy Kimbrell, T. M. Hardy, and “Bo” Holloman.





*Most Beautiful Girl*  
MISS NELL PERMENTER



*Miss Jeannette Van Zandt*





*Miss Glenn Phifer*



*Miss Sarah Rhymes*





*Miss Mary Eleanor Shaughnessy*



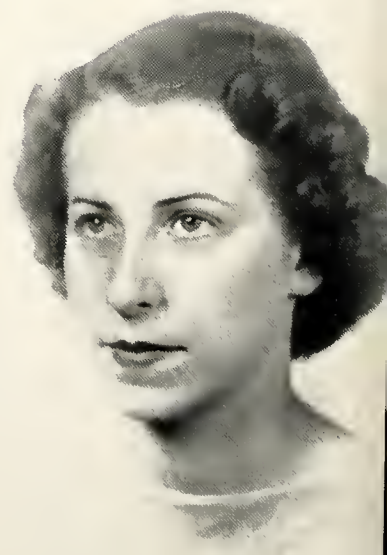
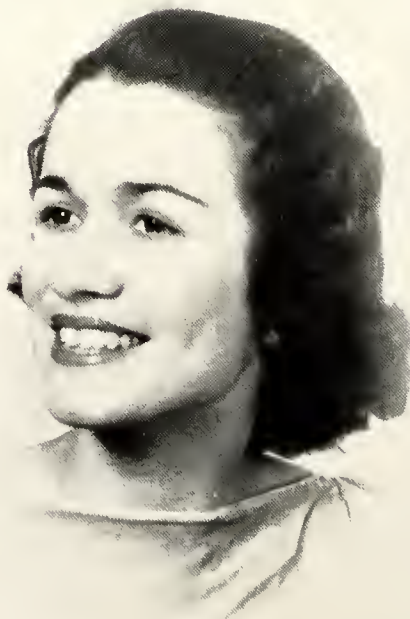
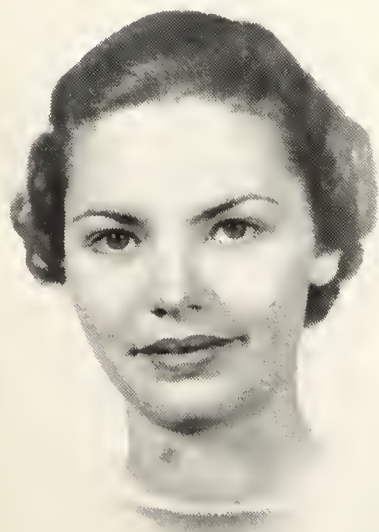
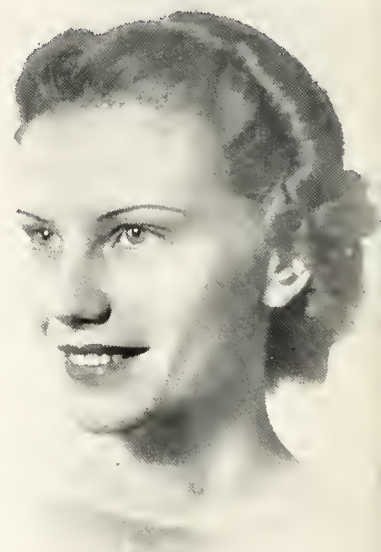
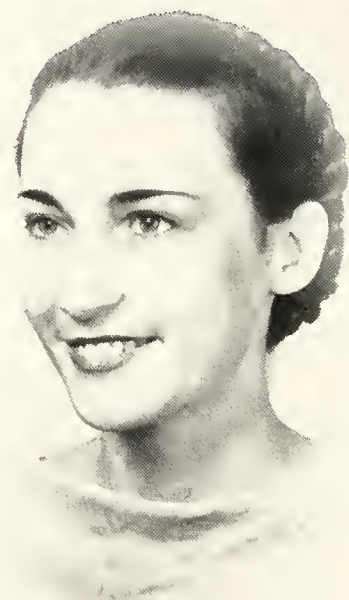
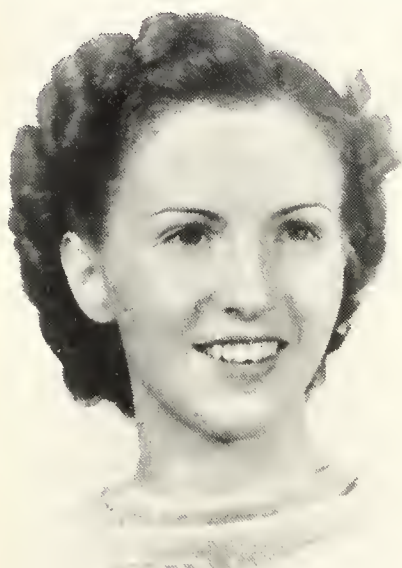


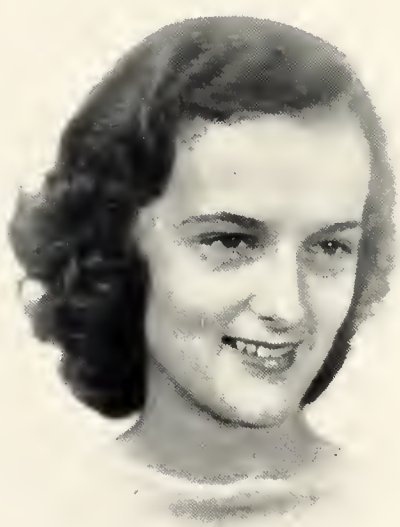
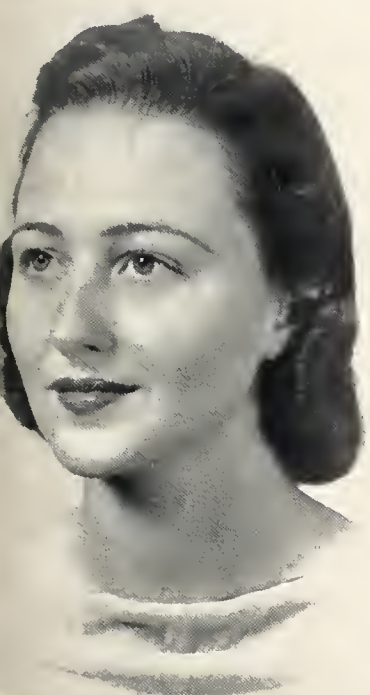
*Miss Myrtle Ruth Howard*



*Miss Clara Frances Dent*  
*Miss Margaret Conn*  
*Miss Inazelle Pierce*  
*Miss Berkley Muh*  
*Miss Jane Hyde West*  
*Miss Margaret McDougal*

# *Campus..*





# F A V O R I T E S



- Miss Ava Sanders*
- Miss Ina Bell Fitts*
- Miss Ruby Martin*
- Miss Floy Denton Thompson*
- Miss Martha McIlwain*
- Miss Sara Gordon*

# MASTER MAJOR

Orator, student of the classics, campus leader—Billy Ford was chosen by his fellow students as the most outstanding young man in the graduating class of 1938. His friendliness, democratic ideals, and achievements make him a real “Millsaps Man”, and it is a genuine pleasure to honor him—our “Master Major”.





## MISS MILLSAPS

Miss Berkley Muh was similarly chosen as the co-ed whose charm, personality, and popularity together with her record of college activity entitled her to receive the honor of being "Miss Millsaps". As the worthy recipient of an unusual distinction, we salute you, Miss Millsaps!

# Campus

## BIG SHOTS

BILLY LAUDERDALE

LOLA DAVIS

BILL BIZZELL

SONNY McRAE

FOSTER COLLINS

ROY DELAMOTTE

WILEY CRITZ

VICTOR ROBY

STACY KELLUM

RUTH WROTEN

EDWIN EDWARDS

MILDRED CLEGG

JEFF HESTER

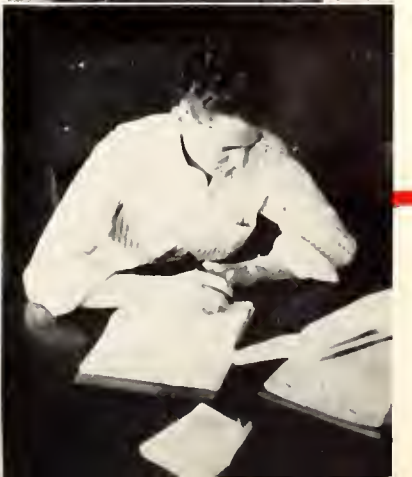
JIMMY DUNN

G. C. CLARKE

BILLY FORD

FAGAN SCOTT





# The G R

*Some of the floats in Homecoming Day parade . . . Beta Sig, Chi Omega, Theta, Phi Mu, Pi K A, and Kappa Sig . . .*





# E E K S

Encompassing about seventy percent of the student body, social fraternities and sororities tend toward forming their members into intimate groups which make for lasting friendships and associations. Realizing their responsibilities toward their Alma Mater and their charges, leaders of these groups exert every effort to promote campus good will, to influence their brothers and sisters to undertake their college work seriously, and, at the same time, to provide a wholesome social life that is instrumental in rounding out the college student. Since 1893, when fraternities were first founded at Millsaps, the Greeks have fulfilled their responsibility well, and we feel that in the future, their standards will be upheld and advanced even further.





DUNN, HARDY, GORDON, MURPHREE, LUKE, CIRLOT, RIMMER,  
LAUDERDALE, KELLUM, BIZZELL.

M E N

Composed of two representatives from each social fraternity, the Men's Pan-Hellenic Council governs the activities of the Greek groups in matters of rushing, formation of policies, and the promotion of good will on the campus. Meetings are held twice-monthly at the various frat houses.

*KAPPA SIGMA*

STACY KELLUM, President                      T. M. HARDY

*KAPPA ALPHA*

ALEX GORDON, Vice-Pres.                      BILLY LAUDERDALE, Sec'y.

*PI KAPPA ALPHA*

BILL BIZZELL                                      JIMMY DUNN

*THETA KAPPA NU*

BERNARD LUKE                                      LEE ROY MURPHREE

*SIGMA RHO CHI*

NEAL CIRLOT                                      JOHN RIMMER

# H E L L E N I C

## W O M E N

A sister organization to the men's council, the Women's Pan-Hellenic Council functions in a similar capacity. Outstanding events of the year were a party given for the men's group during Fair week and an outing to Dockery lake on April 30 in which members of all sororities participated. (Reports said the water was fine!)

### *BETA SIGMA OMICRON*

SARA GORDON, President                      JEAN ROBERTS

### *PHI MU*

SARAH BUIE, Vice-Pres.                      BERT WATKINS

### *KAPPA DELTA*

LOLA DAVIS, Secretary                      MARTHA DEES

### *CHI OMEGA*

BERKLEY MUH, Treasurer                      MAY ELLEN CHICHESTER

ROBERTS, DEES, BUIE, WATKINS, CHICHESTER,  
GORDON, DAVIS, MUH.





Lauderdale, Adams, Collins, Ford, Gordon, Macgowan, McRae, L. Rogers, Ainsworth, Beard, Evans, Ivy, Batte, Byars, Hall, Hudson, Lloyd, McMullan, L. Phillips, T. Phillips, Ricks, Ridgeway, Robertson, Vandiver, Barnes, Hays, Hickman, Kilgore, Lampard, Livesay, Pippen, N. Rogers, Rundle, White, Whitten, Wingate.



# KAPPA ALPHA

Founded - - - - - Washington College, Dec. 21, 1865  
 Established at Millsaps - - - - - Oct. 1, 1893  
 Colors - - - - - Crimson and Gold  
 Flower - - - - - Rose  
 Publication - - - - - "Kappa Alpha Journal"

## Alpha Mu Chapter

### *CLASS OF NINETEEN THIRTY-EIGHT*

M. F. ADAMS	BILLY LAUDERDALE
FOSTER COLLINS	CLIFFORD MACGOWAN, JR.
BILLY FORD	JOHN McRAE
ALEX GORDON, JR.	LEE ROGERS

### *CLASS OF NINETEEN THIRTY-NINE*

JOE AINSWORTH	BEN EVANS
WIRT ADAMS BEARD	ROBERT IVY

### *CLASS OF NINETEEN FORTY*

JOHN BATTE	LEM PHILLIPS
ROY BYARS*	TOM PHILLIPS
GEORGE F. HALL	CAPPY RICKS
MANNING HUDSON	BRYANT RIDGEWAY
THAMES LLOYD	GEORGE ROBERTSON
JOHN McMULLAN*	J. S. VANDIVER, JR.

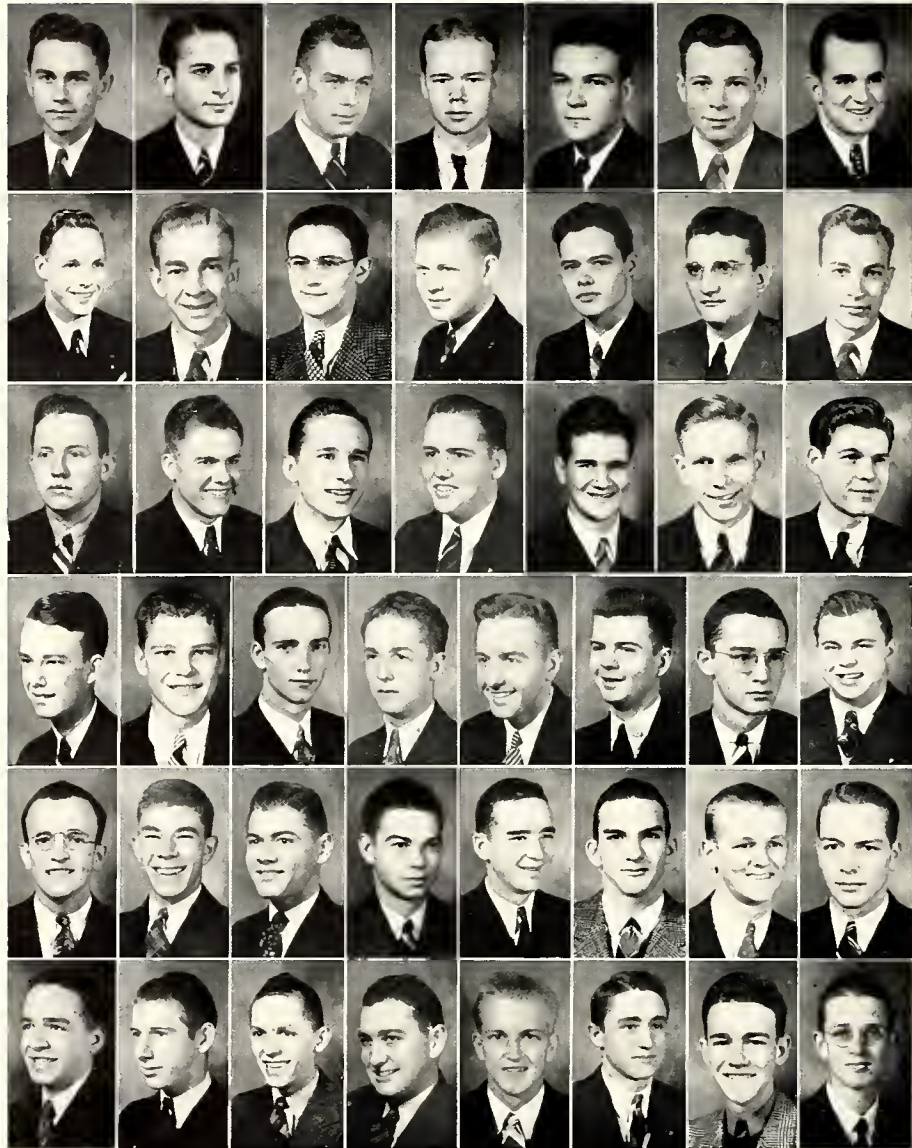
### *CLASS OF NINETEEN FORTY-ONE*

EDMUND BARNES*	JOHN NICHOLSON
BILL CARROLL*	ALBERT PIPPEN*
FRANK HAYS	NAT ROGERS
DWIGHT HICKMAN	JOHN RUNDLE
CHARLES KILGORE	MILTON WHITE
BILL LAMPARD	S. R. WHITTEN, JR.
JIM LIVESAY	ROBERT WINGATE
CHARLES MCGLOHN *	

### *FACULTY*

A. P. HAMILTON	ROSS H. MOORE
J. REESE LIN	MILTON C. WHITE

\* Indicates Pledge



Kellum, Hester, Edwards, Ewing, Felts, Fleming, Hamilton, Hardy, Holloman, McKinnon, Pitard, Sykes, Thames, Bryant, Furkhead, Dickerson, Ferris, Helums, C. Horn, Kernaghan, Kersh, Noble, Salassi, Selman, Walker, Wilson, Ball, Birdsong, Boutwell, Burwell, Cavett, Davis, Farmer, Field, Graham, E. Horn, Lackey, Morgan, Rankin, Russell, Sample, Samuels, Sumrall, Thompson, Wroten.





Bizzell, Adams, Dunn, Hamilton, Hardin, Harvey, Kimbrell, Roby, Scott, Wasson, Ainsworth, Bush, Doggett, Godbold, Landrum, May, Palmer, Sheffield, Tucker, C. Wright, Booth, Brent, Broyles, Denton, Gainey, Henderson, Hilton, Horne, Lord, McKee, Whitsett, J. Wright, Clark, Dorman, Hill, Holyfield, Lowery, Miller, Murry, Northington, Nowell, Pearson, Rimmer, Spann, Wall, White, Williamson, Wilson, Worthington.



# PI KAPPA ALPHA

Founded - - - - - University of Va., March 1, 1868  
Established at Millsaps - - - - - March 23, 1905  
Colors - - - - - Garnet and Gold  
Flower - - - - - Lily of the Valley  
Publication - - - - - "The Shield and Diamond"

## Alpha Iota Chapter

### *CLASS OF NINETEEN THIRTY-EIGHT*

AUBREY ADAMS	BILLY KIMBRELL
JAMES DUNN	VICTOR ROBY
FRANCIS HAMILTON	FAGAN SCOTT
BILL HARDIN	WILBOURN WASSON
WIRT TURNER HARVEY	

### *CLASS OF NINETEEN THIRTY-NINE*

BILL AINSWORTH	ALBERT L. MAY, JR.
WILLIAM H. BIZZELL	BILL PALMER*
FRED BUSH*	PAUL SHEFFIELD
BLANTON DOGGETT	TOM A. TUCKER
JOHN GODBOLD	CHARLES WRIGHT
HUGH LANDRUM*	

### *CLASS OF NINETEEN FORTY*

JAMES BOOTH	CARSON HILTON
EDWIN BRENT	HOOPER HORNE
NASH BROYLES*	DICK LORD
LESLIE CRIPPEN*	CLYDE MCKEE
JOEL DENTON	PAUL WHITSETT*
A. G. GAINEY, JR.	JOHN WRIGHT
RAY HENDERSON*	

### *CLASS OF NINETEEN FORTY-ONE*

RUDOLPH BANGERT*	ERLON NOWELL*
ROY C. CLARK	DAVID PEARSON*
AL FRED DANIELS*	JAMES RIMMER*
RICHARD DORMAN	WALTER SCOTT*
DAVID HILL	HENRY SPANN*
KENNY HOLYFIELD	JAMES WALL*
KELTON LOWERY*	ESS WHITE
CARL MILLER	MARTIN WILLIAMSON*
CHARLES MURRY	LOUIS WILSON*
BILL NORTHINGTON*	GORDON WORTHINGTON*

### *FACULTY*

DR. D. M. KEY	PAUL RAMSEY
---------------	-------------

\* Indicates Pledge



DeLamotte, L. Clark, Ellis, Hoffpauir, McKenzie,  
Murphree, Luke, Spinks, Bain, C. Clark,  
Watts, Beard, Brooks, Estes, Godwin,  
James, Ledbetter, Stroud, Turner, Walker, Ward.



# THETA KAPPA NU

Founded - - - - - Drury College, June 9, 1924  
 Established at Millsaps - - - - - Dec. 11, 1924  
 Colors - - - - - Crimson, Argent and Sable  
 Flower - - - - - White Rose  
 Publication - - - - - "Theta News"

## Mississippi Alpha Chapter

### *CLASS OF NINETEEN THIRTY-EIGHT*

LEONARD CLARK	CHESTER MCKENZIE
SAM ELLIS	LEE ROY MURPHREE
BILLY HOFFPAUIR	

### *CLASS OF NINETEEN THIRTY-NINE*

ROY DELAMOTTE	EDWARD MULLEN*
BERNARD LUKE	A. C. SPINKS*

### *CLASS OF NINETEEN FORTY*

JACK BAIN	WILLIAM GREEN*
CHARLES CLARK	EUGENE WATTS
JAMES ELLIOTT	

### *CLASS OF NINETEEN FORTY-ONE*

JAMES BAGGETT*	TOM NEELY*
WALTER BEARD	BILLY PITTS*
JOE BROOKS	FERD SHELL*
BILLY ESTES	BURCH STROUD*
CLIFFORD GODWIN	JACK THORNTON*
FRANK HUDSON*	BERDYNE TURNER
DWIGHT JAMES*	RALPH WALKER
GWIN KOLB	JAMES WARD
BOB LEDBETTER*	

\* Indicates Pledge



Cirlot, Bingham, Clarke, Dorris, Elfert, Matheny, McAlilly,  
Rimmer, Sims, Smith, J. Williams, Simpson, Stewart, Triplett,  
S. Williams, Roberts.



# SIGMA RHO CHI

Founded - - - - - Millsaps College, December, 1930  
Colors - - - - - Scarlet and Cream  
Flower - - - - - Carnation

## Alpha Chapter

### *CLASS OF NINETEEN THIRTY-EIGHT*

GENE BINGHAM	ROBERT MATHENY
NEAL CIRLOT	ALTON McALILLY*
G. C. CLARK	JOHN RIMMER
GEORGE DORRIS	LAVELLE SIMS
R. J. ELFERT	J. D. SMITH
CHARLES HEGWOOD*	JAMES WILLIAMS

### *CLASS OF NINETEEN THIRTY-NINE*

GERALD CARMICHAEL	JOE SIMPSON*
JOE CARRUTHERS*	GRANT STEWART*
ROGER ELFERT	CECIL TRIPLETT
W. C. HERRON*	HULBERT NOVELL*

### *CLASS OF NINETEEN FORTY*

GEORGE C. HALL*	EDWIN ROBERTS
DEWITT HOLLIDAY	JACK WINBORN*

### *CLASS OF NINETEEN FORTY-ONE*

BERT ALLEN*	SCHOOLAR WILLIAMS*
ALBERT CAMERON*	

\* Indicates Pledge



Buie, Hogue, Crisler, Dent, Wroten, Buck, Darden, Flowers, Gaddy, Manning, McCafferty, Reeves, Rhymes, Stokes, Watkins, Martha McIlwain, Mary McIlwain, Riddell, Wilson.

●

# PHI MU

Founded - - - - - Wesleyan College, March 4, 1852  
Established at Millsaps - - - - - March 24, 1914  
Colors - - - - - Rose and White  
Flower - - - - - Rose Carnation  
Publication - - - - - "Aglaiia"

## Epsilon Chapter

### *CLASS OF NINETEEN THIRTY-EIGHT*

MARJORIE HOGUE

### *CLASS OF NINETEEN THIRTY-NINE*

SARAH BUIE	MARION STEWART
CHARITY CRISLER	RUTH WROTEN
CLARA FRANCES DENT	

### *CLASS OF NINETEEN FORTY*

CAROLYN BUCK	BESS McCAFFERTY
MARGUERITE DARDEN	DOROTHY REEVES
EDWINA FLOWERS*	SARA RHYMES
VIRGINIA GADDY	TIMORA SPANN*
MARY FRANCES MANNING	RUTH STOKES
	BERT WATKINS

### *CLASS OF NINETEEN FORTY ONE*

MARTHA McILWAIN	CATHERINE RIDDELL*
MARY McILWAIN	VIRGINIA WILSON
MARY JANE MOHEAD*	

### *FACULTY*

MRS. MARGUERITE GOODMAN

\* Indicates Pledge



Davis, Blount, Coltharp, Dement, Holloman, Litton, Ruth Martin, Permenter, Strahan, Suttle, Champenois, Conn, Rubye Martin, Mitchell, Pettit, Swayze, Terrell, West, Wilson, Dees, Durley, Larsen, McGahey, Brown, Craig, Garrett, Heidelberg, Heron, Jones, McDougal, Terry, Wright.



●

# KAPPA DELTA

Founded - - - - - Va. State Normal College, Oct. 23, 1897  
Established at Millsaps - - - - - Sept. 26, 1914  
Colors - - - - - Green and White  
Flower - - - - - White Rose  
Publication - - - - - "The Angelos of Kappa Delta"

## Mu Chapter

### *CLASS OF NINETEEN THIRTY-EIGHT*

IMOGENE BLOUNT	RUBY LITTON
MARGUERITE COLTHARP	RUTH MARTIN
LOLA DAVIS	NELL PERMENTER
ANNIE K. DEMENT	LUCILE STRAHAN
MARY LOUISE HOLLOMAN	ELIZABETH SUTTLE

### *CLASS OF NINETEEN THIRTY-NINE*

ROMA FERN CHAMPENOIS	MARY E. SHAUGHNESSY
MARGARET CONN*	LILLIAN D. SWAYZE
RUBY MARTIN	KATHERYNE TERRELL
CORINNE MITCHELL	JANE HYDE WEST
VIRGINIA PETTIT	ELIZABETH WILSON

### *CLASS OF NINETEEN FORTY*

MARTHA DEES	BETTY LARSEN
ELIZABETH DURLEY	EVELYN MCGAHEY

### *CLASS OF NINETEEN FORTY-ONE*

DINAH BROWN	EVELYN JONES
MILDRED CRAIG	MARGARET MCDUGAL
ELAINE GARRETT*	MARIANNA TERRY
MAY BLACK HEIDELBERG*	MILDRED WRIGHT*
MARY SYLVIA HERON	

\* Indicates Pledge



Gordon, Clegg, Collins, Hinson, Lamb, Brooks, Chatham, Hull,  
McGee, Conner, Nichols, Ogden, Porter, Roberts, Crout, Kendrick.

# BETA SIGMA OMICRON

Founded - - - - - University of Missouri, Dec. 12, 1888  
Established at Millsaps - - - - - Sept. 1, 1926  
Colors - - - - - Ruby and Pink  
Flowers - - - - - Richmond and Killarney Roses  
Publication - - - - - "The Urn"

## Alpha Zeta Chapter

### *CLASS OF NINETEEN THIRTY-EIGHT*

MILDRED CLEGG	SYBLE HINSON
VIRGINIA COLLINS	MARY SUE LAMB
SARA GORDON	

### *CLASS OF NINETEEN THIRTY-NINE*

EVELYN BROOKS	MARJORIE HULL
MYRTLE CHATHAM	DOROTHY MCGEE

### *CLASS OF NINETEEN FORTY*

MARTHA CONNER	JUANITA PIERCE *
EDWINA NICHOLS	MARGARET PORTER
FRANCES OGDEN	JEAN ROBERTS

### *CLASS OF NINETEEN FORTY-ONE*

DIXIE DELL CROUT	MARTHA KENDRICK
------------------	-----------------

\* Indicates Pledge



Muh, Davis, Enochs, Golden, Heidelberg, Sanders, Thompson,  
 M. Chichester, Cunningham, Nobles, Van Zandt, Burkhead,  
 I. B. Fitts, Moorcr, Naylor, Phifer, Robert, Stone, Brent,  
 Carraway, S. Chichester, Dennis, Doggett, U. B. Fitts, Holmes,  
 Howard, Nichols, O'Brien, Pierce, Walker.



# CHI OMEGA

Founded - - - - - University of Ark., April 15, 1895  
 Established at Millsaps - - - - - March 31, 1934  
 Colors - - - - - Cardinal and Straw  
 Flower - - - - - White Carnation  
 Publication - - - - - "The Elcuis"

## Chi Delta Chapter

### *CLASS OF NINETEEN THIRTY-EIGHT*

CATHERINE DAVIS	BERKLEY MUH
MILDRED ENOCHS	AVA SANDERS
MAUDE LYLE GOLDEN	FLOY DENTON THOMPSON
ANNIE LOU HEIDELBERG	

### *CLASS OF NINETEEN THIRTY-NINE*

MAY ELLEN CHICHESTER	PEARL NOBLES
GRACE CUNNINGHAM	JEANNETTE VAN ZANDT

### *CLASS OF NINETEEN FORTY*

VERA BURKHEAD	GLENN PHIFER
INA BELL FITTS	MARY MUNGER ROBERT
LOUISE MOORER	ANN STONE
MYRT NAYLOR	

### *CLASS OF NINETEEN FORTY-ONE*

FRANCES BRENT	MARGUERITE HOLMES
MARY DOUGLAS BROADFOOT*	MYRTLE RUTH HOWARD
MARY CARRAWAY	CHARLOTTE NICHOLS
SHIRLEY CHICHESTER	PATRICIA O'BRIEN
MARY CRAWFORD DENNIS	INAZELLE PIERCE
GAYLE DOGGETT	JEAN WALKER
UNA B. FITTS	EMMA RUSSELL WATSON*

\* Indicates Pledge

# The ORGA

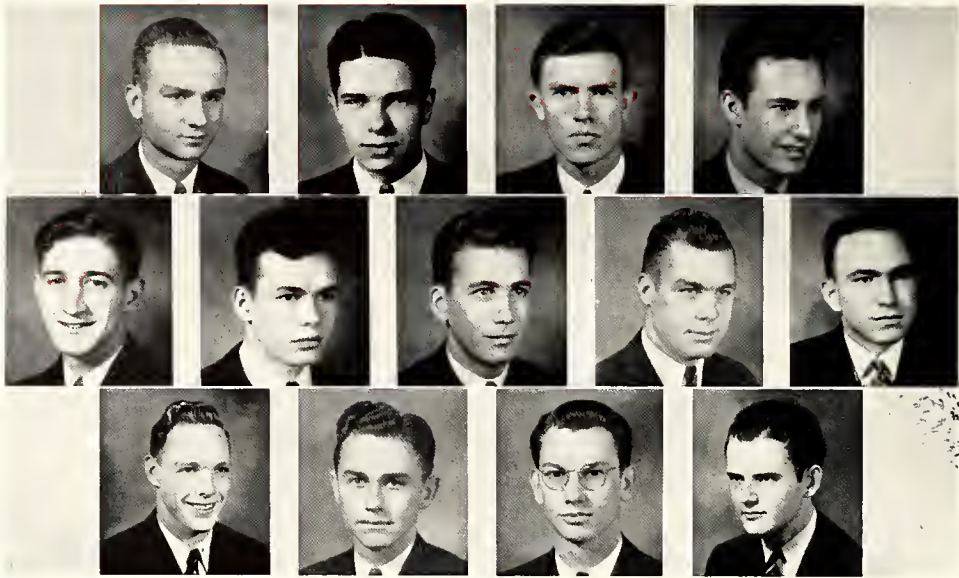
*Music • Drama • Enthusiasm  
The tops • Surveying*



# NIZATIONS

Parallel to prescribed academic work, numerous activities have afforded outlets for special ability in the fields of music, singing, dramatics, and the like. Organizations exist for the purpose of bringing together students interested in common subjects. Honorary fraternities and sororities offer recognition to students of outstanding merit in scholarship, leadership, and accomplishment in varied lines of endeavor. These activities, organizations, and fraternities have throughout the year played an important role in presenting to students that extra something — a diversified college career.





LAUDERDALE, ROBY, BIZZELL, COLLINS  
 CRITZ, DELAMOTTE, DUNN, EDWARDS, FORD  
 HARDY, KELLUM, KIMBRELL, SCOTT

## OMICRON DELTA KAPPA

Founded - - - - - Washington and Lee, 1914  
 Colors - - - - - Blue and White  
 Publication - - - - - "The Circle"

Omicron Delta Kappa recognizes student leadership in fields of scholarship, athletics, and other activities, and is the highest honor that can be received by a Millsaps man in the scope of honorary organizations.

### OFFICERS

BILLY LAUDERDALE - - - - - President  
 VICTOR ROBY - - - - - Vice President

### MEMBERS

BILL BIZZELL	EDWIN EDWARDS
FOSTER COLLINS	BILLY FORD
WILEY CRITZ	T. M. HARDY
ROY DELAMOTTE	STACY KELLUM
JIMMY DUNN	BILLY KIMBRELL
FAGAN SCOTT	

### FACULTY MEMBERS

DR. D. M. KEY	DR. M. C. WHITE
Professor PAUL RAMSEY	



# SIGMA LAMBDA

Sigma Lambda was organized in 1936 to offer to women students a similar recognition as that afforded men by Omicron Delta Kappa.

## OFFICERS

LOLA DAVIS - - - - - President  
SARA GORDON - - - - - Vice President  
BERKLEY MUH - - - - - Secretary-Treasurer  
JEAN KINNAIRD - - - - - Historian

## MEMBERS

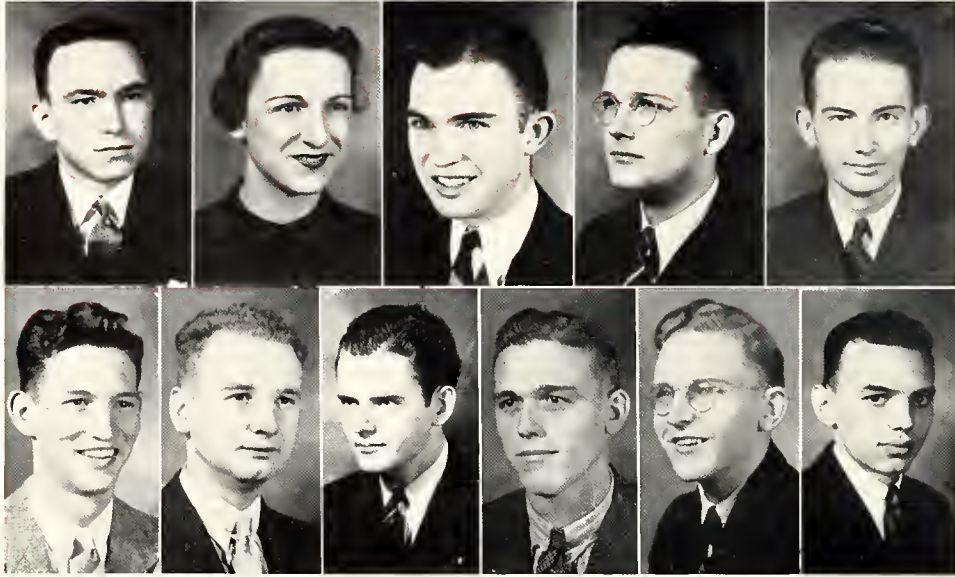
IMOGENE BLOUNT      CATHERINE DAVIS  
MILDRED CLEGG      RUTH WROTEN

## FACULTY MEMBERS

MRS. MARY B. STONE      MRS. HENRY COBB

L. DAVIS, GORDON, MUH, KINNAIRD  
- BLOUNT, CLEGG, C. DAVIS, WROTEN





FORD, DAVIS, TRIPLETT, GODBOLD, LORD  
MAY, O'CONNOR, SCOTT, SHANKS, VANDIVER, WILLIAMS

## PI KAPPA DELTA

(Forensic)

Pi Kappa Delta this year sponsored sixty-five intercollegiate debates, sent delegates Godbold and Ford to national tourney; also, Pi Kappa Delta members entered State Tournament, Louisiana Tournament, and Mid-South Tournament with creditable results.

### OFFICERS

BILLY FORD	-----	President
LOLA DAVIS	-----	Vice President
CECIL TRIPLETT	-----	Secretary-Treasurer
FAGAN SCOTT	-----	SEB Representative

### MEMBERS

JOHN GODBOLD	DONALD O'CONNOR
DICK LORD	BAYLIS SHANKS
ALBERT MAY	J. S. VANDIVER
MARVIN WILLIAMS	

### FACULTY MEMBER

Professor PAUL RAMSEY

# ALPHA EPSILON DELTA

(Pre-Med)

Founded - - - - - University of Alabama, 1926  
 Established at Millsaps - - - - - April 28, 1935  
 Colors - - - - - Red and Violet  
 Flower - - - - - Red Rose  
 Publication - - - - - "The Scalpel of Alpha Epsilon Delta"

## OFFICERS

JOHN RIMMER - - - - - President  
 LEE ROY MURPHREE - - - - - Vice President  
 EARL HARPER - - - - - Secretary  
 WILLIAM BRADSHAW - - - - - Treasurer

## MEMBERS

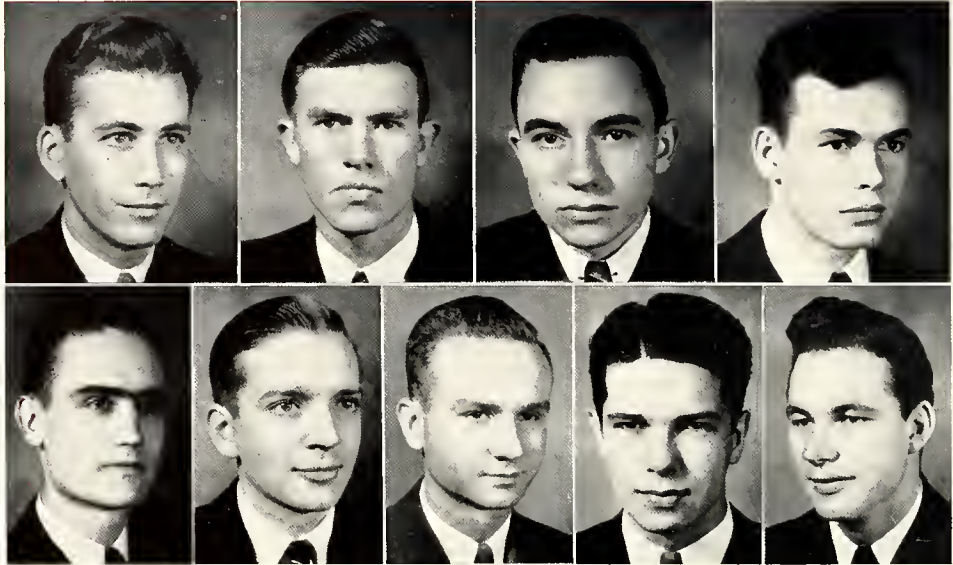
AUBREY ADAMS	A. L. MAY, JR.
JIMMY BOOTH	CARL RAY NEWSOM
WILLARD COMMANDER	CAPPY RICKS
EDWIN EDWARDS	AVA SANDERS
MANNING HUDSON	RUTH WROTEN

## FACULTY MEMBERS

DR. WILLIAM E. RIECKEN      DR. JOHN M. SULLIVAN

RIMMER, MURPHREE, HARPER, BRADSHAW, ADAMS  
 BOOTH, COMMANDER, EDWARDS, HUDSON, MAY  
 NEWSOM, RICKS, SANDERS, WROTEN





●
●
 DUNN, BIZZELL, CONNER, DeLAMOTTE  
 DOGGETT, IVY, LAUDERDALE, ROBY, WASSON

## SIGMA UPSILON

Founded - - - - - University of the South  
 Colors - - - - - Green and Gold  
 Publication - - - - - "The Scarab"

As a literary fraternity, Sigma Upsilon offers a limited membership to students of proven writing ability and fosters creative writing on the campus.

### Kit Kat Chapter

JIMMY DUNN, <i>Secretary</i>	ROBERT IVY
BILL BIZZELL	BILLY LAUDERDALE
ROY DeLAMOTTE	DONALD O'CONNOR
BLANTON DOGGETT	VICTOR ROBY
WILBOURN WASSON	

#### FACULTY MEMBERS

Professor R. H. MOORE	Professor J. B. PRICE
Professor PAUL RAMSEY	Professor A. G. SANDERS
DR. M. C. WHITE	



# CHI DELTA

Blue Stockings of Chi Delta limits its membership to women students who have shown exceptional ability in literary work. Its monthly meetings feature the reading of original compositions, including reviews, essays, poems, and short stories.

## OFFICERS

JEAN KINNAIRD - - - - - President  
BERKLEY MUH - - - - - Vice President  
MARJORIE WALTERS - - - - - Secretary-Treasurer

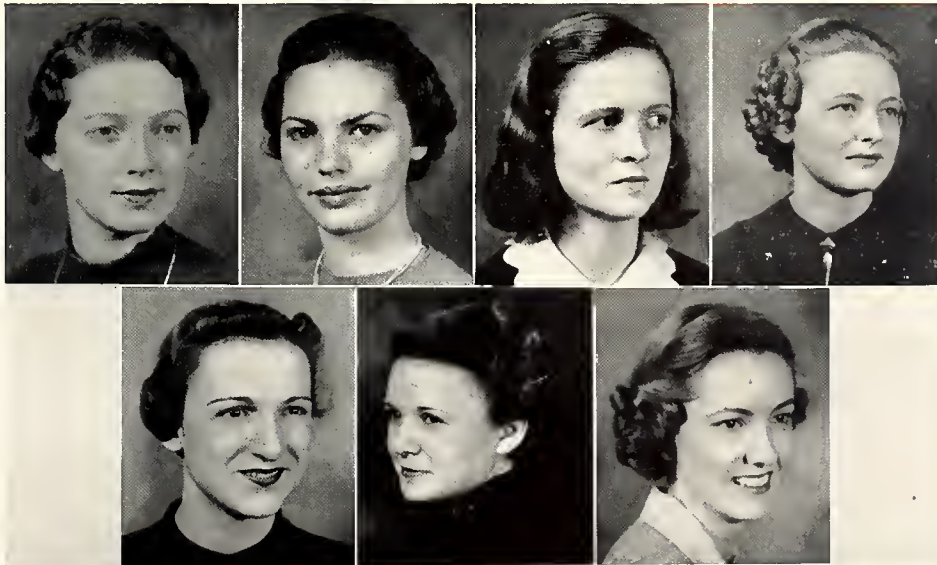
## MEMBERS

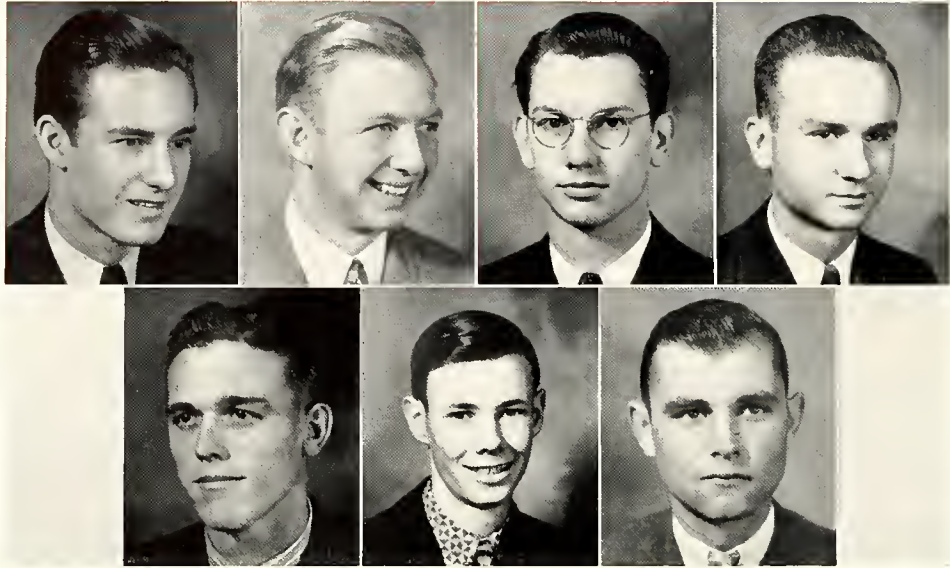
MILDRED CLEGG           GLENN PHIFER  
LOLA DAVIS             BERT WATKINS

## FACULTY MEMBERS

MRS. HENRY COBB        MRS. MARGUERITE GOODMAN  
MISS ELIZABETH CRAIG   MRS. MARY B. STONE

KINNAIRD, MUH, WALTERS, CLEGG  
DAVIS, PHIFER, WATKINS





COLLINS, HOFFPAUIR, KIMBRELL, LAUDERDALE  
SHANKS, SIMS, SMITH

## ETA SIGMA

*Founded Locally at Millsaps in 1923*

Election to Eta Sigma is an honor accorded those whose scholastic standing is the highest in the entire student body. Its purpose is to promote scholastic achievement in academic pursuits.

### MEMBERS

BILL BIZZELL	BILLY KIMBRELL
FOSTER COLLINS	BAYLIS SHANKS
BILLY HOFFPAUIR	LAVELLE SIMS
J. D. SMITH	

### FACULTY MEMBERS

DR. D. M. KEY	Professor R. H. MOORE
DR. W. E. RIECKEN	Professor J. R. LIN
MRS. HENRY COBB	

# ETA SIGMA PHI

Eta Sigma Phi selects its members from the students of classical languages. An average of "B" is required in either Latin or Greek to be eligible for admission.

## OFFICERS

M. F. ADAMS	- - - - -	Prytamis
MILDRED CLEGG	- - - - -	Hyparchos
JAMES KELLY	- - - - -	Chrysopholax
BLANTON DOGGETT	- - - - -	Grammáteus
CECIL TRIPLETT	- - - - -	Epistolographus
ROY DELAMOTTE	- - - - -	Pyloros

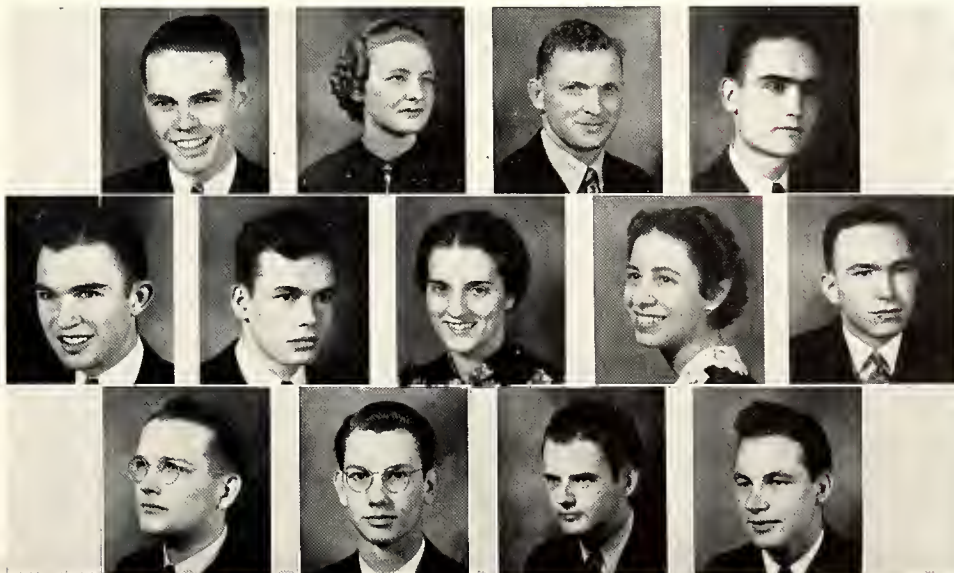
## MEMBERS

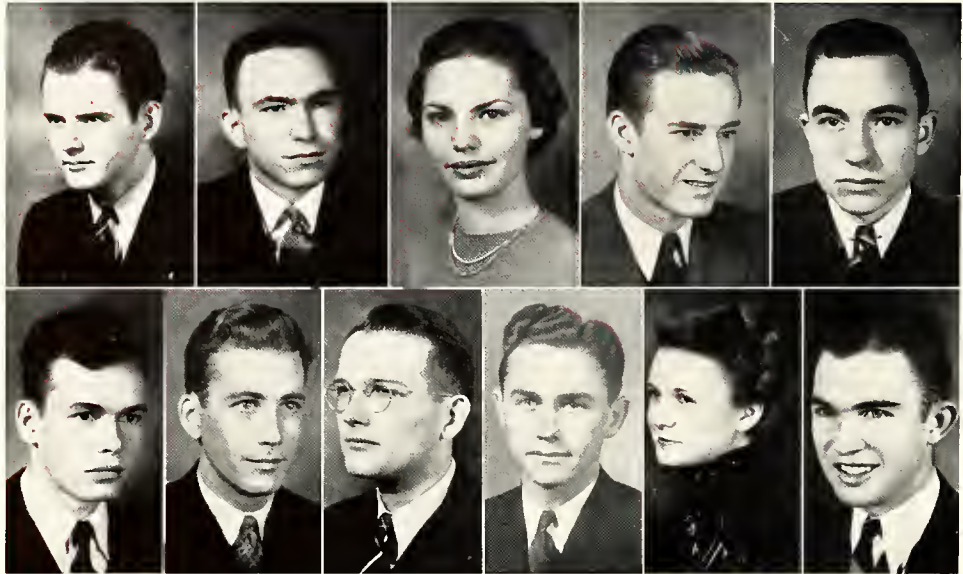
VIRGINIA COLLINS	JOHN GODBOLD
ANNIE K. DEMENT	BILLY KIMBRELL
BILLY FORD	FAGAN SCOTT
WILBOURN WASSON	

## FACULTY MEMBERS

MRS. HENRY COBB	DR. A. P. HAMILTON
MRS. ARMAND COULET	DR. D. M. KEY
MISS ELIZABETH CRAIG	Professor J. REESE LIN
Professor A. G. SANDERS	

ADAMS, CLEGG, KELLY, DOGGETT  
 TRIPLETT, DELAMOTTE, COLLINS, DEMENT, FORD  
 GODBOLD, KIMBRELL, SCOTT, WASSON





● ● SCOTT, FORD, MUH, COLLINS, CONNER,  
DELAMOTTE, DUNN, GOBOLD, KELLUM, PHIFER, TRIPLETT

## INTERNATIONAL RELATIONS CLUB

Entrance into IRC is elective, and membership is limited to a small percentage of the student body. The club seeks to promote interest in national and international affairs.

### OFFICERS

FAGAN SCOTT - - - - - President  
 BILLY FORD - - - - - Vice-President  
 BERKLEY MUH - - - - - Secretary-Treasurer

### MEMBERS

FOSTER COLLINS	JOHN GOBOLD
JAMES CONNER	STACY KELLUM
ROY DELAMOTTE	GLENN PHIFER
JAMES DUNN	CECIL TRIPLETT

### FACULTY MEMBERS

PROF. RALPH G. JONES	PROF. R. H. MOORE
PROF. PAUL RAMSEY	





# LA TERTULIA

Organized in 1936 by J. D. Smith and Paul Whitsett who were interested in forming a club of students mutually interested in Spanish, the Spanish Club is now an affiliate of the national organization, "La Tertulia". Unusually good class standing in Spanish courses is a prerequisite to elected membership.

## OFFICERS

J. D. SMITH - - - - - President  
 PAUL WHITSETT - - - - - Vice-President  
 DELORES DYE - - - - - Secretary-Treasurer

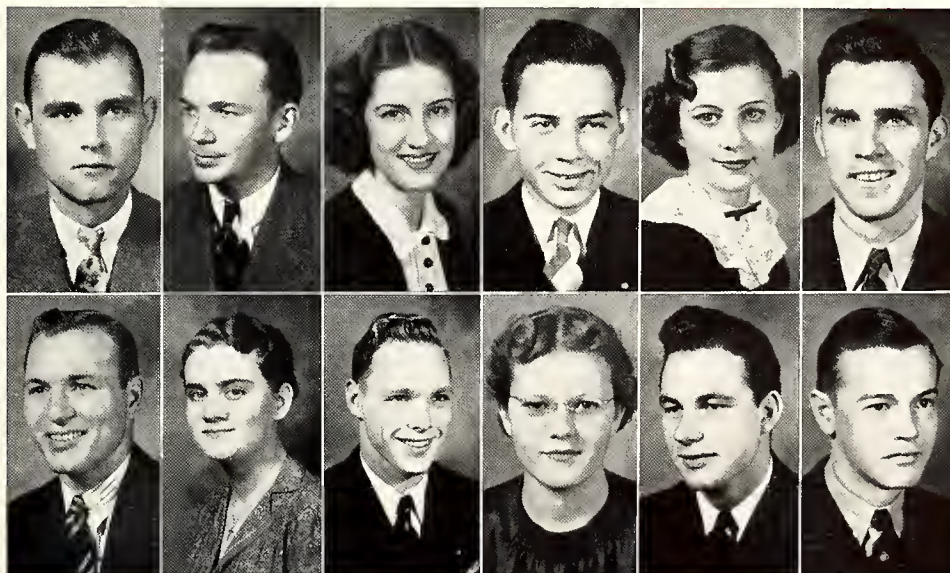
## MEMBERS

WALTER BEARD	OLLIE MAY GRAY
ROMA FERN CHAMPENOIS	T. M. HARDY
LEONARD CLARK	JEAN ROBERTS
R. J. ELFERT	WILBOURN WASSON
S. R. WHITTEN, JR.	

## FACULTY MEMBERS

MRS. HENRY COBB                      PROF. A. G. SANDERS

SMITH, WHITSETT, DYE, BEARD, CHAMPENOIS, CLARK,  
 ELFERT, GRAY, HARDY, ROBERTS, WASSON, WHITTEN.





KIMBRELL, STRAHAN, ADAMS, BLOUNT, CLEGG,  
 DOGGETT, GORDON, HOFFPAUR, SHAUGHNESSY, WHITSETT.

## ALPHA PSI OMEGA

Membership in Alpha Psi Omega is awarded to those students who have done outstanding work in the field of dramatics, either in acting, or in make-up, managership, or properties.

### OFFICERS

BILLY KIMBRELL - - - - - President  
 LUCILE STRAHAN - - - - - Secretary-Treasurer

### MEMBERS

M. F. ADAMS	ALEX GORDON
IMOGENE BLOUNT	BILLY HOFFPAUR
MILDRED CLEGG	BLACKIE SHAUGHNESSY
BLANTON DOGGETT	PAUL WHITSETT

### FACULTY MEMBERS

PROF. R. H. MOORE	DR. M. C. WHITE
-------------------	-----------------

# THE MILLSAPS PLAYERS

## PRESENTATIONS OF THE YEAR

### "A FRIEND AT COURT"

*Cast*

SHIRLEY CHICHESTER  
KENNY HOLYFIELD  
BOB LEDBETTER  
CARL MILLER  
MARY JANE MOHEAD  
CAROLYN BUCK  
PAUL VINING  
JANE HYDE WEST

### "HER STEP-HUSBAND"

*Cast*

LUCILE STRAHAN  
NELL PERMENTER  
"BLACKIE" SHAUGHNESSY  
MARTHA DEES  
M. F. ADAMS  
BILLY HOFFPAUR  
FRED BUSH  
CHARLES CLARK

### "WHO'S A COWARD"

*Cast*

A. G. GAINNEY  
ROMA FERN CHAMPENOIS  
LEELAND MORGAN

### "A BALKY COURTSHIP"

*Cast*

BILL LAMPARD  
DICK LORD  
CHARITY CRISLER

### "THE SERVANT IN THE HOUSE"

*Cast*

BILLY KIMBRELL  
MILDRED CLEGG  
BLANTON DOGGETT  
PAUL WHITSETT  
A. G. GAINNEY  
BOB LEDBETTER  
GLENN PHIFER

### "THE FIRST DRESS SUIT"

*Cast*

JOE BROOKS  
JIM LIVESAY  
VIRGINIA PETTIT  
MARIANNA TERRY

### BUSINESS, PUBLICITY, STAGE AND MAKEUP

CHESTER MCKENZIE  
ALEX GORDON  
JACK BAIN  
JACK FERRIS  
MILTON WHITE  
DELIA RAY LIDDELL  
ERNEST FELTS  
LILLIAN D. SWAYZE  
ROY DELAMOTTE

### DRAMATICS DIRECTOR

DR. M. C. WHITE

WHITSETT, DOGGETT, KIMBRELL, BUSH, HOLYFIELD, ADAMS, GORDON, FELTS,  
HOFFPAUR, LIVESAY, LAMPARD, BROOKS, BAIN, MORGAN, GAINNEY, VINING,  
CHAMPENOIS, SHAUGHNESSY, CHICHESTER, WEST, STRAHAN, PERMENTER,  
TERRY, DEES, BLOUNT





JOE AINSWORTH  
MR. COULET  
JOHN MCRAE

# The MILLS

---

Director - - - - - ARMAND COULET  
 President - - - - - JOHN M. MCRAE  
 Vice-President - - - - - JOE AINSWORTH

*Clarinets:*

JOE AINSWORTH  
 EDMUND BARNES  
 NASH BROYLES  
 BEN EVANS  
 PEMBLE FIELD  
 JAMES HUDSON  
 GRADY KERSH  
 CHARLES MURRAY  
 CAPPY RICKS

*Saxophones:*

BERNARD LUKE  
 LEELAND MORGAN  
 W. B. TURNER

*Cornets:*

EDGAR HORN  
 PAUL LACKEY  
 PAUL SHEFFIELD  
 JAMES SIMMONS  
 NORVILLE SUTHOFF  
 LAMAR VENTERS  
 MARVIN WILLIAMS

*Euphonium:*

A. L. MAY

*Bass Horns:*

CLIFFORD GODWIN  
 PAUL VINING

*Drums:*

MANNING HUDSON  
BILLY LAUDERDALE  
JOHN M. McRAE  
TOM TUCKER

*Trombones:*

FRED BUSH  
CARL RAY NEWSOM  
JAMES RIMMER  
JAMES WALL

*French Horns:*

KENNY HOLYFIELD  
JOSEPH SNYDER  
EUGENE WATTS  
MILTON WHITE

*Glockenspiel:*

TOM NEELY

*Flute:*

JOHN RUNDLE

*Accordian:*

BILL PALMER

*Baritone:*

FRANK HAYS

# A P S B A N D . .





## *The* MILLSAPS SINGERS

The Millsaps Singers under the direction of Alvin J. King completed this season a very successful tour through fourteen Mississippi towns. Later "The Messiah" and "Hiawatha's Wedding Feast" were presented.

### OFFICERS

CHESTER MCKENZIE	- - - - -	President
MARGARET PORTER	- - - - -	Vice-President
FAGAN SCOTT	- - - - -	Business Manager
BERT WATKINS	- - - - -	Secretary-Treasurer
JACK BAIN	- - - - -	Librarian

### SOLOISTS

MRS. ARMAND COULET	A. G. GAINNEY
BILLY KIMBRELL	

---

# A CAPELLA CHOIR

## *SOPRANOS*

MARGUERITE COLTHARP  
GRACE CUNNINGHAM  
CATHERINE DAVIS  
EDWINA FLOWERS

BETTY LARSEN  
EVELYN MCGAHEY  
LUCILE STRAHAN

ANN STONE  
BERT WATKINS  
VIRGINIA WILSON

## *ALTOS*

IMOGENE BLOUNT  
OTTOMESE CASSELS  
SELLA CASSELS  
MARGUERITE DARDEN

LOLA DAVIS  
MARTHA DEES  
CORINNE DENSON

CLARA F. DENT  
MARGARET PORTER  
ELIZABETH WILSON

## *TENORS*

JOHN BURWELL  
JAMES CAVETT  
BLANTON DOGGETT

DICK DORMAN  
ROBERT IVY  
BILLY KIMBRELL

BERNARD LUKE  
HILLIE SHARP  
EUGENE WATTS

## *BASSES*

M. F. ADAMS  
JACK BAIN  
RUDOLPH BANGERT  
BILL BIZZELL

A. G. GAINEY  
BILLY HOFFPAUIR  
GRADY KERSH  
CHESTER MCKENZIE

VICTOR ROBY  
FAGAN SCOTT  
FERD SHELL





HARVEY, LITTON, SHAUGHNESSY, WILSON  
 COLTHARP, CONNER, CUNNINGHAM, DENT, OGDEN  
 PALMER, TERRELL, WALKER, WHITSETT.

## BEETHOVEN CLUB

### OFFICERS

WIRT TURNER HARVEY	- - - - -	President
RUBY LITTON	- - - - -	First Vice-President
MRS. PAUL RAMSEY	- - - - -	Second Vice-President
MARY E. SHAUGHNESSY	- - - - -	Third Vice-President
ELIZABETH WILSON	- - - - -	Secretary
ANNIE SUE KNIGHT	- - - - -	Treasurer
MRS. J. L. ROBERTS	- - - - -	Counselor

### MEMBERS

MARGUERITE COLTHARP	FRANCES OGDEN
JAMES CONNER	BILL PALMER
GRACE CUNNINGHAM	KATHERINE TERRELL
CLARA F. DENT	RALPH WALKER

PAUL WHITSETT

### ASSOCIATE MEMBERS

BARBARA BOSWELL	ANNE NEWELL
KATHERINE GRIMES	PATSY PARKER
NITA HISCHER	MRS. DUDLEY PHELPS
DAVIS MACCORMICK	MARY JOE WERINER



# PRE-LAW CLUB

In the fall of 1937, and chiefly through the efforts of Marvin Williams, the pre-law club was organized. Open to students primarily interested in pursuing the study of law as a vocation, the club holds meetings for the purpose of discussing questions concerning law-making, law-enforcement, and law interpretation.

## OFFICER

MARVIN WILLIAMS - - - - - President

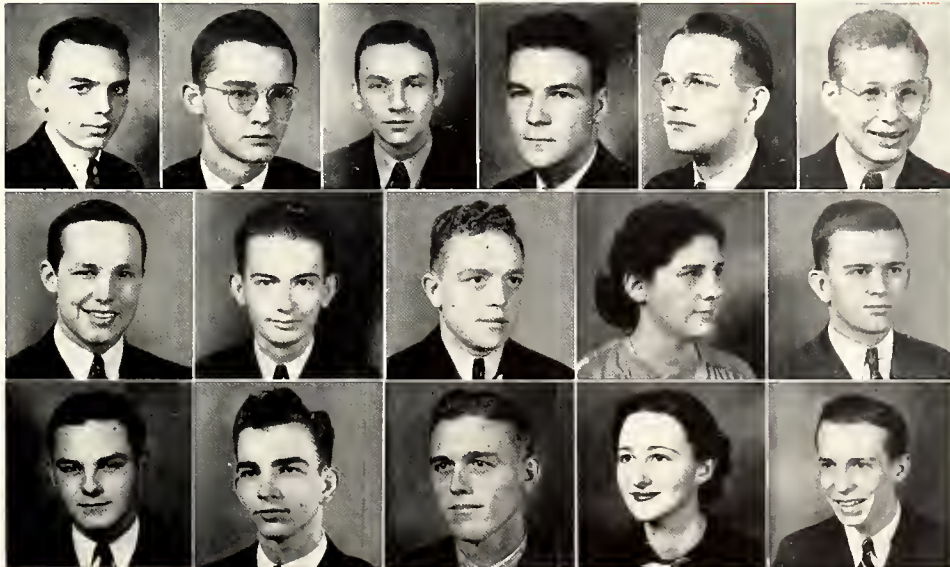
## MEMBERS

SAM BIRDSONG	DICK LORD
JOEL DENTON	CLYDE McKEE
ERNEST FELTS	CHARLOTTE NICHOLS
JOHN GOBOLD	ERLON NOWELL
GEORGE C. HALL	ALBERT PIPPEN
KENNY HOLYFIELD	GEORGE ROBERTSON
JOEL HUNTER	BAYLIS SHANKS
CHARLES KILGORE	FLOY THOMPSON

MARTIN WILLIAMSON

PROF. R. R. HAYNES - - - - - Faculty Adviser

WILLIAMS, BIRDSONG, DENTON, FELTS, GOBOLD, HOLYFIELD,  
KILGORE, LORD, McKEE, NICHOLS, NOWELL,  
PIPPEN, ROBERTSON, SHANKS, THOMPSON, WILLIAMSON





● ● CLEGG, DAVIS, GRAY, BLOUNT, CHICHESTER  
 CUNNINGHAM, DOGGETT, DARDEN, GORDON, HINSON  
 KINNAIRD, LAMB, OGDEN, WROTEN

## Y. W. C. A. CABINET

### OFFICERS

MILDRED CLEGG - - - - - President  
 CATHERINE DAVIS - - - - - Secretary  
 OLLIE MAY GRAY - - - - - Treasurer

### MEMBERS

IMOGENE BLOUNT	SARA GORDON
MAY ELLEN CHICHESTER	SYBLE HINSON
GRACE CUNNINGHAM	JEAN KINNAIRD
GAYLE DOGGETT	MARY SUE LAMB
MARGUERITE DARDEN	FRANCES OGDEN

RUTH WROTEN



# Y. M. C. A. CABINET

## OFFICERS

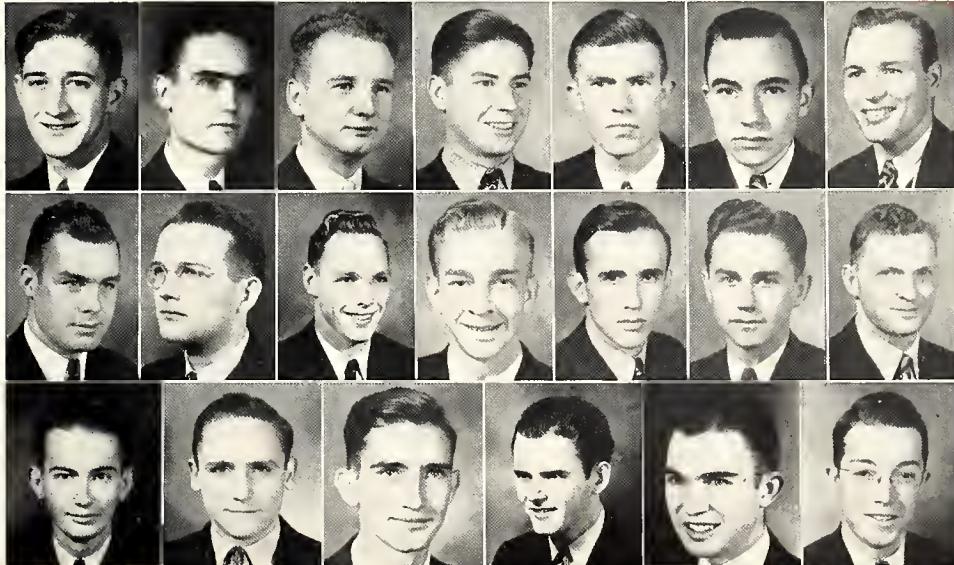
WILEY CRITZ - - - - - President  
 BLANTON DOGGETT - - - - - Vice-President  
 DONALD O'CONNOR - - - - - Secretary-Treasurer

## MEMBERS

JOHN BATTE	MANNING HUDSON
BILL BIZZELL	STACY KELLUM
JAMES CONNER	JAMES KELLY
R. J. ELFERT	DICK LORD
EDWIN EDWARDS	ROBERT MATHENY
JOHN GODBOLD	CHESTER MCKENZIE
T. M. HARDY	FAGAN SCOTT
FIELDING HOLLOMAN	CECIL TRIPLETT

EUGENE WATTS

CRITZ, DOGGETT, O'CONNOR, BATTE, BIZZELL, CONNER, ELFERT,  
 EDWARDS, GODBOLD, HARDY, HOLLOMAN, HUDSON, KELLUM, KELLY,  
 LORD, MATHENY, MCKENZIE, SCOTT, TRIPLETT, WATTS.





● Top Row: FREEMAN, DOGGETT, MANGUM, BRIDEWELL, SMITH, JONES  
 Middle Row: WROTEN, COURTNEY, SNYDER, O'CONNOR, LYTLE, VENTERS, HETRICK, CALDWELL  
 Bottom Row: PEDEN, EMANUEL, BANGERT, PEVEY, BRANTLEY, THORNTON, WATTS, WALLACE  
 Center Front: ROGERS

## MINISTERIAL LEAGUE

### OFFICERS

B. B. ROGERS	-----	President
MILTON PEDEN	-----	Secretary
PERCY EMANUEL	-----	Treasurer
DONALD PEVEY	-----	Program Chairman
DONALD O'CONNOR	-----	Publicity Chairman

### MEMBERS

RUDOLPH BANGERT	LUCIEN FREEMAN	MIKE McELHANEY
OTHO BRANTLEY	WILLIAM FULGIUM	ALGIE OLIVER
ALBERT BRIDEWELL	JOHN H. HETRICK	AUBREY SMITH
JACK CALDWELL	ELLIOTT JONES	JOE BOB SNYDER
JOE CARRUTHERS	JAMES KELLY	JACK THORNTON
JOHN COURTNEY	MARK LYTLE	LAMAR VENTERS
WILEY CRITZ	WALLACE MANGUM	HUBERT WALLACE
FRANK DEMENT	ROBERT MATHENY	EUGENE WATTS
BLANTON DOGGETT	TORRENCE MAXEY	JAMES WROTEN
JAMES ELLIOTT	W. R. MURRAY	

### HONORARY MEMBERS

DR. H. M. BULLOCK	PROF. J. REESE LIN	DR. J. M. SULLIVAN
MISS RUTH COOPER	DR. B. E. MITCHELL	MISS VIRGINIA THOMAS



# THE CHRISTIAN COUNCIL

Composed of representatives from the student body and campus religious organizations, the Christian Council serves as the executive and planning committee of religious activity on the campus.

## OFFICERS

JAMES KELLY - - - - - President  
SARA GORDON - - - - - Vice-President  
BLANTON DOGGETT - - - - - Secretary-Treasurer

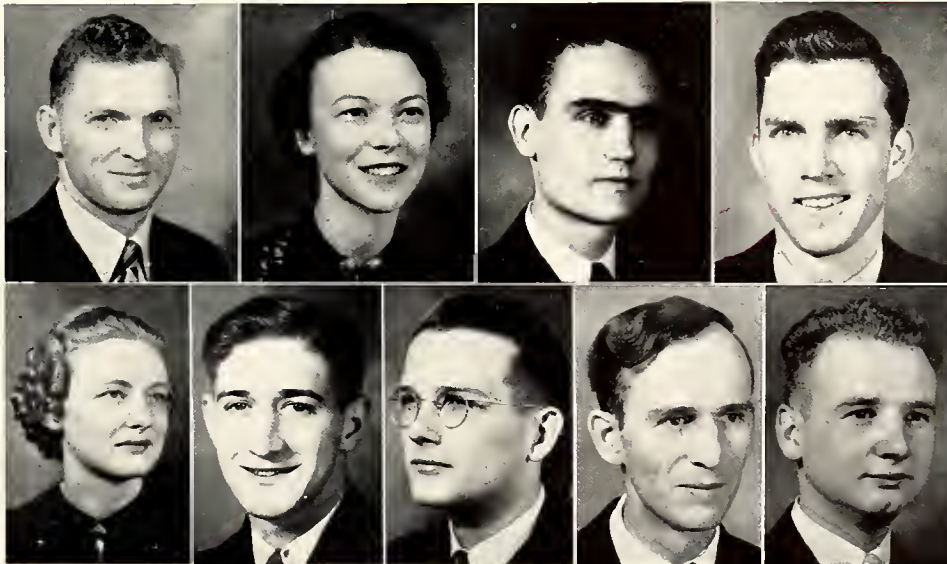
## MEMBERS

LEONARD CLARK                      JOHN GODBOLD  
MILDRED CLEGG                     MARDELLE HARDIN  
WILEY CRITZ                        BILL MURRAY  
DONALD O'CONNOR

## FACULTY MEMBERS

DR. H. M. BULLOCK                MISS VIRGINIA THOMAS

KELLY, GORDON, DOGGETT, CLARK,  
CLEGG, CRITZ, GODBOLD, MURRAY, O'CONNOR.





RIECKEN, SNYDER, ROBERTSON, SHARP, FREEMAN,  
 McWHORTER, O'CONNOR, YOUNGBLOOD, CASSELS,  
 WALLACE, HUNTER, EMANUEL, CONNER, KELLY

## THE BARBARIANS

Made up of men and women students not enrolled in a Greek-letter society, the Barbarian Club seeks to provide social opportunities for all students and to strengthen the ties of school loyalty by organizing the non-Greeks.

Colors: Orange and Black

Publication: "The Broadside"

### OFFICERS

HILLIE SHARP	-----	President
DONALD O'CONNOR	-----	Vice-President and Publication Editor
SELLA CASSELS	-----	Secretary
OTTOMESE CASSELS	-----	Treasurer
HUBERT WALLACE	-----	Sergeant-at-Arms

### MEMBERS

O. D. BONNER	OLLIE MAY GRAY	TOM ROBERTSON
JACK CALDWELL	IMOGENE HAMMOND	LAURA MAE SHRADER
JAMES CONNER	JOEL HUNTER	JOE BOB SNYDER
CORRINNE DENSON	JAMES KELLY	WILEY WILLIAMS
ROSE NELL DENSON	LEROY KELLY	JAMES McWHORTER
PERCY EMANUEL	BILL MURRAY	JENNIE YOUNGBLOOD
LUCIEN FREEMAN	MILTON PEDEN	
CLINTON GLASER	LOUISE RAY	
DR. WILLIAM E. RIECKEN	-----	Faculty Adviser

# THE MAJORETTE CLUB

Interested in promoting women's athletics, the club sponsors an intramural program for young women. Membership in the club is limited to those who have achieved success in intramural sports.

EMBLEM - - - - - Purple "M"

## OFFICERS

MARGARET PORTER - - - - - President  
 SELLA CASSELS - - - - - Vice-President  
 MARJORIE WALTERS - - - - - Secretary-Treasurer  
 VIRGINIA GADDY - - - - - Intramural Manager  
 JEAN KINNAIRD - - - - - Reporter

## MEMBERS

CAROLYN BUCK  
 OTTOMESE CASSELS  
 MARGUERITE DARDEN  
 OLLIE MAY GRAY  
 ANNIE LOU HEIDELBERG  
 PEARL NOBLES

JEAN ROBERTS

MISS ELIZABETH TAYLOR - - - - - Sponsor

PORTER, S. CASSELS, WALTERS, GADDY, KINNAIRD, BUCK  
 O. CASSELS, DARDEN, GRAY, HEIDELBERG, NOBLES, ROBERTS.



# *In Appreciation*

In the production of this book we are deeply grateful to Bob Faerber of Alabama Engraving Company for invaluable aid in suggestions and layouts; to Durant Finley of Tucker Printing House for his work in helping the staff compile the volume; to Mrs. Yvette Cole for her photographic work; and especially to our advertisers whose support substantially financed the publication.

—The staff.



## Jennings & Hutchins

Inc.

"Smart Mens Wear"

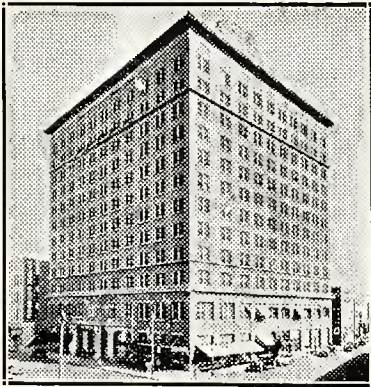
149 E. Capt. Phone 6676  
JACKSON, MISS.

## BETTER LIVING APPLIANCES, Inc.

430 E. CAPITOL ST.

General Electric Radios,  
Refrigerators, Washers.

SMALL TABLE MODEL RADIOS  
CAN BE PURCHASED ON A  
MONTHLY PAYMENT PLAN.



## Edwards Hotel

Jackson, Mississippi

400 Rooms 400 Baths

FIRST IN COMFORT,  
ACCOMMODATIONS,  
HOSPITALITY

Make The Edwards Your Home  
When In Jackson.

## A STUDENT'S DAY

7:25—Clock goes off with that hideous noise. Ho-Hum! Jumps out of bed, throws on some clothes and makes it to the dining hall just in time for breakfast. Hastily downs the meal and then back to the room. A quick shower and take off to class. On way over, remembers that forgot to study lesson.

Arrives in class just before 8:35 bell. Takes seat and scans lesson during roll call. Lesson gets under way. "Will you read now?" "Er-uh, I couldn't translate that." Horrors, better study the lesson next time. Bell rings at last, and class is out. Well, will go over to the grill and hang around a while.

"Hi-Ho, boys." Kills 50 minutes before chapel and then to general assembly. Wonders half-heartedly what program will be like. Speaker is introduced. Begins to wonder what he is talking about. Decides might as well study for next class. Chapel dismissed. Goes to next lecture. Prof fires a way about Holy Roman Empire. Takes a few notes but over head. Prof. then announces test for next time and lets class out ten minutes ahead of time. Another hour to pass away. Guesses he'll go over to the library and look for a book to report on. Asks Bill what is a short one. "So-and-so" by Whoosis. O. K. Goes up to desk and asks for this "So-and-So". Not in right now. "If I might suggest one, this is a particularly good work." Glances at 400 page volume.

"Uh, I think I've read that before." Thinks a moment. "I'll just wait 'til "So-and-So" gets in." Leaves desk,

## THE VOGUE

146 E. CAPITOL STREET

Jackson, Miss.

## CHESTER E. JONES DRUG STORE

SERVICE WITH A SMILE

N. West & Fortification Sts.  
Phone 4567-8 Jackson, Miss.

FREE DELIVERY

SODA, SANDWICHES, DRUGS,  
CIGARS AND SUNDRIES

Support Those Who Cooperate

## When Down Town

VISIT

## PRIMOS COFFEE SHOP

A Rendezvous for  
COLLEGE STUDENTS

236 E. Capitol St.

OPPOSITE POST OFFICE

We Appreciate Our Millsaps  
Patrons



Lead The Way - - -

## As Millsaps Marches On!

Swinging into stride as Mississippi Marches On, Millsaps College is conducting an endowment drive which will make possible a greater Millsaps.

A new day is dawning for the Magnolia State, and Millsaps must be ready to maintain the standard of service she has achieved through the years.

With Methodist educational activity now concentrating at Millsaps, an influx of new students is expected next year . . . the college will be ready.

From her present students . . . who are carrying on the Millsaps tradition . . . their college seeks support for the Millsaps of the future.



## MILLSAPS COLLEGE

D. M. Key, President

Jackson, Mississippi

## GREETINGS GRADS!

HERE'S HOPING  
THERE'S A JOB  
AWAITING YOU!



*Dunnaway's*  
105 N. STATE STREET

COMPLIMENTS

**CITY SHOE SHOP**

**MANGEL'S**

MISSES' AND WOMEN'S  
APPAREL

126 East Capitol Street  
JACKSON, MISS.

**EDWIN B. LANGFORD**

Distributor

BUS, BODIES, TRAILORS,  
TRUCK EQUIPMENT

Jackson Mississippi

Smart Apparel For All Occasions  
from  
Mississippi's Largest Specialty  
Store Are Always Correct

**PARISIAN**

Store For Women



**COLLEGE CAPERS**

WE WELCOME ORDERS FROM

**THE MAJORS**



1808 N. State St. Phone 5328



looks around and spots one and only. "Hello, whatcha doin'?" "Getting up my English. (Sweetly) This hot weather certainly makes one thirsty, doesn't it?" (Catches hint, but broke)—"Yeah, sure does; well, don't study too hard. G'bye."

Gins over to Science Hall for coming recitation. Still some time, so sits down and hope Prof cuts class. No such luck—here he comes up steps now. Bell rings. First thing—a pop test. Wow! Almost keels over. Then—whew! This is the stuff we had last week. Knows that. During rest of period draws pictures on side of notebook page. Comes to conclusion that 12:10 classes are bad on the appetite.

1:05 at last. Goes up to room and drops books. Then to dinner. A little bit better than yesterday. After dinner studies a little and then sleeps 'til suppertime. Well, well, surprise!! A good supper!! A good show on downtown, so might as well take it in. Talks room-mate into going and then bums two bits off him for showfare. We're off—After show walks up Capitol Street to see the sights for the 1,543rd time. Catches a ride to school.

Gets there about 10:30. The session is under way in Jack's room. Hears a dispute, so joins in. Tempus fugit, and quickly. Goes to room to study. Decides it's too late and resolves to get up early in the morning and study.

Sets clock. (Tempus fugits some more). Wakes up. Sun is shining brightly. Gosh, didn't hear alarm. Dial reads 8:25. Ho-Hum. Grabs clothes, dons them and runs for class. Realizes that hasn't studied again.

(Ho-Hum, this is where we came in—so long)

## 20th Century

RECREATION

Center

"The Pride of the South"

FOR LADIES & GENTLEMEN

LAMAR AND CAPITOL

JACKSON, MISS.

PURSER BROTHERS

OWNERS

**BETTER PRINTING  
COMPANY**

QUALITY PRINTERS  
AND ENGRAVERS

Telephone 3044

JACKSON MISSISSIPPI

**AUNT BETTY BREAD**

IS SERVED IN MILLSAPS  
DORMITORIES



**ACME BAKERY**

230 NORTH FARISH ST.  
Jackson, Miss.



L. V. Berbette Moran Berbette

**WHITE'S  
LUMBER YARD**



GENERAL  
BUILDING MATERIALS



PHONE—629—630

Jackson Mississippi



*Again . . .*

*FOR PROMPT, EFFICIENT WORK  
THE STAFF OF THE  
BOBASHELA  
CHOSE*

*Cole Studio*

*YVETTE M. COLE, Photographer*

*Jackson*

*Mississippi*

*FOR THE ANNUAL PORTRAITS*



▼

**CAPITAL  
Paint & Glass Co.**

●

401-407 SOUTH STATE STREET  
Jackson, Miss.

▼

**S. P. McRae  
Company**

Department Store

●

200-202 WEST CAPITOL STREET  
Phone 4400  
Jackson Mississippi

**ROBINSON  
BROTHERS**

●

**Plymouth — DeSoto  
Sales and Service**

●

PHONE 5666-7-8  
Jackson Mississippi

Smoke . . .

PORTINA, TAMPA NUGGET,  
MURIEL, GREAT SOUTHERN,  
KEEP MOVING, EL TRELLES,  
WHITE OWL, JOHN RUSKIN  
—Good Cigars.

▼

**CORR-WILLIAMS  
TOBACCO CO.**

WHOLESALE DISTRIBUTORS

**Sorority Songs**

**Beta Sigma Omicron**

True love, dear Beta Sigma,  
to you we bring,  
Hearts all beating with loyalty  
just for you.  
Memories throughout the years  
Evermore will bring loyalty,  
love for you,  
Joy just in serving you, Beta  
dear.

—

**Chi Omega**

I love you truly, Chi Omega  
dear,  
Vows we have taken will hold  
ever near;  
Now and forever, we'll always  
be  
True to Chi Omega—true to  
thee.  
Ah, girls, 'tis something, your  
friendship to hold  
Ah, girls, 'tis something that  
ne'er will grow old;  
Strong are the bonds that  
unite you and me,  
Holding us together thru  
eternity.

—

**Phi Mu**

Verse:

The twilight brings you mem-  
ories  
Of the girls that make life  
worthwhile,  
Some greet you with laughing  
faces,  
And some with a tender smile;  
But after the rest have gone  
There's one that still lingers  
on—

Chorus:

The love in the heart of a Phi  
Mu girl  
Is as pure as the heart of a  
glowing pearl;  
Loyal and true she will ever be  
To the standards of her fra-  
ternity;  
She's united by ties of her  
bond of love  
To her sisters throughout the  
world,  
Truth and joy and beauty lie  
In the heart of a Phi Mu girl.

**Batton Tire & Oil Co.**

**FISK TIRES**

PHONE 783-4

●

Complete One Stop Service

●

FRANK BATTON B. JOHNSON  
SIDNEY ATKINSON

▼

HEADQUARTERS FOR

●

**ELGIN WATCHES**

●

**O'Ferrall Jewelry Co.**

Standard Life Building

▼

THE BEST DRESSED  
MEN WEAR



THE SCHWOB CO.

163 E. Capitol St.  
Jackson Mississippi

**MILLSAPS COLLEGE  
LEADS IN EDUCATION**

●

**JACKSON  
STEAM LAUNDRY**

LEADS IN LAUNDRY &  
DRY CLEANING

●

Phone 7730  
I. LEHMAN, President

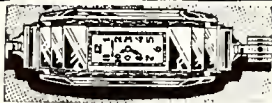
SMOOTH FROZEN



*Seale-Lily*  
ICE CREAM  
*YOU EAT IT WITH A SMILE*

*ICE CREAM Every Day*

*In Some Way*



Dolly Madison  
17 Jewels  
YELLOW GOLD  
\$29.75

**J. L. ALBRITON**

Opposite Post Office

Phone 3904



PAINTS, VARNISHES,  
LACQUERS, LEADS, OILS,  
ENAMELS, BRUSHES  
AND PAINTERS'  
SPECIALTIES

*The Sherwin-Williams Co.*

OF GEORGIA

219 E. Capitol Street Jackson, Miss.

Compliments of  
**STANDARD PHOTO CO.**

*IN JACKSON IT'S*

*The* JACKSON'S GREATEST STORE  
*Emporium*

*"Jackson's Greatest Store"*

**COMPLETE SELECTIONS**

**CORRECT STYLES**

**ATTRACTIVE VALUES**

▼

**ELECTRIC POWER**  
and  
**SERVICE**



**A BASIC  
MISSISSIPPI  
INDUSTRY**

▼

**Dr. H. F. Magee**

**Physician and Surgeon**

LAMAR LIFE BUILDING

Jackson Mississippi

**Hederman Brothers**

**PRINTERS**

**Blank Book Makers**

**Stationers—Lithographers**

6500 JACKSON, MISS. 6501

**DON'T FORGET BOYS AND  
GIRLS WE SELL**

**FURNITURE**

**Batte Furniture**

JOHN C. BATTE

**Kappa Delta**

There is no girl like a KD girl  
With her smile like the dawn  
of the day,  
There is no vow like the KD  
vow,  
It's as true as the stars they  
say  
And the sweetheart he loves  
wears a KD pin,  
And her love is as deep as  
the sea;  
So she knows she'll be his  
If she vows she will  
By the honor of her KD.

**Fraternity Songs**

**Dream Girl of Pi K A**

In the still of the night,  
When you turn down the light,  
There's a memory of a girl in  
your mind;  
For her sweet little smile  
Makes life worthwhile;  
If you'll look everywhere,  
You'll find none so sweet  
As this dream girl of mine.  
She is surely divine,  
And I'd lay all I have at her  
feet;  
For the love of a girl  
Is like the pore of a pearl  
When it comes from the girl  
of my dreams.

Chorus:

When the nightbirds are sing-  
ing their love song,  
And you sit by the fireside  
and dream;  
There's the thought of a girl  
Puts your brain in a whirl—  
For her eyes, like the bright  
embers, gleam;  
She is fair as the heaven above  
her,  
She is true to the trust that  
she bears;  
For, though she is far away  
She'll be yours some sweet  
day,  
She's the dream girl of Pi  
K A.

▼

Compliments of

**McCarty - Holman**

▼

“Say It With Flowers”

PROGRESSIVE FLORIST FOR  
MORE THAN FORTY YEARS

●

**Capitol Floral Co.**

LINDSEY CABINESS

▼

Compliments of

**Cabell Electric Co.**

Jackson Miss. Meridian

▼

**ALBRITTON**  
**Ice Cream Company**

●

**Phones 4133-4134**

●

**229-231 South Congress**

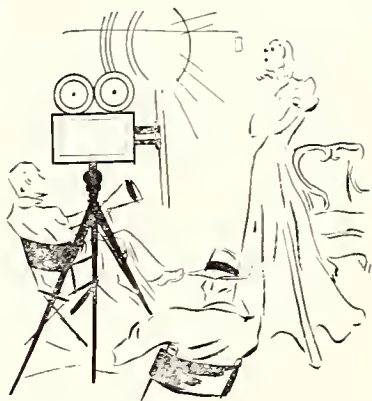
**Jackson, Miss.**

## Remember?

—The place where you bought all those good sandwiches; where you purchased your textbooks and other classroom materials; where the gang gathered for a hot drink in winter and a cold drink in spring; where you met the friends who autographed your Bobashela? Sure, you remember. And remember, too, you're always welcome here.

## THE GRILL

### *DRESS THE PART YOU WANT TO PLAY*



The question now is not "Do you want to play act?", but "Do you dress the part you want to play?"

You may be glamorous . . . or strikingly plain—It's The Clothes You Wear. And, so we say, make your clothes investment wisely. You'll find our friendly and experienced people eager to help you select what is individually becoming.

Big occasions demand clothes in the grand manner — and Kennington's swings the spotlight on you.

"Mississippi's Best Store"

**KENNINGTON'S** Jackson



Compliments of

**WALTHALL  
HOTEL**

Jackson Mississippi

**FIELDS**

224 E. Capitol St.  
CATERING TO THE MILLSAPS  
MISS

**DUKE'S  
APPAREL FOR MEN**

240 EAST CAPITOL STREET

Compliments of

**Blue Ribbon Creamery**  
"Safest Milk You Can Buy"

**Burns & Lacey, Inc.**  
STORE FOR MEN  
218 W. CAPITOL STREET  
NEXT TO BOURGEOIS

**Kappa Sigma's Sweetheart**

To Kappa Sigma's sweetheart  
Let us drink a toast tonight;  
She is loyal to the colors,  
To the scarlet, green, and  
white.

You must confess her loveli-  
ness  
Would set your heart awirl;  
Raise a brimming glass  
To the sweetest lass,  
The Kappa Sigma girl.

**K A Sweetheart**

K. A. sweetheart,  
Each Kappa Alpha will sing  
Every praise that your smile  
Through life's journey will  
bring  
Loveliness—and sincerity ere  
will stay  
In the heart of a girl,  
The sunny south's pearl,  
She's the sweetheart of old  
K. A.

In the southland  
Down where the magnolia  
grows  
Lives this maiden, her cheeks  
like the crimson rose,  
Other girls like the shadows  
must fade away;  
She's the fairest I've found  
the whole world around,  
She's the sweetheart of old  
K. A.

**The Sweetheart of Theta Nu**  
Of one sweet girl I am dream-  
ing,  
The sweetheart of Theta Nu;  
True love to her I am bring-  
ing  
A love that will ever be true.  
At night in a moonlight  
garden,  
When stars are shining above,  
I'll tell her the sweetest of  
stories,  
The sweetheart of Theta Nu.



"Dress Well And Succeed"

**Etheredge Cleaners**

PHONE 801

**BURTON'S**

"JUST A GOOD PLACE TO EAT"

**AIR CONDITIONED**

Jackson Mississippi

**Millsaps Alumni**

**SEE AND USE THE**

**ROYAL  
TYPEWRITERS**

VISIT US WHEN IN JACKSON

Sales — Service — Supplies

**JACKSON  
TYPEWRITER CO.**

Jackson, Miss.



# Ready to Face the World

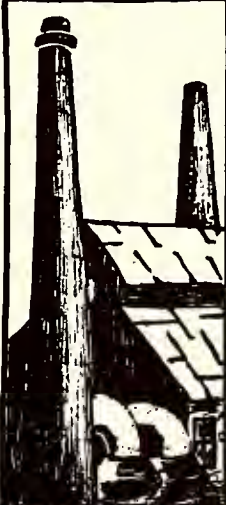
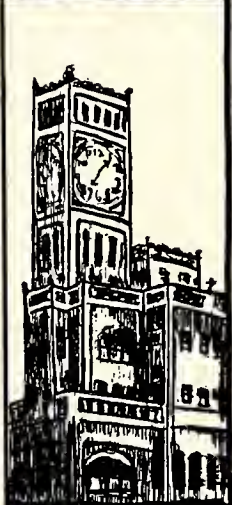
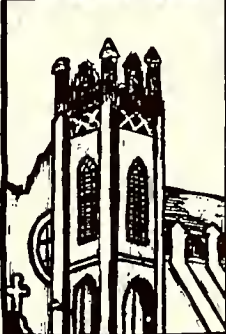
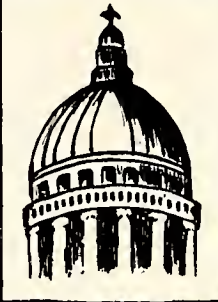
★ ★ COME WHAT MAY.

CONFIDENCE is the heritage of youth . . . . it is also a fundamental requirement of business . . . . attained by long study, training and experience • We have enjoyed the confidence of yearbook Staffs throughout the country for over thirty years . . . . an accomplishment for which we are truly grateful and justly proud . . . .

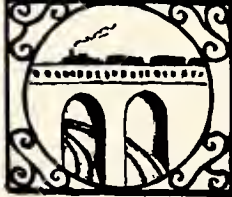
★ ★ ★ ★ ★  
COLLEGE ANNUAL DIVISION  
ALABAMA ENGRAVING COMPANY  
BIRMINGHAM



# TUCKER



PRINTING AND BINDING



# AUTOGRAPHS







