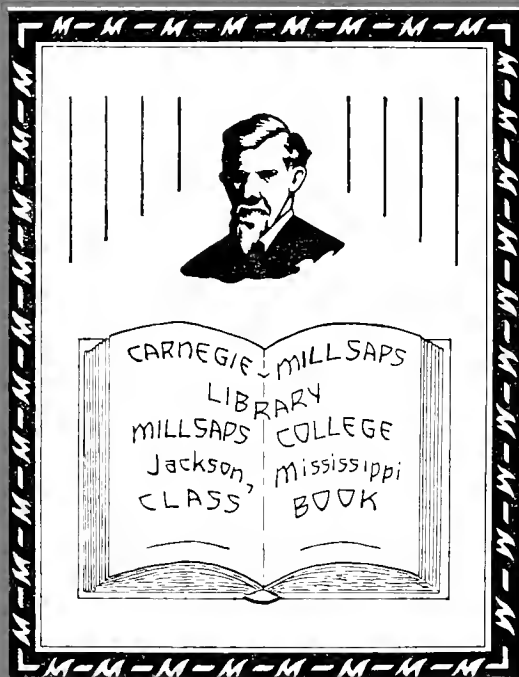
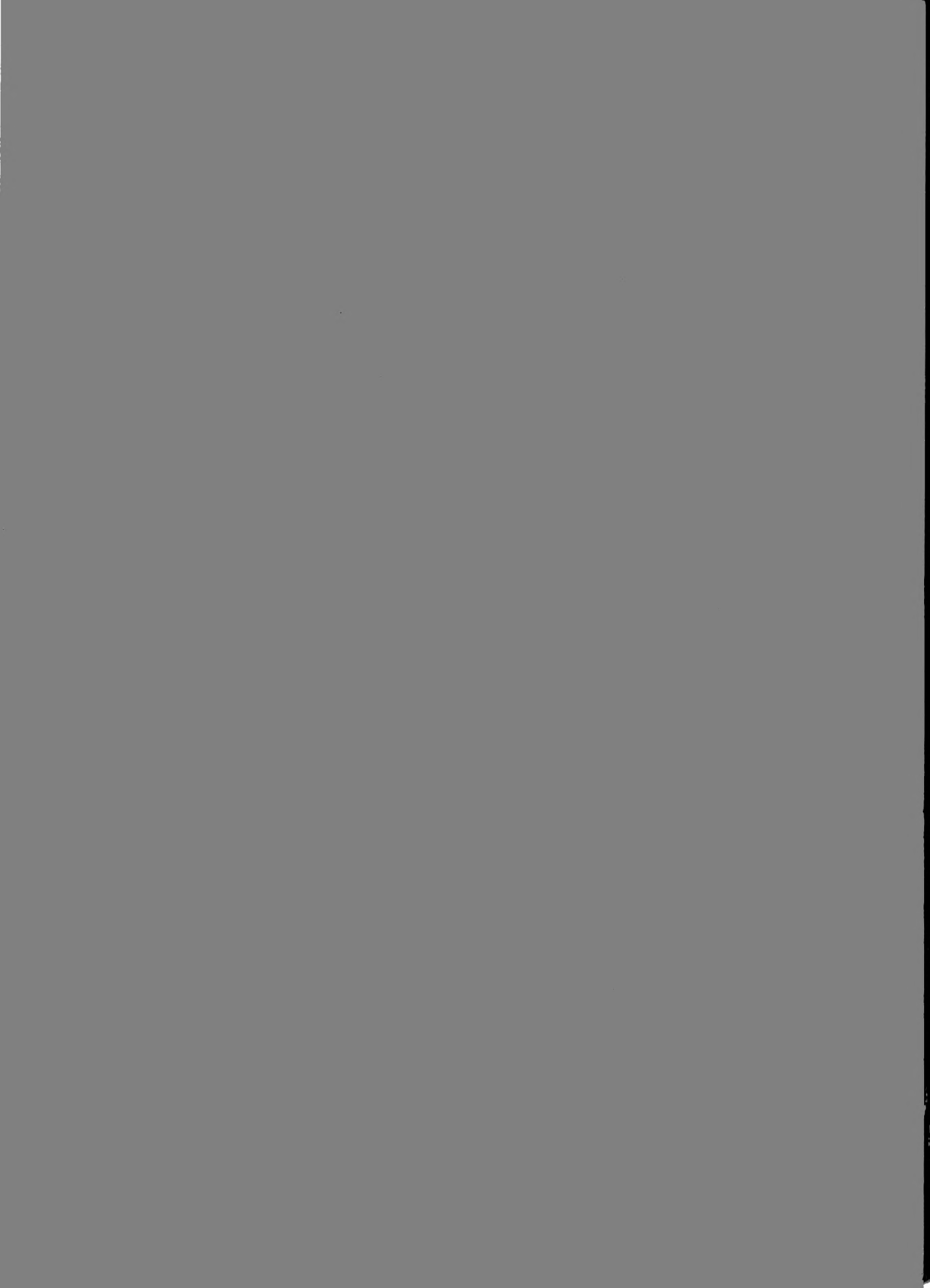
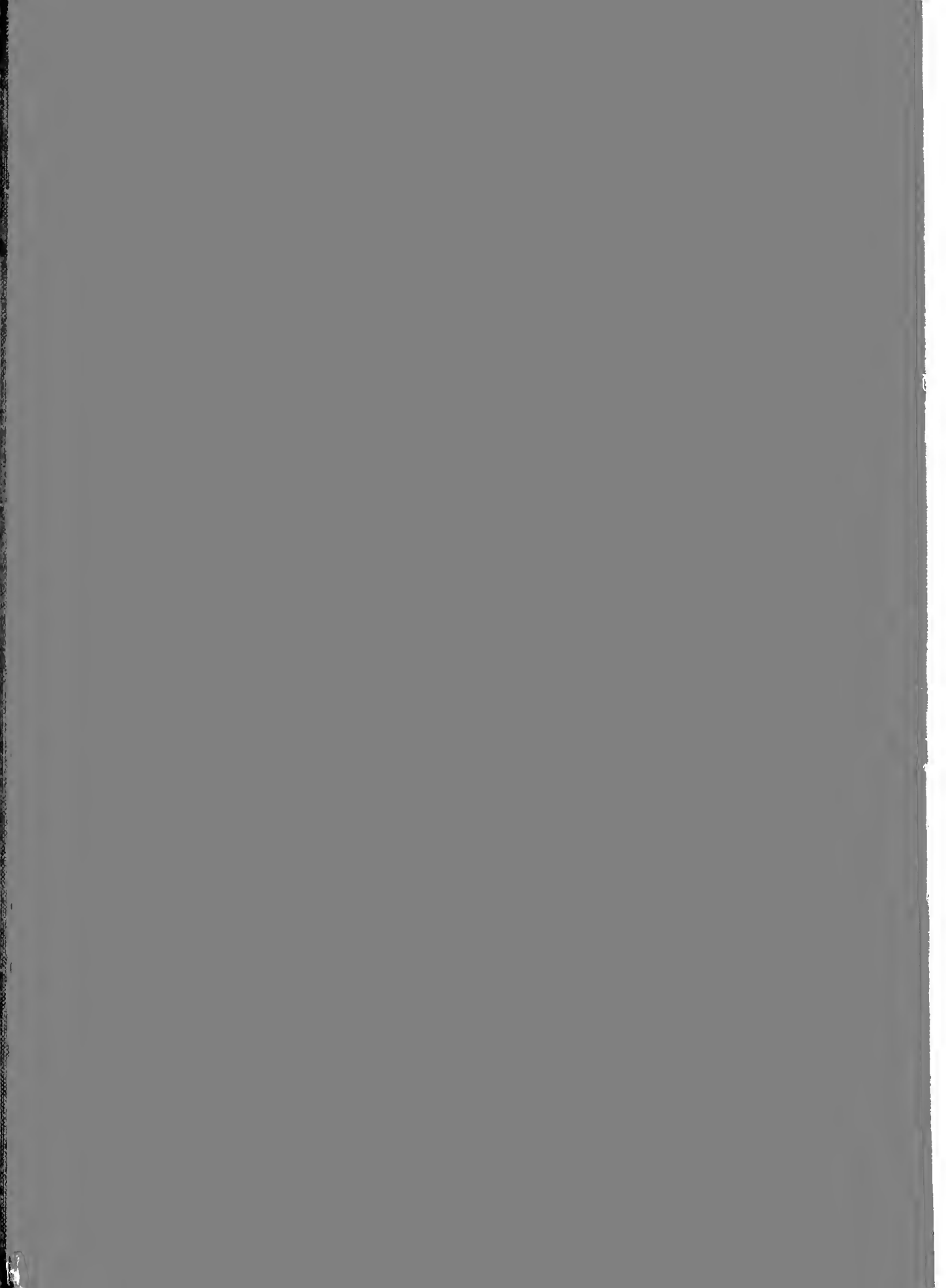




The 1938
BOBASHIELA







Millsaps College
Library

MILLSAPS COLLEGE ARCHIVES

"At LONG LAST
We give you . . ."

The 1938 B



O B A S H E L A . .

A Y E A R B O O K

Published by

T H E S E N I O R C L A S S
M I L L S A P S C O L L E G E

at

J A C K S O N , M I S S I S S I P P I

Copyright

J E F F H E S T E R—E D I T O R



F A G A N S C O T T—B U S I N E S S M A N A G E R

Portraying



I N W O R D *and* P I C T U R E

Life at Millsaps as we have been able to record it. If, in any respect, the contents of this volume are indicative of the colorful, exciting, and inspiring atmosphere of our collegiate surroundings—if this book offers pleasure in the reading—if our manner of presentation serves to recall pleasant associations, to bring back happy memories of undergraduate life, or to afford a retrospective glance of days gone by, then we feel that our efforts have not been in vain and are duly grateful.

C O N T E N T S

- THE COLLEGE
- THE CLASSES
- THE ATHLETICS
- THE FEATURES
- THE GREEKS
- THE ORGANIZATIONS
- OUR PATRONS

Just Waiting ● *Palsie-Walsies*
Grilling ● *Leaving class*
Chatting ● *Time out*

A N D

Speaking



*The co-ed marches
on ● Miss Millsaps ●
Miss Most Beautiful ●
Playing.*

of Millsaps

There comes to mind the realization of the great progress our college has made during past decades and the many factors that have contributed toward this success. With the advent of co-education at the turn of the century, women students have played a great part in the growth of our institution. Honorary societies have been created to offer recognition for outstanding achievements on the part of co-eds; an extensive athletic program has been inaugurated for their benefit; and numerous activities have been modified to encourage their participation. It is significant that one of the first points in the drive toward a greater Millsaps is the erection of a new dormitory for women. It is these factors and the influence that co-education has had in making a more outstanding Millsaps that motivates us to dedicate this volume to --- the Millsaps co-ed.

The C O

- *Carnegie-Millsaps Library*
- *Millsaps parades*
- *The tomb of Major Millsaps*



COLLEGE

Once upon a time a man had a dream of an institution where the youth of Mississippi could glean an insight into that by which men scale the heights—education. This institution was to offer to Mississippi students unexcelled opportunities. That man was Major Millsaps, and his dream has come true. Millsaps College stands today a symbol of culture and presents a program of learning unhampered by political trends or other factors which tend to hamper freedom of thought. Millsaps is now a great center of learning—in the future it will be even greater.





ADMINISTRATION BUILDING

*Classes • Dramatic and
Glee Club Presentations
• Recitals • Assemblies*

The MILLSAPS

SEPTEMBER — and the campus hums with a new spirit — the excitement of going to school again pervades the atmosphere. We see new faces mingled with old ones. There is gay and carefree laughter — textbooks are bargained for—campus romances are in the making. A slight tinge of autumn is in the air. Football season is speculated upon—fraternities are seeking pledges—academic pursuits are discussed—but not seriously—yet.

“Br-r-r-ing”. — sounds the gong. Crowds disperse—a hurried joke is told—notebooks are gathered up—a pencil is borrowed — a short greeting is made to an old friend seen for the first time this year—and then the nine-months trek to classes is begun. Another year of education is under way.

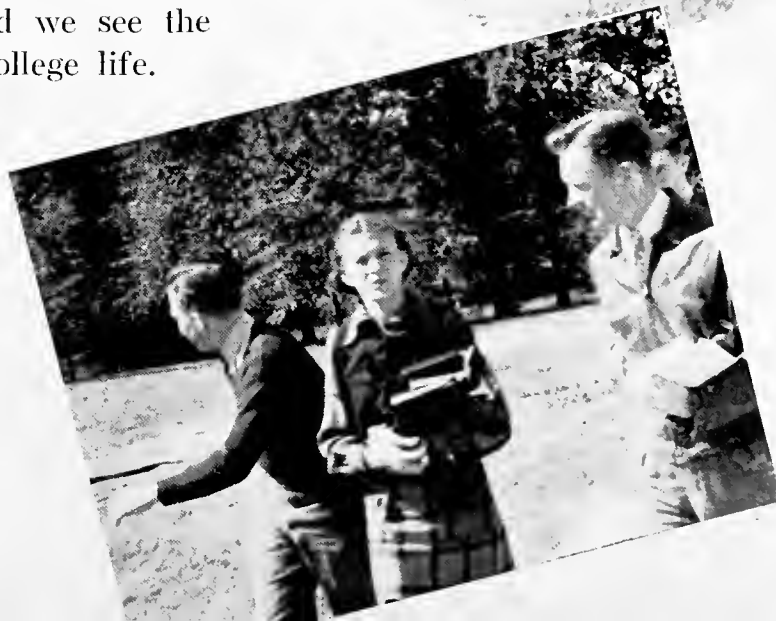


Science Hall, classes are out • It's on to the next class or, maybe the Grill, or, perhaps for a stroll about the campus.



CAMPUS

This delegation seems to be headed toward the Grill—where the nickelodeon blares forth—where we get our mail—or read the morning paper. Here also that last minute studying for a test is done—we buy our best girl a drink—politics are discussed—a game of pool is indulged in—late-risers grab a cup of java—and we see the lighter side of college life.





SULLIVAN-
HARRELL HALL
Chemistry • Geology
Zoology • Physics
Botany

BUIE MEMORIAL
GYMNASIUM
Basketball • The Grill
Physical Education



SCIENCE HALL NOTES

Dr. Sullivan: (to student coming in late)
"Ah, Good morning."

Prof. Harrell: "Now let us pay attention to
the roll call."

Dr. Riecken: "By George, if you want to
pass, you'll have to study."

Prof. Price: "By jacks, you just don't ever
meet lab anymore."

AT THE GYM

Coach Van: "Yeah, we're gonna have a good
ball club this year."

Coach Gaddy: "If Red wasn't so lazy, he
might make a good ball-player."

Duke: "'Ja ever hear the one about the two
little kids that had a nickel apiece - - - ?"

Bo: "Now, Y'all be out there tonight and
holler."

REMEMBER—?

Hoping it doesn't rain today—staying up all night to study for an exam to be taken tomorrow—saying Prof. is certainly a nice fellow—being broke most of the time—screaming your lungs out at the ball-game—how glad you were when tests were over—resolving to study next semester—what a cute girl she was—sleeping through a class—that all-important letter arriving from home—waiting for the Purple and White to be issued—being told that the classroom isn't the place to read it—and deciding that Millsaps is a pretty swell place after all . . . ?



*Proving that freshmen
do study • Going to
classes • Co-eds.*

Millsaps College
Library



Founders Hall ●
● Galloway Hall

IN THE DORMITORIES—

A gab-fest in the next room—no heat today—hot-water all used up—tooth-paste all gone—feast on a box from home—can't find that book — that afternoon nap — borrowing money to go to the picture-show — a round of favorite jokes—alarm clocks going off at the same time—and everybody is just one big happy family.

JUNE—'tis a beautiful day
—the bright sunshine
sheds its warmth on the
campus and fills one with ex-
uberance and a glad-to-be alive
feeling. Nevertheless there is a
sort of quiet melancholy sur-
rounding all—a sort of intangi-
ble something that is only felt
when one is going away. It
makes us forget some of the
petty jealousies we have har-
bored—the fits of anger that
came over us when everything
was not as we felt it should be.
This same feeling dispenses
memories of bad moments and
disappointments. Everything
that happened has been covered
in our minds by a net of mel-
low sentiment that embraces
all recollections and softens
them. Yes, we have come to
the parting of the ways—and
we regret it—so, it's . . . good-
bye, Millsaps.

*Kids again • talking it
over • chapel time*



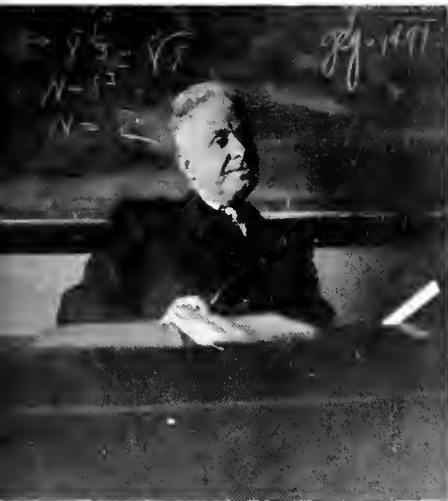


DAVID MARTIN KEY, President of Millsaps College

A learned scholar, a liberal educator, and a true gentleman, David Martin Key has served Millsaps not in vain. During his tenure of office, and under his guidance, old traditions have been hallowed, and new ones have come into being. Instrumental in the growth and development of our Alma Mater, he has learned to love Millsaps as Millsaps has learned to love him. It is with the deepest feeling and profoundest respect that we pay tribute to him. Possessed of an unusual wit, congenial personality, liberal thoughts, and a warm heart, he takes his place among other notables whose first thought was to give and not to take, and in the fulfillment of his task has left a mark which time will not erase but enlarge.

The FACULTY

DR. A. P. HAMILTON - - - - - Dean of Freshmen, Latin, German
 PROF. B. O. VAN HOOK - - - - - Mathematics
 MRS. MARY CLARK - - - - - Librarian
 MRS. MARGUERITE GOODMAN - - - - - English
 PROF. A. G. SANDERS - - - - - Romance Languages
 DR. J. M. SULLIVAN - - - - - Chemistry, Geology
 PROF. RALPH G. JONES - - - - - Journalism, Political Science



The F A C

PROF. J. B. PRICE - - - - - Mathematics, Chemistry
MRS. HENRY COBB - - - - - Spanish
PROF. G. L. HARRELL - - - - - Registrar, Physics, Astronomy
MISS VIRGINIA THOMAS - - - - - Religion
MRS. ARMAND COULET - - - - - Latin
DR. HENRY M. BULLOCK - - - - - Religion
PROF. PAUL RAMSEY - - - - - History, Sociology



U L T Y

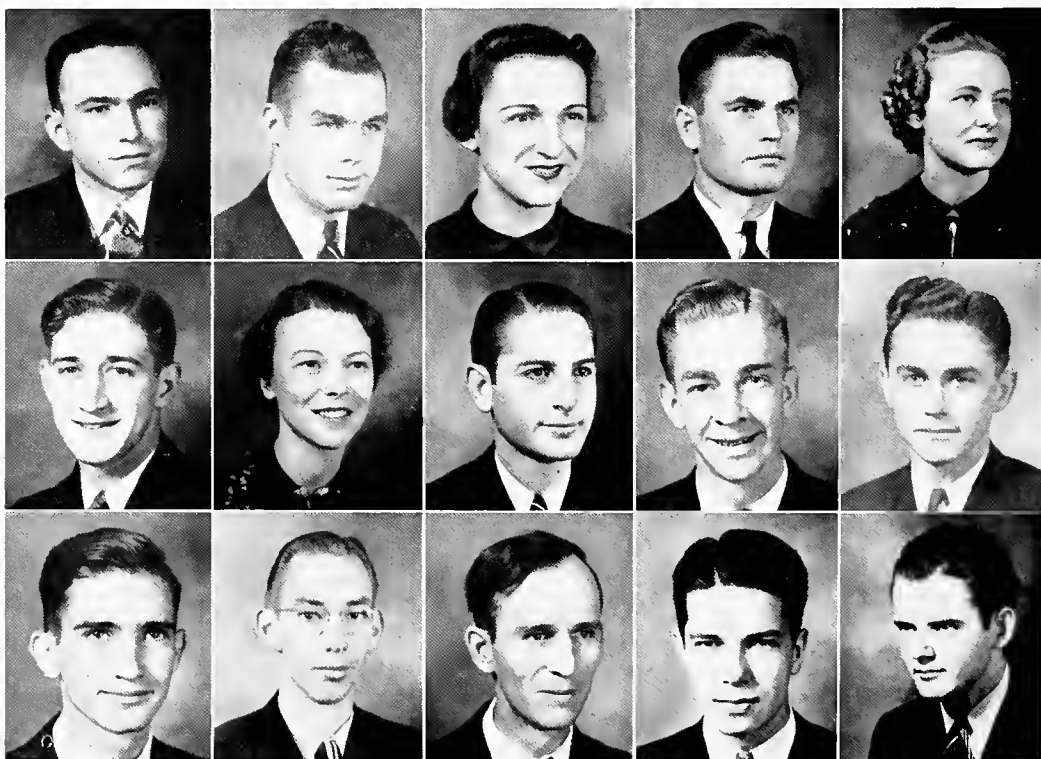
DR. WILLIAM E. RIECKEN - - - - - Biology
V. B. HATHORN - - - - - Bursar
DR. B. E. MITCHELL - - - - - Dean of Men, Mathematics
PROF. ROSS H. MOORE - - - - - History
PROF. R. R. HAYNES - - - - - Education
PROF. J. REESE LIN - - - - - Philosophy
DR. M. C. WHITE - - - - - English



STUDENT EXECUTIVE BOARD

This Board is composed of representatives from major phases of campus activities. Its primary purpose is to allot funds for student activities and compose legislation to govern and regulate student affairs.

BILLY FORD	President of Student Body
EDWIN EDWARDS	Vice Pres. of Student Body
LOLA DAVIS	Sec'y. Treas. of Student Body
G. C. CLARK	"M" Club
MILDRED CLEGG	Y. W. C. A.
WILEY CRITZ	Y. M. C. A.
SARA GORDON	Pan-Hellenic and Woman's Ass'n.
JEFF HESTER	Bobashela
FIELDING HOLLOWAN	Head Cheerleader
STACY KELLUM	Men's Pan-Hellenic
CHESTER MCKENZIE	Millsaps Singers
JOHN MCRAE	Millsaps Band
W. R. MURRAY	Ministerial League
VICTOR ROBY	Purple and White
FAGAN SCOTT	Debate



FORD, EDWARDS, DAVIS, CLARK, CLEGG,
CRITZ, GORDON, HESTER, HOLLOWAN, KELLUM,
MCKENZIE, MCRAE, MURRAY, ROBY, SCOTT



GORDON, CHICHESTER, BLOUNT, KINNAIRD, WATKINS

WOMAN'S ASSOCIATION

An organization which includes all the women students, this association meets twice-monthly to hear programs of especial interest to co-eds. This year a new constitution was drawn up which materially strengthened the group and advanced further the ideals of this organization.

OFFICERS

SARA GORDON	- - - - -	President
MAY ELLEN CHICHESTER	- - - - -	Vice President
IMOGENE BLOUNT	- - - - -	Program Chairman
JEAN KINNAIRD	- - - - -	Secretary
BERT WATKINS	- - - - -	Treasurer

BOB ASHELA

EDITORIAL STAFF

JEFF HESTER - - - - - Editor
FOSTER COLLINS - - - - - Assistant Editor
BILLY HOFFPAUIR - - - - - Assistant Editor
LUCILE STRAHAN - - - - - Class Editor
BERKLEY MUH - - - - - Organizations Editor
GLENN PHIFER - - - - - Assistant Organizations Editor
HAYS FLEMING - - - - - Sports
INA BELL FITTS - - - - - Greeks
SAM BIRDSONG - - - - - Snapshots
JIMMY CAVETT - - - - - Snapshots

MUH, FITTS, BIRDSONG, CAVETT, PHIFER,
STRAHAN, HOFFPAUIR, HESTER, COLLINS,
FLEMING



STAFF ..

BUSINESS STAFF

FAGAN SCOTT - - - - - Business Manager
JOHN GODBOLD - - - - - Associate Business Manager
WILLIAM BRADSHAW - - - - - Advertising Manager
FLOY THOMPSON - - - - - Circulation Manager
WILBOURN WASSON - - - - - Publicity
ANNIE LOU HEIDELBERG - - - - - Assistant
ANNIE K. DEMENT - - - - - Assistant
VIRGINIA GADDY - - - - - Assistant
ERNEST FELTS - - - - - Assistant

HEIDELBERG, WASSON, THOMPSON,
BRADSHAW, DEMENT, GADDY, SCOTT,
GODBOLD





NOWELL, ROBY, DAVIS, DELAMOTTE,
TUCKER, O'CONNOR

The PURPLE

EDITORIAL STAFF

VICTOR M. ROBY - - - - - Editor-in-Chief

TOM TUCKER - - - - - Copy Editor

BOB LEDBETTER - - - - - Proof Reader

WILBOURN WASSON - - - Exchange Editor and Bulletin Board Manager

NEWS—DONALD O'CONNOR, Editor; ERLON NOWELL, FOSTER COLLINS,
JEAN KINNAIRD, JAMES CONNER, ESS WHITE, ELLIS PARKER,
JIM LIVESAY, ROY CLARK, NAT ROGERS, EVELYN BROOKS, JOHN
RUNDLE, DOROTHY REEVES, ALBERT PIPPEN.

FEATURES—ROY DELAMOTTE, Editor; FRED BUSH, CARSON HILTON,
CARL MILLER, THOMAS ROBERTSON, CATHERINE DAVIS,
DAVID HILL, JOHN GODBOLD, MARGUERITE DARDEN.

SPORTS—JAMIE EWING, JOE BROOKS.

BUSINESS STAFF

JAMES C. DUNN - - - - - Business Manager

HUGH B. LANDRUM - - - - - Assistant Business Manager

LEWIS THAMES - - - - - Assistant

INA BELL FITTS - - - - - Assistant

ED BRENT - - - - - Assistant

JACK BAIN - - - - - Circulation

BILL ESTES - - - - - Circulation

and WHITE..

BAIN, THAMES, FITTS, LANDRUM, ESTES,
DUNN



Snap SHOTS

Faculty on parade. "A Servant in the House." "Down with the Choes." The last locks. Ho-Hum. "So that's the way it is." A tense moment. Go get 'em. "Have you heard?" Registration day. "We must face the situation." Just standing around. Jovial Tom. Coach tells 'em. KD float. Well, Carolyn? Sponsoring around. Hold 'em, Majors. Eugene is curious.





Snap SHOTS

Kappa Sigs. Sponsors. Sarah and Blackie. It looks like Glenn. KA float. NYAing. Majors toot 'em up. Intelligence Tests. Lucile tells one. Between classes. To classes. After the accident. All over. "On, boys, on". A good view. Just pals. Making up. "Is that the way you worked it?" Up the avenue.





The C L

*Classroom • Lab
Library • Auditorium
Pleasant Interlude*

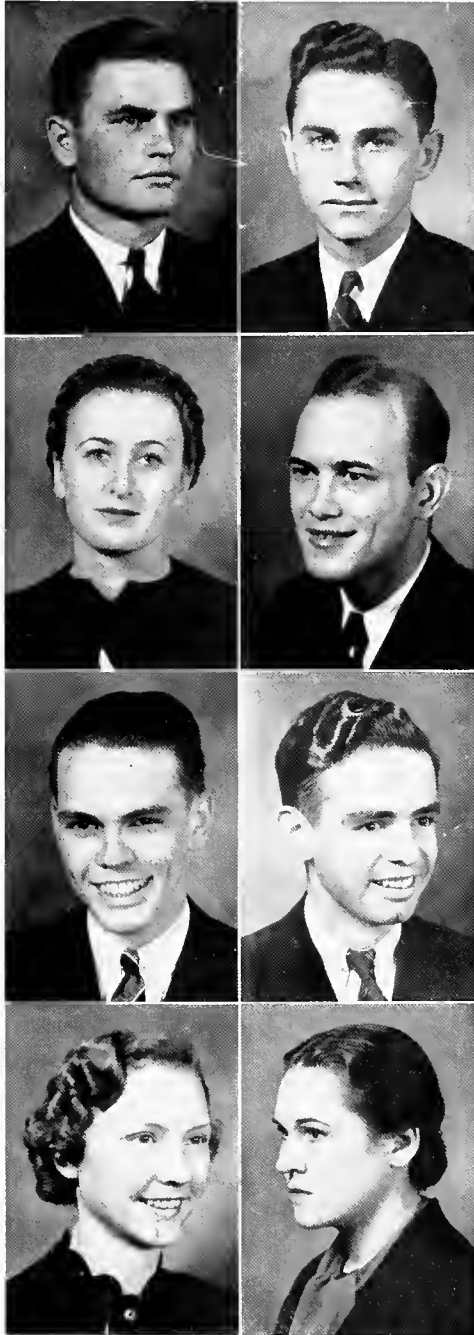


A S S E S

Since the dawn of educational institutions, students have been divided into sections for classification purposes. Passing from one class to another is passing from one educational milestone to the next until the completion of the journey. A freshman enters college with eyes cast toward the future. For four years he studies, and grows in body, mind, and character. As a senior, he leaves behind the integrated community where he has worked and played—a finished product with a determination to carve his niche in the wall of life with the tools with which he has been practicing.



★
S E N I O R



G. C. CLARK, JR., B. S.
President of Senior Class
Waynesboro, Miss.
SIGMA RHO CHI

Omicron Delta Kappa; Baseball 1; Track 1, 4; Basketball 1, 2, 3, 4; Football 1, 2, 3, 4; Capt. Football 4; Most valuable football player award 4; "M" Club 2, 3, 4; Pres. "M" Club 4; Science Club 3; Ramblers Club 4; Student Assistant 2, 3, 4; Student Executive Board 4.

WILLIAM STACY KELLUM, B. S.
Vice Pres. of Senior Class
Shaw, Miss.
KAPPA SIGMA

Omicron Delta Kappa; Y. M. C. A. Cabinet 3, 4; Pan-Hellenic 3, 4; Pres. Pan-Hellenic 4; I. R. C. 3, 4; Student Ex. Bd. 4.

NELL LOUISE PERMENTER, B. A.
Sec'y.-Treas. Senior Class
Jackson, Miss.
KAPPA DELTA

Most beautiful Co-ed 4; Millsaps Players 1, 2, 4; Classical Club 1, 2, 3; Feature Section Bobashela 3; Sec'y.-Treas. Class 3; Pan-Hellenic 2, 3; Sec'y. Woman's Ass'n. 2.

AUBREY ADAMS, B. S.
Longview, Wash.
PI KAPPA ALPHA

Copiah-Lincoln Jr. College 1, 2; Football 3; Pre-Med. Club 3, 4; Science Club 3, 4; Student Assistant 4; Alpha Epsilon Delta 4.

MOUNGER FAVRE ADAMS, B. A.
Lumberton, Miss.
KAPPA ALPHA

Classical Club 1, 2; Eta Sigma Phi 3, 4; Pres. Eta Sigma Phi 4; Millsaps Singers 2, 3, 4; Millsaps Players 2, 3, 4; Beethoven Club 3; Student Assistant 3, 4; Ramblers Club 4.

GENE BINGHAM, B. S.
Shreveport, La.
SIGMA RHO CHI

Football 1; Track 1; Science Club 1, 2

IMOGENE BLOUNT
Bassfield, Miss.
KAPPA DELTA

Sigma Lambda; Whitworth College 1, 2; Y. W. C. A. 3, 4; Y. W. C. A. Cabinet 4; Blue Ridge Delegate 3; Blue Ridge Scholarship 4; Millsaps Singers 3, 4; Alpha Psi Omega 3, 4; Sec'y. of Woman's Association 4.

OTTOMESE CASSELS
Gloster, Miss.
Millsaps Barbarians

Millsaps Singers 1, 2, 3, 4; Y. W. C. A. 1, 2, 3, 4; Classical Club 1, 2, 3; Basketball 2, 3; Majorette Club 3.

B O B A S

1 9

C L A S S

SELLA CASSELS, B. A.
Gloster, Miss.

MILLSAPS BARBARIANS

Y. W. C. A. 1, 2, 3, 4; Classical Club 1, 2, 3;
Sec'y. Classical Club 3; Millsaps Singers 1, 2, 3, 4;
Majorette Club 3, 4; Vice Pres. Majorettes 4;
Student Assistant 4.

NEAL WADE CIRLOT, B. S.
Moss Point, Miss.

SIGMA RHO CHI

Y. M. C. A. 1; Basketball 1, 2; Baseball 1, 2;
Track 1, 4; Football 1, 2, 3, 4; Millsaps Players
2, 3; Millsaps Singers 1, 2, 3; P & W Staff 3;
Intramural Director 3; Pan-Hellenic 4; "M"
Club 4; Publicity Officer "M" Club 4.

LEONARD ELLIS CLARK, B. S.
Jackson, Miss.

THETA KAPPA NU

Hinds County Junior College 1; Spanish Club 4.

MILDRED CLEGG, B. A.
Brookhaven, Miss.

BETA SIGMA OMICRON

Whitworth College 1, 2; Sigma Lambda 4;
Treasurer Y. W. C. A. 3; Pres. Y. W. C. A. 4;
Editor Co-ed Edition Purple & White 3; Winner
Women's Oratorical Contest 3; Chi Delta 4;
Eta Sigma Phi 4; Alpha Psi Omega 4; Le Cercle
Francais 4; Christian Council 4; Student Execu-
tive Board 4; "Who's Who in American Colleges
and Universities" 4.

FOSTER COLLINS, B. S.
Yazoo City, Miss.

KAPPA ALPHA

Omicron Delta Kappa; Student Assistant 2, 3;
S. I. M. A. Contestant 2; Purple and White
Staff 2, 3; I. R. C. 3; Bobashela Staff 3; Dean's
List 3.

VIRGINIA COLLINS, B. A.
Jackson, Miss.

BETA SIGMA OMICRON

Louisiana College 1, 2, 3; Y. W. C. A. 4; Eta
Sigma Phi 4.

MARGUERITE COLTHARP, B. A.
New Albany, Miss.

KAPPA DELTA

Grenada College 1, 2; Y. W. C. A. 3, 4; Football
Sponsor 4; Beethoven Club 3, 4; Millsaps Singers
3, 4.

WILLIAM MARCUS COMMANDER, B. S.
Philadelphia, Miss.

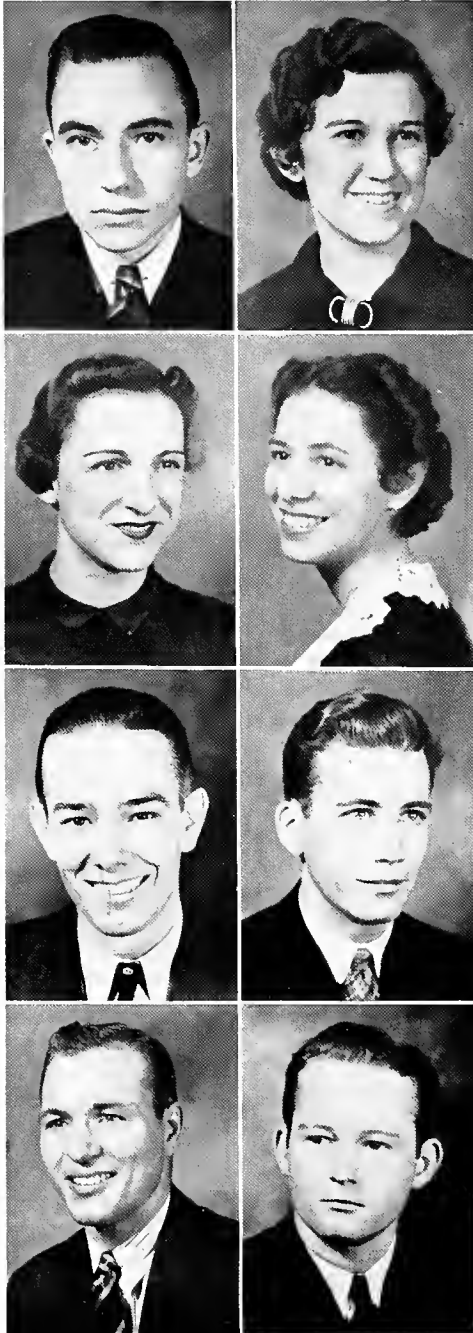
East Central Junior College 1, 2; Y. M. C. A.
3, 4; Science Club 3, 4; Pre-Med. Club 3, 4;
Alpha Epsilon Delta 3, 4; Dean's List 3, 4;
Pres. Rambler's Club 4; D. A. R. Scholarship 4.



H E L A

3 8

★
S E N I O R



JAMES CONNER, B. A.
Hattiesburg, Miss.

MILLSAPS BARBARIANS
Y. M. C. A. 1, 2, 3, 4; Y. M. C. A. Cabinet 4;
Beethoven Club 1, 2, 3, 4; Jackson Intercollegiate
Council 2, 3, 4; I. R. C. 4; Purple and White 4;
Kit Kat 4; Millsaps Singers 4.

CATHERINE DAVIS, B. S.
Brookhaven, Miss.

CHI OMEGA
Sigma Lambda; Hinds County Junior College
1, 2; Y. W. C. A. 3, 4; Millsaps Singers 3, 4;
Purple and White 4; Editor Co-Ed Edition 4.

LOLA DAVIS, B. S.
Jackson, Miss.

KAPPA DELTA
Sigma Lambda; Pi Kappa Delta 1, 2, 3, 4;
Vice Pres. Pi Kappa Delta 3, 4; Chi Delta
1, 2, 3, 4; Pres. Chi Delta 2, 3; Millsaps Singers
1, 2, 3, 4; Purple and White 1; Sec'y. Major
Club 2; Treas. Y. W. C. A. 2; Student Assistant
2; Vice Pres. Sigma Lambda 3; Pres. Sigma
Lambda 4; Treas. Woman's Pan-Hellenic 3;
Sec'y. Woman's Pan-Hellenic 4; La Tertulia 3;
Sec'y.-Treas. Student Body 4; Student Exec.
Bd. 4; Rambler's Club 4; "Who's Who in Ameri-
can Universities and Colleges" 4.

ANNIE KATHERINE DEMENT, B. A.
Jackson, Miss.

KAPPA DELTA
Randolph-Macon 1, 2; Le Cercle Francais 4;
Eta Sigma Phi 4; Bobashela Staff 4.

GEORGE THOMAS DORRIS, B. S.
Jackson, Miss.

SIGMA RHO CHI
Baseball 1; Track 1; Science Club 2, 3, 4; Ramb-
ler's Club 3; Bobashela Staff 3.

JAMES CAMMACK DUNN, B. S.
Greenville, Miss.

PI KAPPA ALPHA
Omicron Delta Kappa; Band 1, 2; Tennis 1, 3;
Purple and White 1, 2, 3, 4; Business Manager
Purple and White 3, 4; Blue Ridge Scholarship
2, 3; Kit Kat 2, 3, 4; Pan-Hellenic 3; I. R. C. 3, 4.

RALPH JERRY ELFERT, JR., B. S.
Seminary, Miss.

SIGMA RHO CHI
Jones County Jr. College 1, 2; Spanish Club 4;
Football 3, 4; Y. M. C. A. Cabinet 3, 4; Science
Club 3, 4; Dean's List 3, 4; Student Assistant
4; Baseball 3; "M" Club 4.

SAMUEL AUBREY ELLIS, B. S.
Lauderdale, Miss.

THETA KAPPA NU
Basketball 1; Basketball Manager 2; Baseball
1, 2, 3, 4; Millsaps Singers 1, 3, 4; "M" Club
2, 3, 4; Sec'y. "M" Club 4; Science Club 3;
Vice Pres. Rambler's Club 4.

B O B A S

1 9

C L A S S

MILDRED ENOCHS, B. A.
Jackson, Miss.
CHI OMEGA

Belhaven College 1; Millsaps Singers 1; Classical Club 2, 3; Y. W. C. A. 2, 4; Le Cercle Francais 3, 4.

WILLIAM R. FORD, B. A.
Taylorsville, Miss.
KAPPA ALPHA

Omicron Delta Kappa; Buie Declamation Medal 2; Varsity Debater 2, 3, 4; Pi Kappa Delta 2, 3, 4; Pres. Pi Kappa Delta 3, 4; Winner Miss. Oratorical Contest 3, 4; Carter Oratorical Medal 3, 4; Bobashela Staff 3; Vice Pres. Class 3; Eta Sigma Phi 3, 4; I. R. C. 3, 4; Vice Pres. I. R. C. 4; Y. M. C. A. Cabinet 3, 4; Pres. Student Body 4; Student Executive Board 4; Master Major 4; Christian Council 4; Student Assistant 3, 4; Dean's List 4; Who's Who in American Universities and Colleges 4.

LUCIEN R. FREEMAN, B. A.
Kansas City, Missouri

MILLSAPS BARBARIANS

Junior College of K. C. 1; Ministerial League 2, 3, 4.

MAUD LYLE GOLDEN, B. A.
Laurel, Miss.
CHI OMEGA

Whitworth College 1, 2; Classical Club 3; Y. W. C. A. 3, 4.

ALEX GORDON, JR., B. S.
Jackson, Miss.
KAPPA ALPHA

Millsaps Players 3, 4; Vice Pres. Science Club 3; Assistant Boxing Manager 4.

SARA GORDON, B. S.
Vaiden, Miss.

BETA SIGMA OMICRON

Sigma Lambda; Vice Pres. Sigma Lambda 4; Grenada College 1, 2; Millsaps Singers 3, 4; Y. W. C. A. 3, 4; Y. W. C. A. Cabinet 4; Feature Section Bobashela 3, 4; Blue Ridge Delegate 3; Pres. Woman's Ass'n. 4; Pres. Woman's Pan-Hellenic 4; Vice Pres. Classical Club 4; Vice Pres. Christian Council 4; Student Ex. Bd. 4; Dean's List 4; "Who's Who in American Universities and Colleges" 4.

FRANCIS HAMILTON, B. A.
Jackson, Miss.
PI KAPPA ALPHA
Tennis 1, 2, 3, 4.

WILLIAM GILES HARDIN, B. S.
Jackson, Miss.

PI KAPPA ALPHA

Millsaps Players 1; Boxing 2, 3, 4; Capt. Boxing 2, 3, 4; Pre-Med. Club 3, 4; Science Club 4.



H E L A

3 8

★
S E N I O R



WIRT TURNER HARVEY, B. S.
Water Valley, Miss.

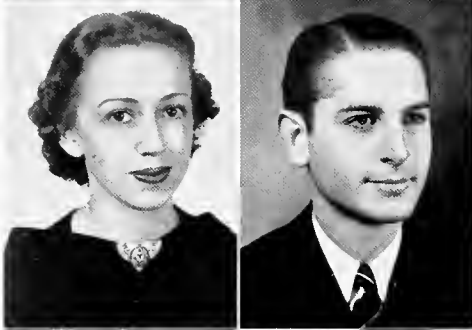
PI KAPPA ALPHA

Beethoven Club 1, 2, 3, 4; Pres. Beethoven Club 2, 3, 4; Y. M. C. A.; Dean's List 3, 4.

CHARLES HEGWOOD, B. S.
Pineville, Miss.

SIGMA RHO CHI

Jones County Jr. College 1, 2; Football 3, 4; Basketball 3, 4; Capt. Basketball 4; Baseball 4; "M" Club 3, 4; Ramblers' Club 4; Track 4.



ANNIE LOU HEIDELBERG, B. S.
Jackson, Miss.

CHI OMEGA

Y. W. C. A. 1, 2, 3, 4; Millsaps Singers 1; Science Club 3; Majorette Club 3, 4; Vice Pres. Majorette Club 3.

JEFFERSON MOORE HESTER, B. S.
Laurel, Miss.

KAPPA SIGMA

Y. M. C. A. 1, 2, 3; Y. M. C. A. Cabinet 2, 3; Millsaps Singers 3; Bobashela Staff 2, 3, 4; Editor Bobashela 4; Student Executive Bd. 4; Le Cercle Francais 4.

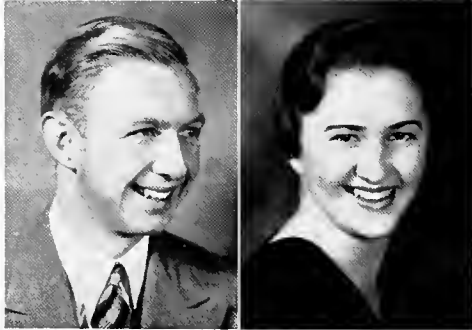


JOHN HAROLD HETRICK, B. S.
Jackson, Miss.

SYBLE HINSON, B. S.
Lumberton, Miss.

BETA SIGMA OMICRON

Pearl River Jr. College 1, 2; Y. W. C. A. 3, 4; Major Club 3; Ramblers' Club 4; Dean's List 4.



WILLIAM IVY HOFFPAUR, B. S.
Jackson, Miss.

THETA KAPPA NU

Millsaps Singers 1, 2, 3, 4; Millsaps Players 1, 2, 3, 4; Alpha Psi Omega 2, 3, 4; Tennis 1, 3, 4; Purple and White 1, 3; SIMA Contestant 2, 3, 4; Eta Sigma 3, 4; Student Assistant 4; Bobashela Staff 4.

MARJORIE HOGUE, B. S.
Natchez, Miss.

PHI MU

M. S. C. W. 1, 2.

B O B A S
I 9

C L A S S

MARY LOUISE HOLLOMAN, B. S.
Jackson, Miss.

KAPPA DELTA
Delta State Teachers College 1, 2; Y. W. C. A. 2, 3, 4; Millsaps Singers 2, 3, 4; Major Club 3.

JAMES KELLY, B. A.
Raleigh, Miss.

MILLSAPS BARBARIANS
Clarke College 1; Ministerial League 2, 3, 4; Y. M. C. A. 2, 3, 4; Y. M. C. A. Cabinet 4; Jackson Interracial Council 2, 3, 4; Pres. Interracial Council 4; Le Cercle Francais 3, 4; Eta Sigma Phi 3, 4; Christian Council 3, 4; Pres. Christian Council 4.

WILLIAM GILLON KIMBRELL, B. A.
Jackson, Miss.

PI KAPPA ALPHA
Omicron Delta Kappa; Millsaps Singers 1, 2, 3, 4; Business Manager Singers 3; Tennis 1, 2, 3; Millsaps Players 1, 2, 3, 4; Alpha Psi Omega 1, 2, 3, 4; Eta Sigma Phi 2, 3, 4; Eta Sigma 3, 4; Y. M. C. A.; Pres. Alpha Psi Omega 4; Travelli Scholarship 3, 4.

JEAN KINNAIRD, B. A.
Jackson, Miss.

Sigma Lambda; Historian Sigma Lambda 4; Classical Club 1; Purple and White 2, 3, 4; Y. W. C. A. 3, 4; Y. W. C. A. Cabinet 4; Chi Delta 3, 4; Sec'y.-Treas. Chi Delta 3; Pres. Chi Delta 4; Sec'y. Woman's Ass'n. 3; Program Chairman Woman's Ass'n. 4; Majorette Club 3, 4; Blue Ridge Delegate 3; Le Cercle Francais 4.

MARY SUE LAMB, B. S.
Laurel, Miss.

BETA SIGMA OMICRON
Whitworth College 1, 2; French Club 3; Y. W. C. A. 3, 4; Y. W. C. A. Cabinet 4.

WILLIAM MOORE LAUDERDALE, B. S.
Jackson, Miss.

KAPPA ALPHA
Omicron Delta Kappa; Pres. Omicron Delta Kappa 4; Band 1, 2, 3, 4; Staff Sergeant 3; Technical Sergeant 4; Band Publicity Officer 3; Purple and White 1, 2; Clark Essay Medal 2; Kit Kat 2, 3, 4; Student Assistant 3, 4; Pan-Hellenic 4; Sec'y. Pan-Hellenic 4; "Who's Who in American Universities and Colleges" 4.

RUBY LITTON, B. A.
Shaw, Miss.

KAPPA DELTA
Grenada College 1, 2; Y. W. C. A. 3, 4; Classical Club 3; Beethoven Club 3, 4; Vice Pres. Beethoven Club 3, 4.

CLIFFORD MACGOWAN, JR.
Jackson, Miss.

KAPPA ALPHA
Science Club 2, 3; Ramblers' Club 4.

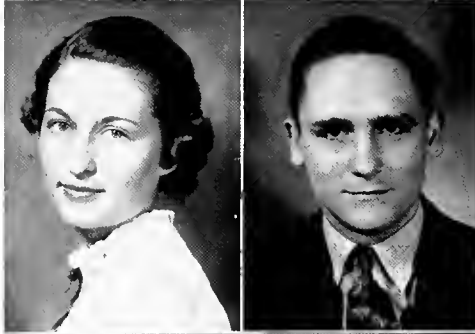


H E L A

3 8



SENIOR



RUTH MARTIN, B. S.

Midnight, Miss.

KAPPA DELTA

M. S. C. W. 1, 2; Y. W. C. A. 3, 4.



EFFIE EUGENIA MAULDIN, B. A.

Baldwyn, Miss.

Grenada College, 1, 2; Classical Club 3; Millsaps Singers 3, 4; Y. W. C. A. 3, 4.

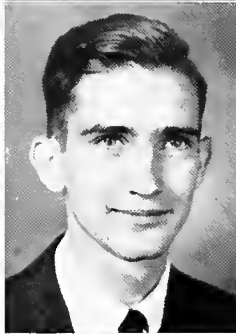


ALTON McALILLY, B. S.

Louisville, Miss.

SIGMA RHO CHI

Sunflower Junior College 1, 2; Football 3, 4; "M" Club 3, 4.



CHESTER MCKENZIE, B. S.

Memphis, Tenn.

THETA KAPPA NU

W. T. S. T. C. 1, 2; Band 2, 3; Millsaps Singers 2, 3, 4; Librarian 2, 3; Pres. Singers 4; Millsaps Players 3, 4; Alpha Psi Omega 3, 4; Voice Scholarship 2, 3, 4; Science Club 3, 4; Y. M. C. A. Cabinet 3, 4.



JOHN M. McRAE, B. S.

Jackson, Miss.

KAPPA ALPHA

Band 1, 2, 3, 4; Drum-Major 2, 3, 4; Vice Pres. and Business Mgr.-Elect 2; Staff Sergeant 4; Assistant Director Band 3, 4; Pres. Band 3, 4; Science Club 1; Y. M. C. A. 1, 2; Student Exec. Bd. 3, 4.



CONAN HUMBER MILLSTEIN, B. S.

Jackson, Miss.

Pre-Med. Club 1, 2, 3, 4; Science Club 1, 2, 3, 4.



JOSEPHINE BERKLEY MUH, B. S.

Jackson, Miss.

CHI OMEGA

Miss Millsaps; Sigma Lambda; Millsaps Singers 1, 2, 3, 4; Vice Pres. Singers 3; Purple and White 1, 2; Treas. Beethoven Club 2; Y. W. C. A. 1, 2, 3; Sec'y. Y. W. C. A. 2, 3; Pan-Hellenic 3, 4; Pres. Pan-Hellenic 3; Chi Delta 2, 3, 4; Vice Pres. Chi Delta 4; I. R. C. 3, 4; Student Assistant 4; Bobashela Staff 4.

B O B A

C L A S S

LEE ROY MURPHREE, B. S.
Okolona, Miss.

THETA KAPPA NU

Commonwealth Scholarship 3; Pre-Med. Club 1, 2, 3; Pres. Pre-Med. Club 2, 3; Science Club 1, 2, 3; Pres. Science Club 3; Alpha Epsilon Delta 2, 3; Vice Pres. Alpha Epsilon Delta 3; Student Assistant 2, 3; Pan-Hellenic 3; Dean's List 3.

WILLIAM RICHARD MURRAY, B. A.
Harrisville, Miss.

MILLSAPS BARBARIANS

Ministerial League 2, 3, 4; Pres. Ministerial League 4; French Club 3, 4; Y. M. C. A. Student Executive Board 4.

CARL RAY NEWSOM, B. S.
Madison, Miss.

Band 1, 2, 3; Y. M. C. A. 1, 2, 3; Science Club 1, 2, 3; Pre-Med. Club 1, 2, 3; Alpha Epsilon Delta 2, 3; Dean's List 2, 3; Ramblers' Club 3; Le Cercle Francais 3; Student Assistant 3.

MILTON PEDEN, B. S.
Schlater, Miss.

MILLSAPS BARBARIANS

Sunflower Jr. College 1, 2; Ministerial League 3, 4.

JOHN RIMMER, B. S.
Camden, Miss.

SIGMA RHO CHI

Band 1, 2, 3; Track 1; Science Club; Pre-Med. Club, Pan-Hellenic 3, 4; Y. M. C. A.; Alpha Epsilon Delta 3, 4; Pres. Alpha Epsilon Delta 4; Student Assistant 4.

VICTOR MILLS ROBY, B. S.
Jackson, Miss.

PI KAPPA ALPHA

Omicron Delta Kappa; Vice Pres. Omicron Delta Kappa 4; Debate 1; Band 1; Purple and White 1, 2, 3, 4; Freshman Editor Purple and White 1; Editor Purple and White 3, 4; Millsaps Singers 1, 2, 3, 4; Y. M. C. A.; Millsaps Players 1, 3; College Publicity 2; Classical Club 2; I. R. C. 3; Kit Kat 3, 4; Student Exec. Bd. 3, 4.

LEE ROGERS, JR.
New Albany, Miss.

KAPPA ALPHA

Freshman Y. M. C. A. Cabinet; Millsaps Singers 1; Purple and White 1; Ramblers' Club 2; Science Club 1, 2, 3, 4; Pre-Med. Club 2, 3, 4.

AVA SANDERS, B. S.
Glen Allen, Miss.

CHI OMEGA

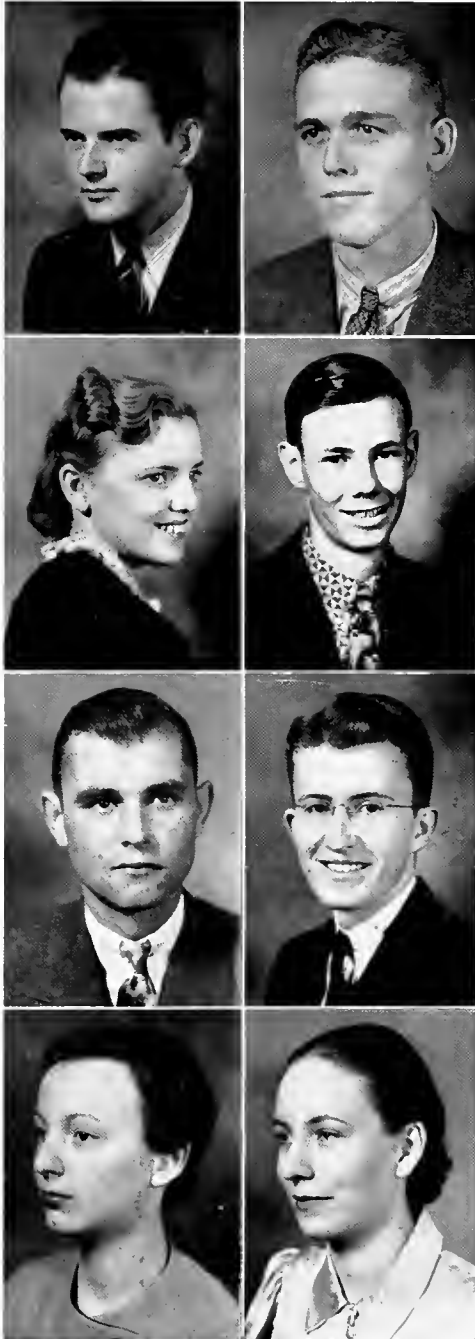
Delta State Teachers College 1, 2; Alpha Psi Omega 3, 4; Pre-Med. Club 3, 4; Alpha Epsilon Delta 3, 4; Feature Section Bobashela 3, 4.



E L A



SENIOR



FAGAN SCOTT, B. A.

Jackson, Miss.

PI KAPPA ALPHA

Omicron Delta Kappa; Varsity Debater 2, 3; Eta Sigma Phi 2, 3, 4; Associate Editor "Nuntius" 3; Spanish Club 3; Millsaps Singers 3, 4; Bus. Mgr. Singers 4; Pi Kappa Delta 3, 4; I. R. C. 3, 4; Pres. I. R. C. 4; Student Exec. Bd. 4; Y. M. C. A. Cabinet 4; Student Assistant 4; Bus. Mgr. Bobashela 4; "Who's Who among Students in American Universities and Colleges" 4.

EUGENE BAYLIS SHANKS, B. A.

Sumrall, Miss.

Football 1; Galloway Lit. Society 1, 2; Classical Club 1, 2; Tennis 1, 2, 3; Science Club 2; Student Assistant 2; Debate Club 4; Pre-Law Club 4; Eta Sigma 4; Pi Kappa Delta 4.

LAURA MAE SHRADER, B. S.

Hazelhurst, Miss.

MILLSAPS BARBARIANS

Copiah-Lincoln Jr. College 1, 2; Y. W. C. A. 3, 4; Ramblers' Club 4; Student Assistant 4.

LAVELLE SIMS, B. S.

Jackson, Miss.

SIGMA RHO CHI

Basketball 1, 2, 3; Manager Basketball 4; S. I. M. A. Contestant 2, 3, 4; "M" Club 4; Eta Sigma 3, 4; Dean's List 3, 4; Student Assistant 3, 4.

J. D. SMITH, B. S.

Madison, Miss.

SIGMA RHO CHI

Y. M. C. A.; Pres. Spanish Club 4; Science Club; Freshman Football; Bourgeois Medal 3; Graduate Assistantship Georgia School of Technology.

A. C. SPINKS, B. S.

Decatur, Miss.

THETA KAPPA NU

Decatur Junior College 1, 2; Kit Kat.

LUCILE STRAHAN, B. S.

Jackson, Miss.

KAPPA DELTA

Millsaps Singers 1, 2, 3, 4; Y. W. C. A. 1, 2, 3, 4; Millsaps Players 1, 2, 3, 4; Alpha Psi Omega 2, 3, 4; Sec'y. Treas. Alpha Psi Omega 2, 3, 4; Classical Club 2, 3; Purple and White 3; Vice Pres. Woman's Association 3; Bobashela Staff 4.

ELIZABETH SUTTLE, B. S.

Edwards, Miss.

KAPPA DELTA

Hinds County Jr. College 1, 2; Dean's List 3, 4; Student Assistant 4.

B O B A S

1 9

C L A S S

FLOY DENTON THOMPSON, B. S.

Jackson, Miss.

CHI OMEGA

Y. W. C. A. 1, 2; Millsaps Players 1, 2, 3; Alpha Psi Omega 2; Science Club 3; Pre-Law Club 4; Bobashela Staff 4; Le Cercle Francais 4; Feature Section Bobashela 4.

CARROLL VARNER, JR. B. A.

Jackson, Miss.

SIGMA ALPHA EPSILON

Southwestern 1, 2; Northwestern 3.

RODNEY WALKER, B. S.

Lauderdale, Miss.

THETA KAPPA NU

Y. M. C. A. 1; Basketball 1, 2; Football 1, 2, 3, 4; Boxing 3; "M" Club 2, 3, 4; Vice Pres. "M" Club 4; Dean's List 3, 4; Alternate Capt. Football 4; Student Assistant 4.

HUBERT GILL WALLACE, B. S.

Shelby, Miss.

MILLSAPS BARBARIANS

Sunflower Junior College 1, 2; Ministerial League.

MARJORIE AGNES WALTERS, B. S.

Jackson, Miss.

Purple and White 1; Chi Delta 1, 2, 3, 4; Vice Pres. Chi Delta 3; Sec'y.-Treas. Chi Delta 4; Majorette Club 3, 4; Sec'y.-Treas. Majorette Club 4; Spanish Club 3; Intramural Class Manager 3, 4.

WILBOURN WASSON, B. S.

Columbus, Miss.

PI KAPPA ALPHA

Classical Club 1, 2; Eta Sigma Phi 2, 3, 4; Purple and White 2, 3, 4; Millsaps Singers 3; Spanish Club 3, 4; Kit Kat 4; Bobashela Staff 4; Y. M. C. A. Cabinet 3, 4.

JAMES WILLIAMS, B. S.

Brandon, Miss.

SIGMA RHO CHI

Pearl River Junior College 1, 2.

THOMAS MARVIN WILLIAMS, B. S.

Lexington, Miss.

Holmes Jr. College 1, 2; Debate Club 3, 4; Varsity Debater 4; Pi Kappa Delta 4; Band 3, 4; Pres. Pre-Law Club 4.



H E L A

3 8

The

J U N I O R



T. M. HARDY.....Natchez
President of Junior Class
Kappa Sigma

JOE AINSWORTH.....Raymond
Vice-President of Junior Class
Kappa Alpha

JANE HYDE WEST.....Shaw
Sec'y.-Treas. of Junior Class
Kappa Delta

BILL AINSWORTH.....Bay Springs
Pi Kappa Alpha

HAMPTON BALLARD.....Shaw

WIRT ADAMS BEARD.....Jackson
Kappa Alpha

BILL BIZZELL.....Pace
Pi Kappa Alpha

DAVID BLOUGH.....Okolona

EVELYN BROOKS.....Carthage
Beta Sigma Omicron

SARA BUIE.....Jackson
Phi Mu

FRED BUSH.....Brookhaven
Pi Kappa Alpha

ROMA FERN CHAMPENOIS.....Hattiesburg
Kappa Delta

MYRTLE CHATHAM.....Rose Hill
Beta Sigma Omicron

MAY ELLEN CHICHESTER.....Jackson
Chi Omega

MARGARET CONN.....Monticello
Kappa Delta

CHARITY CRISLER.....Jackson
Phi Mu

B O B A

1 9

C L A S S

WILEY CRITZ.....Clarksdale
Sigma Alpha Epsilon
 GRACE CUNNINGHAM.....Corinth
Chi Omega
 ROY DELAMOTTE.....Moss Point
Theta Kappa Nu

CLARA FRANCES DENT.....Jackson
Phi Mu
 BLANTON DOGGETT.....Kossuth
Pi Kappa Alpha
 EDWIN EDWARDS.....Gulfport
Kappa Sigma

BEN EVANS.....Water Valley
Kappa Alpha
 JAMIE EWING.....Vaughan
Kappa Sigma
 ERNEST FELTS.....Batesville
Kappa Sigma

HAYS FLEMING.....Minter City
Kappa Sigma
 JOHN GODBOLD.....Jackson
Pi Kappa Alpha
 OLLIE MAY GRAY.....Burnsville

JAMES HAMILTON.....Tutwiler
Kappa Sigma
 EARL HARPER.....Brandon
 CHARLES HICKS.....Minter City

FIELDING HOLLOMAN.....Jackson
Kappa Sigma

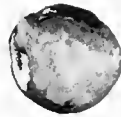


S H E L A

3 8

The

J U N I O R



MARJORIE HULL.....Lawrence
Beta Sigma Omicron

ROBERT IVY..... Jackson
Kappa Alpha

HUGH LANDRUM..... Jackson
Pi Kappa Alpha

BERNARD LUKE..... Jackson
Theta Kappa Nu

W. T. MANGUM..... Jackson

RUBY MARTIN.....Midnight
Kappa Delta

ALBERT MAY..... Jackson
Pi Kappa Alpha

TORRANCE MAXEY..... Noxapater

DOT MCGEE..... Collins
Beta Sigma Omicron

M. L. MCKINNON.....Lauderdale
Kappa Sigma

CORINNE MITCHELL.....Plantersville
Kappa Delta

PEARL NOBLES..... Jackson
Chi Omega

DONALD O'CONNOR.....Vicksburg
Millsaps Barbarians

BILL PALMER..... Brookhaven
Pi Kappa Alpha

ELLIS PARKER.....Laurel

VIRGINIA PETTIT..... Jackson
Kappa Delta

CECIL PITARD..... Jackson
Kappa Sigma

B O B A

1 9

C L A S S



MARY ELEANOR SHAUGHNESSY..... Jackson
Kappa Delta

PAUL SHEFFIELD..... Jackson
Pi Kappa Alpha

JOE SIMPSON..... Ackerman
Sigma Rho Chi

GRANT STEWART..... New Hebron
Sigma Rho Chi

MARY LOU STRAIT..... Gloster

LILLIAN DOUGLAS SWAYZE..... Yazoo City
Kappa Delta

BEN SYKES..... Jackson
Kappa Sigma

KATHERYNE TERRELL..... Prentiss
Kappa Delta

LEWIS THAMES..... Sanatorium
Kappa Sigma

JOHN THOMPSON..... Bassfield

CECIL TRIPLETT..... Mashulaville
Sigma Rho Chi

TOM TUCKER..... Kosciusko
Pi Kappa Alpha

JEANNETTE VAN ZANDT..... Jackson
Chi Omega

SUE FRANCES WATKINS..... Grenada

ELIZABETH WILSON..... Pelahatchie
Kappa Delta

CHARLES WRIGHT..... Jackson
Pi Kappa Alpha

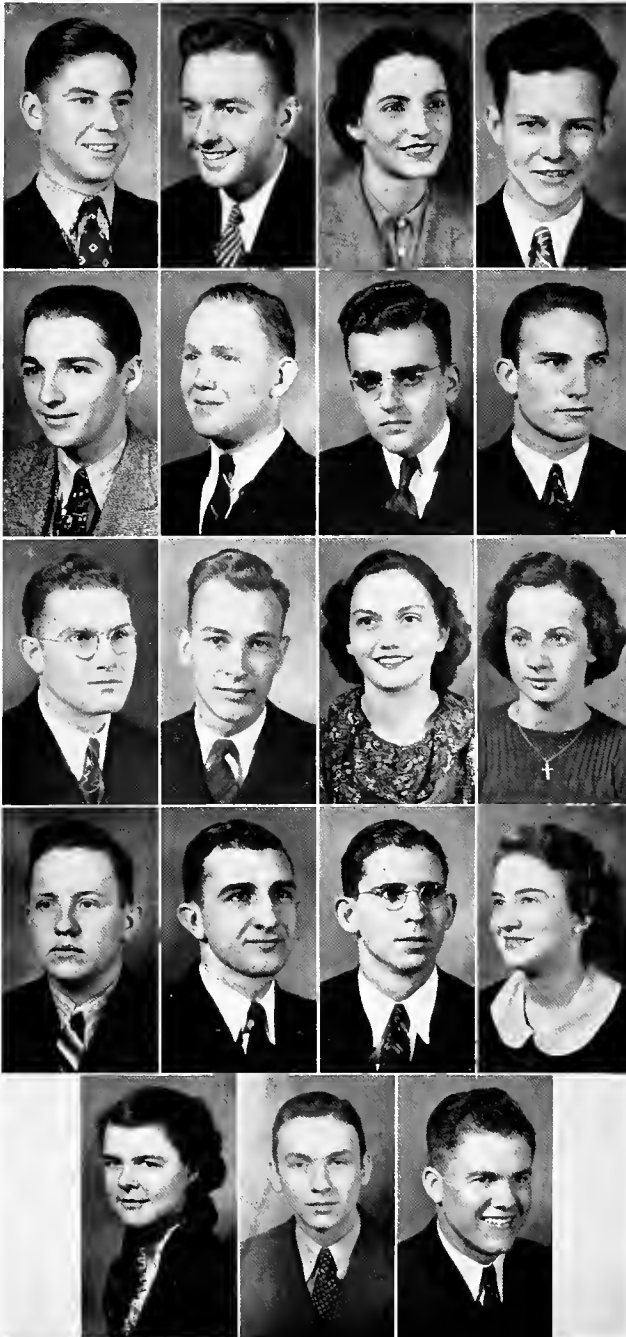
RUTH WROTEN..... Corinth
Phi Mu



S H E L A

8 8

S O P H O



- JOHN BATTE.....Jackson
 President of Sophomore Class
Kappa Alpha
- JAMES WILSON.....Natchez
 Vice-President of Sophomore Class
Kappa Sigma
- MARTHA DEES.....Jackson
 Sec'y.-Treas. of Sophomore Class
Kappa Delta
- JACK BAIN.....Jackson
Theta Kappa Nu
- JAMES BOOTH.....Jackson
Pi Kappa Alpha
- WILLARD BOURNE.....Monticello
- WILLIAM BRADSHAW.....Bentonla
- EDWIN BRENT.....Crystal Springs
Pi Kappa Alpha
- NASH BROYLES.....Columbus
Pi Kappa Alpha
- COOPER BRYANT.....Jackson
Kappa Sigma
- CAROLYN BUCK.....Jackson
Phi Mu
- VERA BURKHEAD.....Jackson
Chi Omega
- VERNON BURKHEAD.....Jackson
Kappa Sigma
- ROY BYARS.....Cascilla
Kappa Alpha
- CHARLES CLARK.....Jackson
Theta Kappa Nu
- MARTHA CONNER.....Hattiesburg
Beta Sigma Omicron
- MARGUERITE DARDEN.....Jackson
Phi Mu
- JOEL DENTON.....Jackson
Pi Kappa Alpha
- TOM DICKERSON.....Sumrall
Kappa Sigma

M O R E S

- ELIZABETH DURLEY.....Drew
Kappa Delta
- DELORES DYE..... Jackson
- JACK FERRIS..... Yazoo City
Kappa Sigma
- INA BELL FITTS..... Jackson
Chi Omega
- EDWINA FLOWERS..... Jackson
Phi Mu
- GERALD GABLE..... Eastabuchie
- VIRGINIA GADDY..... Jackson
Phi Mu
- A. G. GAINEY..... Meridian
Pi Kappa Alpha
- GEORGE F. HALL..... West Palm Beach, Florida
Kappa Alpha
- LONGSTREET HAMILTON..... Jackson
Sigma Chi
- DALE HARPER..... Brandon
- VERNON HATHORN..... Jackson
- WALTER HELUMS..... Jackson
Kappa Sigma
- RAY HENDERSON..... Carthage
Pi Kappa Alpha
- CARSON HILTON..... Jackson
Pi Kappa Alpha
- EUGENE HOPPER..... Corinth
- CARL HORN..... Magee
Kappa Sigma
- HOOPER HORNE..... Carriere
Pi Kappa Alpha
- MANNING HUDSON..... New Albany
Kappa Alpha



S H E L A

3 8

The

S O P H O



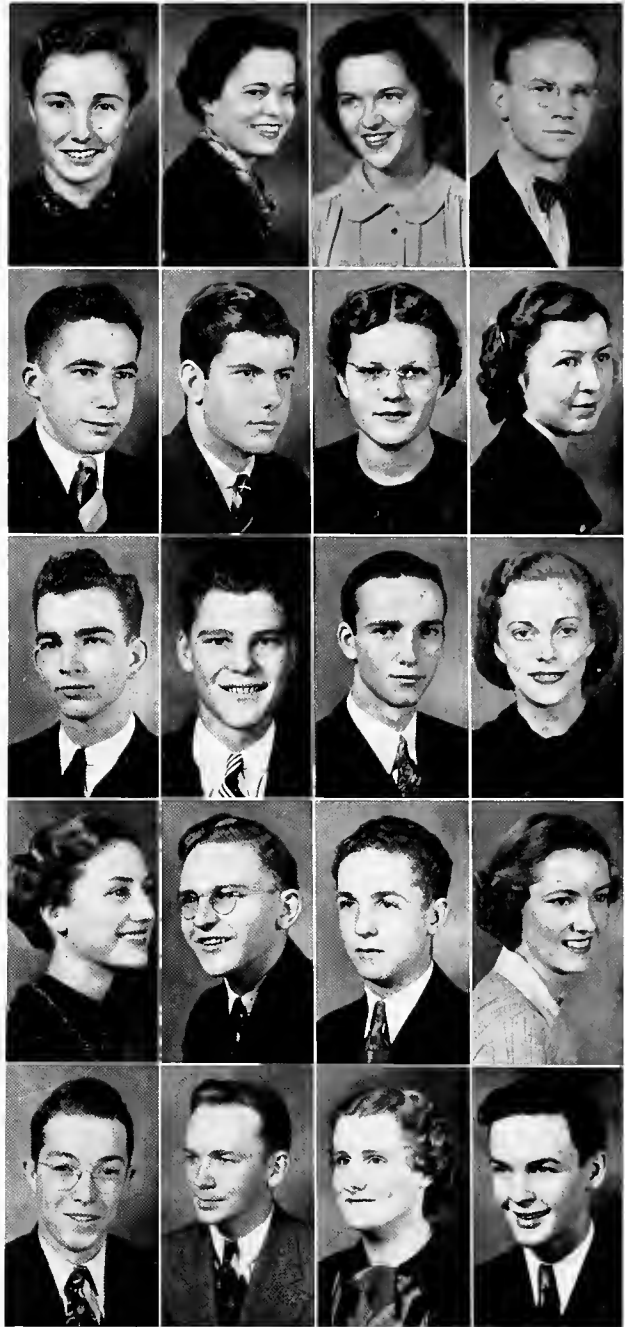
- SYLVIAN KERNAGHAN.....Hattiesburg
Kappa Sigma
- GRADY KERSH.....Jackson
Kappa Sigma
- BETTY LARSEN.....Council Bluffs, Iowa
Kappa Delta
- DELIA RAY LIDDELL.....Shaw
- THAMES LLOYD.....Jackson
Kappa Alpha
- DICK LORD.....Tunica
Pi Kappa Alpha
- BESS McCAFFERTY.....Lexington
Phi Mu
- EVELYN MCGAHEY.....Jackson
Kappa Delta
- CLYDE MCKEE.....Jackson
Pi Kappa Alpha
- JOHN McMULLAN.....Lake
Kappa Alpha
- LOUISE MOORER.....Jackson
Chi Omega
- MYRT NAYLOR.....Jackson
Chi Omega
- EDWINA NICHOLS.....Jackson
Beta Sigma Omicron
- ED DAVIS NOBLE.....Fayette
Kappa Sigma
- FRANCES OGDEN.....Hattiesburg
Beta Sigma Omicron
- GLENN PHIFER.....Jackson
Chi Omega
- TOM PHILLIPS.....Holly Bluff
Kappa Alpha
- LEM PHILLIPS.....Holly Bluff
Kappa Alpha
- ANNIE BELL PIERCE.....McComb

B O B A

1 9

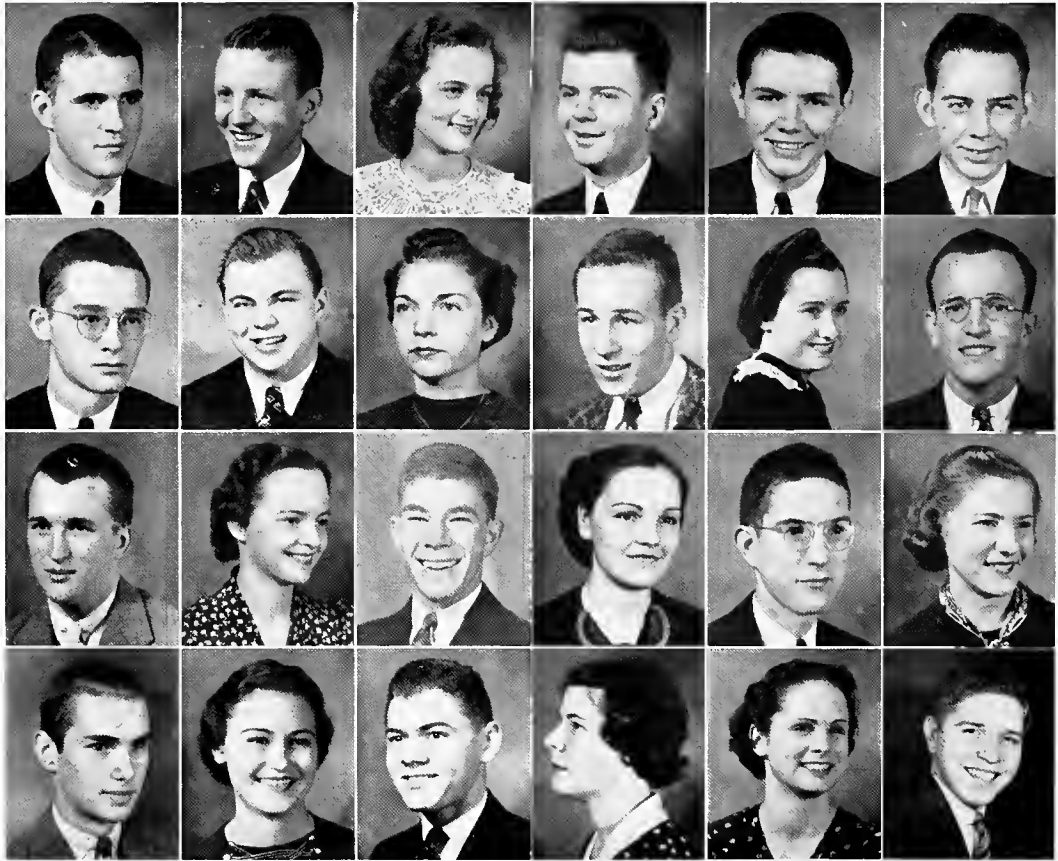
M O R E S

- MARGARET PORTER.....Jackson
Beta Sigma Omicron
- DOROTHY REEVES.....Jackson
Phi Mu
- SARAH RHYMES.....Monticello
Phi Mu
- CAPPY RICKS.....Jackson
Kappa Alpha
- BRYANT RIDGEWAY.....Jackson
Kappa Alpha
- EDWIN ROBERTS.....Prentiss
Sigma Rho Chi
- JEAN ROBERTS.....Jackson
Beta Sigma Omicron
- MARY MUNGER ROBERT.....Jackson
Chi Omega
- GEORGE ROBERTSON.....Jackson
Kappa Alpha
- JAMES SALASSI.....Slidell, La.
Kappa Sigma
- HERBERT SELMAN.....Monticello
Kappa Sigma
- RUTH STOKES.....Corinth
Phi Mu
- ANN STONE.....Jackson
Chi Omega
- J. S. Vandiver.....Jackson
Kappa Alpha
- BIN WALKER.....Magee
Kappa Sigma
- BERT WATKINS.....Jackson
Phi Mu
- EUGENE WATTS.....Camden
Theta Kappa Nu
- PAUL WHITSETT.....Mobile, Alabama
Pi Kappa Alpha
- FLORENCE WORTHINGTON.....Jackson
- JOHN WRIGHT.....Jackson
Pi Kappa Alpha



S H E L A

3 8

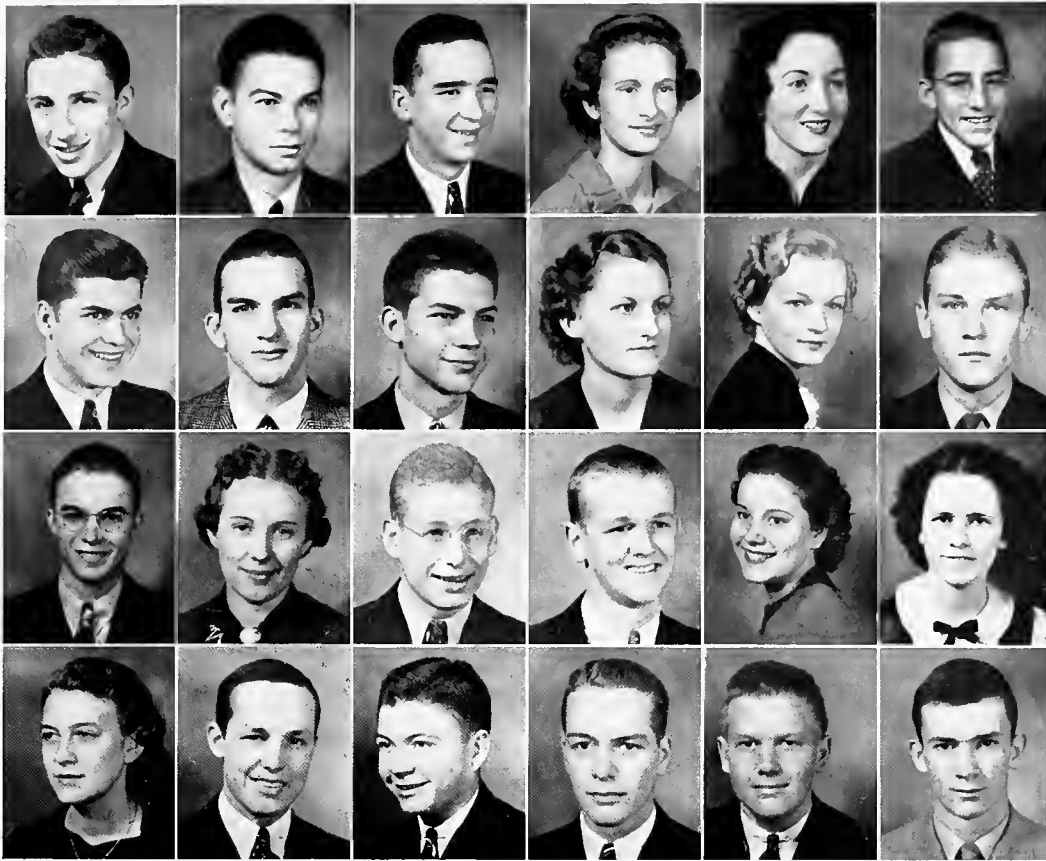


CARL MILLER, Pi Kappa Alpha.....Moss Point
President of Freshman Class
 DWIGHT JAMES, Theta Kappa Nu.....Stratton
Vice President of Freshman Class
 MARTHA McILWAIN, Phi Mu.....Greenwood
Sec'y.-Treas. of Freshman Class
 DORSEY BALL, Kappa Sigma.....Jackson
 EDMUND BARNES, Kappa Alpha.....Jackson
 WALTER BEARD, Theta Kappa Nu.....Jackson
 SAM BIRDSONG, Kappa Sigma.....Jackson
 JAMES BOUTWELL, Kappa Sigma.....Laurel
 FRANCES BRENT, Chi Omega.....Jackson
 JOE BROOKS, Theta Kappa Nu.....Washington, D.C.
 DINAH BROWN, Kappa Delta.....Lauderdale
 JOHN BURWELL, Kappa Sigma.....Jackson
 JACK CALDWELL, Millsaps Barbarians.....Canton
 MARY CARRAWAY, Chi Omega.....Jackson

The
 F R E S

JIMMY CAVETT, Kappa Sigma.....Jackson
 SHIRLEY CHICHESTER, Chi Omega.....Jackson
 ROY CLARK, Pi Kappa Alpha.....Meridian
 MILDRED CRAIG, Kappa Delta.....Memphis, Tenn.
 LEWIS CROUCH, Kappa Sigma.....Artesia
 DIXIE DELL CROUT, Beta Sigma Omicron-Raleigh
 BARNEY DAVIS, Kappa Sigma.....Jackson
 MARY CRAWFORD DENNIS, Chi Omega.....Jackson
 GAYLE DOGGETT, Chi Omega.....Kossuth
 DICK DORMAN, Pi Kappa Alpha.....Jackson

B O B A
 1 9



H M E N

BILLY ESTES, Theta Kappa Nu.....Hattiesburg
 EDWIN FARMER, Kappa Sigma.....Shaw
 PEMBLE FIELD, Kappa Sigma.....Magee
 UNA B. FITTS, Chi Omega.....Jackson
 ELAINE GARRETT, Kappa Delta.....Jackson
 CLINTON GLASER, Millsaps Barbarians Greenwood
 CLIFFORD GODWIN, Theta Kappa Nu.....Jackson
 GRADY GRAHAM, Kappa Sigma.....Jackson
 FRANK HAYS, Kappa Alpha.....Grenada
 MAE BLACK HEIDELBERG, Kappa Delta..Jackson

MARY SYLVIA HERON, Kappa Delta.....Jackson
 DWIGHT HICKMAN, Kappa Alpha.....Noxapater
 DAVID HILL, Pi Kappa Alpha.....Corinth
 MARGUERITE HOLMES, Chi Omega.....Vaiden
 KENNY HOLYFIELD, Pi Kappa Alpha.....Summit
 EDGAR HORN, Kappa Sigma.....Magee
 MYRTLE RUTH HOWARD, Chi Omega.....Jackson
 EVELYN JONES, Kappa Delta.....Jackson
 MARTHA KENDRICK, Beta Sigma Omicron Jackson
 CHARLES KILGORE, Kappa Alpha.....Jackson
 GEORGE KLEE.....Memphis, Tenn.
 PAUL LACKEY, Kappa Sigma.....Jackson
 BILL LAMPARD, Kappa Alpha.....Cleveland
 BOB LEDBETTER, Theta Kappa Nu.....Utica

S H E L A

3 8

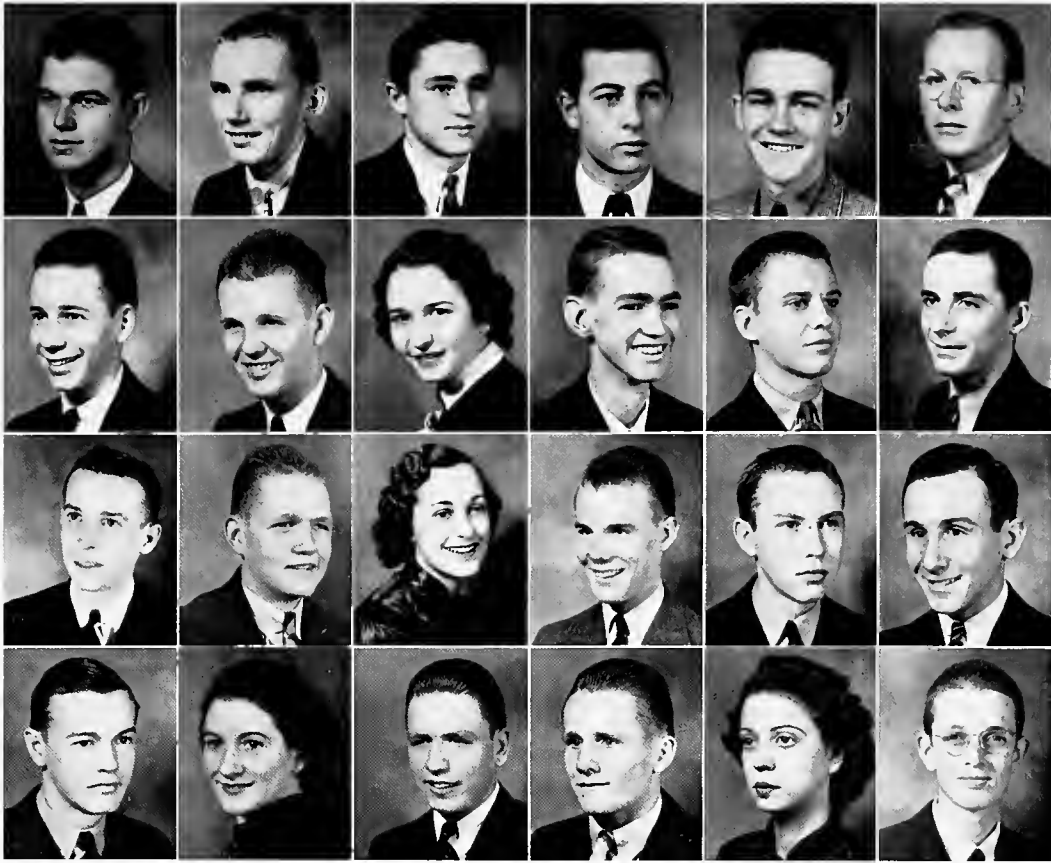


JIM LIVESAY, Kappa Alpha.....Jackson
 KELTON LOWERY, Pi Kappa Alpha.....Jackson
 MARGARET McDOUGALL, Kappa Delta....Jackson
 MARY McILWAIN, Phi Mu.....Greenwood
 LEELAND MORGAN, Kappa Sigma.....Vicksburg
 CHARLES MURRY, Pi Kappa Alpha.....Ripley
 CHARLOTTE NICHOLS, Chi Omega.....Jackson
 BILL NORTHINGTON, Pi Kappa Alpha...Verona
 ERLON NOWELL, Pi Kappa Alpha.....Kosciusko
 PATRICIA O'BRIEN, Chi Omega.....Jackson
 DAVID PEARSON, Pi Kappa Alpha...Sweetwater
 INAZELL PIERCE, Chi Omega.....Jackson
 ALBERT PIPPEN, Kappa Alpha.....Columbus
 HAROLD RANKIN, Kappa Sigma.....Corinth
 MILAN RICHARDSON.....Jackson

The
 F R E S

KATHERINE RIDDELL, Phi Mu.....Jackson
 JAMES RIMMER, Pi Kappa Alpha.....Camden
 NAT ROGERS, Kappa Alpha.....New Albany
 JOHN RUNDLE, Kappa Alpha.....Grenada
 NORRIS RUSSELL, Kappa Sigma...Stanford, Tex.
 SAM SAMPLE, Kappa Sigma.....Jackson
 WILLARD SAMUELS, Kappa Sigma...Clarksdale
 JAMES SIMMONS.....Columbia
 JOE BOB SNYDER, Millsaps Barbarians.....
 Montgomery, Ala.

B O B A
 1 9



H M E N

HENRY SPANN, Pi Kappa Alpha.....Pelahatchie
 BURCH STROUD, Theta Kappa Nu.....Louise
 BERT SUMRALL, Kappa Sigma.....Jackson
 NORVILLE SUTHOFF.....Moss Point
 JIM THOMPSON, Kappa Sigma.....Jackson
 BERDYNE TURNER, Theta Kappa Nu.....Hattiesburg
 LAMAR VENTERS.....Montgomery, Ala.
 PAUL VINING.....Greenwood
 JEAN WALKER, Chi Omega.....Jackson
 RALPH WALKER, Theta Kappa Nu.....McComb

JAMES WALL, Pi Kappa Alpha.....Rosedale
 JAMES WARD, Theta Kappa Nu.....Montrose
 MARTIN WILLIAMSON, Pi Kappa Alpha.....
 Union Springs, Ala.
 LOUIS WILSON, Pi Kappa Alpha.....Brandon
 VIRGINIA WILSON, Phi Mu.....Clarksdale
 ROBERT C. WINGATE, Kappa Alpha.....Greenville
 ESS WHITE, Pi Kappa Alpha.....Jackson
 MILTON WHITE, Kappa Alpha.....Jackson
 S. R. WHITEN, JR., Kappa Alpha.....Jackson
 ANNIE LOIS WHYTE.....Jackson
 SCHOOLAR WILLIAMS, Sigma Rho Chi.....Macon
 GORDON WORTHINGTON, Pi Kappa Alpha.....Brandon
 MILDRED WRIGHT, Kappa Delta.....Jackson
 JAMES D. WROTEN, Kappa Sigma.....Corinth

S H E L A

3 8

The ATH

*Pepping it up • Around
the end • On the offense
Frosh day • The squad*



LETICS

The sound of the whistle, the roar of the crowd, and another Millsaps team takes the field. A scrapping football varsity, a fast-moving basketball team, a fighting bunch of mittmen, a hustling baseball squad, a skilled tennis team, and a fast crew of trackmen provided an excellent year of athletic activity. The Frosh football and basketball teams gave vent to the athletic inclination of Minor students. Receiving unusually good student body support, Major teams turned in good performances to justify the wearing of the purple and white and to uphold the standards of our Alma Mater.



We CHEER

To "Bo" Holloman, head cheerleader, and his assistants, George Robertson, Sarah Rhymes, and Blackie Shaughnessy, goes much of the credit of stirring up school spirit, inspiring gentlemanly feeling toward our opponents, and spurring student body support of the teams. Clad in white costumes and wearing purple M's, these whirlwinds of action and stunting contortionists displayed a skill of enticing yells from bashful throats that was astonishing. So—

THREE CHEERS FOR THE CHEERLEADERS!!

They deserve it.

ROBERTSON, SHAUGHNESSY,
HOLLOMAN, RHYMES



the WEARERS *of the . .*

M

The M Club

This organization is composed of men who have earned letters in varsity sports, and is one of the top clubs on the campus.

OFFICERS

G. C. CLARK - - - - - President
RODNEY WALKER - - - - - Vice-President
SAM ELLIS - - - - - Secretary-Treasurer
NEAL CIRLOT - - - - - Reporter

WALKER, MCALILLY,
GREEN, SIMPSON,
BLOUGH, PRICE,
HERRON, SIMS,
HEGWOOD, MATHENY,
CLARKE, ROGER ELFERT,
FELTS, SHELTON,
COOPER, WRIGHT,
COX, R. J. ELFERT,
THOMPSON, LITTON,
MELTON, BALLARD, ELLIS





*O*ur C O A

B. O. VAN HOOK
Director of Athletics

TRANNY LEE GADDY
Coach of Football

G. C. CLARK
Captain of Football

Football season saw a light Major team take the field against ten tough opponents, and despite a record of three wins, two ties, and five losses, showed an efficient defense and an occasional spark of brilliant offense.

The first game of the season ended in a scoreless tie with Union University at Union. In the first home game, the Pensacola flyers were brought down with a Major victory of 7—0. Traveling to Memphis next, our boys battled in several inches of mud to lose a hard-fought game to Southwestern 14—0.

A trip to Rustin, La. resulted in dropping a game to Louisiana Tech 12—0. At the fair day classic here, the Purple-clad gridmen held the Choc redskins

• •

COACHING STAFF *and* SQUAD

to a 0—0 tie. In Birmingham the next week-end the team played Birmingham-Southern to come out on the little end of a 12—7 score.

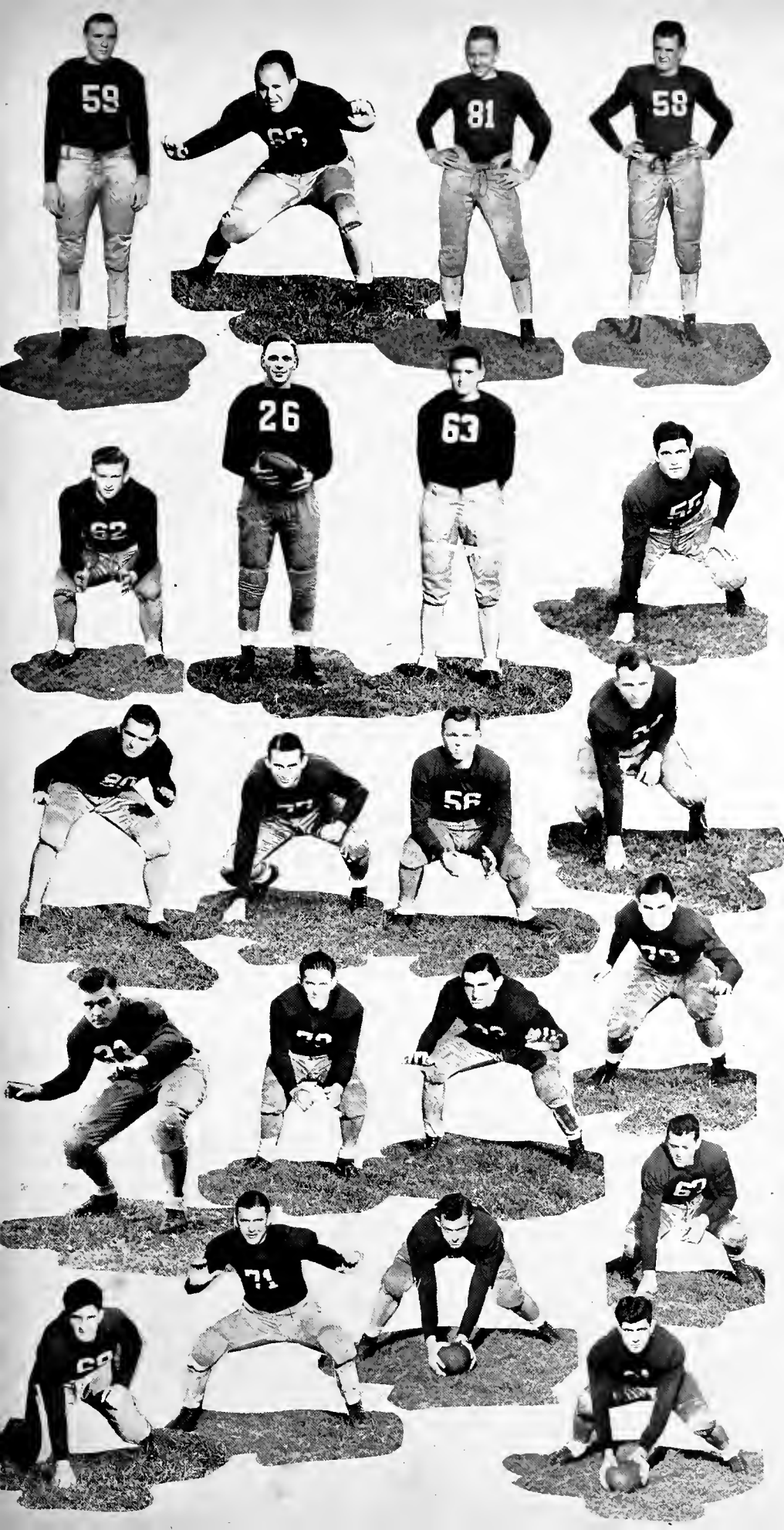
Venturing to Southwestern Louisiana Institute, the losing streak still held, and the Majors suffered a 7—0 loss. The tide turned in the homecoming game, however, and the boys took Spring Hill for a 7—0 cleaning. A trek to Rollins College in Florida netted another win by a score of 13—12. The season closed with the traditional game with Mississippi College and bad breaks at the wrong time resulted in Millsaps losing 12—0.



The VARSITY PLAYERS

ALTON MCALILLY	- - - - -	Tackle
EDWIN LOWTHER	- - - - -	End
GRANT STEWART	- - - - -	Tackle
RED WILSON	- - - - -	Back
"DOC" HAMILTON	- - - - -	Back
WILLIAM GREEN	- - - - -	End
TOM DICKERSON	- - - - -	End
BERTRAND MELTON	- - - - -	Back
T. M. HARDY	- - - - -	Back
ROSS SHELTON	- - - - -	Back
NEAL CIRLOT	- - - - -	Center
JOE SIMPSON	- - - - -	Center
DEWITT HOLLIDAY	- - - - -	Guard
RODNEY WALKER	- - - - -	Guard
ROGER ELFERT	- - - - -	Back
R. J. ELFERT	- - - - -	Tackle
GERALD CARMICHAEL	- - - - -	Guard
EBBIE EDWARDS	- - - - -	End
ROBERT COX	- - - - -	Back
CHARLES HEGWOOD	- - - - -	Tackle
G. C. CLARK	- - - - -	Tackle
DAVID BLOUGH	- - - - -	Center
HAMPTON BALLARD	- - - - -	End
FRED BLEDSOE	- - - - -	Tackle
JOHN BAIN	- - - - -	Center
EUAL COOPER	- - - - -	Guard
EDWIN ROBERTS	- - - - -	Center
WILEY CRITZ	- - - - -	Back





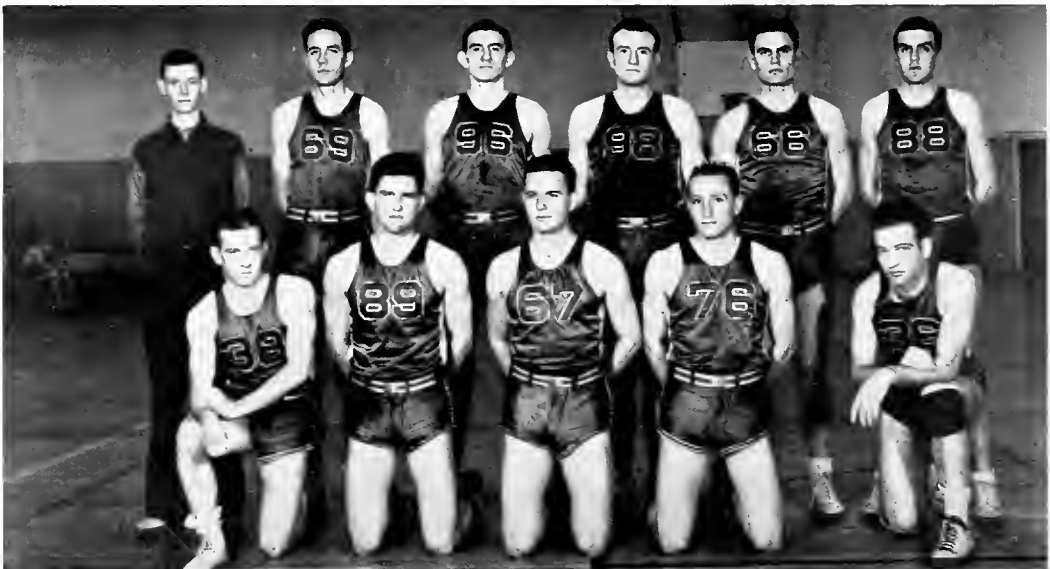
Managers:

- ROBERT MATHENY
- CECIL TRIPLET
- VERNON HATHORN

BASKET BALL

Coach Van Hook placed one of the South's fastest basketball teams into Dixie Conference competition this year. Decidedly "Box-office", the squad turned in the best playing that the Majors have seen for some time. With fast competition, the cagemen displayed in games a brand of play that was hard to beat. "Shot-gun" Herron's eye for the basket, the Curries' spectacular work, Blakeney's superb floor work, Hegwood's ace shots, Thompson's swell defense and all backed up by good work by Clarke, Ballard, Shelton, and Price produced a successful basketball season.

THE SQUAD



● SIMS, HERRON, HEGWOOD, BLAKENEY, CLARKE,
THOMPSON, J. CURRIE, BALLARD, SHELTON, PRICE,
K. CURRIE.



The
VARSITY

J. CURRIE

HEGWOOD

BALLARD

THOMPSON

K. CURRIE

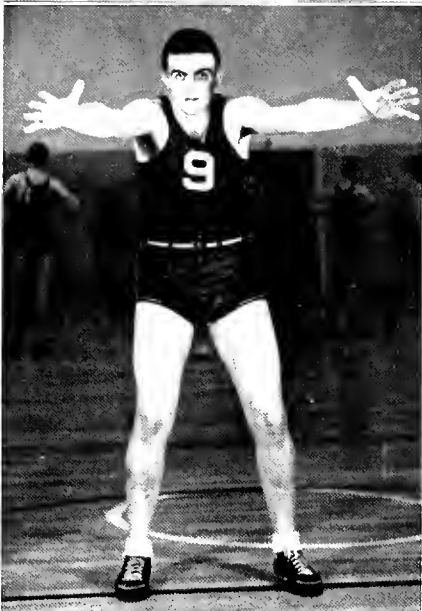
PRICE

BLAKENEY

HERRON

Manager:

LAVELLE SIMS



BASEBALL

Not very successful in number of games won and lost—won 4, lost 12, Coach Gaddy's baseballers nevertheless turned in some good games. Composed of mostly sophomores and juniors, good material that will probably be whipped in to first-class shape next year will make up for this year's losses. Sehan, Litton, Hamilton, and Felts handled most of the hurling assignments, while Salassi and Wilson worked behind the plate. Infielders were Ballard, Cox, Green, Ellis, and Critz. Covering the outfield were Price, Cooper, and Hathorn. Capable reserves were Hegwood, Stewart, and McAllily.



B O X I N G

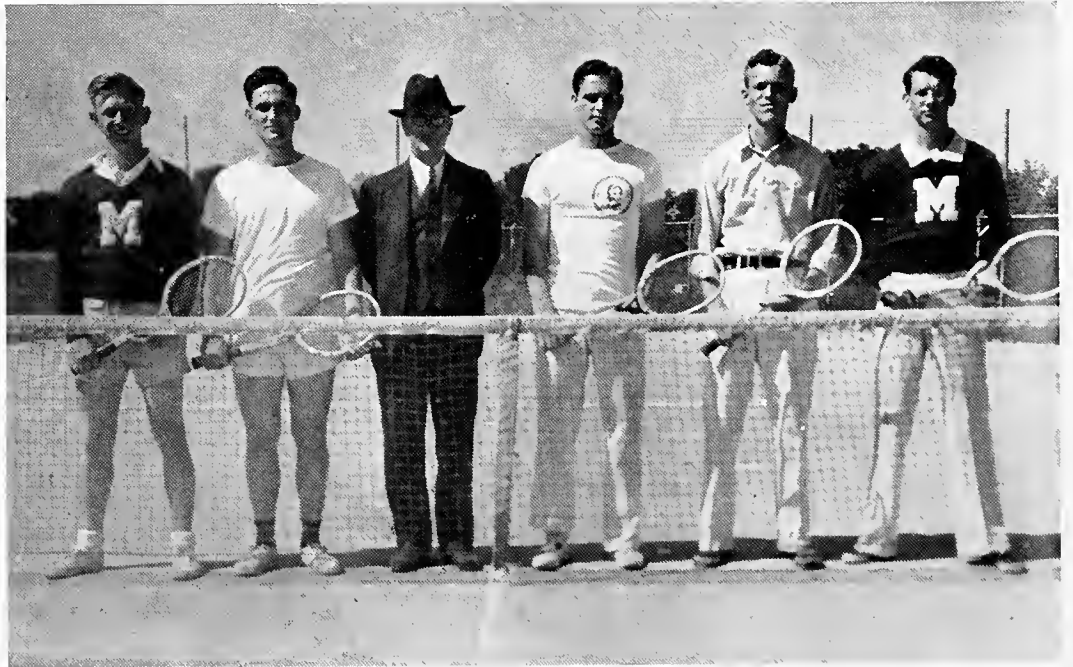
With boxing this year under the direction of Sam Bowers, devoting full time to developing prospective pugilists, several inter-collegiate matches were held. In a match with Raymond, the Major mittmen came out on the top of a 6-0 score. In his bout, Nash Broyles scored a knockout. Louisiana Tech's punchers won the next match here 5-3. In a return match there our boxers lost again 7-1, Holliday alone winning his match. Bouts with Centenary resulted in another loss 7-0. The season closed out with a 5-3 win over Raymond. Taking part in boxing were Bill Hardin, captain of the team, Jim Thompson, Bin Walker, Wilfred Saxton, Bob Cox, Nash Broyles, Bryant Ridgeway, Dewitt Holliday, Tom Tucker, and David Pearson.

With this same material next year, and a year's added experience, the Majors should have a team that will show up advantageously in the bouts.

Managers were Johnny Batte and Alex Gordon.

T E N N I S

The tennis team engaged Illinois, Ole Miss, Spring Hill, Louisiana Tech, Mississippi College, and Loyola. Unfortunately, Major netmen came out on the small end of the score of matches, securing only one victory, defeating Louisiana Tech five matches to two. Individually scoring the matches, the netmen won fifteen and lost thirty. Hoffpanir led the Millsaps team in winning matches. The team will suffer the loss of Shanks, Kimbrell, Hoffpauir, and Hamilton next year.



HOFFPAUIR, GAINNEY, DR. M. C. WHITE (*coach*), WRIGHT, SHANKS, KIMBRELL.

T R A C K

The first track team in a number of years made its debut on the cinder path this spring under the guiding hand of Coach Van Hook. A ruling permitting the eligibility of freshmen proved a boon to the squad's performances. The first meet was with Birmingham-Southern and resulted in a close decision of 72-64 with the home boys trailing. Subsequent meets with Raymond, Goodman, Moorhead, Southwestern, Ole Miss, and Mississippi found Millsaps piling up points if not always winning. High scorers for the Majors were Beard, Payne, Worthington, Carmichael, Melton, and Herron.



FRESHMAN FOOTBALL

The Freshmen played two home games and made two trips. In the first, the Minors were held scoreless while Pearl River Junior College made three touchdowns. A game with Hinds County Junior College here resulted in a loss for the home team by a score of 13—8. A trip to Perkinston found the Minors behind 6—0. The final game was with the Choctaw frosh. In spite of losses, the Millsaps freshmen showed some good promise, and the varsity next season should be able to use many of this year's frosh.

Sitting: MCELHANEY, SPANN, TAYLOR, PEARSON, RICHARDSON, LEDBETTER, MCKEITHEN.

Kneeling: CAMERON, CARROLL, BOUTWELL, DORMAN, S. WILLIAMS, SAXON, SUMRALL, SAMUELS.

Standing: MANAGER WILSON, W. WILLIAMS, BRAME, TYNES, GODWIN, PAYNE, LIPSCOMB, DEAR, MILES, WORTHINGTON, MOORE, COACH RICHARDSON.



WOMAN'S ATHLETICS

An extensive intramural program was set forth this year with Miss Elizabeth Taylor as director. Points are awarded for creditable work in the athletic activities. These points are applied toward other awards until finally a plaque is presented to those who have been outstanding.

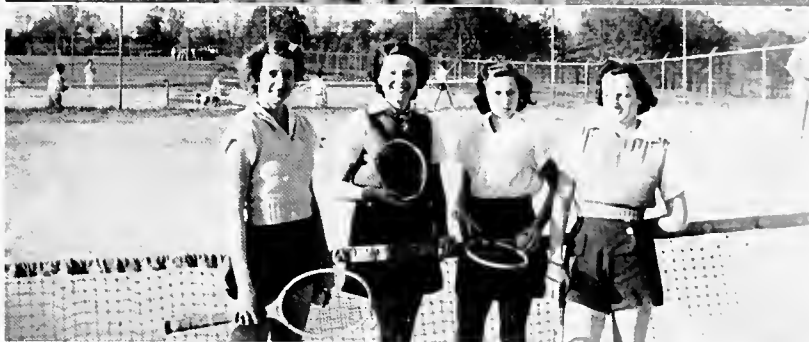


BASEBALL

BASKETBALL

TENNIS

A HIT!



The F E A

Glenn • Nell • Sarah
Myrtle Ruth • Blackie
Jeannette



T U R E S

The feature section of our book is devoted to those among us who are conspicuous—either because of their personal charm or by their attainments in campus activity. In the beauty section are the most beautiful girls as chosen by the student body. Included also in the features are Master Major and Miss Millsaps—by popular vote the most outstanding people on the campus. In the “Big-Shot” section are others who have won laurels in campus achievements. To those in this section we should like to add four other names whose possessors we feel worthy of the honor—Sara Gordon, Billy Kimbrell, T. M. Hardy, and “Bo” Holloman.





Most Beautiful Girl
MISS NELL PERMENTER



Miss Jeannette Van Zandt





Miss Glenn Phifer



Miss Sarah Rhymes





Miss Mary Eleanor Shaughnessy

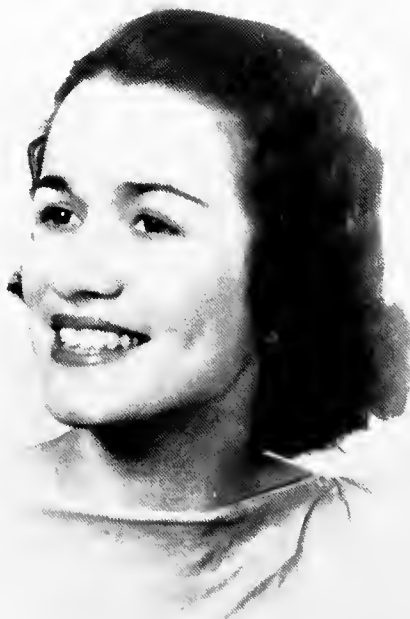
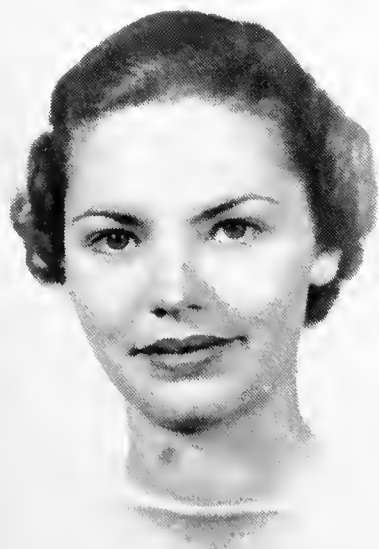
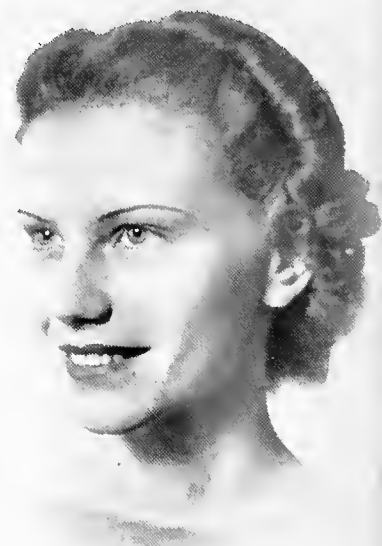
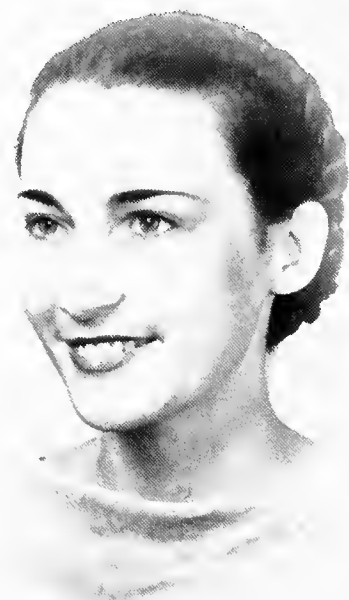
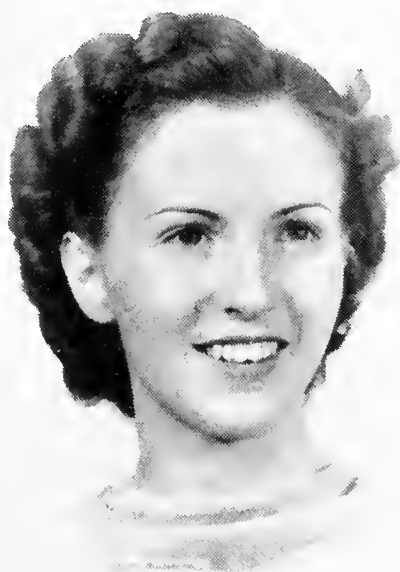


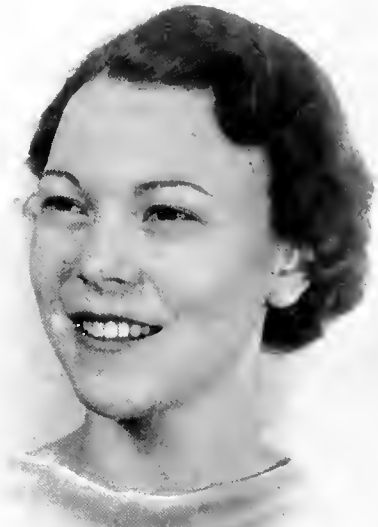
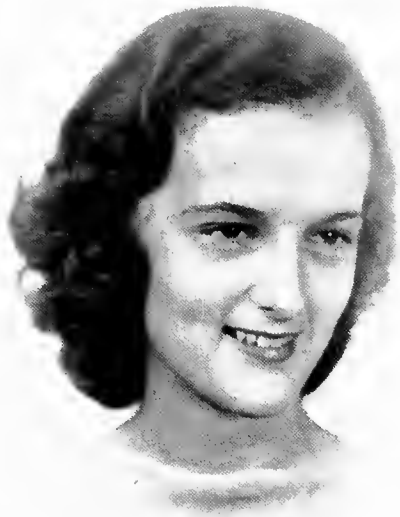
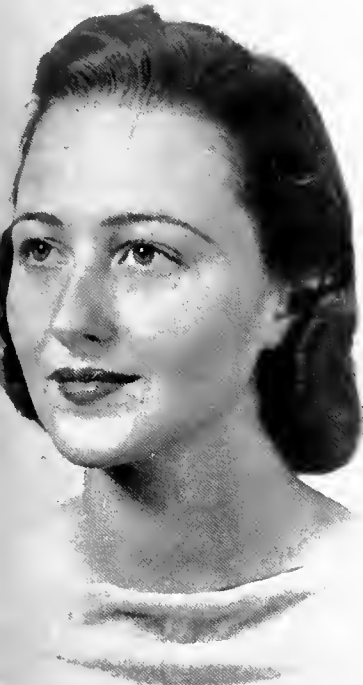
Miss Myrtle Ruth Howard



Miss Clara Frances Dent
Miss Margaret Conn
Miss Inazelle Pierce
Miss Berkley Muh
Miss Jane Hyde West
Miss Margaret McDougul

Campus..





F A V O R I T E S



- Miss Ava Sanders*
- Miss Ina Bell Fitts*
- Miss Rubye Martin*
- Miss Floy Denton Thompson*
- Miss Martha McIlwain*
- Miss Sara Gordon*

MASTER MAJOR

Orator, student of the classics, campus leader—Billy Ford was chosen by his fellow students as the most outstanding young man in the graduating class of 1938. His friendliness, democratic ideals, and achievements make him a real “Millsaps Man”, and it is a genuine pleasure to honor him—our “Master Major”.





MISS MILLSAPS

Miss Berkley Muh was similarly chosen as the co-ed whose charm, personality, and popularity together with her record of college activity entitled her to receive the honor of being "Miss Millsaps". As the worthy recipient of an unusual distinction, we salute you, Miss Millsaps!

Campus

BIG SHOTS

BILLY LAUDERDALE

LOLA DAVIS

BILL BIZZELL

SONNY McRAE

FOSTER COLLINS

ROY DELAMOTTE

WILEY CRITZ

VICTOR ROBY

STACY KELLUM

RUTH WROTEN

EDWIN EDWARDS

MILDRED CLEGG

JEFF HESTER

JIMMY DUNN

G. C. CLARKE

BILLY FORD

FAGAN SCOTT





The G R

Some of the floats in Homecoming Day parade . . . Beta Sig, Chi Omega, Theta, Phi Mu, Pi K A, and Kappa Sig . . .



E E K S

Encompassing about seventy percent of the student body, social fraternities and sororities tend toward forming their members into intimate groups which make for lasting friendships and associations. Realizing their responsibilities toward their Alma Mater and their charges, leaders of these groups exert every effort to promote campus good will, to influence their brothers and sisters to undertake their college work seriously, and, at the same time, to provide a wholesome social life that is instrumental in rounding out the college student. Since 1893, when fraternities were first founded at Millsaps, the Greeks have fulfilled their responsibility well, and we feel that in the future, their standards will be upheld and advanced even further.





DUNN, HARDY, GORDON, MURPHREE, LUKE, CIRLOT, RIMMER,
LAUDERDALE, KELLUM, BIZZELL.

M E N

Composed of two representatives from each social fraternity, the Men's Pan-Hellenic Council governs the activities of the Greek groups in matters of rushing, formation of policies, and the promotion of good will on the campus. Meetings are held twice-monthly at the various frat houses.

KAPPA SIGMA

STACY KELLUM, President T. M. HARDY

KAPPA ALPHA

ALEX GORDON, Vice-Pres. BILLY LAUDERDALE, Sec'y.

PI KAPPA ALPHA

BILL BIZZELL JIMMY DUNN

THETA KAPPA NU

BERNARD LUKE LEE ROY MURPHREE

SIGMA RHO CHI

NEAL CIRLOT JOHN RIMMER

H E L L E N I C

W O M E N

A sister organization to the men's council, the Women's Pan-Hellenic Council functions in a similar capacity. Outstanding events of the year were a party given for the men's group during Fair week and an outing to Dockery lake on April 30 in which members of all sororities participated. (Reports said the water was fine!)

BETA SIGMA OMICRON

SARA GORDON, President JEAN ROBERTS

PHI MU

SARAH BUIE, Vice-Pres. BERT WATKINS

KAPPA DELTA

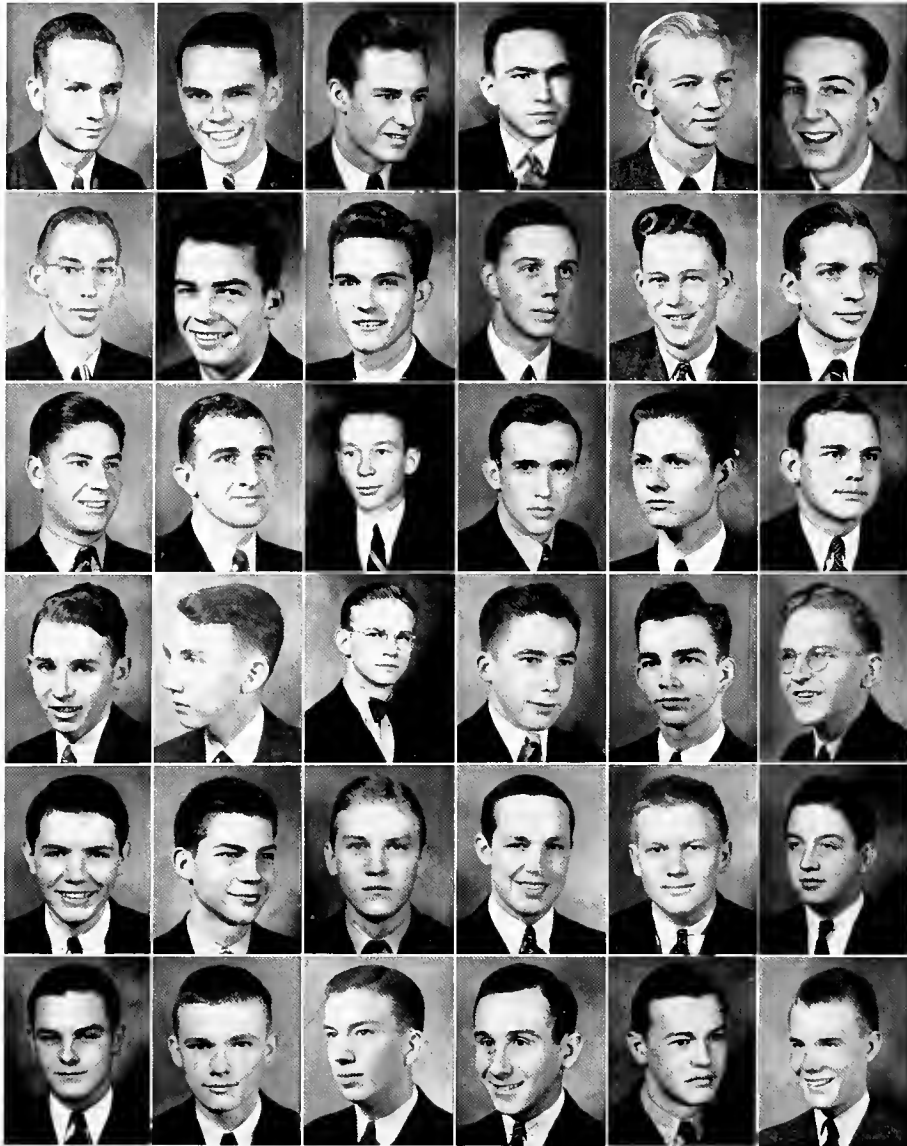
LOLA DAVIS, Secretary MARTHA DEES

CHI OMEGA

BERKLEY MUH, Treasurer MAY ELLEN CHICHESTER

ROBERTS, DEES, BUIE, WATKINS, CHICHESTER,
GORDON, DAVIS, MUH.





Lauderdale, Adams, Collins, Ford, Gordon, Macgowan, McRae, L. Rogers, Ainsworth, Beard, Evans, Ivy, Batte, Byars, Hall, Hudson, Lloyd, McMullan, L. Phillips, T. Phillips, Ricks, Ridgeway, Robertson, Vandiver, Barnes, Hays, Hickman, Kilgore, Lampard, Livesay, Pippen, N. Rogers, Rundle, White, Whitten, Wingate.

KAPPA ALPHA

Founded - - - - - Washington College, Dec. 21, 1865
 Established at Millsaps - - - - - Oct. 1, 1893
 Colors - - - - - Crimson and Gold
 Flower - - - - - Rose
 Publication - - - - - "Kappa Alpha Journal"

Alpha Mu Chapter

CLASS OF NINETEEN THIRTY-EIGHT

M. F. ADAMS	BILLY LAUDERDALE
FOSTER COLLINS	CLIFFORD MACGOWAN, JR.
BILLY FORD	JOHN McRAE
ALEX GORDON, JR.	LEE ROGERS

CLASS OF NINETEEN THIRTY-NINE

JOE AINSWORTH	BEN EVANS
WIRT ADAMS BEARD	ROBERT IVY

CLASS OF NINETEEN FORTY

JOHN BATTE	LEM PHILLIPS
ROY BYARS*	TOM PHILLIPS
GEORGE F. HALL	CAPPY RICKS
MANNING HUDSON	BRYANT RIDGEWAY
THAMES LLOYD	GEORGE ROBERTSON
JOHN McMULLAN*	J. S. VANDIVER, JR.

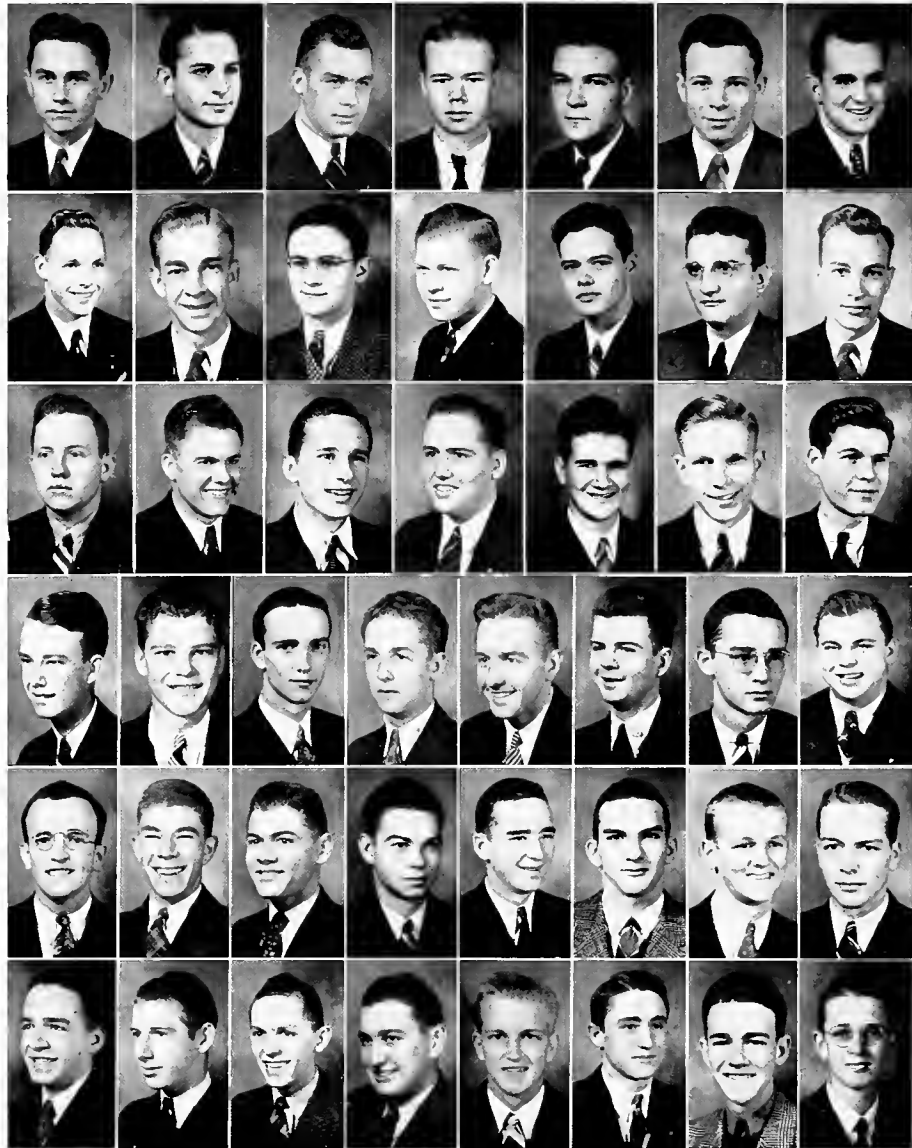
CLASS OF NINETEEN FORTY-ONE

EDMUND BARNES*	JOHN NICHOLSON
BILL CARROLL*	ALBERT PIPPEN*
FRANK HAYS	NAT ROGERS
DWIGHT HICKMAN	JOHN RUNDLE
CHARLES KILGORE	MILTON WHITE
BILL LAMPARD	S. R. WHITTEN, JR.
JIM LIVESAY	ROBERT WINGATE
CHARLES MCGLOHN *	

FACULTY

A. P. HAMILTON	ROSS H. MOORE
J. REESE LIN	MILTON C. WHITE

* Indicates Pledge



Kellum, Hester, Edwards, Ewing, Felts, Fleming, Hamilton, Hardy, Holloman, McKinnon, Pitard, Sykes, Thames, Bryant, Furkhead, Dickerson, Ferris, Helums, C. Horn, Kernaghan, Kersh, Noble, Salassi, Selman, Walker, Wilson, Ball, Birdsong, Boutwell, Burwell, Cavett, Davis, Farmer, Field, Graham, E. Horn, Lackey, Morgan, Rankin, Russell, Sample, Samuels, Sumrall, Thompson, Wroten.



Bizzell, Adams, Dunn, Hamilton, Hardin, Harvey, Kimbrell, Roby, Scott, Wasson, Ainsworth, Bush, Doggett, Godbold, Landrum, May, Palmer, Sheffield, Tucker, C. Wright, Booth, Brent, Broyles, Denton, Gainey, Henderson, Hilton, Horne, Lord, McKee, Whitsett, J. Wright, Clark, Dorman, Hill, Holyfield, Lowery, Miller, Murry, Northington, Nowell, Pearson, Rimmer, Spann, Wall, White, Williamson, Wilson, Worthington.

PI KAPPA ALPHA

Founded - - - - - University of Va., March 1, 1868
 Established at Millsaps - - - - - March 23, 1905
 Colors - - - - - Garnet and Gold
 Flower - - - - - Lily of the Valley
 Publication - - - - - "The Shield and Diamond"

Alpha Iota Chapter

CLASS OF NINETEEN THIRTY-EIGHT

AUBREY ADAMS	BILLY KIMBRELL
JAMES DUNN	VICTOR ROBY
FRANCIS HAMILTON	FAGAN SCOTT
BILL HARDIN	WILBOURN WASSON
WIRT TURNER HARVEY	

CLASS OF NINETEEN THIRTY-NINE

BILL AINSWORTH	ALBERT L. MAY, JR.
WILLIAM H. BIZZELL	BILL PALMER*
FRED BUSH*	PAUL SHEFFIELD
BLANTON DOGGETT	TOM A. TUCKER
JOHN GODBOLD	CHARLES WRIGHT
HUGH LANDRUM*	

CLASS OF NINETEEN FORTY

JAMES BOOTH	CARSON HILTON
EDWIN BRENT	HOOPER HORNE
NASH BROYLES*	DICK LORD
LESLIE CRIPPEN*	CLYDE MCKEE
JOEL DENTON	PAUL WHITSETT*
A. G. GAINES, JR.	JOHN WRIGHT
RAY HENDERSON*	

CLASS OF NINETEEN FORTY-ONE

RUDOLPH BANGERT*	ERLON NOWELL*
ROY C. CLARK	DAVID PEARSON*
AL FRED DANIELS*	JAMES RIMMER*
RICHARD DORMAN	WALTER SCOTT*
DAVID HILL	HENRY SPANN*
KENNY HOLYFIELD	JAMES WALL*
KELTON LOWERY*	ESS WHITE
CARL MILLER	MARTIN WILLIAMSON*
CHARLES MURRY	LOUIS WILSON*
BILL NORTINGTON*	GORDON WORTHINGTON*

FACULTY

DR. D. M. KEY	PAUL RAMSEY
---------------	-------------

* Indicates Pledge



DeLamotte, L. Clark, Ellis, Hoffpauir, McKenzie,
Murphree, Luke, Spinks, Bain, C. Clark,
Watts, Beard, Brooks, Estes, Godwin,
James, Ledbetter, Stroud, Turner, Walker, Ward.

THETA KAPPA NU

Founded - - - - - Drury College, June 9, 1924
Established at Millsaps - - - - - Dec. 11, 1924
Colors - - - - - Crimson, Argent and Sable
Flower - - - - - White Rose
Publication - - - - - "Theta News"

Mississippi Alpha Chapter

CLASS OF NINETEEN THIRTY-EIGHT

LEONARD CLARK	CHESTER MCKENZIE
SAM ELLIS	LEE ROY MURPHREE
BILLY HOFFPAUR	

CLASS OF NINETEEN THIRTY-NINE

ROY DELAMOTTE	EDWARD MULLEN*
BERNARD LUKE	A. C. SPINKS*

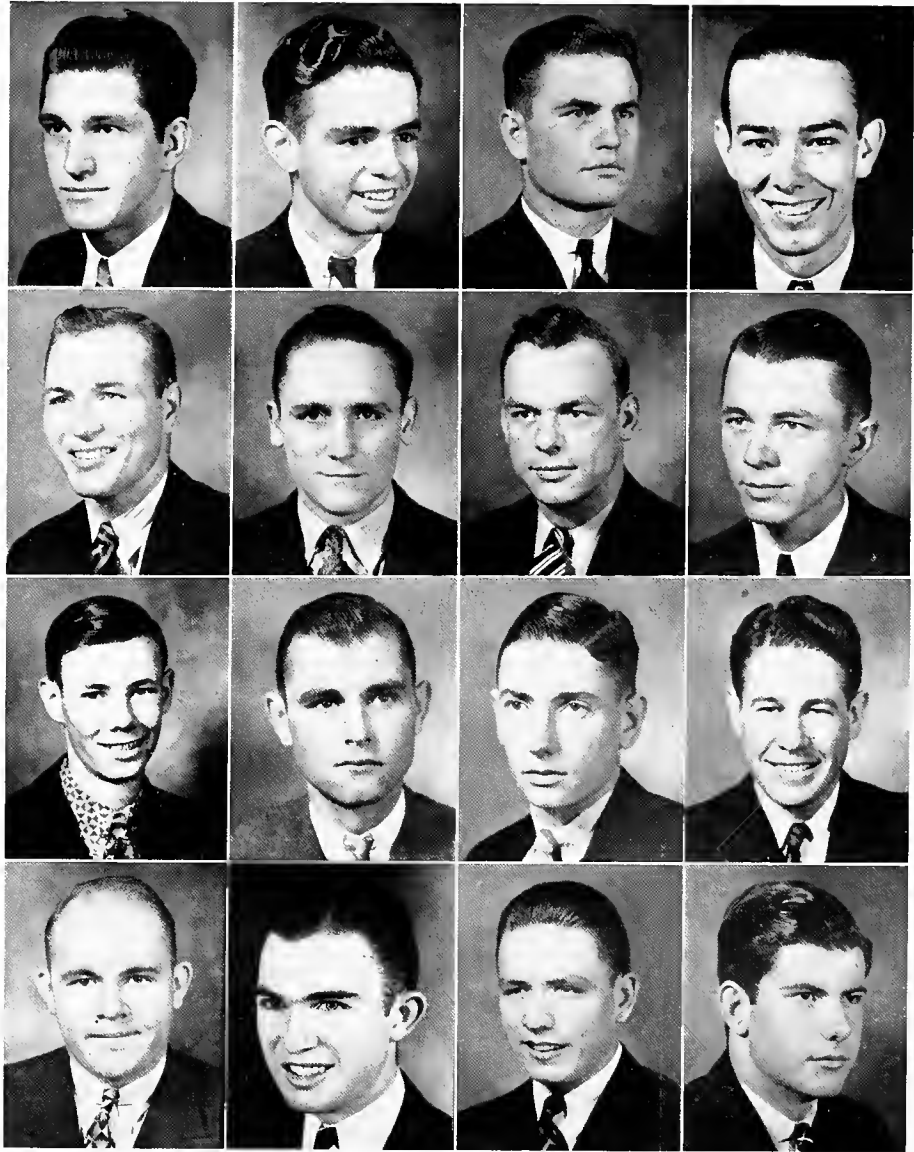
CLASS OF NINETEEN FORTY

JACK BAIN	WILLIAM GREEN*
CHARLES CLARK	EUGENE WATTS
JAMES ELLIOTT	

CLASS OF NINETEEN FORTY-ONE

JAMES BAGGETT*	TOM NEELY*
WALTER BEARD	BILLY PITTS*
JOE BROOKS	FERD SHELL*
BILLY ESTES	BURCH STROUD*
CLIFFORD GODWIN	JACK THORNTON*
FRANK HUDSON*	BERDYNE TURNER
DWIGHT JAMES*	RALPH WALKER
GWIN KOLB	JAMES WARD
BOB LEDBETTER*	

* Indicates Pledge



Cirlot, Bingham, Clarke, Dorris, Elfert, Matheny, McAlilly,
Rimmer, Sims, Smith, J. Williams, Simpson, Stewart, Triplett,
S. Williams, Roberts.

SIGMA RHO CHI

Founded - - - - - Millsaps College, December, 1930
Colors - - - - - Scarlet and Cream
Flower - - - - - Carnation

Alpha Chapter

CLASS OF NINETEEN THIRTY-EIGHT

GENE BINGHAM	ROBERT MATHENY
NEAL CIRLOT	ALTON McALILLY*
G. C. CLARK	JOHN RIMMER
GEORGE DORRIS	LAVELLE SIMS
R. J. ELFERT	J. D. SMITH
CHARLES HEGWOOD*	JAMES WILLIAMS

CLASS OF NINETEEN THIRTY-NINE

GERALD CARMICHAEL	JOE SIMPSON*
JOE CARRUTHERS*	GRANT STEWART*
ROGER ELFERT	CECIL TRIPLETT
W. C. HERRON*	HULBERT NOVELL*

CLASS OF NINETEEN FORTY

GEORGE C. HALL*	EDWIN ROBERTS
DEWITT HOLLIDAY	JACK WINBORN*

CLASS OF NINETEEN FORTY-ONE

BERT ALLEN*	SCHOOLAR WILLIAMS*
ALBERT CAMERON*	

* Indicates Pledge



Buie, Hogue, Crisler, Dent, Wroten, Buck, Darden, Flowers, Gaddy, Manning, McCafferty, Reeves, Rhymes, Stokes, Watkins, Martha McIlwain, Mary McIlwain, Riddell, Wilson.

PHI MU

Founded - - - - - Wesleyan College, March 4, 1852
Established at Millsaps - - - - - March 24, 1914
Colors - - - - - Rose and White
Flower - - - - - Rose Carnation
Publication - - - - - "Agliaia"

Epsilon Chapter

CLASS OF NINETEEN THIRTY-EIGHT

MARJORIE HOGUE

CLASS OF NINETEEN THIRTY-NINE

SARAH BUIE MARION STEWART
CHARITY CRISLER RUTH WROTEN
CLARA FRANCES DENT

CLASS OF NINETEEN FORTY

CAROLYN BUCK BESS McCAFFERTY
MARGUERITE DARDEN DOROTHY REEVES
EDWINA FLOWERS* SARA RHYMES
VIRGINIA GADDY TIMORA SPANN*
MARY FRANCES MANNING RUTH STOKES
 BERT WATKINS

CLASS OF NINETEEN FORTY ONE

MARTHA McILWAIN CATHERINE RIDDELL*
MARY McILWAIN VIRGINIA WILSON
MARY JANE MOHEAD*

FACULTY

MRS. MARGUERITE GOODMAN

* Indicates Pledge



Davis, Blount, Coltharp, Dement, Holloman, Litton, Ruth Martin, Permenter, Strahan, Suttle, Champenois, Conn, Rubye Martin, Mitchell, Pettit, Swayze, Terrell, West, Wilson, Dees, Durley, Larsen, McGahey, Brown, Craig, Garrett, Heidelberg, Heron, Jones, McDougal, Terry, Wright.

KAPPA DELTA

Founded - - - - - Va. State Normal College, Oct. 23, 1897
Established at Millsaps - - - - - Sept. 26, 1914
Colors - - - - - Green and White
Flower - - - - - White Rose
Publication - - - - - "The Angelos of Kappa Delta"

Mu Chapter

CLASS OF NINETEEN THIRTY-EIGHT

IMOGENE BLOUNT	RUBY LITTON
MARGUERITE COLTHARP	RUTH MARTIN
LOLA DAVIS	NELL PERMENTER
ANNIE K. DEMENT	LUCILE STRAHAN
MARY LOUISE HOLLOMAN	ELIZABETH SUTTLE

CLASS OF NINETEEN THIRTY-NINE

ROMA FERN CHAMPENOIS	MARY E. SHAUGHNESSY
MARGARET CONN*	LILLIAN D. SWAYZE
RUBY MARTIN	KATHERYNE TERRELL
CORINNE MITCHELL	JANE HYDE WEST
VIRGINIA PETTIT	ELIZABETH WILSON

CLASS OF NINETEEN FORTY

MARTHA DEES	BETTY LARSEN
ELIZABETH DURLEY	EVELYN MCGAHEY

CLASS OF NINETEEN FORTY-ONE

DINAH BROWN	EVELYN JONES
MILDRED CRAIG	MARGARET MCDUGAL
ELAINE GARRETT*	MARIANNA TERRY
MAY BLACK HEIDELBERG*	MILDRED WRIGHT*
MARY SYLVIA HERON	

* Indicates Pledge



Gordon, Clegg, Collins, Hinson, Lamb, Brooks, Chatham, Hull,
McGee, Conner, Nichols, Ogden, Porter, Roberts, Crout, Kendrick.

BETA SIGMA OMICRON

Founded - - - - - University of Missouri, Dec. 12, 1888
Established at Millsaps - - - - - Sept. 1, 1926
Colors - - - - - Ruby and Pink
Flowers - - - - - Richmond and Killarney Roses
Publication - - - - - "The Urn"

Alpha Zeta Chapter

CLASS OF NINETEEN THIRTY-EIGHT

MILDRED CLEGG	SYBLE HINSON
VIRGINIA COLLINS	MARY SUE LAMB
SARA GORDON	

CLASS OF NINETEEN THIRTY-NINE

EVELYN BROOKS	MARJORIE HULL
MYRTLE CHATHAM	DOROTHY MCGEE

CLASS OF NINETEEN FORTY

MARTHA CONNER	JUANITA PIERCE *
EDWINA NICHOLS	MARGARET PORTER
FRANCES OGDEN	JEAN ROBERTS

CLASS OF NINETEEN FORTY-ONE

DIXIE DELL CROUT	MARTHA KENDRICK
------------------	-----------------

* Indicates Pledge



Muh, Davis, Enochs, Golden, Heidelberg, Sanders, Thompson,
 M. Chichester, Cunningham, Nobles, Van Zandt, Burkhead,
 I. B. Fitts, Moorcr, Naylor, Phifer, Robert, Stone, Brent,
 Carraway, S. Chichester, Dennis, Doggett, U. B. Fitts, Holmes,
 Howard, Nichols, O'Brien, Pierce, Walker.

CHI OMEGA

Founded - - - - - University of Ark., April 15, 1895
Established at Millsaps - - - - - March 31, 1934
Colors - - - - - Cardinal and Straw
Flower - - - - - White Carnation
Publication - - - - - "The Elcuis"

Chi Delta Chapter

CLASS OF NINETEEN THIRTY-EIGHT

CATHERINE DAVIS	BERKLEY MUH
MILDRED ENOCHS	AVA SANDERS
MAUDE LYLE GOLDEN	FLOY DENTON THOMPSON
ANNIE LOU HEIDELBERG	

CLASS OF NINETEEN THIRTY-NINE

MAY ELLEN CHICHESTER	PEARL NOBLES
GRACE CUNNINGHAM	JEANNETTE VAN ZANDT

CLASS OF NINETEEN FORTY

VERA BURKHEAD	GLENN PHIFER
INA BELL FITTS	MARY MUNGER ROBERT
LOUISE MOORER	ANN STONE
MYRT NAYLOR	

CLASS OF NINETEEN FORTY-ONE

FRANCES BRENT	MARGUERITE HOLMES
MARY DOUGLAS BROADFOOT*	MYRTLE RUTH HOWARD
MARY CARRAWAY	CHARLOTTE NICHOLS
SHIRLEY CHICHESTER	PATRICIA O'BRIEN
MARY CRAWFORD DENNIS	INAZELLE PIERCE
GAYLE DOGGETT	JEAN WALKER
UNA B. FITTS	EMMA RUSSELL WATSON*

* Indicates Pledge

The ORGA

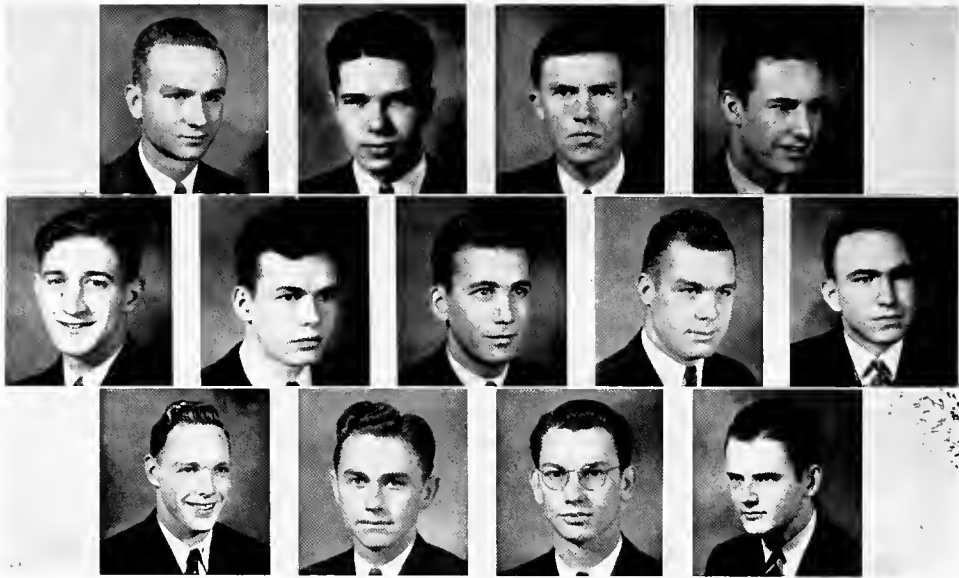
Music • Drama • Enthusiasm
The tops • Surveying



NIZATIONS

Parallel to prescribed academic work, numerous activities have afforded outlets for special ability in the fields of music, singing, dramatics, and the like. Organizations exist for the purpose of bringing together students interested in common subjects. Honorary fraternities and sororities offer recognition to students of outstanding merit in scholarship, leadership, and accomplishment in varied lines of endeavor. These activities, organizations, and fraternities have throughout the year played an important role in presenting to students that extra something — a diversified college career.





LAUDERDALE, ROBY, BIZZELL, COLLINS
 CRITZ, DELAMOTTE, DUNN, EDWARDS, FORD
 HARDY, KELLUM, KIMBRELL, SCOTT

OMICRON DELTA KAPPA

Founded - - - - - Washington and Lee, 1914
 Colors - - - - - Blue and White
 Publication - - - - - "The Circle"

Omicron Delta Kappa recognizes student leadership in fields of scholarship, athletics, and other activities, and is the highest honor that can be received by a Millsaps man in the scope of honorary organizations.

OFFICERS

BILLY LAUDERDALE - - - - - President
 VICTOR ROBY - - - - - Vice President

MEMBERS

BILL BIZZELL	EDWIN EDWARDS
FOSTER COLLINS	BILLY FORD
WILEY CRITZ	T. M. HARDY
ROY DELAMOTTE	STACY KELLUM
JIMMY DUNN	BILLY KIMBRELL
FAGAN SCOTT	

FACULTY MEMBERS

DR. D. M. KEY	DR. M. C. WHITE
Professor PAUL RAMSEY	

SIGMA LAMBDA

Sigma Lambda was organized in 1936 to offer to women students a similar recognition as that afforded men by Omicron Delta Kappa.

OFFICERS

LOLA DAVIS - - - - - President
SARA GORDON - - - - - Vice President
BERKLEY MUH - - - - - Secretary-Treasurer
JEAN KINNAIRD - - - - - Historian

MEMBERS

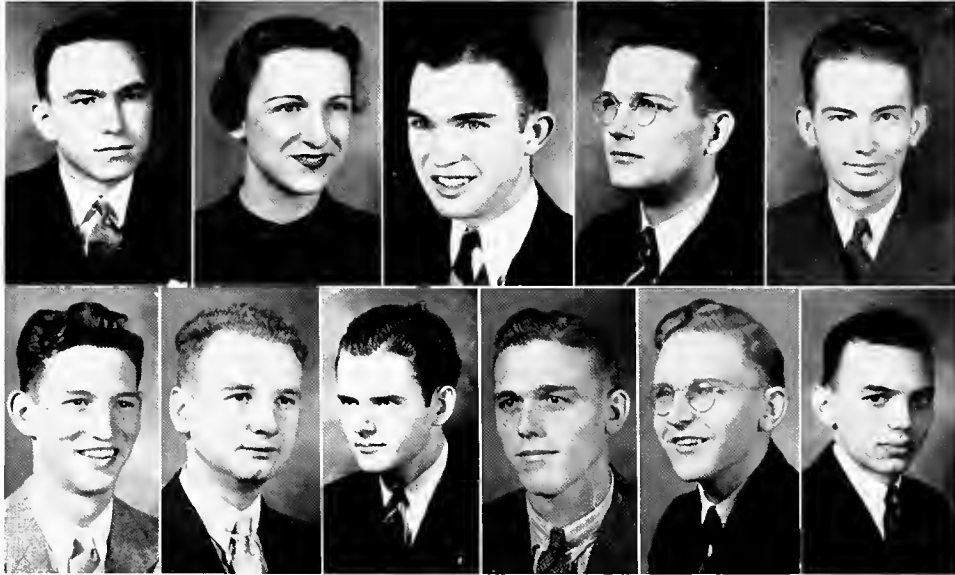
IMOGENE BLOUNT CATHERINE DAVIS
MILDRED CLEGG RUTH WROTEN

FACULTY MEMBERS

MRS. MARY B. STONE MRS. HENRY COBB

L. DAVIS, GORDON, MUH, KINNAIRD
- BLOUNT, CLEGG, C. DAVIS, WROTEN





FORD, DAVIS, TRIPLETT, GODBOLD, LORD
 MAY, O'CONNOR, SCOTT, SHANKS, VANDIVER, WILLIAMS

PI KAPPA DELTA

(Forensic)

Pi Kappa Delta this year sponsored sixty-five intercollegiate debates, sent delegates Godbold and Ford to national tourney; also, Pi Kappa Delta members entered State Tournament, Louisiana Tournament, and Mid-South Tournament with creditable results.

OFFICERS

BILLY FORD	- - - - -	President
LOLA DAVIS	- - - - -	Vice President
CECIL TRIPLETT	- - - - -	Secretary-Treasurer
FAGAN SCOTT	- - - - -	SEB Representative

MEMBERS

JOHN GODBOLD	DONALD O'CONNOR
DICK LORD	BAYLIS SHANKS
ALBERT MAY	J. S. VANDIVER
MARVIN WILLIAMS	

FACULTY MEMBER

Professor PAUL RAMSEY



ALPHA EPSILON DELTA

(Pre-Med)

Founded - - - - - University of Alabama, 1926
 Established at Millsaps - - - - - April 28, 1935
 Colors - - - - - Red and Violet
 Flower - - - - - Red Rose
 Publication - - - - - "The Scalpel of Alpha Epsilon Delta"

OFFICERS

JOHN RIMMER - - - - - President
 LEE ROY MURPHREE - - - - - Vice President
 EARL HARPER - - - - - Secretary
 WILLIAM BRADSHAW - - - - - Treasurer

MEMBERS

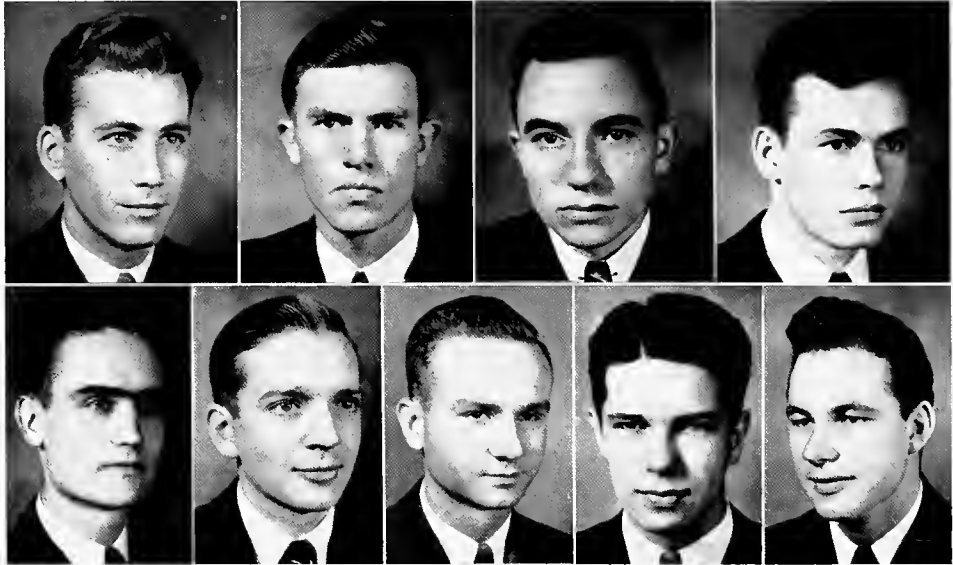
AUBREY ADAMS	A. L. MAY, JR.
JIMMY BOOTH	CARL RAY NEWSOM
WILLARD COMMANDER	CAPPY RICKS
EDWIN EDWARDS	AVA SANDERS
MANNING HUDSON	RUTH WROTEN

FACULTY MEMBERS

DR. WILLIAM E. RIECKEN DR. JOHN M. SULLIVAN

RIMMER, MURPHREE, HARPER, BRADSHAW, ADAMS
 BOOTH, COMMANDER, EDWARDS, HUDSON, MAY
 NEWSOM, RICKS, SANDERS, WROTEN





● ●
 DUNN, BIZZELL, CONNER, DeLAMOTTE
 DOGGETT, IVY, LAUDERDALE, ROBY, WASSON

SIGMA Upsilon

Founded - - - - - University of the South
 Colors - - - - - Green and Gold
 Publication - - - - - "The Scarab"

As a literary fraternity, Sigma Upsilon offers a limited membership to students of proven writing ability and fosters creative writing on the campus.

Kit Kat Chapter

JIMMY DUNN, <i>Secretary</i>	ROBERT IVY
BILL BIZZELL	BILLY LAUDERDALE
ROY DeLAMOTTE	DONALD O'CONNOR
BLANTON DOGGETT	VICTOR ROBY
WILBOURN WASSON	

FACULTY MEMBERS

Professor R. H. MOORE	Professor J. B. PRICE
Professor PAUL RAMSEY	Professor A. G. SANDERS
DR. M. C. WHITE	



CHI DELTA

Blue Stockings of Chi Delta limits its membership to women students who have shown exceptional ability in literary work. Its monthly meetings feature the reading of original compositions, including reviews, essays, poems, and short stories.

OFFICERS

JEAN KINNAIRD - - - - - President
 BERKLEY MUH - - - - - Vice President
 MARJORIE WALTERS - - - - - Secretary-Treasurer

MEMBERS

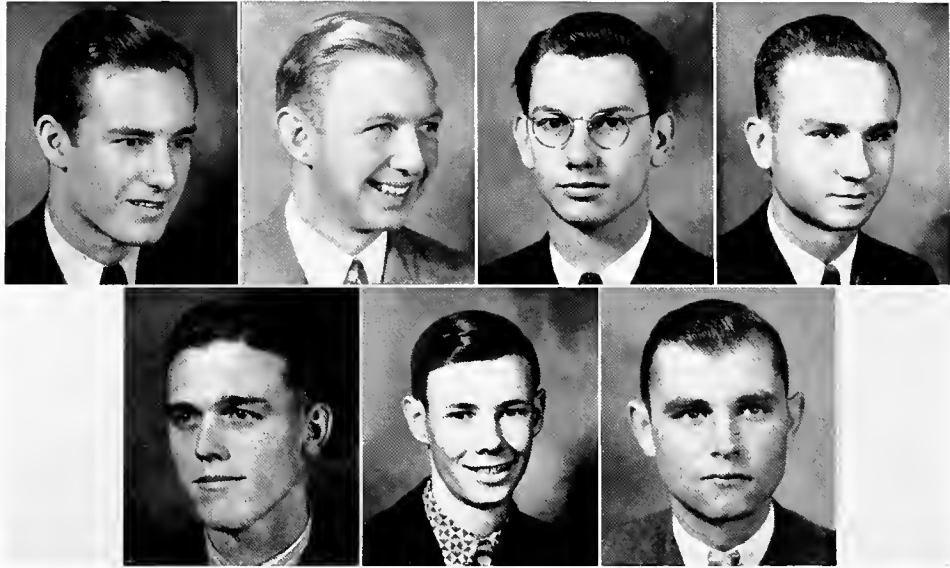
MILDRED CLEGG GLENN PHIFER
 LOLA DAVIS BERT WATKINS

FACULTY MEMBERS

MRS. HENRY COBB MRS. MARGUERITE GOODMAN
 MISS ELIZABETH CRAIG MRS. MARY B. STONE

KINNAIRD, MUH, WALTERS, CLEGG
 DAVIS, PHIFER, WATKINS





COLLINS, HOFFPAUR, KIMBRELL, LAUDERDALE
SHANKS, SIMS, SMITH

ETA SIGMA

Founded Locally at Millsaps in 1923

Election to Eta Sigma is an honor accorded those whose scholastic standing is the highest in the entire student body. Its purpose is to promote scholastic achievement in academic pursuits.

MEMBERS

BILL BIZZELL	BILLY KIMBRELL
FOSTER COLLINS	BAYLIS SHANKS
BILLY HOFFPAUR	LAVELLE SIMS
J. D. SMITH	

FACULTY MEMBERS

DR. D. M. KEY	Professor R. H. MOORE
DR. W. E. RIECKEN	Professor J. R. LIN
MRS. HENRY COBB	

ETA SIGMA PHI

Eta Sigma Phi selects its members from the students of classical languages. An average of "B" is required in either Latin or Greek to be eligible for admission.

OFFICERS

M. F. ADAMS	- - - - -	Prytamis
MILDRED CLEGG	- - - - -	Hyparchos
JAMES KELLY	- - - - -	Chrysopholax
BLANTON DOGGETT	- - - - -	Grammâteus
CECIL TRIPLETT	- - - - -	Epistolographus
ROY DELAMOTTE	- - - - -	Pyloros

MEMBERS

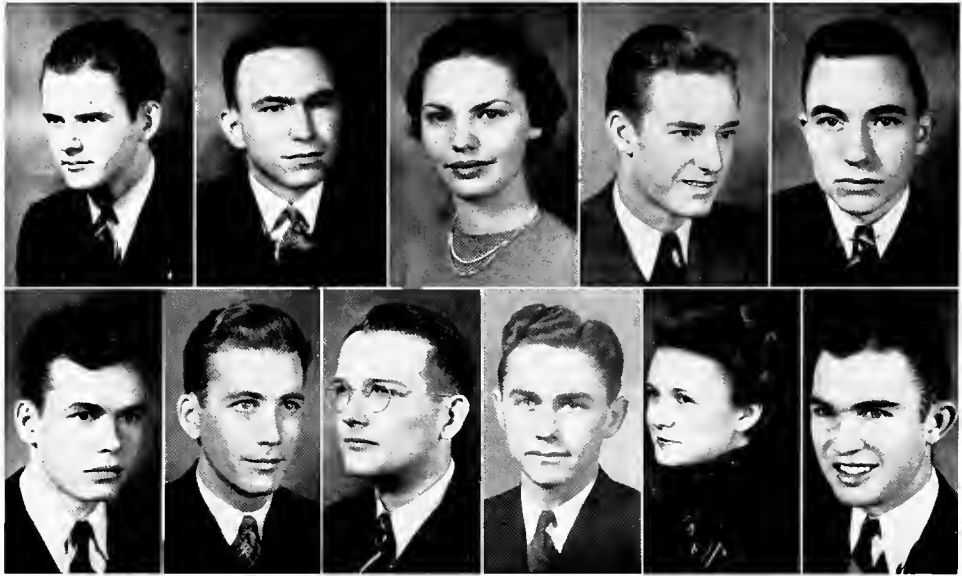
VIRGINIA COLLINS	JOHN GODBOLD
ANNIE K. DEMENT	BILLY KIMBRELL
BILLY FORD	FAGAN SCOTT
WILBOURN WASSON	

FACULTY MEMBERS

MRS. HENRY COBB	DR. A. P. HAMILTON
MRS. ARMAND COULET	DR. D. M. KEY
MISS ELIZABETH CRAIG	Professor J. REESE LIN
Professor A. G. SANDERS	

ADAMS, CLEGG, KELLY, DOGGETT
 TRIPLETT, DELAMOTTE, COLLINS, DEMENT, FORD
 GODBOLD, KIMBRELL, SCOTT, WASSON





SCOTT, FORD, MUH, COLLINS, CONNER,
 DELAMOTTE, DUNN, GODBOLD, KELLUM, PHIFER, TRIPLETT

INTERNATIONAL RELATIONS CLUB

Entrance into IRC is elective, and membership is limited to a small percentage of the student body. The club seeks to promote interest in national and international affairs.

OFFICERS

FAGAN SCOTT - - - - - President
 BILLY FORD - - - - - Vice-President
 BERKLEY MUH - - - - - Secretary-Treasurer

MEMBERS

FOSTER COLLINS	JOHN GODBOLD
JAMES CONNER	STACY KELLUM
ROY DELAMOTTE	GLENN PHIFER
JAMES DUNN	CECIL TRIPLETT

FACULTY MEMBERS

PROF. RALPH G. JONES	PROF. R. H. MOORE
PROF. PAUL RAMSEY	

LA TERTULIA

Organized in 1936 by J. D. Smith and Paul Whitsett who were interested in forming a club of students mutually interested in Spanish, the Spanish Club is now an affiliate of the national organization, "La Tertulia". Unusually good class standing in Spanish courses is a prerequisite to elected membership.

OFFICERS

J. D. SMITH - - - - - President
 PAUL WHITSETT - - - - - Vice-President
 DELORES DYE - - - - - Secretary-Treasurer

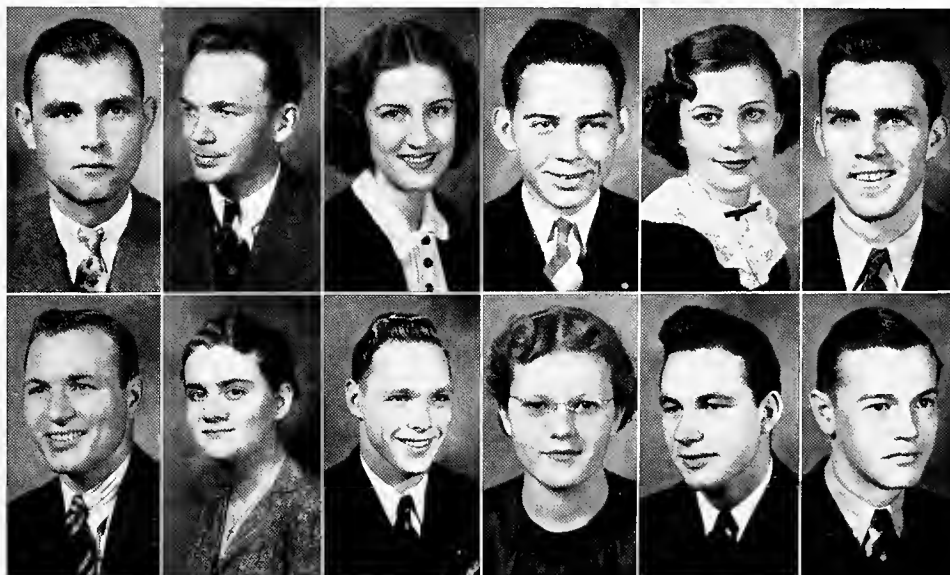
MEMBERS

WALTER BEARD	OLLIE MAY GRAY
ROMA FERN CHAMPENOIS	T. M. HARDY
LEONARD CLARK	JEAN ROBERTS
R. J. ELFERT	WILBOURN WASSON
S. R. WHITTEN, JR.	

FACULTY MEMBERS

MRS. HENRY COBB PROF. A. G. SANDERS

SMITH, WHITSETT, DYE, BEARD, CHAMPENOIS, CLARK,
 ELFERT, GRAY, HARDY, ROBERTS, WASSON, WHITTEN.





KIMBRELL, STRAHAN, ADAMS, BLOUNT, CLEGG,
 DOGGETT, GORDON, HOFFPAUIR, SHAUGHNESSY, WHITSETT.

ALPHA PSI OMEGA

Membership in Alpha Psi Omega is awarded to those students who have done outstanding work in the field of dramatics, either in acting, or in make-up, managership, or properties.

OFFICERS

BILLY KIMBRELL - - - - - President
 LUCILE STRAHAN - - - - - Secretary-Treasurer

MEMBERS

M. F. ADAMS	ALEX GORDON
IMOGENE BLOUNT	BILLY HOFFPAUIR
MILDRED CLEGG	BLACKIE SHAUGHNESSY
BLANTON DOGGETT	PAUL WHITSETT

FACULTY MEMBERS

PROF. R. H. MOORE	DR. M. C. WHITE
-------------------	-----------------

THE MILLSAPS PLAYERS

PRESENTATIONS OF THE YEAR

"A FRIEND AT COURT"

Cast

SHIRLEY CHICHESTER
KENNY HOLYFIELD
BOB LEDBETTER
CARL MILLER
MARY JANE MOHEAD
CAROLYN BUCK
PAUL VINING
JANE HYDE WEST

"HER STEP-HUSBAND"

Cast

LUCILE STRAHAN
NELL PERMENTER
"BLACKIE" SHAUGHNESSY
MARTHA DEES
M. F. ADAMS
BILLY HOFFPAUR
FRED BUSH
CHARLES CLARK

"WHO'S A COWARD"

Cast

A. G. GAINES
ROMA FERN CHAMPENOIS
LEELAND MORGAN

"A BALKY COURTSHIP"

Cast

BILL LAMPARD
DICK LORD
CHARITY CRISLER

"THE SERVANT IN THE HOUSE"

Cast

BILLY KIMBRELL
MILDRED CLEGG
BLANTON DOGGETT
PAUL WHITSETT
A. G. GAINES
BOB LEDBETTER
GLENN PHIFER

"THE FIRST DRESS SUIT"

Cast

JOE BROOKS
JIM LIVESAY
VIRGINIA PETTIT
MARIANNA TERRY

BUSINESS, PUBLICITY, STAGE AND MAKEUP

CHESTER MCKENZIE
ALEX GORDON
JACK BAIN
JACK FERRIS
MILTON WHITE
DELIA RAY LIDDELL
ERNEST FELTS
LILLIAN D. SWAYZE
ROY DELAMOTTE

DRAMATICS DIRECTOR

DR. M. C. WHITE

WHITSETT, DOGGETT, KIMBRELL, BUSH, HOLYFIELD, ADAMS, GORDON, FELTS,
HOFFPAUR, LIVESAY, LAMPARD, BROOKS, BAIN, MORGAN, GAINES, VINING,
CHAMPENOIS, SHAUGHNESSY, CHICHESTER, WEST, STRAHAN, PERMENTER,
TERRY, DEES, BLOUNT





JOE AINSWORTH
MR. COULET
JOHN McRAE

The MILLS

Director - - - - - ARMAND COULET
 President - - - - - JOHN M. McRAE
 Vice-President - - - - - JOE AINSWORTH

Clarinets:

JOE AINSWORTH
 EDMUND BARNES
 NASH BROYLES
 BEN EVANS
 PEMBLE FIELD
 JAMES HUDSON
 GRADY KERSH
 CHARLES MURRAY
 CAPPY RICKS

Saxophones:

BERNARD LUKE
 LEELAND MORGAN
 W. B. TURNER

Cornets:

EDGAR HORN
 PAUL LACKEY
 PAUL SHEFFIELD
 JAMES SIMMONS
 NORVILLE SUTHOFF
 LAMAR VENTERS
 MARVIN WILLIAMS

Euphonium:

A. L. MAY

Bass Horns:

CLIFFORD GODWIN
 PAUL VINING

Drums:

MANNING HUDSON
BILLY LAUDERDALE
JOHN M. McRAE
TOM TUCKER

French Horns:

KENNY HOLYFIELD
JOSEPH SNYDER
EUGENE WATTS
MILTON WHITE

Accordian:

BILL PALMER

Trombones:

FRED BUSH
CARL RAY NEWSOM
JAMES RIMMER
JAMES WALL

Glockenspiel:

TOM NEELY

Flute:

JOHN RUNDLE

Baritone:

FRANK HAYS

A P S B A N D . .





The MILLSAPS SINGERS

The Millsaps Singers under the direction of Alvin J. King completed this season a very successful tour through fourteen Mississippi towns. Later "The Messiah" and "Hiawatha's Wedding Feast" were presented.

OFFICERS

CHESTER MCKENZIE	- - - - -	President
MARGARET PORTER	- - - - -	Vice-President
FAGAN SCOTT	- - - - -	Business Manager
BERT WATKINS	- - - - -	Secretary-Treasurer
JACK BAIN	- - - - -	Librarian

SOLOISTS

MRS. ARMAND COULET	A. G. GAINES
BILLY KIMBRELL	

A CAPELLA CHOIR

SOPRANOS

MARGUERITE COLTHARP
GRACE CUNNINGHAM
CATHERINE DAVIS
EDWINA FLOWERS

BETTY LARSEN
EVELYN MCGAHEY
LUCILE STRAHAN

ANN STONE
BERT WATKINS
VIRGINIA WILSON

ALTOS

IMOGENE BLOUNT
OTTOMESE CASSELS
SELLA CASSELS
MARGUERITE DARDEN

LOLA DAVIS
MARTHA DEES
CORINNE DENSON

CLARA F. DENT
MARGARET PORTER
ELIZABETH WILSON

TENORS

JOHN BURWELL
JAMES CAVETT
BLANTON DOGGETT

DICK DORMAN
ROBERT IVY
BILLY KIMBRELL

BERNARD LUKE
HILLIE SHARP
EUGENE WATTS

BASSES

M. F. ADAMS
JACK BAIN
RUDOLPH BANGERT
BILL BIZZELL

A. G. GAINEY
BILLY HOFFPAUIR
GRADY KERSH
CHESTER MCKENZIE

VICTOR ROBY
FAGAN SCOTT
FERD SHELL





HARVEY, LITTON, SHAUGHNESSY, WILSON
 COLTHARP, CONNER, CUNNINGHAM, DENT, OGDEN
 PALMER, TERRELL, WALKER, WHITSETT.

BEETHOVEN CLUB

OFFICERS

WIRT TURNER HARVEY	- - - - -	President
RUBYE LITTON	- - - - -	First Vice-President
MRS. PAUL RAMSEY	- - - - -	Second Vice-President
MARY E. SHAUGHNESSY	- - - - -	Third Vice-President
ELIZABETH WILSON	- - - - -	Secretary
ANNIE SUE KNIGHT	- - - - -	Treasurer
MRS. J. L. ROBERTS	- - - - -	Counselor

MEMBERS

MARGUERITE COLTHARP	FRANCES OGDEN
JAMES CONNER	BILL PALMER
GRACE CUNNINGHAM	KATHERINE TERRELL
CLARA F. DENT	RALPH WALKER

PAUL WHITSETT

ASSOCIATE MEMBERS

BARBARA BOSWELL	ANNE NEWELL
KATHERINE GRIMES	PATSY PARKER
NITA HISCHER	MRS. DUDLEY PHELPS
DAVIS MACCORMICK	MARY JOE WERINER

PRE-LAW CLUB

In the fall of 1937, and chiefly through the efforts of Marvin Williams, the pre-law club was organized. Open to students primarily interested in pursuing the study of law as a vocation, the club holds meetings for the purpose of discussing questions concerning law-making, law-enforcement, and law interpretation.

OFFICER

MARVIN WILLIAMS - - - - - President

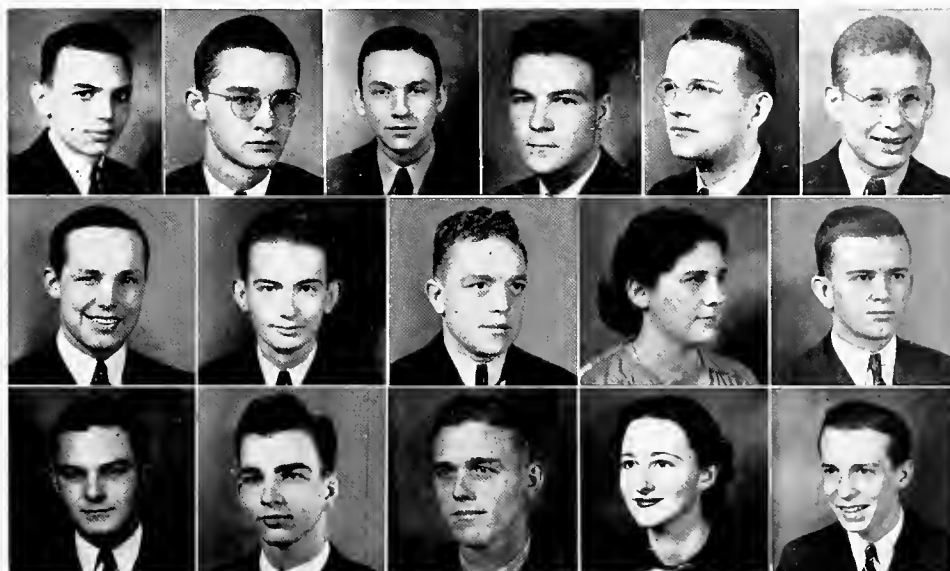
MEMBERS

SAM BIRDSONG	DICK LORD
JOEL DENTON	CLYDE McKEE
ERNEST FELTS	CHARLOTTE NICHOLS
JOHN GOBOLD	ERLON NOWELL
GEORGE C. HALL	ALBERT PIPPEN
KENNY HOLYFIELD	GEORGE ROBERTSON
JOEL HUNTER	BAYLIS SHANKS
CHARLES KILGORE	FLOY THOMPSON

MARTIN WILLIAMSON

PROF. R. R. HAYNES - - - - - Faculty Adviser

WILLIAMS, BIRDSONG, DENTON, FELTS, GOBOLD, HOLYFIELD,
KILGORE, LORD, McKEE, NICHOLS, NOWELL,
PIPPEN, ROBERTSON, SHANKS, THOMPSON, WILLIAMSON





● ● CLEGG, DAVIS, GRAY, BLOUNT, CHICHESTER
 CUNNINGHAM, DOGGETT, DARDEN, GORDON, HINSON
 KINNAIRD, LAMB, OGDEN, WROTEN

Y. W. C. A. CABINET

OFFICERS

MILDRED CLEGG	- - - - -	President
CATHERINE DAVIS	- - - - -	Secretary
OLLIE MAY GRAY	- - - - -	Treasurer

MEMBERS

IMOGENE BLOUNT	SARA GORDON
MAY ELLEN CHICHESTER	SYBLE HINSON
GRACE CUNNINGHAM	JEAN KINNAIRD
GAYLE DOGGETT	MARY SUE LAMB
MARGUERITE DARDEN	FRANCES OGDEN

RUTH WROTEN



Y. M. C. A. CABINET

OFFICERS

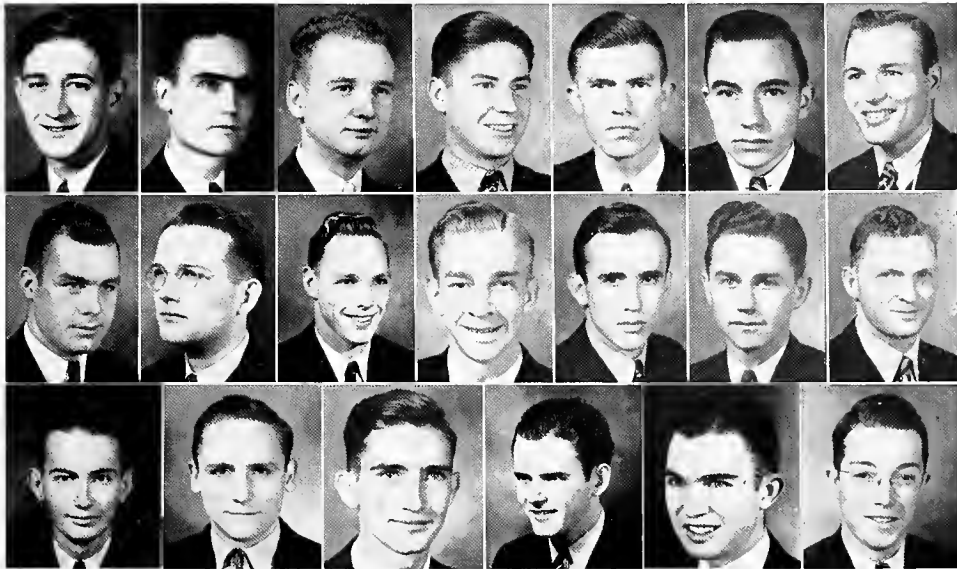
WILEY CRITZ - - - - - President
 BLANTON DOGGETT - - - - - Vice-President
 DONALD O'CONNOR - - - - - Secretary-Treasurer

MEMBERS

JOHN BATTE	MANNING HUDSON
BILL BIZZELL	STACY KELLUM
JAMES CONNER	JAMES KELLY
R. J. ELFERT	DICK LORD
EDWIN EDWARDS	ROBERT MATHENY
JOHN GODBOLD	CHESTER MCKENZIE
T. M. HARDY	FAGAN SCOTT
FIELDING HOLLOMAN	CECIL TRIPLETT

EUGENE WATTS

CRITZ, DOGGETT, O'CONNOR, BATTE, BIZZELL, CONNER, ELFERT,
 EDWARDS, GODBOLD, HARDY, HOLLOMAN, HUDSON, KELLUM, KELLY,
 LORD, MATHENY, MCKENZIE, SCOTT, TRIPLETT, WATTS.





● Top Row: FREEMAN, DOGGETT, MANGUM, BRIDEWELL, SMITH, JONES
 Middle Row: WROTEN, COURTNEY, SNYDER, O'CONNOR, LYTLE, VENTERS, HETRICK, CALDWELL
 Bottom Row: PEDEN, EMANUEL, BANGERT, PEVEY, BRANTLEY, THORNTON, WATTS, WALLACE
 Center Front: ROGERS

MINISTERIAL LEAGUE

OFFICERS

B. B. ROGERS	-----	President
MILTON PEDEN	-----	Secretary
PERCY EMANUEL	-----	Treasurer
DONALD PEVEY	-----	Program Chairman
DONALD O'CONNOR	-----	Publicity Chairman

MEMBERS

RUDOLPH BANGERT	LUCIEN FREEMAN	MIKE McELHANEY
OTHO BRANTLEY	WILLIAM FULGIUM	ALGIE OLIVER
ALBERT BRIDEWELL	JOHN H. HETRICK	AUBREY SMITH
JACK CALDWELL	ELLIOTT JONES	JOE BOB SNYDER
JOE CARRUTHERS	JAMES KELLY	JACK THORNTON
JOHN COURTNEY	MARK LYTLE	LAMAR VENTERS
WILEY CRITZ	WALLACE MANGUM	HUBERT WALLACE
FRANK DEMENT	ROBERT MATHENY	EUGENE WATTS
BLANTON DOGGETT	TORRENCE MAXEY	JAMES WROTEN
JAMES ELLIOTT	W. R. MURRAY	

HONORARY MEMBERS

DR. H. M. BULLOCK	PROF. J. REESE LIN	DR. J. M. SULLIVAN
MISS RUTH COOPER	DR. B. E. MITCHELL	MISS VIRGINIA THOMAS



THE CHRISTIAN COUNCIL

Composed of representatives from the student body and campus religious organizations, the Christian Council serves as the executive and planning committee of religious activity on the campus.

OFFICERS

JAMES KELLY - - - - - President
 SARA GORDON - - - - - Vice-President
 BLANTON DOGGETT - - - - - Secretary-Treasurer

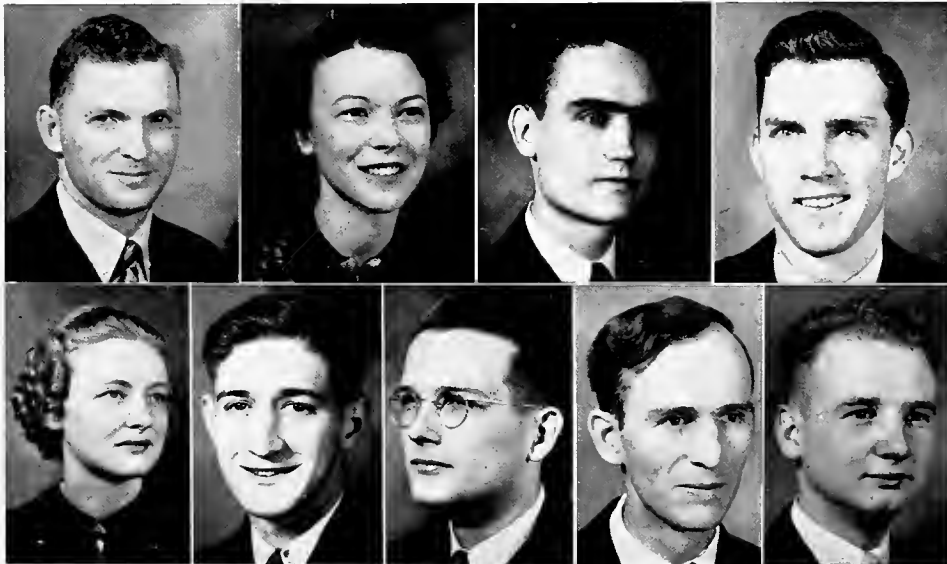
MEMBERS

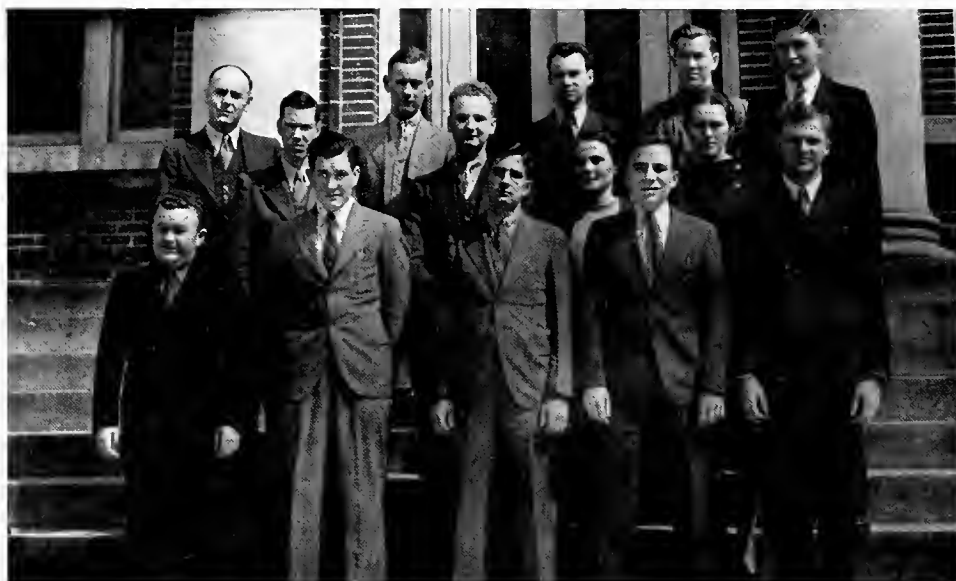
LEONARD CLARK	JOHN GODBOLD
MILDRED CLEGG	MARDELLE HARDIN
WILEY CRITZ	BILL MURRAY
DONALD O'CONNOR	

FACULTY MEMBERS

DR. H. M. BULLOCK	MISS VIRGINIA THOMAS
-------------------	----------------------

KELLY, GORDON, DOGGETT, CLARK,
 CLEGG, CRITZ, GODBOLD, MURRAY, O'CONNOR.





RIECKEN, SNYDER, ROBERTSON, SHARP, FREEMAN,
 McWHORTER, O'CONNOR, YOUNGBLOOD, CASSELS,
 WALLACE, HUNTER, EMANUEL, CONNER, KELLY

THE BARBARIANS

Made up of men and women students not enrolled in a Greek-letter society, the Barbarian Club seeks to provide social opportunities for all students and to strengthen the ties of school loyalty by organizing the non-Greeks.

Colors: Orange and Black

Publication: "The Broadside"

OFFICERS

HILLIE SHARP	President
DONALD O'CONNOR	Vice-President and Publication Editor
SELLA CASSELS	Secretary
OTTOMESE CASSELS	Treasurer
HUBERT WALLACE	Sergeant-at-Arms

MEMBERS

O. D. BONNER	OLLIE MAY GRAY	TOM ROBERTSON
JACK CALDWELL	IMOGENE HAMMOND	LAURA MAE SHRADER
JAMES CONNER	JOEL HUNTER	JOE BOB SNYDER
CORRINNE DENSON	JAMES KELLY	WILEY WILLIAMS
ROSE NELL DENSON	LEROY KELLY	JAMES McWHORTER
PERCY EMANUEL	BILL MURRAY	JENNIE YOUNGBLOOD
LUCIEN FREEMAN	MILTON PEDEN	
CLINTON GLASER	LOUISE RAY	
DR. WILLIAM E. RIECKEN		Faculty Adviser

THE MAJORETTE CLUB

Interested in promoting women's athletics, the club sponsors an intramural program for young women. Membership in the club is limited to those who have achieved success in intramural sports.

EMBLEM - - - - - Purple "M"

OFFICERS

MARGARET PORTER - - - - - President
 SELLA CASSELS - - - - - Vice-President
 MARJORIE WALTERS - - - - - Secretary-Treasurer
 VIRGINIA GADDY - - - - - Intramural Manager
 JEAN KINNAIRD - - - - - Reporter

MEMBERS

CAROLYN BUCK OLLIE MAY GRAY
 OTTOMESE CASSELS ANNIE LOU HEIDELBERG
 MARGUERITE DARDEN PEARL NOBLES

JEAN ROBERTS

MISS ELIZABETH TAYLOR - - - - - Sponsor

PORTER, S. CASSELS, WALTERS, GADDY, KINNAIRD, BUCK
 O. CASSELS, DARDEN, GRAY, HEIDELBERG, NOBLES, ROBERTS.



In Appreciation

In the production of this book we are deeply grateful to Bob Faerber of Alabama Engraving Company for invaluable aid in suggestions and layouts; to Durant Finley of Tucker Printing House for his work in helping the staff compile the volume; to Mrs. Yvette Cole for her photographic work; and especially to our advertisers whose support substantially financed the publication.

—The staff.

Jennings & Hutchins

Inc.

"Smart Mens Wear"

149 E. Capt. Phone 6676
JACKSON, MISS.

BETTER LIVING APPLIANCES, Inc.

430 E. CAPITOL ST.

General Electric Radios,
Refrigerators, Washers.

SMALL TABLE MODEL RADIOS
CAN BE PURCHASED ON A
MONTHLY PAYMENT PLAN.



Edwards Hotel

Jackson, Mississippi

400 Rooms 400 Baths

FIRST IN COMFORT,
ACCOMMODATIONS,
HOSPITALITY

Make The Edwards Your Home
When In Jackson.

A STUDENT'S DAY

7:25—Clock goes off with that hideous noise. Ho-Hum! Jumps out of bed, throws on some clothes and makes it to the dining hall just in time for breakfast. Hastily downs the meal and then back to the room. A quick shower and take off to class. On way over, remembers that forgot to study lesson.

Arrives in class just before 8:35 bell. Takes seat and scans lesson during roll call. Lesson gets under way. "Will you read now?" "Er-uh, I couldn't translate that." Horrors, better study the lesson next time. Bell rings at last, and class is out. Well, will go over to the grill and hang around a while.

"Hi-Ho, boys." Kills 50 minutes before chapel and then to general assembly. Wonders half-heartedly what program will be like. Speaker is introduced. Begins to wonder what he is talking about. Decides might as well study for next class. Chapel dismissed. Goes to next lecture. Prof fires a way about Holy Roman Empire. Takes a few notes but over head. Prof. then announces test for next time and lets class out ten minutes ahead of time. Another hour to pass away. Guesses he'll go over to the library and look for a book to report on. Asks Bill what is a short one. "So-and-so" by Whoosis. O. K. Goes up to desk and asks for this "So-and-So". Not in right now. "If I might suggest one, this is a particularly good work." Glances at 400 page volume.

"Uh, I think I've read that before." Thinks a moment. "I'll just wait 'til "So-and-So" gets in." Leaves desk,

THE VOGUE

146 E. CAPITOL STREET

Jackson, Miss.

CHESTER E. JONES DRUG STORE

SERVICE WITH A SMILE

N. West & Fortification Sts.
Phone 4567-8 Jackson, Miss.

FREE DELIVERY

SODA, SANDWICHES, DRUGS,
CIGARS AND SUNDRIES

Support Those Who Cooperate

When Down Town

VISIT

PRIMOS COFFEE SHOP

A Rendezvous for
COLLEGE STUDENTS

236 E. Capitol St.

OPPOSITE POST OFFICE

We Appreciate Our Millsaps
Patrons



Lead The Way - - -

As Millsaps Marches On!

Swinging into stride as Mississippi Marches On, Millsaps College is conducting an endowment drive which will make possible a greater Millsaps.

A new day is dawning for the Magnolia State, and Millsaps must be ready to maintain the standard of service she has achieved through the years.

With Methodist educational activity now concentrating at Millsaps, an influx of new students is expected next year . . . the college will be ready.

From her present students . . . who are carrying on the Millsaps tradition . . . their college seeks support for the Millsaps of the future.



MILLSAPS COLLEGE

D. M. Key, President

Jackson, Mississippi

GREETINGS GRADS!

HERE'S HOPING
THERE'S A JOB
AWAITING YOU!



Dunnaway's
105 N. STATE STREET

COMPLIMENTS

CITY SHOE SHOP

MANGEL'S

MISSES' AND WOMEN'S
APPAREL

126 East Capitol Street
JACKSON, MISS.

EDWIN B. LANGFORD

Distributor

BUS, BODIES, TRAILORS,
TRUCK EQUIPMENT

Jackson Mississippi

Smart Apparel For All Occasions
from
Mississippi's Largest Specialty
Store Are Always Correct

PARISIAN

Store For Women



COLLEGE CAPERS

WE WELCOME ORDERS FROM

THE MAJORS



1808 N. State St. Phone 5328



looks around and spots one and only. "Hello, whatcha doin'?" "Getting up my English. (Sweetly) This hot weather certainly makes one thirsty, doesn't it?" (Catches hint, but broke)—"Yeah, sure does; well, don't study too hard. G'bye."

Gins over to Science Hall for coming recitation. Still some time, so sits down and hope Prof cuts class. No such luck—here he comes up steps now. Bell rings. First thing—a pop test. Wow! Almost keels over. Then—whew! This is the stuff we had last week. Knows that. During rest of period draws pictures on side of notebook page. Comes to conclusion that 12:10 classes are bad on the appetite.

1:05 at last. Goes up to room and drops books. Then to dinner. A little bit better than yesterday. After dinner studies a little and then sleeps 'til suppertime. Well, well, surprise!! A good supper!! A good show on downtown, so might as well take it in. Talks room-mate into going and then bums two bits off him for showfare. We're off—After show walks up Capitol Street to see the sights for the 1,543rd time. Catches a ride to school.

Gets there about 10:30. The session is under way in Jaek's room. Hears a dispute, so joins in. Tempus fugit, and quickly. Goes to room to study. Decides it's too late and resolves to get up early in the morning and study.

Sets clock. (Tempus fugits some more). Wakes up. Sun is shining brightly. Gosh, didn't hear alarm. Dial reads 8:25. Ho-Hum. Grabs clothes, dons them and runs for class. Realizes that hasn't studied again.

(Ho-Hum, this is where we came in—so long)

20th Century

RECREATION

Center

"The Pride of the South"

FOR LADIES & GENTLEMEN

LAMAR AND CAPITOL

JACKSON, MISS.

PURSER BROTHERS

OWNERS

BETTER PRINTING COMPANY

QUALITY PRINTERS
AND ENGRAVERS

Telephone 3044

JACKSON

MISSISSIPPI

AUNT BETTY BREAD

IS SERVED IN MILLSAPS
DORMITORIES



ACME BAKERY

230 NORTH FARISH ST.

Jackson, Miss.



L. V. Berbette

Moran Berbette

WHITE'S LUMBER YARD



GENERAL
BUILDING MATERIALS



PHONE—629—630

Jackson

Mississippi



Again . . .

**FOR PROMPT, EFFICIENT WORK
THE STAFF OF THE
BOB ASH E L A
C H O S E**

Cole Studio

YVETTE M. COLE, Photographer

Jackson

Mississippi

FOR THE ANNUAL PORTRAITS



▼

**CAPITAL
Paint & Glass Co.**

●

401-407 SOUTH STATE STREET
Jackson, Miss.

▼

**S. P. McRae
Company**

Department Store

●

200-202 WEST CAPITOL STREET
Phone 4400
Jackson Mississippi

**ROBINSON
BROTHERS**

●

**Plymouth — DeSoto
Sales and Service**

●

PHONE 5666-7-8
Jackson Mississippi

Smoke . . .

PORTINA, TAMPA NUGGET,
MURIEL, GREAT SOUTHERN,
KEEP MOVING, EL TRELLES,
WHITE OWL, JOHN RUSKIN
—Good Cigars.

▼

**CORR-WILLIAMS
TOBACCO CO.**

WHOLESALE DISTRIBUTORS

Sorority Songs

Beta Sigma Omicron

True love, dear Beta Sigma,
to you we bring,
Hearts all beating with loyalty
just for you.
Memories throughout the years
Evermore will bring loyalty,
love for you,
Joy just in serving you, Beta
dear.

—

Chi Omega

I love you truly, Chi Omega
dear,
Vows we have taken will hold
ever near;
Now and forever, we'll always
be
True to Chi Omega—true to
thee.
Ah, girls, 'tis something, your
friendship to hold
Ah, girls, 'tis something that
ne'er will grow old;
Strong are the bonds that
unite you and me,
Holding us together thru
eternity.

—

Phi Mu

Verse:

The twilight brings you mem'-
ries
Of the girls that make life
worthwhile,
Some greet you with laughing
faces,
And some with a tender smile;
But after the rest have gone
There's one that still lingers
on—

Chorus:

The love in the heart of a Phi
Mu girl
Is as pure as the heart of a
glowing pearl;
Loyal and true she will ever be
To the standards of her fra-
ternity;
She's united by ties of her
bond of love
To her sisters throughout the
world,
Truth and joy and beauty lie
In the heart of a Phi Mu girl.

Batton Tire & Oil Co.

FISK TIRES

PHONE 783-4

●

Complete One Stop Service

●

FRANK BATTON B. JOHNSON
SIDNEY ATKINSON

▼

HEADQUARTERS FOR

●

ELGIN WATCHES

●

O'Ferrall Jewelry Co.

Standard Life Building

▼

**THE BEST DRESSED
MEN WEAR**



THE SCHWOB CO.

163 E. Capitol St.
Jackson Mississippi

**MILLSAPS COLLEGE
LEADS IN EDUCATION**

●

**JACKSON
STEAM LAUNDRY**

LEADS IN LAUNDRY &
DRY CLEANING

●

Phone 7730
I. LEHMAN, President

SMOOTH FROZEN



Seale-Lily
ICE CREAM
YOU EAT IT WITH A SMILE

ICE CREAM Every Day

In Some Way



Dolly Madison
17 Jewels
YELLOW GOLD
\$29.75

J. L. ALBRITON

Opposite Post Office

Phone 3904



PAINTS, VARNISHES,
LACQUERS, LEADS, OILS,
ENAMELS, BRUSHES
AND PAINTERS'
SPECIALTIES

The Sherwin-Williams Co.

OF GEORGIA

219 E. Capitol Street Jackson, Miss.

Compliments of
STANDARD PHOTO CO.

IN JACKSON IT'S

The JACKSON'S GREATEST STORE
Emporium

"Jackson's Greatest Store"

COMPLETE SELECTIONS

CORRECT STYLES

ATTRACTIVE VALUES

▼

ELECTRIC POWER
and
SERVICE



**A BASIC
MISSISSIPPI
INDUSTRY**

▼

Dr. H. F. Magee

Physician and Surgeon

LAMAR LIFE BUILDING

Jackson Mississippi

Hederman Brothers

PRINTERS

Blank Book Makers

Stationers—Lithographers

6500 JACKSON, MISS. 6501

**DON'T FORGET BOYS AND
GIRLS WE SELL**

FURNITURE

Batte Furniture

JOHN C. BATTE

Kappa Delta

There is no girl like a KD girl
With her smile like the dawn
of the day,
There is no vow like the KD
vow,
It's as true as the stars they
say
And the sweetheart he loves
wears a KD pin,
And her love is as deep as
the sea;
So she knows she'll be his
If she vows she will
By the honor of her KD.

Fraternity Songs

Dream Girl of Pi K A

In the still of the night,
When you turn down the light,
There's a memory of a girl in
your mind;
For her sweet little smile
Makes life worthwhile;
If you'll look everywhere,
You'll find none so sweet
As this dream girl of mine.
She is surely divine,
And I'd lay all I have at her
feet;
For the love of a girl
Is like the pore of a pearl
When it comes from the girl
of my dreams.

Chorus:

When the nightbirds are sing-
ing their love song,
And you sit by the fireside
and dream;
There's the thought of a girl
Puts your brain in a whirl—
For her eyes, like the bright
embers, gleam;
She is fair as the heaven above
her,
She is true to the trust that
she bears;
For, though she is far away
She'll be yours some sweet
day,
She's the dream girl of Pi
K A.

▼

Compliments of

McCarty - Holman

▼

"Say It With Flowers"

PROGRESSIVE FLORIST FOR
MORE THAN FORTY YEARS

●

Capitol Floral Co.

LINDSEY CABINESS

▼

Compliments of

Cabell Electric Co.

Jackson Miss. Meridian

▼

ALBRITTON
Ice Cream Company

●

Phones 4133-4134

●

229-231 South Congress

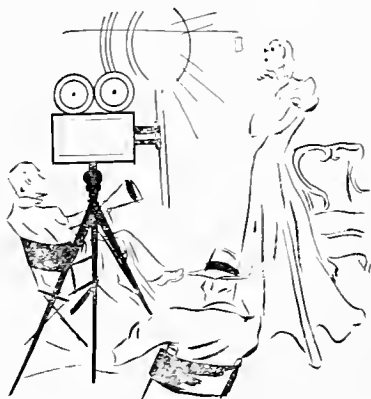
Jackson, Miss.

Remember?

—The place where you bought all those good sandwiches; where you purchased your textbooks and other classroom materials; where the gang gathered for a hot drink in winter and a cold drink in spring; where you met the friends who autographed your Bobashela? Sure, you remember. And remember, too, you're always welcome here.

THE GRILL

DRESS THE PART YOU WANT TO PLAY



The question now is not "Do you want to play act?", but "Do you dress the part you want to play?"

You may be glamorous . . . or strikingly plain—It's The Clothes You Wear. And, so we say, make your clothes investment wisely. You'll find our friendly and experienced people eager to help you select what is individually becoming.

Big occasions demand clothes in the grand manner — and Kennington's swings the spotlight on you.

"Mississippi's Best Store"

KENNINGTON'S Jackson

▼

Compliments of

**WALTHALL
HOTEL**

Jackson Mississippi

▼

FIELDS

224 E. Capitol St.
CATERING TO THE MILLSAPS
MISS

DUKE'S
APPAREL FOR MEN

240 EAST CAPITOL STREET

Compliments of

Blue Ribbon Creamery
"Safest Milk You Can Buy"

Burns & Lacey, Inc.
STORE FOR MEN
218 W. CAPITOL STREET
NEXT TO BOURGEOIS

Kappa Sigma's Sweetheart

To Kappa Sigma's sweetheart
Let us drink a toast tonight;
She is loyal to the colors,
To the scarlet, green, and
white.

You must confess her loveli-
ness
Would set your heart awirl;
Raise a brimming glass
To the sweetest lass,
The Kappa Sigma girl.

—————

K A Sweetheart

K. A. sweetheart,
Each Kappa Alpha will sing
Every praise that your smile
Through life's journey will
bring
Loveliness—and sincerity ere
will stay
In the heart of a girl,
The sunny south's pearl,
She's the sweetheart of old
K. A.

In the southland
Down where the magnolia
grows
Lives this maiden, her cheeks
like the crimson rose,
Other girls like the shadows
must fade away;
She's the fairest I've found
the whole world around,
She's the sweetheart of old
K. A.

—————

The Sweetheart of Theta Nu
Of one sweet girl I am dream-
ing,
The sweetheart of Theta Nu;
True love to her I am bring-
ing
A love that will ever be true.
At night in a moonlight
garden,
When stars are shining above,
I'll tell her the sweetest of
stories,
The sweetheart of Theta Nu.



"Dress Well And Succeed"

Etheredge Cleaners

PHONE 801

▼

BURTON'S

"JUST A GOOD PLACE TO EAT"

AIR CONDITIONED

Jackson Mississippi

▼

Millsaps Alumni

●

SEE AND USE THE

ROYAL
TYPEWRITERS

VISIT US WHEN IN JACKSON

Sales — Service — Supplies

JACKSON
TYPEWRITER CO.

Jackson, Miss.

●

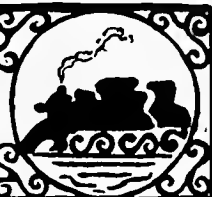
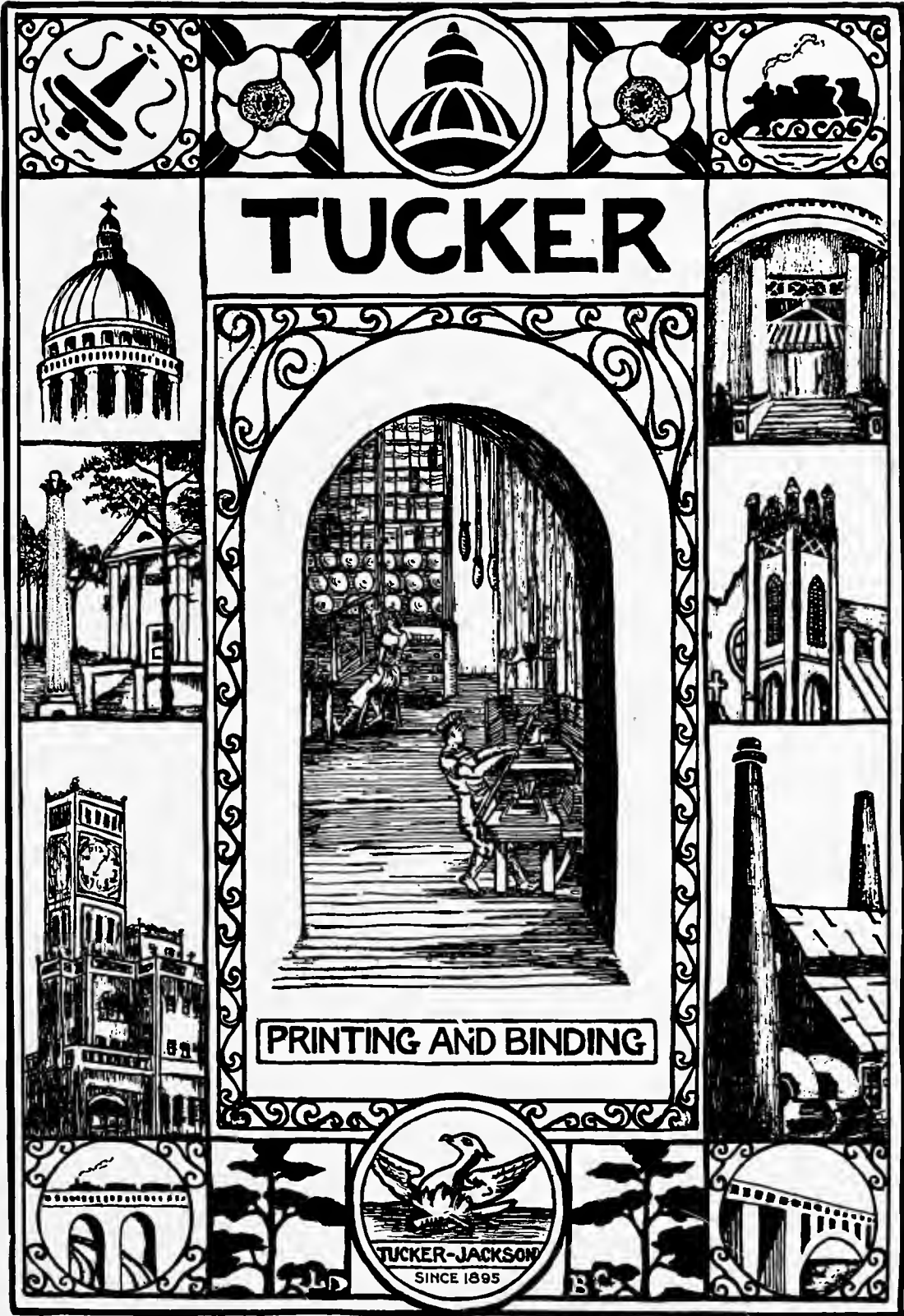


Ready to Face the World

★ ★ COME WHAT MAY.

CONFIDENCE is the heritage of youth it is also a fundamental requirement of business attained by long study, training and experience • We have enjoyed the confidence of yearbook Staffs throughout the country for over thirty years an accomplishment for which we are truly grateful and justly proud

★ ★ ★ ★ ★
COLLEGE ANNUAL DIVISION
ALABAMA ENGRAVING COMPANY
BIRMINGHAM



TUCKER



PRINTING AND BINDING



AUTOGRAPHS



