



The
BOBASHELA
1939



MILLSAPS COLLEGE ARCHIVES

MILLSAPS CYCLE DE ARCHIVES

Digitized by the Internet Archive
in 2011 with funding from
LYRASIS members and Sloan Foundation

<http://www.archive.org/details/bobashela1939mill>

WELLSAPS'



ALBUM OF MEMBERS

The



Copyright

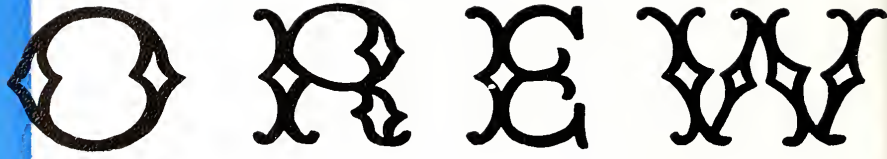
B Y G L E N N P H I L F E R E D I T O R



BASSHELLA
1939

Published by the Students
of
MILLSAPS COLLEGE

JOHN GODBOLD, BUSINESS MANAGER



With the inauguration of President M. L. Smith, a new chapter was begun in the history of Millsaps College. As we turn the first page of the new chapter, it is natural that we also look back at the yellowed but still splendid pages of the first chapter, begun almost fifty years ago, in the days when buggies and bicycles-built-for-two sped up muddy State Street to bring a handful of students to the new school. Styles and customs have changed, but the ideals and high standards of those first years are still respected. To pay tribute to those teachers and students who made those early days memorable, and to symbolize the linking of the traditions of the past and the aspirations of the future in the building of a Greater Millsaps, we have chosen as the theme for the 1939 Bobashela the date of founding of Millsaps College--1892.





and
CONTENTS

THE COLLEGE
THE STUDENT BODY
ATHLETICS
FEATURES
GREEKS
ORGANIZATIONS
ADVERTISEMENTS

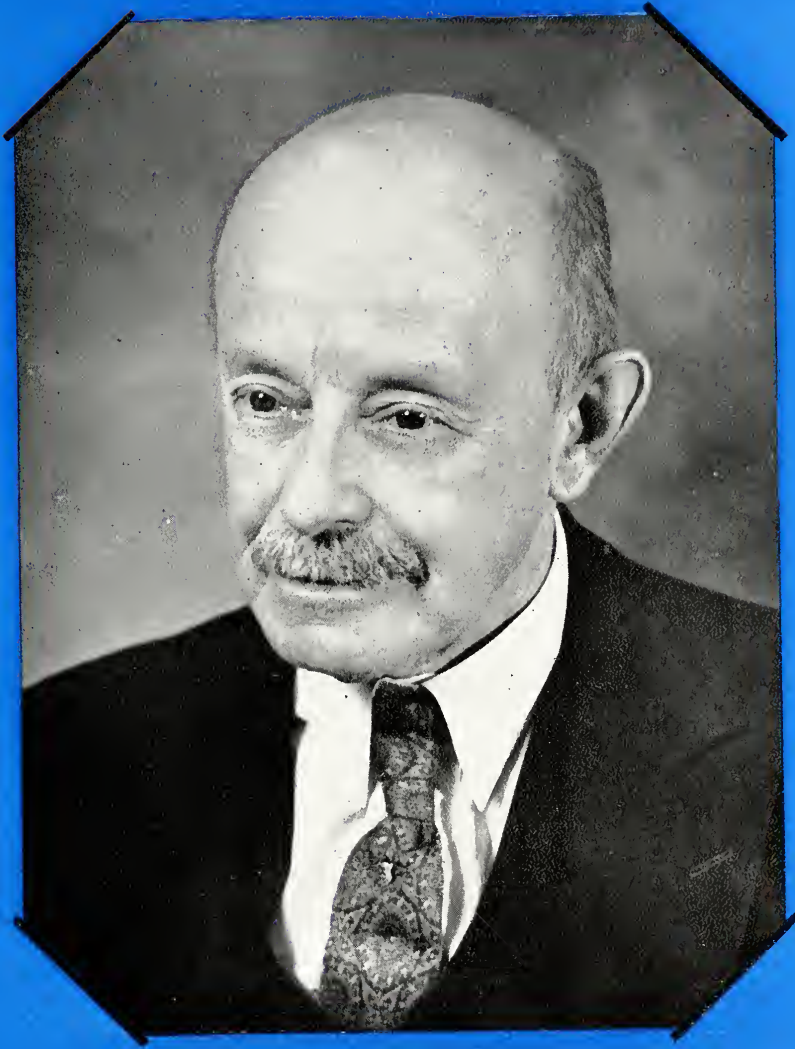


The

D E B I C A T I O N

In paying tribute to the past, its traditions, ideals, and its people, we are reminded of one who remembers well the "Gay Nineties" and who with priceless bits of philosophy and delightful humor has recalled those days for us and made them live again as he tells his anecdotes in the classroom. Not only has he brought numbers of honors to Millsaps College through personal achievement and through innumerable services to the school, but he has made for himself a permanent place in the hearts of the students he has taught. And so it is to Professor J. Reese Lin, our "guide, philosopher and friend" to whom we respectfully dedicate this volume.





J. REESE LIN

J. Reese Lin

MELVIN AT MILLSAPS

Once upon a time there was a high school senior who for purposes of publication we shall designate as Melvin Wood.

And Melvin had always determined that when the time came he would certainly go to Millsaps because his father had gone to Millsaps and his brother had gone to Millsaps and the times that they had had could only be weakly described as good;

They were more than good; they were swell;

And Melvin had determined that the same were in store for little Mel.

So he put away his thoughts of high school and pondered about the fun he was going to have and came out to Millsaps and looked at all the beauties of the campus--of one sort and another--that surround us

And then he saw Foundus.

Now Founders Hall had been seen by Melvin before when he and his father and his brother came to Jackson for the inauguration of one of Millsaps' presidents,

But not as a potential residents.

No, he had merely viewed it as a building on the campus that maybe had been in style once.

Now, however, he viewed it as building where his sleeping and laughing and talking and telephoning would take place for the next number of monce.

Momentarily Melvin was cast into gloom,

And then he reflected that after all what was a room

And after all what fun was a dormitory that was as well furnished as a house; Was he man or mouse,

And Melvin said, "Father, I have thought it all over, and I have concluded that if Founders is part of Millsaps, I love Founders because I subscribe to the school of My Country right or wrong, but if wrong, still my country."

And his tolerant father thought it all over too and decided this was not effrontery

So he said, "Very well, Melvin, we'll go talk it over with U. Z."

Which they did, with the result of loss of money to Mr. Wood, and loss of prestige to Freshman Wood, because he stopped being a senior automatically.

Since there are a number of pictures for you to look at and see some of the things Melvin saw, we will take leave of our Freshman feeling few of the sensations experienced by Ferdinand when he contemplated flowers,

For by this time Melvin is established in Founders, feeling anything but peaceful when he tries to solve the eternal and sphinx-like problem of the Founder's showers.



COLLEGE





DR. M. L. SMITH

The PRESIDENT . . .

In the short time that Dr. Smith has been President of Millsaps College, every member of the student body has been influenced by the friendliness and personal interest shown them by the President. An excellent scholar and a man of foresight and unlimited industry, Dr. Smith, by his work this year, has already indicated that his career as President will be a glorious chapter in the history in the building of The Greater Millsaps.



DR. D. M. KEY

There are a number of forces that have made Millsaps an outstanding college, esteemed for its high standards and enviable record of achievement, but among the strongest forces has been the loyalty and vision of Dr. D. M. Key. For the years of faithful service to this "small liberal arts college"--years during which the light in his office has burned late many a night as he worked to help Millsaps keep the honorable position it occupies in the educational world, we hereby express again the appreciation of the student body.



MRS. MARY B. STONE

Through the difficulties of freshman year, to the day of graduation, Millsaps girls have always the assurance of a wise and sympathetic counsellor as well as teacher in Mrs. Mary B. Stone. Through her interest in women student activities, Mrs. Stone has been a strong influence in forming well rounded personalities as well as well trained minds in the women graduates.



MURRAH HALL



SULLIVAN-HARRELL HALL



The FACULTY

MRS. HENRY COBB

Spanish

MR. ARMAND COULLET

Music

MRS. ARMAND COULLET

Latin

MRS. W. F. GOODMAN

English

PROFESSOR R. R. HAYNES

Education

PROFESSOR RALPH JONES

Political Science

PROFESSOR A. G. SANDERS

Spanish and French

PROFESSOR B. O. VAN HOOK

Mathematics

MISS VIRGINIA THOMAS

Religion





SULLIVAN-HARRELL HALL AND MURRAH HALL ●

● FOUNDERS HALL





● NEW WOMEN'S DORMITORY

BUIE MEMORIAL GYMNASIUM ●



The FACULTY

MISS ELIZABETH CRAIG - - - - - *French*



DR. J. M. SULLIVAN - - - - - *Chemistry*

DR. B. E. MITCHELL - - - - - *Mathematics*

PROFESSOR J. B. PRICE - - - - - *Chemistry*



PROFESSOR G. L. HARRELL - *Physics and Chemistry*





The FACULTY

DR. M. C. WHITE - - - - - *English*

PROFESSOR PAUL RAMSEY - - - - - *History and Social Science*

DR. R. H. MOORE - - - - - *History*

DR. A. P. HAMILTON - - - - - *Latin and German*

DR. H. M. BULLOCK - - - - - *Religion*

DR. W. E. REICKEN - - - - - *Biology*

The FACULTY

1939 was a gala year for Millsaps--first, the inauguration of the new president, Dr. Smith, and then, for the first time, the celebration of Founders Day. In the pictures below:

Dr. Robert Lester of New York City speaks at the inauguration of Dr. Smith; Hugh Clegg, former student of Millsaps, visits the campus; Dr. Smith takes the oath of office; the Glee Club sings at Founders Day celebration; Mr. Clegg speaks on Founders Day; Seniors take part in the celebration.



CLASSY, WHAT?

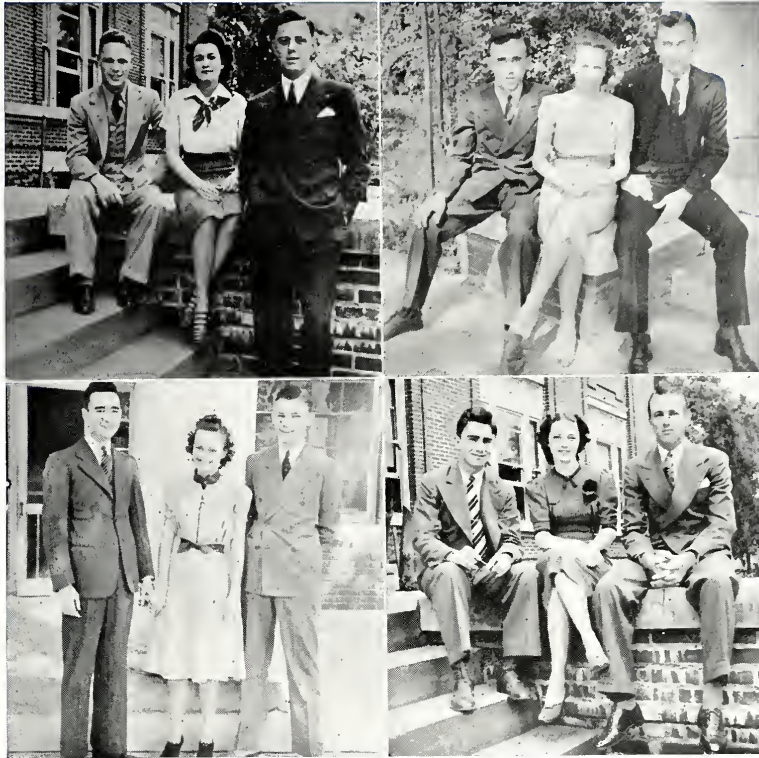
Well, where did we leave Melvin? Oh, yes, he went to Millsaps and then he went to classes and then he went crazy
Because he saw right off that if you worked real hard on Freshman Lit and wrote your weekly impressions you couldn't get up all your trig too and then Van Hook thought you were lazy.
So then if you tried to get up English Monday and then on Wednesday get up trig. (which is planned economy, the Russians inform us)
The English assignment on Monday would be trivial and on Wednesday it would be enormous.
Anyway, he was not alone in these troubles involving education
As he realized after a little meditation.
So Melvin said, "I will bestir myself and meet my class-mates--
"My a-making mates and my fail-mates and my pass-mates--
"Eds, and coeds, for misery loves company,
"And I might as well know a bunch of people to whom I can be grumpy if I care to grumpany."
So Melvin bestirred himself. He went to the grill and he never took a girl, he just stood there, smiled aloofly and ate candy,
Which led coeds to reflect that at dances he would be handy.
In the future they were nice to Melvin, and that made him happy, which all Millsaps students should be, according to our president, M. L. S.
Whis is a noble sentiment, we must confess.
Melvin learned that there is a vicious circle which is said to be the last word in educational (vicious) circles,
Which works this way: you make all B's because you go to class regularly and so you are on the Dean's list and not required to go to class and this is a great honor. So, lest no one realize that you have this great honor you cut a few classes and then you cut a few more and then you take the exam and you don't have the B average and then you go to class next semester and get back your B average and so it goes until you feel that life is just a series of ups and downs and wails and gurgles.
He was handy in bull sessions too because he read *Readers Digest* and *Time* and *Life*
And had an excellent memory which could always produce a gorier murder concerning knives whenever someone in the state was murdered with a knife.
He developed the nonchalance of a dean's-list-student-cutting-for-the-thirteenth-time which he employed in walking out of class fifteen minutes early or coming in fifteen minutes tardy,
And he was not particular pious, but on the other hand, he wasn't nardy.
So he was popular among the students whose pictures are represented on the following pages, with gay ninety borders hemmin' in,
Probably because there is no one of them who did not have at least one of the attributes attributed to Melvin, except that according to the Millsaps college bulletin, March 1939, 165 of the attributes may be considered as applying to the feminine.



CLASSES







Hardy, West, Beard,
Hudson, Burkhead,
Bledsoe, Field, Car-
raway, Rogers, Kel-
lum, Montgomery,
Branch.

Class OFFICERS

CLASS OF 1939:

T. M. HARDY	- - - - -	President
WIRT ADAMS BEARD	- - - - -	Vice-President
JANE HYDE WEST	- - - - -	Secretary-Treasurer

CLASS OF 1940:

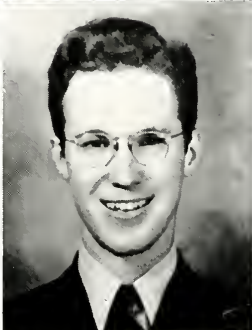
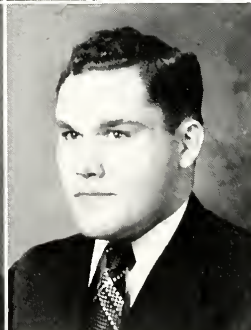
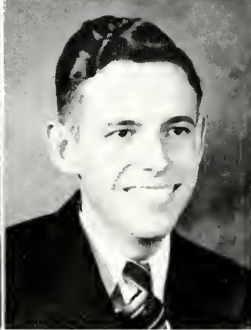
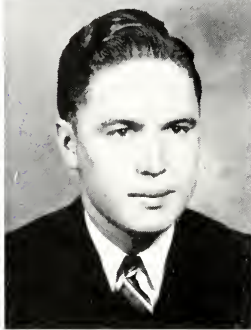
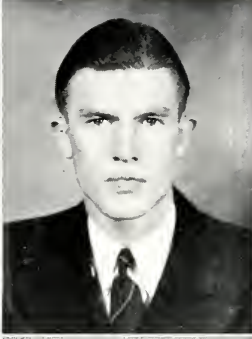
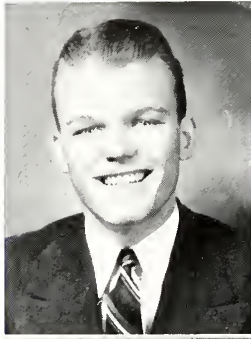
MANNING HUDSON	- - - - -	President
FRED BLEDSOE	- - - - -	Vice-President
VERA BURKHEAD	- - - - -	Secretary-Treasurer

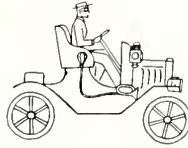
CLASS OF 1941:

PEMBLE FIELD	- - - - -	President
NAT ROGERS	- - - - -	Vice-President
MARY CARRAWAY	- - - - -	Secretary-Treasurer

CLASS OF 1942:

BOYD KELLUM	- - - - -	President
WILLIE BRANCH	- - - - -	Vice-President
EVELYN MONTGOMERY	- - - - -	Secretary-Treasurer





The SENIOR Class

WILLIAM L. AINSWORTH - - - Bay Springs
Pi Kappa Alpha

Jones Co. Jr. College, 1; Howard College, 2; Pre-Med Club, 3, 4; Science Club, 3, 4; A. E. D., 3, 4; Baptist Student Union, 3, 4; Pres. Baptist Student Council, 4; Christian Counsel, 4; Y. M. C. A., 3, 4.

WIRT ADAMS BEARD - - - - - Jackson
Kappa Alpha

Football, 1; Marion Military Inst., 2; Glee Club, 1, 3; Spanish Club, 3, 4; Track, 3, 4; Pres. Men's Pan Hellenic, 4; Vice-President Senior Class, 4; Student Executive Board, 4; Y. M. C. A., 1, 3, 4; Y. M. C. A. Cabinet, 4; Delta Kappa Delta, 4; Purple and White Staff, 1; Pre-Law Club, 3, 4.

WILLIAM HARDY BIZZELL - - - - - Pace
Pi Kappa Alpha

Omicron Delta Kappa, 3, 4; Who's Who in American Colleges and Universities, 4; Bourgeois Medal, 1; Tribbett Scholarship, 2; Dean's List, 3, 4; Eta Sigma, 3, 4; Pres. Eta Sigma, 4; Kit Kat, 3, 4; Le Cercle Francais, 2, 3, 4; Sec. Le Cercle Francais, 3, 4; SIMA Contestant, 2, 4; Student Assistant, 3, 4; Blue Ridge Scholarship, 3; Christian Council, 4; Y. M. C. A. Cabinet, 3, 4; Vice-Pres. Y. M. C. A., 4; Millsaps Singers, 2, 3, 4; Pres. Singers, 4; Basketball 1; Pan Hellenic Council, 3, 4.

DAVID BLOUGH - - - - - Okolona
Football, 1, 2, 3, 4; "M" Club, 3, 4; Secretary "M" Club, 4; Y. M. C. A., 1, 2, 3, 4; Dean's List, 4; Pre-Med Club, 1, 2, 3, 4.

O. D. BONNER - - - - - Jackson
Tennis Team, 4; SIMA, 4; Mathematics Assistantship, 4.

JAMES BOOTH - - - - - Jackson
Pi Kappa Alpha

Eta Sigma Phi, 2, 3; Secretary, 3; Alpha Epsilon Delta, 2, 3; Historian, 2; Vice-President, 3; Pre-Med Club, 1, 2, 3; President, 3; Pi Kappa Delta, 2, 3; Science Club, 3; Vice-President, 3; Student Assistant in Biology, 3.

MARY DOUGLAS BROADFOOT - Jackson
Chi Omega

Belhaven, 1; University of Mississippi, 2; Spanish Club, 3; Woman's Association, 3; Y. W. C. A., 3; Photography Club, 3.

EVELYN BROOKS - - - - - Carthage
Beta Sigma Omicron

Whitworth College, 1, 2; Y. W. C. A., 3, 4; Y. W. C. A. Cabinet, 4; Dean's List, 4; Purple and White Staff, 3, 4; Eta Sigma Phi, 4.

SARAH BUIE - - - - - Jackson
Phi Mu

Woman's Association, 1, 2, 3, 4; Program Chairman, 2; Major Club, 2; Women's Pan Hellenic, 2, 3, 4; Secretary, 2; Vice-President, 3; Science Club, 3, 4; Y. W. C. A., 1, 2, 3, 4.

FRED BUSH - - - - - Brookhaven
Pi Kappa Alpha

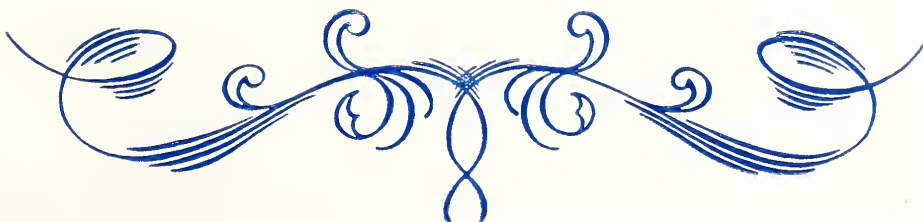
Whitworth, 1, 2; Dramatics, 1, 2, 3, 4; Millsaps Singers, 3, 4; Glee Club, 3, 4; Band, 3, 4; Alpha Psi Omega, 3, 4; Purple and White, 3; Mathematics Assistant, 4; "Nit Wits", 3, 4.

GERALD CARMICHAEL - - - - - Utica
Sigma Rho Chi

Football, 3, 4; Track, 3, 4; Hinds Junior College, 1, 2.

PAUL CARRUTH - - - - - McComb
Pi Kappa Alpha

Band, 1, 2; Y. M. C. A., 1, 2, 3, 4; Y. M. C. A. Cabinet, 2, 3, 4; Debate Club, 4; Ministerial League, 4; Pre-Med Club, 1, 2; Le Cercle Francais, 4; Science Club, 1, 2; International Relations Club, 1, 2, 3, 4; Intercollegiate Council, 2, 3, 4.







The SENIOR Class

ROMA FERN CHAMPENOIS - - - Hattiesburg
Kappa Delta

Miss. Woman's College, 1, 2; Alpha Psi Omega, 3, 4; President, 4; Y. W. C. A., 3, 4; Y. W. C. A. Cabinet, 4; Sigma Lambda, 4; Spanish Club, 3; Millsaps Players, 3, 4.

MYRTLE CHATHAM - - - - - Rose Hill
Beta Sigma Omicron

Whitworth, 1, 2; Y. W. C. A., 3, 4; Women's Pan Hellenic Council, 4.

MAY ELLEN CHICHESTER - - - Jackson
Chi Omega

Y. W. C. A., 1, 2, 3, 4; Y. W. C. A. Cabinet, 3; Vice-President Woman's Association, 3; Classical Club, 1; French Club, 2, 3, 4; Spanish Club, 4; English Assistant, 3, 4; Women's Pan Hellenic, 3, 4; Secretary, 4; Eta Sigma, 4.

MARGARET CONN - - - - - Monticello
Kappa Delta

Copiah-Lincoln Junior College, 1, 2; Y. W. C. A., 3, 4; Bobashela Staff, 4; Glee Club, 3, 4.

GILBERT COOK - - - - - Canton
Pi Kappa Alpha

Football, 1, 2; Boxing, 3.

ROBERT COX - - - - - Madison
Football, 1, 2, 3, 4; Basketball, 1, 2; Boxing, 3; Baseball, 1, 2, 3; Rambler's Club, 3; Captain of Football Team, 4; "M" Club, 2, 3, 4.

CHARITY CHRISLER - - - - - Jackson
Phi Mu

Hinds Jr. College, 1, 2; Y. W. C. A., 3, 4; Y. W. C. A. Cabinet, 4; Woman's Association, 3, 4; Pi Kappa Delta, 3, 4; Secretary-Treasurer, 4; Chi Delta, 3, 4; Millsaps Players, 3, 4; Women's State Oratorical Champion, 3.

WILEY CRITZ - - - - - Clarksdale
Sigma Alpha Epsilon

Miss. State College, 1; Football, 2, 3, 4; Baseball, 2, 3; Ministerial League, 2, 3, 4; Y. M. C. A., 2, 3, 4; Y. M. C. A. Cabinet, 2; President, 3, 4; International Relations Club, 3, 4; Christian Council, 3, 4; "M" Club, 3, 4; Student Executive Board, 3, 4; Omicron Delta Kappa, 3, 4; Who's Who in American Colleges and Universities, 4.

GRACE CUNNINGHAM - - - - - Amory
Chi Omega

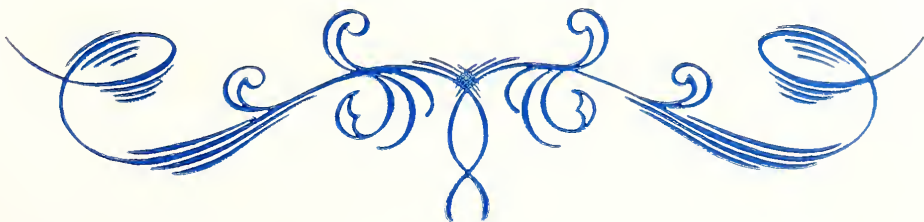
Grenada College, 1, 2; Y. W. C. A., 3, 4; Y. W. C. A. Cabinet, 3, 4; Secretary-Treasurer, 4; Women's Pan Hellenic, 4; Secretary, 4; Glee Club, 3, 4; A Capella Choir, 3, 4; Beethoven Club, 3, 4; Sigma Lambda, 4; Secretary-Treasurer, 4.

ROY DELAMOTTE - - - - - Moss Point
Theta Kappa Nu

Purple and White Staff, 1, 2, 3; Purple and White Feature Editor, 3; Eta Sigma Phi, 3, 4; International Relations Club, 3, 4; Pi Kappa Delta, 2, 3, 4; Debate Club, 1, 2, 3; Kit Kat, 2, 3, 4; Secretary, 4; Student Assistant English, 3, 4; Ministerial League, 4; Staff Artist Bobashela, 2; Omicron Delta Kappa, 3, 4; President, 4; Who's Who in American Colleges and Universities, 4.

CORINNE DENSON - - - - - Jackson
Y. W. C. A. 1, 2, 3, 4; Hinds Jr. College, 1, 2; Band, 1, 2; Glee Club, 1, 2, 3, 4; Woman's Association, 3, 4.

ROSE NELL DENSON - - - - - Jackson
Y. W. C. A., 1, 2, 3, 4; Hinds Jr. College, 1, 2; Band, 1, 2; Glee Club, 1, 2, 3, 4; Woman's Association, 3, 4.







The SENIOR Class

CLARA FRANCES DENT - - - - Jackson
Phi Mu
Whitworth, 1, 2; Purple and White Staff, 4; Feature Section, 3; Most Beautiful Girl, 4; President Woman's Association, 4; Eta Sigma Phi, 4; Beethoven Club, 3; Glee Club, 3, 4; A Capella Choir, 3, 4; Y. W. C. A., 3, 4; Sigma Lambda, 4; Who's Who in American Colleges and Universities, 4.

BLANTON DOGGETT - - - - Kossuth
Pi Kappa Alpha
Ministerial League, 1, 2, 3, 4; Y. M. C. A. Cabinet, 1, 2, 3, 4; Vice-President Y. M. C. A., 3; Glee Club, 1, 2, 3, 4; Secretary Glee Club, 3, 4; French Club, 2, 3, 4; President, 2; Eta Sigma, 3, 4; Dean's List, 3; Kit Kat, 2, 3, 4; Eta Sigma Phi, 3, 4; President, 4; Christian Council, 3, 4; President, 4; International Relations Club, 4; Beethoven Club, 4; Assistant in Religion, 2, 3; Alpha Psi Omega, 1, 2, 3, 4; Omicron Delta Kappa, 4; Who's Who in American Colleges and Universities, 4.

EDWIN EDWARDS - - - - Gulfport
Kappa Sigma
President of Student Body, 4; Vice-President of Student Body, 3; Alternate Captain Football Team, 4; Alpha Epsilon Delta, 3, 4; Vice-President of Class, 1; Y. M. C. A. Cabinet, 2, 3; Football Team, 1, 2, 3, 4; Basketball Team, 1; Omicron Delta Kappa, 2, 3, 4; Who's Who in American Colleges and Universities, 3, 4.

ROGER ELFERT - - - - Seminary
Football, 1, 2, 3, 4; "M" Club, 2, 3, 4; President of "M" Club, 4; Student Executive Board, 4; Basketball, 1, 2; Baseball, 1, 2, 3.

PERCY EMANUEL - - - - Lorman
Ministerial League, 1, 2, 3, 4; Treasurer Ministerial League, 3; Y. M. C. A., 1, 2, 3, 4; Y. M. C. A. Cabinet, 3; Barbarians, 1, 2, 3, 4; Vice-President Barbarians, 4; Glee Club, 3, 4.

DAKIN FITZGERALD - - - - Okolona
Theta Kappa Nu
Pre-Medical Club, 1, 2, 3, 4; Science Club, 1, 2, 3, 4; Y. M. C. A., 3, 4; Alpha Epsilon Delta, 3, 4; Student Assistant, 2, 3.

HAYS FLEMING - - - - Minter City
Kappa Sigma
Pre-Med Club, 1, 2, 3, 4; Science Club, 1, 2, 3, 4; Alpha Epsilon Delta, 4; Tennis, 1; International Relations Club, 4; Bobashela Staff, 3; Dean's List, 3, 4.

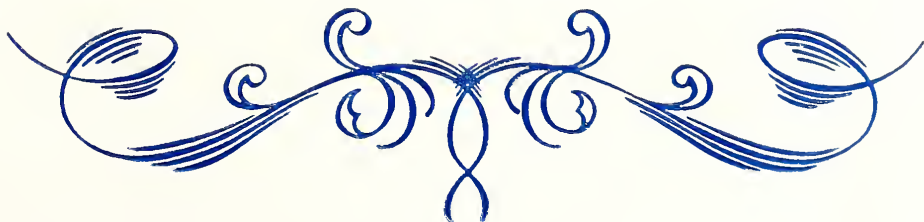
JOHN GODBOLD - - - - Jackson
Pi Kappa Alpha
Band, 1, 2; Debate, 1, 2, 3, 4; Men's Pan Hellenic, 4; Pi Kappa Delta, 2, 3, 4; Eta Sigma Phi, 2, 3, 4; International Relations Club, 2, 3, 4; President, 4; Student Assistant, 3, 4; Buie Medal, 2; Bobashela Staff, 3, 4; Business Manager, 4; Purple and White Staff, 3; Y. M. C. A. Cabinet, 3, 4; Student Executive Board, 4; Omicron Delta Kappa, 4.

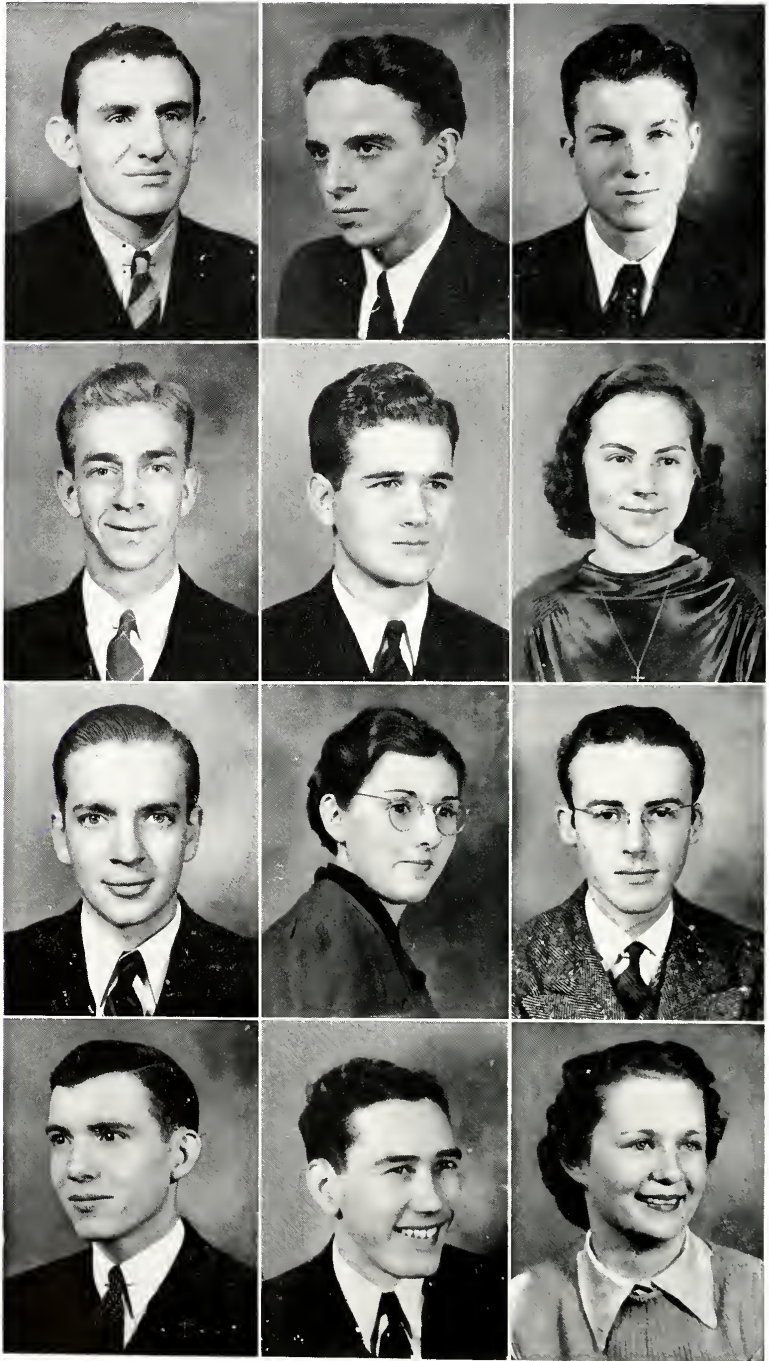
OLLIE MAY GRAY - - - - Burnsville
Grenada College, 1, 2; Barbarians Club, 3, 4; "La Tertulia", 3; Majorette Club, 3; Y. W. C. A., 3, 4; Treasurer, 3; Program Chairman, 4; Assistant to Hostess of Galloway Hall, 3, 4; Biology Assistant, 4; Glee Club, 3, 4; Vice-President Woman's Association, 4; Secretary-Treasurer Mississippi Methodist Student Conference, 4; Sigma Lambda, 4; Vice-President, 4.

JAMES T. HAMILTON - - - - Tutwiler
Kappa Sigma
Northwest Jr. College, 1, 2; Football, 3, 4; Baseball, 3, 4; Track, 3, 4; Basketball, 3; "M" Club, 3, 4.

T. M. HARDY, JR. - - - - Natchez
Kappa Sigma
President of Class, 1, 2, 3, 4; Y. M. C. A. Cabinet, 2, 3, 4; La Tertulia, 2, 3; Science Club, 3; Football, 1, 2, 3, 4; Basketball, 1; Baseball, 1; Track, 3; Assistantship in Bursar's Office, 3, 4; "M" Club, 3, 4; Vice-President, 4; Men's Pan Hellenic, 3, 4; Secretary, 4; Omicron Delta Kappa, 3, 4; Dean's List, 3, 4; Master Major, 4.

EARL HARPER - - - - Brandon
Theta Kappa Nu
Pre-Med Club, 1, 2, 3, 4; President, 4; Alpha Epsilon Delta, 2, 3, 4; Secretary, 3; President, 4; Student Assistant, 3, 4; Y. M. C. A., 4; Science Club, 1, 2, 3, 4; O. D. K., 4; Eta Sigma, 4.







The SENIOR Class

CHARLES HEGWOOD - - - - - Forest

Sigma Rho Chi

Ellisville Jr. College, 1, 2; Football, 2, 3; Basketball, 3, 4; Captain Basketball Team, 3, 4; Baseball 3; Track, 3; "M" Club, 3, 4; Most Valuable Player, 1938.

CARSON HILTON - - - - - Jackson

Pi Kappa Alpha

Spanish Club, 2, 3; Bobshela Staff, 3; Purple and White Staff, 1, 2; Dramatic Club, 2, 3; Dean's List, 2, 3.

HENRY HOLLEMAN - - - - - Pickens

Pre-Med Club, 1, 2, 3, 4; Science Club, 3, 4; Boxing, 2; Dean's List, 4; Student Assistant, 4; Y. M. C. A., 1, 2, 3, 4.

W. FIELDING HOLLOMAN - - - - - Jackson

Kappa Sigma

Y. M. C. A., 1, 2, 3, 4; Y. M. C. A. Cabinet, 3, 4; Assistant Cheerleader, 2; Head Cheerleader, 3, 4; Student Executive Board, 3, 4; Science Club, 2, 3.

CARL HORN - - - - - Magee

Kappa Sigma

Y. M. C. A., 1, 2, 3; Pre-Med Club, 1, 2, 3; Vice-President, 1, 2, 3; Alpha Epsilon Delta, 3.

MARJORIE HULL - - - - - Lawrence

Beta Sigma Omicron

Whitworth, 1, 2; Y. W. C. A., 3, 4.

ROBERT IVY - - - - - Jackson

Kappa Alpha

Kit Kat, 2, 3, 4; Eta Sigma, 3, 4; Glee Club, 1, 3; A Capella Choir, 1, 3; Y. M. C. A., 1, 2, 3, 4; Secretary Freshman Y. M. C. A.; Classical Club, 1; French Club, 2, 3, 4; Blue Ridge Scholarship, 2, 3; Trevelli Scholarship, 3, 4; International Relations Club, 3, 4; Vice-President, 4.

ANNIE SUE KNIGHT - - - - - Brandon

Y. W. C. A., 1, 2, 3, 4; Barbarian Club, 1, 2, 3, 4; Secretary, 4; Beethoven Club, 1, 2, 3, 4; Secretary-Treasurer, 3, 4; Student Assistant in English, 4.

BERNARD LUKE - - - - - Jackson

Theta Kappa Nu

Band, 1, 2, 3, 4; Vice-President, 4; Millsaps Singers, 2, 3, 4; Beethoven Club, 4; Men's Pan Hellenic, 3, 4; Y. M. C. A., 1, 2; Tennis, 1.

JOHN MALONEY - - - - - Jackson

Kappa Sigma

Y. M. C. A., 3, 4; Basketball, 1, 2.

WALLACE MANGUM - - - - - Jackson

Barbarians, 1, 2, 3, 4; President, 2; Y. M. C. A., 1, 2, 3, 4; Y. M. C. A. Cabinet, 1, 2, 3, 4; Major Club, 1, 2; Ministerial League, 1, 2, 3, 4.

RUBY MARTIN - - - - - Midnight

Kappa Delta

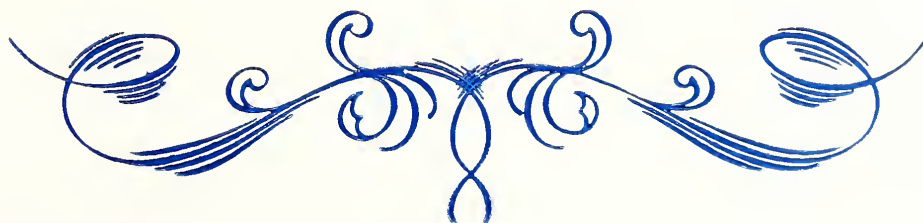
Mississippi State College for Women, 1; Y. W. C. A., 2, 3, 4; Woman's Association, 2, 3, 4.

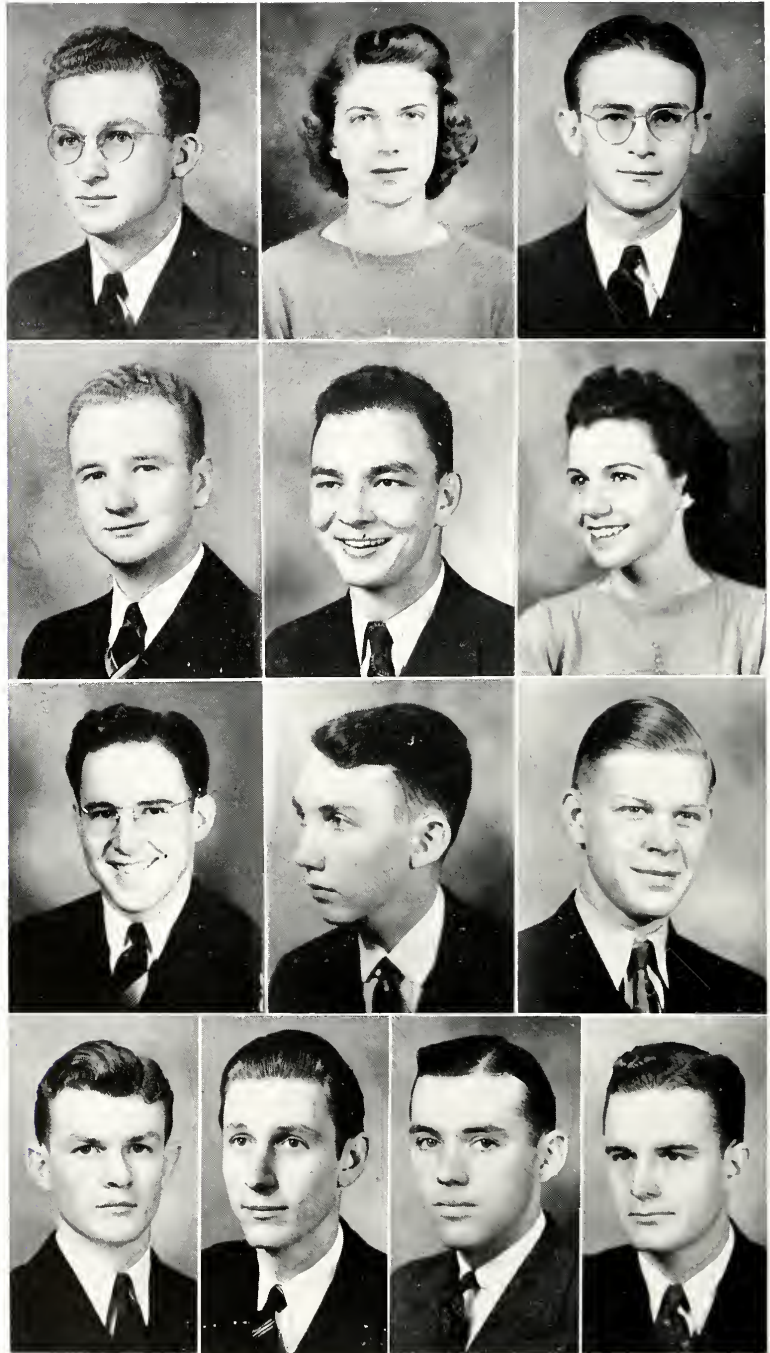
NO PICTURE

ALBERT MAY, JR. - - - - - Jackson

Pi Kappa Alpha

Purple and White Staff, 1, 2; Business Manager Freshman Edition, 1; Freshman Y. M. C. A. Cabinet, 1; Golf Team, 1, 2, 4; Pre-Med Club, 1, 2, 3, 4; Science Club, 1, 2, 3, 4; Varsity Debate Team, 2, 3; Band, 1, 2, 3, 4; President, First Sergeant, Drum Major of Band, 4; Student Assistant, Chemistry, 3, 4; Dean's List, 3, 4; Pi Kappa Delta, 3, 4; President, 4; Alpha Epsilon Delta, 3, 4; Vice-President, 4; Student Executive Board, 4; Omicron Delta Kappa, 3, 4; Eta Sigma, 4.







The SENIOR Class

BERTRAND MELTON - - - - Ackerman
Hinds Jr. College, 1, 2; Football, 3, 4; Track,
3, 4; "M" Club, 3, 4.

DONALD PEVEY - - - - Houston, Texas
Glee Club, 1, 2; "Nit Wits", 1, 2; Dramatic
Club, 1, 2.

CORINNE MITCHELL - - - - Plantersville
Kappa Delta
Y. W. C. A., 1, 2, 3, 4; Y. W. C. A. Cabinet, 4;
Pre-Med Club, 3, 4; Alpha Epsilon Delta, 3, 4.

TOM H. PHILLIPS - - - - Holly Bluff
Kappa Alpha
Baseball, 1; Y. M. C. A., 1, 2, 3.

MARKS McKINNON - - - - - Lauderdale
Kappa Sigma
Pre-Med Club, 1, 2, 3, 4; Dramatics, 1; Freshman
Baseball Manager.

CECIL PITARD - - - - - Jackson
Kappa Sigma
Science Club, 1, 2, 3, 4; President, 4; Photog-
raphy Club, 4; Assistant Physics Department;
President Millsaps Motorcycle Club, 4.

DONALD R. O'CONNOR - - - - Vicksburg
Editor Purple and White, 4; News Editor, 2, 3;
Varsity Debater, 2, 3, 4; Pi Kappa Delta, 2, 3, 4;
Y. M. C. A. Cabinet, 2, 3, 4; Secretary-Treasurer
Y. M. C. A., 2, 3; Blue Ridge Delegate, 2; Blue
Ridge Scholarship, 4; Kit Kat, 3, 4; International
Relations Club, 3, 4; Barbarians Club, 1, 2, 3, 4;
Officer, 3; Ministerial League, 2, 3, 4; Intramural
Sports, 1, 2, 3; Basketball 1; Omicron Delta
Kappa, 4.

HAROLD ROBERTSON - - - - - Jackson
Theta Kappa Nu
Hinds Junior College, 1; Science Club, 2, 3, 4.

ALGIE OLIVER - - - - - McComb
Pi Kappa Alpha
Copiah-Lincoln Jr. College, 1, 2; Ministerial
League, 3, 4; Student Assistant, 4; Football 3, 4;
Track, 3, 4; "M" Club, 3, 4.

B. B. ROGERS - - - - - Montgomery, Ala.
Ministerial League, 1, 2, 3, 4; Vice-President, 3;
President, 4; Student Executive Board, 4.

VIRGINIA PETTIT - - - - - Jackson
Kappa Delta
Dramatic Club, 3, 4; Y. W. C. A., 3, 4; Glee
Club, 3, 4; Delta Psi Omega.

PAUL SHEFFIELD - - - - - Jackson
Pi Kappa Alpha
Band, 1, 2, 3; "Collegians", 1, 2; Pre-Med Club,
1, 2, 3, 4; "Nit Wits", 3, 4; Vice-President B. S.
U., 4; Corporal in Band, 2; Sergeant, 3; Y. M.
C. A., 3, 4; Student Assistant in Chemistry, 4;
Millsaps Motorecycle Club, 4; Science Club, 2,
3, 4; Master of Ceremonies, Faculty Frolics, 3.

ROSS SHELTON - - - - - Jackson
Football, 1, 2, 3, 4; Basketball, 1, 2; Y. M. C. A.,
1, 2; "M" Club, 3, 4.







The SENIOR Class

JOE SIMPSON - - - - - Ackerman
Sigma Rho Chi
Football, 1, 2, 3, 4; Basketball, 2, 3; "M"
Club, 2, 3, 4.

MARY LOU STRAIT - - - - - Gloster
Copiah-Lincoln Jr. College, 1, 2; Y. W. C. A.,
1, 2, 3, 4; Y. W. C. A. Cabinet, 2, 4; Debate, 1, 2;
Basketball, 1.

LILLIAN DOUGLAS SWAYZE - Yazoo City
Kappa Delta
Whitworth College, 1, 2; Y. W. C. A., 3, 4; Y. W.
C. A. Cabinet, 4; Secretary-Treasurer Student
Body, 4; Student Executive Board, 4; Millsaps
Players, 3, 4; Alpha Psi Omega, 3, 4; Millsaps
Singers, 3, 4; A Capella Choir, 4; Secretary-
Treasurer Alpha Psi Omega, 4; Sigma Lambda.
4; Historian Sigma Lambda, 4; Who's Who in
American Colleges and Universities, 4; Miss
Millsaps, 4.

KATHERYNE TERRELL - - - - - Prentiss
Kappa Delta
Belhaven, 1, 2; Beethoven Club, 3, 4; President
Beethoven Club, 4.

LEWIS THAMES - - - - - Sanatorium
Kappa Sigma
Purple and White Staff, 3; Business Manager, 4;
University of Mississippi, 1; Baptist Student
Union, 4; Pre-Medical Club, 2, 3, 4; Science
Club, 2, 3, 4.

CECIL TRIPLETT - - - - - Mashulaville
Sigma Rho Chi
Y. M. C. A. Cabinet, 1, 3, 4; Pi Kappa Delta,
1, 2, 3; Eta Sigma Phi, 2, 3, 4; Eta Sigma, 3, 4;
Classical Club, 1, 2; Pan-Hellenic Council, 3;
Baseball Manager, 2; Student Manager of Ath-
letics, 3, 4; Vice-President Student Body, 4;
Director of Intramurals, 4.

TOM TUCKER - - - - - Clarksdale
Pi Kappa Alpha
Holmes Jr. College, 1, 2; Copy Editor, Purple
and White, 3; Boxing Team, 3; Band, 3, 4;
Assistant Editor Purple and White, 4; Kit Kat,
4; Y. M. C. A., 3, 4.

JEANETTE VAN ZANDT - - - - - Jackson
Chi Omega
Sullins College, 1, 2; Spanish Club, 3, 4; Secre-
tary-Treasurer Spanish Club, 4; Feature
Section, 3, 4.

SUE FRANCES WATKINS - - - - - Grenada
Grenada College, 1, 2; Y. W. C. A., 3, 4; Y. W.
C. A. Cabinet, 4; Purple and White Staff, 4;
Intercollegiate Council, 3, 4; Secretary-Treas-
urer, 4; Eta Sigma Phi, 4.

KATE WELLS - - - - - Anguilla
Whitworth, 1, 2; Y. W. C. A., 3, 4; Pre-Medical
Club, 3, 4; Woman's Association, 3, 4; Eta Sigma
Phi, 4.

JANE HYDE WEST - - - - - Shaw
Kappa Delta
Belhaven, 1, 2; Feature Section, 3, 4; Glee Club,
3, 4; Y. W. C. A., 3, 4; Y. W. C. A. Cabinet, 4;
Purple and White Staff, 4; Bobashela Staff, 4;
Secretary-Treasurer Class, 3, 4; Dramatic Club,
3, 4; Pan-Hellenic, 4; Eta Sigma Phi, 4.

ELIZABETH WILSON - - - - - Pelahatchie
Kappa Delta
Millsaps Singers, 1; Accompanist, 2, 3, 4;
Beethoven Club, 1, 2, 3, 4; Secretary, 3.

RUTH WROTEN - - - - - Columbus
Phi Mu
Grenada College, 1; Glee Club, 2; French Club,
2; Pre-Med Club, 2, 3, 4; Alpha Epsilon Delta,
3, 4; Secretary, 4; Student Assistant, 3; Y. W.
C. A., 3, 4; President, 4; Sigma Lambda, 3, 4;
President, 4; Dean's List, 3, 4; Christian Council,
4; Student Executive Board, 4; Blue Ridge
Scholarship, 3.





The
JUNIORS



MARY ASKEW - - - - - Sardis <i>Beta Sigma Omicron</i>	VIRGINIA GADDY - - - - Jackson <i>Phi Mu</i>
JACK BAIN - - - - - Jackson <i>Theta Kappa Nu</i>	FRANCES GILL - - - - - Jackson <i>Chi Omega</i>
JOHN BURTON BAIN - - - Belzoni	LONGSTREET HAMILTON - Jackson <i>Sigma Chi</i>
NASH BROYLES - - - - Rome, Ga. <i>Pi Kappa Alpha</i>	DALE HARPER - - - - - Brandon <i>Theta Kappa Nu</i>
COOPER BRYANT - - - - Jackson <i>Kappa Sigma</i>	VERNON HATHORN, JR. - - Jackson <i>Kappa Sigma</i>
CAROLYN BUCK - - - - Jackson <i>Phi Mu</i>	HOOVER HORNE - - - - - Carriere <i>Pi Kappa Alpha</i>
VERA BURKHEAD - - - - Jackson <i>Chi Omega</i>	MANNING HUDSON - - - New Albany <i>Kappa Alpha</i>
MARGUERITE DARDEN - - - Jackson <i>Phi Mu</i>	GRADY KERSH - - - - - Jackson <i>Kappa Sigma</i>
MARTHA DEES - - - - - Jackson <i>Kappa Delta</i>	JAMES LANCASTER - - - Sunflower <i>Kappa Alpha</i>
ELIZABETH DURLEY - - - - Drew <i>Kappa Delta</i>	THAMES LLOYD, JR. - - - Jackson <i>Kappa Alpha</i>
DELORES DYE - - - - - Jackson	MARGUERITE MATHISON - - Prentiss
INA BELL FITTS - - - - - Jackson <i>Chi Omega</i>	VIRGINIA MAYFIELD - - - Leland <i>Phi Mu</i>
JACK FERRIS - - - - - Yazoo City <i>Kappa Sigma</i>	MARY MOORE - - - - - Biloxi
MARGARET FORSYTHE - - - Jackson <i>Phi Mu</i>	

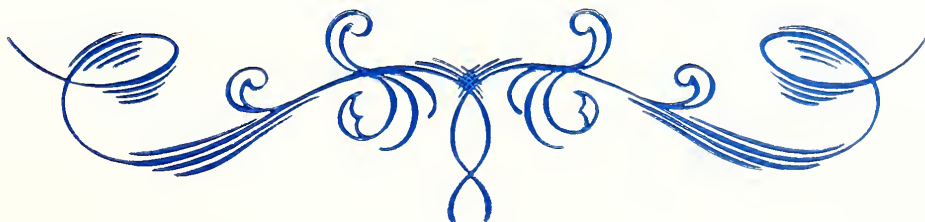




The
MEMBERS



LOUISE MOORER - - - - Jackson <i>Chi Omega</i>	LOUISE RAY - - - - - Cockrum
MARY MYERS - - - - - Morton <i>Beta Sigma Omicron</i>	SARAH RHYMES - - - - - Jackson <i>Phi Mu</i>
BESS McCAFFERTY - - - Lexington <i>Phi Mu</i>	CAPPY RICKS - - - - - Jackson <i>Kappa Alpha</i>
CARTER McCAY - - - - Baldwin <i>Pi Kappa Alpha</i>	JEAN SCALES - - - - - Morton
EVELYN McGAHEY - - - - Jackson <i>Kappa Delta</i>	HERBERT SELMAN - - - Monticello <i>Kappa Sigma</i>
CLYDE McKEE - - - - - Jackson <i>Pi Kappa Alpha</i>	FRED SIMMONS - - - - - Columbia <i>Theta Kappa Nu</i>
ALEX McKEIGNEY - - - - Eupora <i>Kappa Alpha</i>	ANN STONE - - - - - Jackson <i>Chi Omega</i>
MYRT NAYLOR - - - - - Lauderdale <i>Chi Omega</i>	VIRGINIA SWAYZE - - - Yazoo City <i>Kappa Delta</i>
ED DAVIS NOBLE - - - - Fayette <i>Kappa Sigma</i>	MARJORIE TERRY - - - Fernwood
FRANCES OGDEN - - - Hattiesburg <i>Beta Sigma Omicron</i>	J. S. VANDIVER, JR. - - - Jackson <i>Kappa Alpha</i>
GLENN PHIFER - - - - - Jackson <i>Chi Omega</i>	BIN WALKER - - - - - Magee <i>Kappa Sigma</i>
LEM PHILLIPS - - - - Holly Bluff <i>Kappa Alpha</i>	BERT WATKINS - - - - - Jackson <i>Phi Mu</i>
GRACEALINE PORTER - - Vicksburg <i>Phi Mu</i>	JAMES WILSON - - - - - Natchez <i>Kappa Sigma</i>
MARGARET PORTER - - - Jackson <i>Beta Sigma Omicron</i>	FLORENCE WORTHINGTON - Jackson





The SOPHOMORE Class

J. D. BALL - - - - - Jackson
Kappa Sigma

EDMUND BARNES - - - - - Jackson
Kappa Alpha

HELEN BARNES - - - - - Columbia
Kappa Delta

ELIZABETH BEALL - - - - - Lexington
Phi Mu

SAM BIRDSONG - - - - - Jackson
Kappa Sigma

W. J. BOURN, JR. - - - - - Monticello

JAMES BOUTWELL - - - - - Laurel
Kappa Sigma

JOE BROOKS, IV - - - - - Long Beach, Cal.
Theta Kappa Nu

DINAH BROWN - - - - - Lauderdale
Kappa Delta

J. C. BUCKLEY, JR. - - - - - Newton

JOHN BURWELL - - - - - Jackson
Kappa Sigma

JACK CALDWELL - - - - - Canton

MARY CARRAWAY - - - - - Jackson
Chi Omega

JAMES CAVETT - - - - - Jackson
Kappa Sigma

ELIZABETH CAVIN - - - - - Wilkinson

SHIRLEY CHICHESTER - - - - - Jackson
Chi Omega

ROY CLARK - - - - - Columbia
Pi Kappa Alpha

MARY CRAWFORD DENNIS - - - - - Jackson
Chi Omega

TOM DICKSON - - - - - Bassfield

GAYLE DOGGETT - - - - - Kossuth
Chi Omega

PATRICIA EAGER - - - - - Jackson
Chi Omega

PEMBLE FIELD - - - - - Magee
Kappa Sigma

UNA B. FITTS - - - - - Jackson
Chi Omega

JOHNNIE FLOYD - - - - - Weathersby

LUCILLE FOX - - - - - Brandon
Chi Omega

MARTHA GERALD - - - - - Leland
Kappa Delta

CLINTON GLASER - - - - - Greenwood
Theta Kappa Nu

GRADY GRAHAM - - - - - Jackson
Kappa Sigma

MARY MARGARET HALL - - - - - Columbia
Kappa Delta

FRANK HAYS - - - - - Grenada
Kappa Alpha

WALTER HELUMS - - - - - Jackson
Kappa Sigma

MARY SYLVIA HERRON - - - - - Jackson
Kappa Delta

DWIGHT HICKMAN - - - - - Noxapater
Kappa Alpha

KENNY HOLYFIELD - - - - - Summit
Pi Kappa Alpha

EDGAR HORN - - - - - Magee
Kappa Sigma

MYRTLE RUTH HOWARD - - - - - Jackson
Chi Omega

DWIGHT JAMES - - - - - Stratton
Pi Kappa Alpha

VIRGINIA JAMES - - - - - Midnight
Kappa Delta

EVELYN JONES - - - - - Jackson
Kappa Delta

MARTHA KENDRICK - - - - - Jackson
Beta Sigma Omicron

ROBERT KENNEDY - - - - - Whistler, Ala.

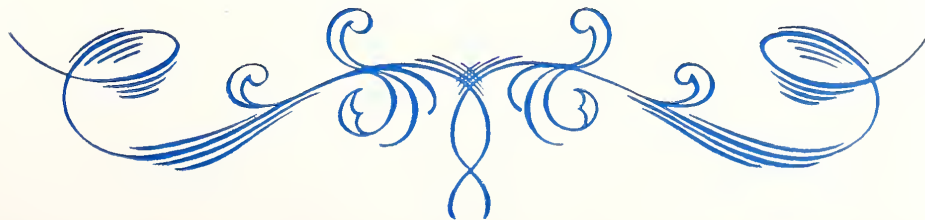
CHARLES KILGORE - - - - - Jackson
Kappa Alpha

GWIN KOLB - - - - - Durant
Theta Kappa Nu

PAUL LACKEY - - - - - Jackson
Kappa Sigma

BETTY LARSEN - - - - - Council Bluffs, Iowa
Kappa Delta

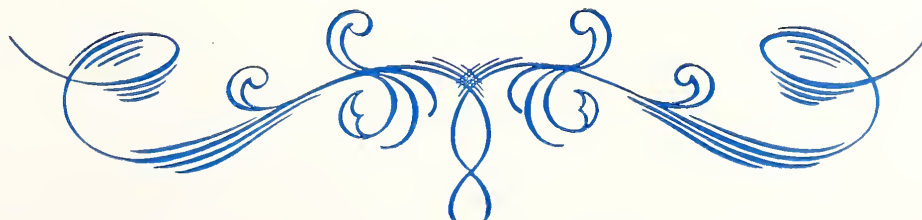
JIM LIVESAY - - - - - Jackson
Kappa Alpha





The SOPHOMORE Class

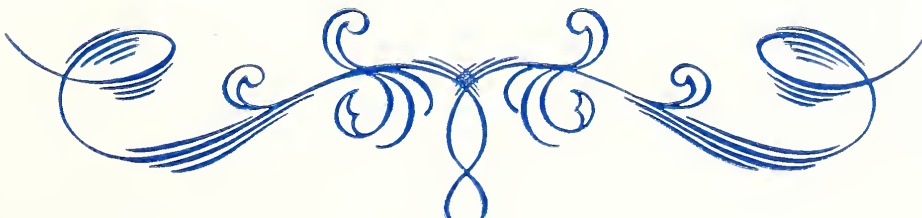
KELTON LOWRY - - - - - Greenville <i>Pi Kappa Alpha</i>	NAT ROGERS - - - - - New Albany <i>Kappa Alpha</i>
CALVIN MICHEL - - - - - Jackson	JOHN RUNDLE - - - - - Grenada <i>Kappa Alpha</i>
MARJORIE MILLER - - - - Tylertown <i>Kappa Delta</i>	BURCH STROUD - - - - - Louise <i>Theta Kappa Nu</i>
CARL MILLER - - - - - Moss Point <i>Pi Kappa Alpha</i>	KIMBLE TAYLOR - - Crystal Springs
MARY ALYCE MOORE - - - - Leland <i>Chi Omega</i>	JAMES THOMPSON - - - - - Jackson <i>Kappa Sigma</i>
LEELAND MORGAN - - - - Vicksburg <i>Kappa Sigma</i>	J. V. TURNAGE - - - - - New Hebron
CHARLES M. MURRY - - - - Ripley <i>Pi Kappa Alpha</i>	BERDYNE TURNER - - - - Hattiesburg <i>Theta Kappa Nu</i>
MARGARET McDOUGAL - - - Jackson <i>Kappa Delta</i>	RALPH WALKER - - - - - McComb <i>Theta Kappa Nu</i>
CHARLES McGLOHN - - - - Gulfport <i>Kappa Alpha</i>	JAMES D. WALL - - - - - Rosedale <i>Pi Kappa Alpha</i>
MARTHA McILWAIN - - - - Greenville <i>Phi Mu</i>	VIRGINIA WALL - - - - - Jackson <i>Kappa Delta</i>
MARY McILWAIN - - - - - Greenville <i>Phi Mu</i>	JAMES WARD - - - - - Montrose <i>Theta Kappa Nu</i>
WYC NAYLOR - - - - - Lauderdale <i>Chi Omega</i>	J. M. WEAVER - - - - - Jackson <i>Pi Kappa Alpha</i>
CHARLOTTE NICHOLS - - - - Jackson <i>Chi Omega</i>	ESS WHITE - - - - - Jackson <i>Pi Kappa Alpha</i>
ERLON NOWELL - - - - - Kosciusko	MILTON WHITE - - - - - Jackson <i>Kappa Alpha</i>
PATRICIA O'BRIEN - - - - - Jackson <i>Chi Omega</i>	PAUL WHITSETT - - - - Mobile, Ala.
LAWRENCE PAINTER - - - - Columbus <i>Pi Kappa Alpha</i>	S. R. WHITTEN - - - - - Gulfport <i>Kappa Alpha</i>
DAVID PEARSON - - - - Sweet Water, Ala.	LOUIS WILSON - - - - - Brandon <i>Pi Kappa Alpha</i>
INAZELLE PIERCE - - - - - Jackson <i>Chi Omega</i>	VIRGINIA WILSON - - - - Clarksdale <i>Phi Mu</i>
ALBERT PIPPEN - - - - - Columbus <i>Kappa Alpha</i>	JACK WINBORN - - - - - Durant <i>Sigma Rho Chi</i>
HAROLD RANKIN - - - - - Corinth <i>Kappa Sigma</i>	ROBERT WINGATE - - - - Greenville <i>Kappa Alpha</i>
SARAH RAY - - - - - Canton <i>Phi Mu</i>	JOHN WRIGHT - - - - - Jackson <i>Pi Kappa Alpha</i>
FRANCES REMBERT - - - - - Jackson <i>Chi Omega</i>	JAMES WROTEN - - - - - Columbus <i>Kappa Sigma</i>
KATHERINE RIDDELL - - - - Jackson <i>Phi Mu</i>	JOHN YEAGER - - - - - Lumberton
JAMES RIMMER - - - - - Camden <i>Pi Kappa Alpha</i>	

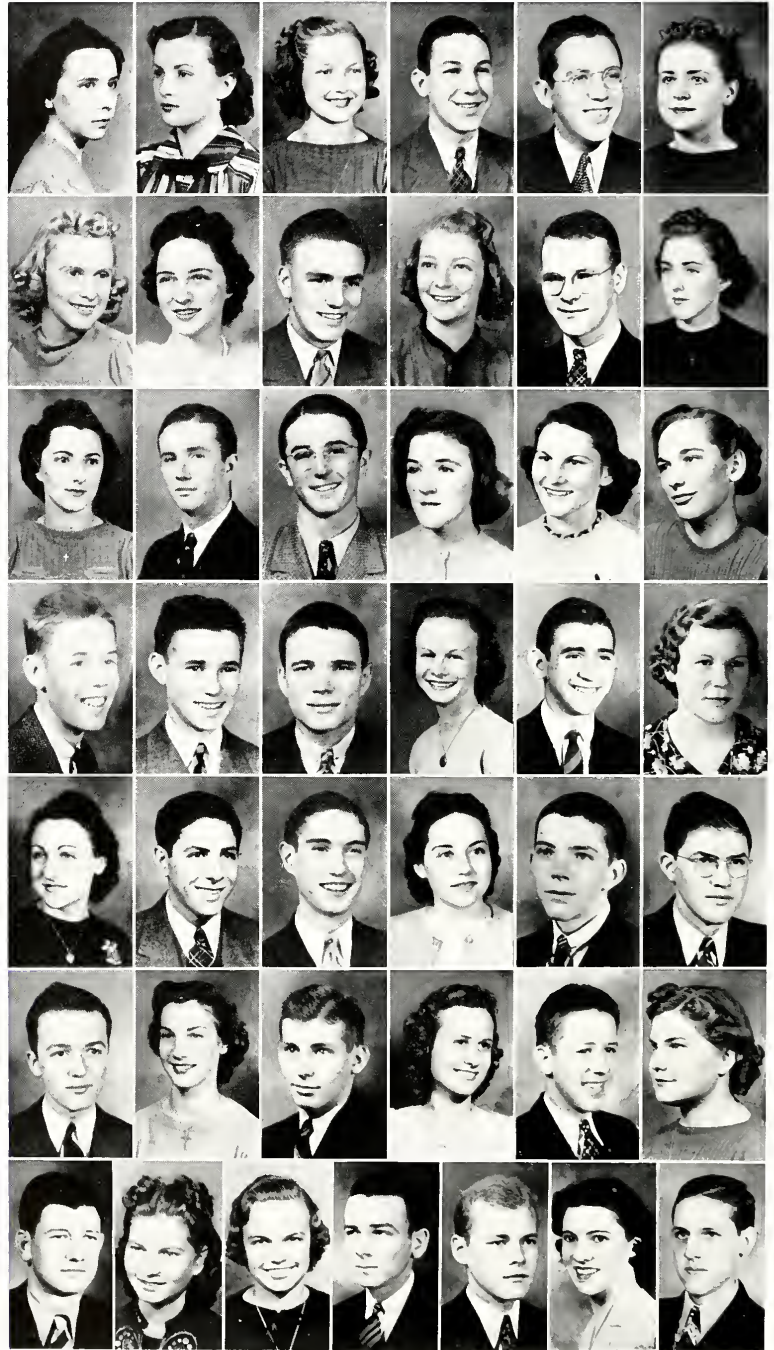




The F R E S H M A N Class

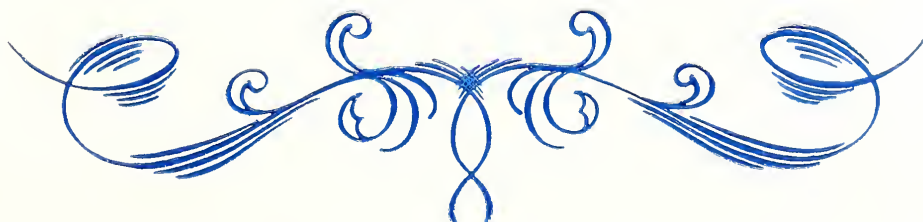
LESLIE ADDISON - - - - - Jackson <i>Theta Kappa Nu</i>	WILFORD DOSS - - - - - Houston <i>Pi Kappa Alpha</i>
CORINNE BALL - - - - - Jackson <i>Phi Mu</i>	EARL EPPERSON - - - - - Jackson <i>Kappa Alpha</i>
MARION BLAKE - - - - - Pocahontas	WILLIAM FAZAKERLY - - - - - Jackson <i>Theta Kappa Nu</i>
HELEN BOOTH - - - - - Kosciusko <i>Beta Sigma Omicron</i>	EDWARD FLEMING - - - - - Minter City <i>Kappa Sigma</i>
HUGH BOSWELL - - - - - New Albany <i>Pi Kappa Alpha</i>	PAULINE FOSTER - - - - - Greenville
FLOYD BRADLEY - - - - - Aberdeen <i>Pi Kappa Alpha</i>	ELIZABETH ANN GILLIS - - - - - Jackson <i>Kappa Delta</i>
JUDGE G. BRADY - - - - - Jackson <i>Kappa Sigma</i>	FLOYD GILLIS - - - - - Jackson <i>Theta Kappa Nu</i>
GILES BRYANT - - - - - Purvis <i>Pi Kappa Alpha</i>	SIDNEY GRAVES - - - - - Laurel <i>Kappa Alpha</i>
CECELIA BURDETTE - - - - - Jackson <i>Chi Omega</i>	W. L. GULLETT, JR. - - - - - Booneville <i>Pi Kappa Alpha</i>
JESSIE LEE CARPENTER - - - - - Rosedale <i>Pi Kappa Delta</i>	MONTA HARDING - - - - - Greenwood <i>Kappa Delta</i>
HARRIS CARTER - - - - - Jackson <i>Kappa Sigma</i>	TOMMY HATHORN - - - - - Jackson <i>Kappa Sigma</i>
ALLIE RUTH CHATHAM - - - - - Montrose <i>Beta Sigma Omicron</i>	CAROL HERRON - - - - - Canton <i>Chi Omega</i>
ROBERT CONDON - - - - - Greenville	ALAN HOLMES - - - - - Danbury, Conn. <i>Theta Kappa Nu</i>
BERTHA COUNCIL - - - - - Jackson <i>Beta Sigma Omicron</i>	MARGARET HULEN - - - - - Jackson <i>Phi Mu</i>
DOROTHY COURTNEY - Shreveport, La.	HANIEL JONES - - - - - Florala, Ala.
MILDRED CRESSWELL - - - - - Jackson <i>Beta Sigma Omicron</i>	BOYD KELLUM - - - - - Greenville <i>Kappa Sigma</i>
CLEMETS CROOK - - - - - Jackson <i>Kappa Alpha</i>	SARAH KENNEDY - - - - - Natchez <i>Chi Omega</i>
MARY JOE CURRIE - - - - - Raleigh	SHELTON KEY - - - - - Jackson <i>Pi Kappa Alpha</i>
EDWARD DANIEL - - - - - New Albany <i>Pi Kappa Alpha</i>	DIXIE KNIGHT - - - - - Mendenhall <i>Chi Omega</i>
GUY DEAN - - - - - Shaw <i>Kappa Sigma</i>	RICHARD LAUDERDALE - - - - - Jackson <i>Kappa Alpha</i>
BEVERLY DICKERSON - - - - - McComb <i>Chi Omega</i>	BALDWIN LLOYD - - - - - Jackson <i>Kappa Alpha</i>





The F R E S H M A N Class

ELEANOR GRACE LUCAS - - - - - Kosciusko <i>Chi Omega</i>	ROBERT RISER - - - - - Jackson <i>Kappa Alpha</i>
JEANETTE MacFALLS - - - - - Jackson <i>Beta Sigma Omicron</i>	LAURA JEAN RODGERS - - - - - Brandon
MARTHA MANSFIELD - - - - - Jackson <i>Kappa Delta</i>	ETHEL ROELL - - - - - Jackson <i>Kappa Delta</i>
ALBERT MARTIN - - - - - Aberdeen <i>Pi Kappa Alpha</i>	EMMETT ROSSIE - - - - - Shaw <i>Theta Kappa Nu</i>
RAYMOND MARTIN - - - - - Jackson <i>Kappa Sigma</i>	SAM SCHIEK - - - - - Meridian <i>Theta Kappa Nu</i>
MARY JULIA MASSEY - - - - - Steele, Mo. <i>Beta Sigma Omicron</i>	MARTHA SHEFFIELD - - - - - Jackson <i>Chi Omega</i>
FRANCES LUCILLE MILLER - - - - - Leland <i>Kappa Delta</i>	JOHN SIGMAN - - - - - Holly Springs <i>Kappa Sigma</i>
EVELYN MONTGOMERY - - - - - Leland <i>Kappa Delta</i>	BILL SMITH - - - - - Ripley <i>Kappa Sigma</i>
REX MURFF - - - - - Noxapater <i>Kappa Alpha</i>	THOMAS SPENGLER - - - - - Jackson <i>Kappa Sigma</i>
NELL MURRAY - - - - - Jackson <i>Phi Mu</i>	MARY STONE - - - - - Jackson <i>Chi Omega</i>
GRAHAM McFARLANE - - - - - Aberdeen <i>Pi Kappa Alpha</i>	RANDOLPH SULLIVAN - - - - - Jackson <i>Kappa Alpha</i>
ANNE NEWELL - - - - - Jackson <i>Phi Mu</i>	LOUISE THOMPSON - - - - - Jackson
MARY ELIZABETH NORDIN - - - - - Jackson <i>Chi Omega</i>	LAWRENCE WARING - - - - - Tylertown <i>Pi Kappa Alpha</i>
GEORGE O'CALLAGHAN - - - - - Tupelo	EMMA RUSSELL WATSON - - - - - Brandon <i>Chi Omega</i>
JAMES O'CALLAGHAN - - - - - Tupelo <i>Pi Kappa Alpha</i>	JOHN WEBB - - - - - Columbia <i>Kappa Alpha</i>
EMELIE OLSON - - - - - Jackson <i>Phi Mu</i>	ANNIE RUTH WILLIAMS - - - - - Lexington
ELIZABETH PEELER - - - - - Ashland <i>Beta Sigma Omicron</i>	MARGARET WILLIAMS - - - - - Jackson
FRANCES PEVEY - - - - - Forest	JAMES WILLIAMSON - Union Springs, Ala.
DUVAL PROUDFIT - - - - - Grenada <i>Kappa Alpha</i>	EUGENE WINK - - - - - Gulfport <i>Kappa Alpha</i>
LAWRENCE RABB - - - - - Lexington <i>Kappa Sigma</i>	RUBY WINTER - - - - - Leland <i>Kappa Delta</i>
HERBERT RICE - - - - - Mobile, Ala. <i>Pi Kappa Alpha</i>	CHARLES YEAGER - - - - - Lumberton <i>Pi Kappa Alpha</i>
HELEN RICKS - - - - - Jackson <i>Chi Omega</i>	



OUT TO THE BALL GAME

Hurrah for the professors, hurrah for U. Z too,
And if you are a Choctaw,--then you know the rest of the chant we chant when
we are enchanted by a half-back or quarter-back breaking through.
But most especially, on this occasion, hurrah for U. Z., surnamed Hathorn,
Upon whom we sometimes vent our wrath and teases when we want a good
sport to tease or vent or wrathorn.
U. Z., however, is worthy of merit,
Because his is one of the major sponsors of the major school spirit.
I make this remark because you all know that he is sorta funny
About money.
But we really shouldn't criticize when we stop to think about it because among
other monies that he takes is \$15 for student activity,
Which solves a number of problems throughout the year, the main one being
that we need never miss a campus ball-game, even if the bread-line is in
dangerous proclivity.
For out of the \$15 comes our tickets to all of the football games and basketball
and just ball games in general,
And we need never stop to reflect that we are traitors to the purple and white
just because we spent our last fifty cents for animal vegetable or mineral.
No stiff backbone do we need, no budget, no question of endurance
At least, where campus ball-games are concerned, because U. Z., the nice man,
has taken over and gives us the Student Activity Fee as insurance.
Therefore we go to the football games and basketball games et al
And U. Z. is our pal,
Because it is through him that we have seen in action and color the people and
passes that live again in the following pages in black and white;
It is through him that we are able to share the thrills of the various games
whether they be played in the afternoon or at night.
It is he that sees that uniforms are brought and lights are lighted and balls are
put up safely after the game and likewise visiting teams
So it seems
That we are not amiss in proclaiming this to be
A hurrah for U. Z.



ATHLETICS





1st Row: Shelton, Hardy, Hamilton, Richardson, J. Currie, Dickson
 2nd Row: Tynes, Miles, Walters, Hegwood
 3rd Row: Winborne, Thompson, Williams, Cox, Triplett
 4th Row: Blough, K. Currie, Green, Melton, Ballard
 5th Row: Hogan, Carmichael, Hall, Wilson, Elfert
 6th Row: Wright, Price, Samuels

The "M" Club

Representing the top in athletic achievement at Millsaps is the "M" Club. Earning of a letter in a varsity sport and campus leadership are the minimum requirements of this organization.

OFFICERS

ROGER ELFERT	- - - - -	President
T. M. HARDY	- - - - -	Vice-President
DAVID BLOUGH	- - - - -	Secretary-Treasurer

MEMBERS

HAMPTON BALLARD	ED HOGAN
DAVID BLOUGH	BETRAND MELTON
GERALD CARMICHAEL	JOE MILES
EUEL COOPER	GENE PRICE
ROBERT COX	MILAN RICHARDSON
JOHN CURRIE	WILLARD SAMUELS
KEYES CURRIE	ROSS SHELTON
TOM DICKSON	JOHN THOMPSON
ROGER ELFERT	CECIL TRIPLETT
WILLIAM GREEN	OSCAR TYNES
GEORGE HALL	TERRY WALTERS
TOTTEN HAMILTON	WILEY WILLIAMS
T. M. HARDY	JAMES WILSON
CHARLES HEGWOOD	JACK WINBORN
CHARLES WRIGHT	



The COACHE

*MAJOR LEADERS FOR EIGHT
YEARS*

TRANNY LEE GADDY
Head Football Coach

B. O. VAN HOOK
Director of Athletics

This year's squad ended the march of two generations of Major gridsters through the hands of Head Coach T. L. Gaddy. From his first year, when he produced a championship team, Coach Gaddy showed that he could inspire Millsaps' small and inexperienced teams to play football far above their heads.

Three lean years in a row with lack of material started the Majors out on a hard road in 1938. A head injury to Robert Cox, co-captain of the Militants, at the first of the season deprived Coach Gaddy of his best running back.

In spite of the loss through injuries of two more varsity backs, Mike McElhaney and Bert Sumrall, the Majors kept digging in all season. Against eleven strong opponents the Militants gained but one victory, yet managed to hold their enemies to close scores.

Coach Gaddy leaves Millsaps at the end of his eighth year, with wishes of the best of luck from the students who have and will continue to admire him as a leader of men.

S and SQUAD

FOR YEARS TO COME

Upon the resignation of his friend and former coach, T. L. Gaddy, Henry L. "Hook" Stone agreed to lead the Militant march on the gridiron, beginning with spring practice in 1939.

Coach Stone comes to Millsaps with a record of eight state championships for his ten years as coach of the Copenh-Lincoln Wolfpack.

With the growth of "Greater Millsaps", bringing with it a better choice of gridiron material, the Purple wheel of fortune is due to swing around again to the point where Coach Gaddy first placed champion Majors on the field.

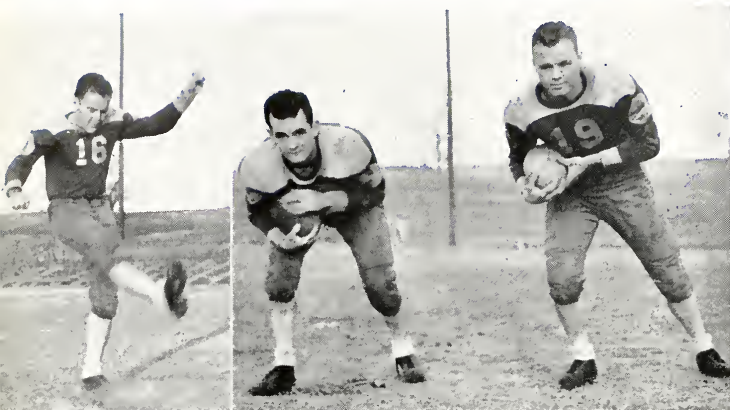


Coach
HENRY L. STONE

L. Wilson, Dorman, Boutwell, Green, Blough, Tynes, Wright, Saxton, Cooper, Bledsoe, Holliday, Hall, Bain, Pearson, Williams, Stuart, J. Wilson, Worthington, Sumrall, Cox, Melton, Elfert, Shelton, Hamilton, Samuels, Miles, Hardy, Dickerson, Winborn, Richardson, Walters, Hogan, Edwards, Simpson, Carmichael, Hegwood, Ballard.



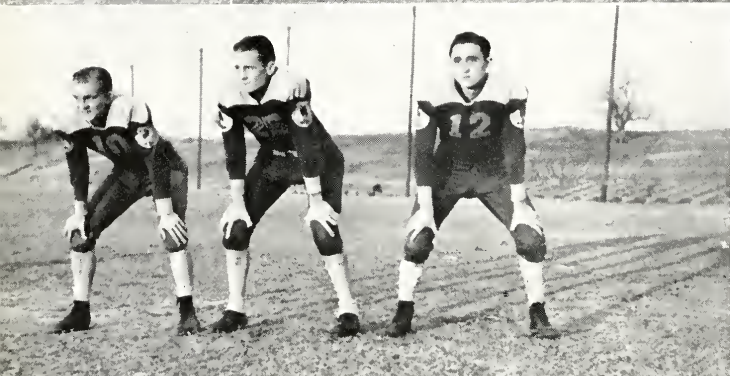
FOOTBALL



COX, Fullback

HAMILTON, Halfback

ELFORT, Halfback



SAMUELS, Quarterback

WORTHINGTON, Halfback

SUMRALL, Halfback

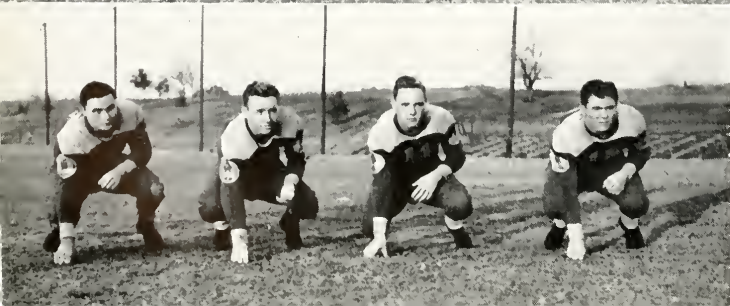


MILES, Halfback

MELTON, Halfback

SHELTON, Halfback

WINBOURNE, Quarterback



RICHARDSON, Halfback

WILSON, Halfback

HARDY, Fullback

DICKERSON, Halfback

HOGAN, Tackle

BLED SOE, Tackle

HEGWOOD, Tackle

WRIGHT, Guard

PEARSON, Guard

DORMAN, Tackle

HOLLIDAY, Tackle

BAIN, Center

BOUTWELL, Tackle

BLOUGH, Center

GREEN, End

SIMPSON, Center

EDWARDS, Tackle

SAXTON, Center

WALTERS, End

TYNES, End

CARMICHAEL, Guard

BALLARD, End

STEWART, Tackle

COOPER, Guard

WILLIAMS, Guard

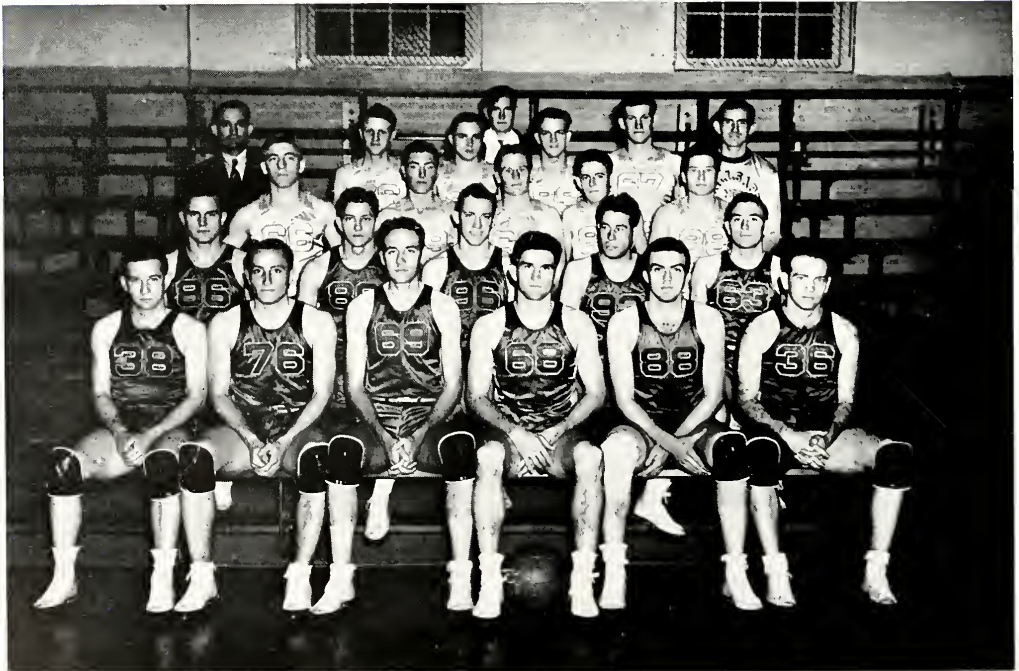
HALL, Guard



BASKETBALL

Rating among the first five in the Dixie Conference all season, the Major courtmen were constant threats for the Dixie Conference Tourney title. Though they dropped out of the Dixie Conference Tourney in the semi-finals, the Majors boasted the two highest scorers in the loop. They were Keyes Currie, conference leader, and Cannon "Shotgun" Herron, second gun in the Dixie. Against the powerful Clinton Choctaws Coach Van Hook's men had heart-breaking luck. Both of the first games with the Tribesmen slipped through the Majors' fingers by margins of one point each. Twice in the second contest the game rested in the hands of Captain Keyes Currie, but the iron ring twice turned a cold shoulder to the Majors' efforts to sink the deciding free shot. Besides Currie's brilliant, unorthodox shots the long tosses of Herron and John Thompson were not less important in keeping the Militants in the front ranks of the Dixie Conference.

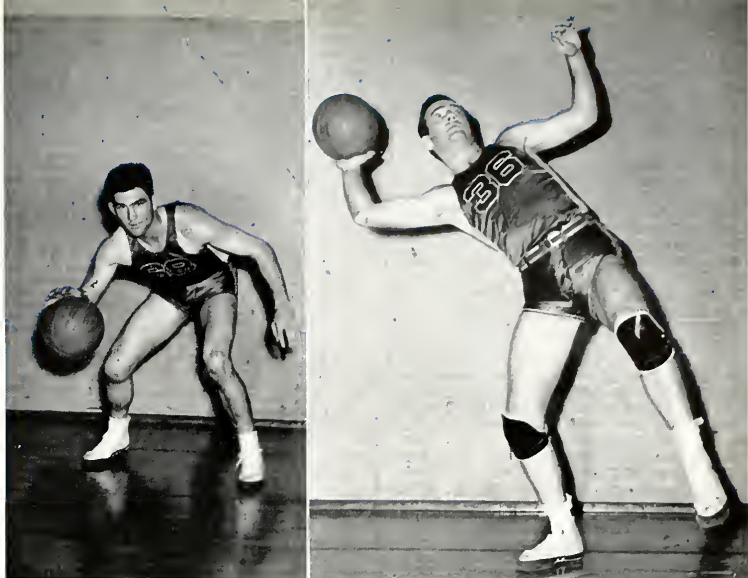
Van Hook, James, Richardson, Hunter, Samuels, Dear, Hegwood, Miles, Tynes, Worthington, Bonner, Terry, Shelton, Green, Bain, Simpson, Lowther, J. Currie, Price, Herron, Ballard, Thompson, K. Currie.



THE VARSITY

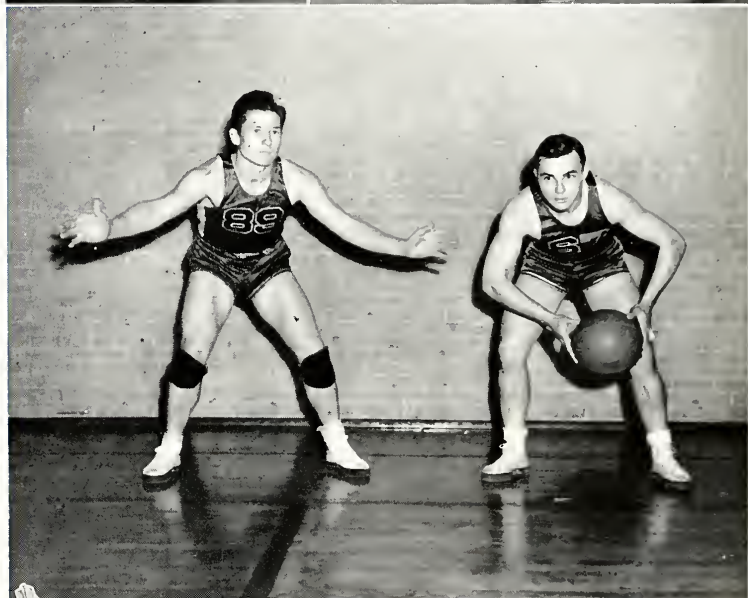
HAMPTON BALLARD

KEYES CURRIE



TERRY WALTERS

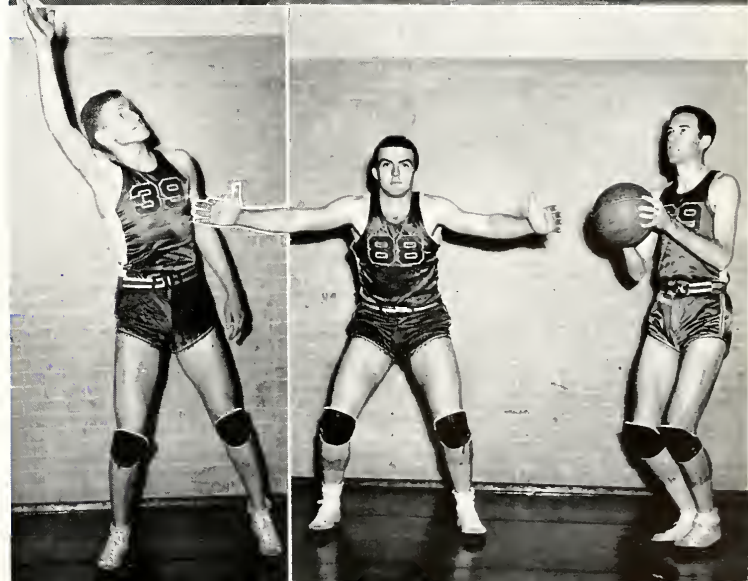
MILAN RICHARDSON



DENVER DEAR

JOHN THOMPSON

CANNON "SHOTGUN" HERRON



BASEBALL

Improved fielding this year behind steady hurlers started the Major diamondmen on a successful season. Only a lack of heavy hitters kept the Militants from being one of the leading Southern nines. Herbert Selman with his slow rolling ball led the Majors in most of their victories. Other Top moundmen were Charlie Ward, Wallace Litton, Brandon Bell, "Doc" Hamilton, George Todd and Kelton Lowry. Stars of the infield were Edward Matulich, freshman, and Milan Richardson, sophomore. William Green and Eugene Price turned in air-tight performances in the outfield. Samuels, Ballard, Lester Cooper, and Edward Fleming in the infield; and Eual Cooper and Charles Hammack in the outfield started most of the time for the Majors. Red Wilson and Virgil Anders took time about behind the plate.

Noble, Bell, Cooper, Hathorne, Todd, Ward, Ballard, Green, Price, Dean, Lowry, Humphreys, Richardson, Maturlich, Wilson, Gaddy, Anders, Selman, Fleming, Hammack, Samuels.



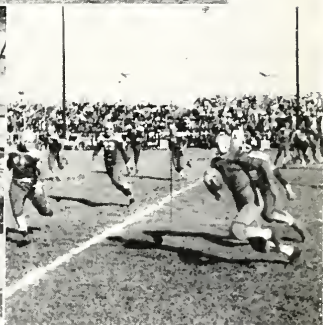


Indian's-eye view of the Major camp.



Perfect form--but it was out!

"A base knock, now, Army."



Submarining.

A scalp in sight.

Is everybody happy?



First and ten

With the greatest of ease.



TENNIS



Epperson, Thorne, Wright, Hudson.

Of the six members of the Major net squad four were freshmen, one of whom, Earl Epperson, played No. 1 racket. Because of the green material the Militants were on the little end of the score for most of their matches. As the team consistently lost, Epperson steadily won his contests. His only defeat of the season was at the hands of the present national parks champion, Lou Faquin. Charles Wright and O. D. Bonner will be lost to the team next year but the freshmen under the leadership of Epperson should develop into a champion foursome.



Van Hook, Wilson, Warren, McFarland, Dear, Nato, Ellzey, Carmichael, Bryant, McElhane, Holleman, Upton, Smith, Worthington, Taylor, Hutchison, Canterbury, Sumrall, Miles, Steinriede, Rush, King, Melton.

TRACK

With his squad almost double that of last year Coach Van Hook found plenty of material to work with this year though not many experienced trackmen. Because of a late start the Majors didn't begin breaking the tape until late in the season. From the first, however, Gordon Worthington, Bert Melton, and Joe Miles began taking top honors in their events. In a triangle meet with Mississippi College and Southwestern the Major cindermen captured more first places than their opponents but failed to take the crown. Loss of Herron in the distance events and Beard in the dashes gave Coach Van Hook the task of developing new sprinters who will probably step out ahead next season.

FRESHMAN FOOTBALL

A harbinger of what is come under the "Greater Millsaps" athletic program was the performance of the Minors on the gridiron. After winning the majority of their games against powerful junior college elevens, the Minors proceeded to give the Mississippi College Papooses one of their first drubbings in years. It is hoped that this was but a taste of the bitter dose that is to be dealt out next year by the varsity to the ancient rivals. Edward Matulich, freshman half-back danced through the opposition in a way that made Coach Gaddy declare that it had been many years since Millsaps had possessed such a talented ball carrier. A strong line, which even outweighed the varsity, made it possible for Matulich to cash in on his running ability.

Steinriede, Harwell, Perette, Jones, L. Cooper, M. Williamson, Carter, Williamson, Burger, Hamick, Avery, Taylor, King, Hutchison, Hathorne, Richardson, Bell, Rush, Maturlich, McFarland, Strait, Canterbury, Humphreys, Webb, Bryant, Murff, McAllily, Branch, Sullivan.





Emily makes a hit.

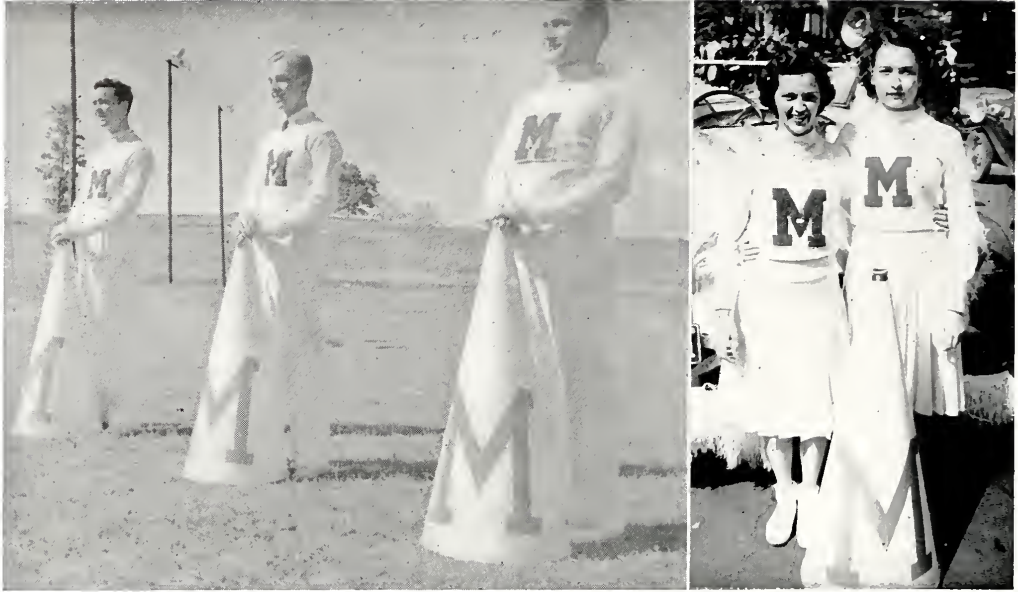
Tennis Star.

Bull's Eye!



WOMEN'S ATHLETICS

In recent years there has been an increasing interest at Millsaps in women's athletics. The program this year has included intra-murals in which non-fraternity, Barbarian, and sorority girls participated. The need for physical education in colleges has been widely recognized and it is hoped that this department, which has done such excellent work, will be rapidly enlarged.



Field, Holloman, Taylor, Rhymes, Walker.

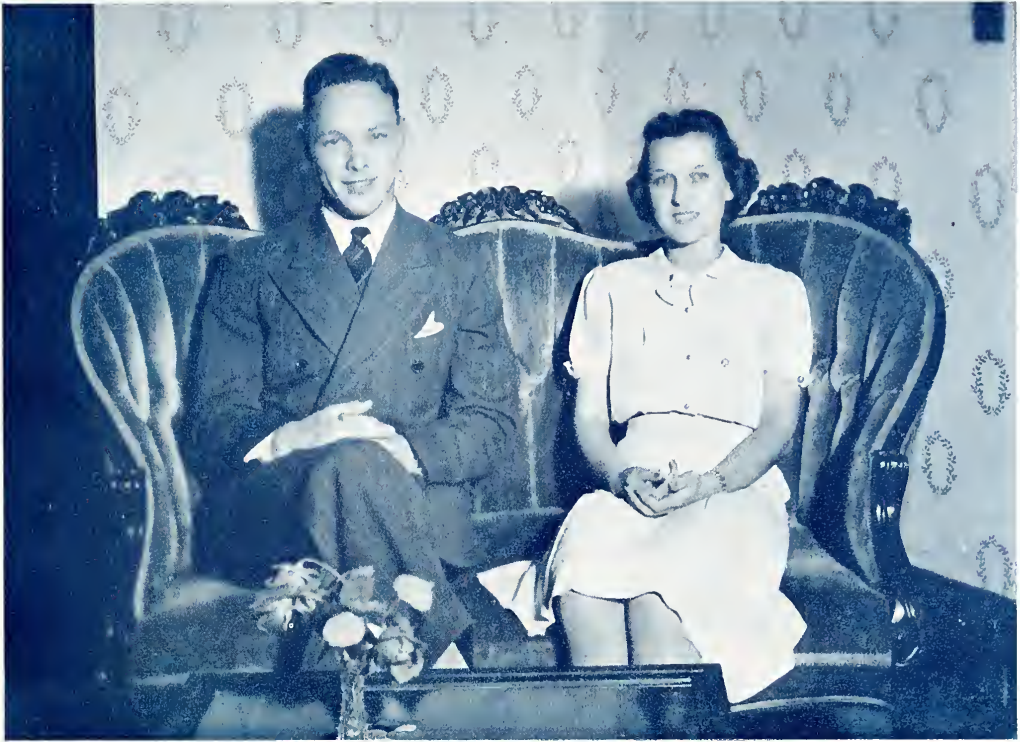
The PEP MASTERS

Under the capable leadership of Fielding "Bo" Holloman, the official welcomers and general enthusiasm-rousers of the college have led parades up Capitol Street, and the cheering at the ball games in grand style. "Bo" and Jean will be missed next year, but "Teeny" and Kimble will be with us again to cheer the Purple and White to victory.



FEATURES





T. M. HARDY, LILLIAN DOUGLAS SWAYZE

MASTER MAJOR *and* MISS MILLSAPS ● ●

In being selected as Master Major and Miss Millsaps, T. M. Hardy and Lillian Douglas Swayze have won the highest honor that can be bestowed by the student body. Standing high in scholarship, prominent in student activities, and possessing those fine qualities of character and personality which mark the outstanding citizen of a college community, they well deserve the honor accorded them.



MISS CLARA FRANCES DENT

Most Beautiful





MISS BEVERLY DICKERSON





MISS GLENN PHIFER





MISS SARAH RHYMES





MISS JEANETTE VAN ZANDT



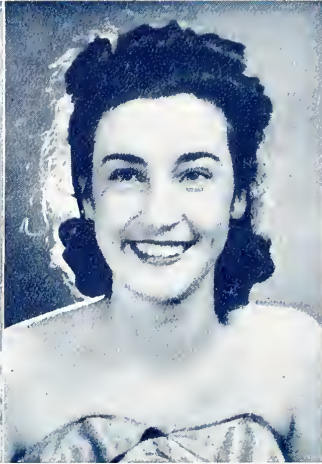


MISS JANE HYDE WEST





MARY CARRAWAY



MARGARET CONN

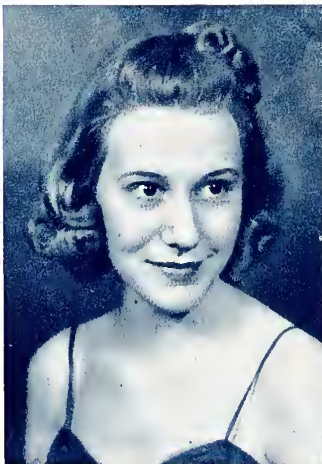


INA BELL FITTS



MYRTLE RUTH HOWARD

The CAMPUS



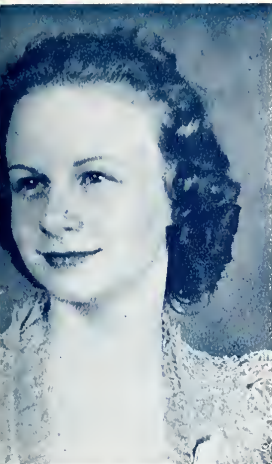
MARGARET HULEN



RUBYE MARTIN



MARTHA McILWAIN



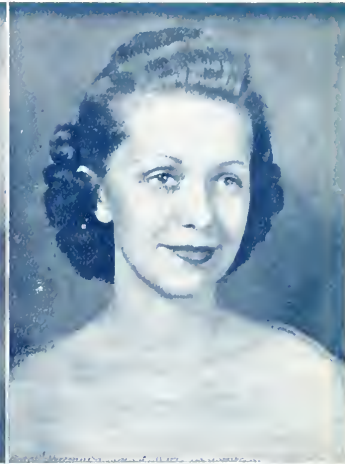
HELEN RICKS



LILLIAN DOUGLAS SWAYZE



VIRGINIA SWAYZE



RUTH WROTEN

FAVORITES . . .



MARY ALYCE MOORE



INAZELLE PIERCE



SARAH RAY

The CAMPUS



John Godbold

Ollie May Gray

Lillian Douglas Swayze

T. M. Hardy

Donald O'Connor

Frances Ogden

Glenn Phifer

B. B. Rogers

Ann Stone

Cecil Triplett

Bert Watkins



Two of the most prominent students on the campus, William Hardy Bizzell and Blanton Doggett, were camera-shy, but herewith we present those who were not:

Jack Bain



Wirt Adams Beard



Grace Cunningham



Albert May

Roy DeLamotte

Sarah Buie

Roma Fern Champenois

Marguerite Darden

Clara Frances Dent

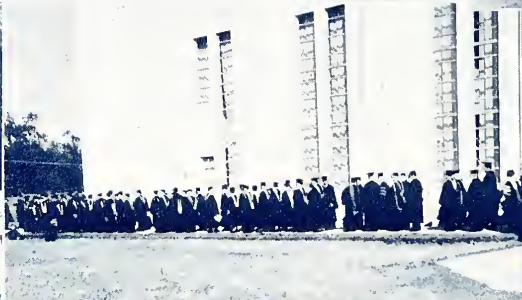
Edwin Edwards



BIG SHOTS

Snap SHO

The winner . . . That's Bo in the middle . . . Swing it! . . . Please march, Edgar . . .
And there really were that many . . . New dormitory goes up . . . Smile, Gege . . .
Plowboy Smith . . . Where's Albert, Ann? . . . It's 8:29, girls . . . Why don't they begin?
. . . Wait for Vera . . . Here comes the parade.





Fashion parade

Y'all line up, now.

"Teeny" human fly.

Let's get together on this thing.

We'll win next time, Clyde.

It was just a dare, boys.

Chapel time.

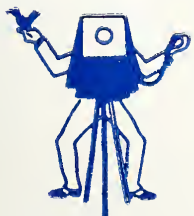
O. K., gang, let's go.

The sponsors smile.

Timing.

Y'all are so silly.

Three musketeers



Snap SHOOT

Boo! . . . Alma Mater . . . He made it! . . . Four spades . . . Test day . . .
Er, er . . . Secrets . . . What's the matter, Glenn? . . . "Y'S" men . . .
Faculty marches on.



T S



Why didn't you go to chapel?



Exams.

Springtime.

Chopsticks.

Kurt draws a crowd.

Lab times boys.

More springtime.

Ross sets them up again.



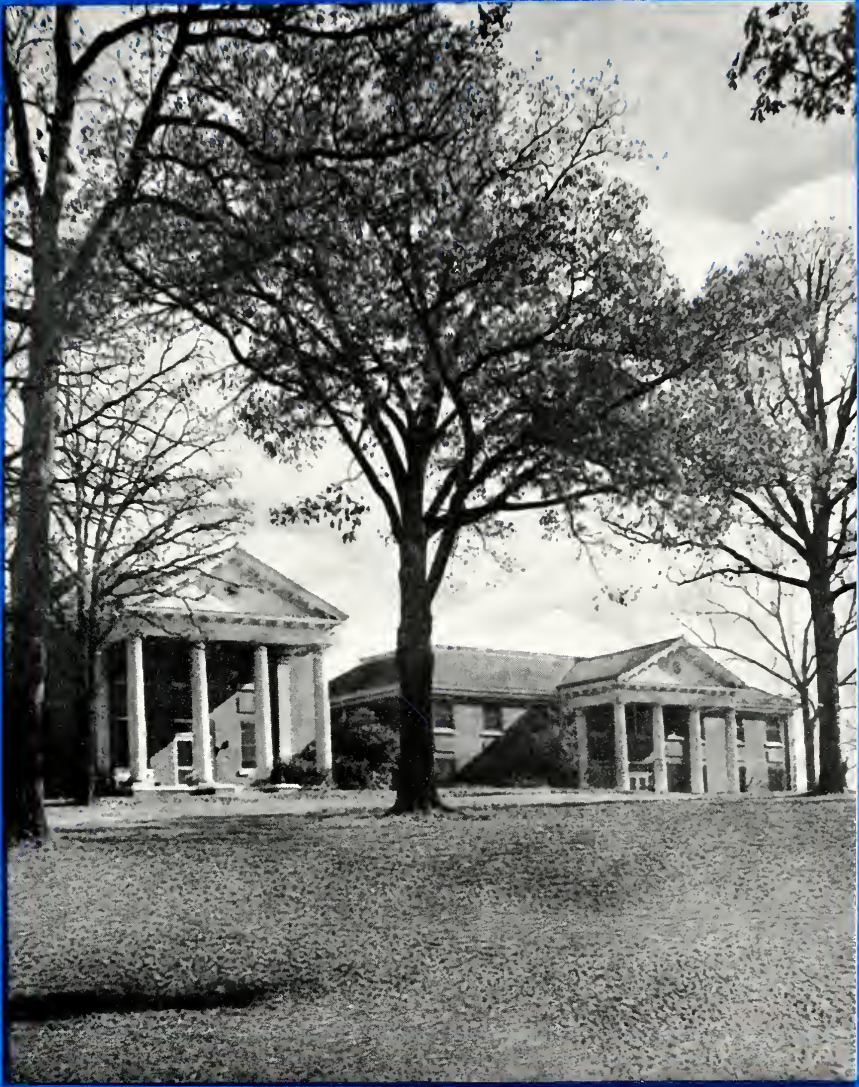
All we can say is-- well!

And another thing.



THE GREEKS HAD A WORD FOR MELVIN

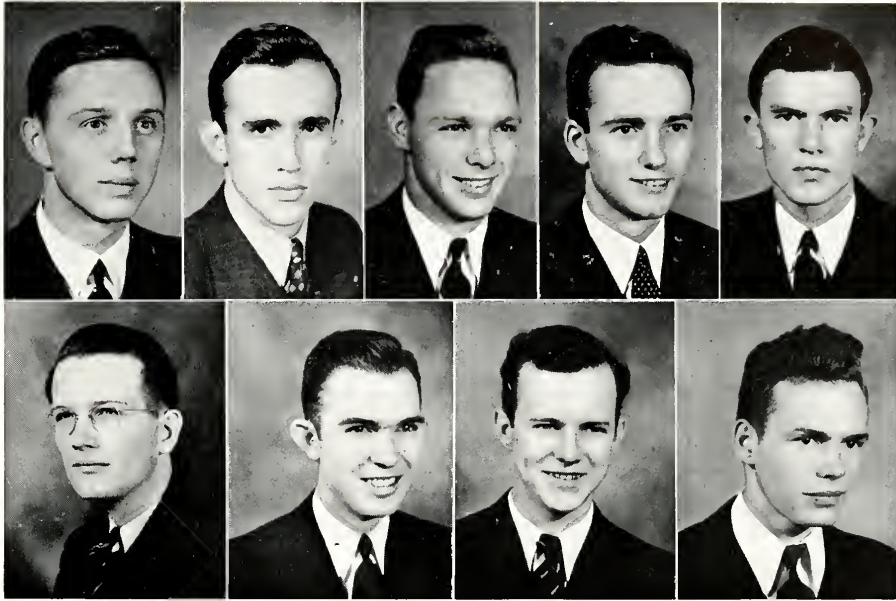
And the word, dear friends, was rushee,
Which, being translated, means the person a freshman is for a few precious
days when upper-class boys and girls are super-swell to under-class boys
and girls and often in the latter case, mushee.
Melvin, being a nice kid, and knowing how to take girls for granted and respect
senior men
Got along fine during those days (except on the occasion when he politely
smoked black cigars to the number of ten).
Of course he was interested when informed that of one of the groups Columbus
was the patron saint,
And somewhat confused when a rival group informed him that he would
probably hear that Columbus is an alumnus of the first group but to bear
in mind that he aint.
Then the first group when questioned by Melvin brought out documents to
prove it,
And he made up his mind to pledge and when his mind was all settled the other
bunch made up its collective mind to move it.
So they took Melvin into a small back room and introduced him to a couple
of other fellows
And they talked and talked and talked, saying that after all who was Colum-
bus--America had been discovered by the Vikings already, and that the
Columbuses of the world were helpless unless diamonds were sold by the
Isabellows.
They said now you take Arnold McFee, that was a man for you.
He founded our noble fraternity and if you will wear this little piece of plaid
around your arm tomorrow, symbolizing that you are pledged to the clan
of McFee, we will simply adore you.
Then at last they let him go home and he sneaked in and didn't turn on the
lights because he was afraid that he would wake up the kid brother of a
chapter president who had already told everybody that he was going to
carry on in the family tradition and make his mark.
So rather than hear any more Melvin went to bed in the dark
And of all the luck he got in the wrong bed
And woke up the kid brother of the chapter president, so he didn't get to go to
sleep, because along about dawn he had to go Alpha Beta Gamma instead.



GOVERNORS







Beard, Hudson, Hardy, Selman, Bizzell,
 Godbold, Triplett, Bain, DeLamotte.

MEN'S PAN-HELLENIC COUNCIL

Men's Pan Hellenic Council, composed of two representatives of each of the five social fraternities on the campus governs rushing rules and other policies of the fraternities, and seeks to promote cooperation and good will among the Greeks on the campus.

KAPPA ALPHA

WIRT ADAMS BEARD, *President*

MANNING HUDSON

KAPPA SIGMA

T. M. HARDY

HERBERT SELMAN

PI KAPPA ALPHA

WILLIAM HARDY BIZZELL

JOHN GODBOLD

THETA KAPPA NU

ROY DELAMOTTE

BERNARD LUKE

SIGMA RHO CHI

GENE BINGHAM

CECIL TRIPLETT



Barnes, Beard, Crook, Epperson, Graves, Hall,
 Hays, Hickman, Hudson, Ivy, Kilgore, Lancaster,
 Lauderdale, Livesay, B. Lloyd, T. Lloyd, McGlohn, McKeigney,
 L. Phillips, T. Phillips, Pippen, Proudfit, Ricks, Riser,
 Rogers, Rundle, Sullivan, Vandiver, White,
 Whitten, Wingate, Murff, Webb, Wink.

KAPPA SIGMA

Founded - - - - - University of Virginia, Dec. 10, 1869
Established at Millsaps - - - - - Oct. 18, 1895
Colors - - - - - Scarlet, Green and White
Flower - - - - - Lily of the Valley
Publication - - - - - "The Caduceus"

Alpha Upsilon Chapter

CLASS OF NINETEEN THIRTY-NINE

EDWIN EDWARDS	CARL HORN
HAYS FLEMING	M. L. MCKINNON
T. M. HARDY	CECIL PITARD
W. F. HOLLOMAN	BEN SYKES

LEWIS THAMES

CLASS OF NINETEEN FORTY

COOPER BRYANT	HERBERT SELMAN
TOM DICKERSON	BIN WALKER
JACK FERRIS	JAMES WILSON
VERNON HATHORNE	WILLIAM GREEN*
GRADY KERSH	ED HOGAN*

ED NOBLE

CLASS OF NINETEEN FORTY-ONE

SAM BIRDSONG	JOHN MALONEY
JOHN BURWELL	LELAND MORGAN
JAMES BOUTWELL	HAROLD RANKIN
JAMES CAVETT	MILAN RICHARDSON*
JENNINGS FIELD	WILLARD SAMUELS
GRADY GRAHAM	JIM THOMPSON
EDGAR HORN	JIM WROTEN
PAUL LACKEY	LEWIS CROUCH

CLASS OF NINETEEN FORTY-TWO

GRAHAM BRADY	LAWRENCE RABB
HARRIS CARTER	ALBERT SANDERS
ELBERT COPELAND*	JOHN SIGMAN
GUY DEAN	BILL SMITH*
EDWARD FLEMING	THOMAS SPENGLER
BOYD KELLUM	HENRY STEINRIEDE*
RAYMOND MARTIN	HERMAN ZIMOSKI*

* Indicates pledge.



Birdsong, Brady, Bryant, Burwell, Boutwell, Carter, Cavett,
 Dean, Dickerson, Edwards, Field, Ferris, Fleming, Fleming,
 Hardy, Hathorn, Holloman, Horn, Horn, Kellum, Lackey,
 Maloney, Martin, McKinnon, Morgan, Noble, Pitard,
 Rabb, Rankin, Selman, Sigman, Spengler, Thames,
 Thompson, Walker, Wilson, Wroten, Green, Smith.

PI KAPPA ALPHA

Founded - - - - - University of Virginia, March 1, 1863
 Established at Millsaps - - - - - March 23, 1905
 Colors - - - - - Garnet and Gold
 Flower - - - - - Lily of the Valley
 Publication - - - - - "The Shield and Diamond"

Alpha Iota Chapter

CLASS OF NINETEEN THIRTY-NINE

WILLIAM AINSWORTH	CARSON HILTON
WILLIAM HARDY BIZZELL	A. L. MAY
FRED BUSH*	CARTER McCAY
G. P. COOK	ALGIE OLIVER
BLANTON DOGGETT	PAUL SHEFFIELD
JOHN GODBOLD	TOMMY TUCKER
CHARLES WRIGHT	

CLASS OF NINETEEN FORTY

JIMMY BOOTH	HOOPER HORNE
NASH BROYLES*	CLYDE McKEE
JOHN WRIGHT	

CLASS OF NINETEEN FORTY-ONE

ROY CLARK	LAWRENCE PAINTER
RICHARD DORMAN	JIMMY WALL
KENNY HOLYFIELD	ESS WHITE
GEORGE KLEE	LOUIS WILSON
KELTON LOWRY	GORDON WORTHINGTON
CARL MILLER	JIMMY RIMMER*
CHARLES M. MURRY	J. M. WEAVER*

CLASS OF NINETEEN FORTY-TWO

HUGH BOSWELL	PAT KING*
FLOYD BRADLEY*	ALBERT MARTIN*
WILLIE J. BRANCH*	GRAHAM McFARLANE
GILES BRYANT*	LOUIS NAVARRO*
JESSIE LEE CARPENTER*	JAMES O'CALLAGHAN*
LEWIS CLARK*	J. B. REGISTER*
WILFORD DOSS	HERBERT RICE*
CRAFTON GILPIN	CHARLTON ROBY*
WILLIAM L. GULLETT*	BOB RUSLING*
DAVID HARPOLE*	T. C. SCHILLING
SHELTON KEY	LAWRENCE WARING
CHARLES YEAGER*	

* Indicates pledge



Ainsworth, Bizzell, Booth, Boswell, Clark, Cook, Doggett,
 Dorman, Doss, Godbold, Hilton, Holyfield, Horne, Key,
 Lowry, May, Miller, Murry, McKee, McCay, McFarlane,
 Oliver, Painter, Sheffield, Tucker, Wall, Waring, White,
 Wilson, Wright, Bradley, Broyles, Bryant, Bush, Carpenter,
 Daniels, Gullett, Martin, O'Callaghan, Rice, Rimmer, Yeager.



Addison, Bain, Brooks, DeLamotte, Fazakerly,
Fitzgerald, Glazer, Harper, Holmes, Kolb,
Luke, Robertson, Schiek, Simmons, Turner,
Walker, Ward, Buckley, Gillis, Rossie.



Robertson, Upton, Elfert, Warren, Dickson,
 Tynes, Carmichael, Bingham, Burger, Miles, Thompson,
 Simpson, Stewart, Walters, Bledsoe, Sumrall, Hegwood, Herron.

SIGMA RHO CHI

Founded - - - - - Millsaps College, December, 1930
 Colors - - - - - Scarlet and Cream
 Flower - - - - - Carnation

Alpha Chapter

CLASS OF NINETEEN THIRTY-NINE

GENE BINGHAM
 GERALD CARMICHAEL
 CHARLES HEGWOOD
 HULBERT NOWELL

JOE SIMPSON
 GRANT STEWART
 CECIL TRIPPLETT
 JOHN THOMPSON

CLASS OF NINETEEN FORTY

FRED BLEDSOE
 N. A. DICKSON
 W. C. HERRON
 TERRY WALTERS

DEWITT HOLLIDAY
 ELTON SUMRALL
 EUGENE WARREN
 FELIX SUTPHIN

CLASS OF NINETEEN FORTY-ONE

JOE WILLIE MILES
 TOM ROBERTSON

OSCAR TYNES
 J. B. UPTON

JACK WINBORN

CLASS OF NINETEEN FORTY-TWO

FRED BERGER

WINFORD SAXTON*

* Indicates pledge



Chatham, Chichester, Cunningham, Dees,
Ogden, Rhymes, Watkins, West.

WOMEN'S PAN-HELLENIC COUNCIL

Women's Pan Hellenic Council formulates rushing rules and other policies for the social sororities on the campus. Pan Hellenic parties are held twice each year for the members of all the sororities. The Council also makes an annual award at commencement to the woman student who is selected by the faculty as having been the best citizen of the college.

PHI MU

BERT WATKINS, *President*

SARAH RHYMES

KAPPA DELTA

MARTHA DEES

JANE HYDE WEST

BETA SIGMA OMICRON

FRANCES OGDEN

MYRTLE CHATHAM

CHI OMEGA

GRACE CUNNINGHAM

MAY ELLEN CHICHESTER



PHI MU

Founded - - - - - Wesleyan College, March 4, 1852
Established at Millsaps - - - - - March 24, 1914
Colors - - - - - Rose and White
Flower - - - - - Rose Carnation

Epsilon Chapter

CLASS OF NINETEEN THIRTY-NINE

SARAH BUIE	CLARA FRANCES DENT
CHARITY CRISLER	RUTH WROTEN

CLASS OF NINETEEN FORTY

CAROLYN BUCK	VIRGINIA MAYFIELD
MARGUERITE DARDEN	BESSIE HESTER McCAFFERTY
MARGARET FORSYTHE	GRACEALINE PORTER
VIRGINIA GADDY	ROSALIE RAMSAY
MARY FRANCES MANNING	SARAH RHYMES
BERT WATKINS	

CLASS OF NINETEEN FORTY-ONE

ELIZABETH BEALL	SARAH RAY*
MARTHA McILWAIN	KATHERINE RIDDELL
MARY McILWAIN	VIRGINIA WILSON

CLASS OF NINETEEN FORTY-TWO

CORINNE BALL	MARGARET HULEN*
OLA PEARL BURNS*	NELL MURRAY
ELEANOR COBB	ANN NEWELL
EMILIE OLSON	

* Indicates pledge



Ball, Beall, Buck, Buie, Crisler,
 Darden, Dent, Forsythe, Gaddy, Mayfield,
 McCafferty, Martha McIlwain, Mary McIlwain, Murray,
 Newell, Olson, Porter, Rhymes, Riddell, Watkins,
 Wilson, Wroten, Hulen, Ray.

KAPPA DELTA

Founded - - - - - Virginia State Normal College, Oct. 23, 1897
Established at Millsaps - - - - - Sept. 26, 1914
Colors - - - - - Green and White
Flower - - - - - White Rose
Publication - - - - - "The Angelos of Kappa Delta"

Mu Chapter

CLASS OF NINETEEN THIRTY-NINE

ROMA FERN CHAMPENOIS	VIRGINIA PETTIT
MARGARET CONN	LILLIAN DOUGLAS SWAYZE
RUBY MARTIN	KATHERINE TERRELL
CORINNE MITCHELL	JANE HYDE WEST
ELIZABETH WILSON	

CLASS OF NINETEEN FORTY

MARTHA DEES	EVELYN McGAHEY
ELIZABETH DURLEY	VIRGINIA SWAYZE

CLASS OF NINETEEN FORTY-ONE

HELEN BARNES*	EVELYN JONES
DINAH BROWN	BETTY LARSON*
MILDRED CRAIG	MARGARET McDOUGAL
ELAINE GARRETT	FRANCES LUCILLE MILLER
MARTHA GERALD	MARJORIE MILLER
MARY MARGARET HALL	MARIANNA TERRY
MAY BLACK HEIDELBERG	VIRGINIA WALL
MARY SYLVIA HERRON	RUBY WINTER*
VIRGINIA JAMES	MILDRED WRIGHT

CLASS OF NINETEEN FORTY-TWO

ELIZABETH ANN GILLIS	MARTHA MANSFIELD
KATHERINE ANN GRIMES	EVELYN MONTGOMERY*
MONTA HARDING*	ETHEL ROELL

* Indicates pledge



Dees. Champenois, McGahey, Wilson, Herron,
 Brown, Durley, Jones, Martin, McDougal,
 Mitchell, L. Swayze, Pettit, Terrell, West,
 Conn. Gerald, Gillis, Hall, James,
 Mansfield, F. Miller, M. Miller, Roell, V. Swayze,
 Wall, Winter, Montgomery, Harding, Barnes, Larsen.



Askew, Brooks, M. Chatham, Hull,
 Kendrick, Ogden, Porter, Booth,
 A. Chatham, Creswell, Foster, MacFalls,
 Massey, Myers, Peeler.

CHI OMEGA

Founded - - - - - University of Arkansas, April 5, 1895
Established at Millsaps - - - - - March 31, 1934
Colors - - - - - Cardinal and Straw
Publication - - - - - "The Eleusis of Chi Omega"

Chi Delta Chapter

CLASS OF NINETEEN THIRTY-NINE

MARY DOUGLAS BROADFOOT GRACE CUNNINGHAM
MAY ELLEN CHICHESTER JEANETTE VAN ZANDT

CLASS OF NINETEEN FORTY

VERA BURKHEAD LOUISE MOORER
JANE CLOWE MYRT NAYLOR
INA BELL FITTS GLENN PHIFER
FRANCES GILL ANN STONE

CLASS OF NINETEEN FORTY-ONE

MARY CARRAWAY MYRTLE RUTH HOWARD
SHIRLEY CHICHESTER MARY ALYCE MOORE
MARY CRAWFORD DENNIS WYC NAYLOR
GAYLE DOGGETT CHARLOTTE NICHOLS
PATRICIA EAGER PATRICIA O'BRIEN
UNA B. FITTS INAZELLE PIERCE
LUCILLE FOX FRANCES REMBERT

CLASS OF NINETEEN FORTY-TWO

CECELIA BURDETTE ELEANOR GRACE LUCAS
BEVERLY DICKERSON MARY ELIZABETH NORDIN
CAROL HERRON HELEN RICKS
SARAH KENNEDY MARTHA SHEFFIELD
DIXIE KNIGHT MARY STONE

EMMA RUSSELL WATSON



Broadfoot, Burdette, Burkhead, Carraway, M. E. Chichester, S. Chichester,
 Cunningham, Dennis, Dickerson, Doggett, Eager, I. B. Fitts,
 U. B. Fitts, Fox, Gill, Herron, Howard, Kennedy,
 Knight, Lucas, Moore, Moorer, M. Naylor, W. Naylor,
 Nichols, Nordin, O'Brien, Phifer, Pierce, Rembert,
 Ricks, Sheffield, A. Stone, M. Stone, Van Zandt, Watson.

THE KEY TO SUCCESS

Melvin had not been at Millsaps long before he found that there were two series of students;

The good ones, and the not-so-gudents.

And he discovered further that the good ones generally made not only good grades, But likewise most of the honoraries, and whenever there were parades, they led the parades.

And he sat and reasoned thus: "How can it be

"That all of these people who make good grades meet lab all afternoons and then on Monday nights they go alternately to French and IRC

"And on Tuesday nights they go to glee club and help with the P&W and on Wednesday night to pre-med club and on Thursday nights the boys go to frat meetings and the girls have a town-boy date

"And on Friday night the preachers meet, and so it goes, and yet they generally look pretty good and as if they hadn't sat up particularly late.

"It might not be so bad if they only had to go to the meetings because maybe they could sit on the back rows and read a book,

"But they can't, because look

"The campus big-shots get elected to offices in these things

"And they have to get up programs and ask people to speak and decide what to eat at banquets

"And if its a sorority, see a man to mow the house yard and see another man when the first manquits,

"And therefore I don't see how under the sun

"They get it all done."

"I will tell you," responded an upperclassman who was an ODK, and this is what he respondit:

"The more you belong to the less you have to do, and the way it works is this, as I have found it:

"Let us say that you are expected to be on the IRC program, help make up the P&W, ask a doctor to speak at pre-med club, report on the Christmas party plans for Alpha Beta Gamma, and represent Millsaps at a Rotary meeting and you decide you have therefore too much to do.

"Very well. There are two courses to follow. You can come down with a fall or spring or regular (as the time of the year may be) case of flu,

"Or you can say, 'I'm sorry, Ross, I can't be on the program; I have too much to do;'

"I am sorry, Tom, I can't help with the P&W, and if you want any heads written, you'd better get someone else to writum;'

"I am sorry, Junior or Earl, I can't call the doctor; I have too much to do,' and so on ad infinitum.

"And they all realize that you are supposed to do all these other things and they all say with the wisdom of two dozen Minervas,

"You are right, and I will get somebody else to do it,' and thus you are spared a breakdown modified by nervous.

"So then you can cram for a test if you have to or do whatever you choose,

"And what have you to lose!"

"You are right," said Melvin, "You are absolutely right."

And he went out and joined a club that night.

And the next night he joined another and he wrote for the paper (one newstory every other week)

And one day he tried out for a play and got a walk on part with three words to speak: The play took a little time because twice he had to go and practice and say "Dinner is served"

But from his purpose he never swerved.

And he worked and worked and worked, apparently, and finally his reward came and he was made happy and his frat brothers even happier

Because on tap day he was the only freshman in the long and honorable history of Millsaps to be tapped by Omicron Delta Kappier.

So here he is a big shot right off the bat--a big shot to start with

Which is a pretty good time,

I guess to part with

Melvin, the pride of Millsaps and Alpha Beta Gamma.

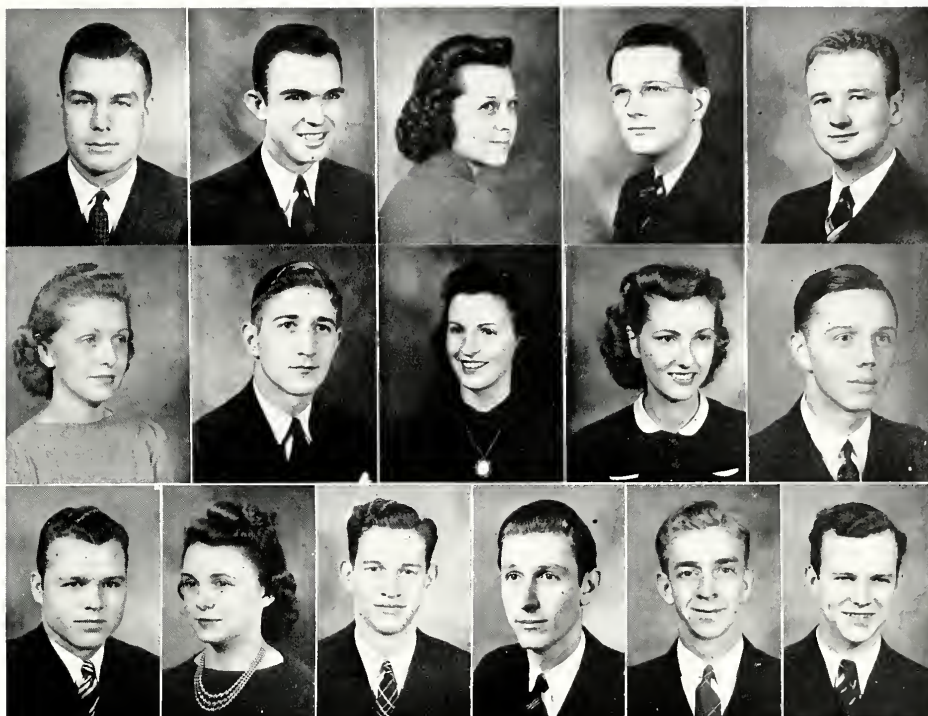
—PATRICIA O'BRIEN



ORGANIZATIONS







Edwards, Triplett, Swayze, Godbold, O'Connor,
 Wroten, Critz, Dent, Watkins, Beard,
 Elfert, Phifer, May, Rogers, Holloman, Bain.

STUDENT EXECUTIVE BOARD

OFFICERS

EDWIN EDWARDS - - - - - *President of Student Body*
 CECIL TRIPLETT - - - - - *Vice-President of Student Body*
 LILLIAN DOUGLAS SWAYZE - - - - - *Secretary-Treasurer of Student Body*

MEMBERS

JACK BAIN - - - - - Glee Club
 WIRT ADAMS BEARD - - - - - Men's Pan Hellenic
 WILEY CRITZ - - - - - Y. M. C. A.
 CLARA FRANCES DENT - - - - - Woman's Association
 ROGER ELFERT - - - - - "M" Club
 JOHN GODBOLD - - - - - Debate
 FIELDING HOLLOMAN - - - - - Head Cheerleader
 ALBERT MAY - - - - - Band
 DONALD O'CONNOR - - - - - Purple and White
 GLENN PHIFER - - - - - Bobashela
 B. B. ROGERS - - - - - Ministerial League
 BERT WATKINS - - - - - Women's Pan Hellenic
 RUTH WROTEN - - - - - Y. W. C. A.



Brooks, Robertson, Porter, O'Connor, Morgan, Farrar, O'Brien.

The PURPLE

EDITORIAL STAFF

DONALD O'CONNOR	- - - - -	Editor
TOM TUCKER	- - - - -	Assistant Editor
LARSTON FARRAR	- - - - -	Assistant Editor
TOM ROBERTSON	- - - - -	Feature Editor
JOE BROOKS	- - - - -	Sports Editor
CLAYTON MORGAN	- - - - -	Copy Editor
CHARLTON ROBY	- - - - -	News Editor

News: Jim Livesay, Evelyn Brooks, Patricia O'Brien, Bob Riser, Sue Frances Watkins, Raymond Martin, Wendell Keith, Albert Sanders, Frances Pevey, Lawrence Rabb.

Features: Gracealine Porter, Mary Askew, Bob Ledbetter, Evalyn Khayat, Carolyn Slaymaker, Lucille Fox.

Make-Up Editor: Gracealine Porter.
 Make-Up Assistant: Sidney Graves, Jr.
 Proofs: Lawrence Waring.
 Artists: Paul Whitsett, Louis Navarro.



Sanders, Dent, Thames, Wall, McDougal, Burwell, Graves.

and W H I T E

BUSINESS STAFF

LEWIS THAMES	- - - - -	<i>Business Manager</i>
JACK BAIN	- - - - -	<i>Circulation Manager</i>
JAMES WARD	- - - - -	<i>Assistant Circulation Manager</i>
INA BELL FITTS	- - - - -	<i>Advertising Manager</i>
MARGARET McDOUGAL	- - - - -	<i>Advertising Manager</i>
KELTON LOWRY	- - - - -	<i>Advertising Manager</i>
CLARA FRANCES DENT	- - - - -	<i>Advertising Manager</i>
JOHN BURWELL	- - - - -	<i>Advertising Manager</i>
EVELYN JONES	- - - - -	<i>Advertising Manager</i>
VIRGINIA WALL	- - - - -	<i>Advertising Manager</i>
ALBERT SANDERS	- - - - -	<i>Advertising Manager</i>

The BOBAS

EDITORIAL STAFF

GLENN PHIFER	- - - - -	Editor
INA BELL FITTS	- - - - -	Greeks
LOUISE MOORER	- - - - -	Art Editor
SHELTON KEY	- - - - -	Assistant Art Editor
LUCILLE FOX	- - - - -	Assistant Art Editor
ESS WHITE	- - - - -	Class Editor
CARL MILLER	- - - - -	Assistant Class Editor
PATRICIA O'BRIEN	- - - - -	Literary Editor
LAWRENCE PAINTER	- - - - -	Sports Editor
SAM BIRDSONG	- - - - -	Snapshots
JIMMY CAVETT	- - - - -	Snapshots



Birdsong, Key, Moorer, Phifer, O'Brien, White, Cavett.

H E L A *Staff*

BUSINESS STAFF

JOHN GODBOLD	- - - - -	<i>Business Manager</i>
HOOPER HORNE	- - - - -	<i>Advertising Manager</i>
JAMES WALL	- - - - -	<i>Organizations Finance Manager</i>
VIRGINIA SWAYZE	- - - - -	<i>Circulation Manager</i>
VIRGINIA WALL	- - - - -	<i>Circulation Assistant</i>
EVELYN JONES	- - - - -	<i>Circulation Assistant</i>
JANE HYDE WEST	- - - - -	<i>Circulation Assistant</i>
MARGARET CONN	- - - - -	<i>Circulation Assistant</i>
MARGARET McDUGAL	- - - - -	<i>Circulation Assistant</i>
CARSON HILTON	- - - - -	<i>Publicity</i>



FRONT ROW: Conn, V. Wall, McDougal, Jones.
BACK ROW: Hilton, Godbold, Horne, J. Wall.



BERNARD LUKE

ALBERT MAY

MR. COULLET

THE MILLSAPS BAND

ARMAND COULLET	- - - - -	Director
ALBERT MAY	- - - - -	President
BERNARD LUKE	- - - - -	Vice-President

Clarinets:

EDMUND BARNES, Cpl.
 ROY SIMS
 CAPPY RICKS, St. Sgt.
 HARRIS CARTER
 GRADY KERSH
 CHARLTON ROBY
 A. P. MESSINA
 NASH BROYLES, Cpl.
 BOB MAGRUDER
 ALBERT PIPPEN
 CHARLES YEAGER
 WILFORD DOSS

Saxophones:

HANIEL JONES
 BERDYNE TURNER
 BERNARD LUKE, Sgt.

Piccolo and Flute:

SAM SIURUA
 BOB KENNEDY

French Horns:

MILTON WHITE, Sgt.
 HENRY WEDIG
 KENNY HOLYFIELD
 JAMES RIMMER

Basses:

BILL GULLETT
 GEORGE O'CALLAGHAN

Trombones:

JAMES WALL, Sgt.
 WILLIAM FAZAKERLY
 CHARLES BRUMFIELD
 FRED BUSH

B A N D . .

Baritone:

MAX BRUMFIELD

ALBERT MAY, Tech. Sgt.

Cornet:

J. G. HAMPTON

GRAHAM McFARLANE

JIMMY O'CALLAGHAN

ALBERT MARTIN

HERMAN ZIMOSKI

Percussion:

JESSE CARPENTER

TOM TUCKER

MARZINE HUDSON

BOB RUSLING

D. B. LARR, JR.

Xylophone and Bells:

BEVERLY DICKERSON



Y. M. C. A. CABINET

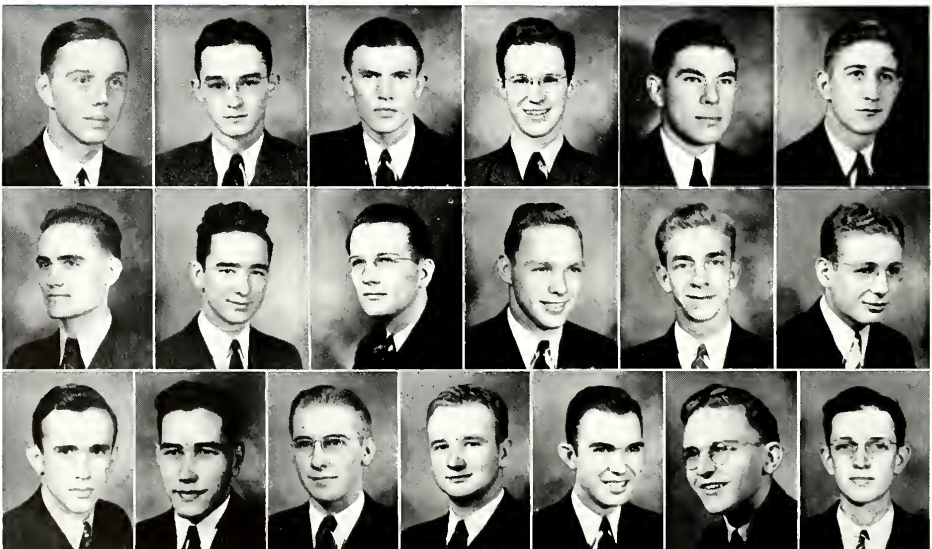
OFFICERS

WILEY CRITZ - - - - - *President*
 WILLIAM BIZZELL - - - - - *Vice-President*
 CECIL TRIPLETT - - - - - *Secretary-Treasurer*

MEMBERS

WIRT ADAMS BEARD	FIELDING HOLLOMAN
SAM BIRDSONG	KENNY HOLYFIELD
PAUL CARRUTH	MANNING HUDSON
JIMMY CAVETT	WALLACE MANGUM
BLANTON DOGGETT	CHARLES MURRY
PEMBLE FIELD	DONALD O'CONNOR
JOHN GODBOLD	J. S. VANDIVER
T. M. HARDY	JIM WROTEN

Beard, Birdsong, Bizzell, Carruth, Cavett, Critz, Doggett, Field, Godbold, Hardy, Holloman, Holyfield, Hudson, Mangum, Murry, O'Connor, Triplett, Vandiver, Wroten.



Y. W. C. A. CABINET

OFFICERS

RUTH WROTEN - - - - - *President*
 FRANCES OGDEN - - - - - *Vice-President*
 GRACE CUNNINGHAM - - - - - *Secretary*
 MARGUERITE DARDEN - - - - - *Treasurer*
 OLLIE MAY GRAY - - - - - *Program Chairman*

MEMBERS

EVELYN BROOKS	PATRICIA O'BRIEN
ROMA FERN CHAMPENOIS	GLENN PHIFER
MAY ELLEN CHICHESTER	MARGARET PORTER
GAYLE DOGGETT	ANN STONE
ELIZABETH DURLEY	MARY LOU STRAIT
BESSIE HESTER McCAFFERTY	LILLIAN DOUGLAS SWAYZE
CORINNE MITCHELL	BERT WATKINS
MARY ALYCE MOORE	JANE HYDE WEST

Brooks, Champenois, Chichester, Cunningham, Darden, Doggett, Durley, Gray, McCafferty, Mitchell, Moore, O'Brien, Ogden, Phifer, Porter, Stone, Strait, Swayze, Watkins, West, Wroten.





MR. ALVIN J. KING

Director

MRS. ARMAND COULLET

Soloist

THE MILLSAPS SINGERS

OFFICERS

- WILLIAM HARDY BIZZELL - - - - - *President*
- MARTHA DEES - - - - - *Vice-President*
- ESS WHITE - - - - - *Librarian*
- EDWIN JACKSON BAIN - - - - - *Business Manager*
- BLANTON DOGGETT - - - - - *Secretary*
- BERT WATKINS - - - - - *Secretary*



A CAPELLA CHOIR

SOPRANOS

MARY ASKEW
GRACE CUNNINGHAM
FRANCES GILL
MARTHA KENDRICK

EVELYN McGAHEY
FRANCES OGDEN
HELEN RICKS

MARTHA SHEFFIELD
ANN STONE
BERT WATKINS
VIRGINIA WILSON

ALTOS

GAYLE DOGGETT
MARGUERITE DARDEN
MARTHA DEES
CORINNE DENSON

ROSE NELL DENSON
CLARA FRANCES DENT
INA BELL FITTS

GRACEALINE PORTER
MARGARET PORTER
LILLIAN SWAYZE
ELIZABETH WILSON

TENORS

JOHN BURWELL
PAUL CARRUTH
JAMES CAVETT

BLANTON DOGGETT
RICHARD DORMAN

JACK FERRIS
JAMES LIVESAY
BERNARD LUKE

BASSES

EDWIN JACKSON BAIN
WILLIAM HARDY BIZZELL
FRED BUSH

LONGSTREET HAMILTON
SHELTON KEY
JAMES W. LANCASTER
THOMAS SPENGLER, JR.

LAWRENCE WARING
ESS WHITE
PAUL T. WHITSETT



OMICRON DELTA KAPPA

Founded at Washington and Lee in 1914.

Omicron Delta Kappa recognizes leadership on the campus both in scholarship and in student activities. Membership in Omicron Delta Kappa is one of the highest honors a student can receive.

OFFICERS

ROY DELAMOTTE - - - - - *President*
 PROFESSOR PAUL RAMSEY - - - - - *Secretary*

MEMBERS

WILLIAM HARDY BIZZELL	JOHN GODBOLD
BLANTON DOGGETT	T. M. HARDY
EDWIN EDWARDS	ALBERT MAY
DONALD O'CONNOR	

FACULTY MEMBERS

DR. D. M. KEY	DR. WILLIAM E. RIECKEN
DR. M. C. WHITE	

Key, Ramsey, White, Riecken, DeLamotte, Bizzell,
 Hardy, O'Connor, Doggett, Edwards, Godbold, May.



SIGMA LAMBDA

Organized at Millsaps in 1936.

Sigma Lambda recognizes outstanding scholastic and executive ability among women students. Its purpose is to render service to the college through its numerous projects.

OFFICERS

RUTH WROTEN - - - - - *President*
 OLLIE MAY GRAY - - - - - *Vice-President*
 GRACE CUNNINGHAM - - - - - *Secretary-Treasurer*
 LILLIAN DOUGLAS SWAYZE - - - - - *Historian*

MEMBERS

ROMA FERN CHAMPENOIS	FRANCES OGDEN
MARGUERITE DARDEN	GLENN PHIFER
CLARA FRANCES DENT	ANN STONE

FACULTY MEMBERS

MRS. HENRY COBB	MRS. MARY B. STONE
ARLYNE McGAHEY, Alumnae Member	

Champenois, Cunningham, Darden, Dent, Gray,
 Ogden, Phifer, Stone, Swayze, Wroten.



WOMAN'S ASSOCIATION

OFFICERS

CLARA FRANCES DENT - - - - - *President*

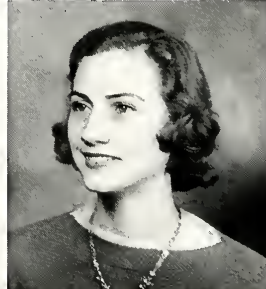
OLLIE MAY GRAY - - - - - *Vice-President*

FRANCES OGDEN - - - - - *Secretary*

ANN STONE - - - - - *Treasurer*

EVELYN McGAHEY - - - - - *Program Chairman*

Dent, Gray, McGahey, Ogden, Stone.



PI KAPPA DELTA

Pi Kappa Delta this year sponsored two debate tournaments, and altogether, Millsaps debaters participated in some two hundred and fifty intercollegiate debates, highest in the forensic history of the college. Having won the state championship, Millsaps debaters also won the Southeastern regional contest in which teams from seven states participated.

OFFICERS

ALBERT L. MAY - - - - - *President*
 DONALD R. O'CONNOR - - - - - *Vice-President*
 CHARITY CRISLER - - - - - *Secretary-Treasurer*
 JOHN GODBOLD - - - - - *S. E. B. Representative*

MEMBERS

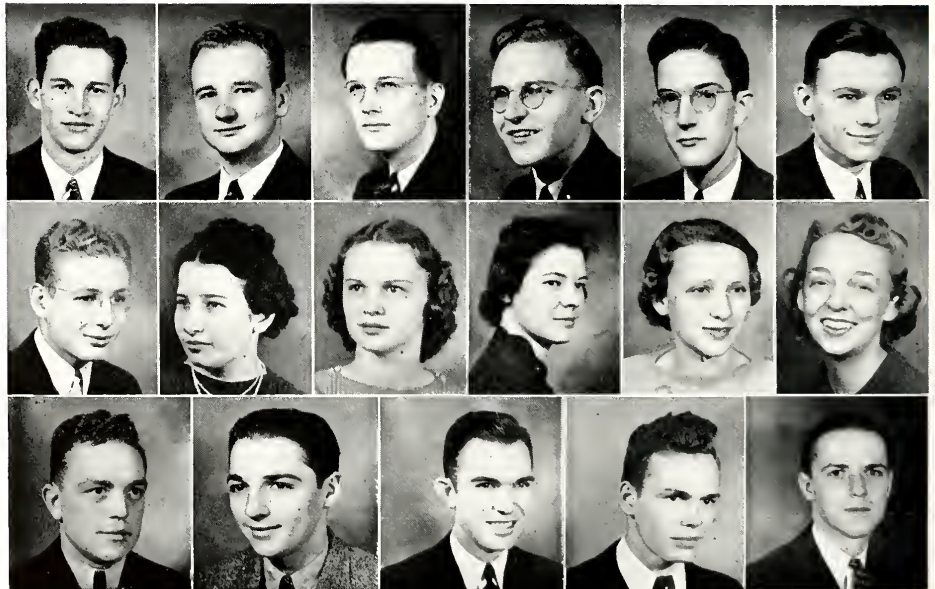
JIMMY BOOTH	KENNY HOLYFIELD
ROY CLARK	CLYDE McKEE
ROY DELAMOTTE	FRANCES OGDEN
MARY CRAWFORD DENNIS	ROSALIE RAMSEY
LUCILLE FOX	NAT ROGERS
MARTHA GERALD	CECIL TRIPLETT

J. S. VANDIVER

FACULTY MEMBER

PROFESSOR PAUL RAMSAY

May, O'Connor, Godbold, Vandiver, Clark, Rodgers,
 Holyfield, Crisler, Fox, Dennis, Gerald, Ogden,
 McKee, Booth, Triplett, DeLamotte, Ramsey.



ALPHA EPSILON DELTA

Founded at University of Alabama, 1926.

Established at Millsaps April 28, 1935.

A. E. D. recognizes superior ability among pre-medical students and seeks to promote interest in health projects on the campus. A number of speakers well known in the medical profession have been brought to Millsaps under the auspices of Alpha Epsilon Delta.

OFFICERS

EARL HARPER	- - - - -	President
ALBERT MAY	- - - - -	Vice-President
RUTH WROTEN	- - - - -	Secretary
MANNING HUDSON	- - - - -	Treasurer
JIMMY BOOTH	- - - - -	Historian

MEMBERS

BILL AINSWORTH	LONGSTREET HAMILTON
EDWIN EDWARDS	CARL HORN
DAKIN FITZGERALD	CORINNE MITCHELL
HAYS FLEMING	CAPPY RICKS

FACULTY MEMBERS

DR. WILLIAM E. RIECKEN	DR. J. M. SULLIVAN
------------------------	--------------------

Harper, May, Wroten, Hudson, Booth,
Horn, Edwards, Hamilton, Ricks, Ainsworth,
Fitzgerald, Mitchell, Fleming, Sullivan, Reicken.



SIGMA Upsilon

Founded at the University of the South.

Membership in Sigma Upsilon is indicative of unusual interest and ability in creative writing. Programs of the monthly meetings include presentation and criticism of original work.

KIT KAT CHAPTER

ROY DELAMOTTE, *Secretary*
WILLIAM H. BIZZELL
BLANTON DOGGETT
LONGSTREET HAMILTON
ROBERT IVY

DONALD O'CONNOR
LAWRENCE PAINTER
CAPPY RICKS
TOM ROBERTSON
TOMMY TUCKER

J. S. VANDIVER

FACULTY MEMBERS

DR. ROSS H. MOORE
PROFESSOR J. B. PRICE

PROFESSOR PAUL RAMSEY
PROFESSOR A. G. SANDERS

DR. M. C. WHITE

Bizzell, DeLamotte, Doggett, Hamilton, Ivy,
O'Connor, Painter, Ricks, Tucker, Vandiver,
Moore, Price, Ramsey, Sanders, White.



CHI DELTA

Membership in Chi Delta requires a good scholastic average and a real interest in creative writing. Chi Delta seeks to promote interest in original literary work on the campus.

OFFICERS

BERT WATKINS - - - - - *President*
 GLENN PHIFER - - - - - *Vice-President*
 DELORES DYE - - - - - *Secretary-Treasurer*
 INA BELL FITTS - - - - - *Reporter*

MEMBERS

CAROLYN BUCK
 CHARITY CRISLER
 MARGUERITE DARDEN
 DELORES DYE

FACULTY MEMBERS

MRS. HENRY COBB
 MISS ELIZABETH CRAIG
 MRS. MARY B. STONE
 MISS VIRGINIA THOMAS

ALUMNAE MEMBERS

LOLA DAVIS
 BERKLEY MUH
 JEAN KINNAIRD

Buck, Crisler, Darden, Dye, Fitts,
 Phifer, Watkins, Davis, Kinnaird, Muh.



ETA SIGMA PHI

Eta Sigma Phi, honorary classical organization, requires a B average in Latin or Greek for membership.

MEMBERS

JAMES BOOTH
EVELYN BROOKS
CLARA FRANCES DENT
ROY DELAMOTTE
BLANTON DOGGETT
DELORES DYE
JOHN GODBOLD

THAMES LLOYD
FRANCES OGDEN
CECIL TRIPLETT
J. S. VANDIVER
SUE FRANCES WATKINS
KATE WELLS
JANE HYDE WEST

FLORENCE WORTHINGTON

FACULTY MEMBERS

MRS. HENRY COBB
MRS. ARMAND COULLET
MISS ELIZABETH CRAIG

DR. A. P. HAMILTON
DR. D. M. KEY
PROFESSOR J. R. LIN

PROFESSOR A. G. SANDERS

Booth, Doggett, Dye, Godbold, DeLamotte, Lloyd, Triplett,
Vandiver, Watkins, West, Wells, Ogden, Dent, Worthington,
Brooks, Sanders, Hamilton, Coulet, Key, Lin.



INTERNATIONAL RELATIONS CLUB

The International Relations Club is an honorary organization whose membership is restricted to those whose scholastic average is good and who are interested particularly in the study of history and international problems.

OFFICERS

JOHN GODBOLD - - - - - *President*
 ROBERT IVY - - - - - *Vice-President*
 ANN STONE - - - - - *Secretary-Treasurer*

MEMBERS

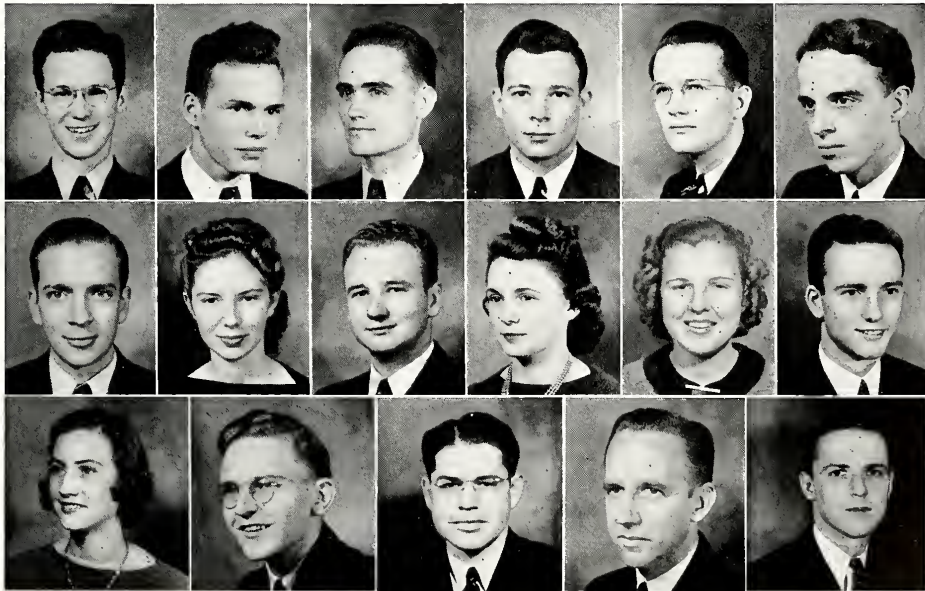
PAUL CARRUTH	J. S. VANDIVER
WILEY CRITZ	ROBERT IVY
BLANTON DOGGETT	PATRICIA O'BRIEN
ROY DELAMOTTE	DONALD O'CONNOR
HAYS FLEMING	GLENN PHIFER
CARSON HILTON	GRACEALINE PORTER

HERBERT SELMAN

FACULTY MEMBERS

PROFESSOR RALPH JONES DR. ROSS R. MOORE
 PROFESSOR PAUL RAMSEY

Carruth, DeLamotte, Doggett, Fleming, Godbold, Hilton,
 Ivy, O'Brien, O'Connor, Phifer, Porter, Selman,
 Stone, Vandiver, Jones, Moore, Ramsey.



ALPHA PSI OMEGA

Alpha Psi Omega recognizes outstanding work in dramatics, and sponsors a number of plays each year.

OFFICERS

ROMA FERN CHAMPENOIS - - - - - *President*
LILLIAN DOUGLAS SWAYZE - - - - - *Secretary-Treasurer*

MEMBERS

FRED BUSH
BLANTON DOGGETT
GLENN PHIFER
PAUL WHITSETT

FACULTY MEMBERS

DR. M. C. WHITE
DR. ROSS H. MOORE

Champenois, Doggett, Bush, Whitsett,
Phifer, Swayze, Moore, White.



MILLSAPS PLAYERS

CASTS OF PLAYS GIVEN BY THE DRAMATIC CLUB 1938-1939

Suppressed Desires

HELEN RICKS
CHARITY CHRISLER
JIM THOMPSON

Grandma Pulls the Strings

JEAN SCALES
KATHERINE ANN GRIMES
LUCILLE FOX
MARY E. MOORE
SIDNEY GRAVES
VIRGINIA SWAYZE

Thirst

PAUL WHITSETT
FRED BUSH
KENNETH GRANTHAM

Let's Move the Furniture

ALBERT PIPPEN
LEELAND MORGAN
FLOYD GILLIS
HELEN RICKS
VIRGINIA PETTIT
HAROLD DOUGLAS

Printer's Ink

J. S. VANDIVER
MARGARET HULEN
PAUL CARRUTH
THAMES LLOYD
JIM LIVESAY
CLEM CROOK

The Black Valise

FRED BUSH
PAUL WHITSETT
JOE JONES
DONALD PEVEY
VIRGINIA WALL

The Noble Outcast

VIRGINIA WALL
JIM THOMPSON
HELEN RICKS
MARIANNA TERRY
FRED BUSH
PAUL WHITSETT
JIMMY CAVETT
BLANTON DOGGETT

The Importance of Being Earnest

BOB LEDBETTER
JOE BROOKS
HELEN RICKS
EVELYN JONES
ROMA FERN CHAMPENOIS
KENNETH GRANTHAM
BETTY LARSEN
ESS WHITE
PAUL WHITSETT

Brooks, Phippen, Douglas, Bush, White, Hilton, White, Graves, Crook, Ledbetter, Doggett, Morgan, Thompson, White, Kolb, Whitsett, Phifer, Terry, Champenois, Scales, West, Crisler, Moore, Dees, Wall, L. Swayze, Murray, Durley, V. Swayze, Ricks, Grimes, Larsen, Fox.



BEETHOVEN CLUB

OFFICERS

KATHERINE TERRELL - - - - - *President*
 RALPH WALKER - - - - - *Vice-President*
 WIRT TURNER HARVEY - - - - - *Secretary*
 ANNIE SUE KNIGHT - - - - - *Treasurer*

MEMBERS

BEVERLY DICKERSON	FRANCES LUCILLE MILLER
BLANTON DOGGETT	MARJORIE MILLER
ELIZABETH DURLEY	ANNE NEWELL
INA BELL FITTS	MRS. PAUL RAMSEY
KATHERINE GRIMES	LAURA JEAN RODGERS
MARGUERITE MATHISON	ETHEL ROELL
EVELYN McGAHEY	ELIZABETH WILSON

FACULTY MEMBER

MRS. J. R. ROBERTS

Terrell, Walker, Harvey, Watkins, Doggett, Dickerson,
 Durley, Fitts, Mathison, McGahey, F. Miller,
 M. Miller, Newell, Rodgers, Roell, Wilson.



DELTA KAPPA DELTA

Delta Kappa Delta, founded on Millsaps Campus in 1939, is an honorary organization whose members plan to study law, and who have shown considerable ability in that field.

OFFICERS

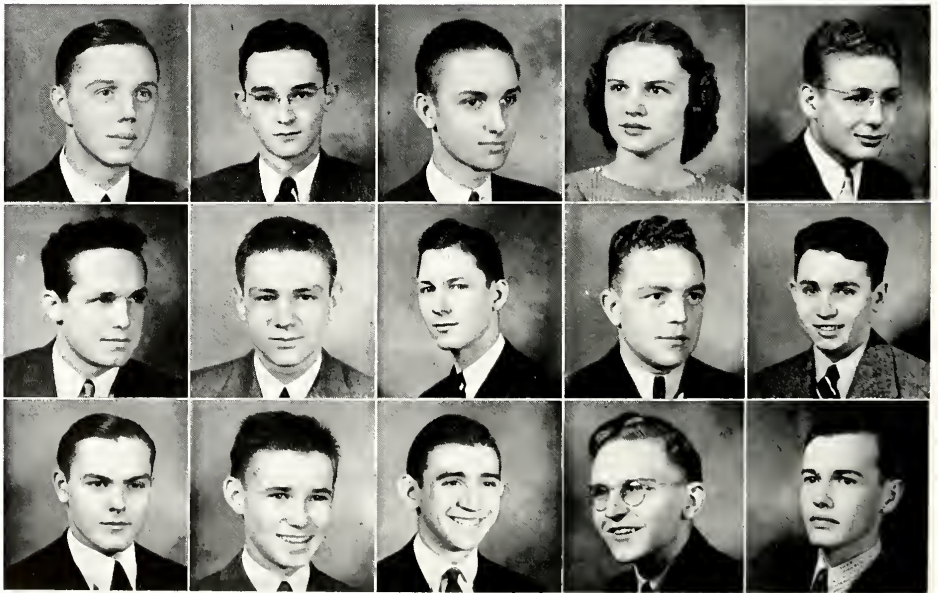
ALBERT PIPPEN	- - - - -	President
CHARLES KILGORE	- - - - -	Vice-President
SAM BIRDSONG	- - - - -	Secretary
LUCILLE FOX	- - - - -	Treasurer
KENNY HOLYFIELD	- - - - -	Baliff

MEMBERS

WIRT ADAMS BEARD
 HARRIS CARTER
 RICHARD LAUDERDALE
 BALDWIN LLOYD
 CLYDE McKEE

LEM PHILLIPS
 LAWRENCE RABB
 BOB RISER
 J. S. VANDIVER
 S. R. WHITTEN

Beard, Birdsong, Carter, Fox, Holyfield,
 Kilgore, Lauderdale, Lloyd, McKee, Phillips,
 Phippen, Rabb, Riser, Vandiver, Whitten.



MINISTERIAL LEAGUE

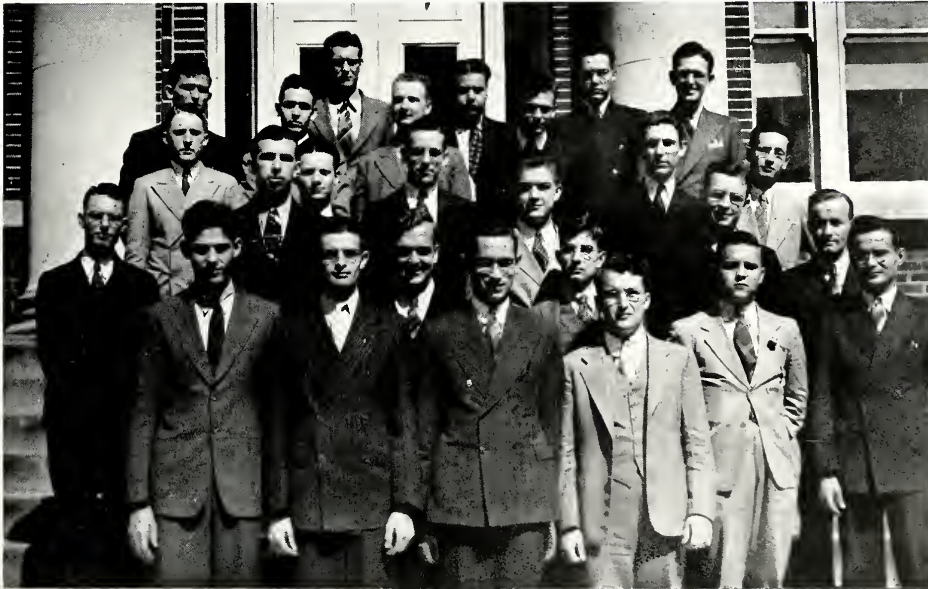
OFFICERS

B. B. ROGERS - - - - - *President*
AUBREY SMITH - - - - - *Vice-President*
JAMES WROTEN - - - - - *Secretary-Treasurer*

MEMBERS

OTHO BRANTLEY	ALGIE OLIVER	GLENN WATERS
RUDOLPH BANGERT	DONALD PEEVY	JOSEPH JONES
JACK CALDWELL	WILEY CRITZ	PAUL BROWN
PAUL CARRUTH	JOE BOB SNYDER	CHARLES SCHULTZ
JOE CARRUTHERS	LAMAR VINTERS	EDWARD JORDAN
BLANTON DOGGETT	EUGENE WATTS	WOODROW DARBY
JAMES ELLIOTT	BILL IRVING	JOHN SPEED
PERCY EMANUEL	JOHN PAUL NIX	SHUFORD AVERY
ELIOT JONES	FELIX SUTPHIN	JOHN CARTER
WALLACE MANGUM	THOMAS JERNIGAN	WESLEY LEGGETT
DAVID McKEITHEN	HANIEL JONES	W. C. McLELLAND
DONALD O'CONNOR	JOEL McDAVID	E. B. WROTEN
	ROBERT LANGFORD	

1st Row: McDavid, Sutphin, Waters, Caldwell, McLelland, Schultz.
2nd Row: Jordan, Jernigan, Smith, McKeithen, Irving, Rush.
3rd Row: Carter, H. Jones, Rogers, Elliott.
4th Row: Langford, Brown, O'Connor, DeLamotte.
5th Row: E. Jones, Avery, Mangum, Wroten.



CHRISTIAN COUNCIL

OFFICERS

BLANTON DOGGETT - - - - - *President*
JACK BAIN - - - - - *Vice-President*
FRANCES OGDEN - - - - - *Secretary*
BILL BIZZELL - - - - - *Treasurer*

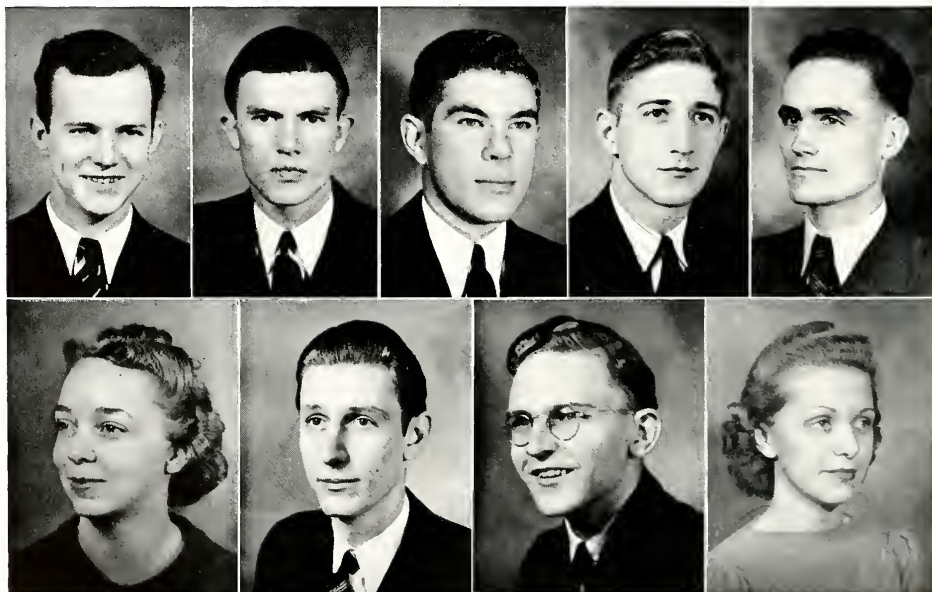
MEMBERS

JIMMY CAVETT
WILEY CRITZ

B. B. ROGERS
J. S. VANDIVER

RUTH WROTEN

Bain, Bizzell, Cavett, Critz, Doggett,
Ogden, Rogers, Vandiver, Wroten.



The Advertisers

Purser Brothers'
BETTER PRINTING
COMPANY

▼
QUALITY PRINTERS AND
ENGRAVERS

Telephone 2-3288

JACKSON MISSISSIPPI

BLUE RIBBON
CREAMERY

"Safest Milk You Can Buy"

Mississippi Cotton
Oil Company

●
BUYERS OF COTTONSEED
AND MANUFACTURERS OF
COTTONSEED PRODUCTS

●
Telephone 2-2681

JACKSON MISSISSIPPI



DR. H. F. MAGEE

●
PHYSICIAN AND
SURGEON

●
Lamar Life Building

Jackson Mississippi

COMMENTARY, '38-'39

BY CARSON HILTON

Millsaps has marched on—its own feet at least, this year. Dr. D. M. Key, Millsaps president and great man for the past fifteen years, resigned last year in favor of Dr. M. L. Smith. We enter the new era.

For those students with poor memories I will present a brief resume of the events of the year which attracted the attention of the student body and that embryo weekly, the Purple and White.

The first week of school found the enrollment unbelievably high and dormitory space amazingly scarce. That is, scarce until Millsaps' "U. Z. John Pierpont Morgan" conceived the idea of stacking beds six high in five by ten dormitory rooms. This relieved the necessity of demanding colonial concessions from neighboring institutions to take care of our teeming hordes. That was the first record history has of the "appeasement" policy adopted unsuccessfully a few days later by Prime Minister Chamberlain of Great Britain.

This was the same week in which Greek students assiduously avoided the preserves of their "friendly rivals." Great was the enmity thereof when two groups "invited" the same man to enter their parlors. Aye, 'twas faintly reminiscent of the '60's when brother fought brother.

Also, in this same memorable week, several students were raised from the ranks of the insignificant and placed on the Y cabinet, among them being the Vice-president of the student body. The president being left to struggle for recognition in other fields.

By October 1st Dean Key had placed twenty eight devotees of the scholastic art on his Dean's list. Thus decreasing chapel attendance by twenty eight.

Tryouts were given to candidates for the Millsaps Swingers by Mr. King. Ninety five members were named.

Ninety seven pledge pins were distributed by "local Greeks" at end of Rush week.

The war scares etc. caused a precipitation of students on the Millsaps National Guard band, swelling its numbers beyond that of the previous year.

The P & W announced that Millsaps would at long last have a literary magazine under the guidance of a certain Ph. D. and the editorship of a student genius, whose names I will not embarrass them by mentioning. Oh well, the announcement was well written; the reporter should be congratulated.

The Stewed Executive Board began the first in a long series of futile meetings for the school year.

But most important of all, a sinister and feral beast, the dirt-dauber, made his first appearance of the year in the pages of the P & W. He dubbed President Smith "baby," a la Mrs. Smith.

"Say It With Flowers"

CAPITAL FLORAL
COMPANY

▼
LINDSEY CABANESS

Phone 3-2405

Millsaps Students

See the New

ROYAL

Typewriters

Sales --- Service --- Supplies

▼
JACKSON
TYPEWRITER
COMPANY

▼
413 E. Capitol Street

JACKSON MISSISSIPPI

Compliments of
CABELL ELECTRIC
COMPANY

▼
JACKSON MERIDIAN

MISSISSIPPI

*Things Such As These
Must Always Live On*



June . . . and another college year glides away from the present to rekindle treasured memories of the past. Echoes of *Alma Mater* reverberate across the campus as another class leaves academic halls to enrich a tradition of service already half a century in the making.

September . . . and hearts beat faster as a new class is inspired by the Millsaps tradition which now is their own. Breathless Today blends with serene Yesterday to bring forth a brilliant Tomorrow. Drawing upon her heritage of service, Millsaps again prepares to carry on.

Things such as these must always live on! To those who know Millsaps and what it stands for, a call goes out to keep their college in the vanguard of educational leadership and service in Mississippi and the South. Don't *you* know a student who should come to Millsaps?



MILLSAPS COLLEGE

M. L. SMITH, President

JACKSON, MISSISSIPPI

PRIMOS
COFFEE SHOP
is the Down Town
Hangout
for College Students

▼
 236 E. CAPITOL STREET
 OPPOSITE THE POSTOFFICE

▼
Millsaps Students
Are Welcomed!

Burns & Lacey, Inc.
 STORE FOR MEN
 218 W. Capitol Street
 JACKSON

RETAIL LUMBER

●
 Mill Work, Sash and Doors,
 Asphalt Shingles, Lime, Plaster,
 Ceiling, Wall Board,
 Plaster Board

●
Jackson Lumber Co.
 322 West Capitol
 DIAL 4-5066

THOMAS
DEPARTMENT STORE
 William S. Thomas, Prop.
 "Where Price and Quality Meet"
SHOES, LADIES' READY TO WEAR,
MEN'S FURNISHINGS
 Corner President and Pearl Streets
 Jackson, Mississippi

October the eighth was Homecoming day with accompanying parade. Incidentally—ever so incidentally—there was a ball game that night in which Millsaps won a brilliant moral victory.

Millsaps engaged in the usual sports throughout the year, but since this is supposed to be publicity, I will let the dead past bury our bad scores and immortalize our good ones. Suffice it to say that our athletic department had varied success—too varied in fact. There is a certain Indian tribe of collegiate heathens whom I refrain from mentioning for obvious reasons.

Coach Gaddy resigned during the course of the year, and is to be replaced by Coach Hook Stone who is justifiably optimistic about the future. We congratulate Coach Gaddy on his brilliant victories while he has been here and wish him luck. He was well liked by those who knew him, which is a credit to any man.

The much debated and overlooked school calendar was published by that wishful fantasy the SEB.

I quote from the Purple & White of October the thirteenth; "Political Front Quiet Tomorrow As Millsaps Class Elections Loom." Unfortunately that is true, quiet as an elephant's graveyard—with the concomitant stench. The winning fraternity and sorority members with their misbegotten sense of fair play gloated over their mane victories while the defeated powers indignantly turned their gaze from the political sour grapes which they had failed to grab, and piously shouted, "Line-up." This accusation was often impiously denied.

The ludicrous motto of this same issue of the P & W as brazenly conceived by our sanguine editor was "Beat Those Choctaws." However, I hope that motto will be a prophecy for next year.

The following week Doctor Key cut chapel attendance six more by as many additions to the Dean's List.

The college announced the largest student body enrolled in its history—562 students—which rapidly mounted to over 600.

Credit to be given here to that benighted P & W staff member who so effectively buried alive the art which the great poets had attached to barren illiteration. May his whole dang illiterate tribe decrease.

Worthy of mention was the lack of tuberculosis on the campus as determined by the State Board of Health tests.

Somewhere in here religious emphasis week was observed by the Ministerial League and Y officers.

Doctor Smith, soon to become "Smiley," was inaugurated on Tuesday, November, 8th. An understanding and praiseworthy faculty abolished compulsory chapel attendance on Monday, thus allowing Y. M. C. A. to meet at that time



S M O K E :

Portina, Tampa Nuggett, Muriel, Great Southern, Keep Moving, El Trelles, White Owl, John Ruskin

—GOOD CIGARS

CORR-WILLIAMS
Tobacco Company

WHOLESALE DISTRIBUTORS

Hederman Brothers

PRINTERS

BLANK BOOK BINDERS
 STATIONERS — LITHOGRAPHERS

Phone 4-4421
 JACKSON MISSISSIPPI

Smart Apparel for all occasions
 from
 Mississippi's Largest Specialty
 Store are Always Correct

THE PARISIAN
 STORE FOR WOMEN

S. P. McRAE
COMPANY

DEPARTMENT STORE

200-202 West Capitol Street

Phone 4-8334

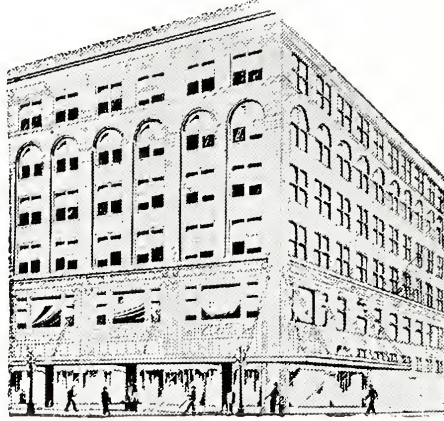
JACKSON MISSISSIPPI

JACKSON
STEAM LAUNDRY

LAUNDRY AND DRY CLEANING

Phone 2-3315

I. LEHMAN, President



"Mississippi's Best Store"

KENNINGTON'S
JACKSON



is destined to go far in life. Its members are well versed in the art of campusology. Here at The College Store they have absorbed the wisdom of masters. We graduate them with flying colors knowing that the classes of '40, '41, and '42 will follow diligently in their footsteps to—The College Store.

THE COLLEGE STORE

McCarty - Holman Company

WHOLESALE
GROCERS

JACKSON MISSISSIPPI

THE VOGUE

149 E. CAPITOL STREET
JACKSON

Jackson Builders Supply Company

Wholesale and Retail

GENERAL BUILDERS
SUPPLIES

227 South State Street

Phone 4-6648

JACKSON MISSISSIPPI

"Dress Well and Succeed"

Etheredge Cleaners

PHONE 4-4413



PAINTS, VARNISHES,
LACQUERS, LEADS,
OILS, ENAMELS,
BRUSHES,
and Painters' Supplies
and Specialties.

THE SHERWIN- WILLIAMS CO.

219 E. Capitol Street

JACKSON MISSISSIPPI

and catch a few idle students and increase their attendance. This also officially decreased chapel non-attendance.

Millsaps, famous for its banal and boring chapel programs boasts of a few (infinitely few) good ones this school year, and shows great promise for the future in disrespect.

The Millsaps players lurched, or launched out on a very successful year at playing.

About this time the editor of the Bobashela set the first of an indefinite series of deadlines for Bobashela pictures.

Millsaps was host to the Southern Debate Tournament in December. Professor Ramsey and his debaters should be given a medal for their excellent work in this field for the school year. All the honors they have won this year in the tournament were of dubiously inestimable value to the college as publicity.

Merry Christmas! Also a Happy New Year! See you after the holidays.

After the holidays.

Some optimist decided that they could select six beauties from among the Millsaps coeds, and By George, they did it!

It was about this time, January 5, that the P & W started carrying copious copy referring to something called "Mortmain" laws, which seem terribly sensational. However, on seizing this opportunity to carry on my diligent search for knowledge, I found that none of the professedly wise whom I questioned about this matter could tell me what they were, though they claimed to understand them.

All during this period a successful campaign to obtain a post office on the campus was carried on with the apparent purpose of alleviating the necessity of student's going to the Grill to get their mail. But for deep and subtle reasons the logical place for it, The Administration Building, remains the logical place for it, and the postoffice, steeped in irony, resides faithfully in the Gym.

Another campaign was not so successful. This was the campaign to recognize a certain amount of literacy among Millsaps students by placing adequate lights in the library.

The paper announced that the new girls dormitory would be dedicated March 12th., but fortunately did not say which March.

Exams are permanently behind most seniors and temporarily behind under-classmen at the beginning of the second semester.

Greek letter organizations indulged in a bit of initiation to swell their ranks.

Doctor Key brings chapel attendance down forty-three. By this time most students have become conscious of the improvements made on the campus the previous summer and being continued.

AUNT BETTY BREAD

IS SERVED IN MILLSAPS

DORMITORIES

ACME BAKERY

230 NORTH FARISH STREET

JACKSON, MISS.

L. V. Berbette

Moran Berbette

COLLEGE CAPERS

SUPPORTS

THE MAJORS

1808 N. State St.

Phone 3-2672

Paints -- Wallaper -- Glass

For Every Purpose



CAPITAL PAINT & GLASS CO.

401-407 S. State St.

JACKSON, MISS.



Patronize

BOBASHELA

Advertisers



IN JACKSON IT'S—



COMPLETE SELECTIONS

CORRECT STYLES

ATTRACTIVE VALUES

JACKSON HOTEL ASSOCIATION

JACKSON, MISSISSIPPI

***CONGRATULATIONS AND BEST WISHES FOR
THE ENTIRE STUDENT BODY***

EDWARDS HOTEL

J. D. Buchanan, Manager

HEIDELBERG HOTEL

Arthur F. Landstreet, Manager

ROBERT E. LEE HOTEL

Stewart Gammill, Manager

ROYAL HOTEL

W. T. Reese, Manager

WALTHALL HOTEL

E. W. Freeman, Manager



Copyright 1933 by International Association of Ice Cream Manufacturers.

Eat

ICE CREAM *Every day*

★ ★ *IN SOME WAY* ★ ★

▼
ELECTRIC POWER
and
SERVICE



A BASIC
MISSISSIPPI
INDUSTRY

▼

Millsaps this year gave birth to the nation's first K. A.—I mean pre-law fraternity.

Chi Omega and Pi K. A. tie in quality point rating with the Thetas and Phi Mus close behind them.

The "have's" won another empty victory in the election in April, and the "have-nots" boast of another useless moral victory. However, non-partisan student objection to such tactics took more concrete form than ever before in this election.

The college announced that next year it will march in a department of psychology and economics.

April the 29th was High School day—Oh Boy!

Debaters win "Southeastern Crown" and the P & W is awarded for the first time first class honors.

One thing which we can well be proud of beyond any doubt is the new girls' dormitory to be opened next school year. Rumor has it that it will be named The David Martin Key Dormitory. That is not only the most appropriate name for it, but it is the only name for it—a small reward to Doctor Key for his invaluable services to the college and the students.

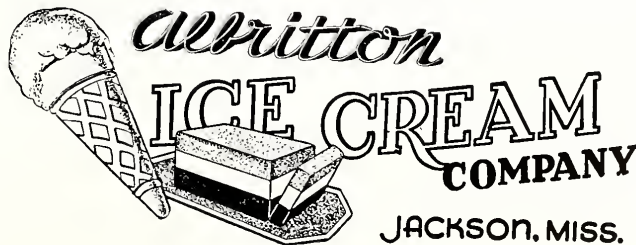
And so to exams for underclassmen and graduation for us sad-hearted seniors who soon face oblivion or hard work and both are equally undesirable.

▼
JACKSON

TYPEWRITER

COMPANY

▼



AGAIN—



FOR PROMPT, EFFICIENT WORK
AND COURTEOUS SERVICE THE
BOB ASH ELA STAFF CHOSE



COLE STUDIO



YVETTE M. McGOWAN

Photographer



JACKSON

MISSISSIPPI



FOR THE ANNUAL PORTRIATS



Ready to Face the World

★ ★ COME WHAT MAY.

CONFIDENCE is the heritage of youth it is also a fundamental requirement of business attained by long study, training and experience • We have enjoyed the confidence of yearbook Staffs throughout the country for over thirty years an accomplishment for which we are truly grateful and justly proud

★ ★ ★ ★

COLLEGE ANNUAL DIVISION
ALABAMA ENGRAVING COMPANY
BIRMINGHAM

TUCKER PRINTING HOUSE



Foreword..

TUCKER PRINTING HOUSE — JACKSON, MISSISSIPPI

"Annual specialists for over twenty years"

AUTOGRAPHS

AUTOGRAPHS

