

BOBASHELA
1977





BOBASHELA 1977

Sara Evans, editor

Buster Shirley, assistant editor

Barbara Smith, co-business manager

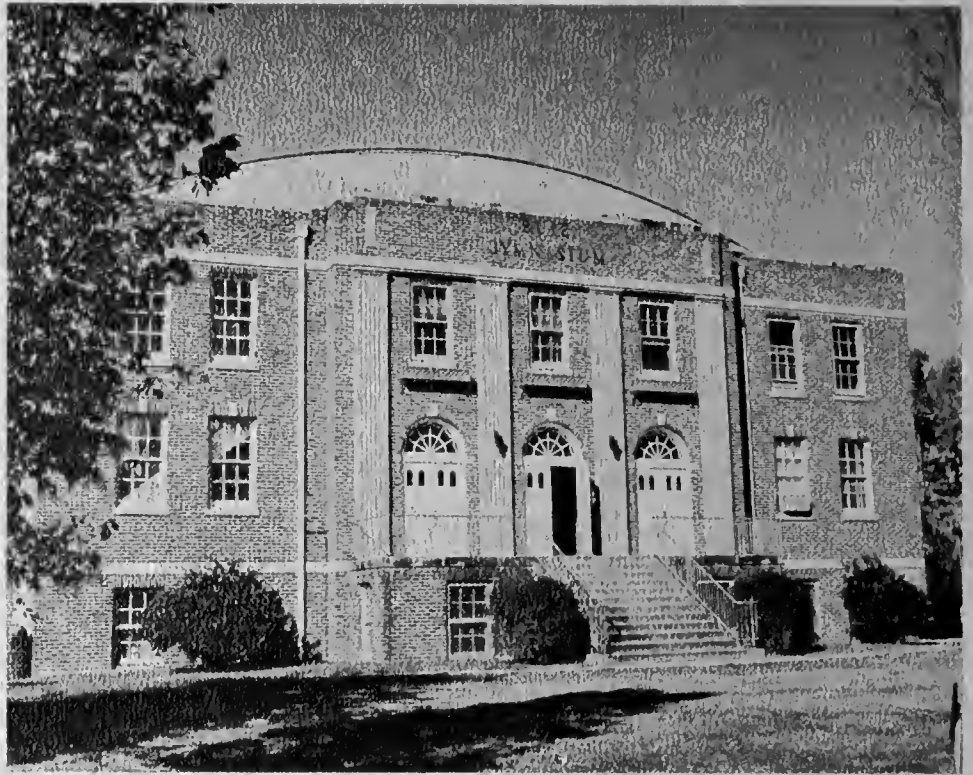
Leland Smith, co-business manager

Hey, you know everybody's talkin' about the good ole days, right? Come to think of it, as bad as we may think they are, these will become the good ole days for our children.





Why don't we try to remember the kind of September, when life was slow, and oh, so mellow. Try to remember, and if you remember, then follow . . .



... Oh, why does it seem that the past is always better?





We look back and think, the winters were warmer, the grass was greener, the skies were bluer, and the smiles, bright.



Can it be that it was all so simple then? Or has time re-written every line?





And if we had the chance to do it all again, tell me, would we? Could we?

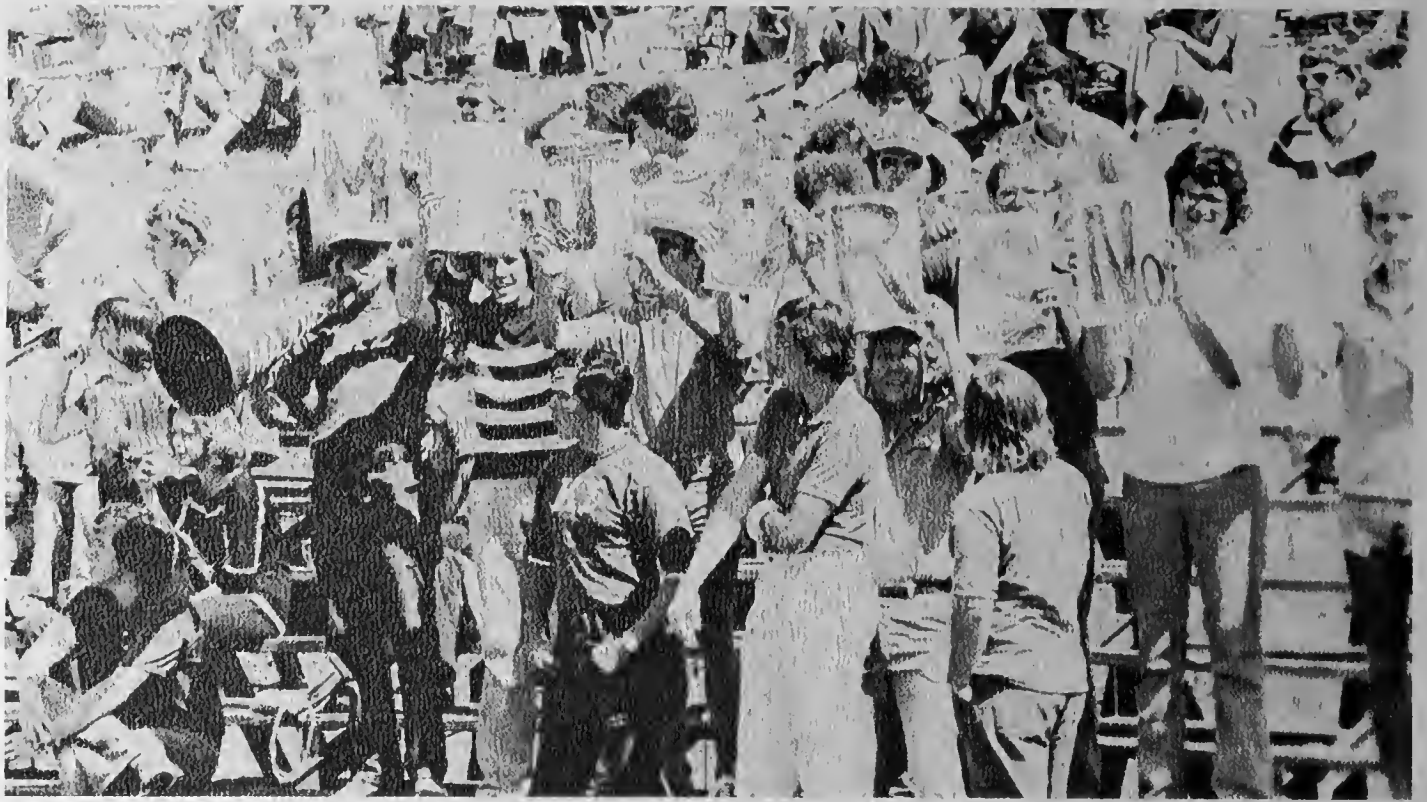


Memories ...
light the corners of my mind.





Misty water color memories



of the way we were





Scattered pictures of the smiles we left behind ...



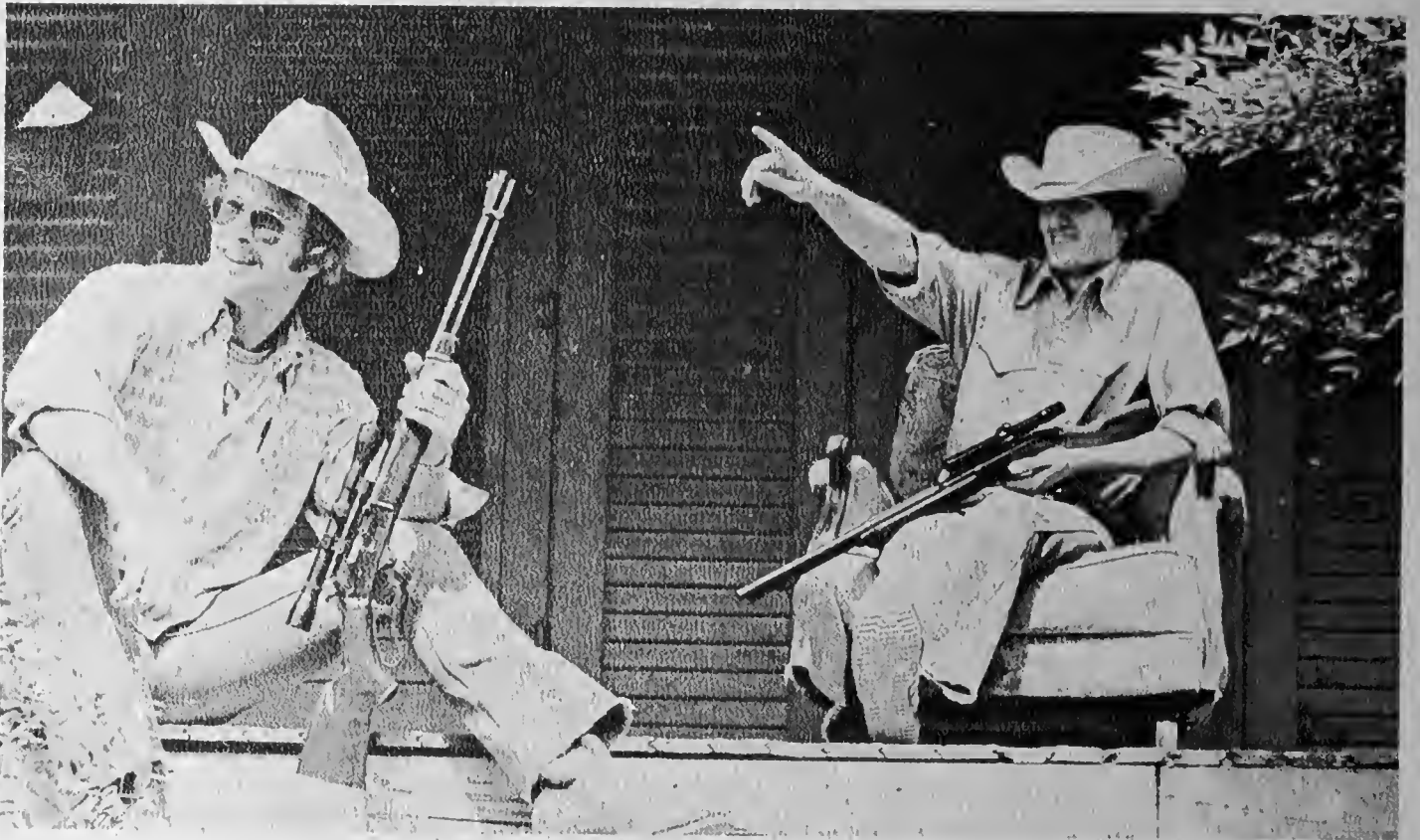


Smiles we gave to one another



for the way we were



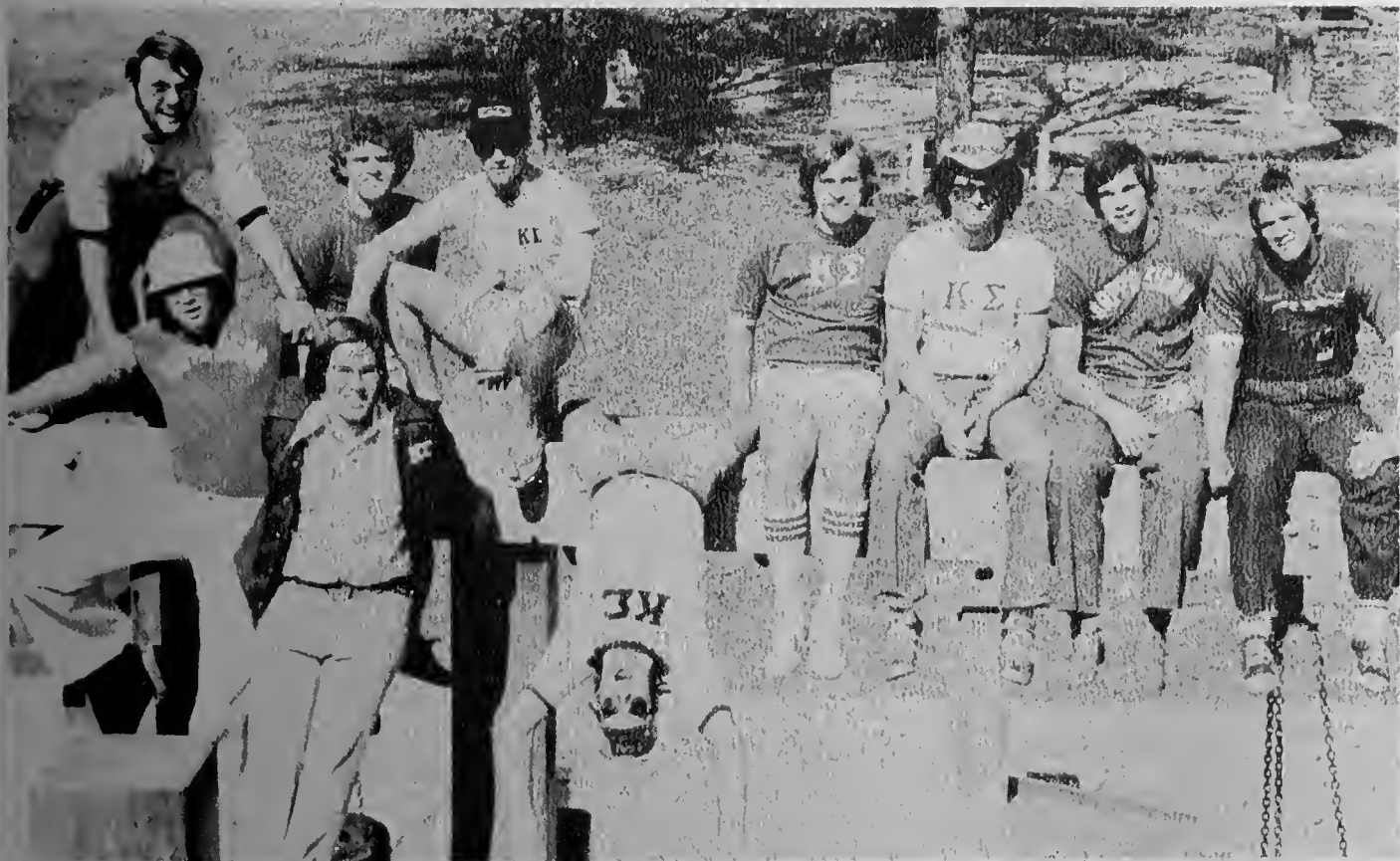


Can it be that it was all so simple then?
Or has time re-written every line?





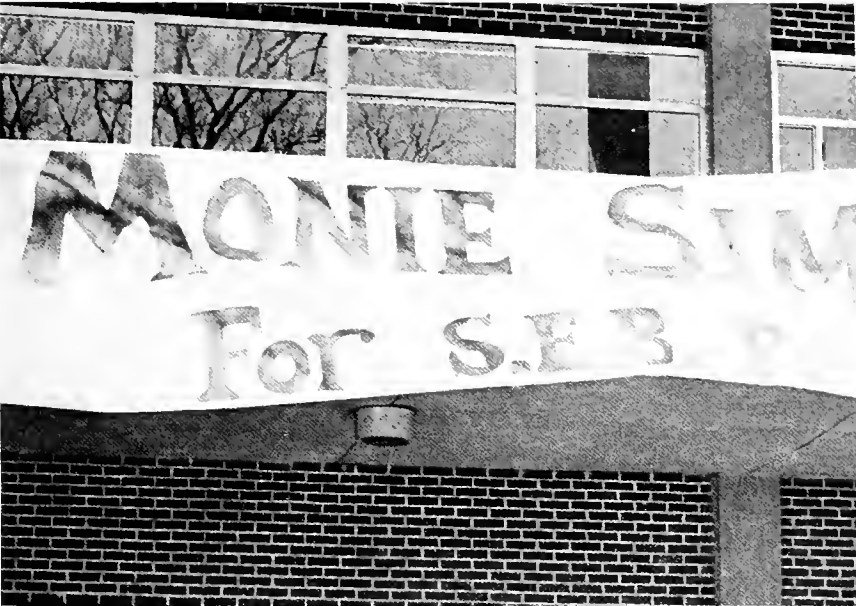
And if we had the chance to do it all again, tell me, would we? Could we?







May be beautiful and yet ...

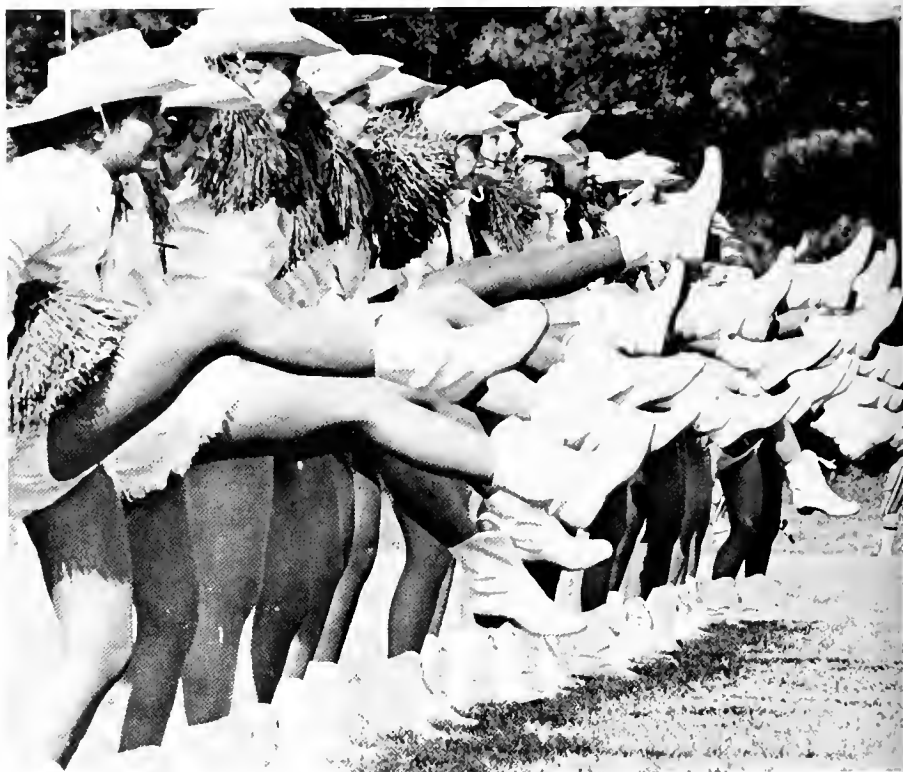


What's too painful to remember, we simply choose to forget.



So it's the laughter ...





We will remember,





the way we were.





Remember -
the way we were





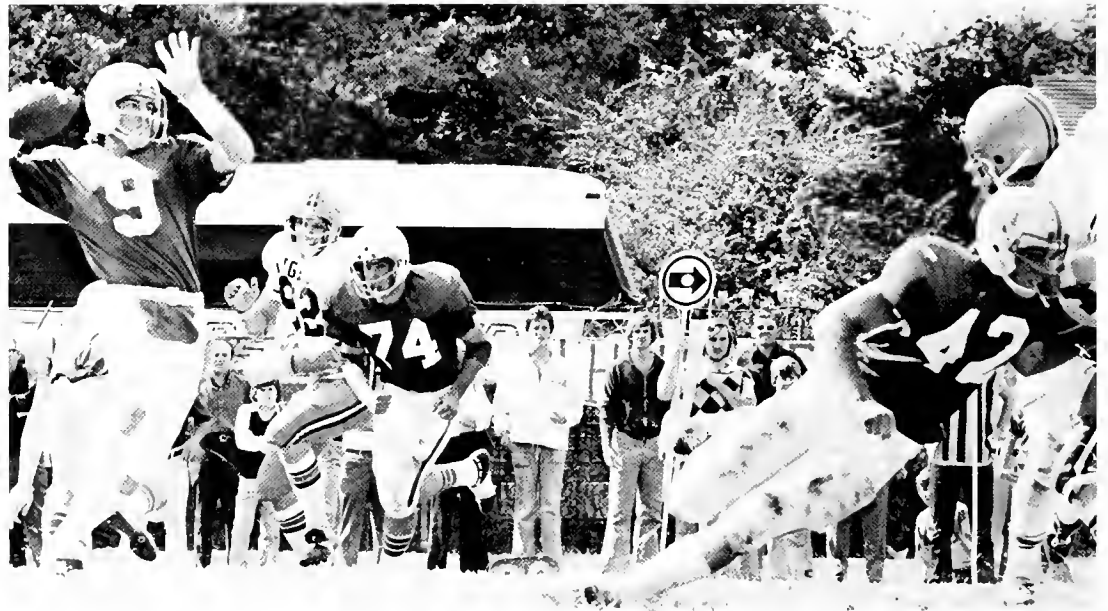
With sincere appreciation to each member of the Millsaps Majors Football Team for their participation in a very important part of the total Millsaps College program, we offer this tribute of thanks.

The individual dedication and devotion involved in long and tough hours of practice resulted in a game-time team which deserves special recognition. Achieving a 7-2 season this year after reaching the NCAA Division III National play-offs last year, the football team revitalized the athletic program and regained enthusiastic support of the student body, fans, and friends. With a complete coaching staff of two—Head Coach Harper Davis and Assistant Coach Tommy Ranager—and a modest budget, the team, through its success earned national exposure and recognition for Millsaps College.

Haygood, Hinton & Company were responsible for many exciting and enjoyable (nearly heart-stopping!) Saturday afternoons at Legion Field that will long be remembered. Each member of the team not only sought superior athletic performance, but also conducted himself in a manner such that each served as a goodwill ambassador for Millsaps College and the State of Mississippi.

They were leaders on campus. They wore the purple and white jerseys with pride. In the finest tradition established by Majors' teams in the past, they have done a good job.

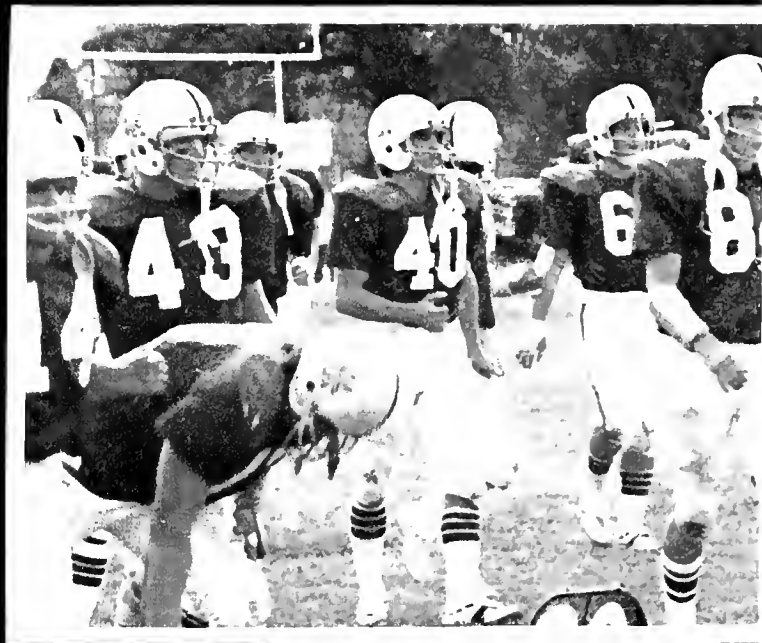
Wells & Co.







Faculty	30
Features	58
Sports	86
Organizations	108
Students	154
Advertisement	206



FACULTY



ADMINISTRATION



Edward M. Collins, President



Paul Hardin, Registrar



J. Harvey Saunders, Dean of Faculty



John Christmas, Dean of Admissions



Jack Woodward, Dean of Men
and Director of Financial Aid



Jane Corder, Dean of Women



James McLeod, Director of Placement



William Hannah, Business Affairs



James E. Livesay, Director of Alumni



Cermette Clardy, Institutional Advisor



Marilyn Fisher, Public Relations



William Franklin, Institutional Advisor



Martha Neal, President's Office



Nancy White, Business Affairs



Katherine Lefoldt, AC Hostess



Claudia O'Keefe, Student Affairs



Don Fortenberry, Chaplain



Development

Ann Farmer, Madge Columbus, Dot Knox, Peggy Sumrall



Admissions Counselors

Ward Emling, Clark Henderson, Floy Hollowman



Admissions

Cathy Martella, Sherrie Hobbs



Business Office

Cheryll Patrick, Dorothy Nettles, Alice Borders, Warren Lee



Patty Fennel, Dispensary



Registrar's Office

Sara Borders, Sandra Webb, Pearl Dyer, Bea Woodard



Doug Townsend, Food Service



Bookstore

Mittie Welty and Marsha Schivers



Virginia McCoy, Switchboard



LIBRARY

(seated l. to r.) Lillian Cooley, Caroline Moore, Floreada Harmon, Ann Ratchford
 (standing l. to r.) James Parks, Edith Bowie, Frances Boeckman, Joycelyn Trotter, Gerry Reiff



Ann Hendrix Jew, Dorm Mother



Mrs. Price, Dorm Mother



Elaine and Paul Christu, Dorm Parents



Chief Nichols, Security



Ramon, AC Custodian

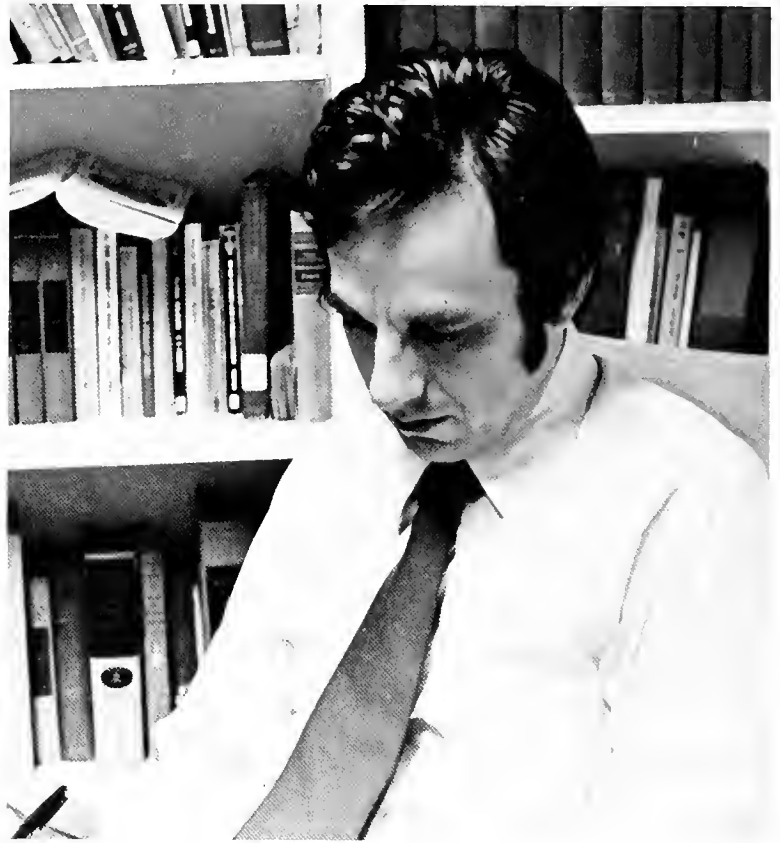


Joe Lee Gibson, Dormkeeper

ANCIENT LANGUAGES



Catherine Freis



Richard Freis

Magnolia Coulette



ART



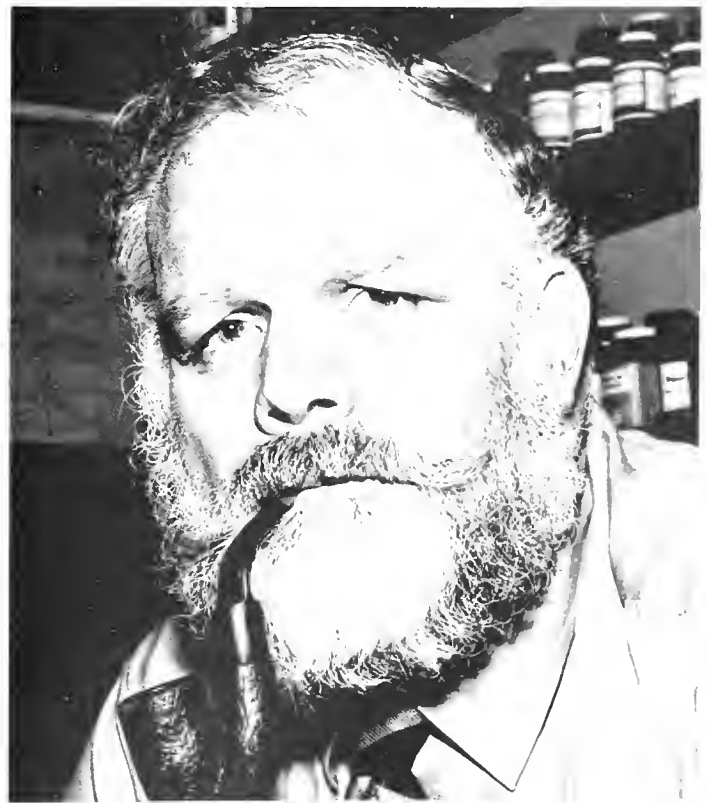
Lucy Webb Millsaps



Rufus Turner

BIOLOGY

James McKeown



Rondal Bell

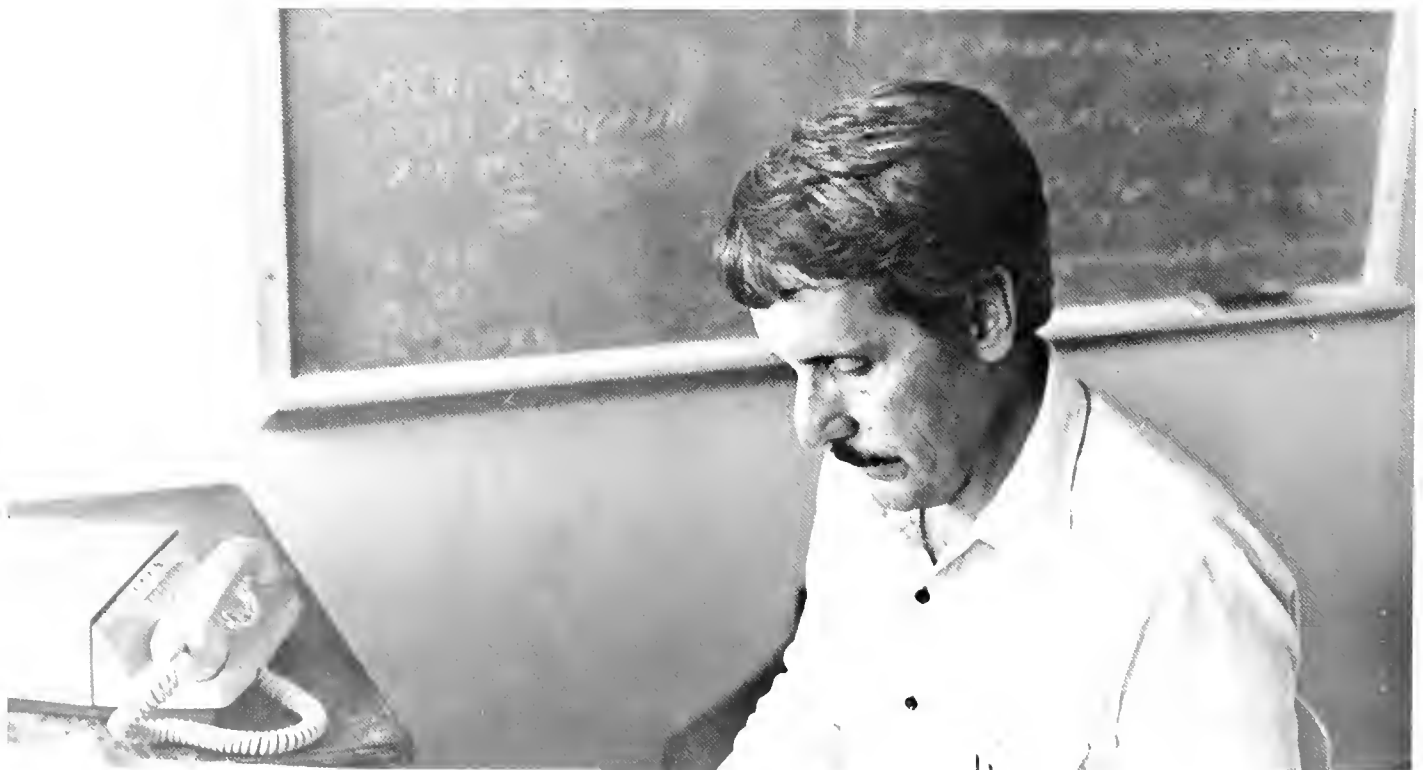


Robert Nevins



Eric Yensen

BUSINESS



Richard Baltz



Frank Frohnhoefer

Steve Wells



Mike Ainsworth



Clyde Ballard



William Watson III

CHEMISTRY



Roy Berry



Allen Bishop



Eugene Cain



George Ezell



Anna Ezell

EDUCATION



Ira Harvey

Linda Harvey



Myrtis Meaders



ENGLISH



Lois Blackwell



George Boyd



Daniel Hise



Mildred Morehead



Robert Padgett



LeRoy Percy

GEOLOGY

Wendell Johnson



Austin Wilson



HISTORY



Frank Laney

Charles Sallis



Robert McElvaine



Ross H. Moore

MATHEMATICS



Samuel Knox



Herman McKenzie



Robert Shive



Arnold Ritchie

MODERN LANGUAGE



Mary Robinson

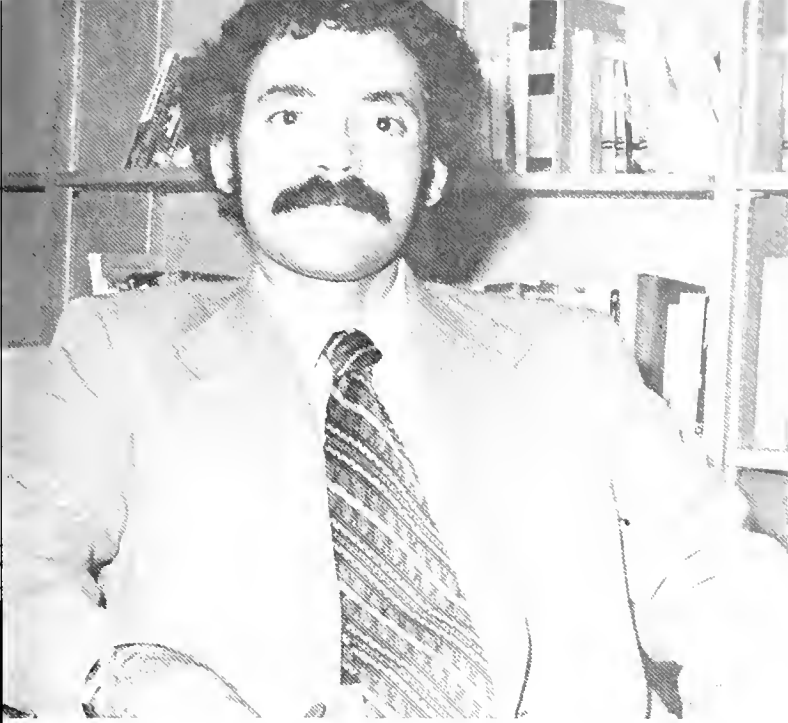


Billy Bufkin, Spanish

John Guest, German



Nellie Hederi, Spanish



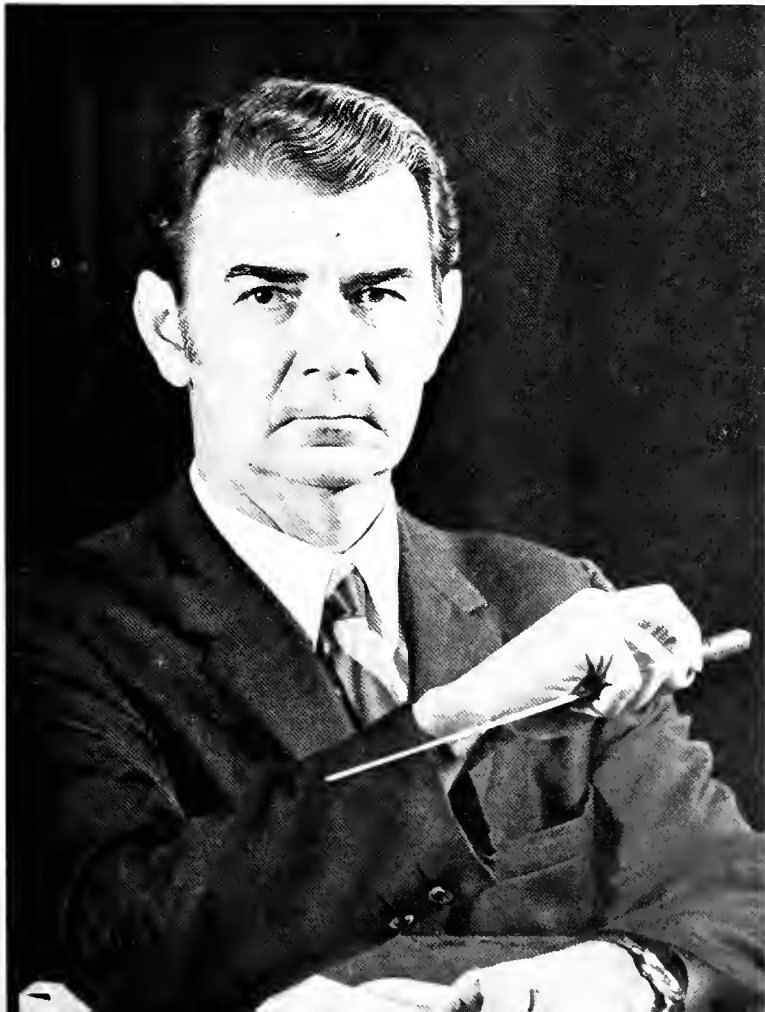
Robert Kahn, Romantic Languages



Hilliard Saunders, Romantic Languages

MUSIC

Leland Byler



Louise Byler



McCarrell Ayers



Francis Polanski



Donald Kilmer



Jonathan Sweat



Robert Bergmark



Michael Mitias

PHYSICAL EDUCATION



James Montgomery



Mary Ann Edge

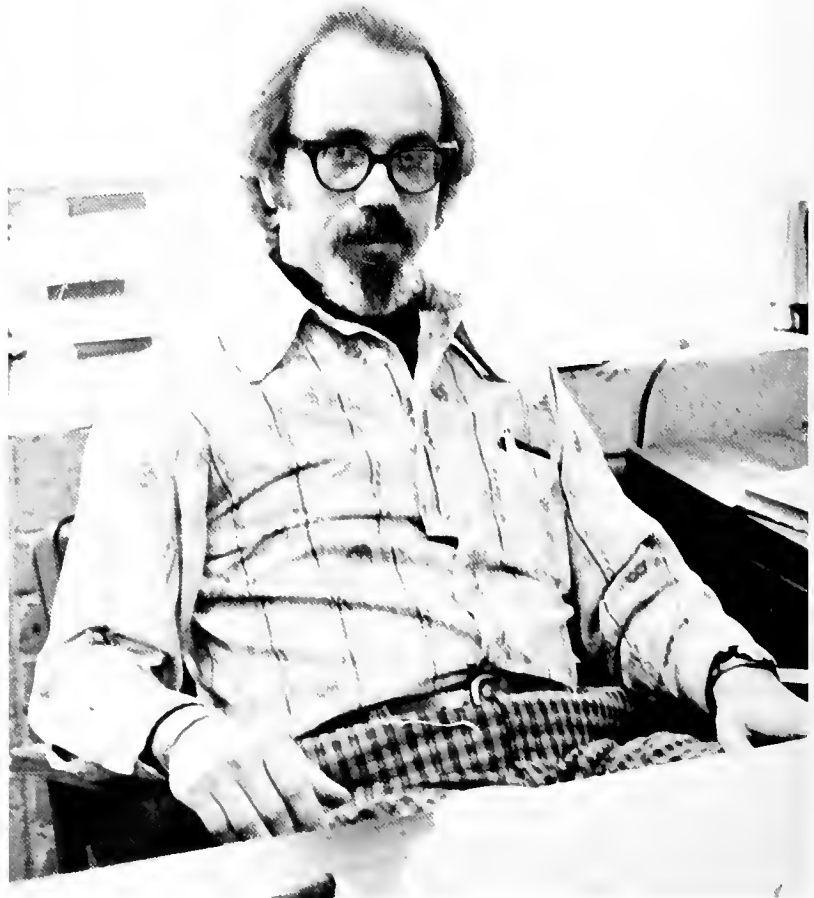


Harper Davis
Tommy Ranager

PHYSICS POLITICAL SCIENCE

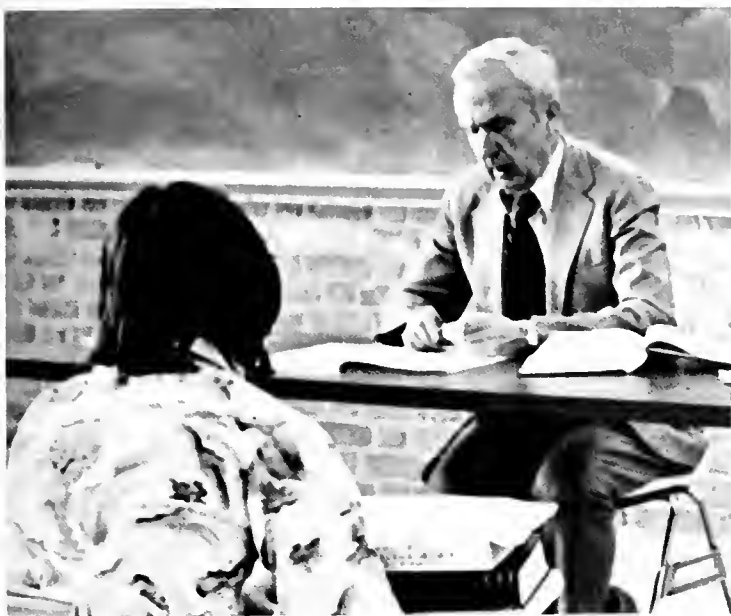


George Beardsley

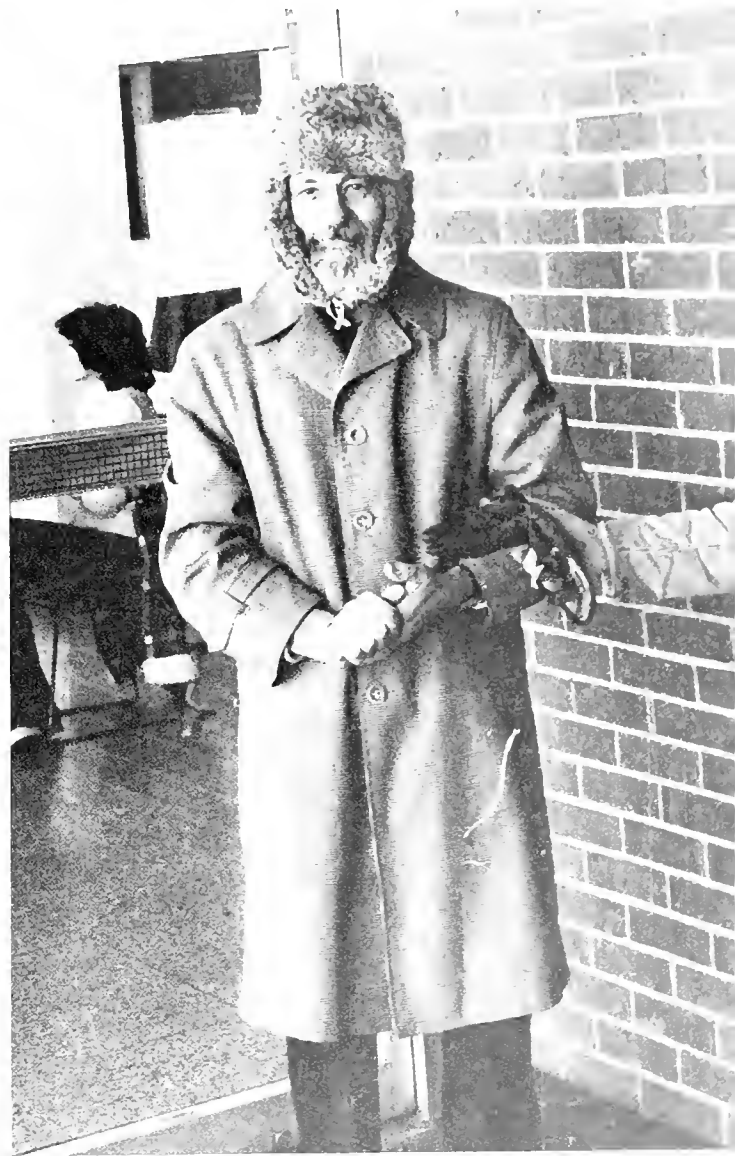


John Quincy Adams

PSYCHOLOGY



Howard Bavender



Russell Levanway



Edmond Venator

RELIGION



T.W. Lewis



Lee Reiff

SOCIOLOGY



Frances Coker



Paul Murray



THEATRE

Lance Goss



Mrs. Cooper, Theatre Movement

FEATURES





Kathryn Barksdale
Bob Lewis



Carol Burrus
Bill Rice

Deborah Madden
Rob Wells



Shane Pittman
Kent Kebert



Michelle Tate
Monie Simpkins

Jana Walker
Jay Jabour



HOMECOMING QUEEN



Robin Rice
David Carroll





Every decade or so, a college football team will be blessed with an outstanding All-American athlete who makes his name well remembered. In 1976 at Millsaps College, his name is RICKIE HAYGOOD.

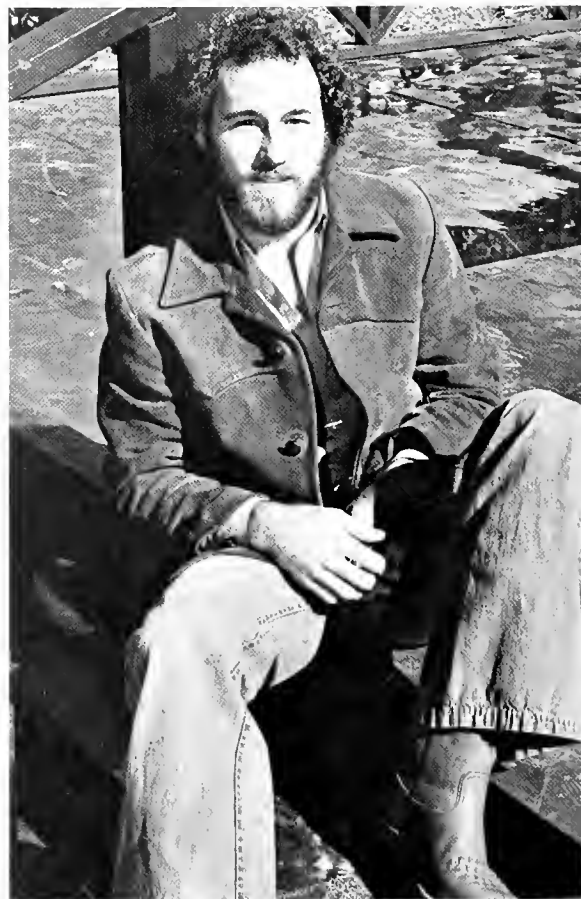
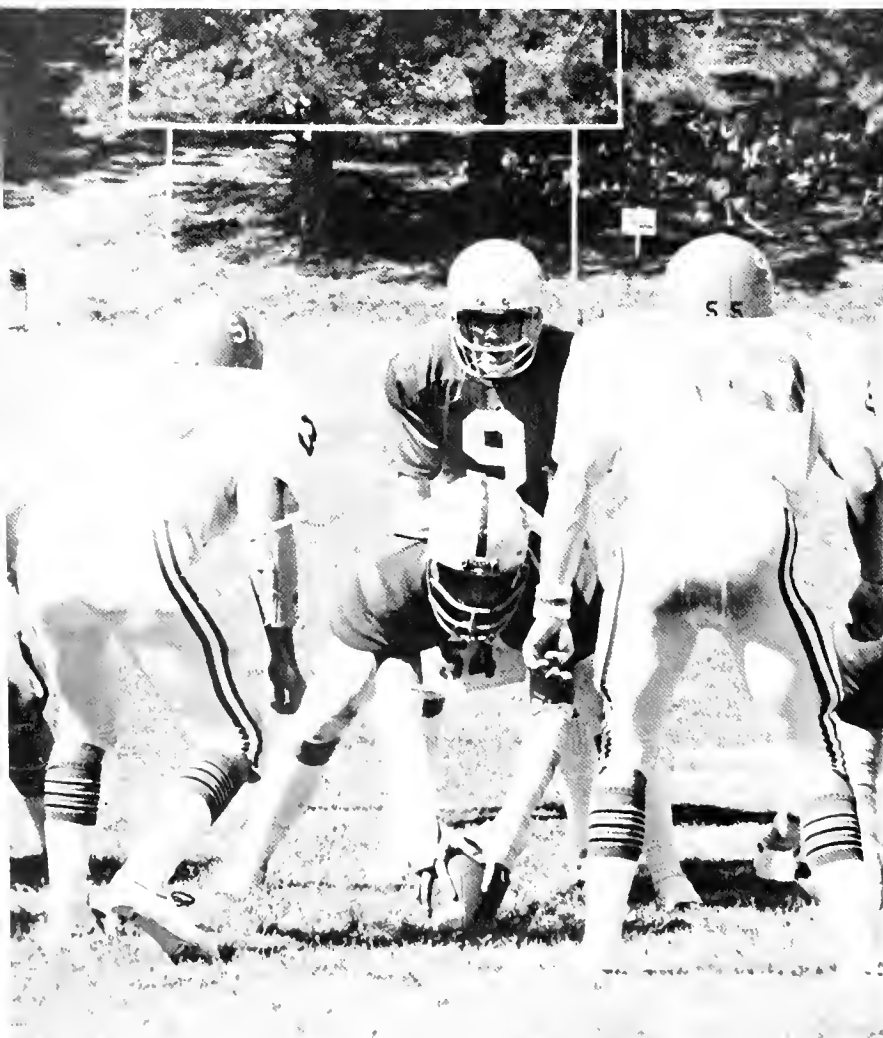
The American Football Coaches Association dubbed the 5-foot 10, 168-pound senior from Pascagoula as the best quarterback in the nation in the NCAA Division III, and named Haygood to the Kodak College Division III, All-American Team.

Voted by his teammates as the Most Valuable Player of the year, Haygood piloted the Majors to a 7-2 record this past season. He terminated his passing career in fine fashion as he threw for 221 yards and two touchdowns in the final contest of '76, and connected on 18 of 31 aerials to maintain his completion and total yards average.

Nationally ranked as the fourth best passer in Division III, Haygood completed 135 of 269 attempts for 1,794 yards average.

Following a fantastic 384 yard passing performance against McMurry College which gave the Majors a 5-0 standing, 7 at mid-year, Haygood surpassed that mark against Georgetown in the homecoming game. Ironically, he completed 23 of 41 aerials for an amazing 408 yards and three touchdowns, but the remarkable effort left the Purple and White 10 points short (30-40).

Haygood was also rated in the country in total offense as he gained 1,966 yards in nine contests for a 218.4 yards per game.





Dean Jane Corder is one of those rare people who is able to "get it done" and be a good friend at the same time. She always has time for a chat with her friends, time to do someone a favor, in addition to her numerous committees, groups, and organizing tasks, all of which she tackles with enthusiasm. Dean Corder is the friend I would like to have around in a crisis—steady, non-judgemental, practical, yet warm, she seems to approach life as a pleasant challenge. She views people not only as they are, but as they could be, recognizing and encouraging unrealized potential. Her capacity for fun and her sense of humor are part of all she does. One never gets the feeling that Dean Corder is over-worked or a martyr to her many tasks, because she loves her work and the students and it shows. Somehow on top of all her many duties and projects, Dean Corder finds the time to learn and grow. She is open to new ideas, courageous in taking new steps, and yet her sound judgment serves her well. As a Dean of Women and as a counselor, Dean Corder is at the forefront of her disciplines. She is a thorough professional, and yet she never loses her warmth or her sensitivity to individuals. Dean Jane Corder is one of those rare people whose integrity and loyalty are unquestionable. She is what she is and does what she says she will do. If she is your friend you have a constant course of warmth and strength.

FAREWELL, MA PRICE

Who is that energetic little lady that seems to be all places at once, makes sure all the upperclass women fill out dorm cards, enforces the few remaining rules, and, in general, keeps the men and women on campus from destroying the dormitory? Of course, she is our own MA PRICE. When we entered as freshmen, she was here and she surely would be here when we graduated. Ma Price is as much a part of Millsaps as the "green thing" in the bowl, the M-bench, or Major Millsaps. But Millsaps is about to lose this respected and lovable lady who has served as a figurehead on campus since 1934.

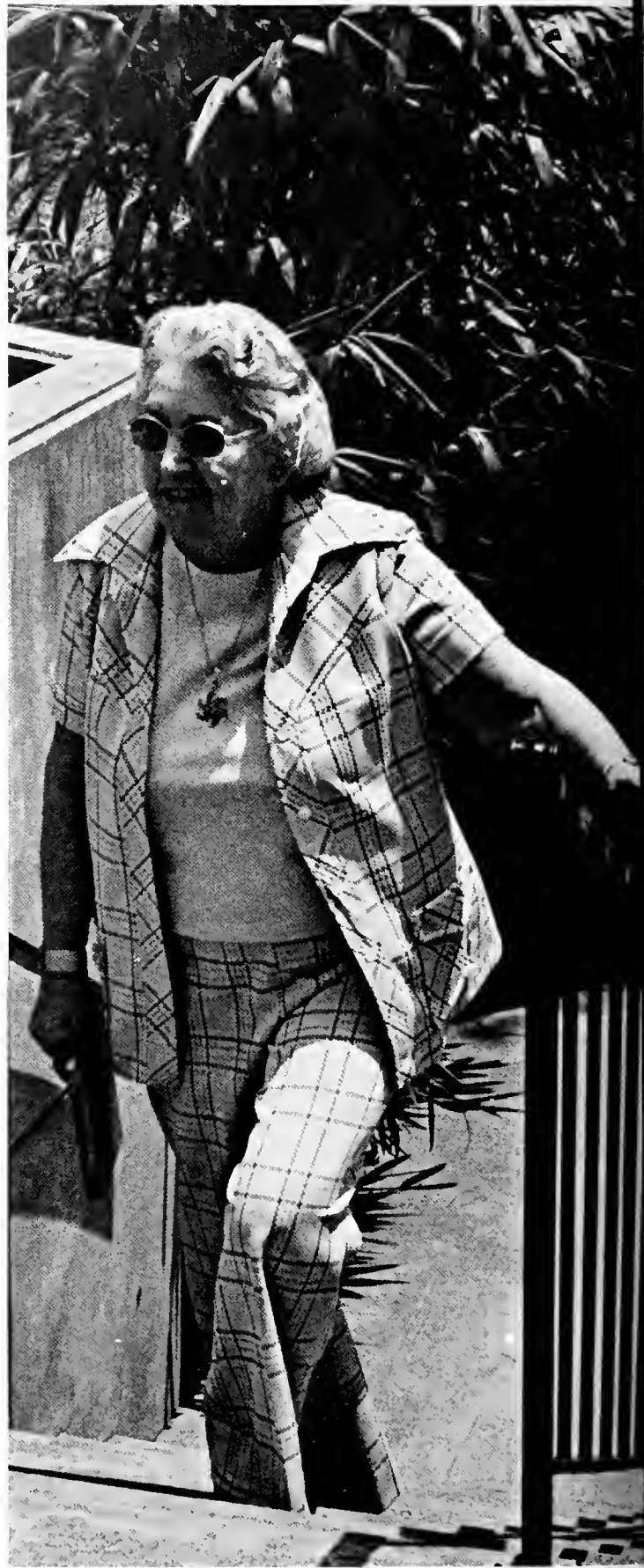
Ma Price came to Millsaps 43 years ago when she became Mrs. Joseph B. Price. Dr. Price had been a member of the Chemistry department for four years when he married "Ma" in 1934. For 22 years he served as the dedicated and influential chairman of the chemistry department. Ma Price is the mother of three Millsaps graduates: Mary Charles, now a freelance journalist and photographer with her husband for travel magazines, was a member of the Millsaps Singers and the Chi Omega Fraternity; Mac and Doug, now aerospace technicians for NASA residing in Newport News, Virginia, are twins, both of whom were also members of the Millsaps Singers and the Kappa Alpha Order.

In her years of association with Millsaps, Ma Price has devoted her time and energy to many aspects of the school. The KA's have honored her with the title of Perpetual Rose, for not only were her two sons KA's at Millsaps, but she also married one. For eighteen years, Ma Price was a chaperon for the Millsaps Singers while on tour. It was during her first trip with the Singers that the students started calling her "Ma." But more important than this, she has been a friend and mother for hundreds of girls for thirteen years.

When Franklin Dorm opened in 1964, Ma Price began her career as dorm mother. After spending two and a half years there, she moved into the newly erected Bacot Dorm where she has remained.

Times have changed since Ma Price moved onto the girls' side of campus. When she first came, all girls' dorms closed at 10:00 but second semester seniors could stay out until 10:30. Of course, the boys have never had hours. Eleven o'clock was the closing time for the dorms on Friday and Saturday nights. If a girl wanted to leave the dorm any time after dark to go anywhere, on campus or off, she had to sign out in a book by the front door. If a girl got caught breaking any rule, for example—wearing pants in any public place, she could expect to be campused for as much as a month. This included not even being able to sit with a male in the cafeteria. As time went by, the senior girls eventually acquired what was known as "Senior Privilege." This, Ma Price explained, enabled the seniors to enter the dorm at any time of the night. Things definitely have changed around here.

Ma Price has seen numerous other changes take place at Millsaps. She attended the first and last basketball game at Bowie Gym. She remembers when the four girls' dorms, Whitworth, Sanders, Franklin, and Bacot, were built.



What will Millsaps do without Ma Price? Probably fall apart. She has been a loyal supporter of every aspect of Millsaps and, in particular, the women on campus. I think I speak for everyone, Ma Price, when I say that we will all miss your presence at Millsaps and that the place will not be the same without you!





Miss Jackson
Sherry Pearson



WHO'S WHO AMONG AMERICAN COLLEGES AND UNIVERSITIES



Jenny Bland Bates, active in Millsaps' Greek life, served as Co-chairman of the Panhellenic Field Day and as Co-chairman of the Panhellenic Summer Ice Cream Party. As a member of Chi Omega, Jenny held the offices: Personnel Chairman, Pledge Trainer, and Vice-President. She received the Chi Omega honors of Outstanding Sophomore and the President's Award. Jenny was editor of the MAJOR'S FACTS for two years and also worked on the BOBASHELA Staff. She was President of Sigma Lambda, Treasurer of the SEB, and a member of Omicron Delta Kappa. A Dean's List Scholar, she also was the 1974 Homecoming Queen, an Orientation Counselor, and a part of the Sander's Food Club. Jenny was Bacot's representative to the Dormitory Affairs Committee and an assistant to the Student Affairs Office. An Accounting major, she served an intership at Tattis & Tattis, Accountants and Auditors.



A member of the College Senate and the Student Senate, Daniel Seymore Bowling also served on the President's Advisory Committee and as Chairman of the Publications Committee. In addition to holding the President offices of Omicron Delta Kappa and the Junior Class, he was an officer of the Kappa Alpha Order. Danny received the Baseball Team Scholastic Trophy for two years and was a three year letterman in baseball. He was Contributing Editor of the PURPLE AND WHITE, an intern at Jackson/Hinds Youth Court, and a National Mississippi Society Delegate to the Southern Regional Conference on Prisons in 1975. Danny graduated cum laude with honors in English.



Mary Lucy Burrus has held many offices during her four years at Millsaps. She was Vice-President of Omicron Delta Kappa, Vice-President of Sigma Lambda, Sophomore Class Vice-President, Junior Class Vice-President, and Chapter Correspondent and Pledge Trainer of Chi Omega. A cheerleader and member of the 1975 Homecoming Court, Lucy also served on several committees. She was Chairman of the Legal Code Committee, Chairman of the Organized Affairs Committee, and a member of the Library Committee. Lucy was also a member of the Major-ette Club, Kappa Delta Epsilon, and the Student Senate for two years. She displayed her musical talent as a part of JOLAS, a Christian singing group. During her three years in the Millsaps Singers, Lucy was a member of the Choir Council. She participated in the Millsaps Players' "Sound of Music." A Dean's List Scholar for seven semesters, Lucy, an English major, graduated cum laude.

Juliet Wilkins Dantin, Millsaps' Major's Lady, was a member of Kappa Delta Sorority. She was a member of the Millsaps Singers, and was tapped into Sigma Lambda Honorary and Omicron Delta Kappa Honorary. Serving the Millsaps Student Body as SEB President in 1976 and SEB Second Vice-President in 1975, Jigs was also Sophomore Class President and a member of the President's Advisory Board. She was a student representative on the Millsaps Board of Trustees and has also served on the College Senate, Student Senate, and the Governor's Youth Advisory Board. Jigs has interned in the Mississippi State Senate as well as the United States Senate.

Barry Keith Cockrell showed interest in student government at Millsaps by serving on the Student Senate Committee to investigate the tuition plan, the Student Senate Financial Affairs Committee, and the Student Senate Social Affairs Committee. As the 1975 President of the Millsaps Chapter of Young Democrats, Barry also was a Freshman Orientation Counselor and member of the Student Advisory Board. Barry participated in Intramural Sports and was recorder for the Group Session of the Millsaps Symposium. He served as Assistant Editor of the PURPLE AND WHITE in 1976 and was admitted into the Honors Program the same year. A Dean's Scholar every semester graduating magna cum laude, Barry received the Eta Sigma Phi Award his first and second year. He was also awarded a scholarship to the British Studies at Oxford in 1976. A member of Eta Sigma, Eta Sigma Phi, and Phi Sigma Eta, Barry was a Teaching Assistant in Latin and a Student Assistant in the Registrar's Office.



A sociology major, Gail Elaine Doss was the Sociology Departmental Assistant and received the Junior Sociology Award. She received the C. Wright Mills Award, a scholarship to the British Studies at Oxford in 1976, and a scholarship to the University of North Carolina at Chapel Hill. Gail served on the Planning Committee for Wald's Symposium and the Christmas Involvement Committee. Active in Intramurals, she was part of the Millsaps Players and the Aldo Leopold Society. Holding the Vice-President offices of Schiller Gesellschaft and the English Club, Gail was also a member of Sigma Lambda, Eta Sigma, Deutsche Verein, and the National Organization for Women. Gail graduated magna cum laude.



James Steven Jenkins received the Freshman Mathematics Award (1973-4), the Computer Science Award (1975-6), the Mathematics Major's Award (1977), and the Theta Nu Sigma Organizational Award (1977). He was tapped into the honoraries Omicron Delta Kappa, Theta Nu Sigma, and Eta Sigma. As a member of the Millsaps Troubadours, Steve played bass three years and was Equipment Manager. He also played bass with the Jackson Symphony Orchestra for three years and with St. Andrews Cathedral Chamber Society for five years. Steve was Scholarship Chairman and Rush Film Chairman for Kappa Alpha Order and Senior Lab Assistant and Systems Assistant for the Millsaps Computing Center. Steve served on the College Senate Library Committee for two years, the SEB Social Activities Committee, and the Campus Radio Committee. Steve graduated *cum laude*.



Chosen Model Pledge and Secretary of Kappa Delta Sorority, Nancy Williams Lang was chosen as a Kappa Sigma Little Sister and served as Co-Chairman of the Summer Panhellenic Ice Cream Parties. As a sociology major, she received the Junior Sociology Award. Nancy was a Sociology Departmental Assistant, Millsaps' Representative to the Sociology Career Day Conference, and an Intern at the Jackson/Hinds County Youth Court. She studied during her Appalachian Semester with a legal aid firm. As an Assistant Girl Scout Leader, Nancy is a member of other groups such as the Coalition for Carter, the American Civil Liberties Union, and The Southern Poverty Land Center, Public Citizen. A Dean's List Scholar, she was on the Homecoming Court, a cheerleader, and an Orientation Counselor. Nancy was a member of Sigma Lambda, Omicron Delta Kappa, the Majorette Club, and the Sander's Food Club. Serving as Culture and Arts Editor for the PURPLE AND WHITE, Nancy was also a worker on the BOBASHELA Staff and a member of the College Senate. She was nominated for the Academic Council, behavioral science division, as student representative. Nancy served on the Chaplain's Committee for two years, the Financial Affairs Committee, the Supper Lecture Series Committee, the Twentieth Century Symposium as Recorder, and the Food Club Committee. She graduated *cum laude*.



A four year football letterman and voted by his teammates as the Most Valuable Player of the year, Charles Rickie Haygood was named to the Kodak College Division III, All-American Team. His junior year he was the leading quarterback in the nation in the NCAA Division III, in addition to being ranked as the fourth best passer in Division III. Not only did Rickie excel in football, but he was a four year letterman in baseball. As the best all around player in batting and fielding, Rickie showed his agility by playing short stop, second base, and outfield. As an active participant in Intramurals, Rickie was a creditable tennis player and was outstanding in basketball and volleyball.

Rickie was a member of the Intramural Sports Council for several years and was an active member of Kappa Alpha Order. He was a Physical Education Departmental Assistant. Being a Dean's List graduate, Rickie received a Graduate Assistantship to the University of North Carolina at Chapel Hill, working towards a degree in Recreation Leadership.



A Dean's List English Major, Frances Lavelle was a member of the English Club, the *STYLUS* Staff, and an executive member of the Creative Writing Club. She was an officer in Zeta Tau Alpha and represented her sorority in Junior Panhellenic in 1974. Interested in acting, Frances was a part of the Millsaps Players and received the Junior Acting Award in 1976. Working as Assistant Director of "Ben Franklin in Paris," Frances was also Best Supporting Actress in "The Lady Is Not for Burning." A Bacot Resident Assistant for two years, she was a member of Alpha Psi Omega, Deutsche Verein, the Supper Club, the Mississippi Lung Association, and the Mississippi Annual Rescue League. Frances participated in Intramurals and was a volunteer at the Methodist Children's Home. Frances graduated *magna cum laude*.

Reigning as Millsap's first Queen Elizabeth at the Elizabethan Festival in 1976, Elizabeth Jo McKinnon was also the Co-Chairman Orientation Coordinator. A member of the College Senate, Betty served on the President's Food Service Committee, the Who's Who Committee, the Energy Conservation Committee, and the BOBA-SHELA Staff. She was Pledge Trainer and Vice-President of the Chi Omega Fraternity and was chosen its Outstanding Junior Member. Representing Chi O, Betty participated in Intramurals and was a volunteer at the Cerebral Palsy School. Betty was a member of the Millsaps Singers, the Girl's Ensemble, the Majorette Club, and the Aldo Leopold Society. She was also a member of Beta Beta Beta and Sigma Lambda.

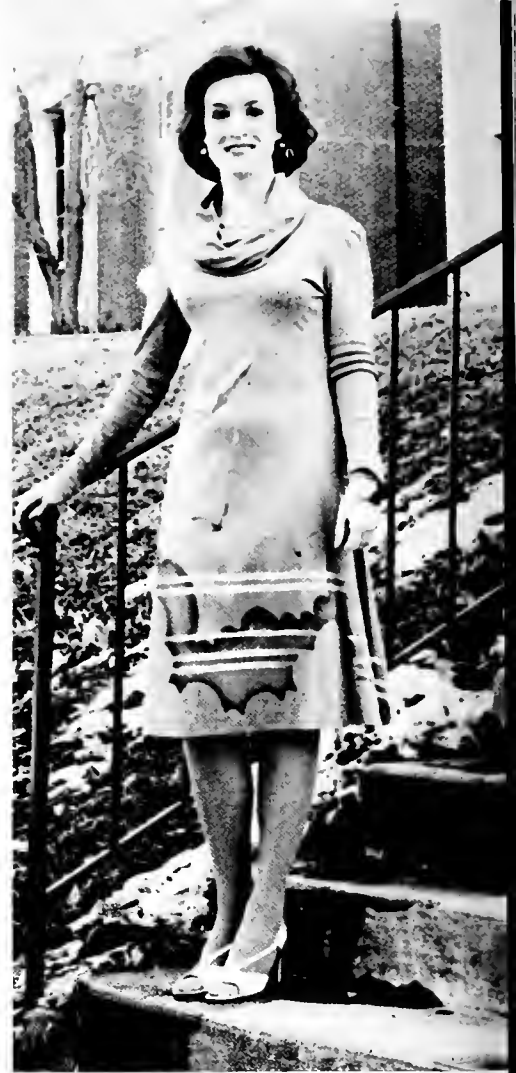
Tapped into the honoraries Omicron Delta Kappa, Alpha Psi Omega, and Eta Sigma Phi, James Minor Matheny also was President of Eta Sigma. As an English major, he was Vice-President of the English Club, and English Department Assistant, and the recipient of the Clark Essay Award. Jim was a member of the Berean Fellowship and the Inter-Varsity Christian Fellowship. An Orientation Counselor for two years, he was part of the Millsaps Players, and the Millsaps Singers during which he served on the Choir Council. Jim was Lambda Chi Alpha's Ritualist and Editor. He graduated *magna cum laude*.



As Business Manager of the PURPLE AND WHITE, Mary Elizabeth Megehee also worked on the BOBASHELA Staff three years and was Editor in 1976. She was a Dean's List Scholar and a member of Omicron Delta Kappa and Sigma Lambda. Maribeth served as Vice-President of Circle K and as social Chairman of Chi Omega Fraternity. She was Secretary of her Chi O pledge class. Maribeth was cast in the Millsaps Players' "Sound of Music," and she also was a Freshman Orientation Counselor. Maribeth did volunteer work at the Cerebral Palsy School and for the Cancer Crusade. She aided Mrs. Heber Simmons with research on a book about Mississippi. A member of the Small Business Institute, Maribeth received a Nonservice Fellowship to the University of Mississippi Graduate School of Business. Maribeth graduated *cum laude*.

Serving IFC as President and Vice-President, John Bryan Miller was also Grand Scribe and President of Kappa Sigma. He received the Scholarship/Leadership Award for Kappa Sigma and organized the Kappa Sigma Blood Fund Drive. Bryan also organized the Heart Fund Drive and the Special Olympics for the Handicapped. In addition to being the Sophomore Class President, he was a member of the Chaplain's Committee, the Who's Who Committee, the Judicial Rules Committee, and the Orientation Council. Intellectual as well as athletic, Bryan was a Dean's List Scholar with a Diamond Merit Scholarship and also active in varsity Basketball and Soccer.

Douglas Marehand Minor, Millsaps' Master Major, was active in his fraternity, Pi Kappa Alpha, serving as President, Vice-President, and Membership Education Coordinator. Named "Pike of the Month" by the National Pi Kappa Alpha Fraternity, chosen as Model Pledge and Outstanding Junior of Pi Kappa Alpha, Doug was also the President of IFC. He organized the Pike Bike Race for MDA, the Christmas Party and the Easter Egg Hunt for the Magnolia Speech School. Active in Intramurals, Doug was Sports Editor of the PURPLE AND WHITE and BOBASHELA, Sports Information Director, and Assistant Editor of the PURPLE AND WHITE. A member of the Golf Team, he was named Golfer of the Year in 1977. Doug was a Dorm Assistant, a Dorm Senator, the Vice-Chairman of the College Senate, and a member of the Judicial Council. Recipient of a Diamond Merit Scholarship, Doug was a Dean's List Scholar and was recently tapped into Omicron Delta Kappa.





An English major graduating *magna cum laude*, William Russell Presson was a member of the English Club and an English Departmental Assistant. On the Dean's List every semester, he was Circle K President, a member of Omicron Delta Kappa and Eta Sigma, and an Orientation Counselor. Bill was President, Fraternity Educator, House Manager, and IFC Representative for Lambda Chi Alpha Fraternity. Active in Intramurals and the Millsaps Players, he worked for the BOBASHELA as Business Manager in 1975-76 and on the Business Staff in 1973-75. Bill will enter the University of Texas School of Law.



Tapped into several science honoraries, Scott Thomas Shows was elected Vice-President and President of Beta Beta Beta, Secretary and President of Theta Nu Sigma, Chapter Delegate of Alpha Epsilon Delta, and was a member of Chi Chi Chi. He served on the Student Government Food Committee and was a member of the Millsaps Singers. A Dean's List Scholar, Scott was the recipient of the Marion L. Smith Scholarship.



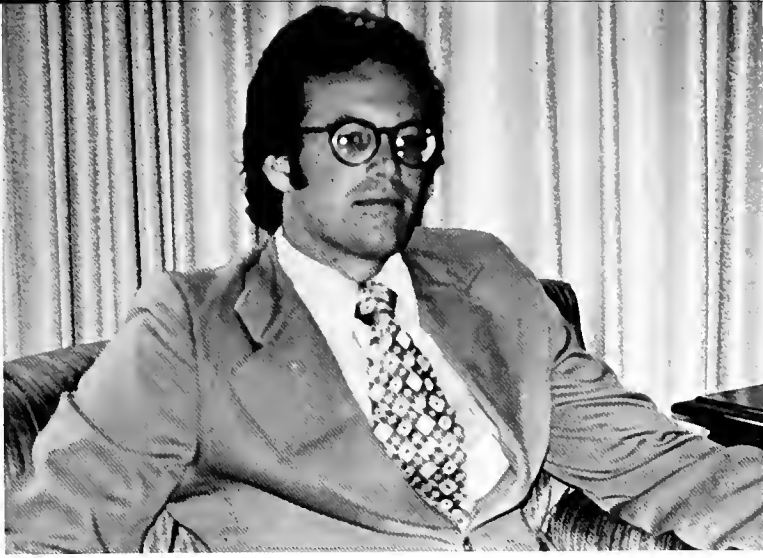
Gloria Steinwinder served Kappa Delta Sorority as Editor, Rush Chairman, Historian, and House Chairman. She was Vice-President of her pledge class and played for KD in Intramurals. Interested in student government, Gloria, in addition to being SEB Secretary, was a member of the Publications Committee, the President's Advisory Committee, the Senate Publicity Committee, the Homecoming Committee, the Christian Involvement Committee, and the Young Republicans. A Dean's List Scholar, she was tapped into Omicron Delta Kappa, Kappa Delta Epsilon, and Sigma Lambda of which she was Secretary-Treasurer. A Student Assistant in the Education Department, Gloria also tutored at the Methodist Children's Home, taught swimming to the handicapped children, helped in the Special Olympics, and participated in the Big Sister Sociology Program. Gloria was a member of the German Club and the BOBASHELA Staff. She graduated *cum laude*.

Graduating *magna cum laude*, Toni Elizabeth Walker was a Dean's List Scholar and recipient of the Bourgeois Medal in 1975. Toni was tapped into Omicron Delta Kappa, Sigma Lambda, Eta Sigma, and Kappa Delta Epsilon of which she was elected Treasurer. As Kappa Alpha Rose, she was also Greek Goddess and a member of the 1975 Homecoming Court. In Chi Omega Toni served as President, Rush Chairman, Panhellenic President, and Jr. Panhellenic her Freshman year. As a Student Assistant for the Education Department, she assisted Mrs. Meadows in teaching the enrichment course "Encouraging Creativity in Children." Toni was Head Resident for Sander's Hall.

Recipient of a United Methodist Scholarship Certificate, Olive Margaret Wahrendorff was Chairperson of the United Methodist Council on the Young Adult Ministry. In junior college, Peg was a member of Phi Theta Kappa, the Social Events Committee, and had minor roles in two plays. During her years at Millsaps, she worked as Assistant Editor of the BOBASHELA and served on the Publications Committee. A Dean's List Scholar, Peg was a member of Omicron Delta Kappa, Sigma Lambda, Eta Sigma, and she received the Junior Sociology Award. Chosen Homecoming Queen in 1975, she also belonged to the Majorette Club. In the Kappa Delta Sorority, Peg was the Social Service Chairperson, Parliamentarian, and Chapter Education Chairperson. She graduated *magna cum laude*.

A member of Who's Who Among American Junior Colleges, Margaret Rose Wilson was Freshman and Sophomore Class President and Class Favorite for two years. In addition to serving Phi Theta Kappa as President and State Secretary, Margaret was Tri-Campus Student Council Vice-President, Vice-President of Samothrobe, and a member of the Student Council Association of Mississippi, the discipline Committee, and the Hall of Fame. A Dean's List and President's List Scholar in Junior College, Margaret received the ROTC Military History Award, the Citizenship Award, and a scholarship to an Honors Institute. Here at Millsaps, Margaret served on the Homecoming Committee, the Publications Committee, and as Chairperson and Recorder for the Judicial Council. A Dean's List Scholar, she received the Junior Sociology Award and the Alexander Watkin's Scholarship. Margaret played intramural Basketball and Softball and was Time-Keeper during Football. A member of the Millsaps Players, Margaret was also active in the Catholic Church. She worked at a mission in Satillo, Mexico, was director of "Search" team for the Catholic Diocese of Natchez-Jackson, and was a member of the Newman College, a Catholic Organization. Margaret graduated *cum laude*.





At Mississippi State University James Lucius Wofford was a member of the University Choir, a German Honorary, and Alpha Epsilon. He served as President of Phi Eta Sigma (Freshman Honorary) and as an officer in Sigma Alpha Epsilon. A President's List Scholar, Jim also was on the MSU Social Committee. After transferring to Millsaps, he was elected to the Student Senate, and he became SEB First Vice-President. A Dean's List Scholar, Jim was a member of Theta Nu Sigma and the Millsaps Singers. Jim attended St. Luke's Methodist Church.

George Morgan Yeates was the first sophomore music major presented in full recital at Millsaps, and also the first collegiate musician to perform as a soloist with the Jackson Symphony Orchestra in a regular concert series. In 1976 Morgan received the Mississippi Young Artist Award and the Mississippi Arts Festival Prize. He was Mississippi Collegiate Pianoist and a finalist in the Mississippi Piano Soloist contest. In 1977 Morgan won the Mississippi Piano Soloist contest and also received the Music Department Citation. He was a member of the Troubadours and received a Freshman Music Scholarship. A double major in music and mathematics, Morgan was a Computing Center Lab Assistant and a private tutor for the Mathematics Department. He was the 1977 recipient of the Mathematics Major's Award.

A member of Who's Who Among American Colleges and Universities, Morgan served on the Millsaps Academic Council and Judicial Council. Recipient of the R. Mason Stricker Academic Scholarship, he was a Dean's List Scholar seven semesters and graduated cum laude.



President of the English Club, May Lipe Zehnder received a scholarship to British Studies at Oxford. She served on the Financial Committee, the Food Committee, and the Social Committee. May Lipe was Publicity Chairman for the Student Senate and Historian for Sigma Lambda. Recipient of the Marion L. Smith Scholarship, she was a Heritage and History Departmental Assistant. May Lipe was a member of the Millsaps Singers, the Millsaps Players, and the Majorette Club. She served the Chi Omega Fraternity as Activities Chairman. May Lipe has worked for two Governor Campaigns. She graduated from Millsaps cum laude.



ELIZABETHAN FESTIVAL



Queen Elizabeth, Ruth Lloyd







Greek God and Goddess
Paul Walker and Toni Walker



MILLSAPS PLAYERS

“DARK OF THE MOON”

John
 Conjur Man
 Dark Witch
 Fair Witch
 Conjur Woman
 Hank Gudger
 Miss Metcalf
 Mr. Jenkins
 Edna Summey
 Mrs. Summey
 Mr. Summey
 Mr. Atkins
 Uncle Smelicue
 Floyd Allen
 Ella Bergen
 Mr. Bergen
 Mrs. Bergen
 Burt Dinwiddy
 Miss Leafy
 Greeny Gorman
 Square Dance Caller
 Pianist
 Harmonica Player
 Hattie Heffner
 Marvin Hudgins
 Barbara Allen
 Mrs. Allen
 Mr. Allen
 Preacher Haggler
 Villagers

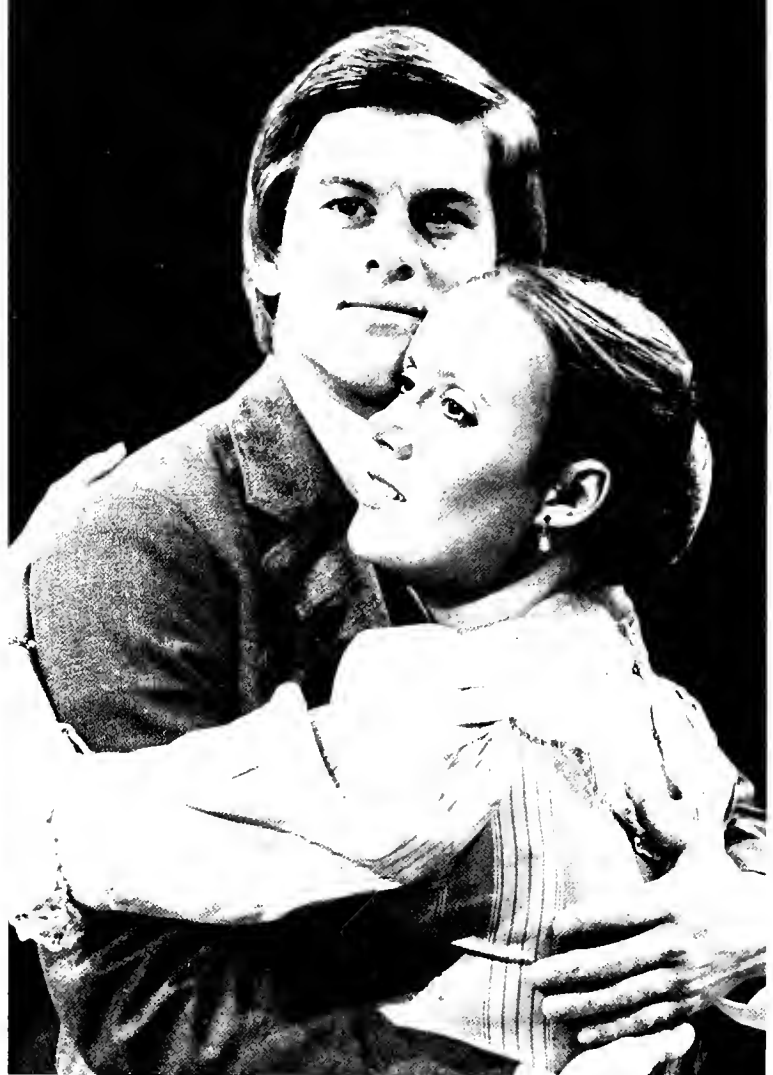
John Dominick
 James Thrasher
 Candace Hall
 Clara Ann Horne
 Diane Wiltshire
 Alan Hunter
 Norma Gardner
 John Woosley
 Margaret Wilson
 Melissa Matthews
 Clay Rouse
 Frank Burton
 Jim Ranager
 Ward Ripley
 Sue Stuart
 Peter Lukichs
 Lisa Lowe
 Billy Stevenson
 Mary Hamrick
 Lisa Clark
 Ralph Nieder-Westermann
 Brenda Ware
 Brad Carter
 Cathy Hamrick
 Gary De Bruin
 Peggy Potter
 Kim Stanfield
 Lee Rogers
 Michael Forester
 Cliff Coats, Mary Sanders



"THE DAY AFTER THE FAIR"

Letty Harnham
Arthur Harnham
Edith Harnham
Sarah
Anna
Charles Bradford
Wedding Guests

Frances Lavelle
Sandlin Scott
Diane Wiltshire
Jackie Pearson
Peggy Potter
John Dominick
Doug Park
Ann Roscopf
Kim Stanfield
James Thrasher





"THE RIVALS"

Lackey
 Lackey
 Thomas
 Fag
 Lucy
 Lydia Languish
 Julia Melville
 Mrs. Malaprop
 Sir Anthony Absolute
 Captain Jack Absolute
 Faulkland
 Bob Acres
 Sir Lucius O'Trigger
 David
 A Servant to Bob Acres

Marc Hawkins
 Doug Park
 Ralph Nieder-Westermann
 James Thrasher
 Jan Dickson
 Brenda Ware
 Ann Roscopf
 Wynn Saggus
 Peter Lukidis
 Rob Rice
 Sandlin Scott
 Frank Burton
 Clay Rousey
 John Woosley
 Robert Johnson





"ANASTASIA"

Chernov
 Varya
 Petrovin
 Prince Bounine
 Sergei
 Anna
 Counsellor Drivinitz
 Sleigh Driver
 Charwoman
 Dr. Serensky
 Dowager Empress
 Baroness Livenbaum
 Prince Paul

Sandlin Scott
 Sue Stuart
 Ralph Nieder-Westermann
 Frank Burton
 Edmund Senteno
 Jan Dickson
 Peter Lukidist
 James Thrasher
 Cynthia Webber
 Alan Hunter
 Diane Wiltshire
 Frances Lavelle
 John Dominick





SPORTS



FOOTBALL

The Millsaps College Majors, coached by Harper Davis and Tommy Ranager, terminated the regular season of 1976 with an impressive 7-2 record following a decisive 35-3 victory over Culver-Stockton College and closely missed an opportunity to compete in the playoffs of Division Three football in the NCAA.

Coach Davis now has nine consecutive winning seasons under his belt for his thirteen-year-reign as head director of the Majors.

Senior quarterback Rickie Haygood, who was voted the team's Most Valuable Player, was also nationally ranked as the fourth best passer in Division Three. He connected on 135 of 269 tries for 1974 yards and 15 touchdowns during the season.

Dees Hinton, the senior wingback who was Haygood's primary receiver the entire year, closed the season as the third best receiver in the NCAA Division Three. Hinton earned the Best Offensive Back Award as he caught 54 aerials for 886 yards and six touchdowns.

The Majors were led by senior tailback Ted Ruemke on the ground, who totaled eight touchdowns for the year. As the leading ground gainer, Ruemke rushed for 662 yards on 176 carries.

The staunch Millsaps defense, tutored by Coach Ranager, played a vital role in the Purple and White's fine grid season. Selected as the Best Defensive Back, senior Bob King ended his career with six aerial steals. Defensively, sophomore safety Trex Morris led the squad with seven interceptions.

Senior defensive end Steve McAlilly was chosen as the Most Outstanding Senior Collegiate football player representing Millsaps College.

In the tackling category, senior Ronnie Journey compiled 65 tackles and 35 assists from the linebacker spot, and was voted Most Outstanding Lineman.

Other awards went to defensive tackle Wayne Watson and offensive lineman Gary Garrett. Watson made 53 tackles and 23 assists and was voted Best Defensive Lineman. Garrett, a senior tackle and experienced blocker, received the Best Offensive Lineman Award.

The Majors lost the assistance of senior defensive rover Dan Richards midway through the season due to a head injury, and senior offensive lineman Paul Walker who broke his arm early in the year.





First row: Timmy Ratchford, Leslie Mims, Rem McNealy, Robin Whatley, David Carroll, Robin Rice, Monie Simpkins, Carol Burrus

Second row: Pat Davis, Archie Lamb, Dees Hinton, Dexter Cantelou, Bill Lancaster, Bryan Stacy, Ken Granberry, Bob King, Don Hinton, Tim Dulaney, Rob Rice, Jerry Hazlip

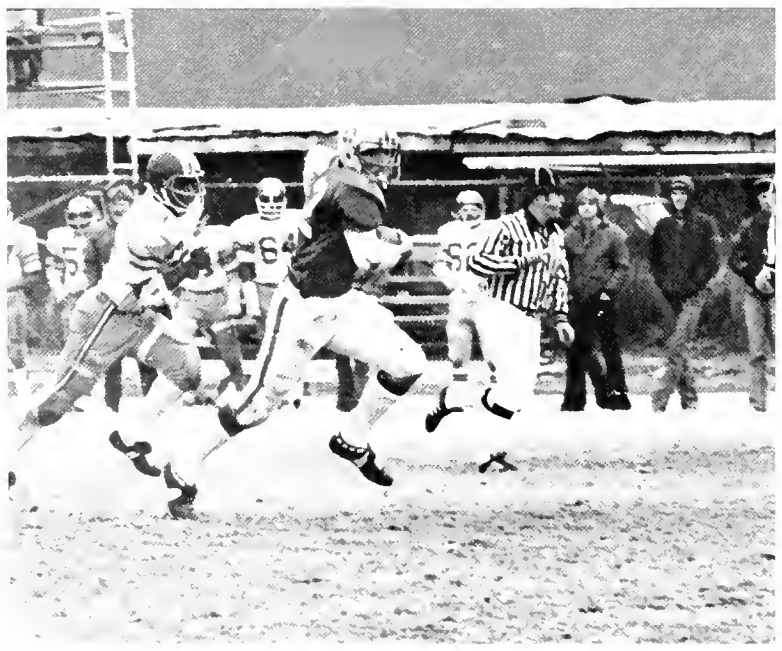
Third row: John Cox, Rickie Haygood, Ted Ruemke, David Handshoe, Trex Morris, David Culpepper, Gary Dunn, Harold Weaver, Perry Wallace, Robert Wright, Mark Vesser

Fourth row: Coach Harper Davis, James O'Fallon, Greg Nieberg, Chris Christmas, Orman Knox, Bo Wroten, Ronnie Jurney, Bert Wilkins, David Powers, Roy Lindsay, Charles Baldwin, Coach Tommy Ranager

Fifth row: Ed Senteno, Mike Harrison, Rick Grisham, Paul Walker, Raymond Carmeans, Wayne Watkins, Mark Ikner, Bill McAlilly, Steve McAlilly, Dan Richards, Gary Garrett, Pat Kirby











BASKETBALL

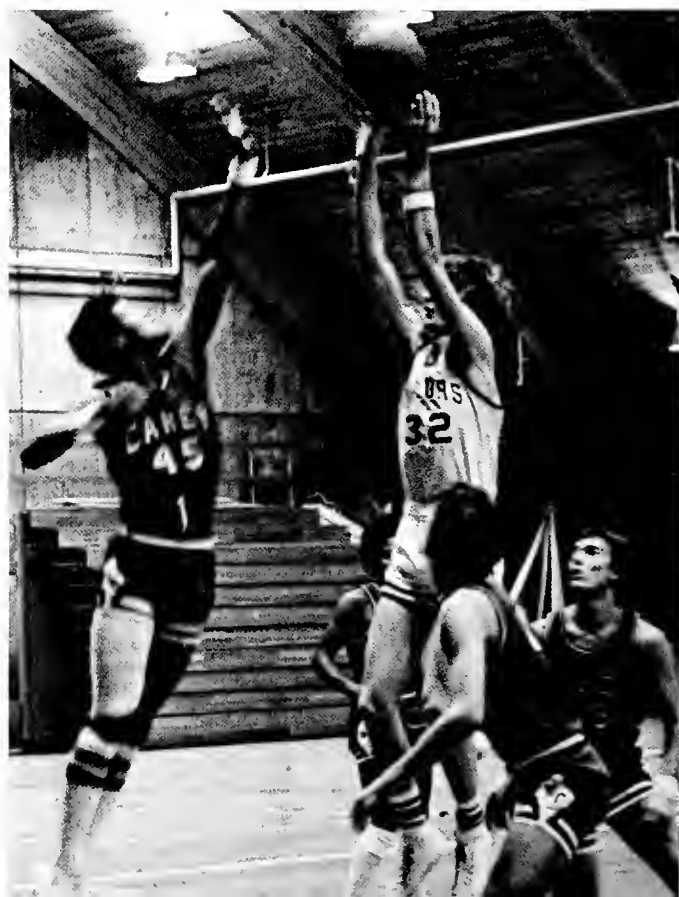
The Millsaps round ballers terminated their 1976-77 season with a 6-15 win-loss record under coach Bob Booth.

Senior Ricky Casey and junior Dennis Prowell sparked the Majors in the final contests as they won three of four in the stretch. Casey paced the Purple and White with a 15.85 scoring average from his guard position, and shot 46% from the floor.

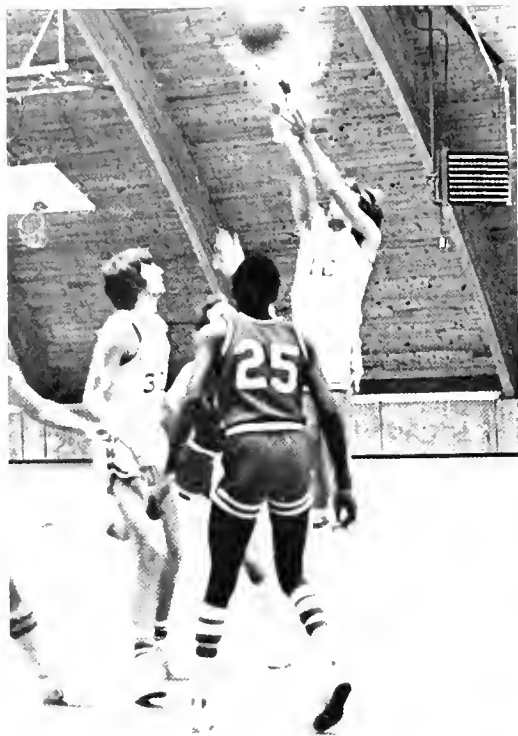
Prowell, a junior college transfer, ended his initial term under Booth with a 14.0 point average per game, while shooting 48% from the field. The jumping forward also led Millsaps with 192 rebounds for 20 contests, averaging 9.6 rebounds per game.

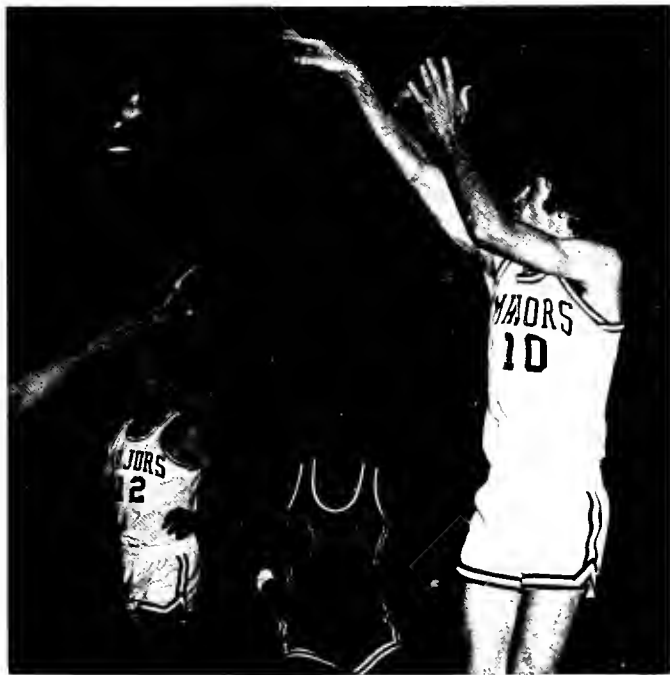
J.B. Byrd, another junior college transfer, maintained a 13.7 game average until he suffered an ankle injury late in the year. Byrd shot 43% from the floor and an impressive 81% from the charity line.

Dave Hardin and Jayson Norris rounded out the starting five with an 11-point game shooting average, and a 76 and an 80 per cent free throw shooting average respectively.











BASEBALL

The Millsaps College Baseball Squad ended the 1977 spring season with a total of eight wins against 12 defeats.

Seven of the eight losses that the Majors suffered were by a lone run. Coached by Tommy Ranager, the baseballers maintained an 8-4 record among NCAA Division III teams during the year.

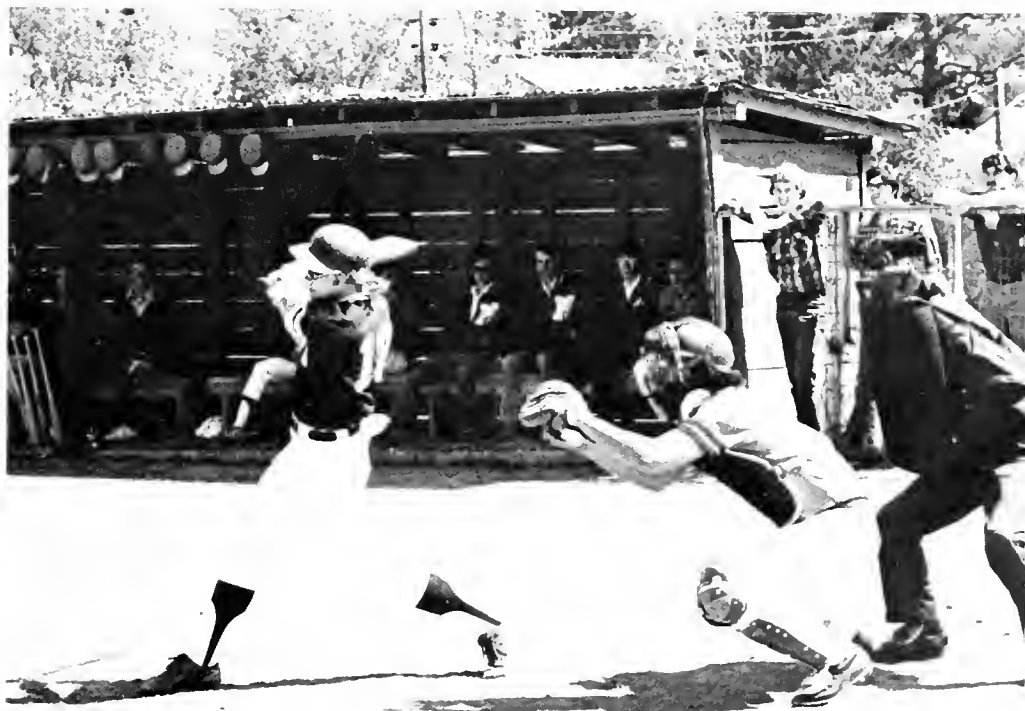
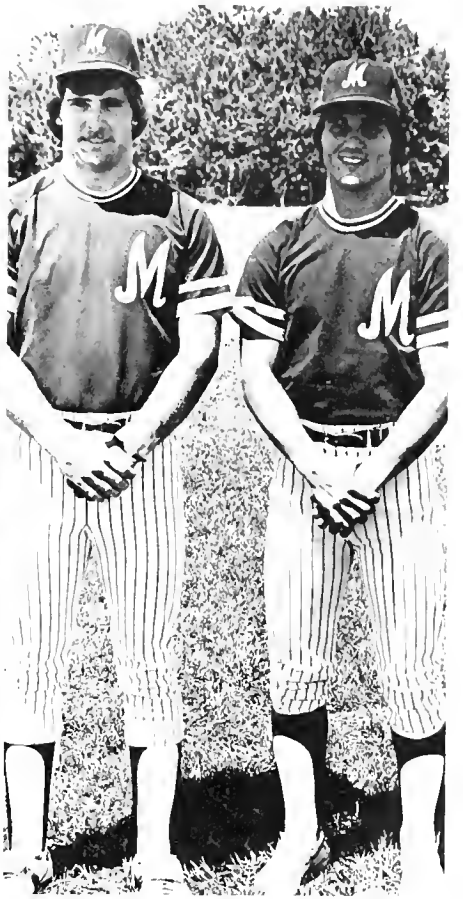
The Majors diamonders voted Archie Lamb as their Most Valuable Player, as he played in three different positions on the diamond; second base, pitcher, and catcher, and led the team with three homers and 17 runs scored.

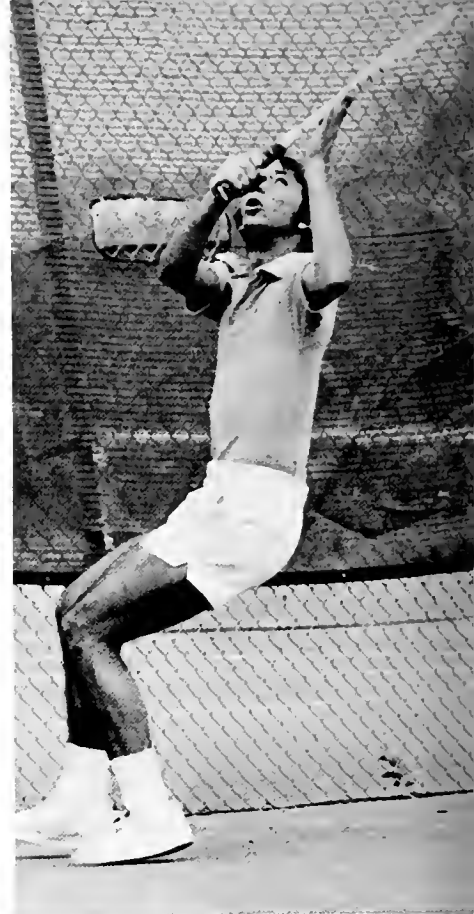
Receiving the Best Defensive Player Award, Greg Nieberg made just five errors on the field during the season; while John Cox took the Academic Award.

Rickie Haywood paced the Purple and White with a .333 batting average and led the crew with 23 hits and 15 RBI's.

Seniors who graduated from the team are: Haygood, Lamb, Mike Harrison, Ken Grandberry, and Ricky Casey.







TENNIS

Coach Jim Montgomery's Millsaps netters concluded another fine season with an outstanding 26-12 record and once again earned a berth in the NCAA Division III Tennis Championship, which Millsaps hosted.

Mike Bourland, the Most Valuable Player on the team, compiled a 21-11 dual match record in his number one position.

The permanent team captain for the 1976-77 season was Mike Woods, who ended his tennis career for Millsaps with a 23-13 record.

Joey Langston was voted as the squad's Most Improved Player as he finished with 22 wins versus 15 defeats. Randall Boyd chalked up the best dual match record of 25-8, while teammate Hugh White followed at 23-9.

Senior Ken Hall Barnett maintained a 17-8 win-loss record, and Monie Simpkins held a 10-10 match record for the Majors.





GOLF

The 1977 Millsaps linksters had their third consecutive winning season this year as they terminated the schedule with a 6 and 4 record.

Graduating seniors Doug Minor and Philip Maples were invited to represent the Majors' Golf Team in the third annual NCAA Division III Golf Championship. Minor, who received the Golfer of the Year Award, was selected on the basis of his 74.8 stroke average, while Maples was chosen for his 75.6 average per round.

Juniors Charlie Frye, Les Cunningham, and Lance Wyble made up the remainder of the group which was coached by Mary Ann Edge.

Frye maintained a 79.1 average, followed by Cunningham with an average of 82 strokes per round, and Wyble held an 84 average for the season.

Charbe Frye



Doug Minor



INTRAMURALS





Sullivan-Harrell Intramural Team

Andy LaGarde, George Beardsley, Alan LaGarde, Tommy Cobb, Mark Simon, Alan Whitley, Alan Hunter











ORGANIZATIONS



MORNING

6

~~G. G.~~
~~G. LAB. - E.~~

SPORT

STUDENT SENATE



Student Executive Board

Monie Simpkins, President
Alan Hunter, First Vice-President
Marion Wofford, Second Vice-President
Cristi Roberson, Treasurer
Susan Tsimortos, Secretary

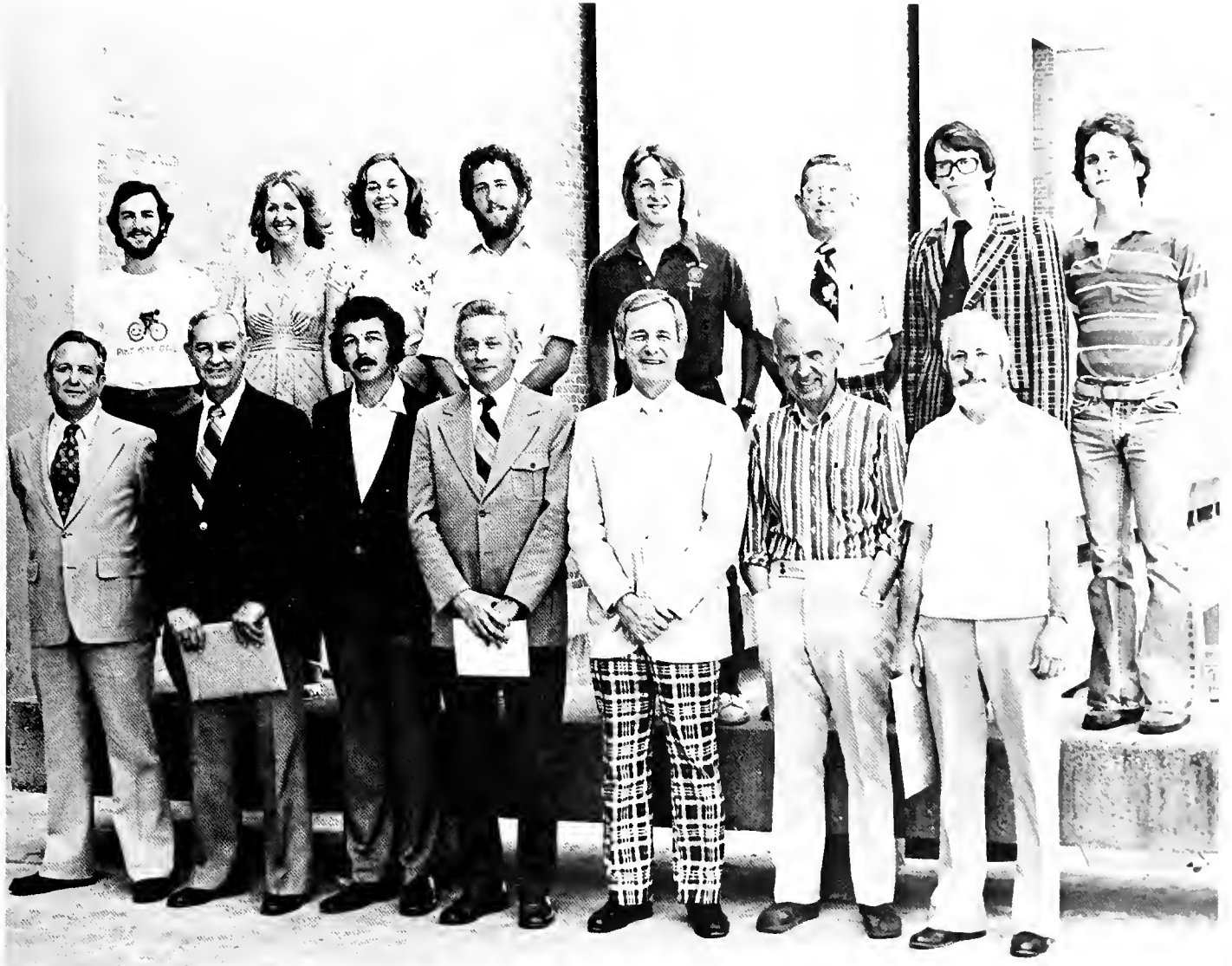
The Student Senate at Millsaps serves over the non-academic areas of the college that are the responsibility of students. This organization is the spokesman for the student body on all matters concerning students.

Senators

Cindy Crowe
Doug Demmons
Bobby Graham
Mike Holloway
Trey Jones
Mary Martin
Daryl Plunk
Vonda Reeves
Debbie Salvant
Laura Sherrod
Lawrence Stevens
Michelle Tate
Marie Waller
Mike Workman
John Woosley
Collier Graham

The College Senate has the purpose of giving effective, responsive and responsible governance to the entire Millsaps community. The three college constituencies—administration, faculty, and student—all come together to delegate authority and review decisions of the College Senate which affect the life of the entire college.

COLLEGE SENATE



First Row: Paul D. Hardin, Dr. Frank Laney, Dr. Hilliard Saunders, Billy Bufkin, Dr. Jonathan Sweat, Howard Bavender, Dr. Russell Levanway
Second Row: Doug Minor, Cindy Bourgeois, Susan Tsimortos, Pat Dickens, Monie Simpkins, Dr. Samuel Knox, Dr. Robert Shive, Frank Young
Not Pictured: Doug Levanway, Fred Richards

JUDICIAL COUNCIL

Denise Bershon
Mack Cheney
Renita Cotton
David Ettman
Michael Mansour
Gary Meek
Cherese Ward
Cindy Wilson
Margaret Wilson, Chairperson





Celeste Draffen, Editor

STYLUS



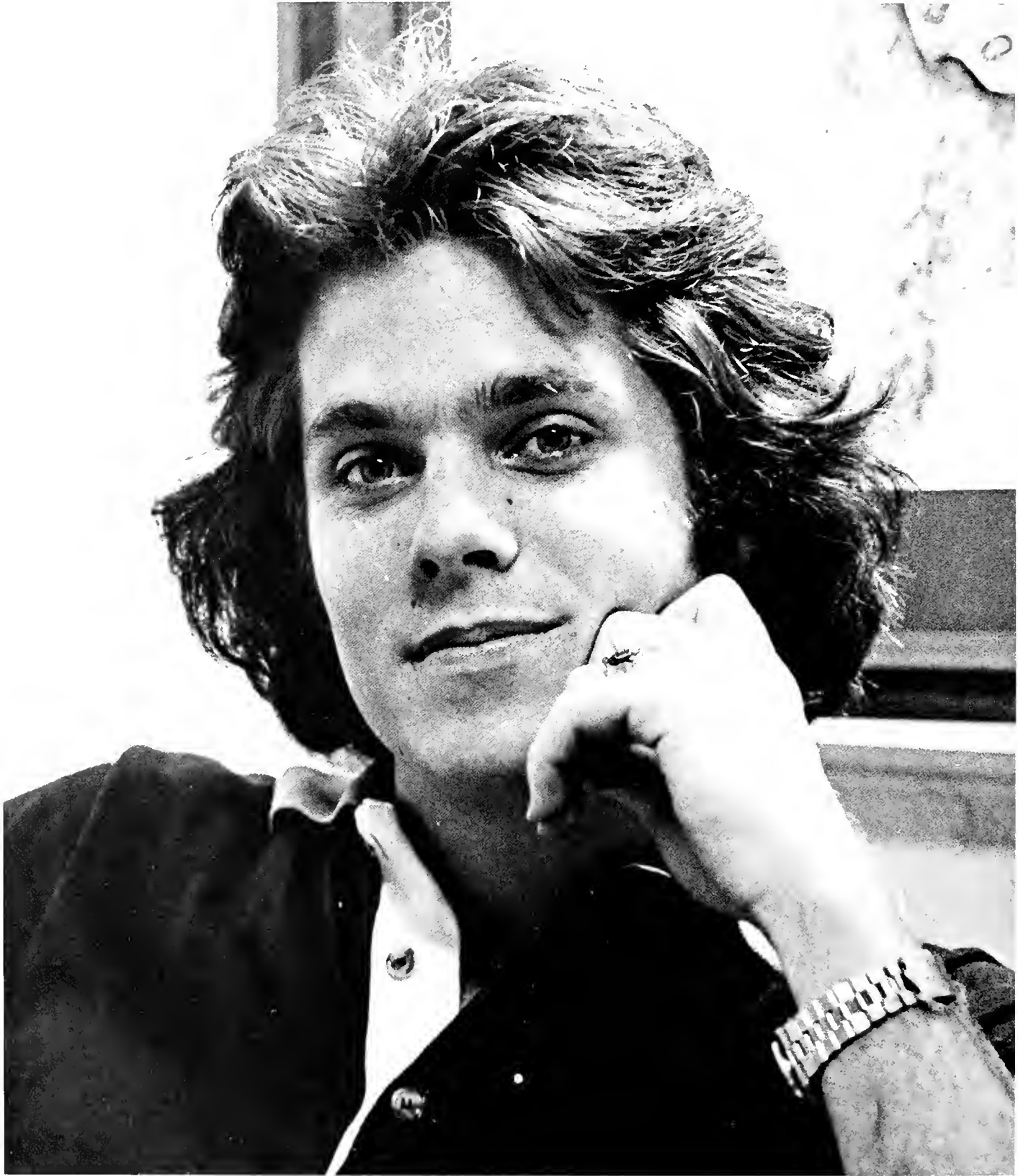
Mary Martin, Assistant Editor



Frances Lavelle
Reilly Morse
Ben Fewel

Not Pictured:
Doug Demmons

PURPLE AND WHITE



Frank Young, Editor



Susie Baker, Assistant Editor



Maribeth Megchee, Business Manager



Timmy Ratchford
David Bowling
Ann Roskopf
Mary Martin
Anna Furr
Beth Clark
Jerry Shivers
Holly Gilbert

BOBASHELA



Sara Evans, Editor



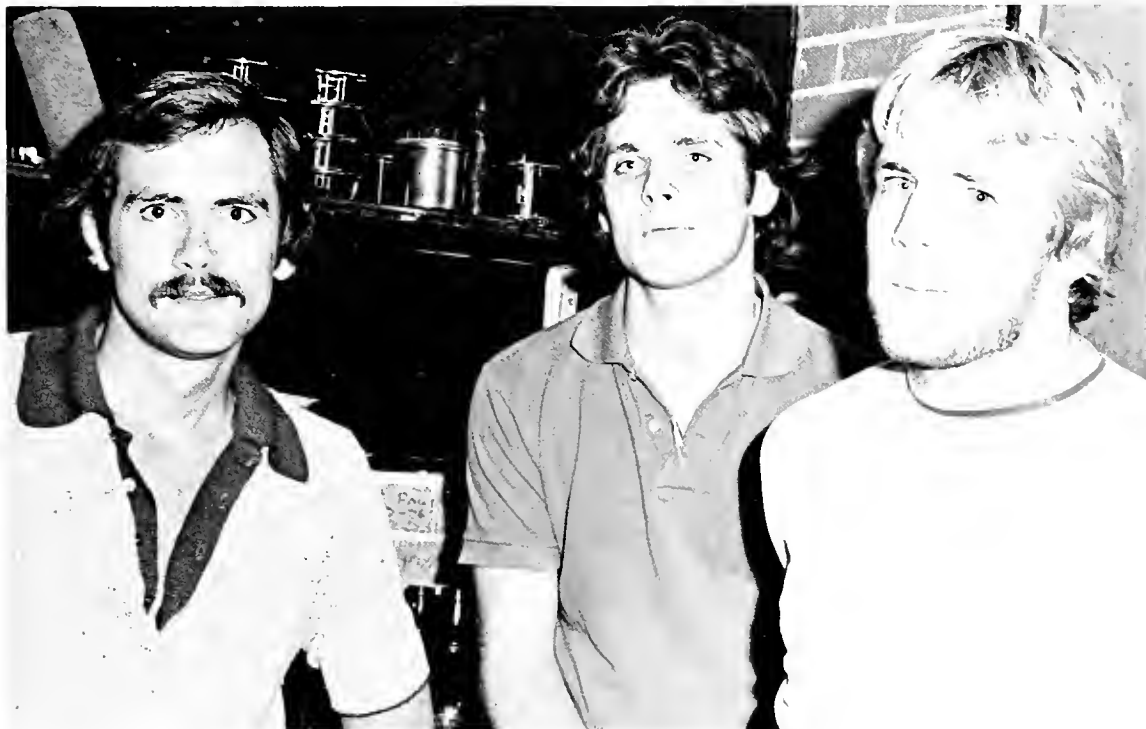
Brister Shipley, Assistant Editor



Kate Bradley, Mary Martin, Helen McCormick, Maribeth Megehee



Leland and Barbara Smith, Co-business Managers



Photographers:
David Brandon
Frank Young
Ted Ruemke

MILLSAPS SINGERS



It has been a busy year for the Millsaps Singers. We have participated in five major concerts—"The Messiah," "Elijah," "Beethoven's Ninth,"—to name a few. Many members of the choir participated in the world premier of Opera South's "Jubilee." Numerous Methodist churches throughout the state have enjoyed our Sunday night concerts—we, in turn, enjoyed pot luck suppers and—ugh—bus trips! Perhaps the most notable achievement of the Singers this year was the world premier presentation of the "Easter Laudate," a cantata by Alva Henderson and Janet Lewis.

It has been a good year, and the group can not help but be a close one for we spend five hours a week together, in addition to extra rehearsals and performances. However, the things we will remember most as the Singers are the little things ...

Mr. "B" ... concerts ... bus rides ... practice, practice, practice ... PITCH ... Mother's Club ... Sweet art ... "We love you, Leland" ... parties ... the Jackson Symphony ... "Elijah" ... blue dresses ... quartets ... one and-a two and-a ... Dalvitt ... home, sweet home ... sectionals ... give us the right note, Bev ... the baton ... posture, please! ... humph ... conflicts: football practice, tests, Friday Forum, and other unimportant things ... choir committee ... Rob's opinion ... Vicksburg ... Frank and his ten minute pictures ... Matheny's entertainment ... sore throats ... risers ... pot luck suppers ... S.O.C.—red lips and pony tails ... Ma Price ... happy birthday ... lunch at "Everybody's" ... and a real fellowship.



First Row: Donna Doorenbas, Sherry Pearson, Beth Conner, Blair Chism, Rebecca Brent Gaby, Gail Stanton, Carla Jenkins, Christina Morris
Second Row: Ann Kenneth, Blanche Williams, Janice Mitchell, Theresa Prescott, Kathy Byler, Lisa Lowe, Toni McMillan, Cristi Roberson, Lucy Burrus, Kim Myrick, Ann Ables
Third Row: Beverly Clement, Linda Gray, Bill Leech, Jim Matheny, Joel Youngblood, Frank Burton, Mike McDonald, Bill Rigby, Mike Gaby, Ralph Nieder-Westermann, Rob Rice, Janet Hall, Sally Eaton Buys
Fourth Row: Bob Smith, Bob Ross, Mark Youngblood, Jimmy Boone, Bob Lyle, Tad Denson, John Stark, Jimmy Ray, Jim Ranager, Tommy Rose, Bill Rice, Hugh Clark, Jim Clark

TROUBADOURS

A remarkably talented, versatile group of young performers, they have amassed a wealth of experience in a few short years: six international tours, including jaunts to Europe, the Caribbean, Iceland, Newfoundland, and Romania; countless appearances within their home state (at art festivals, carnival balls, civic and church functions) as well as in Colorado and Mexico; guest appearances with the Memphis Symphony Orchestra and on television; not to mention the annual spring concerts at Millsaps, and numerous other special performances.

Throughout the years the Troubadours have continued to demonstrate their talent, versatility, and enthusiasm, thereby fulfilling a traditional concept of Troubadours: taking their talents to the people.

First Row:
Jackie Pearson, piano
Sherry Pearson
Bob Smith
Jan Dickson
Beverly Clement

Second Row:
Danny Cooper
Brad Carter, guitar
Adren McCoy, drums
Billy Bryan
Cheryl Hunt
Alan Hunter
Steve Jenkins, bass





ALPHA EPSILON DELTA

Alpha Epsilon Delta, the international premedical honor society, was organized to encourage students taking premedical curriculum to strive for excellence and to promote interest in the field of medicine. Members are chosen on the basis of leadership, scholarship, character, and personality.



First Row: Martha Hutchison, Kristi McIntyre, Les Cunningham, Mack Cheney, Danny Carey, Lance Wyble, Tommy Cochran
Second Row: Morris Parsons, Joel Youngblood, Mark Stanton, Dr. Allen Bishop, Bob Lewis, Stewart Lawrence, Scott Boswell, Frank Burton
Third Row: Dr. Roy Berry, Dr. Eugene Cain
Not Pictured: Andrew Bishop, Tomas Blackwell, Mark Clay, Cindy Crowe, Alvin Darby, Bobby Graham, Tom Halton, Huel Harris, David Hassell, Kent Kebert, Tina Kiefer, Ben Looney, Doug Packer, Bob Ross, Scott Shows, Joy Siegrist, Earl Stewart, Trey Thomas, Randy Weimer, Ralph Wells, Nathan Williams

Alpha Psi Omega is a national honorary dramatics fraternity. Its purpose is to stimulate interest in dramatic activities at Millsaps College. Membership is earned through active participation in the Millsaps Players.

ALPHA PSI OMEGA



Jan Dickson, Diane Wiltshire, Frances Lavelle, Brenda Ware
Sharon Sanders, Marc Hawkins, Frank Burton, Sandy Scott
Jimmy Thrasher, Cliff Coats, Ralph Neider-Westerman, Clay Rouse, Rob Blount

BETA BETA BETA

Beta Beta Beta is a national honorary for students in the biological sciences. The purposes are to stimulate sound scholarship, to promote the dissemination of scientific truth, and to encourage investigation in the life sciences.



First Row: Glen Dickerson, Cindy Webber, John Watts

Second Row: Annie Baldwin, John Fowler, Cindy Milton, Lynn Brown, Teena Freeman, Roberta Osborn

Third Row: Bob Lewis, Doug Packer, Jim Clark, Les Cunningham, Laura Hanson

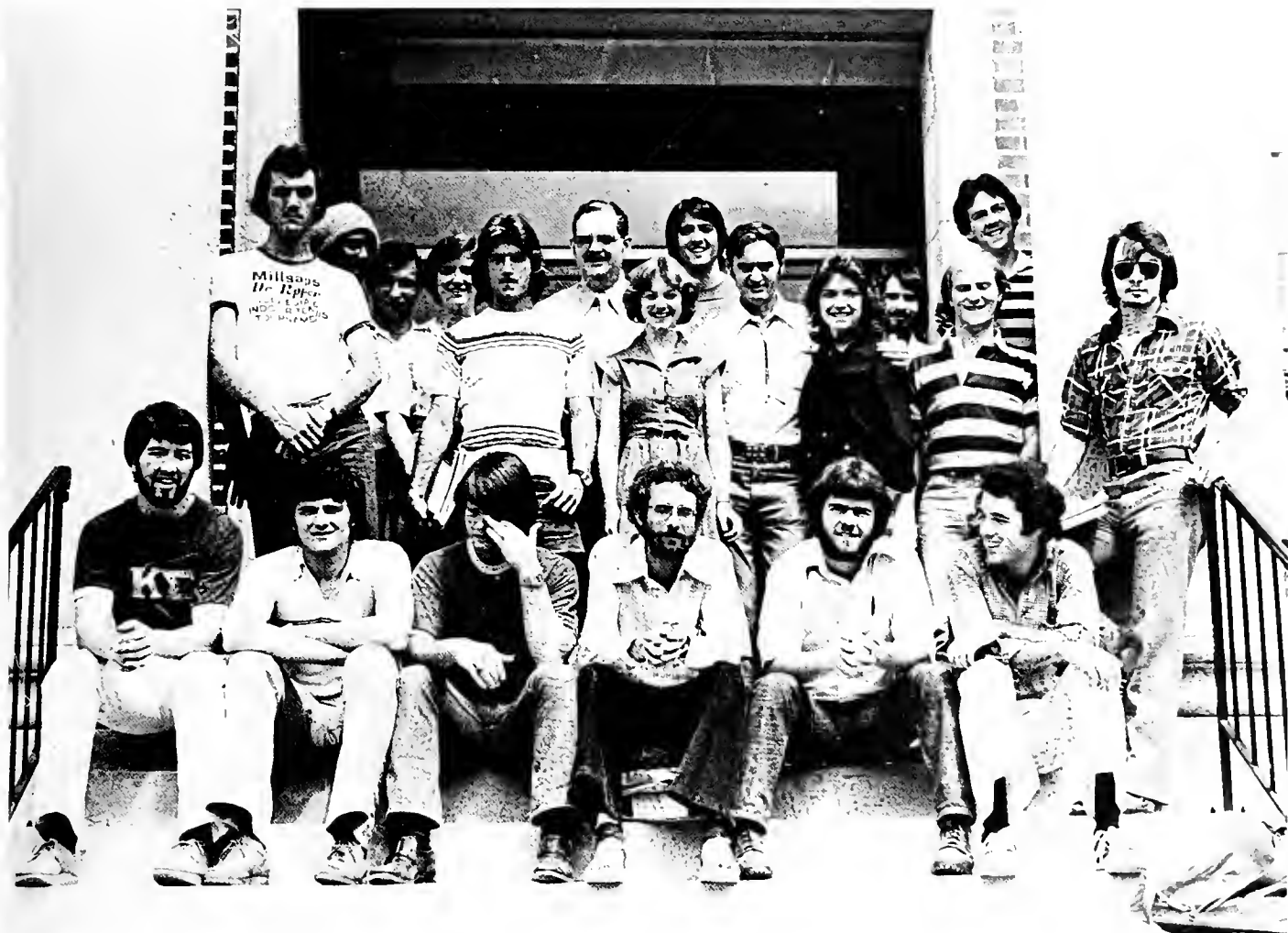
Fourth Row: Sally Sudduth, Mack Cheney, Marion Wofford, Betty McKinnon, Cindy Crowe, Jeff Moseley

Fifth Row: Dr. James McKeown, Dr. Eric Yensen, Dr. Rondal Bell

Not Pictured: Scott Boswell, Mark Clay, Huel Harris, Sam McKee, Jeff Moseley, Ricky Smith, Nathan Williamson, Steve Wisley

Chi Chi Chi is an honorary recognizing outstanding scholarship in the study of chemistry. It encourages students having an interest in chemistry to enter graduate and professional school. Membership is determined by scholastic excellence in meeting the requirements for a chemistry degree or for those persons whose curriculum involves a great deal of study in the field of chemistry.

CHI CHI CHI



First Row: Scott Boswell, Ben Looney, Trex Morris, Stewart Lawrence, Mack Cheney, Les Cunningham
Second Row: David Hassell, Danny Carey, Martha Hutchison, Dr. Eugene Cain, Kristi McIntyre, Tommy Cochran, Frank Burton
Third Row: Earl Stewart, Lance Wyble, Tina Kiefer, Dr. Allen Bishop, Mark Stanton, Morris Parsons, Bob Lewis
Not Pictured: Mark Clay, Alvin Darby, Tom Halton, Huel Harris, Allen Morton, Scott Shows, Darrel Thigpen, Ralph Wells, Rob Wells,
Nathan Williamson, Jim Wofford

ETA SIGMA

Eta Sigma is a national scholastic honorary which promotes excellence in scholarship on the campus. Members are required to have completed a minimum of seventy-five hours. Juniors must have an overall index of 3.55

Margaret Lawrence
Linda Wells
Rob Rice
Diane Bosarge
Theresa Prescott
Bill Leech
Beverly Clement
Sue Humphrey
Mark Stanton
Martha Mouser
Jenni Tenhet
Peg Wahrendorff
Gail Doss
Donna Doorenbos

Not Pictured
Charlene Abraham
Renee Brou
Barry Cockrell
David Cook
Janet Hall
Robin Randall Hall
Steve Jenkins
Bob Lewis
Kristi McIntyre
Virginia Lynn Magee
Jim Matheny
Mike Moss
Marion Pinson
Bill Presson
Mariann Stokes
Caren Sullivan
Toni Walker
Ralph Wells
Anthony Womack



Eta Sigma Phi is the national classical fraternity that has the dual purposes to recognize outstanding students of Greek and Latin studies and to cultivate an interest in the art and the literature of Ancient Greece and Rome.

ETA SIGMA PHI



Timmy Ratchford, President; Dr. Freis, Faculty Advisor

Not pictured: Alan Burrow, Barry Cockrell, Angela Dawson, Doug Demmons, Diane Dickey, Jean Harkins, Yvonne Plunkett, David Thornton, Elizabeth Wofford, Steve Woosley

KAPPA DELTA EPSILON

Kappa Delta Epsilon is an education honorary that encourages high professional, intellectual, and personal standards and to recognize outstanding contributions to education. Membership is chosen through personal qualities, worthy educational ideals, and sound scholarship. It shall endeavor to maintain a high degree of professional growth by honoring Achievement in educational work.



Kneeling: Robin Rice, Cindy Rosson, Kathryn Barksdale, Susie Baker, Lindsay Shallcross

Standing: Cindy Sanders, Toni McMillan, Gail Stanton, Lucy Burrus, Linda Wells, Sherry Pearson

Not Pictured: Charlene Abraham, Ann Alexander, Cindy Bourgenis, Sally Buys, Steve Byrd, Nancy Carson, Claire Crofford, Debra Deraps, Gail Gober, Ken Granberry, Robin Hall, Dr. Linda Harvey, Rickie Haygood, Cae Ivy, Kevin Jeffries, Jeannie Josey, Bill Leech, Adren McCoy, Gloria Steinwinder, Mariann Stokes, Toni Walker, Cynthia Webber, Margaret Williams

OMICRON DELTA KAPPA

Alumni Members (active):

Mr. Zachery Taylor, Jr.

Carl J. Bush

Faculty and Staff:

Ms. Frances Coker

President E.M. Collins

Dr. Sam Knox

Dr. Frank Laney

Dr. Ross A. Moore

Dean J. Harvey Saunders

Omicron Delta Kappa is a national leadership honorary that strives to recognize those who excel in all phases of college life. It is unique among the honor societies in that student members are chosen not only for scholastic achievement, but also for their leadership contributions to the Millsaps community.



First Row: Toni Walker, Ms. Frances Coker, Maribeth Megehee, Linda Wells, Lucy Burrus, David Bourgeois, Steve Jenkins, Gloria Steinwinder, Margaret Wilson, President E.M. Collins

Second Row: Dr. Frank Laney, Dr. Sam Knox, Bob Lewis, Billy Jack Bass, Bill Leech, Danny Bowling, May Lipe Zehnder, Jim Matheny, Barry Cockrell, Rob Rice

Not Pictured: Cindy Crowe, Juliet Dantin, Donna Doorenbas, Nancy Lang, Bill Presson, Mark Stanton, Peg Wahrendorff, Jim Wofford

PHI ALPHA THETA

Phi Alpha Theta is the largest of the accredited honor societies in the nation; it promotes and encourages the study of history. It is open to those students who have acquired twelve hours in history while maintaining a 3.0 average in history as well as a 3.0 overall average.



First Row: Isabelle Ezell Dominick, Mike McDonald, Janet Hall
Second Row: Dr. Charles Sallis, Dr. Frank Laney, Karen Roemer, Sue Humphrey, Dr. Ross Moore, Dr. Bob McElvaine
Not Pictured: Terri Cowley

Schiller Gesellschaft is a German honorary recognizing outstanding students in the study of German and promoting an interest in German culture. Those invited for membership must present a research paper on some aspect of Germany's contributions to the arts of sciences.

SCHILLER GESELLSCHAFT



First Row: Jane Cashon, John Stark, Scott Spillman
Second Row: John Guest, Jo Ann Stokes

SIGMA DELTA PI

Sigma Delta Pi is a Spanish honor society which recognizes attainment and scholarship in the study of the Spanish language and literature. Its purpose is to honor students who have earned several hours in Spanish, and who hold a high scholastic average in all subjects.



Billy Bufkin, Cindy Webber, Mrs. Nellie Hederi, Dr. Hilliard Saunders, Renee Brou, Dr. Robert Kahn, Charlotte Correll

Sigma Lambda's membership is the highest honor a Millsaps woman can receive. Each must be of junior standing and must have exhibited qualities of leadership, character, and service to the college community.

SIGMA LAMBDA



First Row: Dean Jane Corder, May Lipe Zehnder, Mrs. Ross A. Moore, Gloria Steinwinder, Lucy Burrus, Jenny Bates
 Second Row: Margaret Wilson, Gail Doss, Linda Wells, Cindy Crowe, Martha Mouser, Theresa Prescott, Peg Wahrendorff, Nancy Lang, Maribeth Megehee, Diane Bosarge, Janet Hall
 Third Row: Betty Mckinnon, Annie Baldwin, Sue Humphrey, Marion Wofford, Frances Lavelle, Donna Doorenbas
 Not Pictured: Sally Eaton Buys, Beverly Clement, Ms. Frances Coker, Juliet Dantin, Sandra Johnson, Ruth Lloyd, Adren McCoy, Toni Walker

THETA NU SIGMA

Theta Nu Sigma is an honorary that recognizes excellence in scholarship and leadership among science students and strives to further interest in the sciences.



First Row: Earl Stewart, Mark Stanton, Scott Spillman, Dr. George Beardsley
Second Row: Tom Cochran, Steve Jenkins



MAJORETTE CLUB

The Majorette Club is an honorary recognizing those women who have exhibited active interest and participation in women's intramural sports. A member must have participated in at least three sports and have maintained a point index of 2.5 for two semesters.

First Row:
Nancy Lang
Carol Middlestead
Peg Wahrendorff
Betty McKinnon
Jigs Dantin

Second Row:
Leslie Mims
Charlene Roosenthal
Linda Wells

Third Row
Beth Clark
Cristi Roberson
Sissy Sights
Adren McCoy



CIRCLE K

First Row:
Carol Downy
Brister Shipley
June Johnson
Janis Mabry
Holly Gilbert
Mary Martin
Margaret Kastla

Second Row:
Jimmy Boone
Tom Parry
Mary Alice Nye
Barbara Smith
Roger Ishee
Dale Hetrick

Third Row:
David Hassell
Leland Smith
Billy Jack Bass

Black Student Association

Claude Anderson
 Patricia Atkins
 Janice Bacon
 Annie Baldwin
 Terri Banks
 Billy Jack Bass
 Linda Bennett
 Patricia Bogan
 Natalie Brookins
 Gladys Bush
 Ferilyn Butler
 J.B. Byrd
 Henry Clay
 Renita Cotton
 Diethra Cox
 Bobby Crudrys
 Johnnie Cummings
 Pam Curry
 Alvin Darby
 Gerald Davis
 Linda Fields
 Sherry Floyd
 Terilyn Flucker
 Sonja Fuqua
 Dwight Gaddis
 Jeffery Garner
 Raymond Gordan
 Eddie Green
 Kenneth Harris
 Cordelia Hayes
 Bettie Hicks
 Eugene Jackson
 Sylvia Jacobs
 Searcy Jamison
 Brenda Jones
 Laurette Jordan
 Orman Knox
 Valencia Martin
 Verba Moore
 Kieth Moses
 Belinda Nichols
 Michael Patterson
 Dennis Prowell
 Vonda Reeves
 Rennee Rhodeman
 Tommy Rose
 Robert Scott
 Michael Seals
 Terrence Shirley
 Reginald Stanton
 Oteria Starling
 Earl Stewart
 Darrell Thigpin
 Tim Thompson
 Perry Wallace
 Terry Wallace
 Marie Waller
 Cherese Ward
 Debra Williams
 Homer Williams
 Ron Wise
 Honey Womack
 Jerry Yearell





Panhellenic association consists of representatives from all three sororities. Its function is the administration and regulation of the sororities' rush and activities. This year Panhellenic, along with IFC, sponsored "Greek Week" which successfully involved the entire Millsaps community in various festivities.

PANHELLENIC

President
Secretary
Treasurer

Shawn Harper
Carol Burrus
Charlene Rosenthal



Holly Gilbert, Phi Mu; Shane Pittman, Kappa Delta; Shawn Harper, Phi Mu; Susan Tsimortos, Kappa Delta; Charlene Rosenthal, Kappa Delta; Carol Burrus, Chi Omega; Michelle Tate, Chi Omega
Not Pictured: Robin Rice, Chi Omega; Deborah Madden, Phi Mu

The Interfraternity Council with officers Frank Appleby (President), Rob Rice (Vice President), and Bill McAlilly (Secretary-treasurer), introduced an afternoon of odd and hilarious activities in what they called "Greek Day."

An innovative idea which had as its objective the bringing together of all Millsaps people, the day was co-sponsored by panhellenic and turned out to be an enjoyable experience for everyone and will likely become an annual affair.

IFC has attempted to change its role from a longtime lackadaisical organization to one that will benefit and promote the Greek system.

INTERFRATERNITY COUNCIL



John Watts, Pi Kappa Alpha; Mark Stanton, Lambda Chi Alpha; Ed Senteno, Lambda Chi Alpha
Kent Kebert, Pi Kappa Alpha; Martin Baker, Kappa Alpha; Rob Rice, Kappa Alpha; Bill McAlilly, Kappa Sigma
Tim Kemp, Kappa Sigma; Doug Minor, Pi Kappa Alpha; Jim Watts, Kappa Sigma; Frank Appleby, Kappa Sigma

Chi Delta of Chi Omega

President
Vice President
Secretary
Treasurer
Pledge Trainer
Personnel Chairman
Chapter Correspondent
Freshman Officer
Rush Chairmen

Robin Rice
Beth Clark
Leah Melichar
Kate Bradley
Ruth Lloyd
Cristi Roberson
Helen McCormick
Michelle Tate
Jeanne Smith
Cindy Crowe



"There's a bond in Chi Omega" . . . owls, white carnations, the cardinal and straw . . . "you've got to have friends," candlelights, and Owl Man Court (Rob, Bill, Bob, Don, Mark) . . . Millsaps Singers and Players . . . Troubadours . . . scholarship trophy—again and again . . . our Fraternity—a symphony of high purpose and helpfulness . . . intramurals: basketball champs, tennis queens, Flautt and "Go Big Chi O, Go!" . . . Crescent Court . . . Greek Goddess . . . Queen Elizabeth . . . Homecoming Queen and maids . . . cheerleaders! . . . Bobashela editor . . . P&W . . . J.O.L.A.S. . . . Orientation Co-chairman . . . Jackson Symphony Orchestra . . . S.E.B. Treasurer . . . senators . . . Sigma Lambda—president . . . ODK—vice president . . . AED . . . BBB—president . . . Eta Sigma . . . KDE—president . . . Theta Nu Sigma . . . Chi Chi Chi . . . all alike, yet all different—each adds her own special spirit . . . Owl Pals . . . Big Sisters—come find us! . . . Hootie-Hoot . . . GWO (C.B., you were great!) . . . Pledge Slave Sale . . . Owl Man Dance and Serenade . . . Fine Feathered Friends . . . Little Fox . . . Chi O Songfest (yes, you have to stand on the front!) . . . cafeteria performance—the first time and the last time! . . . rockin' out a new stereo . . . swiating baskets . . . "to be womanly always, discouraged never" . . . CHI OMEGA—tears of sadness and tears of joy and sisters to share them with . . . "and our bond will ne'er be broken."





Peggy Austin
 Susie Baker
 Jenny Bates
 Catherine Bowlus
 Kate Bradley
 Betsy Broome
 Laurie Brown
 Carol Burrus
 Lucy Burrus
 Allison Callaway
 Beth Clark
 Cathy Crosby
 Cindy Crowe
 Sara Evans
 Anna Furr
 Rebecca Brent Gaby
 Brooks Gibson
 Linda Gray
 Robin Randall Hall
 Malinda Hamilton
 Amanda Harding
 Clara Ann Horne
 Julie Joseph
 Ruth Kellum
 Ruth Lloyd
 Helen McCormick
 Adren McCoy
 Susan McEuen
 Betty McKinnon
 Maribeth Megehee
 Leah Melichar

Martha Nadler
 Karen Nolan
 Elise Norfleet
 Jackie Pearson
 Sherry Pearson
 Merrin Prewitt
 Robin Rice
 Cristi Roberson
 Ann Roscopf
 Cindy Rosson
 Cindy Sanders
 Lindsay Shalleross
 Laura Sherrod
 Cissy Sights
 Barbara Smith
 Jeanne Smith
 Lynn Stone
 Tracey Sweet
 Michelle Tate
 Beth Thomas
 Lydia Thomas
 Terry Toler
 Kellye Wade
 Toni Walker
 Carmie Watson
 Linda Wells
 Kathy Weston
 Robin Whatley
 Lynn Woodard
 Maggie Wynn
 Beth Yeager



May Lipe Zehnder

Alpha Mu of Kappa Alpha

I
II
III
IV
V
VI
VII
VIII
IX

Peder Johnson
Cooper Morrison
Matt Harkey
James Holland
Jay Jabour
Michael Mansour
Bruce McKinley
Bill Richter
David Hassell



"In 1865 at Washington and Lee" ... Hi! How you? ... na na na Snapper Time ... Cabana Club ... Brotherhood rallies ... Kiss Ass Band ... Who's Who in American Jails and Prisons ... SEB president (finally) ... the Off-campus Society for the Preservation of Seniors ... Panama and Pop-a-top ... Scholarship Trophy ... how many pins now, Lele? ... the party of the Rose ... Crazy Mary ... a dozen carnations for Cathy ... The Best of My Love ... Amy's baby ... Rose Debbie ... Eric Gunn Scholarship ... Peder's plutonic relationships ... way to go, Rickie ... swamp cowboys ... queen's quacker ... KA Dodson ... nappy-headed boy ... red-headed chinaman ... river-boat party ... Bahama Momma ... the gape—A.O.S. ... Hassole ... cashier ... FAT bob ... Black and White ... a witch? ... chicken and noodle ... Booze-wah ... Hudspeth Center children ... social mannerism ... gator ... Kiss Kiss Kiss ... the hulk ... double-knit kid ... no parking on the white curb ... walbash cannonball ... "Bulldog" Bill goes KD? ... Luau ... "and all those damned Yankees can simply go to Hell ..."





Martin Baker
 David Bourgeois
 Danny Bowling
 David Bowling
 Randall Boyd
 Rod Clement
 Kenny David
 David Flautt
 Charlie Frye
 Matt Harkey
 David Hassell
 Kurt Henke
 James Holland
 Roger Ishee
 Jay Jabour
 Peder Johnson
 Walt Jones
 Archie Lamb
 Joey Langston
 David Lee
 Bill Leech
 Greg Loyd
 Bob Lyle

Ed Manning
 Michael Mansour
 Bo McEuen
 Bruce McKinley
 Jack Mobly
 Cooper Morrison
 Rob Nichols
 Timmy Ratchford
 Bill Rice
 Rob Rice
 Bill Richter
 Ward Ripley
 Bob Ross
 Greg Rula
 Jerry Runnels
 Monie Simpkins
 Leland Smith
 Scott Spillman
 Carter Stamm
 Hugh Tedder
 Alex Wallace
 Bert Wilkins
 Frank Young



Mu of Kappa Delta

President
Vice President
Secretary
Treasurer
Assistant Treasurer
Editor
Membership Chairman
Rush Chairmen

Susan Tsimortos
Cindy Bourgeois
Cindy Marsalis
Laura Adkins
Karen Corban
Debbie Salvant
Beverly Clement
Joy Chastain
Norma Gardner



"We are the Kappa Delta Sisters" ... activities ... second semester pledges ... Steve, Ronnie, Bruce?! ... Ruth?! ... K.A. Rose ... homecoming mails ... Major's Lady ... ODK ... Pike Dream Girl Court ... Sigma Lambda ... Lambda Chi Crescent girls ... P&W ... Stylus ... Bobashela ... Singers and Players ... Troubs ... S.E.B. ... Senate ... Judicial Council ... football jocks? ... "B" league basketball ... bye seniors ... '77—we'll miss you ... "We have a song to sing for you"—we sure got the "inspiration" in Songfest ... "We're linked by ties of love and friendship" ... Mayflower ... raffles ... chapter meeting and education ... candlelights ... cookouts ... Emerald Ball ... Methodist Children's Home ... house clean-up?!?! ... telethon ... let's have a project! ... "We pledge ourselves to Kappa Delta" ... each of us is an individual—a paper doll ... KD binds us together with lots of love, laughter, and A.O.T.



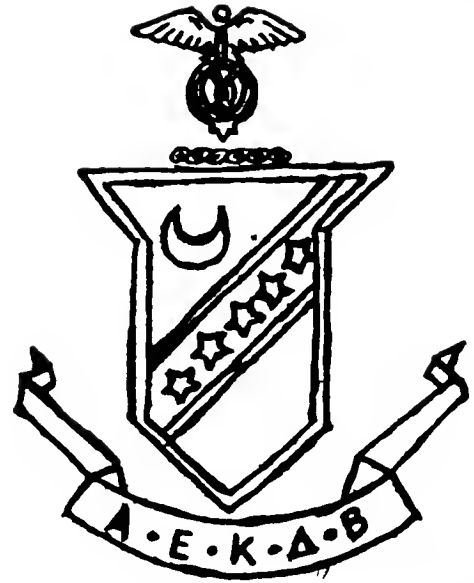


Laura Adkins
 Cindy Bourgeois
 Lynn Brumfield
 Sally Eaton Buys
 Kathy Byler
 Sharon Carter
 Retta Chaffin
 Joy Chastain
 Lisa Clark
 Beverly Clement
 Mary Al Cobb
 Karen Corban
 Gwen Crane
 Emily Crews
 Jacque Cruthirds
 Juliet Dantin
 Debbie Deraps
 Jan Dickson
 Celeste Draffen
 Norma Gardner
 Lynn Gleaton
 Jan Guild
 Cathy Hamrick
 Mary Hamrick
 Lee Herold
 Claudia Hopkins
 Toni Howard
 Cheryl Hunt
 Martha Hutchinson

Carla Jenkins
 Sandra Johnson
 Nancy Lang
 Margaret Lawrence
 Lisa Lee
 Lisa Lowe
 Cindy Marsalis
 Mary Martin
 Nancy Martin
 Leslie Mims
 Kathryn Myrick
 Wilma Parry
 Shane Pittman
 Joyce Posey
 Peggy Potter
 Theresa Prescott
 Donna Read
 Charlene Rosenthal
 Betsy Ross
 Debbie Salvant
 Sharon Sanders
 Gloria Steinwinder
 Sally Sudduth
 Sue Sunkel
 Susan Tsimortos
 Peg Wahrendorff
 Cindy Wilson
 Diane Wiltshire
 Mary Witten



ALPHA UPSILON OF KAPPA SIGMA



G.M.
G.P.
G.M.C.
G.T.
G.S.
Guards

Jim Watts
Frank Appleby
Bill McAlilly
Huel Harris
Ben Looney
Eddie Hilliard
Tim Dulaney

Louis Alexander
Frank Appleby
Rob Blount
Scott Boswell
Brian Browning
Dexter Cantelou
Andy Cotten
Marland Dulaney
Tim Dulaney
John Dyer
Herbie Ellis
Paul Gamble
David Handshoe
Huel Harris
Eddie Hilliard
Tim Kemp
Rich Knox
Ben Looney
Bill McAlilly
Steve McAlilly
Rem McNealy
Jerry Mallett
Bryan Miller
Trex Morris
Jack Neely
David Reilly
Donald Reilly
Jay Robertson
Dwayne Self
Brian Stacy
Lawrence Stephens
John Tannehill
Trey Thomas
Jim Watts



Huel Harris



What's the only thing more irrepressible (but more lovable) than a Sig?—A WHOLE GROUP OF SIGS!!! ... wet serenade ... E.P. ... 1-2-3 ... swinging baskets ... Huel, how 'bout that trip to Meredian ... let's camp out ... Bacon ... bang ... Everybody's ... Bro. Buffett ... Herbacide ... HOOT HOOT ... we're innocent this time ... Watts, don't kick the chair ... "Three Little Fishes" ... "Pollywooly Doodle" ... Browning, where's your hat ... KS Kola ... "at the old house ..." ... Mojo ... Embarrassment City ... Slim, who's that in the shower? ... the chewin' bench ... yo mama, yo mama ... c'mon Flynn, only 1806 cases to go ... manpower ... what keg? ... the Mayflower ... I'm gonna kill that rooster! ... Who got my water gun? ... Boz, where's your date? ... Freddie's B's ... "As A Mighty Oak Stands" ... Don't worry Stacy—it all comes out in the wash ... son of business ... "uh, yeah baby, it's Michael ... NOT THE MEASLES!?! ... scuse me! ... Tannehill, not in the fireplace ... T.J. ... B-52's ... Sado ... Coonasses: like father, like son ... senate-bogus or bemus? ... Which ex, Pup? ... Marland Einstein ... power play ... Kemp, how 'bout a game of cardinal puff? ... Gamble, open your mouth when you talk ... the eternal keg ... Now which Barn Dance is it? ... I'm not as think as you drunk I am ... putitaltogetherandwhatthellyougot?—SIGMA!



THETA ETA ZETA OF LAMBDA CHI ALPHA

President
Vice President
Secretary
Treasurer
Fraternity Educator
Rush Chairman
Ritualist
Scholarship Chairman
Social Chairman
Alumni Chairman

Mark Stanton
Jim Clark
Phillip Ball
Ken Szeto
John Stark
James Lowe
Jimmy Ray
Frank Burton
Jeff Delmas
David Ettman



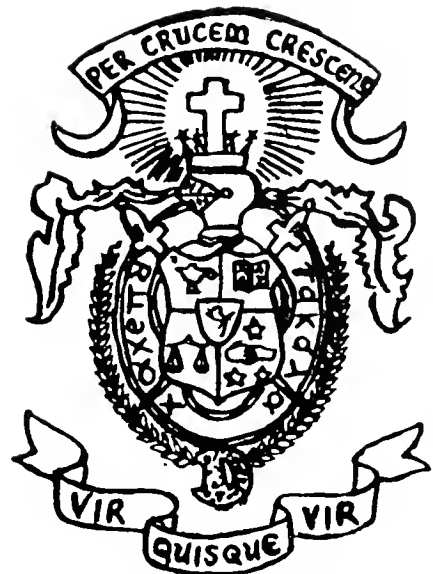
LAMBDA CHI ... a sense of pride and strength ... a tradition of hard work (house cleanup, 1 p.m.), hard play (we're gonna drink this place dry!), but always having fun ... Happy Halloween (Bill, where did you get all that Spanish Moss?!) ... Crescent Ball ... frozen hayrides (again) ... Purple Passion and Green Slime; Conclave? ... Helping others (Heart Fund and Cancer Society called, "let's go!") ... Sunnybrook and the children ... Easter Seals (telephone at 3 a.m.) ... wise men say ... (get the tub ready, and watch out for Ma Price's roses) ... combat frisbee, intramurals are still for fun (grrr ...) ... Water Tower? What water tower? You used whose paint? ... Schnoz, get the keys and load the machine ... injun ... Go Sub 330 ... that awat lead pipe! ... even you guys, Joe Lee and the six foot taco ... How many P.B.'s does it take to type the minutes? ... Buzzard Boy ... hey, Max, Michelle called ... yo' llama! ... Rastro, Stork, the Rod, even the U still wonders ... camel Jock ... Bob-Kat ... Owl Man emeritus ... last of the Pozos ... Billy 2 by 4 ... the real bigby ... pay yo' bill ... the S.H. bail out and everybody else ... We're all good brothers, each one of the other's friend ... Aim high, Lambda Chi!



Phillip Ball
 Jacques Bell
 Tomas Blackwell
 Billy Bryan
 Frank Burton
 Jim Clark
 Joe Clark
 David Cook
 Max Courtney
 Gary DeBruin
 Jeff Delmas
 David Ettman
 Bob Faulkes
 Ben Fewel
 Dean Foley
 Richard Fox
 Bobby Graham
 Bob Lewis
 Tom Lindsay
 James Lowe
 David McCord

Joel Youngblood

Jim Matheny
 Tom Parry
 Ben Polle
 Mike Posey
 Bill Presson
 Jimmy Ray
 Fred Richards
 Bill Rigby
 Ed Senteno
 Mark Simon
 Bob Smith
 Ralph Smith
 Mark Stanton
 John Stark
 Billy Stephens
 Scott Stephens
 Ken Szeto
 Jeff Willers
 Marty Williams
 David Witty
 Mike Workman



EPSILON OF PHI MU



President
Vice President
Corresponding Secretary
Recording Secretary
Treasurer
Rush Chairmen

Phi Director

Deborah Madden
Martha Mouser
Corinne Wood
Charlotte Correll
Karen Crawford
Barbara McLemore
Shawn Harper
Lindsey Green



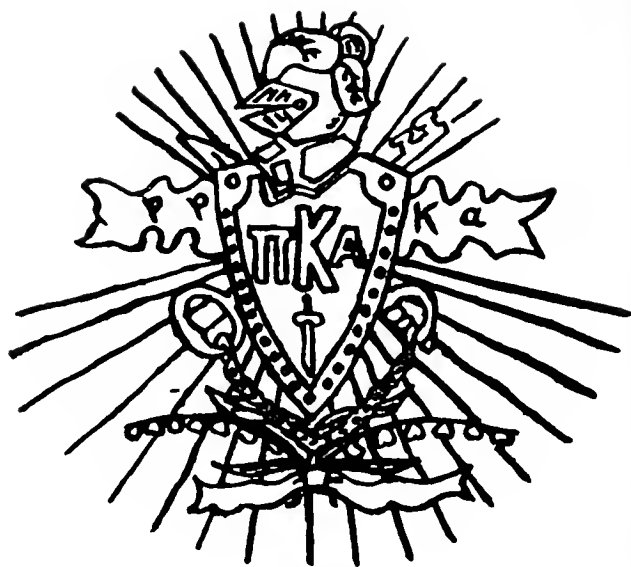
Ann Ables
Lisa Anderson
Michelle Antalec
Nancy Baker
Anne Brady
Bridgett Braswell
Blair Chism
Suzi Clark
Lynn Cole
Charlotte Correll
Marsha Crandall
Karen Crawford
Lisa Fisackerly
Cathy Flinn
Robin Fratesi
Debbie Freeman
Holly Gilbert
Lindsey Green
Cheryl Groves
Candace Hall
Shawn Harper
Lisa Heatherly
Jacy Hill

June Johnson
Margaret Kastla
Deborah Madden
Melissa Matthews
Barbara McLemore
Deedy McCrory
Martha Mouser
Kim Myrick
Mary Alice Nye
Roberta Osborn
Paula Painter
Karen Prishmont
Jo Ann Shanks
Kim Stanfield
Sue Stuart
Pam Turner
Mary Jo Wechsler
Leslie Wheeler
Vicki White
Elizabeth Wofford
Corinne Wood
Becky Wright
Shaunda Zinnecker

Phi Mu . . . it's individuals together . . . welcoming new faces . . . planning and playing . . . intramurals, Songfest, or a picnic at the lake . . . Enchantress Ball and a Houseboat Cruise . . . carolling for the frats and stealin' those hearts . . . Pi Kappa Alpha Dream Court . . . Homecoming Court . . . candlelights and carnations . . . leading and serving . . . Sigma Lambda and Linguistic honoraries . . . Campaigning for the Cancer Society . . . H.O.P.E . . . bringing Easter to children at Bethlehem Center . . . Phi Mu is Players, Singers, and Sisters . . . All sharing pride in 125 years of Les Soeurs Fideles.



ALPHA IOTA CHAPTER OF PI KAPPA ALPHA



President
Vice President
Secretary
Treasurer

Doug Minor
John Watts
Don Bailey
Mark Ikner

Tim Alford
Don Bailey
Mark Bailey
Ken Hall Barnett
Don Brunell
David Carroll
David Collins
Mark Collins
Bobby Crews
Jimmy Crump
Les Cunningham
Robert Denson
Mark Ensminger
Joel Everett
Collier Graham
Rusty Hood
Mark Ikner
Kent Kebert
Steve Laney
Peter Lukidas
Phillip Manser
Doug Minor
Allen Morton
Mark Pace
Fred Pepper

Doug Packer
Roy Price
Trent Riggins
Jack Ritter
John Sandefur
Tom Sikera
Charlie Smith
Jimmy Smith
Lance Smith
Ricky Smith
Stewart Smith
John Sneed
Ricky Spencer
Jimmy Thrasher
Paul Walker
Johnny Ward
John Watts
Rob Wells
Hugh White
Robert Williard
Jeff Wilson
John Vest
Chris Yochim
Steve Dean
Richard Edgerton



Renovation! (thanks Ruff) . . . Alumni Relations Award (thanks Eppes) . . . 23 is great with me . . . soccer and volleyball champs again . . . Pi Kappa Alpha Beer Booth . . . the Toilet Roll . . . Karate exhibition . . . Old North . . . Santa Sam . . . Magnolia Speech School Christmas and Easter Egg Parties . . . Delta Regional Conference . . . Herr Fink . . . "Pike of the month" . . . rock 'n roll jamburee . . . volts . . . stew . . . zinger . . . we love you space chimp . . . golden legs . . . fish-buddy . . . beetle . . . Greek God Crotch . . . snowball fight in Memphis . . . Donna and Rat . . . little guy . . . Cotton Ball . . . Dream Girl . . . Casino Night . . . three Master Majors in a row . . . Intramural Trophy again . . . first Paul D. Hardin Award . . . Pike Bike Race . . . Look Out! Smythe and Harvey T. Newell Awards!



Donna Doorenbas—Dream Girl

STUDENTS



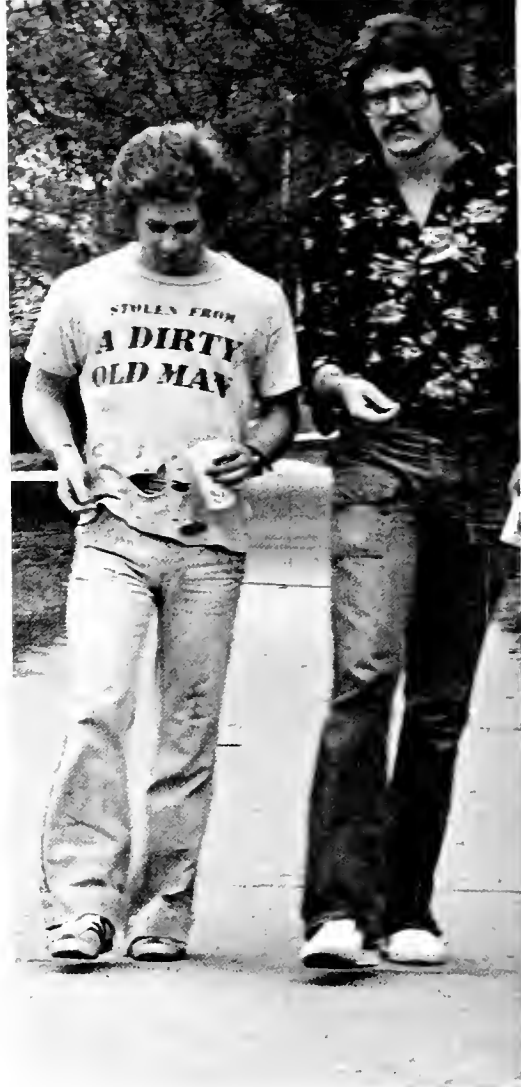
The one shrine at which all of us seem to worship today is Change.
We had better, or fall upon our own swords of resistance.



Jimmy Thrasher (sr.)



Ralph Wells (jr.)



Bill Little (fr.), C.A. Dodson (jr.)

Jenny Tenhet (sr.), Lynn Roberts (sr.)



Martha Hutchinson (jr.), Cindy Crowe (jr.)





Beverly Clement (jr.), Sherry Pearson (sr.), Billy Bryan (soph.), Alan Hunter (soph.), Brad Carter (sr.)



Kellye Wade (fr.), Betty McKinnon (sr.)



Jeanette Josey (fr.)



Danny Cooper (soph.), Kenny Davis (soph.)



Jim Wofford (sr.)



Robert Fagan (soph.)

Pham-Van Nhuong (soph.)



Tom Jordan (sr.)



Fred Pepper (fr.), Lisa Heatherly (fr.), Collier Graham (fr.), Amanda Beard (fr.)



Dwayne Self (jr.), Huel Harris (sr.), Bryan Miller (sr.), Steve McAlilly (sr.), Andy Cotton (sr.)



Johnnie Cummings (sr.)

249

The issue before us today is not the fact of change but how much of it we can handle.



Alan Hunter (soph.)



Carla Jenkins (fr.)
Debbie Salvant (jr.)
Donna Read (fr.)
Beverly Clement (jr.)
Diane Wiltshire (sr.)

Barbara Smith (sr.)
Martin Baker (fr.)
Bruce McKinley (jr.)
David Bourgeois (jr.)
Cindy Bourgeois (soph.)



Jim Wofford (sr.)



Nancy Spencer (jr.)
Kent Kebert (soph.)
Lisa Lowe (soph.)
Rusty Williard (jr.)
Donna Doorenbas (jr.)
Clay Rouse (soph.)
Jennie Parsons (soph.)

Kathy Byler and Daddy

Cristi Roberson (soph.)





Doug Levanway (sr.), Danny Bowling (sr.)

David Lee (fr.)





Rennee Rhodeman (fr.)



David Bowling (fr.), Ann Roscoph (fr.)



Mark Simon (soph.)



Jeanne Smith (soph.), Cristi Roberson (soph.), Bill Leech (jr.), Cissy Sights (soph.)



Charlie Waters (jr.), Laurie Brown (sr.), Martha Hutchison (jr.), Bob Ross (soph.), John Dyer (soph.), Alan Burrow (jr.), Kristi McIntyre (jr.), Peder Johnson (soph.)

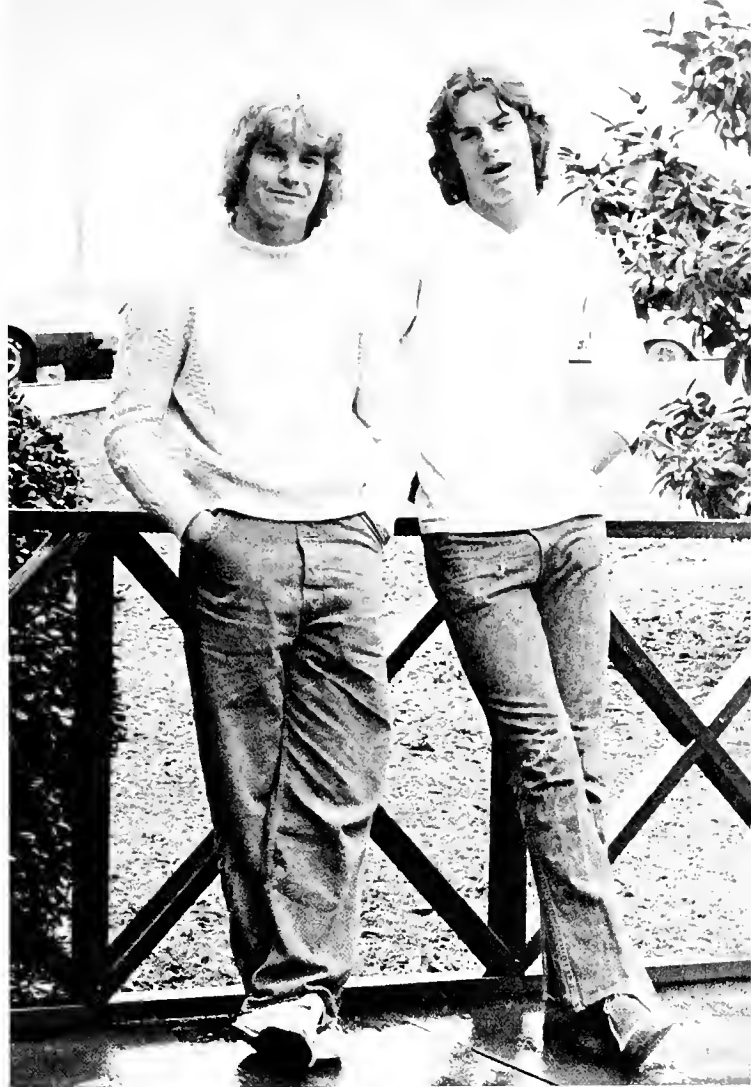
Linda Wells (sr.), Rob Rice (jr.)



May Lipe Zehnder (sr.)



Sara Evans (soph.), Linda Gray (fr.)



Alan Lagarde (fr.), Andy Lagarde (soph.)



Jerry Shivers (sr.), Bruce Fairburn (sr.)

In the midst of all the changes
we must find the unchanging;
In the obsolescence there must
be the durable; in the tempo-
rary there must be the
permanent.



Marsha Crandall (fr.), Alison Callaway (fr.), Vickie White (fr.), Beth Yeager (fr.), Kathy Weston (fr.)

Bruce McKinley (jr.), Debbie Salvant (jr.)



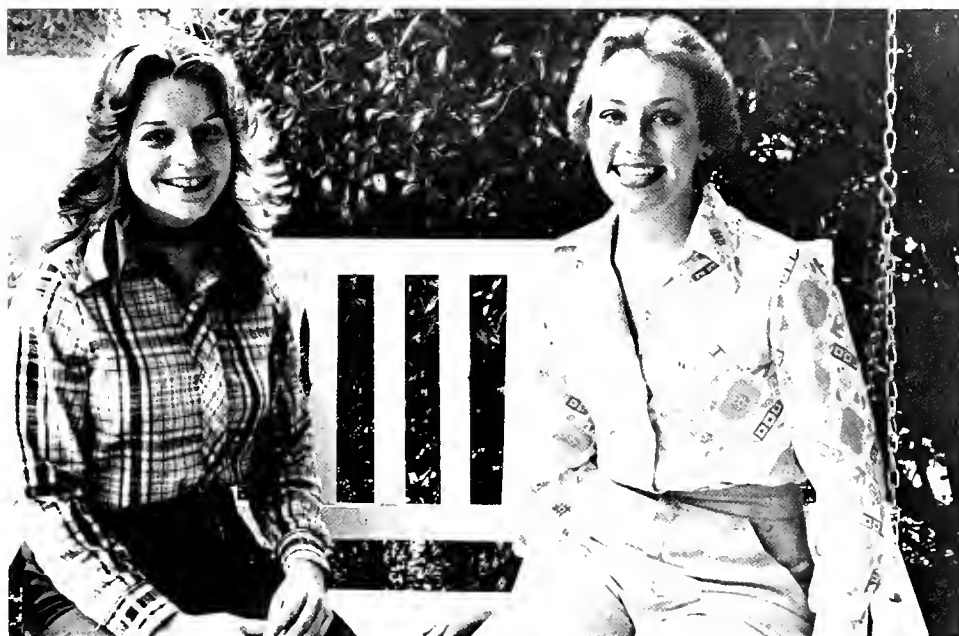
Michael Mansour (soph.), Kenny Davis (soph.)



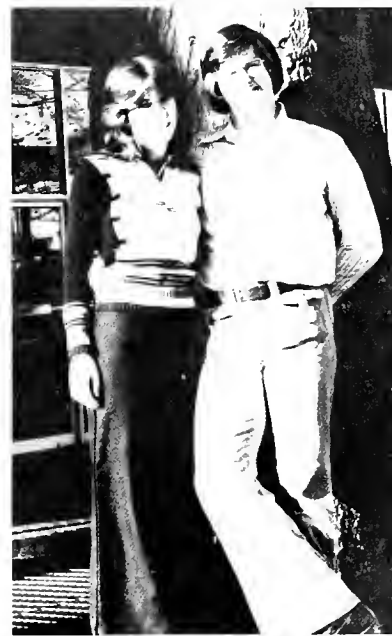
Roberta Osborn (jr.), Martha Mouser (jr.)



Brenda Ware (soph.), Mike Harrison (sr.)



Janice Mabry (soph.), Joyce Posey (soph.)



Denise Bershon (fr.), Hugh Tedder (jr.)



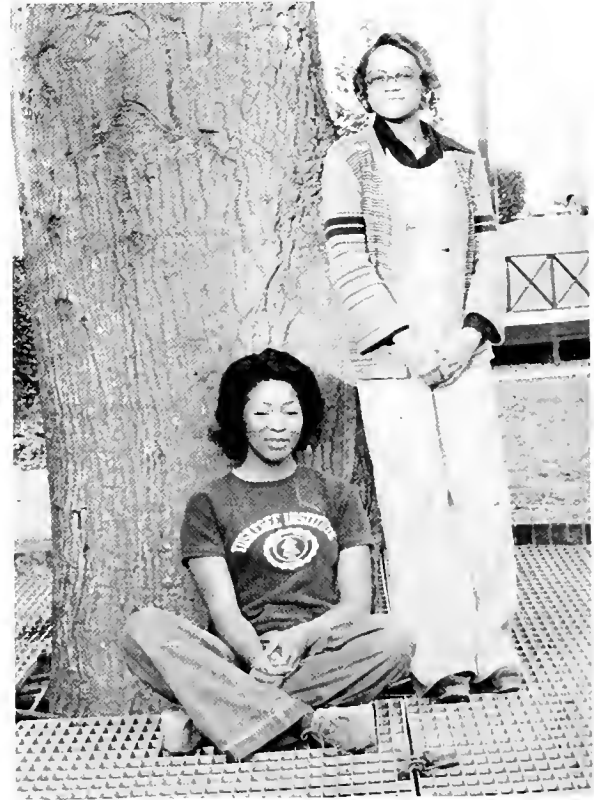
George Slay (soph.)



Bill McAlilly (jr.) and buddies



Robert Gillon (sr.), Ben Sydboten (fr.)



Vonda Reeves (jr.), Gladys Bush (jr.)



Myra Gilmore (fr.), Donna Davis (fr.)



Doug Packer (jr.)
Mack Cheney (jr.)
Wayne Hazlip (sr.)
Pat Dickins (soph.)

What are some of these values that abide—values that have stabilized civilization and stood the test of history?



Teresa Prescott (jr.), Rebecca Brent Gaby (jr.)



Joel Rea (fr.), Susan Adair (fr.)



Les Cunningham (jr.)



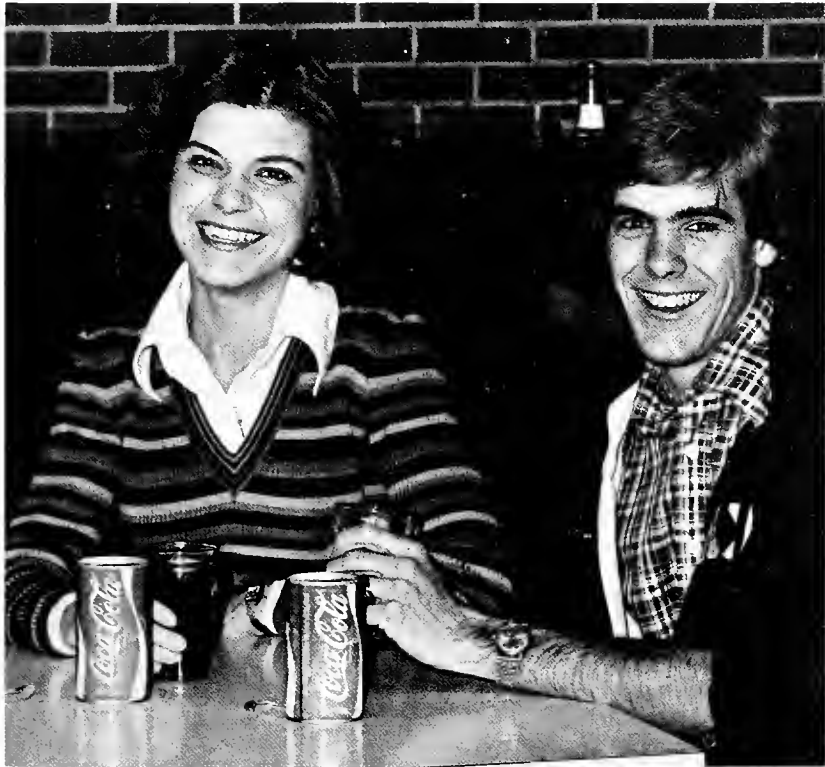
Ruth Lloyd (jr.), Beth Clark (soph.), Kate Bradley (soph.)



Marie Waller (jr.), Pam Curry (jr.), Rennee Rhodeman (fr.)



Bettie Box (jr.)



Lucy Burrus (sr.), Bob Smith (sr.)



Lisa Heatherly (fr.), Elise Norfleet (fr.)



Sylvia Jacobs (soph.), Belinda Nichols (soph.)



Jim Wofford (sr.)



Lauretta Jordan (fr.), Gerald Davis (fr.)



Lisa Heatherly (fr.), Ricky Spencer (fr.), Elise Norfleet (fr.), Timmy Ratchford (soph.), Sherry Jenkins (soph.)



Tina Kiefer (soph.), Ritta Russell (soph.), Linda Price (soph.), Lynn Woodard (soph.)



Rickie Haygood (sr.)



David Faerber (fr.)



Lynn Stone (fr.), Laura Sherrod (fr.), Toni Howard (fr.), Pam McCarley (fr.), Lisa Favarh (fr.), Kathy Weston (fr.), Retta Chaffin (fr.), Kathryn Myrick (fr.)

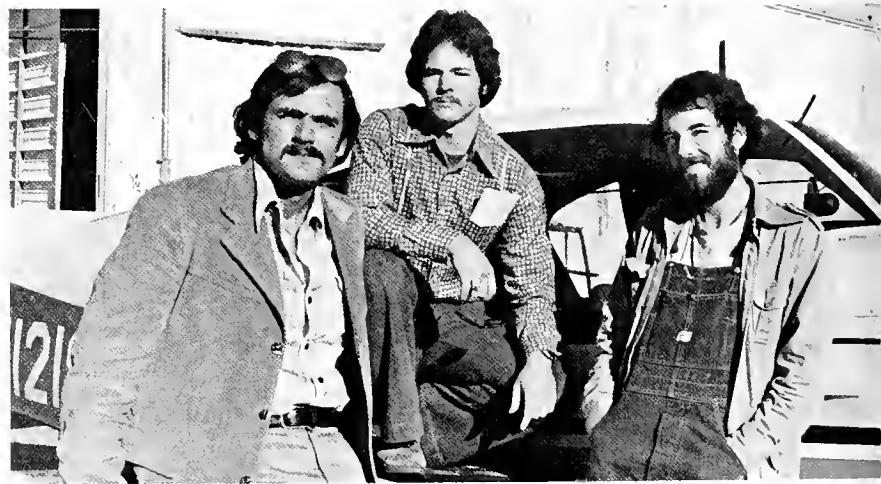


The first is a faith to launch us.

David Bolling (soph.)



Ben Clark (soph.)



David Brandon (sr.), Mark Bailey (soph.), Les Cunningham (jr.)

Paul Walker (sr.), John Woosley (soph.), C.A. Dodson (jr.), Gloria Walker (soph.), Donna Doorenbas (jr.), Johnny Hawkins (soph.), Nancy Spencer (jr.), Lisa Lowe (soph.), Rusty Williard (jr.)



Susan Thames (soph.), Jennie Parsons (soph.)





Cooper Morrison (jr.)



Jack Mobley (fr.), Danny Cooper (soph.), Ann Roscof (fr.), Clown



David Witty (soph.), Charlene Rosenthal (soph.)



Morgan Yeates (sr.)



David McAdams (soph.), Nancy Powell (sr.)



Cindy Crowe (jr.), Amanda Harding (fr.), Carmie Watson (soph.)



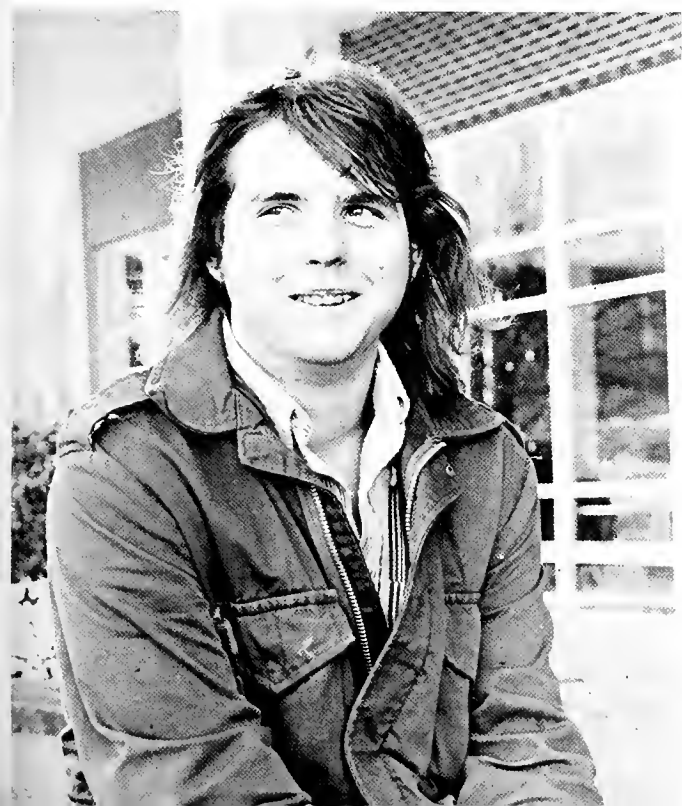
Amy Kebert (soph.), Mike Hartung (sr.)



Candace Hall (fr.)

Scott Raff (jr.)

Martha deHombre (fr.)





Carol Pape (fr.), Lance Smith (fr.)



Sonja Fuqua (fr.), Oteria Starling (fr.), Terilyn Fluker (jr.)

Trent Riggins (fr.), Margaret Wilson (sr.)



Don Hinton (sr.)



Jack Mobley (fr.), Danny Cooper (soph.), Bill Lancaster (soph.), Greg Loyd (soph.), Rob Nichols (sr.)



Catherine Bowlus (fr.), Kim Stanfield (fr.)

Second, boundaries to secure us.



John Allen (fr.)



Mike Harrison (sr.)



Robert Scott (jr.)



Carol Pape (fr.), Don Bradshaw (jr.), Cheryl Groves (fr.), Jim Garrard (jr.)

David Lee (fr.), Roger Ishee (fr.), Dale Hectrick (fr.), Guy Roberts (fr.)





Billy Jack Bass (sr.)



David Brandon (sr.)



Savilla Bynum (fr.), John May (fr.)



Mike Urban (soph.)



"The Kitchen Club"

Toni Walker (sr.), Michelle Antalec (sr.), Diane Bosarge (sr.), Maribeth Megehee (sr.), Cae Ivy (sr.), Suzie Baker (sr.)
Robin Whatley (sr.), Lindsay Shallcross (sr.), Brister Shipley (jr.)



Bill Montgomery (sr.), Trey Jones (sr.), Mark Frasier (sr.), Cindy Wilson (jr.), Betsy Goldman (sr.), Matt Harkey (soph.), Leland Smith (soph.),
David Hassell (soph.)



Roberta Osborn (jr.)

Third, habits to discipline us.



Toni Howard (fr.)

Chris Yochim (jr.)



Cindy Marsalis (soph.), David Thornton (soph.)





Gail Gober (jr.), Nancy Clarkson (jr.), Leah Melichar (jr.), Cindy Rosson (jr.), Isabelle Ezell Dominick (jr.), Cindy Sanders (jr.), Sally Lawrence (jr.)



Robin Brinkley (fr.), Debbie Freeman (fr.), Claudia Hopkins (fr.), Sue Sunkel (fr.), Ann Ables (fr.)



Jackie Pearson (fr.)



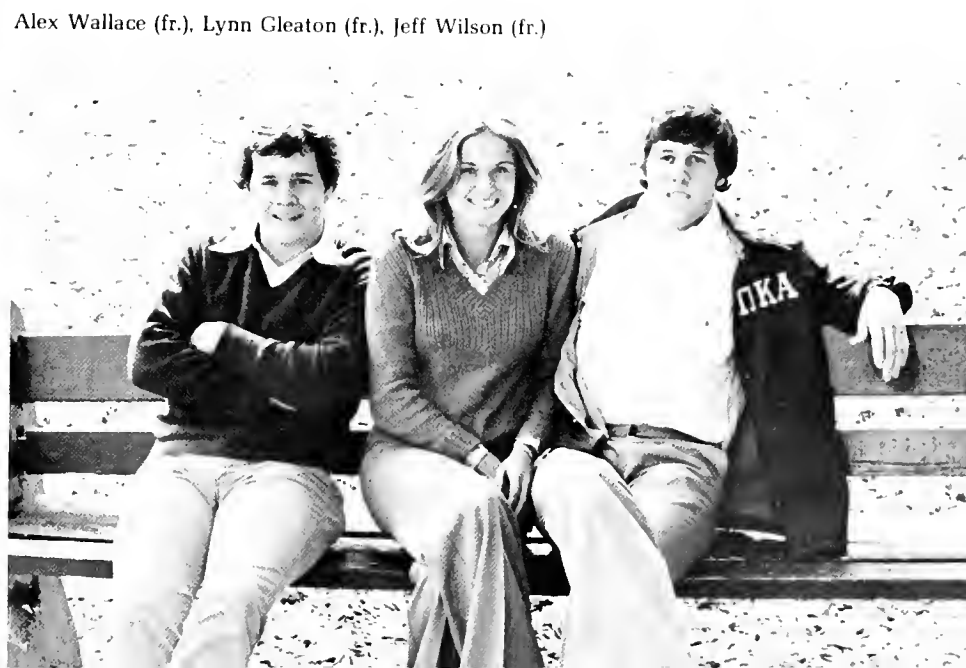
Sharon Edwards (jr.), Daryl Plunck (jr.), Janet Hall (jr.)



Rick Grisham (jr.), Bert Wilkins (fr.), Trex Morris (soph.)



Renita Gotton (soph.)



Alex Wallace (fr.), Lynn Gleton (fr.), Jeff Wilson (fr.)

And finally, a joy to fulfill us.



Greg Loyd (soph.), Ann Roscof (fr.), Bill Lancaster (soph.), Randall Boyd (soph.), Leslie Mims (soph.), Bill Lecch (jr.), Monie Simpkins (soph.), Brooks Gibson (soph.), Tim Ayers



Scott Martin (fr.)



Edwin Walker (jr.), Jenny Tenhet (sr.), Ruby Bowers (sr.)





Greg Nieberg (soph.)



Betty McKinnon (sr.), Jim Clark (jr.), Julie Joseph (fr.), Danny Carey (jr.), Michelle Tate (fr.)



Beth Thomas (soph.), Helen McCormick (soph.), Jan Kynerd (jr.), Norma Gardner (soph.), Jan Guild (jr.)



Robin Robinson
Jim Watts (jr.)
Ben Looney (soph.)
Rich Knox (soph.)



Morris Parsons (jr.), Pamela Gressett (jr.)



Retta Chaffin (fr.)
Cathy Hamrick (fr.)
Joy Chastain (soph.)
Lisa Lee (fr.)
Ronnie Journey (sr.)
Pat Kirby (sr.)



Lance Smith (fr.), Susan Tsimortos (jr.)



Louis Alexander (fr.)
Lisa Lowe (soph.)
Trey Thomas (soph.)

Jerry Runnels (jr.), Susan Thames (soph.)



Steve McAlilly (sr.), Dwayne Self (jr.)





Rod Clement (fr.), Martin Baker (fr.)



Paul Walker (sr.)



Elise Norfleet (fr.), David Flautt (sr.), Beth Thomas (soph.), Mark Frasier (sr.)

Celeste Draffen (jr.)





Mark Youngblood (sr.)



Jim Ranager (jr.), Ken Hipple (jr.), Janet Hall (jr.)



Margaret Kastla (fr.), Mary Alice Nye (fr.), Peggy Potter (fr.)



Dees Hinton (sr.)



Charlene Abraham (sr.), Richard Grisham (jr.)



Jimmy Crump (fr.)



Gail Stanton (sr.), Blanche Williams (sr.)



Michael Patterson (jr.), Henry Clay (fr.)



Bill McAlilly (jr.), Mike Harrison (sr.)



Rickie Haygood (sr.)



Verba Moore (fr.)



Mike Posey (soph.)



Clay Rouse (soph.), David Ott (fr.)

We must live in this world of change. Who would return to the limitations of the past? We must rule the changes, however, and not be enslaved by them. These things endure and serve as the stabilizing force for us while the new is channeled into the good. Faith to launch us, boundaries to secure us, good habits to discipline us, and joy to fulfill us.



Pam Turner, Gloria Steinwinder, Suzie Baker, Betty McKinnon, Adren McCoy, Laurie Brown, Linda Wells



Steve Jenkins (sr.)



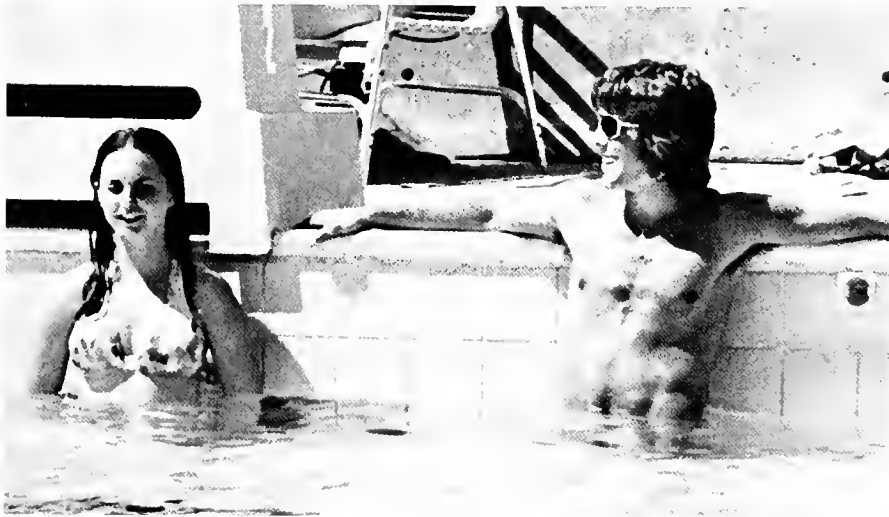
Gary Garrett (sr.), Ronnie Journey (sr.), Rickie Haygood (sr.), Dees Hinton (sr.), Ken Granberry (sr.), Wayne Watson (jr.), Bob King (sr.)



Lisa Lee (fr.), Jan Guild (jr.), Joy Chastain (soph.), Norma Gardner (soph.)



Bill Wilburn (sr.)



Lynn Stone (fr.), Gary Dunn (fr.)



Maribeth Megehee (sr.)
 Andrea Walker (fr.)
 Betsy Broome (fr.)
 Betty McKinnon (sr.)
 Ruth Kellum (fr.)
 Brooks Gibson (soph.)
 Suzie Baker (sr.)
 May Lipe Zehnder (sr.)
 Tracey Sweet (soph.)
 Elise Norfleet (fr.)
 Adren McCoy (sr.)
 Kellye Wade (fr.)
 Peggy Austin (fr.)
 Malinda Hamilton (fr.)



Danny Bowling (sr.), Mr. Frohnhoefer, David Flautt (sr.)



Don Hall (jr.), James Holland (jr.), Martha Nadler (soph.)



Renee Brou, Gail Gober (jr.), Linda Wells, Ann Roscopf (fr.), Jim Matheny, President Collins



Lisa Clark (fr.), Martha Mouser (jr.), Laura Adkins (soph.), Charlene Rosenthal (soph.)



Leslie Mims (soph.)



Teena Freeman (sr.)



Bryan Stacy (fr.), Brian Browning (soph.), Tim Kemp (fr.)

Where do we find these marks of permanence in the impermanent, the changeless in the midst of change?



Carol Downing (jr.), Brister Shipley (jr.)



Brenda Ware (soph.), James Lowe (soph.)



Orman Knox (fr.), Jerry Yearell (soph.), Johnnie Cummings (sr.)



Bob Smith (sr.), Lucy Burrus (sr.)



Cooper Morrison (jr.)



Frank Young (sr.), Mary Martin (soph.)



Betsy Alexander (fr.), Joel Youngblood (jr.)



Ben Clark (soph.), Sheldon Mahaffey (soph.), Bobbie White (soph.), Doug Demmons (soph.), Tom Herold (soph.)

Randall Boyd (soph.), Leslie Mims (soph.)



Charlotte Correll (soph.), Randy Weimer (soph.), Rita Russell (soph.)



Scott Spillman (jr.)



Adren McCoy (sr.), Betty McKinnon (sr.)



Madhu Sharma (soph.), Martha Nadler (soph.), Terry Toler (soph.), Cissy Sights (soph.), Jeanne Smith (soph.), Beth Conner (soph.)

Keith Walden (sr.)



Eddie Greene (jr.)



Betsy Ross (fr.), Susan Tsimortos (jr.)



Robert Scott (jr.), Dennis Powell (jr.)



Jerry Britt (sr.)



Rusty Cunningham (fr.)



Trex Morris (soph.) and buddies



Lisa Lee (fr.), Lisa Heatherly (fr.), Leslie Wheeler (fr.), Gwen Crane (fr.), Karen Corban (fr.)

In the pioneer days of this nation, circuit riding preachers and others had to swim their horses across rivers while they were still mounted. They learned that when they were crossing a swollen stream if they fixed their attention upon the swirling waters they would become dizzy and fall into the dangerous swirls. But if they fixed their eyes upon a tree, or some high hill, they rode through safely. Take note of change in the world for it's the mood of the moment, but put your attention upon Christ who is the same yesterday, today and forever.

Bishop Joel D. McDavid

ADVERTISEMENTS





BILL RAY

4099 North State St., Jackson, MS
Ph. 984-272



Far Women

ZANTARIS

The Quarter
Bldg K, 1855 Lakeland Dr
Jackson MS 39216
981 5230

Stephen T. Harris

Louis J. Zant

JOE GROGAN CARPETS

5339 I-55 NORTH

W. M. BUIE

INSURANCE AGENCY

Fire - Auto - Casualty - Bonds

1334 First National Bank Building
P. O. Box 82
Jackson, Mississippi 39205
Phone - 355-6442



authentic
New Orleans Recipes



adjoining the jacksonian, a master hosts inn

GTE SYLVANIA
ZINSCO ELECTRICAL
PRODUCTS

750 boling street
jackson, ms. 39209
phone 948-0531

THE ARTIST'S
Complete *Headquarters*
for Commercial Art • Fine Art



MATERIALS
Phone 948-4141
Down Town
418 TOMBRIGEE ST.
JACKSON, MISSISSIPPI 39205

HEATING
EQUIPMENT
& SUPPLIES



SHEET
METAL
SUPPLIES

AIR CONDITIONING EQUIPMENT AND ACCESSORIES

Kremser-Oliver Co., Inc.

WHOLESALE DISTRIBUTORS
520 HIGHWAY 80 WEST
JACKSON, MISS.

{ 354-4335
{ 354-4336



P.O. Box 76 JACKSON, MS. 39205

Randall's

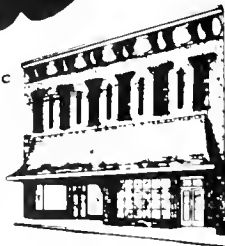
Men's Formal Wear
Coast to Coast

366-1213

4505 I-55 North
Jackson, MS 39206



Karl's
HABERDASHERS, INC.



1412-14 Washington Street
Vicksburg, MS. 39180
Telephone 636-6582

From Jackson use our toll-free number: 353-9625

America Loves





12

Jackson Coca Cola

AREA CODE 601 948 7343



World's Largest Transmission Specialists

MACK LOWERY
OWNER

441 SOUTH STATE STREET
JACKSON, MISS. 39201



4149 northview drive
jackson, mississippi

juniker jewelry company

diamonds—antique jewelry

jewelry designers and manufacturers
phone 353-4312
deposit guaranty plaza
jackson, ms. 39201



FINE FOODS & DRINK

4450 i-55 north
"dark on sundays"

C CHARLES B. B PATTON, JR. P REALTOR

REAL ESTATE DEVELOPER RESIDENTIAL
COMMERCIAL INDUSTRIAL
ACREAGE SYNDICATORS
MULTIPLE LISTING SERVICE
LIFE INSURANCE

24 HOUR ANSWERING SERVICE

RES NORTH HILLS SQUARE... 981-4819
MOBILE PHONE... 948-8462



REALTOR



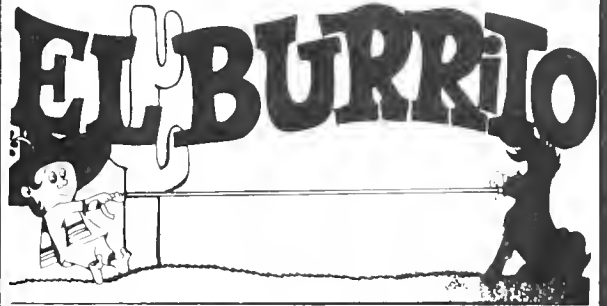
Suite 250 Woodland Hills Building
3000 Old Canton Road, Jackson, Mississippi 39216



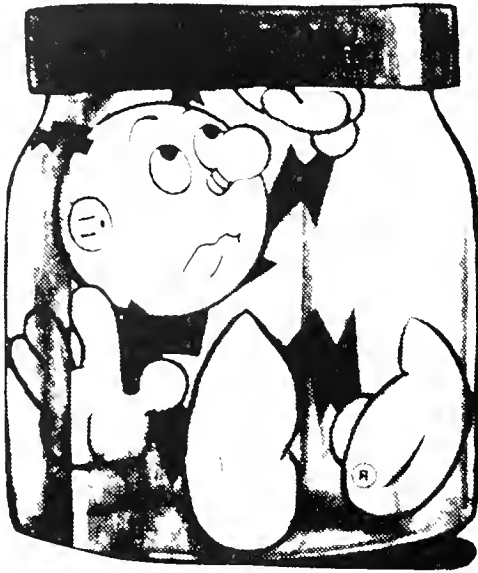
FURNITURE, CARPETS, FABRICS, DESIGNS
LOUIS NAVARRO MARCUS TREADWAY
BUDDY GRAHAM AYLENE HURST
AL McLEAN

Compliments
of

FRAZIER FURNITURE REPAIR



It just won't keep!



Too bad, but you can't put electricity in a jar and keep it!

No, electricity has to be generated and transmitted at the very instant you need it. And as western Mississippi grows and develops, more and more electricity will be needed.

That's why Mississippi Power & Light is constructing Grand Gulf Nuclear Station: to be ready with dependable electric power. All you need...when you need it!



MISSISSIPPI POWER & LIGHT

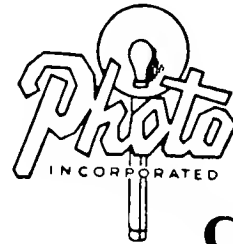
Helping Build Mississippi



Maywood Mart

PET

Jackson



Center

P O BOX 1527 • 350 E PEARL

TELEPHONE 541-977

CAMERAS — PROJECTORS — ACCESSORIES

JACKSON, MISSISSIPPI 39205

JOHN HARVEY FORD, INC.

SALES • SERVICE • PARTS

956-7000

"NEW AND DIFFERENT"

6130 I-55 NORTH



SERVICE PRINTERS, INC.
3225 NORTH WEST STREET
JACKSON, MISSISSIPPI 39216

MAC MCGEE

LETTERPRESS AND OFFSET PRINTING

- LETTERHEADS
- ENVELOPES
- OFFICE FORMS
- BROCHURES
- WEDDING INVITATIONS
- WEDDING NAPKINS



"SERVICE IS
OUR BUSINESS"

362-7223

The only shoe
of its kind.

KALSO **Earth
shoe**
For every walk of life

a simple cobbler me
1855 LAKELAND DR., JACKSON, MI 49216

(601) 366-9658

Southern Beverage Company, Inc.



This is the famous Budweiser beer we know of no brand produced by any other brewer which costs so much to brew and age. Our exclusive Beechwood Aging produces a taste, a smoothness and a drinkability you will find in no other beer at any price.



THE WORLD
RENOWNED



BUDWEISER
LAGER BEER



GENUINE

Budweiser

KING OF BEERS

*Brewed by our original process from the
Choicest Hops, Rice and Best Barley Malt*

THE LARGEST-SELLING BEER IN THE WORLD

Anheuser-Busch, Inc.

ST LOUIS NEWARK LOS ANGELES TAMPA HOUSTON
COLUMBUS JACKSONVILLE MERRIMACK WILLIAMSBURG

GENUINE

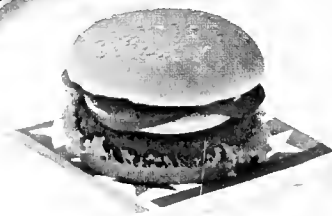


SAGA



La Belle Femme
 155 DEPOSIT GUARANTY PLAZA
 JACKSON, MISSISSIPPI 39201

PRESTO®



PRESTO®

Florist Incorporated

901 E. Fortification

354-3766

RIDGWAY REALTY

1855 Lakeland Dr.

981-2181



Suite 1154
One Deposit Guaranty Plaza
Jackson, Mississippi 39201
601/969-1434

EVERY BODY'S

*Thanks
Millseps College*
RESTAURANT, INC.
CORNER OF NORTHWEST AND ADELLE
STEVE NORRIS, Manager

Open From 5 a.m. to 2 a.m.

Mayflower Cafe

fresh seafood received daily
try our broiled red snapper
delectably fresh from the gulf coast
or our unique seafood norfolk
and then there is our famous greek salad



CAPITAL SECURITY SERVICES, INC.

P. O. Box 10681
Jackson, Miss. 39209

A professional protection company



Smith's

MUTUAL OF NEW YORK INSURANCE

921 North President

Barksdale

Bonding
&
Insurance

5155 Galaxie Dr.

Bicycles

For All Ages

366-3535

Bicycle Center



Mississippi's Foremost Diamond Merchant



albritton's
DEPOSIT GUARANTY PLAZA
HIGHLAND VILLAGE

Betty McRae's Flowers

3006 N. State
Jackson, Miss. 39216

366-6449

Standard Photo Company

Cameras—Photo Equipment—Supplies—
Finishing

Jackson, Mississippi 39201

Mississippi School Supply

4155 Industrial Dr.

948-8600

Pabst Blue Ribbon Beer

HALE & JONES INC.

Athletic Supplies

141 SOUTH LAMAR STREET

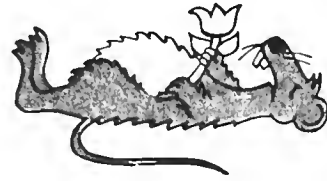
Phone 352-6625

JACKSON, MISSISSIPPI 39201



R.M. Hendrick Graduate Supply

Jackson, Mississippi
Representing
Herff-Jones Company
345-3523



ACE PEST CONTROL CO., INC.
PROFESSIONAL SERVICE

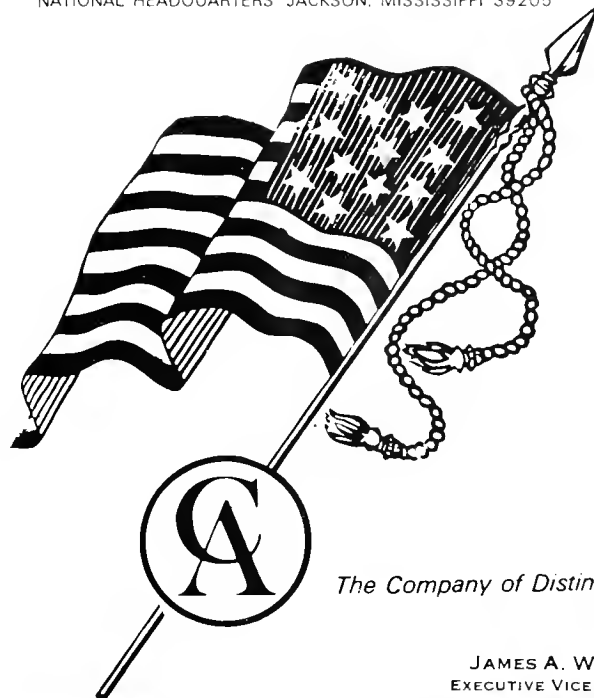
THE EDGEWORTH GROUP, LTD.

Box 4707-1855 LAKELAND DR.-JACKSON,
MISS. 39216
601/982-4123

TANN, BOURN, CROWELL & BROWN
404 BARNETT BUILDING
JACKSON, MISS.
TEL. 601/354-4926

Consolidated American Life Insurance Company

NATIONAL HEADQUARTERS: JACKSON, MISSISSIPPI 39205



The Company of Distinguished Personal Service

GEORGE B. PICKETT
PRESIDENT

JAMES A. WHEELER
EXECUTIVE VICE PRESIDENT



TRI-STATE

*Brick and Tile
Company, Inc.*

SIZES

Standard — Modular — Norman

COLORS

Red — Brown — Black — Buff — Tan — Pink — Gray

USED EFFECT BRICK

MORTAR COLOR • FIRE BRICK • BRICK CLEANER

phone 981-1410

P.O. Box 9787—Forest Drive

Jackson, Mississippi 39206

FRIERSON

**Building
Supply**

922-1321

4525 Lynch St. Ext.

The 1977 BOBASHELA

wishes to extend thanks to

the students of Millsaps College
the BOBASHELA Staff Members
Mary Martin and Frank Young
Carol Burrus

Dean Corder, Dean Woodward, Claudia O'Keefe
Warrene Lee, Financial Advisor
Ralph Farr and Mr. Summerall, Advisors

and a special thanks to

The Millsaps Majors Football Team

and

Ma Price

I have these moments
All steady and strong
I'm feeling so holy and humble
The next thing I know
I'm all worried and weak
And I feel myself
Starting to crumble.

The meanings get lost
And the teachings get tossed
And you don't know
What you're going to do next.
You wait for the sun
But it never quite comes
Some kind of message comes through to you
Some kind of message comes through.

And it says to you . . .

Love when you can
Cry when you have to . . .
Be who you must
That's a part of the plan
Await your arrival
With simple survival
And one day we'll understand . . .

I had a woman
Who gave me her soul
But I wasn't ready to take it.
Her heart was so fragile
And heavy to hold
And I was afraid I might break it.

Your conscience awakes
And you see your mistakes
And you wish someone
Would buy your confessions.
The days miss their mark
And the night gets so dark
And some kind of message
Shoots through—

And it says to you . . .

Love when you can
Cry when you have to . . .
Be who you must
That's a part of the plan
Await your arrival
With simple survival
And one day we'll all understand . . .

There is no Eden or Heavenly gates
That you're gonna make it to one day
But all of the answers you seek can be found
In the dreams that you dream on the way.

Dan Fogelberg





