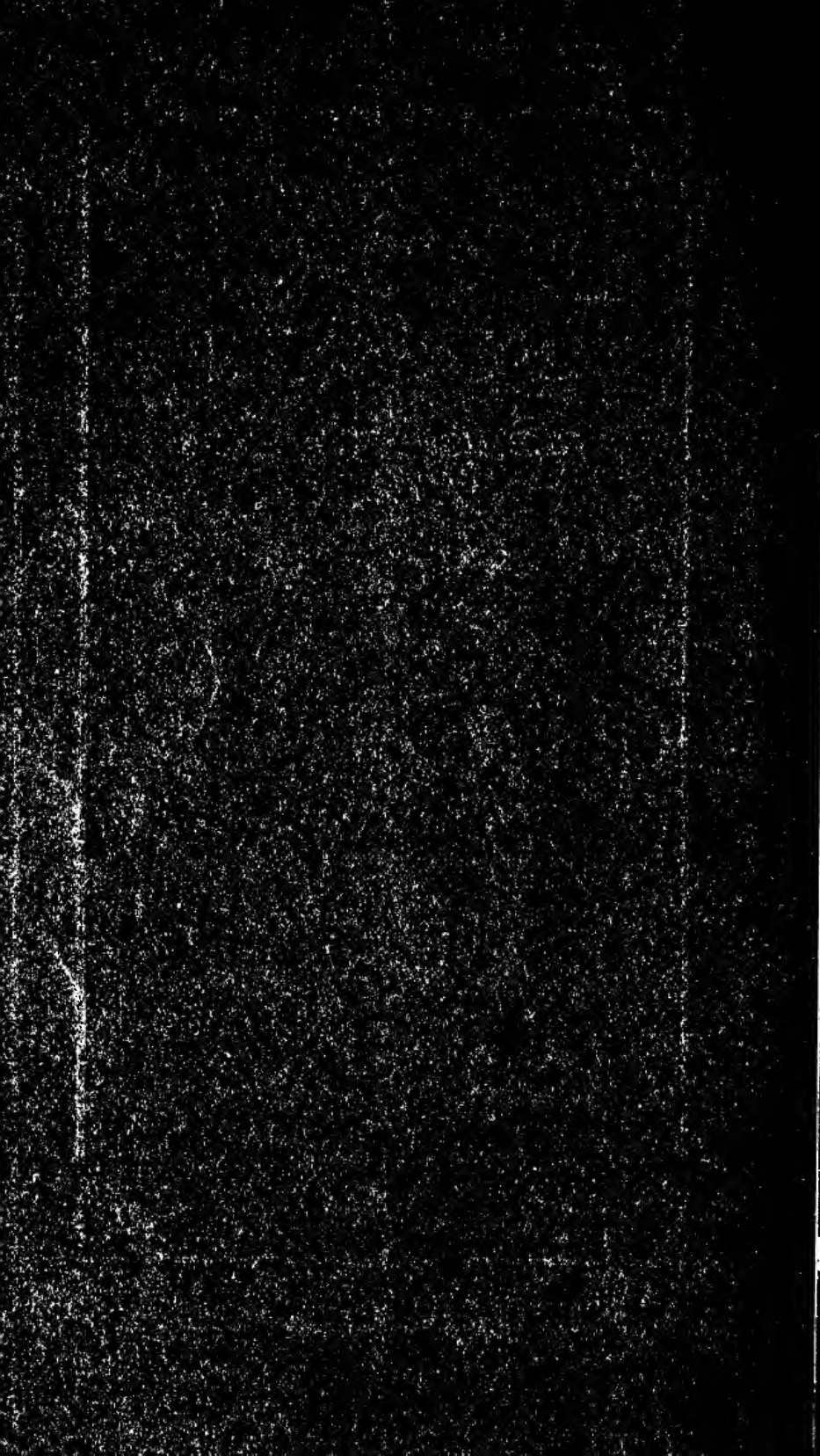


12















*From a print*

*In the collection of the State Street Trust Company*

WASHINGTON STREET AT THE HEAD OF STATE STREET ABOUT 1835  
Showing the end of the Old State House when it was used as a post-office.  
The building on the right is the site of the proposed new main office  
of the State Street Trust Company.



ONE HUNDRED YEARS

---

*A collection of views made from*  
**Rare Prints and Old Photographs**  
showing the changes which have  
occurred in Boston during  
*the One Hundred Years*  
of its existence as  
*A City*

---



*Presented by the*

In commemoration of the  
**One Hundredth Anniversary of the**  
*Incorporation as a City of Boston*  
Massachusetts

F73  
.3  
.58  
copy 2

COPYRIGHT, 1922,  
BY THE  
STATE STREET TRUST COMPANY ✓

✓ Edited, arranged and printed by direction of  
Walton Advertising & Printing Co. ✓  
Boston, Mass.

APR -3 1922 ✓

©Cl. A659446 ✓

## TABLE OF CONTENTS.

---

	PAGE
Washington Street at the head of State Street about 1835	ii
The United States Agricultural Society Exhibition in 1855	vii
Exterior of Faneuil Hall about 1826 . . . . .	ix
Charles River embankment before construction of Esplanade	xi
The silver casket which contains the original charter of the City of Boston . . . . .	xii
Plan of Boston 1822 . . . . .	2
Plan of Boston 1922 . . . . .	3
High Street in 1822 . . . . .	4
The old City Hall of Boston . . . . .	5
Old Norfolk House in Eliot Square, Roxbury, about 1828	6
The residence of Samuel Whitwell on Winthrop Place . . .	7
View of Boston and the South Boston Bridge . . . . .	8
The Bradlee-Doggett House . . . . .	9
Temple Place, looking toward the Common . . . . .	10
Braman's Baths on Chestnut Street . . . . .	11
The old Bromfield House in 1858 . . . . .	12
A bird's-eye view of Boston and its surroundings in 1850	13
View of the Back Bay, Charles Street and the Common in 1823 . . . . .	14
The old Sheafe House . . . . .	14
Scollay Square, looking toward Pemberton Square . . . .	15
Cathedral of the Holy Cross . . . . .	16
Tremont Street, showing Winter Street and the Masonic Temple . . . . .	17
Tremont Street in 1843 . . . . .	18
North side of Court Street . . . . .	19
The State House, as it appeared in 1835 . . . . .	20
The original location of S. S. Pierce Company . . . . .	21
Site of the old Hotel Dartmouth . . . . .	22
Bunker Hill Monument, Charlestown . . . . .	23
View of Summer Street . . . . .	23
Chauncy Hall School and First Church, as they appeared in 1828 . . . . .	24
The Samuel N. Brown House . . . . .	25
North side of State Street from Washington Street . . . .	25
Pemberton Square about 1860 . . . . .	26

State Street, showing the Merchants Exchange as it appeared in 1860 . . . . .	27
National Horse & Carriage Mart on Portland Street . . . . .	28
Commonwealth Avenue at the corner of Dartmouth Street . . . . .	28
View of Boston Harbor from East Boston about 1860 . . . . .	29
Summer Street, showing the South Boston horse railway depot at Church Green . . . . .	30
Park Street from Tremont Street . . . . .	30
View of the Back Bay about 1857 before the process of filling in was started . . . . .	31
View of Boston and Charlestown . . . . .	32
Looking down Congress Street . . . . .	33
The old Hotel Boylston at the corner of Tremont and Boylston Streets . . . . .	34
A view of the Public Garden and Boston Common about 1870 . . . . .	35
Quincy Hall Market about 1830 . . . . .	36
The old Boston Public Library on Boylston Street . . . . .	37
View of Boston and East Boston about 1859 . . . . .	38
Park Square in 1870 . . . . .	39
Washington Square, Fort Hill about 1870 . . . . .	40
South Boston with Boston in the distance . . . . .	41
How the Back Bay looked in 1872 . . . . .	42
Trinity Church in Copley Square about 1877 . . . . .	43
The Custom House of Boston . . . . .	43
The Franklin Hotel in 1829 . . . . .	44
The second Exchange Coffee House . . . . .	45
Post Office Square in 1878 . . . . .	46
The Blake-Shaw Houses in Bowdoin Square . . . . .	46
Haymarket Square . . . . .	47
The old Hancock House . . . . .	48
Boylston Street . . . . .	49



*From a print*

*In the collection of the State Street Trust Company*

## THE UNITED STATES AGRICULTURAL SOCIETY

View of the grounds and structures at its third exhibition in Boston in 1855.

So with the individual, so with the community, a birthday is an interesting occasion. The State Street Trust Company, in commemoration of the one hundredth anniversary of the incorporation of Boston as a city, issues as its annual brochure a series of views showing some of the many changes which have taken place in the city during the past century.

Before the town became a city, a form of government was submitted to the people of Boston together with an inquiry as to whether the name "the Town of Boston" should be changed to "the City of Boston." Two thousand, seven hundred and twenty-seven voted in the affirmative and 2,087 in the negative, so that a small matter of 640 votes decided that Boston should become a city, and on February 23, 1822, the Governor approved the act establishing "the City of Boston." The new charter was drafted by Lemuel Shaw, later Justice of the Supreme Court, and in it the principal head was named "Mayor," the "Board of Aldermen" was fixed at eight members, and a "Common Council" of forty-eight persons was created, four from each of the twelve wards into which the city was divided.

It was not, however, until March 4, 1822, that the charter incorporating the city was accepted by the town, the vote then being 2,797 in favor and 1,881 against, a majority of 916, showing a slight increase in the number of those who favored the change. Accordingly a city government was organized, and on May 1, 1822, John Phillips was chosen mayor. The term of office was one year until the statute of 1895 made it two years. The two-year term began with the election of Josiah Quincy in 1896, but in 1909, in accordance with the statute then passed, a four-year

term of office was established. It is interesting, however, to note in detail the steps which made Boston a city.

For many years after the beginning of the settlement, the form of government was that of the old-fashioned town meeting, in which each freeman had a voice and in which town affairs were regulated by the whole body of freemen represented at the meeting. Finally town affairs became so unwieldy that certain persons were delegated to conduct them. At first these were chosen for six months, then for a year, and finally they came to be called the Board of Selectmen.

The town grew rapidly. Its activities became larger than even the Selectmen could regulate. Accordingly officials were chosen to look after special departments of public service, such as constables, surveyors of highway, clerks of market, sealers of leather, packers of fish and meat, and hog reeves. Even with these changes the town form of government had become unwieldy by 1708, and attempts were made to incorporate the town, but these failed. In 1784 a number of influential citizens petitioned for the appointment of a committee, which in due course reported two plans for the better government for Boston. One made the body politic consist of a Mayor, Aldermen, and Common Council; the other suggested a President and Board of Selectmen; but the residents were not ready for the adoption of either plan, and it was decided, when put up to the voters, inexpedient to make the alterations suggested. Again in 1791 and 1804 futile efforts were made to secure the consent of the voters that Boston might become a city. When, however, the time had arrived for this important step, it was discovered that no provision existed in the State Constitution which gave authority to the General Court to erect a city government, and this necessarily led to a movement which on April 9, 1821, culminated in the passage of such an amendment to the constitution.

In 1820 the population of Boston was 43,298, and the town meeting had become a farce. It was attended by less than fifty voters, save when questions of great interest came up, and was quite dominated by the public officials who always turned out. Yet every step in the direction of a change of government was opposed by a conservative element, one of the most strenuous objectors being Josiah Quincy, who afterwards became the second mayor of the city.

Matters came to such a pass that a special meeting was called in Faneuil Hall in January, 1822, and a committee reported in



*From a print*

*In the collection of the State Street Trust Company*

#### EXTERIOR OF FANEUIL HALL ABOUT 1826

It was here that the people of Boston voted to change the name "the Town of Boston" to "the City of Boston" and later accepted the charter incorporating the City, March 4, 1822.

favor of a chief executive to be called the Intendant. He was to be elected by the Selectmen. An executive board of seven persons called Selectmen was to be elected by the inhabitants on a general ticket, and a body with mixed legislative and executive powers, called the Board of Assistants, was to be composed of four persons chosen from each of the twelve wards. The report was amended by changing the name "Intendant," taken from the French, to the name "Mayor," "Selectmen" to "Aldermen," and "Board of Assistants" to "Common Council." It was upon the adoption of this report that the people of Boston finally passed favorably.

A comparison of the Boston of 1822 with that of the present may be made by means of the statistics which exist in the statistician's office of the city. While those of 1822 are quite meager as compared with those of today, nevertheless one may, by a comparison, gain some interesting facts as to the changes and expansions that have taken place in the city. The area of the city in 1822 was 4.7 square miles. In 1922 it covers 47.81 square miles, of which 43.55 are land area. Its population has multiplied sixteen times in a hundred years. The approximate population of the city

in 1822 was 46,226, while the United States census, which some claim underestimated the actual figures, gives the population in 1920 as 748,060. When Boston became a city it had 7,705 homes and in 1922 it has 164,785. The debt which the city carried over from the town government was \$100,000, being the cost of a jail and court-house on Leverett Street. In 1922, the net city debt is \$79,379,925, or \$99.10 approximate net debt per capita.

The cost of running the city in 1822 was \$249,000. For the fiscal year of 1920-21 the expenses, ordinary and extraordinary, were \$57,477,910. The following figures show the valuation of property at the two periods. In 1822, the total valuation was \$42,140,200 divided as follows—\$23,364,400 real estate and \$18,775,800 personal. The rate of taxation was \$7.30 per thousand, and 8,800 persons were then taxable. This included every male over sixteen years old. In 1920 the valuation of property in the city was \$1,572,458,780 divided into real estate \$1,396,073,300 and personal estate \$176,385,480, the rate of taxation being \$24.10 per thousand, and 195,795 individuals appear as taxable.

On its school department the city spent in the fiscal year of 1820-21 a total of \$45,045. In 1920-21 the amount expended for education was a total of \$10,808,753. In 1822 there were 29 elementary schools containing 3,827 pupils. The English High School for boys started in 1821 with George B. Emerson, a Harvard graduate, as headmaster, and had 6 teachers and 207 pupils. In 1921 there were 279 public schools, 3,422 teachers, and 126,507 pupils. In addition, there were 13,631 students in the evening schools. Private schools of Boston, whose pupils come not alone from Boston, but from the outlying districts, have a registration of 32,132 between the ages of 5 and 16.

In 1822 the only theatre in Boston was the Boston Theatre on Federal and Franklin Streets, which had been remodeled in 1798 and was considered one of the best in the country. The performance began at six o'clock in the winter and half-past six in the spring. Today there are 40 theatres in Boston, 36 motion-picture houses, 80 halls which seat four hundred or more, and 62 halls seating less than four hundred.

There was no organized fire department in 1822. In 1922 Boston has a highly organized fire force comprising 1,170 men, with 62 fire stations and 1,205 alarm boxes. In 1822 the men who worked the engines received a small compensation and were exempt from militia duty. In 1920 the cost of the fire department was \$3,223,133 including pensions.



The "Constables" who kept the Bostonians of 1822 in order are now replaced by 1,846 policemen. In the city today there are 135 hotels, 33 incorporated hospitals, and 3,077 manufacturing plants. The largest number of establishments in any one industry is in the book and job printing business—311 individual enterprises. The confectionery and ice-cream trades employ the largest number of workers.

It is fitting that we should here acknowledge our indebtedness to the following who have assisted in the preparation of this brochure by permitting us to use photographs and prints: the directors of the Boston Real Estate Exchange, the members of the House Committee of the Exchange Club, the Bostonian Society, the officers of the New England Mutual Life Insurance Company, J. Sumner Draper and Mark Temple Dowling, Claude Fisher, Herman Parker of Macullar Parker Company, and Henry Penn of Penn the Florist. We desire especially to mention the cordial co-operation given to us by Walter K. Watkins, Charles F. Read and William B. Clarke of the Bostonian Society.

Thanks are also due to the Hon. Andrew J. Peters, Ex-Mayor of Boston, to the late Dr. Edward M. Hartwell, City Statistician, and Horace R. Keay and William T. Seeger of his office, Irwin C. Cromack, assistant chief City Engineer, and James Donovan, City Clerk, for their help in preparing this brochure.

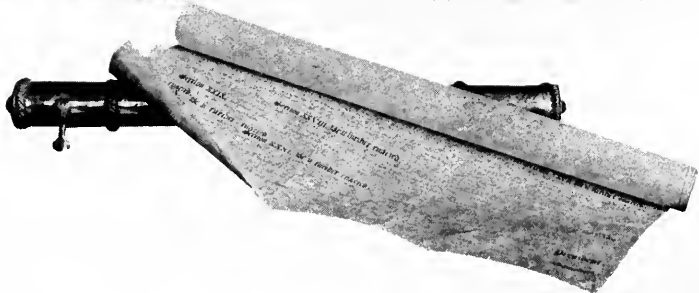


CHARLES RIVER EMBANKMENT BEFORE CONSTRUCTION  
OF ESPLANADE



we names of the Mayors elected under this  
 Charter.  
 John Phillips  
 1822  
 James Andrew  
 1823 1824 1825 1826 1827 1828  
 Harrison Gray Otis  
 1829 1830 1831  
 Charles Fells  
 1832 1833  
 Shadrach Knapen Jr.  
 1834 1835  
 Samuel Sewall, & Amos A. Phelps  
 1836  
 Samuel Atkins Elliot  
 1837 1838 1839  
 Jonathan Kimball  
 1840 1841 1842  
 Austin Corbinson  
 1843 1844  
 Thomas Espinwall & Charles  
 1845  
 and lastly in the order  
 of each ensuing year  
 1846 1847 1848  
 John Percival Kirtlev  
 1849 1850 1851  
 Benjamin Oliver  
 1852 1853  
 Jerome Van Koven & Charles Smith  
 1854

in Charter Boston incorporated with the addition of the other officers of the  
 City & Boston under a new Charter, the names of the officers for the  
 year 1854 were chosen from the result of the election and as follows:  
 At the time of making this arrangement the Charter of 1822 was the  
 only one in force and therefore John Quincy Adams, Peter Sumner, Charles  
 Sumner, James P. Freeman, and Benjamin Lynde, Mayor, in 1854, and James  
 P. Smith.



From a photograph

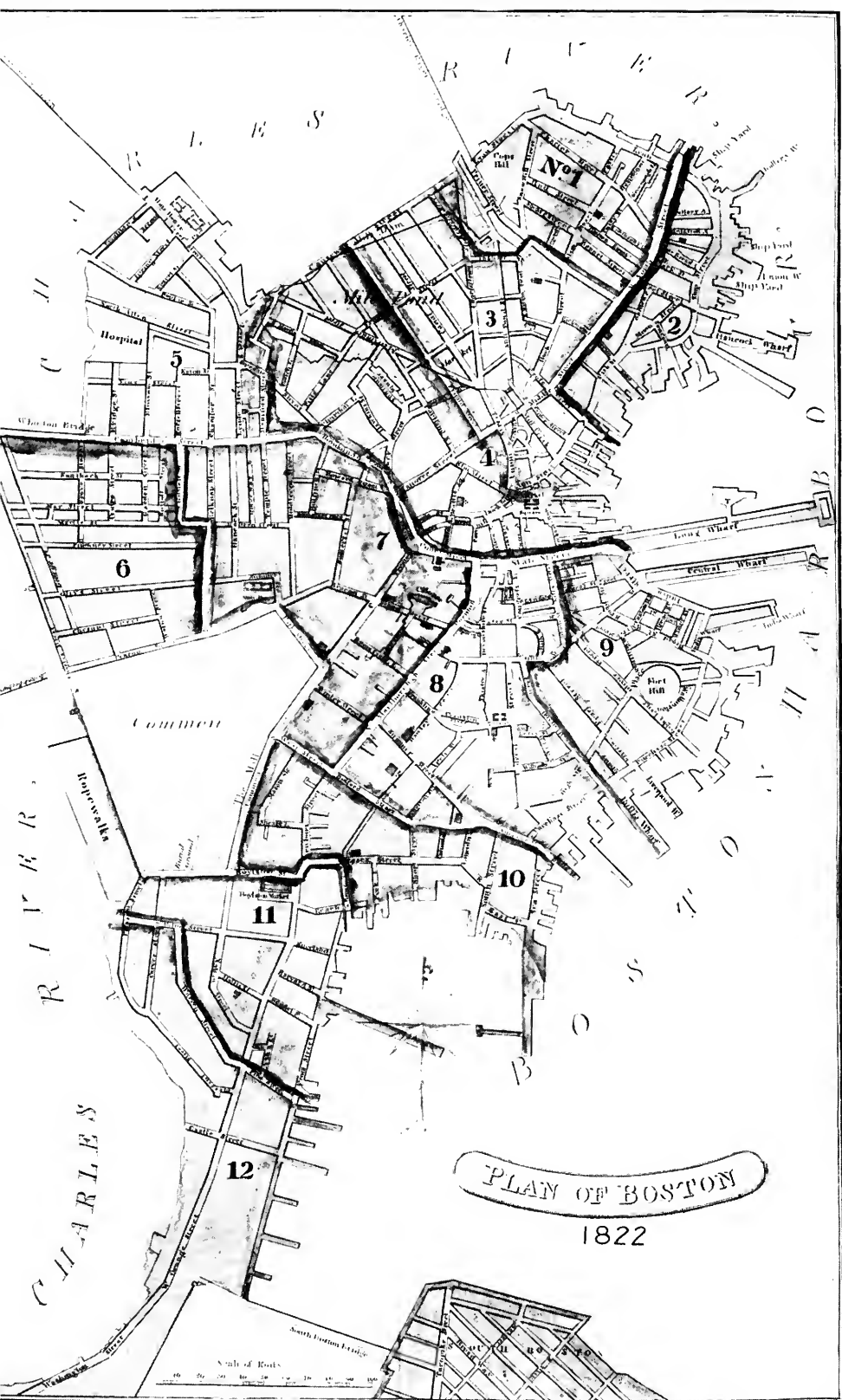
Kindness of the City of Boston

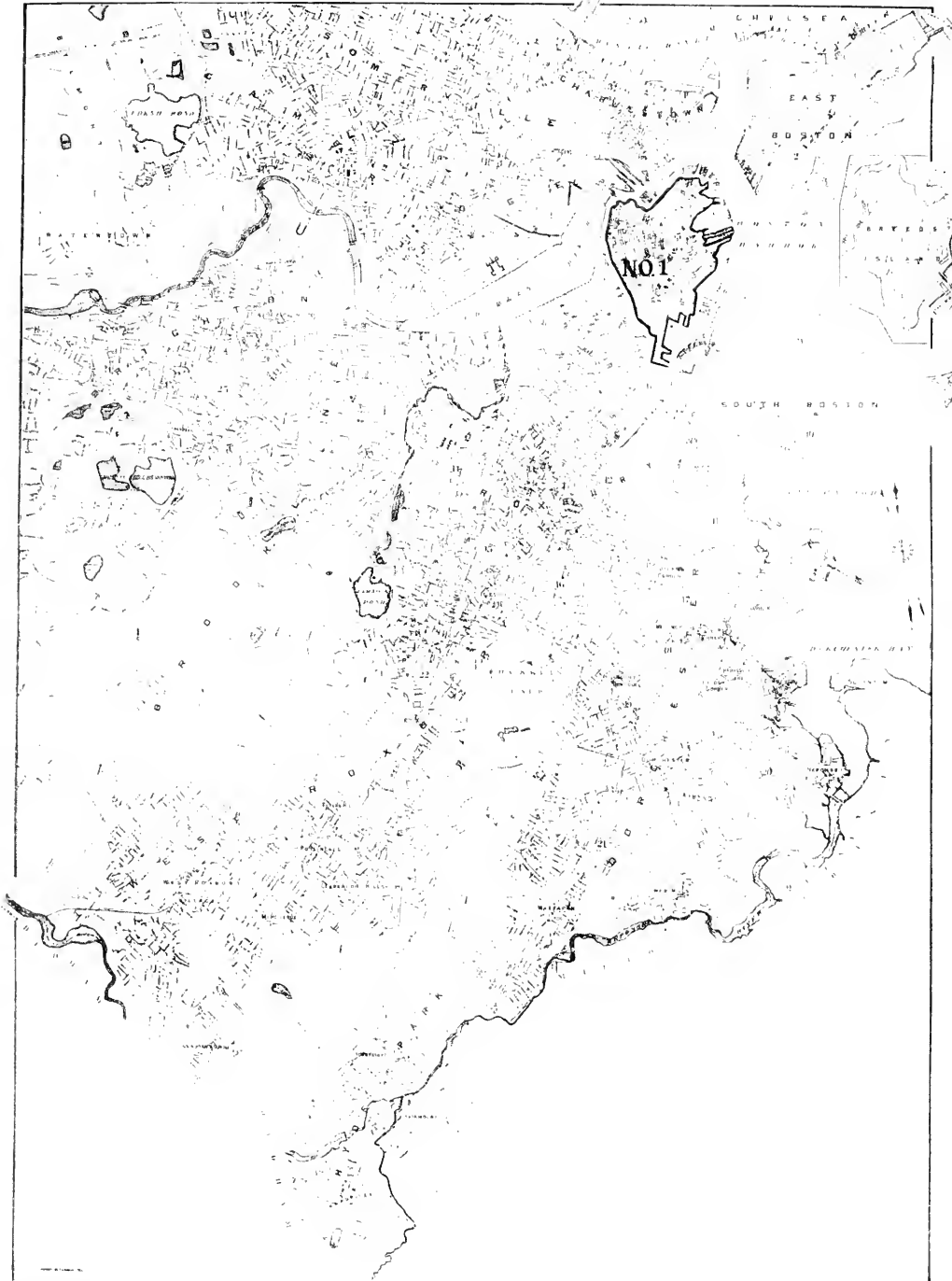
THE SILVER CASKET WHICH CONTAINS THE ORIGINAL CHARTER OF THE CITY OF BOSTON

The engraving shows the names of the mayors who were elected under this charter and served the city from 1822 to 1854.

# VIEWS OF BOSTON





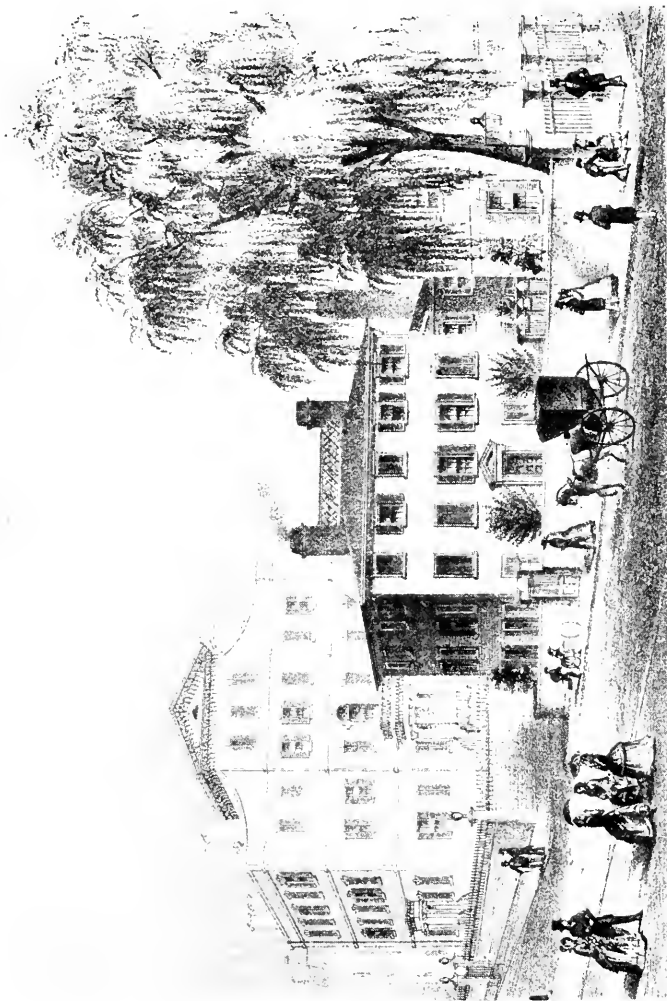


*From a map*

*Courtesy of The Helotype Company of Boston*

### PLAN OF BOSTON 1922

The section enclosed and marked No. 1 shows the size of Boston in 1822, which is shown in detail on the opposite page. Boston in 1822 was bounded roughly on the west by Charles Street and the South Boston Bridge.



*From a print*

HIGH STREET IN 1822

*Kindness of the Boston Real Estate Exchange*

Showing "Harris' Folly" in the background of the Jeffrey Richardson residence on the corner of Pearl Street.

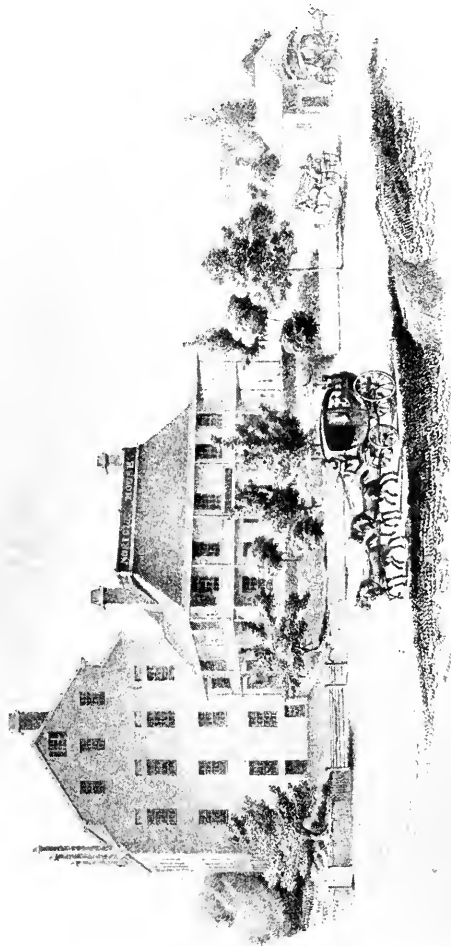


*From a photograph*

*Kindness of Messrs. Draper & Dowling*

### THE OLD CITY HALL OF BOSTON ON SCHOOL STREET

Before the erection of the present building it was here that the city officials, under the charter of 1822, first had their offices. To the left of the picture can be seen the former Registry of Deeds and to the right, the Niles Building.



### NORFOLK HOUSE....ROXBURY.

THE subscriber, who has occupied the NARVEST TOWER for the last three years, has taken the NORFOLK HOUSE, in Roxbury, and is ready to receive moderate parties, large or small, which may favor him with their company. The House is large, has several parlours, about thirty bed-rooms, new furniture, and is well appointed for Ladies and Gentlemen, and one of the largest and most splendid breakfast-rooms in this city, called the HOLLANDER HALL.

Gentlemen and Ladies from a distance, who visit Boston for pleasure or health; and wish to visit the society of the city with the retirement of the country, will find this House, an agreeable residence, its situation being upon an eminence, surrounded by fine trees and shrubbery, commanding a fine view of the city of Boston, harbor, and adjacent country, contiguous to the

Powder-house road, distance only two miles from the capital, in road down which express-messengers, will run every half hour in the day. Parties are received, affording an easy and regular conveyance to all who may wish to use them.

The subscriber might give abundant assurance of unswerving attention, choice liquors, good waiters, judicious charges, &c. &c. but he prefers to leave it to the judgment of his visitors whether he deserves their patronage or not.

M. DURAND.

27 Eight engraver JOHN LIND ALLEN are attached to the House for the convenience of Clubs and other parties, but in a situation calculated to give no annoyance to visitors.

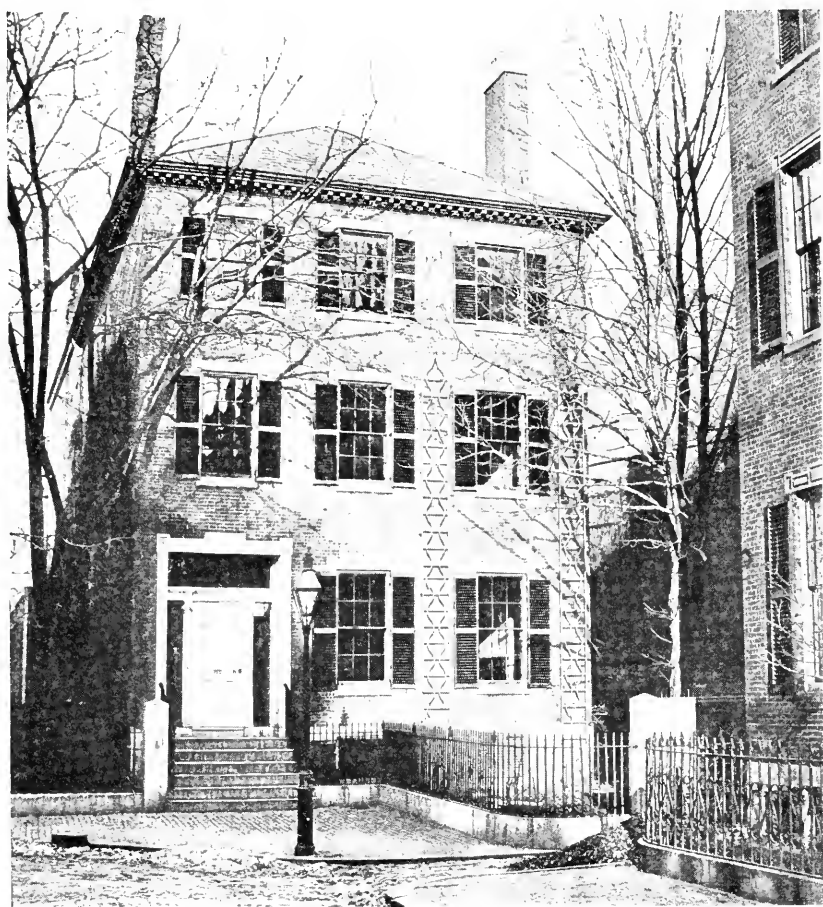
June, 1828.

From a print

Kindness of Messrs. Draper & Dowling

OLD NORFOLK HOUSE IN ELIOT SQUARE, ROXBURY, ABOUT 1828



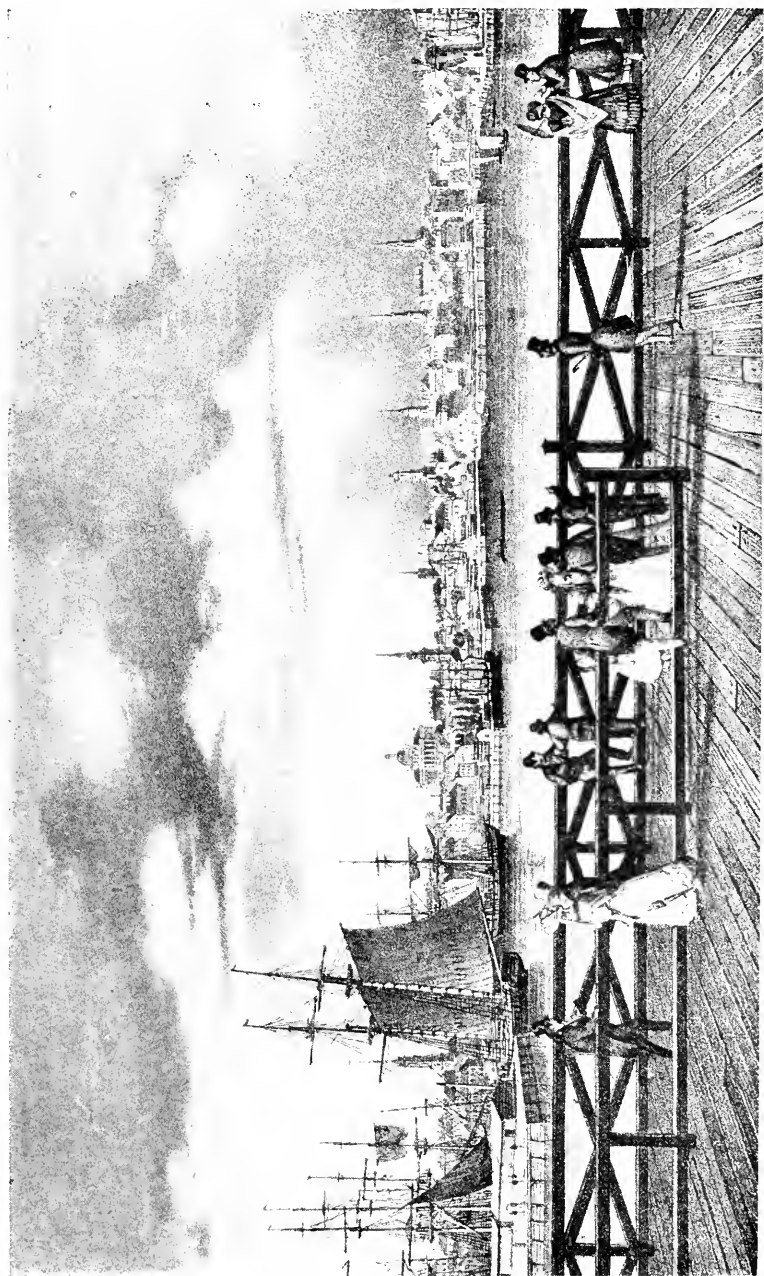


*From a photograph*

*Kindness of the Boston Real Estate Exchange*

THE RESIDENCE OF SAMUEL WHITWELL

Built by him in 1822, on Winthrop Place, now Winthrop Square.

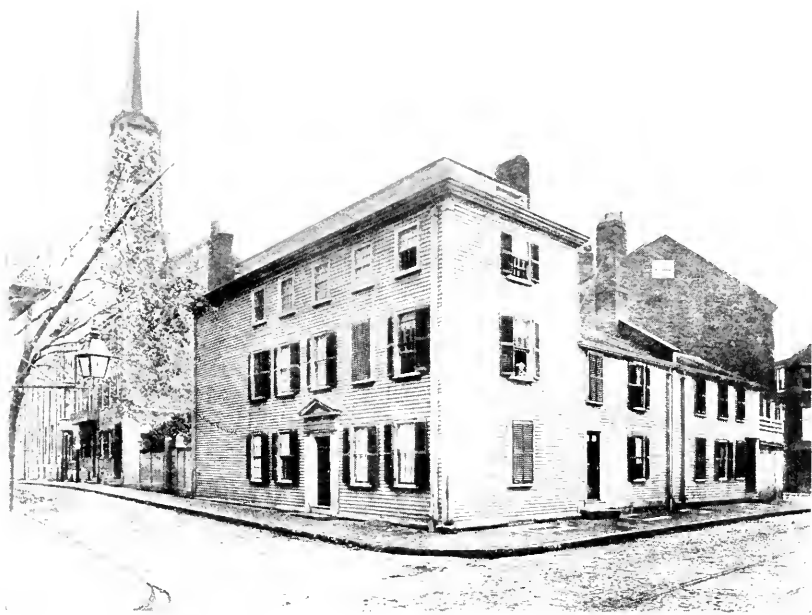


*From a French print*

*In the collection of the State Street Trust Company*

**VIEW OF BOSTON AND THE SOUTH BOSTON BRIDGE**

Showing the State House in the center and Wind Mill Point on the extreme right, now the vicinity of the South Terminal.



*From a photograph*

*Kindness of the Exchange Club*

### THE BRADLEE-DOGGETT HOUSE

Formerly on the corner of Tremont and Hollis Streets, where some of the Boston Tea Party assembled. On the left of the picture can be seen the Hollis Street Church, later altered as the Hollis Street Theatre.

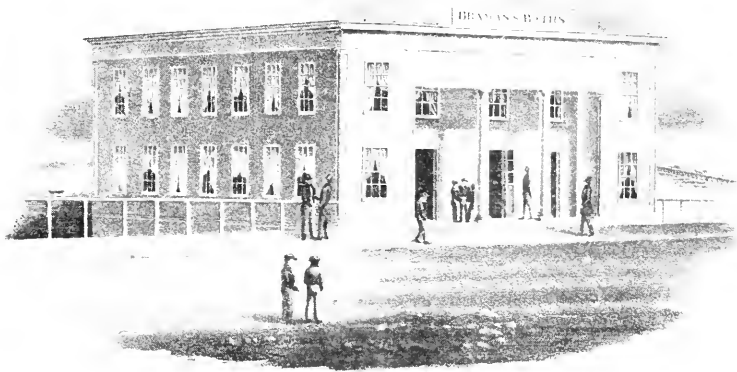


*From a photograph*

*Kindness of the Exchange Club*

### TEMPLE PLACE

Looking toward Tremont Street and the Common.

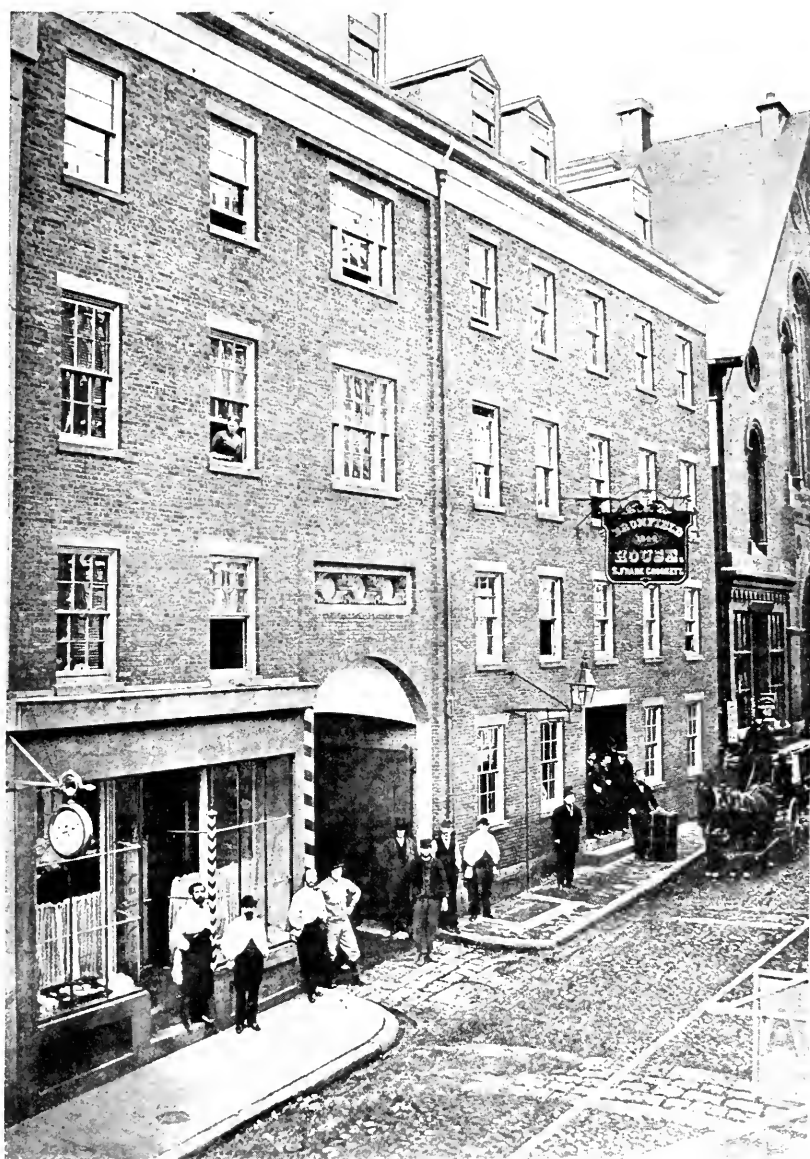


( BRAMAN'S )  
**HOT & COLD BATHS**  
AND SWIMMING SCHOOL  
( Lower end of Chestnut St near the Mill Dam. )  
( BOSTON. )

*From a lithograph*

*Kindness of Messrs. Draper & Dowling*

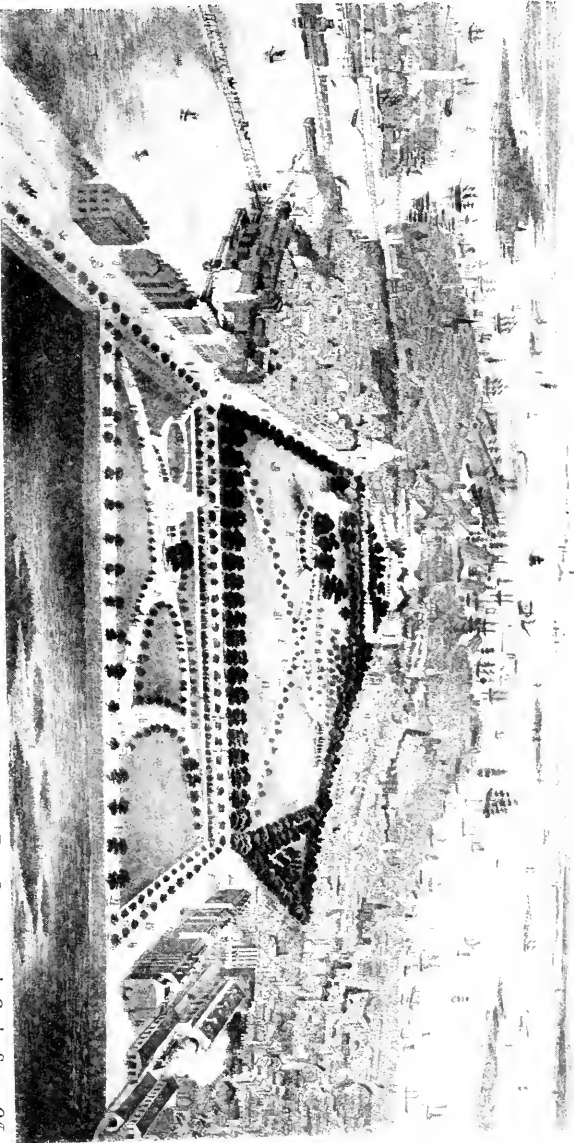
BRAMAN'S BATHS ON CHESTNUT STREET



*From a photograph*

*Kindness of the Exchange Club*

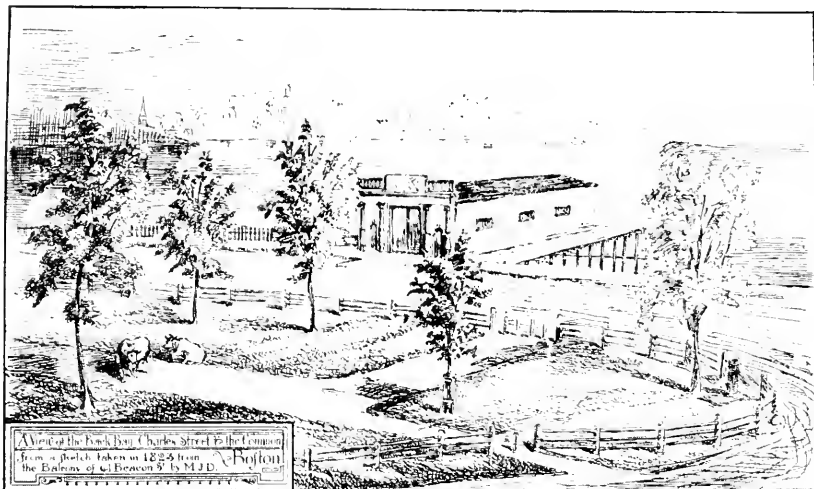
THE OLD BROMFIELD HOUSE ON BROMFIELD STREET IN 1858  
With the Bromfield Street Methodist Church on the extreme right. The archway shown in the center of the picture, still in existence, was then the entrance to the stable in the rear of the hotel.



*From a lithograph*

*In the collection of the State Street Trust Company at the Copsey Square Office*

A BIRD'S-EYE VIEW OF BOSTON AND ITS SURROUNDINGS IN 1850

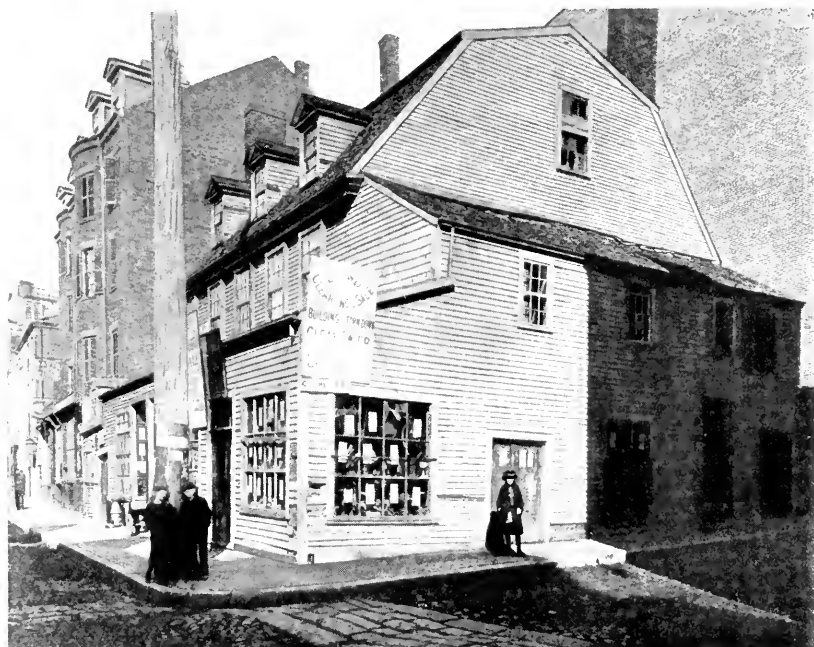


*From a drawing*

*Kindness of the Bostonian Society*

### VIEW OF THE BACK BAY, CHARLES STREET AND THE COMMON IN 1823

The building shown is the gun house of the Sea Fencibles, an independent company of maritime men. Sketch from the balcony of 61 Beacon Street.



*From a photograph*

*Kindness of the Exchange Club*

### THE OLD SHEAFE HOUSE

On the corner of Columbia and Essex Streets, which was Earl Percy's headquarters during the siege of Boston.





*From a photograph*

*Kindness of the Boston Real Estate Exchange*

### SCOLLAY SQUARE

Looking toward Pemberton Square. On the left is the site of the Suffolk Savings Bank and on the right, the Scollay Building. The dwellings seen in the background are now on the site of the present Court House.



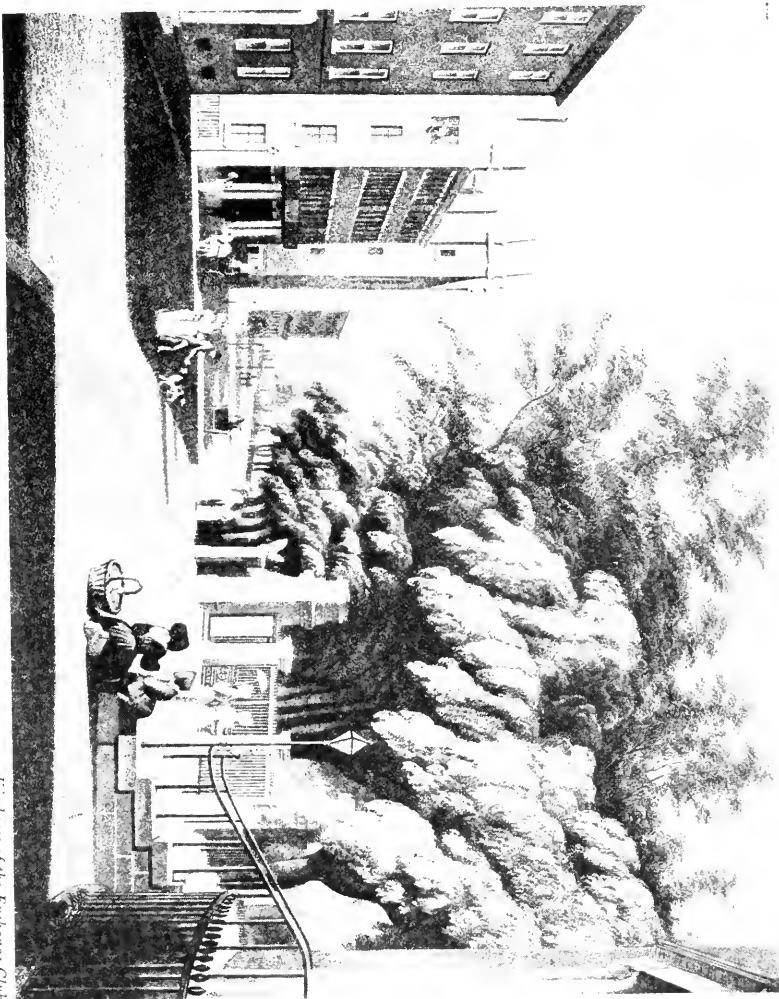
CATHEDRAL OF THE HOLY CROSS.  
FRANKLIN ST. BOSTON.

DEDICATED SEPT. 29<sup>TH</sup> 1803.  
Length 100 feet, greatest width 24 feet.

*From a print*

*Kindness of Messrs. Draper & Dowling*

CATHEDRAL OF THE HOLY CROSS  
On Franklin Street near the corner of Devonshire Street.



*From a print*

### TREMONT STREET

*Kindness of the Exchange Club*

Showing Winter Street on the left and beyond Masonic Temple at the corner of Temple Place.  
The steps of the Park Street Church, Boston Common fence and the Elms are shown on the right.

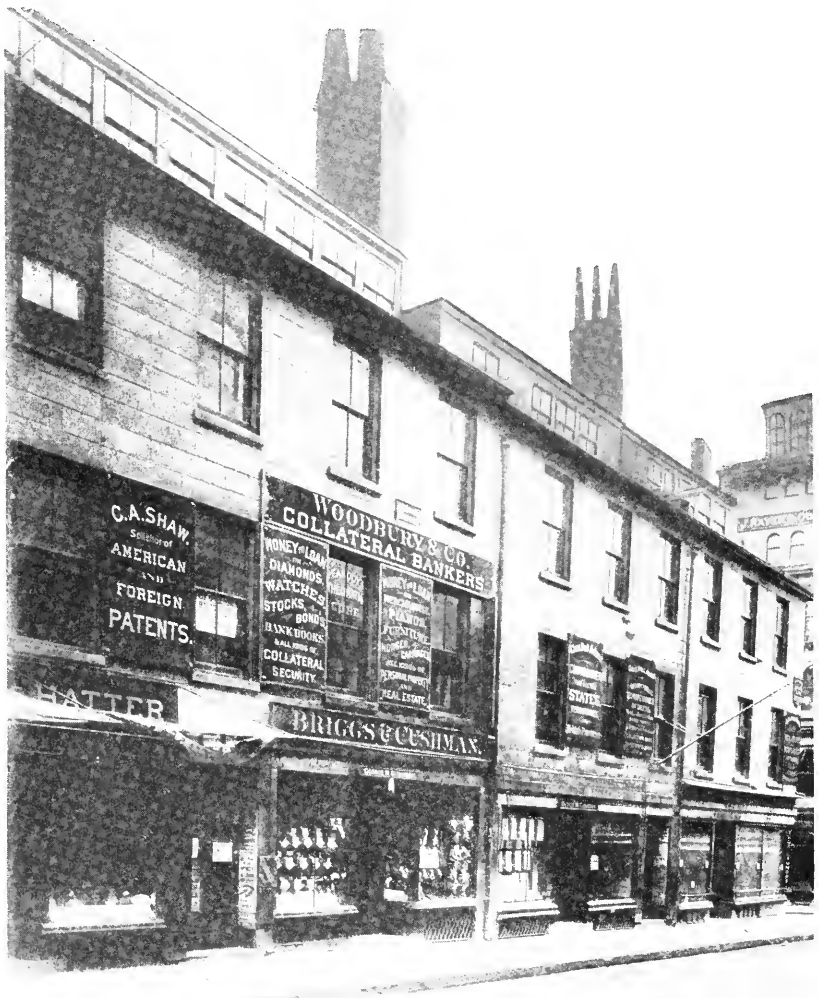


*From a print*

*Kindness of the Bostonian Society*

### TREMONT STREET IN 1843

Showing on the left the old Tremont House, and on the right, Tremont Theatre, later Tremont Temple, since burned and rebuilt. King's Chapel and burial-ground are seen beyond.

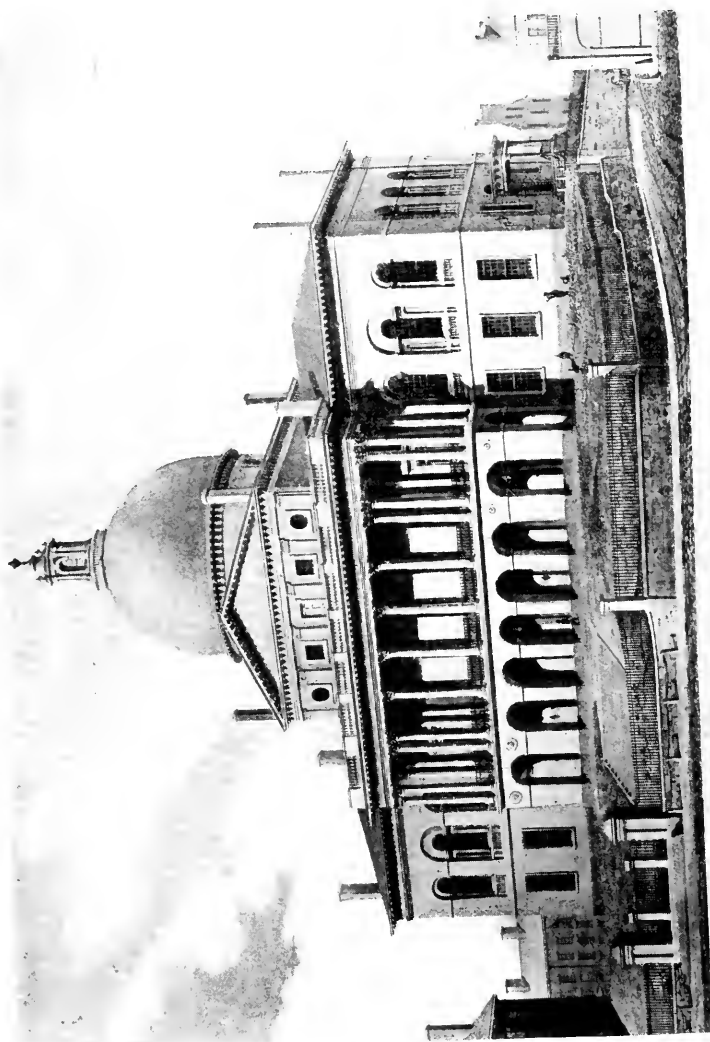


*From a photograph*

*Kindness of the Exchange Club*

**NORTH SIDE OF COURT STREET**

The present site of the Ames Building on the corner of Washington Street.

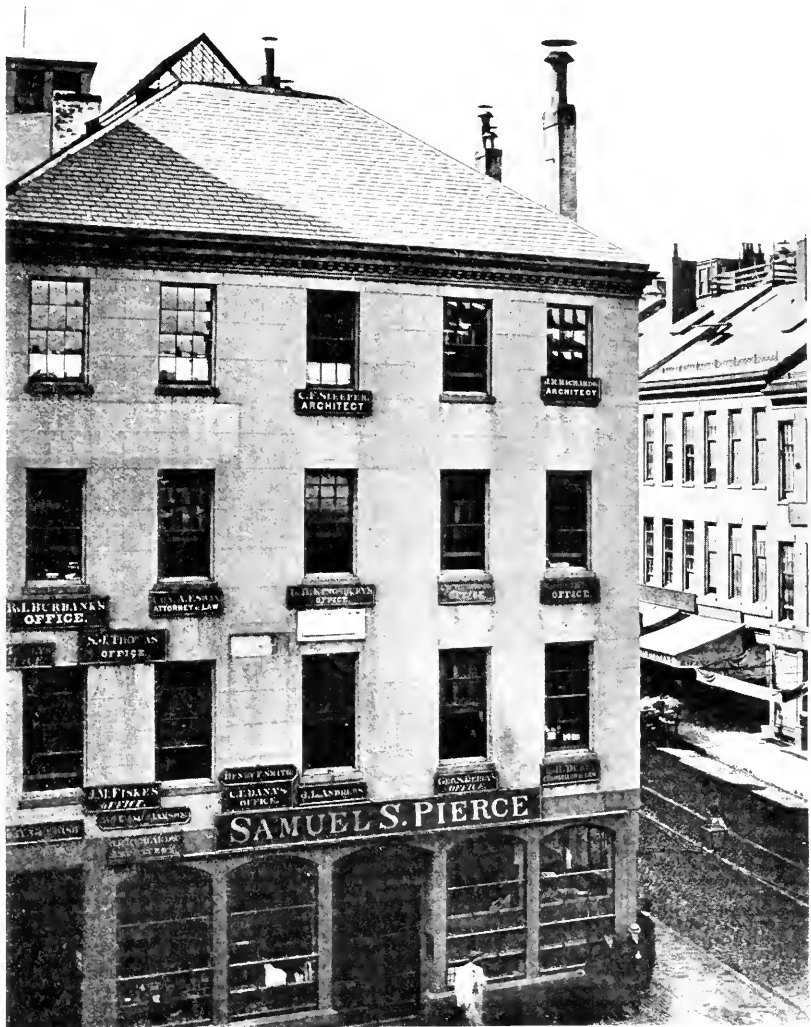


STATE HOUSE, BOSTON.

*Kindness of Messrs. Draper & Dowling*

THE STATE HOUSE OF THE COMMONWEALTH OF MASSACHUSETTS  
Designed by Bulfinch, as it appeared in 1835.

*From a print*

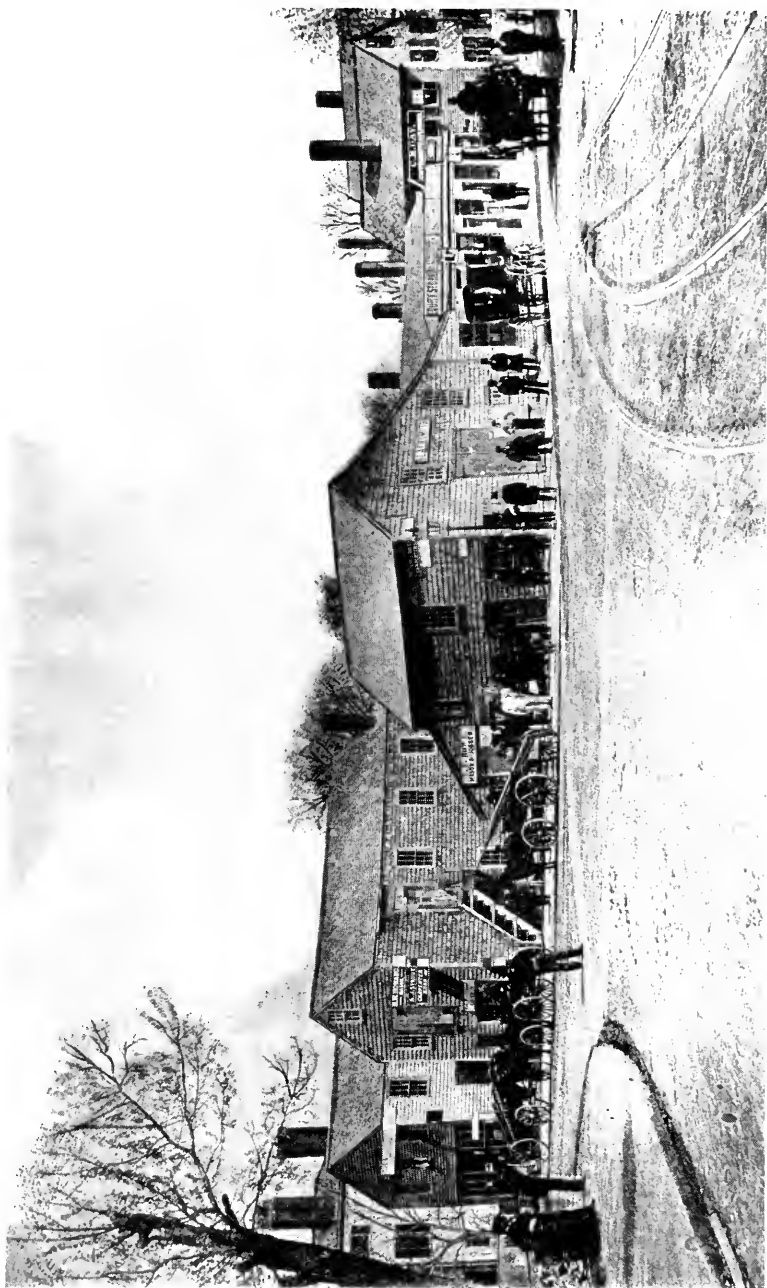


*From a photograph*

*Kindness of the Boston Real Estate Exchange*

**THE ORIGINAL LOCATION OF S. S. PIERCE COMPANY**

On Court Street. Showing Tremont Street on the right. George Washington lodged in this building in 1789.

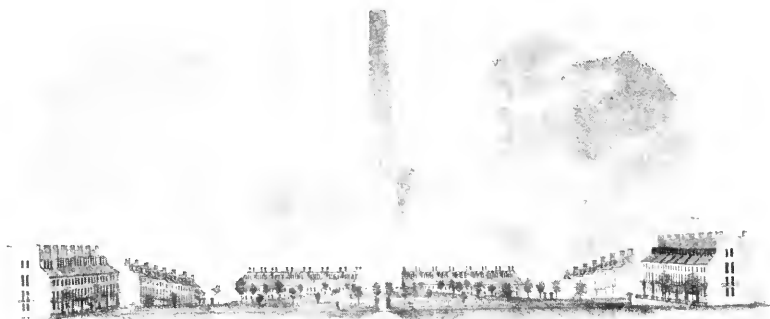


*From a photograph*

**SITE OF THE OLD HOTEL DARTMOUTH**  
At the corner of Dudley and Warren Streets, Roxbury.

*Kindness of the Boston Real Estate Exchange*





BUNKER HILL MONUMENT

*From a print*

*In the collection of the State Street Trust Company*

**BUNKER HILL MONUMENT, CHARLESTOWN**

The earliest view, showing the restricted style of residences.

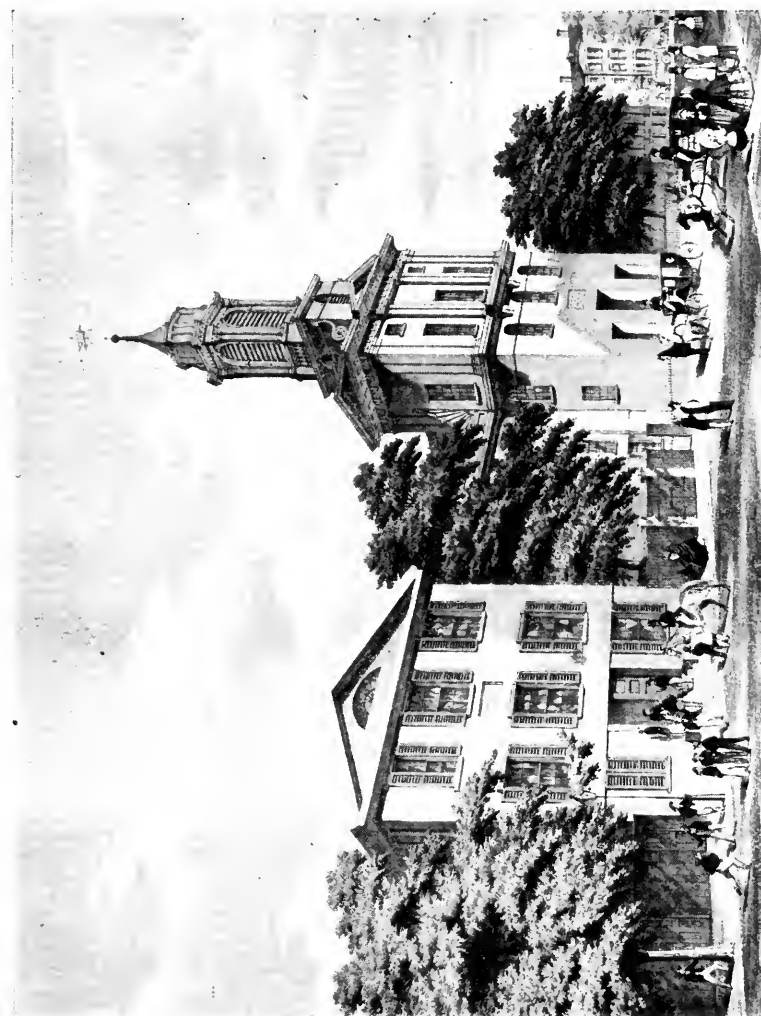


*From a print*

*Kindness of the Bostonian Society*

**VIEW OF SUMMER STREET**

Showing the Meeting-house of the New South Society, designed by Bulfinch, on Church Green at the junction of Bedford and Summer Streets.

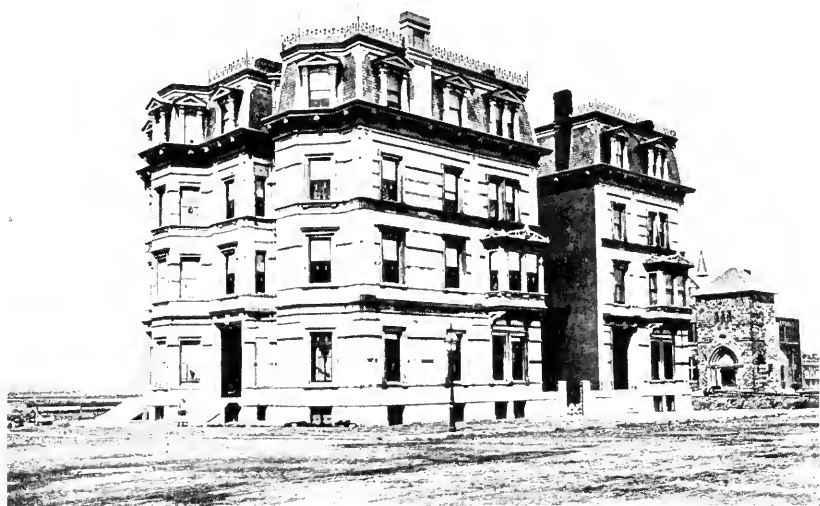


*From a print*

*Kindness of Messrs. Draper & Dowling*

**CHAUNCY HALL SCHOOL AND FIRST CHURCH ON CHAUNCY PLACE, NOW CHAUNCY STREET, AS THEY APPEARED IN 1828**

The school at one time was on Boylston Street, next to the present location of the Copley Square office of the State Street Trust Company.



*From a photograph*

*Kindness of the Boston Real Estate Exchange*

### THE SAMUEL N. BROWN HOUSE

On Dartmouth Street at the corner of Blagden Street, the site of the Boston Public Library in Copley Square. On the right is the unfinished tower of the New Old South Church on Boylston Street.



*From a painting*

*Kindness of the Bostonian Society*

NORTH SIDE OF STATE STREET FROM WASHINGTON STREET  
As it appeared in 1825. On the left is the site of the first shop in Boston and of the present Devonshire Building and on the right is the Old State House.



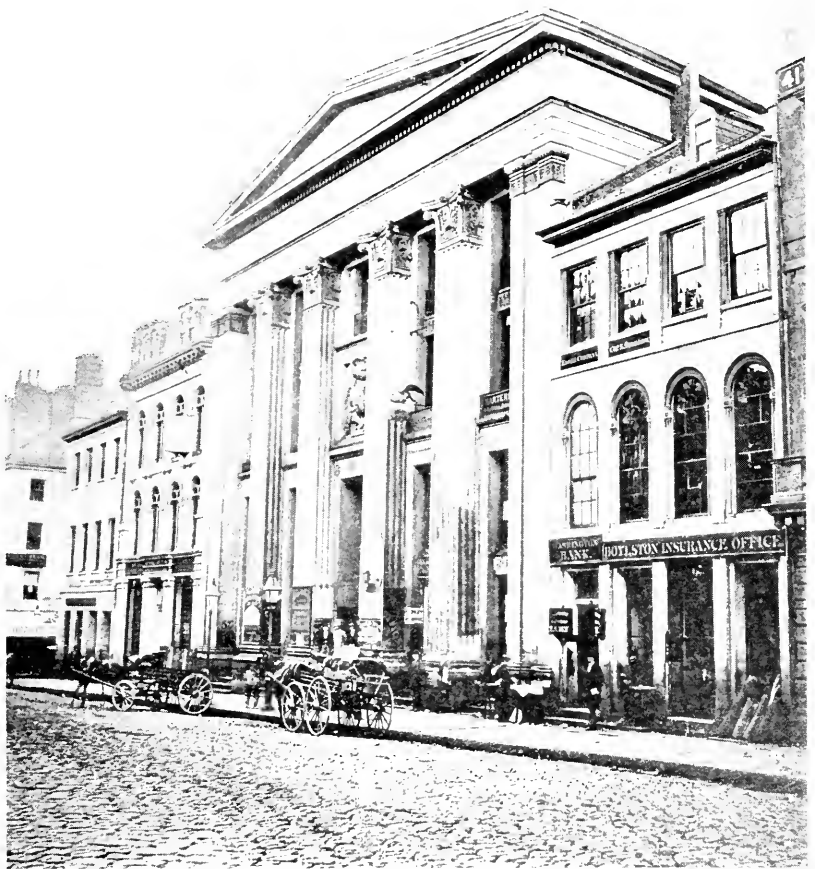
*From a photograph*

*Kindness of J. Murray Forbes*

#### PEMBERTON SQUARE ABOUT 1860

On the left is the present site of the Suffolk County Court House, in the center background, Police Headquarters, and on the right, Barristers Hall, and the extreme right, the Pemberton Building.

Among the residents of this locality were the following: Dr. George C. Shattuck, Mrs. John Mackay, Samuel R. Putnam, Joseph Coolidge, F. B. Crowninshield, Robert M. Mason, Nathaniel I. Bowditch, John A. Lowell, Peter C. Brooks, Jr., P. S. Shelton, Josiah Bardwell, Mark Healey, R. C. Winthrop, and Mrs. Henry Sigourney.

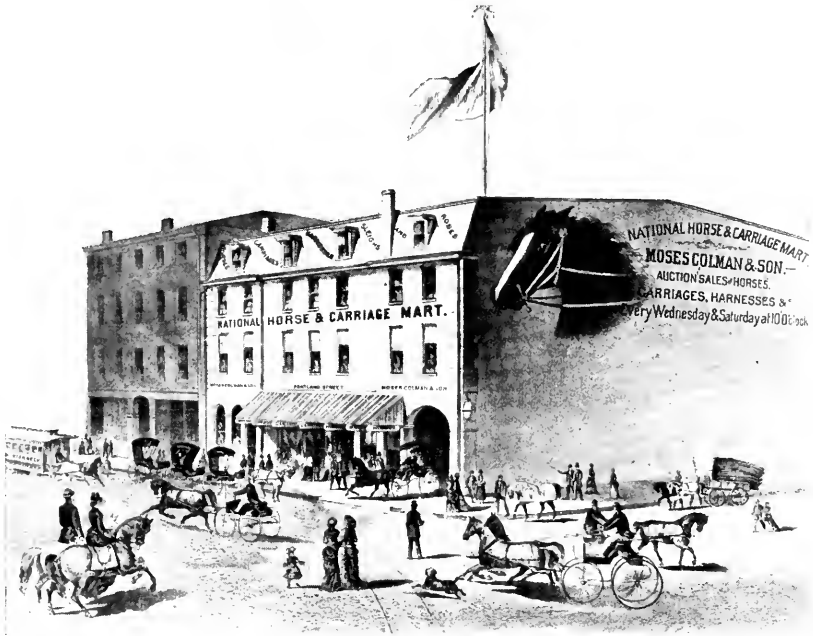


*From a photograph*

*Kindness of the Exchange Club*

### STATE STREET

Showing the Merchants Exchange as it appeared in 1860. These buildings are now replaced by the Exchange Building, number 53 State Street.



*From a lithograph*

*Kindness of Messrs. Draper & Dowling*

**NATIONAL HORSE & CARRIAGE MART ON PORTLAND STREET**

This street has been since 1875—about the time of this print—the center of auction sales of horses, carriages, etc., and the above illustration shows the form of advertising used in early days.

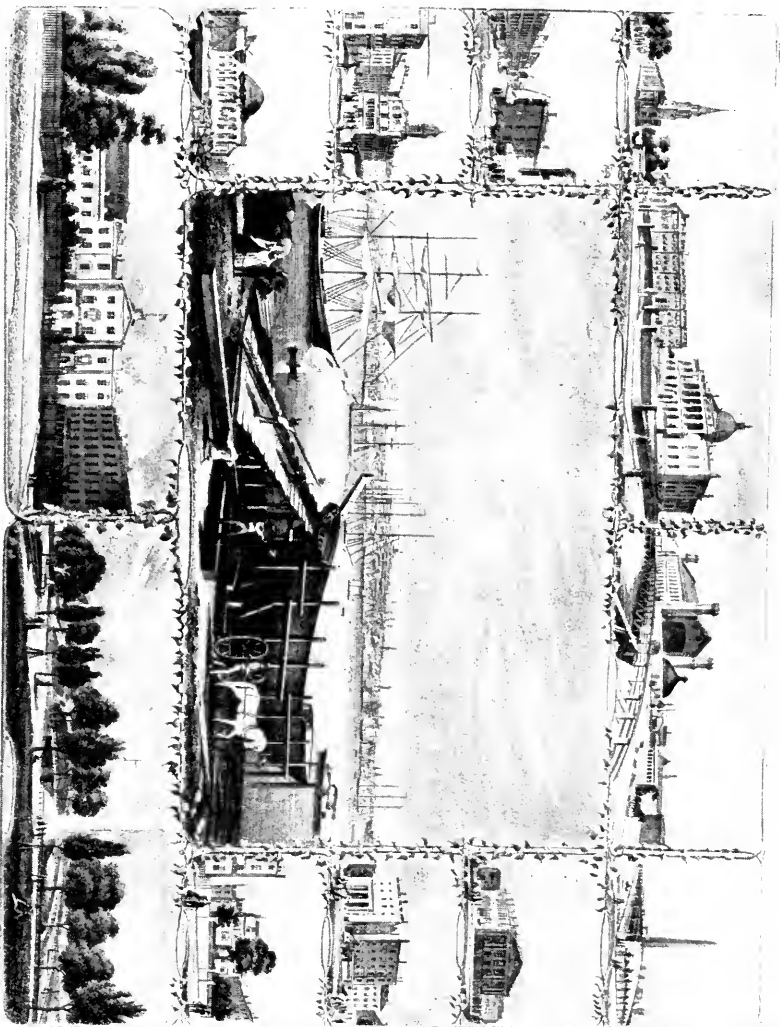


*From a photograph*

*Kindness of the Boston Real Estate Exchange*

**COMMONWEALTH AVENUE AT THE CORNER OF DARTMOUTH STREET**  
 Showing the Hotel Vendome before the addition was built.

.Iround the  
edge of the  
picture be-  
ginning on the  
top from left to  
right can be  
seen views of  
the Park Street  
Church, State  
House, Fitch-  
burg Railroad  
Depot, Banker  
Hill Monu-  
ment, Boston



From a print

VIEW OF BOSTON HARBOR FROM EAST BOSTON ABOUT 1860

In the collection of the State Street Trust Company

and Maine  
Depot, Reserve  
House, Han-  
cock House,  
Boston Com-  
mon, City  
Hall, Custom  
House, Old  
State House,  
Tremont Row  
and the Scollay  
Building.



*From a print*

*Kindness of Messrs. Draper & Dowling*

### SUMMER STREET

Showing the South Boston horse railway depot at Church Green.



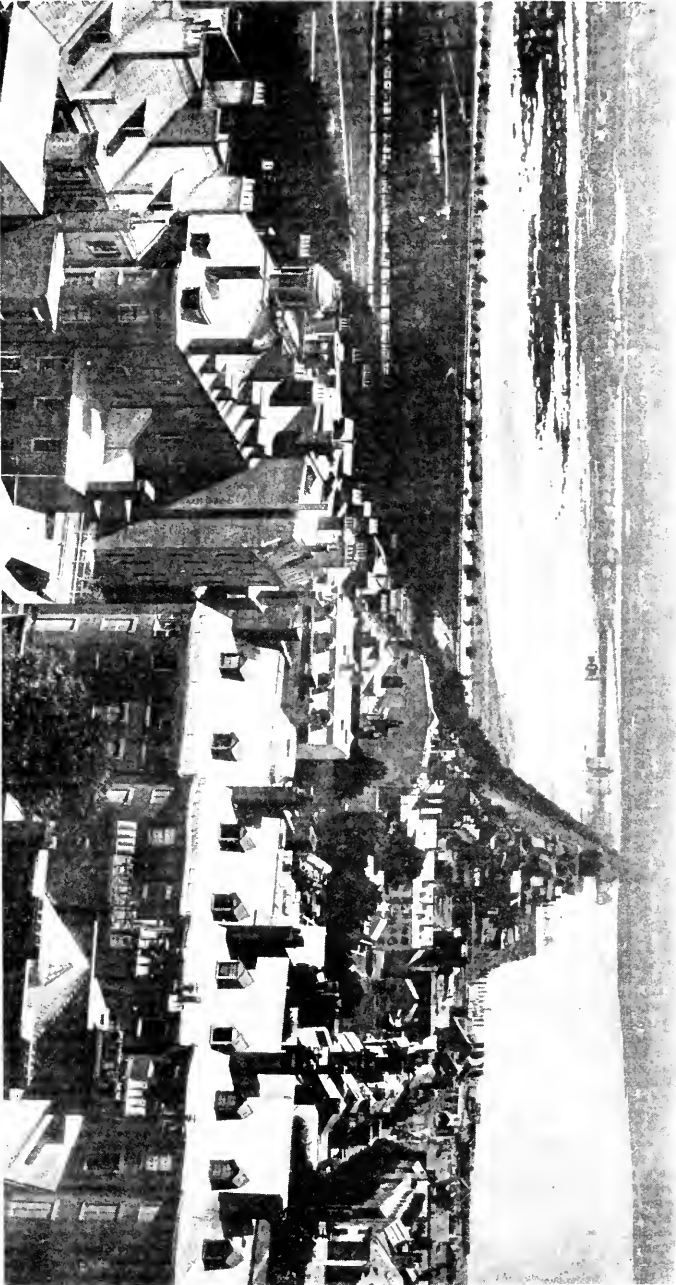
*From a painting*

*Kindness of Henry Penn*

### PARK STREET FROM TREMONT STREET

Showing the Common on the left, the State House on Beacon Hill in the center, and the Park Street Church and Burying Ground on the right.  
The original is in the possession of Bostonian Society.





*From a photograph*

**VIEW OF THE BACK BAY ABOUT 1857 BEFORE THE PROCESS OF FILLING IN WAS STARTED**

The Mill Dam, now Beacon Street, can be seen extending across the water. Charles and Arlington Streets appear at the left bordering the Public Garden.

*In the collection of the State Street Trust Company, Copley Square Office*



*From a print*

**VIEW OF BOSTON AND CHARLESTOWN**

Showing Bunker Hill Monument on Breed's Hill to the right, the Navy Yard in the center, and the Chelsea Bridge crossing the Mystic River.

*Kindness of Claude Fisher*



*From a photograph*

*Kindness of the Boston Real Estate Exchange*

**LOOKING DOWN CONGRESS STREET**

Showing the old Traveller Building at the corner of State Street, now the site of the main office of the State Street Trust Company.



*From a photograph*

*Kindness of the Boston Real Estate Exchange*

**THE OLD HOTEL BOYLSTON AT THE CORNER OF TREMONT AND  
BOYLSTON STREETS**

Now the site of the Hotel Touraine. On the right of the picture can be seen  
the Hotel Pelham, now replaced by the Little Building.



FROM ARLINGTON, S.E.

*From a lithograph*

**A VIEW OF THE PUBLIC GARDEN AND BOSTON COMMON**

From Arlington Street about 1870.

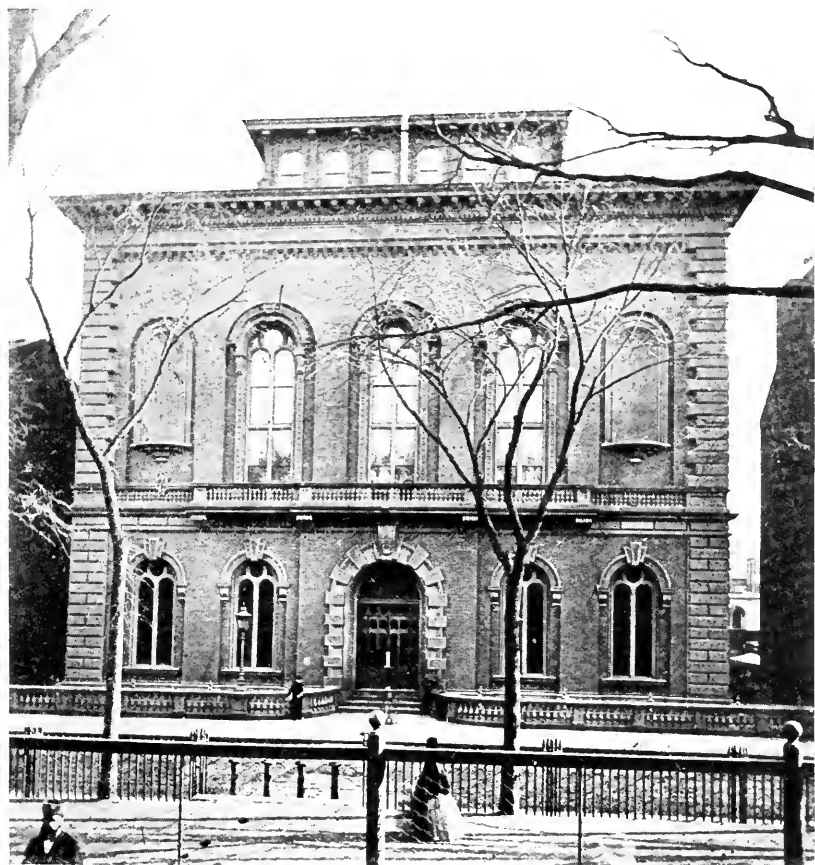
*In the collection of the State Street Trust Company*



*From a Pendleton print*

QUINCY HALL MARKET ABOUT 1830

*In the collection of the State Street Trust Company*



*From a photograph*

*Kindness of the Boston Real Estate Exchange*

THE OLD BOSTON PUBLIC LIBRARY ON BOYLSTON STREET  
Later used as a zoo for animals and now the site of the Colonial Building.  
The fence in the foreground was used to surround the Deer Park on  
Boston Common.



*From a photograph*

*In the collection of the State Street Trust Company*

**VIEW OF BOSTON AND EAST BOSTON**  
About 1859 from Telegraph Hill, South Boston.





*From a photograph*

*Kindness of the Boston Real Estate Exchange*

### PARK SQUARE IN 1870

Looking toward the second Boston and Providence Railroad Station from Boston Common.

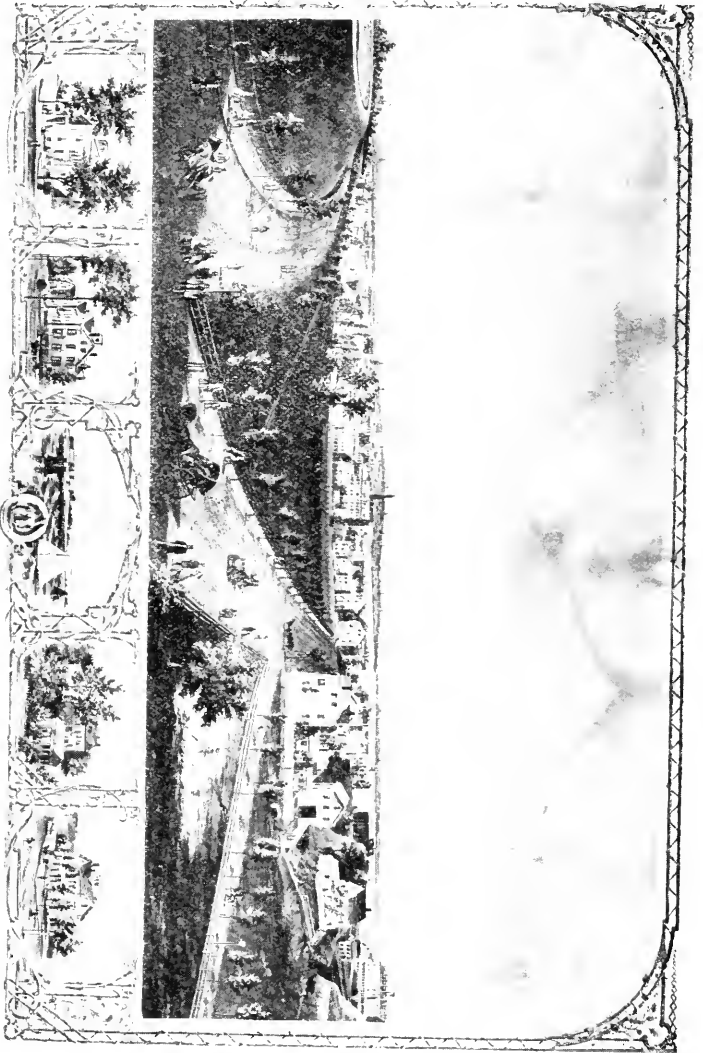


*From photographs*

*Kindness of Macullar Parker Company*

### WASHINGTON SQUARE, FORT HILL ABOUT 1870

Showing (above) Fort Hill before and (below) Fort Hill during the process of demolition. The dirt removed was used in filling in Atlantic Avenue and the Shawmut Avenue District.

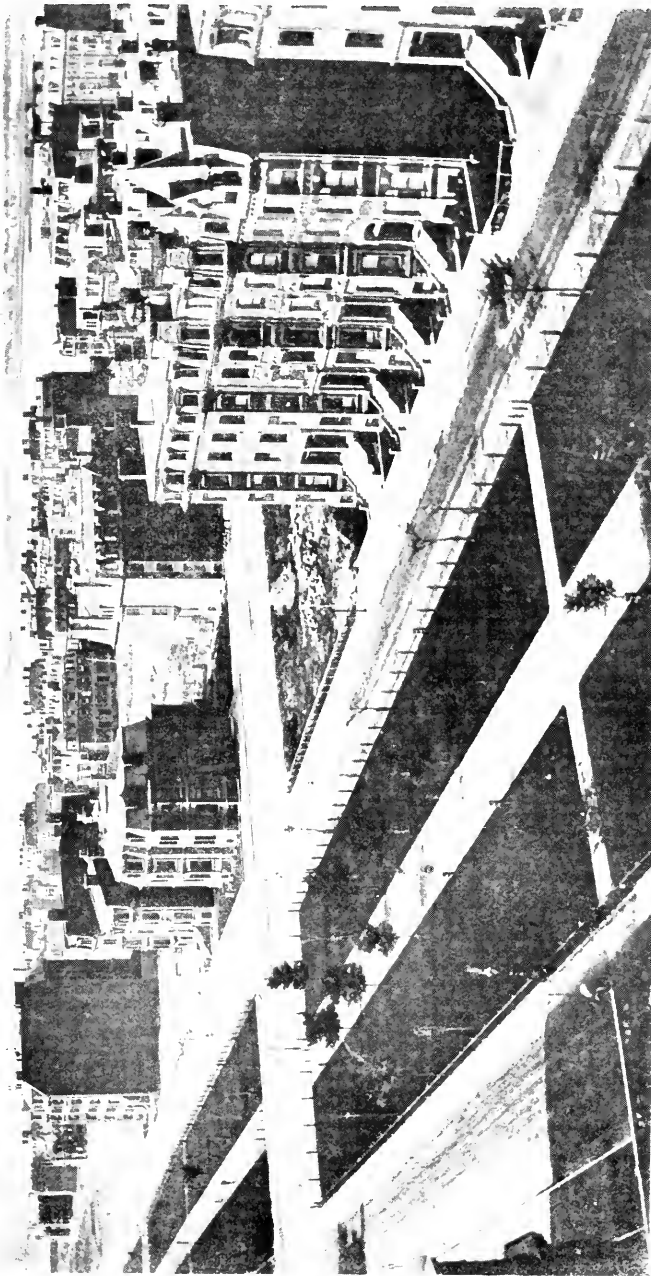


*From a print*

**SOUTH BOSTON WITH BOSTON IN THE DISTANCE**

Showing the reservoir on the left and the Perkins Institution for the Blind on the right.

*Kindness of the Bostonian Society*



*From a photograph*

**HOW THE BACK BAY LOOKED IN 1872**

Showing the west side of Commonwealth Avenue and its junction with Dartmouth Street. The Charles River is in the background.

*Kindness of the Boston Real Estate Exchange*



*From a photograph*

*Kindness of the Boston Real Estate Exchange*

#### TRINITY CHURCH IN COPLEY SQUARE ABOUT 1877

Showing the Hotel Brunswick on the left. The site of the Hotel Westminster can be seen on the right. Just beyond the tower on the extreme right of Trinity Church is the site of the present new building of the John Hancock Mutual Life Insurance Co.

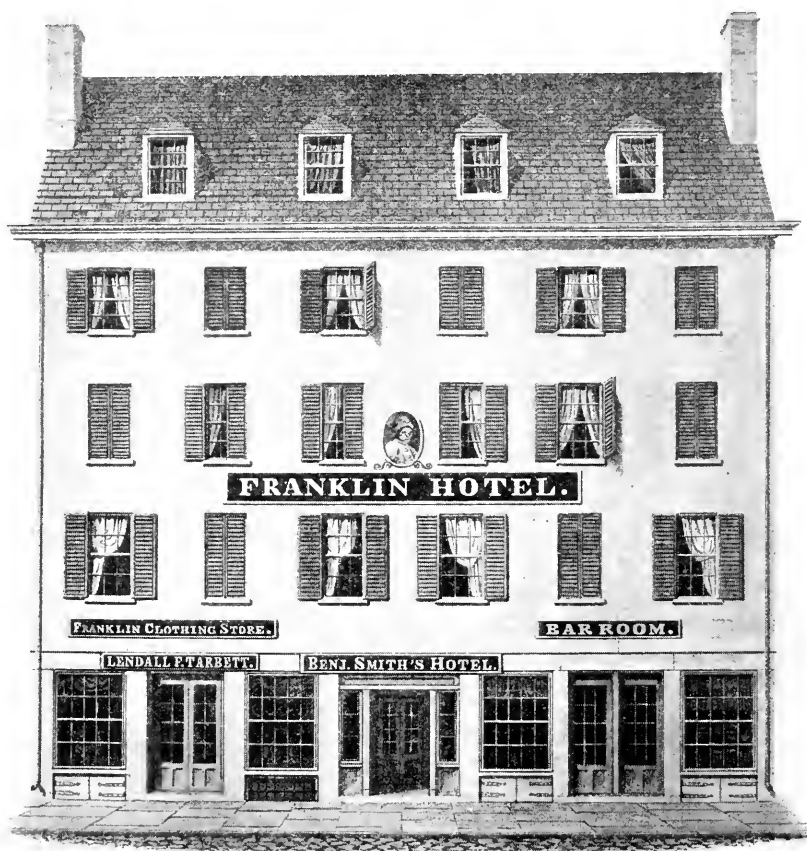


*From a photograph*

*Kindness of the Exchange Club*

#### THE CUSTOM HOUSE OF BOSTON

On lower State Street before its tower was built. On the right can be seen the Boston Chamber of Commerce Building, and in the foreground the site of the Board of Trade Building.



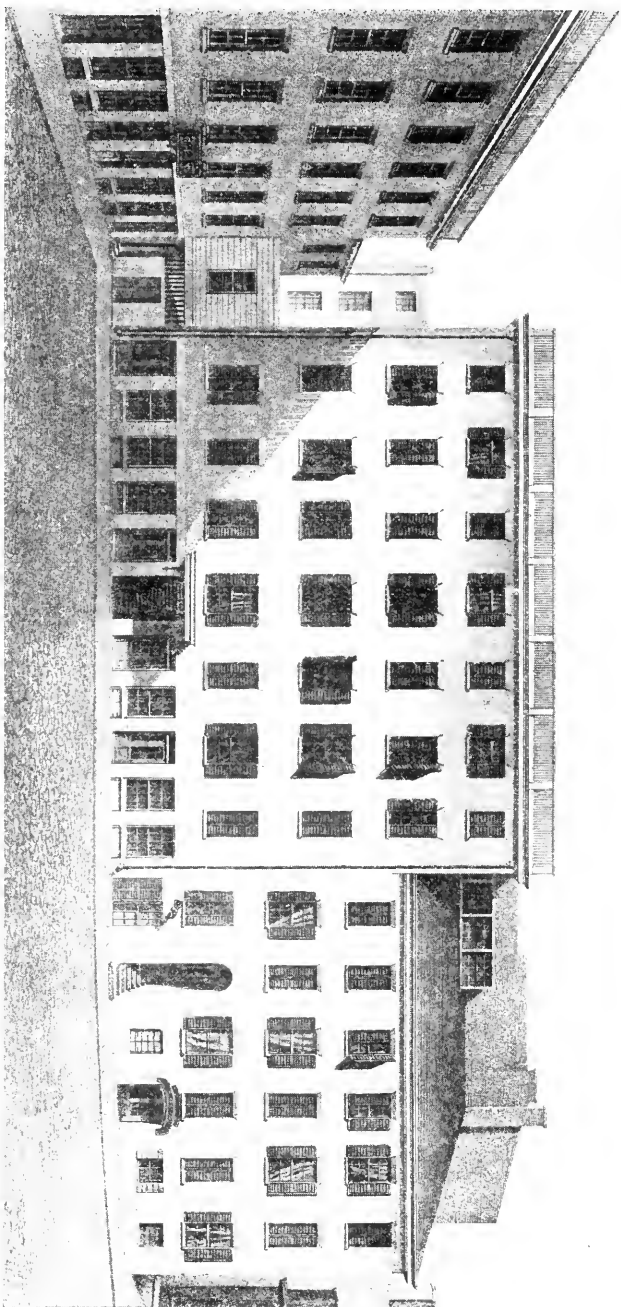
*MERCHANTS ROW, BOSTON.*

*From a Pendleton lithograph*

*Kindness of Messrs. Draper & Doxling*

THE FRANKLIN HOTEL IN 1829

West side of Merchants Row between Franklin Hall Square and North Street.



*From a Pendleton lithograph*

**THE SECOND EXCHANGE COFFEE HOUSE.**

Showing the west and south sides of Congress Square. The office of James Wilson, Town Crier is in the adjoining building on the right which shows the sign of the "Bell-in-Hand." Devonshire Street is in the rear of these buildings.

*Kindness of Messrs. Daper & Dowling*

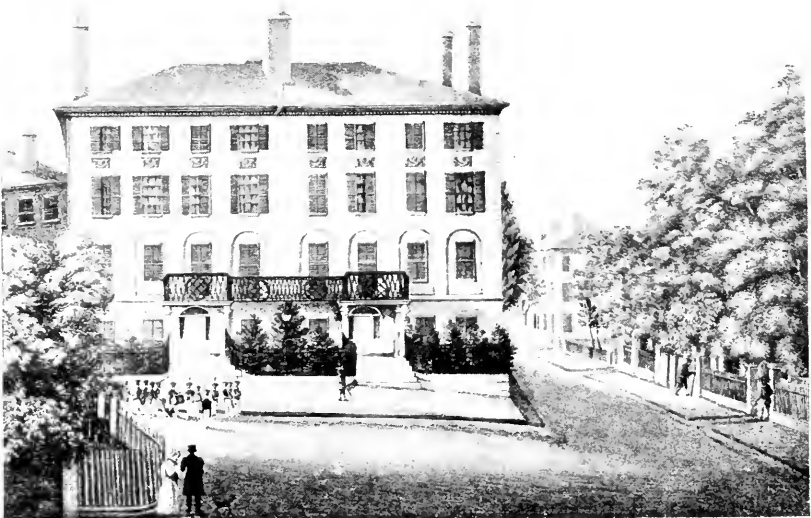


*From a painting*

*Kindness of New England Mutual Life Insurance Co.*

### POST OFFICE SQUARE IN 1878

Showing the New England Mutual Life Insurance Company building, between Pearl and Congress Streets on Milk Street.



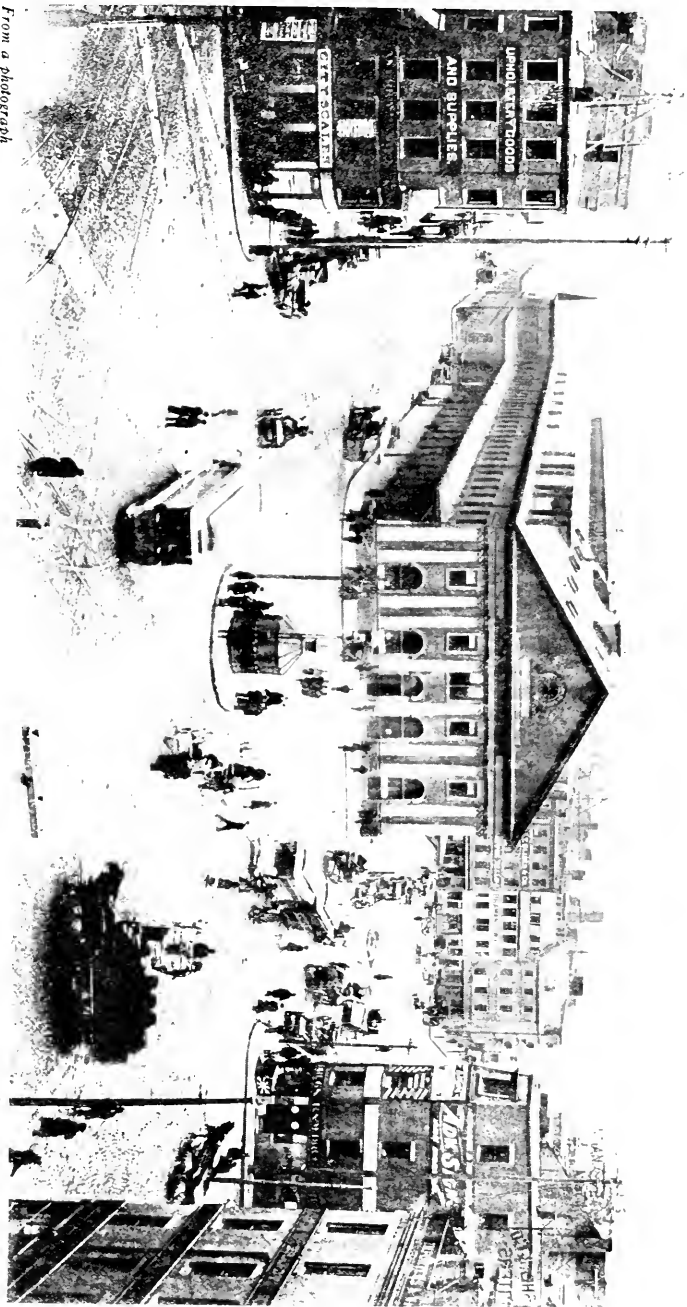
*From a lithograph*

*Kindness of the Bostonian Society*

### THE BLAKE-SHAW HOUSES IN BOWDOIN SQUARE

Between Green and Cambridge Streets, built by Samuel Parkman about 1810.





*From a photograph*

**HAYMARKET SQUARE**

Showing the Boston and Maine Railroad Station, which is now the site of the Relief Hospital.

*A kindness of the Exchange Club*



*From a photograph*

*Kindness of the Exchange Club*

### THE OLD HANCOCK HOUSE

Formerly the old Hancock Tavern, located on Corn Court off Faneuil Hall Square. Up to the time it was torn down in 1902, it was considered the oldest tavern in Boston.



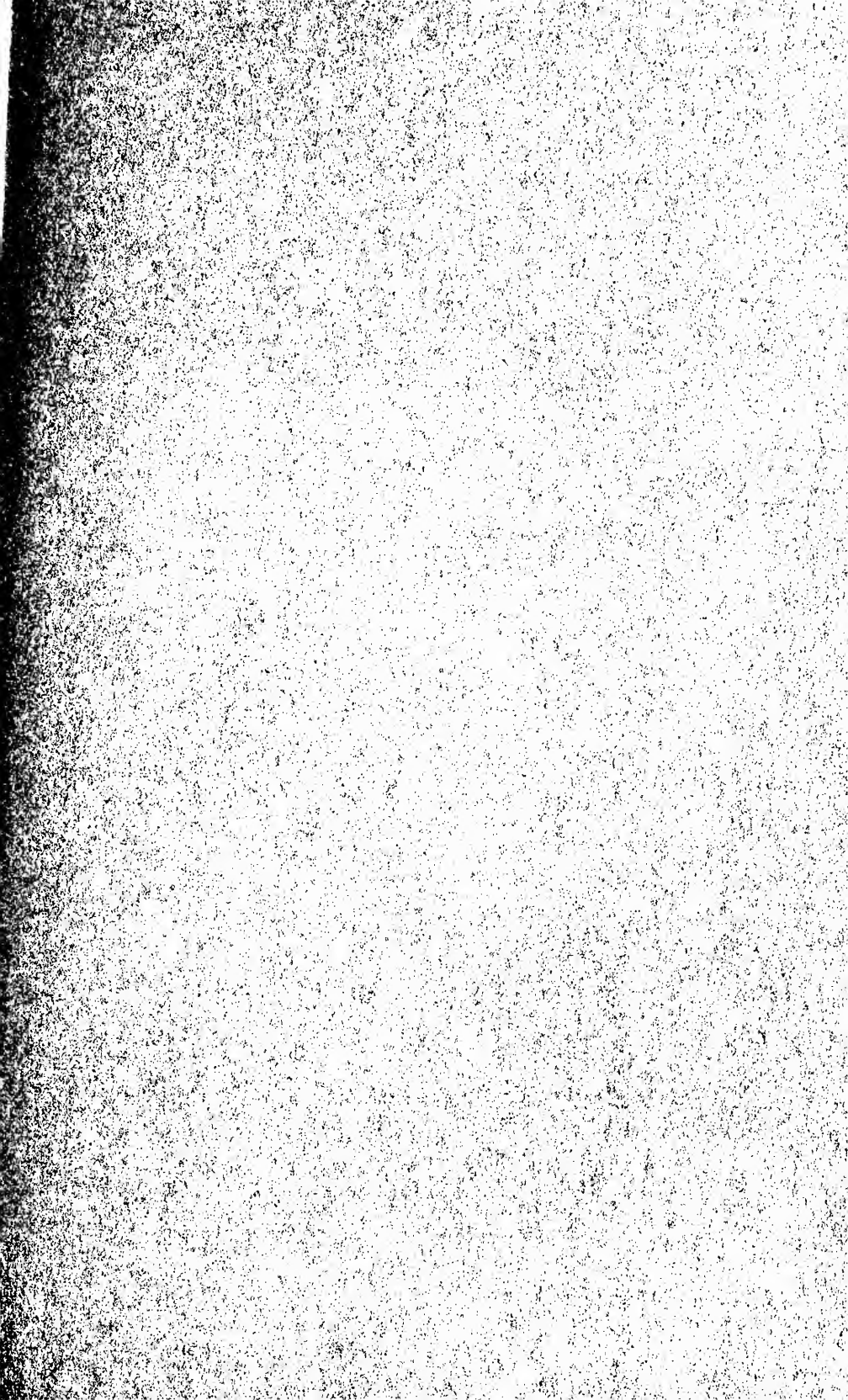
*From a photograph*

*Kindness of the Exchange Club*

BOYLSTON STREET

Looking toward Tremont Street. The building in the center is the  
Old Public Library.





LIBRARY OF CONGRESS



0 014 013 082 5