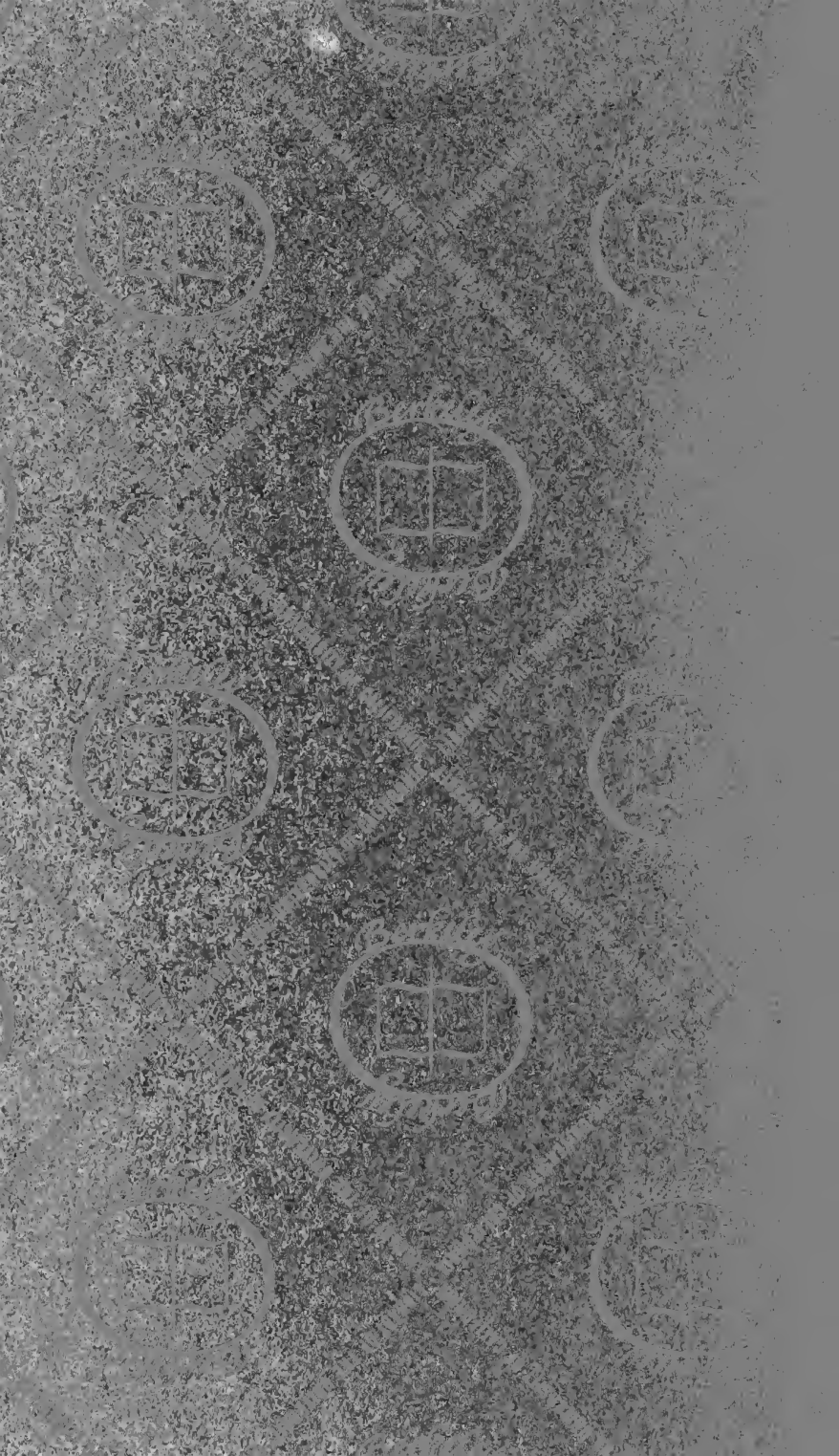


N  
1217  
A52  
1911

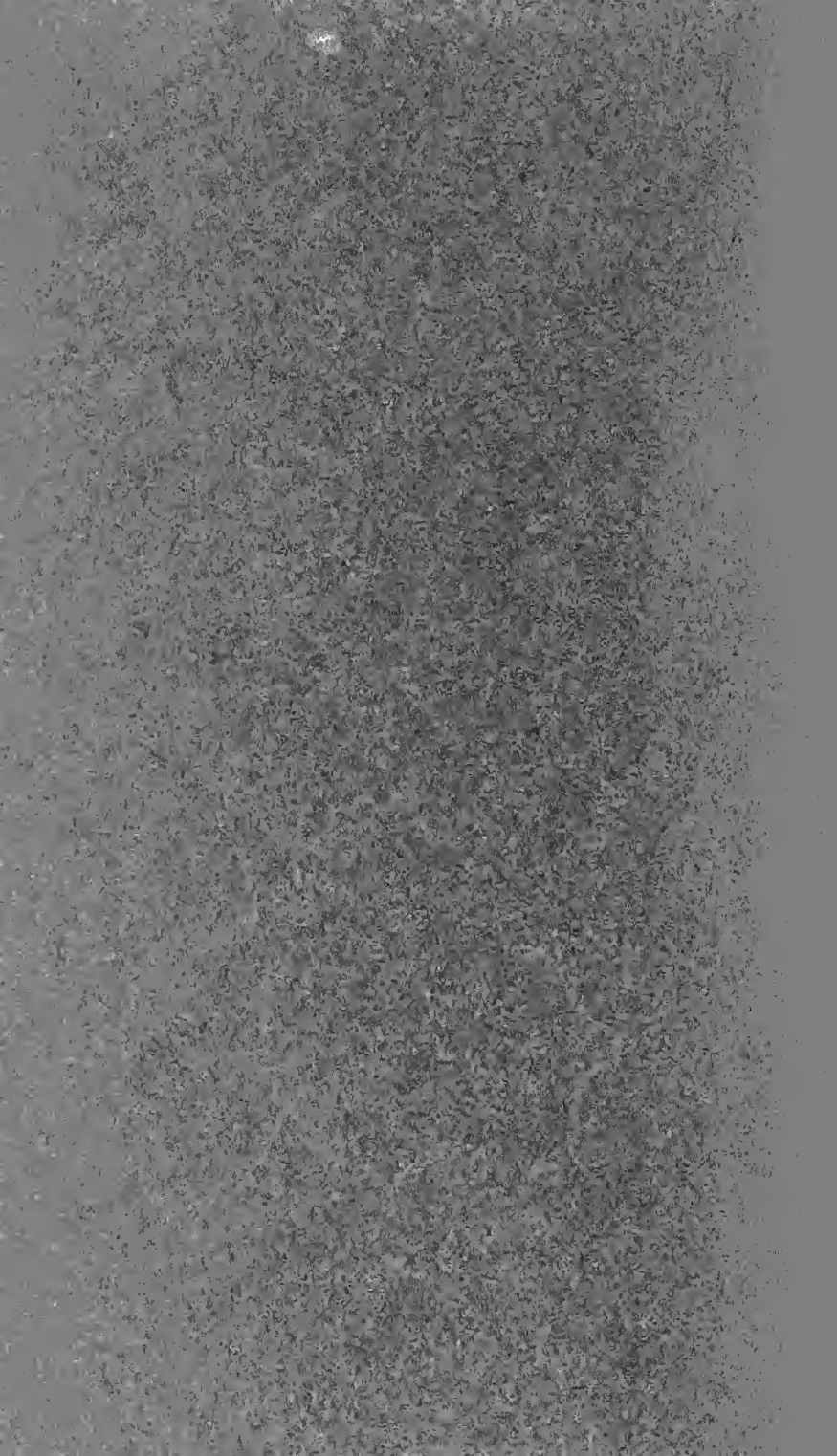
UC-NRLF



\$B 270 707



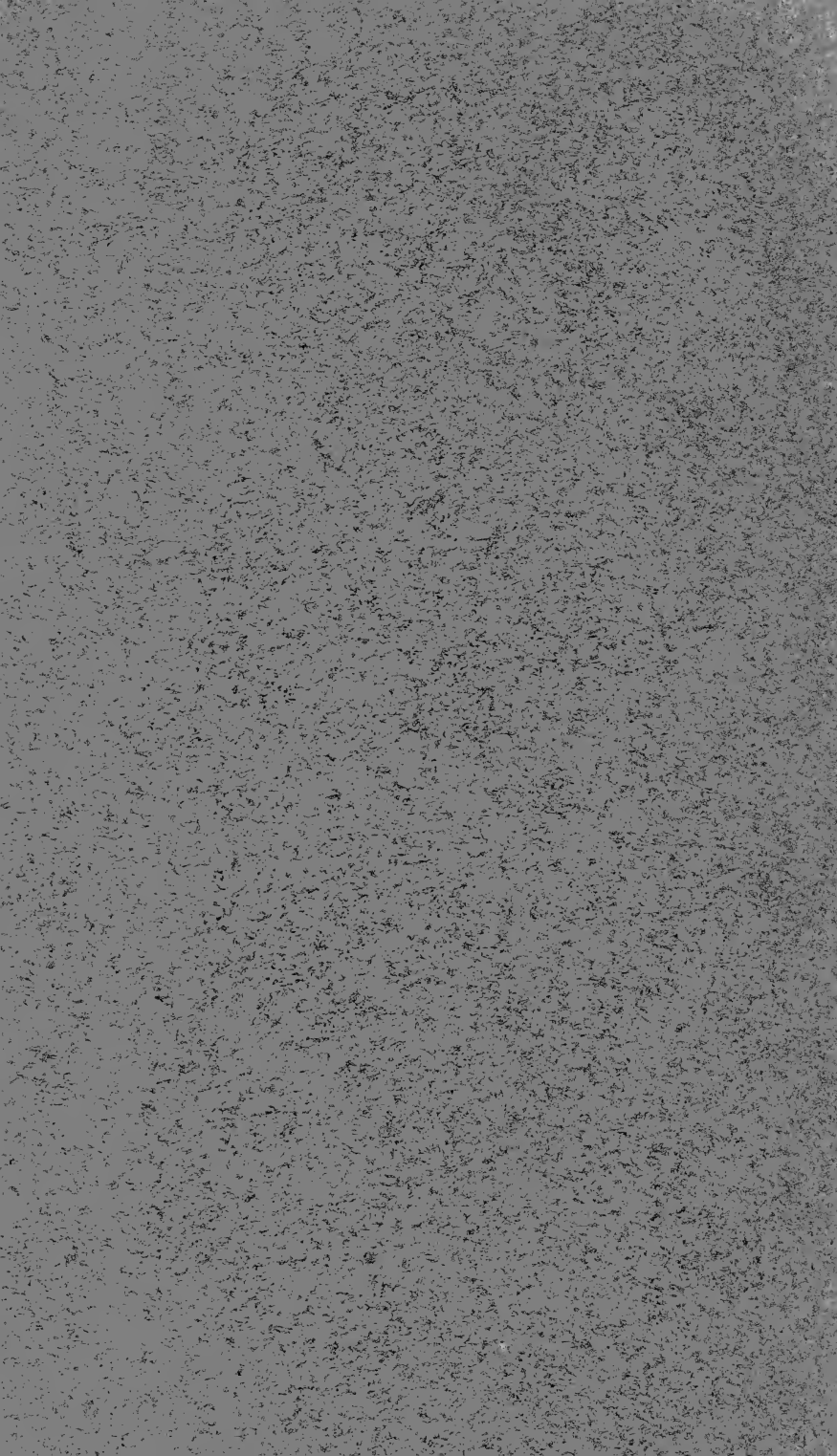




A BRIEF CATALOGUE  
OF THE  
PICTURES  
IN THE  
FITZWILLIAM MUSEUM

Cambridge :  
Printed at the University Press  
1911

*Price Sixpence*



A BRIEF CATALOGUE  
OF THE  
PICTURES  
IN THE  
FITZWILLIAM MUSEUM

**Cambridge:**

PRINTED BY JOHN CLAY, M.A.  
AT THE UNIVERSITY PRESS



Cambridge, Eng. University.

Fitzwilliam  
Museum.

A BRIEF CATALOGUE

OF THE

PICTURES

IN THE

FITZWILLIAM MUSEUM

Cambridge :

Printed at the University Press

1911

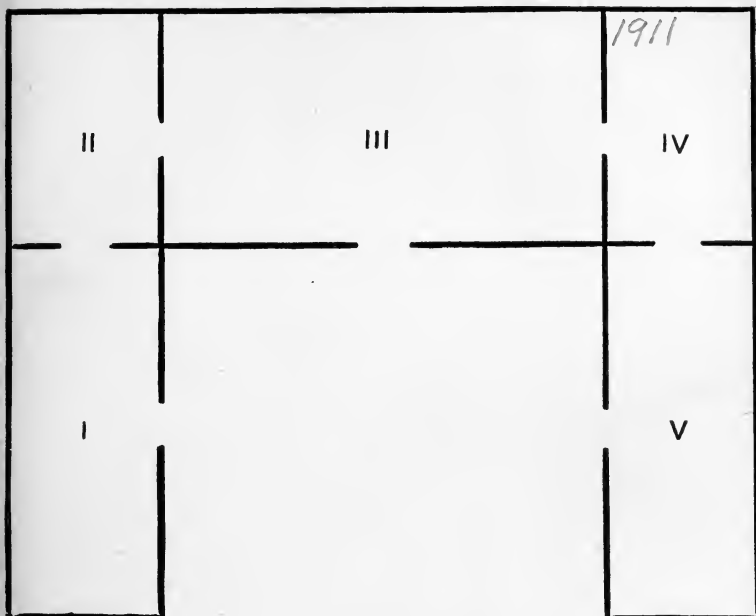
## NOTICE

The first edition of this Brief Catalogue was compiled under the direction of Sir Sidney Colvin and was issued in 1895. Since then it has been several times reprinted. The present edition has been revised by E. O. Vulliamy, M.A., King's College, who has made use of valuable notes and attributions obtained from Sir Walter Armstrong, Mr Bernhard Berenson, Mr Lionel Cust and other authorities. Over a hundred pictures, acquired since the reprint of 1902, are now entered for the first time.

[The Full Descriptive Catalogue of the Pictures, with numerous illustrations, published by the Cambridge University Press, is procurable at the Museum and elsewhere, price 7s. 6d.]

PLAN OF THE GALLERIES

N1217  
A52



IN the following list the initials in brackets, following the description of each picture, refer to the names of the undermentioned persons by whom pictures have been given or bequeathed to the Museum, or from whom they have been purchased.

- A. The representatives of the Rev. J. W. Arnold, D.D. 1873.
- B. The representatives of the Rev. W. J. Butler, D.D., Dean of Lincoln. 1894.
- C. B. Charles Butler. 1893.
- A. C. Lord Alwyne Compton, formerly Bishop of Ely. 1905.
- E. Mrs Ellison. 1862.
- F. Viscount Fitzwilliam. 1816.
- H. The representatives of Archdeacon Hare. 1855.
- K. The Rev. R. E. Kerrich, M.A., Christ's College. 1873.
- M. Daniel Mesman. 1834.
- P. J. Prior, M.A., Trinity College. 1879.
- Pf. H. J. Pfungst, F.S.A. 1904—1908.
- S. The Rev. C. Lesingham Smith, M.A., Christ's College. 1878.
- V. A. A. VanSittart, M.A., Trinity College. 1864, 1876
- W. W. Aldis Wright, M.A., Vice Master of Trinity College. 1907—9.

In the case of single acquisitions, the source from which each has been derived is mentioned after its description.

The dimensions of the pictures are given in feet and inches: the first measurement given is in all cases that of the vertical height of the picture; the second, that of its width.



## INDEX

to the Names of the Painters arranged according to the numbers of the Pictures.

1. Wright, of Derby
2. Howard, H.
3. Hone, N., R.A.
4. Cooper, Samuel
5. Wootton, J.
6. Morland, G.
7. Barrett, G., Senior
8. Richardson, J.
9. Thornhill, Sir J.
10. Phillipps, T., R.A.
11. Legros, A.
12. Williams, S.
- 13, 14. Morland, G.
15. Gainsborough, T., R.A., after
16. Richardson, J.
17. Grisoni, G.
18. Gainsborough, T., R.A.
- 19, 20. Morland, G.
21. Hogarth, W.
22. Knapton, F.
23. Northcote, J., R.A.
24. Hogarth, W.
25. Lonsdale, J.
26. Hogarth, W., attributed to
27. Lawrence, Sir T., P.R.A.
28. Lievens, J. A.
29. Molyn, P.
30. Deelen, D. van
31. Steenwijck, H. van
32. Mieris, F. van, I.
- 33-35. Dou, G.
36. Mieris, W. van
- 37-40. Wynants, J.
41. Zeeman, R.
42. Goyen, J. van
43. Anthonissen, H.
44. Berckheyde, G. A.
- 45, 46. Molyn, P.
47. Berckheyde, G. A.
48. Bloot, P. de
49. Hobbema, M.
50. Weenix, J.
51. Feti, D.
- 52, 53. Goyen, J. van
54. Vlieger, S. de
55. Rietschoof, Jan C., manner of
56. Both, J.
57. Champaigne, P. de, Sch. of
58. Pieters, G.
59. Janssens van Ceulen, C., attributed to
60. Ward, J., R.A.
61. Wildens, J., manner of
62. Snyder, Sch. of
63. Ruisdael, J. van
64. Ostade, A. van
65. Ruisdael, J. van
66. Everdingen, A. van
67. Rombouts, G., manner of
68. Cuypp, A.
69. Wouwerman, Philips
70. Ostade, A. van
71. Wouwerman, Pieter
72. Teniers, D.
73. Steen, J.
- 74, 75. Ruisdael, J. van
76. Steen, J.
77. Cuypp, A.

78. Steen, J.  
79. Vliet, H. C. van  
80. Wouwerman, Philips  
81. Ryckaert, M.  
82. Nickele, I. van  
83. Janssens van Ceulen, C., attributed to  
84. Ruisdael, J. van  
85. Asch, P. J. van  
86. Laer, P. van, manner of  
87. Patch, T.  
88. Velde, A. van de  
89. Janssens, A., manner of  
90. Vinck-Boons, D.  
91. Neeffs, P., with Teniers  
92. Uden, L. van  
93. Schurman, A. Maria van (?)  
94. Legros, A.  
95. Wildens, J., manner of  
96. Schney, F. V.  
97. Neer, A. van der  
98. Bles, H. met de  
99. Master of the Brussels *Assumption*  
100. Murillo, attributed to  
101. Elsheimer, A.  
102. Elsheimer, A., imitation of  
103. Heemskerck, M. van  
104. Master of the *Death of Mary*  
105. Vlieger, S. de  
106. Storck, A.  
107. Beham, H. S., manner of  
108. Palma Giovine  
109. Palma Vecchio  
110. Piazza, A.  
111. Palma Giovine  
112-114. Bassano, Sch. of  
115. Palma Vecchio, after  
116. Raphael, after  
117. Schidone, B.  
118. Raphael, after  
119. Pinturicchio  
120. Perugino, imitation of  
121. Santa Croce, F. R. da  
122, 123. Carracci, Sch. of the  
124. Reni, Guido, Sch. of  
125. Credi, Lorenzo di  
126. Raphael, after  
127. Unknown  
128. Flemish School  
129. Tiziano Vecelli  
130, 131. Maratti, C.  
132. Meulen, A. F. van der  
133. Bartolommeo Veneto  
134. Carracci, An.  
135. Bassano, Sch. of  
136. Cignani, C.  
137. Pasinelli, L.  
138. Venetian School  
139. Guercino, imitation of  
140. Fabris, M. P.  
141. Solario, A. da, imitation of  
142. Palma Vecchio, after  
143. Veronese, P. C., atelier of  
144. Rosa, Salvator  
145. Lanzani, P.  
146. Guercino, imitation of  
147. Cuyp, J. G., manner of  
148. Castiglione, G. B.  
149. Helst, B. van der  
150. Hals, F.  
151. Tintoretto, J. R., after  
152. Rembrandt, H. van Ryn  
153. Bakhuyzen, L., attributed to  
154. Padovanino  
155. Carracci, Sch. of the  
156. Lanzani, P.  
157. Baroccio, after  
158. Herp, G. van  
159. Vos, C. de  
160. Garofalo, B. T. da  
161. Lely, Sir P., attributed to  
162. Albertinelli, M., imitation of  
163. Carracci, Lod.  
164. Holbein, Sch. of  
165. German School  
166. Spagnoletto, after  
167. Albani, F., Sch. of  
168. Albani, F.  
169. Carracci, Ag., after eng. by  
170. Unknown  
171. Carracci, Sch. of the  
172. Grimaldi, G. F.  
173. Ghisolfi, G.

174. Muziano, G.  
 175. Sesto, C. da, after  
 176. Muziano, G.  
 177. Solimena, F.  
 178. Appiani, A.  
 179. Ghisolfi, G.  
 180. Ricci, S.  
 181. Veronese, P. C., after  
 182. Marieschi, M.  
 183, 184. Guardi, F.  
 185. Marieschi, M.  
 186. Bellotto, B.  
 187, 188. Guardi, F.  
 189, 190. Marieschi, M.  
 191. Zuccarelli, F., R.A.  
 192. Bellotto, B.  
 193, 194. Canaletto, Sch. of  
 195. Bellotto, B.  
 196. Zuccarelli, F., R.A.  
 197. Zucchi, A., A.R.A.  
 198. Zuccarelli, F., R.A.  
 199. Zucchi, A., A.R.A.  
 200. Zuccarelli, F., R.A.  
 201. Zucchi, A., A.R.A.  
 202. Swanevelt, H. van  
 203. Canaletto, Sch. of  
 204. Zucchi, A., A.R.A.  
 205. Canaletto, Sch. of  
 206. Swanevelt, H. van  
 207. Zucchi, A., A.R.A.  
 208. Giolfino, N.  
 209. Unknown  
 210. Giolfino, N.  
 211. Correggio, imitation of  
 212. Grimaldi, G. F.  
 213. Carracci, Sch. of the  
 214. Unknown  
 215. Dolci, Carlo  
 216. Schnorr, J., attributed to  
 217. Castiglione, G. B.  
 218. Lauri, F.  
 219. Castiglione, G. B.  
 220. Raeburn, Sir H., R.A.  
 221. Piazzetta, G. B.  
 222. Millet, F.  
 223, 224. Kessel, J. van  
 225. Meulen, A. F. van der  
 226. Tillemans, P.  
 227. Schoubroeck, P.  
 228-231. Rubens, P. P.  
 232. Vries, R. van  
 233. Brill, P., attributed to  
 234. Artois, J. d'  
 235. Janson, J.  
 236. Vries, R. van  
 237. Breydel, Karel  
 238. Unknown  
 239. Aachen, H. van  
 240-243. Rubens, P. P.  
 244. Janson, J.  
 245, 246. Lint, H. van  
 247. Huysmans, C.  
 248. Brueghel, P., after  
 249. Niulandt, W. van  
 250. Teniers, D.  
 251. Haarlem, C. C. van  
 252. Unknown  
 253. Janson, J.  
 254. Jordaens, J., attributed to  
 255. Unknown  
 256. Schoevaerds, M.  
 257. Bloemen, P. van  
 258. Flemish School  
 259. Deyster, L. de  
 260. Bloemen, J. F. van  
 261. Unknown  
 262. Franck, F.  
 263. Bloemen, P. van  
 264. Schoevaerds, M.  
 265. Lint, H. van  
 266. Bloemen, J. F. van  
 267. Rubens, P. P.  
 268. Cranach, L., Sch. of  
 269. Unknown  
 270. Cranach, L., Sch. of  
 271, 272. Leyden, L. van, after eng.  
     by  
 273. Hemessen, K. van  
 274. Aldegrever, H., after  
 275. Leyden, L. van, after eng.  
 276. Unknown  
 277. Meyer, C.  
 278. Roos, J. H.  
 279. Ferg, F. de P.

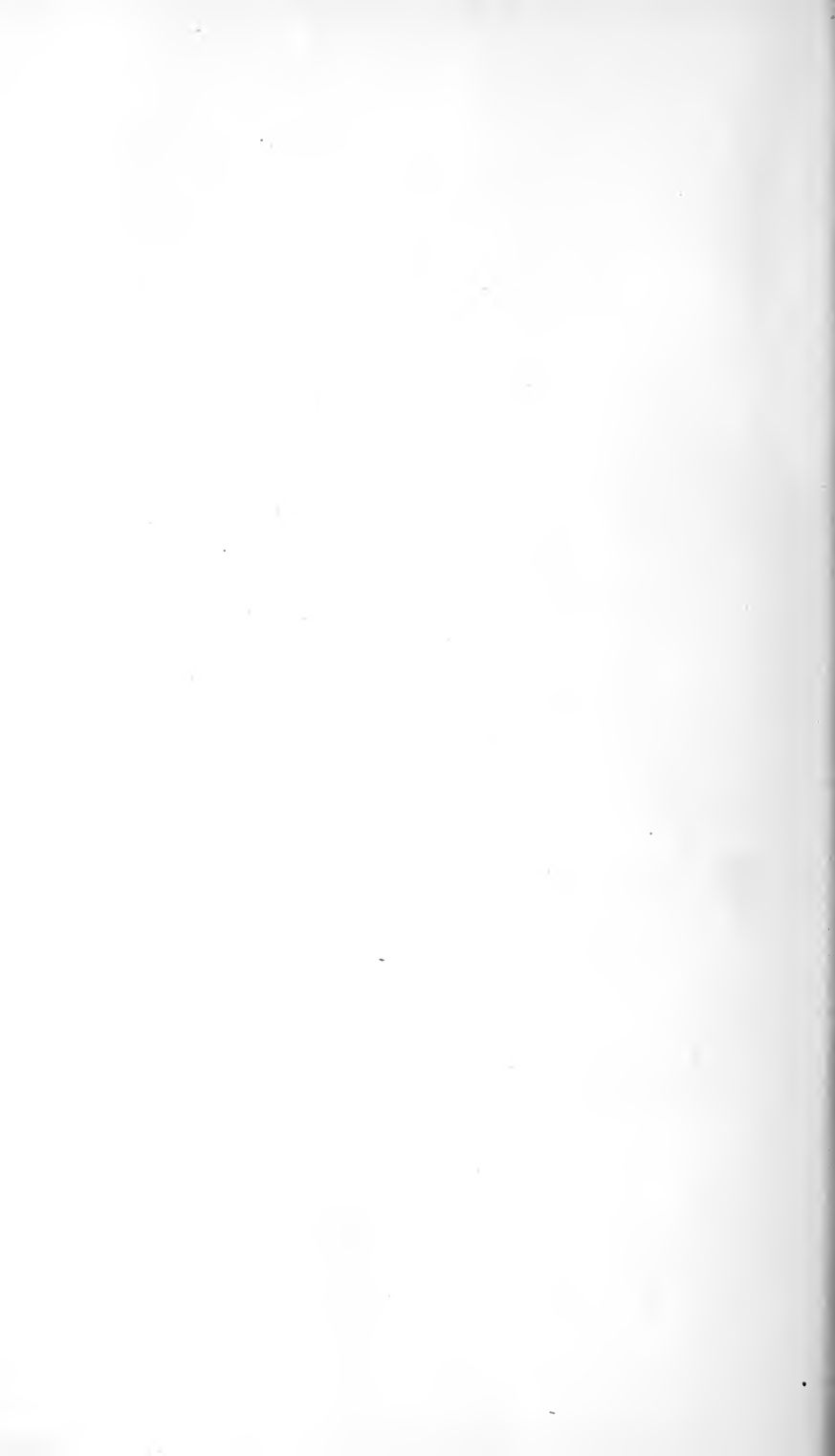
280. Dietrich, C. W. E.  
 281-283. Heere, L. d', attributed to  
 284, 285. Querfurt, A.  
 286, 287. German School  
 288. Bidermann, J. J.  
 289. Kobell, J.  
 290. Bidermann, J. J.  
 291. Wagner, J. G.  
 292. Kobell, J.  
 293. Gryef, A.  
 294. Claesz, P.  
 295. Ast, B. van der  
 296, 297. Hamilton, F. de  
 298. Kessel, J. van  
 299. Brill, P., attributed to  
 299\*. Unknown  
 300. Aelst, W. van  
 301. Labrador, J.  
 302. Os, J. van  
 303. Marseus, O. van S.  
 304. Aelst, W. van, in the manner  
     of  
 305. Fyt, J.  
 306. Mignon, A.  
 307. Labrador, J.  
 308. Bosschaert, A.  
 309. Kessel, J. van  
 310, 311. Boudewyns, A. F.  
 312. Kessel, J. van  
 313. Heem, J. D. de  
 314. Aelst, W. van, in the manner of  
 315. Reyn, Jan de  
 316. Poussin, N., after  
 317. Watteau, A.  
 318. Greuze, J. B.  
 319. Huet, J.-B.  
 320, 321. French School  
 322. Glimes, P. de  
 323. Poussin, G.  
 324. Huet, J.-B.  
 325. Le Sueur, E., attributed to  
 326. Bourdon, S.  
 327. Patel, P.  
 328. Le Nain, A.  
 329, 330. Watteau, A.  
 331. Patel, P.  
 332. Greuze, J.-B.  
 333. Coypel, A.  
 334. Spanish School  
 335. Poussin, G.  
 336. Vernet, C. J.  
 337. Bourdon, S.  
 338. Bourdon, S., attributed to  
 339. Le Brun, C.  
 340. Wouwerman, Philips  
 341. Gelttou, T.  
 342, 343. Savery, R.  
 344. Borssom, A. van  
 345. Vlieger, S. de  
 346. Cuyp, A.  
 347. Peeters, B.  
 348, 349. Klomp, A. J.  
 350. Cuyp, A., attributed to  
 351. Wyck, T.  
 352, 353. Broers, K.  
 354. Heyden, J. van der, attrib. to  
 355, 356. Hondius, A.  
 357. Netscher, T.  
 358. Moni, L. de  
 359. Hondius, A.  
 360. Moni, L. de  
 361. Bogdani, J.  
 362. Snyders, Sch. of  
 362\*. Jardin, K. du  
 363. Saftleven, H., manner of  
 363\*. Potter, P.  
 364. Saftleven, H., manner of  
 365. Schalcken, G.  
 365\*. Mieris, F. van, II.  
 366. Saftleven, H., manner of  
 367. Swanevelt, H. van  
 368. Schalcken, G.  
 369-371. Maas, Dirk  
 372. Vinne, J. V. van der  
 373, 374. Verkolje, J.  
 375-377. Werff, A. van der  
 378. Vorsterman, L.  
 379. Saftleven, H.  
 380, 381. Saftleven, C.  
 382. Sorgh, H. M.  
 383. Saftleven, C.  
 384. Griffier, J.  
 385. Unknown  
 386. Vlieger, S. de



387. Saftleven, H., manner of  
 388-390. Poelenburg, C. van  
 391, 392. Dutch School  
 393. Bronchorst, G. van  
 394. Neer, E. H. van der  
 395, 396. Dutch School  
 397. Hoet, G.  
 398, 399. Peeters, Bonaventura  
 400, 401. Asselyn, Jan  
 402. Murant, E.  
 403. Brakenburgh, R.  
 404. Brekelenkam, Q. G. van  
 405. Olis, J.  
 406. Slabbaert, K.  
 407. Lisse, D. van der  
 408. Dutch School  
 409. Moucheron, I. de  
 410. Dutch School  
 411. Witt, P. de, manner of  
 412. Balen, H. van, with J. Brueghel  
 413. Peeters, Bonaventura  
 414. Deelen, D. van, attributed to  
 415. Goyen, J. van  
 416. Balen, H. van, with J. Brueghel  
 417. Dou, G.  
 418. Dyck, A. van, after  
 419. Heyden, J. van der, imitation of  
 420. Lairesse, G. de  
 421. Laer, P. van  
 422. Gyselaer, N. de  
 423. Duck, Jac.  
 424. Antonissen, H. J.  
 425. Moucheron, I. de  
 426. Uded, L. van  
 427. Wttewael, J. A.  
 428. Sch. of J. Brueghel, I.  
 429. Laer, P. van  
 430. Heemskerck, E. van  
 431, 432. Breenbergh, B.  
 433. Cuylenborch, A. van  
 434. Brakenburgh, R.  
 435. Rubens, P. P., after  
 436. Webber, J., R.A.  
 437. Meyer, De  
 438-440. Unknown  
 441. Seguier, J.  
 442-444. Unknown  
 445. Ashford, W., P.R.H.A.  
 446. Unknown  
 447. Ashford, W., P.R.H.A.  
 448. Reinagle, R. R., R.A.  
 449. Unknown  
 450. Seymour, J.  
 451, 452. Robert, H.  
 453. Reinagle, P., R.A.  
 454. Hodges, C. H.  
 455. Maes, N., attributed to  
 456. Knapton, F.  
 456\*. Walton, E.  
 456\*\*. Blake, W.  
 457. Hone, N., R.A.  
 458. Damloux, H.  
 459. Hone, N., R.A.  
 460. Collier, Sir R.  
 460\*. Lear, E.  
 461. Hoare, P.  
 462. Ashford, W., P.R.H.A.  
 463. Hoare, P.  
 464. Ashford, W., P.R.H.A.  
 465. Hudson, T.  
 466, 467. Ashford, W., P.R.H.A.  
 468. Lewis, J. F.  
 469. Cooper, T. S., R.A.  
 470. Goodall, F., R.A.  
 471. O'Connor, J.  
 472. Linton, W.  
 473. Horsley, J. C., R.A.  
 474. Schelfhout, A.  
 475. Jones, G., R.A.  
 476. Linton, W.  
 477, 478. Cosway, R., R.A.  
 479. Good, T. S.  
 480. Creswick, T., R.A.  
 481. Nasmyth, P.  
 482. Goodall, F., R.A.  
 483. Good, T. S.  
 484. Collins, W., R.A.  
 485. Linton, W.  
 486. Jones, G., R.A.  
 487. Cosway, R., R.A., after etching by Rembrandt

488. Cosway, R., R.A.  
 489. Good, T. S.  
 490. Lance, G.  
 491. Parker, J.  
 492. Cooper, T. S., R.A.  
 493, 494. Linton, W.  
 495. Oules, W. W., R.A.  
 495\*. Turner, J. W. M., R.A.  
 496. Manzuoli, T. d'A.  
 497. Collins, W., R.A.  
 498. Frith, W. P., R.A.  
 499. Gill, C.  
 499\*. Millais, Sir J. E., P.R.A.  
 500. Danby, F.  
 501. Stanfield, W. C., R.A.  
 502. Richmond, Sir W. B., R.A.  
 503. Watts, G. F., R.A.  
 503\*. Herkomer, H., R.A.  
 503\*\*. Hudson, T.  
 504. Keirinckx, A.  
 505. Pot, H. G.  
 506. Kessel, J. van  
 507. Teniers, D., after G. Coques  
 508. Kessel, J. van  
 509. Bol, F.  
 510. Keirinckx, A.  
 511. Zuccaro, F., attributed to  
 512. Molanus, M. A.  
 513. Nuzzi, M.  
 514, 515. Pisani, A.  
 516. Nuzzi, M.  
 517. Molanus, M. A.  
 518. Gabbiani, A. D., and Guercino  
 519, 520. Unknown  
 521. Bassano  
 522. Unknown  
 523. Bassano  
 524. Unknown  
 525. Ferg, F. de P.  
 526. Brill, P., attributed to  
 527. Quinkhard, J. M.  
 528. Unknown  
 529. Brueghel, J., Sch. of  
 530. Herreyns, G. J.  
 531. Morland, G.  
 532. Elsheimer, A.  
 533. Elsheimer, A., manner of  
 534. Willaerts, A.  
 535. Horst, G.  
 536. Steenwijck, H. van  
 537. Holbein, Sch. of  
 538. Bois, Simon du  
 539. Elsheimer, A.  
 540. Vasari, G.  
 541, 542. Pisani, A.  
 543. Coques, G., attributed to  
 544. Herreyns, G. J.  
 545. Poelenburg, C. van, attrib. to  
 546. Unknown  
 547. Meulen, A. F. van der  
 548, 549. Unknown  
 550. Gaddi, Taddeo, Sch. of  
 551. Ponte, G. da  
 552. Martini, Simone  
 553. Martino, Bartolomei  
 554. Neroccio di Bartolomeo di Be-  
     nedetto Landi  
 555. Monaco, L.  
 556. Rosselli, Cosimo  
 557. Sienese School  
 558. Ceccharelli, N.  
 559. Lippi, Fra F., Sch. of  
 560. Vanni, A. di  
 561. Andrea di Niccolò di Giacomo  
 562. Lorenzetti, A., attributed to  
 563. Tommè, L. di  
 564. Sienese School  
 565. Ponte, G. da  
 566. Venetian School  
 567-591. Turner, J. M. W.  
 592. Agricola, C. L.  
 593-595. Ince, J. M.  
 596-598. Prout, S.  
 599, 600. Cox, D.  
 601. Rembrandt, H. van Ryn  
 602. Schouman, A.  
 603. Schouman, M.  
 604. Master of Flémalle  
 605. Unknown  
 606, 607. Beijer, J. de  
 608. Legros, A.  
 609. Unknown  
 609\*. Bridge, J. R.  
 610. Caldecott, R.

- 611, 612. Doyle, R.  
 613. Rowlandson, T.  
 614. Ruskin, J.  
 615-617. Keene, C.  
 618, 619. Rooke, T. M.  
 620. Turchi, A.  
 621. Titian, after  
 621\*. Unknown  
 622. Harding, S.  
 623. Dubbels, H.  
 624. Ter Borch, G.  
 625, 626. Croos, J. van  
 627. Broers, K., attributed to  
 628. Beechey, Sir W.  
 629. Sandby, P.  
 630. Harlow, G. H.  
 631. Garofalo, B. T. da, School of  
 632. Orizonte, J. F. van B.  
 633. Rembrandt, School of  
 634. Titian, after  
 635. Huysum, J. van  
 636. Asselyn, J.  
 637. Boughton, G. H.  
 638. Cuyp, J. G.  
 639. Molenaer, K.  
 640. Callow, J.  
 641. Etty, W., R.A.  
 642. Aikman, W.  
 643. Beale, C.  
 644, 645. Gainsborough, T. R.A.  
 646. Highmore, J.  
 647, 648. Hogarth, W.  
 649. Jackson, J., R.A.  
 650. Jervais, C.  
 651. Peruzzi, B.  
 652, 653. Reynolds, Sir J.  
 654. Romney, G.  
 655, 656. West, B.  
 657. Wills, Rev. J.  
 658. Wilson, R., attributed to  
 659. Wright of Derby  
 660-665. Brabazon, H. B.  
 666. Boyce, G. P., R.W.S.  
 667. Burne-Jones, Sir E.  
 668. Seddon, T.  
 669. Rossetti, D. G., after  
 670. Neer, A. van der  
 671, 672. Unknown  
 673. Geoffroy-Dechaume, C. L.  
 673\*. Knewstub, W. J.  
 674. Spedding, J.  
 675. Hogarth, W.  
 676. Collins, C. A.  
 677-679. Burne-Jones, Sir E.  
 680. Rossetti, Mrs D. G.  
 681-686. Rossetti, D. G.  
 687. Holman-Hunt, W., O.M.  
 688. Paton, Sir J. Noel  
 689. Murray, C. F.  
 690. Burne-Jones, Sir E.  
 691. Strang, W., A.R.A.  
 692. Geoffroy-Dechaume, C. L.  
 693. Hogarth, attributed to  
 694. Millet, J. F.  
 695-698. Cox, D.  
 699. Burne-Jones, Sir E.  
 700. Peplow, S. J.  
 701, 702. Daubigny, C. F.  
 703, 704. Strang, W., A.R.A.  
 705. Stark, J.  
 705\*. Richardson, J.  
 706, 707. East Anglian School,  
 c. 1400.  
 708. Spanish School  
 709. Gainsborough, T., R.A.  
 710. Gainsborough, T., R.A.



Note. N.E.=not exhibited

Gallery. No.

**AACHEN, HANS VAN.** German School: b. 1552,  
d. 1615. Cologne, Italy, Prague.

[After van Aachen.]

I 239 *Adoration of the Shepherds.*  
Panel. Oval. 9" by 6 $\frac{3}{4}$ ". (M.)

**AELST, WILLEM (GUILLIELMO) VAN.**  
Dutch School: b. 1626, d. 1679. Delft, Italy,  
Amsterdam.

I 300 *Group of Flowers.*  
Signed Guilmo. van Aelst. 1675. Canvas. 1' 0 $\frac{1}{2}$ " by 9 $\frac{3}{4}$ ". (M.)  
[In the manner of van Aelst.]

I 304 *Group of Flowers.*  
Canvas. 1' 4" by 1' 2". (M.)

I 314 *Group of Flowers.*  
Canvas. 2' 6 $\frac{1}{2}$ " by 2' 1". (F.)

**AGRICOLA, CHRISTOPH LUDWIG.** b. 1667,  
d. 1719. Ratisbon, Italy.

V 592 *Two Views near Naples.*  
Water Colour. Each 6 $\frac{1}{2}$ " by 8 $\frac{1}{2}$ ". (V.)

**AIKMAN, WILLIAM.** British School: b. 1682,  
d. 1731. Scotland, London.

III 642 *Portrait of James Thomson the Poet.*  
Canvas. 2' 5 $\frac{1}{4}$ " by 2' 0 $\frac{1}{4}$ ". (Anon. 1908.)

**ALBANI, FRANCESCO.** Bolognese School:  
b. 1578, d. 1660. Rome, Florence, Bologna.

II 168 *Venus and Cupid in a landscape.*  
Canvas. 1' 2 $\frac{1}{4}$ " by 1' 5 $\frac{3}{4}$ ". (F.)

[School of Albani.]

II 167 *The Virgin and Child.*  
Canvas. 8" by 6 $\frac{3}{8}$ ". (M.)

Gallery. No.

**ALBERTINELLI, MARIOTTO.** Florentine  
School: b. 1474, d. 1515. Florence.  
[Imitation of Albertinelli.]

III 162 *The Virgin and Child with S. John.*  
Panel. 2' 2" by 1' 8½". (H.)

**ALDEGREVER, HEINRICH.** German School:  
b. 1502, d. after 1555. Soest.  
[After Aldegrever.]

I 274 *Dives and Lazarus.*  
Panel. 6½" by 8¾". (M.)

**ALLEGRI, ANTONIO:** see **CORREGGIO.**

**ANDREA DI NICCOLÒ DI JACOMO.** Sienese  
School: worked about 1512. Siena.

V 561 *Madonna and Child with two Saints.*  
Panel. 1' 7" by 1' 2". (C. B.)

**ANTHONISSEN, H.** Dutch School: d. 1666.  
Haarlem.

III 43 *View of Scheveningen Sands.*  
Panel. 1' 9¾" by 3' 3½". (K.) Remains of a signature and  
date, 1641, are on a spar to the left.

**ANTONISSEN, HENDRIK JOZEF.** Flemish  
School: b. 1737, d. 1794. Antwerp.

I 424 *Landscape, with a road winding among trees and a  
river.*  
Signed H. J. Antonissen F. 1787. Panel. 11¼" by 1' 3". (M.)

**APPIANI, ANDREA.** Italian School: b. 1754,  
d. 1817. Rome, Milan.

II 178 *Minerva holding up the mirror to Innocence.*  
Copper. Circular. 11" in diameter. (M.)

**ARTOIS, JACQUES D'.** Flemish School: b. 1613,  
d. 1665. Brussels.

I 234 *Landscape, with trees and a river.*  
Panel. 7¼" by 8¾". (M.)

Gallery. No.

**ASCH, PIETER JANSZ VAN.** Dutch School :  
b. 1603, d. 1678. Delft.

- II 85 *Wooded landscape, with canal and figures.*  
Panel. 10½" by 1' 2½". (M.)

**ASHFORD, WILLIAM, P.R.H.A.** British  
School : b. 1746, d. 1824. London, Dublin.

- V 445 *View in Mount Merrion Park.*  
Canvas. 2' 1" by 3' 8". (F.)
- V 447 *View in Mount Merrion Park, with figures of Lord  
Fitzwilliam and his Steward.*  
Canvas. 2' 1" by 3' 8". (F.)
- V 462 *View in Mount Merrion Park ; in the distance Raw  
Buck's Castle, Butler's Town and Dublin.*  
Signed W: Ashford. 1804. Canvas. 3' 1" by 4' 2". (F.)
- V 464 *View in Mount Merrion Park.*  
Canvas. 2' 1" by 2' 5½". (F.)
- V 466 *View in Mount Merrion Park.*  
Canvas. 2' 1" by 2' 5½". (F.)
- V 467 *View in Mount Merrion Park.*  
Canvas. 2' 1" by 2' 5½". (F.)

**ASSELYN, JAN.** Dutch School: b. 1610, d. 1652.  
Rome, Amsterdam.

- I 400 *Italian Landscape. Seaward view, with boats and  
figures.*  
Signed monogram J. A. Copper. 4¼" by 9¼". (M.)
- I 401 *Italian Landscape. River-scene, with mountains.*  
Panel. 11¾" by 1' 3". (M.)
- II 636 *Travellers resting.*  
Canvas. 1' 5" by 1' 9". (Pf. 1906.)

**AST, BALTHASAR VAN DER.** Dutch School:  
worked about 1619—1656. Utrecht, Delft.

- I 295 *Macaws and Fruit.*  
Signed · B · vander · Ast. fe. 1622. Copper. 7½" by 10¼". (M.)

Gallery. No.

**BAKHUYSEN, LUDOLF.** Dutch School  
b. 1631, d. 1708. Amsterdam.

[Attributed to Bakhuisen.]

III 153 *Storm at Sea.*  
Canvas. 3' 5½" by 6' 4½". (F.)

**BALEN, HENDRICK VAN, THE ELDER.**  
Flemish School: b. 1575, d. 1632. Antwerp.

I 412 With Jan Brueghel I. *Adoration of the Shepherds.*  
Signed H BALEN. Copper. 1' 1¾" by 10¼". (F.)

I 416 With Jan Brueghel I. *The Judgment of Paris.*  
Copper. 9¾" by 1' 2". (F.)

**BARBIERI:** see **GUERCINO.**

**BAROCCIO, FEDERIGO.** Italian School:  
b. 1528, d. 1612. Urbino, Rome.

[After Baroccio.]

III 157 *Holy Family with S. John the Baptist.*  
Canvas. 5' 0" by 3' 8". Presented by Mrs Charles Geldart,  
1877.

**BARRETT, GEORGE (SENIOR), R.A.** British  
School: b. 1728 or 1732, d. 1784. Dublin,  
London.

III 7 *Falls of the Clyde.*  
Canvas. 2' 3½" by 2' 11½". (S.)

**BARTOLOMMEO VENETO.** Venetian and  
Lombard Schools: worked about 1505—1530.  
Venice, Cremona.

III 133 *Portrait of a Gentleman.*  
Panel. 2' 4¼" by 1' 9½". (H.)

**BASSANO (GIACOMO DA PONTE, called).**  
Venetian School: b. 1510, d. 1592. Venice.

[School of Bassano.]

III 112 *S. Jerome in the wilderness.*  
Canvas. 2' 2" by 2' 7¾". A copy. (F.)



- Gallery. No.
- II 113 *Landscape, with Abraham and Isaac.*  
Canvas. 1' 10 $\frac{3}{4}$ " by 2' 5 $\frac{1}{4}$ ". By Ippolito Scarsella, pupil of Bassano. Bequeathed by E. FitzGerald, Esq., 1883.
- II 114 *Landscape, with shepherds.*  
Canvas. 2' 1 $\frac{3}{4}$ " by 3' 1". A copy. (F.)
- II 135 *Virgin and Child, with S. John the Baptist and S. Catharine.*  
Canvas. 2' 3 $\frac{1}{2}$ " by 3' 0 $\frac{1}{2}$ ". Given by the Rev. W. Whewell, D.D.  
[Attributed to Bassano.]
- I 521 *Portrait of a man.*  
Copper. Circular. 2 $\frac{3}{8}$ " in diameter. Given by Mr Henry Roe, 1837.
- I 523 *Portrait of a man.*  
Copper. Circular. 2 $\frac{3}{4}$ " in diameter. Given by Mr Henry Roe, 1837.
- BEALE, CHARLES.** British School: b. 1660.
- II 643 *Portrait of Dryden (?)*.  
Signed Carolus Beale fecit 1693. Canvas. 2' 4 $\frac{3}{4}$ " by 1' 11 $\frac{3}{4}$ ".  
(Anon. 1908.)
- BEECHEY, SIR WILLIAM, A.R.A.** British School: b. 1753, d. 1839.
- II 628 *Hebe.* Said to be a portrait of Lady Beechey.  
Canvas. 2' 2 $\frac{1}{2}$ " by 1' 6 $\frac{1}{4}$ ". (Pf. 1904.)
- BEHAM, HANS SEBALD.** German School: b. 1500, d. 1550. Nuremberg, Frankfort on the Main.  
[In the manner of Beham.]
- III 107 *The beheading of S. John.*  
Panel. 8 $\frac{1}{2}$ " by 11 $\frac{1}{8}$ ". (H.)
- BEIJER, JAN DE.** Dutch School: c. 1705—1768. Amsterdam.
- IV 606 *Market Place and Town Hall, Ruremonde.*  
Signed with monogram, 1739. Water Colour. 7 $\frac{3}{4}$ " by 1' 0". (V.)
- IV 607 *Bridge at Ruremonde.*  
Water colour. 7 $\frac{1}{8}$ " by 11 $\frac{1}{2}$ ". (V.)
- BELLOTTO, BERNARDO.** Venetian School: b. 1720, d. 1780. Italy, Germany, England, Poland.
- II 186 *View at the entrance to the Grand Canal, Venice.*  
Canvas. 1' 11 $\frac{1}{4}$ " by 3' 1 $\frac{1}{2}$ ". (F.)

Gallery. No.

- II 192 *View on the Arno, looking towards the Ponte Vecchio, Florence.*  
Canvas. 2' 4" by 3' 5". (V.)
- II 195 *View on the Arno, looking towards the Ponte alle Grazie, Florence.*  
Canvas. 2' 4" by 3' 5". (V.)

**BERCKHEYDE, GERRIT ADRIAENSZ.** Dutch School: b. 1638, d. 1698. Haarlem, Germany.

- III 44 *View in Amsterdam, with the façade of the Stadhuis and the Nieuwe Kerk.*  
Signed G. Berck Heyde. Panel. 1' 3½" by 1' 0½". (F.)
- III 47 *View in Haarlem, with the Grootte Kerk.*  
Signed G. Berck Heyde. 1674. Panel. 1' 3½" by 1' 0½". (F.)

**BIDERMANN, JOHAN JAKOB.** Swiss School: b. 1762, d. 1828. Dresden, Berne, Constance.

- I 288 *Swiss Landscape, with sheep in the foreground.*  
Signed J. J. B. Metal. 6½" by 8". (M.)
- I 290 *Landscape, with mountains in the distance and chamois feeding in the foreground.*  
Signed J. J. B. Metal. 6½" by 8". (M.)

**BLAKE, WILLIAM.** British School: b. 1757, d. 1827. London.

- IV 456\*\* Three water-colours, painted in 1785.  
(a) *Joseph ordering Simeon to be bound.*  
(b) *His brethren bowing before Joseph.*  
(c) *Joseph making himself known to his brethren.*  
Each 1' 3¾" by 1' 10". Purchased, 1900.

**BLES, HENDRICK MET DE.** Flemish School: worked about 1511. Italy, Flanders.

- III 98 *The Annunciation.*  
Panel. 2' 11" by 1' 9¾". (F.)

**BLOEMEN, JAN FRANS VAN.** Flemish School: b. 1662 (?), d. 1740. Rome.

- I 260 *Landscape.*  
Canvas. Oval. 1' 2½" by 11". (M.)
- I 266 *Landscape.*  
Copper. Oval. 1' 2½" by 11". (M.)

Gallery. No.

**BLOEMEN, PIETER VAN.** Flemish School :  
b. 1657, d. 1720. Antwerp, Rome.

I 257 *Mules halting by the wayside.*  
Canvas. 1' 1 $\frac{3}{4}$ " by 1' 5 $\frac{1}{8}$ ". (M.)

I 263 *Horses drinking at a fountain.*  
Canvas. 1' 1 $\frac{1}{2}$ " by 1' 5". (M.)

**BLOOT, PIETER DE.** Dutch School : b. 1601,  
d. 1658. Rotterdam.

I 48 *Street scene with figures.*  
Panel. 7 $\frac{1}{4}$ " by 9". (S.)

**BOGDANI, JAMES.** Hungarian School : d. 1720.  
London.

I 361 *Birds.*  
Signed J. Bogdanĭ. Canvas. 2' 11" by 2' 10". (M.)

**BOIS, SIMON DU.** Dutch School : d. 1708.  
Holland and England.

I 538 *Miniature portrait of a man.*  
Signed S. du Bois. fecit. 1682. Copper. Oval. 3 $\frac{1}{2}$ " by 2 $\frac{1}{2}$ ". (M.)

**BOL, FERDINAND.** Dutch School : b. 1616,  
d. 1680. Amsterdam.

I 509 *Portrait of a Gentleman.*  
Signed F. Bol. Panel. Oval. 5" by 3 $\frac{5}{8}$ ". (F.)

**BORSSOM, ANTHONIE VAN.** Dutch School :  
b. 1629(30), d. 1677. Amsterdam.

I 344 *Landscape, with cattle.*  
Signed A V Borssom fe. Panel. 1' 8 $\frac{1}{4}$ " by 2' 6". (V.)

**BOSSCHAERT, ABRAHAM.** Dutch School :  
b. 1585(6), d. after 1643. Amsterdam, Utrecht.

I 308 *Flowers in a glass vase.*  
Panel. 1' 1" by 9 $\frac{1}{4}$ ". (M.)

**BOTH, JAN.** Dutch School : b. about 1610,  
d. 1652. Utrecht, Rome.

III 56 *Landscape, with cattle and figures.*  
Signed J. Both. Canvas. 4' 8 $\frac{1}{2}$ " by 6' 8". (F.)

Gallery. No.

**BOUDEWYNS, ADRIAEN FRANS.** Flemish School: b. 1644, d. 1711. Brussels, Paris.

I 310 With P. Bout. *Landscape*.  
Panel.  $3\frac{3}{4}$ " by  $5\frac{3}{4}$ ". (M.)

I 311 With P. Bout. *Landscape*.  
Panel.  $3\frac{3}{4}$ " by  $5\frac{3}{4}$ ". (M.)

**BOUGHTON, GEORGE HENRY, R.A.** British School: b. 1834, d. 1905.

V 637 *Winter scene in Holland*.  
Signed G. H. Boughton. Canvas.  $1' 3\frac{1}{4}"$  by  $1' 11\frac{1}{2}"$ . (Pf. 1906.)

**BOURDON, SEBASTIEN.** French School: b. 1616, d. 1671. Italy, Paris.

I 326 *Landscape*.  
Canvas.  $1' 4\frac{1}{2}"$  by  $1' 11\frac{1}{4}"$ . (M.)

I 337 *Christ and the woman of Samaria*.  
Canvas.  $10"$  by  $1' 2\frac{1}{2}"$ . (F.)

[Attributed to Bourdon.]

I 338 *Man smoking*.  
Canvas.  $6"$  by  $5\frac{1}{4}"$ . (M.)

**BOUT, PIETER.** Flemish School: b. 1658, d. after 1702. Brussels. See **BOUDEWYNS**.

**BOUTS, ALBERT.** See Master of the Brussels "Assumption."

**BOYCE, GEORGE P., R.W.S.** British School: b. 1826, d. 1896.

V 665 *Farm buildings, Dorchester, Oxfordshire*.  
Water colour.  $1' 2"$  by  $1' 9"$ . (Anon. 1908.)

**BRABAZON, HERCULES BRABAZON** (formerly Hercules Brabazon Sharpe, Trin. Coll., B.A. 1844, M.A. 1848). British School: b. 1822, d. 1906.

I 660 *Ulysses deriding Polyphemus*, after J. M. W. Turner.  
Water colour. Signed H. B. B.  $8"$  by  $1' 1\frac{1}{2}"$ . Presented by Mrs Harvey Brabazon Combe, 1908.

- Gallery. No.
- IV 661 *Mount Carmel.*  
 (a) Pencil sketch.  $4\frac{1}{8}$ " by  $7\frac{7}{8}$ ".  
 (b) Slight water colour.  $6\frac{5}{8}$ " by 8". Presented by Mrs H. B. C., 1908.
- IV 662 *A street in Spain.*  
 Water colour. Signed H. B. B.  $8\frac{3}{4}$ " by  $5\frac{1}{4}$ ". Presented by Mrs H. B. C., 1908.
- IV 663 *Luxor. Temple front.*  
 Water colour. Signed H. B. B.  $9\frac{1}{4}$ " by  $1' 0\frac{1}{4}$ ". Presented by Mrs H. B. C., 1908.
- IV 664 *Murcia.*  
 Water colour. Signed H. B. B. Pastel.  $6\frac{1}{4}$ " by  $8\frac{1}{4}$ ". Presented by Mrs H. B. C., 1908.
- IV 664\* *Berne.*  
 Water colour. Signed H. B. B.  $5\frac{1}{2}$ " by  $7\frac{1}{2}$ ". Presented by Mrs H. B. C., 1908.
- BRAKENBURG, RICHARD.** Dutch School: b. 1650, d. 1702. Haarlem, Leeuwarden.
- I 403 *Conversation.*  
 Signed R. Brakenbg. Panel. 1' 1" by 11". (M.)
- I 434 *Interior of a farmhouse.*  
 Signed R. Brakenburg: 1699. Canvas. 1'  $3\frac{1}{2}$ " by 1'  $6\frac{1}{2}$ ". (F.)
- BREENBERGH, BARTHOLOMEUS.** Dutch School: b. 1599, d. before 1659. Amsterdam, Rome.
- I 431 *Classical landscape.*  
 Copper. Circular. 8" in diameter. (F.)
- I 432 *Classical landscape.*  
 Copper. Circular. 8" in diameter. (F.)
- BREKELENKAM, QUIRYN GERRITSZ VAN.** Dutch School: d. 1668. Leiden.
- I 404 *Cottage interior: a woman combing a girl's hair.*  
 Signed Brekelenkam. Panel. 1' 5" by 1' 2". (F.)
- BREYDEL, KAREL.** Flemish School: b. 1678, d. 1733. Antwerp, Italy, Ghent.
- I 237 *Battle-piece.*  
 Signed C Breydel. Panel.  $7\frac{3}{8}$ " by  $8\frac{3}{8}$ ". (M.)
- BRIDGE, J. R.** British School: b. 1845, d. 1894. Shrewsbury.
- IV 609\* *Portrait of the third Earl of Powis.*  
 Canvas. 2' 3" by 1' 10". (Purchased 1897.)

Gallery. No.

**BRILL, PAULUS.** Flemish School: b. 1554,  
d. 1626. Antwerp, Rome.

[Attributed to P. Brill.]

- I 233 *Landscape with a ravine and men hunting.*  
Panel.  $7\frac{1}{4}$ " by  $9\frac{1}{2}$ ". (M.)
- I 299 *Emblems of the Passion, and of Mortality.*  
Copper. 7" by  $4\frac{3}{4}$ ". (M.)
- I 526 *The Good Samaritan.*  
Panel.  $7\frac{3}{4}$ " by  $10\frac{1}{2}$ ". (M.)

**BROERS, JASPAR or KASPER.** Flemish  
School: b. 1682, d. 1716. Antwerp.

- I 352 *Battle-piece.*  
Panel.  $8\frac{1}{2}$ " by 11". Presented by J. Heath, M.A., King's  
College, 1861.
- I 353 *Battle-piece.*  
Signed J. Broers Fecit 1715. Panel.  $8\frac{1}{2}$ " by 11". Presented by  
J. Heath, M.A., King's College, 1861.

[Attributed to G. Broers.]

- I 627 *Peasants drinking in a tavern.*  
Panel.  $6\frac{5}{8}$ " by  $5\frac{1}{2}$ ". Presented by Miss Ready, 1904.

**BRONCHORST, GERRIT VAN.** Dutch School:  
b. 1637, d. after 1665. Utrecht, Italy.

- I 393 *Landscape with ruins; women bathing.*  
Panel.  $11\frac{1}{2}$ " by  $1' 1\frac{1}{2}$ ". (F.)

**BROWN, FORD MADOX.** British School:  
b. 1821, d. 1893. Antwerp, London.

- V 668 *Work.* Drawn by Thomas Seddon for engraving,  
and retouched by the artist.  
Arched top.  $1' 1\frac{3}{4}$ " by  $1' 7\frac{3}{4}$ ". (Anon. 1908.)

**BRUEGHEL, JAN, I.** Flemish School: b. 1568,  
d. 1625. Brussels, Antwerp, Italy.

- I 412 With H. van Balen. *Adoration of the Shepherds.*  
Copper.  $1' 1\frac{3}{8}$ " by  $10\frac{1}{4}$ ". (F.)
- I 416 With H. van Balen. *The Judgment of Paris.*  
Copper.  $9\frac{3}{4}$ " by  $1' 2"$ . (F.)

Gallery. No.

[School of J. Brueghel, I.]

- I 428 *Night scene with fire.*  
Copper. 6" by 8". (M.)
- I 529 *River scene with ferry-boat.*  
Copper. 3" by 4 $\frac{3}{4}$ ". (M.)

**BRUEGHEL, PIETER, I.** Flemish School:  
b. about 1525, d. 1569. Antwerp, Rome, Brussels.

[After P. Brueghel.]

- I 248 *Frost-piece.*  
Copper. 7" by 9 $\frac{1}{2}$ ". (M.)

**BURNE-JONES, SIR EDWARD.** British  
School: b. 1833, d. 1898.

- V 677 *Studies for the decoration of William Morris's first house, The Red House, Bexley Heath.*  
Signed E. Jones 1860. 11 $\frac{7}{8}$ " by 1' 6 $\frac{1}{2}$ ". (Anon. 1909.)
- V 678 *Pen and ink drawing "Buondelmonte's Wedding."*  
Signed E. B. J. Drawn about 1859. 10" by 2' 6 $\frac{1}{4}$ ". (Anon. 1909.)
- V 667 *Two chiaroscuro sketches for bronze reliefs for the Tomb of the 8th Earl of Carlisle.*  
(a) *The Nativity.*  
(b) *The Entombment.*  
Each 9 $\frac{7}{8}$ " by 1' 4". (Anon. 1908.)
- V 679 *Study for "Perseus."*  
Water colour. 1' 9" by 1' 2 $\frac{1}{4}$ ". Presented by Executors of Sir E. Burne-Jones, Bart., 1909.
- Hall 690 *Three cartoons for glass in Lyndhurst Church, Hants.*  
Water colour. 3' 6" by 1' 10". (Anon. 1909.)
- Hall 699 *Two coloured cartoons for glass in Salisbury Cathedral.*  
(i) *Angeli laudantes.*  
(ii) *Angeli ministrantes.*  
Pastel. 7' 0" by 4' 10". (Anon. 1910.)

**CALDECOTT, RANDOLPH.** British School:  
b. 1846, d. 1886.

- IV 610 *Four drawings for "Flirtations in France."* Published in *Graphic Pictures*, 1889.  
Signed R. C. Size of Mount 1' 5 $\frac{3}{4}$ " by 1' 5 $\frac{3}{4}$ ". (Purchased 1886.)

**CALIARI, PAOLO :** see **VERONESE.**

Gallery. No.

**CALLOW, JOHN.** British School: b. 1822, d. 1878. London.

- V 640 *Sea piece with shipping near shore.*  
Signed John Callow 1864. 11 $\frac{1}{8}$ " by 1' 5 $\frac{5}{8}$ ". Presented by  
W. Aldis Wright, M.A., 1907.

**CANALE, ANTONIO DA:** called **CANA-  
LETTO.** Venetian School: b. 1697, d. 1768.  
Rome, Venice, London.

[School of Canaletto.]

- II 193 *S. Mark's, Venice.*  
Canvas. 1' 6" by 1' 2 $\frac{1}{2}$ ". (F.)
- II 194 *Interior Court of the Doge's Palace at Venice.*  
Canvas. 1' 6" by 1' 2 $\frac{1}{2}$ ". (F.)
- II 203 *View in Venice.*  
Canvas. 1' 9" by 3' 0". Presented by the Rev. T. Halford,  
1855.
- II 205 *View in Venice.*  
Canvas. 1' 8 $\frac{3}{4}$ " by 2' 11 $\frac{1}{2}$ ". Presented by the Rev. T. Halford  
1855.

**CARRACCI, AGOSTINO.** Bolognese School:  
b. 1557, d. 1602. Bologna, Parma, Venice, Rome.

[After an engraving by Ag. Carracci.]

- II 169 *Venus chastising Cupid.*  
Copper. 6 $\frac{1}{4}$ " by 4 $\frac{1}{4}$ ". (M.)

**CARRACCI, ANNIBALE.** Bolognese School:  
b. 1560, d. 1609. Bologna, Rome.

- III 134 *S. Roch and the Angel.*  
Canvas. 2' 0" by 2' 7 $\frac{1}{4}$ ". (F.)

**CARRACCI, LODOVICO.** Bolognese School:  
b. 1555, d. 1619. Bologna, Rome.

- III 163 *Christ and an Angel appearing to the Virgin Mary.*  
Canvas. 7' 4 $\frac{1}{4}$ " by 4' 7 $\frac{1}{2}$ ". (F.)

[School of the Carracci.]

- N.E. 122 *Virgin and Child with S. John and an Angel.*  
Canvas. 1' 11 $\frac{3}{8}$ " by 1' 7 $\frac{1}{2}$ ". (F.)

- N.E. 123 *Triumph of Galatea.*  
Canvas. 1' 6 $\frac{3}{4}$ " by 2' 1 $\frac{1}{4}$ ". (F.)

- III 155 *Vision of S. Francis Xavier.*  
Canvas. 2' 10 $\frac{3}{4}$ " by 1' 10 $\frac{3}{4}$ ". (F.)



Gallery. No.

- II 171 *S. Dominic receiving the rosary from the Virgin.*  
Panel. 1' 2½" by 10⅞". (M.)
- II 213 *The Virgin lamenting over the body of Christ.*  
Canvas. 1' 1½" by 11½". (M.)

**CASTIGLIONE, GIOVANNI BENEDETTO.**

Italian School: b. 1616, d. 1670. Genoa, Rome, Naples, Venice.

- N.E. 148 *Abraham journeying to the land of Canaan.*  
Canvas. 2' 8¾" by 3' 2¼". (F.)
- II 217 *Landscape, with cattle.*  
Canvas. Circular. 11½" in diameter. (M.)
- II 219 *Landscape, with cattle and figures.*  
Canvas. Circular. 11½" in diameter. (M.)

**CECCHARELLI, NADDO.** Sienese School:  
worked about 1347. Siena.

- V 558 *The Crucifixion.*  
Panel. 1' 6½" by 7¾" with triangular top. (C. B.)

**CHAMPAIGNE, PHILIPPE DE.** Flemish  
School: b. 1602, d. 1674. Brussels, Paris.

[School of Ph. de Champaigne.]

- III 57 *Portrait of a young man.*  
Canvas. 2' 6½" by 2' 0". (F.)

**CIGNANI, CARLO.** Bolognese School: b. 1628,  
d. 1719. Bologna, Forlì.

- III 136 *Madonna.*  
Canvas. 2' 2" by 1' 8". (M.)

**CLAESZ, PIETER.** Dutch School: b. about  
1590, d. 1660. Haarlem.

- I 294 *Still life.*  
Signed monogram P. C. 1630. Panel. 9½" by 1' 0½". (M.)

**COLLIER, SIR R. (LORD MONKSWELL).**  
British School: b. 1817, d. 1886.

- V 460 *Swiss Landscape.*  
Canvas. 4' 11" by 5' 11½". Presented by Lord Monkswell, 1887.

Gallery. No.

**COLLINS, CHARLES ALLSTON.** British School: b. 1828, d. 1873.

- V 588 *Portrait of Wilkie Collins the novelist (brother of the Artist).*  
Signed with monogram, 1853. Panel, arch top.  $11\frac{5}{8}''$  by  $9\frac{1}{8}''$ .  
(Anon. 1909.)

**COLLINS, WILLIAM, R.A.** British School: b. 1787, d. 1847. London.

- N.E. 484 *Children fishing.*  
Signed Collins R.A. 1837. Canvas.  $1' 8\frac{1}{4}''$  by  $1' 4\frac{1}{4}''$ . (E.)
- N.E. 497 *Meadford Bay.*  
Signed W. Collins 1846. Canvas.  $2' 2\frac{3}{4}''$  by  $3' 0\frac{1}{2}''$ . (E.)

**COOPER, SAMUEL.** British School: b. 1609, d. 1672. London.

- Library 4 *Miniature Portrait of the Rev. Mr Stairsmore, Vicar of Edmonton.*  
Signed monogram S. C. 1657. Ivory. Oval.  $2\frac{1}{2}''$  by  $1\frac{7}{8}''$ . (S.)

**COOPER, THOMAS SIDNEY, R.A.** British School: b. 1803, d. 1902. London.

- IV 469 *Cattle-piece.*  
Signed T. S. Cooper 1835. Panel.  $5\frac{3}{4}''$  by  $10\frac{1}{4}''$ . (E.)
- IV 492 *Cattle-piece.*  
Signed T. Sidy. Cooper 1846. Canvas.  $3' 7\frac{1}{2}''$  by  $5' 1\frac{1}{2}''$ . (E.)

**COQUES, GONZALES.** Flemish School: b. 1618, d. 1684. Antwerp.

[Attributed to Coques.]

- I 543 *Portrait of a woman in white cap and ruff.*  
Copper.  $5\frac{1}{2}''$  by  $4\frac{1}{2}''$ . (M.)  
See also **TENIERS.**

**CORREGGIO (ANTONIO ALLEGRI, called).** Lombard School: b. 1494, d. 1534. Correggio, Parma.

[By a Bolognese imitator of Correggio.]

- II 211 *The Nativity.*  
Canvas.  $10\frac{3}{4}''$  by  $8\frac{1}{2}''$ . (M.)

Gallery. No.

**COSWAY, RICHARD, R.A.** British School:  
b. 1740, d. 1821. London.

- IV 477 *Corn-field.*  
Panel.  $4\frac{3}{4}$ " by  $6\frac{3}{4}$ ". (M.)
- IV 478 *Landscape.*  
Panel.  $7\frac{3}{4}$ " by  $10\frac{1}{4}$ ". (M.)
- IV 487 *After an etching by Rembrandt. Landscape.*  
Panel.  $4\frac{3}{4}$ " by  $6\frac{5}{8}$ ". (M.)
- IV 488 *Landscape.*  
Panel.  $7\frac{3}{4}$ " by  $10\frac{1}{4}$ ". (M.)

**COX, DAVID.** British School: b. 1783, d. 1859.  
London.

- V 599 *View near Croydon.*  
Signed D. Cox. Water colour.  $8\frac{3}{4}$ " by 8". (V.)
- V 600 *Landscape, with figures and cattle.*  
Water colour.  $6\frac{1}{4}$ " by  $9\frac{1}{8}$ ". (V.)
- I 695 *Mountains in Wales.*  
Water colour.  $11\frac{3}{4}$ " by  $1' 5\frac{1}{4}"$ . Presented by Augustus  
Walker, Esq., 1910.
- I 696 *Study of trees in Yorkshire.*  
Crayon.  $1' 5\frac{1}{2}"$  by  $11\frac{1}{2}"$ . Presented by A. Walker, Esq., 1910.
- I 697 *On the Wye near Monmouth.*  
Water colour.  $1' 0"$  by  $1' 5"$ . Presented by A. Walker, Esq.,  
1910.
- I 698 *Eight studies of men and animals.*  
Water colour. Presented by A. Walker, Esq., 1910.

**COYPEL, ANTON.** French School: b. 1661,  
d. 1728. Paris.

- I 333 *Zephyr and Flora.*  
Canvas.  $1' 0"$  by  $9\frac{1}{4}"$ . (F.)

**CRANACH, LUCAS, I.** German School: b. 1472,  
d. 1553. Wittenberg, Weimar.

[School of Cranach.]

- II 268 *Portrait of Martin Luther.*  
Panel. 8" by  $5\frac{3}{4}"$ . Presented by R. B. Seeley, Esq., 1850.
- II 270 *Portrait of Melancthon.*  
Panel. 8" by  $5\frac{3}{4}"$ . Presented by R. B. Seeley, Esq., 1850.

**CREDI, LORENZO DI.** Florentine School:  
b. 1459, d. 1537. Florence.

[School of Lorenzo di Credi.]

- III 125 *S. Sebastian.*  
Panel.  $5' 10"$  by  $3' 9"$ . Presented by David Forbes, Esq., 1885.

Gallery. No.

**CRESWICK, THOMAS, R.A.** British School:  
b. 1811, d. 1869. London.

IV 480 *The Ford.*  
Signed Thos. Creswick 1849. Canvas. 2' 7 $\frac{3}{4}$ " by 3' 8 $\frac{1}{2}$ ". (E.)

**CROOS, J. VAN.** Dutch School: 17th century.  
The Hague.

II 625 *Landscape with figures.*  
Signed J. v. Croos 1646. Panel. Circular. 9 $\frac{1}{2}$ " in diameter.  
(Pf. 1904.)

II 626 *Landscape with figures.*  
Signed J. v. Croos 1646. Panel. Circular. 9 $\frac{1}{2}$ " in diameter.  
(Pf. 1904.)

**CUYLENBORCH, ABRAHAM VAN.** Dutch  
School: d. 1658. Utrecht.

I 433 *Grotto with huntsmen resting.*  
Signed A. v. Cuylenborch. f. Panel. 1' 0 $\frac{1}{2}$ " by 1' 3 $\frac{1}{2}$ ". (M.)

**CUYP, AELBERT.** Dutch School: b. 1620,  
d. 1691. Dordrecht.

III 68 *Landscape, with figures and horses.*  
Signed A. C. Panel. 1' 2" by 1' 8 $\frac{3}{4}$ ". (F.)

III 77 *Landscape, with figures and horses.*  
Panel. 1' 2" by 1' 8 $\frac{3}{4}$ ". (F.)

I 346 *Cattle-piece.*  
Signed A. C. Panel. 1' 4 $\frac{1}{2}$ " by 1' 2 $\frac{1}{4}$ ". (M.)  
[Attributed to Cuyp.]

I 350 *Interior of a Stable.*  
Panel. 1' 0 $\frac{1}{2}$ " by 11 $\frac{1}{2}$ ". (M.)

**CUYP, JACOB GERRITSZ.** Dutch School:  
b. 1575, d. after 1649. Dordrecht.

III 638 *Portrait of a young girl.*  
Signed J. G. Cuyp fecit 1645. Panel. 2' 2 $\frac{3}{4}$ " by 1' 11". Pre-  
sented by Mrs Atkinson, Clare College Lodge, 1907.

See also **DUTCH SCHOOL.**

**DANBY, FRANCIS, A.R.A.** British School:  
b. 1793, d. 1861. London.

N.E. 500 *Imaginary Landscape ('Painter's Holiday').*  
Canvas. 2' 5" by 3' 5 $\frac{1}{2}$ ". (E.)

Gallery. No.

**DANLOUX, H.** French School. See Library Catalogue, p. 52.

V 458 *Portrait of Charles X, King of France.*  
Canvas. 10 $\frac{1}{4}$ " by 8 $\frac{1}{2}$ ". (F.)

**DAUBIGNY, CHARLES FRANÇOIS.** French School: b. 1817, d. 1878.

V 701 *Landscape.*  
Panel. 8 $\frac{1}{2}$ " by 1' 6". (Anon. 1910.)

V 702 *Landscape.*  
Panel. 9 $\frac{3}{4}$ " by 1' 2 $\frac{1}{4}$ ". (Anon. 1910.)

**DEELEN, DIRCK VAN.** Dutch School: b. 1605 d. 1671. Arnemuyden, Middelburg, Antwerp.

IV 30 *Interior of a Church, with a christening procession.*  
Signed dirck van delen fecit 1628. Panel. 1' 10 $\frac{3}{8}$ " by 1' 2 $\frac{1}{8}$ ". (F.)  
[Attributed to van Deelen.]

I 414 *Interior of a Church.*  
Copper. 11 $\frac{1}{2}$ " by 9 $\frac{3}{4}$ ". (M.)

**DEYSTER, LODEWYCK DE.** Flemish School: b. 1656, d. 1711. Bruges, Italy, Lisbon.

I 259 *Adoration of the Shepherds.*  
Canvas. 1' 7 $\frac{1}{2}$ " by 2' 0 $\frac{3}{4}$ ". (H.)

**DIETRICH, CHRISTIAN WILHELM ERNST.** German School: b. 1712, d. 1774. Weimar, Dresden, Italy.

I 280 *Christ disputing with the Doctors.*  
Canvas. 1' 9" by 1' 5 $\frac{1}{2}$ ". (M.)

**DOLCI, CARLO.** Florentine School: b. 1616, d. 1686. Florence.

II 215 *Mater Dolorosa.*  
Copper. 1' 7 $\frac{1}{2}$ " by 1' 3 $\frac{1}{4}$ ". (F.)

**DOU, GERARD.** Dutch School: b. 1613, d. 1675. Leiden.

III 33 *Schoolmaster and boys.*  
Signed G Dou 1645. Panel. 10" by 7". (F.)

III 34 *Woman at a window.*  
Signed G Dou 1663. Panel. 1' 2 $\frac{5}{8}$ " by 10 $\frac{7}{8}$ ". (F.)

III 35 *Portrait of a man.*  
Signed G Dou. Panel. Oval. 5 $\frac{1}{2}$ " by 4 $\frac{1}{4}$ ". (M.)

Gallery. No.

- I 417 *Rembrandt holding portrait of his Father.*  
Panel. Oval.  $11\frac{1}{4}''$  by  $8\frac{3}{4}''$ . (F.)

**DOYLE, RICHARD.** British School: b. 1824  
d. 1883.

- IV 611 *Three pen and ink and three water-colour sketches on one mount.*

Size of mount  $1' 5\frac{1}{2}''$  by  $2' 1\frac{5}{8}''$ . Purchased 1886.

- IV 612 *The Scandinavian god Thor.*

Water colour. Signed with monogram R. D.  $7\frac{5}{8}''$  by  $10\frac{7}{8}''$   
(Purchased 1886.)

**DUBBELS, HENDRIK.** Dutch School: 17th  
century.

- II 623 *Sea-piece.*

Panel.  $1' 3\frac{1}{2}''$  by  $1' 11\frac{3}{8}''$ . (Pf. 1904.)

**DUCK, JACOB.** Dutch School: b. about 1600  
d. after 1660. Utrecht, The Hague.

- I 423 *Woman at work.*

Panel.  $1' 1\frac{1}{2}''$  by  $10\frac{1}{2}''$ . (M.)

**DUGHET :** see **POUSSIN.**

### DUTCH SCHOOL.

[In the manner of Jan Claesz Rietschoof.]

- III 55 *Sea-piece; with a Dutch man-of-war and sloop.*  
Canvas.  $2' 5''$  by  $3' 6''$ . (F.)

[Attributed to C. Janssens van Ceulen.]

- III 59 *Portrait of Margaret, wife of Thomas, first Viscount Fitzwilliam.*

Canvas.  $3' 8''$  by  $2' 8''$ . (F.)

[In the manner of Gillis Rombouts.]

- III 67 *Landscape, with sportsmen.*

Panel.  $1' 0''$  by  $9\frac{3}{4}''$ . (M.)

[Attributed to C. Janssens van Ceulen.]

- III 83 *Portrait of Thomas, first Viscount Fitzwilliam.*

Canvas.  $3' 7\frac{3}{4}''$  by  $2' 8''$ . (F.)

[In the manner of P. van Laer.]

- III 86 *Adjusting the stirrup.*

Canvas.  $1' 2\frac{3}{4}''$  by  $1' 6''$ . (S.)

Gallery. No.

[Anna Maria van Schurman (?)]

- I 93 *Portrait of a female artist.*  
Canvas. 2' 11" by 2' 4½". (F.)

[In the style of J. G. Cuyp.]

- E. 147 *Portrait of a child, with a toy-goat.*  
Canvas. 3' 7" by 2' 7". (F.)

[In the manner of H. Saftleven.]

- 363 *River scene, with figures.*  
Canvas. 11" by 1' 3¾". (M.)

- 364 *Landscape: wooded country, with figures.*  
Copper. 8¾" by 1' 0½". (M.)

- 366 *River scene, with figures.*  
Canvas. 11" by 1' 3¾". (M.)

- 387 *Landscape, with river and boat.*  
Panel. 6½" by 8½". (M.)

- 391 *Frost-piece.*  
Signed B. Panel. 5½" by 6½". (M.)

- 392 *Sea-piece.*  
Signed B. Panel. 5¾" by 6½". (M.)

- 395 *A man teaching a girl to read.*  
Signed HB. Panel. 1' 2½" by 11". (M.)

- 396 *Portrait of a Lady.*  
Panel. 10¾" by 8½". (M.)

- 408 *River scene by moonlight.*  
Signed C. V. M. Panel. 9¾" by 1' 0". (M.)

- 410 *Landscape, with figures.*  
Signed C. V. M. Panel. 10" by 11¾". (M.)

[In the manner of P. de Witt.]

- 411 *Ruin, with figures.*  
Canvas. 1' 4½" by 1' 7". (M.)

[Imitation of van der Heyden.]

- 419 *A Dutch house.*  
Panel. 10" by 7¾". (M.)

**DYCK, ANTHONIE VAN.** Flemish School:  
b. 1599, d. 1641. Antwerp, Italy. London.

[After van Dyck.]

- I 418 *Portrait of Petrus Stevens.*  
Panel. 7" by 5". (M.)

Gallery. No.

**ELSHEIMER, ADAM.** German School: b. 1578,  
d. 1620. Frankfort on the Main, Rome.

I 101 *Latona transforming the peasants into frogs.*  
Signed A. Elsheimer. Copper. 9 $\frac{1}{4}$ " by 11 $\frac{3}{4}$ ". (M.)

I 532 *Venus and Cupid in a landscape.*  
Copper. 3 $\frac{1}{4}$ " by 5 $\frac{3}{4}$ ". (M.)

I 539 *Minerva as a patroness of Arts and Sciences.*  
Copper. 3 $\frac{1}{4}$ " by 5 $\frac{1}{2}$ ". (M.)

[Imitation of Elsheimer.]

III 102 *S. Peter healing S. Agatha.*  
Panel. 10 $\frac{1}{4}$ " by 1' 2". (F.)

[In the manner of Elsheimer.]

I 533 *River scene by moonlight.*  
Panel. Oval. 4 $\frac{2}{8}$ " by 5 $\frac{3}{4}$ ". (F.)

**ETTY, WILLIAM, R.A.** British School:  
b. 1787, d. 1849.

IV 641 *Portrait of John Camidge, Mus.D.*  
Millboard. 1' 0" by 9 $\frac{1}{4}$ ". Presented by Mrs Hustwick, 1907.

**EVERDINGEN, ALLART VAN.** Dutch School:  
b. 1621, d. 1675. Haarlem, Norway, Amsterdam.

III 66 *Norwegian Landscape.*  
Signed A. V. Erdingen fl. 1650. Panel. 1' 4 $\frac{3}{4}$ " by 1' 9 $\frac{1}{2}$ ". (M.)

**FABRIS, M. PETER.** Italian School: worked  
about 1770. Naples.

IV 140 *Ferry over the Volturmo near Caviazzo.*  
Canvas. 1' 1 $\frac{2}{8}$ " by 1' 9 $\frac{3}{8}$ ". (M.)

**FERG, FRANZ DE PAULA.** German School:  
b. 1689, d. 1740. Dresden, London.

I 279 *A quay.*  
Copper. 7" by 9 $\frac{3}{4}$ ". (M.)

I 525 *River scene, with figures.*  
Copper. 2 $\frac{1}{4}$ " by 4 $\frac{1}{8}$ ". (M.)

**FETI, DOMENICO.** Italian School: b. 1589,  
d. 1624. Rome, Mantua, Venice.

III 51 *Christ's Agony in the Garden.*  
Canvas. 1' 11 $\frac{3}{4}$ " by 1' 7". (F.)



Gallery. No.

**FLEMISH SCHOOL.**

[In manner of J. Wildens.]

III 61 *View of the Old Palace at Richmond.*  
Canvas. 4' 11½" by 9' 10½". (F.)

III 95 *View of Theobald's Palace in the time of James I.*  
Canvas. 4' 10½" by 9' 10½". (F.)

[In manner of A. Janssens.]

III 89 *Portrait of a Gentleman holding a statuette.*  
Inscribed "Anno 1629." Panel. 2' 1" by 1' 6". (F.)

III 128 *Venus and Cupid.*  
Panel. 1' 3¼" by 2' 2". (F.)

I 258 *Two studies of a male head.*  
Canvas. 1' 0¾" by 1' 0". Presented by F. Thackeray, Esq.,  
1841.

**FRANCK, FRANÇOIS.** Flemish School: b. 1581,  
d. 1642. Italy, Antwerp.

I 262 *The worship of the Golden Calf.*  
Signed Do Ffranck in. et F. Panel. 1' 10½" by 2' 9". (V.)

**FRENCH SCHOOL.**

I 320 *Nymph.*  
Panel. 3½" by 5½". (M.)

I 321 *Nymph.*  
Signed Courtois (?) (wife of Nattier). Panel. 3½" by 5½". (M.)

**FRITH, WILLIAM POWELL, R.A.** British  
School: b. 1819. London.

N.E. 498 *Othello and Desdemona.*  
Signed W. P. Frith 1856. Canvas. 1' 9½" by 1' 6½". (E.)

**FYT, JAN.** Flemish School. b. 1609, d. 1661.  
Antwerp.

I 305 *Dead birds: partridge and larks.*  
Signed Joannes Fyt f. Canvas. 1' 4¼" by 1' 4¼". (M.)

**GABBIANI, ANTONIO DOMENICO.** Italian  
School: b. 1652, d. 1722. Rome, Florence.

[By or after Gabbiani.]

I 518<sup>a</sup> *Portrait of the Painter.*  
Panel. Oval. 2⅞" by 2¼". (M.)

Gallery. No.

**GADDI, TADDEO.** Florentine School: b. about 1300, d. 1366. Assisi, Florence, Arezzo.

[School of Taddeo Gaddi.]

- V 550 *Annunciation.*  
Two panels, each 2' 7½" by 1' 6", arched at top. (C. B.)

**GAINSBOROUGH, THOMAS, R.A.** British School: b. 1727, d. 1788. Bath, London.

- III 18 *Portrait of the Hon. W. Fitzwilliam.*  
Signed T. G. Canvas. 2' 5¼" by 2' 0½". (F.)
- IV 644 *Portrait of John Kirby, author of the Suffolk Traveller.*  
Canvas. 2' 5¼" by 2' 0½". (Anon. 1908.)
- IV 645 *Portrait of Mrs John Kirby:*  
Canvas. 2' 5¼" by 2' 0¼". (Anon. 1908.)
- IV 709 *Portrait of John Joshua Kirby.*  
Canvas. 2' 5¼" by 2' 0½". (Anon. 1911.)
- IV 710 *Portraits of Heneage Lloyd and his sister with landscape background.*  
Canvas. 2' 1" by 2' 7½". (Anon. 1911.)

[After Gainsborough.]

- V 15 *Portrait of the Right Hon. W. Pitt.*  
Canvas. 1' 11½" by 1' 7½". Presented by the Rev. G. G. Stonestreet, 1836.

**GAROFALO, BENVENUTO TISI DA.** Ferrarese School: b. 1481, d. 1559. Ferrara.

- III 160 *S. John in the Wilderness.*  
Panel. 2' 4" by 1' 8¼". (H.)
- [School of Garofalo.]
- III 631 *Virgin and Child with St Catherine.*  
Panel. 1' 7½" by 1' 1¾". (A. C. 1905.)

**GELTTON, TOUSSAINT.** Dutch School: worked about 1674. Amsterdam, The Hague, Stockholm, Germany, Denmark.

- I 341 *Boors playing at cards.*  
Signed t. geldtton. Panel. 10" by 7¾". (F.)

Gallery. No.

**GEOFFROY-DECHAUME, CHARLES L.**  
French School: living.

- III 673 *Notre Dame, Paris.*  
Water colour. Signed with monogram, 1907. 8½" by 11⅞".  
Presented by the Artist, 1909.
- III 692 "*Château Gaillard on the Seine.*"  
Water colour. 11½" by 1' 4½". Given by Hon. John W.  
Fortescue, M.A., Trinity College, 1909.

**GERMAN SCHOOL.**

- II 286 *Portrait of Albrecht du Beherzte, Duke of Saxony.*  
Panel. 1' 2⅞" by 10½". (M.)
- II 287 *Portrait of the Emperor Maximilian.*  
Panel. 1' 2⅞" by 10½". (M.)
- II 165 *Portrait of a man.*  
Panel. 2' 5½" by 1' 11". (B.)

**GHISOLFI, GIOVANNI.** Italian School: b. 1623,  
d. 1680. Rome.

- II 173 *Landscape.*  
Canvas. 1' 1¼" by 1' 2⅞". (M.)
- II 179 *Landscape, with ruins and figures.*  
Canvas. 1' 6⅜" by 1' 2⅞". (M.)

**GILL, CHARLES.** British School: d. after 1755.  
London.

- N.E. 499 *Leap-Frog.*  
Panel. 1' 5½" by 2' 0¼". (E.)

**GIOLFINO, NICCOLO.** Veronese School: b.  
about 1465, d. not before 1518. Verona.

- III 208 *Classical Subject.*  
Panel. 9⅜" by 11". (M.)
- III 210 *Atalanta's race.*  
Panel. 9⅜" by 11". (M.)

**GLIMES, P. DE.** Flemish School: worked about  
1780. Brussels.

- I 322 *Portrait of a young man.*  
Signed P. De Glimes, 1793. Panel. 5⅞" by 4". (M.)

Gallery. No.

**GOOD, THOMAS SWORD.** British School:  
b. 1789, d. 1872. Berwick-upon-Tweed.

- N.E. 479 *Reading the News.*  
Panel. 1' 3" by 11¼". (E.)
- N.E. 483 *The Music Lesson.*  
Panel. 1' 4¼" by 1' 0¾". (E.)
- N.E. 489 *Old woman.*  
Panel. 1' 3" by 11". (E.)

**GOODALL, FREDERICK, R.A.** British School:  
b. 1822. London.

- IV 470 *An Interior with figures.*  
Signed F. Goodall 1844. Panel. 1' 0¾" by 1' 5". (E.)
- IV 482 *The Heathcart.*  
Signed F. Goodall. Panel. 11¼" by 1' 3½". (E.)

**GOYEN, JAN VAN.** Dutch School: b. 1596,  
d. 1656. Leiden, Haarlem, France, The Hague.

- III 42 *River scene.*  
Signed V. G. 1643. Panel. 1' 1¾" by 1' 1". (M.)
- I 52 *Landscape, with figures.*  
Signed I. V. Goyen 1628. Panel. 11¼" by 1' 2¼". (M.)
- III 53 *Landscape; view near Dort.*  
Signed V. Goyen. Panel. 1' 2¾" by 1' 10¾". (M.)
- I 415 *River view.*  
Signed V. G. 1654. Panel. 8" by 11¼" (M.)

**GREUZE, JEAN-BAPTISTE.** French School:  
b. 1725, d. 1805. Paris.

- I 318 *French beggar-boy.*  
Panel. 8¼" by 5¾". (F.)
- I 332 *French beggar-girl.*  
Panel. 8¼" by 5¾". (F.)

**GRIFFIER, JAN.** Dutch School: b. 1656, d. 1718.  
Amsterdam, London.

- I 384 *Dutch Landscape, with a fair.*  
Canvas. 2' 0" by 2' 5". (V.)

Gallery. No.

**GRIMALDI, GIOVANNI FRANCESCO:** called  
**IL BOLOGNESE.** Bolognese School: b. 1606,  
d. 1680. Rome, Paris.

II 172 *Landscape, with sheep.*  
Panel. Oval. 1' 0 $\frac{3}{8}$ " by 1' 4". (M.)

II 212 *Landscape, with waterfall.*  
Panel. Oval. 1' 0 $\frac{3}{8}$ " by 1' 4". (M.)

**GRISONI, GIUSEPPE.** Italian School: b. about  
1700, d. 1769. Florence, England.

III 17 *Portrait of Handel.*  
Panel. Oval. 7" by 6". Presented by Rev. A. R. Ward.

**GRYEF, ANTON.** Flemish School: worked  
about 1650.

I 293 *Spaniels and dead game, in a landscape.*  
Signed A. Gryef f. Panel. 11 $\frac{1}{4}$ " by 1' 2". (M.)

**GUARDI, FRANCESCO.** Venetian School:  
b. 1711, d. 1793. Venice.

II 183 *View near Venice.*  
Panel. 5" by 7". (M.)

II 184 *The Island of Anconetta.*  
Canvas. 6" by 8 $\frac{1}{2}$ ". (M.)

II 187 *View near Venice.*  
Canvas. 6 $\frac{3}{8}$ " by 9 $\frac{1}{4}$ ". (M.)

II 188 *View near Venice.*  
Canvas. 6 $\frac{3}{8}$ " by 9". (M.)

**GUERCINO: FRANCESCO BARBIERI,** called  
**IL.** Bolognese School: b. 1591, d. 1666. Cento,  
Rome, Bologna.

[Attributed to Guercino.]

I 518<sup>b</sup> *Portrait of the Painter.*  
Panel. Oval. 2 $\frac{7}{8}$ " by 2 $\frac{1}{4}$ ". (M.)

[Imitation of Guercino.]

III 139 *Christ driving the money-changers out of the Temple.*  
Canvas. 3' 3" by 4' 6". (V.)

III 146 *Christ disputing with the Doctors.*  
Canvas. 3' 7 $\frac{1}{2}$ " by 5' 0". (V.)

Gallery. No.

**GYSELAER, NICOLAES DE.** Dutch School :  
worked about 1600—25. Leiden, Utrecht.

- I 422 *Interior of a Hall with figures.*  
Signed N. D. Geselaer Fecit A. 1621. Panel. 1' 7 $\frac{3}{4}$ " by  
2' 0 $\frac{3}{4}$ ". (F.)

**HAARLEM, CORNELIS CORNELISZ VAN.**  
Dutch School : b. 1562, d. 1638. Haarlem.

- I 251 *Female head.*  
Signed C. H. 1624. Panel. 8 $\frac{3}{4}$ " by 6 $\frac{1}{2}$ ". (M.)

See also **DUTCH SCHOOL.**

**HALS, FRANS.** Dutch School : b. 1580, d. 1666.  
Haarlem.

- III 150 *Portrait of a man.*  
Signed monogram F. H. Canvas. 2' 6" by 2' 0 $\frac{1}{2}$ ". (P.)

**HAMILTON, FRANS DE.** Dutch School :  
worked from 1660—83. Holland, Cleve, Pots-  
dam, Vienna, Cassel, Munich.

- I 296 *A thistle, with snakes, butterflies, etc.*  
Panel. 11" by 8 $\frac{1}{4}$ ". (M.)
- I 297 *Ivy, with bird's-nest, snakes, and butterflies.*  
Panel. 11" by 8 $\frac{1}{4}$ ". (M.)

**HARDING, SYLVESTER.** English School :  
b. 1745, d. 1809. London.

- I 622 7 water colour miniatures. 4 $\frac{1}{4}$ " by 3 $\frac{1}{4}$ ". Presented by J. W.  
Clark, M.A., 1903.
- (a) *Robert Rushbrooke, M.A. Trinity College, 1804.*  
(b) *Marmaduke Dayrell, Fellow Commoner, Christ's  
College, 1789.*  
(c) *John Hopkins, M.A. Christ's College, 1783.*  
(d) *John Thomas Nottidge, M.A. Trinity College,  
1800.*  
(e) *Walter Blackett Trevelyan, M.A. St John's  
College, 1803; or Raleigh Trevelyan, M.A.  
St John's College, 1807.*  
(f) *Philip Francis, M.A. St John's College, 1794.*

- Gallery. No. **HARLOW, GEORGE HENRY.** British School:  
b. 1787, d. 1819.
- IV 630 *Portrait of Charles Hague, Mus.B., Prof. of Music*  
1799—1821.  
Canvas. 2' 5½" by 2' 0¼". (Purchased 1904.)
- HEEM, JAN DAVIDSZ DE.** Dutch School:  
b. 1606, d. 1683. Utrecht, Leiden, Antwerp.
- I 313 *Group of flowers.*  
Signed J. de Heem. Canvas. 2' 1" by 1' 8". (M.)
- HEEMSKERCK, EGBERT VAN.** Dutch  
School: b. 1645, d. 1704. Haarlem, Amster-  
dam, London.
- I 430 *Monks singing.*  
Signed monogram H. V. Panel. 9½" by 8½". (M.)
- HEEMSKERCK, MAERTEN VAN.** Dutch  
School: b. 1498, d. 1574. Haarlem, Italy.
- III 103 *Portrait of the Painter, with the Colosseum in the*  
*background.*  
Signed Martin Van hemscker 1563. Panel. 1' 4¼" by 1' 9". (K.)
- HEERE, LUCAS D'.** Flemish School: b. 1534,  
d. 1584. Ghent, London.  
[Attributed to L. d'Heere.]
- II 281 *Portrait of a man.*  
Panel. 10¾" by 8½". (M.)
- II 282 *Portrait of a man.*  
Panel. 1' 0¾" by 9½". (M.)
- II 283 *Portrait of a man.*  
Panel. 10¾" by 8½". (M.)
- HELST, BARTHOLOMEUS VAN DER.**  
Dutch School: b. 1611—2, d. 1670. Amsterdam.
- III 149 *Portrait of a man.*  
Signed B. vander helst 1662. Canvas. 2' 7" by 2' 3½". Pre-  
sented by Mrs Thompson, 1886.
- HEMESSEN, KATHARINA VAN.** Flemish  
School: worked about 1556. Haarlem, Spain.
- I 273 *Portrait of a man.*  
Panel. 6" by 4¼". (M.)

Gallery. No.

**HERKOMER, HUBERT, R.A.** British School:  
b. 1849. London.

- IV 503\* *Portrait of Professor Fawcett.*  
Signed H. H. 86. Canvas. 4' 7½" by 3' 7". Presented by the  
Subscribers, 1887.

**HERP, GUILLIAM VAN.** Flemish School:  
b. 1614, d. 1677. Antwerp.

- III 158 *The Resurrection.*  
Canvas. 3' 7¼" by 3' 3". (M.)

**HERREYNS, GUILLAUME JACQUES.**  
Flemish School: b. 1743, d. 1827. Malines,  
Antwerp.

- I 530 *Adoration of the Magi.*  
Copper. Oval. 3⅞" by 4¼". (M.)

- I 544 *Adoration of the Shepherds.*  
Copper. Oval. 3⅞" by 4¼". (M.)

**HEYDEN, JAN VAN DER.** Dutch School:  
b. 1637, d. 1712. Amsterdam, England, Germany.

[Attributed to J. van der Heyden.]

- I 354 *Architecture with figures.*  
Signed V. Heyde 1676. Panel. 1' 10½" by 2' 4½". (V.)  
See also **DUTCH SCHOOL.**

**HIGHMORE, JOSEPH.** British School: b. 1692,  
d. 1780.

- IV 646 *Portraits of Mrs Elizabeth Birch and her daughter.*  
Signed Jos. Highmore pinx. 1742. Canvas. 3' 10" by 3' 1¼".  
(Anon. 1908.)

**HOARE, PRINCE.** British School: b. 1755,  
d. 1834. Bath, London.

- V. 461 *Portrait of Lord Fitzwilliam's mother.*  
Pastel. 1' 11½" by 1' 5¼". (F.)

- V 463 *Portrait of Lord Fitzwilliam's father.*  
Pastel. 1' 11½" by 1' 5¼". (F.)



Gallery. No.

- HOBBEEMA, MEINDERT.** Dutch School:  
b. 1638, d. 1709. Amsterdam.
- III 49 With J. Lingelbach. *Wooded landscape, with hawk-  
ing party.*  
Signed m. Hobbema f. 1667. Canvas. 2' 7" by 3' 5". (V.)
- HODGES, CHARLES HOWARD.** British  
School: b. 1764, d. 1837. Amsterdam, The Hague.
- V 454 *A Native of Otaheite.*  
Canvas. 1' 5½" by 1' 1". (M.)
- HOET, GERARD.** Dutch School: b. 1648,  
d. 1733. The Hague, Paris, Brussels, Utrecht.
- I 397 *Adoration of the Magi.*  
Copper. 1' 0½" by 1' 4¾". (F.)
- HOGARTH, WILLIAM.** British School: b. 1697,  
d. 1764. London.
- III 21 *Portrait of George Arnold, Esq., of Ashby Lodge.*  
Canvas. 2' 11" by 2' 3". (A.)
- III 24 *Portrait of Frances, daughter of George Arnold, Esq.*  
Canvas. 2' 11" by 2' 3". (A.)
- IV 647 *A musical party.*  
Canvas. 2' 0" by 2' 5½". Anon. 1908.
- IV 675 *A prisoner of the Fleet Prison being examined before  
a committee of the House of Commons respecting  
the cruelties that took place at the Prison, 1729.*  
Given by the painter to Horace Walpole. Oil Sketch on  
Paper. 1' 6½" by 1' 11½". Anon. 1909. Bambridge (not  
Huggins) on extreme left.  
Trial was in 1729, large picture painted same year for Sir  
Archibald Grant of Monymusk, one of the committee.
- IV 648 *Portrait of Benjamin Hoadly, M.D.*  
Canvas. 1' 10¾" by 1' 6¼". (Anon. 1908.)  
[Attributed to Hogarth.]
- III 26 *View of Ashby Lodge, Leicestershire.*  
Canvas. 2' 7¾" by 3' 11¼". (A.)  
[School of Hogarth.]
- IV 693 *Portrait of Handel.*  
Canvas. 3' 11" by 3' 1". Bequeathed by F. T. Cobbold, Esq.,  
1909.

Gallery. No.

**HOLBEIN, HANS.** German School: b. 1497, d. 1543. Basel, London.

[School of Holbein.]

II 164 *Portrait of Sir William Fitzwilliam, Earl of Southampton and Lord High Admiral of England.*

Panel. 6' 0½" by 3' 3". (F.)

I 537 *Portrait of a man.*

Copper. 5" by 3½". (F.)

**HOLMAN-HUNT, WILLIAM, O.M.** British School: b. 1827, d. 1910.

IV 687 *Morning.*

Decorative Sketch in pen and ink. 6½" by 1' 1½". (Anon. 1909.)

**HONDIUS, ABRAHAM.** Dutch School: b. about 1633, d. 1692. Rotterdam, Amsterdam, London.

I 355 *Ship in distress off Greenland.*

Signed Abraham Hondius. Canvas. 1' 9¼" by 2' 8½". (F.)

I 356 *Hawking party.*

Signed A. Hondius f. 1665. Canvas. 1' 7" by 2' 0¼". (M.)

I 359 *Pheasant and ducks.*

Canvas. 1' 9¾" by 2' 8½". (F.)

**HONE, NATHANIEL, R.A.** British School: b. 1730, d. 1784. London.

III 3 *Portrait of Viscount Fitzwilliam (unfinished).*

Card. 6¾" by 5' 0¾". Presented by Henry Smedley, M.A.

V 457 *Portrait of General Lloyd.*

Canvas. 2' 5" by 2' 0½". (F.)

V 459 *Copy of the picture by Titian said to represent Philip II of Spain and the Princess d' Eboli.* (See **TITIAN**.)

Enamel. 5¾" by 8". (F.)

**HORSLEY, JOHN CALLCOTT, R.A.** British School: b. 1817. London.

IV 473 *Scene from Rob Roy; expulsion of Andrew Fair-service.*

Signed J. C. Horsley 1852. Panel. 11¾" by 9". (E.)

**HORST, G.** Dutch School: fl. about 1640 to 1650.

I 535 *Moonlight Scene.*

Signed G. Horst. Copper. 3¾" by 5". (M.)

Gallery. No.

**HOWARD, HENRY, R.A.** British School :  
b. 1769, d. 1847. London.

[By or after Howard.]

V 2 *Portrait of Viscount Fitzwilliam.*  
Panel. 1' 2 $\frac{3}{4}$ " by 1' 0". (F.)

**HUDSON, THOMAS.** British School : b. 1701,  
d. 1779. London.

V 465 *Portraits of John and Thomas Fitzwilliam, brothers  
of the Earl of Southampton.* (From a monument.)  
Canvas. 2' 8" by 3' 8 $\frac{1}{2}$ ". (F.)

IV 503\*\* *Portrait of Viscount Fitzwilliam, father of the  
Founder.*  
Canvas. 2' 5" by 2' 0". Presented by the Rev. H. B. George,  
1895.

**HUET, JEAN-BAPTISTE.** French School :  
b. 1745, d. 1811. Paris.

I 319 *A Pastoral.*  
Signed J-B. H. Canvas. 7 $\frac{3}{4}$ " by 1' 4". (S.)

I 324 *A Pastoral.*  
Canvas. 7 $\frac{3}{4}$ " by 1' 4". (S.)

**HUYSMANS, CORNELIS.** Flemish School :  
b. 1648, d. 1727. Antwerp, Mechlin.

I 247 *Landscape, with figures.*  
Panel. 4 $\frac{3}{8}$ " by 6 $\frac{3}{4}$ ". (M.)

**HUYSUM, J. VAN.** Dutch School : b. 1659,  
d. 1716.

II 635 *Group of Flowers.*  
Signed Justa van Huysum. Canvas. 2' 11 $\frac{1}{2}$ " by 3' 8 $\frac{3}{4}$ ". (Pur-  
chased 1905.)

**INCE, JOSEPH MURRAY.** British School :  
b. 1806, d. 1859. London, Cambridge.

V 593 *Interior of Caius College Chapel.*  
Water colour. Signed J. M. Ince 1834. 11 $\frac{7}{8}$ " by 8". (V.)

V 594 *Interior of Jesus College Chapel.*  
Water colour. Signed J. M. Ince 1837. 8 $\frac{3}{4}$ " by 6 $\frac{1}{4}$ ". (V.)

V 595 *Gate of Honour, Caius College.*  
Water colour. Signed J. M. Ince, 1834. 1' 0 $\frac{1}{2}$ " by 7 $\frac{1}{4}$ ". (V.)

Gallery. No.

**JACKSON, JOHN, R.A.** British School: b. 1778,  
d. 1831. London.

- IV 649 *Portrait of Thomas Stothard, R.A. (1755—1834).*  
Canvas. 2' 5 $\frac{1}{8}$ " by 2' 0 $\frac{1}{4}$ ". (Anon. 1908.)

**JANSON, JACOBUS.** Dutch School: b. 1729,  
d. 1784. Leiden.

- I 235 *Cattle-piece.*  
Signed J. Janson 1779. Canvas. 1' 0 $\frac{1}{4}$ " by 1' 3 $\frac{1}{2}$ ". (M.)
- I 244 *Cattle-piece.*  
Signed J. Janson 1779. Canvas. 1' 0 $\frac{1}{4}$ " by 1' 3 $\frac{1}{2}$ ". (M.)
- I 253 *Cattle-piece.*  
Signed Js Janson f. Panel. 1' 1 $\frac{1}{4}$ " by 1' 6". (M.)

**JANSSENS, ABRAHAM.** Flemish School:  
b. 1575, d. 1632. See **FLEMISH SCHOOL.**

**JANSSENS, CORNELIS (VAN CEULEN).**  
Dutch School: b. 1593, d. 1664. London, Am-  
sterdam, Utrecht. See **DUTCH SCHOOL.**

**JARDIN, KAREL DU.** Dutch School: b. 1622,  
d. 1678. The Hague, Amsterdam, Italy.

- I 362\* *Italians with dog.*  
Signed C. du iardin. Copper. 8 $\frac{1}{2}$ " by 6 $\frac{1}{2}$ ". (M.)

**JERVAIS, CHARLES.** British School: b. 1675,  
d. 1739. London.

- IV 650 *Portraits of Martha and Teresa Blount.*  
Canvas. 3' 6" by 3' 7". (Anon. 1908.)

**JONES, GEORGE, R.A.** British School: d. 1869.  
London.

- IV 475 *Edinburgh.*  
Canvas. 11" by 9 $\frac{1}{2}$ ". Presented by Mrs Jones, 1873.
- IV 486 *Nuremberg.*  
Signed G. J. Millboard. 1' 0 $\frac{1}{2}$ " by 10". Presented by Mrs  
Jones, 1873.

Gallery. No.

**JORDAENS, JACOB.** Flemish School: b. 1593,  
d. 1678. Antwerp.

[Attributed to Jordaens.]

I 254 *Girl's head.*  
Canvas. 1' 2 $\frac{3}{4}$ " by 10 $\frac{1}{2}$ ". (M.)

**KEENE, CHARLES SAMUEL.** British  
School: b. 1823, d. 1891.

IV 615 *Pen and ink sketch of Matthew Lawless (1836—1864).*  
On the reverse side is a sketch of a Jester. 4 $\frac{1}{4}$ " by 7".  
(Purchased 1898.)

IV 616 *Drawing for "Punch," 1886.*  
4 $\frac{1}{4}$ " by 6 $\frac{3}{4}$ ". (Purchased 1898.)

IV 617 *Pen and ink drawing of an old man seated (Mr  
Millar).*  
6 $\frac{3}{4}$ " by 3 $\frac{3}{4}$ ". (Purchased 1898.)

**KEIRINCKX, ALEXANDER.** Flemish School:  
b. 1600, d. 1652. Antwerp, London, Amsterdam.

I 504 *Landscape, with figures.*  
Panel. 5" by 4". (M.)

I 510 *River scene.*  
Signed monogram A. K. Panel. 7 $\frac{1}{4}$ " by 6 $\frac{3}{4}$ ". (M.)

**KESSEL, JOHAN VAN.** Flemish School:  
b. 1626, d. 1679. Antwerp.

I 223 *Butterflies and other insects.*  
Signed I. V. Kessel. fecit. A.<sup>o</sup> 1661. Panel. 7 $\frac{1}{4}$ " by 11". (M.)

I 224 *Butterflies and other insects.*  
Signed I. V. Kessel. fecit. anno. 1661. Panel. 7 $\frac{1}{4}$ " by 11".  
(M.)

I 298 *Insects.*  
Panel. 4 $\frac{3}{8}$ " by 5 $\frac{7}{8}$ ". (M.)

I 309 *Insects.*  
Panel. 4 $\frac{3}{8}$ " by 5 $\frac{7}{8}$ ". (M.)

I 506 *Insects.*  
Panel. 3 $\frac{1}{4}$ " by 4 $\frac{3}{4}$ ". (M.)

I 508 *Insects.*  
Panel. 3 $\frac{1}{4}$ " by 4 $\frac{3}{4}$ ". (M.)

I 312 *Insects.*  
Panel. 4 $\frac{3}{8}$ " by 5 $\frac{7}{8}$ ". (M.)

Gallery. No.

**KLOMP, AELBERT JANSZ.** Dutch School :  
b. 1618, d. 1688. Amsterdam.

I 348 *Cattle-piece.*  
Signed A klomp fe. Panel. 1' 6" by 2' 1". (M.)

I 349 *Cattle-piece.*  
Signed A klomp fe. Panel. 1' 6" by 2' 1". (M.)

**KNAPTON, FRANCIS.** British School: b. 1698,  
d. 1788. London.

III 22 *Portrait of a member of the Arnold family.*  
Canvas. 2' 5½" by 2' 0½". (A.)

V 456 *Portrait of Henry, ninth Earl of Pembroke, when a boy.*  
Canvas. 2' 8¼" by 2' 3¼". (F.)

**KNEWSTUB, W. J.** British School: b. 1833,  
d. 1906.

IV 617 *O if I were Grandma.*  
Signed with monogram. 1' 8¾" by 1' 1¾". (Anon. 1909.)

**KOBELL, JAN.** Dutch School: b. 1782, d. 1816.  
Utrecht, Paris, Amsterdam.

I 289 *Landscape, with a castle and ruined gateway.*  
Panel. 6¾" by 7¾". (M.)

I 292 *Landscape, with sheep.*  
Panel. 1' 2½" by 1' 4¾". (M.)

**LABRADOR, JUAN.** Spanish School: d. 1600.  
Madrid.

I 301 *Festoon of flowers.*  
Canvas. 1' 1¾" by 1' 3". (M.)

I 307 *Flowers.*  
Canvas. 1' 1¾" by 1' 3". (M.)

**LAER, PIETER VAN:** called **BAMBOCCIO.**  
Dutch School: b. before 1613, d. about 1648.  
Haarlem, France, Rome.

I 421 *Classical ruins with figures.*  
Canvas. 1' 6¾" by 2' 0½". (M.)

I 429 *Bandit's cave.*  
Canvas. 1' 6½" by 2' 0½". (M.)

See also **DUTCH SCHOOL.**

Gallery. No.

**LAIRESSE, GERARD DE.** Dutch School :  
b. 1641, d. 1711. Amsterdam, Bois-le-Duc,  
Utrecht, The Hague.

I 420 *Circe.*  
Panel. 8 $\frac{7}{8}$ " by 11 $\frac{5}{8}$ ". (M.)

**LANCE, GEORGE.** British School : b. 1802,  
d. 1864. London.

IV 490 *Fruit-piece.*  
Canvas. 10 $\frac{1}{2}$ " by 1' 1 $\frac{1}{2}$ ". (E.)

**LANZANI, POLIDORO.** Venetian School :  
b. 1515, d. 1565. Venice. A pupil of Titian.  
He was also called Polidoro Veneziano.

III 145 *The Holy Family, with S. Catharine.*  
Canvas. 3' 10" by 5' 6". (H.)

III 156 *The Holy Family, with S. Catharine and S. Barbara.*  
Canvas. 4' 4 $\frac{1}{2}$ " by 5' 9 $\frac{1}{4}$ ". (H.)

**LAURI, FILIPPO.** Italian School : b. 1623,  
d. 1694. Rome.

II 218 *Christ's Agony in the Garden.*  
Canvas. 8" by 10 $\frac{3}{8}$ ". (F.)

**LAWRENCE, SIR THOMAS, P.R.A.** British  
School : b. 1769, d. 1830. London.

III 27 *Portrait of Samuel Woodburn.*  
Panel. 3' 7" by 2' 8 $\frac{1}{2}$ ". Presented by Miss Woodburn, 1865.

**LEAR, EDWARD.** British School : b. 1812,  
d. 1888. London, Rome.

V 460\* *View of the Temple of Apollo at Bassae in Arcadia.*  
Signed monogram E. L. 1854—5. Canvas. 4' 8" by 7' 7".  
Presented by friends of the Painter, 1860.

**LE BRUN, CHARLES.** French School : b. 1619,  
d. 1690. Paris.

I 339 *Holy Family.*  
Panel. 1' 9 $\frac{3}{4}$ " by 1' 4 $\frac{1}{2}$ ". (M.)

Gallery. No.

**LEGROS, A.** French School: b. 1837. Paris, London.

III 11 *The Coming Storm.*  
Signed A. Legros. 1878. Canvas. 4' 10" by 3' 7". Presented  
by the Painter, 1879.

III 94 *Jacob's Dream.*  
Signed A. Legros. 1879. Canvas. 5' 0½" by 11½". Presented  
by the Painter, 1881.

V 608 *Drawings from the antique.*  
Presented by the Painter, 1880.

**LELY: SIR PETER VAN DER FAES,** (called  
**LELY**). Dutch or British School: b. 1618,  
d. 1680. London.

[Attributed to Lely.]

III 161 *Portrait of Lady Eleanor Holles, daughter of John,  
Earl of Clare, and wife of Oliver, second Viscount  
Fitzwilliam.*  
Canvas. 2' 5" by 2' 0". (F.)

**LE NAIN, ANTOINE.** French School: worked  
about 1650.

I 328 *Portrait of a young gentleman.*  
Panel. 8½" by 6½". (F.)

**LE SUEUR, EUSTACHE.** French School:  
b. 1617, d. 1655. Paris.

[Attributed to Le Sueur.]

I 325 *The Four Evangelists adoring the Sacrament.*  
Canvas. 1' 6¼" by 1' 1½". (M.)

**LEWIS, JOHN FREDERICK, R.A.** British  
School: b. 1805, d. 1876. London.

IV 468 *A Sheikh.*  
Signed J. F. Lewis. 1856. Panel. 1' 4¾" by 11½". (E.)

**LEYDEN, LUCAS (HUYGENSZ) VAN.**  
Dutch School: b. 1494, d. 1533. Leiden.

[After an engraving by L. van Leyden.]

I 271 *S. Matthew and S. Luke.*  
Panels. 6" by 3⅜". Arched at top. (M.)



## Gallery. No.

- I 272 *S. John and S. Mark.*  
Panels. 6" by 3 $\frac{7}{8}$ ". Arched at top. (M.)
- I 275 *Young man holding a skull.*  
Signed and dated, L 1503. Panel. 6 $\frac{3}{4}$ " by 4 $\frac{7}{8}$ ". (M.)
- LIEVENS, JAN ANDRIES.** Dutch School :  
b. 1644. Leiden.
- III 28 *Portrait of the father of Sir Matthew Decker, on horseback, with a view of Haarlem in the background.*  
Signed I. A. Livenz An<sup>o</sup> 1671. Canvas. 4' 5 $\frac{1}{4}$ " by 4' 3". (E.)
- LINGELBACH, JOHANNES.** Dutch School :  
b. 1623, d. 1674? Paris, Italy, Amsterdam.
- III 38 With Wynants. *Landscape, with figures.*
- III 49 With Hobbema. *Wooded landscape, with hawking party.*
- LINT, HENDRIK VAN.** Flemish School :  
b. 1684, d. after 1726. Antwerp, Rome.
- I 245 *Lake, with boats and fishermen.*  
Signed Enrico van Lint detto studio Ft 1756. Canvas.  
8 $\frac{1}{4}$ " by 6". (M.)
- I 246 *Landscape, with figures and cattle.*  
Signed Enrico van Lint detto studio Ft. Roma 1756. Canvas.  
8 $\frac{3}{8}$ " by 5 $\frac{3}{8}$ ". (M.)
- I 265 *An Italian palace.*  
Signed Enrico van lint detto studio Ft. Roma 1748. Canvas.  
1' 1 $\frac{5}{8}$ " by 1' 5 $\frac{1}{2}$ ". (M.)
- LINTON, WILLIAM.** British School : b. 1791,  
d. 1876. London.
- IV 472 *Venice.*  
Signed W. Linton. Canvas. 1' 3 $\frac{1}{2}$ " by 1' 11 $\frac{1}{2}$ ". (E.)
- IV 476 *S. Giorgio, Venice.*  
Panel. 9 $\frac{1}{4}$ " by 1' 1 $\frac{1}{4}$ ". (E.)
- IV 485 *Venice.*  
Millboard. 9" by 1' 1". (E.)
- N.E. 493 *Mistra.*  
Signed W. Linton. Canvas. 3' 8 $\frac{1}{4}$ " by 3' 5 $\frac{1}{4}$ ". (E.)
- IV 494 *Taormina, with Mount Etna.*  
Signed W. Linton 1848-9. Canvas. 3' 5 $\frac{1}{2}$ " by 6' 5 $\frac{1}{2}$ ". (E.)

Gallery. No.

**LIPPI, FRA FILIPPO.** Florentine School:  
d. 1469. Naples, Prato, Spoleto.

[School of Lippi.]

- V 559 *Triptych: Madonna and Angels, with figures of the Donor and Saints.*  
Panel. 1' 4½" by 10½". Wings 1' 4½" by 4¾". (C. B.)

**LISSE, DIEDERICK VAN DER.** Dutch School: d. 1669. The Hague.

- I 407 *Diana and Actaeon.*  
Signed monogram D. V. L. Panel. 9½" by 1' 2". (F.)

**LONSDALE, JAMES.** British School: b. 1777,  
d. 1839. London.

- III 25 *Portrait of the Rev. Dr Parr.*  
Canvas. 2' 5½" by 2' 0¼". Presented by the Right Rev. Dr Maltby, 1859.

**LORENZETTI, PIETRO.** Sienese School:  
b. about 1285, d. 1348 (?).

- V 562 *Head of Our Lord.*  
In fresco, on plaster. 1' 0⅝" by 1' 0¼". (Purchased 1892.)

**MAAS, DIRK.** Dutch School: b. 1656, d. 1717.  
Haarlem, England.

- I 369 *Stag hunt.*  
Signed D. Maas. Canvas. 1' 0½" by 1' 3½". (M.)

- I 370 *Landscape, with horsemen.*  
Signed D: Maas. Canvas. 1' 3½" by 1' 6⅝". (F.)

- I 371 *Landscape, with horsemen.*  
Signed D: Maas. Canvas. 1' 3½" by 1' 6⅝". (F.)

**MAES, NICOLAAS.** Dutch School: b. 1632,  
d. 1693, pupil of Rembrandt. Dordrecht, Amsterdam, Antwerp.

[Attributed to Maes.]

- V 455 *Portrait of a child.*  
Canvas. 2' 11" by 2' 9". (F.)

**MANZUOLI, TOMMASO D' ANTONIO.**  
Florentine School: b. 1536, d. 1571. Florence.

- IV 496 *The Salutation.*  
Signed M. PF MDLX. Panel. 12' 11" by 8' 1". Arched at top. Presented by H. T. Hope, Esq., 1859.

Gallery. No.

**MARATTI, CARLO.** Roman School: b. 1625,  
d. 1713. Rome.

III 130 *The Transfiguration.*  
Canvas. 3' 2" by 2' 3 $\frac{3}{4}$ ". (M.)

III 131 *Virgin and Child.*  
Canvas. 3' 2 $\frac{1}{2}$ " by 2' 4 $\frac{1}{2}$ ". (M.)

**MARIESCHI, MICHELE.** Italian School:  
d. 1743. Venice.

II 182 *View on the Grand Canal, Venice.*  
Canvas. 1' 11 $\frac{3}{4}$ " by 3' 1 $\frac{3}{4}$ ". (V.)

II 185 *View looking towards Venice from the lagoon.*  
Canvas. 1' 0" by 1' 8". (S.)

II 189 *View of Venice from the lagoon.*  
Canvas. 1' 0" by 1' 8". (S.)

II 190 *View on the Grand Canal, Venice.*  
Canvas. 2' 0" by 3' 2". (V.)

**MARSEUS, OTTO VAN SCHRIECK.** Dutch  
School: b. 1619(20), d. 1678. Amsterdam, France,  
Italy.

I 303 *Flowers, insects and reptiles.*  
Signed Otho Marseus v. Schrieck 1673. Canvas. 2' 3 $\frac{1}{4}$ " by  
1' 8 $\frac{1}{2}$ ". (M.)

**MARTINI, SIMONE.** Sienese School: b. 1283,  
d. 1344. Siena, Florence, Avignon.

V 552 *S. Michael between S. Augustine and S. Ambrose ;  
above are three angels.*  
Altar-piece on wood, six panels, the three lower are arched at  
top, each 1' 11 $\frac{1}{2}$ " by 1' 2", the upper ones triangular 1' 1"  
high, 1' 0" at base. (C. B.)

**MARTINO, BARTOLOMEI.** Sienese School:  
d. about 1433. Siena, Pisa.

V 553 *Annunciation.*  
Two panels, each 1' 2 $\frac{1}{4}$ " by 9 $\frac{1}{4}$ ". Arched at top. (C. B.)

**MASTER OF THE BRUSSELS "ASSUMP-  
TION"** (Albert Bouts, son of Diric Bouts).  
Flemish School: worked towards the end of the  
15th century. Brussels.

III 99 *The Transfiguration.*  
Panel. 2' 4" by 1' 5 $\frac{1}{2}$ ". Arched at top. Presented by Mr  
R. Ellison, 1857.

Gallery. No.

**MASTER OF THE "DEATH OF MARY".**  
Flemish School: worked about 1520. Antwerp,  
Lower Rhine.

III 104 *Virgin and Child.*  
Canvas (mounted on panel). 1' 11 $\frac{3}{4}$ " by 1' 6". (K.)

**MASTER OF FLÉMALLE (? ROBERT  
CAMPIN, 1375—1444).** Flemish School.

III 604 *S. Veronica.*  
Pen and ink drawing, resembling the picture at Frankfort.  
Height of figure 1' 2". (K.)

**MEULEN, ADAM FRANÇOIS VAN DER.**  
Flemish School: b. 1634, d. 1690. Brussels,  
Paris.

III 132 *The Siege of Besançon by Condé, 1674.*  
Canvas. 3' 5 $\frac{1}{4}$ " by 4' 8 $\frac{1}{2}$ ". (F.)

I 225 *Sea-shore, with boats and figures.*  
Panel. 1' 0 $\frac{3}{4}$ " by 1' 4". (M.)

I 547 *Wooded landscape, with stream and figures.*  
Panel. 6 $\frac{1}{4}$ " by 8 $\frac{3}{4}$ ". (M.)

**MEYER, CHRISTOFFEL.** Dutch School:  
worked about 1780. Rotterdam.

I 277 *Adoration of the Magi.*  
Panel. 11 $\frac{1}{4}$ " by 1" 4". (F.)

**MEYER, DE.**

V 437 *Portraits of the daughters of Sir M. Decker.*  
Canvas. 2' 5 $\frac{1}{4}$ " by 2' 0 $\frac{1}{2}$ ". (F.)

**MIERIS, FRANS VAN, I.** Dutch School:  
b. 1635, d. 1681. Leiden.

III 32 *Dutch courtship.*  
Panel. 10" by 7 $\frac{3}{4}$ ". Arched at top. (F.)

**MIERIS, FRANS VAN, II.** Dutch School:  
b. 1689, d. 1763. Leiden.

I 365\* *A man with a tankard*<sup>2</sup>.  
Signed F. V. Mieris Fecit a° 1739. Panel. 8" by 6 $\frac{1}{2}$ ". (M.)

<sup>1</sup> A copy or replica of this picture was exhibited at the Golden Fleece Exhibition at Buges in 1907, No. 233. It is not the same as the picture (formerly in the Kann collection) mentioned in Mr Earp's catalogue.

<sup>2</sup> Similar picture at Munich, Alte Pinakothek (409) and copy in Victoria and Albert Museum, Jones collection (499).

Gallery. No.

**MIERIS, WILLEM VAN.** Dutch School :  
b. 1662, d. 1747. Leiden.

III 36 *The market stall.*  
Panel. 1' 3 $\frac{3}{4}$ " by 1' 1 $\frac{5}{8}$ ". (F.)

**MIGNON, ABRAHAM.** Dutch School : b. 1640,  
d. 1679. Frankfort on the Main.

I 306 *Flower-piece.*  
Signed A. Mignon. fe. Panel. 1' 7 $\frac{1}{4}$ " by 1' 2 $\frac{1}{2}$ ". (M.)

**MILLAIS, SIR JOHN EVERETT, P.R.A.**  
British School : b. 1829, d. 1896. London.

V 499\* *The Bridesmaid.*  
Signed J. E. M. Panel. 10 $\frac{3}{4}$ " by 7 $\frac{3}{4}$ ". Presented by T. R.  
Harding, Esq., 1889.

**MILLET, FRANCISQUE.** Flemish School :  
b. 1642, d. 1679. Antwerp, Paris.

II 222 *Landscape, with figures and cattle.*  
Canvas. 3' 2" by 3' 11 $\frac{1}{2}$ ". Presented by Mrs Symonds, 1869.

**MILLET, JEAN FRANÇOIS.** French School :  
b. 1814, d. 1875.

III 649 *A peasant resting.*  
8 $\frac{1}{4}$ " by 11 $\frac{1}{8}$ ". Presented by Holcombe Ingleby, Esq., 1909.

**MOLANUS, MATHEUS A.** Dutch School :  
d. 1645. Middelburg.

I 512 *Garden scene.*  
Copper. 3 $\frac{1}{2}$ " by 4 $\frac{3}{4}$ ". (M.)

I 517 *Frost-piece.*  
Copper. 3 $\frac{1}{2}$ " by 4 $\frac{3}{4}$ ". (M.)

**MOLENAER, KLAES.** Dutch School : d. 1676.

IV 639 *Landscape with buildings and figures.*  
Signed K. Molenaer 1660. Panel. 1' 7 $\frac{1}{8}$ " by 1' 3 $\frac{1}{4}$ ". Pre-  
sented by Rev. G. A. S. Schneider, M.A., 1907.

Gallery. No.

**MOLYN, PIETER.** Dutch School: b. 1595,  
d. 1661. London, Haarlem, Scandinavia.

- I 29 *Landscape, with figures.*  
Panel. 11 $\frac{1}{4}$ " by 1' 1 $\frac{1}{4}$ ". (M.)
- III 45 *Landscape, with figures.*  
Signed P. Molyn. Panel. 1' 5 $\frac{1}{4}$ " by 1' 11 $\frac{1}{4}$ ". (S.)
- III 46 *Landscape, with figures.*  
Signed P. Molyn. Panel. 1' 3 $\frac{1}{2}$ " by 1' 11 $\frac{3}{4}$ ". (M.)

**MONACO, LORENZO.** Florentine School: b.  
about 1370, d. 1425. Florence.

- V 555 *Madonna enthroned between two adoring Angels.*  
Panel. 1' 1" by 8 $\frac{1}{2}$ ". (C. B.)

**MONI, LOUIS DE.** Dutch School: b. 1698,  
d. 1771. Breda, Leiden, Cassel, The Hague.

- I 358 *Fishmonger.*  
Panel. 1' 0 $\frac{5}{8}$ " by 10". (M.)
- I 360 *Fishwife.*  
Panel. 1' 1 $\frac{1}{4}$ " by 10 $\frac{5}{8}$ ". (M.)

**MORLAND, GEORGE.** British School: b. 1763,  
d. 1804. London.

- III 6 *Encampment of Gipsies.*  
Signed G. Morland. Canvas. 2' 0 $\frac{1}{2}$ " by 2' 5 $\frac{1}{2}$ ". (E.)
- III 13 *Calf and sheep.*  
Signed G. Morland. Canvas. 11 $\frac{3}{4}$ " by 1' 2 $\frac{3}{4}$ ". (M.)
- III 14 *Donkey and pigs.*  
Signed G. Morland 1789. Canvas. 11 $\frac{3}{4}$ " by 1' 2 $\frac{3}{4}$ ". (M.)
- III 19 *Landscape, with figures.*  
Signed George Morland. Canvas. 11 $\frac{1}{4}$ " by 1' 2 $\frac{1}{4}$ ". (M.)
- III 20 *Coast scene.*  
Signed G. Morland 1798. Canvas. 9 $\frac{1}{2}$ " by 11 $\frac{3}{4}$ ". (E.)
- I 531 *Landscape, with stream and figures.*  
Panel. 5 $\frac{1}{2}$ " by 8". (M.)

**MOUCHERON, ISAAK DE.** Dutch School:  
b. 1670, d. 1744. Amsterdam, Italy.

- I 409 *Rocky landscape, with stream and figures.*  
Canvas. 9" by 10 $\frac{3}{8}$ ". (M.)
- I 425 *River scene.*  
Canvas. 9" by 10 $\frac{3}{8}$ ". (M.)

Gallery. No.

**MURANT, EMMANUEL.** Dutch School:  
b. 1622, d. 1700. Amsterdam, France, Leeu-  
warden.

- I 402 *Landscape, with a bridge.*  
Panel.  $7\frac{1}{4}$ " by 10". (M.)

**MURILLO, BARTOLOMÉ ESTÉBAN.**  
Spanish School: b. 1618, d. 1682. Seville.

- III 100 *Vision of Fra Lauterio.*  
Canvas. 7' 1" by 5' 7". Arched at top. (P.)

**MURRAY, CHARLES FAIRFAX:** living. (See  
also under **ROSSETTI**.)

- V 689 *Sepia drawing, portrait of William Allingham, Poet,*  
1824—1889.  
Signed C. F. Murray F. 7" by  $5\frac{5}{8}$ ". (Anon. 1909.)

**MUZIANO, GIROLAMO.** Venetian School:  
b. 1530, d. 1590. Venice, Rome.

- II 174 *Magdalene in a landscape.*  
Canvas. 1'  $4\frac{3}{4}$ " by 1' 1". (M.)

- II 176 *S. Francis.*  
Panel. 1'  $0\frac{3}{4}$ " by  $9\frac{3}{4}$ ". (M.)

**NASMYTH, PATRICK.** British School: b. 1786,  
d. 1831. London.

- IV 481 *Landscape, with stream and figures.*  
Panel. 11" by 1' 2". (E.)

? NEAPOLITAN SCHOOL.

- V 618 *S. Julian the deacon.*  
Panel. 4' 6" by 1'  $5\frac{3}{4}$ ". (Pf. 1904.)

**NEEFFS, PIETER, THE ELDER.** Flemish  
School: b. about 1578, d. about 1659. Antwerp.

- III 91 *With Teniers. Interior of a Church.*  
Signed Den avden Neeffs. Canvas. 2' 6" by 1'  $10\frac{1}{2}$ ". (F.)

Gallery. No.

**NEER, AERT VAN DER.** Dutch School :  
b. 1603, d. 1677. Amsterdam.

III 97 *Moonlight landscape.*  
Signed monogram A. V. D. N. Panel. 9¼" by 1' 2¾". (M.)

III 623 *Night scene with fire.*  
Signed monogram A. V. D. N. Panel. 9⅝" by 1' 2¾".  
(Pf. 1908.)

**NEER, EGLON HENDRIK VAN DER.** Dutch  
School : b. 1635, or 1636, d. 1703. Amsterdam,  
Orange, Rotterdam, The Hague, Brussels, Düs-  
seldorf.

I 394 *A woman sleeping.*  
Panel. 10¼" by 1' 1½". (M.)

**NEROCCIO DI BARTOLOMEO DI BENE-  
DETTO LANDI.** Sienese School : worked  
about 1476. Siena.

V 554 *Madonna and Child with S. Bernardino and S.  
Catharine of Siena.*  
Panel. 1' 6½" by 1' 0½". (C. B.)

**NETSCHER, THEODORUS.** Dutch School :  
b. 1661, d. 1732. The Hague, Paris, London.

I 357 *Pineapple grown in Sir Matthew Decker's garden, at  
Richmond, Surrey, the first grown in England.*  
Canvas. 2' 0½" by 2' 4½". (F.)

**NICKELE, ISAACK VAN.** Dutch School :  
b. about 1630—35, d. 1703. Haarlem.

III 82 *Interior of the Great Church at Antwerp.*  
Signed jsaac van Nickele 1666. Canvas. 2' 2¼" by 1' 11". (V.)

**NIEULANDT, WILLEM VAN.** Flemish  
School : b. 1584, d. 1635. Antwerp, Rome.

I 249 *The Campo Vaccino at Rome.*  
Copper. 8⅝" by 11½". (M.)

**NORTHCOTE, JAMES, R.A.** British School :  
b. 1746, d. 1831. London.

IV 23 *Portrait of Joseph Nollekens, the sculptor.*  
Canvas. 1' 10¾" by 1' 6⅝". (K.)



Gallery. No.

**NUZZI, MARIO** : called **MARIO DEI FIORI**.  
Italian School : b. 1603, d. 1673. Rome.

I 513 *Flowers*.  
Panel.  $3\frac{3}{4}$ " by 5". (M.)

I 516 *Flowers*.  
Panel.  $3\frac{3}{4}$ " by 5". (M.)

**O'CONNOR, JAMES**. British School : b. 1793,  
d. 1841. London, Dublin.

IV 471 *River scene, with figures*.  
Signed J. A. O'C. 1839. Canvas.  $1' 0\frac{1}{2}"$  by  $1' 3\frac{1}{4}"$ . (E.)

**OLIS, JAN**. Dutch School : b. 1610, d. after 1655.  
Dordrecht.

I 405 *Gentlemen playing backgammon*.  
Signed Olis fecit. Panel.  $1' 0\frac{1}{8}"$  by  $1' 3\frac{5}{8}"$ . (M.)

**ORIZONTE** : **JAN FRANS VAN BLOEMEN**,  
called **ORIZONTE**. Italian School : b. 1662,  
d. 1790. (?) Rome.

IV 632 *The back of the Church of Ss. Giovanni e Paolo and  
the top of S. Giovanni Laterano at Rome*.  
Canvas.  $1' 1\frac{3}{4}"$  by  $1' 5\frac{1}{4}"$ . (A. C. 1887.)

**OS, JAN VAN**. Dutch School : b. 1744, d. 1808.  
The Hague.

I 302 *Fruit-piece*.  
Signed J. van Os, fecit. Panel.  $1' 5\frac{1}{4}"$  by  $1' 1\frac{1}{2}"$ . (M.)

**OSTADE, ADRIAEN VAN**. Dutch School :  
b. 1610, d. 1685. Haarlem.

III 64 *Boors smoking*.  
Signed A. v. Ostade fe. Panel. 9" by  $7\frac{5}{8}"$ . (V.)

III 70 *Fiddler surrounded by children at the door of a house*.  
Signed A. v. ostade. Panel. Oval.  $11\frac{1}{2}"$  by 9". (F.)

**OULESS, WALTER WILLIAM, R.A.** British  
School : b. 1848. London.

IV 495 *Portrait of Sir G. M. Humphry, M.D.*  
Signed W. W. O. 1886. Canvas.  $2' 1\frac{1}{2}"$  by  $1' 9\frac{1}{4}"$ . Pre-  
sented by the Subscribers, 1887.

Gallery. No.

**PADOVANINO : ALESSANDRO VARO-TARI**, called **IL**. Venetian School : b. 1590, d. 1650. Padua, Venice.

[Attributed to Padovanino.]

III 154 *Sleeping Venus, after Giorgione*.  
Canvas. 3' 2" by 5' 4½". (F.)

**PALMA, JACOPO** : called **PALMA VECCHIO**.  
Venetian School : b. 1480, d. 1528. Venice.

III 109 *Venus and Cupid*.  
Canvas. 3' 10" by 6' 8½". (F.)

[After Palma Vecchio.]

N.E. 142 *Portrait of a poet*<sup>1</sup>.  
Canvas. 2' 8" by 2' 0¼". (H.)

III 115 *Portraits of three Venetian Ladies*<sup>2</sup>.  
Canvas. 2' 11" by 4' 0". (H.)

**PALMA, JACOPO** : called **PALMA GIOVINE**.  
Venetian School : b. 1544, d. 1628. Urbino, Rome, Venice.

III 108 *Christ calling Zaccheus*.  
Canvas. 3' 3" by 1' 4". Arched at top. (F.)

III 111 *The Angel appearing to Elijah*.  
Canvas. 3' 3" by 1' 4". Arched at top. (F.)

**PARKER, JOHN** British School : d. after 1776.  
London.

N.E. 491 *The fisherman's departure*.  
Canvas. 1' 11" by 2' 2¾". (E.)

**PASINELLI, LORENZO**. Italian School :  
b. 1629, d. 1700. Bologna.

III 137 *A Sibyl*.  
Canvas. 2' 1½" by 1' 7". (M.)

**PATCH, THOMAS**. British School : d. after  
1772. Rome.

III 87 *Interior of an Italian coffee-house*.  
Canvas. 1' 3" by 1' 7¼". (M.)

<sup>1</sup> The original is in the National Gallery.

<sup>2</sup> A copy of a picture at Dresden.

Gallery. No.

**PATEL, P.** French School: d. about 1676. Paris.I 327 *River scene, with a shepherd and sheep.*  
Canvas. 9 $\frac{1}{4}$ " by 1' 0 $\frac{1}{2}$ ". (M.)I 331 *Landscape, with figures and classical ruins.*  
Canvas. 2' 1" by 2' 9 $\frac{1}{2}$ ". (V.)**PATON, SIR JOSEPH NOEL.** British School:  
b. 1821, d. 1902. London, Edinburgh.III 688 *Pencil Study for "Hesperus."*  
8" by 7 $\frac{1}{4}$ ". (Anon. 1909.)**PEETERS, BONAVENTURA.** Flemish School:  
b. 1614, d. 1652. Antwerp.I 347 *Sea-piece, with figures.*  
Signed B. P. Panel. 1' 0 $\frac{1}{2}$ " by 1' 5 $\frac{1}{2}$ ". (M.)I 398 *Sea-piece, with shipping.*  
Panel. 9" by 1' 2 $\frac{1}{4}$ ". (M.)I 399 *Sea-coast, with a storm.*  
Panel. 4 $\frac{5}{8}$ " by 8". (M.)I 413 *River scene.*  
Signed B. P. Panel. 8" by 10 $\frac{1}{2}$ ". (M.)**PEPLOE, S. J.** British School: b. 1871. Edinburgh, Paris.III 700 *Still Life.*  
Signed Peploe. Canvas. 10" by 13". Presented by Mr and Mrs Vulliamy, 1910.**PERUGINO: PIETRO VANUCCI,** called.  
Umbrian School: b. 1446, d. 1523. Perugia,  
Rome, Florence.

[Imitation of Perugino.]

III 120 *Virgin and Child.*  
Panel. 1' 8" by 1' 5". (H.)**PERUZZI, BALDASSARE.** Italian School:  
b. 1481, d. 1536. Siena, Rome, Bologna.V 651 *The Holy Family.*  
Panel. 3' 2 $\frac{3}{4}$ " by 2' 5 $\frac{3}{4}$ ". (Anon. 1908.)

Gallery. No.

**PHILLIPPS, THOMAS, R.A.** British School :  
b. 1770, d. 1845. London.

- III 10 *Portrait of the Duke of Northumberland, Chancellor of the University*, 1840—1847.  
Canvas. Oval. 2' 2 $\frac{3}{4}$ " by 1' 10 $\frac{3}{4}$ ". Presented by G. C. Heath, M.A., King's College, 1850.

**PIAZZA, ALBERTINO.** Milanese School :  
b. 1450, d. about 1529. Lodi.

- III 110 *Virgin and Child.*  
Panel. 10" by 8". (H.)

**PIAZZETTA, GIOVANNI BATTISTA.** Italian School : b. 1682, d. 1754. Venice.

- II 221 *Girl with a cat.*  
Canvas. 1' 5" by 1' 1 $\frac{1}{2}$ ". (M.)

**PIETERS, GEERTJE.** Dutch School : worked about 1675. Delft.

- III 58 *Flowers.*  
Signed Geerti-Pieters. Canvas. 2' 6 $\frac{1}{2}$ " by 2' 1 $\frac{1}{2}$ ". (F.)

**PINTURICCHIO : BERNARDINO DI BETTO BIAGIO,** called **IL.** Umbrian School : b. 1454, d. 1513. Perugia, Rome, Orvieto, Siena.

- III 119 *Virgin and Child.*  
Panel. 1' 9" by 1' 3". Arched at top. Presented by Samuel Sandars, M.A., Trinity College, 1880.

**PISANI, ALFONSO.** Italian School : worked about 1750. Bologna.

- I 514 *Landscape, with figures and sheep.*  
Copper. Oval. 5 $\frac{3}{4}$ " by 7 $\frac{3}{8}$ ". (M.)
- I 515 *River scene, with cattle.*  
Copper. Oval. 5 $\frac{3}{4}$ " by 7 $\frac{3}{8}$ ". (M.)
- I 541 *River scene, with figures and buildings.*  
Copper. Oval. 5 $\frac{3}{4}$ " by 7 $\frac{3}{8}$ ". (M.)
- I 542 *Wooded landscape, with stream.*  
Copper. Oval. 5 $\frac{3}{4}$ " by 7 $\frac{3}{8}$ ". (M.)

Gallery. No.

**POELENBURG, CORNELIS VAN.** Dutch School : b. 1586, d. 1667. Utrecht, Italy, London.

I 388 *Landscape, with Abraham and Isaac.*  
Signed C. P. Copper. 7" by 9". (F.)

I 389 *Landscape, with the finding of Moses.*  
Signed C. P. Panel.  $7\frac{1}{4}$ " by  $9\frac{3}{4}$ ". (M.)

I 390 *Landscape, with herdsmen and flocks.*  
Panel.  $6\frac{1}{2}$ " by  $8\frac{1}{2}$ ". (M.)

[Attributed to Poelenburg.]

I 545 *Portrait of a Gentleman.*  
Copper.  $5\frac{1}{4}$ " by  $4\frac{7}{8}$ ". (M.)

**PONTE, GIOVANNI DA.** Florentine School :  
b. 1306, d. 1365. Florence, Assisi.

V 551 *Madonna and Child enthroned with Angels.*  
Panel. 4' 6" by 2' 9". Arched at top. (C. B.)

V 565 *Four Saints : S. Jerome, S. Francis, S. John the Baptist, and S. Anthony.*  
Two panels, each 2'  $10\frac{1}{2}$ " by 1' 1". (C. B.)

**POT, HENDRIK GERITZ.** Dutch School :  
b. 1600, d. 1656. Haarlem.

I 505 *Portrait of a man.*  
Panel.  $6\frac{1}{2}$ " by 5". (M.)

**POTTER, PAULUS.** Dutch School : b. 1625,  
d. 1654. Delft, The Hague, Amsterdam.

I 363\* *Horse drinking.*  
Signed P. P. f. Panel.  $8\frac{1}{2}$ " by  $6\frac{3}{4}$ ". (V.)

**POUSSIN : GASPARD DUGHET, called G. POUSSIN.** French School : b. 1613, d. 1675.  
Rome.

I 323 *Landscape, with Satyrs.*  
Panel.  $7\frac{1}{4}$ " by 9". (F.)

I 335 *Italian landscape, with figures.*  
Canvas. 1' 6" by 2'  $1\frac{1}{4}$ ". (F.)

Gallery. No.

**POUSSIN, NICOLAS.** French School: b. 1594,  
d. 1665. Paris, Rome.

[After Nicolas Poussin.]

- I 316 *Rebecca and Eliezer at the well*<sup>1</sup>.  
Canvas. 1' 7 $\frac{1}{4}$ " by 2' 6 $\frac{3}{4}$ ". (F.)

**PROUT, SAMUEL.** British School: b. 1783,  
d. 1852. Plymouth, London.

- V 596 *Coast scene, with cliffs and fishermen.*  
Water colour. Signed S. Prout. 8 $\frac{5}{8}$ " by 12 $\frac{5}{8}$ ". (V.)
- V 597 *Coast scene, fishermen conversing, town on cliff.*  
Water colour. Signed S. Prout. 8 $\frac{5}{8}$ " by 1' 1". (V.)
- V 598 *Coast scene, with boat in foreground.*  
Water colour. 7 $\frac{7}{8}$ " by 10 $\frac{1}{2}$ ". (V.)

**QUERFURT, AUGUST.** German School:  
b. 1696, d. 1761. Vienna.

- I 284 *Portrait of Charles VII, Emperor of Germany.*  
Canvas. 1' 6" by 1' 1 $\frac{3}{8}$ ". Presented by Miss Whitehurst, 1834.
- I 285 *Portrait of Maria Theresa, Empress of Germany.*  
Canvas. 1' 6" by 1' 1 $\frac{3}{8}$ ". Presented by Miss Whitehurst,  
1834. A similar picture at Windsor.

**QUINKARD, JAN MAURITS.** Dutch School:  
b. 1688, d. 1772. Amsterdam.

- I 527 *Portrait of the paintress, Henrietta Wolters.*  
Signed Quinkhard f 1739. Copper. Oval. 4" by 3 $\frac{1}{2}$ ". (M.)

**RAEBURN, SIR HENRY, R.A.** British School:  
b. 1756, d. 1823. Edinburgh.

- II 220 *Portrait of W. Glendowyn.*  
Canvas. 4' 1 $\frac{1}{2}$ " by 3' 3". Purchased in 1892.

**RAPHAEL: RAFFAELLO SANZIO,** called.  
Roman School: b. 1483, d. 1520. Urbino,  
Perugia, Florence, Rome.

[After Raphael.]

- N.E. 118 *The Vision of Ezekiel.*  
Panel. 1' 4 $\frac{1}{2}$ " by 1' 1". (H.)

<sup>1</sup> Copy of a picture at the Louvre, Paris.

Gallery. No.

III 126 *Holy Family.*  
Canvas. 4' 10" by 3' 8". Presented by the Rev. W. S. Burgess, M.A., 1847.

III 116 *Holy Family.* Copy of the *Connestabile* Madonna.  
Panel. 6 $\frac{3}{4}$ " square. Presented by S. Sandars, M.A., Trinity College, 1886.

**REINAGLE, PHILIP, R.A.** British School:  
b. 1749, d. 1833. London.

V 453 *Landscape, with figures.*  
Panel. 5" by 8 $\frac{3}{4}$ ". (M.)

**REINAGLE, RAMSAY RICHARD, R.A.**  
British School: b. 1775, d. 1862. London.

V 448 *Landscape, with part of the Claudian Aqueduct near Rome.*  
Canvas. 1' 8" by 2' 4 $\frac{3}{4}$ ". (F.)

**REMBRANDT, HERMENSZ VAN RYN.**  
Dutch School: b. 1606, d. 1669. Leiden, Amsterdam.

III 152 *Study of a man with a plumed hat and long sword.*  
Signed Rembrandt. fe 1636. Panel. 4' 1 $\frac{1}{2}$ " by 3' 4 $\frac{1}{2}$ ". Arched at top. (F.)

I 601 *Sepia drawing, view with windmill and buildings.*  
3 $\frac{1}{4}$ " by 8 $\frac{7}{8}$ ". (V.)

[School of Rembrandt.]

IV 633 *Baptism of Christ.*  
Canvas. 1' 6 $\frac{1}{2}$ " by 1' 2 $\frac{1}{4}$ ". (A. C.)

**RENI, GUIDO.** Bolognese School: b. 1575,  
d. 1642. Rome, Bologna.

[School of Guido.]

N.E. 124 *Daughter of Herodias, with the head of John the Baptist.*  
Canvas. 6' 1 $\frac{1}{4}$ " by 4' 11 $\frac{1}{2}$ ". Presented by the Rev. T. Halford, 1855.

**REYN, JAN DE.** Flemish School: b. 1610,  
d. 1678. Dunkirk.

I 315 *The Fowl Market.*  
Canvas. 6' 11" by 10' 11". Presented by C. Maud, Esq., 1856.

Gallery. No.

**REYNOLDS, SIR JOSHUA, P.R.A.** British School: b. 1723, d. 1792. London.

IV 652 *Portrait of a Librarian.*  
Canvas. 2' 10½" by 2' 2¾". (Anon. 1908.)

IV 653 *Portraitgroup of Lord Rockingham and Edmund Burke (unfinished).*  
Canvas. 4' 8½" by 5' 2". (Anon. 1908.)

**RIBERA, JUSEPE DE:** called **SPAGNO-  
LETTO.** Neapolitan School: b. 1588, d. 1656.  
Naples.

[After Spagnoletto.]

II 166 *Jacob in prayer, while keeping Laban's sheep.*  
Canvas. 5' 9" by 6' 10½". Presented by J. Fitzgerald, Esq.,  
1854.

**RICCI, SEBASTIANO.** Italian School: b. 1659(60),  
d. 1734. Venice.

II 180 *Bacchus and Ceres.*  
Canvas. 2' 9½" by 3' 6¾". (M.)

**RICHARDSON, JONATHAN.** British School:  
b. 1665, d. 1745. London.

III 8 *Portrait of the painter, Thomas Gray.*  
Canvas. 4' 1" by 3' 3½". Presented by H. Hazard, Esq., 1858.

III 16 *Portrait of Alexander Pope:*  
Signed monogram J. R. 1742. Canvas. 1' 1" by 11". (M.)

IV 705\* *Portrait of Handel.*  
Canvas. 3' 10" by 3' 0½". (Sold at Christie's, July, 1909;  
then attributed to Hogarth.) Bequeathed by Felix  
Thornley Cobbold, King's College, M.A., M.P., 1910.

**RICHMOND, SIR WILLIAM BLAKE, R.A.**  
British School: b. 1843. London.

IV 502 *Portrait of Dr Westcott, Bishop of Durham.*  
Canvas. 4' 1½" by 3' 3". Presented by the Subscribers, 1890.

**RIETSCHOOF, JAN CLAESZ.** Dutch School:  
b. 1652, d. 1719. Hoorn.

See **DUTCH SCHOOL.**



Gallery. No.

**ROBERT, HUBERT.** French School: b. 1733,  
d. 1808. Paris.

V 451 *Staircase in a classical building.*  
Panel.  $5\frac{3}{4}$ " by  $4\frac{5}{8}$ ". (M.)

V 452 *Statue and figures in a ruined building.*  
Panel.  $5\frac{3}{4}$ " by  $4\frac{5}{8}$ ". (M.)

**ROBUSTI, JACOPO:** see **TINTORETTO.**

**ROMBOUTS, GILLIS.** Dutch School: worked  
about 1652. Haarlem.

See **DUTCH SCHOOL.**

**ROMNEY, GEORGE.** British School: b. 1734,  
d. 1802.

V 654 *Portrait of a young man; formerly called William  
Hayley.*  
Canvas.  $1' 8\frac{5}{8}$ " by  $1' 3\frac{1}{2}$ ". (Anon. 1908.)

**ROOKE, THOMAS MATTHEWS, R.W.S.**  
British School: living.

V 618 *Beaugency on the Loire.*  
Signed with monogram T. M. R. 1896.  $9\frac{1}{2}$ " by  $1' 2\frac{7}{8}$ ".  
(Purchased 1898.)

V 619 *Troyes, with the Church of S. Jean in which Henry V  
was married.*  
Painted in 1891.  $1' 0\frac{1}{2}$ " by  $1' 7\frac{3}{8}$ ". (Purchased 1898.)

**ROOS, JOHANN HEINRICH.** German School:  
b. 1631, d. 1685. Amsterdam, Frankfort on the  
Main.

I 278 *Cattle-piece.*  
Canvas.  $1' 2\frac{1}{2}$ " by  $1' 2"$ . (M.)

**ROSA, SALVATOR.** Italian School: b. 1615,  
d. 1673. Naples, Rome.

III 144 *The sacrifice of Isaac.*  
Canvas.  $4' 5"$  by  $6' 1"$ . (S.)

Gallery. No.

**ROSSELLI, COSIMO.** Florentine School:  
b. 1439, d. after 1506. Florence, Rome.

- V 556 *Madonna enthroned, with S. John the Baptist, S. Andrew, S. Bartholomew and S. Zenobio.*  
Panel. 6' 2" by 5' 8½". (C. B.)

**ROSSETTI, GABRIEL CHARLES DANTE  
(DANTE GABRIEL ROSSETTI).** British  
School: b. 1828, d. 1882.

- V 685 *Joan of Arc* [Rossetti's last picture, 1882].  
Signed monogram D. G. R. 1882. 1' 8½" by 1' 6". (Anon.  
1909.)
- V 681 *Portrait of Robert Browning.*  
Dated October 1855. 4⅞" by 4⅞". (Anon. 1909.)
- V 682 *Portrait of Algernon Charles Swinburne.*  
Signed with monogram 1861. 7" by 6". (Anon. 1909.)
- V 683 *Pen drawing, portrait of the artist.*  
Dated Sep. 20, 1855. 5" by 4¾". (Anon. 1909.)
- V 684 *Pencil drawing of Mrs D. G. Rossetti.*  
9¾" by 10". (Anon. 1909.)
- V 686 *Pencil drawing, portrait of Mrs William Morris.*  
Dated July 14, 1869. 9¾" by 1' 1¾". Presented by J. W.  
Mackail, Esq., 1909.

[After, copy by Charles Fairfax Murray.]

- V 669 *King Arthur's Tomb.*  
Signed C. F. M. 1886. 9¼" by 1' 2¾". (Anon. 1908.)

**ROSSETTI, MRS D. G. (E. E. SIDDAL).**  
British School: d. 1862.

- V 680 *Clerk Saunders.*  
Water colour. 11" by 7¾". (Anon. 1910.)

**ROWLANDSON, THOMAS.** British School:  
b. 1756, d. 1827.

- I 613 *Library interior, with readers.*  
Signed 1800. Presented by J. E. Foster, M.A., 1887.

**RUBENS, PETRUS PAULUS.** Flemish School:  
b. 1577, d. 1640. Antwerp, Italy, Paris, England,  
Madrid.

- III 228 *The triumph of the Church.* (Sketch.)  
Panel. 6½" by 9¾". (K.)
- III 229 *The triumph of Orthodoxy.* (Sketch.)  
Panel. 6⅞" by 8⅞". (K.)

- Gallery. No.
- III 230 *The triumph of Charity.* (Sketch.)  
Panel.  $6\frac{1}{8}''$  by  $6\frac{1}{8}''$ . (K.)
- III 231 *Abraham receiving bread from Melchizedek.* (Sketch.)  
Panel.  $6''$  by  $6''$ . (K.)
- III 240 *Design for the title-page of the Pompa Introitus  
Ferdinandi, Antwerp, 1641.* (Sketch.)  
Panel.  $1' 8\frac{1}{2}''$  by  $1' 2\frac{1}{2}''$ . (K.)
- III 241 *The Fathers of the Church.* (Sketch.)  
Panel.  $6\frac{1}{2}''$  by  $6\frac{1}{2}''$ . (K.)
- III 242 *The four Evangelists.* (Sketch.)  
Panel.  $6\frac{1}{4}''$  by  $6\frac{1}{4}''$ . (K.)
- III 243 *The triumph of Faith.* (Sketch.)  
Panel.  $6''$  by  $8\frac{1}{2}''$ . (K.)
- I 267 *Emblematical design: Earth and Water.*  
Panel.  $1' 1\frac{1}{2}''$  by  $11\frac{3}{4}''$ . Presented by C. Finch, Esq.  
[After Rubens.]
- I 435 *The judgment of Solomon.*  
Canvas.  $2' 7\frac{1}{2}''$  by  $3' 10''$ . Presented by Mr J. Massey, 1851.

**RUISDAEL, JACOB VAN.** Dutch School:  
b. 1628(9), d. 1682. Haarlem, Amsterdam.

- III 63 *Landscape, with waterfall.*  
Signed J. v. Ruisdael. Canvas.  $3' 3''$  by  $2' 9\frac{1}{2}''$ . (V.)
- III 65 *Landscape, with a brook and farm-house among trees.*  
Signed monogram J. v. R. Panel.  $9\frac{1}{2}''$  by  $1' 1\frac{3}{4}''$ . (V.)
- III 74 *View on the Amstel, looking towards Amsterdam.*  
Signed J. v. Ruisdael. Canvas.  $1' 8\frac{1}{2}''$  by  $2' 1\frac{3}{4}''$ . (V.)
- III 75 *Landscape, with river and pines.*  
Canvas.  $2' 0\frac{1}{4}''$  by  $1' 8''$ . (F.)
- III 84 *Landscape, with a blasted tree near a house.*  
Signed J. v. Ruisdael 16.... Panel.  $1' 8\frac{3}{4}''$  by  $2' 2\frac{1}{2}''$ . (V.)

**RUSKIN, JOHN:** b. 1819, d. 1900.

- V 614 *Two views of Fribourg.*  
 $4\frac{1}{8}''$  by  $6''$  and  $5\frac{3}{8}''$  by  $7\frac{3}{8}''$ . (Purchased 1891.)

**RYCKAERT, MARTEN.** Dutch School: b. 1587,  
d. 1631. Antwerp, Italy.

- III 81 *Classical landscape, with Pan and Syrinx.*  
Copper.  $1' 3\frac{1}{2}''$  by  $1' 11\frac{1}{2}''$ . (V.)

Gallery. No.

**SAFTLEVEN, CORNELIS.** Dutch School:  
b. 1608, d. 1681. Rotterdam.

- I 380 *Interior of a stable.*  
Panel. 1' 3½" by 1' 6½". (F.)
- I 381 *Kitchen.*  
Panel. 7¼" by 9¾". (M.)
- I 383 *Boy with goats.*  
Panel. 1' 4¼" by 1' 10¾". (M.)

**SAFTLEVEN, HERMAN.** Dutch School:  
b. 1609, d. 1685. Rotterdam, The Rhine, Utrecht.

- I 379 *View of the Rhine, near Cologne.*  
Copper. 9⅞" by 1' 0". (F.)

See also **DUTCH SCHOOL.**

**SANDBY, PAUL, R.A.** British School: b. 1725,  
d. 1809.

- IV 629 *Chepstow Castle.*  
Signed P. Sandby. 2' 2¼" by 3' 1½". Bequeathed by Arnold  
W. Sandby, Esq., 1904.

**SANTA CROCE, FRANCESCO RIZO DA.**  
Venetian School: d. after 1541. Bergamo.

- III 121 *Holy Family, with S. Catharine.*  
Panel. 1' 10½" by 2' 2½". (H.)

**SAVERY, ROELANDT.** Dutch School: b. 1576,  
d. 1639. Amsterdam, Utrecht, Germany.

- I 342 *Orpheus, with beasts and birds.*  
Signed Roeoint Savery fe 1622. Copper. 8¾" by 10½". (M.)
- I 343 *The Creation of Birds.*  
Signed R. Savery fe. 1619. Panel. 7¾" by 9½". (M.)

**SAYE, F. R.** British School: b. about 1800.  
London.

*The Prince Consort, as Chancellor of the University*  
(1847-1861).  
Canvas. 8' 9½" by 5' 9". In the Sculpture Gallery. Pre-  
sented by himself, 1850.

Gallery. No.

**SCHALCKEN, GODFRIED.** Dutch School:  
b. 1643, d. 1706. Dordrecht, England, The  
Hague.

I 365 *A lady holding a plate.*  
Signed G. Schalcken. Panel. 9 $\frac{1}{8}$ " by 8". (F.)

I 368 *Portrait of the Painter.*  
Canvas. 1' 6" by 1' 11 $\frac{1}{2}$ ". (F.)

**SCHELFHOUT, ANDREAS.** Dutch School:  
b. 1787, d. 1870. The Hague.

N.E. 474 *Winter scene.*  
Signed A. Schelfhout f 1840. Panel. 1' 11 $\frac{1}{4}$ " by 2' 6". (E.)

**SCHIDONE, BARTOLOMMEO.** Italian School:  
d. 1615. Modena, Parma.

III 117 *Holy Family.*  
Panel. 1' 4 $\frac{1}{4}$ " by 1' 1 $\frac{1}{4}$ ". (M.)

**SCHNEY, F. V.** Worked about 1610.

III 96 *Kitchen utensils, meat, and vegetables.*  
Canvas. 3' 3 $\frac{1}{4}$ " by 4' 5 $\frac{1}{2}$ ". Presented by C. Hague, Mus.D.,  
1820 (?).

**SCHNORR (VON CAROLSFELD), JULIUS.**  
German School: b. 1794, d. 1872. Leipzig,  
Vienna, Italy, Munich, Dresden.

[Attributed to Schnorr.]

II 216 *S. Cecilia.*  
Panel. 1' 3" by 11 $\frac{1}{2}$ ". (H.)

**SCHOEVAERDTS, MATHEUS.** Flemish  
School: born about 1665. Brussels.

I 256 *Classical ruins, with a hunting party.*  
Signed M. Schoevaerds. f. Copper. 1' 9" by 2' 2 $\frac{1}{2}$ ". (M.)

I 264 *Landscape, with a pleasure party.*  
Signed M. Schoevaerds. f. Copper. 1' 9" by 2' 2 $\frac{1}{2}$ ". (M.)

**SCHOUBROECK, PETER.** Flemish School:  
worked about 1598. Frankenthal.

I 227 *View on the Rhine.*  
Copper. 8 $\frac{1}{4}$ " by 11 $\frac{1}{4}$ ". (M.)

- Gallery. No. **SCHOUMAN, ARTHUR.** Dutch School: b. 1710, d. 1792.
- V 602 *Two views of Dordrecht.*  
Each  $4\frac{3}{4}$ " by 10". (V.)
- SCHOUMAN, MARTIN (?)**: Dutch School: b. 1770, d. 1848.
- V 603 *Two sea-pieces.*  
Each  $6\frac{1}{2}$ " by  $8\frac{7}{8}$ ". (V.)
- SCHURMAN, ANNA MARIA VAN.** Dutch School: b. 1607, d. 1678. Utrecht.  
See **DUTCH SCHOOL.**
- SEDDON, T.** See **FORD MADOX BROWN.**
- SEGUIER, JOHN.** British School: b. 1785, d. 1856. London.
- V 441 *Frost scene.*  
Panel.  $11\frac{5}{8}$ " by  $1' 2\frac{3}{8}$ ". (M.)
- SESTO, CESARE DA.** Milanese School: d. 1524 (?). Milan.  
[After C. da Sesto.]
- II 175 *Holy Family, with S. John, Joseph, and Zacharias.*  
Copper.  $1' 4\frac{1}{2}$ " by  $1' 0"$ . (F.)
- SEYMOUR, JAMES.** British School: b. 1702, d. 1752.
- V 450 *Horse and groom.*  
Canvas.  $11\frac{1}{2}$ " by  $1' 1\frac{3}{4}$ ". (M.)
- SIENESE SCHOOL.**
- V 557 *Madonna and Child, angels and saints.*  
Panel: in form of a niche: angels and saints on jambs and soffit of arch. Central panel  $3' 0"$  by  $1' 5\frac{1}{2}"$ : depth of niche  $4"$ . (C. B.)
- V 564 *Crucifixion.*  
Panel.  $4' 5"$  by  $3' 1\frac{1}{2}"$ . (C. B.)
- SLABBAERT, KAREL.** Dutch School: b. 1618(19), d. 1654. Middelburg, Amsterdam.
- I 406 *Boy drinking.*  
Panel.  $6"$  by  $4\frac{3}{4}"$ . (M.)

Gallery. No.

**SNYDERS, FRANS.** Flemish School : b. 1579,  
d. 1657. Antwerp, Italy.

[School of Snyders.]

III 62 *Stag hunt.*  
Canvas. 5' 6 $\frac{3}{4}$ " by 7' 10". (Attributed to Paul de Vos.) (F.)

I 362 *Larder.*  
Canvas. 4' 7" by 8' 5 $\frac{1}{2}$ ". (F.)

**SOLARIO, ANDREA DA.** Milanese School :  
b. about 1458, d. after 1515. France, Pavia.

[Imitation of Solario.]

N.E. 141 *Ecce Homo.*  
Panel. 1' 10" by 1' 5 $\frac{1}{4}$ ". (H.)

**SOLIMENA, FRANCESCO.** Neapolitan School :  
b. 1657, d. 1747. Naples.

II 177 *Virgin and Child.*  
Canvas. 1' 7 $\frac{1}{2}$ " by 1' 3 $\frac{1}{2}$ ". (M.)

**SORGH, HENDRIK MARTENSZ.** Dutch  
School: b. 1611, d. 1670. Rotterdam.

I 382 *Peasant, etc. in an outhouse.*  
Signed M. Sorg. Panel. 8 $\frac{1}{2}$ " by 10 $\frac{1}{2}$ ". (M.)

**SPAGNOLETTO** : see **RIBERA**.

**SPANISH SCHOOL.**

I 334 *S. John the Baptist with the Scribes and Pharisees.*  
Canvas. 8' 7" by 5' 8 $\frac{1}{2}$ ". (Purchased 1869.)

**SPANISH SCHOOL** (circa 1500).

V 708 *The Mass of St Gregory, donor kneeling in foreground.*  
Panel. 1' 10" by 1' 3 $\frac{1}{4}$ ". Given by the Friends of the  
Fitzwilliam Museum, 1910.

**SPEEDING, JAMES.** Author and writer :  
b. 1808, d. 1881.

V 649 *Pencil drawing, portrait of Edward Fitzgerald, as an  
undergraduate.*  
Signed J. S. del. 7 $\frac{5}{8}$ " by 5 $\frac{1}{8}$ ". Presented by W. Aldis  
Wright, M.A., 1909.

Gallery. No.

**STANFIELD, WILLIAM CLARKSON, R.A.**  
British School: b. 1794, d. 1867. London.

N.E. 501 *Coast scene, near Genoa.*  
Signed C. Stansfield. R.A. 1846. Canvas. 2' 3½" by 3' 7". (E.)

**STARK, JAMES.** Norwich School: b. 1794,  
d. 1859. Norwich, Yarmouth, London.

705 *Landscape, with trees and cows.*  
Canvas. 1' 9" by 2' 4¾". Given by Mrs Laurence Humphry,  
1909.

**STEEN, JAN.** Dutch School: b. 1626, d. 1679.  
Leiden, Haarlem, The Hague.

III 73 *Village Festival.*  
Signed J. Steen. Canvas. 1' 9¾" by 2' 1¼". (F.)

III 76 *Interior, with figures.*  
Signed J. Steen. Canvas. 1' 3½" by 1' 10". (F.)

III 78 *Interior, with a painter and his wife.*  
Signed J. Stien. Panel. 1' 3¾" by 1' 0". (F.)

**STEENWIJCK, HENDRIK VAN, II.** Flemish  
School: b. about 1580, d. before 1649. Antwerp,  
London.

III 31 *Liberation of S. Peter from prison.*  
Signed Henri Steinwick 1626. Panel. 1' 2½" by 1' 8". (K.)

I 536 *Prison scene, with guards.*  
Signed S. 1615. Panel. Circular. 4½". (M.)

**STORCK, ABRAHAM.** Dutch School: b. about  
1630, d. about 1710. Amsterdam.

III 106 *Sea-piece; view of the fight off Lowestoft, 1665.*  
Signed Abraham Storck fecit. Canvas. 2' 8" by 4' 7". Pre-  
sented by Rev. T. Halford, 1855.

**STRANG, WILLIAM, A.R.A.** British School:  
b. 1859.

691 *Portrait of Dr M. R. James, Provost of King's  
College.*  
Chalk drawing. 1' 6" by 11½". Presented by the artist in  
1909.

703 *Portrait of W. Aldis Wright, M.A., Vice Master of  
Trinity College.*  
Chalk drawing. 1' 4½" by 11¾". Commissioned in 1910.

704 *Portrait of W. B. Yeats.*  
Chalk drawing. 1' 4" by 10¼". Presented by the artist in  
1910.



Gallery. No.

**SWANEVELT, HERMAN VAN.** Dutch School: b. about 1600, d. 1655. Rome, Paris.

- II 202 *Landscape, with Joseph and his brethren.*  
Canvas. 1' 7½" by 2' 1". (F.)
- II 206 *Landscape, with the sale of Joseph by his brethren.*  
Canvas. 1' 7½" by 2' 1". (F.)
- I 367 *View of the Campo Vaccino at Rome.*  
Signed H. Swanevelt fecit 16-1. Copper. 1' 5¼" by 1' 7¾". (F.)

**TENIERS, DAVID, II.** Flemish School: b. 1610, d. 1690. Antwerp, Brussels.

- III 72 *Interior, with an old woman peeling apples.*  
Signed D. Teniers · F. Panel. 1' 1¾" by 1' 6". (F.)
- I 250 *The temptation of S. Anthony.*  
Copper. 6¾" by 5½". (F.)
- III 91 *With Neefs. Interior of a Church.*  
Canvas. 2' 6" by 1' 10½". (F.)
- [After G. Coques.]
- I 507 *Portrait of Gonzales Coques.*  
Signed monogram D. T. 1646. Panel. Oval. 3¼" by 2½". (M.)

**TER BORCH, GERARD (TERBURG).** Dutch School: b. 1614, d. 1681.

- III 624 *Portrait of an old woman.*  
Panel. 10½" by 9¼". (Pf. 1904.)

**THORNHILL, SIR JAMES.** British School: b. 1676, d. 1734. London.

- III 9 *Portrait of Handel.*  
Canvas. 3' 3¾" by 2' 9½". Presented by Adam Lodge, Esq., 1875.

**TILLEMANS, PETER.** Flemish School: b. 1684, d. 1734. England.

- I 226 *View of the walls of a town and a castle, with figures.*  
Signed P: Tillemans F. 1709. Canvas. 1' 3" by 1' 7¼". (F.)

Gallery. No.

**TINTORETTO (JACOPO ROBUSTI:** called **IL).** Venetian School: b. 1519, d. 1594. Venice.

[After Tintoretto.]

- III 151 *The Marriage at Cana.*  
Canvas. 1' 9 $\frac{1}{2}$ " by 2' 2 $\frac{3}{4}$ ". Presented by the Rev. Charles Turner, 1841.

**TIZIANO VECELLI:** called **TITIAN.** Venetian School: b. 1477, d. 1576. Venice.

- III 129 *Venus and Cupid, with a man playing the guitar*<sup>1</sup>.  
Canvas. 4' 10 $\frac{3}{4}$ " by 6' 4 $\frac{1}{2}$ ". (F.)

[After Titian.]

- II 634 *The Tribute Money.*  
Canvas. 2' 8 $\frac{1}{4}$ " by 2' 3 $\frac{1}{4}$ ". (A. C. 1905.)

- II 621 *The death of S. Peter, Martyr.*  
Canvas. 3' 11 $\frac{1}{4}$ " by 2' 8 $\frac{1}{2}$ ". Presented by J. W. Clark, M.A., Trinity College, 1891.

**TOMMÈ, LUCA DI.** Sienese School: worked about 1366. Siena.

- V 563 *Madonna and Child, with adoring angels.*  
Panel. 5' 3" by 2' 10". Arched at top. (C. B.)

**TURCHI, ALESSANDRO:** called **ALESSANDRO VERONESE.** Italian School: b. 1582, d. 1648 or 50. Venice, Rome.

- V 620 *At the well.*  
Canvas. 1' 6" by 1' 1 $\frac{3}{8}$ ". Presented by C. E. Sayle, M.A., 1900.

**TURNER, JOSEPH WILLIAM MALLORD,** R.A. British School: b. 1775, d. 1851. London.

- I 567—591 *Turner drawings.* See printed list.

[Attributed to Turner.]

- I 495\* *Mouth of the Thames.*  
Panel. 1' 2 $\frac{1}{2}$ " by 2' 0 $\frac{1}{4}$ ". (E.)

**UDEN, LUCAS VAN.** Flemish School: b. 1595, d. 1672. Antwerp.

- III 92 *Landscape.*  
Panel. 1' 6 $\frac{3}{4}$ " by 2' 4 $\frac{1}{2}$ ". (K.)

- I 426 *River scene, with sportsman.*  
Canvas. 8 $\frac{1}{2}$ " by 10 $\frac{1}{2}$ ". (M.)

<sup>1</sup> The head of the lady and the child are not by Titian himself.

Gallery. No.

**VANNI, ANDREA DI.** Sieneſe School: b. about 1332, d. about 1414. Siena.

- V 560 *Madonna and Child.*  
Panel. 2' 11" by 1' 8". Arched at top. (C. B.)

**VASARI, GIORGIO.** Florentine School: b. 1511, d. 1574. Arezzo, Florence, Rome.

[By or after Vasari.]

- I 540 *Portrait of Bindo Altoviti.*  
Copper. Oval. 4" by 3¼". (M.)

**VECELLI:** see **TIZIANO.**

**VELDE, ADRIAEN VAN DE.** Dutch School: b. 1635(6), d. 1672. Amsterdam.

- III 88 *Landscape, with cattle and figures.*  
Signed A. V. Velde 1664. Canvas. 4' 1" by 5' 5¼". (V.)
- III 39 With Wynants. *Landscape, with cattle.*  
Panel. 8¾" by 11". (V.)

**VENETIAN SCHOOL.**

[Resembling Pietro della Vecchia, 1605—1678.]

- III 138 *Adoration of the Shepherds.*  
Canvas. 3' 10½" by 5' 3½". Copy of Sebastiano Luciani, or del Piombo. (F.)

[Attributed to Bernardino da Brescia.]

- V 566 *The Entombment of Christ.*  
Canvas. 4' 1½" by 5' 0". (B.)  
It is almost identical with the lunette of an altar-piece in the church of S. Barnabas, Venice. (B.)

**VERKOLJE, JOHANNES.** Dutch School: b. 1650, d. 1693. Delft, Amsterdam.

- I 373 *A lady with a cockatoo.*  
Signed monogram O. V. K. Panel. 7¾" by 6¼". (M.)
- I 374 *A lady with a green parroquet.*  
Panel. 7¾" by 6¼". (M.)

Gallery. No.

**VERNET, CLAUDE JOSEPH.** French School:  
b. 1712, d. 1789. Rome, Paris.

- I 336 *View on the Arno.*  
Signed Joseph Vernet f. Romæ 1747. Canvas. 11 $\frac{3}{4}$ " by  
1' 7". (M.)

**VERONESE : PAOLO CALIARI,** called  
**PAOLO VERONESE.** Venetian School:  
b. 1528, d. 1588. Verona, Venice.

[Atelier of Paul Veronese.]

- III 143 *Hermes, Herse and Agraulos.*  
Signed Paulus Caliar Veronensis Fac. Canvas. 7' 6 $\frac{3}{4}$ " by  
5' 7 $\frac{1}{2}$ ". (F.)

[After P. Veronese.]

- II 181 *The Martyrdom of S. George.* Copy of the picture  
in the Church of S. George, Verona.  
Canvas. 13' 10 $\frac{1}{2}$ " by 9' 9 $\frac{1}{2}$ ". Presented by the Ven. G. O.  
Cambridge, 1835.

**VINCK-BOONS, DAVID.** Flemish School:  
b. 1578, d. 1629. Mechlin, Amsterdam.

- III 90 *Landscape, with peasants presenting game to a gentle-  
man and lady on horseback.*  
Panel. 1' 9 $\frac{1}{2}$ " by 3' 5 $\frac{1}{2}$ ". (F.)

**VINNE, JAN VINCENTSZ VAN DER.** Dutch  
School: b. 1663, d. 1721. Haarlem.

- I 372 *Buildings, with figures.*  
Panel. 1' 5 $\frac{1}{2}$ " by 1' 2 $\frac{1}{4}$ ". (M.)

**VLIEGER, SIMON DE.** Dutch School: b. 1601,  
d. 1653. Rotterdam, Delft, Amsterdam, Weesp.

- III 54 *Sea-piece; a breeze near a Dutch port.*  
Signed S. de Vlieger. Panel. 1' 8" by 3' 0 $\frac{1}{2}$ ". (F.)
- III 105 *Sea-piece.*  
Signed S. de Vlieger 1631. Panel. 2' 10 $\frac{1}{2}$ " by 3' 11 $\frac{1}{2}$ ". (F.)
- I 345 *Sea-piece, with wreck.*  
Signed S de VL. Panel. 10 $\frac{3}{4}$ " by 1' 2". (F.)
- I 386 *Sea-piece, a calm.*  
Signed S de Vlieger. Panel. 11 $\frac{3}{4}$ " by 10 $\frac{3}{4}$ ". (F.)

Gallery. No.

**VLIET, HENDRIK CORNELISZ VAN.** Dutch School: b. 1611(2), d. 1675. Delft.

- III 79 *Interior of a Church.*  
Signed with false signature of B De Witt. Panel. 1' 7" by 1' 2". (K.)

**VORSTERMAN, LUCAS.** Flemish School: b. 1643, d. 1699(?). Antwerp, England.

- I 378 *View on the Rhine.*  
Panel. 8 $\frac{3}{8}$ " by 11". (M.)

**VOS, CORNELIS DE.** Flemish School: b. 1585, d. 1651. Antwerp.

- III 159 *Portrait, said to be that of Count Wendlesford.*  
Panel. 1' 11 $\frac{3}{4}$ " by 1' 8". (F.)

**VRIES, ROELOF VAN.** Dutch School: b. 1631, d. after 1669. Haarlem, Amsterdam.

- I 232 *Landscape, with figures.*  
Signed R. Vries. fe. Panel. 9" by 1' 0". (M.)

- I 236 *River scene.*  
Panel. 9" by 1' 0". (M.)

**WAGNER, JOHANN GEORG.** German School: b. 1744, d. 1766. Dresden.

- I 291 *Landscape, with figures.*  
Panel. 8 $\frac{1}{2}$ " by 1' 0 $\frac{1}{4}$ ". (M.)

**WALTON, ELIJAH.** British School.

- V 456\* *The Tombs of the Sultans, near Cairo.*  
Signed Elijah Walton 1865. Canvas. 4' 5" by 5' 11". Presented by the Artist, 1866.

**WARD, JAMES, R.A.** British School: b. 1768, d. 1859. London.

- III 60 *Fight between a lion and tiger.*  
Signed James Ward Pinx<sup>t</sup> 1797. Canvas. 3' 2" by 4' 4". (E.)

Gallery. No.

**WATTEAU, ANTOINE.** French School: b. 1684,  
d. 1721. Paris.

- I 317 *Conversation.* (Perhaps by Lancret.)  
Panel. 10 $\frac{1}{4}$ " by 7". (F.)
- I 329 *A music-party in a landscape.* (Perhaps by Pater.)  
Panel. 8 $\frac{1}{4}$ " by 11". (M.)
- I 330 *Conversation.* (Perhaps by Lancret.)  
Panel. 10 $\frac{1}{4}$ " by 7". (F.)

**WATTS, GEORGE FREDERICK, R.A.** British  
School: b. 1820. London.

- IV 503 *Portrait of the Duke of Devonshire as Chancellor of  
the University* (1861—1892).  
Signed G. F. Watts 1883. Canvas. 4' 1" by 3' 3". Presented  
by the Subscribers, 1887.

**WEBBER, JOHN, R.A.** British School: b. 1752,  
d. 1795. London.

- V 436 *A Convent on the Rhine.*  
Copper. 8 $\frac{1}{2}$ " by 11 $\frac{3}{4}$ ". (M.)

**WEENIX, JAN.** Dutch School: b. 1640, d. 1719.  
Amsterdam, Utrecht, Düsseldorf.

- III 50 *Hare, pheasant, fruit and flowers.*  
Signed J. Weenix f 1706. Canvas. 3' 4 $\frac{3}{4}$ " by 3' 0 $\frac{1}{2}$ ". (F.)

**WERFF, ADRIAEN VAN DER.** Dutch School:  
b. 1659, d. 1722. Rotterdam.

- I 375 *Tancred's servant presenting the heart of Guiscard in  
a golden cup to Guismond.*  
Signed A: Vander Werf: fe. Panel. 1' 4 $\frac{3}{4}$ " by 1' 2". (F.)

**WERFF, PIETER VAN DER.** Dutch School:  
b. 1665, d. 1718. Rotterdam.

- I 376 *Bacchus and Ariadne.*  
Signed P: V<sup>D</sup> W Ano 1712. Panel. 1' 2 $\frac{1}{2}$ " by 11". (F.)
- I 377 *Portrait of a Dutch Lady.*  
Canvas. 1' 4 $\frac{1}{4}$ " by 1' 1". (M.)

Gallery. No.

**WEST, BENJAMIN, P.R.A.** British School:  
b. 1738, d. 1820.

IV 655 *The continence of Scipio.*  
Panel. 3' 3 $\frac{1}{4}$ " by 4' 4 $\frac{1}{4}$ ". (Anon. 1908.)

II 656 *Christ healing the sick.* Chiaroscuro design for one  
of the windows in S. George's Chapel, Windsor.  
Canvas. 2' 11 $\frac{3}{4}$ " by 2' 3 $\frac{5}{8}$ ". (Anon. 1908.)

**WILDENS, JAN.** Flemish School: b. 1586,  
d. 1658. Antwerp, Italy.

See **FLEMISH SCHOOL.**

**WILLAERTS, ABRAHAM.** Dutch School:  
b. about 1605, d. 1669. Utrecht, Brazil, Rome.

I 534 *Family group.*  
Signed A. Willac-- 1660. Panel. 7" by 6 $\frac{3}{4}$ ". (M.)

**WILLIAMS, SAMUEL.** British School: d. 1824.  
Dublin, London.

III 12 *Portrait of Daniel Mesman, Esq.*  
Canvas. 2' 5 $\frac{1}{4}$ " by 2' 0 $\frac{1}{2}$ ". (M.)

**WILLS, REV. JAMES.** British School: d. 1777.  
London.

IV 657 *Family group.*  
Signed J. Wills pinxit 1749. Canvas. 3' 6 $\frac{1}{4}$ " by 4' 8 $\frac{1}{4}$ ".  
(Anon. 1908.)

**WILSON, RICHARD, R.A.**

[Attributed to Wilson.]

II 658 *Portrait of an artist.*  
Canvas. 4' 0" by 3' 1 $\frac{3}{4}$ ". (Anon. 1908.)

**WITT, PIETER DE.** Flemish School: b. 1620,  
d. 1669 (?). Antwerp.

See **DUTCH SCHOOL.**

**WOOTTON, JOHN.** British School: b. 1765.  
London.

III 5 *Classical landscape.*  
Canvas. 2' 7 $\frac{3}{4}$ " by 3' 5 $\frac{1}{2}$ ". (V.)

Gallery. No.

**WOUWERMAN, PHILIPS.** Dutch School :  
b. 1619, d. 1668. Haarlem.

III 69 *Landscape, with a horse drinking.*  
Panel. 1' 1 $\frac{3}{4}$ " by 1' 4 $\frac{3}{4}$ ". (F.)

III 80 *Interior of a stable.*  
Signed Pls-W. Panel. 1' 1" by 1' 7". (F.)

I 340 *Study of horses.*  
Paper stuck on panel. 5" by 7 $\frac{1}{2}$ ". (M.)

**WOUWERMAN, PIETER.** Dutch School :  
b. 1623, d. 1682. Haarlem, Amsterdam.

III 71 *Neighbourhood of a camp, with soldiers and camp-followers.*  
Signed P. W. Canvas. 1' 3 $\frac{3}{8}$ " by 1' 7 $\frac{1}{4}$ ". (F.)

**WRIGHT, JOSEPH, OF DERBY.** British  
School : b. 1734, d. 1797. Derby.

III 1 *Portrait of Viscount Fitzwilliam, when a fellow-commoner of Trinity Hall, Cambridge.*  
Canvas. 2' 5 $\frac{1}{4}$ " by 2' 0 $\frac{1}{4}$ ". Presented by the Rev. R. Fitzwilliam Halifax, 1819.

IV 659 *Portrait of a lady.*  
Canvas. 4' 1 $\frac{1}{4}$ " by 3' 3 $\frac{1}{4}$ ". (Anon. 1908.)

**WTTEWAEL, JOACHIM ANTONISZ.** Dutch  
School : b. 1566, d. 1638. Utrecht, Italy, France.

I 427 *The Judgment of Paris.*  
Copper. 6 $\frac{1}{2}$ " by 8 $\frac{1}{4}$ ". (M.)

**WYCK, THOMAS.** Dutch School : b. 1616,  
d. 1677. Haarlem, Italy.

I 351 *A chemist.*  
Signed T. W. Panel. 1' 1 $\frac{3}{8}$ " by 11 $\frac{1}{4}$ ". (M.)

**WYNANTS, JAN.** Dutch School : b. about 1625,  
d. after 1682. Haarlem, Amsterdam.

III 37 *Landscape, with figures.*  
Signed J. W. Canvas. 9" by 10 $\frac{1}{4}$ ". (M.)

III 38 *With Lingelbach. Landscape, with figures.*  
Signed J. W. Canvas. 8 $\frac{3}{4}$ " by 11" (V.)



Gallery. No.

III 39 With A. van de Velde. *Landscape, with cattle.*  
Signed Wijnants 1670. Canvas.  $8\frac{3}{4}$ " by 11". (V.)

III 40 *Landscape, with men and dogs coursing.*  
Signed J. W. Panel. 8" by  $10\frac{1}{2}$ ". (F.)

**ZEEMAN: REINIER NOOMS**, called. Dutch  
School: b. 1623, d. before 1668. Amsterdam  
France, Berlin.

III 41 *Sea-piece.*  
Signed R. Zeeman. Canvas.  $1' 1\frac{3}{4}"$  by  $1' 0"$ . (M.)

**ZUCCARELLI, FRANCESCO, R.A.** Italian  
School: b. 1702, d. 1788. Florence, London.

II 191 *Landscape, with Madonna and Child and angels.*  
Canvas.  $1' 5\frac{3}{4}"$  by  $2' 5\frac{3}{4}"$ . (M.)

II 196 *Italian landscape.*  
Canvas.  $1' 6"$  by  $2' 5\frac{1}{2}"$ . (M.)

II 198 *Landscape, with figures.*  
Canvas.  $2' 3\frac{1}{2}"$  by  $3' 4\frac{1}{2}"$ . (F.)

II 200 *Death of a Stag.*  
Canvas.  $2' 3\frac{1}{2}"$  by  $3' 4\frac{1}{2}"$ . (F.)

**ZUCCARO, FEDERIGO.** Italian School: b. 1543,  
d. 1609 (?). Rome, England.

[Attributed to Zuccaro.]

I 511 *Portrait of the Earl of Leicester.*  
Panel.  $4\frac{1}{2}"$  by  $3\frac{1}{2}"$ . (M.)

**ZUCCHI, ANTONIO, A.R.A.** Italian School:  
b. 1726, d. 1795. Rome, England.

II 197 *Ruins, with figures.*  
Canvas.  $2' 0\frac{3}{4}"$  by  $2' 5\frac{1}{2}"$ . (M.)

II 199 *Ruins, with figures.*  
Canvas.  $1' 4"$  by  $1' 0\frac{1}{2}"$ . (F.)

II 201 *Ruins, with figures.*  
Canvas.  $2' 0\frac{1}{2}"$  by  $2' 5\frac{1}{4}"$ . (M.)

II 204 *Ruins near Rome, with figures.*  
Canvas.  $1' 4"$  by  $1' 0\frac{1}{2}"$ . (F.)

II 207 *Marcus Curtius leaping into the gulf.*  
Canvas.  $2' 4\frac{1}{2}"$  by  $3' 2\frac{1}{2}"$ . (F.)

Gallery. No.

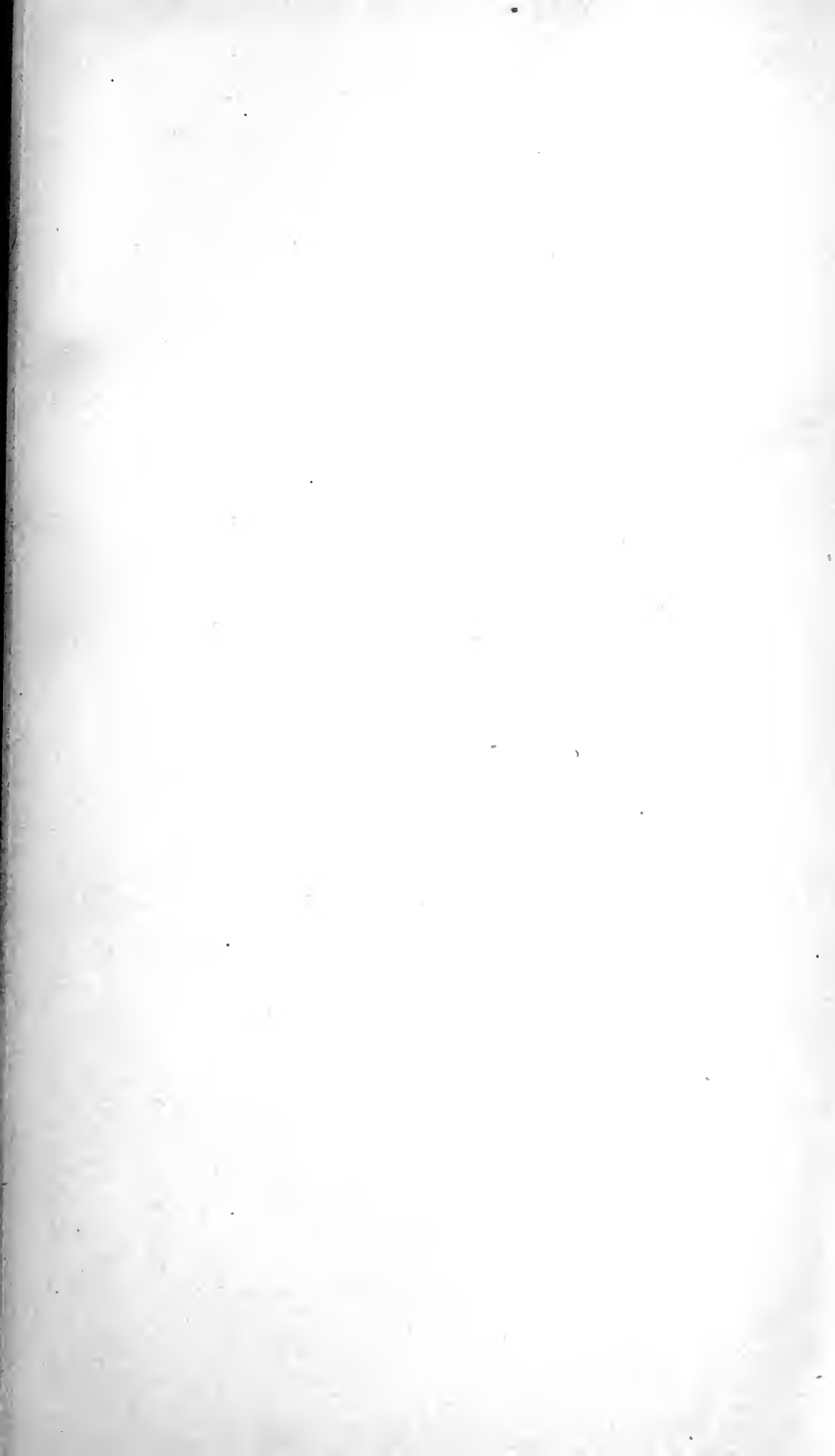
## UNKNOWN.

- N.E. 127 *Head of Christ.*  
Canvas. 1' 5 $\frac{3}{8}$ " by 1' 2 $\frac{1}{2}$ ". (H.)
- II 170 *A Saint.*  
Copper. 7 $\frac{1}{4}$ " by 5 $\frac{1}{2}$ ". (M.)
- II 209 *Portrait of an old man.*  
Panel. 6 $\frac{1}{2}$ " by 5 $\frac{1}{2}$ ". (M.)
- II 214 *S. Stanislaus contemplating the infant Jesus.*  
Copper. 1' 0 $\frac{1}{2}$ " by 9 $\frac{1}{4}$ ". (S.)
- I 238 *Cattle-piece.*  
Panel. 1' 2 $\frac{5}{8}$ " by 1' 5 $\frac{1}{8}$ ". (Imitation of Potter.) (M.)
- I 252 *Child asleep, with a skull and poppy-head.* (Spanish.)  
Panel. 1' 10 $\frac{1}{4}$ " by 1' 3 $\frac{3}{4}$ ". (? Francesco Herrera, the younger.)  
Presented by the Rev. C. Turner, 1841.
- II 255 *The daughter of Herodias with the head of S. John the Baptist.*  
Panel. 10 $\frac{3}{4}$ " by 7 $\frac{3}{4}$ ". (F.)
- I 261 *Portraits of a man and wife.*  
Canvas. 1' 7 $\frac{1}{2}$ " by 2' 7 $\frac{1}{2}$ ". (F.)
- II 269 *Portrait of a woman.*  
Panel. 11 $\frac{3}{4}$ " by 9". (K.)
- I 276 *Scene in Otaheite.*  
Paper. Water colour. 8 $\frac{3}{4}$ " by 11 $\frac{3}{8}$ ". (Louthburgh?) (M.)
- I 299\* *Portrait of a lady.*  
Dated 1550. Panel. 10 $\frac{1}{2}$ " by 7 $\frac{3}{4}$ ". (M.)
- I 385 *Woman holding a medal or coin.*  
Panel. 8 $\frac{3}{4}$ " by 6 $\frac{1}{2}$ ". (M.)
- N.E. 438 *Portrait of Mary Stapleton, wife of Thomas, fourth Viscount Fitzwilliam.*  
Canvas. 1' 11" by 1' 5 $\frac{3}{4}$ ". (F.)
- N.E. 439 *Portrait of Thomas, fourth Viscount Fitzwilliam.*  
Canvas. 1' 11 $\frac{1}{4}$ " by 1' 5 $\frac{3}{4}$ ". (F.)
- V 440 *Portrait of Richard, fifth Viscount Fitzwilliam.*  
Canvas. 2' 5 $\frac{1}{2}$ " by 2' 0 $\frac{3}{8}$ ". (F.)
- V 442 *Portrait of Catharine Vaux, wife of Henry, Baron Abergavenny.*  
Canvas. 2' 5" by 2' 0". (F.)

- Gallery. No.
- V 443 *Portrait of Sir Matthew Decker.*  
Canvas. 2' 11½" by 2' 4½". (F.)
- V 444 *Portrait of Lady Decker.*  
Canvas. 2' 5" by 2' 0". (F.)
- V 446 *Portrait of Frances, daughter of Sir J. Shelley.*  
Canvas. 2' 3" by 1' 9½". (F.)
- N.E. 449 *Portrait of Sir Thomas Adams.*  
Panel. 2' 1" by 1' 6". Formerly in the possession of Mr  
H. Bradshaw, M.A., King's College. Purchased 1887.
- I 519 *Miniature portrait of Hélène Fourment.*  
Metal. Oval. 2½" by 2". (M.)
- I 520 *Miniature portrait of a man.*  
Ivory. Oval. 3" by 2½". (M.)
- I 522 *Miniature portrait of the Queen of Bohemia.*  
Copper. Oval. 2½" by 2". (M.)
- III 524 *Girl gathering flowers.*  
Copper. 5¾" by 3¾". (M.)
- I 528 *Landscape, with figures.*  
Panel. 6⅝" by 9¼". (M.)
- I 546 *Portrait of Sarah, Duchess of Marlborough.*  
Copper. Oval. 3⅝" by 2¾". (M.)
- I 548 *Portrait of Antonius Densingius.*  
Copper. 6⅝" by 4¾". (M.)
- I 549 *The Holy Family.*  
Panel. 5½" by 4½". (M.)
- N.E. 605 *Quaker meeting disturbed by a Beau.*  
Panel. 1' 7½" by 2' 8". Bequeathed by the Rev. J. Ind  
Smith, M.A., 1896.
- IV 609 *Portrait of George Dyer (Historian of the University).*  
Canvas. 2' 11½" by 2' 3½". (? Henry Meyer, who painted  
a portrait of Charles Lamb now in the National Portrait  
Gallery.) Bequeathed to the University by Miss Sarah  
Travers, 1897.
- 621\* *Portrait of Dr Barnes, Master of Peterhouse,*  
1788-1838.  
Water colour. 3½" by 3". Presented by J. W. Clark, M.A.,  
1901.

Gallery. No.

- IV 671 *Portrait of Christopher Willibald Ritter von Gluck*  
(1714—1787).  
Panel. 1' 0 $\frac{3}{8}$ " by 10 $\frac{1}{8}$ ". (Purchased 1908.)
- IV 672 *Portrait of Johann Nepomuk Hummel* (1778—1837).  
Panel. 1' 3 $\frac{1}{8}$ " by 11 $\frac{1}{4}$ ". (Purchased 1908.)
- V 605 *Two classical landscapes, with figures.*  
Water colour. Each 6 $\frac{5}{8}$ " by 5 $\frac{3}{4}$ ". (V.)
- V 609 *Saint Dorothy.*  
Stone. 1' 2 $\frac{1}{4}$ " by 8 $\frac{1}{2}$ ". (Fresco from Chesterton Church,  
Cambs.) Presented by T. H. Naylor, M.A., 1881.
- III 706 *Christ mocked.*  
East Anglian School: c. 1400.  
Panel. 12 $\frac{3}{4}$ " by 11 $\frac{1}{2}$ ". Given by the Friends of the Fitzwilliam  
Museum, 1910.
- III 707 *Christ bearing the Cross.*  
East Anglian School: c. 1400.  
Panel. 12 $\frac{3}{4}$ " by 11 $\frac{1}{2}$ ". Given by the Friends of the Fitzwilliam  
Museum, 1910.













**14 DAY USE**  
**RETURN TO DESK FROM WHICH BORROWED**  
**LOAN DEPT.**

This book is due on the last date stamped below, or  
on the date to which renewed.

Renewed books are subject to immediate recall.

3 APR '62EX	
REC'D LD	
MAR 21 1962	

LD 21A-50m-8,'61  
(C1795s10)476B

General Library  
University of California  
Berkeley

LIBRARY OF CALIFORNIA  
LIBRARY OF THE UNIVERSITY OF CALIFORNIA  
LIBRARY OF THE UNIVERSITY OF CALIFORNIA  
LIBRARY OF THE UNIVERSITY OF CALIFORNIA



YB 09420

