


The
Broom
1949







Digitized by the Internet Archive
in 2010 with funding from
Lyrasis Members and Sloan Foundation

<http://www.archive.org/details/broom1949delt>

Ex Libris



The 1949

LEONA DEAN Editor

JAMES WHITE Business Manager

Published by the Students of
DELTA STATE TEACHERS COLLEGE
Cleveland, Mississippi

BROOM





Foreword . . .

THE BROOM staff of 1949 wishes to express its appreciation to the student body and faculty for the cooperation you have given us in the compilation of this twenty first edition.



COLLEGE
FACULTY
CLASSES
FEATURES
ORGANIZATIONS
ATHLETICS
CAMPUS LIFE
ADVERTISEMENTS

Contents

DEDICATION

To Roy Lee Wiley, Associate Professor of Physics,
The Broom Staff of 1949 dedicates this edition. We
have looked to him for help and understanding,
whether personal or academic. We admire him as a
teacher and counselor and are grateful for his loyal
school spirit.



ROY LEE WILEY



INSTITUTIONS OF HIGHER
LEARNING
State of Mississippi

His Excellency
FIELDING L. WRIGHT
Governor of Mississippi

BOARD OF TRUSTEES

MARTIN V. B. MILLER, President	Meridian
E. R. JOBE, Executive Secretary	Jackson

MEMBERS OF THE BOARD

State-at-Large	
R. D. MORROW, Twelve-Year Term, 1948-1960	Brandon
H. M. IVY, Twelve-Year Term, 1944-1956	Meridian
First District	
R. N. HENLEY, Twelve-Year Term, 1944-1956	Macon
Second District	
R. B. SMITH, JR., Eight-Year Term, 1944-1952	Ripley
Third District	
HARRY CARPENTER, Five-Year Term, 1947-1952	Rolling Fork
Fourth District	
MRS. NED LEE, Eight-Year Term, 1944-1952	Eupora
Fifth District	
MARTIN V. B. MILLER, Twelve-Year Term, 1944-1956	Meridian
Sixth District	
JOHN W. BACKSTROM, Twelve-Year Term, 1948-1960	Leakesville
Seventh District	
OLIVE EMMERICH, Twelve-Year Term, 1944-1956	McComb
Northern Supreme Court District	
R. W. REED, Eight-Year Term, 1944-1952	Tupelo
Central Supreme Court District	
MRS. JANIE RICE TAYLOR, Twelve-Year Term, 1948-1960	Jackson
Southern Supreme Court District	
REECE McLENDON, Twelve-Year Term, 1948-1960	Poplarville
LaBauve Fund Trustee for University of Mississippi	
PAUL H. BOWDRE	Hernando



COLLEGE



BROOM MEMORIAL ADMINISTRATION BUILDING



SNOW SCENE, BROOM ADMINISTRATION BUILDING



ROBERTS MEMORIAL LIBRARY



CLEVELAND HALL



HILL DEMONSTRATION SCHOOL

WHITFIELD GYMNASIUM





SCOTT DINING HALL



PRESIDENT'S
HOME

DEAN'S HOME



TAYLOR HALL





HOME MANAGEMENT HOUSE

WARD HALL





FACULTY

PRESIDENT
WILLIAM MARION KETHLEY, LL.D.
DELTA STATE TEACHERS COLLEGE



Keep and guard as a sacred trust the responsibility which your Alma Mater commits to you. You, as former students and graduates, are responsible in part for the character and the reputation of our school and for its continued support.

W. M. Kethley



JOE FARRAR, Ph.D.
Dean of the Faculty

Delta State is proud of its past. It looks hopefully toward the future, confident that, with the loyalty and devotion of its student body, faculty, and alumni it can and will meet the ever-increasing demand for the enlargement of its facilities and for the extension of its services.

Joe Farrar

FACULTY

WIRT ALFRED WILLIAMS, M.A.
Head of Department of Social Science



RICHARD LEE CAYLOR, Ph.D.
Head of Department of Science

ALBERT LEON YOUNG, Ph.D.
Head of Department of Education



EVELYN ALLEN HAMMETT, M.A.
Head of Department of Languages and
Literature

THOMAS B. MARTIN, M.A.
Head of Department of Business Education



ETHEL CAIN, Ed.M.
Acting Head of Department of Health and
Physical Education

GRACE GAW, M.A.
Acting Head of Department of Art



MINNIE PATTON, M.S.
Acting Head of Department of
Vocational Home Economics

PAUL R. MAGEE, M.A.
Acting Head of Department of Music



ELEANOR BOYD WALTERS, M.A.
Acting Head of Department of Mathematics



FACULTY

DEWITT TALMADGE OAKS, M.A.
Director of Elementary
Demonstration Schools

KATIE D. MAULDIN, M.A.
Registrar

JEFF D. MILLER
Financial Secretary



DOUGLAS M. ALLEN, M.A.
Public Relations Director

ELEANOR HARKINS, M.S.
Librarian

SIDNEY H. BLAKELY, Ph.D.
Language and Literature



GEORGIA L. TATUM, Ph.D.
Social Science

NELL LAWLER, M.A.
Dean of Women

RAY RICKS, M.A.
Dean of Men
Health and Physical Education



LOWREY A. BASS, Ph.D.
Science

JANE OLIVER, M.A.
Elementary Education

CAROL BRUMBY, M.A.
Social Science



NELL R. MIMS, M.A.
Vocational Home Economics

ROY L. WILEY, M.A.
Science

NELL WYNN, M. Mus.
Music

FACULTY

ELIZABETH ZEIGEL, M.A.
Secondary Demonstration Schools

RUTH M. WILLIAMS, M.A.
Languages and Literature

DOXIE DEXTER, Ph.D.
Languages and Literature

MRS. DORA TYER, M.S.
Health Education

W. T. POWELL, B.S.
Social Science

ELIZABETH DAKIN, B.L.S.
Assistant Librarian



WALTER N. GARDINER, M.A.
Language and Literature

FOREST E. WYATT, M.A.
Health and Physical Education

LARISA MORUZEANU, License
Health and Physical Education



EDWARD L. CROSS, M.M.
Music

MRS. ANITA D. STONE, M.A.
Science

HENRY J. JACOB, M.A.
Education

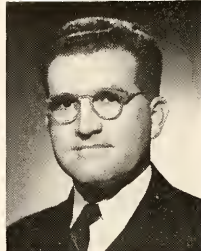
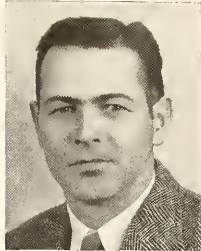


JAMES E. SISSON, M.S.
Language and Literature

JESSE WHITE, B.S. in ED.
Science

C. H. HAGENSON, Ph.M.
Education





FACULTY

E. R. CHADWICK, B.S.
Health and Physical Education

J. D. HAGGARD, M.S.
Mathematics

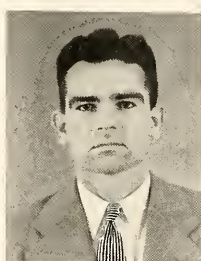
KATHERYNE KEENER, M. Com. Sc.
Business Education



JEAN M. KNOTT, M.A.
Business Education

DALE SHULAW, M.S. in Ed.
Business Education

MARY EMMA BOGGAN, M.A.
Language and Literature



MARTIN L. ABBOTT, B.A.
Social Science

LEE J. MELTON, JR., B.A.
Social Science

ARRELL MACE, M.M.
Music



MARY EMMA BLAKEMAN, B.S.
Vocational Home Economics

LYNN GOODMAN, B.S., B.A.
Health and Physical Education

MAUD CAIN, M.A.
Elementary Demonstration Schools



FRANCES GRUBBS, M.S. in Ed.
Elementary Demonstration Schools

MRS. W. P. KEESLER
Elementary Demonstration Schools

MRS. C. H. HAGENSON, M.A.
Education

FACULTY

MRS. W. N. GARDINER
Elementary Demonstration Schools



MRS. E. B. CHADWICK, B.S. in Ed.
Elementary Demonstration Schools

MRS. KENNETH WILLIAMS, A.M.
Wesley Foundation Secretary



MRS. JOHN C. MERRILL, B.A.
B.S.U. Secretary

ETHEL CRAWLEY
Dormitory Advisor

ETHEL GILLESPIE
Dormitory Advisor

BESS VINSON, B.S.
Dietitian

MRS. W. A. CARPENTER
Assistant Dietitian

HERBERT PRICE, B.S. in Ed.
Dormitory Advisor



VIRGINIA THOMPSON, A.B.
Secretary to President

GLADYS CASTLE, B.S. in Ed.
Secretary to Dean of Faculty

HUGH SMITH, B.S. in Ed.
Assistant to Financial Secretary



RUTH BARKLEY, B.S. in Ed.
Secretary

MARGARET WILSON, B.A.
Music

SUE THWEATT, B.S. in Ed.
Secretary



FACULTY



WILLA MAE BELL, R.N.
Nurse



MRS. ALEX HINTON
B.S.
Secretary



HARRIET CAUSEY, B.A.
Secretary



NAN SIMMONS, B.S.
Secretary



Faculty Snaps



CLASSES



SENIOR CLASS OFFICERS

HARRIS COLEMAN

President

REBECCA SEARCY

Vice-President

LEONA DEAN

Secretary

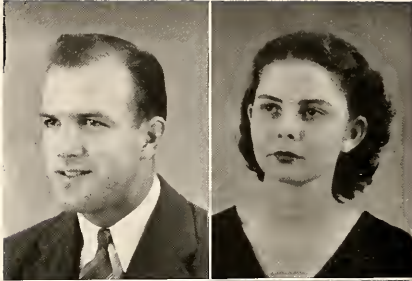
BILL MANNING

Treasurer

MR. D. M. ALLEN

Sponsor

SENIORS



WILLIAM CURTIS ALLEN Brookhaven, Miss.
 Physical Education
 B.S. in Education
 Transfer, Copiah Lincoln Junior College; Football; Basketball; Physical Education Club; "M" Club, President.



EMOGENE BAILEY Daphne, Ala.
 Home Economics
 B.S. in Education
 Home Economics Club; Inter-Faith Council; Y.W.A.; B.S.U., Vice-President.



EDITH McKNIGHT BAILEY Shelby, Miss.
 English
 Business Education
 B.S. in Education
 French Club; Y.W.A.; Commercial Club.



LEROY BAILEY Shelby, Miss.
 Biological Science
 B.S.
 French Club; Science Club, Vice-President.



RENA BAILEY Maude, Miss.
 English
 Mathematics
 B.S. in Education
 Transfer, Wood Junior College; Y. W. C. A.; Wesley Foundation Council; Winstan Scholarship; Who's Who Among Students in American Universities and Colleges.



JOE W. BAKER New Albany, Miss.
 Science
 B.S. in Education
 Transfer, Holmes Junior College; Baseball; Basketball.



MAPLE BARNES Hollandale, Miss.
 Physical Education
 B.S. in Education
 Y. W. C. A.; Dance Group; Broom Staff, Physical Education Majors Club, Secretary; W. A. A., President.



MARY ANN BELL Drew, Miss.
 English
 B.S. in Education
 Transfer, M. S. C. W.; Delta Playhouse; Second Best Actress; Scribes Club; Dance Group.

SENIORS

WILLA MAE BELL Houston, Texas
 Science
 B.S.

Transfer, University of Houston; Spanish Club; Science Club; Dance Club; Graduate, Methodist Hospital, Houston, Texas.

JOHNNIE BIGGERS Ackerman, Miss.

Social Science
 B.S. in Education

Transfer, Holmes Junior College.

GENE E. BONDS Charleston, Miss.

Business Administration

TOMMY BOONE Leland, Miss.

Mathematics
 Physical Education
 B.S. in Education

"M" Club; Physical Education Majors Club.

LAVIS BOX Stewart, Miss.

Elementary Education
 B.S. in Education

Transfer, Wood Junior College.

GROVER BREWER Charleston, Miss.

English
 Social Science
 B.S. in Education

Transfer, Mississippi State College; International Relations Club.

SAMUEL J. BRIDGERS, JR. Tchula, Miss.

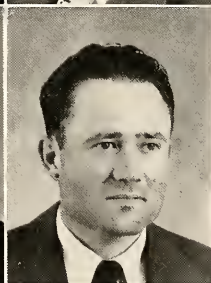
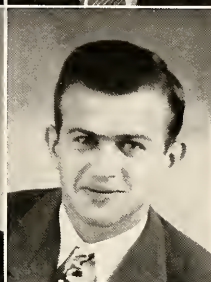
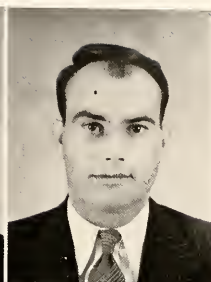
Business Education
 B.S. in Education

Transfer, Holmes Junior College.

HARRY P. BROOKS Merigold, Miss.

Business Administration
 B.S.

Spanish Club; Commercial Club; MISS DELTA Staff; Band; Delta State Orchestra.



SENIORS



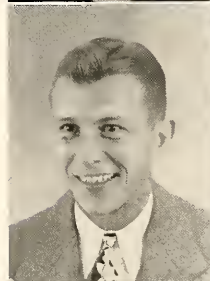
BILL BUSH Rosedale, Miss.
 Social Science
 Physical Education
 B.S. in Education
 Transfer, Southwestern; Football; "M" Club; Physical
 Education Majors Club, Vice-President.



R. A. BYARS Bruce, Miss.
 Social Science
 Business Education
 B.S. in Education

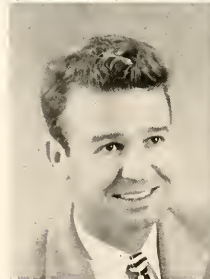
EVELYN CARTER Belzoni, Miss.
 Home Economics
 B.S. in Education
 Y. W. A.; Home Economics Club.

R. B. CARTER Belzoni, Miss.
 Biological Science
 B.S. in Education
 Transfer, Sunflower Junior College.



G. M. CHESTER Vaughn, Miss.
 Physical Education
 B.S. in Education
 Transfer, Halmes Junior College; Physical Education.
 Majors Club; Intramural Council, Chairman.

ROBERT A. CIRE Greenville, Miss.
 Physical Education
 B.S. in Education
 "M" Club; Physical Education Majors Club.



WILLIAM E. COCKRELL Cleveland, Miss.
 English
 Biological Science
 B.S. in Education

HARRIS COLEMAN Greenwood, Miss.
 Social Science
 B.S. in Education
 Transfer, Mississippi State College; Delta Playhouse;
 French Club; Junior Class, President; Senior Class, President;
 The Broom, Assistant Business Manager; Most Handsome;
 Men's Honor Council; Civic Chairman, Hardee Hall; Who's
 Who Among Students in American Universities and Colleges.

SENIORS

JACK COOK Indianola, Miss.
Business Administration
B.S.

Transfer, Sunflower Junior College.

HOMER CORN Greenwood, Miss.
Mathematics
Social Science
B.S. in Education

WAYNE P. DAVIDSON Leland, Miss.
Physical Education
Social Science
B.S. in Education
"M" Club; Physical Education Majors Club.

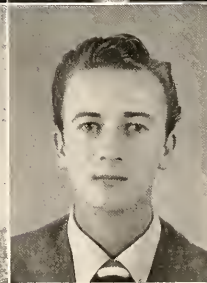
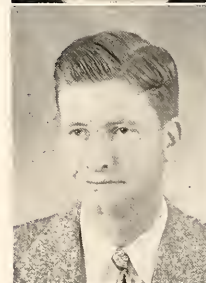
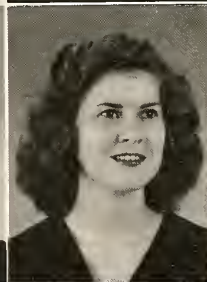
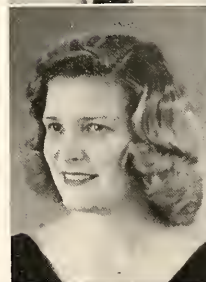
VIVIAN ADELE DAVIS Pettit, Miss.
Chemistry
B.S.
Delta Musico; French Club; Home Economics Club;
Science Club, Treasurer.

LEONA ANISTON DEAN Leland, Miss.
Business Education
Biological Science
B.S. in Education
Delta Playhouse; Alpha Psi Omega, Vice-President;
Science Club; Commercial Club; Senior Class, Secretary;
Women's Honor Council; Student Body, Secretary; THE
BROOM, Editor-in-Chief; Who's Who Among Students in
American Universities and Colleges.

IRIS DICKSON Tippo, Miss.
Elementary Education
B.S. in Education
Transfer, Wood Junior College; Elementary Club, President.

ROGER E. (Bill) DUNCAN Preston, Miss.
Social Science
Transfer, East Mississippi Junior College; Baseball;
Basketball.

JOHN C. FARRIS Hallandale, Miss.
English



SENIORS



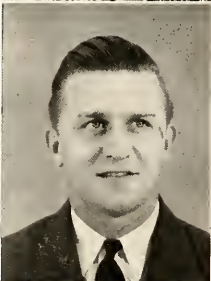
JANE FARRISH Greenwood, Miss.
 Elementary Education
 B.S. in Education
 Transfer, Holmes Junior College; Elementary Club; Delta
 Singers; W. A. A.

EDNA FEATHER Hushpuckena, Miss.
 Mathematics
 B.S. in Education
 Transfer, Sunflower Junior College; Y. W. A.; B. T. U.,
 President.



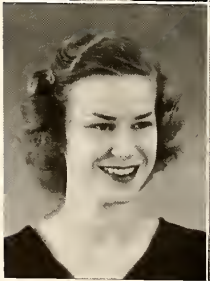
WAYNE GADDIS Baldwyn, Miss.
 Mathematics
 Physical Education
 B.S. in Education

BEN GANN Booneville, Miss.
 Physical Education
 B.S. in Education



ALICE HAMMOND GARDNER Greenwood, Miss.
 English
 B.S. in Education
 Transfer, M. S. C. W.; Scribes Club.

BILL GARDNER Greenwood, Miss.
 Social Science
 Business Administration
 B. S.
 Commercial Club, President; "M" Club, Vice-President;
 Baseball; Football, Captain; Best Mannered Boy; Assistant
 Business Manager MISS DELTA; Student Government,
 Vice-President; Who's Who Among Students in American
 Universities and Colleges.



JEANNINE HUGHES GARDNER Greenwood, Miss.
 Elementary Education
 B.S. in Education
 Elementary Club; Delta Singers; Football Maid.

JAMES E. GILLESPIE Pleasant Grove, Miss.
 Business Administration
 B.S.
 Transfer, Northwest Junior College.

SENIORS

JAMES O. GREGORY Cleveland, Miss.
 Social Science
 Business Administration
 B.S.

BOBBIE (Momie) HAMMACK Tutwiler, Miss.
 Social Science
 B.S. in Education
 W. A. A.

LORAIN HEATH Grenada, Miss.
 Home Economics
 B.S. in Education
 Transfer, M. S. C. W.; Home Economics Club.

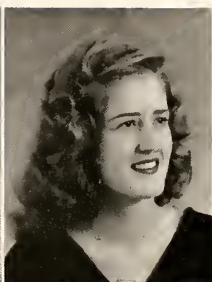
MARY HARPOLE Eupora, Miss.
 Home Economics
 B.S. in Education
 Transfer, Wood Junior College; Home Economics Club,
 President.

RICHARD HENRY Pace, Miss.
 Business Administration
 B.S.

MARY HILLIARD Nitta Yuma, Miss.
 Physical Education
 B.S. in Education
 Elementary Club; W. A. A.; Physical Education Majors
 Club, Secretary.

RITA TERRY HOFMAN Scott, Miss.
 Art
 B.S. in Education
 Transfer, M. S. C. W.; Most Beautiful.

WARD JACKSON Carrollton, Miss.
 Social Science
 B.S. in Education



SENIORS



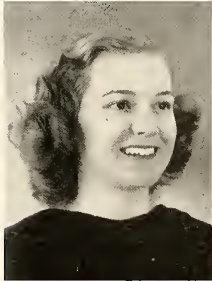
WAYNE JACKSON New Albany, Miss.
 English
 Social Science
 B.S. in Education

ARTIE JANOUSH Bayle, Miss.
 Business Administration
 B.S.
 Transfer, Mississippi State Collage.



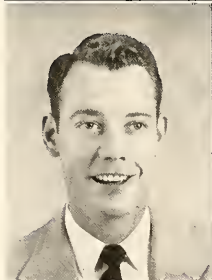
FRED C. JEPSEN Sledge, Miss.
 Physical Education
 B.S. in Education

NELLE BRIDGERS JOINER Minter City, Miss.
 English
 Physical Education
 B.S. in Education
 Delta Playhouse; W. A. A.; MISS DELTA Staff; THE BROOM Staff.



MARTHA ELAINE JONES Lambert, Miss.
 Home Economics
 B.S. in Education
 Transfer, Clarke Memorial College; Y. W. A; Delta Sing-ers; Home Economics Club; B. S. U. Council.

JIMMY B. LANGSTON Greenville, Miss.
 Chemistry
 Biological Science
 B.S.



CHARLIE LEE Merigold, Miss.
 Physical Education
 B.S. in Education
 Physical Education Majors Club.

JARVIS EMILY LOVE Itta Bena, Miss.
 Business Education
 B.S. in Education
 Delta Playhouse; Scribes Club; Delta Musica; MISS DELTA Staff; Band, Secretary; Commercial Club; THE BROOM Staff; Alpha Psi Omega, Secretary; Wittiest Girl; Women's Honor Council; Who's Who Among Students in American Universities and Colleges.

SENIORS

ALBERT MANN, JR. Skene, Miss.

Social Science
B.S. in Education

Baseball.

BILL MANNING Drew, Miss.

Business Education
B.S. in Education

Transfer, M. S. C. W.; Commercial Club; W. A. A.;
Y. W. C. A.

TOM MASSEY Booneville, Miss.

Business Administration
B.S.

SIDNEY E. MAYO Cleveland, Miss.

Business Administration
B.S.

Transfer, Mississippi State College.

BETTY JO McCAIN Cleveland, Miss.

Business Education
B.S. in Education

Transfer, M.S.C.W.; W. A. A.; Delta Playhouse; MISS
DELTA Staff; Dance Club.

JEWELL McGINTY Lexington, Miss.

Home Economics
B.S. in Education

Transfer, Holmes Junior College; Home Economics Club,
Vice-President.

RICHARD RUBE McLENDON Crenshaw, Miss.

Business Administration
B.S.

Transfer, Northwest Junior College.

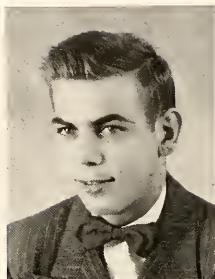
JOHN C. MERRILL, JR. Cleveland, Miss.

English
Social Science
B.A.

Scribes Club; B.S.U.; Spanish Club, President; MISS
DELTA, Editor; LITTLE GREEN BOOK, Editor; Studen Cab-
inet; Most Versatile; Who's Who Among Students in Ameri-
can Universities and Colleges.



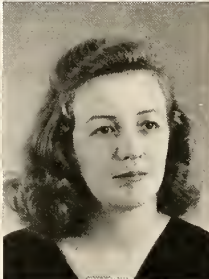
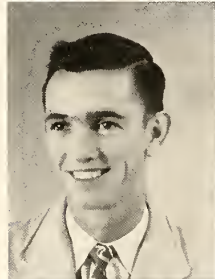
SENIORS



WALTER (Tollie) MILLER Greenwood, Miss.
 Science
 B.S.

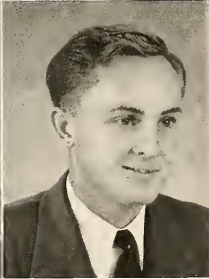
Wittiest Boy.

GENE MORLEY Skene, Miss.
 Business Education
 B.S. in Education
 Delta Singers; Commerical Club; Delta Musica.



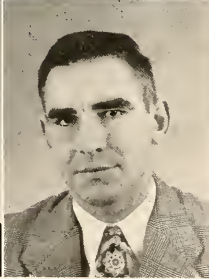
CECIL (Little Joe) OSWALT Alligator, Miss.
 Social Science
 B.S. in Education
 International Relations Club; Men's Honor Council; Civic
 Chairman, Hardee Hall.

LADY ARNOLD PATE Goodman, Miss.
 Business Education
 B.S. in Education
 Transfer, Holmes Junior College.



NELL ELIZABETH PATTERSON Memphis, Tenn.
 Business Education
 Physical Education
 B.S. in Education
 Commercial Club; Physical Education Majors Club; MISS
 DELTA Staff; Delta Playhouse; Women's Honor Council.

ROBERT M. POWELL Memphis, Tenn.
 Social Science
 Physical Education
 B.S. in Education
 Basketball; International Relations Club; Physical Edu-
 cation Majors Club; "M" Club; Baseball; Intramural Council.



MRS. O'WHITE PRICE Catchings, Miss.
 Music
 B.S. in Music Education

HOWARD LEE RAY Etta, Miss.
 Physical Education
 B. S. in Education
 Transfer, Holmes Junior College; Physical Education
 Majors Club, Treasurer.

SENIORS

LINVILLE REED Glen Allan, Miss.

Mathematics
Business Administration
B.S.

French Club; THE BROOM Staff.

WILLIAM REED Booneville, Miss.

Business Administration
B.S.

A. C. (Chicken) ROBERTS Webb, Miss.

Business Administration
B.S.

WAYNE L. ROBERTS Blue Springs, Miss.

Social Science
B.S. in Education

Transfer, Halmes Junior College; International Relations Club.

MARTHA (Polly) RYALS Hollandale, Miss.

Science
Mathematics
B.S. in Education

Science Club, Secretary; W. A. A.; Delta Playhouse, President; Alpha Psi Omega; Y. W. C. A., President; Wesley Foundation Council, MISS DELTA Staff; THE BROOM Staff; Women's Honor Council, President; Best Play Director.

FAYE SANDIFER Ralling Fork, Miss.

Business Education
B.S. in Education

Transfer, Belhaven; Delta Musica; Y. W. C. A.; Y. W. A.; Ensemble.

REBECCA SEARCY Boyle, Miss.

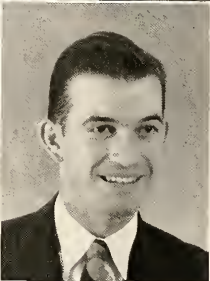
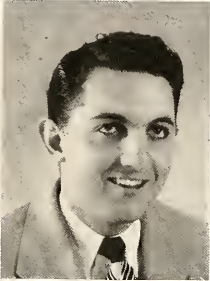
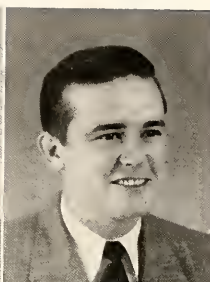
Foreign Language
B.A.

Y. W. C. A.; MISS DELTA Staff; THE BROOM Staff; French Club; Commercial Club; Spanish Club; Most Intellectual Girl; Junior Class, Secretary; Senior Class, Vice-President; Who's Who Among Students in American Universities and Colleges.

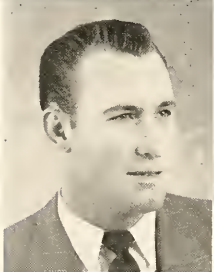
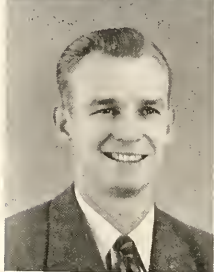
ROBERT SIMPSON Cleveland, Miss.

Mathematics
Business Administration
B.S.

Band; Delta Singers; Delta Playhouse; Alpha Psi Omega.



SENIORS



HUBERT DEAN SMITH Greenville, Miss.
Physical Education
B.S. in Education

Physical Education Majors Club; Delta Playhouse; Best Character Actor; Football Manager; Men's Honor Council; Who's Who Among Students in American Universities and Colleges.

ROY A. SMITH Philipp, Miss.
Business Administration
B.S.

Transfer, Sunflower Junior College; Baseball; Intramural Council; "M" Club.

BILLY STEPHENSON Clarksdale, Miss.
Mathematics
Physics
B.S.

Football; Track; "M" Club; Delta Singers; B.S.U.

WILLIAM BURNS STRODE Clarksdale, Miss.
Business Administration
B.S.

Delta Singers; Band; Orchestra Director.

ROBERT SYKES Philipp, Miss.
Physical Education
B.S. in Education

Football; Baseball; "M" Club; Physical Education Majors Club.

JOSEPH N. TACKETT Cleveland, Miss.
Social Science
B.S. in Education

International Relations Club.

DOROTHY ADELIA THOMAS Vaughn, Miss.
Physical Education
Science

B.S. in Education
Most Typical Freshman Girl; W. A. A.; French Club; Physical Education Majors Club, President; Most Athletic Girl.

ELMON THOMAS Webb, Miss.
Science
B.S. in Education

Transfer, Sunflower Junior College.

SENIORS

MORRIS KING THOMPSON Cleveland, Miss.
 Art
 B.S. in Education
 Transfer, Mississippi State College; Band; Track; "M"
 Club; Delta Singers, President; Art Club, Vice-President.

ROBERT TOLLISON Moorhead, Miss.
 Secondary Education
 B.S. in Education
 Transfer, Sunflower Junior College.

ROSE VANCE Dixon, Miss.
 Business Education
 B.S. in Education
 Commercial Club; Y. W. C. A.; Junior Class, Vice-Presi-
 dent; Women's Honor Council.

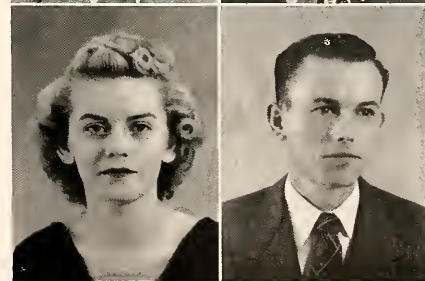
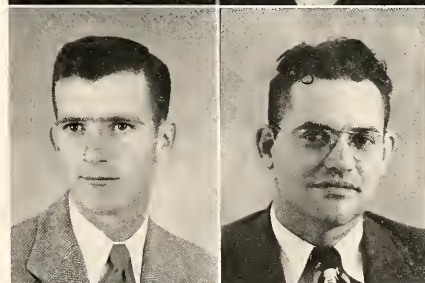
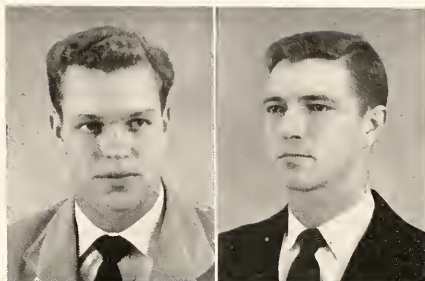
BILLIE WALKER Pheba, Miss.
 Home Economics
 B.S. in Education
 Transfer, M. S. C. W.; Home Economics Club.

JAMES H. WHITE Beulah, Miss.
 Social Science
 Business Administration
 B.S.
 "M" Club; Golf; Business Manager THE BROOM; Men's
 Honor Council.

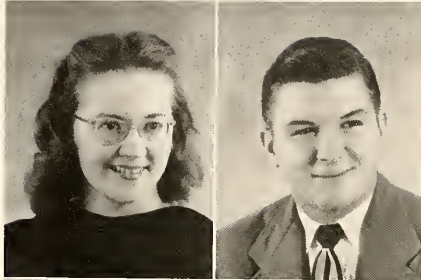
KENNETH C. WILLIAMS Cleveland, Miss.
 Social Science
 B.A.
 Transfer, Kentucky Wesleyan College; French Club.

THERESA WILLIAMS HANSBROUGH Crowder, Miss.
 Biological Science
 B.S. in Education
 Science Club; THE BROOM Staff.

CARL WILLIAMSON Louisville, Miss.
 Social Science
 B.S. in Education
 International Relations Club, President.

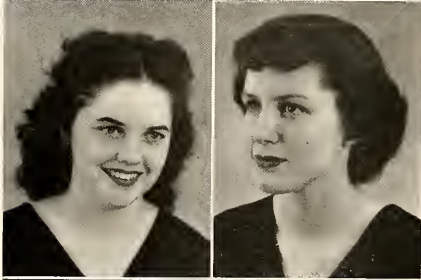


SENIORS



EMMA JO YEAGER WOODRUFF Skene, Miss.
Chemistry
B.S.

Delta Singers; French Club; Women's Honor Council; Women's Ensemble; Inter-Faith Council; B.S.U., President.



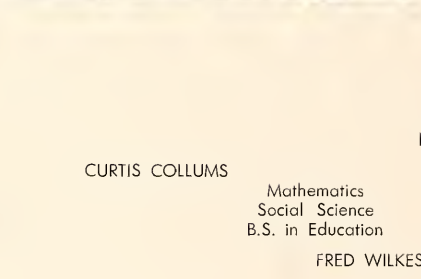
PATSY LAFOE YERBY Glen Allan, Miss.
Music
B.M.

Transfer, University of Mississippi; Cheer Leader; Most Beautiful; Delta Singers, Vice-President.



KATE YERGER Rosedale, Miss.
Social Science
B.S. in Education

Transfer, M. S. C. W.; Delta Singers; W. A. A.; International Relations Club; Y. W. C. A.; MISS DELTA Staff.



MARY YOUNG Walnut Grove, Miss.
Business Education
B.S. in Education

Transfer, East Central Junior College; Y. W. C. A.



JOHN YURKOW Leland, Miss.
Business Administration
B.S.

Delta Playhouse; Best Actor; Wittiest Boy; Sophomore Class, President; MISS DELTA, Business Manager; Student Government, President; Who's Who Among Students in American Universities and Colleges.

NOT PICTURED

CURTIS COLLUMS

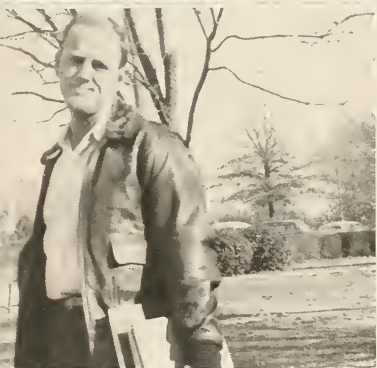
Mathematics
Social Science
B.S. in Education

CHARLES MABRY

Business Administration
B.S.

FRED WILKES

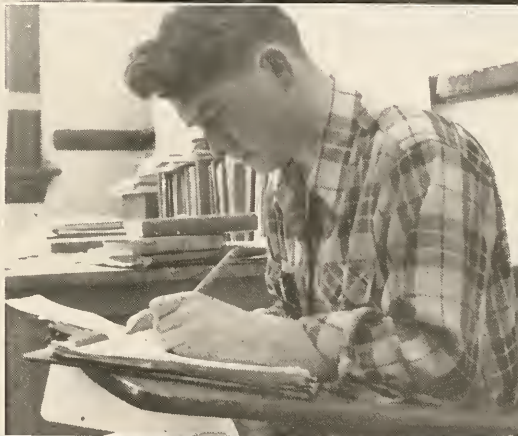
Business Administration
B.S.

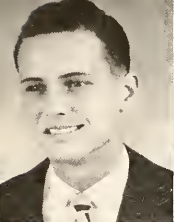




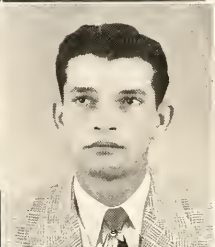
JUNIOR CLASS OFFICERS

KENNETH SISSELL	President
KAY POE	Vice-President
NELL CLEMENT	Secretary-Treasurer
DICK MOORE	Class Representative
MR. JAMES SISSON	Sponsor

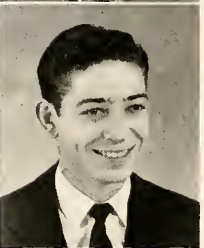
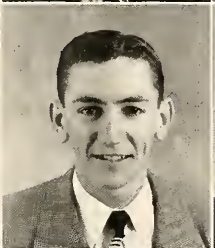
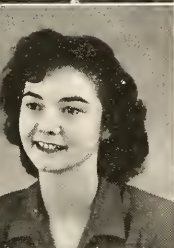




ABEL, C.
 ABRAHAM, C.
 ALFORD, H.
 ANDERSON, P.



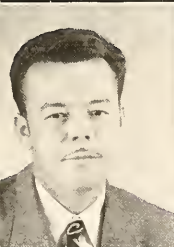
ARNOLD, B. J.
 ARNOLD, E. C.
 AYCOCK, R.
 BECKUM, J.



BEEVERS, B.
 BELLIPANNI, J.
 BOGGS, H.
 BONDS, B. L.



BOYD, B.
 BRADLEY, B. R.
 BRANNON, B.
 BRYANT, J. W.



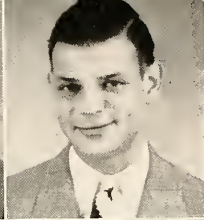
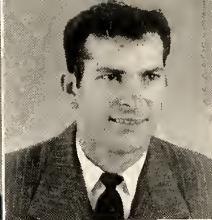
CALLOWAY, C.
 CAMPBELL, C.
 CARROLL, R.
 CARTER, D.



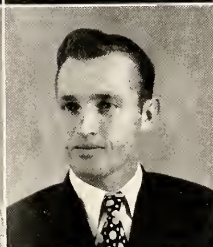
CHANDLER, R.
 CHERTOW, M.
 CHESTER, P.
 CHILDRESS, H.

JUNIORS

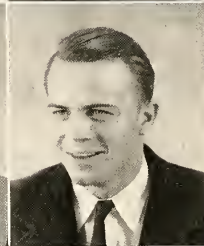
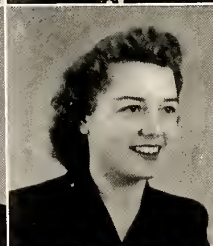
CLAUDE ABEL	Cleveland, Miss.	BETTYE BOYD	Anguilla, Miss.
CAROLYN ABRAHAM	Leland, Miss.	BILL R. BRADLEY	Tutwiler, Miss.
HOWARD ALFORD	Vicksburg, Miss.	BILLIE BRANNON	Cleveland, Miss.
PAUL (Buzz) ANDERSON	Indianola, Miss.	JOHN W. BRYANT	Holly Springs, Miss.
BETTY JEAN ARNOLD	Charleston, Miss.	CHARLES CALLOWAY	Grenada, Miss.
E. C. ARNOLD	Itta Bena, Miss.	CHARLSIE CAMPBELL	Greenwood, Miss.
RAYMOND AYCOCK	Elliott, Miss.	RUTH CARROLL	Walthall, Miss.
JOE BECKUM	Ruleville, Miss.	DOROTHY CARTER	Belzoni, Miss.
BOBBIE BEEVERS	Ruleville, Miss.	RAY CHANDLER	Ruleville, Miss.
JIMMIE BELLIPANNI	Indianola, Miss.	MILTON CHERTOW	Pace, Miss.
HARMON BOGGS	Booneville, Miss.	PAUL CHESTER	Money, Miss.
BOBBY L. BONDS	Charleston, Miss.	HARRY CHILDRESS	Satartia, Miss.



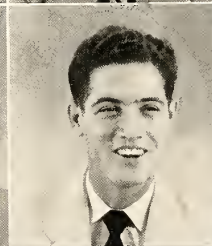
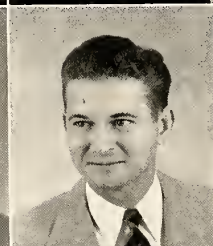
CLEARMAN, M. G.
 CLEMENT, N.
 COCHRAN, F.
 COHEN, M.



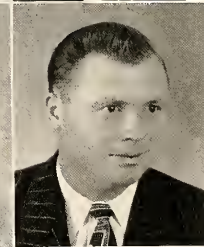
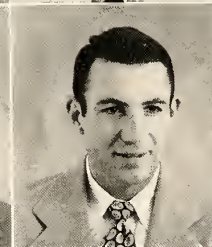
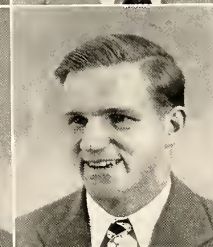
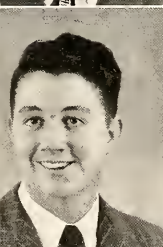
COLEMAN, W. M.
 COLLUMS, C.
 CRAWFORD, C.
 CROMER, M. S.



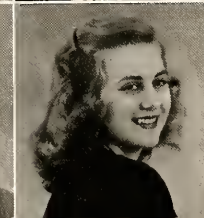
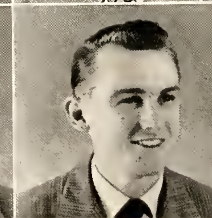
CROWELL, H.
 CURTISS, M.
 DALTON, A. C.
 DAVIS, J.



DAVIS, R.
 DILLARD, J.
 DORROUGH, C.
 DOWDY, D. L.



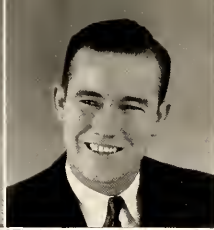
DULANEY, S.
 DURHAM, W.
 EARLE, W.
 EASTERWOOD, T. E.



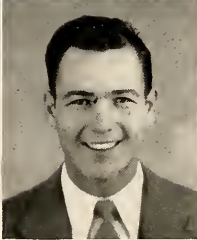
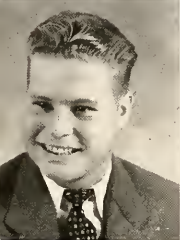
EDWARDS, G. W.
 ELLINGTON, M.
 ELLIS, H.
 ENGLAND, M. E.

JUNIORS

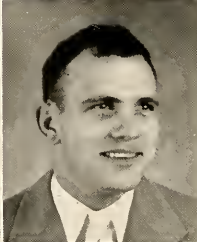
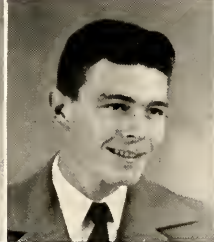
MARY GEORGE CLEARMAN	Louisville, Miss.	REX DAVIS	Maben, Miss.
NELL CLEMENT	Black Hawk, Miss.	JEFF DILLARD	Itta Bena, Miss.
FRANK COCHRAN	Hazel, Kentucky	CHARLES (Sonny) DORROUGH	Ruleville, Miss.
MELVIN COHEN	Shaw, Miss.	DORMAN L. DOWDY	New Albany, Miss.
WILLIAM (Bill) COLEMAN	Drew, Miss.	SIM DULANEY	Clarksdale, Miss.
CURTIS COLLUMS	Marks, Miss.	WILLIAM (Sugar) DURHAM	Friars Point, Miss.
CHARLENE CRAWFORD	Isala, Miss.	WOODSON (Male) EARLE	Clarksdale, Miss.
MARY SUE CROMER	Greenville, Miss.	THAD E. EASTERWOOD	Clarksdale, Miss.
HILDA CROWELL	Eupora, Miss.	GATLIN W. EDWARDS	Macrhead, Miss.
MARJORIE CURTISS	Clarksdale, Miss.	MORRIS ELLINGTON	Ackerman, Miss.
A. C. DALTON	Cleveland, Miss.	HUGH ELLIS	Camden, Arkansas
JOHN DAVIS	Cleveland, Miss.	MAY EVELYN ENGLAND	Eupora, Miss.



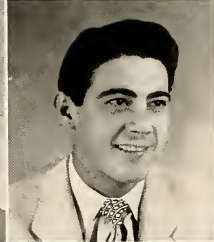
ERVIN, C. L.
 FARNED, J.
 FEARS, R. P.
 FERRACCI, F.



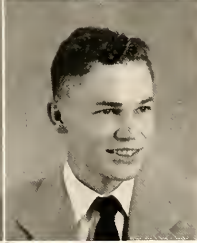
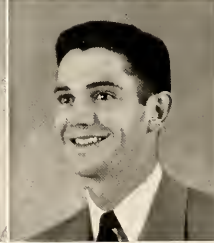
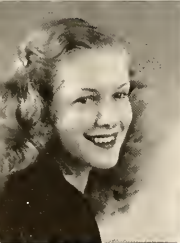
FEW, H.
 FIELDER, P.
 FORBES, M. W.
 FOREMAN, D.



FULCHER, D.
 FUNCHESS, K. D.
 GERRARD, H.
 GIBSON, D.



GORMAN, J. H.
 GRAHAM, C.
 GRANT, D.
 GREZAFFI, T.



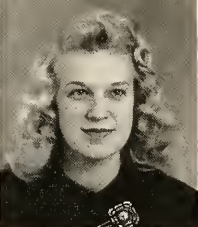
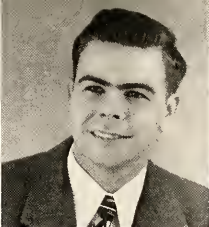
GRIFFIN, R.
 GUEST, J.
 GUION, O.
 GUNTER, C.



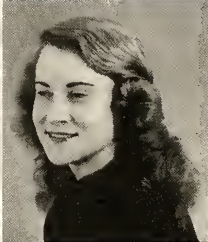
GUYNES, C.
 HALL, O. W.
 HARDY, L.
 HARPOLE, W.

JUNIORS

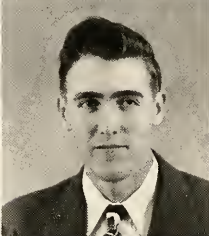
CALVIN L. ERVIN	Hazelhurst, Miss.	JOHN H. GORMAN	Greenville, Miss.
JOE FARNED	Cleveland, Miss.	CHARLES GRAHAM	Corinth, Miss.
RALPH P. FEARS	Anding, Miss.	DERALD GRANT	Greenwood, Miss.
FRANCES FERRACCI	Show, Miss.	TONY GREZAFFI	Benait, Miss.
HUBERT FEW	Gunnison, Miss.	ROXIE GRIFFIN	Cleveland, Miss.
PAUL FIELDER	Charleston, Miss.	JOE GUEST	Greenville, Miss.
MARY W. FORBES	Shaw, Miss.	OSBORNE GUION	Jackson, Miss.
DERRALL FOREMAN	Bastrop, La.	CHARLES (Wimpy) GUNTER	Pace, Miss.
DOROTHY FULCHER	Yazoo City, Miss.	CHARLES GUYNES	Hazelhurst, Miss.
KARL D. FUNCHESS	Panama City, Fla.	OTTO W. HALL	Hollandale, Miss.
HAL GERRARD	Yazoo City, Miss.	LUCILLE HARDY	Cleveland, Miss.
DONALD GIBSON	Cleveland, Miss.	WILBUR (Son) HARPOLE	Mathiston, Miss.



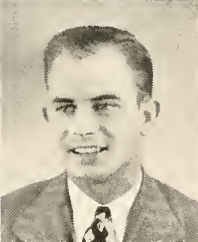
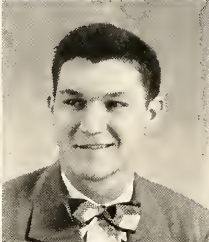
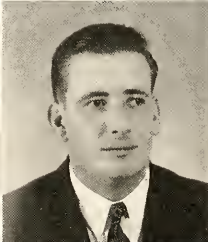
HARRINGTON, G.
 HERRING, E.
 HIGGS, C.
 HINTON, J.



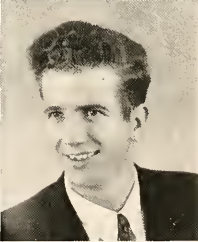
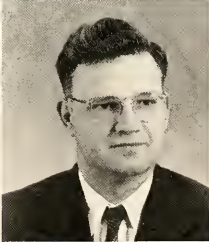
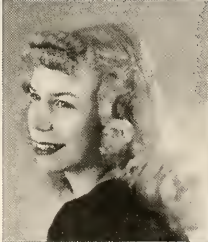
HODGES, B. R.
 HOGUE, B.
 HOLMES, A.
 HOLLAND, F.



HOLLINGSWORTH,
 M. A.
 HOOD, S.
 HORTON, R.
 HUGHES, H. T.



JACOBS, F. C.
 JOHNSTON, L.
 JOINER, W.
 JONES, L. A.



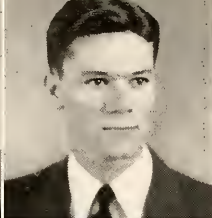
JUMPER, J.
 KEALHOFER, A. A.
 KEALHOFER, J. B.
 KIKER, B. L.



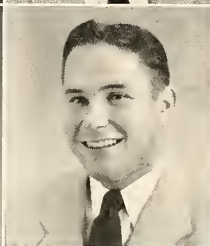
KING, M. T.
 KNIGHTEN, J.
 LANGDON, M. N.
 LEE, P.

JUNIORS

GWENDOLYN HARRINGTON	Houston, Miss.	FRED C. (Toby) JACOBS	Rosedale, Miss.
ELIZABETH (Liz) HERRING	Dundee, Miss.	LOUIS JOHNSTON	Drew, Miss.
CY HIGGS	Greenville, Miss.	WALTER (Slick) JOINER	Minter City, Miss.
JOYCE HINTON	Lakeland, Fla.	L. A. JONES	Oakland, Miss.
BILLY RAY HODGES	Collinsville, Miss.	JERRY JUMPER	Booneville, Miss.
BARBARA HOGUE	Eden, Miss.	ALICE ALLISON KEALHOFER	Merigold, Miss.
AVIS HOLMES	Shelby, Miss.	JOHN B. KEALHOFER	Merigold, Miss.
FRANCES HOLLAND	Mothiston, Miss.	B. L. KIKER	Drew, Miss.
MARGARETTE ANN HOLLINGSWORTH	Lelond, Miss.	MARTIN T. KING, JR.	Vicksburg, Miss.
SIMON HOOD, JR.	Ruleville, Miss.	JEAN KNIGHTEN	Ruleville, Miss.
RAYMOND HORTON	Merigold, Miss.	MARY NELL LANGDON	Thomaston, Miss.
H. T. HUGHES	Water Valley, Miss.	PAT LEE	Carrollton, Miss.



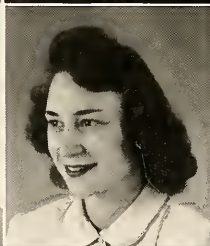
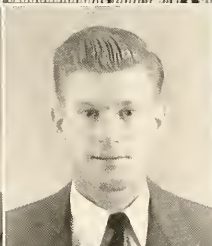
LIPE, R.
LINDSEY, A. W.
MADDEN, B.
MAGERS, J.



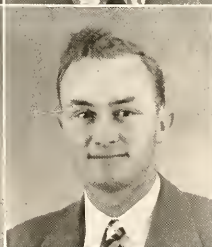
MAXWELL, R. L.
MEADERS, E.
MCCOOL, R.
MCCREARY, J. R.



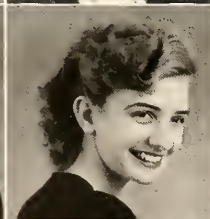
MCCRORY, D. R.
MCGEE, A.
MCGEE, M.
MCGUIRE, J. C.



MCKELROY, P.
MCKINNEY, L.
MCKNIGHT, O.
MOORE, D.



MOORE, E.
NASH, T.
NEVEL, C.
NEVEL, E.



NEVEL, H.
NORWOOD, D.
OSOINACH, E.
PAYNE, R.

JUNIORS

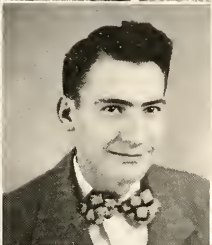
ROY LIPE	Bayle, Miss.	PAUL McKELROY	Bruce, Miss.
A. W. LINDSEY	Cleveland, Miss.	LESTER McKINNEY	New Site, Miss.
BUDDY MADDEN	Wiggins, Miss.	OLLIE McKNIGHT	Cleveland, Miss.
JAMES MAGERS	Baldwyn, Miss.	DICK MOORE	Clarksdale, Miss.
R. L. MAXWELL	Isola, Miss.	EDITH MOORE	Lexington, Miss.
EDITH MEADERS	Water Valley, Miss.	THERON NASH	Florence Miss.
ROBERT McCOOL	Leland, Miss.	CARLEE NEVEL	Staver, Miss.
JAMES R. McCREARY	New Site, Miss.	ERBA NEVEL	Staver, Miss.
DONALD R. McCRORY	McAdams, Miss.	HAZEL NEVEL	Staver, Miss.
ANN McGEE	Pheba, Miss.	DOLLIE NORWOOD	Sumner, Miss.
MARY McGEE	Pheba, Miss.	ELIZABETH OSOINACH	Inverness, Miss.
J. C. McGUIRE	Gulfport, Miss.	ROBERT PAYNE	Cascilla, Miss.



PEACOCK, W.
 PHILLIPS, J.
 PHILLIPS, M. W.
 PITTMAN, A.



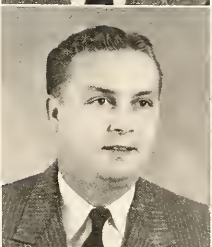
POE, K.
 POE, L.
 RAKESTRAW, T.
 REAVES, A.



REED, R.
 RICKS, A.
 RODGERS, P. O.
 ROGERS, D.



ROSSETTI, F.
 RUTHERFORD, M.
 SHEPHERD, F.
 SISSELL, K.



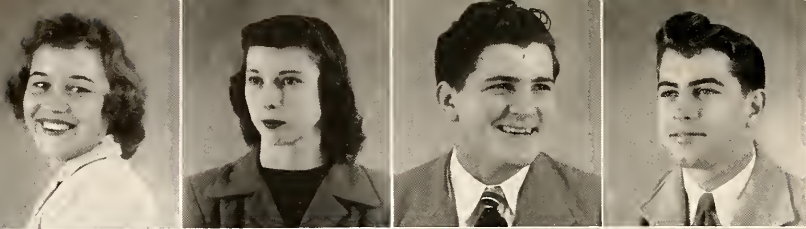
SLAUGHTER, E.
 SLAWSON, P.
 SMITH, B.
 SMITH, H.



SPELLS, A.
 SPRY, D.
 SPRY, J. H.
 STEPHEN, P.

JUNIORS

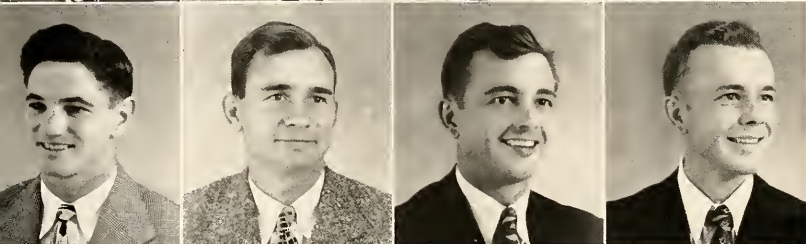
WILLIAM PEACOCK	Merigold, Miss.	FRED ROSSETTI	Shaw, Miss.
JAMES (Flip) PHILLIPS	Greenville, Miss.	MILDRED RUTHERFORD	Faulkner, Miss.
MARGARET W. PHILLIPS	Greenville, Miss.	FREDERICK SHEPHERD	Greenville, Miss.
ANN PITTMAN	Boyle, Miss.	KENNETH SISSELL	Water Volley, Miss.
KAY POE	Indianola, Miss.	EDWARD SLAUGHTER	Silver City, Miss.
LIBA POE	Indianola, Miss.	PAUL SLAWSON	Brooksville, Miss.
TYE RAKESTRAW	Macedonia, Miss.	BILLY SMITH	Booneville, Miss.
ALLEN REAVES	Blue Mountain, Miss.	HERMAN SMITH	Vordamon, Miss.
RUTH REED	Ripley, Miss.	ALBERT SPELLS	Cleveland, Miss.
ALTON RICKS	Wheeler, Miss.	DON SPRY	West Memphis, Ark.
PAUL OWEN RODGERS	Etta, Miss.	JONNIE H. SPRY	West Memphis, Ark.
DON ROGERS	Glendora, Miss.	PERCY STEPHEN	Greenwood, Miss.



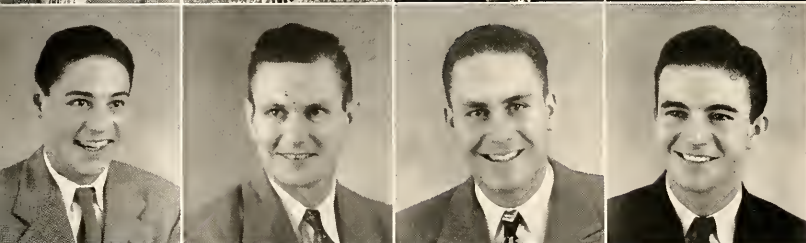
STRATTON, E.
STRICKLAND, M.
TARZI, J.
TATUM, T.



TAYLOR, R.
THOMPSON, J. W.
THRASH, P.
VALENTINE, J. W.



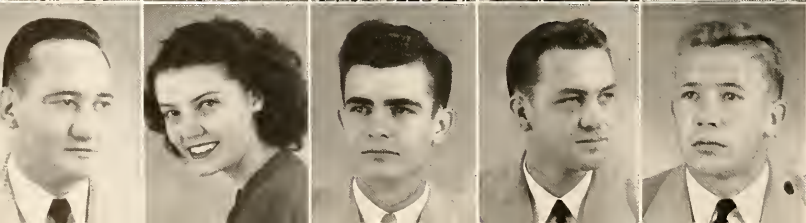
WADE, D.
WALKER, H. H.
WALKER, G.
WALKER, T.



WALPER, J.
WARD, F.
WARD, H.
WATTS, W.



WEEKS, B.
WEEKS, D.
WHITE, B.
WHITE, H.
WHITE, N.



WILKES, J. F.
WILLIAMSON, M. M.
YERBY, E. L.
YOSTE, J. P.
YOUNG, F.

JUNIORS

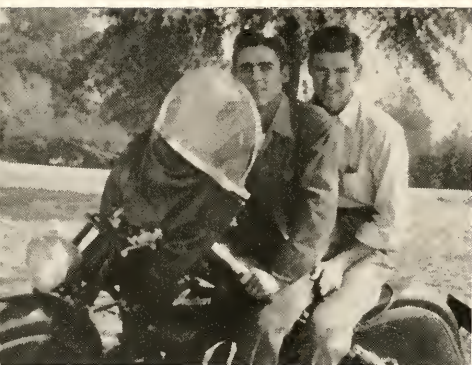
ELOISE STRATTON	Mayersville, Miss.	FELIX WARD	Ruleville, Miss.
MARIANNE STRICKLAND	Belzoni, Miss.	HORACE WARD	Canton, Miss.
JIMMY TARZI	Clarksdale, Miss.	WENDELL WATTS	Clarksdale, Miss.
TAYLOR (Tick) TATUM	Brookhaven, Miss.	BENNIE WEEKS	Lula, Miss.
RALPH TAYLOR	Marks, Miss.	DAN WEEKS	Greenwood, Miss.
J. WILLIAM THOMPSON	Cleveland, Miss.	BENA WHITE	Cruger, Miss.
PATSY THRASH	Boyle, Miss.	HORACE WHITE	Guntown, Miss.
JOHN WHITE VALENTINE	Cleveland, Miss.	NANCY WHITE	Cruger, Miss.
DARRY WADE	Belzoni, Miss.	JAMES F. WILKES	Clarksdale, Miss.
HARRY H. WALKER	Cleveland, Miss.	MARY MARGARET WILLIAMSON	Tutwiler, Miss.
GRAHAM WALKER	Leland, Miss.	EARL LEE YERBY, JR.	Greenville, Miss.
TIM WALKER	Leland, Miss.	JERRY J. YOSTE	Vicksburg, Miss.
JOSEF WALPER	Memphis, Tenn.	FRANK YOUNG	Hazelhurst, Miss.

JUNIORS

NOT PICTURED

BARBOUR, EARL
BARLOW, RALPH
BARNETT, JO
BASKIN, JOHN
CHORLEY, GEORGE
COCKRELL, RICHARD
DUNAWAY, JOHN

HOLLINGSWORTH, WALTER
JONES, WILLIE
LINGLE, DAVID
NEMITZ, CLARENCE
PARTEE, BILLY
WOOD, KENNETH
COURTNEY, LLOYD



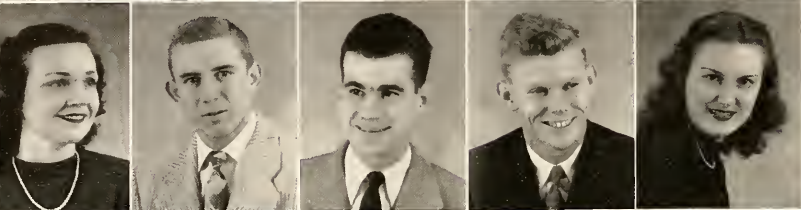


SOPHOMORE CLASS OFFICERS

MILLS ROGERS	President
FRANK JOHN LOYACANO	Vice-President
KATE GREEN	Secretary
MARGUERITE (Titter) TURNER	Treasurer
DR. DOXIE DEXTER	Sponsor



ADCOCK, M.
ADERHOLT, R.
AINSWORTH, B.
ALFORD, B.
ALLBRITTON, A.



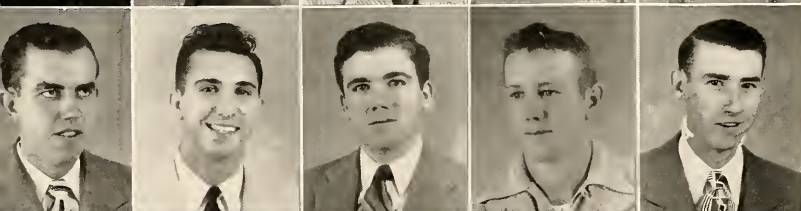
BAYNE, P.
BARNES, H. D.
BEAIRD, J. R.
BENNETT, J.
BEST, C.



BINGHAM, R.
BISHOP, Y.
BOUNDS, E.
BOONE, M. A.
BOX, R.



BOYKIN, M.
BROWN, J.
BUFKIN, F.
CALVERT, L.
CARPENTER, E. R.



CARROLL, G.
CINTGRAM, A.
CLARK, J. F.
CLEMONS, A.
COCKERHAM, C. H.



CONN, V.
COOPER, C. E.
CORK, J.
COX, W. L.
DABBS, C. T.



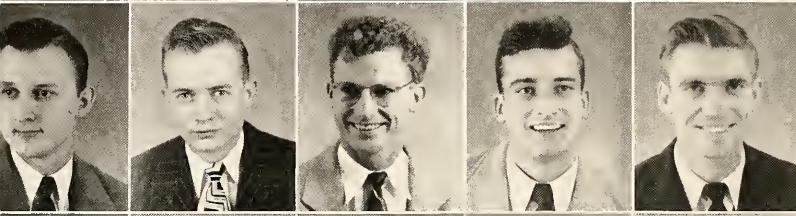
DALTON, L.
FOUNTAIN, G.
GIBSON, J.
GILLON, J.
GLASSCO, S.

SOPHOMORES

MARIE ADCOCK	Cleveland, Miss.	LOUISE CALVERT	West Point, Miss.
ROGER ADERHOLDT	Clarksdale, Miss.	ELLA ROSE CARPENTER	Indianola, Miss.
BILL AINSWORTH	Jackson, Miss.	GRANVILLE CARROLL	Grenada, Miss.
BETTY ALFORD	Sidon, Miss.	ANTHONY CINTGRAM	Gunnison, Miss.
ALBERT ALLBRITTON	Charleston, Miss.	JOE F. CLARK, JR.	Yozoo City, Miss.
PATTY BAYNE	Ruleville, Miss.	ARCHIE CLEMONS	Cleveland, Miss.
HARRY D. BARNES	Vicksburg, Miss.	C. H. COCKERHAM	Shaw, Miss.
JOHN R. BEAIRD	Isola, Miss.	VIRGINIA CONN	Belzoni, Miss.
JAMES BENNETT	Blue Mountain, Miss.	CARL E. COOPER	Graysport, Miss.
CAROLYN BEST	Hallandale, Miss.	JOYCE CORK	Cleveland, Miss.
REX BINGHAM	Graysport, Miss.	WILLIAM L. COX, JR.	Drew, Miss.
YVONNE BISHOP	Shaw, Miss.	C. T. DABBS	Shannon, Miss.
ERNESTINE BOUNDS	Calhoun City, Miss.	LILLIAN DALTON	Cleveland, Miss.
MARY ANNE BOONE	Leland, Miss.	GEORGE FOUNTAIN	Yazoo City, Miss.
ROBERT BOX	Stewart, Miss.	JO GIBSON	Anguilla, Miss.
MARGARET BOYKIN	Catchings, Miss.	JOY GILLON	Graysport, Miss.
JANE BROWN	Isola, Miss.	SUMNER (Soup) GLASSCO	Rolling Fork, Miss.
FRANK M. BUFKIN	Vicksburg, Miss.		



GREEN, K.
HALL, M.
HANNAH, B.
HARRIS, M. C.
HEAD, C. V.



HENRY, W. R.
HENSON, L. C.
HEWLETT, D.
HOFMANN, J.
HOLLOWAY, B.



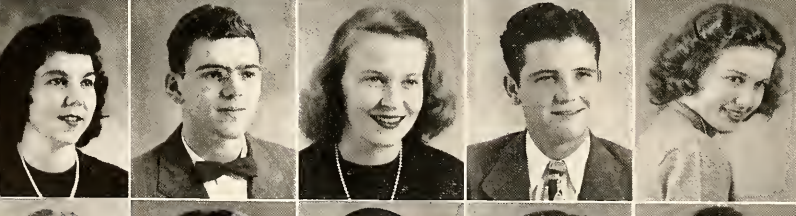
HOLLOWELL, H.
HOLMES, C. H.
HOLMES, E.
HUBBARD, C. W.
HUMPHREY, J.



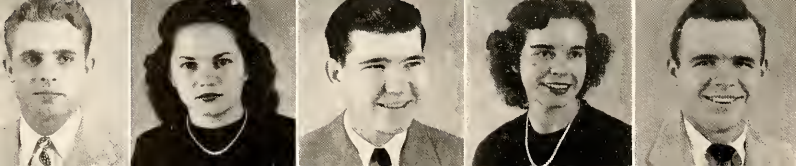
IZNAGA, F.
JAMES, L. J.
JOHNS, M. L.
JOHNSON, A.
JUNOV, F.



LORANCE, W. G.
LOYACONO, F. J.
MACHEL, J.
MANCILL, R. W.
MANGUM, C.



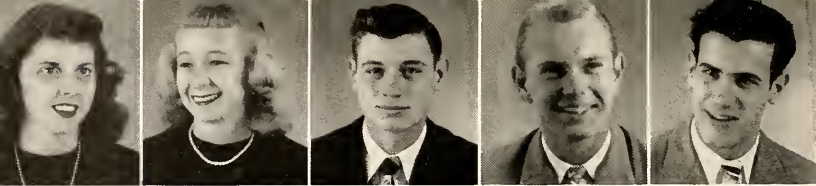
McCOOL, B. J.
McEACHERN, B. M.
McNUTT, B.
MEDDERS, C.
MOORE, V.



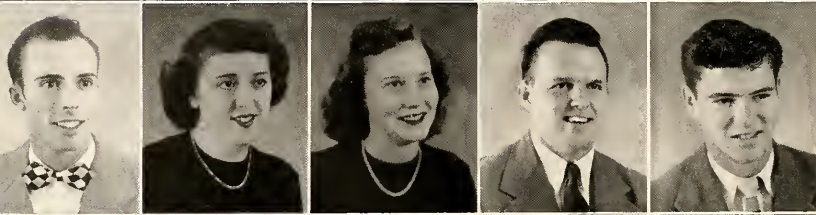
NUSKIEWIEZ, A.
OAKES, J.
OAKMAN, B.
OAKS, L.
O'ROURKE, D.

SOPHOMORES

KATE GREEN	Anguilla, Miss.	ANN JOHNSON	Leland, Miss.
MARGIE HALL	Hollandale, Miss.	FRANCES JUNOV	Beulah, Miss.
BETTY HANNAH	Marks, Miss.	WILLIAM G. LORANCE	Cleveland, Miss.
MARY CLARK HARRIS	Deeson, Miss.	FRANK JOHN LOYACONO	Greenville, Miss.
C. V. HEAD	Ruleville, Miss.	JACK MACHELL	Ruleville, Miss.
WILLIAM R. HENRY	Greenville, Miss.	ROBERT W. MANCILL	Indianola, Miss.
L. C. HENSON	Stewart, Miss.	CHARLES MANGUM	Tribbett, Miss.
DEWELL HEWLETT	Pascagoula, Miss.	BETTY JEAN McCOOL	Cleveland, Miss.
JOHN HOFMANN	Detroit, Mich.	BILLY M. McEACHERN	Ruleville, Miss.
BENOIT HOLLOWAY	Anguilla, Miss.	BEVERLY McNUTT	Greenwood, Miss.
HELEN HOLLOWELL	Cleveland, Miss.	CLARENCE MEDDERS	Boyle, Miss.
CLAIRE HERMAN HOLMES	Duckhill, Miss.	VIRGINIA MOORE	Belen, Miss.
ELOISE HOLMES	Shelby, Miss.	ANTHONY NUSKIEWIEZ	Chicago, Ill.
C. W. HUBBARD	Tunica, Miss.	JEAN OAKES	Murphy, Miss.
JACK HUMPHREY	Helena, Ark.	BILLY OAKMAN	Panther Burn, Miss.
FERNANDO IZNAGA	Havana, Cuba	LUCILLE OAKS	Cleveland, Miss.
LAURA JEAN JAMES	Graysport, Miss.	DAN (Jabo) O'ROURKE	Clarksdale, Miss.
MARY LOUISE JOHNS	Greenville, Miss.		



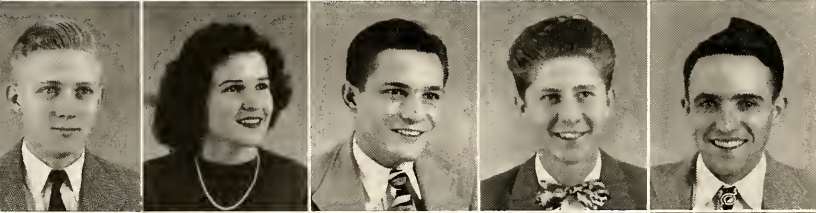
PEARSON, M. A.
PEEPLES, J.
PERRY, J. P.
PETERSON, J.
POLLES, J.



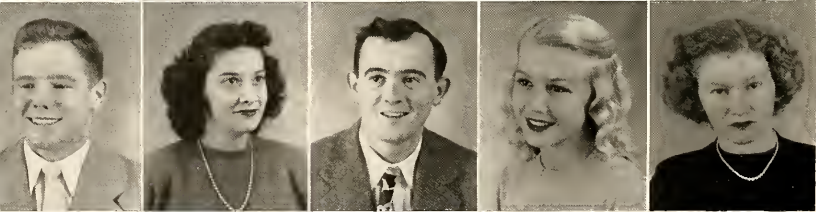
PRITCHARD, L. R.
PRYOR, B. Z.
QUINN, G.
RACKLEY, R.
REEVES, J.



ROBERTS, D. I.
ROBERTS, J.
RODGERS, B. L.
ROGERS, M.
SCHOONOVER, J.



SINCLAIR, C. R.
STAFFORD, J. R.
STRICKLAND, B.
STRIDER, D.
SUDDOTH, J.



TAGGART, B.
TATUM, S. F.
TERRY, H.
THOMAS, B.
TURNER, M.



VINCENT, J.
VINER, L.
WATTS, E.
WEST, M. J.
WHITAKER, F.



WHITTEN, D.
WIGGINS, B.
WOOD, M.
WRIGHT, B.
WUN, W.

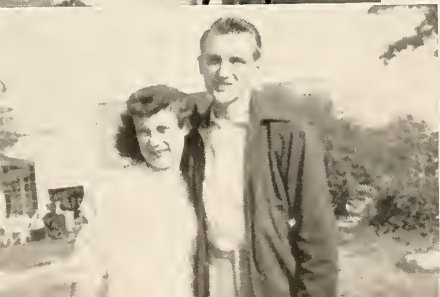
SOPHOMORES

MARY ANN PEARSON	Cleveland, Miss.	DONALD STRIDER	Charleston, Miss.
JOYEANNE PEEPLES	Schlater, Miss.	JACK SUDDOTH	Friars Point, Miss.
JIMMY P. PERRY	Greenville, Miss.	BILL TAGGART	Greenville, Miss.
JIMMIE PETERSON	Clarksdale, Miss.	SARA FELTON TATUM	Como, Miss.
JOHN POLLES	Clarksdale, Miss.	HARRIS TERRY	Schlater, Miss.
LEONARD RAY PRITCHARD	Webb, Miss.	BILLIE THOMAS	French Camp, Miss.
BETTY ZANE PRYOR	Rolling Fork, Miss.	MARGUERITE (Titter) TURNER	Estill, Miss.
GLADYS QUINN	Elaine, Ark.	JOAN VINCENT	Clarksdale, Miss.
RUFFIN RACKLEY	Pantotoc, Miss.	LOUISE VINER	Drew, Miss.
JAMES REEVES	Jackson, Miss.	EUNICE WATTS	Clarksdale, Miss.
D. I. ROBERTS	Greenville, Miss.	MARY JEANNETTE WEST	Hushpuckena, Miss.
JIM ROBERTS	Leland, Miss.	FRANK WHITAKER	Mayersville, Miss.
BOBBIE LEE RODGERS	Ruleville, Miss.	DON WHITTEN	Charleston, Miss.
MILLS ROGERS	Cleveland, Miss.	BETTY WIGGINS	Cleveland, Miss.
JOAN SCHOONOVER	Louise, Miss.	MARJORIE WOOD	Merigold, Miss.
CHARLIE RAY SINCLAIR	Cleveland, Miss.	BOB WRIGHT	Rolling Fork, Miss.
JOHNNIE RUTH STAFFORD	Cleveland, Miss.	WILLIE WUN	Merigold, Miss.
BILL STRICKLAND	Rolling Fork, Miss.		

NOT PICTURED

BENNETT, EMMA JEAN
 BIBB, BETTY
 BOYLE, BARBARA
 CHILCOAT, SUE
 CRUMBY, HORACE
 ELLIS, RUTH ANN

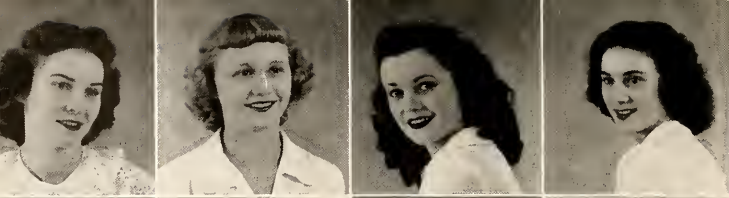
FRAZIER, JOE
 HUDE, HALVOR
 McPEAK, ROBERT
 PEARSON, GUY
 PENDERGRAST, FRANK
 POWELL, CAROLYN



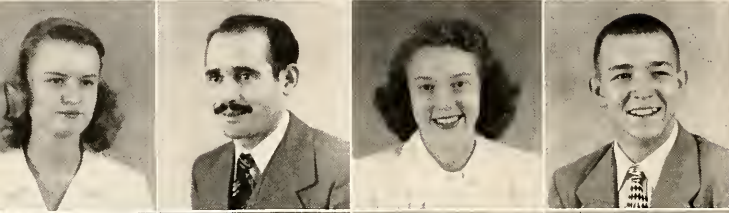


FRESHMAN CLASS OFFICERS

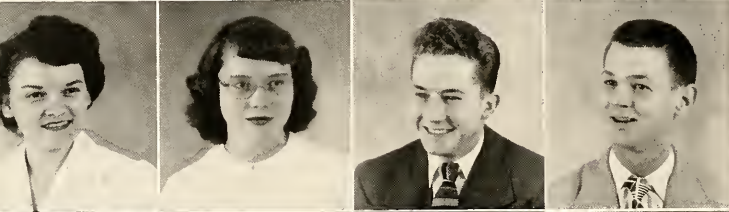
BOBBY BARRETT	President
JOHN GUERIERI	Vice-President
PATSY PORTER	Secretary
SARAH LAWRENCE	Treasurer
MR. FOREST WYATT	Sponsor



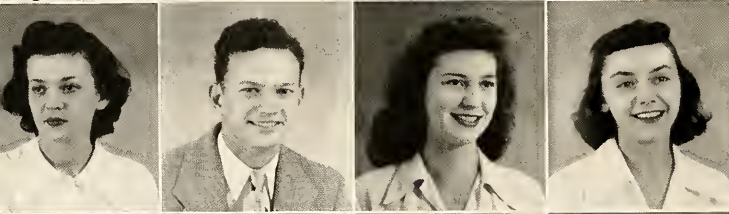
ABEL, E.
ABEL, J.
ABEL, S.
ALLISON, P.



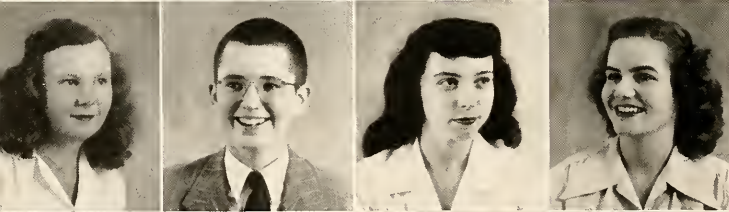
ORMOND, E.
ARTIGAS, E.
BARKEMEYER, R.
BARRETT, B.



BELL, L.
BENNETT, L.
BEST, T.
BISEL, A. H.



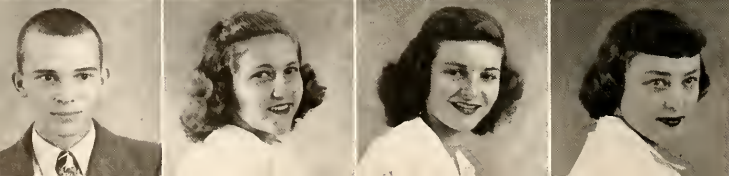
BLACK, A.
BLACK, L.
BLAINE, J.
BLANDING, G.



BLAYLOCK, B.
BONNER, H. H.
BRONN, K.
BROOKS, L.



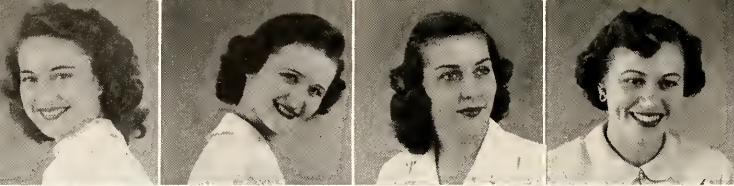
BUNCH, M. F.
BURLE, B.
BYRD, B.
CLARKE, R.



COLEMAN, B.
CRUMBY, A.
CUCICCHI, A.
DANTZLER, C.

FRESHMEN

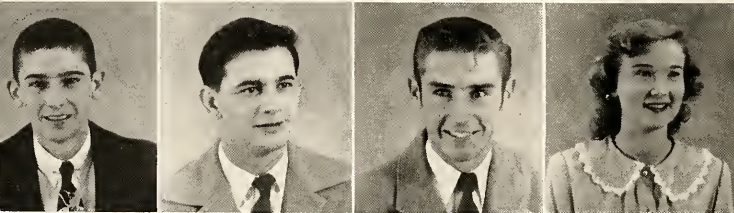
ELOISE ABEL	Duck Hill, Miss.	JANE BLAINE	Mount Olive, Miss.
JEWEL ABEL	Belzoni, Miss.	GEORGIE BLANDING	Stoneville, Miss.
SARAH ABEL	Duck Hill, Miss.	BETTY BLAYLOCK	Cleveland, Miss.
PEGGY ALLISON	Tippa, Miss.	HARRY H. BONNER	Greenwood, Miss.
ELIZABETH ORMOND	Doddsville, Miss.	KATHERINE BRONN	Natchez, Miss.
CELSO ARTIGAS	Adjuntas, Puerto Rico	LOUISE BROOKS	Ruleville, Miss.
RUTH BARKEMEYER	West Point, Miss.	MARY FRANCES BUNCH	Cleveland, Miss.
BOBBY BARRETT	Greenwood, Miss.	BARBARA BURLE	Greenville, Miss.
LAQUITA BELL	Belzoni, Miss.	BERRY BYRD	Cleveland, Miss.
LIL BENNETT	Clarksdale, Miss.	REBA CLARK	Hollandale, Miss.
TERRY BEST	Yazoo City, Miss.	BILL COLEMAN	Greenville, Miss.
ALLEN H. BISSELL	Itto Bena, Miss.	ANN CRUMBY	Cleveland, Miss.
ALICE BLACK	Greenville, Miss.	ANGELINA CUICCHI	Shaw, Miss.
LEROY BLACK	Greenville, Miss.	CATHRON DANTZLER	Drew, Miss.



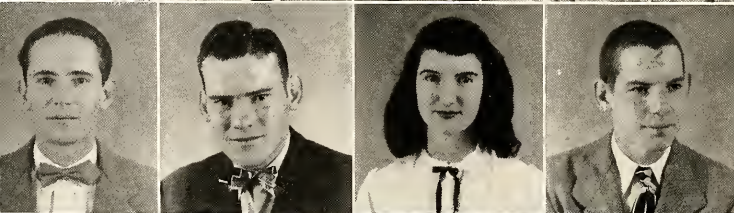
DARBY, J.
DAVIDSON, A. A.
DEAN, F.
DEAN, M.



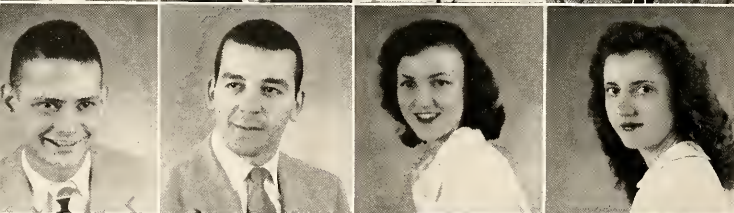
DICKSON, L.
DOUGLAS, E.
ESTES, B.
FARRIS, R.



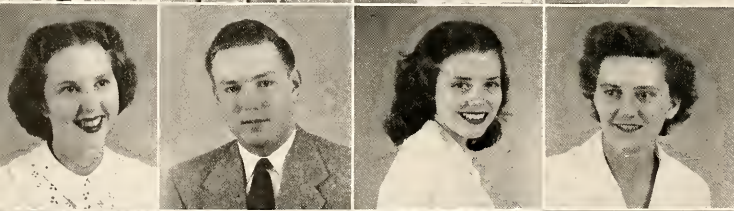
FULLER, B.
FULLILOVE, W.
GAMMILL, P.
GEDDIE, B.



GILDER, J. H.
GORMAN, J.
GRAY, J. A.
GRAY, W.



GREEN, E.
GUERIERI, J.
GUNN, C.
HANDLEY, M. R.



HARRISON, R.
HARTLEY, C.
HEARN, J. A.
HORNOR, J.



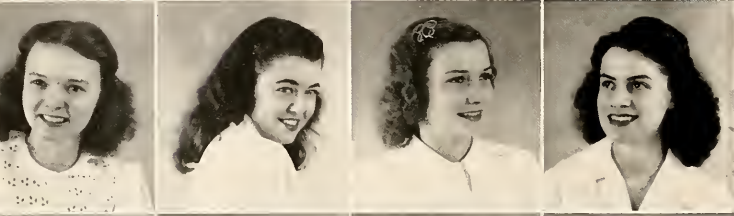
HOUSE, J.
HOWELL, J.
HUBBARD, A.
HUTCHINSON, J.

FRESHMEN

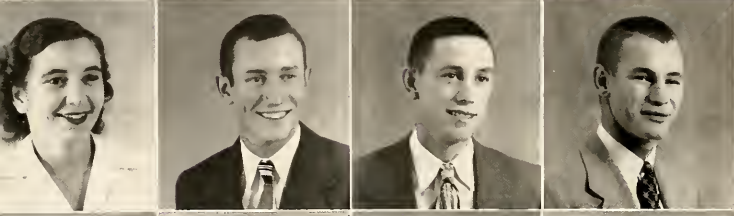
JUANITA DARBY	Charleston, Miss.	JO ANNE GRAY	Clarksdale, Miss.
ALICE ANNE DAVIDSON	Greenville, Miss.	WINSTON GRAY	Belzoni, Miss.
FRANCES DEAN	Okolona, Miss.	ED GREEN	Cleveland, Miss.
MARIE DEAN	Cleveland, Miss.	JOHN GUERIERI, JR.	So. Plainfield, N. J.
LOUISE DICKSON	Tippo, Miss.	CATHIE GUNN	Tutwiler, Miss.
EARLINE DOUGLAS	Charleston, Miss.	MARY RUTH HANDLEY	Skene, Miss.
BILLY ESTES	Benoit, Miss.	ROBBIE HARRISON	Cockrum, Miss.
REBECCA FARRIS	Hollandale, Miss.	CLYDE HARTLEY	Vicksburg, Miss.
BILLY FULLER	Cleveland, Miss.	JOY ANNE HEARN	Greenville, Miss.
WILLIS FULLILOVE, JR.	Yazoo City, Miss.	JEAN HORNER	Cincinnati, Ohio
PAUL (Pete) GAMMILL, JR.	Jackson, Miss.	JOHN A. HOUSE	Boyle, Miss.
BETTY GEDDIE	Hollandale, Miss.	JOHN HOWELL	Parchman, Miss.
JAMES H. GILDER	Greenville, Miss.	ANN HUBBARD	Lyon, Miss.
JAMES GORMAN	Greenville, Miss.	JAMES HUTCHINSON	Cleveland, Miss.



JAMES, H.
JACKSON, A.
JOHNSON, B.
KIMBRELL, C.



LAWRENCE, S.
LEE, B. S.
LEWIS, C.
LEWIS, M. D.



LIFER, V.
MALONE, W.
MANNING, C.
MARKHAM, H.



McCLAIN, M. M.
McCOOL, G.
McKEITHEN, E.
McMAHON, C.



McMAHON, C.
McWILLIAMS, M.
MILAM, A.
MUIRHEAD, B.



NABORS, J.
NELSON, V.
NOEL, P.
NORWOOD, A. L.



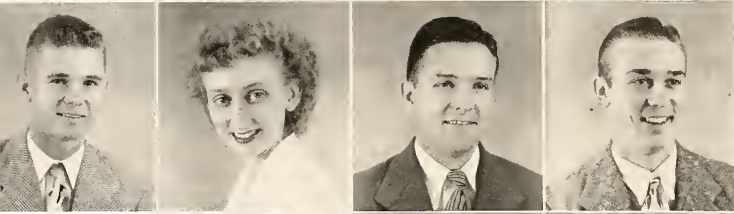
NUNNERY, L.
PATTERSON, J.
PHILLIPS, B. B.
PORTER, P.

FRESHMEN

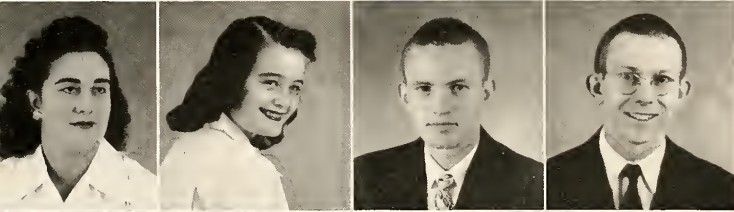
HELEN JAMES	Graysport, Miss.	EMORY McKEITHEN	Skene, Miss.
ANNE JACKSON	Clarksdale, Miss.	CLARA McMAHON	Greenville, Miss.
BETH JOHNSON	Doddsville, Miss.	CATHRON McMAHON	Halcomb, Miss.
CURTIS KIMBRELL	Clarksdale, Miss.	MARGARET McWILLIAMS	Kilmichael, Miss.
SARAH LAWRENCE	Greenville, Miss.	ANN MILAM	Charleston, Miss.
BETTY SUE LEE	Cleveland, Miss.	BUDDY MUIRHEAD	Greenville, Miss.
CORRINE LEWIS	Shaw, Miss.	JOY NABORS	Cleveland, Miss.
MARY DEAN LEWIS	Charleston, Miss.	VIRGINIA NELSON	Glen Allan, Miss.
VIOLA LIFER	Cleveland, Miss.	PEGGY NOEL	Greenwood, Miss.
WAYNE MALONE	Water Valley, Miss.	ANNIE LEE NORWOOD	Cleveland, Miss.
CARROL MANNING	New Albany, Miss.	LOUIS NUNNERY	Greenville, Miss.
HAROLD MARKHAM	Aberdeen, Miss.	JANIE PATTERSON	Sunflower, Miss.
MATTIE MAE McCLAIN	Shaw, Miss.	BILLY B. PHILLIPS	Greenville, Miss.
GLEN McCOOL	Merigold, Miss.	PATSY PORTER	Greenville, Miss.



PREWITT, A. C.
RICHTER, R.
RICKELS, V.
ROBBINS, K.



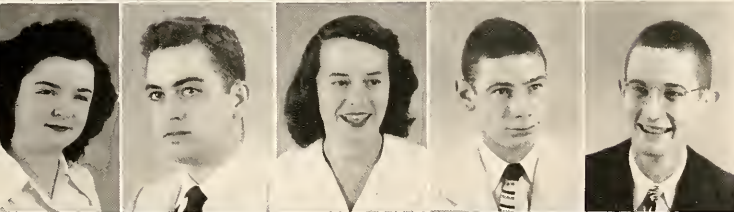
SAVELL, H.
SCOGIN, S.
SEALE, J.
SHARP, C.



SHARP, B. T.
SPRUILL, B.
STORY, E. E.
STRICKLAND, M.



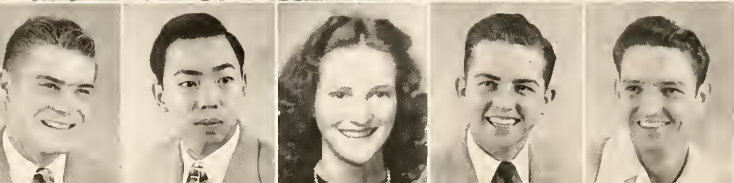
TAGGART, D.
THOMASON, M. A.
THOMPSON, R.
THORNTON, B. J.



TINNIN, D.
TRIM, W. R.
TURNER, A. J.
WEAVER, G.
WEBB, P. L.



WILKERSON, G. A.
WILKINSON, S.
WILLIAMS, E. D.
WILLIAMS, P. A.
WILSON, B.



WILSON, C.
WUN, J.
WYNN, A.
YOSTE, J. L.
YOUNG, J.

FRESHMEN

A. C. PREWITT	Merigold, Miss.	DOT TINNIN	Inverness, Miss.
ROBERT RICHTER	Greenwood, Miss.	WILLIAM R. TRIM	Rosedale, Miss.
VIVIEN RICKELS	Tchula, Miss.	ANNIE JO TURNER	Anguilla, Miss.
KENNETH ROBBINS	Oxford, Miss.	GEORGE WEAVER	Water Valley, Miss.
HAROLD SAVELL	Catchings, Miss.	PRENTISS L. WEBB, JR.	Greenwood, Miss.
SARAH SCOGIN	Charleston, Miss.	GEORGE A. WILKERSON	Vicksburg, Miss.
JAMES SEALE	Batesville, Miss.	SALLY WILKINSON	Waxhaw, Miss.
CECIL SHARP	Marks, Miss.	EMERY D. (Turkey) WILLIAMS	Rolling Fork, Miss.
BONNIE TUTOR SHARP	Marks, Miss.	PATRICIA ANN WILLIAMS	Leland, Miss.
BETTY SPRUILL	Belzoni, Miss.	BILLY WILSON	Clarksdale, Miss.
EDWARD E. STORY, JR.	Ruleville, Miss.	CHARLES WILSON	Benoit, Miss.
MILTON STRICKLAND	Belzoni, Miss.	JOE WUN	Merigold, Miss.
DOLL TAGGART	Greenville, Miss.	ANN WYNN	Lexington, Miss.
MARY ANN THOMASON	Alligator, Miss.	JOHN L. (Jack) YOSTE	Vicksburg, Miss.
RALPHINE THOMPSON	Cleveland, Miss.	JIMMIE YOUNG	Vicksburg, Miss.
BETTY JO THORNTON	Clarksdale, Miss.		





FEATURES

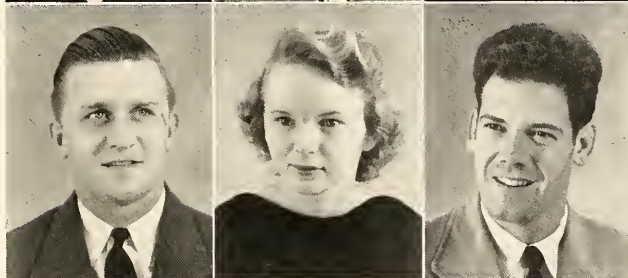
Who's Who . . .

Among Students in American Universities and Colleges

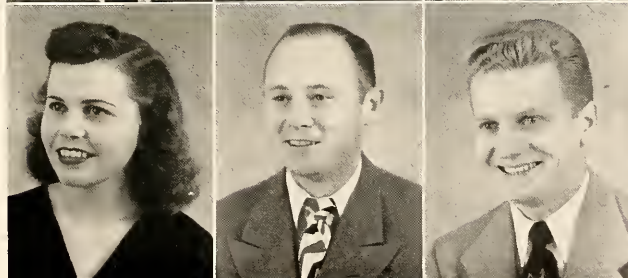
RENA BAILEY
HARRIS COLEMAN
LEONA DEAN



BILL GARDNER
JARVIS LOVE
JOHN MERRILL



REBECCA SEARCY
HUBERT DEAN SMITH
JOHN YURKOW



These students have been recommended by the college to receive recognition for their accomplishments on the campus. As an honor to those meeting the requirements, they will appear in the publication of WHO'S WHO AMONG STUDENTS IN AMERICAN COLLEGES AND UNIVERSITIES.

Miss D. S. T. C.



REBECCA SEARCY

Mr. D. S. T. C.



JOHN YURKOW

MOST BEAUTIFUL



ROXIE GRIFFIN

B E A U T Y



JOYCE HINTON

B E A U T Y



PATSY LAFOE YERBY

B E A U T Y



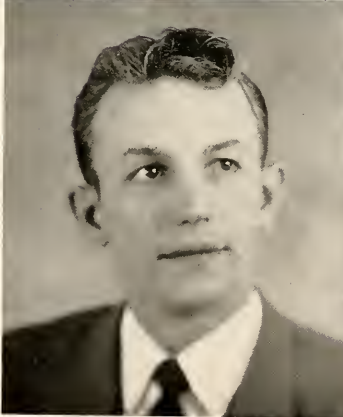
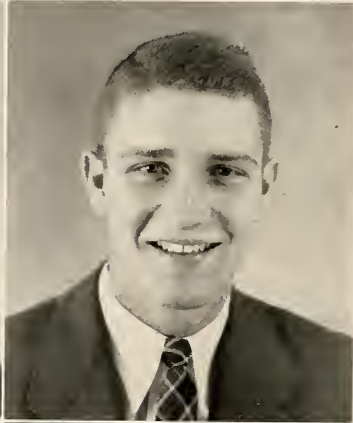
CAROLYN ABRAHAM

W H O ' S W H O

MOST CHARMING GIRL
Kay Poe



MOST HANDSOME
Kenneth Robbins



BEST MANNERED BOY
Paul Anderson



BEST GIRL DANCER
Mary Ann Bell

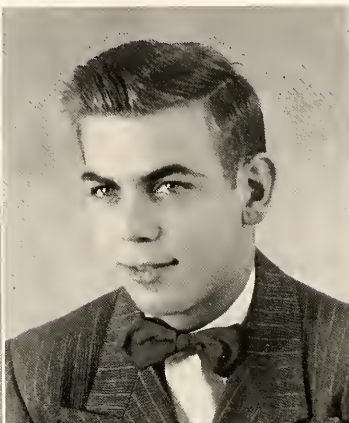
BEST BOY DANCER
(not pictured)
Billy Partee

at D. S. T. C. . . .

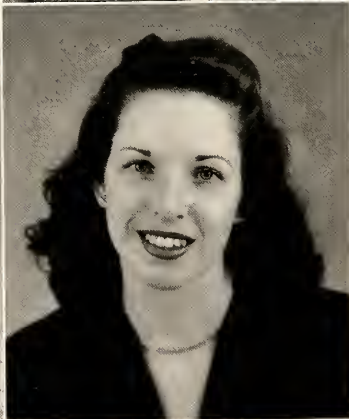
MOST POPULAR GIRL
Bill Manning



MOST POPULAR BOY
Tollie Miller



BEST DRESSED BOY
Bill Coleman



BEST DRESSED GIRL
Liba Poe

W H O ' S W H O

MOST VERSATILE BOY
Jerry Yoste



MOST VERSATILE GIRL
Patsy Thrash



MOST INTELLECTUAL GIRL
Jo Gibson



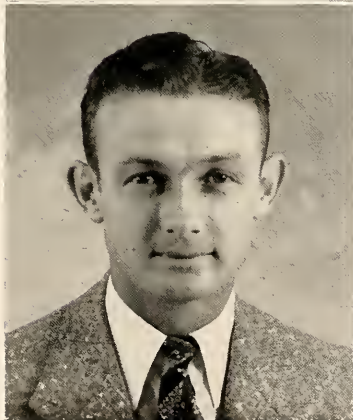
MOST INTELLECTUAL BOY
Sim Dulaney

at D. S. T. C. . . .

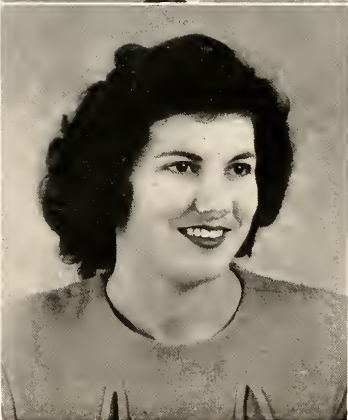
WITTIEST GIRL
Ann Crumby



WITTIEST BOY
Jimmy Peterson



MOST POPULAR ATHLETE
Tye Rakestraw



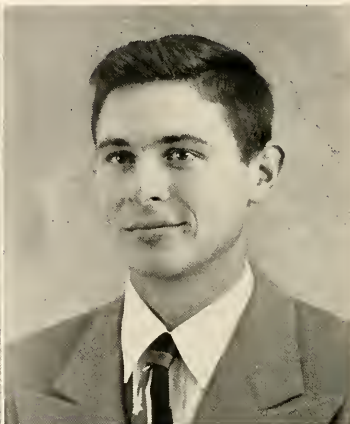
MOST POPULAR ATHLETE
Frances Ferracci

More WHO'S WHO

FRIENDLIEST GIRL
Mary Ann Boone



FRIENDLIEST BOY
Mills Rogers



MOST TYPICAL FRESHMAN BOY
Prentiss Webb



MOST TYPICAL FRESHMAN GIRL
Corrine Lewis



ORGANIZATIONS



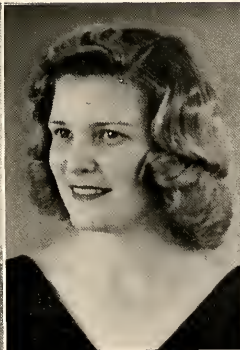
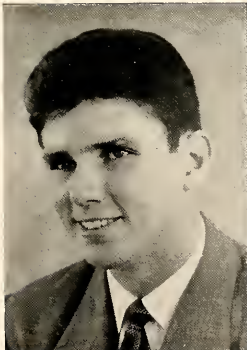
JOHN YURKOW
President

STUDENT GOVERNMENT

MARTIN KING Vice-President

LEONA DEAN Secretary

PATSY THRASH Treasurer



S T U D E N T

WOMEN'S HONOR COUNCIL

MARTHA RYALS	Chairman, Senior Representative
PATSY THRASH	Junior Representative
LAURA JAMES	Sophomore Representative
BETH JOHNSON	Freshman Representative
LUCILLE OAKS	Town Representative
JARVIS LOVE	House Chairman, Cleveland Hall
ROSE VANCE	Civic Chairman, Cleveland Hall
JOAN VINCENT	House Chairman, Ward Hall
MARGUERITE TURNER	Civic Chairman, Ward Hall
LEONA DEAN	Secretary, Student Government
MISS NELL LAWLER	Dean of Women
MRS. J. D. MILLER	Faculty Advisor



C A B I N E T

MEN'S HONOR COUNCIL

JOHN YURKOW	Chairman, Senior Representative
DICK MOORE	Junior Representative
CHARLES MANGUM	Septomcre Representative; Civic Chairman, G. I. II
BUDDY MUIRHEAD	Freshman Representative
JOHN MERRILL	Town Representative
JERRY YOSTE	House Chairman, Hardee Hall
CECIL OSWALT	Civic Chairman, Hardee Hall
HORACE WARD	House Chairman, G. I. I
KENNETH SISSELL	Civic Chairman, G. I. I
HUBERT DEAN SMITH	House Chairman, G. I. II
MARTIN KING	Vice-President, Student Government
MR. RAY RICKS	Dean of Men
MR. ROY L. WILEY	Faculty Advisor



THE DELTA



MEMBERS



PLEDGES

PLAYHOUSE

OFFICERS

KAY POE	President
CHARLES CALLOWAY	Vice-President
PATSY THRASH	Secretary-Treasurer
MISS RUTH WILLIAMS	Sponsor

MEMBERS

Charles Calloway
Paul Chester
Leona Dean
C. W. Hubbard
Jarvis Love

Kay Poe
Martha Ryals
Hubert Dean Smith
Patsy Thrash
Harris Terry

PLEDGES

Jewel Abel
Carolyn Abraham
Ruth Barkemeyer
Bobbie Beevers
Mary Ann Bell
Louise Dalton
Lillian Dalton
Catheron Dantzler
Hugh Ellis

Winston Gray
Cathie Gunn
Margie Hall
Avis Holmes
Eloise Holmes
Ann Hollingsworth
Barbara Hague
Mary Louise Johns
Betty Jo McCain

Beverly McNutt
Betty Osainach
Nell Patterson
Joyeanne Peebles
Ray Pritchard
Mildred Rutherford
Percy Stephens
Ralph Taylor
Kate Yerger

ALPHA PSI OMEGA

PAUL CHESTER	Cast Director
LEONA DEAN	Worthy Stage Manager
JARVIS LOVE	Worthy Business Manager

Paul Chester
Leona Dean
Jarvis Love
Martha Ryals

Patsy Thrash
Ruth Barkley
Harriet Causey
Walter Neal Gardiner
H. L. Nowell

Betty Oakman
James Sission
Jesse White
Ruth Williams

Alpha Psi Omega is the only Greek letter fraternity on the Delta State campus. It is a national honorary dramatic organization established for the purpose of furthering dramatic interests. Members of Delta Playhouse who meet specified requirements are eligible for membership in the Delta State chapter, Zeta Epsilon.





THE BAND

OFFICERS

MILTON CHERTOW
 KATE GREEN
 J. WILLIAM THOMPSON
 EDWARD L. CROSS

President
 Vice-President
 Secretary-Treasurer
 Director

DRUM MAJOR: Martin T. King, Jr.
 MAJORETTES: Katherine Bronn
 Ann Hollingswrth
 Sarah Scogins
 Betty Spruill
 Betty Jean Arnold
 CLARINETS: Rcbert Simpson
 Kate Green
 Burns Strade
 Paul Chester
 Jean Knighten
 A. W. Lindsey
 Bill Estes
 SAXOPHONES: Avis Holmes
 Milton Chertow
 Mary M. Williamson
 James Hutchinson
 Glen McCool
 Mary A. Pearson
 Winstan Grey

CORNETS: J. William Thompson
 Jimmy Fullilove
 Betty Blaylock
 Bill Wilson
 Charlie Sinclair
 Pot Brooks
 FRENCH HORN: Roger Aderholdt
 TROMBONES: C. J. Wilson
 H. N. Crumby
 BARITONES: Ralph Carroll
 Louise Dickson
 BASES: Robert Richter
 Granville Carroll
 R. J. Rackley
 PERCUSSION: Harry Bonner
 Betty Ja Thornton
 Margie Hall
 Bub Mahan
 Jean Oakes



DELTA SINGERS

OFFICERS

MORRIS KING THOMPSON	President
KAY POE	Librarian
LUCILLE OAKS	Accompanist
JOHN HOUSE	Business Manager
PAUL R. MAGEE	Director

Jo Ann Gray
 Martha Jones
 Gwendolyn Harrington
 Elizabeth Osoinach
 O. White Price
 Bonnie Sharp
 Eleanor Walters
 Mary Ann Pearson
 Kay Poe
 Liba Poe
 Marguerite Turner
 Betty Wiggins

John Gibson
 Robert Richter
 Robert Simpson
 W. R. Trim
 Horace White
 Claude Abel
 Otto Hall
 James Hutchinson
 John House
 James Roberts
 Mills Rogers
 Morris King Thompson

J. William Thompson

FRENCH CLUB

Le Cercle Francais



OFFICERS

REBECCA SEARCY	President
BOBBY BONDS	Vice-President
LUCILLE OAKS	Secretary
CY HIGGS	Treasurer
DR. DOXIE DEXTER	Sponsor

MEMBERS

Ray Bailey
 Rex Bingham
 John R. Beard
 Ella Rose Carpenter
 Bobby Bonds
 Virginia Cann
 Jayce Carr
 Vivian Davis

Hugh Ellis
 Ralph Fears
 Cy Higgs
 John Howell
 C. W. Hubbard
 Mary Louise Johns
 Ann Johnson
 Billy Lorange

Lucille Oaks
 Ray Pritchard
 Ruffin Rackley
 Rebecca Searcy
 Charlie Sinclair
 Ralph Taylor
 Frank Whitaker
 Emma Jo Y. Woodruff

HOME ECONOMICS CLUB

OFFICERS

MARY HARPOLE	President
JEWEL McGINTY	Vice-President
CHARLSIE CAMPBELL	Secretary
MARY MARGARET WILLIAMSON	Treasurer
MISS MINNIE PATTON	Sponsor

MEMBERS

Eloise Abel
 Betty Jean Arnald
 Emogene Bailey
 Ruth Barkemeyer
 Laquita Bell
 Bettye Boyd
 Charlsie Campbell
 Ruth Carroll
 Evelyn Carter
 Nell Clement
 Hilda Crowell
 Frances Dean

May Evelyn England
 Rebecca Farris
 Joy Gillon
 Mary Ruth Handley
 Mary Harpale
 Lorraine Heath
 Frances Halland
 Martha Janes
 Alice Allison Kealhafer
 Mary Nell Langdan
 Pat Lee
 Mattie Mae McClain

Mary McGee
 Jewel McGinty
 Clara McMahan
 Edith Maare
 Vivien Rickels
 Dot Tinnin
 Billie Thomas
 Billie Walker
 Sally Wilkinsan
 Patricia Williams
 Mary Margaret Williamson



SCIENCE CLUB



OFFICERS

A. W. LINDSEY	President
ROY BAILEY	Vice-President
MARY LOUISE JOHNS	Secretary
BILLY COX	Treasurer
DR. R. L. CAYLOR	Sponsor

MEMBERS

Roy Bailey
John Beard
Alice Black
John Bryant
Ella Rose Carpenter
Harry Childress
Joe Clark
Joyce Cork
Billy Cox

Vivian Davis
Leona Dean
James Gorman
John H. Gorman
Theresa W. Hansbraugh
Cy Higgs
Mary Louise Johns
Jimmy Langston
Sarah Lawrence

A. W. Lindsey
Billy Lorange
Charles Mangum
Martha Ryals
Charles Sinclair
Herman Smith
Robert Tollison
Mary Jeannette West

NOT PICTURED
Clyde Weston
James Bullock

ELEMENTARY CHILDHOOD EDUCATION CLUB

OFFICERS

IRIS DICKSON
ELIZABETH HERRING
HAZEL NEVEL
MISS JANE OLIVER

President
Vice-President
Secretary-Treasurer
Sponsor

MEMBERS

Betty Lynn Alfard
Peggy Allison
Lavis Box
Billie Brannon
Louise Calvert
Paul Chester
Mary Sue Cramer
Marjarie Curtiss
Juanita Darby
Iris Dickson
Louise Dickson
Earline Douglas
Jane Farrish
Rbbie Harrison

Elizabeth Herring
Joyce Hinton
Ann Hallingsworth
Avis Holmes
Ann Hubbard
Mary Dean Lewis
Hazel Nevel
Dallie Norwood
Betty Osoinach
Joyeanne Peeples
Liba Poe
Ruth Reed
Marianne Strickland
Nancy White



SPANISH CLUB

Los Amigos



OFFICERS

CELSE ARTIGAS	President
REBECCA SEARCY	Vice-President
MILDRED RUTHERFORD	Secretary
ELOISE HOLMES	Treasurer
DR. DOXIE DEXTER	Sponsor

MEMBERS

Celso Artigas	Frances Junov
Willia Mae Bell	Cathron McMahon
Lillie Reed Bennett	James Roberts
Osborne Guion	Mildred Rutherford
Eloise Halmes	Rebecca Searcy
Ann Johnson	John White Valentine

Frank Whitaker
NOT PICTURED
Clarence Nemitz

SCRIBES CLUB

OFFICERS

KAY POE	President
PATSY THRASH	Vice-President
PATSY PORTER	Secretary
MISS EVELYN HAMMETT	Sponsor

MEMBERS

Howard Alford	Osborne Guion
Mary Ann Bell	Edith Meaders
Lillie Reed Bennett	Margaret McWilliams
Marie Dean	Kay Poe
Alice Gardner	Patsy Porter
Winston Gray	Patsy Thrash

NOT PICTURED

Ruth Helen Greenlee
Elizabeth Ormond
David Lindh



INTERNATIONAL RELATIONS CLUB



OFFICERS

CARL WILLIAMSON	President
JOE FARNED	Vice-President
EDITH MEADERS	Secretary-Treasurer
MR. WILLIAM T. POWELL	Sponsor

MEMBERS

Yvonne Bishop	Ray Pritchard
Grover Brewer	Wayne Roberts
Jane Brown	Paul Rodgers
Joe Farned	Joe Tackett
Toby Jacobs	Jehn White Valentine
Edith Meaders	Joe Walper
Cecil Oswolt	Carl Williamson

Sam Wright
 NOT PICTURED
 Charles Burnett

INTRAMURAL COUNCIL

CHAIRMEN

G. M. Chester
Robert Powell

SPONSORS

Forest Wyatt
Lynn Goodman

TEAM REPRESENTATIVES

SHARECROPPERS

Jean Horner
B. L. Kiker

GINNERS

Eloise Strotton
Roy Smith

BOLLWEEVILS

Dot Thomas
Horace Ward

COTTON PICKERS

Mary Hilliard
Charles Colloway



WOMEN'S ATHLETIC ASSOCIATION



OFFICERS

MAPLE BARNES	President
HAZEL NEVEL	Vice-President
FRANCES FERRACCI	Secretary-Treasurer
MISS ETHEL CAIN	Sponsor

MEMBERS

Maple Barnes
 Katherine Brann
 Nell Clement
 Frances Dean
 Angelina Cuicchi
 Frances Ferracci
 Kate Green
 Roxie Griffin
 Mary Frances Gunn
 Laura Jean James

Mary Hilliard
 Bobbie Hammack
 Jean Harner
 Carrine Lewis
 Bill Manning
 Betty Jo McCain
 Virginia Moore
 Erba Powell Nevel
 Hazel Nevel
 Lucille Oaks

Patsy Parter
 Martha Ryals
 Kate Yerger
 Sally Wilkinson
 Dot Thomas
 Margarette Turner
 Betty Jo Thornton
 Marianne Strickland
 Eloise Strattan

" M " C L U B

OFFICERS

CURTIS ALLEN	President
LESTER McKINNEY	Vice-President
DON SPRY	Secretary
MARTIN T. KING, JR.	Treasurer

MEMBERS

Claude Abel
 Curtis Allen
 Harman Boggs
 Tammy Boone
 Frank Bufkin
 Anthony Cintgram
 Archie Clemans
 Wayne Davidsan
 Tany Grezaffi
 Bill Gardner
 Billy Ray Hedges
 John Hafmann

Fred Jepsen
 B. L. Kiker
 Martin King
 L. A. Jones
 Albert Mann
 Lester McKinney
 Dick Moore
 Carlee Nevel
 Dan O'Rourke
 Robert Powell
 Tye Rakesstraw
 Allen Reaves

James Reeves
 Fred Rassetti
 Kenneth Sissell
 Ray Smith
 Don Spry
 Billy Stephenson
 Robert Sykes
 Jimmy Tarzi
 Bennie Weeks
 James White
 Sam Wright



PHYSICAL EDUCATION MAJORS CLUB



OFFICERS

TONY GREZAFFI
ELOISE STRATTON
MAPLE BARNES
HOWARD LEE RAY
MISS ETHEL CAIN
MR. FOREST WYATT

President
Vice-President
Secretary
Treasurer
Sponsor
Sponsor

MEMBERS

Roger Aderhaldt
Bill Ainsworth
Curtis Allen
Raymond Aycock
Bill Bush
Maple Barnes
Bobby Barrett
Harman Baggs
Tammy Boone
Frank Bufkin
Charles Callaway
G. M. Chester
Anthony Cintgram
Robert Cire
Frank Cackran
Carl Cooper

Angelina Cuicchi
Travis Dabbs
John T. Davis
Wayne Davidson
Rex Davis
Darman Dowdy
Woodsan Earle
Thad Easterwood
Frances Ferracci
Hubert Few
Derrall Fareman
Karl Funchess
Ben Gann
Kate Green
Donald Gibson
Charles Graham

Tony Grezaffi
Mary Catherine Gunn
Charles Guynes
Wilbur Harpole
Mary Hilliard
Billy Ray Hedges
Jean Harner
H. T. Hughes
Fred Jepsen
Nelle B. Joiner
B. L. Kiker
John Kealhofer
Charlie Lee
Ray Lipe
J. C. McGuire
Paul McKelroy

Lester McKinney
Jack Machell
James Magers
Harald Markham
Clarence Medders
Ann Milam
Virginia Maare
Carlee Nevel
Anthony Nuskiewicz
Dan O'Rourke
Nell Patterson
Jimmy Peterson
Robert Powell
Tye Rakestraw
Hcward Lee Ray
Allen Reaves

Kenneth Rabbins
LaRue Saulters
Hubert Dean Smith
Ray Smith
Don Spry
Eloise Stratton
Robert Sykes
Taylor Tatum
Dct Thomas
Betty Ja Tharnton
Marguerite Turner
Lauise Viner
Bennie Weeks
Frank Young

INTERFAITH COUNCIL

OFFICERS

KENNETH R. SISSELL	President
LOUISE CALVERT	Vice-President
CAROLYN ABRAHAM	Secretary-Treasurer
DR. A. L. YOUNG	Sponsor

MEMBERS

Carolyn Abraham
 Louise Calvert
 Morgie Hall
 Mary Louise Johns
 Martin King

Lucille Oaks
 Mills Rogers
 Kenneth Sissell
 Patsy Thrash
 Jerry Yoste

NOT PICTURED
 Mrs. John Merrill, Jr.
 Mrs. Kenneth Williams
 Mr. H. J. Jacob

The purpose of this group is several fold: (1) To carry out the Danforth Foundation idea of an informal fellowship for students of various faiths; (2) To promote better relations among the various denominations on the campus; (3) To select or delegate to the American Youth Foundation camp at Camp Miniwanca, near Shelby, Michigan; (4) To sponsor vespers on the campus; (5) To integrate the influence of campus faiths in selecting speakers for Religious Emphasis Week on the campus each year.

Membership in this council will be as follows: the president of each church's group; one member of each church's college group; the church secretaries on the campus; the faculty advisor of the group; the Danforth Faculty representatives; and others the council sees fit to add from time to time, including any Camp Miniwanca delegates.

The council will promote some worthy project of an international nature and campus-wide interest during the year.

The churches that are represented in this organization are the Methodist, Baptist, Presbyterian, Christian, Episcopalian, and Catholic.



WESLEY COUNCIL



OFFICERS

PATSY THRASH	President
PAUL ANDERSON	Vice-President
LIBA POE	Secretary
MARTHA RYALS	Treasurer

MEMBERS

Paul Anderson
 Charlsie Campbell
 Nell Clement
 Louise Dickson
 Ja Gibson
 Benoit Holloway
 Kay Poe

Liba Poe
 Robert Richter
 Martha Ryals
 Kenneth Sissell
 Marianne Strickland
 Patsy Thrash
 John White Valentine

Betty Wiggins

Y. W. C. A.

OFFICERS

MARTHA RYALS
REBECCA SEARCY
ROSE VANCE
MISS RUTH BARKLEY

President
Vice-President
Secretary-Treasurer
Sponsor

MEMBERS

Jewel Abel
Ruth Barkemeyer
Maple Barnes
Louise Calvert
Mary Wanda Farbes
Jarvis Love
Bill Manning
Cathron McMahan

Mildred Rutherford
Martha Ryals
Rebecca Searcy
Marianne Strickland
Annie Ja Turner
Rose Vance
Kate Yerger
Mary Young



B. S. U. COUNCIL



OFFICERS

MILLS ROGERS	President
REX BINGHAM	Vice-President
AVIS HOLMES	Secretary
LILLIAN DALTON	Treasurer

MEMBERS

Caralyn Abraham	Mary Harpole
Emogene Bailey	Avis Holmes
Rex Bingham	Laura Jean James
Carl Cooper	Martha Jones
Lillian Dalton	John Merrill
Catheron Dantzler	Mills Rogers
Mary Wanda Forbes	Gladys Quinn
Not pictured	
Jo Barnett	

YOUNG WOMEN'S AUXILIARY

OFFICERS

CATHERON DANTZLER
FRANCES HOLLAND
LAVIS BOX
VIVIEN RICKELS

President
Vice-President
Secretary
Treasurer

MEMBERS

Lavis Box
Bettye Boyd
Catheron Dantzler
Juanita Darby
Louise Dickson
May Evelyn England

Mary Wanda Forbes
Frances Holland
Martha Jones
Peggy Noel
Vivien Rickels
Patricia Williams

Mary Young



DANCE GROUP



OFFICERS

RALPH TAYLOR President
 WILLA MAE BELL Secretary-Treasurer
 MISS LARISA MORUZEANU, MRS. RUTH HART Sponsors

MEMBERS

Mary Ann Bell
 Willa Mae Bell
 Katherine Bronn
 Winston Gray
 Kate Green
 Jay Hearn

Jayce Hinton
 C. W. Hubbard
 Betty Osainach
 Jayeanne Peoples
 Patsy Porter
 Ralph Taylor

Harris Terry

MISS DELTA

OFFICERS

PATSY THRASH
JOHN YURKOW
MARTIN KING
TIM WALKER
DON SPRY
CAROLYN ABRAHAM
KAY POE
HUGH ELLIS
JAMES SISSON

Editor
Business Manager
Assistant Business Manager
Circulation Manager
Sports Editor
News and Proof Editor
Society Editor
Activities Editor
Faculty Advisor

STAFF WRITERS

Newton Mitchell
Mory Wonda Forbes
Dick Howell
Osborne Guion
B. J. Thornton

Sue Cromer
Frances Dean
John White Valentine
Ruth Greenlee
Winston Gray

Martha Ryals
Cathron McMahon
Reno Bailey
John House
Alice Gardner



THE BROOM



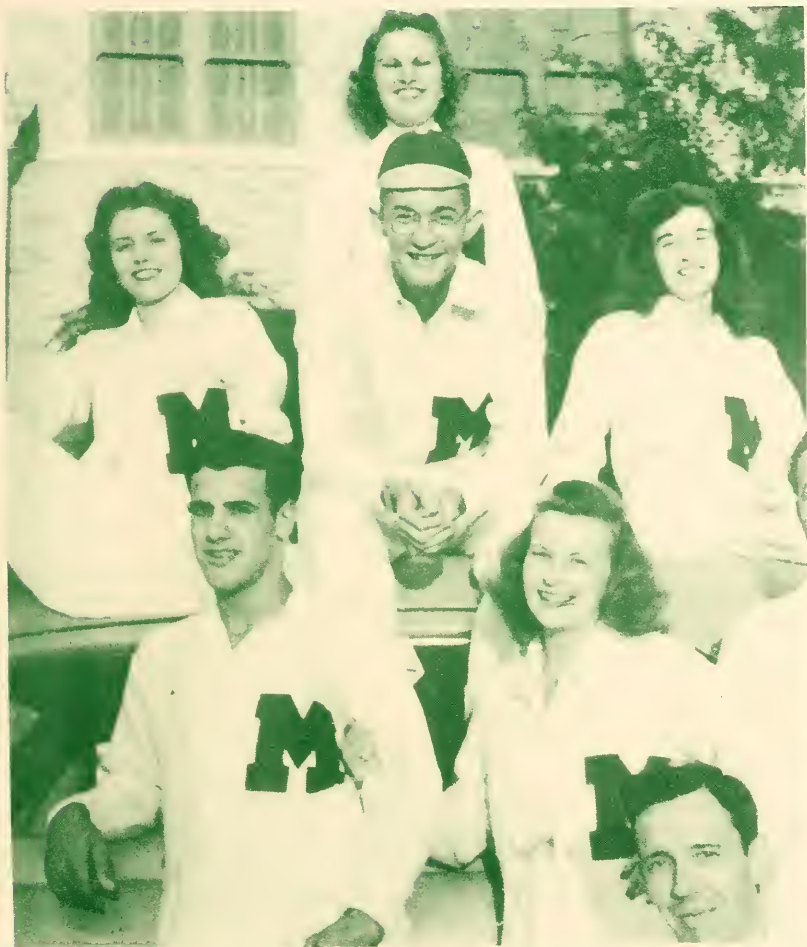
LEONA DEAN
Editor-in-Chief

JAMES WHITE
Business Manager

MISS GRACE GAW
Faculty Advisor

LUCILLE OAKS
HARRIS COLEMAN
MARTHA RYALS
PATSY THRASH
JOAN VINCENT
RUTH BARKEMEYER
SIM DULANEY
MARTIN KING
NELL CLEMENT
HUGH ELLIS
REBECCA SEARCY
THERESA WILLIAMS HANSBROUGH
LINVILLE REED

Assistant Editor
Business Manager
Senior Editor
Junior Editor
Sophomore Editor
Freshman Editor
Activities Editor
Athletics Editor
Athletics Editor
Photographer
Photographer
Photographer
Photographer



ATHLETICS



FOREST E. WYATT
Physical Education Director

E. B. "GENE" CHADWICK
Athletic Director
and
Football Coach

ATHLETIC COMMITTEE

SEATED: Dr. A. L. Young, Dr. Joe Farrar, D. M. Allen, Chairman.
STANDING: R. L. Wiley, W. T. Powell, Hugh Smith.





FRONT ROW: (kneeling) Left to Right: LeMastus (Manager), Markham, Grezaffi, Hughes, Tatum, Clemons, Hollingswarth, Bufkin, Barrett, Wade, Montague, Gibsan, Hoffman, Allen, Wright (Manager), Moore, (Manager).

HOMECOMING QUEENS



Sarah Nell Tatum, Bill Manning, Roxie Griffin

OFFICIAL SEAS

ARKANSAS A & M	12
ALABAMA STATE	6
MISSISSIPPI COLLEGE	6
ARKANSAS COLLEGE	0
ARKANSAS STATE	13
OKLAHOMA STATE	12
AUSTIN PEAY	7
LOUISIANA COLLEGE	6
CUMBERLAND UNIVERISTY	14



SECOND ROW (standing): Coach Chadwick, Cire, Kimbrell, Harpole, Graham, Trelaar, Mitchell, Magers, Wilson, Lindh, Reed, Durham, Bayd, Padovan, Smith (Manager). THIRD ROW (standing): Dabbs, Weeks, Machell, Sykes, Lingle, Payne, Janes, Young, Smith, Barbour, Gardner, Cintgram, Taggart, McGuire.

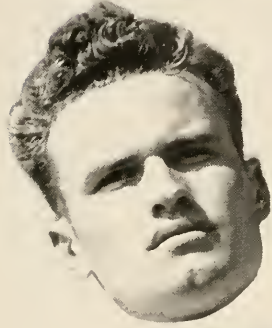
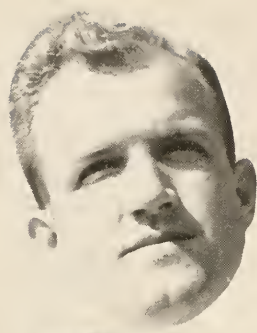
STUDENT MANAGERS

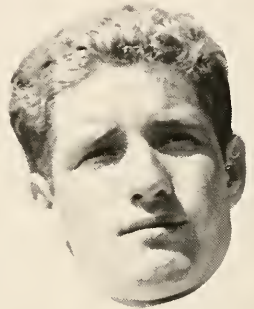
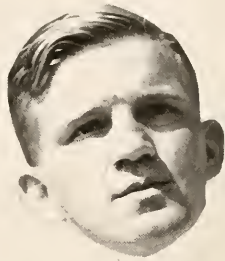
ON'S RESULTS

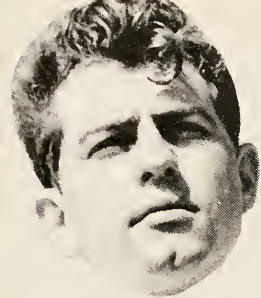
DELTA STATE	33
DELTA STATE	27
DELTA STATE	7
DELTA STATE	46
DELTA STATE	13
DELTA STATE	6
DELTA STATE	48
DELTA STATE	15
DELTA STATE	27



Guy LeMastus, Sam Wright, Dickie Moore, Hubert D. Smith









Greenies Take 27-6 Victory Over Ala. State

Luke's Game

STATESMEN BOW TO SOUTHEASTERN

Playing one of their finest first halves this year, but failing to hold their own during the final stages of the game, the Delta Statesmen were upset by Luke Marlars' Southeastern Five Thursday night 63 to 59.

GREENIES TRAMPLE GOVS

Delta State's basketball five bounced back to the victory trail Saturday night by trouncing the Austin Peay Governors 55 to 48 in a rugged contest.

CHEER LEADERS ARE ELECTED

Cheer leaders for Delta State Teachers College were elected by the students under the supervision of John Yurkoff, student leader and Walter N. Gardner, faculty advisor on Friday, September 17. John Polles, Clarksdale, Marly Anne Boone, Leland, and Beverly McNutt, Greenwood, were re-elected after ably serving in this po-

Unleashing a devastating ground attack, the Delta Statesmen upset the Alabama State Teachers eleven Saturday night, 27 to 6. The Deltans scored once in the first and three times in the third period.

Statesmen End Most Successful Season

By DON E. SPRY

The 1948 football season begins a new era in Delta State football. The coaching is new, and the spirit at Delta State is on the road back in the world of football.

Gene Chadwick took over a football team last spring that barely managed to be anything but successful, winning five and dropping four during the 1947 season. In spring practice that followed and during the first two weeks of the pre-season practice of this Sep-

GREENIES SLAUGHTER JAX

It was Harmon Boggs and Co. that gave the Jax from Alabama State such a bad evening Monday

to 49
ut in
enies
point,
g 15
little
guest

Site
kers
added
rtion
3.
st
0
e

his third tally. Bobby returned the kick-off to the 44. Tony Grezaffi's added 7 through right tackle on the Arkansas 49-yard line. Archie Clemons, playing sensational ball, took the oval from Durham and

State Ties Ark. State

atesmen remained
aten football team
Monday as they
a 13 to 13 tie by
College at Jones-
lay night. Hot tem-
cuffs featured the
machines failed to
in the first half.

had to be content with a 26-yard gain to the 25. Again Durham found Hollingsworth for another pass to the 7. Bobby Barbour bulled his way to the 3, and on the next play, "Sugar" Durham sneaked over for the touchdown. Tony Grezaffi converted the extra point.

Statesmen Upset Choctaws 7 to 6

Vengeance highlighted Delta's victory over Mississippi College last Saturday night in a thrills-packed tilt that resulted in the Greenies third triumph of the season and the first over the Braves on the 30-yard in the 14-year ri

Tony Grezaffi's the winning m
cessfully booted
after, Durham's p
a touchdown.

GREENIES THRASH ARKANSAS A. & M.

Delta State's 1948 gridiron edition blossomed out in all its glory

Boggs, McKinney are Scoring Stars of Statesmen Victory

By Charles S. Kerg

WHITFIELD GYM, CLEVELAND — Sparked by Harmon Boggs with 24 and Les McKinney with 22, the mind-bending Delta Statesmen of Cleveland wreaked sweet revenge for a four-point loss at Memphis last week by even topping the high-point of the electric scoreboard here Friday night to soundly trounce the Memphis State Tigers, 80-58 before a packed gymnasium.

Deltans Win From Ark. College

Rising to unexpected heights last Saturday night, the strong Greenies completely outclassed a weak but spirited Arkansas College eleven 46 to 0.

Much can be said about the Deltans' success Saturday, because of

his third tally. Bobby returned the kick-off to the 44. Tony Grezaffi's added 7 through right tackle on the Arkansas 49-yard line. Archie Clemons, playing sensational ball, took the oval from Durham and

Time Out With Spry

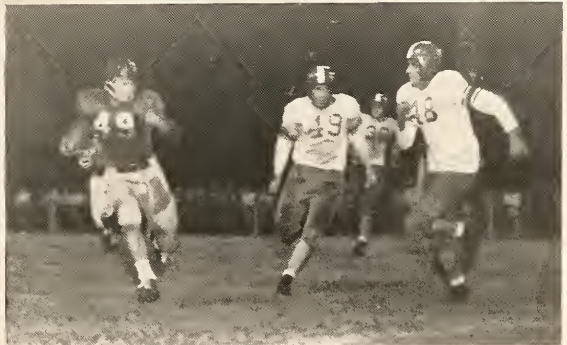
Perhaps one of the roughest football games in Delta history and maybe even in Arkansas State history was concluded last Saturday.



DON SPRY
Sports Publicity



GANG SHOTS





LEFT TO RIGHT: Guynes, Hodges, McKinney, Saulter, Ricks, Robbins, Baggs, Ray, Cochran, Baker, Rakestraw and Reaves (Manager).

JOHN R. RICKS
BASKETBALL COACH



OFFICIAL SEAS

Arkansas A & M	32	Delta State	54
Southeaster Louisiana	49	Delta State	58
Ouachita College	51	Delta State	77
Alabama State, Livingston	44	Delta State	50
Alabama State, Livingston	46	Delta State	44
Arkansas Tech	62	Delta State	86
S. E. Missouri State	57	Delta State	61
Murray State	65	Delta State	33
S. Illinois University	80	Delta State	60
New Mexico State	42	Delta State	55
Indiana State	64	Delta State	52
Arkansas State	46	Delta State	71
Sautheastern Louisiana	63	Delta State	59

TRI-STATE TOURNAMENT

Alabama State, Jacksonville	41	Delta State	63
Austin Peay	35	Delta State	61

BOGGS



MCKINNEY



ON'S RESULTS

Spring Hill	76	Delta State	65
Loyala University	58	Delta State	46
Austin Peay	48	Delta State	55
Alabama State, Jacksonville	49	Delta State	69
Alabama State, Jacksonville	47	Delta State	60
Memphis State	48	Delta State	44
Arkansas State	57	Delta State	50
Memphis State	58	Delta State	80
Austin Peay	55	Delta State	67
Spring Hill	50	Delta State	61
Alabama State, Livingston	49	Delta State	33
Alabama State, Jacksonville	60	Delta State	62
Arkansas A & M	45	Delta State	74

N. A. I. B. TOURNAMENT

Kansas State, Emporia	67	Delta State	57
-----------------------	----	-------------	----



COCHRAN

ROBBINS



RAKESTRAW



SAULTERS



RICKS

GUYNES



RAY

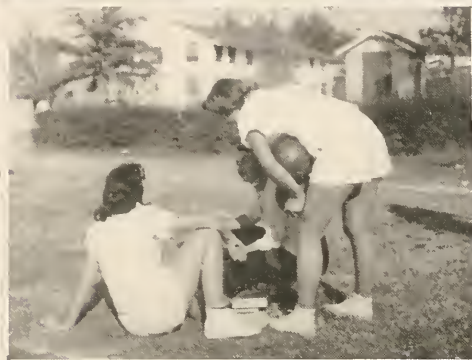


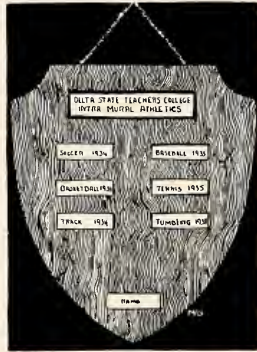
HODGES



BAKER







SHIELD WINNERS

Girls who receive a shield must excel in a number of sports. For each major All-Star team made, 100 points are given; for minor sports 25 to 75 points. Membership in the W. A. A. and making the basketball officiating team give points. 1,000 points are required to receive a shield.



Mary Hilliard



Martha Ryals



Frances Ferracci



Hazel Nevel



QUEEN
Sadie Trim

KING
Billy Mullins

SPRING PAGEANT

1948

PAGEANT COURT *and* BALLET





BALLET *and* GREEK DANCE



THE ORCHESTRA

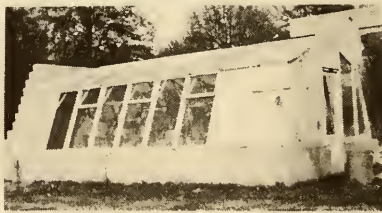
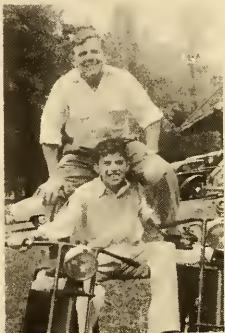


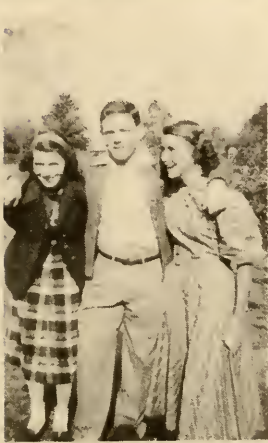
STUDENT LIFE



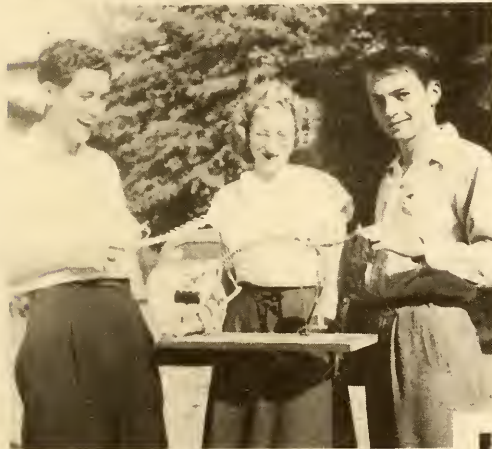


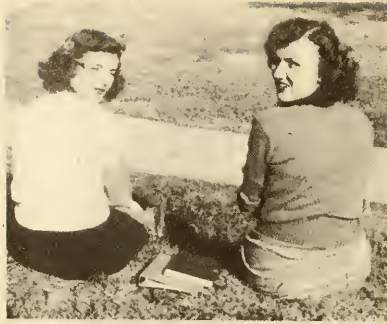














ADVERTISEMENTS

MISSISSIPPI DELTA STATE TEACHERS COLLEGE

A Standard Four Year Institution for Higher
Education Offering Equal Opportunities
To Young Men and Women

Cleveland, Mississippi

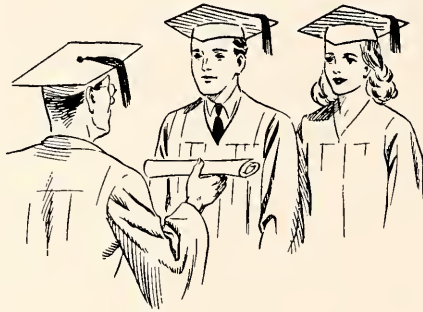
In the Heart of the Mississippi Delta

Write for Catalogue

Address: The Secretary

DELTA STATE TEACHERS COLLEGE

Cleveland, Mississippi



COMPLIMENTS OF

The Cleveland State Bank

CLEVELAND,

MISSISSIPPI



COMPLIMENTS OF

THE GOYER COMPANY

GREENVILLE

CLEVELAND

YAZOO CITY

GREENWOOD

"Tobe" Kaplan's

KAY'S STYLE SHOP

and

KAPLAN'S MEN'S SHOP

For The Well Dressed Lady and Man

Cleveland, Mississippi



McGOWAN STUDIO

YVETTE McGOWAN, Photographer

HATTIESBURG,

MISSISSIPPI

NOWELL LUMBER COMPANY, INC.

QUALITY BUILDING MATERIAL

Building Material

Plumbing Supplies

Telephone Number 11

CLEVELAND,

MISSISSIPPI

COMPLIMENTS OF

NORWOOD V. BROWN

BOLIVAR INSURANCE COMPANY

CLEVELAND, MISSISSIPPI

SCOTT BUILDING SUPPLY

When in Cleveland

MERIGOLD BUILDING SUPPLY

When in Merigold

ANGUILLA LUMBER COMPANY

When in Anguilla

W. R. Samuels, Sr. W. R. Samuels, Jr.

DIXIE STAR BAKERY

150 SHARPE AVENUE

Phone 42

Cleveland,

Mississippi

KAMIEN'S

"Your Favorite Store Since 1904"

Cleveland,

Mississippi

Phone 216

Compliments

Of

**LEVINGSTON FURNITURE
STORE**

Cleveland,

Mississippi

Compliments

Of

BOOTS JONES

COTTON BUYER

Cleveland,

Mississippi

Demand

DENTON'S QUALITY ICE CREAM

Pasteurized Dairy Products

**THE DENTON
MANUFACTURING CO.**

CLEVELAND

SHELBY

MISSISSIPPI

COMPLIMENTS

OF

THE SMART SHOP

GREENVILLE, MISSISSIPPI

"The Delta's Finest Women's

Specialty Shop"

**CLEVELAND
LAUNDRY - CLEANERS**

Phone 230

CLEVELAND, MISSISSIPPI

COMPLIMENTS

OF

**KENNEDY MOTOR CO.,
Incorporated**

SALES and SERVICE

FORD

Telephone 370 203 South Court

Cleveland, Mississippi

COMPLIMENTS

OF

**C. E. JORDAN
FURNITURE CO.**

SERVING THE DELTA

Cleveland, Mississippi

**KOSSMAN BUICK
COMPANY**

We Service All Makes Of Cars and
Trucks

PHONOGRAPH RECORDS

Cleveland, Mississippi

Compliments

Of

**CLEVELAND LUMBER
and
SUPPLY COMPANY**

Cleveland,

Mississippi

Compliments

Of

BANK OF CLEVELAND

Cleveland,

Mississippi

Compliments

Of

WARD'S PHARMACY

Fourth and Oak — Phone 734

WARD'S DRUG STORE

101 Sharpe — Phone 200

Cleveland,

Mississippi

Compliments

Of

**ELLIS AND REGENT
THEATRES**

Cleveland,

Mississippi

**THE MODERN
STORE**

The Very Best In

GROCERIES

Cleveland,

Mississippi

Compliments

Of

**STERLING
DEPARTMENT STORE**

Cleveland,

Mississippi

**DELTA HARDWARE AND
IMPLEMENT CO.**

Cleveland,

Mississippi

Compliments

Of

**H. M. WARD LUMBER
COMPANY**

All Kinds Of Building Materials

DISTRIBUTOR OF
QUONSET BUILDINGS

Cleveland,

Mississippi

Phone 8

SHOENHOLZ
Department Store

EVERYTHING TO WEAR

Cleveland, Mississippi

WEST IMPLEMENT
COMPANY

John Deere Quality Farm Equipment

Cleveland, Mississippi

The
BOLIVAR COMMERCIAL

JOB PRINTING

OFFICE SUPPLIES

Cleveland, Mississippi

NELSON'S
FIRESTONE STORE

QUALITY MERCHANDISE

At Prices You Can Afford

Cleveland, Mississippi

BISHOP'S SERVICE
STATION

SINCLAIR PRODUCTS

Everything for the Modern Tourist

Cleveland, Mississippi

Morgan And Lindsey
5c and 10c Store

"Stores of Courtesy"

Cleveland, Mississippi

OWEN'S DRUG STORE

J. H. OWEN, Proprietor

SUNDRIES PRESCRIPTIONS

Phone 166 Delivery

Cleveland, Mississippi

T. M. JONES

COTTON BUYER

Cleveland, Mississippi

**C. W. CAPPS And
COMPANY**

COTTON SHIPPERS — DOMESTIC
AND EXPORT

Cleveland, Mississippi

**KELSO'S
Dry Cleaning Company**

Phone 168

Storage Hot Blocking
Rug Cleaning

Cleveland, Mississippi

FOR FINE FOODS

BROCK'S

Cleveland, Mississippi

**SERVICE MOTOR
COMPANY**

M. C. SIMPSON, Owner

Cleveland, Mississippi

Phone 382-W

STUDEBAKER — SALES AND SERVICE

Compliments Of
**BOB REDDING PONTIAC
COMPANY**

PONTIAC CADILLAC
SALES AND SERVICE

Cleveland, Mississippi

**Jones Manufacturing
Company**

KOOL VENT ALUMINUM AWNINGS

Box 48

Cleveland, Mississippi

**PACE SEED SUPPLY
COMPANY**

SEED, FEED AND FERTILIZER

Cleveland Indianola

Mississippi

**61 SERVICE STATION
AND TAXI**

PAN-AM PRODUCTS

WRECKER SERVICE

Floyd Wood, Owner

Cleveland, Mississippi

Barbati & Son Shoe Shop

Cleveland,

Mississippi

The Parisian

Cleveland,

Mississippi

Norman Insurance Agency

Cleveland,

Mississippi

Glasco Sporting Goods

Headquarters for Delta Sportsmen

Cleveland,

Mississippi

MISTLOW GARDENS

For Your Flower Needs — Phone 82

Cleveland,

Mississippi

ODOM MOTORS

Cleveland,

Mississippi

Western Auto Associate Store

Home Owned by MARCEL DAVIDOW

Cleveland,

Mississippi

Allen's College Grill And Grocery

Phone 9123

Cleveland,

Mississippi

Compliments

Of

THE TEA ROOM

U. S. Highway 61

Cleveland,

Mississippi

Compliments

Of

FLETCHER FUNERAL HOME

The Newest and Most Modern

Funeral Home In

Mississippi

Phone 318-J

Cleveland,

Mississippi

**NEW DEAL TOBACCO &
CANDY COMPANY**

Cigarettes Cigars Tobacco

Candies

Greenville and Greenwood

Mississippi

Phone 96

Phone 21

Compliments

Of

**SLEDGE TOBACCO AND
CANDY COMPANY**

Cleveland,

Mississippi

Harpole Implement Co.

Dealers In

Ford Tractors and Dearborn Farm
Equipment

Cleveland,

Mississippi

BACK OUR BACKERS

Compliments Of

HYTKEN'S

Cleveland,

Mississippi

Ready to Face the World



★ ★ COME WHAT MAY

CONFIDENCE is the heritage of youth . . . it is also a fundamental requirement of business . . . attained by long study, training and experience * We have enjoyed the confidence of year-book Staffs throughout the country for over thirty years . . . an accomplishment for which we are truly grateful and justly proud.

COLLEGE ANNUAL DIVISION
ALABAMA ENGRAVING COMPANY
BIRMINGHAM



FOR A BETTER TOMORROW . . .

Education owes its existence to the Printing Press . . . In the future as in the past, wherever there is enlightenment, the printed word shall lead the way.

The Paragon Press

DESIGNERS AND CREATORS OF *Fine Printing* 14 ADAMS · MONTGOMERY, ALA.





