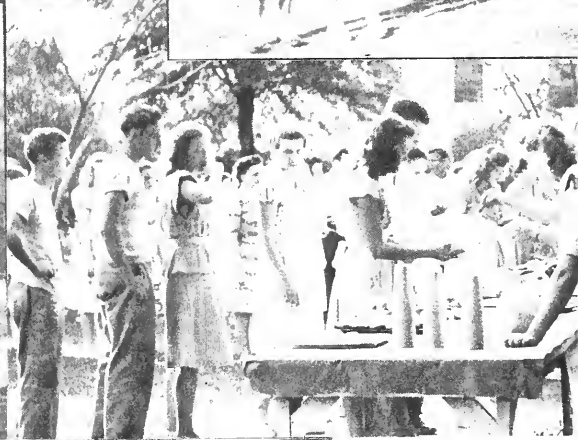


The  
Broom  
1949





Digitized by the Internet Archive  
in 2010 with funding from  
Lyrasis Members and Sloan Foundation

<http://www.archive.org/details/broom1949delt>



*Ex Libris*



# *The* 1949

LEONA DEAN . . . . . Editor

JAMES WHITE . . . . . Business Manager

Published by the Students of  
DELTA STATE TEACHERS COLLEGE  
Cleveland, Mississippi

B R O O M





# Foreword . . .

THE BROOM staff of 1949 wishes to express its appreciation to the student body and faculty for the cooperation you have given us in the compilation of this twenty first edition.



COLLEGE  
FACULTY  
CLASSES  
FEATURES  
ORGANIZATIONS  
ATHLETICS  
CAMPUS LIFE  
ADVERTISEMENTS

# Contents

# DEDICATION

To Roy Lee Wiley, Associate Professor of Physics,  
The Broom Staff of 1949 dedicates this edition. We  
have looked to him for help and understanding,  
whether personal or academic. We admire him as a  
teacher and counselor and are grateful for his loyal  
school spirit.



ROY LEE WILEY





INSTITUTIONS OF HIGHER  
LEARNING  
State of Mississippi

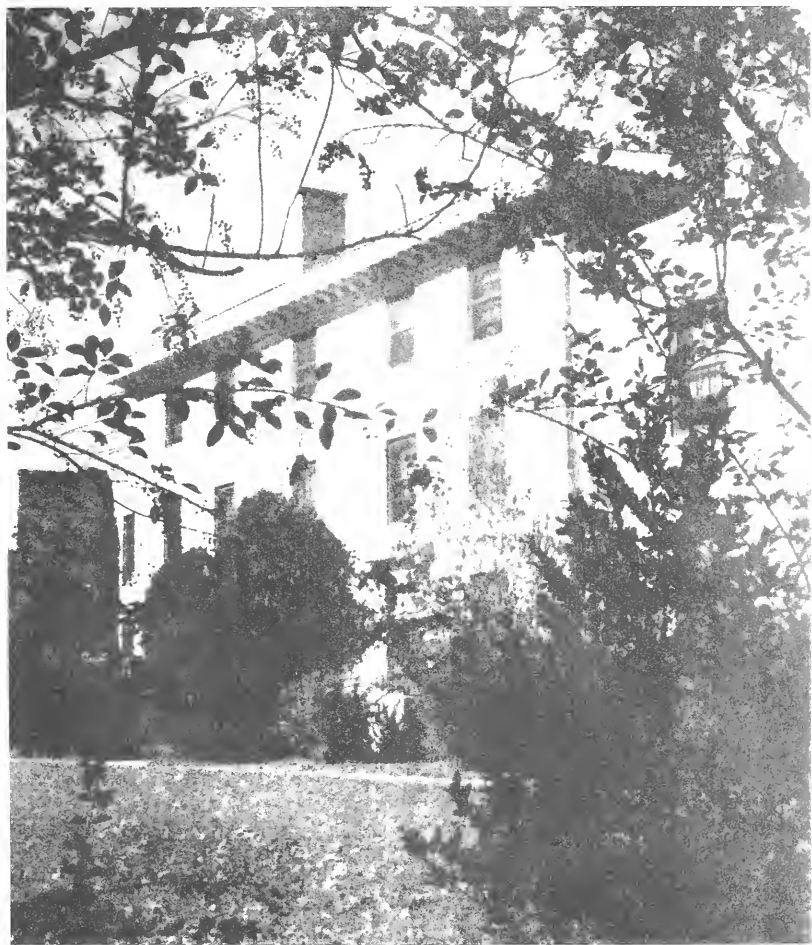
His Excellency  
FIELDING L. WRIGHT  
Governor of Mississippi

BOARD OF TRUSTEES

MARTIN V. B. MILLER, President . . . . . Meridian  
E. R. JOBE, Executive Secretary . . . . . Jackson

MEMBERS OF THE BOARD

State-at-Large  
R. D. MORROW, Twelve-Year Term, 1948-1960 . . . . . Brandon  
H. M. IVY, Twelve-Year Term, 1944-1956 . . . . . Meridian  
First District  
R. N. HENLEY, Twelve-Year Term, 1944-1956 . . . . . Macon  
Second District  
R. B. SMITH, JR., Eight-Year Term, 1944-1952 . . . . . Ripley  
Third District  
HARRY CARPENTER, Five-Year Term, 1947-1952 . . . . . Rolling Fork  
Fourth District  
MRS. NED LEE, Eight-Year Term, 1944-1952 . . . . . Eupora  
Fifth District  
MARTIN V. B. MILLER, Twelve-Year Term, 1944-1956 . . . . . Meridian  
Sixth District  
JOHN W. BACKSTROM, Twelve-Year Term, 1948-1960 . . . . . Leakesville  
Seventh District  
OLIVE EMMERICH, Twelve-Year Term, 1944-1956 . . . . . McComb  
Northern Supreme Court District  
R. W. REED, Eight-Year Term, 1944-1952 . . . . . Tupelo  
Central Supreme Court District  
MRS. JANIE RICE TAYLOR, Twelve-Year Term, 1948-1960 . . . . . Jackson  
Southern Supreme Court District  
REECE McLENDON, Twelve-Year Term, 1948-1960 . . . . . Poplarville  
LaBauve Fund Trustee for University of Mississippi  
PAUL H. BOWDRE . . . . . Hernando

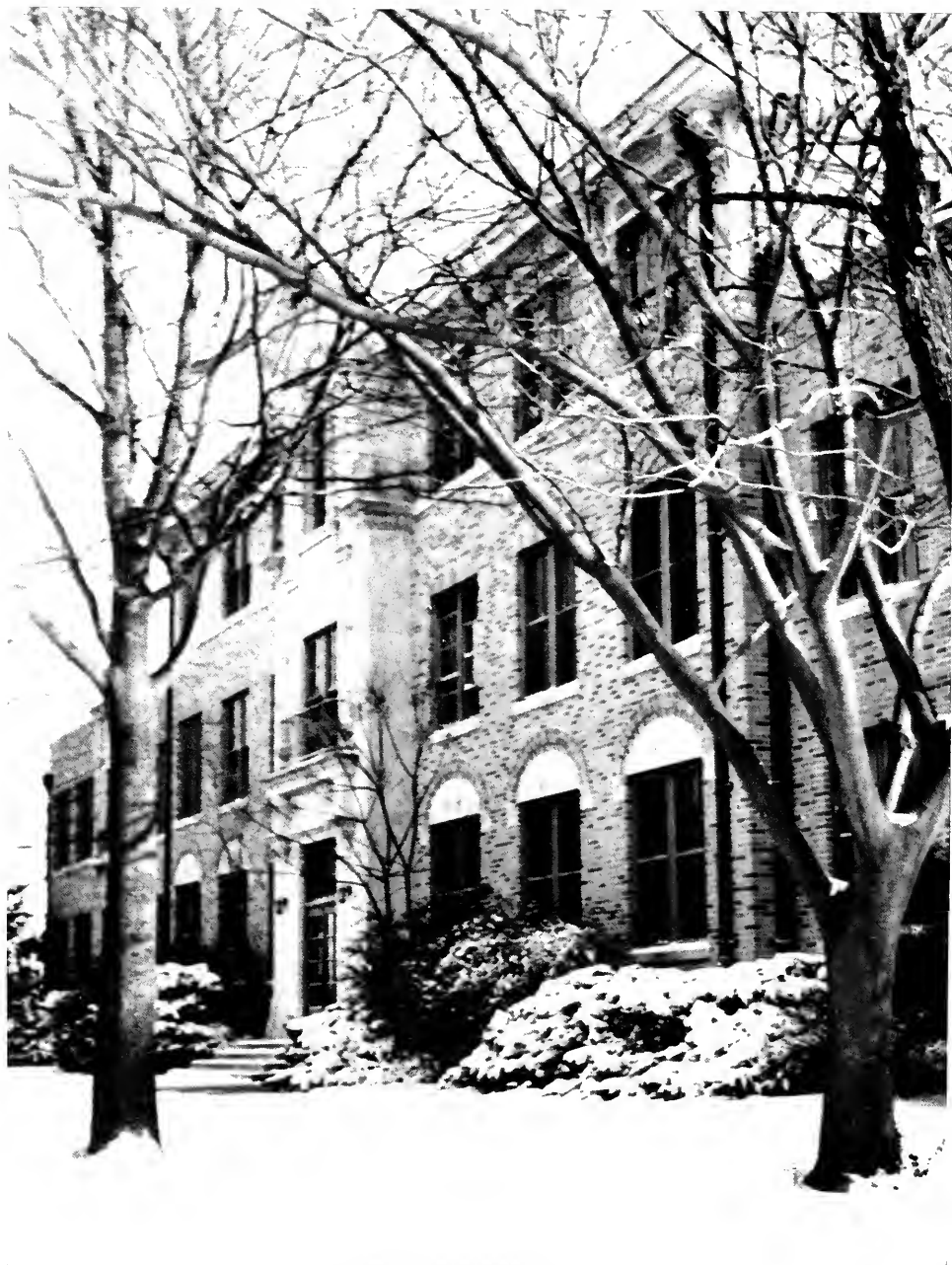


COLLEGE





BROOM MEMORIAL ADMINISTRATION BUILDING



SNOW SCENE, BROOM ADMINISTRATION BUILDING



ROBERTS MEMORIAL LIBRARY



CLEVELAND HALL





HILL DEMONSTRATION SCHOOL

WHITFIELD GYMNASIUM





SCOTT DINING HALL



PRESIDENT'S  
HOME

DEAN'S HOME



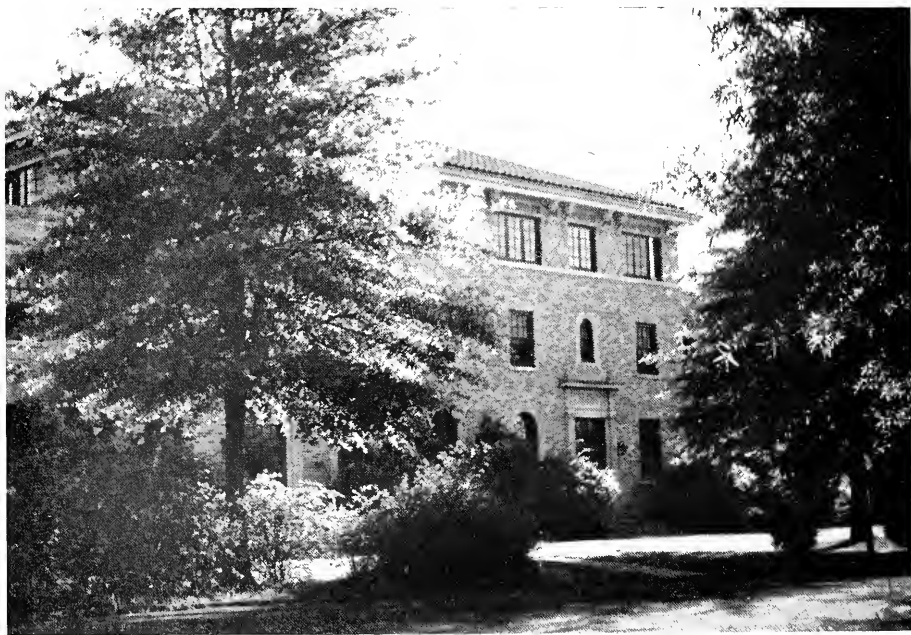
TAYLOR HALL





HOME MANAGEMENT HOUSE

WARD HALL





FACULTY



PRESIDENT  
WILLIAM MARION KETHLEY, LL.D.  
DELTA STATE TEACHERS COLLEGE



Keep and guard as a sacred trust the responsibility which your Alma Mater commits to you. You, as former students and graduates, are responsible in part for the character and the reputation of our school and for its continued support.

W. M. Kethley





JOE FARRAR, Ph.D.  
Dean of the Faculty

Delta State is proud of its past. It looks hopefully toward the future, confident that, with the loyalty and devotion of its student body, faculty, and alumni it can and will meet the ever-increasing demand for the enlargement of its facilities and for the extension of its services.

Joe Farrar

## FACULTY

WIRT ALFRED WILLIAMS, M.A.  
Head of Department of Social Science



RICHARD LEE CAYLOR, Ph.D.  
Head of Department of Science

ALBERT LEON YOUNG, Ph.D.  
Head of Department of Education



EVELYN ALLEN HAMMETT, M.A.  
Head of Department of Languages and  
Literature

THOMAS B. MARTIN, M.A.  
Head of Department of Business Education



ETHEL CAIN, Ed.M.  
Acting Head of Department of Health and  
Physical Education

GRACE GAW, M.A.  
Acting Head of Department of Art



MINNIE PATTON, M.S.  
Acting Head of Department of  
Vocational Home Economics

PAUL R. MAGEE, M.A.  
Acting Head of Department of Music



ELEANOR BOYD WALTERS, M.A.  
Acting Head of Department of Mathematics



## FACULTY

DEWITT TALMADGE OAKS, M.A.  
Director of Elementary  
Demonstration Schools

KATIE D. MAULDIN, M.A.  
Registrar

JEFF D. MILLER  
Financial Secretary



DOUGLAS M. ALLEN, M.A.  
Public Relations Director

ELEANOR HARKINS, M.S.  
Librarian

SIDNEY H. BLAKELY, Ph.D.  
Language and Literature



GEORGIA L. TATUM, Ph.D.  
Social Science

NELL LAWLER, M.A.  
Dean of Women

RAY RICKS, M.A.  
Dean of Men  
Health and Physical Education



LOWREY A. BASS, Ph.D.  
Science

JANE OLIVER, M.A.  
Elementary Education

CAROL BRUMBY, M.A.  
Social Science



NELL R. MIMS, M.A.  
Vocational Home Economics

ROY L. WILEY, M.A.  
Science

NELL WYNN, M. Mus.  
Music

# FACULTY

ELIZABETH ZEIGEL, M.A.  
Secondary Demonstration Schools

RUTH M. WILLIAMS, M.A.  
Languages and Literature

DOXIE DEXTER, Ph.D.  
Languages and Literature

MRS. DORA TYER, M.S.  
Health Education

W. T. POWELL, B.S.  
Social Science

ELIZABETH DAKIN, B.L.S.  
Assistant Librarian



WALTER N. GARDINER, M.A.  
Language and Literature

FOREST E. WYATT, M.A.  
Health and Physical Education

LARISA MORUZEANU, License  
Health and Physical Education



EDWARD L. CROSS, M.M.  
Music

MRS. ANITA D. STONE, M.A.  
Science

HENRY J. JACOB, M.A.  
Education



JAMES E. SISSON, M.S.  
Language and Literature

JESSE WHITE, B.S. in ED.  
Science

C. H. HAGENSON, Ph.M.  
Education





## FACULTY

E. R. CHADWICK, B.S.  
Health and Physical Education

J. D. HAGGARD, M.S.  
Mathematics

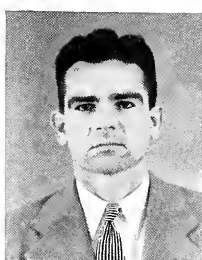
KATHERYNE KEENER, M. Com. Sc.  
Business Education



JEAN M. KNOTT, M.A.  
Business Education

DALE SHULAW, M.S. in Ed.  
Business Education

MARY EMMA BOGGAN, M.A.  
Language and Literature



MARTIN L. ABBOTT, B.A.  
Social Science

LEE J. MELTON, JR., B.A.  
Social Science

ARRELL MACE, M.M.  
Music



MARY EMMA BLAKEMAN, B.S.  
Vocational Home Economics

LYNN GOODMAN, B.S., B.A.  
Health and Physical Education

MAUD CAIN, M.A.  
Elementary Demonstration Schools



FRANCES GRUBBS, M.S. in Ed.  
Elementary Demonstration Schools

MRS. W. P. KEESLER  
Elementary Demonstration Schools

MRS. C. H. HAGENSON, M.A.  
Education

# FACULTY

MRS. W. N. GARDINER  
Elementary Demonstration Schools



MRS. E. B. CHADWICK, B.S. in Ed.  
Elementary Demonstration Schools

MRS. KENNETH WILLIAMS, A.M.  
Wesley Foundation Secretary



MRS. JOHN C. MERRILL, B.A.  
B.S.U. Secretary

ETHEL CRAWLEY  
Dormitory Advisor

ETHEL GILLESPIE  
Dormitory Advisor

BESS VINSON, B.S.  
Dietitian

MRS. W. A. CARPENTER  
Assistant Dietitian

HERBERT PRICE, B.S. in Ed.  
Dormitory Advisor



VIRGINIA THOMPSON, A.B.  
Secretary to President

GLADYS CASTLE, B.S. in Ed.  
Secretary to Dean of Faculty

HUGH SMITH, B.S. in Ed.  
Assistant to Financial Secretary



RUTH BARKLEY, B.S. in Ed.  
Secretary

MARGARET WILSON, B.A.  
Music

SUE THWEATT, B.S. in Ed.  
Secretary



# FACULTY



WILLA MAE BELL, R.N.  
Nurse



MRS. ALEX HINTON  
B.S.  
Secretary



HARRIET CAUSEY, B.A.  
Secretary



NAN SIMMONS, B.S.  
Secretary



## Faculty Snaps





# CLASSES

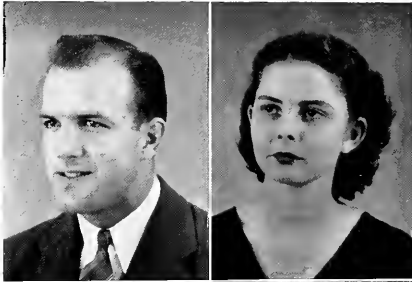




## SENIOR CLASS OFFICERS

HARRIS COLEMAN	President
REBECCA SEARCY	Vice-President
LEONA DEAN	Secretary
BILL MANNING	Treasurer
MR. D. M. ALLEN	Sponsor

## SENIORS



WILLIAM CURTIS ALLEN . . . . . Brookhaven, Miss.  
 Physical Education  
 B.S. in Education  
 Transfer, Copiah Lincoln Junior College; Football; Basketball; Physical Education Club; "M" Club, President.



EMOGENE BAILEY . . . . . Daphne, Ala.  
 Home Economics  
 B.S. in Education  
 Home Economics Club; Inter-Faith Council; Y.W.A.; B.S.U., Vice-President.



EDITH McKNIGHT BAILEY . . . . . Shelby, Miss.  
 English  
 Business Education  
 B.S. in Education  
 French Club; Y.W.A.; Commercial Club.



LEROY BAILEY . . . . . Shelby, Miss.  
 Biological Science  
 B.S.  
 French Club; Science Club, Vice-President.



RENA BAILEY . . . . . Maude, Miss.  
 English  
 Mathematics  
 B.S. in Education  
 Transfer, Wood Junior College; Y. W. C. A.; Wesley Foundation Council; Winstan Scholarship; Who's Who Among Students in American Universities and Colleges.

JOE W. BAKER . . . . . New Albany, Miss.  
 Science  
 B.S. in Education  
 Transfer, Holmes Junior College; Baseball; Basketball.

MAPLE BARNES . . . . . Hollandale, Miss.  
 Physical Education  
 B.S. in Education  
 Y. W. C. A.; Dance Group; Broom Staff; Physical Education Majors Club, Secretary; W. A. A., President.

MARY ANN BELL . . . . . Drew, Miss.  
 English  
 B.S. in Education  
 Transfer, M. S. C. W.; Delta Playhouse; Second Best Actress; Scribes Club; Dance Group.

# SENIORS

WILLA MAE BELL . . . . . Houston, Texas  
 Science  
 B.S.

Transfer, University of Houston; Spanish Club; Science Club; Dance Club; Graduate, Methodist Hospital, Houston, Texas.

JOHNNIE BIGGERS . . . . . Ackerman, Miss.  
 Social Science  
 B.S. in Education  
 Transfer, Holmes Junior College.

GENE E. BONDS . . . . . Charleston, Miss.  
 Business Administration

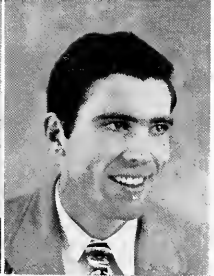
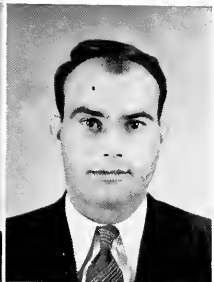
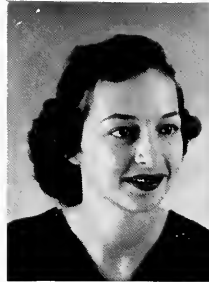
TOMMY BOONE . . . . . Leland, Miss.  
 Mathematics  
 Physical Education  
 B.S. in Education  
 "M" Club; Physical Education Majors Club.

LAVIS BOX . . . . . Stewart, Miss.  
 Elementary Education  
 B.S. in Education  
 Transfer, Wood Junior College.

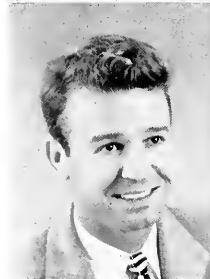
GROVER BREWER . . . . . Charleston, Miss.  
 English  
 Social Science  
 B.S. in Education  
 Transfer, Mississippi State College; International Relations Club.

SAMUEL J. BRIDGERS, JR. . . . . Tchula, Miss.  
 Business Education  
 B.S. in Education  
 Transfer, Holmes Junior College.

HARRY P. BROOKS . . . . . Merigold, Miss.  
 Business Administration  
 B.S.  
 Spanish Club; Commercial Club; MISS DELTA Staff; Band; Delta State Orchestra.



# SENIORS



BILL BUSH . . . . . Rosedale, Miss.  
 Social Science  
 Physical Education  
 B.S. in Education  
 Transfer, Southwestern; Football; "M" Club; Physical Education Majors Club, Vice-President.

R. A. BYARS . . . . . Bruce, Miss.  
 Social Science  
 Business Education  
 B.S. in Education

EVELYN CARTER . . . . . Belzoni, Miss.  
 Home Economics  
 B.S. in Education  
 Y. W. A.; Home Economics Club.

R. B. CARTER . . . . . Belzoni, Miss.  
 Biological Science  
 B.S. in Education  
 Transfer, Sunflower Junior College.

G. M. CHESTER . . . . . Vaughn, Miss.  
 Physical Education  
 B.S. in Education  
 Transfer, Halmes Junior College; Physical Education Majors Club; Intramural Council, Chairman.

ROBERT A. CIRE . . . . . Greenville, Miss.  
 Physical Education  
 B.S. in Education  
 "M" Club; Physical Education Majors Club.

WILLIAM E. COCKRELL . . . . . Cleveland, Miss.  
 English  
 Biological Science  
 B.S. in Education

HARRIS COLEMAN . . . . . Greenwood, Miss.  
 Social Science  
 B.S. in Education  
 Transfer, Mississippi State College; Delta Playhouse; French Club; Junior Class, President; Senior Class, President; The Broom, Assistant Business Manager; Most Handsome; Men's Honor Council; Civic Chairman, Hardee Hall; Who's Who Among Students in American Universities and Colleges.

# SENIORS

JACK COOK Indianola, Miss.  
Business Administration  
B.S.

Transfer, Sunflower Junior College.

HOMER CORN Greenwood, Miss.  
Mathematics  
Social Science  
B.S. in Education

WAYNE P. DAVIDSON Leland, Miss.  
Physical Education  
Social Science  
B.S. in Education  
"M" Club; Physical Education Majors Club.

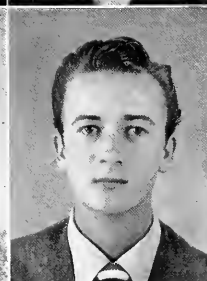
VIVIAN ADELE DAVIS Pettit, Miss.  
Chemistry  
B.S.  
Delta Musica; French Club; Home Economics Club;  
Science Club, Treasurer.

LEONA ANISTON DEAN Leland, Miss.  
Business Education  
Biological Science  
B.S. in Education  
Delta Playhouse; Alpha Psi Omega, Vice-President;  
Science Club; Commercial Club; Senior Class, Secretary;  
Women's Honor Council; Student Body, Secretary; THE  
BROOM, Editor-in-Chief; Who's Who Among Students in  
American Universities and Colleges.

IRIS DICKSON Tippo, Miss.  
Elementary Education  
B.S. in Education  
Transfer, Wood Junior College; Elementary Club, Pre-  
sident.

ROGER E. (Bill) DUNCAN Preston, Miss.  
Social Science  
Transfer, East Mississippi Junior College; Baseball;  
Basketball.

JOHN C. FARRIS Hallandale, Miss.  
English



# SENIORS



JANE FARRISH . . . . . Greenwood, Miss.  
 Elementary Education  
 B.S. in Education  
 Transfer, Holmes Junior College; Elementary Club; Delta  
 Singers; W. A. A.

EDNA FEATHER . . . . . Hushpuckena, Miss.  
 Mathematics  
 B.S. in Education  
 Transfer, Sunflower Junior College; Y. W. A.; B. T. U.,  
 President.



WAYNE GADDIS . . . . . Baldwyn, Miss.  
 Mathematics  
 Physical Education  
 B.S. in Education

BEN GANN . . . . . Booneville, Miss.  
 Physical Education  
 B.S. in Education



ALICE HAMMOND GARDNER . . . . . Greenwood, Miss.  
 English  
 B.S. in Education  
 Transfer, M. S. C. W.; Scribes Club.

BILL GARDNER . . . . . Greenwood, Miss.  
 Social Science  
 Business Administration  
 B. S.  
 Commercial Club, President; "M" Club, Vice-President;  
 Baseball; Football, Captain; Best Mannered Boy; Assistant  
 Business Manager MISS DELTA; Student Government,  
 Vice-President; Who's Who Among Students in American  
 Universities and Colleges.



JEANNINE HUGHES GARDNER . . . . . Greenwood, Miss.  
 Elementary Education  
 B.S. in Education  
 Elementary Club; Delta Singers; Football Maid.

JAMES E. GILLESPIE . . . . . Pleasant Grove, Miss.  
 Business Administration  
 B.S.  
 Transfer, Northwest Junior College.



# SENIORS

JAMES O. GREGORY . . . . . Cleveland, Miss.  
 Social Science  
 Business Administration  
 B.S.

BOBBIE (Momie) HAMMACK . . . . . Tutwiler, Miss.  
 Social Science  
 B.S. in Education  
 W. A. A.

LORRAINE HEATH . . . . . Grenada, Miss.  
 Home Economics  
 B.S. in Education  
 Transfer, M. S. C. W.; Home Economics Club.

MARY HARPOLE . . . . . Eupora, Miss.  
 Home Economics  
 B.S. in Education  
 Transfer, Wood Junior College; Home Economics Club,  
 President.

RICHARD HENRY . . . . . Pace, Miss.  
 Business Administration  
 B.S.

MARY HILLIARD . . . . . Nitta Yuma, Miss.  
 Physical Education  
 B.S. in Education  
 Elementary Club; W. A. A.; Physical Education Majors  
 Club, Secretary.

RITA TERRY HOFMAN . . . . . Scott, Miss.  
 Art  
 B.S. in Education  
 Transfer, M. S. C. W.; Most Beautiful.

WARD JACKSON . . . . . Carrollton, Miss.  
 Social Science  
 B.S. in Education



# SENIORS



WAYNE JACKSON . . . . . New Albany, Miss.  
 English  
 Social Science  
 B.S. in Education

ARTIE JANOUSH . . . . . Bayle, Miss.  
 Business Administration  
 B.S.  
 Transfer, Mississippi State Collage.



FRED C. JEPSEN . . . . . Sledge, Miss.  
 Physical Education  
 B.S. in Education

NELLE BRIDGERS JOINER . . . . . Minter City, Miss.  
 English  
 Physical Education  
 B.S. in Education  
 Delta Playhouse; W. A. A.; MISS DELTA Staff; THE BROOM Staff.



MARTHA ELAINE JONES . . . . . Lambert, Miss.  
 Home Economics  
 B.S. in Education  
 Transfer, Clarke Memorial College; Y. W. A; Delta Sing-ers; Home Economics Club; B. S. U. Council.

JIMMY B. LANGSTON . . . . . Greenville, Miss.  
 Chemistry  
 Biological Science  
 B.S.



CHARLIE LEE . . . . . Merigold, Miss.  
 Physical Education  
 B.S. in Education  
 Physical Education Majors Club.

JARVIS EMILY LOVE . . . . . Itta Bena, Miss.  
 Business Education  
 B.S. in Education  
 Delta Playhouse; Scribes Club; Delta Musica; MISS DELTA Staff; Band, Secretary; Commercial Club; THE BROOM Staff; Alpha Psi Omega, Secretary; Wittiest Girl; Women's Honor Council; Who's Who Among Students in American Universities and Colleges.

# SENIORS

ALBERT MANN, JR. Skene, Miss.

Social Science  
B.S. in Education

Baseball.

BILL MANNING Drew, Miss.

Business Education  
B.S. in Education

Transfer, M. S. C. W.; Commercial Club; W. A. A.;  
Y. W. C. A.

TOM MASSEY Booneville, Miss.

Business Administration  
B.S.

SIDNEY E. MAYO Cleveland, Miss.

Business Administration  
B.S.

Transfer, Mississippi State College.

BETTY JO McCAIN Cleveland, Miss.

Business Education  
B.S. in Education

Transfer, M.S.C.W.; W. A. A.; Delta Playhouse; MISS  
DELTA Staff; Dance Club.

JEWELL McGINTY Lexington, Miss.

Home Economics  
B.S. in Education

Transfer, Holmes Junior College; Home Economics Club,  
Vice-President.

RICHARD RUBE McLENDON Crenshaw, Miss.

Business Administration  
B.S.

Transfer, Northwest Junior College.

JOHN C. MERRILL, JR. Cleveland, Miss.

English  
Social Science  
B.A.

Scribes Club; B.S.U.; Spanish Club, President; MISS  
DELTA, Editor; LITTLE GREEN BOOK, Editor; Studen Cab-  
inet; Most Versatile; Who's Who Among Students in Ameri-  
can Universities and Colleges.



# SENIORS



WALTER (Tollie) MILLER Greenwood, Miss.  
 Science  
 B.S.

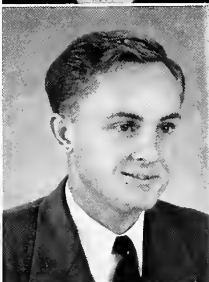
Wittiest Boy.

GENE MORLEY Skene, Miss.  
 Business Education  
 B.S. in Education  
 Delta Singers; Commerical Club; Delta Musica.



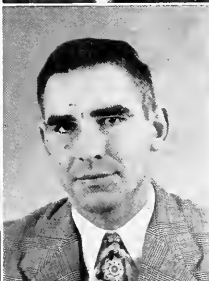
CECIL (Little Joe) OSWALT Alligator, Miss.  
 Social Science  
 B.S. in Education  
 International Relations Club; Men's Honor Council; Civic  
 Chairman, Hardee Hall.

LADY ARNOLD PATE Goodman, Miss.  
 Business Education  
 B.S. in Education  
 Transfer, Holmes Junior College.



NELL ELIZABETH PATTERSON Memphis, Tenn.  
 Business Education  
 Physical Education  
 B.S. in Education  
 Commercial Club; Physical Education Majars Club; MISS  
 DELTA Staff; Delta Ployhouse; Women's Honor Council.

ROBERT M. POWELL Memphis, Tenn.  
 Social Science  
 Physical Education  
 B.S. in Education  
 Basketball; International Relations Club; Physical Edu-  
 cation Majars Club; "M" Club; Baseball; Intramural Council.



MRS. O'WHITE PRICE Catchings, Miss.  
 Music  
 B.S. in Music Education

HOWARD LEE RAY Etta, Miss.  
 Physical Education  
 B. S. in Education  
 Transfer, Holmes Junior College; Physical Education  
 Majars Club, Treasurer.

# SENIORS

LINVILLE REED Glen Allan, Miss.

Mathematics  
Business Administration  
B.S.

French Club; THE BROOM Staff.

WILLIAM REED Booneville, Miss.

Business Administration  
B.S.

A. C. (Chicken) ROBERTS Webb, Miss.

Business Administration  
B.S.

WAYNE L. ROBERTS Blue Springs, Miss.

Social Science  
B.S. in Education

Transfer, Holmes Junior College; International Relations Club.

MARTHA (Polly) RYALS Hollandale, Miss.

Science  
Mathematics  
B.S. in Education

Science Club, Secretary; W. A. A.; Delta Playhouse, President; Alpha Psi Omega; Y. W. C. A., President; Wesley Foundation Council, MISS DELTA Staff; THE BROOM Staff; Women's Honor Council, President; Best Play Director.

FAYE SANDIFER Rolling Fork, Miss.

Business Education  
B.S. in Education

Transfer, Belhaven; Delta Musica; Y. W. C. A.; Y. W. A.; Ensemble.

REBECCA SEARCY Boyle, Miss.

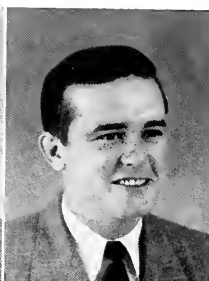
Foreign Language  
B.A.

Y. W. C. A.; MISS DELTA Staff; THE BROOM Staff; French Club; Commercial Club; Spanish Club; Most Intellectual Girl; Junior Class, Secretary; Senior Class, Vice-President; Who's Who Among Students in American Universities and Colleges.

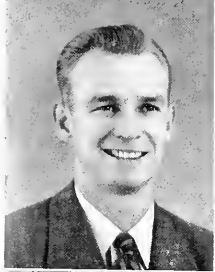
ROBERT SIMPSON Cleveland, Miss.

Mathematics  
Business Administration  
B.S.

Band; Delta Singers; Delta Playhouse; Alpha Psi Omega.



# SENIORS



HUBERT DEAN SMITH Greenville, Miss.  
 Physical Education  
 B.S. in Education  
 Physical Education Majors Club; Delta Playhouse; Best Character Actor; Football Manager; Men's Honor Council; Who's Who Among Students in American Universities and Colleges.

ROY A. SMITH Philipp, Miss.  
 Business Administration  
 B.S.  
 Transfer, Sunflower Junior College; Baseball; Intramural Council; "M" Club.

BILLY STEPHENSON Clarksdale, Miss.  
 Mathematics  
 Physics  
 B.S.  
 Football; Track; "M" Club; Delta Singers; B.S.U.

WILLIAM BURNS STRODE Clarksdale, Miss.  
 Business Administration  
 B.S.  
 Delta Singers; Band; Orchestra Director.

ROBERT SYKES Philipp, Miss.  
 Physical Education  
 B.S. in Education  
 Football; Baseball; "M" Club; Physical Education Majors Club.

JOSEPH N. TACKETT Cleveland, Miss.  
 Social Science  
 B.S. in Education  
 International Relations Club.

DOROTHY ADELIA THOMAS Vaughn, Miss.  
 Physical Education  
 Science  
 B.S. in Education  
 Most Typical Freshman Girl; W. A. A.; French Club; Physical Education Majors Club, President; Most Athletic Girl.

ELMON THOMAS Webb, Miss.  
 Science  
 B.S. in Education  
 Transfer, Sunflower Junior College.

# SENIORS

MORRIS KING THOMPSON . . . . . Cleveland, Miss.  
 Art  
 B.S. in Education  
 Transfer, Mississippi State College; Band; Track; "M"  
 Club; Delta Singers, President; Art Club, Vice-President.

ROBERT TOLLISON . . . . . Moorhead, Miss.  
 Secondary Education  
 B.S. in Education  
 Transfer, Sunflower Junior College.

ROSE VANCE . . . . . Dixon, Miss.  
 Business Education  
 B.S. in Education  
 Commercial Club; Y. W. C. A.; Junior Class, Vice-Presi-  
 dent; Women's Honor Council.

BILLIE WALKER . . . . . Pheba, Miss.  
 Home Economics  
 B.S. in Education  
 Transfer, M. S. C. W.; Home Economics Club.

JAMES H. WHITE . . . . . Beulah, Miss.  
 Social Science  
 Business Administration  
 B.S.  
 "M" Club; Golf; Business Manager THE BROOM; Men's  
 Honor Council.

KENNETH C. WILLIAMS . . . . . Cleveland, Miss.  
 Social Science  
 B.A.  
 Transfer, Kentucky Wesleyan College; French Club.

THERESA WILLIAMS HANSBROUGH . . . . . Crowder, Miss.  
 Biological Science  
 B.S. in Education  
 Science Club; THE BROOM Staff.

CARL WILLIAMSON . . . . . Louisville, Miss.  
 Social Science  
 B.S. in Education  
 International Relations Club, President.



# SENIORS

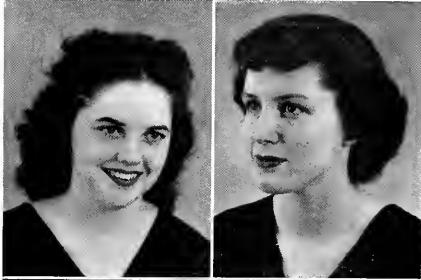


EMMA JO YEAGER WOODRUFF . . . . . Skene, Miss.  
Chemistry  
B.S.

Delta Singers; French Club; Women's Honor Council; Women's Ensemble; Inter-Faith Council; B.S.U., President.

SAM WRIGHT . . . . . Greenwood, Miss.  
Social Science  
B.S. in Education

Transfer, University of Missouri; "M" Club; Football Manager; International Relations Club.

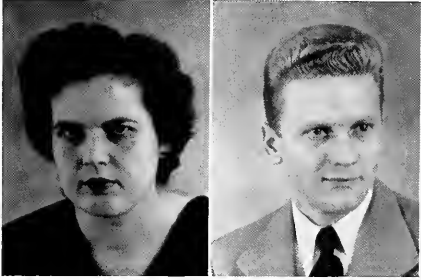


PATSY LAFOE YERBY . . . . . Glen Allan, Miss.  
Music  
B.M.

Transfer, University of Mississippi; Cheer Leader; Most Beautiful; Delta Singers, Vice-President.

KATE YERGER . . . . . Rosedale, Miss.  
Social Science  
B.S. in Education

Transfer, M. S. C. W.; Delta Singers; W. A. A.; International Relations Club; Y. W. C. A.; MISS DELTA Staff.



MARY YOUNG . . . . . Walnut Grove, Miss.  
Business Education  
B.S. in Education

Transfer, East Central Junior College; Y. W. C. A.

JOHN YURKOW . . . . . Leland, Miss.  
Business Administration  
B.S.

Delta Playhouse; Best Actor; Wittiest Boy; Sophomore Class, President; MISS DELTA, Business Manager; Student Government, President; Who's Who Among Students in American Universities and Colleges.

## NOT PICTURED

CURTIS COLLUMS

Mathematics  
Social Science  
B.S. in Education

CHARLES MABRY

Business Administration  
B.S.

FRED WILKES

Business Administration  
B.S.







## JUNIOR CLASS OFFICERS

KENNETH SISSELL	President
KAY POE	Vice-President
NELL CLEMENT	Secretary-Treasurer
DICK MOORE	Class Representative
MR. JAMES SISSON	Sponsor





ABEL, C.  
ABRAHAM, C.  
ALFORD, H.  
ANDERSON, P.



ARNOLD, B. J.  
ARNOLD, E. C.  
AYCOCK, R.  
BECKUM, J.



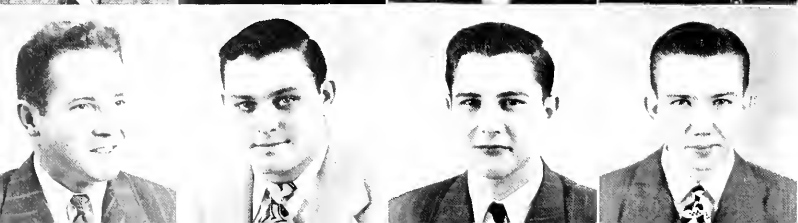
BEEVERS, B.  
BELLIPANNI, J.  
BOGGS, H.  
BONDS, B. L.



BOYD, B.  
BRADLEY, B. R.  
BRANNON, B.  
BRYANT, J. W.



CALLOWAY, C.  
CAMPBELL, C.  
CARROLL, R.  
CARTER, D.



CHANDLER, R.  
CHERTOW, M.  
CHESTER, P.  
CHILDRESS, H.

# JUNIORS

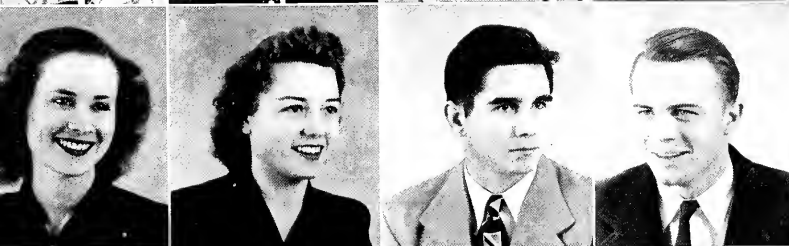
CLAUDE ABEL	Cleveland, Miss.	BETTYE BOYD	Anguilla, Miss.
CAROLYN ABRAHAM	Leland, Miss.	BILL R. BRADLEY	Tutwiler, Miss.
HOWARD ALFORD	Vicksburg, Miss.	BILLIE BRANNON	Cleveland, Miss.
PAUL (Buzz) ANDERSON	Indianola, Miss.	JOHN W. BRYANT	Holly Springs, Miss.
BETTY JEAN ARNOLD	Charleston, Miss.	CHARLES CALLOWAY	Grenada, Miss.
E. C. ARNOLD	Itta Bena, Miss.	CHARLSIE CAMPBELL	Greenwood, Miss.
RAYMOND AYCOCK	Elliott, Miss.	RUTH CARROLL	Walthall, Miss.
JOE BECKUM	Ruleville, Miss.	DOROTHY CARTER	Belzoni, Miss.
BOBBIE BEEVERS	Ruleville, Miss.	RAY CHANDLER	Ruleville, Miss.
JIMMIE BELLIPANNI	Indianola, Miss.	MILTON CHERTOW	Pace, Miss.
HARMON BOGGS	Baoneville, Miss.	PAUL CHESTER	Money, Miss.
BOBBY L. BONDS	Charleston, Miss.	HARRY CHILDRESS	Satartia, Miss.



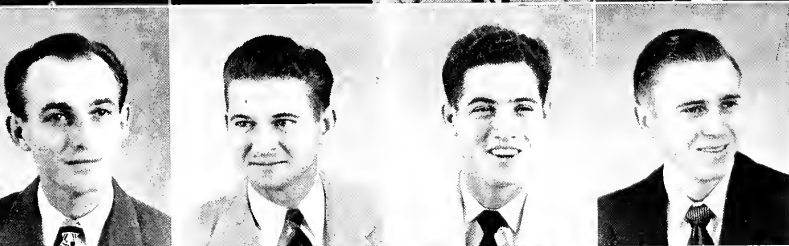
CLEARMAN, M. G.  
CLEMENT, N.  
COCHRAN, F.  
COHEN, M.



COLEMAN, W. M.  
COLLUMS, C.  
CRAWFORD, C.  
CROVER, M. S.



CROWELL, H.  
CURTISS, M.  
DALTON, A. C.  
DAVIS, J.



DAVIS, R.  
DILLARD, J.  
DORROUGH, C.  
DOWDY, D. L.



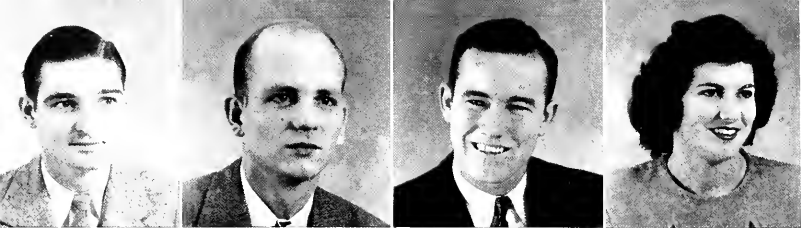
DULANEY, S.  
DURHAM, W.  
EARLE, W.  
EASTERWOOD, T. E.



EDWARDS, G. W.  
ELLINGTON, M.  
ELLIS, H.  
ENGLAND, M. E.

# JUNIORS

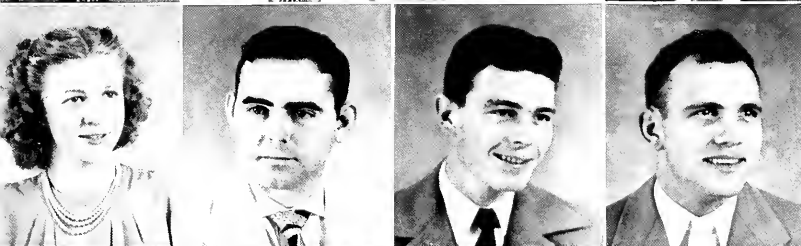
MARY GEORGE CLEARMAN	Louisville, Miss.	REX DAVIS	Maben, Miss.
NELL CLEMENT	Black Hawk, Miss.	JEFF DILLARD	Itta Bena, Miss.
FRANK COCHRAN	Hazel, Kentucky	CHARLES (Sanny) DORROUGH	Ruleville, Miss.
MELVIN COHEN	Shaw, Miss.	DORMAN L. DOWDY	New Albany, Miss.
WILLIAM (Bill) COLEMAN	Drew, Miss.	SIM DULANEY	Clarksdale, Miss.
CURTIS COLLUMS	Marks, Miss.	WILLIAM (Sugar) DURHAM	Friars Point, Miss.
CHARLENE CRAWFORD	Isala, Miss.	WOODSON (Male) EARLE	Clarksdale, Miss.
MARY SUE CROMER	Greenville, Miss.	THAD E. EASTERWOOD	Clarksdale, Miss.
HILDA CROWELL	Eupora, Miss.	GATLIN W. EDWARDS	Macrhead, Miss.
MARJORIE CURTISS	Clarksdale, Miss.	MORRIS ELLINGTON	Ackerman, Miss.
A. C. DALTON	Cleveland, Miss.	HUGH ELLIS	Camden, Arkansas
JOHN DAVIS	Cleveland, Miss.	MAY EVELYN ENGLAND	Eupora, Miss.



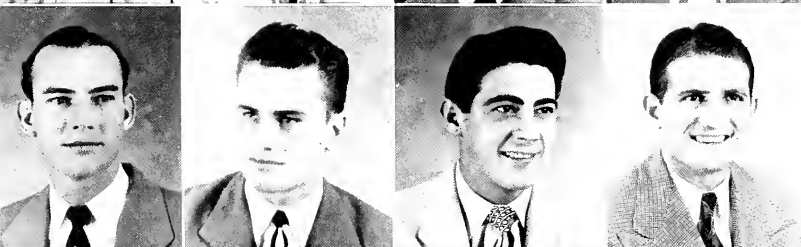
ERVIN, C. L.  
FARNED, J.  
FEARS, R. P.  
FERRACCI, F.



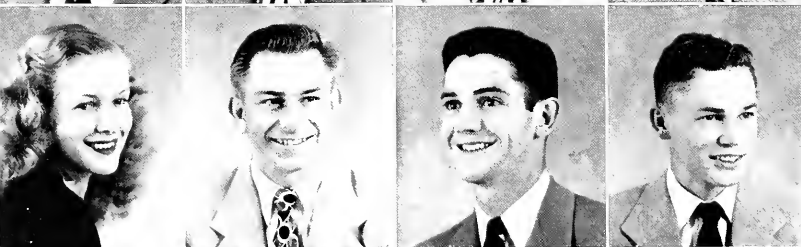
FEW, H.  
FIELDER, P.  
FORBES, M. W.  
FOREMAN, D.



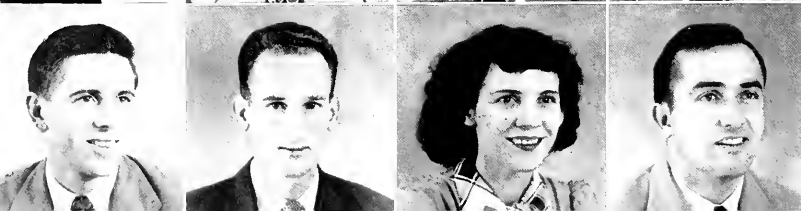
FULCHER, D.  
FUNCHESS, K. D.  
GERRARD, H.  
GIBSON, D.



GORMAN, J. H.  
GRAHAM, C.  
GRANT, D.  
GREZZAFFI, T.



GRIFFIN, R.  
GUEST, J.  
GUION, O.  
GUNTER, C.



GUYNES, C.  
HALL, O. W.  
HARDY, L.  
HARPOLE, W.



# JUNIORS

CALVIN L. ERVIN . . . . .	Hazelhurst, Miss.	JOHN H. GORMAN . . . . .	Greenville, Miss.
JOE FARNED . . . . .	Cleveland, Miss.	CHARLES GRAHAM . . . . .	Corinth, Miss.
RALPH P. FEARS . . . . .	Anding, Miss.	DERALD GRANT . . . . .	Greenwood, Miss.
FRANCES FERRACCI . . . . .	Show, Miss.	TONY GREZAFFI . . . . .	Benoit, Miss.
HUBERT FEW . . . . .	Gunnison, Miss.	ROXIE GRIFFIN . . . . .	Cleveland, Miss.
PAUL FIELDER . . . . .	Charleston, Miss.	JOE GUEST . . . . .	Greenville, Miss.
MARY W. FORBES . . . . .	Shaw, Miss.	OSBORNE GUION . . . . .	Jackson, Miss.
DERRALL FOREMAN . . . . .	Bostrop, Lo.	CHARLES (Wimpy) GUNTER . . . . .	Poce, Miss.
DOROTHY FULCHER . . . . .	Yozoo, City, Miss.	CHARLES GUYNES . . . . .	Hazelhurst, Miss.
KARL D. FUNCHESS . . . . .	Panama City, Fla.	OTTO W. HALL . . . . .	Hollandole, Miss.
HAL GERRARD . . . . .	Yozoo City, Miss.	LUCILLE HARDY . . . . .	Cleveland, Miss.
DONALD GIBSON . . . . .	Cleveland, Miss.	WILBUR (Son) HARPOLE . . . . .	Mathiston, Miss.



HARRINGTON, G.  
 HERRING, E.  
 HIGGS, C.  
 HINTON, J.



HODGES, B. R.  
 HOGUE, B.  
 HOLMES, A.  
 HOLLAND, F.



HOLLINGSWORTH,  
 M. A.  
 HOOD, S.  
 HORTON, R.  
 HUGHES, H. T.



JACOBS, F. C.  
 JOHNSTON, L.  
 JOINER, W.  
 JONES, L. A.



JUMPER, J.  
 KEALHOFER, A. A.  
 KEALHOFER, J. B.  
 KIKER, B. L.



KING, M. T.  
 KNIGHTEN, J.  
 LANGDON, M. N.  
 LEE, P.

# JUNIORS

GWENDOLYN HARRINGTON	Houston, Miss.	FRED C. (Toby) JACOBS	Rosedale, Miss.
ELIZABETH (Liz) HERRING	Dundee, Miss.	LOUIS JOHNSTON	Drew, Miss.
CY HIGGS	Greenville, Miss.	WALTER (Slick) JOINER	Minter City, Miss.
JOYCE HINTON	Lakeland, Fla.	L. A. JONES	Oakland, Miss.
BILLY RAY HODGES	Collinsville, Miss.	JERRY JUMPER	Booneville, Miss.
BARBARA HOGUE	Eden, Miss.	ALICE ALLISON KEALHOFFER	Merigold, Miss.
AVIS HOLMES	Shelby, Miss.	JOHN B. KEALHOFFER	Merigold, Miss.
FRANCES HOLLAND	Mothiston, Miss.	B. L. KIKER	Drew, Miss.
MARGARETTE ANN HOLLINGSWORTH	Leland, Miss.	MARTIN T. KING, JR.	Vicksburg, Miss.
SIMON HOOD, JR.	Ruleville, Miss.	JEAN KNIGHTEN	Ruleville, Miss.
RAYMOND HORTON	Merigold, Miss.	MARY NELL LANGDON	Thomaston, Miss.
H. T. HUGHES	Water Valley, Miss.	PAT LEE	Carrollton, Miss.



LIPE, R.  
LINDSEY, A. W.  
MADDEN, B.  
MAGERS, J.



MAXWELL, R. L.  
MEADERS, E.  
MCCOOL, R.  
MCCREARY, J. R.



MCCRORY, D. R.  
MCGEE, A.  
MCGEE, M.  
MCGUIRE, J. C.



MCKELROY, P.  
MCKINNEY, L.  
MCKNIGHT, O.  
MOORE, D.



MOORE, E.  
NASH, T.  
NEVEL, L.  
NEVEL, E.



NEVEL, H.  
NORWOOD, D.  
OSOINACH, E.  
PAYNE, R.

# JUNIORS

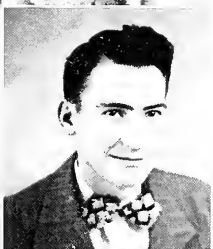
ROY LIPE	Bayle, Miss.	PAUL McKELROY	Bruce, Miss.
A. W. LINDSEY	Cleveland, Miss.	LESTER McKINNEY	New Site, Miss.
BUDDY MADDEN	Wiggins, Miss.	OLLIE McKNIGHT	Cleveland, Miss.
JAMES MAGERS	Baldwyn, Miss.	DICK MOORE	Clarksdale, Miss.
R. L. MAXWELL	Isola, Miss.	EDITH MOORE	Lexington, Miss.
EDITH MEADERS	Water Valley, Miss.	THERON NASH	Florence Miss.
ROBERT McCOOL	Leland, Miss.	CARLEE NEVEL	Stover, Miss.
JAMES R. McCREARY	New Site, Miss.	ERBA NEVEL	Stover, Miss.
DONALD R. McCRORY	McAdams, Miss.	HAZEL NEVEL	Stover, Miss.
ANN McGEE	Pheba, Miss.	DOLLIE NORWOOD	Sumner, Miss.
MARY McGEE	Pheba, Miss.	ELIZABETH OSOINACH	Inverness, Miss.
J. C. McGUIRE	Gulfport, Miss.	ROBERT PAYNE	Cascilla, Miss.



PEACOCK, W.  
 PHILLIPS, J.  
 PHILLIPS, M. W.  
 PITTMAN, A.



POE, K.  
 POE, L.  
 RAKESTRAW, T.  
 REAVES, A.



REED, R.  
 RICKS, A.  
 RODGERS, P. O.  
 ROGERS, D.



ROSSETTI, F.  
 RUTHERFORD, M.  
 SHEPHERD, F.  
 SISSELL, K.



SLAUGHTER, E.  
 SLAWSON, P.  
 SMITH, B.  
 SMITH, H.



SPELLS, A.  
 SPRY, D.  
 SPRY, J. H.  
 STEPHEN, P.

# JUNIORS

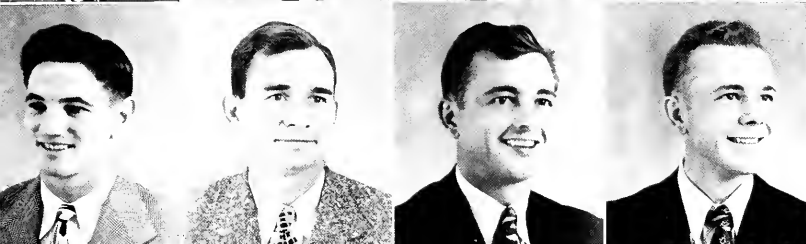
WILLIAM PEACOCK	Merigold, Miss.	FRED ROSSETTI	Shaw, Miss.
JAMES (Flip) PHILLIPS	Greenville, Miss.	MILDRED RUTHERFORD	Faulkner, Miss.
MARGARET W. PHILLIPS	Greenville, Miss.	FREDERICK SHEPHERD	Greenville, Miss.
ANN PITTMAN	Boyle, Miss.	KENNETH SISSELL	Water Valley, Miss.
KAY POE	Indianola, Miss.	EDWARD SLAUGHTER	Silver City, Miss.
LIBA POE	Indianola, Miss.	PAUL SLAWSON	Brooksville, Miss.
TYE RAKESTRAW	Macedonia, Miss.	BILLY SMITH	Booneville, Miss.
ALLEN REAVES	Blue Mountain, Miss.	HERMAN SMITH	Vordaman, Miss.
RUTH REED	Ripley, Miss.	ALBERT SPELLS	Cleveland, Miss.
ALTON RICKS	Wheeler, Miss.	DON SPRY	West Memphis, Ark.
PAUL OWEN RODGERS	Etta, Miss.	JONNIE H. SPRY	West Memphis, Ark.
DON ROGERS	Glendora, Miss.	PERCY STEPHEN	Greenwood, Miss.



STRATTON, E.  
STRICKLAND, M.  
TARZI, J.  
TATUM, T.



TAYLOR, R.  
THOMPSON, J. W.  
THRASH, P.  
VALENTINE, J. W.



WADE, D.  
WALKER, H. H.  
WALKER, G.  
WALKER, T.



WALPER, J.  
WARD, F.  
WARD, H.  
WATTS, W.



WEEKS, B.  
WEEKS, D.  
WHITE, B.  
WHITE, H.  
WHITE, N.



WILKES, J. F.  
WILLIAMSON, M. M.  
YERBY, E. L.  
YOSTE, J. P.  
YOUNG, F.



# JUNIORS

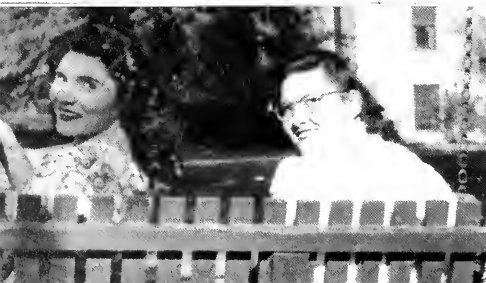
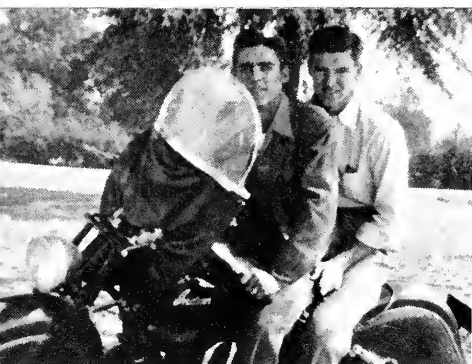
ELOISE STRATTON . . . . .	Mayersville, Miss.	FELIX WARD . . . . .	Ruleville, Miss.
MARIANNE STRICKLAND . . . . .	Belzoni, Miss.	HORACE WARD . . . . .	Canton, Miss.
JIMMY TARZI . . . . .	Clarksdale, Miss.	WENDELL WATTS . . . . .	Clarksdale, Miss.
TAYLOR (Tick) TATUM . . . . .	Brookhaven, Miss.	BENNIE WEEKS . . . . .	Lula, Miss.
RALPH TAYLOR . . . . .	Marks, Miss.	DAN WEEKS . . . . .	Greenwood, Miss.
J. WILLIAM THOMPSON . . . . .	Cleveland, Miss.	BENA WHITE . . . . .	Cruger, Miss.
PATSY THRASH . . . . .	Boyle, Miss.	HORACE WHITE . . . . .	Guntown, Miss.
JOHN WHITE VALENTINE . . . . .	Cleveland, Miss.	NANCY WHITE . . . . .	Cruger, Miss.
DARRY WADE . . . . .	Belzoni, Miss.	JAMES F. WILKES . . . . .	Clarksdale, Miss.
HARRY H. WALKER . . . . .	Cleveland, Miss.	MARY MARGARET WILLIAMSON . . . . .	Tutwiler, Miss.
GRAHAM WALKER . . . . .	Leland, Miss.	EARL LEE YERBY, JR. . . . .	Greenville, Miss.
TIM WALKER . . . . .	Leland, Miss.	JERRY J. YOSTE . . . . .	Vicksburg, Miss.
JOSEF WALPER . . . . .	Memphis, Tenn.	FRANK YOUNG . . . . .	Hazelhurst, Miss.

# JUNIORS

NOT PICTURED

BARBOUR, EARL  
BARLOW, RALPH  
BARNETT, JO  
BASKIN, JOHN  
CHORLEY, GEORGE  
COCKRELL, RICHARD  
DUNAWAY, JOHN

HOLLINGSWORTH, WALTER  
JONES, WILLIE  
LINGLE, DAVID  
NEMITZ, CLARENCE  
PARTEE, BILLY  
WOOD, KENNETH  
COURTNEY, LLOYD





## SOPHOMORE CLASS OFFICERS

MILLS ROGERS      1945      President

FRANK JOHN LOYACANO      1945      Vice-President

KATE GREEN      1945      Secretary

MARGUERITE (Titter) TURNER      1945      Treasurer

DR. DOXIE DEXTER      1945      Sponsor



ADCOCK, M.  
ADERHOLT, R.  
AINSWORTH, B.  
ALFORD, B.  
ALLBRITTON, A.



BAYNE, P.  
BARNES, H. D.  
BEAIRD, J. R.  
BENNETT, J.  
BEST, C.



BINGHAM, R.  
BISHOP, Y.  
BOUNDS, E.  
BOONE, M. A.  
BOX, R.



BOYKIN, M.  
BROWN, J.  
BUFKIN, F.  
CALVERT, L.  
CARPENTER, E. R.



CARROLL, G.  
CINTGRAM, A.  
CLARK, J. F.  
CLEMONS, A.  
COCKERHAM, C. H.



CONN, V.  
COOPER, C. E.  
CORK, J.  
COX, W. L.  
DABBS, C. T.



DALTON, L.  
FOUNTAIN, G.  
GIBSON, J.  
GILLON, J.  
GLASSCO, S.

## SOPHOMORES

MARIE ADCOCK . . . . .	Cleveland, Miss.	LOUISE CALVERT . . . . .	West Point, Miss.
ROGER ADERHOLDT . . . . .	Clarksdale, Miss.	ELLA ROSE CARPENTER . . . . .	Indianola, Miss.
BILL AINSWORTH . . . . .	Jackson, Miss.	GRANVILLE CARROLL . . . . .	Grenada, Miss.
BETTY ALFORD . . . . .	Sidon, Miss.	ANTHONY CINTGRAM . . . . .	Gunnison, Miss.
ALBERT ALLBRITTON . . . . .	Charleston, Miss.	JOE F. CLARK, JR. . . . .	Yazoo City, Miss.
PATTYE BAYNE . . . . .	Ruleville, Miss.	ARCHIE CLEMONS . . . . .	Cleveland, Miss.
HARRY D. BARNES . . . . .	Vicksburg, Miss.	C. H. COCKERHAM . . . . .	Show, Miss.
JOHN R. BEAIRD . . . . .	Isala, Miss.	VIRGINIA CONN . . . . .	Belzoni, Miss.
JAMES BENNETT . . . . .	Blue Mountain, Miss.	CARL E. COOPER . . . . .	Grayspart, Miss.
CAROLYN BEST . . . . .	Hallandale, Miss.	JOYCE CORK . . . . .	Cleveland, Miss.
REX BINGHAM . . . . .	Grayspart, Miss.	WILLIAM L. COX, JR. . . . .	Drew, Miss.
YVONNE BISHOP . . . . .	Shaw, Miss.	C. T. DABBS . . . . .	Shannon, Miss.
ERNESTINE BOUNDS . . . . .	Calhoun City, Miss.	LILLIAN DALTON . . . . .	Cleveland, Miss.
MARY ANNE BOONE . . . . .	Leland, Miss.	GEORGE FOUNTAIN . . . . .	Yazoo City, Miss.
ROBERT BOX . . . . .	Stewart, Miss.	JO GIBSON . . . . .	Anguilla, Miss.
MARGARET BOYKIN . . . . .	Catchings, Miss.	JOY GILLON . . . . .	Grayspart, Miss.
JANE BROWN . . . . .	Isala, Miss.	SUMNER (Soup) GLASSCO . . . . .	Rolling Fork, Miss.
FRANK M. BUFKIN . . . . .	Vicksburg, Miss.		



GREEN, K.  
HALL, M.  
HANNAH, B.  
HARRIS, M. C.  
HEAD, C. V.



HENRY, W. R.  
HENSON, L. C.  
HEWLETT, D.  
HOFMANN, J.  
HOLLOWAY, B.



HOLLOWELL, H.  
HOLMES, C. H.  
HOLMES, E.  
HUBBARD, C. W.  
HUMPHREY, J.



IZNAGA, F.  
JAMES, L. J.  
JOHNS, M. L.  
JOHNSON, A.  
JUNOV, F.



LORANCE, W. G.  
LOYACONO, F. J.  
MACHELL, J.  
MANCILL, R. W.  
MANGUM, C.



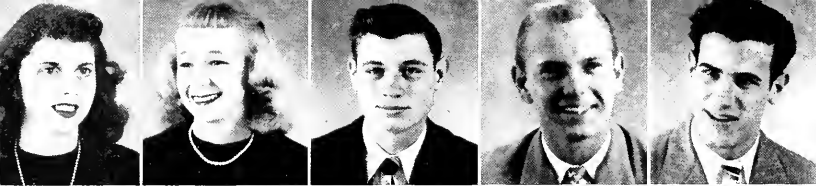
McCOOL, B. J.  
McEACHERN, B. M.  
McNUTT, B.  
MEDDERS, C.  
MOORE, V.



NUSKIEWIEZ, A.  
OAKES, J.  
OAKMAN, B.  
OAKS, L.  
O'ROURKE, D.

# SOPHOMORES

KATE GREEN	Anguilla, Miss.	ANN JOHNSON	Leland, Miss.
MARGIE HALL	Hollandale, Miss.	FRANCES JUNOV	Beulah, Miss.
BETTY HANNAH	Marks, Miss.	WILLIAM G. LORANCE	Cleveland, Miss.
MARY CLARK HARRIS	Deeson, Miss.	FRANK JOHN LOYACONO	Greenville, Miss.
C. V. HEAD	Ruleville, Miss.	JACK MACHELL	Ruleville, Miss.
WILLIAM R. HENRY	Greenville, Miss.	ROBERT W. MANCILL	Indianola, Miss.
L. C. HENSON	Stewart, Miss.	CHARLES MANGUM	Tribbett, Miss.
DEWELL HEWLETT	Pascagaula, Miss.	BETTY JEAN McCOOL	Cleveland, Miss.
JOHN HOFMANN	Detroit, Mich.	BILLY M. McEACHERN	Ruleville, Miss.
BENOIT HOLLOWAY	Anguilla, Miss.	BEVERLY McNUTT	Greenwood, Miss.
HELEN HOLLOWELL	Cleveland, Miss.	CLARENCE MEDDERS	Boyle, Miss.
CLAIRE HERMAN HOLMES	Duckhill, Miss.	VIRGINIA MOORE	Belen, Miss.
ELOISE HOLMES	Shelby, Miss.	ANTHONY NUSKIEWIEZ	Chicago, Ill.
C. W. HUBBARD	Tunica, Miss.	JEAN OAKES	Murphy, Miss.
JACK HUMPHREY	Helena, Ark.	BILLY OAKMAN	Panther Burn, Miss.
FERNANDO IZNAGA	Havana, Cuba	LUCILLE OAKS	Cleveland, Miss.
LAURA JEAN JAMES	Grayspart, Miss.	DAN (Jabo) O'ROURKE	Clarksdale, Miss.
MARY LOUISE JOHNS	Greenville, Miss.		



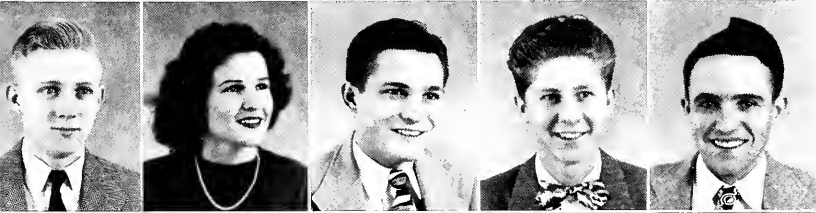
PEARSON, M. A.  
PEEPLES, J.  
PERRY, J. P.  
PETERSON, J.  
POLLES, J.



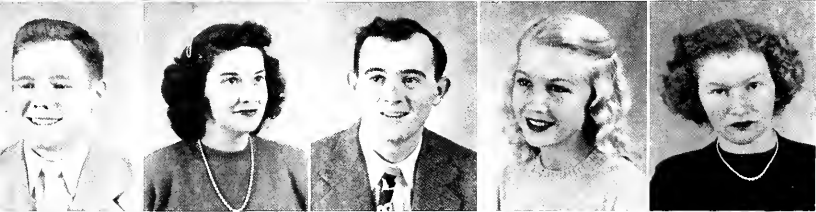
PRITCHARD, L. R.  
PRYOR, B. Z.  
QUINN, G.  
RACKLEY, R.  
REEVES, J.



ROBERTS, D. I.  
ROBERTS, J.  
RODGERS, B. L.  
ROGERS, M.  
SCHOONOVER, J.



SINCLAIR, C. R.  
STAFFORD, J. R.  
STRICKLAND, B.  
STRIDER, D.  
SUDDOTH, J.



TAGGART, B.  
TATUM, S. F.  
TERRY, H.  
THOMAS, B.  
TURNER, M.



VINCENT, J.  
VINER, L.  
WATTS, E.  
WEST, M. J.  
WHITAKER, F.



WHITTEN, D.  
WIGGINS, B.  
WOOD, M.  
WRIGHT, B.  
WUN, W.



# SOPHOMORES

MARY ANN PEARSON . . . . .	Cleveland, Miss.	DONALD STRIDER . . . . .	Charleston, Miss.
JOYEANNE PEEPLES . . . . .	Schlater, Miss.	JACK SUDDOTH . . . . .	Friars Point, Miss.
JIMMY P. PERRY . . . . .	Greenville, Miss.	BILL TAGGART . . . . .	Greenville, Miss.
JIMMIE PETERSON . . . . .	Clarksdale, Miss.	SARA FELTON TATUM . . . . .	Camo, Miss.
JOHN POLLES . . . . .	Clarksdale, Miss.	HARRIS TERRY . . . . .	Schlater, Miss.
LEONARD RAY PRITCHARD . . . . .	Webb, Miss.	BILLIE THOMAS . . . . .	French Camp, Miss.
BETTY ZANE PRYOR . . . . .	Rolling Fork, Miss.	MARGUERITE (Titter) TURNER . . . . .	Estill, Miss.
GLADYS QUINN . . . . .	Elaine, Ark.	JOAN VINCENT . . . . .	Clarksdale, Miss.
RUFFIN RACKLEY . . . . .	Pantatac, Miss.	LOUISE VINER . . . . .	Drew, Miss.
JAMES REEVES . . . . .	Jackson, Miss.	EUNICE WATTS . . . . .	Clarksdale, Miss.
D. I. ROBERTS . . . . .	Greenville, Miss.	MARY JEANNETTE WEST . . . . .	Hushpuckena, Miss.
JIM ROBERTS . . . . .	Leland, Miss.	FRANK WHITAKER . . . . .	Mayersville, Miss.
BOBBIE LEE RODGERS . . . . .	Ruleville, Miss.	DON WHITTEN . . . . .	Charleston, Miss.
MILLS ROGERS . . . . .	Cleveland, Miss.	BETTY WIGGINS . . . . .	Cleveland, Miss.
JOAN SCHOONOVER . . . . .	Lauipe, Miss.	MARJORIE WOOD . . . . .	Merigold, Miss.
CHARLIE RAY SINCLAIR . . . . .	Cleveland, Miss.	BOB WRIGHT . . . . .	Rolling Fork, Miss.
JOHNNIE RUTH STAFFORD . . . . .	Cleveland, Miss.	WILLIE WUN . . . . .	Merigold, Miss.
BILL STRICKLAND . . . . .	Rolling Fork, Miss.		

---

## NOT PICTURED

BENNETT, EMMA JEAN  
 BIBB, BETTY  
 BOYLE, BARBARA  
 CHILCOAT, SUE  
 CRUMBY, HORACE  
 ELLIS, RUTH ANN

FRAZIER, JOE  
 HUDE, HALVOR  
 McPEAK, ROBERT  
 PEARSON, GUY  
 PENDERGRAST, FRANK  
 POWELL, CAROLYN





## FRESHMAN CLASS OFFICERS

BOBBY BARRETT	President
JOHN GUERIERI	Vice-President
PATSY PORTER	Secretary
SARAH LAWRENCE	Treasurer
MR. FOREST WYATT	Sponsor



ABEL, E.  
ABEL, J.  
ABEL, S.  
ALLISON, P.



ORMOND, E.  
ARTIGAS, E.  
BARKEMEYER, R.  
BARRETT, B.



BELL, L.  
BENNETT, L.  
BEST, T.  
BISELL, A. H.



BLACK, A.  
BLACK, L.  
BLAINE, J.  
BLANDING, G.



BLAYLOCK, B.  
BONNER, H. H.  
BRONN, K.  
BROOKS, L.



BUNCH, M. F.  
BURLE, B.  
BYRD, B.  
CLARKE, R.



COLEMAN, B.  
CRUMBY, A.  
CUCCHI, A.  
DANTZLER, C.

# FRESHMEN

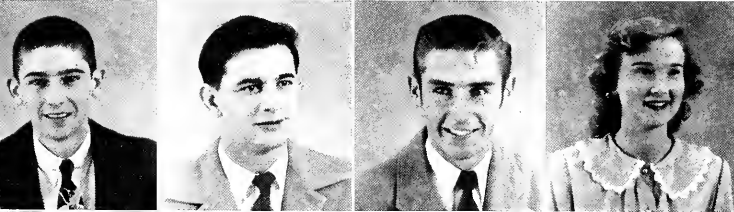
ELOISE ABEL . . . . .	Duck Hill, Miss.	JANE BLAINE . . . . .	Mount Olive, Miss.
JEWEL ABEL . . . . .	Belzoni, Miss.	GEORGIE BLANDING . . . . .	Stoneville, Miss.
SARAH ABEL . . . . .	Duck Hill, Miss.	BETTY BLAYLOCK . . . . .	Cleveland, Miss.
PEGGY ALLISON . . . . .	Tippo, Miss.	HARRY H. BONNER . . . . .	Greenwood, Miss.
ELIZABETH ORMOND . . . . .	Doddsville, Miss.	KATHERINE BRONN . . . . .	Natchez, Miss.
CELSO ARTIGAS . . . . .	Adjuntas, Puerto Rico	LOUISE BROOKS . . . . .	Ruleville, Miss.
RUTH BARKEMEYER . . . . .	West Point, Miss.	MARY FRANCES BUNCH . . . . .	Cleveland, Miss.
BOBBY BARRETT . . . . .	Greenwood, Miss.	BARBARA BURLE . . . . .	Greenville, Miss.
LAQUITA BELL . . . . .	Belzoni, Miss.	BERRY BYRD . . . . .	Cleveland, Miss.
LIL BENNETT . . . . .	Clarksdale, Miss.	REBA CLARK . . . . .	Hollandale, Miss.
TERRY BEST . . . . .	Yazoo City, Miss.	BILL COLEMAN . . . . .	Greenville, Miss.
ALLEN H. BISSELL . . . . .	Itto Beno, Miss.	ANN CRUMBY . . . . .	Cleveland, Miss.
ALICE BLACK . . . . .	Greenville, Miss.	ANGELINA CUICCHI . . . . .	Shaw, Miss.
LEROY BLACK . . . . .	Greenville, Miss.	CATHRON DANTZLER . . . . .	Drew, Miss.



DARBY, J.  
DAVIDSON, A. A.  
DEAN, F.  
DEAN, M.



DICKSON, L.  
DOUGLAS, E.  
ESTES, B.  
FARRIS, R.



FULLER, B.  
FULLILOVE, W.  
GAMMILL, P.  
GEDDIE, B.



GILDER, J. H.  
GORMAN, J.  
GRAY, J. A.  
GRAY, W.



GREEN, E.  
GUERIERI, J.  
GUNN, C.  
HANDLEY, M. R.



HARRISON, R.  
HARTLEY, C.  
HEARN, J. A.  
HORNOR, J.



HOUSE, J.  
HOWELL, J.  
HUBBARD, A.  
HUTCHINSON, J.

# FRESHMEN

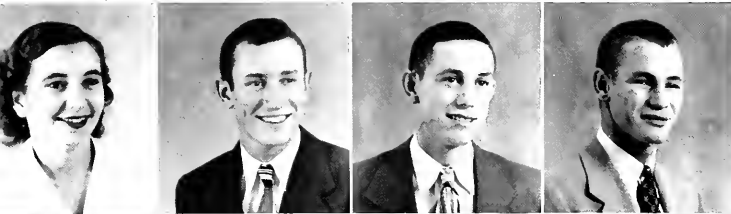
JUANITA DARBY	Charleston, Miss.	JO ANNE GRAY	Clarksdale, Miss.
ALICE ANNE DAVIDSON	Greenville, Miss.	WINSTON GRAY	Belzoni, Miss.
FRANCES DEAN	Okolona, Miss.	ED GREEN	Cleveland, Miss.
MARIE DEAN	Cleveland, Miss.	JOHN GUERIERI, JR.	So. Plainfield, N. J.
LOUISE DICKSON	Tippo, Miss.	CATHIE GUNN	Tutwiler, Miss.
EARLINE DOUGLAS	Charleston, Miss.	MARY RUTH HANDLEY	Skene, Miss.
BILLY ESTES	Benoit, Miss.	ROBBIE HARRISON	Cockrum, Miss.
REBECCA FARRIS	Hollandale, Miss.	CLYDE HARTLEY	Vicksburg, Miss.
BILLY FULLER	Cleveland, Miss.	JOY ANNE HEARN	Greenville, Miss.
WILLIS FULLILOVE, JR.	Yazoo City, Miss.	JEAN HORNER	Cincinnati, Ohio
PAUL (Pete) GAMMILL, JR.	Jackson, Miss.	JOHN A. HOUSE	Boyle, Miss.
BETTY GEDDIE	Hollandale, Miss.	JOHN HOWELL	Parchman, Miss.
JAMES H. GILDER	Greenville, Miss.	ANN HUBBARD	Lyon, Miss.
JAMES GORMAN	Greenville, Miss.	JAMES HUTCHINSON	Cleveland, Miss.



JAMES, H.  
JACKSON, A.  
JOHNSON, B.  
KIMBRELL, C.



LAWRENCE, S.  
LEE, B. S.  
LEWIS, C.  
LEWIS, M. D.



LIFER, V.  
MALONE, W.  
MANNING, C.  
MARKHAM, H.



McCLAIN, M. M.  
McCOOL, G.  
McKEITHEN, E.  
McMAHON, C.



McMAHON, C.  
McWILLIAMS, M.  
MILAM, A.  
MUIRHEAD, B.



NABORS, J.  
NELSON, V.  
NOEL, P.  
NORWOOD, A. L.



NUNNERY, L.  
PATTERSON, J.  
PHILLIPS, B. B.  
PORTER, P.



# FRESHMEN

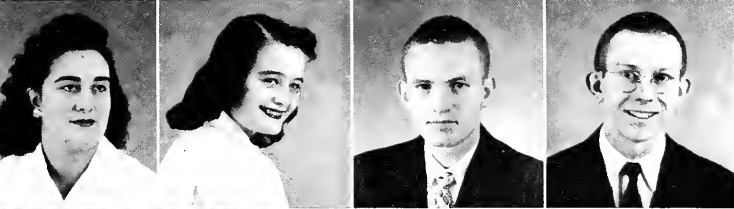
HELEN JAMES . . . . .	Graysport, Miss.	EMORY McKEITHEN . . . . .	Skene, Miss.
ANNE JACKSON . . . . .	Clarksdale, Miss.	CLARA McMAHON . . . . .	Greenville, Miss.
BETH JOHNSON . . . . .	Daddsville, Miss.	CATHRON McMAHON . . . . .	Halcomb, Miss.
CURTIS KIMBRELL . . . . .	Clarksdale, Miss.	MARGARET McWILLIAMS . . . . .	Kilmichael, Miss.
SARAH LAWRENCE . . . . .	Greenville, Miss.	ANN MILAM . . . . .	Charleston, Miss.
BETTY SUE LEE . . . . .	Cleveland, Miss.	BUDDY MUIRHEAD . . . . .	Greenville, Miss.
CORRINE LEWIS . . . . .	Shaw, Miss.	JOY NABORS . . . . .	Cleveland, Miss.
MARY DEAN LEWIS . . . . .	Charleston, Miss.	VIRGINIA NELSON . . . . .	Glen Allan, Miss.
VIOLA LIFER . . . . .	Cleveland, Miss.	PEGGY NOEL . . . . .	Greenwaad, Miss.
WAYNE MALONE . . . . .	Water Valley, Miss.	ANNIE LEE NORWOOD . . . . .	Cleveland, Miss.
CARROL MANNING . . . . .	New Albany, Miss.	LOUIS NUNNERY . . . . .	Greenville, Miss.
HAROLD MARKHAM . . . . .	Aberdeen, Miss.	JANIE PATTERSON . . . . .	Sunflower, Miss.
MATTIE MAE McCLAIN . . . . .	Shaw, Miss.	BILLY B. PHILLIPS . . . . .	Greenville, Miss.
GLEN McCOOL . . . . .	Merigold, Miss.	PATSY PORTER . . . . .	Greenville, Miss.



PREWITT, A. C.  
RICHTER, R.  
RICKELS, V.  
ROBBINS, K.



SAVELL, H.  
SCOGIN, S.  
SEALE, J.  
SHARP, C.



SHARP, B. T.  
SPRUILL, B.  
STORY, E. E.  
STRICKLAND, M.



TAGGART, D.  
THOMASON, M. A.  
THOMPSON, R.  
THORNTON, B. J.



TINNIN, D.  
TRIM, W. R.  
TURNER, A. J.  
WEAVER, G.  
WEBB, P. L.



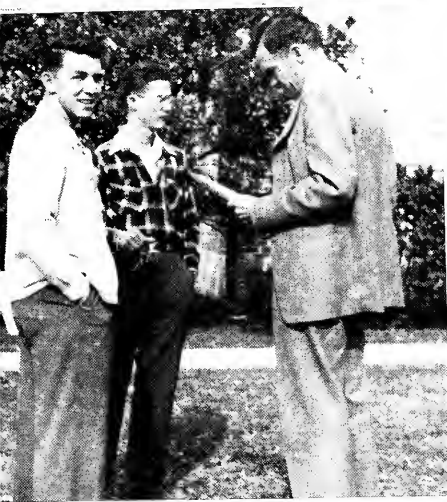
WILKERSON, G. A.  
WILKINSON, S.  
WILLIAMS, E. D.  
WILLIAMS, P. A.  
WILSON, B.

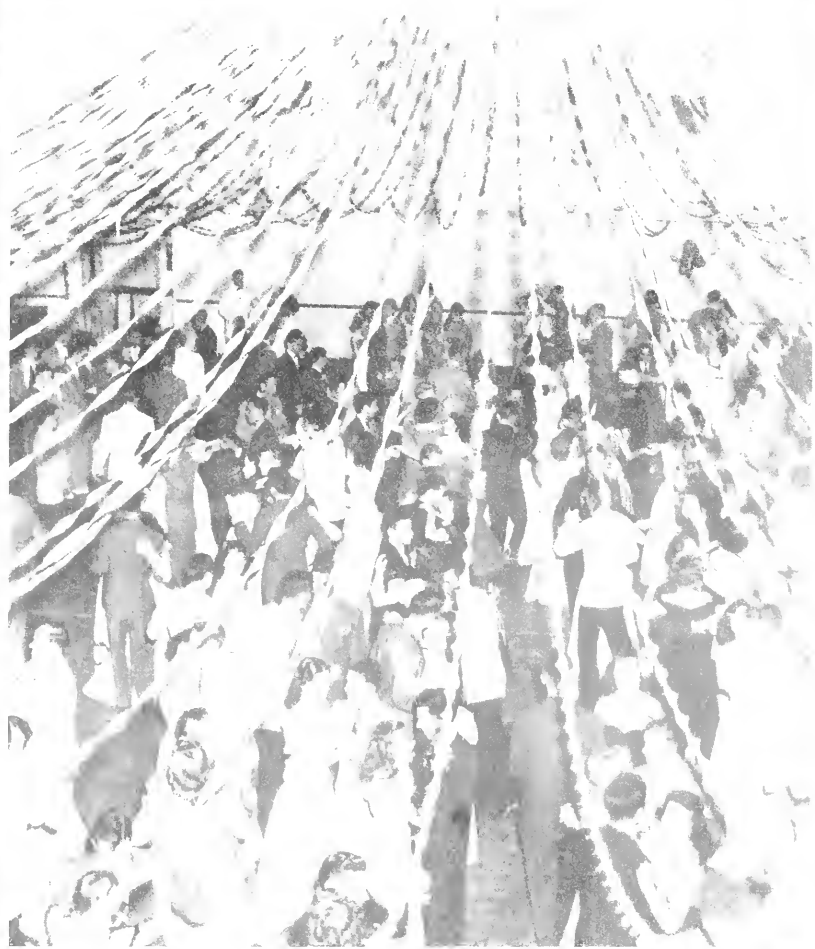


WILSON, C.  
WUN, J.  
WYNN, A.  
YOSTE, J. L.  
YOUNG, J.

# FRESHMEN

A. C. PREWITT	Merigold, Miss.	DOT TINNIN	Inverness, Miss.
ROBERT RICHTER	Greenwood, Miss.	WILLIAM R. TRIM	Rosedale, Miss.
VIVIEN RICKELS	Tchula, Miss.	ANNIE JO TURNER	Anguilla, Miss.
KENNETH ROBBINS	Oxford, Miss.	GEORGE WEAVER	Water Valley, Miss.
HAROLD SAVELL	Catchings, Miss.	PRENTISS L. WEBB, JR.	Greenwood, Miss.
SARAH SCOGIN	Charleston, Miss.	GEORGE A. WILKERSON	Vicksburg, Miss.
JAMES SEALE	Batesville, Miss.	SALLY WILKINSON	Waxhaw, Miss.
CECIL SHARP	Marks, Miss.	EMERY D. (Turkey) WILLIAMS	Rolling Fork, Miss.
BONNIE TUTOR SHARP	Marks, Miss.	PATRICIA ANN WILLIAMS	Leland, Miss.
BETTY SPRUILL	Belzoni, Miss.	BILLY WILSON	Clarksdale, Miss.
EDWARD E. STORY, JR.	Ruleville, Miss.	CHARLES WILSON	Benoit, Miss.
MILTON STRICKLAND	Belzoni, Miss.	JOE WUN	Merigold, Miss.
DOLL TAGGART	Greenville, Miss.	ANN WYNN	Lexington, Miss.
MARY ANN THOMASON	Alligator, Miss.	JOHN L. (Jack) YOSTE	Vicksburg, Miss.
RALPHINE THOMPSON	Cleveland, Miss.	JIMMIE YOUNG	Vicksburg, Miss.
BETTY JO THORNTON	Clarksdale, Miss.		





# FEATURES



# Who's Who . . .

Among Students in American Universities and Colleges

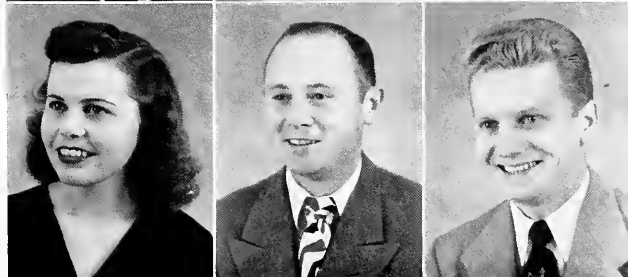
RENA BAILEY  
HARRIS COLEMAN  
LEONA DEAN



BILL GARDNER  
JARVIS LOVE  
JOHN MERRILL



REBECCA SEARCY  
HUBERT DEAN SMITH  
JOHN YURKOW



These students have been recommended by the college to receive recognition for their accomplishments on the campus. As an honor to those meeting the requirements, they will appear in the publication of WHO'S WHO AMONG STUDENTS IN AMERICAN COLLEGES AND UNIVERSITIES.

*Miss* D. S. T. C.



REBECCA SEARCY



*Mr.* D. S. T. C.



JOHN YURKOW

# MOST BEAUTIFUL



ROXIE GRIFFIN

B E A U T Y



JOYCE HINTON

# B E A U T Y



PATSY LAFOE YERBY

# B E A U T Y



CAROLYN ABRAHAM

# W H O ' S      W H O

MOST CHARMING GIRL  
Kay Poe



MOST HANDSOME  
Kenneth Robbins



BEST MANNERED BOY  
Paul Anderson



BEST GIRL DANCER  
Mary Ann Bell

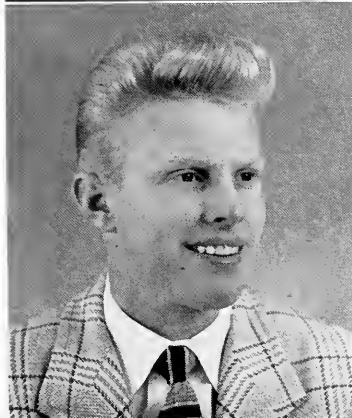
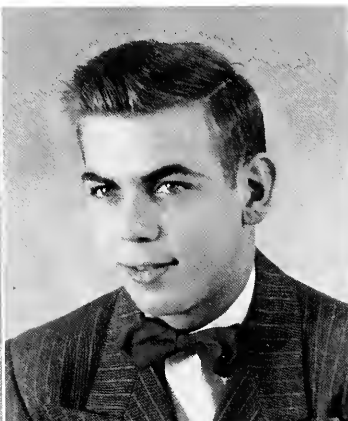
BEST BOY DANCER  
(not pictured)  
Billy Partee

*at* D. S. T. C. . . .

MOST POPULAR GIRL  
Bill Manning



MOST POPULAR BOY  
Tollie Miller



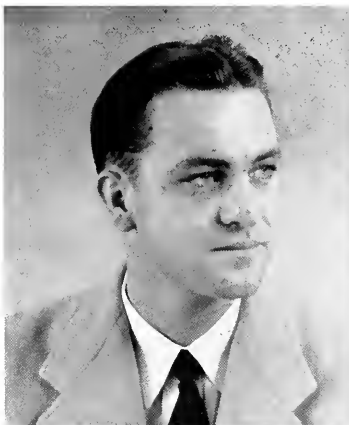
BEST DRESSED BOY  
Bill Coleman



BEST DRESSED GIRL  
Liba Poe

# W H O ' S   W H O

MOST VERSATILE BOY  
Jerry Yoste



MOST VERSATILE GIRL  
Patsy Thrash



MOST INTELLECTUAL GIRL  
Jo Gibson



MOST INTELLECTUAL BOY  
Sim Dulaney

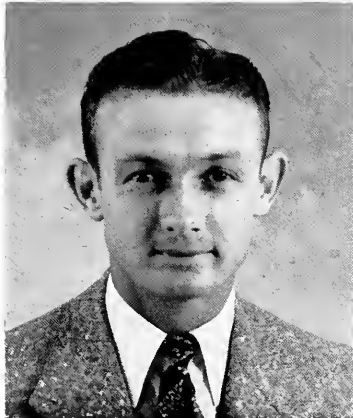


*at* D. S. T. C. . . .

WITTIEST GIRL  
Ann Crumby



WITTIEST BOY  
Jimmy Peterson



MOST POPULAR ATHLETE  
Tye Rakestraw



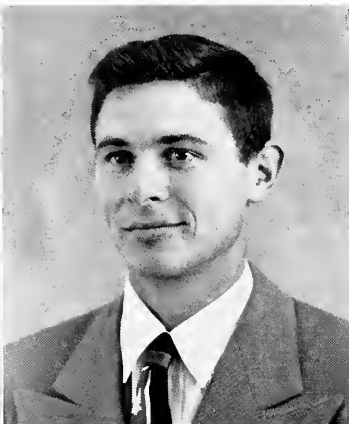
MOST POPULAR ATHLETE  
Frances Ferracci

# *More* WHO'S WHO

FRIENDLIEST GIRL  
Mary Ann Boone



FRIENDLIEST BOY  
Mills Rogers



MOST TYPICAL FRESHMAN BOY  
Prentiss Webb



MOST TYPICAL FRESHMAN GIRL  
Corrine Lewis



# ORGANIZATIONS





JOHN YURKOW  
President

# STUDENT GOVERNMENT

MARTIN KING . . . . . Vice-President

LEONA DEAN . . . . . Secretary

PATSY THRASH . . . . . Treasurer



# S T U D E N T

## WOMEN'S HONOR COUNCIL

MARTHA RYALS	Chairman, Senior Representative
PATSY THRASH	Junior Representative
LAURA JAMES	Sophomore Representative
BETH JOHNSON	Freshman Representative
LUCILLE OAKS	Town Representative
JARVIS LOVE	House Chairman, Cleveland Hall
ROSE VANCE	Civic Chairman, Cleveland Hall
JOAN VINCENT	House Chairman, Ward Hall
MARGUERITE TURNER	Civic Chairman, Ward Hall
LEONA DEAN	Secretary, Student Government
MISS NELL LAWLER	Dean of Women
MRS. J. D. MILLER	Faculty Advisor



# C A B I N E T

## MEN'S HONOR COUNCIL

JOHN YURKOW	Chairman, Senior Representative
DICK MOORE	Junior Representative
CHARLES MANGUM	Seaphmcre Representative; Civic Chairman, G. I. II
BUDDY MUIRHEAD	Freshman Representative
JOHN MERRILL	Tawn Representative
JERRY YOSTE	House Chairman, Hardee Hall
CECIL OSWALT	Civic Chairman, Hardee Hall
HORACE WARD	House Chairman, G. I. I
KENNETH SISSELL	Civic Chairman, G. I. I
HUBERT DEAN SMITH	House Chairman, G. I. II
MARTIN KING	Vice-President, Student Government
MR. RAY RICKS	Dean of Men
MR. ROY L. WILEY	Faculty Advisor



# THE DELTA



MEMBERS



PLEDGES



# PLAYHOUSE

## OFFICERS

KAY POE	President
CHARLES CALLOWAY	Vice-President
PATSY THRASH	Secretary-Treasurer
MISS RUTH WILLIAMS	Sponsor

## MEMBERS

Charles Calloway  
Paul Chester  
Leona Dean  
C. W. Hubbard  
Jarvis Love

Kay Poe  
Martha Ryals  
Hubert Dean Smith  
Patsy Thrash  
Harris Terry

## PLEDGES

Jewel Abel  
Caralyn Abroham  
Ruth Barkemeyer  
Bobbie Beevers  
Mary Ann Bell  
Louise Calvert  
Lillian Dalton  
Catheran Dantzler  
Hugh Ellis

Winston Gray  
Cathie Gunn  
Margie Hall  
Avis Holmes  
Eloise Holmes  
Ann Hollingsworth  
Barbara Hague  
Mary Louise Johns  
Betty Jo McCain

Beverly McNutt  
Betty Osoinach  
Nell Patterson  
Joyeanne Peebles  
Ray Pritchard  
Mildred Rutherford  
Percy Stephens  
Ralph Taylor  
Kate Yerger

# ALPHA PSI OMEGA

PAUL CHESTER	Cast Director
LEONA DEAN	Worthy Stage Manager
JARVIS LOVE	Worthy Business Manager

Paul Chester  
Leona Dean  
Jarvis Love  
Martha Ryals

Patsy Thrash  
Ruth Barkley  
Harriet Causey  
Walter Neal Gardiner  
H. L. Nowell

Betty Oakman  
James Sission  
Jesse White  
Ruth Williams

Alpha Psi Omega is the only Greek letter fraternity on the Delta State campus. It is a national honorary dramatic organization established for the purpose of furthering dramatic interests. Members of Delta Playhouse who meet specified requirements are eligible for membership in the Delta State chapter, Zeta Epsilon.





# THE BAND

## OFFICERS

MILTON CHERTOW  
 KATE GREEN  
 J. WILLIAM THOMPSON  
 EDWARD L. CROSS

President  
 Vice-President  
 Secretary-Treasurer  
 Director

DRUM MAJOR: Martin T. King, Jr.  
 MAJORETTES: Katherine Bronn  
 Ann Hallingswrth  
 Sarah Scogins  
 Betty Spruill  
 Betty Jean Arnold  
 CLARINETS: Rcbert Simpson  
 Kate Green  
 Burns Strade  
 Paul Chester  
 Jean Knighten  
 A. W. Lindsey  
 Bill Estes  
 SAXOPHONES: Avis Holmes  
 Milton Chertow  
 Mary M. Williamson  
 James Hutchinson  
 Glen McCool  
 Mary A. Pearson  
 Winstan Grey

CORNETS: J. William Thompson  
 Jimmy Fullilove  
 Betty Blaylock  
 Bill Wilson  
 Charlie Sinclair  
 Pat Brooks  
 FRENCH HORN: Roger Aderholdt  
 TROMBONES: C. J. Wilson  
 H. N. Crumby  
 BARITONES: Ralph Carroll  
 Louise Dickson  
 BASES: Robert Richter  
 Granville Carrall  
 R. J. Rackley  
 PERCUSSION: Harry Bonner  
 Betty Ja Tharnton  
 Margie Hall  
 Bub Mahan  
 Jean Oakes



# DELTA SINGERS

## OFFICERS

MORRIS KING THOMPSON	President
KAY POE	Librarian
LUCILLE OAKS	Accompanist
JOHN HOUSE	Business Manager
PAUL R. MAGEE	Director

Jo Ann Gray  
 Martha Jones  
 Gwendolyn Harrington  
 Elizabeth Osainach  
 O. White Price  
 Bonnie Sharp  
 Eleanor Walters  
 Mary Ann Pearson  
 Kay Poe  
 Liba Poe  
 Marguerite Turner  
 Betty Wiggins

John Gibson  
 Robert Richter  
 Robert Simpson  
 W. R. Trim  
 Horace White  
 Claude Abel  
 Otto Hall  
 James Hutchinson  
 John House  
 James Roberts  
 Mills Rogers  
 Morris King Thompson

J. William Thompson

# FRENCH CLUB

Le Cercle Francais



## OFFICERS

REBECCA SEARCY	President
BOBBY BONDS	Vice-President
LUCILLE OAKS	Secretary
CY HIGGS	Treasurer
DR. DOXIE DEXTER	Sponsor

## MEMBERS

Roy Bailey  
 Rex Bingham  
 John R. Beard  
 Ella Rose Carpenter  
 Bobby Bonds  
 Virginia Conn  
 Joyce Cork  
 Vivian Davis

Hugh Ellis  
 Ralph Fears  
 Cy Higgs  
 John Howell  
 C. W. Hubbard  
 Mary Louise Johns  
 Ann Johnson  
 Billy Lorange

Lucille Oaks  
 Roy Pritchard  
 Ruffin Rockley  
 Rebecca Searcy  
 Charlie Sinclair  
 Ralph Taylor  
 Frank Whitaker  
 Emma Jo Y. Woodruff

# HOME ECONOMICS CLUB

## OFFICERS

MARY HARPOLE	President
JEWEL McGINTY	Vice-President
CHARLSIE CAMPBELL	Secretary
MARY MARGARET WILLIAMSON	Treasurer
MISS MINNIE PATTON	Sponsor

## MEMBERS

Eloise Abel  
 Betty Jean Arnold  
 Emogene Bailey  
 Ruth Barkemeyer  
 Laquita Bell  
 Bettye Boyd  
 Charlsie Campbell  
 Ruth Carrall  
 Evelyn Carter  
 Nell Clement  
 Hilda Crowell  
 Frances Dean

May Evelyn England  
 Rebecca Farris  
 Joy Gillon  
 Mary Ruth Handley  
 Mary Harpole  
 Laraine Heath  
 Frances Holland  
 Martha Jones  
 Alice Allison Kealhofer  
 Mary Nell Langdon  
 Pat Lee  
 Mattie Mae McClain

Mary McGee  
 Jewel McGinty  
 Clara McMahan  
 Edith Maare  
 Vivien Rickels  
 Dot Tinnin  
 Billie Thomas  
 Billie Walker  
 Sally Wilkinson  
 Patricia Williams  
 Mary Margaret Williamson



# SCIENCE CLUB



## OFFICERS

A. W. LINDSEY	.....	President
ROY BAILEY	.....	Vice-President
MARY LOUISE JOHNS	.....	Secretary
BILLY COX	.....	Treasurer
DR. R. L. CAYLOR	.....	Sponsor

## MEMBERS

Roy Bailey  
 John Beard  
 Alice Black  
 John Bryant  
 Ella Rose Carpenter  
 Harry Childress  
 Jce Clark  
 Joyce Cork  
 Billy Cox

Vivian Davis  
 Leona Dean  
 James Gorman  
 John H. Garman  
 Theresa W. Hansbrough  
 Cy Higgs  
 Mary Louise Johns  
 Jimmy Langston  
 Sarah Lawrence

A. W. Lindsey  
 Billy Lorange  
 Charles Mangum  
 Martha Ryals  
 Charles Sinclair  
 Herman Smith  
 Robert Tallison  
 Mary Jeannette West

NOT PICTURED  
 Clyde Weston  
 James Bullock

# ELEMENTARY CHILDHOOD EDUCATION CLUB

## OFFICERS

IRIS DICKSON	President
ELIZABETH HERRING	Vice-President
HAZEL NEVEL	Secretary-Treasurer
MISS JANE OLIVER	Sponsor

## MEMBERS

Betty Lynn Alford	Elizabeth Herring
Peggy Allison	Joyce Hinton
Lavis Box	Ann Hollingsworth
Billie Brannon	Avis Holmes
Louise Calvert	Ann Hubbard
Paul Chester	Mary Dean Lewis
Mary Sue Cromer	Hazel Nevel
Marjorie Curtiss	Dollie Norwood
Juanita Darby	Betty Osoinach
Iris Dickson	Joyeanne Peeples
Louise Dicksan	Liba Poe
Earline Douglas	Ruth Reed
Jane Farrish	Marianne Strickland
Rbbie Harrison	Nancy White



# SPANISH CLUB

Los Amigos



## OFFICERS

CELSE ARTIGAS	.....	President
REBECCA SEARCY	.....	Vice-President
MILDRED RUTHERFORD	.....	Secretary
ELOISE HOLMES	.....	Treasurer
DR. DOXIE DEXTER	.....	Sponsor

## MEMBERS

Celso Artigas	.....	Frances Junov
Willia Mae Bell	.....	Cathron McMahon
Lillie Reed Bennett	.....	James Roberts
Osborne Guion	.....	Mildred Rutherford
Eloise Halmes	.....	Rebecca Searcy
Ann Johnson	.....	John White Valentine

Frank Whitaker  
 NOT PICTURED  
 Clarence Nemitz



# SCRIBES CLUB

## OFFICERS

KAY POE	President
PATSY THRASH	Vice-President
PATSY PORTER	Secretary
MISS EVELYN HAMMETT	Sponsor

## MEMBERS

Howard Alford  
Mary Ann Bell  
Lillie Reed Bennett  
Marie Dean  
Alice Gardner  
Winston Gray

Osborne Guion  
Edith Meaders  
Margaret McWilliams  
Kay Poe  
Patsy Porter  
Patsy Thrash

## NOT PICTURED

Ruth Helen Greenlee  
Elizabeth Ormand  
David Lindh



# INTERNATIONAL RELATIONS CLUB



## OFFICERS

CARL WILLIAMSON	.....	President
JOE FARNED	.....	Vice-President
EDITH MEADERS	.....	Secretary-Treasurer
MR. WILLIAM T. POWELL	.....	Sponsor

## MEMBERS

Yvonne Bishop  
 Grover Brewer  
 Jane Brown  
 Joe Farned  
 Toby Jacobs  
 Edith Meaders  
 Cecil Oswalt

Roy Pritchard  
 Wayne Roberts  
 Paul Rodgers  
 Joe Tackett  
 John White Valentine  
 Joe Walper  
 Carl Williamson

Sam Wright  
 NOT PICTURED  
 Charles Burnett

# INTRAMURAL COUNCIL

## CHAIRMEN

G. M. Chester  
Robert Powell

## SPONSORS

Forest Wyatt  
Lynn Goodman

## TEAM REPRESENTATIVES

### SHARECROPPERS

Jean Horner  
B. L. Kiker

### GINNERS

Eloise Strotton  
Roy Smith

### BOLLWEEVILS

Dot Thomas  
Horace Ward

### COTTON PICKERS

Mary Hilliard  
Charles Colloway



# WOMEN'S ATHLETIC ASSOCIATION



## OFFICERS

MAPLE BARNES	President
HAZEL NEVEL	Vice-President
FRANCES FERRACCI	Secretary-Treasurer
MISS ETHEL CAIN	Sponsor

## MEMBERS

Maple Barnes  
 Katherine Brann  
 Nell Clement  
 Frances Dean  
 Angelina Cuicchi  
 Frances Ferracci  
 Kate Green  
 Roxie Griffin  
 Mary Frances Gunn  
 Laura Jean James

Mary Hilliard  
 Babbie Hammack  
 Jean Horner  
 Carrine Lewis  
 Bill Manning  
 Betty Jo McCain  
 Virginia Moore  
 Erba Powell Nevel  
 Hazel Nevel  
 Lucille Oaks

Patsy Porter  
 Martha Ryals  
 Kate Yerger  
 Sally Wilkinson  
 Dat Thomas  
 Margarette Turner  
 Betty Jo Tharntan  
 Marianne Strickland  
 Eloise Stratton

# " M " C L U B

## OFFICERS

CURTIS ALLEN	President
LESTER McKINNEY	Vice-President
DON SPRY	Secretary
MARTIN T. KING, JR.	Treasurer

## MEMBERS

Claude Abel  
 Curtis Allen  
 Harman Baggs  
 Tammy Boone  
 Frank Bufkin  
 Anthony Cintgram  
 Archie Clemans  
 Wayne Davidson  
 Tany Grezaffi  
 Bill Gardner  
 Billy Ray Hodges  
 John Hofmann

Fred Jepsen  
 B. L. Kiker  
 Martin King  
 L. A. Jones  
 Albert Mann  
 Lester McKinney  
 Dick Moore  
 Carlee Nevel  
 Dan O'Rourke  
 Robert Powell  
 Tye Rakestraw  
 Allen Reaves

James Reeves  
 Fred Rossetti  
 Kenneth Sissell  
 Ray Smith  
 Don Spry  
 Billy Stephenson  
 Robert Sykes  
 Jimmy Tarzi  
 Bennie Weeks  
 James White  
 Sam Wright



# PHYSICAL EDUCATION MAJORS CLUB



## OFFICERS

TONY GREZAFFI  
 ELOISE STRATTON  
 MAPLE BARNES  
 HOWARD LEE RAY  
 MISS ETHEL CAIN  
 MR. FOREST WYATT

President  
 Vice-President  
 Secretary  
 Treasurer  
 Sponsor  
 Sponsor

## MEMBERS

Roger Aderholdt  
 Bill Ainsworth  
 Curtis Allen  
 Raymond Aycock  
 Bill Bush  
 Maple Barnes  
 Bobby Barrett  
 Harman Baggs  
 Tommy Boone  
 Frank Bufkin  
 Charles Calloway  
 G. M. Chester  
 Anthony Cintgram  
 Robert Cire  
 Frank Cackran  
 Carl Cooper

Angelina Cuicchi  
 Travis Dabbs  
 John T. Davis  
 Wayne Davidson  
 Rex Davis  
 Dorman Dowdy  
 Woodson Earle  
 Thad Easterwood  
 Frances Ferracci  
 Hubert Few  
 Derrall Foreman  
 Karl Funchess  
 Ben Gann  
 Kate Green  
 Donald Gibson  
 Charles Graham

Tony Grezaffi  
 Mary Catherine Gunn  
 Charles Guynes  
 Wilbur Harpole  
 Mary Hilliard  
 Billy Ray Hodges  
 Jean Horner  
 H. T. Hughes  
 Fred Jepsen  
 Nelle B. Joiner  
 B. L. Kiker  
 John Kealhofer  
 Charlie Lee  
 Roy Lipe  
 J. C. McGuire  
 Paul McKelroy

Lester McKinney  
 Jack Machell  
 James Magers  
 Harold Markham  
 Clarence Medders  
 Ann Milam  
 Virginia Moore  
 Carlee Nevel  
 Anthony Nuskiewicz  
 Dan O'Rourke  
 Nell Patterson  
 Jimmy Peterson  
 Robert Powell  
 Tye Rakestraw  
 Hcward Lee Ray  
 Allen Reeves

Kenneth Robbins  
 LaRue Saulters  
 Hubert Dean Smith  
 Roy Smith  
 Don Spry  
 Eloise Stratton  
 Robert Sykes  
 Taylor Tatum  
 Dct Thomas  
 Betty Jo Thornton  
 Marguerite Turner  
 Louise Viner  
 Bennie Weeks  
 Frank Young

# INTERFAITH COUNCIL

## OFFICERS

KENNETH R. SISSELL	President
LOUISE CALVERT	Vice-President
CAROLYN ABRAHAM	Secretary-Treasurer
DR. A. L. YOUNG	Sponsor

## MEMBERS

Carolyn Abraham  
 Louise Calvert  
 Morgie Hall  
 Mary Louise Johns  
 Martin King

Lucille Oaks  
 Mills Rogers  
 Kenneth Sissell  
 Patsy Thrash  
 Jerry Yaste

NOT PICTURED  
 Mrs. John Merrill, Jr.  
 Mrs. Kenneth Williams  
 Mr. H. J. Jacob

The purpose of this group is several fold: (1) To carry out the Danforth Foundation idea of an informal fellowship for students of various faiths; (2) To promote better relations among the various denominations on the campus; (3) To select or delegate to the American Youth Foundation camp at Camp Miniwanca, near Shelby, Michigan; (4) To sponsor vespers on the campus; (5) To integrate the influence of campus faiths in selecting speakers for Religious Emphasis Week on the campus each year.

Membership in this council will be as follows: the president of each church's group; one member of each church's college group; the church secretaries on the campus; the faculty advisor of the group; the Danforth Faculty representatives; and others the council sees fit to add from time to time, including any Camp Miniwanca delegates.

The council will promote some worthy project of an international nature and campus-wide interest during the year.

The churches that are represented in this organization are the Methodist, Baptist, Presbyterian, Christian, Episcopal, and Catholic.



# WESLEY COUNCIL



## OFFICERS

PATSY THRASH	President
PAUL ANDERSON	Vice-President
LIBA POE	Secretary
MARTHA RYALS	Treasurer

## MEMBERS

Paul Anderson  
 Charlsie Campbell  
 Nell Clement  
 Louise Dickson  
 Jo Gibson  
 Benoit Hallaway  
 Kay Poe

Liba Poe  
 Robert Richter  
 Martha Ryals  
 Kenneth Sissell  
 Marianne Strickland  
 Patsy Thrash  
 John White Valentine

Betty Wiggins



# Y. W. C. A.

## OFFICERS

MARTHA RYALS	President
REBECCA SEARCY	Vice-President
ROSE VANCE	Secretary-Treasurer
MISS RUTH BARKLEY	Sponsor

## MEMBERS

Jewel Abel	Mildred Rutherford
Ruth Barkemeyer	Martha Ryals
Maple Barnes	Rebecca Searcy
Louise Calvert	Marionne Strickland
Mary Wanda Forbes	Annie Jo Turner
Jarvis Love	Rose Vance
Bill Manning	Kate Yerger
Cathron McMahon	Mary Young



# B. S. U. COUNCIL



## OFFICERS

MILLS ROGERS	President
REX BINGHAM	Vice-President
AVIS HOLMES	Secretary
LILLIAN DALTON	Treasurer

## MEMBERS

Carolyn Abraham	Mary Harpole
Emogene Bailey	Avis Holmes
Rex Bingham	Laura Jean James
Carl Cooper	Martha Jones
Lillian Dalton	John Merrill
Catheron Dantzler	Mills Rogers
Mary Wanda Forbes	Gladys Quinn
Not pictured	
Jo Barnett	

# YOUNG WOMEN'S AUXILIARY

## OFFICERS

CATHERON DANTZLER	President
FRANCES HOLLAND	Vice-President
LAVIS BOX	Secretary
VIVIEN RICKELS	Treasurer

## MEMBERS

Lavis Box  
Bettye Bayd  
Catheron Dantzler  
Juanita Darby  
Louise Dickson  
May Evelyn England

Mary Young

Mary Wanda Farbes  
Frances Holland  
Martha Janes  
Peggy Nael  
Vivien Rickels  
Patricia Williams



# DANCE GROUP



## OFFICERS

RALPH TAYLOR . . . . . President  
 WILLA MAE BELL . . . . . Secretary-Treasurer  
 MISS LARISA MORUZEANU, MRS. RUTH HART . . . . . Sponsors

## MEMBERS

Mary Ann Bell  
 Willa Mae Bell  
 Katherine Bronn  
 Winston Gray  
 Kate Green  
 Jay Hearn

Jayce Hinton  
 C. W. Hubbard  
 Betty Osainach  
 Jayeanne Peoples  
 Patsy Porter  
 Ralph Taylor

Harris Terry

# MISS DELTA

## OFFICERS

PATSY THRASH	Editor
JOHN YURKOW	Business Manager
MARTIN KING	Assistant Business Manager
TIM WALKER	Circulation Manager
DON SPRY	Sports Editor
CAROLYN ABRAHAM	News and Proof Editor
KAY POE	Society Editor
HUGH ELLIS	Activities Editor
JAMES SISSON	Faculty Advisor

## STAFF WRITERS

Newton Mitchell  
 Mary Wanda Forbes  
 Dick Howell  
 Osbcurne Guion  
 B. J. Thornton

Sue Cromer  
 Frances Dean  
 Jchn White Valentine  
 Ruth Greenlee  
 Winston Groy

Martha Ryals  
 Cathron McMahon  
 Reno Bailey  
 John House  
 Alice Gardner



# THE BROOM



LEONA DEAN  
Editor-in-Chief

JAMES WHITE  
Business Manager

MISS GRACE GAW  
Faculty Advisor

LUCILLE OAKS  
HARRIS COLEMAN  
MARTHA RYALS  
PATSY THRASH  
JOAN VINCENT  
RUTH BARKEMEYER  
SIM DULANEY  
MARTIN KING  
NELL CLEMENT  
HUGH ELLIS  
REBECCA SEARCY  
THERESA WILLIAMS HANSBROUGH  
LINVILLE REED

Assistant Editor  
Assistant Business Manager  
Senior Editor  
Junior Editor  
Sophomore Editor  
Freshman Editor  
Activities Editor  
Athletics Editor  
Athletics Editor  
Photographer  
Photographer  
Photographer  
Photographer



# ATHLETICS







FOREST E. WYATT  
Physical Education Director

E. B. "GENE" CHADWICK  
Athletic Director  
and  
Football Coach

ATHLETIC COMMITTEE

SEATED: Dr. A. L. Young, Dr. Joe Farrar, D. M. Allen, Chairman.  
STANDING: R. L. Wiley, W. T. Pawell, Hugh Smith.





FRONT ROW: (kneeling) Left to Right: LeMastus (Manager), Markham, Grezaffi, Hughes, Tatum, Clemons, Hallingsworth, Bufkin, Barrett, Wade, Mantague, Gibson, Hoffman, Allen, Wright (Manager), Moore, (Manager).

#### HOMECOMING QUEENS



Sarah Nell Tatum, Bill Manning, Roxie Griffin

## OFFICIAL SEAS

ARKANSAS A & M	12
ALABAMA STATE	6
MISSISSIPPI COLLEGE	6
ARKANSAS COLLEGE	0
ARKANSAS STATE	13
OKLAHOMA STATE	12
AUSTIN PEAY	7
LOUISIANA COLLEGE	6
CUMBERLAND UNIVERISTY	14

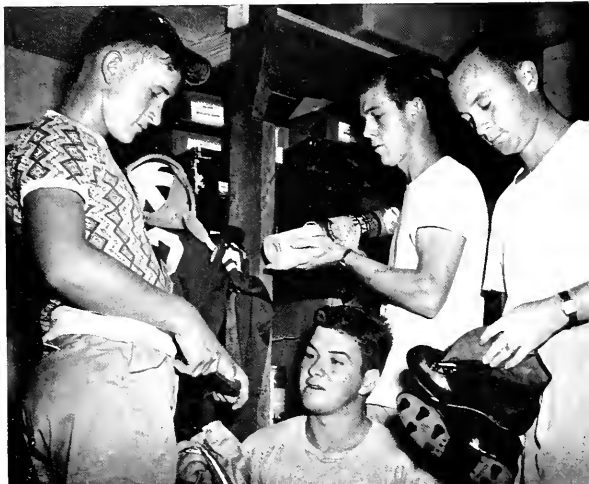


SECOND ROW (standing): Coach Chadwick, Cire, Kimbrell, Harpole, Graham, Treloor, Mitchell, Magers, Wilson, Lindh, Reed, Durham, Bayd, Padavan, Smith (Manager). THIRD ROW (standing): Dabbs, Weeks, Machell, Sykes, Lingle, Payne, Jones, Young, Smith, Barbour, Gardner, Cintgram, Taggart, McGuire.

#### STUDENT MANAGERS

## ON'S RESULTS

DELTA STATE	33
DELTA STATE	27
DELTA STATE	7
DELTA STATE	46
DELTA STATE	13
DELTA STATE	6
DELTA STATE	48
DELTA STATE	15
DELTA STATE	27



Guy LeMastus, Sam Wright, Dickie Moore, Hubert D. Smith









# Greenies Take 27-6 Victory Over Ala. State

## Luke's Game

### STATESMEN BOW TO SOUTHEASTERN

Playing one of their finest first halves this year, but failing to hold their own during the final stages of the game, the Delta Statesmen were upset by Luke Marlars' Southeastern Five Thursday night 63 to 59.

### GREENIES TRAMPLE GOVS

Delta State's basketball five bounced back to the victory trail Saturday night by trouncing the Austin Peay Governors 55 to 48 in a rugged contest.

### CHEER LEADERS ARE ELECTED

Cheer leaders for Delta State Teachers College were elected by the students under the supervision of John Yurkow, student leader and Walter N. Gardner, faculty advisor on Friday, September 17. John Polles, Clarksdale, Maury Anne Boone, Leland, and Beverly McNutt, Greenwood, were re-elected after ably serving in this po-

Unleashing a devastating ground attack, the Delta Statesmen upset the Alabama State Teachers eleven Saturday night, 27 to 6. The Deltas scored once in the first and three times in the third period.

# Statesmen End Most Successful Season

By DON E. SPRY

The 1948 football season begins a new era in Delta State football. The coaching is new, and the spirit at Delta State is on the road back in the world of football.

Gene Chadwick took over a football team last spring that barely managed to be anything but successful, winning five and dropping four during the 1947 season. In spring practice that followed and during the first two weeks of the pre-season practice of this Sep-

### GREENIES SLAUGHTER JAX

It was Harmon Boggs and Co. that gave the Jax from Alabama State such a bad evening Monday

to 49  
ut in  
enies  
point,  
e 15  
little  
guest

his third tally. Bobby returned the kick-off to the 44. Tony Grezaffi's added 7 through right tackle on the Arkansas 49-yard line. Archie Clemons, playing sensational ball, took the oval from Durham and

# State Ties Ark. State

atesmen remained  
aten football team  
Monday as they  
a 13 to 13 tie by  
College at Jones-  
lay night. Hot tem-  
cuffs featured the  
machines failed to  
in the first half.

had to be content with a 26-yard gain to the 25. Again Durham found Hollingsworth for another pass to the 7. Bobby Barbour bulled his way to the 3, and on the next play, "Sugar" Durham sneaked over for the touchdown. Tony Grezaffi converted the extra point.

## Statesmen Upset Choctaws 7 to 6

Vengeance highlighted Delta's victory over Mississippi College last Saturday night in a thrills-packed tilt that resulted in the Greenies third triumph of the season, and the first over the Braves on the 30-yard in the 14-year ri-

Tony Grezaffi's the winning mcessfully booted after, Durham's p a touchdown.

### GREENIES THRASH ARKANSAS A. & M.

Delta State's 1948 gridiron edition blossomed out in all its glory

# Boggs, McKinney are Scoring Stars of Statesmen Victory

By Charles S. Kerg

WHITFIELD GYM, CLEVELAND — Sparked by Harmon Boggs with 24 and Les McKinney with 22, the mind-bending Delta Statesmen of Cleveland wreaked sweet revenge for a four-point loss at Memphis last week by even topping the high-point of the electric scoreboard here Friday night to soundly trounce the Memphis State Tigers, 80-58 before a packed gymnasium.

## Deltas Win From Ark. College

Rising to unexpected heights last Saturday night, the strong Greenies completely outclassed a weak but spirited Arkansas College eleven 46 to 0.

Much can be said about the Deltas' success Saturday, because of

## Time Out With Spry

Perhaps one of the roughest football games in Delta history and maybe even in Arkansas State history was concluded last Saturday.



DON SPRY  
Sports Publicity





# GANG SHOTS





LEFT TO RIGHT: Guynes, Hedges, McKinney, Saulter, Ricks, Rabbins, Baggs, Roy, Cochran, Baker, Rakestraw and Reaves (Manager).

JOHN R. RICKS  
BASKETBALL COACH



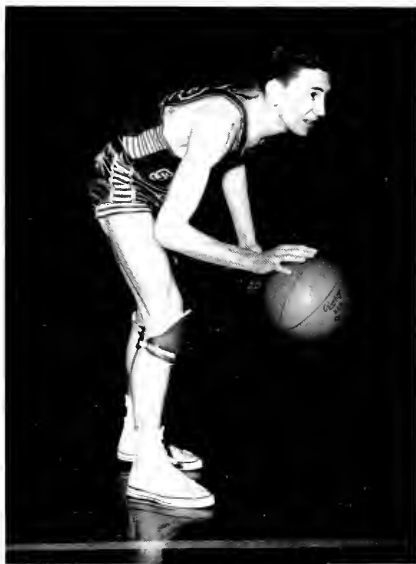
## OFFICIAL SEAS

Arkansas A & M	32	Delta State	54
Southeaster Louisiana	49	Delta State	58
Ouachita College	51	Delta State	77
Alabama State, Livingstan	44	Delta State	50
Alabama State, Livingston	46	Delta State	44
Arkansas Tech	62	Delta State	86
S. E. Missouri State	57	Delta State	61
Murray State	65	Delta State	33
S. Illinois University	80	Delta State	60
New Mexica State	42	Delta State	55
Indiana State	64	Delta State	52
Arkansas State	46	Delta State	71
Sautheastern Louisiana	63	Delta State	59

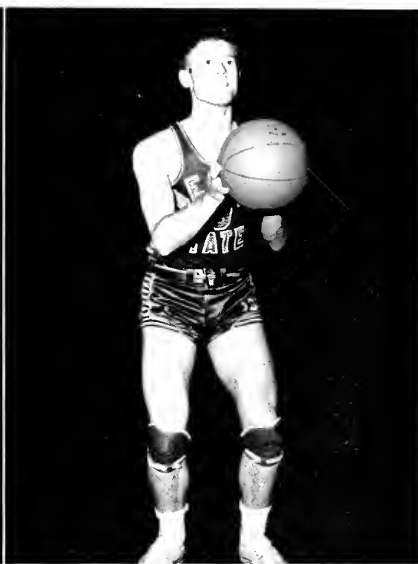
### TRI-STATE TOURNAMENT

Alabama State, Jacksonville	41	Delta State	63
Austin Peay	35	Delta State	61

BOGGS



MCKINNEY



## ON'S RESULTS

Spring Hill	76	Delta State	65
Loyala University	58	Delta State	46
Austin Peay	48	Delta State	55
Alabama State, Jacksonville	49	Delta State	69
Alabama State, Jacksonville	47	Delta State	60
Memphis State	48	Delta State	44
Arkansas State	57	Delta State	50
Memphis State	58	Delta State	80
Austin Peay	55	Delta State	67
Spring Hill	50	Delta State	61
Alabama State, Livingston	49	Delta State	33
Alabama State, Jacksonville	60	Delta State	62
Arkansas A & M	45	Delta State	74

### N. A. I. B. TOURNAMENT

Kansas State, Emporia	67	Delta State	57
-----------------------	----	-------------	----



COCHRAN

ROBBINS



RAKESTRAW



SAULTERS



RICKS

GUYNES



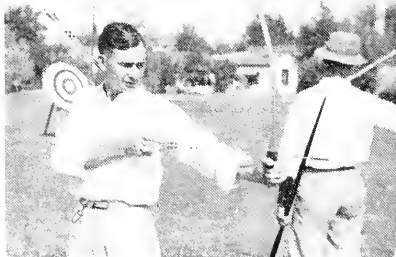
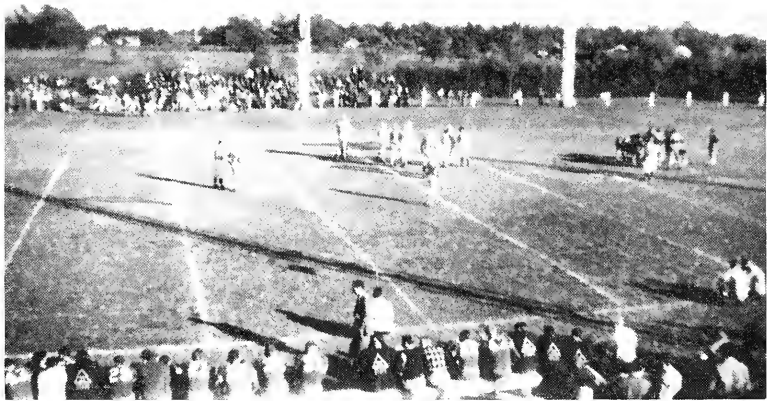
RAY



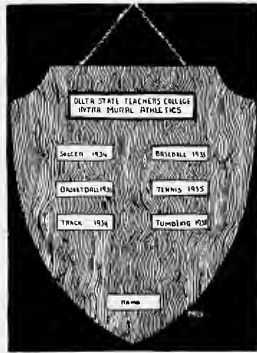
HODGES



BAKER







# SHIELD WINNERS

Girls who receive a shield must excel in a number of sports. For each major All-Star team made, 100 points are given; for minor sports 25 to 75 points. Membership in the W. A. A. and making the basketball officiating team give points. 1,000 points are required to receive a shield.



Mary Hilliard



Martha Ryals



Frances Ferracci



Hazel Nevel





QUEEN  
Sadie Trim

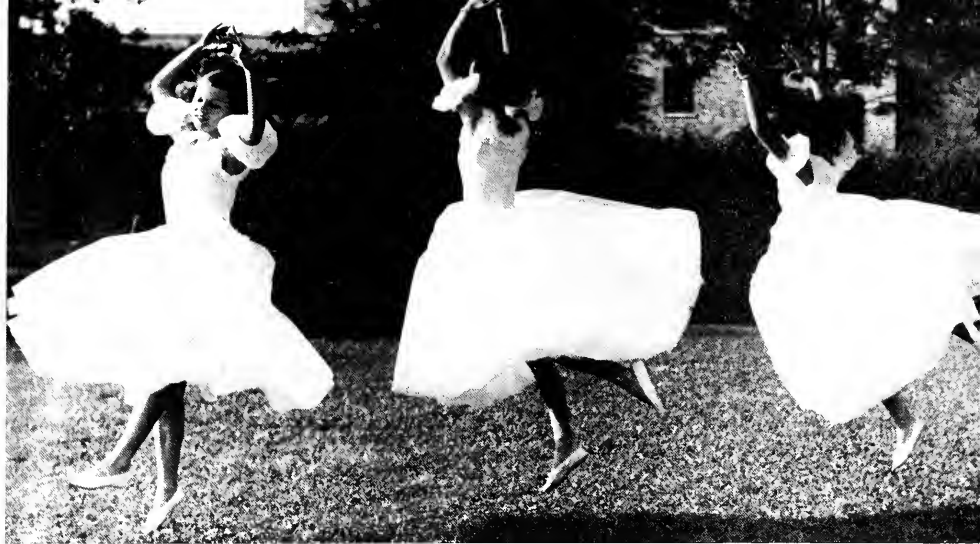
KING  
Billy Mullins

# SPRING PAGEANT

1948

# PAGEANT COURT *and* BALLET

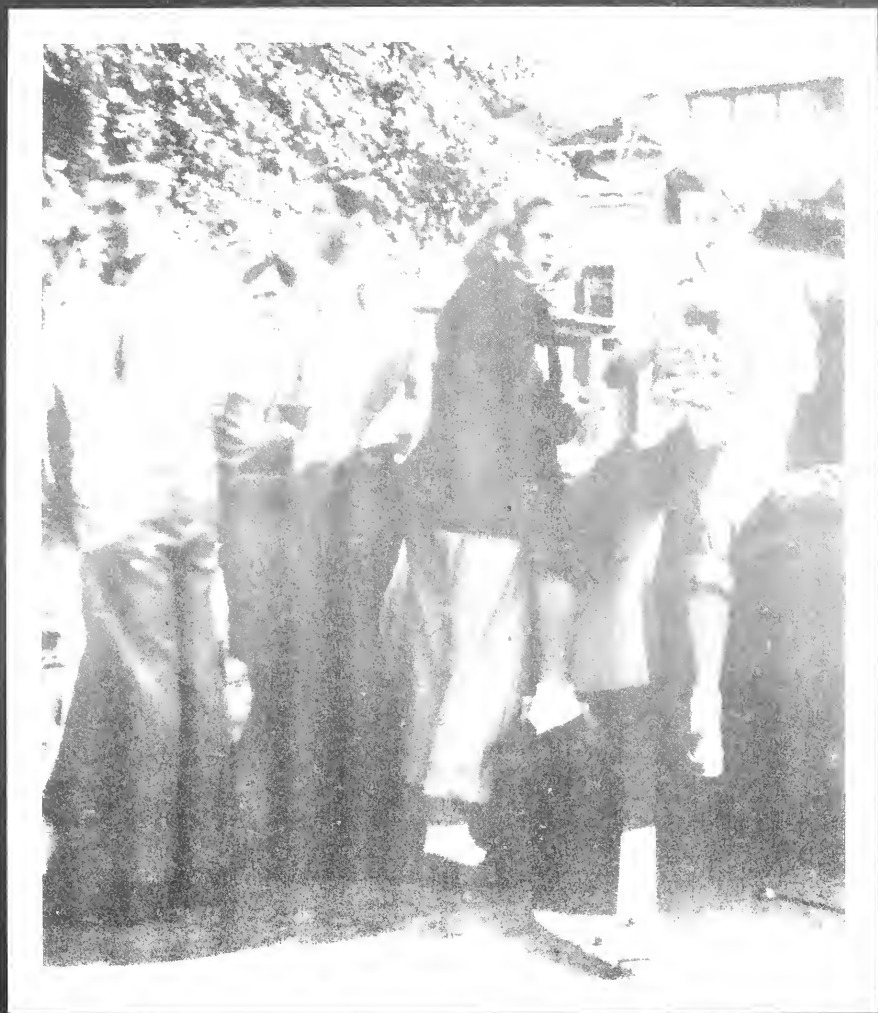




# BALLET *and* GREEK DANCE

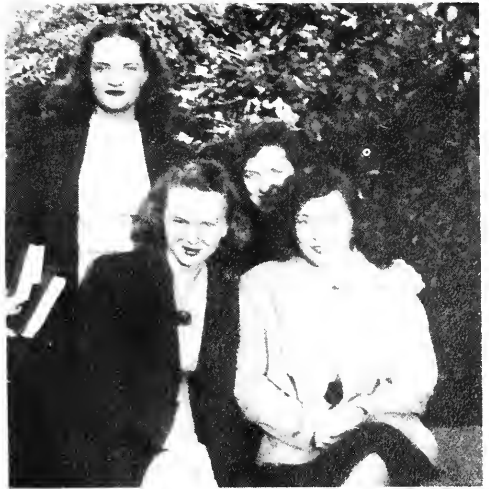


# THE ORCHESTRA



STUDENT LIFE

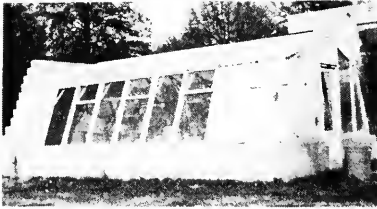
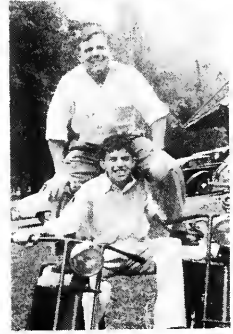




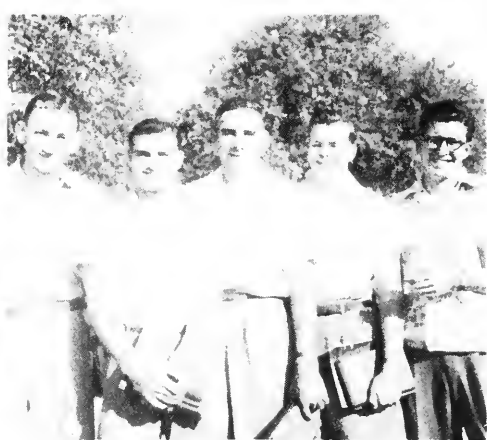


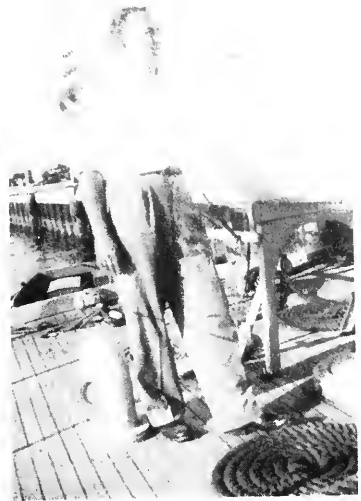
















ADVERTISEMENTS





# **MISSISSIPPI DELTA STATE TEACHERS COLLEGE**

A Standard Four Year Institution for Higher  
Education Offering Equal Opportunities  
To Young Men and Women

**Cleveland, Mississippi**

In the Heart of the Mississippi Delta

Write for Catalogue

Address: The Secretary

**DELTA STATE TEACHERS COLLEGE**

**Cleveland, Mississippi**



COMPLIMENTS OF

**The Cleveland State Bank**

CLEVELAND,

MISSISSIPPI



COMPLIMENTS OF

# THE GOYER COMPANY

GREENVILLE

CLEVELAND

YAZOO CITY

GREENWOOD

"Tobe" Kaplan's

**KAY'S STYLE SHOP**

and

**KAPLAN'S MEN'S SHOP**

For The Well Dressed Lady and Man

**Cleveland, Mississippi**



# ***McGOWAN STUDIO***

YVETTE McGOWAN, Photographer

HATTIESBURG,

MISSISSIPPI

**NOWELL LUMBER COMPANY, INC.**

QUALITY BUILDING MATERIAL

Building Material

Plumbing Supplies

Telephone Number 11

CLEVELAND,

MISSISSIPPI

COMPLIMENTS OF

**NORWOOD V. BROWN**

**BOLIVAR INSURANCE COMPANY**

CLEVELAND, MISSISSIPPI

**SCOTT BUILDING SUPPLY**

When in Cleveland

**MERIGOLD BUILDING SUPPLY**

When in Merigold

**ANGUILLA LUMBER COMPANY**

When in Anguilla

W. R. Samuels, Sr.    W. R. Samuels, Jr.

**DIXIE STAR BAKERY**

150 SHARPE AVENUE

Phone 42

Cleveland,

Mississippi

**KAMIEN'S**

"Your Favorite Store Since 1904"

Cleveland,

Mississippi

Phone 216

Compliments

Of

**LEIVINGSTON FURNITURE  
STORE**

Cleveland,

Mississippi

Compliments

Of

**BOOTS JONES**

COTTON BUYER

Cleveland,

Mississippi

Demand

DENTON'S QUALITY ICE CREAM

Pasteurized Dairy Products

**THE DENTON  
MANUFACTURING CO.**

CLEVELAND

SHELBY

MISSISSIPPI

COMPLIMENTS

OF

**THE SMART SHOP**

GREENVILLE, MISSISSIPPI

"The Delta's Finest Women's

Specialty Shop"



**CLEVELAND  
LAUNDRY - CLEANERS**

Phone 230

CLEVELAND, MISSISSIPPI

COMPLIMENTS

OF

**KENNEDY MOTOR CO.,  
Incorporated**

SALES and SERVICE

**FORD**

Telephone 370 203 South Court

Cleveland, Mississippi

COMPLIMENTS

OF

**C. E. JORDAN  
FURNITURE CO.**

SERVING THE DELTA

Cleveland, Mississippi

**KOSSMAN BUICK  
COMPANY**

We Service All Makes Of Cars and  
Trucks

PHONOGRAPH RECORDS

Cleveland, Mississippi

Compliments

Of

**CLEVELAND LUMBER  
and  
SUPPLY COMPANY**

Cleveland,

Mississippi

Compliments

Of

**BANK OF CLEVELAND**

Cleveland,

Mississippi

Compliments

Of

**WARD'S PHARMACY**

Fourth and Oak — Phone 734

**WARD'S DRUG STORE**

101 Sharpe — Phone 200

Cleveland,

Mississippi

Compliments

Of

**ELLIS AND REGENT  
THEATRES**

Cleveland,

Mississippi

**THE MODERN  
STORE**

The Very Best In

**GROCERIES**

Cleveland, Mississippi

Compliments

Of

**STERLING  
DEPARTMENT STORE**

Cleveland, Mississippi

**DELTA HARDWARE AND  
IMPLEMENT CO.**

Cleveland, Mississippi

Compliments

Of

**H. M. WARD LUMBER  
COMPANY**

All Kinds Of Building Materials

DISTRIBUTOR OF  
QUONSET BUILDINGS

Cleveland, Mississippi  
Phone 8

**SHOENHOLZ**  
**Department Store**

EVERYTHING TO WEAR

Cleveland, Mississippi

**WEST IMPLEMENT**  
**COMPANY**

John Deere Quality Farm Equipment

Cleveland, Mississippi

**The**  
**BOLIVAR COMMERCIAL**

JOB PRINTING

OFFICE SUPPLIES

Cleveland, Mississippi

**NELSON'S**  
**FIRESTONE STORE**

QUALITY MERCHANDISE

At Prices You Can Afford

Cleveland, Mississippi

**BISHOP'S SERVICE**  
**STATION**

SINCLAIR PRODUCTS

Everything for the Modern Tourist

Cleveland, Mississippi

**Morgan And Lindsey**  
**5c and 10c Store**

"Stores of Courtesy"

Cleveland, Mississippi

**OWEN'S DRUG STORE**

J. H. OWEN, Proprietor

SUNDRIES      PRESCRIPTIONS

Phone 166      Delivery

Cleveland, Mississippi

**T. M. JONES**

COTTON BUYER

Cleveland, Mississippi

**C. W. CAPPS And  
COMPANY**

COTTON SHIPPERS — DOMESTIC  
AND EXPORT

Cleveland, Mississippi

**KELSO'S  
Dry Cleaning Company**

Phone 168

Storage Hot Blocking  
Rug Cleaning

Cleveland, Mississippi

FOR FINE FOODS

**BROCK'S**

Cleveland, Mississippi

**SERVICE MOTOR  
COMPANY**

M. C. SIMPSON, Owner

Cleveland, Mississippi

Phone 382-W

STUDEBAKER — SALES AND SERVICE

Compliments Of  
**BOB REDDING PONTIAC  
COMPANY**

PONTIAC CADILLAC  
SALES AND SERVICE

Cleveland, Mississippi

**Jones Manufacturing  
Company**

KOOL VENT ALUMINUM AWNINGS

Box 48

Cleveland, Mississippi

**PACE SEED SUPPLY  
COMPANY**

SEED, FEED AND FERTILIZER

Cleveland Indianola

Mississippi

**61 SERVICE STATION  
AND TAXI**

PAN-AM PRODUCTS

WRECKER SERVICE

Floyd Wood, Owner

Cleveland, Mississippi

## Barbati & Son Shoe Shop

Cleveland,

Mississippi

## The Parisian

Cleveland,

Mississippi

## Norman Insurance Agency

Cleveland,

Mississippi

## Glasco Sporting Goods

Headquarters for Delta Sportsmen

Cleveland,

Mississippi

## MISTLOW GARDENS

For Your Flower Needs — Phone 82

Cleveland,

Mississippi

## ODOM MOTORS

Cleveland,

Mississippi

## Western Auto Associate Store

Home Owned by MARCEL DAVIDOW

Cleveland,

Mississippi

## Allen's College Grill And Grocery

Phone 9123

Cleveland,

Mississippi

Compliments

Of

## THE TEA ROOM

U. S. Highway 61

Cleveland,

Mississippi

Compliments

Of

## FLETCHER FUNERAL HOME

The Newest and Most Modern

Funeral Home In

Mississippi

Phone 318-J

Cleveland,

Mississippi

**NEW DEAL TOBACCO &  
CANDY COMPANY**

Cigarettes      Cigars      Tobacco

Candies

Greenville and Greenwood

Mississippi

Phone 96

Phone 21

Compliments

Of

**SLEDGE TOBACCO AND  
CANDY COMPANY**

Cleveland,

Mississippi

**Harpole Implement Co.**

Dealers In

Ford Tractors and Dearborn Farm  
Equipment

Cleveland,

Mississippi

**BACK OUR BACKERS**

Compliments Of

**HYTKEN'S**

Cleveland,

Mississippi

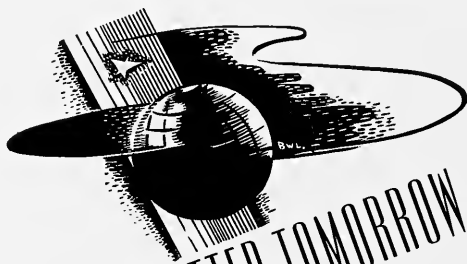
*Ready to Face the World*

★ ★ COME WHAT MAY



CONFIDENCE is the heritage of youth . . . it is also a fundamental requirement of business . . . attained by long study, training and experience \* We have enjoyed the confidence of year-book Staffs throughout the country for over thirty years . . . an accomplishment for which we are truly grateful and justly proud.

COLLEGE ANNUAL DIVISION  
ALABAMA ENGRAVING COMPANY  
BIRMINGHAM



FOR A BETTER TOMORROW . . .

Education owes its existence to the Printing Press . . . In the future as in the past, wherever there is enlightenment, the printed word shall lead the way.

**The Paragon Press**

DESIGNERS AND CREATORS OF *Fine Printing* 14 ADAMS · MONTGOMERY, ALA.





