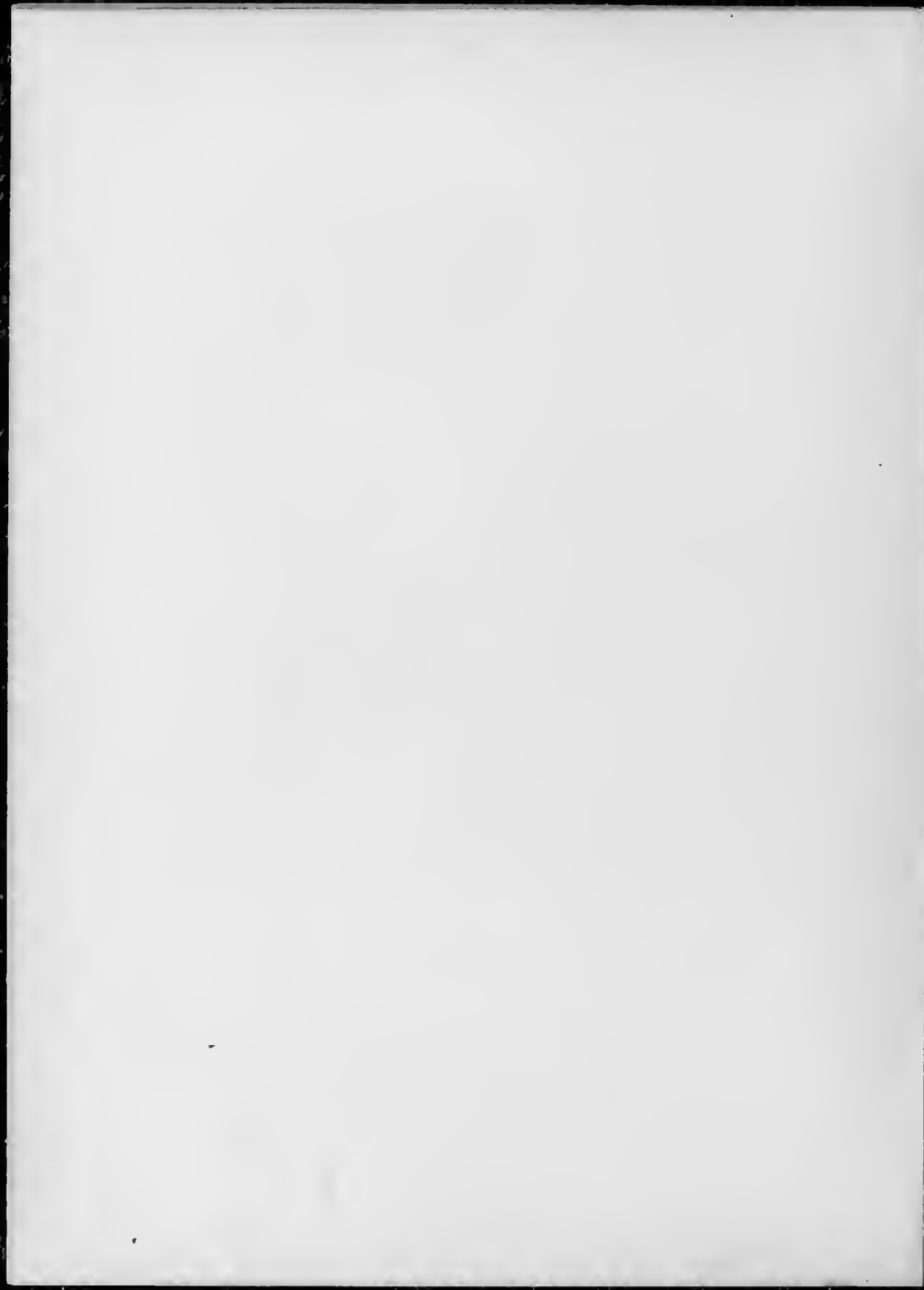




WASHBURN MEMORIAL LIBRARY

Please return to:
Gardner-Webb Archives
Dover Memorial Library







THE 1941 BUBBLES

Published by
THE SENIOR CLASS OF
BOILING SPRINGS COLLEGE
BOILING SPRINGS, N. C.

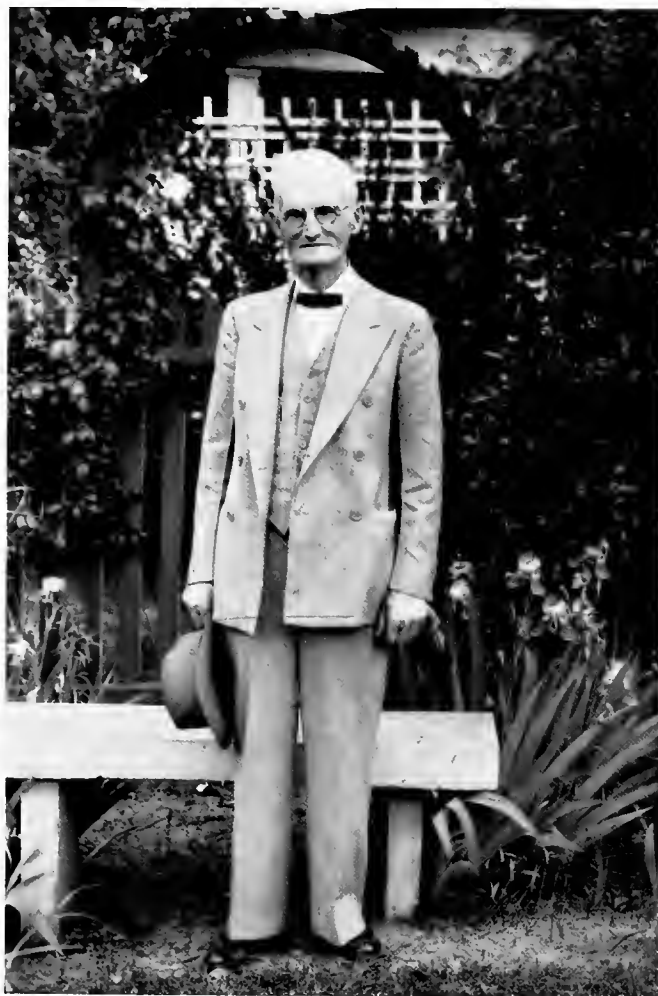
ROBERT BROOKS, *Editor*

ROBERT MORGAN, *Business Manager*

FOREWORD

WITH camera and pen we earnestly desire in this volume to give and preserve for you a picture of whatsoever things are true, whatsoever things are pure, whatsoever things are lovely, whatsoever makes the heart happiest in Boiling Springs College Life.

If it succeeds in making some memory clearer, some smile deeper, some heart happier, we shall be abundantly rewarded for our labors.



DEDICATION

For more than 50 years the Reverend John W. Suttle has held a high place in the hearts of Christians throughout North Carolina. His tireless efforts as a pastor, his loyal devotion and inestimable service to Christian education, and his Christ-like life among his fellowmen, will cause his name to be highly revered long after this small tribute has been forgotten.

Through these many years of conspicuous Christian leadership, Reverend Suttle has remained one of the most stalwart supporters of Boiling Springs College and his efforts in behalf of this institution have been manifold.

In appreciation of his loyalty to the institution most dear to us, and in recognition of his great contribution to the establishment and advancement of Christ's Kingdom in the hearts of men, to John W. Suttle is this book dedicated.







PRESIDENT

JOHN R. CANTRELL

FACULTY

MARJORIE CRISP
*Dean of Women, Physical Education,
Health, Athletics*

MAMIE LOU CROWE
Secretary to the Bursar

FRANCES CUTHBERTSON
English

W. W. DAVIDSON
Bible, Greek, Psychology

MRS. ELMA HORSLEY DAVIDSON
High School Subjects

HUBERT C. DIXON
Dean of Instruction, Mathematics, Economics

MRS. LUCILE JOHNSON DIXON
*Registrar, Director of Religious Activities,
Public School Music*

VELMA GOODE
Librarian

ELMA E. HARPER
Modern Languages

GRIFFIN HOLLAND
Commercial Department

J. L. LOVELACE
Bursar

ABBIE MILLER
Music

MRS. LILLIAN RITCH
Dietitian

JENNIE SMITH
Social Science

PAUL STACY
Science

MARY FRANCES WHITE
Home Economics





SENIOR CLASS

OFFICERS

PAUL BROCK
President

CECIL PROPST
Vice-President

AL CRISP
Secretary

SENIORS

HUBERT BEAM
"Beam"
Shelby, N. C.

K. K. L. S. (1, 2); Basketball (1, 2); I. R. C. (1); Boys' Athletic Association (2).



CLAUDE BLANTON
Ellenboro, N. C.

I. R. C. (1, 2); Basketball (2); A. R. L. S. (2); Boys' Athletic Association (2).

JAMES BLANTON
"Porky"
Shelby, N. C.

I. R. C. (1, 2); A. R. L. S. (1, 2); Boys' Athletic Association (1, 2).



SARA BLANTON
"Sis"
Lattimore, N. C.

A. R. L. S. (1, 2); I. R. C. (1, 2); Cheerleader (1, 2); Chorus (1, 2); Sextet (1); Girls' Athletic Association (1, 2); Y. W. A. (1, 2); BUBBLES Staff (2); Band (1, 2).

BETTY LOU BRIDGES
"Bett"
Mooresboro, N. C.

Y. W. A. (1, 2); I. R. C. (1, 2); A. R. L. S. (1, 2); Girls' Athletic Association (1, 2); Basketball (2).



PAUL BROCK
Spindale, N. C.

Class President (2); Ministerial Band (1, 2); President (2); K. K. L. S. (1, 2); I. R. C. (1).

ROBERT BROOKS
"Bob"
Mooresboro, N. C.

K. K. L. S. (2); President (2); Class President (1); *Piedmont Piper* Staff (1, 2); Editor (1); *Bubbles* Staff (1, 2); Editor (2); B. S. U. Council (2); Chorus (1); Quartet (1, 2); Athletic Association (2); I. R. C. (1); Chief Marshal (1).



AGNES CAMP
Gaffney, S. C.

K. K. L. S. (1, 2); Y. W. A. (1, 2); I. R. C. (1, 2); Girls' Athletic Association (1, 2).

MARY HESTER CLARK
"Hess"
Newton, N. C.

Class Secretary (1); Marshal (1); K. K. L. S. (1, 2); Vice-President (2); Girls' Athletic Association (1, 2); May Queen Attendant (1); Basketball (2); Y. W. A. (1).



DORRIS CLINE
"Cline"
Shelby, N. C.

B. S. U. Council (2); BUBBLES Staff (2); A. R. L. S. (1, 2); President (2); Girls' Athletic Association (1, 2); *Piedmont Piper* Staff (2); I. R. C. (1, 2); Y. W. A. (1, 2); President (2); Basketball (2); Band (1, 2).

SENIORS

SAM CRAWLEY, JR.
"SAMMY"
Lattimore, N. C.

A. S. T. C. (1); Boys' Athletic Association (2); Basketball (2); Vice-President I. R. C. (2); President A. R. L. S. (2).



ALBERT CRISP
"AL"
Grover, N. C.

K. K. L. S. (1); Class Secretary (2); I. R. C. (1); Basketball (1, 2); Football (1); Baseball (1); Band (1); Tennis (1); A. R. L. S. (2); Boys' Athletic Association (2).

JUANITA DAVIDSON
Chesnee, S. C.

A. R. L. S. (1, 2); Band (1, 2); Chorus (2); Basketball (2); Athletic Association (1, 2); I. R. C. (1, 2); President (2); Y. W. A. (1, 2).



HAL DEDMON
Shelby, N. C.

A. R. L. S. (1, 2); I. R. C. (1, 2); Vice-President (2); Boys' Athletic Association (1, 2); Basketball (1, 2).

DOROTHY SUE HAMRICK
"DOTTY SUE"
Boiling Springs, N. C.

A. R. L. S. (1, 2); Chorus (1, 2); Girls' Athletic Association (2).



MARGARET HAMRICK
Boiling Springs, N. C.

K. K. L. S. (1, 2); Pianist (1); I. R. C. (1).

MARIE HAMRICK
Gaffney, S. C.

K. K. L. S. (1, 2); I. R. C. (1, 2); Y. W. A. (1, 2); B. S. U. Council (2); Chorus (1); Girls' Athletic Association (1, 2).



MAE HARRIS
Shelby, N. C.

A. R. L. S. (1, 2); Girls' Athletic Association (1, 2); Y. W. A. (1, 2).

ELIZABETH HAWKINS
"Liz"
Cliffside, N. C.

I. R. C. (1, 2); Girls' Athletic Association (2); A. R. L. S. (2); Y. W. A. (2).



ELIZABETH HENDERSON
"Liz"
Hickory, N. C.

K. K. L. S. (1, 2); Girls' Athletic Association (1, 2); Chorus (1, 2); I. R. C. (1); Piedmont Piper Staff (1); Basketball (2).

SENIORS

L. H. HOLLINGSWORTH
Asheville, N. C.

Ministerial Band (1, 2); I. R. C. (1), President (1); Boys' Athletic Association (1, 2); K. K. L. S. (1, 2).



MARION JENRETTE
Ash, N. C.

A. R. L. S. (1, 2); Girls' Athletic Association (1, 2); B. S. U. Council (2); Y. W. A. (1, 2); BUBBLES Staff (2); Chorus (1, 2); Sextet (1, 2).

FRANCES JOLLY
"FRANKIE"
Rutherfordton N. C.

A. T. C. (1); K. K. L. S. (2); I. R. C. (2); Y. W. A. (2); Girls' Athletic Association (2); Chorus (2).



DAN WATSON JONES
Boiling Springs, N. C.

A. R. L. S. (1, 2); B. S. U. Council (2); Boys' Athletic Association (1, 2); Basketball (1, 2); Chorus (1, 2); Quartet (1, 2); I. R. C. (2); BUBBLES Staff (1, 2); Band (1).

MILLER JONES
Shelby, N. C.

K. K. L. S. (1); A. R. L. S. (2); Boys' Athletic Association (1, 2); I. R. C. (1).



BERTIE LEE KENDRICK
Spindale, N. C.

B. S. U. President (2); Chorus (1, 2); Sextet (1, 2); A. R. L. S. (1, 2); BUBBLES Staff (2); Girls' Athletic Association (1, 2).

REBECCA KENDRICK
"BECKER"
Shelby, N. C.

I. R. C. (1, 2); Y. W. A. (1, 2); A. R. L. S. (1, 2); Girls' Athletic Association (1, 2).



BETTY LOU MCCLURE
"BECK"
Shelby, N. C.

A. R. L. S. (1, 2), Vice-President (1); Marshal (1, 2); May Day Attendant (1); *Piedmont Piper* Staff (1); Basketball Manager (2); Band (1, 2); B. S. U. Council (2); BUBBLES Staff (2); Y. W. A. (1, 2); Girls' Athletic Association (1, 2); I. R. C. (2); Chorus (2).

EUGENE MCKINNEY
"KINNEY"
Harris, N. C.

A. R. L. S. (1, 2); Boys' Athletic Association (1, 2); I. R. C. (1); Tennis (1).



MARIE MARTIN
Shelby, N. C.

Mitchell College (1); Girls' Athletic Association (2); Basketball (2); *Piedmont Piper* Staff (2); BUBBLES Staff (2).

SENIORS

LOUISE MATHENY
Moorsboro, N. C.

Girls' Athletic Association (1, 2);
K. K. L. S. (1, 2); Y. W. A. (1, 2).



ROBERT MORGAN
Shelby, N. C.

K. K. L. S. (1, 2), President (2);
Marshal (1); Class Vice-President
(1); BUBBLES Staff (1, 2), Business
Manager (2); *Piedmont Piper* Staff
(1); Boys' Athletic Association (1,
2); Tennis (1); B. S. U. Council
(2); I. R. C. (1, 2); Basketball (1),
Manager (2).

FIDELIA PADGETT
"FIDDLE"
Lattimore, N. C.

Chorus (1, 2); Basketball (2);
Sextet (1); I. R. C. (2); Girls'
Athletic Association (1, 2); Physical
Education Club (2); Y. W. A. (1,
2); Band (1, 2); A. R. L. S. (1, 2),
Vice-President (1).



MARGARET PHILBECK
Polkville, N. C.

A. R. L. S. (1, 2); Chorus (1,
2); Girls' Athletic Association (1, 2);
Physical Education Club (2); I. R.
C. (1); Basketball (2).

ELVIN PRICE
Hollis, N. C.

K. K. L. S. (1); A. R. L. S. (2);
I. R. C. (1); Basketball (1).



CECIL PROPST
Belwood, N. C.

K. K. L. S. (1, 2); B. S. U.
Council (2); Editor *Piedmont Piper*
(2); Boys' Athletic Association (1,
2); BUBBLES Staff (2); Basketball
(1, 2); Chorus (1); Marshal (1);
Class Vice-President (2).

MYRTLE LEE REYNOLDS
Kings Mountain, N. C.

Chorus (1, 2); K. K. L. S. (1, 2),
Vice-President (2); Physical Educa-
tion Club (2); Basketball (2); I. R.
C. (1, 2); Girls' Athletic Association
(1, 2); B. S. U. Council (2); Y.
W. A. (1, 2).



MELVA SETTLEMIRE
Kings Mountain, N. C.

Band Director (1, 2); A. R. L. S.
(1, 2); I. R. C. (1, 2); Girls' Athle-
tic Association (1, 2); Y. W. A.
(1, 2).

OLAN SPEAGLE
Vale, N. C.

Boys' Athletic Association (1, 2);
A. R. L. S. (2); K. K. L. S. (1).



BLANCHE TAYLOR
Chesnee, S. C.

K. K. L. S. (1, 2); Physical Educa-
tion Club (2); Y. W. A. (1, 2);
B. S. U. Council (2); Girls' Athletic
Association (1, 2); I. R. C. (2);
Piedmont Piper Staff (2).



SENIOR SUPERLATIVES

CECIL PROPST, MYRTLE LEE REYNOLDS
 PAUL BROOK, BERTIE LEE KENDRICK
 BOB BROOKS, DORRIS CLINE
 ROBERT MORGAN, BETTYE LOU McCLURE
 HAI D'AMON
 MARY HESTER CLARK
 AL CRISP, FIDELIA PADGETT

Most Intellectual
Most Influential
Most Versatile
Most Popular
Most Handsome
Prettiest
Most Athletic



FRESHMAN CLASS

OFFICERS

WILSON PADGETT
President

MARGARET JONES
Vice-President

DOROTHY AUSTELL
Secretary

ANNIE RUTH MCNEIL
Treasurer

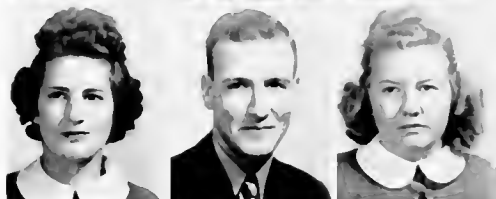
FRESHMEN



ROBERT ABRAMS Rutherfordton, N. C.
 JOHN AMMONS Swannanoa, N. C.
 DOROTHY AUSTELL Shelby, N. C.



MRS. PAUL BROCK Spindale, N. C.
 GLADYS BROOKS Shelby, N. C.
 SADIE BROOKS Mooresboro, N. C.



DORIS CAMPBELL Ellenboro, N. C.
 HILL CARPENTER Cherryville, N. C.
 MARY E. COGGINS Mooresboro, N. C.



ANNIE MERLE COSTNER Casar, N. C.
 JULIA CRISP Grover, N. C.
 JESSIE DAVIS Ellenboro, N. C.



J. B. ELMORE, JR. Lawndale, N. C.
 ROSEMARY ESKRIDGE Shelby, N. C.
 JAMES ILEY GANTT Mooresboro, N. C.



MORRISON GILBERT Rutherfordton, N. C.
 VIRGINIA GUFFEY Cliffside, N. C.
 BERNICE HARTON Rutherfordton, N. C.



PURNIA HARTON Rutherfordton, N. C.
 WILBURN HENDRIX Cramerton, N. C.
 EDLEY HICKS Mooresboro, N. C.
 MARGRETTA HICKS Kings Mt'n., N. C.

FRESHMEN

SAM HIGH Dallas, N. C.
 C. O. HOLLAND Mooresboro, N. C.
 FARRELL JENKS Vale, N. C.



MARTHA JOLLEY Rutherfordton, N. C.
 MARGARET JONES Lattimore, N. C.
 MRS. ELMA KING Durham, N. C.



MARY LANCASTER Avondale, N. C.
 MELVIN LOWERY Shelby, N. C.
 JAMES L. MCCLUNEY Forest City, N. C.



MRS. JAMES L. MCCLUNEY Forest City, N. C.
 LUCILLE MCFARLAND Shelby, N. C.
 ANNIE R. MCNEIL Wilkesboro, N. C.



EUZELIA MCSWAIN Kings Mt'n., N. C.
 MILDRED MCSWAIN Shelby, N. C.
 HILLARY MAGNESS Lattimore, N. C.



HAROLD OWEN Salisbury, N. C.
 WILSON PADGETT Forest City, N. C.
 JANE PUTNAM Shelby, N. C.



ROBERT TREXLER Salisbury, N. C.
 REBECCA TURNER Blacksburg, S. C.
 HELEN WHISENANT Gaffney, S. C.
 JOHNNIE WILKINS Lawndale, N. C.



BUBBLES EDITORIAL STAFF



BUBBLES BUSINESS STAFF

PIEDMONT PIPER STAFF



I. R. C.

ATHENIAN-RHAMSÆUR LITERARY SOCIETY



KALAGATHIAN-KALLIERGEONIAN LITERARY SOCIETY

MINISTERIAL BAND



B. S. U. COUNCIL

MALE QUARTET



MIXED QUARTET



OCTET

CHORUS



CHEERLEADERS

BOYS' ATHLETIC ASSOCIATION



GIRLS' ATHLETIC ASSOCIATION

BOYS' BASKETBALL



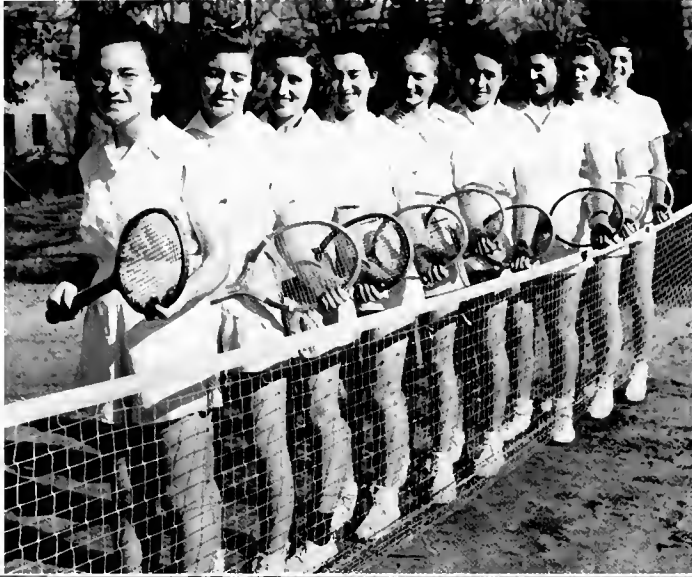
GIRLS' BASKETBALL

VOLLEY BALL



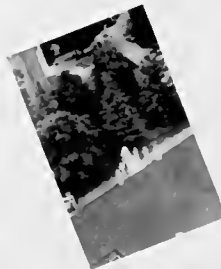
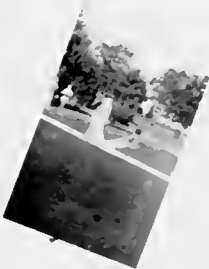
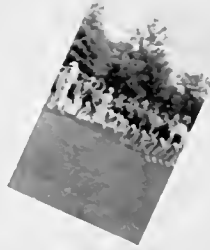
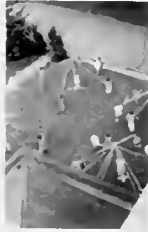
SOFT BALL

TENNIS



PHYSICAL EDUCATION CLUB

May Day







BOILING SPRINGS BAPTIST CHURCH

J. L. JENKINS, *Pastor*

H. C. DIXON, *Sunday School Supt.*

BROOKS E. PIERCY, *Chairman Board of Deacons*

BEAVER DAM BAPTIST CHURCH

J. W. SUTTLE, *Pastor*

E. D. HUMPHRIES, *Sunday School Supt.*

E. D. HUMPHRIES, *Chairman Board of Deacons*

Compliments of

NEW BETHEL BAPTIST CHURCH

DOUBLE SPRINGS BAPTIST CHURCH

J. W. SUTTLE, *Pastor*

F. E. GREENE, *Sunday School Supt.*

D. R. WASHBURN, *Chairman Board of Deacons*

**BELMONT COTTON MILLS
COMPANY**

Manufacturers of
HIGH GRADE
CARDED YARNS



SHELBY, NORTH CAROLINA

Photography By

HORDS STUDIO

PHOTOGRAPHY OF QUALITY

+ +

SHELBY, N. C.

Phone 877

Royster Building

Compliments of

Cleveland Sandwich Shop

Fountain Service School Supplies

▲

MAKERS OF
GRADE A SANDWICHES

WHOLESALE

RETAIL

BOILING SPRINGS, NORTH CAROLINA

Compliments of
**BEN FRANKLIN
STORES**
SPINDALE, N. C.

W. J. DIXON & SONS
GENERAL MERCHANDISE
STAR BRAND SHOES
For the Whole Family
FALLSTON, N. C.

Compliments of
**McSWAIN
CASH GROCERY**
BOILING SPRINGS, N. C.

Compliments of
**COLLINS-EVANS
DEPARTMENT STORE**
FOREST CITY, N. C.

Compliments of
JOHN W. BELL
Route 4
SHELBY, N. C.

★
ROLLING STORES
GENERAL MERCHANDISE
ANTIQUES

We Invite
BOILING SPRINGS COLLEGE
to make
**BELK-STEVENSON
COMPANY**
"Shelby's Shopping Center"

●
Your Store



Compliments of

CLEVELAND MILL and POWER CO.

LAWNDALE, N. C.



LILY MILL CO.

Spinners of Sewing Thread

LILY, TULIP AND DAISY

LILY SIX-STRAND FLOSS

LILY CROCHET YARNS & LILY TWINES

SHELBY, N. C.

T. W. HAMRICK Co.

DIAMONDS, WATCHES
SILVERWARE

Wedding Gifts a Specialty

SHELBY, N. C.

SHELBY SUPPLY Co.

Mill Supplies

Phone 121

SHELBY, N. C.

**A. V. WRAYS
AND-6-SONS**

*Shelby's One-Stop
Shopping Center*

SHELBY, N. C.

Comfort is what you want; and that
is what you get when we rebuild your
shoes without nails or stitches.

SHINE 5c At

SELLERS SHOE SHOP

W. P. Sellers, Proprietor
Boiling Springs Alumnus
Opposite First Baptist Church

SHELBY, N. C.

+

Compliments of

**C. J. Hamrick
& Sons**

Boiling Springs, N. C.

+

**CLEVELAND LUMBER
COMPANY**

★

*"Everything to Build
With"*

★

SHELBY, N. C.

Compliments of

*Dover and Ora Mill
Company*



RAYON SPECIALTIES



SHELBY, N. C.

CONGRATULATIONS TO BOILING SPRINGS
GRADUATES—CONTINUE YOUR EDUCATION AT
ELON COLLEGE

ELON, NORTH CAROLINA



Courses offered in: Journalism, Business Administration,
Music, Medicine, Law, Languages, Home Economics, etc.



REASONABLE FEES

For Further Information Write To

GEO. D. COLCLOUGH, *Field Secretary*

ELON, NORTH CAROLINA

ZEN BRIDGES

Staple and Fancy Groceries

Heavy and Shelf Hardware—Notions and Tennis Shoes

Gas, Oils and Accessories

Fruits and Vegetables—Fertilizer and Feeds

Patent Medicines—Candies and Smokes

School Supplies

Country Produce Bought and Sold

Facing the Campus

BOILING SPRINGS, NORTH CAROLINA

**CHAMPION OIL
COMPANY**

SHELBY, N. C.

Eat Blue Ridge Ice Cream

Phone 182

**BLUE RIDGE
PRODUCTS CO.**

SHELBY, N. C.

Compliments of

**CAMPBELL
DEPARTMENT STORE**

SHELBY, N. C.

Compliments of

D. A. BEAM COMPANY

FIELD SEEDS

FERTILIZER

SHELBY, N. C.

MAXWELL-MORRIS & KENNEDY

Shelby's Leading Furniture Store

PHILCO RADIOS—FRIGIDAIRES

Phone 788

S. LaFayette St.

Compliments of

MOORESBORO CREAMERY CO.

1909—1941

"Oldest Creamery in the State"

Highest Cash Prices Paid for Cream

MOORESBORO, N. C.

BOSTS BAKERY

DELICIOUS CAKES

At Your
GROCER

+ +

PHONE 158
SHELBY, N. C.

THE AUTO INN

Dealers in GOODYEAR TIRES

(Independent Gas and Oil Dealers)

Distributors of

REPUBLIC PRODUCTS

SHELBY, N. C.

GENERAL INSURANCE

See us before you buy your insurance.

Reliable Companies

Courteous Services

Prompt Adjustments



E. L. WALKER

General Agent

O. P. HAMRICK

Local Representative

M. H. HAMRICK & SONS

Cleveland County's
LARGEST CANDY JOBBER

Shelby, N. C.

Phone 2411

Compliments of

UNION TRUST COMPANY

of

SHELBY AND BRANCHES



RUTHERFORDTON—FALLSTON
FOREST CITY—LAWDALE
ELLENBORO—SPINDALE

Member F.D.I.C.

Banking

Insurance

Trusts

FIRST NATIONAL BANK



SHELBY, N. C.



Member Federal Deposit Insurance Corporation

Compliments of

Morgan & Co.

FEED SEED FERTILIZERS

SHELBY, N. C.

Phone 345

DENNIS DRUG COMPANY

PHONE 774
Professional Building
S. Washington Street
SHELBY, N. C.

Cleveland Hardware Company

"Washburn's"
52 YEARS OF SERVICE
Established 1889
SHELBY, N. C.

For Genuine Dry Cleaning
and
Dependable Service

Whiteway Cleaners

SHELBY, N. C.

Wilson & Warlick Service Station

131 N. LaFayette Street

SHELBY, N. C.

Phone 878

BOILING SPRINGS COLLEGE

CLEVELAND COUNTY, NORTH CAROLINA

A Junior College for Men and Women

A Christian Institution owned and supported by
One Hundred Baptist Churches of the
Piedmont Section

Courses

Two years of standard college work leading to title of
Associate in Arts.

Special Courses in
Piano, Voice, Expression, Commercial Subjects.

Student Activities

Athletics, Debating, Dramatics, Glee Club, Literary
Societies, Religious Life, Social Activities.

Expenses

Opportunity to earn part of expenses. Total charges for
year for room, board, tuition and fees—\$270.00.

For catalogue and other information write to

PRESIDENT J. R. CANTRELL

BOILING SPRINGS, NORTH CAROLINA

Compliments

QUALITY CLEANERS
Shelby, N. C.

PAUL WEBB
Shelby, N. C.

AVERY OIL COMPANY
Shelby, N. C.

D. Z. NEWTON
Shelby, N. C.

LOY'S MEN SHOP
Shelby, N. C.

RALPH W. GARDNER
Shelby, N. C.

HORACE EASOM
Shelby, N. C.

C. C. HORN
Shelby, N. C.

E. L. WEBB
Shelby, N. C.

I. W. OSBORNE
Shelby, N. C.

●

Patronize
our
Advertisers

●



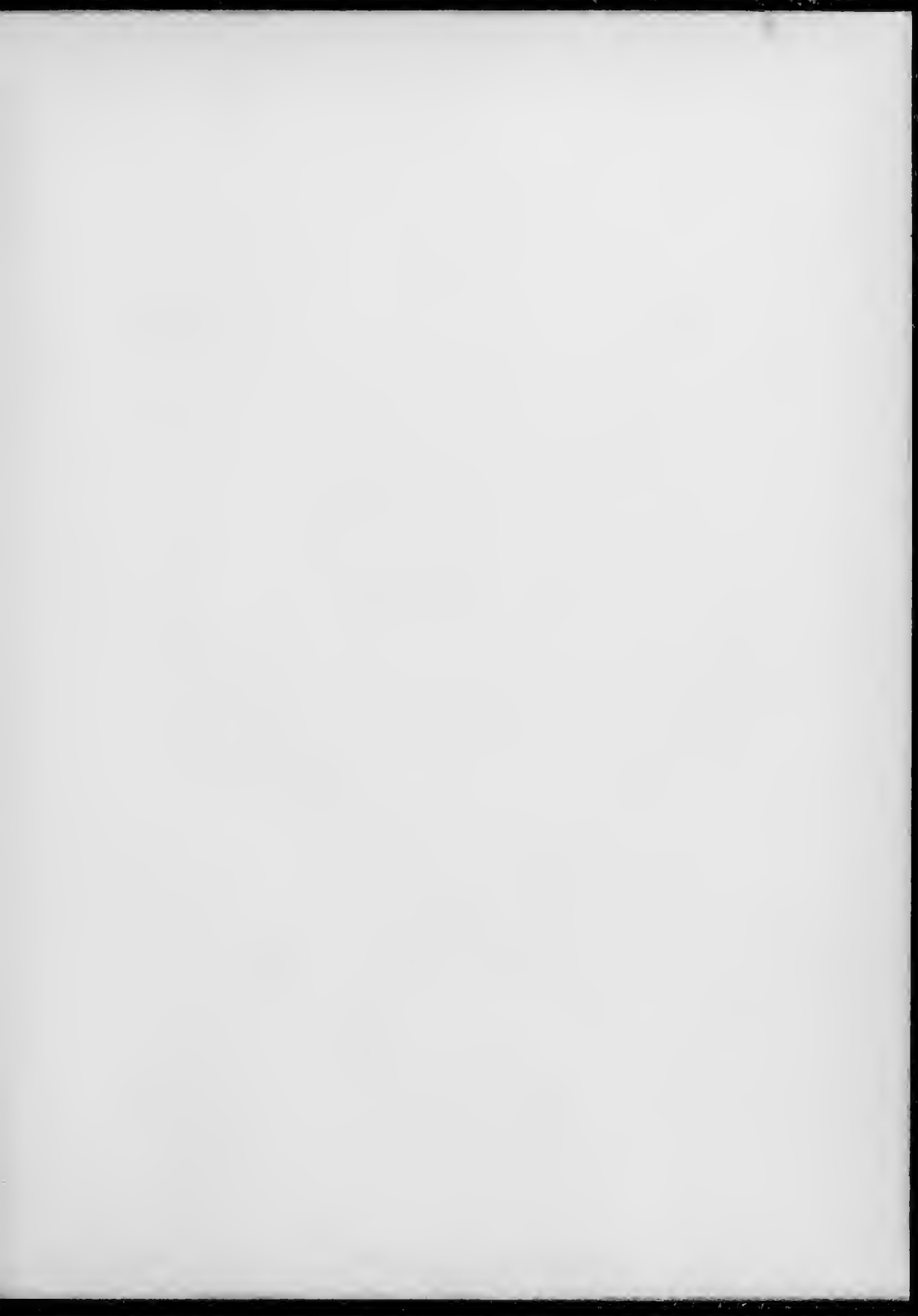


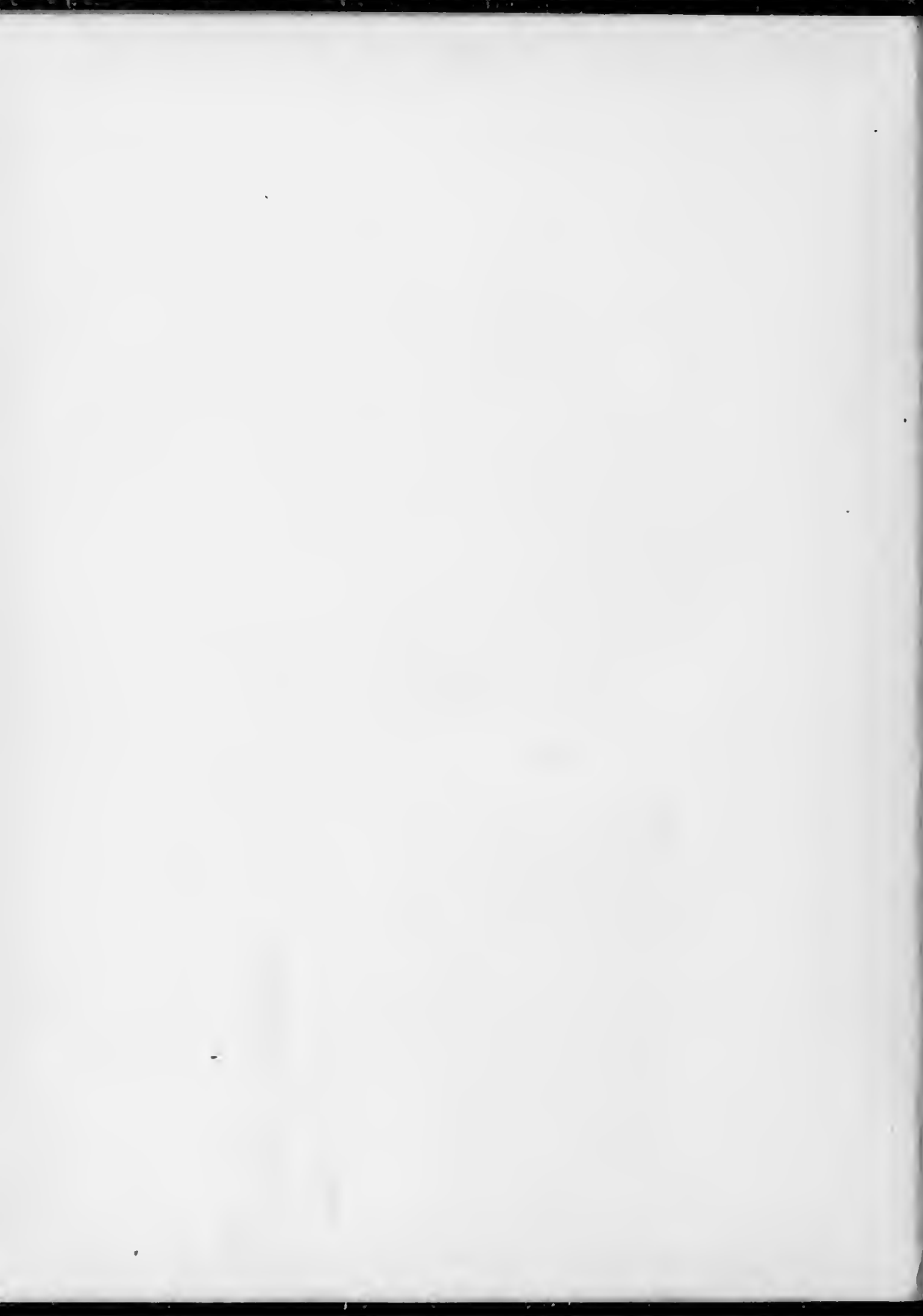












Gardner-Webb College

AUTHOR

Annual - 1941.

TITLE

DATE DUE

BORROWER'S NAME

Gardner-Webb College

Annual - 1941.

