

# *The Buffalo*

MILITARY COLLEGE

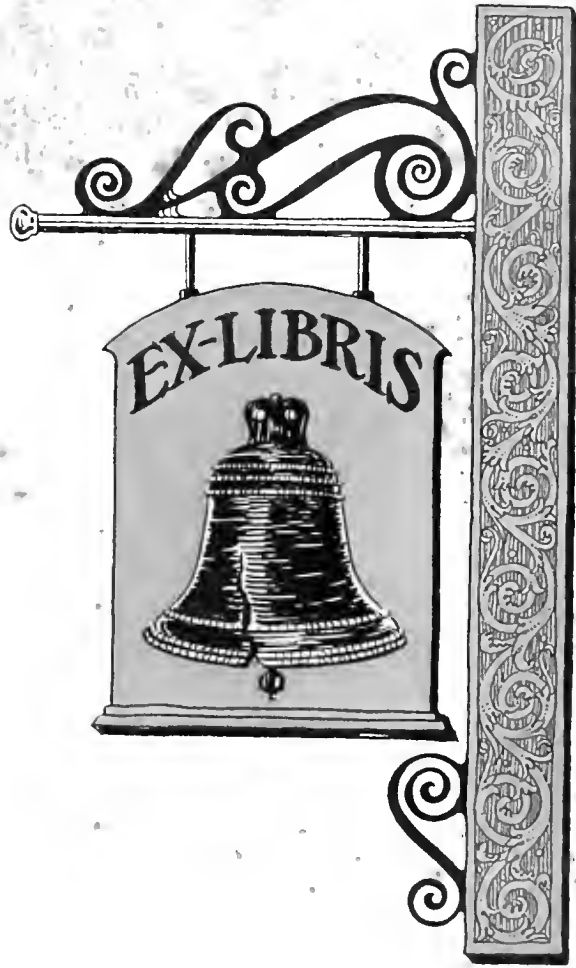
Milligan College Library  
LD3311.A47M5627 1929 c.2 MA  
**Milligan College Buffalo.**

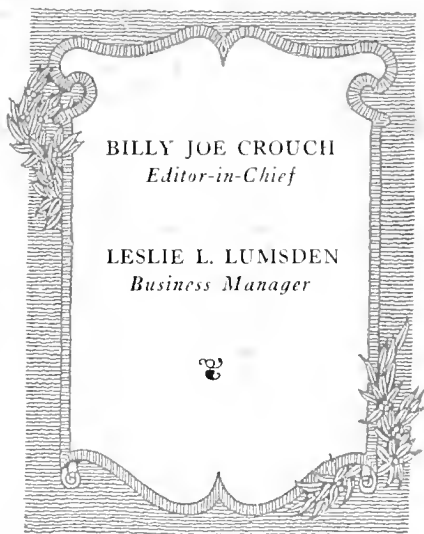


3 1881 0001 1696 8

Digitized by the Internet Archive  
in 2011 with funding from  
LYRASIS Members and Sloan Foundation









*The*  
**BUFFALO**  
 1929  
 PUBLISHED ANNUALLY BY  
 THE SENIOR CLASS  
*of*  
 MILLIGAN COLLEGE



WELSHIMER BROS. CO. PRINTERS  
 MILLIGAN COLLEGE, TENN.



# DEDICATION

To

ADAM B. CROUCH

An Alumnus of Milligan College who exemplifies the fine ideals and possesses the rich inheritance of her best traditions; a Christian business man who is outstanding in ability, in business ethics, integrity and honor; a Trustee whose loyalty, foresight, faith and gifts have advanced the standards of Christian education; we, the Senior Class of 1929, in appreciative recognition of his abiding interest, untiring efforts and cordial co-operation for a greater and better Milligan, dedicate this our 1929 Buffalo





614



97736



# FOREWORD



In years to come, when you turn the pages of this book, we hope that you will remember that through inexperienced amateurs, we have done our best to present the real Milligan College. Looking forward to the rise of a greater Milligan, looking backward to note how far down the road of progress we have come, pausing for a while to view the campus and its many activities, in that list our aims in compiling the 1929  
Buffalo.





# CONTENTS

3

BOOK I	COLLEGE
BOOK II	CLASSES
BOOK III	FEATURES
BOOK IV	ORGANIZATIONS
BOOK V	ATHLETICS





# STAFF

- BILLY JOE CROUCH - - *Editor-in-Chief*
- VICTOR ALLEN - - - - *Assistant Editor*
- BETTY CROW - - - - - *Assistant Editor*
- LESLIE L. LUMSDEN - - - - - *Business Manager*
- JORDAN J. CROUCH - - - - *Assistant Business Manager*
- WADE B. DENNIS - - - - - *Athletic Editor*
- ROBERT SHUPE - - - - - *Art Editor*
- LENA SUE HARTMAN - - - - - *Snapshot Editor*
- MARY SUE JAYNES - - - - - *Society Editor*
- GEORGE BYRD - - - - - *Circulation Manager*

8

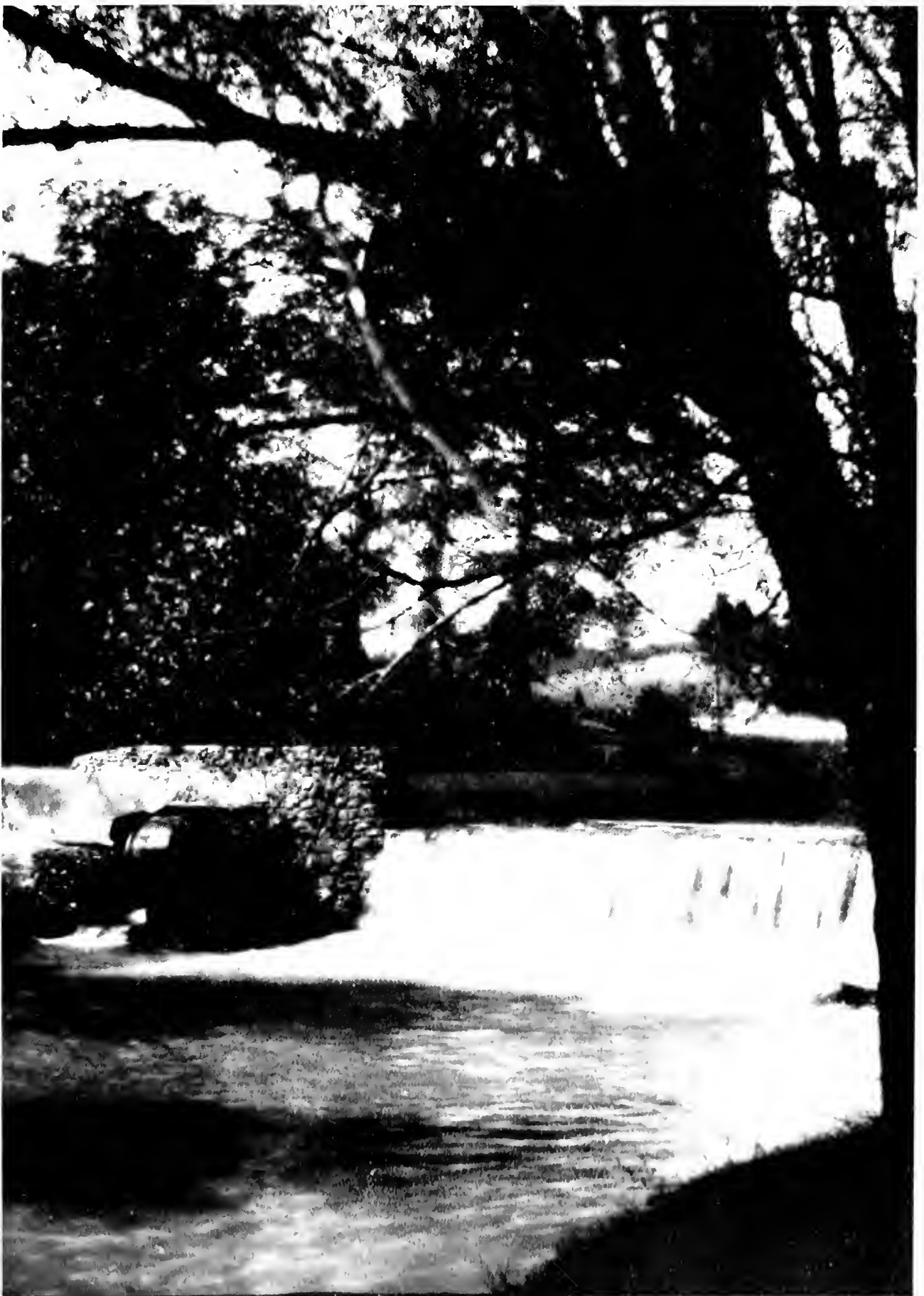


# COLLEGE



BOOK I



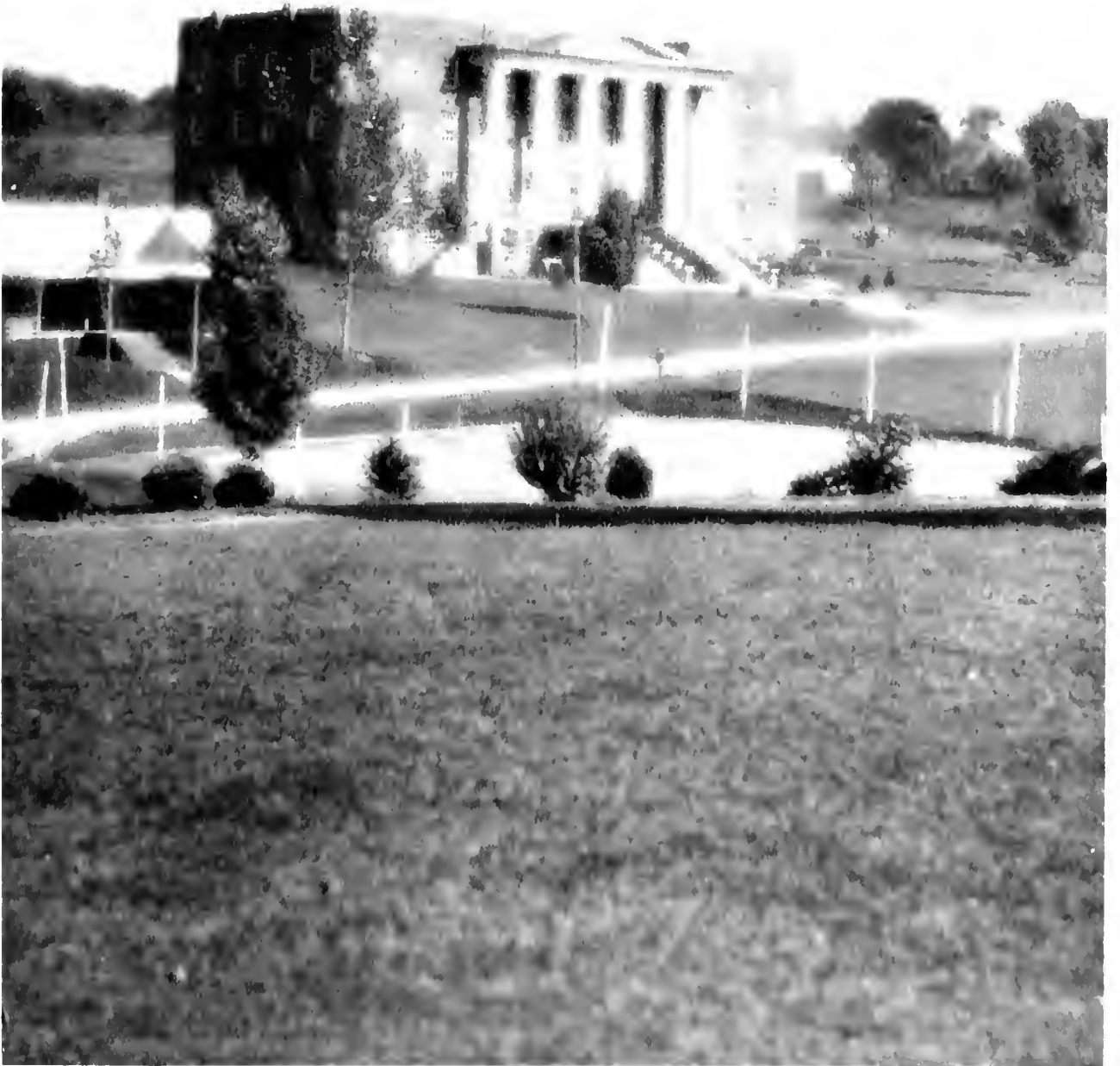


*D. ... ..*

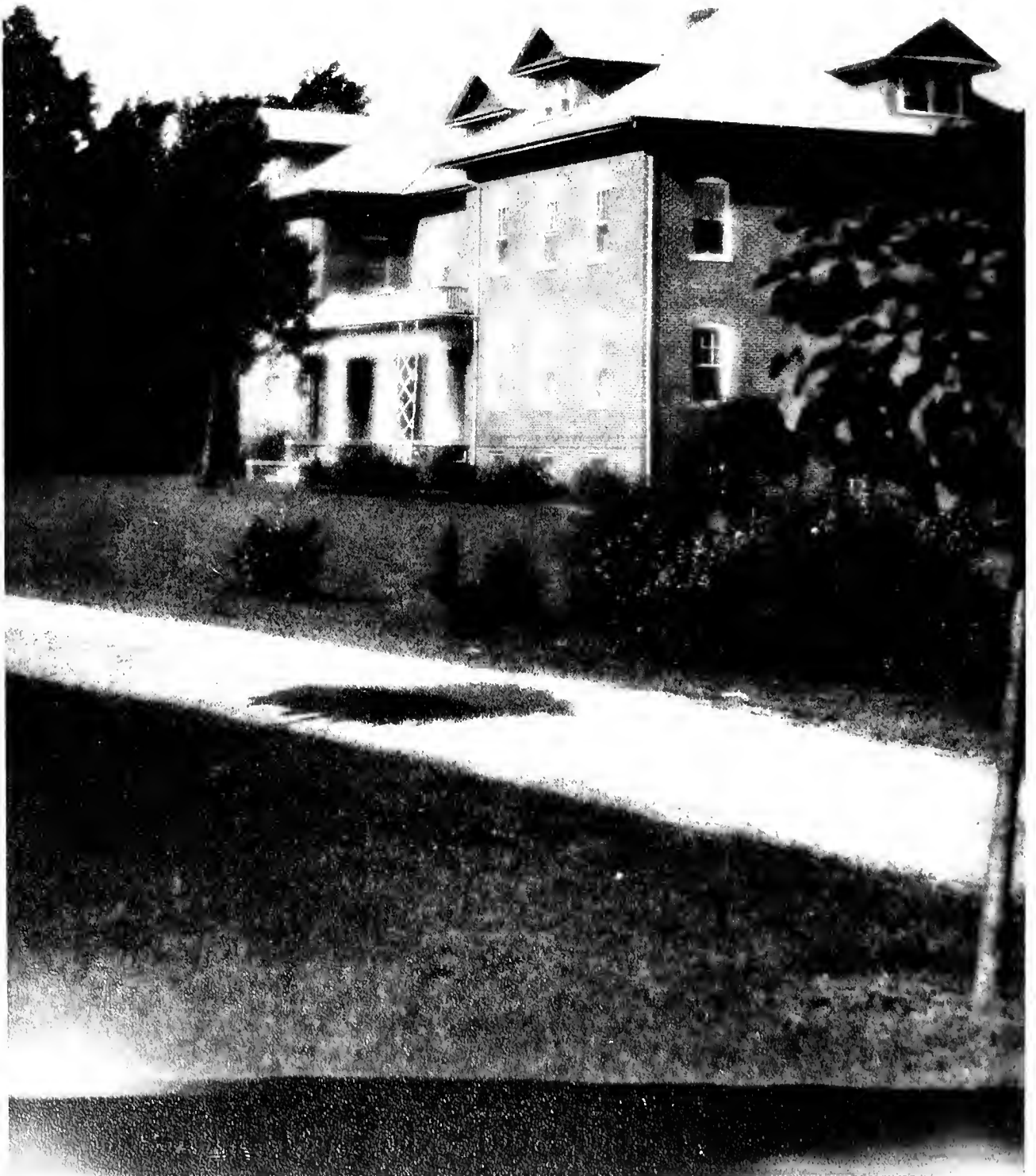


*More like the beauty of a dream, truly Milligan the beautiful*

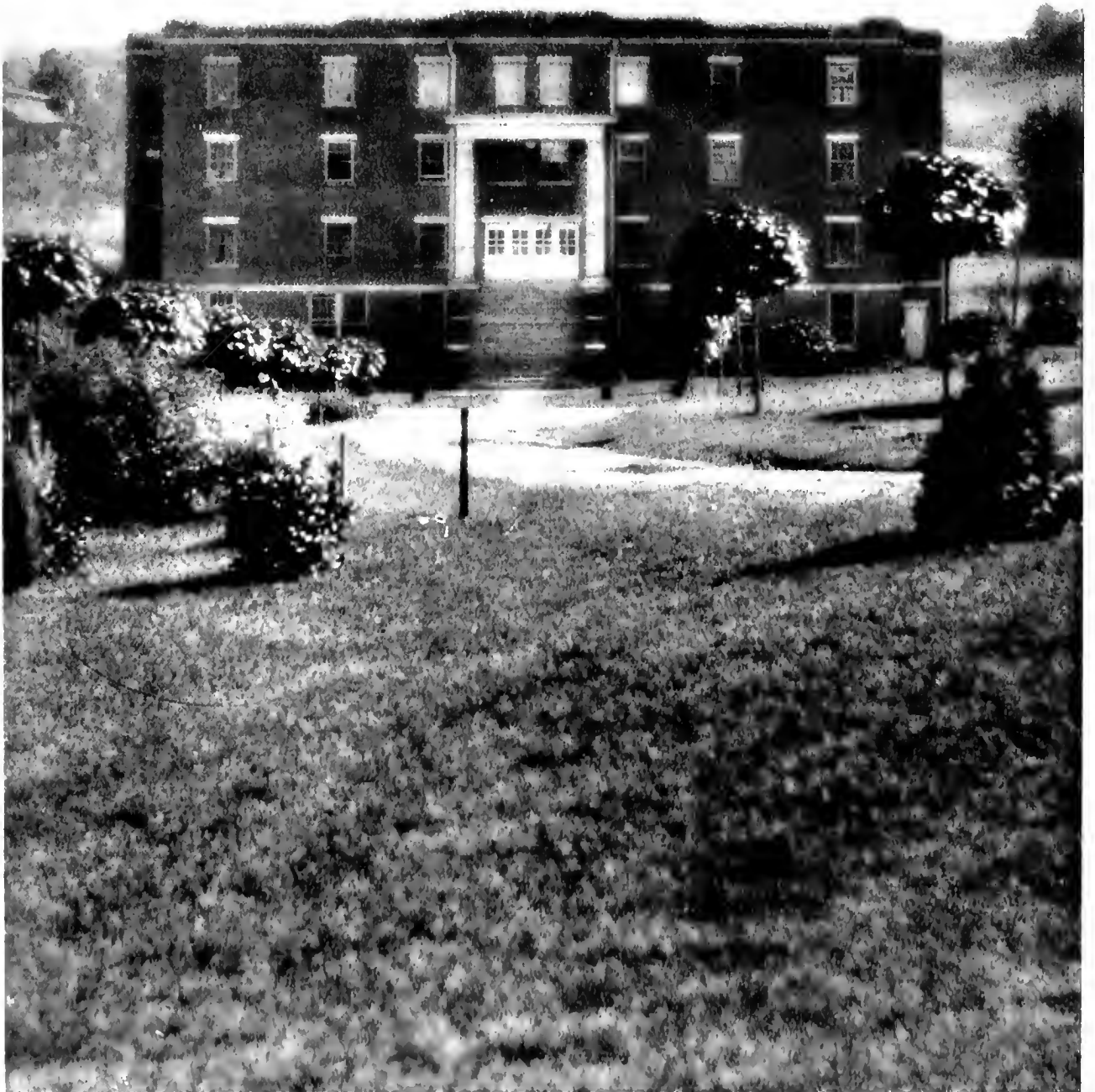




*Across the Shattuck has an entrance* *Wiss II*



*Hardin Hall, the home of our Milligan Girls*



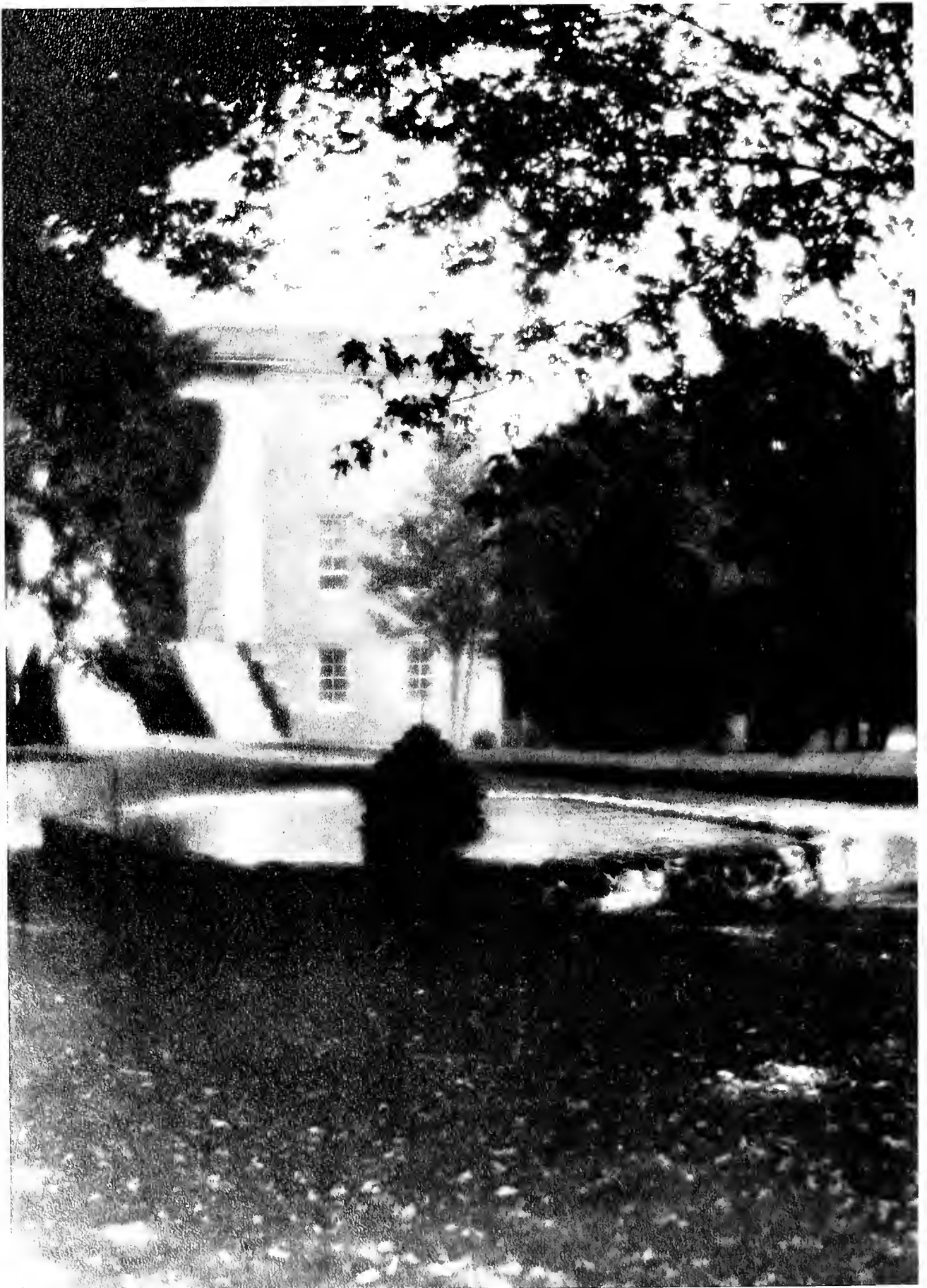
*J. O. Clark Faculty Building, The University of Virginia, Charlottesville, Virginia*



*Nestled among the celestial trees, the home of our President*



THE UNIVERSITY BUILDING



*Where beauty sleeps, and lovers dream*

## The Happy Valley Trail

BY PROF. W. A. WRIGHT, PH.D.

*I see the throngs go sweeping by each day  
As lazy summer bids me come and rest  
Beneath the oaks. The road with graceful curves  
Now plain to view, now playing hide and seek  
As leafy boughs sway to and fro, is lost  
Around the hill. The sound of horns is heard  
That signal speeding cars. And still they come;  
And still they come, far into night. But where?  
And why such haste, as if to reach some goal  
That yearning hearts must find and find at once!  
It is the Happy Valley Trail. O now  
I know and understand it all. And so  
I say to those who've journeyed far in quest  
Of beauty, such as nature spreads for all,  
With lavish hand; Go on, you're almost there!  
I see the peaks of Smoky Mountain Park  
From where I sit and seem to hear the sound  
Of splashing waters as they fall, and then  
Go rushing on to fall again. The sky  
Above is blue today. That cloud now floats  
Like silent sail on Summer Sea. But soon  
Perchance the lightning and the thunder's crash  
May mirror Nature's other mood. Go on;  
You'll soon be there; then rest until the thrill  
Shall make you feel you are in Paradise.*



H. J. DERTHICK  
*President*

MRS. H. J. DERTHICK  
*Assistant to President  
Dean of Women*





C. E. BURNS  
DEAN OF MEN  
*Professor of Business Administration*



MRS. W. B. BOYD  
LIBRARIAN



J. WALTER CARPENTER  
DEAN OF BIBLE DEPARTMENT  
*Professor of New Testament*



DIMPLE HART  
*Instructor in Expression*

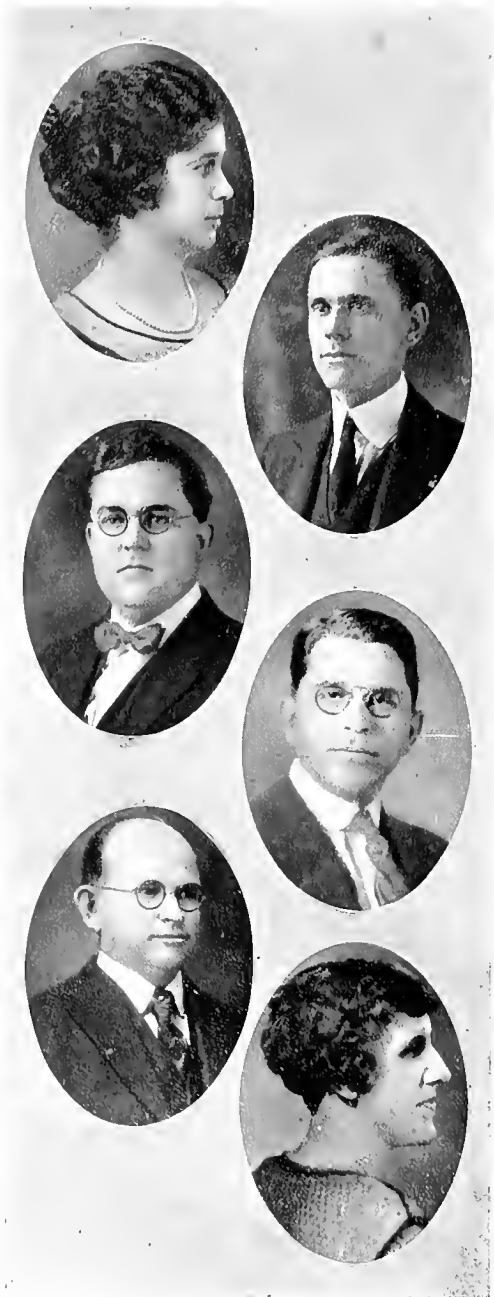


ADA BESS HART  
*Coach and Physical Director for Women*



JAMES T. EDWARDS  
*Coach of Football*





MRS. A. F. COCHRANE  
*Matron of Boys' Home*

ASA FRAZIER COCHRANE  
*Professor of Biology*

SAM J. HYDER  
*Professor of Mathematics*

CLEMENT M. EYLER  
*Professor of English*  
*Director of Physical Education for Men*  
*Coach of Basketball and Baseball*

W. B. BOYD  
*Ex-Member of Faculty*  
*Friend of the College*

SARAH HUGHES WHITE  
*Director of Music*

KATHLEEN ADAMS  
*Professor of Freshman English*  
*Debating Coach for the Girls*



M. G. MAIDEN  
*Professor of History and Sociology*



HUGH M. THOMPSON  
*Professor of Chemistry and Physics*



THOMAS B. FORD  
*Professor of Education*





ERNESTINE RICHARDSON  
*Instructor in Home Economics*



WILLIAM A. WRIGHT  
*Professor of Latin and Greek*

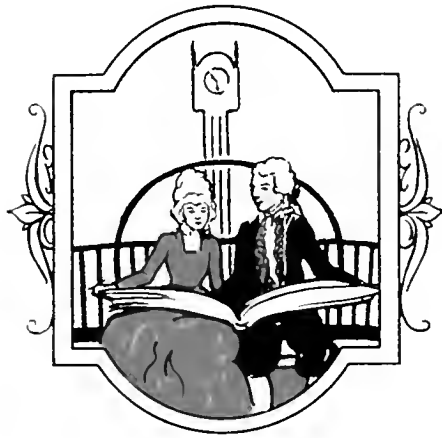


LLOYD E. RACKLEY  
*Professor of Psychology and Philosophy*



ERWIN ESCHER  
*Professor of Modern Language*

# CLASSES



BOOK II



# SENIORS



Now WHAT?



NANCY CANTRELL, A.B.  
FULTON, KENTUCKY

President Senior Class; President Girls' Senior Council; Forensic Council; Masque; Philomathean Literary Society; Elected Best All-round Girl of the school.

The best way to judge one's popularity is by the number of friends that she has. Nancy numbers her friends with her acquaintances. She is quiet and unassuming, but there is no moving her where her ideals and convictions are involved. Truly the gods smiled on her.

C. C. ALBERT, B.S.  
EMORY, VIRGINIA

American Literary Society 1, 2, 3, 4; "M" Club 4; Football 4.

Our "Gallant Man" from Virginia as Dean Boyd calls him. Clifford closes with his Senior year an honorable career of four years at Milligan College. He did not become afflicted with the almost fatal disease which attacks many sophomores, nor is he going out into the world like some Seniors to solve all of its vexing problems. Albert has many friends in Milligan who wish him a world of success in his chosen career. Wherever Clifford goes, Milligan will always have a true friend.





ELIZABETH GUNDER CROW, A.B.  
ASHEVILLE, NORTH CAROLINA

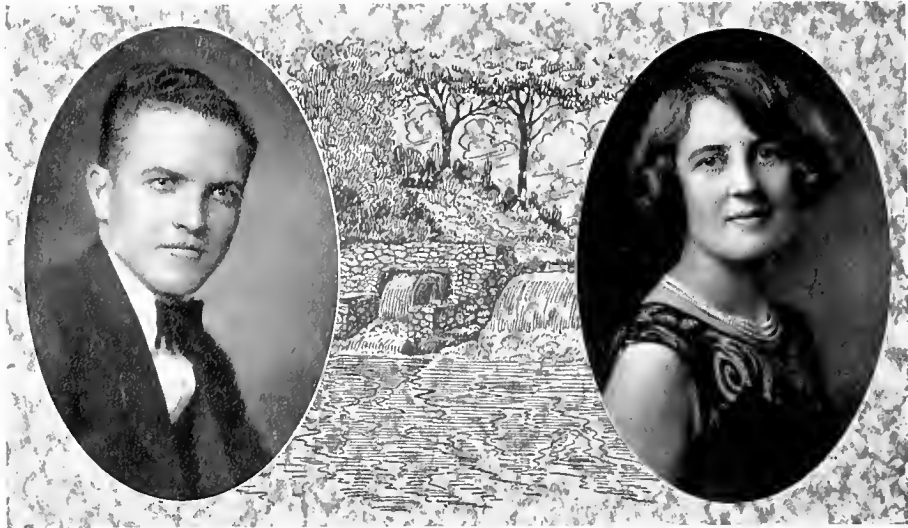
Philomathean Literary Society 2, 3, 4, President 4; Dramatic Club 3; Masque 4; Kappa Epsilon 4; Forensic Council 4; Foreign Language Club 2; "M" Club 3, 4; Basketball 3, 4, Captain 4; Debate Team 3, 4.

As Betty would say, "I may be only a Crow" now, but someday I hope to be a real "Byrd." However, we like the name as it is, and not only the name, but the girl. Betty is one of our few all-round students. In our college activities she holds an important place; in our social life she is popular; in the class-room she is an admirable student.

WADE B. DENNIS, B.S.  
ERWIN, TENNESSEE

President American Literary Society 3; President "M" Club 4; Captain Football 3, Football 1, 2, 3, 4; Manager Basketball 3; Masque; President Student Council; Treasurer Senior Class; Pre-Med Club 4, President Pre-Med 4; Baseball 2, 3; Dramatic Club 2, 3.

Wade came to Milligan with a reputation in Athletic Circles. Since he has been here he has made a name for himself in all branches of college activities, truly proving that it can be done. On the gridiron he is a hero, in the classroom a scholar; but above all a gentleman. Our best wishes attend him in whatever profession he chooses to follow.



LESLIE L. LUMSDEN, A.B.  
ASHLAND, VIRGINIA

President Sunday School Class 2; Business Manager Stampede 3; Business Manager Buffalo 4; Athenian Literary Society 1, 2, 3, 4; Cheer Leader 2, 3, 4; "M" Club 4.

At times in one's college career there are diversities which lead that one from the straight and narrow academic path. This has happened to Less. Having a devout belief in the adage that "Cleanliness is next to Godliness," Less decided to help in the process of keeping the section in clean shirts. He has succeeded to the extent that he could place the third-finger head-light on the hand of his Juliet. Regardless of the fact that Less has engaged in outside interests he has maintained his prominent position on the campus. As he leaves, the best wishes of all go with him that he may continue to have the rich success he deserves.

BESS STRICKLAND, A.B.  
CLIFTON, TENNESSEE

President Ossolian Literary Society 2, 3; Ossolian Literary Society 1, 2, 3, 4; Forensic Council 2, 3, 4.

"O, Young Lochinvar is come out of the West" and has captured this maiden, but unlike the ballad hero he has no steed. Bess has taken a conspicuous part in the activities of the college, and her departure will leave a gap for some ambitious student to fill. When her partner allowed himself to slip in class work, Bess felt it her obligation to continue to step on the academic gas so that the fall would not be too great. Milligan rejoices that you have made your commendable record, and her wishes are that you will continue to make A's in your chosen "Profession." Let your motto be "Regardless, Less will always be Less, never more, never less."



ELEANOR VAN WINKLE  
CLEVELAND, OHIO

Philomathean Literary Society 4; Transferred from Hiram College.

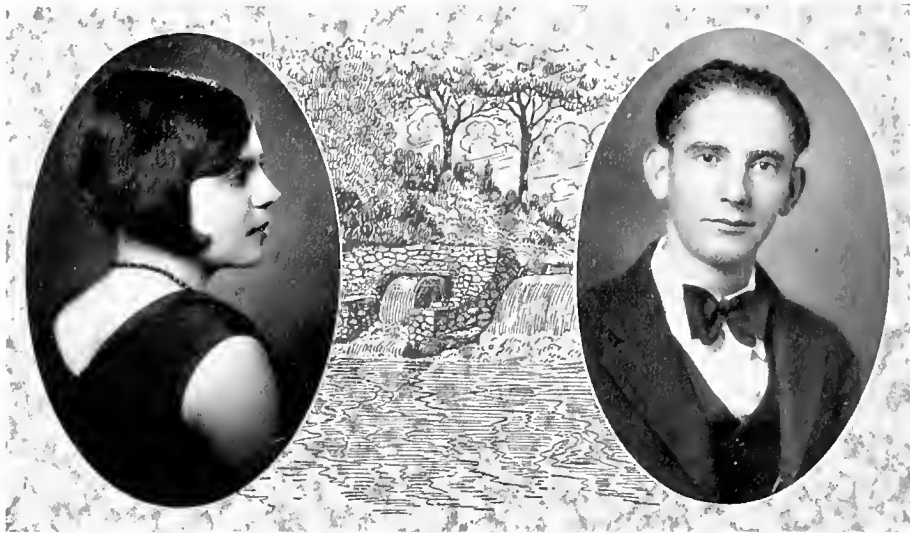
Eleanor came to us from Hiram College, although she was with us only a short time we learned to love her. As an artist she showed great talent, both in painting and designing.

BILLY JOE CROUCH, A.B.  
JOHNSON CITY, TENNESSEE

Secretary Freshman Class; President Sophomore Class; President Junior Class; Business Manager Stampede 3; "M" Club 2, 3, 4; Baseball 1, 2; Football 4; Forensic Council 2, 3, 4, President Forensic Council 4, Secretary 3; American Literary Society 1, 2, 3, 4, President 2; Pre-Med Club 4; Editor-in-Chief of Buffalo 4; Secretary and Treasurer "M" Club.

The Editor of the 1929 Buffalo deserves great credit for his untiring efforts and innumerable sacrifices. An athlete, playing for his Alma Mater, Billy Joe merits the love and respect of his team mates, the appreciation of all who love the Orange and Black. As a student he has come to be cherished by his classmates and honored by his instructors. As a debater he has won the pride and admiration of his colleagues, the fear and respect of his opponents.

A gentleman in every respect, upholding the highest ideals of Christian character, a good sport, willing to give and to take, and a fine fellow, co-operating with the groups for the common good of all. Billy Joe has won for himself many laurels and has made a coveted record during his stay on the Classic Hill. For you we predict a bright and prosperous future, a success in the highest sense of the word.



ELLEN FAY MONTGOMERY, A.B.  
ROCKWOOD, TENNESSEE

Girls' "M" Club 2, 3, 4; Orchestra 2, 3, 4; Philomathean Literary Society 2, 3, 4; Dramatic Club 2, 3; Basketball 2; Masque 4; Kappa Epsilon Club 4; Volunteer Band 4; Latin Club 2; Modern Language Club 3.

Ellen is a representative co-ed with a sparkling personality and "a heart for any fate." We are proud of her because of her ability as a violinist. We admire her for her loyalty, unselfishness, and disposition.

VICTOR ALLEN, A.B.  
SPRINGFIELD, TENNESSEE

Athenian Literary Society 1, 2, 3, 4; Forensic Council 2, 3, 4; President Athenian Literary Society 4; Student Council 3, 4.

A man among men, a gentleman, and a scholar, are the indelible impressions that Victor has made upon the Milligan Commonwealth. He has made a wonderful reputation as a college debater winning many victories and we confidently expect him to be one of our greatest business men and statesmen. Victor is young in years but old in experience, to take his advice one would not venture into the pitfalls of life. Victor can be depended upon, and that is what the world wants, so Victor we are backing you.



NELLE GRAY, A.B.  
BILTMORE, NORTH CAROLINA

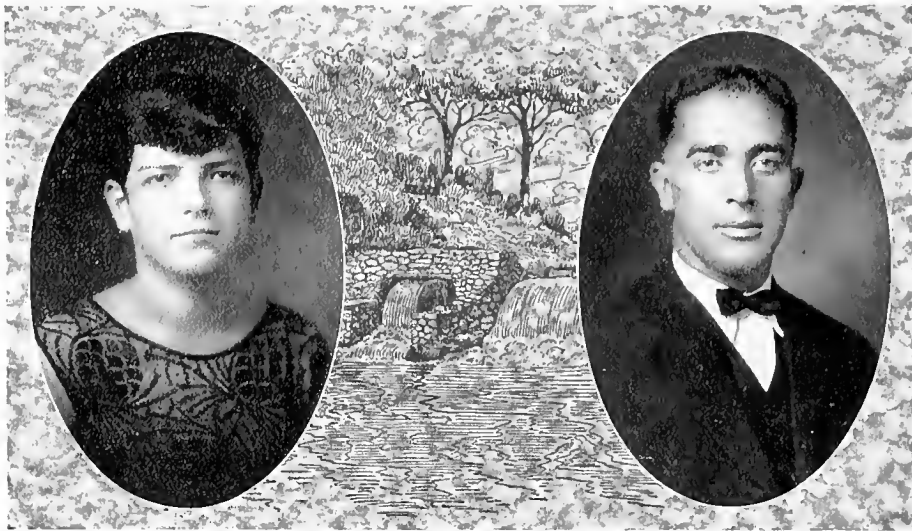
President Girls' Forensic Council 3, 4; President Christian Endeavor 4; President Sunday School Class 4; Graduate Home Economics; Winner of The Anne Lucas Reading Contest 3; Forensic Council 3; Philomathean Literary Society 2, 3, 4; Dramatic Club 2, 3, 4; Volunteer Band 2, 3, 4.

In this age of bobbed hair and business women, it is refreshing to find a girl who devotes her time to strictly feminine pursuits. We shall remember her because of her high principles and winning personality. As a student she takes pains with her work and is rewarded by the high grades which come as a result of it.

JOSEPH ROBERT BOWMAN, B.S.  
JONESBORO, TENNESSEE  
R. F. D. 4

President Freshman Class 1; Athenian Literary Society 1, 2, 3, 4, President 3, 4; Editor-in-Chief "Stampede"; Dramatic Club 3, 4; Annual Play 3; Pre-Med Club 4, President 4; Member Student Council 3; Masque 4.

Robert came to us four years ago from Boone's Creek. Like the old pioneer, Daniel Boone, Robert has overcome all difficulties in a quiet, unassuming, forceful manner. A hard working and brilliant student. We all are sure that Bob will make a marked success, and to you, Bob, we wish you luck.



LUCILE LUMSDEN, A.B.  
ASHLAND, VIRGINIA

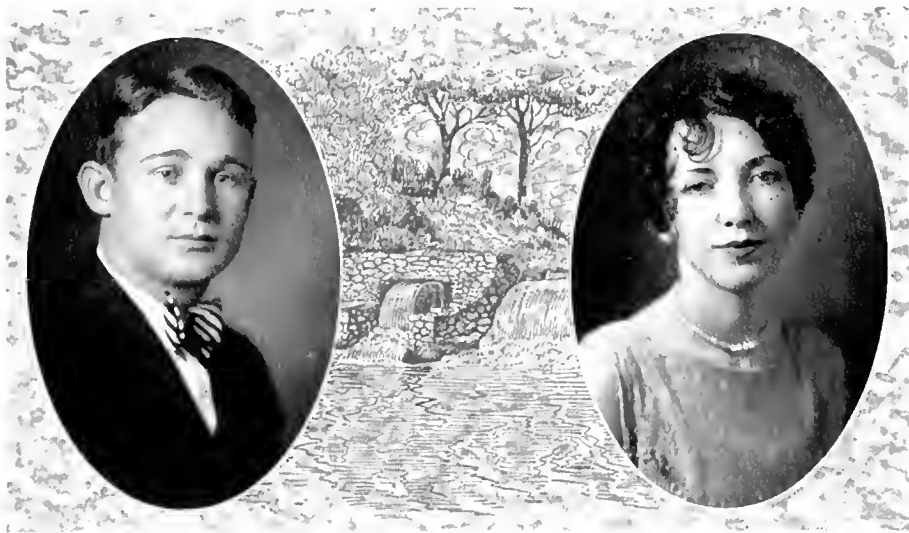
Volunteer Band 1, 2, 3, 4, President 3;  
Philomathean Literary Society 1, 2, 3, 4,  
President 3; President Girls' Senior  
Council 4.

Nature formed but one such as she—  
"then broke the die." She is bright,  
friendly, witty, intelligent, attractive, and  
charming—what we are trying to say is  
that she is an all-round good sport, and  
we love her.

J. DAVID KIDWELL, A.B.  
MARTINSBURG, WEST VIRGINIA

Athenian Literary Society 1, 2, 3, 4, Presi-  
dent 2; Ministerial Association 1, 2, 3,  
4, President 1, 2; Forensic Council  
2, 3, 4; Masque 3, 4.

In 1925 out of the mountains of Vir-  
ginia came "Our Dave." His four years  
at Milligan have been clean, manly, and  
he has always stood for the right things.  
David has chosen for his life's work the  
calling of Christ, and he is taking the  
Torch of Christianity with him wherever  
he goes. Nowhere can a finer Christian  
character be found and to David goes  
our best wishes.



HERSCHEL J. SPRINGFIELD, B.S.  
SODDY, TENNESSEE

American Literary Society 1, 2, 3, 4;  
"M" Club 2, 3, 4; Football 2, 3, 4, Cap-  
tain 4; Basketball 2, 3, 4.

Just another great fellow from Soddy, Tennessee and to know him is to know a true friend. "Springy" is a man you can depend upon at all times, and with such men as this you will always have a great school. He was Captain of the 1928 stampeding Buffaloes, one of the best basketball guards ever seen upon a basketball court, in short an all-round good fellow. Springfield whether in athletics, school or wherever he is will be a success, and Herschel, old boy, we are betting on you.

GEORGIA FIELDS, A.B.  
GREENEVILLE, TENNESSEE

Philomathean Literary Society 1, 2, 3, 4;  
Dramatic Club 1, 2; Masque 3, 4; Latin  
Club 1, 2; Foreign Club 3.

The girl with golden hair and blue dreamy eyes. She doesn't let books interfere too seriously with her college activities. You'll find her on the spot when there is a good time to be had. However, her excellent ability and originality in class-room, and her lovable personality have endeared her to the hearts of all.



THELMA INEZ BELL, A.B.  
COLTEWAH, TENNESSEE

Varsity Basketball 1, 2, 3, 4; Captain 3, Manager 4; Girls' "M" Club 1, 2, 3, 4; Volunteer Band 2, 3, 4, President Volunteer Band 3; Philomathean Literary Society 1, 2, 3, 4; Home Economics Club 3, 4.

Thelma is the embodiment of all that is generous, noble, and good. She is friendly, nice and in other words the kind that you like and we like. The definiteness of her purpose, and the strength of her convictions make her life one of positive influence upon all with whom she comes in contact.

T. T. TRAVIS, A.B.  
FAYETTEVILLE, GEORGIA

American Literary Society 1, 2, 3, 4, President 3; Dramatic Club 2, 3, 4; Masque 3, 4; "M" Club 2, 3, 4; President Sunday School Class; Football 2, 3, 4; Baseball 1, 2, 3, 4, Captain 4; Assistant Buyer; Elected Best All-round Student of the school.

"Firecracker" does not need an introduction to anyone on the hill. Truly, we can say he is loved by all who know him. He was elected the most representative boy in the school, and what we can say would only be a peep into his Christian character. Travis is a great football player, and our only rival of Walter Johnson, the great baseball pitcher. This Georgia Cracker will make his mark, so old world get ready.





POLLY HAWKINS, A.B.  
GREENEVILLE, TENNESSEE

Ossolian Literary Society 1, 2, 3, 4, President 4; President Girls' "M" Club; President Kappa Epsilon 4; Basketball 2.

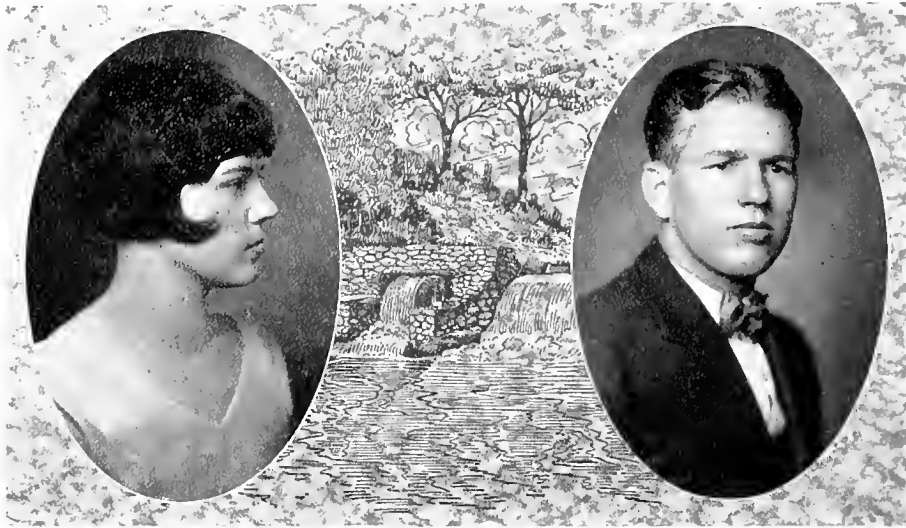
Those who know her best only those know "Polly." We like her. She is genuine and straight-forward. Merry, vivacious, always ready to help others—that's Polly.

EDRIC CLARENCE OWENS, A.B.  
CURVE, TENNESSEE

Transferred from U. T. Junior College 1929; American Literary Society 4; Football 4; "M" Club 4; Ministerial Association 4.

It is with great regret that we have not had the privilege of having Bull with us for four years. Ours is the loss, Bull, the pride of "Curve", Tennessee, came to us last fall, and quickly won his way into the hearts of all. It was Edric who plunged through the opposing team line for first down after first down, it was Edric who took the hard knocks for his Alma Mater, and Edric when you get out upon the battlefield of life, you carry with you the love of the 1929 senior Class.

97786



MARY SUE JAYNES, A.B.  
GREENEVILLE, TENNESSEE

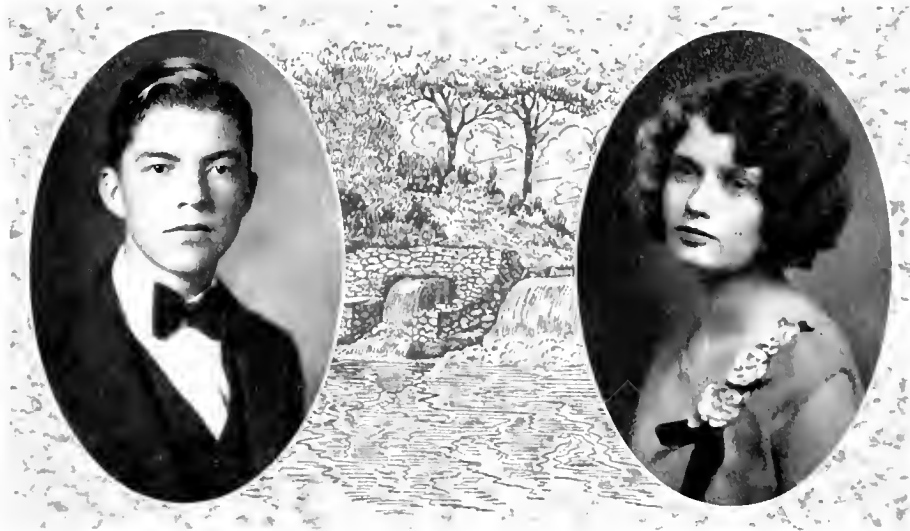
Philomathean Literary Society 1, 2, 3, 4, President 4; Intercollegiate Debate 2; Latin Club 2, 3; Dramatic Club 3, 4; Kappa Epsilon 4; Foreign Language Club 2.

Mary Sue, the Society Editor of the 1929 Buffalo, elected the Prettiest Girl of the Senior Class, is the kind of a girl that you read about. Level-headed, dignified, capable, efficient, trustworthy, that's the Mary Sue we admire. Jolly, friendly, a good sport, that's the Mary Sue we love. Always in her four years at Milligan she has been dependable, and loved by all.

CLARK L. GRANT, B.S.  
SODDY, TENNESSEE

American Literary Society 1, 2, 3, 4; "M" Club 2, 3, 4; Basketball 2, 3, 4; Baseball 1, 2; Football 4.

Another one of our great athletes who hails from Soddy, Tennessee. Jake, the "Old Reliable", who has given his best to his Alma Mater. A three letter man whom very few can equal. A great halfback, the best running guard in the Smoky Mountain Conference as voted by all of the coaches of the conference, the greatest college catcher to don a baseball uniform. Not only is Jake a great athlete, but he has won the heart of the fair sex in his conference tilts. Jake, old boy, we are watching you, and we know you will reach the top.



DOUGLAS VON CANON, B.S.  
BANNER ELK, NORTH CAROLINA

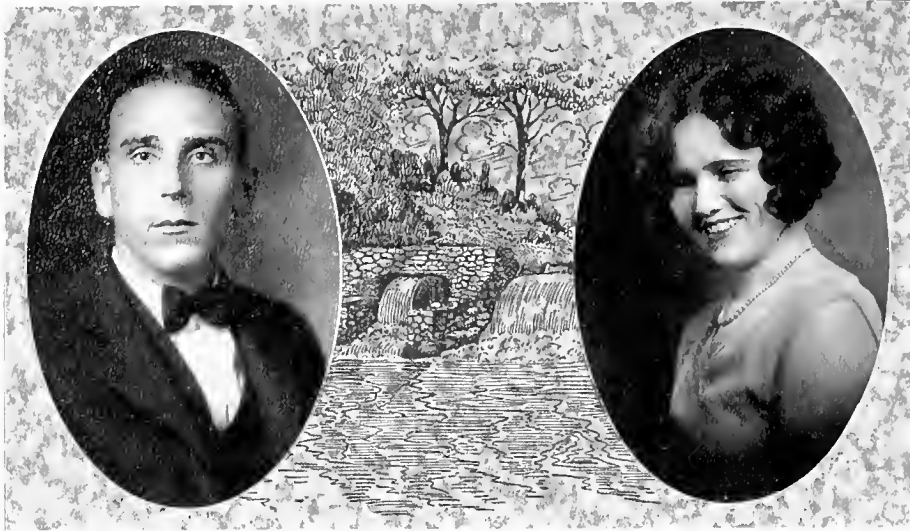
American Literary Society 1, 2, 3, 4;  
Manager Basketball 4; "M" Club 4;  
Pre-Law Club 3.

Four years ago there "hailed" upon the Campus of Milligan a boy wearing knee pants. He was called the "Kid", and many of the boys thought he was a visitor, but not so for it turned out to be our own Blackball Von Canon. No one has been more faithful and conscientious than Douglas. He is dependable and willing to do all things when called upon. He is one of the youngest members of our class, and one of the finest. His most excellent disposition, and earnest industry have made him loved by all. Blackball is a true friend, and a cultured gentleman. There is no doubt that he will be a great success in years to come.

LENA SUE HARTMAN, A.B.  
GATES, TENNESSEE

Philomathean Literary Society 1, 2, 3, 4;  
Latin Club 1; Foreign Language Club 2;  
Kappa Epsilon Club 3, 4.

If you want to tell anything, tell Lena. She is a good confidant, and is true as steel. To know Lena is to love her—knowing her, you find her a valuable friend.



BERT FRANKLIN WADDELL, B.S.  
GREENEVILLE, TENNESSEE

American Literary Society 1, 2, 3, 4, 5;  
"M" Club 2, 3, 4, 5, President 5; Foot-  
ball 1, 2, 3, 4, Captain 3.

Bert came to Milligan in . . . ? No one here is able to give us this information. However, his place will be hard to fill, when he is gone. For several seasons he was one of the greatest football players Milligan has ever had. We are sorry that we haven't more friends like Bert. We wish him the greatest success and happiness that life has to offer.

EDDIE MAE HARTMAN, B.S.  
GATES, TENNESSEE

Philomathean Literary Society 4; Assistant Registrar; Transferred from Union University.

Although Eddie Mae has been with us only a year, her lovable personality, her modest ways, and her sunny disposition have endeared her to each of us. As a friend, she is sympathetic—and somehow it is easy to put all one's faith in her. We hope that great success will be hers in life.



EFFIE KATE KIRBO, A.B.  
CAMILLA, GEORGIA

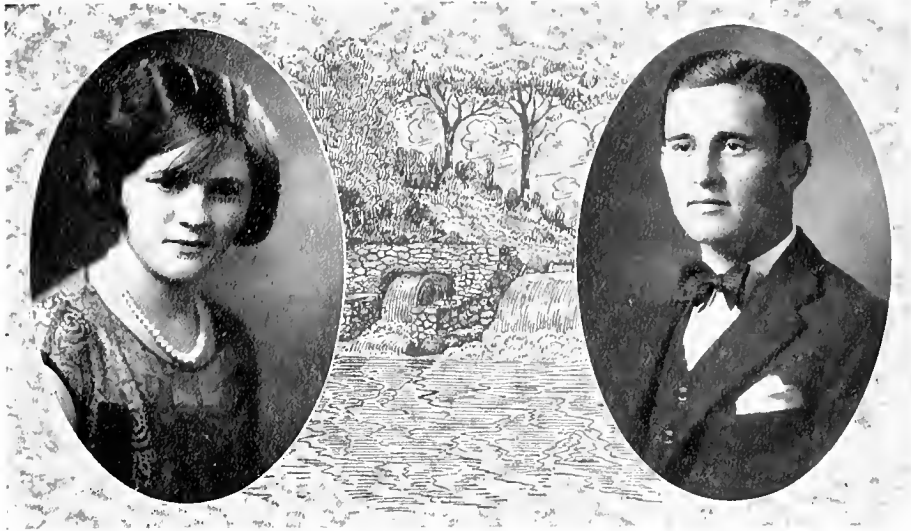
Philomathean Literary Society 1, 2, 3, 4, President 4; Dramatic Club 3; Home Economics Club 3, 4; Masque 4; Girls' "M" Club 4; Basketball 4.

Modest of speech, womanly in manner, and of unblemished character. She always wears a smile and is ready at any time to lend a helping hand. She is much loved by all the girls.

GRACE PHELPS, A.B.  
JOHNSON CITY, TENNESSEE

Philomathean Literary Society 2, 3, 4, President 3; Kappa Epsilon Club 4; Dramatic Club 3, 4; Masque 4; Latin Club 1, 2; Graduate of Expression 4.

Grace is one of our town girls of whom we are justly proud. She possesses a keen and ready wit, an attractive appearance, magnetic personality, and high ambitions. We expect great things of her unless—some sheik captures her.



MAUDE WHITLOCK, B.S.  
BAILEYTON, TENNESSEE

Ossolian Literary Society 1, 2, 3, 4; Sewing Club 3, 4.

There is something about the quiet, steady, conscientious individual which commands, and demands the love and respect of his fellow-men—such a girl we affectionately know as Maude. In her school work she has ever been rated as a good student. We predict for her success in her chosen profession, whatever it may be.

HARVEY BULLINGTON, A.B.  
ERWIN, TENNESSEE

American Literary Society 1, 2, 3, 4; "M" Club 1, 2, 3, 4; Basketball 1, 2, 3; Football 1, 2, 3; Baseball 1, 2, 3, 4.

"Little Harvey" comes to us from Erwin, the home of so many of our distinguished students and athletes. Harvey, or "Little Napoleon", as he is known to many of his friends is one of the few men who have made letters in three sports at Milligan. Whether on the football field, baseball field, or basketball court Harvey excels. Milligan will miss this athlete who has contributed so much to her record—we predict great things for Harvey in the athletic world.



DAISY COOK, A.B.

CONNELLY SPRINGS, NORTH CAROLINA

Ossolian Literary Society 3, 4, President 4; Volunteer Band 3, 4, President 4; Dramatic Club 4; Home Economics Club.

Daisy is quiet and modest, but full of fun whether at work or play. She has an attractive personality, and makes friends wherever she goes. She belongs to the "Kappa Epsilon" and from all appearances she will soon be putting her domestic arts to a practical application. We know that she will make an excellent wife for some preacher.

ANN LITTLE, A.B.

CLARRRANGE, TENNESSEE

Basketball 1, 2, 3, Captain 1, 3; "M" Club 1, 2, 3, 4, President 4; Dramatic Club 2, 3; Masque 4; Kappa Epsilon Club 4; Foreign Language Club 2.

One of the most noted characteristics of Anne is that she will give her opinion when one asks her for it, sometimes when not asked for it. When you want an earnest reliable thinker and worker who is dependable, conscientious and sure, we present Anne. Quality doesn't always come in small packages.



VIRGINIA M. REYNOLDS, A.B.  
ERWIN, TENNESSEE

Ossolian Literary Society 2, 3, 4, President 4; Basketball 2; "M" Club 2, 3, 4; Latin Club 2; Modern Language Club 3.

Level-headed, dignified, smiling—that's the Virginia we see; capable, efficient, trustworthy—that's the Virginia we admire; jolly, friendly, a good sport—that's the Virginia we love. These qualities have won for her the respect and esteem of all who have known her—both teachers and students alike.

RUTH ELIZABETH REYNOLDS, A.B.  
ERWIN, TENNESSEE

Philomathean Literary Society 1, 2, 3, 4; Latin Club 2, 3; Glee Club 1, 2, 3, 4.

Ruth is best known, perhaps for her talent in music. She has a good personality, and her loving smile and tender kindness have won for her many friends. It has been proven that she is a "one man girl." Lucky man.





GRACE DEAN, A.B.  
CROCKETT MILLS, TENNESSEE

President Home Economics Club 3, 4;  
President Ossolian Literary Society 4;  
Graduated in Home Economics 3; Osso-  
lian Literary Society 1, 2, 3, 4; Home  
Economics Club 2, 3, 4; Kappa Epsilon 4.

Silently she slips across the campus and  
tenderly glides into our hearts. The two  
great characteristics of womanhood, pa-  
tience and gentleness, are portrayed in  
her character as she performs her daily  
tasks.

GERALDINE PARKER, A.B.  
COVINGTON, GEORGIA

Volunteer Band 1, 2, 3, 4; Philomathean  
Literary Society 1, 2, 3, 4.

Jerry is one of our Georgia girls.  
When her friends were so unlucky as to  
fall ill, they were very lucky to have her  
prescribe for them. She is a diligent  
student with a sterling character and  
high ideals, and a determination to  
achieve success. She has been efficient  
as a religious worker and leader on the  
campus.

# “The Annual Play”

“The Passing of The Third Floor Back.”

(BY) JEROME K. JEROME

PRESENTED BY

Senior and Junior Members of the Dramatic Club

DIRECTED BY

DIMPLE HART AND PROF. C. M. EYLER

(PROLOGUE)

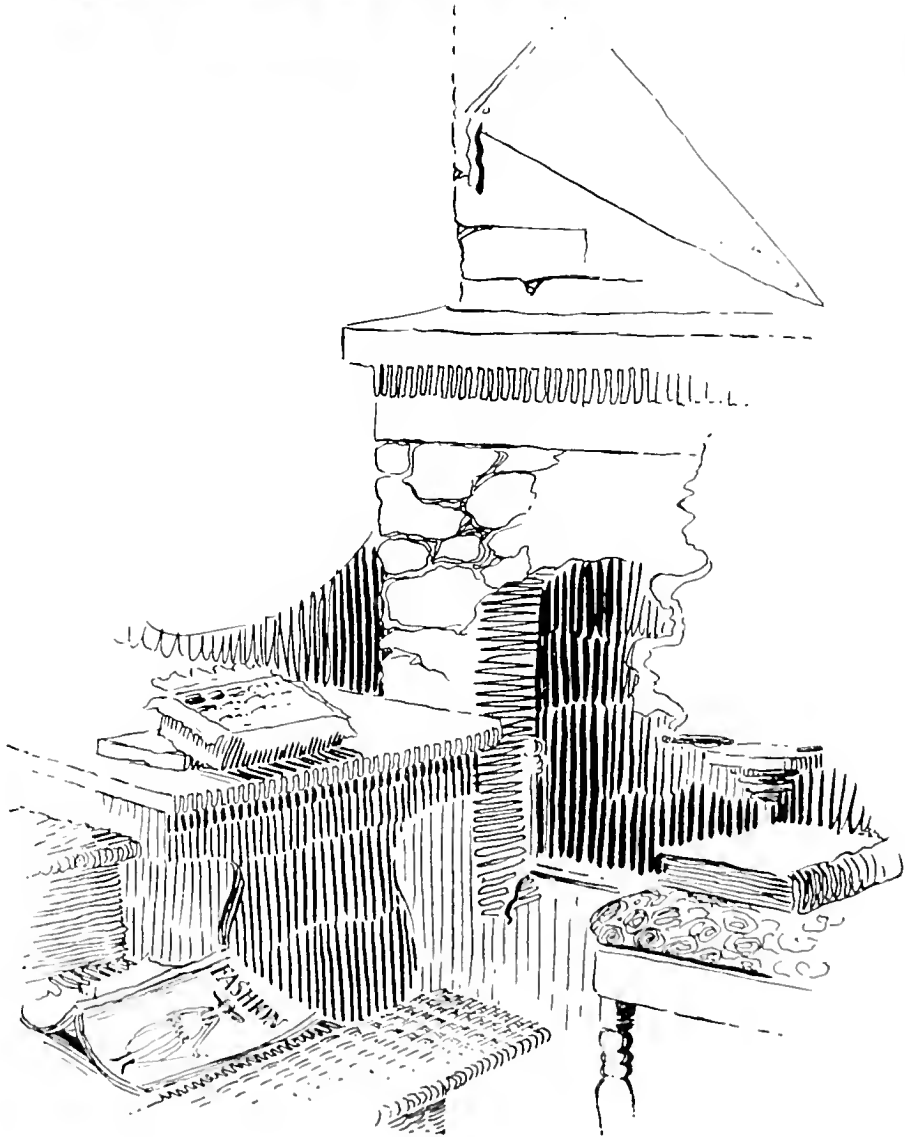
(THE PLAY)

(EPOLOGUE)

(Characters in order of appearance)

A Cheat.....	Mrs. Sharpe.....	Anne Little.....	The Lady of the Hour
A Slur.....	Stacia.....	Nancy Cantrell.....	An Important Person
A Cat.....	Miss Kite.....	Mrs. W. P. Walker.....	A Modern Lady
A Shrew.....	Mrs. Tompkins.....	Betty Crow.....	} A Husband and Wife
A Hully.....	Major Tompkins.....	Kermit Jones.....	
A Snob.....	Mrs. DeHooley.....	Alma Price.....	A Rich Aunt
A Hussy.....	Vivian.....	Maltier Chauncey.....	} Two Lovers
A Coward.....	Christopher Penny.....	Paul Howell.....	
A Satyr.....	Joey Wright.....	Tete Boswell.....	An Old Bachelor
A Rogue.....	Jape Samuels.....	Bob Bowman.....	A Jew
A Cad.....	Harry Larkcomb.....	Frank Rustymeyer.....	An Entertaining Party
A Pässer by.....	The Third Floor Back.....	Grady Atkisson.....	A Friend

# Junior



"JUNIOR CLASS"



*Juniors*

GEORGE BYRD  
JONESBORO, TENNESSEE

*"Have your fun and let the rest of the  
world go by."*



WALTER CARPENTER  
JOHNSON CITY, TENNESSEE

*"There is a divinity that shapes our  
ends."*



ARCHIE GRANT  
SODDY, TENNESSEE

*"The boy that delivers the goods."*



FRED KEGLEY  
WYTHEVILLE, VIRGINIA

*"Still wanting coat hangers."*



CARRIE PETERS  
CLARKRANGE, TENNESSEE

*"She says little but thinks much."*



MARTIN L. PIERCE, JR.  
NORTH CANTON, OHIO

*"He is still our Duke."*



LANTA STRUNK  
PINEVILLE, KENTUCKY

*"The girl you read about."*

"JUNIOR CLASS"

F. D. OWENS  
TULSA, OKLAHOMA

*"His heart is only a stone."*

PAULINE WILLIAMS  
HARTFORD, KENTUCKY

*"Loved and respected by all."*

GRACE STONE  
PINEVILLE, KENTUCKY

*"A scholar and a good sport."*

JAMES CHRISTO  
NORFOLK, VIRGINIA

*"An athlete, lover, and good fellow."*

GERALD WERKING  
PORT GIBSON, MISSISSIPPI

*"One you can depend upon."*

GRACE CANTRELL  
FULION, KENTUCKY

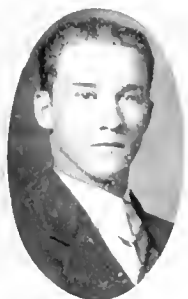
*"Tickle the ivories, as we know  
you can."*

RUBY COCHRANE  
ETOWAH, TENNESSEE

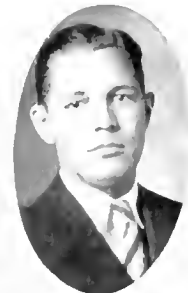
*"She is a peach of a sport."*

STANLEY CARPENTER  
OMER, KENTUCKY

*"Men may come, men may go, but  
I go on forever."*



Junior



# School Calendar

## SEPTEMBER

- 11.—Matriculation.
- 13.—Classes Begin.
- 14.—Faculty Reception.
- 18.—Dean Boyd returns to campus.
- 23.—Dean Burns preaches first sermon. Enjoyed by all.
- 29.—First movie.

## OCTOBER

- 6.—Hoover Day. Football game. Milligan 18, Mars Hill 0.
- 8.—Picnic given by boys Sunday School Class.
- 13.—Football game. Milligan 8, Atlantic Christian 0.
- 20.—Football game at Carson-Newman. Milligan 37, Carson-Newman 0.
- 22.—Martin Pierce goes to conference.
- 26.—Bennett College football team comes to town.
- 27.—Football game. Milligan 50, Bennett College 0.
- 29.—President and Mrs. Derthick return to campus.
- 31.—Hallowe'en party.

## NOVEMBER

- 2.—Night workout for game. Milligan vs. Catawba.
- 3.—Football game. Milligan vs. Catawba.
- 4.—Bro. Hensley brings delightful message in chapel.
- 6.—Election day.
- 7.—Mid-semester exams begin. Mrs. Derthick acts as head waiter.
- 8.—Freshmen sweat in Freshman English exam.
- 10.—Exams over. Everyone happy.
- 12.—Back to school after exams. Everyone sleepy.
- 13.—Separate chapels. Getting ready for King game.
- 15.—Lyceum number. Chicago Civic Opera. Enjoyed by everyone.
- 16.—Pep meeting for King game.
- 17.—King College football game.
- 20.—Annual pictures given out.
- 21.—Dr. McCawley, Southern Association Inspector, pays visit.
- 24.—Football game. Milligan vs. Tusculum.
- 27.—Prof. William Eyler's Junior High choir sings in chapel.
- 28.—Prayer meeting led by Bert Waddell.
- 29.—Thanksgiving. Football game. Milligan vs. Emory and Henry. Banquet John Sevier Hotel.

## DECEMBER

- 4.—Dr. Escher speaks in chapel on his trip through Germany.
- 6.—Girls' basketball game with Johnson Bible College. Milligan 56, J. B. C. 13.
- 8.—Prof. Eyler makes interesting speech in chapel on Settlement Houses.

- 9.—Dean Burns preaches interesting sermon on "The Garden of Eden."
- 11.—Basketball game. Milligan 37, Erwin "Y" 17.
- 13.—Prof. Mettetal speaks and plays in chapel.
- 14.—Boys' Literary Societies meet.
- 15.—Thelma Fogleman plays in chapel.
- 16.—Interesting Christmas program rendered in Sunday School.

## JANUARY

- 19.—Basketball game. Milligan 57, Tusculum 20.
- 20.—Bro. Riddel brings interesting message.
- 21.—Lyceum number. Enjoyed by all.
- 22.—Exams over.
- 23.—Matriculation.
- 24.—Girls' basketball game. Milligan 30, E. & H. 25.
- 25.—Boys' basketball game. Milligan 40, Erwin "Y" 17.
- 29.—Dramatic Club gives play at Erwin.

## FEBRUARY

- 1.—Girls' basketball game. Buffalettes 43, Lenoir 24.
- 4.—Basketball game. Milligan 36, E. & H. 23.
- 7.—Boys' basketball game. Milligan 64, Tusculum 29.
- 8.—Dramatic club gives program in chapel.
- 12.—Double header, Buffalettes 21, Personettes 21. Buffaloes 47, Lenoir-Rhyne 13.
- 13.—Buffaloes 41, King 23.
- 15.—Basketball game at Maryville. Buffaloes 17, Maryville 22.
- 16.—Basketball game at Carson-Newman. Buffaloes 45, Carson-Newman 20.
- 19.—Basketball game. Buffaloes 32, Maryville 29.
- 21.—Basketball game. Buffaloes 61, Carson-Newman 13.
- 22.—Mrs. A. B. Crouch Oratorical Contest.
- 28.—Buffaloes 29, King 22. Buffalettes 27, Parsonettes 33.

## MARCH

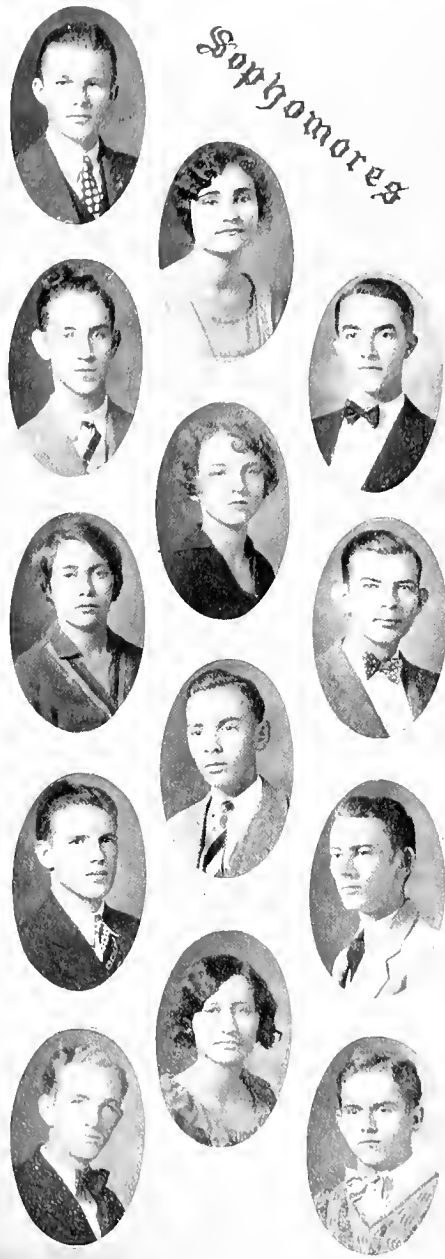
- 6.—Pre-Med Club presents program in chapel.
- 8.—Boys' Debate. Milligan 2, Lenoir-Rhyne 1.
- 13.—Rev. Wampler speaks in chapel.
- 16.—Coach McMurray speaks in chapel.
- 18.—Boys debate Mars Hill.
- 20.—Girls debate East Radford.
- 22.—Girls debate Maryville.
- 27.—Boys debate Emory and Henry.
- 28.—Pre-Easter meetings begin.
- 30.—Meeting closes.

## APRIL

- 1.—April Fools Day.
- 3.—Prayer Meeting.
- 11.—Lucas Reading Contest.
- 12.—Philomathean open program.
- 15.—Girls debate Mars Hill.

# Sophomore





*Sophomores*

HENRY M. JOHNSON  
LOUISVILLE, KENTUCKY

ZADA DOTSON  
GRUNDY, VIRGINIA

AUBREY RICHARDS  
WHITEVILLE, TENNESSEE

JOE BROADWAY  
PARIS, TENNESSEE

NEWELL FREEMAN  
CROCKETT MILLS, TENNESSEE

CHARLOTTE WATSON  
COOKEVILLE, TENNESSEE

CHAMBELAIN HALE  
ERWIN, TENNESSEE

CHARLES REESE  
JOHNSON CITY, TENNESSEE

RICHARD GEAR  
STUART, IOWA

STEVE LACY  
FORDTOWN, TENNESSEE

IULA KILDAY  
GREENEVILLE, TENNESSEE

ROBERT ADKISSON  
HARRIMAN, TENNESSEE



JORDAN J. CROUCH  
JOHNSON CITY, TENNESSEE

EDITH WOODWARD  
CHATTANOOGA, TENNESSEE

WILLIAM BOWMAN  
ERWIN, TENNESSEE

IRENE ELDER  
MANCHESTER, TENNESSEE

LAURA HITT  
SAVANNAH, TENNESSEE

FRANKLIN ELLINGTON  
FAYETTEVILLE, GEORGIA

CHESTER BROWN  
EUCHEE, TENNESSEE

ANNA RUTH HONEYCUTT  
DUNGANSON, VIRGINIA

FERD FERGUSON  
KNOXVILLE, TENNESSEE

IRENE PACE  
LEAKSVILLE, NORTH CAROLINA

HAZEL NICHOLS  
CROCKETT MILLS, TENNESSEE

DWIGHT BILLINGS  
NORTON, VIRGINIA

ROBERT L. SHUPE  
MILLIGAN COLLEGE, TENNESSEE



*Sophomores*

*Sophomores*



CHASTINE KIRBY  
CROCKETT MILLS, TENNESSEE



KATHERINE FOSHEE  
MANCHESTER, TENNESSEE



HOWARD McCORKLE  
JOHNSON CITY, TENNESSEE



ROY IRVIN  
WYTHEVILLE, VIRGINIA



MRS. W. P. WALKER  
MILLIGAN COLLEGE, TENNESSEE



JOE KEEFAUVER  
JONESBORO, TENNESSEE



CARRIE DISHNER  
BRISTOL, VIRGINIA



HAZEL TALLENT  
RHEA SPRINGS, TENNESSEE



ESTHER OWINGS  
GLEN ALICE, TENNESSEE



ELBERT JEWELL  
GRUNDY, VIRGINIA

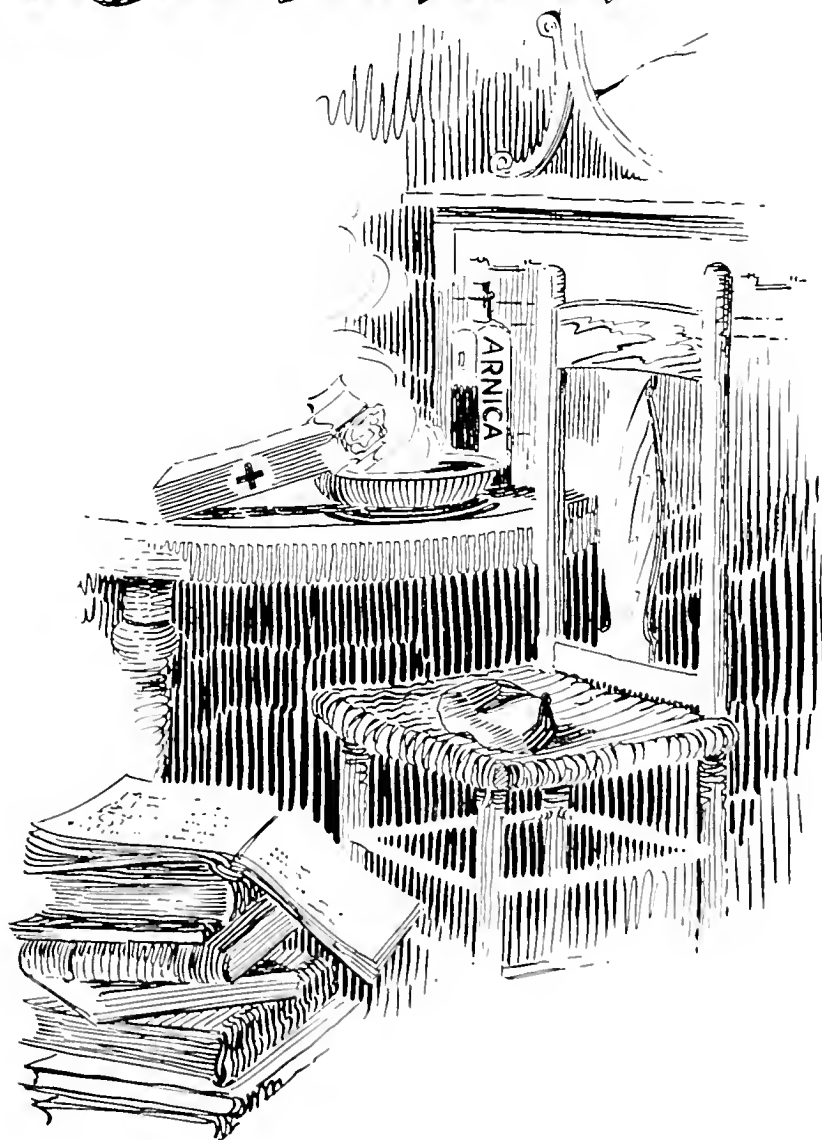


ALMA MATNEY  
WYTHEVILLE, VIRGINIA



HERMAN MILHORN  
JOHNSON CITY, TENNESSEE

# Freshmen





Freshmen



## Freshman Class

KATHRYN SHIELDS	MELBA SUE CAWTHORN
MARTHA VIRGINIA CORUM	PAUL COCHRANE
ISABELL PERKINS	ALGER LOLLIS
BESS CONNELL	BILL WOODS
RUBY STONE	CLYDE CAMPBELL
ELIDA BAKER	GALLEE PHELPS
CLARK CALVARD	JOY GILLENWATER
JAMES HENDRICKS	RUTH BELL
ALBERT LOLLIS	OLLIE SMITH
BUFORD ROBERTS	GLADYS JOHNSON
HOWARD SAGE	BUENOS BAKER
BESSIE BOYD	ROBERT ADKINS
CARRIE BELL	NAT HONEYCUTT



## Freshman Class

HAMILTON MANTOOTH

GLADIOLA THACKER

PAUL MORLEY

RALPH BRADLEY

VERNAN HINDMAN

OLEAN HARBER

OLIVER REYNOLDS

MABLE JOHNSON

CHARLES STARNES

HELEN FIELDS

ELLA PAYNE

THOMAS GODWIN

RUTH LEE MITCHELL

PEARL GILLEY

JEANELLE COULTER

LILLIAN SPIVEY

ELIZABETH DIVERS

FRED SNODGRASS

MARJORIE COPELAND

RANDELL FOSTER

BILLIE COOTER

CARLEE LASITER

RUTH STYKES

LOUISE WILSON



BOB HENRY



ORACE

MILLIGAN VS MARS HILL



Pauline



Grin



B... ..



NEW



LOLLIS



3rd Floor



Betty D...



LAK...



The Other Lollis

BaBa



Sister Green



Pumpkin



NIGHT FOOTBALL



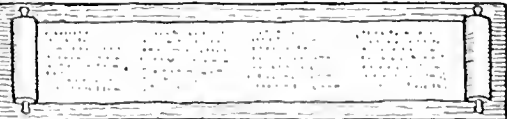
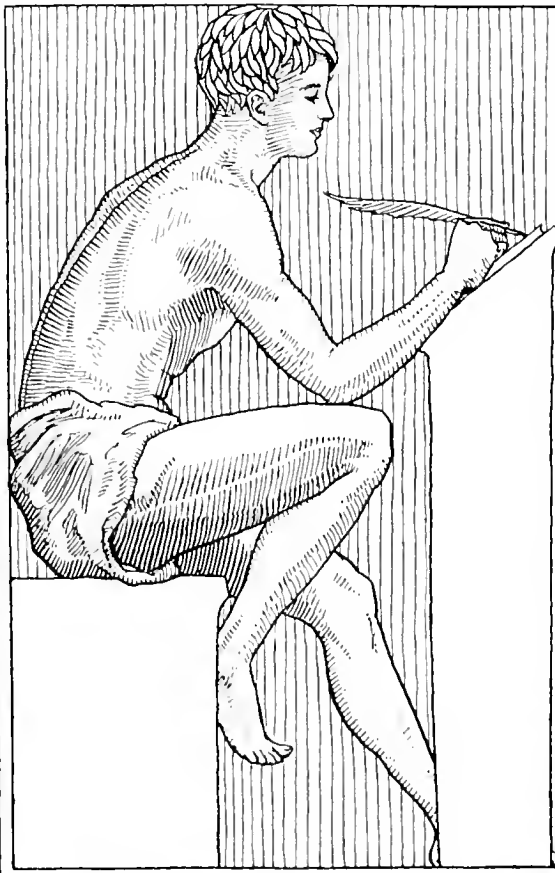
LOLLIS



Jack + Ellen



# LITERARY





Music Department Milligan College  
Sarah Hughes White, Director.



Miss. White in  
Costume Recital



# Philomathean Literary Society

Presents as an annual open program

"FAMILIAR FIGURES IN AMERICAN FICTION"

—At—

MILLIGAN COLLEGE CHAPEL

8:00 O'clock P. M., April 12, 1929

DEVOTIONAL.....	<i>Parable of the Talents</i>
LORD.....	Ruby Cochrane
SERVANTS.....	Martha Virginia Corum, Melba Sue Cawthorn, Grace Cantrell
INDIAN PERIOD—"Hiawatha".....	<i>Longfellow</i>
THE ARROW MAKER.....	Eddie Mae Hartman
HIAWATHA.....	Effie Kate Kirbo
MINNEHAHA.....	Pearl Gilley
PURITAN PERIOD—"Miles Standish".....	<i>Longfellow</i>
JOHN ALDEN.....	Ellen Montgomery
PRISCILLA.....	Mary Sue Jaynes
MESSENGER.....	Bernice Farmer
REVOLUTIONARY PERIOD—"Minuet"	
Galilee Phelps, Thelma Bell, Ruth Reynolds, Georgin Fields, Esther Owens, Martha Virginia Corum.	
CIVIL WAR PERIOD—"Uncle Tom's Cabin".....	<i>Harriet Beecher Stowe</i>
TOPSY.....	Grace Phelps
MISS OPHELIA.....	Anne Little
EVA.....	Nelle Gray
"A GLIMPSE OF NEGRO LIFE"	
Katheryn Shields, Ruth Stykes, Helen Fields, Ruth Bell, Ruth Lee Mitchell, Lena Sue Hartman, Grace Hobbs, Carrie Dishner, Gerry Parker, Louise Wilson, Ruby Cochrane, Grace Cantrell, Elizabeth Divers, Carrie Bell.	
AMERICAN YOUTH—"Seventeen".....	<i>Booth Tarkington</i>
MRS. BAXTER.....	Edith Woodward
JANE.....	Jeanette Coulter
WILLIE BAXTER.....	Charles Reese
WORLD WAR PERIOD—"A Well Remembered Voice"	
MRS. DON.....	Betty Crow
MR. DON.....	Steve Lacy
LAURA.....	Nancy Cantrell
DICK.....	Herman Milhorn
RADIO—	
ANNOUNCER.....	Lucille Lumsden
PIANIST—MARJORIE COPLAND	



## Domestic Science Department

MISS RICHARDSON - - - - *Instructor*

MELBA SUE CAWTHORN  
 LUCILLE LUMSDEN  
 LENA SUE HARTMAN  
 ELLEN MONTGOMERY  
 MARY SUE JAYNES  
 ELIZABETH BUCK  
 GRACE DEAN  
 NELLE GRAY  
 CARRIE DISHNER  
 CARRIE PETERS  
 ANNE LITTLE  
 EFFIE KATE KIRBO

MAUDE WHITLOCK  
 HELEN FIELDS  
 JOY GILLENWATER  
 DAISY COOK  
 ZADA DOTSON  
 BETTY CROW  
 OLLIE SMITH  
 MILDRED PRICE  
 POLLY HAWKINS  
 PAULINE WILLIAMS  
 GRACE PHELPS  
 MRS. HYDER

### SENIOR MEMBERS

LENA SUE HARTMAN

DAISY COOK



## Kappa Epsilon

COLORS: Green and White

1927-'28 witnessed the creation of the Kappa Epsilon, the first organization of this nature on the hill. The Club was organized with this purpose in view: To further study the different phases of Home Economics, American Arts, and the application of art in everyday life. This study was based on field trips, reports from current magazines, and information furnished by the Director of the State Home Economics Club.

Any girl having taken a course in Home Economics is an eligible candidate for membership in Kappa Epsilon and, upon application, the vote of the club determines acceptance. And as Keats has divinely stated: *Art is truth, and truth beauty; beauty is truth; truth, beauty; that is all ye know on earth, and all ye need to know.*



## Commercial Department

The Commercial Department has become the "workshop" of Milligan College. Under the direction of Miss Pearl C. Wildermuth, (A.B. "cum laude", University of Buffalo, N. Y.) the department has undergone complete reorganization. With the addition of new equipment—typewriters, a mimeograph, a phonograph, filing cabinet, new desk furniture, effective display charts, and a large, well-lighted room facing the College Campus. The Commercial Department takes on the aspect of a well-polished locomotive which has the possibility of reaching a powerful, smooth pull.

The Commercial Department is proud of its "workshop" spirit. The students have learned to turn hard work into romance. The hard work has comprised research from textbooks and from printed material coming into the various college departments, that has been given to the students for criticism and revision. Methods of style and psychological experiments have been studied and put into practice. The students have enjoyed the romance of serving as amanuenses, reporters, stenographers, typists and secretaries whenever the demand has come from the faculty.

Following is the roll of the department:

RUTH BELL  
 ROBERT BOWMAN  
 MARTHA VIRGINIA CORUM  
 NANCY CANTRELL  
 FRANKLIN ELLINGTON  
 THELMA FOGELMAN  
 NEWELL FREEMAN

MABLE JOHNSON  
 LUCILLE LUMSDEN  
 CHARLES STARNES  
 HAZEL TALENT  
 BESS STRICKLAND  
 BILLIE COUTER  
 DIMPLE HART

NAT HONEYCUTT



## “The Masque”

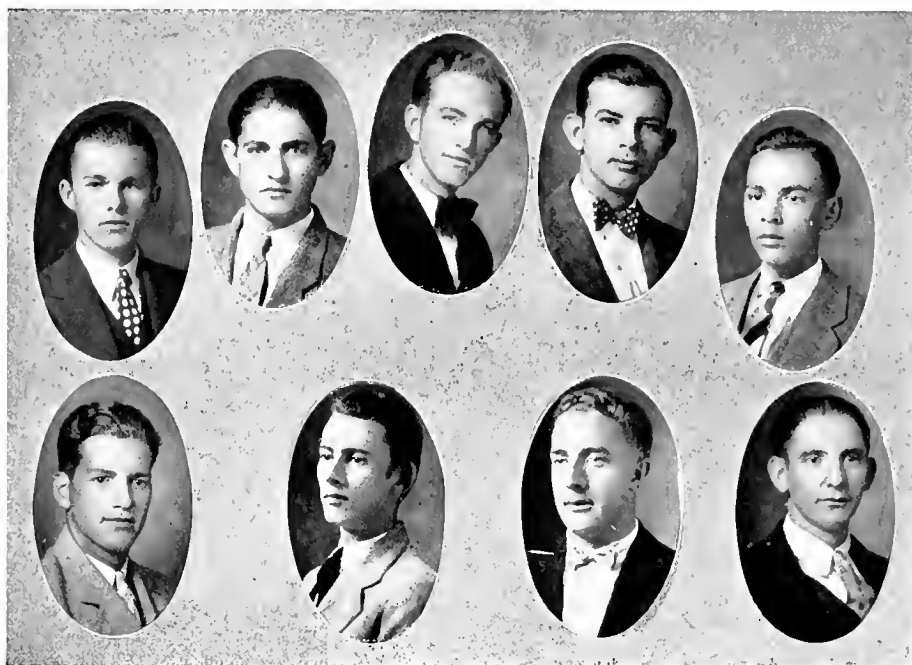
The Masque, which is one of the recent organizations, is a higher step in the dramatic field representing the highest interests of Dramatic Art. Members of the Dramatic Club may be promoted to this organization only after they have proved their ability and pledged their unfailing interest and service by hard work. Those who belong to the Masque have a genuine love of the drama. Although they are amateur players they endeavor to approach their field from the point of view of the critic as well as that of pleasurable entertainment. The Masque is one of the most animated organizations on the Hill.

### MEMBERS

KATHLEEN ADAMS  
 NANCY CANTRELL  
 WADE DENNIS  
 GEORGIA FIELDS  
 ELLEN MONTGOMERY

THELMA TRAVIS  
 ANNE LITTLE  
 DAVID KIDWELL  
 F. D. OWENS  
 BETTY CROW

GRACE PHELPS  
 MARTIN PIERCE  
 MRS. W. P. WALKER  
 BETTY STONE  
 FILLIE KATE KIRBO



## The Forensic Council

BILLY JOE CROUCH - - - - - *President*  
 VICTOR ALLEN - - - - - *Secretary*  
 HENRY JOHNSON - - - - - *Vice-President*

This organization has met with both success and defeat for this season. However the experience gained has been very helpful and it is hoped, profitable. The lesson learned has been that success comes only by hard work and much effort.

Under the leadership of Billy Joe Crouch and Victor Allen, the council has enjoyed real co-operation of all its members. The council wishes to express its appreciation to Dean Burns and Professor Eyler for their untiring efforts in the aid and assistance given. President and Mrs. Derthick have also shown a fine spirit both in the interest and the co-operation given.

We wish for the Forensic Council a very successful year in 1930.



# FEATURES

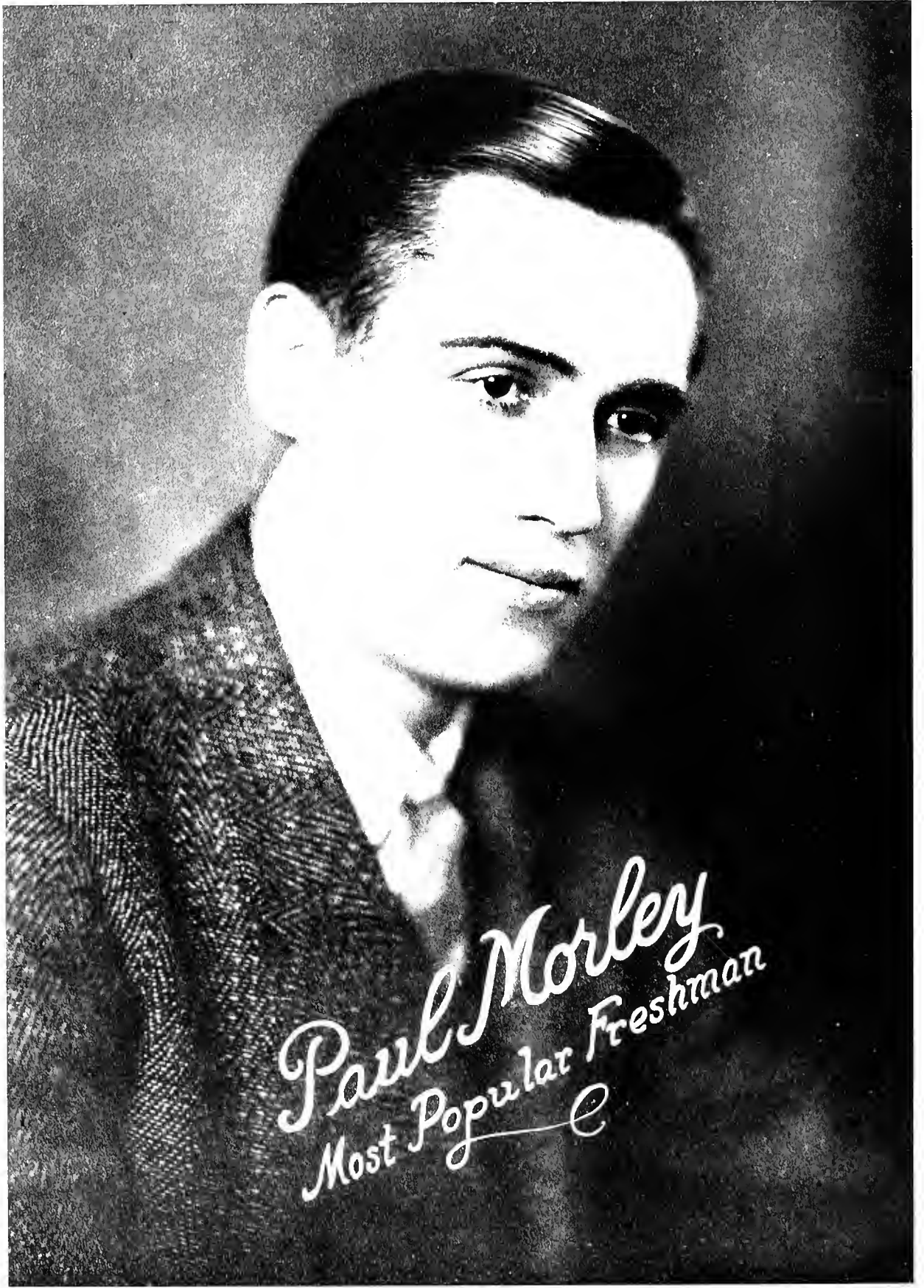


BOOK III





ward  
more

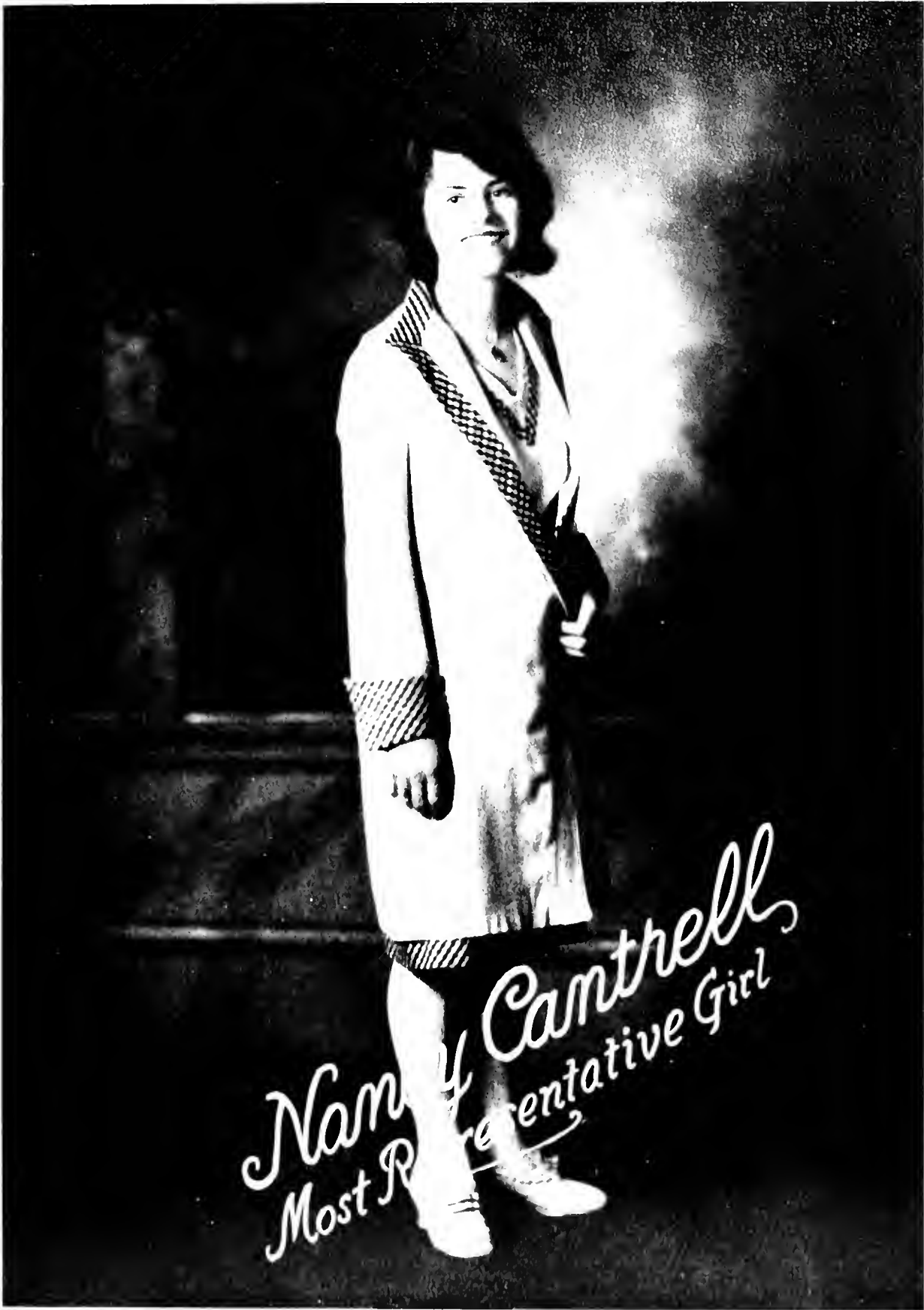


*Paul Morley*  
*Most Popular Freshman*



Betty Crow  
Athletic Girl



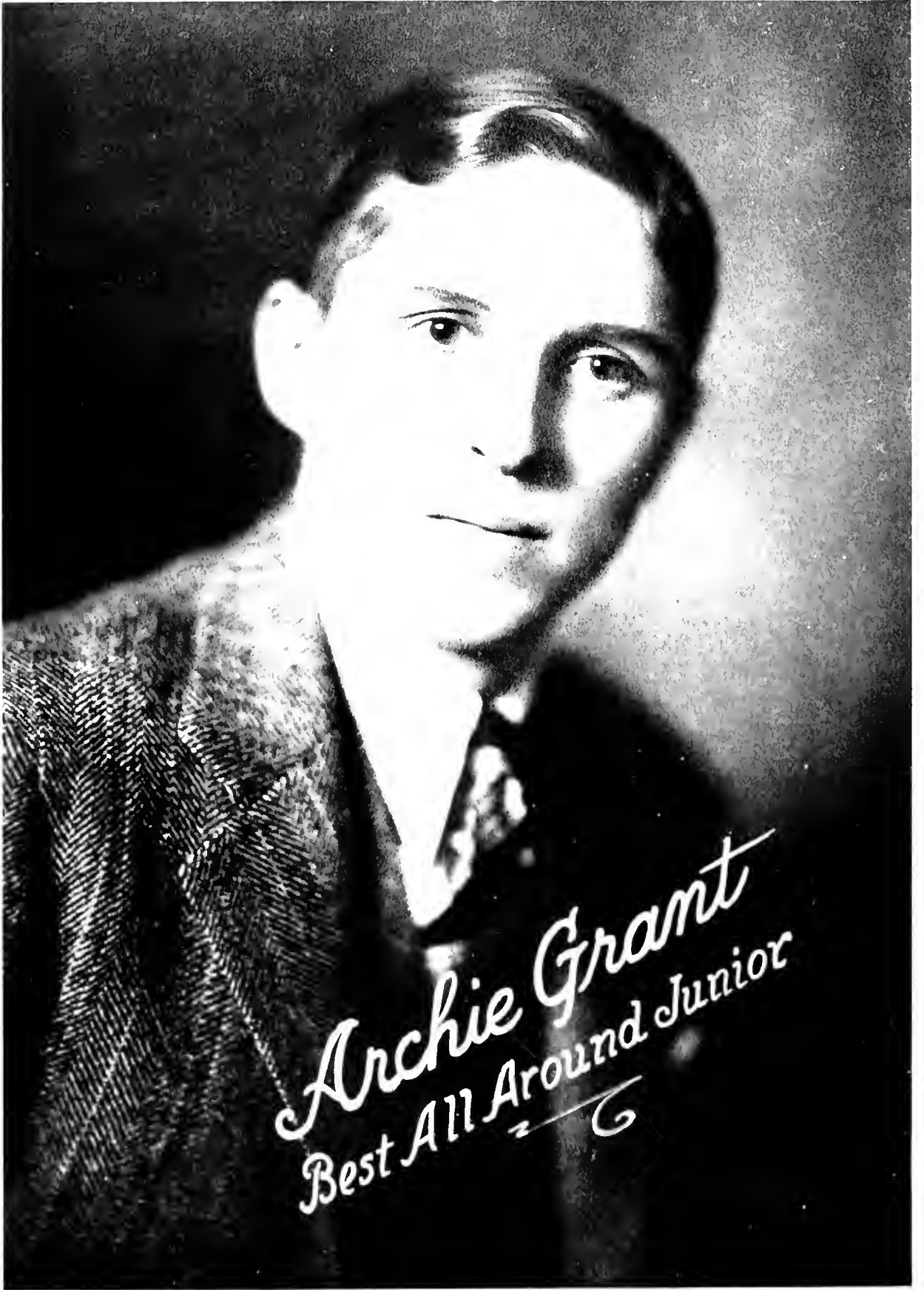


*Nancy Camthell  
Most Representative Girl*



*Mary Sue Gaymes*  
*Prettiest Senior*





Archie Grant  
Best All Around Junior



P. L. Morgan

# ORGANIZATIONS



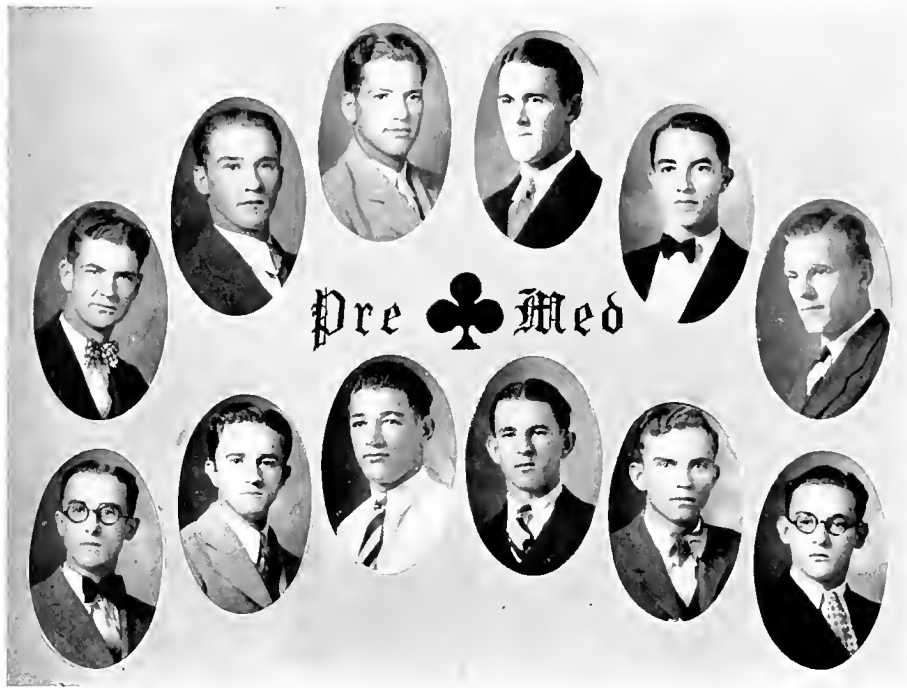
BOOK IV





## “M” Club

The “M” Club enjoyed one of the largest memberships in its history during the past year. Many were admitted on their varsity “M’s” and many lettermen of last year returned. Their activities during the year aside from the regular weekly meetings included, a banquet in honor of the Senior members of the club, an ugly man contest, a chapel program, and two warm initiations thrown in. The men were all enthusiastic making any project go over with a bang. They carry out the ideals of the “M” Club in their every day life. They are all true clean athletes, and loyal sons of Milligan.



## Milligan Pre-Med Club

The Milligan Pre-Med Club was organized at the beginning of the present school year, for the purpose of creating and maintaining an interest in the medical sciences—Dentistry, Pharmacy, and the various branches of General Medicine. Since its organization, the Club has been very successful, local physicians having gratefully given their services in rendering inspiring and instructive lectures. And, too, the Club Members have been congenial, and have shown their loyalty by giving their time and efforts in promoting interesting and purposeful programs. Such consecration of purpose presages an exceptionally bright future for the Pre-Med Club and its Members.



## Girls' "M" Club

This Club is made up of those girls who win the privilege of wearing the official "M" by virtue of athletic ability in basketball or any other form of athletics for which the "M" may be awarded at Milligan College.

The Club stands for clean and wholesome athletic principles and true sportsmanship.

### MEMBERS

VIRGINIA REYNOLDS

ANN LITTLE

ADA BESS HART

BETTY CROW

IRENE PACE

POLLY HAWKINS

BETTY STONE

ELLEN MONTGOMERY

THELMA BELL





## Philomathean Literary Society

COLORS: Old Rose and Gray                      FLOWER: Chrysanthemum  
MOTTO: "Ad Astra per Aspera"

Philomathia, the goddess of learning, because of our great esteem for her great works, was chosen as the model and ideal of each member of the society. This organization trains the college women for leadership in all phases of life, and develops the art of expression and reveals the hidden talents. Each week a literary program is given, and every member is called upon to do her part. An annual open program is given which displays the years work of the society. This society under its president, Anne Little, has completed one of its most successful years.

### MEMBERS

RUTH LEE MITCHELL	LENA SUE HARTMAN	EDITH WOODWARD
NELLE GRAY	LUCILLE LUMSDEN	JULA KILDAY
MARY SUE JAYNES	RUTH REYNOLDS	CHARLOTTE WATSON
LAURA HITT	HAZEL TALENT	BESSIE BOYD
GLADYS JOHNSON	CARRIE BELL	RUTH BELL
GERALDINE PARKER	HELEN FIELDS	HELEN FIELDS
MARTHA V. CORUM	EFFIE KATE KIRBO	PEARL GILLEY
KATHRYN SHIELDS	IRENE ELDER	BETTY CROW
GRACE PHELPS	ELLEN MONTGOMERY	RUBY COCHRANE
ELEANOR VANWINKLE	NANCY CANTRELL	MARJORIE COPELAND
MELBA S. CAWTHORN	ISABELL PERKINS	GAILEE PHELPS
ELIZABETH DIVERS	BILL OWENS	JEANELLE COULTER
LOUISE WILSON	EDDIE M. HARTMAN	ANNE LITTLE
THELMA BELL	RUTH STYKES	



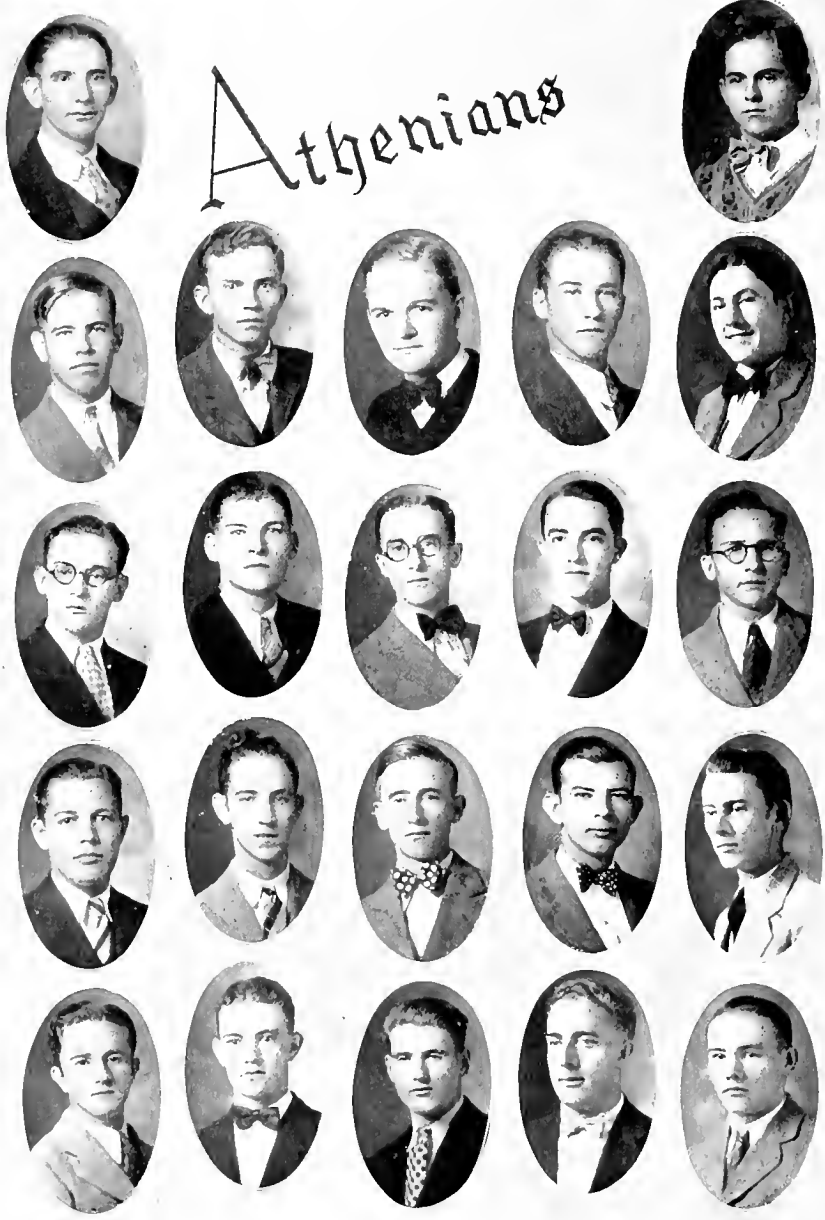
## American Literary Society

The American Literary Society enjoyed a most active year in every branch of society work. The meetings were interfered with during the fall by night football, but the society was active at every opportunity. The programs were varied and interesting with a mingling of musical numbers along with the regular literary work, this feature elevated the programs greatly and added to their entertaining qualities. The literary standards of the society were held high throughout the year. We were represented in the oratorical contest by Henry Johnson, and in the inter-collegiate debates by the following, Lacy, Johnson, Gillispie, and Jewell. All in all the American Literary Society enjoyed an exceptionally good year.

### MEMBERS

CHAMBERLAIN HALE	CLARK COLVARD	JOE KEEFAUVER
HERMAN MILHORN	BUCK HINDMAN	CHESTER BROWN
BILL BOWMAN	BASIL CASEY	STEVE LACY
JORDAN CROUCH	EDRIC OWENS	OLIVER REYNOLDS
PAUL MORLEY	DOUGLAS VON CANON	ROY IRVIN
CHARLES REES	BERT WADDELL	JAKE GRANT
CLYDE CAMPBELL	RANDELL FOSTER	WADE DENNIS
ARCHIE GRANT	BILLY JOE CROUCH	ROBERT SHUPE
ELBERT JEWELL	HOWARD SAGE	GEORGE BYRD
PAUL COCHRANE	BILL WOODS	BUENOS BAKER
HOWARD McCORKLE	HENRY JOHNSON	JAMES CHRISTO
DWIGHT BILLINGS	JAMES HENDRICKS	THELMA TRAVIS
HARVEY BULLINGTON	FRED SNODGRASS	FRED KIGLEY

# Athenians



## Athenian Literary Society

The Athenian Literary Society has enjoyed a very successful year. This society has been fortunate indeed in securing the cream of the Freshman Class. Many interesting and instructive programs have been rendered which have been enjoyed by all.

The programs which have been rendered consisted in debates, orations, declamations, etc. All the members have displayed some real talent in the many literary activities.

More interest has been shown in literary work than ever before in the history of the society. Attendance has been unusually good which further demonstrates the growing interest and appreciation of society work. The society has also been fortunate in having real, wide awake officers to guide its destinies. The future promises to be even more successful for the Athenian Literary Society.

### MEMBERS

VICTOR ALLEN	ROBERT ATKISSON
CHARLES STARNES	ROBERT BOWMAN
J. W. CARPENTER	F. D. OWENS
FRANKLIN ELLINGTON	LOUIS PERRY
HAMILTON MANTOOTH	RALPH BRADLEY
AUBREY RICHARDS	ALBERT LOLLIS
GERALD WERKING	JOE BROADWAY
STANLEY CARPENTER	RICHARD GEAR
DON EMERSON	BUFORD ROBERTS
HARLES BOLLING	ROBERT ADKINS
DAVID KIDWELL	ALGER LOLLIS



Assolian

Society

## Ossolian Literary Society

This year the Ossolians attracted many new members into their society who have contributed to our successful year. Our ideal has ever been the appreciation of the fine arts. Social meetings as well as programs were held weekly. Much interest has been shown by the old members as well as the new.

### MEMBERS

ANNA RUTH HONEYCUTT	ALMA MATNEY
IRENE PACE	BESS CONNELL
LANTA STRUNK	CARRIE PETERS
DAISY COOK	ELLA PAYNE
CHASTINE KIRBY	GRACE DEAN
GLADIOLA THACKER	MRS. WALKER
HAZEL NICHOLS	BILLIE COOTER
BESS STRICKLAND	NEWELL FREEMAN
VIRGINIA REYNOLDS	RUBY COCHRANE
JOY GILLENWATER	OLLIE SMITH
BETTY STONE	OLEAN HARBOR
LILLIAN SPIVEY	PAULINE WILLIAMS
CARLEE LASSITER	MABEL JOHNSON
ZADA DOTSON	ELIDA BAKER
POLLY HAWKINS	KATHRYN FOSHEE

MAUDE WHITLOCK





## Ministerial Association and Volunteer Band

This year, as in previous years, the Ministerial Association and Volunteer Band have met together. The members of the Volunteer Band are girls who have planned some definite religious work as their life calling.

Each Monday night, during the hour from 6:45 to 7:45, the group meets together, rendering programs consisting of topics vital to the Christian life in general and the Minister and Missionary in particular. To the members of this group these services are the most spiritual, the most inspirational and uplifting of all the religious activities on the Hill.

The State Volunteer Convention convened at the University of Tennessee in February, and the Volunteer Band of Milligan College was represented by one member of the Faculty and five young ladies of the student body.

Special features of the activities of this band are outside programs, the first one of the year being rendered in the First Christian Church of Greeneville, Tennessee; another in the College Chapel, and another in Hardin Hall.

All the members of the Ministerial Association are employed regularly in nearby churches, and these young men practice preaching in the group meetings on Monday night.

Eight members of this group of young people graduate this year, and it is one of their greatest pleasures and privileges to leave as a gift to the Prayer Room, a handsome Bible, expressing only in a feeble way the love and appreciation of the Sacred hours spent in this Room of Prayer.

Our words are better expressed in the following lines:

“Christ has no hands but our hands  
To do His work today;  
He has no feet but our feet  
To lead men in His way.  
What if our hands are busy  
With other things than His?  
What if our feet are walking  
Where sin's allurements is?  
What if our tongues are speaking  
Of things His lips would spurn?  
How can we hope to help Him  
And hasten His return?”



Dramatic

G  
H  
B



## "The Dramatic Club"

The Dramatic Club began the year with a small number on the roll. Many members were lost through graduation last year. However the small number seemed only to give greater enthusiasm to the organization which united its forces for a larger and better Dramatic Club. The roll increased by forty-one, making the total number on the roll, fifty-one.

The Dramatic Club is the workshop of the Senior organization the Masque. By a years membership in the Dramatic Club and playing in one leading role or in three minor roles, a member of the Dramatic Club becomes a member of the Masque.

The Club meets each month on the second Tuesday night of the month. The officers for the Dramatic Club are chosen from the Masque which is the ruling organization.

The Club has had a very prosperous year in Dramatic work, giving its annual open program before Christmas, and also giving the same program at Erwin, Tennessee during the month of January.

The roll of the Dramatic Club is as follows:

RUBY COCHRANE	ESTHER OWINGS
BOB ATKISSON	LANTA STRUNK
NELLE GRAY	ROBERT BOWMAN
MARY SUE JAYNES	CHARLOTTE WATSON
JOE KEEFAUVER	BESS CONNELL
HERBERT LIVESAY	CARRIE BELL
RALPH BRADLEY	RUTH BELL
JIMMIE CHRISTO	DAISY COOK
JEANELLE COULTER	JORDAN CROUCH
ZADA DODSON	ELIZABETH DIVERS
IRENE ELDER	FRANK ELLINGTON
HELEN FIELDS	NEWELL FREEMAN
JUNE HUMPHRIES	RANDALL FOSTER
CARLEE LASSITER	CHASTINE KIRBY
HERMAN MILHORNE	ALMA MATNEY
RUTH LEE MITCHELL	HAZEL NICHOLS
LEWIS E. PERRY	ROBERT SHUPE
PAUL STRUNK	RUBY STONE
LILLIAN SPIVEY	GERALD WERKING
PEARL C. WILDERMUTH	MARTHA V. CORUM
HAZEL TALENT	RICHARD GEAR
FRED FERGUSON	CHARLEY REES
WILLIAM BOWMAN	HAMILTON MANTOOTH

STEVE LACY

## "The Dramatic Club"

The open program given at Milligan on Wednesday, December 17, consisted of four one-act plays as follows:

### "BEAU OF BATH"

(True love affair of the Beau of Bath)

*Constance D'Arcy Mackay*

CHRISTMAS EVE

#### CHARACTERS

Beau Nash .. .. . WADE DENNIS  
Jepson (his servant) .. .. . HERBERT LIVESAY  
The Lady of the Portrait.....NELLE GRAY

### "HIS BLUE SERGE SUIT"

(A COMEDY)

—*Belle Mac Dearmind Ritchey*

#### CHARACTERS

Howard Corder .. .. . FRED FERGUSON  
Nancy Corder, his wife .. .. . GEORGIA FIELDS  
Ice Man..... BILL BOWMAN  
Trash Man .. .. . RALPH BRADLEY  
Janitor... .. . HERMAN MILHORN  
Lenox Stan .. .. . MARTIN PIERCE

### "GRETNA GREEN"

(The romantic elopement of Richard Brinsley Sheridan with Marina Linley)

—*Constance D'Arcy Mackay*

BATH, ENGLAND—EIGHTEENTH CENTURY

#### CHARACTERS

Marina Linley .. .. . betrothed to RICHARD  
Brinsley Sheridan .. .. . ELEANOR VAN WINKLE  
Thomas Linley, her father .. .. . THELMA TRAVIS  
Avis Linley, her aunt .. .. . EFFIE KATE KIRBO

### "AT THE GATE BEAUTIFUL"

(Drama of the Bible Time)

—*Harry S. Mason*

#### CHARACTERS

Demos, a Vendor of idols .. .. . RICHARD GEAR  
Berith, an unbeliever .. .. . BESS STRICKLAND  
Abigail, a Christian .. .. . NANCY CANTRELL  
Issachor, Son of Abigail .. .. . GRIS HYDER  
Raamah, a cripple .. .. . BELFORD ROBERTS  
Peter, a disciple .. .. . DAVID KIDWELL  
John, another disciple .. .. . STEVE LACY  
Passers By



GRETNA GREEN



THE GATE BEAUTIFUL



BEAU OF BATH



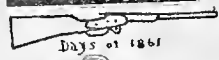
LITTLE WOMEN



HIS BLUE SERGE SUIT



Blazing  
Blond



Days of 1861



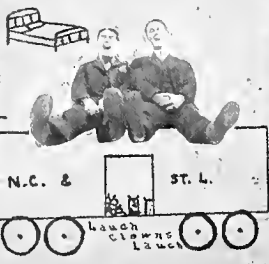
Hoover Day



Us 4 - No More



Jerry



visitino.



# ATHLETICS



BOOK V





## Review of the Football Season

Tobe Edwards—Coaching the Buffaloes for the fifth year, put out a great team. Handicapped by lack of material, Edwards put out a team that was in the fight from the first whistle. The team of 1928 was the cleanest, hardest fighting, hardest training team ever put out by the Buffaloes. The season started off with great promise of a winning season. The first four games were easily won, but due to the occurrence of injuries and lack of experience the rest of the games were lost, but not without a struggle. The team was made up of youngsters with a sprinkling of veterans. This lack of experience hobbled up many times during the season. All in all the season was a success. Mars Hill, Atlantic Christian, Carson-Newman and Bennett Colleges were defeated. The Buffaloes were rebuffed by Catawba, King, Emory and Henry, and Tusculum Colleges.



### JAMES T. (TOBE) EDWARDS

*Coach*

For the fifth year he has guided the Buffaloes and for the fifth time his efforts have met with success. He is a well liked fellow and his loss next year will be sorely missed. His success has been due to his understanding of the boys and his untiring efforts in the field. He is a prince of a good fellow and our wish for his success in whatever field he takes up goes with him as he goes from us.

### CAPTAIN SPRINGFIELD

*End*

"Goat" played a brilliant game during the entire season. His aggressiveness counted for many scores. His play was above par all season and he was a great leader for the Buffaloes. His play in the early games was phenomenal. The Buffaloes lose a great athlete when "Springy" goes from us.

### DON EMERSON

*Manager*

"Skeeter" was an able manager. Ever on the job in administering to the worries and wants of the players. He was economical and thoughtful in his many duties. A friend to all. Don lives in Fruitvale, Tennessee.

T. T. TRAVIS

*Guard*

"Buck" played both guard and end and played them well. One of the most versatile and valuable men on the team. "Buck" played his last year for the Orange and Black and sure did a noble job of it. His covering of punts from the guard position was uncanny. We wish you every success possible "Buck." "Firecracker" blew in from Fayetteville, Georgia.

EDWARD HARRY

*Guard*

"Cadillac" played his third year with the Buffaloes and did good work in the line. He is big and a smart football player. He played a good brand of ball throughout the season. His experience and coolness helped him to be of great aid to the Buffaloes. "Cadillac" has one more year. He hails from Pompano, Florida.

WADE DENNIS

*Quarterback*

Some schools may boast of their great football players, but Wade is as good as any of them. For four years "Hippo" has been the main cog of Milligan's football machine. Our opposing teams have learned to respect Dennis. He has never met a line that he could not tear into shreds. Milligan will miss "Hippo" next year, for he is one of her greatest athletes.

BASIL CASEY

*Guard*

Valuable goods come in small packages. A little man but a big fighting spirit. Casey played along beside Brown and this pair sure could open up a hole. Casey could come out in the interference or break through the opponents line to drag down a runner. In short he is an ideal guard. His play was hard and consistent and bordered on the brilliant. Casey is another Erwin man.





**BILLY JOE CROUCH**

*End*

"Hammer" had to wait until his Senior year to come out, due to injuries. But he came out in his last year and made things hum around the end positions. He was good on covering punts and receiving passes. Not many yards were registered around his end. Much praise is due a fellow who can come back as "Hammer" did. He will be missed when he goes from us this spring.

**GEORGE BYRD**

*Center*

George, our big lanky, dependable center played great ball from start to finish. George was especially good on diagnosing the enemy's plays. He was also good on offense. This was George's third year on the squad and he certainly did snap out of it. He is a dependable and accurate passer to the backs. He has one more year as a Buffalo. George came from Jonesboro.

**CHESTER BROWN**

**CAPTAIN-ELECT**

*Tackle*

One of the best men in the line to ever play on a Buffalo eleven. He can certainly play tackle to a queen's taste. His aggressiveness has won for him the honor of Captain for 1929.

**HOWARD SAGE**

*Halfback*

"Curly" made things hum in the backfield. He is a fast, aggressive back and much is expected of him in the coming seasons. He was also used at quarter part of the time. His playing all season was good and many long gains went down to his credit.

FRED FERGUSON

*End*

Ferguson came to us from the U. T. rats. His ready smile, steady work, along with his extraordinary punting ability, won him a place on the Buffaloes squad. Fred is a good end, both on defense and offense. His playing in every game was above reproach. He has two more years on the squad and we are expecting great things of him. Fred is a resident of Knoxville.

CLARK GRANT

*Fullback*

"Jake" waited until his Senior year to begin football, but when he did start, he developed into a hard-hitting back and had the side line saying "what if he had been out all four years?" "Jake" played like a veteran all year and has shown us that Soddy is where good athletes grow. We are sure he will be a successful Coach wherever he goes.

BILL BOWMAN

*Tackle*

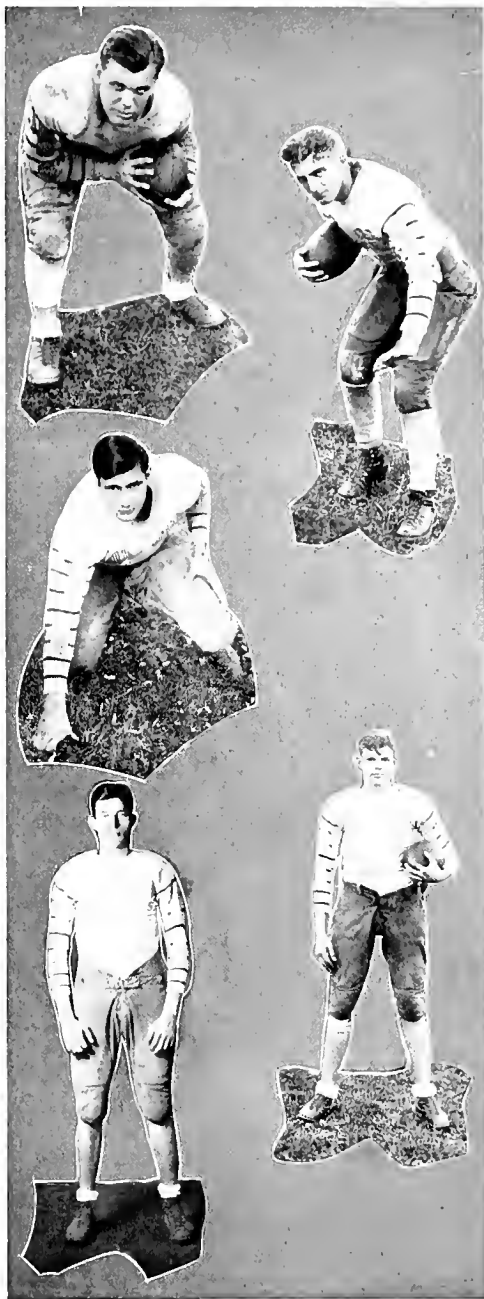
Bill was a tower of defense and a steam roller on offense. Bill played consistently all season. In the latter part of the season he was shifted to quarterback due to his experience. Bill played brilliantly at each position. He is indeed a great tackle and has two more years on the squad. Bill hails from Erwin, another place like the renowned Soddy. We will be watching you, Bill.

FRED SNODGRASS

*Center*

Fred put up a scrappy game all season. He was a hard trainer and consistent player. He played equally well at guard but served chiefly as Byrd's understudy. Fred just lives for football and you can look out for him next year and the years to come. His passes are accurate and his defense is splendid. Fred lives in Elizabethton.





**EDRIC OWEN**

*Fullback*

"Bull" came to us this year from a Junior College in West Tennessee and engraved his name into the hearts of Milligan fans. "Bull" started as a fullback, but was later shifted to tackle, where he performed with equal brilliance. He is a hard, consistent player and will be sorely missed next year.

**ROY ERWIN**

*Halfback*

"Ironhead" turned in some mighty sweet games during the season of 1928. We are of the opinion that when this boy finds himself he will be hard to cope with. Roy has two more years on the squad. He is fast and aggressive and should have enough experience by now to make a wonderful player next year. His playing in the past two years has been good, but just watch him go next year.

**CLYDE CAMPBELL**

*Halfback*

"Country" could sure show 'em a leg and take it away. His brilliance held out during the entire season. He was by far the most consistent ground gainer the Buffaloes had this year. His name will live long in the Milligan Hall of Fame. He is a true noble spirited athlete. Power to him.

**VERNON HINDMAN**

*Halfback*

"Buck" did not find himself until the middle of the season and when he did—Wow! Such runs we have never seen! His first one was for 65 yards. He was handicapped most of the time with skin eruptions and leg injuries. He has the makings of a good athlete. "Buck" comes to us from Murfreesboro, Tennessee.

**LEWIS TAYLOR**

*End*

Great shades! What a punt! and all eyes turned to Taylor. His punting kept the ball out of Buffalo territory many times. "Lew" is indeed a wonderful end, long, rangy, fast and a good pass receiver. Lew has three more years on the squad and will certainly make things buzz. He is truly a great athlete. Lew is from Johnson City.





## Review of Basketball Season

The Milligan College Stamping Buffaloes have finished the best season ever recorded in Milligan Basketball History. At home and abroad they swept their opponents off their feet. When the "Big Five" started down the ole hardwood floor something was bound to happen and it did, in the form of "two more points" for Milligan. At no time during the entire season were the Buffaloes at a loss as to what to do in case of an emergency. Their motto was, "In case of doubt, SHOOT", which they did and invariably the score keeper would mark two more points for Milligan. True, they met defeat, four times, but it was glorious defeat for each man had given his all. What more can be expected of any team? If a substitution was to be made it was not looked upon as a handicap but as new strength going in to take the place of a hard-fighting comrade. Each new piece was a perfect fit, because it had been made to fit the place in which it was placed. The Buffaloes had no equal when it came to team spirit and machine-like precision. They were irresistible, none could stop them in their wild plunge for victory.

According to the official record the Buffaloes won fourteen out of eighteen games played. One loss was to one of the best Professional teams in the South, the "St. Louis Americans", by the score of 23-33. Later the "Americans" swamped the "Chattanooga Raillights" by a margin of 12 points. The games won are as follows: Tusculum (2), Carson-Newman (2), Emory and Henry (2), King, Maryville, Johnson Bible, Olson's "Terrible" Nordies, Lenoir-Rhyne, Erwin "Y" (2). There were only three games lost during the regular season, they are as follows: St. Louis Americans, King, and Maryville. These games were lost only by a few points, the largest negative score being the one with the Americans. For the first time in several years the Buffaloes met every team in the Smoky Mountain Conference, losing only two games, the best Conference record in Milligan's history. Because of the best seasonal record the Buffaloes were given the Conference Championship. Last year Milligan and Emory-Henry tied for the championship, but this season Milligan won the undisputed right to the championship.

The 1929 basketball season saw the first Conference Tournament in the history of basketball of East Tennessee. The tournament was played at Kingsport and won by Emory and Henry. Since Coach Eyer has been at Milligan he has wished for a Conference Tournament. This year it came to pass. Although his team did not win the Tournament, Coach Eyer must be given the credit as the instigator of one of the greatest steps in the progress of Smoky Mountain Basketball. Milligan easily won from King, in the first game of the tournament. The second night the Buffaloes lost to Emory by a small margin. The Smoky Mountain Tournament is to be an annual affair. Thanks to Coach Eyer.

The past season was characterized by clean sportsmanship, hard work, loyalty, and clean living. The basketball squad, consisting of ten men of the highest type, do honor to their Alma Mater by possessing all these qualities. May they live as they have played! Jake and Heischell will not be back another year, but they must remember, their teammates are with them, wherever they may be. Go to it boys, we are for you!



**CLEMENT M. EYLER**

*Coach*

Coach Eyer finished his third and most successful season at Milligan. He was always thinking, planning and working for the good of his team. The development of team spirit and playing ability was what he wanted, and he got it, because he was liked and respected by each and every man on the team. Coach Eyer was the same in defeat as in victory. His words were, "you look as good to me in defeat as you do in victory." He always had words of praise and encouragement for the team.

**CAPTAIN ARCHIE GRANT**

*Forward*

To Captain Archie Grant goes much of the praise for the success of the 1929 "Buffaloes." Archie is a natural leader of basketball men. He is one of the greatest basketball players that has ever graced the Milligan hardwood. There is something about Captain Grant that always commands the respect of his team-mates. His pleasing personality radiates a team spirit that has carried the Milligan team to many victories. He was appreciated by his team-mates as much as any captain could be, as was shown by his being re-elected to lead the Buffaloes next year.

**DOUGLAS VON CANON**

*Manager*

"Blackie" was always on the job. All you had to do was press a button and the manager was ready to serve you. No one could have served the team more loyally and faithfully than Douglas. He deserves all the credit possible to give an athletic manager. The comfort and the success of his team were always first with him. The team deeply appreciates his service.

**HERSCHEL SPRINGFIELD**

*Guard*

"Springy", the man with many motions, was one of the main cogs in the machine that brought Milligan many victories this year. Herschel has a patent on guarding that places him in a class all his own, superior to all others. He uses his feet, hands, legs, head, and psychology to check the flying opposition. He has every quality that any player could desire to have. He has quick action, keen judgment, fight, and all characteristics that a star basketeer possesses. Everyone regrets to see Springy go because his place cannot easily be filled.

### JOE KEEFAUVER

*Forward*

"Little Joey" played his second year for the Buffaloes. This little dynamo of courage and optimism, from Boones Creek could always be counted on to give his all to his team, coach, and school. "Joey" should make a great little player with another season of practice and experience. Remembering the great game he played against Maryville is all one needs to prove "Whackers" worth to the Buffaloes.

### BILL WOODS

*Forward*

Bill came to us from New Castle. He was unknown and untried, but it was not long before he broke into the "lime-light" and was looked upon by all as a great little forward. Fast, accurate, and hardworking Billy should become a main cog in the Buffalo wheel.

### ELMER SOLOMON

*Guard*

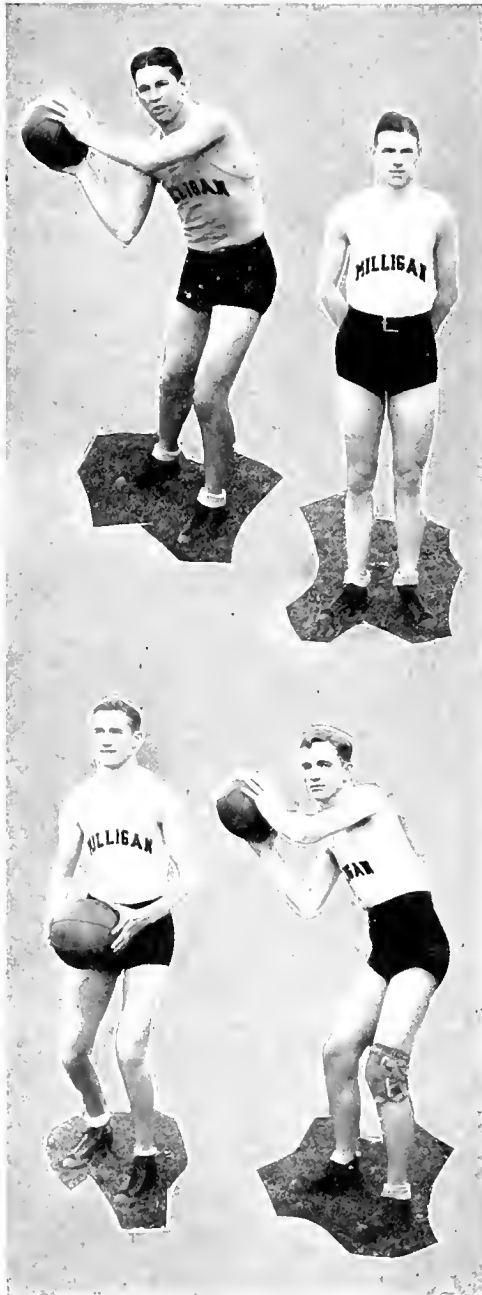
"King" Solomon came to Milligan from Mosheim, with the "rep" of being an artist. But Coach Eyler had to be shown, so, naturally Elmer set out to show him, and as is his custom, he did it in big style. With a little more experience as a guard "Sol" should develop into a "sure 'nough" artist, that would make any coach feel proud to have him on his team.

### LEW TAYLOR

*Center*

Just plain Ole Lew, as he is known far and wide, came from Johnson City High to prove his worth as a Buffalo. "Did he do it?" An' how! Lew just seemed to fit in as though he had been made for a Buffalo center. Under the goal he was a demon, rolling up the points promiscuously. With three more years to play, Lew should develop into a "super-basketeer" for the stampeding Buffaloes.





### CLARK GRANT

*Guard*

Ex-Captain, "Jake" Grant, the "Pride of Soddy" has been a bulwark on the Milligan team for the last three years. However, this year he reached the culmination of fame as a basketball player. Jake is one of the most skillful hardwood artists that East Tennessee College circles have ever known, as is shown by his being placed on the All-Smoky Mountain Conference Team for two years. Jake's motto is, "wherever that ball goes, there I will be also." As this athlete makes his exit from Milligan, the world receives one of the greatest athletes ever produced by our Alma Mater.

### CHAMBERLAIN HALE

*Guard*

"W. C.", playing his second season, proved to all that loyalty and hard work are the essentials for making a great athlete. "Jim" could always be depended on for his best, which is saying a great deal. Chamberlain will be one of the main cogs next year, probably filling Jake's place as guard.

### PAUL MORLEY

*Forward*

Paul came to Milligan from Erwin, where he played center for the Erwin "Y" team one season. It did not take this lad long to cinch a berth on the "Big Five", for the coach realized his ability as a basketball player at the very beginning. Neither did he fail to notice and commend his fighting spirit. He played many games in the "winning column" for Milligan with his sensational side-shots.

### STEVE LACY

*Center*

"Punkin" Lacy, another Sophomore who made the varsity "M" his first year, returned to his Buffalo comrades, to show them what he could do, and he did it, as only a genius could. The Buffs will be looking to "Punkin" for leadership in next season's activities.



## Review of the Season

ADA BESS HART - - - - - *Coach*  
 BETTY CROW - - - - - *Captain*  
 THELMA BELL - - - - - *Manager*

Under the leadership of Coach Hart the Milligan Buffalettes experienced one of the most successful seasons ever witnessed on the historic Hill.

They had on their schedule some of the fastest teams in East Tennessee and Western North Carolina. Among them were such teams as the Canton "Y", Carson-Newman, and Biltmore Junior College.

The trip through North Carolina proved rather disastrous for the Buffalettes, yet the score does not always tell a true story in Basketball. The girls played exceedingly well considering everything and much honor is due them.

The eleven girls receiving letters this year are: Crow, Spivey, Gilly, Kirbo, T. Bell, C. Bell, Hyder, Pace, Stone, Humphreys, and Harbor.

### RECORD

Johnson Bible College - - -	13	Milligan - - -	56
Johnson Bible College - - -	11	Milligan - - -	58
Emory-Henry - - - - -	25	Milligan - - -	30
Lenoir-Rhyne - - - - -	24	Milligan - - -	43
Canton Y. W. C. A. - - - -	38	Milligan - - -	34
Lenoir-Rhyne - - - - -	15	Milligan - - -	12
Biltmore Junior College - - -	24	Milligan - - -	19
Carson-Newman - - - - -	21	Milligan - - -	21
Emory-Henry - - - - -	15	Milligan - - -	32
Emory-Henry - - - - -	15	Milligan - - -	25
	219	Milligan - - -	330



### ADA BESS HART

*Coach*

"Ada", our efficient and beloved Coach has been with us for two seasons. She showed herself as a Coach of marked ability when she took material that looked new, green, and undeveloped and moulded them into one of the most successful girls' teams Milligan has ever produced. She possessed a magnetic personality and was held in esteem by all who knew her. She knew and taught many of the fine points of the game which are sometimes over-looked by less experienced coaches. She possessed a never-dying spirit which she instilled into every member of her squad.

### CAPTAIN CROW

*Forward*

You should see our Betty play ball. Now you're talking real basketball. "She's like a bird on the wing" when she goes down the floor. This is Betty's last year and we're wondering who is going to fill the worthy shoes of Captain Crow. If you have seen Betty play ball then you realize the true spirit of Milligan.

### PACE

*Guard*

There's an old saying that dynamite comes in small packages. Consider Pace and agree. With the greatest of swiftness she intercepts passes, and covers an unbelievable amount of space with her one dribble and has the ball ready for the forwards use. She is always cool and calm and can be depended upon to do her part and more.

### SPIVEY

*Forward*

Spivey is our happy, snappy, scrappy forward. She never acknowledges defeat, no matter if the score be against her. She is quick and always on the job. She has an unfailing eye for the basket and many times has saved Milligan from defeat by her long shots from the corner.

**HYDER**

*Guard*

Ruth is some scrapper and possesses that determination that is necessary to win ball games. More than once it has been her fighting spirit that turned the tide of battle our way. She is some guard and can always be depended on to intercept passes and get the ball to the forwards.

**STONE**

*Guard*

Rubye always played a hard game. She played guard and showed marked ability in that position. She always tried to back the team to the limit and to bring home the bacon. We predict a bright future for her on the basketball court.

**HUMPHRIES**

*Guard*

"Florida", our faithful guard, always played a hard game and enjoyed the fight to the utmost. Any of her opposing forwards will tell you that it was almost impossible to get between her and the goal. When they did shoot, it was Florida that jumped and took the ball from out of the air.





BELL, THELMA

*Guard*

Thelma, our faithful guard, was manager this season and displayed great ability, both as a manager and as a player. It was always her desire to bring honor to the Orange and Black.

BELL

*Center*

Carrie came to us this fall and showed us her ability as an accurate shooter. She took the game seriously and is developing into one of Milligan's best.

GILLEY

*Center*

Gilley, our good old stand-by and determinedly consistent center. Gilley always played a great game and we're glad to know that this valuable player will return to us next fall.



# READ THE ADS



OPEN ALL NIGHT

ADAM B. CROUCH  
President

JOE P. McCORMICK  
Gen. Mgr.

JOHNSON CITY STEAM  
LAUNDRY, INC.

*"Thirty-Seven Years of  
Satisfactory Service"*

LAUNDERERS - DRY CLEANERS  
DYERS

.....

We Are Now Operating in Our New  
Daylight Plant

.....

PHONE 5188  
COR. WILSON AVENUE AND BOONE STREET

.....

*See Our Agent at the College*

*Complete Banking Service*

SAFETY  
COURTESY

UNAKA AND CITY NATIONAL  
BANK

Johnson City

.

Tennessee

---

*Always Ask for*

SOUTHERN MAID ICE CREAM

MANUFACTURED BY

SOUTHERN ICE CREAM COMPANY

PHONE 5109

Boys and Girls of Milligan College  
Wear Bemberg Fabrics

AMERICAN BEMBERG  
CORPORATION



P. S.—Ask in your home town stores for  
Bemberg fabrics

Compliments  
of  
WAGGONER  
DRUG  
COMPANY

Compliments  
of  
FAW  
&  
DE VAULT  
CO.

HIGH CLASS WORK

LADIES and GENTLEMEN

CONGRESS BARBER SHOP

Up-to-Date Bobs a Specialty

You've Tried the Rest—Now Try the Best

TENNESSEE NATIONAL BANK BUILDING

JOHNSON CITY

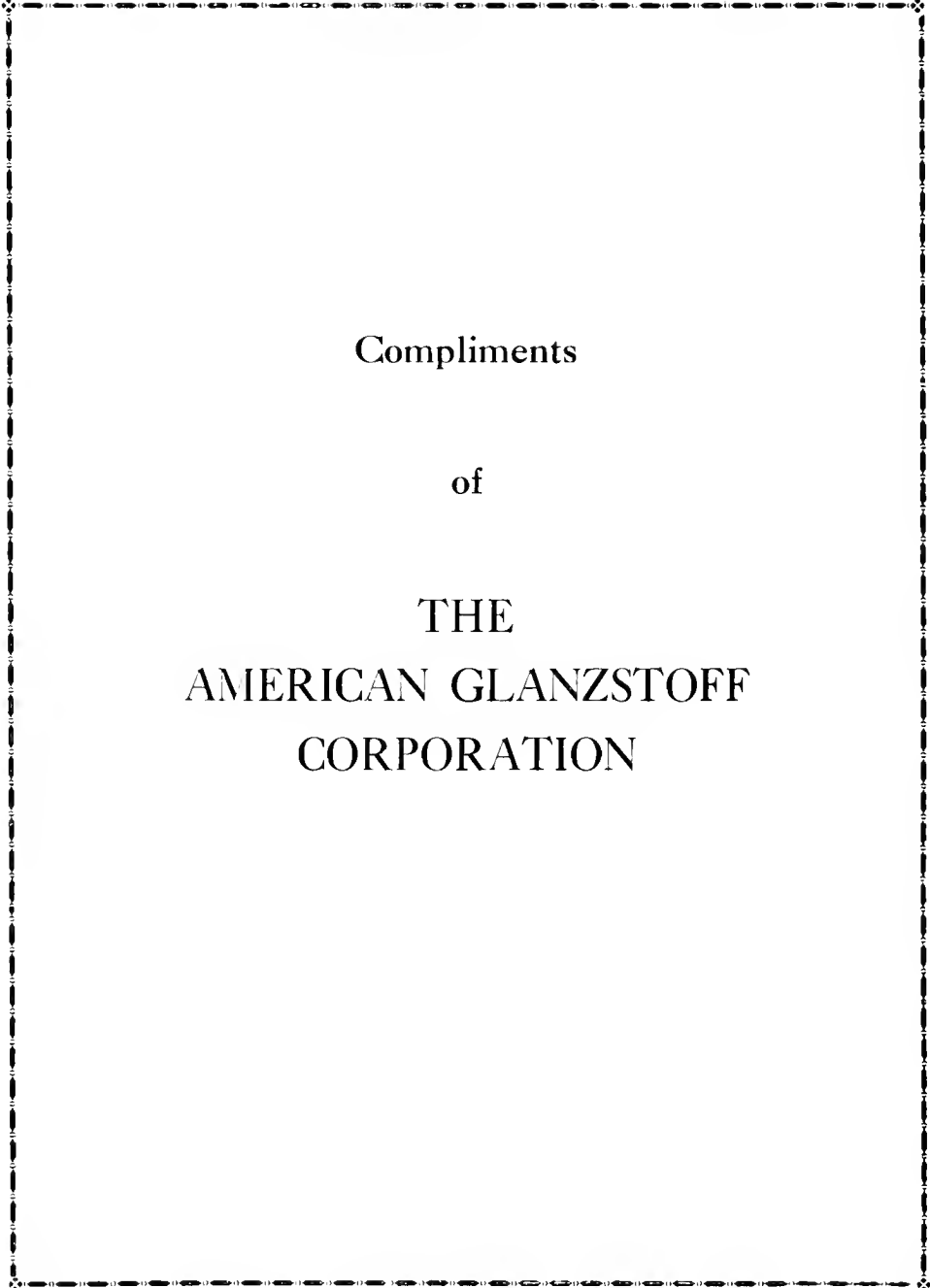
TENNESSEE

*Compliments of*

Cash and Haul Wholesale Grocery  
Company

Johnson City

Tennessee



Compliments  
of  
THE  
AMERICAN GLANZSTOFF  
CORPORATION

Compliments  
of  
Washington  
County  
Gas  
Company

Compliments  
of  
Hill  
Summers  
Chevrolet  
Company

PHONE 5100  
Miller Bros.  
Co., Inc.  
Lumber  
and Building  
Materials  
:::  
Manufacturers of  
Hardwood  
Floors  
:::  
JOHNSON CITY  
TENN.

THE CHARLEY CARGILLE STUDIO

Made All the  
PHOTOGRAPHS  
for This Annual

THE TENNESSEE NATIONAL BANK  
JOHNSON CITY  
TENN.

Eight Years Old  
Resources:  
Two and Three-Quarter Millions



*We Want Your Business*



*Donated by*  
Central Tire Co.  
JOHNSON CITY  
TENN.

*Compliments of*  
Sterling Motor Co.  
JOHNSON CITY  
TENN.

COMPLIMENTS  
OF  
RAY WALKER'S  
SHOP

MASENGILL'S  
Correct Apparel for  
Women and Misses  
PHONE 153  
MAIN AND ROAN STS.  
JOHNSON CITY - TENNESSEE

*Compliments of*  
MARKET STREET  
DRUG CO.  
CORNER MARKET AND BOONE  
PHONE 112  
"Serves You Right"  
JOHNSON CITY, TENNESSEE

Gunnar Teilman and  
Son  
"Johnson City's Leading  
Florist"  
PHONE 511  
FLOWERS BY WIRE

Jim Preas, Mgr.      Phone 772  
THE  
PREAS COMPANY  
Oil-O-Matic Heating  
Plumbing and Heating  
Contractors  
PREAS BUILDING  
JOHNSON CITY - TENNESSEE

INTERNATIONAL  
TRUCKS  
A. E. McCorkle, Mgr.  
114 JOBE STREET  
JOHNSON CITY, TENNESSEE



# KING'S

JOHNSON CITY

The Most Complete and  
Modern Department  
Store in East  
Tennessee

A STORE FOR ALL THE PEOPLE  
*where everyone—young and old—likes to shop*

It makes no difference the means of any individual . . . nor that one's particular taste . . . for KING'S have truthfully exemplified their slogan of "a store for all the people" with merchandise of merit for all needs.

Far from a "class" store . . . it is in reality a "mass" store . . . serving all people whose demands may lead from the underpriced merchandise of a BARGAIN BASEMENT to the exquisite imported creations of our exclusive

FRENCH ROOM.

—You'll like shopping at KING'S

---

JOHNSON CITY ENTERPRISES, INC.

MAJESTIC - CRITERION  
CAPITOL

.....

Home of Paramount  
Talking and Singing Pictures

BEST ENTERTAINMENT

BEST SERVICE

HANNAH'S  
The Young Men's  
Store of

JOHNSON CITY, TENNESSEE

THE ERWIN  
NATIONAL BANK  
OF ERWIN, TENN.  
WE WILL FINANCE WORTHY  
STUDENTS

*Ask Us*

*Your Smallest Purchase is Important Here*

The same care and study back of our selections of diamonds and other precious stones, the same thorough knowledge of materials and workmanship in all we buy is employed in choosing even the least expensive articles you will find here . . . This is, of course, the reason why everything is distinctive—yet low priced.

I. N. BECKNER'S SON, Jeweler

L. F. MARTIN

JOHN S. MARTIN

Sanitary Barber Shop

SHINE — BATH

*"It Pays to Look Well"*

111 SPRING STREET

"Established Over Quarter of Century"

WILLIAM SILVER CO.  
JEWELERS

Optometrists and Manufacturing Opticians

102 W. MARKET STREET



# EMPIRE CHAIR COMPANY

Manufacturers of

## CHAIRS AND FURNITURE

Johnson City

-

Tennessee

No. 1 Store

W. MARKET AND McCLURE STS.  
PHONE 1400

No. 2 Store

BUFFALO AND TIPTON STS.  
PHONE 9

## MILLER GROCERY CO.

Staple and Fancy Groceries

Fresh and Cured Meats—Fruits and Vegetables

*"The Best for Less"*

OPERATING OUR OWN COLD STORAGE PLANTS—We are prepared to  
give you the most wholesome foods and the best service in this section.  
TRY US FIRST

JOHNSON CITY

-

TENNESSEE

GEO. T. WOFFORD

H. L. WOFFORD

H. M. BURLESON

H. M. HARRIS, Office Manager

## WOFFORD BROTHERS

ESTABLISHED 1886

Real Estate - Insurance  
Loans

JOHNSON CITY

.

TENNESSEE

---

THE ELECTRICAL SUPPLY CO.

SPRING STREET

.....

RADIOS AND ELECTRIC

SUPPLIES

.....

*We Boost Milligan College*

Invest Your Savings in Six Per Cent First Mortgage

Real Estate Bonds

Safe

Convenient · Profitable

SECURITY INVESTMENT CO.

331 EAST MAIN STREET

JOHNSON CITY

·

TENNESSEE

---

SUMMERS HARDWARE COMPANY  
INCORPORATED

Wholesale Only

HARDWARE, CUTLERY, SPORTING GOODS,  
STOVES AND RANGES

PAINTS, VARNISHES, FARM IMPLEMENTS, BUILDING MATERIALS,  
RAILROAD, MILLS, MINE, ELECTRICAL, WATER WORKS, PLUMB-  
ING, AND HEATING SUPPLIES

EQUIPMENT FOR STORES, OFFICES, SCHOOLS, HOTELS, RESTAU-  
RANTS, FACTORIES, GARAGES, AND INSTITUTIONS.

McCRAE REFRIGERATORS, MAJESTIC HOTEL RANGES, COFFEE  
URNS, AND STEAM TABLES.

Johnson City

·

Tennessee

**JOHNSON CITY FOUNDRY AND  
MACHINE CO.**

**Structural and Ornamental Iron  
Work**

**Steel Stairs, Fire Escapes, Area Gratings, Jail Work,  
Steel Grates, Bridges, Grills, Riveted and Welded  
Pipe, Tanks, Smoke Stacks, Breechings,  
Penstocks, Steel-plate Work**

.....

**COR. WALNUT AND TENNESSEE STREETS**

**PHONE 5133**

**JOHNSON CITY**

-

**TENNESSEE**

---

**C. E. HOLLINGSWORTH**

**DELL HOLLINGSWORTH**

**JOHNSON CITY HARDWARE  
COMPANY, INC.**

**Wholesale Athletic Equipment for  
Every Athletic Activity**

.....

**REACH**

**RAWLINGS**

**SPALDING**

**D & M**



JOHNSON CITY  
OIL CO.

JOHNSON CITY, TENNESSEE

::::

*Distributors*  
*of*  
TEXACO OIL CO

::::

FRANK GAMMON  
PRESIDENT

COLONIAL  
DRUG CO.

201 E. MAIN ST.

JOHNSON CITY, TENNESSEE

VISIT OUR MEZZANINE FOR  
LIGHT LUNCHES, ICE CREAM  
AND SODAS

Moderate Prices      Clean Service

—  
Away from the noise and bustle of  
the street—A delightful place  
to meet your friends.

—  
*Cut Rate Drug Store*

PIERCE & PIERCE  
SHOE REPAIR SHOP

106 BUFFALO STREET

JOHNSON CITY

TENNESSEE

THE  
AMERICAN BANK & TRUST  
COMPANY

DR. H. O. MILLER  
FOLSOM B. TAYLOR  
DR. C. V. MORGAN  
W. B. BOYD  
NAT. G. TAYLOR

WALTER P. SHIPLEY  
A. O. SEARLE  
W. C. PHLEGAR  
CAPT. J. S. GRAY  
CARMON S. BOWERS

**FRANK MILLER  
COMPANY**

:::

STETSON AND VANITY HATS  
ARROW UNDERWEAR  
SURE-FIT CAPS  
LUGGAGE  
ARROW and VAN HEUSEN  
COLLARS  
CHENEY SILK CRAVATS  
INTERWOVEN HOSIERY  
SMITH SMART SHOES

:::

*"There is no substitute  
for quality"*

The  
**Tennessee Eastern  
Electric Co.**

Light                      Power  
Heat

Electricity is a willing ser-  
vant and costs, in terms  
of man power, less than  
eight cents per day.

What other power is so  
economical?

*"Service Counts"*

**RENT-A-FORD  
COMPANY**

Drive it yourself and  
save the difference

—————  
*Snappy Service*  
—————

PHONE 513  
403 S. ROAN STREET  
JOHNSON CITY, TENNESSEE

**SMITH HIGGINS  
COMPANY**

WHOLESALE DEALERS IN

Drugs  
and  
Laboratory  
Supplies

—————  
JOHNSON CITY  
TENN.



*Best for Everything*

---

## RED BAND FLOUR

---

Kitchen-Tested

Made in a clean mill, under supervision of Chemist and Baking Expert.

MODEL MILL COMPANY, INC.

JOHNSON CITY

TENNESSEE

---

# J. C. PENNEY CO. <sup>INC.</sup>

240-42 MAIN STREET

JOHNSON CITY

TENNESSEE

*There is a "Snap and Go" in the Smart Line of Students' Suits in Our Clothing Department*

Come in our store and visit the clothing department—let us show you a new style suit, in a becoming fabric pattern. You will like our service—always sincerely helpful. Our Sales-People know what smart styles are and can aid you to select a suit that is good looking and right for you.

Also, we see that it fits you correctly. Price! We leave that for you to decide. The largest department store in the world, operating 1212 stores. Think of our mass buying power.

J. C. PENNEY CO., INC.

*Buy Your New Ford  
at the Home of Good  
Service*

We have been selling Ford cars for a great many years and we have installed every modern facility for giving you good service. Our mechanics have been specially trained to service the new Ford car. Our new precision service equipment duplicates factory manufacturing methods. You will find that it pays to buy your car at the Home of Good Service.

Universal Motor  
Corporation

JOHNSON CITY, TENNESSEE

1929 electric ATWATER  
KENT RADIO is here  
Now \$120.00

Model 40 uses 1 rectifying and 6  
A.C. tubes. Full toned; powerful,  
more sensitive. Less tubes

\$77.00

COMPLETE  
ON EASY TERMS

Bishop Electric  
Company

JOHNSON CITY, TENNESSEE

DON'T LET 'EM FOOL YOU

DRINK

NEHI

IN ALL POPULAR FLAVORS

# MILLIGAN COLLEGE

H. J. DERTHICK

PRESIDENT

MILLIGAN COLLEGE . TENNESSEE

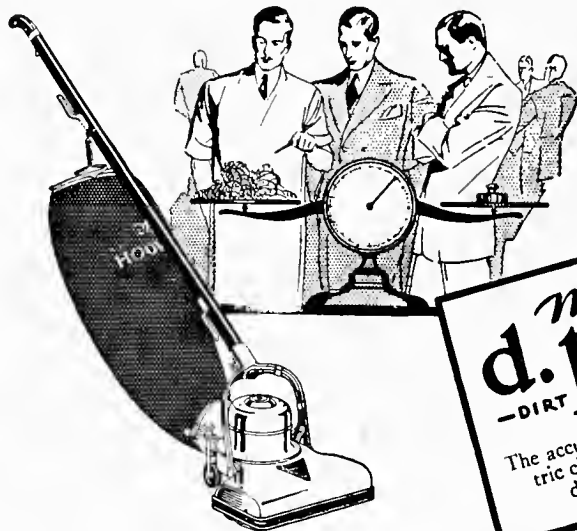
*Milligan College Is An Institution With—*  
a rich tradition; a unique history; an ideal location; wholesome Christian atmosphere; standard courses in Science, Philosophy, Education, Religion: Courses in Business, Expression, Music, Home Economics; adequate and efficient teaching staff, clean and vigorous athletics, intercollegiate forensics, opportunities for young ministers; aid for honor graduates of standard high schools; new buildings and equipment; delightful climate; select student body.

:::::

FALL SEMESTER  
OPENS SEPTEMBER 10, 1929

:::::

*Write for Literature*



*more*  
**d.p.m.**  
—DIRT PER MINUTE

The accurate measure of electric cleaner efficiency is dirt per minute

## *They* MEASURED *the dirt!*

The makers of the Hoover have long known that it could outstrip other cleaning methods by a very wide margin.

But they wanted to give electric cleaner purchasers really accurate evidence of this cleaning superiority.

So they put all the best known cleaners at work cleaning rugs. Rugs dirtied in use in homes, ho-

tels and clubs were used so that they would represent actual home conditions. At the end of five minutes, ten minutes, fifteen minutes, they measured the amount of dirt removed by each cleaner. And in every instance the Hoover had taken out more—far more.

You should have a demonstration of the Hoover in your home. There's no obligation. And it is interesting.

THE HOOVER COMPANY

NORTH CANTON, OHIO

ERWIN AUTO  
SALES  
COMPANY

*Lincoln Fordson*  
*Ford*

∴

T. F. JONES  
MGR.

Erwin - Tennessee

ALLRED  
FURNITURE  
COMPANY

*"Everything for the  
Home"*

Funeral Directors and  
Embalmers

∴

Erwin - Tennessee

STANDARD GROCERY COMPANY  
INCORPORATED

WHOLESALE GROCERS

Distributors of High Quality Foods  
and

*Cumberland Club  
Coffee*

ELIZABETHTON

-

TENNESSEE

D. W. LOWRY, President

L. E. FAULK, Sec'y-Treas.

## THE LOWRY FRUIT COMPANY

INCORPORATED

Wholesale Dealers in Fruits, Vegetables, Candies  
Grocers' -Specialties

Bananas, Oranges, Apples, Potatoes, Cabbage, Onions — Candies, Cigars,  
Cakes, Crackers, Cheese, Peanuts

JOHNSON CITY

TENNESSEE

E. C. ALEXANDER, President

SAM T. MILLARD, Vice-Pres.

E. H. HOLLY, Vice-Pres.

J. G. HOLLY, Cashier

## THE FIRST NATIONAL BANK

ELIZABETHTON, TENNESSEE

INVITES YOUR ACCOUNT—WE PAY 4% ON  
SAVINGS ACCOUNTS

WE SOLICIT, APPRECIATE — AND — PROTECT YOUR BUSINESS

*Compliments of*

HARRIS MANUFACTURING  
COMPANY

JOHNSON CITY, TENNESSEE



E

DUNGAN BROTHERS

L

Telephone

301

I

RENTALS

Z

A

B

E

T

H

INVESTMENTS

T

If you are interested in

ELIZABETHTON

O

We are interested in you

N

A decorative border surrounds the central text. It features two vertical columns on either side, each with a classical capital at the top and a base at the bottom. The columns are adorned with a garland of roses. At the top and bottom of the border, three open books are displayed, showing various designs and illustrations. The background within the border is filled with a repeating geometric pattern.

**KNOXVILLE  
LITHOGRAPHING  
COMPANY**

DESIGNERS AND PRINTERS  
OF  
FINE COLLEGE ANNUALS

KNOXVILLE, TENN.  
U. S. A.

*Personal co-operation with  
the staff in the planning  
and designing of the  
annual is a definite  
part of our service.*

The LONGINES watch is Standard of the World

*"It is First on the Second"*

and

*Internationally Famous!*

\$35 and Up

NOW ON DISPLAY AT

H. E. HART, Jeweler

JOHNSON CITY

-

TENNESSEE

---

East Tennessee  
and Western North Carolina Railroad  
Company

PROVIDES—

Improved facilities for handling excursions, picnics, and other parties seeking outings at points of scenic beauty along these lines.

Special picnic grounds and pavilion at Cranberry, North Carolina.

EXCURSION RATES ON APPLICATION

For information call or address:

GENERAL PASSENGER DEPARTMENT  
East Tennessee and Western North Carolina  
Railroad Company

JOHNSON CITY

-

TENNESSEE

# RITZ

A BUCHANAN THEATRE

:::::

Offers the public classics of the screen and stage  
in Tabloid Musical Comedy and  
Vaudeville acts

:::::

*A variety of entertainment to please the most  
fastidious*

---

*While in Erwin, Visit . . .*

COOK'S

FOR A BIT O' SWEETS OR A BIT TO EAT

Candy, Cosmetics, Soda, Cigars

ERWIN

.

TENNESSEE

---

IMPERIAL DRUG COMPANY

*"All that the name implies"*

MASONIC BUILDING

ELIZABETHTON

.

TENNESSEE

# The South's Foremost College Annual Engravers"

## OUR SUPREMACY

IN THE SOUTHERN  
YEAR-BOOK FIELD  
IS THE RESULT OF  
PERSONAL SERVICE

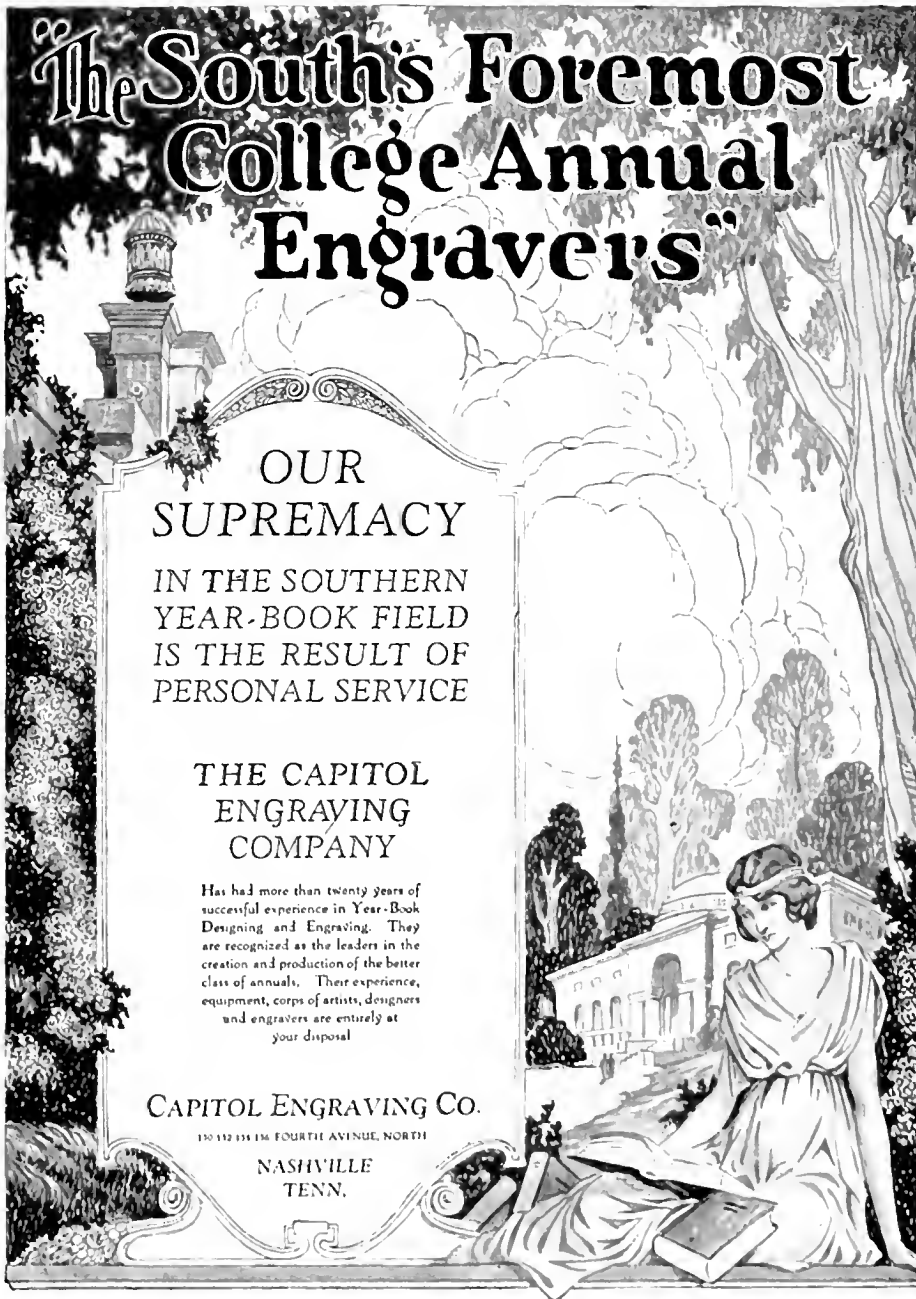
### THE CAPITOL ENGRAVING COMPANY

Has had more than twenty years of  
successful experience in Year-Book  
Designing and Engraving. They  
are recognized as the leaders in the  
creation and production of the better  
class of annuals. Their experience,  
equipment, corps of artists, designers  
and engravers are entirely at  
your disposal

CAPITOL ENGRAVING CO.

130-132-134 E. FOURTH AVENUE, NORTH

NASHVILLE  
TENN.



Federal Tires and Tubes, Texaco Gas,  
Oils and Greases

:::::

ALEMITE LUBRICATION AND  
FITTINGS

*Special prices on Tires and  
Tubes to anyone connected  
with Milligan College*

Your car will look like new when washed with  
our new HARDIE Car Washer

WHILE YOU WAIT

JOHN ANDERSON SERVICE STATION

*"We'll go miles to serve you"*

PHONE 77

# DOSSER'S

*The Woman's Store*

—Built upon public confidence and presenting the best values possible. Dosser's issue this announcement as their personal invitation to you to come and see the smart garments and accessories they are showing. We want you to make our store your headquarters when shopping. Get your checks cashed—leave your bundles.

Our store is your store—DOSSER'S.

JOHNSON CITY

TENNESSEE

## Sell Brothers

FRESH and CURED MEATS—POULTRY

Wholesale and Retail

:::::

113 BUFFALO STREET

140 E. MARKET STREET

JOHNSON CITY

TENNESSEE

The Elizabethton Steam Laundry

WE SELL

*"BUNDLES OF SATISFACTION"*

Let the Laundry Do It

PHONE 295

**S. B. WHITE**

Solicits Your Business in Stoves,  
and Tinware, Roofing and All  
Kinds Sheet Metal Work

408 S. ROAN ST.

PHONE 17

JOHNSON CITY, TENNESSEE

**COX'S**

Sanitary Dairy

VISCO ICE CREAM

Pasteurized Milk

PHONE 353

**GARAGE**

**STUDEBAKER AND**

**ERSKINE**

*Sales and Service*

**A. J. Sheldon & Co.**

*Compliments of*

**THE KINMEYER**

**INC.**

**RIDE**

**Anywhere—Anytime**

**THE YELLOW CAB COMPANY**



Have YOU tried the long loaf of Honey-Krust  
Bread?

*Six more delicious slices!*

“Taste the Milk and Honey”

## Grocers Baking Co.

*The Honey-Krust Bakery*

You are invited to visit our Plant and see  
HONEY-KRUST made.

:::::

CORNER BUFFALO AND ASH STREETS

PHONE 5123

JOHNSON CITY

.

TENNESSEE

Southeastern Paving & Construction Co.  
INCORPORATED

GENERAL OFFICES, 112 JOBE STREET

JOHNSON CITY . TENNESSEE

*Compliments of*

Free Service Tire Company

PHONE 5158

*"Don't Cuss Call Us"*

JOHNSON CITY . TENNESSEE

Liberty Theatre

HIGHEST TYPE PICTURES

With Photophone

JOHNSON CITY . TENNESSEE

Brading-Rhea Lumber Co.

LUMBER AND BUILDING MATERIAL

EAST MAIN AND DIVISION STREETS

JOHNSON CITY . TENNESSEE

All Rings Worn By Your Senior Class  
of This Year Are Products

of

THE L. G. BALFOUR CO.

:::::

*Each ring carries a life time guarantee  
and each wearer our  
best wishes*

THE L. G. BALFOUR CO.

ATTLEBORO, MASS.



# Autographs

# Autographs

# Autographs









Milligan College Library



3 1881 0001 1696 8