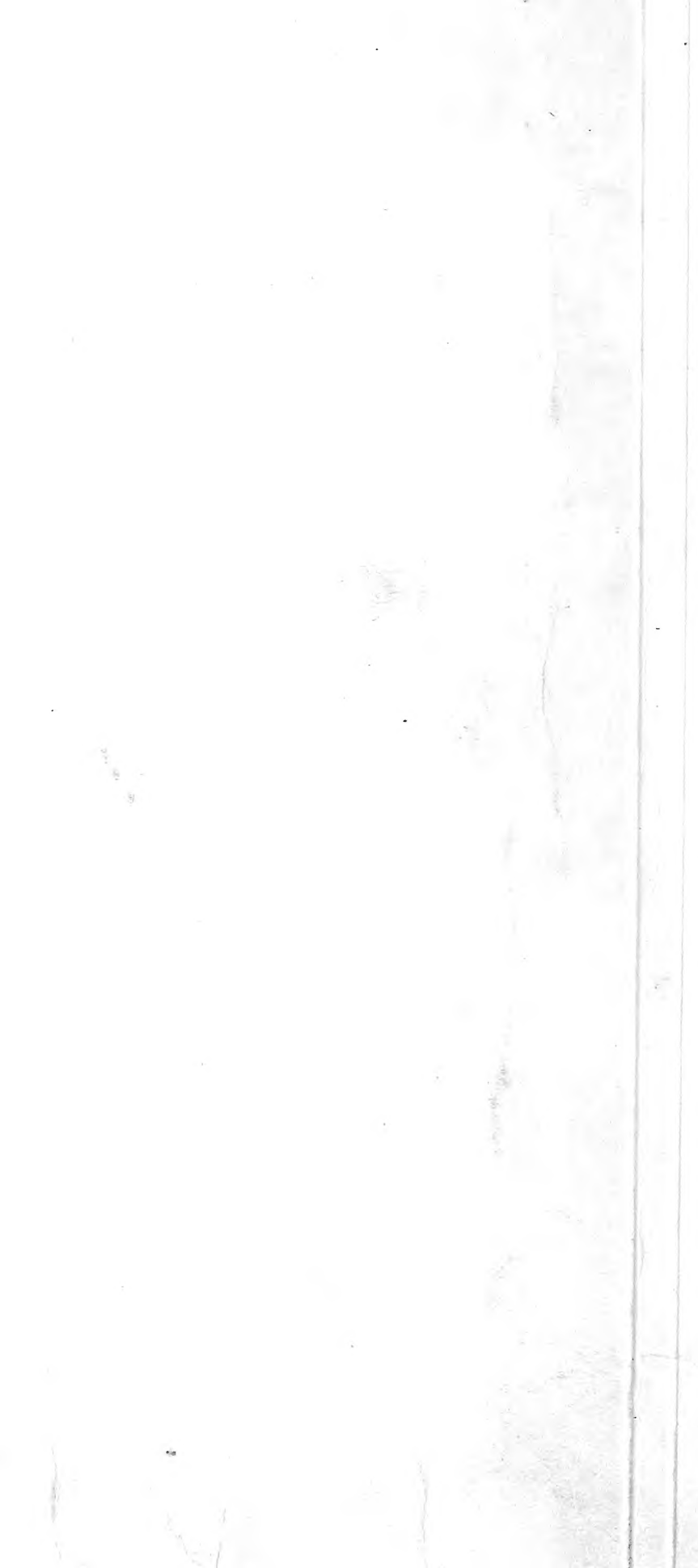


Historic, archived document

Do not assume content reflects current scientific knowledge, policies, or practices.



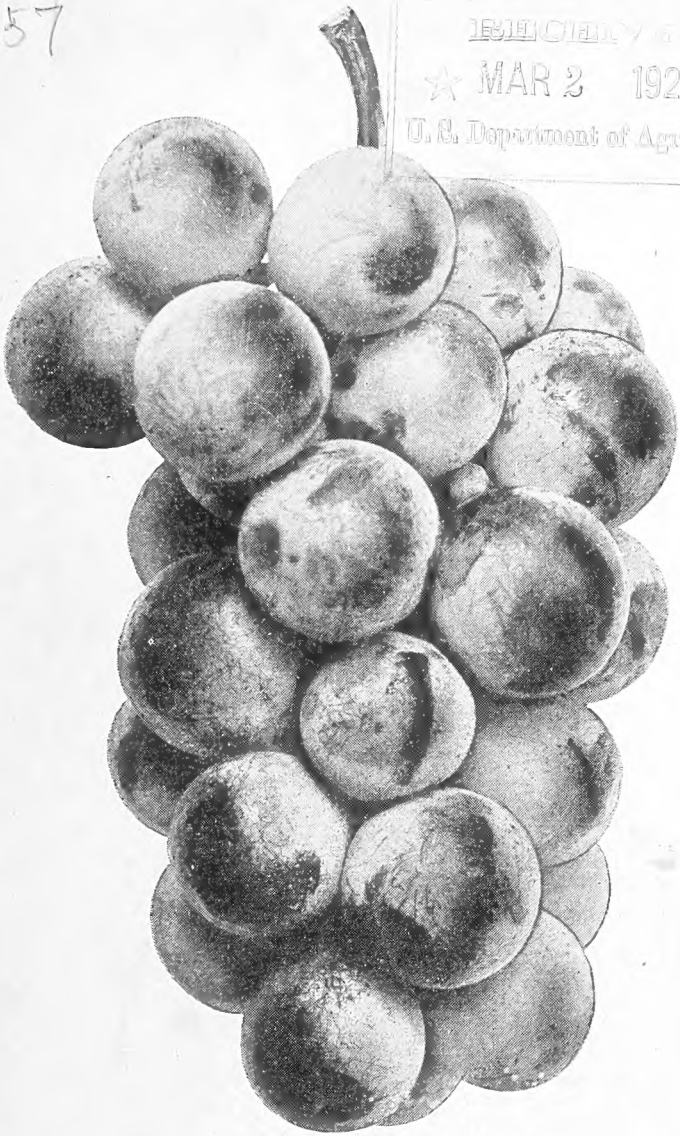
✓

62.57

1920

CACO (Catawba-Concord) GRAPE

RECEIVED
★ MAR 2 1920 ★
U. S. Department of Agriculture.



A perfectly hardy grape that has been pronounced by America's greatest experts to equal in high quality and melting texture the finest grapes grown under glass.

In appearance, the most beautiful of all hardy grapes. Berry large, bright wine red; bunch of good size, compact and good form. Ripens with Concord or earlier, and so rich in sugar it is excellent in flavor two weeks before it is fully ripe. Vine a very strong, vigorous grower and very prolific. Highly commended by prominent growers throughout all America.

Awarded a medal by The American Institute of New York City.

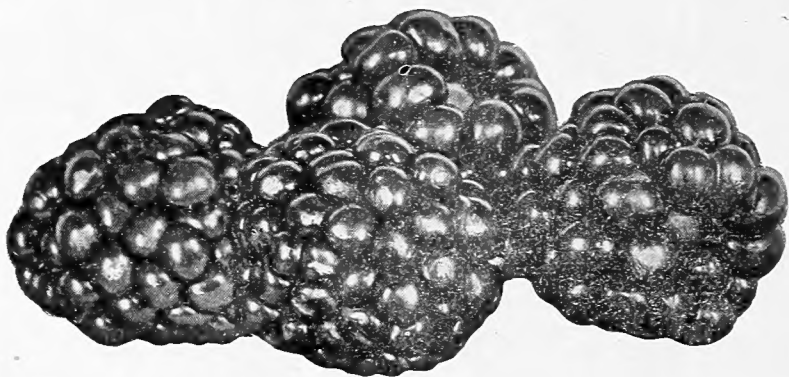
Prices of Vines: One year, each, 25c; dozen, \$2.00; 100, \$12.00.

Two years, each, 30c; dozen, \$3.00; 100, \$18.00.

Fruiting size, each, 50c; dozen, \$5.00.

J. T. LOVETT, Inc., Little Silver, N. J.

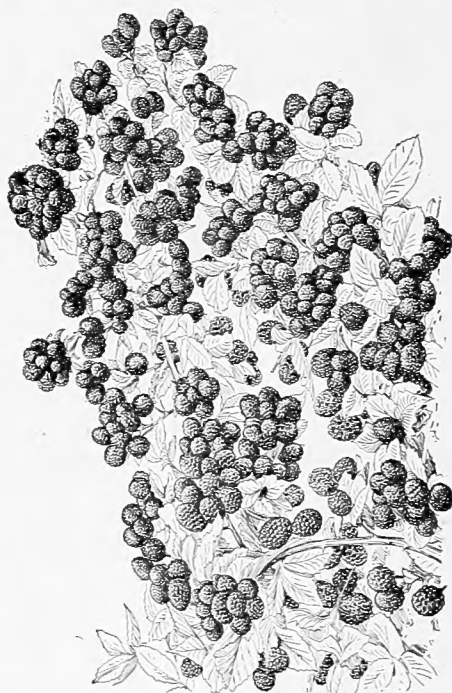
JOY BLACKBERRY.



Yes, the Joy has "made good" and has proved beyond doubt to be the finest blackberry for American growers as yet offered.

The berries are large, almost round, and are coal black. In rich, luscious flavor it surpasses all other blackberries.

Mr. Leonard Barron, editor of the *Garden Magazine*, writes: "The Joy Blackberry I have already known and appreciated. It has fruited here at Garden City and is the best blackberry we have on the place."



From a Photograph.

PRICE OF PLANTS:

Root cutting plants, dozen, 60c; 100, \$2.50; 1000, \$20.00.

Transplanted plants, dozen, 75c; 100, \$3.50; 1000, \$30.00.

J. T. LOVETT, Inc., Little Silver, N. J.

Pittsburg, Penn., March 7th, 1918.

Last year I bought some plants of you. I bought also from other nurseries. Your plants were better stock than I received from any other place.

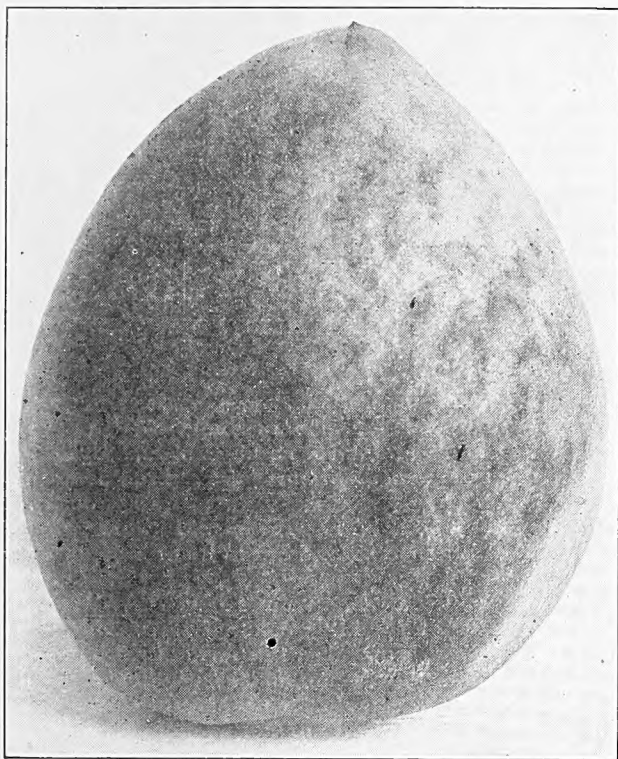
MRS. R. S. ROBBINS.

Montgomery County, Ohio, February 27, 1918.

My father bought fruit trees from you over thirty years ago and several times afterward. Always good and true to name.

Mrs. T. A. BAMBER.

STEBENRAUCH PEACHES.



Toughina Peach.

A group of Peaches that are truly wonderful. They were produced by Mr. J. W. Steubenrauch of Texas, the originator of the Carman Peach, and in addition to fine appearance and high quality, they are so hardy in tree and blossom as to insure a heavy crop of Peaches every year.

Anita, Frank, Lizzie, Tena and Toughina are all yellow fleshed varieties, and all of them have been thoroughly tested for many years.

TOUGHINA.—In size this Peach is very large, some specimens weighing twelve ounces. The color is a bright yellow, nearly covered with beautiful red. Fuzz, what there is of it, is very short. Quality is far better than Elberta, or even Hale, which I have growing close by. Owing to its blooming later, it escapes injury by cold when the Elbertas are killed. Speaking of the Hale, it is certainly ahead of Elberta and side by side, Toughina is yet decidedly ahead of Hale.

The name was given to it by reason of its remarkable shipping properties; for in addition to its certainty to bear peaches of great size and high quality, beyond a doubt it surpasses by far all other peaches as a shipper. On two different occasions, specimens sent us by parcel post from Texas arrived in perfect condition, and after being kept a week in our office after arrival, were found to be of very superior quality. The illustration is of one thus received.

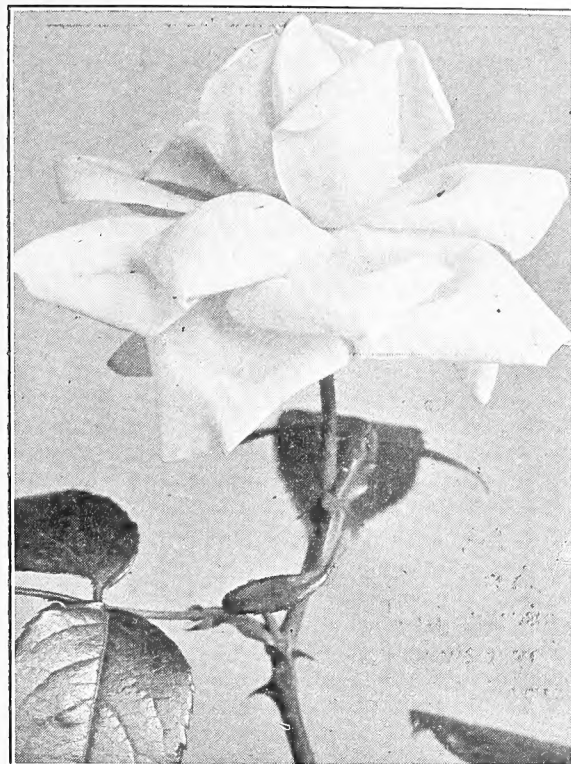
The *Rural New Yorker* says: "The Toughina seems to us of better quality than J. H. Hale and it appears to be an acquisition." For details, see our Catalogue No. 1.

PRICES OF TREES:

First class, each, 50c; dozen, \$5.00; 100, \$25.00.
3 to 4 feet, each, 40c; dozen, \$4.00; 100, \$20.00.
2 to 3 feet, each, 35c; dozen, \$3.50; 100, \$15.00.

J. T. LOVETT, Inc., Little Silver, N. J.

THE LOVETT SISTER ROSES.



Alida Lovett Rose.

These Climbing Roses are, to say the least, remarkable roses; and after a thorough and careful test, we sincerely believe each to be the finest and best climbing rose of its color as yet produced.

They are all hybrids produced by that greatest of hybridizers, Dr. W. Van Fleet, and have characteristics in common, namely: All are of strong, vigorous growth and entirely hardy; all have large, handsome, glossy, "mildew proof" foliage; all are very free flowering and flower for a long season; all have large, exquisitely formed buds and large, beautifully modeled flowers, that are held on long, stiff stems (hence ideal for cutting); all have delightfully fragrant flowers (an exceptional property in a climbing rose) and the flowers of all three are unusually enduring. An added merit and an important property, all shed their blooms promptly as soon as they have faded.

Alida Lovett is lively clear shell pink with shadings of sulphur at the base of the petals.

Bess Lovett is clear bright scarlet-crimson; richly fragrant.

Mary Lovett is the purest snow white throughout.

Prices, strong 2 year plants or plants from 5 inch pots:

Alida Lovett, each, 75c; dozen, \$7.50.

Bess Lovett, each, 50c; dozen, \$5.00.

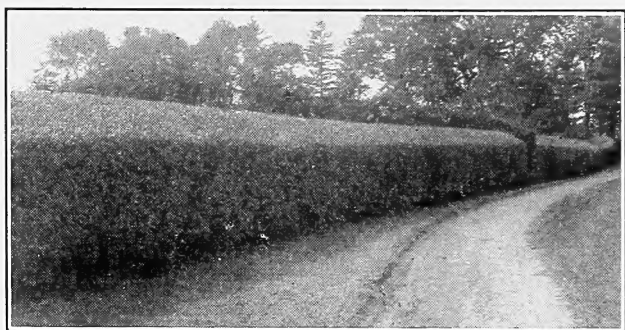
Mary Lovett, each, 50c; dozen, \$5.00.

I think you have roses of unusual merit in at least two of the Lovetts. Alida Lovett and Bess Lovett, as in bloom in the Washington rose-garden of the American Rose Society, have shown this year real superiority.—J. HORACE MCFARLAND, [President Amer. Rose Society].

Mary Lovett, aptly described as a white flowered Dr. Van Fleet, is another triumph of the successful hybridist, Dr. Van Fleet.—GARDEN MAGAZINE.

J. T. LOVETT, Inc., Little Silver, N. J.

CALIFORNIA PRIVET.



Original California Privet Hedge as it now appears.

Introduced by the Monmouth Nursery as a hedge plant in the early seventies and now more largely planted by far, for producing ornamental hedges, than any other shrub. We are the largest growers of it of any nursery in the world. At present we have a stock of over two million plants of California Privet, of very superior quality, both in top and root, that cannot fail to please all who buy any of it. All the plants offered, except the one-year grades, have been cut back one or more times.

	Doz.	100	1000
One year, 12 to 18 inches.....	\$.50	1.75	\$12.00
One year, 1½ to 2 feet.....	.75	2.00	15.00
Two years, 12 to 18 inches.....	.75	2.00	15.00
Two years, 1½ to 2 feet.....	1.00	2.50	20.00
Two years, 2 to 3 feet.....	1.25	3.00	25.00
Two years, 3 to 4 feet.....	1.50	4.50	35.00

For other varieties of Privet and other Hedge Plants see our Descriptive Catalog (No. 1).

A leaflet giving full instructions for planting and the care of Privet Hedges mailed upon request.

J. T. LOVETT, Inc., Little Silver, N. J.

Sonoma County, California, March 14, 1918.

We decided to send a small order to you, because we find that your catalog tells the truth. Looking through your catalog, the varieties of fruit we know if they have a fault you mention it every time.

We were raised at the Pine Hill Nurseries, Buffalo, N. Y. I remember my father bought a lot of peach trees from Monmouth Nurseries about 50 or more years ago. They were a fine lot; larger than we could grow them.

F. G. ZIMMERMAN.

Reno County, Kansas, April 22, 1918.

Some 15 or 16 years ago I ordered some fruit plants of you when I was living at Pana, Ill. I will never forget your courtesy, manner of doing business, and the excellent plants that you sent me. They came in fine shape and all grew.

J. Q. SWINN.

Sussex County, New Jersey, April 23, 1918.

Your plants arrived in fine shape and are beyond my expectations—they are such fine and large plants.

MRS. P. V. HEMENOVER.

OUR ILLUSTRATED DESCRIPTIVE CATALOGUE No. 1

This is a booklet of sixty pages (6½x10 inches) elegantly printed on coated paper. In it are described with illustrations and prices, cultural instructions, notes on ordering, etc.:

25 VARIETIES OF STRAWBERRIES;

including the best Autumn or Everbearing kinds.

15 VARIETIES OF RASPBERRIES;

including the St. Regis Everbearing and Logan Berry.

18 VARIETIES OF BLACKBERRIES and DEWBERRIES.

16 VARIETIES OF CURRANTS and GOOSEBERRIES;

including Everybody's Currant.

15 VARIETIES OF GRAPES;

including the remarkable Red, White and Blue Grapes,

ASPARAGUS, RHUBARB, HORSE RADISH, CHIVES,

HOP, ROSEMARY, MINT, SAGE, TARRAGON &c.

25 VARIETIES OF APPLES;

including Dwarf and Crab Apples.

PEACHES, PEARS, PLUMS, CHERRIES and QUINCES.

HARDY PECANS, WALNUTS and OTHER NUT TREES.

**EVERBLOOMING, HYBRID PERPETUAL, CLIMBING and
OTHER ROSES;**

and a complete list of the best

HARDY FLOWERING SHRUBS,

HARDY VINES AND CREEPERS,

ORNAMENTAL SHADE TREES,

EVERGREEN TREES,

**HARDY PERENNIAL PLANTS or Old Fashioned Flowers
and HEDGE PLANTS.**

Send for it to-day! It is mailed free upon request,

Tuscarawas County, Ohio, March 14, 1918.

When you took over E. P. Roe's business, I had been a patron of his; he wrote for me to patronize you. I did so for a number of years, then moved to city. Now I am going to the farm and need some plants, etc. Therefore, send me your catalog for 1918 as soon as possible.

(Mrs.) MARY LUDWIG.

Philadelphia, Penn., June 12, 1918.

I beg to enclose check covering your statement. I wish to express our appreciation of the plants sent us. The evergreens are the best we have bought out of some 4,000 trees this year.

N. P. SLOAN.

Alameda County, California, September 20, 1918.

Will you kindly send me your booklet on Strawberries. I remember buying small fruit plants of you about 35 years ago in Corning, N. Y., and that what I got was fine—and I have always remembered the name.

W. E. PURDY.

Virginia, July 22, 1918.

About 10 years ago I ordered a large selection of fruits, which did very well indeed.

J. P. McCLUER.

