

SK 605

.K5 A5

Copy 1

CAMP KINEOWATHA
WILTON, MAINE

CAMP KINEOWATHA

WILTON, MAINE

A SELECT SUMMER CAMP FOR GIRLS

UNDER THE PERSONAL SUPERVISION OF

ELISABETH BASS, B. A. - - - Director
LILLIAN R. CONANT - - - Head Councilor
IRVING G. McCOLL, B. L. General Director



SEASON FROM JULY 1st TO SEPTEMBER 1st
F O U N D E D 1 9 1 2

For Further Information Address
ELISABETH BASS, WILTON, MAINE, or
IRVING G. McCOLL, Hotel McAlpin, N. Y. CITY

Entire Contents Copyrighted, 1918, by Irving G. McColl

SK605
K5A5

Camping for Girls

THE rapid development of camping for girls during the comparatively short time it has been in vogue, indicates a trend toward a broader training in the social education of the gentler sex.

This movement assumes that the girl, like the boy, has a natural instinct for play, possesses the primitive taste for life in the open, and experiences, with the advent of adolescence, a manifestation of the gang spirit in her desire for intimate associates.

The purpose of the camp is to offer the girl ample opportunity for natural self-expression both in physical activity and in a wholesome, buoyant spirit of co-operation with others. It aims to divert her thoughts and ideals from the frivolous, artificial and deleterious aspects of modern social intercourse. It attempts to broaden her interests by accentuating the wholesome pleasures of life and by encouraging the formation of habits that make for health and vigor. Its training tends to lead her to become a useful member of a group, and thus to proceed naturally from one sphere of society to the next larger one.

The camp adapts its plan to the changing needs of the girl during the various stages in her development. It takes cognizance of the imperious demands of the self-centered ages of eight and nine; of the hesitating physical progress at ten or eleven; and of the psychic changes at about twelve. Its restraining and sympathetic influence is exerted at the time when the flood tide of physical strength and energy ordinarily reaches its climax between the ages of thirteen and fifteen, with the attendant awakening of social instinct and a spirit of independence and aggressiveness. It provides suitable activities to meet the more moderate physical needs and increasing social demands of those in the advanced teens.

In the better camps the welfare of the individual girl is the centre of interest, and an effort is made to direct her natural energy and tastes along beneficial lines to develop her individuality and permanent personality, and to give special training supplemental to that of the home and school.

Camps vary widely in individuality, class of clientele, morale and ideals. Some of the smaller ones with less than a hundred members exercise great care in the selection of their members and are able to meet the most exacting demands of discriminating parents.



FEB 13 1918

©CLA 91561

no. 1



KINEOWATHA CAMPERS AND COUNCILORS 1917 GROUP



KINEOWATHA COUNCILORS

Purpose

KINEOWATHA aims to provide a Camp Life in which its girls will grow to love Out-of-Doors, gain health and strength at play, and learn to be loyal to the interests of a larger group than the family. The organization of the Camp brings every girl in direct contact with the Councilors, a group of women especially chosen for their fitness to be leaders. From living together and from doing together things that both enjoy, a close relationship arises naturally between campers and councilors, making possible a friendly supervision of all activities and the cultivation of simple wholesome tastes and right health habits. At the same time the camper is surrounded by girls of about her own age and through rivalry in sports and group competition valuable experience in social relationships is gained and most desirable friendships are formed.

Individuality

Each camp has its own peculiar individuality which makes it appeal to its particular class of patrons. Kineowatha was the pioneer in providing for its campers refinements in living conditions which make camp life a suitable form of recreation for those from luxurious homes, who, while they may seek the pleasure and benefit of "real camping" on canoe, hiking and mountain trips for short periods at a time, could not endure permanent crudeness and hardships in their summer home. While Kineowatha provides for every feature offered by any other camp, it keeps in mind the quality of service and supervision most suitable for its class of campers and a camp spirit most thoroughly consistent with its ideals.

Location

The Camp is situated near Wilton, Maine, seventy-five miles north of Portland on the Farmington branch of the Maine Central Railroad. The buildings are located on a slope rising from the shores of Wilton Lake and from all the bungalows the view of woods and mountains across the water is a constant delight and an invitation to ride or tramp or climb.

Equipment

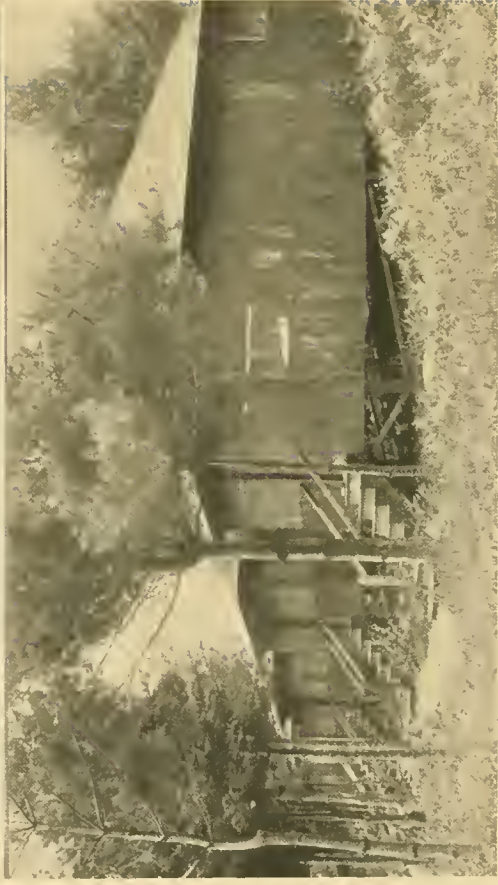
THE equipment includes a Main Bungalow with wide porches, and large room for dancing and social gatherings, office, camp headquarters, etc., a large bungalow for Arts and Crafts, two Dining Halls with large windows which open wide or protect from storm, several larger bungalows for living quarters, and a group of small bungalows. Each of the bungalows, used for living quarters, is large enough to accommodate five or more girls and one or more Councilors and is provided with living room, the larger ones with fireplaces, dressing-rooms, bath room, running hot and cold water and complete modern conveniences and electric lights. Row-boats, canoes and a good sized launch make trips upon the water an attractive feature of Camp, while good tennis courts, croquet and ball grounds provide equally good opportunities for land sports.

The living quarters at Kineowatha are specially designed for providing much better ventilation than tents permit, provide commodious quarters for keeping clothing and the campers' belongings in good order, and protect from dampness, and encourage orderliness and appeal to the natural taste for neatness and artistic arrangement of the little summer home. While none of the real benefits of camping are sacrificed in these comfortable quarters many superior opportunities are given the councilors for training along lines that appeal especially to mothers.

The importance of suitable and adequate equipment for a girls' camp should not be overlooked by parents. The ordinary rough, primitive equipment usually provided in camps on the pretext that summer camping should be "real camping" and not too comfortable is not at all suitable for girls of refinement. The Kineowatha bungalows and "bunгаlets" completely equipped with modern comforts are perfectly suited to the needs of girls from refined homes for their regular summer quarters. They are given sufficient opportunity for "real camping" and out-of-doors sleeping on the numerous trips and the Mt. Washington and Weld Branch Camps.



SENIOR LIVING QUARTERS



INTERIOR AND EXTERIOR OF MIDDLE BUNGALETS.



JUNIOR LIVING AND SLEEPING QUARTERS



THE BUNGALETS AND LAKE

Equipment

A VERY attractive Bungalow is reserved for an INFIRMARY. It is seldom needed for real illness but it is reassuring to parents and campers to know that a quiet place is always available for rest and a separate room is ready for isolation in case of contagious disease. The resident nurse is in charge of the infirmary and Doctors are within easy call.

The beautiful large main bungalow shown in the illustrations is a constant delight for the campers. Its appointments are perfectly suited for its purpose as the social headquarters, for assemblies, for dancing instruction, for the numerous "evenings" given in turn by the various bungalow groups to the other campers, and for the numerous entertainments.

The boat cove shown in one of the cuts is a very safe place for beginners' practice in rowing and paddling. It is deep enough for the purpose and never rough, being protected on all sides from which disturbing winds usually blow. This safe water for beginners in boating and canoeing is one of Kineowatha's greatest features which should appeal to mothers especially. The swimming cove beyond the point provides shallow water and an especially safe place for instruction to beginners. In deeper water a large float with spring boards and tower is anchored for the use of more advanced swimmers and divers.

Sports and Recreation

IT is the policy of Kineowatha to safeguard the health of its girls not only by making the living conditions sanitary and providing most excellent food but by encouraging every girl to enter so enthusiastically into all camp activities that a positive gain in health and strength may be realized. The weight is taken at the beginning of the season and at frequent intervals and any indication that the health is not improving carefully noted. It is intended that each day shall include a few minutes exercise of a general setting-up character, some coaching in a chosen sport, and some time to play without coaching. Instruction is provided in all sports offered and each girl is encouraged to become proficient in more than one.

Tennis

Tennis is everywhere one of the most popular summer sports. It is a game which holds its devotees for life; it becomes interesting to the beginner at the very start and few players become so expert that the hope of improvement fails to hold the interest. Kineowatha does all that it can to encourage the popularity of tennis at camp. It provides three well-built clay courts which are in use most of the time.

This sport is in charge of councilors who are enthusiastic players and instruction and coaching are provided for all. Beginners are taught the fundamentals of the game—the grip of the racket, the straight service, the principles of forehand and backhand strokes, and how to begin and “follow through” all these strokes with good “head work.” More advanced players are helped in mastering more difficult serves and are encouraged in every way to improve their form.

The final matches of the Juniors, Midlers and Seniors form one of the most interesting features of Tournament Week.



ONE OF THE TENNIS COURTS---RIDING RING



BOATING COVE---WAR CANOE

Water Sports

KINEOWATHA believes that water sports constitute one of the most important features of camp life. Instruction in nearly all other sports, even riding and arts and crafts, is offered to many during their school year. But summer is primarily the time to learn to swim and to use a canoe or boat. Only experience and the right kind of instruction can give the knowledge, confidence and self-control necessary to make these sports safe. Such experience and instruction Kineowatha aims to provide.

SWIMMING is in charge of a thoroughly competent instructor, one who not only swims and dives in excellent form but who inspires confidence in every camper and is successful as a teacher. Campers are classified according to their ability; as soon as certain requirements are met they become Class C swimmers, later Class B; a Class A swimmer may be justly proud of her accomplishment. The Aquatic Meet is perhaps the most popular event of Tournament Week. Diving for form and a varsity of races give a chance to use in competition all the skill gained in the summer's training.

BOATING AND CANOEING is in charge of a second instructor. Individual coaching is given in both rowing and paddling. It is the policy of the camp to allow as free a use of boats and canoes as is consistent with safety believing that only through use can real skill be acquired. Boat and canoe races are held during the summer at frequent intervals and they form an important part of the Aquatic Meet.

During the season a swimming exhibition is held. In this a demonstration of various strokes and dives are given by both campers and instructors. Egg and spoon, tub and funny costume races add to the enjoyment of the day. During Tournament Week competitive events are held. These include boat, canoe and swimming races, and diving for form. All instruction in aquatics is included in the camp fee.

Horseback Riding

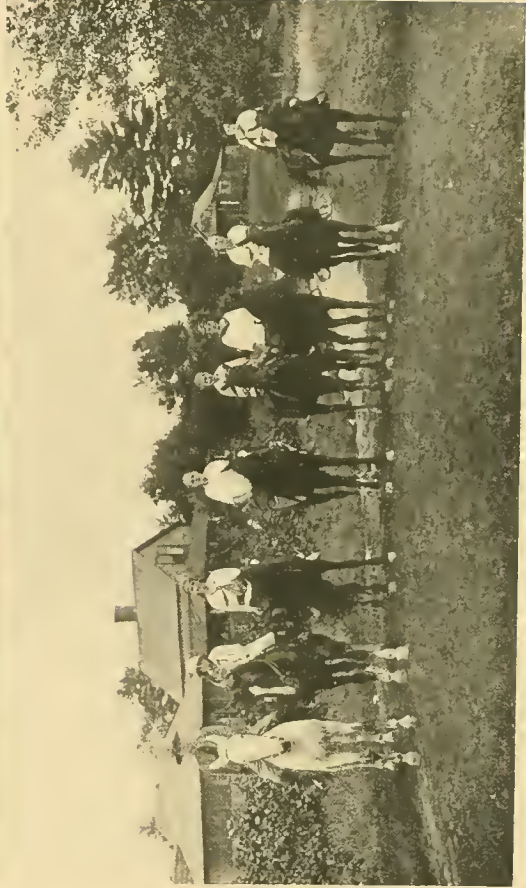
THE riding at Kineowatha is in charge of a thoroughly competent instructor, a man who has not only mastered the art of teaching riding, but whose personality is happily suited to the work. This department was organized and conducted for several years by West Point Army Officers, and their methods of instruction are still followed. The management feels that no better guarantee of the quality and thoroughness of such instruction could be given to its patrons.

Riding is one of the most popular sports at camp. Nearly every camper takes it for the whole season. For many it provides the first opportunity to learn. For others who have ridden only in a city riding school, and perhaps a different horse for each lesson, it is the first opportunity to know a horse on friendly terms and to learn the true consideration for an animal which comes in no other way.

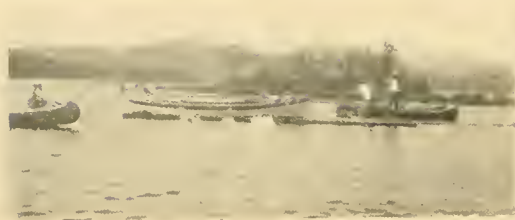
The first lesson includes a talk on the right treatment of the horse. Then follow instruction in mounting and dismounting, starting and stopping correctly. During the first season the trot and canter are very well mastered by most pupils. Those who show sufficient control over themselves and their mounts are then taken out on trips and taught the more difficult kinds of riding.

Kineowatha provides the best of facilities. A good sized dirt ring free from stones and surrounded by a fence makes a safe place for beginners. Here all fundamentals may be mastered before going out on the road. There are many beautiful rides in the country surrounding the camp and the good dirt roads make these rides one of the most attractive features of the summer for the more advanced riders.

The extra charge for riding covers the instruction, escort and the use of the horse. Bloomers are worn for the riding on the camp grounds and on the nearby country roads but divided skirts or habits must be provided for trips to neighboring towns, such trips, however, are not usual or necessary to the full enjoyment of the riding at camp.



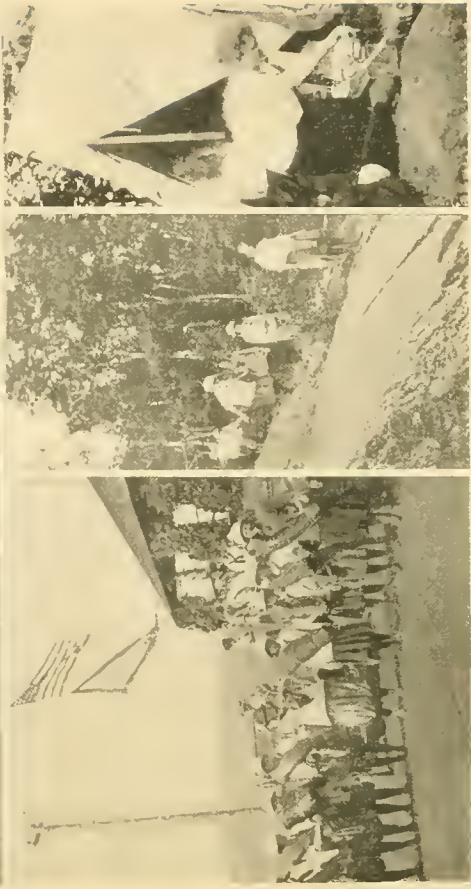
STARTING FOR THE RIDE



ON HIKING AND MOUNTAIN TRIPS



AT THE MT. WASHINGTON BRANCH CAMP



STARTING FOR MT. WASHINGTON BRANCH CAMP

Hikes and Mountain Trips

NO summer at camp is successful unless it leaves one with pleasant memories of tramping along country roads, across pleasant meadows and over mountain trails. Experience proves that the remembrance of pack-free sunny hours is more pleasant if beside it stands the memory of a fairly heavy pack and the dry open trails are better loved because of an occasional shower and a few miles through an abandoned path grown up to underbrush.

Kineowatha plans to give every girl a chance to go on hikes, to actually cook over an open fire and sleep in the open on a bough bed of her own make. In the early part of the season trips are taken to the nearby mountains, Saddleback, Bald, Blue and Tumbledown, all well worth climbing.

To older girls who have demonstrated their ability in hiking, a week of camping at the foot of Mt. Washington is offered. While there the girls live in tents not far from the Glen House. Using these as headquarters tramps to various points are taken, including Glenn Ellis, Carter Dome, and up the trails on Mt. Washington and others of the Presidential Range. Time is also allowed for quiet days at camp or trout fishing in the beautiful mountain streams.

For the White Mountain trip and for all trips which require special conveyances from camp or other travelling expenses an extra charge is made.

Arts and Crafts

A SPACIOUS new bungalow has been built for work in the Arts and Crafts and instruction is provided in basketry, leather work and jewelry making; each girl pays for materials used in the articles made. Every camper is urged to do something in the line for the value of the training in hand work and the pleasure of actually making things.

A well-equipped shop is provided for jewelry, and the pins, rings, pendants and chains made at camp show that real skill is developed in working in copper and silver and also in setting stones. Work in basketry and leather is done in the bungalow or on the benches provided for the purpose under the trees in the grove. Baskets, trays, napkin rings and other articles are made, both reed and raffia being used. Portfolios, pocketbooks and desk blotter pads are some of the articles made in tooled or ooze leather, many of which show original designs carefully worked out.

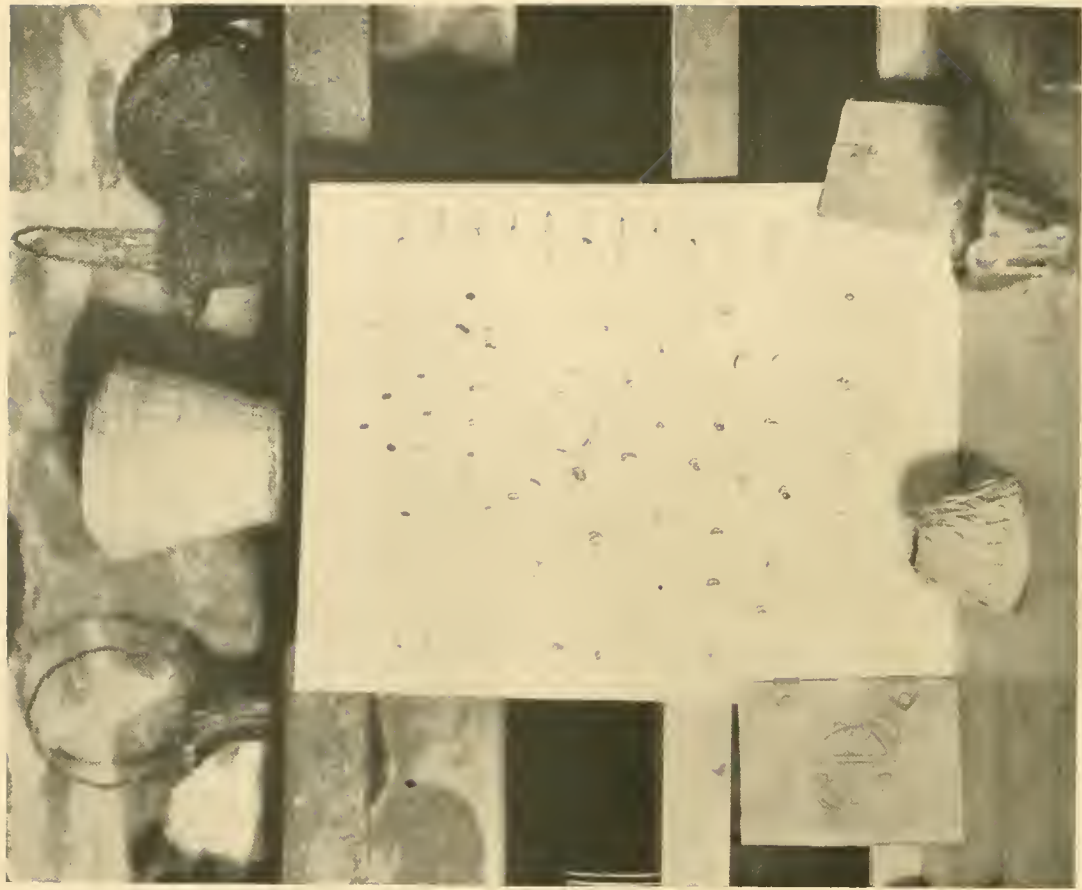
Classification of Campers

Accepting campers of the wide range of ages from eight to twenty years necessitates their classification into natural groups for their social life, instruction and competitions in sports.

Natural dividing lines, based not entirely on age but on development, mental and physical, and experience in sports and in social relationships, are discovered soon after camp opens which enables the directors to form more or less separate groups of campers which are known as Juniors, usually under twelve years, Midlers, usually above twelve and under sixteen, and Seniors, above sixteen or seventeen. These three classes are assigned to separate groups of bungalows on the same grounds and each has a separate and distinct program varying according to their tastes and development. This results, for all the most desired ends, in the formation of three separate camps without the undesirable entire isolation of the groups.



ARTS AND CRAFTS INSTRUCTION



SAMPLES OF JEWELRY, LEATHER AND BASKET WORK



SWIMMING AND BOATING COVES AND DINING HALLS



COLORS---SWIMMING BEACH---PAGEANT WORK

Colors

KINEOWATHA'S ceremony of "Colors" which gives the honor of raising and lowering the flag to the Bungalow Group having the best all-round record for the preceding day is a custom loved alike by campers and councilors. It is carried on as it was originally conducted by West Point men and it serves as a constant though silent reminder that physical fitness, orderliness and efficiency are characteristics of patriotic service of which the soldier's life is but one example.

The ceremony of "Colors" in Kineowatha's attempt to make all who come within her influence feel a connection between unselfish efficiency in ordinary living and patriotism.

The Day's Program

6:45 Reveille.	2:30 Hikes, Sports, Games or Riding.
7:20 Setting-up Drill and Colors.	4:00 Regular Swim for all except Beginners.
7:30 Breakfast.	5:20 Colors.
8:45 Inspection of Bungalows.	5:30 Supper.
9:00 Special Instruction in Handicrafts, Sports and Riding.	6:30 to 7:30 Canoeing, Boating, Launch Trips, etc.
11:00 Swimming for Juniors.	7:30 Pow-Wow for all Classes.
11:20 Swimming for beginners in Middle and Senior Classes.	7:45 Tattoo for Juniors.
12:30 Dinner.	8:15 Tattoo for Midlers.
1:30 to 2:30 Rest Hour.	8:45 Tattoo for Seniors.
Taps one-half hour after Tattoo.	

The above schedule is subject to change to meet unusual conditions.

Social Life

THE object in the social life is not so much to provide entertainment for the campers as to give each girl experience in entertaining and to cultivate in her a spirit of unselfishness and a desire to contribute her full share to whatever undertaking is in progress. Nearly every evening before the hymn is sung at the close of the camp day the girls gather in the main bungalow for an impromptu program of games, charades, storytelling or dancing. On Friday or Saturday evening of each week a more elaborate party is given; each bungalow in turn makes plans for these and acts as hostess to the rest of the camp. Sometimes a masquerade ball is given or a program of music and readings, or one providing a great variety of games and "stunts." Once or twice during the season the whole camp enjoys a hay ride or a picnic across the lake.

Perhaps the most enjoyable social feature of the whole season is the annual "Big Party" which is given about the middle of the season for the boys from Camp Kineo, a camp under the same management situated at Harrison, sixty miles distant. It is the one event of the season when boys are present and play any part in the camp life. Both camps contribute to the entertainment which is given on the evening before the party and both enjoy the dancing which follows on both evenings, on the green and in the main bungalow.

Annual Banquet

The ANNUAL BANQUET held at the end of camp is always one of the most important events of the season. The arrangements are made largely by committees of campers and are a credit to all concerned.

At the close of the after-dinner speeches a Cup is awarded to the Best-All-Round Camper in Junior, Midler and Senior classes, in each case the Best-All-Round Camper is determined by the Honor Point System. In addition smaller cups and ribbons are given for other accomplishments. It is the policy of the camp, however, not to award these for the same things each year, in order that they may always be given as a recognition of some achievement unconsciously gained.



THE RED CROSS PATRIOTIC PAGEANT



JUNIOR PAGEANT---THE LAKE---A SENIOR BUNGALOW



COSTUME PARTY GROUPS



MAIN BUNGALOW AND ITS INTERIOR---COMING FROM THE BEACH

Honor Point System

THE Honor Point System is adapted from a similar plan worked out for boys through years of experience at Camp Kineo. By it every camper is encouraged to test her skill against certain standards of attainments which are established as being normal for her age and development. Its object is to arouse an interest in each girl which shall lead to actual participation in all forms of camp activity.

All-round development is the ideal Kineowatha strives to put before its campers. In athletics the aim is to encourage every one to gain form in her chosen sport rather than to give undue importance to the winning of medals or cups. Recognition is given in handicrafts to each who meets the standard required for her class rather than to the one who makes the best basket or the most difficult piece of jewelry; in nature lore not to the girl who succeeds in identifying the largest number of birds or flowers but to each who becomes familiar with the specified number; and in camp craft to every one who masters the rudiments of out-door cooking and camping in the open. Again appreciation and recognition is given to all who do creditable work on committees and show real ability in entertaining, story-telling or impromptu speaking. Above all an effort is made to show the value and necessity for co-operation for the common welfare of the whole group by trying in every way to develop bungalow loyalty and camp spirit. And the highest value of all is placed upon certain traits of character or moral qualities. These aims are carefully considered in working out the details of the honor point system and are kept in view in determining the definite things for which Honors, High Honors and Major Honors are given. These awards count for one, one and a half and two points respectively in keeping the camp records of the camper's attainments toward the winning of the best all-round-camper cups, the awarding of which is based entirely upon this Honor Point System.

Admission and expense

KINEOWATHA opens about July 1 and closes about September 1, the exact dates being given to registered campers in the Blue Letter. The season covers two calendar months, or nine weeks.

Membership is limited to girls between the ages of eight and twenty years from refined American Christian families, and all acceptances are given with this understanding, subject to recall. As it is the desire of the management to admit only congenial and desirable campers all applicants not personally known to one of the Councilors or a patron are asked to furnish two references, one of whom should be a teacher.

MINIMUM RATE, \$250. INCLUDING ALL ESSENTIALS.

In Camp Kineowatha the charges for all essential features for the regular season of nine weeks is \$250; for one month, \$150. An extra charge is made for plain laundry, 24 pieces, of 75 cents per week; also for academic tutoring at the rate of \$1 per hour.

Extra features not included in above camp fee, desirable but not essential to the enjoyment of camp, and not subscribed to by all campers, are as follows:

Horseback Riding, \$35 for the full course of 35 hours, or \$1.25 per hour for shorter course.

Mt. Washington Branch Camp, for good trampers among Seniors and older Midlers, including transportation, \$25 for the trip covering one week.

Coaching or "Gypsy" trip, available for all others not taking the Mt. Washington trip, covering one week, \$25.

Many special short trips, including those to our Weld Branch Camp, offered to all campers, averaging one each week, for which a charge is made only for transportation by automobiles amounting usually to \$15 for the season.

MAXIMUM INCLUSIVE RATE, \$300.

A maximum inclusive rate, including all above extra features except tutoring, of \$300 is offered to those who wish to apply for the majority of these features. This will include the full riding course, Mt. Washington or Gypsy trip, all other trips and laundry, amounting separately to \$332.50. This does not include charges for materials used in Arts and Crafts.

What to Bring to Camp

- | | |
|-------------------------------------------------------------|--------------------------------------------------------------------------------|
| 1 pair of blue serge bloomers. | 1 Rubber blanket or poncho for trips. |
| 1 Pair of dark blue galatea bloomers. | 1 Dark, heavy, double, woolen blanket, or two heavy single blankets for trips. |
| 6 or 8 Plain white middies (no colors). | Sweater. |
| 1 Blue serge skirt, to be worn outside camp grounds. | Raincoat. |
| 1 or 2 White skirts. | Umbrella and rubbers. |
| 1 or 2 simple dresses for church or evening entertainments. | Heavy Kimono. |
| Tennis shoes or moccasins. | 2 Laundry bags. |
| Drinking cup. | Bathing suit and cap. |

Two regular camp blankets and sheets, pillows, slips and towels are supplied by the Camp.

A small steamer trunk is best for camp use. Other useful things for camp are costumes for plays, masquerades, banners and pennants for decorations in the bungalows.

Kineowatha's colors are blue and white. Uniform white hats with emblems, blue ties and head bands may be obtained at Camp. Full details about the cost and where to secure the Camp Costume will be sent to registered Campers. All articles brought should be plainly marked with the owner's full name.

How to Reach Camp

Registered campers will be notified when and where to join the Regular Camp Parties leaving New York and Boston on date set for departure.

For further information application should be made to the Director or General Director whose names and addresses are given on the title page.

Parents of campers are invited to visit camp at some time during the season. Those desiring to do so will find excellent accommodations at the Blue Mountain Inn, Wilton. The camp management will make reservations, if desired.

Camp Council for 1917

Irving G. McColl, B.L. (University of Michigan), General Director
Elisabeth Bass, B.A. (Wellesley College; late Dean of Women, Colby), Director
Lillian R. Conant, Head Councilor
Gertrude F. Gibson (Faculty, Mount Holyoke College), Instructor in Swimming
Elliott C. Logan (Wesleyan University), Instructor in Riding
Robert H. Long (Springfield College), Instructor in Canoeing and Boating
Nancy W. Friend (Teachers' College), Instructor in Arts and Crafts
Mrs. Bessie Sargent (Teacher Arts and Crafts), Instructor in Arts and Crafts
Marion M. Crawford, Instructor in Dancing
Mrs. Nathena P. Godfrey, Instructor in Dancing
Mrs. Grace L. Abbott, Camp Mother and Nurse
Caroline C. Johnson (Teacher, Albany Academy for Girls), Physical Instructor
Mrs. Irving Parker Mills (Pub. Educa. Ass'n, N. Y. C.), Head Councilor of Juniors
Mary Louis R Brown (Smith College), Councilor for Middlers
Marion W. Cannon (The Gateway School), Councilor for Middlers
Margaret M. Craig (Mount Holyoke College), Councilor for Middlers
Beatrice F. Morse (Liggett School), Councilor for Seniors
Mabel G. Morse (Liggett School), Councilor for Juniors
Ellen O. Palmer (Kent's Hill Seminary), Councilor for Juniors
Isabel Wyckoff (Hartford Public Schools), Councilor for Seniors
Mary Speed O'Connor (Teachers' College), Secretary

Aides

Eunice L. Davis

Bertha Clark Williams

Edith Hahn

Lucile Page

Jean Freeman Moore

General References

Recent patrons and others who know personally the intimate facts about the camp.

- Lyman Abbott, D.D., The Outlook Co., New York City
Miss Ellen Fitz Pendleton, President of Wellesley College, Wellesley, Mass.
Arthur Jeremiah Roberts, M.A., President of Colby College, Waterville, Me.
† Roswell Parker Angier, Ph.D., Professor, Yale University, New Haven, Conn.
Miss Flora J. Cook, Principal, The Francis W. Parker School, Chicago, Ill.
Miss Amy Morris Homans, Dept. of Hygiene, Wellesley College, Mass.
Miss Marian Elizabeth Hubbard, Professor, Wellesley College, Wellesley, Mass.
† Preston Kyes, M.D., Professor, Chicago University, Chicago, Ill.
† Albert A. Baker, Providence, R. I.
Herbert C. Belden, Hartford, Conn.
† George W. Corbin, New Britain, Conn.
† Merwin Gray, Hartford, Conn.
† Clyde A. Heller, Overbrook, Pa.
† William K. Holman, St. Davids, Pa.
† Welles E. Holmes, Newton, Mass.
Frederic R. Hoover, Columbus, Ohio
E. Y. Judd, Hartford, Conn.
† Mrs. Gail Borden Munsill, Winsted, Conn.
Charles F. Perkins, Grand Rapids, Mich.
† William H. Putnam, Hartford, Conn.
† Harry C. Rindge, Grand Rapids, Mich.
† Dr. Rollin H. Stevens, Detroit, Mich.
Heath Sutherland, Hartford, Conn.
† Frank D. True, Portland, Me.
Arnold Turner, Danbury, Conn.
Kenneth D. Wood, Columbus, Ohio

† Has visited camp.

Campers and Patrons for 1917

Addresses will be given on request to prospective patrons.

Campers	Parent or Guardian	Residence
Lydia Bradley Allen	Julian S. Allen	Connecticut
Margaret Bradshaw Alling	Wilbur M. Alling	New Jersey
Marian Booth Alling	Wilbur M. Alling	New Jersey
Susan Spencer Beach	Mrs. Frank S. Cornwell	Connecticut
Clara Adelia Bingham	E. H. Bingham	Michigan
Doris Borden	Dr. C. H. Borden	Connecticut
Gertrude Bell Borden	Dr. C. H. Borden	Connecticut
Barbara Bronson	Mrs. D. D. Bronson	Connecticut
Vera Ernestine Burke	Walter E. Burke	Massachusetts
Zillah Marion Burke	Arthur W. Burke	Massachusetts
Margaret Ida Butler	Louis F. Butler	Connecticut
Beatrice Cady	Ernest H. Cady	Connecticut
Poly Douglas Campbell	Dr. Don M. Campbell	Michigan
Adelaide Pierce Carvalho	Capt. B. N. Carvalho	Connecticut
Hannah Chamberlain	W. F. Chamberlain	Connecticut
Carolyn Cheney	John P. Cheney	Connecticut
Frances Virginia Cheney	Frank Cheney, Jr.	Connecticut
Alice Chester	Dr. Weston Chester	Connecticut
Betsey Collins	Benj. W. Collins	Connecticut
Julia Dexter Cooley	Charles H. Cooley, Jr.	Connecticut
Grace Cutler	Alden Cutler	Connecticut
Dorothy Denniston	Austin G. Denniston	New York
Katherine McComas Edgar	C. Goodloe Edgar	Michigan
Aimee Ellis	George W. Ellis	Connecticut
Enid Virginia Ely	Mrs. H. H. Ely	Massachusetts
Marian Ruth Evans	Dr. John R. Evans	New Jersey
Katherine Ferguson	Dr. R. J. Ferguson	Connecticut

Campers and Patrons—*Continued*

Campers	Parent or Guardian	Residence
Elizabeth Henrietta Gadd	Robert F. Gadd	Connecticut
Dorothy Godfrey	Mrs. N. P. Godfrey	Connecticut
Genevieve Griswold Goodrich	Mrs. A. P. Goodrich	New York
Elizabeth Hallock	Dr. F. K. Hallock	Connecticut
Chesley Hastings	Walter M. Hastings	Massachusetts
Grace Helen Hayden	George W. Hayden	Connecticut
Francelia Elizabeth Holmes	V. F. Holmes	Massachusetts
Ruth Adele Holmes	V. F. Holmes	Massachusetts
Marion Frances Hunt	Edwin S. Hunt	Connecticut
Dorothy Hyde	Edward P. Hyde	Ohio
Martha Johnson	John Q. A. Johnson	New York
Roberta Keen	Albert S. Keen	Michigan
Marion Knox	Robert C. Knox	Connecticut
Bernice Louise Heber	J. N. Krolik	Michigan
Margaret Louise Krolik	J. N. Krolik	Michigan
Pamelia May Littlefield	Charles G. Littlefield	Massachusetts
Frances Macaffill	Miss Jane A. Denton	New York
Mabel G. Martin	Charles B. Martin	New York
Jane Craig Miller	Joseph T. Miller	Pennsylvania
Josephine Goodale Mills	Irving P. Mills	New Jersey
S. Priscilla Morse	Mrs. Alice B. Morse	Michigan
Catherine Wells Mott	Mrs. J. H. Steane	Connecticut
Sue Noble	Francis B. Noble	Connecticut
Barbara Northam	Russell C. Northam	Connecticut
Evelyn Page	Frederic H. Page	Massachusetts
Helen Bruce Page	George A. Page	Massachusetts

Campers and Patrons—Continued

Campers	Parent or Guardian	Residence
Madelene Dorothy Pearce	Arthur P. Pearce	Massachusetts
Virginia Perry	Ray P. Perry	New Jersey
Anna Petrunkevitch	Prof. Alexander Petrunkevitch	Connecticut
Wanda Petrunkevitch	Prof. Alexander Petrunkevitch	Connecticut
Mary Puffer	Mrs. Georgia E. Puffer	Connecticut
Alice Louise Redfield	Edward D. Redfield	Connecticut
Beatrice Reynal	Louis S. Reynal	Connecticut
Arline Northam Romer	John Irving Romer	New York
Dorothy Adams Sargent	Mrs. Bessie Sargeant	Connecticut
Katherine Sears	Harold C. Sears	Massachusetts
Jane Smith	F. L. Smith	Michigan
Josephine Smith	F. L. Smith	Michigan
Sarah Virginia Smith	E. Walter Smith	Massachusetts
Barbara Tallmadge Swift	Tallmadge Swift	Connecticut
Katherine Tallmadge Swift	Orlando E. Swift	Connecticut
Else Thieme	Oscar Thieme	New Jersey
Katrina Cupp van Asmus	Edward van Asmus	New York
Isabel Prime Waterworth	Thomas E. Waterworth	Michigan
Dorothy Goodwin Whitney	Clarence E. Whitney	Connecticut
Laura Cheney Whitney	Clarence E. Whitney	Connecticut
Eleanor Porter Williams	Samuel P. Williams	Connecticut
Sally Homer Williams	Samuel P. Williams	Connecticut
Lucy Hale Williams	Henry J. Williams	Massachusetts
Pauline Williams	A. N. Williams	Connecticut
Juliette Ann Wills	H. S. Wills	New York

CAMP KINEOWATHA

Application for Membership

Please enroll my name as a member of Camp Kineowatha for the regular season from June 29, 1918, to August 30, 1918. I have read the camp prospectus and agree to abide by the customs, rules and regulations adopted by this camp. (Preference is given to applications for the full season. If the desire is to enroll only for one month, please fill out following line.) My enrollment is from.....1918 to.....1918. (Either for first or second full month.)

Name in full.....
(Please give all names in full)

Street and No..... City or Town..... State.....

School attending..... Principal.....

Age in years..... months..... Date of last birthday.....

In addition to all essentials included in the minimum rate, I desire to subscribe for the following extra features. (Write "Yes" or "No" in blank spaces.)

Horseback riding and instruction; full course of 35 hours..... Or..... hours.

Mt. Washington branch camp, if accepted..... Or alternative Coaching trip.....

The Weld branch camp..... Weekly short trips.....

Or I desire to subscribe for all extra features under the maximum inclusive rate.....

Enclosed find five dollars on account.

.....
Parent or Guardian

Business Address.....

Accepted as a camper subject to all conditions named.

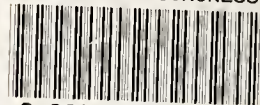
Signed duplicate as acceptance enclosed herewith.

Receipt is hereby acknowledged of \$..... deposit on account.

.....
Director or General Director.

RATES: The minimum rate for two months including all essentials is \$250; for one month, \$150. Maximum inclusive rate for two months covering extra, \$300. Riding, 35 hours, \$35.00; less time, \$1.25 per hour. Mt. Washington or Coaching trip, either \$25. Weld branch camp, \$15. Laundry, two months, \$7.50. Academic tutoring, \$1.00 per hour. Make checks payable to Kineowatha Camps and address all business communications to IRVING C. McCOLL, Hotel McAlpin, New York City.

LIBRARY OF CONGRESS



0 002 908 080 A

