



SEWANEE







**Ex Libris**  
Petrus  
Lambertus

COPYRIGHT

1931

†

GEORGE COPELAND

*Editor*

DAVID WALKER

*Manager*

18



Painting by the artist, "The Battle of Shiloh,"  
West Coast, Englewood, Tennessee, 1862.

# 1931 CAP AND GOWN

VOLUME XXXV

THE UNIVERSITY OF THE SOUTH

SEWANEE, TENNESSEE

## FOREWORD

*In presenting the thirty-fifth "Cap and Gown" the editors hope that they have overcome the difficulties that attend such publications in periods of financial stress sufficiently to earn the approval of the student body. It is the way of editors to hope to be brilliantly original, but it is the way of circumstances to restrain them.*



• • THEME • •  
EXPLANATION

*Sewanee is so completely "of the South" that our theme needs no explanation. We present it in the hope that at Sewanee the best of a quickly passing age will be preserved and handed on to her future sons as a heritage from an age when the art of living was perhaps better understood.*

# DEDICATION

to

Brigadier-General James Postell  
Fervey

*To honor a man of many honors is  
difficult and even smacks of conceit.  
We find ourselves in this double pre-  
dicament in dedicating this volume  
of the Cap and Gown to a gentle-  
man whose spirit exemplifies that of  
the old South and of our  
own Sewanee.*



# In Memoriam

1 1 1

William Boone Nantz

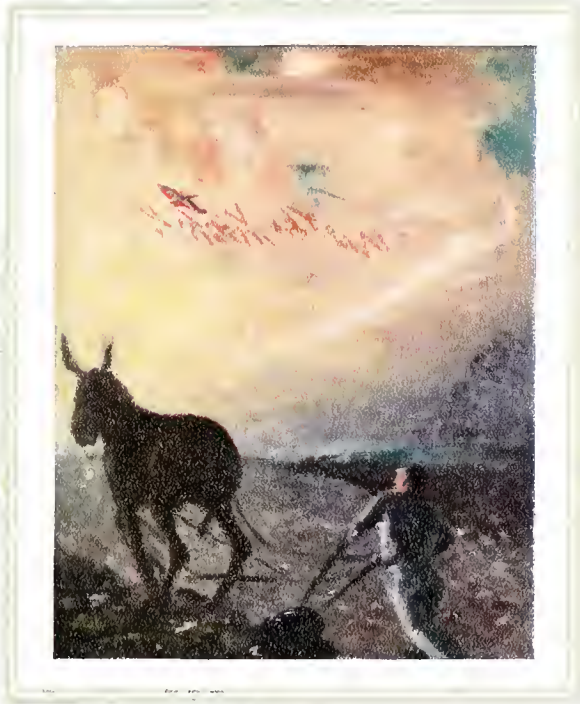
A.B., M.A.

Professor of Latin

1

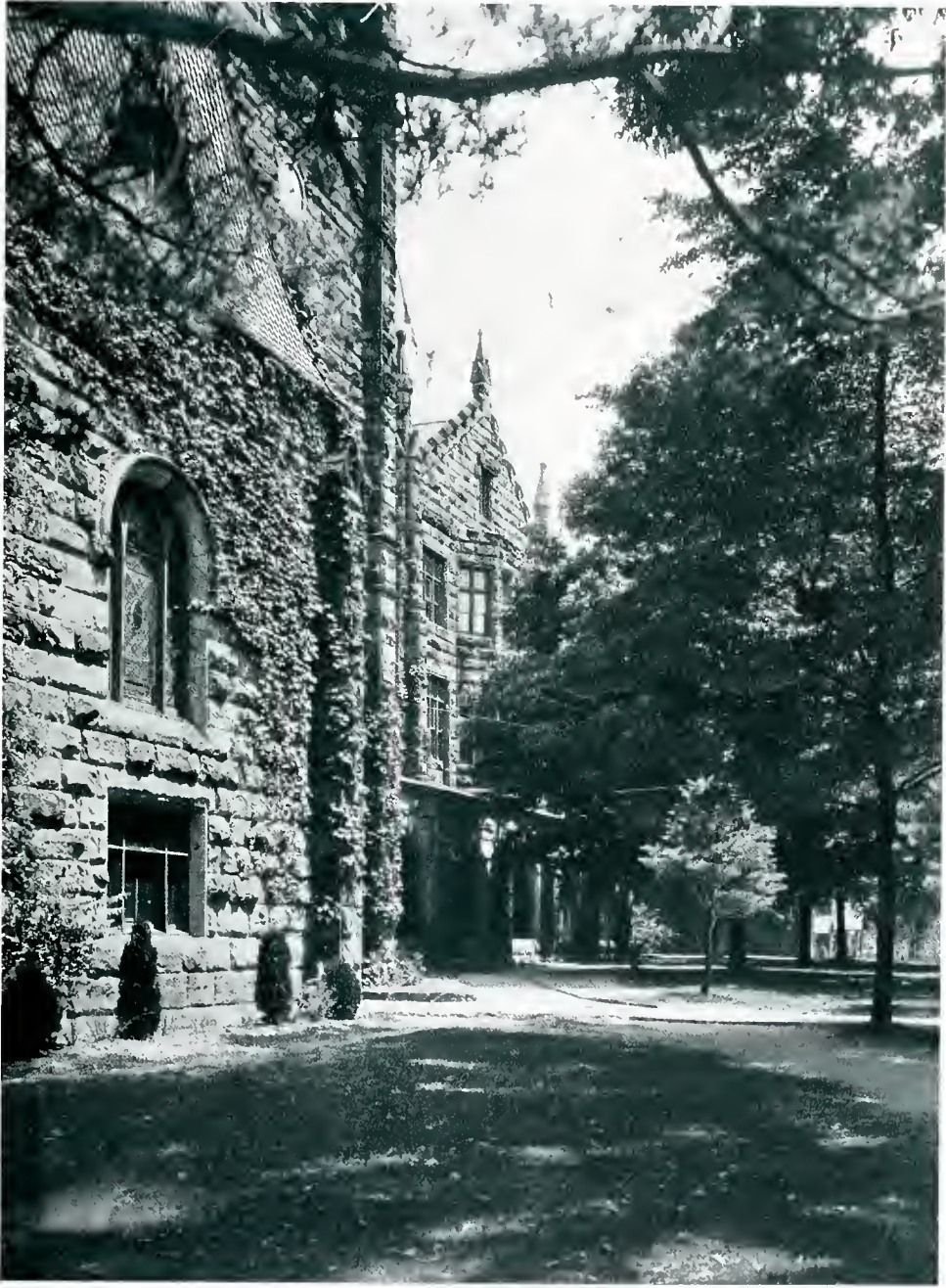
John Wood Tilford, Jr.

Freshman in the College of  
Arts and Sciences



UNIVERSITY





*THE LIBRARY*



*JOHNSON HALL*





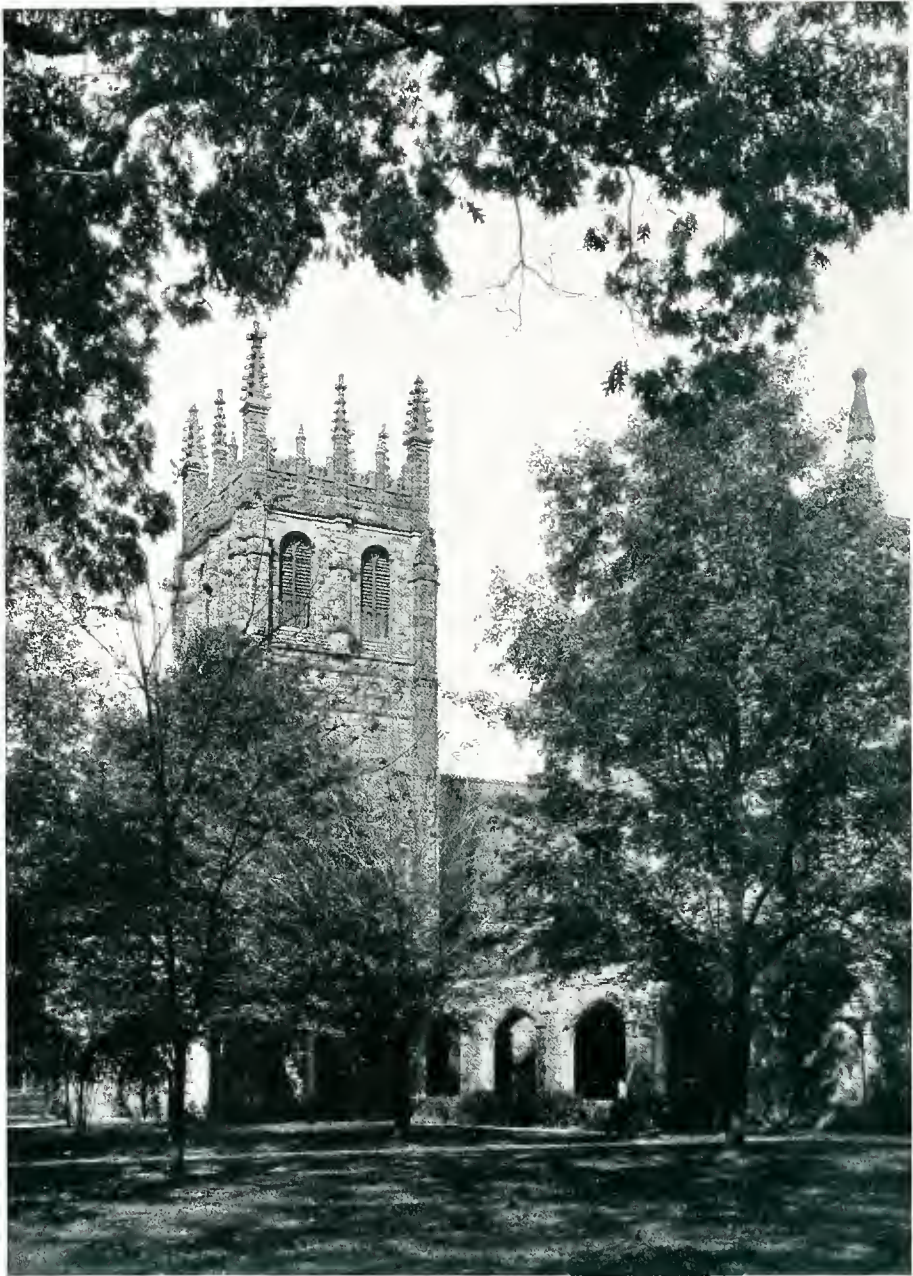
*WALSH HALL*



*CHAPEL AND WALK*



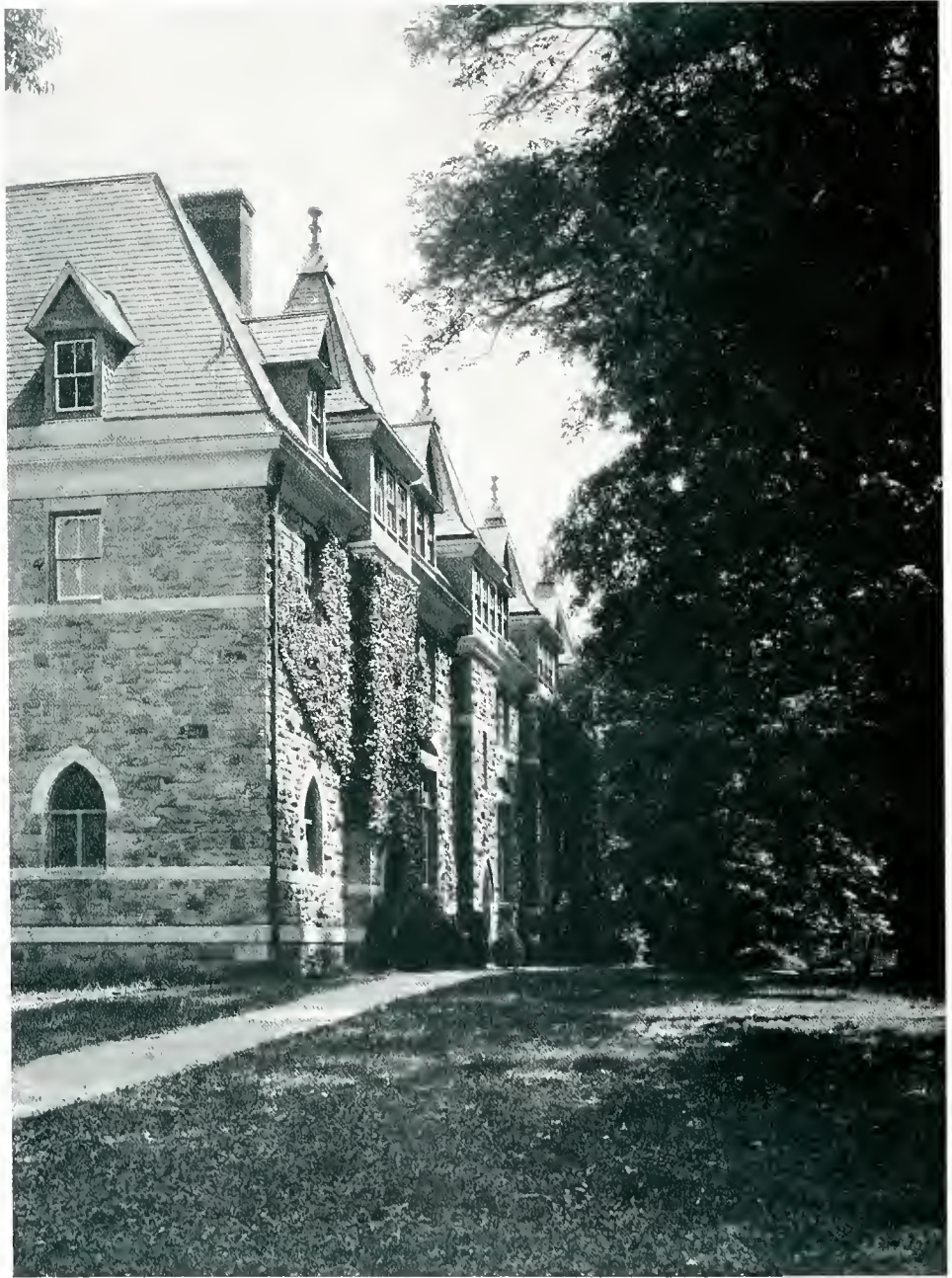
AN ARCHWAY



BRESLIN TOWER



*THE CROSS*



*ST. LUKE'S HALL*

# *Administration*

## Board of Regents

RT. REV. THOMAS F. GAILOR, S.T.D., <i>Chancellor, Chairman</i> . . . . .	Memphis, Tennessee
B. F. FINNEY, LL.D., <i>Vice-Chancellor</i> . . . . .	Sewanee, Tennessee
RT. REV. FREDERICK F. REESE, D.D. . . . .	Savannah, Georgia
RT. REV. T. D. BRATTON, D.D. . . . .	Jackson, Mississippi
RT. REV. EDWIN A. PENICK, D.D. . . . .	Charlotte, North Carolina
REV. CHARLES T. WRIGHT . . . . .	Memphis, Tennessee
REV. CHARLES CLINGMAN, D.D. . . . .	Birmingham, Alabama
REV. WALTER WHITAKER, D.D. . . . .	Knoxville, Tennessee
JOHN L. DOGGETT, ESQ. . . . .	Jacksonville, Florida
WM. B. HALL, M.D. . . . .	Selma, Alabama
G. W. DUVAL . . . . .	Greenville, South Carolina
ROBERT JEMISON, JR. . . . .	Birmingham, Alabama
OSCAR N. TORIAN, M.D. . . . .	Indianapolis, Ind.
ALEXANDER S. CLEVELAND . . . . .	Houston, Texas
GEORGE H. NOBLE, M.D. . . . .	Atlanta, Georgia
FRANK H. GAILOR, D.C.L. . . . .	Memphis, Tennessee

The Board of Regents is the executive committee of the Board of Trustees and has all of the powers of that body when it is not in session. The regents are composed of three bishops, three presbyters, and nine laymen, all elected by the trustees. Though its functions are primarily financial, it may deal with any phase of the university interests.







RT. REV. THOMAS F. GAILOR

*Chancellor*

For over forty years Bishop Gailor has been officially connected with Sewanee as professor, chaplain, vice-chancellor, and chancellor. While chaplain of the university he refused a bishopric, preferring to cast his lot with the university, and has never ceased to be a source of inspiration to every man who goes out from Sewanee.



DR. B. F. FINNEY

*Vice-Chancellor*

Elected a regent in 1913 and vice-chancellor in 1921, Dr. Finney has served his alma mater with devotion and passionate idealism. This commencement, on the completion of his tenth year of service, he was presented with a testimonial of appreciation signed by representatives of every Sewanee organization.



DR. GEORGE MERRICK BAKER

*Dean*

Dr. Baker's services to the university have been many, but perhaps the greatest of these is the broad understanding which he has built up between the students and faculty. It has been said of him that in handling student problems he has shown justice tempered with intelligence, which is after all, wisdom.

## Faculty of the College of Arts and Sciences

**HURLBUT ANTON GRISWOLD**  
B.A., University of the South; B.D., University  
of the South.

*Instructor in Bible and Greek*

**ALBERT GAYLORD WILLEY**  
B.A., Dartmouth  
*Associate Professor of Biology*

**DAVID E. FRIERSON**  
B.A., M.A., University of South Carolina  
*Assistant Professor of Spanish*

**JOHN JAMES DAVIS**  
B.A., Virginia Polytechnic Institute.  
*Professor of French*

**HARVEY E. HARMON**  
B.A., University of Pennsylvania  
*Professor of Physical Education*

**WILLIAM WATERS LEWIS**  
C.E., University of the South  
*Professor of Spanish*

**GEORGE FRANCIS RUPP**  
B.S., Pennsylvania State College; M.F., Yale

**ROBERT LOWELL PETRY**  
B.A., Earlham; Ph.D., Princeton  
*Professor of Physics*

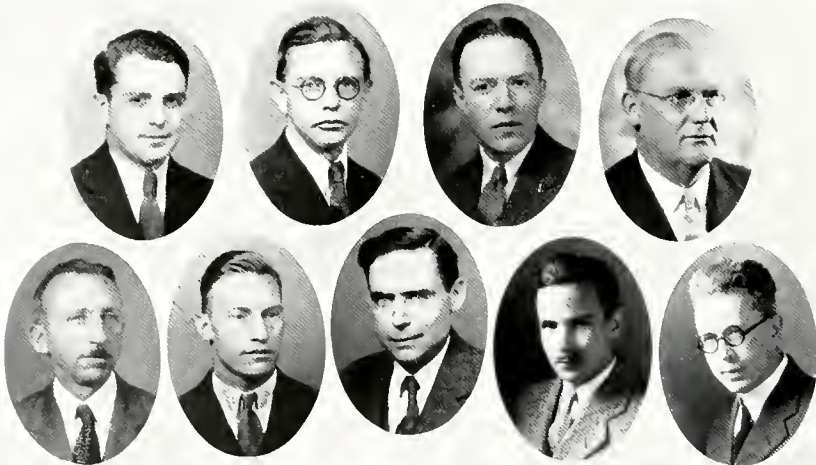
**ABBOT COTTON MARTIN**  
B.A., M.A., University of Mississippi  
*Assistant Professor of English*

**JOHN MAXWELL STOWELL MACDONALD**  
B.A., Harvard; M.A., Columbia  
*Professor of Philosophy*

**GEORGE WILSON NICHOLSON**  
B.S., Citadel; M.A., North Carolina  
*Assistant Professor of Mathematics*

**MAURICE AUGUSTUS MOORE**  
B.S., University of the South; M.A., North  
Carolina  
*Instructor in English*

**BERNARD E. HIRONS**  
B.A., Waterloo College, Ontario; B.M., Toronto  
Conservatory of Music  
*Instructor in Music*



# Faculty of the College of Arts and Sciences

**BRIGADIER GENERAL JAMES POSTELL JERVEY**  
(United States Army, retired)  
*Professor of Mathematics*

**WILLIAM HOWARD MACKELLAR**  
B.A., M.A., University of the South  
*Professor of Public Speaking*

**TUDOR SEYMOUR LONG**  
B.A., Cornell  
*Associate Professor of English*

**WILLIAM SKINKLE KNICKERBOCKER**  
B.A., M.A., Ph.D., Columbia  
*Professor of English Literature*

**THE REV. MOULTRIE GUERRY**  
B.A., University of the South; B.D., Virginia  
Theological Seminary  
*Chaplain of the University and Professor of  
English Bible*

**HENRY MARKLEY GASS**  
B.A., Oxon; M.A., University of the South  
*Professor of Greek and Latin*

**SEDLEY LYNCH WARE**  
B.A., Oxon; LL.B., Columbia; Ph.D., Johns  
Hopkins  
*Professor of History*

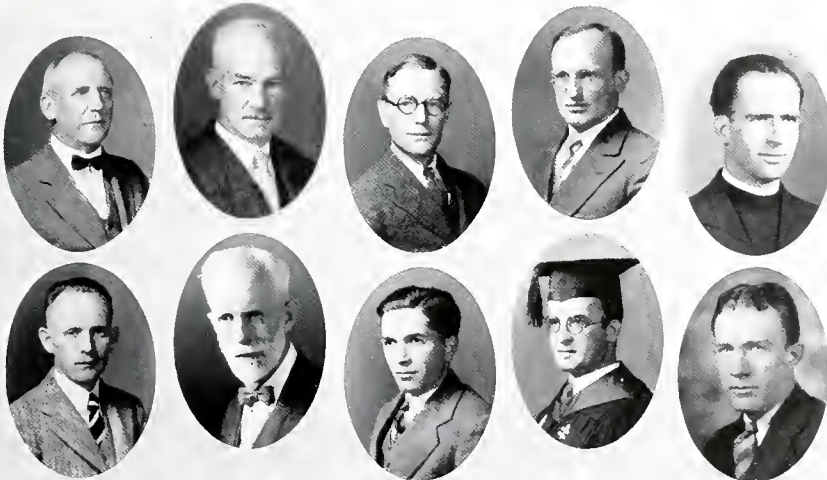
**JOHN MARK SCOTT**  
B.A., Southwestern College; M.S., Iowa State;  
Ph.D., University of Iowa.  
*Assistant Professor of Chemistry*

**EUGENE MARK KAYDEN**  
B.A., University of Colorado; M.A., Harvard  
*Professor of Economics*

**GEORGE MERRICK BAKER**  
B.A., Ph.D., Yale  
*Dean of the College of Arts and Sciences and  
Professor of Germanic Languages*

**ROY BENTON DAVIS**  
B.A., Earlham College; M.A., Missouri  
*Professor of Chemistry*

**GASTON SWINDELL BRULON**  
B.A., M.A., University of North Carolina  
*Associate Professor of Mathematics*



# Matrons

- MRS. L. P. ANDERSON . . . . . *Johnson*
- MRS. PERCY CUNNINGHAM . . . . . *Hoffman*
- MRS. MARY EGGLESTON . . . . . *Magnolia*
- MRS. H. H. FAULKNER . . . . . *The Inn*
- MISS JOHNNIE TUCKER . . . . . *Tuckaway*
- MRS. HORACE TYLER . . . . . *Cannon*

Sewanee students are not allowed to live in fraternity houses due to the small size of the student body. As a result a dormitory system has been built up that compares favorably with those of other institutions. Perhaps the most distinctive feature of this system is the matrons who create an home-like atmosphere of social dignity that plays a large part in the development of the Sewanee student. Too much cannot be said in praise of these ladies, whose ministrations to our spiritual and often to our physical needs, symbolize home to us during our stay at Sewanee.

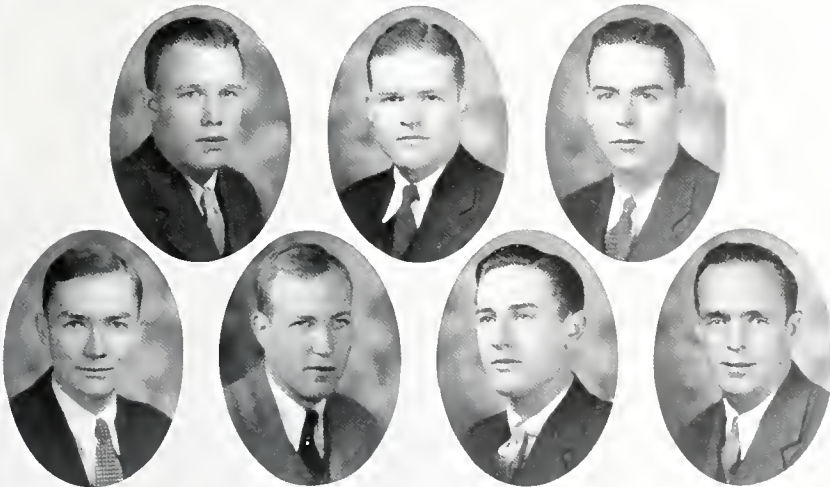


# Proctors

JOHN MORAN EZELL, *Head Proctor*

- DAVID YATES . . . . . *Cannon*  
 CHARLES HENRY BARRON . . . . . *Johnson*  
 CHARLES THOMAS HOPPEN . . . . . *The Inn*  
 CLAYTON LEE BURWELL . . . . . *The Inn*  
 HUGH MARION GOODMAN . . . . . *Tuckaway*  
 JOHN CARLTON TURNER . . . . . *St. Luke's*

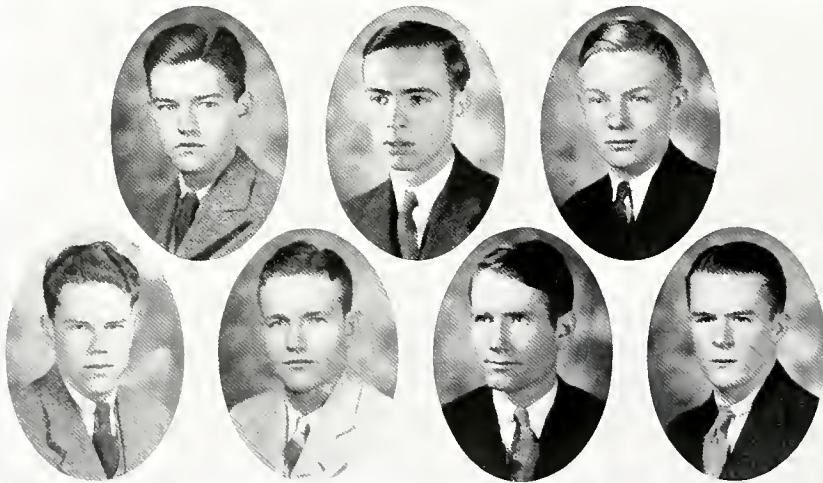
The proctorial system is maintained at Sewanee for the purpose of enforcing discipline. The proctorial body is composed of outstanding members of the junior and senior classes chosen by the vice-chancellor with the advice of the retiring board and the matrons. Taken from the student body as they are, the proctors have the support of the majority of the students and the university has found this system capable at all times of performing the function for which it was created. Each proctor is given jurisdiction over one dormitory, although their duty also extends to the university campus.



# Honor Council

- G. DAVID WALKER . . . . . *Seniors*
- EDWARD CORNELIUS NASH . . . . . *Seniors*
- J. MORGAN SOAPER . . . . . *Juniors*
- FRANK MIX ROBBINS, JR. . . . . *Juniors*
- DUBOSE EGLESTON . . . . . *Sophomores*
- ST. GEORGE COOPER . . . . . *Freshmen*
- JOHN TURNER . . . . . *Theological School*

The Honor System has been used at Sewanee since the founding of the University. The Honor Council is made up of seven members. Two are elected from each of the two upper classes and one from both the sophomore and freshman classes. Before this body are brought all of the infringements of the Honor System. After careful consideration the Honor Council can advise the faculty as to the punishments necessary.





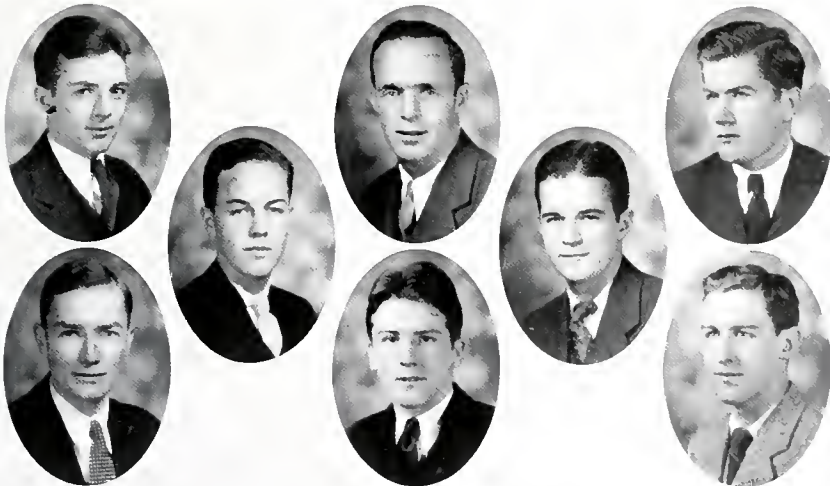
# Student Vestry

- THE REV. MOULTRE GUERRY . . . . . *Chaplain*  
 DAVID YATES . . . . . *Senior Warden*  
 CHARLES H. BARRON . . . . . *Junior Warden*  
 A. H. JEFFRESS . . . . . *Secretary*  
 FRANK FORTUNE . . . . . *Treasurer*

- |               |                 |
|---------------|-----------------|
| D. HOLLIS     | I. BALL III     |
| CARLISLE AMES | INNIS JENKINS   |
| HOMER STARR   | HAROLD F. BACHE |

The Student Vestry holds a unique position at Sewanee. It is entirely a student organization, but its chief duty is to keep the school linked closely together with the chapel in all its undertakings. It is made up of two members from each class, elected by popular vote. The Theological school is also represented by two members. The Vestry sponsored a program of Lenten speakers, including Dr. Alexander Guerry. This year it inaugurated a "Chapel Completion Fund" for All Saints Chapel.

Also it managed special Lenten-Easter offerings for the Mountain Missions.



## *Alma Mater*

*Alma Mater, Sewanee,  
My glorious Mother ever be,  
I will give my all to thee—  
God bless thee to eternity.  
Thou canst make me worth the while,  
O guide and shelter me,  
And all my life, through storm  
and strife,  
My star thou'lt be.*

—NEWTON MIDDLETON.



CLASSES





## SENIOR CLASS OFFICERS

CHARLES HENRY BARRON . . . . . *President*  
ROBERT BLANKENSHIP STIMSON . . . . . *Vice-President*  
CHARLES THOMAS HOPPEN . . . . . *Secretary-Treasurer*

## SENIORS



KENNETH T. ANDERSON

WICHITA, KANSAS

Φ Γ Δ

*B.A. Degree*

Order of Gownsmen; Varsity Football, '29, '30; "Mountain Goat" Staff; "Cap and Gown" Staff; Pi Omega; Senior German Club; Prowlers; Pan-Hellenic; Fraternity Athletics.



CHARLES FREDERICK BAARCKE

COLUMBIA, SOUTH CAROLINA

Σ X

*B.A. Degree*

Order of Gownsmen; Glee Club; Prowlers; Senior and Junior German Club; Sigma Epsilon; South Carolina Club; Fraternity Athletics.



WILLIAM MOULTRIE BALL

NASHVILLE, TENNESSEE

Λ Τ Ω

*B.A. Degree*

Order of Gownsmen; Scholarship Society; Pan-Hellenic; Alpha Phi Epsilon; Neograph; Sigma Upsilon; Senior German Club; Sigma Epsilon, Secretary, '29, President, '30; Varsity Debating; Freshman Football, Basketball; Fraternity Basketball, Track, Tennis, Swimming, Baseball; Tennessee Club.

## SENIORS

### CHARLES HENRY BARRON

COLUMBIA, SOUTH CAROLINA

Φ Δ Θ

*B.A. Degree*

Order of Gownsmen; President of Senior Class; Vice-President Sophomore Class; Omicron Delta Kappa; Blue Key; Proctor; Freshman Football, Basketball, Track; Varsity Football, '28, '29, '30; Basketball, '29; Track, '29, '30, '31; Captain, '31; Student Vestry, Junior Warden; Pan-Hellenic, Secretary and Treasurer, '29, '30; "S" Club; Prowlers; Chief of Chemical Department; Waiters' Union; Junior German Club; Senior German Club; Captain Class Track Team; Owl Club; Sphinx Club; Circle Club; Fraternity Handball, Tennis; ABC; Sewanee Union.



### JAMES O. BASS

NASHVILLE, TENNESSEE

Α Τ Ω

*B.A. Degree*

Order of Gownsmen; Freshman Tennis, Basketball; Assistant Editor "Freshman Purple"; Sigma Epsilon, President '31; Necgraph; Tennessee Club; Junior and Senior German Club; Fraternity Basketball, Track, Tennis, Golf, Touchball; Varsity Golf, '31; Prowlers; Pan-Hellenic; Fire Department; Scholarship Society.



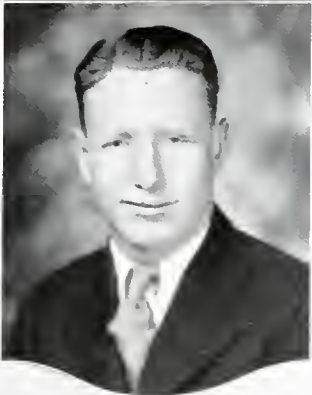
### JOSEPH SMITH BEAN

WINCHESTER, TENNESSEE

Φ Γ Δ

*B.A. Degree*

Order of Gownsmen; Freshman Football, Basketball, Track; Varsity Football, Basketball, Track, '29, '30, '31; Fraternity Baseball, Tennis, Swimming; "S" Club; International Relations Club; Tennessee Club; Senior German Club; Prowlers; Ratting Commission, Rat Leader; Sigma Epsilon; Debating Team; Fire Department; Interfraternity Council; "Mountain Goat" Staff; Choir; "Cap and Gown" Staff; Sewanee Union; Purple Masque.



## SENIORS



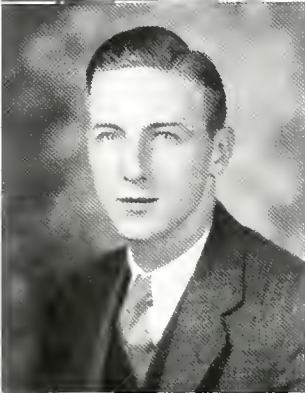
WILLIAM THOMAS BRAUN, JR.

MEMPHIS, TENNESSEE

K Σ

*B. I. Degree*

Order of Gownsmen; Junior and Senior German Club; Fraternity Basketball, Baseball, Track, Tennis; Varsity Golf, '31; "Purple" Staff; Pi Omega; Frosh Football.



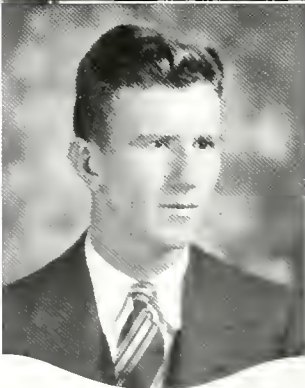
JAMES WILLIAM BRETTMAN

WICHITA, KANSAS

Φ Γ Δ

*B. S. Degree*

Order of Gownsmen; Freshman Track; Glee Club; Fraternity Track, Basketball, Baseball, Tennis; Choir; Senior German Club; Kansas Club; Pan-Hellenic; "Mountain Goat" Staff; "Cap and Gown" Staff.



MOULTRIE BRAILSFORD BURNS

CAMDEN, SOUTH CAROLINA

Σ X

*B. I. Degree*

Order of Gownsmen; Blue Key; Alpha Phi Epsilon; Owl Club; Prowlers; Junior and Senior German Club; Sigma Epsilon; Varsity Debating, '31; "Purple" Staff, '28, '29, '30; Assistant Athletic Editor, '31; Fraternity Track, Basketball, Handball, Tennis; Freshman Football, Track; "Cap and Gown"; Waiters' Union; Manager Freshman Track, '30; Varsity Track Manager, '31; "S" Club; Scholarship Society; South Carolina Club.



## SENIORS

### THOMAS DORGAN BYRNE

MOBILE, ALABAMA

Π Κ Φ

*B.A. Degree*

Order of Gownsmen; Freshman Football; Sigma Epsilon; Sewanee Union; Fraternity Athletics; Senior German Club; Alabama Club; Owl Club; Athletic Editor "Cap and Gown"; Athletic Editor of "Purple"; Sewanee Syncopators; Prowlers; Debate Council; Latin Salutatorian; Pan-Hellenic, '30-'31.



### GEORGE COPELAND

SAN ANTONIO, TEXAS

Π Κ Φ

*B.S. Degree*

Order of Gownsmen; Editor of "Cap and Gown", '31; Class Editor, '29; Photographic Editor, '30; "Freshman Purple", '28; Feature Editor "Purple", '29, '30; Literary Editor, '31; Business Manager of "Purple Masque", '30; Neograph; Sopherin; Blue Key; Prowlers; Pan-Hellenic.



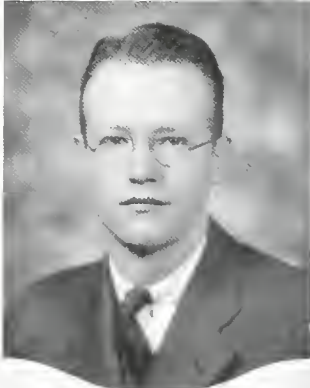
### WILLIAM DIXON DOSSETT

BEULAH, MISSISSIPPI

Κ Α

*B.S. Degree*

Order of Gownsmen; Mississippi Club; Fraternity Basketball; Varsity Track Team; Pan-Hellenic Council.



## SENIORS



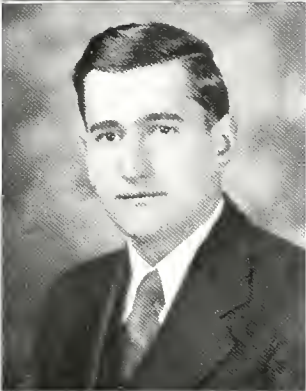
**REDMOND RENN EASON, JR.**

MEMPHIS, TENNESSEE

Δ T Δ

*B..I. Degree*

Order of Gownsmen; Fraternity Baseball, Track, Golf, Handball; Junior and Senior German Club; Circle Club; Sphinx Club; Sewanee Synopators, '28-'31; Vice-President Glee Club, '30, '31; Prowlers; Tennessee Club; Fire Department; Assistant in Forestry, '30, '31.



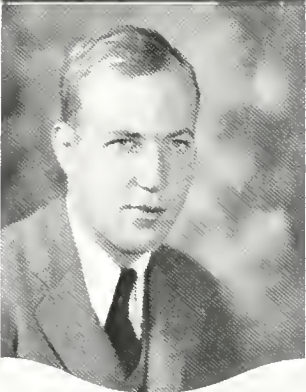
**CHARLES C. EBY**

WEST MONROE, LOUISIANA

Π K Φ

*B..I. Degree*

Order of Gownsmen; Senior German Club; "S" Club; Louisiana Club; Sewanee Union, Vice-President, '30; Prowlers; Freshman Football, Track; Varsity Football, '30; Varsity Track, '29-'31; Cross-Country Team, '29; Waiters' Union, Head Waiter, '30; Fraternity Track, Touchball, Basketball, Baseball; Pan-Hellenic Council; Sigma Epsilon; "Purple" Staff.



**JOHN MORAN EZZELL**

NASHVILLE, TENNESSEE

Φ Δ Θ

*B.S. Degree*

Order of Gownsmen; Head Proctor; President of the Order of Gownsmen, '31; Freshman Football; Varsity Football, '28-'30, Alternate Captain, '30; "S" Club, President, '30; Blue Key; Omicron Delta Kappa, Vice-President, '31; Prowlers; ABC; Proctor of Summer School, '30; Varsity Track, '31; Sphinx Club; Secretary-Treasurer Freshman Class; "Purple" Staff, '28-'30; Vice-President Junior Class, '30; Fraternity Basketball, Baseball, Track, Golf; Waiters' Union; Junior German Club, Secretary-Treasurer, '28; Senior German Club; Pan-Hellenic Council, President, '29; Pi Omega; Honor Council.

## SENIORS

### ALEXANDER C. HANNON

MONTGOMERY, ALABAMA

K  $\Sigma$

*B.S. Degree*

Order of Gownsmen; Scholarship Society; Pi Gamma Mu; Varsity Track Squad, '30, '31; Alabama Club; Pi Omega; "Freshman Purple", '28; Waiters' Union; Fraternity Baseball, Basketball, Golf.



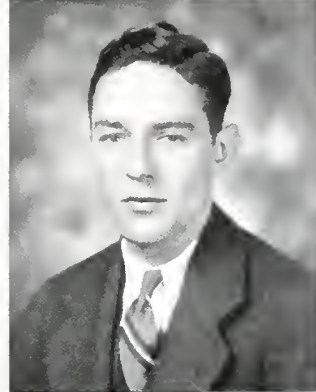
### RICHARD D. HARWOOD

MEMPHIS, TENNESSEE

$\Sigma$   $\Delta$  E

*B.A. Degree*

Order of Gownsmen; Senior German Club; Prowlers; Pan-Hellenic Council; Tennessee Club; Glee Club; Golf Team, '31; Fraternity Golf, Handball, Track.



### FRED T. HOLLIS

BENNETTSVILLE, SOUTH CAROLINA

$\Sigma$  N

*B.S. Degree*

Order of Gownsmen; Junior and Senior German Club; Owl Club; Prowlers; Fraternity Baseball, Handball, Track; Freshman Track; Varsity Track, '29; Boxing Team, '30.



## SENIORS



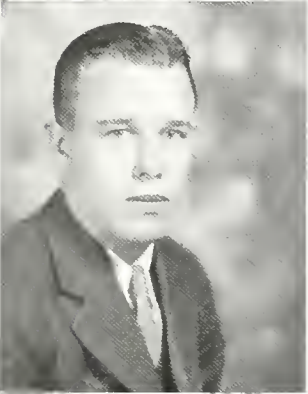
**WILLIAM FOWLER HOLMES, JR.**

YAZOO CITY, MISSISSIPPI

Δ T Δ

*B.A. Degree*

Order of Gownsmen; Organist St. Luke's Chapel, '28-'31; University Organist and Choir Director, '28, '29; Glee Club, '29; Purple Masque; Debate Council; Pi Omega; Mississippi Club; Student Library Assistant, '31.



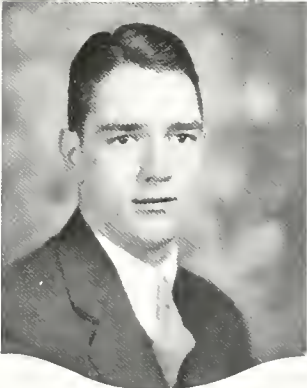
**CHARLES THOMAS HOPPEN**

BOGALUSA, LOUISIANA

Σ A E

*B.A. Degree*

Order of Gownsmen; Proctor; Freshman Football, Track; Senior German Club; Blue Key, Treasurer, '31; "S" Club, Secretary, '31; Cheer Leader; Secretary Senior Class; Freshman Football Manager, '29; Varsity Football Manager, '30; Varsity Track, '29-'31; Fire Department, Hose Chief, '30; Prowlers; Louisiana Club; Fraternity Baseball, Basketball, Track; Art Editor "Mountain Goat" and "Cap and Gown"; Sphinx Club; Circle Club.



**CHARLES RICHARD KELLERMAN**

SOUTH PITTSBURG, TENNESSEE

K Σ

*B.S. Degree*

Order of Gownsmen; Freshman Football, Track, '28; Varsity Football, '29-'30; Waiters' Union; Boxing Team; Fraternity Basketball, Baseball; Varsity Track, '30; Pi Omega; Sewanee Union; Senior German Club.

## SENIORS

### PETER WILLIAM LAMBERT

LIBERTY, NEW YORK

*B.A. Degree*

Order of Gownsmen; Sopherim; Librarian of the Choir.



### ALFRED ST. JOHN MATTHEWS

ST. AUGUSTINE, FLORIDA

BETTA A

*B.S. Degree*

Order of Gownsmen; Assistant in Biology, '29, '30; Pi Omega, Treasurer, '31; Florida Club; Fraternity Baseball, Handball.



### EDWARD CORNELIUS NASH

KAUFMAN, TEXAS

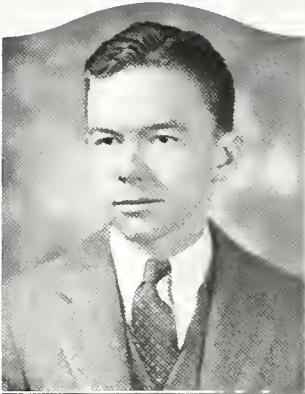
Δ T Δ

*B.A. Degree*

Order of Gownsmen, Vice-President, '31; Senior and Junior German Club, President '30-'31, Vice-President, '29-'30; Blue Key, President, '31; Prowlers, President, '31; Pan-Hellenic, '31; Manager Freshman Basketball, '30; Manager Varsity Basketball, '31; Rat Leader, '29; Ratting Commission, '30; Committee on Freshman Discipline; Freshman Football and Track; Fraternity Basketball, Baseball, Golf; Assistant to Graduate Manager; Omicron Delta Kappa; "S" Club; Texas Club; Circle Club; "Cap and Gown" Circulation Staff; Honor Council; Inter-Fraternity Athletic Council, '31, Vice-President.



## SENIORS



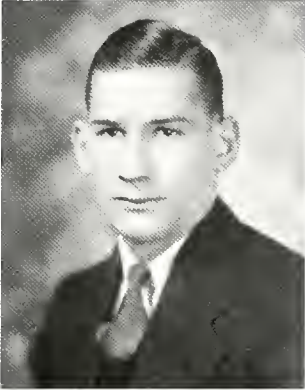
HENRY CLAY ROBERTSON, JR.

CHARLESTON, SOUTH CAROLINA

Φ Δ Θ

*B.A. Degree*

Order of Gownsmen; "Purple", '28; Neograph; Sigma Epsilon; Fraternity Handball, Basketball, Tennis, Track; Owl Club; Waiters' Union; Senior German Club; South Carolina Club; Scholarship Society; Phi Beta Kappa; Prowlers; Fire Department.



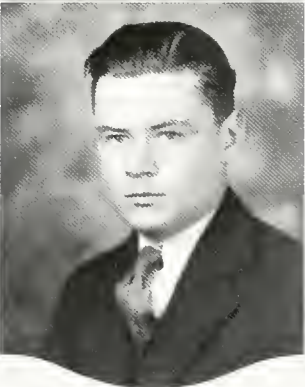
JOSEPH WILLIAM SCHUESSLER, JR.

COLUMBUS, GEORGIA

B E T T A A

*B.S. Degree*

Order of Gownsmen; Scholarship Society; Waiters' Union; Fraternity Handball, Baseball, Basketball; Pi Omega; Georgia Club.



VIRGIL PIERCE STEWART

HUTCHINSON, KANSAS

Φ Γ Δ

*B.A. Degree*

Order of Gownsmen; Sopberin; Pi Omega; Choir; Fraternity Baseball, Track; Senior German Club; Kansas Club; International Relations Club.

## SENIORS

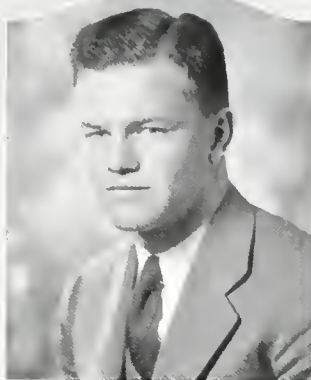
### ROBERT B. STIMSON

MEMPHIS, TENNESSEE

Σ A E

*B.S. Degree*

Order of Gownsmen; Freshman Football; Varsity Football, Captain, '30; "S" Club, President, '30; Blue Key; Prowlers, Vice-President; Fire Department, Chief, '31; Vice-President Senior Class; Senior German Club; Fraternity Basketball, Baseball, Track.



### ROBERT WALTON THOMAS

RIDGEWAY, SOUTH CAROLINA

Σ N

*B.A. Degree*

Order of Gownsmen; Senior German Club; South Carolina Club; Fraternity Track.



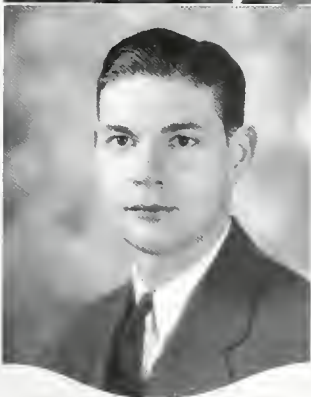
### JEROME PILLOW THOMPSON

HELENA, ARKANSAS

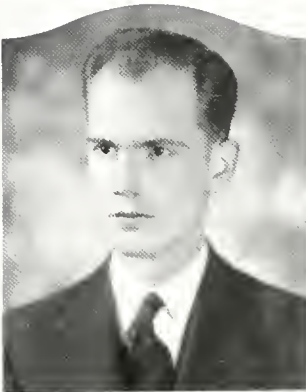
Δ T Δ

*B.A. Degree*

Order of Gownsmen; Glee Club, Secretary-Treasurer, '29, '30, President, '31; Sewanee Syncopators, '28-'31; Arkansas Club; Choir, Vice-President, '30; Neograph; "Freshman Purple", '28; Freshman Basketball; Varsity Track, '30; Fraternity Basketball, Swimming; "S" Club; Cheer Leader; "Purple Masque"; Fire Department; Secretary-Treasurer Pan-Hellenic Council; Prowlers; Alpine Club.



## SENIORS



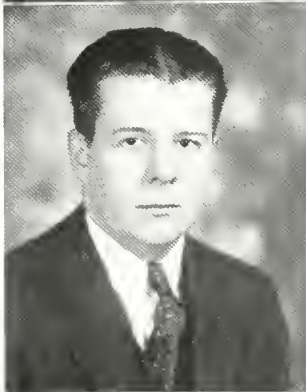
HOMER NEVILLE TINKER

HOUSTON, TEXAS

K  $\Sigma$

*B.S. Degree*

Order of Gownsmen; Sopherim; Debate Team, '30; Jemison Medal, '30; "Purple Masque"; President Pi Omega; Pi Gamma Mu; "Purple" Staff; "Cap and Gown" Business Staff, '30; Senior German Club.



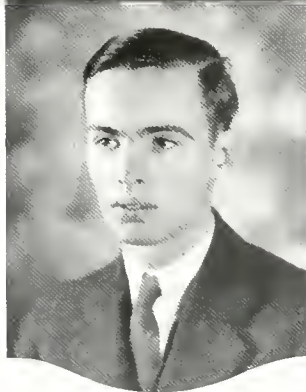
EDWIN S. TOWLE

FALLS CITY, NEBRASKA

$\Phi$   $\Gamma$   $\Delta$

*B.A. Degree*

Order of Gownsmen; Fraternity Basketball, Baseball, Track, Handball, Tennis; Senior German Club; Glee Club, '29, '30, '31; Sigma Epsilon; "Mountain Goat"; Senior German; Neograph; Fraternity Athletics.



GEORGE DAVID WALKER

HELENA, ARKANSAS

K  $\Sigma$

*B.A. Degree*

Order of Gownsmen; Phi Beta Kappa; Omicron Delta Kappa; Blue Key; Sopherim; Pi Gamma Mu; Neograph; Prowlers; President Honor Council, '31; "Cap and Gown", Business Manager, '30, '31; "Purple", '28-'30; Varsity Track, '29-'31; Freshman Football; Track; Pan-Hellenic, Scholarship Society; Fraternity Basketball; Arkansas Club.



## SENIORS

### CHARLES MASON WALTER

MONTGOMERY, ALABAMA

K  $\Sigma$

*B.S. Degree*

Order of Gownsmen; Pan-Hellenic Council; Fraternity Baseball, Basketball, Track; Varsity Track, '31; Freshman Football; "Cap and Gown" Staff, '31; Alabama Club; Junior and Senior German Club; Varsity Boxing, '30.



### SPIRES WHITAKER, JR.

CHAUFVAOOGA, TENNESSEE

$\Delta$  T  $\Delta$

*B.A. Degree*

Order of Gownsmen; Junior and Senior German Club; Neograph; Secretary of Pi Omega; Tennessee Club; S. M. A. Club; Fraternity Track, Swimming; Prowlers; "Mountain Goat".



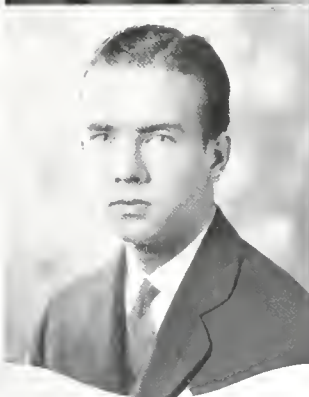
### WALDO WILSON

BEAUMONT, TEXAS

$\Phi$   $\Delta$   $\Theta$

*B.A. Degree*

Order of Gownsmen; Texas Club; Senior German Club; Prowlers; Fraternity Athletics.



## SENIOR



DAVID YATES

CHARLOTTE, NORTH CAROLINA

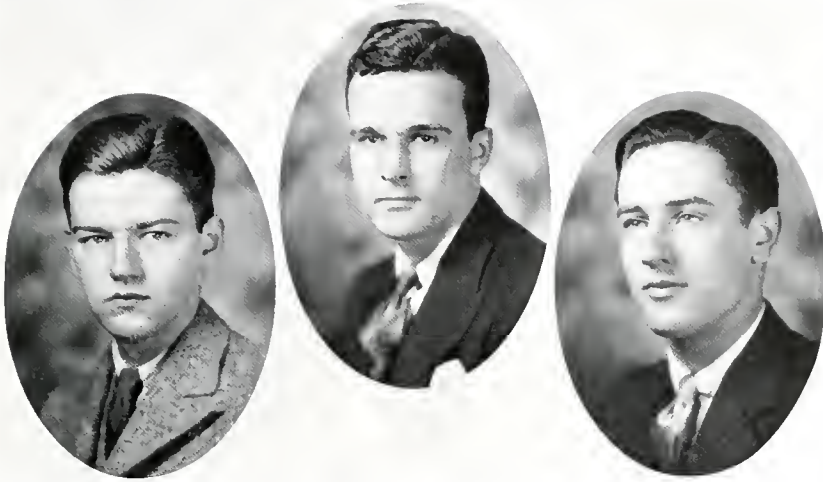
A T Ω

*B.A. Degree*

Order of Gownsmen; Freshman Basketball; President Freshman Class, '28; Student Vestry, '28-'31; Senior Warden, '31; Glee Club, '28-'31; Sigma Epsilon; Neograph; Choir; Junior and Senior German Club; Varsity Basketball, '29-'31; Varsity Tennis, '29-'31, Manager, '31; Honor Council; Varsity Debate, '29-'31; President Debate Council, '30, '31; "S" Club, Secretary, '31; President Junior Class, '30; Omicron Delta Kappa, President, '31; Phi Beta Kappa, Vice-President, '31; Proctor, '30, '31; Scholarship Society; President, '31; Prowlers; Alpha Phi Epsilon; Blue Key; Fire Department; Fraternity Touchball, Baseball, Track; North Carolina Club; "Freshman Purple" Staff, '28; Varsity Track; Valedictorian.



THE CAP AND GOWN



JUNIOR CLASS

OFFICERS

GEORGE MALORY BUFORD . . . . . Forrest City, Arkansas  
Σ A E

Order of Gownsmen; Arkansas Club; Senior German Club; Honor Council, '30; President Junior Class, '31; Scholarship Society; Pi Gamma Mu; Phi Beta Kappa; Owl Club; Union; Prowlers; Assistant Manager of Glee Club; "Purple" Staff; Fraternity Track.

C. W. CROSS . . . . . Clarksville, Tennessee  
Σ A E

Order of Gownsmen; Vice-President Freshman Class, '28; Sophomore Class, '29; Junior Class, '30; Freshman Football; Prowlers; Owl Club; Phi Beta Kappa; Scholarship Society; Senior German Club; Tennessee Club.

CLAYTON LEE BURWELL . . . . . Charlotte, North Carolina  
Σ N

Order of Gownsmen; Freshman Football, Track, Tennis; Sewanee Union; Waiters' Union; Neograph, President, '30; Debating, '29, '30; North Carolina Club; Choir; Acolyte; President Sophomore Class; Pi Gamma Mu, Vice-President, '30; Inter-Fraternity Athletic Council; Tennis Team, '30, Captain, '31; Southern Intercollegiate Champion, '31; Varsity Track, '31; Alpha Phi Epsilon, President, '32; "S" Club; Proctor; Omicron Delta Kappa; Scholarship Society; Blue Key; Fraternity Touchball, Track; Pan-Hellenic; Sigma Epsilon; Senior German Club; Prowlers; "Purple" Staff, '29; Secretary-Treasurer, Junior Class.





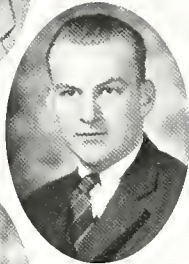
THE CAP AND GOWN

JUNIORS



CARL BIEHL  
GALVESTON, TEXAS  
BETTA

Order of Gownsmen; Pi Omega; Freshman Track; Assistant Track Manager, '31; Fraternity Basketball, Baseball; Texas Club; Senior German Club.



ROBERT DONALD BLAIR  
NASHVILLE, TENNESSEE  
K Σ

"S" Club; "Purple Masque"; Union Theater Staff; Pi Omega; "Cap and Gown" Staff; Freshman Football; Track Squad; Fraternity Athletics; Pan-Hellenic; German Club; Varsity Football.



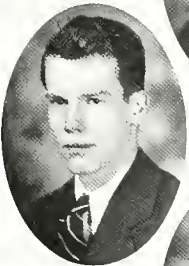
OGDEN DUNWAY CARLTON, II  
THOMASTON, ALABAMA  
A T Ω

Order of Gownsmen; Sigma Epsilon, Secretary-Treasurer, '31; Fraternity Basketball, Baseball, Track, Golf; Senior German Club.



WOOD BOWYER CARPER, JR.  
CHARLESTON, WEST VIRGINIA  
Σ N

Order of Gownsmen; Phi Beta Kappa; Scholarship Society; Sophomore; Pi Gamma Mu, Choir, President, '31; Glee Club; Fraternity Basketball, Baseball; Senior German Club.



WILLIAM HASKELL DUBOSE  
SEWANEE, TENNESSEE  
A T Ω

Order of Gownsmen; Sigma Epsilon; Senior German Club; Fraternity Track, Baseball; Owl Club.



BERRYMAN W. EDWARDS  
CEDARTOWN, GEORGIA  
K A

Order of Gownsmen; Glee Club, '30, '31; Fraternity Basketball, Baseball; Pan-Hellenic Council, '31; Choir; Scholarship Society.

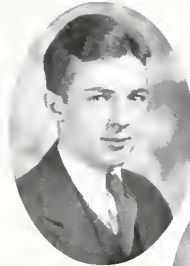


JUNIORS

FRANK VAN DUSEN FORTUNE

WOOSTER, OHIO  
Σ X

Order of Gownsmen; Fraternity Basketball, Baseball, Touchball, Tennis, Swimming; Freshman Basketball, Track; Varsity Basketball, '29, '31; Secretary Committee on Publications; Sigma Epsilon; Freshman "Purple", '29; Neograph; Pi Gamma Mu; Student Vestry '29, Secretary, '30, Treasurer '31; Prowlers; Choir, Vice-President, '31; Yankee Club; Senior German Club; News Editor of "Purple", '31; Class Editor of "Cap and Gown", '30, '31; Bible Assistant; Scholarship Society; Phi Beta Kappa.



GEORGE THOMAS FOUST

CLARKSVILLE, TENNESSEE  
B E F T A A

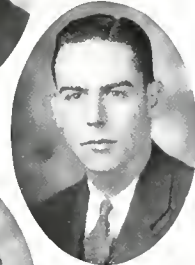
Order of Gownsmen; Phi Beta Kappa; Scholarship Society; Pi Gamma Mu; Sigma Epsilon; Fraternity Basketball, Baseball, Track; Washington Medal for Essay on United States Constitution; Tennessee Club; International Relations Club.



DANIEL GILCHRIST, JR.

COURTLAND, ALABAMA  
Π K Φ

Order of Gownsmen; Senior German Club; Alabama Club; Sigma Epsilon; Sewanee Union; Fraternity Tennis, Golf, Swimming.



HUGH MARION GOODMAN

NASHVILLE, TENNESSEE  
Σ X

Omicron Delta Kappa; Blue Key; Vice-President Junior German Club; Proctor; Prowlers; Tennessee Club; Varsity Football, '29, '30; Basketball, '29, Captain, '30; Track, '30, '31; Freshman Football, Basketball, Track; Fraternity Baseball, Tennis, Swimming.



ELLWOOD HANNUM

PRIMOS, PENNSYLVANIA  
B E F T A A

Order of Gownsmen; Varsity Football, '30, Track, '31; Fraternity Sports; Waiters' Union; Pi Omega; Choir; Yankee Club.



ROBERT PHILIP HARE, III

ATLANTA, GEORGIA  
Φ Δ Θ

Order of Gownsmen; Assistant Editor of "Freshman Purple", '29; Freshman Tennis Team; Fraternity Basketball, Baseball, Touchball, Swimming, Golf, Tennis; Varsity Tennis, '30, '31; Senior German Club; Pi Omega; "Purple" Staff, '30, '31; Fire Department; Sewanee Union; Prowlers; Exchange Editor of "Mountain Goat"; Georgia Club.



THE CAP AND GOWN

JUNIORS

GEORGE ERNEST HART, JR.

INVERNESS, MISSISSIPPI

A T Q

Order of Gownsmen; Sigma Epsilon; Mississippi Club; Senior German Club; Fraternity Track, Touchball; Sewanee Union.

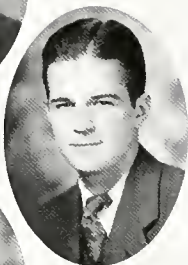


CARLOSS DUDLEY HOLLIS

BENNETTSVILLE, SOUTH CAROLINA

Σ N

Order of Gownsmen; Prowlers; Blue Key; Freshman Basketball Manager; Varsity Basketball Manager; Freshman Football, Track; Varsity Track '30, '31; Student Vestry; Junior and Senior German Club; Fraternity Basketball, Baseball, Track, Swimming, Touchball; Rat Leader; South Carolina Club; Owl Club.



JOSEPH LODGE KELLERMAN

SOUTH PITTSBURG, TENNESSEE

K Σ

Freshman Football, Track; Varsity Football, '29, '30; Track, '30, '31; Fraternity Basketball, Track, Baseball; Tennessee Club; Senior German Club.



F. CHARLES LANDERS

ALEXANDRIA, LOUISIANA

K A

Order of Gownsmen; Scholarship Society; Student Assistant in Physics; Pi Omega; Senior German Club.

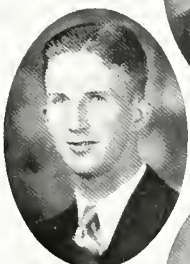


EDWARD L. LANDERS

ALEXANDRIA, LOUISIANA

K A

Order of Gownsmen; Scholarship Society; Pi Omega; Fraternity Baseball; Louisiana Club; Senior German Club.



EDWIN L. MULLINS

CLANTON, ALABAMA

K Σ

Order of Gownsmen; Senior German Club; Fraternity Basketball, Baseball; Freshman Track Squad; Varsity Track Squad, '31; Pi Omega.





THE CAP AND GOWN

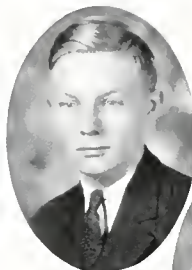
JUNIORS

FRANK MIX ROBBINS, JR.

SIGNAL MOUNTAIN, TENNESSEE

Δ T Δ

Order of Gownsmen; Glee Club; Choir; Secretary of the Honor Council; Freshman Track Manager; "Mountain Goat" Staff; Senior German Club; Prowlers; Fraternity Basketball, Baseball, Swimming.



JOHN MORGAN SOAPER

HARRODSBURG, KENTUCKY

Φ Δ Θ

Order of Gownsmen; "S" Club; Varsity Basketball '30, '31 Alternate Captain-elect, '32; Freshman Basketball Football, Track; Varsity Football Squad, '30; Fraternity Baseball, Track Tennis, Swimming, Touchball; Sigma Epsilon; Prowlers; Circle Club; Senior German Club; Cosmopolitan Club; Honor Council; Committee on Freshman Discipline; Fire Department



BENJAMIN SPRINGER

GALVESTON, TEXAS

Order of Gownsmen; Freshman Track; Pi Omega, Sophomore; International Relations Club; Senior German Club; S. M. A. Club; Texas Club.



DICK TAYLOR, JR.

WINCHESTER, TENNESSEE

Π K Φ

Order of Gownsmen; Phi Beta Kappa; Scholarship Society; Assistant in Biology and Spanish; Pi Gamma Mu; Secretary-Treasurer, '31, '32; Sophomore; Neograph; "Freshman Purple" Staff; Assistant Business Manager "Purple", '30; Class Editor "Cap and Gown", '30; Photographic Editor, '31; "Mountain Goat" Staff; Exchange Editor, '29; Fraternity Basketball, Tennis; Freshman Basketball; Sigma Epsilon.



ROBERT B. TOOMBS

GALVESTON, TEXAS

K A

Order of Gownsmen; Fraternity Basketball, Baseball, Track; Texas Club; Senior German Club.



HEDLEY JAMES WILLIAMS

BROOKLYN, NEW YORK

B E T T A A

Order of Gownsmen; Glee Club, '30, '31, Choir, '29-'31; Fraternity Handball Baseball, Basketball; Scholarship Society; Sigma Epsilon; International Relations Club; Yankee Club; Assistant Organist for All Saints Chapel.

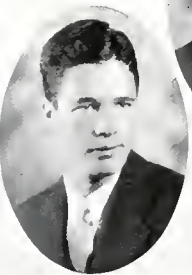


MAURICE LESLIE WEUSCHER, JR.

BOGALUSA, LOUISIANA

Σ A E

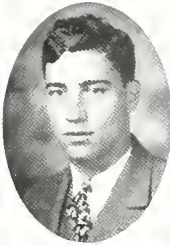
Order of Gownsmen; Freshman Football; Varsity Football, '29, '30; "S" Club; Fraternity Baseball, Basketball, Track, Golf; Varsity Track Squad, '31; Fire Department; Louisiana Club; Senior German Club.



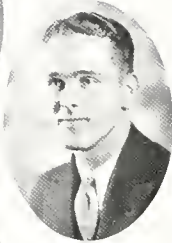


THE CAP AND GOWN

SOPHOMORES



GEORGE H. DUNLAP, JR. . . Mobile, Alabama  
Δ T Δ



Junior German Club; Freshman Dramatics; Fraternity Athletics.

J. HAVIS DAWSON . . . . . Mobile, Alabama  
Σ X



Freshman Football, Basketball, Track; Varsity Football, '29, '30, Basketball, '30, Alternate Captain, '31; Prowlers; Fraternity Athletics.

EDWARD B. CROSLAND . . . Montgomery, Alabama  
K Σ



Freshman Football Manager, '30; Pi Omega, "Purple" Staff; Fraternity Athletics; President Junior German Club; Neograph; Prowlers; Alabama Club.

CALLIWAY M. CALLICOTT . . . Clarksdale, Mississippi  
Φ Δ Θ



Prowlers; Junior German Club; Fraternity Baseball.

BAYARD MCINTOSH COLE . . . Marietta, Georgia  
Choir; Glee Club.



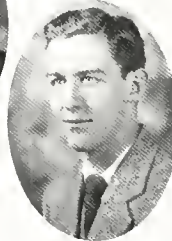
CORNELIUS B. BURNS . . . Camden, South Carolina  
Σ X

Prowlers, Freshman Football; Choir; Fraternity Athletics; Owl Club; Assistant Track Manager; Sigma Epsilon; Junior German Club.



OLIN GORDON BEALL . . . . . Macon, Georgia  
K A

Freshman Football; Sigma Epsilon; Glee Club.



CHARLES C. AMES . . . . . Catlettsburg, Kentucky  
Δ T Δ

Choir; "Mountain Goat"; Freshman Football; Sigma Epsilon; Student Vestry; Junior German Club.







THE CAP AND GOWN

SOPHOMORES

THOMAS B. HENDERSON . Indianapolis, Indiana

Φ Δ Θ

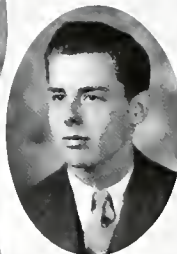
Glee Club; "Purple" Staff; "Mountain Goat" Staff; Fraternity Athletics.



EDWIN IRBY HATCH . . . Uniontown, Alabama

A T Ω

Freshman Basketball, Football, Track, Tennis; Sigma Epsilon; Fraternity Athletics; Varsity Basketball, Tennis, Track; Junior German Club; "Purple Masque"; Prowlers; "S" Club.



WASHINGTON FRAZER . . . Nashville, Tennessee

Φ Δ Θ

Freshman Football Manager; "Mountain Goat" Staff, Fire Department; Junior German Club; Prowlers.



E. CAMPBELL GRAY . . . Mishawaka, Indiana

B E T T A

Pi Omega; Fraternity Athletics, Choir; Yankee Club.



HARRY L. GRAHAM . . . New York, New York

Δ T Δ

Choir; Glee Club; Junior German Club.



GEORGE FRELINGHUYSEN . Princeton, New Jersey

A T Ω

Pi Omega; Junior German Club.



WILLIAM SPENCER FAST . . . Atchinson, Kansas

Φ Γ Δ

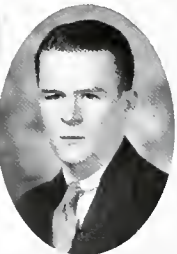
Fraternity Athletics; "Cap and Gown" Staff; "Mountain Goat" Staff, '30, '31; Junior German Club; Pi Omega; "Purple Masque".

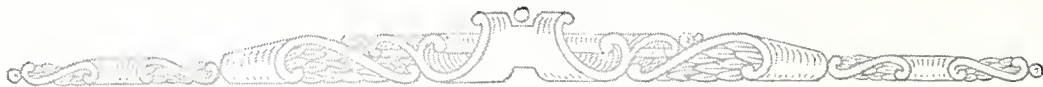


DUBOSE EGGLESTON . Hartsville, South Carolina

Σ X

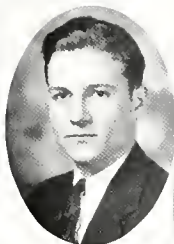
Freshman Football; Varsity Football; Freshman Basketball Manager; Fraternity Athletics; Prowlers; Junior German Club; Sigma Epsilon.





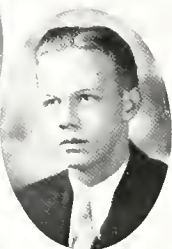
THE CAP AND GOWN

SOPHOMORES



HENRY F. HOLLAND . . . Brownsville, Texas  
A T Ω

Debate Council; Neograph; Junior German Club;  
Freshman Football; Fraternity Athletics; Glee  
Club; Alpha Phi Epsilon; Choir.



ARTHUR R. HOLLIDAY . . . Houston, Texas  
K A

Pan-Hellenic; Fraternity Athletics; Pi Omega.



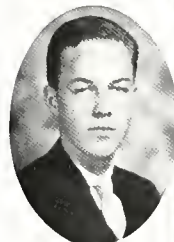
CHARLES E. HOLMES, II . Greenwood, Mississippi  
A T Ω

Sigma Epsilon; "Mountain Goat"; Fraternity  
Track; Junior German Club.



FRANCIS C. HUDSON . . . Memphis, Tennessee  
Φ Δ Θ

Freshman Basketball; Sigma Epsilon; Fraternity  
Athletics; Prowlers; Junior German Club.



ALONZO H. JEFFRESS . Kinston, North Carolina  
A T Ω

Fraternity Athletics; Secretary-Treasurer Sopho-  
more Class; Student Vestry; Neograph; "Purple  
Masque"; Sigma Epsilon.



THOMAS D. JEFFRESS . Kinston, North Carolina  
A T Ω

Freshman Athletics; Sigma Epsilon; Junior Ger-  
man Club; Choir.



OTIS JEFFRIES . . . Decatur, Alabama  
Σ N

Freshman Football; Varsity Football, '29, '30; Fra-  
ternity Athletics; Prowlers.



WILLIAM E. LEECH . . . Tiptonville, Tennessee  
Φ Γ Δ

Fraternity Athletics; Sigma Epsilon; Junior Ger-  
man Club; "Cap and Gown" Staff, '30; Assistant  
Business Manager, '31; Fire Department.





THE CAP AND GOWN

SOPHOMORES

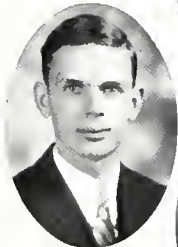
WILLIAM O. LINDHOLM . . . Atlanta, Georgia  
A T Ω

Honor Council, '30; Freshman Football, Sigma Epsilon; Junior German Club; Fraternity Athletics; "Freshman Purple"; "Mountain Goat" Staff; "Cap and Gown" Staff; Student Vestry; Waiters' Union; Cheer Leader; Choir; Student Post Office; Week-end Dance Promoter.



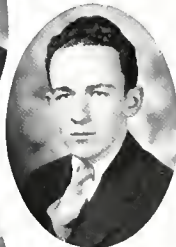
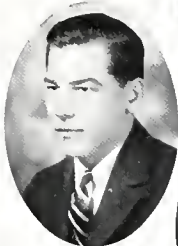
SHIRLEY N. LITTLELL . . . Ville Platte, Louisiana  
Φ Δ Θ  
Football; Track; Prowlers; Fraternity Athletics.

HENRY BUNYAN LORD, JR. . . Dublin, Georgia  
Neograph; Junior German Club.



DANIEL R. McALPINE, JR. . Nashville, Tennessee  
A T Ω

Secretary-Treasurer Freshman Class, '29; Student Vestry, '29; Committee on Student Activities, '29; Freshman Basketball; Varsity Basketball, '31; Track; "S" Club; Prowlers; Junior German Club; Fraternity Athletics; Sigma Epsilon; Fire Department.

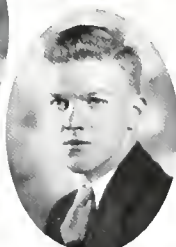
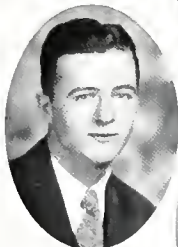


EUGENE L. McLURE, JR. . Memphis, Tennessee  
Σ A E

Captain Freshman Football; Varsity Football; Track; "S" Club; Fraternity Athletics; Rat Leader; Fire Department; Junior German Club; Pi Omega.

WALTER WM. McNEIL, JR. . . Elgin, Illinois  
Π K Φ

Glee Club; "Purple" Staff; Choir; "Mountain Goat" Staff; Junior German Club; Pi Omega; Fraternity Athletics.



JOE SMITH MELLON . . . Bolton, Mississippi  
Σ N

Fraternity Athletics; Freshman Track; Junior German Club; Prowlers; Sigma Epsilon; "Purple" Staff.

LEWIS B. MILWARD . . . Lexington, Kentucky  
K A

"Purple" Staff; Junior German Club.





THE CAP AND GOWN

SOPHOMORES



JOHN WATSON MORTON . . . Nashville, Tennessee  
Σ N

Freshman Football, Basketball, Track; Sigma Epsilon; Choir; Junior German Club; Fraternity Athletics; Varsity Football, Basketball, Track; "S" Club; Prowlers; Vice-President Sophomore Class.



HOWARD F. MUELLER . . . Orlando, Florida  
Δ T Δ

Secretary to the Dean; "Purple" Staff; Choir; Sigma Epsilon; Fraternity Athletics.



ALLEN WARREN PALMER . . . Atlanta, Georgia  
Φ Γ Δ

Fraternity Athletics; Director of Sewanee Synopsators; "Mountain Goat"; "Purple Masque"; Pi Omega; Junior German Club; Glee Club.



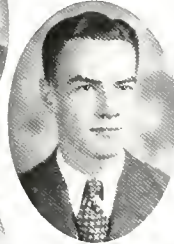
ALBERT G. PARST, JR. . . Galveston, Texas  
Φ Γ Δ

Fraternity Athletics; Junior German Club; Prowlers; "Mountain Goat" Staff; Pi Omega.



CARLISLE S. PAGE, JR. . . Memphis, Tennessee  
Σ A E

Freshman Football; Varsity Football, '29; "S" Club; Fraternity Athletics; Secretary-Treasurer of Junior German Club; Prowlers; Fire Department; Boxing, '30.



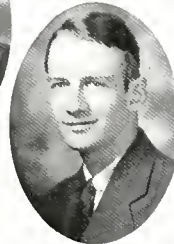
WILLIAM T. PARISH . . . Newport, Arkansas  
Φ Δ Θ

Varsity Track Squad; Fraternity Baseball; Junior German Club; Prowlers.



JAY D. PATTON . . . South Ardmore, Pennsylvania  
Α T Ω

Fire Department; Captain Freshman Track; Freshman Football; Varsity Football, '29, '30, Track '30; "S" Club; Sigma Epsilon; Boxing Team; Prowlers; Rat Leader; Junior German Club; Fraternity Athletics.



CHARLES LEE PIPLAR . . . Tampa, Florida  
Σ A E

Freshman Football, Basketball; Varsity Football, Basketball; Fraternity Athletics; Prowlers; Junior German Club; Rifle Club; Pi Omega.





THE CAP AND GOWN

SOPHOMORES

BRAXTON PROVINE, JR. . Greenwood, Mississippi  
Φ Δ Θ

Fraternity Athletics; Prowlers; Junior German Club; "Purple Masque"; Freshman Basketball, Track.



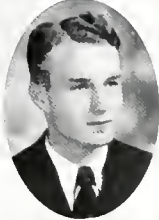
FRED A. ROGERS, JR., Bennettsville, South Carolina  
Π Κ Φ

Sigma Epsilon; Fraternity Athletics; Junior German Club; Varsity Track.



GEORGE A. STERLING, Greenville, South Carolina  
Α Τ Ω

Freshman Football Basketball; Varsity Football, '29, '30 Alternate Captain, '31; Varsity Basketball, '30; "S" Club; Fraternity Athletics; Prowlers; Junior German Club; S. M. A. Club; Varsity Debate; Sigma Epsilon.



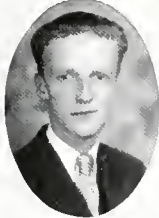
ANDREW STIMSON . . . Memphis, Tennessee  
Σ Α Ε

Junior German Club; Prowlers; Rat Leader; Fraternity Athletics; Varsity Football; "S" Club



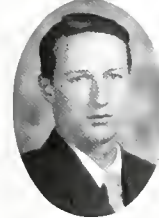
JOHN POTTER TORIAN . . Indianapolis, Indiana  
Φ Δ Θ

President of Sophomore Class; Secretary-Treasurer Freshman Class; Freshman Basketball; Fraternity Athletics; Junior German Club; Prowlers, "Purple" Staff.



CHAS. W. UNDERWOOD, JR. . Sewanee, Tennessee  
Π Κ Φ

Freshman Football, Basketball, Track, Varsity Football; Fraternity Athletics; Junior German Club; Commencement Declamation, '30, '31.



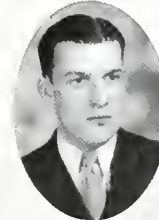
FRANK E. WALTERS . . . Natchez, Mississippi  
Κ Σ

President of Neograph; President of Pi Omega; Business Manager of "Purple Masque"; '31; Varsity Debate; Crucifer of Choir; Fraternity Golf.



MASON WEBSTER, JR. . . Galveston, Texas  
Κ Α

Fraternity Athletics; Texas Club.



ARCHIE L. WILLIAMS . . . Wichita, Kansas  
Φ Γ Δ

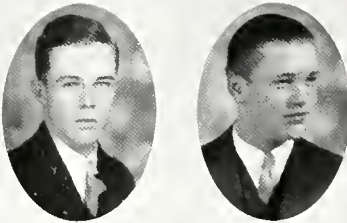
"Purple" Staff; Sigma Epsilon; Kansas Club; Junior German Club.





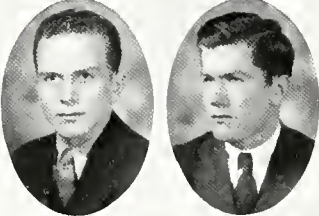
THE CAP AND GOWN

FRESHMEN



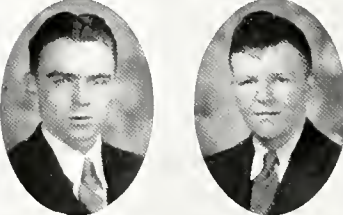
JOHN AUGUSTINE ADAIR . . . Mobile, Alabama  
Φ Δ Θ  
Fraternity Baseball, Track, Swimming, Basketball;  
Junior German Club.

ROBERT B. ALLEN . Signal Mountain, Tennessee  
Δ T Δ  
Neograph; Sewanee Synopators; Freshman Foot-  
ball Squad; Fraternity Tennis, Baseball, Basketball  
Track, Pi Omega; Junior German Club; Tennessee  
Club.



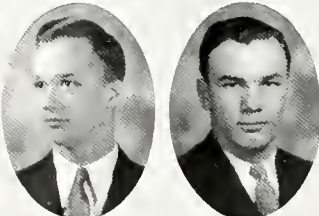
JAMES R. ANDERSON . . . Birmingham, Alabama  
Φ Δ O  
Fraternity Baseball, Track, Swimming; Junior Ger-  
man Club.

ISAAC BALL, III . . . Eastover, South Carolina  
A T Ω  
Student Vestry; Secretary and Treasurer of Fresh-  
man Class; Freshman Football Squad; Sigma  
Epsilon; Fraternity Baseball, Basketball, Track,  
Swimming; South Carolina Club; Junior German  
Club.



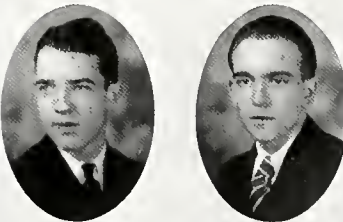
JAMES THYRON BOYD . . . Abilene, Texas  
Φ Γ Δ  
Texas Club; Junior German Club; Choir; Fire De-  
partment; Debating Team; "Mountain Goat"; Fra-  
ternity Basketball, Baseball, Track, Swimming.

JAMES D. BUTLER . . . Memphis, Tennessee  
Σ A E  
Freshman Basketball, Football; Fraternity Tennis,  
Track, Baseball, Golf; Junior German; Tennessee  
Club.



MARSHALL CARNELL, JR. . Okmulgee, Oklahoma  
Δ T Δ  
Junior German Club.

WOODROW L. CASTLEBERRY, Vanndale, Arkansas  
Σ A E  
Freshman Football; Junior German Club; Arkansas  
Club; Fraternity Baseball, Track.



THOS. A. CLAIBORNE, JR. . Lynchburg, Virginia  
K A  
Neograph; Junior German Club.

HUGH WM. CLIFT, JR. . . Corinth, Mississippi  
Π K Φ  
Mississippi Club; Sigma Epsilon; Fraternity Base-  
ball, Swimming, Track; Junior German Club.

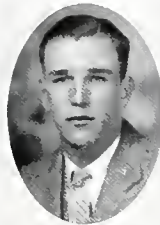




THE CAP AND GOWN

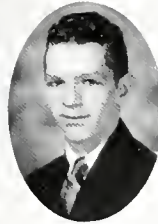
FRESHMEN

MILTON C. COBURN . . . Asheville, North Carolina  
Σ A E  
Freshman Football; Fraternity Baseball, Basketball, Track; Junior German Club.



ST. GEORGE COOPER . . . Jacksonville, Florida  
Σ A E  
Freshman Football, Track; Fraternity Baseball, Basketball, Junior German Club.

JOHN FAIN CRAVENS . . . Sewanee, Tennessee  
K A  
Freshman Football, Track; Fraternity Baseball, Basketball, Swimming; Junior German; Pi Omega



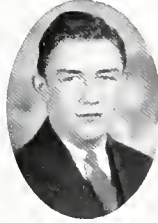
CHARLES H. DOUGLASS . . . Mobile, Alabama  
Π K Φ  
Editor "Freshman Purple"; Fraternity Baseball, Basketball; Freshman Track; "Purple" Staff; Waiters' Union.

DAVID T. DUNCAN . . . Greenwood, Mississippi  
A T Ω  
Sigma Epsilon; Mississippi Club; Fraternity Baseball.



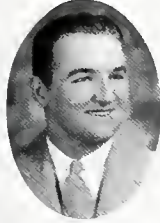
FREDERICK M. DYER, JR. . . Birmingham, Alabama  
Π K Φ  
Freshman Football, Basketball, Track; Sigma Epsilon; Junior German; Fraternity Baseball; Ride Club; Sports Editor "Freshman Purple"; Fraternity Golf.

ROBERT WALLACE FORT . . . Dunleith, Mississippi  
A T Ω  
Mississippi Club; Sigma Epsilon; Junior German Club.



ROBERT McD. GAMBLE, JR. . . Memphis, Tennessee  
Σ A E  
Freshman Football, Track; Fraternity Baseball, Basketball, Handball, Tennis; "Purple"; Junior German; Sigma Epsilon; Tennessee Club.

GUY WILL GLASS . . . Memphis, Tennessee  
Σ A E  
Sigma Epsilon; Junior German; Fraternity Athletics; Tennessee Club; Freshman Football, Track.



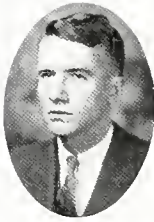
ROBERT E. GREENWOOD . . . Fitchburg, Massachusetts  
Δ T Δ  
Fraternity Athletics; Choir; Glee Club; Junior German.





THE CAP AND GOWN

FRESHMEN



FRANCIS B. HARRIS, JR. . . Thomasville, Georgia  
Δ T Δ  
Fraternity Athletics; Junior German Club.

JOSEPH E. HART, JR. . . . . York, South Carolina  
Σ N  
Sewanee Glee Club; Neograph; Choir; Sewanee  
Syncoptors; Junior German Club.



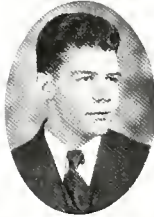
FRANK LOUIS HAWKINS . . . Caiden, Mississippi  
Δ T Δ  
Choir; Junior German Club; Pi Omega; Assistant  
Freshman Track Manager; Mississippi Club; Fra-  
ternity Athletics.

THOMAS L. HERBERT . . . . Nashville, Tennessee  
Φ Δ Θ  
Freshman Football; Fraternity Athletics; Junior  
German Club; Tennessee Club.



WILLIAM B. HERBERT, JR. . . Nashville, Tennessee  
Φ Δ Θ  
Junior German Club; Tennessee Club.

JOHN BISHOP JOHNSTON . . . Monroe, Louisiana  
K Σ  
Junior German; Louisiana Club.



FRANCIS KELLERMAN . . . South Pittsburg, Tennessee  
K Σ  
Freshman Football, Basketball; Choir; Fraternity  
Athletics; Junior German Club; Orchestra.

JOHN S. KIRBY-SMITH . . . . Sewanee, Tennessee  
Σ Δ Ε  
Freshman Football; Tennessee Club.



JAMES P. KRANZ, JR. . . . Nashville, Tennessee  
Α T Ω  
Sigma Epsilon; Junior German Club; Tennessee  
Club; Fraternity Athletics; Varsity Debating.

WILLIAM L. W. MCKEE . . . Greenville, Mississippi  
Α T Ω  
Neograph; Sigma Epsilon; Junior German.



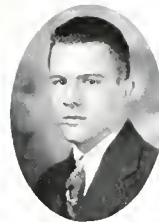




THE CAP AND GOWN

FRESHMEN

DEWITT T. MYERS . . . Chattanooga, Tennessee;  
Φ Γ Δ  
Fraternity Athletics; Tennessee Club; Sigma  
Epsilon; Junior German.



SERVETUS W. OGEN, JR. . . . Wynne, Arkansas  
Α Τ Ω  
Fraternity Athletics; Junior German Club.



EARL BEAN PATE . . . . Memphis, Tennessee  
Φ Γ Δ  
Freshman Football, Basketball, Track; Fraternity  
Athletics; Junior German Club

CHARLES A. POLLARD . . . Greenwood, Mississippi  
Α Τ Ω  
Sigma Epsilon; Mississippi Club; Fraternity Golf.



THOMAS L. RAY . . . . Shelbyville, Tennessee  
Φ Γ Δ  
Junior German; Fraternity Baseball.

RUTLEDGE JOHN RICE . . . San Antonio, Texas  
Φ Γ Δ  
Texas Club; Junior German Club; "Mountain  
Goat"; Fraternity Athletics; Rifle Club; Sigma  
Epsilon; Purple.



HENRY D. RUSSELL . . N. Chattanooga, Tennessee  
Π Κ Φ  
Fraternity Athletics; Junior German Club; Glee  
Club; Choir.

OMAR BOSTICK SANDERS . . . Albany, Georgia  
Σ Α Ε  
Junior German; Fraternity Athletics, Freshman  
Track.



HOMER P. STARR . . . Charleston, South Carolina  
Α Τ Ω  
Student Vestry; Choir; Sigma Epsilon; South Caro-  
lina Club; Freshman Football; Fraternity Athletics.

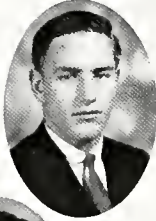
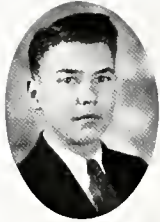
MARTIN CHARLES STONE . Kingsport, Tennessee  
Φ Γ Δ  
Glee Club; Choir; Neograph; Pi Omega; Junior  
German Club; Tennessee Club; Fraternity Athletics.





THE CAP AND GOWN

FRESHMEN



JOHN L. TISON, JR. . . . Cedartown, Georgia  
Σ N  
Sigma Epsilon; "Purple"; Fraternity Athletics.

DOUGLAS L. VAUGHN, JR. . . Sewanee, Tennessee  
Φ Δ Θ  
Freshman Football, Track; Glee Club; Sewanee  
Syncoptors; S. M. A. Club; Junior German Club;  
Tennessee Club; Fraternity Athletics.

THEODORE JOY WAGNER, JR. . . Amarillo, Texas  
Φ Γ Δ  
Texas Club; Junior German; Sigma Epsilon; As-  
sistant Freshman Football Manager; Fraternity  
Athletics.

ALEXANDER W. WELLFORD . . . Memphis, Tennessee  
Σ A E  
Junior German; Freshman Football, Basketball,  
Track; Fraternity Baseball; Vice-President Fresh-  
man Class.

PAUL ZIEGLER . . . . . Elgin, Illinois  
Δ T Δ  
Fraternity Athletics; Choir; Pi Omega; Junior  
German Club.



*Theological*



THE CAP AND GOWN



Faculty of the Theological School

THE REV. GEORGE BOGGAN MYERS

LL.B., University of Mississippi; B.D., University of the South.

*Professor of Philosophy of Religion, Ethics, and Sociology*

THE REV. WILLIAM H. DUBOSE

B.A., M.A., University of the South; D.D., Virginia Theological Seminary.

*Professor of Old Testament Language and Interpretation*

THE REV. CARY B. WILMER

B.A., William and Mary; D.D., University of the South.

*Professor of Practical Theology*

THE REV. ROBERT MACD. KIRKLAND

B.A., University of Chicago; M.A., University of Pennsylvania.

*Professor of New Testament Language and Interpretation*

THE REV. CHARLES LUKE WELLS

B.A., Harvard; B.D., Cambridge; Ph.D., Harvard.

*Dean of the Theological School and Professor of Ecclesiastical History and Canon Law*

THE REV. WILSON L. BEVAN

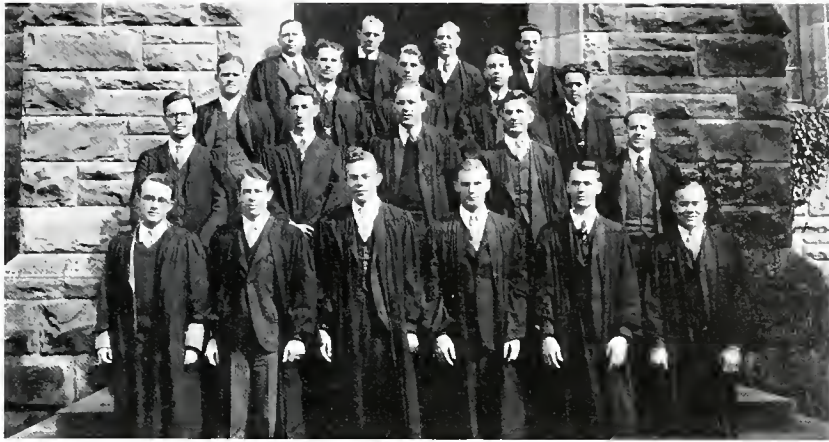
M.A., Columbia; S.T.B., General; Ph.D., Munich.

*Professor of Systematic Divinity*





THE CAP AND GOWN



Theological Students

CLASS OF 1931

H. F. BACHF, B.S. . . . .	Delray Beach, Florida
G. H. HANN . . . . .	Atlantic City, New Jersey
B. E. HIRONS, B.A. . . . .	Waterloo, Ontario, Canada
W. H. R. JACKSON . . . . .	New York, New York
L. E. PATEE . . . . .	Ansonia, Connecticut
J. A. PINCKNEY . . . . .	Charleston, South Carolina
E. C. SIMKINS . . . . .	Jacksonville, Florida
J. C. TURNER, B.A. . . . .	Greenville, South Carolina
J. B. WALTHOUR . . . . .	Savannah, Georgia
J. S. WASHINGTON, B.A. . . . .	Memphis, Tennessee

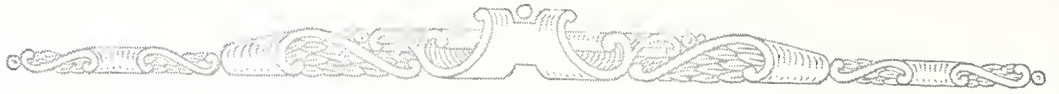
CLASS OF 1932

J. S. BUTLER, JR., B.A. . . . .	Yazoo City, Mississippi
I. LAR. JENKINS, B.A. . . . .	Sewanee, Tennessee

CLASS OF 1933

F. P. DEARING, B.S. . . . .	Jacksonville, Florida
T. P. DEVLIN, B.A. . . . .	Proffit, Virginia
C. B. JONES, B.A. . . . .	Woodville, Mississippi
THEODORE PATTON, B.A. . . . .	Coalmont, Tennessee
F. E. PULLEY . . . . .	Tarboro, North Carolina
C. D. SNOWDEN . . . . .	Overbrook, Pennsylvania
C. S. TISDALE . . . . .	Sumter, South Carolina





THE CAP AND GOWN

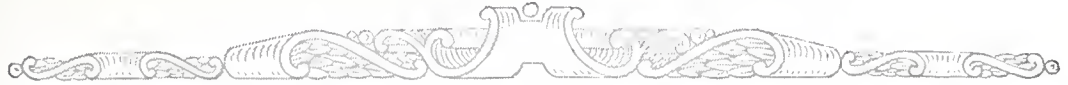




ATHLETICS







THE CAP AND GOWN

## Athletic Board of Control

GEORGE F. RUPP, ESQ.  
*Chairman*

B. F. FINNEY, ESQ.

G. S. BRUTON, ESQ.

MR. PHILLIP B. WHITAKER

MR. JOHN M. EZELL





## THE CAP AND GOWN



### Coach Harvey Harmon

Coming from Haverford, where he had been very successful, Coach Harmon instituted the Warner system of football at Sewanee for the season of 1930. His work with the team was sufficiently productive to bring into the limelight the latent possibilities of the use of the Warner system in connection with a light, fast squad.

### Coach Lucien Emerson

Coach Emerson came to Sewanee from the Montgomery Bell Academy of Nashville, and has been head coach of basketball for the last two seasons. Both his varsity and freshman teams have made good on the courts of the South. He will coach the 1932 edition of the basketball Tiger.

### Coach Harry E. Clark

Coach Clark, familiarly known as Hec, has coached the freshman squad for several years, leaving that position in 1929 to assist the head coach of the varsity team, and returning to that berth in 1930. He is head coach elect for the season of 1931, and will be assisted by Mr. Allen G. Lincoln. Coach Hec is an alumnus of Sewanee.





## THE CAP AND GOWN



### Coach Albert G. Willey

After the resignation of Coach Harmon, Professor Willey took over the reins of the track team, in an hour of desperate need having volunteered his services. Under his direction and training members of the 1931 squad succeeded in breaking and setting three Sewanee records. Coach Willey is a one-time holder of a world track record.

### Coach Paul Scull

During the season of 1928 Coach Scull was selected one of the halfbacks of the All-American football team. His Alma Mater is the University of Pennsylvania, and he accompanied Coach Harmon down from the East to instill the new system into the Purple squad. His specialty was the backfield.

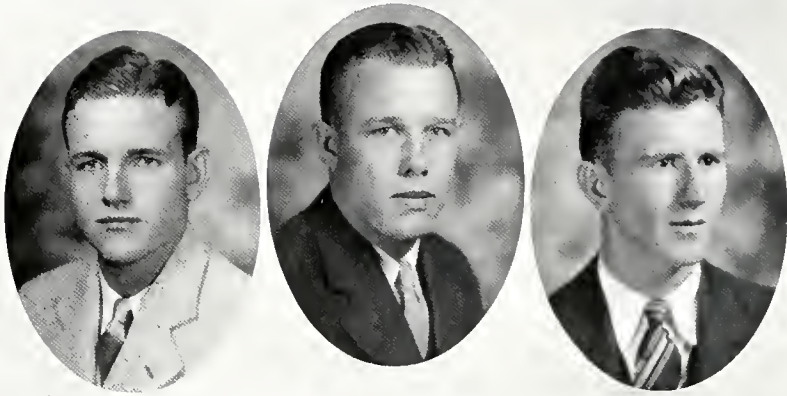
### Coach Gordon Clark

Mr. Gordon Clark was assistant freshman football coach for the past season, performing at the same time the duties of graduate manager of athletics and organizing secretary of the alumni. Mr. Clark is an alumnus of Sewanee, and will coach the 1931 freshman football team.





THE CAP AND GOWN



Team Managers

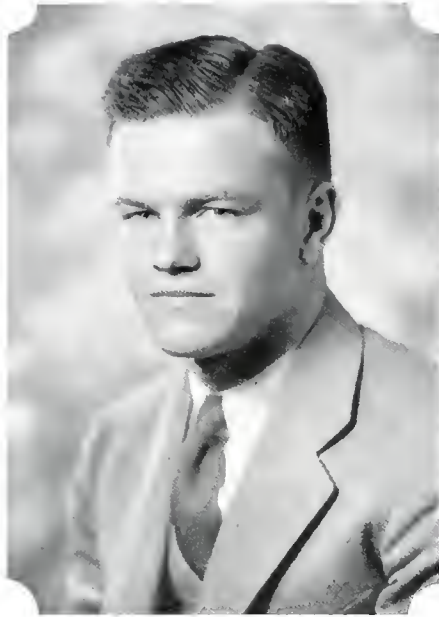
CHARLES HOPPEN	Football
EDWARD NASH	Basketball
MOULTRIE BURNS	Track

Cheer Leaders

OSCAR LINDHOLM

JEROME THOMPSON





CAPTAIN ROBERT STIMSON

Captain Stimson has held the center position of the Tiger line for three years, and was a member of the 1931 freshman team, the last team to defeat Vanderbilt in football. He has played through his entire football career, both in high school and in college, without receiving an injury, and he is noted for his fighting game. At the end of the season of 1930 he received from the All-American Board of Football a certificate of merit for distinguished service to his team. He is a member of the Sigma Alpha Epsilon.

# FOOTBALL



## THE CAP AND GOWN



### Varsity Football

Coaches Harvey Harmon and Paul Scull, accompanied by the Warner system of football, introduced the 1930 football season at Sewanee. Coach Harmon came to Sewanee from Haverford, where he had been head coach, and Scull, an All-American of 1928, resigned a business position to take up his new job of coaching. Believing that the Warner system, requiring lighter and faster men, was the most suitable type of football for the small-sized Tigers, the mentors began to instill the fundamentals of "Pop's" doctrines into the minds of their men, and the squad responded beautifully, showing great improvement as the season progressed.

#### A Satisfactory Victory

In their first game of the season the Tigers won a very satisfactory victory from the Jacksonville Teachers' College, Jacksonville, Ala. Four touchdowns and one extra point to the Teachers' zero gave the victory to Sewanee. The weight of the two teams was about equal, but the Mountain men displayed superior skill in every department of the game in spite of the fact that the Teachers forced them to punt on several occasions. Putting forward an offense that had not been seen on the Mountain in years, the victors gained fifteen first downs to the opponents' three. End runs enabled the visitors to make their most dangerous threats, but these attempts were stopped by men hardened in a season of good preliminary training. Clockwork plays on the offensive and improved blocking on the defensive made evident the work of the new coaching staff. McLure, Phillips, and Jeffries in the backfield, French, Stinson, R., and Patton in the line, were the mainstays in the first public appearance of the 1930 football Tiger.

#### Tennessee Poly Bows to Tiger

Clicking together surprisingly well for early season games, the Tigers defeated Tennessee Polytechnic Institute, 14-0, in their second game of the





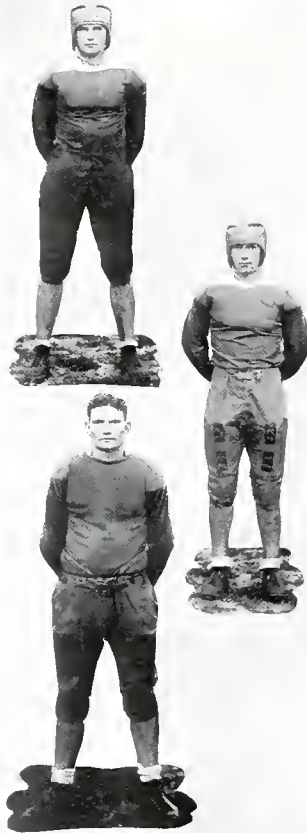
## THE CAP AND GOWN



season. Sewanee passes were good six times out of twelve attempts, and netted the victors well-earned yardage. Barron and Phillips piled up distance gained to take a total of one hundred and ninety-one yards between them. Fumbles cost Sewanee several chances to score, and when Taylor of T. P. I. intercepted a Sewanee pass to run within five or six yards of the goal, his team had its only chance to push the ball across the scoring marker. The Tiger failed to gain few times, and succeeded in amassing fifteen first downs to Tech's four. Coach Harmon was enthusiastic over the evidences of improvement made manifest in the game. The T. P. I. team put up a game fight, but were thrown back by a business-like Tiger out to win.

### Tiger Loses to Kentucky Wildcat

Kentucky defeated Sewanee, 37-0, when the two teams met in Lexington for their seasonal fracas. The game was unique for Sewanee in two respects. It was Sewanee's first conference game of the season, and it was the first time the Purple Tiger had ever used his claws at night. The game was played under the glare of the big lights, and the Purplemen found it hard to judge the flight of a white pigskin sailing through the upper regions of the murky darkness. The Wildcat gained at will through the lighter Tiger line, and held Sewanee to a hundred and forty-four yards gained from scrimmage. Sewanee took to the air seventeen times, completed seven of the passes, and outpunted Kentucky by a five-yard average. In spite of the score the Tiger played a hard-fought game, for of the six touchdowns Kentucky earned four getting the others on the breaks of the game, such as when Urbaniack scooped up a pass that looked like it had been grounded as it was watched from the stands, Jeffries' passes, Barron's running, and Phillips' punts gained most of the yardage for the Tiger. Andy and Bob Stimson, Sterling, Kellerman, Patton, and French were the staunch pillars of the line. Jeffries was the surprise of the game with his





THE CAP AND GOWN



long passes, one of which traveled seventy yards to be barely knocked down by one of the Wildcats.

**Tiger Fights 'Bama to Standstill**

Playing against a team of gargantuan size in comparison to their own meagre physique, the Sewanee football team fought the championship Alabama Crimson Tide to a standstill, holding them scoreless for two periods of the game. Never before has the scrappy little team from the Mountain received such an ovation as it received in Birmingham. The Tide scored in the last part of the second quarter, and was unable to scratch again until the very last few minutes of the fourth, when Sewanee's reserves were gone. Outweighed twenty-five pounds to the man, the Purplemen several times turned the Tide back from the very shadow of the goal, allowing the victors only twenty-five points. The coaches of both teams started second-string men. It was a surprise to Sewanee men as well as to Alabama rooters to see a fresh Sewanee team begin to warm up at the same time Wallace Wade called forth his wrecking crew. The wrecking crew scored only once, for it was after they had beaten the Sewanee men to a frazzle and turned the struggle over to second team men that the champions added three more scores. In spite of the dislike anyone has for the term "moral victory," it is certain that the Tiger gained just such a victory on that afternoon in Legion Field. It was almost a reproduction of the game Sewanee played against 'Bama in 1926, when the Tide won 2-0.



**Tiger Triumphs Over Ole Miss**

Playing before a large home-coming crowd and consequently against an inspired team, Sewanee won her annual fracas with the University of Mississippi. It was Sewanee's first conference win since 1927 (Tulane 6, Sewanee 12). It was also the first time during the season that Sewanee had gone up against a team using the Warner system of football, but the Tiger showed his superior knowl-







## THE CAP AND GOWN



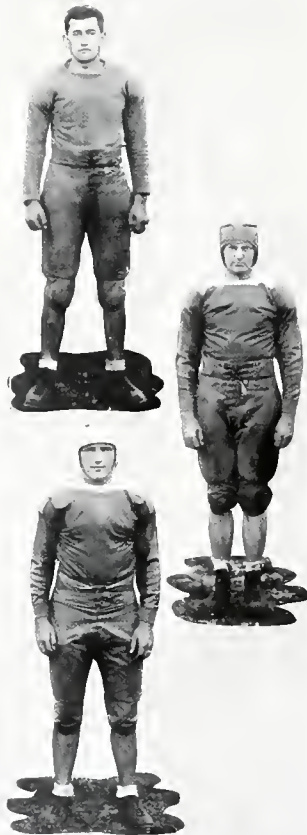
edge of the principles of the system to gain two touchdowns to Ole Miss' one. Sewanee's line and backfield were functioning well in the opening periods of the game, but fell off at the beginning of the second half when the infuriated Ole Miss team came back to win on their home-coming occasion. The most outstanding improvement noted in the game was that in the passing attack, which was responsible for the two touchdowns and came near netting the Tiger another. Sterling and Phillips were playing the passing game to perfection.

### Purplemen Bow to L. S. U.

By converting a pair of fumbles into touchdowns, and by keeping Sewanee out of their eighteen-yard line, the Tigers of L. S. U. defeated the Tigers of the Mountain, 12-0. Fumbles played a great part in the game. Both teams succeeded in working the ball into scoring territory only to lose the chance to score by a fumble, or by a pass intercepted or dropped over the last little white line. The victors' first score came in the second quarter after they had intercepted a Sewanee toss, and completed one of their own. The second tally was scored in the second quarter on four successive first downs, and a short run over the goal line for the score. Gene McLure furnished Sewanee's best chance to score. He received a punt to run sixty yards to within eighteen yards of L. S. U.'s goal, but three Sewanee passes failed and a line buck was stopped. Merton bore the brunt of the attack, and was cheered time and time again by the large crowd when he stopped L. S. U. end runs almost single-handed.

### Rice Wins, 12-0

Sewanee lost to Rice by two touchdowns, but not even a Houston paper has said that Rice outplayed Sewanee. From start to finish it was a beautiful game, and anybody's up to the last few minutes of action. The Tiger line for over three quarters





## THE CAP AND GOWN



withstood the attacks of determined Rice backs, and threatened to open the way to a score on several occasions. Early in the game Sewanee launched a passing attack that caused the Texans no end of worry. But superior numbers of the Rice team and lack of reserve in their own finally lost the game for the Mountain men. Words are insufficient to express the part played by every Sewanee man in that contest. Les Weischer made several lengthy runs, returning punts for good gains. French, Bean, Patton, and Morton were again the defensive bulwark of the Tigers. "Jamerson and Wallace are good runners for Rice, and can be counted on for several touchdowns before the season is over—provided they don't have another Sewanee team to face," said a Houston paper of the contest.

### Chattanooga and Sewanee Tie

Sewanee remained undefeated by the Chattanooga Moccasins at the end of the seventh engagement of the two teams, but that is as much as can be said, for no victory can be recorded for either team. Chattanooga threatened the Sewanee goal line time after time, but just as often the fighting Tiger threw the serpent for losses to maintain the integrity of his goal line. Sewanee was unable to get close to the goal, for the Tiger was clawing at an inspired team, since nothing could be dearer to the hearts of the Moccasins than to defeat the Cat of the Mountain. On the defense the entire Sewanee team was wide awake and functioned, except for an end run now and then that slipped by the outposts, but on the offensive the line seemed unable to fling back the coils of the serpents of Chattanooga. Several times it was enough to bring the hearts of Sewanee men into their mouths to see Moccasins carry the ball on and on toward the Purple goal only to be stopped by a desperate tackle within scoring territory and thrown back by a line that froze with adamantine obstinacy.



## THE CAP AND GOWN



### Gamecock Noses Tiger Out

The South Carolina Gamecock stole a victory from the Sewanee Tiger to win by one point. Statistics show that in every department of the game the Tiger was superior, but he was unable to take advantage of the breaks and in that he lost. The field of play was standing inches deep in mud, and convenient puddles were waiting here and there to spoil the hopes of passers, runners, and punters. Weuscher made his first college touchdown on a fake pass around left end, and the next tally came from a Phillips to Sterling pass. Sewanee's two scores were the result of a last minute, fourth quarter rally, thrilling even though it did fall short. Little Johnnie Ezzell played the game of his career. Morton, Bean, and Anderson put up the fight in the line, French having received a severe injury to his head. Jeffries excelled himself, and brought many an anxious look to the faces of Carolina rooters. The end of the game left the ball on the Gamecock's two-yard line in Carolina's possession, indicating the extent of the Tiger rally.



### Southwestern Wins

The Sewanee-Southwestern contest was the climax to the 1930 season, and showed the worn-out condition of the Tiger squad. Having reached their peak in the Carolina game, the Sewanee men drooped badly when they faced the Lynx, and lost 26-6. But it was not only the drop from the peak that disturbed the Tiger, for he was injured in every conceivable way and at every possible spot on his anatomy. Sewanee men were put out of the game at frequent intervals through injuries and through the cumulative effect of a long season hard on a squad composed of so few men. French had already been forced out for the season. Andy Stimson, Jeffries, and Phillips had to be sent to the



## THE CAP AND GOWN



THE SQUAD

showers. The Tiger that was left was only a rag, a bone, and a hawk of hair. Nevertheless, the Lynx was playing for dear life, and his performance can not be overrated. His attack functioned well. Bob Stimson completed his career as captain with the greatest game of his experience. He played an inspired game, being one of the few to escape injury, a misfortune he has avoided throughout his football service. Morton, Ezzell, and Bean were with Bob at the peak of their strength throughout the fracas. Sterling was the star of the secondary defense, and Barron was the honor man in the running plays. Abe Phillips gave his best during his short stay in the game, and Jeffries aided Barron in running the ball. His was the important contribution of Sewanee's only touchdown.

## Post Season Comment

At the end of the season Joe Bean, Captain Bob Stimson, and Jack Morton received certificates of merit from the All-American Board of Football for distinguished service to their team. Coach Harmon was released to the University of Pennsylvania, where he has taken over the duties of head coach, and Coach Scull returned to his business position. Hec Clark was elected head coach of football in response to a movement to elect Sewanee men to positions of athletic importance. Mr. Allen G. Lincoln was elected assistant to Coach Clark. Mr. Lincoln comes to Sewanee highly recommended by coaches from all over the nation. He will also be head track coach for the season of 1932.

Coach Harmon and Coach Clark held a spring practice training period to whip the freshman candidates into shape for the varsity team of next fall. At the end of the period a game was held between two squads picked from the spring training group. So evenly matched were the two elevens that the contest ended in a scoreless tie.



## The Freshman Season

While Coaches Harmon and Scull were instilling the fundamentals of the Warner system into the varsity men, Hec Clark, assisted by Gordon Clark, were taking the same work to the freshman squad. Results were immediately forthcoming and the Class of 1934 turned out the strongest yearling eleven Sewanee has had in some years.

The freshmen opened the season with a 33-7 win over the first year men of Union University, Jackson, Tennessee. Pep and punch were the outstanding evidences of the Little Tigers' skill and love for the game. The backs functioned like seasoned old-timers, and the line was stalwart enough to throw off the attacks of the much-touted Union eleven. Welford and Cravens were punting with remarkable early season skill, Kauerz backed up the line as it should be done, and Castleberry's line-backs added to the yardage gained. A light and inexperienced Sewanee Military Academy team opposed the freshmen in their next contest, and the yearlings came out on top of a 52-0 score. Passes netted the freshmen most of their gains, for their heavier men were either on the sidelines or in the game for very short stays. The Academy played a good fighting game, but were unable to push past the heavy Sewanee line composed of men of the calibre of Larry Thompson, Ox Clark, Hayes, Lawrence, and Glass.

Morgan High School offered the yearlings their next opponents. The first-year men found it easy to pass over the heads of the Morgan men, but were instructed to drop the passing attack and develop some of their running plays. Toward the last of the contest Morgan opened a serious passing rally on a second string Tiger team, and the threat was ended by Starr, who intercepted a Morgan pass on his own five-yard line. Six touchdowns and three extra points was the extent of the Tiger victory. A strong and powerful University of Tennessee team visited the Mountain, touted to win, but were sent away with the meagre satisfaction of a tied contest. For three scoreless periods the battle raged on, and then Wynn of Tennessee broke loose for a long run and six points. Sewanee was not far behind, and the brilliant passing of Pate soon netted her the touchdown. The yearling line was adamant against a large and hard-hitting opposition. Guy Glass, Clark, L. Thompson, and Hanson were in the line with a fight for every Tennessee attempt to gain.

The annual contest with the Chattanooga freshmen ended in a defeat for Sewanee. A Sewanee punt was blocked early in the game and the visitors turned it into a touchdown. A pass from Welford to Kauerz gave the freshmen their counter in the fourth period, but they were unable to make good the extra point necessary to tie the game. The contest ended a 7-6 victory for the Moccasin yearlings. Doug Vaughan played a brilliant game for Sewanee. He defended his end of the line, at which Chattanooga directed most of her attacks, until it seemed that the visitors should have learned a lesson and tried some other path.



## THE CAP AND GOWN

The Little Colonels of Centre College outfought and out-smarted a stronger team to defeat the Tiger freshmen, 14-0. Every type of football known to man was displayed by both teams. The first half was all in favor of the Kentuckians, but the second half gave Sewanee the edge, although she was unable to make the tallies necessary to a win. Thompson, L., Herbert, Clark, and Hanson waged the defensive battle for the Tigers. The entire backfield shared equally the honors of gaining yardage and upholding the secondary defense. During the last few minutes of play the Little Tigers resorted to passing, but the threat occasioned by that attempt was ended when one of the tosses was intercepted by Barksdale of Centre, who ran fifty-five yards for his team's second tally.

Handicapped by a field resembling the muddy bottoms of Mississippi, the Tiger yearlings were held to a zero tie by Vanderbilt freshmen. Twice Coburn placed his team within scoring distance, but both times the ball slipped from the hands of Sewanee men and went over to Vanderbilt. Sewanee's line continually opened holes, but in the end a fumble or an obstinate secondary defense lost them the ball. The Purplemen carried most of the play into the line, where Castleberry and Kauerz bucked into a seething mass of mud-covered figures on play after play. On one trip toward the promised land, Sewanee carried the ball to Vandy's five-yard stripe, but were penalized when a substitute failed to report, and subsequently lost the ball on downs. Big Guy Glass was the mainstay of the Purple defense, aided by L. Thompson and Hanson. Castleberry, Kauerz, and Cravens performed the backfield work for the freshmen. The last Tiger threat was stopped by the Vandy forward wall, an impenetrable barrier when its back was to the goal posts. At the beginning of the game the field was in excellent condition, the rain was wetting the bare spots just enough to keep down the dust, but the drizzle soon turned into a downpour, and the field became soggy and slippery, a serious handicap to the fast Tiger backs and accurate passers.

With the Vanderbilt game the 1930 yearling season came to an end. The freshmen had made a good showing, and everyone felt highly jubilant over the prospects of their performances with the varsity next season. Since Coach Hec Clark had been elected head coach, Gordon Clark, now graduate manager of athletics and organizing secretary of the alumni, was elected to succeed him. Mr. Clark will retain his former positions. Not only has Coach Gordon Clark very good prospects for an excellent entering squad next year, but Coach Hec Clark is also looking forward to the addition of the freshman squad to his next year's varsity material.





CAPTAIN HUGH GOODMAN

Captain Goodman has not only distinguished himself in basketball, but also in the major sports of football and track, for he is a three-letter man. His position on the basketball team was running guard, in football he was an end, and in track he ran the middle distances, setting during the season of 1931 a new record in the four-forty. He is captain-elect of track, and is a member of the Sigma Nu fraternity.

# BASKETBALL



## Varsity Basketball

With eight old men returning for the season, one old man returning after an absence of a year due to illness, and the addition of five men from the freshman ranks of 1930, the 1931 edition of the basketball Tiger faced prospects of a bright career on the Courts of the South during the season. Some of the men were prevented from starting with the rest of the squad because of football injuries, and some were hurt later in the year to such an extent that they were unable to stay in the game. The 1931 basketball team was nevertheless an excellent one, even though it did have its temperamental moments.

The Burk Terrors were the first opponents of the season. The Tiger won the game, 36-27, in spite of the work of Wolfe, who took nine points for high score honors. Goodman and McAlpine followed him with eight apiece, and were the stars of the victorious Tiger team. Morgan Soaper, standing guard, shot the first basket of the season.

Toward the end of the Christmas holidays the basketeers returned to the Mountain and mobilized for a trip through the South. Just previous to the vacation the powerful DuPont team from Old Hickory, Tennessee, went down before the onslaught of the Tigers by one point, the game ending 27-26. At the outset of the long trip another corporation team was encountered. They were the mighty Tepco team of Chattanooga. Sewanee's team was not up to the lightning speed of the opponents of national fame, and lost, 36-15. Yates was high point man with a meagre score of six. From Chattanooga the Tiger journeyed to New Orleans to meet Tulane.

Sewanee swept a double-header with Tulane. By a score of 27-25 the first game went to the Tiger. Goodman came up from his guard position time after time and finished the contest with ten points to his credit. He distinguished himself in the second game by again coming through with a good eleven points. The second game Sewanee won by a safer margin of ten points, 49-39. McAlpine led the field with twelve points. The two games with Tulane were the first appearances of the Purple basketeers in Southern Conference games, and put







## THE CAP AND GOWN

them at the head of the list. Either New Orleans or the two hard games took the fire out of the Tigers, for they slipped up in the next game and lost to the Mississippi State Teachers' College. A score of 20 to 35 gave the Teachers a decided victory. Allums of the victors piled up fourteen points, whereas McAlpine was high Purple scorer with seven counters.

The last game of the trip went to Sewanee by a twenty-five-point margin, for the Purplemen had retrieved their snap and dash. The McRae team of Laurel, Mississippi, was the loser. Both Yate and McAlpine scored seventeen points, and Morton followed them with thirteen. McRee, giant Tiger center, made four baskets and one foul goal. The score went to the lopsided count of 60-35. The wins of the trip brought Sewanee into the limelight cast by the writing of sport writers over the South, all of whom advised that the Sewanee Tigers be watched as a possible championship contender.

The Tiger lost his first home-court game to Middle Tennessee State Teachers' College, 29-37. Inaccurate passing and a general relapse cost the Purplemen the victory. The Teachers featured a fast-moving, quickly-breaking team that missed few shots throughout the game. Captain Goodman, however, was high point man with his twelve markers. The Teachers were in top form and hit a fast stride all the way through the game.

The Tiger recovered from the slump when he went up against the Moccasins of the University of Chattanooga, and won in an extra period game, 41-35. Sewanee took the lead early in the contest and retained it at the half. The Moccasins came back on the floor determined to reproduce their win of the previous year, and soon tied the score at twenty-four. At the final whistle the game stood at thirty-three all, and the extra period began after a short rest. Sewanee began to get in her long shots, managing to get well out in front before the end of the overtime. Goodman again took high point honors. The game was the most beautiful staged on the home court through the year, for both quintets were functioning with near perfection.

Vandy clicked perfectly to deal Sewanee her first conference defeat of the season. The Tiger was playing on foreign soil and was weakened by injuries. The score was 17-35. Even the high scor-





## THE CAP AND GOWN



ing Captain Goodman was held to four points, and McRee was unable to gather in more than seven. The Tigers went to the showers at the half with the score against them, 15-11. During the second half they were able to collect only one field goal, and could not penetrate the Vandy defense.

Playing again on foreign soil the Tiger lost a return game with the University of Chattanooga by 31-36, allowing the Moccasins to avenge the defeat of a few weeks previous. It was a much improved Moccasin team that faced the Tiger in the second contest. Donnelly took thirteen points for the victors, Dawson led the Tigers with eleven, and Yates and Goodman each got eight.

Coach Emerson's fighting Tigers gave Alabama a hard contest, but finally came out on the short end of a 25-31 score. The big Tide team led almost all the way through the game, but the Tigers threatened the champions several times in the second half. Soaper played one of the greatest defensive games of his career, and Morton and Yates performed beautifully in the floor work. The absence of McRee, out with injuries, was keenly felt in the Purple line-up. But the Tiger was not long in the slump. Hitting the basket with telling efficiency he came through with a 39-32 win over Southwestern of Memphis, after overcoming an eleven-point lead piled up by the Lynx in the first minutes of play. Bean took high point honors for the first time of the season with twelve counters. The Purple quintet settled down to its natural game in the last half, and allowed the losers only three field goals.

On their second long trip of the year the Tigers found hard sledding and succeeded in winning only one out of five games. V. M. I. won the first contest of the trip, 48-28. The victors led at the half, 25-11, nine of Sewanee's points being on fouls. Sewanee came back at the end of the half period rest to score seventeen points, but her defense failed to function, and the Virginians added twenty more. Morton was Tiger high scorer with nine points to his credit.

Meeting V. P. I. a night later, the Tiger held the lead throughout the contest except when the score was tied six times in the first half. The final score was 34-27 in purple ink. Dawson took scoring honors for the Sewanee men with ten points, and Soaper

## THE CAP AND GOWN

played an outstanding game to take eight, covering the entire floor in his efforts for the Purple and White. The contest showed the superiority of the Tigers over their opponents in every department, for the Purplemen were on top of the tide in that contest.

A terrible slump overtook the Tiger in the next game, and he lost to the Virginia Cavaliers, 48-15. The game was slow starting and neither team made a field goal till late in the first period. Tiger shots were inaccurate, allowing Virginia to lead at the half, one point. The second half found the Cavaliers able to make good their shots from every angle of the floor, while the Purplemen took shot after shot only to have them curve back out of the basket. Captain Goodman took ten beautiful tries that only arched out of the ring as if repelled by the iron hoop. The Tiger high point man took a meagre five points, whereas Mayo of Virginia scored twenty-one.

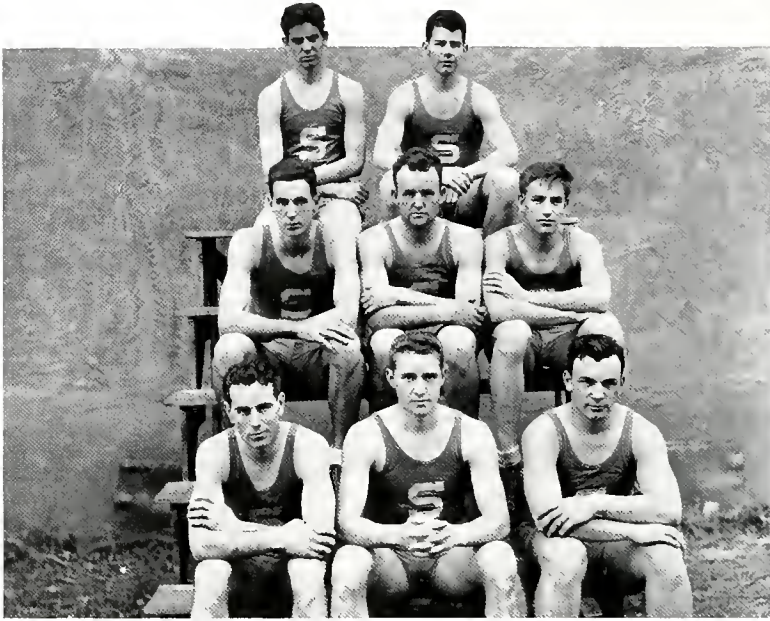
A Tiger rested over the week-end met the fast Blue Devils of Duke to go down into defeat, 65-22. The game began with Goodman's two flashy baskets before a minute of action was up, but his shots only enraged the Dukemen, and they soon took the lead for the rest of the contest. At the half the victors held the lead, 36-15. Goodman scored ten of the Tiger's fifteen points with five baskets. Sewanee was able to collect only seven points in the last half, an all-Duke affair. The Tiger defense was badly weakened by McRee's enforced absence. Goodman led the Tiger scoring with thirteen points, and Carter took the honors of the game with sixteen toward the Duke victory.

The Purplemen concluded the trip by dropping a hard-fought game to the University of North Carolina, 37-28. The Tarheel held the lead most of the game, but only by a slim margin. Six minutes before the whistle the Tiger held the lead, 22-21, but his defense weakened and the Tarheels came through to win the victory. Abe Phillips played his greatest game at guard. Goodman got nine points, and McRee followed him with eight, garnered during his short stay in the contest. At the end of the season Coach Emerson was again re-elected coach after having brought the Tiger through two successful seasons of basketball.





## THE CAP AND GOWN



### Freshman Basketball

The University freshmen met the Boys' Club of Sewanee in their first game and won by a score of 60-24. Speed and passing ability enabled the freshmen to pile up the high score, whereas the Boys' Club team was handicapped by the absence of some of its regulars. It was a trial game for the freshmen, and every man acquitted himself well.

The Little Tigers displayed true Sewanee fight and grit in a hard-fought game lost to the freshmen of the University of Chattanooga, 36-13. The half found the Tiger trailing by the score of 22-4, but in spite of the fact that they were outclassed, the losers offered the Moccasins some tense moments. Castleberry and Kauertz were the mainstays of several Tiger rallies, but Purple defense was weak, and the Moccasins romped home to victory.

In a fast and exciting game the freshmen eked out a 29-27 victory over Castle Heights. Castleberry was the stellar performer with ten points, and Kauertz followed him with eight. Kenneth Clark played an excellent game at guard.

On the next day the freshmen exhibited a sterling brand of basketball to defeat the Baylor quintet, 35-14. The fresh were on their toes throughout the contest, and allowed the Baylor men only one field goal in the first half. Castleberry and Beggs were in top form, the former making one-hand tosses good for twelve points, and Beggs followed him with eight.

The freshmen were unable to stand up to their next opponents, the fast-shooting M. B. A. quintet, consequently losing, 29-14. The prep schoolers outplayed the Tigers in making crisp shots good and in moving in under the baskets with accurate passing. Lawver at center was the only Sewanee man in form, and he succeeded in scoring ten of the Little Tigers' fourteen points.

The little freshmen won their game on the occasion of their first invasion of Chattanooga, defeating the Notre Dame High School 29-25 in a closely-fought game. Kauertz, who got twelve counters, and Castleberry, who made seven, assured the Little Tigers of the victory. These two men used their long-range guns. The game was rough, since the score was about even all through the contest.

The Little Tigers avenged their loss to M. B. A. in a return game to the tune of 36-30, and in their second game with Notre Dame High School handed that team a second defeat. The score was 32-16. The entire squad was showing better form to defeat these teams touted as the best high school quintets in the section. In two games with the State Teachers' College of Murfreesboro, the Little Tigers halved the bill. The first game went to the Teachers, 35-30, and the Tigers won the second, 33-29, each team winning its home game. The Chattanooga freshmen gave them their worst beating of the season, almost tripling the score of the freshmen. The final count was 44-15.

McCallie and City High of Chattanooga both handed the freshmen defeats in their appearances in the Moccasin City. City High won, 31-25, Castleberry contributing ten of the Tiger points. McCallie took a four-point lead to win, 27-23. The Tiger points were hunched around seven, scored by Beggs. The freshmen wound up their season in Lebanon, Tenn., where they lost a close scrap to Castle Heights Military Academy. It was a return match, and the freshmen had won the first one. The freshmen kept within a few points of the cadets throughout the contest, but were hampered by the small gym in which the game was played and by the long absence of Kauertz and Dyer.





CAPTAIN CHARLES BARRON

Charlie Barron has distinguished himself in all three of the major sports. He now holds the Sewanee record in the half mile, and led his team during the season to victories over several competent contenders. In track he ran the middle distances, in football he was a halfback, and in basketball a forward. His home town of Columbia, South Carolina, has awarded him a medal for distinguished service in athletics. He is a member of the Phi Delta Theta fraternity.

# TRACK



## Varsity Track

The Tiger track team was somewhat at a loss after the resignation of Coach Harmon, but their worries were brought to an end when Mr. Willey offered his services as coach. Their worries ceased but their work began, for Mr. Willey thought that a team was as strong as its legs. The Purplemen under the guidance of Mr. Willey and backed by their persevering captain began to show real Sewanee spirit. Four of the Sewanee records were broken during the season, which shows the calibre of the team. Captain Barron, in the first meet of the season against the University of Tennessee, bettered his own record and Sewanee's record in the half mile. Goodman ran the four-forty against Kentucky in fifty-one and one-tenth seconds, setting a new Sewanee record. Twice during the season Eby forced the two-mile record down several seconds, and left the new mark at ten minutes, twenty-four seconds.

U. T., 83½; SEWANEE, 33½

The Tiger tracksters faced one of the strongest opponents of the season in the first meet. The Vols offered too much opposition for the inexperienced Sewanee team. In this meet Captain Barron bettered his old record in the half mile and set a new Sewanee record at two minutes and two and three-tenths seconds. Although the Tigers were able to capture only one first place, they hauled in a number of seconds, indicating that the team had done some work in the short time that the new coach had.

ALABAMA, 70; SEWANEE, 42

The next week-end Alabama invaded the lair of the Tiger and took a victory in the cold and rain. The Sewanee men still showed lack of experience except in the middle distances. Captain Barron, Hoppen, and Eby took first places. Eby came in second in the two mile after placing first in the mile. Goodman, Ezzell, Hannum, Bean, Dossett, and Walthour were the other Tigers to take places.

KENTUCKY, 85; SEWANEE, 32

On the next week-end the Wildcats of Kentucky defeated the Tiger in his own home. The famous Shipwreck Kelly was high point man of the afternoon, winning twenty-one of his team's eighty-five.





## THE CAP AND GOWN

The Kentuckians took eleven first places and ten seconds from the Tigers. Goodman for Sewanee ran the best race of the day and established a new record in the 440 at 51.1 seconds. Hoppen won first in the 220-yard low hurdles, Bean won the discus, and Captain Barron kept his slate clean by winning the half mile.

### SEWANEE, 77½; CHATTANOOGA, 34½

The Tigers hit their stride against the University of Chattanooga, and took ten first places from the Moccasins on their own field. Joe Robinson was high point man with twelve points to his credit. Eby ran the two mile in ten minutes and thirty-two seconds, lowering the old Sewanee record of ten and forty-two, which was held by Roscoe Howser. The Chattanooga boys were only able to capture three first places. Barron ran the mile for the first time and came out with a win to his credit. Chattanooga failed to enter a relay team, and two Sewanee teams fought it out.

### CHATTANOOGA, 38; SEWANEE, 74

The next week the Moccasins made another unsuccessful attempt against the Tigers and returned to their own campus after a thorough beating from the claws of the Tiger. Captain Barron and Hoppen were both away at the S. I. C. meet, where both of them ran the best races of their careers. Hoppen ran the 220 low hurdles in 25 flat. Barron won his heat in the preliminaries of the half mile, but was locked in by his opponents in the finals and lost. The absence of these two men did not seem to hinder the remaining Mountaineers. The two teams were composed of the best men from both the varsity and the freshman squads of each school. The Tigers captured nine first places and eight seconds. This meet was a glorious finish for a fighting Tiger team. Thanks of the University are due to Mr. Willey, to Captain Barron, and to the members of the team, for they certainly had the real stuff. It was their job to overcome the handicap of an eleventh hour change in coaches, and they did it successfully.

Letters were awarded to the following men: Barron, Eby, Bean, Robinson, Goodman, Hoppen, Ezzell, Walker, Hannum, Morton, Walthour, Kellerman, and Manager Burns. Mr. Allen G. Lincoln will coach the track team during the next season, and Goodman was elected captain of the 1932 track team.





## THE CAP AND GOWN



### Freshman Track

The Freshman Tiger Cats took a foraging trip to Nashville to hunt for the scalp of the Commodores, and returned without the prey. They took first in eight events and second in three others to score 53 points to the Commodores' 59. Cooper began his college track career with fifteen points to his credit. He again led a freshman victory of 66-46 in the next meet, a dual contest with the University of Chattanooga, his total for the afternoon being twenty-four. In a return meet with the Commodore freshmen, the Tiger avenged their former defeat, 59-53. The yearling flash, Cooper, took eighteen points to average  $17\frac{1}{2}$  per meet.

Castle Heights and Baylor lost to the first year men in a three-cornered track meet held on Hardee Field. They tallied thirty-one for Baylor, thirty-five for Castle Heights, and fifty-one for Sewanee. The flashing spikes of Cooper carried him to a 17-point total. He scored in the century, the 220-yard dash, the broad jump, and took a tie in the high jump. His final appearance was in a combination meet between Sewanee's combined freshman and varsity squads, and those of the University of Chattanooga. The Purples won, 74-38. Joe Robinson led the scoring with eleven to beat Cooper's ten by one point.

### Varsity Golf

Minus all aid from the University, with little time to practice due to bad weather, and with a golf course in bad condition, the 1931 Tiger golfers went out on their own to compete for Southern conference honors in the tournament held in Athens, Georgia. In the qualifying rounds water hazards and winter greens, of which the team had had little experience, accounted for Sewanee high scores. Les Wuescher and Goldie Hudson failed to qualify, and Harwood and Knorr went into the second flight. Harwood lost his first match to Goodes of North Carolina, 5-4. Harwood's Nemesis later eliminated Kilpatrick, Vanderbilt star, who made the lowest score in the practice rounds. In his first match Knorr beat Marshall of Vanderbilt, going to an extra green to win. Latimer of Georgia was the acting captain's opponent in the second match. They were even on the eighteenth, and both shot even pars through the twenty-first. On the twenty-second Latimer took a twenty-foot putt for a birdie to win over Knorr's par, and Sewanee's golf season was over.







## Interfraternity Athletics

Much interest was exhibited this year in the interfraternity athletic contests. The Bennett Cup, given annually to the fraternity winning the largest number of points in basketball, baseball, golf, swimming, and tennis was awarded to the Sigma Alpha Epsilon fraternity. The Sigma Nu finished in second place, and last year's cup winners, Alpha Tau Omega, ended the season in third position.

### S. A. E. VICTORIOUS IN BASKETBALL

The Sons of Minerva, flashing a powerful machine and an airtight defense, swept through the field suffering but one loss during the campaign. Charlie Piplar was the thorn in the side of the opponents of the winners. Sigma Nu took second place and Phi Gamma Delta rated third.

### BENGALS RETAIN HANDBALL TITLE

Joseph Schuessler and Hedley Williams walked off with the handball crown for the second consecutive year, defeating Harwood and Gamble of S. A. E. in the finals. The first contest of the finals was closely contested, but the Bengals flashed through to an easy win of 21-9 in the second.

### A. T. O. CAPTURES GOLF TITLE

A. T. O. made a clean sweep of golfing honors by winning first and second in that event. Charlie Pollard and Jimmy Bass shot good golf throughout the tournament to advance to the finals.

### S. A. E. TAKES TENNIS CROWN

Duplicating the feat of the A. T. O.'s in golf, the S. A. E.'s made a grand slam in tennis by taking both first and second places. Alex Wellford and Dick Butler won their way into the final round, and on their way to the crown suffered little trouble until the semi-finals, when they met stubborn opposition from Soaper, Phi Delta Theta, and Bass, A. T. O.

### SIGMA NU WINS SWIMMING MEET

Led by Dubose Eggleston, the Sigma Nus carried away honors in the annual swimming meet. The Phi Gams trailed the victors all the way to win second place. Points were well scattered, the winners claiming a meagre thirteen points.

### BASEBALL TITLE GOES TO S. A. E.

During the past season the Sigma Nus suffered their first loss in the great American pastime of baseball, and with it they lost the championship. The deciding game was probably the most exciting of the series. The Sigma Nus began a belated rally in the last inning of their contest with the victors, the rally fell short by one run, and gave the S. A. E.'s a three-to-two win. The champion S. A. E.'s exhibited the best fielding club of the league, and although they lacked real slugging ability, came through in the pinches with sufficient hits to win. Sigma Nu, in winning second place, showed themselves the best offensive team. Phi Delt, A. T. O., and Phi Gam tied for third.

### A. T. O. TRIUMPHANT IN TRACK

By placing in almost every event the Alpha Tau Omega's nosed out Sigma Nu to win the track meet for the second straight year. The victors totalled 51 points, and second took 48. Kappa Sig finished in third place with 35 points.



## Varsity Tennis

The Tiger tennis season was a marked success since Captain Teddy Burwell brought to the Mountain the first Southern Conference championship in many a year. He won the title under the hardest conditions. Teddy was trailing Yeomens of North Carolina under a scorching New Orleans sun with scores of 5-7 and 4-6. He had not yet become acclimated to the heat of the far South, being used to the cool mountain air. He came from behind in a dazzling display of court generalship to win, 5-7, 4-6, 6-3, 6-0, 6-1.

The netmen opened the season with their traditional rivals, Vanderbilt, to win before home folks, 4-0. On the next day the Purple team defeated the strong Birmingham-Southern team, 6-0. Miller and Bieman, playing singles and doubles for the visitors, later became S. I. A. A. champions.

The team left the latter part of April on their trip through the Carolinas and Georgia. Their first match was with Myers Park Club in Charlotte. The match was called a draw as both teams won three matches each. The next stop was in Chapel Hill, where the Tigers were defeated by Bryan Grant, national claycourt champion, and company. The inexperienced Sewanee team could do nothing with North Carolina's array of title holders, and came out on the short end of a 6-0 score. North Carolina later demonstrated that she had the best team in the country by defeating Princeton, Army, Harvard, and Yale.

The next match was with the Blue Devils of Duke. Sewanee again lost, this time, 4-2. Burwell accounted for a win in the singles, and with Hare decisively defeated Rogers and Jones. Sewanee then boarded the Pullman for Columbia, S. C., where they threw away a match to the Gamecocks by another 4-2 score.

The next day found the Tigers in Atlanta, where they met the strong Georgia Tech netmen. The match ended in a 3-3 tie. Aside from the brilliant play of Burwell, Hare lost a match by counts of 6-1, 15-17, 7-9. The match lasted from two in the afternoon until after six at night. The next day Sewanee was the guest of the University of Georgia, but the match had to be called off because of the bad temper of old Jupe Pluvius. Sewanee led the Bulldogs by a few games when the contest was called.

The Tiger next appeared in Chattanooga, where they blanked the Moccasins, 6-0, in a match started after five in the afternoon. Returning to the Mountain and remaining for a few days' practice, the Tiger again entrained for a road trip. The Crimson Tide of Alabama swept over the Purple, 4-2. Birmingham-Southern again lost to the Tiger, 4-2, and then the team split. Burwell and Hare proceeded to the Crescent City, where the former won the championship.



BURWELL



# ACTIVITIES



# *Fraternities*



## The Pan-Hellenic Council



THE Pan-Hellenic Council is composed of two representatives of each of the national fraternities at Sewanee. Acting under the authority of a charter granted it by the University, it is the body which governs all interfraternity relations at Sewanee.

From time to time it publishes booklets containing the rules covering all of the phases of fraternity activities on the Mountain. It is significant of fraternity life at Sewanee that Pan-Hellenic has not in the last five years been called upon to censure any of its member bodies. The offices of president and secretary rotate between the various fraternities, the representatives of each holding office for one year. For the year 1930-1931, these offices were held by Messrs. E. C. Nash and J. P. Thompson for the Delta Tau Delta fraternity.





THE CAP AND GOWN



BALL

ΑΤΩ



YATES



HOPPEN

ΣΑΕ



STIMSON, R.



WALKER

ΚΣ



WALTER



THOMPSON

ΔΤΔ



NASH



EZELL

ΦΔΘ



BARRON



EDWARDS

ΚΑ



DOSSETT



LEECH

ΦΓΔ



BRETTMAN



BURWELL

ΣΝ



MASSENGALE



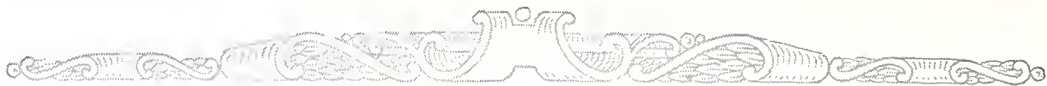
BYRNE

ΠΚΦ



COPELAND





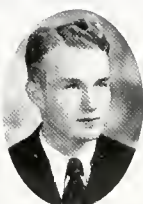
THE CAP AND GOWN



BASS



YATES



STERLING



PATTON, J.D.



JEFFRESS, T.



JEFFRESS



HOLMES



HATCH



HART



FRELINGHUYSEN



BALL, M.



DeBOSE



BALL, J.



DUNCAN



KRANZ



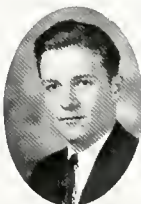
LINDHOLM



STARR



McALPINE



HOLLAND



OGAN



CARLTON



MEKEE



POLLARD



FORT







THE CAP AND GOWN

# Alpha Tau Omega

Founded at Virginia Military  
Institute, 1865

TENNESSEE OMEGA CHAPTER  
Installed, 1877



*Colors:*  
Old Gold and Sky Blue

*Flower:*  
White Tea Rose

## CHAPTER MEMBERSHIP

### *In Officio*

THE RE. REV. THOMAS F. GAILOR, S.T.D.

DR. B. F. FINNEY

DR. G. M. BAKER

### *In Facultate*

W. M. MACKELLAR  
W. B. NAUTIS\*

R. B. DAVIS  
DR. W. L. BEVANS

DR. W. H. DUBOSE  
DR. J. M. SCOTT

### *In Urbe*

P. S. BROOKS

P. S. BROOKS, JR.

### *In Theologia*

DEARING

TISDALE

T. PATTON

### *In Academia*

BALL, I.  
BALL, M.  
BASS  
CARLTON  
DUBOSE

DUNCAN  
FORT  
FRELINGHUYSEN  
GREEN  
HART

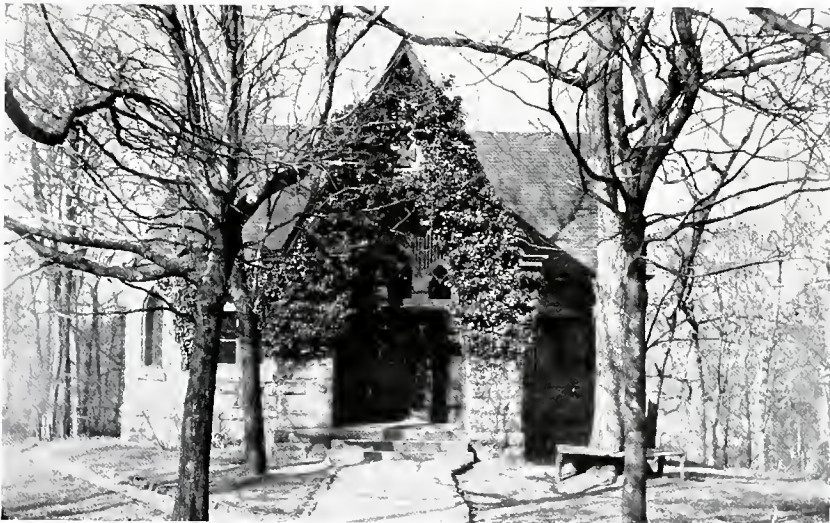
HATCH  
HOLLAND  
HOLMES  
JEFFRESS, A. H.  
JEFFRESS, T. D.

JONES  
KING  
KRANZ  
LINDHOLM  
MCALPINE

MACKINTOSH  
MCKEE  
OGAN  
PATTON, J. D.  
POLLARD

STARR  
STERLING  
THAMES  
YATES

\*Deceased





THE CAP AND GOWN



ΑΤΩ

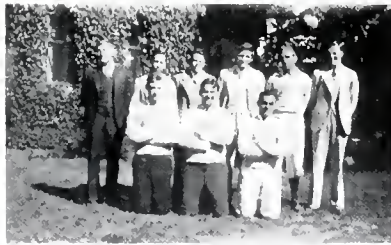
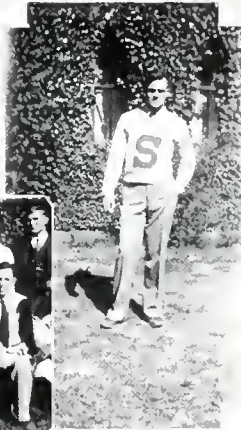




THE CAP AND GOWN



ΣΑΕ





THE CAP AND GOWN



KIRBY-SMITH



WEUSCHER



PIPLAR



COOPER



STIMSON, R



STIMSON, A



HARWOOD



CROSS



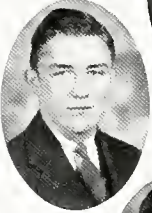
BUFORD



PAGE



McLURE



GAMBLE



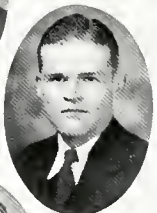
BUTLER



HOPPEN



CASTLEBERRY



TURNER



SANDERS



CUBURN



WELLFORD



GLASS





THE CAP AND GOWN

# Sigma Alpha Epsilon

Founded at University of  
Alabama, 1856

TENNESSEE OMEGA CHAPTER  
Installed, 1881



*Colors:*  
Royal Purple and Old Gold

*Flower:*  
Violet

## CHAPTER MEMBERSHIP

### *In Officio*

REYNOLD M. KIRBY-SMITH, M.D.

### *In Facultate*

T. S. LONG

MAURICE A. MOORE

MOULTRIE GUFREY

H. A. GRISWOLD

### *In Urbe*

H. E. CLARK

### *In Theologia*

J. C. TURNER

### *In Academia*

HARWOOD  
STIMSON, R.  
CROSS  
BUFORD  
BECKWITH  
STIMSON, A.

SADLER  
McLURE  
WEUSCHER  
PAGE  
HOPPEN

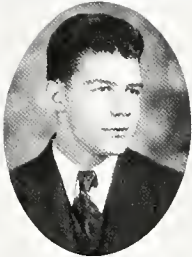
BUTLER  
GAMBLE  
GLASS  
KIRBY-SMITH  
WELLFORD

SANDERS  
CASTLEBERRY  
COBURN  
COOPER  
PIPLAR  
JAMES





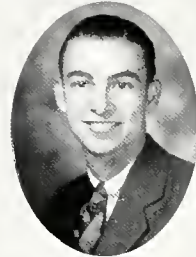
THE CAP AND GOWN



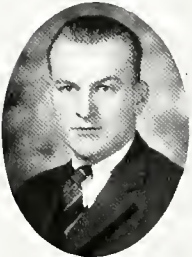
KELLARMAN, F



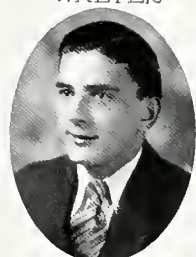
MULLINS



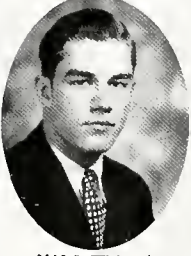
WALTER



BLAIR



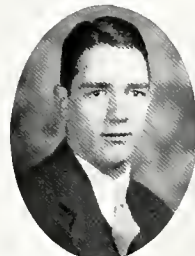
JOHNSTON



WALTERS



TINKER



KELLARMAN, R.



KELLARMAN, J.



HANNON



WALKER





THE CAP AND GOWN

# Kappa Sigma

Founded at University of  
Virginia, 1867

OMEGA CHAPTER

Installed, 1882



*Colors:*

Scarlet, Green, and White

*Flower:*

Lily-of-the-Valley

## CHAPTER MEMBERSHIP

### *In Officio*

A. L. LEAR, M.D.

### *In Theologia*

HAROLD BACHIE

### *In Academia*

BRAUN  
HANNON  
KELLERMAN, C. D.  
TINKER  
WALKER  
WALTER, C. M.

KELLERMAN, J. L.  
MULLINS  
ADAMS  
BLAIR  
CROSLAND  
QUISENBERRY

TAUBER  
THOMPSON, F. A.  
WALTERS  
BAILEY  
CARPENTER  
CHERRY

HAYWARD  
JOHNSTON, J. B.  
KELLERMAN, F.  
KING, W. D.  
WALTER, B. H.  
WISE





THE CAP AND GOWN



KΣ







THE CAP AND GOWN





THE CAP AND GOWN

EZELL      ROBERTSON      BARRON

WILSON      HARE      TORIAN      SOAPER

PARISH      FRAZER

HUDSON

VAUGHN      PROVINE      HERBERT, W.      HERBERT, T.

LITTEL      HENDERSON      ADAIR      CALICUTT      ANDERSON





THE CAP AND GOWN

# Phi Delta Theta

Founded at Miami University,  
1848

TENNESSEE BETA CHAPTER  
Installed, 1883



*Colors:*  
Orchid and Azure

*Flower:*  
White Carnation

## CHAPTER MEMBERSHIP

*In Facultate*

H. M. GASS

*In Officio*

TELEFAIR HODGSON

*In Urbe*

ATKINS

FAZICK

*Chapter Mother*

MRS. MARY EGGLESTON

*In Academia*

ROBERTSON  
EZELL  
BARRON  
WILSON  
PEACOCK

PARRISH  
HARE  
HERBERT, T.  
HERBERT, W.  
SOAFER

TORIAN  
PROVINE  
LITTELL  
ADAIR, D.  
FRAZER, W.

CHEEK  
MCSPADDEN  
VAUGHAN  
ADAIR, J.  
CALICUTT

HENDERSON  
LAWRENCE  
HUDSON  
ANDERSON, J.  
FRAZER, D.

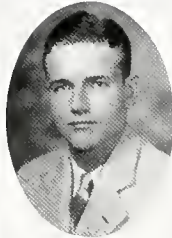




THE CAP AND GOWN



HOLMES



NASH



WHITAKER



THOMPSON



EASON



DUNLAP



ROBBINS



GRAHAM



MUELLER



GREENWOOD



HAWKINS



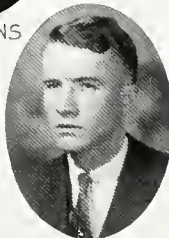
AMES



ALLEN



CARNELL



HARRIS



ZEIGLER





THE CAP AND GOWN

# Delta Tau Delta

Founded at Bethany College,  
West Virginia, 1859

BETA THETA CHAPTER  
Installed, 1883



*Colors:*  
Purple, White, and Gold

*Flower:*  
Pansy

## CHAPTER MEMBERSHIP

### *In Facultate*

DR. G. B. MYERS

W. W. LEWIS

### *In Academia*

WHITAKER  
THOMPSON, J. P.  
EASON  
NASH  
HOLMES

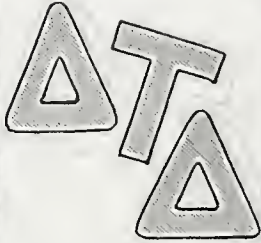
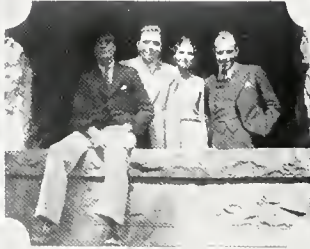
DUNLAP  
MUELLER  
AMES  
HARRIS, F. B.  
ROBBINS  
HAWKINS

GRAHAM  
ALLEN  
GREENWOOD  
CARNELL  
ZEIGLER





THE CAP AND GOWN





THE CAP AND GOWN



K  
A





THE CAP AND GOWN



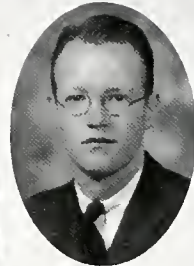
CLAIBORNE



TOMBS



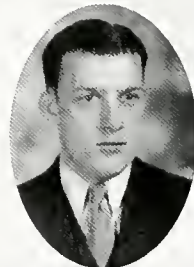
EDWARDS



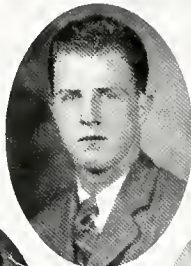
DOSSETT



BEALL



WEBSTER



CRAVENS



LANDERS, C



LANDERS, E.



HOLLIDAY



MILWARD







THE CAP AND GOWN

# Kappa Alpha

Founded at Washington and Lee  
University, 1868

ALPHA ALPHA CHAPTER  
Established, 1883



*Colors:*  
Crimson and Gold

*Flowers:*  
Magnolia and Crim'on Rose

## CHAPTER MEMBERSHIP

### *In Facultate*

COL. D. G. CRAVENS

A. C. MARTIN

G. W. NICHOLSON

### *Chapter Mother*

MRS. D. G. CRAVENS

### *In Academia*

EDWARDS  
HOLLIDAY  
HOBART  
HERRING  
CLAIBORNE

BEALL  
MILWARD  
LANDERS, E. L.  
LANDERS, F. C.  
PALMER, R. A.

WEBSTER  
CRAVENS  
McCULLOCH  
DOSSETT  
TOMBS

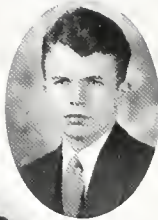




THE CAP AND GOWN



PABST



WILLIAMS



LEECH



FAST



WAGNER



RICE



STONE



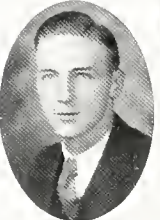
MYERS



ANDERSON



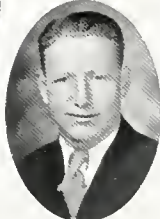
BOYD



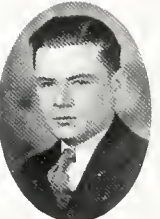
BRETTMAN



TOWLE



BEAN



STEWART



PALMER, A.



PATE



RAY



# Phi Gamma Delta

Founded at Jefferson College,  
Canonsburg, Pa., 1848

GAMMA SIGMA CHAPTER  
Established, 1919



*Color:*  
Royal Purple

*Flower:*  
Heliotrope

## CHAPTER MEMBERSHIP

### *In Officio*

HARVEY HARMAN

### *In Facultate*

DR. C. L. WELLS

GEN. J. P. JERVEY

G. F. RUPP

### *In Academia*

PABST  
WILLIAMS  
LEECH  
FAST  
WAGNER  
RICE

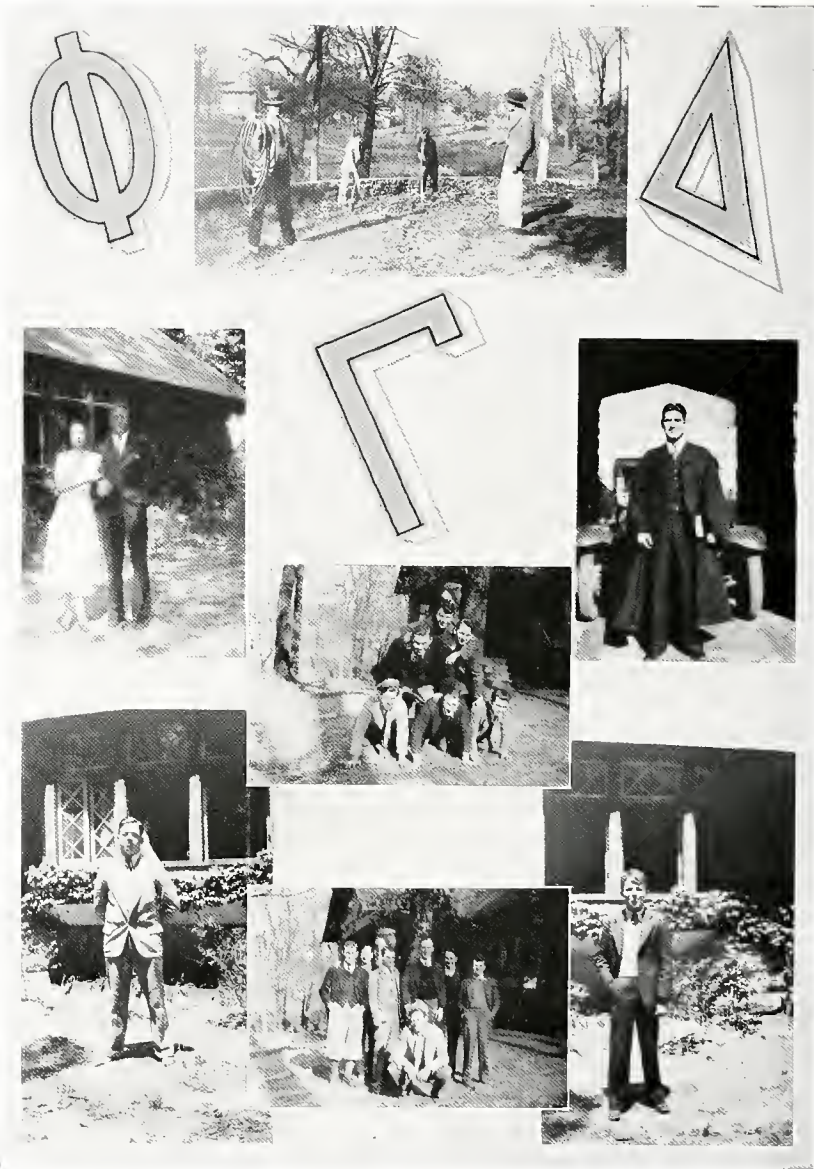
STONE  
BOYD  
MYERS  
ANDERSON  
BREITMAN  
TOWLE

BEAN  
STEWART  
PALMER, A. W.  
PALE  
RAY  
BEGGS



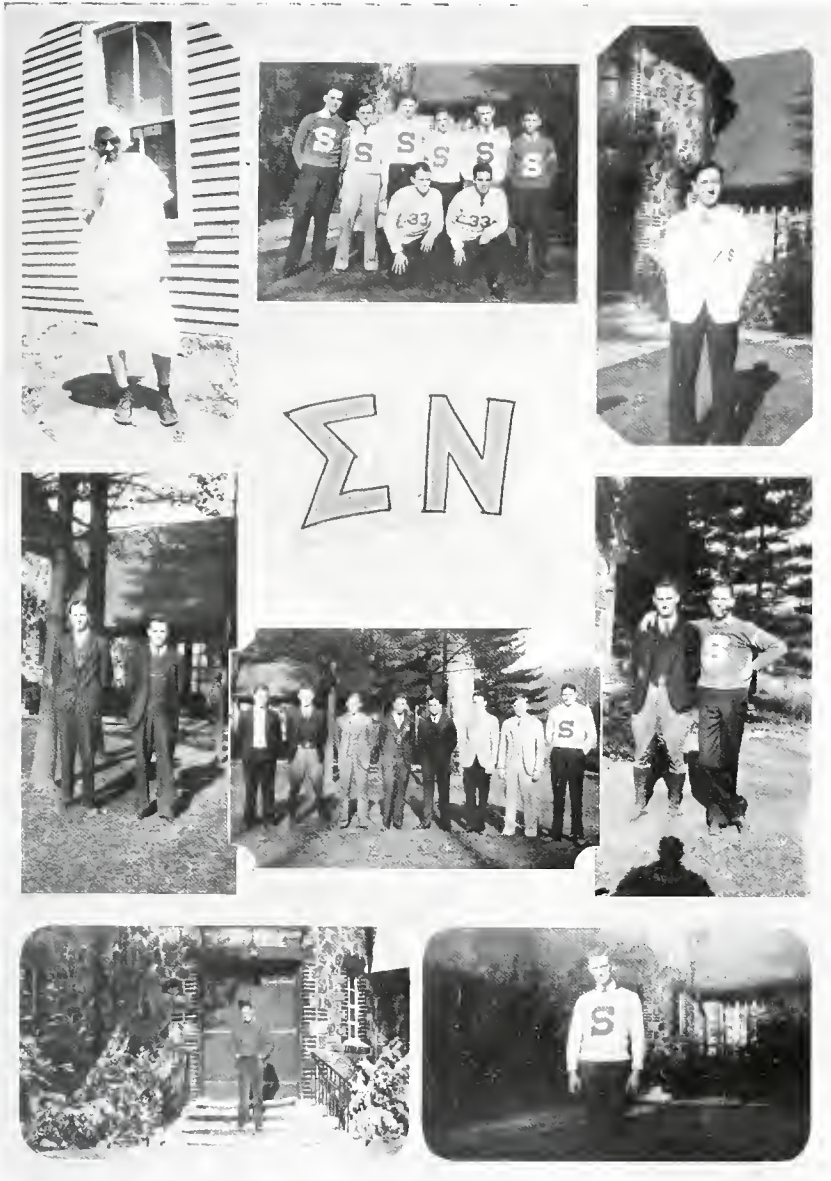


THE CAP AND GOWN





THE CAP AND GOWN

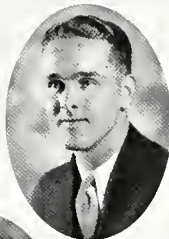




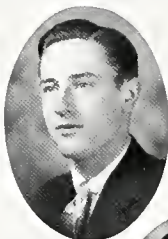
THE CAP AND GOWN



HOLLIS, F.



DAWSON



BURWELL



EGGLESTON



FORTUNE



CARPER



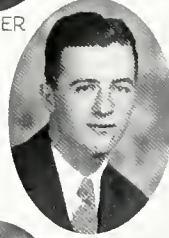
JEFFRIES~



HART



GOODMAN



MELLON



BAARCKE



BURNS, B.



BURNS, M.



HOLLIS, D.



TISON



THOMAS



MORTON





THE CAP AND GOWN

# Sigma Nu

Founded at Virginia Military  
Institute, 1868

BETA OMICRON CHAPTER  
Established, 1889



*Colors:*  
Black, White, and Gold

*Flower:*  
White Rose

## CHAPTER MEMBERSHIP

### *In Facultate*

DR. S. L. WARE

### *Chapter Mother*

MRS. S. L. WARE

### *In Academia*

BURWELL  
CARPER  
MORTON  
FORGY  
FORTUNE  
EGLESTON  
MASSENGALE  
HOLLIS, F.

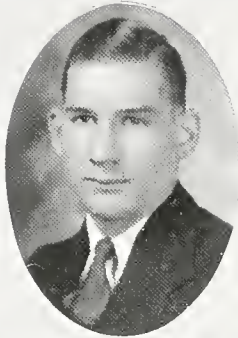
HOLLIS, D.  
BAARCKE  
THOMAS  
BURNS, M.  
BURNS, B.  
DAWSON  
GOODMAN  
MELLON

PHILLIPS, W.  
PHILLIPS, B.  
HART, J.  
KAUERZ  
TISON  
PERRIN  
JEFFRIES  
WELSHAMPLE

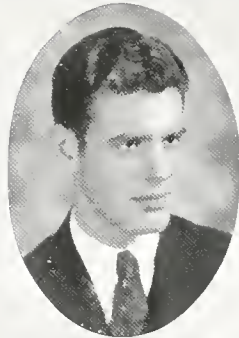




THE CAP AND GOWN



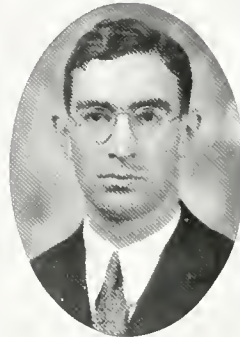
SCHUESSLAR



GRAY



WILLIAMS, H.



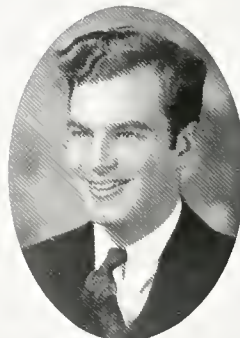
FOUST



BIEHL



HANNUM



MATTHEWS







THE CAP AND GOWN

## The Royal Bengal Fraternity

Founded at the University of  
the South, 1926

ALPHA CHAPTER



*Colors:*  
Green and White

*Flower:*  
White Jasmine

CHAPTER MOTHER  
MRS. CARY B. WILMER

### CHAPTER MEMBERSHIP

MATTHEWS  
HANNUM  
CALIFF  
BIEHL

FOUST  
BARTLAM  
WILLIAMS, H.  
SYLVESTER  
WYCKOFF

ELLIS  
HAYES  
GRAY  
SCHUFSSLER





THE CAP AND GOWN



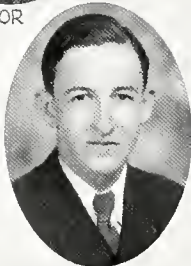
TAYLOR



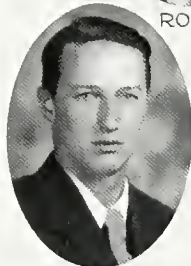
COPELAND



ROGERS



BYRNE



UNDERWOOD



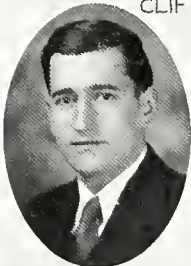
CLIFT



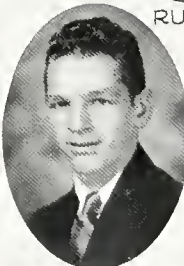
RUSSEL



GILCHRIST



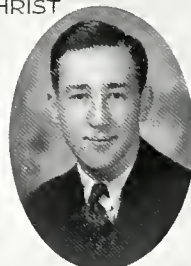
EBY



DOUGLASS



McNEIL



DYER





THE CAP AND GOWN

# Pi Kappa Phi

Founded at the College of  
Charleston, 1904

ALPHA PI CHAPTER  
Established, 1929



*Colors:*  
Gold and White

*Flower:*  
Red Rose

## CHAPTER MEMBERSHIP

### *In Facultate*

DR. R. L. PETRY

### *In Theologia*

G. H. HANN

F. E. PULLEY

### *In Academia*

GILCHRIST  
EBY  
TAYLOR  
ROGERS  
HUNTLEY  
UNDERWOOD

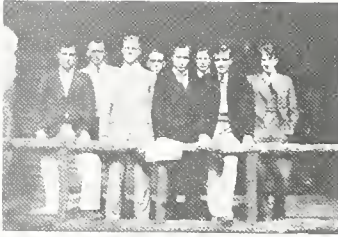
DYER  
BYRNE  
WEAVER  
THOMPSON, L.  
THOMPSON, A.

DOUGLASS  
MCNEIL  
CLIFT  
CLARK, K. K.  
COPELAND  
ROBINSON

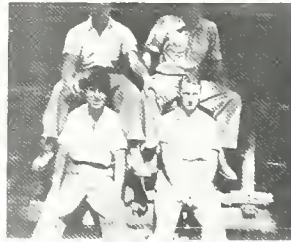




THE CAP AND GOWN



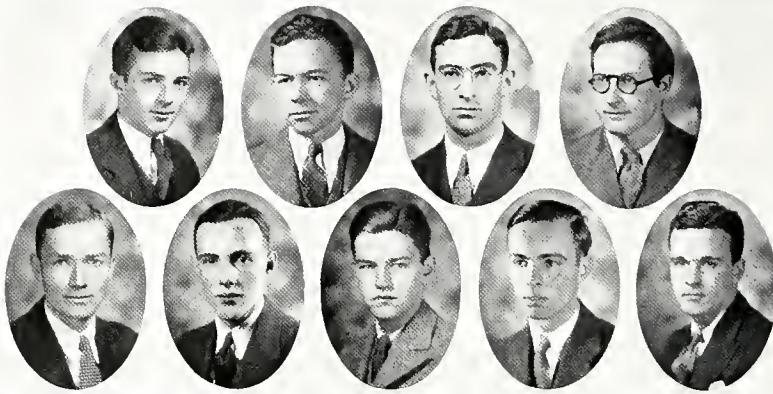
Π Κ Ø



*Honorary  
Fraternities*



THE CAP AND GOWN



Phi Beta Kappa

National Honorary Scholastic Fraternity  
Founded at William and Mary, December 5, 1776

BETA OF TENNESSEE

Established 1926

ROLL

*In Facultate*

- GEORGE MERRICK BAKER
- WILLIAM HASKELL DUBOSE
- BENJAMIN FICKLIN FINNEY
- HENRY MARKLEY GASS
- WILLIAM S. KNICKERBOCKER
- ROBERT LOWELL PETRY
- SEDFY LYNCH WARE
- CARY BRECKINRIDGE WILMER
- DAVID E. FRIERSON
- W. M. MACKELLAR



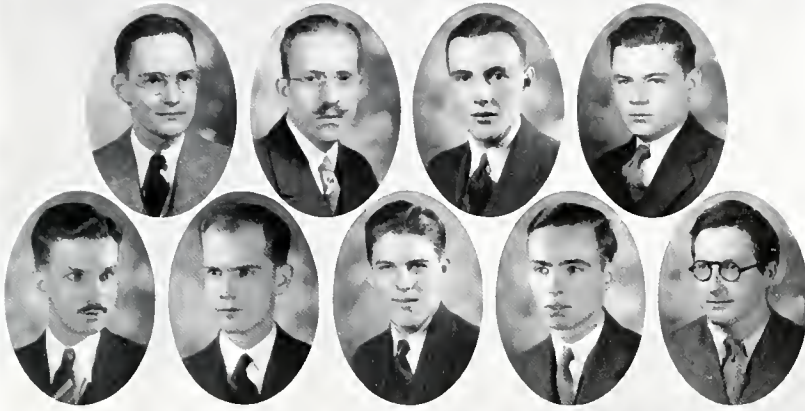
*In Academia*

- H. C. ROBERTSON
- D. YATES
- G. D. WALKER
- W. B. CARPER, JR.
- M. BUFORD
- F. V. D. FORTUNE
- G. T. FOUST
- DICK TAYLOR, JR.
- C. W. CROSS
- R. B. SEARS





THE CAP AND GOWN



### Sigma Upsilon

National Honorary Literary Fraternity  
Founded at the University of the South in 1906

#### SOPHERIM CHAPTER

*(Mother Chapter)*

##### ROLL

GENERAL J. P. JERVEY

MARTIN  
LAMBERT  
GRISWOLD  
MASSENGALE  
COPELAND

STEWART  
TAYLOR  
SPRINGER  
TINKER  
PULLEY

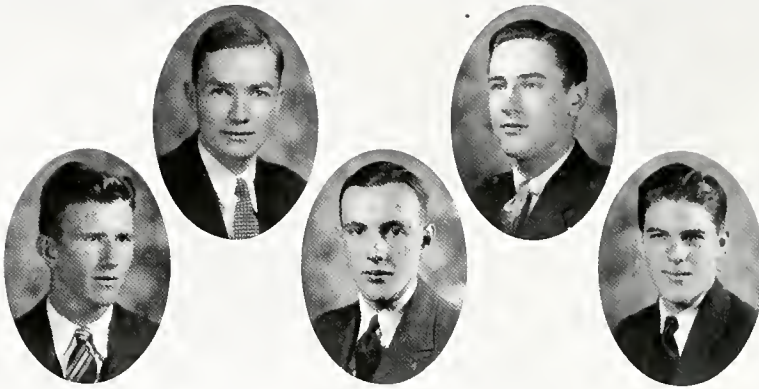
CARPER  
WALKER  
DEARING  
PATTON  
BALL, M.

Membership in Sopherim is limited to Gownsmen who have shown decided literary interests during their first two years in the University. Meetings are held twice a month at which no less than two papers are read. The subjects of these papers, though decidedly literary in tone, are optional with the writer. Sopherim is perhaps the most informal as well as the most active honorary organization at Sewanee.





THE CAP AND GOWN



## Alpha Phi Epsilon

National Honorary Forensic Fraternity  
Founded at the University of Alabama in 1918

### ALPHA ALPHA CHAPTER

*Established in 1926*

#### ROLL

PROF. E. M. KAYDLN

PROF. T. S. LONG

PROF. W. H. MACKELLAR

H. A. GRISWOLD

DAVID YATES

GEORGE HANN

C. L. BURWELL

W. B. CARPER, JR.

F. E. PULLEY

ST. E. MASSENGALE

JULIUS FRENCH

MOULTRIE BURNS

W. M. BALL

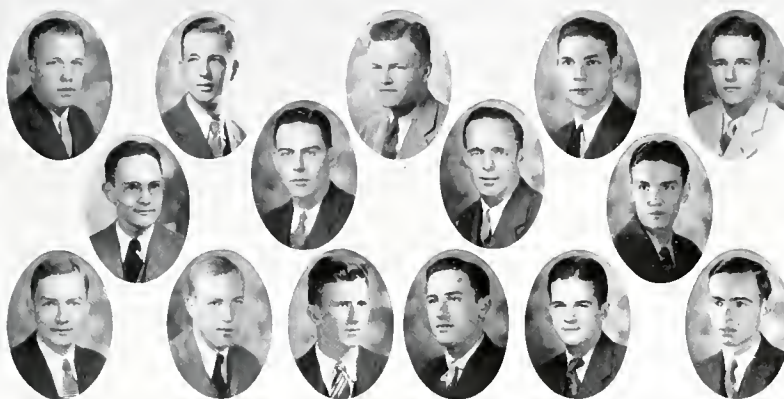
Alpha Phi Epsilon holds monthly meetings during the year, at which pertinent topics are discussed. Membership in the fraternity is limited to Gownsmen who have shown proficiency in the forensic activities of the University.







THE CAP AND GOWN



Blue Key

National Honorary Leadership Fraternity  
Founded at the University of Florida in 1924

SEWANEE CHAPTER

*Established in 1927*

ROLL

*In Facultate*

PROFESSOR W. H. MacKELLAR

*In Academia*

BARRON  
EZEIL  
HOPPEN  
MASSENGALE  
NASH  
WALTHOUR  
YATES  
STIMSON, R. B.  
GOODMAN



COPELAND  
BURNS, M. B.  
BURWELL  
PHILLIPS  
THOMPSON  
WALKER  
CROSLAND  
HOLLIS, D.  
CARPER

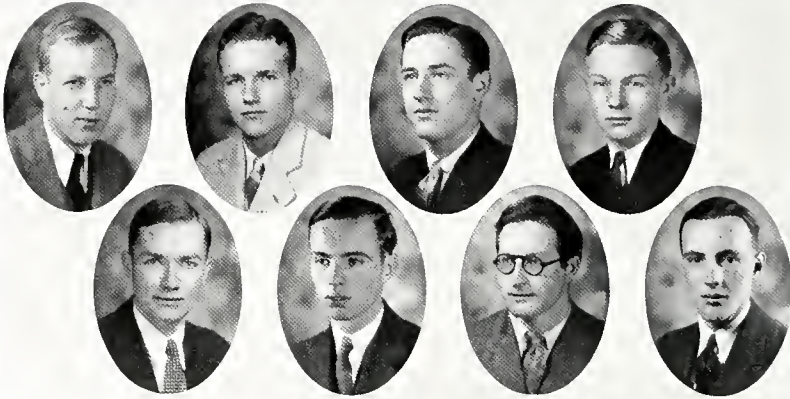
Blue Key plays the part of Campus Kiwanis at the University, meeting from time to time with the purpose of discussing the more practical problems of local student life. It maintains a fire department and acts as host to various visiting athletic teams during the course of the scholastic year.

Only outstanding men of the junior and senior classes are elected to membership in Blue Key.





THE CAP AND GOWN



Omicron Delta Kappa

National Honorary Leadership Fraternity  
Founded at Washington and Lee University in 1914

ALPHA ALPHA CIRCLE

Established in 1920

ROLL

*In Facultate*

DR. B. F. FINNEY	R. B. DAVIS
DR. G. M. BAKER	H. M. GASS
REV. MOULIRIE GUERRY	

*In Academia*

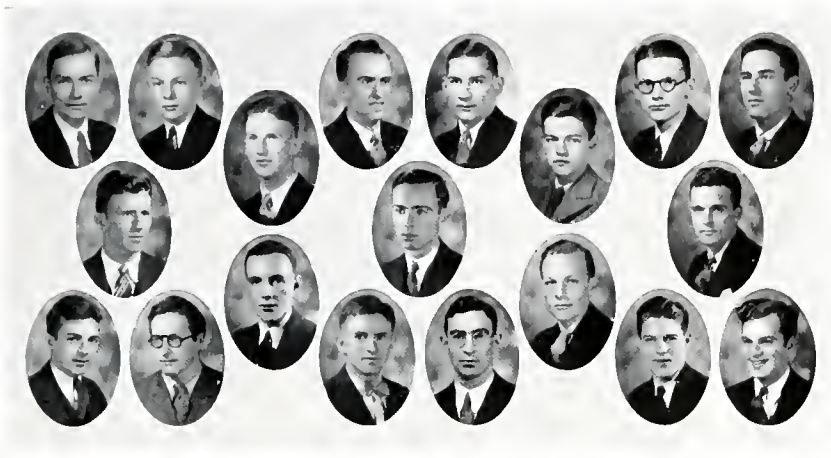
YATES	WALKER
EZELL	TAYLOR
NASH	CARPER
BURWELL	ROBBINS

O. D. K. is the reward of merit for men who have shown ability in various fields of activity, scholarship, publications, athletics, etc. The society aims to meet and discuss problems of general interest; the society aims to solve these problems by the individual members of the circle. Its purposes may be said to be three: to recognize unusual and many-sided ability, and to encourage it; to bring together a representative group of men and create an organization which will mold the sentiment of the University on questions local and intercollegiate; to bring together members of the faculty and student body on a basis of mutual understanding.





THE CAP AND GOWN



Scholarship Society

DAVID YATES . . . . . *President*  
 DAVID WALKER . . . . . *Vice-President*  
 ABBOT C. MARTIN . . . . . *Secretary-Treasurer*

ROLL

*In Facultate*

DR. BAKER	DR. WELLS	DR. SCOTT
DR. BEVAN	DR. WILMER	DR. PETRY
DR. DU BOSE	MR. GASS	MR. KAYDEN
DR. FINNEY	MR. R. B. DAVIS	MR. FRIERSON
DR. KNICKERBOCKER	MR. GUERRY	MR. MOORE
DR. WARE	MR. LONG	GEN. JERVEY

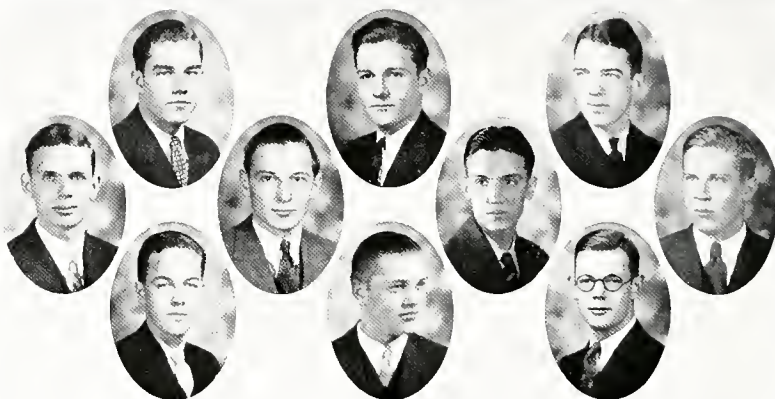
*In Academia*

BALL, W. M.	TAYLOR, D., JR.	FORTUNE, F. V. D.
BURNS, M. B.	CARPER, W. B., JR.	FOUST, G. T.
HANNON, A. C.	BASS, J. O.	LANDERS, C. L.
MASSENGALE, ST. E.	BUFORD, G. M.	LANDERS, E. L.
ROBERTSON, H. C.	BURWELL, C. L.	ROBBINS, F. M.
SCHUESSLER, J. W.	CROSS, C. W.	SEARS, R. B.
WALKER, G. D.	EDWARDS, B. W.	WILLIAMS, H. J.
YATES, D.		MATTHEWS, A. ST. J.





THE CAP AND GOWN



## Neograph

Under-Gownsmen Honorary Literary Fraternity  
Founded at the University of the South in 1903

### ROLL

ADAIR  
HOLLAND  
WALTERS  
STONE

CLAIBORNE  
CROSLAND  
BAILEY  
ALLEN  
J. HART

GREEN  
A. JEFFRIES  
MCKEE  
LORD

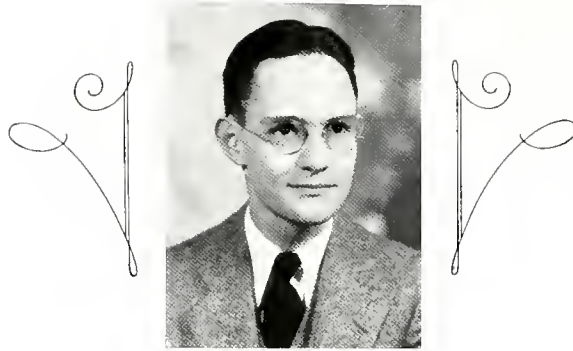
Neograph was founded at the University of the South in 1903. It is a literary fraternity for men who have shown literary ability, but are ineligible for Sopherim on account of gowns-man requirements.



# *Publications*



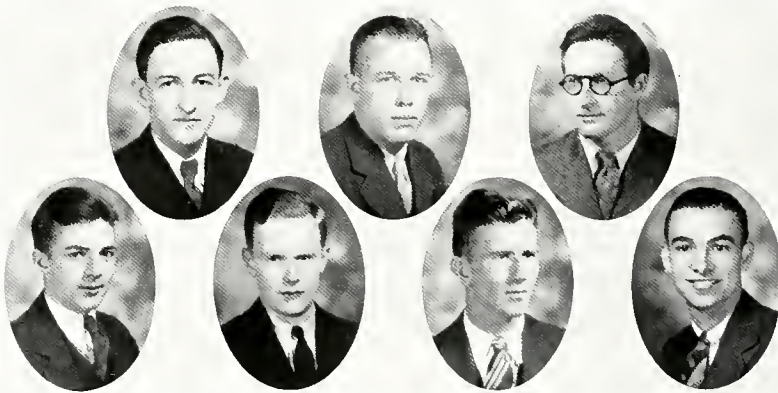
THE CAP AND GOWN



Cap and Gown

EDITORIAL STAFF

GEORGE COPELAND . . . . .	Editor-in-Chief
CHARLES WALTER . . . . .	Photographic Editor
DICK TAYLOR . . . . .	Photographic Editor
CHARLES HOPPEN . . . . .	Art Editor
DOUGLAS ADAIR . . . . .	Assistant Art Editor
FRANK FORTUNE . . . . .	Photographic Editor
FRANK PULLEY . . . . .	Humor Editor
ROYAL SANFORD . . . . .	Humor Editor





THE CAP AND GOWN



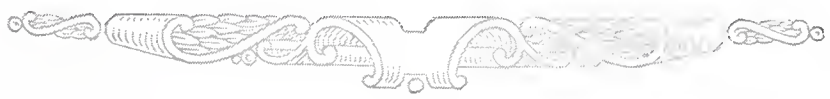
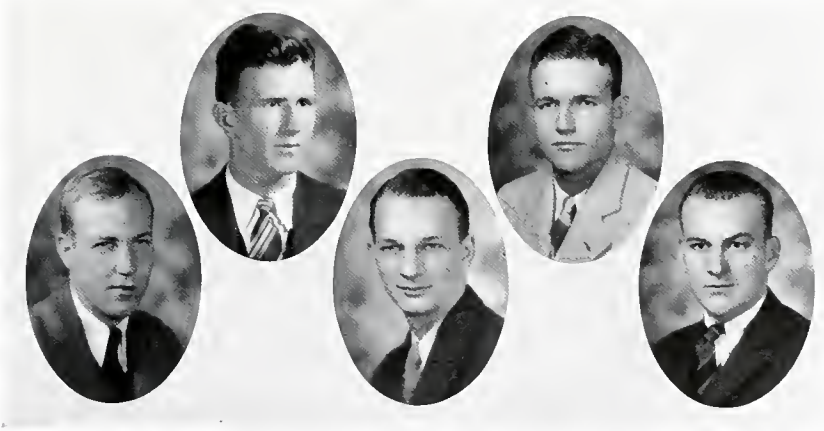
Cap and Gown

BUSINESS STAFF

- DAVID WALKER . . . . . *Manager*
- R. D. BLAIR . . . . . *Associate Business Manager*
- WILLIAM LEECH . . . . . *Advertising Manager*

SALES STAFF

- ARCHIE STERLING
- MOULTRIE BURNS
- JOHN EZELL
- EDWARD NASH





THE CAP AND GOWN



Purple Staff

ST. ELMO MASSENGALE . . . . . Editor-in-Chief  
F. E. PULLEY . . . . . Managing Editor

LITERARY STAFF

GEORGE COPELAND . . . . . Contributing Editor  
BURTON PHILLIPS . . . . . Assistant Managing Editor  
HOWARD MUELLER . . . . . News Editor  
FRANK FORTUNE . . . . . News Editor  
JERRY THOMPSON . . . . . Local News Editor

ATHLETICS

TOM BYRNE . . . . . Athletic Editor  
MOULTRIE BURNS . . . . . Assistant Athletic Editor

CIRCULATION

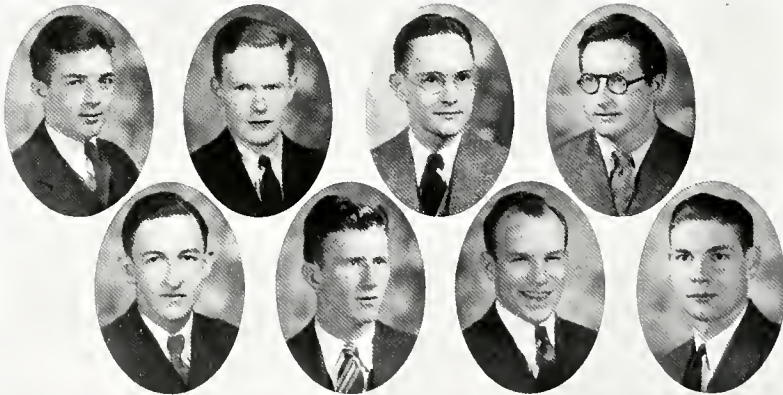
McNIEL . . . . . TORIAN . . . . . PEACOCK

BUSINESS

C. W. UNDERWOOD . . . . . Business Manager  
DICK TAYLOR . . . . . Student Business Manager

REPORTERS

BUFORD . . . . . MILWARD  
MELLON . . . . . TYSON





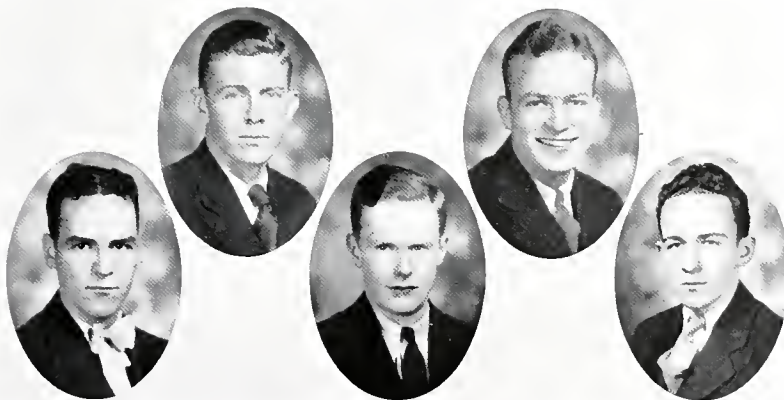


THE CAP AND GOWN



Mountain Goat Staff

- FRANK E. PULLEY . . . . . *Editor-in-Chief*
- K. T. ANDERSON, JR. . . . . *Business Manager*
- ST. ELMO MASSINGALE . . . . . *Poetry*
- PETER LAMBERT . . . . . *Books*
- CHARLES WEISHAMBLE . . . . . *Copy*
- DOUGLAS ADAIR . . . . . *Art*
- ROBERT P. HARE, III . . . . . *Exchange*
- BILL KNORR . . . . . *Literary*
- OSCAR LINDHOLM . . . . . *Advertising Manager*
- WALTER McNEIL . . . . . *Circulation Manager*
- ALLEN PALMER . . . . . *Art Assistant*





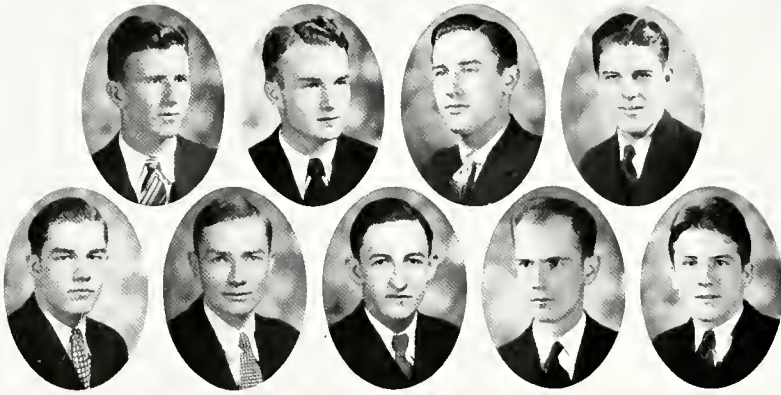
THE CAP AND GOWN



# *Clubs*



## THE CAP AND GOWN



### Debaters

MOULTRIE BALL  
MOULTRIE BURNS  
TOMAS D. BYRNE  
H. NEVILLE TINKER  
FRANK E. WALLERS

DAVID YATES  
CLAYTON L. BURWELL  
WALTER JONES  
ARCHIE SIERLING  
HOMER P. STARR

Debating has held an honored position among the extra-curricula activities at Sewanee since the founding of the University. This year efforts were made to interest the student body in college debating. Pertinent subjects were discussed with representatives from leading Southern colleges.





THE CAP AND GOWN



Choir

OFFICERS

WOOD BOWYER CARPER, JR. . . . . <i>President</i>	HOWARD FREDERICK MUELLER . . . . . <i>Sec'y-Treas.</i>
FRANK VAN DUSEN FORTUNE . . . . . <i>Vice-President</i>	PIERRE DU MAINE LAMBERT . . . . . <i>Librarian</i>

*Tenors*

DAVID YATES	FRANK MIX ROBBINS, JR.	JAMES SESSIONS BUTLER, JR.
JEROME PILLOW THOMPSON	FRANK DEARING, JR.	JOHN BUCKMAN WALTHOUR
CHARLES FREDERICK BAARCKE	WILLIAM MINTER WEAVER	JOSEPH FVFRETT HART, JR.
HEDLEY JAMES WILLIAMS	H. DUANE RUSSELL	HOMER PILGRIM STARR
	WALTER WILLIAM McNEIL, JR.	

*Baritones*

JOHN ASHMORE GOWEN	PIERRE DU MAINE LAMBERT	BYARD McINTOSH COLE
WOOD BOWYER CARPER, JR.	PAUL ZIEGLER	CHARLES STONE
HOWARD FREDERICK MUELLER	ROBERT ERNEST GREENWOOD	THOMAS B. HENDERSON
CHARLES CARLISLE AMES	WILLIAM HAYS KNORR	CECIL B. JONES
CHARLES AXEL WISHAMBLE	WILLIAM FRANK KING, JR.	THEODORE P. DEVLIN
GEORGE HAMILTON DUNLOP IV	RICHARD HARWOOD	FRANK LOUIS HAWKINS

*Basses*

HENRY FINCH HOLLAND	WILLIAM J. WYCKOFF	BERRYMAN W. EDWARDS
FRANK VAN DUSEN FORTUNE	OLIN GORDON BEALL	OMAR BOECKCK SANDERS
FRED ARNOLD THOMPSON	JAMES W. BREITMANN	EDWIN S. FOWLE, JR.
BURTON KEENEY PHILIPS	FRANCIS GAMBELL GRAY	HARRY GRAHAM
VIRGIL PIERCE STEWART	DUNCAN MONROE HOBART	PRISTON BROOKS HUNTLEY
E. PERCY BARTLAM	THEODORE PATTON	EDMUND T. TURNER
	INNIS LaRoche JENKINS	

*Organist and Choirmaster*

BERNARD EDWIN HIGONS





THE CAP AND GOWN



The Glee Club

BERNARD E. HIRONS . . . . . *Director*  
 JOHN TURNER . . . . . *Manager*  
 W. K. McCULLOCH . . . . . *Director of Dramatics*  
 JEROME THOMPSON . . . . . *President*  
 REDMOND EASON . . . . . *Vice-President*  
 JOHN GOWAN . . . . . *Secretary-Treasurer*

DEARING  
 ROBBINS  
 YATES  
 RUSSEL  
 GOWEN  
 KNORR  
 HARWOOD  
 BRETTMAN

AMES  
 EDWARDS  
 THOMPSON  
 DUNLAP  
 BAARCKE  
 THOMPSON  
 McNEIL

WEAVER  
 CARPER  
 HENDERSON  
 TOWLE  
 GREENWOOD  
 HART  
 PATTON  
 HOLLAND

CHARLES STONE, *Accompanist*





THE CAP AND GOWN



The Sewanee Syncopators

ALLEN PALMER, *Director*

- KELLERMAN, F. . . . . *Violin*
- THOMPSON, J. P. . . . . *First Saxophone*
- ALLEN PALMER . . . . . *Second Saxophone*
- AMES . . . . . *Third Saxophone*
- EASON . . . . . *Trumpet*
- VAUGHN . . . . . *Banjo*
- HART . . . . . *Piano*
- BYRNE . . . . . *Drums*





THE CAP AND GOWN



Sigma Epsilon

OFFICERS

- MOULTRE BALL . . . . . *President*
- J. O. BASS . . . . . *Vice-President*
- O. D. CARLTON . . . . . *Secretary-Treasurer*

MEMBERS

- |              |           |            |          |
|--------------|-----------|------------|----------|
| PULLEY       | BURNS, M. | MASSENGALE | TAYLOR   |
| FRENCH       | BURNS, B. | HOLLAND    | BYRNE    |
| AMES         | BAARCKE   | DUNCAN     | EBY      |
| JEFFRESS, A. | ROBERTSON | FORT       | BEAN     |
| JEFFRESS, T. | YATES     | BALL, I.   | HART, G. |
|              |           | JONES      |          |

Sigma Epsilon and its rival, Pi Omega, are the oldest student organizations on the Mountain. They were founded back in the days when there were few social fraternities on the Mountain and no honorary fraternities. The societies furnished the student with his main interest outside his studies. The name Sigma Epsilon is taken from the initial letters in the name of Bishop Stephen Elliott, one of the founders of the University. Sigma Epsilon sponsors debates, orations, and discussions at its weekly meetings. All these are in the nature of a preparation for the commencement contests with Pi Omega.





THE CAP AND GOWN



Pi Omega

B. F. SPRINGER . . . . . *President*  
 L. S. WHITAKER . . . . . *Secretary*  
 A. St. J. MATTHEWS . . . . . *Treasurer*

ROLL

HANN	TINKER	QUISENBERRY
TAUBER	GRAY	HAYWARD
PALMER	SYLER	WALTERS
BIEHL	SIMONS	CALIFF
SANFORD	MCNEIL	LANDERS, E.

Like Sigma Epsilon, Pi Omega sponsors debates and discussions among its members at regular bi-monthly meetings held at Walsh Hall. The name Pi Omega is taken from the initial letters of the names of two of the founders of the University, Bishops Polk and Otey.



THE CAP AND GOWN



German Clubs

OFFICERS OF THE SENIOR GERMAN CLUB

- EDWARD C. NASH . . . . . *President*
- ST. ELMO MASSENGALE . . . . . *Vice-President*
- W. K. McCULLOCH . . . . . *Secretary-Treasurer*

OFFICERS OF THE JUNIOR GERMAN CLUB

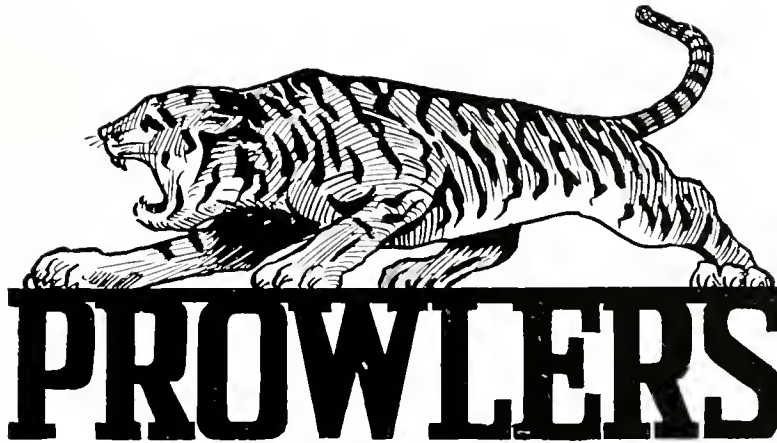
- EDWARD B. CROSLAND . . . . . *President*
- HUGH GOODMAN . . . . . *Vice-President*
- CARLISLE PAGE . . . . . *Secretary-Treasurer*

The German Clubs are the organizations which conduct and attend the University dances. The membership is composed of those students who attend. There are three sets of dances given annually, the Pre-Lenten, Easter, and Commencement dances. Girls are "imported" to Sewance from various places.





THE CAP AND GOWN



OFFICERS

EDWARD NASH . . . . . *President*  
 ROBERT STIMSON . . . . . *Vice-President*  
 CHARLES BARRON . . . . . *Secretary-Treasurer*

MEMBERS

ADAIR	COPELAND	HOLLIS, F.	ROBINSON
ANDERSON	CROSLAND	HOPPEN	ROBERTSON
BAARCKE	CROSS	HUDSON	SADLER
BALL	DAWSON	LITFELL	STIMSON, A.
BARRON	EASON	MASSEGALE	STIMSON, R.
BASS	EGGLESTON	MCCULLOCH	STRAS
BEAN	EZZELL	MELLON	SOAPER
BECKWITH	FORTUNE	MORTON	THOMPSON
BRETTMANN	FRAZIER	NASH	TRABUE
BUFORD	GOODMAN	PABST	WALKER
BURNS, B.	HARE	PROVINE	WALTER
BURNS, M.	HARWOOD	PIPLAR	WHITAKER
BYRNE	HATCH	QUISENBERRY	WILSON
CALLICUT	HOLLIS, D.	ROBBINS	





THE CAP AND GOWN



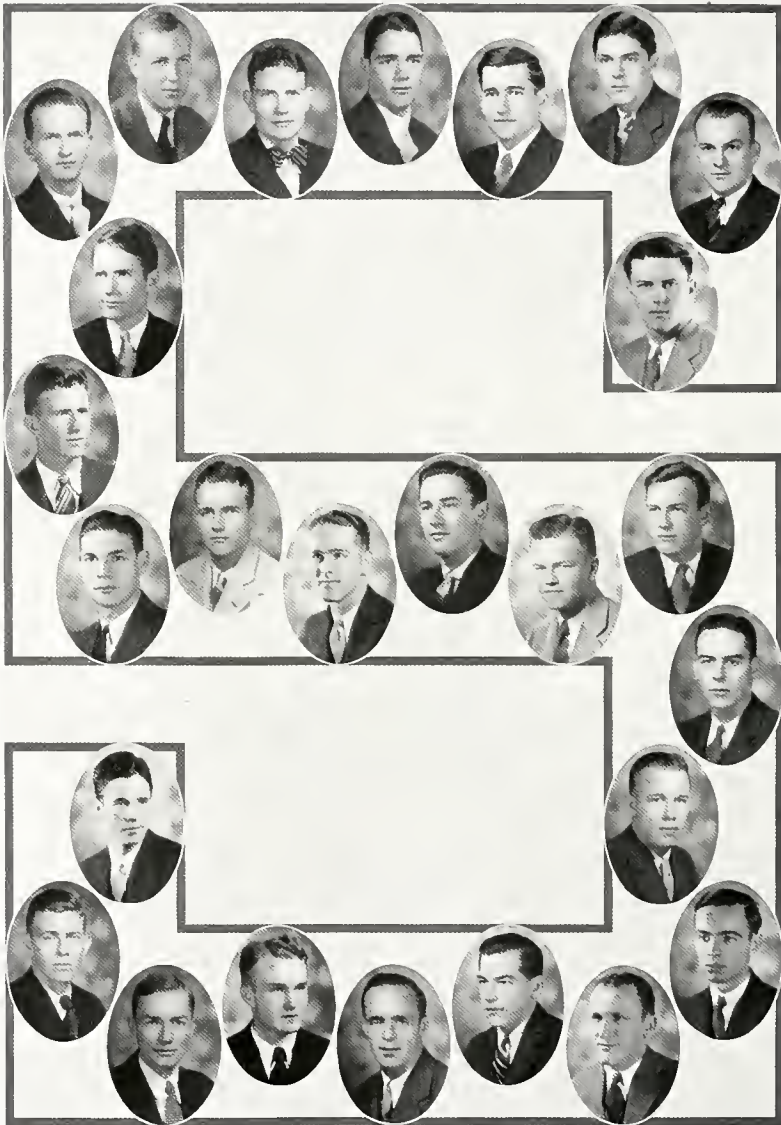


THE CAP AND GOWN





THE CAP AND GOWN

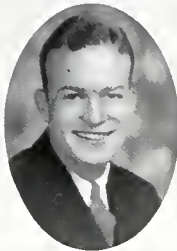




THE CAP AND GOWN



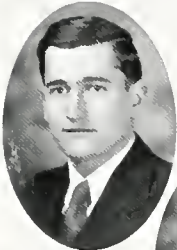
KELLERMAN, J.



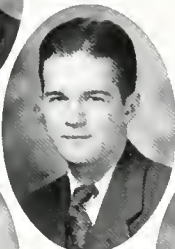
LINDHOLM



BAARCKE



EBY



HOLLIS, D.



HANNON



BARRON



HANNUM



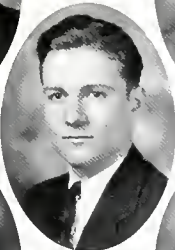
ROBERTSON



DAWSON



BURNS, B.



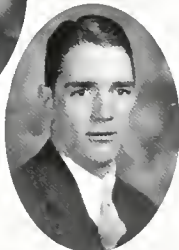
HOLLAND



BURNS, M.



CARPER



KELLERMAN

WALTERS  
UNION









FEATURES





*Miss Miriam Black*



*Miss Mary Brooks Kirby-Smith*



*Miss Mary Mitchell*



*Miss Natalie Coleman*



*Miss Peggy Wood*



*Miss Mary Lake Wooten*





*Miss Maude Cain Crowe*



PRESENTING

# The Cat and Clown

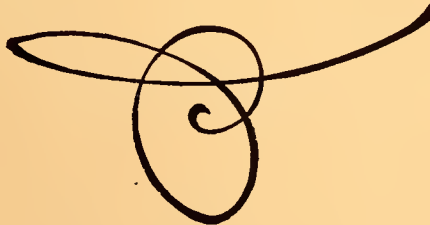
(A Yearbook to End Yearbooks)

---

---

## THE EXPLANATION

*Due to discord and ill-feeling arising among the editors it was decided to have no theme, but adequate space has been left along the margins for any industrious reader to fill in any scheme of decoration that he (or she) might think appropriate.*





---

---

## DEDICATION

*All yearbooks have to be dedicated, just as all women in novels have to be sloe-eyed. So, we dedicate, consign, assign, and resign this miniature annual to those dear Americans who call "Whoopee" "whoopee" and not "hoopie." May the nation of rock-garden builders, Buick drivers, and Sunday beef-roast eaters never fall on evil days!*



# AT A MEETING OF THE FACULTY—



**DR. SCALELY:** The meeting will come to order. Gentlemen, you were requested to meet tonight to discuss certain revisions of our curriculum which have been suggested as essential.

**DR. COOK:** It seems that the necessary change is a reduction in the number of required courses. Since we raised the number of required hours to sixty, I find it almost impossible to schedule all the compulsory courses without conflicts. Also, those who have been so bold as to take an elective course in their first three years, are forced to carry ten required courses their senior year. That takes so much time that we have been compelled to dissolve the Society for the Investigation of Relations with Patagonia and the Artillery Club.

**PROF. HADEN:** Yes, gentlemen, I agree that we should have less required courses. What good does it do to have so much attention devoted to classical languages? Everyone knows that they are dead; we can develop our vocabularies by reading the dictionary. I propose that we abolish the requirements for languages, philosophy, and Bible. This would give us money for an assistant in the social science department, and time to have more required work of that kind. We could then require all students to take Art of Business I, II, III, as well as accounting, bookkeeping, and How to Get Rich.

**DR. PANTALOON:** Although I agree with Mr. Haden that the number of required subjects is too great, I differ with him on the method of reduction. Since English is the one really cultural study, I propose that it be the only required study.

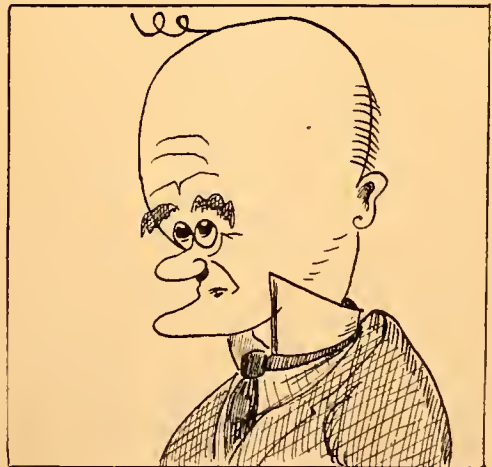
The end in view is that after three years of required work the best students may be selected for special training, in the hope of developing a mind able to understand the meaning of Neo-Humanism. This plan has the further advantage that with the money saved from the other professors' salaries another English assistant might be employed, so that I would have my time free to debate that we have progressed since the Stone Age, and, perhaps, to lecture on True Confessions.

**CHAPLAIN TERRY:** Since this is a Christian school, it seems that we should have more training in Christian manhood. I propose that we increase the requirements in Bible. It is essential that we teach Bible, anyway, for failure to do so means loss of Mrs. Tattler's endowment for the upkeep of the flags in the Chapel. I am sure the other professors will be willing to decrease the requirements in their departments.

**DR. TEAR:** Gentlemen, what this school needs is another assistant in the social science department, but I believe he should be in history instead of economics, as Mr. Haden suggested. We need instructors in political science and civics. The schoolmarms have turned out these wretched johnnies in appalling ignorance, and they need instruction in history, which is the study of civilization and culture.

**MR. SWALLOW:** The whole situation is the result of the way things are done under the influence

(Continued on Page 170)



# SENIORS



FREDDIE GÜRGLAN

Freddie graduates after only seven years' exposure. When he was eighteen his father called him to one side, give him a hundred bucks and suggested that travel broadens the mind.

MOSE KELLY

Mose passes from the School of Fine Arts Janitorialing this June. The only kind of cuts he knows anything about are those between two book covers. He is a member of the Wets, the Green Pea Club, Thimble and Needle, and Pi Gamma Mu.

"PANSY" BROOKS

"Pansy" majored in piano and football. In 1929 he was awarded the title of "Grand Old Man of Jantzen Bathing Suits." He goes from here to Rochester, Minnesota, where the Mayo Brothers are going to do something about "Pansy's" ears being too far apart.

## AT A MEETING OF THE FACULTY—

(Continued from Page 169)

of the Methodist Church and Prohibition in these miserable states of Tennessee, Arkansas, and Mississippi. The solution of the problem is to give up all classes and become cultured by meeting in small groups to speak French. Ah, how cultured Europe is!

COACH HARMONY: This whole discussion, gentlemen, misses the true purpose of this University, which is to maintain athletics. I suggest that all required classes be abolished for the benefit of the football players. They should be given nine hours per term in coaching, provided they make the team. This would enable them to return to school indefinitely without embarrassing the dean

by forcing him to retract his regulations on re-admission, overcutting, etc.

ALL: I object! My course is essential! It must be required of all students.

DR. COOK: It is apparent that we cannot agree on the reduction of the number of hours. I move that to satisfy the athletes we make coaching a required subject also. This is the true spirit of compromise, since it satisfies nobody.

DR. SCALELY: The motion is carried. This makes the number of required hours sixty-nine. Does anyone suggest any further subjects which could be added to the list?

# STATION XYZ BROADCASTS THE SEWANEE DANCES

## FOREWORD



*As you all know, Sewanee Dances are the best in the South. We never fail to have a leading orchestra and charge five dollars per dance to unsuspecting collegians. Our dances are always patronized by the best girls, and we have absolutely no drinking. Sewanee is heaven when the dances are here, as one young lady put it. It is heaven all the time, especially at 11:30 M. W. F.*

Good evening, friends of the invisible audience. I am having the pleasure of announcing to you the Sewanee Dances, held at the beautiful University Gym. Johnny Scamp and his Melodians are playing, and the big hall is decorated with twelve Japanese lanterns. While Mr. Scamp is playing that irresistible piece, "You Came to Me From Out of Nowhere," I will endeavor to give you a running account of the famous personages here. Just as I was speaking, Dr. Finney walked past with a beautiful Southern beauty on his arm. I just saw him break in on one of the undergraduates. He is having an enjoyable time, laughing and joking to his partner. Before the affair is over I hope to have him speak to you. Right in front of me is a girl who is from Nashville. I just heard her say she loves Sewanee dances, only a Nashville girl would be so conspicuous. To my left is the head proctor. He has on some sort of badge to distinguish him from the rest of the fellows. I have been told that he patrols the floor and tells wayward gentlemen to go home and sleep it off. Just passing the door is Sheriff Jackson. He sticks around to see that the liquor is not stolen from the boys' cars. "§§%—&'(). Pardon me, folks, but that was a Sewanee boy who wanted

to say hello. I am afraid that he is in no condition for such affairs. I saw the head proctor (the guy with the badge) tell him to go home and get another drink—I'm sorry, I meant go home and sleep it off. "§§%—&'() ¾. Pardon me again—that is another Sewanee boy. He wants ten million people to hear his voice. He says he sings in the Glee Club, and that he once broadcasted. There was a bit of commotion at the door just now, but I see that Ticket Collector Blair has the "sitchiashun" well in hand. The head proctor just told another proctor to save him a drink. They are playing the Grand March now, folks, and a boy in the second line is talking mighty sweet to his partner. Another boy, over in the corner, can hardly touch the ground with his hat, if he still had it on. "§§%—&'() ¾. That is just another Sewanee boy. What—the dance is over? Hardly anybody is here yet, but the dance is really over. This programme came to you through the courtesy of the Liddel and Scott, publishers of Supreme Greek Lexicons, and translation used exclusively by Charles Crenshaw. Listen closely, folks, and you can hear that great big "Yea! Sewanee's Right!" "§§%—&'() ¾. Oh, just another Sewanee boy.

# EXPLANATION

*With a keen eye to service the Cat and Clown has compiled a handy reference page to the various fraternities at Sewanee. All information herein contained is strictly confidential as well as*

*authoritative. It required our research department many moons and necessitated the use of very expensive machinery to verify these facts, but here they are.*

---

## Alpha Tau Omega

Alpha Tau Omega was founded at V. M. I. It is generally rumored that the founding occurred on a very foggy night and that the founders had difficulty in seeing each other. This tradition of carelessness has survived, as the motto of the fraternity now is, "Pledge the man. We want to know what he's like."

## Phi Delta Theta

Phi Delta Theta has some alumni, but for several years has been looking for an active chapter. With her new house finished she is all dressed up, but we doubt that she will go very far, especially with Barron and Ezell gone. The Phi Deltas are distinguished by the fact that every ten years one stays in school long enough to become a senior.

## Delta Tau Delta

Delta Tau Delta has a tradition, but does not bother to get anything else. Thus college life to a Delta becomes a mere social whirl with now and then a steak cooked in the Delta kitchen thrown in.

## Kappa Alpha

Kappa Alpha was founded one Saturday night halfway between Monteagle and Sewanee. For this reason they always hold their meetings on Saturday night. They have a pretty pin and are strictly Southern.

## Phi Gamma Delta

Phi Gamma Delta had a Texas complex, but traded it in on a Kansas one. What other things they have on their mind is was impossible to find out, as they built their house under a hill and then put a wall around it.

## Kappa Sigma

Like the turnip, Kappa Sigma got its start in life behind the barn and, like the turnip, it grew and it grew. "Till now, ladies and gentlemen, step right this way and see the greatest conglomeration of Modern Greeks. Only ten cents or a dime. It has an aim in life, however, even if it is just to get through one more day.

## Sigma Alpha Epsilon

Sigma Alpha Epsilon is a society that builds houses so pictures of Bobby Jones and Rudy Vallee will have walls to hang on. Aside from their elephantine chapters the most distinguishing feature of the fraternity is the tenacity with which they continue to pledge Memphis boys, even in the face of many adverse results. It evolved at the University of Alabama.

## Sigma Nu

In cigarettes it's taste, but in athletics it's Sigma Nu. Brains, too; just look at the Phi Beta Kappas and Purple editors. However, at last reports Sigma Nu had no plans for the future, as they have to wait to see what a new year will bring.

## Pi Kappa Phi

Pi Kappa Phi is really a literary society disguised as an athletic training camp. For several years now she has said, "Just you wait," but we are still waiting. She was founded at Charleston, but has since lived that fact down.

## Royal Bengal Fraternity

The Royal Bengal Fraternity has been noted for its optimism. We heard that they were going to petition the Ku Klux Klan next.



# THE WHIRL OF SPORTS AT SEWANEE

---

## PROLOGUE

*Lest any casual visitor should pass through Sewanee and, observing the air of quiet serenity that reigns here, conclude that here lives a race of*

*dreamers, the Cat and Clown has at great pains and expense gathered the opinions of some of our most respected citizens on the question of athletics.*

---

## FOOTBALL AT SEWANEE

Doctor Finney says: "Officer! Officer! Where are you going with that boy? Why, look here, you can't do that. Good gracious, man, he's just here to see us play 'Bama! What if he did drop a bottle in the lobby?"

Mr. Martin says: "Like everything else American, football has taken on a commercial aspect. I am sure that to an English gentleman, with many of whom I am acquainted, it is a most repulsive profanation of sport. Take the spirit of Bulwerps Alfingalphin, that great Oxford guard, for instance. When reproached by a friend for carrying a bottle of Johnnie Walker into every game and taking a drink between plays, he calmly and most reasonably replied, 'Why, if football interfered with my drinking, I would give up football'. Now here we have the true amateur spirit: here a game that a gentleman might delight in."

Dr. Ware says: "Football? Ah, yes, a great sport that! Why, young man, that game has been

played for centuries, although of course not in the form now used. You just take one of my history courses, or ask my good friend Hannon if you want to know how football originated."

Dean Baker says: "Football is one of the greatest factors in bringing about a closer feeling between the faculty and the student body. Take me, for instance; I almost feel like a father to every football player. In fact, a day never passes in which one or two don't drop in at my office."

Kayden says: "Football, like everything else, is basically dependent on economics. Henry George has already alluded to this fact, and I would show you the passage if I hadn't already used it to prove that the five-year plan was fundamentally sound. Now if coaches would only use graphs, the game could be reduced to a much more scientific basis. For instance, let this line represent the unearned increment gained by use of a fake pass . . . ."

## TENNIS AT SEWANEE

Taylor says: "A man is as good as his stomach. A square meal is as necessary an ingredient to a good game as a racquet."

Knickerbocker says: "Now in tennis I have never ceased to experiment and also to try to apply the lessons learned by Ulysses in watching the oars

of his boat. This, of course, is of vital importance if one is a conscientious neo-humanist (or is it Neo-humanist?). For instance, if you make a bad shot with your favorite racquet, throw it away and try a broom. Why, I know a man who, except for this method, would never have found out that he played best with an ice-tea spoon."

## GOLF AT SEWANEE

Dr. Baker said: "Ah! Ah!" And then we ran.

Major McKellar says: "Why, there's nothing to it. Any man who plays that game has a bee in his bonnet. It ought to be unconstitutional, and next year I shall prove that it is in my classes."

Eason says: "In tennis it's power, but in cigarettes it's Picayunes."

Ezell says: "Well, boys, when I get through with this meeting, maybe I can tell you something about it."

Barron says: "Ya ask Teddy. He knows."

# The Bouncing Boat

EDITED FOUR TIMES A YEAR—BY REQUEST

S. S. Teacher: "Johnny, did Noah bring the worms into the Ark in pairs?"

Johnny: "No, in apples."

✓ ✓ ✓

"My mother-in-law was at death's door."

"Have a cigar?"

"Close but no cigar."

✓ ✓ ✓

Freshman men should be called "Moses."

Why? Because they are frequently found in bullrushes.

✓ ✓ ✓

"Where did I come from?" asked the rosebud.

"The stalk brought you," answered the rose.

✓ ✓ ✓

I've heard that Cupid strikes the match

Which sets the world aglow;

But where does Cupid strike the match?

That's what I want to know.

✓ ✓ ✓

Man wants but little here below—

But woman—Oh, oh, oh, oh, oh!

✓ ✓ ✓

And then there's the contortionist who dreamed he was eating dried peaches and chewed his ears off in his sleep.

## SEEN IN THE ADVERTISERS' COLUMN

WANTED—A female donkey—apply personally or by letter.

TURKEY CARPET FOR SALE—The property of a gentleman too large for his room.

WANTED—At a factory, 16 girls to sew buttons on the sixth floor.

FOR SALE—Folding bed by a lady that folds up and looks like a piano.

WANTED—Two strong clean youths for sausages.

WANTED—Plain cook who can milk a cow and a Christian preferred.

HOTEL—New management—a la carte, table d'hote: Dark room for developments.

PIANO FOR SALE—By lady with carved legs.

THE DRAPERY TRADE—Wanted, a young man to be partly outdoors and partly behind the counter.

MODEL LAUNDRY—Change of proprietorship. N. B. Shirts ironed on the new principal.

WANTED—A steady respectable man to look after the gardens, milk a cow who has a good voice and is accustomed to sing in the parlor.

FOR SALE—Large Newfoundland dog—eats everything. Very fond of children.

Sportsmen-  
Whatever the Sport you'll find  
Spalding Equipment  
Authentic

Golf-  
Tennis-  
Base Ball-  
Swimming-  
Track-  
and practically  
every game from  
Ping Pong to  
Foot Ball

A. G. Spalding & Bros.

74 Broad St., N. W.  
ATLANTA, GA.

Compliments  
of  
**HARRISON BROS.**  
FLORISTS  
NASHVILLE, TENN.

University Supply  
Store  
*Sewanee Agents*

THE  
*Thomas Jefferson*  
Hotel

IN BIRMINGHAM

The Headquarters for Sewanee Tigers  
and Their Friends

The Only Hotel in the City with a Fine  
Dance Orchestra in Dining Rooms,  
Ballroom and Terrace Gardens

*We Also Have*

THE ONLY AIR-COOLED  
COFFEE SHOP

313 ROOMS                      313 BATHS

The Red Beacon on the Roof  
Will Guide You

THE MEMPHIS HOME  
OF SEWANEE MEN

Southern College Men appreciate the home-like features of Hotel Chisca . . . and like the way the management watches over their comfort and happiness.

**HOTEL CHISCA**

*The Best Popular Price Hotel  
in the South*

MEMPHIS, TENNESSEE

## RIVOLI THEATRE

WINCHESTER, TENN.

*The Home of First Runs*

Paramount, First National and  
Metro-Goldwyn-Mayer  
Pictures

Good Music

Good Projection

COMPLIMENTS

OF

## Norton Jewelry Co.

*Victor Dealers*

WINCHESTER, TENNESSEE

YOU CAN FIND WHAT YOU  
WANT IN

## Vaughan Hardware Company's

Well Assorted Stock of  
Hardware

WINCHESTER, TENNESSEE

We Specialize in Collegiate  
Work

Cleaning and Pressing

## SEWANEE BARBER SHOP

W. YARBROUGH, *Proprietor*

### INSURANCE

Fire, Windstorm, Casualty,  
Accident, Health, Life, Bonds

### THE HOME OF INSURANCE SERVICE

*Special and Prompt Attention  
to Sewanee Lines*

V. R. WILLIAMS

Office Phone 37

Res. Phone 121

Winchester, Tennessee

## H. GLENN McNAIR

### CLOTHES

Made for You

### SOUTHERN TAILORS

Atlanta

*Compliments of*

## McKESSON-DUFF DRUG CO.

CHATTANOOGA, TENN.

*Compliments of*

## JAMES SUPPLY COMPANY

CHATTANOOGA, TENN.

THE PEAK OF PERFECTION

IS APPARENT IN EVERY

“Famous Kalamazoo” Uniform and  
“Superior Quality” Cap

They Have Given Perfect Satisfaction for Over  
Forty Years

They Are Always Up-to-Date and Give the  
Service Expected

*Convince Yourself by Inspection*

THE HENDERSON-AMES CO.

KALAMAZOO, MICHIGAN



SINCE 1868

OUR FIRM HAS BEEN SERVING THE PUBLIC  
IN THEIR

GENERAL INSURANCE

NEEDS

MAY WE PLACE OUR FACILITIES AT YOUR  
DISPOSAL

GALE-SMITH & COMPANY

NASHVILLE, TENN.

# Sewanee

1868

SEWANEE, TENNESSEE

1930

FOR CATALOGUE ADDRESS BOX Z

Member Association of Military Colleges and Schools of the  
United States

Member of Southern Association of Colleges and Secondary  
Schools

A School of Fine Tradition and Christian Influences  
Essentially Military

# Military

10,000 Acre Domain, 2,000 Feet Elevation  
Broadest Certificating Privileges  
Small Classes—Intelligent Leadership  
Military Training and Discipline and Life  
Clean, Healthful, Amateur Athletics

# Academy

# THE UNIVERSITY OF THE SOUTH

What Sewanee Stands for

## THE EDUCATION OF THE WHOLE MAN—

His BODY, in a physical environment and training almost ideal.

His MIND, through courses in a scientifically correct curriculum, and through contact with a faculty strong in scholarship and personality.

His CHARACTER, through the constant influence of Christianity as expounded and exemplified in the life of the University Community.

## THE MAKING OF A CITIZEN—

In theory, through the influence of that ideal of patriotism which we call the Sewanee Spirit.

In practice, through the dynamic living as a citizen in a community of which the student body constitutes the citizenship.

---

Individuality, Originality, Initiative

---

*Taught to Think Independently, Plan Independently,  
But to Act As a Community Member*

Compliments  
of  
**Phillips & Buttorff**  
**Company**  
NASHVILLE, TENN.

Compliments  
of  
**ROBERT ORR CO.**  
NASHVILLE, TENN.

**GLORIA FLOUR**  
*The Flower of Flours*  
RIGHT ALWAYS  
ALL RIGHT  
Nashville Roller Mills  
NASHVILLE, TENN.

Compliments  
of  
**Treman King & Co.**  
NASHVILLE, TENN.

THE FOLLOWING  
**MERCHANTS OF CHATTANOOGA**

Have Helped to Make Possible the 1931 *CAP AND GOWN* and  
Deserve Your Patronage



JAMES M. SHAW  
STERCHI BROS. STORES, INC.  
HARDIE AND CAUDLE  
T. H. PAYNE AND COMPANY  
MAYPOLE CAFETERIA



FOR NEARLY 100 YEARS

## THEDFORD'S BLACK-DRAUGHT

*(Purely Vegetable)*

Has been used with success in relieving Constipation, Bilioussness,  
Indigestion, in cases where a laxative or cathartic was required.

*Your Druggist Sells Black-Draught*

Manufactured by

**The Chattanooga Medicine Co.**

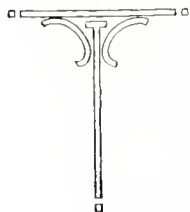
CHATTANOOGA, TENN.

COMPLIMENTS

OF

TENNESSEE ELECTRIC POWER  
COMPANY

COMPLIMENTS  
OF  
A FRIEND



THE B. H. STIEF  
JEWELRY CO.

Diamond Merchants  
Silversmiths  
Stationers  
Jewelers

Stief's Corner  
NASHVILLE, TENN.



COX SONS &  
VINING

131 E. 23rd St.  
New York

Makers of  
Caps, Gowns  
and Hoods  
for all  
Degrees.  
Church  
Vestments  
and Clerical  
Clothing

Compliments  
of  
Baggenstoss Bakery  
Company

TRACY CITY, TENN.

Compliments  
of  
McREE'S MODEL  
PHARMACY

JOHN I. McREE, SR.  
JOHN I. McREE, JR.

HELENA, ARKANSAS

JACKSON'S GARAGE

Automobile and General  
Repair Work

Auto Accessories, Vesta and Willard  
Batteries

A. F. JACKSON, *Proprietor*

Phone 88

SEWANEE, TENN.

Sanitary Meat Market  
Choice Meats, Up-to-the-Min-  
ute Refrigeration. Unexcelled  
Cleanliness.

Complete Grocery  
Department

Always Ready to Serve Repre-  
sentative Selections. Fresh  
Fruits and Vegetables Our  
Specialty.

A  
Combined Service

That meets all the needs of the peo-  
ple of Sewanee. We invite you to  
visit our several departments at any  
time. Our business is created for the  
purpose of satisfying Sewanee stu-  
dents and residents.

*We Have It,  
Can Get It, or  
It Isn't Made*

Drug Department  
Highest Quality Chemicals  
and Drugs. Prescriptions care-  
fully compounded by a Regis-  
tered Pharmacist of years' ex-  
perience.

Stationery Department  
With a Full Line to Meet  
Every Need of the Public

*Hollingsworth Candies  
Soft Drinks  
Whitman's Candies*

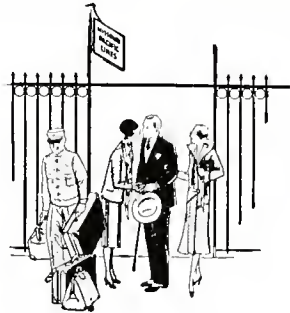
UNIVERSITY SUPPLY  
STORE

E. W. MANER, *Manager*

Sewanee, Tenn.

Phone 46-51

To The  
**SOUTHWEST**



via the  
**Memphis Gateway**

**No. 219**

Leaves Memphis 8:00 am daily, for Hot  
Springs, Dallas, Ft. Worth, El Paso,  
Houston . . . Austin . . . San Antonio  
and Mexico. Dining car service for all  
meals.

**The TEXAN**

Leaves Memphis 7:15 pm daily. Ob-  
servation sleeper overnight to Dallas  
and Ft. Worth. Fast through service  
to Houston . . . Austin . . . San An-  
tonio. Dining car meals.

**The SUNSHINE SPECIAL**

Leaves Memphis 11:05 pm daily. Fast  
through service to Dallas, Ft. Worth  
. . . El Paso . . . Southern California  
. . . Houston . . . Austin . . . San  
Antonio and Mexico City. Sun room  
lounge service to El Paso, San Antonio  
and Mexico City. Dining car meals.

The convenient service and distinctive  
travel comfort offered by The Texan,  
The Sunshine Special and No. 219 have  
made them the outstanding choice of  
travelers from Memphis to The South-  
west.

J. M. BRYAN  
General Agent  
MISSOURI PACIFIC  
LINES  
313 Independent Life  
Building  
Nashville, Tenn.



*"A Service Institution"*

Compliments of  
B. H. FRANKLIN  
& CO.  
WINCHESTER, TENN.

## RILEY'S GARAGE

Phone 55  
Taxis, Gas, Oil, Tires  
Repairing  
SEWANEE, TENNESSEE

## P. S. BROOKS & COMPANY

Dry Goods, Groceries  
Shoes, Men's Furnish-  
ings, Etc.

SEWANEE, TENNESSEE

## BAKER'S

Cigars  
andy  
igarettes  
old Drinks

SEWANEE

## COMPLIMENTS OF J. BAYARD SNOWDEN

REAL ESTATE  
INVESTMENTS

MEMPHIS, TENNESSEE

# The South's Foremost College Annual Engravers"

OUR  
SUPREMACY

IN THE SOUTHERN  
YEAR-BOOK FIELD  
IS THE RESULT OF  
PERSONAL SERVICE

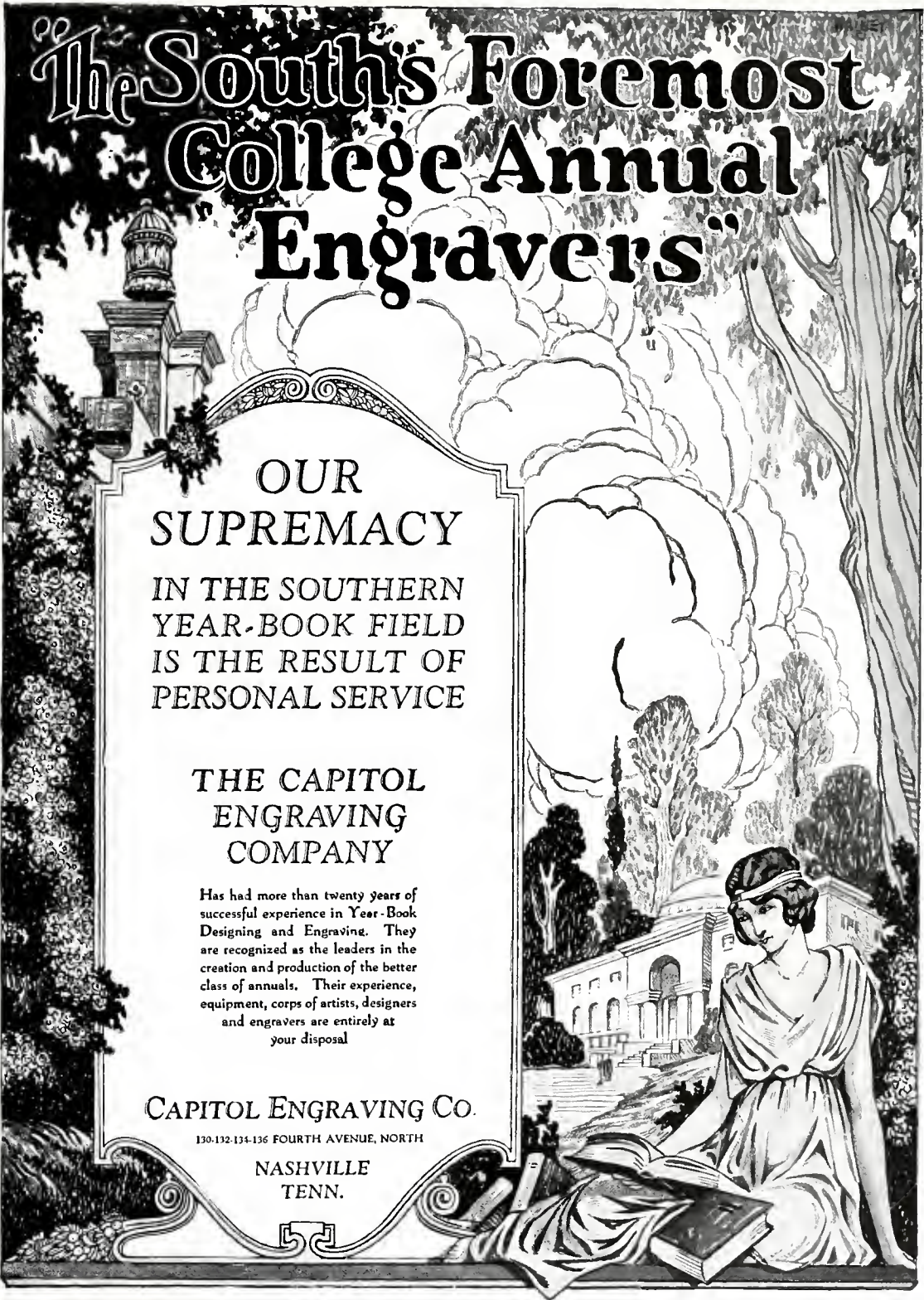
THE CAPITOL  
ENGRAVING  
COMPANY

Has had more than twenty years of  
successful experience in Year-Book  
Designing and Engraving. They  
are recognized as the leaders in the  
creation and production of the better  
class of annuals. Their experience,  
equipment, corps of artists, designers  
and engravers are entirely at  
your disposal

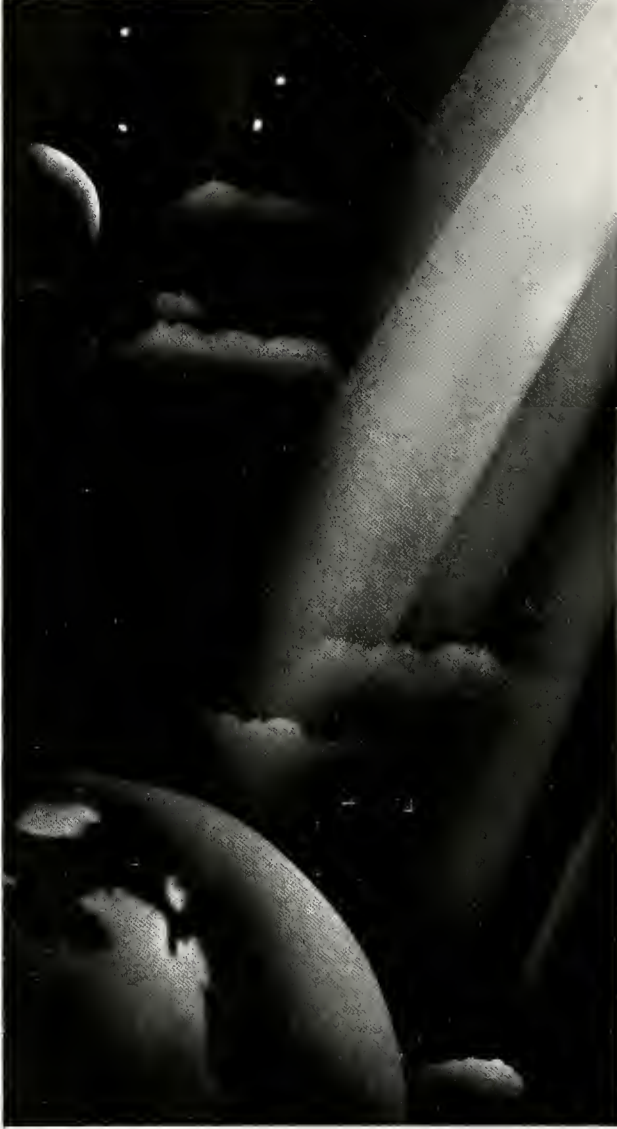
CAPITOL ENGRAVING CO.

130-132-134-136 FOURTH AVENUE, NORTH

NASHVILLE  
TENN.



THIS BOOK PRINTED BY.....



THE  
WORLD'S  
LARGEST  
PUBLISHERS  
OF  
COLLEGE  
ANNUALS



**COLLEGE ANNUAL HEADQUARTERS**

*Highest Quality Workmanship Superior Extensive Service*











UNIVERSITY OF THE SOUTH



1100747816