


Archives

presented by

Wylie Mitchell, editor

Theodore C. Heyward, Jr., business manager



Digitized by the Internet Archive
in 2011 with funding from
LYRASIS Members and Sloan Foundation

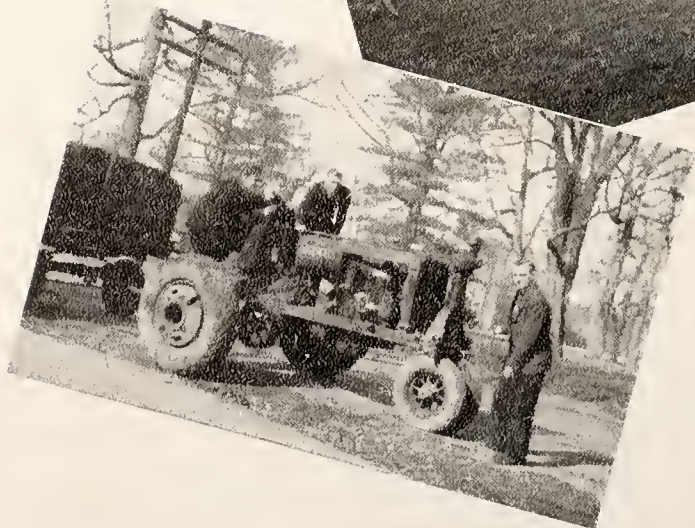
<http://www.archive.org/details/capgown193700univ>

the
cap and gown
of 1937

edition thirty-one



published by the students
of
university of the south
sewanee, tennessee



index . . .

book one . . . page 8

The University—including the officers of the administration, the deans, and the faculty of the college and the seminary.

book two . . . page 20

The Classes—including the Seniors, the Juniors, the Sophomores, the Freshmen, and the Theologs.

book three . . . page 70

Activities—including the social fraternities, the student administrative organizations, honor societies, and other activities.

book four . . . page 112

Athletics—including football, basketball, track, tennis, and the intramural athletics.

book five . . . page 130

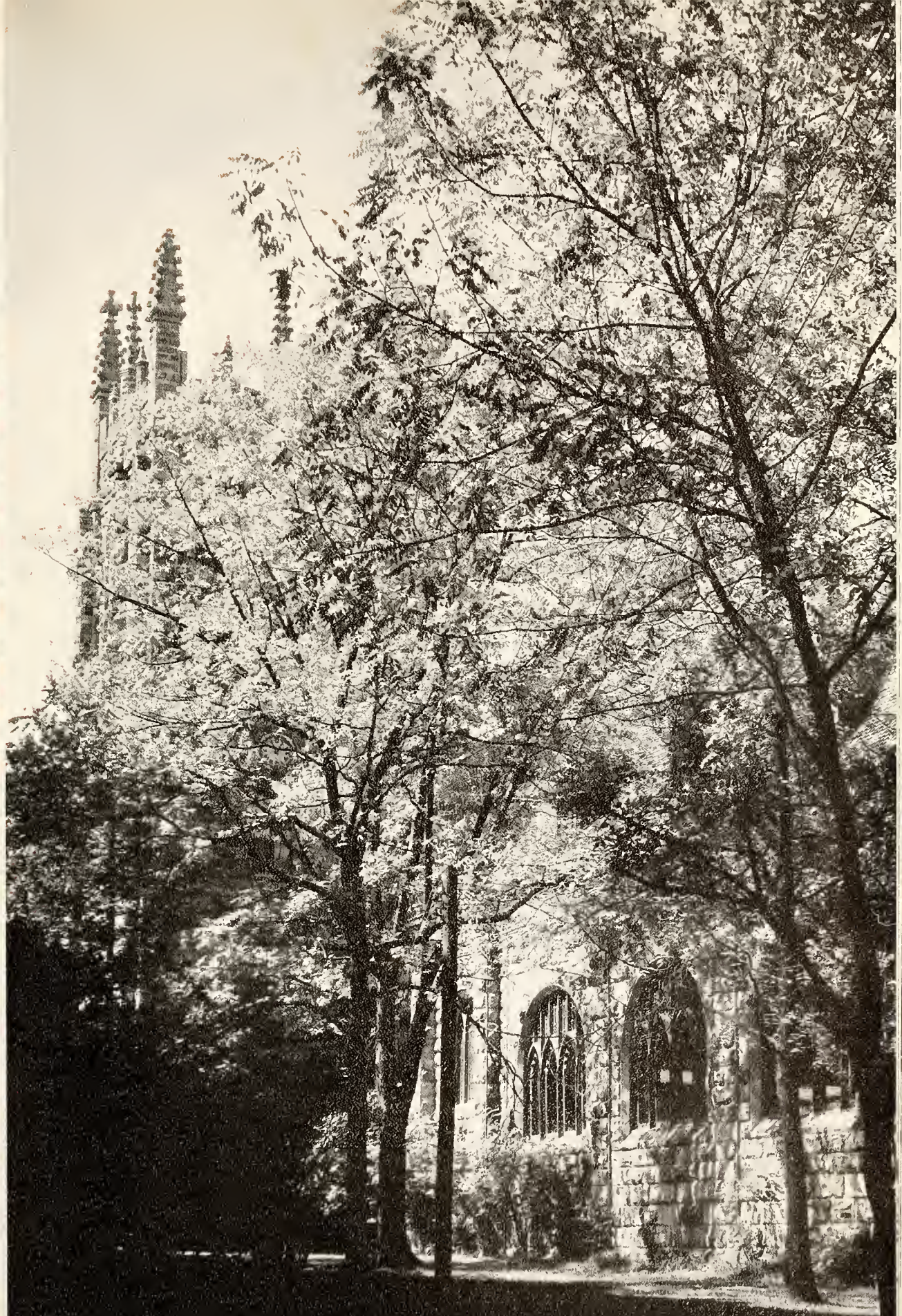
The Features—including informal pictures of Sewanee and Sewaneeans during the year and the yells and songs of the University.



to dr. finney - -

During the last fifteen years as the Vice Chancellor of the University of the South, Dr. Finney has by all his acts won a secure place in the hearts of Sewanee men. Nothing has been too small for Dr. Finney's most careful attention. Through all these years he has devoted his time and efforts most generously to promoting the cause of Sewanee. They have not been easy years. Regardless of the task or the difficulties connected with it Dr. Finney has worked unceasingly for the betterment of the University. There has been no student in whom he has not taken a personal interest, and for this, words cannot express our appreciation. • As a slight expression of the gratitude and love which is in the hearts of the students of Sewanee, we present this book to him.

university



board of regents



The Board of Regents is the executive committee of the Board of Trustees, and may deal with any phase of the University's interests. It is presided over by the Chancellor of the University. The meetings are held regularly three times a year and special meetings are called when the need arises. It plays a most important part in the life of the University, and a great deal depends upon the decisions which it makes. The members are elected by the Board of Trustees, although three of the lay members are nominated by the Associated Alumni.

MEMBERS

Rt. Rev. Theodore DuBose Bratton, D.D., Chancellor Jackson, Miss.
Benjamin Ficklin Finney, LL.D., Vice-Chancellor Sewanee, Tenn.
Rt. Rev. Frank A. Juhan, D.D. Jacksonville, Fla.
Rt. Rev. Henry J. Mikell, D.D. Atlanta, Ga.
Rt. Rev. Charles Clingman, D.D. Louisville, Ky.
Rev. Malcolm W. Lockhart, D.D. Jacksonville, Fla.
Rev. R. Bland Mitchell, D.D. Birmingham, Ala.
Rev. John Gass, D.D. New York, N. Y.
Frank H. Gailor, D.C.L. Memphis, Tenn.
Arthur Crownover Nashville, Tenn.
J. Bayard Snowden Memphis, Tenn.
L. Kemper Williams, D.C.L. New Orleans, La.
Charles E. Thomas, Secretary Indianapolis, Ind.
L. Niles Trammell Chicago, Ill.
Charles L. Minor New York, N. Y.

the chancellor



THE RT. REV. THEODORE DuBOSE BRATTON, D.D.

Bishop of Mississippi

Bishop Bratton's frequent visits to the Mountain and his interest in the events at Sewanee have endeared him to all. We look to him with the greatest respect and confidence in these times of stress in the life of the University. We feel that under his guidance Sewanee will not fail.

vice-chancellor



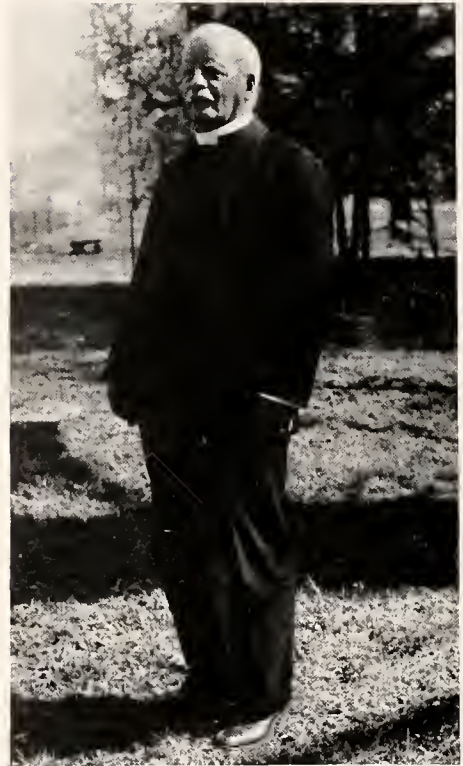
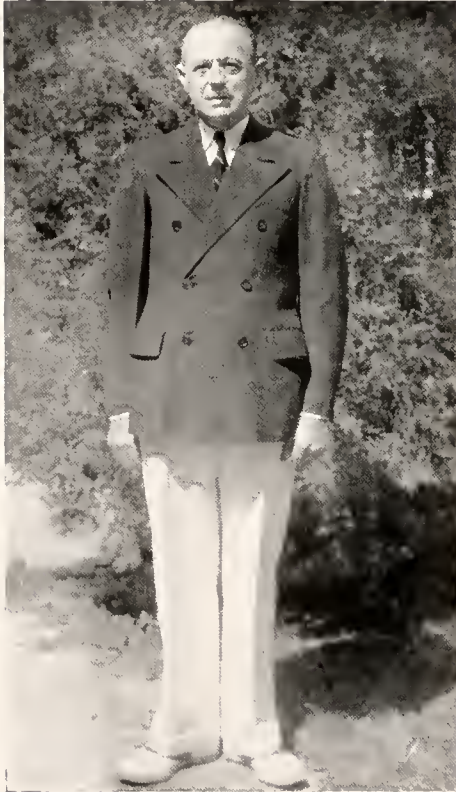
BENJAMIN FICKLIN FINNEY, LL.D.

Dr. Finney, a true Sewanee gentleman, has as the Vice-Chancellor of the University proved himself a friend of everyone and particularly the students. The respect which they hold for him is of the highest degree. To him we offer our humblest thanks.

the deans . .

GEORGE MERRICK BAKER, Ph.D.
B.A., Ph.D., Yale
Dean of the College of Arts and Sciences

As dean of the college for the last sixteen years, Dr. Baker has won great favor with those connected with the University. His German and French classes are rare experiences to all who, at one time or another, have been in them.



CHARLES LUKE WELLS, Ph.D.
B.A., Harvard; B.D., Cambridge; Ph.D., Harvard
Dean of the Theological School

The influence which Dr. Wells has had on the development of the Theological School has been considerable. His devotion to the Christian cause, to say nothing of his jovial nature, has been of vast inspiration to all who have studied under him.

faculty . .



SEDLEY LYNCH WARE

B.A. (Oxon.); LL.B., Columbia; Ph.D., Johns Hopkins
Francis S. Houghteling Professor of History

WILLIAM HOWARD MacKELLAR

B.A., M.A., University of the South
Professor of Public Speaking

GEORGE MERRICK BAKER

B.A., Ph.D., Yale
Dean of the College of Arts and Sciences and
Professor of Germanic Languages

WILLIAM WATERS LEWIS

C.E., University of the South
Professor of Spanish

faculty



HENRY MARKLEY GASS

B.A., M.A., University of the South;
M.A., (Oxon.)

Professor of Greek and Acting
Professor of Latin

EUGENE MARK KAYDEN

B.A., University of Colorado; M.A.,
Harvard

Professor of Economics

JAMES POSTELL JERVEY

Brigadier-General U. S. A., Retired;
Honor Graduate U. S. Military Acad-
emy; Graduate U. S. Engineering
School

Professor of Mathematics

WILLIAM SKINKLE
KNICKERBOCKER

B.A., M.A., Ph.D., Columbia
Jesse Spaulding Professor of English

THE REV. GEORGE BOGGAN
MYERS

LL.B., University of Mississippi; B.D.,
University of the South

Professor of Philosophy of Religion,
Ethics and Sociology

THE REV. ROBERT MacDONALD
KIRKLAND

B.A., University of Chicago; M.A.,
University of Pennsylvania

Professor of New Testament Language
and Interpretation



faculty

JOHN MAXWELL STOWELL
McDONALD

B.A., Harvard; M.A., Ph.D., Columbia
Professor of Philosophy

ROBERT LOWELL PETRY

B.A., Earlham; Ph.D., Princeton
Professor of Physics

ALBERT GAYLORD WILLEY

B.A., Dartmouth
Associate Professor of Biology

THE REV. MOULTRIE GUERRY

B.A., University of the South; B.D.,
Virginia Theological Seminary
Chaplain of the University and
Professor of English Bible

ARTHUR TAYLOR PRESCOTT

B.S., M.A., Louisiana State University;
D.C.L., University of the South.
Professor of Government

TUDOR SEYMOUR LONG

B.A., Cornell
Associate Professor of English

faculty



GASTON SWINDELL BRUTON

B.A., M.A., University of North
Carolina; Ph.D., Wisconsin
Associate Professor of Mathematics

JOHN MARK SCOTT

B.A., Southwestern College; M.S.,
Iowa State College; Ph.D., University
of Iowa
Associate Professor of Chemistry

DAVID ETHAN FRIERSON

B.A., M.A., South Carolina
Assistant Professor of Spanish

MAURICE AUGUSTUS MOORE

B.S., University of the South; M.A.,
North Carolina
Acting Assistant Professor of English

HURLBUT ANTON GRISWOLD

B.A., B.D., University of the South
Instructor in Bible and Greek

JAMES EDWARD THOROGOOD

B.A., University of the South
Instructor in Economics

faculty

(No pictures)

ROY BENTON DAVIS

B.A., Earlham College; M.A., Missouri

F. B. Williams Professor of Chemistry

ABBOTT COTTON MARTIN

B.A., M.A., University of Mississippi

Assistant Professor of English

JOHN FREDERICK MOYER

B.S., Colorado State College; M.S., University of Wyoming

Acting Professor of Forestry

PAUL SCHOFIELD McCONNELL

A.A.G.O., B.A., University of Southern California; M.A., Princeton

Instructor in Music and Organist

THE REV. CHARLES LUKE
WELLS

B.A., Harvard; B.D., Cambridge;
Ph.D., Harvard

Dean of the Theological School and
Professor of Ecclesiastical History and
Canon Law

THE REV. ROYDEN KEITH
YERKES

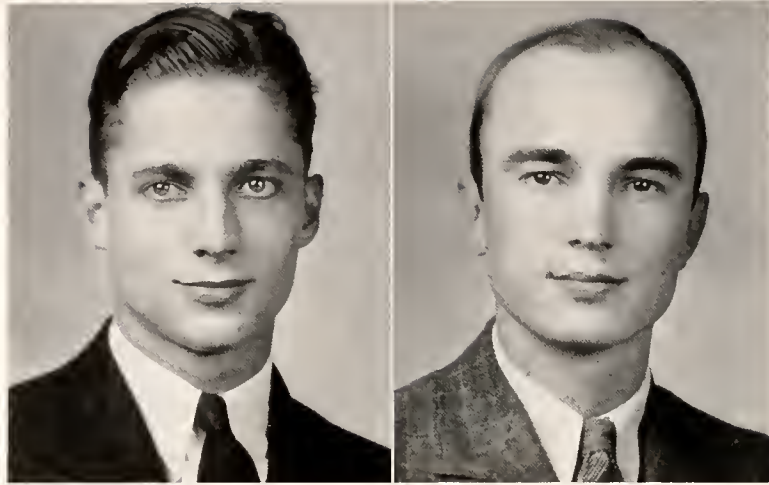
Ph.D., University of Pennsylvania; D.D.,
Philadelphia Divinity School

Professor of Systematic Divinity

the classes



the seniors



the seniors . .

GEORGE MOYER ALEXANDER

1835 Perry Street

JACKSONVILLE, FLORIDA

Order of Gownsmen, Pi Gamma Mu.

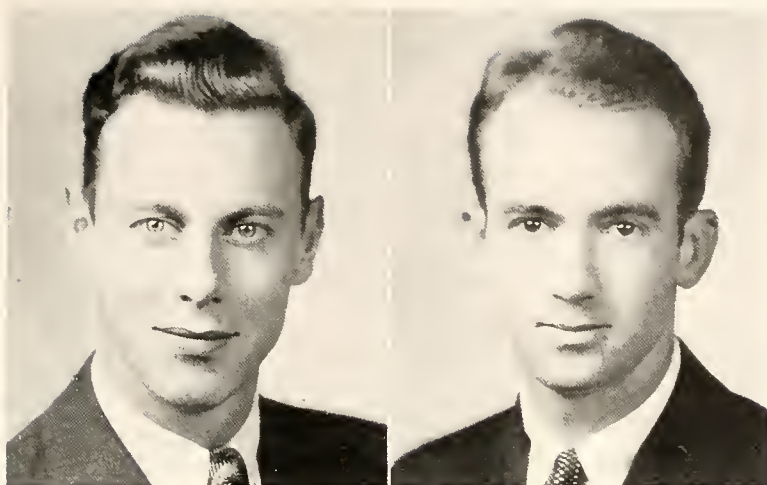
CECIL LOCKE ALLIGOOD

823 Branson Avenue

FAYETTEVILLE, NORTH CAROLINA

Kappa Alpha

Order of Gownsmen, Pan-Hellenic Council, Debate Council, Interfraternity Athletics, Choir.



the seniors . .

JOHN P. BINNINGTON

24 Silver Street

MIDDLETOWN, CONNECTICUT

Delta Tau Delta

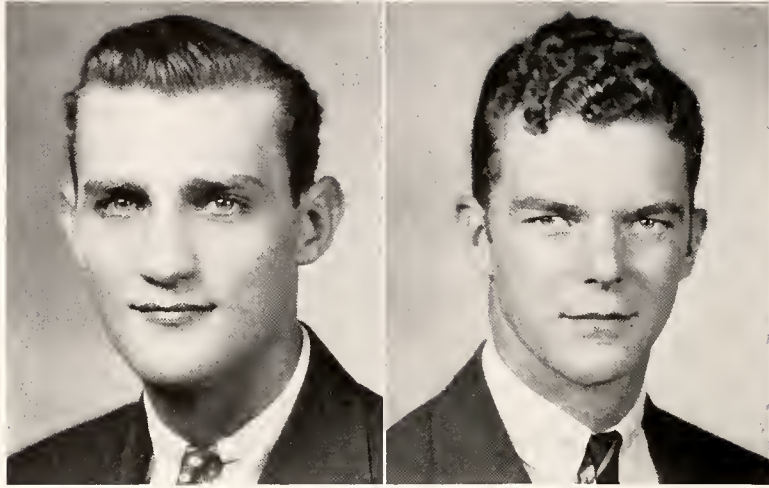
Order of Gownsmen, "S" Club, Glee Club, Alpha Psi Omega, Head Cheerleader '35-'36, German Club, Interfraternity Athletics.

JOHN C. BROWN

OLD HICKORY, TENNESSEE

Sigma Nu

Order of Gownsmen, German Club, Interfraternity Athletics.



the seniors . .

WYATT BROWN, JR.

321 North Front Street

HARRISBURG, PENNSYLVANIA

Phi Delta Theta

Order of Gownsmen, Scholarship Society, Omicron Delta Kappa, Blue Key, Proctor, Neograph, Glee Club, President of German Club, L'Allegro, "Mountain Goat" Staff, Freshman Football, Freshman Basketball, Freshman Track, Varsity Football, Varsity Track, "S" Club, Freshman Class President, Pi Gamma Mu, Dramatics.

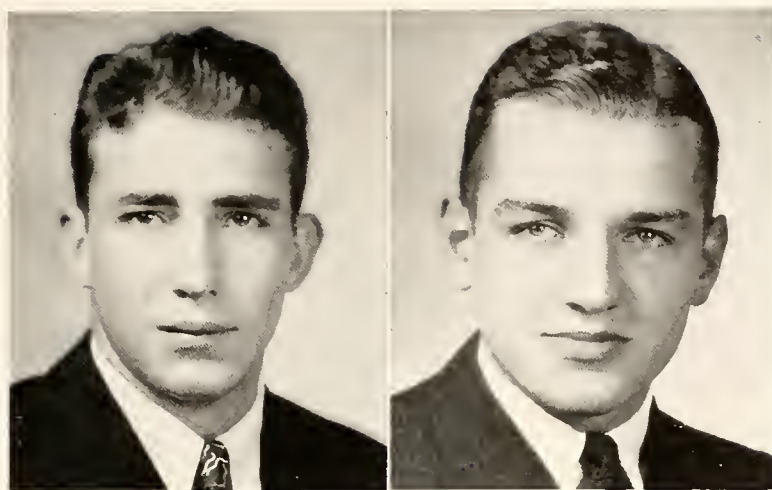
COLIN REID CAMPBELL

247 Riverview Drive

ASHEVILLE, NORTH CAROLINA

Alpha Tau Omega

Order of Gownsmen, Head Waiter, Glee Club, Choir, Freshman Football, Freshman Basketball, Interfraternity Athletics.



the seniors . .

RUPERT McPHERSON COLMORE, JR.

1 Mabel Street

CHATTANOOGA, TENNESSEE

Alpha Tau Omega

Order of Gownsmen, Blue Key, President of Senior Class, Freshman Football, Freshman Basketball, Freshman Track, Varsity Football, Varsity Basketball, Varsity Track, "S" Club—President, German Club.

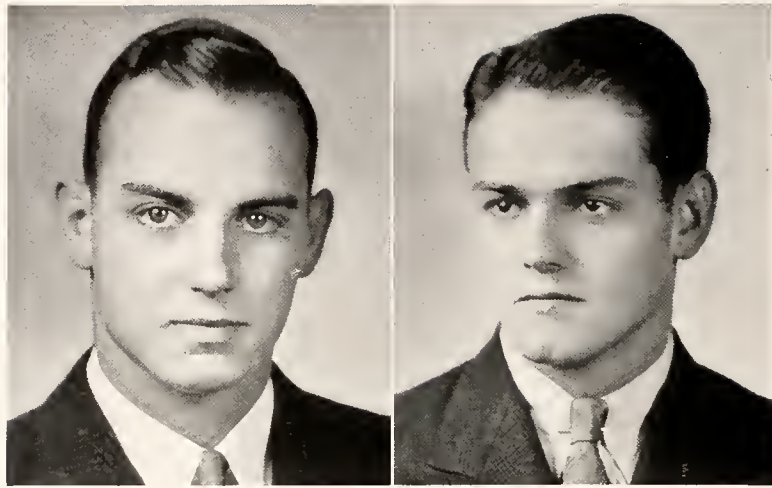
WILLIAM G. CROOK

1210 Highland Avenue

JACKSON, TENNESSEE

Phi Delta Theta

Order of Gownsmen—Vice-President, Scholarship Society, Pi Gamma Mu—President, Interfraternity Athletics, Omicron Delta Kappa, German Club, Freshman Football, Freshman Tennis, Varsity Football, Varsity Tennis, "S" Club, Glee Club, Debate Council, Honor Council, Blue Key.



the seniors . . .

BERTRAM COTTINGHAM DEDMAN, JR.

416 West Sixth Street

COLUMBIA, TENNESSEE

Sigma Alpha Epsilon

Order of Gownsmen, Proctor, Omicron Delta Kappa, Blue Key, Scholarship Society, Honor Council—President, Debate Council, L'Allegro—President, "S" Club, Freshman Football, Freshman Basketball, Freshman Tennis, Varsity Football, Varsity Basketball, German Club, Pi Gamma Mu.

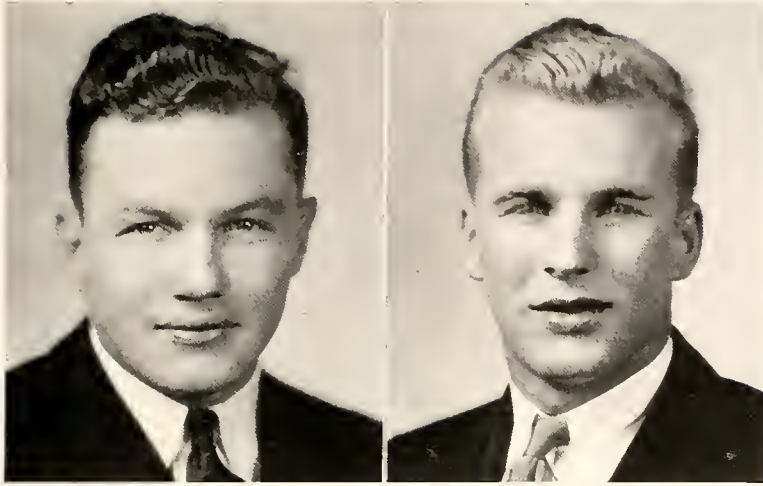
WILLIAM A. DOUGLAS, JR.

1555 Dauphin Street

MOBILE, ALABAMA

Phi Delta Theta

Order of Gownsmen, "S" Club, Manager Freshman Football '35, Manager Varsity Football '36, Varsity Track, Blue Key, Interfraternity Athletics, Glee Club, German Club.



the seniors . .

HAROLD EUSTIS

103 North Edison Street

GREENVILLE, MISSISSIPPI

Alpha Tau Omega

Order of Gownsmen, Blue Key—President, Glee Club, "S" Club, Freshman Football, Varsity Football, Vice-President of Freshman Class, Secretary of Sophomore Class, German Club, Interfraternity Athletics.

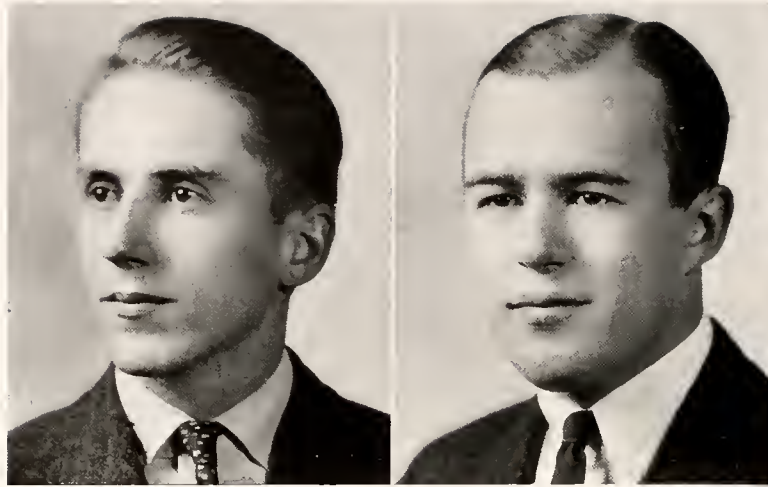
WILLIAM STUART FLEMING, III

Rock Rest

COLUMBIA, TENNESSEE

Sigma Alpha Epsilon

Order of Gownsmen, Blue Key, "S" Club, Freshman Football, Varsity Football, German Club.



the seniors . .

GEORGE SELLERS GRAHAM, JR.

2620 Madison Avenue

BIRMINGHAM, ALABAMA

Phi Gamma Delta

Order of Gownsmen, Scholarship Society, Sopherim, Neograph, Interfraternity Athletics, "Mountain Goat"—Editor '35-'36, "Purple" Staff, Pi Gamma Mu, German Club.

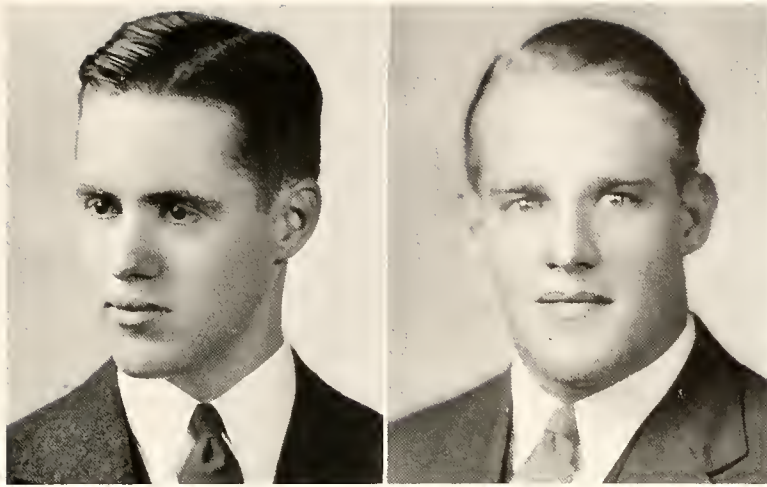
AUGUSTUS TOMPKINS GRAYDON

1110 Barnwell Street

COLUMBIA, SOUTH CAROLINA

Sigma Nu

Order of Gownsmen, Phi Beta Kappa, Blue Key, Omicron Delta Kappa, Scholarship Society, Pi Gamma Mu, Sopherim, Neograph, "Purple"—Editor, Glee Club, German Club, L'Allegro, Dramatics, Choir, "Mountain Goat" Staff, Fire Chief.



the seniors . . .

ROBERT EMMET GRIBBIN, JR.

60 Ravenscroft Drive

ASHEVILLE, NORTH CAROLINA

Delta Tau Delta

Order of Gownsmen, Phi Beta Kappa, Pi Gamma Mu, Sopherim—
President, Scholarship Society, Debate Council, Glee Club, German
Club, Dramatics, Choir, "Purple" Staff, Interfraternity Athletics.

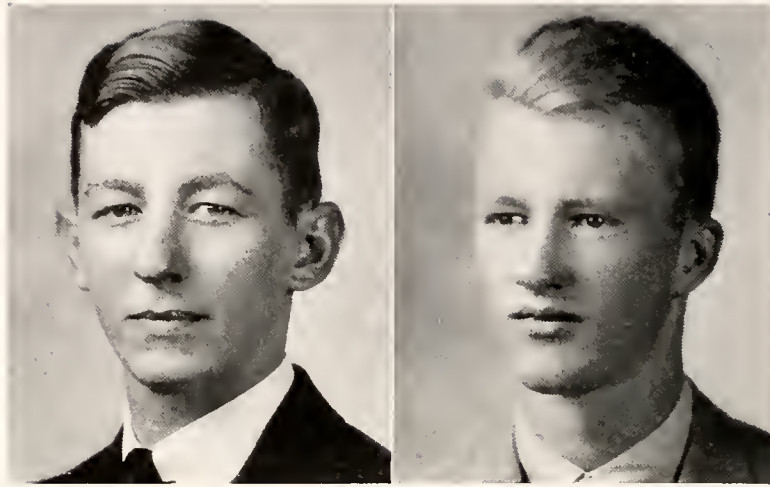
WALTER MOORE HART

3 King's Mountain Street

YORK, SOUTH CAROLINA

Sigma Nu

Order of Gownsmen, Scholarship Society, Glee Club, German Club,
Dramatics, Alpha Psi Omega, Choir—President, Freshman Football,
Interfraternity Athletics, "Mountain Goat" Staff.



the seniors . .

THEODORE C. HEYWARD, JR.

R. F. D. No. 1

CHARLOTTE, NORTH CAROLINA

Delta Tau Delta

Order of Gownsmen, Glee Club, German Club, "Cap and Gown"—
Business Manager, Interfraternity Athletics, Head Cheerleader
'36-'37.

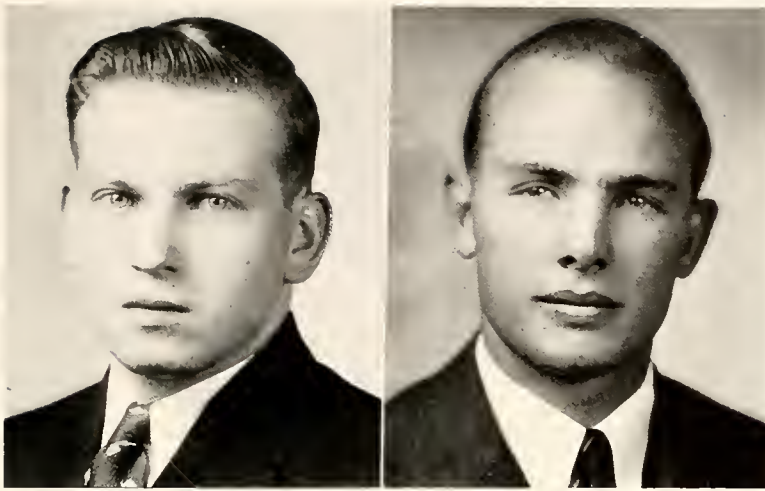
FRANCIS HAMMOND HOLMES

23 West Sixth Avenue

LEXINGTON, NORTH CAROLINA

Sigma Nu

Order of Gownsmen, German Club, "Mountain Goat"—Editor '36-
'37, Freshman Basketball, Interfraternity Athletics, Sopherim.



the seniors . .

JAMES TAYLOR HUFFMAN

WINCHESTER, TENNESSEE

Order of Gownsmen.

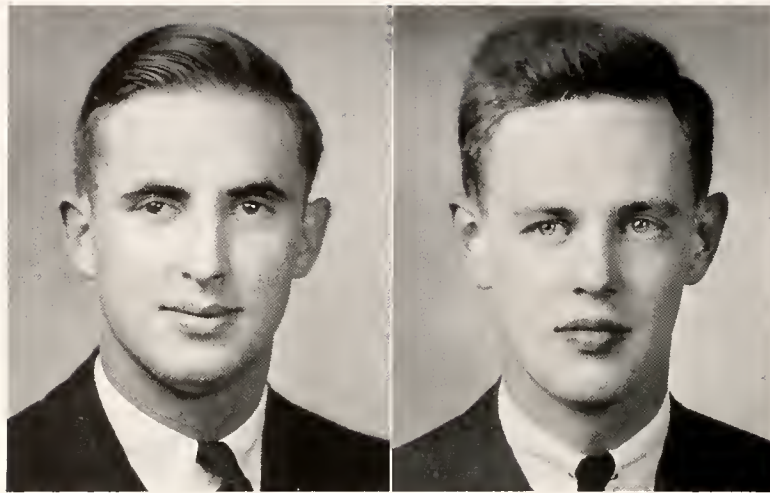
H. HILL LUCE

1641 McDuff Avenue

JACKSONVILLE, FLORIDA

Kappa Alpha

Order of Gownsmen, Freshman Basketball, Freshman Tennis, Varsity Football, Varsity Basketball, German Club, Interfraternity Athletics, "S" Club.



the seniors . . .

JAMES TUCKER MacKENZIE, JR.

4300 Glenwood Avenue

BIRMINGHAM, ALABAMA

Sigma Alpha Epsilon

Order of Gownsmen, Phi Beta Kappa, Omicron Delta Kappa, Blue Key, Glee Club—President, Student Vestry—Senior Warden, German Club—Vice-President, Neograph, Freshman Football, Freshman Track, Varsity Football, Varsity Track, Debate Council, President of Sophomore Class, Choir, Scholarship Society.

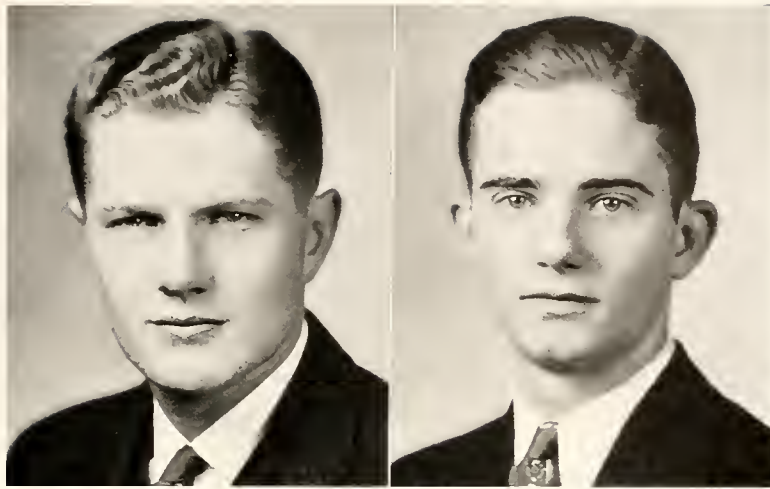
WYLIE MITCHELL

102 Stanley Street

MIDDLETOWN, OHIO

Phi Delta Theta

Order of Gownsmen, Pi Gamma Mu, Scholarship Society, "Cap and Gown"—Editor, Glee Club, Neograph, German Club, Freshman Football Manager '35.



the seniors . .

BAXTER SPRINGS MOORE, JR.

714 Queens Road

CHARLOTTE, NORTH CAROLINA

Sigma Nu

Order of Gownsmen, Blue Key, Freshman Football, Varsity Football, "S" Club, Freshman Basketball Manager '36, Varsity Basketball Manager '37, Dramatics, "Mountain Goat" Staff, L'Allegro, Biology Lab. Assistant, German Club.

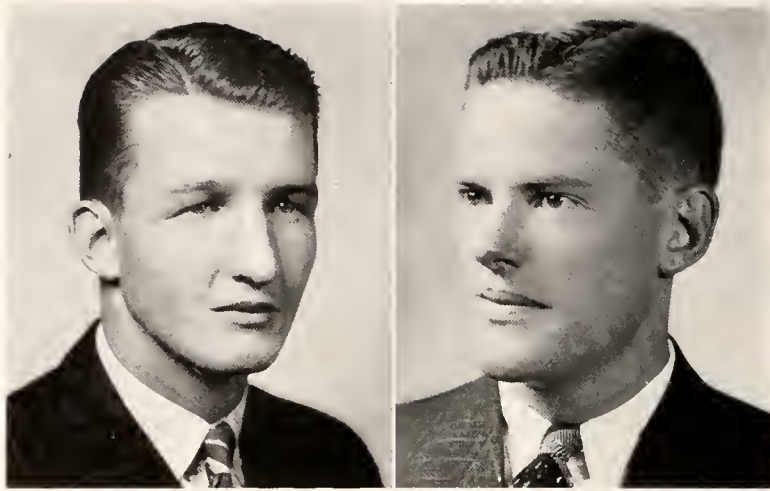
BEN PHILLIPS, JR.

1805 Broadway

GALVESTON, TEXAS

Phi Gamma Delta

Order of Gownsmen—President, Phi Beta Kappa, Omicron Delta Kappa, Blue Key, Scholarship Society, Proctor, Head Proctor '36-'37, Student Vestry, Neograph, German Club, L'Allegro, "S" Club, Varsity Football Manager '35, Interfraternity Athletics, Vice-President of Sophomore Class, Glee Club, Pi Gamma Mu.



the seniors . .

HUGH TODD SHELTON, JR.

School Street

COLUMBIA, TENNESSEE

Sigma Alpha Epsilon

Order of Gownsmen, Omicron Delta Kappa, Blue Key, Pi Gamma Mu, Freshman Football, Freshman Basketball, Freshman Tennis, Varsity Football, Varsity Basketball, Varsity Tennis, "S" Club, German Club.

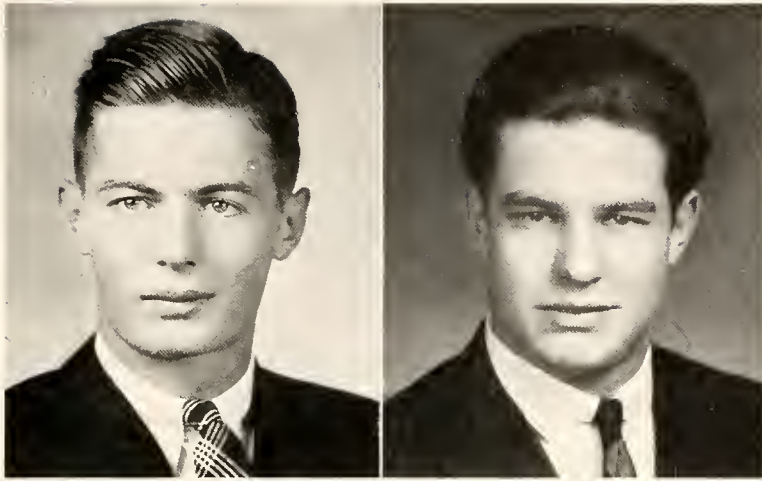
SAMUEL BARTOW STRANG, JR.

Battery Place

CHATTANOOGA, TENNESSEE

Phi Delta Theta

Order of Gownsmen, Blue Key, German Club, L'Allegro, Freshman Track Manager '36, Varsity Track Manager '37, Interfraternity Athletics, Postmaster.



the seniors . .

MARSHALL SAYRE TURNER, JR.

1010 East Ninth Avenue

WINFIELD, KANSAS

Phi Delta Theta

Order of Gownsmen, Scholarship Society, Blue Key, Glee Club, German Club, Dramatics, Freshman Football, Freshman Basketball, Varsity Football, Varsity Basketball, Varsity Track, Interfraternity Athletics.

RICHARD WALKER BOLLING

425 McClung Street

HUNTSVILLE, ALABAMA

Phi Delta Theta

Order of Gownsmen, Freshman Football, Varsity Football, "S" Club, German Club, Interfraternity Athletics.

(No Picture)

GILBERT MARSHALL CHATTIN

WINCHESTER, TENNESSEE

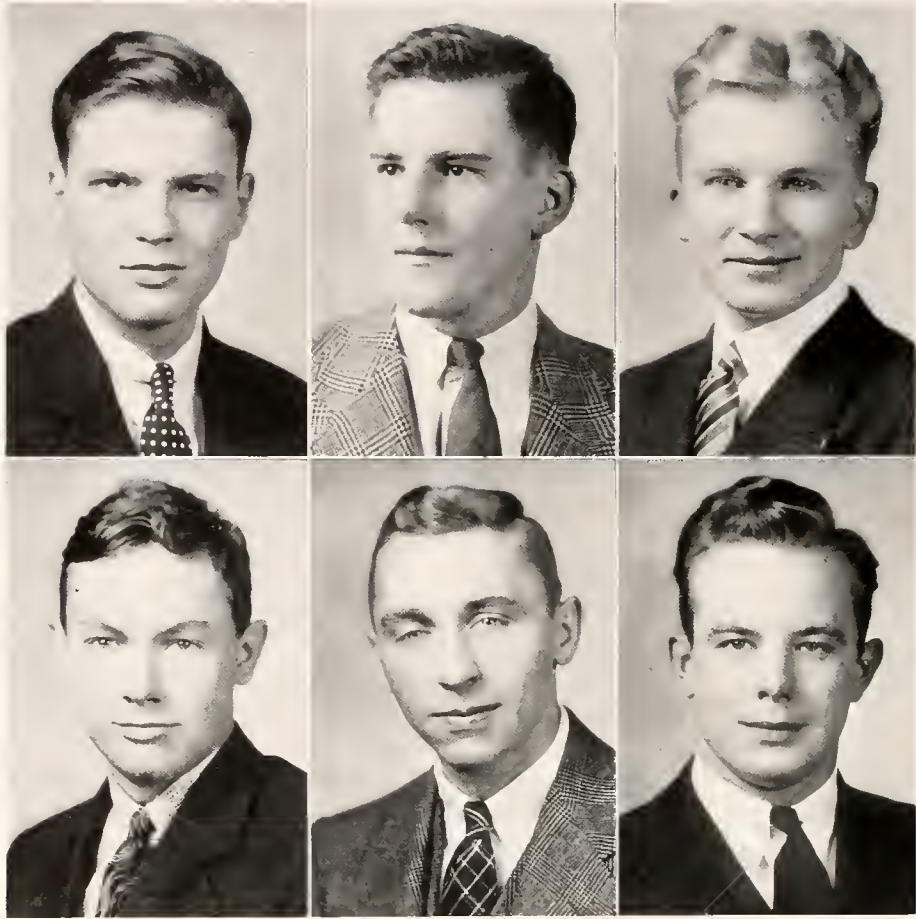
Order of Gownsmen.

a l m a m a t e r

Alma Mater, Sewanee,
My glorious Mother ever be,
I will give my all to thee—
God bless thee to eternity.
Thou canst make me worth the while,
O guide and shelter me,
And all my life, through storm and strife,
My star thou'lt be.

—Newton Middleton.

the juniors



the juniors

SAMUEL THOMPSON ADAMS

The Plains, Virginia
Alpha Tau Omega
Order of Gownsmen.

FRANCIS A. BASS

Decherd, Tennessee
Order of Gownsmen.

PERRY M. BALLENGER

4 Hillcrest Drive
Greenville, South Carolina
Kappa Alpha
Order of Gownsmen.

GEORGE G. BEAN

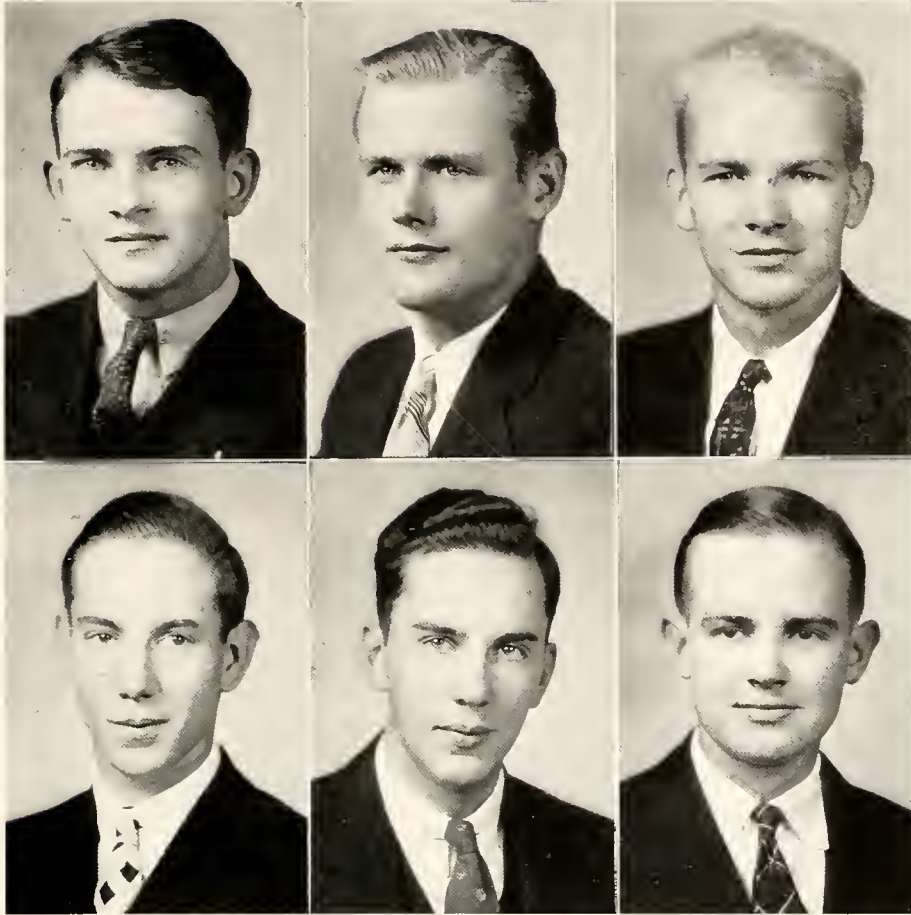
22 Jordan Avenue
Brunswick, Maine
Alpha Tau Omega
Order of Gownsmen.

MARSHALL IRELAND BARNES

Bardstown, Kentucky
Kappa Sigma
Order of Gownsmen, Debate Council, Pi Gamma Mu, Scholarship Society.

FRANKLYN HEEMAN BOARD

Burlington, North Carolina
Sigma Nu
Order of Gownsmen, Scholarship Society.



CHARLES A. BOHMER

P. O. Box 145
 Lexington, Kentucky
 Delta Tau Delta
 Order of Gownsmen, "Purple" Student Business Manager, Interfraternity Athletics, "Cap and Gown" Staff.

CHARLES M. BROWN

321 North Front Street
 Harrisburg, Pennsylvania
 Phi Delta Theta
 Order of Gownsmen, Glee Club, Freshman Football, Neograph, German Club.

WILLIAM SYDNEY BURGESS

13 Broad Street
 Sumter, South Carolina
 Sigma Nu
 Order of Gownsmen, Student Vestry, Freshman Basketball.

RICHARD C. COBBS

2 Ridge Avenue
 Montgomery, Alabama
 Sigma Alpha Epsilon
 Order of Gownsmen, Pi Gamma Mu, Interfraternity Athletics, Neograph, Freshman Football, Scholarship Society.

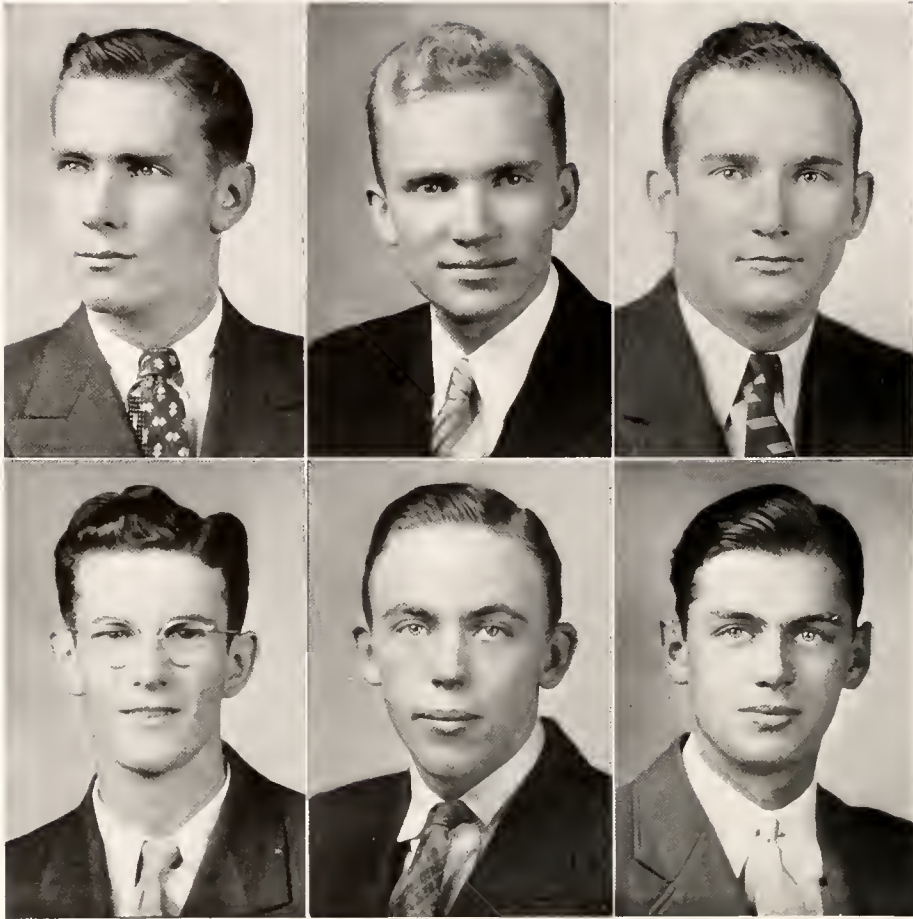
JEFFERSON D. COPELAND, JR.

148 Railroad Avenue
 Bamberg, South Carolina
 Phi Delta Theta
 Order of Gownsmen, German Club, Freshman Football, Interfraternity Athletics.

HERBERT EPHGRAVE, JR.

1016 South 42nd Street
 Birmingham, Alabama
 Sigma Alpha Epsilon
 Order of Gownsmen, Neograph, Pi Gamma Mu, Interfraternity Athletics, Scholarship Society.

the juniors



the juniors

FRANK MORGAN GILLESPIE

Vance Jackson Road
 San Antonio, Texas
 Phi Delta Theta
 Order of Gownsmen, Proctor,
 Freshman Football, Varsity Foot-
 ball, Freshman Track, Varsity
 Track; Interfraternity Athletics.

NORWOOD C. HARRISON

Calhoun Falls, South Carolina
 Pi Kappa Phi
 Order of Gownsmen, Neograph,
 Scholarship Society.

DANIEL ROGER GRAY, JR.

Mount Pleasant, Tennessee
 Delta Tau Delta
 Order of Gownsmen, Pi Gamma
 Mu, Interfraternity Athletics, Schol-
 arship Society.

JAMES WRIGHT HILL

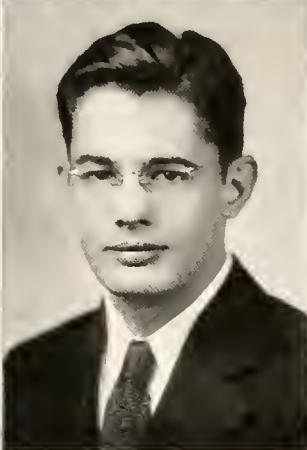
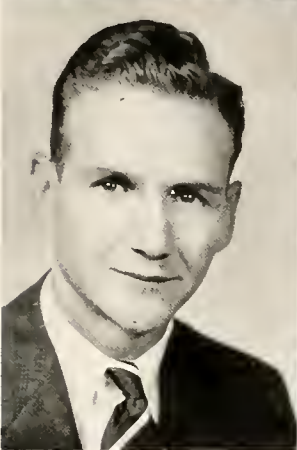
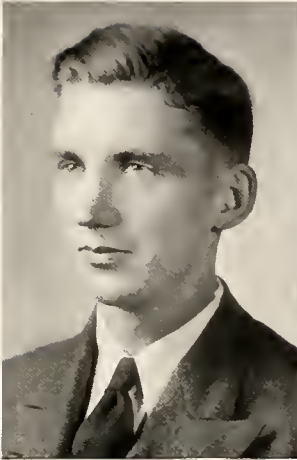
Cowan, Tennessee
 Order of Gownsmen.

P. B. GRIFFIN, JR.

Winterville, Mississippi
 Alpha Tau Omega
 Order of Gownsmen, Freshman
 Football, Varsity Football, "S"
 Club.

JACK HOPPER

Cohoes, New York
 Sigma Alpha Epsilon
 Order of Gownsmen, Interfrater-
 nity Athletics.



SUGG KEISER

Union City, Tennessee
Sigma Alpha Epsilon
Order of Gownsmen, Varsity Football, Varsity Basketball, "S" Club.

JAMES EDMUND McCANTS

2880 College Street
Jacksonville, Florida
Sigma Nu
Order of Gownsmen.

the juniors

THOMAS V. MAGRUDER, JR.

2712 Hanover Circle
Birmingham, Alabama
Phi Delta Theta
Order of Gownsmen, Freshman Basketball Manager '37, Scholarship Society.

HARVEY B. McCLELLAN

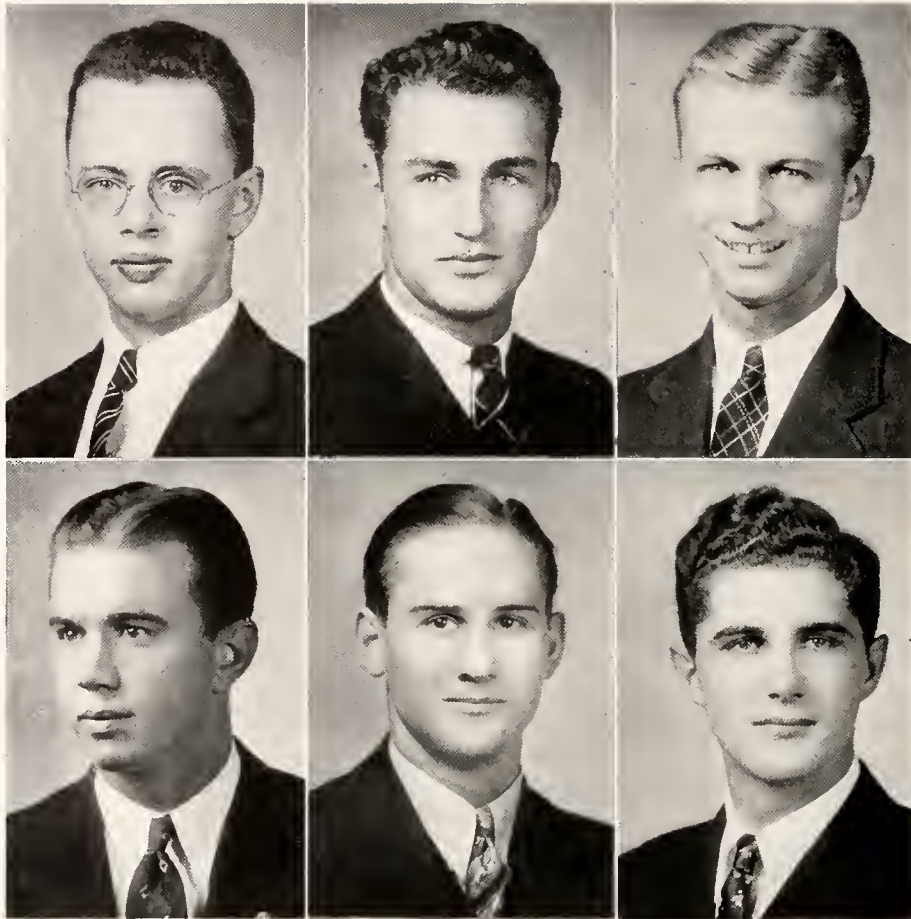
105 Washington Street
Henderson, Kentucky
Sigma Alpha Epsilon
Order of Gownsmen, Neograph, Student Vestry, Scholarship Society.

HENRY PINDELL MANNING

1932 West Fayette Street
Baltimore, Maryland
Order of Gownsmen, Alpha Psi Omega, Dramatics, Scholarship Society.

HENDREE BRINTON MILWARD

559 North Broadway
Lexington, Kentucky
Kappa Alpha
Order of Gownsmen, Pi Gamma Mu, Sopherim, "Purple" Sports Editor, "Cap and Gown" Staff, Freshman Football, Freshman Basketball, Varsity Basketball, Interfraternity Athletics, German Club, Scholarship Society.



the juniors

J. NESBITT MITCHELL

102 Stanley Street
 Middletown, Ohio
 Phi Delta Theta
 Order of Gownsmen, Pi Gamma
 Mu, "Mountain Goat" Staff, Inter-
 fraternity Athletics, German Club,
 Scholarship Society.

RALPH T. PHILLIPS

Eupora, Mississippi
 Sigma Nu
 Order of Gownsmen, Varsity Foot-
 ball, "S" Club.

JAMES RICHARD NEWTON

Swan Lake, Mississippi
 Order of Gownsmen, Varsity Foot-
 ball, Varsity Basketball, "S" Club.

CARL IVES SCHUESSLER

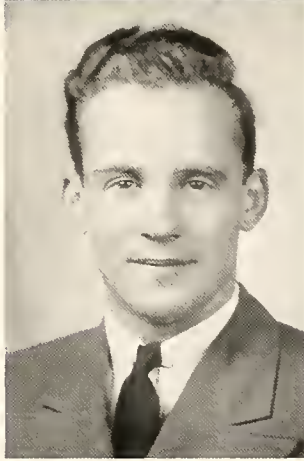
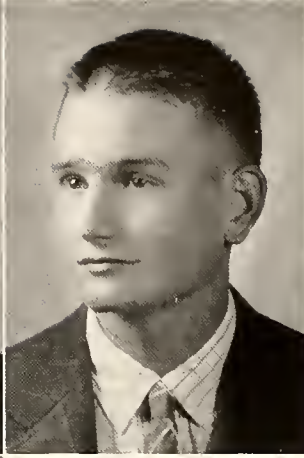
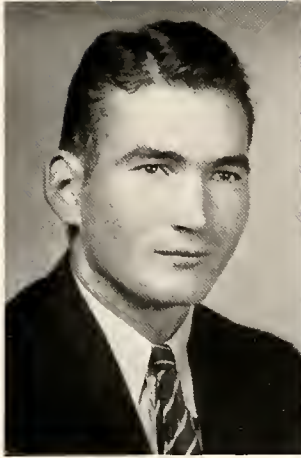
1135 Broadway
 Columbus, Georgia
 Phi Gamma Delta
 Order of Gownsmen, Freshman
 Football, Varsity Football, Scholar-
 ship Society.

JAMES MALCOLM PACKER

2027 White Street
 Alexandria, Louisiana
 Kappa Alpha
 Order of Gownsmen, Proctor,
 Neograph, Blue Key.

HOWELL HOBSON SHELTON

3801 Maplewood Avenue
 Dallas, Texas
 Phi Delta Theta
 Order of Gownsmen, German
 Club, Interfraternity Athletics.



DEXTER S. STANPHILL

Cotton Plant, Mississippi
Order of Gownsmen, Varsity Football, Varsity Basketball, "S" Club.

JOHN RUSHING WELSH

Monroe, North Carolina
Kappa Sigma
Order of Gownsmen, "Purple" Staff, German Club, Interfraternity Athletics.

the juniors

LYON VAIDEN

618 Morehead Avenue
Durham, North Carolina
Alpha Tau Omega
Order of Gownsmen, Neograph, German Club, Interfraternity Athletics, Scholarship Society.

WILLIAM N. WILKERSON, II

1258 Carr Avenue
Memphis, Tennessee
Delta Tau Delta
Order of Gownsmen, "Purple" Managing Editor, Blue Key, Neograph, Sopherim, Alpha Psi Omega, Pi Gamma Mu, Scholarship Society, German Club Treasurer, Interfraternity Athletics.

in memoriam



Parr Hooper McQueen

1918 - 1957

Class of 1940

Phi Gamma Delta



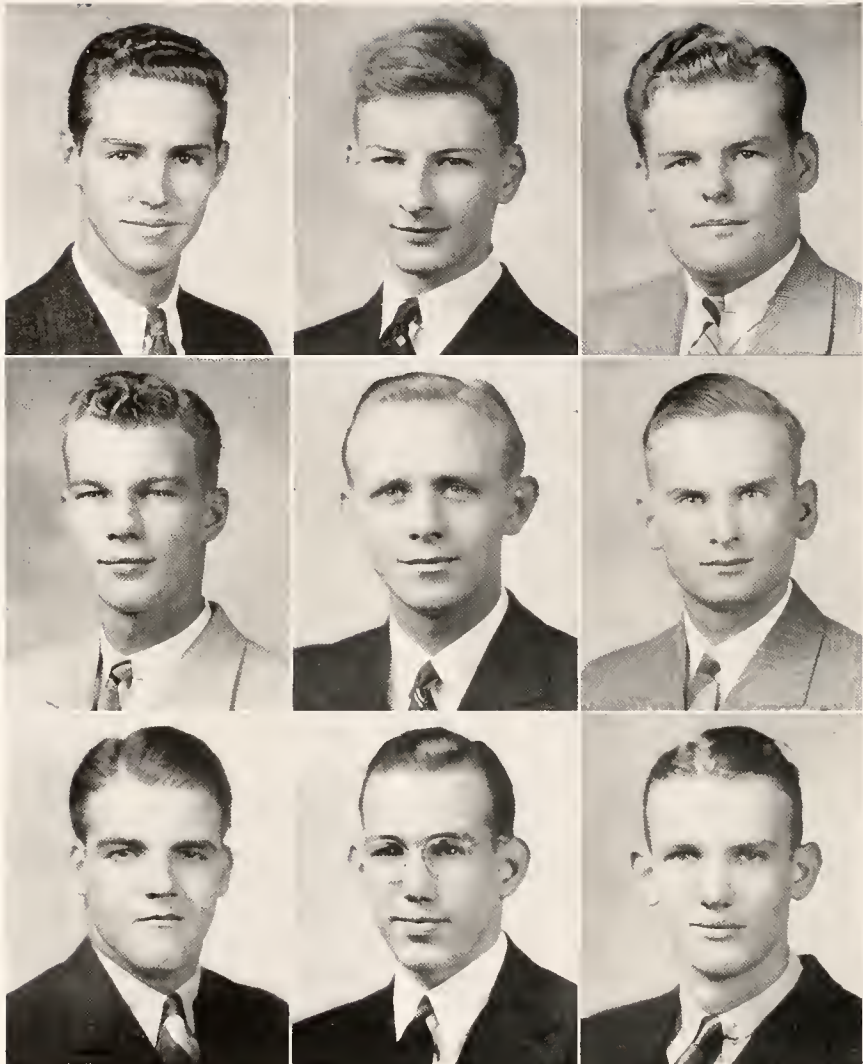
Percy Bell

1920 - 1957

Class of 1940

Kappa Alpha Pledge

the sophomores



the sophomores

SAM LANHAM ALLEN
 206 Elm Street
 Lancaster, South Carolina
 Sigma Nu

JOSEPH ADDISON ATKINS
 Sewanee, Tennessee
 Phi Delta Theta

W. HARRISON BESTE
 6370 Alamo Avenue
 Saint Louis, Missouri
 Kappa Sigma

ARCH BISHOP, JR.
 Golf Club Lane
 Nashville, Tennessee
 Phi Delta Theta

SAMUEL BOYKIN
 Boykin, South Carolina
 Sigma Alpha Epsilon

THEODORE DuBOSE BRATTON
 401 Boyd Place
 Memphis, Tennessee
 Phi Delta Theta

ROBERT SAM BROWN
 Walnut Street
 Springfield, Tennessee
 Sigma Chi

ARCHIBALD R. CAMPBELL
 1515 Broadway
 Galveston, Texas
 Phi Gamma Delta

HENRY CORNELIUS CORTES
 4210 Roseland Street
 Houston, Texas
 Sigma Alpha Epsilon



the sophomores

ERNEST W. COTTEN

350B Cliff Road
Birmingham, Alabama
Sigma Alpha Epsilon

T. RUTHERFORD CRAVENS

Sewanee, Tennessee
Kappa Alpha

HOWARD R. CRISPELL

271 39th Street
Brooklyn, New York
Delta Tau Delta

WM. HOUSTON CROZIER

903 School Street
Columbia, Tennessee
Sigma Alpha Epsilon

BEN PHILIPS DONNELL

5619 Cates Avenue
Saint Louis, Missouri
Sigma Alpha Epsilon

WILSON R. EATHERLY

Metcalfe, Mississippi
Phi Delta Theta

GILBERT G. EDSON

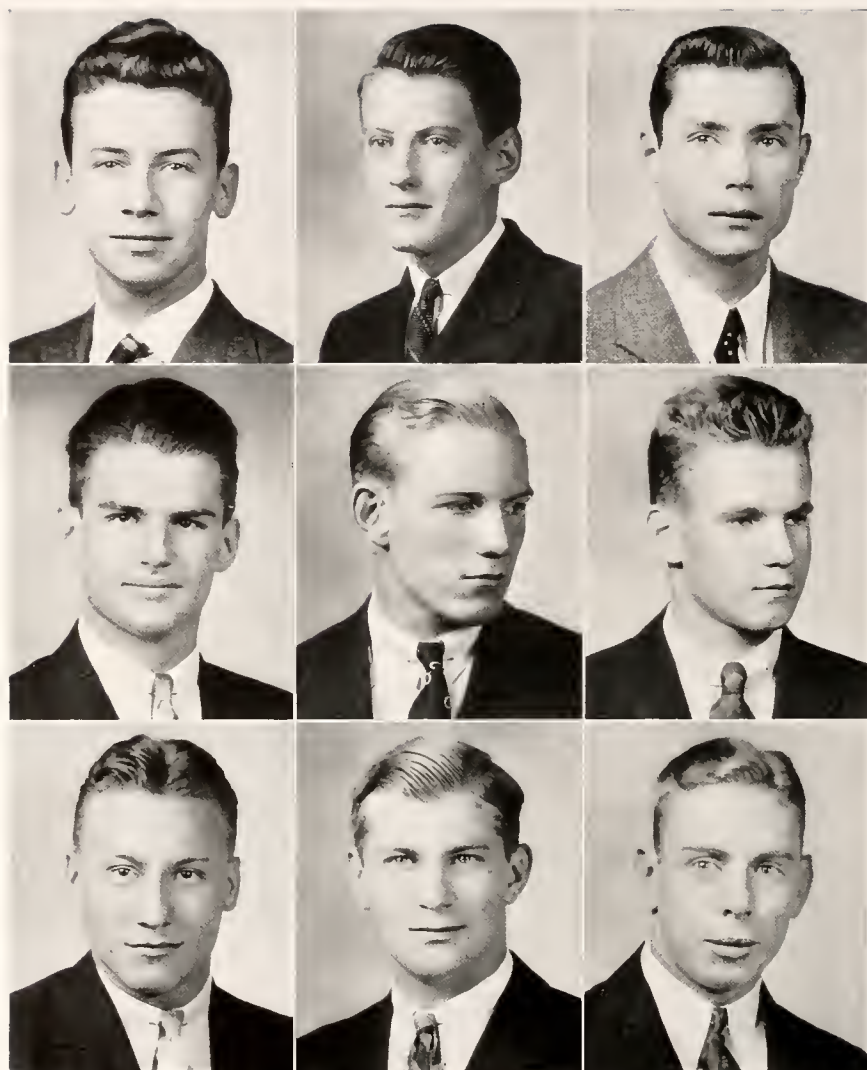
Hotel Shoreham
Washington, D. C.
Alpha Tau Omega

BAUCUM FULKERSON

Route 1
North Little Rock, Arkansas
Sigma Chi

WALLACE H. GAGE

107 Cole Avenue
Williamstown, Massachusetts
Kappa Alpha



the sophomores

GANT GAITHER, JR.
 1704 South Main Street
 Hopkinsville, Kentucky
 Phi Gamma Delta

WM. MORRIS GIVEN, JR.
 4312 Glenwood Avenue
 Birmingham, Alabama
 Phi Delta Theta

ROBERT A. GRAY
 4516 Clairmont Avenue
 Birmingham, Alabama
 Phi Delta Theta

ALEXANDER GUERRY, JR.
 605 Oak Street
 Chattanooga, Tennessee
 Sigma Alpha Epsilon

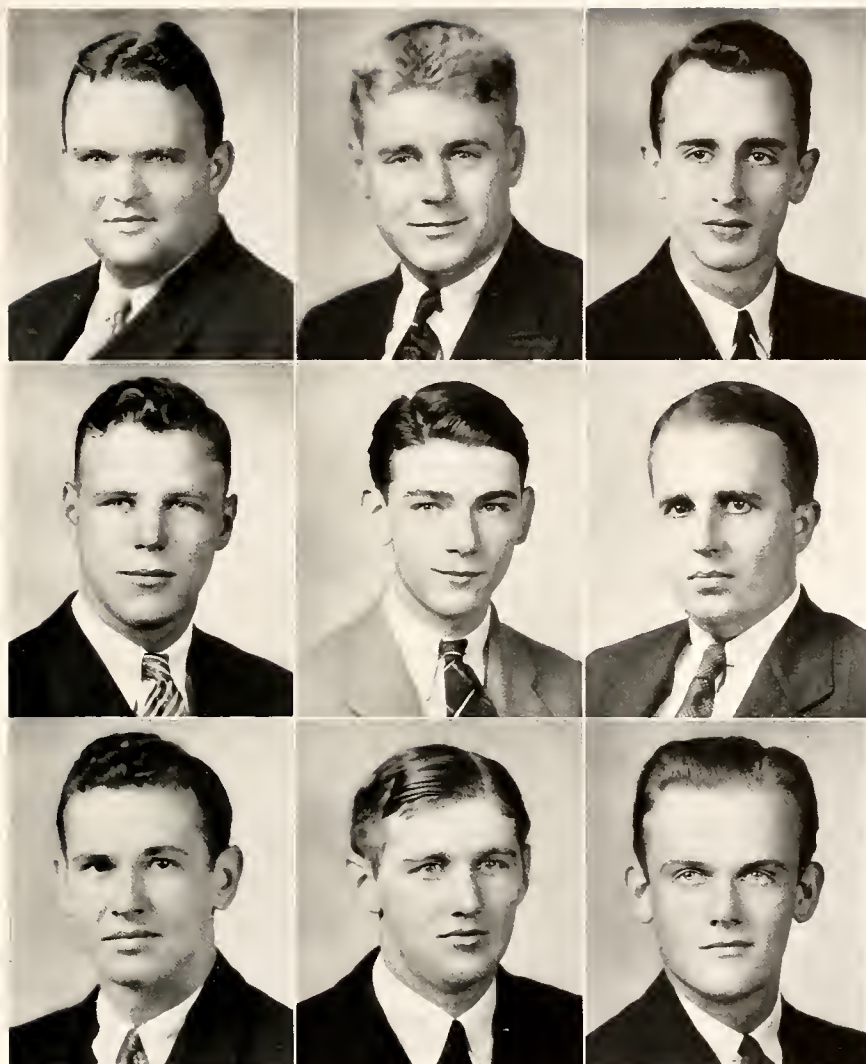
OLIVER MORGAN HALL
 1203 Washington Avenue
 Greenville, Mississippi
 Sigma Alpha Epsilon

BERT SHEARS HAYS
 930 Cherokee Lane
 Signal Mountain, Tennessee
 Kappa Sigma

WALTER VERNON HIGGINS
 1711 8th Avenue, North
 Birmingham, Alabama

S. WITHERS HOWELL, JR.
 Signal Mountain, Tennessee
 Phi Delta Theta

MARION FRANCIS JACKSON
 Sewanee, Tennessee
 Sigma Nu



the sophomores

JAMES ROBERT LASATER
Cowan, Tennessee
Phi Gamma Delta

STANLEY F. LAWS
111 Pleasant Avenue
Sturgis, Michigan
Sigma Nu

LESLIE McLAURIN, JR.
223 South Coit Street
Florence, South Carolina
Phi Gamma Delta

WALTER L. McGOLDRICK
632 North Dunlap Avenue
Memphis, Tennessee
Delta Tau Delta

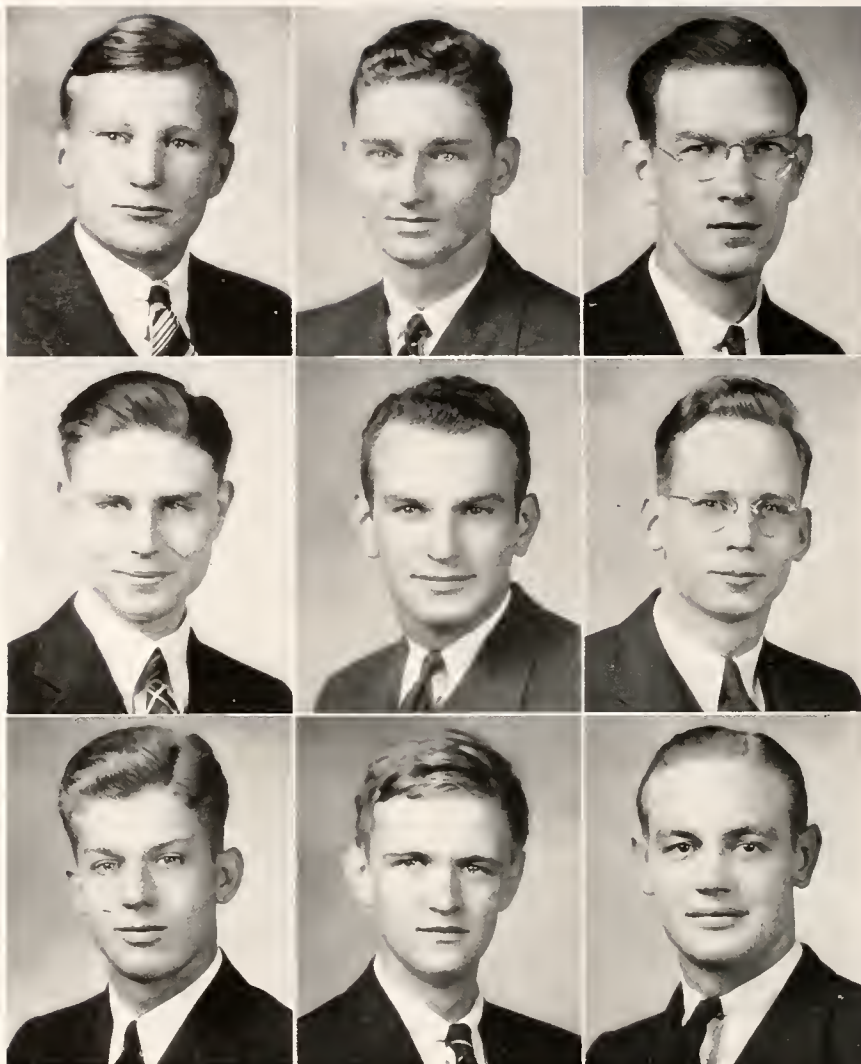
EDWIN M. McPHERSON, JR.
36 Club Drive
Atlanta, Georgia
Phi Delta Theta

DAVIS LYEN MATHEWS
Quarters 15
Fort McClellan, Alabama

C. L. MONTGOMERY, JR.
1425 Peabody Avenue
Memphis, Tennessee
Sigma Alpha Epsilon

M. A. NEVIN PATTON, JR.
Summerville Road
Rome, Georgia
Sigma Alpha Epsilon

WALKER N. PENDLETON
1125 Oxford Road
Atlanta, Georgia
Delta Tau Delta



the sophomores

THOMAS T. PHILLIPS

360 Sorrento Road
Jacksonville, Florida
Sigma Nu

THOMAS NEAL SAUER

531 South Main Street
Sauk Center, Minnesota
Kappa Sigma

LEONARD L. SHERTZER

14 Ridge Avenue
Montgomery, Alabama
Kappa Sigma

R. STANLEY QUISENBERRY

5 Thomas Avenue
Montgomery, Alabama
Kappa Sigma

ELMER DAVID SCHOERNER

431 North Franklin Street
Saginaw, Michigan

E. HARTWELL K. SMITH

1109 South 33rd Street
Birmingham, Alabama
Sigma Nu

RICHARD RHODA ROACH

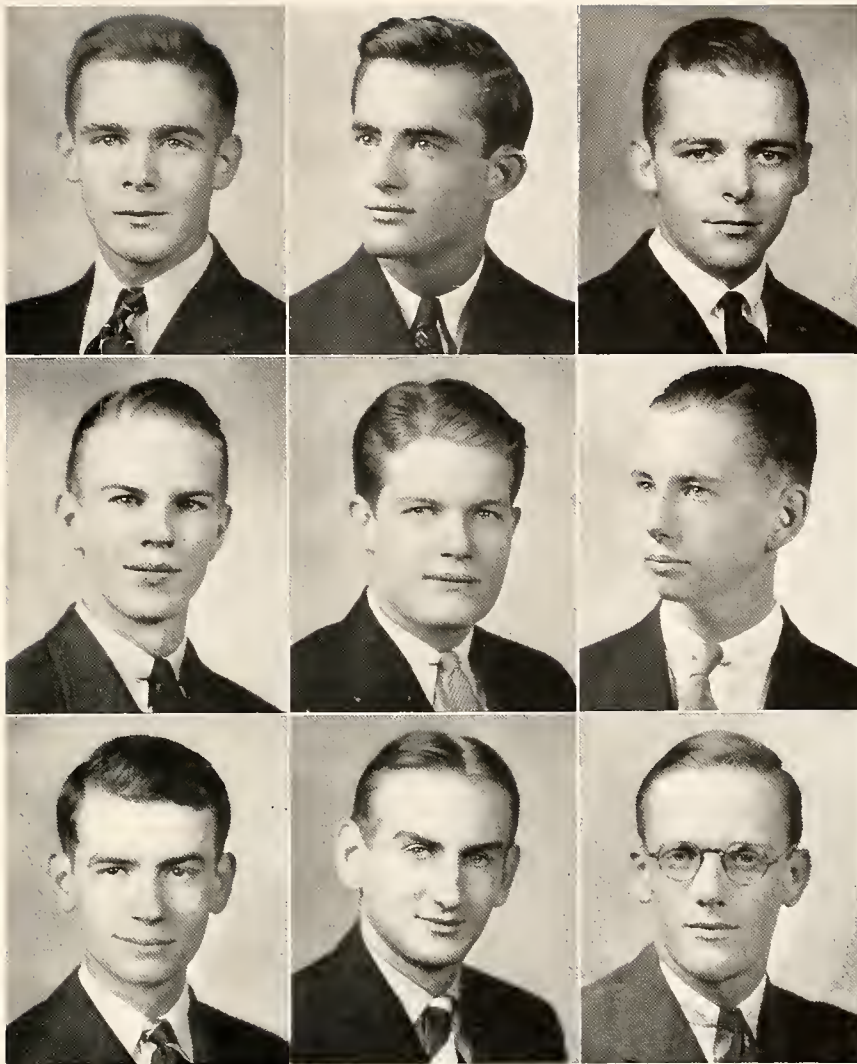
306 West Third Street
Elmira, New York
Alpha Tau Omega

JAMES E. SAVOY

Beverly Hills
Chattanooga, Tennessee
Kappa Sigma

EUGENE J. SMITH

424 West Pear Street
Lakeland, Florida
Kappa Sigma



the sophomores

THOMAS MELVILLE STEWART
Winchester, Tennessee
Delta Tau Delta

RANDELL CROFT STONEY
573 Huger Street
Charleston, South Carolina
Alpha Tau Omega

PRIDE TOMLINSON
607 West Seventh Street
Columbia, Tennessee
Kappa Alpha

ROBERT W. TURNER, III
3701 Meadowbrook Avenue
Nashville, Tennessee
Sigma Nu

RUSSELL WOOD TURNER
1010 East Ninth Street
Winfield, Kansas
Phi Delta Theta

GEORGE NOBLE WAGNON
331 Tenth Street, N. E.
Atlanta, Georgia
Sigma Nu

JEREMIAH GREEN WALLACE
1520 South Fourth Street
Springfield, Illinois
Delta Tau Delta

HENRY LYTTLE WILSON
Tullahoma, Tennessee
Alpha Tau Omega

WILLIAM FINLEY WRIGHT
2134 Wyoming Avenue, N. W.
Washington, D. C.
Alpha Tau Omega

the sophomores

(No Pictures)

ALEXANDER M. ANDREWS
Andrews, South Carolina

JAMES CLEVELAND ROBERTS
New Roads, Louisiana

FLEET FOXWORTH MAGEE
1302 Pecan Street
Texarkana, Arkansas
Sigma Alpha Epsilon

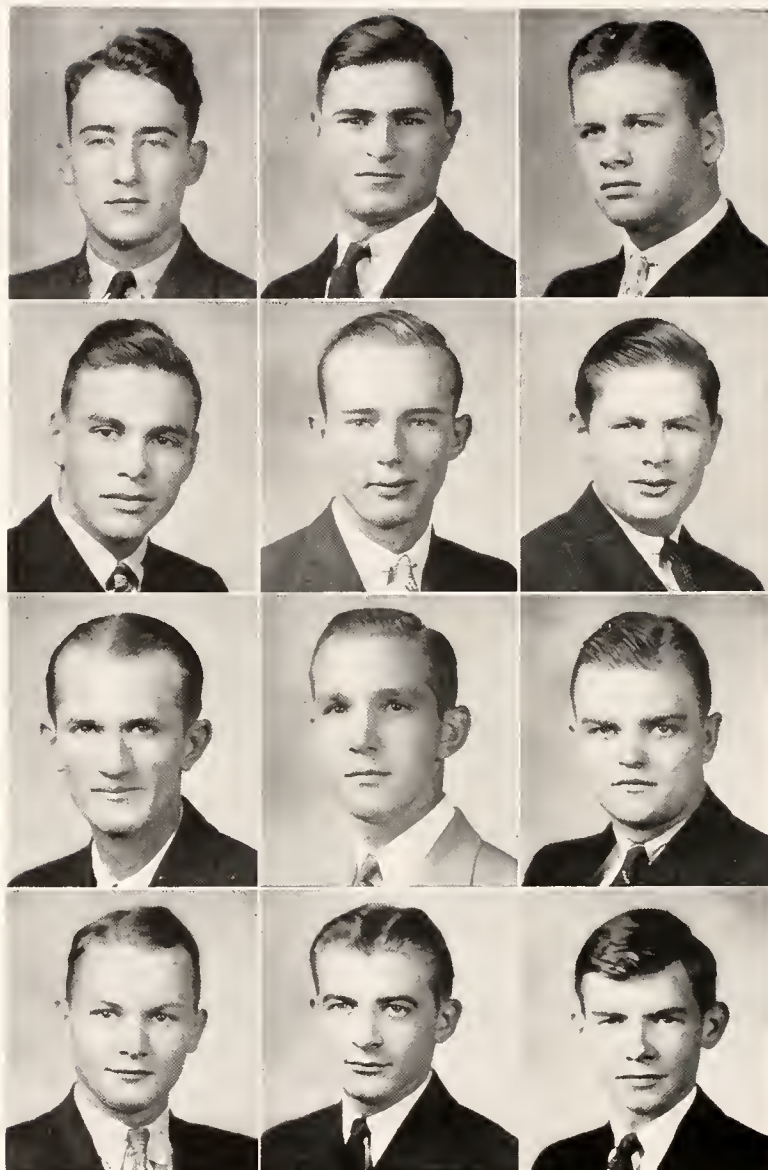
THOMAS ADRIAN ROSE
4222 Arcady Avenue
Dallas, Texas
Sigma Alpha Epsilon

JOHN SEARCY PETOT, JR.
1629 South Third Street
Louisville, Kentucky

JACK ADRIAN WHITLEY
3228 Lemmon Avenue
Dallas, Texas
Phi Delta Theta

TIMOTHY GLYNE WILLIAMS
Decherd, Tennessee

the freshmen



the freshmen

JO CARTER ANDERTON
Winchester, Tennessee
Alpha Tau Omega

JOHN NORTON ATKINS
Sewanee, Tennessee
Phi Delta Theta

CECIL ISOM BEASLEY
216 Phelps Street
Jacksonville, Florida
Kappa Sigma

SHUBAEL T. BEASLEY
99 South Main Street
Memphis, Tennessee
Delta Tau Delta

ROBERT WALTER BELFORD
1107 East Duffy Street
Savannah, Georgia
Delta Tau Delta

PERCY BELL
1603 Washington Avenue
Greenville, Mississippi
Kappa Alpha

ROBERT E. BELL
9 Audubon Place
Tuscaloosa, Alabama
Phi Gamma Delta

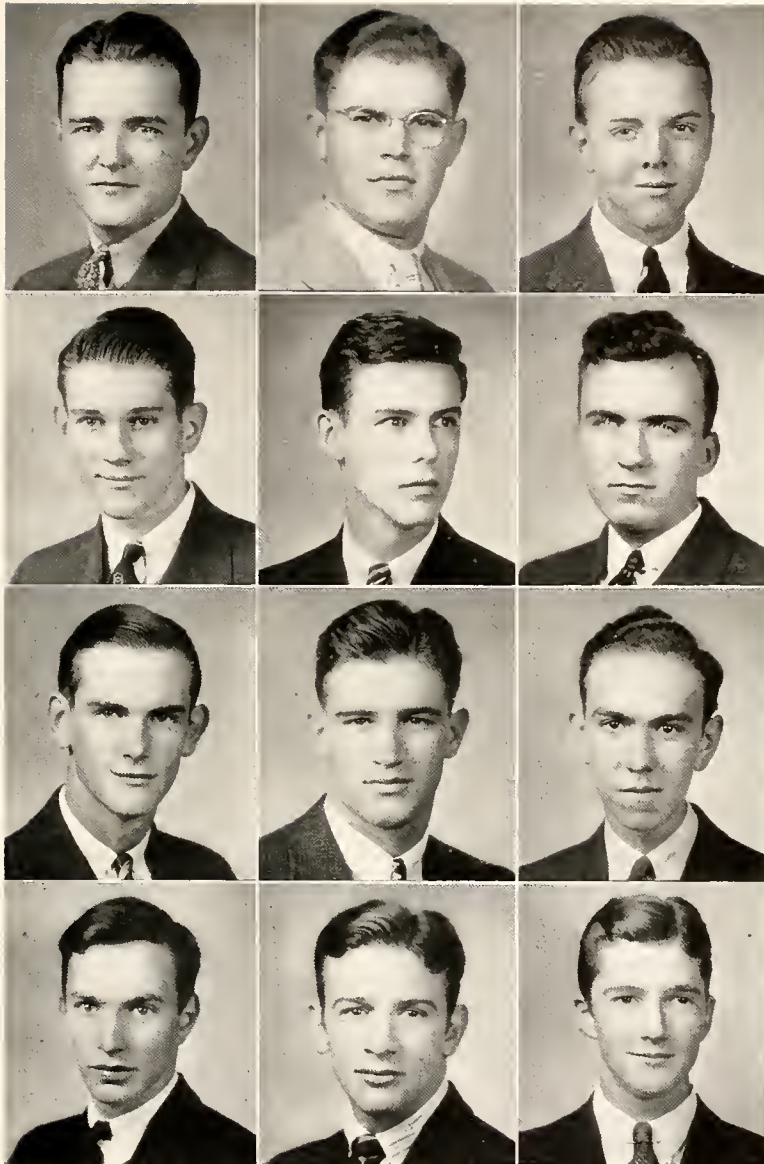
HENRY G. BOESCH
76 Lyndon Road
Providence, Rhode Island
Sigma Alpha Epsilon

HIRAM WILKS BRAWLEY
Pinkney Street
Chester, South Carolina
Sigma Nu

WENDELL VINTON BROWN
801 Chickasha Avenue
Chickasha, Oklahoma
Kappa Sigma

STANLEY BURLEW
1024 Griffith Avenue
Owensboro, Kentucky

NOEL CARPENTER
509 Line Street
Decatur, Alabama
Kappa Alpha



the freshmen

J. A. CHAMBERS, JR.
1743 Harbert Avenue
Memphis, Tennessee
Sigma Alpha Epsilon

LESTER R. CHISHOLM
Eunice, Louisiana
Kappa Sigma

J. WALKER COLEMAN, JR.
40 Tradd Street
Charleston, South Carolina
Sigma Alpha Epsilon

HUBERT B. CROSBY
1704 Washington Avenue
Greenville, Mississippi
Sigma Alpha Epsilon

ALBERT L. DADE
139 South Main Street
Henderson, Kentucky
Delta Tau Delta

LESLIE ROGERS DARR
Jasper, Tennessee
Kappa Sigma

JAMES MONROE DEDMAN, JR.
414 West 6th Street
Columbia, Tennessee
Sigma Alpha Epsilon

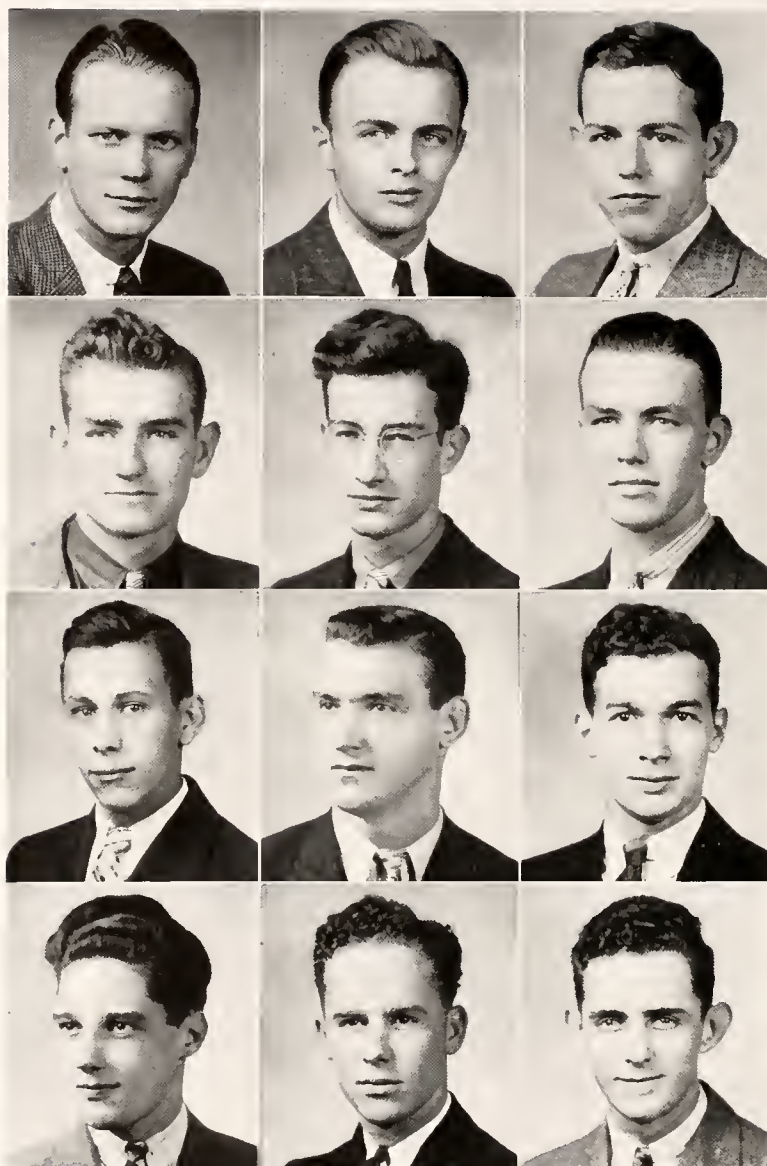
JAMES COPELAND DENNIS
517 Harrison Avenue
San Antonio, Texas
Phi Delta Theta

JAMES P. DeWOLFE, JR.
1204 Lovett Boulevard
Houston, Texas
Delta Tau Delta

WILLIAM MORGAN EDWARDS
599 University Place
Grosse Point, Michigan

JOHN R. EHRSAM
Enterprise, Kansas
Phi Gamma Delta

HAYWOOD CLARK EMERSON
621 Dock Street
Wilmington, North Carolina
Delta Tau Delta



the freshmen

THOMAS BROOKS FAIRLEIGH
Hopkinsville, Kentucky
Phi Delta Theta

JOSEPH E. FERGUSON, JR.
Forrest City, Arkansas
Sigma Alpha Epsilon

GEORGE WARD FORGY
Cowan, Tennessee
Phi Gamma Delta

PRESTON C. FOWLKES
Fort Davis, Texas
Sigma Nu

LEE EMIL GESSNER
5331 Morningside
Dallas, Texas
Phi Gamma Delta

GEORGE LESTER GLASS
5107 Central Avenue
Tampa, Florida
Beta Theta Pi

KENNETH ROY GREGG
Shamrock Heights
Booneville, Missouri
Sigma Nu

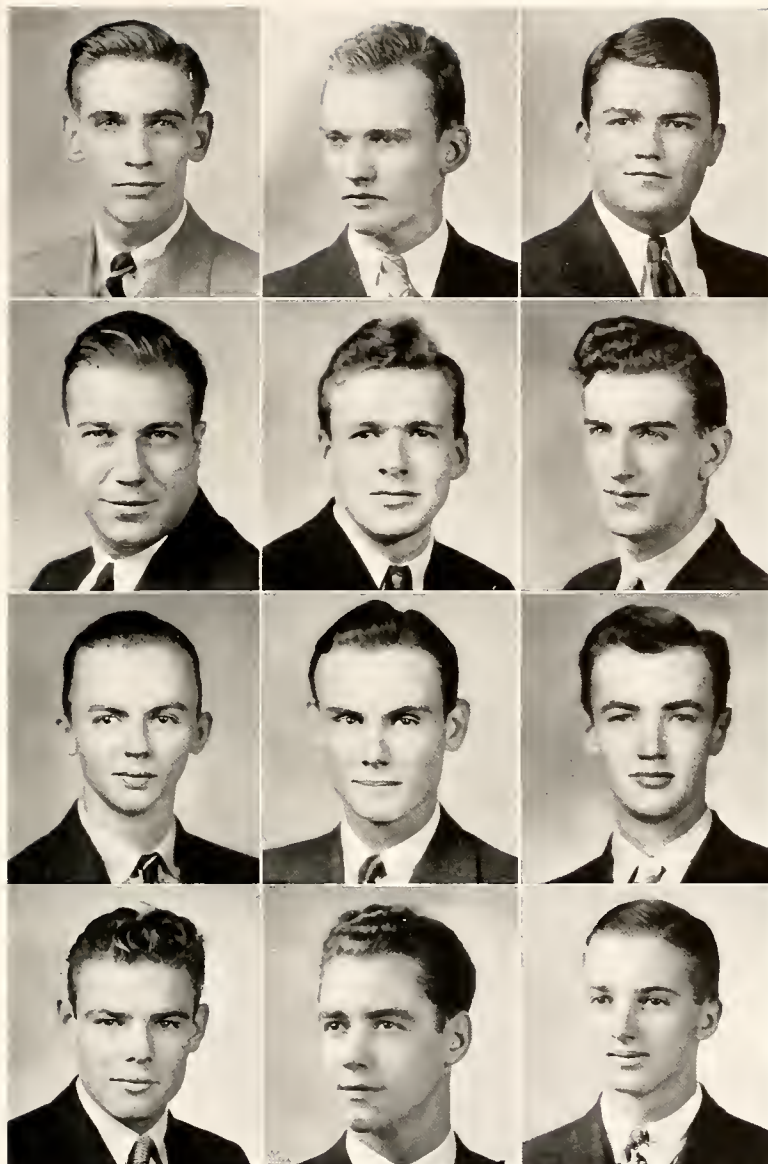
JOHN B. HAGLER
606 West Broadway
Lenoir City, Tennessee

GEORGE M. HARRIS, JR.
13 Bryant Avenue
Bladensburg, Maryland
Kappa Alpha

THOMAS RALPH HATFIELD
3303 Hazelwood Street
Detroit, Michigan
Phi Gamma Delta

ROBERT B. HAYS, JR.
3153 Norwood Boulevard
Birmingham, Alabama
Phi Delta Theta

ALEX C. HEATHMAN
Indianola, Mississippi
Alpha Tau Omega



the freshmen

JOE ROY HICKERSON
Cowan, Tennessee
Alpha Tau Omega

HARRY M. HILL
211 South Jackson Street
Tullahoma, Tennessee
Alpha Tau Omega

JOE JACK HOLSTUN
5420 Worth Avenue
Dallas, Texas

WILLIAM HOSKING
Gadsden, Alabama
Kappa Sigma

FRANK NEWTON HOWDEN
Sheffield, Massachusetts

ALBERT SYDNEY JOHNSON
2261 West 83rd Street
Cleveland, Ohio
Phi Gamma Delta

THOMAS MADISON JOHNSON
530 Orme Circle, N. E.
Atlanta, Georgia
Kappa Alpha

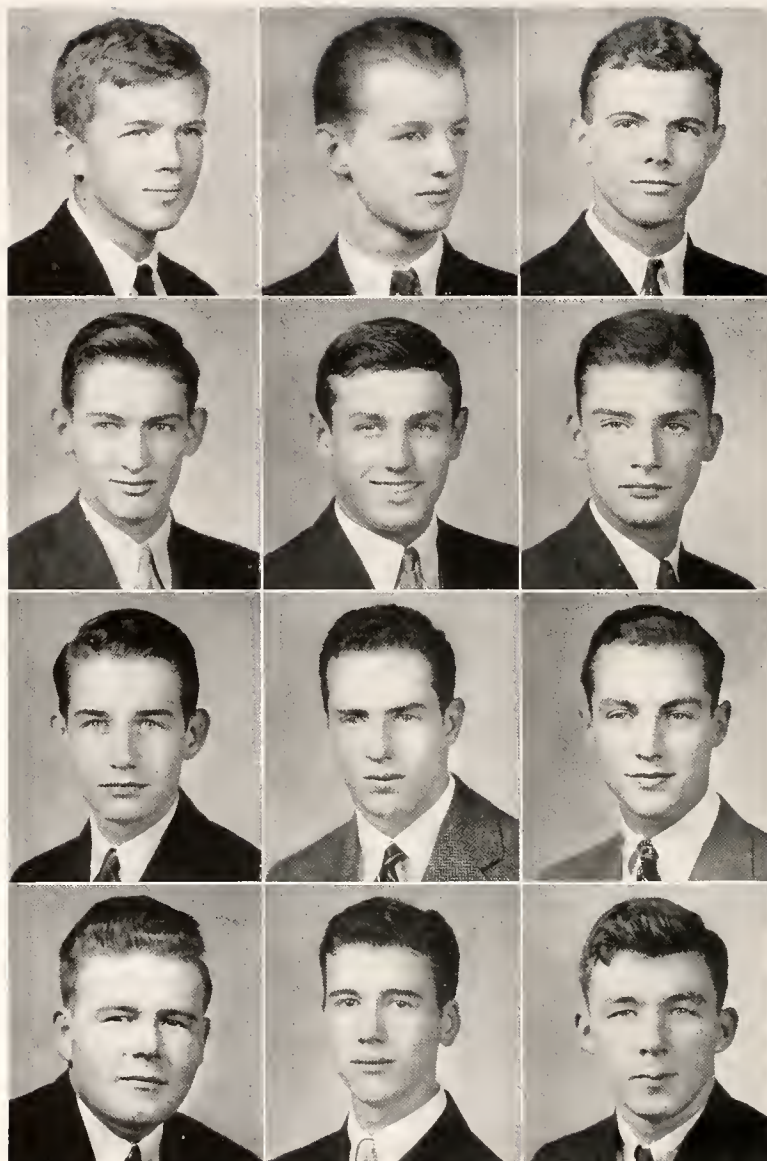
JARVIS P. JONES
505 Lamont
San Antonio, Texas
Sigma Nu

THOMAS STANLEY JONES
222 Fifth Avenue, West
Decatur, Alabama
Phi Delta Theta

JOHN WILLIAM JOURDAN, JR.
1508 South Delaney Street
Orlando, Florida
Delta Tau Delta

G. HARVEY KELLERMAN
South Pittsburg, Tennessee
Kappa Sigma

CHESTER B. KILPATRICK
227 Bronson Avenue
San Antonio, Texas
Phi Delta Theta



the freshmen

R. A. KIRCHHOFFER, JR.
1304 Dauphin Street
Mobile, Alabama
Sigma Alpha Epsilon

ROBERT DALBY KUEHNLE
310 South Commerce Street
Natchez, Mississippi
Kappa Sigma

LENOIR VALENTINE LEE, JR.
3716 Miramar Avenue
Dallas, Texas
Phi Delta Theta

CHARLES W. LOKEY, JR.
4342 Cliff Road
Birmingham, Alabama
Phi Delta Theta

JOHN K. LONGENECKER
1321 State Street
Harrisburg, Pennsylvania
Phi Delta Theta

MYRLIN McCULLAR
Courtland, Alabama
Delta Tau Delta

ERSKINE W. McKINLEY, JR.
1212 Avalon Street
Birmingham, Alabama

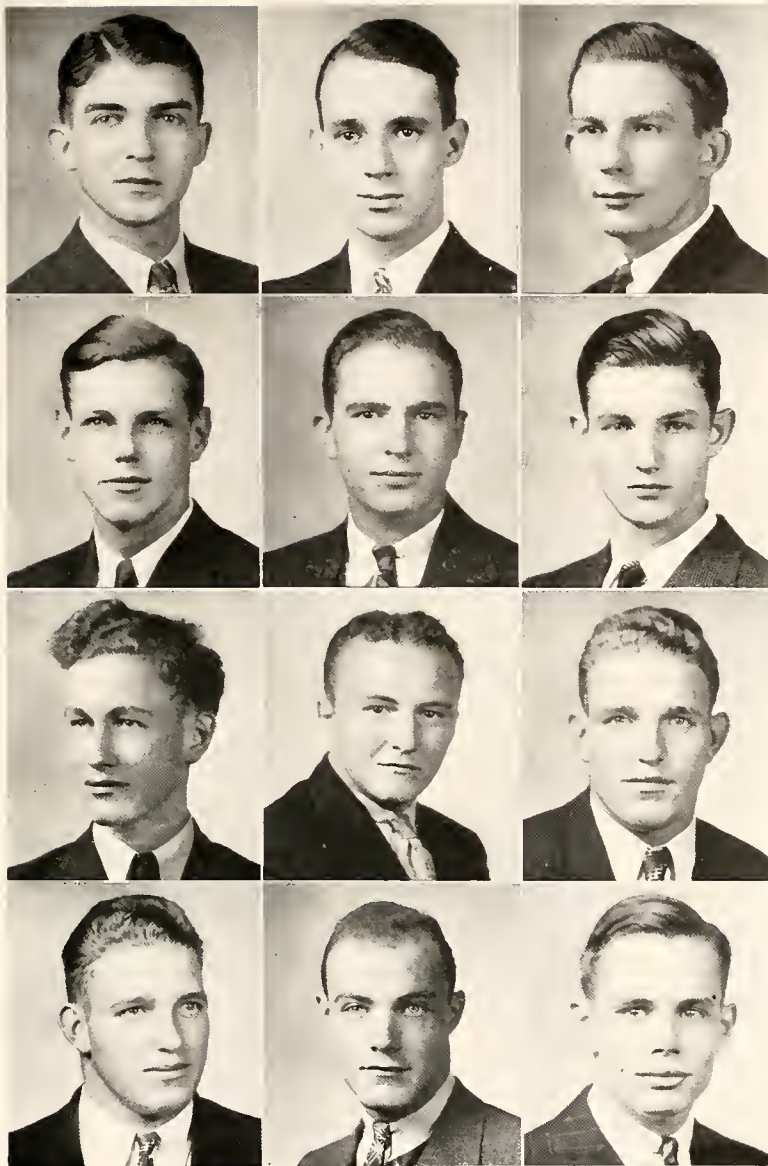
PARR HOOPER McQUEEN
Silver Springs, Maryland
Phi Gamma Delta

WILLIAM FINLEY MILLIGAN
333 North Water Street
Liberty, Missouri
Sigma Nu

W. HAL NEEL
1230 Park Street
Bowling Green, Kentucky
Phi Delta Theta

GEORGE NESSELRODE
927 Cleveland Avenue
Kansas City, Kansas
Phi Delta Theta

JOHN MARTIN NESTER
205 South Dearborn Street
Mobile, Alabama



the freshmen

ALPHA O. NEWBERRY
 101 Polloch Street
 New Bern, North Carolina
 Delta Tau Delta

SAMUEL MYERS RATLIFF
 Princeton, Kentucky
 Sigma Nu

EDWIN H. REEVES
 Route 7
 Nashville, Tennessee
 Sigma Nu

HENRY JOHN ROSE
 4222 Arcady Avenue
 Dallas, Texas
 Sigma Alpha Epsilon

HENRY SPENCER ROSS
 Box 54
 Joplin, Missouri
 Sigma Nu

ROBERT EMMET SEIBELS, JR.
 2028 Wheat Street
 Columbia, South Carolina
 Sigma Alpha Epsilon

PAUL K. SHASTEEN
 Winchester, Tennessee

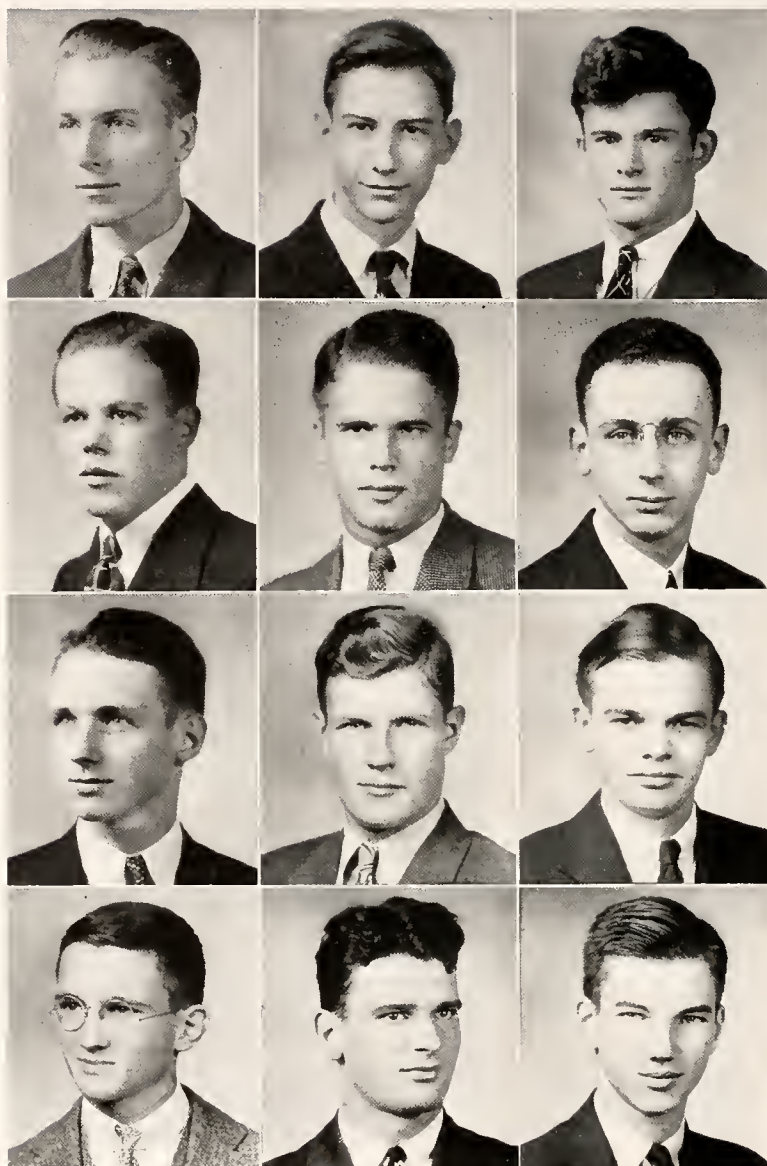
PAUL EUGENE SHORT
 Sewanee, Tennessee

CLAUDE SMITH
 Sewanee, Tennessee

CLYDE SMITH
 Sewanee, Tennessee

ROBERT T. SNOW
 315 Valley Road, N. E.
 Atlanta, Georgia
 Alpha Tau Omega

ROBT. GALLOWAY SNOWDEN
 1325 Lamar Avenue
 Memphis, Tennessee
 Sigma Alpha Epsilon



the freshmen

LAVERNE B. SPAKE, JR.
2000 Oakland Avenue
Kansas City, Kansas
Sigma Alpha Epsilon

M. D. C. STOCKELL, JR.
Donelson, Tennessee
Alpha Tau Omega

THEODORE DuB. STONEY
573 Huger Street
Charleston, South Carolina
Alpha Tau Omega

PICKENS C. TALLEY
1918 Seminole Trail
Lakeland, Florida
Alpha Tau Omega

JAMES B. THOMAS, JR.
5 Union Street
Selma, Alabama
Phi Delta Theta

JOHN SPAULDING VARLEY
304 North West Street
Wheaton, Illinois
Delta Tau Delta

RANSOM VARLEY
304 North West Street
Wheaton, Illinois
Delta Tau Delta

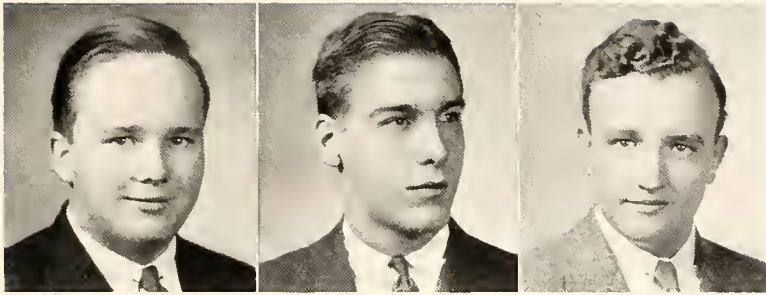
LOWREY ALBERT WEED, JR.
9 East 32nd Street
New York, New York
Phi Delta Theta

SAM FARRINGTON WEED
Cordova, Alabama
Kappa Alpha

RICHARD FRANKLIN WHITE
1721 Polk Street
Alexandria, Louisiana
Kappa Alpha

ARTHUR D. WHITTINGTON
1706 Fifth Avenue, North
Birmingham, Alabama

JAMES PERRY WILLIS
673 W. E. Boulevard
Winston-Salem, North Carolina
Sigma Alpha Epsilon



the freshmen

B. WILMER WING

324 Interlochen Avenue
Winter Park, Florida
Kappa Alpha

WALTER WORMAN

Ridgefields, R. R. No. 7
Dayton, Ohio
Sigma Nu

GILBERT G. WRIGHT, III

Milton and Eldon Roads
San Antonio, Texas
Phi Delta Theta

(No Pictures)

ALBERT A. CASTLEBERRY

Sewanee, Tennessee

JOHN L. HOLMES

3561 Fitch Street
Jacksonville, Florida
Sigma Alpha Epsilon

FRANK W. SYLER

Cowan, Tennessee

WM. J. COCHRANE, JR.

903 South Madison Street
Webb City, Missouri
Sigma Nu

FRANK H. McLEOD, III

300 South Dargan Street
Florence, South Carolina
Phi Gamma Delta

BERNARD E. WRIGLEY

417 Bigelow Street
Peoria, Illinois

HARRIS G. COPE

405 West Main Street
Cartersville, Georgia

ROGER L. MINER

611 West 114th Street
New York, New York
Delta Tau Delta

JAMES W. MEDFORD

Sewanee, Tennessee

ELIJAH W. MOORE

Winchester, Tennessee

FRANK SMITH

Sewanee, Tennessee

in memoriam



The Rev. William Haskell DuBose **1870 - 1936**

B.A., M.A., University of the South; D.D., Virginia Theological Seminary
Professor of Old Testament Language and Interpretation

William Haskell DuBose, scholar, teacher, missionary, and gracious companion to all, well exemplified in all his interests the words of Saint Paul to the Philippians, "Finally, brethren, whatsoever things are true, whatsoever things are honest, whatsoever things are just, whatsoever things are pure, whatsoever things are lovely, whatsoever things are of good report; if there be any virtue, and if there be any praise, think on these things."

theologs



theologs

GEORGE M. ALEXANDER

1835 Perry Street
Jacksonville, Florida
 Univ. of the South; Diocese of
 Florida.

LEE A. BELFORD

1107 East Duffy Street
Savannah, Georgia
 B.A., Univ. of the South; Dio-
 cese of Georgia.

JOHN R. ANSCHUTZ

1412 Benton Avenue
Springfield, Missouri
 B.A., Drury; Diocese of Mis-
 souri.

LAWRENCE M. BERRY

Alton, Illinois
 B.S., Univ. of Alabama; Dio-
 cese of Springfield.

LEONARD C. BAILEY

Ocala, Florida
 B.A., M.A., Univ. of Florida;
 Diocese of South Florida.

JOHN R. BILL

1024 Fillmore Street
Philadelphia, Pennsylvania
 B.S., Temple; Missionary Dio-
 cese of Spokane.



theologs

ALLEN B. CLARKSON

722 High Street
Columbia, South Carolina
A.B., Univ. of S. C.; Diocese
of Upper S. C.

JAMES L. DUNCAN

1778 Boulevard Drive, N. E.
Atlanta, Georgia
B.A., M.A., Emory Univ.; Dio-
cese of Atlanta.

NATHANIEL C. CROFT

Aiken, South Carolina
B.A., Univ. of S. C.; Diocese
of Upper S. C.

ALFRED D. ELLIS

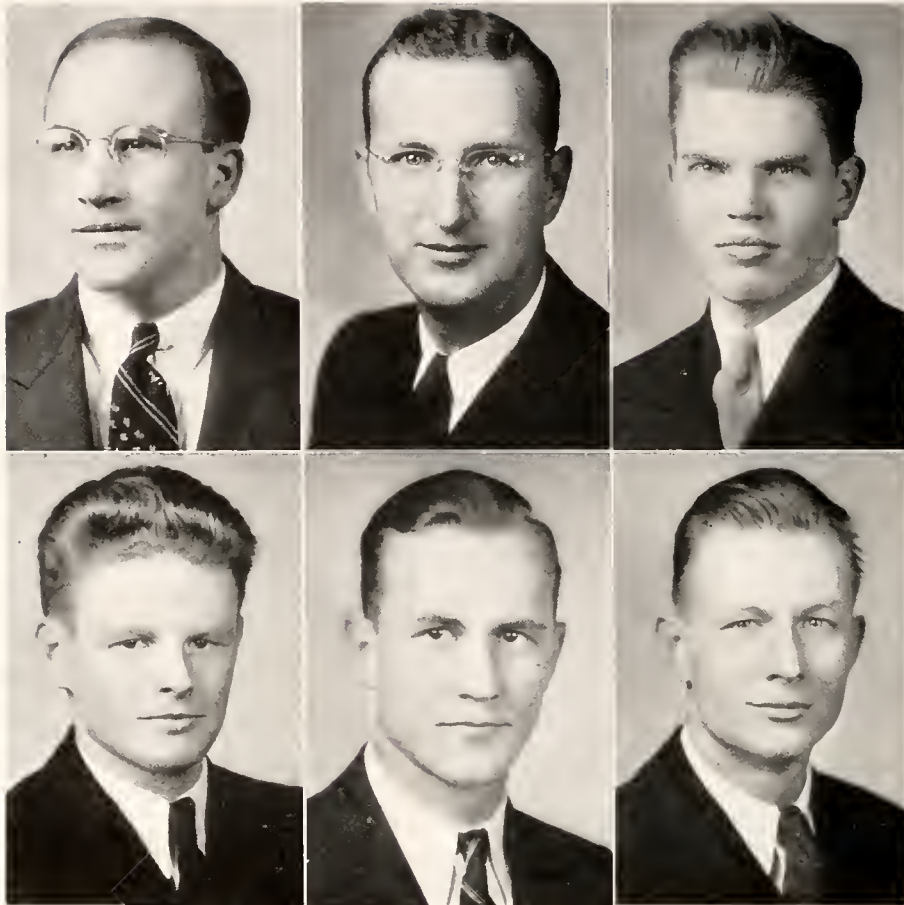
421 Woodland Street
Nashville, Tennessee
B.A., Vanderbilt; Diocese of
Tennessee.

RICHARD E. DICUS

Jerome, Arizona
B.A., Univ. of the South; Mis-
sionary Diocese of Arizona

ORVILLE B. HARRIS

Baxter, Tennessee
Univ. of the South; Diocese of
Tennessee.



theologs

WATIES R. HAYNSWORTH

302 N. Salem Avenue
Sumter, South Carolina
B.A., Citadel; Diocese of South
Carolina.

JAMES H. MacCONNELL

803 North Main Street
Athens, Pennsylvania
B.A., Univ. of the South; Dio-
cese of Central N. Y.

NORMAN F. KINZIE

Fort Myers, Florida
B.A., Univ. of Florida; Diocese
of Florida.

AUBREY C. MAXTED

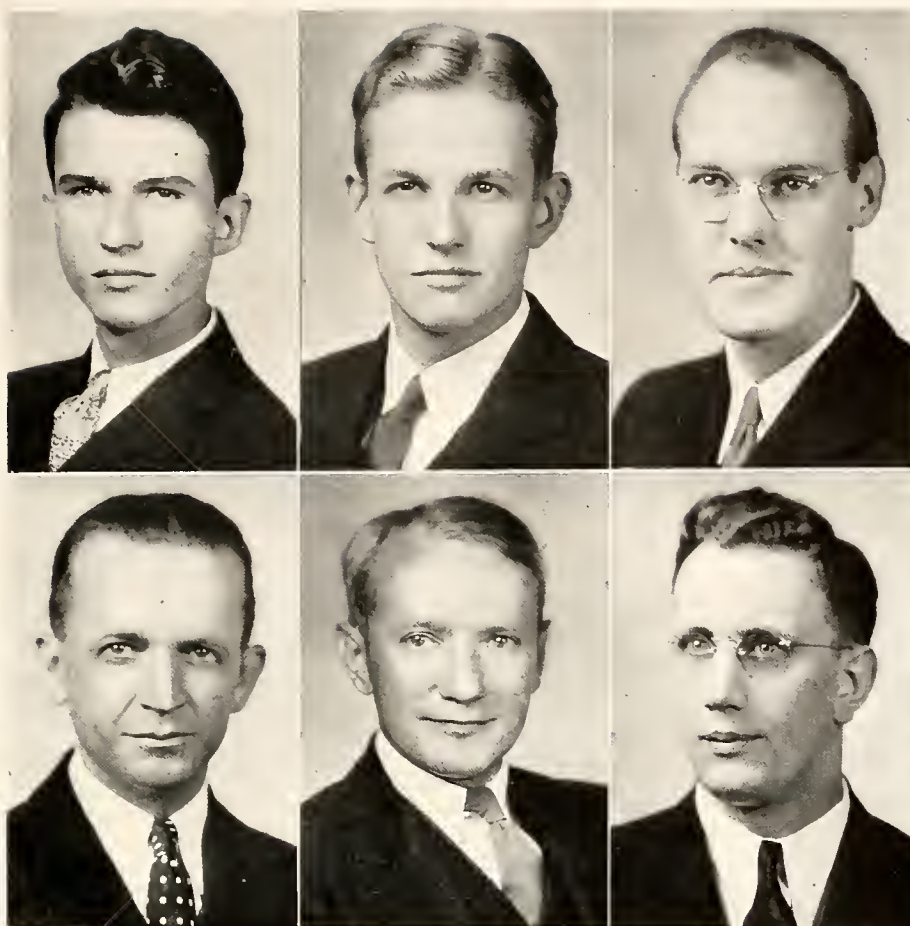
345 Live Oak Street
Pascagoula, Mississippi
A.B., Millsaps; Diocese of Mis-
sissippi.

COTESWORTH P. LEWIS

832 North 37th Place
Birmingham, Alabama
B.A., Birmingham-Southern;
Diocese of Alabama.

BENJAMIN A. MEGINNISS, JR.

Box 456
Tallahassee, Florida
B.A., Univ. of Florida; Diocese
of Florida.



theologs

GEORGE W. MORREL

3206 Louisville Street
El Paso, Texas
Univ. of the South; Diocese of
New Mexico.

DAVID S. ROSE

R. R. No. 2
Nashville, Tennessee
B.A., Univ. of the South; Dio-
cese of Tennessee.

GEORGE R. STEPHENSON

820 North West Street
Jackson, Mississippi
B.A., Millsaps; Diocese of Mis-
sissippi

NEVILLE C. STURRUP

21 Forsyth Place
Newburgh on Hudson, N. Y.
Diocese of Louisiana

STERLING H. TRACY

1074 Monroe Avenue
Memphis, Tennessee
A.B., M.A., Univ. of Wis.;
Ph.D., Yale University; Diocese
of Tennessee.

H. GRUBER WOOLF

356 West First Street
Elmira, New York
A.B., Hamilton; M.R.E., Au-
burn; Diocese of Central New
York.

(No pictures)

OLIN G. BEALL

CYRIL BEST

activities



fraternities at sewanee



The fraternities at Sewanee play an unusually important part in the life of the school. When a new man arrives on the mountain and is immediately rushed off his feet by the various Greeks, he is apt to receive the erroneous impression that fraternities at Sewanee are, as they are in so many schools, places from which social and political attainments arise. As he stays longer he comes to the realization that here the fraternities do considerably more than just that. They act as the catalytic substance in adjusting the new man to the life at Sewanee. For the older men they represent a means by which the smaller groups can work for the good of the whole. In the fraternities the men learn the traditional behavior of the Sewanee gentlemen, to be the gracious hosts to other men, and to work together as a small, united group. There is a feeling of subtle competition among the fraternities, but at the same time there is little if any actual cliquishness. The fraternities welcome all comers into their houses with equal cordiality and they are to be complimented upon the goodwill and common interest which they all possess for the University above all else.

alpha tau omega



TENNESSEE OMEGA CHAPTER

Installed 1872

Founded: Virginia Military Institute, 1865

Colors: Old Gold and Sky Blue

MEMBERS

In Officio

THE RT. REV. T. D. BRATTON
DR. B. F. FINNEY DR. G. M. BAKER

In Facultate

MR. W. M. MacKELLAR
MR. R. B. DAVIS DR. J. M. SCOTT

In Academia

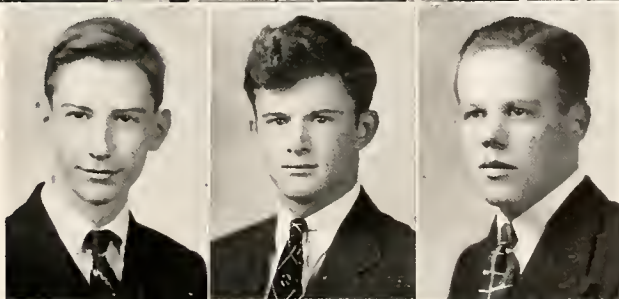
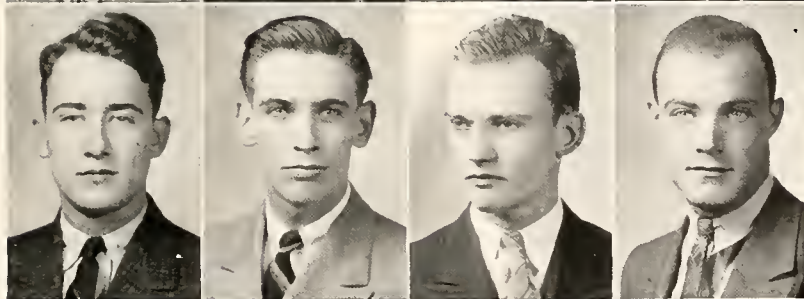
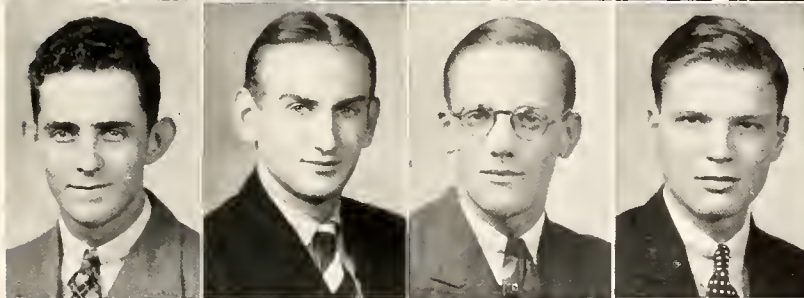
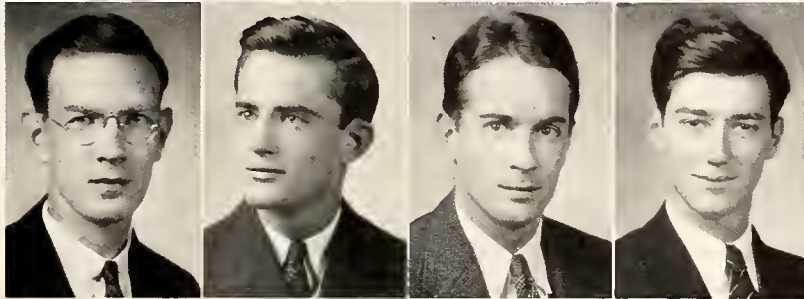
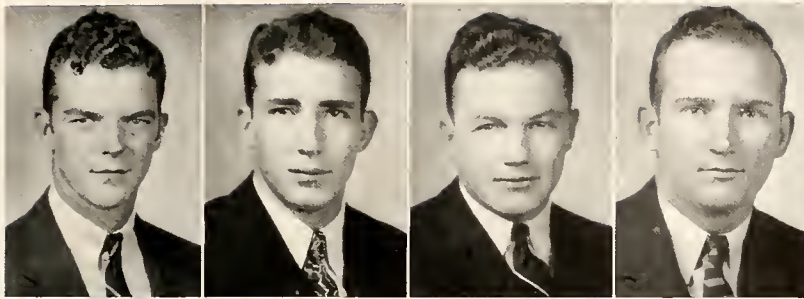
COLIN CAMPBELL
RUPERT COLMORE
GILBERT EDSON
HAROLD EUSTIS
P. B. GRIFFIN
ALEX HEATHMAN

RICHARD ROACH
RANDELL STONEY
LYON VAIDEN
FINLEY WRIGHT
HENRY WILSON
SAM ADAMS
PICKENS TALLEY

JO ANDERTON
JOE HICKERSON
HARRY HILL
ROBERT SNOW
COOPER STOCKELL
THEODORE STONEY



fraternity



Campbell, Colmore
 Eustis, Griffin
 Roach, R. Stoney
 Vaiden, Edson
 Heathman, Wilson
 Wright, Adams
 Anderton, Hickerson
 Hill, Snow
 Stockell, T. Stoney
 Talley

sigma alpha epsilon



TENNESSEE OMEGA CHAPTER

Installed 1881

Founded: University of Alabama, 1856 Colors: Royal Purple and Old Gold

MEMBERS

In Officio

DR. R. M. KIRBY-SMITH

In Facultate

MR. T. S. LONG

REV. MOULTRIE GUERRY

MR. H. A. GRISWOLD

MR. M. A. MOORE

In Academia

SAM BOYKIN
J. A. CHAMBERS
HENRY CORTES
ERNEST COTTEN
HOUSTON CROZIER
BERTRAM DEDMAN
BEN DONNELL
HERBERT EPHGRAVE
WILLIAM FLEMING
ALEX GUERRY

MORGAN HALL
JACK HOPPER
HARVEY McCLELLAND
TUCKER MacKENZIE
FLEET MAGEE
C. L. MONTGOMERY
M. A. NEVIN PATTON
DAVID ROSE
HUGH SHELTON
HENRY BOESCH
WALKER COLEMAN
HUBERT CROSBY

JAMES DEDMAN
JOSEPH FERGUSON
JOHN HOLMES
SUGG KEISER
RICHARD KIRCHHOFFER
HENRY ROSE
ROBERT SEIBELS
ROBERT SNOWDEN
LaVERNE SPAKE
JAMES WILLIS



fraternity



B. Dedman, Fleming
MacKenzie, Shelton
Rose

Chambers, Cobbs, Ephgrave
Hopper, McClellan

Montgomery, Boesch
Boykin, Cortes, Cotten

Crozier, Donnell, Guerry
Hall, Patton

Coleman, Crosby
J. Dedman, Ferguson
Keiser

Kirchhoffer, H. Rose
Seibels, Snowden
Spake, Willis

kappa sigma



TENNESSEE OMEGA CHAPTER

Installed 1882

Founded: University of Virginia, 1869

Colors: Scarlet, Green and White

MEMBERS

In Officio

MR. H. R. FLINTOFF

In Facultate

DR. W. S. KNICKERBOCKER

In Academia

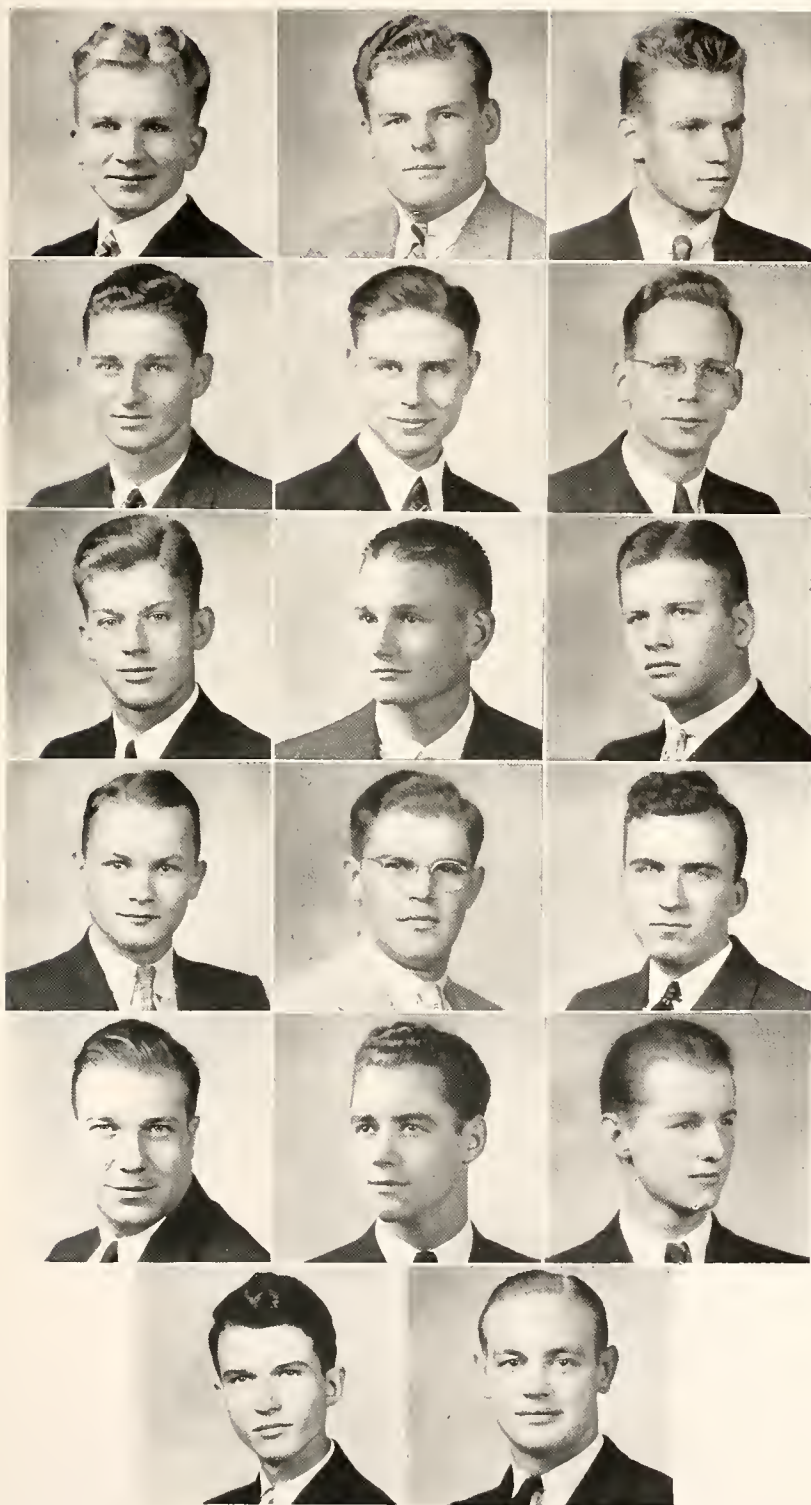
MARSHALL BARNES
HARRISON BESTE
BERT HAYS
STANLEY QUISENBERRY
THOMAS SAUER

JAMES SAVOY
LEONARD SHERTZER
JOHN WELSH
CECIL BEASLEY
WENDELL BROWN
LESLIE CHISHOLM
ROGER DARR

WILLIAM HOSKING
HARVEY KELLERMAN
ROBERT KUEHNLE
GEORGE MORREL
EUGENE SMITH



fraternity



Barnes, Beste
Hays
Quisenberry, Sauer
Savoy
Shertzer, Welsh
Beasley
Brown, Chisholm
Darr
Hosking, Kellerman
Kuehne
Morrel, Smith

delta tau delta



BETA THETA CHAPTER

Installed 1883

Founded: Bethany College, 1858

Colors: Purple, Gold and White

MEMBERS

In Officio

GEN. W. R. SMITH
MR. I. H. HODGES

In Facultate

MR. W. W. LEWIS
REV. G. B. MYERS

In Academia

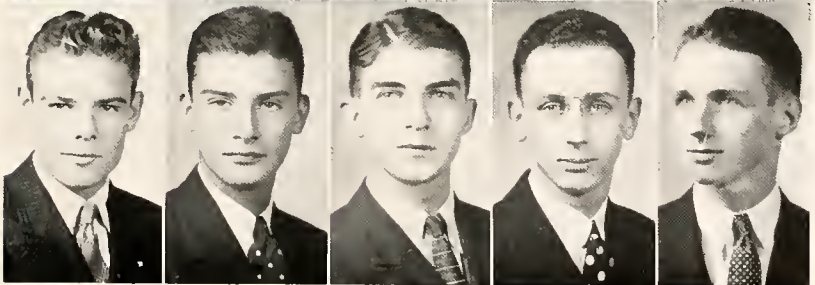
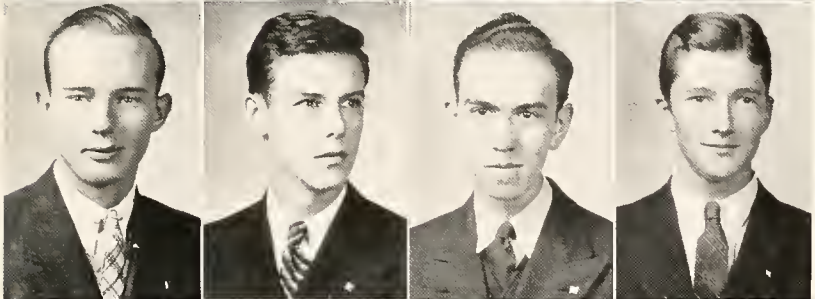
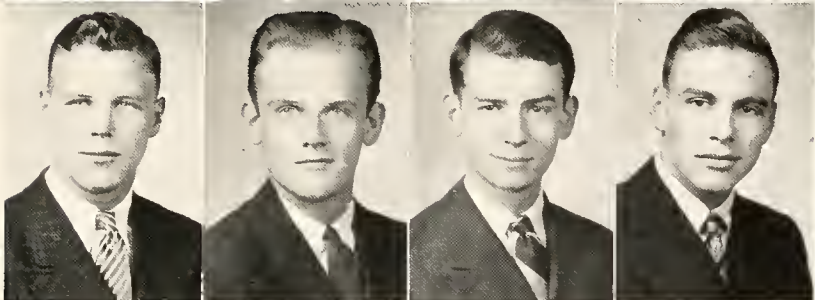
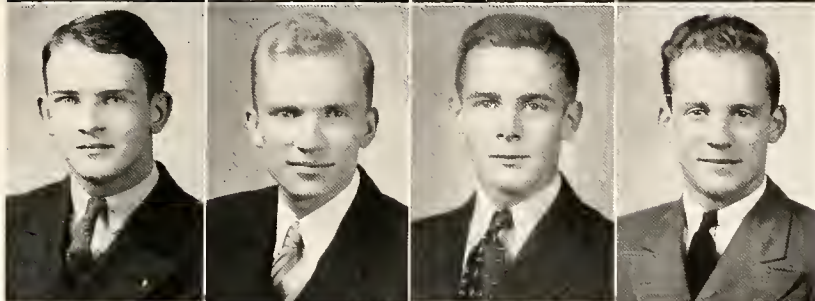
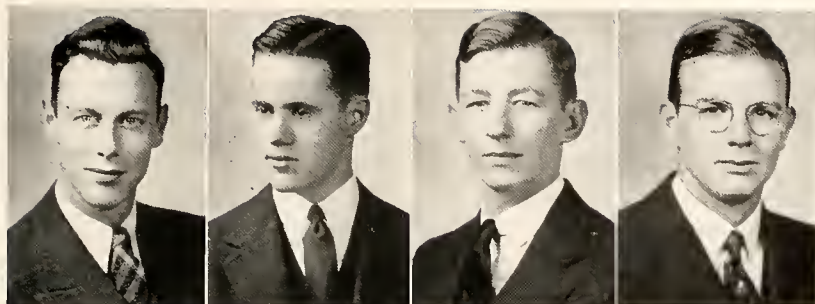
LEE BELFORD
JOHN BINNINGTON
CHARLES BOHMER
HOWARD CRISPELL
DANIEL GRAY
EMMETT GRIBBIN
THEODORE HEYWARD, JR.

WALTER McGOLDRICK
WALKER PENDLETON
THOMAS STEWART, JR.
JEREMIAH WALLACE
WILLIAM WILKERSON, II
SHUBAEL BEASLEY
ROBERT BELFORD
ALBERT DADE
JAMES DeWOLFE

HAYWOOD EMERSON
JACK JOURDAN
MYRLIN McCULLAR, JR.
ROGER MINER
ALPHA OMEGA NEWBERRY, JR.
JOHN VARLEY
RANSOM VARLEY



fraternity



Binnington, Gribbin
 Heyward, L. Belford
 Bohmer, Gray
 Stewart, Wilkerson
 McGoldrick, Pendleton
 Wallace, Beasley
 R. Belford, Dade
 DeWolfe, Emerson
 Jourdan, McCullar
 Newberry, J. Varley
 R. Varley

phi delta theta



TENNESSEE BETA CHAPTER

Installed 1883

Founded: Miami University, 1848

Colors: Argent and Azure

MEMBERS

In Officio

MR. TELFAIR HODGSON

In Facultate

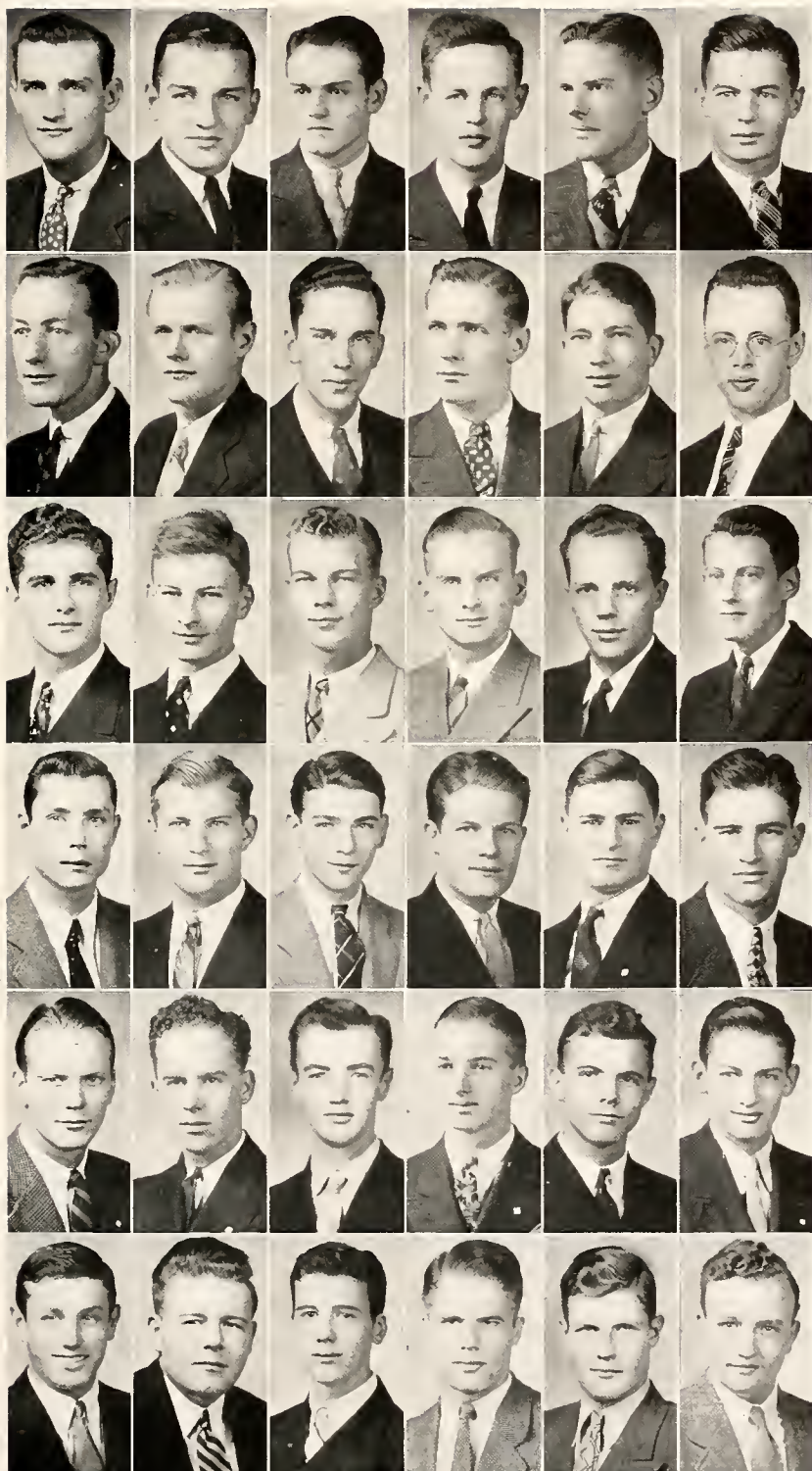
MR. H. M. GASS

In Academia

JOSEPH ATKINS	WILLIAM DOUGLAS	WYLIE MITCHELL	STANLEY JONES
ARCH BISHOP, JR.	WILSON EATHERLY	HOWELL SHELTON	CHESTER KILPATRICK
RICHARD BOLLING	FRANK GILLESPIE	SAMUEL STRANG	VALENTINE LEE
THEODORE BRATTON	WILLIAM GIVEN	MARSHALL TURNER	CHARLES LOKEY
CHARLES BROWN	ROBERT GRAY	RUSSELL TURNER	JOHN LONGENECKER
WYATT BROWN	WITHERS HOWELL	JOHN ATKINS	HAL NEEL
J. D. COPELAND	EDWIN McPHERSON	JAMES DENNIS	GEORGE NESSELRODE
WILLIAM CROOK	THOMAS MAGRUDER	THOMAS FAIRLEIGH	JAMES THOMAS
EARL DICUS	NESBITT MITCHELL	ROBERT HAYS	LOWREY WEED
			GILBERT WRIGHT



fraternity



W. Brown, Crook, Douglas
 W. Mitchell, Strang, M. Turner
 Dicus, C. Brown, Copeland
 Gillespie, Magruder
 N. Mitchell
 Shelton, J. A. Atkins, Bishop
 Bratton, Eatherly, Given
 Gray, Howell, McPherson
 R. Turner, J. N. Atkins, Dennis
 Fairleigh, Hays, Jones
 Kilpatrick, Lee, Lokey
 Longenecker, Neel, Nesselrode
 Thomas, Weed, Wright

kappa alpha



ALPHA ALPHA CHAPTER

Installed 1883

Founded: Washington and Lee University, 1865

Colors: Crimson and Gold

MEMBERS

In Facultate

MR. A. C. MARTIN

COL. A. T. PRESCOTT

In Academia

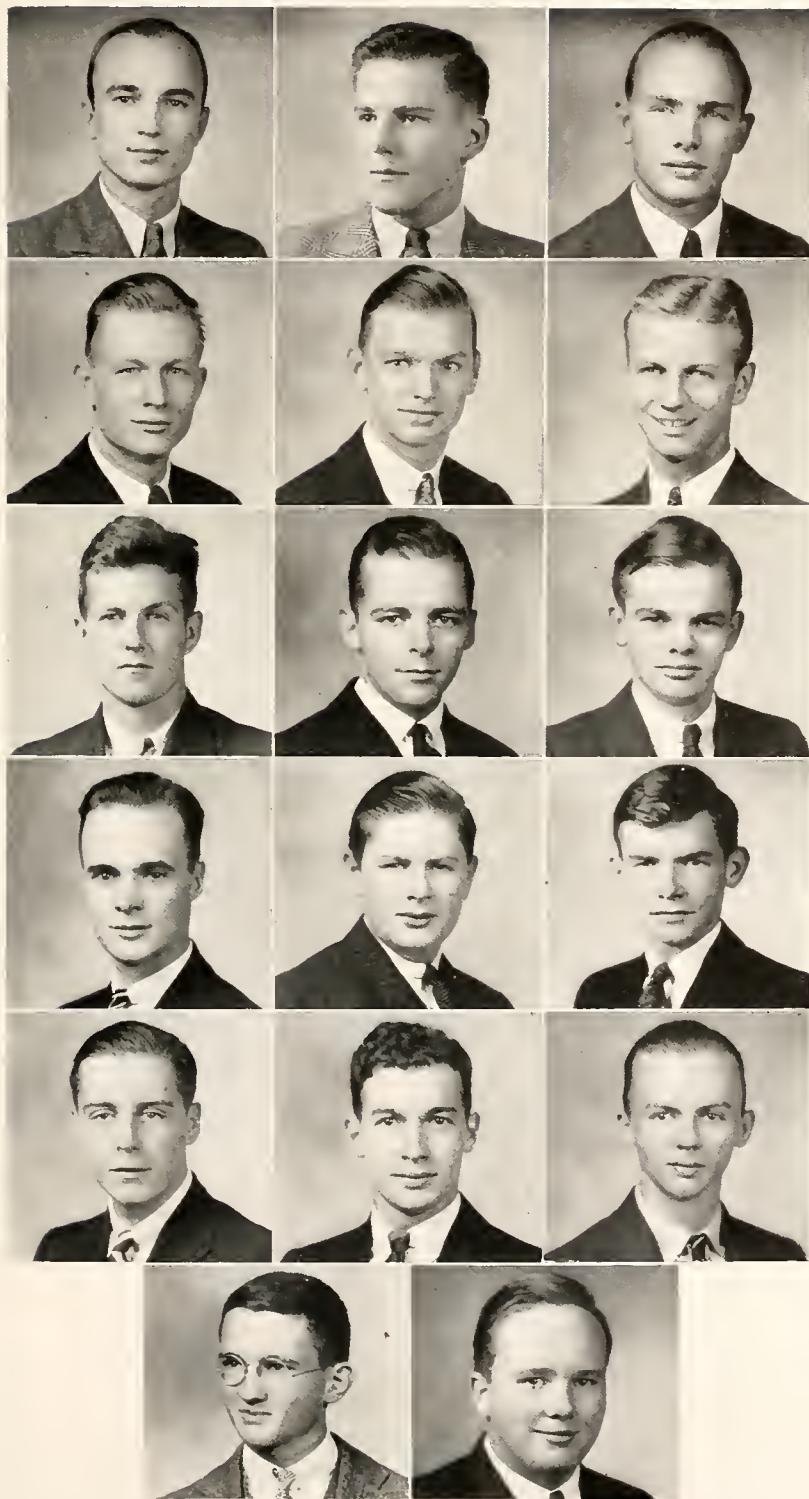
CECIL ALLIGOOD
PERRY BALLENGER
OLIN BEALL
JAMES DUNCAN
RUTHERFORD CRAVENS

HILL LUCE
JAMES PACKER
PRIDE TOMLINSON
SAM WEED
PERCY BELL
BEN MEGINNISS
ALEX MEYERS
HENDREE MILWARD
NOEL CARPENTER

WALLACE GAGE
GEORGE HARRIS
THOMAS JOHNSON
WILMER WING
FRANKLIN WHITE



fraternity



Alligood, Ballenger
Luce

Meginniss, Milward
Packer

Cravens, Tomlinson
Weed

Duncan, Bell
Carpenter

Gage, Harris
Johnson

White, Wing

phi gamma delta



GAMMA SIGMA CHAPTER

Installed 1919

Founded: Washington and Jefferson College, 1848

Color: Royal Purple

MEMBERS

In Facultate

GEN. J. P. JERVEY

In Academia

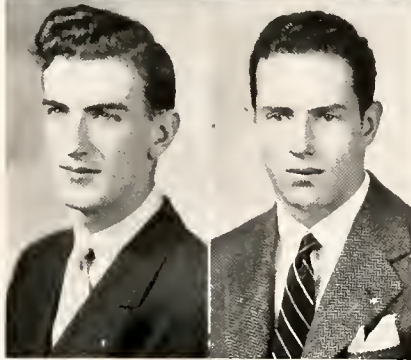
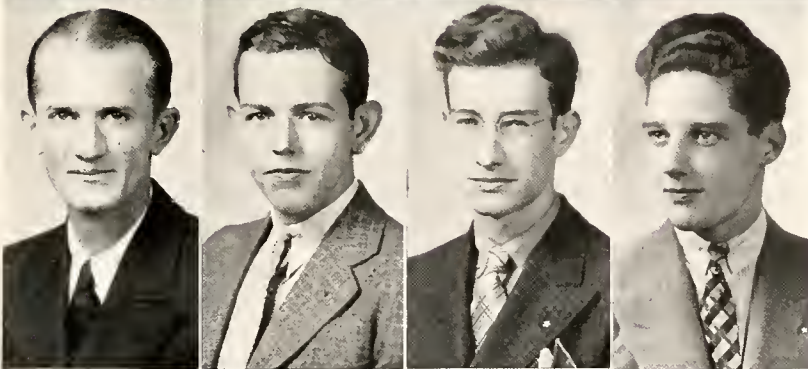
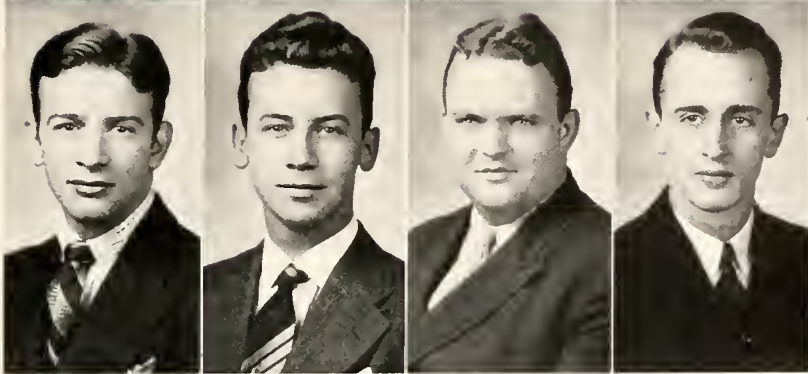
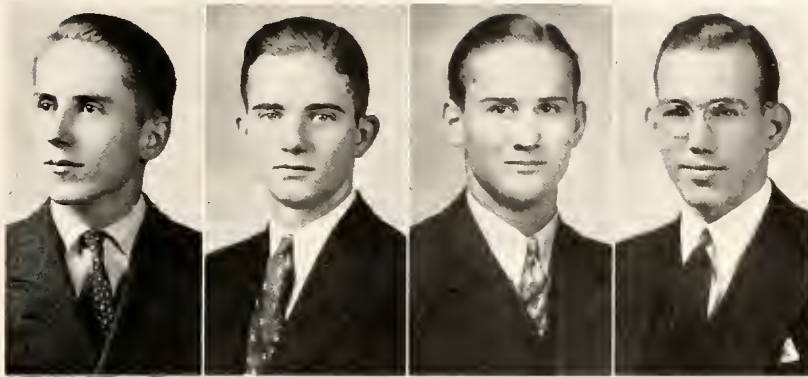
ARCH CAMPBELL, JR.
GILBERT CHATTIN
JOHN ERSHAM
GANT GAITHER

GEORGE GRAHAM
JAMES LASATER
LESLIE McLAURIN, JR.
FRANK McLEOD, III
BEN PHILLIPS
CARL SCHUESSLER
JAMES WILLIAMS
ROBERT BELL
GEORGE FORGY

LEE GESSNER
THOMAS HATFIELD
ALBERT JOHNSON
HOOPER McQUEEN



fraternity



Graham, Phillips
Schuessler, Campbell

Ehrsam, Gaither
Lasater, McLaurin

Bell, Forgy
Gessner, Hatfield

Johnson, McQueen

sigma nu



BETA OMICRON CHAPTER

Installed 1889

Founded: Virginia Military Institute, 1868

Colors: Black, White and Gold

MEMBERS

In Facultate

DR. S. L. WARE

In Academia

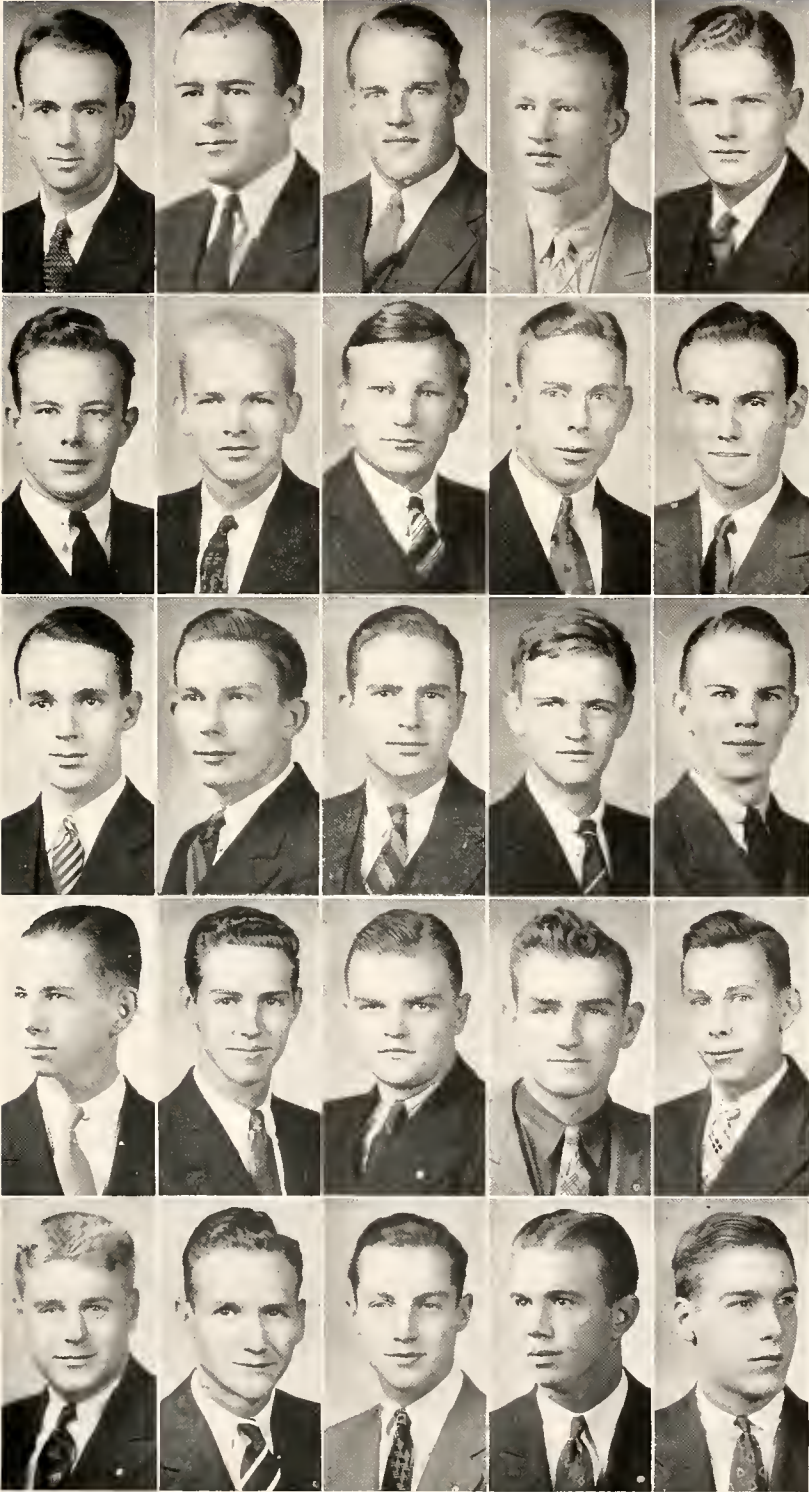
CYRIL BEST
FRANKLYN BOARD
JOHN BROWN
SYDNEY BURGESS
WILLIAM COCHRANE
GUS GRAYDON
WALTER HART

FRANCIS HOLMES
M. F. JACKSON
JARVIS JONES
BAXTER MOORE
T. T. PHILLIPS
SAMUEL RATLIFF
EDWIN REEVES
HENRY ROSS
HARTWELL SMITH
ROBERT TURNER
GEORGE WAGNON
SAMUEL L. ALLEN
HIRAM BRAWLEY

PRESTON FOWLKES
KENNETH GREGG
STANLEY LAWS
JAMES McCANTS
WILLIAM MILLIGAN
RALPH PHILLIPS
WALTER WORMAN



fraternity



Brown, Graydon, Hart
 Holmes, Moore
 Board, Burgess, T. Phillips
 Jackson, Jones
 Ratliff, Reeves, Ross
 Smith, Turner
 Wagon, Allen, Brawley
 Fowlkes, Gregg
 Laws, McCants, Milligan
 R. Phillips, Worman

the pan-hellenic council

MEMBERS

MARSHALL I. BARNES, President	Kappa Sigma
JOHN R. WELSH, Secretary-Treasurer	Kappa Sigma
HAROLD EUSTIS	Alpha Tau Omega
LYON VAIDEN	Alpha Tau Omega
R. EMMET GRIBBIN, JR.	Delta Tau Delta
WILLIAM N. WILKERSON	Delta Tau Delta
FRANCIS H. HOLMES	Sigma Nu
WALTER M. HART	Sigma Nu
MARSHALL S. TURNER, JR.	Phi Delta Theta
WYATT BROWN, JR.	Phi Delta Theta
BEN PHILLIPS, JR.	Phi Gamma Delta
GEORGE S. GRAHAM, JR.	Phi Gamma Delta
CECIL L. ALLIGOOD	Kappa Alpha
HENDREE B. MILWARD	Kappa Alpha
WILLIAM S. FLEMING, III	Sigma Alpha Epsilon
BERTRAM C. DEDMAN	Sigma Alpha Epsilon

The Pan-Hellenic Council is composed of two representatives from each of the eight national fraternities on the mountain. This council governs the actions of the fraternities where coordination of their actions is needed, as during rushing and the period preceding initiation. The officers of the Council are rotated annually among the various delegations.

the order of gownsmen

OFFICERS

BEN PHILLIPS, JR.	President
WILLIAM G. CROOK	Vice-President
HAROLD EUSTIS	Secretary-Treasurer

COMMITTEES

Traditions Committee

BEN PHILLIPS, JR.	Senior Class
WYATT BROWN, JR.	Senior Class
BERTRAM C. DEDMAN	Senior Class
WILLIAM G. CROOK	Senior Class
HENDREE B. MILWARD	Junior Class
HERBERT EPHGRAVE, JR.	Junior Class
R. STANLEY QUISENBERRY	Sophomore Class

Publications Committee

GEORGE S. GRAHAM, JR.	FRANCIS H. HOLMES
HENDREE B. MILWARD	

Student Activities Fee Committee

J. TUCKER MacKENZIE	WILLIAM G. CROOK
LYON VAIDEN	

The Order of Gownsmen is one of the most important organizations on the campus. It is composed of all students who have attained the academic rating of Junior. The members wear the academic gown and are granted certain privileges not given to the lower classes. It acts as the governing body of the students. The committees which are elected from the group carry out the various details of its functions.



phi beta kappa

NATIONAL HONORARY SCHOLARSHIP FRATERNITY

Founded at William and Mary in 1776

TENNESSEE BETA CHAPTER

Established at Sewanee 1926

MEMBERSHIP

In Facultate

DR. B. F. FINNEY

DR. G. M. BAKER

MR. H. M. GASS

MR. W. H. MacKELLAR

DR. W. S. KNICKERBOCKER

DR. R. L. PETRY

DR. S. L. WARE

MR. D. E. FRIERSON

DR. G. S. BRUTON

MR. E. M. KAYDEN

MR. J. E. THOROGOOD

In Academia

BEN PHILLIPS, JR.

J. TUCKER MacKENZIE, JR.

R. EMMET GRIBBIN, JR.

GUS GRAYDON

HERBERT EPHGRAVE, JR.

DANIEL R. GRAY

HARVEY B. McCLELLAN

HENRY P. MANNING

J. NESBITT MITCHELL

WILLIAM N. WILKERSON

The purpose of Phi Beta Kappa is to promote scholarship among college students. The elections are made from those students who have completed five consecutive semesters with an average of at least ninety.

omicron delta kappa



NATIONAL HONORARY LEADERSHIP FRATERNITY

Founded at Washington and Lee in 1914

ALPHA ALPHA CIRCLE

Established at Sewanee 1929

MEMBERSHIP

In Facultate

DR. B. F. FINNEY

DR. G. M. BAKER

MR. R. B. DAVIS

MR. H. M. GASS

REV. M. GUERRY

In Academia

R. EARL DICUS

GEORGE R. STEPHENSON

BEN PHILLIPS, JR.

BERTRAM C. DEDMAN

DAVID S. ROSE

WYATT BROWN, JR.

J. TUCKER MacKENZIE, JR.

WILLIAM G. CROOK

GUS GRAYDON

HUGH T. SHELTON, JR.

Election to Omicron Delta Kappa is recognition of marked student leadership in the various activities of the University. The membership is restricted to three per cent of the student body who must be members of the Order of Gownsmen.



blue key

NATIONAL HONORARY LEADERSHIP FRATERNITY

Founded at the University of Florida in 1924

SEWANEE CHAPTER

Established in 1927

MEMBERSHIP

In Facultate

MR. W. H. MCKELLAR

DR. J. M. SCOTT

MR. D. E. FRIERSON

MR. H. A. GRISWOLD

In Academia

HAROLD EUSTIS

RUPERT M. COLMORE, JR.

J. TUCKER MacKENZIE, JR.

BEN PHILLIPS, JR.

WYATT BROWN, JR.

DAVID S. ROSE

BERTRAM C. DEDMAN

H. GRUBER WOOLF

R. EARL DICUS

WILLIAM G. CROOK

HUGH T. SHELTON, JR.

GEORGE S. GRAHAM, JR.

GUS GRAYDON

WILLIAM A. DOUGLAS

MARSHALL S. TURNER, JR.

WILLIAM S. FLEMING, III

BAXTER S. MOORE, JR.

WILLIAM N. WILKERSON

JAMES M. PACKER

SAMUEL B. STRANG, JR.

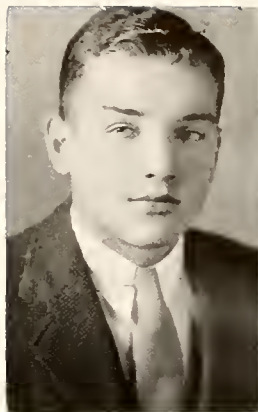
Blue Key recognizes outstanding men in the two upper classes not only for what they have done for the improvement of the University, but for what they are capable of doing.

pi gamma mu

NATIONAL SOCIAL SCIENCE HONOR SOCIETY
Founded at Southwestern College, Kansas, in 1924

TENNESSEE BETA CHAPTER

Established in 1930



MEMBERSHIP

In Facultate

DR. B. F. FINNEY
DR. S. L. WARE
MR. E. M. KAYDEN
REV. G. B. MYERS

DR. J. M. S. McDONALD
COL. A. T. PRESCOTT
MR. T. S. LONG
MR. J. E. THOROGOOD

In Academia

WILLIAM G. CROOK
WYLIE MITCHELL
GUS GRAYDON
GEORGE M. ALEXANDER
WYATT BROWN, JR.
HUGH T. SHELTON, JR.
R. EMMET GRIBBIN, JR.
GEORGE S. GRAHAM, JR.

BEN PHILLIPS, JR.
HERBERT EPHGRAVE, JR.
WILLIAM N. WILKERSON
HENDREE B. MILWARD
R. CHRISTOPHER COBBS
J. NESBITT MITCHELL
MARSHALL I. BARNES
DANIEL R. GRAY

Pi Gamma Mu is composed of men who have shown themselves to be particularly interested in contemporary problems of world interest. They meet once a month for informal round-table discussions.



sopherim

OF SIGMA UPSILON LITERARY FRATERNITY

Founded at the University of the South in 1906

MEMBERSHIP

In Facultate

GEN. J. P. JERVEY

MR. T. S. LONG

MR. H. A. GRISWOLD

MR. A. C. MARTIN

REV. G. B. MYERS

REV. M. GUERRY

MR. H. M. GASS

In Academia

BENJAMIN A. MEGINNISS JR.

LEONARD C. BAILEY

STERLING H. TRACY

LEE A. BELFORD

GEORGE R. STEPHENSON

GEORGE S. GRAHAM JR.

GUS GRAYDON

R. EMMET GRIEBIN, JR.

FRANCIS H. HOLMES

WILLIAM N. WILKERSON

HENDREE B. MILWARD

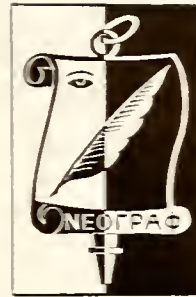
JAMES H. WILLIAMS

The membership of Sopherim, the mother chapter of Sigma Upsilon, is made up of Gownsmen who have proved themselves capable of and interested in creative writing. Original papers are presented at the meetings of the society and are criticised and discussed. At the end of the year the best papers are collected and distributed among the members.

neograph

UNDERGOWNSMEN LITERARY SOCIETY

Founded at the University of the South in 1903



OFFICERS

GANT GAITHER, JR.	President
BAUCUM FULKERSON	Secretary-Treasurer

MEMBERS

GILBERT G. EDSON	GEORGE N. WAGNON
ALEX GUERRY, JR.	WALKER COLEMAN
EDWIN M. McPHERSON, JR.	THOMAS R. HATFIELD
F. HOOPER McQUEEN	
ROBERT E. SEIBELS, JR.	
ROBERT T. SNOW	
GILBERT G. WRIGHT	

Neograph is composed of undergraduates who have shown themselves interested in creative writing. At the meetings the members present papers which are discussed and criticised by the others. Interest in writers of established position is developed through the discussions held on them and their works.



scholarship society

HONORARY SCHOLASTIC SOCIETY

MEMBERSHIP

In Facultate

DR. B. F. FINNEY	DR. C. L. WELLS
DR. G. M. BAKER	DR. J. M. SCOTT
DR. W. S. KNICKERBOCKER	REV. M. GUERRY
DR. S. L. WARE	MR. H. M. GASS
MR. A. C. MARTIN	MR. E. M. KAYDEN
MR. T. S. LONG	MR. J. E. THOROGOOD

In Academia

WYATT BROWN, JR.	FRANKLYN H. BOARD
BERTRAM C. DEDMAN	R. CHRISTOPHER COBBS
J. TUCKER MacKENZIE, JR.	HERBERT EPHGRAVE, JR.
WYLIE MITCHELL	DANIEL R. GRAY
GUS GRAYDON	NORWOOD C. HARRISON
R. EMMET GRIBBIN, JR.	HARVEY B. McCLELLAN
BEN PHILLIPS, JR.	THOMAS V. MAGRUDER
WILLIAM G. CROOK	HENRY P. MANNING
MARSHALL S. TURNER, JR.	HENDREE B. MILWARD
WALTER M. HART	J. NESBITT MITCHELL
GEORGE S. GRAHAM, JR.	CARL I. SCHUESSLER
GEORGE M. ALEXANDER	LYON VAIDEN
MARSHALL I. BARNES	WILLIAM N. WILKERSON

Students in the University who have completed four semesters with an average of eighty-five or higher are elected to the Scholarship Society.

the german club

UNIVERSITY DANCE ORGANIZATION



OFFICERS

WYATT BROWN, JR. President
J. TUCKER MacKENZIE, JR. . . . Vice-President
WILLIAM N. WILKERSON Treasurer
LEONARD L. SHERTZER Secretary
H. A. GRISWOLD Faculty Adviser

The German Club sponsors all of the University dances. During the course of the year it gives five dances. One is a Saturday night dance following a football game on the mountain. This year's was most enjoyable. The Thanksgiving dances are the first regular set. This year they were greatly enjoyed by everyone. President Brown's hunting scene decorations were extremely well done and greatly admired. The Mid-Winter dances are perhaps the most popular of the year. This year with the return of Kay Kyser for the fourth time, the mountain took on a more than festive air and a gala time was had. There were probably more girls here for the set than any other in recent years with the possible exception of the commencement set of last year. Again Wyatt Brown did a splendid job of decorating the gym, this time in a style which combined modern and classical lines. It was most spectacular. At the time of going to press the plans for the other dance sets are indefinite, but the officers of the German Club promise big things for the members, particularly at Commencement.



the proctors

The Members

Ben Phillips, Jr., Head Proctor	Sewanee Inn
Bertram C. Dedman	Johnson Hall
Wyatt Brown, Jr.	Hoffman Hall
Frank M. Gillespie	Cannon Hall
James M. Packer	Tuckaway Inn
R. Earl Dicus	Saint Luke's

The Proctors are selected from the Junior and Senior classes for the purpose of enforcing discipline in the dormitories of which they are in charge and generally on the campus. They are appointed by the Vice-Chancellor upon the recommendations of the retiring Proctors. The system has proved to be a most satisfactory way of maintaining the discipline of the student body.

the choir



Officers

WALTER M. HART President
THOMAS N. SAUER Vice-President
GUS GRAYDON Secretary-Treasurer
J. TUCKER MacKENZIE, JR. Librarian

Members

ALBERT S. JOHNSON	ERSKINE W. McKINLEY, JR.
ROBERT T. SNOW	HENRY G. BOESCH
ROBERT E. SEIBELS, JR.	JOHN P. BINNINGTON
WENDELL V. BROWN	COLIN R. CAMPBELL
R. EMMET GRIBBIN, JR.	WILLIAM M. EDWARDS
EDWIN M. McPHERSON, JR.	BEN P. DONNELL
T. STANLEY JONES	JOHN M. NESTER
GEORGE NESSELRODE	GEORGE L. GLASS
WALKER COLEMAN	PICKENS C. TALLEY
WILLIAM F. MILLIGAN	LESLIE McLAURIN, JR.
R. CHRISTOPHER COBBS	JAMES P. DeWOLFE, JR.
FRANCIS H. HOLMES	ALPHA O. NEWBERRY
JAMES E. McCANTS	

The Choir has been reorganized this year, largely through the efforts of the students, and sings in daily and Sunday Chapel.

student vestry

Officers

J. TUCKER MacKENZIE, JR. . . . Senior Warden
BEN PHILLIPS, JR. . . . Junior Warden
HARVEY B. McCLELLAN Secretary
W. SYDNEY BURGESS Treasurer

Members

J. TUCKER MacKENZIE, JR. Senior Class
BEN PHILLIPS, JR. Senior Class
HARVEY B. McCLELLAN Junior Class
W. SYDNEY BURGESS Junior Class
THEODORE D. BRATTON Sophomore Class
W. HARRISON BESTE Sophomore Class
JOHN W. JOURDAN Freshman Class
RICHARD A. KIRCHHOFFER Freshman Class
NORMAN F. KINZIE Theological School
W. REES HAYNSWORTH Theological School

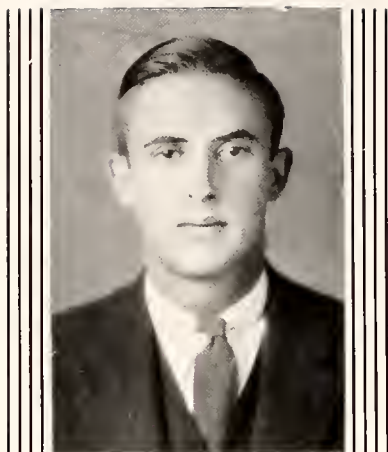
The Student Vestry works with the Chaplain in carrying out his work
and in promoting the religious life of the students.

honor council

The Members

Bertram C. Dedman, President	Senior Class
William G. Crook	Senior Class
Harvey B. McClellan	Junior Class
Frank M. Gillespie	Junior Class
W. Houston Crozier	Sophomore Class
Walker Coleman	Freshman Class
Olin G. Beall	Theological School

The Honor Council is elected each year by the students of the various classes for the purpose of maintaining the Honor System at Sewanee. Its function is important in that it deals with all infractions of the Honor Code, which all new students sign upon entering the University. There are no regular meetings of the Council, but they are called when the need arises.



glee club

Officers

J. TUCKER MacKENZIE, JR. President
 GUS GRAYDON Vice-President
 HAROLD EUSTIS Treasurer
 LESLIE McLAURIN, JR. Librarian
 JAMES E. SAVOY Accompanist
 PAUL S. McCONNELL Director

Members

First Tenors

Thomas N. Sauer	R. Emmet Gribbin, Jr.	Edwin M. McPherson, Jr.
Robert T. Snow	Wendell V. Brown	Theodore C. Heyward, Jr.

Second Tenors

Robert E. Seibels, Jr.	Albert S. Johnson	John P. Binnington
	William A. Douglas	
	Harold Eustis	

First Basses

William G. Crook	William F. Milligan	Henry C. Cortes
Marshall S. Turner, Jr.	Walker Coleman	Stanley Jones
Hubert B. Crosby	Charles M. Brown	Gus Graydon
	J. Tucker MacKenzie, Jr.	

Second Basses

Wyatt Brown, Jr.	John M. Nester	Ben P. Donnell
Robert W. Belford	Colin R. Campbell	Alpha O. Newberry
Wylie Mitchell	Ben Phillips, Jr.	Pickens C. Talley
	Leslie McLaurin, Jr.	

dramatics



Members

William M. Given, Jr.	Marshall I. Barnes	Walter M. Hart
Charles W. Lokey, Jr.	Bertram C. Dedman	Hiram W. Brawley
George Nesselrode	R. Emmet Gribbin, Jr.	Theodore D. Bratton
Albert S. Johnson	Robert E. Seibels, Jr.	William F. Milligan
Wyatt Brown, Jr.	Russell W. Turner	John P. Binnington
L. Valentine Lee, Jr.	Marshall S. Turner, Jr.	Gus Graydon
William M. Edwards	Edwin M. McPherson, Jr.	Henry P. Manning
William Hosking	Joseph A. Atkins	Roger L. Miner
Baxter S. Moore, Jr.	John N. Atkins	William N. Wilkerson

Members of Alpha Psi Omega

Marshall I. Barnes	Walter M. Hart	Henry P. Manning
	John P. Binnington	
	William N. Wilkerson	

The dramatic group presented the annual Nativity Play in Saint Luke's Chapel prior to the Christmas holidays. Since then they have been working almost continuously in the MacKellar Theatre, where several one-act plays and an old-fashion melodrama are to be presented. All of the scenery and properties used in the productions are the products of the group's work. This year the Sewanee Chapter of Alpha Psi Omega, national honorary dramatic fraternity, has been reorganized. It is expected to promote greater interest in the dramatic work at Sewanee.



lettermen's club

OFFICERS

RUPERT M. COLMORE, JR. President
 HUGH T. SHELTON, JR. Vice-President
 WILLIAM A. DOUGLAS . . . Secretary-Treasurer

MEMBERS

BAXTER S. MOORE, JR.	RUTHERFORD CRAVENS
C. L. MONTGOMERY	JOHN P. BINNINGTON
M. F. JACKSON	W. HOUSTON CROZIER
P. B. GRIFFIN	H. HILL LUCE
BEN PHILLIPS, JR.	RALPH T. PHILLIPS
WILLIAM G. CROOK	JAMES R. LASATER
WILLIAM S. FLEMING, III	JAMES R. NEWTON
WYATT BROWN, JR.	SUGG KEISER
BERTRAM C. DEDMAN	DEXTER L. STANPHILL
HAROLD EUSTIS	WILLIAM COCHRANE
RICHARD W. BOLLING	COACH H. E. CLARK
MARSHALL S. TURNER, JR.	COACH G. M. CLARK
JACK A. WHITLEY	MR. A. G. WILLEY

WILLIE SIX, Honorary Member

The "S" Club is composed of all men who have won their letters in one or another of the phases of athletics at Sewanee.

sewanee purple



Editorial Staff

GUS GRAYDON Editor-in-Chief
WILLIAM N. WILKERSON Managing Editor
BENJAMIN A. MEGINNISS, JR. Features

Reporters

EDWIN M. McPHERSON, JR. THOMAS N. SAUER
RUSSELL W. TURNER ERSKINE W. McKINLEY, JR.
GANT GAITHER, JR. ROBERT E. SEIBELS, JR.
R. EMMET GRIBBIN

Contributors

WALKER COLEMAN KENNETH R. GREGG
HAYWOOD C. EMERSON THOMAS B. FAIRLEIGH
ALBERT L. DADE

Business Staff

C. W. UNDERWOOD Business Manager
CHARLES A. BOHMER Associate Business Manager

Circulation Staff

BERT S. HAYS GEORGE NESSELRODE
JOHN R. WELSH ROBERT G. SNOWDEN
JAMES P. WILLIS NOEL CARPENTER
LESTER R. CHISHOLM JAMES P. DeWOLFE, JR.

"The Sewanee Purple" is the student newspaper and is published twenty-five times during the school year by the Athletic Board of Control.



the mountain goat

FRANCIS H. HOLMES Editor-in-Chief
 JAMES H. WILLIAMS Business Manager

Literary Staff

THOMAS R. HATFIELD	EDWIN M. McPHERSON, JR.	BAXTER S. MOORE
J. NESBITT MITCHELL	R. EMMET GRIBBIN, JR.	GUS GRAYDON
WALTER M. HART	P. HOOPER McQUEEN	JOHN ANSCHUTZ

Art Staff

EDWIN M. McPHERSON, JR.	ROBERT A. GRAY
WYATT BROWN, JR.	

Business Staff

JOHN R. EHRSAM	JAMES R. LASATER
JOHN W. JOURDAN	GEORGE W. FORGY
FRANK H. McLEOD	

"The Mountain Goat" is the humorous magazine of the college. It is published four times during the year. This year the staff has presented a fine series of editions with particularly fine cartoons.



the cap and gown

WYLIE MITCHELL Editor-in-Chief
 THEODORE C. HEYWARD, JR. Business Manager

Editorial Staff

HENDREE B. MILWARD	RUSSELL W. TURNER
WILLIAM M. GIVEN, JR.	ROBERT E. SEIBELS, JR.
R. STANLEY QUISENBERRY	THOMAS R. HATFIELD
EDWIN M. McPHERSON, JR.	GILBERT G. WRIGHT
THOMAS B. FAIRLEIGH	ROBERT D. KUEHNLE
RICHARD A. KIRCHHOFFER	T. STANLEY JONES

Photography Staff

JEREMIAH G. WALLACE	J. NESBITT MITCHELL
P. HOOPER McQUEEN	JOHN N. ATKINS

Business Staff

JAMES E. SAVOY	MARSHALL I. BARNES
E. HARTWELL SMITH	CHARLES A. BOHMER
JOHN W. JOURDAN	

The "Cap and Gown" tries to present an accurate picture of the student activities and life during the school year. It is handicapped by having to go to press before the year is completed, but an effort is made to make up for this deficiency.

the debate council

Officers

J. TUCKER MacKENZIE, JR. President
MARSHALL I. BARNES Secretary

Members

R. EMMET GRIBBIN, JR.
WILLIAM G. CROOK
HUGH T. SHELTON, JR.
FRANK M. GILLESPIE
BERTRAM C. DEDMAN
RUSSELL W. TURNER
ORVILLE B. HARRIS

The Debate Council is composed of all men who have taken part in the intercollegiate debates of the University. This year an unusually large number of debates were held. Among the schools that were debated were: Waynesburg College, Tulane, T. P. I., Florida, Southwestern, William and Mary (Girls' Debate Team), University of South Carolina (Girls' Debate Team), Springhill, Citadel, Union College, and Murfreesboro State Teachers.

l'allegro club

SOCIAL CLUB

Officers

BERTRAM C. DEDMAN President
GUS GRAYDON Secretary-Treasurer

Members

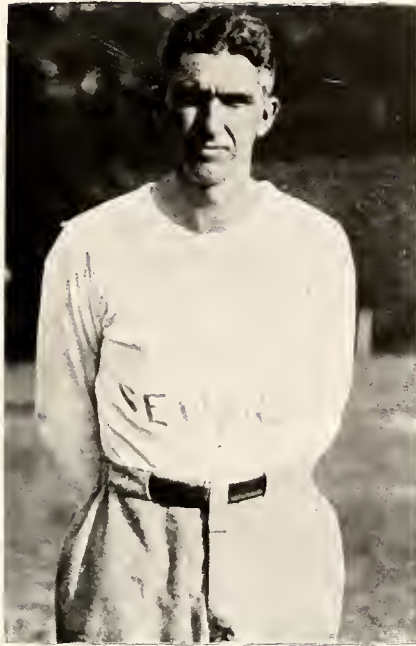
WYATT BROWN, JR.
RUPERT M. COLMORE, JR.
R. EARL DICUS
WILLIAM S. FLEMING
BAXTER S. MOORE
BEN PHILLIPS, JR.
DAVID S. ROSE
SAMUEL B. STRANG, JR.
H. GRUBER WOOLF

The L'Allegro Club was organized last year for the purpose of promoting social activities on the mountain. It sponsors parties generally limited to its members and occasionally for the entire student body. At the time that this goes to press the new members have not been elected.

athletics



the tiger coaches



COACH H. E. CLARK

During his six years as head-coach at the University of the South, Mr. Clark has consistently turned out teams that play with the same spirit that marked the Sewanee teams of yore. "Hec" is one of the few coaches left of the old school of character builders, and we are thankful for his great personal interest in the players. In a recent sports-writers' election of the best football coach in the Southeastern Conference, Coach Clark's name was prominently mentioned.



GORDON M. CLARK

COACH GORDON M. CLARK

Gordon Clark has served as Graduate Manager of Athletics and Freshman Football Coach for several seasons. This year he turned out an exceptionally fine Freshman team.

COACH ALLEN LINCOLN

Mr. Lincoln acts as varsity backfield coach during the football season and during the remainder of the year coaches basketball and track.



ALLEN LINCOLN

football at sewanee

When Rupert Colmore came to the mountain after starring in prep school, it had been a long time since Sewanee had had an All-Southeastern football player. It was taken for granted that Rupert would go places and he did not disappoint us as so many prep stars do in college. He gave the varsity plenty of trouble his freshman year whenever the Frosh scrimmaged the Upperclassmen. Though hurt part of the season during his sophomore year, he was outstanding in every game in which he played and received many favorable comments. At the end of his Junior season, "Rupe" received several honorable mentions on all-star teams, but he especially valued a card of merit from the All-American Board of Football. Then last fall rolled around and with it came the climax of Rupert's football career, for sportswriters and coaches alike praised his playing with the utmost enthu-



RUPERT McPHERSON COLMORE, JR.

iasm. Colmore played sixty minutes in practically all the games and never let up. "Rupe" came as close to perfection at the tackle position as it is humanly possible. He was hard to move, fast on the getaway, a deadly blocker, and an excellent tackler both at the line of scrimmage and in open field. Aside from this he was a talented place kicker.

A three letter man, "Rupe" not only plays football, but is a first string basketball and track man. He is prominent in campus activities and is president of his class. Among the honors received by Colmore are: Associated Press, All-Southeastern and honorable mention All-American; Ray Morrison, All-Southeastern; United Press, All-Southern (second team); Collier's, honorable mention All-American; and All-Southeastern on several newspaper teams. Rupert also received an offer from the Philadelphia Eagles, professional team, but refused it.

VARSITY SQUAD 1936



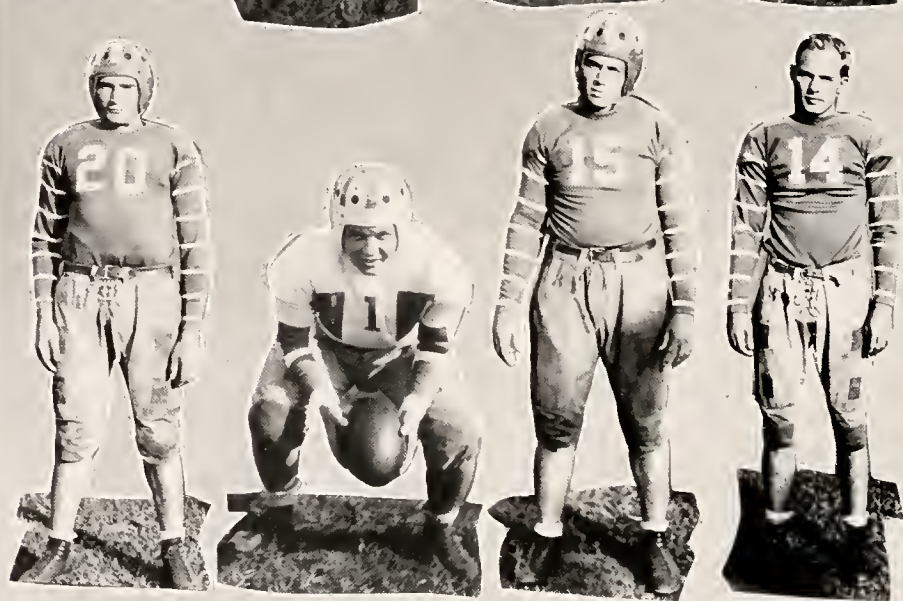
managers and cheer leaders



Theodore Heyward, head cheerleader, and his assistants, George Wagnon, Stanley Jones, and Jack Jourdan were largely instrumental in reviving the Sewanee spirit and maintaining it throughout the athletic seasons.



The athletic managers have been unusually efficient in doing their respective tasks this year. They are: William Douglas, football; Baxter Moore, basketball; and Sam Strang, track.



Colmore, Turner
Montgomery, Griffin

Stanphill, Eustis
R. Phillips, Luce

Dedman, Crook
Shelton, Bolling

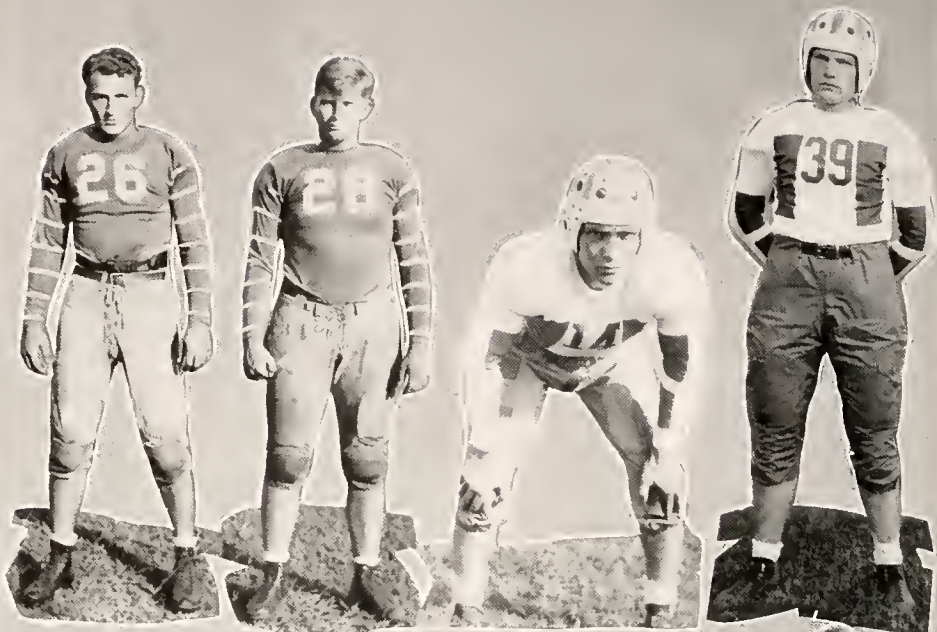


summary . . .

The 1936 football season was one of the most disastrous that the University of the South has ever experienced. There is no doubt as to that fact, for the Tigers failed to win a game; a tie with a much weaker team was the closest they came to victory. Nevertheless, the season was not without its bright moments and on the whole it was an interesting one.

Hopes for a good year were blasted as Georgia Tech ran roughshod over the Purples 58 to 0 in the season's opener. The team did not play well and the Yellow Jackets had things very much their own way. A two weeks' rest did little good, for the Tigers fell before Tennessee Wesleyan 19 to 7 in a game that is normally considered a breather. Sugg Keiser caught one of "Sonny" Montgomery's passes for the lone score. There were eleven men on the field with potential football ability, but they made many mistakes, and seemed unable to play as a

unit. Though Sewanee made eighteen first downs to T. P. I.'s seven in their next game, a scoreless tie was all they could get out of the contest. The Tigers played good ball in mid-field but seemed jinxed whenever they approached the goal line. On the following Saturday, Sewanee suffered a terrific 68 to 0 licking at the hands of the Mississippi State Maroons. All appeared lost, for the next game was with Vanderbilt, the Purples' traditional rivals, and a rout at their hands would completely ruin the season; but the Mountain was to be reckoned with. The Sewanee spirit which was woefully lacking early in the year was completely revived and an inspired band of Tigers journeyed to Nashville to hold the Commodores scoreless for three quarters, only to lose 14 to 0 in the game's closing minutes. It was a moral victory in the real sense of the word. The Mountain took a new lease on life and began supporting their team as never



Newton, Howell
Gillespie, Moore

Fleming, Jackson
Patton, Cravens

Bratton, T. Phillips
Crozier, Schuessler





summary . . .

before. Florida was the Tiger's next opponent, and everyone was firmly convinced that the Gators would be beaten. However, Florida won 18 to 7 in a hard-fought game that was not decided until the last quarter. Sewanee led 7 to 0 early in the contest as Dexter Stanphill picked up a fumble on his goal line and dashed 100 yards to score. Led by Mayberry, the Gators came back strong and gained a lead which the Tigers could not overcome. Closing the season, the Purples encountered a powerful Tulane University team in New Orleans and went down under a deluge of last quarter touchdowns to lose 53 to 6. A pass, Cochrane to Keiser, accounted for the Tiger's only score.

So closed the 1936 season, unsuccessful of course, but unique in the respect that it plainly showed that spirit can go a long way in making a football team. At the end of the season, Rupert Colmore

received the distinctive honor of being chosen first string tackle on the majority of the All-Southeastern teams picked by sportswriters, as well as several honorable mentions on All-American teams. It is also interesting to note that Stanphill's run against Florida was one of the nation's longest for the past season.

At the annual football banquet, Rupert Colmore was chosen captain of the team as well as its most valuable player. The following men were awarded varsity letters at the same time for their outstanding work: Houston Crozier, Hill Luce, P. B. Griffin, Ralph Phillips, Baxter Moore, Rupert Colmore, James Lasater, Richard Bolling, James Newton, Hugh Shelton, Bert Dedman, William Crook, Sugg Keiser, Harold Eustis, M. F. Jackson, "Sonny" Montgomery, Dexter Stanphill, William Fleming, Marshall Turner, William Cochrane, and Manager William Douglas.

freshman football . . .

Late in September a small but talented group of Freshmen reported to Coach "Nig" Clark for football practice. Work was started immediately to get them in shape for scrimmages with the varsity and the two intercollegiate games allowed Freshman teams in the Southeastern Conference. Though handicapped during the entire season, the first year men had a fairly successful season, losing one game and tying another.

Cecil Beasley and Walter Higgins, first string players, were out most of the season with injuries and with no capable reserves to replace them, the Baby Tigers were put at a decided disadvantage.

A 13 to 13 tie with T. P. I's Freshmen was the result of the first game played by the Frosh. Sewanee started strong and pushed over touchdowns in the second and third quarters to lead the Baby Eagles by what appeared to be a safe margin. However, the T. P. I. Frosh played inspired ball and by taking advantage of a fumble and an intercepted pass, made two touchdowns to tie the game in its closing minutes. Hagler, Whittington, Fowlkes, and Holmes played well for the Frosh.

The yearlings closed their season with a 20 to 0 loss to the strong Vanderbilt Freshman team. Playing on a snow-covered field, Sewanee held the Vandy Frosh to one touchdown until the last quarter, when the Commodores scored twice. Hagler and Whittington were outstanding for the Purples while Marshall played exceptional ball for Vandy, and made two of their touchdowns.

The following men, who should be excellent varsity material next year, were given numerals at the end of the season: Brawley, Holmes, Dennis, Smith, Beasley, Fowlkes, Hall, Holstun, Laws, Higgins, Hagler, Kellerman, Thomas, Spake, Worman, Jones, and Manager Ephgrave.





b a s k e t b a l l s e a s o n

With the exception of the 1934 season when Sewanee did not win a game, the basketball season just closed was one of the most disastrous in the University's recent history. The Tiger quintet, though they played many close games, lost all but one of their contests.

Opening their season with a practice game after only ten days of practice, Sewanee lost to Hiwassee College 28 to 30 on December 12th. Returning to the Mountain after the holidays, the squad had but two days of practice before they met Emory and Henry College on January 6th. The game was lost 41 to 20. Three days later, Western Kentucky Teachers defeated the Tigers 48 to 22 in an interesting game. The Purple squad next journeyed to Nashville, where the Commodores swamped them by a 46 to 26 score. Vandy hit the basket frequently, while Coach Lincoln's boys could not find it. On January 15th, Auburn came to the Mountain and took two victories from the much-abused Tigers. Sewanee led during the initial half of the first game, but could not stave off an Auburn rally and lost 42 to 34. The second game was taken by the Plainsmen by a 34 to 29 score. Turner with 10 points led his teammates. The Purples suffered the heaviest loss of the season when the University of Tennessee beat them 47 to 13 in a game played at Knoxville. Tennessee Wesleyan defeated Sewanee 41 to 33 on January 21st, despite the fact that the Tigers outscored them 17 to 9 in the last half. Playing without their star, Rupert Colmore, the Purples fell easy prey to Georgia Tech and lost 52 to 32 in the last game before the exams. On February 6th, Sewanee lost to Southwestern 47 to 30 in a ragged game. Next the Purples journeyed to Auburn, Alabama, where two more games were lost to the Plainsmen by 39 to 32 and 36 to 16 scores. Colmore scored 16 points in the first contest. On their way back to the Mountain, the Tigers played Georgia Tech and lost 36 to 18. A typical last half rally fell short and Sewanee lost again to Southwestern 34 to 27 on February 13th. In the most exciting game of the season, the Tigers defeated Tennessee Junior College, 43 to 39, for their first and only victory. Sewanee trailed at the half, but came back to win in the closing minutes of the game which was played on the 19th of February. Tennessee scored their second victory over the Purples the next night by a 36 to 23 score. Closing their season on February 23rd, Sewanee lost a tight game to Vanderbilt 43 to 38.



Dedman, Luce
Cochrane, Colmore

Shelton, Stanphill
Turner, Milward

Guerry, Keiser



b a s k e t b a l l s q u a d

Finishing his third year of varsity basketball, **BERT DEDMAN** turned in an excellent season at guard and though handicapped by his lack of height, held down many of the best forwards that the Tigers played against this year. During the season he scored 47 points.

HILL LUCE, a Senior, played his first year of varsity ball and proved an invaluable aid to the Purple team. A real ball-hawk, Luce showed plenty of fight at guard and scored 51 points.

Leading his team's scoring with 99 points, **RUPERT COLMORE** was the Tiger's outstanding player. Rupe finished his third year at center and played the full 40 minutes in practically all the games this season. His loss will be keenly felt.

SUGG KEISER played his first season with the Tigers this year, alternating at the center and forward positions. He was adept at following up shots and was second high scorer with 92 points.

Another man who also holds three letters in basketball is **HUGH SHELTON**, forward on the Sewanee five. Hugh was especially good on the offensive and gave many an opponent's guard a hard evening. He hit the basket for 54 points during the season.

Seeing his third year of service with the varsity, **MARSHALL TURNER** played good ball at the forward position all season. One of the best ball handlers and passers on the team, Turner garnered 62 points for third scoring honors.

BILL COCHRANE, up from last year's freshman ranks, was a valuable addition to Sewanee's squad. "Micky," especially good at dribbling and faking, made a total of 31 points.

DEXTER STANPHILL, **ALEX GUERRY**, and **HENDREE MILWARD** filled out the Sewanee roster. They proved valuable substitutes for the Tigers and saw service in the majority of the games.

freshman basketball . . .

As a contrast to the varsity, the class of 1940 had one of the best freshman basketball teams ever to represent the University of the South. At the end of the season, the Frosh had run up a perfect record of nineteen straight victories. Opening the season, the Baby Tigers easily defeated St. Andrew's 40 to 10, and then followed this up by two quick victories over the Winchester Independents and Pulaski High. Journeying to Nashville, the Frosh staved off a last half rally to down the Vanderbilt Freshmen 23 to 21. Worman led his team with 8 points. Another win over Winchester followed by victories over M. B. A. and Baylor marked the next week of play. Fowlkes, at center, was high point man in each game, scoring forty points for the three. On January 20th, the Freshmen played a double-header, defeating Rhea County High 42 to 21 and Sale Creek 22 to 9. These were followed by a 34 to 12 victory over Morgan and a 33 to 14 victory over Columbia Military Academy. Within a period of five days after a week's lay-off for exams, the Frosh easily defeated four teams—Darlington, Chattanooga City High, Castle Heights, and Notre Dame of Chattanooga. Worman and Spake played good offensive ball in each of these, while Whittington put in excellent work on the defense. On February 17th, a strong McCallie team held the Freshmen to an 11 to 10 score at the half, but weakened, and the Purples pulled away to win handily 39 to 22. Games with B. G. A. and Nashville Central were won next by 33 to 20 and 22 to 13 scores. Closing the season, the Frosh scored a 30 to 20 victory over Vanderbilt's yearlings in one of their best games. High scorers for the year were: Worman, 151; Fowlkes, 116; Spake, 103; Laws, 73; Whittington, 52, and Thomas, 34.





Coach Allen Lincoln is faced with the difficult task of building his 1937 track team from only five lettermen and very little other material from which to choose. The lettermen and their events are: Wyatt Brown, 440 and discus; William Douglas, 100 and 220; Dick Bolling, javelin; Rupert Colmore, high jump, pole vault, and shot put; and Marshall Turner, 880 and mile. Returning squad members are Tucker MacKenzie, hurdler, and Charlie Brown, who runs the 880. The Tigers were especially weak in the hurdles last year but this difficulty should be remedied by Bill Cochrane, Sophomore star, who runs both the high and low hurdles in excellent time. Cochrane holds the Missouri State Prep School record in this event. Other men up from the Freshman ranks are Ted Bratton and George Wagnon, distance runners. All of these men form the nucleus of the squad, though it is possible that others trying out for the different events may improve sufficiently to press them for their places.

If Coach Lincoln can develop this small squad and discover some new material, Sewanee will probably have a fairly successful season. He is especially handicapped by the small number out for each event and by the lack of good distance men.

As we go to press, no meets have been held but several have been scheduled. The intramural meet will be held first, April 2nd and 3rd, in order to uncover any new talent. Following this will be meets with T. P. I. on April 17th at Sewanee; with Southwestern on April 24th at Memphis; and with Vanderbilt on May 1st. The place is yet undecided. The T. J. A. A. meet will be held at Knoxville on May 8th, and the Tigers should show up well in this meet. Last year they finished fourth out of a large field. If the team produces any unusual talent, it will be represented at the South-eastern Conference meet in Birmingham on May 14th and 15th.

. . . track

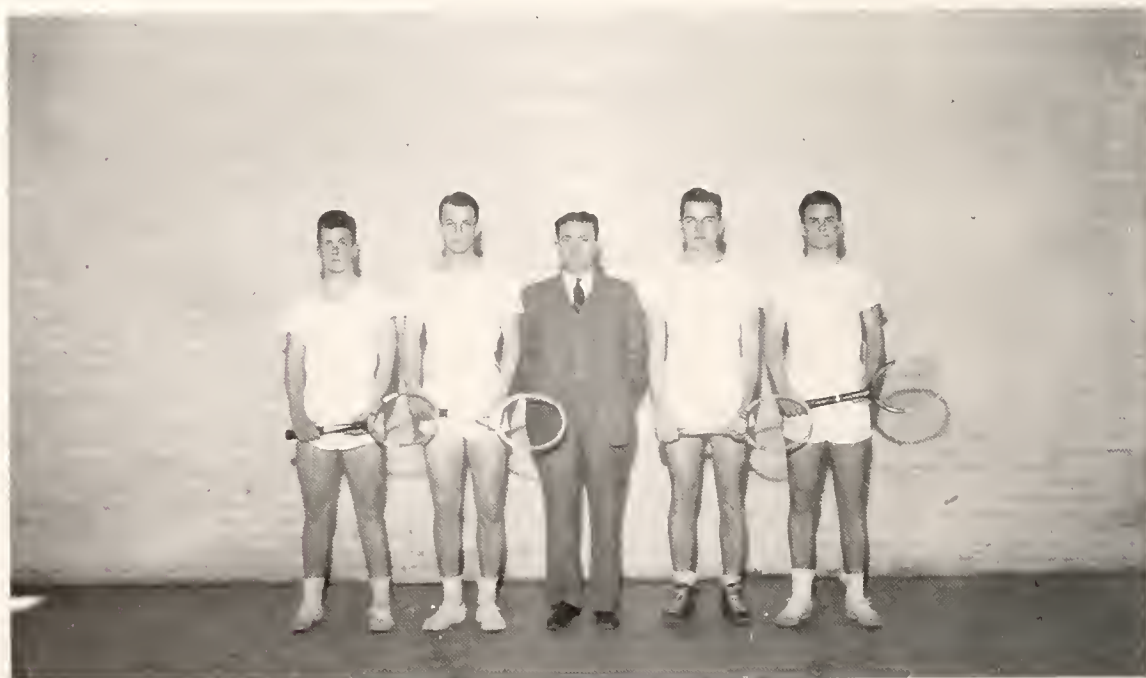
tennis . . .

Although no meets have been held at the time we go to press, present indications point to a very successful 1937 tennis season for the Sewanee racqueteers. Practice opened on March 1st under the direction of Dr. G. S. Bruton, tennis coach, and will be held in the gymnasium until the weather permits outdoor work.

With Hugh Shelton, Tennessee Inercollegiate Athletic Association champion, Billy Crook, and "Ruddy" Cravens back from last year's squad, and Alex Guerry, Chattanooga City Champion, up from the Freshman ranks, the first four positions are well under control. However, as in track, there is a dearth of material and it will be difficult to fill the number five and six positions. The last two places will probably be held by Sam Brown and Hill Luce, though they will be pressed by Jim Packer and Billy Hall. These men are fair players, but they lack the needed experience that is characteristic in the first four positions.

Last year's team was one of the best ever to represent Sewanee, and this season the squad will attempt to better their record. The 1936 team ran up the enviable record of 15 wins out of 19 matches played. Hugh Shelton was crowned T. I. A. A. champ, defeating "Biggy" Marshall, of Tennessee, in the finals, and then paired with Sidney Young to be runners-up in the doubles.

At the present time, a complete schedule has not been worked out, but meets definitely will be held with the following schools: Wayne University, of Detroit; Augustana College, of Chicago; Mississippi State; University of Kentucky; Southwestern; and the University of Tennessee. Tentative meets are scheduled with Alabama, Vanderbilt, and several other schools.



As the "Cap and Gown" goes to press, only two of the intramural sports have been completed. The Sigma Nu's have won both the volleyball and basketball championships and have thereby gained a safe lead toward the intramural cup which has been won by the S. A. E.'s for the past three years.

VOLLEYBALL

Opening the season the Sigma Nu's breezed through the entire schedule without suffering a loss. They were closely followed by Delta Tau Delta's and Phi Delta Theta's, who finished second and third respectively. Outstanding players in the loop were: Wally Hart and "Wimpy" Holmes, Sigma Nu's; John Binnington, Delta; Alex Guerry, S. A. E.; John Riddick, Phi Delt; Stanley Quisenberry, Kappa Sig; and Randell Stoney, A. T. O.

BASKETBALL

Repeating their victory of last year, the Sigma Nu's took the basketball crown at the end of a season which was marked by many thrills and upsets. The Snakes were defeated once, by the Phi Gam's, but their record gave them the title. Close behind in second place were the Phi Delta Theta's, while the Kappa Sig's finished in third position.

OTHER SPORTS

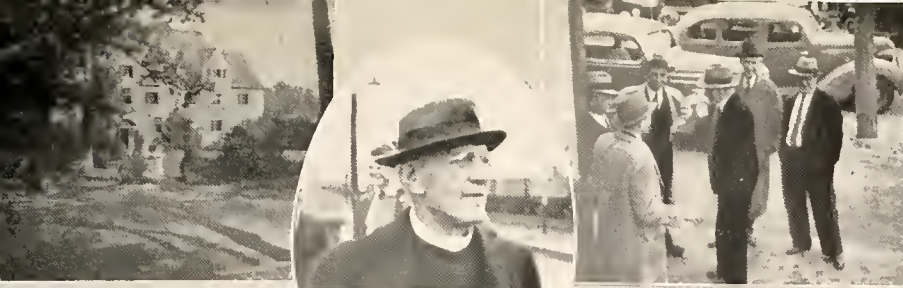
As yet no handball matches have been played, although the entries are in from the various competitors. Present indications point to the Sig Alph's, Phi Delt's, and K. A.'s as favorites. The S. A. E.'s took the event last year.

The schedules for track, tennis, golf, swimming, and baseball are yet to be made up, but the competition in all these sports should be keen, as there is considerable ability in all the fraternities, especially among the members of the Freshman class. As a result, it is difficult to attempt to predict any of the results. Last year the Phi Delts won the intramural track meet by a large margin. The Sigma Nu's won the swimming meet, defeating the Phi's by only five points. Billy Daniel, golf champion, graduated last June, but his runner-up, Stanley Burlew, is still in school. Burlew is an Outlaw. Alex Guerry was the winner of the 1936 tennis tournament, but is now on the varsity squad, and is ineligible for fraternity competition. In baseball, the Sigma Nu's took an early lead and retained it throughout the season to win the championship. Second place went to the S. A. E. fraternity.

. . . intramurals

the features





Johnson Hall . . . Bishop
 Bratton . . . At the Cowan
 station . . . Off for Van-
 derbilt . . . Science Hall
 . . . Waiting for taxis . . .
 Oh, Milligan! . . . Sewanee
 spirit . . . Kinzie in thought
 . . . On the quadrangle . . .
 Studying . . . Loafing . . .
 Hiking . . . Mountain sceno
 . . . All Saints . . . Vandy
 Game.



Major Mac and Coach talk things over . . . "H" gets a duck . . . Saint Luke's Chapel . . . "Mickey" looks worried . . . Vandy Game . . . The matrons . . . Mr. Guerry entrains . . . "Sonny" in Nashville . . . Cave scene . . . Sunday afternoon hike . . . Freshman rat race . . . Brown does some studying . . . Hoffman Hall . . . Classes over . . . Johnson Hall . . . Thanksgiving snow.





●
 Waiting for chapel . . .
 Girls! . . . Going for the
 mail . . . Posing . . .
 "Scamp" and Bob . . .
 Sugar report . . . Well, well,
 Henry and Alice! . . . Mr.
 Guerry, "Willy," and Crook
 . . . Gus and "Tight-eye"
 . . . Bob and Mary . . . Mr.
 McConnell off to chapel
 . . . "Sooky," Jim, and
 Rudy . . . Campbell does
 go to chapel . . . Wilker-
 son again! . . . S. A. E.
 House.

Johnsonites . . . "Uncle
 Jack" and Senor . . . Wil-
 kerson and Louise . . . Dean
 explains a few things to
 Bert . . . Mr. Martin and
 belongings . . . Jane and
 Tucker . . . Give it to him,
 Bob! . . . Pauline, Frank,
 and others . . . Strange
 sight . . . Oh, "Hayseed"!
 . . . Looking glum . . .
 What'cha thinkin' 'bout,
 Gray? . . . J. P. . . Mag-
 nolia scene . . . The Jeep
 and protege.





What an argument! . . .
 Dr. Finney signs some eggs
 Pepsodent smiles . . . "Cob-
 bo" and "Leo" . . . Mr.
 Moore takes off . . . Par-
 don me! . . . Waiting for
 dinner . . . Some stuff . . .
 Neb goes to class . . . Pro-
 fessorial confab . . . Kir-
 ch-
 hoffer and friend . . . The
 cloister . . . Gownsmen . . .
 J. P. Jones . . . The Dean.



Frosh numerals . . . Sophomores call the roll . . . "H" and "Bollo" at checkers . . . In front of Johnson . . . "Sargent York" . . . Going places . . . Frosh waiting . . . Poor Pat! . . . Lining up . . . "Who's got my pants?" . . . After chapel . . . Sledding . . . Watching the proceedings . . . Coming in.

sewanee songs and yells

YEA, SEWANEE'S RIGHT!

"BIG FOUR"

(Air—"Yale Marching Song")

March, march on down the field,

Fighting for victory;

Never give in or yield

Till 'cross the goal are we.

We'll give a yell for Sewanee's men,

They'll fight like hell to win;

Vandy's crowd may flash their tin,

But Sewanee will win.

—McMillin.

(Air—"Princeton Cannon March")

Fight! fight! fight! for Sewanee!

O, send our backs around the end!

Plow, plow, through Vandy's line!

Sewanee's honor to defend.

We'll give a cheer, cheer, cheer, cheer, rah, rah, rah.

For we're the Tigers, sis, boom, bah!

And we'll fight with a vim that is dead sure to win,

For Se-wa-nee!

—McMillin.

sewanee songs and yells

(Air—"Yale 'Boola Boola' ")

Sewanee Tiger! Tiger Sewanee!
Play the football,
Hear your sons call!
We will rough-house dear old Vandy
Till she hollers "Sewanee's won!"

"U. OF S."

U. of S.! Rah! Rah! U. of S.! Rah! Rah!
Hoorah! Hoorah! Sewanee! Sewanee! Rah! Rah!
Rah! Ree! Varsity! Hip! Hip!
Se-wa-nee!
Sewanee rah! Sewanee rah!
Sewanee Tigers! Sis, boom, bah!
Rackety—ackety—ackety—ack!
Rackety—ackety—ackety—ack!
Hullabaloo! How—d'y'-do! How-d'y'-do—SE-WA-NEE!
YEA, SEWANEE'S RIGHT!

"A LONG SEWANEE"

S—E—W—A—N—E—E!
S—E—W—A—N—E—E!
S—E—W—A—N—E—E!
Fight! Fight! Fight!

sewanee songs and yells

"RAMBLE"

Vandy was the first team that Sewanee ever beat,
Sewanee is the best team that Vandy'll ever meet.
So take 'em down you Tigers and give old Vandy hell,
And we'll put those Nashville Commodores beneath
the mountain spell!

CHORUS

Oh, do they ramble, ramble,
Ramble all around, in and out of town;
Ramble, Ramble, Ramble,
Till they had to cut him down.

Sewanee had a tiger with long and grizzly hair
And Vandy had a bulldog—now wouldn't that make a pair?
But when they get together—there is sure to be a scrap.
Just watch that Sewanee Tiger knock that bulldog off the map!

"VICTORY MARCH"

(Air—"Notre Dame Victory March")

Cheer for the Purple and White,
Sing brothers with all your might,
Vandy's crowd may soon go down,
Under the Tiger, he's all right!
We'll take the ball round the end,
Win for Sewanee again.
Tiger Sewanee! Fight, fight, fight!
And lead us to victory!

sewanee songs and yells

"SEWANEE TIGER"

When those Sewanee Tigers fall in line,
We're going to win this game another time!
For SE-WA-NEE I yell, I yell!
And for the University I yell like hell!
We will FIGHT! FIGHT! FIGHT! for every yard!
We'll circle ends and hit that line right hard;
We're gonna roll old Vandy on the sod, on the sod!
SE-WA-NEE!

"LOCOMOTIVE RAH"

Rah! Rah! Rah! Rah!
U. of S. Rah!

"SEWANEE TIGERS"

Sewanee Tigers! Sewanee Tigers!
The pride of every student here!
Come on you old grads,
Let's join the young lads,
Sewanee Tigers now we cheer—RAH! RAH!
Now's the time boys to make a big noise
No matter what the people say,
For there is none to fear—
The gang's all here.
Hail to old Sewanee! Hail!

sewanee songs and yells

"TEAM RAH!"

Team—Rah!

Team—Rah!

Rah! Rah! Rah! Rah!

Team—Rah!

"Don't send my boy to Tennessee,"

The dying mother said.

"Don't send my boy to Georgia Tech,

I'd rather see him dead.

But send him to Sewanee

It's better than Cornell;

And rather than to Vanderbilt

I'd send my boy to hell."

"RIP 'EM UP!"

Rip 'em up! Tear 'em up!

Give 'em hell, Tigers!

"CHEER, BOYS, CHEER"

Cheer, boys, cheer, Sewanee has the ball:

My, oh, my, O won't there be a fall!

For when we hit that line,

There'll be no line at all,—

We'll have a hot time in Nashville tonight.

"YEA, TIGERS!"

Yea, Tigers!—Fight! Fight! Fight!

a final word . . .

The work on the "Cap and Gown" has been completed. We have tried our best to make it a reliable record of the school year of 1936 and 1937. We hope that it will be enjoyed by everyone, and where our mistakes come out we hope that they will be forgiven. We have honestly tried our best, although greatly handicapped by lack of experience and the fact that the time at which the book had to go to press was long before the completion of the year.

We wish particularly to thank the members of the staff for their cooperation. Without their assistance our efforts would have been far less successful.

We wish to thank all of the members of the faculty who in one way or another have given us great assistance and encouragement.

We wish to thank Mr. John T. Benson, of the Benson Printing Company; Mr. Clyde Bateman, of the Capitol Engraving Company, and Mr. Charles Wechsel, of the Commercial Photograph Company, for their efforts in the preparation of the "Cap and Gown."

And to everyone else who has made the publication of this book possible we give our sincerest thanks.

May you all enjoy this edition of the "Cap and Gown" as much as its predecessors and find in its pages a pleasant reminder of a most pleasant school year!

WYLIE MITCHELL, Editor

THEODORE C. HEYWARD, JR., Business Manager.

advertisements

The University of the South

What Sewanee Stands For...

The Education of the Whole Man—

His body, in a physical environment and training almost ideal.

His mind, through courses in a scientifically correct curriculum, and through contact with a faculty strong in scholarship and personality.

His character, through the constant influence of Christianity as expounded and exemplified in the life of the University community.

The Making of a Citizen—

In theory, through the influence of that ideal of patriotism which we call the Sewanee Spirit.

In practice, through the dynamic living as a citizen in a community of which the student body constitutes the citizenship.

Individuality, Originality, Initiative.
Taught to think independently, plan independently,
but to act as a community member.

Sewanee Military Academy

1868

SEWANEE, TENNESSEE

1937

Major-General William R. Smith
U. S. Army, Retired
SUPERINTENDENT
Formerally Superintendent U. S. Military Academy

•

Junior Unit Reserve Officers Training Corps
Member of the Association of Military Colleges and
Schools of the United States
Member of the Southern Association of Colleges
and Secondary Schools

•

10,000 Acre Domain, 2,000 Feet Elevation

BROADEST CERTIFICATION PRIVILEGES
SMALL CLASSES—INTELLIGENT LEADERSHIP
MILITARY TRAINING AND DISCIPLINE
CLEAN LIFE, HEALTHFUL AND AMATURE ATHLETICS

•

A School of Fine Tradition and Christian
Influence, Essentially Military

•

FOR CATALOGUE, ADDRESS BOX Z

University Supply Store

The University of the South

Everything for the Students

Men's Furnishings, Clothing, Athletic Goods, Shoes, School Supplies,
Stationery, Fountain Supplies, Candies, Fruits, Vegetables, Im-
ported and Domestic Groceries, Meats, Drugs, Jewelry,
Radios, Toilet Articles, Smokers' Supplies

Five Departments

Each Under An Efficient Manager

James H. Reynolds, Jr.
General Manager

Harry E. Clark
Assistant General Manager

Telephones 46 and 51

Sewanee, Tenn.

Compliments

of

Lieut. Col. James H.
Reynolds, Jr.

Established in 1858

Phillips & Buttorff
Manufacturing
Company

Manufacturers of

ENTERPRISE

Stoves, Ranges, and Furnaces
For Coal, Wood, and Gas



NASHVILLE, TENNESSEE

Compliments of

THE SELIG COMPANY

Manufacturers of

Floor Maintenance

Disinfectants

Sanitary Products

Insecticides

ATLANTA, GEORGIA

ARCHER PAPER CO.

Wholesale Paper and Twine
Roofing Paper, Office Supplies
Printing Paper, Linoleum

1124-26 Market Street
CHATTANOOGA, TENNESSEE

New Hotel Monteleone

600 New Orleans, La. 500
ROOMS BATHS

MODERATE RATES

Free Radios in Rooms

Air-Conditioned Lobby, Coffee Shop, Grill, Dining Room,
Cocktail Lounge and Bar, Mezzanine, Convention
Hall, and some Guest Rooms

Garage in Connection, also Large Parking Grounds

F. J. MONTELEONE
Managing Director

A. F. SPATAFORA
General Manager

BLACK-DRAUGHT

A GOOD Laxative

Manufactured by

THE CHATTANOOGA
MEDICINE COMPANY
CHATTANOOGA, TENNESSEE

"Good Reading Is A Necessity Of Life"

THE BEST BOOKS

Of all Publishers are available through
our store

Biography - History - Travel - Adventure - Fiction - Non-
Fiction - Classics - Religious - Inspirational - Devotional
- Juvenile

Bibles—Song Books—Church Supplies

Methodist Publishing House
810 Broadway Tel. 6-2641 Nashville, Tenn.

GLORIA

Supreme High Patent Flour

"Right Always All Ways"

USE IT AND BE SURE

SINCE 1868

Our Firm Has Been Serving
The Public in Their

GENERAL INSURANCE NEEDS

May We Place Our Facilities
At Your Disposal?



GALE, SMITH & CO.

NASHVILLE, TENNESSEE

Pittsburgh Products

GLASS, PAINT, VARNISH
MIRRORS, BRUSHES

PITTSBURGH PLATE
GLASS COMPANY

11th and Grundy St.

Nashville, Tenn.

HERMITAGE COFFEE

Vacuum Packed in Glass

"YOU'LL NOTICE ITS FINE FLAVOR"

Sewanee Men:

We congratulate you upon the selection of
your Alma Mater. May you make her
honorable traditions a part of your
future life

JAMES SUPPLY CO.

515 E. Eleventh St. Chattanooga, Tenn.

Leave Your Kodak Films

with the

UNIVERSITY SUPPLY STORE

Wright's Photographic Service

"Don't let your memories grow dim, make them
into pictures"

Nashville, Tennessee

Capacity 40,000 Pictures Daily

Put one penny to work electrically

And see how much it will buy
for you in comforts and
conveniences

NO OTHER ITEM OF LIVING GIVES YOU
SO MUCH FOR SO LITTLE

THE TENNESSEE ELECTRIC POWER CO.

Your electric service is a



development of private enterprise

Colonial Coffee

and

Other Fine Foods



C. B. Ragland Company

Incorporated

Nashville, Tennessee

NEELY, HARWELL & CO.

WHOLESALE DRY GOODS, NOTIONS AND SHOES

EXCLUSIVE DISTRIBUTORS OF SUNBURST
HOSIERY

NASHVILLE, TENNESSEE



**THE LILLEY-
AMES CO.**

Columbus, Ohio

*Manufacturers of
Military and College*

UNIFORMS

and Equipment, Sabres and
Swords

Catalog on Request

Farmers' Association

Incorporated

**HARDWARE and IMPLEMENTS
GROCERIES**

We Buy and Sell Everything

Telephone 157

Winchester, Tenn.

COMPLIMENTS

OF THE

Queen Feature Service

Incorporated

**THEATRE EQUIPMENT AND
SUPPLIES**

BIRMINGHAM, ALABAMA

THE PARK HOTEL

"Chattanooga's Favorite"

MODERN - FIREPROOF

Reasonable Rates

Excellent Coffee Shop

WM. H. MOORE, JR., Manager

COMPLIMENTS

OF

A FRIEND

Vaughan Hardware Co.

A Complete Stock

**Franklin County's Leading
Hardware Store**

WINCHESTER, TENNESSEE

George Wallace, Jr.

**TILE, TERRAZZO,
RESILIENT FLOORING**

718 Cherry

CHATTANOOGA, TENNESSEE

V. R. WILLIAMS

The Home of Insurance Service

Agency Established 1863

Fire, Windstorm, Casualty, Accident, Health
Life and Automobile Insurance Bonds

Office Phone 37

Res. Phone 121

WINCHESTER, TENNESSEE



The Thinker

in the MODERN LAW OFFICE
has "THOUGHT IT THROUGH" and decided on

BALDWIN'S SERVICE

WHEN
HE NEEDS LAW BOOKS



Banks-Baldwin Law Publishing Co.

3730 EUCLID AVENUE

CLEVELAND, OHIO

Jim Moore Co.

TAILORS

CINCINNATI

THE
NEW READ HOUSE

*Chattanooga's Finest
Hotel*

"WELCOMES YOU"

COMPLIMENTS
OF
T. H. Payne & Co.

Stationers, Booksellers
Office Outfitters

CHATTANOOGA, TENNESSEE

COMPLIMENTS
OF
**Baggenstoss Bakery
Company**

TRACY CITY, TENNESSEE

DRINK

Coca-Cola

IN BOTTLES

W. H. WILSON &
SON

TULLAHOMA

Two stores whose first thoughts are
QUALITY

COMPLIMENTS

OF

The McDowell Ice
Cream Company

WINCHESTER, TENNESSEE

Compliments

of

L. Kemper Williams

**THE NASHVILLE, CHATTANOOGA & ST.
LOUIS RAILWAY**

Takes great pride in placing before the student body the most complete
train service to or from Sewanee and

**FLORIDA, GEORGIA, ARKANSAS,
OKLAHOMA, TEXAS**

High grade improvement—Fast—Comfortable travel
Air Conditioned Comforts, Providing the Highest Type of Service for all
Classes of Travel

J. F. GAFFNEY, JR., General Passenger Agent

The Nashville, Chattanooga & St. Louis Railway

*Photographic Work in the 1937
Cap and Gown*

BY

**THE
COMMERCIAL PHOTOGRAPHY
COMPANY**

NASHVILLE

The South's Foremost College Annual Engravers"

OUR
SUPREMACY
IN THE SOUTHERN
YEAR-BOOK FIELD
IS THE RESULT OF
PERSONAL SERVICE

THE CAPITOL
ENGRAVING
COMPANY

Has had more than twenty years of
successful experience in Year-Book
Designing and Engraving. They
are recognized as the leaders in the
creation and production of the better
class of annuals. Their experience,
equipment, corps of artists, designers
and engravers are entirely at
your disposal

CAPITOL ENGRAVING Co.

130-132-134-136 FOURTH AVENUE, NORTH

NASHVILLE
TENN.



World's Largest Publishers

THIS BOOK DESIGNED AND PRINTED BY

BENSON

PRINTING COMPANY ☆ NASHVILLE

of College Annals

UNIVERSITY OF THE SOUTH



1100734092