

Archives

LD

4481

.P665

.C3

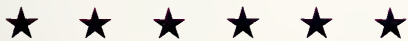
1944

The CARO



1944
nTAWAN

Volume 27



MANSFIELD STATE COLLEGE LIBRARY
MANSFIELD, PENNSYLVANIA

** mansfield*

state teachers

*college **



FOREWORD

This year, we are indeed fortunate to have a yearbook.

Due to conditions existing at the present time we have met with many difficulties in publishing the college annual. There is little need to elaborate on this situation, since the readers of this book will be familiar with the various handicaps.

However, we do have a book which many of us will cherish and spend many pleasant hours in retrospect during the years that follow.

The book has been cut a great deal in size, but remember, our sacrifice of having a smaller book, is minute in comparison to the sacrifices of millions.

Archie
 2
 W
 H
 E
 E
 T
 H





CONTENTS

The College

The Classes

The Activities

The Advertisements

223197



*state teachers
college **



edication



college ★

DEDICATION

The theme of this yearbook is planning for better homes in Post-war America through Education. To reach this goal it is necessary to have the cooperation of the Home, the School, the Factory, and the Church.

With these thoughts in mind, we humbly, but proudly dedicate this, the twenty-seventh edition of the Carontawan, to our President, MR. JAMES G. MORGAN.

Mr. Morgan has served the college for the past twenty-three years, and has witnessed many progressive changes during this time.





THE COLLEGE





PRESIDENT



In The President's Office

The college experiences of the class of 1944 have had as a background the disrupting overtones of three college administrations and four years of global conflict. The college is grateful to them for their patience and loyalty under most adverse conditions. During this period many members of the class enlisted in the armed forces and scores have been and now are in actual combat in remote quarters of the world. Of their deeds of valor Mansfield is eternally proud. To them and to you we suggest as your class motto the words of William James:

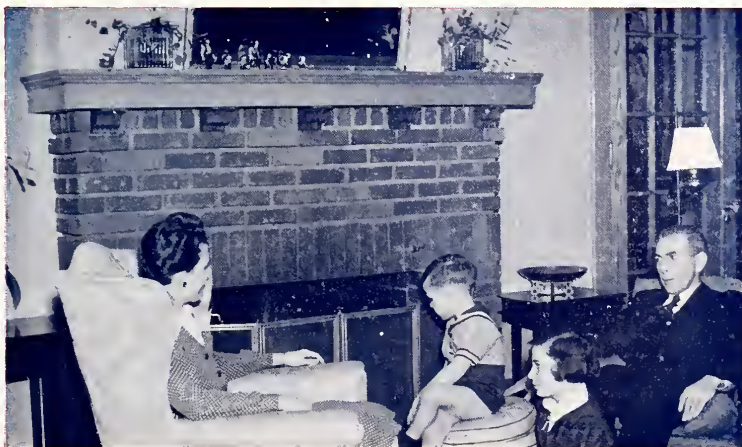
"The great use of a life is to spend it for something that outlasts it."

There is the great challenge to your college education and its greatest contribution. The primary function of your college has never been the grim business business of educating fighting men. The men and women of Mansfield, who are spending their lives today in defense of a philosophy of life we hold dear, will have spent their lives for something which outlasts them only if we are capable of educating America's youth in constructive democratic principles so that the basis of a world worth fighting for may be attained. This is our task.

—James G. Morgan, President.



OF THE COLLEGE



The President at Home



DR. CYRIL L. STOUT, Dean of Men



MISS DOROTHY M. WASLEY,
Dean of Women

The evidences of the war are nowhere more apparent upon our campus than among our men. So many have been called to do their bit in the armed forces that your ranks have been greatly depleted. Many of you have entered upon your college career knowing full well that it would be short. Those of you who are permitted to complete the work for a degree have an equal responsibility. It is for you to acquire the knowledge, poise, judgment, and qualities of leadership which are necessary to keep the educational front intact so that those returning from the battlefield may find a dynamic not stagnant society. Opportunities for developing the personality are provided for you through contacts with other students and with the faculty. Here a two-fold responsibility is involved. One is that of the college in providing the richest experiences for you. The other means that you must make the most of these opportunities to the mutual benefit of all.

—Cyril L. Stout,
Acting Dean of Men,

We as college women must focus our attention on the responsibilities we are assuming and will assume in building the kind of world we want. Two basic factors, world cooperation and the development of human beings, challenge us. Certainly a college campus is an appropriate place to practice cooperation in effective living. Here at Mansfield may each of you use every opportunity to develop your character so as to be sympathetic, understanding, and tolerant, and your mind so as to develop a realistic basic philosophy and resourcefulness in meeting the uncertain future. This is my sincerest wish for you.

—Dorothy M. Wasley,
Dean of Women



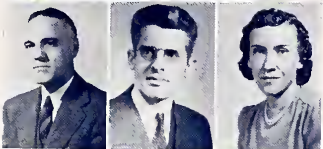
Faculty



HUGH W. ALGER, A.B. (Yale), M.Sc. (Temple), Supervisor of Science.

ELIZABETH S. ALLEN, B.S. (Mansfield), M.A. (Columbia), Supervisor of English.

CORA A. ATWATER, Mus.B. (Chicago Conservatory), Instructor in Voice.



EUGENE P. BERTIN, A.B. (Bucknell), M.A. (Harvard), Instructor in Education and Psychology.

LEONARD K. BYER, B.S. (Bethany), M.S. (Cornell), Instructor in Biological Science.

MARGARETTA BONE, B.S. (Bloomsburg), Ed.M. (Pennsylvania State), Supervisor of Kindergarten and Grade 1.



MARJORIE C. BROOKS, B.S. (New York), M.A. (Eastman), Instructor in Music Theory and History.

LILLIAN E. BUCKINGHAM, B.S. (Pennsylvania State), M.S. (Cornell), Instructor in Foods and Family Health.

JOHN W. CURE, Ph.B. (Bucknell), Ed.M. (Harvard), Instructor in Language and Literature.



PAUL J. DAVIS, LL.B. (Dickinson), Instructor in History.

ISAAC DOUGHTON, A.B. (Harvard), M.A., Ph.D. (Pennsylvania), Instructor in Education.

C. AILEEN ERICKSEN, B.S. (Utah), M.S. (New York), Instructor in Clothing, Applied Design and Consumer Education.



MARYON FARRER, B.S. (Simmons), M.A. (Columbia), Instructor in Foods and Nutrition.

BERTRAM W. FRANCIS, B.M.E., Mus.M. (Northwestern), Instructor in Band and Wind Instruments.

CLYDE W. WINN, A.B. (York), M.A. (Nebraska), Ph.D. (Peabody), Instructor in History.



MILDRED L. GEISEKE, B.S. (Ohio), M.A. (Columbia), Supervisor Grade 1.

HERBERT GRANT, B.S., M.S., (Columbia), Instructor in Chemistry.

JESSIE I. GRIGSBY, B.S., M.A., (New York), Principal Junior High.



MILDRED L. GRIGSBY, B.S., (Bucknell), M.A. (Columbia), Supervisor Grade 6.

LORENE M. HABEGER, B.S. (Kansas Teachers), M.A. (Columbia), Supervisor Grade 2.

LEAH A. HANCOCK, A.B. (Illinois), M.A. (Columbia), Supervisor of Homemaking.



LEWIS HIGLEY, B.S. (Mansfield), Instructor in Industrial Arts.

DOROTHY HUTCHINSON, B.S., M.S. (Pennsylvania), Supervisor of Grade 4.

JANETT M. LEBERMAN, B.S. (Simmons), M.S. (Colorado), Instructor in Related Science.

Faculty



S. MANFORD LLOYD, B.S. (Mansfield), M.A. (Columbia), Instructor in Mathematics.

EDNA P. MARSH, B.S., M.A. (Columbia), Supervisor Grade 3.

KIMBLE G. MARVIN, B.S. (Lafayette), M.A. (New York), Instructor in Health and Physical Education.

MAY M. MATTSON, B.S. (Cornell), M.S. (Colorado), Instructor in Home Management and Child Development.

BERNARD MANDELKERN, Mus.B. (Ithaca Conservatory), B.S. (Ithaca College), M.S. (Pennsylvania), Instructor in Orchestra and Strings.

HERBERT E. MANSER, B.S., M.A. (Columbia), Instructor in French, Latin and Spanish.

LILLIAN W. MCKINNEY, B.S., M.A. (Peabody), Dietitian.

JOSEPH H. MOORE, M.D. (Pennsylvania), College Physician.

ELIZABETH B. MORALES, B.S., M.A. (Columbia), Director of Homemaking Education.

MARGARET MORRIS, A.B. (Iowa Teachers), M.A. (New York), Instructor in Health and Physical Education.

S. MARJORIE MURPHEY, B.S. (Edinboro), Ed.M. (Pittsburgh), Instructor in Art.

MARGARET O'BRIEN, A.B. (Syracuse), M.A. (McGill), Supervisor of Reading and Social Studies.

MARTHA G. PHIFER, A.B. (Converse), M.A. (Columbia), Supervisor Grade 4.

CLARISSA A. RANDALL, B.A., M.A. (Columbia), Supervisor Music, Campus Schools.

GEORGE A. RETAN, Pd.M. (Mansfield), B.F. (Pennsylvania State Forest School), Ph.D. (New York), Director of Campus Schools.

GRACE M. REIMARD, B.S. (Pennsylvania State), M.S. (Columbia), Cooperative Senior High School Teacher.

BLANCHE R. ROSS, B.S., M.A., (Columbia), Supervisor Grade 3.

HENRIETTE E. SERGE, B.S. (Hunter), M.A. (New York), Supervisor of Grade 4.

ELIZABETH P. STALFORD, B.S. (Bucknell), M.A. (Columbia), Supervisor Grade 5.

REA J. STEELE, A.B. (Wisconsin), M.S. (Columbia), College Librarian.

CYRIL L. STOUT, B.S. (Knox), Ph.M. (Wisconsin), Ph.D. (Peabody), Acting Dean of Men.

ELIZABETH M. SWAN, A.B. (Kentucky), M.A., Ph.D. (Virginia), Instructor in Literature.

L. MABEL UMSTOT, B.S. (Shepard), M.Ed. (Duke), Supervisor Grade 2.

DOROTHY M. WASLEY, A.B. (Goucher), M.A. (Columbia), Dean of Women.



Business Administration



HELEN V. BOWERS—Secretary to the Dean of Instruction.

CHARLOTTE NIXON DURKEE—Account Clerk.

DOROTHY BUNN HALL—Book Store Clerk.



EDNA HEWSON—Registrar.

EDYTHA KEENEY—R.N. (Clifton Springs), Campus School Nurse.

MARGARET KERWIN, R.N. (Williamsport), Hospital, College Nurse.



HATTIE L. KING—Matron.

JEANETTE NORTON—Secretary to Director of Campus School.

BERTHA R. PALMER—Secretary to College Librarian.



LAURA C. RHEBEIN—Secretary to Business Manager.

MARIE MILLER SCHWAB—Secretary to Director of Music Education.

CARMEN SHREY—R.N. (Williamsport), College Nurse.



ROSS W. SOPER—Receiving Clerk.

VICTORIA H. THIEMANN—Revenue Agent.

LENORA VAN HORN—Secretary to Director of Homemaking Education.



A. H. VOSBURG—Superintendent of Grounds and Buildings.

DOROTHY WHITNEY—Account Clerk.

MARGARET EVANS WILSON—Secretary to President of College.



THE HOME MAKING

The Homemaking Education Department is the largest department on campus this year. This department has much to contribute to wise spending, careful saving, budgeting of time, money and energy.

Discussion of these problems encourages individual resourcefulness and thereby helps to develop independent and constructive thinking in the solution of problems of living which are pertinent to the planning for national welfare and enduring victory.

The students are given an opportunity to participate in all phases of homemaking. The student teachers are given guidance in their student teaching on campus and during their six weeks vocational practice off campus.



MRS. ELIZABETH B. MORALES,
Director of Homemaking Department

DEPARTMENT

JUNIOR HIGH SCHOOL LUNCH

During six weeks of their junior year, groups of homemaking students manage the Junior High School Lunch under the supervision of Miss Farrer. The girls rotate duties so that each member of the group has experience in each of the activities involved in carrying out a successful school lunch. This includes planning of meals, marketing, preparation and serving, and financial accounting with banking experience. Each student when manager plans the activities for the other members of the group. The school lunch is not set up on a money making basis, but is run to provide experience for the college students and at the same time provide nutritionally adequate and attractive, yet inexpensive lunch for the school children.



School Lunch
"At Home"



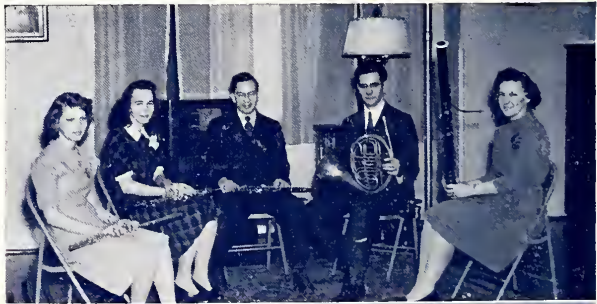
THE HOME MANAGEMENT APARTMENT

Six weeks of the junior year the homemaking students live in the home management apartment or the practice house. This gives them an opportunity to show how they can blend the theories or practices learned during their first two college years. Like school lunch, the duties rotate. Students who have personal interest, who esteem friendship and what it stands for, who like to share the work and pleasures of others, find this course an enriching experience.

MUSIC EDUCATION

Due to the fact that many men students have been called to serve a vastly larger organization, our country, the music department has been considerably reduced this year. Under the guidance of Mr. Bertram W. Francis, the remaining students are determined to keep the high teaching standards set by the preceding students throughout the state of Pennsylvania, New York and New Jersey. To keep these high standards the students realize that they must put even more effort into their work than ever before. The war with all of its scientific developments will naturally have the effect of retarding the development of the art of music making these concentrated efforts necessary.

Not only are the music students determined to keep the teaching standard high, but they are equally determined to be as vital a part of campus activity as in preceding years. The usual Sunday afternoon recitals, in which both soloists and ensemble groups take part, are one of the entertainments sponsored by the music department. The ad-



DEPARTMENT

vanced Choral group is another organization which participates in campus activities by presenting assembly programs and taking part in the vesper services of Straughn Hall. Both the band and the orchestra open the doors for the students of other departments to join them in reading interesting music literature.

Besides the practical experience gained by the students from the organizations of band, orchestra and chorus and also through their participation in the recitals, there is also the student teaching program of the training schools. Here the seniors of the department meet for the first time the actual experiences of teaching and with the guidance of supervisors are directed into the field of effective teaching.

Included in the music curriculum are interesting courses concerning music theory and culture. Individuals are given private instruction in the fields of both voice and instrumental work. The students are required to become acquainted with the fundamentals of playing as many instruments as possible.



BERTRAM W. FRANCIS

Junior High School



THE STUDENT TEACHERS

The Junior High School is a lovely red brick building located upon a hill above the main part of the college campus. It accomodates the seventh, eighth, and ninth grade children from Mansfield and the surrounding township. These students are very fortunate as this is one of the best equipped schools in this part of the state.

The variety of courses offered presents to each individual pupil an opportunity to develop his interests and talents. In addition to the regular academic subjects, there are others which seek to achieve a broader refinement. A well planned program of physical education is executed. Art and Music are designed to serve the purpose of expanding the cultural aspect. The industrial arts shop provides the means of familiarizing the youth with the different handicrafts. The homemaking department strives



In Miss Grigsby's Office

to give the boys and girls a practical foundation which should make them better qualified to take their place in the home. The homemaking department also maintains a cafeteria luncheon service which is beneficial to both students and supervisors. This service helps to insure the health of the child by offering a well balanced and nutritious meal.

Extra curricular activities are planned to enrich and extend the students' social life. For example, an interest in sports is encouraged. A fine selection of books is to be found on the shelves of the library.

The supervisors of the Junior High School have a dual task to perform. It is that of teaching the pupils and also training the student teachers to take their place in the teaching profession. Their rich background of experience makes them very well fitted for this work.

Secondary Education Club



Seated: Snell, Reese, Colwell.

First Row: Young, Miss O'Brien, Beardslee, Dr. Swan, Kingsley, Miss Grigsby, Fitzgerald, Clair, Martin, Nicholas, Dwyer.

Second Row: Mr. Cure, Mr. Marvin, Mr. Manser, Mr. Alger, Mr. Lloyd, Mr. Davis, Rodsky, Kuhl, Cichocki, Mr. Bertin.



The Secondary Education Club is one of the most recently developed organizations on the campus and its membership is open to any student in the Secondary Department, including the Laboratory Schools.

As its name implies, the purpose of this club is to unite in active cooperation the students and faculty interested in Secondary Education.

Mr. Eugene P. Bertin, Director of Secondary Education, is the club's sponsor and has been an important factor in the establishment and growth of the Secondary Club.

The program for this year has been organized to open up several important issues in the field such as, "Juvenile Delinquency"; "Articulation of Secondary and Higher Education"; "The Development of a Freer Rapport between Instructors and Students on the Campus"; and "Affiliation with the State and National Associations".

The officer personnel consisted of Frank Cichocki, President; Anne Martin, Secretary; Ethel Nicholas, Treasurer.

Junior High School Supervisors

STUDENT TEACHERS

Who are the student teachers? They are the college students in the secondary, music and homemaking departments who have entered the last stretch of their college training before graduation. A student teacher participates and teaches either in his major or minor field. At first they participate and observe while their supervisor demonstrates how it's done. Later the student teacher takes over and teaches the class on his own. Their supervisor offers suggestions and constructive criticism.

The basic principle of this program is the slogan, "Learning by Doing". It seeks to iron out any problems or difficulties that may confront the budding teacher. Thus he leaves the college confident that teaching is really what he wants to do.



JESSIE I. GRIGSBY
Principal Junior High



JUNIOR HIGH SUPERVISORS

Mr. Higley, Miss Murphey, Miss O'Brien, Mr. Alger, Miss Grigsby, Miss Randall, Miss Allen, Mr. Marvin, Miss Hancock.

Elementary School



DR GEORGE RETAN,
Director of Elementary Education



ELEMENTARY SCHOOL SUPERVISORS

Serge, Habeger, Stalford, Phifer, Hutchinson, Ross, Retan, Geiske, Bone, Marsh, Grigsby, Umstot.

Elementary School

This new building of red brick trimmed with Indiana limestone presents a pleasant picture that the citizens of tomorrow will always treasure in their memories. This modern structure was designed to develop the abilities and interests of the child and make his school life a happy experience.

The elementary school guides the child from kindergarten through the sixth grade. It is here that much of the foundation for later life is laid. Many advantages of modern educational research are put into practice. There is a beautiful library room with books especially for their appeal and interest to young readers. Art music and industrial arts have their place in the curriculum in addition to the traditional "three R's". This model school also possesses a lovely gymnasium auditorium. Most of the classrooms have an observtion booth where the pupils may be observed unnoticed.

Accumulative records are kept of each child which serve as indicators of the child's progress. These include the results of intelligence tests, reading tests, performance tests and also records of the growth of the child's character and personality traits. This information establishes a basis for more efficient teaching systems by placing the child in groups and thereby making it easier to solve the problems of the individual child.

Every room is in charge of a supervisor whose task is to instruct the children and advise the student teacher. This job is not a simple one. However, with their fine background of professional experience and pleasant, tactful personalities, these supervisors are truly the ones for this responsibility.



In Dr. Retan's Office



Classes

The American Association for Childhood Education



First Row: Casey, Corbin, Scudder, Hedge, Wilson, Bump, Danielksi, Wood, Wier, Benn, Hickok.
Second Row: Miss Umstot, Gilbert, Roy, Benson, Pease, Kriesler, Landon, Brunner, Beach, Cawley, Cole.
Third Row: Dr. Retan, Kraiss, Miles, Rybicki, Schanbacher, Harrington, Taylor, Purdy, Howe, Roupp, Slocum.



The association for childhood education is made up of all students and supervisors in the elementary field.

The main purpose of this organization is to further the development of Childhood Education. It is also the desire of this association to bring about and maintain high ideals in the field of elementary teaching and to instill within the prospective teachers in the organization the fundamentals of the teaching profession.

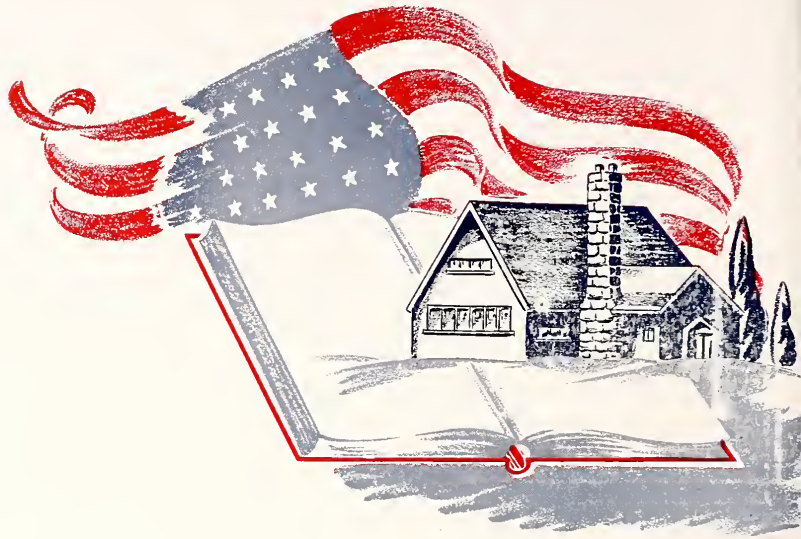
The monthly meetings offer the members the opportunity to express their opinions and thoughts for the betterment of our organization and add to the enjoyment of all.

Under the capable direction of our co-sponsors Dr. G. A. Retan and Miss Mildred Grigsby the association has shown a keen interest in both its members and in doing all that is possible to prepare the students to meet successfully the present emergencies of the elementary teaching profession.

--



Kindergarten





THE CLASSES



SENIOR



SENIOR CLASS OFFICERS

President—Rodskey
Treasurer—Harrington
Vice President—Stuart
Secretary—Snyder



Out in the "Field"
In the Apartment

CLASS



DR. ELIZABETH SWAN,
Senior Class Adviser

To the Class of 1944:

A great American philosopher has said: "If there is any period one would desire to be born in, is it not the age of Revolution; where the old and the new stand side by side and admit of being compared; when the energies of all men are searched by fear and by hope; when the historic glories of the old can be compensated by the rich possibilities of the new era. This time, like all times, is a very good one, if we but know what to do with it."

The nature of the post-war world will depend on you and on the girls and boys whom you will guide.

May you, therefore, the Class of 1944, take with you from Mansfield the wisdom to know what to do with your new world, and the faith and courage to translate your knowledge into living deeds.

Sincerely,
—Elizabeth Marshall Swan.

CLASS OF 1944

For the past four years the history of the class of 1944 has been interwoven in a succession of happenings of world-wide interests.

History is a fascinating thing, however, because it is living. Each day is but another page in the history of the world, and each minute sees new history written. The progress of man sweeps along, impeded at times by wars and depressions, but the onward march is ever present.

We, as proud seniors, are now to go out into the field of education. Plans must be made for a future.

Mansfield has contributed much towards this uncertain future. Our college days have been meaningful in too many ways to mention. We hope our efforts and contributions have been just as significant to our Alma Mater. And may there be read in the annals of our class records one short line—"They served their fellow-man."

SENIOR CLASS

E. JEAN AUTEN

Homemaking

Danville, Penna.

Omicron Gamma Pi 1, 2, 3; W.A.A. 1, 2, 3; Women's Chorus 2; Y.W.C.A. 1, 2, 3.

ELOISE BEARDSLEE

Homemaking

Starrucca, Penna.

Omicron Gamma Pi 1, 2, 3, 4; W.A.A. 1, 2, 3, 4; Y.W.C.A. 1, 2.

DORIS JEAN BENSON

Elementary

Susquehanna, Penna.

A.A.C.E. 1, 2, 3; Art Club 3; W.A.A. 1, 2, 3; Treasurer 3; Y.W.C.A. 1, 2, 3.

IRENE BOTTIGER

Homemaking

Mt. Pleasant Mills, Penna.

Flashlight 1, 2, 3, 4; Business Manager 4; Omicron Gamma Pi 1, 2, 3, 4; Sigma Zeta 2, 3; Student Council 3; Y.W.C.A. 1, 2, 4; W.A.A. 3; Women's Chorus 4.

ARLENE BRIGHTBILL

Homemaking

Myerstown, Penna.

Omicron Gamma Pi 1, 2, 3, 4; W.A.A. 4; Y.W.C.A. 1, 2, 3, 4.

ELEANORE BRYAN

Music

Mansfield, Penna.

Band 2, 3, 4; Day Students Club 1, 2, 3, 4; Kappa Delta 3, 4; Lambda Mu 2, 3, 4; President 4; Chorus 1, 2, 3, 4; Music Educator's Club 1, 2, 3, 4; Orchestra 1, 2, 3, 4; Vested Choir 1, 2; Who's Who in American Colleges and Universities 4; Y.W.C.A. 1, 2, 3.

DOROTHY JEAN BUMP

Elementary

Lawrenceville, Penna.

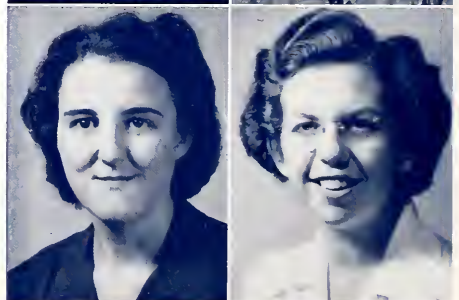
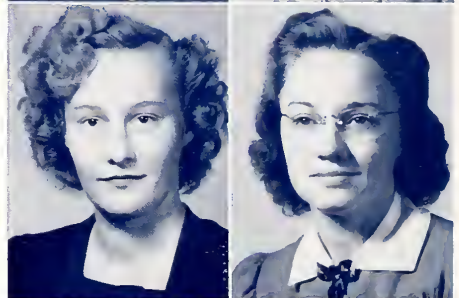
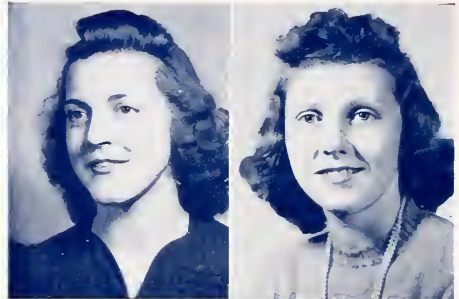
A.A.C.E. 2, 3, 4; Day Students' Club 1, 2; W.A.A. 2, 3, 4; Women's Chorus 2, 3, 4; Y.W.C.A. 1, 2, 3, 4.

VIRGINIA CASEY

Elementary

Susquehanna, Penna.

A.A.C.E. 1, 2, 3; President 3; Art Club 3; College Players 2, 3; Treasurer 3; Kappa Delta Pi 3; Y.W.C.A. 1, 2, 3.





JOAN CAWLEY
 Elementary Eldred, Penna.
 A.A.C.E. 2, 3, 4; Senior Class Editor Carontawan 4; Kappa Delta Pi 4; Music Educator's 1; Student Council 2, 3; Vice President 3; W.A.A. 1, 2, 3; Treasurer 2, 3; Who's Who in American Colleges and Universities 4; Women's Club 2, 3, 4; President 4; Y.W.C.A. 1, 2.



FRANCES CICHOSHI
 Secondary Plains, Penna.
 Band 2; College Players 2, 3, 4; "M" Club 3, 4; Music Educator's 2; Secondary Club 3, 4; President 4; Vested Choir 2.

CORIS JEAN CLAIR
 Secondary Montoursville, Penna.
 Flashlight 3, 4; Secondary Club 4; W.A.A. 3, 4; Women's Chorus 3, 4; Y.W.C.A. 3, 4; Treasurer 4.



MARGARET ARLIENE CLARK
 Music Knoxville, Penna.
 Band 3; Chorus 1, 2, 3; Day Students Club 1, 2, 3; Kappa Delta 3; Lambda Mu 3; Treasurer 3; Music Educators Club 1, 2, 3; Orchestra 1, 2, 3; W.A.A. 2; Y.W.C.A. 3.

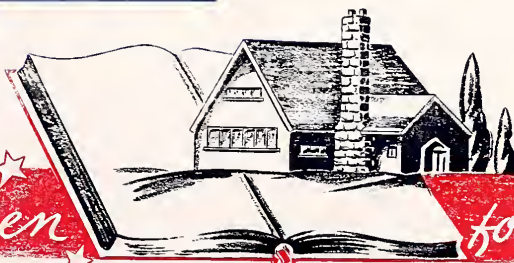
ANNA COLE
 Elementary Mansfield, Penna.
 A.A.C.E. 2, 3, 4; Day Students Club 1, 2, 3, 4; W.A.A. 1, 2, 3.

MARJORIE COLE
 Homemaking Meshoppen, Penna.
 Carontawan Board 1, 2; Omicron Gamma Pi 1, 2, 3; Student Council Secretary 2; W.A.A. 1, 2, 3; President 3.



TERRY COPPERSMITH
 Music Emporium, Penna.
 Lambda Mu 2, 3, 4; Vice President 4; Music Educators Club 1, 2, 3, 4; Band 2, 3, 4; Orchestra 2, 3, 4; Vested choir 2, 3; Women's Dormitory Council 2, 4; Vice President 4; Y.W.C.A. 2, 3.

MARTHA CONNER
 Homemaking Orangeville, Penna.
 Art Club 2, 3, 4; Kappa Delta Pi 4; Omicron Gamma Pi 2, 3, 4; W.A.A. 2, 4; Y.W.C.A. 2, 3, 4.



SENIOR CLASS

VIRGINIA CROSSLEY

Homemaking

Mansfield, Penna.

Day Students Club 1, 2, 3, 4; Omicron Gamma Pi 1, 2, 3, 4; President 4; Y.W.C.A. 4.

EDNA DAY

Elementary

Wellsboro, Penna.

Day Students Club 1, 2, 3; Secretary 3; College Players 2, 3; Kappa Delta Pi 3; Secondary Club 2, 3; W.A.A. 1, 2, 3; Women's Chorus 2, 3; Y.W.C.A. 1, 2, 3.

EDWARD H. DEGVILLE

Secondary

Wellsboro, Penna.

Transfer.

LOIS DIEFFENBACHER

Homemaking

Bloomsburg, Penna.

Art Club 3, 4; College Players 2, 3, 4; Omicron Gamma Pi 1, 2, 3, 4; W.A.A. 1, 2, 3; Y.W.C.A. 1, 2.

DOROTHY DOLL

Homemaking

Tunkhannock, Penna.

Omicron Gamma Pi 1, 2, 3, 4; Women's Chorus 3, 4; Y.W.C.A. 1, 2, 3, 4.

ALENE DORSETT

Secondary

Mansfield, Penna.

College Players 1, 2, 3; Day Students Club 1, 2, 3; President 3; French Club 1, 2; Kappa Delta Pi 3; Secondary Club 2, 3; Student Council 3; Women's Chorus 2, 3.

BEATRICE E. DUNBAR

Homemaking

Troy, Penna.

Day Students Club 1, 2, 3, 4; Omicron Gamma Pi 1, 2, 3, 4.

BETTY M. EBINGER

Homemaking

Weatherly, Penna.

Carontawan Board 4; College Players 2, 3, 4; Vice President 4; Flashlight 1, 2, 3; Omicron Gamma Pi 1, 2, 3; W.A.A. 1, 2; Women's Chorus 4; Y.W.C.A. 1, 2, 3, 4.





CATHERINE T. FIVES

Homemaking Dunmore, Penna.
W.A.A. 2, 3; Omicron Gamma Pi 2, 3, 4; College
Players 4.

BARBARA ANNA FERSTER

Homemaking McAlisterville, Penna.
Flashlight Staff 3, 4; Kappa Delta Pi 4; Kappa
Phi 3, 4; Omicron Gamma Pi 1, 2, 3, 4; W.A.A. 3;
Y.W.C.A. 1, 2, 3, 4.

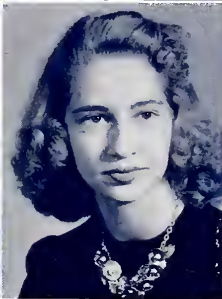
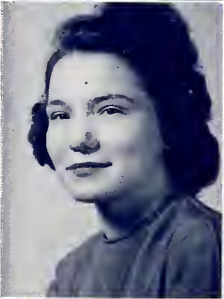


BETTY FREDRIC

Homemaking Carlisle, Penna.
College Players 4; Carontawan 4; Omicron Gamma
Pi 1, 2, 3, 4; W.A.A. 1, 2, 3, 4; Y.W.C.A. 1, 2, 4.

BETTY JANE GILBERT

Elementary Wyoming, Penna.
A.A.C.E. 1, 2, 3; Recording Secretary 3; W.A.A.
1, 2, 3; Y.W.C.A. 1, 2, 3.



GRACE GROVE

Homemaking Mount Union, Penna.
Omicron Gamma Pi 1, 2, 3, 4; W.A.A. 1, 2, 3, 4;
Women's Chorus 2; Y.W.C.A. 1, 2, 3, 4.

JOYCE HARRINGTON

Elementary Mansfield, Penna.
A.A.C.E. 2, 3, 4; Art Club 2, 3, 4; Treasurer 3;
Classical Club 1, 2; Day Students Club 1, 2, 3, 4;
Kappa Delta Pi 3, 4; Treasurer 4; Senior Class
Treasurer; W.A.A. 1, 2, 3; Women's Chorus 3, 4.

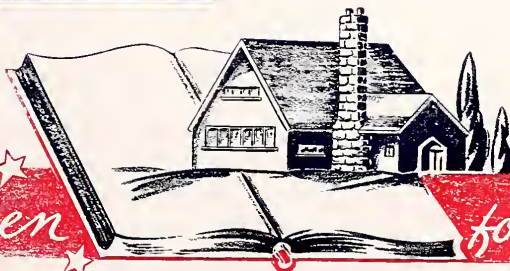


ALICE M. HART

Homemaking Forksville, Penna.
Art Club 2, 3; President 4; College Players 2, 3,
4; Omicron Gamma Pi 1, 2, 3, 4; Sigma Zeta 2, 3;
W.A.A. 1, 2; Y.W.C.A. 1; Cabinet 2, 3, 4.

VIRGINIA HAYNES

Elementary Susquehanna, Penna.
A.A.C.E. 1, 2, 3; Vice President Kindergarten 2;
Y.W.C.A.



SENIOR CLASS

LAURA R. HESS

Homemaking

Williamsport, Penna.

Art Club 2, 3, 4; College Players 2, 3, 4; Kappa Delta Pi 3, 4; Kappa Phi 3, 4; Omicron Gamma Pi 1, 2, 3, 4; Pi Kappa Epsilon 4; Y.W.C.A. 1, 2, 3, 4; Y.W.C.A. Cabinet 2, 3, 4.

MURIEL V. HESS

Homemaking

Mansfield, Penna.

Omicron Gamma Pi 1, 2, 3, 4; Art Club 2, 3, 4; W.A.A. 1, 2; Sigma Zeta 2, 3; Kappa Delta Pi 3, 4; Pi Kappa Epsilon 3, 4; Carontawan Board 3; Kappa Phi 2, 3, 4; Secretary 3; Day Students Club 1, 2, 3, 4; Y.W.C.A. 1, 2, 3; Cbeer Leader 1.

ELEANOR HOFFMAN

Homemaking

New Albany, Penna.

Day Students 1, 2, 3, 4; Omicron Gamma Pi 1, 2, 3, 4.

FRANCIS HOFFMAN

Homemaking

Northumberland, Penna.

Art Club 2, 3, 4; Flashlight Staff 4; Omicron Gamma Pi 1, 2, 3, 4; Pi Kappa Epsilon 3, 4; Treasurer 3; President 3; Sigma Zeta 2, 3; Y.W.C.A. 1, 2, 4.

JEAN HOWE

Elementary

Ulysses, Penna.

A.A.C.E. 2, 3; Treasurer 3; Art Club 1, 2, 3; Treasurer 3; Kappa Delta Pi 3; W.A.A. 3; Women's Chorus 1, 2, 3; Y.W.C.A. 1, 2, 3; Cabinet Member 2, 3.

MARY JANE KITAIF PRIME

Homemaking

Douglaston, L. I.

Art Club 2, 3; College Players 2, 3, 4; Omicron Gamma Pi 1, 2, 3, 4; Sigma Zeta 2, 3; Vice President 2; W.A.A. 1; Y.W.C.A. 1, 2, 3.

MARY KRAISS

Elementary

Canton, Penna.

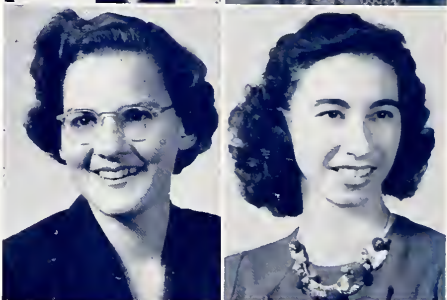
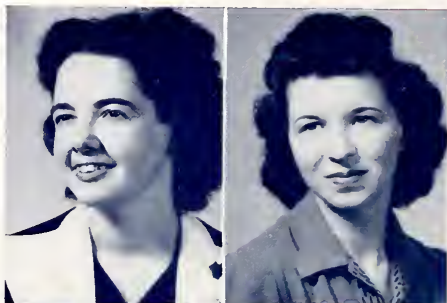
A.A.C.E. 4; Emersonian 3; German Club 1, 2, 3; Kappa Delta Pi 3; Y.W.C.A. 1, 2, 3, 4; Secretary of Foreign Affairs 3.

ELIZABETH LEONARD

Homemaking

Philadelphia, Penna.

Omicron Gamma Pi 1, 2, 3.





JEANNE L. MCHENRY

Homemaking

Benton, Penna.

College Players 3, 4; Omicron Gamma Pi 1, 2, 3, 4; Board 2, 4; W.A.A. 1, 2; Women's Chorus 4; Women's Dormitory Council 3; Y.W.C.A. Cabinet 2, 3; Secretary 4.

HELEN L. MACK

Homemaking

Sunbury, Penna.

Omicron Gamma Pi 1, 2, 3; W.A.A. 1, 2, 3; Y.W.C.A. 1.



MARJORIE MAHOOD

Homemaking

Troy, Penna.

Omicron Gamma Pi 1, 2, 3, 4; Pi Kappa Epsilon 3, 4; Women's Chorus 3, 4.

ANNE S. MARTIN

Secondary

Mansfield, Penna.

Secondary Education Club 3, 4; Secretary 4; Day Students Club 1, 2, 3, 4; French Club 2; Y.W.C.A. 1, 2, 3; W.A.A. 1, 2, 3.



JUNE MERTZ

Homemaking

Northumberland, Penna.

Art Club 2, 3, 4; Flashlight Staff 3, 4; Kappa Delta Pi 4; Omicron Gamma Pi 1, 2; Board 3, 4; Y.W.C.A. 1, 2, 4.

SARA FAE METZGER

Homemaking

South Williamsport, Penna.

College Players 1, 2, 3, 4; Secretary 3; Kappa Delta Pi 3, 4; Corresponding Secretary 4; Omicron Gamma Pi 1, 2, 3, 4; Pi Kappa Epsilon 3, 4; Sigma Zeta 2, 3; Y.W.C.A. 1, 2, 3, 4; Vice President 3; President 4.



MARY JANE MEYER

Secondary

Blossburg, Penna.

Caroutawan Staff 4; Art Editor 4; Day Student Club 1, 2; Secretary 2; Kappa Delta Pi 3, 4; President 4; Secondary Club 4; Vice-President Junior Class; W.A.A. 3, 4; Women's Chorus 3, 4, Secretary 4; Y.W.C.A. 1, 3, 4.

CATHERINE A. MILES

Elementary

Elkland, Penna.

A.A.C.E. 3, 4; Day Students Club 1, 2, 3, 4; Latin Club 2; W.A.A. 1, 2, 3, 4.



nineteen

forty-four

SENIOR CLASS

GLENNA MILLER

Homemaking Nescopeck, Penna.
Flashlight 3; Omicron Gamma Pi 1, 2, 3; W.A.A. 3.

MARY ELIZABETH MORLEY

Homemaking Gold, Penna.
Day Student Club 1, 2; Omicron Gamma Pi 1, 2, 3, 4; W.A.A. 1; Women's Chorus 3, 4; Y.W.C.A. 1, 2, 3, 4.

JANE C. MOORE

Homemaking Forty Fort, Penna.
College Players 2, 3, 4; Omicron Gamma Pi 1, 2, 3, 4; Student Council 4; W.A.A. 2, 3; Women's Chorus 3, 4; Women's Dormitory Council 3, President 4; Who's Who in American Colleges and Universities 4.

JOAN LOUISE MORRISON

Homemaking Smethport, Penna.
College Players 2, 3, 4, President 4; Omicron Gamma Pi 1, 2, 3, 4; W.A.A. 1, 2; Y.W.C.A. 1, 2, 3, 4.

LOUETTA MOSCH

Homemaking Galeton, Penna.
Omicron Gamma Pi 1, 2, 3; W.A.A. 1, 2, 3; Y.W.C.A. 1.

MARGARET MUTH

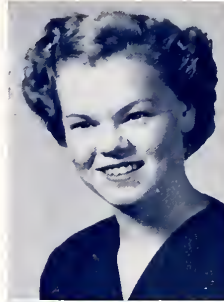
Homemaking Avon, Penna.
Omicron Gamma Pi 1, 2, 3, 4; W.A.A. 2, 4; Y.W.C.A. 1, 3, 4.

ETHEL NICHOLAS

Secondary Mansfield, Penna.
Art Club 2, 3, 4; Classical Club 1, 2; Flashlight Board 2, 3, 4; French Club 2, 3, Secretary 3; Kappa Delta Pi 3, 4; Secondary Club 3, 4, Treasurer 4; Day Students Club 1, 2, 3, 4.

JANET G. PREISLER

Homemaking Columbia, Penna.
College Players 4; Flashlight 1, 2, 3, 4; Omicron Gamma Pi 1, 2, 3, 4; W.A.A. 1, 2; Y.W.C.A. 1, 2, 3, 4, Cabinet 3, 4.





ALICE E. PURDY

Elementary

Mill City, Penna.

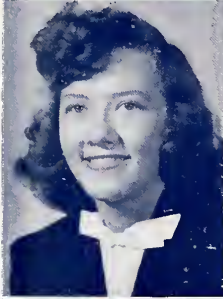
A.A.C.E. 1, 2, 3; Art Club 4; W.A.A. 1, 2, 3; Women's Chorus 3; Y.W.C.A. 2, 3.

GLORIA B. RAUCH

Homemaking

Slatington, Penna.

Art Club 2, 3, 4; Omicron Gamma Pi 1, 2, 3, 4; Student Council 3, 4; Treasurer 3; President 4; Women's Dormitory Council 2; W.A.A. 1, 2, 3; Who's Who in American Colleges and Universities 4; Women's Chorus 4; Y.W.C.A. 1, 2, 4.



ISABELLE REEDY

Homemaking

Sheridan, Penna.

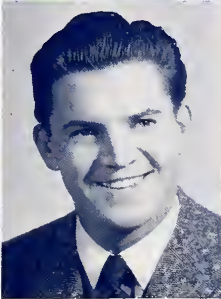
Art Club 1, 2, 3; Vice President 3; Kappa Delta Pi 3; Omicron Gamma Pi 1, 2, 3; Vice President 3; Class Vice President 2; W.A.A. 1, 2, 3; Women's Chorus 2, 3; Y.W.C.A. 1, 2, 3.

DONNA REES

Secondary

Austin, Penna.

Art Club 2, 3; Kappa Delta Pi 3; Secondary Club 2, 3; Sigma Zeta 2; Y.W.C.A. 1, 2, 3; W.A.A. 1, 2, 3.



MARY L. RICHMOND

Elementary

Mainesburg, Penna.

A.A.C.E. 3, 4; Y.W.C.A. 3.

LEONARD B. RODSKY

Secondary

Plymouth, Penna.

Baseball 1, 2; Basketball 1, 2, 3; Football 1, 2, 3; College Players 4; Day Students Club 4; "M" Club 2, 3, 4; Vice President 3, 4; Class President 3, 4; Student Council 3, 4; Secondary Club 3, 4; Junior Hi Basketball Coach 4.



NANCY N. ROSS

Homemaking

Fullerton, Penna.

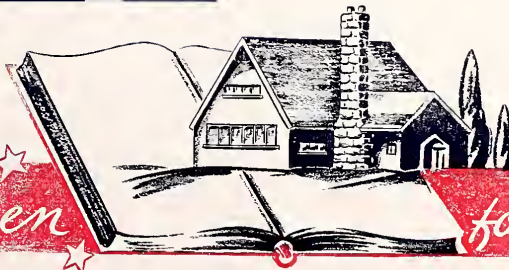
Carontawan Board 2, 3, 4; Editor 4; Omicron Gamma Pi 1, 2, 3, 4; Secretary 2; Student Council 3, 4; W.A.A. 1, 2; Who's Who in American Colleges and Universities 4; College Players 2, 3, 4; Women's Chorus 4; Y.W.C.A. 1, 2, 4.

MARIA ROY

Elementary

Horseheads, New York

A.A.C.E. 2, 3, 4; College Players 2, 4; W.A.A. 3; Women's Chorus 2.



SENIOR CLASS

LESALEE JEANNE SNYDER

Homemaking Dushore, Penna.
 Class Secretary 4; Day Students Club 1, 2; Flashlight 1; Omicron Gamma Pi 1, 2, 3, 4; W.A.A. 1, 2, 3, 4; Women's Chorus 2, 4.

JANIS SNELL

Secondary Towanda, Penna.
 Kappa Delta Pi 3; Secondary Club 3; W.A.A. 1, 2, 3; Women's Chorus 1; Y.W.C.A. 3.

ELEANOR SMITH

Homemaking Hatfield, Penna.
 Art Club 2, 3, 4; Kappa Delta Pi 4; Omicron Gamma Pi 1, 2, 3, 4; W.A.A. 1, 2; Y.W.C.A. 1, 2, 4.

FLORENCE SINGLEY MICHAEL

Homemaking Shuman's, Penna.
 Art Club 1, 2, 3, 4; Kappa Delta Pi 3, 4; Vice President 4; Omicron Gamma Pi 1, 2, 3, 4; Treasurer 4; Pi Kappa Epsilon 3, 4; Secretary 3; Sigma Zeta 2, 3; W.A.A. 1, 2; Y.W.C.A. 1, 2, 3, 4; Cabinet 3, 4.

RUTH I. SHEPHERD

Homemaking Kingston, Penna.

LOIS SHENEN

Homemaking Pockville, Penna.
 Omicron Gamma Pi 2, 3, 4; W.A.A. 2, 4; Women's Chorus 3, 4; Y.W.C.A. 2.

ZOE SHELHAMER

Homemaking Berwick, Penna.
 Flashlight 1, 2, 4; Omicron Gamma Pi 1, 2, 3, 4; W.A.A. 1, 2, 3; Y.W.C.A. 1, 2, 3.

JOYCE SCHANBACHER

Elementary Mansfield, Penna.
 A.A.C.E. 2, 3, 4; Secretary 3; Art Club 3, 4; Business Manager Carontawan 4; College Players 1, 2, 3, 4; Class Secretary 1; Vice President 2; Day Students Club 1, 2, 3, 4; Kappa Delta Pi 3, 4; Recording Secretary 4; W.A.A. 1, 2, 4; Women's Chorus 3, 4; Y.W.C.A. 1, 4.





MARY LOUISE SAXTON

Homemaking Trot, Penna.
Day Students Club 1, 3, 4; Omicron Gamma Pi 1, 2, 3, 4.

ALICE S. RYBICKI

Elementary Noxen, Penna.
A.A.C.E. 1, 3, 4; Day Students Club 2, 3, 4; French Club 2; Y.W.C.A. 1, 2, 3; W.A.A. 2, 3.



BETTY STROUBLE

Homemaking Trout Run, Penna.
Classical Club 2; College Players 4; Day Students Club 1, 2, 3; Omicron Gamma Pi 1, 2, 3, 4; W.A.A. 4; Y.W.C.A. 1, 2, 4.

THEODORE C. SWANSON

Music Corry, Penna.
Music Educators Club 1, 2, 3, 4; Drill Band 1, 2, 3; Chorus 1, 2, 3, 4; Esquires 2, 3, 4; Symphonis Band 1, 2, 3, 4; Symphonic Orchestra 3, 4.



MARY JO STUART

Homemaking Mansfield, Penna.
Day Students Club 1, 2, 3, 4; Music Educators Club 1, 2, 3, 4; Lambda Mu 2, 3, 4.

ANNE B. SWEIGART

Homemaking Lancaster, Penna.
Flashlight 3; Omicron Gamma Pi 1, 2, 3; W.A.A. 1, 2, 3.



JEAN R. TRIVELPIECE

Homemaking Danville, Penna.
College Players 3, 4; Flashlight 1, 2, 3, Editor 4; Omicron Gamma Pi 1, 2, 3, 4; Student Council 4; W.A.A. 1, 2; Women's Chorus 3, 4; Y.W.C.A. 1, 2, 3, 4.

HELEN OWEN WEBSTER

Homemaking Mansfield, Penna.
Omicron Gamma Pi 1, 2, 3, 4.



SENIOR CLASS

A. JEANNETTE WEHR

Homemaking Dalton, Penna.
 Dormitory Council 4; Omicron Gamma Pi 1, 2, 3, 4; Student Council Secretary 2; W.A.A. 1, 2, 4; Women's Chorus 3, 4; Y.W.C.A. 1, 2.

MARY WEST

Elementary Mansfield, Penna.
 A.A.C.E. 2, 3, 4; Day Students 1, 4; Y.W.C.A. 2; W.A.A. 2.

GLADYS WHITMIRE

Homemaking Renovo, Penna.
 Art Club 1, 2, 3, 4; Kappa Delta Pi 4; Omicron Gamma Pi 1, 2, 3, 4; Sigma Zeta 2, 3; W.A.A. 1, 4; Y.W.C.A. 1, 2, 4.

BEATRICE VAN WIE

Elementary Keating Summit, Penna.



Members of Senior Class Serving in Armed Forces

DONALD AYRES

HOMER BAILEY

DWIGHT BERG

RICHARD BRASTED

RONALD BROOKS

JOHN BIERNE

BERNARD BRYAN

JOHN CAMPANA

MICHAEL CASALE

ROBERT CEDER

RICHARD DORNEY

ROBERT FINN

EDWARD HENRY

DANIEL HOOLEY

DONALD JOHNSON

KENNETH LEE

JACK LONG

ROBERT MAGALSKI

JAMES McHENRY

ROBERT MINERD

ROBERT PIORETTI

ROBERT RICE

JACK SNYDER

FREDERIC STEHLE

JACK WILCOX

FRANKLIN WOLF

Graduates of August 1943

MERCEDES ATEN—Elementary
 BETTY BAKER—Secondary
 VERA BARRETT—Elementary
 JEANETTE BURTON—Elementary



JOHN CAMPANA—Secondary
 BARBARA CLENDENON—Music
 MIRIAM CUMMINGS—Elementary



ELEANOR DILDINE—Music
 JEAN FARRAR—Elementary
 LOIS HELLER—Music



EDWARD HENRY—Music
 LUCY HOWARD—Homemaking
 MABLE JAQUISH—Elementary



TECLA KINGSLEY—Music
 SHERRY PEARD—Music
 RUTH PINNOCK—Music



BEATRICE PLASTOW—Homemaking
 LARENE THOMAS—Elementary
 JEANNETTE WILSON—Secondary



JUNIOR



JUNIOR CLASS OFFICERS

President—Thiemann
Treasurer—Fought
Secretary—Coon
Vice President—Armstrong



"School Days"

CLASS

Message to the Class of 1945:

You have couræ and foresight and are facing your responsibilities and accepting your opportunities.

In one of Mr H. G. Well's novels, "The Undying Fire," the chief character, the headmaster of a British boys' school, speaks of his school as a "torch at which lives have been set aflame." And then he speaks of the essential work of the teacher as he conceives it. It is the work, he says, of releasing men and women from the narrow prison of self into a large circle of ideas in which they can forget themselves and their meager personal ends. It is for the teacher, he says, to open men's "eyes to the past and to the future and to the undying life of man."

—S. Marjorie Murphey.



MISS S. MARJORIE MURPHEY
Junior Class Adviser



It seems that fate has been against our college class, for each year has brought with it a few depressing incidents which have been challenges to us. Before we were even enrolled to become freshmen in 1941 the infantile paralysis epidemic retarded the arrival of some of our members. In our sophomore year a great majority of the boys in our class responded to the call of our country. And this year some of the girls have chosen actual defense work and real home making jobs in preference to the educational field.

We hope and believe that we have accepted these challenges by carrying on our class activities as normally as possible. May we continue to do our part in this time of world conflict, both to our school and to our country.

To you boys in the service we send our regards and hope you like the following pictures. May we remind you that you still have a place in Mansfield.

Best of luck, '45ers!



RUSSEL ANDERSON—Music—Kane, Pa.

JUNE E. ARMSTRONG—Homemaking—Taylor, Pa.

SUSAN B. BURGER—Homemaking—Scranton, Pa.



BARBARA BETZ—Elementary—Venus, Pa.

RUSSELL R. CAMP—Secondary—Mansfield, Pa.

CHARLOTTE ROBERTA CAMPELL—Elementary—Erie, Pa.



HELEN BETTY COON—Homemaking—Clarks Summit, Pa.

MAUDE M. DRUMM—Homemaking—Sunbury, Pa.

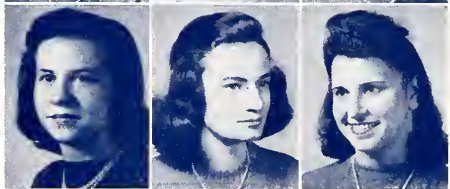
D. HELEN DWYER—Secondary—Tionga, Pa.



PRISCILLA ANN EGIZIE—Homemaking—Perwick, Pa.

HILDA I. ELSBREE—Music—East Smithfield, Pa.

VIRGINIA A. GALLO—Music—Pittsburgh, Pa.



M. ELEANOR GILBERT—Homemaking—Montoursville, Pa.

CONSTANCE ELEANOR GREENING—Secondary—Milford, Pa.

MADELINE GREGO—Homemaking—Hep Bottom, Pa.



G. LOUISE HEGE—Music—Dover, Pa.

LOIS MARJORIE HENNING—Homemaking—Trucksville, Pa.

FETTY J. HERROLD—Homemaking—Selinsgrove, Pa.

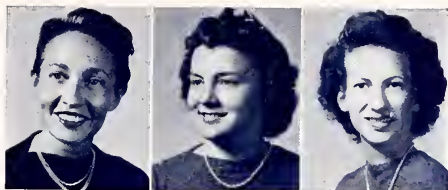


HARRIET A. HETRICK—Music—Mansfield, Pa.

ELAINE J. JACQUISH—Homemaking—Tunkhannock, Pa.

MARY E. KENEDY—Homemaking—Pleasant Mount, Pa.

HARRIET JONES KING—Elementary—Wellsboro, Pa.
 HELEN KOHLER—Elementary—Hughesville, Pa.
 DORIS JANE KREISLER—Elementary—Elkland, Pa.



LEONORE M. LAUDENSLAGER—Homemaking—Valley View, Pa.
 VIRGINIA MOWERY—Homemaking—Frackville, Pa.
 JANE E. MURDOCK—Music—Knoxville, Pa.



BLANCHE L. PEASE—Elementary—Susquehanna, Pa.
 LOUISE B. RICHARDSON—Homemaking—Harrisburg, Pa.
 JANE MacCARTNEY RATHBUN—Music—Wyalusing, Pa.



BERNICE ROUPP—Music—Liberty, Pa.
 MARY ELIZABETH SHIELDS—Music—Nicholson, Pa.
 PHYLLIS LORRAINE SLAIR—Music—Brownstown, Pa.



MARION LOIS SLOCUM—Elementary—Millerton, Pa.
 CHRISTINE STEVER—Elementary—Palmerton, Pa.
 IDA ANN STUMP—Homemaking—Taylor, Pa.



LEONA D. TAYLOR—Elementary—Rummerfield, Pa.
 M. CHRISTINE THIEMAN—Homemaking—Mansfield, Pa.
 JUNE A. TOBIAS—Homemaking—Williamsport, Pa.



REGINA LEE FOUGHT—Homemaking—Hughesville, Pa.
 PHYLLIS E. UTT—Homemaking—Orangeville, Pa.
 JEANNE WEIL—Homemaking—Plymouth Pa.
 NAOMA RUTH WOOD—Elementary—Knoxville, Pa.



SOPHOMORE



SOPHOMORE CLASS OFFICERS

President—Pawling
Treasurer—Corbin
Vice President—Smith
Secretary—Betz



"The Fourth Floor Gang"
The Picnic

CLASS

You entered Mansfield in the Fall of 1942, during a period of world unrest and conflict. Unfortunately, these adverse conditions haven't been subdued, and during this past year many of your classmates have left your ranks to answer the call of service.

However, as a class, you have excelled in friendliness, eager participation in college activities, and scholastic averages.

May you keep up the good work, and your cheerful, friendly spirits, so that your ex-classmates and Mansfield will always be proud of you.

—Janett M. Leberman.



MISS JANETT LEBERMAN
Sophomore Class Adviser

Two years ago in September, 1942, seventy-five new faces appeared on Mansfield's campus. We are sorry to say, however, that all those seventy-five people are not with us today. But each is doing his part in the present conflict. Many of the boys have been called to help protect our country. And here in Mansfield some of us have chosen to follow the accelerated program which will allow us to graduate one year earlier than planned.

We're all doing our part on the home front by preparing ourselves for the world to come and by making it a better world for those after us when peace is here once more.

We have not been able to have as many class activities as we would like, but the Class of '46 has the spirit, faith and determination to carry on.



ELAINE MAIE AUSTIN—Home Economics—Washington Crossing, Pa.

ALICE E. BEACH—Home Economics—Mansfield, Pa.

MAE HELEN BEACH—Elementary—Towanda, Pa.



SYLVIA BECK—Secondary—Jermyn, Pa.

BEATRICE BETZ—Home Economics—Venus, Pa.

LORETTA R. BRIGGS—Secondary—LeRaysville, Pa.



M. HELEN BUCKINGHAM—Home Economics—Scenery Hill, Pa.

GEORGIA A. COLWELL—Secondary—Susquehanna, Pa.

MAXINE E. CORBIN—Elementary—Rome, Pa.



ELIZABETH DOUGHTON KELTS—Music—Mansfield, Pa.

ANNA MARY DRUMM—Home Economics—Middleburg, Pa.

MARJORY ANN EICK—Home Economics—Hillsgrove, Fla.



F. FLORENCE HEDGE—Elementary—Ulster, Pa.

PATRICIA JAMES—Music—Erie, Pa.

VIRGINIA R. KAST—Home Economics—Leighton, Pa.



EILEEN LEONARD—Home Economics—Pleasant Mount, Pa.

EMMA LOU LOVE SAYERS—Home Economics—Falls Creek, Pa.

JANICE E. MADIGAN—Home Economics—Mansfield, Pa.

L. CAROL McCLINTOCK—Home Economics—Erie, Pa.

JEAN W. McFADDEN—Secondary—Forksville, Pa.

ELEANOR JUNE MISSIMER—Home Economics—Pottstown, Pa.

ELIZABETH H. MOLYNEAUX—Home Economics—Mansfield, Pa.



JANE PAWLING—Home Economics—West Milton, Pa.

MARY JANE PETERS—Music—Savona, N. Y.

JANET E. READ—Secondary—Forksville, Pa.



JOHN O. ROBERTS—Secondary—Little Marsh, Pa.

ARLENE M. ROTHERMEL—Home Economics—Klingerstown, Pa.

MARIE V. SCUDDER—Elementary—Riverhead, N. Y.



VIRGINIA M. SINGLEY—Home Economics—Shumans, Pa.

RAE H. SMITH—Home Economics—Catawissa, Pa.

ROMAYNE E. SMITH—Music—Dalton, Pa.



WANDA R. SMITH—Secondary—Crooked Creek, Pa.

ROBERT C. FOUST—Music—Washingtonville, Pa.

Laura Elizabeth Tyrrell—Home Economics—Nicholson, Pa.



MILDRED WARNER—Home Economics—Montrose, Pa.

ELIZABETH BRACE WETMORE—Music—Wellsboro, Pa.

JEAN M. WILSON—Elementary—Sayre, Pa.

ELEANOR JEANETTE WOOD—Music—Knoxville, Pa.



Absent: **EVA LANDON**—Elementary—Towanda, Pa.

FRESHMAN



FRESHMAN CLASS OFFICERS

President—Phineas Kuhl
Vice President—Ann McCawley
Secretary—Connie Nares
Treasurer—Philip Kuhl



The poor Frosh!
Next year they'll be the Sophomores!

Here we are, Mansfield, the Seniors of 1947. At present, of course, you may refer to us as the Freshmen. Although our enrollment fell a little short of other years, our entrance here was a merry one, making up for deficiency in number by multiplication of activity and ambition. Rumors from upper classmen carry tales of more gay and exciting pre-war days at M. S. T. C., but we, realizing that our sacrifice is minute compared to millions of others, are firm believers in "making the best of what we have". Consequently, committees representing all curricula delved deep into thought and we all resolved to make a good time for everyone. First of all, we upheld each other's morale and weakened the Scphs' at initiation (which, incidentally, we all loved!). Then, getting into the swing, we managed to be participants in assembly programs, college sings, and various campus organizations. Next, we combined to present our impressive Christmas program, and again to be host at the annual Frosh party. More fun! So far we've done well, don't you agree? Just wait till next year, and next and the next! Our quartet of Elementary, Home Ec, Secondary and Music Sups is one that can't be beaten!

Greetings to the Class of 1947!

You have completed one phase of your college education and doubtless are evaluating it in terms of the progress you have made. A person is respected if he has a worthwhile task to do and does it well. Have you put forth your greatest effort to do your college work as effectively as possible? It is essential that you do so because our country is in constant need of trained leaders. During the next three years study diligently so as to learn as much as possible, interpret what you learn in terms of use in daily living, and face wisely each personal problem that confronts you. In this way you will become a valuable leader in building the world of tomorrow.

As your advisers, may we wish for you a college experience which is meaningful and a life which is worthwhile.

*Dorothy M. Wasley
Cyril L. Stout*



MISS DOROTHY M. WASLEY.



DR. CYRIL L. STOUT,



GERALDINE BAKER—Elementary—Rixford, Pa.
 GLORIA BEARDSLEE—Secondary—New Albany, Pa.
 MINNIE BENDER—Homemaking—New Albany, Pa.



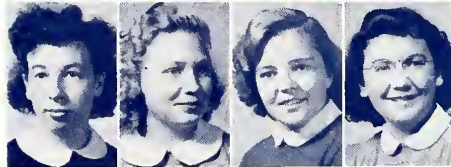
LOIS FENN—Elementary—Elmira, N. Y.
 ALMA JEAN ERIGN—Homemaking—Liberty, Pa.
 JEAN I. BRUNNER—Elementary—Ridgway, Pa.



DOROTHY A. EUNTING—Homemaking—Waymart, Pa.
 E. MAE BUTTON—Homemaking—Mansfield, Pa.
 FRANCIS P. CANCELLIERE—Secondary—Williamsport, Pa.
 RAYMETA LEE CHAFFEE—Music—Rome, Pa.



ANNA MARION CHERRINGTON—Homemaking—Port Allegheny, Pa.
 GENEVIEVE CICHOCKI—Homemaking—Plains, Pa.
 PHILIP COLEMAN—Secondary—Rushville, Pa.
 EDWARD J. COOLIDGE—Secondary—Wellsboro, Pa.



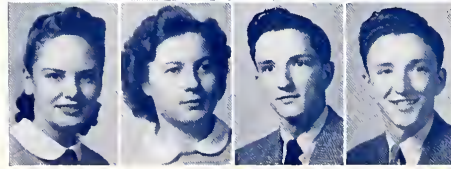
JANET LOUISE CRIST—Music—Jersey Shore, Pa.
 ISABELLE DANIELSKI—Elementary—Bradford, Pa.
 MARY LOUISE DORRANCE—Homemaking—Elkland, Pa.
 JANICE M. FERMAN—Music—Smethport, Pa.



MARY LOUISE FITZGERALD—Secondary—Little Meadows, Pa.
 BETTE JO GOODALL—Music—Liberty, Pa.
 MILDRED B. HART—Homemaking—Forksville, Pa.
 DORA MAY HAMMOND—Homemaking—Wellsboro, Pa.



LUCILLE A. HICKOK—Elementary—Troy, Pa.
 BETTY E. HUGHES—Homemaking—Tioga, Pa.
 RUTH EVANNA IZER—Homemaking—Weissport, Pa.
 ELEANOR JONES—Elementary—Little Meadows, Pa.



ELIZABETH KINGSLEY—Secondary—Columbia Cross Roads, Pa.
 SARA E. KROUSE—Homemaking—Morris, Pa.
 PHILIP H. KUHL—Secondary—Lawrenceville, Pa.
 PHINEAS R. KUHL—Secondary—Lawrenceville, Pa.

EVA LANDON—Elementary—Towanda, Pa.
 ELLEN R. LOTT—Elementary—Mehoopany, Pa.
 KITTY LORRAINE LOVELAND—Elementary—Mansfield, Pa.



ANN McCAWLEY—Music—Susquehanna, Pa.
 AUDREY ANN McKENZIE—Music—Riford, Pa.
 JEANETTE MASTROPIETRO—Elementary—Susquehanna, Pa.
 ELEANOR E. MERTZ—Secondary—Forksville, Pa.



OLGA E. NAGORNY—Music—Susquehanna, Pa.
 CONNIE CHRISTINE NARES—Elementary—Mansfield, Pa.
 VIVIAN L. OAKY—Music—Wyalusing, Pa.
 O. BRUCE PICKERING—Secondary—Nelson, Pa.



GLORIA R. RAZEY—Music—Emporium.
 PATRICIA ANNE ROACHE—Homemaking—Corning, N. Y.
 MARIAN ROSS—Music—Tunkhannock, Pa.
 NAOMI SAYERS—Homemaking—Petrolia, Pa.



PAULINE SCHANBACHER—Homemaking—Mansfield, Pa.
 MARGARET HELEN SCHEERER—Homemaking—Wellsboro, Pa.
 ELIZABETH M. SCHMIDT—Homemaking—Lehighton, Pa.
 REGINA L. SEELEY—Music—Dushore, Pa.



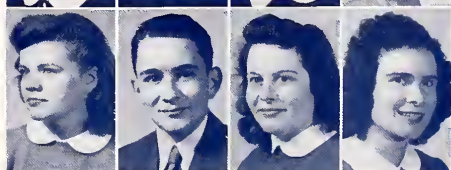
ANNA MARY SHULTZ—Homemaking—Williamsport, Pa.
 CECIL E. SIMMONS—Secondary—Wellsboro, Pa.
 HELEN A. SMITH—Homemaking—Mainesburg, Pa.
 SUZZAN SMYTH—Elementary—Laporte, Pa.

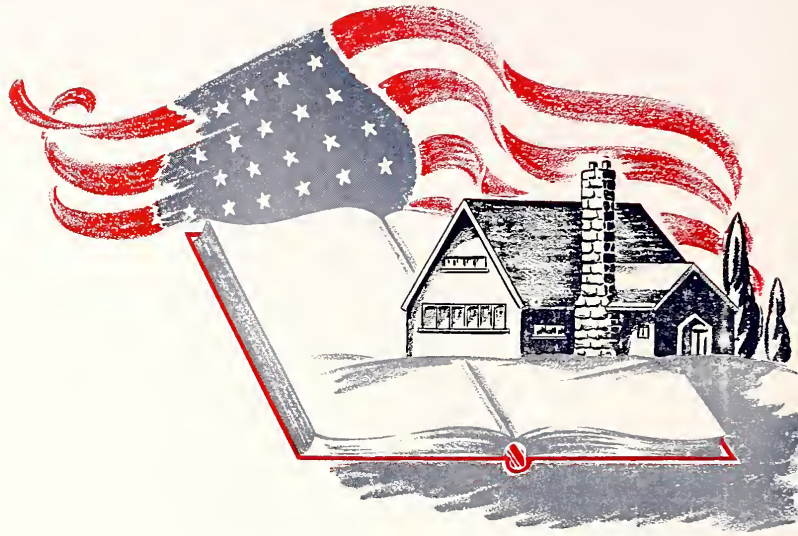


JUNE SPENCER—Homemaking—Elkland, Pa.
 CARMEN V. STERMER—Homemaking—Lawrenceville, Pa.
 CLARICE LORENA STILWELL—Homemaking—Mansfield, Pa.
 MARGARET ANNE THOMPSON—Music—Clarks Summit, Pa.



ELEANOR F. WARTERS—Homemaking—Mansfield, Pa.
 WILLIAM J. WEAVER—Secondary—Blossburg, Pa.
 JEAN REYNOLDS WHITNEY—Music—Ulysses, Pa.
 MIRABEL YOUNG—Secondary—Mansfield, Pa.







THE ACTIVITIES



Student Council



Top Row: Dorsett, Gallo, Kuhl, Moore, Pawling, Rathbun, Rauch.
Second Row: Rodsky, Ross, Scudder, Dr. Stout, Trivelpiece, Thiemann, Miss Wasley.

The 1943-'44 Student Council has had a happy and successful year despite the many difficulties inflicted upon it due to the uncontrollable problems of war. Many new ideas and plans have been initiated and the older perhaps more enjoyable, projects and activities discarded until peace shall once more bring not only college life—but all life—back to normal.

The Student Council, which is the governing body of the Mansfield State Teachers College Government Association, is made up of 12 members. These representatives are: Officers of the Council, class presidents, editors of publications, dormitory president and day student president. Because of the present emergency the Council has been reduced from the former 20 members to only 12 representatives. The Council has promoted numerous projects, among them are: "Big and Little Sister" System, planning of the social calendar, publication of "The Password", operation of extra-class point system, appointment of Mansfield representatives to "Who's Who in American Colleges and Universities" and organization of Freshman Week. Besides these usual activities, the 1943-'44 Council has also inaugurated the Friday night sale of War Stamps, as well as the presentation of an assembly program on "Campus Traditions".

The Student Council is eager to do the best possible in all phases of its functions and with the complete co-operation of the entire student body its desires shall be fulfilled

May Day

Perhaps May Day was just another day. Or perhaps it was a memorable occasion. To all the underclassmen let me say this, "May Day" is not just another day, but a day of recognition for many and a day for all who participate. It is not only a day of recognition for the seniors, but also a glimpse of college life for next year's frosh. On this day Mansfield plays host to many high school students from the surrounding area.

The May Day festival was ruled by the regal Queen, Katherine Etsweiler. Her court was composed of eight outstanding Seniors from the class of "43". She was crowned Queen at an impressive ceremony in the afternoon. She and her court presided over the dance held in the student center, Saturday evening.

May Day is a project of the Student Council, and we hope it will be held every year and become a very permanent part of life at Mansfield.



STUDENT COUNCIL MEMBERS

President—Rauch
 Treasurer—Gallo
 Secretary—Scudder
 Vice President—Rathbun



MAY COURT

Front Row: Brotzman, Campbell, Etsweiler.—Queen, Farrar, Durkin.
 Back Row: Orndorf, Sultzer, Weissenfuh, Redfield.

Women's Dormitory Council



Teresa Coppersmith, Lois Henning.
Patricia James, Carol McClintock.
Jane Moore, President, Louise Richardson.
Phyllis Slair, Jean Wehr.

We think of the home as a place to live happily and healthfully with the other members of the household. During our stay at Mansfield we adopt North Hall as our home, thus we strive to make our dormitory resemble a home.

If a group of people are to live together harmoniously it is necessary to have rules. In the home Mother and Dad make those rules which they believe essential, while here at college the Women's Dormitory Council takes on that responsibility. In the home we have learned that the cooperation of everyone is necessary, so it is here in North Hall. The Council strives, just as did your parents, to make your surroundings pleasant.

The year 1943-1944 has been a happy one for most of us here in North Hall. We want to thank each of you who by your cooperation and interest have made this successful year possible.



Day Student's Club

The Women's Day Student Club is composed of all the women students who do not live in the dormitory. All the women students who commute, or rent a room, or live in Mansfield automatically belong. Its purpose is to give those students an opportunity to become better acquainted with each other and to have fun together. The 62 members may go at any time they wish to their room on the first floor of North Hall to rest, study, play cards or talk.

Some of the social activities that linger in their memories are the picnics held at the beginning and end of the school term, the teas and parties, and the monthly luncheons, particularly the one held at Christmas. Unfortunately, the war interrupted the joint luncheons with the men.



DAY STUDENT'S OFFICERS

President—Alene Dorsett

Vice President—Helen Dwyer

Secretary - Treasurer—Edna Day



The Carontawan 1944



CARONTAWAN BOARD
Standing: Kennedy, Thiemann, McCawley, Tobias.
Seated: Road, Ebinger, Cawley, Elsbree, Colwell.



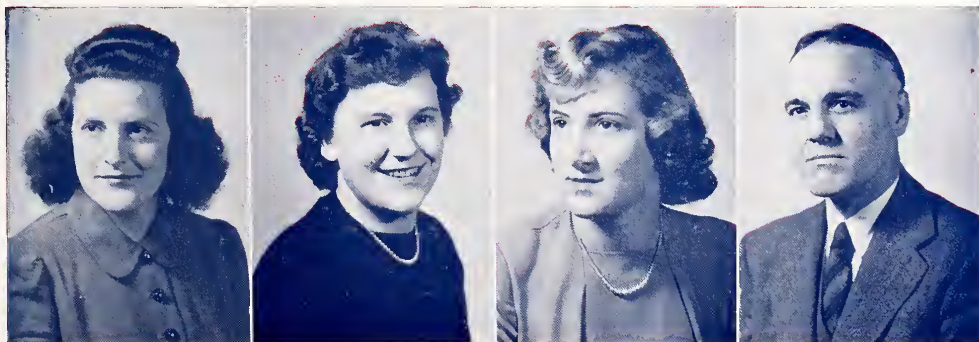
NANCY ROSS, Editor

The Carontawan is your yearbook. Within its pages are pictured the memories of many of your happiest days. To some of you it will bring reminders of nights in the dorm after a big dance, working till the "wee" hours of the morning to complete a project, or studying for a test, initiations on the arcade, and student teachers dashing up the hill to their first class.

This publication has many unique features. The athletic division is conspicuous by its absence. There are very few pictures of men since there are very few men on campus. Then this is the first Carontawan ever to be published by a board composed entirely of women students.

We realize the book is far from perfect. Grammatical errors glare at you, there aren't many pictures, favoritism is prevalent, but at least we have a year book.

The Carontawan board thanks each of you for your cooperation in helping us publish this book, and we hope you enjoy thumbing through the pages.



Joan Cawley, Senior Class Editor. Betty Shields, Photography Editor. Joyce Schanbacher, Business Manager. Mr. Bertin, Adviser.



FLASHLIGHT BOARD

Seated: Nicholas, Smith, McClintock, Singley, Bottiger, Mertz, Ferster, Henning, Hoffman.
Standing: Benn, Mertz, Clair, Eunt'ng, Pawling, Madigan, Austin, Tobias, Colwell, Briggs, Corbin,
Miller, Sweigert, Seudder, McKenzie, Smyth.



JEAN TRIVELPIECE, Co-Editor



IRENE BOTTIGER, Business Manager



MR. EUGENE P. BERTIN, Sponsor

Flashlight

Campus life at M. S. T. C. for the year 1943-44 has been no ordinary situation. The cause? . . . the present emergency. Due to this emergency the Flashlight has been operating under a new policy and this year was edited by co-editors.

It was the chief aim of the Flashlight to promote interest in college activities and relate the campus events in such a way as to bring Mansfield just a little closer home for as many of our men and women in the service as it was possible to send copies of the Flashlight to them.



SYLVIA BECK, Co-Editor



BOTTIGER—Business Manager

Music Educators' Club



Front Row: Chaffee, Keltz, Goodall, Shields, Gallo, Elsbree, Rathbun, Hege, Hetrick, Slair.
Back Row: Brion, Peters, James, Nagorny, Murdock, Whitmore, Wood, Smith, Razy, Coppersmith, Whitney.



Advanced Chorus



Front Row: Mr. Mandelkern, Miss Randall, Smith, Ross, McCawley, Razy, Thompson, Miss Brooks, Miss Atwater, Mr. Francis.
Second Row: Clark, Shields, Coppersmith, Hage, Ferman, Whitney, Crist, Seely.
Third Row: Bookmiller, Bryan, James, Peters, Wood, Wetmore, McKenzie, Foust.
Last Row: Swanson, Nagorney, Hetrick, Murdock, Rathburn, Chaffee, Slair, Goodall, Oakey, Anderson.



Front Row: Miss Randall, Myer, Wilson, Shennen, McFadden, Henning, Ross, N. Weir, Fought, Ebinger, Rauch, Roethermel, Campbell.
Second Row: Austin, Hedge, Fitzgerald, Ferman, Scudder, Cawley, Kingsley, Roupp, McCawley, Ross, M., Howe, Missimer, Danielski, Bump, Reedy.
Third Row: Rathbun, Corbin, Richardson, Mahood, McKenzie, Smith, Purdy, Brunner, McHenry, Baker, Crist, Day, Bottiger, Wood.
Fourth Row: Harrington, Doll, Coon, Tyrrell, Morley, Schanbacher, Benn, Scheerer, Utt, Laudenslager, Seeley, Oakley, Trivelpiece, Clair.

Women's Chorus

The Women's Chorus is composed of a group of Secondary, Elementary, and Homemaking students. This organization provides choral experience for those women who are not in the music department. Members are chosen by competitive tryouts.

The chorus has presented several programs during the year, under the direction of Miss Clarissa Randall. Joan Cawley is the President, Mary Meyer, Secretary, and Jane Rathbun, accompanist.

Kappa Delta Pi

Kappa Delta Pi, an honor society in education, limits its membership to juniors and seniors who have attained an excellence in scholarship. The purpose of Kappa Delta Pi is to encourage high intellectual and scholastic standards and to recognize outstanding contributions to education.

Kappa Delta Pi grew out of the Illinois Education Club which was established at the University of Illinois in 1909 to recognize and encourage high scholastic achievement and to dignify the teaching profession. In 1911 the Illinois Education Club was recognized as Kappa Delta Pi.

The Beta Rho Chapter was installed at Mansfield in 1930 with Dr. Isaac Doughton as the sponsor. Dr. Doughton has been the counselor ever since and the society has maintained a reputation of repute and worthy attainments under his guidance.

The activities of the local chapter this year centered around a program devised to broaden the intellectual, the cultural and social interest of the members.



KAPPA DELTA PI OFFICERS

Seated: Corresponding Secretary—Metzger
President—Meyer
Vice President—Michael

Standing: Treasurer—Harrington
Recording Secretary—Schanbacher



KAPPA DELTA PI

Top Row: Brion, Campbell, Casey, Cawley, Clark, Conner.

Second Row: Coon, Day, Dorsett, Egizie, Ferster, Gilbert.

Third Row: Greening, Harrington, L. Hess, M. Hess, Hertick, Howe.

Fourth Row: Kennedy, Mertz, Metzger, Meyer, Murdock, Nicholas.

Fifth Row: Pease, Rathburn, Reedy, Reese, Schanbacher, Shields.

Sixth Row: Michael, Simth, Snell, Tobias, Whitmire, Wood.



Front Row: Sheerer, Messimer, Jacquish, Weil, Armstrong, Beach, Shultz, Dorrance, Cichoeki, Roche, Richardson, Crossley, Miss Erickson.
 Second Row: Henning, Cherrington, Bunting, Schmidt, Krouse, Hughes, Buton, Hart, Wartars, Thiemann, Grego, Hammond, Schanbacher, Coon.
 Third Row: Miss Leberman, Miss Mattson, Izer, Drumm, Spencer, Miss Buckingham, Miss Farrer, Mrs. Morales, Warner, Madigan, Bryan, Sayers, Beardsley, Miss Hancock, Laugenslager.
 Fourth Row: Stoump, Kreger, Tobias, Mowery, Sayers, Singley, Molyneaux, Eick, Leonard, Pawling, Betz, Stillwell, Miss Reimard, Tyrrell.
 Last Row: Berger, Utt, Stermer, Ezizie, Buckingham, McClintock, Smith, Kast, Drumm, Gilbert, Kennedy, Herold, Rothermel, Austin, Fought.



Omicron Gamma Pi

Omicron Gamma Pi—"Homemaking to know and to teach" is the organization composed of all girls enrolled in the Homemaking Department. This club is affiliated with the State and National Home Economics associations and sends delegates to the State convention. It also contributes to the Foreign Scholarship fund.

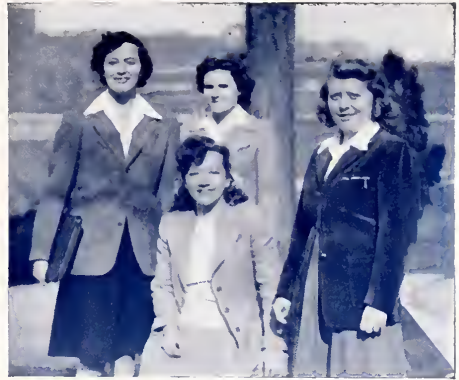
The monthly meetings include programs centered around the following themes: social service, finance, education, and various phases of home economics. Outside speakers discussed "Your place in Girl Scouting", "Peace", and other timely topics. Local talent in the form of music and plays provide added entertainment at meetings.

This year's Seniors will recall that outstanding events of the past four years as being a closed formal dance in '41, a formal banquet in '42, a Winter Carnival in '43 and during this school year an Open House to familiarize the students and community friends with departmental activities. These outstanding activities not only add meaning to classwork, but prepare the girls to meet similar situations in the establishment of their profession.

The long range plan and aims of Omicron Gamma Pi are the furtherance of better homemaking teacher activities and the establishment of better homes, both of which make for better and happier living.



C. AILEEN ERICKSEN, Adviser



OMICRON GAMMA PI

- President—Crossley
- Vice President—Reedy
- Treasurer—Smith
- Secretary—Drumm



First Row: Mouth, Hart, Hess, Fives, Morrison, Crossley, Snyder, Shelhamer, Brightbell, Doll.
 Second Row: Hoffman, Fredricks, Ebinger, Rauch, Ross, Michael, Hoffman, Whitmire, Smith, Shepherd.
 Third Row: Morley, Priesler, Hess, McHenry, Mertz, Dunbar, Strobel, Grove, Mahood, Saxton, Firster, Bottiger.
 Last Row: Shennan, Wehr, Cole, Trivelpiece, Miller, Connor, Auten, Sweigert, Mack, Mouche, Prime, Reedy, Metzger.



Coon, Eriize, Miss Hancock, Co-Sponsor, Henning, Hess, L., Hess, M., Hoffman, Reedy, Miss Leberman, Co-Sponsor, Mahood, Metzger, Micheal, Thiemann, Tobias.

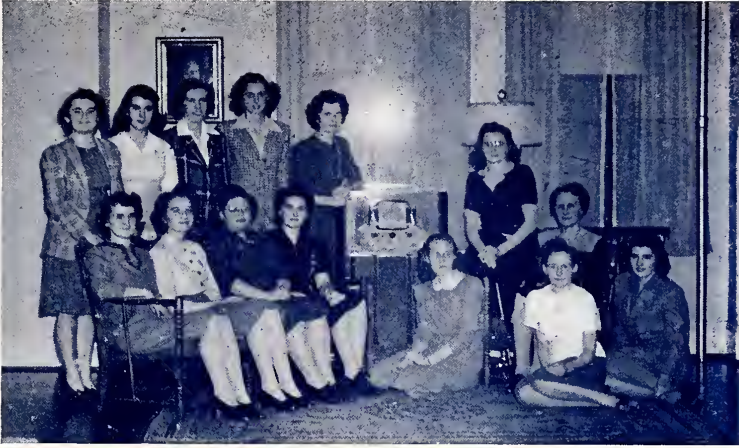


Pi Kappi Epsilon

Pi Kappa Epsilon is an honorary Homemaking sorority, striving for professional, cultural and inspirational growth. This organization seeks as its object, the furtherance of scholarship and the development of leadership ability among the students of the Homemaking Department. Membership in the organization is limited to the upper 15% of each class. Members must have attained a 2.3 average or better, and are eligible at the end of their Sophomore year. The Sorority selects its members on the basis of their ability to make and keep friends, leadership ability and other general high standards.

The aim of every member in this organization is a greater understanding of the breadth and meaning of "To be an efficient and well trained teacher and a confident and helpful homemaker." Each member pledges herself to make a "worthy contribution to the profession of homemaking."

The Sorority's sponsorship consists of two Homemaking faculty members, one of whom acts as sponsor and the other as co-sponsor. The year's programs are planned to increase appreciation of the fine things of life and to stimulate originality and creativeness. Members of the faculty and guest speakers aid the students in presenting these programs. A special research problem in the field of Homemaking is carried out each year by the Sorority members. Meetings are held each alternate month and a banquet and initiation of new members in May terminates the year's activities.



Front Row: Micheal, McHenry, Clair, Metzger, Pease, Hart, Rathburn.
Standing: Singley, V., James, Coon, Utt, Roupe, Howe, Miss Grigsby.



Y. W. C. A.

During these trying times, the Y. W. C. A. has more purposeful meaning to its members on the Mansfield Campus than ever before. This organization attempts to develop and promote Christian living in its spiritual, physical, mental, and moral phases through its work and fellowship together. Our membership is on a voluntary basis and each member is given an opportunity to participate in one of the various programs during the year.

This year our meetings have been unusually interesting and varied. They have consisted of plays, vesper services, choral readings, panel discussions and outside speakers. Being a member of the Student Movement, we are better able to keep in contact with the work of other Christian organizations in colleges throughout the country. The Y. W. C. A. has also sponsored social events which make for a better-rounded individual.

Our hope for this year is that the work of the "Y" will so inspire its members that each may better carry out its purpose which is: "To unite in a desire to realize full and creative life through a growing knowledge of God."

Women's Athletic



Front Row: Dwyer, Krouse, Button, Kriesler, Bump, Weir, Beardslee, Shennon, Cole, Eenson, Smith, Scheerer, Hart, Cherrington, Henning.
Second Row: Betz, Tyrrell, Eick, Leonard, Shultz, Schmidt, Seeley, Cichoeki, Roche, Bunting, Beach, Landon, Warner.
Third Row: Greening, Slocum, Armstrong, Corbin, Chaffee, Dorrance, Loveland, Spencer, Richardson, Jacquish, Brian, Hammond, Leonard, Fought.
Fourth Row: Hess, Izer, Utt, Doll, Hickok, Kingsley, Stilwell, Schanbacher, Day, Clair, Purdy, Grego, Hedge.
Fifth Row: Thompson, McCawley, Nagorny, Ross, Mertz, Read, Beck, Buckingham, Sayres, Miss Morris, Swigert, Mosch, Mack, Rothermel, Colwell.



The Women's Athletic Association, under the direction of Miss Morris, affords all the women students an opportunity to take part in various sports and recreational activities. The stimulation of whole-hearted good sportsmanship is but one of the goals toward which the Association aims.

In this present emergency it is of utmost importance to maintain good health at all times. It is also toward this end that the W. A. A. strives.

This organization maintains a lively interest in the morale of the college students. In all seasons throughout the year activities are carried on, some of them climaxed by tournaments. Swimming, tennis, hiking, softball and out-door roller skating are the outstanding fall activities. During

Association



In the Bowling Alleys

the winter months, attention is focused upon basketball, table tennis, shuffleboard, bowling, badminton, volley-ball and indoor roller skating. The high point of the winter's activities is our annual sleigh-ride.

Meetings are held every other month. This year they included a marshmallow roast, Hallowe'en party, sports movie and other interesting activities.

Each member who earns the required 200 points by participation in various activities is awarded a school letter in recognition of her accomplishments. At the same time she is keeping physically fit to meet the problems of the post-war world.



COLLEGE PLAYERS OFFICERS

Ebinger, Vice President; Tobias, Secretary; Morrison, President;
Casey, Treasurer.



College Players

"The show must go on", so despite the apparent manpower shortage at M. S. T. C., the College Players has enjoyed another highly successful year. During the first semester we presented a group of choral readings in an assembly program which was enthusiastically received by students and faculty alike. We hope to present a three-act play entitled "Letters to Luzerne", using a cast composed entirely of women students as our main production for the second semester.

It is not our purpose to develop professional actors, but rather to develop the literary and dramatic appreciation that lies latent in all of us. We wish to help prospective teachers correlate their abilities to the demands of education and life. The poise, confidence, and clarity of speech which we develop cannot be over-estimated.

Our members are secured not only through the medium of competition try-outs held semi-annually, but also by presenting letters of application for make-up, costuming and directing.



Front Row: Tyrrell, Dorsett, Buckingham, Messimer, Beach, Schanbacher, Dwyer.
Second Row: Trivelpiece, Krouse, Greening, Hart, Casey, Ebinger, Miss Allen, Morrison, McHenry, Diefenbacher, Ross.
Last Row: Cichocki, Pawling, Moore, Prime, Fives, Day, Strobel, Priesler, Fredric, Rodsky.



Front Row: Benson, Howe, Hart, President, Miss Murphey, Reedy, Coon, Smith, E. Whitmire, Madigan,
Second Row: Buckingham, McClintock, Hess, L. Murdock, Singley, Hoffman, Thiemann, Egizie, Casey.
Third Row: Tobias, Smith, W., Nicholas, Hess, M., Henning, Utt, Laugenslager, Purdy, Pease.
Last Row: Betz, Beck, Harrington, Schanbacher, Landon, Conner, Rouch, Reese, Smith, R., Pawling.



Art Club

The Art Club is an honorary society, in which membership is limited to those students who attain the grade of A in one semester of any art course. This organization strives to promote an appreciation of the fine arts through the examination and creation of artistic things.

Several projects are undertaken. One of its most outstanding activities is the decoration of the campus for the Christmas holiday season. Meetings are held each month and programs are planned to develop the interests and talents of all members.

The Art Club is affiliated with the Eastern Arts Association. Each year the president of the Club is sent as a delegate to the Art Convention, and from here many new ideas are conceived and incorporated in the Club meetings.



LAMBDA MU OFFICERS

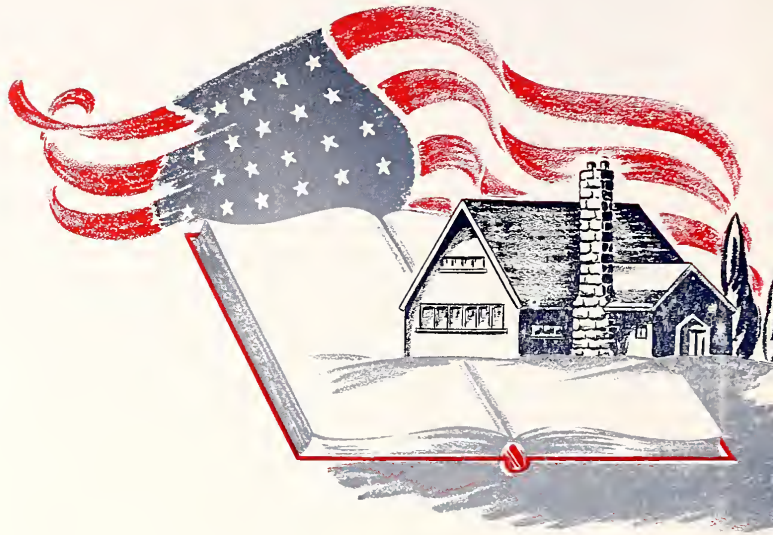
Vice President, Coppersmith. Treasurer, Stuart. Corresponding Secretary, Rathbun. Miss Brooks, Sponsor. Recording Secretary, Murdock. President, Eleanore Bryan.

Lambda Mu

Lambda Mu is a local Music sorority, the membership of which is made up of women students from the senior, junior, and second semester sophomore classes of the Music Education Department. Election is based on musical attainment, general scholarship, and integrity of character. The organization stresses individual and group musical performances. Program meetings are held monthly and initiation ceremonies twice a year.



Front Row: Shields, Clark, Coppersmith, Bryan, Miss Randall, Miss Atwater, Hetrick.
Last Row: Rathbun, Miss Brooks, Murdock.





THE ADVERTISEMENTS



To the Graduates
of the
State Teachers College
we extend
sincere congratulations
and a
cordial invitation
to make use
of our
extensive facilities
for all
personal and business
banking needs.



FIRST NATIONAL BANK
Mansfield, Penna.

Compliments of
MANSFIELD NOVELTY CO.

MAC'S
enjoys serving
students
and
faculty
of the college.



STATIONERY
SCHOOL SUPPLIES
TOILETRIES

TRY
THE DAIRY STORE
for the best
in fountain service
delicious sundaes.
and sodas

H. S. DAVIS GARAGE



Dependable Auto Repairing
Chrysler and Plymouth
Sales and Service

TYDOL GAS VEEDOL OILS

Willard Batteries and Parts
for all cars



Citizens' Phone 169
Bell Phone 9052



MANSFIELD, PA.

SUNOCO A TO Z LUBRICATION
FIRESTONE PRODUCTS



MERRICK'S
SERVICE STATION
Telephone 26

Compliments of
ROSE CHEVROLET

JOHN'S
SHOE REPAIR SHOP



Special attention given to
Miss and Mrs. shoes.



12 W. Wellsboro St.
MANSFIELD, PENNSYLVANIA

**THE
CROSSLEY
GREENHOUSES**

We wish to thank you
for your patronage in the
past, and we are always
ready to serve you in the
future in anything you may
wish in the florists' line



**Member of Florists'
Telegraph Delivery**



MANSFIELD, PENNA.

**Compliments of
GERRY BARNES GARAGE**

To the graduating class
of 1944, may we extend
our best wishes for success
throughout the years to
come.



GOODRICH CLEANERS

**Compliments of
EMPIRE FOODS, INCORPORATED
ELMIRA, N. Y .**

Compliments of
WEST'S SERVICE STATION

CHARLES McDOWELL



AGRICULTURAL EQUIPMENT
BUILDING MATERIAL
COAL



MANSFIELD, PENNSYLVANIA

MANY THANKS

To the Faculty and Students
of Mansfield State Teachers
College for the Liberal Patron-
age during the past 54 years
to this Leather Shop.



FRED L. JUPENLAZ
EVERYTHING IN LEATHER

Compliments of
TWAIN THEATER

Compliments of
FASHIONETTE BEAUTY SALON

GENERAL
INSURANCE

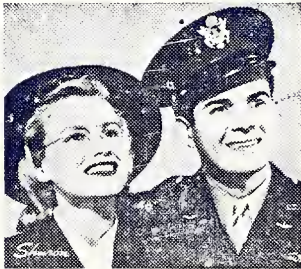


F. E. LENT
Agent and Broker



Both Phones
Bell 41 Citizens' 163

LEADERS OF TOMORROW
NEED GOOD EYESIGHT TODAY



My Best Wishes to You and All
Alumni

DR. GEORGE L. PALMER, O. D.
19 College Ave.

Eyes Examined, Glasses Fitted.
All Repairs Made Promptly.

*This Carontawan
was printed by
Mansfield Advertiser*



We also print yearbooks
for several High Schools.

WELLS & GOODALL
MANSFIELD, PA.
Phone 192



Buy at the
ESSO
Sign

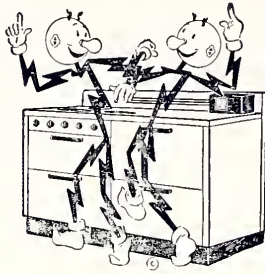


**COMPLETE BODY AND
FENDER WORK**

**Compliments of
THE WRIGHT SHOP**

**Compliments of
MANSFIELD DINER**

**Compliments of
STUART L. JOHNSON**



*Congratulations
and
Best Wishes
for a
Successful
Career*



*Northern Pennsylvania
Power Co.*

Satisfactory Laundry Co., Inc.

737 W. Fourth Street

WILLIAMSPORT, PA.

"Satisfactory Since 1908"

Hughes Dairy Farm

PRODUCERS FOR MANSFIELD DAIRY

Richard Lyle Hughes, Prop.



PASTEURIZED

Wholesale—MILK—Retail

MANSFIELD

LAWRENCEVILLE

TIOGA

Phone 179X

Phone 29-R-5

Photographs By Harrington Studio

It is our hearty wish that this Carontawan with its portraits and group photographs by Harrington Studio will bring back to you many times in years to come, happy recollections of the years spent at MSTC. To this we add our congratulations and "Best of Luck Always."

12 East Wellsboro Street
Mansfield, Pa.

Compliments of
THE BAYNES SHOE CO.

Compliments of
JIM'S SHOE SHOP

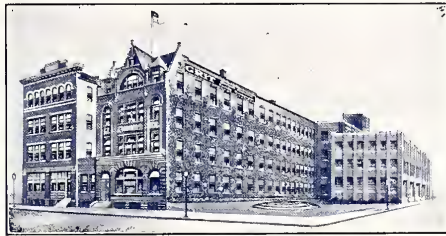
Compliments of
MRS. S. FINESILVER

Compliments of
BEN FRANLIN STORES
H. T. and Dorotha E. Witmore

Ideas

FOR THE ASKING

Whether it's a yearbook, a booklet, a catalog or a pamphlet, a brochure, broadside . . . whether it's big or little, simple or complex, deluxe or economical . . . our well-equipped and highly skilled organization is capable of handling it from beginning to end—from originating the idea to preparing the finished job for shipment . . . Call us in while the job is being planned.



Buildings Occupied Exclusively by the Grit Publishing Co.

GRIT PUBLISHING COMPANY
Artists Engravers Printers Binders

*The Carontawan was Designed and Engraved in Our
College Annual Department.*

CRUTTENDEN'S NEWS ROOM



GIBSON GREETING CARDS
WHITMAN CANDY
NEWSPAPERS AND
MAGAZINES

**Compliments of
T. W. JUDGE CO.**

**COLES PHARMACY
(On the Corner)**



Prescriptions Filled
Two Registered Pharmacists



Drugs, Gifts, Stationery
Fro-Joy Ice Cream
Served at Our Fountain

**GARRISON & MYERS
(The Clothing Store on the Corner)**



Dear Ladies:

When your soldier boys get home, remind them we have the wardrobe to start them off in civilian life again.

In the meantime, can we do your cleaning and pressing?

**TRI-COUNTY RURAL ELECTRIC
COOPERATIVE, INC.**

R. E. A.



Furnishing Electric Power to more
than 2500 Farms in Bradford.

Tioga, Potter and Lycom-
ing Counties.

GEORGE DYER

Mansfield, Pennsylvania



**ELECTRICAL CONTRACTOR
REFRIGERATOR SERVICE**



Citizens' Phone 73W

Bell Phone 14R13

**Compliments of
MORRIS FARMS
Mansfield, Penna.**

CECIL H. GARRISON

Class of 1918

45 East Elmira Street

MANSFIELD, PA.



**Equitable Life Insurance Co.
of Iowa.**

**All other lines of insurance written
in strong companies. Your
patronage appreciated.**



