


CARONTAWAN  
1946

Archives  
LD  
4481  
.P665  
.C3  
1946







Digitized by the Internet Archive  
in 2011 with funding from  
LYRASIS Members and Sloan Foundation

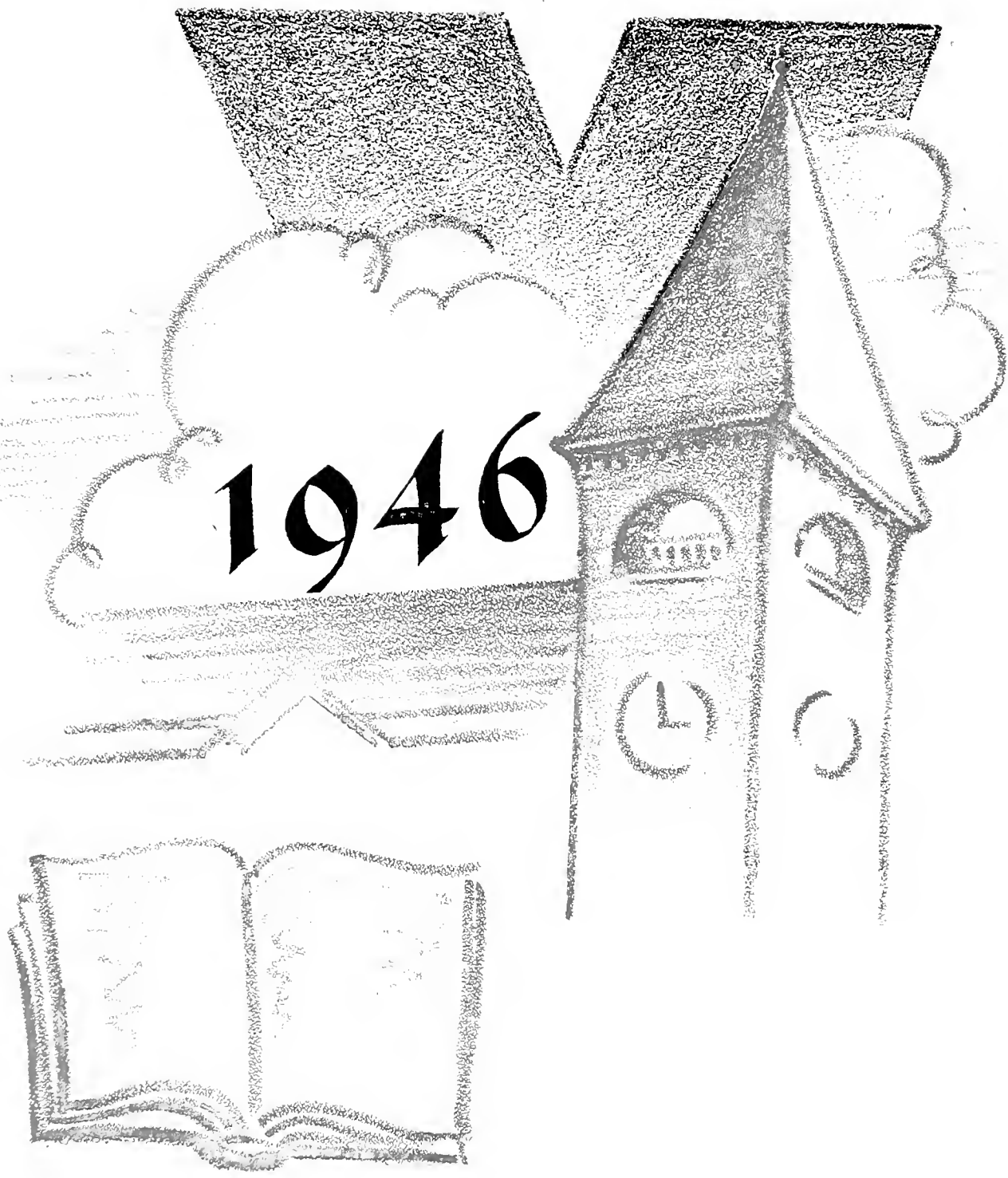
<http://www.archive.org/details/carontawan1946ye00mans>







1946

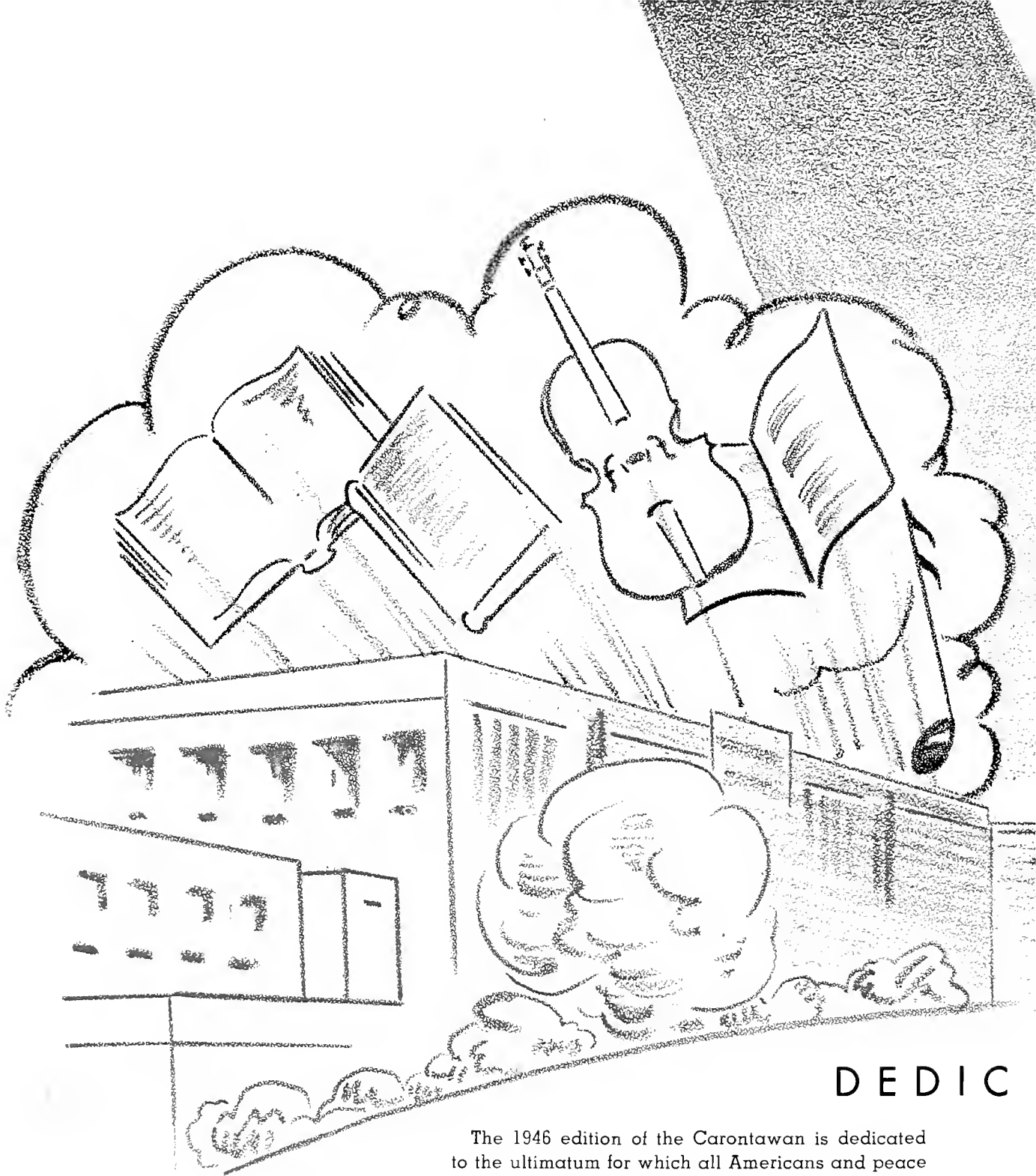




# Carontawan

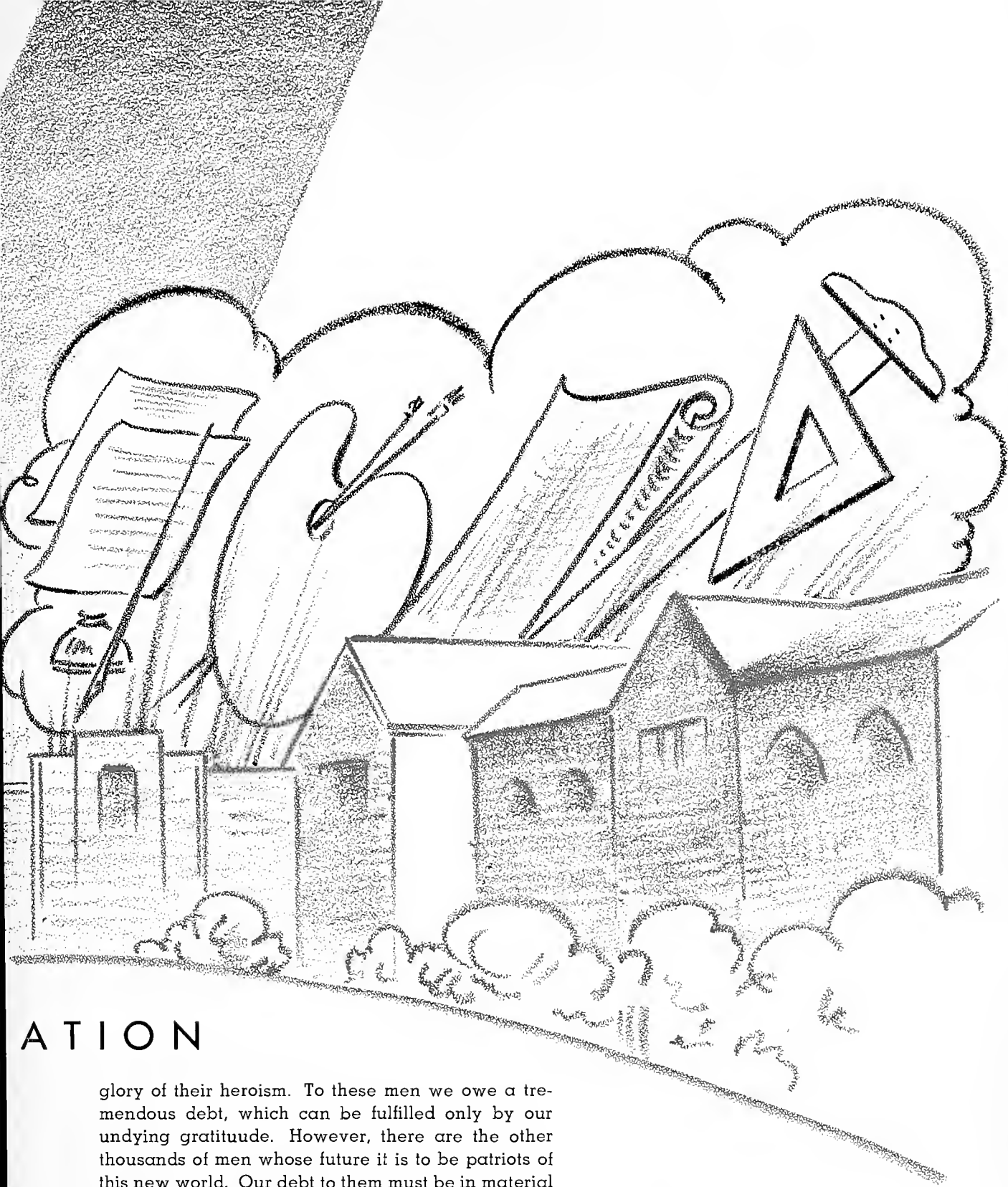


MANSFIELD STATE COLLEGE LIBRARY  
MANSFIELD, PENNSYLVANIA



## DEDIC

The 1946 edition of the Carontawan is dedicated to the ultimatum for which all Americans and peace loving peoples have prayed and God has finally given us—world peace. Almost a year has elapsed since the inspiring VE and VJ days, but that precious heritage left us by our servicemen will live in the heart of each of us forever. We are progressing toward a post-war world of liberty, happiness and prosperity through the efforts of the thousands of men who died for their country and all it stands for, and we must remember that we are living in the

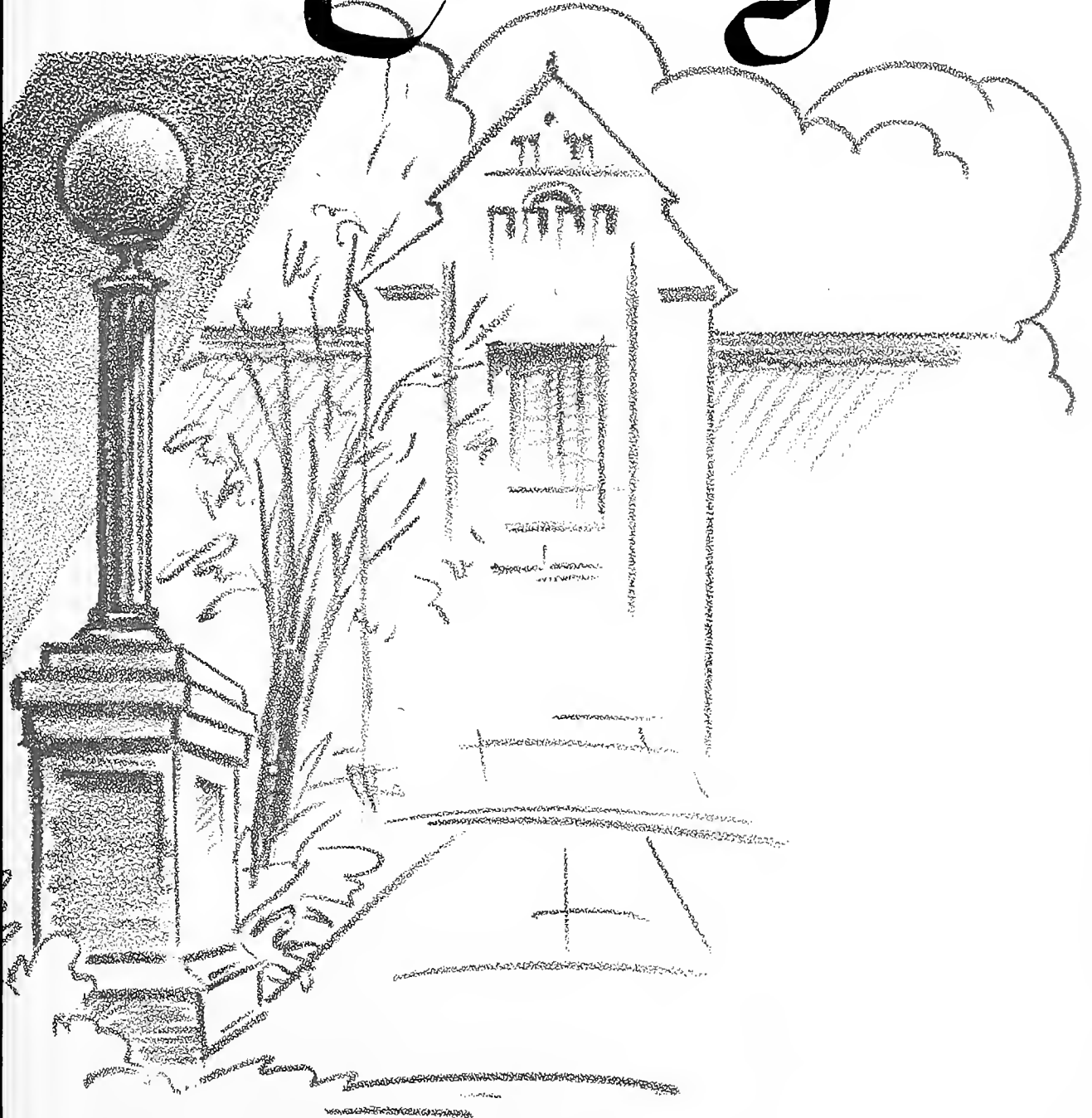


# ATION

glory of their heroism. To these men we owe a tremendous debt, which can be fulfilled only by our undying gratitude. However, there are the other thousands of men whose future it is to be patriots of this new world. Our debt to them must be in material form. The world is conscious of the atrocities of the wake of World War I, and it is the duty of every American to see that such happenings shall not be repeated. With these foremost thoughts constantly in mind, let us each in our own potential way, strive to reward the men, those who are with us now, and those who will not return, to the utmost of our ability.



# The College





JAMES G. MORGAN

## President of the College

It is always a sincere pleasure to extend congratulations to the members of a Senior Class on the threshold of graduation. This pleasure is greatly enhanced by the fact that the student body is rapidly approaching normality and that former students and others who have so courageously discharged their duties in the service of their country are returning to the campus. Your class during the past four years has been confronted with abnormal conditions. The tensions and sorrows, the strain and stress of the war years have all shadowed the gayety of college life. You have experienced curtailed activities and intercollegiate associations, and yet, have strengthened the bonds of campus friendship, preserved our college traditions and the spirit that is Mansfield. It is our hope that every one of you will meet the grave challenges and tremendous opportunities for service in the years ahead in the same loyal spirit with which you responded to the duties of a citizen in a nation at war—and that for each of you "the best is yet to be".



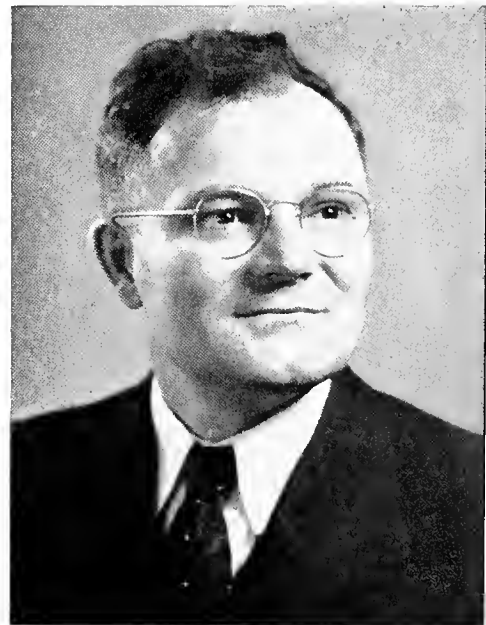
At the conclusion of the worst war in history we of the allied nations in addition to being grateful for the victory which has come to us must also face the problem that the war has opened all frontiers and we must turn and live with the peoples of all nations. As college women you can make a tremendous contribution by facing this task courageously. The teaching profession embodies the spirit of service to others and that is a basic keynote in understanding people. By assuming this social responsibility ably, by understanding our present heritage in terms of the past, by being interested sufficiently in the group of which you are a part to take an active interest in its projects, by being a person whose life is characterized by qualities of high character, leadership and service, by possessing an intelligent calm spirit, and by practicing a philosophy to live usefully and bravely, you will do much to guide others to live successfully with the people of the world.

DOROTHY M. WASLEY,  
*Dean of Women*

## Deans

A moment of retrospect shows a great contrast between the college years of 1944-45 and 1945-46. The former was a period when all eyes were focused upon the armed conflicts of the world and the many immediate problems. A glance at the present shows this year to be one in which Japan's premature collapse brought us face to face with the immediate execution of certain of the preconceived post-war plans. It is a time of welcoming into our midst two groups of young men. One is composed of those young men who left us to enter the armed services, the other those young men who are entering college for the first time. Both are taking advantage of the opportunity to obtain more education. It is with great pride that we welcome them into our midst. May you never lose sight of the fact that an enlightened public is a most desirable goal. It will be your duty to wage the war against ignorance by carrying the torch of knowledge into the schools of our country as you carried the battle for the four freedoms to the corners of the earth. Hold the torch high.

CYRIL L. STOUT,  
*Acting Dean of Men*





**ELISABETH S. ALLEN**, B.S. (Mansfield), M.A. (Columbia), Supervisor of English, Campus Junior High School.

**CORA A. ATWATER**, Mus.B. (Chicago Conservatory), Instructor in Voice.

**HELEN V. BOWERS**, Secretary to the Dean of Instruction.



**LEONARD K. BEYER**, B.S. (Bethany), M.S. (Cornell), Instructor in Biological Science.

**MARGARETTE BONE**, B.S. (Bloomsburg), Ed.M. (Penn State), Supervisor of Kindergarten, Campus Elementary School.

**PAUL L. DAVIS**, Ll B. (Dickinson), Instructor in History.



**EUGENE P. BERTIN**, A B. (Bucknell), M.A. (Harvard), Director of Secondary Education and Extension Education.

**MARJORIE C. BROOKS**, B.S. (New York), M.A. (Eastman), Director of Music Education.

**LILLIAN E. BUCKINGHAM**, B.S. (Pennsylvania State), M.S. (Cornell), Instructor in Foods and Family Health.



**LILLA CORTWRIGHT**, B.S. (Buffalo State Teachers), M.S. (Cornell), Instructor in Home Management and Child Development.

**JOHN W. CURE**, Ph B. (Bucknell) Ed. M. (Harvard), Instructor Language and Literature.

**HELEN FIELD**, Matron



**MILDRED L. GIESECKE**, B.S. (Ohio), M.A. (Columbia), Supervisor of Grade 1, Campus Elementary School.

**JESSIE L. GRIGSBY**, B.S., M.A. (New York), Principal and Supervisor of Mathematics, Campus Junior High School.

**MILDRED L. GRIGSBY**, B.S. (Bucknell), M.A. (Columbia), Supervisor of Grade 6, Campus Elementary School.



**LORENE M. HABEGER**, B.S. (Kansas Teachers), M.A. (Columbia), Supervisor of Grade 2, Campus Elementary School.

**DOROTHY B. HALL**, Clerk in Campus Store.

**EDNA HEWSON**, (Geneseo, Elmira Business Institute, Gregg), Registrar.



**LEWIS R. HIGLEY**, B.S. (Mansfield), Supervisor of Industrial Arts, Campus Junior High School.

**DOROTHY HUTCHINSON**, B.S., M.A. (Pennsylvania), Supervisor of Grade 4, Campus Elementary School.

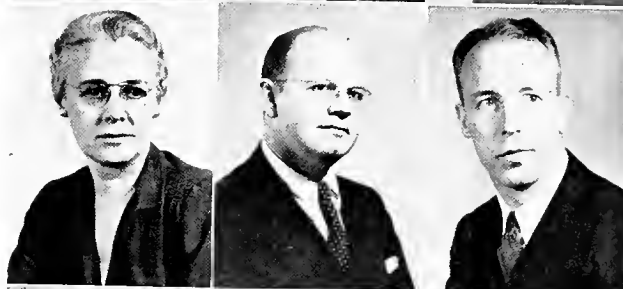
**JEAN CHARLES KOHLER**, B.M. (De Pauw), M.M. (Eastman), Instructor in Piano and Organ.



**EDYTHA KEENEY**, R.N., (Clifton Springs), Campus Schools Nurse.

**AUSTIN G. LEDWITH**, Mus.B. (New England Conservatory), M.A., (Harvard), Instructor in Band and Orchestra Instruments, Instrumental Organizations, Chorus, Conducting, and Music History.

**S. MANFORD LLOYD**, B.S. (Mansfield), M.A. (Columbia), Instructor in Mathematics.



**HERBERT E. MANSER**, B.S., M.A., (Columbia), Instructor in French, Latin, and Spanish.

**ELIZABETH B. MORALES**, B.S., M.A., (Columbia), Director of Home Economics Education.

**EDNA P. MARSH**, B.S., M.A., (Columbia), Supervisor of Grade 3, Campus Elementary School.



**KIMBLE G. MARVIN**, B.S. (Lafayette), M.A., (New York), Instructor in Health and Physical Education.

**JOSEPH J. MOORE**, M.D. (Pennsylvania), College Physician.





**MARGARET R. MORRIS**, A.B. (Iowa), M.A. (New York) Instructor in Health and Physical Education.

**JAMES G. MORGAN**, Ph.B. (Muhlenberg), M.A. (University of Michigan) President of College Dean of Instruction

**S. MARJORIE MURPHEY**, B.S. (Edinburgh), Ed.M. (Pittsburgh), Instructor in Art.



**CLARENCE R. MUCHLER**, B.S. (Lock Haven), M.S. (Bucknell), Campus Junior High School.

**JEANETTE NORTON**, Secretary to Director of Campus Schools.

**AGATHA NELSON**, B.S. (Minnesota), College Dietician.



**MARGARET O'BRIEN**, A.B. (Syracuse) M.A. (McGill), Supervisor of Reading and Social Studies, Campus Junior High School.

**BERTHA R. PALMER**, B.S. (Bucknell), B.S. in Liberal Science (Millersville), Librarian of Campus Schools.

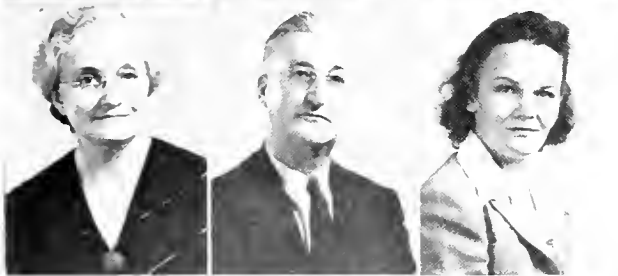
**FLO A. RAMSEY**, B.S. (Lady of Lake College, Texas), M.A. (Columbia), Instructor in Clothing Applied Design, and Consumer Education.



**CLARISSA A. RANDALL**, B.S., M.A., (New York), Supervisor of Music, Campus Schools.

**LAURA C. RHEBEIN**, Secretary to the Business Manager.

**GEORGE A. RETAN**, Pd.M. (Mansfield), B.F. (Pennsylvania State Forest School), Ph.D. (New York), Director of Elementary Education Student Teaching, and Placement.



**BLANCHE R. ROSS**, B.S., M.A. (Columbia), Supervisor of Grade 3, Campus Elementary School.

**ROSS W. SOPER**, Receiving Clerk.

**CYNTHIA SCHLAPPI**, Secretary to Home Economics and Music Department Directors



**GRACE M. REIMARD**, B.S. (Pennsylvania State), M.S. (Columbia) Cooperative Senior High School Teacher of Homemaking

**MARYON FARRER**, B.S. (Simmons), M.A. (Columbia), Instructor in Foods and Nutrition.

**ENID L. HENDRICKS**, B.Ed. (Bridgewater) M.Ed. (Boston University), Supervisor of Grades 4 Campus Elementary School.

**HENRIETTE E. SERGE**, B.S. (Hunter), M.A. (New York), Supervisor of Grade 4 Campus Elementary School.

**CARMEN SHREY**, R.N. (Williamsport Hospital), College Nurse.

**ELIZABETH P. STALFORD**, B.S. (Bucknell), M.A. (Columbia), Supervisor of Grade 5 Campus Elementary School.



**REA J. STEELE**, A.B. (Wisconsin), M. S. (Columbia), College Librarian.

**CYRIL L. STOUT**, B.S. (Knox), Ph.M. (Wisconsin), Ph.D. (Peabody), Acting Dean of Men, Instructor in Social Studies.

**MYRA DEANE STOUT**, Secretary to the President of the College.



**ALBERT K. SUNDBERG**, B.S. (Lock Haven), M.Ed. (Penn State), Instructor in Science and Mathematics.

**ELIZABETH M. SWAN**, A.B. (Kentucky), M.A., Ph.D. (Virginia), Instructor in Literature.

**VICTORIA H. THEIMANN**, Revenue Agent.



**L. MABEL UNSTAT**, B.S. (Shepherd), Ed.M. (Duke), Supervisor of Grade 1, Campus Elementary School.

**A. H. VOSBURG**, Superintendent of Buildings and Grounds.

**DOROTHY M. WASLEY**, A.B. (Gaucher), M.A. (Columbia), Dean of Women.



**ELLIS F. WHITE**, B.S., M.A. (St. Lawrence), Ed.D. (New York), Assistant Director of Elementary Education.

**DOROTHY WHITNEY**, Account Clerk.





MRS. MORALES

# The Homemaking

The Home Economics Department, under the able guidance of Mrs. Elizabeth B. Morales, prepares future teachers and home makers. A home economics student, after study in many fields, is ready to help America make good her victory. American citizens must know about health and nutrition to be able to serve their country adequately and efficiently.

The young women are given every possible opportunity to practice homemaking in all its phases. Small groups of students live for a period of six weeks during their Junior year in the home management apartment. Here they put into practice the principles they have learned in other home economics courses. The Juniors also manage and carry out the school lunch program in the Junior High School.

Each student teaches a semester on campus under careful guidance. She has the additional privilege of teaching with supervision in a vocational home economics department of an approved Pennsylvania high school for six weeks during her Senior year.

Another phase of the Home Economics curriculum involves a Child Development Course. In connection with this, a nursery school is conducted in a house and campus which has been specially equipped for this purpose. It provides an opportunity for the college students to actually take part in guiding preschool children in learning how to live with others and to develop as individuals. Discussions and reading pertaining to the physical, mental, emotional and social development of the child are supplemented by observation and contact with children.

## THE HOME MANAGEMENT APARTMENT

Every year the Juniors, in several groups, spend six weeks in the very modern and attractive apartment in the Arts building on campus. Here they put into practice the principles they have been taught in other homemaking courses. Each member, while in the apartment, has her own duties to perform for a week at a time. These include meal planning, cooking, managing, etc. The girls are supervised by a resident director, Miss Lilla Cortwright.

# Department

Bridge in the Apartment



Faculty





MARJORIE BROOKS

# Music Education



Student Conducting



Junior Ensemble



Brass Ensemble

# Department

The Music Department wishes to take this opportunity to welcome the ex-servicemen back to the campus. By next year the department expects to have a regular peacetime enrollment.

This department is one of the most active groups on and off campus. In addition to the many assembly and Vesper programs, the students participate in Sunday musicales and recitals, lead group singing and assembly hymns, and provide cultural as well as entertaining programs in their regular meetings.

Again this year, emphasis was placed on small ensemble work, in preparation for better band and orchestra organizations.



DR. G. A. RETAN

The Elementary School, one of the newest buildings on campus, is an impressive modern structure especially designed to fit the educational needs of growing children. This school guides the child from the kindergarten through the sixth grade. The curriculum includes all the traditional subjects of reading, writing, and arithmetic plus music, art, and industrial arts. The main emphasis is on the social studies. The laboratory school provides the children with a fine education for living. It is here that much of the foundation is laid for later life. The atmosphere of the school is strikingly democratic.

Every room is in charge of a supervisor who has the double responsibility of teaching the children and guiding the student teacher. Each supervisor has a line background of professional training and experience. Through her the student teacher develops in technique and personality.

# Elementary





Campus Elementary School



School



MISS JESSIE GRIGSBY

## Junior High

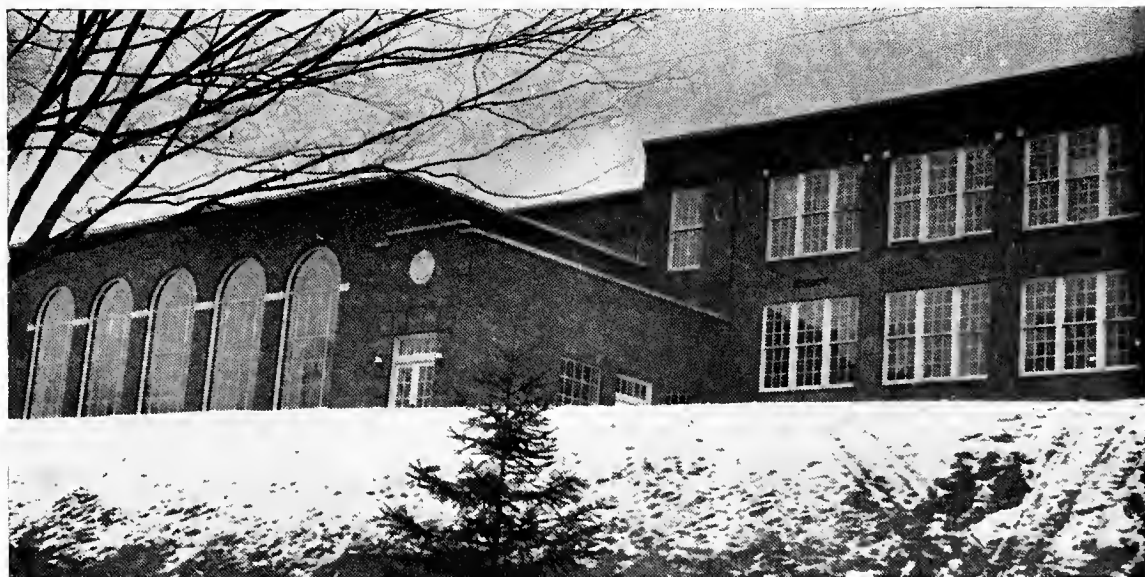
"To provide modern, progressive, educational facilities to the boys and girls of the community of Mansfield, and to provide laboratory school experience for the college students," that is the dual purpose of the campus Junior High School.

The Junior High School serves the children in the seventh, eighth and ninth grades. To them it offers the educational opportunities of a well rounded curriculum. In addition to the academic subjects, such as English, social studies, science, and mathematics, there are modern departments, offering constructive programs in health and physical education, music, art, homemaking, and industrial arts.

In the campus Junior High School, college students in the secondary, music and homemaking departments have opportunities to teach, to correlate, to evaluate, and to put into practice the educational theories and principles which they have acquired in college classes.

At the head of each department there is an efficient supervisor who supervises and guides his department, and who must act as a critic, guide, and good example for student teachers. No word of praise is too great for the supervisors and the part they play in the growth of the student teachers.

# School



Campus Junior High School

# The Secondary Club



First Row A Trowbridge, S Spencer, Sect'y-Treas., J. Read, Pres.; S. Smythe, V Pres., B Gallup, M Rice, M Fitzgerald, N Cook, K Welch.

Second Row G Colwell, L Briggs, S Beck, E Mertz, J Seigel, M Russell, A Payne, S Pierce

Third Row C Weed, B Hazlett, L Lehner, G Beardslee, B Kingsley, J. Ford, L. Kneller, R. Sheehan, H Sampson

Fourth Row W Close, W Lester, M Galavitz, E Nash, E. Varcoe, P Volante, D Swimley.

The Secondary Club is an independent campus organization composed of faculty members and students in the Secondary Department. The purpose of the club is to create a closer fellowship and a better understanding between the students and instructors in secondary education. The club attempts to keep in touch with current developments in secondary education and participate in the other benefits that result from membership in any such organization.

The sponsor of this comparatively young club is Eugene P. Bertin, director of Secondary Education at M.S.T.C. His tireless activity has been a key factor in the establishment and development of the Secondary Club.

During this year, the club has been under the efficient direction of: Janet Read, Seldon Spencer, and Sue Smythe.

# American Association of Childhood Education



First Row: J. Brunner, Pres.; J. Casey, W. Warner, W. Cornell, L. Byham, C. Payne, D. Hadley

Second Row: K. Loveland, C. Nares, E. Jones, M. Stebbins, M. Slocum, F. Marcucci, R. Rexford, S. Hollenbach, B. Davis, J. Mastropietro, M. Curtis, I. Danielsky, N. Williams, W. Macorkel, R. Bunn, R. Brown, J. Ferman.

Third Row: P. Spencer, B. Watkins, H. Wilson, M. Umstot, M. Geisecke, M. Serge, M. Bone, Mrs. Hendricks, M. Habeger, M. Grigsby, M. Marsh, M. Ross, J. Miller, Dr. Retan, M. Stallord, M. Hutchinson, A. Herzog, G. Baker.

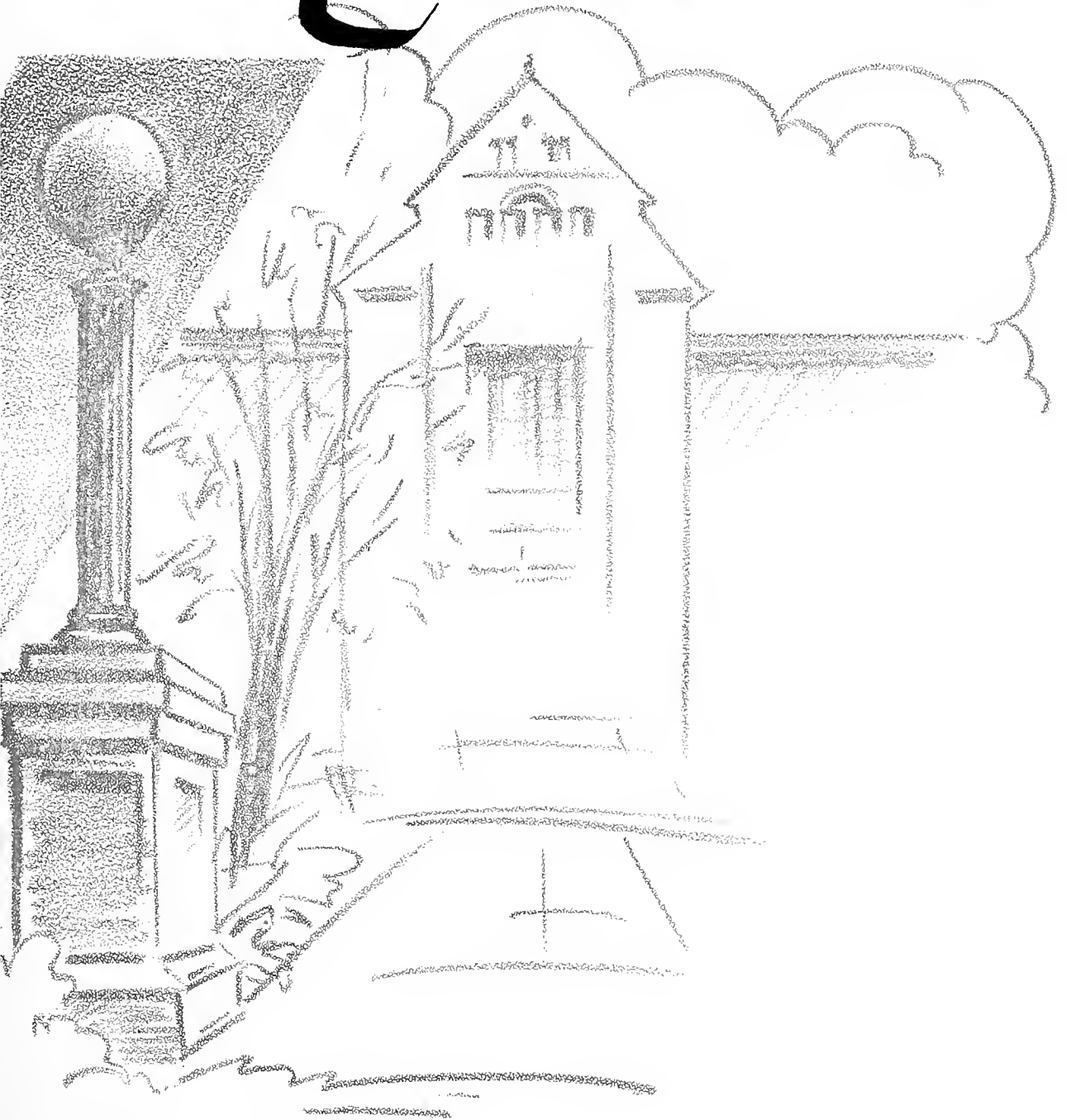
The A.A.C.E., officially known as the American Association for Childhood Education, is a national organization consisting of all the students and faculty members enrolled in the Elementary Department. Our club at M.S.T.C. is only one of many throughout the United States.

The purpose of the A.A.C.E. is to better prepare its members for the important role of the Elementary teacher. The meetings throughout the year are planned to meet this purpose, for they include discussions of current affairs, both as governmental and cultural topics, lectures, holiday observances, workshop meetings, and panel discussions. Through these meetings the students are also given the opportunity of getting better acquainted with other students training for Elementary education, and with the instructors in this field.

Our organization this year has proved its worth on the campus, for it has provided both intellectual and cultural development of its members.



# The Classes



# SENIORS

Class of  
1946



Our Sophisticated Seniors

## TO THE SENIORS

To each of you happiness and success! To help you achieve these may I suggest a few designs or patterns for living? Plan success in your mind and it will contribute immeasurably to your success. Keep interested in your own career, however humble. It is a real possession in the changing fortunes of times. Design a positive technique in handling limitations. There will always be greater and lesser persons than yourself. Discover within your own walls of limitations happiness, opportunity and abiding friendships. Design a peace policy for yourself, a policy of inward peace and serenity. Cultivate the art of peaceful living. Keep peace in your soul. Emotional poise is one of the most valuable and most difficult qualities to possess. It is not acquired easily. It means long and patient self-discipline. A discipline which will gradually modify not only your actions in moments of crises but also modify your habitual attitudes toward life and people. Strive for emotional poise. And lastly the designs suggested by Saint Paul—"Whatsoever things are true, honest, just, pure, lovely and of good report, think on these things." Meditate on these. You will be armed from within. It is well to meditate, too, on the words of the English critic Junius: "It is not that you do wrong by design, but that you never do right by mistake. Do correct things deliberately and intelligently by design." Design your life so that your contributions and achievements are richly satisfying to yourself and your fellowmen.

"For yesterday is but a dream, and tomorrow  
is only a vision;  
But today well lived makes yesterday a dream  
Of happiness and every tomorrow a vision of  
hope."

MARYON FARRER





We are approaching our Commencement Day and as we do we look with retrospect upon our last four years of college life. In the fall of 1942 seventy-eight people came to the campus of Mansfield State Teachers College as green Frosh. After a slightly uncomfortable initiation, we entered with lots of spirit into the college activities. As Sophomores, we continued with that same pep and vigor as we had when Frosh. In our Junior year we enjoyed picnics and roller skating parties instead of dances.

We are proud of those who left us to answer a much higher call—that of Uncle Sam's armed forces. And today we would like to thank them for helping give us our victory.

We are sad because we must leave Mansfield's campus, but as we take up our places in a peaceful world, we shall always remember our Alma Mater and try to live up to the principles which she has intrusted in us.





**SYLVIA LORRAINE BECK**

Secondary

Jermyn, Pa.

Flashlight 1, 2, 3, 4; Co-Editor 2; Editor 3; Senior Class President; Art Club 2, 3, 4, Kappa Delta Pi 3, 4, Carontawan Board 4; W.A.A. 1, 2, 3, 4; College Players 4; Secondary Club 1, 2, 3, 4; Y.W.C.A. 1, 2; Student Council 3, 4; Who's Who in American Colleges and Universities 4.

Ambition: To return to MSTC. to teach.

Favorite hero:

At what I'm a genius. Bridge.

**JEAN I. BRUNNER**

Elementary

Ridgway, Pa.

College Players 1, 2, 3; Y.W.C.A. 1, 2, 3; A.A.C.E. 1, 2; President 3; W.A.A. 2; Women's Chorus 1, 3; Flashlight 1, 2, 3; Kappa Delta Pi 3; Senior Class Treasurer.

Nickname Fat

At what I'm a genius. Getting out Phys. Ed

Outstanding thing which I remember: Registration Days, North Wing of Third Floor



**M. HELEN BUCKINGHAM**

Homemaking

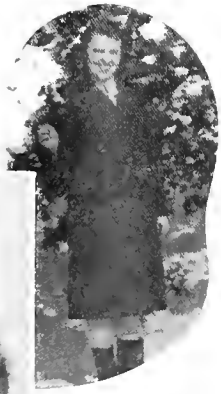
Scenery Hill, Pa.

Omicron Gamma Pi 1, 2; Vice Pres 3; President 4; Art Club 2, 3, 4, Y.W.C.A. 1, 2, 3; Secretary 4; W.A.A. 1, 2, 3, 4; College Players 2, 3, 4, Class Secretary 3.

Favorite saying. Doggone.

Pet Peeve: Hats.

Outstanding thing I remember First week-end in Mansfield.



CARLTON F. CARPENTER

Secondary

Osceola, Pa.



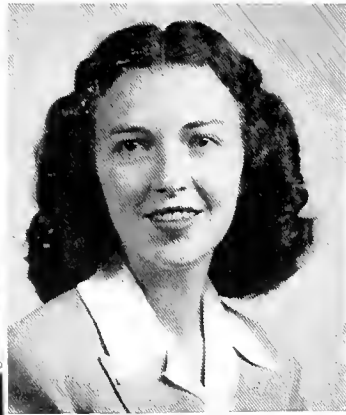
MARIAN CLARKE

Music

(Transfer)

Sylvania, Pa.





**GEORGIA A. COLWELL**

**Secondary**

**Susquehanna, Pa.**

Flashlight 1, 2, 3, 4; Y.W.C.A 1, 2; Vice Pres. 3; President 4; W.A.A 1, 2; Treas. 3, 4; Carontawan 2, 3; Secondary Club 2, 3, 4; College Players 4

Pet Peeve: People changing my alarm clock

At what I'm a genius: Getting places a little late.

Things I like most about M.S.T.C. Mr. Beyer's field trip!

**EDWARD H. DEGVILLE**

**Secondary**

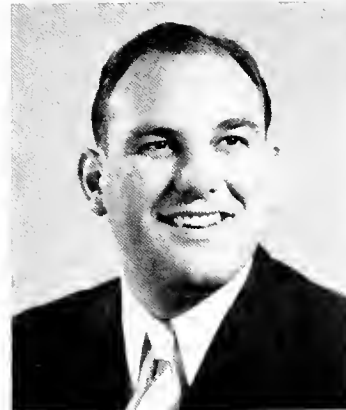
**R.D. 2, Wellsboro, Pa.**

Secondary Club 2, 3, 4; College Players 3, 4, Men's Student Club 2, 3, 4, President 3; Kappa Delta Pi 3, 4; Basketball 4, Student Council 3; Flashlight 3, 4; "M" Club 4

Hobby Raising a family.

Things I liked best about MSTC. Coming back of men.

Outstanding thing I remember My wife attending performance of "Jane Eyre"



**ANNA M. DRUMM**

**Homemaking**

**Middleburg, Pa.**

Y.W.C.A. 4; W.A.A. 3, 4; Omicron Gamma Pi 1, 2, 3, 4; Flashlight 3, 4; College Players 3, 4.

Favorite saying: By Golly!

Ambition: To graduate—and maybe be a dietitian.

At what I'm a genius: Worrying.

**MARJORY ANN EICK**

**Homemaking**

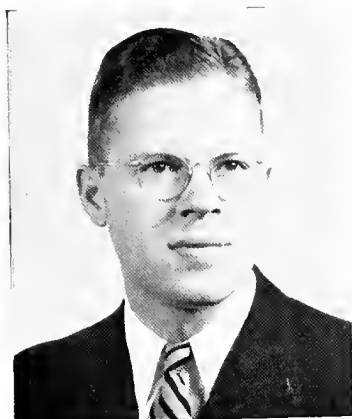
**Hillsgrove, Pa.**

Omicron Gamma Pi 1, 2, 3, 4; Treas. 3; Kappa Delta Pi 3, 4; Corresponding treasurer 4; College Players 3, 4; Historian 4; Y.W.C.A. 1, 2, 3, 4; Band 1, 2; Carontawan 4.

Favorite saying: Glory!

Pet peeve: People that don't think for themselves.

Ambition: To find time to do all the things I've wanted to do.



**RUSSELL CAMP**

**Secondary**

**Mansfield, Pa.**

**PATRICIA ANN JAMES**

**Music**

**Erie, Pa.**

Music Ed. Club 1, 2, 3, 4; Y.W.C.A. 1; Cabinet 2, 3, 4; Kappa Phi 1, 2, 3; President 4; Women's Dorm Council 2; Student Council Treas. 3; Lamba Mu 2, 3, 4; Treas. 3; Vice Pres. 4; Kappa Delta Pi 3; President 4; Who's Who in American Colleges and Universities 4; Madrigal Singers 3, 4; Orchestra 1, 2; Concert Group 3, 4.

Pet peeve: Having to go to bed.

Hobby: Collecting violin mutes.

Outstanding thing I remember: Lambda Mu initiation.





**VIRGINIA R. KAST**

**Homemaking Education**

**Lehigh, Pa.**

College Players 3; Secretary 4, W.A.A. 1, 2, 3; Treasurer 4; Y.W.C.A. 1, 2, 3, 4; Flashlight Staff 3, 4; Omicron Gamma Pi 1, 2, 3, 4

Pet peeve: No sleep.

In what I'm a genius: Saying the wrong things at the right time

Outstanding thing I remember: The first time I was called Miss Kast.

**EMILIE E. KERLIN**

**Homemaking**

**Falls, Pa.**

(Transfer) Y.W.C.A. 3, Publicity chairman 4; W.A.A. 3, 4, Omicron Gamma Pi 3, 4

Favorite food: Chocolate ice cream.

Favorite hero: "Lee"

Things I like most about M.S.T.C.: Roomies, campus, waitress table.



**EILEEN V. LEONARD**

**Homemaking**

**Pleasant Mount, Pa.**

Class vice president 3; Class secretary 4; Omicron Gamma Pi 1, 2, 3, 4; W.A.A. 2, 3, president 4; College Players 3, 4; Kappa Delta Pi Vice President 4.

Favorite saying: Oh Gosh!

At what I'm a genius: Sleeping

Outstanding thing I remember about M.S.T.C.: Christmas caroling and the party afterwards.

**L. ELIZABETH TYRELL LORD**

**Homemaking**

**Nicholson, Pa.**

College Players 1, Secretary-treasurer 2, 3, President 4; W.A.A. 1, 2, Secretary 3, 4; Y.W.C.A. 1, 2, 3, 4; Omicron Gamma Pi 1, 2, 3, 4; Women's Chorus 1, 2; Flashlight Homemaking editor 3.

Nickname: Teddy.

Hobby: Collecting poems.

Outstanding thing I remember about M.S.T.C.: Student Teaching.



**JANICE ELAINE MADIGAN**

**Homemaking**

**Mansfield, Pa.**

Class President 3; Day Student Club 1, 2, 3, president 4; Pi Kappa Epsilon 3, president 4; Kappa Delta Pi 3, recording secretary 4; Omicron Gamma Pi 1, 2, 3, 4; Student Council 1, 3, 4; Flashlight 1, 2, 3, 4; Art Club 1, 2, 3, 4; W.A.A. 4; Student-faculty alumni committee 2, 3, 4; Y.W.C.A. 1, 2, 3, 4.

Pet peeve: Stripes, plaids, and prints worn together.  
Hobby: Gardening and photography.

Things I like most about M.S.T.C.: Student body and long vacations.

**JEANETTE MASTROPIETRO**

**Elementary**

**Susquehanna, Pa.**

A.A.C.E. 1, 2; Vice President 3; W.A.A. 2.

Pet peeve: 8:00 classes and 3:00 classes.

In what I'm a genius: Chewing gum.

Favorite song: "It's been a long, long time."





**LILON CAROL McCLINTOCK**

**Homemaking**

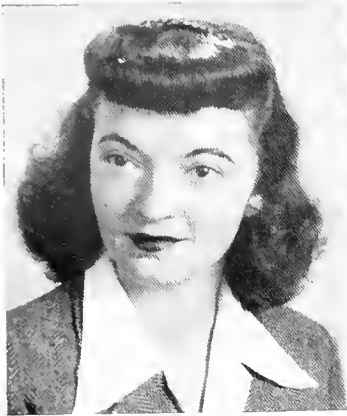
**Waterford, Pa.**

Women's Dormitory Council 2, 3; President 4; Class secretary 1; Who's Who in American Colleges and Universities 4; Student Council 4; Kappa Delta Pi 3, 4; Pi Kappa Epsilon 3, 4, Art Club 1, 2, 3; Vice-President 4; Flashlight Staff 2, 3; Carantawan 3; W.A.A. 3, 4; Y.W.C.A. 1, 3, 4; Dramatic Club 3, 4; Omicron Gamma Pi 1, 2, 3, 4

Nickname: L. C. or Fat.

Hobby: Needlework.

Outstanding thing I remember: The day I said "Hi!" to Mrs. Morales.



**ELEANOR JUNE MISSIMER**

**Homemaking**

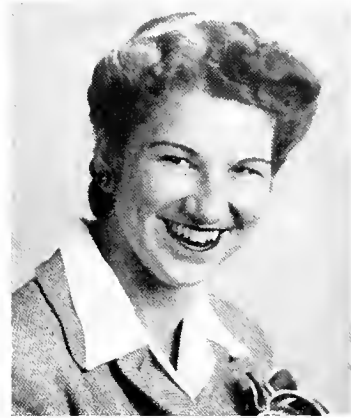
**Pottstown, Pa.**

W.A.A. 1, 2, 3, 4; Women's chorus 2; Y.W.C.A. 1, 2, 3, 4; Omicron Gamma Pi 1, 2, 3, 4, College Players 2, 3, 4; Flashlight 2, 3, 4.

Favorite sport: Football.

Outstanding thing I remember about M.S.T.C. My senior year

What are your post-war plans now that the war is over? To teach for three years and get my permanent certificate. By that time I hope to be married and then some time I'd like to have two little redheads.



**JANE PAWLING OWENS**

**Homemaking**

**West Milton, Pa.**

Class president 2; Student Council 2; Dormitory Council 4; Carantawan Photographer 3, 4; Flashlight 2, 3; Art Club 2, president 3, 4; Pi Kappa Epsilon 3, 4; Kappa Delta Pi 3, 4; Omicron Gamma Pi 1, 2, 3, 4; College Players 1, 2, 3, 4; W.A.A. 1, 2, 3; Y.W.C.A. 1, 2, 3, 4; Who's Who in American Universities and Colleges 4

Nickname: Janie

Pet peeve: People who sing in the morning.

Ambition: To travel around the world.





**MARY JANE PETERS**

**Music**

**Savona, N. Y.**

Music Educators Club 1, 2, 3, 4; Y.W.C.A. 1, 2, 3, 4; W.A.A. 2, 3; Flashlight Exchange Editor 2; Kappa Delta Pi 3, 4; Lambda Mu 2, vice president 3, president, 4; Dormitory Council 3; Carantawan Music Editor 4; Band 1, 2, 4; Orchestra 1, 2, 4; Who's who in American Universities and Colleges 4.

Pet peeve: No mail.

Thing I like most about M.S.T.C.: Faculty, friends, friendly atmosphere and the organ.

Outstanding thing I remember about M.S.T.C.: Initiation into Lambda Mu.



**JOHN S. RACZKOWSKI**

**Secondary**

**Plains, Pa.**

**JANET E. READ**

**Secondary**

**Mansfield, Pa.**

Carantawan Board 1, 2, 3, 4; Flashlight Board 2, 3; Women's chorus 1, 4; Secondary Club 1, 2, Treasurer 3, President 4; Y.W.C.A. 1, 2, 3, 4; W.A.A. 1, 2, 3, 4; Class Treasurer 3.

Nickname: Johnnie.

Ambition: To go to Hawaii with Syl Beck.

Hobby: Daing Math problems





**ARLENE M. ROTHERMEL**  
Homemaking

Klingerstown, Pa.

Y W C.A. 1, 2, 3, 4; W A A 1, 2, 3, 4; Omicron Gamma Pi 1, 2, 3, 4, College Players 3, 4, Women's Chorus 2.

Favorite sport: Roller skating

Outstanding thing I remember about M.S.T.C.: Life in Room 428, Christmas dinners.

Favorite song: The Lord's Prayer



**MARIE V. SCUDDER**  
Elementary

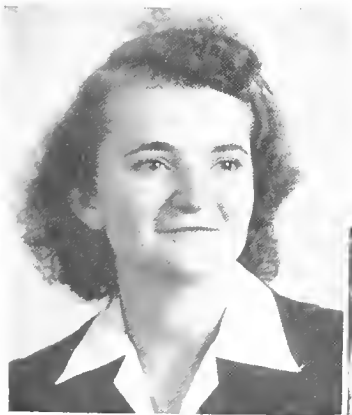
Riverhead, L. I.

Student Council 2, Vice president 3, president 4, A A C E 1, 2, 3, 4; Who's Who in American Universities and Colleges, 4, W.A.A. 1, 2, 3, 4, Y W C.A. 1, 2, 3, 4, Art Club 3, 4; Yo-Yo club 4; Flashlight 3, 4

Favorite saying: Oh heavens, No!

Ambition: What is it?

At what I'm a genius: Getting myself into complications.



**VIRGINIA MAE SINGLEY**  
Homemaking

Shumans, Pa.

Women's Dormitory Council 3, 4; Kappa Delta Pi 3, 4; Pi Kappa Epsilon 3, president 4; Y W C.A. 1, 2, 3, 4; W A A 1, 2, 3, 4; College Players 3, 4; Omicron Gamma Pi 1, 2, 3, 4

Favorite saying: My word!

At what I'm a genius: Penmanship (?)

Outstanding thing I remember about M.S.T.C.: The incident during our Freshman year when a bus left from in front of Straughn Hall with the last of our male population off to the wars.



**MILDRED WARNER**

**Homemaking**

**Montrose, Pa.**

W.A.A. 1, 2, 3, 4; Omicron Gamma Pi 1, 2, 3, 4; Class Vice President 4, Day Student Club 1, 2, 3, 4.

Favorite food: Milk.

Outstanding thing I remember about M.S.T.C.: The Apartment.

Favorite song: Always.



**ELIZABETH BRACE WETMORE**

**Music**

**Wellsboro, Pa.**

Music Educators Club 1, 2, 3, president 4; Lambda Mu 3, Corresponding Secretary 4; Kappa Delta Pi 3, 4; Day Student Club 2, 3; Chorus 1, 2, 3, 4; Carontawan Music Editor 3; Concert Group 3, 4; Woodwind Ensemble 3, 4.

Favorite saying: I thought I'd die

Ambition: To own a Hammond organ.

Pet Peeves: Bed filled with sugar, being pulled out for a fire drill.



**OLIVE STONIER WHITING**

**Music**

**East Aurora, N. Y.**

(Transfer) Lambda Mu 4; Kappa Delta Pi 4; Music Education Chorus 4.

Favorite food: Steak.

Pet peeve: People who leave theatre seats down.

Hobby: Collecting bells



# JUNIORS

## Class of 1947

President, C Stilwell  
Vice President P Schanbacher  
Secretary E Schmidt  
Treasurer, P Roche



It is later than you think! Three of your four short years of college life are gone—but, truly the best year is yet to come.

A real champion always has two characteristics—(1) the ability to perform under pressure and (2) a "kick" at the finish. You have proved yourselves with respect to the first of these by performing successfully with determination and cooperation during three war-time years of college education. It is now time to dedicate yourselves to a "successful finish". Next year will be the shortest of the four. Yet it should be filled with the choicest of fruits—hard work, full participation in co-educational life on an intercollegiate basis, and the laying of plans for the future. Let us bring to a successful conclusion—a job so well begun.

S. MANFORD LLOYD

Next year's Seniors—and we can hardly make ourselves believe it. With three grand years of M.S.T.C. behind us, we wonder what next year will find us doing.

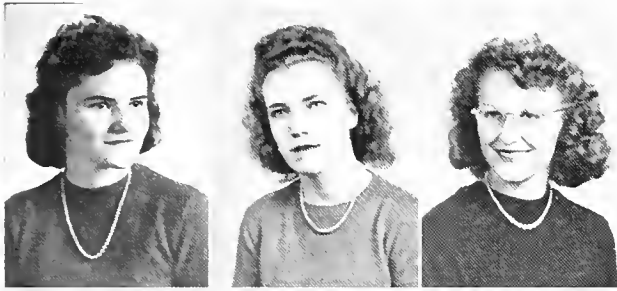
Still the class of endless energy, we're more than glad to add some of the newly acquired male population to our roster of girl after girl after girl! (Only now it's girl after boy after girl!)

Seriously though, we consider it an honor to be the second post war class to graduate from Mansfield and we wish to thank our more than capable advisor, Mr. Lloyd, and all of our instructors for seeing us through the difficult war years and bringing us out on top.

We hope our last year here will make you all as proud of us as we are of M.S.T.C.



Our Jolly Juniors



Rae S. Allen, Home Economics, Catawissa, Pa.  
Geraldine Frances Baker, Elementary, Rixford,  
Pa.  
Gloria V. Beardsley, Secondary, New Albany,  
Pa.



Minnie E. Bender, Home Economics, New  
Albany, Pa.  
Harold Besanceney, Secondary, Mansfield, Pa.  
Loretta Briggs, Secondary, LeRaysville, Pa.



Alma Jean Brion, Home Economics, Liberty, Pa.  
Dorothy A. Bunting, Home Economics, Way-  
mart, Pa.  
Raymeta Chaffee Hollenshead, Music, Rome,  
Pa.



Anna Marion Cherrington, Home Economics,  
Port Allegheny, Pa.  
Genevieve M. Cichocki, Home Economics, Plain,  
Pa.  
Janet Louise Crist, Music, Jersey Shore, Pa.



Patrick J. Cunningham, Secondary, Wilkes-  
Barre, Pa.  
Isabelle Danielski, Home Economics, Rummer-  
field, Pa.  
Mary Louise Dorrance, Home Economics, Elk-  
land, Pa.

Janice Margaret, Ferman, Elementary, Smethport, Pa.

Vesta Lorraine Fiddler, Home Economics, Brockway, Pa.

Mary Louise Fitzgerald, Secondary, Little Meadows, Pa.



William Flindt, Secondary, Montrose, Pa.

Bettejo Goodall, Music, Liberty, Pa.

Lawrence Charles Grow, Secondary, Covington, Pa.



Dora Mae Hammond, Home Economics, Wellsboro, Pa.

Mildred B. Hart, Home Economics, Forksville, Pa.

Audrey La Rue Heasley, Music, Rew, Pa.



Betty E. Hughes, Home Economics, Tioga, Pa.

Benjamin Husted, Music, Mansfield, Pa.

Eleanor Jones, Elementary, Little Meadows, Pa.



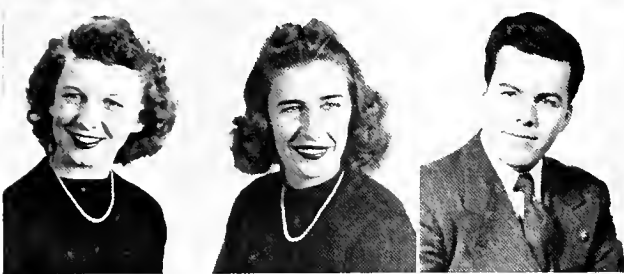
Elizabeth E. Kingsley, Secondary, Columbia Cross Roads, Pa.

Kitty Lorraine Loveland, Elementary, Mansfield, Pa.





Joseph A. Markle, Secondary, Kingston, Pa.  
Anne Marie McCawley, Music, Susquehanna,  
Pa.  
Leon A. McGinley, Secondary, Upper Darby, Pa.



Audrey Ann McKenzie, Music, Rixford, Pa.  
Eleanor E. Mertz, Secondary, Mansfield, Pa.  
Joseph M. Mollahan, Secondary, Wilkes-Barre,  
Pa.



Paul H. Mulford, Secondary, Wellsboro, Pa.  
Olga Nagorny Norton, Home Economics, Sus-  
quehanna, Pa.  
Connie Nares, Elementary, Mansfield, Pa.



Eleanor Yvonne Nash, Secondary, Mainesburg,  
Pa.  
Vivian Lucille Oakley, Music, Wyalusing, Pa.  
Gloria R. Razey, Music, Emporium, Pa.



Patricia Anne Roche, Home Economics, Corning,  
N. Y.  
Marion Jean Ross, Music, Tunkhannock, Pa.  
Pauline B. Schanbacher, Home Economics,  
Mansfield, Pa.



Margaret H. Scheerer, Home Economics, Wellsboro, Pa.

Elizabeth A. Schmidt, Home Economics, Lehigh- ton, Pa.

Anna Mary Shultz, Home Economics, Williams- port, Pa.



Regina Louise Seeley, Music, Dushore, Pa.

Helen A. Smith, Home Economics, Mainesburg, Pa.

Suzzan Smyth, Secondary, Laporte, Pa.



Eleanor Warters, Home Economics, Mansfield, Pa.

Charles Weed, Secondary, Dushore, Pa.

Jean Reynolds Whitney, Music, Ulysses, Pa.



Margaret A. Spencer, Elementary, Canton, Pa.

Margaret Anne Thompson, Music, Clarks Sum- mit, Pa.

Lydia Gloria Ulanitsky, Music, Philadelphia, Pa.



Clarice Stilwell, Home Economics, Mansfield, Pa.

Richard Stroud, Secondary, Athens, Pa.



# Sophomore

## Class of 1948



President B. Leach  
Vice President, S. Palmer  
Secretary W. Lewis  
Treasurer, J. Monroe



To the Class of 1948:

College gives you four years of freedom from the necessity of toiling day after day merely to exist. It gives you an honorary entree into that aristocracy which no form of government has ever been able to suppress: the aristocracy of the well-informed. If you would establish yourself in this magnificence, you must avail yourselves of every opportunity here at Mansfield to acquire all of the necessary techniques of your chosen profession, to school yourself to be agreeable to others, and to cultivate the fine art of plausibility. The degree to which you will be able to obtain these will go far in determining your chances for future success.

AUSTIN LEDWITH,  
Class Adviser

As the class of 1948 turns to face a world at peace, we feel proud and grateful to the fighting forces that won this peace for us. We will have as a goal for our endeavors at Mansfield a better society for future generations, a firmer understanding and love of our fellowmen, and the desire to create, design, and promote for the benefit of all humanity.



Our Fun-loving Sophomores



**TOP ROW**

Bohlayer, M. Elizabeth  
Home Economics  
Troy Penna.

Brueilly, Virginia Louise  
Elementary  
Covington, Penna.

Byham, Lois Ann  
Elementary  
Kane, Penna.

Capwell, Esther Marie  
Home Economics  
Allentown, Penna.

**MIDDLE ROW**

Carlson, Rena Iris  
Elementary  
Turtlepoint, Penna.

Close, S Wayne  
Secondary  
Lawrenceville, Penna.

Collins, Dolores Ann  
Home Economics  
Laceyville, Penna.

Cook, Nelda Betty  
Secondary  
Millerton, Penna.

**BOTTOM ROW**

Cornell, H Wanda  
Elementary  
Genesee, Penna.

Costello, Patrice  
Secondary  
Mainesburg, Penna.

Cowles, Jean Marie  
Music  
Orwell, Penna.

Turtis, Marion Alice  
Elementary  
Flemington, New Jersey

Cunningham, Leatrice Aleene  
Music  
Mt. Jewett Penna.



**TOP ROW**

Dunlap, Delphine Ella  
Home Economics  
Meshoppen, Penna.

Dussinger, Doris  
Music  
Brownstown, Penna.

Farbes, Luella  
Music  
Towanda, Penna.

Ford, Janice L.  
Secondary  
Rome, Penna.

**MIDDLE ROW**

Harrington, Myra  
Elementary  
Shinglehouse, Penna.

Herzog, Anne Katherine  
Elementary  
Smethport, Penna.

Hollenback, M. Shirley  
Elementary  
Kingsley, Penna.

Hotchkiss, Elma  
Music  
Fairview, Penna.

**BOTTOM ROW**

Kneiss, Eleanor  
Music  
Taylor, Penna.

Kneller, Lorena Mae  
Secondary  
Dushore, Penna.

Leach, Elizabeth Ann  
Elementary  
Mansfield, Penna.

Lewis, Wilma E.  
Music  
Harrison Valley, Penna.

Marucci, Frances V.  
Elementary  
Wyalusing, Penna.



**TOP ROW**

Mase, Ruth L.  
Home Economics  
Liberty, Penna

Meyer, Audrey  
Music  
Blossburg, Penna.

Miller, W Jean  
Elementary  
Tioga, Penna

Monro, Janice Marcelle  
Home Economics  
Troy, Penna.

**MIDDLE ROW**

Muth Lita  
Music  
Lebanon, Penna

Palmer, Shirley A.  
Music  
Troy, Penna.

Ramage, E. Alice  
Home Economics  
Wyoming, Penna.

Rexford, Ruth I.  
Elementary  
Sabinsville, Penna.

**BOTTOM ROW**

Rhodes, Leda Irene  
Elementary  
Kinsley, Penna.

Ritter, James  
Music  
Eaglesmere, Penna.

Russell, Mary Ellen  
Secondary  
Genesee, Penna.

Shaw, Ada M.  
Music  
Mansfield, Penna.

Shedden, Lynette  
Secondary  
Blossburg, Penna.



**TOP ROW**

Sheehan, Ruth  
Secondary  
Mansfield, Penna.

Siegel, Joan L.  
Secondary  
Laceyville, Penna.

Stebbins, Mona Lee  
Elementary  
Sabinsville, Penna.

Spencer, Patricia J.  
Elementary  
Towanda, Penna.

**MIDDLE ROW**

Simmons, Cecil  
Secondary  
Wellsboro, Penna.

Trowbridge, Anna M.  
Secondary  
Laceyville, Penna.

Warner, Dorothy I.  
Elementary  
Friendsville, Penna.

Washleski, Victoria H.  
Music  
Simpson, Penna.

**BOTTOM ROW**

Watkins, Barbara S.  
Elementary  
Williamsport, Penna.

Weber, Eleanor J.  
Music  
Erie, Penna.

White, Josephine M.  
Home Economics  
Greenwood, New York

Williams, Norrine  
Elementary  
Le Raysville, Penna.

Wilson, Hazel Elizabeth  
Elementary  
Elmira, New York

Willson, Doris  
Home Economics  
Taylor, Penna.

# FRESHMEN

## Class of 1949

To the Class of 1949:

As your class advisers we trust that your first year at Mansfield has been a challenging experience and has made a rich and significant contribution to your life. Since last September you have worked and played together as a class and a fine spirit of cooperation, loyalty and friendliness has characterized your various activities. This important lesson will be a valuable asset in life. The principles of international friendship and good will, freedom and peace are based on the simple axioms of common sense, decency, good taste, kindness, and justice. By practicing these principles as an individual and as a member of the college group you are aiding in maintaining world peace which we are valiantly striving to attain.

It has been a pleasure to be your advisers during your Freshmen year and our best wishes are extended to you.

DOROTHY M. WASLEY,  
CYRIL L. STOUT,  
*Class Advisers*



President, W. Lester  
Vice President, G. Maxwell  
Secretary, F. Gazdick  
Treasurer, M. McCawley





## 1945-46 WAR ENDED. VICTORY! PEACE?

We, the first Freshmen to climb Mansfield's college hill since the close of World War II, found a genuine campus spirit waiting up for us.

Our first few weeks were packed with thrills and bewilderments. With a smattering of interviews, tests, schedules, and parties, we started our year; and were helped over the bumps by the friendly Sophomores who showed us our place as "poor green Frosh" during our week of initiation. Our class work started with the election of officers.

Since we were the first peace-time Freshman class, our enrollment met the 80 mark. Our boys helped gain the victory and can share, with us, the opportunity of creating a happy college life. As we build our foundations we hope to gain wisdom from our American heritage and knowledge from those before us. With the Faculty, Upper Classmen, and Big Sisters as friends we have found a happy —?— in our new college career.



Our Promising Frosh



RICHARD BAITY—Secondary—Covington, Pa  
 GENEVIEVE BARNES—Secondary—Mansfield, Pa.  
 CATHERINE BERCOT—Music, Wellsboro, Pa.



ELEANOR BITNER—Home Economics—Mill Hall, Pa.  
 LOIS JEANETTE BOARDMAN—Music—Nichols, N. Y.  
 ARNETA BRAINARD—Secondary—Harford, Pa.



RUTH LOUELLA BUNN—Elementary—Canton, Pa  
 BEVERLY BROWN—Secondary—Nescopeck, Pa  
 RHEA HELEN BROWN—Elementary—Burlington, Pa



BETTY VIRGINIA BURT—Home Economics—Tioga, Pa.  
 BETTY BUTMAN—Music—Tioga, Pa  
 JANET RUTH CASEY—Elementary—Susquehanna, Pa.



THELMA JANE CARR—Home Economics—Corning, N. Y.  
 GROVER CLEVELAND—Secondary—Covington, Pa.  
 JOSEPH H CUNNINGHAM—Secondary—Wilkes-Barre, Pa.



RICHARD ROMNEY DANN—Music—Elkland, Pa.  
 JEANETTE M DAVEY—Home Economics—Mansfield, Pa.  
 BARBARA JEAN DAVIS—Elementary—Nelson, Pa.

T. ISABELLE DIEZ—Music—Plymouth, Pa.  
 BARBARA ANN DIMON—Music—Rome, Pa.  
 JEAN DRAGWA—Music—Simpson, Pa.



EMELYN ANNE DRAKE—Music—Shinglehouse, Pa.  
 SHIRLEY JEAN DUTCHER—Music—Tioga, Pa.  
 ADRIAN FAYE—Secondary—Covington, Pa.



ARDIA FESSLER—Elementary—Covington, Pa.  
 JEAN FORD—Home Economics—Wellsboro, Pa.  
 BERNICE E. GALLUP—Secondary—Glenolden, Pa.



MARIE GALAVITZ—Secondary—Simpson, Pa.  
 L. FLO GAZDICK—Music—Gaines, Pa.  
 JUNE ELIZABETH GEISS—Home Economics—Scranton, Pa.



ELSIE MAE GILBERT—Home Economics—Bradley Beach, N. J.  
 DORIS MARIANNE HADLEY—Elementary—Mansfield, Pa.  
 JULANA R. HANNOLD—Secondary—Tiona, Pa.



HELEN RUTH HISSAM—Home Economics—Milford, Pa.  
 DORIS M. KNOWLTON—Elementary—Covington, Pa.  
 LOIS ALEEN KUNKIE—Music—Wyalusing, Pa.





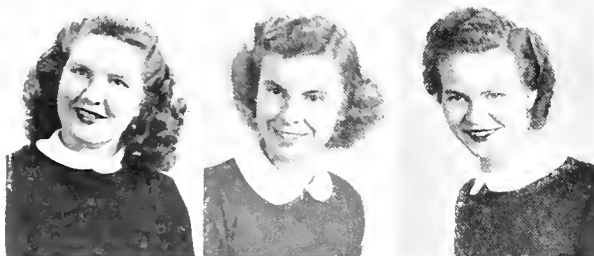
BETTY LAMB—Secondary—Susquehanna, Pa  
LUCILLE MARY LEHNER—Secondary—Susquehanna, Pa  
WELLINGTON LESTER—Secondary—Equinunk, Pa



PAOLINE LEVENGOOD—Home Economics—Brownston, Pa  
LEONA L. LUDWIG—Home Economics—Hegins, Pa  
F WINIFRED MACORKEL—Elementary—Wilkes-Barre, Pa



GENE ELIZABETH MAXWELL—Home Economics—Williamsport, Pa  
MARY REGINA McCAWLEY—Secondary—Susquehanna, Pa  
SHIRLEY ANN McCONNELL—Home Economics—Mansfield, Pa.



MARY JANE McNETT—Music—Roaring Branch, Pa  
JEANNE SHIRLEY MEEK—Home Economics—Allenwood, Pa  
AVA H PAYNE—Secondary—Westfield, Pa.



CAROLAN A PAYNE—Elementary—Eldred, Pa  
SHIRLEY DEANE PIERCE—Secondary—Wellsboro, Pa  
MARLEA L RICE—Secondary—Canton, Pa



JEANNINE FRANCES ROCKWELL—Home Economics—Troy, Pa.  
MARY ALICE ROGAN—Secondary—Springville, Pa  
DOROTHY SOLOWIEZ—Elementary—Wyalusing, Pa.

HELEN M SAMSON—Secondary—Roulette, Pa.  
MARILYN ELAINE SLOCUM—Elementary—Ararat, Pa.  
GENEVIEVE SMITH—Music—Camptown, Pa.



SELDEN SPENCER—Secondary—Towanda, Pa  
LUCILLE E. STERLING—Music—Wyalusing, Pa.  
PHYLLIS JEAN STRANGE—Home Economics—Sylvania, Pa



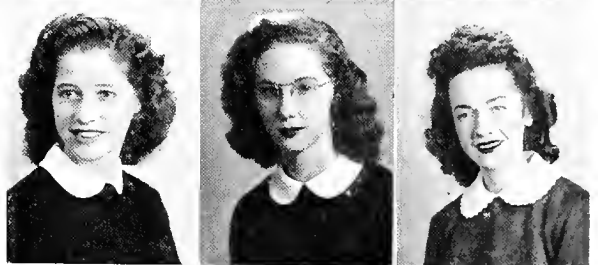
MIRIAM LOUISE SWAN—Music—Williamsport, Pa.  
DUANE SWIMLEY—Secondary—Knoxville, Pa.  
EUNICE VARCOE—Secondary—Waymart, Pa.



PAUL VOLANTE—Secondary—Elkland, Pa  
EDITH M WARREN—Music—New Milford, Pa.  
CATHERINE E. WELCH—Secondary—Corning, N Y.



MAYBELLE WOODIN—Music—Kane, Pa.  
ARLENE WHITNEY—Elementary—Nelson, Pa  
RUTH WILLIAMSON—Home Economics—Dushare, Pa.

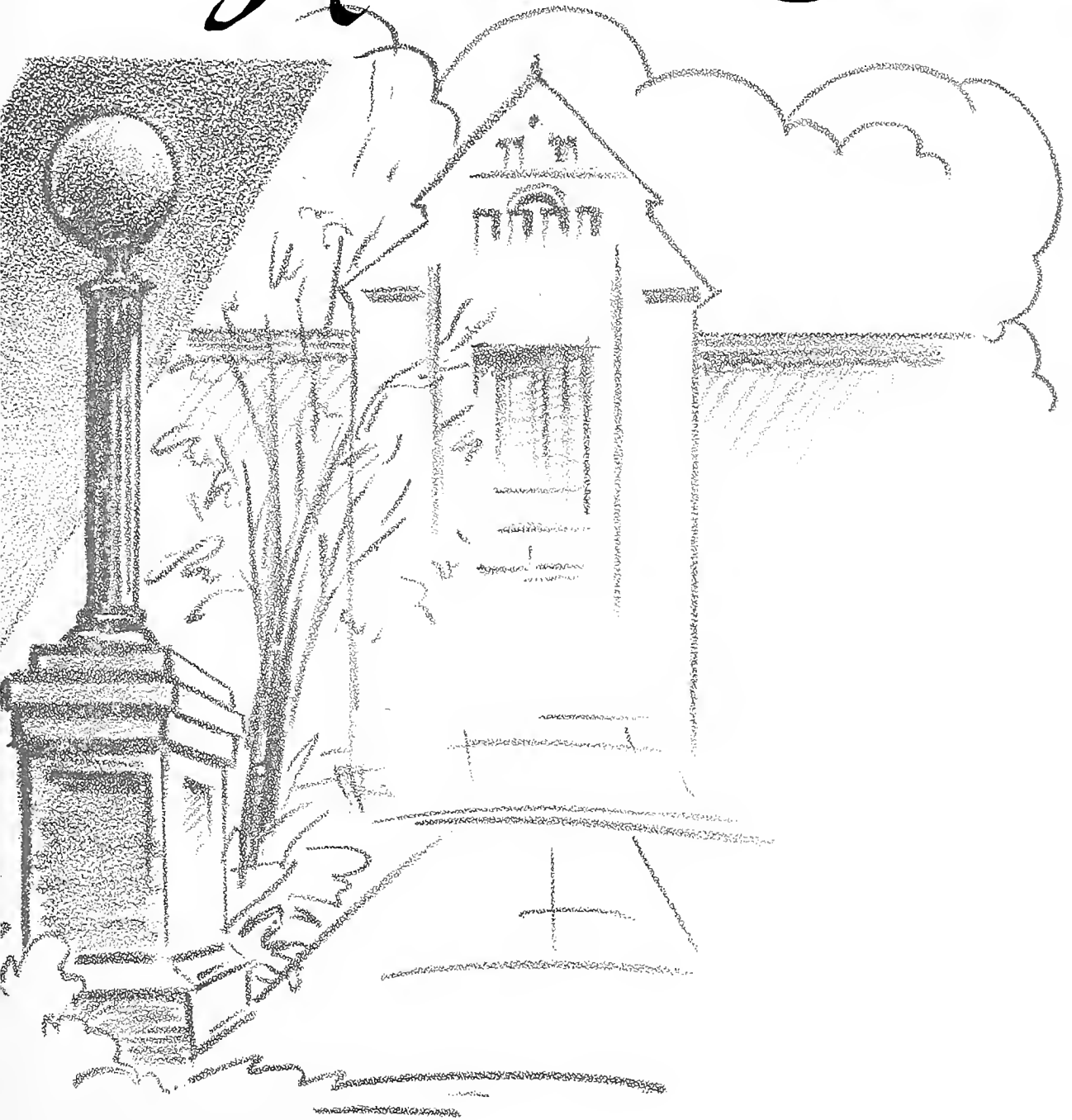


MARY ELLEN YEAGER—Home Economics—Millersburg, Pa  
JEANNE MARIE ZIMMERMANN—Home Economics—Mansfield, Pa





# The Activities



# Student Council



First Row J Madigan, V Wosheleski, Sect'y, C Weed, Treas ; M Scudder, Pres.; R Hollenshead, V Pres.,  
C Sulwell, E Mertz

Second Row W Close, Dr Stout, C McCintock, B Leach, A McCawley, S Beck, Miss Wasley, W Lester.



The meetings of the Student Council of 1945-46 were called to order by President Marie Scudder in the Student Activities Room on the first and third Monday of each month.

A motion was made, seconded and carried that the Student Council of Mansfield State Teachers' College strive to uphold high standards in this year of victory; to maintain and achieve a magnificent foresight in the future years of peace.

Discussion took place regarding; the big and little sister system, the planning of the social calendar, the publication of the "Password", the operation of extra-class point system, the appointment of Mansfield representatives to "Who's Who in American Universities and Colleges", the organization of Freshmen Week, and the sponsoring of the Victory Loan Drive.

Another motion was made, seconded and carried that the Student Council consist of thirteen members and two advisers. These members are: officers of the Council, class presidents, editors of publications, Day Students president, Men Students president, and Dormitory Council President.

The members of the Student Council decided that full cooperation from all was absolutely necessary for the success of all phases of college activities; a successful goal relies firmly on the full and enthusiastic cooperation of the entire student body.

The meetings were adjourned.





# May Day



The observance of Mayday has come to be one of M.S.T.C.'s most cherished and lovely traditions. Each year a group of our most charming Seniors girls is selected by the student body on the bases of their attractiveness, personality, extra-curricular activities and academic rating, to compose the May Court. From these, the Queen is secretly chosen, and is not revealed until the impressive ceremony on the appointed day. The 1945 court was truly representative of Mansfield's outstanding women, with Virginia Bailey appearing as a most regal Queen. The lovely Maypole dance by our capable Frosh initiated the ceremony, and an excellent program by the Sophomore Music Supes followed. The ceremony in Straughn Hall was climaxed when Lieutenant Homer Bailey of the United States Naval Air Corps, crowned our lovely Virginia Queen of the May.

Whoever might say that school teachers can't be glamorous need only take a look at M.S.T.C.'s May Court to find that he is badly mistaken!

## Women's Dormitory Council



First Row: D Dussinger, V Singley, C McClintock, Pres. J Owens, D Bunting  
Second Row: Miss Wosley, B Goodall, D Willson, R Izer

Each spring, the women students living in North Hall elect eight members who act as the governing body of the dormitory. The Council exists for the purposes of administering student life in the dormitory so that all might live comfortably and with consideration for others; of developing individual and group responsibilities; of promoting conditions for the development of courtesy, self-control, and the desire to strive toward higher scholastic standards.

Several projects have been undertaken by the Council throughout the year including the orientation of Freshmen women students to dormitory life, and the wall decorations of the living quarters-floors of North Hall.

The Council believes that the strength of its program is dependent upon the active participation of all the students and faculty, and is constantly seeking to stimulate that participation through basic, practical, and long-range planning.

M.S.T.C.'s "day hops" are real "belongers" to the college. To counterbalance their living off campus, and consequently, their missing many extra-curricular activities, their organization provides fellowship and good times that foster the real significance of college life. Members have their own rooms on first floor of North Hall, which is convenient for study, rest, or feminine "conversation" in between classes. The Day Students have been particularly active in campus affairs this year—perhaps due to the recent influx of men to South Hall!

## Day Students' Club

Officers for the year were:

*President*—J. MADIGAN

*Vice-President*—M. WARNER

*Secretary-Treasurer*—P. SCHANBACHER

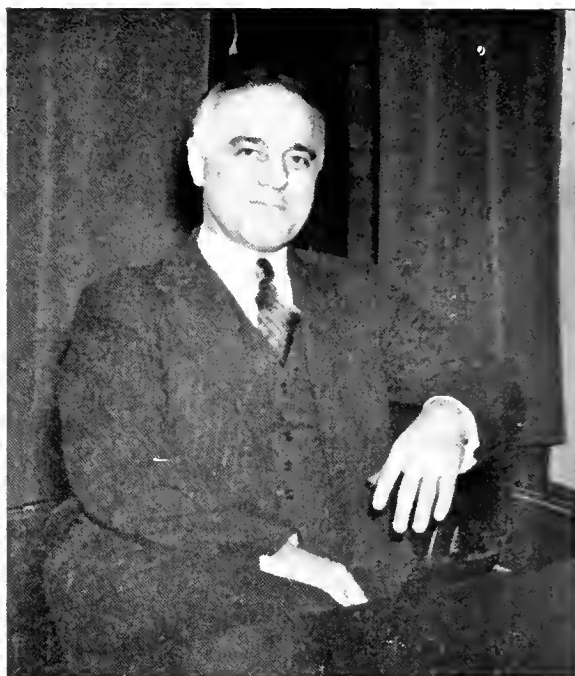
President, J. Madigan

Vice President, P. Schanbacher

Sec'y-Treas., Ruth Mase



# The Carontawan



Mr. Bertin, Sponsor

First Row H Besansceny, S Beck, J Owens, A McCawley, M Ross, V Washeleski.  
Second Row E Capwell, J Read, G Razy, J Whitney, A McKenzie  
Third Row M Eick, M. Peters, G Maxwell.



We, the staff of the 1946 Carontawan, have taken this opportunity of saying thanks from the bottom of our hearts to our servicemen—those who have come back to our campus, those of our Alumni, and those who will never return—by dedicating the yearbook to them and to the ideals for which they fought. We realize that this a meagre offering, but with it is included the sentiment of the entire college and all it stands for.

In this, our first post-war year we have been in competition with tremendous odds in publishing a yearbook. However, the spirit is here to stay, and we can rest assured that next year and the following years, the Carontawans will improve in size with the enrollment.

Anne McCauley  
Editor-in-chief



Harold Besancency  
Assistant Editor



Marian Ross  
Business Manager



Members of the Staff



# The Flashlight

Mr. Bertin  
Sponsor



First Row: B. Lord, L. Briggs, J. Miller, E. Jones, E. Nash, P. Roche, V. Washeleski, M. Dorrance.  
Second Row: L. Lehner, S. Palmer, B. Gallup, N. Cook, V. Kast, A. Drumm, H. Besansceny.  
Third Row: M. McCawley, R. Hollenshead, M. Yeager, M. Ress, E. Missimer, C. Stilwell, S. Hollenbach.  
Fourth Row: C. Weed, L. Cunningham, G. Beardslee, J. Brunner, R. Allen, R. Sheehan, J. Read.





E. Mertz, Co-Editor

The Student Body of M.S.T.C. has gradually become aware of the importance of the Flashlight, and each month its publication is greatly anticipated.

The Flashlight this year has made its principal aim that of discussing the social life of Mansfield in such a way as to bring Mansfield just a little closer home to our men and women in service to whom copies of each issue were sent.

In February, the Flashlight celebrated its twentieth anniversary, the first publication having been made in 1926. The editors endeavored to give Flashlight readers a picture of the paper "up through the years". Eight pages, instead of the usual four, composed the edition, and pictures of the campus from the 1880's up to the present were used. Jokes, an editorial, and other interesting articles were taken from back issues.

This year, there was a close coordination among the members of the staff, and this has been conducive to a spirit of cooperation. Each member has realized that the Flashlight rises above the petty factors of working together, and each aimed toward the ultimate goal — making the Flashlight the perfect journal!



E. Jones, Co-Editor



L. Briggs, Business Manager

## Music Educators' Club



First Row E. Warren, B. Dimon, L. Boardman, R. Seeley, Vice Pres. E. Wetmore, Pres.; A. McKenzie, Treas., E. Hatchkiss, Sec'y, G. Barnes, M. Thompson, O. Whiting, A. Meyer  
 Second Row L. Sterling, J. Dragwa, L. Kunkle, M. McNett, V. Washeleski, J. Crist, D. Dussinger, M. Rass, A. McCawley, G. Razy  
 Third Row R. Hallenshead, V. Oakey, B. Goodall, A. Heasley, B. Butman, L. Forbes, K. Bercot, L. Muth, W. Lewis, L. Cunningham  
 Fourth Row P. James, F. Gazdick, E. Drake, S. Dutcher, M. Paters, J. Ritter, B. Husted, E. Kneiss.

## Advanced Chorus



J. Hannold, J. Geiss, R. Bunn, R. Brawn, M. Thompson, A. Ramage, P. Spencer, B. Davis, J. Ferman, R. Rexford, M. Fitzgerald, M. Rice, S. Smythe, P. Strange, P. Lamb, E. Varcoe, W. Macorkel, M. Stebbins, J. Munro, S. Pierce, P. Schanbacher, A. Brian, B. Watkins, J. Seigel, L. Byham, M. Ross, J. Read, O. Nargorney, L. Lehner, M. McCawley, R. Mase, A. Cherrington, J. Miller, J. Brunner, D. Hammond, M. Scheerer, E. Wartlers, A. Herzog, M. Spencer, G. Razy, accompanist, Miss Randall, conductor.



# Women's Chorus

The Women's Chorus is an organization which provides an opportunity to sing, for the women of the Elementary, Secondary, and Homemaking departments.

The chorus is under the capable direction of Miss Clarissa Randall. We meet regularly for rehearsal on Wednesday nights at 6:45 in the "Y" rooms.

In order to be a member you must have a vocal "try-out" at the beginning of the year. Those that have been in the chorus previously, and is their desire to continue to be a member are automatically in for the following year.

Since we have organized Women's Chorus, we have prepared and presented programs showing our ability.



Officers: J. Madigan, Vice Pres.; L. Grow, Treas.; M. Eick, Sec'y; P. James, Pres.  
Miss Allen, R. Allen, G. Beardslee, S. Beck, J. Brunner, L. Briggs.  
Miss Brooks, D. Bunting, L. Grow, A. Cherrington, E. Degville, M. Eick.  
Miss Farrer, W. Flndt, B. Goodall, R. Izer, P. James, E. Leonard.  
J. Madigan, A. McCawley, C. McClintock, E. Mertz, Mrs. Morales, Miss O'Brien.

# Kappa Delta Pi



President, P. James  
Vice President, J. Madigan  
Secretary, M. Eick  
Treasurer, L. Grow

Kappa Delta Pi is an honor society in education, limits its membership to Juniors and Seniors who have attained excellence in scholarship. Since its purpose is to encourage high intellectual and scholastic standards, and to recognize outstanding contributions to education, emphasis has always been placed on high scholastic standing.

Kappa Delta Pi grew out of the Illinois Education Club which was established at the University of Illinois in 1909 to recognize and encourage high scholastic achievement and to dignify the teaching profession. In 1911, the club was reorganized as Kappa Delta Pi, which today ranks as one of the outstanding and influential organizations in the educational field. The Beta Rho chapter was installed at Mansfield in 1930, and since its inception on campus, Kappa Delta Pi has carved an enviable reputation. Our unit has been under the untiring guidance and assistance of Miss O'Brien.



# Omicron Gamma Pi

Omicron Gamma Pi is an organization composed of all the home economics students. The club is affiliated with the State and National Home Economics Association, and sends delegates to the state convention.

The aims of the organization are to promote a feeling of unity among the separate classes, to create better teaching activities for student teachers, and to make better and happier homes for coming generations. A wholesome and stimulating social atmosphere is maintained by the many activities planned by competent committees.

In our first meeting this year, a humorous skit was presented, portraying the experiences of the senior girls in their past summer projects. In November, Omicron Gamma Pi was hostess to Miss Culmer, Eastern Regional Editor of CHARM Magazine. Miss Margaret Kingsley of COOD HOUSEKEEPING staff, came to lecture in assembly and gave some special time to the home economics department.

Our special project for the year is a Treasure Chest for children overseas. The chest includes appropriate books depicting manners, customs and traditions of American culture. Friendship promoted in the hearts of children we hope to carry over into adult life in international relationships.

The special event of the Omicron group featured a dance in March and in the manner of welcoming to college life the returned veterans and young men entering college training.



First Row: O Nagorney, E Schmidt, G Cichocki, H Buckingham, D. Bunting, A Schultz, R. Mase, M. Dorrance, C Stilwell, P. Roche.

Second Row: V. Fiddler, M. Scheerer, R Izer, R Allen, A. Cherrington, P. Schanbacher, J. Brion, B. Hughes, H Smith

Third Row: M. Warner, J. Owens, E. Missimer, A. Drumm, J. Madigan, V. Singley, V. Kast.

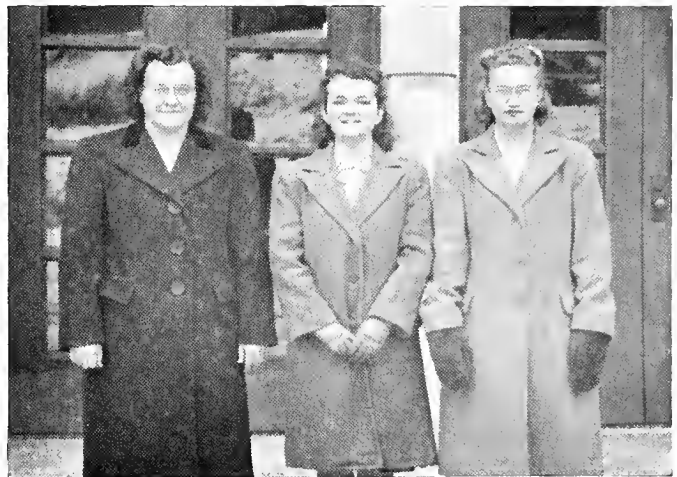
Fourth Row: M. Eick, C. McClintock, E. Leonard.



First Row: R. Williamson, M. Yeager, J. Zimmerman, H. Buckingham, D. Bunting, A. Schultz, R. Mase, H. Hissam, L. Ludwig, E. Rickard.

Second Row: A. Ramage, E. Capwell, D. Dunlap, D. Collins, J. Carr, E. Bitner, J. Ford, G. Maxwell.

Third Row: J. White, D. Wilson, P. Stronge, J. Munro, E. Bohlayer, P. Levengood, E. Gilbert, M. McCawley.



President, V. Singley

Secretary, A. Schultz

Treasurer, E. Schmidt

# Pi Kappa Epsilon



Top. R Allen, J Madigan, C McClintock, J. Owens.

Bottom V Singley, A Schultz, Sec'y. E Schmidt, Treas C Stilwell.

Pi Kappa Epsilon is a local Home Economics sorority striving for professional, cultural, and inspirational growth. Members of the organization are second semester Sophomores, Juniors, and Seniors who attain the required scholastic average. The sorority selects its members on the basis of their ability to get along with others, leadership, and maintenance of high standards.

The sponsorship and co-sponsorship consists of two Home Economics faculty members. A special problem in the field of home economics is carried out every year by the members under the able guidance of the sponsors.

Each member of the sorority pledges herself to make "A worthy contribution to the profession of Home Economics".

Meetings are held each alternate month. Members of the faculty and guest speakers aid the students in presenting interesting and educational programs. A banquet and initiation of new members in May terminates the year's activities.

# Y. W. C. A.



President, G. Colwell  
Vice President, E. Schmidt  
Secretary, M. Hart  
Treasurer, H. Buckingham

Every woman student on campus is a member of the Young Women's Christian Association. The organization, a member of the Student Christian Movement, has for its purpose, "to unite in a desire to realize full and creative life through a growing knowledge of God." We determine to have a part in making this life possible for all people.

The program of the YWCA is not yet back to its normal status of pre-war activities, but the regular Thursday evening devotional meetings consists of lectures and discussions of current social or national problems, conducted by faculty members, students or local ministers.

The comfortably furnished "Y" rooms on the first floor of North Hall are a perfect setting for the lively activities of the club. The atmosphere set by the ambition of the members promotes Christian living among the girls, and is of inestimable value to the woman teacher of today's world.



On the march



After the Hike



Aquatics

## Women's Athletic

The Women's Athletic Association, under the direction of Miss Morris, affords the girls the opportunities of participating in the various sports provided for in the recreational program. Seasonal tournaments were carried out during the year including bowling, tennis, archery, softball, basketball and volleyball. A course in Senior lifesaving was offered in the fall, and a good number of women students received their badges. The W.A.A. had for its officers throughout the 1945-46 year the following:

*President*—E. LEONARD  
*Vice-President*—M. HART  
*Secretary*—A. MEYER  
*Treasurer*—V. KAST

### MANAGERS OF W.A.A. 1945-46

*Softball*—KITTY LOVELAND  
*Swimming*—CLARICE STILWELL  
*Tennis*—BETSY LEACH  
*Basketball*—ELMA HOTCHKISS  
*Table Tennis*—AUDREY MEYER  
*Roller Skating*—MONA STEBBINS  
*Bicycling*—ANN DRUMM  
*Volley Ball*—MARION CURTIS  
*Bowling*—SYLVIA BECK, ELEANOR MERTZ  
*Badminton*—ESTHER CAPWELL  
*Sleighs, Toboggans, etc.*—ANN DRUMM





We like to hike

# Association

First Row: L. Muth, B. Watkins, A. Shultz, J. Brion, D. Collins, L. Ulanitsky, D. Bunting, M. Hart, A. Meyer, E. Leonard, V. Kast, M. Dorrance, C. Stilwell, K. Laveland, J. White, E. Hatchkiss, M. Spencer.

Second Row: A. Drumm, E. Schmidt, J. Ferman, E. Missimer, R. Rexford, P. Schanbacher, G. Gallup, M. McCawley, G. Maxwell, L. Cunningham, M. Yeager.

Third Row: K. Solowiej, H. Buckingham, B. Lord, A. Cherrington, R. Mase, D. Dunlap, E. Capwell, L. Byham, S. Palmer, L. Lehner, E. Kneiss, D. Willson.

Fourth Row: M. Scheerer, M. Warner, M. Eick, C. McClintock, V. Singley, A. Ramage, E. Drake, S. Dutcher, W. Lewis, D. Hammond, J. Cowles.

Last Row: M. Bender, M. Woodin, E. Kerlin, G. Colwell, J. Casey, J. Rockwell, J. Monroe, P. Strange, M. Curtis, M. Stebbins, P. Spencer, H. Wilson.



# College Players



First Row H Besanceney, M Hart, M Harrington, V Singley, Miss Allen, C Weed, V Kast, S. Smythe, M Eick, P. Levegood, A Rothermel, J Rockwell.

Second Row R Sheehan, M Dorrance, M Thompson, B. Hazlett, M Ross, A Drumm, G Maxwell, R. Carlson, M Stebbins.

Third Row E Jones, E Mertz, E Missimer, L Rhodes, L Byham, J. Brunner, L. Lehner, M McCawley, G Cichocki, L Briggs.

Fourth Row S Beck, A McKenzie, J Munro, G Colwell, B Watkins, E Leonard, J Miller, A Herzog, G Razez, A McCawley

Last Row S Spencer, J Ritter, J. Owens, C McClintock, R Seeley.

## DRAMATIC APPRECIATION DEVELOPED BY THE COLLEGE PLAYERS

The Dramatic Club of M.S.T.C. has proved a flourishing organization this year with the production of "Jane Eyre" heading the list of performances. It was with great pride that the club presented "Clarence" as its Spring production with actual men taking the male parts, and the play met with much-voiced approval.

With the addition of men on campus and the return of ex-College Players, the membership enrollment of the organization has steadily increased. The members of the club who enter for the purposes of acting, stage and back-stage set-up, and make-up, have enjoyed a year of interesting as well as beneficial meetings.

It is the belief of this organization that the student who is well learned in the various phases of dramatics will prove to be a more efficient American teacher.



On the set with "Jane Eyre" and "Clarence".

# Art Club



First Row. J Modigan, D. Bunting, H Buckingham, R Allen, Miss Murphey, P. Schonbacher, Pres; C. McClintock, J. Owens, F. Marcucci, C Stilwell, R. Rexford

Second Row J Monroe, V. Fiddler, A Meyer, E. Bohlayer, R Hollenshead, J. Ford, E. Leach, G Razy, A McCawley.

Each semester the Art Club sees its membership increased with those persons who attain an "A" in one semester of Art. Members find the club very active in carrying on a program of work, study and entertainment.

The aim of the club is the enrichment of life through the study and appreciation of Art which we feel is vital to the education of the reliable teacher.

The club is affiliated with the Eastern Arts Association, an active national organization, and each year the president is sent as a delegate to its convention.

As a special project, the club takes complete charge of the campus decorations for the Christmas season annually.

Under the direction of Miss Murphey, with Pauline Schanbacher as president, the club has participated in a very profitable and enjoyable year of meetings and lectures.



# Lambda Mu

President, M. J. Peters  
 Vice President, P. James  
 Rec. Secretary, V. Oakey  
 Cor. Secretary, E. Wetmore  
 Treasurer, G. Razey

Lambda Mu is the local honorary sorority for women students in the Music Department. Requirements for admission are based on musical talent, personality, integrity of character, and the attainment of second semester Sophomore rating plus certain academic and musical standards. Bi-annually Lambda Mu initiates candidates for membership and sponsors a banquet for members, active and alumnae, and the initiates.

The traditional well program at Christmas this year, was based on a child's perception of the holiday, and proved to be most successful. The reading used and the arrangements of the vocal numbers were special projects of the girls of the sorority.

Again this year, the group spent a week-end in New York City where they attended performances of the New York Philharmonic, the NBC Symphony, the Metropolitan Opera, and the Broadway musical, "Oklahoma".

Meetings during the year evolved around representative national opera. The sorority has been under the capable sponsorship of Miss Brooks, with the following officers:

President—M. P. PETERS  
 Vice-President—P. JAMES  
 Treasurer—G. RAZEY  
 Secretary—V. OAKEY  
 Corresponding Secretary—E. WETMORE



Top Row: Miss Brooks, sponsor; R. Hollenshecd, B. Goodall, P. James, A. McCawley.  
 Second Row: V. Oakey, M. Peters, G. Razey, R. Seeley, O. Whiting, E. Wetmore



### CADET NURSES

This year again Mansfield has assisted in the war program by providing the fundamental academic courses for the cadet nurses from Hahnemann Hospital in Scranton and the Robert Packer Hospital in Sayre. Several groups from both hospitals have had their initial training on our campus. The cadets enroll

for a sixteen-week period during which they pursue a vigorous pre-clinical program before proceeding to their actual participation in nursing at the hospital. These are the girls who have chosen so noble a profession, and to whom we give a great deal of admiration. We send our best wishes for their future with them at their departure from M.S.T.C.!

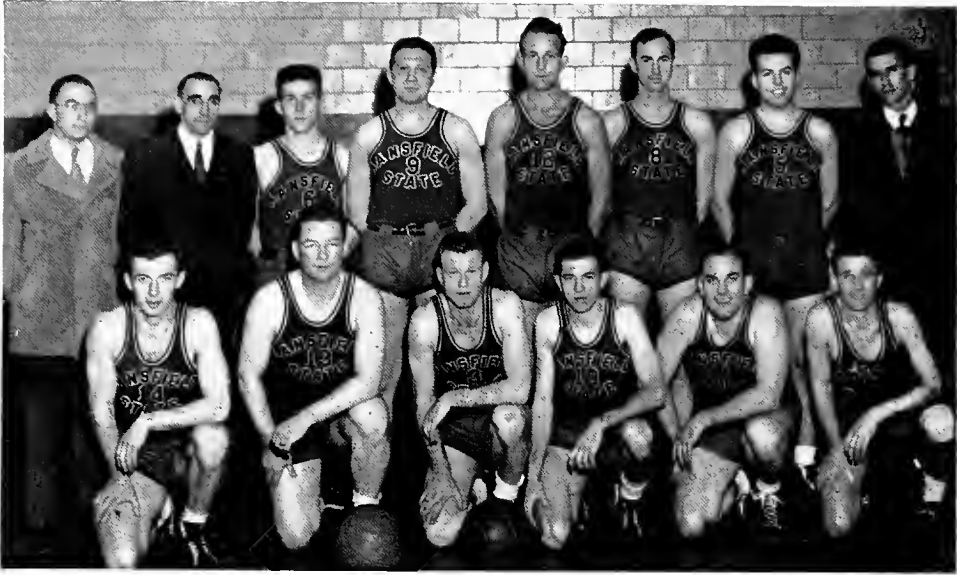




Who's Who  
in  
American  
Universities  
and  
Colleges



# Athletics



Front Row: D. Dorney, P. Cunningham, B. Johnson, C. Weed, E. Degville, J. Cunningham.

Back Row: W. Lester, Ass't Student Manager, Mr. Marvin, coach; D. Baity, J. Markle, E. Wilson, P. Mulford, J. Mollahan, L. McGinley, student manager.

## WE PLAYED BASKETBALL IN 1946

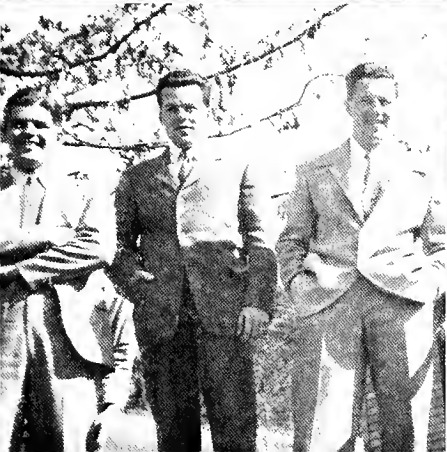
With the return of a good number of ex-GI's to the campus, the college was able to support a basketball team that proved to initiate a wonderful future in athletics for M.S.T.C. For those who recall the "old days" of Mansfield's fame in sports, the presence of the team proved rejuvenating; several of the players are "M" club men who have come back to Mansfield after doing their part in winning the war for us. Among the returned players are Joe Markle, Dick Dorney, Pat and Joe Cunningham, Joe Mollahan, and Paul Mulford. With Pat Cunningham and Bill Johnson as co-captains, the team fared a comparatively good opening season. We tangled with several of the teachers' colleges plus a number of local teams. The outstanding game of the season was the upsetting victory over Ithaca College. Special mention should be made of the prowess of Chuck Weed, Ed Degville, and Earl Wilson. Student managers for the year were Leo McGinley and Wellington Lester, Mr. Marvin coaching. With this start, Mansfieldians can anticipate a bigger and better athletic program in the succeeding years.







Mansfield's  
Vets  
on  
Campus



# Killed in Action

With this publication of the Carontawan in the spring of 1946, Mansfield feels more than ever before, the absence of her former students who have given their lives for their country in World War II. With reverent praise, we pay tribute to these men. It is our prayer that the democratic ideals for which they died may stand as living forces throughout the world, edifices to their sacrifices.

These men stand before us as eternal, radiant examples of the price of our way of Life, Justice and Freedom:



**John  
Beirne**



**Robert  
Van Horn**



**Robert  
McMullen**



**Joseph E  
Reed**



**Ralph  
Ross**



**John M.  
Sturdevant**



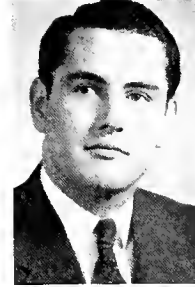
**Stanley D.  
Woodard**



**Robert  
Redner**



**Bruce  
Mack**



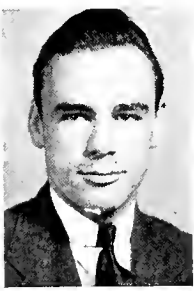
**Thomas  
Brannan**



**Robert  
Holland**



**Melvin  
Skerpon**



**Joseph L.  
Kilmer**



**James H.  
McHenry**

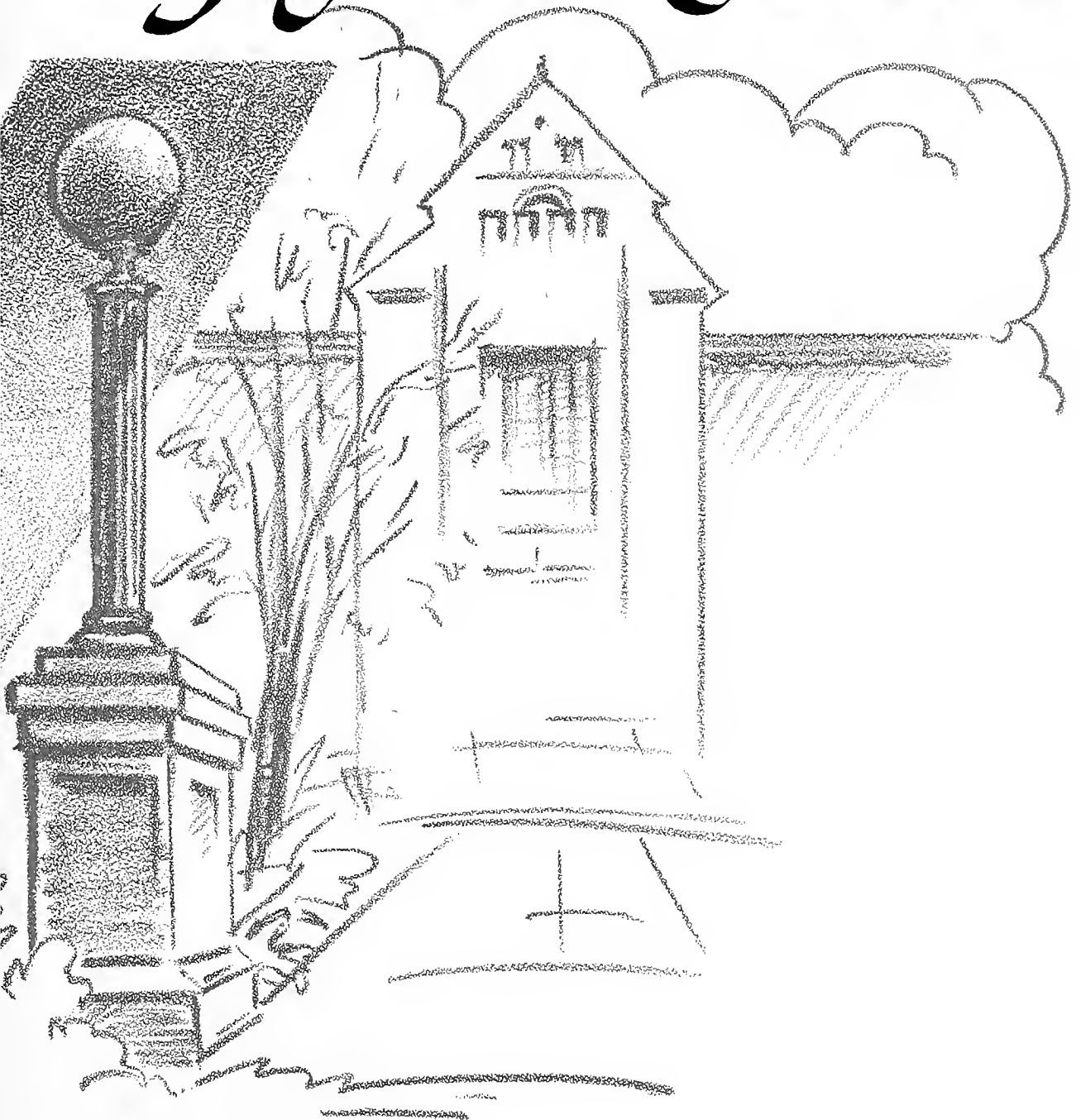


**Edward N.  
Henry**





# The Advertisers



SATISFACTORY LAUNDRY CO., INC.

737 West Fourth Street

WILLIAMSPORT, PENNA.

*“Satisfactory Since 1908”*

CAROLYN . . . . .

Sportswear

Coats

Dresses

Furs

*As advertised in Vogue, Harper's and Mademoiselle.*

Exclusively at

ROSENBAUM'S

ELMIRA, NEW YORK

Compliments of  
SMITH SALES AND  
SERVICE  
Telephone 26

Compliments of  
MUDGE BROTHERS  
Groceries and Meats  
Elmira Street  
MANSFIELD, PENNA.  
Citizens Phone 13Y

Compliments of  
MORRIS FARMS  
MANSFIELD, PA.

Compliments of  
CLEVELAND AND  
RAYMOND  
Hardware

EMPIRE FOODS INCORPORATED

Wholesalers and Distributors of  
Groceries, Fruits, Vegetables, Beverages

ELMIRA BINGHAMTON HORNELL AUBURN

Compliments of

THE PENN-WELLS HOTEL

Wellsboro, Pennsylvania



Congratulations to the  
1946  
Graduates.

BEN FRANKLIN  
STORE  
H. T. and Dorotha E.  
Witmore

Compliments of  
THE WRIGHT SHOP  
Fashion Center

GARRISON & MYERS  
*The Clothing Store on the  
Corner*

Arrow Shirts  
Stetson Hats  
Interwoven Socks  
Timely Clothes  
Michael-Stern Suits  
Style-Mart Suits

*We carry only quality lines.*

Cleaning and Pressing De-  
partment

*We appreciate your trade.*

DRUGS                      GIFTS  
STATIONERY

Complete line of Hallmark  
Greeting Cards  
Yardley, Lenthalic, Old  
Spice Toiletries  
Prescriptions Compounded

COLES PHARMACY  
(On the Corner)

MANSFIELD DAIRY COMPANY

Pasteurized Milk Products

Richard Lyle Hughes, Owner

BLOSSBURG

COVINGTON

Phone 179X and 180Y

LAWRENCEVILLE

TIOGA—Phone 29R5

Compliments of

NORTH PENN POWER COMPANY

Compliments of  
FRED L. JUPENLAZ  
Leather Shop

Compliments of  
BARNES GARAGE  
Ford Sales and Service

We extend hearty  
congratulations  
to the Graduates  
of 1946

SOURS VARIETY  
STORE

STRAIT'S HARDWARE

*On the Square*

Good Luck and Best Wishes  
for the future.

Always a Good Show  
at the  
TWIN THEATRE

Compliments of  
NORTH PENN GAS  
COMPANY

PHOTOGRAPHS  
BY HARRINGTON STUDIO

It is our hearty wish that this Carontawan with its portraits and group photographs by Harrington Studio will bring back to you many times in years to come, happy recollections of the years spent at M. S. T. C. To this we add our congratulations and "Best of Luck Always."

12 EAST WELLSBORO STREET  
MANSFIELD, PA.

EQUITABLE LIFE  
INSURANCE COMPANY  
OF IOWA

Fire Insurance  
Casualty Insurance  
Bonds

CECIL H. GARRISON  
45 E. Elmira Street  
MANSFIELD, PENNA.  
Bell Phone 14R2  
Citizens Phone 108W

H. K. BROWN MOTORS

19 E. Wellsboro St.

MANSEIELD, PA.

Citizens Phone 169

Bell 9052

Congratulations and  
Best Wishes.

MANSFIELD NOVELTY  
COMPANY

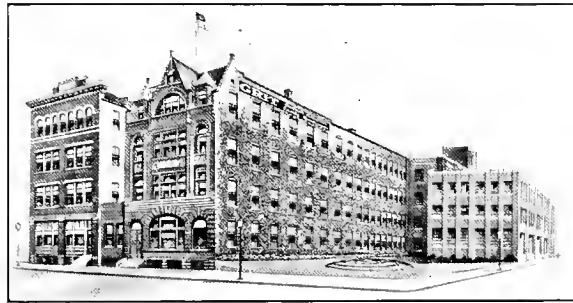
Building Material of All  
Kinds

Compliments of  
ROSE CHEVROLET

IDEAS

FOR THE ASKING

Whether it's a yearbook, a booklet, a catalog, or a pamphlet, a brochure, broadside . . . whether it's big or little, simple or complex, deluxe or economical . . . our well equipped and highly skilled organization is capable of handling it from beginning to end—from originating the idea to preparing the finished job for shipment . . . Call us in while the job is being planned.

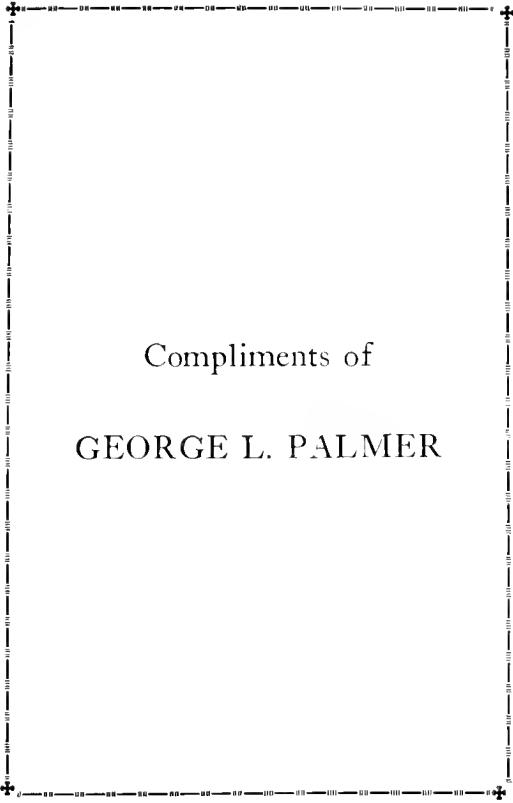


*Buildings Occupied Exclusively by the Grit Publishing Co.*

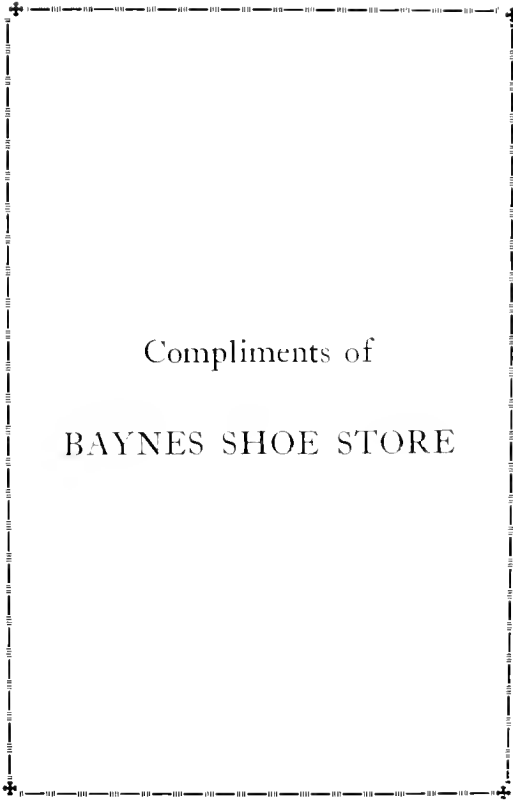
GRIT PUBLISHING COMPANY

ARTISTS    ENGRAVERS    PRINTERS    BINDERS

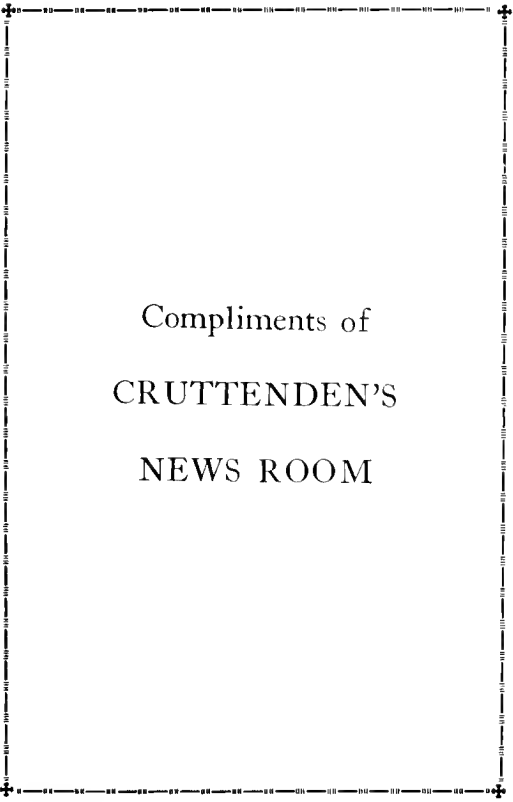
*The Carontawan was Designed and Engraved in Our  
College Annual Department.*

A decorative border consisting of a series of small, repeating geometric patterns forming a square frame around the text.

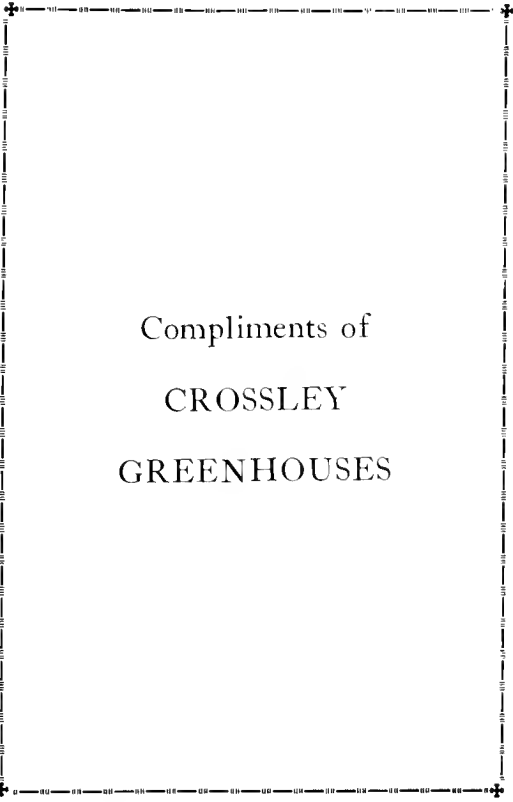
Compliments of  
GEORGE L. PALMER

A decorative border consisting of a series of small, repeating geometric patterns forming a square frame around the text.

Compliments of  
BAYNES SHOE STORE

A decorative border consisting of a series of small, repeating geometric patterns forming a square frame around the text.

Compliments of  
CRUTTENDEN'S  
NEWS ROOM

A decorative border consisting of a series of small, repeating geometric patterns forming a square frame around the text.

Compliments of  
CROSSLEY  
GREENHOUSES

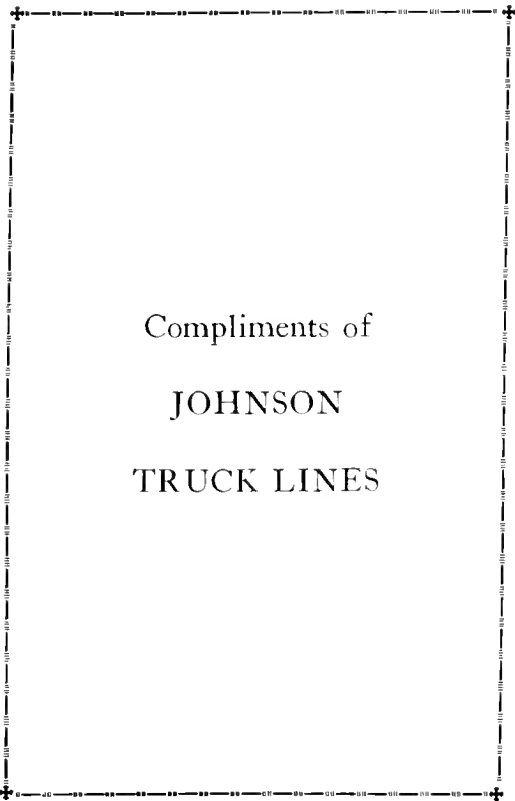
Compliments of  
MANSFIELD  
RESTAURANT

Compliments of  
GOODRICH  
CLEANERS

Compliments of  
JIM'S SHOE REPAIR  
Shop

Compliments of  
WELLS & GOODALL  
SERVICE STATION

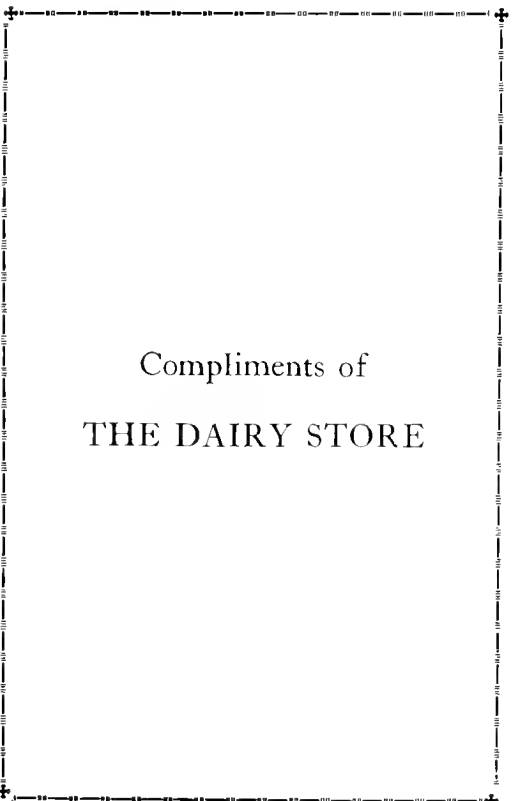




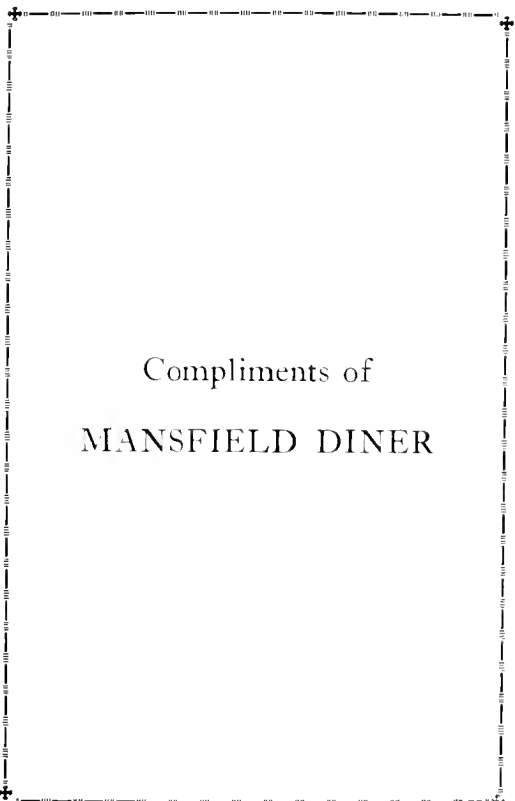
Compliments of  
JOHNSON  
TRUCK LINES



Compliments of  
MRS. FINESILVER



Compliments of  
THE DAIRY STORE



Compliments of  
MANSFIELD DINER

TRI-COUNTY  
RURAL ELECTRIC  
COOPERATIVE

Serving 3500 rural homes in  
Bradford, Tioga, Potter  
and Lycoming  
Counties.

By the excellence of its service  
through the years . . . .

MANSFIELD STATE  
TEACHERS COLLEGE

has earned a fine reputation.

As a store serving the college  
and the community we endeavor  
to do the same thing.

We are happy to share in the  
splendid spirit of loyalty and  
friendship which exists between  
the college and the community  
of Mansfield.

Yours for . . . .

A Greater College . . . .

THE T. W. JUDGE  
COMPANY

BEST WISHES

from the

MANSFIELD ADVERTISER

PRINTERS OF THE CARONTAWAN FOR OVER

A QUARTER CENTURY





