




CARONTAWAN

1948





Digitized by the Internet Archive
in 2011 with funding from
LYRASIS Members and Sloan Foundation

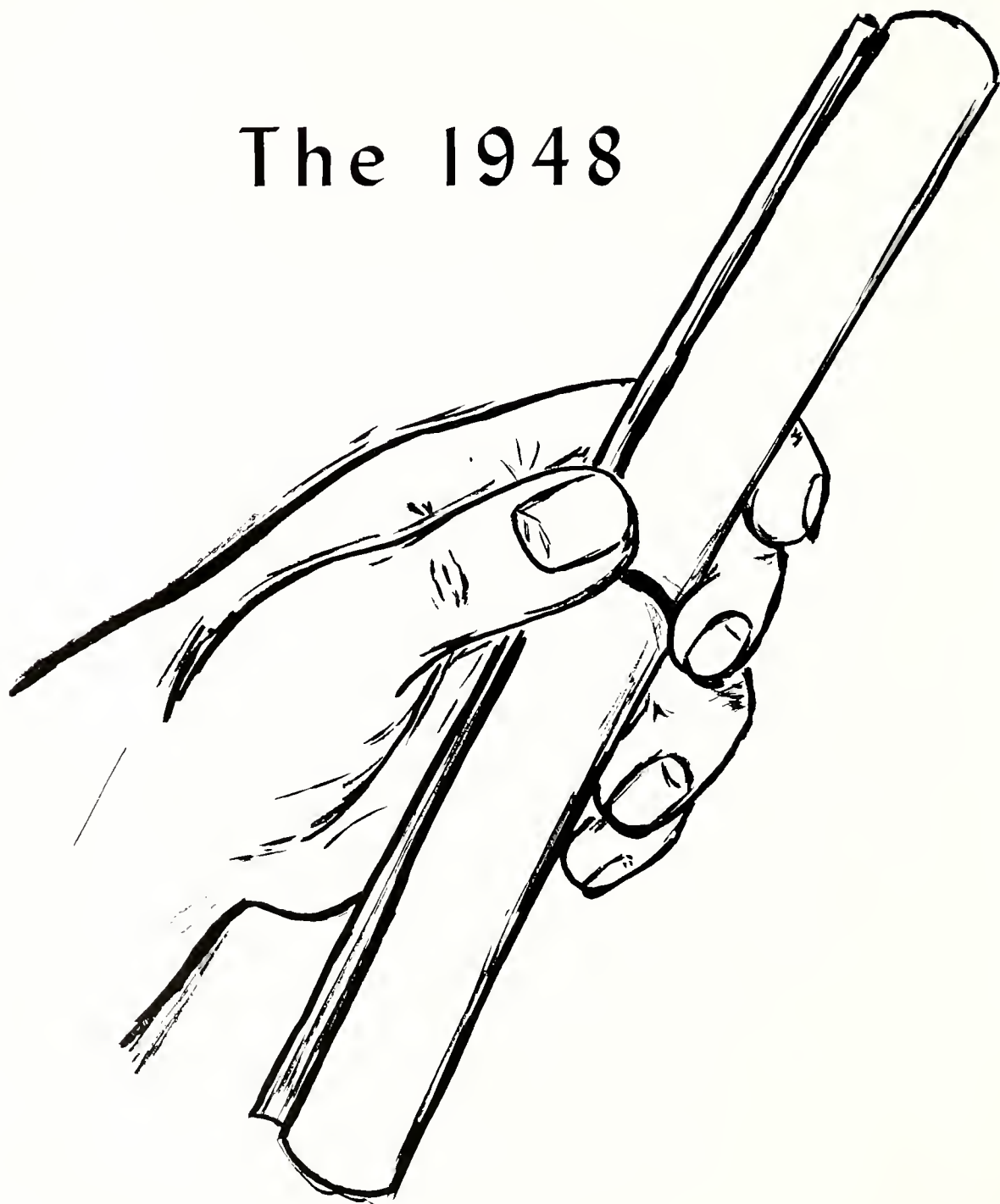
<http://www.archive.org/details/carontawan1948ye00mans>



EX LIBRIS

*The Senior Class
Presents . . .*

The 1948



CARONTAWAN



Contents

Our College



Our Classes



Organizations



Athletics



Advertisements



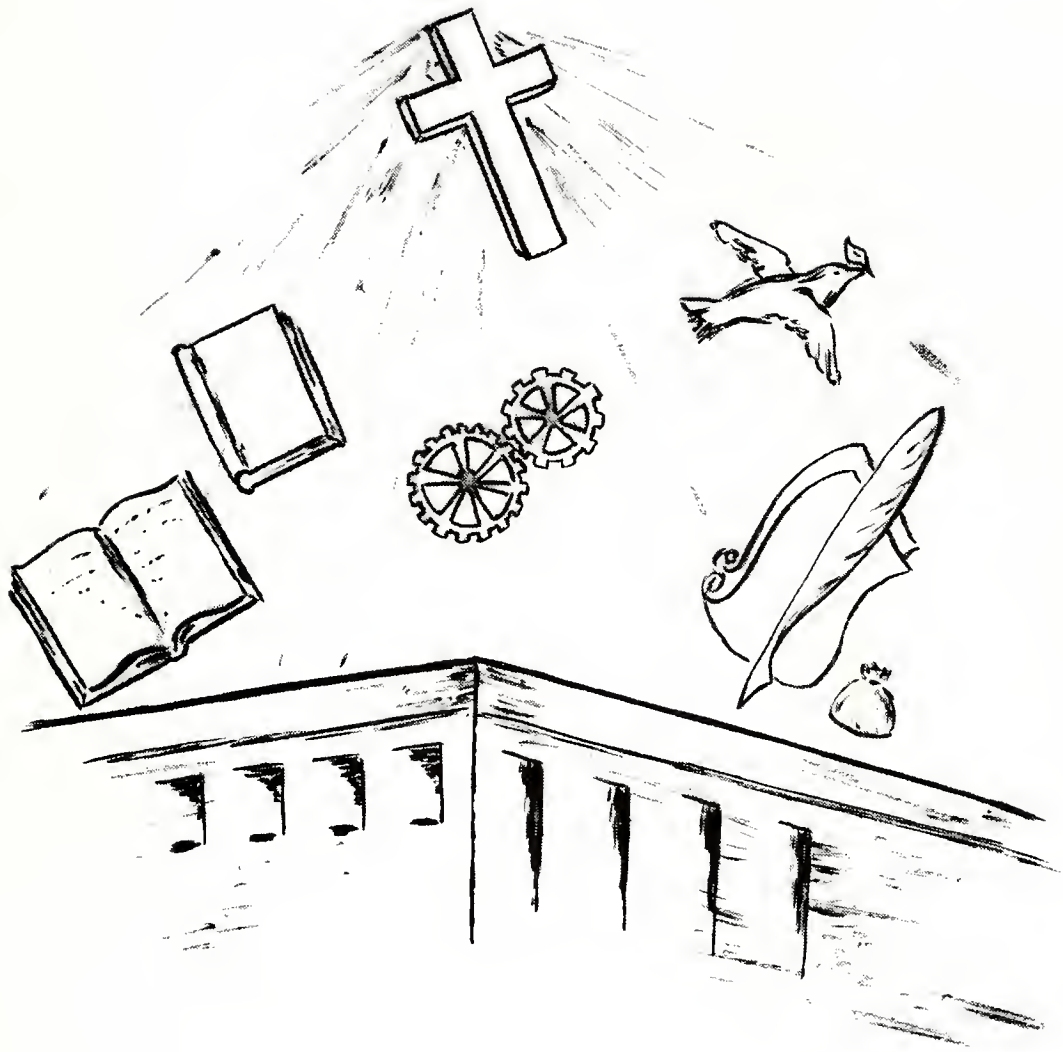
Dedication

The 1948 edition of the CARONTAWAN is dedicated to an Ideal and a Great Hope—the United Nations.

The success of the United Nations depends upon man's intelligence and faith—attributes which no one in all the world has the right to under-rate.

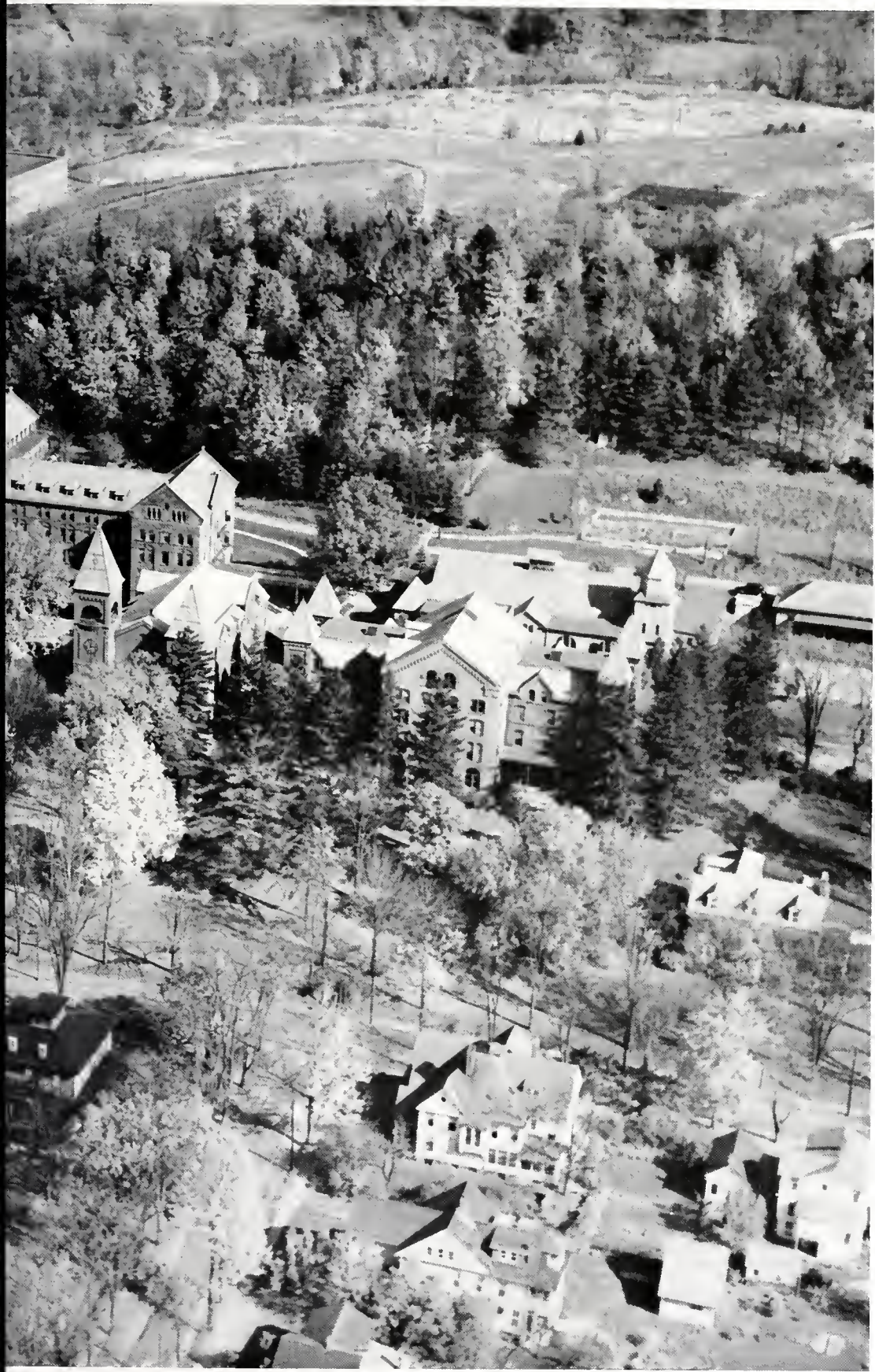
When we think of the United Nations, let us think of it as a great international university with a curriculum affording us, the peoples of the world, an occasion to gather facts; but, facts are of little use until we evaluate them. In this world university, man has the opportunity to learn and apply the vital lesson of how to live together permanently in peace, happiness, and prosperity. International and political and economic policies must be developed to give access to the world's material resources on a fair basis to all countries, consistently preserving the political independence of each nation.

Let us, and the classes following, pledge our talents of intelligence, co-operation, and faith to developing a world of truly United Nations.





O
U
R



C
O
L
L
E
G
E



STRAUGHN HALL



ALUMNI HALL



NORTH HALL



NORTH HALL ENTRANCE .



SOUTH HALL



ARTS BUILDING



PRESIDENT JAMES G. MORGAN

JAMES G. MORGAN

President of College

It is my sincere wish that whatever walk of life you pursue, your words, actions and unselfish service will bring honor and distinction to your Alma Mater.



The President at Home



Dean of Instruction

DEAN MANSER

HERBERT E. MANSER

Dean of Instruction

To the future teachers of America I say: Go
out and do your work and follow directions.

Dean of Women

DOROTHY M. WASLEY

“The great use of a life is to spend it for something that outlasts it.”

—WILLIAM JAMES

THE DEANS

MISS WASLEY, Dean of Women



Dean of Men

SAMUEL M. LONG

No one can answer the question as to whether or not you will be a success but yourself, and no one but you can translate the answer into reality.

Success is distance traveled; mile-posts passed; capacity utilized.



MR. LONG, Dean of Men



ELIZABETH S. ALLEN, B.S. (Mansfield), M.A. (Columbia), Instructor in English.
 CORA A. ATWATER, Mus.B. (Chicago Conservatory), Instructor in Voice.
 GRANT L. BARTHOLOMEW, B.S. (Lafayette), M.A. (New York), Instructor in Physical Science.



JOHN H. BAYNES, B.S. (Mansfield), Mus.M. (Michigan), Instructor of Music in Campus Schools.
 CHRISTINE BEASLEY, B.S. (Alabama), M.Ed. (Colorado State), Instructor in Home Management and Child Development.
 LEONARD K. BEYER, B.S. (Bethany), M.S. (Cornell), Instructor in Biological Science.



MARGARETTA BONE, B.S. (Bloomsburg), M.Ed. (Penn State), Supervisor of Kindergarten, Campus Elementary School.
 FLORENCE R. BORKEY, B.S. (West Chester), B.M. (Eastman), M.A. (Columbia), Instructor in Piano and Eurythmics.
 MARJORIE C. BROOKS, B.S. (New York), M.A. (Eastman), Director of Music Department and Instructor in Harmony.



FRANK BROWN, M/Sgt. U. S. Army, R. O. T. C. Instructor.
 LILLIAN E. BUCKINGHAM, B.S. (Penn State), M.S. (Cornell), Instructor in Foods and Family Health.
 LUCILLE H. BUTLER, B.S. (Mansfield), B.S. in L.S. (Peabody), Assistant College Librarian.



EDWARD D. CASEY, A.B. (Scranton), M.A. (New York), Athletic Coach and Instructor in Health and Physical Education.
 HELEN M. CLEVELAND, Secretary to the Dean of Instruction.
 VIRGINIA J. CONSON, A.B. (Randolph-Macon), M.A. (Peabody), Supervisor of English, Campus Junior High School.



JOHN W. CURE, Ph.B. (Bucknell), M.Ed. (Harvard), Instructor in English.
 MARION E. DECKER, B.S. (Illinois), M.Ed. (Penn State), Director of Athletics and Instructor in Health and Physical Education.
 HELEN M. DIEFFENBACH, B.S. (East Stroudsburg), M.Ed. (Penn State), Instructor in Health and Physical Education.



JOHN G. DOYLE, B.A. (Charleston), M.A. (Columbia), Instructor in Piano.
 MARION L. DREW, R.N. (Beverly Hospital, Mass.), College Nurse.
 ELIZABETH DUFF, B.S. (Kent State University), Supervisor of Health and Physical Education, Campus Junior High School.



SARAH I. DRUM, A.B., M.Ed. (Pittsburgh), Instructor in French, Spanish and Latin.
 JANE R. EARLY, Clerk in Campus Book Store.
 MARYON FARRER, B.S. (Simmons), M.A. (Columbia), Instructor in Foods and Nutrition.



MELINDA FIAT, B.S. (Indiana State), M.Ed. (Penn State), Instructor in Clothing and Textiles.
 JAY B. FOREMAN, B.A., M.A. (Penn State), Instructor in History.
 HELEN FIELD, Matron.

BERTRAM W. FRANCIS, B.M.E., Mus.M. (Northwestern), Instructor in Band Instruments.

LILYAN K. GALBRAITH, B.S., M.S. (West Virginia), Supervisor of Home Economics, Campus Junior High School.

MARION GLECKER, B.S. (Mansfield), M.A. (Syracuse), Instructor in English, Senior High School.

G. HEIL GRANLEY, B.S. (Albright), M.A. (Bucknell), Director of Publicity and Instructor in Literature.

MILDRED L. GRIGSBY, B.S. (Bucknell), M.A. (Columbia), Supervisor of Grade 6, Campus Elementary School.

JESSIE L. GRIGSBY, B.S., M.A. (New York), Principal and Supervisor of Mathematics, Campus Junior High School.

LORENE M. HABEGER, B.S. (Kansas Teachers), M.A. (Columbia), Supervisor of Grade 2, Campus Elementary School.

SALLY P. HAINES, R.N. (Paterson General, N. J.), College Nurse.

ENID L. HENDBICKS, B.Ed. (Bridgewater), M.Ed. (Boston), Supervisor of Grade 5, Campus Elementary School.

EDNA HEWSON, (Genesea, Elmira Business Institute, Gregg), Registrar.

LLOYD E. HOWE, B.S. (Juniata), M.Ed. (Pittsburgh), Instructor in Physical Science and Mathematics.

FAUSTINA B. HUGHES, A.B. (Penn State), M.A. (Pennsylvania), Instructor in English and Latin, Senior High School.

DOROTHY HUTCHINSON, B.S., M.A. (Pennsylvania), Supervisor of Grade 4, Campus Elementary School.

ELEANOR JOHNSTON, B.S., M.S. (Minnesota), Instructor in Clothing and Foods.

JACOB H. JONES, A.B. (Clarion), M.A. (Columbia), Supervisor of Grade 5, Campus Elementary School.

FRED A. JUPENLAZ, B.S. (Mansfield), M.Ed. (Bucknell), Instructor in Education and Veterans Adviser.

EDYTHA KEENEY, R.N. (Clifton Springs), Campus School Nurse.

WAYNE M. KELTS, Business Manager.

MARY LOU KYOFSKI, Secretary to the Director of Campus Schools.

GEORGE L. LANCDON, B.S., M.S. (Penn State), Instructor in Geography.

AUSTIN LEDWITH, Certificate (Yale), Mus.B. (New England Conservatory), M.A. (Harvard), Instructor in Music Theory.

CHRISTINE S. LEWIS, B.S. (Missouri), M.A. (Northwestern), Instructor in Voice.

S. MANFORD LLOYD, B.S. (Mansfield), M.A. (Columbia), Instructor in Mathematics.

SAMUEL M. LONG, B.S. (Lock Haven), M.A. (Columbia), Dean of Men.

VALENTINE A. LUCK, B.Mus. (Grinnell), M.A. (Columbia), Instructor in Piano.

LEON E. LUNN, B.S. (Mansfield), M.Ed. (Saint Bonaventure), Instructor in History.

IRENE LUKE, Clerk in Campus Book Store.





HERBERT E. MANSER, B.S., M.A. (Columbia), Dean of Instruction.

KIMBLE G. MARVIN, B.S. (Lafayette), M.A. (New York), Supervisor of Health and Science, Campus Junior High School.

EDNA P. MARSH, B.S., M.A. (Columbia), Supervisor of Grade 3, Campus Elementary School.



LAURA McCANN, Clerk in Campus Book Store.

RUSSELL McCOMMONS, B.S. (Edinboro), M.Ed. (Pittsburgh), Instructor in Art.

SIGMUND MICHOTA, B.S., M.A. (New York), Instructor in Stringed Music and Orchestra Director.



WARREN MILLER, B.S. (Mansfield), M.S. (Bucknell), Supervising Principal and Instructor in Physics, Senior High School.

C. MAX MILLIREN, B.S. (Mansfield), M.Ed. (Duke), Instructor in Mathematics, Senior High School.

ELIZABETH B. MORALES, B.S., M.A. (Columbia), Director of Home Economics.



JOSEPH J. MOORE, M.D. (Pennsylvania), College Physician.

JAMES G. MORGAN, Ph.B. (Muhlenberg), M.A. (Michigan), President of College.

S. MARJORIE MURPHEY, B.S. (Edinboro), Ed.M. (Pittsburgh), Instructor in Art and Supervisor of Art in Campus Schools.



CLARENCE R. MUTCHLER, B.S. (Lock Haven), M.S. (Bucknell), Supervisor of Science, Campus Junior High School.

WALTER A. NOSAL, B.S. (Indiana), M.A., Ed.D. (George Washington), Instructor in Education and Psychology.

MARGARET O'BRIEN, A.B. (Syracuse), M.A. (McGill), Instructor in English.



BERTHA R. PALMER, B.S. (Bucknell), B.S. in L.S. (Millersville), Librarian in Campus Schools.

EVERT R. PEARCY, A.B. (Salem), M.S. (West Virginia), Instructor in Social Science.

CLARISSA A. RANDALL, B.S., M.A. (New York), Supervisor of Music in Campus Schools.



JOHN REESE, B.S. (Mansfield), Supervisor of Industrial Arts, Campus Junior High School.

GEORGE A. RETAN, Pd.M. (Mansfield), B.F. (Pennsylvania State Forest School), Ph.D. (New York), Director of Elementary Education, Student Teaching and Placement.

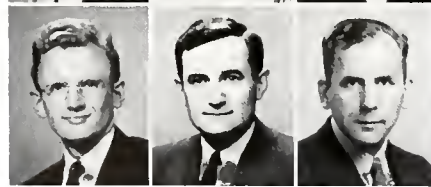
MOLLY REED, B.S. (Salem), M.A. (Syracuse), Assistant Dean of Women.



LAURA C. RHEBEIN, Account Clerk.

HARRIET REYNOLDS, B.S. (Penn State), College Dietician.

BLANCHE R. ROSS, B.S., M.A. (Columbia), Supervisor of Grade 3, Campus Elementary School.



G. RUSSELL ROSS, B.M. (Morningside, Iowa), M.M. (Northwestern), Instructor in Music Theory and Choral Conducting.

JOHN S. SANDELL, B.S., M.S. (Penn State), Supervisor of Social Studies, Campus Junior High School.

NEWELL A. SCHAPPELLE, B.S. (Massachusetts State), Ph.D. (Cornell), Instructor in Physical Science.



ALBERT W. SCHROER, B.S.M., A.B. (Bluffton), M.A. (Ohio State), Instructor in Voice and Chorus.

HENRIETTE E. SERGE, B.S. (Hunter), M.A. (New York), Supervisor of Grade 4, Campus Elementary School.

ROSS SOPER, Receiving Clerk.



HELEN S. STRAIT, A.B. (Wilson), Instructor in History, Senior High School.

ELIZABETH P. STALFORD, B.S. (Bucknell), M.A. (Columbia), Supervisor of Grade 5, Campus Elementary Schools.

REA J. STEELE, A.B. (Wisconsin), M.S. in L.S. (Columbia), College Librarian.



ALBERT K. SUNBERG, B.S. (Lock Haven), M.Ed. (Penn State), Instructor in Physical Science.

ELIZABETH M. SWAN, A.B. (Kentucky), M.A., Ph.D. (Virginia), Instructor in Literature.

VICTORIA H. THIEMANN, Revenue Agent.



ANNA MAE TRAUTMAN, Secretary to the President.

L. MABEL UMSTOT, B.S. (Shepherd), M.Ed. (Duke), Supervisor of Grade 1, Campus Elementary Schools.

A. H. VOSBERG, Supervisor of Buildings and Grounds.



MARY SHARP WARD, B.S. (Lock Haven), M.A. (Columbia), Supervisor of Grade 2, Campus Elementary Schools.

DOROTHY M. WASLEY, A.B. (Goucher), M.A. (Columbia), Dean of Women.

DOROTHY WHITNEY, Account Clerk.



RICHARD M. WILSON, B.S. (Mansfield), M.Ed. (Penn State), Supervisor of Social Studies and Science, Campus Elementary Schools.

GLADYS YOUNG, B.S. (Mansfield), Instructor in Science and French, Senior High School.

THEODORE R. BESANCENY, B.S. (Mansfield), Instructor in Economic Geography, Mathematics, and Physical Science, Senior High School.

ELIZABETH BOWMAN, R.N. (Sayre), College Nurse.

BEVERLY THOMAS, R.N. (Wilkes-Barre General), College Nurse.

MARGARET VANCE, B.S. (Battle Creek), M.A. (Columbia), College Dietician.



Mrs. MORALES
Head of the Home Economics Department



Home Economics



Bottom Row, Left to Right—Misses Buckingham, Bensley, Johnston, Fiat,
Top Row—Miss Farrer, Mrs. Morales.



Department

The Home Economics Department of the Mansfield State Teachers College has earned the reputation for having one of the finest Home Economics courses in the state. This course especially prepares young women for the teaching profession, but it is so comprehensive that other types of positions related to the field are open to its graduates.

The young women are given every possible opportunity to practice Home Economics in all of its phases. In our very attractive apartment on campus, small groups of students live for a period of six weeks with a resident director during their junior year. The principles they have been taught in other home economics classes are put into practice. Also they spend nine weeks managing the school lunch at the junior high school. The lunches are planned with consideration of nutritional value, attractiveness of food and economy of cost.

The nursery school is an important part of the senior girls curriculum. For one semester they are associated with the children, learning of their habits and personalities. Each student teaches a semester on campus under careful guidance and has the additional privilege of teaching under supervision in a vocational homemaking department in an approved high school in Pennsylvania.

Fashion shows, food demonstrations, dinners, teas, and exhibits are interesting, worthwhile projects and activities of the department. The course at Mansfield meets the requirement for certification in Home Economics Education and in addition each student gains inspiration and knowledge with which to encourage others in the community to create better home living and as an ultimate goal—live graciously in her own home or within her profession.



MARJORIE C. BROOKS
Director of Music Department



Sophomore Ensemble

Music Education



Orchestra



Advanced Chorus



Woodwind Ensemble



Senior Madrigals

Seated, Left to Right—George Wilt, Ronald Brooks, Mary Kingan, Mary J. McNeth, Marjorie Shafer, William Bender, Howard Williams.
Standing—Fred Bowerschmidt, Shirley Dutcher, Maybelle Woodin, Thomas Donahue.



Brass Ensemble

Department

The Music Department under the direction of Miss Brooks again gained a foothold on the campus of M. S. T. C. After several years of small enrollment in the music course, the returning G. I.'s not only brought about an astounding increase in number, but a renewed interest in music activities. The formation of "The Airliners" and "The Esquires," our college bands, the Marching Band, and activities sponsored by Phi Mu Alpha clearly demonstrated the presence of active, music-minded men.

However, the Sophomore Girls' Ensemble reminded us that not all our talent was "male sponsored"! The increase in the number of members of Lambda Mu, the women's honor music sorority, indicated a body of women students who were thinking seriously along the lines of a professional career.

The Advanced Chorus, Freshman Chorus, Brass and Woodwind Ensembles all performed during the year. Two groups of Madrigal Singers have given programs both on and off the campus. Our band and orchestra also presented concerts, the former organization having broadcast a Sunday performance over the radio.

New members of our faculty have been heard in recitals during the year and were well received by their audiences.

We are *proud* of our Music program and our faculty. We only hope in return that they will be proud of us when *we* become music teachers, graduates of M. S. T. C.



Band



DR. RETAN

Elementary

The Campus Elementary School is a modern building equipped with all the facilities for a progressive educational program. These facilities include provisions for art, music, physical education, library work, and visual education. The student body is a typical cross section of children from a rural and a town environment as this is the only elementary school in this vicinity. Provision is also made for the contact of student teachers with groups of parents and for the study of individual children through an adequate system of school records for each child.





Elementary Building

School

The class rooms are in charge of exceptionally well trained supervisors who have the double responsibility of giving the children an excellent educational background and of giving student teachers real experience in handling a typical class room group. The curriculum, while not too progressive, yet reflects modern tendencies in best elementary practice. Our graduates have an enviable record of success in the field.





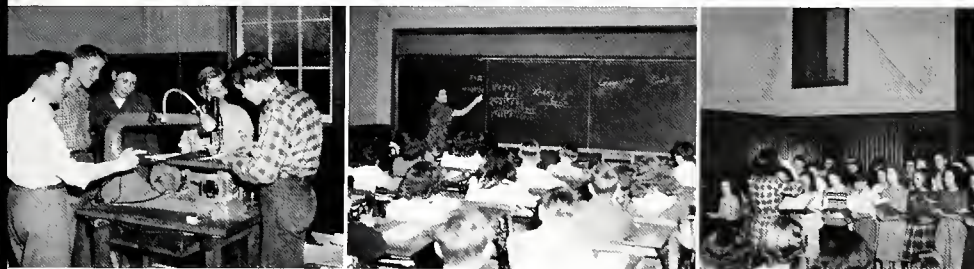
MISS GRIGSBY



Junior High



Junior High School



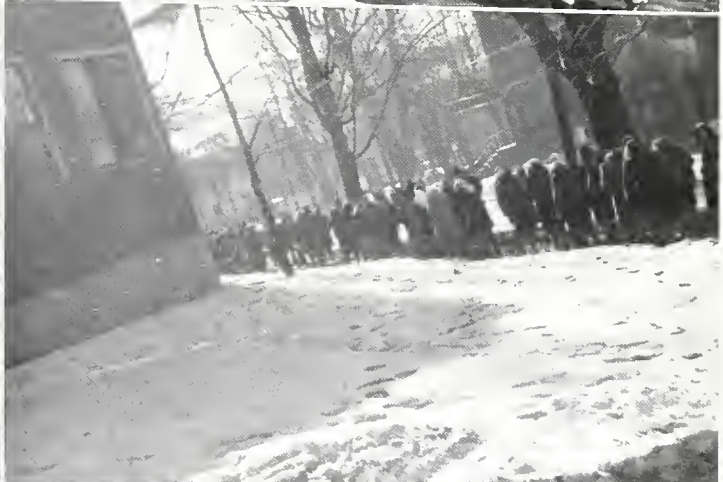
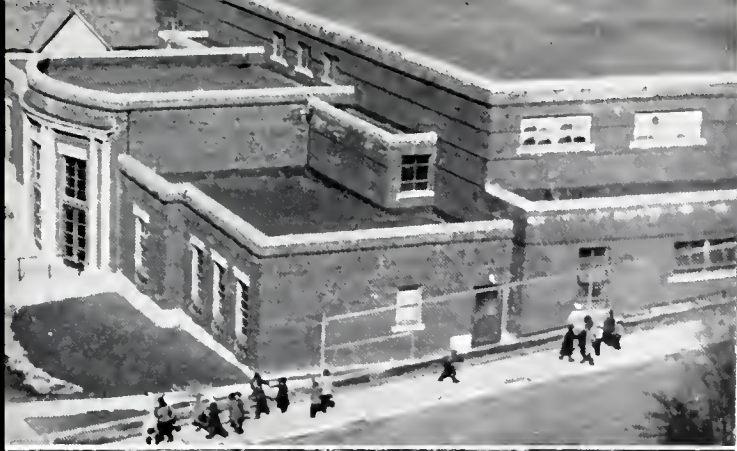
School

The Junior High School, located on the college campus, has modern facilities for the education of seventh, eighth, and ninth-grade pupils, and the training of student teachers from the College. The school presents special opportunities in Music, Industrial Arts for the boys, and Homemaking for the girls.

The boys and girls, after graduation, enter Senior High School with an excellent background for continuation of their secondary education. Meanwhile, the student teachers of the Secondary Department receive training which helps to acquaint them with classroom teaching problems. The laboratory situation, wherein they actually teach under the guidance and direction of the supervisors, helps them to become the better Teachers of Tomorrow.



OUR CLASSES





SENIOR CLASS OFFICERS

<i>Vice President</i>	- - - - -	DORIS DUSSINGER
<i>President</i>	- - - - -	JAMES RITTER
<i>Treasurer</i>	- - - - -	LOIS BYHAM
<i>Secretary</i>	- - - - -	DORIS WILLSON

Class of 1948

To THE CLASS OF 1948:

I wonder if you realize what Mansfield has done for you during the past eight semesters? I am thinking of registration day, September 1944, then and now. Then you were scared and awkward youngsters; now you are poised, charming young people who are able to stand forth in public and ready to teach others. You are prime products of the American system of public education and we, your faculty, are proud of you. It is now your duty and privilege to do unto others as others have done unto you so that our way of life may be perpetuated in the generations to come.

AUSTIN LEDWITH



MR. LEDWITH
Adviser



We of the class of 1948 are preparing to graduate from Mansfield State Teachers College and take our place in society.

When we view this situation from the past, we see the curriculums that we chose, and are happy to have had the opportunity to learn and make judgment from our specific study and from participation in extra curricular activities. The dream of being a senior has been the stimulating force in advancing toward the ultimate goal. The time spent at this college has proved to be most enjoyable. The increased confidence that we have gained through our work here will drive us on toward the betterment of a happier society.

Lastly, the future aspect of the situation will undoubtedly recall pleasant memories of these college days with fellow associates. The long awaited hour of graduation is fast approaching and bidding us to contribute our bit to advance a happier social order. We, along with other graduating classes, will always hold M. S. T. C. in the highest regard.



MAY GRADUATES



M. ELIZABETH BOHLAYER

"Betty"

Home Economics

Omicron Gamma Pi 1, 2, 3, 4; Pi Kappa Epsilon 3, 4, Secretary-Treasurer 3, Vice President 4; Y. W. C. A. 1, 2, 3, 4, Secretary 3; CARONTAWAN Board 4, Art Editor; Kappa Delta Pi 3, 4; Art Club 1, 2, 3, 4.

Ambition: Teach in Florida.



LOIS ANN BYHAM

"Joe"

Elementary

Class Offices—Senior Treasurer; W. A. A. 2, 3, 4; College Players 2, 3, 4, President 4; A. A. C. E. 2, 3, 4, Treasurer 3; Kappa Delta Pi 4; Women's Chorus 2, 3, 4.

Pet Peeve: People who are cheerful before breakfast.



ESTHER CAPWELL

"Cap"

Home Economics

Omicron Gamma Pi 1, 2, 3, 4; Pi Kappa Epsilon 3, 4; Y. W. C. A. 1, 2, 3; W. A. A. 1, 2; CARONTAWAN Board 1, 2, 3; Kappa Delta Pi 3, 4, President 4.

Ambition: I won't tell you, but I love large families.



RENA CARLSON

"Iris"

Elementary

Flashlight Board 2, 3, 4; CARONTAWAN Board 3; College Players 2, 3, 4; A. A. C. E. 2, 3, 4; Kappa Delta Pi 3, 4, Recording Secretary 4.

Favorite Saying: Seatwork.





NORRINE CHIAFFEE

"Norrine" Elementary

Y. W. C. A. 1, 2, 3, 4; W. A. A. 1, 2, 3, 4; *Flashlight* Board 3, 4; A. A. C. E. 1, 2, 3, 4; Secondary Club 3.

Pet Peeve: Wrinkled clothes.

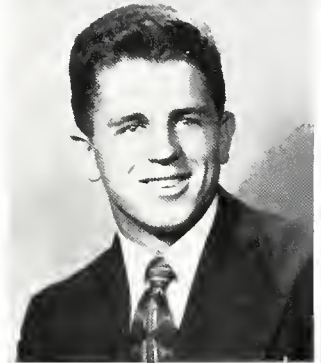


DAVID CHEPLICK

"Chep" Secondary

Student Council 4, President 4; Men's Dorm Council 4; M Club 4; Who's Who in American Universities and Colleges 4; Phi Sigma Pi 4; Football 3, 4; Baseball 3, 4; Co-Captain, Football 4.

Pet Peeve: Girls who leave lipstick on white shirts.



DOLORES ANN COLLINS

"D. A." Home Economics

Omicron Gamma Pi 1, 2, 3, 4; Y. W. C. A. 3, 4; W. A. A. 1, 2, 3, 4; College Players 4; Kappa Delta Pi 4.

At what I'm a genius: Trying to control my alarm clock.

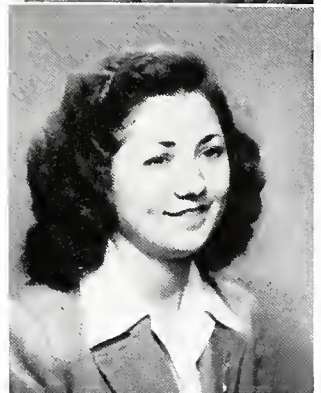


H. WANDA CORNELL

"Snooks" Elementary

Y. W. C. A. 3, 4; W. A. A. 1, 2, 3, 4; *Flashlight* Board (Elementary Editor) 3, 4; A. A. C. E. 1, 2, 3, 4.

Favorite Food: Hot pie and cokes.





LEATRICE CUNNINGHAM

"Lee"

Music

Music Educators Club 1, 2, 3; Lambda Mu 2, 3, 4, Secretary 3; Student Council 4; Who's Who in American Universities and Colleges 4; Y. W. C. A. 1, 2, 3; W. A. A. 1, 2, 3, 4; Flashlight Board 2, 3, Music Editor 3; Editor of CARONTAWAN 4; College Players 4; Kappa Delta Pi 3, 4; Art Club 2, 3, 4.

Ambition: Well, I don't want to be a career woman.



MARION CURTIS

"Curt"

Elementary

Y. W. C. A. 1, 4; W. A. A. 1, 2, 3, 4, Vice President 3, 4; Flashlight Board 1, 2, 3, 4; A. A. C. E.: Art Club 3, 4; Women's Chorus 1, 2, 3, 4.

At what I'm a genius: "Sticky Buns."



JAMES DANIELS

"Jim"

Secondary

Secondary Club 1, 2, 3; Y. M. C. A. 1, 2.

Favorite Food: Spaghetti.



DELPHINE DUNLAP

"Dell"

Home Economics

Omicron Gamma Pi 1, 2, 3, 4; Y. W. C. A. 1, 2.

Ambition: To be a buyer in a department store.





DORIS DUSSINGER

"Davie"

Music

Music Educators Club 1, 2, 3, 4; Women's Dorm Council 2; Class Offices, Vice President 4; Y. W. C. A. 3, 4. Song Director 3. Treasurer 4; W. A. A. 2, 3.

Hobby: "Ray"



ROCCO ENGLISH

"Roc"

Secondary

M Club; Secondary Club; President Newman Club.

Favorite Saying: How ya doin'.



JANICE FORD

"Jan"

Secondary

Y. W. C. A. 1, 2, 3, 4, Vice President 4; W. A. A. 1, 2, 3; Flashlight Board 4; Secondary Club 1, 2, 3, Treasurer 3; Kappa Delta Pi 3, 4; Art Club 2, 3, 4. Treasurer 3, Vice President 4; Women's Chorus 2, 3, 4.

Pet Peeve: Late buses!



LARRY GROW

"Larry"

Secondary

Secondary Club 2, 3, 4; Kappa Delta Pi 3, 4.

Favorite Food: Steak and strawberry shortcake.





MYRA HARRINGTON

"Mysie"

Elementary

Y. W. C. A. 4; W. A. A. 1, 2, 4; College Players 1, 2, 3, 4; A. A. C. E. 1, 2, 3, 4; Day Student Club 1, 2, 3.

Ambition: Stage career.



ANNE K. HERZOG

"Anne K."

Elementary

Student Council Treasurer 3; Women's Dorm Council, Vice President 4; Who's Who in American Universities and Colleges; Y. W. C. A. 1, 2, 3, 4; W. A. A. 1, 2, 3, 4; Flashlight Board 3, 4, Typist; College Players 1, 2, 3, 4; A. A. C. E. 1, 2, 3, 4, Intermediate Vice President 3; Women's Chorus 2, 3, 4, President 2.

At what I'm a genius: Playing records and sleeping.



WILMA LEWIS JUDD

"Willie"

Music

Music Educators Club 2, 3, 4; Class Offices, Secretary (one year); Y. W. C. A. 1, 2, 3, 4; W. A. A. 1, 2, 3, 4; Kappa Phi 1, 2, 3, 4, President 4.

Pet Peeve: Slow tables in the dining room.



ELEANOR KNEISS

"Ellie"

Music

Music Educators Club 1, 2, 3, 4; Y. W. C. A. 1, 2; W. A. A. 1, 2, 3, 4; Cheerleader 3.

Pet Peeve: Damp weather and chow hounds.





LORENA MAE KNELLER

"Dinky"

Secondary

Y. W. C. A. 4; W. A. A. 3, 4; Secondary Club 1, 2, 3; Kappa Delta Pi 4; Day Student Club 1, 2, 3.

Favorite Saying: Heavenly days.



LENA LANGHAM

"Lee"

Elementary

Kappa Delta Pi.

Ambition: To see if the ideas I have pilfered from Dr. Retan will work for me.



PAULINE S. LEVENGOOD

"Polly"

Home Economics

Omicron Gamma Pi 2, 3, 4; Pi Kappa Epsilon 3, 4; W. A. A. 2, 3; College Players 2, 3, 4; Kappa Delta Pi 3, 4; Art Club 3, 4.

Ambition: To meet a nice Dutchman and raise a Dutch family.



JEAN C. LUNDY

"Jeannie"

Music

Music Educators Club 1, 2, 3, 4; Y. W. C. A. 1, 2, 3, 4; W. A. A. 1, 2, 3, 4.

Pet Peeve: Waiting for someone when I am all ready.





FRANCES MARCUCCI

"Fran"

Elementary

Y. W. C. A. 1, 2, 3, 4; W. A. A. 1, 3, 4; CARONTAWAN Board 4, Elementary Editor; A. A. C. E. 1, 2, 3, kdg. Vice President 4; Kappa Delta Pi 3, 4; Art Club 2, 3, 4, Secretary 4; Women's Chorus 2, 3, 4, Vice President 4.

At what I'm a genius: Missing buses.



ROBERTS R. MARTIN

"Pepper"

Secondary

M Club 4; Senior Manager 1947 Football Team; Phi Sigma Pi 4.

Pet Peeve: Standing in lines.



RUTH MASE

"Sunshine"

Home Economics

Omicron Gamma Pi 1, 2, 3, 4, Secretary and President; Y. W. C. A. 3, 4; W. A. A. 1, 2, 3, 4; CARONTAWAN Board. Business Staff.

Favorite Food: Scrambled eggs.



AUDREY MEYER

"Audie"

Music

Music Educators Club 1, 2, 3, 4; Lambda Mu 3, 4, Vice President 4; Student Council 1; Women's Dorm Council 3; Class Offices, President Freshman Class; Y. W. C. A. 1, 2; W. A. A. 1, 2, 3, 4, Secretary 2; College Players 3, 4; Art Club 2, 3, 4, Vice President 3.

Pet Peeve: Static radios.





JANICE MONRO

"Jan"

Home Economics

Omicron Gamma Pi 1, 2, 3, 4, Council 4; Pi Kappa Epsilon 3, 4, Vice President 3, President 4; Class Treasurer 2; Kappa Delta Pi 3, 4, Corresponding Secretary 4; Y. W. C. A. 1, 2, 3; W. A. A. 1, 2, 3, 4.

Thing I like best about M. S. T. C.: Christmas festivities.



ANDREW MORTAVANCY

"Morty"

Secondary

Phi Sigma Pi 2, 3, 4; Y. M. C. A. 1; Kappa Delta Pi 3, 4; Men's Day Student Club 1, 2, 3, 4; Secondary Club 1, 2, 3.

At what I'm a genius: Parliamentary procedure.



SHIRLEY PALMER

"Shirl"

Music

Class Vice President 2; Y. W. C. A. 1, 4; W. A. A. 1, 4; *Flashlight* Board 1, 2, 3, 4; Cheerleader 2, 3, 4.

Thing I like best about M. S. T. S.: "The gang", the men and everything.



ELMA HOTCHKISS PERKINS

"Elma"

Music

Music Educators Club 1, 2, 3, 4, Secretary 2, Treasurer 4; Women's Dorm Council 3, 4; Y. W. C. A. 1, 2, 3, 4; W. A. A. 1, 2, 3, 4.

Ambition: To graduate and to have a home of my own.





AGNES IRENE PLACE

"Agnes"

Home Economics

Omicron Gamma Pi 1, 2, 3, 4; Y. W. C. A. 1, 2, 3, 4; W. A. A. 1, 2; Art Club 3, 4.

At what I'm a genius: Talking.



E. ALICE RAMAGE

"Blond Job"

Home Economics

Omicron Gamma Pi 1, 2, 3, 4; Y. W. C. A. 1, 2; W. A. A. 1; Cheerleader 3, 4; Women's Chorus 2, 3.

Ambition: Airline stewardess.



RUTH RANSOM

"Kid"

Elementary

Class Offices, Secretary 3; Y. W. C. A. 1, 2, 3, 4. Vice President 3; W. A. A. 2, 3; CARONTAWAN Board, Elementary Editor 3; A. A. C. E. 1, 2, 3, 4, President 4; Kappa Delta Pi 3, 4; Art Club 2, 3, 4, Treasurer 4.

Pet Peeve: Furnace fire that just won't burn.



JAMES RITTER

"Jim"

Music

Music Educators Club 2; Student Council 1; Men's Dorm Council 1; Class Offices, President Senior Class; Y. M. C. A.; College Players 3; Kappa Delta Pi 1; Phi Mu Alpha 3.

Favorite Saying: My soul!





MARY ELLEN RUSSELL

"Irish" Secondary

Student Council 3, 4; Who's Who in American Universities and Colleges 3, 4; W. A. A. 1, 2, 3, 4; Flashlight Board 1, 2, 3, 4, Editor 4; Secondary Club 1, 2, 3; Art Club 2, 3, 4.

At what I'm a genius: Collecting bugs.



DOROTHY M. SCHANK

"Dottie" Secondary

Y. W. C. A. 2, 3, 4; W. A. A. 3, 4; Flashlight Board 4; Secondary Club 2, 3; Kappa Phi 2, 3, 4.

Hobby: Photography and stamp collecting.



ADA M. SHAW

"Shaw" Music

Music Educators Club 1, 2, 3, 4; Lambda Mu 4; Student Council 2, 3; President Women's Day Student Club; Y. W. C. A. 1; W. A. A. 2, 3; Flashlight Board, Feature Editor 3, 4; Kappa Delta Pi 4; Who's Who in American Universities and Colleges 4.

Favorite Food: Anything but mush.



JOAN SIEGEL

"Joanie" Elementary

Y. W. C. A. 1, 2; W. A. A. 1, 2, 3, 4; Flashlight Board, Literary Editor 3, Staff 4; A. A. C. E. 3, 4; Secondary Club 1, 2.

At what I'm a genius: Eating pop-corn.





MONA STEBBINS

"Steb"

Elementary

W. A. A.; College Players, Secretary 4; A. A. C. E.; Women's Chorus.

Hobby: Dancing and dramatic work.



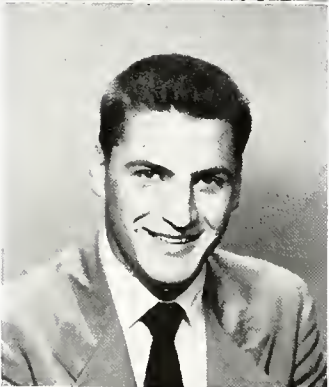
ANNA TROWBRIDGE

"Ann"

Secondary

Y. W. C. A. 1, 4; W. A. A. 1, 2, 3; Secondary Club 1, 2, 3.

Favorite Food: Hot fudge sundaes.



PAUL VOLANTE

"Tony"

Secondary

Student Council 4; Men's Dorm Council 2, 3, 4; Who's Who in American Universities and Colleges; M Club; Secondary Club.

Favorite Saying: Don't worry about it.



DOROTHY WARNER

"Dot"

Elementary

Y. W. C. A. 3; W. A. A. 4; A. A. C. E. 4; Kappa Delta Pi 1; Art Club 2.

At what I'm a genius: Waiting on the faculty table.





VICTORIA WASHELESKI

"Vicky"

Music

Music Educators Club 1, 2, 3, 4; Lambda Mu 4; Student Council 2, 3, 4, Secretary 2, Vice President 3; Women's Dorm Council 4, President 4; Who's Who in American Universities and Colleges; Class Offices, Secretary of Freshman Class; Y. W. C. A. 1, 2, 3, 4; W. A. A. 1, 2, 3, 4; Flashlight Board 1, 2, 3, 4; CARONTAWAN Board 1, 2, 3.

Ambition: Play in an all-girl orchestra.



CHET WASILEWSKI

"Chet"

Secondary

M Club 2, 3, 4, President M Club 2, 3, 4; Secondary Club 2, 3, 4.

Pet Peeve: Taking the water fountain off the second floor and not replacing it with a new one.



BARBARA WATKINS

"Barb"

Elementary

Y. W. C. A. 1, 2, 3, 4, President 4; W. A. A. 2, 3, 4; College Players 3, 4; A. A. C. E. 2, 3, 4, Secretary 4; Women's Chorus 3, 4.

Ambition: To become a child psychologist.



JOSEPHINE WHITE

"Jo"

Home Economics

Omicron Gamma Pi 1, 2, 3, 4, Treasurer 4; Y. W. C. A. 1, 2, 3; W. A. A. 1, 2, 3.

Ambition: To design my own home.





DORIS WILLSON

"Do" Home Economics

Omicron Gamma Pi 1, 2, 3, 4, Vice President 3; Pi Kappa Epsilon 4; Class Secretary 4; Y. W. C. A. 1, 2; W. A. A. 1, 2; CARONTAWAN Board 4, Senior Editor; Kappa Delta Pi 3, 4, Treasurer 4.

Thing I like best about M. S. T. C.: The "kids."



LEDA RHODES YOUNG

"Letsy" Elementary

W. A. A. 2, 3, 4; *Flashlight* Board 2, 3, 4; College Players 2, 3; A. A. C. E. 1, 2, 3, 4.

Favorite Food: Apple pie a la mode and T-bone steaks.



JANUARY GRADUATES

LOREN D. BUTTS

"Doctor"

Secondary

Music Educators Club 1, 2, 3; Kappa Delta Pi 4; Phi Mu Alpha 1, 2, 3, Treasurer 4, Vice President.

Thing I like best about M. S. T. C.: I found a home.



PATRICK J. CUNNINGHAM

"Pat"

Secondary

M Club 3, 4; Secondary Club 1, 2, 3.

Hobby: Basketball.



DELBERT B. DAVIS

"Crash"

Secondary

M Club 3; Flashlight Board 3; Secondary Club 3; Kappa Delta Pi 3; Phi Sigma Pi 3.

Ambition: To drive in the Indianapolis Speedway.



JOHN A. DWYER

"Dwyer"

Secondary

Secondary Club 1, 2, 3.

Hobby: Eating.





ALDEN ROBERT DYGERT

"Al"

Secondary

Student Council 4; Men's Dorm Council 3; Who's Who in American Colleges and Universities 4; Senior Class President 4; CARONTAWAN Board 3, 4; Secondary Club 3; Phi Sigma Pi 3, 4, President.

Thing I like best about M. S. T. C.: Got a wife here.



FRANK A. JUZWIAK

"Frank"

Secondary

M Club 1, 2, 3, 4; Secondary Club 2, 3; Phi Sigma Pi 3, 4.

At what I'm a genius: Playing pinochle.



KENNETH LEE

"Ken"

Secondary

M Club 2, 3, 4; Phi Sigma Pi 2, 3, 4.

Favorite Food: My wife's cooking.



JOHN A. LALLY

"John"

Secondary

Y. M. C. A. 1, 2; M Club 1, 2, 3, 4, Treasurer; Secondary Club 1, 4; Phi Sigma Pi 3, 4.

Hobbies: Photography, athletics, cooking.

JERRY SHANNON

"Jerry"

Secondary

Secondary Club 1, 2, 3; Phi Sigma Pi 3, 4, Vice President.

Hobby: Reading.



First Row, Left to Right—James Ritter, Doris Dussinger, Lorena Kneller, Mary Ellen Russell, Frances Marcucci, Myra Harrington, Ruth Ransom, Norrine W. Chaffee, Alice Ramage, Shirley Palmer, Victoria Washeleski, Lois Byham, Doris Willson.
 Second Row—Shirley Hollenback, Janice Ford, Audrey Meyer, Anna Trowbridge, Joan Siegel, Wanda Cornell, Dorothy Warner, Ada Shaw, Pauline Levengood, Janice Monro.
 Third Row—Agnes Place, Dorothy Schank, Marion Curtis, Anne Herzog, Barbara Watkins, Delphine Dunlap, Esther Capwell, Dolores Collins, Josephine White, Eleanor Kneiss.
 Fourth Row—Mona Stebbins, Ruth Mase, Betty Bohlayer, John Lally, James Daniels, Jerry Shannon, Eleanor Weber, Leatrice Cunningham, Wilma L. Judd, Elma H. Perkins.
 Fifth Row—Albert Crispell, Lawrence Grow, Seldon Spencer, Kenneth Lee, Frank Juzwiak, Patrick Cunningham, Chester Wasilewski, Rocco English, David Cheplick, Paul Volante.

AUGUST GRADUATES



ARNETA BRAINARD

"Neta"

Secondary

Y. W. C. A. 1, 2, 3; W. A. A. 1, 2, 3; Secondary Club 1, 2.

Favorite Saying: It's all in a lifetime!



RONALD E. BROOKS

"Ron"

Music

Phi Mu Alpha 2, 3, 4.

Pet Peeve: Jr. High-itis.



ALBERT J. CRISPELL

"Al"

Secondary

Secondary Club 1, 2, 3.

Favorite Food: All good food.



ELWOOD E. KINNEY

"Radar"

Music

Music Educators Club 2, 3, 4; Men's Dorm Council 2, 3, 4; Phi Mu Alpha 2, 3, 4, President.

Favorite Food: Shrimp cocktail and Filet Mignon.





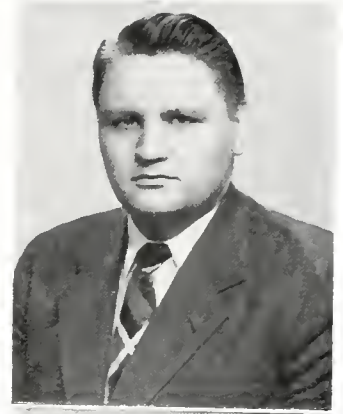
ATWELL M. BOOKMILLER

"Bookie"

Music

Phi Mu Alpha 2, 3, 4, Historian.

Pet Peeve: Thin people who eat a lot.



ORVILLE O. DICKERSON

"Dickerson"

Secondary

Secondary Club 3; Kappa Delta Pi 4.

Ambition: Further education.



NICHOLAS FADUSKA

"Nick"

Secondary

M Club 3, 4; Secondary Club 1, 2, 3.

Pet Peeve: Girls who insist they are always right.



ROBERT J. GLASSER

"Bob"

Secondary

Student Council 2; Men's Dorm Council, President 2;
Secondary Club 1, 2, 3.

At what I'm a genius: Getting into trouble.





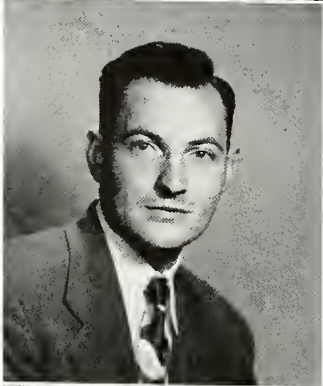
JOHN J. KERRIGAN

"Barrel"

Secondary

Secondary Club 1, 2, 3.

Pet Peeve: Poor food.



ALBERT J. MARTIN

"Al"

Secondary

M Club 1, 2, 3, 4.

Thing I like best about M. S. T. C.: Everything.



THEODORE JOSEPH NOVAK

"Steggie"

Secondary

Student Council 3, 4, Vice President; Class President 2; M Club 1, 2, 3, 4; Who's Who in American Colleges and Universities 4; Secondary Club 1, 2, 3; Art Club 2, 3, 4; Phi Sigma Pi 2, 3, 4.

Favorite Food: All foods.



DAVID G. SNELL

"Dave"

Secondary

College Players 2, 3; Secondary Club 1, 2.

Favorite Saying: Two can live as cheap as one.



SELDON JAMES SPENCER

"Dud"

Secondary

College Players 3, 4; Secondary Club 1, 2, 3; Phi Mu Alpha 3, 4; Men's Chorus; Orchestra.

Ambition: To teach in a small college.



ELEANOR JENNIE WEBER

"Roommate"

Music

Music Educators Club 2, 3, 4; Y. W. C. A. 2, 3. Pianist.

Ambition: To teach and become a good church organist.





JUNIOR CLASS OFFICERS

President - - - - - L A V E R N E T H O R N T O N
Treasurer - - - - - P H I L L I P D E W E Y
Secretary - - - - - M A R Y A L I C E R O G A N
Vice President - - - - - J O H N B O B K O W S K I

Class of 1949

Each one of us is given a task to perform. The task that is given you can be done by no other. For many years you have been preparing yourself to accept the share of the responsibilities of the future. Only one short year remains in which to complete your preparations. Now, as never before, our future depends upon the youth of today. This is indeed a great challenge to all of you. The leaders of tomorrow must be men and women who possess courage, loyalty and faith. Your task awaits you. Are you prepared?



M R . F O R M A N
Adviser



We congratulate the CLASS OF 1948, having triumphed over the vicissitudes of four years at M. S. T. C. With the same amount of perseverance, we, the Junior class, hope to follow them in another year, and carry on the high ideals and standards that they have left us.



RICHARD BAITY (*Secondary*) Covington, Pa.

RICHARD BAKER (*Secondary*) Rexford, Pa.

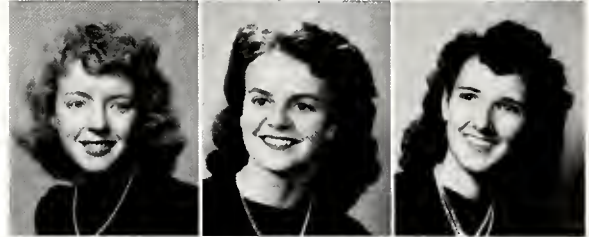
GENEVIEVE BARNES BAKER (*Secondary*)
Mansfield, Pa.



LOIS BOARDMAN (*Music*) Rome, Pa.

RHEA BROWN (*Elementary*) Burlington, Pa.

RUTH L. BUNN (*Elementary*) Canton, Pa.



JANET R. CASEY (*Elementary*) Susquehanna, Pa.

GORDON A. COLE (*Secondary*) Lawrenceville, Pa.

THOMAS H. COYLE (*Secondary*) Towanda, Pa.



GROVER D. CLEVELAND (*Secondary*) Covington, Pa.

BARABARA J. DAVIS (*Elementary*) Nelson, Pa.

PHILIP H. DEWEY (*Secondary*) Gaines, Pa.



BRUCE DIMMICK (*Secondary*) Gaines, Pa.

BARBARA ANN DIMON (*Music*) Rome, Pa.

ISABEL DIEZ (*Secondary*) Plymouth, Pa.



JEAN A. DRAGWA (*Music*) Simpson, Pa.

EMELYN A. DRAKE (*Music*) Shinglehouse, Pa.

SHIRLEY JEAN DUTCHER (*Music*) Tioga, Pa.



CHARLES FADUSKA (*Secondary*) Bear Creek, Pa.

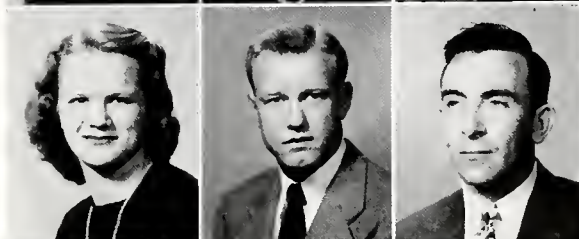
ARDIS L. FESSLER (*Elementary*) Covington, Pa.

JEAN RUTH FORD (*Home Economics*)
Wellsboro, Pa.





MARIE L. GALAVITZ (*Secondary*) Simpson, Pa.
ELSIE M. GILBERT (*Home Economics*) Bradley Beach, N. J.
GLENN HEWITT (*Secondary*) Troy, Pa.



HELEN R. HISSAM (*Home Economics*) Millford, Pa.
WILLIAM JOHNSON (*Secondary*) Elmira, N. Y.
JAMES KENNEY (*Secondary*) Wilkes-Barre, Pa.



ROBERT R. KITCHUN (*Secondary*) Dushore, Pa.
DORIS KNOWLTON (*Elementary*) Covington, Pa.
LOIS KUNKLE (*Elementary*) Wyalusing, Pa.



BETTY RUTH LAMB (*Secondary*) Susquehanna, Pa.
EDGAR M. LAWTON (*Secondary*) Wellsboro, Pa.
LUCILLE M. LEHNER (*Secondary*) Wilkes-Barre, Pa.



WELLINGTON F. LESTER (*Secondary*) Equinunk, Pa.
LEONA L. LUDWIG (*Home Economics*) Hegins, Pa.
F. WINIFRED MACORKEL (*Elementary*) Wilkes-Barre, Pa.



GENE E. MAXWELL (*Home Economics*) Williamsport, Pa.
MARY R. McCAWLEY (*Secondary*) Susquehanna, Pa.
GERALD McENENY (*Secondary*) Wilkes-Barre, Pa.



MARY JANE McNETT (*Music*) Roaring Branch, Pa.
LAWRENCE L. MEADE (*Secondary*) Mansfield, Pa.
JEANNE S. MEEK (*Home Economics*) Allenwood, Pa.

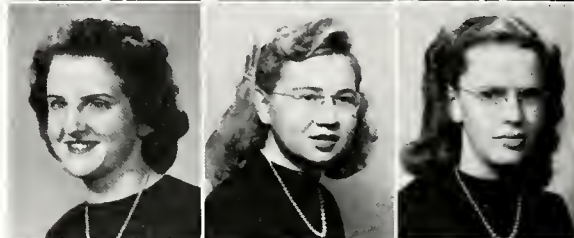
PETER A. MOLLAHAN (*Secondary*) Wilkes-Barre, Pa.
 GEORGE B. MYFELT (*Secondary*) Mansfield, Pa.
 JEROME J. O'KEEFE (*Secondary*) Towanda, Pa.



WILLIAM F. OWEN (*Secondary*) Mansfield, Pa.
 SHIRLEY D. PIERCE (*Secondary*) Wellsboro, Pa.
 F. C. PRINDLE (*Secondary*) Elkland, Pa.



JEANNINE ROCKWELL (*Home Economics*) Troy, Pa.
 MARY ALICE ROGAN (*Elementary*) Springville, Pa.
 HELEN M. SAMPSON (*Secondary*) Roulette, Pa.



MARILYN SLOCUM (*Elementary*) Ararat, Pa.
 LOIS E. SLUSSER (*Home Economics*) Nescopeck, Pa.
 JAMES STEINBACHER (*Secondary*)
 Towanda, Pa.



LUCILLE STERLING (*Elementary*) Wyalusing, Pa.
 MIRIAM L. SWAN (*Music*) Williamsport, Pa.
 LAVERNE ARLAND THORNTON (*Secondary*)
 Watrona, Pa.

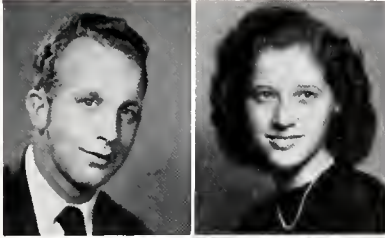


BASIL TERPAK (*Secondary*) Mayfield, Pa.
 EUNICE P. VARCOE (*Secondary*) Waymart, Pa.
 EDITH M. WARREN (*Music*) Susquehanna, Pa.



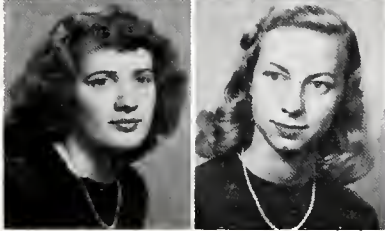
ELEANOR WEED (*Home Economics*) Mill Hall, Pa.
 LORENZ HENRY WEIBEL (*Secondary*) Scranton, Pa.
 CHARLES R. WILSON (*Secondary*) Towanda, Pa.





EARL WILSON (*Secondary*) Wellsboro, Pa.

MAYBELLE WOODIN (*Music*) Duke Center, Pa.

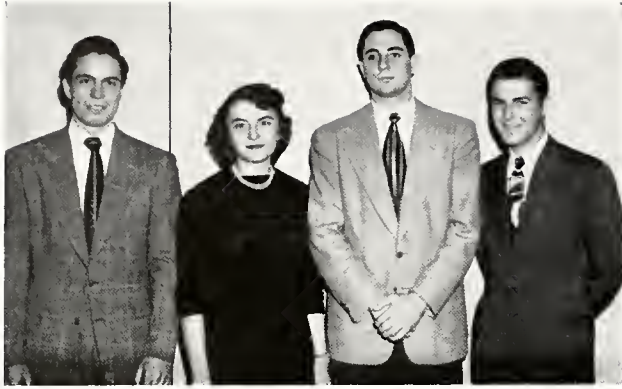


MARY ELLEN YEAGER (*Home Economics*)
Millersburg, Pa.

DORIS J. YOST (*Home Economics*) Bausinan, Pa.



Christmas in the Dining Room



SOPHOMORE OFFICERS

<i>Vice President</i>	- - - -	GENE McLANE
<i>Secretary</i>	- - - -	MARY LOUISE DUBBLE
<i>President</i>	- - - -	GEORGE OTT
<i>Treasurer</i>	- - - -	PETER KEARNEY

Class of 1950

TO THE CLASS OF 1950:

The class of '50 arrived in '46. This date is important because it is the first truly post-war class. Among us we find a great number of Veterans— young men and women— returning and continuing, after a brief pause in the span of life, to prepare themselves for a fuller, more complete life.

The class of 1950 is striving to do its part in carrying on the good conditions and values of Mansfield. It is also attempting to establish high standards for future classes to emulate. With such an excellent record behind it last year, the class of 1950 may well look forward to a profitable Junior Year.

E. PEARCY, *Class Adviser*



MR. PEARCY
Class Adviser



As we turn back the pages of time for one short year, the class of 1950, reminiscing, recalls vivid memories of their experiences here at Mansfield. With the exception of the Vets, we obeyed the iron hand rule of the Sophomores during initiation week, and demonstrated unusual ability when we were able to meet the present overcrowded conditions that exist in colleges today, and overcome the difficulties of readjustment. Our Frosh formal, the colorful "SNOWBALL," proved to be the greatest social event of the season. Still later we displayed our versatility in the Freshman Talent show, and received accolades for the entertaining Minstrel "Kampus Kapers." Members of the class were well represented in many other school events such as the Fashion Show, May Festival, Recitals, and Varsity teams, to mention but a few. With co-operation as a basis of our foundation, we hope to attain a perfect record for outstanding activities. As we go along through our remaining years, we hope to fully develop the school spirit we revived.





CURTIS H. ACKER, *Music*, Allentown, Pa.
 ANTHONY C. AMENDOLA, *Secondary*, Ashley, Pa.
 CHARLES B. ANDERSON, *Music*, Bradford, Pa.
 CHARLES ARNISTRANSKI, *Secondary*, Wilkes-Barre, Pa.

MARGARET J. ARNTS, *Home Economics*, Sayre, Pa.
 THELMA E. AULT, *Home Economics*, Yeagertown, Pa.
 JACOB AZAIN, *Secondary*, Wilkes-Barre, Pa.
 LENA MAE BAKER, *Music*, Hanover, Pa.

EMILY JEAN RANZHOFF, *Elementary*, Tioga, Pa.
 GLENN W. BARRETT, *Secondary*, Snedekerville, Pa.
 DONALD C. BARTOO, *Secondary*, Harrison Valley, Pa.
 JOEY L. BEDFORD, *Home Economics*, Canton, Pa.

GEORGE F. BEERS, *Secondary*, Towanda, Pa.
 WILLIAM G. BENDER, *Music*, Kane, Pa.
 RUSSELL E. BENJAMIN, *Secondary*, Canton, Pa.
 PHYLLIS K. BENSON, *Home Economics*, Athens, Pa.

VIVIAN F. BERIE, *Home Economics*, Northumberland, Pa.
 WILLIAM T. BIDDLE, *Secondary*, Troy, Pa.
 ELIZABETH M. BOOTH, *Secondary*, East Smithfield, Pa.
 FRANK R. BOTSFORD, Jr., *Secondary*, Canton, Pa.

ELIZABETH A. BOWERS, *Music*, Chambersburg, Pa.
 ROBERT W. BOWMAN, *Secondary*, Sayre, Pa.
 FRANCIS BRADSHAW, *Secondary*, Wilkes-Barre, Pa.
 FERN BRICKER, *Home Economics*, Frackville, Pa.

CHARLES R. BROWN, *Secondary*, Burlington, Pa.
 PHILIP A. BROWN, *Elementary*, Erie, Pa.
 BETTY LOU BRUNELL, *Music*, Turtle Point, Pa.
 MARGERY A. BRUSH, *Home Economics*, Scranton, Pa.

ANTHONY J. BUCHAN, *Secondary*, Wilkes-Barre, Pa.
 PATRICIA J. BURNS, *Secondary*, Athens, Pa.
 JAMES D. BURNS, *Secondary*, Athens, Pa.
 MARCUS L. BURR, *Secondary*, Canton, Pa.

THEODORE S. CALLAS, *Secondary*, Athens, Pa.
 ROBERT N. CARLBURG, *Music*, Pleasantville, Pa.
 BURNELL E. CARLSON, *Music*, Kane, Pa.
 LOIS M. CASE, *Secondary*, Milan, Pa.

CARMEN C. CAVUTO, *Music*, W. Wyoming, Pa.
 HAROLD H. CHADWICK, *Secondary*, Wyalusing, Pa.
 M. VIRGINIA CHERRINGTON, *Home Economics*, Port Allegany, Pa.
 DONALD J. CHUBBUCK, *Secondary*, Towanda, Pa.

JAMES J. CLANCY, *Elementary*, Olyphant, Pa.
 FRANCIS I. CLARKE, *Home Economics*, Mexico, N. Y.
 DONNA E. CLEVELAND, *Elementary*, Mansfield, Pa.
 LEE B. CLEVELAND, *Secondary*, Troy, Pa.

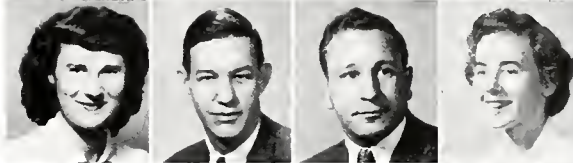
ELEANOR L. COBB, *Elementary*, Stevensville, Pa.
 ERNEST A. CODISPOTI, *Secondary*, Elkland, Pa.
 JANET J. COLWELL, *Home Economics*, Susquehanna, Pa.
 CARLETON P. COOK, *Secondary*, Wysox, Pa.



EUGENE D. CORBO, *Music*, Elmira, N. Y.
 DONNA M. COX, *Secondary*, Coudersport, Pa.
 ARLENE B. CRAIG, *Elementary*, Wellsburg, N. Y.
 ALLEN E. CRANDALL, *Music*, Mansfield, Pa.



VELMA A. CRUTTENDEN, *Secondary*, Wellsboro, Pa.
 JAMES W. DANIEL, *Secondary*, Bartow, Fla.
 LEON F. DANIELS, *Secondary*, Athens, Pa.
 PHYLLIS J. DARRIN, *Secondary*, Coudersport, Pa.



MARY E. DAVIS, *Music*, LeRaysville, Pa.
 MARIAM R. DAVIS, *Music*, Nelson, Pa.
 JIMMY DECKER, *Secondary*, Wilkes-Barre, Pa.
 JOSEPH D. DeLEO, *Secondary*, Sheffield, Pa.



FLOYD A. DELGROSSO, *Secondary*, Galeton, Pa.
 RAYMOND L. DETZ, *Secondary*, Nanticoke, Pa.
 PETER DeQUINQUA, *Secondary*, Olyphant, Pa.
 RUTH DIETRICH, *Secondary*, Fleetwood, Pa.



ANTHONY L. DOMBROSKI, *Secondary*, Wilkes-Barre, Pa.
 THOMAS F. DONAGHUE, *Music*, Schuylkill, Pa.
 JACK V. DREW, *Secondary*, Mansfield, Pa.
 MARY L. DUBBLE, *Music*, Myerstown, Pa.



JACK DUNBAR, *Secondary*, Wilkes-Barre, Pa.
 WALLACE S. DUNMORE, *Secondary*, Watrous, Pa.
 BEVERLY L. EVANS, *Home Economics*, Corning, N. Y.
 HARLAND J. EVANS, *Secondary*, Mansfield, Pa.



LESLIE D. EVANS, *Secondary*, Mansfield, Pa.
 STANLEY M. EVANS, *Secondary*, Olyphant, Pa.
 LAURA L. ECKROTH, *Home Economics*, Bloomsburg, Pa.
 WALTER E. EDGERTON, *Secondary*, Mansfield, Pa.



LOU ELSTER, *Music*, McKeesport, Pa.
 EDMUND S. FALKOWSKI, *Secondary*, Wilkes-Barre, Pa.
 MARILYN N. FEHR, *Home Economics*, Allentown, Pa.
 PAT FERRY, *Home Economics*, Dallas, Pa.

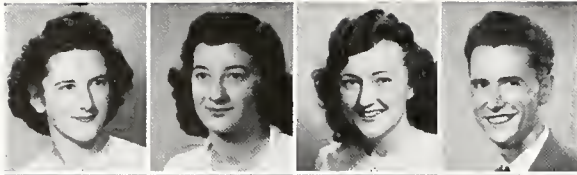


MARION C. FINCH, *Secondary*, Crooked Creek, Pa.
 FRANK FISH, *Secondary*, Mansfield, Pa.
 EDWARD J. FLANAGAN, *Secondary*, Wilkes-Barre, Pa.
 DONNA J. FOX, *Music*, Susquehanna, Pa.



DICK FRALEY, *Secondary*, Wilkes-Barre, Pa.
 K. BENEDICT GARRISON, *Secondary*, Mansfield, Pa.
 LOIS S. GASS, *Home Economics*, Danville, Pa.
 JOHN F. GEARHART, *Secondary*, Tower City, Pa.

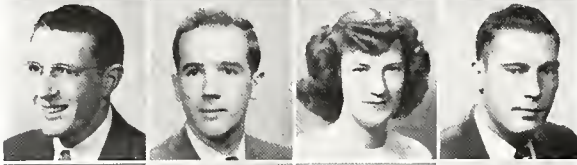




JOAN JEAN GEIGLE, *Secondary*, Condersport, Pa.
 VILMA ANN GEORGETTI, *Secondary*, Carbondale, Pa.
 EMMA JANE GESSNER, *Music*, Dornsife, Pa.
 JOHN GILLETTE, *Secondary*, Germania, Pa.



ROBERT A. GRIFFITH, *Secondary*, Millerton, Pa.
 RAYMOND S. GRUZLEWSKI, *Secondary*, Blossburg, Pa.
 GERALD HADLEY, *Secondary*, Olyphant, Pa.
 SALLY PERKINS HAINES, *Secondary*, Hallstead, Pa.



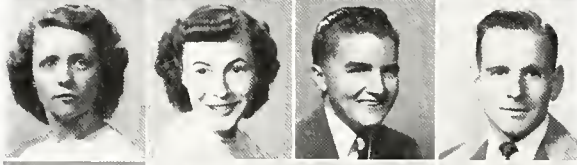
WILLIAM F. HAMILTON, *Secondary*, Galeton, Pa.
 ANTHONY HARASKA, *Secondary*, Olyphant, Pa.
 DOROTHY HARKNESS, *Home Economics*, Canton, Pa.
 JOSEPH E. HARRINGTON, *Secondary*, Kingston, Pa.



TOM HARRINGTON, *Secondary*, Kingston, Pa.
 ERNESTINE L. HASWELL, *Music*, Lehighton, Pa.
 DORIS EILEEN HEALEY, *Secondary*, Wilkes-Barre, Pa.
 MARIE P. HEMBURY, *Secondary*, Mildred, Pa.



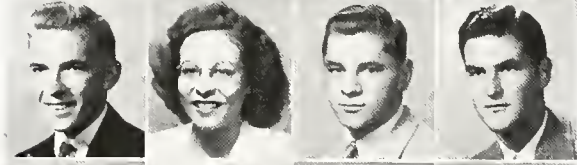
ROBERT HENRY, *Secondary*, Hudson, Pa.
 DELOS HENRICH, *Secondary*, Sayre, Pa.
 EARL EDWARD HINMAN, *Secondary*, Monroeton, Pa.
 FRANCES BERNERDINE HOFFMANN, *Home Economics*, Forty Fort, Pa.



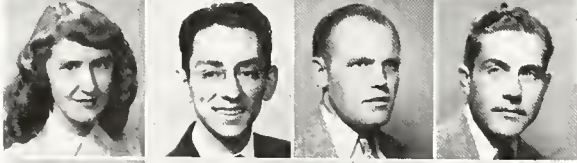
ELLEN HOUSER, *Music*, Millerton, Pa.
 AUDREY JANE HUTCHESON, *Elementary*, Mansfield, Pa.
 RICHARD G. HUTCHINSON, *Secondary*, Olean, N. Y.
 WILLIAM JAQUISH, *Secondary*, Tunkhannock, Pa.



ALGRETTA M. JENKINS, *Home Economics*, Peckville, Pa.
 WESLEY R. JOHNSON, *Music*, Williamsport, Pa.
 MARY ANN JONES, *Music*, Scranton, Pa.
 MORGAN W. JONES, *Music*, Wilkes-Barre, Pa.



FREDRIC G. JUDD, *Secondary*, Harrison Valley, Pa.
 ALTA MARIE JUMPER, *Music*, Newville, Pa.
 JOSEPH T. KATUSZ, *Secondary*, Wilkes-Barre, Pa.
 PETER W. KEARNEY, *Secondary*, Olyphant, Pa.



NORMA C. KEELER, *Secondary*, Athens, Pa.
 JOHN DANIEL KEIHRES, *Music*, Rebeck, Pa.
 ALFRED E. KJELGAARD, *Secondary*, Watrous, Pa.
 ROBERT M. KEMP, *Secondary*, Nelson, Pa.



EDITH M. KENDALL, *Music*, Marienville, Pa.
 CLAIR J. KENNEDY, *Secondary*, Mansfield, Pa.
 MARSHALL L. KENNEDY, *Secondary*, Troy, Pa.
 LEE M. KERCHUSKY, *Secondary*, Ringtown, Pa.



MARY E. KINGAN, *Music*, Slippery Rock, Pa.
 RICHARD W. KINNAN, *Secondary*, Middlebury Center, Pa.
 LYDIA MARGARET KINNEY, *Elementary*, Mansfield, Pa.
 HAROLD W. KINTNER, *Secondary*, Brackney, Pa.

ELEANOR RUTH KITHCART, *Secondary*, Wyalusing, Pa.
 FRANK KIWATISKY, *Irregular Secondary*, Lopez, Pa.
 BERNICE P. KLINGAMAN, *Music*, Gilbert, Pa.
 EDWARD A. KNOB, *Music*, Stroudsburg, Pa.

RAY A. KODISH, *Secondary*, Kingston, Pa.
 MATILDA T. KOSLOSKY, *Secondary*, Dushore, Pa.
 CHESTER FRANK KOVALESKI, *Secondary*, Wilkes-Barre, Pa.
 LEON W. KREGER, *Secondary*, Liberty, Pa.

DOROTHY MARIE KROTZER, *Home Economics*, Liberty, Pa.
 WALTER J. KUCEWICZ, *Secondary*, Wilkes-Barre, Pa.
 H. EUGENE LANDON, *Secondary*, Towanda, Pa.
 STEPHEN LAPSANSKY, *Music*, Pittston, Pa.

ROBERT W. LESHINSKI, *Secondary*, Hudson, Pa.
 GEORGE F. LEVERING, *Secondary*, Athens, Pa.
 WILLARD E. LLOYD, *Secondary*, Wellsboro, Pa.
 WILLIAM LOMBARDI, *Music*, Stroudsburg, Pa.

THOMAS F. LYNCH, *Secondary*, Athens, Pa.
 MICHAEL P. MADDOCK, *Music*, Lopez, Pa.
 VITO JOHN MAGDELINSKAS, *Secondary*, Wilkes-Barre, Pa.
 ALICE MAY MAGUIRE, *Home Economics*, Plains, Pa.

FRANK J. MAMINSKI, *Music*, Wilkes-Barre, Pa.
 PRUE MANLEY, *Elementary*, Elmira, N. Y.
 LEE MARCUCCI, *Elementary*, Laceyville, Pa.
 ESTHER J. MARSHALL, *Home Economics*, Roaring Branch, Pa.

MARY ELIZABETH MARSHALL, *Home Economics*, Mansfield, Pa.
 LOU MARVIN, *Music*, Forty Fort, Pa.
 RITA MASTERSON, *Secondary*, Eldred, Pa.
 RAYMAON MAZZA, *Music*, Steelton, Pa.

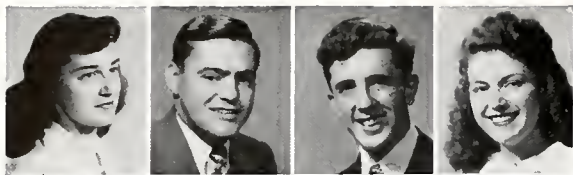
LAURA ALICE McCARTY, *Home Economics*, Lehighton, Pa.
 JAMES E. McCLURE, *Secondary*, Troy, Pa.
 BARBARA McFADDEN, *Home Economics*, Bradford, Pa.
 EUGENE M. McLAIN, *Secondary*, Olyphant, Pa.

RICHARD McLANE, *Music*, Pittston, Pa.
 DOROTHY ELAINE McLAUGHLIN, *Music*, Roulette, Pa.
 JOHN A. McDONALD, *Secondary*, Mansfield, Pa.
 EMMET L. McINTOSH, *Music*, Erie, Pa.

LORENE McMILLEN, *Home Economics*, Loysville, Pa.
 JEAN METZGER, *Elementary*, Millport, Pa.
 DOROTHY J. MICHAELS, *Elementary*, Covington, Pa.
 DENNETH A. MILLARD, *Secondary*, Canton, Pa.

JOHN JOSEPH MILLER, *Secondary*, Wyalusing, Pa.
 ROBERT S. MILLS, *Secondary*, Wilkes-Barre, Pa.
 LUCILLE ANN MIRMACK, *Secondary*, Wilkes-Barre, Pa.
 MERNA ELAINE MOON, *Secondary*, New Albany, Pa.

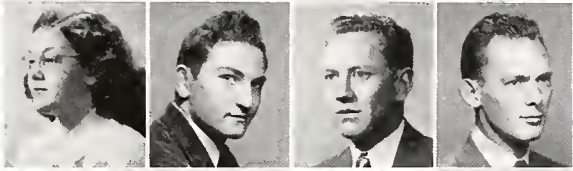




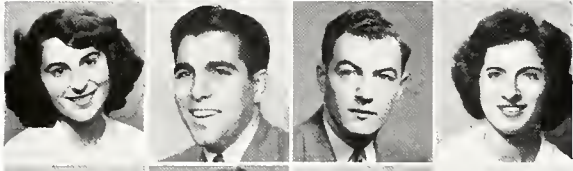
NAN MAUL, *Music*, Mansfield, Pa.
 CHARLES RICHMOND MAUL, *Music*, Mansfield, Pa.
 KENNETH MASTERSON, *Music*, Tower City, Pa.
 THERESE A. NAPOLITAN, *Music*, Hazelhurst, Pa.



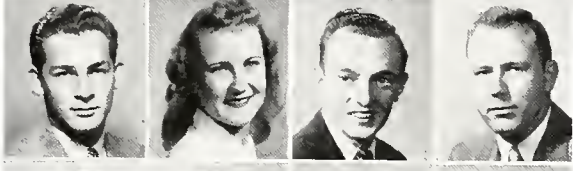
PAT O'NEILL, *Elementary*, Mauch Chunk, Pa.
 GEORGE EDWARD OTT, *Secondary*, Wayne, Pa.
 MAIRLYN AGNES PAGE, *Music*, Susquehanna, Pa.
 PETER P. PAZAHANICK, *Secondary*, Wilkes-Barre, Pa.



PHYLLIS M. PEIFER, *Home Economics*, Manheim Lane, Pa.
 ANTHONY M. PETRILLO, *Secondary*, Wilkes-Barre, Pa.
 JAMES C. PHILLIPS, *Secondary*, Laurel Springs, N. J.
 ROBERT A. PHILLIPS, *Secondary*, Kingston, Pa.



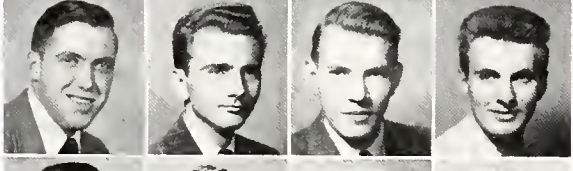
RUTH E. PHILLIPS, *Music*, Covington, Pa.
 FRANCIS LOUIS PINENO, *Music*, Wyoming, Pa.
 MICHAEL POLTASH, *Secondary*, Plains, Pa.
 EUGENIA MARIE PORRETTA, *Secondary*, Silver Creek, Pa.



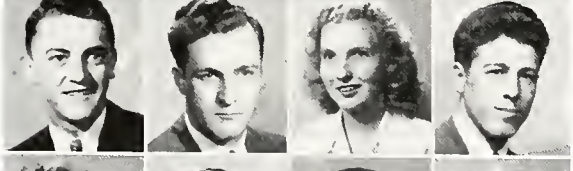
ARNOLD R. POSTER, *Secondary*, Valley Stream, Long Island, N. Y.
 CAROL V. POTTER, *Secondary*, Coudersport, Pa.
 ERWIN PRINDLE, *Secondary*, Shinglehouse, Pa.
 RICHARD RADEBOCK, *Music*, Ebensburg, Pa.



IRMA B. RAGNELLI, *Secondary*, Philadelphia, Pa.
 BARBARA E. RAMSEY, *Elementary*, Norristown, Pa.
 TED RANDON, *Secondary*, Wilkes-Barre, Pa.
 BETTY MAE RAVKOVITZ, *Home Economics*, Sayre, Pa.



HORACE W. REES, *Secondary*, Wellsboro, Pa.
 EUGENE F. REHRER, *Music*, Pine Grove, Pa.
 CHARLES L. RICKOIT, *Secondary*, Muncy, Pa.
 PAUL RICKOIT, *Secondary*, Muncy, Pa.



RICHARD L. RITTER, *Secondary*, Mansfield, Pa.
 JOHN ROBERTS, *Music*, Edwardsville, Pa.
 GAYL MARIE ROSS, *Music*, Waverly, Pa.
 NICK RUSIN, *Secondary*, Mildred, Pa.



MARGARET JEAN RUSSELL, *Home Economics*, Mansfield, Pa.
 BILLY SAVAGE, *Music*, Clarks Summit, Pa.
 MARVIN SCHLENKER, *Music*, Kutztown, Pa.
 C. DOLORES SCHMELZLE, *Secondary*, Ralston, Pa.

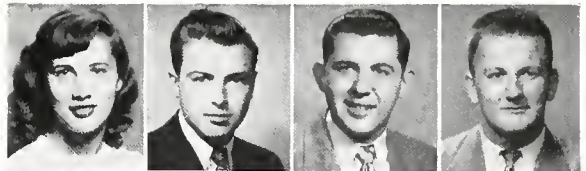


GORDON S. SECOR, *Secondary*, Towanda, Pa.
 BEATRICE SHAFER, *Home Economics*, Cogan Station, Pa.
 MARGIE SHAFER, *Music*, Cogan Station, Pa.
 ELIZABETH B. SHEFFEL, *Secondary*, Roaring Branch, Pa.



DOROTHY E. SJOSTROM, *Elementary*, Athens, Pa.
 DONALD C. SHIRFT, *Music*, Sommerhill, Pa.
 WAUNITA S. SIMONSON, *Elementary*, Montrose, Pa.
 PHILIP H. SITTLER, *Music*, Allentown, Pa.

MARIE KINGA SLAWTA, *Music*, Lopez, Pa.
 ALBERT SMITH, *Secondary*, Troy, Pa.
 CHARLES F. SMITH, *Secondary*, Wyalusing, Pa.
 JOHN DONALD SMITH, *Secondary*, Kingston, Pa.



LEO SMITH, *Secondary*, Galeton, Pa.
 RICHARD J. SMITH, *Music*, West Pittston, Pa.
 BARBARA JANE SNYDER, *Home Economics*, Sunbury, Pa.
 WELLINGTON SNYDER, *Music*, Rebusk, Pa.



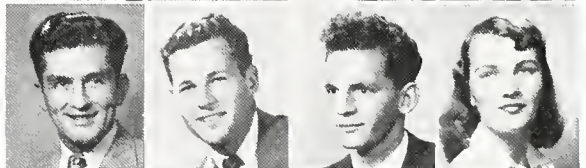
JOHN R. SONES, *Secondary*, Muncy, Pa.
 REV. ALLEN SOURS, *Secondary*, Mainsburg, Pa.
 MARGARET ORMSBY SPLEEN, *Home Economics*, Ridgeway, Pa.
 STEVE STARCHESKI, *Secondary*, Scranton, Pa.



MARY LYNNE STEVENS, *Irregular Secondary*, Mansfield, Pa.
 HOWARD STRAILEY, *Secondary*,
 MARGARET LOUISE STROM, *Secondary*, Forest City, Pa.
 ARNOLD B. SUNDBERG, *Secondary*, Jersey Shore, Pa.



JOSEPH JOHN SWEEDA, *Secondary*, Hudson, Pa.
 WILLIAM TAYLOR, *Secondary*, Mansfield, Pa.
 CHARLES H. THOMAS, *Music*, Kingston, Pa.
 RUTH M. TINGLEY, *Elementary*, Blossburg, Pa.



IRENE TOMPKINS, *Secondary*, Hallstead, Pa.
 JEAN E. TRACH, *Home Economics*, Saylorsburg, Pa.
 JOHN THOMAS WALKER, *Secondary*, Peckville, Pa.
 JOE WALSH, *Secondary*, Plains, Pa.



ANDY WEIT, *Music*, Academy Hill, Pa.
 ESTHER P. WELLENDORF, *Music*, South Williamsport, Pa.
 RALPH H. WELLER, *Secondary*, Towanda, Pa.
 LINCOLN WELLES, *Secondary*, Wyalusing, Pa.



BETTY WHITEHORN, *Secondary*, Gilberton, Pa.
 RICHARD L. WHITING, *Secondary*, Elmira, N. Y.
 ELYNOR M. WILCOX, *Music*, Montrose, Pa.



REID A. WILCOX, *Secondary*, Williamsport, Pa.
 RODNEY C. WILCOX, *Secondary*, Williamsport, Pa.
 HOWARD C. WILLIAMS, *Music*, Scranton, Pa.



EUGENE H. WITCRAFT, *Music*, Stroudsburg, Pa.
 ELMER J. YECK, *Secondary*, Olyphant, Pa.
 LILLIAN ARDELLE ZILLHARDT, *Home Economics*, Fleetwood, Pa.



Without Photographs

PAUL W. BOINSKE, *Secondary*, Blossburg, Pa.
EDWARD CALBY, *Secondary*, Mansfield, Pa.
GORDON R. CARSON, *Secondary*, Covington, Pa.
ROBERT C. CONNIFF, *Secondary*, Plains, Pa.

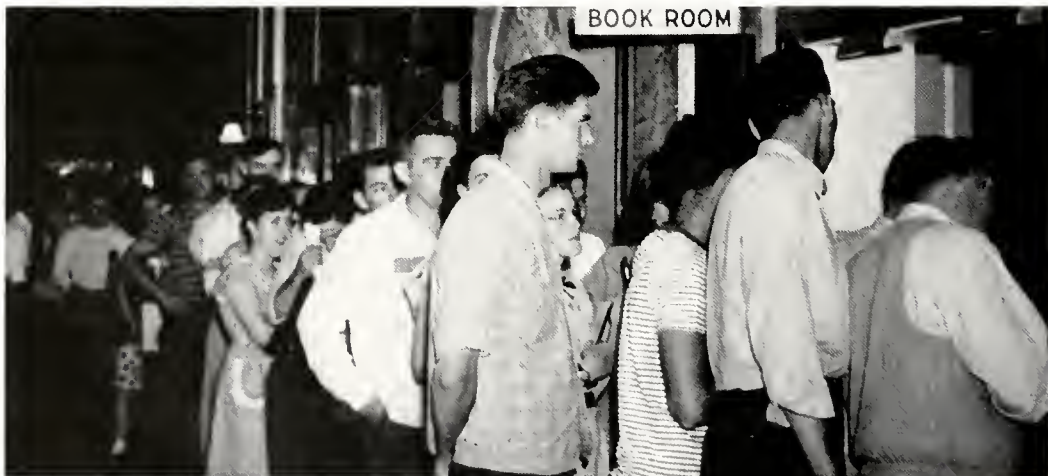
LEONARD CHARLES DRABINSKI, *Secondary*, Blossburg, Pa.
JOSEPH ENNIS, *Secondary*, Mansfield, Pa.
JOHN P. HARKINS, *Secondary*, Wilkes-Barre, Pa.
KEITH D. HEATON, *Secondary*, Mansfield, Pa.

THEODORE D. METARKO, *Secondary*, Blossburg, Pa.
ANTHONY EDWARD ROSKO, *Secondary*, Olyphant, Pa.
WILLIAM JAMES NOVITSKE, *Secondary*, Blossburg, Pa.
JOSEPH O'DONNELLI, *Secondary*, Wilkes-Barre, Pa.

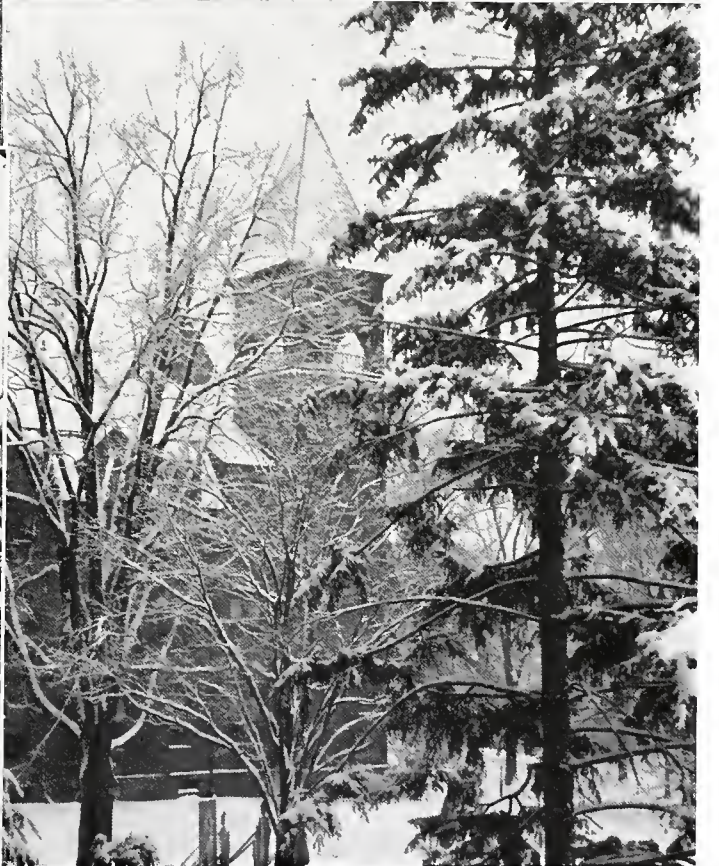
JOHN HARRY PARSONS, *Secondary*, Towanda, Pa.
WALTON K. PARSONS, *Secondary*, Towanda, Pa.
KENNETH E. PERSCHAW, *Secondary*, Wilkes-Barre, Pa.
GEORGE JOHN POLTASH, *Secondary*, Plains, Pa.

JACK PRUTSMAN, *Secondary*, Troy, Pa.
FRANK J. RAYKOVITZ, *Secondary*, Wilkes-Barre, Pa.
JOHN PATRICK TURNICK, *Secondary*, Olyphant, Pa.
FRANCIS L. VROMAN, *Secondary*, Blossburg, Pa.

GEORGE Y. WILT, *Music*, Towanda, Pa.
MILTON W. WHEELER, *Secondary*, Elkland, Pa.
WARREN G. WOOD, *Secondary*, Athens, Pa.



THAT LINE!



Class of 1951

TO THE MEMBERS OF THE FRESHMAN CLASS:

College life is a new environment, many aspects of which are deliberately planned to the end that each individual who chooses this new experience may have the opportunity to attain a well integrated life and consequently contribute his or her just share to the betterment of the social order. Every new experience means unexpected opportunities, different ideas, strange problems and new decisions. A new environment means adjustments of many kinds.

Any one who conscientiously enters into this new environment will discover among other characteristics at least four basic ones: a loyalty to the past, which eliminates the necessity of learning everything anew; a spirit of teachableness which means open-mindedness and an appreciation of the viewpoints of others; a balanced independence, which means neither the blind acceptance of the opinions of others, nor the selfishness which disregards everything and everybody; a steadfast determination which will persist after the glamour of the first year of college is over and which will afford you the joy of achievement.

Our best wishes for your continued success.

DOROTHY M. WASLEY,
SAMUEL M. LONG,
Class Advisers



OFFICERS

- | | | |
|-----------------------|-----------|-----------------|
| <i>President</i> | - - - - - | BILL DIETZ |
| <i>Secretary</i> | - - - - - | JANET EVANS |
| <i>Treasurer</i> | - - - - - | STEVE HARCHARIK |
| <i>Vice President</i> | - - - - - | GEORGE BROOKE |



DEAN WASLEY
DEAN LONG
Advisers

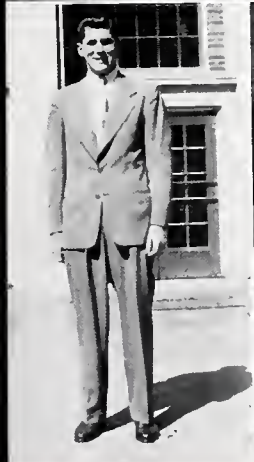


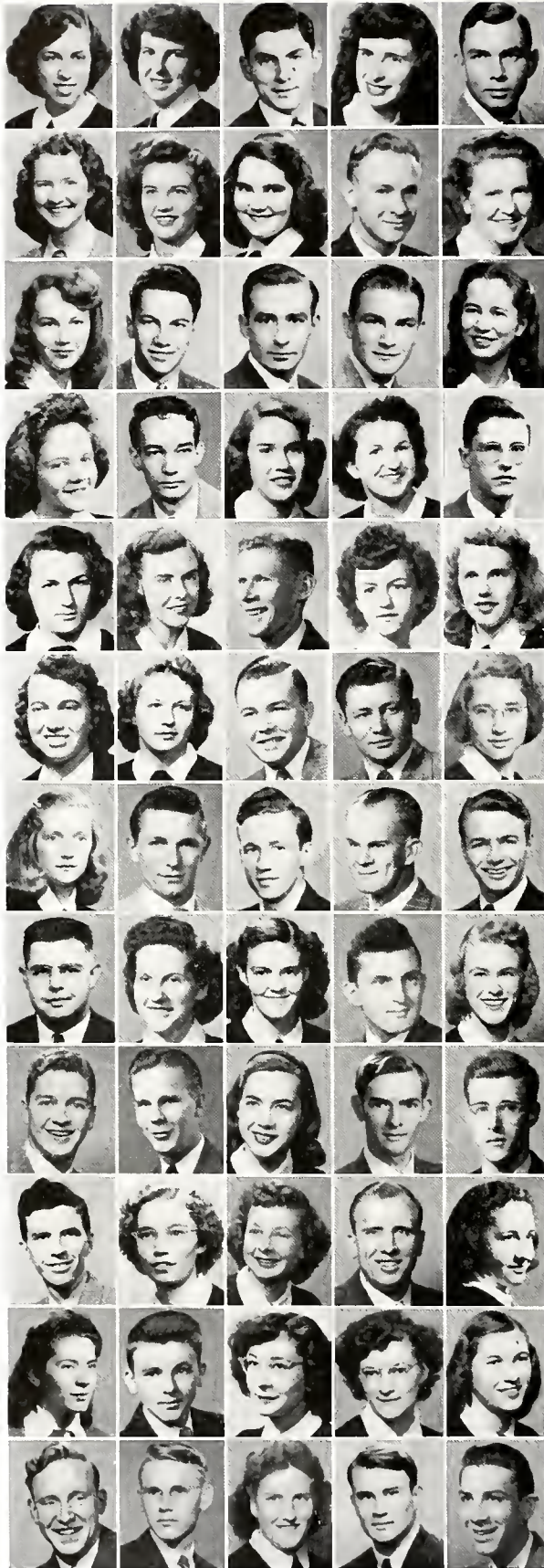
The Freshmen of 1947-48

One day in September there descended upon Mansfield's lovely college hill more than three hundred young people. They were the Freshman class of 1947-48. A large number, true, but it typified clearly the swollen enrollment of American universities and colleges in this whirling post war world. Where once eighty Freshmen had shared the genuine campus spirit of the college, three hundred now endeavored to do so.

They succeeded amazingly well. The Initiation provided thrills and fun for everyone concerned. Parties and dances created an atmosphere of friendliness. Finally, that great, intangible something, Tradition, stepped in and completed the task. Verily, Mansfield impressed its Freshmen profoundly with the richness of her tradition.

In speaking of friends, we must not neglect the faculty. It was with their help and advice that we were launched successfully on our new college career. Thus, Tradition, campus spirit and the Faculty combined to make our Freshman year a very pleasant one indeed.





Ruth Sonya Aaron, *Secondary* Philadelphia, Pa.
 Elizabeth M. Aber, *Home Economics* Matamoras, Pa.
 Ralph J. Aloï, *Secondary* Clermont, Pa.
 Sylvia Marie Annhein, *Secondary* Waverly, N. Y.
 Francis W. Artley, *Secondary* Liberty, Pa.

Jeanne Elizabeth Ayers, *Music* Millerton, Pa.
 Louise Baer, *Home Economics* Huntingdon Mills, Pa.
 Mary Jane Baily, *Secondary* Tamaqua, Pa.
 Harry Richard Baker, Jr., *Secondary* Reading, Pa.
 Louise E. Balz, *Elementary* Toledo, Ohio

Ann M. Barden, *Elementary* Mansfield, Pa.
 Clarence D. Barlet, *Secondary* Lebanon, Pa.
 J. Warren Barrett, *Secondary* Millerton, Pa.
 Martin James Barrett, *Music* Waverly, N. Y.
 Helen Margaret Bartha, *Secondary* Yeagertown, Pa.

Marcella Dee Bastian, *Home Economics* Wellsboro, Pa.
 Jan Beck, *Secondary* Renovo, Pa.
 Lilly Bechakas, *Home Economics* Bradford, Pa.
 Matilda V. Bednash, *Secondary* Springville, Pa.
 Gny C. Beishline, *Secondary* Benton, Pa.

Mary Christine Bell, *Home Economics* Lewistown, Pa.
 Alice Mildred Bellairs, *Music* Stroudsburg, Pa.
 Edward D. Bellis, *Secondary* Millersburg, Pa.
 Nancy Jeanne Becker, *Home Economics* East Mauch Chunk, Pa.
 Joann Bentley, *Secondary* Bristol, Pa.

Sarah Louise Bilheimer, *Home Economics* Northampton, Pa.
 Betty Ann Billings, *Music* Sayre, Pa.
 Victor R. Bird, *Secondary* Sayre, Pa.
 E. Keith Birth, *Secondary* Benton, Pa.
 Kathryn Bitner, *Elementary* Mill Hall, Pa.

Betty Jean Black, *Secondary* Athens, Pa.
 Harold D. Black, *Secondary* Athens, Pa.
 Laurin Ray Blasien, *Music* Sherrill, N. Y.
 C. L. Bockneweh, *Secondary* Knoxville, Pa.
 Richard Boehl, *Music* Suffolk, N. Y.

Donald C. Bogaczyk, *Secondary* Blossburg, Pa.
 June Eilleen Brabec, *Elementary* Beaver, Pa.
 Geraldine Myra Bradshaw, *Elementary* Stevensville, Pa.
 William Case Bradshaw, *Secondary* Mansfield, Pa.
 Edith May Brong, *Music* Wealthampton Beach, N. Y.

George Hughes Brooke, *Secondary* Wayne, Pa.
 A. Dean Brown, Jr., *Music* Middletown, Pa.
 Janice C. Brown, *Music* Ulster, Pa.
 Kenneth Ira Brown, *Secondary* Ulster, Pa.
 M. Donald Buford, *Secondary* Port Allegany, Pa.

Ray Burbick, *Music* Williamsport, Pa.
 M. Charmaine Burdick, *Elementary* Uniondale, Pa.
 Joan Marie Burlein, *Secondary* Honesdale, Pa.
 Stephen J. Butelko, *Elementary* Nanticoke, Pa.
 Margie June Bunt, *Elementary* Tioga, Pa.

Viola Calaiaco, *Elementary* Matamoras, Pa.
 Gail F. Calkins, *Secondary* Canton, Pa.
 Elaine Carlson, *Secondary* Tioga, Pa.
 Esther G. Cassel, *Home Economics* Kutztown, Pa.
 Mary Cassel, *Elementary* Kutztown, Pa.

Joe M. Castle, *Secondary* Canton, Pa.
 Robert B. Castle, *Secondary* Canton, Pa.
 Mary Alice Cawley, *Elementary* Eldred, Pa.
 Russell F. Chaffee, *Secondary* Towanda, Pa.
 Floyd Raul Chastain, Jr., *Secondary* Shinglehouse, Pa.

Joseph G. Cbeplick, *Secondary* Olyphant, Pa.
 Sarah F. Chinn, *Secondary* Connellsville, Pa.
 Patricia Jean Cochran, *Home Economics* Williamsport, Pa.
 C. Eugene Cole, *Secondary* Mansfield, Pa.
 Willis Elmer Cole, *Secondary* Mansfield, Pa.

William E. Conwell, *Secondary* Wilkes-Barre, Pa.
 Clara Elizabeth Cooner, *Secondary* Waverly, Pa.
 Robert M. Coy, *Secondary* Norristown, Pa.
 Gertrude Crama, *Elementary* Tioga, Pa.
 Joseph J. Craven, Jr., *Secondary* Peckville, Pa.

Janice Alice Croman, *Elementary* Troy, Pa.
 Elvira L. Cummings, *Elementary* Mansfield, Pa.
 Patricia Curran, *Music* Galeton, Pa.
 Lillian M. Curtis, *Music* Springboro, Pa.
 Phyllis Anne Cutler, *Home Economics* Niagara Falls, N. Y.

Phoebe C. Dalzell, *Home Economics* Ebensburg, Pa.
 John Dandois, *Secondary* Troy, Pa.
 G. F. Dandois, *Secondary* Troy, Pa.
 Joyce Danknich, *Home Economics* Tioga, Pa.
 James B. Darling, *Secondary* Wellsboro, Pa.

Elaine Carol Davis, *Home Economics* Matamoras, Pa.
 Darrell E. Davis, *Music* Shinglebouse, Pa.
 William H. Davitt, *Secondary* Scranton, Pa.
 Patricia A. Day, *Elementary* Mansfield, Pa.
 Howard W. Decker, *Secondary* Forty Fort, Pa.

Vincent Walter Delida, *Secondary* Wilkes-Barre, Pa.
 Kenneth Denel, *Secondary* Wellsboro, Pa.
 Joseph M. Denham, *Secondary* Matamoras, Pa.
 Paul Depue, *Secondary* Montrose, Pa.
 Peter A. DeQuinqua, *Secondary* Scranton, Pa.

Robert Oakley Dewey, *Secondary* Coudersport, Pa.
 Lyman S. Dibble, *Secondary* Westfield, Pa.
 Irene V. Dickinson, *Music* Oswego, N. Y.
 Bill Dietz, *Secondary* Franklin, Pa.
 Marian E. Ditzler, *Music* Lititz, Pa.

Jack Dodson, *Secondary* Greensburg, Pa.
 Jack Domboski, *Secondary* Scranton, Pa.
 Raymond John Dombrowski, *Music* New Castle, Pa.
 Ann Marie Done, *Home Economics* Shenandoah, Pa.
 Owen J. Dougherty, *Secondary* Dunmore, Pa.

Edward J. Drabinski, *Secondary* Blossburg, Pa.
 Helen Louise Drebert, *Home Economics* E. Northampton, Pa.
 Ann Duffy, *Secondary* Honesdale, Pa.
 Donovan Dunn, *Secondary* Binghamton, N. Y.
 Raymond Martial Durant, *Secondary* Reading, Pa.

Isabelle L. Dye, *Music* Wellsboro, Pa.
 John J. Earley, *Secondary* Montrose, Pa.
 Patsy Ruth Edgar, *Elementary* Westfield, Pa.
 Lola Jean Edmunds, *Secondary* Hawley, Pa.
 Edwin Francis Eiswekth, *Secondary* Williamsport, Pa.

Robert C. Eldred, *Secondary* Sayre, Pa.
 Harry Earl Engle, *Secondary* Upper Darby, Pa.
 Sally Rae Eno, *Elementary* Honesdale, Pa.
 Catherine Ervey, *Music* East Stroudsburg, Pa.
 Myra Beth Ervine, *Elementary* Montrose, Pa.

Mary Alice Eshelman, *Home Economics* Mohnton, Pa.
 Dean Richard Evans, *Secondary* Tower City, Pa.
 Janet Louise Evans, *Secondary* Watsontown, Pa.
 Olin W. Evans, *Secondary* Wilkes-Barre, Pa.
 William Marlin Evey, *Secondary* Bellefonte, Pa.





Phyllis Lee Feinsilber, *Home Economics* Stroudsburg, Pa.
 Loretta Fiaschi, *Secondary* Susquehanna, Pa.
 Frank T. Flannelly, *Secondary* Dunmore, Pa.
 Anne Kathryn Forrest, *Home Economics* Tamaqua, Pa.
 Richard T. Fraley, *Secondary* Wilkes-Barre, Pa.

Mona Lou Frank, *Music* Clearfield, Pa.
 Helen L. Frank, *Elementary* Rockdale, N. Y.
 Nancy Fray, *Music* Clarks Green, Pa.
 Alice C. Fritz, *Secondary* Mahanoy City, Pa.
 Francis A. Gallicchio, *Secondary* Troy, Pa.

Nancy A. George, *Home Economics* Latrobe, Pa.
 Fred Gialloreto, *Secondary* Galeton, Pa.
 Shirley Ruth Giles, *Home Economics* Saxtonburg, Pa.
 John Lewis Gillette, *Secondary* Germania, Pa.
 Ray Goeringer, *Secondary* Dallas, Pa.

James G. Goodwin, *Secondary* Uniontown, Pa.
 Donald Edgar Greene, *Music* Scranton, Pa.
 Florence Jean Grimm, *Home Economics* La Anna, Pa.
 Shirley LaRue Grow, *Secondary* Shamokin, Pa.
 George W. Guldin, *Music* Schuylkill Haven, Pa.

Donna Hackett, *Music* McKeesport, Pa.
 Richard D. Hammond, *Secondary* Loganton, Pa.
 Evelyn J. Haner, *Home Economics* Gaines, Pa.
 Gene C. Harbach, *Music* Loganton, Pa.
 Stephen J. Harcharik, *Secondary* Peckville, Pa.

Helen V. Harsh, *Secondary* Bradford, Pa.
 Robert Charles Hartman, *Music* East Stroudsburg, Pa.
 William Edward Heatwole, *Secondary* Littlestown, Pa.
 Robert B. Heim, *Music* Clarks Summit, Pa.
 Betty M. Heimbach, *Home Economics* Summit Station, Pa.

William Charles Hendler, *Secondary* Scranton, Pa.
 Frances Hendricks, *Secondary* Mansfield, Pa.
 Lucille H. Hennessey, *Home Economics* Ringtown, Pa.
 Bernice A. Hicks, *Secondary* Sayre, Pa.
 John Hime, *Secondary* Mauch Chunk, Pa.

Gene Horn, *Secondary* Tower City, Pa.
 Jean L. Howells, *Elementary* Scranton, Pa.
 Marion Hoffman, *Home Economics* Canton, Pa.
 Jack L. Hummel, *Secondary* Mt. Carmel, Pa.
 Anne Hunter, *Home Economics* Bristol, Pa.

Miriam S. Hunter, *Music* Taylor, Pa.
 Mary Mae Inseho, *Elementary* Mansfield, Pa.
 Gwendolyn Jones, *Music* Taylor, Pa.
 Bernard F. Judd, *Secondary* Westfield, Pa.
 Sue Kaufman, *Secondary* Carbondale, Pa.

E. Arthur Keen, Jr., *Secondary* Parkersburg, Pa.
 Richard E. Knapp, *Secondary* Lawrenceville, Pa.
 Ruth Frances Knoebel, *Home Economics* Northumberland, Pa.
 Martin Kozel, *Secondary* Rochester, N. Y.
 Eleanor R. LaCoe, *Secondary* Clarks Summit, Pa.

Stephen M. Lapsansky, *Music* Pittston, Pa.
 Joan Adele Lasday, *Secondary* Philadelphia, Pa.
 George Lashak, *Secondary* Lakewood, Pa.
 Florence Therese Levitsky, *Secondary* Pittston, Pa.
 John Lindemann, *Music* Westwood, N. J.

Helen Marie Long, *Music* Patton, Pa.
 William A. Lombardi, *Music* Stroudsburg, Pa.
 Grace Charmaine Loveland, *Elementary* Meadville, Pa.
 Zelda Luce, *Home Economics* Hallstead, Pa.
 Frances Marie Luekner, *Secondary* Corning, N. Y.

Dorothy Elizabeth Luft, *Secondary* Coudersport, Pa.
 Gerald Lukas, *Secondary* Swoyerville, Pa.
 John C. Machun, *Secondary* Ashley, Pa.
 Roger Allen Madigan, *Secondary* Towanda, Pa.
 James Lawrence Malarkey, *Secondary* Wyoming, Pa.

Catherine Maloney, *Elementary* Wysox, Pa.
 S. Ralph Manganello, *Secondary* Wyoming, Pa.
 Doris E. Manley, *Home Economics* Newport, Pa.
 Dorothy Ann Manning, *Elementary* Gibson, Pa.
 Madelyn L. Markley, *Secondary* Pennsburg, Pa.

Benjamin Louis Marzo, *Secondary* Elkland, Pa.
 Kenneth L. Masterson, *Music* Tower City, Pa.
 Charles R. Maul, *Music* Mansfield, Pa.
 Betty McCabe, *Secondary* Blahely, Pa.
 Charles L. McElheny, *Secondary* Penbrook, Pa.

Carl W. McEntire, *Secondary* Sayre, Pa.
 Edward J. McFadden, *Secondary* Allentown, Pa.
 Elaine A. McLeod, *Elementary* Lanesboro, Pa.
 Gordon S. McLean, *Secondary* Towanda, Pa.
 Martha Ann McMillan, *Secondary* Waynesburg, Pa.

Arlene Merritt, *Secondary* Jermyn, Pa.
 Charles E. Miller, *Secondary* Harrisburg, Pa.
 Jesse A. Miller, *Secondary* Emmaus, Pa.
 Lewis A. Miller, *Secondary* Summit Hill, Pa.
 Kenneth R. Miller, *Secondary* Ulysses, Pa.

Robert J. Miller, *Secondary* Wellsboro, Pa.
 Gib Muir, *Music* Shamokin, Pa.
 Rosemary Patricia Mullen, *Home Economics* Willow Grove, Pa.
 Donna R. Mutchler, *Home Economics* Sunbury, Pa.
 Kenneth Myfelt, *Secondary* Millerton, Pa.

Margaret Ann Newell, *Secondary* Wysox, Pa.
 Richard Lawrence Newins, *Secondary* Patchogue, N. Y.
 Amos W. Northrop, Jr., *Secondary* Rome, Pa.
 Jacqueline Mignon O'Dell, *Secondary* Bradford, Pa.
 Roberta M. O'Dell, *Secondary* Bradford, Pa.

Patrick A. O'Hearn, *Music* Scranton, Pa.
 Charles W. Osani, *Secondary* Galeton, Pa.
 Margaret Therese Packer, *Elementary* Mansfield, Pa.
 Bettina de Palma, *Secondary* Philadelphia, Pa.
 Violet J. Portchey, *Secondary* Lewistown, Pa.

Theodore J. Patt, *Secondary* Wellsboro, Pa.
 Robert T. Patton, *Secondary* Wilkes-Barre, Pa.
 Ruth Pelczar, *Home Economics* Nanticoke, Pa.
 Milton H. Phillips, *Secondary* Tunkhannock, Pa.
 Thomas N. Phillips, *Secondary* Edwardsville, Pa.

Ward Pinner, *Secondary* Jackson Heights, N. Y.
 Howard O. Plasan, *Secondary* Montgomery, Pa.
 Francis Pollini, *Secondary* Wyoming, Pa.
 Michael Poltash, *Secondary* Plains, Pa.
 Patricia Pomeroy, *Home Economics* Troy, Pa.

Donald D. Preate, *Secondary* Old Forge, Pa.
 Erwin W. Prindle, *Secondary* Shinglehouse, Pa.
 Gilbert H. Pry, *Secondary* Modena, Pa.
 Richard William Radebach, *Secondary* Ebensburg, Pa.
 Violet Suzanne Rauch, *Secondary* Bethlehem, Pa.

Shirley M. Rauscher, *Secondary* Mansfield, Pa.
 Joseph M. Ream, *Secondary* Berlin, Pa.
 Jacqueline June Redner, *Secondary* Tioga, Pa.
 G. Mark Reynold, *Secondary* Montrose, Pa.
 Charles L. Ricker, *Secondary* Philadelphia, Pa.





Walter Newton Ridgway, *Home Economics* Fayette City, Pa.
 Ruth M. Riegel, *Home Economics* Shenandoah, Pa.
 Harold J. Risler, *Secondary* Drexel Hill, Pa.
 Sally E. Roberts, *Elementary* Mansfield, Pa.
 Patricia Rohrey, *Home Economics* Mainsburg, Pa.

Charles William Romig, *Secondary* Harrisburg, Pa.
 Martha Jean Ross, *Secondary* Smethport, Pa.
 John R. Rossbacher, *Music* Corry, Pa.
 Gwendolyn Marie Roy, *Home Economics* Gillett, Pa.
 Mary Lon Rule, *Secondary* Wanamie, Pa.

Jane A. Rushim, *Home Economics* Alden Station, Pa.
 Esther Russell, *Secondary* Rome, Pa.
 Thomas Sadler, *Secondary* Greensburg, Pa.
 Joseph Santiago, *Music* Kingston, Pa.
 Walter C. Schleinitz, *Music* Islip, N. Y.

Marvin F. Schlenker, *Music* Kutztown, Pa.
 Russell Clinton Seward, *Secondary* Benton, Pa.
 Bernardine M. Shaw, *Music* Coudersport, Pa.
 Teresa M. Sheehan, *Secondary* Sunbury, Pa.
 Ruth Louise Shiner, *Home Economics* Forty Fort, Pa.

Anthony B. Shumskas, *Secondary* Mahanoy City, Pa.
 Richard Sick, *Secondary* Towanda, Pa.
 Emmerme Lois Siglin, *Secondary* Noxen, Pa.
 William R. Sittig, *Secondary* Bradford, Pa.
 Phyllis Skelly, *Secondary* Ralston, Pa.

Richard C. Slocum, *Secondary* Wellsboro, Pa.
 Stephen V. Slovenkai, *Secondary* Dunmore, Pa.
 Arlene L. Smith, *Elementary* Mansfield, Pa.
 Betty Jean Smith, *Home Economics* Covington, Pa.
 Evelyn Elaine Smith, *Secondary* Ridley Park, Pa.

Arthur I. Smulowitz, *Secondary* Wilkes-Barre, Pa.
 Robert Louis Snover, *Secondary* Elmira, N. Y.
 Barbara Ann Snyder, *Music* Valley Stream, N. Y.
 Lois Marie Snyder, *Home Economics* Bairs, Pa.
 Marie E. Snyder, *Secondary* Hopbottom, Pa.

Reida J. Spang, *Secondary* Saxonburg, Pa.
 Marie T. Stankevitz, *Home Economics* Glen Lyon, Pa.
 Stephen F. Starcheski, *Secondary* Scranton, Pa.
 Sara Louise Staub, *Home Economics* Littlestown, Pa.
 Mary Elizabeth Sterling, *Elementary* Morris Run, Pa.

John William Sterling, *Secondary* Pine City, N. Y.
 Irma M. Stilwell, *Elementary* Roulette, Pa.
 Francis John Stracka, *Secondary* Peckville, Pa.
 Mary Louise Strohecker, *Music* Millersburg, Pa.
 John H. Strobe, *Secondary* Montrose, Pa.

George Struble, *Secondary* Republic, Pa.
 David H. Strunk, *Secondary* Wapwallopen, Pa.
 Lena M. Swetland, *Music* Waverly, Pa.
 Donald K. Sykes, *Secondary* Lansdowne, Pa.
 Janet E. Taylor, *Elementary* Sylvania, Pa.

Janet Marilyn Taylor, *Music* Montrose, Pa.
 Eugene C. Tedesco, *Secondary* Peckville, Pa.
 Janice Terry, *Secondary* Athens, Pa.
 Elden P. Tweksburg, *Secondary* Meshoppen, Pa.
 Beverly Ann Theetqe, *Music* Sayre, Pa.

Doyle L. Thomas, *Secondary* Orangeville, Pa.
 Evan Thomas Thomas, *Secondary* Pittston, Pa.
 Lena B. Thomas, *Secondary* Orangeville, Pa.
 Harold J. Thompson, *Secondary* Wellsboro, Pa.
 Constance Ellen Corinne Tingley, *Home Economics*
 Atlantic Highlands, N. J.

Joyce W. Tobey, *Elementary* Millerton, Pa.
 Mary Frances Toy, *Elementary* Moscow, Pa.
 Louis Trojani, *Secondary* Berwick, Pa.
 Basil E. Trowbridge, *Music* Westfield, Pa.
 Eddie N. Turnberger, *Secondary* Forty Fort, Pa.

K. Anita Turner, *Secondary* Canton, Pa.
 Joyce Gerard Tuthill, *Elementary* Long Island, N. Y.
 Raymund Tyrrell, *Secondary* Carbondale, Pa.
 Charlotte M. Underwood, *Home Economics* Danville, Pa.
 Arnold J. VanDruff, *Secondary* Covington, Pa.

Leonard A. Van Kewien, *Secondary* Elmira, N. Y.
 Anthony Volante, Jr., *Secondary* Elkland, Pa.
 Aubrey D. Vose, *Secondary* LeRaysville, Pa.
 Bonnie Wakely, *Home Economics* Covington, Pa.
 Lois Warters, *Secondary* Mansfield, Pa.

Natalie H. Webster, *Music* Wellsboro, Pa.
 Patricia Welles, *Music* Wyalusing, Pa.
 Helen G. Wells, *Home Economics* Wyalusing, Pa.
 Charles W. Welsh, *Secondary* Emporium, Pa.
 Joan Ethel Wentzel, *Secondary* Ashland, Pa.

James M. White, *Secondary* Wellsboro, Pa.
 Richard E. Winters, *Secondary* Lock Haven, Pa.
 Frances Wentersteen, *Home Economics* Danville, Pa.
 Harold E. Wolfe, *Music* Kane, Pa.
 Eleanor Jane Young, *Elementary* Long Island, N. Y.

Irving J. Young, *Secondary* Knoxville, Pa.
 William P. Young, *Secondary* Towanda, Pa.
 Gloria Theresa Zack, *Secondary* Shenandoah, Pa.
 Michael R. Zaley, *Secondary* Wilkes-Barre, Pa.



Without Photographs

Fred J. Bauerschmidt, Jr., *Music* Baldwin, N. Y.
 Charles D. Butch, *Secondary* Tioga, Pa.
 Robert Lewis Cole, *Secondary* Watrous, Pa.
 James William Crawford, *Secondary* Blossburg, Pa.
 Robert C. Depp, *Secondary* Punxsutawney, Pa.
 John E. Dugan, *Secondary* Wellsboro, Pa.
 D. Stuart Frear, *Secondary* State College, Pa.
 D. Malcolm Glenn, *Secondary* Milesburg, Pa.
 Lois Ruth Hayford, *Home Economics* Pittsburgh, Pa.
 Inge Hoffmann Philadelphia, Pa.
 William Houser, *Secondary* Millerton, Pa.
 Frank Albert Keitz, *Secondary* Bradford, Pa.
 John J. Kohut, *Secondary* Vandling, Pa.
 Richard R. Mays, *Secondary* Bradford, Pa.
 Joseph J. Moresco, *Secondary* Wilkes-Barre, Pa.
 Grant Irwin Reinhart, *Secondary* Wanamakers, Pa.
 Locey W. Simcoe, *Secondary* Waverly, N. Y.
 Ernest Spencer, *Secondary* Millerton, Pa.
 Harold E. Strailey, *Secondary* Blossburg, Pa.
 Joseph S. Wayno, *Secondary* Moosic, Pa.

Nurses on Campus

SCRANTON NURSES

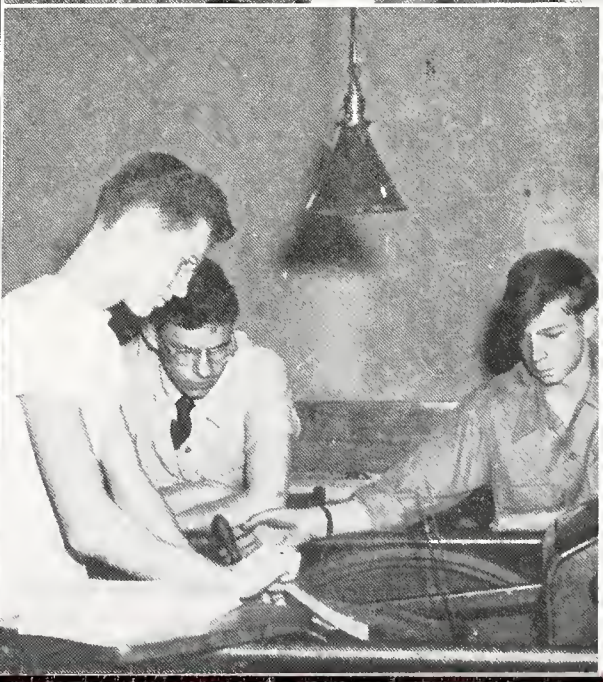
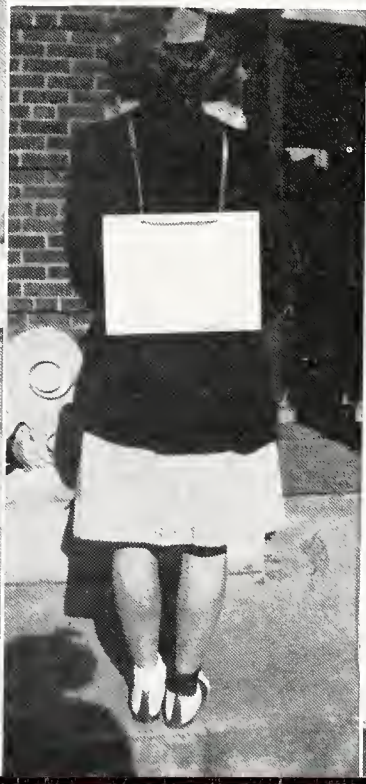
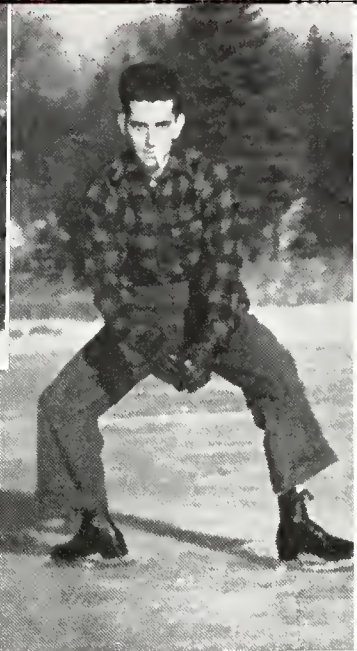


First Row, Left to Right—Mrs. Weeks, M. Picci, G. Curtes, A. Bayless, A. Stango.
 Second Row—D. Latimer, R. McGarry, N. Wittman, R. DeMaio, L. Kosakevitch.
 Third Row—C. Kotar, L. Sovich, E. Harrison, L. Darin, C. Luciano.

SAYRE NURSES



First Row, Left to Right—Lois Beckhorn, LaVerne McClelland, Lois Morgan, Jane Swingle, Irene Lane, Dorothy McKensie, Nancy Cook, Barbara Dunbar, Shurley Tanner, Mabel Corl, Consuela Roy, Miss Hughes.
 Second Row—Marian White, Juanita Lankford, Evelyn Noble, Mary Ellen Coolidge, Gussie Blaisure, Phyllis Spenser, Patricia Snow, Anne Wayman, Mary Morse, Helen Niblock, Marty Louise Steinbacher, Roberta Bond, Madeline McKenzie.
 Third Row—Eloise Shaddock, Emily Motichka, Doris Beach, Elinor Dorn, Betty Brillhardt, Joan Worthington, Iva Mae Carr, Ginger Pilager, Darleen Slater, Dora Botton, Florence Mason, Lois Tomkins, Ruth Cook.
 Fourth Row—Alta Rose, Caroline Benjamin, Shirley Wetherly, Ruth Strain, Martha Secunda, Sophie Ronamski, Emily Lou Adams, Rita Covey, Eleanor McSparrow, Geargette Boughton, Adeline Anofrio, Sylvia Fleet, Geraldine Harford.





ORGANIZATIONS



Who's Who in American Universities and Colleges

The scoop of the year goes to "Who's Who Among Students in American Universities and Colleges." Representing Mansfield State Teachers College in this annual for 1947-48 are five boys and five girls, all of whom will be graduated in 1948. These students were elected by the Freshmen, Sophomore, and Junior members of Student Council for their "contribution to and leadership in campus extra-curricular activities, their scholastic rating, their actual service to the school, character, and their potentiality for usefulness to business and society." Every student considers it an honor and a worthy recognition of their school's outstanding students.



David Cheplik



Leatrice Cunningham



Alden Dygert



Anne Herzog



Theodore Novak



Mary Ellen Russell



James Ritter



Ada Shaw



Paul Volante



Victoria Washeleski



Student Council



DAVID CHEPLICK
President

The meetings of the 1947-48 Student Council of Mansfield State Teachers College were called to order by President David Cheplick in the Student Activities Room on the first and third Mondays of each month.

Secretary Thomas Coyle read the minutes and Wellington Lester presented the Treasurer's reports for the approval of the council members at each meeting.

Among the various activities of the Council were such items as: fostering of closer relationship between the student body and the administration, provision of the publishing of the Password for next year, planning of the calendar, election of representatives to "Who's Who in American Colleges and Universities," and assumption of the responsibility of sponsoring the after dinner dances.

Seated, Left to Right—Ada Shaw, Mary Ellen Russell, David Cheplie, Dean Wasley, Victoria Washleski, Leatrice Cunningham.

Standing—Wellington Lester, George Ott, Theodore Novak, Thomas Coyle, Paul Volante, James Ritter, William Dietz, LaVerne Thornton, Dean Long.





First Row, Left to Right—Mary Ellen Yeager, Elma Perkins, Ruth Bunn, Victoria Washeleski, Margaret Spleen, Bernice Klingamen,
Second Row—Dean Wasley, Anne Herzog, Emelyn Drake, Assistant Dean Reed.

Women's Dormitory Council

The Women students living in North Hall elect three seniors, three juniors, two sophomores, and two freshmen who act as the governing body of the dormitory. The Council's chief functions are: to administer student life in the dormitory so that all might live comfortably and with consideration for others; to develop in-

dividual and group responsibilities; to promote conditions for the development of courtesy; to practice self-control; and to encourage the desire to strive toward higher scholastic standards.

The projects which the Council undertook throughout the year were: redecorating the halls and the walls for Christmas, sponsoring a Leap Year Dance, and orientating the freshman women students to the dormitory.

The Council believes that the strength of its program depends upon active participation of all students and faculty, and is constantly seeking to stimulate that participation through basic practical and long-range planning.



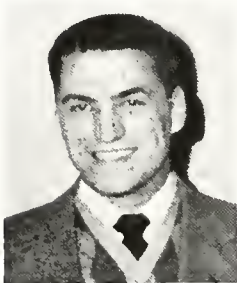
VICTORIA WASHELESKI
President Women's
Dormitory Council

Men's Dormitory Council

Similar in its duties to the Women's Dormitory Council is the Dormitory Council of the men.

The men have their representative whose duty it is to see that order is kept in the living quarters. Without such a council it would be impossible for fellow students to live in unison.

Our Men's Dorm Council is newly functioning due to the absence, for several years during the period of the war, of men students.



PAUL VOLANTE
President Men's Dormitory
Council



Left to Right—Paul Volante, Peter Pazahnick, John Bobkowski, Elwood Kinney.

Women's Day Student Club

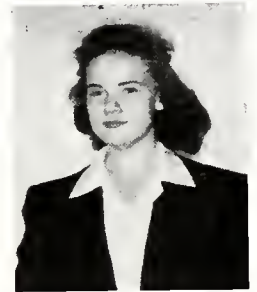
All the women who do not live in North Hall are members of the Women's Day Student Club. This organization provides fun and fosters a sense of belonging to M. S. T. C. for those people who miss many of the extra-curricular affairs which the college provides.

The women have their own room for rest, study, and feminine chit-chat on the first floor of North Hall.

In the club meetings an effort is made to discuss and solve, if possible, any individual or group problems that might affect the welfare of the women students.



Food!



ADA SHAW
President Women's Day
Student Club

Men's Day Student Club

Due to the recent influx of men and the lack of adequate living quarters, the men's day student club is fast becoming one of the most important organizations on the campus.

The men students, together with the women, participate in picnics, luncheons, and parties. These activities help to make them acquainted with other "Day Hops" and give them an opportunity to discuss problems or any ideas which they may have to further their organization.



LESLIE EVANS
President Men's Day
Student Club

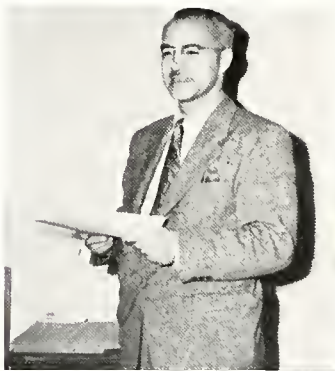


It's a Picnic



LEATRICE CUNNINGHAM
Editor

MR. GRAMLEY
Adviser



RICHIE MAUL
Business Manager

We Publish a Yearbook

To record faithfully the many phases of our college life was much more complicated than we had at first anticipated. The work called for planning and much thought, the co-operation of the faculty and student body as well as the members of the staff, the assistance of the photographer and the publisher, and more time than we seemed able to find.

If we have made omissions or errors, we ask you to bear with us, for we believe we have also made some fine contributions.



Staff at Work

Carontawan Staff

MARILYN PAGE
Photographic Editor



DORIS WILLSON
Senior Editor

(Left to Right)

- | | | | | | |
|---------------------|---|---|---|---|----------------------------------|
| BASIL TERPAK | - | - | - | - | <i>Asst. Photographic Editor</i> |
| FRANCES MARCUCCI | - | - | - | - | <i>Elementary Editor</i> |
| HELEN HISSAM | - | - | - | - | <i>Asst. Art Editor</i> |
| WAUNITA SIMONSON | - | - | - | - | <i>Organizations Editor</i> |
| MARILYN PAGE | - | - | - | - | <i>Photographic Editor</i> |
| RICHMOND MAUL | - | - | - | - | <i>Business Maaager</i> |
| DORIS WILSON | - | - | - | - | <i>Senior Editor</i> |
| LEATRICE CUNNINGHAM | - | - | - | - | <i>Editor</i> |
| SHIRLEY DUTCHER | - | - | - | - | <i>Juuior Editor</i> |
| FRANCIS POLLINI | - | - | - | - | <i>Freshman Editor</i> |
| BETTY BOHLAYER | - | - | - | - | <i>Art Editor</i> |
| RICHARD HUTCHINSON | - | - | - | - | <i>Asst. Typing Editor</i> |
| PHILLIP DEWEY | - | - | - | - | <i>Typiag Editor</i> |





MARY ELLEN RUSSEL
Flashlight Editor

The Flashlight

The *Flashlight* is the student newspaper, the "Voice of the Student Body of Mansfield State Teachers College." The purposes of the *Flashlight* are: to promote interest in college activities, to develop a high degree of school spirit, to give an opportunity to students, to develop initiative and skill in writing; and to develop a spirit of co-operation among the student body. The *Flashlight* staff of 1947-48 has endeavored to fulfill these purposes.

This year, there has been a close coordination among the members of the staff, and this has been conducive to a spirit of co-operation. Each member realizes that the staff working together can obtain the ultimate goal—the successful journal.



First Row, Left to Right—Helen Hissam, Leda Rhodes, Norrine Williams, Mary Ellen Russel, Editor; Eugenia Porretta, Shirley Palmer, Helen Sampson, Wanda Cornell, Gene Maxwell, Francis Polini.
Second Row—Lucille Lehner, Laura McCarty, Dorothy Shank, Joan Seigel, Rena Carlson, Albert Crispell, John McDonald, Wally Dunmore, Ernie Cottisodi, Marian Curtis, Anne Herzog, Mary McCawley.



Left to Right—Beatrice Shaffer, Mary Ellen Yeager, Jean Ford, Ruth Mase.

Omicron Gamma Pi

OFFICERS

RUTH MASE	-	-	-	<i>President</i>
JEAN FORD	-	-	-	<i>Vice President</i>
BEATRICE SHAFFER	-	-	-	<i>Secretary</i>
MARY ELLEN YEAGER	-	-	-	<i>Treasurer</i>

Omicron Gamma Pi is an active organization composed of all the home economics students. The Club is affiliated with the State and the National Home Economics Association.

The organization aims to promote unity among the separate classes, to create better teaching activities for student teachers, and to make better and happier homes in the future. Its membership has been increased to the grand total of one hundred and nine.

"Tips for Family Living," the special event for this year, was acclaimed a great success for the club. Discussions, demonstrations, and exhibits featured all phases of family life.

The "adoption" of a needy Home Economics school in Germany is our winter project. We have sent approved articles for sewing and for home management. In this way we hope to show our interest in furthering Home Economics all over the world.



First Row, Left to Right—Miss Flat, Zelda Luce, Louise Straub, Jean Berry, Nancy Becker, Algretta Jenkins, Patricia Ferry, Dorothy Krotzer, Delores Collins, Frances Clark.
 Second Row—Evelyn Hainer, Janice Monro, Delphine Dunlap, Marie Stankiewitz, Ruth Pelczar, Bevelry Evans, Marjorie Brush, Lois Gass, Virginia Cherrington.
 Third Row—Gwen Roy, Josephine White, Ruth Rejgal, Florence Grimm, Ruth Mase, Vivian Berry, Laura Eckroth, Gene Maxwell, Lorene McMillan, Ann Marie Dove.
 Fourth Row—Lucille Henessy, Doris Wilson, Betty Bohlager, Betty Heimbach, Laura McCarty, Jean Trach, Francis Hoffman.

Y. W. C. A.



Seated, Left to Right—Marian Swan, Janice Ford, Vice President; Doris Dussinger, Treasurer; Barbara Watkins, President, Miss Borkey, Adviser; Shirley Dutcher, Secretary. Standing—Leona Ludwig, Rhea Brown, Zella Luce, Lois Kunkle, Emelyn Drake, Berniece Klingaman, Vilma Georgetti.

Membership in the Young Women's Christian Association is open to all women students enrolled at Mansfield. The organization, a member of the Student Christian Movement, has for its purpose, "to unite in a desire to realize full and creative life through a growing knowledge of God."

The program of the Y. W. C. A. is planned to include a variety of subjects which will appeal to all the members of the organization. These programs are planned and conducted by the girls. One of the Y. W. C. A. projects this year was the collection of food and clothing for overseas relief.

A banquet for the cabinet, a picnic for the entire organization, and the installation of new officers in May terminates the year's activities.



Y. W. C. A. OFFICERS

Left to Right:

JANICE FORD	-	-	<i>Vice President</i>
DORIS DUSSINGER	-	-	<i>Treasurer</i>
BARBARA WATKINS	-	-	<i>President</i>
SHIRLEY DUTCHER	-	-	<i>Secretary</i>



Y. M. C. A.

Back Row, Left to Right—Russell Chaffee, James Ritter, La Verne Thornton, Fred Bauer-schmit, Donald Buford, Charles Brown, Frank Fish, Ralph Weller, Francis Polini.
Front Row—Alpert Crispell, Kenneth Brown, Russell Seward, Eugene Carbo, James Barrett, Glen Barrett, Harold Wolfe.

The Young Men's Christian Association is active again on the campus at Mansfield State Teachers College. During the recent War it was necessary to discontinue the activities of the Y. M. C. A., due to the acute shortage of men students.

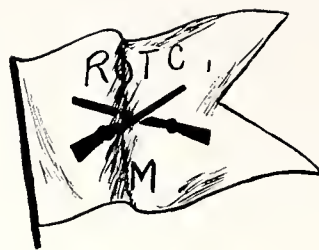
The Young Men's Christian Association, whose membership is open to all men students, attempts to develop and promote Christian living in its physical, mental, moral, and spiritual phases through recreational facilities, study, fellowship, and worship. Interesting programs are given twice each month with speakers selected from faculty, ministers, and prominent citizens of near-by communities.

A Gospel Team sponsored by the Y. M. C. A. has conducted a series of eight religious services in near-by communities bringing messages in song and sermon to Youth Groups and at special church services.

At the Meeting



R. O. T. C.



The mission of the ROTC is two-fold: to train junior officers for wartime emergency and to teach leadership, citizenship, and the development of character through self-discipline.

"I call, therefore, a complete and generous education that which fits a man to perform justly, skillfully, and magnanimously all the offices, both private and public, of peace and war."—*John Milton*

"If war comes to us again the fact seems inescapable that we will not have time to train units before we are faced with the final issue of defeat or victory. We must be prepared on M-day, the day the enemy strikes. Our weapons must be better than theirs on that day, our resources must be promptly available, and, above all, our manpower

must have already been trained. This training must be given in time of peace. Without a standing army of prohibitive size, this can only be accomplished by training our civilian reserve, our citizen army.

It is my personal opinion that the greatest single motivation force for world peace today is the organized military potentiality of the United States. Its potentiality for the maintenance of world peace will continue so long as the world is convinced of our willingness and ability to vitalize it in time to meet any threat of aggression from any other power. This is our greatest assurance of keeping the peace for which we fought."

(Excerpts from General Eisenhower's speech before Congress on November 15, 1945).



Standing, Left to Right—Mays, Preate, Denham, McLean, Keltz, Bird, Madigan, Vose, Sykes, Baker, Pinner, Frear, C. Miller, Beishine, President Morgan, Colonel Chastaine, Sgt. Brown, Pollini, Hummel, Dandois.

Back Row—Myfelt, Romig, Birth, L. Miller, Seward.

Middle Row—Dombrowski, Flannely, Keenan, Plasan, Dibble, Welsh, Manganello, J. Miller,

Front Row—Davitt, Aloj, Goodwin, Sadler, Barlet, Evans, Machun, Delida, Pry.



Bunn, Watkins, Curtis, Ransom.

A. A. C. E.

OFFICERS

RUTH RENFORD RANSOM	-	-	<i>President</i>
MARIAN CURTIS	-	-	<i>Vice President</i>
BARBARA WATKINS	-	-	<i>Secretary</i>
RUTH BUNN	-	-	<i>Treasurer</i>

The American Association for Childhood Education, commonly known on Campus as the Elementary Club, is a large and active national organization.

The members work for the education and well-being of children by promoting desirable educational conditions, programs, and practices in the elementary field. The club attempts to raise the standards of preparation and to encourage continued professional growth of teachers in this field. Regular monthly meetings are held, which include various social activities.

It is the club's aim to develop within each individual such qualities as leadership, initiative, and self-reliance in the interest of childhood education.





Star Dust

College

The College Players have as their objective the growth of those qualities which contribute most to personal and professional advancement. They foster enthusiasm for their immediate environment, promote co-operation, and develop a pleasure on hard work for the ultimate satisfaction of others as well as for themselves.



First Row, Left to Right—Florence Levitsky, Eugenia Porretta, Lois Kunkle, Sophie Lou Marvin, Janet Evans, Lois Byham, Audrey Meyer.
 Second Row—Barbara Watkins, Marie Slawta, Lola Edmonds, Barbara Ramsey, Leatrice Cunningham, Gene Maxwell.
 Third Row—Ralph Weller, Eugene McLain, Ann Duffey, Gordon Secor, Waunita Simonson.



Star Dust

Players

The basic training that members receive in all phases of dramatic production proves invaluable as they go out in their chosen profession and the Players believe that their organization provides experiences in imaginative and constructive thinking and doing not found in any other extra-academic activity.

Always a large group, the club has greatly increased in the past year. Membership is limited to seventy-five, necessitating the selection of plays with big casts, thus complicating the problems of production. However, the Players are adhering to their established high standards of performance as was proven by the beautiful presentation of "A Midsummer Night's Dream" during the Commencement Week last year; and by the expert and amusing characterizations in "Stardust" this fall. Their contribution of profits from the 1947-48 productions to the College Band Uniform Fund is an indication of their desire to give of themselves and the results of their efforts for the benefit of others.

The College Players believe whole-heartedly in the value of their organization and through this belief find in it fun, hard work, and the pleasure of cooperative effort.



Art Club



OFFICERS

HELEN HISSAM	-	-	-	<i>President</i>
JANICE FORD	-	-	-	<i>Vice President</i>
JEANNE MEEK	-	-	-	<i>Secretary</i>
RUTH REXFORD RANSOME	-	-	-	<i>Treasurer</i>

The Art Club, organized in 1923, is an honorary society for those who attain an "A" in one semester of Art. The same spirit which inspired the charter members motivates the present group. Its desire is to increase the significance of the Fine Arts, through the study and production of artistic things, and to share their joys with others.

The Club is now affiliated with the Eastern Arts Association which is an active national organization. With others who are interested, the President, as a representative of the club is sent to attend the convention of the Eastern Arts Association. It is here that many new ideas are conceived and incorporated in the Club meetings.

Several projects are undertaken in the course of the college year. The Club each year has complete charge of the campus decorations for the Christmas holiday season. Work periods this year have included ceramics and the production and presentation of a puppet show.

The President and sponsor, Miss Murphy, and the club members have witnessed a gradual development of individual talent and of art appreciation.



First Row, Left to Right—Virginia Cherrington, Frances Clark, Frances Marcucci, Janice Ford, Helen Hissam, Doris Yost, Dorothy Krotzer.
Second Row—Leatrice Cunningham, Betty Bohlayer, Audrey Meyer, Eunice Varcoe, Gene Maxwell, Dorothy Warner, Agnes Place.
Third Row—Thomas Coyle, Gordon Cole, Jean Trach, Laura McCarty, Frances Hoffman, Miss Murphy, Adviser.



Kappa Delta Pi

OFFICERS

<i>President</i>	-	-	-	EASTER CAPWELL
<i>Vice President</i>	-	-	-	PAULINE LEVENGOOD
<i>Corresponding Secretary</i>	-	-	-	JANICE MUNROE
<i>Recording Secretary</i>	-	-	-	RENA CARLSON
<i>Treasurer</i>	-	-	-	DORIS WILSON

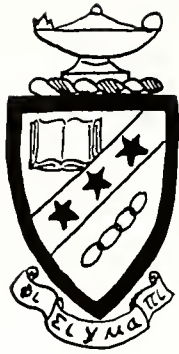
Kappa Delta Pi grew out of the Illinois Education Club founded in 1909 at the University of Illinois. In 1932 the title became what it is today, Kappa Delta Pi, an Honor Society in Education. Beta Rho Chapter was installed at Mansfield in 1930.

The purpose of Kappa Delta Pi is to encourage professional, intellectual, and personal standards and to recognize outstanding contributions to education. To this end it invites to membership Juniors and Seniors that exhibit commendable personal qualities, worth while educational ideals, and sound scholarship.

Beta Rho Chapter, under the supervision of Miss O'Brien, endeavors to bring to the campus activities which will benefit all students fully interested in the development of education.



First Row, Left to Right—Janice Ford, Mary Ellen Russel, Lois Boardman, Ruth Bunn, Rhea Brown, Dolores Ann Collins, Janice Monro, Pauline Levengood.
 Second Row—Ada Shaw, Leatrice Cunningham, Doris Wilson, Eunice Varcoe, Shirley Pierce, Helen Sampson, Maybell Woodin, Miss O'Brein.
 Third Row—Thomas Coyle, James Ritter, Laurence Grow, Wellington Lester, Loren Butts, Orville Dickerson.



Phi Sigma Pi



"Too Bad!"

Phi Sigma Pi is a national honorary professional fraternity for men preparing to enter the field of teaching. It has two paramount aims, viz., the discussion and advancement of educational ideas and the cultivating of fraternal fellowship. The fraternity's Teacher Placement Bureau assists in securing positions for their graduating members. Membership to the oldest fraternity on the campus is limited to upper classmen possessing fine character traits and a high scholastic standing.

Phi Sigma Pi and Phi Mu Alpha Sinfonia combined for their second annual Inter-Fraternity Dinner Dance at the Mark Twain Hotel in Elmira. It was an impressive and complete success from beginning to end.



The Fraters



Initiation

The fraternity room is receiving a new look for 1948. A newly installed record player plus the addition of new furniture gives the room an atmosphere of elegance and grandeur.

Theta chapter engaged in numerous activities the previous semester. Among them was a highly entertaining assembly program. Home coming day the chapter served a luncheon to the alumni members.

The ambitious and aggressive members make Phi Sigma Pi a prominent and leading fraternity at Mansfield.

MEMBERS

Andrew Mordivancy
 Leslie Evans
 Robert Hryniewicki
 Bruce Dimmick
 John Lalley

Roberts Martin
 Ted Novak
 Dave Cheplick
 Gordon Coles
 Orville Dickerson

Earl Wilson
 Jerry Shannon
 Tom Coyle
 Delbert Davis
 Wellington Lester
 Gordon Secor

Bob Kitchen
 George Myfelt
 Bill Taylor
 Glenn Hewitt
 K. B. Lee

Frank Juzwiak
 John Steinbacker
 Al Dygert
 John Parsons
 Harold Kintner



Ouch!



Lambda Mu

OFFICERS

President - - - EDITH WARREN
Vice President - - - AUDREY MEYER
Secretary-Treasurer - MAYBELLE WOODIN



Lambda Mu is Mansfield's sorority for women students in the Music Department. Requirements for admission are based on musical talent, personality, integrity of character, and the attainment of second semester Sophomore rating plus certain academic and musical standards. Semi-annually Lambda Mu initiates candidates for membership and sponsors a banquet for members, alumnae, and the initiates.

The girls this year sponsored a "White Elephant Sale" and provided entertainment for certain clubs on campus.

Meetings during the year evolved around the subjects of oratorios and famous women musicians. The sorority has been under the sponsorship of Mrs. Lewis.



Back Row, Left to Right—Mrs. Lewis, Miss Brooks, Miss Atwater.
Front Row—Victoria Washeleski, Ada Shaw, Leatrice Cunningham, Edith Warren, Audrey Meyer, MayBelle Woodin.



Spencer, Kinney, Cavuto.



Phi Mu Alpha

OFFICERS

ELWOOD KINNEY	-	-	-	<i>President</i>
SELDON SPENCER	-	-	-	<i>Secretary</i>
CARMEN CAVUTO	-	-	-	<i>Warden</i>

Phi Mu Alpha Sinfonia is a national music fraternity for men who show their love for music by either adopting music as their profession or by working to advance the cause of music in America.

Beta Omicron Chapter has once more become one of the leading organizations on the campus after being inactive from 1943 to 1946. In addition to planning an assembly program, smokers, and well sings the chapter expects to sponsor a woodwind ensemble program in the spring. Of a less formal nature are the rollicking arcade sessions performed by our nine pledges. Our social events of the year were climaxed by the interfrat dinner-dance in the Mark Twain Hotel in Elmira.

With a present active membership of some twenty-seven men, Beta Omicron feels that it is doing much to advance the cause of music in America, to foster the mutual welfare and brotherhood of students of music, to develop the true fraternal spirit among its members and to encourage loyalty to our glorious Alma Mater.



First Row, Left to Right—Allen Crandall, John McDonald, Emmett McIntosh, Thomas Donahue.
 Second Row—Seldon Spencer, Robert Carlberg, Elwood Kinney, Maurice Bookmiller, Carmen Cavuto.
 Third Row—William Bender, Howard Williams, Louis Elster, Curtis Acker, James Ritter, LaVerne Thornton.

ΠΚΕ

Phi Kappa Epsilon



Leona Ludwig

Gene Maxwell

Jeanne Meek

Pi Kappa Epsilon is a local Home Economics sorority attempting to stimulate professional, cultural, and inspirational growth. Its members are selected from the second semester sophomore, junior, and senior classes according to definite scholarship and character requirements. Annually Pi Kappa Epsilon initiates candidates for membership and sponsors a banquet for active members and alumni members.

Every member in this organization strives to obtain a greater understanding of the breadth and slope of the ideal—"To be an efficient and well trained teacher and a confident and helpful homemaker," pledging herself to make a "Worthy contribution to the profession of home economics."

Each year the sorority, assisted by the sponsor, the homemaking faculty, and the guest speakers, plan and carry out programs of creativeness and originality. To supplement the year's activities the organization undertakes a research problem to promote interest in homemaking education. This year a scrap book is being developed as a part of the program leading toward a presentation of the petition for affiliation with a national honorary sorority.



Back Row, Left to Right—Doris Willson, Gene Maxwell, Pauline Levingood, Leona Ludwig, Ester Capwell.

Front Row—Mrs. Galbraith, Jeanne Meek, Janice Monro, Elizabeth Bohlager, Miss Beasley.



Queen—Gloria Razyey.
Court—Back Row—Margaret Spenser, Ann MacCawley, Ruth Izer, Vivian Oakey.
Front Row—Raymetta Hollenshead, Bettejo Goodall, Jean Jones, Pauline Schanbacher.

May Day

One of Mansfield's most lovely and cherished traditions is the annual May Day celebration.

We are proud of our co-eds and this is our opportunity to show them off. Each year our May Queen and court are selected by the student body. They are chosen on the following qualifications: Personality, attractiveness, extra-curricular participation, and academic rating. These girls are examples of Mansfield's outstanding women.

Court-Queen—Gloria Razyey. Members of court—Bettyjo Goodall, Raymeta Chaffee Hollingshead, Margaret Spenser, Ann McCawley, Ruth Izer, Vivian Okey, Eleanor Jones, Pauline Shanbacher.



W. A. A.

Halloween Party

In our educational system we believe in all around participation. Thus the Women's Athletic Association is one of the biggest organizations on the campus. All women are eligible and it is this group which presents the coveted letter to the women.

W. A. A. provides equipment for roller skating, bowling, volley ball, basketball, tennis, swimming, badminton, and shuffleboard.

Under the leadership of Miss Diffenbach, with Donna Cox as President, this organization means "tops" in recreation.





Club Dance

The M Club

In the fall of 1921, a student at Mansfield State Normal School suggested that all varsity men form an organization to be known as the M Club. The charter members, in formulating the constitution, agreed that all former letter-men should become honorary members.

The M Club, still very much active, aims to promote good sportsmanship, wholesome living, and loyal school spirit. In addition to promoting athletics, the M Club has done much in furnishing social entertainment with its annual spring sports dance — one of the year's most popular events.

First Row, Left to Right—Roberts Martin, Chester Wasilewski, Ray Kodish, David Chepliek, Joe Walsh, Jerry McEneny, Jake Azain.

Second Row—Albert Martin, Bill Johnson, Ted Novak, Chet Kovaleski, Frank Juzwick.

Third Row—Joe Katusz, Ken Perschau, Charles Smith, Frank Raykovitz, Tony Amendola, Evert Pearey.

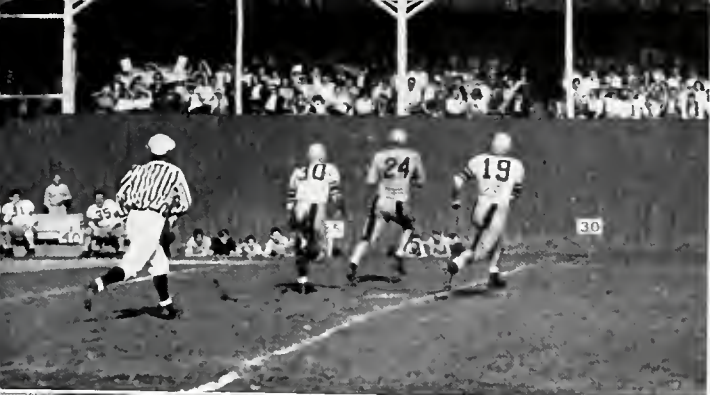
Fourth Row—Ted Randon, Bob Bowman, Tony Dombrowski, Jack Dunbar, George Ott, Joe O'Donnell, Tony Petrillo, Nick Fadnska.

Fifth Row—Earl Wilson, Rocco English, Vito Magdalinskas, Joe Harrington.





OUR ATHLETICS



We Were Football Champs In 1947



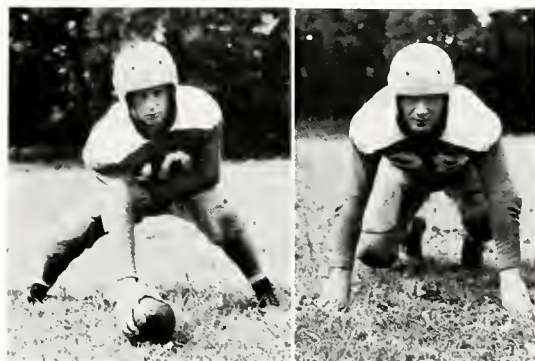
Dr. Nosal, Head Coach Casey, Pearey

The Coaches

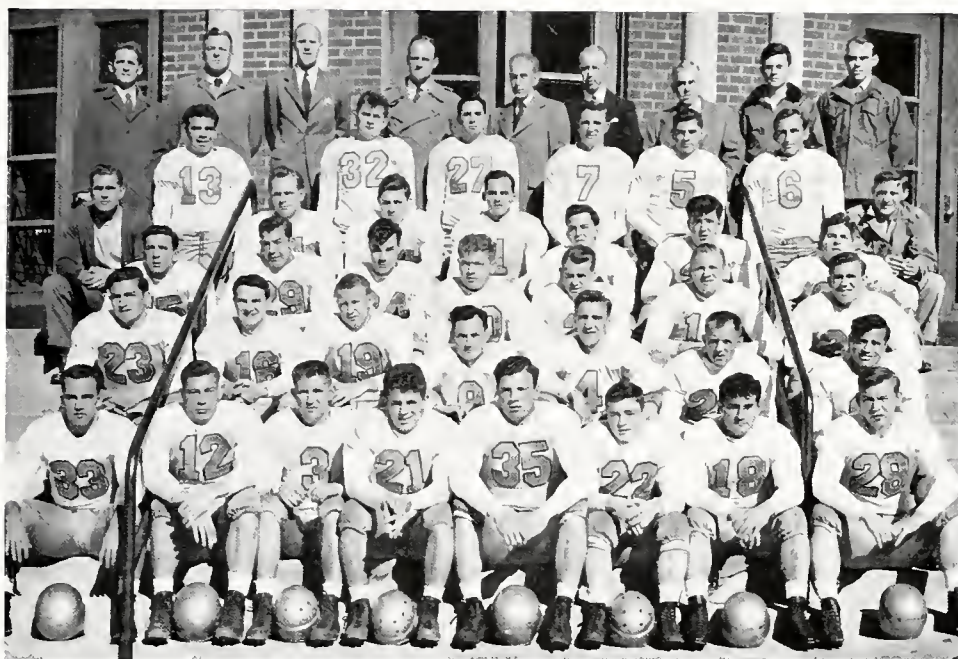


Left to Right—James Clancy, Mary Kingan, Alice Ramage, Lucille Lehmer, Lois Boardman, Shirley Palmer, Ernie Codespotti.

Our Cheerleaders



“Dave” Cheplick—“Ted” Novak
Co-Captains

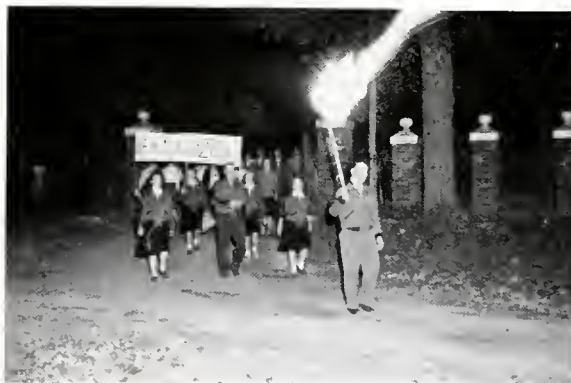


First Row, Left to Right—Gerald McEneny, Joe Harrington, Pete Pazahaich, David Cheplik, Ted Novak, Co-Captains; Jackie Dumber, Jake Azain, Chet Kovaleski.
 Second Row—Peter Petrillo, Bill Conwell, Bill Johnson, Albert Martin, Tony Dombroski, Bob Leshinski, Tony Amendola.
 Third Row—Joe Cheplik, Tom Harrington, Ried Wilcox, Bob Bowman, Joe Walsh, Chet Washeleski, Ray Kodish.
 Fourth Row—Glenn Hewitt, Student Manager; Frank Jnswiak, Owen Dougherty, Jack Bobkowski, Carl McIntyre, Frank Rakowitz, Peter Mollahan.
 Fifth Row—Peter DeQuinca, Tony Shumskas, George Oit, Vito Magzabingskas, Joe Kudish, Nick Faduska, Charles Anistranski, Student Manager.
 Sixth Row—Dr. Walter Nosal, Evert Pearey, "Spots" Decker, "Ted" Casey, President Moegan, Manford Lloyd, Walter VanNorman, "Pepper" Martin.

SUMMARY

September 27—Mansfield.....	7	Bloomsburg	6
October 3—Mansfield.....	0	Millersville	0
October 11—Mansfield.....	6	Cortland	13
October 18—Mansfield.....	40	Kutztown	6
October 25—Mansfield.....	48	Brockport	0
November 1—Mansfield.....	33	Edinboro	0
November 8—Mansfield.....	31	Indiana	7
November 15—Mansfield.....	14	Lock Haven	21
TOTAL—Mansfield.....	179	Opponents	53

The Parade





George Ott



Bill Johnson



Tony Petrillo,



Joe O'Donnell



Joe Walsh



Joe Harrington



Chet Wasilewski

State Champs—yes, that's the title given to the Mountaineers at the close of the 1947 football season. Winning four conference games, losing one, and tying one, gave the Mountaineers the mythical State Championship Title. Our only conference defeat was at the hands of our traditional rival, Lock Haven; while Bloomsburg, Kutztown, Edinboro, and Indiana State Teachers Colleges fell prey to the Mountaineers, and Millersville gained a tie. Non-Conference games included a victory over the future tutors at Brockport and a defeat at the hands of the Cortland State Teachers College.

Throughout the season the dauntless Mountaineers displayed their unlimited talent against their oncoming foes. The Mountaineers were aggressive from the beginning of the season, when they defeated Bloomsburg 7-6 in the season's opener, to

the end of the season when they were defeated by Lock Haven, 21-14.

When we look back and view in our minds the games played, we realize how well our players performed. Much credit is due Coach "Ted" Casey and his able assistants, Doctor Walter Nosal and Mr. Evert Percy, for their proficient job in training and developing the team throughout the season. Several times during the season injuries and other handicaps prevented Coach Casey from having his team in top condition for every game. Nevertheless, the team, with the material on hand, entered each game with vigor and determination.

Several of the players received honors from the Associated Press. Chester Wasilewski received honors on several post-season teams. He was chosen as first team



Ray Kodish



Nick Faduska



Jack Bobkowski



Tony Amendola



Bob Bowman



Jake Azain



Joe Katusz



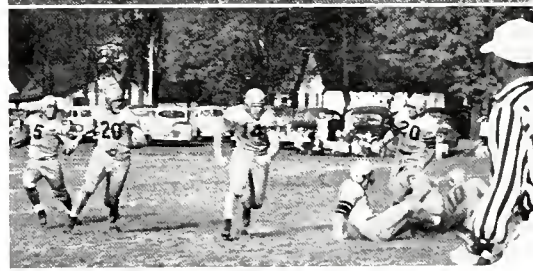
Pete Pasabanick Jerry McEnehy Frank Rakiwitz Chet Kovaleski Tony Domreski Bob Leshinski Owen Dougherty

half-back on the All-Teachers College Team for his outstanding performance as regular season half-back and passing star. His passing was responsible for many of the Mountaineers' victories. He was also given honorable mention on the A. P. All-Eastern Team and the All-State Team.

Jack Dunbar, regular season guard, was chosen as first team guard on the All-Teachers College Team. He also received honorable mention on the All-State Team.

Joseph Harrington, first team end and high scorer of the season for the Mountaineers, and David Cheplick, center, were given honorable mention on the All-State Team.

Thus ended another victorious season for the Mountaineers of Mansfield. We are all proud of them, and our praise goes to "the Mountaineers of 1947."



Al Martin Vito Magdalingskas Bill Conwell Frank Juzwiak Jackie Dunbar Joe Cheplick Pete Mollahan

Basketball



COACH CASEY



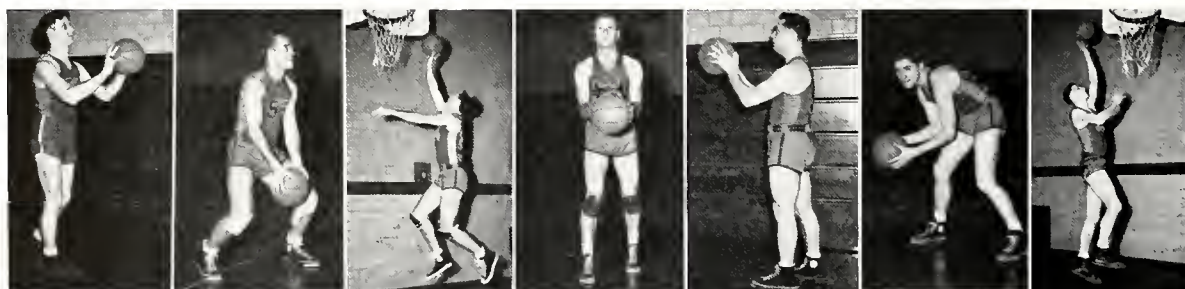
Yeah, Team!



Left to Right—Shirley Palmer, Lois Boardman, Lucille Lehner, Lucille Merrick, Jean Burleoine, Mary Kingan, Sally Eno, Ernest Collispati.

With the passing of a great football season we turned our attention to basketball. Great enthusiasm and hard practice greeted the basketball season when the men, comprising a sizable squad, presented themselves as candidates. The varsity was composed of seven former varsity men and five new candidates. The Mountaineers, coached by Coach "Ted" Casey, wound up their season with ten victories and six defeats. Two of these defeats, which were handed to the Mountaineers on successive nights, proved to be very decisive. Losing to Millersville and Shippensburg State Teachers Colleges, the Mountaineers were dragged back into second place in the Teachers Conference with a record of five and three.

The Mansfield loopmen, led by All-Teachers College forward Joe Harrington, showed aggressiveness throughout the entire season. Harrington led the Mountaineers in scoring with two hundred and thirty-two points for an average of 14.5 points per game. Next in line was our six-foot six-inch center, Kenny Perschau, with one hundred and ninety-nine points for an average of 12.4 per game. The other scoring went as follows: Ted Randon, one hundred; George Ott,



Link Welles

Jerry McEneny

George Ott

Bill Johnson

Les Evans

Bob Patton

Slim Sundberg



First Row, Left to Right—Bill Johnson, Chet Wasilewski, Ted Randon, Gerald McEneny, George Ott, Joe Harrington.

Second Row—Mr. Decker, Director of Athletics; Arnold Sundberg, Earl Wilson, Kenny Perschau, Steve Butchko, Ray Mazza, Ted Casey, Coach.

Third Row—James Clancey, Student Manager; Link Welles, Leslie Evans, Bob Patton, Gerald Lukas, Student Manager.

sixty-eight; Jerry McEneny, sixty-four; Chet Wasilewski, sixty-two; Bill Johnson, fifty-seven; Bob Patton, thirty-six; Ray Mazza, twenty; Arnold Sundberg, nine; Les Evans, two. Although scoring the points means a lot, players should be congratulated on their fine floor work. Special mention should be given to Harrington, Wasilewski, Johnson, Randon, Ott, and McEneny.

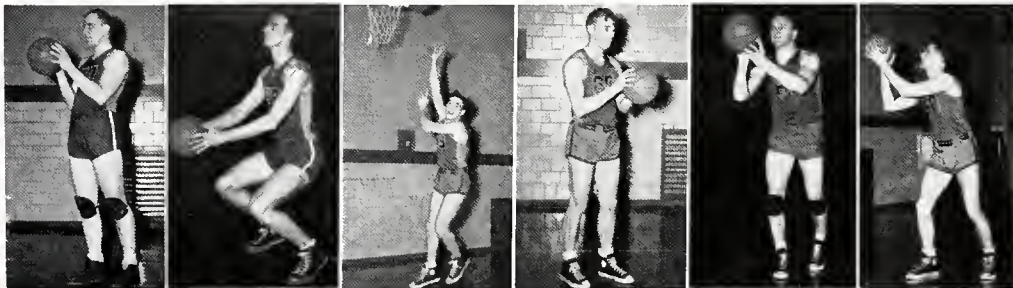
Losing only two varsity men, the Mountaineers show promise of another banner season. Returning will be, Juniors: Joe Harrington, Ted Randon, Bill Johnson, and Arnold Sundberg. Sophomores: Ken Perschau, George Ott, Ray Mazza, and Les Evans. Freshmen: Bob Patton and Steve Butchko. Bob Patton and Ray Mazza showed great promise and we predict a great future for these two boys.

Although the Mountaineers lost the Teachers title, it must be remembered that they led

the conference throughout the season and lost out when they were defeated by Millersville and Shippensburg on two successive nights away from home at the close of the season.

SCHEDULE

		M	O
Jan. 13—Lycoming College	Home	56	33
Jan. 16—Millersville S. T. C.	Home	59	45
Jan. 20—Ithaca College	Away	52	58
Jan. 23—Kutztown S. T. C.	Home	58	46
Jan. 26—Bloomsburg S. T. C.	Away	53	51
Jan. 30—Lock Haven S. T. C.	Home	35	34
Feb. 3—Kings College	Away	55	43
Feb. 6—Bloomsburg S. T. C.	Home	43	42
Feb. 11—Lock Haven S. T. C.	Away	46	65
Feb. 20—Ithaca College	Home	40	59
Feb. 21—Lycoming College	Away	59	52
Feb. 25—Scranton University	Away	55	57
Feb. 28—Scranton University	Home	54	39
Mar. 2—Kings College	Home	64	53
Mar. 5—Millersville S. T. C.	Away	54	71
Mar. 6—Shippensburg S. T. C.	Away	61	82
		844	830



Steve Butchko

Kenny Perschau

Ray Mazza

Joe Harrington

Chet Wasilewski

Ted Randon



Girls'

Since our college believes in an all around education, participation in girls' sports plays a large part. Under the direction of Miss Diffenbach and Miss Duff, together with the student managers, we have a program that is interesting and varied.

As the seasons roll around the girls have their respective sports. In the fall and spring they have softball games. During the winter months basketball, bowling, ping pong, badminton, and tennis occupy their time.

Volleyball Champs



Seated, Left to Right—Margaret Arutz, Rita Masterson, Norma Keeler, Phyllis Benson, Irene Tompkins.
Standing—Donna Cox, Carol Potter, Peggy Strom, Phyllis Darrin, Donna Cleveland, Marie Hembury, Matilda Koslosky.

Sports



The girls' basketball tournaments are some of the most interesting on the campus. The girls have their games on Monday and Wednesday nights, usually with a large male audience. We like to think that they come to get a few tips for their own games.

These athletic activities give the girls a chance to get rid of excessive energy and to know the rules of the game and especially to learn good sportsmanship.





ADVERTISEMENTS



Compliments of

**MUDGE'S
SUPERETTE**

Compliments of

LESTER MERRICK

Your JOHN DEERE DEALER

Compliments of

**JIM'S SHOE REPAIR
SHOP**

Compliments of

KUHL'S GREENHOUSE

Compliments of
**TERRY'S DRUG
STORE**

Compliments of
**McCONNELL'S
BARBER SHOP**

Compliments of
**BOWSERS MUSIC
STORE**

Compliments of
MRS. FINESILVER

Compliments of
**NORTH PENN GAS
COMPANY**

Compliments of
**THE T. W. JUDGE
COMPANY**
to the
CLASS OF 1948

Compliments of
THE DAIRY STORE

Compliments of
THE TWAIN THEATER
MANSFIELD, PA.

Compliments of

FISHES SHOE STORE

MANSFIELD, PA.



Quality FOOTWEAR and Lat-
est Styles for College Students.

Compliments from

MARKSONS



Complete OUTFITTERS

for

MEN and BOYS

Compliments of

**WELLS and GOODALL
SERVICE STATION**



Dealers in
**PONTIAC and
G. M. C.**

Compliments of

**CLEVELAND and
RAYMOND'S**



**Hardware and
Sporting Goods**

BAYNES SHOE STORE

Extends

BEST WISHES TO THE
CLASS OF '48

WITMORES STORE

H. T. AND DOROTHA WITMORE

MANSFIELD, PA.

DRUGS AND GIFTS

School Supplies
Perfumes and Toilet Water



COLES PHARMACY

(on the Corner)

Compliments of

GOODRICH

Cleaners

MANSFIELD, PA.

For gifts you will
remember as long as
your Alma Mater —

•

R. J. ESTEP

Jeweler

22 S. Main Street
MANSFIELD, PA.



The Finest in
WOMEN'S FASHIONS

GARRISON and MEYERS

THE CLOTHING STORE ON THE
CORNER

ARROW SHIRTS
STETSON HATS
INTERWOVEN SOCKS
TIMELY CLOTHS
MICHAEL-STERN SUITS
STYLE-MART SUITS

We carry only quality lines
Cleaning and Pressing
Department

We Appreciate Your Trade

In appreciation of the generous
patronage of the Students and
Faculty of M. S. T. C.

•

JUPENLZ'S

MANSFIELD, PA.

"Quality Leather Goods"
Since 1890

Compliments of

THE WRIGHT SHOP

Fashion Center

Compliments of

**TRI-COUNTY RURAL
ELECTRIC COOP.**

CONGRATULATIONS
and BEST WISHES to the
CLASS OF '48

•

Mansfield Novelty Co.

Building Materials
of All Kinds

For a Friendly Meeting and
Eating Gather at—

**Ernies
Mansfield Restaurant**

STRAIT'S HARDWARE

On the Square



GOOD LUCK and BEST WISHES

For the Future

Compliments of

**CRUTTENDEN'S
NEWS ROOM**

BEST WISHES

HARRINGTON STUDIO



Portrait

Commercial Photographers

NORTHERN PENNSYLVANIA POWER CO.

Wish to Extend Hearty

Congratulations

to the Class of 1948

BEST WISHES

from the

MANSFIELD ADVERTISER

We Extend Hearty Congratulations
To the Class of '48

~

SOURCES
VARIETY STORE

Best Wishes for Your Future
Choice of Profession

•

Dr. GEORGE L. PALMER

Registered Optometrist

19 COLLEGE AVE.

**HARRINGTON'S GIFT
SHOP**

•

GIFTS CAMERAS
FILMS

Compliments of
MANSFIELD DINER

Satisfactory Laundry Co., Inc.

737 West Fourth Street

WILLIAMSPORT, PENNA.



"Satisfactory Since 1908"

Complete Commercial

ENGRAVING and PRINTING Service

- . . . DESIGNING
- . . . ENGRAVING
- . . . PRINTING
- . . . BINDING

A new streamlined modernly equipped printing plant with facilities for every type of commercial printing . . . including, Folders, Catalogues, College and School yearbooks.

« »

CARONTAWAN is one of the many
annuals engraved and printed in
our Commercial Department.

GRIT PUBLISHING COMPANY

WILLIAMSPORT, PA.

Dial 4111



