



CARDNEYMAN

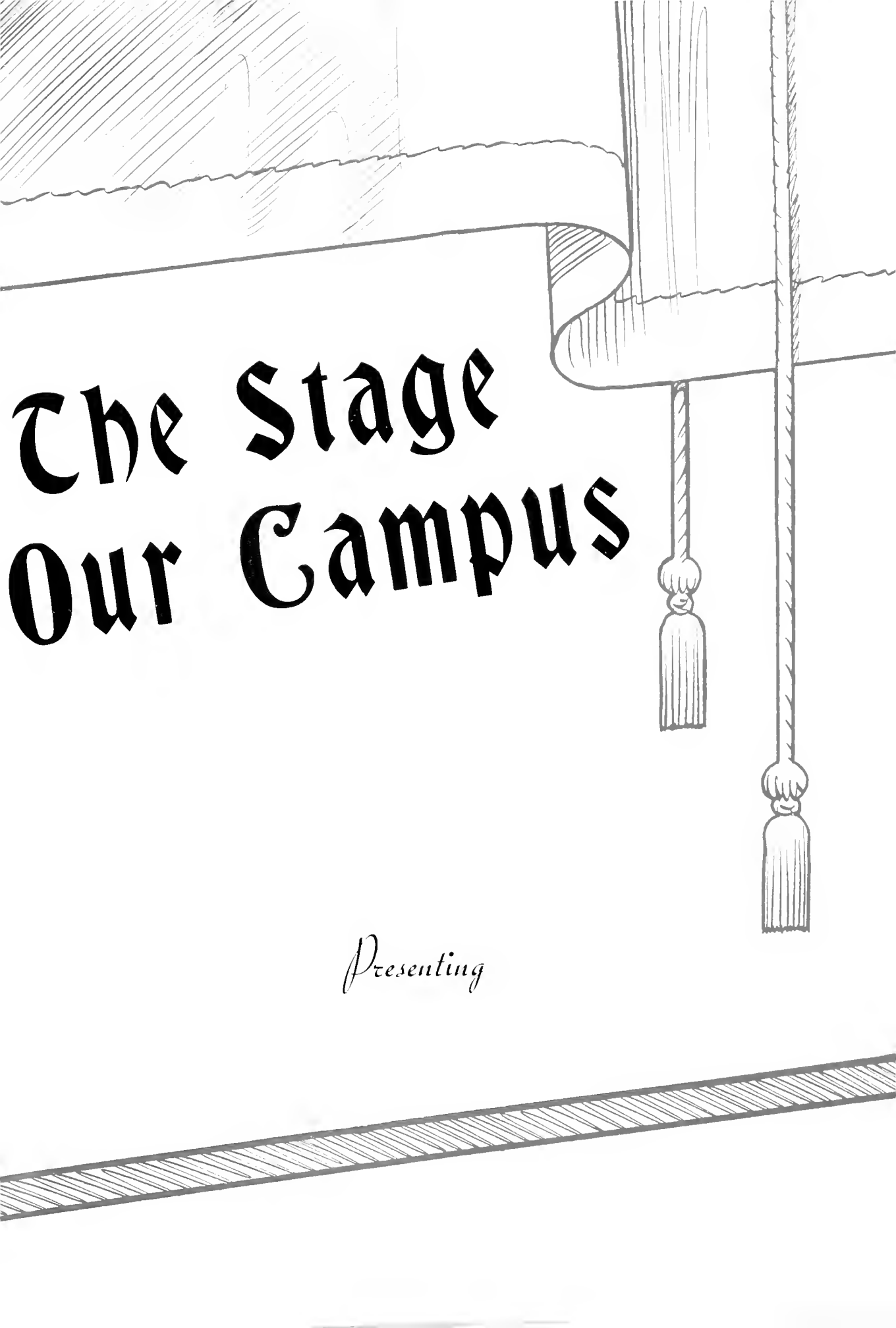
1949





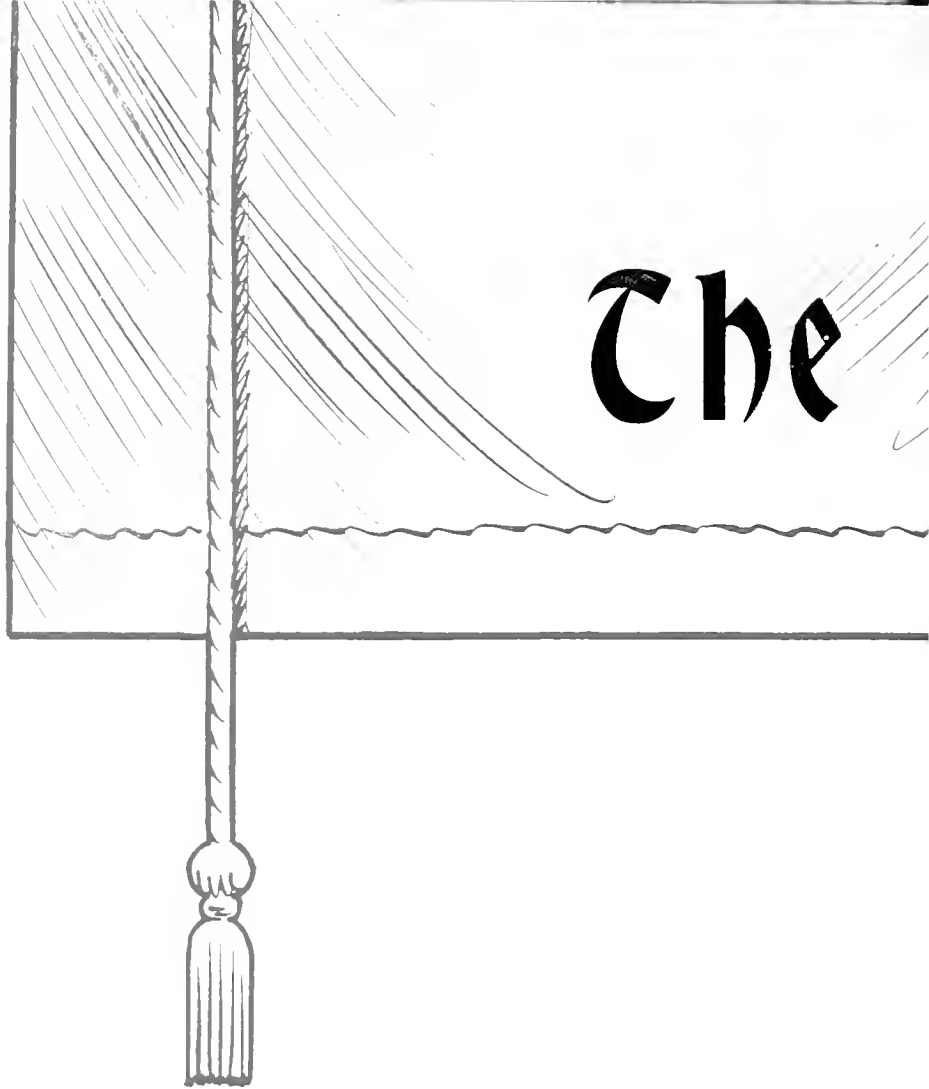
Digitized by the Internet Archive  
in 2011 with funding from  
LYRASIS Members and Sloan Foundation

<http://www.archive.org/details/carontawan1949ye00mans>



# The Stage Our Campus

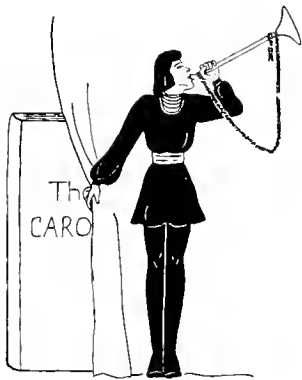
*Presenting*



PUBLISHED BY THE STUDENTS OF  
MANSFIELD STATE TEACHERS COLLEGE  
MANSFIELD, PENNSYLVANIA

# Carontawan

1949





# PROGRAM

*Time:* THE YEAR 1949

*Place:* MANSFIELD, PENNSYLVANIA

*Setting:* OUR CAMPUS

As the curtain rises, the drama of the Year 1949 is relived.

## PROLOGUE:

THE SETTING

THE DIRECTORS

THE DEDICATION

## ACT ONE:

*Scene One:*

THE FRESHMEN

*Scene Two:*

THE SOPHOMORES

*Scene Three:*

THE JUNIORS



# OF THE YEAR

ACT TWO:

PLAYTIME AND WORK

*Scene One:*

OUR CLUBS

*Scene Two:*

OUR SPORTS

BETWEEN THE ACTS:

PERSONALITIES OF 1949

ACT THREE:

THE SENIOR CLASS

PATRONS: ADVERTISEMENTS

# PROLOGUE:



# *The Setting*

*"All the world's a stage  
And all the men and women merely players."*

WILLIAM SHAKESPEARE.

Life at Mansfield may be likened to a play. Each student is a star in his own right, and the way he portrays his part will largely determine his future life and success in his chosen field. The value of his past and future days is priceless, and every person must act his role to the best advantage.

Through participation, co-operation, and genuine interest the play is revealed to the audience, superb in its production. By such means, also, the drama depicts the training, the association, and the opportunities which we as future teachers have experienced and shall attempt to pass on to those who will someday take our place.

Our play, the portrayal of Campus Life at M. S. T. C., is enacted on the following pages.

Curtain! First Curtain!



# DIRECTORS



# DEDICATION

*"Men work together," I told him from the heart,  
"Whether they work together or apart."*

ROBERT FROST.

Colleges are not merely institutions of learning. They represent the priceless period in the lives of students who are gathered together for social contacts and academic achievement.

How very different is our present outlook on life from that which we had when we entered college! Since our arrival at Mansfield State, we have grown in strength of mind and body, developing tolerance, self-reliance, and leadership through association and co-operation with each other and with the faculty.

We dedicate this 1949 CARONTAWAN to the continued enrichment of the intellectual, ethical, spiritual, and aesthetic lives of these students who have worked together . . . whether together or apart.





PRESIDENT JAMES G. MORGAN

# President Morgan's Message to the Class of 1949

Your college experiences in study, instruction in classroom and laboratory, and participation in all phases of academic and social life have afforded you countless opportunities for the development of those qualities of character, intellect, and personality that distinguish educated men and women. As beneficiaries of these opportunities, your responsibilities for professional service and as participating citizens in the life of your world are heavier but your accomplishments should be greater. We challenge each of you to discharge his obligations to the best of his ability.

PRESIDENT MORGAN  
AND  
MISS TRAUTMAN



## Dean of Instruction



DEAN MANSER

It is the duty of every teacher to work for the betterment of himself, his community, and his nation.

HERBERT E. MANSER  
*Dean of Instruction*



DEAN MANSER  
AND  
MISS CLEVELAND



DOROTHY M. WASLEY  
*Dean of Women*

"Look to This Day—  
For yesterday is already a dream,  
And tomorrow is only a vision:  
But today, well lived, makes every  
yesterday a dream of happiness—  
And every tomorrow a vision of  
hope—  
Look well, then, to this day."

*Anonymous.*



MISS WASLEY, Dean of Women

## THE DEANS



MR. LONG, Dean of Men

SAMUEL M. LONG  
*Dean of Men*

"Whom, then, do I call educated? First, those who control circumstances instead of being mastered by them, those who meet all occasions manfully and act with intelligent thinking, those who are honorable in all their dealings, who treat good naturedly persons and things that are disagreeable, and furthermore, those who hold their pleasures under control and are not overcome by misfortune, finally those who are not spoiled by success."—*Isocrates.*



# HOME ECONOMICS DEPARTMENT

ELIZABETH B. MORALES, B.S., M.A., (Columbia)  
Head of the Home Economics Department.

CHRISTINE BEASLEY, B.S. (Alabama), M.Ed. (Colorado State), Instructor in Home Management and Child Development.

LILLIAN E. BUCKINGHAM, B.S. (Penn State), M.S. (Cornell), Instructor in Foods and Family Health.

MARYON FARRER, B.S. (Simmons), M.A. (Columbia), Instructor in Nutrition, School Lunch, and Bacteriology.

MELINDA FIAT, B.S. (Indiana State), M.Ed. (Penn State), Instructor in Clothing and Textiles.

LILYAN K. GALBRATH, B.S., M.S. (West Virginia), Supervisor of Home Economics.

ELEANOR JOHNSTON, B.S., M.S. (Minnesota), Instructor in Clothing and Foods.





The Home Economics Department of the Mansfield State Teachers College has earned the reputation of having one of the finest Home Economics courses in the State. This course especially prepares young women for the teaching profession, although it is so comprehensive that other types of positions related to this field are open to its graduates.

The young women are given every possible opportunity to practice Home Economics in all of its phases. In our very attractive apartment on campus, small groups of students live for a period of six weeks during their Junior year with a resident director. The principles they have been taught in other home economics classes are put into practice. Also they spend nine weeks managing the school lunch at the Junior High School. The lunches are planned with consideration of nutritional value, attractiveness of food and economy of cost.

The nursery school is an important part of the Senior girls' curriculum. For one semester they are associated with the children, learning about their habits and personalities. Each student teaches a semester on campus under careful guidance and has the additional privilege of teaching under supervision of a vocational homemaking department in an approved high school in Pennsylvania.

Fashion shows, food demonstrations, dinners, teas, and exhibits are interesting, worthwhile projects and activities of the department. The course at Mansfield meets the requirements for certification in Home Economics Education and in addition each student gains inspiration and knowledge with which to encourage others in the community to create better living and as an ultimate goal, to live graciously in her own home or within her profession.





# MUSIC EDUCATION DEPARTMENT

MARJORIE C. BROOKS, B.S. (New York), M.A.  
(Eastman), Director of Music Department.

CORA A. ATWATER, Diploma (Elmira College), Mus.B. (Chicago Conservatory), Instructor in Voice.

AUSTIN LEDWITH, Certificate (Yale), Mus.B. (New England Conservatory), M.A. (Harvard), Instructor in Music Theory.

SIGMUND MICHOF, B.S., M.A. (New York), Instructor in Stringed Instrument and Conducting, Director of Orchestra.

FLORENCE R. BORKEY, B.S. (West Chester), B.M. (Eastman), M.A. (Columbia), Instructor in Piano and Eurythmics.

CHRISTINE S. LEWIS, B.S. (Missouri), M.A. (Northwestern University), Instructor in Voice.

CLARISSA A. RANDALL, B.S., M.A. (New York), Instructor in Methods and Music Appreciation.

JOHN G. DOYLE, Diploma (Julliard), B.A. (Charleston), M.A. (Columbia), Instructor in Piano.

VALENTINE A. LUCK, B.Mus. (Grinnell), M.A. (Columbia), Instructor in Piano.

GEORGE R. ROSS, B.Mus. (Morningside), Mus.M. (Northwestern University), Instructor in Music Theory and Choral Conducting.

BERTRAM W. FRANCIS, B.M.E., Mus.M. (Northwestern University), Instructor in Band Instruments.

DOROTHY G. MORSE, B.A., M.A. (Carnegie Institute of Technology), Instructor in Piano, Supervisor of Music Student Teachers.

ALBERT W. SCHROER, B.S.M., A.B. (Bluffton), M.A. (Ohio State), Instructor in Voice and Chorus.





## Music, A World Language

Our Music Department with its curriculum based on musical literature from the world's great composers and compositions of all periods represents an attempt to develop an understanding for the student that he may consummate a program of world music in the public schools. The stress is on applied techniques in music literature from these periods.

The highest possible professional standard was the goal set for each student. The Faculty of Specialist Instructors gave entertainingly instructive recitals of exemplified professionalism. The students also portrayed their musical ability professionally on and off the campus in various organizations such as: The Brass Ensemble, Woodwind Quintet, String Quartet and Vocal Quartet, the Madrigal Singers, the Chorus, Symphony Orchestra, and the Marching and Symphonic Bands.

The Music Department was responsible for most of the musical programs on the campus. In spite of this huge task, they managed to have a special musical program every month.

Many new improvements were made in the department: the teaching staff was increased; the recording equipment was put into excellent working order; the organ in Straughn Hall was completely overhauled; last, but not least, the beauty of the Marching Band was enhanced a thousand fold with the purchase of new red and black uniforms.

This year the classes in student teaching surpassed any previous records. Thus several student teachers received their training in secondary schools outside of Mansfield having a high musical rating.

Music is a language to everyone. Our aim is to speak to the entire world of today and tomorrow.





## Elementary Education

DR. GEORGE A. RETAN, PD.M. (Mansfield),  
B.F. (Pennsylvania State Forest School),  
PH.D. (New York), Director of Elementary  
Education, Student Teaching and Placement.



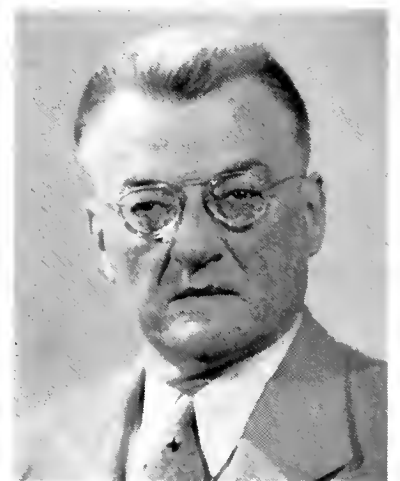
Elementary Building



Junior High School

## Secondary Education

HERBERT E. MANSER, B.S., M.A. (Columbia),  
Head of the Secondary Department.



## ENGLISH

ELIZABETH S. ALLEN, B.S. (Mansfield), M.A. (Columbia), Instructor in English.

JOHN W. CURE, Ph.B. (Bucknell), M.Ed. (Harvard), Instructor in English.

MARGARET O'BRIEN, A.B. (Syracuse), M.A. (McGill), Instructor in English.

ELIZABETH M. SWAN, A.B. (Kentucky), M.A., Ph.D. (Virginia), Instructor in Literature.



## EDUCATION AND PSYCHOLOGY

WALTER S. NOSAL, B.S. (Indiana), M.A., Ed.D. (George Washington), Instructor in Education and Psychology.

MARGARETTA BONE, B.S. (Bloomsburg), M.Ed. (Penn State), Instructor in Education.

G. HEIL GRAMLEY, B.S. (Albright), M.A. (Bucknell), Director of Publicity and Instructor in Education.

FRED A. JUPENLAZ, B.S. (Mansfield), M.Ed. (Bucknell), Instructor in Education and Veterans Adviser.



## SOCIAL STUDIES

EVERT R. PEARCY, A.B. (Salem), M.S. (West Virginia), Instructor in Social Science.

LEON E. LUNN, B.S. (Mansfield), M.Ed. (Saint Bonaventure), Instructor in History.

JAY B. FOREMAN, B.A., M.A. (Penn State), Instructor in History.

GEORGE L. J. LANGDON, B.S., M.S. (Penn State), Instructor in Geography and Geology.



## SCIENCE

LEONARD K. BEYER, B.S. (Bethany), M.S. (Cornell), Instructor in Biological Science.

ALBERT K. SUNDBERG, B.S. (Lock Haven), M.Ed. (Penn State), Instructor in Physical Science.

NEWELL A. SCHAPPELLE, B.S. (Massachusetts State), Ph.D. (Cornell), Instructor in Physical Science.

GRANT L. BARTHOLOMEW, B.S. (Lafayette), M.A. (New York), Instructor in Physical Science.





### MATHEMATICS AND FOREIGN LANGUAGE

- S. MAXFORD LLOYD, B.S. (Mansfield), M.A. (Columbia), Instructor in Mathematics.  
 LLOYD E. HOWE, B.S. (Juniata), M.Ed. (Pittsburgh), Instructor in Physical Science and Mathematics.  
 SARAH I. DRUM, A.B., M.Ed. (Pittsburgh), Instructor in French, Spanish, and Latin.

### HEALTH AND PHYSICAL EDUCATION

- MARION E. DECKER, B.S. (Illinois), M.Ed. (Penn State), Instructor in Health and Physical Education.  
 HELEN M. DIEFFENBACH, B.S. (East Stroudsburg), M.Ed. (Penn State), Instructor in Health and Physical Education.  
 EDWARD D. CASEY, A.B. (Scranton), M.A. (New York), Athletic Coach.

### ART

- S. MARJORIE MURPHEY, B.S. (Edinboro), M.Ed. (Pittsburgh), Instructor in Art.  
 RUSSELL McCOMMONS, B.S. (Edinboro), M.Ed. (Pittsburgh), Instructor in Art and Supervisor of Art in Campus Schools.  
 JOYCE S. CARLYLE, B.S. (Mansfield), Supervisor of Kindergarten.

### SUPERVISORS OF ELEMENTARY BUILDING

- MILDRED L. GRIGSBY, B.S. (Bucknell), M.A. (Columbia), Supervisor of Grade Six.  
 LORENE M. HABEGER, B.S. (Kansas Teachers), M.S. (Columbia), Supervisor of Grade Two.  
 ENID L. HENDRICKS, B.Ed. (Bridgewater), M.Ed. (Boston University), Supervisor of Grade Five.  
 RUTH M. HUGHES, B.S. (Mansfield), M.A. (Columbia), Supervisor of Grade Three.  
 DOROTHY HUTCHINSON, B.S., M.S. (Pennsylvania), Supervisor of Grade Four.  
 JEANNETTE JARECKE, B.S. (Mansfield), M.A. (Duke), Supervisor of Grade One.  
 JACOB H. JONES, A.B. (Penn State), M.A. (Columbia), Supervisor of Grade Five.  
 EDNA P. MARSH, B.S., M.A. (Columbia), Supervisor of Grade Three.  
 HENRIETTE E. SERGE, B.S. (Hunter), M.A. (New York), Supervisor of Grade Four.  
 ELIZABETH P. STALFORD, B.S. (Bucknell), M.A. (Columbia), Supervisor of Grade Five.  
 L. MABEL UMSTOT, B.S. (Shepherd), M.Ed. (Duke), Supervisor of Grade One.  
 MARY SHARP WARD, B.S. (Lock Haven), M.A. (Columbia), Supervisor of Grade Two.





## SUPERVISORS OF JUNIOR HIGH SCHOOL

VIRGINIA J. CONSON, A.B. (Randolph-Macon), M.A. (Peabody), Supervisor of English.

ELIZABETH DUFF, B.S. (Kent State University), M.S. (N. Y. U.), Supervisor of Health and Physical Education.

JESSIE L. GRIGSBY, B.S., M.A. (New York), Principal and Supervisor of Mathematics, Campus Junior High School.

KIMBLE G. MARVIN, B.S. (Lafayette), M.A. (New York), Supervisor of Health and Science.

JANE S. MERVINE, A.B. (Hood College), M.A. (University of Michigan), Supervisor of English.

CLARENCE R. MUTCHLER, B.S. (Lock Haven), M.S. (Bucknell), Supervisor of Science.

JOHN REESE, B.S. (Mansfield), Supervisor of Industrial Arts.

JOHN S. SANDELL, B.A., M.Ed. (Penn State), Supervisor of Social Studies.

RICHARD M. WILSON, B.S. (Mansfield), M.Ed. (Penn State), Supervisor of Social Studies and Science.



## SUPERVISORS OF SENIOR HIGH SCHOOL

JOHN H. RAYNES, B.S. (Mansfield), Mus.M. (Michigan), Instructor in Music.

THEODORE R. BESANCENEY, B.S. (Mansfield), Instructor in Economic Geography, Mathematics, and Physical Science.

MARION GLECKER, B.S. (Mansfield), M.A. (Syracuse), Instructor in English.

CHARLES H. HESS, B.S. (Penn State), Instructor in Agriculture.

FAUSTINE B. HUGHES, A.B. (Penn State), M.A. (Pennsylvania), Instructor in English and Latin.

BERNADINE JOHNSON, B.S. (James Millikin University), M.S. (Colorado A. and M.), Co-operative Home Economics Instructor.

C. MAX MILLREN, B.S. (Mansfield), M.Ed. (Duke), Instructor in Mathematics.

WARREN MILLER, B.S. (Mansfield), M.S. (Bucknell), Supervising Principal and Instructor in Physics.

BERTHA R. PALMER, B.S. (Bucknell), B.S. in L.S. (Millersville), Librarian of Campus Schools.

HELEN S. STRAIT, A.B. (Wilson), Instructor in History.

WILLIAM WANICK, B.S. (Bloomsburg), Instructor in Commercial Subjects.

GLADYS YOUNG, B.S. (Mansfield), Instructor in Science and French.





## DEANS AND ADMINISTRATIVE ASSISTANTS

GLORIA ANDERSON, Account Clerk.

ELIZARETH BOWMAN, R.N. (Sayre), College Nurse.

FRANK BROWN, M/Sgt., U. S. Army, R. O. T. C. Instructor.

LUCILLE H. BUTLER, B.S. (Mansfield), B.S. in L.S. (Peabody), Assistant College Librarian.

HELEN M. CLEVELAND, Secretary to the Dean of Instruction.

JANE R. EARLY, Clerical Assistant in Business Office.

HELEN E. FIELD, Matron.

SALLY P. HAINES, R.N. (Patterson General, New Jersey), College Nurse.

DORIS HAYDEN, Secretary to Director of Music.

EDNA HEWSON, (Genesee, Elmira Business Institute, Gregg), Registrar.

EDYTHA KEENEY, R.N. (Clifton Springs), Campus Schools Nurse.

WAYNE M. KELTS, Business Manager.

MARY LOU KUHIL, Secretary to the Director of the Campus Schools.

IRENE LUKE, Clerk in Campus Book Store.

MARIAN MCGOWAN, Assistant Dietitian.

DOROTHY MAGDELINSKAS, Stenographer.

SAMUEL M. LONG, B.S. (Lock Haven), M.A. (Columbia), Dean of Men.

JOSEPH J. MOORE, M.D. (Pennsylvania), College Physician.

JACK MULLEN, A. F. C. U. S. Army, Assistant to Sgt. Brown.

MOLLY L. REED, B.S. (Salem Teachers), M.A. (Syracuse), Assistant Dean of Women.

LAURA C. REHBEIN, Bookkeeper.

ROSS W. SOPER (Mansfield), Receiving Clerk.

REA J. STEELE, A.B. (Wisconsin), M.S. in L.S. (Columbia), College Librarian.

VICTORIA H. THIEMANN, Revenue Agent.

BEVERLY THOMAS, R.N. (Wilkes-Barre General), College Nurse.

ANNA MAE TRAUTMAN, Secretary to the President.

RUTH H. TUCK, College Dietitian.

A. HOWARD VOSBURG, Superintendent of Grounds and Buildings.

SARA WEIT, Secretary to the Director of Home Economics.

DOROTHY M. WASLEY, A.B. (Goucher), M.A. (Columbia), Dean of Women.



# ACT ONE

## SCENE ONE: THE FRESHMEN





Miss Wasley, Robert Maxon, Paul Lemon, Mary Helen Scott, Richard Boerlin, Mr. Long.

## The Class of 1952

### OFFICERS

<i>President</i>	- - - - -	- PAUL LEMON
<i>Vice President</i>	- - - - -	RICHARD BOERLIN
<i>Secretary</i>	- - - - -	MARY HELEN SCOTT
<i>Treasurer</i>	- - - - -	ROBERT MAXON
<i>Advisers</i>	- - - - -	DEAN WASLEY, DEAN LONG

Intrigued by the school's friendliness that first week of September, we, as freshmen, began to realize the full impact of belonging to the Mansfield Campus. Our final admittance to Mansfield was delivered by the Sophomores during Freshman Initiation Week. During this brief period of adjustment to college life, we established ourselves with friendliness and a spirit of good sportsmanship.

With the guidance of our advisers, Dean Wasley and Dean Long, we prospered in each of our undertakings: the Freshman Talent Show, which displayed the wide range of abilities within our class; and the largest event of the year, our Freshman Hop. We were also represented in other school activities such as Football and Basketball, May Day, and Homecoming Week-End.

In the oncoming years, our chief aim is to uphold and increase the values and traditions of Mansfield which have been cherished so long.



## FRESHMEN CLASS

### TOP PICTURE

Front Row, Left to Right—Ellen Abrahamian, Arlene Churnicky, Mary Louise Boller, Barbara Burleigh, Marjorie Bjork, Gloria Benfer, Roberta Bleiler, Louise Blanning, Nancy Chamberlain.  
 Second Row—Jean Brown, Emily Borek, Hughla Borden, Jean Anglemyre, Phyllis Courtney, Dorothy Buck, Almeria Brennan, Alice Baker, Barbara Bertolette, Joyce Baker.  
 Third Row—Thomas Bromfield, Thomas Casak, Edna Arndt, Lois Brown, Martha Ashby, Glenn Beck, Richard Cook, Dayton Alger, Donald Barton.  
 Fourth Row—Franklin Coole, Reese Berdanier, Jr., Kermit Boothroyd, Richard Boyce, Earl Charles, Thomas Ansilio, Clement Cobusko, Nevin Andre, Robert Cole.  
 Fifth Row—Harold Bredbenner, John Ayers, Robert Buckley, Paul Barton, Edgar Cole, John Baker, John Bunnell, Vincent Casella, Donald Cope.

### BOTTOM PICTURE

First Row, Left to Right—Edith Davis, Joyce Howe, Enid Andeer, Mabel Fullmer, Emma Ann Evans, Nancy Ferguson, Rosemarie Eichhorn, Joyce Cunningham, Dorothy Everitt, Katlyn Gregg.  
 Second Row—Peggy Lindgren, Nadine Davidheiser, Annalen Eslinger, Audrey Gombert, Beverly Hall, Anne Folweiler, Anne Greene, Carol Cummings, Dorothy Everlee, Jean Eisenhart.  
 Third Row—Richard Edwards, Thomas Guinane, Neil Haskins, Donald Gaddess, Robert Hogenmiller, Bill Doherty, Ronald Graham, Ned Dunkin, Jo Ann Harris, Joan Green, Barbara Hosler.  
 Fourth Row—Aaron Hafetz, James Fink, Nelson Entwistle, Alan Reed, Roy Herlocher, James Cross, Wayne Saxton, William Card, John Darr, Duane Cruttenden, John Haines.  
 Fifth Row—Henry Goodman, Gaylord Evey, Peter Georgi, Thomas Ansilio, Paul Eyer, Norman Duffy, John Horn, Andrew Michanowicz, John Ayers, Charles Dempsey, Rich Rafaldo, Joseph Gorniuk.



## FRESHMEN CLASS

### TOP PICTURE

First Row, Left to Right—Louise Kalano, Joan Duntz, Eva Lou Marks, Joanne Rutledge Johnson, Joann May, Getelle Mendelssohn.  
 Second Row—Ruth MacBain, Joan Kanyuck, June Montgomery, Joan Stevens, Mildred Kneiss, Phyllis McGuirl.  
 Third Row—William Johnson, Thomas Hugh McQueen, Fred Place, John Ludwick, Edwin J. Morley, Harold Kreiser.  
 Fourth Row—James McKeehen, Frank Michanowicz, Andrew Michanowicz, Barre Kaufman.

### BOTTOM PICTURE

First Row, Left to Right—Dorothy Naveen, Elsie Neal, Helen Seeley, Louise Penfield, Carmela Napolitan, Elizabeth Ann Park, Aviva Sare.  
 Second Row—Theresa Pierotti, Marjorie Porter, Charlotte Robinson, Helen Rybicki, Margaret Muth, Barbara Park, June Rollison.  
 Third Row—Anne Pearson, Elizabeth Redcay, Edith Neslon, Jean Nauman, Mary Helen Scott, Elaine Notari.  
 Fourth Row—Charles Randall, Ned Cole, John F. McElroy, Harley Rex, Alan Reed, Dan F. Schline, Morris Oviatt, Herbert Oldham.  
 Fifth Row—Fred Place, Eugen Seifert, Jr., Time Rodriguez, Donald Quirt, John Schwering, Andrew Mechanowicz, Bruce Ratthfor, Edward Refaleo, Walt Sox.



## FRESHMEN CLASS

First Row, Left to Right—June Zimmerman, Ellen Spencer, Joan Worthington, Janet Wentzel, Alice Whitney, Marietta Tiffany, Mary Ellen Wagner.  
 Second Row—Marjorie Wetmore, Janet Tritt, Marjorie Telford, Naomi Wright, Lorrina Smith, Sally Tiffany, Ann Sealey, Helen Tiffany.  
 Third Row—Eva Schmalbach, Eileen Piper, Jean Woodring, Sarah Sparks, Jo Anne Sowash, Joan Spiegel.  
 Fourth Row—John Thomas Southall, Tony Rossi, Douglas Welgel, Donald Turner, Richard Stone, Leonard Walukas.  
 Fifth Row—Dean Williamson, Bruce Snyder, Llewellyn Turnbull, Vincent Williams, George White.

## Freshmen Not In Pictures

Beagle, Boyd, Jr.  
 Bennett, Fenton S.  
 Bennett, J. Robert  
 Berdanier, C. Reese, Jr.  
 Bocknewch, C. L.  
 Bollinger, Ward James  
 Bower, William H.  
 Brennan, Philip  
 Brown, James A.  
 Burnett, J. Richard  
 Callas, Socrates  
 Canavan, Laurence F.  
 Caro, Edward M.  
 Chadwick, James  
 Chilson, Lewis  
 Clancy, Jerry  
 Clancy, John M.  
 Collins, Jerry J.  
 Colin, Michael Giorgi  
 Crawford, Corinne A.  
 Croft, Mary R.  
 Davis, James William  
 Day, Donald B.  
 Decker, Kenneth S.  
 DeWitt, James B.  
 Dokas, Peter P.  
 Douglass, Tom  
 Dunkin, Ned R.  
 Dye, Isabelle L.  
 Entwistle, Maurie S.  
 Erbe, Beverly  
 Farrer, Thomas William  
 Fenstermacher, Jean S.  
 Fleischauer, Richard  
 Flynn, Frank M.  
 Frey, H. Glenn, Jr.  
 Ganley, Thomas B.  
 Gardner, Barbara  
 Glenn, Claude F.  
 Grajewski, Richard  
 Greebe, Mary Anne  
 Gregg, Doris Virginia  
 Crimes, Waller F.

Hammerly, Ruth  
 Hart, Geraldine Mary  
 Honusby, Duwade E.  
 Howe, Donald A.  
 Howe, Richard A.  
 Huffman, Marion  
 Hume, Hallie H.  
 Hume, G. Willett  
 Hurlbert, Paul Gandel  
 Hurley, Thomas James  
 James, Fanny E.  
 James, Joan S.  
 Jaquish, Orin W.  
 Johnson, Lorena Evans  
 Junker, W. Duane  
 Kassab, Geraldine  
 Keating, William J.  
 Kepner, Ray E. II  
 Kershner, Donna Yvonne  
 Kimble, Raymond L.  
 Klingler, Merrill  
 Klinkel, Jean Ruth  
 Knierim, Olive Alene  
 Kniffin, Nelson A.  
 Kobeski, Leonard  
 Knouse, Donald R.  
 Kodish, Carl C.  
 Lake, Madalene  
 Lazevnick, John J.  
 Leach, Charles D.  
 Lech, Joseph D.  
 Lemon, Paul  
 Lenker, Resta  
 Lerner, Stuart Lowell  
 Lobach, Catherine L.  
 Lombardi, Bill  
 Lowe, William C., Jr.  
 Luce, Zelta Joyce  
 Madigan, Leila M.  
 Mancina, Harry J., Jr.  
 Mangus, Mary M.  
 Manzari, Joseph

Marble, Gordon H.  
 Marucci, Togle  
 Maxson, Bob  
 McCarthy, Thomas P.  
 McClaren, Richard  
 McGlynn, Cornelius T.  
 McGonigal, Ira  
 McInroy, Stanley H.  
 McLain, Thomas Anthony  
 McLaud, Lloyd L.  
 McMaster, John G.  
 McNett, William T.  
 Merrell, Joyce Lamar  
 Messerve, Anne Louise  
 Miliauskas, John Joseph  
 Miller, Samuel Austin, Jr.  
 Munkittrick, Milton William  
 Mitchell, William Edward  
 Mitstifer, Robert M.  
 Moleskie, Bernard Walter  
 Morosini, Joan Carol  
 Marceav, Myers C.  
 Nares, Kenneth G.  
 Nelson, Bettie  
 Nichols, Bob  
 Oldsey, Joseph J.  
 Olger, Dayton T.  
 Owlett, Egbert R.  
 Palmer, Leslie  
 Parsons, Llewellyn S.  
 Pereci, Anthony Joseph  
 Place, June E.  
 Polak, John J.  
 Patton, Sam  
 Porter, Marjorie Lois  
 Proroty, Mary Catherine  
 Reckus, John F.  
 Rader, Audrey Mae  
 Rauscher, Shirley M.  
 Riordan, Derle R.  
 Robbins, Wyman Charles  
 Rohrey, Pat

Romawoski, Edward J.  
 Russell, Edward C., Jr.  
 Salutus, William C.  
 Santoro, Dominick V.  
 Saxe, Walter  
 Schneider, Robert W.  
 Schnette, Robert L.  
 Schwering, John E.  
 Seutt, Richard J.  
 Sebastian, Joseph A.  
 Sellaer, Stephen  
 Semko, Andrew John  
 Serafini, John J.  
 Shaw, Horslef L.  
 Sherman, Maynard D.  
 Slocum, Eugene  
 Snee, William J.  
 Solofka, Peter T.  
 Spencer, John M.  
 Stahler, Joan P.  
 Stenzhorn, G. William  
 Stephens, Elmer E., Jr.  
 Stepkowitch, John D.  
 Stewart, George F., Jr.  
 Stilwell, Arthur J.  
 Strobe, Donald  
 Sumner, Donald K.  
 Taylor, William John, Jr.  
 Thomas, William J.  
 Tomlinson, George R.  
 Tunison, Howard Perillee  
 Vroman, Joan N.  
 Ward, Robert L.  
 Warnkessel, Kenneth Scott  
 Watkins, Neil  
 Webster, Jerome H.  
 Welles, Patricia  
 Wetherbee, William Briggs  
 Wieward, Kathryn Jane  
 Yancoski, Gene A.  
 Yaudes, Kenneth W.  
 Zehner, Dave J., Jr.

# Nurses



## SCRANTON NURSES

Standing, Left to Right—Lillian Pomperi, Bernice Covalk, Joan Weaver, Rose Tapyrik, Nancy Ezersky, Jean Lotimer, Jean Hankinson, Naomi Anderson, Jane Hughes.  
Seated—Miss Hennigan, Anna Mae Mudzo, Mary Lewis, Betty Irion, Betty Priest.



## SAYRE NURSES

First Row, Left to Right—Marilyn Danmahne, Jean McKinley, Charlotte Workheiser, Joan Drake, Margaret Seeley, Marlene Covert, Rowena Carlin, Bernice Dean, Joyce Dunn, Miss Hughes.  
Second Row—Ethel Bumpus, Marie Slawin, Ruth Farnam, Lois Potter, Lois Case, Joanne Cody, Joyce Thomas, Evelyn Crowley, Carolyn Covert, Ann Musto.  
Third Row—Shirley Stoops, Jean Smith, Mary Garfield, Merrill Anderson, Doris Pent, Shirley Smith, Mury Hoyt, Joyce Packard, Doris Green, JoAnn Stegner.  
Fourth Row—Laura Wiles, Mickey Shay, Lucelle Sheldon, Gordis McCall, Madeline Wright, Sue Crocker, Jacqueline Dewey, Helen Garret, Jeannette Narsh, Margaret Mitten.  
Fifth Row—Helen Stone, Jane Wilcox, Shirley Douglas, Constance Jewel, Connie Butler, Elizabeth Brasda, Joanne Hern, Doris Cain.





# Scene Two

THE SOPHOMORES





Left to Right - Mr. Lunn, Nancy Fray, Janice Brown, Edward Turnberger, Eugene Tedesco.

## The Sophomore Class

### OFFICERS

<i>President</i>	-	-	-	-	-	-	-	-	-	EUGENE TEDESCO
<i>Vice President</i>	-	-	-	-	-	-	-	-	-	EDWARD TURNBERGER
<i>Secretary</i>	-	-	-	-	-	-	-	-	-	JANICE BROWN
<i>Treasurer</i>	-	-	-	-	-	-	-	-	-	NANCY FRAY
<i>Adviser</i>	-	-	-	-	-	-	-	-	-	MR. LUNN

The hazing of the Freshmen highlighted the beginning of our Sophomore year. Our success in this undertaking proved to us that we could and must work together. It also set a goal for us in our other class activities.

On November 6, we held the first semi-formal dance of the year, "The Harvest Moon," which proved to be a great success. We chose "The Autumn" as the theme and the decorations were centered around this unique idea.

We soon take our positions as dignified Juniors, and we hope our next two years are as successful as the one we just completed.



## SOPHOMORE CLASS

### TOP PICTURE

Front Row, Left to Right—Ann M. Borden, Christine Bell, Jean Berrie, Nancy Becker, Kay Bitner, Esther Cassel, June Brabec, Jeanne Ayres, Geraldine Bradshaw, Mary Alice Cawley.  
 Second Row—Louise Balz, Phyllis Cutler, Marcella Bastian, Lily Beechakas, Louise Baer, Alice Bellairs, Janice Brown, Charmaine Burdick, Janice Croman.  
 Third Row—Robert Castle, Russell Chaffee, Tony Apecchio, Elaine Carlson, Margie June Bunt, Mary Cassel, James Barrett, Martin Barrett.  
 Fourth Row—Frank Brown, Steven Butchko, Joseph Cheplick, Donald Buford, Laurin Blasien, A. Dean Brown, Richard Boehl, Ray Burbick.

### BOTTOM PICTURE

Front Row, Left to Right—Jean L. Howells, Ann Hunter, Patricia Cochran, Helen Drebert, Florence Grimm, Helen L. Frank, Mona Frank, Nancy Fray, Miriam Hunter.  
 Second Row—Isabelle Dye, Myra Ervine, Evelyn Hauer, Mary Mae Inescho, Marilyn Daron, Marion Ditzler, Donna Hackett, Gwendolyn Jones.  
 Third Row—Robert Hartman, Ann Marie Dove, Loretta Fiaschi, Betty Heinbach, Elaine Davis, Catherine Ervey, Irene Dickinson, John Allen.  
 Fourth Row—Joseph Geyer, James DeWitt, George Guldin, Eugene Horn, Gene Harbach, Paul Depue, Robert Heim, Donald Green, Vera S. Buller.



## SOPHOMORE CLASS

### TOP PICTURE

Front Row, Left to Right—Patsy Edgar, Zelda Luce, Alda Jumper, Marian Kostenbauder, Esther Russell, Peggy Newell, Katherine Kuster, Rosemary Mullen, Margaret Packer, Grace Loveland.  
 Second Row—June Place, Sally Eno, Ruth Shiner, Bernadine Shaw, Doris Manley, Ruth Riegel, Catherine Maloney, Eleanor LaCoe.  
 Third Row—Jacqueline Redner, Gwendolyn Roy, Mary Elizabeth Sterling, Ealine McLand, Betty McCabe, Donna Mutchler, Violet Partchey, Dorothy Manning, Emerreme Siglin.  
 Fourth Row—Ray Pearson, Bill Lombardi, John Rossbacher, James Malarkey, Malin Martin, Gib Muir, Patrick O'Hearn, Amos Northrop, Dick Sick.

### BOTTOM PICTURE

Front Row, Left to Right—Mary Toy, Sara Staub, Constance Tingley, Charlotte Underwood, Eleanor Young, Joyce Tutill.  
 Second Row—Janet E. Taylor, Joyce Tabey, Frances Wintersteen, Barbara Snyder, Lois Snyder.  
 Third Row—Irving Young, David Sykes, David Strunk, Duane Swimley, Evan Thomas.



# Scene Three

THE JUNIORS





Left to Right—James Decker, Rita Masterson, Mr. Percy, Norma Keeler, Robert Phillips.

## The Junior Class

### OFFICERS

<i>President</i>	- - - - -	JAMES DECKER
<i>Vice President</i>	- - - - -	ROBERT PHILLIPS
<i>Secretary</i>	- - - - -	NORMA KEELER
<i>Treasurer</i>	- - - - -	RITA MASTERSON
<i>Adviser</i>	- - - - -	MR. PEARCY

The Junior class has seen the completion of its third successful year. The Juniors look back with fond memories and ahead with bright hopes as they stand on the threshold of their Senior year.

To the Class of '49, the Class of '50 extends sincere praise and congratulations. Your four years at M.S.T.C. constitute a chapter in your life that will have a great influence on successive chapters. You have contributed a great deal to the betterment of your alma mater, and the training which you have received here should help to overcome any obstacles which you will encounter in future years.

Curtis H. Acker, *Music* Allentown, Pa.  
 Margaret Jane Arnts, *Home Economics* Sayre, Pa.  
 Thelma E. Ault, *Home Economics* Yeagertown, Pa.  
 Charles B. Backnewek, *Secondary* Knoxville, Pa.



Lena Mae Baker, *Music* Hanover, Pa.  
 Glenn W. Barrett, *Secondary* Snedekenville, Pa.  
 Donald D. Bartoo, *Secondary* Harrison Valley, Pa.  
 Joey Louise Bedford, *Home Economics* Canton, Pa.



George E. Beers, *Secondary* Towanda, Pa.  
 William Bender, *Music* Kane, Pa.  
 Russell Benjamin, *Secondary* Canton, Pa.  
 Vivian Berie, *Home Economics* Northumberland, Pa.



William T. Biddle, *Secondary* Troy, Pa.  
 Elizabeth M. Booth, *Secondary* East Smithfield, Pa.  
 Elizabeth Ann Bowers, *Music* Chambersburg, Pa.  
 Francis R. Bradshaw, *Secondary* Wilkes-Barre, Pa.



Fern Lorraine Bricker, *Home Economics* Frackville, Pa.  
 Charles R. Brown, *Secondary* Burlington, Pa.  
 Margery Arline Brush, *Home Economics* Scranton, Pa.  
 James D. Burns, *Secondary* Athens, Pa.



Patricia Burns, *Elementary* Athens, Pa.  
 Theodore S. Callas, *Secondary* Elmira, N. Y.  
 Gordon R. Carson, *Secondary* Covington, Pa.  
 Lois Case, *Secondary* Milan, Pa.



Virginia Cherrington, *Home Economics* Port Allegany, Pa.  
 Frances Irene Clarke, *Home Economics* Mexico, N. Y.  
 Donna E. Cleveland, *Elementary* Mansfield, Pa.  
 Eleanor L. Cobb, *Elementary* Stevensville, Pa.



Robert A. Collins, *Secondary* Laceyville, Pa.  
 Janet Joyce Colwell, *Home Economics* Susquehanna, Pa.  
 William E. Conwell, *Secondary* Wilkes-Barre, Pa.  
 Carleton P. Cook, *Secondary* Wysox, Pa.



Eugene David Corbo, *Music* Elmira, N. Y.  
 Audrey L. Cornell, *Elementary* North Bingham, Pa.  
 Arlene B. Craig, *Elementary* Wellsburg, N. Y.  
 Joseph John Craven, *Elementary* Peckville, Pa.



Velma A. Cruttenden, *Secondary* Wellsboro, Pa.  
 Leon F. Daniels, *Secondary* Athens, Pa.  
 Darrell E. Davis, *Music* Shinglehouse, Pa.  
 Mariam R. Davis, *Music* Nelson, Pa.



Mary Elizabeth Davis, *Home Economics* Leraysville, Pa.  
 Floyd A. Delgrosso, *Secondary* Mansfield, Pa.  
 Raymond L. Detz, *Secondary* Nanticoke, Pa.  
 Robert Dewey, *Secondary* Troy, Pa.





Ruth E. Dietrich, *Secondary*  
 Anthony L. Dombroski, *Secondary*  
 Mary Louise Dubble, *Music*  
 Laura Lou Eckroth, *Home Economics*

Fleetwood, Pa.  
 Wilkes-Barre, Pa.  
 Myerstown, Pa.  
 Bloomsburg, Pa.



Robert Eldred, *Secondary*  
 Louis E. Elster, *Music*  
 Beverly Evans, *Home Economics*  
 Stanley M. Evans, *Secondary*

Sayre, Pa.  
 McKeesport, Pa.  
 Corning, N. Y.  
 Olyphant, Pa.



William Marlin Evey, *Secondary*  
 Marilyn N. Fehr, *Home Economics*  
 Patricia Ferry, *Home Economics*  
 Marion C. Finch, *Secondary*

Bellefonte, Pa.  
 Allentown, Pa.  
 Dallas, Pa.  
 Crooked Creek, Pa.



Frank Erwin Fish, *Secondary*  
 Ava Payne Foster, *Secondary*  
 Richard Fraley, *Secondary*  
 Francis Gallieho, *Secondary*

Manstfield, Pa.  
 Westfield, Pa.  
 Wilkes-Barre, Pa.  
 Troy, Pa.



Kenneth B. Garrison, *Secondary*  
 John F. Gearhart, *Secondary*  
 Joan Jean Geigle, *Secondary*  
 Emma Jane Gessner, *Music*

Covington, Pa.  
 Tower City, Pa.  
 Condersport, Pa.  
 Dornsife, Pa.



John Lewis Gillette, *Secondary*  
 Doris M. Gohl, *Music*  
 Lois Shipe Gass, *Home Economics*  
 Robert A. Griffith, *Secondary*

Germania, Pa.  
 Jersey Shore, Pa.  
 Danville, Pa.  
 Millerton, Pa.



Raymond S. Gruzlewski, *Secondary*  
 Sally Perkins Haines, *Secondary*  
 William F. Hamilton, *Secondary*  
 Dorothy Harkness, *Home Economics*

Blossburg, Pa.  
 Hallstead, Pa.  
 Galeton, Pa.  
 Canton, Pa.



Joseph Harrington, *Secondary*  
 Thomas Harrington, *Secondary*  
 Ernestine L. Haswell, *Elementary*  
 Joseph P. Hawkins, *Secondary*

Kingston, Pa.  
 Kingston, Pa.  
 Lehighton, Pa.  
 Canton, Pa.



Doris Eileen Healey, *Secondary*  
 Marie P. Hembury, *Secondary*  
 Earl Edward Hinman, *Secondary*  
 Frances Bernardine Hoffman, *Home Economics*

Wilkes-Barre, Pa.  
 Mildred, Pa.  
 Monroeton, Pa.  
 Forty Fort, Pa.



John D. Holton, *Music*  
 Eugene Horn, *Secondary*  
 Anthony E. Horosko, *Secondary*  
 Ellen Houser, *Music*

Norristown, Pa.  
 Tower City, Pa.  
 Olyphant, Pa.  
 Millerton, Pa.



Richard G. Hutchinson, *Secondary*  
 William J. Jaquish, *Secondary*  
 Lloyd A. Johnson, *Secondary*  
 Wesley Johnson, *Music*

Olean, N. Y.  
 Tunkhannock, Pa.  
 Penbrook, Pa.  
 Williamsport, Pa.



Mary Ann Jones, *Music*  
 Frederic Judd, *Secondary*  
 Peter W. Kearney, *Secondary*  
 Norma Keeler, *Secondary*

Scranton, Pa.  
 Harrison Valley, Pa.  
 Olyphant, Pa.  
 Athens, Pa.



John Daniel Kebres, *Music*  
 Edith M. Kendall, *Music*  
 Marshall L. Kennedy, *Secondary*  
 Lee M. Kerchusky, *Secondary*

Reback, Pa.  
 Marienville, Pa.  
 Troy, Pa.  
 Ringstown, Pa.



Mary E. Kingan, *Music*  
 Lydia M. Kinney, *Secondary*  
 Eleanor Ruth Kithcart, *Secondary*  
 Frank Kiwatsky, *Secondary*

Slippery Rock, Pa.  
 Mansfield, Pa.  
 Wyalusing, Pa.  
 Lopez, Pa.



Alfred E. Kjelgaard, *Secondary*  
 Beraiece P. Klingaman, *Music*  
 Edward A. Knob, *Music*  
 Matilda Koslosky, *Elementary*

Galeton, Pa.  
 Gilbert, Pa.  
 Stroudsburg, Pa.  
 Dushore, Pa.



Leon Kreger, Jr., *Secondary*  
 Kay Krouse, *Elementary*  
 Eugene Landon, *Secondary*  
 George Frederick, *Secondary*

Liberty, Pa.  
 Morris, Pa.  
 Towanda, Pa.  
 Athens, Pa.



Thomas F. Lynch, *Secondary*  
 Stuart S. MacKowiack, *Secondary*  
 Alice Mae Maguire, *Home Economics*  
 Prudence Manley, *Elementary*

Athens, Pa.  
 Blossburg, Pa.  
 Plains, Pa.  
 Elmira, N. Y.



Alita Marcucci, *Elementary*  
 Esther S. Marshall, *Home Economics*  
 Lou Marvin, *Music*  
 Kenneth Masterson, *Music*

Laceyville, Pa.  
 Roaring Branch, Pa.  
 Forty Fort, Pa.  
 Tower City, Pa.



Rita Masterson, *Secondary*  
 Charles R. Maul  
 Sam F. Maul, *Music*  
 Raymond P. Mazza, *Music*

Eldred, Pa.  
 Mansfield, Pa.  
 Mansfield, Pa.  
 Steelton, Pa.



Laora A. McCarty, *Home Economics*  
 James E. McClure, *Secondary*  
 Mrs. Jean B. McElroy, *Secondary*  
 Barbara McFadden, *Home Economics*

Troy, Pa.  
 Mansfield, Pa.  
 Bradford, Pa.



Richard McLane, *Secondary*  
 Dorothy E. McLaughlin, *Music*  
 Lorene Isabelle McMillen, *Home Economics*  
 Mary Jane McNett, *Secondary*

Pittston, Pa.  
 Ronlette, Pa.  
 Loysville, Pa.  
 Alba, Pa.



Theodore D. Metarko, *Secondary*  
 Jean Metzger, *Elementary*  
 Dorothy J. Michaels, *Elementary*  
 Kenneth A. Millard, *Secondary*

Blossburg, Pa.  
 Millport, Pa.  
 Covington, Pa.  
 Canton, Pa.





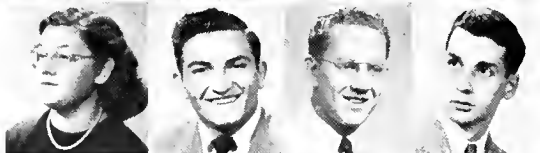
John Miller, *Elementary*  
 Robert S. Mills, *Secondary*  
 Lucille Ann Mirmak, *Secondary*  
 Theresa Napolitan, *Secondary*

Wyalusing, Pa.  
 Wilkes-Barre, Pa.  
 Wilkes-Barre, Pa.  
 Hazelhurst, Pa.



Edward A. Netski, *Secondary*  
 William J. Novitske, *Secondary*  
 Pat O'Neil, *Elementary*  
 Marilyn Agnes Page, *Music*

Wilkes-Barre, Pa.  
 Blossburg, Pa.  
 Mauch Chunk, Pa.  
 Susquehanna, Pa.



Phyllis Peiffer, *Home Economics*  
 Anthony M. Petrillo, *Secondary*  
 James C. Phillips, *Secondary*  
 Milton H. Phillips, *Secondary*

Manheim, Pa.  
 Wilkes-Barre, Pa.  
 Laurel Springs, Pa.  
 Tunkhannock, Pa.



Michel Poltash, *Secondary*  
 Eugenia Marie Porretta, *Secondary*  
 Arnold R. Poster, *Secondary*  
 Erwin W. Prindle, *Secondary*

Plains, Pa.  
 Silver Creek, Pa.  
 Valley Stream, N. Y.  
 Mansfield, Pa.



Richard William Radebach, *Secondary*  
 Barbara E. Ramsey, *Elementary*  
 Eugene E. Rehrer, *Secondary*  
 John Roberts, *Music*

Mansfield, Pa.  
 Norristown, Pa.  
 Pine Grove, Pa.  
 Kingston, Pa.



Joseph B. Robinson, *Secondary*  
 Gayl Marie Ross, *Music*  
 Margaret J. Russell, *Home Economics*  
 William Savage, *Music*

Waverly, N. Y.  
 Waverly, Pa.  
 Mansfield, Pa.  
 Clarks Summit, Pa.



Marvin R. Seldenker, *Music*  
 Dolores D. Schmelzle, *Secondary*  
 Beatrice Shafer, *Home Economics*  
 Donald Shrift, *Music*

Kutztown, Pa.  
 Ralston, Pa.  
 Cogan Station, Pa.  
 Sommerhill, Pa.



Helen Sileski, *Home Economics*  
 Lacey W. Simeoe, *Secondary*  
 Philip Sittler, *Music*  
 Dorothy E. Sjoström, *Elementary*

Pringle, Pa.  
 Waverly, N. Y.  
 Allentown, Pa.  
 Athens, Pa.



Richard E. Smith, *Music*  
 Barbara J. Snyder, *Home Economics*  
 Margaret Ormsby Spleen, *Home Economics*  
 Stephen F. Starcheski, *Secondary*

W. Pittston, Pa.  
 Sunbury, Pa.  
 Ridgway, Pa.  
 Scranton, Pa.



Lucille E. Sterling, *Elementary*  
 Mary Lynne Stevens, *Secondary*  
 Margaret L. Strom, *Secondary*  
 Joseph Sweeda, *Secondary*

Wyalusing, Pa.  
 Mansfield, Pa.  
 Forest City, Pa.  
 Hudson, Pa.



Robert Gerard Sweeney, *Secondary*  
 Ruth M. Tingley, *Secondary*  
 Irene Tompkins, *Secondary*  
 Jean E. Trach, *Home Economics*

Towanda, Pa.  
 Blossburg, Pa.  
 Halstead, Pa.  
 Saylorsburg, Pa.

Anita Turner, *Elementary*  
 Jane Wagner, *Elementary*  
 John T. Walker, *Secondary*  
 Joe Walsh, *Secondary*

Canton, Pa.  
 Renovo, Pa.  
 Peckville, Pa.  
 Plains, Pa.



Thomas S. Ward, *Music*  
 Andrew M. Weit, *Music*  
 Milton W. Wheeler, *Secondary*  
 James M. White, *Secondary*

Meekesport, Pa.  
 Ephrata, Pa.  
 Mansfield, Pa.  
 Wellsboro, Pa.



Betty Whitehorn, *Secondary*  
 Eiyuor M. Wilcox, *Music*  
 Howard C. Williams, *Music*  
 George Y. Wilt, *Music*

Bilberton, Pa.  
 Montrose, Pa.  
 Seranton, Pa.  
 Towanda, Pa.



Elmer J. Yeck, *Secondary*  
 Lillian Ardelle Zilliardt, *Home Economics*  
 Clemens M. Zubres, *Secondary*

Olyphant, Pa.  
 Fleetwood, Pa.  
 Wilkes-Barre, Pa.



## Underclassmen Without Photographs

Bednash, Matilda  
 Burnett, Yvonne  
 Cole, Elizabeth Youmans  
 Conniff, Robert  
 Drabinski, Leonard  
 Houser, William  
 Kunkel, Lois  
 Lenahan, Edward  
 Baker, Joyce E.  
 Brace, Kenneth M.  
 Brown, Kenneth Ira  
 Burian, Nello  
 Burtch, Charles D.  
 Calkins, Gail F.  
 Cole, William Elmer  
 Crumm, Gertrude  
 Crawford, James William  
 Cummings, Elvira L.  
 Cunningham, Joe  
 Davis, Nicholas L.  
 Delida, Vincent W.  
 Dombroski, Jack  
 Drabinski, Edward John  
 Dugan, John E.  
 Earley, John J.

Eldred, Robert C.  
 Galliechio, Francis Aloysius  
 Goeringer, Ray  
 Hendler, William Charles  
 Heis, John Elmer  
 Hendricks, Frances  
 Keuren, Leonard A. Van  
 Knapp, Richard D.  
 Kristunas, Francis W.  
 Leach, Walter, Jr.  
 Lukas, Gerald F.  
 McEntire, Carl W.  
 Moore, Don W.  
 Moresco, Joseph J.  
 Osani, Charles W.  
 Patton, Robert  
 Patton, Samuel E.  
 Robb, Melvin H., Jr.  
 Roberts, John N.  
 Rohrey, Pat  
 Schleinitz, Walter C.  
 Siglin, Emerrene L.  
 Snover, Robert Louis  
 Snyder, Marie E.  
 Steele, Donald R.

Stilwell, Irva M.  
 Stracka, Francis John  
 Strohecker, Mary Louise  
 Swetland, Richard M.  
 Taugreni, Nicholas  
 Taylor, Janet Marilyn  
 Tedesco, Eugene C.  
 Terry, Janice F.  
 Tewksbury, Elden P.  
 Thomas, Raymond J.  
 Theelge, Beverly  
 Toby, Michael Robert  
 Treharn, Shirley  
 Turnberger, Eddie N.  
 Turner, K. Anita  
 Tyrrell, Raymond S.  
 Wagner, Richard K.  
 Warters, Lois  
 Webster, Natalie H.  
 Welles, Lincoln  
 Wells, Helen  
 Wintersteen, Frances E.  
 Wolfe, Harold E.  
 Wood, Warren G.  
 Young, William P.



# ACT TWO

SCENE ONE: OUR CLUBS





## A. A. C. E.

### OFFICERS

<i>President</i>	- - - - -	PHILIP BROWN
<i>Vice President</i>	- - - - -	ALITA MARCUCCI
<i>Primary Vice President</i>	- - - - -	RUTH TINGLFY
<i>Intermediate Vice President</i>	- - - - -	PATRICIA O'NEILL
<i>Secretary</i>	- - - - -	LUCILLE STERLING
<i>Treasurer</i>	- - - - -	JAMES CLANCY
<i>Adviser</i>	- - - - -	DR. RETAN

The American Association of Childhood Education, known on the Campus as the Elementary Club, is a large and active organization.

The club meets once a month, and this year it has for its theme—"Democracy in Education." Several programs were centered around this theme, including a book review and a round table discussion. Other programs were planned to include a drama, music, literature and art, as well as various social activities.

Education must provide children with opportunities for realizing at first hand what democracy means and what it demands of them in ways of social integrity, pooled effort, and shared responsibility. The A. A. C. E. members, as future teachers and builders of democracy, strive toward this concept.

It is the aim of the club to develop within each individual an awareness of the need for deepening one's understanding of children and for helping children understand themselves and the world in which they live.





Sitting, Left to Right—Russell Chaffee, Ralph Weller, Warren Barrett, Glenn Barrett, Charles Brown.  
 Standing—Kenneth Brown, Frank Fish, Robert Saxton, Ned Cole, Neil Watkins, Donald Schline, Lorenzo Weibel.

## Y. M. C. A.

### OFFICERS

<i>President</i>	- - - - -	JAMES BARRETT
<i>Vice President</i>	- - - - -	GLENN BARRETT
<i>Secretary</i>	- - - - -	RALPH WELLER
<i>Treasurer</i>	- - - - -	EUGENE CORBO
<i>Sponsor</i>	- - - - -	R. D. McCOMMONS

This organization exists on the voluntary support of interested men of all creeds who accept the purpose of the organization. The Y. M. C. A. provides entertainment, recreation, and inspirational programs of such a nature as to interest all men. Our programs for the year were based on four phases of Christian faith; social responsibility, growth of persons, Christian heritage and world relatedness. The Y. M. C. A. and Y. W. C. A. programs were paralleled this year, thus making our programs more effective on the campus.

The gospel team, which is sponsored by the Y. M. C. A., conducted several religious services working with youth groups and special worship services in the churches of nearby communities. This team teaches leadership and development of character through individual participation in the services.



## Omicron Gamma Pi

### OFFICERS

<i>President</i>	- - - - -	DORIS YOST
<i>Vice President</i>	- - - - -	JANET COLWELL
<i>Secretary</i>	- - - - -	HELEN DRABERT
<i>Treasurer</i>	- - - - -	MARGERY BRUSH

Omicron Gamma Pi is an organization open to all Home Economic Students. The club is affiliated with the State and National Home Economics Association.

The purpose of this organization is to create interest and enthusiasm in the field through monthly meetings and extra curricular activities.

“Pointers for Personal Living,” the Special Event for the year, was a tremendous success. Exhibits, demonstrations, and discussions featured the various phases of personal living.

The programs for the year were centered around crafts. These included Ceramics, Metal Craft, Wood Craft, Embroidering and Weaving. The monthly programs not only provide entertainment but also broaden our knowledge in the field of Home Economics.



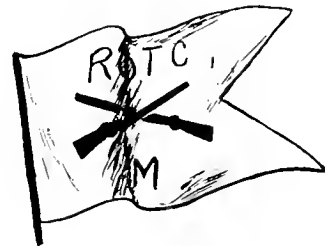


## R. O. T. C.

We stoutly maintain that leaders are made, not born. Leadership can be developed to an almost unlimited degree. Given the rich stock of American manhood to draw upon, we have produced and will continue to produce high-grade officers by doing a high-grade job of selection and of training. A four-year college course is by its nature a selective process. By and large, those who graduate are tested risks for carrying through to successful conclusion the diverse enterprises of modern military science.

In his preparation to be an officer, the R. O. T. C. student receives much more than military training. He is subjected to an increasingly difficult series of mental challenges. He gains information and, more important, he gains tolerance, appreciation, and understanding of the problems of mankind. He grows, matures, and broadens in interest.

The R. O. T. C. graduate, through mental, moral, and physical fitness, is trained to lead in any community and becomes the man to rely on—the one to respect—in danger or in calm.





First Row, Left to Right - Banzhof, Maxwell, McMillen, Yeager, Davis, Trach, Yost, Bunn.  
 Second Row - Vareon, Shusser, Cherrington, Cochran, Rockwell, Brown, Thornton, Casey, Mullen, Kerchusky.  
 Third Row - Miss Murphey, Hunter, Sjostrum, Kostenbauer, Loveland, Turner, Russell,  
 Sileski, Clarke, Drebert, Partelli.  
 Fourth Row - Chaffee, Cole, Netski, Dombroski, Wilson, Stracka, Hoffmann, Underwood, Horosko, Hendlor.

## Art Club

### OFFICERS

<i>President</i>	-	-	-	-	-	-	-	-	-	LA VERNE THORNTON
<i>Vice President</i>	-	-	-	-	-	-	-	-	-	JEANNINE ROCKWELL
<i>Secretary</i>	-	-	-	-	-	-	-	-	-	RHEA BROWN
<i>Treasurer</i>	-	-	-	-	-	-	-	-	-	JANET CASEY
<i>Adviser</i>	-	-	-	-	-	-	-	-	-	MISS MURPHEY

The Art Club is an honorary organization on campus consisting of students who have attained an "A" in one semester of any art course. New members are pledged at the beginning of each semester, and immediately find themselves a part of a spirited program including lectures, group work, special projects and the responsibility for Christmas festivity decorating.

A member of the Eastern Arts Association, the club sends its president as a delegate to the annual convention.



In all of its activities, the Mansfield Chapter is guided by the aim of the enriching of one's life through the study and appreciation of art.



Front Row, Left to Right—Eugenia Porretta, Helen Hissam, Joan Geigle, Theresa Napolitan, Wallace Dunmore, James Clancy, Evan Thomas, Margaret Strom, Ruth Tingley.  
 Second Row—Lydia Kinney, Walter Parsons, Arnold Poster, Peg Lingren, Pat O'Neill, Rita Masterson, Irene Tompkins, Phil Brown, Mr. Gramley, Marie Hembury.  
 Back Row—Les Smith, Don Buford.

## The Flashlight

Foremost among college publications on our campus is the student newspaper, the *Flashlight*. Its fundamental objective this year is to provide a means for students to express their opinions on matters concerning campus life.

The *Flashlight* greatly furthered its objective in stimulating a more active interest on the part of the student body.

The future aim of this newspaper is to continue with the fine ideals it has established.

### STAFF

<i>Editor</i>	- - - - -	THERESE NAPOLITAN
<i>Secondary Editor</i>	- - - - -	LYDIA KINNEY
<i>Home Economics Editor</i>	- - - - -	LAURA MCCARTHY
<i>Music Editor</i>	- - - - -	FRANK PINENO
<i>Elementary Editor</i>	- - - - -	PHILIP BROWN
<i>Sports Editors</i>	- - - - -	JIM CLANCY, PEGGY STROM
<i>Photography Editor</i>	- - - - -	BARBARA RAMSEY
<i>Exchange Editor</i>	- - - - -	ARNOLD POSTER
<i>Art Editor</i>	- - - - -	RUTH TINGLEY
<i>Feature Editor</i>	- - - - -	GLENN HEWITT
<i>Business Manager</i>	- - - - -	JEAN FORD
<i>Advertising Manager</i>	- - - - -	EVAN THOMAS



THERESE NAPOLITAN  
 Editor of *Flashlight*



## College Players

### OFFICERS

*President* - - - - - GORDON SECOR  
*Vice President* - - - - - EUGENE REHRER  
*Secretary* - - - - - DICK HUTCHINSON  
*Treasurer* - - - - - - RALPH WELLER  
*Advisers* - - - MISS ALLEN, MISS DRUM

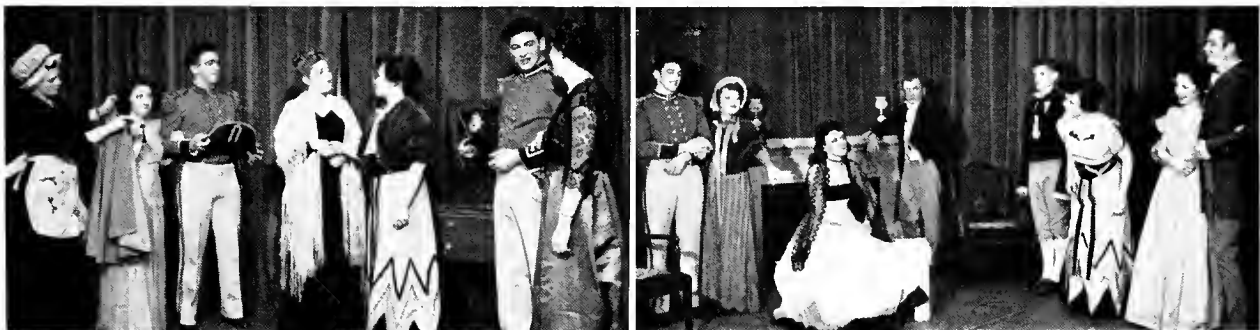


College Players is one of the most vital organizations on the campus today. Participation requires a great deal of work and time, but the Players are compensated for this in the enthusiasm expressed by the students for the finished productions.

For several years the organization has been under the capable direction of Miss Allen. This year, due to increased membership, and the added responsibility placed upon the leadership, she has received the able assistance of Miss Sarah Drum.

The College Players try to vary their productions with a comedy in the fall and a serious play in the spring. This has been evinced by the productions of "A Midsummer Night's Dream" and "Pride and Prejudice" in the last two springs, and with "Stardust" and "Out of the Frying Pan" in the fall.

One needs only to attend a monthly meeting of the College Players to catch the spirit of fun, hard work, and co-operation inherent in our organization.





First Row, Left to Right—Ken Perschau, Bob Bowman, Jake Azain, Tony Amendola, Charlie Anistranski, Tony Petrillo.  
 Second Row—Pete Pazanick, Ray Kodish, Gerald McEneny, LaVerne Thornton, Joe Katusz, Ted Randon, Joe Cheplick.  
 Third Row—James Clancy, Bill Conwell, Bob Patton, Dick Fraley, Bill Johnson, Ray Mazza.  
 Fourth Row—Chet Kovaleski, Tony Dombrowski, Frank Raykovitz, Earl Wilson, Joe O'Donnell, Coach Casey.

## "M" Club

### OFFICERS

<i>President</i>	- - - - -	ANTHONY AMENDOLA
<i>Vice President</i>	- - - - -	JACOB AZAIN
<i>Secretary</i>	- - - - -	KENNETH PERSCHAU
<i>Treasurer</i>	- - - - -	ROBERT BOWMAN
<i>Adviser</i>	- - - - -	MR. CASEY

The "M" Club is composed of men who have gained prominence in inter-collegiate athletics. The aim of this club is to foster keen sportsmanship, better school spirit, and clean wholesome living.

College sports have not only returned to normal but have exceeded previous years. Players and managers, who desire admittance into the "M" Club, must submit to an arduous initiation. Upon completion of this initiation, the entrants are then privileged to wear the school letter "M."

An annual spring dance and various other activities have added to the enjoyment of the campus as a whole.



# Women's Athletic Association

## OFFICERS

<i>President</i>	- - - - -	MARGARET STROM
<i>Vice President</i>	- - - - -	BARBARA RAMSEY
<i>Secretary</i>	- - - - -	DORIS HEALEY
<i>Treasurer</i>	- - - - -	PATRICIA FERRY

The Women's Athletic Association, under the leadership of Miss Dieffenbach, is one of the most active organizations on campus. The aim of the club is to provide an opportunity for all women students to participate in their favorite sports. The members are privileged to use the equipment owned by the organization, including sleds, skis, bicycles, roller skates, and bowling, basketball, swimming, and tennis facilities. Membership in the W. A. A. insures a good time and recreation for all.



MARY LYNN STEVENS  
*President*

## Women's Day Student Club

### OFFICERS

<i>President</i>	- - - - -	MARY LYNNE STEVENS
<i>Vice President</i>	- - - - -	ESTHER MARSHALL
<i>Secretary-Treasurer</i>	- - - - -	WAUNITA SIMONSON

This organization is composed of all women students who do not live on campus. The main purpose for its existence is to provide a link between campus activities and the Day Students who would otherwise feel excluded.

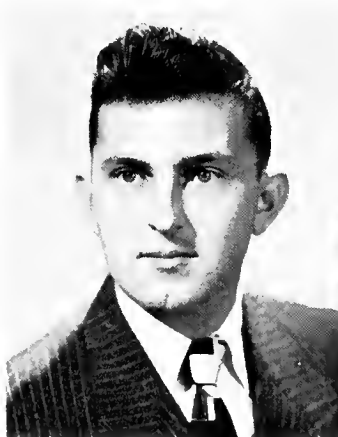
The size of the Day Student Organization has increased considerably during the past few years. Their activities have tried to keep pace with that increase. Parties, picnics, and luncheons have added to the success of this organization.

## Men's Day Student Club

All the men who do not live on our campus are members of the Men's Day Student Club.

These men have their own room in South Hall for study, fun, and recreation.

The aim of the club is to get better acquainted with other Day Hops and to discuss any problems that might better the organization.



WILLIAM BRADSHAW  
*President*





Seated, Left to Right—Miss Reed, Mary Ellen Yeager, Emelyn Drake, Ruth Bunn, Margaret Arnst.  
 Standing—Helen Drebert, Beatrice Shafer, Gwendolyn Roy, Miss Wasley, Margaret Spleen.



EMELYN DRAKE  
*President*

## Women's Dormitory Council

Each spring the women students of Mansfield elect seven members to serve as a council for formulating and enforcing the regulations for the coming year. In the fall, two Freshmen are added to the council by election to make a total of nine acting members.

The council sponsors informal Hall Parties and House Meetings at which the students become acquainted with one another and with Mansfield's traditional friendliness.

During the year, the council arranges for the decoration of the wells at Christmas, the appointing of Junior "Big Sisters" for the Freshmen, the "Sophomore Pals" for the nurses, and other special projects.

But the main purpose of its members is to promote the happiness and well being of Mansfield's women students.

## Men's Dormitory Council

The Men's Dormitory Council is a representative and supervising body for all the men living on the Campus.

This year the council visited dormitories on other campuses. From their observations, they organized a plan to better the development of living and study conditions in the dormitories on the Campus.

The council received fine co-operation from the administration as well as from the student body.



Left to Right—William Conwell, Junior Member; Joseph Chepliek, Sophomore Member;  
 Michael Madlock, Senior Member.



ARNOLD SUNDBERG  
*President*



Seated, Left to Right—Harold Kintner, Charles Anistranski, Ruth Shiner, Wellington Lester, Miss Wasley, Mr. Long.  
 Standing—Mary Lynn Stevens, Emelyn Drake, Gene Maxwell, William Bradshaw, Paul Lemon, Walter Parsons, Arnold Sundberg,  
 Wallace Dunmore, James Decker, Eugene Telesco.

## Student Council

The Student Government Association is composed of all students enrolled at Mansfield State Teachers College. The Student Council is the governing body of the organization. Its members consist of the officers; President, Vice President, Secretary, and Treasurer; the president of each class; the president of the Women's Dormitory Council, the Women's Day Student Club, the Men's Dormitory Council, and the Men's Day Student Club; the Editor-in-chief of the college newspaper, the *Flashlight*; the Advisory Editor of the college yearbook, the *CARONTAWAN*; the Dean of Women and the Dean of Men. These members are from all major organizations on campus and are representative of each student.



WELLINGTON LESTER  
*President*

The Student Council has various activities such as assuming the responsibility for sponsoring the after-dinner dances, planning the social calendar, naming student personnel to the student-faculty committees, publishing the *Password*, electing representatives to "Who's Who in American Colleges and Universities," fostering closer relationships between the student body and the administration, and formulating and administering policies of the Student Government Association.



Seated, Left to Right—Mrs. Morales, Shirley Pierce, Maybelle Woodin, Eunice Varcoe, Mary Ellen Yeager, Ruth Bunn, Miss O'Brien.  
Standing—Lucille Lehner, Gene Maxwell, Wellington Lester, Helen Sampson, Rhea Brown.

# Kappa Delta Pi

## OFFICERS

<i>President</i>	- - - - -	SHIRLEY PIERCE
<i>Vice President</i>	- - - - -	RUTH BUNN
<i>Corresponding Secretary</i>	- - - - -	MARY ELLEN YEAGER
<i>Recording Secretary</i>	- - - - -	MAYBELLE WOODIN
<i>Treasurer</i>	- - - - -	EUNICE VARCOE

Kappa Delta Pi originated at the University of Illinois in 1909 in the form of an educational club. In 1932, the title of this organization became Kappa Delta Pi, an Honor Society in Education. In 1930 Beta Rho Chapter was installed at Mansfield.

The purpose of Kappa Delta Pi is to encourage professional, intellectual, and personal standards, and to recognize outstanding contributions to education. Juniors and Seniors who exhibit commendable personal qualities, educational credits, and scholarship are invited to become members of Kappa Delta Pi.

Beta Rho Chapter, which is under the direction of Miss O'Brien, endeavors to bring benefits to all students who participate in their meetings.

## NEW MEMBERS

Anderson, Charles  
Baker, Lena  
Baker, Richard  
Barrett, Glenn  
Bender, William  
Cherrington, Virginia  
Cleveland, Donna  
Cole, Gordon  
Dewey, Robert  
Donaghue, Thomas  
Dubble, Mary  
Dutcher, Shirley  
Ennis, Joseph  
Evans, Leslie  
Ford, Jean  
Foster, Ave  
Geigle, Joan

Haines, Sally  
Healey, Doris  
Hembury, Marie  
Henry, Robert  
Hewitt, Glenn  
Hoffman, Frances  
Horosko, Anthony  
Jones, Mary  
Johnson, Wesley  
Jumper, Alta  
Keeler, Norma  
Kinney, Lydia  
Klingaman, Berneice  
Kuster, Catherine  
Maddock, Michael  
McCawley, Mary

McIntosh, Emmett  
McLaughlin, Dorothy  
Marcucci, Alita  
Marvin, Sophie Lou  
Masterson, Rita  
Maul, Charles  
Metzger, Ella Jean  
Netski, Edward  
Page, Marilyn  
Parsons, John  
Peiffer, Phyllis  
Poster, Arnold  
Potter, Carol  
Russell, Margaret  
Savage, William  
Secor, Gordon

Schmelzle, Delores  
Shafer, Beatrice  
Shafer, Margie  
Shrift, Donald  
Simonson, Waunita  
Sours, Allen  
Spleen, Margaret  
Stevens, Mary Lynn  
Strom, Margaret  
Thornton, LaVerne  
Tingley, Ruth  
Tompkins, Nellie Irene  
Weller, Ralph  
Wilcox, Elynor  
Wilson, Earl  
Zillhardt, Lillian





RITA MASTERSON  
*Editor-in-Chief*



MR. GRAMLEY  
*Advertiser*

## The 1949 Carontawan

No undertaking is successful unless it has the co-operation of everyone concerned. This year the goal of the CARONTAWAN staff was to meet the expectations of publishers and students in producing a completed yearbook on schedule. The faculty, the administration, and the students have helped us to fulfill our aim. When we say, "Thank you," we mean it in all sincerity.

If from reading and owning this book, you will secure a small fraction of the enjoyment we have derived from its production, our efforts will be repaid.



Seated, Left to Right Marie Hembury, Eugene Horn, Gene Maxwell, Rita Masterson, Helen Hissam, Ruth Tingley, Eugenia Parretta,  
Standing Michael Poltash, Robert Phillips, Richard Hutchinson, Peter Kearney, Doris Healey, Robert Henry, Theresa Napolitano,  
Margaret Strom, Lucille Mirnuk, Joan Geigle, Patricia Ferry, Michael Maddock, Joseph Swعدa, Glenn Barrett, Elmer Yeck.

# Carontawan Staff

*Editor-in-Chief* - - - - - RITA MASTERSON  
*Advisory Editor* - - - - - GENE MAXWELL  
*Business Manager* - - - - - EUGENE HORN  
*Advertising Manager* - - - - - WILLIAM BRADSHAW  
*Literary Editor* - - - - - GLENN BARRETT  
*Assistant Literary Editor* - - - - - JOAN GEIGLI  
*Art Editor* - - - - - RUTH TINGLEY  
*Assistant Art Editor* - - - - - THERESA NAPOLITAN  
*Photography Editor* - - - - - EUGENIA PORRETTA  
*Assistant Photography Editors*  
 ELMER YECK, MICHAEL POLTASH, PETER KEARNEY  
*Typing Editor* - - - - - ARNOLD POSTER  
*Assistant Typing Editor* - - - - - MARGARET STROM  
*Administration Editor* - - - - - ROBERT HENRY  
*Assistant Administration Editor* - - - - - HAROLD KINTNER  
*Classes Editor* - - - - - HELEN HISSAM  
*Assistant Classes Editor* - - - - - MARIE HEMBURY  
*Organizations Editor* - - - - - PATRICIA FERRY  
*Assistant Organizations Editor* - - - - - MICHAEL MADDOCK  
*Sports Editors* - - - - - ROBERT PHILLIPS, DORIS HEALEY  
*Adviser* - - - - - MR. GRAMLEY



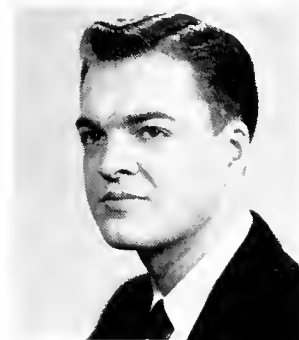
GENE MAXWELL  
Advisory Editor



HELEN HISSAM  
Senior Class Editor



EUGENIA PORRETTA  
Photography Editor



EUGENE HORN  
Business Manager



It's all hard work

# Phi Sigma Pi



MR. SUNDBERG  
Adviser



Top Row, Left to Right—James Steinbacher, Robert Kitchen,  
James White.  
Bottom Row—Arnold Poster, Ernest Codispoti, Charles Wilson.

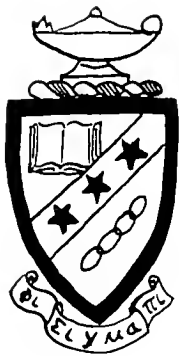


Top Row, Left to Right — Charles Anistranski, Richard Baity, Donald Buford, Robert Casey, Gordon Cole, Thomas Coyle.

Second Row—Bruce Dimmick, Leslie Evans, Robert Henry, Glenn Hewitt, Anthony Horosko, Eugene Horn.

Third Row — Joseph Katusz, Robert Kemp, Harold Kintner, Leon Kreger, Wellington Lester, James McClure.

Bottom Row—John Parsons, Walter Parsons, Gordon Secor, Arnold Sundberg, Ralph Weller, Earl Wilson.



# Phi Sigma Pi

## OFFICERS

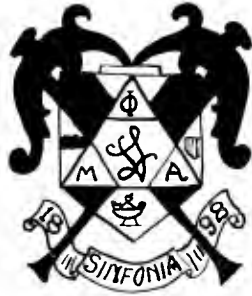
<i>President</i>	- - - - -	JAMES STEINBACHER
<i>Vice President</i>	- - - - -	ROBERT KITCHEN
<i>Secretary</i>	- - - - -	JAMES WHITE
<i>Assistant Secretary</i>	- - - - -	ARNOLD POSTER
<i>Treasurer</i>	- - - - -	CHARLES WILSON
<i>Adviser</i>	- - - - -	MR. SUNDBERG

Teaching is an art—an art so great and so difficult to master that a man or woman can spend a long life at it, without realizing much more than his limitations and mistakes and his distance from the ideal. There never has been in the world's history a period when it was more worth while to be a teacher than in the twentieth century; for there was never an age when such vast multitudes were eager for an education or when the necessity of a liberal education was so generally recognized.

WILLIAM LYON PHELPS

Although at Mansfield there are five other educational fraternities on the campus of under-graduate level, Phi Sigma Pi is not limited to a particular field. This fraternity recognizes high scholarship and is interested in education as a whole; hence it does not emphasize any particular field of subject matter.





Seated, Left to Right—Frank Pineno, Don Shrift, Wesley Johnson.  
 Standing—Carmen Cavuto, Emmett McIntosh, Mike Maddock, Mr. Michota.

## Phi Mu Alpha Sinfonia

### OFFICERS

<i>President</i>	- - - - -	DONALD SHRIFT
<i>Vice President</i>	- - - - -	EMMETT MCINTOSH
<i>Secretary</i>	- - - - -	FRANK PINENO
<i>Treasurer</i>	- - - - -	WESLEY JOHNSON
<i>Warden</i>	- - - - -	CARMEN CAVUTO
<i>Historian</i>	- - - - -	MICHAEL MADDOCK
<i>Adviser</i>	- - - - -	MR. ROSS

The Beta Omicron Chapter of Phi Mu Alpha Sinfonia, a national music fraternity, was particularly active this year in stimulating interest in music on the campus. The organization presented a series of monthly concerts of recorded music for the college students and also made available a supplementary catalog of recordings for request purposes. A string quartet of members of the fraternity presented various programs of chamber music for the college as well as special various musical performances of rarer character for the fraternity. In addition the organization invited professional musicians to visit the campus and thereby made available stimulating and educational opportunities for the music majors in particular. Socially, the fraternity presented an Initiation Dance early in





Seated, Left to Right—Michael Maddock, Emmet McIntosh, Wesley Johnson, Donald Shrift, Carmen Cavuto, Frank Pineno, Mr. Michota.  
 Standing, Second Row—Tom Ward, Bill Savage, Curtis Acker, Charles Maul, Stephen Lapsansky, Mr. Ledwith, Louis Elster, Marvin Schlinker.  
 Standing, Third Row—Mr. Francis, Dick Swetland, Ken Masterson, Ray Burbick, George Will, William Bender, Gene Harbach, Howard Williams, Brunell E. Carlson.  
 Standing, Fourth Row—Robert Hartman, John Roszbacher, Edward Knob, Patrick O'Hearn, Thomas Donoghue, Frank Maminski, John Roberts, Mr. Ross.

the school calendar which will be remembered as an example of our high caliber college social events. The aim of the group is to foster performance and encouragement to American composers and also to foster an understanding on the part of the listener to the works of the contemporary American composers.





Seated, Left to Right—Edith Kendall, Maybelle Woodin, Lou Marvin, Marian Finch, Berneice Klingaman,  
 Standing—Marjorie Shafer, Miss Atwater, Edith Warren, Mrs. Lewis, Barbara Dimon, Mary Jones, Elynor Wileox, Mary Louise  
 Dubble, Lois Boardman.  
 Back Row—Alta Jumper, Shirley Dutcher, Marilyn Page, Dorothy McLaughlin, Miss Marsh, Miss Randall, Miss Brooks, Miss Borkey,  
 Miriam Swan.

## Lambda Mu

### OFFICERS

<i>President</i>	- - - - -	LOU MARVIN
<i>Vice President</i>	- - - - -	MAYBELLE WOODIN
<i>Recording Secretary</i>	- - - - -	BERNEICE KLINGAMAN
<i>Corresponding Secretary</i>	- - - - -	MARIAN FINCH
<i>Treasurer</i>	- - - - -	EDITH KENDALL
<i>Adviser</i>	- - - - -	MRS. LEWIS

Lambda Mu is Mansfield's honorary music sorority. Members consist of those girls who have outstanding academic and musical ability. Second Semester Sophomores and upper classmen whose character and personality meet the standards of the sorority are eligible for membership. A sorority banquet in honor of the pledges is held at each semi-annual initiation.

Under the sponsorship of Mrs. Lewis, the sorority takes an active part in the musical life on the campus. Through their performances and associations with each other, the members broaden their musical interests and experiences.



During the past year Lambda Mu has enjoyed the benefits of an increased enrollment and is looking forward to a continuous growth in its membership and activities.

# Kappa Omicron Phi

## OFFICERS

<i>President</i>	- - - -	MARGARET RUSSELL
<i>Vice President</i>	- - - -	GENE MAXWELL
<i>Secretary</i>	- - - -	FRANCES HOFFMANN
<i>Treasurer</i>	- - - -	LILLIAN ZILLHARDT
<i>Adviser</i>	- - - -	MRS. GALBRAITH



Margaret Russell  
Frances Hoffmann

Gene Maxwell  
Lillian Zillhardt

Kappa Omicron Phi is a national fraternity of professionally trained women in the field of Home Economics. Its aim is to further the best interests of Home Economics by developing women with higher ideals and with a deeper appreciation of the home.

Alpha Beta chapter was installed at the National Conclave held in Indiana, Pennsylvania, August 13, 1918. Ten of the fourteen charter members were present.

Last year the local sorority, Pi Kappa Epsilon, took as its program the problem of

selecting a national honorary fraternity and presenting to it a petition for national affiliation. This entailed much work and effort, but we feel well rewarded by being able to become a part of a national organization.

Girls in the upper 20% of the upperclasses and with a 2.3 average are eligible to become members.

This year, with the combined efforts of both members and pledges, we hope to make our new chapter one of the best and one of which Mansfield can be proud.



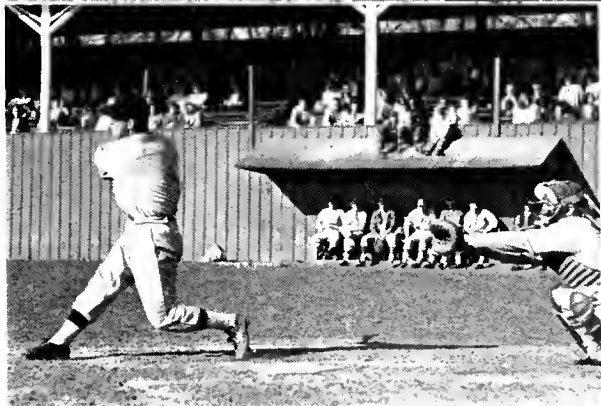
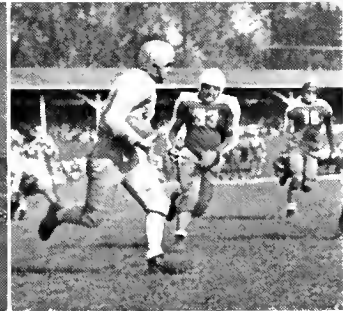
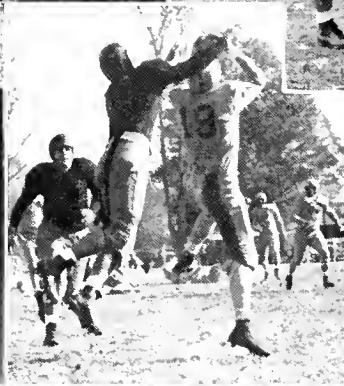
Seated, Left to Right—Beatrice Shafer, Gene Maxwell, Frances Hoffmann, Margaret Russell, Lillian Zillhardt, Margaret Splen.  
Standing—Mrs. Galbraith, Miss Beasley, Miss Morales, Miss Fiat.

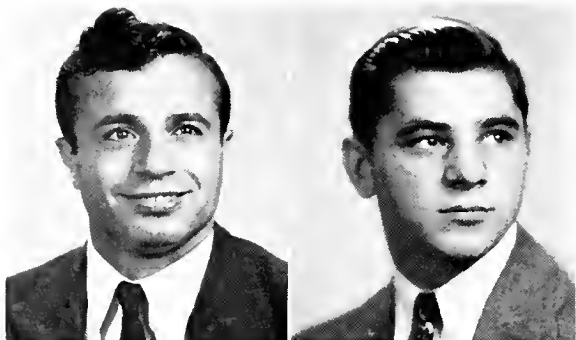




# Scene Two

OUR SPORTS



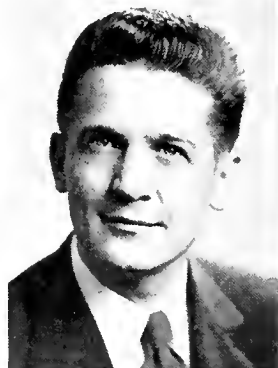


TONY AMENDOLA

JOE KATUSZ

*Co-Captains*

# FOOTBALL IN 1948



DR. NOSAL

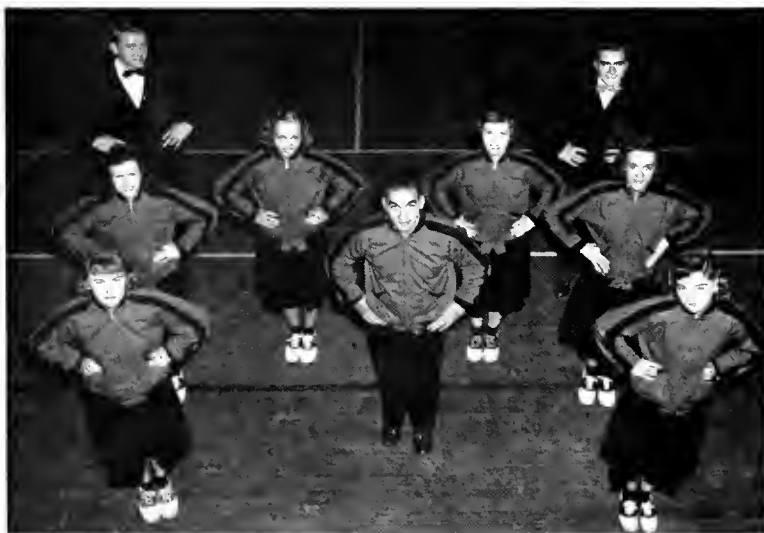


HEAD COACH CASEY

*The Coaches*



MR. PEARCY



The Cheerleaders

Front Row—Lucille Lehner, Lucille Mirmak

Second Row—Nadine Davidheiser, Ernest Codispoti, Florence Grimm

Third Row—Frances Hendricks, Fannie James

Back Row—Gail Cankins, Richard Hutchison

## THE RECORD

	Opp.	M.
Sept. 25—Bloomsburg	7	0
Oct. 2—Indiana	0	27
Oct. 9—Kutztown	13	33
Oct. 16—Stroudsburg	13	7
Oct. 23—Wilkes	7	7
Oct. 30—Scranton	33	12
Nov. 6—Edinboro	0	21
Nov. 13—Lock Haven	34	6

Season Total Points: Mansfield  
113, Opposition 107.



First Row, Left to Right—Bradshaw, Hendler, Lech, Amendola, Katusz, Dunbar, Petrillo.  
 Second Row—Moresco, Polak, Conwell, Roberts, Hurley, Chepliek, McEneny, Rossi, Zubres.  
 Third Row—Dombroski, Santoro, Moleski, Yancoski, T. Harrington, Johnson, Bowman, Magdelinskas, Burian.  
 Fourth Row—Dokas, Azain, Hafetz, Keating, Walsh, Davis, Kovaloski, Reekus, J. Harrington.  
 Fifth Row—Dr. Nosal, Hewitt, Lloyd, President Morgan, Pearey, Coach Casey, Van Norman, Goodman, Geyer.

## RESUME OF GAMES

MANSFIELD LOSES GRID OPENER TO BLOOMSBURG, 7-0

Sept. 25, 1948

Our Mountaineers lost their first game of the season before a large crowd at Memorial Field, September 25th. A strong, aggressive line, plus the brilliant running of 165-pound halfback, Apachello, spelled defeat for our boys.

The "Huskies" scored the only points of the game after seven minutes of play in the first quarter. Mansfield missed a chance to tie the game when a sustained drive from the M. S. T. C. 22-yard line bogged down on the Bloom 1-foot line.

The remainder of the game featured steller defensive ball on the part of both teams.

"Ham" Amendola, the diminutive, fleet-footed halfback, provided the offensive punch for "Ted" Casey's boys while Frank Raykovitz, "Joe" Katusz, and Vito Magdelinskas were towers of strength on the defensive.

M. S. T. C. DEFEATS INDIANA S. T. C., 27-0

Oct. 2, 1948

Our Mountaineers combined their "aerial circus" with a powerful ground attack to defeat the Indians from Indiana S. T. C., 27-0, before a large Parents' Day crowd at Smythe Park.

"Ed" Netski intercepted a pass in the first quarter and galloped deep into I. S. T. C.'s territory before being brought down. A pass from "Billy" Conwell to "Bill" Johnson gave the Caseyemen their first score of the ball game and of the 1948 season. Amendola's try for the extra point was wide. A punt blocked by "Tony" Petrillo set up the play for a second T. D. Conwell swept the end to the Indiana six-inch line. "Jerry" McEneny took the ball over on a "quarterback sneak." Amendola's conversion was good.

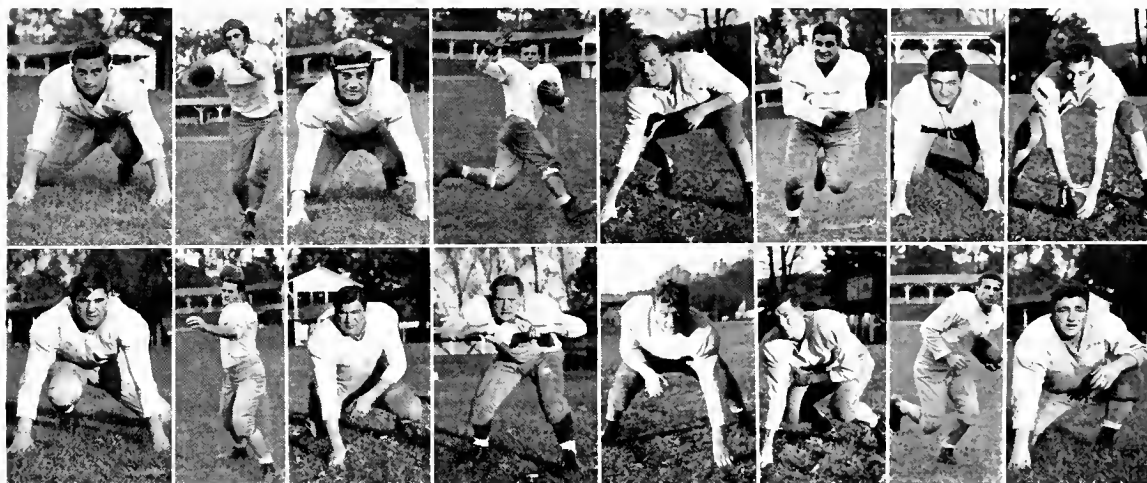
Halfway through the second quarter "Nello" Burian tossed a beautiful pass to "Joe" Walsh who ran the remaining 15 yards to pay dirt. Amendola's kick split the uprights.

Our boys scored their last T. D. when Santoro, end, slashed through and blocked an Indiana punt, and Bill Johnson picked up the oval and scampered the remaining 10 yards for the final tally. "Tony" Amendola added his third bonus point of the day.

#### WARRIORS SCALP MOUNTAINEERS, 13-7

Oct. 16, 1948

The "Warriors" of Stroudsburg S. T. C. defeated our Mountaineers before a large Homecoming Day crowd at Smythe Park on Saturday, October 16.



Top Row, Left to Right—Tony Petrillo, Joe O'Donnell, Tom Hurley, Tony Amendola, Pete Dokas, Jake Azain, John Roberts, Joe Moresco.  
Bottom Row—Joe Katusz, Bill Conwell, John Polak, Red Hendler, Bob Bowman, Tom Harrington, Joe Cheplik, Jack Dunbar.

"Ted" Casey's boys drew first blood when Amendola sliced off his own right tackle for 12 yards and "Pay-dirt." Dombroski completed the extra point to put M. S. T. C. ahead, 7-0. Stroudsburg, unable to penetrate the strong forward wall of the Mountaineers, took to the air. A pass from Swartz to Ritinski was good for 25 yards and a T. D. The conversion hit the uprights and bounded back. The score now stood 7-6. The score remained the same until late in the fourth quarter when Swartz again completed a pass which put the Warriors ahead. The bonus point was good and the score stood 13-7. A "last ditch" stand ended when a M. S. T. C. pass was intercepted on the Stroudsburg 3-yard line.

Amendola, gaining 101 yards from line of scrimmage, was the individual ground gainer for the Hilltoppers. His end sweeps gained ground consistently. The savage "down field" tackling of "Tony" Dombroski and the steller line play of "Rocky" Katusz kept the offensive power of the "Warriors" to a minimum.

#### WILKES AND MANSFIELD TIE, 7-7

Oct. 23, 1948

A stubborn Wilkes College team gave the Mansfield Teachers an unexpected surprise when they gained a tie on October 23 at Smythe Park before a small, rain-drenched crowd.

The "Colonels" from the coal regions took the opening kick-off and through a varied ground attack scored early in the first quarter. The Caseymen, unable to gain on the ground, filled the air with passes. Midway in the second period a pass from "Nello" Burian to "Big Pete" Dokas was completed and the big end traveled the remaining 15 yards to score. The play covered 76 yards in its entirety. However, it took the educated toe of "Tony" Dombroski to insure a tie with the "down valley way" boys.



A torrent of rain prevented anything in the way of an offensive from this point of the game on. Each team was content to keep the ball away from its own goal line.

The line plunging of Burian and O'Donnell, who had been out most of the year with a leg injury, provided the major portion of our offensive power. "Tony" Dombroski and "Rocky" Katusz for the second week starred on the defensive play.

#### ROYALS ROMP OVER HILLTOPPERS

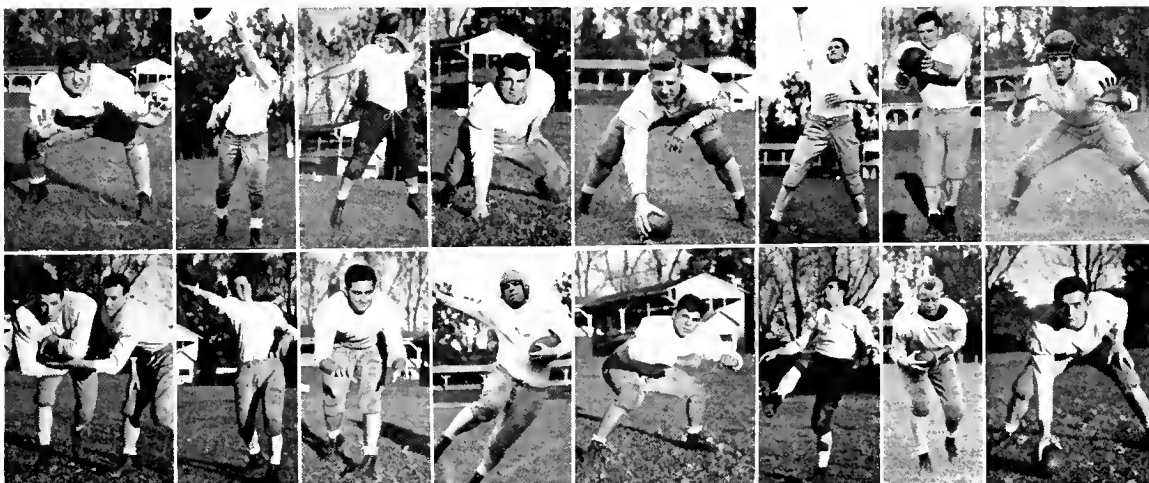
Oct. 30, 1948

The Scranton U "Royals" easily took the measure of our Mountaineers at Dunmore Stadium Saturday night, October 30, before 5,000 chilled spectators.

The hard hitting, aggressive Scranton U aggregation piled up a commanding lead early in the game and were never headed.

The Mountaineers were unable to score until the fourth quarter when "Billy" Conwell found the range with his passes to the waiting arms of "Big Pete" Dokas. Both tries for the bonus points were blocked. "Rocky" Katusz set up the second T. D. when a fake fumble play worked to perfection. Katusz pulled out from his right guard spot, picked up the ball and raced to the eight-yard line before he was forced out of bounds. The final score was Scranton U 33 and Mansfield S. T. C. 12.

The ground gaining of the Hilltoppers was evenly divided between Cheplick, McEneny, and O'Donnell. "Billy" Conwell's two T. D. passes were beauties. "Rocky" Katusz continued his fine brand of defensive playing. A Freshman tackle, Polak, looked very good on the line plugging.



Top Row, Left to Right—Frank Raykovitz, Aaron Hafetz, Jerry McEneny, Joe Lech, Vito Magdelinkas, Joe Walsh, Steve Sella, Tony Dombroski.  
Bottom Row—Bill Davis and Bill Keating, Ed Netski, Dom Santoro, Chet Kovaleski, Tony Rossi, Nello Burian, Bill Johnson, Bernard Moleski.

#### M. S. T. C. LOSES FINAL GRID GAME TO LOCK HAVEN S. T. C., 34-6

Nov. 13, 1948

The Mountaineers lost their last game of the 1948 season to the "Bald Eagles" of Lock Haven S. T. C. The Caseyemen suffered their worst defeat of the year on the High School field at Lock Haven on Saturday evening, November 13, before a large crowd, after battling L. H. on even terms to the middle of the second quarter.

The "fleet-footed" backs of the Bald Eagles exploded to give the Havenite gridders a commanding lead. The Lock Haven team operated from the inverted "A" or short punt formation. It was an uphill fight all the way for our Mountaineers who couldn't stop Colliver. "Billy" Conwell punched over the only Mansfield T. D. on a "quarterback sneak" in the fourth and final period.



Seated, Left to Right—Clem Zubres, Les Evans, Andy Semko, Ted Randon, Ray Mazza, Bob Patton, Bill Johnson.  
 Standing—Coach Ted Casey, Henry Goodman, Arnold Sundberg, Ken Perschau, Joe Moresco, George Tomlinson,  
 Manager James Clancy.

# Basketball

## SCHEDULE

		<i>Opp.</i>	<i>MSTC</i>		<i>Opp.</i>	<i>MSTC</i>
Jan. 11—	Lycoming College	54	68	Feb. 9—	Lock Haven STC	—
Jan. 15—	King's College	65	63	Feb. 15—	Wilkes College	—
Jan. 22—	Wilkes College	52	65	Feb. 18—	Shippensburg STC	—
Jan. 26—	Ithaca College	68	55	Feb. 19—	Millersville STC	—
Jan. 28—	Shippensburg STC	54	58	Feb. 22—	Bloomsburg STC	—
Feb. 1—	Lycoming College	62	69	Feb. 25—	Lock Haven STC	—
Feb. 3—	Bloomsburg STC	53	52	March 1—	King's College	—
Feb. 5—	Millersville STC	67	51			



Four Points in the Making

# Basketball

With the first game scheduled for January 11, the Mansfield Mountaineers started against teams that had played four or five games already and as a result were in better condition and more experienced as teams than the Caseyemen. This was a handicap that had its effect in the games with King's and Ithaca.

This year the team is well-balanced and has some excellent reserve players, a fact demonstrated especially in the Shippensburg game at home. The playing of the lettermen, Randon, Perschau, Johnson, Patton, and Mazza, has been matched by the work of Semko and Moresco, as well as by the relief given by Sundberg, Zubres, Goodman, and Tomlinson.

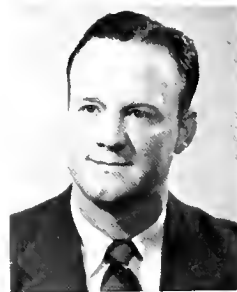
In the opener with Lycoming College of Williamsport, eleven men saw action and all scored.

At Wilkes-Barre against King's the Mountaineers fought to a 55-55 tie, losing only when King's collected 10 points against 8 by the Mountaineer substitutes in the extra period.

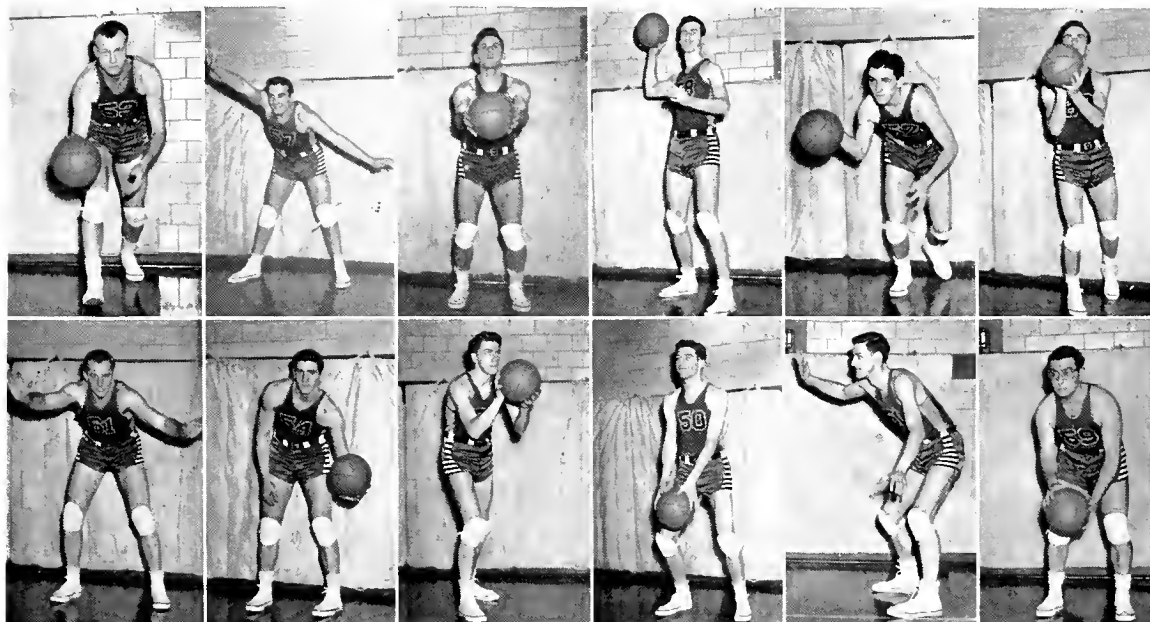
Returning to Wilkes-Barre a week later, the Caseyemen took an early lead over Wilkes and kept it to the end. The shooting of Perschau and Patton, aided by Moresco, won the plaudits of the crowd.

At Ithaca the Mountaineers went into the final period with a good lead. Then Ithaca broke loose and scored 30 points to keep a 5-year win record on their home floor intact. Johnson's 15 points were a big factor in the aggressive play by Mansfield.

Though Shippensburg took a 14-9 lead in the first quarter, and McClellan scored 32 points in the game, the Mountaineers fought back to win in the final frame. Johnson's playing was excellent and the timely baskets of Patton sparked the Caseyemen to victory.



Coach Casey



Top Row, Left to Right—Bill Johnson, Ray Mazza, Ted Randon, Ken Perschau, Bob Patton, Andy Semko.  
Bottom Row—Clem Zubres, George Tomlinson, Henry Goodman, Joe Moresco, Arnold Sundberg, Les Evans.

# WOMEN'S SPORTS

There is a definite need in Teachers Colleges for a Physical Education program that will provide future teachers with a background of activities, enabling them to supervise recreational periods. Emphasis on activities and leadership necessary to fulfill this task can be found in the Mansfield Physical Education Program.

Under the leadership of Miss Dieffenbach and Miss Duff, a program that is interesting and varied has been arranged. All sports activities are grouped according to seasons, thus providing recreation during the entire school year.

Athletic tournaments and class competitions afford each student opportunity to participate in her favorite sports. These activities give the women a chance to know the rules of the game and especially to learn good sportsmanship.



Bowling



Bicycling

Hockey



Basketball



Volleyball  
Badminton



Toboganing

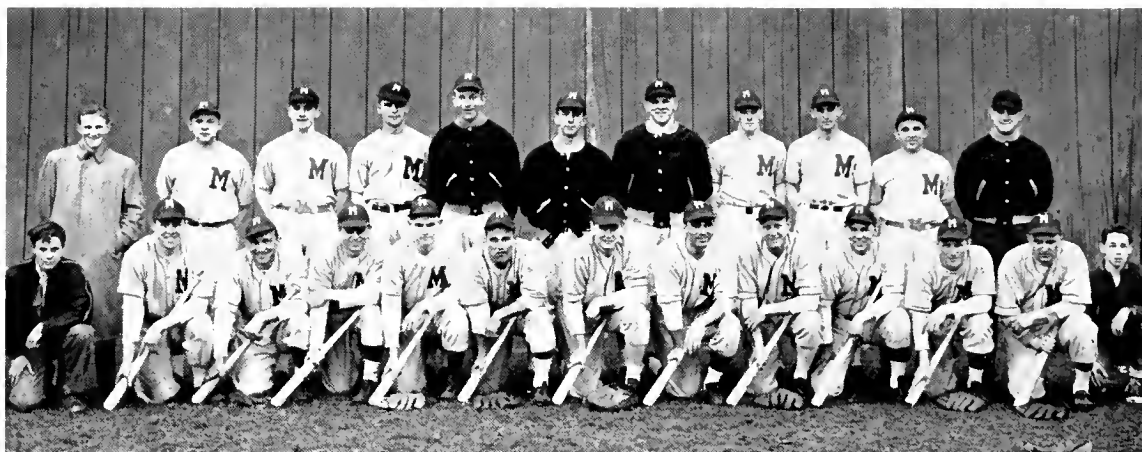


Tennis



Baseball

"Ball — Low and Wide"



First Row, Left to Right—Durland, bat boy; Dougherty, Faduska, D. Chepliek, Brown, McEneaney, Thornton, English, Johnson, Kovaleski, Anistranski, Kobeski, Brown, bat boy.  
 Second Row—Clancy, Smith, Patton, Drabinski, Wilson, J. Chepliek, Wasilewski, Fraley, O'Donnell, Kristunas, Coach Casey. Absent—Ed Flanagan.

## Baseball

Due to the abundance of rain throughout the season, the number of actual baseball games played was limited to five. However, our team showed excellent ability and sportsmanship, and we are looking forward to a better season next year.

### RESUME — 1948

April 12—Mansfield	1	University of Scranton	7
May 1—Mansfield	4	Cortland S. T. C.	12
May 5—Mansfield	5	Lock Haven S. T. C.	7
May 6—Mansfield	6	Lock Haven S. T. C.	10
May 15—Mansfield	6	Bloomsburg S. T. C.	2





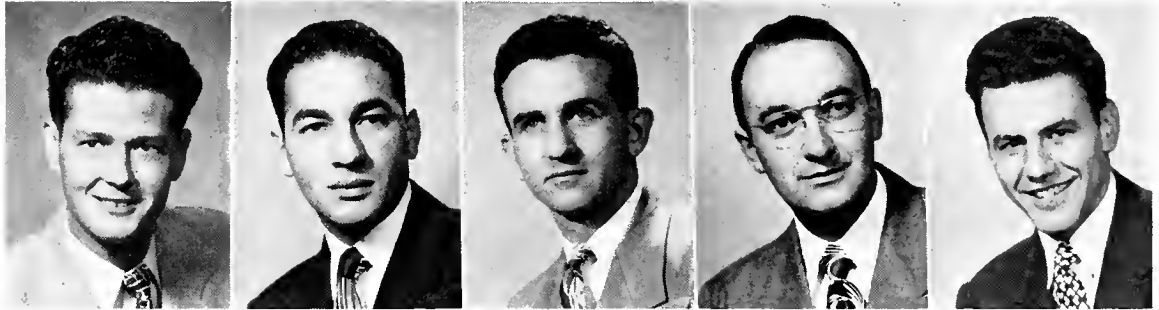
# *Between the Acts*

PERSONALITIES OF 1949



# PERSONALITIES

Every walk of life has personalities who are outstanding in one way or another. So it is at Mansfield. In the fall a college poll was taken as to the five most outstanding personalities of each class. The result represents the attitudes and opinions of the majority of the student body.



LaVerne Thornton

Ernest Codispoti

Tom Coyle

Wellington Lester

Carmen Cavuto

## LAVERNE THORNTON

"But a smooth and steadfast mind  
Gentle thoughts, and calm desires."

—Caru

## ERNEST CODISPOTI

"Here Nature only acts her part  
Unhelped by practice, books or art."

—Swift

## TOM COYLE

"No other worship abides and endures  
Faithful, unselfish, and patient like yours."

—Allen

## WELLINGTON LESTER

"So unaffected, so composed of mind;  
So firm, so strong, yet so refined."

—Byron

## CARMEN CAVUTO

"So you shall smile on us brave and bright  
As first you greeted the morning's light."

—Holmes



Billy Conwell

Rita Masterson

Joe Harrington

Gene Porretta

Stan Evans

## BILLY CONWELL

"A friendly greeting, a cheery smile,  
So many things make life worthwhile."

—Longfellow

## RITA MASTERSON

"The reason firm, the temperate will,  
Endures, foresight, strength and skill."

—Wordsworth

## JOE HARRINGTON

"He was champion in basketball and led his  
team to victory,  
But was modest in his leadership as all true  
leaders are."

—Anonymous

## GENE PORRETTA

"As brimful of mischief and wit and glee  
As ever a human form could be."

—Anonymous

## STAN EVANS

"One who greets life with a smile  
Yet knows its versions all the while."

—Levi



# OF 1949

Students achieve such a rating by friendliness, social accomplishments, dependability, and perseverance gained progressively over a period of time. The CARONTAWAN Staff has endeavored to bring an evaluation such as this to the foreground with the hope that each student will strive to reach the peak of achievement in establishment of happiness, opportunity, and lasting friendships.



Eddie Turnberger

Jeanne Ayers

Joe Cheplick

Ruth Shiner

Gene Tedesco

### EDDIE TURNBERGER

"A jolly companion, a wonderful friend  
Forgiving and understanding right to the end."  
—Anonymous

### JEANNE AYERS

"No time to wait until her mouth can  
Enrich the smile her eyes began."  
—Davis

### GENE TEDESCO

"With gentle yet prevailing force,  
Intent upon his destined course."  
—Cowper

### JOE CHEPLICK

"A heart sincere, a pleasant smile  
Makes his friendship most worthwhile."  
—Anonymous

### RUTH SHINER

"At home or abroad there was peace in her smile,  
A cheerful good nature that needed no guile."  
—Taylor



Bob Maxon

Ellen Spencer

Paul Lemon

Elizabeth Redcay

Jim Dempsey

### BOB MAXON

"With a smile of gentle goodness,  
Like the lovely laughing water."  
—Wells

### ELLEN SPENCER

"There was zest and gladness in her;  
Health and buoyancy of spirit."  
—Sr. Mary Eugene

### JIM DEMPSEY

"Calm yet stirring as the sea  
In all that God made him to be."  
—Crew

### PAUL LEMON

"A little nonsense now and then  
Is relished by the wisest men."  
—Anonymous

### ELIZABETH REDCAY

"Serene, with humor lurking in her eyes  
She stands a gracious challenge to the years."  
—Marsh

# May Day



Queen—Victoria Washeleski.  
Back Row—Court—Mary Ellen Russell, Anne Herzog, Leatrice Cunningham, Lois Byham.  
Front Row—Alice Ramage, Pauline Levengood, Josephine White, Shirley Palmer.

## Who's Who in American Universities and Colleges

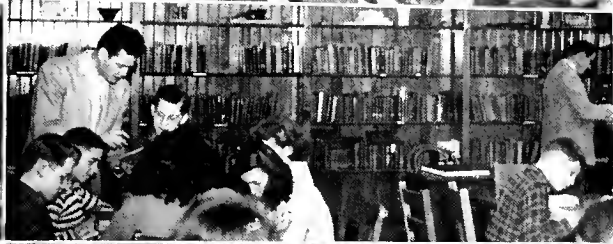
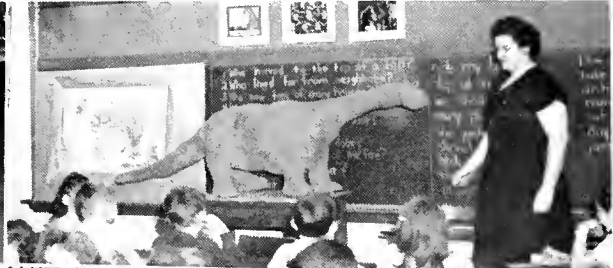


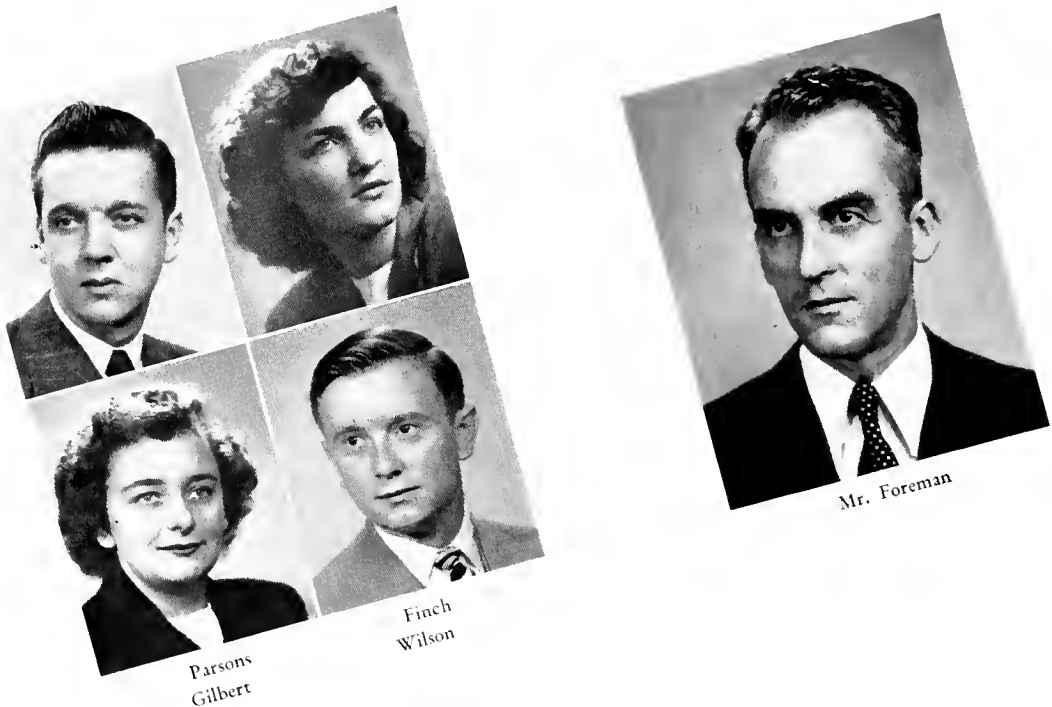
Top Row, Left to Right—James Decker, Charles Anistranski, Emelyn Drake, Harold Kintner, LaVerne Thornton.  
Bottom Row—Gene Maxwell, Arnold Smalberg, Wellington Lester, Walter Parsons, Ruth Bunn.



# ACT THREE

THE SENIORS





## Senior Class

### OFFICERS

<i>President</i> - - - - -	WALTER PARSONS
<i>Vice President</i> - - - - -	CHARLES WILSON
<i>Secretary</i> - - - - -	BARBARA FINCH
<i>Treasurer</i> - - - - -	ELSIE GILBERT
<i>Adviser</i> - - - - -	MR. FOREMAN

Great is the task with which we are entrusted as we depart from Mansfield. Some of us plan to teach, others will pursue different occupations, but we are all directed toward one common aim — to render service to others and achieve the design of living established innately through our associations and experiences during our stay on campus the past four years.

The following pages depict more than faces and names; here, rather, are the varied personalities of our classmates who have worked and played with us, helping to build our design. We value our yearbook for the memories and aspirations it represents.

The success of our efforts depends on us. May we discreetly and willingly divert our lives toward our goal, never forgetting the training, understanding, and opportunities on which it was founded.

“If you can fill the unforgiving minute  
 With sixty seconds worth of distance run,  
 Yours is the earth and everything that’s in it,  
 And which is more, you’ll be a man, my Son.”

RUDYARD KIPLING.



## JANUARY GRADUATES

**RICHARD B. BAITY**

Covington, Pa.

*Secondary*

Men's Day Student Club 1, 2, 3, 4,  
Vice President 3; Phi Sigma Pi 3, 4;  
Secondary Club 1, 2.

**RICHARD M. BAKER**

Mansfield, Pa.

*Secondary*

Sigma Zeta 3, 4, Historian 4.

**VIRGINIA LOUISE BRUEILLY**

Covington, Pa.

*Elementary*

A. A. C. E. 1, 2, 3, 4.

**ROBERT F. CASEY**

Wilkes-Barre, Pa.

*Secondary*

Men's Day Student Club 1, 2, 3, 4;  
Secondary Club 1; Phi Sigma Pi  
3, 4.

**GORDON A. COLE**

Lawrenceville, Pa.

*Secondary*

Secondary Club 1, 2; Phi Sigma Pi  
2, 3, 4.

**THOMAS H. COYLE**

Towanda, Pa.

*Secondary*

Student Council 3, Secretary; Kap-  
pa Delta Pi 3, 4; Sigma Zeta 3, 4;  
Phi Sigma Pi 2, 3, 4.



PHILLIP H. DEWEY, II

Gaines, Pa.

*Secondary*

CARONTAWAN 2, 3, Typing Editor;  
Phi Sigma Pi 2, 3, 4; Secondary  
Club 2; College Players 2, 3, 4;  
*Flashlight* 4; Class Treasurer 3.

CHARLES FADUSKA

Bear Creek, Pa.

*Secondary*

Secondary Club 1, 2.

GLENN M. HEWITT

Troy, Pa.

*Secondary*

Phi Sigma Pi 3, 4; Kappa Delta 4;  
*Flashlight* 4.

JAMES DOMINICK KENNEY

Wilkes-Barre, Pa.

*Secondary*

Secondary Club 1, 2.

ROBERT R. KITCHEN

Dushore, Pa.

*Secondary*

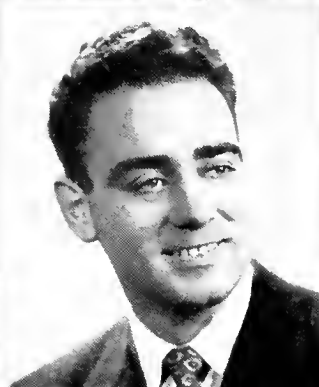
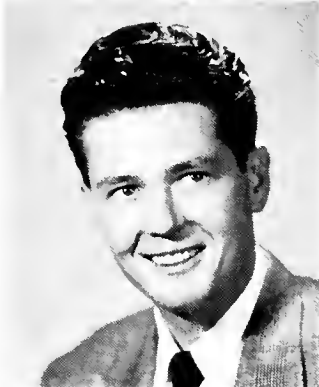
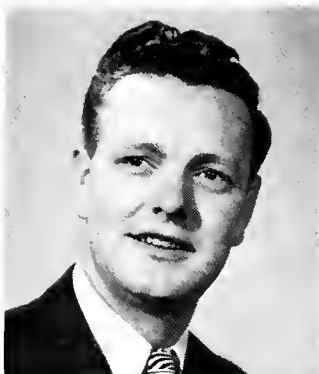
Phi Sigma Pi 2, 3, 4, Secretary 3,  
Vice President 4; Secondary Club  
1, 2.

WILLARD E. LLOYD

Wilkes-Barre, Pa.

*Secondary*

Secondary Club 1.



LAWRENCE L. MEADE

Mansfield, Pa.

*Secondary*

Secondary Club 1, 2; College Players 2, 3, 4; Men's Day Student Club 1, 2, 3, 4; Secretary-Treasurer 3.

PETER G. MOLLAHAN

Wilkes-Barre, Pa.

*Secondary*

M Club 3, 4; Secondary Club 1, 2.

HELEN M. SAMSON

Roulette, Pa.

*Secondary*

Kappa Delta Pi 3, 4; Y. W. C. A. 1; *Flashlight* 3, 4; Secondary Club 1, 2.

LAVERNE A. THORNTON

Watrous, Pa.

*Secondary*

Student Council 3; Phi Mu Alpha Sinfonia 1, 2, 3, 4; CARONTAWAN 2, 3; Secondary Club 2, 3; College Players 3, 4; Art Club 2, 3, 4, President 4; Class President 3; Kappa Delta Pi 4; Who's Who in American Universities and Colleges.

MARTIN JOHN TOOLE

Wilkes-Barre, Pa.

*Secondary*

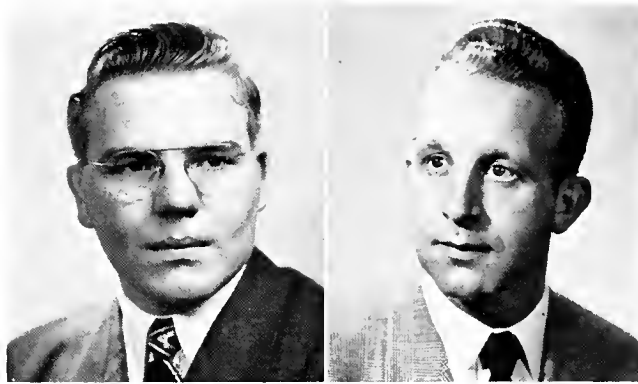
*Flashlight* 1; College Players 1; Secondary Club 1, 2.

EDITH M. WARREN

New Milford, Pa.

*Music*

Lambda Mu 2, 3, 4, President 4; Y. W. C. A. 1; W. A. A. 1; Music Educators Club 1, 2.



LORENZ HENRY WEIBEL

Scranton, Pa.

*Secondary*

Y. M. C. A. 3, 4; Secondary Club 1.

EARL L. WILSON

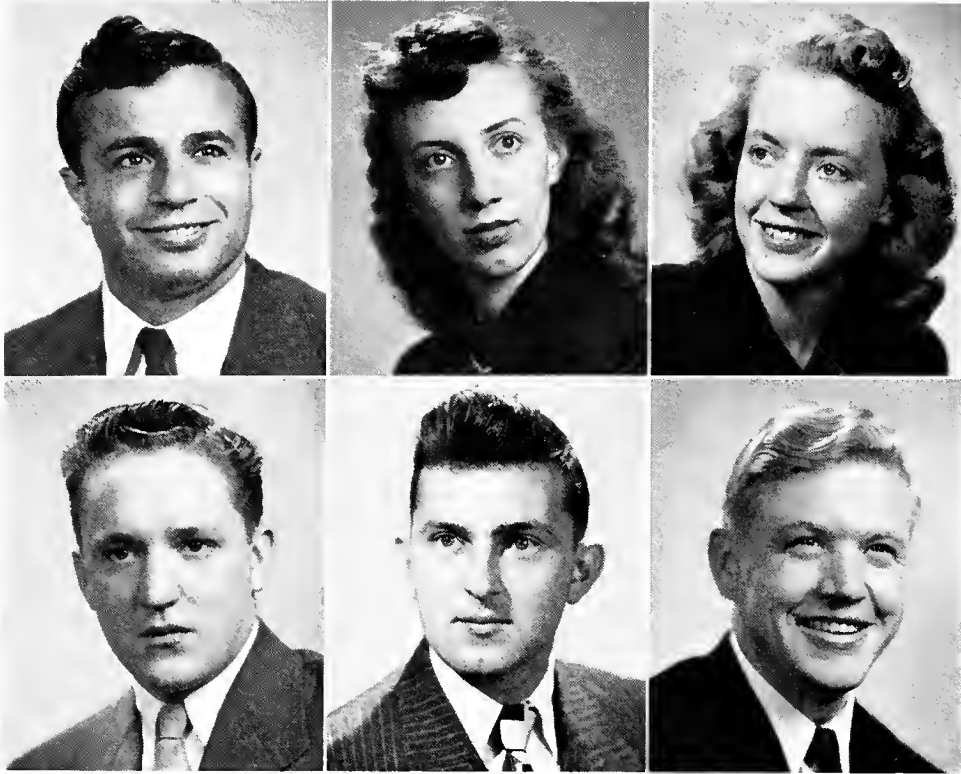
Wellsboro, Pa.

*Secondary*

Art Club 2, 3, 4; Secondary Club 1, 2; M Club 3, 4; Phi Sigma Pi 2, 3, 4; College Players 1, 2, 3, 4.







## MAY GRADUATES

ANTHONY C. AMENDOLA  
Ashley, Pa.

*Secondary*

M Club 1, 2, 3, 4; Secondary Club 1.

JEAN E. BANZHOF  
Tioga, Pa.

*Elementary*

A. A. C. E. 1, 2, 3, 4.

LOIS J. BOARDMAN  
Rome, Pa.

*Music*

Kappa Delta Pi 3, 4; Lambda Mu 3, 4; Music Educators Club 1, 2, 3, 4; Cheerleader 1, 2, 3, 4; Esquirttes 1, 2.

PAUL W. BOINSKE  
Blossburg, Pa.

*Secondary*

Secondary Club 1, 2; Men's Day Student Club 1, 2, 3, 4; Vice President 4.

WILLIAM BRADSHAW  
Mansfield, Pa.

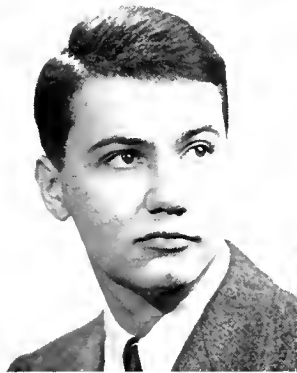
*Secondary*

Day Student Club 1, 2, 4, President 4; Student Council 4; CARONTAWAN 4.

PHILIP ALLEN BROWN  
Erie, Pa.

*Elementary*

Y. M. C. A. 2, 3, 4; A. A. C. E. 2, 3, 4, President 4; College Players 4; *Flashlight* 4; Men's Day Student Club 1, 2, 3, 4; Men's Glee Club 2, 3, 4; Advanced Chorus 1; Orchestra 4.



RHEA H. BROWN

Bradford, Pa.

*Elementary*

Kappa Delta Pi 3, 4; A. A. C. E. 1, 2, 3, 4, Program Chairman 4; Y. W. C. A. 1, 2, 3, 4, Reporter 3, President 4; W. A. A. 3; Art Club 3, 4, Secretary 4; Women's Chorus 1, 2, 3.

ANTHONY JOHN BUCHAN

Wilkes-Barre, Pa.

*Secondary*

Secondary Club 1.

RUTH L. BUNN

Canton, Pa.

*Elementary*

Kappa Delta Pi 3, 4, Vice President 4; Women's Dorm Council 3, 4, Vice President 4; A. A. C. E. 3, 4, Treasurer 3; W. A. A. 3; Art Club 3, 4; Women's Chorus 1, 2, 3, Secretary 2, 3; Who's Who in American Universities and Colleges.

EDWARD M. CALBY

Mansfield, Pa.

*Secondary*

Men's Day Student Club 1, 2, 3, 4.

JANET RUTH CASEY

Susquehanna, Pa.

*Elementary*

Y. W. C. A. 1, 2; Art Club 3, 4; Treasurer 4; A. A. C. E. 1, 2, 3, 4; W. A. A. 1, 2.

CARMEN CARL CAVUTO

West Wyoming, Pa.

*Music*

Phi Mu Alpha Sinfonia 2, 3, 4; Music Educators Club 1, 2, 3, 4



JAMES J. CLANCY  
Olyphant, Pa.

*Elementary*

A. A. C. E. 3, 4; M Club 4; *Flashlight* 1, 2, 3, 4, Sports Editor; Cheerleader 1, 2.

GROVER D. CLEVELAND  
Covington, Pa.

*Secondary*

Men's Day Student Club 1, 2, 3, 4; Secondary Club 1, 2.

ERNEST A. CODISPOTI  
Elkland, Pa.

*Secondary*

Phi Sigma Pi 3, 4; Secondary Club 2, 3; *Flashlight* 2, 3; Cheerleader 1, 2, 3, 4.

ALLEN E. CRANDALL  
Mansfield, Pa.

*Music*

Phi Mu Alpha Sinfonia 3, 4, Organist 4.

T. ISABEL DIEZ  
Plymouth, Pa.

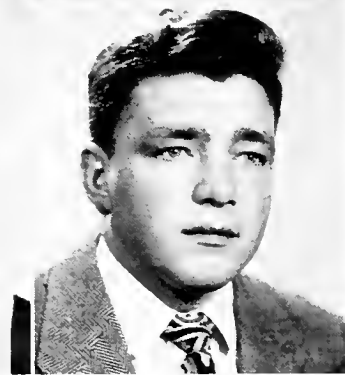
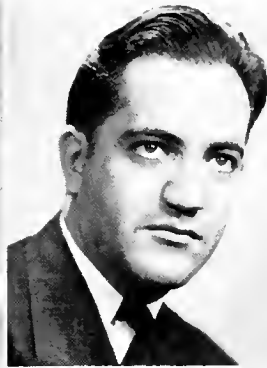
*Secondary*

Y. W. C. A. 1, 2; Music Educators Club 1, 2; W. A. A. 1, 2; Orchestra 1, 2; Band 1.

BRUCE B. DIMMICK  
Gaines, Pa.

*Secondary*

Phi Sigma Pi; Secondary Club 1.



BARBARA ANN DIMON

Rome, Pa.

*Music*

Lambda Mu 4; Y. W. C. A. 1, 2;  
Music Educators Club 1, 2, 4.

THOMAS F. DONAHUE

Schuylkill Haven, Pa.

*Music*

Phi Mu Alpha Sinfonia 1, 2, 3, 4;  
Music Educators Club 1, 2.

JEAN A. DRAGWA

Simpson, Pa.

*Music*

Y. W. C. A. 1; Music Educators  
Club 1, 2, 3, 4.

EMELYN A. DRAKE

Wellsville, N. Y.

*Music*

Student Council 4; Y. W. C. A. 1, 2, 3, 4;  
Women's Dorm Council 2, 3, 4, President  
4, Secretary 2; Music Educators Club 1, 2,  
4; W. A. A. 1, 2, 3; Esquirettes 1, 2; Who's  
Who in American Universities and Colleges.

JACK V. DREW

Mainesburg, Pa.

*Secondary*

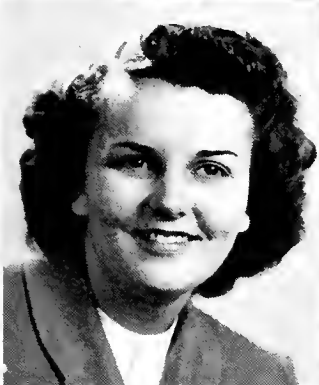
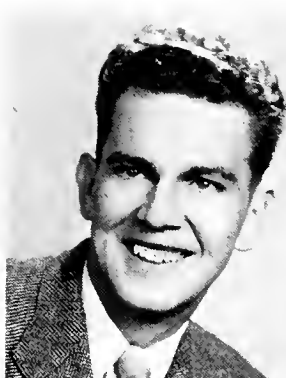
Secondary Club 1; Men's Day Stu-  
dent Club 1, 2, 3, 4.

JACK F. DUNBAR

Wilkes-Barre, Pa.

*Secondary*

M Club 1, 2, 3, 4; Secondary  
Club 1.



WALLACE S. DUNMORE

Watrous, Pa.

*Secondary*

*Flashlight* 3; Men's Day Student Club 2, 3, 4; Y. M. C. A. 4; Secondary Club 1.

SHIRLEY JEAN DUTCHER

Tioga, Pa.

*Music*

Lambda Mu 3, 4; Y. W. C. A. 1, 2, 3, Secretary 3; CARONTAWAN 3, Junior Editor; Music Educators Club 1, 2, 4; College Players 1, 2, 3, 4, Treasurer 3; W. A. A. 1, 2; Madrigals 2, 3; Kappa Delta Pi 4.

JOSEPH ENNIS

Mansfield, Pa.

*Secondary*

Secondary Club 1; Men's Day Student Club 3, 4; Kappa Delta Pi 4.

LESLIE D. EVANS

Mansfield, Pa.

*Secondary*

Sigma Zeta 2, 3, 4, President 3; CARONTAWAN 2, Assistant Business Manager; Phi Sigma Pi 2, 3, 4; Men's Day Student Club 1, 2, 3, 4, President 2.

ARDIS L. FESSLER

Covington, Pa.

*Elementary*

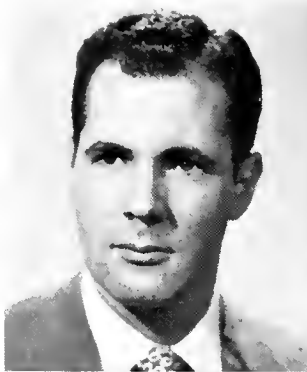
A. A. C. E. 1, 4; Women's Day Student Club 1, 2, 3, 4.

BARBARA D. FINCH

Crooked Creek, Pa.

*Elementary*

A. A. C. E. 1, 2, 3, 4; W. A. A. 3; Y. W. C. A. 1, 2, 3; Class Secretary 4.



EDWARD J. FLANAGAN

Wilkes-Barre, Pa.

*Secondary*

Secondary Club 1, 2.

JEAN RUTH FORD

Wellsboro, Pa.

*Home Economics*

Y. W. C. A. 1, 2; Omicron Gamma Pi 1, 2, 3, 4, Vice President 3; W. A. A. 1, 2, 3, 4; *Flashlight* 3, 4, Business Manager 4; Kappa Delta Pi 4.

MARIE LUCILLE GALAVITZ

Simpson, Pa.

*Secondary*

Sigma Zeta 3, 4, Secretary-Treasurer 4; Secondary Club 1, 2; College Players 3, 4.

ELSIE MAE GILBERT

Bradley Beach, N. J.

*Home Economics*

Y. W. C. A. 1, 2, 3; Omicron Gamma Pi 1, 2, 3, 4; W. A. A. 1, 2, 4; Class Treasurer 4.

SALLY P. HAINES

Hallstead, Pa.

*Secondary*

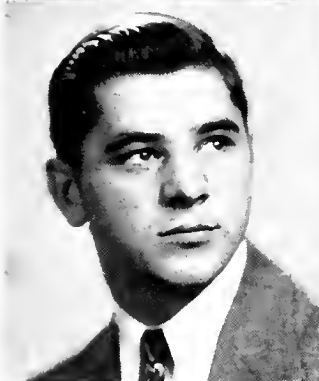
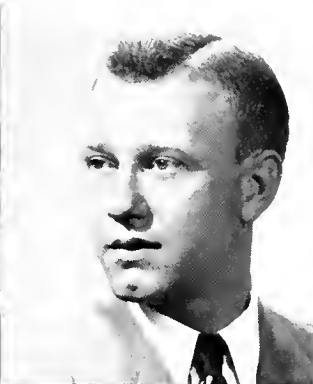
Kappa Delta Pi 4; College Nurse 1, 2, 3, 4.

DELOS S. HENRICH

Sayre, Pa.

*Secondary*

Y. M. C. A. 4; Secondary Club 1, 2.



ROBERT P. HENRY

Hudson, Pa.

*Secondary*

Kappa Delta Pi 4; CARONTAWAN 4, Admin-  
istrations Editor; College Players 2, 3, 4;  
Phi Sigma Pi 2, 3, 4, Treasurer 3, 4; Sec-  
ondary Club 1.

HELEN RUTH HISSAM

Milford, Pa.

*Home Economics*

Art Club 1, 2, 3, 4, President 3; Y. W. C.  
A. 1, 2; CARONTAWAN 3, 4, Art Editor 3,  
Classes Editor 4; Program Chairman 4; Col-  
lege Players 2, 3, 4; W. A. A. 1, 2, 3.

WILLIAM MILES JOHNSON

Elmira, N. Y.

*Secondary*

M Club 2, 3, 4; Secondary Club 1.

JOSEPH T. KATUSZ

Nanticoke, Pa.

*Secondary Club*

M Club 1, 2, 3, 4; Secondary  
Club 1.

ROBERT M. KEMP

Nelson, Pa.

*Secondary*

Phi Sigma Pi 4; Men's Day Student  
Club 1, 2, 3, 4; Secondary Club 1.

RAYMOND A. KODISH

Kingston, Pa.

*Secondary*

M Club 1, 2, 3, 4; Men's Day Stu-  
dent Club 4; Secondary Club 1, 2.



CHESTER FRANK KOVALESKI  
Wilkes-Barre, Pa.

*Secondary*

Secondary Club 1, 2; M Club 1, 2, 4.

BETTY R. LAMB  
Susquehanna, Pa.

*Secondary*

Y. W. C. A. 1, 2; Secondary Club 1, 2; College Players 1; W. A. A. 1, 2, 3, 4.

LUCILLE MARY LEHNER  
Susquehanna, Pa.

*Secondary*

Kappa Delta Pi 3, 4; College Players 1, 2; Y. W. C. A. 1, 2; CARONTAWAN 1, 2; W. A. A. 1, 2, 4; *Flashlight* 1, 2, 3; Cheerleader 1, 2, 3, 4; Class Secretary 2; Secondary Club 1, 2.

WELLINGTON F. LESTER  
Equinunk, Pa.

*Secondary*

Student Council 1, 2, 3, 4, Secretary 2, Treasurer 3, President 4; Phi Sigma Pi 1, 2, 3, 4; College Players 1, 2, 3, 4; *Flashlight* 1, 2, 3; Freshman Manager Baseball Team 1; Secondary Club 1, 2; Who's Who in American Universities and Colleges.

FLORENCE W. MACORKEL  
Wilkes-Barre, Pa.

*Elementary*

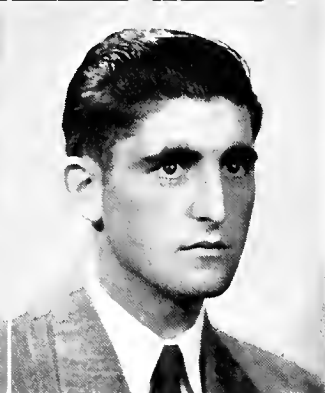
A. A. C. E. 1, 2, 3, 4; Y. W. C. A. 1, 2, 4; Women's Chorus 1, 2, 3.

VITO JOHN MAGDELINSKAS  
Wilkes-Barre, Pa.

*Secondary*

M Club 1, 2, 4; Secondary Club 4; Men's Day Student Club 4.





GENE ELIZABETH MAXWELL  
Williamsport, Pa.

*Home Economics*

Student Council 4; Advisory Editor CARONTAWAN; Kappa Delta Pi 3, 4; Kappa Omicron Pi 3, 4, Vice President 4; Y. W. C. A. 1, 2, 3, 4; CARONTAWAN 1, 2, 3, 4; Omicron Gamma Pi 1, 2, 3, 4; College Players 1, 2, 3, 4; W. A. A. 1, 2, 3, 4; *Flashlight* 2, 3; Class Vice President 1; Who's Who in American Universities and Colleges.

MARY REGINA McCAWLEY  
Susquehanna, Pa.

*Secondary*

Y. W. C. A. 1, 2; CARONTAWAN 1, 2; Secondary Club 1, 2; College Players 1, 2; W. A. A. 1, 3, 4; *Flashlight* 1, 2, 3; Class Treasurer 1; Kappa Delta Pi 4.

JOHN A. McDONALD  
Wilkes-Barre, Pa.

*Secondary*

Phi Mu Apha Sinfonia 2, 3, 4; Music Educators Club 1; *Flashlight* 3, 4; Esquires 1; Symphony Orchestra 1.

GERALD JAMES McENENY  
Wilkes-Barre, Pa.

*Secondary*

Secondary Club 1; M Club 1, 2, 3, 4.

FRANCES B. MILLER  
Troy, Pa.

*Elementary*

A. A. C. E. 4.

JOSEPH E. O'DONNELL  
Wilkes-Barre, Pa.

*Secondary*

M Club 1, 2, 3, 4; Secondary Club 1, 2.



JOHN H. PARSONS

Towanda, Pa.

*Secondary*

Phi Sigma Pi 2, 3, 4; Men's Day Student Club 1, 2, 3, 4; Secondary Club 1; Kappa Delta Pi 4.

WALTER K. PARSONS

Towanda, Pa.

*Secondary*

Student Council 4, Class President; *Flashlight* 4; Men's Day Student Club 1, 4; Phi Sigma Pi 3, 4; Who's Who in American Universities and Colleges.

PETER P. PAZAHANICK

Wilkes-Barre, Pa.

*Secondary*

Men's Dorm Council 3; M Club 2, 3, 4; Secondary Club 1.

RUTH E. PHILLIPS

Covington, Pa.

*Music*

Women's Day Student Club 1, 2, 4; Music Educators Club 1, 2, 4.

SHIRLEY DEANE PIERCE

Wellsboro, Pa.

*Secondary*

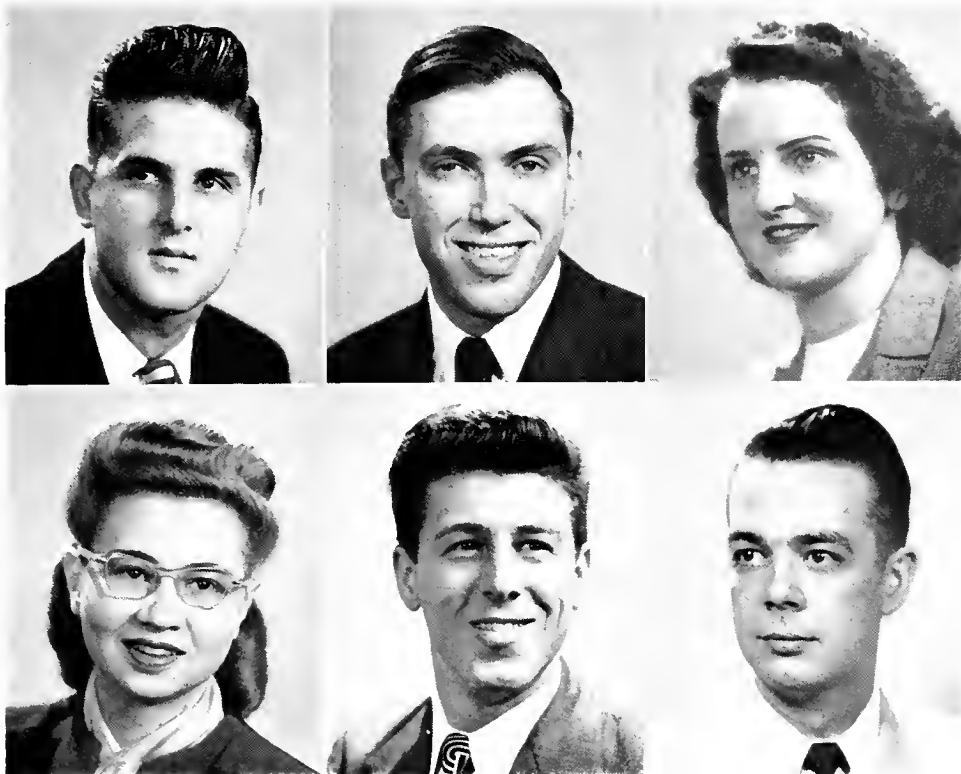
Kappa Delta Pi 3, 4, President 4; Sigma Zeta 3, 4; Y. W. C. A. 1, 2, 3, 4; Women's Chorus 1, 2, 3; Secondary Club 1, 2; W. A. A. 1, 2, 3, 4.

GEORGE JOHN POLTASH

Plains, Pa.

*Secondary*

Secondary Club 1.



TED E. RANDON

Wilkes-Barre, Pa.

*Secondary*

Secondary Club 1; M Club 1, 2, 3, 4.

HORACE W. REES

Wellsboro, Pa.

*Secondary*

Men's Day Student Club 1, 2, 3, 4.

JEANNINE G. ROCKWELL

Troy, Pa.

*Home Economics*

Y. W. C. A. 1, 2; Art Club 2, 3, 4, Vice President 4; Omicron Gamma Pi 1, 2, 3, 4; W. A. A. 1, 2.

MARY ALICE ROGAN

Dimock, Pa.

*Elementary*

Y. W. C. A. 4; Women's Day Student Club 1; Secondary Club 1, 2; A. A. C. E. 3, 4.

NICHOLAS RUSIN

Mildred, Pa.

*Secondary*

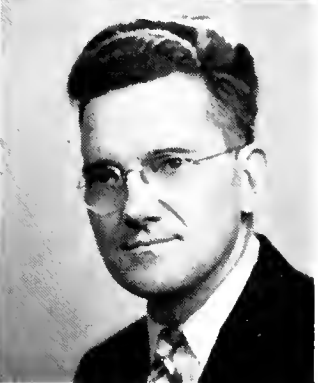
Men's Day Student Club 4; Secondary Club 1.

GORDON S. SECOR

Towanda, Pa.

*Secondary*

Phi Sigma Pi 2, 3, 4; College Players 1, 2, 3, 4, Vice President 3, President 4; Class Treasurer 1; Kappa Delta Pi 4.



WAUNITA S. SIMONSON  
Montrose, Pa.

*Elementary*

Kappa Delta Pi 4; Y. W. C. A. 1, 2, 3, 4; CARONTAWAN 2, 3, Organizations Editor; Women's Day Students Club 2, 3, 4, Secretary-Treasurer 4; A. A. C. E. 1, 2, 3, 4; College Players 2, 3, 4; W. A. A. 1, 2, 3, 4.

DOROTHY E. SJOSTROM  
Athens, Pa.

*Elementary*

Y. W. C. A. 2, 4; A. A. C. E. 1, 2, 3, 4; W. A. A. 1.

MARILYN SLOCUM  
Thompson, Pa.

*Elementary*

Y. W. C. A. 2, 4; A. A. C. E. 1, 2, 3, 4; W. A. A. 1.

LOIS E. SLUSSER  
Nescopeck, Pa.

*Home Economics*

Omicron Gamma Pi 1, 2, 3, 4; College Players 2, 3, 4; W. A. A. 1, 2, 3, 4; Art Club 2, 3, 4.

LESTER JOHN SMITH  
Galeton, Pa.

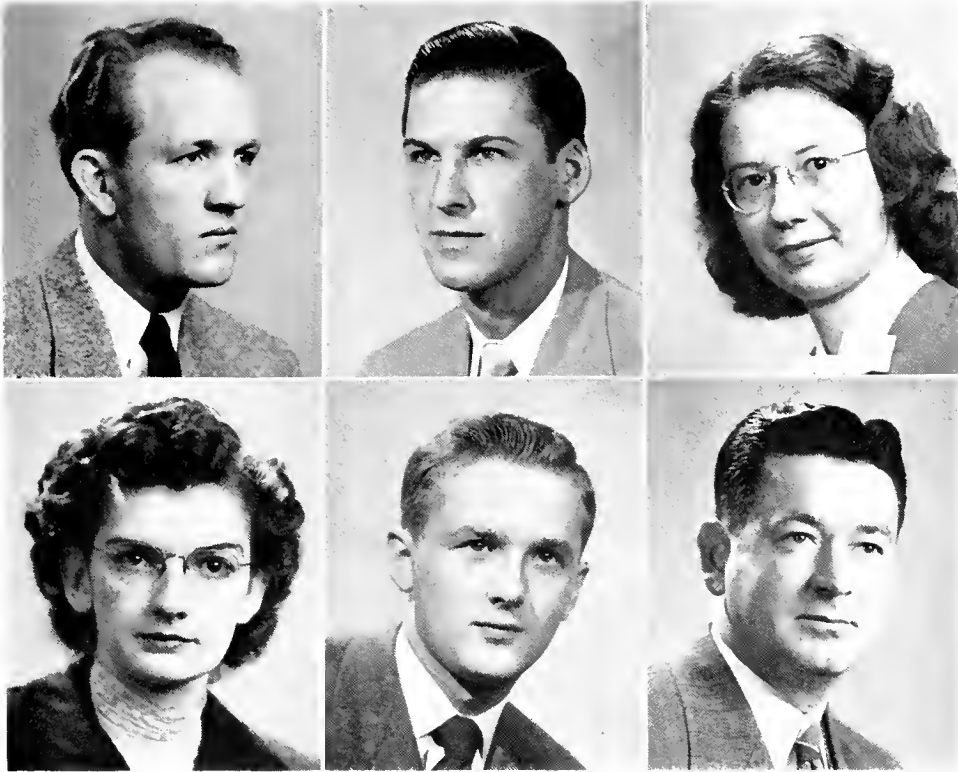
*Secondary*

Y. M. C. A. 4; *Flashlight* 2, 3, 4; Men's Day Student Club 3, 4; Men's Glee Club 1; Secondary Club 1.

N. ALLEN SOURS  
Mainesburg, Pa.

*Secondary*

Kappa Delta Pi 4; Secondary Club 1.



JAMES O. STEINBACHER  
Towanda, Pa.

*Secondary*

Sigma Zeta 3, 4; Phi Sigma Pi 2, 3, 4, President 4; Secondary Club 1.

ARNOLD B. SUNDBERG  
Jersey Shore, Pa.

*Secondary*

Student Council 4; President Men's Dorm Council; Who's Who in American Universities and Colleges.

MIRIAM L. SWAN  
Williamsport, Pa.

*Music*

Lambda Mu 4; Y. W. C. A. 1, 2, 3, 4; Music Educators Club 1, 2, 4; Orchestra, Band.

EUNICE P. VARCOE  
Waymart, Pa.

*Secondary*

Kappa Delta Pi 3, 4, Treasurer 4; Y. W. C. A. 1, 2, 3, 4; Art Club 3, 4; W. A. A. 2, 3, 4; Women's Chorus 1, 2, 3.

RALPH H. WELLER  
Towanda, Pa.

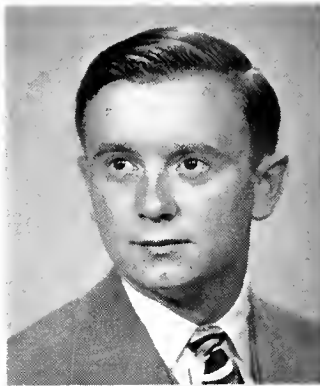
*Secondary*

Y. M. C. A. 2, 3, 4, Secretary 4; Phi Sigma Pi 3, 4; College Players 1, 2, 3, 4, Treasurer 4; Men's Day Student Club 1; Kappa Delta Pi 4.

PAUL R. WILLIS  
Covington, Pa.

*Elementary*

A. A. C. E. 4.



CHARLES R. WILSON  
Towanda, Pa.

*Secondary*

Phi Sigma Pi 3, 4, Historian; Men's  
Dormitory Council 4, Vice Presi-  
dent.

MAY BELLE WOODIN  
Duke Center, Pa.

*Music*

Kappa Delta Pi 3, 4, Recording Secretary 4;  
Lambda Mu 2, 3, 4, Recording Secretary 1,  
Treasurer 3, Vice President 4; Y. W. C. A.  
1, 4; CARONTAWAN 1, 3; Music Educators  
Club 1, 4; W. A. A. 1, 4, Treasurer 3;  
*Flashlight* 1, 3; Madrigals 2, 3.

MARY ELLEN YEAGER  
Millersburg, Pa.

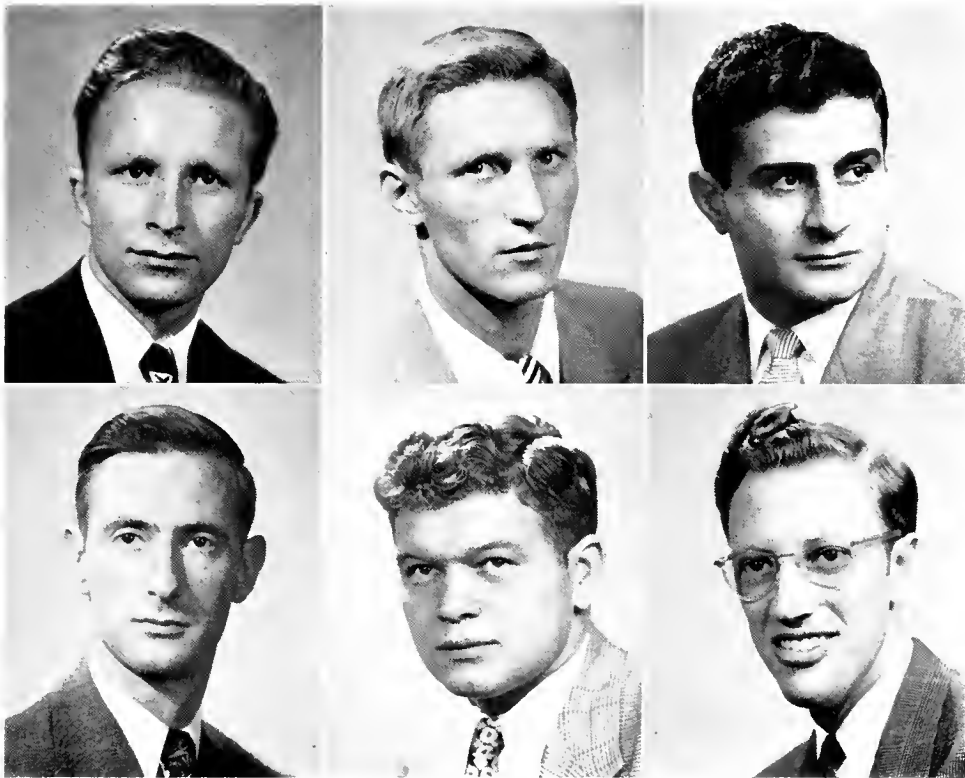
*Home Economics*

Kappa Delta Pi 3, 4, Corresponding Secre-  
tary 4; Y. W. C. A. 1, 2; Women's Dorm  
Council 3, 4, Secretary 3; Art Club 2, 3, 4;  
Omicron Gamma Pi 1, 2, 3, 4, Treasurer 3;  
College Players 1, 3, 4; W. A. A. 1, 2, 3;  
*Flashlight* 1, 2.

DORIS J. YOST  
Bausman, Pa.

*Home Economics*

Y. W. C. A. 2; Art Club 3, 4;  
Omicron Gamma Pi 2, 3, 4, Presi-  
dent 4; W. A. A. 3, 4.



## AUGUST GRADUATES

CHARLES B. ANDERSON  
Bradford, Pa.

*Music*

Kappa Delta Pi 4.

CHARLES ANISTRANSKI  
Wilkes-Barre, Pa.

*Secondary*

Student Council 4, Vice President; Phi Sigma Pi 2, 3, 4; M Club 2, 3, 4; *Flashlight* 4; Secondary Club 1; Who's Who in American Universities and Colleges.

JACOB AZAIN  
Wilkes-Barre, Pa.

*Secondary*

M Club 1, 2, 3, 4; Secondary Club 1.

FRANK R. BOTSFORD, JR.  
Canton, Pa.

*Secondary*

Secondary Club 1.

ROBERT W. BOWMAN  
Sayre, Pa.

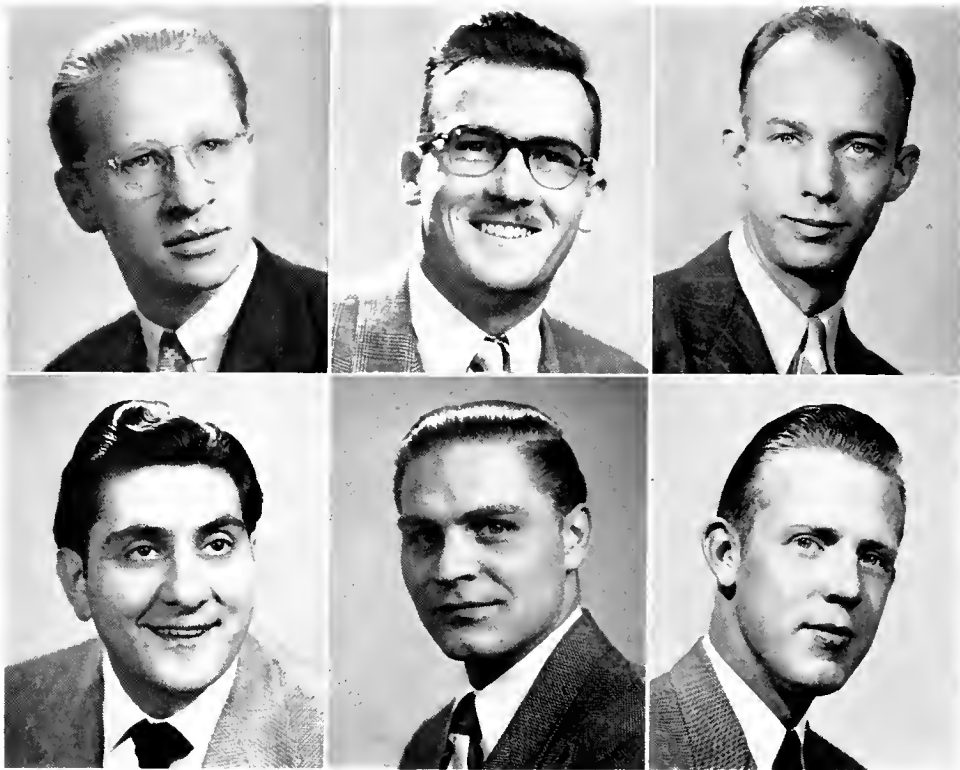
*Secondary*

M Club 1, 2, 3, 4; Secondary Club 1.

MARCUS L. BURR  
Canton, Pa.

*Secondary*

Y. M. C. A. 2, 3, 4; Men's Day Student Club 2, 3, 4.



BRUNELL E. CARLSON  
Kane, Pa.

*Music*

Music Educators Club 2, 4.

LEE R. CLEVELAND  
Troy, Pa.

*Secondary*

Secondary Club 1.

DARELL E. DAVIS  
Shinglehouse, Pa.

*Music*

Music Educators Club 2, 4.

JAMES J. DECKER  
Wilkes-Barre, Pa.

*Secondary*

Student Council 4, Class President;  
Secondary Club 1; Who's Who in  
American Universities and Colleges.

LOUIS ELSTER  
McKeesport, Pa.

*Music*

Phi Mu Alpha Sinfonia 3, 4; Music  
Educators Club 2, 3.

WESLEY R. JOHNSON  
Williamsport, Pa.

*Music*

Music Educators Club; Kappa Del-  
ta Pi 4.





HAROLD KINTNER

Brackney, Pa.

*Secondary*

Student Council Treasurer 4; CARONTAWAN 4; Phi Sigma Pi 2, 3, 4; Secondary Club 1; Kappa Delta Pi 4; Who's Who in American Universities and Colleges.

WALTER J. KUCEWICZ

Wilkes-Barre, Pa.

*Secondary*

Secondary Club 1.

HENRY E. LANDON

Towanda, Pa.

*Secondary*

Secondary Club 4.

STEPHEN M. LAPSANSKY

Pittston, Pa.

*Music*

Phi Mu Alpha Sinfonia 4; Music Educators Club 1, 2, 3; Esquires 1, 2, 3, 4.

MICHAEL P. MADDOCK

Lopaz, Pa.

*Secondary*

Phi Mu Alpha Sinfonia 3, 4, Historian; Music Educators Club 1, 2; CARONTAWAN 4; Men's Dorm Council 4; Kappa Delta Pi 4.

FRANK MAMINSKI

Wilkes-Barre, Pa.

*Music*

Music Educators Club 1, 2, 4.



EMMETT L. MCINTOSH  
Erie, Pa.

*Music*

Kappa Delta Pi 4; Phi Mu Alpha Sinfonia 2, 3, 4; Music Educators Club 1, 2, 3, 4; Men's Day Student Club 1, 2, 3, 4; Airliners 3.

EUGENE M. McLAIN  
Olyphant, Pa.

*Secondary*

Secondary Club 1; College Players 3, 4; Class Vice President 2.

WILLIAM F. OWEN  
Mansfield, Pa.

*Secondary*

Secondary Club 1.

KENNETH E. PERSCHAU  
Wilkes-Barre, Pa.

*Secondary*

M Club 1, 2, 3, 4.

ROBERT A. PHILLIPS  
Kingston, Pa.

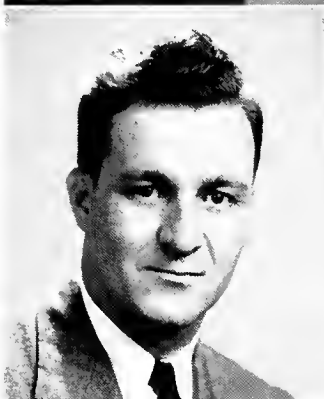
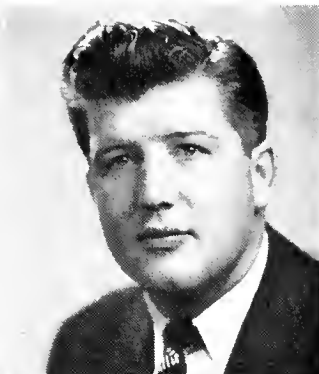
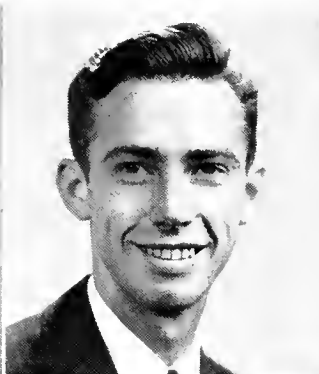
*Secondary*

Secondary Club 1.

FRANCIS L. PINENO  
Wyoming, Pa.

*Music*

Music Educators Club 1, 2, 4; Esquires 3, 4; *Flashlight* 3, 4.



CAROL POTTER

Coudersport, Pa.

*Secondary*

W. A. A. 3, 4; Secondary Club 1; Kappa Delta Pi 4.

JACK D. PRUTSMAN

Troy, Pa.

*Secondary*

Men's Day Student Club 1, 2, 3, 4; Secondary Club 1.

FRANK J. RAYKOVITZ

Wilkes-Barre, Pa.

*Secondary*

M Club 1, 2, 3, 4; Secondary Club 1.

JOHN ROBERTS

Kingston, Pa.

*Music*

Phi Mu Alpha Sinfonia 2, 3, 4; Music Educators Club 1, 2, 3.

DONALD C. SHRIFT

Summerhill, Pa.

*Music*

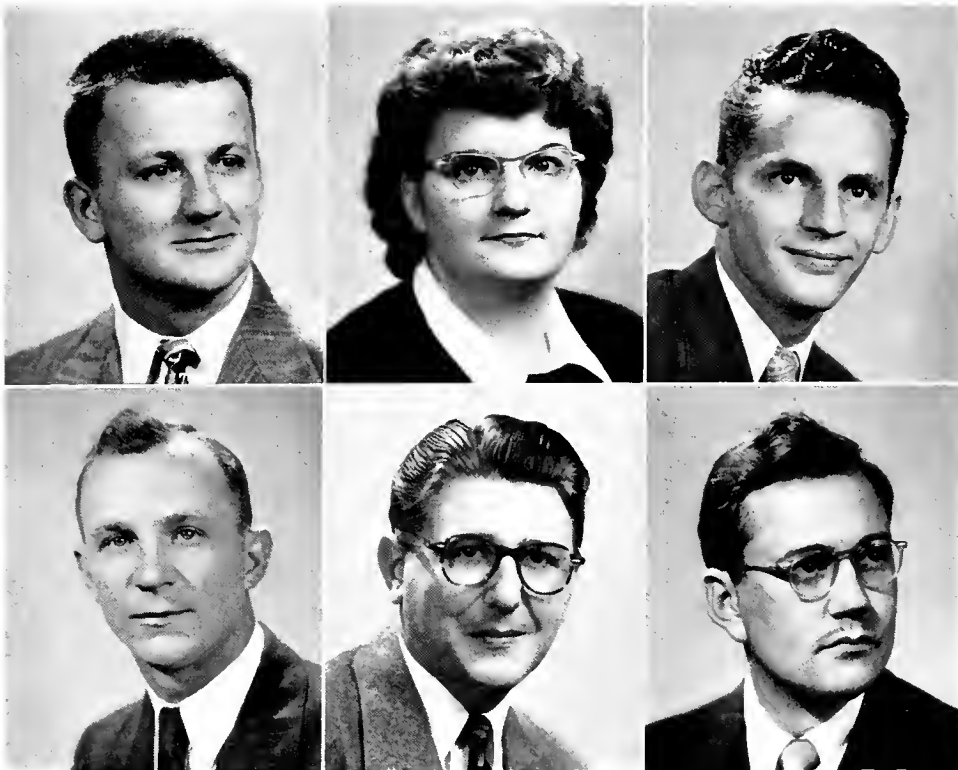
Kappa Delta Pi 3, 4; Phi Mu Alpha Sinfonia 2, 3, 4, President 4; Music Educators Club 2, 3, 4; *Flashlight* 2; Esquires 3, 4.

ALBERT SMITH

Troy, Pa.

*Secondary*

Secondary Club 1.



JOHN DONALD SMITH  
Kingston, Pa.

*Secondary*

CARONTAWAN 1; Secondary Club;  
*Flashlight* 1, 2, 3; Men's Day Student Club 3, 4.

LUCILLE E. STERLING  
Wyalusing, Pa.

*Elementary*

A. A. C. E. 2, 3, 4; Y. W. C. A. 1, 2, 3, 4.

CHARLES H. THOMAS  
Kingston, Pa.

*Music*

Esquires 2, 3, 4; Music Educators Club 1, 2, 3; Phi Mu Alpha Sinfonia 2, 3, 4.

FRANCIS L. VROMAN  
Blossburg, Pa.

*Secondary*

Men's Day Student Club 1, 2, 3, 4;  
Secondary Club 1; M Club 3.

THOMAS S. WARD  
McKeesport, Pa.

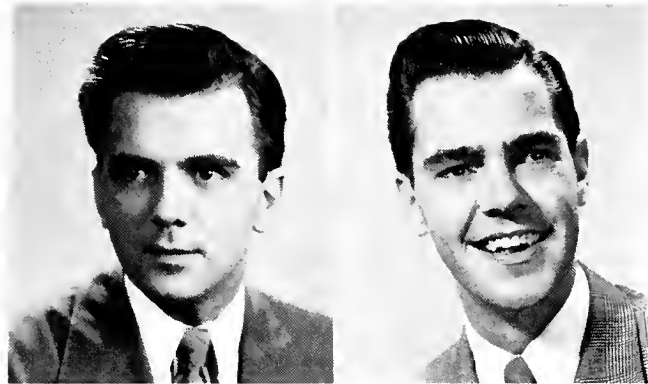
*Music*

Music Educators Club 1, 2, 4.

ANDREW M. WEIT  
Ephrata, Pa.

*Music*

Music Educators Club 1, 2, 4.



RICHARD I. WHITING

Elmira, N. Y.

*Secondary*

Music Educators Club 1; Secondary Club 2; Men's Day Student Club 1, 2, 3; Chorus 1.

GEORGE Y. WILT

Towanda, Pa.

*Music*

Phi Mu Alpha Sinfonia 1, 2, 3, 4; Men's Day Student Club 1, 2, 3, 4.







Strait's Hardware

On the Square



GOOD LUCK

and

BEST WISHES

For the Future

Compliments of

First National Bank

MANSFIELD, PA.

Compliments of

Penn-Wells Hotel

WELLSBORO, PENNA.



*Satisfactory Laundry Co.,  
Inc.*

737 West Fourth Street

Williamsport, Penna.

§

*“Satisfactory Since 1908”*

Compliments of  
**Cruttenden's**  
**News Room**

For a FRIENDLY MEETING  
and EATING  
Gather at—

**Ernies**  
**Mansfield Restaurant**

*Home cooked foods at  
their best!*

---

DIAMONDS

WATCHES

For gifts you will remember as  
long as your Alma Mater —



**R. J. ESTEP**

*Jeweler*

26 N. Main St.  
MANSFIELD, PA.

---

Compliments of

*The*  
*Wright Shop*

∞

*Fashion Center*

DRUGS AND GIFTS  
SCHOOL SUPPLIES  
PERFUMES AND TOILET WATER



*Prescriptions Filled*

**Coles Pharmacy**

On the Corner

For your past patronage we extend  
our sincere thanks



Your College Cleaners

**Goodriches**

Compliments of

**The Twain Theater**

MANSFIELD, PA.

**Baynes Shoe Store**

Extends

*BEST WISHES to the*

*CLASS of '49*

Compliments of  
CLEVELAND and  
RAYMOND'S



HARDWARE and  
SPORTING GOODS

Compliments of  
Fish's Shoe Store  
MANSFIELD, PA.



*Headquarters for*  
COLLEGE FOOTWEAR

*More Power to You*

Northern Pennsylvania Power Co.

---

Wish to Extend Hearty Congratulations  
to the Class of 1949

Phone Elmira 5731 or 5288

# S. M. Flickinger Co., Inc.

*Wholesale* GROCERIES and PRODUCE

ELMIRA, N. Y.

*Special attention given to*

Canned Goods — Frosted Foods — Fresh Fruits  
and Vegetables — Hotel and Restaurant Supplies

---

## Witmore's Store

H. T. AND DOROTHA WITMORE

MANSFIELD, PA.

•

*Headquarters for:*

COSMETICS

GREETING CARDS

SCHOOL SUPPLIES

CANDIES

Compliments from

## MARKSONS

★

Complete *OUTFITTERS*

for

*MEN* and *BOYS*

Compliments of  
**Mrs. Finesilver**

Compliments of  
**Terry's Drug  
Store**

•  
**GOOD LUCK to ALL**  
From REXALL

Compliments of  
**“COLE AND PETE”  
MUDGE**

•  
*MUDGE BROS.  
SELF SERVICE*

WILPORT FOODS  
and  
STOKELY'S FINEST FOODS

★  
*Distributed by*  
**Williamsport Wholesale  
Grocery Co., Inc.**  
WILLIAMSPORT, PA.

Compliments of  
The T. W. Judge Company  
and  
North Penn Gas Company

---

Compliments of  
McCONNELL'S  
BARBER SHOP  
AND  
BEAUTY SALON

Compliments of  
Lester Merrick  
*Your*  
John Deere and  
De Laval Dealer

*Best Wishes*

*Roy J. Dunham Store*

Wellsboro, Pennsylvania



Compliments of  
Jim Caracciolo's  
Shoe Repair Shop

Compliments of  
Empire Foods Incorporated  
*Wholesale Distributors*



Elmira, New York      Auburn, New York  
Hornell, New York      Utica, New York  
Binghamton, New York

---

*Best Wishes*

HARRINGTON STUDIO



*Portrait*  
*Commercial Photographer*

JOHN H. McNANEY

Compliments of  
Tioga County Bell  
Telephone Company

BEST of LUCK to  
The CLASS of '49

★

Ralph's Servicenter

Hudson Dealer

MANSFIELD, PA.

1889

1949

Sixtieth Anniversary

Pledging Continued Faithful Service

For

*Quality* FRUITS and VEGETABLES

*"Eat 'Em and Stay Healthy!"*

A. NARDI'S SONS, INC.

WILLIAMSPORT, PA.

For Those "Homework Snacks"  
Stop at the Foot of the Hill

•

## Hartsock's Bakery

A Complete Line of  
BAKED GOODS

Compliments of

## Rose Chevrolet

## WILLIAMS PRODUCE COMPANY

*Wholesale  
Food Distributors*

★

700 Madison Avenue  
ELMIRA, NEW YORK

Compliments of

## THE NEW CROSS TRAIL RESTAURANT

Harrington's Gift  
Shop



*Gifts*

*Cameras*

*Films*

---

SPORTING GOODS    WHEEL GOODS

Garside's  
Hobby Shop

32 N. Main St.

*Toys for Fun*

*For Young and Old*

CANDY — ICE CREAM — POP

Compliments of

Merrill S. Broderick

23 N. Main St.

MANSFIELD, PA.

---

*Sunoco Gas and Oil*  
*Firestone Store*

Tractor Tires Our Specialty

KAISER-FRAZER Dealer

For your convenience  
— a station down town

SMITH'S

*Sales and Service*

MANSFIELD, PA.

Bell Phone 9127

Citizens 26

Clean, Comfortable  
Overnight Accommodations

•

The Penn-Marlyn  
Hotel

Phone 9131

A. A. A. Listed

Sea Foods

Steaks and Chops

Green Lantern

24 Hour Service

*Restaurant*

and

*Service Station*

“Three miles south  
of Mansfield on the  
Susquehanna Trail”

R-115

Car-Washing

Lubrication

“For quality and service  
at its best . . .”

BOGH'S

for

Flowers

*“Mansfield's Florist and  
Landscape for 20 Years”*

Compliments of

A. S. DECKER

★

COAL, WOOD,

CEMENT, ICE

and

GENERAL TRUCKING

Compliments of

H. K. Brown Motors



CHRYSLER and PLYMOUTH

*Sales and Service*

---

CONGRATULATIONS '49 CLASS

*"If It's Electric"*

George E. Dyer

*Electrical Contractor*

See us for your

Hotpoint Kitchen

Compliments of

SNYDER'S

Atlantic Service Station

MANSFIELD, PA.

---

Garrison & Myers

The Clothing Store on the Corner

We have high grade merchandise — standard brand names. This means dependable goods and we will not be undersold

SENIORS

*Success to You!*

UNDERCLASSMEN

A pleasant vacation to you and we will welcome you back next fall.

Let us help you with your wardrobe.

J. J. MOORE, M.D.

EMERSON A. EVANS, D.D.S.

J. J. McMILLEN, D.D.S.

ROBERT E. FARR, Attorney

§

*“In appreciation —”*

COMPLIMENTS OF YOUR COVINGTON MERCHANTS

---

ZIMMER and BAITY

*General Merchandise*

WEST BROS. GARAGE

DeSoto and Plymouth

*Sales and Service*

---

CYRIL WILSON

•

*Heating and Plumbing  
Contractor*

•

GENERAL ELECTRIC  
APPLIANCES

Compliments of

TIOGA COUNTY  
CANDY COMPANY

COVINGTON, PENNA.



Congratulations to the

Class of 1949

§

*PUTNAM PARK*

and

*THE COLONIAL INN*

District Agency  
Equitable Life of Iowa  
Automobile Insurance  
Fire Insurance  
Casualty Insurance

**G. M. GILLETTE**

and

**B. M. GOODMAN**

14 W. Wellsboro Street

MANSFIELD, PENNA.

Bell Phone 187

Compliments of

**Morris Farms**

MANSFIELD, PENNSYLVANIA

---

CONGRATULATIONS and BEST WISHES

For the

CLASS OF 1949



**MANSFIELD ADVERTISER**

MANSFIELD, PA.



*Your*  
Carontawan

Was Designed, Engraved, Printed  
and Bound in our College  
Annual Department.



We do a variety of Commercial  
Printing — including Catalogs,  
College and School Year Books  
Consult Us before placing your  
next order for Printing.

**GRIT PUBLISHING COMPANY**

WILLIAMSPORT, PENNA.



# AUTOGRAPHS







