


© 1950 by the Board of Trustees of the University of California. Printed in the United States of America.



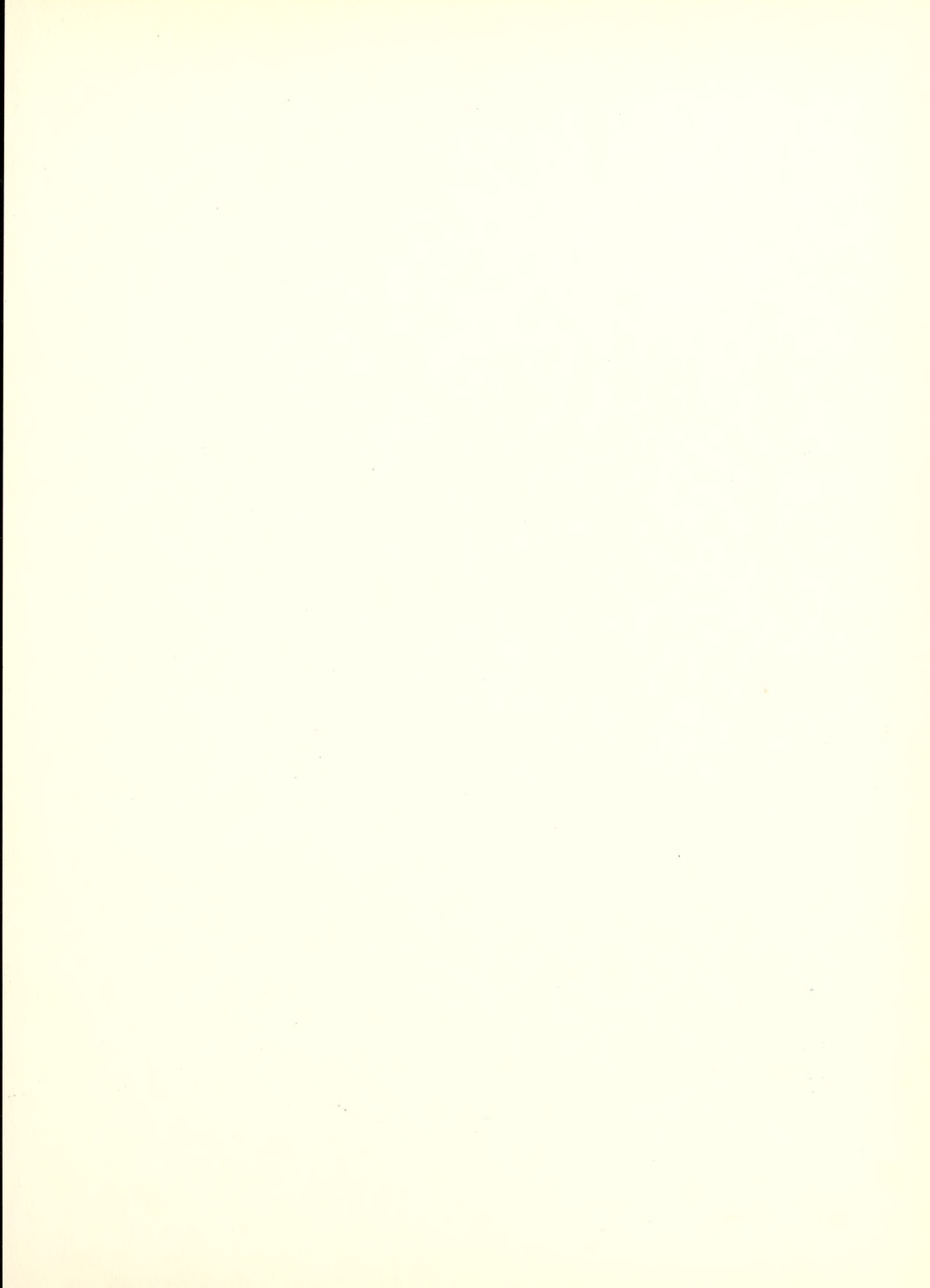
CAROLINA WAIN

1950



Digitized by the Internet Archive  
in 2011 with funding from  
LYRASIS Members and Sloan Foundation

<http://www.archive.org/details/carontawan1950ye00mans>





# The CARONTAWAN . . . 1950



*As we follow the sun—  
so follow the seasons*

MANSFIELD STATE TEACHERS COLLEGE • MANSFIELD, PA.



## President's Message

When you decided to become a part of the profession of teaching, your decision concerned not only the use you will make of yourselves and your talents but in a most vital way the lives of thousands, who for better or worse, will sit at your feet. As beneficiaries of countless influences for good, we challenge you to make your influence on others count.

Your influences may be constructive or destructive: create harmony or discord; encourage the evil or the good forces about you; uphold high ideals or lower them; encourage intelligence or stupidity. As teachers your influence will not only grow with use, but by using it intelligently your own sense of direction and values will grow thereby.





## So Issued Forth The Seasons

### To the Freshmen . . .

First lusty Spring, all dight in leaves of flowers  
That freshly budded, and new blossoms did bear,  
In which a thousand birds had built their bowers,  
That sweetly sung to call forth paramours;  
And in his hand a javelin he did bear,  
And on his head (as fit for warlike stores)  
A gilt engraven morion he did wear,  
That, as some did him love, so others did him fear.

### To the Sophomores . . .

Then came the jolly Summer, being dight  
In a thin silken cassock colored green,  
That was unlined, all to be more light,  
And on his head a garland well besene.





# Of The Year



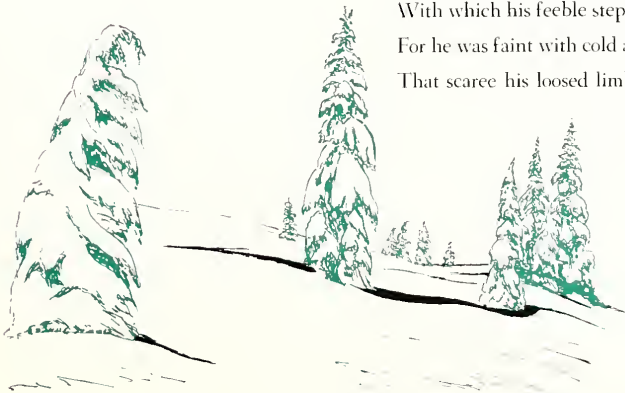
## To the Juniors . . .

Then came the Autumne, all in yellow clad,  
As though he joyed in his plenteous store,  
Laden with fruits that made him laugh, full glad  
That he had banished hunger, which to-fore  
Had by the belly oft him pinched sore;  
Upon his head a wreath, that was enrold  
With ears of come of every sort, he bore,  
And in his hand a sickle he did holde,  
To reape the ripened fruit the which the earth had yold.

## To the Seniors . . .

Lastly came Winter, cloatbed all in frize,  
Chattering his teeth for cold that did him chill;  
Whilst on his hoary beard his breath did freeze,  
And the dull drops that from his purple bill  
As from a limbeck did adown distill;  
In his right hand a tipped staff he held  
With which his feeble steps he stayed still,  
For he was faint with cold and weak with eld,  
That scarec his loosed limbs he able was to weld.

*Spenser.*





## DEAN OF INSTRUCTION

HERBERT E. MANSER

A little learning is a dangerous thing;  
Drink deep, or taste not the Pierian spring;  
There shallow draughts intoxicate the brain,  
And drinking largely sobers us again.

—Alexander Pope

## DEAN OF WOMEN

DOROTHY M. WASLEY

### THINGS TO REMEMBER

*By Marshall Field*

The value of time  
The pleasure of working  
The dignity of simplicity  
The worth of character  
The power of kindness  
The influence of example  
The obligation of duty  
The wisdom of economy  
The virtue of patience  
The joy of originating



## DEAN OF MEN

LAWRENCE H. SNIVELY

"The law of worthy life is fundamentally the law of strife. It is only through labor and painful effort, by grim energy and resolute courage that we move on to better things."—Theodore Roosevelt.



## HOME ECONOMICS

ELIZABETH B. MORALES, B.S., M.A. (Columbia), Head of the Home Economics Department.

CHRISTINE BEASLEY, B.S. (Alabama), M.Ed. (Colorado State), Instructor in Home Management and Child Development.

MARYON FARRER, B.S. (Simmons), M.A. (Columbia), Instructor in Nutrition, School Lunch, and Bacteriology.

MELINDA FLAT, B.S. (Indiana S. T. C.), M.Ed. (Penn State), Instructor in Clothing and Applied Design.

LILYAN K. GALBRAITH, B.S., M.S. (West Virginia), Supervisor of Home Economics.

OLIVE H. GRIFFIN, B.S. (Mansfield), M.S. (Cornell), Instructor in Foods and Family Health.

ELEANOR JOHNSTON, B.S., M.S. (Minnesota), Instructor in Clothing and Foods.

## MUSIC

MARJORIE C. BROOKS, B.S. (New York), M.A. (Eastman), Director of Music Department.

CORA A. ATWATER, Diploma (Elmira), Mus.B. (Chicago Conservatory), Instructor in Voice.

FLORENCE R. BORKEY, B.S. (West Chester), B.M. (Eastman), M.A. (Columbia), Instructor in Piano and Eurythmics.

JOHN G. DOYLE, Diploma (Julliard), B.A. (Charleston), M.A. (Columbia), Instructor in Piano.

BERTRAM W. FRANCIS, B.M.E., Mus.M. (Northwestern U.), Instructor in Band Instruments.

MILDRED HARDING, B.F.A. (Georgia U.), M.A. (Columbia), Instructor in Piano.

AUSTIN LEDWITH, Certificate (Yale), Mus.B. (New England Conservatory), M.A. (Harvard), Instructor in Music Theory.

CHRISTINE S. LEWIS, B.S. (Missouri), M.A. (Northwestern U.), Instructor in Voice.

JOHN B. LITTLE, B.M. (Southern Methodist U.), M.M. (Eastman), Instructor in Piano.

SIGMUND MICHOTA, B.S., M.A. (New York), Instructor of Stringed Instruments and Conducting, Director of Orchestra.

DOROTHY G. MORSE, B.A., M.A. (Carnegie Institute of Technology), Instructor in Piano, Supervisor of Music Student Teachers.

CLARISSA A. RANDALL, B.S., M.A. (New York), Instructor in Methods and Music Appreciation.

ROBERTA SCHLOSSER, B.M., M.M. (Eastman), Instructor in Music Theory and Choral Conducting.

ALBERT W. SCHROER, B.S.M., A.B. (Bluffton), M.A. (Ohio State), Instructor in Voice and Chorus.

## ELEMENTARY

GEORGE A. RETAN, Pd.M. (Mansfield), B.F. (Pennsylvania State Forest School), Ph.D. (New York), Director of Elementary Education, Student Teaching and Placement.

JEAN M. BESSER, B.Ed. (Geneseo), M.A. (Syracuse), Supervisor of Kindergarten.

MARY JANE BIGGY, B.A.Ed. (Bucknell), M.S.Ed. (Pittsburgh), Supervisor of Grade One.

MILDRED L. GRIGSBY, B.S. (Bucknell), M.A. (Columbia), Supervisor of Grade Six.

LORENE M. HABEGER, B.S. (Kansas Teachers), M.A. (Columbia), Supervisor of Grade One.

ENID L. HENDRICKS, B.Ed. (Bridgewater), M.Ed. (Boston U.), Supervisor of Grade Five.





RUTH M. HUGHES, B.S. (Mansfield), M.A. (Columbia), Supervisor of Grade Three.

CLARENCE L. HUNSICKER, B.S.Ed. (Bloomsburg), M.S. (Bucknell), Supervisor of Grade Five.

DOROTHY HUTCHINSON, B.S., M.S. (Pennsylvania), Supervisor of Grade Four.



JACOB H. JONES, A.B. (Penn State), M.A. (Columbia), Supervisor of Grade Four.

JEANNE M. KELLERMAN, B.S.Ed. (East Stroudsburg), M.S. (Penn State), Supervisor of Grade One.

EDNA P. MARSH, B.S., M.A. (Columbia), Supervisor of Grade Three.

MARY E. SIGAFOOS, B.A., M.A. (Iowa State), Supervisor of Grade Two.

ELIZABETH P. STALFORD, B.S. (Bucknell), M.A. (Columbia), Supervisor of Grade Six.



KATHRYN M. ROYER, B.S., M.S. (Penn State), Instructor in Art.

### EDUCATION AND PSYCHOLOGY

MARGARETTE BONE, B.S. (Bloomsburg), M.Ed. (Penn State), Ed.D. (New York), Instructor in Education.

G. HIEL GRAMLEY, B.S. (Albright), M.A. (Bucknell), Director of Publicity, Instructor in Education and English.

FRED A. JUPPENLAZ, B.S. (Mansfield), M.Ed. (Bucknell), Instructor in Education and Veteran Adviser.



EARL W. SEIBERT, A.B. (Elizabethtown), M.Ed. (Penn State), Ph.D. (New York), Instructor in Education and Psychology.

### HEALTH AND PHYSICAL EDUCATION

EDWARD D. CASEY, A.B. (Scranton), M.A. (New York), Athletic Coach.

MARION E. DECKER, B.S. (Illinois), M.Ed. (Penn State), Instructor in Health and Physical Education.



HELEN M. DIEFFENBACH, B.S. (East Stroudsburg), M.Ed. (Penn State), Instructor in Health and Physical Education.

ELIZABETH DUFF, B.S. (Kent State U.), M.S. (New York), Supervisor of Physical Education and Health Education in Campus Elementary School.

### LANGUAGES

ELIZABETH S. ALLEN, B.S. (Mansfield), M.A. (Columbia), Instructor in English.



MARGARET J. O'BRIEN, A.B. (Syracuse), M.A. (McGill), Instructor in English.

ELIZABETH M. SWAN, A.B. (Kentucky), M.A., Ph.D. (Virginia), Instructor in Literature.

SARAH I. DRIM, A.B., M.Ed. (Pittsburgh), Instructor in French and Spanish.

### MATHEMATICS

LLOYD E. HOWE, B.S. (Juniata), M.Ed. (Pittsburgh), Instructor in Physical Science and Mathematics.



S. MANFORD LLOYD, B.S., (Mansfield), M.A. (Columbia), Instructor in Mathematics.

### SCIENCE

GRANT L. BARTHOLOMEW, B.S. (Lafayette), M.A. (New York), Instructor in Physical Science.



LEONARD K. BEYER, B.S. (Bethany), M.S. (Cornell), Instructor in Biological Science.

NEWELL A. SCHAPPELLE, B.S. (Massachusetts State), Ph.D. (Cornell), Instructor in Physical and Biological Science.

ALBERT K. SUNDBERG, B.S. (Lock Haven), M.Ed. (Penn State), Instructor in Physical Science.



## SOCIAL STUDIES

JAY B. FOREMAN, A.B., M.A. (Penn State), Instructor in History.

GEORGE L. J. LANGDON, B.S., M.S. (Penn State), Instructor in Geography and Geology.

LEON E. LUNN, B.S. (Mansfield), M.Ed. (Saint Bonaventure), Instructor in History.

EVERT R. PEARCY, A.B. (Salem), M.S. (West Virginia), Instructor in Social Science.

### SUPERVISORS OF JUNIOR HIGH SCHOOL

JESSIE I. GRIGSBY, B.S., M.A. (New York), Principal and Supervisor of Mathematics, Campus Junior High School.

VIRGINIA J. CONSON, A.B. (Randolph-Macon), M.A. (Peabody), Supervisor of English.

KIMBLE G. MARVIN, B.S. (Lafayette), M.A. (New York), Supervisor of Health and Science.

RUSSELL McCOMMONS, B.S. (Edinboro), M.Ed. (Pittsburgh), Supervisor of Art in Campus Schools.

JANE S. MERVINE, A.B. (Hood College), M.A. (U. of Michigan), Supervisor of English.

CLARENCE R. MUTCHLER, B.S. (Lock Haven), M.S. (Bucknell), Ed.D. (Penn State), Supervisor of Science.

BERTHA R. PALMER, B.S. (Bucknell), B.S. in Lib.Sc. (Millersville), Librarian of Campus Schools.

JOHN REESE, B.S. (Mansfield), Supervisor of Industrial Arts.

JOHN S. SANDEL, B.A., M.S. (Penn State), Supervisor of Social Studies.

RICHARD M. WILSON, B.S. (Mansfield), M.Ed. (Penn State), Supervisor of Social Studies and Science.

### SUPERVISORS OF SENIOR HIGH SCHOOL

WARREN L. MILLER, B.S. (Mansfield), M.S. (Bucknell), Supervising Principal and Instructor in Physics.

JOHN H. BAYNES, B.S. (Mansfield), Mus.M. (Michigan), Instructor in Music.

THEODORE R. BESANCENEY, B.S. (Mansfield), Instructor in Economic Geography, Mathematics, and Physical Education.

MARY M. BRACE, B.S. (Mansfield), Instructor in Home Economics.

MARION GLECKLER, B.S. (Mansfield), M.A. (Syracuse), Instructor in English.

CHARLES H. HESS, B.S. (Penn State), Instructor in Agriculture.

FAUSTINA B. HUGHES, A.B. (Penn State), M.A. (Pennsylvania), Instructor in English and Latin.

C. MAX MILLIREN, B.S. (Mansfield), M.Ed. (Duke), Instructor in Mathematics.

HELEN S. STRAIT, A.B. (Wilson), Instructor in History.

JUNE B. TERRY, B.S. (East Stroudsburg), Instructor in Physical Education and Health.

WILLIAM WANICH, B.S. (Bloomsburg), Instructor in Commercial Subjects.

GLADYS YOUNG, B.S. (Mansfield), Instructor in Science and French.



## NON INSTRUCTIONAL STAFF



GEORGE W. BORDNER, Assistant College Librarian, B.S.Ed. (Kutztown).

BERNICE BORNEMAN, Clerk in Campus Book Store.

HELEN CLEVELAND KODISH, Secretary to the Dean of Instruction.



DONNA COWAN, Secretary to the Director of Music.

JENNIE CROOKS, Head Waitress.

W. H. DEAS, Dietitian.



JANE R. EARLY, Clerical Assistant in Business Office.

JUDY ENTWISTLE, Secretary to the Director of Home Economics.

BETTY HARBACH, Stenographer and Clerk.



EDNA HEWSON, Registrar (Geneseo State Normal, Elmira Business Institute, Gregg).

EDYTHA KEENEY, R.N., Campus Schools Nurse (Chifton Springs).

WAYNE M. KELTS, Business Manager.



JANET KNOUSE, Account Clerk.

BRUNSWICK W. LEONARD, Account Clerk.

IRENE LUKE, Manager of the College Book Store.



GEORGIANNA McNAUGHTON, Matron.

JOSEPH J. MOORE, M.D. (Pennsylvania), College Physician.

MOLLY L. REED, Assistant Dean of Women, B.S. (Salem Teachers), M.A. (Syracuse).



LAURA C. REHBEIN, Bookkeeper.

MARGARET ROE, R.N., College Nurse (Hahnemann Hospital).

PHYLLIS SEMKO, Stenographer and Clerk.



MARGARET SHAW, College Nurse (West Baltimore General Hospital).

THELMA SHAW, R.N., College Nurse (Phillipsburg State Hospital).

ROSS W. SOPER, Receiving Clerk (Mansfield).



REA J. STEELE, College Librarian, A.B. (Wisconsin), M.S. in L.S. (Columbia).

VICTORIA H. THIEMANN, Revenue Agent.

ANNA MAE TRAUTMAN, Secretary to the President.

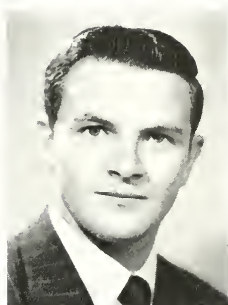


HOWARD A. VOSBURG, Superintendent of Grounds and Buildings.

WILMA S. WHEELER, Clerk in Library.

MARGARET WOOD, Secretary to the Director of the Campus Schools.

# STUDENT COUNCIL



WILLIAM CONWELL  
*President*

The meetings of the 1949-50 Student Council of Mansfield State Teachers College were held on the first and third Mondays of each month.

The Student Council is the governing body of the Student Government Association of the college. Its members are from all major organizations on campus, and are representative of each student.

Among the various activities of the Council were the fostering of closer relationship between the student body and the administration, publishing the "Password," planning the social calendar, assumption of the responsibility of sponsoring the after-dinner dances, and helping to elect the representatives to "Who's Who Among Students in American Colleges and Universities."



Seated, Left to Right: Betty McCabe, William Conwell, Marion Ditzler, Ellen Spencer, Dean Wasley, Dean Snively. Standing: Therese Napolitan, Betty Whitehorn, James Phillips, Harold Hunter, Thomas Harrington, Richard Swetland, Robert Maxson, Rita Masterson, Lydia Kinney.



*Seated, Left to Right:* Ruth Tingley, Beatrice Shafer, Betty Whitehorn, Miss Reed. *Standing:* Barbara Thomas, Dean Wasley, Gwendolyn Roy, Nancy Fray, Mildred Kneiss, Nadine Davidheiser, Jean Murphy, Millie Davis.

## Women's Dormitory Council

Every spring the women students in North Hall elect eight students to serve as the Dormitory Council for the coming year. In the fall two freshman students are added to the Council, which is the governing body of the women's dormitory.

The Council's objectives are: to provide comfortable living; to develop individual and group responsibilities; to practice courtesy and consideration of others; and to encourage high scholastic standards. Some of the Council's annual projects are: the provision for "big and little sisters" and "sophomore pals"; and many hall parties. All students living in North Hall participate in these activities which are guided by Dean Wasley and Miss Reed.

## Men's Dormitory Council

The Men's Dormitory Council is the governing body of the association of men students living in the college dormitories. It consists of the president and four members who make and enforce regulations for the dormitory students, plan for its social life, and act as a judicial body, with the dean of men as its adviser.



*Seated, Left to Right:* James Phillips, Dean Snively. *Standing:* Raymond Tyrrell, Donald Buford, Anthony Petrillo, Thomas Hurley.



# Day Students Club

Advisers—MISS REED, MR. SNIVELY

## OFFICERS

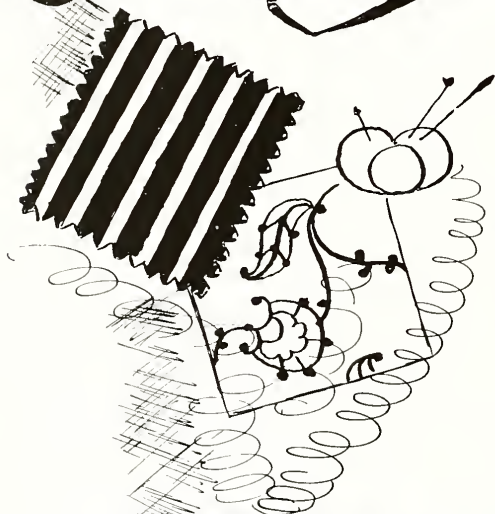
<i>President of Men's Day Students Club</i>	- - - - -	STUART MACKOWIAK
<i>President of Women's Day Students Club</i>	- - - - -	LYDIA KINNEY
<i>Vice President of Men's Day Students Club</i>	- - - - -	CHARLES BURICH
<i>Vice President of Women's Day Students Club</i>	- - - - -	NAN MAUL
<i>Secretary-Treasurer</i>	- - - - -	LORRITA SMITH

The objectives of the Day Students Club are to associate the previously separated Men's and Women's Day Students Clubs, to have a definite voice in the Student Government Association, and to create good will among the day students and the dormitory students through progressive activities.

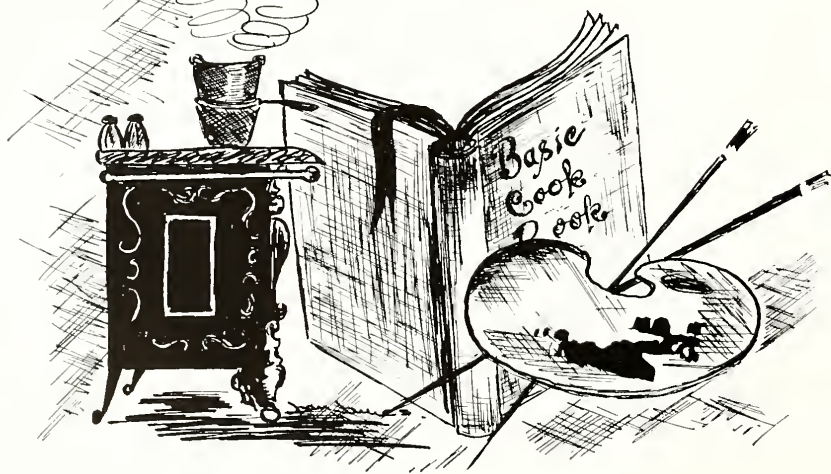
The men and women students participate in picnics, luncheons, and parties, and discuss their problems for the good of their organization.



First Row, Left to Right: Frances Hendricks, Lorrita Smith, Lydia Kinney, Mary Lynne Stevens, Nan Maul, Miss Reed. Second Row: Dean Snively, Andrew Michanowicz, Frank Michanowicz, Richard Boyce.



# HOME ECONOMICS





Under the careful guidance of its instructors the Home Economics Department has sent out many excellent teachers. Not only has the department gained a fine reputation for the ability of the students to teach but also for their ability to be Homemakers and to take their place in the world today.

Every opportunity is given to the girls to practice Home Economics in all of its phases. A very attractive apartment is set up on campus where small groups of students live with a resident director for a period of six weeks during their Junior year. They also spend nine weeks managing the school lunch at the Junior High School.

An important part of the Senior girls' curriculum is the nursery school, which is conducted for one semester. Here they are associated with the children, learning their habits and personalities. Each student teaches for a period of one semester on campus under careful guidance and has the additional privilege of teaching children under the supervision of a vocational homemaking department in an approved high school in Pennsylvania.

Fashion shows, food demonstrations, dinners, teas, and exhibits are interesting, worthwhile projects and activities of the department. The course at Mansfield meets the requirements for certification in Home Economics Education. In addition, each student gains inspiration and knowledge with which to encourage others in the community to create better living and, as an ultimate goal, to live graciously in her own home or within her profession.



Music  
Department

Listen  
Jean Gance

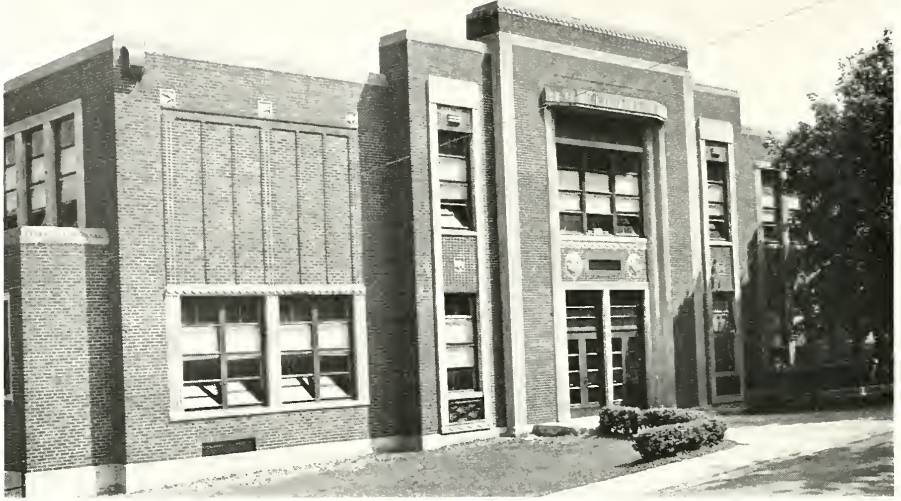


The students of the Music Department portray their musical ability professionally on and off campus in various organizations such as: Woodwind Quintet, String Quartet, Vocal Quartet, Brass Ensemble, Madrigal Singers, Symphony Orchestra, and Marching and Symphonic Bands. The faculty of music gives instructive recitals of exemplified professionalism.

The Music Department is responsible for most of the musical programs on campus which, in turn, exemplify the highest possible professional standard that is set up for each student enrolled in this department.

The Music Department with its curriculum based on musical literature from the world's great composers and compositions of all periods represents an attempt to develop an understanding for the student. Emphasis is placed on the applied teaching techniques in music literature from these periods.

Music is indeed a seasonal salutation to everyone. It inspires everyone, even beyond his own comprehension. The Music Department aims to continue this salutation from the world of yesterday into the promising world of tomorrow.



## Elementary Department

In the Campus Elementary School, the nucleus of the Elementary Department, our student teachers study the individual child through records and talks with his parents. Elementary supervisors give student teachers training in a typical class-room situation.





## Secondary Department

One of the functions of the college is to prepare competent instructors for secondary schools, to the end that . . . the Commonwealth and Nation shall have an enlightened citizenry fully capable of self government in a republic, and . . . a young generation of men and women who have the necessary foundations to become expert in one or more of the specialized fields which the welfare of society may require.





# Freshmen

Spring still makes spring in the mind,  
When sixty years are told;  
Love makes anew this throbbing heart,  
And we are never old.  
Over the winter glaciers,  
I see the summer glow,  
And through the wild piled snowdrift  
The warm rosebuds below.

*—Ralph Waldo Emerson*

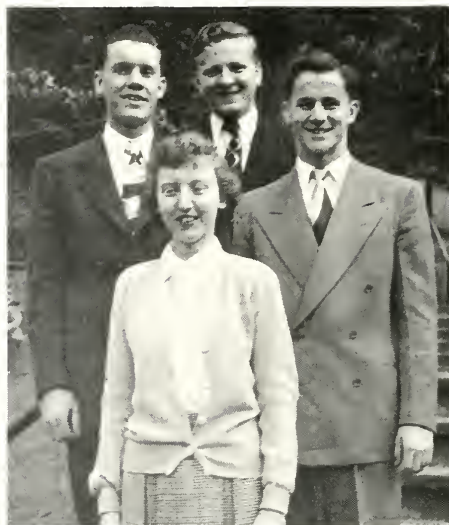




*Advisers*—DEAN WASLEY, DEAN SNIVELY

OFFICERS

*President* - - - HAROLD HUNTER  
*Vice President* - - - ROBERT DECKER  
*Secretary* - - - MARTHA WILLIAMS  
*Treasurer* - - - BRADLEY ALLEN



Allen

Hunter  
Williams

Decker

## The Freshman Class

Mansfield opened wide its doors to welcome us—timid, meek, and mild. We, the little 54's, entered these portals with wondering hearts. Soon we met face to face with the Sophomores, and survived the initiation by producing a great show and dance. We, the Freshmen, will truly try to build Mansfield's glory to the best of our ability. Our aim is to add to Mansfield's honor and fame.



TOP PICTURE

*First Row, Left to Right:* Terry Augustine, Margaret Barden, Elta Carlstrom, Audrie Brush, Helen Alger, Priscilla Blowers, Joyce Austin, Barbara Baileys, Ruth Billmeyer, Berniece Britton. *Second Row:* Anna Burgett, Marilyn Bush, Hazel Beers, Reba Beers, Barbara Ball, Mary Casbeer, Dorothy Balfour, Jennie Brush, Edwin Brinaed. *Third Row:* Shirley Boyle, Mary L. Ayres, Martha Bogaczyk, Evelyn Buza, Ernia Jean Bastian, Virginia Burgess, Margaret Bennett, Charles Ayres. *Fourth Row:* Wickum Booth, Wilbur Bell, Nicholas Brown, Robert Boyce, Howard Beech, George Bliss, Thomas Best, William Butles. *Fifth Row:* Louis Brackman, Richard Bergh, Louis Allen, Gerald Brown, Glenn Bastian, Ford Button, Fred Brooks. *Sixth Row:* Blaine Ballard, Bradley Allen, Clair Campbell, Robert Bierns, Andrew Carola, Mark Bliss.

BOTTOM PICTURE

*First Row, Left to Right:* Charlotte Coxe, Shirley Contad, Barbara Corey, Dolores De Laurentis, Esther Clossen, Beverly Chaffee, Erma Croman, Louise Erichson, Margaret Edmunds, Winifred Deakhin. *Second Row:* Frank Ely, Mary Dewey, Marie Check, Millie Davis, Dorothy Creary, Patricia Coyle, Alice Ferris, Harold Evans. *Third Row:* Jean Fex, Clara Curtis, Barbara Evans, Robert Day, Dvane Drew, Francis Criss. *Fourth Row:* Keith Dewey, Benjamin Evans, Robert Decker, Preston Erway, James Dewitt, Gerald Darow, Leon Fice. *Fifth Row:* Komas Diveris, Silvio Cerchie, Gerald Eastman, Richard Clark, Richard Cooney, Jack Erway, William Farrell. *Sixth Row:* Melville Dickinson, Donald Davis, John Conrad, Charles Driscoll, James English, Paul Coon.



TOP PICTURE

*First Row, Left to Right:* Marie Freeman, Lula Mae Fuller, Janice Hoffman, Louise Hill, Barbara Keller, Margaret Fray, Ruth Lane, Karol Keneski. *Second Row:* Betty Hayden, Cynthia Glennon, Mary Konsho, May Klue, Virginia Lee, Miriam Kowaleyzk, Anna Marie Hooley, Donna Jones, Ada Frailey. *Third Row:* Guy Gross, John Fisher, Thomas Gorrell, Carl Hedglin, Richard Johnson, Duane Fiocca, Bernard Gruber, Donald Kelsey. *Fourth Row:* Chester Kislosky, Robert Griffith, Donald Hoof, James Hambricht, Reuben Hill, Merle Flanders, Richard Grosdefon, Edwin Gillmore. *Fifth Row:* Richard Kreechbaum, Scott Frear, Hiram George, Howard Hughes, Donald Jones, Walter Clemmington, William Hinder. *Sixth Row:* Robert Gross, Stephen Jurnack, Luther Hoffman, Harold Hunter.

BOTTOM PICTURE

*First Row, Left to Right:* Linda Lloyd, Peggy Miller, Miriam McMiller, Lois Long, Joyce Lupton, Lois Owens, Marie Muller, Carol McLaughlin, Dorothy Miller. *Second Row:* Barbara Meyer, Mary Osborn, Norma Maynard, Barbara Long, Elizabeth Murphy, Avis McArthur, Joanne Parker, Esther McCracken. *Third Row:* James McGoff, Clyde Miller, Kenneth Machet, Eugene Place, James Maginsky, Robert Newman, Elmer Pitcher. *Fourth Row:* Stanley Mumford, James Longacre, Donald Parsons, Edward Seleck, George Biebe. *Fifth Row:* Donald Mahon, George Petrillo, Jack Pierson, Stephen Mott, Fred Litwin, John McCormick, William Meade, Andre Meluskey. *Sixth Row:* Kenneth McDonald, John McLean, James Marshall, Jack Nuschke, Robert Park, Robert Kritt, Lavern Merritt.



TOP PICTURE

*First Row, Left to Right:* Charlotte Peeke, Esther Purvis, Yvonne Sherman, Elizabeth Slocum, Helen Russell, Audrey Seeley, Harriet Ross, Arlene Schaffer. *Second Row:* Edward Solomon, Charles Silvick, Marilyn Press, Ruth Siegfried, Shirley Schneider, Dawn Peechatka, Joseph Simonetti, Robert Share. *Third Row:* Paul Shepanski, Gilbert Schmidt, Bertram Silver, Robert Shevan, Edward Bompola, John Rosser, Robert Robbins. *Fourth Row:* George Shoffstall, Thomas Ringgard, Herbert Ruegg, Warren Seamore, Thomas Prugh, Edward Roberts. *Fifth Row:* Harold Shay, Donald Stanton, James Vaughn, Joseph Soper. *Sixth Row:* Myron Shoffstall, Anthony Roan, Neil Slater.

BOTTOM PICTURE

*First Row, Left to Right:* Irene Weaver, Lorraine Syracuse, Catherine Williams, Mary Ann Zngarchik, Julia Wertz, Dora Jane Taylor, Eleanor Sturman, Lucille Updegraff. *Second Row:* Mary Zimmer, Sne Sutton, Martha Williams, Margaret Taylor, Mary Ellen Taylor, Virginia Wilbur, Onalee Swan, Carol Woodrow. *Third Row:* Carl Wisneski, Maurice Tuning, James Wakely, Charles White-sell, Dale Van Natta, Walter Thomas, Donald Stakes. *Fourth Row:* Joseph Zimek, Eugene Svirbely, James Walbridge, Alphonse Zastavny, Richard Turner, John Strupevski, William Young. *Fifth Row:* Howard Webster, Merlin Teed, Ralph VanKeuren, Richard Thorne, Richard Wilcox, Gerald Walsh.

## HAHNEMANN NURSES



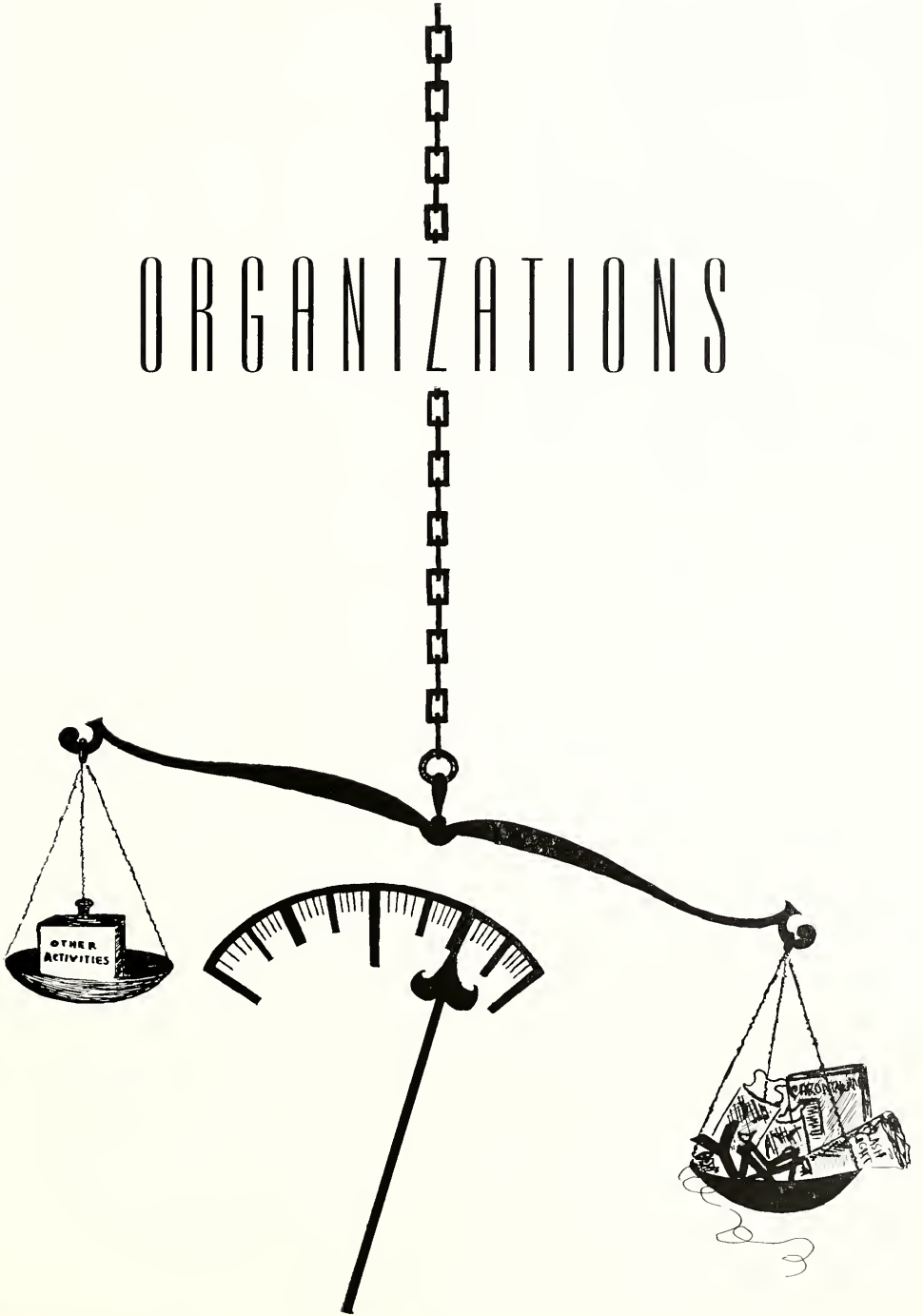
*First Row, Left to Right:* Anne Butrim, Betty Jane Baron, Marjorie Paterjoy, Betty Quick, Dorothy James, Jacqueline Mahoney, Michelina Cariati, Helen Krohl. *Second Row:* Mary Koehler, Joy Langan, Florence Tondora, Teresa Cerwonsky, Catherine Murray, Dolores Slick, Marilyn Ozdnung. *Third Row:* Miss Molly McGrath, Charlotte Russell, Esther Atlas, Marcine Drabert, Joan Price, Virginia Smith, Frances Stuckart, Frances Wenckus.

## ROBERT PACKER NURSES



*First Row, Left to Right:* Miss Askew, Jane Tiffany, Alice Bunn, Barbara Thomas, Irene Varga, Joanne Way, Ernestine Pincock, Elizabeth Daly, Claire Shea, Ann Greene, Eleanor Kibble. *Second Row:* Jean Murphy, Mary Ellen Lorenz, Janette Coddington, Marcella Russell, Alice Setzer, Kathryn Bushofsky, Irene Bullock, Patricia Reynolds, Audrey Metzgar, Jean Johnston, Lois Benning. *Third Row:* Evelyn Austin, Mary Lyon, Patricia Kelly, Marilyn Warden, Margaret Janowski, Margie White, Ernestine Soporowski, Sandra Fuller, Carole Wilson, Betty Marie Bedford. *Fourth Row:* Norma Laman, Barbara Huston, Joan Weaver, Pearl Schaner, Marlene Dunne, Ruth Lawrence, Marilyn Van Fleet, Marilyn Martin, Shirley Carter, Ann Fessenden. *Fifth Row:* Lois Porter, Barbara Horn, Janet Valentine, Patricia Payne, Edna Burnell, Joyce Hickok, Cora Jane De Munn, Barbara Houscknecht, Bethel Sturdavant, Virginia Koontz. *Sixth Row:* Joan Smith, Beverly Slater, Katherine Donnelly, Lois Freeman.

# ORGANIZATIONS





*Seated, Left to Right: Miss F. Borkey, Emily Borck, Margery Brush, Charmaine Burdick,  
Standing: Joyce Merrill, Marjorie Porter, Hughla Borden, Janet E. Taylor, Ruth Hemmerly.*

## Y. W. C. A.

*Advisers—MISS BORKEY, MISS REED*

### OFFICERS

<i>President</i>	CHARMAINE BURDICK
<i>Vice President</i>	EMILY BORCK
<i>Secretary</i>	LAURA ECKROTH
<i>Treasurer</i>	MARJORIE BRUSH

The Young Women's Christian Association is open to all women students enrolled at Mansfield State Teachers College. It is a member of the National Student Y. W. C. A. and the Student Christian Movement. The purpose of the Y. W. C. A. is "to unite in a desire to realize full and creative life through a growing knowledge of God."

All the programs are based on the program outlined by the National Assembly of the Student Christian Association Movement.

The Y. W. C. A. meets on the first and third Thursdays of every month. On the fourth Thursday a joint meeting of the Y. W. C. A. and the Y. M. C. A. is held and different ideas are shared. Debates, discussions, plays, speeches, movies, and book reviews are some of the many ways in which this organization strives to help individuals to grow spiritually.





Seated, Left to Right: Dean Hill, Charles Brown, Keith Dewey, Robert Castle, Gerald Eastman, John Nuschke.  
 Standing: Franklin Coole, James Barrett, Robert Robbins, Leon Kreger, Edward Roberts, Richard Stone, Reese Berdanier, Glenn Barrett, Frank Fish, Russell Chaffee, Paul Coon.

# Y. M. C. A.

Adviser—Dr. MUTCHLER

## OFFICERS

President	GLENN BARRETT
Vice President	FRANK COOLE
Secretary	RUSSELL CHAFFEE
Treasurer	WAYNE SAXTON

The Y. M. C. A. meets regularly twice a month. In addition, it meets interested in developing Christian character and creating a Christian society.

By its varied program, the Y. M. C. A. encourages spiritual, mental, and social growth. This is done through worship and study programs, recreational activities, and participation in campus and community life.

The Y. M. C. A. meets regularly twice a month, in addition, it meets monthly with the Y. W. C. A. to exchange and discuss ideas of common interest.

The Y. M. C. A. also sponsors a Gospel team which is organized for the purpose of spreading Christianity. The Team conducts services in many churches within a forty mile radius of Mansfield. Members give freely of their time and talent toward this objective.



# Omicron Gamma Pi

*Adviser—Miss FIAT*

## OFFICERS

<i>President</i>	MARGARET SPLEEN
<i>Vice President</i>	CONSTANCE TINGLEY
<i>Secretary</i>	GLORIA BENFER
<i>Treasurer</i>	SHIRLEY RAUSCHER

Omicron Gamma Pi is an active organization open to all home economics students. The club is affiliated with the State and National Home Economics Association.

The organization aims to promote unity among classes, to create better teaching activities for the student teacher, and to make better and happier homes in the future.

Each year the club plans one special event. This year it entertained 225 F. H. A. members at their regional convention.

Programs for this past year centered around England. The objective of this plan was to know more about home economics in England in order that Mansfield's Omicron group could aid similar groups in England through teacher exchange or through an exchange of knowledge.



## A. C. E. I.

Adviser—DR. GEORGE A. RETAN

### OFFICERS

<i>President</i>	BARBARA RAMSEY
<i>Vice President</i>	DOROTHY MANNING
<i>Primary Vice President</i>	AUDREY CORNELL
<i>Intermediate Vice President</i>	MARJORIE PORTER
<i>Secretary</i>	VELMA CRUTTENDEN
<i>Treasurer</i>	ARLENE CRAIG

The Association of Childhood Education International, better known on the campus as the Elementary Club, is a professional organization open to all elementary students. It is affiliated with the state, national and international organizations, of which it is a branch. This year the A. C. E. I. has a membership of ninety-five students and faculty members.

The purpose of the club is to promote a broader interest in the education of young children, and to develop a professional outlook which will become an integral part of the student's life at college and in service as a public school teacher.

The A. C. E. I. fosters social and community leadership through its programs and social activities. The programs for this year are related to the theme of community service and world-mindedness. Participation in the work of U. N. E. S. C. O. is a part of this program. In carrying out the purposes of this organization, its members experience the pleasure of working together and having fun in service.



*Front Row, Left to Right:* Barbara Meyer, Barbara Snyder, Catherine Lrvey, Florence Grimm, Thomas McLain, Miss E. Allen, Eugene Horn, Marie Hembury, Ray Kepner, Richard Stone, Kenneth Brown. *Second Row:* James Phillips, Donna Jones, Marian Kostenbauer, Lois Long, Donna Kershner, Gloria Benfer, Frances Hendricks, Fanny James, Joanne Johnson, Irene Tompkins, Phyllis Benson, Richard Hutchinson. *Third Row:* Richard Boyce, James White, Martha Ashby, Corrine Crawford, Lucille Mirmak, Elizabeth Bedcay, Gail Ross, Mary L. Taylor, Lorritta Smith, Betty Nelson, Charles Dempsey, Richard Cook. *Fourth Row:* Richard Clark, Llewellyn Turnball, Eugene McLain, Robert Sharc, Evan Thomas, Alphonse Zastavny, Donald Buford, Robert Long, Ford Button, Russell Chaffe, Howard Webster.

## College Players

Advisers—MISS ALLEN, MISS DRUM

### OFFICERS

<i>President</i>	EUGENE HORN
<i>Vice President</i>	THOMAS McLAIN
<i>Secretary</i>	BEVERLY THEETGE
<i>Treasurer</i>	FLORENCE GRIMM

The College Players have as their objective the growth of those qualities which contribute most to personal and professional advancement. They believe whole-heartedly in the value of their organization and through this belief find it fun, hard work, and immensely rewarding.

It is due, in no small measure, to the capable direction of Miss Allen and Miss Drum that College Players is able to present for their productions Broadway hits as well as classics of the drama. This has been evidenced by the 1948 spring production of "If I Were King," by "Pride and Prejudice" in 1947, "Midsummer Night's Dream" in 1946, "Jane Eyre" in 1945, and by modern comedies each fall.

Participation requires a great deal of work and time, but the players are compensated for this by the enthusiasm expressed by the students for the



finished productions, and by the benefits they themselves derive from co-operative effort.

The dramatic organization on this campus is an integral part of college life, offering to any interested student warm fellowship, cultural and artistic growth and an additional important string to his professional bow.

## Lambda Upsilon Chapter of Alpha Psi Omega Dramatic Fraternity

In 1949 a chapter of Alpha Psi Omega, the national dramatic honor society, was organized at Mansfield. Membership in this fraternity by no means sets one apart from the rest of the College Players. Eligibility is based on a credit system set up by headquarters; and, when sufficient points have accrued to any player, he may join Alpha Psi Omega.

### CHARTER MEMBERS

- WILLIAM BOWER, P. G. '49
- DONALD BUFORD, '51
- SHIRLEY DUTCHER, '49
- FLORANCE GRIMM, '51
- ROBERT HENRY, '49
- HELEN HISSAM, '49
- EUGENE HORN, '50
- RICHARD HUTCHINSON, '50
- WELLINGTON LESTER, '49
- EUGENIA PORRETTA, '50
- EUGENE RHERER, cx-'50
- GORDEN SECOR, '49
- RALPH WELLER, '49



Buford
Horn
Hutchinson  
Grimm
Porretta



# Women's Athletic Association

Adviser—MISS DIEFFENBACH

## OFFICERS

<i>President</i>	BERNADINE SHAW
<i>Vice President</i>	MARY ALICE CAWLEY
<i>Secretary</i>	NADINE DAVIDHEISER
<i>Treasurer</i>	SARAH SPARKS

The Women's Athletic Association is one of the largest organizations on Mansfield's campus. All the women are eligible to become members. It is through this club that the Mansfield letter "M" may be earned. The association aims to create an interest in sports, recreational activities, and tournaments.

The organization provides equipment for skating, skiing, bowling, volleyball, basketball, hockey, tennis, swimming, badminton, softball, and shuffleboard.

Two of the organization's major aims are "fair play" and equal opportunities for all who participate. Membership insures clean fun.



First Row, Left to Right: Charles Smith, Raymond Mazza, William Keating, Joseph Cheplick, Edward Netski, Richard Fraley, Robert Phillips, Thomas Hurley. Second Row: Leon Daniels, Donald Moore, Kenneth Brown, William Corwell, Aaron Hafetz, Fausto Tomassoni, Leonard Kobeski. Third Row: Henry Goodman, Lacey Simcoe, Peter Dókas, Nello Burian, Edward Drabinski.

## "M" Club

Adviser—MR. EDWARD CASEY

### OFFICERS

President	JOSEPH HARRINGTON
Vice President	JOSEPH CHEPLICK
Secretary	JOSEPH MORESCO
Treasurer	NELLO BURIAN

The "M" Club is composed of men who have earned a varsity letter in one or more intercollegiate sport. Its purposes are to encourage wholesome living and good sportsmanship, and to stimulate interest in athletics.

It was in the fall of 1921 that a Mansfield State Teachers College student suggested that all varsity men form an honor organization, the result being the "M" Club.

In addition to managing the printing and sale of programs for home football games and operating concessions for basketball games, the club sponsors a spring sports dance.



First Row, Left to Right: Mary Davis, Virginia Cherrington, Miss Royer, Jean Trach, Joan James, Gloria Benfer, Audrey Cornell, Mary Louise Strohecker. Second Row: Beverly Theetge, Marion Kostenbauder, Frances Clarke Olive Knierim, Marjorie Bjork, Dorothy Everitt, Charmaine Loveland, June Place, Phyllis Benson, Patricia Cochran. Third Row: James Barrett, Anthony Horosko, Russell Chaffee, Francis Stracka, Anthony Domboski, Elizabeth Redcay, Laura McCarthy, Joyce Cunningham, Barbara Snyder, Charlotte Underwood, Cathryn Prouty.

## Art Club

Adviser—MISS ROYER

### OFFICERS

President	JEAN TRACH
Vice President	MARGARET RUSSELL
Secretary	JOAN JAMES
Treasurer	GLORIA BENFER

The Art Club is an honor society for persons who attain an "A" in one semester of art. It was organized in 1923 and is now affiliated with the Eastern Arts Association. The club promotes an appreciation of the fine arts through the examination and creation of artistic things, and sends delegates to the annual Eastern Arts Association. Campus and building decorations for the Christmas festivities are among the projects carried on each year by this club.



Of particular interest and value are work meetings, which influence the development of individual talent. The Mansfield chapter is guided by the aim of enriching life through the creation and appreciation of art.





Seated, Left to Right: Hembury, Febr, Thomas, T. Napolitan, Mr. Gramley, Stevens, Rohrey. Standing: Sick, Frye, Tedesco, Redcay, Woodring, Coole, Gombert, Tompkins, Booth, Hall, Strom, McCarty, Fiaschi, Ashby, Tingley, Jaquish.

## The Flashlight

*The Flashlight*, the student newspaper, is a monthly publication on our campus. It aims to make known any suggestions or constructive criticisms from all campus corners. It is published for the student body and is composed of articles about the students and their activities on the campus.

Each member realizes that the staff working together can attain the ultimate goal—the successful school paper.

### THE STAFF

*Editor* - - - - - THERESE NAPOLITAN

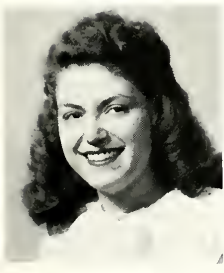
*Business Manager* - - - - - EVAN THOMAS

*Executive Board Members*—Patricia Rohrey, Lydia Kinney, Marilyn Febr, Donald Buford, Mary Lynne Stevens, Barbara Ramsey

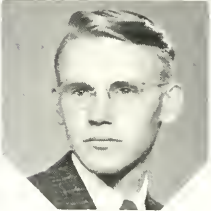
*Literary Staff*—Jean Porretta, Betty Nelson, Marie Hembury, Betty Booth, Rita Masterson, Tom Lynch, Warren Frye, Frank Flynn, Bill Jaquish, Gene Tedesco, Peg Strom, Irene Tompkins, Martha Ashby, Bernadine Shaw, Loretta Fiaschi, Joseph Robinson, Jean Woodring, Ruth Tingley, Joan James, Carmela Napolitan, Laura McCarty, Audrey Gombert, Joan Giegle, Harley Rex, Frances Hendricks

*Business Staff*—Elizabeth Redcay, Frank Coole, Dick Sick, Bill Kay

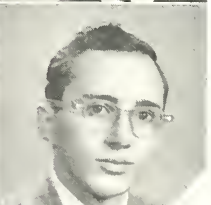
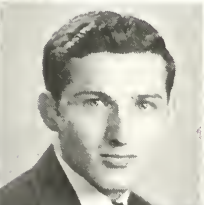
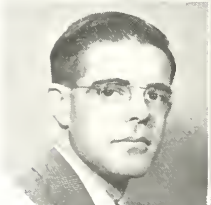
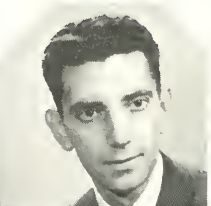
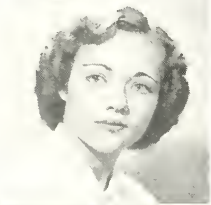
*Faculty Adviser* - - - - - MR. G. H. GRAMLEY



T. NAPOLITAN  
Editor-in-Chief



# 1950 arontawan Staff

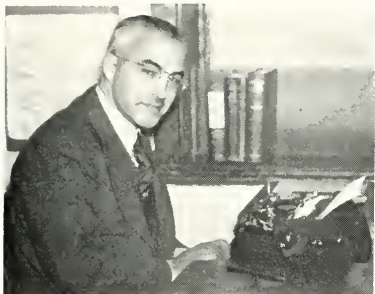


Fray  
Grimm  
Hembury  
Hendricks  
Manley  
Siek

Dye  
Tedesco

Cochran  
Toy

Cawley  
Castle  
Yeck  
Watkins



Mr. Gramley



DePue

Brown

STAFF

<i>Editor-in-Chief</i>	KENNETH BROWN
<i>Advisory Editor</i>	RITA MASTERSON
<i>Business Manager</i>	PAUL DEPUE
<i>Assistant Business Manager</i>	ROBERT CASTLE
<i>Literary Editor</i>	FRANCES HENDRICKS
<i>Art Editor</i>	JOAN JAMES
<i>Assistant Art Editor</i>	NANCY FRAY
<i>Photography Editor</i>	PATRICIA ROHREY
<i>Assistant Photography Editor</i>	ELMER YECK
<i>Typing Editors</i>	NEIL WATKINS, RICHARD SICK
<i>Organization Editor</i>	FLORENCE GRIMM
<i>Assistant Organization Editor</i>	ISABELLE DYE
<i>Classes Editor</i>	MARIE HEMBURY
<i>Assistant Classes Editor</i>	MARY CAWLEY
<i>Sports Editors</i>	MARY TOY, EUGENE TEDESCO
<i>Department Editors</i>	DONNA MUTCHLER, DORIS MANLEY
<i>Administration Editor</i>	PATRICIA COCHRAN
<i>Adviser</i>	MR. GRAMLEY



James



Masterson



Rohrey

# Sophomores

I cannot see what flowers are at my feet,  
Nor what soft incense hangs upon the boughs,  
But, in the embalmed darkness, guess each sweet  
Wherewith the seasonable month endows  
The grass, the thicket, and then fruit tree wild,  
White hawthorn, and the pastoral eglantine;  
Fast-fading violets covered up in leaves;  
And mid-July's wildest child,  
The coming mush-rose, full of dewy wine,  
The murmurous haunt of flies on summer eves.

—John Keats



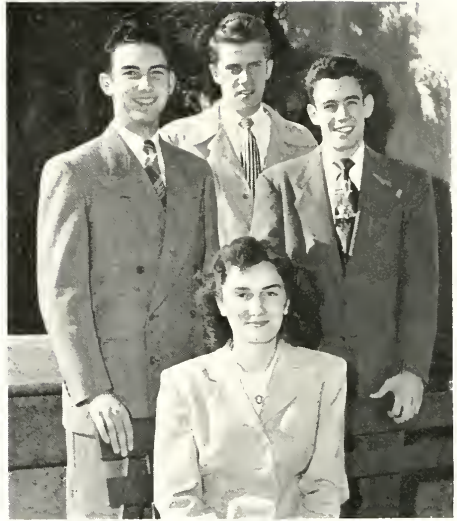


© GOES  
G.P. 9582/2  
BITNO IN U.S.A. Co

Adviser—MR. SANDEL

OFFICERS

President	ROBERT MAXSON
Vice President	HENRY GOODMAN
Secretary	EMILY BORCK
Treasurer	WILLIAM MCNETT



McNett

Goodman

Borck

Maxson

## The Sophomore Class

"You can always tell a freshman—." Ah, yes, we did. We told the verdant newcomers what to do and what not to do for that traditional period of tribulation—Freshman Initiation. As lordly sophomores we were pleased as punch with the spirit in which the frosh tidied rooms, polished shoes and lustily sang "How Green I Am." The assigning of a freshman companion to each member of the Class of '52 was a novel venture in gaining friends.

With such a fine beginning to our second year at Mansfield, it is not strange that we worked with a will and produced a "Pumpkin Prom" which merited highest ovation. Jack O'Lantern was never so honored as he was the evening of our semi-formal dance, October 29th. If Autumn herself had been the connoisseur of the transformation in the gymnasium, she would have judged the conversion faultless and the decorations delightful. Everyone felt the "Pumpkin Prom" reiterated the success of any preceding dance.

As we follow the many pursuits of our college life, we cherish the hope that we will discover ourselves growing and furthering the growth of our chosen Alma Mater.



#### TOP PICTURE

*First Row, Left to Right:* Marjorie Bjork, Barbara Burleigh, Mary Louise Boller, Edith Davis, Gloria Benfer, Arlene Churnicky, Jean Anglemyre, Rosemarie Eichhorn, Almeria Brennan, Phyllis Courtney. *Second Row:* Nadine Davidheiser, Emily Borck, Nancy Chamberlain, Hughla Borden, Lillian Curtis, Martha Ashby, Carol Cummings, Joyce Cunningham, Alice Baker, Miriam Depue. *Third Row:* Richard Boyce, Robert Bennett, John Darr, Charles Dempsey, Franklin Coole, Richard Cooke, Donald Day, Reese Berdanier. *Fourth Row:* Gerald Clancy, James Brown, Kermit Boothroyd, Clement Cobasko, Richard Boerlin, Guy Buck, James Darling, Glenn Beck.

#### BOTTOM PICTURE

*First Row, Left to Right:* Joanne Johnson, Fanny E. James, Virginia Kramer, Betsy Lake, Anne Folweiler, Donna Kershner, Lorena Johnson, Jean Ruth Klinkel. *Second Row:* Joan James, Resta Lenker, Audrey Gombert, Mildred Kneiss, Olive Knierim, Beverly Hall, Ruth Hammerly. *Third Row:* Ray Kepner, Jo Ann Harris, Donna Whipple, Catherine Lobach, Mabel Fuller, Joseph Gorniak, James Fink. *Fourth Row:* Glenn Fry, Ronald Graham, Peter Giorgi, Henry Goodman, Bill Lowe.



TOP PICTURE

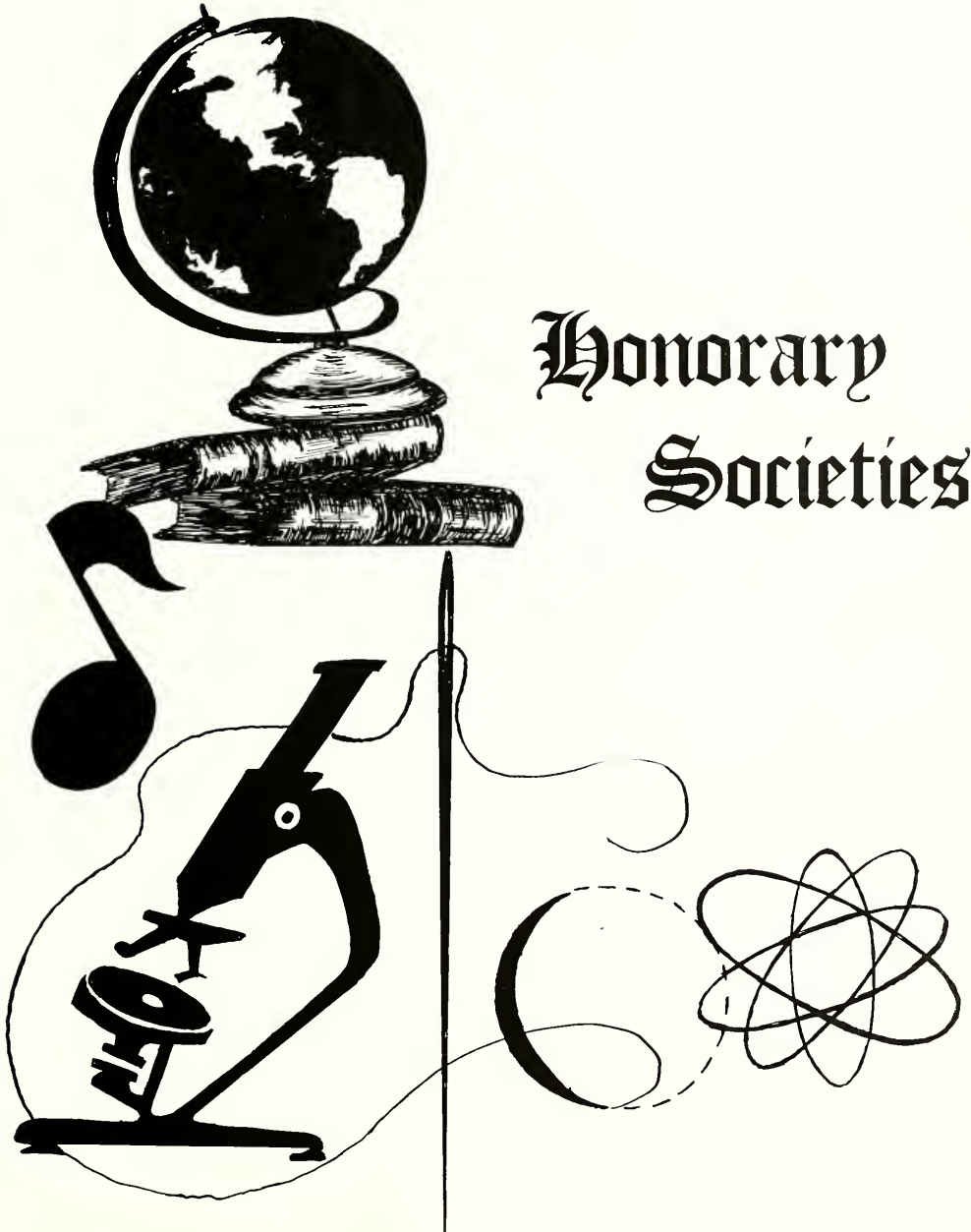
*First Row, Left to Right:* Elsie Neal, Joyce Merrill, Resta Lenker, Carmela Napolitan, Phyllis McGuirl, Mary Mangus, Peggy Lindgren, Eva Lou Marks, Charlotte Robison. *Second Row:* Ann Louise Messerve, Lileen Piper, Catherine Prouty, Catherine Lalach, Betty Nelson, Edith Nelson, Mona Nicolaisen, Marjorie Porter. *Third Row,* Robert Mstifer, Marceau Myers, William McNett, Robert Maxson, Harley Rex, Fred Place, William Lowe, Wayne Saxton, Frank Michanowicz. *Fourth Row:* John McLroy, John Miliauskais, Robert Nichols, Andrew Michanowicz, Harry Mancina, Lloyd McLaud, John McMaster, Edward Russell.

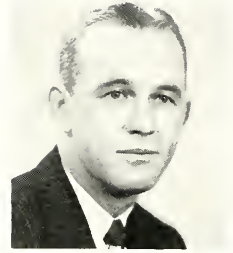
BOTTOM PICTURE

*First Row, Left to Right:* Ellen Spencer, Magorie Westmore, Alice Whitney, Joan Stahler, Ann Seeley, Helen Seeley, Marietta Tiffany. *Second Row:* Joan Worthington, Sarah Sparks, Shirley Treharne, Jean Woodring, Lorrta Smith, Eva Schmalbach. *Third Row:* William Thomas, Douglas Weigel, Richard Stone, Leonard Walukas, Neil Watkins, Donald Schlime. *Fourth Row:* Kenneth Warmkessel, Dean Williamson, William Shaw, Vincent Williams, Howard Tunison, John Stepkovich.



# Honorary Societies





MR. SUNDBERG

## Phi Sigma Pi



CHARLES BROWN  
DONALD BUFORD  
FRANK COOLE  
ROBERT DEWEY  
RAYMOND DETZ

PETER GLOKA  
MALCOLM GLENN  
WILLIAM HAMILTON  
WILLIAM HEATWOLE  
EUGENE HORN

ANTHONY HOROSKO  
RICHARD HUTCHINSON  
LEON KREGER  
JAMES McCLURE  
DONALD MOORE

JAMES PHILLIPS  
MILTON PHILLIPS  
ARNOLD POSTER  
CHARLES SMITH  
FRANCIS STRACKA

ELDON TEWKSBURY  
RICHARD WAGNER  
MILTON WHEELER  
JAMES WHITE  
IRVING YOUNG

Adviser—MR. ALBERT SUNDBERG

#### OFFICERS

<i>President</i>	- - -	ARNOLD POSTER
<i>Vice President</i>	-	JAMES MCCLURE
<i>Secretary</i>	- - -	ROBERT DEWEY
<i>Assistant Secretary</i>	- -	LEON KREGER
<i>Treasurer</i>	- -	ANTHONY HOROSKO
<i>Historian</i>	- -	MILTON PHILLIPS



M. Phillips, Dewey, Kreger, Horosko, McClure, Poster, Sundberg

## Phi Sigma Pi

Phi Sigma Pi is a national honorary professional fraternity for men preparing to enter the field of teaching. It has two paramount aims: the discussion and advancement of educational ideas, and the cultivating of fraternal fellowship. The fraternity's Teacher Placement Bureau assists in securing positions for its graduating members. Membership in this oldest fraternity on the campus is limited to upper classmen possessing fine character traits and a high scholastic standing.





*Seated, Left to Right: Mr. Francis, Curtis Acker, Gene Harbach. Standing: Howard Williams, Kenneth Masterson, William Bender, William Savage.*

## Phi Mu Alpha Sinfonia

Beta Omicron Chapter of Phi Mu Alpha Sinfonia, a national musical fraternity, was particularly active in stimulating interest in various phases of music on the campus this year. A woodwind and a brass group, consisting of members of the fraternity, presented various programs of chamber music



*First Row, Left to Right: Mr. Francis, Eugene Harbach, Howard Williams, Curtis Acker, William Benden, Kenneth Masterson, William Savage, Charles Maul. Second Row: Donald Green, James Fink, Harold Wolfe, Marvin Schlenker, John Kehres, Patrick O'Hearn, John Rossbacker, Harley Rex, Edward Knob, Mr. Little. Third Row: Robert Heim, Kenneth Warmkessel, Ray Burbick, Gib Muir, John McElroy, Richard Swerland, Richard Smith, Philip Sittler, Robert Hartman.*



Mr. Little, Don Green, Gilbert Muir, Ken Warmkessel, James Fink, John McElroy

for the college students and faculty as well as musical performances for the fraternity members during their regular meetings. Upon certain occasions professional musicians are invited to visit the campus making available stimulating and educational opportunities for the members of the student body.

The aim of the fraternity is to create a better understanding on the part of the listener and to encourage the performance of the works of contemporary American composers.

---

## In Memoriam



JOHN DAMON HOLTON



# Sigma Zeta

Advisers—MR. BARTHOLOMEW, DR. SCHAPPELLE

## OFFICERS

*President* . . . . . JAMES MCCLURE  
*Vice President* . . . . . CHARLES BROWN  
*Secretary-Treasurer* . . . . . DORIS HEALEY PERSCHLAVI



ROBERT CASILI  
 RUSSELL DIG VIE  
 PAUL DUPUI  
 RAYMOND DUTZ

ROBERT DEWLY  
 MALCOLM GLENN  
 EARL HINMAN  
 LLOYD JOHNSON

NORMA KELLER  
 BETTY McCABE  
 FUCHI MIRMACH  
 DONALD MOORE

ARNOLD POSTER  
 MILTON PHILLIPS  
 FRANCIS STRACKA  
 IRENE TOMPKINS

EVAN THOMAS  
 WILLIAM WELHERBEF  
 BETTY WHITHORN



Mr. Bartholomew

Dr. Schappelle

Brown

McClure

Perschau

## Sigma Zeta

Lambda, the Mansfield chapter of Sigma Zeta, was founded in 1936. It is a national honorary science society for those Juniors and Seniors who have attained a high scholastic standing in the fields of science or mathematics.

Because many of our students were called into the armed services in 1943, it was found necessary to deactivate this society. However, in 1948 Lambda resumed its former position at Mansfield.

The meetings, field trips, and other special projects make it an active society which we hope will remain active in the future.



# Kappa Delta Pi

Adviser—MISS O'BRIEN

## OFFICERS

President	ANTHONY HOROSKO
Vice President	MARGARET RUSSELL
Corresponding Secretary	DORIS HEALEY PERSCHAU
Recording Secretary	RUTH TINGLEY
Treasurer	WILLIAM SAVAGE

Eager to promote a closer bond among students of education and to enter into more intimate fellowship with those dedicated to the cause of teaching as a profession, the members of the Illinois Education Club established at the University of Illinois, in 1909, an organization which they called Kappa Delta Pi. Beta Rho Chapter of Kappa Delta Pi was installed at Mansfield in 1930.

Kappa Delta Pi aims to encourage professional, intellectual, and personal standards, and to recognize outstanding contributions to education. It is an honor society in education for Juniors and Seniors who show commendable personal qualities, worthy educational ideals, and sound scholarship.

Beta Rho Chapter, which is under the supervision of Miss O'Brien, endeavors to bring benefits to everyone who participates in the meetings.



Seated, Left to Right: Miss O'Brien, Anthony Horosko, Ruth Tingley.  
Standing: Margaret Russell, Doris Healey Perschau, William Savage.



# Kappa Omicron Phi

Adviser—MRS. MORALES

## OFFICERS

President	FRANCES HOFMANN
Vice President	HELEN DREBERT
Secretary	BEATRICE SHAFER
Treasurer	ZELDA LUCE

Kappa Omicron Phi is a national honorary home economics sorority attempting to stimulate cultural and inspirational, as well as professional growth. According to definite scholarship and character requirements, members are selected from home economics students who have attained the rank of second semester sophomores.

“The purpose of this professional organization is to further the best interests of home economics in our four-year colleges. We realize the world needs women who have attained an intellectual, spiritual, ethical, and aesthetic poise.”

The members accept the responsibility for development of women with higher ideals of sane living, with deeper appreciation of the American home, and with broader, higher intellectual and cultural attainments.



Seated, First Row: Zelda Luce, Helen Drebert, Frances Hoffman, Evelyn Haner, Beatrice Shafer. Second Row: Margaret Spleen, Patricia Cochran, Virginia Cherrington, Margaret Russell, Mrs. E. Morales, Mrs. L. Galbraith, Lillian Zillhardt, Miss C. Beasley, Miss M. Fiat.



# Lambda Mu

Adviser—Mrs. Lewis

## OFFICERS

<i>President</i>	LOU MARVIN
<i>Vice President</i>	BERNIECE KLINGAMAN
<i>Recording Secretary</i>	LENA MAE BAKER
<i>Corresponding Secretary</i>	MARY LOUISE DUBBLE
<i>Treasurer</i>	MARY LOUISE STROHECKER

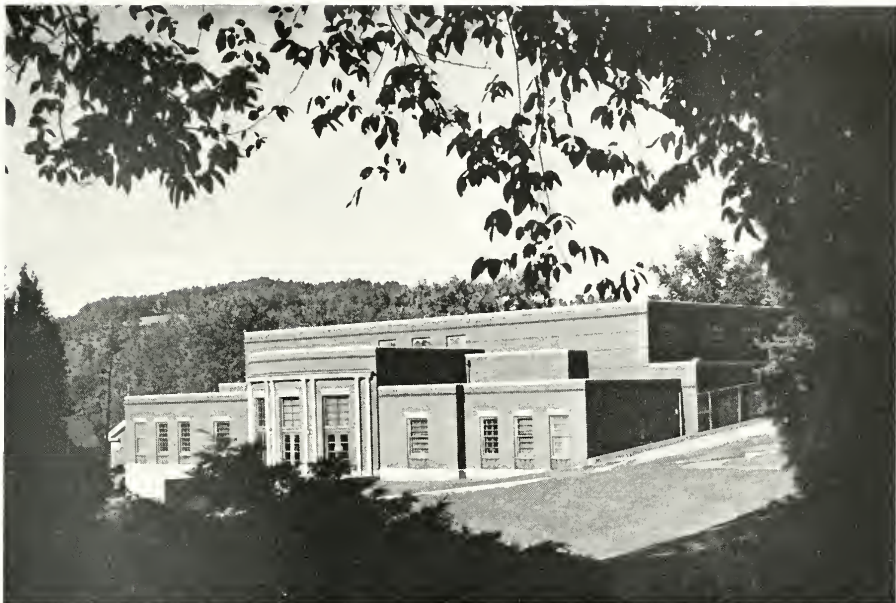
Lambda Mu is Mansfield's local honorary sorority for women students in the music department. Members must be second semester sophomores or upper classmen who have attained outstanding academic and musical accomplishments and whose integrity of character makes them eligible for membership. Lambda Mu initiates candidates for membership semi-annually, at which time a banquet is held for members, alumnae members, and initiates.

In the past year Lambda Mu presented an assembly program of contemporary music and combined with Phi Mu Alpha Sinfonia for a Christmas program.

With Mrs. Lewis as adviser, the sorority is looking forward to another eventful year of continuous growth in membership and activities.



Seated, Left to Right: Irene Dickinson, Mrs. Lewis, Lena Mae Baker, Mary Dubble, Lou Marvin, Mary Louise Strohecker, Berniece Klingaman, Mary Davis, Elynor Wilcox. Standing: Margie Shafer, Beverly Theetge, Loris Gohl, Alta Jumper, Edith Kendall, Miss Atwater, Miss Morse, Miss Burkey, Miss Schlosser, Marilyn Page, June Place, Janice Brown, Nancy Tray, Dorothy McLaughlin, Mary Jones.



# Who's Who Among Students in American Colleges and Universities

The number of students to receive this national honor is determined by the total enrollment of the college. Mansfield's quota was nine. The students were selected on a basis of scholarship, extra-curricular activities, promise of future usefulness, citizenship, and service to the school.

A board of seven faculty members which included the President, Dean of Women, Dean of Men, Dean of Instruction, and three departmental heads with members of two dormitory councils and of student council selected the students.

Every student considers it an honor and a worthy recognition of their school's outstanding students.



JAMES PHILLIPS  
LOU MARVIN  
MARGARET SPLEEN



BETTY WHITEHORN  
ANTHONY HOROSKO  
THERESE NAPOLITAN



RITA MASTERSON  
BEATRICE SLAFER  
WILLIAM CONWELL



*Left to Right:* Rhea Brown, Ruth Bunn, Mary McCawley, Jean Ford, Lois Slusser, Carol Potter, Emelyn Drake, Shirley Dutcher, Lois Boardman.

## May Day

Each year our May Queen and her court are selected by the entire student body. This May Day Celebration is one of the most outstanding and lovely events of the College year.

The girls are chosen on the following qualifications: Personality, attractiveness, extra-curricular participation, and academic rating. They are examples of Mansfield's outstanding women.





## Juniors

Go forth at eventide,  
The eventide of summer, when the trees  
Yield their frail honors to the passing breeze,  
And woodland paths with autumn tints are dyed;  
When the mild sun his paling luster shrouds  
In gorgeous draperies of golden clouds,  
Then wander forth, mid beauty and decay,  
To meditate alone—alone to watch and pray.

—Emma C. Embury



Adviser—MR. LUNN

#### OFFICERS

President - - - RICHARD SWETLAND  
Vice President - - - KENNETH BROWN  
Secretary - - - JANET M. TAYLOR  
Treasurer - - - JANICE TERRY



Taylor

Swetland

Terry

Brown

## The Junior Class

Our first two years at Mansfield were concerned largely with becoming oriented with college life. We lived through the trials of new challenges and strived diligently to make a success of our work.

It was a big thrill to realize that we, as Juniors, were upper-classmen at last! With one foot across the threshold to our Senior year, we pause to review this eventful season. The Junior-Senior Ball was a great success. To most of us, it was the most important event of the year and will live long in our memories.

The step from Junior to Senior will be a big one, and we hope we can take it in our stride as well as did the Seniors of '50.



JEANNE F. AYERS, *Music*, Millerton, Pa.

M. LOUISE RAER, *Home Economics*, Curwensville, Pa.

LOUISE E. BALZ, *Elementary*, Toledo, Ohio

JAMES W. BARRETT, *Secondary*, Millerton, Pa.

MARCELLA D. BASTIAN, *Home Economics*, Wellsboro, Pa.

NANCY J. BECKER, *Home Economics*, East Mauch Chunk, Pa.

MARY CHRISTINE BELL, *Home Economics*, Lewistown, Pa.

ALICE M. BELLAIRS, *Music*, Stroudsburg, Pa.

PHYLLIS K. BENSON, *Elementary*, Athens, Pa.

KATHRYN L. BITNER, *Elementary*, Mill Hall, Pa.

LAURIN RAY BLASIER, *Music*, Sherrill, N. Y.

JUNE E. BRABEC, *Elementary*, Beaver, Pa.

KENNETH M. BRACE, *Secondary*, Mansfield, Pa.

GERALDINE BRADSHAW, *Elementary*, Stevensville, Pa.

PHILIP BRENNAN, *Secondary*, Lawrenceville, Pa.

JANICE BROWN, *Music*, Ulster, Pa.

KENNETH BROWN, *Secondary*, Ulster, Pa.

M. DONALD BUFORD, *Secondary*, Port Allegany, Pa.

M. CHARMAINE BURDICK, *Elementary*, Uniondale, Pa.

M. JUNE BURT, *Elementary*, Tioga, Pa.

CHARLES D. BURTCHE, *Secondary*, Tioga, Pa.

STEPHEN T. BUTCHKO, *Elementary*, Nanticoke, Pa.

H. ELAINE CARLSON, *Secondary*, Tioga, Pa.

MARY S. CASSEL, *Elementary*, Sunbury, Pa.

ROBERT R. CASTLE, *Secondary*, Canton, Pa.

MARY ALICE CAWLEY, *Elementary*, Eldred, Pa.

PATRICIA J. COCHRAN, *Home Economics*, W'nsport, Pa.

WILLIS E. COLE, *Secondary*, Mansfield, Pa.

JANICE A. CROMAN, *Elementary*, Troy, Pa.

MARILYN J. CROOKS, *Elementary*, Mansfield, Pa.

GERTRUDE E. CRUMM, *Elementary*, Rutland, Pa.

ELVIRA L. CUMMINGS, *Elementary*, Mansfield, Pa.

PHYLLIS A. CUTLER, *Home Economics*, Niagara Falls, N. Y.

JOYCE E. DANKNICH, *Elementary*, Covington, Pa.

JAMES B. DARLING, *Secondary*, Wellsboro, Pa.

MARILYN A. DARON, *Secondary*, Camptown, Pa.

NICHOLAS LONG DAVIS, *Secondary*, Shamokin, Pa.

PAUL J. DEPUU, *Secondary*, Montrose, Pa.

JAMES B. DEWITT, *Secondary*, Forty Fort, Pa.

IRENE V. DICKINSON, *Music*, Bernhard's Bay, N. Y.

RUSSELL JAMES DIGATE, *Secondary*, East Hampton, N. Y.

MARLAN E. DITZLER, *Music*, Lititz, Pa.

ANN MARIE DOVE, *Home Economics*, Shenandoah, Pa.

HELEN L. DREBLER, *Home Economics*, Easton, Pa.





ISABELLE T. DYE, *Elementary*, Wellsboro, Pa.  
 PAUL R. EDGAR, *Elementary*, Mansfield, Pa.  
 DIAN R. EVANS, *Elementary*, Tower City, Pa.  
 STANLEY EVANS, *Secondary*, Olyphant, Pa.



L. CATHRINE FRAY, *Music*, E. Stroudsburg, Pa.  
 MYRA BETH FRVINE, *Elementary*, Montrose, Pa.  
 LORI TIA J. FIANCHI, *Secondary*, Susquehanna, Pa.  
 FRANK E. FISH, *Secondary*, Mansfield, Pa.



FRANK M. FLYNN, *Secondary*, Wilkes-Barre, Pa.  
 HELEN L. FRANKS, *Elementary*, Rockdale, N. Y.  
 NANCY IRAY, *Music*, Clarks Green, Pa.  
 WARREN R. FRYE, *Secondary*, Shenandoah, Pa.



JOSEPH W. GYER, *Music*, Kingston, Pa.  
 DONALD M. GLENN, *Secondary*, Milesburg, Pa.  
 DONALD E. GRILLNE, *Music*, Mansfield, Pa.  
 FLORENCE J. GRIMI, *Home Economics*, LaAnna, Pa.



GEORGE W. GUIDIN, *Music*, Schuylkill Haven, Pa.  
 DONNA O. HACKETT, *Music*, McKeesport, Pa.  
 LYLEYN J. HANER, *Home Economics*, Gaines, Pa.  
 ROBERT C. HARTMAN, *Music*, E. Stroudsburg, Pa.



WILLIAM A. HEATH, *Secondary*, Forty Fort, Pa.  
 WILLIAM L. HELM WOLF, *Secondary*, Littlestown, Pa.  
 BETTY M. HEINBACH, *Home Economics*, Summit Sta., Pa.  
 FRANCES A. HENDRICKS, *Secondary*, Mansfield, Pa.



DEAN E. HILL, *Secondary*, Pine City, N. Y.  
 DONALD A. HOWE, *Secondary*, Lavrenceville, Pa.  
 JEAN L. HOWELLS, *Elementary*, Scranton, Pa.  
 DOROTHY A. HUNTER, *Home Economics*, Bristol, Pa.



MIRIAM S. HUNTER, *Music*, Taylor, Pa.  
 GWYNDOLEYN D. JONES, *Music*, Taylor, Pa.  
 ALTA MARIE JUMPER, *Music*, Newville, Pa.  
 WILLIAM D. KAY, *Secondary*, West Summit, N. J.



LIONARD KOBSKI, *Elementary*, Minooka, Pa.  
 MARIAN R. KOSTINBAUDER, *Home Economics*, Danville, Pa.  
 DONALD R. KNOISE, *Secondary*, Mansfield, Pa.  
 BETTY J. KUISTER, *Elementary*, Blossburg, Pa.



ELLENOR R. LAYCOL, *Secondary*, Clarks Summit, Pa.  
 G. CHARMINE LOVELAND, *Secondary*, Meadville, Pa.  
 ZILDA J. LUCE, *Home Economics*, Hallstead, Pa.  
 GERALD F. LUKAS, *Secondary*, Swoyersville, Pa.



CHARLES L. McELHENY, *Secondary*, Penbrook, Pa.  
 DORIS I. MANLEY, *Home Economics*, Harrisburg, Pa.  
 CATHERINE A. MALONEY, *Elementary*, Wysox, Pa.  
 DOROTHY A. MANNING, *Elementary*, S. Gibson, Pa.

BETTY McCABE, *Secondary*, Blakely, Pa.  
 IRA McGONIGAL, JR., *Elementary*, Blossburg, Pa.  
 ELAINE A. McLAUD, *Elementary*, Brooklyn, Pa.  
 CARL W. McENTIRE, *Secondary*, Sayre, Pa.



PATRICIA A. MEEHAN, *Elementary*, Towanda, Pa.  
 THEODORE DONALD METARCKO, *Secondary*, Blossburg, Pa.  
 DONALD W. MOORE, *Secondary*, Blossburg, Pa.  
 GILBERT T. MUHR, *Music*, Shamokin, Pa.



BROOKS EDWARD NANCARROW, *Secondary*, Wellsboro, Pa.  
 KENNETH G. NARES, *Secondary*, Mansfield, Pa.  
 MARGARET A. NEWELL, *Elementary*, Wysox, Pa.  
 PATRICK A. O'HLEARN, *Music*, Scranton, Pa.



ANNA C. PEARSON, *Secondary*, Knoxville, Pa.  
 ANTHONY J. PECCIO, *Secondary*, Elmira, N. Y.  
 RAYMOND H. PIERSON, *Secondary*, Norristown, Pa.  
 JUANE E. PLACE, *Music*, Meshoppen, Pa.



SHIRLEY M. RAUSCHER, *Home Economics*, Mansfield, Pa.  
 JOHN T. BECKUS, *Elementary*, Wilkes-Barre, Pa.  
 JACQUELINE J. REDNER, *Secondary*, Tioga, Pa.  
 RUTH M. RIEGEL, *Home Economics*, Shenandoah, Pa.



PATRICIA M. ROHREY, *Secondary*, Shrewsbury, N. J.  
 JOHN ROBERT ROSSBACHER, *Music*, Corry, Pa.  
 GWENDOLYN M. ROY, *Elementary*, Gillett, Pa.  
 ESTHER J. RUSSELL, *Secondary*, Rome, Pa.



ANDREW J. SEMKO, *Elementary*, Swoyersville, Pa.  
 BERNADINE M. SHAW, *Secondary*, Coudersport, Pa.  
 RUTH L. SHJNER, *Home Economics*, Forty Fort, Pa.  
 RICHARD J. SICK, *Secondary*, Towanda, Pa.



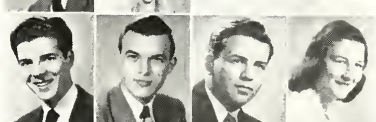
E. LOIS SIGLIN, *Secondary*, Noxen, Pa.  
 BARBARA A. SNYDER, *Music*, Rush, Pa.  
 LOIS M. SNYDER, *Home Economics*, Bairs, Pa.  
 SARA L. STAUB, *Home Economics*, Littlestown, Pa.



G. WILLIAM STENZHORN, *Secondary*, Wellsboro, Pa.  
 MARY E. STERLING, *Elementary*, Morris Run, Pa.  
 IRVA M. STILWELL, *Elementary*, Roulette, Pa.  
 MARY LOUISE STROHECKER, *Music*, Millersburg, Pa.



DAVID H. STRUNK, *Secondary*, Towanda, Pa.  
 RICHARD M. SWETLAND, *Music*, Waverly, Pa.  
 NICHOLAS T. TANGREDI, *Secondary*, Elmira, N. Y.  
 JANET E. TAYLOR, *Elementary*, Troy, Pa.



JANET M. TAYLOR, *Music*, Montrose, Pa.  
 JANICE F. TERRY, *Secondary*, Athens, Pa.  
 ELDEN P. TEWKSBURY, *Secondary*, Meshoppen, Pa.  
 BEVERLY A. THEETGE, *Music*, Sayre, Pa.





RAYMOND J. THOMAS, *Secondary*, Wellsboro, Pa.  
 CONSTANCE E. TINGLEY, *Home Ec.*, Atlantic High'ds, N. J.  
 JOYCE W. TOBLEY, *Elementary*, Millerton, Pa.  
 MARY T. TOY, *Elementary*, Moscow, Pa.  
 RAYMOND S. TYRRELL, *Secondary*, Carbondale, Pa.  
 CHARLOTTE M. UNDERWOOD, *Home Economics*, Danville, Pa.  
 JOHN T. WALKER, *Elementary*, Peckville, Pa.  
 ROBERT L. WARD, *Secondary*, Troy, Pa.  
 MARY LOIS WARTERS, *Secondary*, Mansfield, Pa.  
 WILLIAM M. WATKINS, *Secondary*, Blossburg, Pa.  
 HELEN C. WELLS, *Home Economics*, Wyalusing, Pa.  
 WILLIAM B. WELTBEE, *Secondary*, Wellsboro, Pa.  
 CYNTHIA D. WHITE, *Secondary*, Wellsboro, Pa.  
 FRANCES E. WINTERSTEEN, *Home Economics*, Danville, Pa.  
 HAROLD E. WOLFE, *Music*, Kane, Pa.  
 WARREN G. WOOD, *Secondary*, Athens, Pa.  
 WILLIAM P. YOUNG, *Elementary*, Towanda, Pa.  
 DONNA R. MUTCHELER, *Home Economics*, Sunbury, Pa.  
 WILLIAM J. SNEE, *Secondary*, Wilkes-Barre, Pa.  
 JOSEPH B. SNYDER, *Secondary*, Williamsport, Pa.

## Underclassmen Not In Pictures

### FRESHMEN

Carol Banks  
 Herbert H. Davis  
 Maurice S. Entwistle  
 Donald L. Farley  
 Patrick R. Fischetti  
 Peter R. Giorgi  
 Ellen Graf  
 Gerald Hefferan  
 Richard Kennedy  
 Walter Klimash  
 Robert Lieb  
 Robert Long

Martin J. Memola  
 William Meyer  
 Chester Mikarowicz  
 Edward Mollahan  
 Thomas E. Moseley  
 Richard W. Oliver  
 Paul J. Piatkowski  
 Margaret Roe  
 Thomas J. Rogers  
 Gus Angelo Rossi  
 Thomas B. Seifert

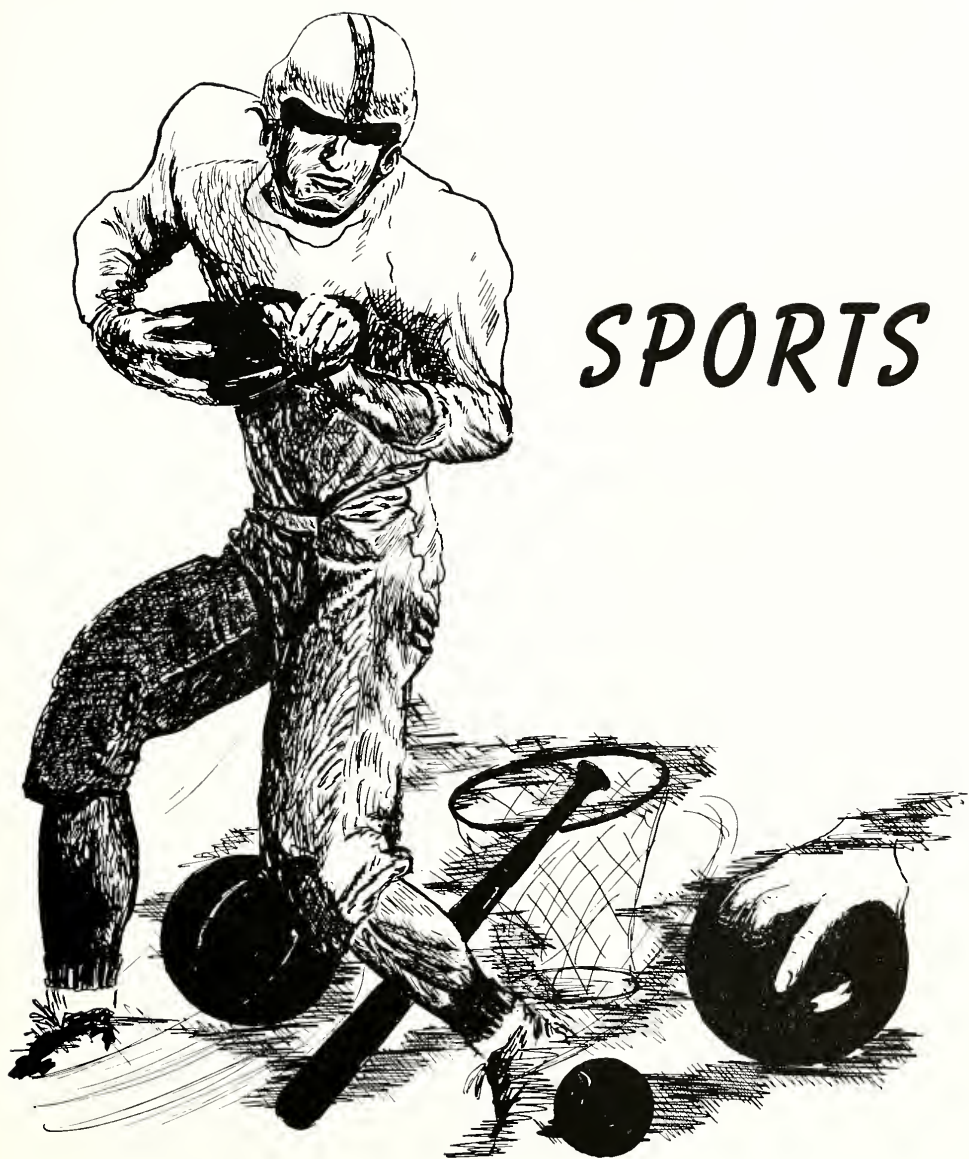
Eugene J. Sharksanas  
 Robert W. Shook  
 Donald Smith  
 Paul Snyder  
 John Stagaman  
 Gerald J. Stashak  
 Glenn Stover  
 Anthony Terosavage  
 Daniel Tomassoni  
 William Weaver  
 Leonard Zanowicz  
 Ronald Zwiegshaum

### SOPHOMORES

John Clancey  
 Corenne Crawford  
 William Doherty  
 Nelson Entwistle  
 Regina Eshmont  
 Amy Evechair  
 Dorothy Everett  
 Gaylord Lvey  
 Paul Fattaruso  
 Thomas Ganley  
 Peter Glofka  
 Cathlyn Gregg  
 Doris Gregg  
 Walter Grimes

Aaron Hafetz  
 Richard Haig  
 Neal Haskins  
 William Heatwole  
 Joyce Howe  
 Thomas Hurley  
 William Keating  
 Gaynelle Kocher  
 Arthur Keltz  
 Carl Kodish  
 John Lazevnick  
 Charles Leach  
 Charles McElheny

Cornelius McGlynn  
 Stanley McIntroy  
 Thomas McLain  
 Alan Park  
 Sam Patton  
 Michael Petz  
 Elizabeth Redcay  
 Albert Rommenberg  
 William Sabitus  
 Thomas Santiso  
 Joseph A. Sebastian  
 Dan Sherman  
 Paul Tice  
 Llewellyn Turnbill



# *SPORTS*



Front Row, Left to Right: Bradshaw, Geroski, Hendler, Cheplick, A. Petrillo, Hurley, Tomassoni, Rogers. Second Row: Mahon, Rossi, Lieb, Wood, Miller, McIntire, Gross. Third Row: Zanowicz, G. Shoffstall, Dombroski, Dickinson, Young, Park, Shepanski, Fischetti, Farley. Fourth Row: Ruegg, Walbridge, Moresco, Buriam, Harrington, Dokas, Keating, Conwell, M. Shoffstall. Standing: Donald, Assistant Manager; Athletic Coach Lloyd; Graduate Manager Van Norman; President Morgan; Coach Casey; Assistant Coach Percy; Manager Gever; Hafetz.

## FOOTBALL 1949

### BLOOMSBURG RUINS MANSFIELD'S OPENER, 26-0

Sept. 24, 1949

The Huskies of Bloomsburg spoiled the opening game of M. S. T. C. before a crowd of more than 5,000 fans at Berwick, Pa., defeating us 26-0. Inexperience of many of our boys was a dominating factor in the defeat.

The first half of the game featured stellar defense on the part of both teams. A costly fumble in the first quarter ended a Mansfield drive on the Bloom 12-yard line.

A pass in the second quarter, covering 35 yards, gave the Huskies their first tally. They scored two six pointers in the third quarter and one in the final period.

"Bill" Conwell, veteran back, quarterbacked the team. Fausto Tomassoni, "Pat" Fischetti, and Len Zanawicz, all new faces on the squad, played brilliant ball.

### INDIANA'S TWO TD'S BEATS MOUNTAINEERS, 14-0

Oct. 1, 1949

Scoring two touchdowns in the second half, Indiana beat the locals 14-0 for their second straight loss. Lack of reserves for the "Caseymen" spelled defeat for Mansfield.

The scoring was done in the third and fourth quarters. Garback, Indiana fullback, scored both touchdowns, one from the 6-yard line and the other on a spectacular 39-yard run around right end. The Mountaineers never threatened.

### M. S. T. C. DROPS THIRD STRAIGHT ON PARENTS' DAY

Oct. 8, 1949

Before a large Parents' Day crowd at Smythe Park, the Mountaineers received their third straight setback at the hands of Kutztown, 12-6.

The Mountaineers took an early lead in the first quarter when "Ed" Nerski gathered in an 18-yard pass from "Bill" Conwell on the visitors' 40-yard line and romped across the goal for the first score.

But the Kutztown boys were not to be out done and late in the second period they added their first 6-pointer after an 88-yard drive down field. With the game tied at half-time, 6-6, Kutztown came back in the final period to score the winning TD. Cantanazara, a reserve tackle, blocked a Mansfield kick and recovered the ball in the end zone.

M. S. T. C. was without the services of "Pete" Dokas, "Aaron" Hafetz, "Jim" DeWitt, "Nello" Burian and "Gidge" Petrillo, all varsity men.

## MOUNTAINEERS LOSE TO STROUD Oct 15, 1949

M. S. T. C. traveled to East Stroudsburg to absorb their fourth defeat of the season, 28-6.

Jack Eagan, fleet-footed half-back of the home team went 88 yards on the opening kick-off to give the Stroud eleven an early lead they never relinquished.

The Stroud team scored TD's in every period but the second. Mansfield's only score came late in the game when Don Farley, hard hitting freshman fullback, went off tackle for the last nine yards.

## M. S. T. C. BEATS ALLIANCE, 14-7 Oct. 29, 1949

The Mountaineers, after suffering four straight setbacks, broke into the win column via 14-7 job over Alliance College.

Alliance scored in the first minute of play after recovering a Mansfield fumble kick-off on the 20. A 12-yard pass was good for paydirt. The Mountaineers then outplayed the visitors for the remainder of the game.

"Bob" Park set the stage for the first local score by intercepting an Alliance pass in the early minutes of the third period on the visitors 35-yard line. This threat bogged down on the 1-yard line, but after an Alliance kick, "Bill" Conwell passed to "Tony" Dombroski who carried it to the 1-yd. line. Conwell went over on the next play. Bill Keating's placement was good.

The last score of the game came in the early minutes of the final period. After an exchange of punts, the Mountaineers took the ball on their own 33, driving to the visitors 25 on a succession of line bucks by "Nello" Burian, "Bill" Conwell and "Joe" Cheplick. On the second play of the final period a pass, Keating to "Pete" Dokas in the end zone, was good for another six-pointer. Dombroski's placement was good.

"Tom" Hurley played terrific defensive ball, stopping the ball carrier three times in a row at one stage of the game.

The return of "Pete" Dokas and "Nello" Burian into the line-up gave the team added spirit.

## MANSFIELD TIES EDINBORO, 6-6

Nov. 5, 1949

The Mountaineers, fresh from its first victory of the year over Alliance, tied Edinboro on a rain-washed field, 6-6. Edinboro drew first blood, scoring its touchdown the first play of the second quarter. A 47-yard pass was good for the score.

Mansfield scored its only touchdown mid-way of the same period. Taking over the ball on their own 30 yard line, the Mountaineers ran the ball down to the Edinboro 1-yard line. "Bill" Conwell then took the ball over.

"Bill" Keating's kick for the extra point was wide.

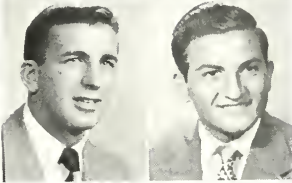
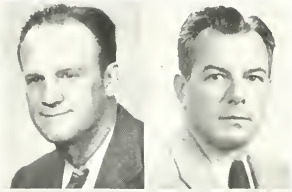
## MOUNTAINEERS LOSE FINAL TO LOCK HAVEN, 33-0

Nov. 12, 1949

The Lock Haven eleven defeated Mansfield, 33-0, before a large Homecoming Day crowd at Smythe Park.

The visitors scored their first TD in the early minutes of the first period and scored in every other period.

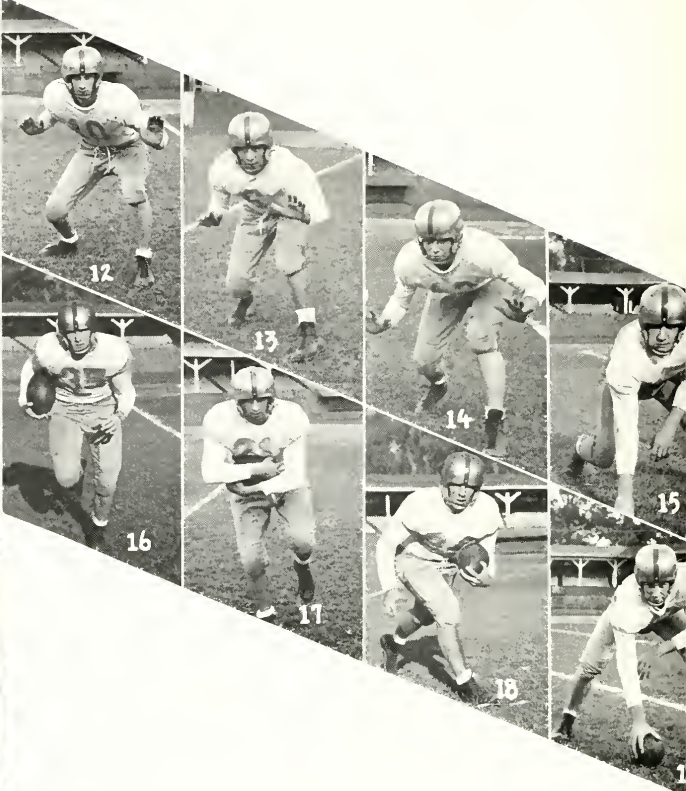
Mansfield threatened several times but could not produce a scoring play.



Coach Casey      Assistant Coach Percy  
Co-Captain Cheplick      Co-Captain Petrillo



F. Hendricks, N. Davidheiser, F. Grimm, L. Mirmak



- |                      |                       |
|----------------------|-----------------------|
| 1. WILLIAM YOUNG     | 11. GEORGE PETRILLO   |
| 2. THOMAS HURLEY     | 12. GEORGE SHOFFSTALL |
| 3. AARON HAIETZ      | 13. FRANK GEROSKI     |
| 4. GUS ROSSI         | 14. LEONARD ZANOWICZ  |
| 5. THOMAS HARRINGTON | 15. ANTHONY DOMBROSKI |
| 6. ANTHONY PETRILLO  | 16. DONALD FARLEY     |
| 7. FRANCIS BRADSHAW  | 17. MYRON SHOFFSTALL  |
| 8. PAUL SHELPAWSKI   | 18. JOSEPH CHLPLICK   |
| 9. ROBERT PARK       | 19. JOSEPH MORFESCO   |
| 10. WARREN WOOD      |                       |

1949 FOOTBALL RECORD

	M.	Opp.
September 24—Bloomsburg S.T.C.	0	26
October 1—Indiana S.T.C.	0	14
October 8—Kutztown S.T.C.	6	12
October 15—E. Stroudsburg S.T.C.	6	28

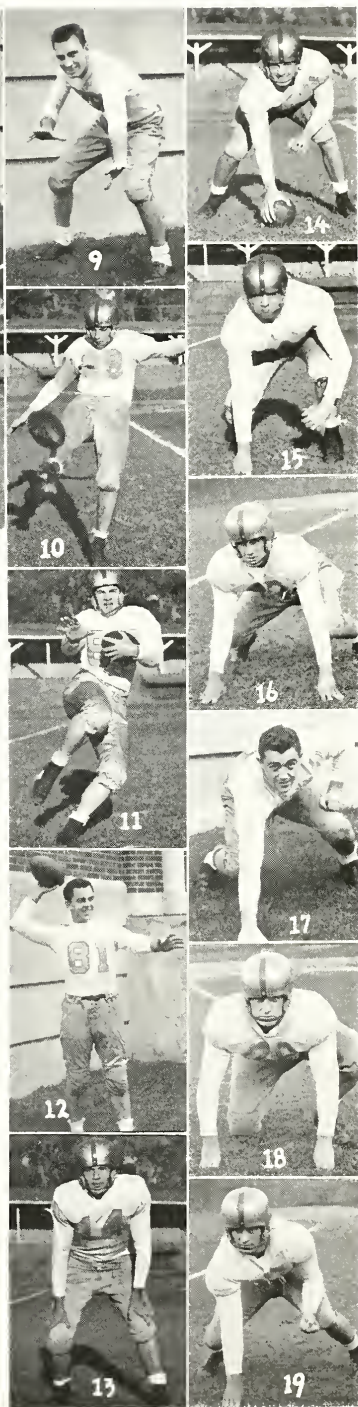




1. THOMAS ROGERS
2. NELLO BURIAN
3. PETER DOKAS
4. FRANK MICHANOWICZ
5. EDWARD NETSKI
6. CLYDE MILLER
7. PATRICK FISCHETTI
8. GAUSTO TOMASSONI
9. GEORGE MICHANOWICZ
10. WILLIAM KEATING

11. WILLIAM CONWELL
12. CARL MCENTIRE
13. GUY GROSS
14. JAMES WALBRIDGE
15. JAMES DEWITT
16. BERT RUEGG
17. ROBERT LIFB
18. WILLIAM HENDLER
19. DONALD MAHON

		M.	Opp.
October	29—Alliance College	14	7
November	5—Edinboro S.T.C.	6	6
November	12—Lock Haven S.T.C.	0	33
	Won — 1	Tied — 1	Lost — 5





Seated, Left to Right: Semko, Tyrrell, Mazza, Maxson, Cerchie, Daniels.  
 Standing: Coach Casey, Hafetz, Moresco, Makarewicz, Jurnack, Goodman, Zubres, Mgr. Lucas.

## Basketball

Even though the Mountaineer squad included five letter men and exceptional talent in the newcomers, they did not strike the win column until the third game. This win from King's College proved to be one of the team's best games and a major up-



COACH CASEY



DANIELS



TYRRELL



GOODMAN



JURNACK



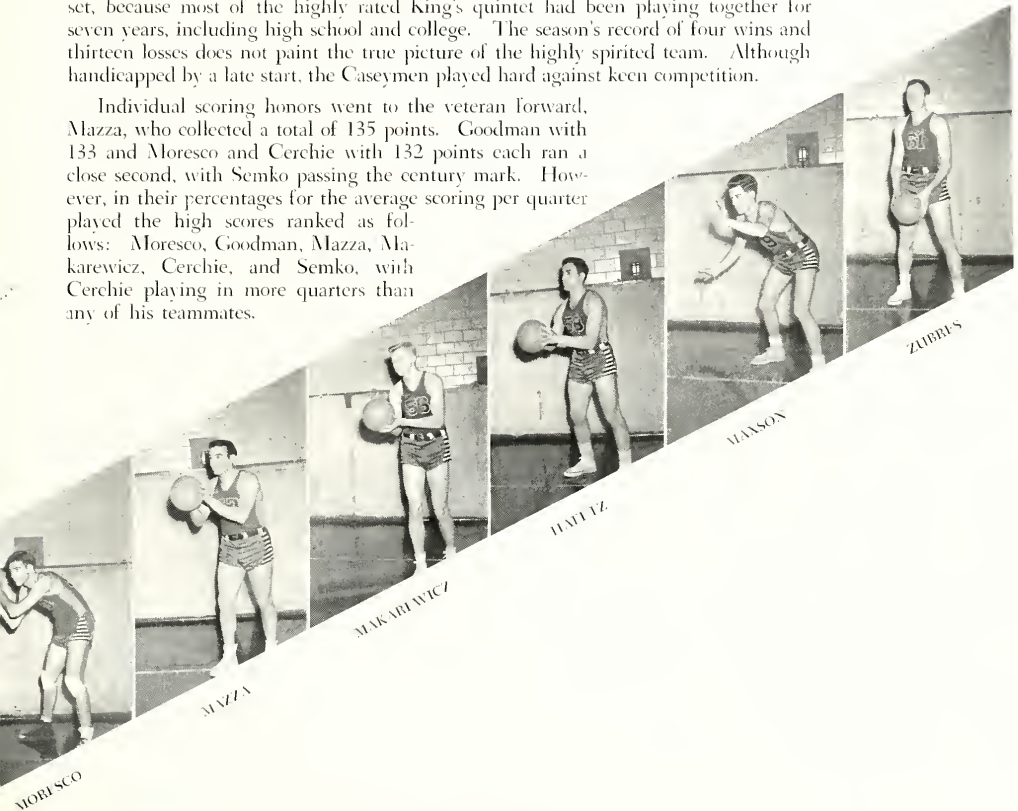
CERCHIE



SEMKO

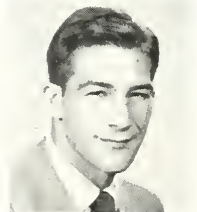
set, because most of the highly rated King's quintet had been playing together for seven years, including high school and college. The season's record of four wins and thirteen losses does not paint the true picture of the highly spirited team. Although handicapped by a late start, the Caseyemen played hard against keen competition.

Individual scoring honors went to the veteran forward, Mazza, who collected a total of 135 points. Goodman with 133 and Moresco and Cerchie with 132 points each ran a close second, with Semko passing the century mark. However, in their percentages for the average scoring per quarter played the high scores ranked as follows: Moresco, Goodman, Mazza, Makarewicz, Cerchie, and Semko, with Cerchie playing in more quarters than any of his teammates.



1950 BASKETBALL SEASON

	Opp.	M. S. T. C.
January 10—Lycoming College	66	45
January 13—Millersville S. T. C.	75	43
January 17—King's College	58	65
January 21—Wilkes College	49	47
January 27—Shippensburg S. T. C.	55	65
January 31—Lycoming College	60	56
February 3—Ithaca College	66	59
February 6—Triple Cities College	43	48
February 8—Lock Haven S. T. C.	57	44
February 11—Bloomsburg S. T. C.	72	50
February 14—Wilkes College	37	52
February 17—Shippensburg S. T. C.	80	42
February 18—Millersville S. T. C.	59	34
February 21—King's College	88	61
February 23—Triple Cities College	83	61
February 25—Lock Haven S. T. C.	66	65
March 1—Bloomsburg S. T. C.	80	66



CAPTAIN MORESCO

# Baseball

## 1949 BASEBALL RECORD

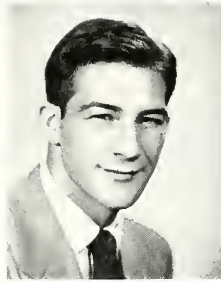
Mansfield	2	University of Scranton	10
Mansfield	6	Cortland	7
Mansfield	1	Lock Haven S. T. C.	6
Mansfield	2	Bloomsburg S. T. C.	13
Mansfield	6	Cortland	9
Mansfield	3	Ithaca	10
Mansfield	7	Bloomsburg S. T. C.	10
Mansfield	1	Lock Haven S. T. C.	3
<hr/>			
Totals	28	Opponents	63



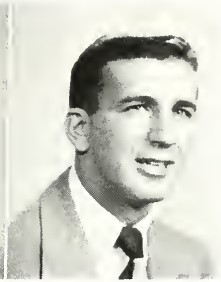
COACH CASEY



Kneeling, Left to Right: Kobeski, Tomassoni, Brown, Johnson, Daniels, Cheplick, Fraley, Perri, Polack. Standing: Manager Phillips, Moore, Flanagan, Kovaleski, Vroman, Ed. Drabinski, Moreseo, Simcoe, Gruzleski, L. Drabinski, Coach Casey, Assistant Manager Geyer. Bat Boy: Doud.



MORESCO

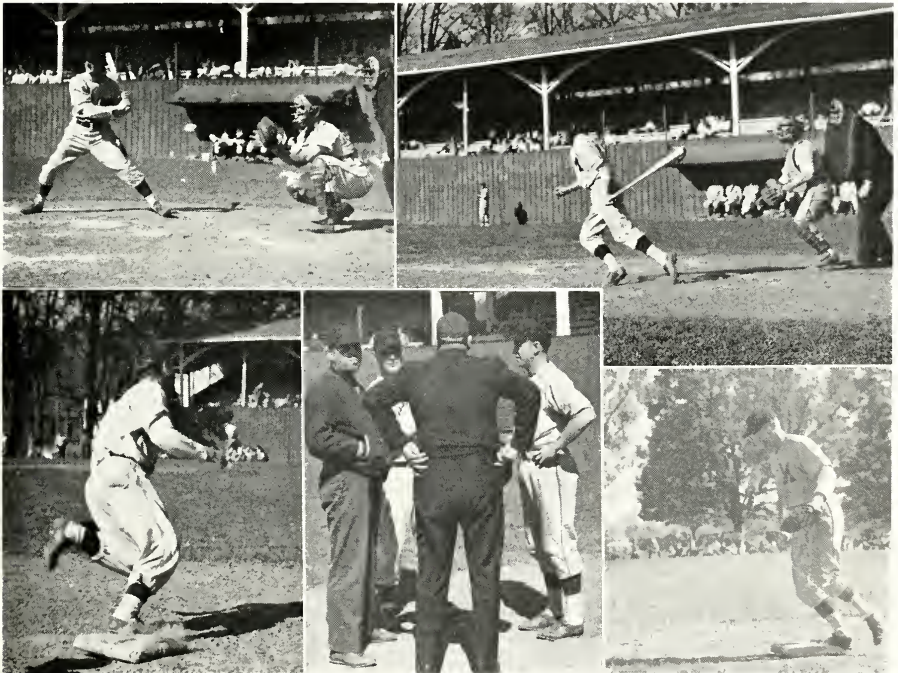


CHEPLICK

*Pitchers*

The Mountaineers, hampered by injuries and an overabundant supply of errors, suffered a poor season despite hard work on the diamond. The club was fairly strong in the hitting department, with Francis Vroman collecting 14 hits in 34 trips to the plate. His batting average of .411 took top honors.

Because most of last season's players were underclassmen, we are hoping that their experience on the field will give us a better season this year.



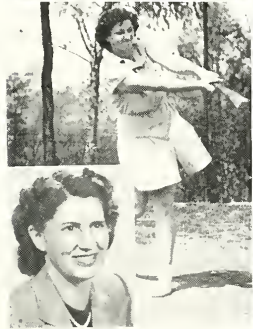
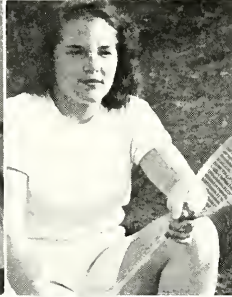
# Women's Sports

Teachers colleges have a definite need for a Physical Education program that will provide future teachers with a background of activities, enabling them to supervise recreational periods. Emphasis on activities and leadership necessary to fulfill this task can be found in the Mansfield Physical Education Program.

A varied and interesting program has been arranged by Miss Dieffenbach and Miss Duff. All sports activities are grouped according to seasons, thus providing recreation during the entire school year.

Athletic tournaments and class competitions afford each student opportunity to participate in her favorite sports. These activities give the women a chance to know the rules of the game and especially to learn good sportsmanship.





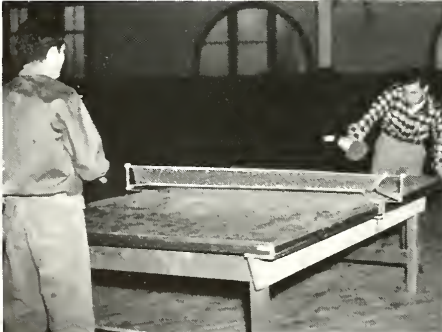
# Men's Sports

With the ever increasing need for recreational activities in Teachers Colleges to aid future teachers in supervising such activities, Mansfield's recreational program for men students has expanded to meet these needs.

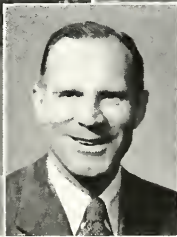
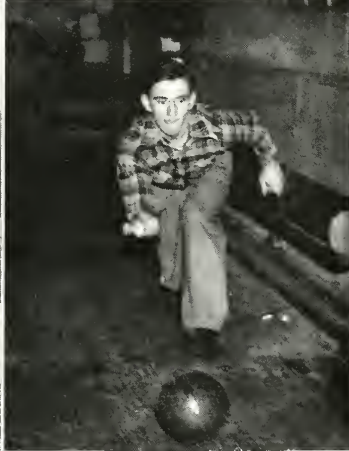
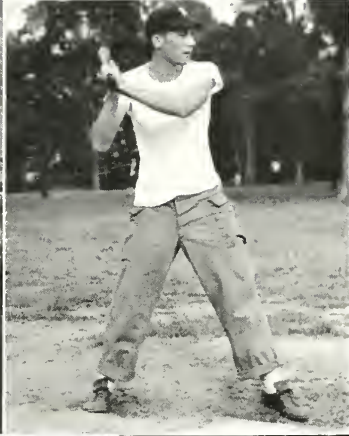
Within the past few years the Men's Recreational Department has added several new sports to its program. At the present time the activities include basketball, softball, volley ball, tennis, swimming, bowling, and table tennis. All of these sports are supervised and leagues in softball, basketball, and bowling have been organized.

Properly distributed throughout the year, there is an all year round sports activity program.

Any student may participate in as many sports as he pleases. During the present year, nineteen intramural teams were formed into a basketball league and a total of 170 games were played during the season.









# Seniors

Freeze, freeze, thou bitter sky!  
That dost not bite so nigh  
As benefits forgot;  
Though thou the waters warp,  
Thy sting is not so sharp  
As friend remembered not.

—*Shakespeare*



*Adviser*—MR. E. PEARCY

#### OFFICERS

*President* - - - THOMAS HARRINGTON

*Vice President* - - - RAYMOND MAZZA

*Secretary* - - - - - JOAN GEIGLE

*Treasurer* - - - - - PATRICIA FERRY



GEIGLE

HARRINGTON  
FERRY

MAZZA

## Senior Class

As seniors, we the class of 1950, have completed the required work in the teaching field and are now qualified teachers. But our certificates do not state all that we have learned and experienced beyond the requirements of teachers. The various organizations, committees, clubs, sports, and heterogeneous groups to which we were members have all contributed toward our education, our social poise, and our attitudes. The following photographs represent more than mere faces and names. They represent the personalities of our classmates that have been profoundly influenced by the professional training that we have received and by the individuals that have been our associates at Mansfield.

Although we now separate, intermingling with peoples all over the world, we have in common and shall keep and cherish the memories of our life at the State Teachers College.



CURTIS ACKER . . . . . Allentown, Pa.  
 Music . . . . . May

Phi Mu Alpha Sinfonia 1, 2, 3, 4, President 4; Music Educators Club 3, 4; Band 1, 2, 3, 4; Orchestra 1, 2, 3, 4; Brass Quartet; Brass Ensemble 1, 2, 3, 4.

"Make yourself necessary to somebody. Do not make life hard to any."—EMERSON.

JOHN C. ALLEN . . . . . Mansfield, Pa.  
 Secondary . . . . . August

Y. M. C. A. 4; Day Students Club 2, 3, 4.

"Let every man be swift to hear, slow to speak, slow to wrath."  
 —NEW TESTAMENT.

MARGARET ARNTS . . . . . Sayre, Pa.  
 Home Economics . . . . . May

Omicron Gamma Pi 1, 2, 3, 4; W. A. A. 1, 2, 3, 4; Women's Dorn Council 3; Secretary and Treasurer 3; Kappa Delta Pi 4.

"Graceful and useful all she does."—USKNOVS.

THELMA E. AULT . . . . . Yeagertown, Pa.  
 Home Economics . . . . . May

Y. W. C. A. 2, 3, 4; W. A. A. 2, 3, 4; Omicron Gamma Pi 2, 3, 4; Kappa Phi 4.

"Oh! could you view the melody of every grace,  
 And music of her face."—LOVELACE.

LENA MAE BAKER . . . . . Hanover, Pa.  
 Music . . . . . May

Lambda Mu 3, 4, Recording Secretary 4; Kappa Delta Pi 3, 4; Y. W. C. A. 1, 2; Music Educators Club 1, 2, 3, 4, Vice President 4; W. A. A. 1, 2, 3; Madrigals 2, 3, 4.

"A star danced; under that I was born."

GLENN BARRETT . . . . . Snedekerville, Pa.  
 Secondary . . . . . May

College Players 1, 2, 3; Art Club 2; Men's Chorus 1, 2, 3; CARONTAWAN 3; Kappa Delta Pi 3, 4; Y. M. C. A. 2, 3, 4, Vice President 3; Treasurer 2, President 4.

"A little learning is a dangerous thing;  
 Drink deep, or taste not the Pierian Spring."  
 —POPE.

MARTIN BARRETT . . . . . Covington, Pa.  
 Music . . . . . May

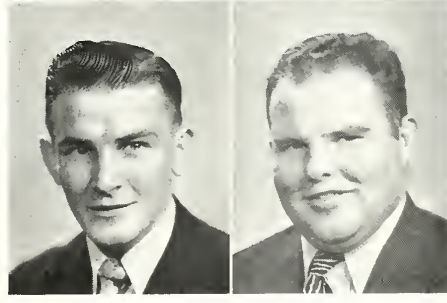
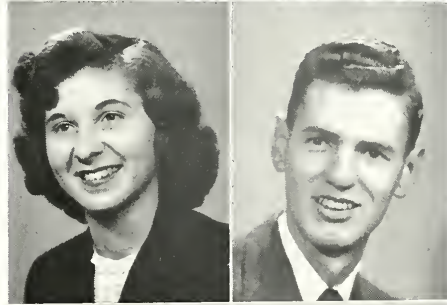
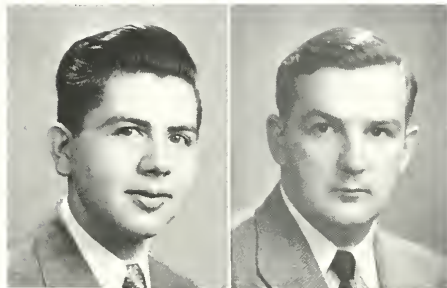
Day Students Club 2, 3, 4; Music Educators Club 4; Band 4; Freshman Chorus 1; Advanced Chorus 3, 4.

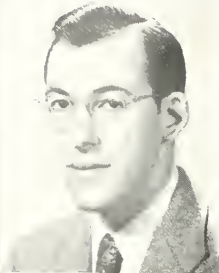
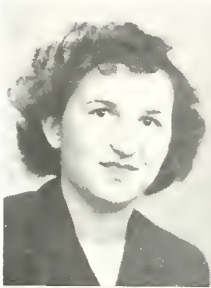
"Rich in deep hymns of gratitude and love."—HOOD.

DONALD BARTOO . . . . . Harrison Valley, Pa.  
 Secondary . . . . . May

Day Students Club 4; Secondary Club 1.

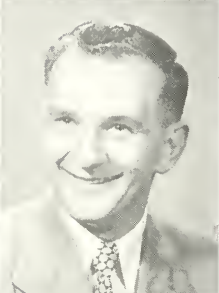
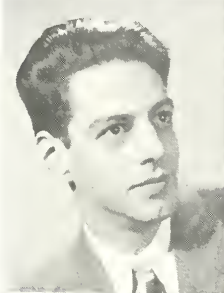
"Be of upright, conscientious, and of soft speech, gentle and not proud."—USKNOVS.





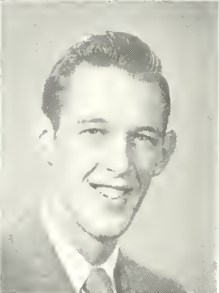
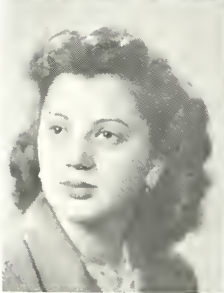
MATILDA V. BEDNASH . . . . . Springville, Pa.  
 Secondary May  
*"Softly speak and sweetly smile."*

GEORGE E. BEERS . . . . . Towanda, Pa.  
 Secondary May  
 Day Students Club 1, 2, 3, 4; Secondary Club 1, 2.  
*"Avoid extreme; and shun the fault of such,  
 Who still are pleased too little or too much."*



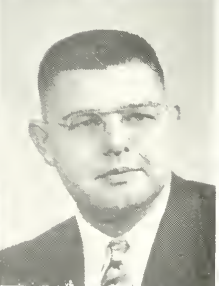
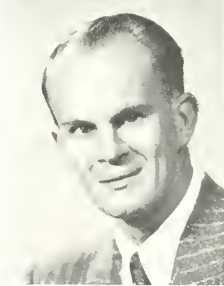
WILLIAM BENDER . . . . . Kane, Pa.  
 Music May  
 Band 1, 2, 3, 4; Orchestra 1, 2, 3, 4; Phi Mu Alpha Sinfonia 1, 2, 3, 4; Historian 4; Woodwind Ensemble 2, 3, 4; Woodwind Quintet 1, 2, 3, 4; Kappa Delta Pi 3, 4; Music Educators Club 1, 2, 3, President 2, 3; Madrigals 1, 2.  
*"Joyous, and clear, and fresh, thy music doth surpass."  
 —BROWNING.*

RUSSELL BENJAMIN . . . . . Canton, Pa.  
 Secondary May  
 Secondary Club 1; Day Students Club 3, 4.  
*"Let us make haste to live since everyday to a wise man is a new life."—SUSLCA.*



VIVIAN BERIE . . . . . Northumberland, Pa.  
 Home Economics May  
 Omicron Gamma Pi 1, 2, 3, 4; W. A. A. 1, 2, 3, 4; Women's Chorus 2; Mixed Chorus 3.  
*"Her aim, her manners, all who saw admired,  
 Courtous though coy, and gentle though retired."  
 —CRABBLE.*

WILLIAM BIDDLE . . . . . Troy, Pa.  
 Secondary May  
 Secondary Club 1.  
*"The future I may face now I have proved the past."*



CHARLES BOCKNEWCH . . . . . Knoxville, Pa.  
 Secondary January  
 Day Students Club 1, 2, 3.  
*"Life is not life at all without delight."—PATMORE.*

DONALD BOGACZYK . . . . . Blossburg, Pa.  
 Secondary August  
 Day Students Club 2, 3, 4.  
*"He that has patience may compass anything."—RABELAIS.*





ELIZABETH BOOTH . . . . . East Smithfield, Pa.  
Secondary May

W. A. A. 1, 2, 3, 4; Y. W. C. A. 1, 2, 3; Orchestra 1, 2, 3, 4;  
Flashlight 3, 4; Secondary Club 1.

*"If to her shore, some female errors fall  
Look in her face and you'll forget them all."*

ELIZABETH BOWERS . . . . . Chambersburg, Pa.  
Music May

Music Educators Club 1, 2, 3, 4; W. A. A. 1, 2, 3, 4; Vocal  
Ensemble 1, 2, 3, 4; Y. W. C. A. 1, 2.

*"A simple maiden in her flower  
Is worth a hundred coats-of-arms."  
—TENNYSON.*

FRANCIS BRADSHAW . . . . . Wilkes-Barre, Pa.  
Secondary May

Football 1, 2, 3, 4.

*"Modesty is the citadel of beauty, and of virtue."—DEMADES.*

FERN LORRAINE BRICKER . . . . . Frackville, Pa.  
Home Economics May

Omicron Gamma Pi 1, 2, 3, 4; Y. W. C. A. 1, 2, 3; W. A. A.  
1, 2, 3, 4; Kappa Phi 4.

*"High erected thoughts seated in the heart of courtesy."*

CHARLES BROWN . . . . . Burlington, Pa.  
Secondary May

Orchestra 1, 2, 3, 4; Y. M. C. A. 2, 3, 4; Treasurer 3; Men's  
Chorus 2, 3; Phi Sigma Pi 3, 4; Sigma Zeta 3, 4; Secondary  
Club 1.

*"Good nature and good-sense must ever join;  
To err is human, to forgive, divine."  
—POPE.*

MARGERY ARLINE BRUSI . . . . . Scranton, Pa.  
Home Economics May

Omicron Gamma Pi 1, 2, 3, 4, Treasurer 3; W. A. A. 1, 2, 3, 4;  
Y. W. C. A. 1, 2, 3, 4, Treasurer 4; Women's Chorus 3, 4;  
Mixed Chorus 4.

*Yet here at least an earnest sense  
Of human right and weal is shown.  
—WHITIER.*

RAYMOND BURBICK . . . . . Mansfield, Pa.  
Music August

Band 1, 2, 3, 4; Orchestra 2, 3, 4; Brass Ensemble 1, 2, 3, 4;  
Woodwind Ensemble 3, 4; Phi Mu Alpha Sinfonia 2, 3, 4; Music  
Educators Club 4.

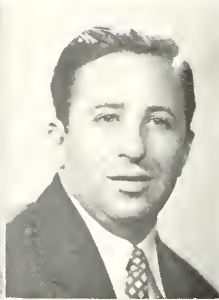
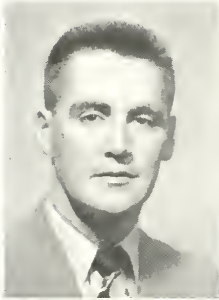
*"A heart sincere, a pleasant smile  
Makes his friendship most worthwhile."*

NELLO BURIAN . . . . . Wilkes-Barre, Pa.  
Secondary May

Football 2, 3, 4; "M" Club Treasurer 4; College Players 4.

*"Give me a staff of honor for mine age,  
But not a sceptre to control the world."  
—SHAKESPEARE.*



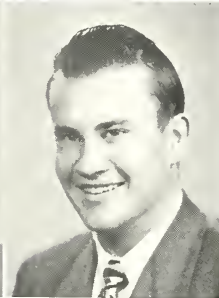
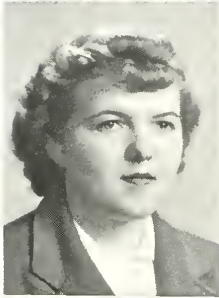


JAMES BURNS . . . . . Athens, Pa.  
Secondary May

Day Students Club 1, 2, 3, 4.  
"Life's race well run,  
Life's work well done."

THEODORE CALLAS . . . . . Elmira, N. Y.  
Secondary May

Day Students Club 2, 3; Men's Chorus 3.  
"They can conquer who believe they can."—VERGIL.

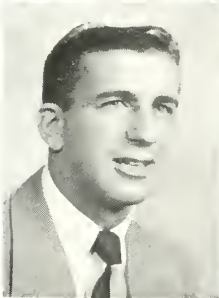


LOIS CASE . . . . . Milan, Pa.  
Secondary May

Secondary Club 1; Y. W. C. A. 1; W. A. A. 3, 4;  
Women's Chorus 2.  
"Joy rises in her like a summer's morn."—COLBRIDGE.

RUSSELL CHAFFEE . . . . . Ulster, Pa.  
Secondary August

Y. M. C. A. 1, 2, 3, Secretary 3; Men's Chorus 1, 2; Art Club  
1, 2, 3; College Players 3.  
"Shallows where a lamb could wade and depths where an elephant  
would drown."



JOSEPH CHEPLICK . . . . . Olyphant, Pa.  
Secondary May

Baseball 1, 2, 3, 4; Football 1, 2, 3, 4; "M" Club Vice President  
4; Men's Dorm Council 4.  
"He'll play a small game rather than stand out."—JOHN BAY.

VIRGINIA CHERRINGTON . . . . . Porth Allegany, Pa.  
Home Economics May

W. A. A. 1, 2, 3, 4; Kappa Omicron Phi 3, 4, Historian 4; Art  
Club 1, 2, 3, 4; Kappa Delta Pi 3, 4; Y. W. C. A. 2, 3.  
"The mirror of all courtesy."



FRANCES CLARKE . . . . . Mexico, N. Y.  
Home Economics May

W. A. A. 1, 2, 3, 4; Omicron Gamma Pi 1, 2, 3, 4; Y. W. C. A.  
1, 2, 3; Art Club 1, 2, 3, 4.  
"She must be seen to be appreciated."

DONNA CLEVELAND . . . . . Mansfield, Pa.  
Elementary May

College Players 2, 3; W. A. A. 1, 2, 3, 4; Kappa Delta Pi 3, 4;  
A. C. E. I. 1, 2, 3, 4; Day Students Club 1, 2, 3, 4; Art Club 3.  
"And though hard be the task,  
Keep a stiff upper lip."







ELEANOR L. COBB . . . . . Stevensville, Pa.  
Elementary . . . . . May

A. C. E. I. 1, 2, 3, 4; Y. W. C. A. 1, 2, 3, 4; W. A. A. 4;  
Women's Chorus 1, 2.

*"Her modest looks the cottage might adorn,  
Sweet as the primrose peeps beneath the thorn."*

JANET COLWELL . . . . . Susquehanna, Pa.  
Home Economics . . . . . May

Omicron Gamma Pi 1, 2, 3, 4, Vice President 2; W. A. A. 1,  
2, 3, 4, Secretary 2.

*"Her very frowns are fairer far  
Than smiles of other maidens are."*

ROBERT CONNIFF . . . . . Plains, Pa.  
Secondary . . . . . January

Day Students Club 2, 3, 4.

*"He set his heart upon the goal and not the prize."—WATSON.*

WILLIAM CONWELL . . . . . Wilkes-Barre, Pa.  
Secondary . . . . . May

Men's Dorm Council 3; Football 1, 2, 3, 4; Who's Who in American  
Universities and Colleges 4; Student Council President 1.

*"A smile that won't come off."*

EUGENE DAVID CORBO . . . . . Elmira, N. Y.  
Music . . . . . August

Men's Chorus 1; Y. M. C. A. 1, 2, 3; Band 2, 3, 4; Orchestra  
2, 3, 4; Music Educators Club 1.

*"A man of all hours, i.e., ready for anything."*

AUDREY L. CORNELL . . . . . North Bingham, Pa.  
Elementary . . . . . May

Art Club 1, 2; A. C. E. I. 3, 4, Primary Vice President 4; W. A.  
A. 4; Mixed Chorus 4.

*"She looks as clear  
As morning roses, newly wash'd in dew."—SHAKESPEARE.*

ARLENE B. CRAIG . . . . . Wellsburg, N. Y.  
Elementary . . . . . May

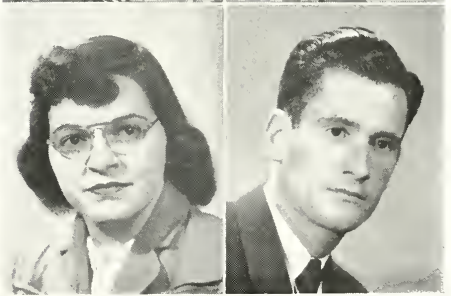
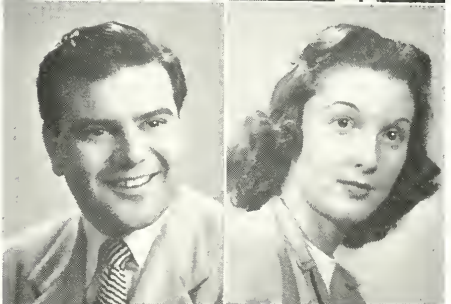
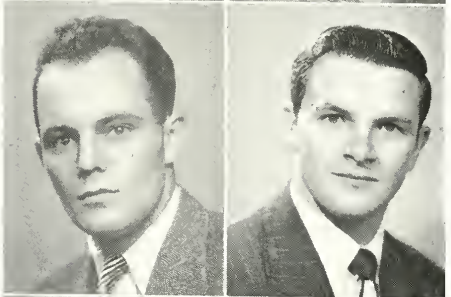
Women's Chorus 3, 4; A. C. E. I. 1, 2, 3, 4, Treasurer 4; W. A.  
A. 1; Day Students Club 1, 2, 3, 4; Mixed Chorus 4.

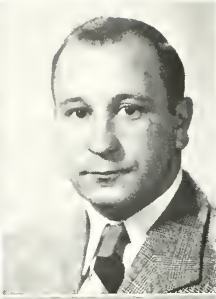
*"I worked with patience, which means almost power."  
—E. B. BROWNING.*

JOSEPH CRAVEN . . . . . Peckville, Pa.  
Elementary . . . . . January

A. C. E. I. 4.

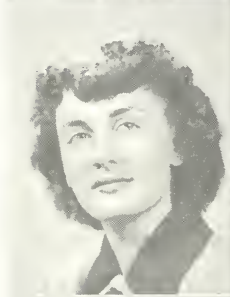
*"Time could not chill him, fortune sway,  
Nor toil with all its burdens tire."  
—O. W. HOLMES.*





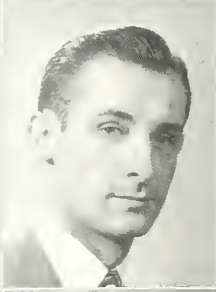
VELMA CRUITTENDEN . . . . . Wellsboro, Pa.  
*Elementary* . . . . . May  
 Y. W. C. A. 1, 2, 3; W. A. A. 1, 2, 3; A. C. E. 1, 2, 3, 4;  
 Secretary 4; Kappa Phi 2, 3, 4, Treasurer 3.  
*"No true and permanent fame can be founded except in labors  
 which promote the happiness of mankind."*  
 —CHARLES SUMNER.

LEON F. DANIELS . . . . . Athens, Pa.  
*Secondary* . . . . . May  
 Baseball 3, 4; Basketball 4.  
*"The force of his own merit makes his way."*



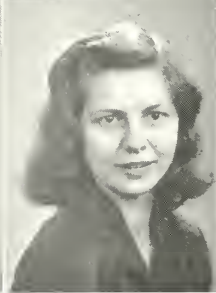
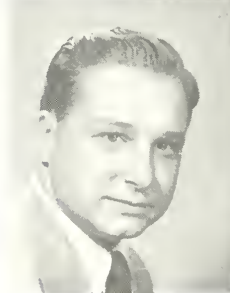
MIRJAM R. DAVIS . . . . . LeRayssville, Pa.  
*Music* . . . . . May  
*"Whose face is this, so musically fair?"—BUCHANAN.*

MARY E. DAVIS . . . . . LeRayssville, Pa.  
*Home Economics* . . . . . May  
 Band 1, 2, 3; Chorus 1, 3; Music Educators Club 1; Y. W. C. A.  
 1, 2, 3, 4; W. A. A. 1, 2, 3, 4; Art Club 3, 4; Omicron Gamma  
 Pi 2, 3, 4; College Players 3, 4; Kappa Phi 3, 4, Treasurer 4;  
 Women's Vocal Ensemble 1.  
*"The social smile, the sympathetic tear."*—THOMAS GRAY.



FLOYD DELGROSSO . . . . . Mansfield, Pa.  
*Secondary* . . . . . May  
 Day Students Club 2, 3, 4.  
*"Our character is our will, for what we will, we are."*  
 —ARCHBISHOP MANNING.

RAYMOND DETZ . . . . . Nanticoke, Pa.  
*Secondary* . . . . . May  
 Phi Sigma Pi 4; Sigma Zeta 4.  
*"All enterprise, when fairly once begun, should be left till all that  
 ought is won."*—SHAKESPEARE.



ROBERT DEWEY . . . . . Troy, Pa.  
*Secondary* . . . . . January  
 Phi Sigma Pi 3, 4, Secretary 4; Sigma Zeta 3, 4; Kappa Delta  
 Pi 3, 4; Day Students Club 3, 4.  
*"I value science—none can prize it more,  
 It gives ten thousand motives to adore."*—COLFS.

RUTH DIETRICH . . . . . Fleetwood, Pa.  
*Secondary* . . . . . May  
 Y. W. C. A. 1, 2; Secondary Club 1; Mixed Chorus 3.  
*"Faith, as an intellectual state, is self-reliance."*—O. W. HOLMES.





PETER DOKAS . . . . . Hanover, Pa.  
 Secondary August

Football 3, 4.

"Success to the strongest, who are always, at last, the wisest and best."—EMERSON.

ANTHONY DOMBROSKI . . . . . Wilkes-Barre, Pa.  
 Secondary May

Football 3, 4; Art Club 3.

"I am the master of my fate,  
 I am the captain of my soul."

EDWARD DRABINSKI . . . . . Blossburg, Pa.  
 Secondary August

Day Students Club 1, 2, 3, 4; Baseball 3, 4; Secondary Club 1, 2.

"A pleasant possession is useless without a friend."

MARY DUBBLE . . . . . Myerstown, Pa.  
 Music May

Lambda Mu 3, 4; Kappa Delta Pi 3, 4; Music Educators Club 1, 2, 3, 4; Secretary 2, 3; W. A. A. 1, 2, 3, 4; Y. W. C. A. 1, 3.

"She was wont to speak plain and to the purpose."

JOHN J. EARLY . . . . . Montrose, Pa.  
 Secondary August

Day Students Club 1, 2, 3, 4.

"Hast thou attempted greatness? then go on:  
 Back turning darkens resolution."—ROBERT HERRICK.

LAURA ECKROTH . . . . . Bloomsburg, Pa.  
 Home Economics May

Y. W. C. A. 1, 2, 3, 4; Secretary 4; Omicron Gamma Pi 1, 2, 3, 4; W. A. A. 1, 2, 3, 4; Kappa Phi 1, 2, 3, 4; Secretary 2, President 4.

"Angles from friendship gather half their joy."—YOUNG.

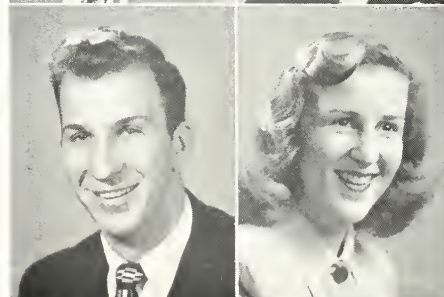
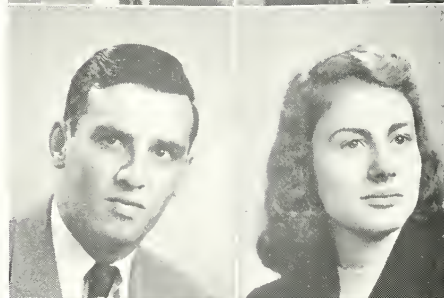
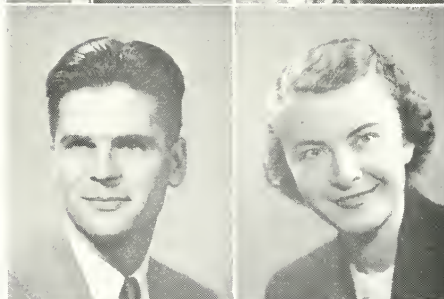
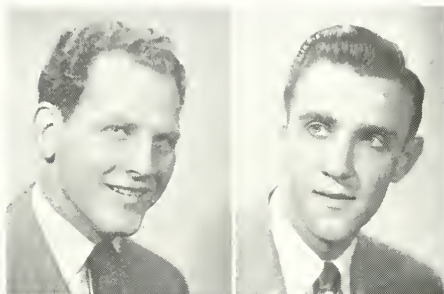
ROBERT ELDRED . . . . . Sayre, Pa.  
 Secondary August

"Know where to speak—for many times it brings danger, to give the best advice to kings."—ROBERT HERRICK.

BEVERLY EVANS . . . . . Corning, N. Y.  
 Home Economics May

Women's Chorus 1, 2; Mixed Chorus 3; Y. W. C. A. 1; College Players 2, 3, 4; Omicron Gamma Pi 1, 2, 3, 4; W. A. A. 1, 2, 3, 4.

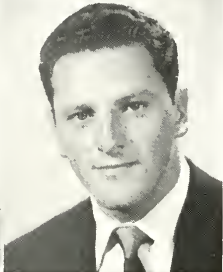
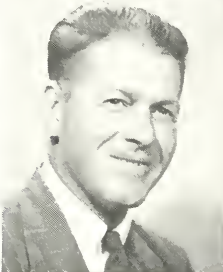
"Where hearts are true, few words will do."—A.B. CHEALS.





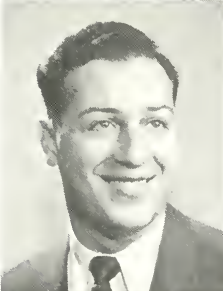
MARHLYN FEHR . . . . . Allentown, Pa.  
*Home Economics* . . . . . May  
 W. A. A. 1, 2, 3, 4; Omicron Gamma Pi 1, 2, 3, 4; *Flashlight*  
 3, 4; Y. W. C. A. 1; Women's Chorus 1, 2.  
*"That which befits us is cheerfulness and courage."*—EMERSON.

PATRICIA FERRY . . . . . Dallas, Pa.  
*Home Economics* . . . . . May  
 Omicron Gamma Pi 1, 2, 3, 4; Class Treasurer 4; W. A. A. 1, 2,  
 3, 4; Treasurer 3; Band 1; Mixed Chorus 3; CARONTWAN 3.  
*"With malice toward none; with charity for all."*—LINCOLN.



MARION FINCH . . . . . Crooked Creek, Pa.  
*Secondary* . . . . . May  
*"That's best which God sends. 'Twas His will; it is mine."*  
 —MERIDITH.

RICHARD FRALEY . . . . . Wilkes Barre, Pa.  
*Secondary* . . . . . January  
 Baseball 3; Secondary Club 1.  
*"Good humor may be said to be one of the very best articles of  
 dress one can wear in society."*—THACKERAY.



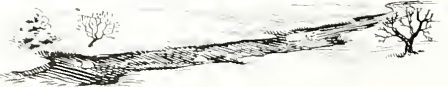
FRANCIS GALLICCHIO . . . . . Troy, Pa.  
*Secondary* . . . . . May  
 College Players 3.  
*"No thoroughly occupied man was ever yet very miserable."*  
 —LONDON.

BENEDICT K. GARRISON . . . . . Mansfield, Pa.  
*Secondary* . . . . . May  
 Day Students Club 1, 2, 3, 4.  
*"Too much for idle thinking—how it steals the time!  
 To business now."*—BROWNING.



LOIS GASS . . . . . Danville, Pa.  
*Home Economics* . . . . . May  
 Omicron Gamma Pi 1, 2, 3, 4; Y. W. C. A. 1, 2, 3, 4; W. A. A.  
 1, 2, 3, 4; Kappa Phi 1; Women's Chorus 1, 2; Mixed Chorus 3, 4.  
*"A truer, nobler, trustier heart,  
 More loving, or more loyal, never beat  
 Within a human breast."*—BYRON.

JOHN GEARHART . . . . . Tower City, Pa.  
*Secondary* . . . . . May  
 College Players 3, 4.  
*"'Tis merry when gentle-folk meet."*—BREWSTER.





JOAN GEIGLE . . . . . Coudersport, Pa.  
*Secondary* . . . . . May

W. A. A. 1, 2, 3, 4; CARONTAWAN 3; Flashlight 3, 4; Women's Chorus 1, 2; Class Secretary 4; Kappa Delta Pi 3, 4; Secondary Club 1; Y. W. C. A. 1.

"Good looks are a great recommendation in the business of mankind."—MONTAIGNE.

EMMA GESSNER . . . . . Dornsife, Pa.  
*Music* . . . . . May

Y. W. C. A. 1, 2, 3, 4; W. A. A. 1, 2, 3, 4; Music Educators Club 1, 2, 3, 4; Vocal Ensemble 1, 2, 3, 4.

"A dignity and stateliness at need,  
 The will to follow or the act to lead."—L. C. THOMAS.

JOHN GILLETTE . . . . . Germania, Pa.  
*Secondary* . . . . . January

"His wise, rare smile lights up his shiny face."

LORIS M. GOHL . . . . . Jersey Shore, Pa.  
*Music* . . . . . August

Lambda Mu 3, 4; Kappa Delta Pi 4; Orchestra 3, 4.

"Oh! then I saw her eye was bright,  
 A well of love, a spring of light."—COLERIDGE.

ROBERT GRIFFITHS . . . . . Millerton, Pa.  
*Secondary* . . . . . May

Day Students Club 1, 2, 3, 4.

"Gentle of speech, beneficent of mind."—HOMER.

RAYMOND GRUZLEWSKI . . . . . Blossburg, Pa.  
*Secondary* . . . . . January

Day Students Club 2, 3, 4.

"A frame of adamant, a soul of fire,  
 No dangers fright him, and no labours tire."  
 —SAMUEL JOHNSON.

WILLIAM HAMILTON . . . . . Galeton, Pa.  
*Secondary* . . . . . May

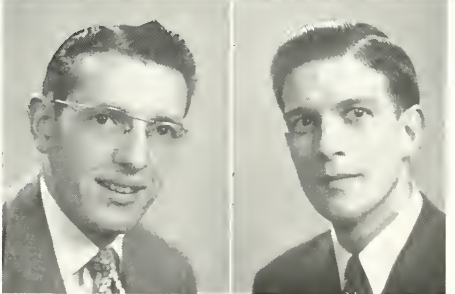
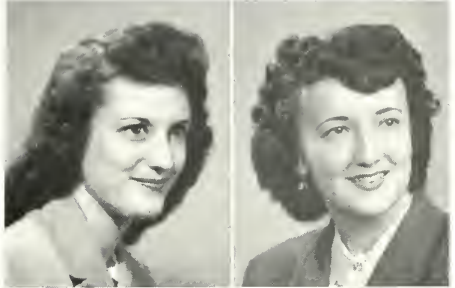
Pbi Sigma Pi 4; Day Students Club 4.

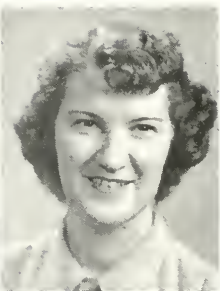
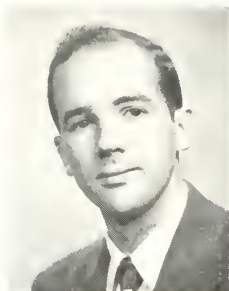
"In most things success depends on knowing how long it takes to succeed."—MONTESQUIEU.

GENE HARBACH . . . . . Loganton, Pa.  
*Music* . . . . . August

Pbi Mu Alpha Sinfonia 2, 3, 4; Music Educators Club 1, 4.

"And therefore does not stoop, nor lie in wait  
 For wealth, or honours, or for worldly state."  
 —WORDSWORTH.





ANTHONY HOROSKO . . . . . Olyphant, Pa.

Secondary January

Art Club 3, 4; Kappa Delta Pi 3, 4; President 4; Phi Sigma Pi 3, 4; Treasurer 4; Who's Who in American Universities and Colleges 4.

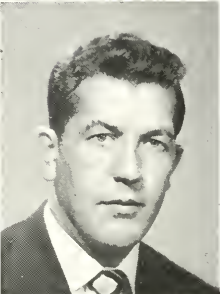
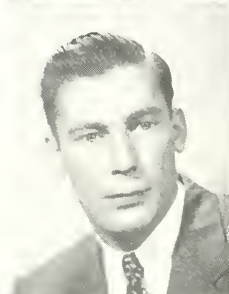
*"But all the pleasure that I find  
Is to maintain a quiet mind."*—DYER.

DOROTHY HARKNESS . . . . . Canton, Pa.

Home Economics May

Omicron Gamma Pi 1, 2, 3, 4; W. A. A. 1, 3; Mixed Chorus 3.

*"Merry as the day is long."*



JOSEPH HARRINGTON . . . . . Kingston, Pa.

Secondary May

Football 1, 2, 3; Basketball 1, 2; "M" Club President 4.

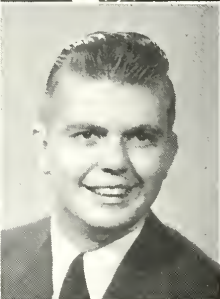
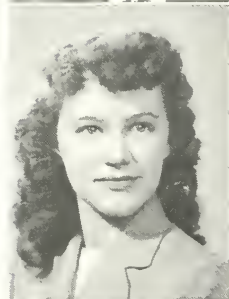
*"A sound mind in a manly body."*—HOMER.

THOMAS HARRINGTON . . . . . Kingston, Pa.

Secondary May

Secondary Club 1, 2; Student Council 4; Football 3, 4; Class President 4.

*"So unaffected, so composed of mind;  
So strong, yet so refined."*



ERNESTINE L. HASWELL . . . . . Lehighton, Pa.

Elementary August

Music Educators Club 1; Y. W. C. A. 1; A. C. E. I. 2, 3, 4; Women's Vocal Ensemble 1.

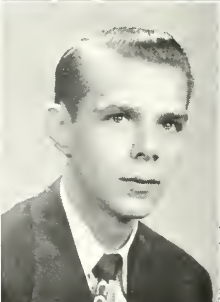
*"She doeth little kindnesses  
Which most leave undone, or despise."*—J. R. LOWELL.

JOSEPH HAWKINS . . . . . Canton, Pa.

Secondary May

Day Students Club 1, 2, 3, 4; Secondary Club 1; Men's Chorus 1, 3; Mixed Chorus 4; R. O. T. C. 3.

*"Patience is the best remedy for every trouble."*—PLAUTUS.



DORIS HEALY PERSCHAU . . . . . Wilkes Barre, Pa.

Secondary May

W. A. A. 2, 3, 4; Secretary 4; Sigma Zeta 3, 4; Secretary 3; Treasurer 4; Kappa Delta Pi 3, 4; CARONTAWAN 3.

*"They are truly great  
That are truly good."*

ROBERT HEIM . . . . . Clarks Summit, Pa.

Music May

Music Educators Club 1, 3; Phi Mu Alpha Sinfonia 2, 3.

*"Work bears witness who does well."*—RAY.

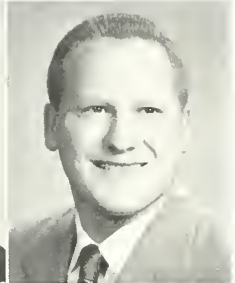




MARIE HEMBURY . . . . . Mildred, Pa.  
*Secondary* . . . . . May

College Players 1, 2, 3, 4; W. A. A. 1, 2, 3, 4; Kappa Delta Pi 3, 4; Flashlight 2, 3, 4; CARONTAWAN 3, 4; Y. W. C. A. 1, 2, 3; Secondary Club 1.

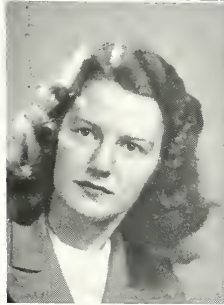
*"To do easily what is difficult for others is the mark of talent."*  
 —AMEL.



WILLIAM HENDLAR . . . . . Scranton, Pa.  
*Secondary* . . . . . August

Football 1, 2, 4; Art Club 2, 3, 4; Y. M. C. A. 1, 2, 3, 4.

*"I hate nobody, I am in charity with the world."*



JOE HERMAN . . . . . Canton, Pa.  
*Home Economics* . . . . . May

Omicron Gamma Pi 1, 2, 3, 4; W. A. A. 4.

*"Things do not happen in this world—they are brought about."*

EARL HINMAN . . . . . Monroeton, Pa.  
*Secondary* . . . . . January

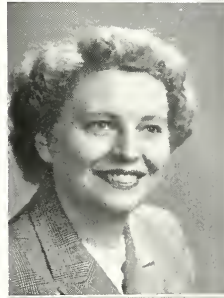
Sigma Zeta 4; Kappa Delta Pi 4.

*"My heart is ever at your service."*—SHAKESPEARE.

FRANCES B. HOFFMANN . . . . . Forty Fort, Pa.  
*Home Economics* . . . . . May

Art Club 2, 3, 4; Kappa Delta Pi 3, 4; W. A. A. 1, 2, 3; Kappa Omicron Phi 3, 4; Secretary 3, President 4; Women's Chorus 1, 2; Omicron Gamma Pi 1, 2, 3, 4; Y. W. C. A. 1.

*"Honor and shame from no condition rise;  
 Act well your part, there all the honor lies."*—POPE.



EUGENE HORN . . . . . Tower City, Pa.  
*Secondary* . . . . . May

Men's Chorus 3, 4; College Players 3, 4; President 4; Phi Sigma Pi 3, 4; Alpha Psi Omega 3, 4; CARONTAWAN Business Manager 3.

*"Steady of heart and stout of hand."*—SCOTT.

ELLEN HOUSER . . . . . Millerton, Pa.  
*Music* . . . . . May

Music Educators Club 1, 2, 3, 4; Y. W. C. A. 1; W. A. A. 1, 2, 3, 4.

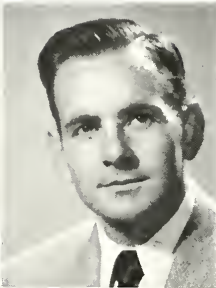
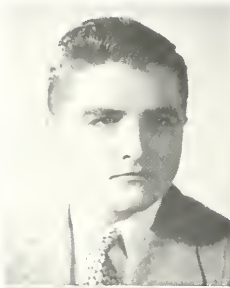
*"While you are upon earth, enjoy the good things that are here."*  
 —JOHN SELDEN.



WILLIAM HOUSER . . . . . Millerton, Pa.  
*Secondary* . . . . . May

Day Students Club 1, 2, 3, 4.

*"He'll find a way."*—BARRIE.



RICHARD HUTCHINSON . . . . . Olean, N. Y.  
Secondary  
May

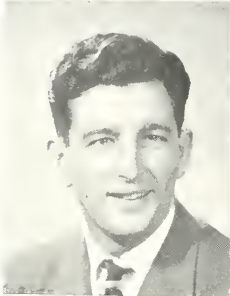
Secondary Club 1; College Players 2, 3, 4; Secretary 3; CARONTAWAN 1, 2; Men's Chorus 1, 2; Cheerleader 3; Alpha Psi Omega, Business Manager 3, 4; Phi Sigma Pi 3, 4; Kappa Delta Pi 4.

"A good man is contented."—FERGUSON.

WILLIAM JACQUISH . . . . . Tunkhannock, Pa.  
Secondary  
January

Day Students Club 3, 4; Flashlight 1.

"A patient man's a pattern for a king."—THOMAS DEKKER.



LLOYD JOHNSON . . . . . Penbrook, Pa.  
Secondary  
May

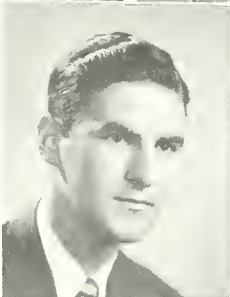
Sigma Zeta 4.

"Let thy speech be short, comprehending much in few words."

MARY ANN JONES . . . . . Scranton, Pa.  
Music  
May

Lambda Mu 2, 3, 4; W. A. A. 1, 2, 3, 4; Y. W. C. A. 1, 2, 3; Music Educators Club 1, 2, 3, 4; Kappa Delta Pi 3, 4.

"Great thoughts, like great deeds, need no trumpet."



PETER KEARNEY . . . . . Olyphant, Pa.  
Secondary  
January

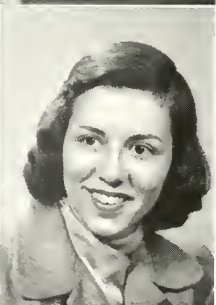
Secondary Club 1; Class Treasurer 3; CARONTAWAN 3.

"No mind is thoroughly well organized that is deficient in a sense of humour."—S. T. COLERIDGE.

NORMA KELLER . . . . . Athens, Pa.  
Secondary  
May

Women's Chorus 1, 2; Y. W. C. A. 1; Secondary Club 1; Kappa Delta Pi 3, 4; Sigma Zeta 4; W. A. A. 1, 2, 3, 4; Class Secretary 3.

"There's language in her eye, her cheek, her lip."—SHAKESPEARE.



JOHN KEHRES . . . . . Rebeck, Pa.  
Music  
May

Music Educators Club 3, 4; Phi Mu Alpha Sinfonia 3, 4; Men's Chorus 4; Band 3, 4; Mixed Chorus 1, 2, 3, 4.

"Of manners gentle; of affections mild; In wit a man—simplicity a child."—POPE.

EDITH KENDALL . . . . . Marienville, Pa.  
Music  
May

Lambda Mu 2, 3, 4; Treasurer 3; W. A. A. 1, 2; Y. W. C. A. 1, 2, 3, 4; Music Educators Club 1, 2, 3, 4; Madrigals 3, 4.

"'Tis true, gold can do much,  
But beauty more."—MANSFIELD.







LEONA KERCHUSKY . . . . . Ringtown, Pa.  
Secondary May

Art Club 3, 4; W. A. A. 1, 3, 4; Secondary Club 1.  
*"With affection beaming in one eye and calculations shining out of the other."*—DICKENS.

MARY KINGAN . . . . . Slippery Rock, Pa.  
Music May

W. A. A. 1, 2, 3, 4; Cheerleader 2, 3; Y. W. C. A. 1; Music Educators Club 1, 2, 3, 4.  
*"To fireside happiness, to hours of ease  
Blest with that charm, the certainty to please."*—S. ROGERS.

LYDIA KINNEY . . . . . Mansfield, Pa.  
Secondary May

Women's Chorus 1, 2; Day Students Club 1, 2, 3, 4, President 4; Kappa Delta Pi 3, 4; Student Council 4; Flashlight 3, 4; W. A. A. 1, 2, 3; Secondary Club 1.  
*"Personality has its own reward."*

ELEANOR KITHICART . . . . . Wyalusing, Pa.  
Secondary May

*"When we build, let us think that we build for ever."*—BUSKIN.

ALFRED KJELGAARD . . . . . Galeton, Pa.  
Secondary May

Day Students Club 1, 2, 3, 4.  
*"The year grows rich as it groweth old,  
And life's latest sands are its sands of gold."*—JULIA.

BERNIECE KLINGAMAN . . . . . Gilbert, Pa.  
Music May

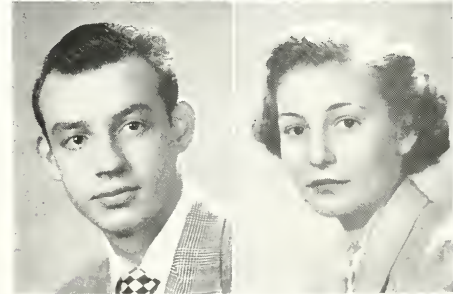
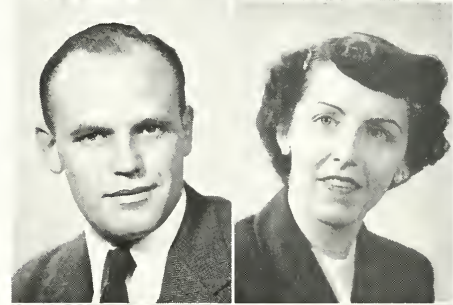
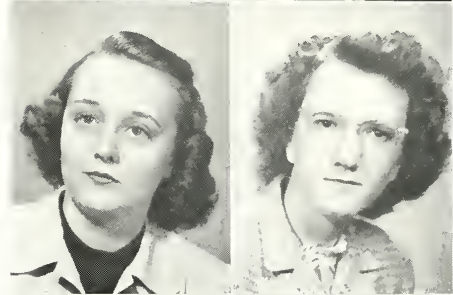
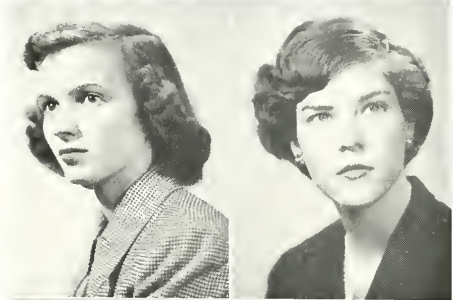
Y. W. C. A. 1, 2, 3, 4, Vice President 3; Lambda Mu 2, 3, 4, Vice President 4; Madrigals 2, 3, 4; Band 3, 4; Orchestra 2, 3; W. A. A. 1, 2, 3, 4; Kappa Delta Pi 3, 4; Dorm Council 2; Music Educators Club 1, 2, 3, 4; Women's Vocal Ensemble 1, 2, 3, 4.  
*"Those graceful acts,  
Those thousand decencies that daily flow  
From all her words and actions."*—MILTON.

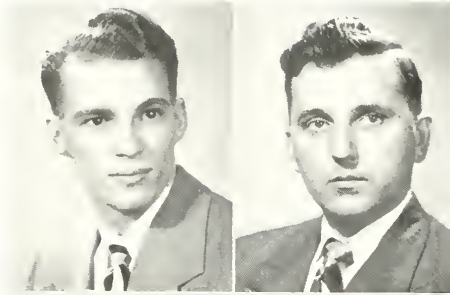
EDWARD KNOB . . . . . Stroudsburg, Pa.  
Music May

Phi Mu Alpha Sinfonia 2, 3, 4; Band 1, 2, 3, 4; Orchestra 2, 3, 4; Woodwind Ensemble 2, 3, 4; Music Educators Club 3; Flashlight 1.  
*"There is no truer truth obtainable  
By man than comes of music."*—ROBERT BROWNING.

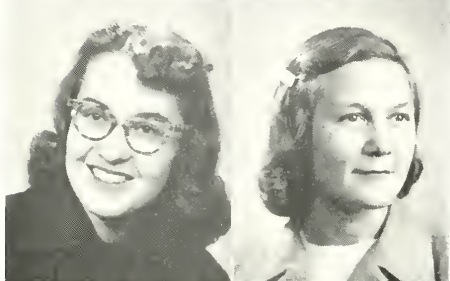
MATILDA KOSLOSKY . . . . . Dushore, Pa.  
Elementary May

Y. W. C. A. 1; Secondary Club 1; W. A. A. 3; A. C. E. I. 3, 4.  
*"Little friends may prove great friends."*—AESOP.



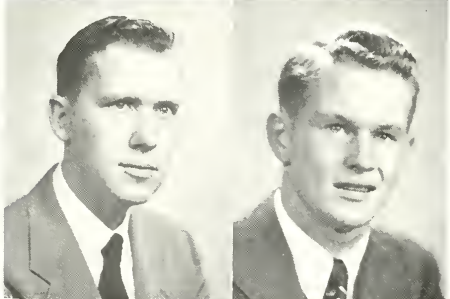


LEON KREGER, JR. . . . . Liberty, Pa.  
 Secondary January  
 Art Club 2, 3; Phi Sigma Pi 3, 4; Sigma Zeta 3, 4;  
 Y. M. C. A. 3, 4.  
*"To know how to wait is the great secret of success."*  
 —DE MAISTRE.



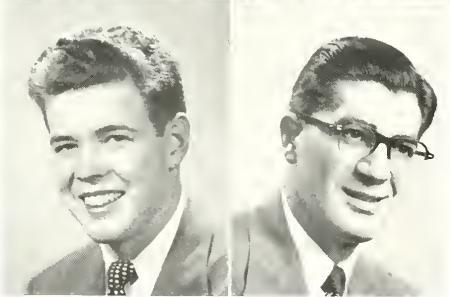
FRANCIS KRISTUNAS . . . . . Duryea, Pa.  
 Secondary August  
 Day Students Club 1, 2, 3.  
*"A happy life consists in tranquility of mind."*—CICERO.

KATHERINE KROUSE . . . . . Morris, Pa.  
 Elementary May  
 A. C. E. I. 3, 4; Y. W. C. A. 3; W. A. A. 3.  
*"Self-confidence is the first requisite to great undertakings."*  
 —JOHNSON.



CATHERINE KUSTER . . . . . Blossburg, Pa.  
 Elementary January  
*"Culture is the habit of being pleased with the best and knowing why."*—HENRY VAN DYKE.

EDWARD LENAHAN . . . . . Wilkes-Barre, Pa.  
 Secondary May  
*"I am not of that feather to shake off  
 My friend when he must need me."*—SHAKESPEARE.



GEORGE LEVERING . . . . . Athens, Pa.  
 Secondary May  
 Day Students Club 1, 2, 3, 4.  
*"Is of a constant loving noble nature."*—SHAKESPEARE.

THOMAS LYNCH . . . . . Athens, Pa.  
 Secondary May  
 Flashlight 3, 4.  
*"The surest way not to fail is to determine to succeed."*

STUART S. MACKOWIAK . . . . . Blossburg, Pa.  
 Secondary May  
 Day Students Club 3, 4; Student Council 4; Kappa Delta Pi 4.  
*"A great mind becomes a great fortune."*—DE CLEMENTIA.





**ALICE MAE MAGUIRE** . . . . . Plains, Pa.  
*Home Economics* . . . . . May

Kappa Delta Pi 4; Omicron Gamma Pi 2, 3, 4; W. A. A. 2, 3, 4;  
 Mixed Chorus 3, 4.

*"Unless degree is preserved, the first place is safe for no one."*  
 —SVRUS.

**ALITA MARCUCCI** . . . . . Laceyville, Pa.  
*Elementary* . . . . . May

A. C. E. I. 1, 2, 3, 4, Vice President 3; Y. W. C. A. 1, 2, 3, 4;  
 Kappa Delta Pi 3, 4; Women's Chorus 1, 2.

*"Never idle a moment, but thrifty and thoughtful of others."*  
 —LONGFELLOW.

**MALIN MARTIN** . . . . . Athens, Pa.  
*Secondary* . . . . . May

Day Students Club 3, 4; Kappa Delta Pi 4.

*"God works wonders now and then;  
 Behold! a lawyer, an honest man."*—FRANKLIN.

**ESTHER MARSHALL** . . . . . Boaring Branch, Pa.  
*Home Economics* . . . . . May

Day Students Club 1, 2, 3, 4, Vice President 3; Omicron Gamma  
 Pi 1, 2, 3, 4; Art Club 2, 3; Y. W. C. A. 1, 2; W. A. A. 1, 2.

*"A merry heart maketh a cheerful countenance."*  
 —OLD TESTAMENT.

**S. LOU MARVIN** . . . . . Forty Fort, Pa.  
*Music* . . . . . May

Lambda Mu 2, 3, 4, President 3, 4; Kappa Delta Pi 3, 4; Music  
 Educators Club 1, 2, 3, 4; W. A. A. 1, 2; Y. W. C. A. 1, 2, 3;  
 College Players 2, 3; Who's Who in American Universities and  
 Colleges.

*"Shall I compare thee to a summer's day?  
 Thou art more lovely and more temperate."*—SHAKESPEARE.

**KENNETH MASTERSON** . . . . . Tower City, Pa.  
*Music* . . . . . May

Madrigals 1, 2, 3, 4; Kappa Delta Pi 3, 4; Phi Mu Alpha Sinfonia  
 3, 4, Secretary 4; Music Educators Club 1, 2, 3, 4; Band  
 3, 4; Orchestra 3, 4.

*"The most manifest sign of wisdom is a continual cheerfulness."*  
 —MONTAIGNE.

**RITA MASTERSON** . . . . . Eldred, Pa.  
*Elementary* . . . . . May

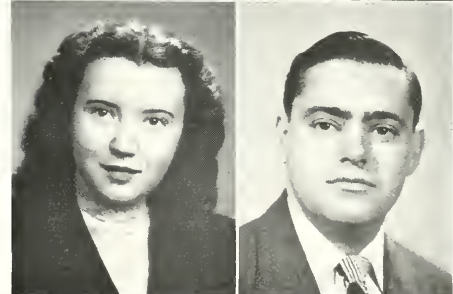
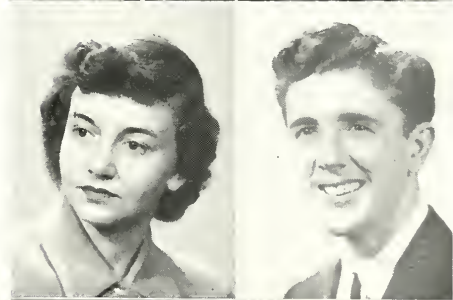
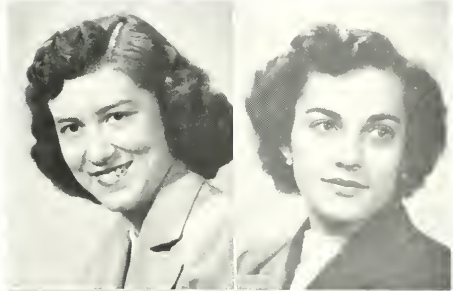
Class Treasurer 3; Student Council 4; Flashlight 3, 4; Kappa  
 Delta Pi 3, 4; Co-editor *Password* 4; A. C. E. I. 3, 4; Secondary  
 Club 1; W. A. A. 1, 2, 3; CARONTAWAN Editor 3, Advisory Editor  
 4; College Players 3, 4; Who's Who in American Universities and  
 Colleges.

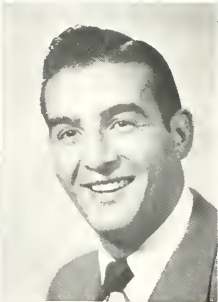
*"Life is not so short but that there is always time enough for  
 courtesy."*—EMERSON.

**CHARLES MAUL** . . . . . Mansfield, Pa.  
*Music* . . . . . January

Madrigals 1, 2, 3, 4; Band 1, 2, 3, 4; Music Educators Club 1,  
 2, 3, 4; Day Students Club 1, 2, 3, 4; Phi Mu Alpha Sinfonia  
 3, 4; Chorus 1, 2, 3, 4; Kappa Delta Pi 3, 4; CARONTAWAN Busi-  
 ness Manager 2.

*"To him whose elastic and vigorous thought keeps pace with the  
 sun, the day is a perpetual morning."*—THOREAU.

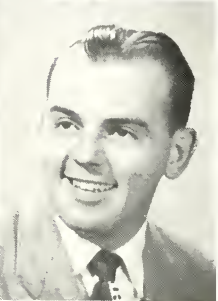




NAN MAUL . . . . . Mansfield, Pa.  
*Music* . . . . . May

Band 1, 2, 3, 4; Music Educators Club 1, 2, 3, 4; Chorus 1, 2, 3, 4; Day Students Club 1, 2, 3, 4; Secretary 3; Treasurer 4; Madrigals 3, 4.

*"The best way to secure future happiness is to be as happy as is rightfully possible today."*—ELIOT.



RAYMOND MAZZA . . . . . Steelton, Pa.  
*Music* . . . . . May

Music Educators Club 3; Basketball 3, 4; Class Vice President 4.

*"He, perfect dancer, climbs the rope, and balances your fear and hope."*

LAURA McCARTY . . . . . Lehighton, Pa.  
*Home Economics* . . . . . May

Art Club 2, 3, 4; W. A. A. 1, 2, 3, 4; Omicron Gamma Pi 1, 2, 3, 4; Flashlight 1, 2, 3, 4; Y. W. C. A. 1.

*"Art is nothing more than the shadow of humanity."*  
 —HENRY JAMES.



JAMES McClURE . . . . . Troy, Pa.  
*Secondary* . . . . . May

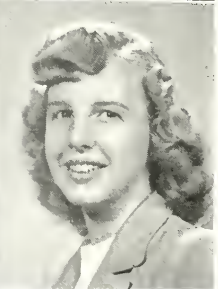
Phi Sigma Pi 3, 4; Vice President 4; Sigma Zeta 3, 4; President 4; Kappa Delta Pi 4.

*"It is impossible to be just if one is not generous."*—ROUX.

JEAN B. McELROY . . . . . Mansfield, Pa.  
*Secondary* . . . . . May

Day Students Club 3, 4.

*"Beauty is truth; truth beauty."*—KEATS.



BARBARA McFADDEN . . . . . Bradford, Pa.  
*Home Economics* . . . . . May

Omicron Gamma Pi 1, 2, 3, 4; W. A. A. 1, 2.

*"Her ways are ways of pleasantness, and all her paths are peace."*  
 —OLD TESTAMENT.

RICHARD McLANE . . . . . Pittston, Pa.  
*Secondary* . . . . . January

Band 2, 3, 4; Music Educators Club 4.

*"He is gentle that doth gentle deeds."*—CHAUCER.

DOROTHY E. McLAUGHLIN . . . . . Roulette, Pa.  
*Music* . . . . . May

Kappa Delta Pi 3, 4; Lambda Mu 2, 3, 4; Music Educators Club 1, 2, 3, 4; Vocal Ensemble 1, 2, 3, 4.

*"Those true eyes—too pure and too honest to disguise  
 The sweet soul shining through them."*—LYTTON.





LORENE McMILLEN . . . . . Loysville, Pa.  
Home Economics May

W. A. A. 1, 2, 3, 4; Omicron Gamma Pi 1, 2, 3, 4; Y. W. C. A. 1, 2, 3; Art Club 1, 2, 3, 4.

*"The fairest garden in her looks,  
And in her mind the wisest books."*—COWLEY.

MARY JANE McNETT . . . . . Alba, Pa.  
Secondary May

Music Educators Club 1, 2; Madrigals 2, 3; Class Treasurer 4; W. A. A. 4; Advanced Chorus 1, 2, 3.

*"Health and cheerfulness mutually beget each other."*—ADDISON.

JEANNE MEEK . . . . . Allenwood, Pa.  
Home Economics May

Y. W. C. A. 1, 2; Omicron Gamma Pi 1, 2, 3, 4; W. A. A. 1, 2, 3; Art Club 1, 2, 3, Secretary 3; Pi Kappa Epsilon 2, 3, Secretary-Treasurer 3; Kappa Delta Pi 3.

*"Her talents are of the more silent class."*—BYRON.

JEAN METZGER . . . . . Millport, Pa.  
Elementary May

W. A. A. 1, 2, 3, 4; A. C. E. I. 1, 2, 3, 4; Women's Chorus 1, 2; Kappa Delta Pi 3, 4.

*"The thing that goes farthest towards making life worth while;  
That costs the least and does the most is first a pleasant smile."*  
—NESBIT.

DOROTHY MICHAELS . . . . . Covington, Pa.  
Elementary May

A. C. E. I. 1, 4; Day Students Club 1, 2, 3, 4; Women's Chorus 2; Mixed Chorus 4.

*"But now my task is smoothly done."*

KENNETH MILLARD . . . . . Monroeton, Pa.  
Secondary May

Day Students Club 3, 4.

*"Every way makes my gain."*

JOHN MILLER . . . . . Wyalusing, Pa.  
Elementary January

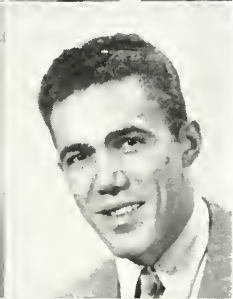
A. C. E. I. 3, 4; Day Students Club 1, 2, 3, 4.

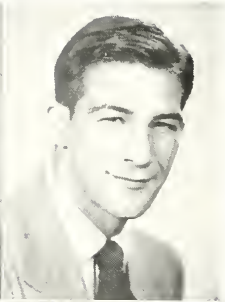
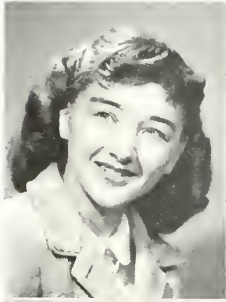
*"As man is now constituted, to be brief is almost a condition of being inspired."*—SANTAYANA.

ROBERT MILLS . . . . . Wilkes-Barre, Pa.  
Secondary January

*"Mad Ambition ever doth caress*

*Its own sure fate, in its own restlessness."*—COLERIDGE.





LUCILLE MBRMAK . . . . . Wilkes-Barre, Pa.

Secondary May

Art Club 2, 4; Flashlight 3; College Players 4; W. A. A. 2, 3, 4; Kappa Delta Pi 4; Sigma Zeta 4; CAROSTAWAN 3; Mixed Chorus 3, 4; Cheerleader 2, 3, 4.

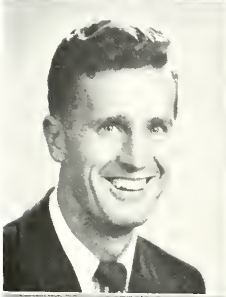
*"The joy of youth and health her eyes displayed,  
And ease of heart her very look convey'd."*—CRABBELE.

JOSEPH MORESCO . . . . . Wilkes-Barre, Pa.

Secondary May

Day Students Club 4; Baseball 2, 3, 4; Football 2, 3, 4; Basketball 2, 3, 4; "M" Club Secretary 4.

*"A sound mind in a sound body is a thing to be prayed for."*  
—JUVENAL.



EDWARD NETSKI . . . . . Wilkes-Barre, Pa.

Secondary January

Kappa Delta Pi 3, 4; Football 2, 3, 4; Art Club 4.

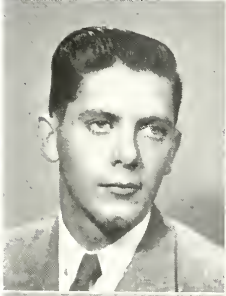
*"The heart to conceive, the understanding to direct, or the hand to execute."*—JUSTUS.

HERESE NAPOLITAN . . . . . Hazlehurst, Pa.

Secondary May

W. A. A. 1, 2, 3; College Players 2, 3; Flashlight Editor 3, 4; CAROSTAWAN 3; Student Council 3, 4; Kappa Delta Pi 4; Who's Who in American Universities and Colleges.

*"She that was fair and never proud, Had tongue at will and yet was never loud."*



WILLIAM NOVITSKI . . . . . Blossburg, Pa.

Secondary May

Day Students Club 1, 2, 3, 4; Secondary Club 1, 2.

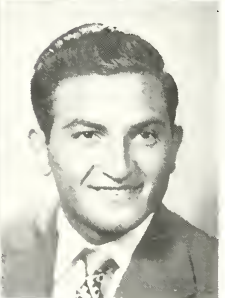
*"It is better to be faithful than famous."*—THEODORE ROOSEVELT.

MARILYN PAGE . . . . . Susquehanna, Pa.

Music May

Lambda Mu 2, 3, 4; Kappa Delta Pi 3, 4; Madrigals 2; CAROSTAWAN 1, 2; Music Educators Club 1, 2, 3, 4; Women's Vocal Ensemble 2, 3, 4; Band 2, 3, 4.

*"Sensitive, swift to resent, but as swift in atoning for error."*  
—LONGFELLOW.



PHYLLIS PEIFER . . . . . Manheim, Pa.

Home Economics May

Y. W. C. A. 2, 3, 4; Cabinet 3, 4; Kappa Delta Pi 3, 4; Omicron Gamma Pi 1, 2, 3, 4; College Players 1, 2, 3, 4; Day Students Club 4.

*"The reward of a thing rightly done is to have done it."*—SENECA.

ANTHONY PETRILLO . . . . . Wilkes-Barre, Pa.

Secondary May

Football 1, 2, 3, 4; Men's Dorm Council 4.

*"Oh happy mortal! He never failed to have his jest."*—CICERO.





JAMES C. PHILLIPS . . . . . Laurel Springs, N. J.  
Secondary . . . . . May

College Players 3, 4; Phi Sigma Pi 4; President Men's Dorn  
Council 4; Who's Who in American Universities and Colleges 4.  
"A tender heart; a will inflexible."—LONGFELLOW.

MILTON PHILLIPS . . . . . Tunkhannock, Pa.  
Secondary . . . . . January

Day Student Club 1, 2, 3, 4; Phi Sigma Pi 3, 4; Historian 4;  
Sigma Zeta 4.  
"What ever is worth doing at all, is worth doing well."  
—CHURCHILL.

MICHAEL POLTASH . . . . . Plains, Pa.  
Secondary . . . . . January

CARONTAWAN 3.

"No one can be perfectly happy until all are happy."—SPENCER.

EUGENIA PORRETTA . . . . . Silver Creek, Pa.  
Secondary . . . . . May

College Players 1, 2, 3, 4; Alpha Psi Omega 3, 4; Y. W. C. A.  
1, 2, 4; Flashlight 1, 2, 3, 4; W. A. A. 1, 2, 3, 4; Kappa Delta  
Pi 4; CARONTAWAN 2, 3; Secondary Club 1.  
"Busy as a one-armed man with the nettle-rash, pasting on wall  
paper."—O. HENRY.

ARNOLD POSTER . . . . . Philadelphia, Pa.  
Secondary . . . . . May

Phi Sigma Pi 2, 3, 4; Assistant Secretary 3; President 4; Kappa  
Delta Pi 3, 4; CARONTAWAN 1, 2, 3; Flashlight 1, 2, 3; Art Club  
3, 4; Secondary Club 1.  
"Mine honor is my life; both grow in one; take honor from me  
and my life is done."—SHAKESPEARE.

ERWIN PRINDLE . . . . . Mansfield, Pa.  
Secondary . . . . . January

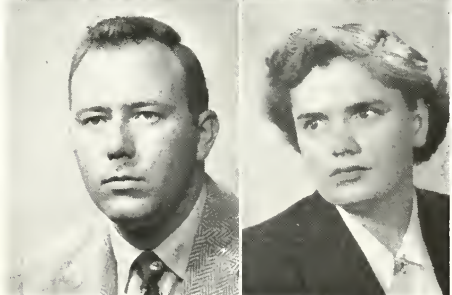
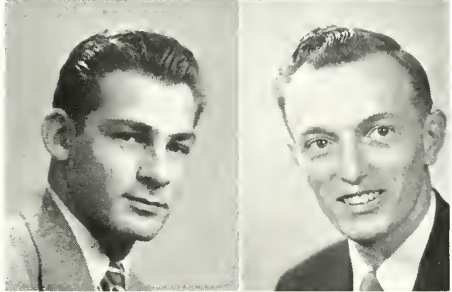
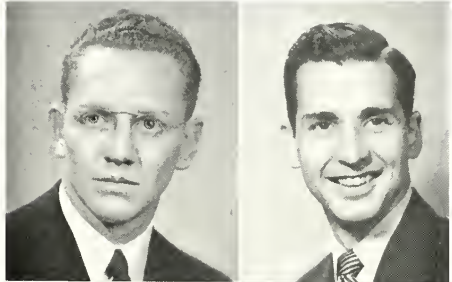
Day Students Club 2, 3, 4; Secondary Club 1.  
"The honest man, though e'er so poor,  
Is king o' men for a' that."—BURNS.

RICHARD RADEBACH . . . . . Mansfield, Pa.  
Secondary . . . . . January

"The strongest principle of growth lies in human choice."—ELIOT.

BARBARA RAMSEY . . . . . Norristown, Pa.  
Elementary . . . . . May

Flashlight 3, 4; W. A. A. 1, 2, 3, 4; Vice President 3; A. C. E.  
I. 1, 2, 3, 4; President 4; Women's Chorus 2; Band I, 2; Orches-  
tra 1, 2; Art Club 4; College Players 2, 3; Y. W. C. A. 1.  
"Vaulting ambition which o'erleaps itself."—SHAKESPEARE.





MELVIN ROBB . . . . . Mansfield, Pa.  
Secondary August

Kappa Delta Pi 4.

"A self-made man; who worships his creator."—HOLMES.

JOSEPH ROBINSON . . . . . Waverly, N. Y.  
Secondary January

Kappa Delta Pi 4; Flashlight 4.

"Conduct is three-fourths of our life and its largest concern."  
—AROLD.



GAIL ROSS . . . . . Waverly, N. Y.  
Music May

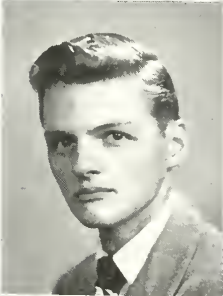
W. A. A. 3; Y. W. C. A. 2; Women's Vocal Ensemble 4; College Players 2; Music Educators Club 4.

"But it is far more glorious to carve and paint the very atmosphere and medium which we look."—THOREAU.

MARGARET RUSSELL . . . . . Mansfield, Pa.  
Home Economics May

Day Students Club 1, 2, 3; Omicron Gamma Pi 1, 2, 3, 4; W. A. A. 1; Art Club 1, 2, 3, 4; Vice President 4; Kappa Delta Pi 3, 4; Vice President 4; Kappa Omicron Phi 2, 3, 4; President 3.

"The golden age is before, not behind us."—SAINT SIMON.



WILLIAM SAVAGE . . . . . Clarks Summit, Pa.  
Music May

Phi Mu Alpha Sinfonia 2, 3, 4; Treasurer 4; Kappa Delta Pi 3, 4; Treasurer 4; Music Educators Club 1, 4; Orchestra 1, 2, 3, 4.

"The future is purchased by the present."—HAMILTON.

ELIZABETH SCARNUCH . . . . . Universal, Pa.  
Home Economics May

Omicron Gamma Pi 4.

"It is only people who possess firmness who can possess true gentleness. Those who appear gentle generally possess nothing but weakness, which is readily converted into harshness."  
—LA ROCHEFOUCAULD.



MARVIN SCHLENKER . . . . . Kutztown, Pa.  
Music January

Phi Mu Alpha Sinfonia 1, 2, 3; Music Educators Club 1; Orchestra 1, 2, 3; Band 1, 2, 3; Brass Ensemble 2, 3; Flashlight 3.

"The reward of one duty is the power to fulfill another."—ELLIOT.

C. DOLORES SCHMELZLE . . . . . Ralston, Pa.  
Secondary May

W. A. A. 1, 2, 3, 4; Kappa Delta Pi 3, 4; Y. W. C. A. 1, 2, 3; Secondary Club 1.

"Born with a gift of laughter and a sense that the world is mad."







BEATRICE SHAFER . . . . . Cogan Station, Pa.  
Home Economics . . . . . May

Y. W. C. A. 1; Art Club 2; W. A. A. 1; Omicron Gamma Pi 1, 2, 3, 4; Secretary 2; Kappa Omicron Phi 2, 3, 4; Secretary 4; Kappa Delta Pi 3, 4; Women's Dorm Council 3, 4; Who's Who in American Universities and Colleges.

*"High erected thoughts seated in the heart of courtesy."*

MARGIE SHAFER . . . . . Cogan Station, Pa.  
Music . . . . . January

Lambda Mu 3, 4; Kappa Delta Pi 3, 4; Music Educators Club 2, 3, 4; Madrigals 2.

*"He who sings frightens away his ills."—L'ENCLOS.*

HELEN SILESKEI . . . . . Wilkes-Barre, Pa.  
Home Economics . . . . . May

Omicron Gamma Pi 1, 2, 3, 4; Art Club 3, 4; W. A. A. 1, 3, 4; College Players 4.

*"If thou faint in the day of adversity, thy strength is small."  
—OLD TESTAMENT.*

LOCEY SIMCOE . . . . . Waverly, N. Y.  
Secondary . . . . . January

Baseball 3, 4.

*"A true friend is forever a friend."—MACDONALD.*

PHILIP SITTLER . . . . . Allentown, Pa.  
Music . . . . . May

Band 1, 2, 3, 4; Chorus 1, 2, 3, 4; Orchestra 1, 2, 3, 4; Woodwind Ensemble 1, 2, 3, 4; Phi Mu Alpha Sinfonia 3, 4; Music Educators Club 2, 3, 4.

*"For knowledge, too, is itself a power."—BACON.*

CHARLES SMITH . . . . . Wyalusing, Pa.  
Secondary . . . . . May

Baseball 1, 2, 3, 4; Basketball 1; Phi Sigma Pi 3, 4; Historian 3; Men's Dorm Council President 3; Secondary Club 1; Student Council 3.

*"Gentle in manner, strong in performance."—GOAVER.*

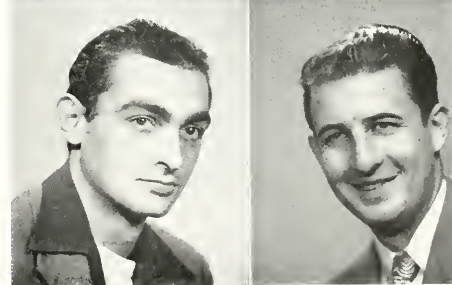
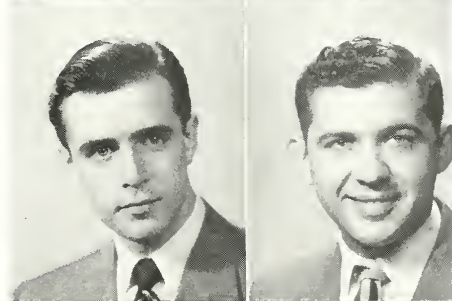
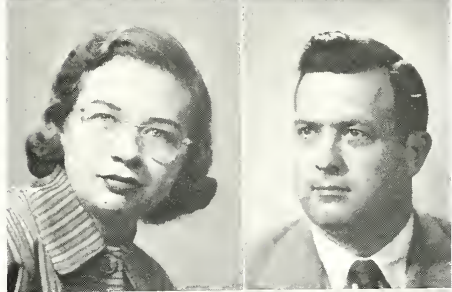
EDWARD SMITH . . . . . Mansfield, Pa.  
Secondary . . . . . August

*"Whence comest thou, worthy thane?"—SHAKESPEARE.*

RICHARD SMITH . . . . . West Pittston, Pa.  
Music . . . . . May

Phi Mu Alpha Sinfonia 1; Band 4; Orchestra 2; Woodwind Ensemble 1.

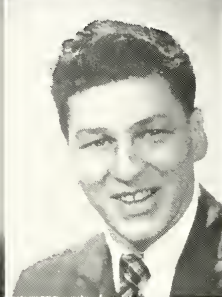
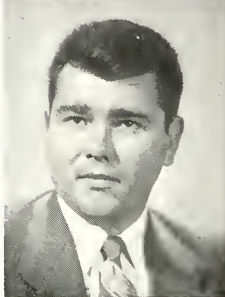
*"He the best of all musicians,  
He the sweetest of all singers."—LONGFELLOW.*





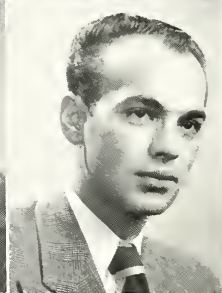
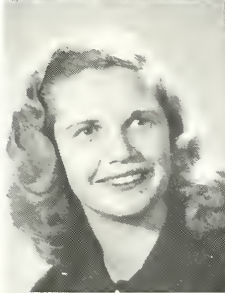
BARBARA SNYDER . . . . . Sunbury, Pa.  
*Home Economics*  
 May  
 Art Club 1, 2, 3, 4; W. A. A. 1, 2, 3, 4; Omicron Gamma Pi  
 1, 2, 3, 4; Women's Chorus 1, 2; Y. W. C. A. 1.  
*"Brevity is the soul of wit."*

MARGARET SPLEEN . . . . . Ridgway, Pa.  
*Home Economics*  
 May  
 Omicron Gamma Pi 1, 2, 3, 4, President 4; Kappa Omicron Phi  
 3, 4; Kappa Delta Pi 3, 4; W. A. A. 1, 2, 3, 4; Women's Dorm  
 Council 2, 3; Who's Who in American Universities and Colleges.  
*"Courage consists in equality to the problems before us."*  
 —EMERSON.



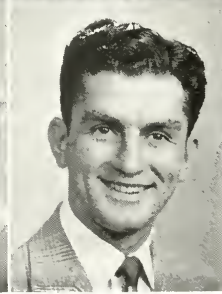
STEPHEN STARCHESKI . . . . . Scranton, Pa.  
*Secondary*  
 January  
 Football 4.  
*"Dread autumn, harvest season of the Goddess of Death."*  
 —HORACE.

DONALD STEELE . . . . . Mansfield, Pa.  
*Secondary*  
 August  
 College Players 2, 3, 4; Art Club 2, 3, 4; Day Students Club 4.  
*"To live is to think."*—CICERO.



MARY LYNNE STEVENS . . . . . Mansfield, Pa.  
*Secondary*  
 May  
 Day Students Club 1, 2, 3, 4, President 1; Student Council 3;  
 Kappa Delta Pi 3, 4; Flashlight 2, 3, 4; CARONTAWAN 1.  
*"The day shall not be up so soon as I."*  
*To try the fair adventure of tomorrow."*—SHAKESPEARE.

FRANCIS STRACKA . . . . . Peckville, Pa.  
*Secondary*  
 May  
 Kappa Delta Pi 4; Phi Sigma Pi 4; Sigma Zeta 4; Art Club 2, 3,  
 4; Day Students Club 1, 2, 3.  
*"Man is the artificer of his own happiness."*—WYNNE.



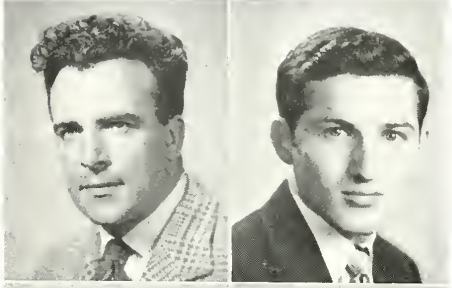
MARGARET STROM . . . . . Forest City, Pa.  
*Secondary*  
 May  
 Y. W. C. A. 1; W. A. A. 1, 2, 3, 4; Kappa Delta Pi 3, 4; Sec-  
 ondary Club 1; Flashlight 3, 4; CARONTAWAN 3.  
*"She is a gallant creature, and complete in mind and feature."*  
 —SHAKESPEARE.

JOSEPH SWEEDA . . . . . Hudson, Pa.  
*Secondary*  
 January  
 CARONTAWAN 2; Secondary Club 1; Men's Chorus 4.  
*"Politeness is to do and say"*  
*The kindest thing in the kindest way."*—LEWISSON.



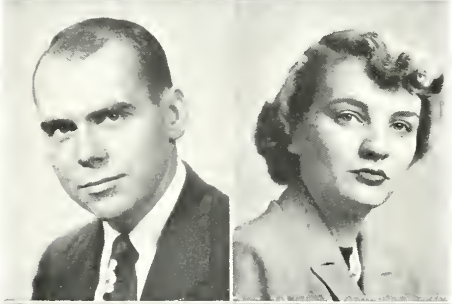


**ROBERT SWEENEY** . . . . . Towanda, Pa.  
 Secondary August  
*"The philosopher is nature's pilot."—SHAW.*



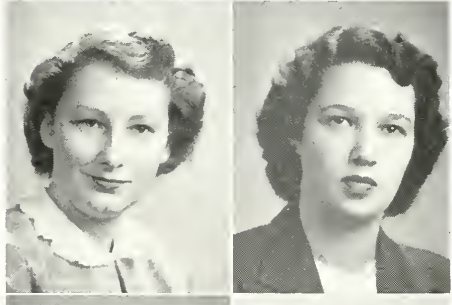
**EUGENE TEDESCO** . . . . . Peckville, Pa.  
 Secondary August  
 Class President 2; Student Council 2; Flashlight 1, 2, 3, 4;  
 CARONTAWAN 4.  
*"Wit that can call forth smiles even from the mourners."—SENECA.*

**EVAN THOMAS** . . . . . Pittston, Pa.  
 Secondary August  
 Y. M. C. A. 3, 4; Men's Chorus 4; Flashlight Business Manager  
 3, 4; College Players 4; Sigma Zeta 4; Day Students Club 2, 3.  
*"No one knows what he can do until he tries."—PUBLIUS SYRUS.*



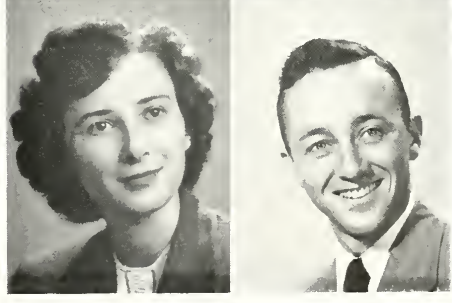
**RUTH TINGLEY** . . . . . Blossburg, Pa.  
 Secondary May  
 Secondary Club 1; A. C. E. I. 1, 2; Flashlight 3, 4; CARONTAWAN  
 3; College Players 2, 3, 4; Kappa Delta Pi 2, 3; Women's Dorm  
 Council 4; W. A. A. 1, 2, 3; Recording Secretary 3.  
*"Action is the proper fruit of knowledge."—FULLER.*

**IRENE TOMPKINS** . . . . . Hallstead, Pa.  
 Secondary May  
 Secondary Club 1; Kappa Delta Pi 3, 4; Y. W. C. A. 1, 2, 3;  
 College Players 3, 4; Flashlight 3, 4; Sigma Zeta 4; W. A. A.  
 1, 2, 3, 4.  
*"A sweeter flower did nature ne'er put forth."*

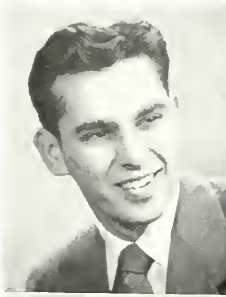


**JEAN TRACHI** . . . . . Saylorsburg, Pa.  
 Home Economics May  
 Omicron Gamma Pi 1, 2, 3, 4; Art Club 2, 3, 4; President 4;  
 W. A. A. 1, 2, 3, 4; Y. W. C. A. 1, 2; Kappa Delta Pi 4.  
*"Modesty is the beauty of women."—UNKNOWN.*

**ANITA TURNER** . . . . . Canton, Pa.  
 Elementary August  
 Y. W. C. A. 4; Art Club 3, 4; A. C. E. I. 3, 4; Kappa Phi 4.  
*"A face with gladness overspread!  
 Soft smiles, by humane kindness bred!"—WORDSWORTH.*



**LEONARD VAN KEUREN** . . . . . Elmira, N. Y.  
 Secondary May  
 Day Students Club 1, 2, 3, 4.  
*"Be not the first by whom the new are tried,  
 Nor yet the last to lay the old aside."—POPE.*



RICHARD WAGNER . . . . . Selingsgrove, Pa.  
Secondary May

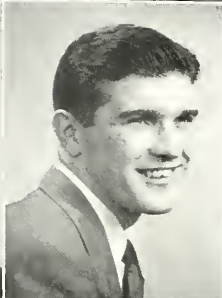
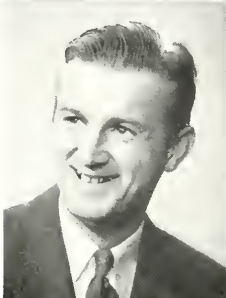
Phi Sigma Pi 4.

*"The true, strong, sound mind is the mind that can embrace equally great things and small."*—JOHNSON.

ESTHER WELLENDORF . . . . . Su. Williamsport, Pa.  
Music January

Madrigals 3, 4; Music Educators Club 2, 3, 4; Advanced Chorus 2, 3, 4.

*"Her voice was ever soft,  
Gentle and low, an excellent thing in women."*—SHAKESPEARE.



MILTON W. WHEELER . . . . . Mansfield, Pa.  
Secondary January

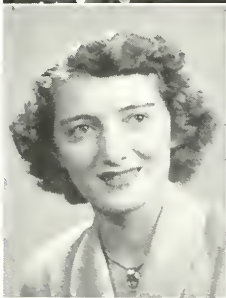
Phi Sigma Pi 4; Secondary Club 1; Day Students Club 4.

*"Here comes a man of comfort, whose advice  
Hath often still'd my brawling discontent."*—SHAKESPEARE.

JAMES WHITE . . . . . Mansfield, Pa.  
Secondary May

Phi Sigma Pi 3, 4; Secretary 3; College Players 2, 3, 4.

*"It is no act of common passage, but a strain of rareness."*  
—SHAKESPEARE.



BETTY WHITEHORN . . . . . Gilberton, Pa.  
Secondary May

Secondary Club 1; Women's Dorm Council 4; Student Council 4; W. A. A. 1, 3, 4; Kappa Delta Pi 4; Sigma Zeta 4; Who's Who in American Universities and Colleges.

*"They are rich, who have a friend like thee."*—JOHNSON.

ELYNOR WILCOX . . . . . Montrose, Pa.  
Music May

Y. W. C. A. 1, 2; Music Educators Club 1, 2, 3; Kappa Delta Pi 3, 4; Lambda Mu 2, 3, 4; Woodwind Ensemble 2, 3, 4; Women's Vocal Ensemble 1, 2, 3, 4; Band 1, 2, 3, 4; Orchestra 1, 2, 3, 4.

*"Favor is deceitful, and beauty is vain;  
But a woman that feareth the Lord, she shall be praised."*



HOWARD C. WILLIAMS . . . . . Scranton, Pa.  
Music May

Music Educators Club 2, 3, 4; Vice President 2, 3; Kappa Delta Pi 4; Phi Mu Alpha Sinfonia 1, 2, 3, 4; Madrigals 1, 2; Brass Ensemble 1, 2, 3, 4; Band 1, 2, 3, 4; Orchestra 1, 2, 3, 4.

*"True and tender and brave and just,  
That man might honor and women trust."*  
—WHITTIER.

ELMER YECK . . . . . Olyphant, Pa.  
Secondary January

CAROLANIAN 3, 4; Secondary Club 1.

*"My heart is true as steel."*—SHAKESPEARE.



LILLIAN ZILLHARDT . . . . . Fleetwood, Pa.  
Home Economics . . . . . May

Kappa Omicron Phi 2, 4, Treasurer 3; Kappa Delta Pi 3, 4;  
Omicron Gamma Pi 1, 2, 3, 4; Y. W. C. A. 1, 3; Art Club 2;  
W. A. A. 3, 4.

*"A good laugh is sun-shine in a house."*—THACKERAY.

CLEM ZUBRES . . . . . Wilkes-Barre, Pa.  
Secondary . . . . . May

Basketball 3, 4.

*"Love is only chatter,  
Friends are all that matter."*—BURGESS.

LOUISE BALZ . . . . . Toledo, Ohio  
Home Economics . . . . . August

W. A. A. 1, 2, 3, 4; Y. W. C. A. 1, 2; A. C. E. I. 2, 3, 4;  
Kappa Delta Pi 3, 4; College Players 1, 2, 3, 4.

*"We look before and after,  
And pine for what is not."*—SHELLEY.



## Post-Graduate Students

- WILLIAM BLANCHARD, B.S., Mansfield; working for Elementary certification.  
ALDEN E. BOWSER, B.S., Mansfield; working for Elementary certification.  
WILLIAM BRADSHAW, B.S., Mansfield; working for Elementary certification.  
ANTHONY BUCHAN, B.S., Mansfield; working for Elementary certification.  
GROVER CLEVELAND, B.S., Mansfield; working for Elementary certification.  
JAMES KENNEY, B.S., Mansfield; working for Elementary certification.  
EUGENE McLAIN, B.S., Mansfield; working for Elementary certification.  
MAHLON E. NORTHPROP, B.S., Mansfield; working for Elementary certification.  
ROBERT PHILLIPS, B.S., Mansfield; working for Elementary certification.  
RUTH S. SCUDDER, A.B., University of Michigan; working for Elementary certification.  
DAVID SWEENEY, A.B., Fordham; working for teaching certification.  
BLANCHE C. WAGNER, B.S., Mansfield; working for Elementary certification.  
KENNETH J. WESNESKI, Bucknell; working for Secondary certification.  
GLADYS YOUNG, B.S., Mansfield; working for additional credit.



*Left to right: Watkins, Depue, Sick, Brown, Castle.*

## Business Staff

To the students and all others that read this book who have muddled through one hundred pages already, we heartily recommend the business concerns herein advertised. We recommend them firstly because of their merit and secondly because of their interest in our college. We have included informal pictures of the students in this section.

The "Carontawan" of 1950 wishes to thank its advertisers for the interest they have manifested in Mansfield State Teachers College. It seems there is an attitude abroad which considered yearbook advertising to be mere complimentary donations; we believe the advertisers in our book receive real benefit from their advertisements. We have included informal pictures with our ads which insure student interest and attention to this part of the book. Also, we feel an ad stimulates a friendly feeling between the student and the business concern.

THE BUSINESS STAFF



ADVERTISING

R E A D  
T H E  
A D S

Compliments of

## First National Bank

MANSFIELD, PA.

### YOU NEED TRAVELERS CHEQUES

Loss of expense money is disastrous whether you are on a vacation rest, or keeping a business appointment. Why take the risk? Instead, convert your funds before you start into American Express Travelers Cheques. They are readily spendable as cash, and if lost or stolen, their value is promptly refunded. No time limit on use. Obtainable here at the low cost of 75c for each \$100 worth you buy. Minimum, 40c.

Member Federal Deposit Insurance Corporation  
Assets over \$6,000,000.00

## The First National Bank

TROY, PA.

Compliments of

## Tioga County Savings and Trust Company

WELLSBORO, PENNA.

~

*Member of F. D. I. C.*

Compliments of

## First National Bank

WELLSBORO, PENNA.

.

*Member of F. D. I. C.*



BEST WISHES  
to  
the CLASS of '50  
and  
a Sincere Thanks  
to  
All Patrons

◆  
**GUY BUCK**  
"Sandwich Man"

---

**E-Z WAY LAUNDRY**  
(Quick Service)

★  
*You do it*                      *We do it*  
**Wash-Dry-Iron**

## WITMORE'S STORE

H. T. AND DOROTHA WITMORE  
MANSFIELD, PA.



*Headquarters for:*

COSMETICS  
GREETING CARDS  
SCHOOL SUPPLIES  
CANDIES

---

Compliments of  
**WELLS & GOODALL**

◆  
*Pontiac*  
**G.M.C.**

For Those "Homework Snacks"  
Stop at the Foot of the Hill



**HARTSOCK'S  
BAKERY**

*A Complete Line of*  
Baked Goods

Compliments of

**Wilson & Knapp Garage**

MANSFIELD, PA.



Bell 278J

Citizens 92B

Compliments of

**Merrill S. Broderick**

23 N. Main St.

MANSFIELD, PA.

Compliments of

**THE NEW**

**CROSS TRAIL**

**RESTAURANT**



Compliments of  
The T. W. Judge Company  
and  
North Penn Gas Company

Best of Luck  
to  
The Class of '50

Compliments of  
The Twain Theater

MANSFIELD, PA.

Ralph's Servicenter  
HUDSON Dealer  
MANSFIELD, PA.

J. J. MOORE, M.D.

J. J. McMILLEN, D.D.S.

ROBERT E. FARR, Attorney

§

*“In appreciation—”*

## Sours Variety Store

MANSFIELD, PA.



*Shop here for:*

SCHOOL SUPPLIES

NYLONS

NOTIONS

McCALL PATTERNS

and many other items.

## Strait's Hardware

On the Square



Good Luck

and

Best Wishes

For the Future

*Best Wishes From Your Carontawan Photographer*

## McNANEY STUDIO



*Portrait*

*Commercial Photographer*

JOHN H. McNANEY

Compliments of

THE  
WRIGHT SHOP

★

*Fashion Center*

Compliments of

Terry's Drug  
Store

•

GOOD LUCK TO ALL

From REXALL

Compliments of

SHAW AND ROBENA  
FUNERAL HOME

F. ROBENA, *Director*

LADY ASSISTANT

Established 1888

N. F. D. A.

MANSFIELD, PA.

*Sunoco Gas and Oil*

*Firestone Store*

Tractor Tires Our Specialty

KAISER-FRAZER *Dealer*

For your convenience  
—a station downtown

SMITH'S

*Sales and Service*

MANSFIELD, PA.

Bell Phone 9127

Citizens 26

Congratulations

and

Best Wishes

to the

Class of '50

•

Ross Insurance Agency

MANSFIELD, PA.

Compliments of

Wilmer and Sarah Beals

at the

Red and White Store

For

Better Vision and Repairs

See

Dr. George L. Palmer

*Registered Optometrist*

19 COLLEGE AVE.

MANSFIELD, PA.



Compliments of  
Rose Chevrolet

---

B. A. NEAL

RADIO — F. M. and

TELEVISION

*Sales and Service*

Authorized Factory Representative

*“See Neal for a Better Deal”*

Best Wishes From  
“Cole and Pete”  
Mudge



MUDGE BROS.  
*Self-Service*

---

Compliments of

McCONNELL'S

Barber Shop

# MORRIS FARMS DAIRY BAR

MANSFIELD, PENNA.



*“Favored by Students for  
Quality and Quantity”*

Compliments of

POWER'S CORNERS  
SERVICE STATION

*“Cabins by the Brook”*



SNACK BAR

Compliments From

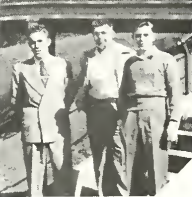
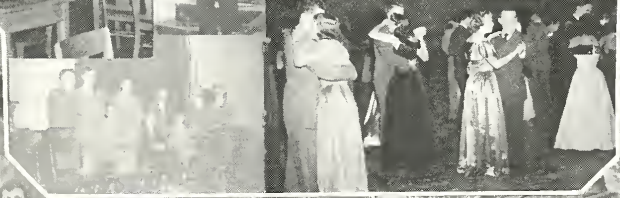
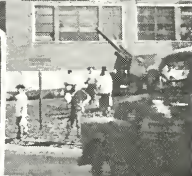
MARKSONS



*Complete* OUTFITTERS

for

MEN and BOYS



# Harrington's Gift Shop



GIFTS

CAMERAS

FILMS

*Snap Shot Finishing*

---

Compliments of

## JOHNSON

Truck Lines

In Appreciation of the Generous  
Patronage by the Students and Faculty  
of M. S. T. C.

## JUPENLAZ'S

MANSFIELD, PA.

*"Quality Leather Goods"*

*Since 1890*

PRICE

SERVICE

---

Compliments of

## MANSFIELD

## DINER

Compliments of

**KUHL'S  
GREENHOUSE**

---

**Mansfield Restaurant**

*“Ernie’s”*

MANSFIELD, PA.

Where the best of foods are served

“Just Right”——

*try*

“ERNIE’S”

And see for yourself.

**Mansfield Novelty  
Company**



BUILDING MATERIALS

SCHOOL RULERS

FRATERNITY PADDLES

PAINTS

All Kinds of MILLWORK

---

**ELLA MAE'S  
BEAUTY SHOP**

*Extends*

**BEST WISHES**

BEST WISHES

*TYOGA FARMS DAIRY*



WELLSBORO, PENNA.

*Everything  
for  
the Farm*

•

MANSFIELD  
COOP GLF  
SERVICES

For Your Past Patronage we extend  
our Sincere Thanks

★

Your College Cleaners  
GOODRICHES

Compliments of

MANSFIELD HOTEL



MR. AND MRS. KING G. ROSE

*Proprietors*

Compliments of

Mrs. Finesilver

Compliments of

FISH'S SHOE STORE

MANSFIELD, PA.

★

*Headquarters for*  
College Footwear

## GARRISON & MYERS

We sell CLOTHES for College  
Men from beginning through  
graduation.

*Good Luck, Seniors*



Welcome back Under-Classmen

A Complete Line of  
Candy — Pop — Ice Cream  
Toys — Sporting Goods  
Novelties — Model Supplies  
Bicycles — Wagons

## GAR SIDE'S Hobby Shop

32 N. Main St.

OPEN EVENINGS UNTIL 10 P. M.



Farm Bureau Mutual Automobile Ins. Co.

Farm Bureau Mutual Fire Ins. Co.

Farm Bureau Life Ins. Co.

## NATHAN E. FRENCH

*Authorized Agent*

MANSFIELD, PA.

Bell 119J

Citizens 21

DIAMONDS

WATCHES

For the gifts you'll give with  
pride,

Let your jeweler be your guide.



## R. J. ESTEP

*Jeweler*

26 N. Main Street

MANSFIELD, PA.

CONGRATULATIONS '50 CLASS

*"If It's Electric"*

## GEORGE E. DYER

*Electrical Contractor*



See us for your  
Hotpoint Kitchen

Compliments of

## A. S. DECKER



COAL, WOOD,

CEMENT, ICE

and

GENERAL TRUCKING

Compliments of  
**The Dairy Store**

Drugs and Gifts  
School Supplies  
Perfumes and Toilet Water



Prescriptions Filled  
**COLES PHARMACY**  
On the Corner

Compliments of  
**CRUTTENDEN'S**  
News Room

Compliments of  
**JIM CARACCILO'S**  
Shoe  
Repair Shop

SEA FOODS

STEAKS and CHOPS

# KENDRICKS RESTAURANT

WHEELER & WHEELER, *Props.*

RESTAURANT  
CABINS  
SERVICE STATION

“Three Miles South of Mansfield  
on the Susquehanna Trail”

R-15

CAR WASHING

LUBRICATION

Compliments of

H. K. Brown Motors



Chrysler and Plymouth

*Sales and Service*

Good  
Food

Everyday  
Low Prices

## BURKE'S

Meat

Groceries

Produce

Drive in Parking

Bell 101

Citizens 103-L

"For Quality and Service  
at Its Best . . . ."

BOGH'S

*for*

FLOWERS

*"Mansfield's Florist"*

Bell 186

Citizens 70Y

Baynes Shoe Store

∞

Extends

BEST WISHES to the

Class of '50

Compliments of

BOUSER MUSIC

BETTER GRADES

to You and  
Your Car

★

SNYDER'S

TEXACO SERVICE

★

Canoe Camp  
Route 15



BEST WISHES

to

CLASS of '50

*from*

**YOUR GULF DEALER**

ADRIAN L. AUSTIN

S. Main Street

**W. D. BRADWAY**

★

*Insurance:*

AUTO — FIRE

HEALTH and ACCIDENT

REAL ESTATE

---

CONGRATULATIONS and BEST WISHES

for the

CLASS of 1950

◆

**MANSFIELD ADVERTISER**

MANSFIELD, PA.

*Satisfactory Laundry Co.  
Inc.*

737 West Fourth Street

Williamsport, Pa.

§

*“Satisfactory Since 1908”*

The Ideal Permanent  
Begins With Proper  
Shaping and Hair Style

Marguerite Donnelly

*Beautician*

•  
Across From the Park

Montrose  
Publishing Company

CALENDARS  
FINE PRINTING  
YEAR BOOKS

\*

MONTROSE, PA.

ESTABLISHED 1816

---

*More Power to You*

Northern Pennsylvania Power Company

~

Wish to Extend Hearty Congratulations  
to the Class of 1950



HARDWARE  
PLUMBING — HEATING  
GIFT DEPARTMENT

P. S. King Hardware  
Company

TROY, PENNSYLVANIA

Phone  
Citizens 6W

Bell 11

---

CHAMBERLAIN TEXACO  
SERVICE STATION  
*Lunch Bar*

U. S. Route 6  
MAINESBURG, PENNA.  
GLENN CHAMBERLAIN, Prop.

Compliments of  
PRESTONS INC.

•  
CANTON -- MANSFIELD  
PENNSYLVANIA

---

Compliments of  
Larry and Henrietta  
Bailey

TYDOL STATION  
Route 6, SYLVANIA, PENNA.

•  
"Our Customers are our  
best Friends"

Compliments of

# McCLURE MOTOR COMPANY

*Sales — FORD — Service*

TROY, PENNSYLVANIA

Ford Cars and Boms-Built Trucks

A-1 Quality Used Cars

Genuine Ford Parts

Factory Trained Mechanics

Compliments of

ADOLPH and CYNTHIA SCHLOPPI

Gobbler's Knob  
Service Station  
and  
Luncheonette

11 Miles East of Mansfield  
Route 6

*Shop at*

HASKINS  
GENERAL STORE  
MAINESBURG, PA.

We give S & H  
Green Stamps

CHEVROLET

PONTIAC

Compliments of

Hall Motor Company

TROY, PA.

*Owners*

RAY M. HALL — JOHN R. HALL

The Penn-Wells Hotel

A Completely Modern Hotel

With Perfect Food

Facilities

For Parties Both Large and Small

WELLSBORO, PA. Phone 2111

Compliments of

WILCOX & AINEY

QUALITY MEATS AND

GROCERIES

MONTROSE BAKED GOODS

SYLVANIA, PA.

CAPITAL BAKERS

Inc.

“Bakers of

Good Bread Since 1891”

Compliments of  
Dixie Bowling Alleys  
and Barbecue

BULKHEAD

ELMIRA, NEW YORK



18 Alleys

Electric Pin Setters

## NATIONAL CLEANERS

LONDON PLAZA

ELMIRA, NEW YORK

“We may not do the most Dry  
Cleaning and Pressing, but  
we do the best.”

*Local Agent*

REESE BERDAMER

---

# S. M. FLICKINGER CO., INC.

Wholesale Groceries and Produce

ELMIRA, NEW YORK

Phone 5288

Deliveries in Mansfield on Monday and Friday

*Special Attention Given to*

CANNED GOODS — FROSTED FOODS — FRESH FRUIT AND  
VEGETABLES — HOTEL AND RESTAURANT SUPPLIES

Best Wishes

*HARRINGTON DAIRY  
COMPANY*

§

Dushore, Penna.

# RICHARD'S

General Merchandise

A. J. BOZARZYK  
Prop.

COVINGTON, PENNA.

# CYRIL WILSON

Heating and Plumbing  
Contractor

GENERAL ELECTRIC  
APPLIANCES

COVINGTON, PENNA.

Compliments of

TIOGA COUNTY  
CANDY COMPANY

COVINGTON, PENNA.

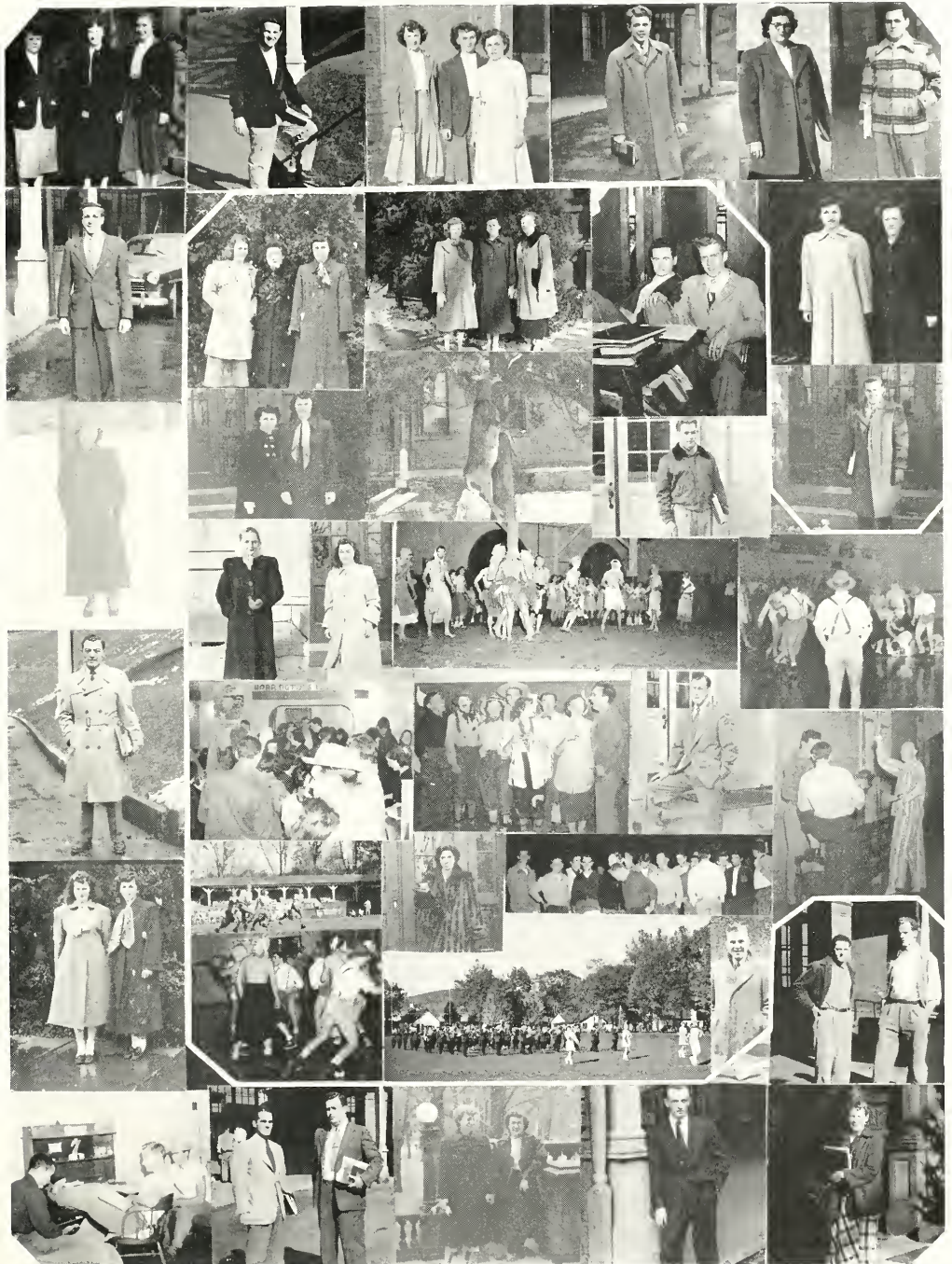
# WEST BROS. GARAGE

•

DESOTO and  
PLYMOUTH  
*Sales and Service*

•

COVINGTON, PA.



Compliments of

# “BILL’S” DRIVE-IN

Open — 6 P. M. to 2 A. M.

“Where Hamburgs and Hot-Dogs come on Toasted Rolls  
and are Full Dressed—A delicacy, not a side line.”

“BILL” BLANCHARD

Chief Cook

Bouncer

Proprietor

Owner

COVINGTON — Across from Uncle John’s

---

## Mansfield State Teachers College

### 1950 SUMMER SESSIONS

JUNE 5 — JULY 14

JUNE 17 — AUGUST 25

*The Summer Sessions make possible*

1. Extension of standard limited certificates.
2. Extension of certificates to include additional fields.
3. Credits toward a baccalaureate degree.
1. Conversion of provisional college certificates to permanent college certificates.

*For further information see DEAN HERBERT E. MANSER*



**CANTON GARAGE  
AAA**

21 Hour Road Service

**WILNOR RESTAURANT  
and SODA BAR  
TROY, PENNSYLVANIA**

**The First National Bank  
of Canton**

Member of Federal Deposit Insurance Corp.

**CON CHAMBERLAIN**

REPAIRS — GAS — OILS  
BURLINGTON, PA.

**MAERENE'S TYDOL INN**

East Troy, Route 6  
21 HOUR SERVICE

**Western Auto Assoc. Store**

ROZELL PORTER, *Owner*  
31 Troy Street CANTON, PA.

**PAUL ESSENWINE**

GENERAL MERCHANDISE  
WEST BURLINGTON, PA.

**DEWEY DENNIS**

*Quality* CLOTHES SHOP  
TOWANDA, PA.

**CARMAN'S SERVICE STATION**

MOBILE OIL — GAS — U. S. TIRES

Route 6 — BURLINGTON, PA.

**BIDDLES**

MEN'S AND BOYS' APPAREL  
CANTON, PA.

**H. ROCKWELL & SON**

*Complete* FEED SERVICE  
CANTON, PA.

**T. BURK & COMPANY**

CANTON, PA.

**S. E. WILLIAMS**

BUILDING SUPPLIES AND CONTRACTING  
CANTON, PA. Phone 260

**KRISE MOTOR CO.**

CHEVROLET and OLDS  
CANTON, PA.

**HALLETT MOTOR CO.**

FORD  
CANTON, PA.

**NEWELL & McCONNELL**

HARDWARE — PAINT — AMMUNITION  
AGRICULTURAL SUPPLIES  
CANTON, PA.

**STANLEY B. MORSE**

FURNITURE — FUNERAL DIRECTOR  
CANTON, PA.



Your  
Carontawan

Was Designed, Engraved, Printed  
and Bound in our College Annual  
Department.



We do a variety of Commercial  
Printing—including Catalogs,  
College and School Year Books.  
Consult Us before placing your next  
order for Printing.

GRIT PUBLISHING COMPANY

WILLIAMSPORT, PENNA.



### 1950 BASEBALL SCHEDULE

April 22	—Bloomsburg	<i>Away</i>
April 25	—Lycoming	<i>Away</i>
April 28	—Cortland	<i>Home</i>
May 3	—Lock Haven	<i>Away</i>
May 4	—Bloomsburg	<i>Home</i>
May 6	—King's	<i>Home</i>
May 9	—King's	<i>Away</i>
May 13	—Lock Haven	<i>Home</i>
May 16	—Lycoming	<i>Home</i>
May 23	—Cortland	<i>Away</i>
May 27	—Ithaca	<i>Home</i>

### 1950 FOOTBALL SCHEDULE

September 23	—Bloomsburg	<i>Away</i>
September 30	—Indiana	<i>Home</i>
October 7	—East Stroudsburg	<i>Home</i>
October 14	—Brockport	<i>Away</i>
October 21	—Lycoming	<i>Home</i>
October 28	—King's	<i>Away</i>
November 4	—Edinboro	<i>Home</i>
November 11	—Lock Haven	<i>Away</i>
November 18	—Millersville	<i>Home</i>

### 1950-51 BASKETBALL SCHEDULE

January 10	—Lycoming	<i>Home</i>
January 13	—Wilkes	<i>Away</i>
January 17	—Lock Haven	<i>Home</i>
January 20	—Triple Cities	<i>Away</i>
January 26	—Millersville	<i>Home</i>
January 31	—Lycoming	<i>Away</i>
February 3	—Bloomsburg	<i>Home</i>
February 7	—Bloomsburg	<i>Away</i>
February 10	—Cortland	<i>Home</i>
February 14	—Lock Haven	<i>Away</i>
February 17	—Wilkes	<i>Home</i>
February 24	—Shippensburg	<i>Away</i>
February 25	—Millersville	<i>Away</i>
February 28	—Cortland	<i>Away</i>
March 3	—Triple Cities	<i>Home</i>









