



CARONTAWAN



1986

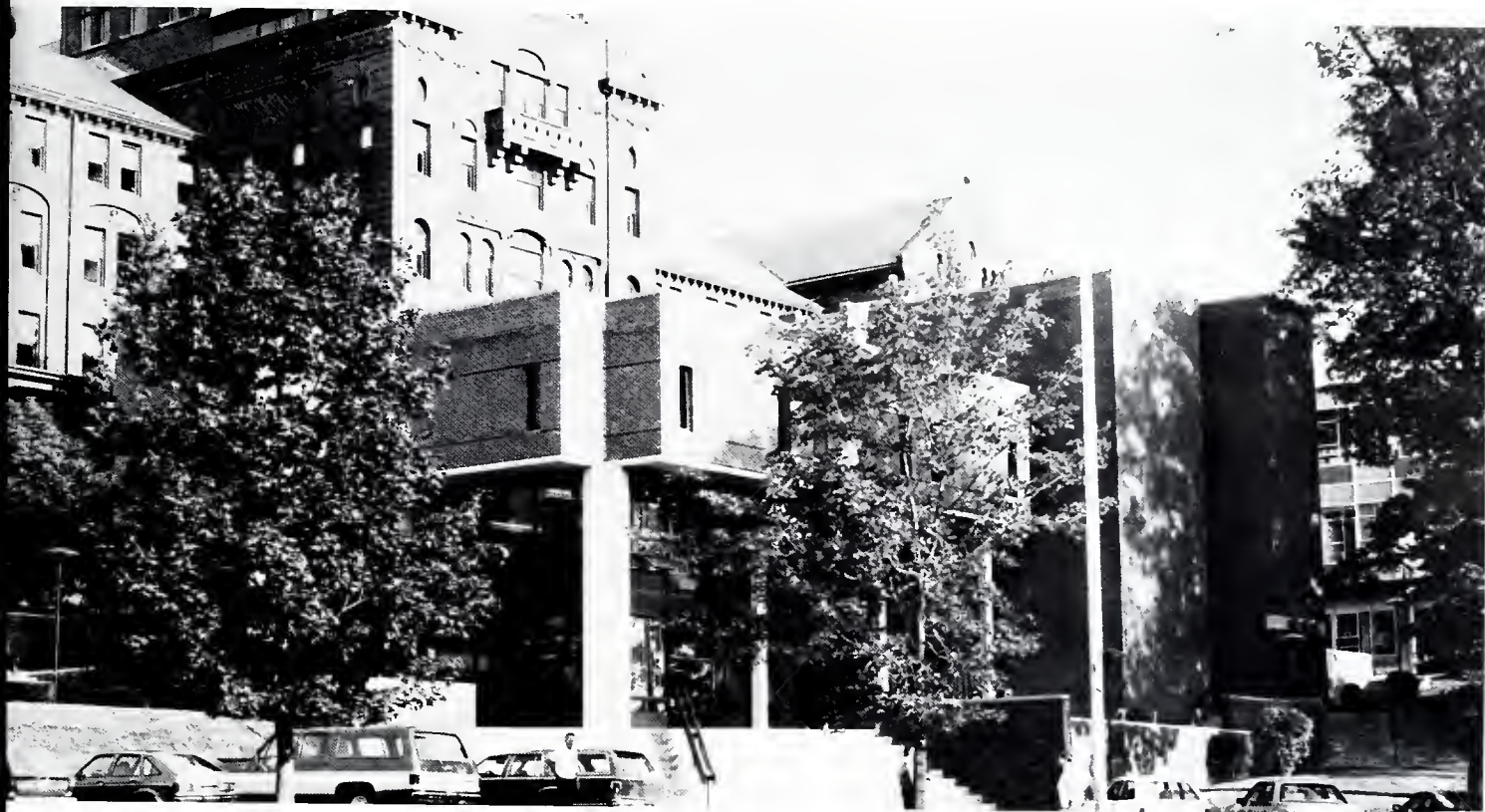












# 1986

“Give me your tired, your poor,  
Your huddled masses yearning to breathe free,  
The wretched refuse of your teeming shore.  
Send these, the homeless, tempest-tost to me,  
I lift my lamp beside the golden door.”

MANSFIELD UNIVERSITY  
MANSFIELD, PA. 16933  
CARANTOWAN VOLUME 68  
SPRING 1986







***The staff of the 1986 Mansfield University Carantowan would like to introduce to you this year's edition with just a few thoughts.***

***Congratulations to the Classes of 1986. You are among the finest that Mansfield has ever sent into the "Real World."***

***The efforts you have made, and the goals you have achieved show what fine people you are.***

***You have made some lasting relationships here at Mansfield. You may keep in close contact with some of your friends, and you may never see some of your friends again. But there is one thing for sure: you will, in the words of a fine professor, never forget "Old MU."***

***Take this opportunity to sit back, relax, and relive those people, places, and events of 1985-1986.***







# TABLE OF CONTENTS

## 1986 CARANTOWAN

### MANSFIELD UNIVERSITY



Opening Section P. 11



Organizations P. 33



Greeks P. 69



Residence Halls P. 93



Activities P. 111



Sports P. 131



Faculty P. 157



Seniors P. 177



Patrons P. 197

FUNDED IN PART BY STUDENT ACTIVITY FEES  
EDITOR-IN-CHIEF — STEPHEN SHIMER







*Symbolism is an interesting concept. A study of the symbols that are meaningful in our culture can provide numerous useful insights into our past. Currently, the Statue of Liberty is the subject of much attention. That soon to be restored monument is a symbol that conjures a variety of images. To some it is a mammoth sculpture, to others a sign of freedom, to others the representation of a new life. Its restoration will enhance its appearance, but its strength as a symbol will endure.*

*Some of your memories of Mansfield University will include symbols. The books you read, the uniform you wore, your class ring, the jewelry that represented a special organization, selected buildings that were important to you, each of these are symbolic. For many, the diploma itself is the paramount symbol of a university education.*

*To many generations of Mansfieldians, North Hall has been an important symbol. Like the Statue of Liberty, it provokes a variety of feelings. To the thousands of students who remember it as their residence hall, it was a home. To those who took meals there, it was the site of endless table conversation. Some remember it as a bookstore, a computer center, a print shop, practice room, studios, a meeting place, office for faculty members, a post office, and the location of yet other services.*

*To most members of your class, the symbolism of North Hall will be different. It may be the only link to Mansfield's past that is available to you. It may represent frustration, for the efforts to restore it can produce that emotion. It could be the symbol of hope - the hope that soon North Hall will become a useful part of our campus. It may depict mystery and curiosity. It sustains the legend of "The Ghost". The memories of Old North will vary, but I suggest that none of you will forget it.*

*The future of North Hall, just as yours, is unpredictable. Its interior may be redesigned to accommodate new functions. Its exterior may be refurbished to enable it to persist. It may give up its location to another structure or to a park place. However, its character and its symbolism will continue to be a part of our University.*

*You too will change. Your physical appearance will be altered. Your interests, your vocations and advocations will vary. Your life style will be modified. However, you will remain a part of Mansfield University.*

*I'm glad that you were among our students and I hope that you treasure the symbols that have special significance to your Mansfield experience.*

# GEORGE H. MULLEN



The year 1985-86 was one in which Mansfield moved strongly ahead into the future. We responded to the challenge of high tech in a number of ways. Most significantly we obtained a new mainframe computer, an IBM Model 4361 with twelve megabytes of memory. The new machine supports two different systems of software — one for academics and the other for administrative purposes. With it we support over forty interactive terminals.

In addition to the mainframe we increased the number of micro-computers available for student use from thirty to forty-two. We believe that Mansfield students have a much easier time obtaining actual computer experience than do students at most universities. Micros are also being used by most secretaries on the campus, easing the burden on these crucial support personnel. We have increased the number of computers available for academic departments, and obtained the important statistical analysis program SASS. (I am sure that this equipment and software will seem quaint and antiquated when graduating seniors of the 1986 class are reviewing their yearbook twenty years from now, but believe me, for today Mansfield University is state of the art with regards to computers.

Another sign of the dynamism of Mansfield this past year was the number of grants awarded to our faculty. Professors George in Chemistry, Linck in Home Economics, Stich in Special Education, Dodson in Geography, Sanders in English and Murray in Psychology and the Rural Services Institute all were recipients during the last twelve months. In addition we received significant grants for putting the card catalogue in the library onto a laser disk system and for an important project in telecommunications and tele-learning.

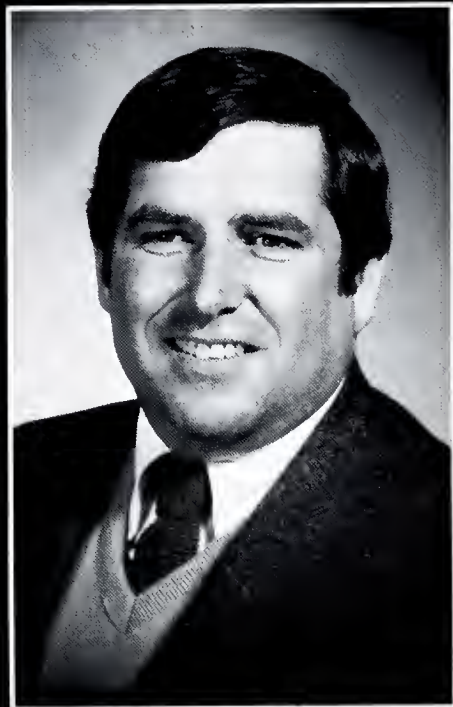
There are a host of very important programs on which faculty and staff have put in enormous amounts of work, and which are scheduled for completion during the coming years. Perhaps the most important of these that will affect all incoming students to Mansfield beginning the summer session of this year is the new General Education program. The new program provides an assurance of real quality in the liberal arts areas, while at the same time expanding the choice of students into what will be called General Education Electives. Other features of the program are an all university requirement in the fine arts area and a revamped junior year literature based composition course.

Important as all the above are, however, what lies at the heart of an academic institution, and what I am the proudest of is the hard work in the all the academic areas of Mansfield's students. College is a time to learn, to grow, to prepare for a rewarding career and a significant life. We are very happy at Mansfield to have played the part we did in the lives of the students of the class of 1986. There's an exciting world out there waiting for our students after graduation, and I have every confidence that they will measure up to the challenges they will face.

A yearbook is a place for nostalgia. I have been speaking of this year, but the last four have been memorable ones for the institution, and certainly for myself, as well as for the class of '86. In 1983 the institution received a new president, Rod Kelchner, and I was fortunate to be appointed to play a key role in his leadership team. Time holds still for no one. Accepting challenges is a key aspect of life, and I want to wish the best of fortune to each and every one of our graduating seniors. Ladies and gentlemen, you have received a fine education. Now it's up to you to use it.



# JOSEPH R. MARESCO



The publication of the 1986 edition of the *Carontawan* freezes in history a part of all the lives associated with Mansfield University. It will enable all of us at some point in the future to look back and remember where we as individuals, as a university, as a nation or as a world family, were at this point in time.

For our nation, perhaps the celebration of the 100th Anniversary of the Statue of Liberty will be the significant memory or perhaps it will be the somber recollection of the tragic circumstances surrounding the loss of the Challenger crew.

As a world family, we may recall the events associated with the change of governments in the Phillipines, the continuing war between Iran and Iraq, the great famine in Africa or the chaotic fall in world oil prices.

For Mansfield University, the memories might be that we finally decided what would happen to North Hall, recollections of the "great Pinecrest blackout", the students' decision to construct a pedestrian mall where there once was a parking lot or that the *Flashlight* went on holiday.

As individuals, you might recall that this was a new beginning for you, the time you began your MU career, a time filled with new friends, new challenges, new ideas and new accomplishments. Or perhaps, for you it was your final time at Mansfield, a time to remember old friends, great experiences, the opportunities that opened for you or maybe the personal values you developed.

I'm confident that the 1986 *Carontawan* will hold many memories for all of us. It will help me remember the students and staff that touched my life and, hopefully, it will help some of you remember some influence that I've had on yours.




# R. DRUE MCGINNES



This past year has seen the completion of many major projects that have enhanced the physical appearance of the campus. Some of the more notable projects were the painting and new curtains for Straughn; painting of several classroom buildings; renovations and improvements of the physical facilities for Admissions and the Alumni Association; renovation of the lower tennis courts; demolition of Oak and Hickory; roof repairs on several classroom buildings and Manser; various landscaping projects throughout the campus; and, the selection of an architect for the feasibility study of the future of North Hall. Plans are well underway for continuing the beautification and renovation of the campus for the coming fiscal year.

Most importantly, this has been a year of fruitful and positive progress in the continuing effort of "rebuilding" Mansfield University. It has been both a privilege and an honor to be part of the Mansfield University community in the endeavors.

The coming years will present unique problems in balancing University needs and available resources. If the University community continues to work together, as it has over the past few years, I have every confidence in our collective ability to continue the revitalization of Mansfield University.



**OPENING  
SECTION**







# THE LADY

**I**t is with pride and honor that we dedicate the 1986 Carontawan to the Statue of Liberty at her 100th birthday. During the past century Miss Liberty and Mansfield University have both been part of the American dream: a dream of freedom . . . and a dream of education and opportunity.

*For one hundred years the lady has kept her vigil in New York Harbor, lighting the way for refugees who came seeking a new life, and welcoming home her sons and daughters who went abroad to defend freedom with their very lives. After a century of wind and weather Lady Liberty had become weary and scarred. It became clear to us who love her, and the things she stands for, that she must be restored. During the past few years this labor of love, financed by private contributions from the American people, has progressed steadily and painstakingly, to restore her to the condition of strength and beauty that she enjoyed at her unveiling in 1886.*

*The original idea for the Statue was born in France in 1865. It was intended as a gift from the French people to the American people, to commemorate the 100th anniversary of American independence. This grand and lasting gesture of international friendship was to be the work of French sculptor Auguste Bartholdi. It was to be built in France, disassembled, taken to America, and erected in time for the Centennial celebration, July 4, 1876.*

*There were many problems and delays in the planning stages of the statue. As years went by it became clear that this magnificent gift would not be ready for America's Centennial. But, finally, the necessary funds were raised by subscriptions and Bartholdi set out to construct his colossal work of art. He designed and built four different scale models, each larger than the last. The fourth model was one-fourth the actual size of the eventual full-size statue.*

*The figure was formed of copper sheets that would be riveted to an iron framework which would stand on a stone pedestal. As the statue took shape, Bartholdi pondered how a support structure might be built that would be strong enough not only to bear the tremendous weight but to stand against wind and weather. He finally approached the famous French engineer, Alexandre Eiffel, builder of the tower that bears his name. Eiffel agreed to design a framework that could support the statue.*

*In 1884 the statue was completed and formally presented to the American minister in France on July 4th. The task now fell to the Americans to secure a proper location and build a suitable pedestal. A major problem, however, was that the American public wasn't sure they even wanted a statue this large. This presented difficulty in regard to the fund-raising efforts. After a great deal of controversy, Joseph Pulitzer, the New York newspaper publisher, organized a fund-raising campaign through his newspaper. He attempted to embarrass his readers into supporting this gift from the French people . . . and it worked. When the necessary funds had been raised, Bedloe's Island, in New York Bay, was acquired as a site and a stone pedestal was built.*

*In 1885 the statue was disassembled in France, crated, and shipped to America. This wasn't a routine voyage, however. The ship encountered a violent storm in the North Atlantic and almost capsized with its precious cargo. When the ship reached New York the pedestal had yet to be completed, and the crated statue sat on Bedloe's Island for a year.*

*When the statue was erected, at long last, she rose 305 feet from the base of the pedestal, a rare engineering feat for that time. The statue alone was 151 feet tall and weighed 225 tons. At her unveiling in October 1886, there was a great celebration and the work was dedicated by President Grover Cleveland.*

*Today, the Lady's beauty and strength have been restored in time for her 100th birthday celebration on July 4th, 1986. In her first century she has weathered many storms and tribulations. She has seen her nation endure depression and war and emerge stronger for the struggle. Lady Liberty has seen countless refugees from all corners of the earth pass under her torch. On nearby Ellis Island, which has also been restored, these homeless arrived in search of opportunity, a new life, and that precious commodity . . . freedom.*

*And now, as we at Mansfield University pay tribute to this great Lady, we resolve to continue our efforts to honor all that she stands for . . . liberty, equality, and human freedom. We are reminded of the final touches that Bartholdi chose to add to his great work: at her feet lie the broken chains of slavery . . . aloft, she holds the eternal torch of liberty . . . in her hand she holds the book of freedom, inscribed "July 4, 1776." From that book comes the words of Thomas Jefferson on that historic day:*

*"We hold these truths to be self-evident,  
That all men are created equal, that they are  
Endowed by their Creator with certain  
Inalienable Rights, that among these are  
Life, Liberty, and the pursuit of Happiness."*

# DEAR OLD MANSFIELD

**D**uring the past century or so, Mansfield University, like the Lady in the Harbor, has seen a great deal of history unfold. Beginning as the Mansfield Classical Seminary in 1857, our campus has evolved into a full-fledged university with over three-thousand faculty, staff, and students. This transition, however, has always involved struggle and determination.

The Mansfield Classical Seminary opened in January 1857 with 105 students. It had taken several years of meetings, debates, and fund-raising to finally accomplish this. By April, when 45 additional students were added for the second term, it was generally felt that the school was on its way to success. This good beginning was short-lived, however, for a fire in late April destroyed most of the building. Fortunately, there were no injuries. It was not until November 1859 that the rebuilding was completed and the school finally reopened.

During the 1860's the Seminary fell on hard times as the able-bodied young men of the area left to fight in the Civil War. At one point the school was almost sold at a sheriff's-sale, but the administration hung on tenaciously.

In 1863, turning to the state for financial support, the Seminary became Mansfield State Normal School. The normal schools functioned primarily to train teachers for the Commonwealth. In the years that followed, Mansfield Normal gained a reputation for excellence as its graduates became sought after as teachers.

In 1874, the newly-completed North Hall was dedicated. This imposing structure was considered a model of academic efficiency. It quickly became a focal point of the campus with facilities like the dining hall, women's dormitories, and the Music and Art Departments. In the 1880's and 1890's Old North underwent an expansion program and the building was in use right into the 1970's.

In 1927 Mansfield Normal became Mansfield State Teachers College, the first state teachers college in Pennsylvania. With collegiate status, Mansfield could grant four-year Bachelor of Science Degrees.

Economic problems arose again in the 1930's when the Great Depression cut enrollment almost in half. But the campus survived and several new buildings were added. During this period three-fourths of the students were women, training to become teachers.

The 1940's brought more challenges to the campus when the young men left to fight in World War II. When the war ended, the GI's came home and went to school, making the Mansfield student body predominantly male.

In 1960, the campus was renamed Mansfield State College and established itself as a liberal arts institution. During this period the college grew tremendously with a tripling of the enrollment. During the 1970's, as teacher training declined, new programs were established in business administration, computer science, and criminal justice administration.

In the fall of 1983, we became Mansfield University under new president, Rod Kelchner. Now, in 1986, with a reverence for our past and hope for our future, we send forth a new graduating class to make their mark on the world.

Life is full of change; without it there would be little adventure. But some things never change . . . . . the love we have for our country, symbolized by the Statue of Liberty . . . . . and the pride we take in our education, symbolized, for us, by "dear old Mansfield".

Ed Meikeljohn

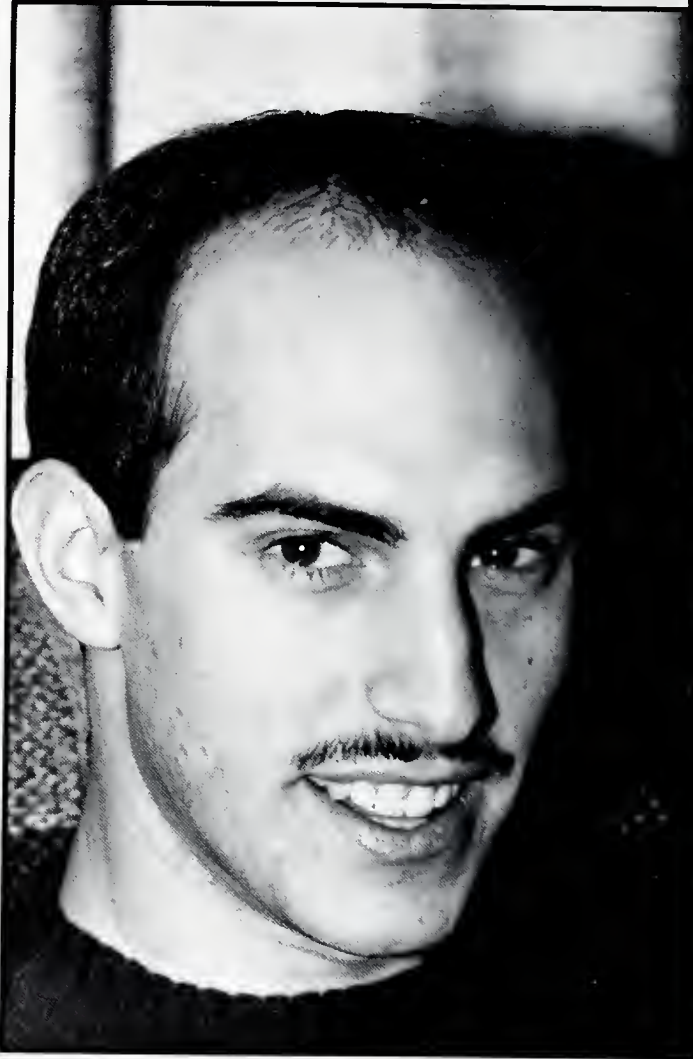








# CAMPUS LIFE . . .



**Upper left:** Bill Kronmiller and friend study at the Lambda Chi Alpha house.

**Upper right:** Kevin Hostetter is caught as he looks up from the ever-present television.

**Middle left:** Cedarcrest residents fill up the Rec. room at the annual Air Band contest.

**Lower left:** Deb Baran takes a break from studying to pose for the Carantowan.

**Lower right:** Jeff Taylor shows off his one of many poses.





**Upper left:** 1985 Homecoming Queen Rhonda Pflieggor gets help from Jim Nevling, Marty Pane, former Homecoming Queen Connie Francis and President Kelchner at the Homecoming festivities.

**Upper right:** Dolby "Crush" Quinn rests after a day of baseball practice.

**Middle left:** l. to r. Liz Bulgar, Theresa Kulak, Sue Ann Moran, Jeff Swingle, and Sharon McCarty ham it up for photographer Kristi Nye.

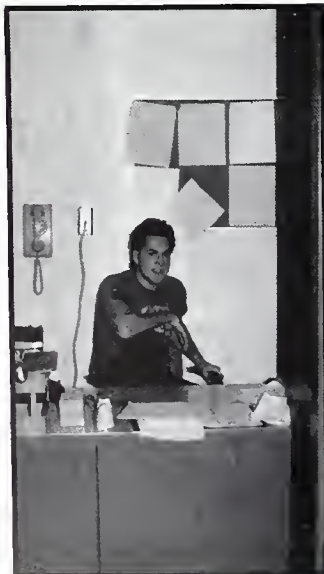
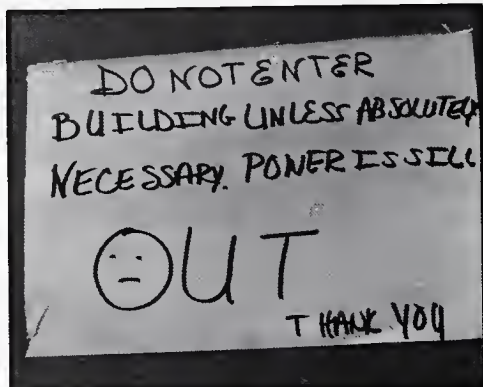
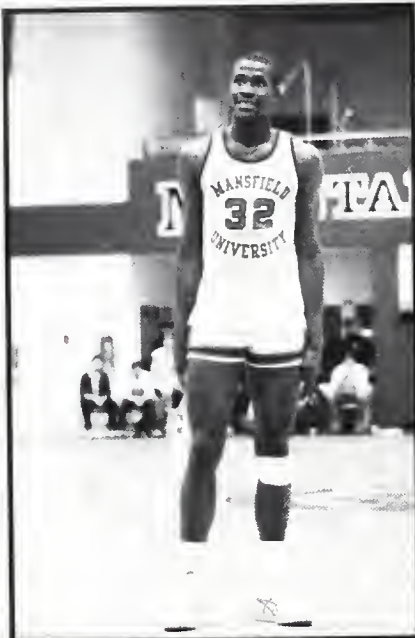
**Middle right:** After several years of non-use, Oak and Hickory are finally torn down.

**Bottom:** Cedarcrest on a normal Mansfield day.





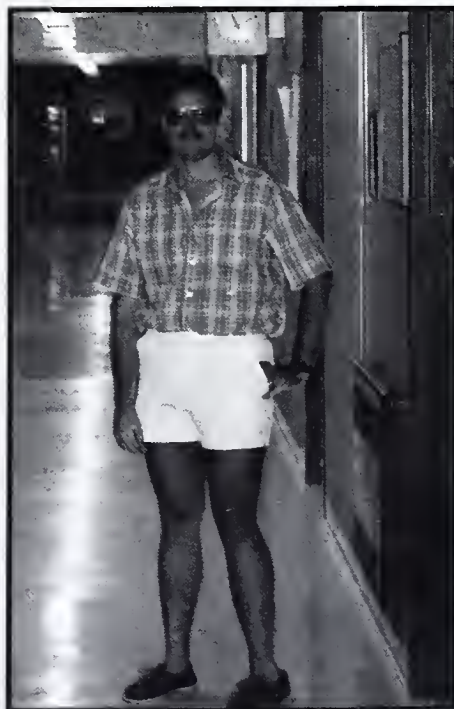
# A LOOK AT THE PEOPLE WHO MA



**Upper left:** Brian "Boogeeye" White watches his foul shot go in at a Mountie game.  
**Upper middle:** Not only do lights go out in Georgia, but Pinecrest also.  
**Upper right:** Susan Nye finds time to jog around town.  
**Lower left:** Roommates Irene Kepple and Kris Schwartzmeier show off their little friend.  
**Middle:** Ed Kasambira stands by one of his many works over the year.  
**Lower middle:** R.A. Craig Bricker does his best to do his duty.  
**Lower right:** Joe Detato the Trojan at Cedarcrest's Toga party.



# KE UP "OLD MU"



**Upper left:** R.A. Ron Puterbaugh shows he doesn't violate the rules.

**Upper right:** S.G.A. President Jennifer Robinson speaks at the January Graduation.

**Lower left:** A familiar sight in the Fall as crews replaced several sets of stairs around campus.

**Lower middle:** A.D.R.L. Michelle Ryan poses with Santa . . . Let's hope Mrs. Claus doesn't find out.

**Lower right:** Photo Editor Cliff Johnson shows off his legs in Grant Science Center.





# CAMPUS LIFE



**Upper left:** Seems to be totally beyond Jens' comprehension.

**Upper right:** INCREDIBLE!!! Stephanie Boyanowski prepares to answer a question from Dating Game contestant Jim Russell.

**Middle left:** Comradship on Maple 4th floor.

**Center:** If my friends could see me now!

**Middle right:** Wake up Quint, you're going to miss your exam.

**Lower left:** What's so interesting Dr. Meyers?

**Lower right:** Talk about two-faced people! The only way Mountie pride shows through.





ONLY AT M.U.



# FRENCH FRIES WARS



**Upper right:** I saw Michele Ryan kissing Santa Claus.

**Insert:** A.R.H.C. Chairman Mark Serva takes a shot at one of the All-Male review strippers.

**Upper right:** President Kelchner gives his closing thoughts at the Jan. Graduation ceremonies.

**Middle left:** Cedarcrest RA Todd Tannehill dukes it out with Dione Wilson at Wendy's on the way to Shippensburg RA Conference.

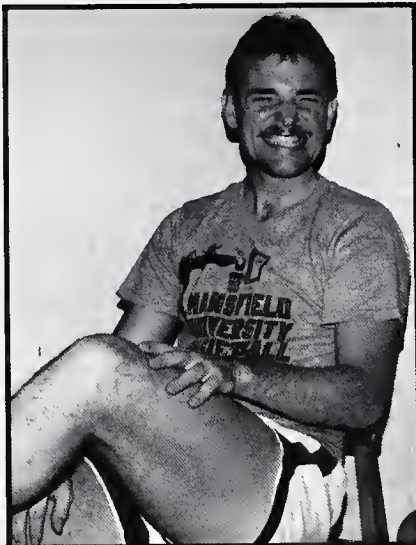
**Center:** Dione comes in a close second.

**Middle right:** Rod Pursel checks out a hot flash during a game at Decker.

**Bottom left:** Chrystal Tannery watches as Stephen Shimer stuff's his face during an ARHC meeting.

**Bottom right:** "I only have eyes for you."





**Upper left:** "Look Ma, No cavities!", says Cedarcrest R.A. Jim Schoonover.

**Upper right:** President Kelchner talks over PENELEC refund.

**Middle left:** Vince and Mike lift Kim Martin to new heights during a home basketball game.

**Middle right:** Laurel R.A. Chris Conning takes a break to reassure us she knows what she is talking about.

**Bottom:** Cedarcrest Air Band contest draws a crowd every year.

*OPPOSITE PAGE-*

**Upper left:** The clowns did their part at the Homecoming parade.

**Upper right:** Brian Greenaugh and Sue Wiggins head for the residence halls after a tough day of classes.

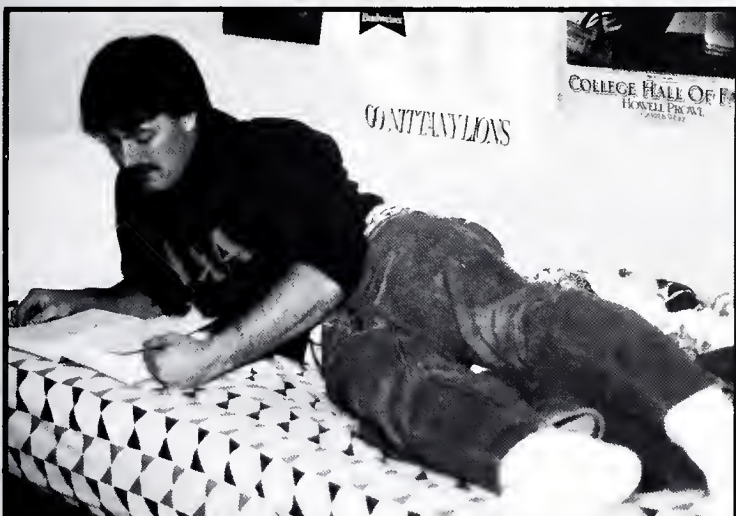
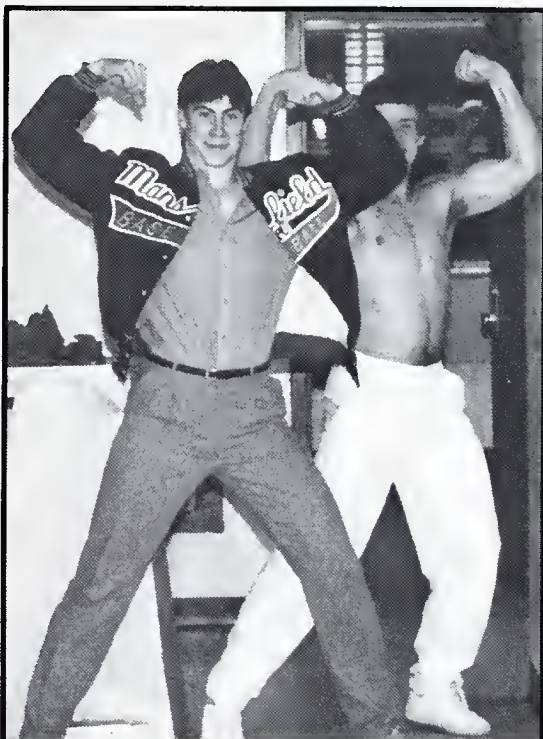
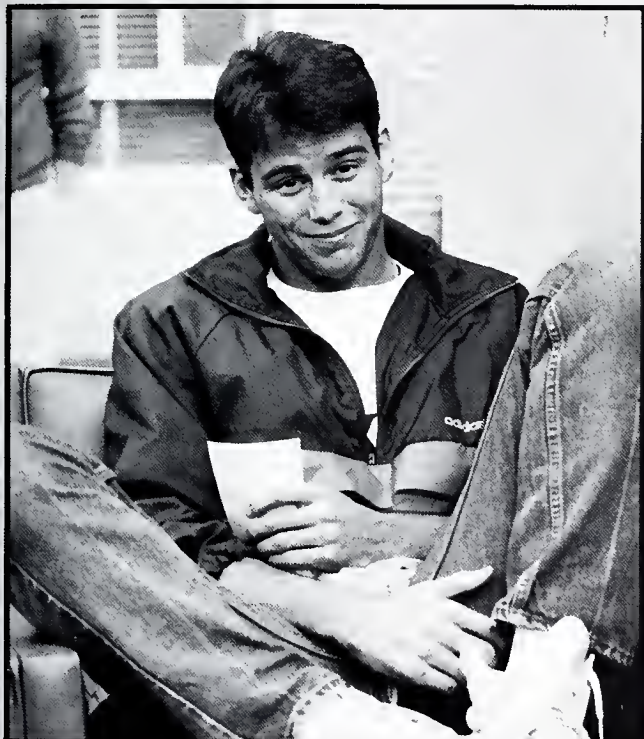
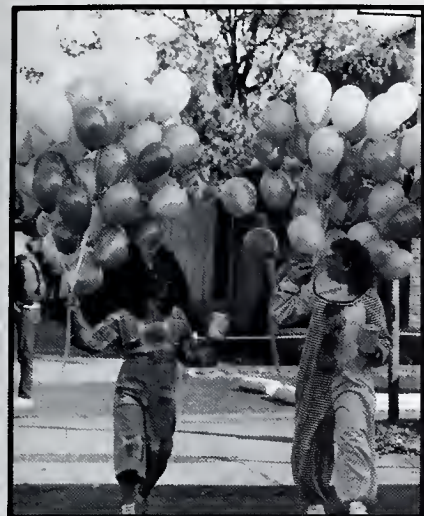
**Middle left:** Jim Russell reacts to a possible dates' question during Greek Week.

**Middle right:** R. Scott Jeffery and Carlos Vales show what it means to be real men.

**Bottom left:** Dwayne Heeter studies.



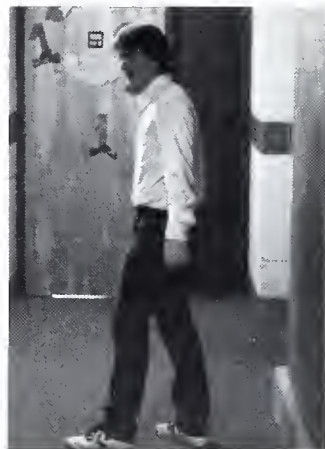
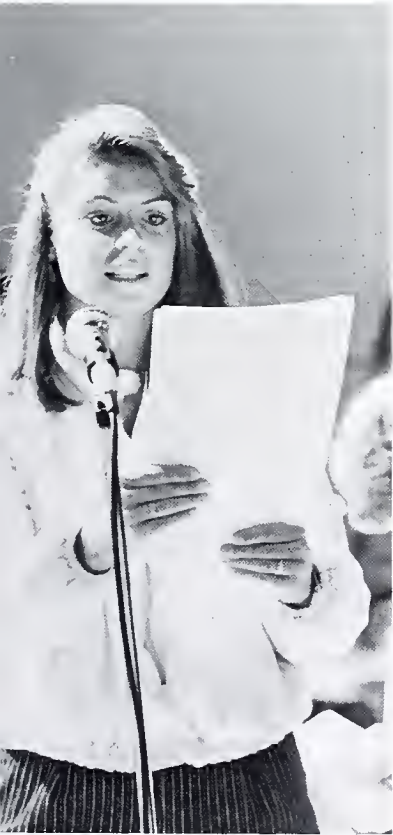


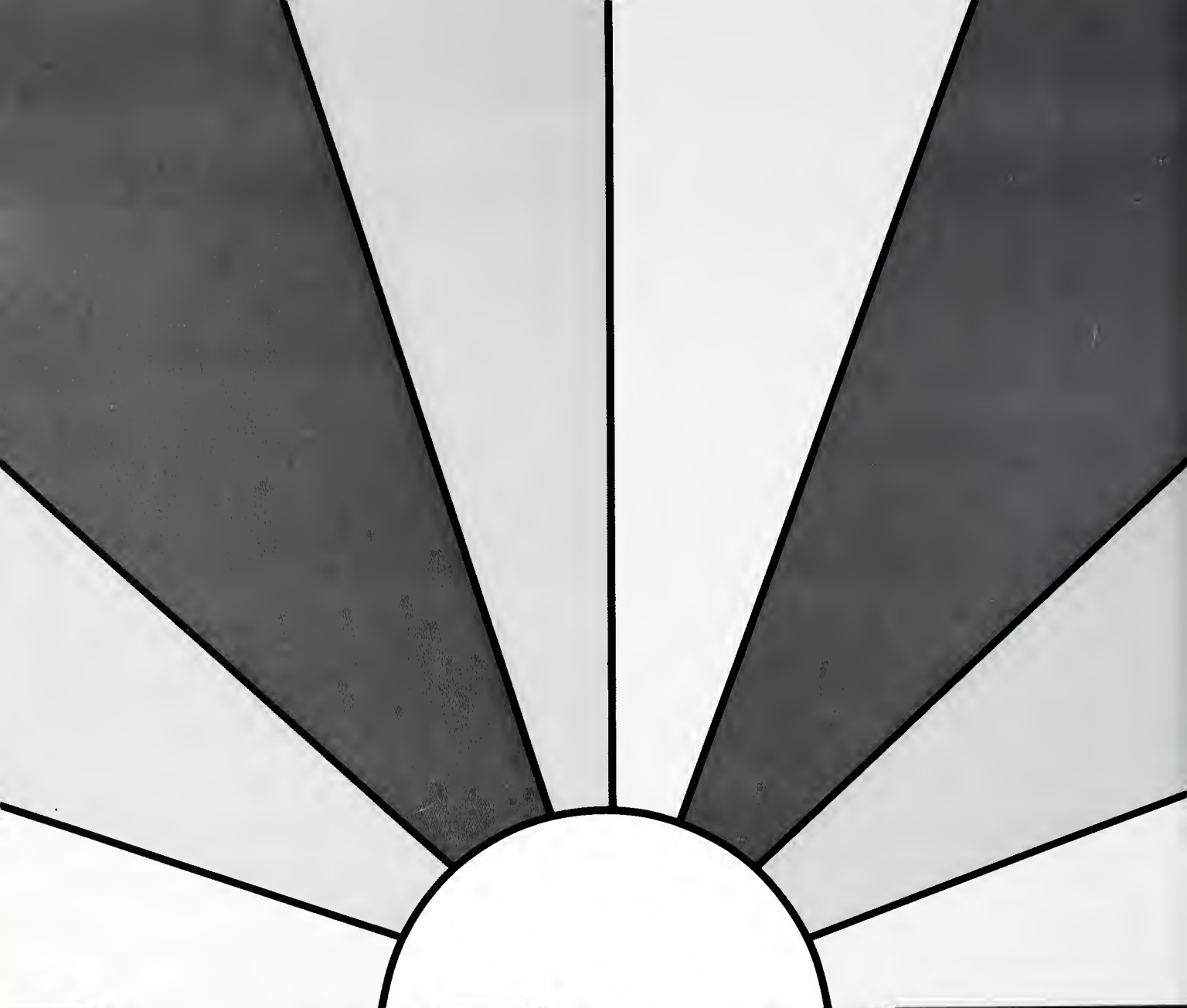








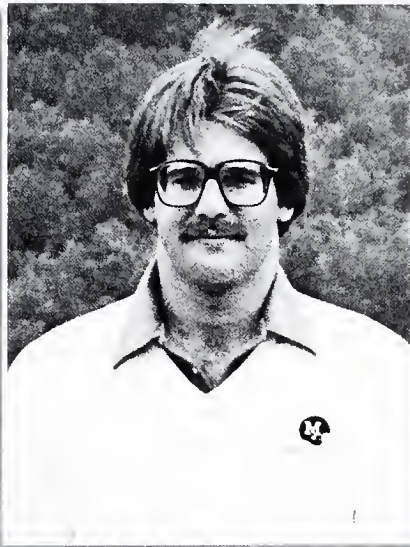




**WE MOURN  
SEVEN HEROES**

*CHALLENGER JANUARY 28, 1986*





## FRANK A. BUTSKO

A university's greatest assets are its people. During the past year Mansfield University lost one of these priceless assets, Frank Butsko. Coach Butsko was an exceptional man with the ability to motivate young people to bring out their very best.

Frank's own college career took him to Drake University in Iowa. He was a starter on the Drake football team all four years and was named most valuable player as a senior. Upon his arrival at MU, Frank served as a graduate assistant football coach while earning his master's degree in special education. In the fall of 1984 he became a full-time assistant coach.

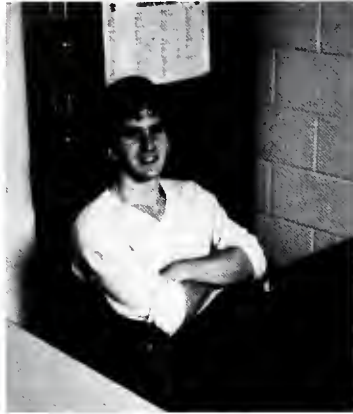
Frank saw football not just as a game but as a way to mold the character of young men the way he himself had been molded. His enthusiasm for football was contagious, as his wife, Jamie, knows better than anyone else. Under Frank's influence, Jamie, an MU Admissions Counselor, became deeply involved with counseling and guiding our recruits, team members, and their parents.

Frank was an aggressive recruiter for MU and Mountaineer football. He travelled extensively to attract talented young people to our campus. Mansfield University acknowledges its gratitude to Coach Butsko.





# IN MEMORIAM . . .



William D. Welfling



Theodore R. Hudson, Jr.



James B. Nevling



ANY MAN'S DEATH DIMISHES ME,  
BECAUSE I AM INVOLVED IN  
MANKIND  
—JOHN DONNE

When I must leave you  
For a little while,  
Please do not grieve  
And shed wild tears  
And hug your sorrow  
To you through the years,  
But start out bravely  
With a gallant smile;  
And for my sake and in my name  
Live on and do all things the same,  
Feed not your loneliness  
On empty days,  
But fill each waking hour in useful ways,  
Reach out your hand  
In comfort and in cheer  
And I in turn will comfort you  
And hold you near;  
And never, never be afraid to die  
For I am waiting  
For you in the sky!

Helen Steiner Rice





William Daniel Welfling  
Born: September 1, 1964  
Died: April 4, 1986



James B. Nevling  
Born: August 18, 1964  
Died: April 4, 1986



Theodore Romel Hudson, Jr.  
Born: August 2, 1965  
Died: April 4, 1986

Special Thanks to Rose Latini and Chris Jakim for Pictures and Information

## True Friendship

A kind mouth multiplies friends, and gracious lips prompt friendly greetings.

Let your acquaintances be many, but one in a thousand your confidant.

When you gain a friend, first test him and be not too ready to trust him.

For one sort of friend is a friend when it suits him, but he will not with you in time of distress.

Another is a friend, a boon companion who will not be with you when sorrow comes.

When things go well, he is your other self and lords it over your servants;

But if you are brought low, he turns against you and avoids meeting you.

Keep away from your enemies; be on your guard with your friends.

A faithful friend is a sturdy shelter, he who finds one- finds a *treasure*.

A faithful friend is a life-saving remedy, such as he who fears God finds;

For he who fears God behaves accordingly; and his friends will be like himself.

Siroch 6: 5-17

Friends to many, always there with a helping hand, Jim, Dan and Teddie were three great people, the kind that made life more enjoyable, the kind you were proud to know. Never forget the tears, the laughter and the memories, no matter how short the time which was spent with them.

For those who knew Jim, Dan and Teddie, you found something we all hope to find someday. You found . . .

**A TREASURE!**



# ORGANIZATIONS





## MANSFIELD ACTIVITIES COUNCIL



Front Row- Rick Kakareka, Kurt Rudy, Orin Jacobs, Wendy Miller, Todd Strohe, Margaret Niblick, Deanna Fish Row 2- Suzanne Smith, Wendy Ives, Connie Myers, Lucille Anderson, Linda Granato Row 3- Melissa Alwine, Theresa Corell, Mark Spiker, Daniel Long, Kevin DeGroff, Steve Norman





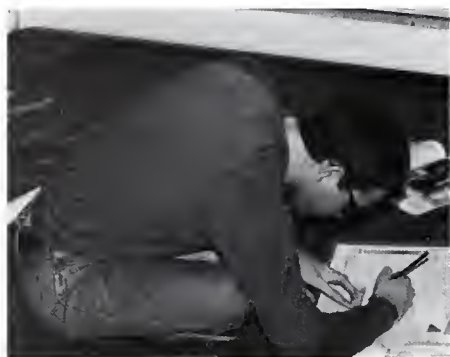
# MORE MANSFIELD ACTIVITIES COUNCIL



Movie Committee (center)- Cliff Johnston, Kevin DeGroff, Steve Norman, Orin Jacobs, Dan Long, Kurt Rudy

Executive Board (left)- Kurt Rudy, Wendy Miller, Todd Strohe, Margaret Niblick  
Row 2- Rick Kakareka, Orin Jacobs, Mark Spiker, Lucille Anderson, Deanna Fish





# ART STUDENTS GUILD ART EXHIBITION and ACQUISITION COMMITTEE



Art Students Guild (above)- Cathy Thomas, Sandy Cogan, Chris Visavati, Deb Smith, Phil Ogden

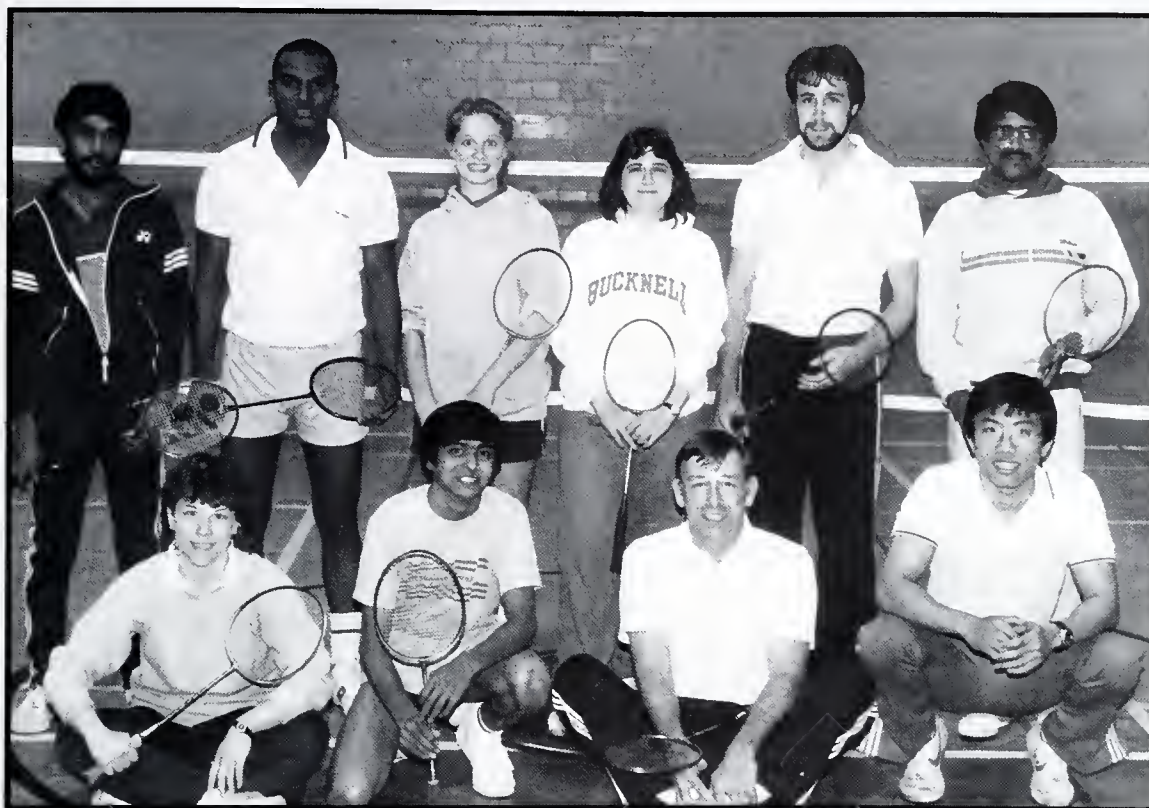
Art Exhib./Acq. (right)- Chris Visavati, Thomas Loomis (advisor), Tammy Matthews



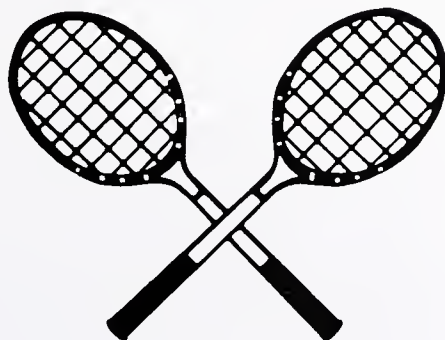




# BADMINTON CLUB



**Front row:** (l to r) Crystal Weyman, Manish Patel, Dr. David Darby, Chee Soon Juan.  
**Row 2:** (l to r) Priyanth DeSilva, Aruna Amarasekera, Dolly Olshenski, Heidi Bogart, Geoff Hanagh, Dr. Ramaswamy Ghanashekara.





## BLACK STUDENT UNION



Front Row- Yvonne Stroman, Darren Davis, Kim Smith, Eric Adams, Rebecca Corum Row 2- Dr. Michael Ayewoh, Mya Royster, Diedre Williams, Tiesa Sims, Brenda Warder, Joseph Grier, Tyrone Brittingham, Andrea Walters Row 3- Karen Lucas, Brian White, Alan Sanders, Eric Alvarado, Indale Berhanu, Pamela Best, Derrick Lewis, James Crocker, Paul Moore Row 4- John Atkins, Robert Funderburk, Kevin Harris, Hank Williams, Chris Venning, Brian Bruce, Clarence Crisp





# JOURNAL CLUB



Bottom- Chess Club





# MOUNTIE PRIDE . . . THE



Not all the action at a Mansfield University Basketball game is on the court. Some of the most difficult and exciting moves are off one end of the court. Every game the fans are treated to pretty women and masculine men to help cheer on the Mounties.

Led by Captain Linda Lagala And Co-captains Tamara Bell and Vince Mascia, The Cheerleaders jump, flip, build pyramids, and give great cheers to rev the Mounties up for a win.

These students have one thing in common which they share with each of us . . . Mountie Pride.



**Upper left:** The Captains; l. to r. Tamara Bell, Vince Mascia, and Linda Lagala.

**Upper right:** Mike and Jennifer make it perfect form as they help cheer on the Mounties.

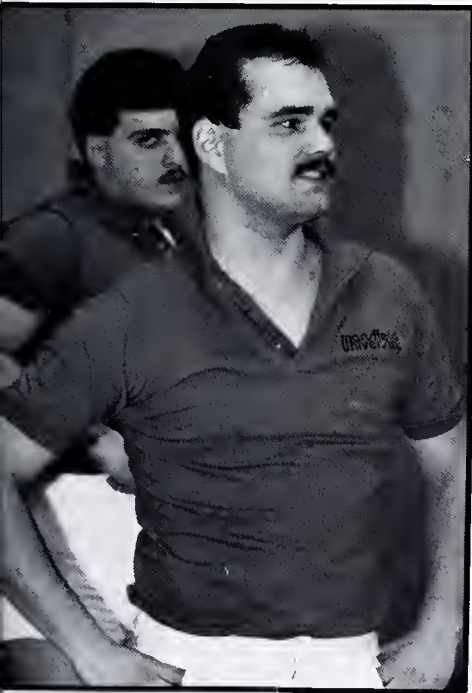
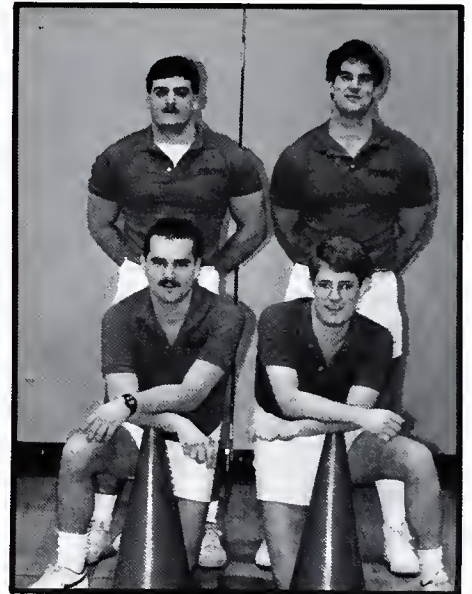
**Bottom:** The beauty of the Cheerleaders; front row l. to r. Kim Martin, Val Kemmer, Linda Lagala, Jen Robinson, Sheryl Arnold. Back row l. to r. Cheryl Pretti, Tamara Bell, Wendy Kukaites, Celia O'Connor.

**Middle:** Cheryl jumps for joy after the Mounties score two more.





# CHEERLEADERS



**Upper left:** The Cheerleaders- building up pride for the Mounties.

**Upper right:** Jennifer is caught up in spirit, and shows it in her smile.

**Lower right:** The brawn of the cheerleaders; kneeling l. to r. Quintin Taylor, Bryan Lane. standing l. to r. Vince Mascia, Mike Cox.

**Lower center:** Celia looks on as the Mounties score two.

**Lower left:** Quintin watches as the girls cheer on.





WNTÉ



Front Row- Vince Comisky, Jeff Westlund, Joe Runkle, Bentley Wolfe, Jill Kemp, Lorena Beniquez Row 2- Fred Coleman, John Minch, Matt Blais, Joe Scrobak, Masaki Wakai, Andy Blais' picture, Chris Johanesen, Dwayne Harris, Audrey Dunkley, Catherine Suzanne Miller, Stephan Wigert, Brian Greenough Row 3- B.J. Hunsinger, Bill Moran, Suzanne Smith, Pat Pantano, Bryan Lane, Tom McDermott, Bob Hughes, Rob Bond, Maria Scureman, Chris Minnich, Orin Jacobs Row 4- Dave Donlich

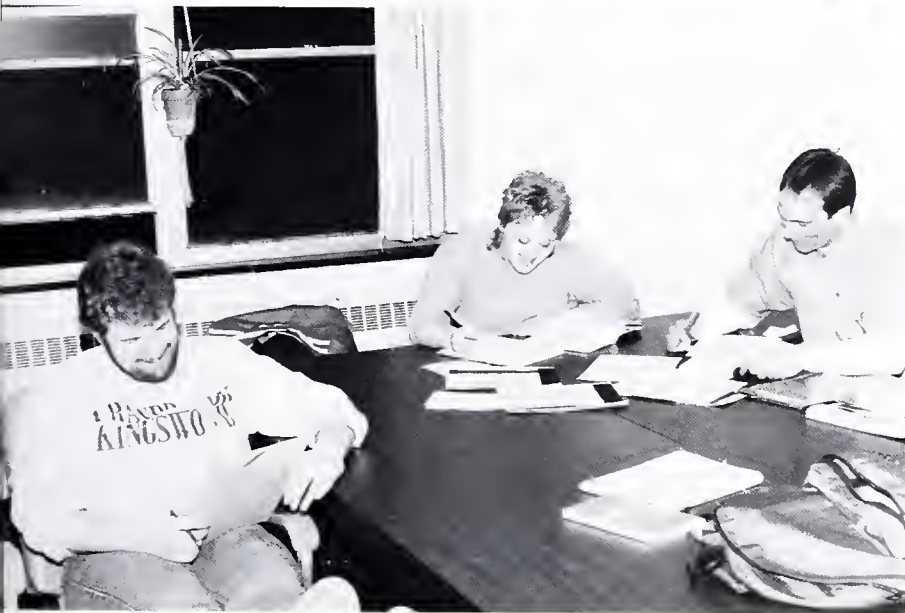




# FORENSICS TEAM POLITICS & GOVERNMENT CLUB



Center Photo:  
Front Row: Amy Welch, Lisa Books, Jennell Nelson  
Row 2: Kenneta Musselman (coach)



Bottom Photo:  
Brett Cole, Christina Conning, David Bogaczyk



## GEOLOGY CLUB



Geology Club members  
Front Row: B. Brecher, W. Howe, S. Bowenoski  
2nd Row: S. Norman, D. Moletic, T. Johnston  
3rd Row: J. Braun, W. Smith, M. Miller, J. Harrington, P. Luce





# GEOGRAPHY CLUB



Front Row: Scott Shaw, Steve Norman, Wayne Walters, Linda Masonic  
Row 2: Jeff Bucheit, Marc Colantuono, Carl Stolarski, Suelyn Clouse, Charles Button, Jerre Cress, Dr. Russ Dodson (advisor)







# MATH CLUB



Math Club members  
 Front Row: Penny Griffin (sec.), Curt Rudy, Angie Stump, Jamie Leach, Deb Gerhard, Cliff Johnston (pres.), Lori Barret-Williams, Row 2: Sue Milroy (treas.), Frank Brown, Karen Roken, Sue Bright, Mr. Engle (advisor), Cara Quick, Paula Carey





# EQUESTRIAN CLUB





# STUDENT DIETETICS ASSOCIATION



Front Row: Sandi Arnold, Ellen Bentzel,  
Julie Schultz Row 2: Nancy Farrell, Robin  
Savino, Gail Link Row 3: Jill DeLong,  
Ann Taylor, Dr. Lindsey (advisor) Row 4:  
Lezlie Oberlin, Betsy Baer, Annemarie  
Nealon





# INTERNATIONAL STUDENTS ORGANIZATION



Front row: l. to r. Indale Berhanu, Jesus Gotoy, Carlos Vales, Linda Granato, Hiromi Sasaki, Florence Mokonchu, Connie Myers, Yoko Ono, Luis Aponte, Manish Patel, Alan Mlambo. Row 2: Chee Soon Juan, Ng'era Bennett, Hector Hernandez, Robin Prophetta, Lisa Adams, Achan Abeysundere, Priyanth DeSilva, Aruna Amarasekera, Ike Onyirimba, Tina Kubota, Kana Kubato (baby), Yoshi Kubato, Kenneth Dias. Back row: Lee Il Yun, Herman Cardoza-Lozano, Emebet Berhanu, Abdullah Ali, Alas on Samateh, Attygalle Suddhamika, Konrad Fernandez, Pamela Best, Elwyn Joseph, Sathis Wijetunge.

M  
I  
S  
O

The International Student Organization is a club created by the international students here at M.U. Membership is open to all on campus who may be interested. With the rich and diverse cultures of it's members from all over the world, the organization is unique, and has much to offer educationally, socially, and culturally.

...to r. Herman Cardoza-Lozano, (Parliamentarian); Luis Aponte, (Historian); Konrad Fernandez, (vice-president); Chee Soon Juan, (president); Emebet Berhanu, (treasurer); Connie Myers, (secretary).







## OUTDOOR RECREATION CLUB



Front Row- Carolyn Speiser, Leanne Hanson  
Row 2- Mr. Ron Remy, Jenell Nelson, Heather Prior, Jennifer, Jeanne Frank, Boone Flint





# PSYCHOLOGY CLUB





# CAMPUS MINISTRY





# CAMPUS CHRISTIAN FELLOWSHIP



Front Row- Chris Minnich, Sam Engle,  
Barb Winters, Joyce Doan, Kathy Bishop,  
Pam Warner Row 2- Mark Appiott, Ka-  
ren Lindemuth, Greg Peck, Steve Har-  
key, Wayne Walters, Nick Smith





# NATIONAL ASSOCIATION OF JAZZ EDUCATORS

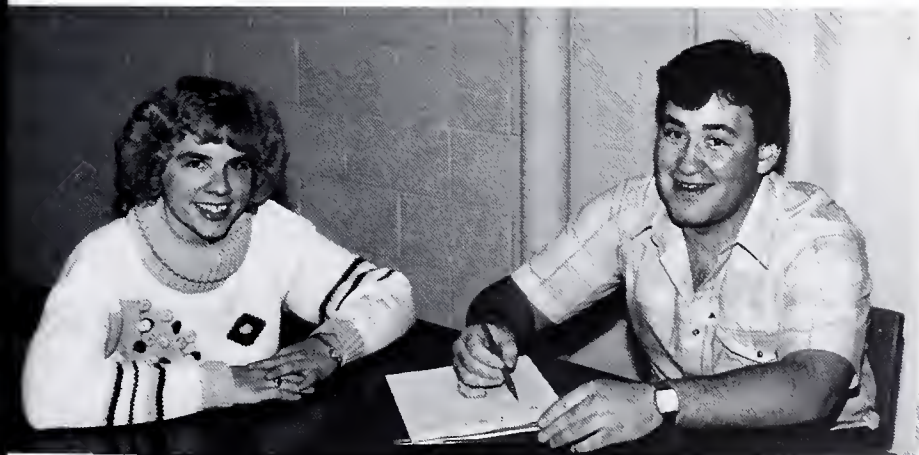


Front Row- Vince Saratori, Michelle Bowersox, Debbie Acor  
 Row 2- Mark Appiott, Larry Kuntz, Cory Miller, Scott Becker, Tony Leukas, Wendy Kern  
 Row 3- Eric Hartranft, Orin Jacobs, Bill Horrax, Joe Roche, Bruce Rice, Harold Mortimer, Brett Holton, Ron Bixler





# MUSIC THERAPY CLUB





# ALL RESIDENCE HALL COUNCIL



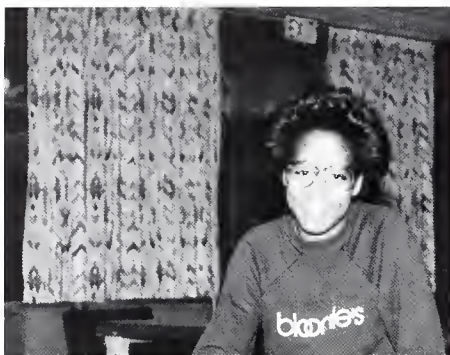


# HEMLOCK HALL COUNCIL



Front Row- Bill Stalter, Randy Abrams, Ken Ferron Row 2- Vince Comisky, Carmen Bianco, Chris Johannessen, Tim Cox, Michael Pritchyk, Chris Smith, John Drumm, Matt Puterbaugh





# PINECREST HALL COUNCIL





# CEDARCREST HALL COUNCIL



Front Row- Scott Jeffery Row 2- Trisha Grzech, Joe Detato, Celia O'Connor, Kelli Mihalick, Karen Pasour, Dave Newcombe (advisor), Kim Erway, Mary Gramlich, Joe Genova, Row 3- Holly Rook, Julie Leonard, Tina Toma, Sue Lee, Patty Kleinhaus, Gerri McGinnes, Brenda Grimes, Nancy Sue Bevis, Coleen Ketrick, Michelle Mignerey, Paul Brown Row 4- Darren Davis, George Chamberlain, Scott Allen, Mark Serva, Larry Baxter, Todd Taneyhill, Bob Williams, Roger Evans, Mark Vok





# MAPLE HALL COUNCIL





# LAUREL HALL COUNCIL



Front Row- Glinda Austin, Lindsey Sprague, Laura Ovelman, Jo Patt, Patty Schwartz, Sue Gauthier, Suzie Kaufman  
 Row 2- Sue Milroy, Ellen Wink, Mary Casbeer, Karen Robinson, Pat Porro, Gail Link, Linda Granata, Theresa Kleiser  
 Row 3- Carolyn Speiser, Karen LeCates, Mary Beth Eggleston (advisor), Betsy Geise, Charlotte Lindvall, Sarah Brunner, Kathy Eiswert, Audrey Kliagenmaier, Heather Prior, Jeanne Frank, Jenell Nelson



# STUDENT GOVERNMENT ASSOCIATION





# FLASHLIGHT STAFF





# LAMBDA SIGMA



Front Row: Corby Woodling, Mary Filicetti, Paige Westfall, Michelle Migherey, Ellen Bentzel, Chad Pisoneschi Row 2: Patti Frey, Julie Leonard, Patty Geer, Patti Mathie, Maureen Henne



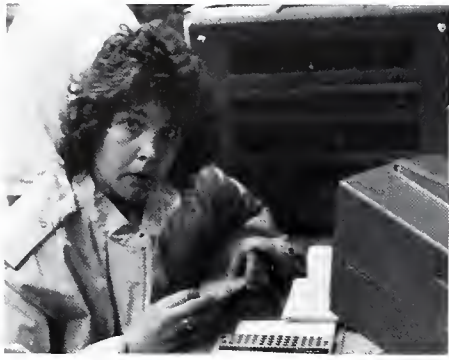


# PHI SIGMA PI



Front row: Michelle Ryan (advisor), Rene Scrip, Darlene Nester, Rhoda Pflieger, Rochelle Snyder, Cathy Thomas, Tim Rooney, Row 2: Tony Yadzinski, Deanna Fish, Lori Heffner, Lindsey Sprague, Amy Wagner, Deb Robison, Lucille Anderson, Dorotha Painter Row 3: Dan Long, Laurie Bencetic, Bonnie Pruyne, Jamie Morris, Karen LeCates, Ellen Wink, Rich Freed





# SIGMA ZETA





KAPPA DELTA PI





# KAPPA OMICRON PHI



Front Row- Nancy Farrell, Sharon Jones, Brenda Eaton, Ellen Bentzel, Lori Seliga, Jill DeLong, Ann Skerpon Row 2- Rhonda Pflieger, Julie Schultz, Beth Bitner, Robin Savino, Mrs. Charlene Plowcha (advisor), Joan Hannon, Jennifer Binkley





A black and white photograph of the Statue of Liberty, viewed from a low angle. The statue is the central focus, standing on its pedestal. Her right arm is raised high, holding the torch, while her left arm is extended, holding a tablet. She wears her iconic crown with seven spikes. The background shows a wide expanse of water, likely New York Harbor, with some distant structures and a hazy sky. The overall image has a halftone or dithered texture.

**GREEKS**



# SISTERS OF SOCIAL SERVICE





# OMICRON GAMMA PI



Front row: Ann Skerpon, Nicole Werni, Kalesta Jones, Kim Peters, Ellen Bentzel, Beth Bitner Row 2: Julie Schultz, Ginny Boumann, Sandi Arnold, Carol Button, Mrs. Rudy (advisor), Carolyn McKelvey, Debbie Irvin, Crystal Tannery, Joan Hannon, Anmarie Neolon, Jodi Gruver

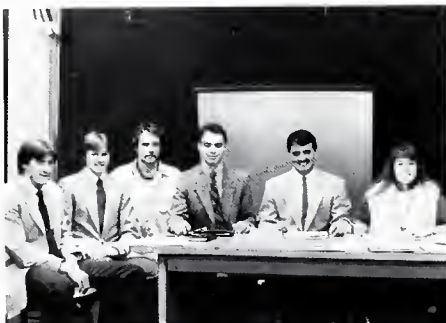




## PHI BETA LAMBDA



Front Row- Michele Burkholder, Jo Patt, Laura Ovelman Row 2- Lynda DeMany, Lori Offner, Tak Sukimoto, Chrissy Derenick, Judy Brokaw, Gail Grundig, Abe Ghods (advisor), Milt Landis, Chris DeYoung, Matt Tighe Row 3- Eric Shively, Mark Garvelli, Doug Schreffler, Ted Fullerton, Brian Fosbrook, Cliff Johnston Row 4- Sharon McCarty, Mark Hoyt, Steve Harkey, Laura Frey, Bill Levy, John Williams, Pat Brown Row 5- Jamie Fry, Denise Gilbert, Rich Lietzke, Ken Warner, Boone Flint, Ruth Butler, Matt Wood





# INTER FRATERNAL COUNCIL



Front row: Tracy Mio, Bill Howe, Mark Caluniuano, Tom Bose, Joe McCormick  
Row 2: Ed Mull, Chris Mohan, Dave Donolich, Tom Malus, Paul Lodge, Tom Porach, Bill Dunovan, Row 3: Dave Martini, Jim Russle, Zane Stetler, John Spanno, Jeff Hine, Don Harris, Eric Horn, Jerry Strubingen, Dan Raci, Jeff Stuckey





# DELTA ZETA

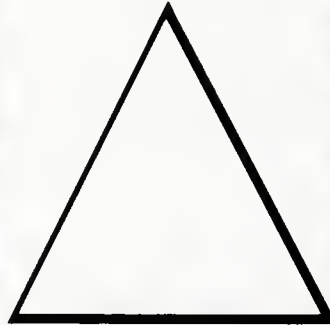


**Front row:** (l to r) Daphne Reed, Beth Bitner, Kris S Schwarzmeier, Lauren Burakoff, and Frogger.  
**Row 2:** (l to r) Donna Josulevicz, Susanna Bright, Denice Fitzwater, Karen Roken, Julie Burkart, Sue Fenstermacher, Julie Ogden, Jennifer Campbell, Berna Van Popering. **Row 3:** (l to r) Rochelle Snyder, Debbie McNicholas, Kim Casler, Pattie Rutledge, Krista Brechtlein, Betsy Brister.



**Front row:** (l to r) Corr. Sec.- F Donna Josulevicz; Ass't to Pres.- Beth Bitner; Vice-Pres. Memb.- Lauren Burakoff; Treasurer- Betsy Brister.  
**Row 2:** (l to r) Rec. Sec.- Denice Fitzwater; Vice-Pres. Pledge Ed.- Julie Burkart.

**MEMBERS NOT PRESENT:** Tammy Arble, Tammy Dance, Patti Doyle, Mari Feil, Keara Fulton, Charlotte Lindvall, Lisa Saeman, Hiromi Sasaki, Marie Farris, Kelly Quattrini, Margie Hancik, Karen Fisher, Irene Kepple.











# ALPHA SIGMA ALPHA



Front row: Elaine Perkis, Judy Flynn, Lisa Boris, Lisa Medvidovich, Alison Hoppey Row 2: Deb Bennett, Lisa May, Sue Sherkness, Denise Alessandrive, Sharon Klock, Ann Reece Row 3: Melanie Freeland, Tammy Bell, Lori Campbell, Janet Lamaraco, Carolyn McKelvey, Michelle Riggle, Sharon Horn, MaryAnn Melito Row 4: Brenda Eaton, Tricia Syron, Jill Bieber, Amy Wertz, Deb Almond





# ALPHA SIGMA TAU







# SIGMA ALPHA BETA



Front Row- JoAnn Alteri, Rhonda Pflieger, Donna Lynn Eshleman, Jodi Cappelli, Jennifer Kenny Row 2- Lisa John, Deanna Fish, Deanne Clenney, Lisa Guerrero, Becky Hannon, Sue Devito, Karen Grecco, Debbie Metzger Row 3- Esther Kennedy, Chris Lukas, Denise Gilbert, Patrice Ametrano, Beth Smith, Mikki Burkholder, Lynn McGuire Row 4- Cecilia Bisher, Charlene Mock, Richelle Brace, Shari Obernader, Patty Geer



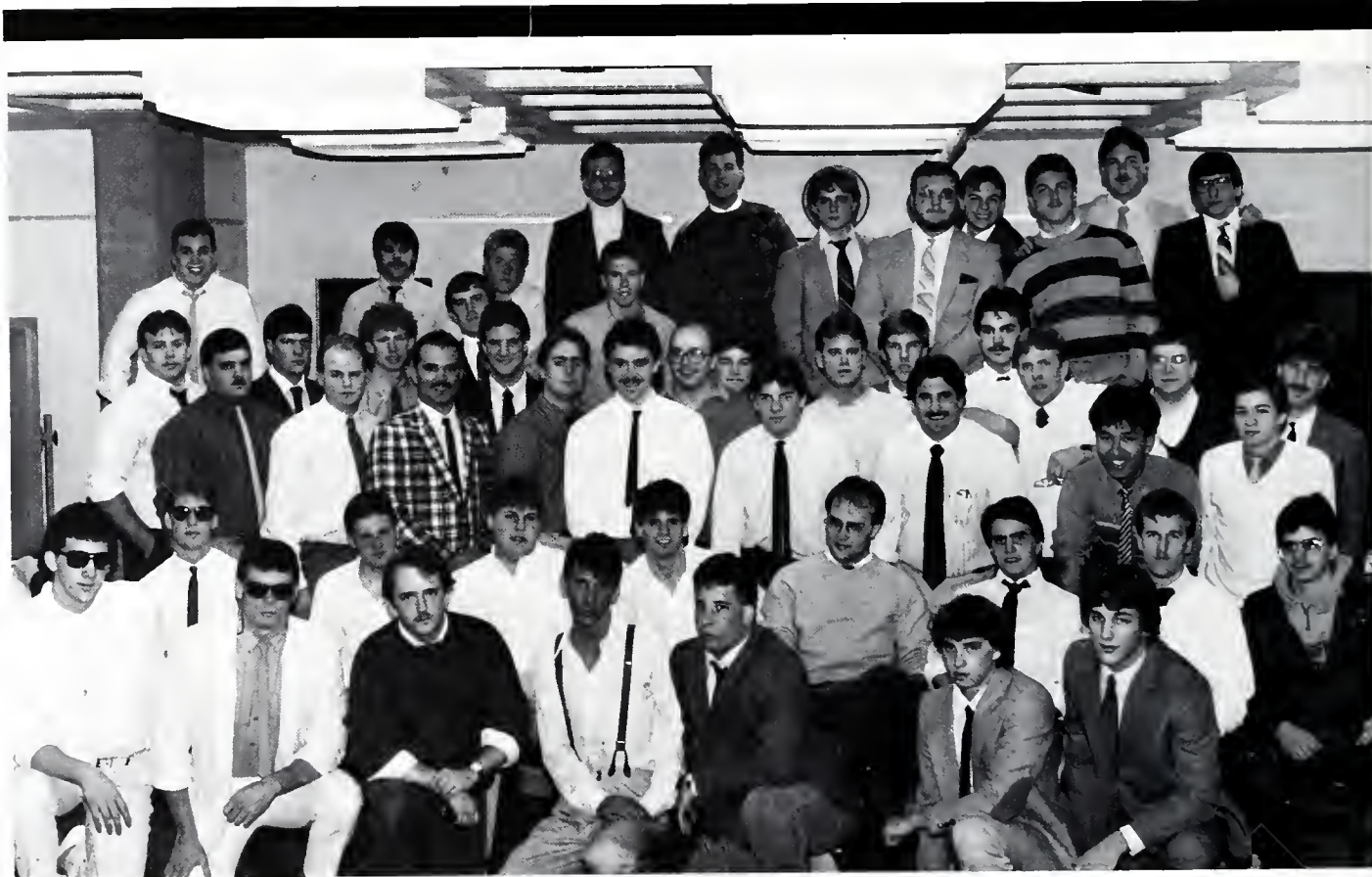








# LAMBDA CHI ALPHA



Front row: Troy Barbusca, Doug Westervelt, Bob Weber, Todd Robinson, Don Faulstick, Bob Oliver, Bill Smith Row 2: Chris Wever, Steve Lichvar, Jeff Swingle, Dave Thomas, James Mitchell Scouten, Brett Wood, Charles Griscavage, Bernard Hunsinger Row 3: Vince Mascia, Dave Donlick, Quint Taylor, Grey Rolland, Jeff Titus, Dave Daily, Todd Hoskins, Tak Sugimoto, Doug Schreffler Row 4: Jeff Cimanasky, Jack Maynard, Rich Kesterke, Jeff Tower, Ron Kubera, Mick McConville, Tim Button, Paul Brown, Rick Fry, Evan Smithgall, Doug Claycomb, Scott Cruttenden, Jim Anderson, Todd Gabello Row 5: John Myers, Don Ribbins, Bob Kaiser, Skip Miller, Ken Hudnall, Bill Howe, Jeff Baird, Rick Robbins, Lee Baker, Pat Pantano, Tom Malos



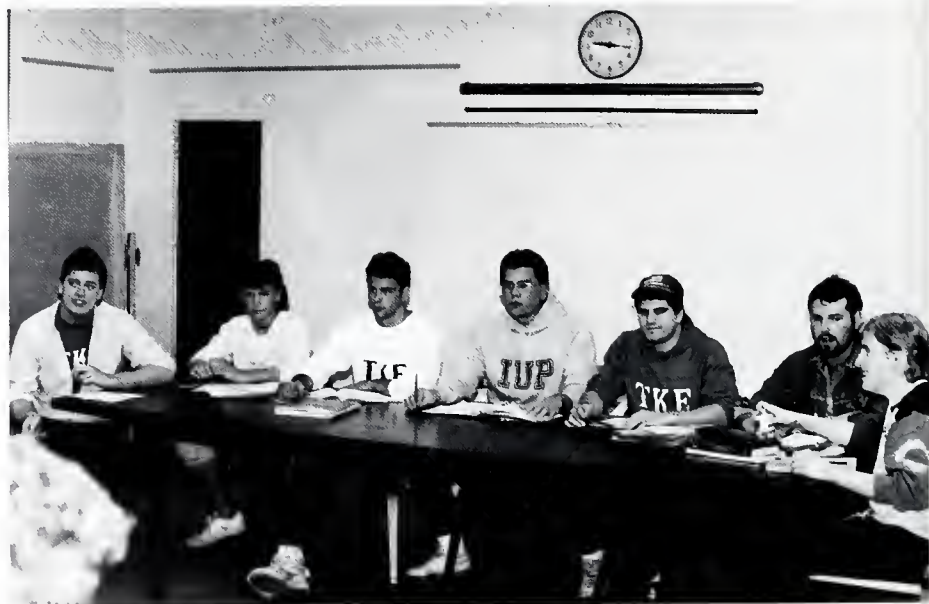








# TAU KAPPA EPSILON



















# PHI MU ALPHA SINFONIA



Front Row- Lonnie Bickel, Andrew Griglock, Christopher Minnich, Anthony Yadzinski, Christopher Ciablatoni, Harold Mortimer Row 2- Bernard Harvard, Tony Leukus, James Updike, Mark Applot, Daniel Boone, David Shepley, Barry Savitz Row 3- Thomas Clarke, Michael Versage, Carl Stolarski, Steven Wolfe, Scott Riply, Steven Fox, Kevin Weibly, Scott Kingston Row 4- Mark Feil, William Horrax, Orin Jacobs





# SIGMA ALPA IOTA



**Front row:** (l to r) Joanne Zimmerman, Patti Mathie, Amy Yastishock, Beth Thomas, Cathy Flynn, Tammy Kozloski. **Row 2:** Andrea Schubert, Deb Acor, Cathy Beish, A Daria Rosar, Judi Carlson, Karen Rosenthal, Jeannine Buzzard. **Row 3:** Andrea Lang, Cindy Paul, Laura Beahm, Yvonne Glass, Sarah Brunner, Robin Tolman, Ruth Capobianco, Gwen Walker, Deb Gerhard, Joyce Conant, Nancy Sue Bevis, Tammy Miller.

W  
A  
I



**Officers:** (l to r) Sgt. at Arms- Judi Carlson; Treasurer- Tammy Miller; Vice-Pres.- Deb Gerhard; Pres.- Yvonne Glass; Cor. Sec.- Gwen Walker; Editor- Joyce Conant; Chaplain- Karen Rosenthal

















# ZETA ALPHA



**Front row:** l. to r. Sharon McCarty, Linda Wendel, MaryAnn Boutcher, Cheryl Pretti, Betsie White, Denise Hartline, Cindy Thorp. **Row 2:** l. to r. Tamie Auckerman, Kelly Rodgers, Pam Rodder, Robin Glass, J'nell Powell, Cindy Corrigan, Sue Ann Moran, Annette Merchant. **Row 3:** l. to r. Marjorie Kreppel, Patti Pretti, Jodi Kishback, Stephanie Boyanowski, Christine Lewis, Marcia Kuni, Kristi Nye. **Row 4:** l. to r. Vicki Valentine, Heidi Merwede, Mary Wilson, Lisa Sirotko, Penny Burnett, Beth Weinland, Jennifer Witkowski. **Row 5:** l. to r. Valerie Kemmer, Cindy Bertz, Denise Duncan.



**Left:** Paula Oleksy shoots for two at the last home game of the season. **Above:** Lisa Sirotko shivers in the cold at Greek week.



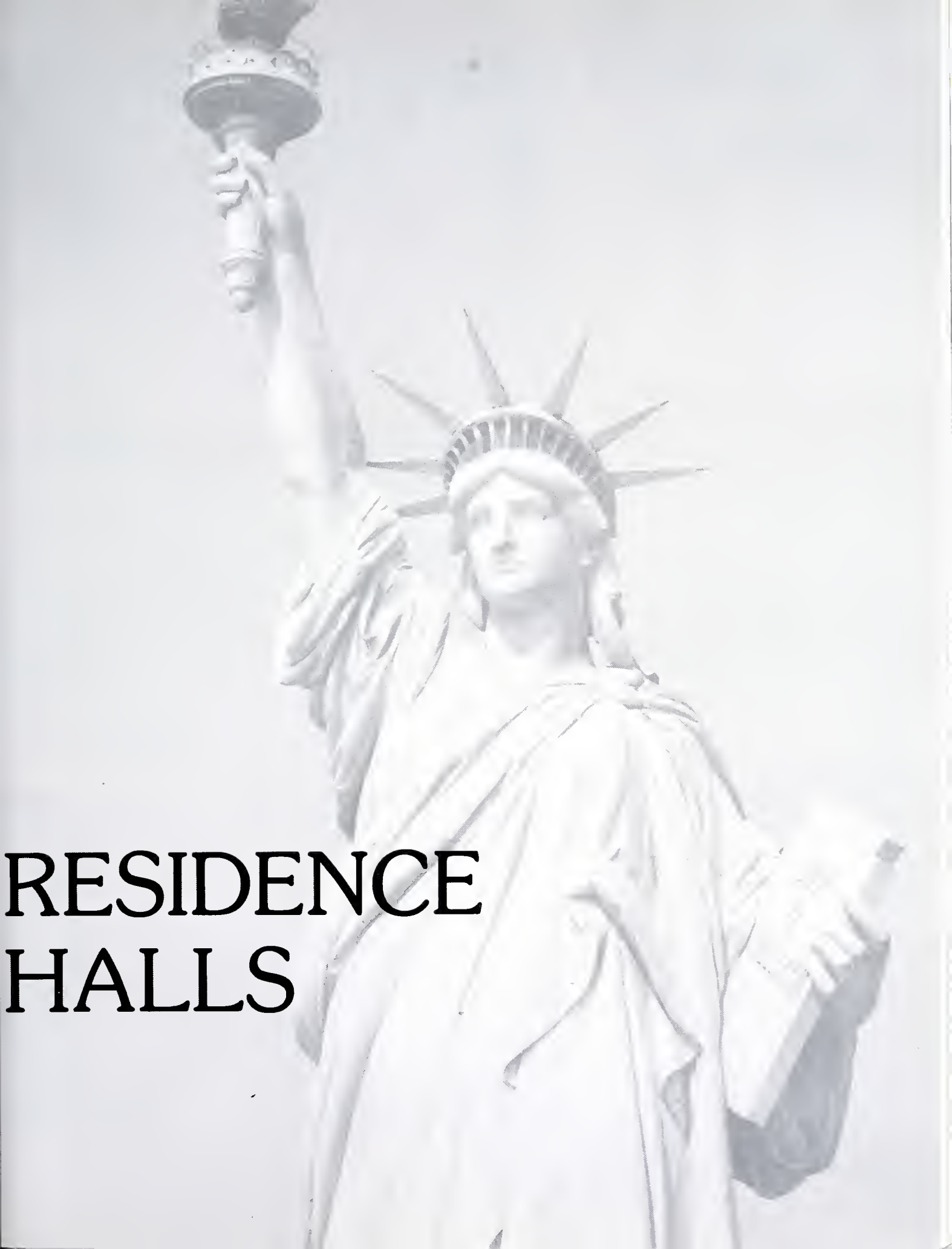
**Front row:** l. to r. Heidi Merwede - Ritual, Marjorie Kreppel - Recording Secretary, Cheryl Pretti - Vice-President I, Cindy Thorp - Vice President II. **Row 2:** l. to r. Robin Glass - Panhellenic Delegate, Vicki Valentine - Historian. Officers not present: l. to r. Liz Bulgar - President, Helen Farneski - Treasurer, Peggy McDonald - Membership.

Members not present: l. to r. Kim Bolig, Helen Farneski, Wendy Herbst, Denise Dougherty, Sue Craddock, Peggy McDonald, Sheryl Arnold, Cheryl Kline, Liz Bulgar, Melody Wert, Maladye Rakerd, Stacey Reinhardt, Stacy Benson, Dominica Convertino, Paula Oleksy, Nora Talty, Wendy Dell, Jenny Robinson, Sandi Satterlee, Lisa Baurys, Lori Ofner.







A black and white photograph of the Statue of Liberty, showing her head, crown, and right arm raised holding a torch. The statue is the central focus of the image.

**RESIDENCE  
HALLS**

Pinecrest Resident Assistant Staff



Hemlock Resident Assistant Staff







Maple Resident Assistant Staff



Cedarcrest Resident Assistant Staff



Top Left: 4th floor Pinecrest

Lower Left: 5th floor Pinecrest

Right: 6th floor Pinecrest







Top Right: 1st floor Hemlock

Above: 2nd floor Hemlock

Left: 3rd floor Hemlock







Top Left- Laurel A 2nd Floor

Center Left- Laurel A 3rd Floor

Bottom Right- Laurel A 4th Floor







Upper Right- 5th Floor Laurel A

Middle Right- 6th Floor Laurel A

Lower Right- 7th Floor Laurel A



Right- 2nd Floor Laurel B  
Below- 3rd Floor Laurel B







Above- 4th Floor Laurel B







Top Left: Ground Floor Cedarcrest A

Middle Left: 1st Floor Cedarcrest A

Right: 2nd Floor Cedarcrest A







Left: 3rd Floor Cedarcrest A

Middle Right: 4th Floor Cedarcrest A

Top Right: 5th Floor Cedarcrest A





Upper Left- 1st Floor Cedarcrest B

Above- 2nd Floor Cedarcrest B

Lower Right- 3rd Floor Cedarcrest B







Upper Right- 4th Floor Cedarcrest B

Above - 5th Floor Cedarcrest B

Lower Left- 6th Floor Cedarcrest B





Upper Left- 2nd Floor Maple A

Above - 3rd Floor Maple A

Lower Right- 4th Floor Maple A







Upper Right- 5th Floor Maple A

Above- 6th Floor Maple A





Above- 2nd Floor Maple B  
Right- 3rd Floor Maple B  
Below- 4th Floor Maple B



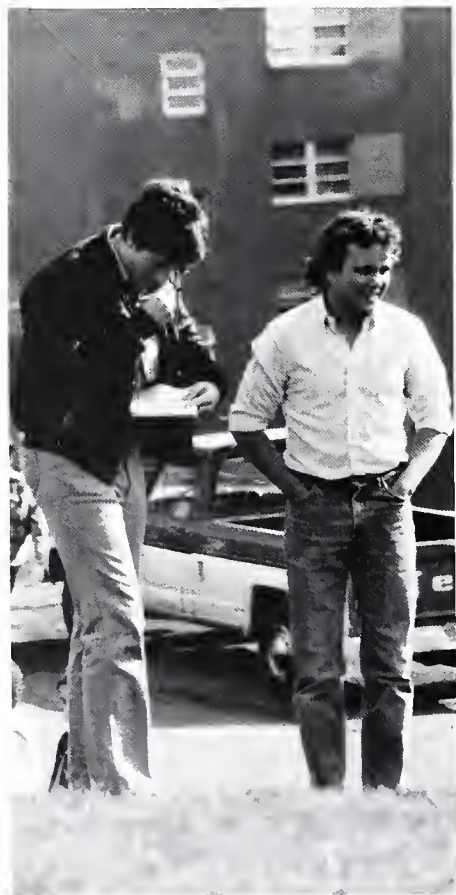




Top- 5th Floor Maple B  
Above- 6th Floor Maple B











# ACTIVITIES



# CULTURAL AWARENESS WEEK







(top left) Mansfield Mountaineer - the mascot

(middle left) All right

(bottom left) What faces . . . undecided and unhappy

(top right) It seems that President Reagan visited Mansfield

(bottom right) There is Jill Myers and escott Michael Dorak





Lori Lynn Barrett



Lisa Baurys



Deborah L. Bennett



Liz Bulger



Karen Eyster



Nancy Farrell



Karen A. Fisher



Debbie Gerhard



Cathy Grassetti



Trisha Grzech



Diane Hamill



Rhonda Healey



Shelly Housel



Dawn M. LaRose



Charlotte Lindvall



Gail Link



Lisa Lublin





Mary Jo Lukehart



Sharon E. McCarthy



Charlene Mock



Jill Myers



Darlene S. Nester



Susan Nye



Rhonda Pfleegor



Cheryl Pretti



Margaret B. Ricketts



Robin L. Savino



Richele Speak



Karen Squier



Deborah Statton



Marion L. Tomlinson



Victoria Toth



Barbara Ann Tsontakis



Gretchen York









# HOMECOMING '86'







# GREEK

Δ  
Χ  
Α ΣΑ  
Α  
ΑΒ

Τ  
Κ  
Ε



ΔΖ  
Τ  
Α

**Upper left:** Linda, Michelle, and Elaine look totally engrossed in Greek Week activities.

**Upper right:** Greek Week judges rate Phi Beta Delta a perfect 10.

**Insert:** Bear gets a hug from Bob during the dance portion of the beauty contest.

**Center:** Alpha Beta brothers Bruce and Craig give it thier all during the car push from Maple to Laurel.

**Middle left:** Mary Ann and Cheryl try to keep warm. During the week temperatures were around 40-50 degrees with the wind blowing constantly.

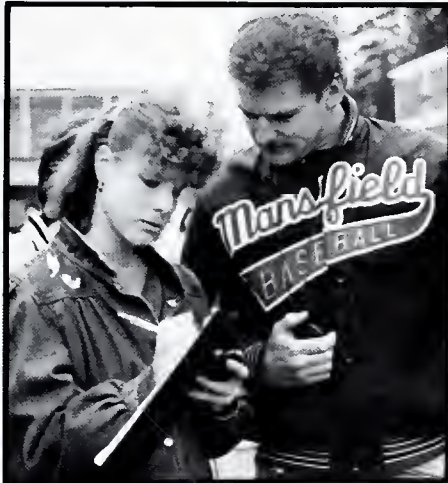




# WEEK



ΦΒΔ



ΑΣΤ



ΣΤΤ

Upper left: "She's A Beauty, She's one in a million girl." Jim Walkingshaw never looked better.

Upper right: the girls of TKE teach the men how to dance.

Middle left: Brotherly love.

Center: The judges did an excellent job.

Middle right: Sig Tau's winning banner.

Bottom left: The boys of Lambda Chi huff and puff in the chariot races.





# PARENT'S WEEKEND

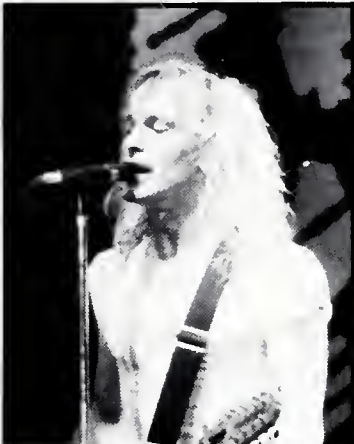








# CHEAP TRICK



It looked as though Mansfield would not be having its annual Homecoming concert, but the announcement finally came. Cheap Trick and John Waite would be appearing in Decker Gym. It was several weeks after Homecoming, but MAC concert chairman, John Kerwin, and the concert staff had organized not only a concert, but a **great** concert.

Mac brought to Mansfield long established rock band Cheap Trick, known for songs like *Dream Police*, *Surrender*, and *Tonight It's You*, to warm up for solo act John Waite. John Waite left the Baby's several years ago, and became popular due to hits such as *Missing You*, *Changes*, and *Every Step of the Way*.

Events of the unforgettable day began at 8:30 am as MAC volunteer musclemen unloaded three tractor-trailers of equipment. After 10 hours of lifting, moving, and hard work the stage was set.

The crowd filed in and Cheap Trick hit the stage with a fantastic light show, and an ear-shattering sound system that let Mansfield University rock for over an hour. Then after two encores, and a few minutes wait, John Waite took his turn to show Mansfield what it means to rock. And did he ever rock. John not only featured his hits, but also gave us some of those old Baby's tunes. For 45 seemingly non-stop rock minutes he went, then he left quick as he had come, leaving Mansfield totally satisfied . . . till the next concert.



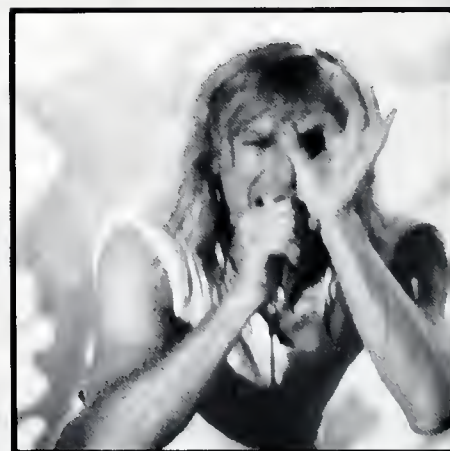
Upper left: Guitarist Rick Nielsen points to the audience in **Tonight It's You**.

Upper middle: Robin Zander pours it on.

Upper right: "Look Ma no hands", says Rick. But we know it's taken years of practice.

Middle: Robin Zander, Jon Brant, and drummer Bun E. Carlos make the crowd **Surrender**.

Bottom: Robin shows what makes Cheap Trick so popular . . . **CRAZINESS!**







# JOHN WAITE

## IN CONCERT



Upper left: John Waite belts out Every Step of the Way.

Upper right: In the encore John sang Missing You.

Lower left: Guitarist Gary Myrick and John "know it doesn't matter who you are."

Lower right: Gary looks out as he solos.



# ALL MALE REVIEW





AND MORE . . . .  
WELL, MAYBE LESS!





# CABARET





















# SPORTS



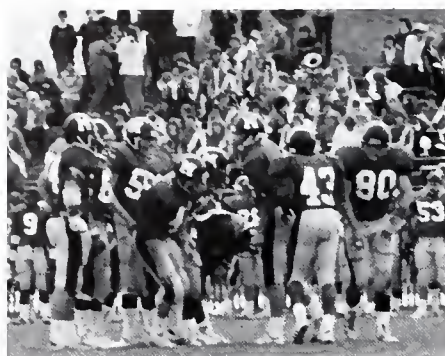
# FOOTBALL







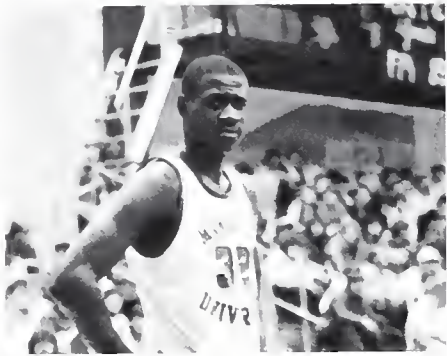




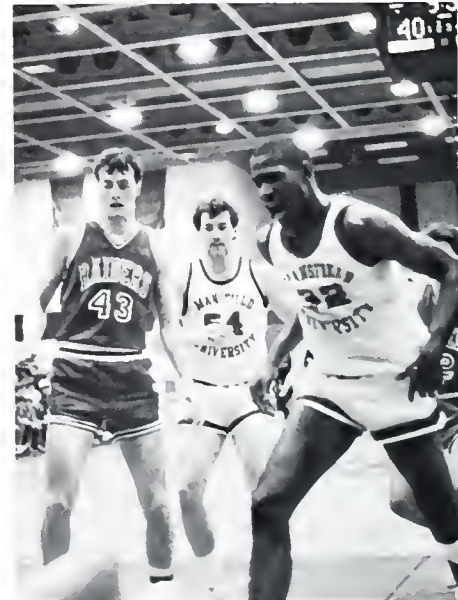
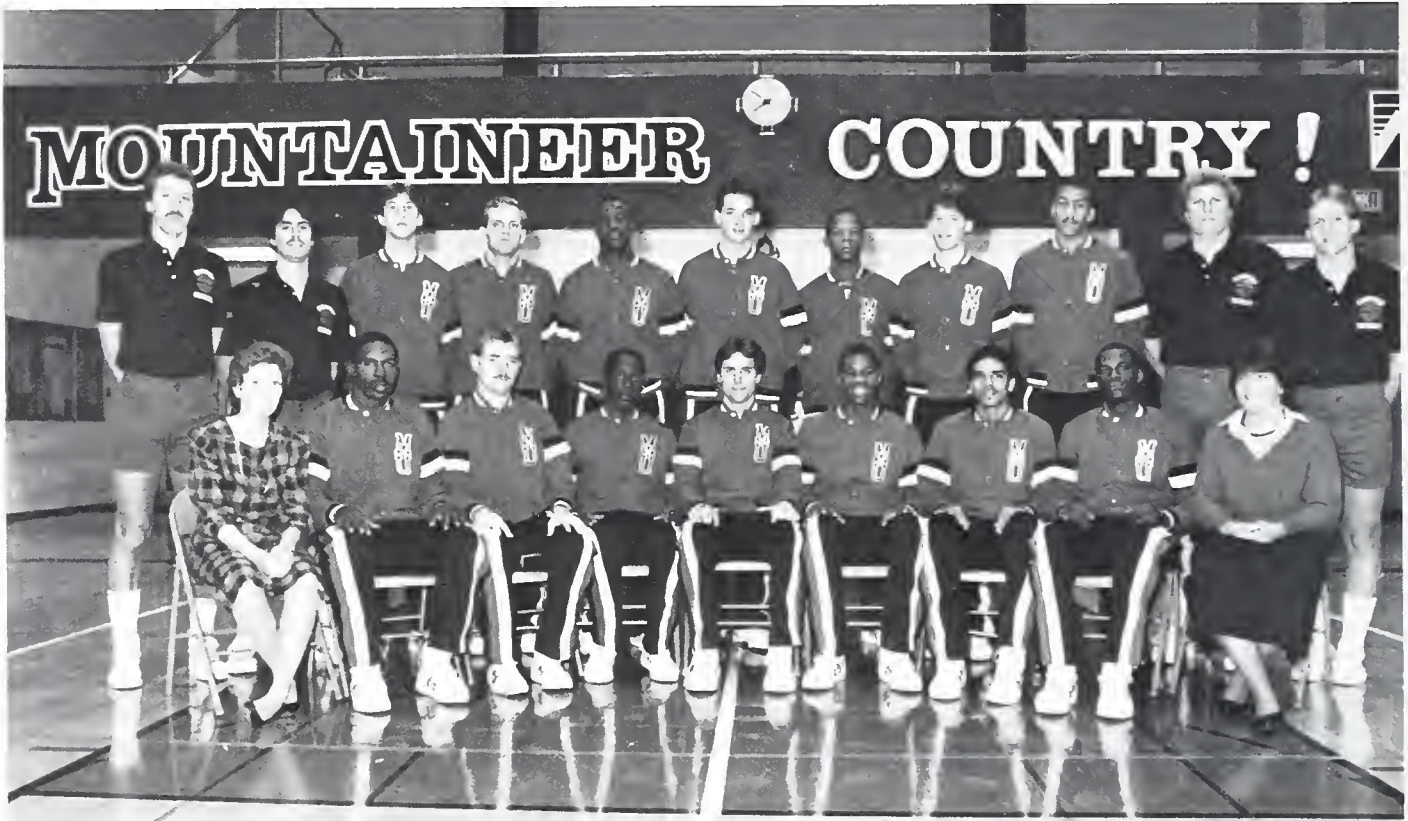








# MEN'S BASKETBALL

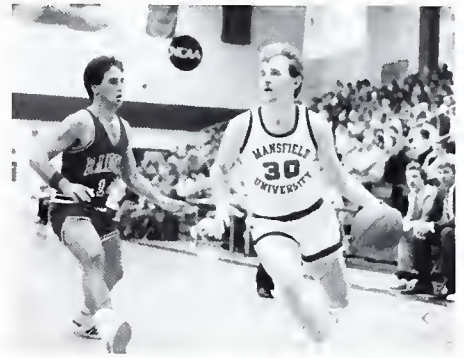
















# WOMEN'S BASKETBALL



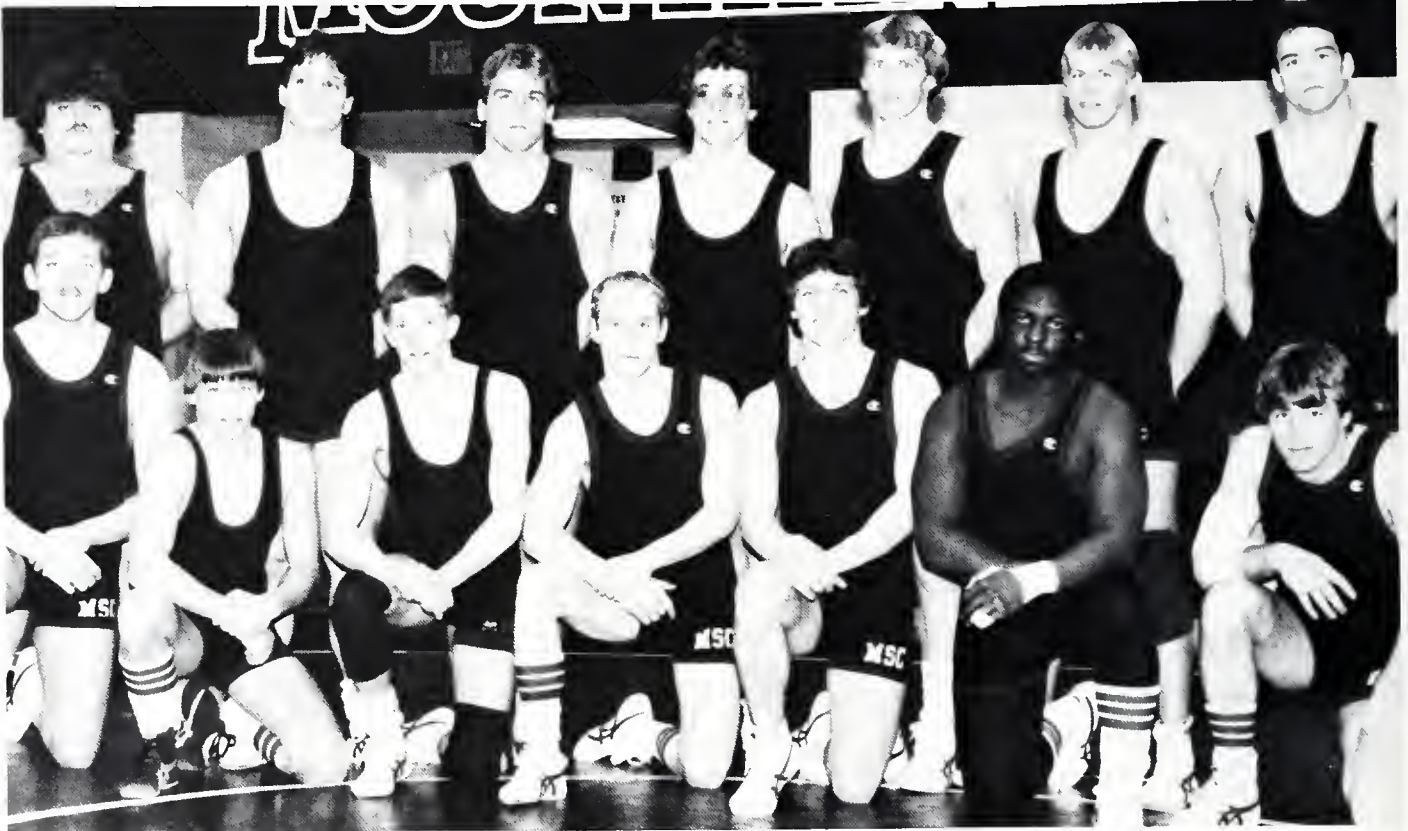








# WRESTLING





# VOLLEYBALL







# FIELD HOCKEY







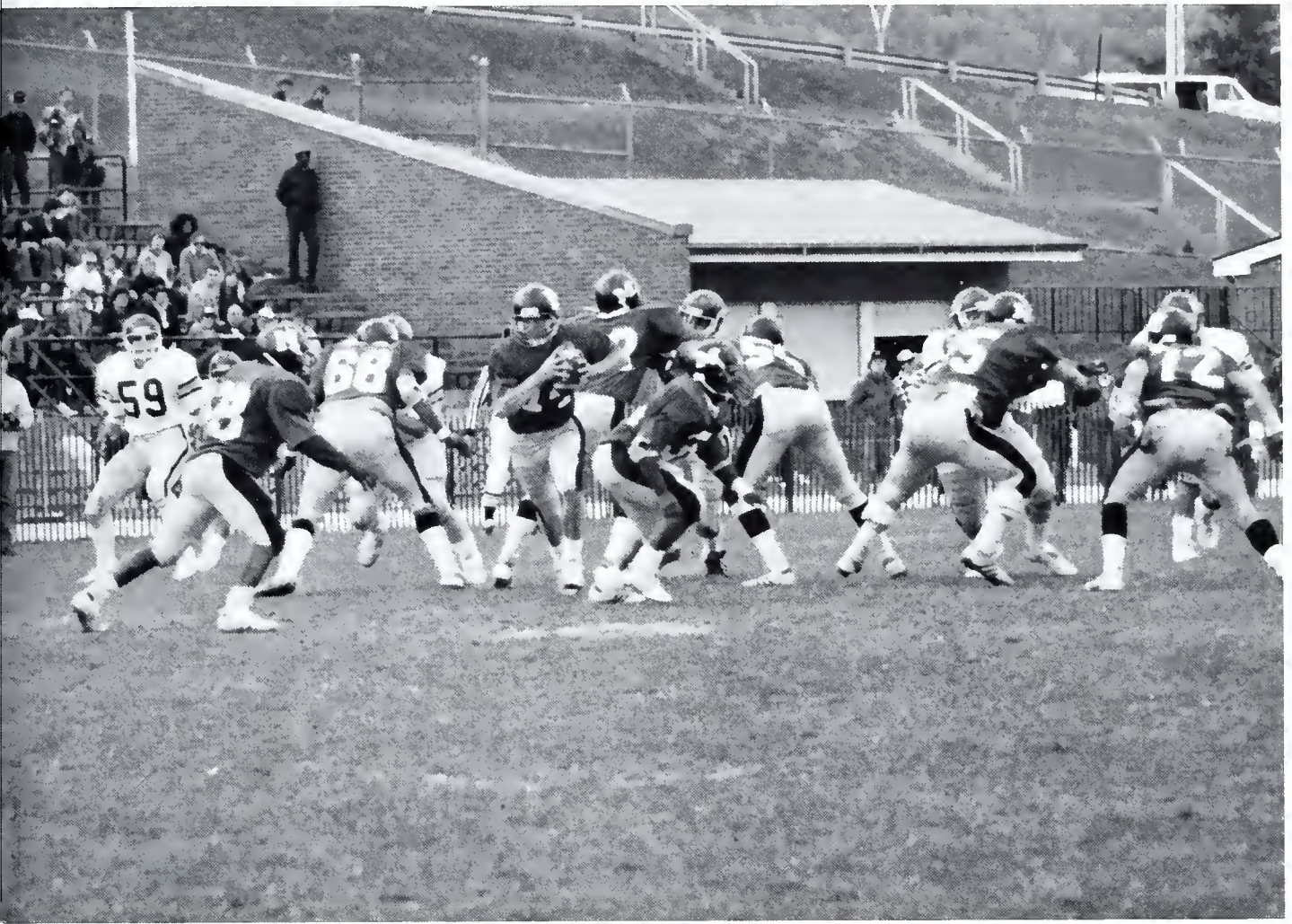




# BASEBALL



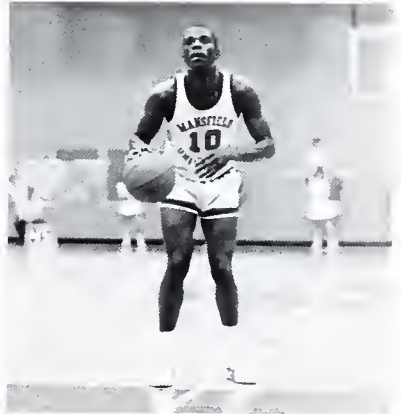
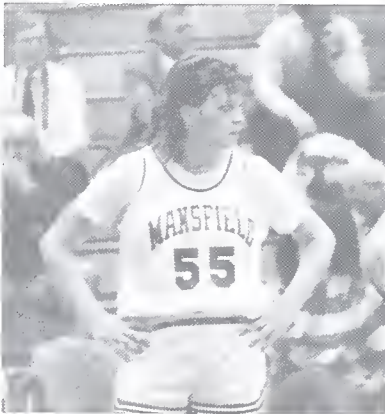


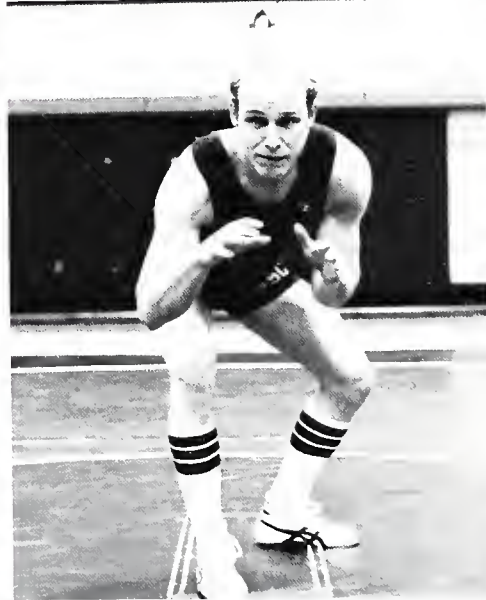
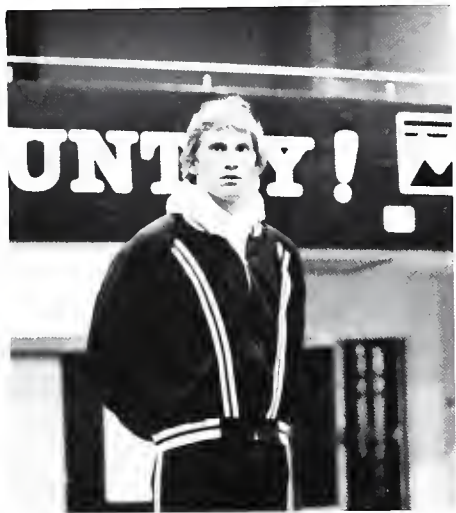








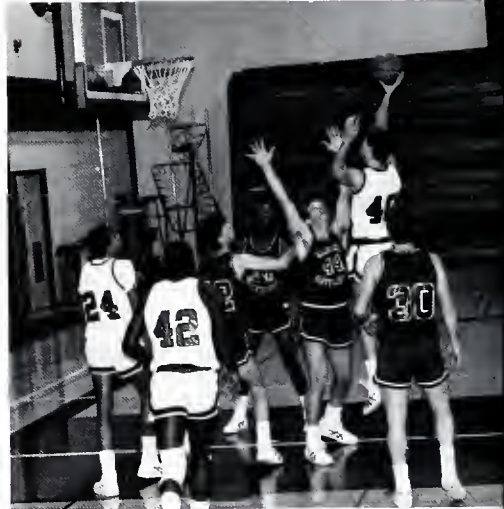
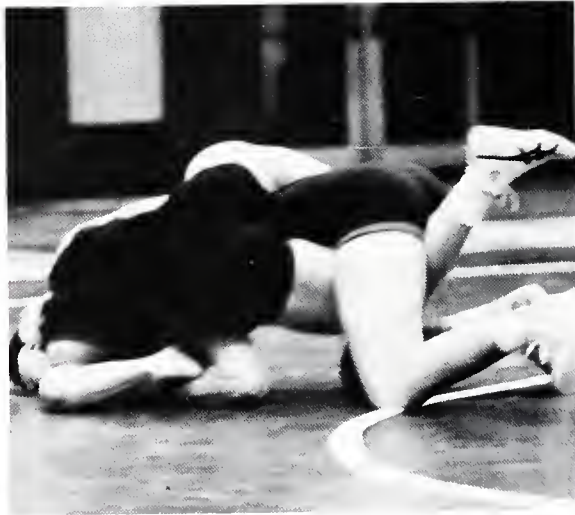




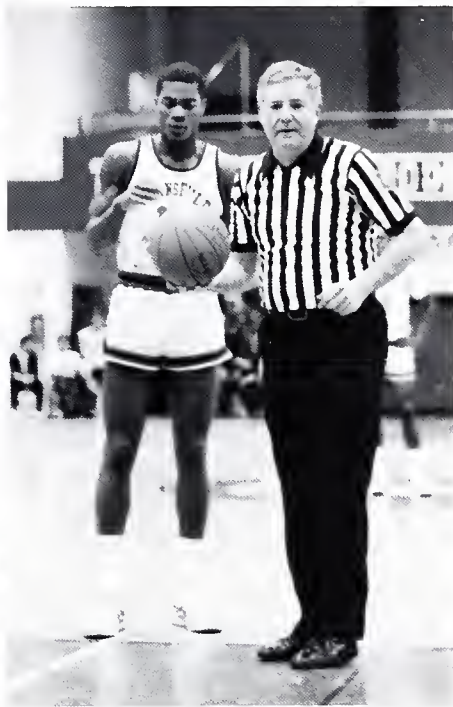




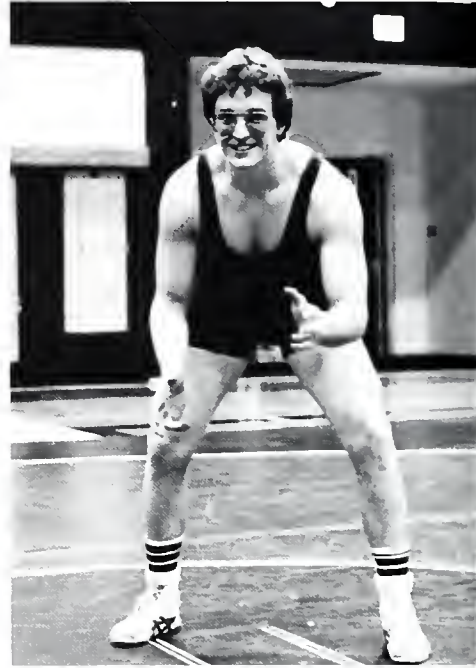




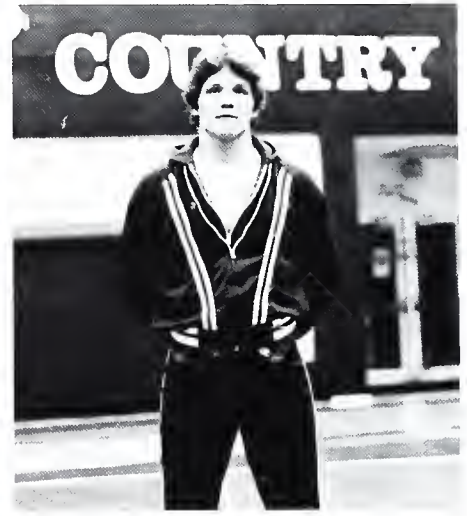




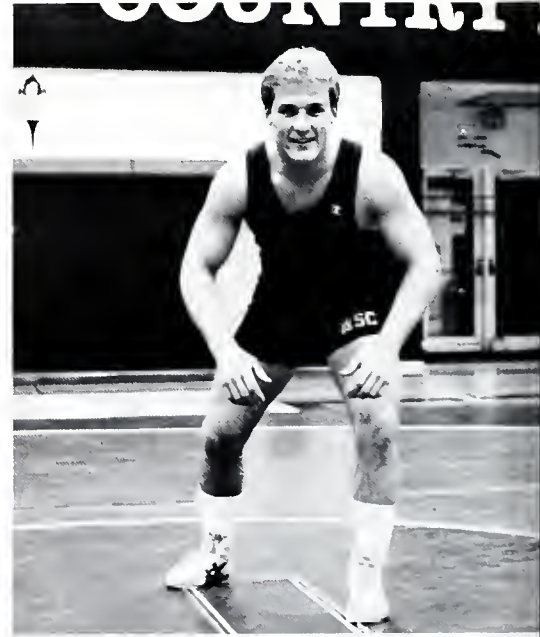
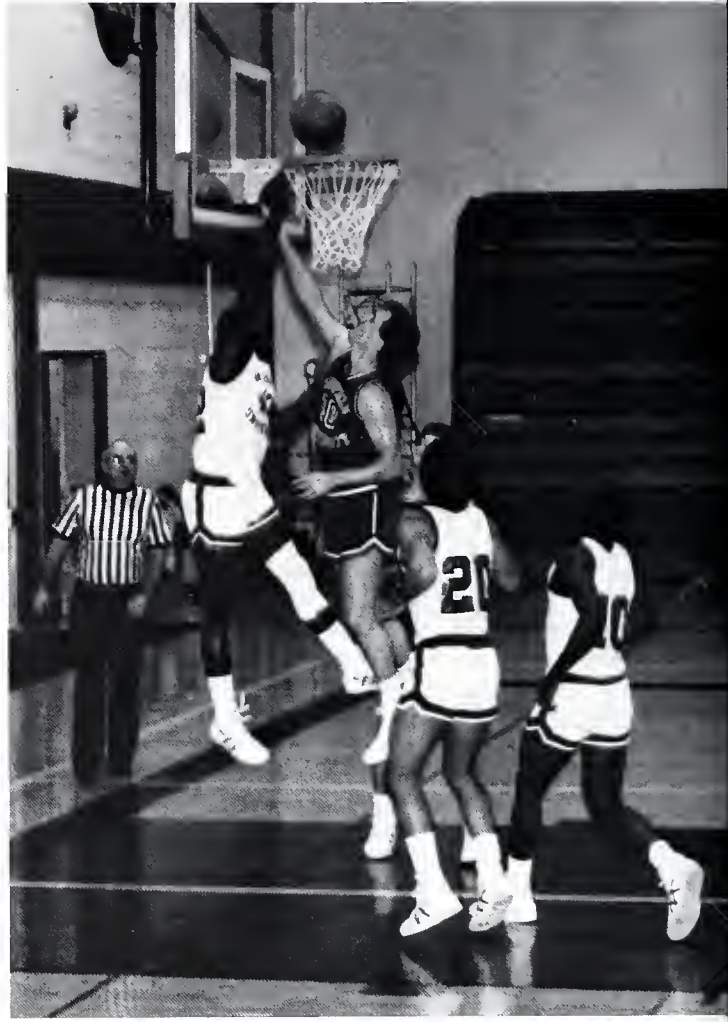






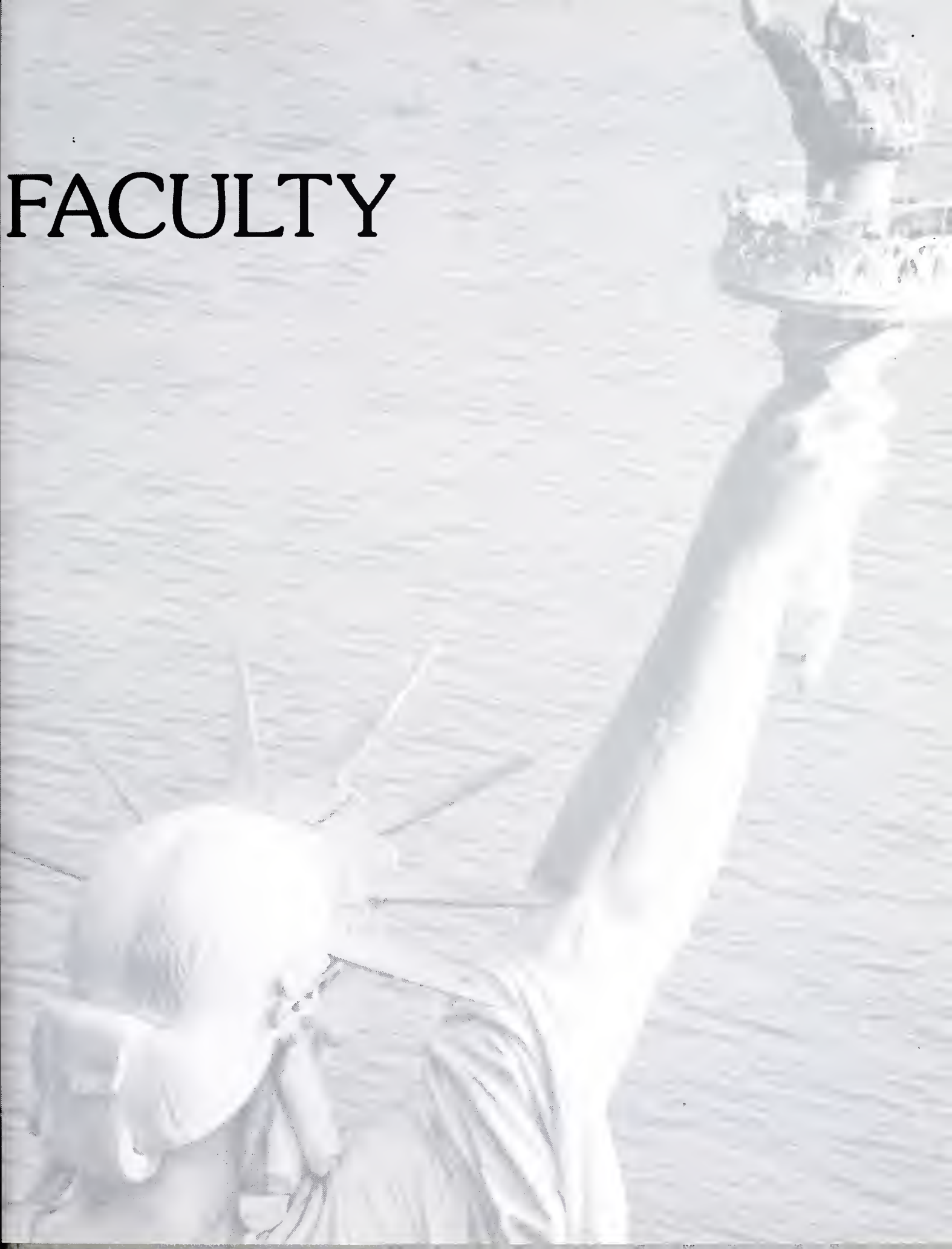








# FACULTY





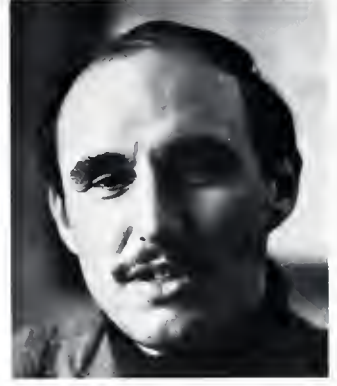
LES ACHEY



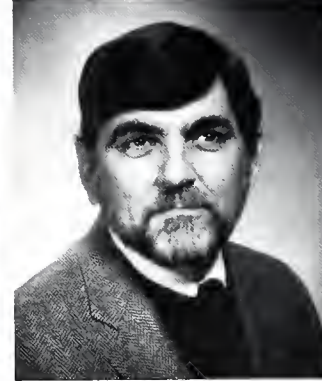
CAROL ALEXANDER



STEVE BEN CETIC



STEPHEN BICKHAM



LARRY BIDDISON



ELLEN BLAIS



WILLIAM BOGART



DAVID BORSHEIM



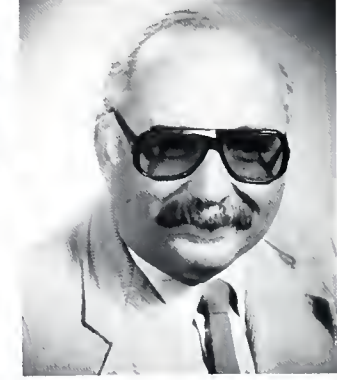
ROBERT BRIDGEMAN



STEVE BROWN



JAMES CARLSON



JAMES CECERE





OWEN CLARK



CLARENCE KRANTZ



CLARENCE CRISP



ARTHUR DEGENERO



MARTHA DONAHUE



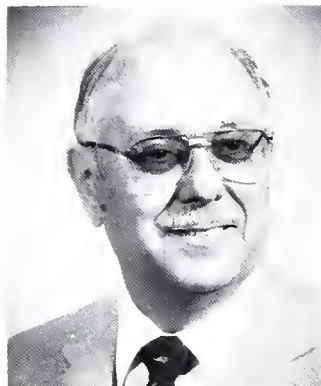
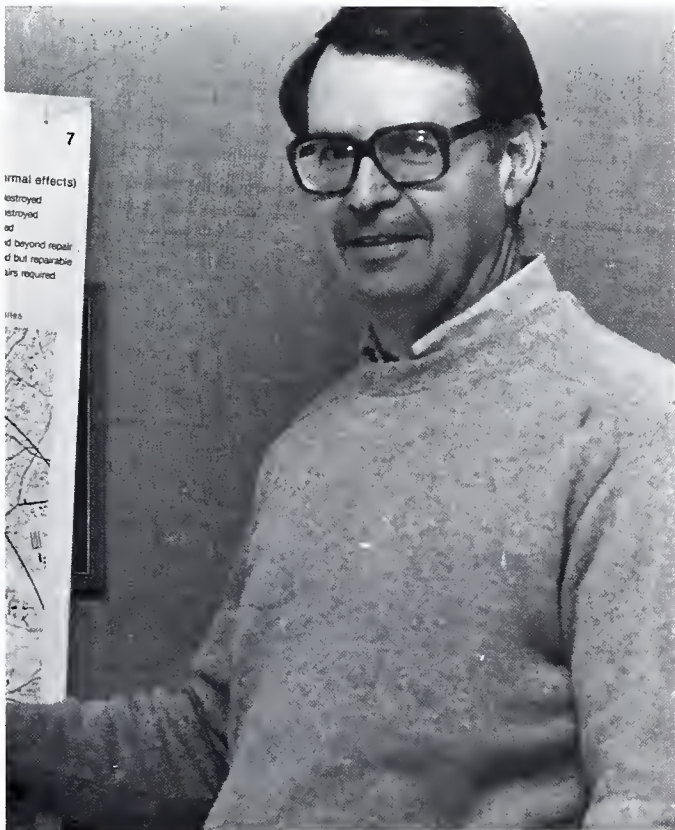
KATHRYN DYKE



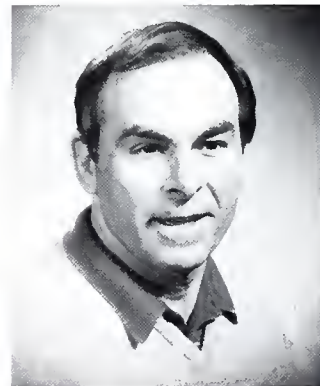
WELLINGTON ENGEL



CLARICE EVANS



LESLIE EVANS



ERNEST FROMBACH



MICHAEL GALLOWAY

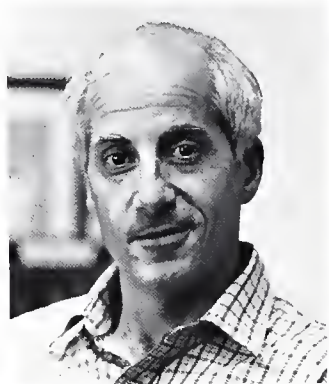


RALPH GARVELLI





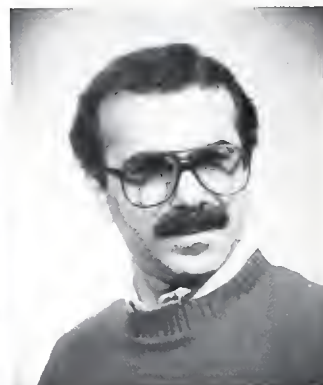
MARY ANN GAYDOS



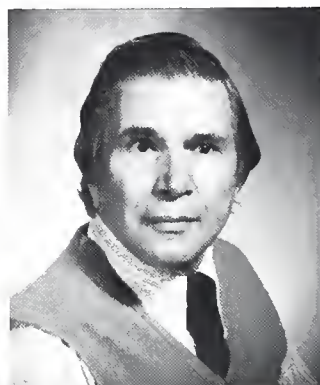
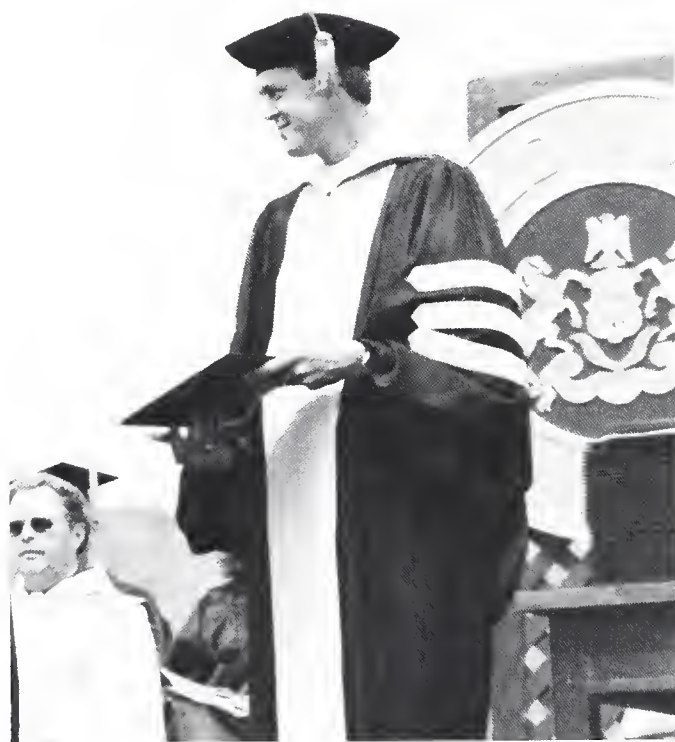
ARNOLD GEORGE



NORMAN GEORGIC



ABE GHODS



WILLIAM GOODE



RALPH GOFF



DANNY HARBER



ANDREW HAVALCHAK



RICHARD HECK



DAISY HERNDON



ROBERT HEVERLY



KENT HILL





IRA HINDMAN



VERNE JEFFERS



MICHAEL JOHNSON



DANIEL KASAMBIRA



RICHARD KEMPER



JANICE KENNEDY



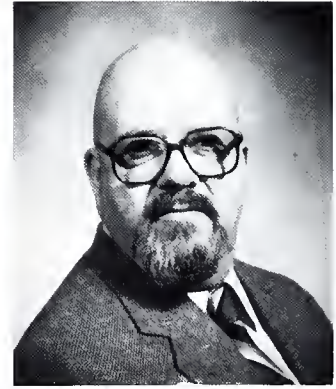
ALFRED KJELGAARD



BERNARD KOLOSKI



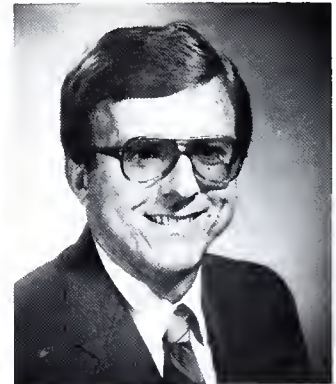
SUSAN KRIEGER



VERNON LAPPS



GALE LARGEY



MICHAEL LEMASTERS





SANDRA LINCK



SHIRLEY LINDSEY



JACK LITTLE



ROGER MAISNER



JOSEPH MORESCO



A. MATTHEWS



R. DRUE MCGINNES



SANDRA MCGINNES



KENNETH MEYER



BARBARA MEMORY



LARRY MILLER

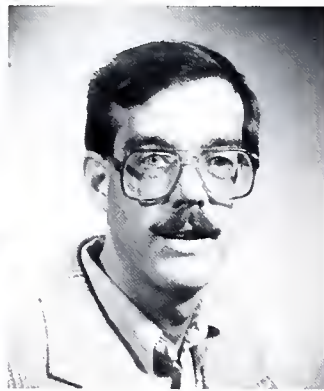


ETHEL MOSER





GEORGE MULLEN



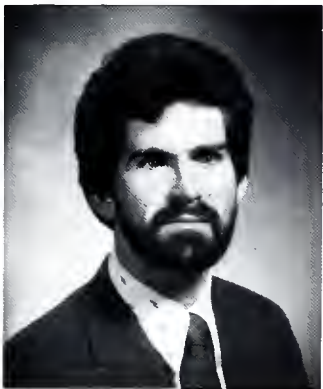
JACQUES MUMMA



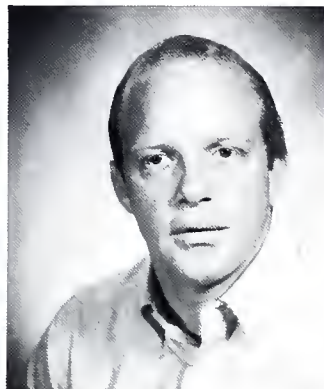
WINIFRED NEFF



LARRY NESBIT



DANIEL NEVILLE



DAVID NEWCOMBE



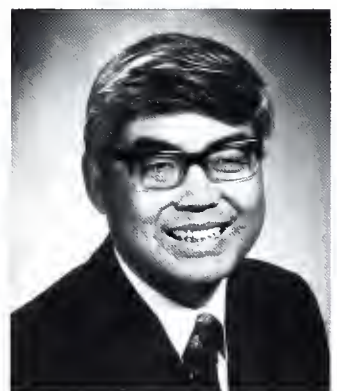
DEANNA NIPP



KONRAD OWENS



ARLIE MULLER PARKS



S. H. PIEN



LUTHER PFULGER

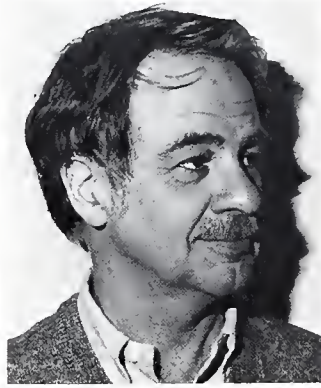


CHARLENE PLOWCHA





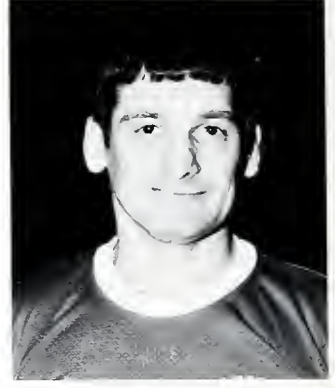
WALTER SANDERS



WILLIAM SCHMID



ENRICO SERINE



HENRY SHAW



MARYLOU SHAW



THEODORE SLABEY



RICHARD SODERBERG



DONALD STANLEY



THOMAS STICK



RICHARD TALBOT



SYLVIA TURNER



LARRY UFFELMAN

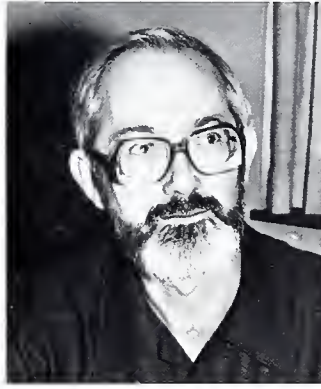




ROBERT UNGER



CHRIS VAUGHN



RICHARD WALKER



PAULA WELCH



STAN WERNER



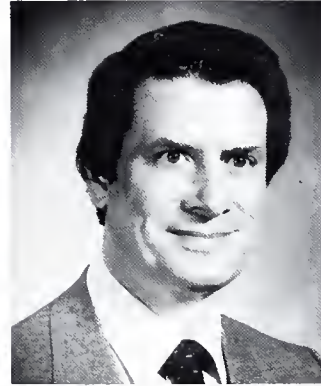
WILLIAM WETHERBEE



JACK WILCOX



EDWARD WINROW



CHARLES WUNDERLICH



JOYCE WUNDERLICH



# GRADUATION

































# SENIORS





**ASHAN  
ABEYESUNDERE**



**NANCY AHARRAH**



**ANITA E. ALEXANDER**



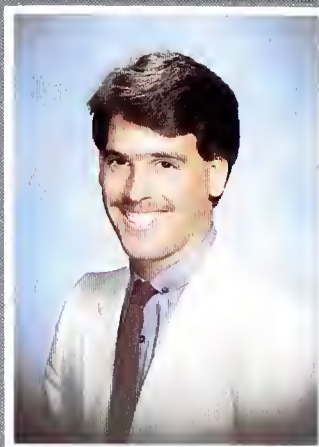
**JAMES L. ANDERSON**



**DEBRA J. ANDREAS**



**DENISE L. ATHERTON**



**JEFFREY S. BAER**



**JEFFREY G. BAIRD**



**ROBERT J.  
BALASAVAGE**



**ANNMARIE BALL**



**LORI L. BARRETT-  
WILLIAMS**



**MARY L. BAUER**





**VIRGINA A. BAUMANN**



**LISA A. BAURYS**



**LAURA A. BEAHM**



**DEBORAH L. BENNETT**



**EMEBET BERHANU**



**CELE BICKLEMAN**



**JILL E. BIEVER**



**SHARON L. BINGAMAN**



**LISA M. BORIS**



**JENNIFER L.  
BOUGHNER**



**DONNA K. BRIGGS**



**BRIAN P. BROWN**





**MARILYN I. BROWN**



**MARK A. BRUMBACH**



**MICHELE ANN  
BURKHOLDER**



**EDWARD BURNSIDE  
JR.**



**BARBARA A. BUTCHAR**



**ROBIN A. CAMPBELL**



**ELIZABETH R.  
CARPENTER**



**ANDREA S. CHASE**



**PEGGY K. CHILSON**



**JOAN E. COLE**



**LORI ANNE COLE**



**JAMES J. COLLINS**

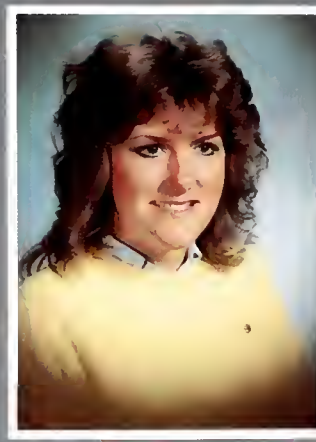




**DOMINICA D.  
CONVERTINO**



**MARK D. COUCH**



**CONNIE B.  
CRUIKSHANK**



**DAVID G. DAILEY**



**ROBIN L. DANIELS**



**TERRI L. DAVIDSON**



**WENDY E. DELL**



**GLENN M. DICKSON**



**JOHN M. DINGER**



**THOMAS M. DODSON**

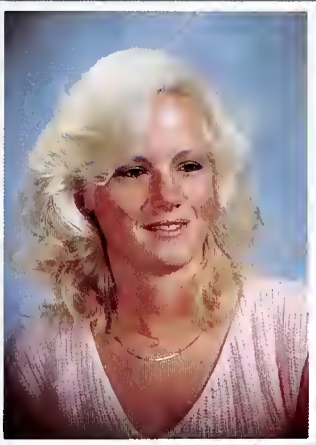


**BIRDENA E. DONOUGH**



**THOMAS B. DONOVAN**

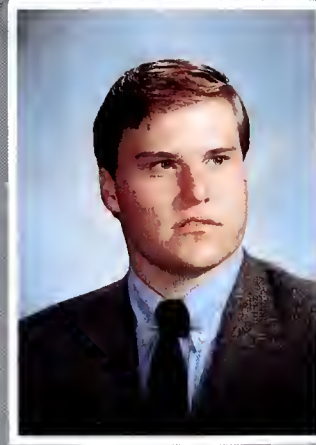




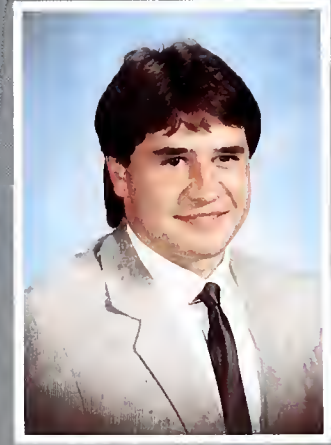
**JACQUELINE D.  
DORSHIMER**



**PATRICIA A. DOYLE**



**WAYNE C. EDMISTON**



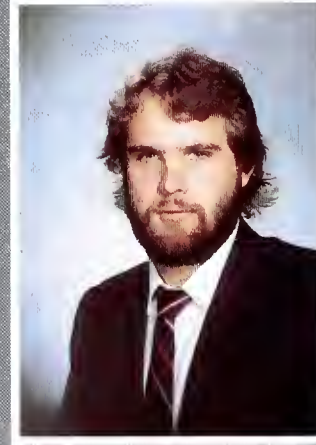
**MICHAEL EGENRIEDER**



**NANCY J. FARRELL**



**KAREN A. FISHER**



**D.W. B. FLINT**



**SHAWN D. FORREST**



**PATRICIA L. FREY**



**LUCINDA T. FROEBEL**



**DENISA D. GILBERT**



**NED D. GLADFELTER**

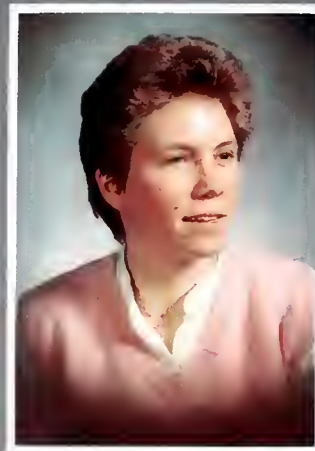




**YVONNE M. GLASS**



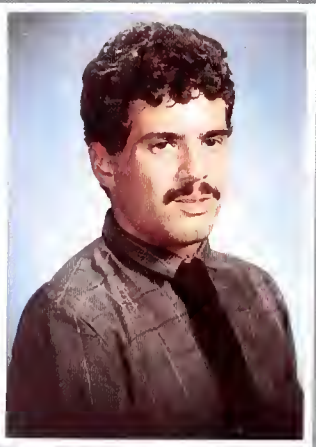
**PAMELA J. GOODRICH**



**CAROLYN A. GOSSMAN**



**LINDA L. GRANATO**



**ROBERT B. GREGER**



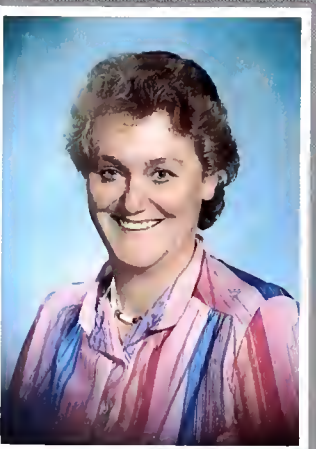
**ANNMARIE Y.  
GRZYMSKI**



**DIANE M. HAMILL**



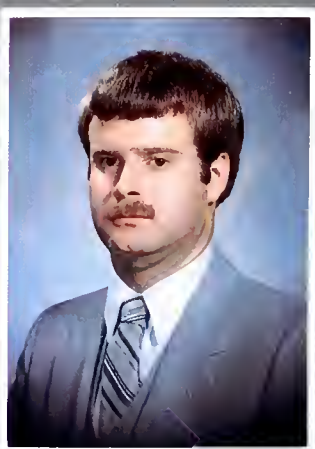
**MARGARET M. HANCIK**



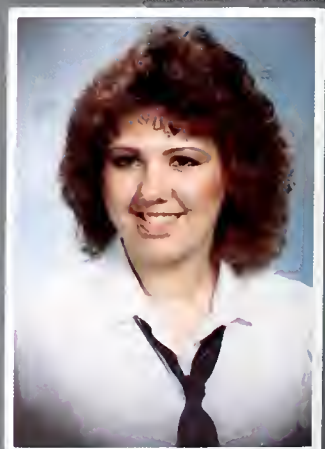
**EVELYNE HAND**



**DENISE A. HARTLINE**



**CARL L. HAWLEY**

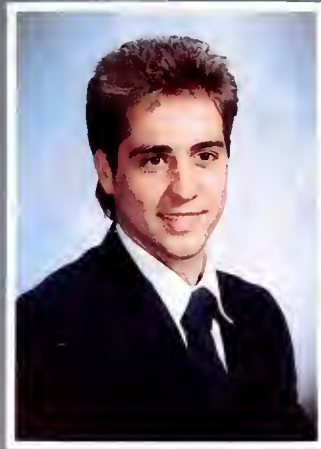


**RHONDA L. HEALEY**





**JULIE L. HEAPS**



**RANDALL M. HEPLER**



**STEVEN T. HINDS**



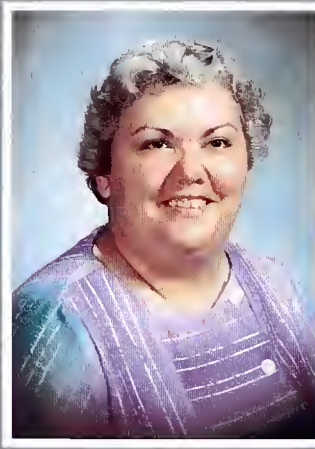
**NANCY L. HOFFMAN**



**WILLIAM M. HORRAX  
JR.**



**TODD J. HOSKINS**



**JUNE K.  
HOUGHTALING**



**ROBERT A. HUGHES**



**LEE A. HULSIZER**



**KAREN S. JACOBSON**



**TRACY R. JUNGQUIST**



**IRENE M. KEPPLE**





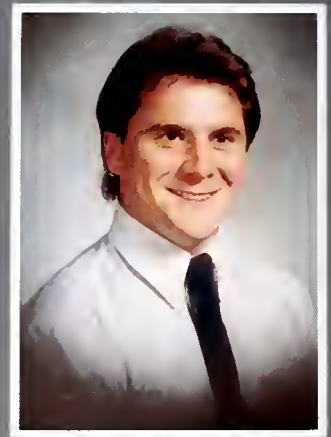
**PATRICK J. KERN**



**SUSAN M. KLINE**



**SHARON J. KLOCK**



**MARK P. KRAVITS**



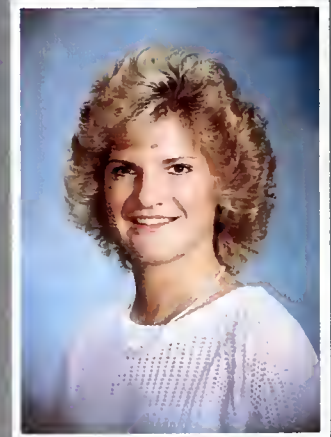
**RON P. KUBERA**



**ALAN E. KULAGA**



**JANET S. LAMARCO**



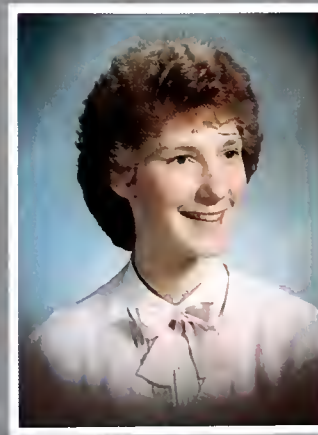
**DAWN M. LAROSE**



**JAMES E. LATTEN**



**GLENN S. LAWRENCE**



**DIANE L. LEARN**



**JENNIFER L. LEMING**

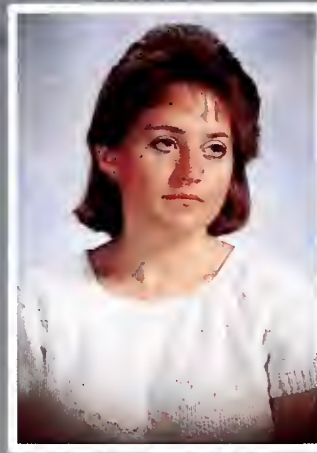




**DERRICK W. LEWIS**



**WALTER LEWIS III**



**CAROL A LINDLEY**



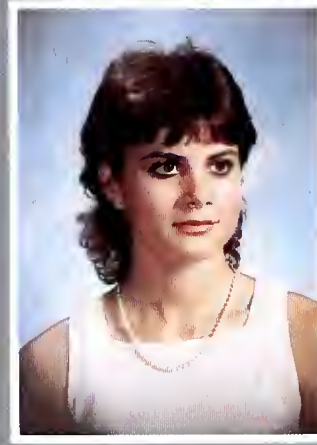
**PHYLLIS C. LUCE**



**THOMAS P. MACHMER**



**ANNE MARIE E.  
MANIKOWSKI**



**CONNIE L. MARPLE**



**LAURA B. MARTIN**



**ERIC J. MARYOTT**



**SHARON E. MCCARTY**



**KEVIN S. MCDONALD**



**JACKIE A. MCGIVERN**





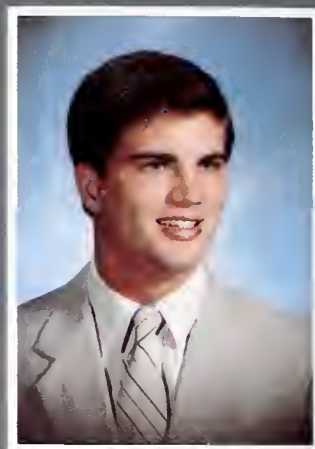
**JOHN W. MCNAMEE**



**DOROTHY M. MECK**



**PAUL J. MIKOKYCYH**



**JAMES D. MILLER**



**KATHRYN S. MILLER**



**MARDEAN E. MILLER**



**MICHELE M. MITCHELL**



**BARBARA MLAMBO**



**DAVID S. MLAMBO**



**CHARLENE M. MOCK**



**FLORENCE U.  
MOKONCHU**



**DANIEL E. MURRAY**





**KAREN E. NEWELL**



**KATHY R. NOGLE**



**SUSAN M. NYE**



**LYNNE M. PATOSKIE**



**JEANNE M. PETERSON**



**L.E. PETERSON**



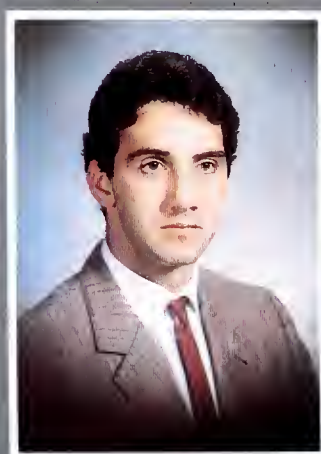
**RONDA S. PFLEEGOR**



**CAMILLE M. PIZII**



**THOMAS C. POLETT**



**MARK A. PREBICH**



**E.R. PROPHETA**



**KELLY A. QUATTRINI**





**CHRISTINE M. RAYMER**



**ANN M. REECE**



**ROBERT P. REEVE**



**MARGARET B.  
RICKETTS**



**CHRISTINA RISCAVAGE**



**JOSEPH G. ROCHE**



**DARIA ROSAR**



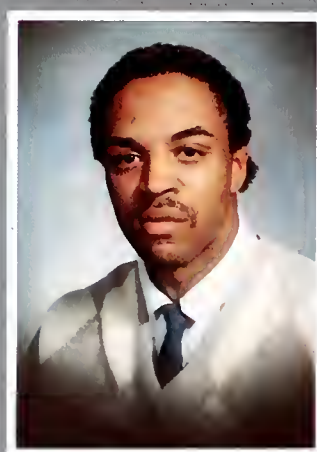
**CURT A. RUDY**



**SUSAN D. ROVENOLT**



**JEFFREY S. SAMPSON**



**SAM J. SANDERS**



**HIROMI SASAKI**

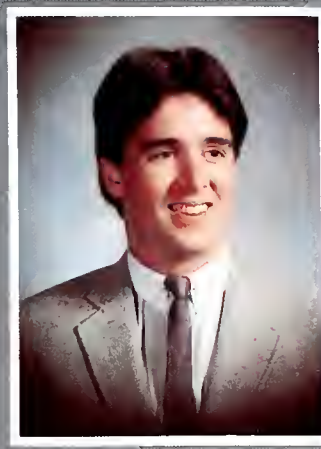




**ROBIN L. SAVINO**



**JUDITH A. SAXTON**



**STUART A. SCHMACK**



**JULI A. SCHULTZ**



**JAMI L. SEDERES**



**ALICIA M. SHADE**



**MARY E. SHAFFER**



**GLENN E. SIDLER**



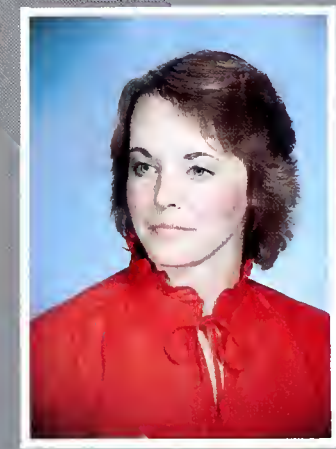
**KIMBERLY D. SMITH**



**NANCY M. SPANGLER**



**RICHELE I. SPEAK**



**LORETTA S. STEVENS**





**MICHAEL C. STEWERT**



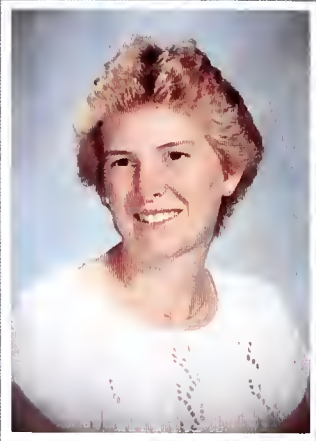
**CHRISTOPHER A.  
STROBAUGH**



**TODD M. STROHE**



**YVONNE L. STROMAN**



**KATHLEEN G. STRUMP**



**DONALD F. SURIANI**



**NORA L. TALTY**



**SAVONIA R. THORNE**



**VICTORIA S. TOTH**



**KRYSIA TURZANSKI**



**KENNETH P. ULRICH**



**RANDY T. VARGASON**





**JUDY J. VONHENDY**



**MICHAEL D. WALTER**



**KENNETH S. WARNER**



**JOHN J. WERTEN**



**JEFF S. WETZEL**



**DAVID R. WHITE**



**REBECCA C. WILBER**



**BARBARA J. WINTERS**



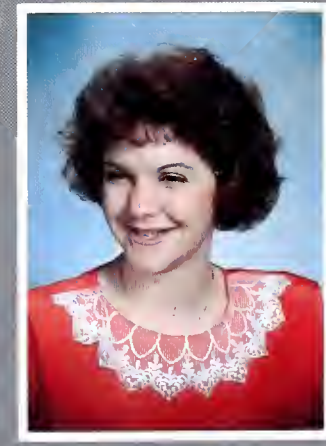
**CAROL J. WITTIG**



**JOHN T. WOMMER**



**ANTHONY J.  
YADZINSKI**

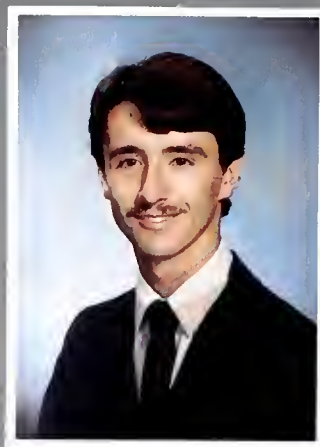


**LYNDA K. ZANG**





**THERESA R. ZIADIE**



**KRIS M. ZINKIEVICH**



**RUSSELL H. ZULLICK  
III**

## A NEW BEGINNING



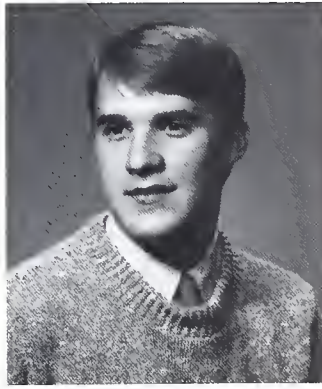




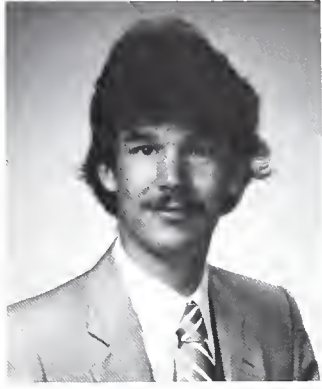
DOUG CLAYCOMB



VALERIE ESPOSITO



MARK HOYT



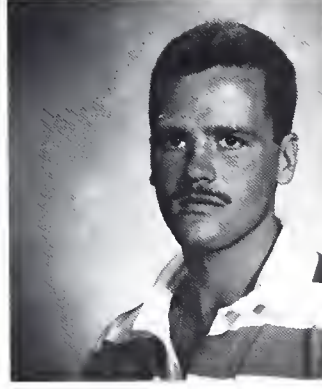
WILLIAM KRONMILLER



ENMOND PORSCH



CHRISTINA RISCAGAVE



DAVID WHITE



ROBERT REPARD















**PATRONS AND  
SUPPORTERS**

# Best Wishes

Wellsboro Area Chamber of  
Commerce

Wellsboro

Home of PA Grand Canyon



## Mansfield

## Video

## System, Inc.



29 East Wellsboro  
Street  
Mansfield, PA 16933



Garrison's Insurance Agency

25 West Wellsboro Street

Mansfield, Pennsylvania 16933

R. M. "Bob" Cooper

717-662-2824





*Your Senior Portrait is too important to be taken by anyone else but Varden.*

## Seniors to be, ALL this is for YOU!

- Creative Photographers.
- Casual outdoor settings.
- Formal academic settings.
- Variety of backgrounds.
- State-of-the-art camera and lighting equipment.

Plus your yearbook print made to your school's specifications, and delivered on time per contract with your school.

**Varden**<sup>TM</sup> Studios





Cooper's Sporting  
Goods

15 N. Wellsboro St.  
Mansfield, PA  
662-3429



DAHLGREN  
CHEVY OLDS

Rt. 15 South  
Mansfield, Pa  
662-2125

Charles H. Dahlgren -  
Owner





*The Petticoat Shoppe*

6 North Main Street  
Mansfield, Pa.

Compliments  
of the  
Penny-Saver  
and  
Wellsboro Advertiser  
the  
Total Market Coverage  
Shopping Guides  
Custom Printing - Resumes  
717-662-3277



# BAILEY JEWELERS

South Main Street

Mansfield, Pennsylvania 16933  
717-662-7333  
"YOUR SCHOOL RING CENTER"

"A Wide Awake Store"

# T.W. JUDGE CO.

8-12 S. Main Street  
Mansfield, PA 16933  
662-2109



# Mansfield Auto Supply



107 N. Main St.  
Mansfield, PA 662-2179



# COLES PHARMACY

Main Street  
Mansfield, PA 16933

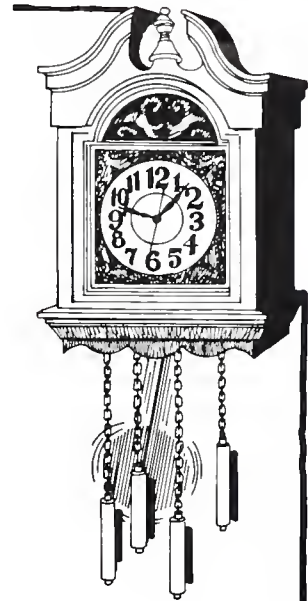


# The Time Is NOW

Congratulations to the graduating seniors of Mansfield University! The time is now to begin the rest of your life. We wish you the greatest success.

We, at First Citizens, offer services to help meet life's changing needs. We invite you to call, write or stop in anytime.

- Loans, all types
- Individual Retirement Accounts
- Discount Brokerage
- Bi-weekly Mortgages
- Trust Services
- Master Card/Visa
- Investment Services



**FIRST CITIZENS  
NATIONAL BANK**

MEMBER FEDERAL DEPOSIT INSURANCE CORPORATION

MANSFIELD BLOSSBURG ULYSSES GENESEE

Call Toll-Free 1-800-822-2049



Wag's Rags

**WAGENHEIM  
CLOTHES**

9½ N. MAIN, MANSFIELD, PA 16933  
717-662-3900



**HALL'S**

**Homes—Hardware  
Excavating—Lumber**

R D 2  
Tioga Pa.  
16946

U.S. Rt. 15 & 32B  
717-827-2127



"Congratulations" Mike Walter '86 On your Graduation. Love Mom and Dad

"Terry - Unsung hero @ T.E." Love Mom (Terrence P. McGovern)

"Best Wishes to Angie '86. Love, Mom and Dad. (Angela M. Pannebaker)

Good Luck "Fred" - Love Mom and Dad (Christine DeYoung)

We are proud of you, Susan. Love, Mom & Dad (Susan M. Nye)

Congratulations, We are all very proud of you. (Laura B. Martin)

God Bless and Best Wishes To Our Son Bob Bailey '87. Love, Mom and Dad.

Best Wishes to Garfield '88. Love Mom, Dad & Amy. (David Fox)

To Tobey K. Miller - I'm behind you all the way! Love, Mother

Sincere Best Wishes to Steven Hinds '86 "a job well done" Love, Mom and Dad

Best of Luck To Bette Morris, We Love You & Proud of You. Mom & Dad

Patrick (Root) - I'll miss you tons! Love Ya, Mary Megan

Congratulations Nora Talty '86 Love, Mom & Dad

Best Always To C.J. Podlaski, '88 Love, Mom and Dad

Go for it!! Lisa O'Connor. Love, Mom and Dad

Good Luck Paula! Love, Dad, Liz, Mom & Penny (Paula Oleksy)

This is the year that opens the door to your future. Good Luck.

Dad & Es. (Adolph A. "Buddy" Luskus)

Good Luck Jomes - Love and Best Wishes - Mom, Dad, Cath, Bill, Tom & Bob (Jim Bierlein)

& Bob (Jim Bierlein)

Dear *CARONTAWAN* Purchaser,

We, the *CARONTAWAN* staff, would like to apologize for the lateness of this publication. We would like to thank you for your patience and understanding, also. This publication has encountered numerous problems along the way which have caused the delay in shipment. Even though this is a quality publication given the time constraints, we would like to apologize for the incompleteness of some of the sections. Therefore, we would appreciate your understanding in this area, too.

To the *CARONTAWAN* staff, a gracious thank you for all of your help. A special thank you to the '87 staff who were largely responsible for completing this publication. THANK YOU!!!

Sincerely,

Stephen C. Shimer

Kevin L. Hostetter

and

*CARONTAWAN* STAFF



# AUTOGRAPHS

ILLIA

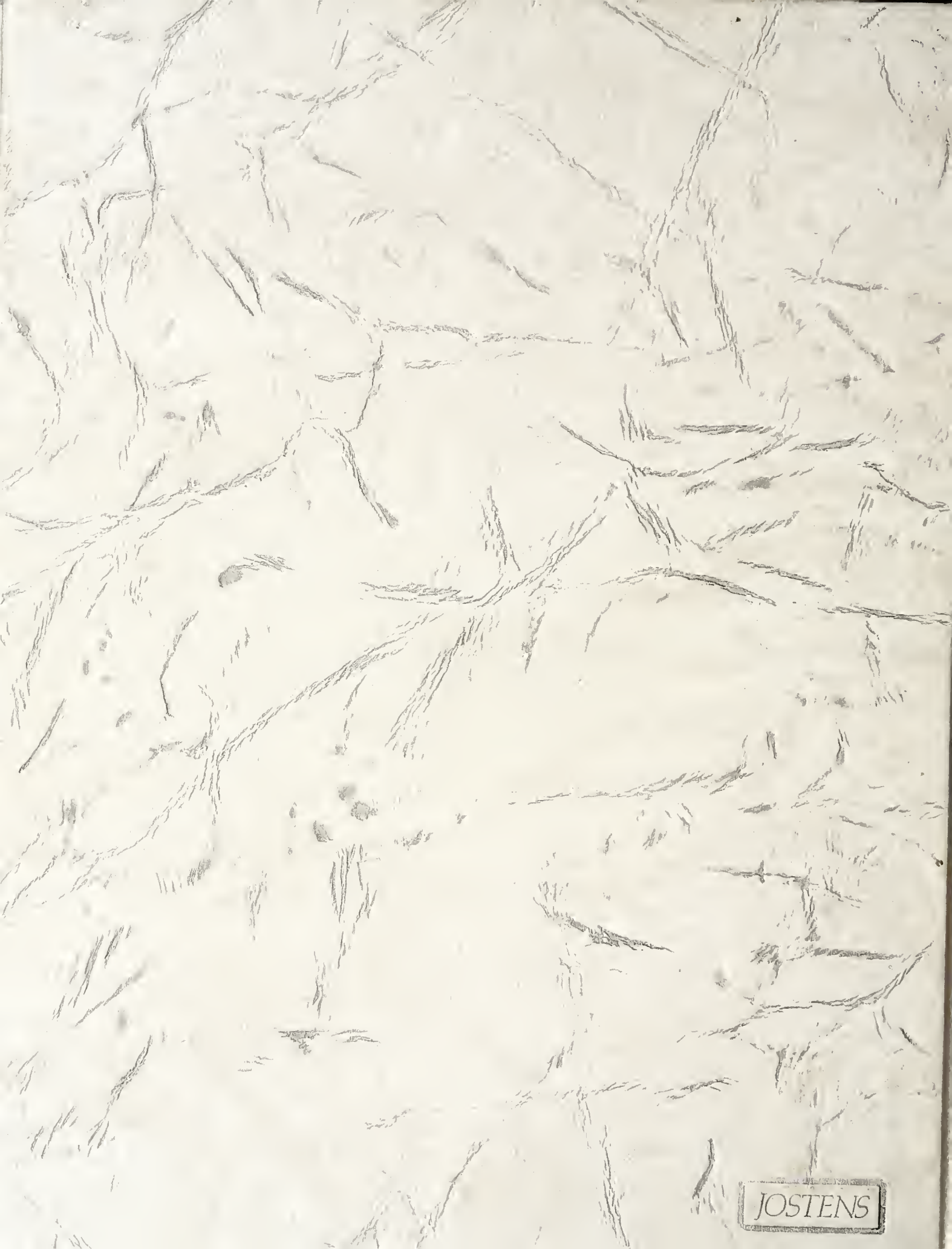












JOSTENS