



Presented To

*St. Mary's
College of Maryland
Library*

By
.....


Date April 1955

St. Mary's Seminary-Junior College

LIBRARY

ST. MARYS SEMINARY JUNIOR COLLEGE

ST. MARY'S COLLEGE OF BOOKS AND LIBRARY
ST. MARY'S CITY, MARYLAND



Digitized by the Internet Archive
in 2010 with funding from
Lyrasis Members and Sloan Foundation

THE

CASTELLAN

1954

St. Mary's Seminary-Junior College

St. Mary's City, Maryland

Gail-Rowe Harbold, Editor

Ann H. Watson, Co-Editor

DEDICATION

MISS MARGUERITE CUSTIS



It is with respect and admiration that we dedicate this, the 1954 Castellan, to Miss Marguerite Custis. Her sincere interest in us and her helpful advice, together with her ready wit, make her our friend and one to whom we shall always be indebted. Her enthusiasm, outstanding abilities as an instructor and constant encouragement have created in her students the desire to attain their highest goals.

For all this and for your untiring efforts to work with and for us, we say, "Thank you, Miss Custis!"



A
D
M
I
N
I
S
T
R
A
T
I
O
N
A
N
D
F
A
C
U
L
T
Y



Miss May Russell
President



Mrs. Grace S. Gardner
Dean



Miss Louise K. Rotha
Registrar



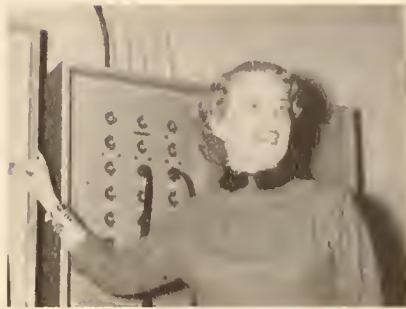
Miss Virginia Barnes
Home Economics



Miss Ethel Chance
Nurse



Miss Betty C. Clutts
History & Social Science



Miss Estelle C. Elliot
Speech & Drama



Mrs. Bessie B. Courtney
Librarian



Mrs. Sara A. Gillium
Head of Residence



Miss Norma Harms
Art



Mrs. Anne M. Keehan
Accountant



Miss Rosamond J. Jones
Mathematics



Mrs. Jean Ressler
Music & Choir



Miss Claire V. Stickney
Foreign Languages



Miss Anna Sander
Secretary



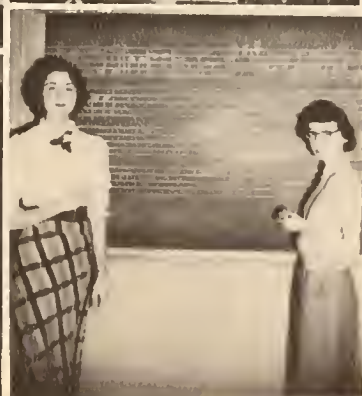
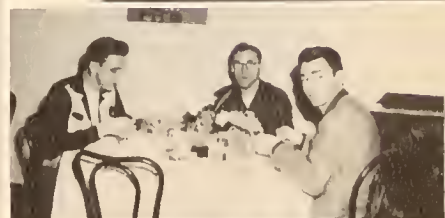
Miss Loretta M. Stallings
Physical & Health Education



Mr. Harrison Tawney
Public Relations



Miss M. Louise Truxal
English



S T U D E N T S

SENIORS



CAROLYN LOUISE LEWIS

"Lewie"

Oakland, Md.

President

Varsity hockey 3,4; basketball 1,2,4; A.A. 1,2; Treasurer 3; Vice President 4; Court 3, House Committee 4; Intramurals 1,2,3,4; Choir 1,2,3,4; Home Ec. 1, Secretary 3; French Club 1, Secretary 2; Artist & Lecture Committee 2; Plant Committee Chairman 3; Health & Safety Committee Chairman 4; Signal News 3.

Ambitious. . .dependable. . .soft, low voice. . . musical. . .always heard yelling "Chris". . .studious . . . keeper of the store. . . frequents U. S. N. A. . . . athletic.



DORIS ADA CLOUGH

"Sunshine"

Price, Md.

Vice President

Varsity hockey 2,3,4; Basketball 2,3,4; Intramurals 2,3,4; A.A. Board 2,3; President of A.A. 4; Choir 2; May Court 3,4; Current Events Club 4; Visual Committee 3; Classroom Building Committee 4; Art Club 3; Orientation Committee 3; Class Vice President 3.

Tops in athletics. . .can be found near ocean. . . likes to party. . .cute, li'l Eastern Sho' gal. . .always laughing. . .gets in on many DEEP discussions . . .will major in English.

"Dotty" DOROTHY ELIZABETH ENNISS Norfolk, Va.

Secretary

Home Ec. Club 3, Vice President 4; Samadra Club 3; A.A. 3,4; Health & Safety Committee 3; Public Relations Committee Chairman 4; King's Daughters Committee 3, CASTELLAN Copy Editor 4.

Sparkling brown eyes. . .big, friendly smile. . . little & cuddly. . .deep Southern accent. . .excellent seamstress. . .Naval Academy miniature. . .wedding bells in near future.



GAIL-ROWE HARBOLD

"Bo"

Annapolis, Md.

Treasurer

Varsity hockey 3,4; Intramurals 3,4; Samadra Club 3, President 4; Choir 4; A.A. 3,4; Home Ec. Club 3,4; Audio-Visual Committee 3; Library Committee 3, Chairman 4; Orientation Committee 4; King's Daughters Committee 3; CASTELLAN Layout Editor 3, Editor-in-chief 4.

Navy Junior. . .laughs at everything. . .dependable. . .good sense of humor. . .icy grey eyes. . .prefers Midshipmen . . .would make a wonderful school teacher. . .famous at parties. . .never quiet.



ELIZABETH STANSBURY DALLAM

"Liz" Sandy Spring, Md.
Tennis Tournament 4; Intramurals 4; A. A. 4; Tumbling Club 4; Choir 3,4; Current Events Club 4; Kings Daughters Comm. 4; Signal News Editor and Copy Editor 3.

Literary. . ."got a cigarette?" . . . generous. . . very friendly. . . rather quiet. . . ready wit. . . has a nice way with children. . . will be a fine teacher.



GRACE MARY ELLIS

"Peaches" Oakley, Md.
Art Club 4; Home Ec. Club 4; A. A. 3,4; Library Comm. 3,4; Public Relations Comm. 3,4.

Friendly and sweet. . . unassuming. . . recognized by her giggle. . . speed demon on the typewriter. . . will make an ideal secretary.



RUTH ALICE ENSOR

"Ruthie" Brunswick, Md.
A. A. 3,4; Intramurals 4; Plant Comm. 3; Assembly Comm. Chairman 4; House Comm. 4; Choir 3,4; Art Club Secretary 3, Vice President 4; Home Ec. Club 3, President 4.

Nice. . . square dancer fiend from The West (of Maryland). . . recognized nationally for 4-H work. . . those talents generously given at S.M.S. . . looks quiet, but looks can be deceiving!

EVA CHRISTINE FRAZER

"Chris" Elkton, Md.
Honor Court Chairman 4; Student Council 3,4, Secretary 3; Class president 3; A.A. 3,4; Art Club 2, President 3,4; Choir 2,3,4; Home Ec. Club 3,4; Artist and Lecture Comm. 2,3; Plant Comm. Chairman 4; Signal News Staff 3; CASTELLAN Art Editor 4.

Our Master Painter. . .likes to study. . .and sing
. . .pretty hair. . .future Harmonicist. . .avid Democrat. . .has determination. . .bound to be successful.



GLADYS MAGDALEN LONG

"Gladys" Loveville, Md.
Audio Visual Aids Comm. 4; Art Club 4.

Diligent. . .very neat. . .attractive. . . "oh, for goodness sakes". . .pretty eyes. . .we like her auto
. . .will make a fine librarian.

ANDREW BEAN SHORTER

"Andy" Drayden, Md.
Current Events Club 4; Christmas Pageant 3,4.

Deep thinker. . .holds his own as lone man of the class. . .always listens to our troubles. . ."Father White". . .wants to be a minister.





JULIA MARIE VALLANDINGHAM
 "Valli" Clements, Md.
 A.A. 3,4; Intramurals 3; Home Ec. Club 3; Library
 Comm. 4.

Sweet, even disposition. . . always ready to help
 . . big smile for everyone. . . loves to dance. . .
 terrific at it! . . "Valli, cut my hair". . . frequently
 seen in the library. . . and smoker.



BARBARA LEE VanDEVANTER
 "Bobbie" Bethesda, Md.
 Council 1, Secretary 2, Treasurer 3, President 4;
 A.A. 1,2,3,4, Board 2,3,4; Intramurals 1,2,3,4; Hockey
 Varsity 2,3,4; Basketball Varsity 1,2,3,4; Volleyball
 Varsity 2,3; Softball Varsity 2; Home Ec. Club 1,2;
 Samadra Club 1; French Club 2,3; Kings Daughters
 Comm. 1,2; Assembly Comm. Chairman 3; Orienta-
 tion Comm. 2,3, Chairman 4; Social Comm. 2,3;
 May Court 2, Queen 4; CASTELLAN Staff 1,2,3.

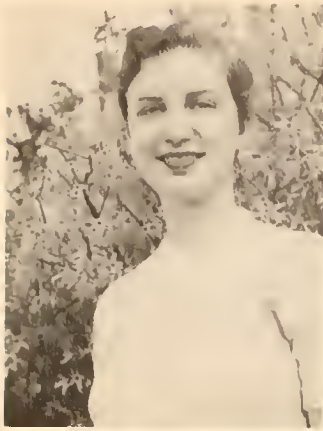
The Spirit of S.M.S. . . has been a great S.G.A.
 president. . . four year stretch. . . all around gal. . . a
 real friend to everyone. . . tall, blonde and terrific
 . . plans include marriage, June '55.



MARY HELEN WARD
 "Frosty" Bel Air, Md.
 Student Council 3, Vice President 4; Chairman House
 Comm. 4; A.A. 3,4; Intramurals 3,4; Home Ec. Club
 3,4; Samadra, President 3; Kings Daughters Comm.
 3; Chairman Social Comm. 4; Fall Play 4; Christmas
 Play 3; May Court 4; Signal News, Feature Editor 3;
 CASTELLAN, Literary Editor 4.

Outstanding leader. . . good actress. . . bubbling
 personality. . . frosty, big, blue eyes. . . like a rose. . .
 U.C.L.A.? . . West Point? . . sophisticated voice. . .
 devilish. . . knows what she wants.

SENIOR SUPERLATIVES



MARY HELEN WARD
Most Likely to Succeed



BOBBIE VanDEVANTER
Most Versatile



DORIS CLOUGH
Most Athletic



CHRISTINE FRAZER
Most Artistic



GAIL HARBOLD
Wittiest



CAROLYN LEWIS
Most Musical

SOPHOMORES



"B. J." BILLIE JEAN WHITTINGTON
Princess Anne, Md.

President

Student Council 1, Treasurer 2; Intramurals 1,2; A. A. 1,2; Home Ec. Club 1,2; French Club 2; Current Events 1,2; Orientation Comm. 2; Library Comm. 2; King's Daughters 2.

"Need a fourth for bridge?". . .devoted to the Eastern Sho'. . .a busy girl with a finger in every pie. . .likes to talk. . .laughs a lot. . .will return next year.



"Lou" LINDA LOU LONG
Brunswick, Md.

Vice-President

Class President 1; Council 1; A. A. 1, Board Treasurer 2; Basketball 2; Softball 1; Intramurals 1,2; French Club 1; Samadra Club 1; Choir 1,2; F. N. A. 2; Kings Daughters 1,2; Orientation Comm. 2; Officials Club 2.

Vivacious. . .personality plus. . .love to hear her version of "Hold Me". . .really has rhythm. . .versatile. . .will soon have her MRS.

"Bobbie" BARBARA MARY MELOCIK
Baltimore, Md.

Secretary

Intramurals 1,2; Cheerleader 1, Captain 2; A.A. 1, Board 2; Choir 1,2; Class Secretary 1; Home Ec. Club 1; French Club 1, President 2; F.N.A. 2, Secretary 1; Samadra Club 1.

Rah-rah girl. . .Charleston expert. . .full of pep
. . ."C'mon gang". . .good student. . .good luck at
Notre Dame of Maryland!

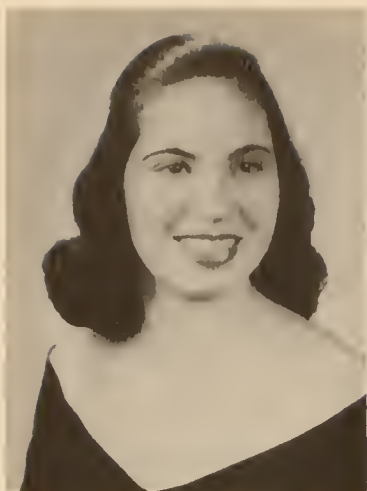


"Faye" MARILYN FAYE SEIFERT
Lexington Park, Md.

Treasurer

Varsity Hockey 1,2; Basketball 1,2; Archery 1,2; Softball 1; Volleyball 1; Intramurals 1,2; A.A.1, Board 2; May Court 1; Fall Play 1; Officials Club 2; French Club Vice President 2; Samadra Club Vice President 2; Tumbling Club 2; Audio-Visual Committee 2; CASTELLAN Photography Editor 2.

Always busy. . .athletic. . ."gee whiz". . .blonde and cute. . .a live wire. . .top tumbler. . .will be a fine P.E. major at Woman's College, U. of N.C.



ROSE YVONNE BLACKWELL

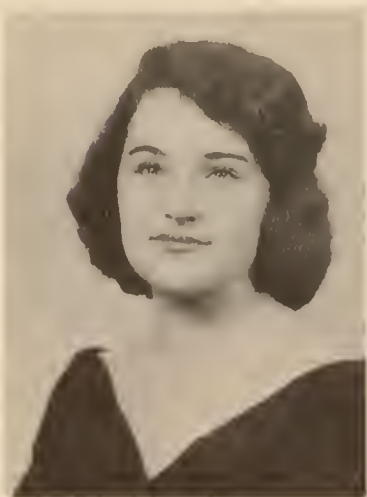
"Yvonne " Baltimore, Md.
A.A. 2; Intramurals 2; Health & Safety Comm. 2;
F.N.A. Vice-President 2; Choir 2; Fall Play make-
up director 2.

Bridge fiend. . .noted for her pony tail. . .always
laughing. . .practical joker. . .swimming and nursing
main interests. . .Miss Chance's assistant.

PATRICIA GAIL DONAHO

"Patty" Patuxent, Md.
A.A. 1,2; Intramurals 1; Archery varsity 2; Choir 1,
2; Home Ec. Club 1, Treasurer 2; Artist & Lecture
Comm. 1.

Tall. . .willowy. . .golden hair. . .persistent. . .
came to SMS from Newfoundland. . .sews well. . .
always with Suie. . .Navy junior.



ELIZABETH CECELIA DAVIS

"Betty" Wynne, Md.
Intramurals 2; Classroom Building Comm. 2.

Southern Marylander with a mania for hillbilly
music. . .likes swimming and speed boats. . .beauty
queen. . .sings and dances. . .wants a convertible.

MARTHA KATHERINE DUDLEY

"Kate" Owings Mills, Md.
Current Events Club 2, Art Club 2, Choir 2, A. A. 2,
Intramurals 2, Signal News 2.

Oh, that look . . . sweet, kind way . . . has a full
date book. . . "Hi, there". . . lover of good books.



CAROL RUTH FUNKHOUSER

"Blackie" Charlestown, W. Va.
A. A. 2, Basketball Varsity 2, Intramurals 2, May
Day Dance 2, F. N. A. 2, Artist & Lecture Commit-
tee 2.

Future undetermined. . . "Okay, when--now?". . .
card shark. . . crazy sports shirts. . . "Dig that Car". . .
very dependable. . . "Man, can he dance".



MARGARET ANNA GILLESPIE

"Peggy" Sudlersville, Md.
Varsity Volleyball 1, A. A. 1,2, Intramurals 1,2;
French Club 1, Home Ec. Club 2, Current Events Forum
2; Library Committee 2; Fall Play 1,2.

Always talking. . . VERY fond of sleeping. . . petite
. . . ardent bridge player. . . very agreeable. . . will re-
turn to S. M. S.





MARY LYNN GRAY

"Mary Lynn" Lexington Park, Md.
A. A. 1,2, Intramurals 1,2; Art Club 1, Treas. 2;
French Club 1, F. N. A. 1, Pres. 2, Home Ec. Club
2, Current Events Forum 2; Orientation Committee
2; King's Daughters Chairman 2; Honor Court 2; Stu-
dent Council Secy. 2; Shennendoah Apple Blossom
Princess 2.

Red hair. . .always active. . .paints beautiful pic-
tures. . .loves clothes. . .contagious giggle. . ."Hey,
y'all". . .future Florence Nightingale.

ELLEN ANTHONY HARKNESS
"Toni" Mutual, Md.
A. A. Board 2, Varsity Hockey 2, Basketball 2, In-
tramurals 2; Plant & Garden Committee 2; May Court
2.

Athletic. . .a regular for bridge. . .noted for those
loud shirts . . . "Don't Call My Name". . .ready for
fun. . .and to lend a helping hand.



LEANORA THERSA HUNNER

"Sis" Baltimore, Md.
Varsity Hockey 2, Basketball 2, Intramurals 2, A. A.
Board 2; Current Events Forum Treas. 2, Artist &
Lecture Committee 2; Tennis Varsity 2, Officials
Club 2, Badminton, Tennis Tournament Winner 2.

Sports-minded. . ."Swing!". . .foremost member
of THE BAND. . .bashful? . . .mischievous. . .beauti-
ful eyes. . .Roland Park's loss was definitely our gain.

BARBARA ANN TAYLOR

"Barb" Baltimore, Md.
A. A. 1,2, Board 2, Varsity Hockey 1,2 Intramurals
1,2; Choir 2; Health & Safety Committee 2, Orientation
Committee 2; Fall Play 2; May Court 2.

Personality plus . . . has cute ways . . . and crazy
impersonations . . . artistic . . . mad about cars . . . re-
cord fiend . . . always ready for a good time.



JANICE TAYLOR

"Janice" Washington, D. C.
Choir 1,2; French Club 1, Home Ec. Club 2, Current
Events Forum 2, Social Committee 2.

"No kidding, can we?" . . . "Should I wear heels?"
. . . bridge fan . . . good student . . . tall blonde (not
peroxide). . . Southern Belle.

PATRICIA ANN TOWNSEND

"Pat" Denton, Md.
House Committee 2; Choir 2; French Club 2; A. A.
2; Current Events Forum Secy. 2; Intramurals 2; So-
cial Committee 2; Signal News 2; CASTELLAN Busi-
ness Editor 2.

Quiet . . . self-controlled . . . has great determina-
tion . . . attractive . . . very neat . . . plans to be a
lawyer.





ANN HARWOOD WATSON

"Woody" Brunswick, Md.
A. A. 1,2, Intramurals 1,2; French Club 1; Choir 2;
Class Treas. 1; Plant Committee 1; Signal News Staff
1,2; CASTELLAN Co-Editor 2.

Loves horses . . . studious . . . full of fun . . . writes
MANY letters . . . seems quiet, but isn't . . . likes to
folk dance . . . journalism main interest.



MARGARET ANNE WILLIAMS

"Willie" Mountain Lakes, N. J.
A. A. 1,2, Intramurals 1,2, Varsity Hockey 2; Art
Club 2, Assembly Committee 2, Plant Committee
1, Choir 1, Treas. 2, Fall Play 2.

Optomistic . . . very practical . . . swimming en-
thusiast . . . partial to the Navy . . . but not to bees . . .
plans to be a physical therapist.



MARILYN LOUISE WILLIAMS
 "Marl" Baltimore, Md.
 A. A. 2, Intramurals 2; Temporary Building Committee 2
 Real great jitterbug...a chatterbox...has a ready smile...Bop fan.



MOLLIE YOUNG
 "Mole" Washington, D. C.
 A. A. 1,2, Varsity hockey 1,2, basketball 1,2, volleyball 1, baseball 1, bowling 1, Intramurals 1,2; Home Ec. Club 1; Choir 1; Audio-Visual Aids Committee 2.
 Bound for U. of Md. ...aims is to P. E. instructor ... "Yea, let's go!"...basketball enthusiast and a 2nd Florence Chadwick...likes to jitterbug and laugh at midnight...always early?

SOPHOMORE SUPERLATIVES



MOST LIKELY TO SUCCEED--
Pat Townsend

MOST VERSATILE--
Faye Seifert



MOST ATHLETIC--
Sis Hunner

MOST ARTISTIC--
Mary Lynn Gray



WITTIEST--
Peggy Gillespie

MOST MUSICAL
Linda Lou Long



JUNIOR CLASS



Left to right: 1st row, S. Doyle, B. Bragg, J. Dodson, M. Jacobs, A. Radford, C. Bloodsworth. 2nd row, C. M. Font, S. Shugart, L. Mikesell, J. Lockard, N. Long, D. Green. 3rd row, R. Golden, L. Cox, B. Heard, J. Jones, M. Wilson, T. Parrott, M. Slingluff, Miss Stallings.



Class officers; S. Shugart, Secretary; M. Wilson, President; Miss Stallings, Advisor; C. M. Font, Treasurer; J. Jones, Vice-President

FRESHMAN CLASS



Class officers: E. Brimer, Secretary; J. Totman, President; Miss Clutts, Advisor; S. Shook, Treasurer; M. Slingluff, Vice-President.

Left to right: 1st row, L. Miller, S. Culver, J. Totman, D. Foley, C. Gross. 2nd row, E. Powell, E. Brimer, S. Shook, N. Kettel, M. Slingluff, J. Cook, Miss Clutts. 3rd row, J. Barker, E. Bowman, E. Sandlin, P. Murray, L. Shure, J. Starkweather, J. Bollinger.





ORGANIZATIONS



COUNCIL

1st row, S. Culver, M. Font, M. Slingluff. 2nd row, M. L. Gray, B. VanDevanter, Mrs. Gardner, M. H. Ward, C. Frazer.



HONOR COURT

Left to right, E. Brimer, B. VanDevanter, C. Frazer, S. Shugart, Miss Russell.

HOUSE COMMITTEE

1st row, P. Townsend, S. Shugart, F. Seifert, M. Slingluff. 2nd row, R. Ensor, M. H. Ward, Mrs. Gilliam, M. Slingluff, C. Lewis.





CASTELLAN

1st row, G. Harbold, Miss Truxal, A. Watson. 2nd row:
P. Townsend, F. Seifert, D. Ennis, M. H. Ward, C.
Frazer, J. Jones.



GAIL HARBOLD
Editor



ANN WATSON
Co-Editor

SIGNAL NEWS



Seated, A. Watson, Miss Truxal, T. Harkness; standing, L. Mikesell, R.
Golden, P. Townsend, D. Green, K. Dudley, S. Culver.

CHOIR



Our TV broadcast on WTOP in Washington



Left to right: 1st row, S. Doyle, E. Bowman, K. Dudley, C. Bloodsworth, Mrs. Ressler, E. Dallam, A. Radford, M. Slingsluff, J. Seiver, 2nd row, J. Smith, R. Ensor, M. L. Gray, C. Frazer, N. Long, C. Lewis, J. Dodson, J. Jones, N. Kettel.



Doing "Barefoot" at one of the Choir-tour performances.



Miss Russell wishing us luck on our spring tour as we leave.

CHOIR



3rd row, P. Chandler, J. Cook, L. Mikesell, L. Long, B. Taylor, S. Culver, E. Heard, C. Gross, M. Jacobs, J. Bollinger. 4th row, G. Harbold, P. Townsend, E. Sandlin, A. Williams, A. Watson, J. Lockard, J. Taylor, T. Parrott, P. Donoho, J. Starkweather, Y. Blackwell.



Taking a bow with Tay after a number on Choir-tour



Our last stop at Fredrick Sasscer, it was a wonderful trip!!



FRENCH CLUB

Left to right: 1st row, P. Murray, V. Green, M. Slungluff, B. J. Whittington. 2nd row, P. Townsend, B. Melocik, C. Norwood, E. Brimer, S. Shook, L. Shure. 3rd row, F. Seifert, S. Culver, J. Totman.

CURRENT EVENTS FORUM

Left to right: S. Doyle, M. L. Gray, P. Townsend, P. Gillespie, B. J. Whittington, S. Shugart, M. Slingluff, M. Slingluff, F. Selfert, P. Murray, J. Totman, C. Bloodsworth, not shown Miss Clutts.



HOME EC CLUB

Seated: E. Heard, G. Ellis, B. J. Whittington, M. Font, P. Gillespie, N. Long, T. Parrott, D. Enniss, R. Ensor, P. Donoho, standing: J. Lockard, L. Cox, M. Ward, G. Harbold, C. Frazier.



FUTURE NURSES OF AMERICA

Top to bottom: M. Slingluff, M. Slingluff, J. Cook, J. L. Gray, Y. Blackwell, P. Murray, B. Melocik, S. Doyle.



SAMADRA CLUB

Left to right - S. Culver, F. Seifert, S. Shugart, J. Totman, G. Harbold, L. Shure, B. Melock.



ART CLUB

Left to right - L. Dallam, D. Green, M. Font, G. M. Elliss, G. Long, R. Golden, J. Lockhard, R. Ensor, C. Frazer, B. Heard.



Health & Safety



New Building



King's Daughters

Committees



Assembly



Artist & Lecture



Plant & Garden



Library



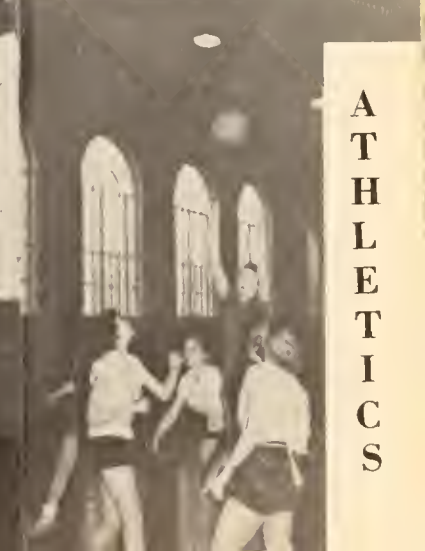
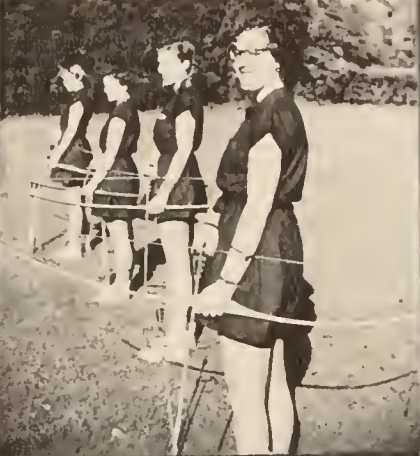
Audio - Visual



Public Relations



Social



ATHLETICS



All Association

ATHLETIC ASSN.



Officers and Adviser



Board members



OFFICIALS CLUB

Front row left to right: P. Murray, S. Hunner, J. Totman, S. Shook.
Back row: M. Wilson, J. Jones, L. Long, F. Seifert.



CHEERLEADERS

Left to right: B. Melocik, A. Radford, M. Jacobs.





HOCKEY VARSITY

Front row left to right: F. Seifert, J. Totman, S. Clough, C. Lewis, S. Hunner, T. Harkness. Back row: A. Williams, M. Young, P. Murray, S. Shook, E. Brimer, G. Harbold, B. VanDevanter.



Sis and Jo practice a bully while Carolyn and Bobbie back them up.



Penalty corner with Carolyn, Anne and Sunshine.



BASKETBALL VARSITY

Left to right: C. Lewis, F. Seifert, L. L. Long, M. Young, B. VanDevanter, T. Harkness, P. Chandler, S. Clough, S. Culver, S. Hunner.



Sis Hunner high scorer



Warm Ups!!



INTRAMURALS CHAMPS



Sophomore Champs in volleyball, basketball and softball. Front row left to right: S. Hunner, P. Gillespie, F. Seifert, B. Melocik, M. L. Gray. Back row: T. Harkness, A. Williams, M. Young, Y. Blackwell, L. L. Long.



Safe!!!

Marianne pitching for the Freshmen.

TOURNAMENT CHAMPS



J. Totman, Freshman
Archery Champ



Sis Hunner, Sophomore
Tennis Champ



Julie Smith, Freshman
Ping Pong Champ



Sis Hunner, Sophomore
Badminton Champ



ARCHERY VARSITY

Left to right: J. Totman, A. Williams, P. Donaho, F. Seifert.



TENNIS VARSITY

Left to right: S. Hunner, S. Clough, P. Chandler, J. Smith.





ACTIVITIES



CAMPUS





CUT-UPS



PROMS





THE BIRTH



OF TOLERANCE





MAY DAY

May Court



Modern Dance Program



The Coronation



CLASS DAY



"I cap thee ----- incoming Senior."



"The Bells of St. Mary's-----"



Out goes the old and in comes the new--1955.

GRADUATION



SENIORS



SOPHOMORES



PHOTOGRAPHS BY

MICHAEL C.

LA COGNATA

and

William Lewis

PATRONS

Mrs. Billy Claggett

Mrs. Mildred McDorman

Mr. and Mrs. H. S. VanDevanter

Miss Eugenia Walters

Compliments of

PARK PHARMACY

— Ray and Jack —

Lexington Park, Md.

G. M. 6161

Thru These Portals Pass the Most
Beautiful Girls in the World.

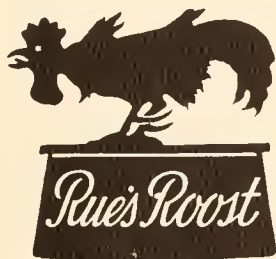
ESKRIDGE FORD INC.

**FORD
SALES AND SERVICE**

Great Mills 3311

Great Mills Road
Lexington Park

Md.



THOMPSON

MOTOR COMPANY

PACKARD SALES & SERVICE

Lexington Park

G.M. 4461

LIBRARY
ST. MARYS SEMINARY JUNIOR COLLEGE

THE ENTERPRISE

Newspaper and Printing Office

in
Lexington Park and Leonardtown

Great Mills 2-1011

Greenwood 5-2131

"Be County Wise -
Read the Enterprise."

TEMPLE OF BEAUTY

Lexington Park, Md.

Phone: G.M. 4422

CHAKALES RESTAURANT

on the Great Mills Road

Serving good food is my business

SMART WEAR

HELEN RYSTICKEN

Feminine Apparel - Accessories

Lexington Park, Md.

SEIFERT'S JEWELERS

LEXINGTON PARK, MD.

Jack Daugherty's

MERCHANDISE MART

Furniture

TV

Appliances

GM 4451 - 7621

*Congratulations
to the*

Classes of 1954

*Compliments
of*

THE HUB

Lexington Park

ASBURY'S FLOWERS

Lexington Park

Maryland

COMPLETE FLORAL SERVICE

Phanes: G.M. 24633 - Leon. 53131

Nite G.M. 27182

Member F.T.D.A.

Free Delivery

Compliments of the

STYLE CENTER

It pays to be thrifty

Lexington Park

Maryland

Compliments of the

**LEXINGTON PARK
ROLLER RINK**

Skate for your health's sake

JOY SHOP

Lexington Park, Maryland

Great Mills 5491

Infants' - Children's
Wear

Tots

Yard Goods

DAVIS PONTIAC

Great Mills 2-4311



Lexington Park

Maryland

BRENEGAN'S DRIVE-IN

Lexington Park, Maryland

Great Mills 3911

- Orders to Go -

Edwards for the Children

Fashion Craft in Dress & Sports
for the Ladies

CORNWELL'S
of course

"The little shoe store in the country"

Park Hall, Maryland

**PUFFENBERGER'S
RADIO SERVICE AND SUPPLY**

Records - Players - Needles
Radio - TV Sales & Service

¼ mile from air station on Great Mills Rd.
Phone - Great Mills 6333

CATO'S TAXI

Radio Dispatched

Reliable 24 hour service

Phone G.M. 21511

Compliments of

**PARK DEPARTMENT STORE,
INC.**

"Your popular price Shopping Center."

Lexington Park Maryland
Telephone: G.M. 5621

*Compliments
of*

THE PARK MEN'S SHOP

Lexington Park Maryland

Next to Dietz Shoe Store

BILL CHAPMAN'S

WESTERN
AUTO
ASSOCIATE
STORE



Lexington Park, Md.
Phone: G.M. 3303

FLOWERS

BOWLES FLORIST

Leonardtown, Maryland
Phone: GRGreenwood 5-2161

Leonardtown

SELF-SERVICE STORE

Washington Street
Opposite Ben Franklin
Greenwood 5-5351

Just the best - try us by test

Plumbing, Lighting, Heating

SMITH'S, INC.

Phone Greenwood 52345
Leonardtown Maryland

**MORGAN'S
DEPARTMENT STORE**

Since 1884
Shop and Save

Leonardtown, Maryland
Phone: Greenwood 5-6101

*Compliments
of*

LEONARDTOWN PHARMACY

1000 WATTS 1370 ON YOUR DIAL

WKIK

Leonardtown, Maryland
First in Southern Maryland

DUKE'S

Restaurant – Fountain

Leonardtown, Md.
Phone: G.M. 5-2671

JANICE

Specialty Shop

For Ladies Apparel
Leonardtown, Md.

FENWICK MOTOR COMPANY

FORD
Sales and Services

Cecil and Mattingly

Phone Greenwood 5-5201

Meats: Groceries: Fruits:
Vegetables: Frozen Foods.

Leonardtown

Maryland

Greenwood 5-5181

Leonardtown

Maryland

You help St. Mary's County enterprisers
and farmers when you buy

LEONARDTOWN DAIRY

Milk

Far home delivery call Greenwood 5-5151

W. C. MATTINGLY, SONS

FUNERAL DIRECTORS

EMBALMERS

Funeral Home – Oxygen Equipped
Ambulance Service

Joseph C. Mattingly, Owner
Charles J. Mattingly

Telephone GREENWOOD 5-6201

LEONARDTOWN

LAUNDRY

Cleoning – Pressing – Laundry

Call

Greenwood 5-6121

Great Mills 2-2411

*COMPLIMENTS
OF*

ST. MARY'S COUNTY

MEMORIAL LIBRARY

Tudor Hall 1750

Leonardtown, Maryland

Community Library Branch
Lexington Park, Maryland
St. Mary's County
Bookmobile

SUNSET MANOR RESTAURANT

Lexington Park

Located in Hotel Building

SPINNING WHEEL

Cocktail Lounge and Restaurant

**One Mile from Naval Air Station
on Great Mills Road**

Telephone: G.M. 3301

With Sincere Best Wishes

LEXINGTON PARK

PHARMACY

Opposite the Post Office
Lexington Park Maryland

Phone: G.M. 3481

Good Luck and Happiness

To The

Seniors and Sophomores

1954

The

DEITZ SHOE COMPANY

Lexington Park, Md.



**Shoes of Quality
For the Entire Family**

Phone: G.M. 5344

BEST WISHES

LEXINGTON PARK

VARIETY STORE

ST. MARY'S COLLEGE OF MARYLAND LIBRARY
ST. MARY'S CITY, MARYLAND

LIBRARY
St. Mary's Seminary - Junior College

COLLECTION

1974

