

1833

The  
Cottages



Presented To

*St. Mary's  
College of Maryland  
Library*

By .....  
.....  
.....


Date ..... April 1955 .....

St. Mary's Seminary-Junior College

LIBRARY

ST. MARYS SEMINARY JUNIOR COLLEGE

ST. MARY'S COLLEGE OF MARYLAND LIBRARY  
ST. MARY'S CITY, MARYLAND



Digitized by the Internet Archive  
in 2010 with funding from  
Lyrasis Members and Sloan Foundation

**THE**

**CASTELLAN**

**1954**

**St. Mary's Seminary-Junior College**

**St. Mary's City, Maryland**

**Gail-Rowe Harbold, Editor**

**Ann H. Watson, Co-Editor**

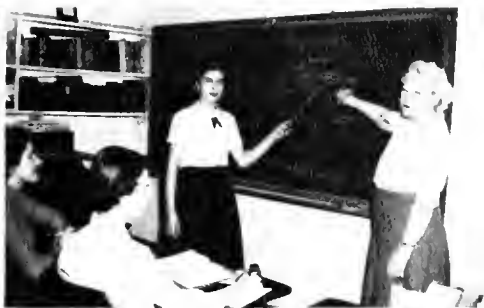
## DEDICATION

### MISS MARGUERITE CUSTIS



It is with respect and admiration that we dedicate this, the 1954 Castellan, to Miss Marguerite Custis. Her sincere interest in us and her helpful advice, together with her ready wit, make her our friend and one to whom we shall always be indebted. Her enthusiasm, outstanding abilities as an instructor and constant encouragement have created in her students the desire to attain their highest goals.

For all this and for your untiring efforts to work with and for us, we say, "Thank you, Miss Custis!"



A  
D  
M  
I  
N  
I  
S  
T  
R  
A  
T  
I  
O  
N  
A  
N  
D  
F  
A  
C  
U  
L  
T  
Y



Miss May Russell  
President



Mrs. Grace S. Gardner  
Dean



Miss Louise K. Rotha  
Registrar





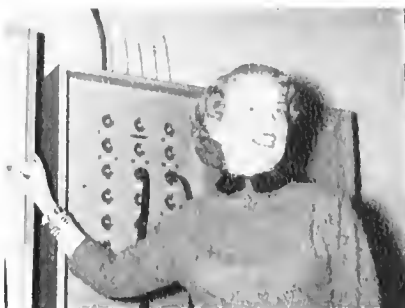
Miss Virginia Barnes  
Home Economics



Miss Ethel Chance  
Nurse



Miss Betty C. Clutts  
History & Social Science



Miss Estelle C. Elliot  
Speech & Drama



Mrs. Bessie B. Courtney  
Librarian



Mrs. Sara A. Gillium  
Head of Residence



Miss Norma Harms  
Art



Mrs. Anne M. Keehan  
Accountant



Miss Rosamond J. Jones  
Mathematics



Mrs. Jean Ressler  
Music & Choir



Miss Claire V. Stickney  
Foreign Languages



Miss Anna Sander  
Secretary



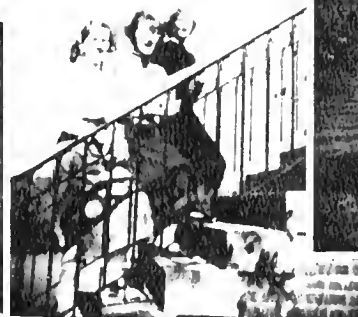
Miss Loretta M. Stallings  
Physical & Health Education



Mr. Harrison Tawney  
Public Relations



Miss M. Louise Truxal  
English



S  
T  
U  
D  
E  
N  
T  
S

# SENIORS



CAROLYN LOUISE LEWIS

"Lewie"

Oakland, Md.

President

Varsity hockey 3,4; basketball 1,2,4; A.A. 1,2; Treasurer 3; Vice President 4; Court 3, House Committee 4; Intramurals 1,2,3,4; Choir 1,2,3,4; Home Ec. 1, Secretary 3; French Club 1, Secretary 2; Artist & Lecture Committee 2; Plant Committee Chairman 3; Health & Safety Committee Chairman 4; Signal News 3.

Ambitious. . .dependable. . .soft, low voice. . . musical. . .always heard yelling "Chris". . .studious . . . keeper of the store. . . frequents U. S. N. A. . . . athletic.



DORIS ADA CLOUGH

"Sunshine"

Price, Md.

Vice President

Varsity hockey 2,3,4; Basketball 2,3,4; Intramurals 2,3,4; A.A. Board 2,3; President of A.A. 4; Choir 2; May Court 3,4; Current Events Club 4; Visual Committee 3; Classroom Building Committee 4; Art Club 3; Orientation Committee 3; Class Vice President 3.

Tops in athletics. . .can be found near ocean. . . likes to party. . .cute, li'l Eastern Sho' gal. . .always laughing. . .gets in on many DEEP discussions . . .will major in English.

"Dotty" DOROTHY ELIZABETH ENNISS Norfolk, Va.

Secretary

Home Ec. Club 3, Vice President 4; Samadra Club 3; A.A. 3,4; Health & Safety Committee 3; Public Relations Committee Chairman 4; King's Daughters Committee 3, CASTELLAN Copy Editor 4.

Sparkling brown eyes. . . big, friendly smile. . . little & cuddly. . . deep Southern accent. . . excellent seamstress. . . Naval Academy miniature. . . wedding bells in near future.



GAIL-ROWE HARBOLD

"Bo"

Annapolis, Md.

Treasurer

Varsity hockey 3,4; Intramurals 3,4; Samadra Club 3, President 4; Choir 4; A.A. 3,4; Home Ec. Club 3,4; Audio-Visual Committee 3; Library Committee 3, Chairman 4; Orientation Committee 4; King's Daughters Committee 3; CASTELLAN Layout Editor 3, Editor-in-chief 4.

Navy Junior. . . laughs at everything. . . dependable. . . good sense of humor. . . icy grey eyes. . . prefers Midshipmen . . . would make a wonderful school teacher. . . famous at parties. . . never quiet.



ELIZABETH STANSBURY DALLAM

"Liz" Sandy Spring, Md.  
Tennis Tournament 4; Intramurals 4; A. A. 4; Tumbling Club 4; Choir 3,4; Current Events Club 4; Kings Daughters Comm. 4; Signal News Editor and Copy Editor 3.

Literary. . . "got a cigarette?" . . . generous. . . very friendly. . . rather quiet. . . ready wit. . . has a nice way with children. . . will be a fine teacher.



GRACE MARY ELLIS

"Peaches" Oakley, Md.  
Art Club 4; Home Ec. Club 4; A. A. 3,4; Library Comm. 3,4; Public Relations Comm. 3,4.

Friendly and sweet. . . unassuming. . . recognized by her giggle. . . speed demon on the typewriter. . . will make an ideal secretary.



RUTH ALICE ENSOR

"Ruthie" Brunswick, Md.  
A. A. 3,4; Intramurals 4; Plant Comm. 3; Assembly Comm. Chairman 4; House Comm. 4; Choir 3,4; Art Club Secretary 3, Vice President 4; Home Ec. Club 3, President 4.

Nice. . . square dancer fiend from The West (of Maryland). . . recognized nationally for 4-H work. . . those talents generously given at S.M.S. . . looks quiet, but looks can be deceiving!

EVA CHRISTINE FRAZER

"Chris" Elkton, Md.  
Honor Court Chairman 4; Student Council 3,4, Secretary 3; Class president 3; A.A. 3,4; Art Club 2, President 3,4; Choir 2,3,4; Home Ec. Club 3,4; Artist and Lecture Comm. 2,3; Plant Comm. Chairman 4; Signal News Staff 3; CASTELLAN Art Editor 4.

Our Master Painter. . .likes to study. . .and sing  
. . .pretty hair. . .future Harmonicat. . .avid Democrat. . .has determination. . .bound to be successful.



GLADYS MAGDALEN LONG

"Gladys" Loveville, Md.  
Audio Visual Aids Comm. 4; Art Club 4.

Diligent. . .very neat. . .attractive. . . "oh, for goodness sakes". . .pretty eyes. . .we like her auto  
. . .will make a fine librarian.



ANDREW BEAN SHORTER

"Andy" Drayden, Md.  
Current Events Club 4; Christmas Pageant 3,4.

Deep thinker. . .holds his own as lone man of the class. . .always listens to our troubles. . ."Father White". . .wants to be a minister.





**JULIA MARIE VALLANDINGHAM**  
 "Valli" Clements, Md.  
 A.A. 3,4; Intramurals 3; Home Ec. Club 3; Library  
 Comm. 4.

Sweet, even disposition. . .always ready to help  
 . . .big smile for everyone. . .loves to dance. . .  
 terrific at it! . . ."Valli, cut my hair". . .frequently  
 seen in the library. . .and smoker.



**BARBARA LEE VanDEVANTER**  
 "Bobbie" Bethesda, Md.  
 Council 1, Secretary 2, Treasurer 3, President 4;  
 A.A. 1,2,3,4, Board 2,3,4; Intramurals 1,2,3,4; Hockey  
 Varsity 2,3,4; Basketball Varsity 1,2,3,4; Volleyball  
 Varsity 2,3; Softball Varsity 2; Home Ec. Club 1,2;  
 Samadra Club 1; French Club 2,3; Kings Daughters  
 Comm. 1,2; Assembly Comm. Chairman 3; Orienta-  
 tion Comm. 2,3, Chairman 4; Social Comm. 2,3;  
 May Court 2, Queen 4; CASTELLAN Staff 1,2,3.

The Spirit of S.M.S. . . .has been a great S.G.A.  
 president. . .four year stretch. . .all around gal. . .a  
 real friend to everyone. . .tall, blonde and terrific  
 . . .plans include marriage, June '55.

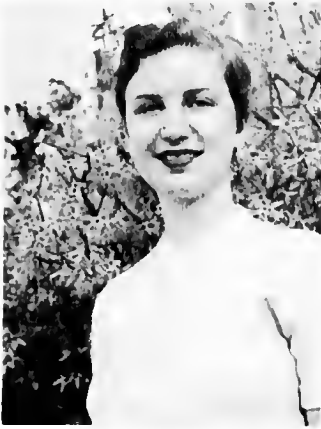


**MARY HELEN WARD**  
 "Frosty" Bel Air, Md.  
 Student Council 3, Vice President 4; Chairman House  
 Comm. 4; A.A. 3,4; Intramurals 3,4; Home Ec. Club  
 3,4; Samadra, President 3; Kings Daughters Comm.  
 3; Chairman Social Comm. 4; Fall Play 4; Christmas  
 Play 3; May Court 4; Signal News, Feature Editor 3;  
 CASTELLAN, Literary Editor 4.

Outstanding leader. . .good actress. . .bubbling  
 personality. . .frosty, big, blue eyes. . .like a rose. . .  
 U.C.L.A.? . . West Point? . .sophisticated voice. . .  
 devilish. . .knows what she wants.



# SENIOR SUPERLATIVES



MARY HELEN WARD  
Most Likely to Succeed



BOBBIE VanDEVANTER  
Most Versatile



DORIS CLOUGH  
Most Athletic



CHRISTINE FRAZER  
Most Artistic



GAIL HARBOLD  
Wittiest



CAROLYN LEWIS  
Most Musical

# SOPHOMORES



"B. J." **BILLIE JEAN WHITTINGTON**  
Princess Anne, Md.

President

Student Council 1, Treasurer 2; Intramurals 1,2; A.A. 1,2; Home Ec. Club 1,2; French Club 2; Current Events 1,2; Orientation Comm. 2; Library Comm. 2; King's Daughters 2.

"Need a fourth for bridge?" . . .devoted to the Eastern Sho'. . .a busy girl with a finger in every pie. . .likes to talk. . .laughs a lot. . .will return next year.



"Lou" **LINDA LOU LONG**  
Brunswick, Md.

Vice-President

Class President 1; Council 1; A.A. 1, Board Treasurer 2; Basketball 2; Softball 1; Intramurals 1,2; French Club 1; Samadra Club 1; Choir 1,2; F.N.A. 2; Kings Daughters 1,2; Orientation Comm. 2; Officials Club 2.

Vivacious. . .personality plus. . .love to hear her version of "Hold Me". . .really has rhythm. . .versatile. . .will soon have her MRS.



"Bobbie"

BARBARA MARY MELOCIK

Baltimore, Md.

Secretary

Intramurals 1,2; Cheerleader 1, Captain 2; A.A. 1, Board 2; Choir 1,2; Class Secretary 1; Home Ec. Club 1; French Club 1, President 2; F.N.A. 2, Secretary 1; Samadra Club 1.

Rah-rah girl...Charleston expert...full of pep  
... "C'mon gang"...good student...good luck at  
Notre Dame of Maryland!



MARILYN FAYE SELFERT

"Faye"

Lexington Park, Md.

Treasurer

Varsity Hockey 1,2; Basketball 1,2; Archery 1,2; Softball 1; Volleyball 1; Intramurals 1,2; A.A.L. Board 2; May Court 1; Fall Play 1; Officials Club 2; French Club Vice President 2; Samadra Club Vice President 2; Tumbling Club 2; Audio-Visual Committee 2; CASTELLAN Photography Editor 2.

Always busy. . . athletic. . . "gee whiz". . . blonde and cute. . . a live wire. . . top tumbler. . . will be a fine P.E. major at Woman's College, U. of N.C.



ROSE YVONNE BLACKWELL

"Yvonne " Baltimore, Md.  
A.A. 2; Intramurals 2; Health & Safety Comm. 2;  
F.N.A. Vice-President 2; Choir 2; Fall Play make-  
up director 2.

Bridge fiend. . .noted for her pony tail. . .always  
laughing. . .practical joker. . .swimming and nursing  
main interests. . .Miss Chance's assistant.

PATRICIA GAIL DONAHO

"Patty" Patuxent, Md.  
A.A. 1,2; Intramurals 1; Archery varsity 2; Choir 1,  
2; Home Ec. Club 1, Treasurer 2; Artist & Lecture  
Comm. 1.

Tall. . .willowy. . .golden hair. . .persistent. . .  
came to SMS from Newfoundland. . .sews well. . .  
always with Suie. . .Navy junior.



ELIZABETH CECELIA DAVIS

"Betty" Wynne, Md.  
Intramurals 2; Classroom Building Comm. 2.

Southern Marylander with a mania for hillbilly  
music. . .likes swimming and speed boats. . .beauty  
queen. . .sings and dances. . .wants a convertible.

MARTHA KATHERINE DUDLEY

"Kate" Owings Mills, Md.  
Current Events Club 2, Art Club 2, Choir 2, A. A. 2,  
Intramurals 2, Signal News 2.

Oh, that look . . . sweet, kind way . . . has a full  
date book. . . "Hi, there". . . lover of good books.



CAROL RUTH FUNKHOUSER

"Blackie" Charlestown, W. Va.  
A. A. 2, Basketball Varsity 2, Intramurals 2, May  
Day Dance 2, F. N. A. 2, Artist & Lecture Commit-  
tee 2.

Future undetermined. . . "Okay, when--now?". . .  
card shark. . . crazy sports shirts. . . "Dig that Car". . .  
very dependable. . . "Man, can he dance".



MARGARET ANNA GILLESPIE

"Peggy" Sudlersville, Md.  
Varsity Volleyball 1, A. A. 1,2, Intramurals 1,2;  
French Club 1, Home Ec. Club 2, Current Events Forum  
2; Library Committee 2; Fall Play 1,2.

Always talking. . . VERY fond of sleeping. . . petite  
. . . ardent bridge player. . . very agreeable. . . will re-  
turn to S. M. S.





MARY LYNN GRAY

"Mary Lynn" Lexington Park, Md.  
A. A. 1,2, Intramurals 1,2; Art Club 1, Treas. 2;  
French Club 1, F. N. A. 1, Pres. 2, Home Ec. Club  
2, Current Events Forum 2; Orientation Committee  
2; King's Daughters Chairman 2; Honor Court 2; Stu-  
dent Council Secy. 2; Shennendoah Apple Blossom  
Princess 2.

Red hair. . .always active. . .paints beautiful pic-  
tures. . .loves clothes. . .contagious giggle. . ."Hey,  
y'all". . .future Florence Nightingale.

ELLEN ANTHONY HARKNESS

"Toni" Mutual, Md.  
A. A. Board 2, Varsity Hockey 2, Basketball 2, In-  
tramurals 2; Plant & Garden Committee 2; May Court  
2.

Athletic. . .a regular for bridge. . .noted for those  
loud shirts . . . "Don't Call My Name". . .ready for  
fun. . .and to lend a helping hand.



LEANORA THERSA HUNNER

"Sis" Baltimore, Md.  
Varsity Hockey 2, Basketball 2, Intramurals 2, A. A.  
Board 2; Current Events Forum Treas. 2, Artist &  
Lecture Committee 2; Tennis Varsity 2, Officials  
Club 2, Badminton, Tennis Tournament Winner 2.

Sports-minded. . ."Swing!". . .foremost member  
of THE BAND. . .bashful. . .mischievous. . .beauti-  
ful eyes. . .Roland Park's loss was definitely our gain.



BARBARA ANN TAYLOR

"Barb" Baltimore, Md.  
A. A. 1,2, Board 2, Varsity Hockey 1,2 Intramurals  
1,2; Choir 2; Health & Safety Committee 2, Orientation  
Committee 2; Fall Play 2; May Court 2.

Personality plus . . . has cute ways . . . and crazy  
impersonations . . . artistic . . . mad about cars . . . record  
fiend . . . always ready for a good time.



JANICE TAYLOR

"Janice" Washington, D. C.  
Choir 1,2; French Club 1, Home Ec. Club 2, Current  
Events Forum 2, Social Committee 2.

"No kidding, can we?" . . . "Should I wear heels?"  
. . . bridge fan . . . good student . . . tall blonde (not  
peroxide). . . Southern Belle.

PATRICIA ANN TOWNSEND

"Pat" Denton, Md.  
House Committee 2; Choir 2; French Club 2; A. A.  
2; Current Events Forum Secy. 2; Intramurals 2; So-  
cial Committee 2; Signal News 2; CASTELLAN Busi-  
ness Editor 2.

Quiet . . . self-controlled . . . has great determina-  
tion . . . attractive . . . very neat . . . plans to be a  
lawyer.





ANN HARWOOD WATSON

"Woody" Brunswick, Md.  
A. A. 1,2, Intramurals 1,2; French Club 1; Choir 2;  
Class Treas. 1; Plant Committee 1; Signal News Staff  
1,2; CASTELLAN Co-Editor 2.

Loves horses . . . studious . . . full of fun . . . writes  
MANY letters . . . seems quiet, but isn't . . . likes to  
folk dance . . . journalism main interest.



MARGARET ANNE WILLIAMS

"Willie" Mountain Lakes, N. J.  
A. A. 1,2, Intramurals 1,2, Varsity Hockey 2; Art  
Club 2, Assembly Committee 2, Plant Committee  
1, Choir 1, Treas. 2, Fall Play 2.

Optomistic . . . very practical . . . swimming en-  
thusiast. . . partial to the Navy. . . but not to bees. . .  
plans to be a physical therapist.





"Marl"  
 A. A. 2, Intramurals 2; Temporary Building Committee 2  
 Real great jitterbug...a chatterbox...has a ready smile...Bop fan.



MOLLIE YOUNG  
 Washington, D. C.  
 A. A. 1,2, Varsity hockey 1,2, basketball 1,2, volleyball 1, baseball 1, bowling 1, Intramurals 1,2; Home Ec. Club 1; Choir 1; Audio-Visual Aids Committee 2.  
 Bound for U. of Md. . . aims is to P. E. instructor . . . "Yea, let's go!" . . . basketball enthusiast and a 2nd Florence Chadwick . . . likes to jitterbug and laugh at midnight . . . always early?

St. Mary's Seminary-Junior Co

## SOPHOMORE SUPERLATIVES

MOST LIKELY TO SUCCEED--  
Pat Townsend



MOST VERSATILE--  
Faye Seifert



MOST ATHLETIC--  
Sis Hunner



MOST ARTISTIC--  
Mary Lynn Gray



WITTIEST--  
Peggy Gillespie



MOST MUSICAL  
Linda Lou Long



## JUNIOR CLASS



Left to right: 1st row, S. Doyle, B. Bragg, J. Dodson, M. Jacobs, A. Radford, C. Bloodsworth. 2nd row, C. M. Font, S. Shugart, L. Mikesell, J. Lockard, N. Long, D. Green. 3rd row, R. Golden, L. Cox, B. Heard, J. Jones, M. Wilson, T. Parrott, M. Slingluff, Miss Stallings.



Class officers: S. Shugart, Secretary; M. Wilson, President; Miss Stallings, Advisor; C. M. Font, Treasurer; J. Jones, Vice-President

## FRESHMAN CLASS



Class officers: E. Brimer, Secretary; J. Totman, President; Miss Clutts, Advisor; S. Shook, Treasurer; M. Slingluff, Vice-President.

Left to right: 1st row, L. Miller, S. Culver, J. Totman, D. Foley, C. Gross. 2nd row, E. Powell, E. Brimer, S. Shook, N. Kettel, M. Slingluff, J. Cook, Miss Clutts. 3rd row, J. Barker, E. Bowman, E. Sandlin, P. Murray, L. Shure, J. Starkweather, J. Bollinger.





# ORGANIZATIONS



## COUNCIL

1st row, S. Culver, M. Font, M. Slingluff. 2nd row, M. L. Gray, B. VanDevanter, Mrs. Gardner, M. H. Ward, C. Frazer.



## HONOR COURT

Left to right, E. Brimer, B. VanDevanter, C. Frazer, S. Shugart, Miss Russell.

## HOUSE COMMITTEE

1st row, P. Townsend, S. Shugart, F. Seifert, M. Slingluff. 2nd row, R. Ensor, M. H. Ward, Mrs. Gilliam, M. Slingluff, C. Lewis.





## CASTELLAN

1st row, G. Harbold, Miss Truxal, A. Watson. 2nd row:  
P. Townsend, F. Seifert, D. Ennis, M. H. Ward, C.  
Frazer, J. Jones.



GAIL HARBOLD  
Editor



ANN WATSON  
Co-Editor

## SIGNAL NEWS



Seated, A. Watson, Miss Truxal, T. Harkness; standing, L. Mikesell, R.  
Golden, P. Townsend, D. Green, K. Dudley, S. Culver.

# CHOIR



Our TV broadcast on WTOP in Washington



Left to right: 1st row, S. Doyle, E. Bowman, K. Dudley, C. Bloodsworth, Mrs. Ressler, E. Dallam, A. Radford, M. Slingsluff, J. Seiver, 2nd row, J. Smith, R. Ensor, M. L. Gray, C. Frazer, N. Long, C. Lewis, J. Dodson, J. Jones, N. Kettel.



Doing "Barefoot" at one of the Choir-tour performances.



Miss Russell wishing us luck on our spring tour as we leave.



# CHOIR



3rd row, P. Chandler, J. Cook, L. Mikesell, L. Long, B. Taylor, S. Culver, E. Heard, C. Gross, M. Jacobs, J. Bollinger. 4th row, G. Harbold, P. Townsend, E. Sandlin, A. Williams, A. Watson, J. Lockard, J. Taylor, T. Parrott, P. Donoho, J. Starkweather, Y. Blackwell.



Taking a bow with Tay after a number on Choir-tour



Our last stop at Fredrick Sasseer, it was a wonderful trip!!



## FRENCH CLUB

Left to right: 1st row, P. Murray, V. Green, M. Slungluff, B. J. Whittington. 2nd row, P. Townsend, B. Meloeik, C. Norwood, E. Brimer, S. Shook, L. Shure. 3rd row, F. Seifert, S. Culver, J. Totman.

## CURRENT EVENTS FORUM

Left to right: S. Doyle, M. L. Gray, P. Townsend, P. Gillespie, B. J. Whittington, S. Shugart, M. Slingluff, M. Slingluff, F. Seifert, P. Murray, J. Totman, C. Bloodsworth, not shown Miss Clutts.



# HOME EC CLUB

Seated: E. Heard, G. Ellis, B. J. Whittington, M. Font, P. Gillespie, N. Long, T. Parrott, D. Enniss, R. Ensor, P. Donoho, standing: J. Lockard, L. Cox, M. Ward, G. Harbold, C. Frazer.



# FUTURE NURSES OF AMERICA

Top to bottom: M. Slingluff, M. Slingluff, J. Cook, J. L. Gray, Y. Blackwell, P. Murray, B. Melocik, S. Doyle.



## **SAMADRA CLUB**

Left to right - S. Culver, F. Seifert, S. Shugart, J. Totman, G. Harbold, L. Shure, B. Melock.



## **ART CLUB**

Left to right - L. Dallam, D. Green, M. Font, G. M. Elliss, G. Long, R. Golden, J. Lockhard, R. Ensor, C. Frazer, B. Heard.



**Health & Safety**



**New Building**



**King's Daughters**

**Committees**



**Assembly**



**Artist & Lecture**



**Plant & Garden**



**Library**



**Audio - Visual**



**Public Relations**



**Social**



ATHLETICS



All Association

## ATHLETIC ASSN.



Officers and Adviser



Board members





## OFFICIALS CLUB

Front row left to right: P. Murray, S. Hunner, J. Totman, S. Shook.  
Back row: M. Wilson, J. Jones, L. Long, F. Seifert.



## CHEERLEADERS

Left to right: B. Melocik, A. Radford, M. Jacobs.





## HOCKEY VARSITY

Front row left to right: F. Seifert, J. Totman, S. Clough, C. Lewis, S. Hunner, T. Harkness. Back row: A. Williams, M. Young, P. Murray, S. Shook, E. Brimer, G. Harbold, B. VanDevanter.



Sis and Jo practice a bully while Carolyn and Bobbie back them up.



Penalty corner with Carolyn, Anne and Sunshine.



## BASKETBALL VARSITY

Left to right: C. Lewis, F. Seifert, L. L. Long, M. Young, B. VanDevanter, T. Harkness, P. Chandler, S. Clough, S. Culver, S. Hunner.



Sis Hunner high scorer



Warm Ups!!



# INTRAMURALS CHAMPS



Sophomore Champs in volleyball, basketball and softball. Front row left to right: S. Hunner, P. Gillespie, F. Seifert, B. Melocik, M. L. Gray. Back row: T. Harkness, A. Williams, M. Young, Y. Blackwell, L. L. Long.



Safe!!!

Marianne pitching for the Freshmen.

# TOURNAMENT CHAMPS



J. Totman, Freshman  
Archery Champ



Sis Hunner, Sophomore  
Tennis Champ



Sis Hunner, Sophomore  
Badminton Champ



Julie Smith, Freshman  
Ping Pong Champ



## ARCHERY VARSITY

Left to right: J. Totman, A. Williams, P. Donaho, F. Seifert.



## TENNIS VARSITY

Left to right: S. Hunner, S. Clough, P. Chandler, J. Smith.





A  
C  
T  
I  
V  
I  
T  
I  
E  
S





## CAMPUS







# CUT-UPS





## PROMS





**THE  
BIRTH**



**OF  
TOLERANCE**





## MAY DAY

May Court



The Coronation



Modern Dance Program



# CLASS DAY



"I cap thee ----- incoming Senior."



"The Bells of St. Mary's-----"



Out goes the old and in comes the new--1955.

# GRADUATION



SENIORS



SOPHOMORES



**PHOTOGRAPHS BY**

**MICHAEL C.**

**LA COGNATA**

**and**

**William Lewis**

## **PATRONS**

**Mrs. Billy Claggett**

**Mrs. Mildred McDorman**

**Mr. and Mrs. H. S. VanDevanter**

**Miss Eugenia Walters**



*Compliments of*

## **PARK PHARMACY**

— Ray and Jack —

Lexington Park, Md.

G. M. 6161

Thru These Portals Pass the Most  
Beautiful Girls in the World.

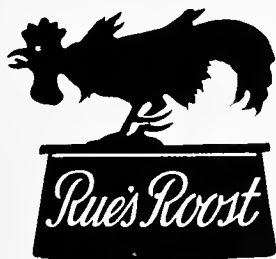
## **ESKRIDGE FORD INC.**

**FORD  
SALES AND SERVICE**

Great Mills 3311

Great Mills Road  
Lexington Park

Md.



## **THOMPSON**

**MOTOR COMPANY**

**PACKARD SALES & SERVICE**

Lexington Park

G.M. 4461

LIBRARY  
ST. MARKS JUNIOR COLLEGE

## THE ENTERPRISE

Newspaper and Printing Office

in  
Lexington Park and Leonardtown

Great Mills 2-1011

Greenwood 5-2131

"Be County Wise -  
Read the Enterprise."

## TEMPLE OF BEAUTY

Lexington Park, Md.

Phone: G.M. 4422

## CHAKALES RESTAURANT

on the Great Mills Road

Serving good food is my business

## SMART WEAR

### HELEN RYSTICKEN

Feminine Apparel - Accessories

Lexington Park, Md.

## SEIFERT'S JEWELERS

LEXINGTON PARK, MD.

Jack Daugherty's

## MERCHANDISE MART

Furniture


TV

Appliances

GM 4451 - 7621

*Congratulations  
to the*

Classes of 1954

<p><i>Compliments of</i></p> <p><b>THE HUB</b></p> <p>Lexington Park</p>	<p><b>ASBURY'S FLOWERS</b></p> <p>Lexington Park Maryland</p> <p><b>COMPLETE FLORAL SERVICE</b></p> <p>Phanes: G.M. 24633 - Leon. 53131 Nite G.M. 27182</p> <p>Member F.T.D.A. Free Delivery</p>
<p><i>Compliments of the</i></p> <p><b>STYLE CENTER</b></p> <p>It pays to be thrifty</p> <p>Lexington Park Maryland</p>	<p><i>Compliments of the</i></p> <p><b>LEXINGTON PARK ROLLER RINK</b></p> <p>Skate for your health's sake</p>
<p><b>JOY SHOP</b></p> <p>Lexington Park, Maryland Great Mills 5491</p> <p>Infants' - Children's Wear</p> <p>Toys Yard Goods</p>	<p><b>DAVIS PONTIAC</b></p> <p>Great Mills 2-4311</p> <p>Lexington Park Maryland</p> 
<p><b>BRENEGAN'S DRIVE-IN</b></p> <p>Lexington Park, Maryland Great Mills 3911</p> <p>- Orders to Go -</p>	<p>Edwards for the Children Fashion Craft in Dress &amp; Sports for the Ladies</p> <p><b>CORNWELL'S</b> of course</p> <p>"The little shoe store in the country" Park Hall, Maryland</p>

**PUFFENBERGER'S  
RADIO SERVICE AND SUPPLY**

Records - Players - Needles  
Radio - TV Sales & Service

¼ mile from air station on Great Mills Rd.  
Phone - Great Mills 6333

**CATO'S TAXI**

Radio Dispatched

Reliable 24 hour service

Phone G.M. 21511

*Compliments of*

**PARK DEPARTMENT STORE,  
INC.**

"Your popular price Shopping Center."

Lexington Park Maryland  
Telephone: G.M. 5621

*Compliments  
of*

**THE PARK MEN'S SHOP**

Lexington Park Maryland

Next to Dietz Shae Store

**BILL CHAPMAN'S**

WESTERN  
AUTO  
ASSOCIATE  
STORE



Lexington Park, Md.  
Phone: G.M. 3303

**FLOWERS**

**BOWLES FLORIST**

Leonardtown, Maryland  
Phone: GRenwood 5-2161

Leonardtown

**SELF-SERVICE STORE**

Washington Street  
Opposite Ben Franklin  
Greenwood 5-5351

Just the best - try us by test

Plumbing, Lighting, Heating

**SMITH'S, INC.**

Phone Greenwood 52345  
Leonardtown Maryland

**MORGAN'S  
DEPARTMENT STORE**

Since 1884  
Shop and Save

Leonardtown, Maryland  
Phone: Greenwood 5-6101

*Compliments  
of*

**LEONARDTOWN PHARMACY**

1000 WATTS      1370 ON YOUR DIAL

**WKIK**

Leonardtown, Maryland  
First in Southern Maryland

**DUKE'S**

**Restaurant – Fountain**

Leonardtown, Md.  
Phone: G.M. 5-2671

**JANICE  
Specialty Shop**

For Ladies Apparel  
Leonardtown, Md.

**FENWICK MOTOR COMPANY**

**FORD**  
Sales and Services

**Cecil and Mattingly**

Phone Greenwood 5-5201

Meats: Groceries: Fruits:  
Vegetables: Frozen Foods.

Leonardtown

Maryland

Greenwood 5-5181  
Leonardtown      Maryland

You help St. Mary's County enterprisers  
and farmers when you buy

## **LEONARDTOWN DAIRY**

Milk

For home delivery call Greenwood 5-5151

**W. C. MATTINGLY, SONS**

## **FUNERAL DIRECTORS**

### **EMBALMERS**

Funeral Home – Oxygen Equipped  
Ambulance Service

Joseph C. Mattingly, Owner  
Charles J. Mattingly

Telephone GRenwood 5-6201

## **LEONARDTOWN**

### **LAUNDRY**

Cleaning – Pressing – Laundry

Call

Greenwood 5-6121

Great Mills 2-2411

*COMPLIMENTS  
OF*

## **ST. MARY'S COUNTY**

### **MEMORIAL LIBRARY**

**Tudor Hall 1750**

Leonardtown, Maryland

Community Library Branch  
Lexington Park, Maryland  
St. Mary's County  
Bookmobile

# **SUNSET MANOR RESTAURANT**

**Lexington Park**

**Located in Hotel Building**

## **SPINNING WHEEL**

**Cocktail Lounge and Restaurant**

**One Mile from Naval Air Station  
on Great Mills Road**

**Telephone: G.M. 3301**

*With Sincere Best Wishes*

## **LEXINGTON PARK**

### **PHARMACY**

Opposite the Post Office  
Lexington Park Maryland

Phone: G.M. 3481

**Good Luck and Happiness**

**To The**

**Seniors and Sophomores**

**1954**

**The**

## **DEITZ SHOE COMPANY**

Lexington Park, Md.



**Shoes of Quality  
For the Entire Family**

Phone: G.M. 5344

*BEST WISHES*

## **LEXINGTON PARK**

### **VARIETY STORE**





ST. MARY'S COLLEGE OF MARYLAND LIBRARY  
ST. MARY'S CITY, MARYLAND

LIBRARY  
St. Mary's Seminary - Junior College



