

THE

*Castellan*

*Castellan*

1955





Digitized by the Internet Archive  
in 2010 with funding from  
Lyrasis Members and Sloan Foundation



# **THE CASTELLAN 1955**

**St. Mary's Seminary Junior College**

**LaRue Mikesell, Editor**

**Starr Culver, Co-Editor**



## COMMENCEMENT

Not an ending, but a beginning;  
A start of a newer life.  
Not a parting, but a moving forward  
To new goals and greater heights.  
Stand ye not idly waiting  
For some noble work to do.  
You must mount the stairs to Fortune--  
She will never come to you.  
Commencement--a mission finished:  
Heed life's new manifest call.  
Go forward with unwavering faith;  
And of yourself--give all.

## DEDICATION



We proudly dedicate this 1955 CASTEL-  
LAN to Mrs. Louise Truxal Ferguson as a  
symbol of our appreciation and thanks to her  
for being the wonderful person she is, for  
helping us as individuals and for helping the  
school as a whole.

We will never forget her excellent sense  
of humor, her enthusiasm for all phases of  
school life, and in particular, her willingness  
to sacrifice her spare minutes for our pro-  
jects.

In her classes we have gained not only an  
understanding of grammar and literature, but  
a wealth of knowledge which we will take with  
us into many future situations.

We honor her as a learned teacher; but  
most of all, we cherish her as an understand-  
ing friend and thank her warmly for adding so  
much of herself to our individual lives.



*May Russell*

To the Graduates of 1955, the faculty and students of St. Mary's extend their sincere wishes for continued success and happiness. We are grateful for your conscientious acceptance of responsible leadership here and we look forward to a manifestation of the results of this leadership in your lives in whatever community you may find yourselves.

May you ever continue to develop to the fullest extent your own innate capacities and may you ever strive to make your world a better place in which to live. Finally, in setting your standards for achievement we are confident that you will remember always to "seek ye first the Kingdom of God, and His righteousness; and all these things shall be added unto you."



## FACULTY AND ADMINISTRATION . . .



MISS LOUISE K. ROTHA  
Registrar, Science

MR. B. ELWOOD FAHL  
Science



MISS L. BEATRICE SIMMS  
Dean

MISS ETHEL CHANCE  
Nurse



MRS. VERA COURT  
Head of Residence

MISS ANNA SANDNER  
Secretary



THEY KEPT THE WHEELS TURNING SMOOTHLY . . .



MR. ALVIN LeBELL  
Accountant



MISS VIRGINIA BARNES  
Home Economics



MRS. BESSIE  
COURTNEY  
Librarian



MISS NORMA  
HARMS  
Art



MISS MILDRED HENNINGER  
Music



MR. HARRISON TAWNEY  
Public Relations

AND HELPED MAKE OUR GRADUATION POSSIBLE.



MISS ROSAMOND J. JONES  
Mathematics



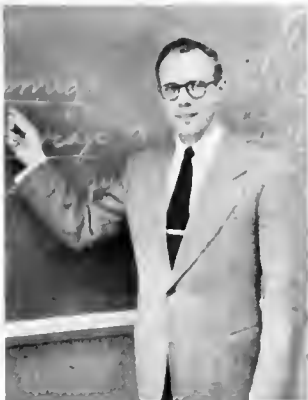
MRS. NANCY S. POSCH  
Physical Education



MRS. VIRGINIA  
D. SMITH  
Business



MR. ARTHUR  
WHITMAN  
Speech-Drama



MR. KENNETH W. WOOD  
Modern Language



MR. KEMP P. YARBOROUGH  
Social Studies



... AND OFTEN ...







**CLASS OFFICERS**

S. Shugart, C. Bloodsworth, J. Jones, L. Mikesell



**SHIRLEY MARGARET SHUGART**  
President

"An investment in knowledge always pays the best interest."  
Class Sec'y 3; Honor Court 3, Chairman 4; House Comm. 3; A. A. Sec'y 3, Vice Pres. - President 4; Samadra Sec'y - Treasurer 3; Current Events Vice Pres. 3; SIGNAL NEWS 4; CASTELLAN Copy Editor 4; Orientation Comm. 3.  
"Shirley" . . . honor roll. . . enjoys social life. . . believer in logic. . . active participator. . . four year stretch. . . able debater. . . flirtatious eyes.

JANE CAROLYN JONES

Vice President

"You say a thousand unsaid things."

Class Vice Pres. 3; House Committee 4; A.A. 3,4;  
Officials' Club 4; Choir 3,4; CASTELLAN Layout Ed.  
3, Business Manager 4; Orientation Comm. 4.

"Janie". . .talkative. . .reminds you of a cocker  
spaniel. . .neat. . .Nancy's "twin". . .always losing  
things. . .heads for Gettysburg College next year.



NANCY CAROLYN BLOODSWORTH

Secretary

"If only everything were as interesting as psychology."  
Choir 3; Current Events Club 3.

"Carolyn". . .serious minded. . .efficient office  
assistant. . .one of few who sticks to diet. . .loves her  
"witch's brew". . .off to American University.

LARUE NADINE MIKESELL

Treasurer

"Convince a man against his will and he is of the  
same opinion still."

A A. 3,4; Choir 3,4, Ensemble 4; SIGNAL NEWS 3,  
News Editor 4; CASTELLAN Editor 4; Birthday Verse  
Committee 3,4.

"LaRue". . .individualist. . .likes to "discuss". . .  
prompt & efficient. . .will always take the opposite  
viewpoint. . .NOSE FOR NEWS. . .introspective. . .  
enjoys writing poetry. . .English & journalism major.





BETTY LEE BRAGG

"Love is ever a matter of comedies."

A. A. 4; Library Assistant 3,4; Career Day Steering Committee 3.

"Betty" . . . friendly as a pup . . . "I beg your pardon" . . . laughs all of a sudden . . . "Come in for some cake" . . . oh! that deceptive blush.



EVELYN PATRICIA CHANDLER

"I never think of the future. It comes soon enough."

A. A. Board 3; President 4; Tennis Varsity 3; Basketball Varsity 3,4; Choir 3,4; Ensemble 3; Current Events 3; Art Club 3; May Day 3.

"Pat" . . . easy going . . . never complains . . . seniors' artist . . . haunts the telephone . . . excellent dancer . . . athletic . . . left us to become Mrs. Russell Wilkie.



JOANNA DODSON

"Live and let live."

A. A. 4; Choir 3.

"Jo" . . . rag-doll co-ordination . . . Navy junior . . . questions, questions . . . loves to cat . . . wild blue yonder in future . . . fun-loving . . . blonde??



ANN TERIUNE DOYLE

"I've seen some balls and revels in my time."

A. A. 4; Board 3; Choir 3; F. N. A. 4; Secretary 3; Current Events 3; Samadra 4; Fall Play 3; May Day 3.

"Suie" . . . ardent Navy enthusiast . . . social butterfly . . . "I ain't never seen nothin' like that" . . . records galore . . . a wisecrack a minute.



CAROL MERLE DUNBAR  
 "Her voice was ever soft, gentle and low."  
 A.A. 4; Intramurals.

"Dunnie" . . . everybody's favorite. . . ardent hill-  
 billy fan. . . "It's just music" . . . great athlete. . . in-  
 stant coffee fiend. . . Rosemary Clooney.



CARMEN MARGARITA FONT  
 "What is life? Just a comedy that passes by as you  
 laugh."

Class Treasurer 3; Council 3; A.A. 3,4; Art Club 3;  
 Home Economics Club 3.

"Margie" . . . Latin lady . . . practical joker. . . loves  
 everybody. . . "I'm telling you one thing" . . . befuddled  
 love life.

WILLIAM HENRY HOLEMAN  
 "The world's best is hillbilly."  
 Volleyball Intramurals.

"Bill" . . . friendly . . . hillbilly enthusiast. . .  
 "Shmoo" entertainer. . . hails from Oklahoma. . . fun-  
 loving. . . "It don't hurt any more" . . .



MARILYN RAZEL JACOBS  
 "There's nothing halfso sweet in life as love's young  
 dream."

A.A. 3,4; Cheerleader 3; May Day 3; Choir 3,4.

"Marilyn" . . . dainty and fragile-looking. . . seen  
 with Lesley. . . patrician. . . easy-going. . . neat. . .  
 vivacious smile. . . wants to be married.



JULIA ANN LOCKARD

"Choose the best life; habit will make it pleasant." A.A. 3,4; Choir 3, Treasurer 4; Art Club 3,4; Home Ec. Club 3, President 4; Art Club 3,4; CASTELLAN, Art Co-Editor 4.

"Judy". . .quiet. . .how are the socks coming?. . .even disposition. . .able seamstress. . .artist. . .a "smash" at badminton. . .will major in Home Ec.

NANCY RUTH LONG

"Music, when soft voices die, vibrates in the memory."

Council Vice-Pres. 4; House Committee 4; A.A. 3, 4; Choir Accompanist 3,4, Ensemble 4; May Day Princess 3; CASTELLAN 4; Home Ec. Club 3, V. Pres. 4; Orientation Committee 4.

"Nancy". . .will always smile. . .likes to sew. . . flirtatious dimple. . .excellent at organ and piano. . . manages to do everything. . .likes the mountains. . . will major in music education.



ANNE WALLER RADFORD

"It is best to love wisely, no doubt, but to love foolishly is better than not to love at all."

Council 4; House Committee 4; A.A. Board 3,4; Cheerleader 3,4; Choir 3; Apple Blossom Princess 4.

"Anne". . .Likes to write letters. . .love that Virginia accent. . .always late. . .guardian of slip box . . .always planning dances & parties. . .never seems to hurry but gets things done.



MARGARET TALBOT SLINGLUFF

"The whole of government consists in the art of being honest."

Council 3, President 4; Honor Court 4; House Committee 3; A.A. 3, Board 4; Current Events Club President 3; F.N.A. 3; Orientation Comm. 3,4.

"Mags". . .natural leader. . .good sense of humor . . .athlete?. . .conceals her beautiful singing voice . . .interests lie in gov't and world affairs. . .will never forget rooming with "Sis"!



LESLEY ANN STAUFFER

"I may commit many follies in life, but I never intend to marry for love."

A.A. 3,4; Choir 4; Samadra 3; Fall Play 3.

"Les" . . . tall, stylish and sophisticated. . . has a way with people. . . blushes when she laughs. . . "I don't believe that" . . . will usually get her way.



MILDRED LUCILLE WILSON

"Do unto the other feller the way he'd like to do unto you, an' do it first."

Class President 3; A.A. 3, Board 4; Officials' Club 3, 4; Current Events Club 3.

"Mo" . . . athletic minded. . . heart of gold. . . 2nd floor food supply. . . likes to tease. . . doesn't mind waiting . . . car demon . . . devilish. . . great referee.

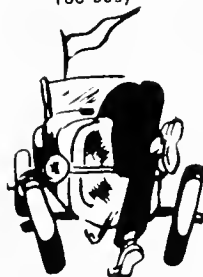


WILLIAM HENRY VOUGHT

"Happy is the man that findeth wisdom."

"Bill" . . . Seminary chauffeur . . . left us for Maryland University. . . starred in world lit. . . drives like a fiend . . . always helpful. . . likes to flirt. . . wants to hitch hike to the West Coast.

Too busy



no picture

# SENIOR STARS . . .

MOST LIKELY TO SUCCEED  
Shirley Shugart



MOST VERSATILE  
Anne Radford



MOST ATHLETIC  
Carol Dunbar

MOST MUSICAL  
Nancy Long



MOST ARTISTIC  
Judy Lockard

WITTIEST  
Lesley Stauffer



# SOPHOMORES



## CLASS OFFICERS

C. Gross, D. Foley, E. Powell, E. Sandlin



### DARLEEN FOLEY

President

"Knowledge is the only instrument of production that is not subject to diminishing returns."

Council Secretary 2; A.A. 1,2; Basketball Varsity 2; May Day 1; CASTELLAN Co-Art Editor 2; Samadra 1; Art Club 2.

"Dee". . .excellent student. . .always busy. . .sophisticated voice. . .devilish. . .art student. . ."Ya don't say". . .plans to return to S.M.S. next year.



ELINOR MARY POWELL

Vice President

"Everlasting giggle and a lovely face."  
A.A. 1,2; Choir 2; SIGNAL NEWS 2; French Club 1,  
2.

"Ellie". . . beautiful complexion. . . lively. . .  
constant giggle. . . whiz in all studies. . . "I'll be  
doggone". . . enjoys playing the piano.

ELIZABETH PLUMMER SANDLIN

Secretary

"A little consideration, a little thought for others  
makes all the difference."

A.A. 1,2; Choir 1,2; French Club 1,2; F.N.A. 1,2.

"Liz". . . very neat. . . attractive clothes. . . studious  
. . . will make a wonderful home economics teacher  
. . . helpful in the library. . . plans to return to S.M.S.  
next year.



CAROL FAE GROSS

Treasurer

"If hope, and truth and justice may avail--thou shalt  
be great!"

Choir 1,2; Pianist for Ensemble 2; SIGNAL NEWS 2;  
Art Club 2.

"C.F". . . the artist. . . Carol Fae's Calorie Store  
. . . Masseuse. . . ideal parents. . . friend to everyone  
. . . "Does anyone want a backrub?". . . distinctive  
giggle. . . sincere. . . willing worker.



JOAN LEE BOLLINGER

"One good hearty laugh is a bomb-shell exploding in the right place."  
A.A. 1,2; Choir 1,2.

"Joan" . . . vivacious . . . likes to talk . . . always ready to have a good time . . . pingpong fiend . . . "I got the bell bottom blues" . . . always seen in jeans.



BARBARA ELLIS BRICKLEY

"I was not born to be forced. I will breathe according to my own fashion."

A.A. 2; Hockey Varsity 2; Basketball Varsity 2.

"Brick" . . . "No foolin'?" . . . basketball whiz . . . blushes easily . . . naturally curly hair . . . not afraid to express an opinion . . . tall, dark, and attractive . . . loves to tease.



EMILY EVANS BRIMER

Sincerity and truth are the basis of every virtue."  
Class Secretary 1; Council 1; House Committee 2;  
A.A. 1, Board 2; Hockey Varsity 1,2; Basketball Varsity 2; Officials' Club 2; CASTELLAN Co-Photo Editor 2; Choir 2; French Club 1.

"Emmy" . . . hard worker . . . whiz on basketball court . . . Eastern 'Sho' . . . Jackie Gleason's music . . . "Tenderly" . . . collection of glasses . . . a sincere friend . . . loves to eat . . . "I'm SO tired!"



STARR CULVER

"I'll speak with a monstrous small voice."  
Council 1; A.A. 1, Sec'y 2; Basketball Varsity 1,2;  
Choir 1,2, Ensemble 1,2; CASTELLAN Co-Editor 2;  
SIGNAL NEWS 1; French Club 1, President 2; Samadra 1; May Princess 1.

"Starr" . . . Ocean City . . . bouncy walk . . . seen with Sis . . . stuffed animal zoo . . . journalism and musical interests . . . gullible--and how! . . . "Does anyone have a light!"





ROGINA FIFER

"Loads of fun and sweet as can be."  
Choir 2; F.N.A. 2; French Club 2.

"Rogina". . .gay. . ."Do I have to take that pill?"  
. . .devilish. . .storekeeper. . ."I like 'em tall!". . .  
always has a smile. . .Whatta laugh.

ANN STAMM FORSHEY

"A little man may cast a great shadow."  
French Club 2; SIGNAL NEWS 2.

"Ann". . ."Oh for Pete's sake. . .petite. . .that  
saxophone. . ."where's Rogina?". . .naturally straight  
hair. . ."Oh, I dunno". . .Mighty Mouse!. . .last  
minute dash for breakfast.



MARIA C. GUINOT

"A woman's love is strong and grows when it is  
waiting."

A.A. 2; Home Economics Club 2.

"Tita". . .curly hair 'n dimples. . .can't wait to  
get home. . .a store house of Latin rhythm. . .big  
smile for everyone. . ."All I do is dream."

BEVERLY BOYD HARRIS

"Mind cannot follow it, nor words express her infinite  
sweetness."

A.A. 2; Choir 2; Ensemble 2; SIGNAL NEWS 2;  
Samadra 2.

"Bevy". . ."You're so sweet". . .pleasant voice. . .  
knack for pen and wash. . ."I had such a good time"  
. . .Chattanooga!. . .men from every where. . ."may  
I borrow your mop?". . ."cry towel" on closet door.





MILDRED ANN HICKSON

"What you are to be, you are now becoming."  
A.A. 2; Choir 2; Ensemble 2.

"Millie". . .an eye for CHMA. . .Southern accent  
. . .cute impl. . .men, men, men. . .Jenny Lind of  
'55. . .very sincere. . .her own laugh. . .twinkling  
eyes. . .likes radio and poetry.



AGNES NADINE KETTEL

"Let's have an Utopia free from worry, free from care."  
Choir 1,2; French Club 2.

"Nadine". . .neat as a pin. . ."Morgan". . .loves  
to drive. . .records. . ."Why don't they do something  
about it?". . .opinionated. . .looks quiet, but looks  
can be deceiving.

ELIZABETH LOUISE MESSICK

"With malice toward none and charity toward all."  
A.A. 2; Choir 2; French Club 2.

"Betty Lou". . .friend to all. . .dependable...  
kitten voice. . .knitting. . .left us for "Dwight."



LINDA LOUISE MILLER

"The greatest people of all ages have been lovers of  
their kind."

House Committee 2; A.A. 1,2; Hockey Varsity 2;  
Officials' Club 2; F.N.A. 2.

"Linda". . .easy going disposition. . .records by  
the hundreds. . .Ocean City parties and vacations. . .  
"Eat, drink, and be merry, for tomorrow we diet!"  
. . .rough halfback. . .Baltimore keed.



PATRICIA ANN MURRAY  
"Paradise and the Eastern Shore are one."  
A.A. 1,2; Varsity Hockey 1,2; F.N.A. 1, President 2;  
French Club 1.

"Pat"...good natured...excellent nurse...keeper  
of the store...good athlete...dislikes grammar...  
wedding bells in near future.

CLAUDIA ANN NORWOOD  
"Good is good, but better carries it."  
Choir 2; French Club 1.

"Cleo"...earrings...Cleopatra's hair...quiet?  
...neat...beautiful sewing...Crisfield... "I'm on  
a diet"...Norwood, Powell, Sandlin, etc...likes to  
read.



SARA LORING SHOOK  
"Live, love, and learn, for who knows what tomorrow  
may bring."  
Class Treasurer 1; A.A. 1, Board 2; Officials' Club 1,  
President 2; Hockey Varsity 1,2; Basketball Varsity 2;  
SIGNAL NEWS 2; CASTELLAN 2; Choir 2; French Club  
1.

"Sally"...always laughing...forever in a dither  
...loves to dance...Navy Jr...sense of humor...  
likes sports...wants to teach school...partial to  
Midshipmen...plans to return to S.M.S.



LINDA MARY SHURE  
"Take love away from life and you take away its  
pleasures."  
A.A. 1,2; Choir 1,2; Samadra 1,2; French Club 1,2;  
Home Economics Club 1.

"Lyn"...a crush a minute...flirt...has a ser-  
ious side...more troubles...local phone calls...  
"Secret Love"...loves men.



MARIANNE ELIZABETH SLINGLUFF

"Variety is the spice of life."

Class Vice-Pres. 1; Council 2; House Committee 1; A.A. 1,2; Officials' Club 2; Choir 1,2, Ensemble 1,2; Samadra 2; French Club 1; F.N.A. 1,2; Current Events Club 1; CASTELLAN Co-Photo. Ed. 2; Orientation Comm. 2.

"Minnie". . .everyone's pal. . .listens to our troubles. . .natural curly hair. . .chatterbox. . .hates French. . .fresh air fiend. . .softball pitcher. . .will return next year.



JULIA BRETNEY SMITH

"Laugh and the world laughs with you."

A.A. 1, Board 2; Tennis Varsity 1; Choir 1,2.

"Julie". . .live wire. . .party girl. . .likes to talk . . ."sings". . .star tennis player. . .hep cheerleader . . .ping-pong demon. . .terrific jitterbugger.



JOHANNA SCHEHEREZADE STARKWEATHER

"Exemplifies the finest in loyalty, courage and true unselfish spirit."

A.A. 1, Board 2; Choir 1,2; Samadra 1; May Day.

"Jo". . .lovely auburn hair. . .our prim ballerina . . ."Starkie". . .infectious giggle. . .men from everywhere. . ."Do you play horse hockey?". . .an angelic look.



RUTH KATHYRN STRICKLAND

"Not by years, but by disposition is wisdom acquired."

Choir 2; F.N.A. 2.

"Kay". . .good taste. . .mature. . .loyal. . .even disposition. . .sews. . ."Has anyone seen my roommate?". . .future nurse. . .lots of fun. . .Duke in the future.





SARAH MARSHALL TALL

"Every cloud must have a silver lining."  
A.A. 2; Hockey Varsity 2; Choir 2; SIGNAL NEWS  
Feature Editor 2; CASTELLAN 2; Samadra 2; French  
Club 2.

"Sally" . . . beautiful hair . . . even disposition . . .  
good artist . . . enjoys writing stories . . . plays the piano  
. . . loves sailing . . . will return to S.M.S.



CAROLINE COOKMAN THOMSON

"Life is a dream sprinkled with men."  
A.A. 2; Hockey Varsity 2; May Queen 2.

"Tommie" . . . a "Crabtown" . . . many admirers  
. . . laughs at anyone's jokes . . . neat dresser . . . curly  
blond hair . . . third floor beautician . . . music--her  
favorite pastime.



JOANNE STAF TOTMAN

"Reason and calm judgment, the qualities belong-  
ing to a leader."

Class President 1; Honor Court 2; A.A. 1, Board 2;  
Hockey Varsity 1,2; Archery Varsity 1; Officials' Club  
1,2; Samadra 1; French Club 1; Current Events Club  
1.

"Jo" . . . short and cute . . . true friend . . . good  
organizer . . . "Are you serious?" . . . men by the dozens  
. . . "Wilhemina Tell" of '55 . . . impish smile.

# SOPHOMORE STARS . . .



**MOST VERSATILE**  
Joanne Totman



**MOST LIKELY TO SUCCEED**  
Darlene Foley



**MOST MUSICAL**  
Starr Culver



**MOST ATHLETIC**  
Sally Shook



**MOST ARTISTIC**  
Beverly Harris



**WITTIEST**  
Carol Thomson

J  
U  
N  
I  
O  
R  
S



Left to right: 1st row, McCall, Gettman, Phipps; 2nd row, Bartelmas, Morgan, Townsend, Rivenburg; 3rd row, Baynard, Holland, Neal, Dinkle, Dyer, Seifert; 4th row, Hall, Taylor, Smallwood, Allgood, Gary; (absent); Hunner, Blackwell, Harkness, Gillespie, Whittington.



OFFICERS



OFFICERS

Left to right: 1st row, Matthews, Warrington, Tooley; 2nd row, Likens, Reyer, Collins; 3rd row, Woodward, Shore, Duvall; 4th row, Eschenburg, Sutton, Mangone; 5th row, McMahan, Wait, Tooley, Carver, Scott.

FRESHMEN





## COUNCIL

1st row, M. Slingluff, F. Seifert, M. Slingluff, Miss Simms, A. Radford, P. Townsend. 2nd row, D. Foley, N. Long, J. Scott.



## HONOR COURT

Left to right: Miss Russell, J. Totman, M. Slingluff, B. Eschenburg, S. Shugart.

## HOUSE COMMITTEE

Seated: E. Brumer, N. Long, A. Radford, Miss Simms. Standing: Mrs. Court, L. Miller, P. Donaho, I. Mahman, J. Baynard.







## CASTELLAN

Seated left to right: S. Tall, J. Lockard, N. Long, S. Shugart, L. Mikesell, S. Culver, S. Shook, E. Brimer. Standing: D. Foley, P. Townsend, J. Jones, M. Slingsluff.

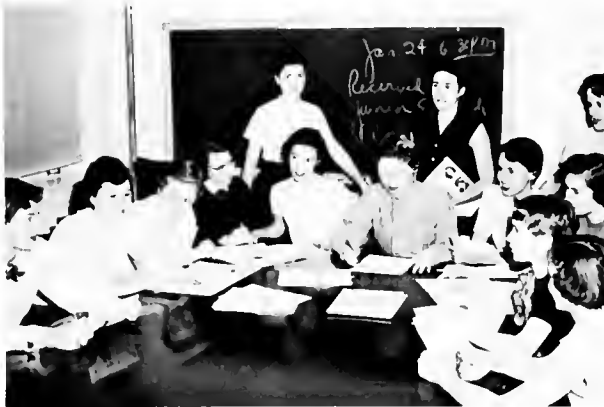


LARUE MIKESELL  
Editor

... PEEKING IN ON ...



STARR CULVER  
Co-Editor



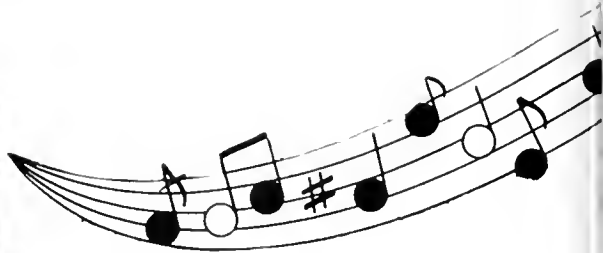
## SIGNAL NEWS

Seated left to right: S. Shook, J. Carver, A. Sutton, B. Neal, R. Dinkle, P. Townsend, E. Powell, C. Gross, A. Forshey, S. Shugart. Standing: L. Mikesell, S. Tall, B. Harris.

C  
H  
O  
I  
R



1st row: R. Fifer, S. Warrington, A. Mathews, B. Harris, S. Doyle, S. Culver, J. Smith, N. Kettell.  
 2nd row: C. Norwood, K. Strickland, R. Dinkle, L. Mikesell, K. Collins, R. Delawder, L. Shure, M. Hickson, P. Rivenburg.  
 3rd row: J. Scott, J. Duvall, B. Messick, M. Slingluff, E. Powell, B. Shore, C. Gross, J. Bollinger, M. Jacobs, J. Jones.  
 4th row: S. Shook, E. Brimer, P. Townsend, C. Wait, L. Stauffer, N. Long, J. Lockard, I. Mahman, B. Brickley, Y. Blackwell, J. Starkweather, P. Gettman, B. Neal.



Choir in TV camera on WBOC, Salisbury.



Choir presenting the best in music on tour of Eastern Shore. They ended with tired feet, but fond memories.



Ensemble taking a bow at evening performance.



## BELLES OF ST. MARY'S



Left to right: S. Culver, R. Dinkle, B. Harris, N. Long, M. Hickson, P. Townsend, L. Mikesell, M. Singluff, C. Gross.



## FRENCH CLUB

Seated: R. Fifer, A. Forshey, A. Matthews, L. Shure. Standing: K. Collins, S. Culver, N. Kettell, B. L. Messick, E. Powell, R. Delawder, K. Strickland, J. Carver, I. Mahman, J. Scott, M. Tooley. (absent: Sandlin, Holland, Tooley).



## ART CLUB

Left to right: K. Likens, P. Gettman, C. Gross, R. Delawder, A. Sutton, J. Lockard. (absent: Foley, Harris).

## FUTURE NURSES OF AMERICA

Left to right: P. Murray, Miss Chance, K. Strickland, S. Doyle, C. Tooley, L. Miller, M. Slingsluff, R. Fifer. (absent: Blackwell).



**HOME EC. CLUB**

Left to right: M. Font, J. Lockard, N. Long, R. Dinkle, M. Guinot, P. Gettman, G. McCall. Absent: Bloodsworth, Neal, Bartelmas.



**SAMADRA**

Left to right: M. Slingluff, B. Harris, A. Matthews, I. Mahman, L. Shure, S. Doyle. Absent: Seifert, Harkness, Smallwood, Blackwell.



**STANDING COMMITTEE CHAIRMEN**  
 SEATED; L. Miller, A. Radford, N. Long, L. Sandlin. STANDING: S. Hunner, M. Slinghuff, S. Doyle, J. Jones.



To SANDRA LEE WARRINGTON, whose loss was felt so deeply by her schoolmates, we dedicate this page of the CASTELLAN of 1955.

A friendship gone, but not erased.

# In Memoriam





All Association

## ATHLETIC ASSOCIATION



Officers and Adviser

Board

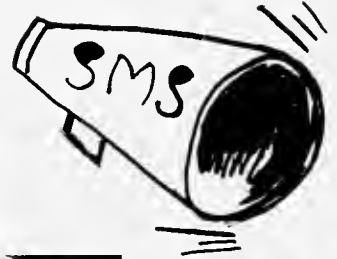




## OFFICIALS CLUB



1ST ROW: L. Miller, R. Fifer, Y. Blackwell, E. Brimer. 2ND ROW: M. Slingluff, J. Totman, S. Shook, F. Seifert. 3RD ROW: P. Murray, M. Wilson, P. Townsend, M. Tooley, A. Forshey.



## CHEERLEADERS



Anne, Janice and Julie kept the S.M.S. school spirit alive and cheered our teams on to victory.

# HOCKEY VARSITY



FRONT: J. Totman, P. Murray, C. Morgan. 2ND ROW: B. Eschenburg, E. Brimer, B. Brickley, L. Miller, S. Tall. 3RD ROW: S. Shook, C. Funkhouser, S. Hunner, C. Thomson, F. Seiffert.



Emmy dribbles the ball down the field.



Winky and Sis practice a bully while the team backs them.

## BASKETBALL VARSITY



KNEELING: F. Seifert, S. Culver, P. Chandler, S. Hunner, B. Eschenburg.  
STANDING: S. Shook, J. Duvall, T. Harkness, D. Foley, Mrs. Posch.



Dee tries to keep WAVES from scoring.



Faye and Emmy practice their passes while Barbara and Sally guard.

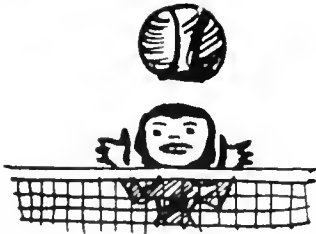


## INTRAMURAL CHAMPS

Junior Champs in volleyball. FRONT ROW, left to right: P. Gillespie, C. Morgan, F. Seifert, B. J. Whittington, J. Dyer. BACK ROW: C. Bartelmas, B. Neal, P. Gettman, P. Phipps, P. Townsend, Y. Blackwell, T. Harkness, P. Smallwood.



Faculty team gets spanked by the Junior champs, 30-21.



Juniors win again. Their dayhops Johnny and Henry were valuable assets in taking the championship.



## INTRAMURAL CHAMPS

Sophomore Champs in basketball. FRONT ROW, left to right: S. Tall, J. Smith, E. Brimer, B. Brickley, M. Slingluff, C. Thomson, K. Strickland. BACK ROW: R. Fifer, L. Miller, M. Hickson, S. Shook, P. Murray, E. Powell, D. Foley, J. Bollinger, A. Forshey.



It's a mad struggle as Starr and Toni go for the ball.

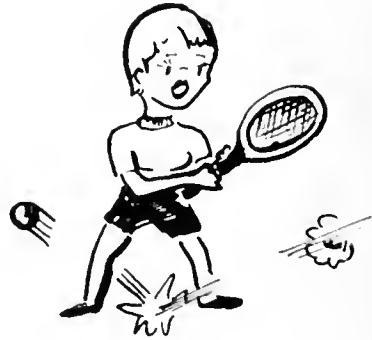


Janice tries her hand at the bat for the Freshmen.

## ARCHERY VARSITY



Left to right: F. Seifert, J. Totman, P. Townsend, P. Gillespie, M. Wilson, I. McMahan.



## TENNIS VARSITY

Left to right: J. Smith, M. Tooley, C. Tooley. Absent: S. Hunner.

## WATER SPORTS

Marilyn and Peggy prepare to leave for an afternoon of rowing.



With access to the St. Mary's River, the students spend many of their spring days swimming, as is displayed by Barbara, who has just come out of a swimming class.

## TOURNAMENT CHAMPS



Julie Smith, Sophomore  
Tennis Champ



Faye Seifert, Junior  
Archery Champ



Sis Hunner, Junior  
Ping Pong Champ



Sis Hunner, Junior  
Badminton Champ





# WILLIAMSBURG TOUR



The girls pose for a picture at the gate of the Governor's Palace.



A visit to the jail gave Jo and Joan an opportunity to experience the feeling of being in the stocks.

One of the dormitories on the campus of William and Mary College.



Anyone for refreshments?





**THE  
BIRTH**



**OF  
TOLERANCE**



# MUSIC AND MOODS



Queen of Hearts



Miss Russell crowns Queen Phyllis as members of the court share in the ceremony. Left to right: Janie Jones, senior; Beverly Harris, sophomore; Allen Wood, crown bearer; Miss Russell; Phyllis Gettman, junior; Janice Scott, freshman.





## MAY DAY

MAY COURT, SEATED: Barbara Jean Libbey, Frank Redmond, Queen Carol Thomson, Bonny Jean Libbey. Left to right: A. Radford, F. Seifert, D. Foley, N. Long, C. Dunbar, S. Shugart, B. Eschenburg.



## CORONATION

Mr. R. Bascom Broun, Jr. crowns Carol Queen of May.



## MODERN DANCE PROGRAM

The theme for this year's program was Greek mythology. This is the portrayal of the Three Graces and Venus.





WE'LL ALWAYS





REMEMBER . . .



DR. W. H. PATRICK  
School Physician



THEIR TIME WAS OUR TIME . . .



MRS. E. FAHL  
Pageant Director



MRS. K. CLARK  
Secretary to Mr. Tawney



MR. J. BROWN  
Cook



MR. J. REDMOND  
MR. T. WOOD  
Maintenance Supervisors

## THEY TOO ARE PART OF S.M.S. . . .



DAYHOPS Left to right: B. Fenwick, D. Dodson, H. Hall, M. L. Gray, D. Smith, J. Allgood.



Our dayhops were active participants both in class and out of class.





**A. A. BANQUET**



Cross country race was won this year by the Juniors. Here the girls start the first run to the oyster house.



Seniors top faculty in softball game to the tune of 13-10.

# CLASS DAY



"The Bells of St. Mary's---"



"I cap thee ---- incoming Senior."



Planting rose in Garden of Remembrance.



Looking toward the future, Katie changes the year to the new--1956.

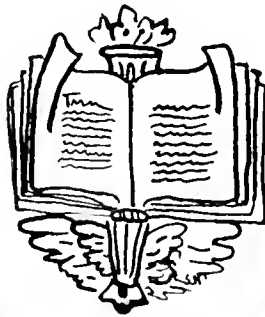


## GRADUATION

CLASSES OF '55 ARE AWARDED THEIR DIPLOMAS  
BY MISS RUSSELL & MR. R. B. BROUN, JR.



Guest Speaker  
Dr. Jesse P. Bogue



The Book of Time closes upon another successful year at S.M.S. as final words of farewell are spoken.

# OUTSTANDING STUDENTS RECEIVE AWARDS



B. Harris  
American Legion Medal



S. Shugart D. Foley  
First Honor Graduates



S. Tall  
Ark and Dove Award



S. Shugart  
President's Award



D. Foley M. Slingluff  
Good Citizenship Medal

# OUTSTANDING STUDENTS RECEIVE AWARDS



N. Long

H. Hall

J. Lockard

Prizes in fields of Music, Mathematics & Oil Paintings. N. Long also received Sarah Burch Palmer Award.



A. Matthews

Outstanding Achievement in Language



M. Slingluff

Outstanding Contribution to School Life & Morale



P. Gettman

Laura Langley Memorial Award in Art.



N. Kettell

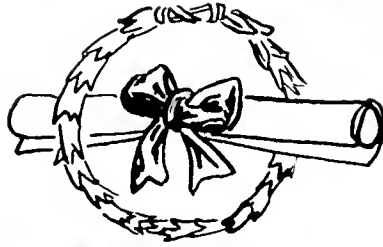
J. Lockard

Bauch and Lomb Science Award



# GRADUATES

SENIORS



SOPHOMORES





Dr. and Mrs. Woodrow C. Jacobs  
Mrs. Esta B. Mikesell  
Mr. and Mrs. Harold Slingluff  
Mr. and Mrs. duVal Radford  
Mr. and Mrs. W. Donald Long  
Mr. and Mrs. Stauffer  
Mr. and Mrs. L. R. Wilson  
Mr. and Mrs. Clarence Lackard  
Mrs. Gardner Shugart  
Capt. and Mrs. Dodson  
Mr. and Mrs. C. J. Bragg  
Mrs. Joseph W. Jones  
Mr. and Mrs. Luis Guinot  
Mr. and Mrs. Jack F. A. Culver, Jr.  
Mr. and Mrs. H. Earl Murray, Sr.  
Mr. and Mrs. Ralph G. Shure  
Mr. and Mrs. Charles A. Grass  
Mr. and Mrs. O. L. Tall  
Capt. and Mrs. L. O. Shaak  
Col. and Mrs. Sandlin  
Mr. and Mrs. Joseph E. Brimer  
Mr. and Mrs. G. Fred Miller  
Dr. and Mrs. J. S. Fifer  
Mr. and Mrs. Wm. O. Narwood, Jr.  
Mrs. Marcella Bollinger

Mr. and Mrs. Harry C. Starkweather  
Dr. and Mrs. E. W. Hickson  
Mr. and Mrs. N. K. Totman  
Mr. and Mrs. Ralph W. Kettell  
Mr. and Mrs. Earl J. Thomson  
Mr. Phillip E. Gray  
Mr. and Mrs. Keith Dyer  
Mr. and Mrs. Harry E. Neal  
Mr. and Mrs. Victor P. Gillespie  
Mr. and Mrs. Robert Harkness  
Mr. and Mrs. E. E. Phipps  
Mr. and Mrs. Everett C. Townsend  
Mrs. Elsie M. Wessel  
Mr. and Mrs. C. D. Bortelmes, Jr.  
Mrs. Margaret Holland  
Mr. and Mrs. George J. Gettman, Jr.  
Mr. and Mrs. J. E. Allgood  
Mr. and Mrs. L. E. Tooley  
Mrs. Edythe Davis  
Dr. and Mrs. Richard Eschenburg  
Mr. and Mrs. Floyd M. Carver  
Mr. and Mrs. Gilbert L. Collins  
Mr. and Mrs. George Wait  
Mrs. Herbert L. DeVries  
Mr. and Mrs. Archie Duvall

PHOTOGRAPHS BY



**HARRISON E. TAWNEY**

FLOWERS

**BOWLES FLORIST**

Leonardtawn, Md.  
Telephone  
Greenwood 52161

Member F.T.D.A.

Free Delivery

I am wishing the graduates of the classes of fifty-five a huge success in their future undertakings and I want it to be known that in the event assistance, in any matter, is needed in further education just call on

**Fred A. DeJagar**

# CATO'S TAXI

Radio Dispatched

Reliable 24 hour service

Phone Great Mills 21511

*Compliments  
of*

## **PARK PHARMACY**

**Your Rexall Store**

– Ray and Jack –

Lexington Park, Md.

G. M. 6161

**Thru These Portals Pass the Most  
Beautiful Girls in the World**

## **LEXINGTON PARK HOTEL, INC.**

Phone: Great Mills 2-1666

Lexington Park

Md.

**THE ENTERPRISE**

Newspaper and Printing Office  
in  
Lexington Park & Leonardtown

Great Mills 2-1011      Greenwood 5-2131

*"Be County Wise –  
Read the Enterprise."*

**Jack Daugherty's  
MERCHANDISE MART**

Furniture

Appliances

TV

GM 4451 - 7621

*The Temple of Beauty, Inc.*

*Creative Hair Stylist*  
DISTINCTIVE FOOTWEAR  
LADIES, MISSES AND CHILDREN

204 GREAT MILLS ROAD  
LEXINGTON PARK, MD

GREAT MILLS 4422

SMART WEAR

**HELEN RYSTICKEN**

Feminine Apparel – Accessories

Lexington Park

Md.

**SEIFERT'S  
JEWELERS**

LEXINGTON PARK

MD.

*"From a Friend"*

**SUNSET MANOR**

Cocktail Lounge  
& Restaurant

Lexington Park Hotel      Phone G.M. 22011

**JANICE**

Specialty Shop  
For Ladies' Apparel

Leonordtown

Md.

*Compliments  
of*

**THE HUB**

Lexington Park

**ASBURY'S FLOWERS**

Lexington Park

Maryland

COMPLETE FLORAL SERVICE

Phone: G. M. 24633 – Leon. 53131

Nite G. M. 27182

Member F.T.D.A.

Free Delivery

*Compliments  
of*

**STYLE CENTER**

It pays to be thrifty

Lexington Park

Maryland

**DAVIS PONTIAC**

Great Mills 2-4311

Lexington Park

Maryland

**JOY SHOP**

Lexington Park, Maryland  
Great Mills 5491

Infants' – Children's  
Wear

Toys

Yard Goods

*With Sincere Best Wishes*

*To The*

*Seniors and Sophomores*

*1955*

**BRENEGAN'S  
DRIVE-IN**

Lexington Park

Maryland

Great Mills 3911

– Orders to Go –

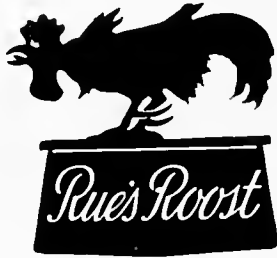
Edwards for the Children  
Fashion Craft in Dress & Sports  
for the Ladies

**CORNWELL'S  
of course**

*"The little shoe store in the country"*

Park Hall

Maryland



Lexington Park, Md.

## ESKRIDGE FORD INC.

FORD  
SALES AND SERVICE

Great Mills 3311  
Great Mills Road  
Lexington Park Md.

You help St. Mary's County enterprisers  
and famers when you buy

## LEONARDTOWN DAIRY

Milk

For home delivery call Greenwood 5-5151

COMPLIMENTS  
OF

## ST. MARY'S COUNTY MEMORIAL LIBRARY

Tudor Hall 1750  
Leonardtwn, Maryland  
Community Library Branch  
Lexington Park, Maryland

St. Mary's County  
Bookmobile



## **SPINNING WHEEL**

**Cocktail Lounge  
and Restaurant**

One Mile from Naval Air Station  
on Great Mills Road

Telephone: G.M. 3301

## **LEXINGTON PARK LAUNDRY**

Phone G.M. 140

**Professional  
Laundry Service**

E. G. Adcock, Prop.

## **W. C. MATTINGLY, SONS**

**FUNERAL DIRECTORS  
EMBALMERS**

**Funeral Home  
Oxygen Equipped Ambulance Service**

Joseph C. Mattingly, Owner  
Charles J. Mattingly  
W. Clarke Mattingly

Telephone GREENWOOD 5-6201

## **FENWICK MOTOR COMPANY**

**FORD  
Sales and Service**

Greenwood 5-5181  
Leonardtown

Maryland

1000 WATTS  
1370 ON YOUR DIAL

**WKIK**

Leonardtown Maryland  
*First in Southern Maryland*

**DUKE'S**

Restaurant – Fountain

Leonardtown Md.  
Phone: G.M. 5-2671

**HOLLYWOOD APPLIANCE SHOP**

Hollywood, Md.

**Appliance & T.V. Sales  
and Service**

G.M. 54121

**Cecil and Mattingly**

Phone Greenwood 5-5201

Meats – Groceries – Fruits  
Vegetables – Frozen Foods

Leonardtown Maryland

**FLORENCE'S  
DRESS SHOP**

Lexington Park Maryland

Great Mills 27111

**BLUM'S FURNITURE**

**Appliances, Housewares**

Owned and Operated  
by  
Sam Millison

**BILL CHAPMAN'S**

WESTERN  
AUTO  
ASSOCIATE  
STORE



Lexington Park, Md.  
Phone: G.M. 3303

*Compliments  
of*

**THE PARK MEN'S SHOP**

Lexington Park Maryland  
Next to Dietz Shoe Store

**MORGAN'S  
DEPARTMENT STORE**

Since 1884

**Shop and Save**

Leonardtown Maryland  
Phone: Greenwood 5-6101

**PUFFENBERGER'S  
RADIO SERVICE AND SUPPLY**

Records – Players – Needles  
Radio – TV Sales & Service

¼ mile from air station on Great Mills Rd.  
Phone – Great Mills 6333

**Leonardtown  
SELF-SERVICE STORE**

Washington Street  
Opposite Ben Franklin  
Greenwood 5-5351

*Just the best – try us by test*

Plumbing, Lighting, Heatin

**SMITH'S, INC.**

Phone Greenwood 52345  
Leonardtown Maryland



**KESSLER'S SERVICENTER**

Phone G.M. 4092 - 22517

**SALES - SERVICE**



Gas

Oil

General Repairs  
Goodyear Tires  
Body Work

**LEONARDTOWN  
LAUNDRY**

Cleaning – Pressing  
Laundry

Call  
Greenwood 5-6121 Great Mills 2-2411

**SEVEN GABLES HOTEL  
and  
COTTAGES**

Open Year Around  
Rooms - Meals  
Entertainment

Phone G.M. 30

R. H. Blackistone  
Owner - Manager

*Compliments  
of*

**The Baltimore Alumnae Chapter**



The

**DEITZ SHOE COMPANY**

Lexington Park, Md.



*Shoes of Quality  
For the Entire Family*

Phone: G.M. 5344

*BEST WISHES*

**LEXINGTON PARK  
VARIETY STORE**







