

The Commonwealth of Massachusetts

NEW BEDFORD TEXTILE
SCHOOL

CATALOGUE

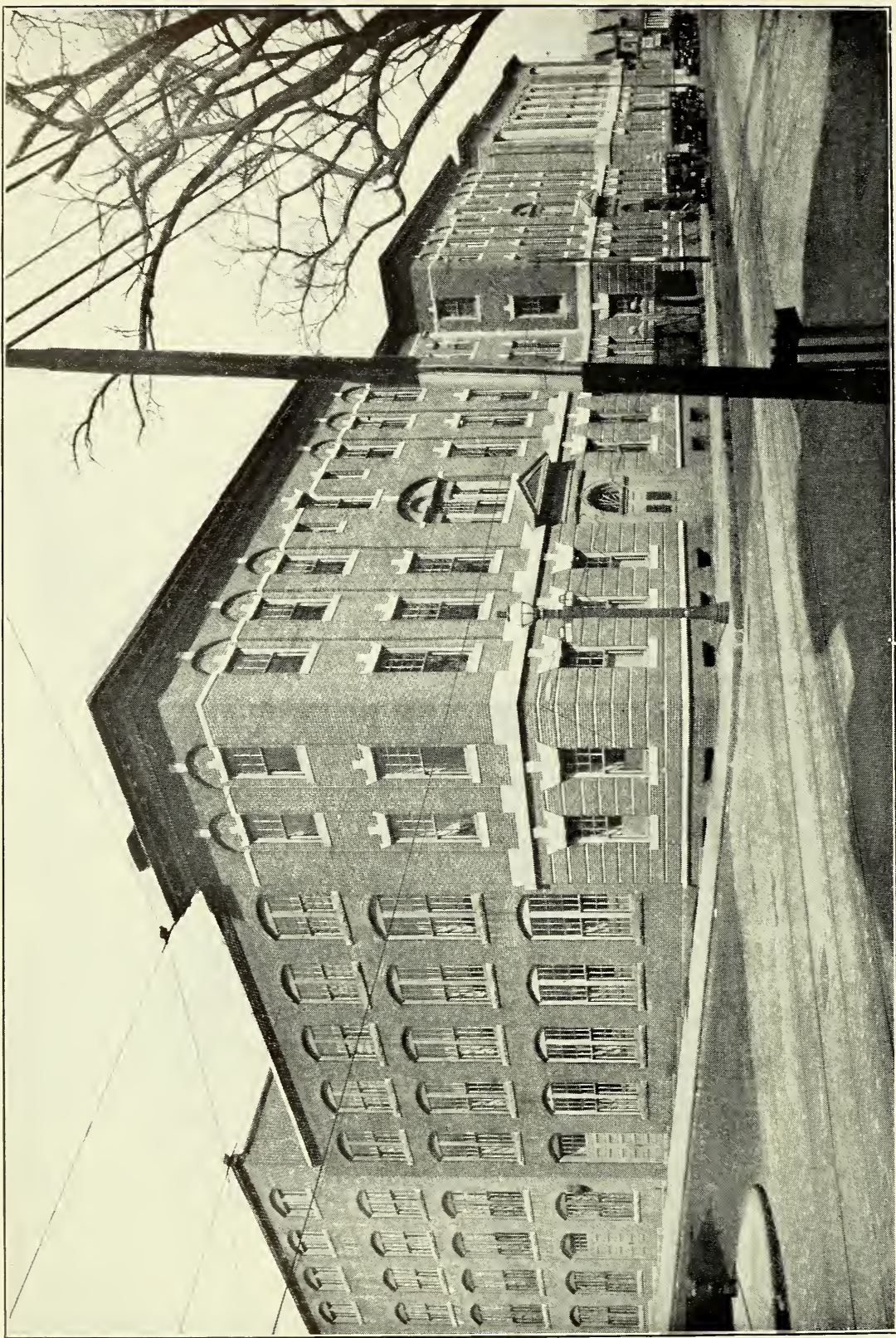
1936 1937

NEW BEDFORD, MASSACHUSETTS

1171-1219 PURCHASE STREET



Digitized by the Internet Archive
in 2012 with funding from
Boston Library Consortium Member Libraries



THE BOARD OF TRUSTEES

OFFICERS OF THE BOARD

JOHN T. KIRK, *President.*
GEORGE WALKER, *Clerk.*

TRUSTEES

Ex officio, HIS HONOR CHARLES S. ASHLEY, Mayor.
Ex officio, JAMES G. REARDON, Commissioner of Education.
Ex officio, ALLEN P. KEITH, Superintendent of Schools.

Term expires June 30, 1936

EARL R. W. BATES, Treasurer, Old Colony Silk Mills Corp.
CHARLES M. HOLMES, Director, Massachusetts Mutual Life Insurance Co.
JOHN T. KIRK, Agent, Nashawena Mills.
CHARLES F. PRIOR, Superintendent of Schools, Fairhaven.
JAMES O. THOMPSON, JR., Agent, New Bedford Mill Division, Hoosac Mills Corp.

Term expires June 30, 1937

JOHN J. BARNES, Fairhaven. General Superintendent, Richard Borden Mfg. Co., Fall River.
HON. SAMUEL ROSS, Secretary, Mule Spinners' Union.
JOHN A. SHEA, Taunton. Supt. of Rayon Dept., Mt. Hope Finishing Co., North Dighton.
GEORGE WALKER, Overseer, Spinning and Twisting, Nashawena Mills.
ELTON S. WILDE, President, Union Street Railway Co.

Term expires June 30, 1938

LOUIS A. CORDEIRO, Mortician, 71 Briggs St., New Bedford.
ADELARD J. LACHAPELLE, Designer, Neild Mfg. Co.
JOSEPH N. FINNI, D.M.D., 644 Kempton St., New Bedford.
EMIL F. SUCHNICKI, M.D., 494 Brock Ave., New Bedford.
JOHN N. O'BRIEN, Mattress Manufacturer, Comfortress Co.

ADMINISTRATION AND INSTRUCTION

ADMINISTRATION

JOHN T. KIRK, *President.*
JOSEPH H. HANDFORD, *Principal.*
MAUD L. CLARK, *Senior Bookkeeper.*
ELLEN BROADMEADOW, *Senior Clerk and Stenographer.*
BERNIECE WEEKS, *Junior Clerk.*

INSTRUCTION

Heads of Departments

THOMAS H. GOURLEY, *Carding and Spinning.*
WILLIAM ACOMB, *Warp Preparation and Weaving.*
SAMUEL HOLT, *Designing.*
JOHN L. FAWCETT, *Rayon and Knitting.*
FRED E. BUSBY, S.B., *Chemistry, Dyeing and Finishing.*
MORRIS H. CROMPTON, *Engineering and Mechanical Drafting.*

Instructors

EDWARD L. MURPHY, JR., *General.*
 MALCOLM H. RICHARDSON, *General.*
 FRED BEARDSWORTH, *Weaving and Designing.*
 JOHN E. FOSTER, B.S. in C.E., *Mechanical Department.*
 ADAM BAYREUTHER, *Machine Shop.*
 ABRAM BROOKS, FRANK L. D. WEYMOUTH, A.B., *Chemistry, Dyeing and Finishing*

The principal and heads of departments constitute the faculty of the school
 The day instructors serve both day and evening.

Assistant Evening Instructors

Carding and Spinning

PAUL GAY
 ISAIAH HADFIELD
 JAMES NISBET, JR.

Warp Preparation and Weaving

FRANCISCO D'O. ABREU	ISABEL C. MURPHY
THOMAS BULLEN	THOMAS PILKINGTON
CHRISTOPHER CHEETHAM	JAMES PLUMMER
JOHN E. COSGROVE	JOSEPH E. PAGEOTTE
OMER DUMAS	FRANK PRESTON
HERBERT FAWCETT	ANTONE RODIL
ABRAHAM JACKSON	ALBERT N. RUSHWORTH
HILDA M. KENWORTHY	RHODES SMITH
ALBERT LEACH	FREDERICK D. WALTON
HERBERT A. LINDBERG	ARTHUR B. WILKINSON
JOHN A. MELLOR	SAMUEL WOODRUFF
CARROLL C. MOORE	EDWARD WUNSCHER

Designing

JEAN C. UBERTI

Cost Finding

ARNOLD DEMORANVILLE

Rayon

HENRY G. CARSE
 MARY COSTA

Mechanical Drawing

HENRY C. NELSON

Machine Shop Practice

EARLE P. BOWEN
 LOUIS CULVER
 RALPH L. LYNAM
 BYRON M. PARDEE

Steam Engineering

CHARLES O. REDFIELD

Operation

CHARLES O. REDFIELD, *Engineer.*
 HAROLD COLLINS, ERNEST L. BARBER, *Steam Firemen.*
 SIDNEY McMULLEN, *Fireman-Janitor.*
 WALTER J. GAUTHIER, JAMES F. LOFTUS, GEORGE WOOD, *Janitors.*

CALENDAR

Day Classes

1936

June 3, Wednesday, 9 A.M.
 September 9, Wednesday, 9 A.M.
 September 14, Monday, 8.30 A.M.
 October 5-9, Monday-Friday
 October 12, Monday
 November 11, Wednesday
 November 25, Wednesday, 12 M.
 November 30, Monday, 8.30 A.M.
 December 18, Friday, 4 P.M.

First entrance examination.
 Second entrance examination.
 First semester begins.
 Class elections.
 Columbus Day—Holiday.
 Armistice Day—Holiday.
 Thanksgiving recess begins.
 Thanksgiving recess ends.
 Christmas recess begins.

1937

January 4, Monday, 8.30 A.M.
 January 25, Monday, 8.30 A.M.
 January 28, Thursday, 4 P.M.
 February 1, Monday, 8.30 A.M.
 February 22, Monday
 March 26, Friday, 4 P.M.
 April 5, Monday, 8.30 A.M.
 April 19, Monday
 May 31, Monday
 June 1-7, Tuesday—Monday
 June 7-11, Monday—Friday
 June 9, Wednesday, 9 A.M.
 June 11, Friday, 8 P.M.

Christmas recess ends.
 Mid-year examinations begin.
 Mid-year examinations end.
 Second semester begins.
 Washington's Birthday—Holiday.
 Spring recess begins.
 Spring recess ends.
 Patriots' Day—Holiday.
 Holiday—Observance of Memorial Day.
 Final examinations, senior class.
 Final examinations, other classes.
 Entrance examinations.
 Graduation exercises, school hall.

Evening Classes

1936

September 25, Friday, 7.30-9 P.M.
 September 28, Monday, 7.30 P.M.
 October 12, Monday
 November 11, Wednesday
 November 26-27, Thursday—Friday
 December 14-18, Monday—Friday
 December 18, Friday

Enrollment.
 First term begins.
 Columbus Day—Holiday.
 Armistice Day—Holiday.
 Thanksgiving recess.
 Examinations.
 First term ends.

1937

January 4, Monday, 7.15-9 P.M.
 January 4, Monday, 7.30 P.M.
 February 22, Monday
 March 26, Friday, 9.15 P.M.
 June 11, Friday, 8 P.M.

Enrollment, second term.
 Second term begins.
 Washington's Birthday—Holiday.
 Second term ends.
 Graduation exercises, school hall.

NEW BEDFORD TEXTILE SCHOOL

THE SCHOOL AND ITS PURPOSES

The Legislature of the Commonwealth of Massachusetts, in the act under which the Trustees of the New Bedford Textile School were incorporated, gives as the purpose of the incorporation that of establishing and maintaining a textile school for instruction in the theory and practical art of textiles and kindred branches of industry.

As New Bedford is primarily a cotton manufacturing city, this school confines itself principally to instruction in the cotton branch of the textile industry, and

seeks to perfect itself in this line. Its course of instruction is arranged to subserve the interests of two general classes of students: (1) day students,—those who give their whole time for two or three years to acquiring the theory as well as the practice of cotton manufacturing in all its details, from the raw cotton to the finished fabric, and also have instruction in the scientific principles which underlie the construction of the machinery and its operation, and the artistic principles which are involved in the production of desirable and ornamental fabrics; (2) evening students,—those who are employed in the mills during the day and who, by attending the Textile School evenings, are able to learn other phases of the industry from that in which they are employed, or to perfect themselves in their special lines of work, and become more efficient workmen. The courses of instruction for these two classes of students are given fully on other pages of this catalogue.

The whole of the machinery in the school is modern, being constructed especially for the school. It is all high grade, has latest improvements, and is especially built to afford facilities for all kinds of experimental work, and represents all the leading types of machines from the best builders in the United States, and several English builders.

There is no mill in which there is so large a variety of machinery as in the New Bedford Textile School. This consequently affords the student a better opportunity to become acquainted with various machines and methods than could be found in any one manufacturing establishment.

Each instructor in the day school is a man who is thoroughly conversant with the work of the department under his charge by thorough training and long experience. Each one has charge of the work in his department at night also, assisted by experienced assistants from the mills, many of whom are graduates of this school.

The school went into operation in the fall of 1899, and the first class was graduated in 1900. The regular courses were one year in length for the first few years, but were afterwards increased to three years. Special shorter courses are given, however, for which certificates are granted.

For nineteen years the school was a semi-private institution, but supported by appropriations made each year by the State and by the city of New Bedford. It was managed by a Board of Trustees, two appointed by the Governor of the Commonwealth, two representing the city (the mayor and the superintendent of schools; *ex officio*), and twenty organized under the general statute by which the school was founded, a perpetual body, with power to fill vacancies other than the four created for and representing the Commonwealth and city.

On July 1, 1918, it became a State institution by an act amending the State Constitution. It is still maintained with appropriations made by the State and city.

It is managed by a Board of Trustees consisting of eighteen members, the Commissioner of Education, *ex officio*, fifteen appointed by the Governor of the Commonwealth, and two, the Mayor and the Superintendent of Schools, *ex officio*, representing the city. Most of the trustees are men who either are or have been connected actively with the manufacture of cotton textiles.

The number of individual students attending the school since its opening is 14,819, the number graduated 4,542. Many evening students who attend regularly do not take the examinations, and therefore do not appear as graduates, though they may have a good record as students, especially in practice. This shrinking from examinations is natural, for many of them have little or no command of English, or are not accustomed to examinations.

A large number of those who do not appear as graduates, however, are benefited by the instruction given in the school, and have acquired a knowledge and skill that have enabled them to rise in the industry and improve their financial and social condition.

THE LOCATION OF THE SCHOOL

The school is situated in the center of the city of New Bedford, Mass., on the main car line of the city, which connects with the mill districts, and is readily accessible to mill operatives who attend the evening sessions of the school. It is near

the residential part of the city, and is therefore conveniently situated for non-resident pupils who take up a temporary residence in the city.

New Bedford is an especially suitable location for an institution of this character. It is the largest cotton manufacturing city of fine yarns and fancy woven fabrics and novelties in the country. Its spindles number 2,002,906; and looms, 42,877.

High grade combed yarns are produced in New Bedford to a greater extent than in any other city, while the mills are engaged in the manufacture of fine shirtings, muslins, lawns, sateens, lenos, checks, piqués, marquissettes and other fancy fabrics to an extent unknown elsewhere. New Bedford's great advantage in this respect can be attributed principally to the fact that her mills are nearly all of recent construction, with the most improved and up-to-date equipment. The environment of these mills is in itself a benefit to the students who select the New Bedford Textile School as the institution in which to learn the mill business, as they have opportunity to observe their construction and operation, and to find employment in them during the long summer vacations and upon finishing their course in the school.

New Bedford is within short distance of Hopedale, Whitinsville, Hyde Park, Providence, Pawtucket, Woonsocket, Taunton and other large cotton machinery centers. It is one of the healthiest of the manufacturing cities in the United States. Picturesquely situated on the extreme south shore of Massachusetts, it enjoys one of the mildest winter climates in New England, and thus offers peculiar residential advantages for non-resident students.

THE BUILDINGS

The school is housed in two separate buildings connected by a tunnel in the basement and by covered bridges overhead. They are constructed of red brick with trimmings of Indiana sandstone. They are classified as the machinery building and the recitation building.

The first now comprises the original building, erected in 1898-99, and the first two additions erected in the years 1901-02 and 1905, respectively, and the latest addition 1922 and 1923. This building is 164 feet in length, with an average depth of 112 feet. It is three stories high, with basement under most of it, and contains a floor space of 59,600 square feet. In it are situated the administration offices, the power house and all the departments comprised in a cotton yarn and cotton cloth mill. In addition, it has two large thoroughly equipped rooms for instruction in the art of knitting, both for hosiery and underwear, and a gymnasium.

The recitation building was completed and occupied in the fall of 1911. It consists of a main building 108 by 93 feet 6 inches, three stories high, with a deep well-lighted basement under the whole of it, and contains 40,392 square feet of floor space. It also has an annex 68 feet 3 inches long by 19 feet 3 inches deep, one story high, with basement, and contains 2,634 square feet of floor space. This annex is used as an experimental laboratory and as a storeroom for chemical supplies.

The main building, besides being equipped with recitation and lecture rooms of various sizes, has a thoroughly equipped chemical laboratory, dyeing and finishing rooms, engineering laboratories, a commodious machine shop, drafting rooms, a designing room especially fitted, an exhibition room, and an assembly hall that will seat 400 persons.

Both structures are of the slow-burning mill construction type, approved by the leading fire insurance associations and mill engineers, while the general equipment of the plant is also illustrative of the best methods of lighting, heating, ventilating, humidifying and fire-protecting mills. Great attention has been paid to the planning and arranging of these buildings for the school, to make them suitable for the purposes of imparting textile instruction, and in order that the machinery building should give an object lesson in cotton mill engineering.

Power and light are purchased from the local electric power company, and the school supplies its own heat and the steam needed in its finishing plant. The fire protection was designed and installed by the General Fire Extinguisher Company of Providence, R. I., the well-known Grinnell Sprinkler being used. The American Moistening Company, the Bahnson Humidifier Company and the Parks-Cramer Company have installed complete humidifying apparatus. The whole equipment is approved by the Massachusetts State inspectors of public buildings.

DAY CLASSES

The regular day diploma courses of the school are as follows:—

General Cotton Manufacturing.
Chemistry, Dyeing and Finishing.
Designing.
Carding and Spinning.
Knit Goods Manufacturing.

All the above courses are diploma courses, three years long, and are intended to qualify students to hold positions of responsibility in textile manufacturing and allied establishments.

The advantages of these courses to qualify men to hold responsible positions in cotton mills, dyeing and finishing plants, commission houses, etc., are many.

It is not expected that a young man going from this school will at once secure an executive position. It is expected, on the contrary, that he will begin in a more humble fashion, that with the knowledge acquired in the school and the experience gained in the mill itself he will be qualified to hold higher positions, and that his advancement will be much more rapid and his knowledge broader than one who has not had the school instruction and training. That such is the case is shown already by the positions now held by the graduates of the school.

Many of them are occupying positions of trust and responsibility in the textile and allied industries as manufacturers, treasurers, agents, superintendents, assistant superintendents, designers in mills and commission houses, overseers, chemists and dyers, etc. Some have been called to good positions as designers directly from the school, and many who have attended the evening classes have so improved in skill and knowledge that they have advanced in position and earning power.

That the work of the school is recognized by textile manufacturers and those engaged in allied industries is attested by the fact that applications are constant for men of the school—more than can be supplied.

But this school does not agree to make successful men out of lazy, careless and indifferent boys, nor does it care for such boys as students. But for those who wish to learn, who are ready to work, who are willing to bide their time, it does offer an opportunity that will supply them with an honorable vocation, with many opportunities for advancement in the world, with good remuneration.

In case a prospective student feels that no one of the diploma courses meets his particular needs, he is requested to communicate with the Principal, stating his wishes. Whenever possible, special courses will be given in the various departments, for which certificates will be granted, stating the subjects taken and the time given to them. The limitations of these special courses will be determined in every case by the management.

General Cotton Manufacturing Course (I)

FIRST YEAR

First Term
Pickers and Cards 101 (6 hrs.)
Weaving 111 (6½ hrs.)
Cloth Analysis 121, 151 (3 hrs.)
Designing 131 (1½ hrs.)
Hand Loom 161 (1½ hrs.)
Principles of Mechanics 171 (1 hr.)
Mechanical Drawing 172 (3½ hrs.)
Slide Rule 170 (1 hr.)
Chemistry 182 (7 hrs.)
Yarn Calculations 121 (1½ hrs.)

Second Term
Cards and Drawing Frames 102 (6½ hrs.)
Weaving 112 (6½ hrs.)
Warp Preparation 122 (3½ hrs.)
Designing 132 (1½ hrs.)
Cloth Analysis 152 (3 hrs.)
Hand Loom 161 (1½ hrs.)
Mechanical Drawing 172 (3½ hrs.)
Textile Chemistry and Dyeing 222 (6½ hrs.)

SECOND YEAR

*First Term**Second Term*

Roving and Spinning Frames 103 (8 hrs.).
 Weaving 113 (3 hrs.).
 Designing 133 (3½ hrs.).
 Cloth Analysis 153 (3½ hrs.).
 Machine Drawing 173, 175 (2 hrs.).
 Machine-shop Practice 174 (3½ hrs.).
 Steam Engineering 176 (1 hr.).
 Dyeing 223 (5 hrs.).
 Rayon Testing 297 (3 hrs.).

Advanced Calculations and Cotton Yarn Preparation 104, 106 (5 hrs.).
 Cotton Sampling 107 (1½ hrs.).
 Weaving 114 (5 hrs.).
 Designing 134 (3 hrs.).
 Cloth Analysis 154 (3½ hrs.).
 Machine-shop Practice 174 (3½ hrs.).
 Machine Drawing 175 (2 hrs.).
 Steam Engineering 176 (1 hr.).
 Textile Chemistry 234 (6½ hrs.).
 Testing 295 (1½ hr.).

THIRD YEAR

*First Term**Second Term*

Combing and Twisting 103, 105 (6½ hrs.).
 Weaving 115 (6 hrs.).
 Designing 135 (3½ hrs.).
 Color 145 (2 hrs.).
 Cloth Analysis 155 (1½ hrs.).
 Machine-shop Practice 174 (3½ hrs.).
 Elementary Electricity 177 (2 hrs.).
 Knitting 294 (2 hrs.).
 Rayon Processing 296 (3 hrs.).
 Merchandising 108 (1 hr.).
 Economics 109 (1½ hrs.).

Carding and Spinning Thesis 106 (8 hrs.).
 Weaving 116, 117 (6½ hrs.).
 Designing 136 (3½ hrs.).
 Color 146 (2 hrs.).
 Cloth Analysis 156 (3 hrs.).
 Mill Engineering 178 (3 hrs.).
 Converting 235-260 (1½ hrs.).
 Rayon Processing 296 (2 hrs.).
 Merchandising 108 (1½ hrs.).
 Economics 109 (1½ hrs.).

General Cotton Manufacturing Course

The course in cotton manufacturing is designed to give the student a thorough fundamental knowledge of the different processes entering into the construction of a piece of cloth from the raw staple to the finished product.

During the first year the student takes up the study of yarn preparation, weaving, designing and cloth analysis. The study of mechanics, mechanical drawing and chemistry is also pursued the first year, the work in these subjects being designed especially for men who are to take up the cotton mill work. Instruction in yarn calculations, spooling, warping, and slashing is also offered during the first year.

In the second and third years sufficient time is given to instruction in picking, carding and spinning, while the subjects of weaving, designing and analysis are continued. Practical work in the machine shop is entered upon the second year.

Dyeing is begun the first year, the work being such as is of special interest to the student of cotton manufacturing. The student is also given instruction in steam engineering during the second year, while in the third year, work in elementary electricity and cotton mill construction is offered. Knitting and color are also given in the third year. Rayon is taken up in the second year and continued in the third year.

The work in all subjects is so arranged that the student is taken gradually from the simpler to the more difficult problems. Much of the work in the last year is original, and the student is thrown on his own resources.

The work in chemistry, dyeing, mechanics and shop practice is all arranged with special reference to the student of cotton manufacturing.

This course is very thorough, and is always recommended to the student who is to make cotton cloth manufacturing his future work.

Designing Course (II)

FIRST YEAR

<i>First Term</i>	<i>Second Term</i>
Pickers and Cards 101 (3 hrs.).	Cards and Drawing Frames 102 (3½ hrs.).
Weaving 111 (6½ hrs.).	Weaving 112 (6½ hrs.).
Cloth Analysis 121, 151 (3 hrs.).	Warp Preparation 122 (3½ hrs.).
Designing 131 (4½ hrs.).	Designing 132 (4½ hrs.).
Hand Loom 161 (1½ hrs.).	Cloth Analysis 152 (3 hrs.).
Principles of Mechanics 171 (1 hr.).	Hand Loom 161 (1½ hrs.).
Slide Rule 170 (1 hr.).	Mechanical Drawing 172 (3½ hrs.).
Mechanical Drawing 172 (3½ hrs.).	Chemistry and Dyeing 222 (6½ hrs.).
Yarn Calculations 121 (1½ hrs.).	
Chemistry 182 (7 hrs.).	

SECOND YEAR

<i>First Term</i>	<i>Second Term</i>
Weaving 113, 114 (6½ hrs.).	Advanced Calculations and Cotton Yarn Preparation 104, 106 (2 hrs.).
Designing 133 (3½ hrs.).	Cotton Sampling 107 (1½ hrs.).
Color 145 (2 hrs.).	Weaving 115 (8 hrs.).
Cloth Analysis 153, 154 (8 hrs.).	Designing 134 (3 hrs.).
Rayon Testing 297 (3 hrs.).	Color 146 (2 hrs.).
Machine Drawing 173, 175 (2 hrs.).	Cloth Analysis 155 (5 hrs.).
Machine-shop Practice 174 (3½ hrs.).	Machine-shop Practice 174 (3½ hrs.).
Steam Engineering 176 (1 hr.).	Machine Drawing 175 (2 hrs.).
Dyeing 223 (3 hrs.).	Steam Engineering 176 (1 hr.).
	Textile Chemistry 222 (3 hrs.).
	Testing 295 (1½ hrs.).

THIRD YEAR

<i>First Term</i>	<i>Second Term</i>
Roving and Spinning Frames 103 (3½ hrs.).	Weaving 116 (6½ hrs.).
Weaving 116 (6 hrs.).	Cost Finding 179 (2 hrs.).
Jacquard Designing 135 (6½ hrs.).	Jacquard Designing 136 (8 hrs.).
Cloth Analysis 156 (4½ hrs.).	Cloth Analysis 156 (5 hrs.).
Knitting 294 (2 hrs.).	Commission House Work 157 (2 hrs.).
Color 146 (2 hrs.).	Styling 158 (1½ hrs.).
Machine-shop Practice 174 (3½ hrs.).	Converting 235 (1½ hrs.).
Elementary Electricity 177 (2 hrs.).	Mill Engineering 178 (3 hrs.).
Merchandising 108 (1 hr.).	Merchandising 108 (1½ hrs.).
Economics 109 (1½ hrs.).	Economics 109 (1½ hrs.).

Designing Course

Designing is a branch of textile manufacturing of sufficient importance to call for a separate diploma course, extending over three school years. Since the major subjects in this course are confined to designing, cloth analysis and weaving, the work is somewhat more intensive than in the general course.

The student, during the first year, takes up the study of the plain loom, the more simple designs and the analysis of such fabrics as contain designs similar to those being studied in the designing lessons.

Instruction the first year is also offered in the preparation of warps for the loom, while work in the mechanical department is entered upon the first year, and extends through all three years of the course.

Instruction in the mechanical department is considered essential to the student of designing, as many of the new fabrics brought out by designers from year to year are based as much upon the mechanism of the loom as upon pure design.

During the second year more advanced fabrics, such as double cloths, Bedford cords, piqués and lenos, are studied, both in designing and analysis, while much of the work in the weave room consists of putting original designs into the looms and weaving a short length of each.

Commencing with the first term of the second year, a practical course in color is offered the student, who is required to work out a series of color scales and apply them in coloring designs.

In the second term of this year cotton sampling is introduced.

The third year is largely devoted to the subject of Jacquard designing in both the designing and weaving departments. During this year the subject of commission house work, as it applies to the styling and finishing of new fabrics, is dealt with, and the student is given a close insight into the requirements of this branch of designing.

For the student who wishes to perfect himself in the subject of cloth designing, as applied to the cotton trade, this course will be found very complete.

Chemistry, Dyeing and Finishing Course (III)

FIRST YEAR

First Term

Principles of Mechanics 171 (1 hr.).
 Mechanical Drawing 172 ($4\frac{1}{2}$ hrs.).
 General Chemistry 181 ($12\frac{1}{2}$ hrs.).
 Inorganic Preparations 183 (10 hrs.).
 Designing and Cloth Analysis 131 ($3\frac{1}{2}$ hrs.).
 Slide Rule 170 (1 hr.).

Second Term

Mechanical Drawing 172 ($3\frac{1}{2}$ hrs.).
 Machine-shop Practice 174 (3 hrs.).
 Qualitative Analysis 191, 192 (13 hrs.).
 Organic Chemistry 212 ($6\frac{1}{2}$ hrs.).
 Textile Chemistry and Dyeing 222 ($6\frac{1}{2}$ hrs.).

SECOND YEAR

First Term

Color 145 (2 hrs.).
 Machine Drawing 173, 175 (2 hrs.).
 Machine-shop Practice 174 (3 hrs.).
 Steam Engineering 176 (1 hr.).
 Quantitative Analysis 202 ($11\frac{1}{2}$ hrs.).
 Organic Chemistry 213 ($6\frac{1}{2}$ hrs.).
 Dyeing 223 ($6\frac{1}{2}$ hrs.).

Second Term

Color 146 (2 hrs.).
 Machine-shop Practice 174 (3 hrs.).
 Machine Drawing 175 (2 hrs.).
 Steam Engineering 176 (1 hr.).
 Dyeing 224 (10 hrs.).
 Textile Chemistry 233 (3 hrs.).
 Cotton Sampling 107 (2 hrs.).
 Cotton Manufacturing and Testing 230 and 295 ($1\frac{1}{2}$ hrs.).
 Quantitative Analysis 203 (8 hrs.).

THIRD YEAR

First Term

Machine Shop 174 (3 hrs.).
 Elementary Electricity 177 (2 hrs.).
 Dyeing 225 ($6\frac{1}{2}$ hrs.).
 Singeing 240 (1 hr.).
 Scouring 241 ($3\frac{1}{2}$ hrs.).
 Bleaching 242 (3 hrs.).
 Mercerizing 245 (1 hr.).
 Textile Chemistry 234 (10 hrs.).
 Merchandising 108 (1 hr.).
 Economics 109 ($1\frac{1}{2}$ hrs.).

Second Term

Drying 250 (4 hrs.).
 Calendering 255 (4 hrs.).
 Putting up 260 (2 hrs.).
 Thesis 269 (13 hrs.).
 Textile Chemistry 234 ($6\frac{1}{2}$ hrs.).
 Merchandising 108 ($1\frac{1}{2}$ hrs.).
 Economics 109 ($1\frac{1}{2}$ hrs.).

Chemistry, Dyeing and Finishing Course

The object of this course is to give to the student a thorough knowledge of the chemistry of the textile processes involved in the manufacture of cotton cloth. To insure a perfect foundation, the first two years are devoted almost entirely to

chemical subjects and laboratory work. During this period the subjects of general chemistry, inorganic and organic, are taught, the preparation and properties of various chemicals and dyestuffs, the properties of the various fibers, and the coloring of them.

The third year is devoted almost entirely to the practical dyeing and finishing of cotton goods. The best current practice is followed, but the underlying principles are thoroughly taught in order that the student may understand the limitations and purpose of each process.

The subjects of machine drawing, principles of mechanics, electricity and shop work are taught. These allied subjects are arranged with special reference to the major subjects, and are considered very important, as they give the student a first-hand knowledge of the construction of the various machines.

The graduates of this course find employment with dyestuff makers and dealers, with manufacturers of chemicals used in dyeing, with bleacheries, dye houses and finishing works.

It is desirable that students entering this course shall have successfully completed a scientific course in high school or its equivalent. Any one, however, who can show by examination his ability to profit by the instruction given is admitted.

Knit Goods Manufacturing Course (IV)

FIRST YEAR

<i>First Term</i>	<i>Second Term</i>
Pickers and Cards 101 (6 hrs.).	Cards and Draw Frames 102 (6½ hrs.).
Principles of Mechanics 171 (1 hr.).	Mechanical Drawing 172 (3½ hrs.).
Mechanical Drawing 172 (4½ hrs.).	Machine-shop Practice 174 (3 hrs.).
Chemistry 182 (7 hrs.).	Textile Chemistry and Dyeing 222 (6½ hrs.).
Knitting 271, 281 (12½ hrs.).	Knitting 271, 281 (13 hrs.).
Yarn Calculations 121 (1½ hrs.).	

SECOND YEAR

<i>First Term</i>	<i>Second Term</i>
Roving and Spinning Frames 103 (8 hrs.).	Doubling and Drafting 104 (5 hrs.).
Machine Drawing 173, 175 (2 hrs.).	Cotton Sampling 107 (1½ hrs.).
Machine-shop Practice 174 (3½ hrs.).	Machine-shop Practice 174 (3½ hrs.).
Steam Engineering 176 (1 hr.).	Machine Drawing 175 (2 hrs.).
Dyeing 223 (6 hrs.).	Steam Engineering 176 (1 hr.).
Knitting 272, 282 (12 hrs.).	Textile Chemistry 234 (6½ hrs.).
	Knitting 273, 283 (11½ hrs.).
	Testing 295 (1½ hrs.).

THIRD YEAR

<i>First Term</i>	<i>Second Term</i>
Machine-shop Practice 174 (3½ hrs.).	Mill Engineering 178 (3 hrs.).
Elementary Electricity 177 (2 hrs.).	Dyeing 226 (3½ hrs.).
Dyeing 226 (3½ hrs.).	Knitting 274, 284, 293 (18 hrs.).
Knitting 274, 284, 293 (19½ hrs.).	Color 146 (2 hrs.).
Color 146 (2 hrs.).	Microscopic Work 298 (6 hrs.).
Microscopic Work 298 (2 hrs.).	

Knit Goods Manufacturing Course

This course in manufacturing knit goods is adapted to the needs of those students desiring a thorough knowledge of the knitting industry.

The instruction given covers both the technical and practical parts of the business, including cost finding.

During the first year the student takes up the winding and preparation of cotton, lisle, wool, worsted and silk yarns for use on hosiery machines; also the principle of circular latch-needle knitting, and the setting and adjusting of different makes of rib-leg and rib-top machines.

In the second and third year the time is given up to the study of the different knitting machines, knitting men's, ladies', children's and infants' hose and garments; method of handling and keeping account of goods through the mill; cost of manufacturing from yarn to the box.

Instruction is also given in cotton yarn preparation, yarn calculations, cotton sampling, mechanics, steam engineering, chemistry and dyeing, the work in these different subjects being arranged to meet the special needs of the student.

The Knit Underwear Manufacturing Course (V) which was offered in previous years is being combined, in 1935, with the Knit Goods Manufacturing Course.

Carding and Spinning Course (VI)

FIRST YEAR

First Term

Picking, Carding, Roving 300 (11½ hrs.).
Mechanical Drawing 172 (3 hrs.).
Chemistry 182 (6½ hrs.).
Knitting 301 (4½ hrs.).
Yarn Calculations 121 (1½ hrs.).
Principles of Mechanics 171 (1 hr.).
Slide Rule 170 (1 hr.).
Designing and Cloth Analysis 131 (3½ hrs.).

Second Term

Drawing, Spinning, Doubling and Drafting 302 (13½ hrs.).
Cloth Analysis 152 (3 hrs.).
Machine-shop Practice 174 (3 hrs.).
Mechanical Drawing 172 (3 hrs.).
Textile Chemistry and Dyeing 222 (6½ hrs.).
Knitting 301 (3½ hrs.).

SECOND YEAR

First Term

Combing and Twisting 303, 304 (10 hrs.).
Cloth Analysis 153, 154 (3½ hrs.).
Knitting 301 (3½ hrs.).
Rayon Processing 296 (3½ hrs.).
Dyeing 223 (6½ hrs.).
Machine Drawing 173-175 (2 hrs.).
Machine-shop Practice 174 (3 hrs.).
Steam Engineering 176 (1 hr.).

Second Term

Spinning, Twisting and Cotton Classing 304 (9 hrs.).
Cloth Analysis 155 (3½ hrs.).
Knitting 301 (3½ hrs.).
Testing 295 (4 hrs.).
Textile Chemistry 234 (6½ hrs.).
Machine Drawing 175 (2 hrs.).
Machine-shop Practice 174 (3 hrs.).
Steam Engineering 176 (1 hr.).

THIRD YEAR

First Term

General Test Work and Roll Covering 305 (19½ hrs.).
Designing 131 (1½ hrs.).
Knitting 301 (3½ hrs.).
Rayon Processing 296 (3 hrs.).
Elementary Electricity 177 (2 hrs.).
Machine-shop Practice 174 (3 hrs.).

Second Term

Yarn Testing and Comber Renedding 306 (19½ hrs.).
Knitting 301 (6½ hrs.).
Rayon Processing 296 (2 hrs.).
Mill Engineering 178 (3 hrs.).
Cost Finding 179 (1½ hrs.).

Carding and Spinning Course

The course in carding and spinning is designed to give the student a thorough knowledge of cotton yarn manufacture.

The larger part of the students' time is devoted to instruction on the different machines used in the preparation of cotton yarn.

Instruction is also given in knitting, mechanics, steam engineering, chemistry and dyeing. Considerable time is given to knitting, as that industry is closely related to cotton yarn manufacture.

This course is recommended to those students who intend to become connected with cotton yarn mills or to become cotton yarn salesmen.

Secretarial Course (VII)**FIRST YEAR***First Term*

Cotton Yarn Preparation (3 hrs.).
 Weaving (6½ hrs.).
 Cloth Analysis (10 hrs.).
 Yarn Calculations (1½ hrs.).
 Designing (4½ hrs.).
 Hand Loom (1½ hrs.).
 Office Practice (4½ hrs.).
 Slide Rule 170 (1 hr.).

Second Term

Cotton Yarn Preparation (5½ hrs.).
 Cotton Sampling (1½ hrs.).
 Weaving (6½ hrs.).
 Cloth Analysis (3 hrs.).
 Designing (6 hrs.).
 Hand Loom (1½ hrs.).
 Knitting (2 hrs.).
 Office Practice (3½ hrs.).
 Business Correspondence (1½ hrs.).
 Testing (1½ hrs.).

SECOND YEAR*First Term*

Cotton Yarn Preparation (6½ hrs.).
 Weaving (3 hrs.).
 Designing (7 hrs.).
 Cloth Analysis (5 hrs.).
 Color (2 hrs.).
 Knitting and Testing (5½ hrs.).
 Office Practice (3½ hrs.).

Second Term

Cotton Yarn Preparation (3 hrs.).
 Weaving (4½ hrs.).
 Designing (5 hrs.).
 Cost Finding (1½ hrs.).
 Color (2 hrs.).
 Knitting (3½ hrs.).
 Analysis (8½ hrs.).
 Office Management (3 hrs.).
 Styling (1½ hrs.).

Secretarial Course.

This course is designed for those who have had a high school education and wish to prepare themselves for mill office work. It is arranged to give the student a knowledge of all the different processes in the manufacture of yarn and cloth and the finishing of the same. It covers all calculations required in laying out draft schedules, production costs, cloth construction and designing and all testing and research work required in cloth manufacture and finishing.

This is a certificate course and can be completed in two years.

Mechanical Course (IX)**FIRST YEAR***First Term*

Shop Mathematics 169 (3 hrs.).
 Mechanical Drawing 172 (10 hrs.).
 Machine-shop Practice 174 (18½ hrs.).
 Slide Rule 170 (1 hr.).

Second Term

Shop Mathematics 169 (3 hrs.).
 Mechanical Drawing 172 (9½ hrs.).
 Machine-shop Practice 174 (20 hrs.).

SECOND YEAR*First Term*

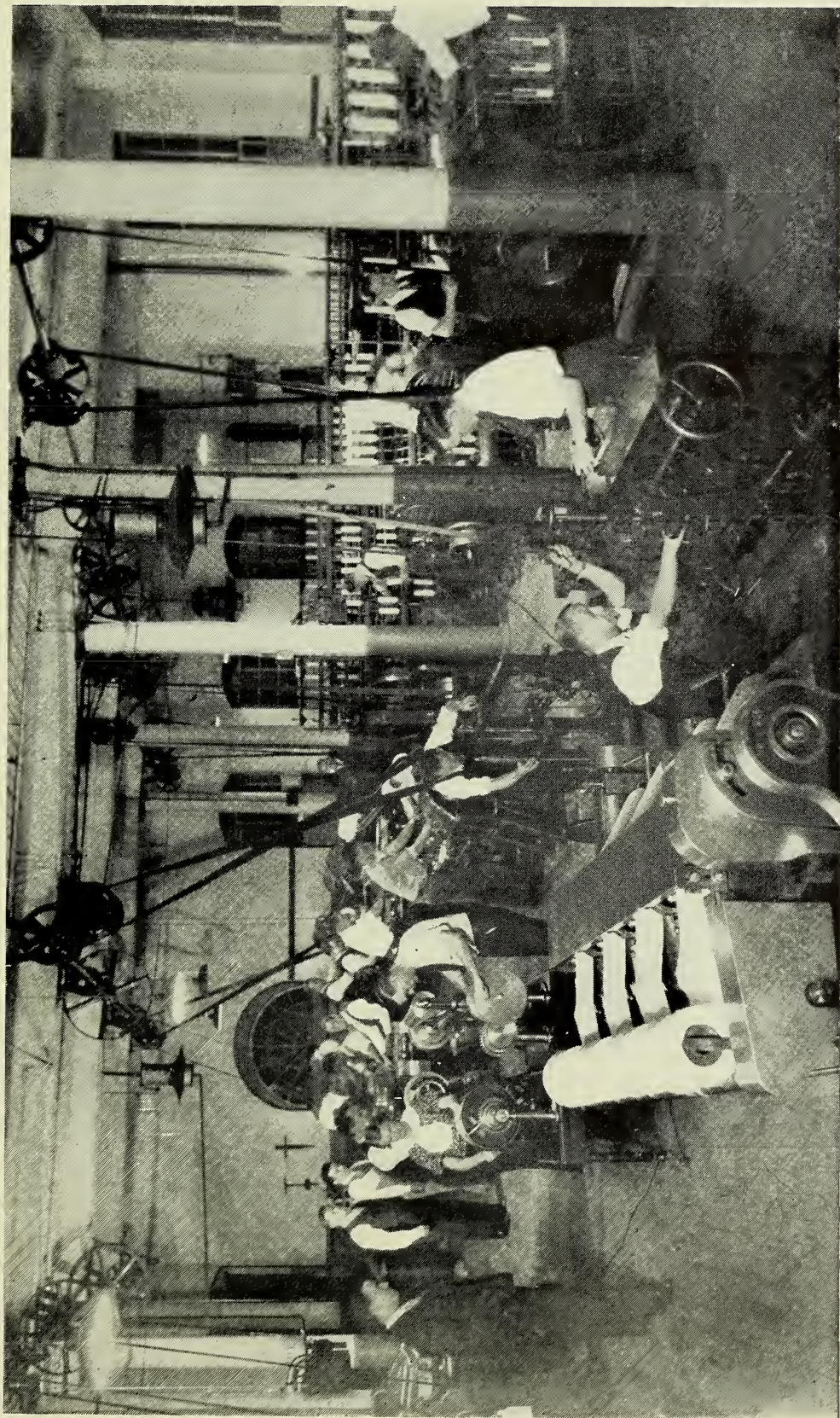
Steam Engineering 176 (3½ hrs.).
 Elementary Electricity 177 (2 hrs.).
 Machine Drawing and Mechanism 175,
 173 (14 hrs.).
 Machine-shop Practice 174 (13 hrs.).

Second Term

Steam Engineering 176 (3½ hrs.).
 Machine Drawing and Design 175 (10
 hrs.).
 Elementary Electricity 177 (3½ hrs.).
 Machine-shop Practice 174 (15½ hrs.).

Mechanical Course

The mechanical course is arranged for those students who have a natural leaning towards mechanical things. A practical knowledge of the mechanical side of a textile mill may be obtained by those attending this course.



EVENING CLASSES—COMBING AND ROVING—SPINNING DEPARTMENT

During the first year all of the students spend the same amount of time in the various subjects, but during the second year the major part of the time can either be spent in the machine shop or the drafting room.

A certificate course can be completed in two years, and, if the student so desires, he may specialize for another year either in the drafting room or the machine shop.

This course will fit the students to enter engineering offices, drafting rooms, machine shops, planning departments of various machine builders and other lines of employment.

Rayon Preparation Course (X)

FIRST YEAR

First Term

Rayon Processing 296 (3 hrs.).
Rayon Testing 297 (3 hrs.).
Cloth Analysis 151 (3 hrs.).
Designing 131 (1½ hrs.).
Hand Loom 161 (1½ hrs.).
Weaving 112 (6½ hrs.).
Yarn Calculations 121 (1½ hrs.).
Chemistry 182 (7 hrs.).
Mechanical Drawing 170, 172 (3½ hrs.).
Principles of Mechanics 171 (1 hr.).
Slide Rule 170 (1 hr.).

Second Term

Rayon Processing 296 (6½ hrs.).
Rayon Testing 297 (3½ hrs.).
Cloth Analysis 152 (3 hrs.).
Designing 132 (1½ hrs.).
Hand Loom 161 (1½ hrs.).
Weaving 112 (6½ hrs.).
Textile Chemistry and Dyeing 222 (6½ hrs.).
Mechanical Drawing 172 (3½ hrs.).

SECOND YEAR

First Term

Rayon Processing 296 (4½ hrs.).
Rayon Testing 297 (3½ hrs.).
Microscopic Work 298 (3½ hrs.).
Cloth Analysis 153 (3½ hrs.).
Designing 133 (3½ hrs.).
Color 145 (2 hrs.).
Weaving 113 (3 hrs.).
Dyeing 223 (6 hrs.).
Machine Drawing 173, 175 (2 hrs.).
Steam Engineering 176 (1 hr.).

Second Term

Rayon Processing 296 (6½ hrs.).
Color 146 (1½ hrs.).
Microscopic Work 298 (3½ hrs.).
Cloth Analysis 154 (3½ hrs.).
Designing 134 (3 hrs.).
Weaving 114 (5 hrs.).
Textile Chemistry 234 (6½ hrs.).
Machine Drawing 175 (2 hrs.).
Steam Engineering 176 (1 hr.).

Rayon Preparation Course

This course is designed to give the student the fundamental knowledge of the different processes entering into the construction of cloth made of rayon yarns.

During the first year the student studies rayon processing from skein to warp and filling packages, rayon testing, weaving, designing and cloth analysis. The study of mechanics, mechanical drawing, slide rule, chemistry and yarn calculations is also pursued in the first year.

In the second year rayon processing, rayon testing, weaving, designing and cloth analysis are continued. Dyeing is started in the first year and continued in the second year. Color and microscopic work are taken up in the second year.

This course is so arranged that the student will be qualified to enter any branch of the rayon textile business.

This is a certificate course and can be completed in two years.

REFERENCES FROM TABULATED COURSES

101. Pickers and Cards

Cotton yarn mill machinery. Lists of processes in cotton mills for different numbers of yarn. Proper sequence of processes.

Objects of blending cotton. Methods of mixing same. Bale breakers.

Picker rooms. Automatic feeders. Construction of different varieties of feeders. Their capacity and suitability for the purpose intended.

The cotton opener, its use and object. Various styles of openers. Setting and adjustment of openers. Connection of feeders to openers. The various styles of trunks. Calculations in connection with openers. Breakers. Intermediate and finisher lappers. Different styles and makes of machines. Use and object of the lapper. Construction of aprons, beaters, bars, screens, fans, lap heads, eveners and measuring motions, etc. The setting and adjustment of lappers. Calculations in connection with lappers.

The revolving flat card. Its principal parts described, including feed, lick, cylinder, doffer, coiler, screens and flats. Different setting arrangements. Speeds of different parts. Top flat cards, roller and clearer, and other cotton cards. Clothing, grinding, setting and stripping cards.

102. Cards and Drawing Frames

Study of the card continued.

The railway head as used either independently or combined with sections of cards. Single and double railway heads. Eveners, draft calculations, metallic and other rolls.

Method of arranging and constructing drawing frames. The use and objects of the frame. Gearing, weighting, stop-motions, varieties of rolls, etc.

103. Roving Frames, Spinning Frames and Twisters

Slubbers. First and second intermediates. Roving or jack frames. The construction and use of the fly frame. Description and use of the different parts. Calculations in connection therewith. Changing and fixing frames, etc.

The spinning frame. Its construction and use. Its principal parts, such as creels, rolls, rings, travelers, speeds, builder motions, etc.

The objects of twisting. Wet and dry twisting. The direction and amount of twist in different ply and cord threads; different methods used in preparing yarn for twisting. Size of rings and travelers for different counts of yarn. Methods of winding, speeds and production.

104. Doubling and Drafting

Figuring the number of doublings and drafts from picker to spinning frame or mule.

Calculations for schedules of machinery required for different counts and amounts. Cost and production of yarn.

Practice work consists of carrying work through picker to spinning frames.

105. Combers and Mules

The sliver and ribbon lap machines. Construction of American and English machines. Methods of operating same. Setting and adjusting same, and calculations in connection therewith.

The cotton comber. The construction of the comber, its use and objects. Comber setting. Comber calculations. Operation and management of combers.

The spinning mule and its uses. The special features of the mule. Description of the head stock, the cam shaft, mule carriage and other parts. The construction and use of each part of the mule. Different movements in the mule and the timing of the same. The topping rail and the building of a cop. Faults in mule spinning and their correction. Mule calculations.

106. Thesis

Original work in laying out processes for different counts of yarn, and carrying the same through from raw cotton to finished yarn. Tests for different processes. Methods of testing from bale to finished fabrics.

107. Raw Cotton

Raw cotton. Its varieties. The cultivation of cotton. The preparation of cotton for the market. Cotton ginning. Cotton as an article of commerce. The selection of cotton, its suitability for different purposes.

108. Merchandising

Products, trade marks, markets, distribution, broker, commission house, advertising, seasons, pricing, market analysis, business policies, price charts.

109. Economics

Problems in textile management, production, labor relations, social, accident and fire insurance, stabilization, business policies, depreciation and obsolescence, financial setup, balance sheets, taxes, tax returns.

111. Plain Looms

The construction of the plain loom. The principal movements in weaving. Methods of shedding. Shedding motions. Shedding by cams. Auxiliary shafts. Variety of cams. Construction of cams. Timing cams and effect on the cloth.

Picking motions. Different methods of picking. Shuttles. Shuttle boxes. Shuttle guards. Protector motions. Reeds. Let-off motions. Take-up motions. Calculations in connection with take-up motions.

Filling-stop motions.

Temples. The various makes and their uses.

The Draper loom. Special features of its construction.

Automatic shuttle and bobbin changing looms.

Special features of the various makes of looms including Crompton & Knowles, Whitin and Stafford looms.

The management, operation and fixing of looms. Putting in warps. Faults and remedies in weaving and fixing. Calculations directly connected with plain looms.

Looms adapted to weave twills and satins.

Mechanical warp stop-motions.

112. Fancies

Looms adapted to weave fancy cloth with dobbies. Dobby construction, timing and setting for single and double index dobbies. Chain pegging for dobbies.

Tying in and starting up warps for which the student has worked out some design. Timing and setting and practical work on 2 x 1 box looms.

113. Box Looms

Looms for the use of various colors of filling. Drop box motions. Box chain multipliers. Multiplier motions. Still box motion.

114, 115. Special Loom Attachments

Dobby looms combined with other motions for special purposes, such as looms adapted to weave lenos with cotton and wire doups and all modern equipment, checks, blankets, handkerchiefs, towels and other goods.

Draper looms. Practical setting of the magazines, feeler and warp stop motions.

Stafford and Automatic looms. Practical setting of the magazines, feeler and warp stop motions for shuttle changing and bobbin changing looms.

Crompton & Knowles Automatic 4 x 1 Box looms. Practical setting of the magazine, multipliers and warp stop motions.

116. Jacquards

The principle of construction of Jacquard machines. Single and double lift machines. Jacquard machines for special purposes. Principles of harness tying. Practical work in cutting cards and weaving the student's own designs.

117. Dobby Automatic Looms

Dobby automatic looms adapted to weaving ginghams, crepe effects and handkerchiefs. Special features of their construction. Practical work with modern wire doup lenos.

Suggestions for the management of the weave room.

121. Yarn Calculations

Definitions. Calculations for finding length, weight or counts of single yarns, whether cotton, woolen, worsted, silk, etc. Ply yarns.

122. Spoolers, Warpers and Slashers

Various methods of preparing cotton warps.

The spooler, its use and construction. Production per spindle. Spindle speeds. Builder motions. Thread guides. Different makes of spoolers.

The operation and setting of the spooler.

Warpers. The object of the warper. Its construction and operations. Speeds, settings, etc. Warpings with and without cone drive. Warper slow motions. Faults in warping and their correction.

The slasher. Its use. Construction of the different parts of the slasher.

Sizing or dressing yarns. Materials used. Methods of mixing same. Suitable materials for various purposes.

Preparing the warp for the loom. The construction of reeds and harnesses.

Variations from the above system for special purposes, such as used in gingham and other mills.

131. Designing

Definitions of the words and terms used in designing and analysis. Characteristics of the various classes of fabrics. Design paper and its application to designing and analysis. Cloth structure, with a study of the various sources from which the patterns of fabrics are obtained. Twills, Wave effects. Diamonds, Sateens. Granites. Checkerboards. Rearranged twills. Figured twills.

132. Designing

Designing for single fabrics continued, such as honeycombs. Mock and imitation lenos. Entwining twills. Spots weaves arranged in various orders. Cord weaves. Imitation welts. Elongated twills. Check effects. Corkscrew weaves. Four change system of designing. Damask weaves.

133. Designing

Designing for more complicated fabrics, such as figure fabrics, using extra materials. Fabrics backed with extra material. Fabrics having the face and back of different material or pattern. Double plain fabrics. Reversible fabrics. Embossed effects, such as Bedford cords, piqués, Marseilles weaves.

134. Designing

Designing for leno, pile and lappet fabrics, such as methods of obtaining leno patterns. Mechanical appliances for the production of lenos, yoke and jumper motions. Bottom douts. Top douts. Check lenos. Jacquard leno-effects. Weaving with wire douts. Weaving with the bead motion. Russian cords. Marquisettes. Full turn lenos.

Pile fabrics, such as velveteens, corduroys, velvets, plushes, carpets, terry toweling.

Lappet weaves. Description of the various lappet motions. Designing for original lappet effects. Reproduction of woven lappet patterns. Chain drafts. Locking motions. Spot effects.

135. Jacquard Designing

Design paper. How to figure the design paper necessary to reproduce any Jacquard pattern. Defects of Jacquard patterns and how to avoid them. Transferring designs to plain paper. Transferring sketches to design paper. Changing the sley of Jacquard fabrics. Method of casting out. Ground weaves. Rules for finding sley, pick, warp and filling. Foundations upon which Jacquard patterns are based.

136. Jacquard Designing.

Different methods of making designs. Sketching original designs by the different methods commonly used. Working out the sketches upon design paper. Cutting cards on the piano card-cutting machine. Card lacing. Weaving of at least one original design. Method of weaving Jacquard leno designs. Mechanisms required in weaving Jacquard lenos. Making Jacquard leno designs.

Harness tying. Various systems of tying Jacquard harnesses. Lay-over ties. Center ties. Compound ties.

145. Color

Theory of colors. Complementary colors. Hue, value and chroma scales. Practical work in color scales.

146. Color

Munsell system of coloring. Color harmony, color effects. Analyzing color effects. Practical work in making sequences and in producing colored designs.

151. Analysis

Standard methods of representing harness and reed drafts. Harness drafts on design paper. Written harness drafts. Chain drafts. Layout plans. Finding weight of warp yarns, weight of filling yarns. Yards per pound of cloth.

152. Analysis

Finding counts of warp and filling by various methods. Finding yards per pound of cloth from a small sample by weighing. Making original designs and weaving them on the power loom. Reproduction of woven samples.

153. Analysis

Analyzing more difficult samples. Finding average counts. Percentage of each material. Production of loom. Price per yard for weaving. Weaving of more difficult original designs.

154. Analysis

Analysis of leno fabrics, making both written drafts and harness drafts on design paper. Chain drafts. Weaving of original leno designs. Changing the construction of fabrics and preserving balance of structure.

155. Analysis

Analysis of more difficult samples continued. Weaving of original samples. Work on changing over samples to different constructions.

156. Analysis

Continuation of the work outlined in 155. Weaving of students' original Jacquard designs. Work on cost of manufacturing fabrics.

157. Commission House Work

Study of fabrics known as standard goods, such as prints, percales, satins, lawns, organdies, chambrays, voiles, etc.

Figuring to obtain material for the reproduction of cloths of standard construction.

Methods of ascertaining counts of warp and filling; also sley and pick for new fabrics.

Determining the manufacturing cost of fabrics.

158. Styling

This course is a continuation of analysis. Application of design to new fabrics. Making sketches for original fabrics. Obtaining cost of fabrics.

161. Hand Loom

The hand loom, its construction and use. Harness drafts as affecting the weave. Building harness chains. Practice on the hand loom in weaving fabrics from original and other designs, and putting into practice the designing lessons.

169. Shop Mathematics

Shop mathematics consists of a review of arithmetic for those who have only an elementary knowledge of mathematics and then branches out in the various standard formulas and data that are necessary for every mechanical superintendent to know. It deals with shop, drafting room, steam and electrical trades.

Various subjects such as trigonometry, logarithms, graphical charts, strength of materials, gearing and mechanisms, etc., are taken up in the class room.

Textbook: "Industrial Mathematics," Farnsworth.

170. Slide Rule

Detail instruction is given in the class room on the use of the slide rule, so that the students may thoroughly learn how to operate and read the slide rule in order to solve all of the practical problems arising in their various classes.

171. Mechanics

The fundamental principles of mechanics and physics, with special reference to practical uses in textile machinery and to future application in the engineering courses, are given in a series of lectures. Practical problems illustrating these principles are worked out in the class room. A study is also made of the strength and nature of the different materials used in machine construction.

Textbook: "Practical Mechanics," Hale.

172. Mechanical Drawing

The object of this course in mechanical drawing is to give the student a good foundation for reading drawings and for making such sketches and drawings as he will be likely to be called on to make in practice. Thoroughness, accuracy and neatness are insisted upon throughout the course. The work in mechanical drawing begins with instruction in the use and care of drawing instruments. The following is a general outline of the work to be covered: plain lettering, geometrical constructions, orthographic and isometric projection, inking and tracing, standards, conventions and tabulation as used in the modern drafting room. Simple working drawings are to be made to scale, and the final work of the year consists of free-hand sketching of machine details from parts of textile machinery. This brings into use at one time all the work covered during the year, and serves as a test of the student's grasp of the subject.

173. Mechanism

In view of the large number of mechanisms used in textile machinery this course is a very important one. The subject is given by means of lectures and recitations, the work in the drawing room being closely related to the classroom instruction. This course includes studies and graphical solutions of cams, gears, etc.

174. Machine Shop

Shopwork and drawing are organized as one department for the purpose of securing close correlation of the work. Many exercises are common to the drawing room and the shop. In the machine shop an effort is made, not only to train the student manually, but also to teach him correct shop methods and practice. Carefully graded exercises are arranged to teach him the use of measuring instruments, hand tools and then machine tools. The different measuring tools and devices, with advantages, methods of use and limits of accuracy of each, are considered. Each cutting tool is taken up, its cutting angles and general adjustments are described, together with the "feeds" and cutting speeds suitable for each material worked and for each machine. The course includes instruction in centering, squaring, straight and taper turning and fitting, outside and inside screw cutting, chucking, reaming, finishing and polishing, drilling, tapping, grinding, boring, planing flat and V surfaces, filing and gear cutting, including spur, bevel, rack and worm gears.

When the student becomes proficient in handling the tools and machines, he is given work in fitting and assembling, and also repair work from other departments.

175. Machine Drawing

Machine drawing is a continuation of the mechanical drawing of the first year, and the work is dependent upon a thorough knowledge of how to apply the conventions of drawing which custom has made standard as given during the first year. The work consists of proportioning of machine details as fixed by practice, making assembly drawing from detailed sketches, and also detailing parts from assembled machines.

176. Steam Engineering

A typical power plant, including the boiler, steam engine and all necessary auxiliary apparatus such as is found in a modern cotton mill, is studied in detail. Prepared outlines are discussed in lecture periods, and the details supplied by the student after reading assignments in standard text and reference books. Practice is given in handling engines, apparatus and equipment in the laboratory. Exercises consist in adjusting, starting and running engines, taking and working out indicator cards, prony brake tests, pump and injector tests, etc.

177. Elementary Electricity

The elementary principles of magnetism and electricity are taken up in lecture and recitation, and are supplemented by laboratory exercises. Emphasis is placed on the different wiring systems and electric drives as used in mills and factories. A general study is made of a typical electrical power plant, and of the apparatus required to generate and distribute electrical energy.

Textbook: "Essentials of Electricity," W. H. Timbie.

178. Mill Engineering

Proficiency in this course depends on the thoroughness with which the work of the previous courses was carried on. The course consists of lectures supplemented by work in the drafting room. Problems in design, construction and equipment of mills and factories are taken up. The subject includes foundations, walls, floors, roofs and mill construction in general. The choice of location and the methods of transmitting power are discussed. The following outline shows the scope of the course: principles underlying the design and construction of framed structures, involving the use of wood, steel, brick, stone, concrete and reinforced concrete, methods of lighting, ventilating and protecting from fire.

179. Figuring Costs

Methods of cost finding in a cotton mill. A complete mill is taken for an illustration, and the reports of both the expense and production are used to work with.

181. General Chemistry

This course comprises three lectures of one hour each and nine and one-half hours of laboratory work each week. The laboratory work is closely criticized by the instructor, and individual effort encouraged. Careful manipulation, thoroughness in observation, accuracy in arriving at conclusions and neatness are required of each student. The fundamental principles of the science are taught in connection with the descriptive chemistry of the elements.

No previous study of chemistry is required for admission to this course, but the instruction is so arranged that students having already spent considerable time in chemistry in other schools are given advanced work in which the knowledge already acquired is utilized.

Textbook: Smith's "College Chemistry."

182. General Chemistry

The training afforded by a course in general chemistry is considered of value to all the students of the school and also lays the foundation for the subsequent course in dyeing. Hence, students taking courses in the cotton or knitting departments are required to take general chemistry during the first term of the first year. This subject covers the same ground as subject 181, but in a briefer manner. Five hours per week are spent in the laboratory and one hour in the lecture and recitation room.

Textbook: Smith's "Elementary Chemistry."

183. Inorganic Preparations

The time in this subject is devoted largely to laboratory work, with an occasional explanatory lecture. First the student is taught the best methods of carrying on the usual laboratory operations, as forming of crystals, precipitates, filtering, evaporating and drying. This is followed by the preparation of several salts and industrial products, substances being selected that are of particular interest to the textile industry. The work is progressive in subject-matter, and so arranged as to be co-ordinate with the subject of general chemistry.

Textbook: Blanchard's "Synthetic Inorganic Chemistry."

191-192. Qualitative Analysis

This course comprises one lecture of one hour and twelve hours' laboratory work a week during the second term of the first year. The student is taught the principle of systematic qualitative analysis and the application of the principles to detect the base-forming elements, the acid-forming elements, and the various classes of compounds of the bases and the acids. Especial attention is paid to the inorganic materials ordinarily met with in the manufacture, dyeing and finishing of cotton piece goods. The student is required to analyze correctly a sufficient number of unknown substances to demonstrate his ability to detect any of the elements ordinarily met with.

Textbook: Noyes' "Qualitative Analysis."

202. Quantitative Analysis

The course in Quantitative Analysis is divided into two parts, each requiring one term for its completion. Stress is laid on the accuracy and integrity necessary for quantitative work. Each student is required, under supervision of the instructor, to adjust his own balances, and calibrate the weights, burettes, flasks, etc., that he uses, that he may understand the nature and amount of error in his work, thus giving him confidence in his results. In connection with the course a thorough training in the solution of chemical problems is given. The course comprises one lecture each week, the remainder of the time being devoted to laboratory practice. The term is spent in volumetric analysis involving the use of acids, alkalis, oxidizing and reducing agents and chlorimetry.

Textbook: Talbot's "Quantitative Analysis."

203. Quantitative Analysis

This course is a continuation of Course 202 and comprises gravimetric determination of chlorine, sulfuric, carbonic and phosphoric acids, and iron, aluminum, calcium and magnesium. The work on chemical problems is also continued through this term, the problems being such as to apply the principles of gravimetric analysis.

Textbook: Talbot's "Quantitative Analysis."

212. Organic Chemistry

This course is divided into two terms, the first term giving a general survey of the subject, a thorough training being given in the reactions and properties of the various compounds met with in textile industries. The two lower members of the paraffines and their derivatives are exhaustively treated. Then the study of the higher members is taken up, the unsaturated hydro-carbons and their derivatives.

Textbook: Remsen & Orndorff's "Organic Chemistry."

213. Organic Chemistry

The work of the second term is devoted exclusively to the study of dyestuffs and their preparation. The constitutions of various typical dyestuffs are studied to determine their influence on coloring power, dyeing properties and fastness to light, acids, alkalis, bleaching, etc. In the limited time afforded, the number of dyestuffs studied is necessarily limited, but the training is made so thorough that the student is enabled to take up further investigation intelligently should his future work demand it.

222. Textile Chemistry and Dyeing

These subjects open with a study of the chemical and physical technology of the fibers. Lectures are given descriptive of the action of heat, moisture, acids, alkalis, oxidizing agents, reducing agents, salts, organic ferments and coloring matter upon the fibers. Parallel with these lectures laboratory experiments are carried out by the performance of which the student becomes familiar with the chemical and physical properties of the various fibers and the actions of the several agents upon them.

This is followed by a series of lectures and experiments that illustrate the application of the above principles to practice. The student is taught how to scour cotton, wool and silk; how to bleach these fibers by the use of sulphur dioxide, chlorine compounds and oxygen compounds. The mercerizing, fireproofing and waterproofing of cotton, the chlorination of wool, and the waterproofing of silk are also demonstrated.

Now the application of the dyestuffs to the various fibers is studied. For convenience the dyestuffs, whether of natural or synthetic origin, are classed as either substantive, acid, basic or mordant. The best method of application of each of the above groups is then taught. The dyed fibers are tested for their fastness to light, water, acid, alkalis, milling, stoving, chloring, crocking and hot finishing. Modified methods are then considered for the production of especial degrees of fastness to certain agents by after-treating of the dyed fibers.

223. Dyeing

This course is supplementary to the course in textile chemistry and dyeing and consists principally in the application of dyes to cotton and rayon. Lectures are given as the occasion requires, but most of the time is spent in the laboratory.

Samples acquired in connection with the laboratory practice are mounted and bound with the above notes, which they serve to illustrate.

224. Dyeing

The laboratory work of this term is mainly devoted to the printing of textile fabrics, especial emphasis being laid on cotton. The theory and practice of the various styles, such as the pigment style, the direct printing style, the steam style,

or metallic or tannin mordants, resist and discharge dye styles, the developed azo style, the printing of indigo and similar dyestuffs and aniline black are studied. The student makes as many different prints as the time will allow. During the entire course the student accumulates many samples which he is required to mount in a specially designed sample book for his reference in the future. Special stress is laid on quality rather than quantity of work done.

225. Dyeing

During the course the general principles of cotton matching are taken up, and experimental work is carried on demonstrating the proper method of obtaining a given shade by mixing several dyes. Obtaining the value of a dye is taught, and the detection of adulterants. Finally, methods for determining the dye, either in the form of a dyestuff or on the dyed fabric, are considered.

Construction and operation of jiggers. Speed of operation. Penetration of solutions used. Selection of dyestuffs. Preparation of dye liquor. Dyeing, washing and after-treating.

Construction of dye padders. Selection of material for rolls. Speed of machines. Penetration of materials. Selection of dyestuffs. Washing off. After-treatment.

226. Dyeing of Knit Goods

The object of this course is to give the student an opportunity to dye commercial size lots of knit goods and hosiery. Lectures describing the various processes are given, and the necessary calculations are taught in connection with this course. Scouring and bleaching are also taught. The student is required to make use of knowledge acquired in the previous courses in dyeing.

230. Cotton Manufacture

Cotton Manufacture is the name assigned to a course of lectures given to the second year students in chemistry, so that they may become acquainted with the methods employed in the manufacture of cotton yarn and cloth. The various machines are thoroughly described and the methods of using them discussed in the lecture room. Because of the limited amount of time allowed for this subject the students are not taught to operate the machines, but are given an opportunity to examine them at rest, and later to observe them in operation.

233. Textile Chemistry I

This subject comprises a study of the properties and analysis of soap, mordants and other chemicals used in the textile industries. One lecture of forty-five minutes' duration is given each week, and frequent conferences are held with the student in the laboratory. The student is required constantly to consult standard books of reference in connection with his laboratory work. While the limited time devoted to this course does not give enough time for the student to make many complete analyses, it does illustrate to him the application of the knowledge acquired in the previous subjects of qualitative and quantitative analysis and organic chemistry.

234. Textile Chemistry II

This subject deals with coal, oil, soap, water, starches, sizing and softening compounds and textile fabrics. The commercial methods of obtaining the above substances, their usual composition and application, is discussed in lectures. The laboratory work consists of the analysis of typical compounds, obtained from the consumers when possible. The detection of the various starches and fibers by the microscope is taught, and their separation and estimation by chemical methods. Sizing and loading of fabrics is also discussed. This course is very practical in its application, and *accurate* work is required.

235. Finishing of Cotton Fabrics

The object of this course is to give to the designer a knowledge of the various methods used in finishing, and the effect of the same on the appearance and construction of the fabric. Simple methods of distinguishing between different fibers and finishes filled and pure starched cloths, are taught. The instruction is given by means of one lecture a week and two hours' laboratory practice.

240. Singeing

Construction of machine. Function of air pump. Adjustment of gas. Speed of operation. Singeing for a face finish. Singeing for a body finish. Determination of best conditions for a particular cloth.

241. Scouring

Construction of kiers. Methods of circulation. Packing of goods. Time of boiling. Washing down. Use and operation of washing machines. Choice of scouring agent.

242. Bleaching

Construction of chemic vats and cisterns. Application of bleaching solution to the goods. Squeezers. Piling down. Precautions to prevent tendering action of bleaching agent. Washing. Use of "Antichlors." Openers and scutchers. Selection of bleaching agent.

245. Mercerizing

Construction of mercerizing machine. Design of tenter clips. Proper tension in tenter frame. Removal of caustic by washing. Neutralization of last traces. Variation in conditions to suit cloth treated.

250. Drying

Preparation of goods for drying. Importance of proper mangling. Construction and operation of a mangle. Construction of the drying cylinders. Mechanical limits of speed of operation. Best speed in view of results obtained on goods. Static electricity and its grounding.

Construction and use of tenter frames. Methods of heating, direct and indirect. Direction of air currents in relation to that of the cloth. Conditions giving the most rapid drying; the best width. Choice of tenter clip for a specific purpose.

255. Calendering

Types of calenders and various finishes obtained. Construction of a simple calender, friction calender, chasing calender, Schreiner and embossing calenders. Speeds and conditions governing the operation of the above machines. Use of scrimp bars and stretchers. Gas and steam heating. Metallic rolls, fibrous rolls, and finishes produced by them. Care of rolls. Use of water. So-called permanent calender finishes. Use of beetles and hot presses for preparation for calendering. Top finishing.

260. Putting up

Inspection of goods for faults. Classing as firsts, seconds, thirds and remnants. Yarding by flat folding, by rolling machines. Construction and operation of these machines. Various folds and put-up required by the several trades. Ticketing, banding and papering. Assortment in cases and storage of goods.

269. Thesis

Each student who is to graduate from the course in chemistry and dyeing must devote twelve hours per week during the last half of his third year to original work, and at least one week before graduation must submit to the principal of the department a thesis of not less than two thousand words based upon the results of his own investigations.

271. Elementary Knitting

A study of the various types of winding machines used for cotton, wool and worsted yarns preparatory to running on the ribbers and hosiery machines.

Principles of latch and spring needle knitting and a study of the various types of machines used for making rib tops.

Construction study of the automatic hosiery machines used on coarse gauge work including men's, ladies' and children's hose.

272. Advanced Knitting

Winding and the preparation of cotton, worsted, rayon and silk yarns used in knitting.

A study of the medium and fine gauge ribbers with draw-string, French welt and yarn changing attachments.

Construction and adjustments used on medium and fine gauge full automatic hosiery machines for making plain and fancy pattern hosiery.

273. Hosiery Finishing

Fundamental principles and a study of the various types of loopers. Rough inspecting and the handling of work preparatory to going to the dyeing department.

A study of the sewing machines used in finishing hosiery, including hemming, mock seam, cloc work, etc.

Cloth analysis and testing of knitting yarns and fabrics.

274. Hosiery Manufacture

Mending, drying and pressing. Inspecting, pairing, stamping, folding, banding and boxing.

Scientific management and the handling of goods and records throughout the mill and office.

Cost control and a study of its application to the modern hosiery mill.

281. Elementary Knitting

A study of the various types of winding machines used for cotton, worsted, merino, rayon and silk yarns used in the manufacture of underwear.

Principles of latch and spring needle knitting and a study of the various types of machines used in making cuffs, sleeves and body cloth.

282. Underwear Cutting

A study of pattern making and handling of cloth in the cutting department for making a line of men's, ladies', children's and infants' underwear.

283. Underwear Finishing

A study of the various finishes used on underwear.

Setting up, adjusting and a study of the various types and makes of sewing machines used in the manufacture of underwear.

Cloth analysis and testing of knitting yarns and fabrics.

284. Underwear Manufacturing

Mending, inspecting, pressing, folding, banding and boxing of the finished garment.

Scientific management and the handling of goods and records throughout the mill and office.

Cost control and a study of its application to the modern underwear mill.

293. Miscellaneous Knitting

Knitting fine French balbriggan cloth, worsted and merino cloth, single and double plush cloth, for fleece-lined underwear, made on spring needle frame.



EVENING CLASS—WEAVING DEPARTMENT

Sweater knitting, with racked rib and cuffs, pineapple stitch and fancy-colored effects, on circular rib machines.

Full-fashion sweater knitting on the Lamb full-fashion, hand-power machine.

Knitting gloves on the Lamb hand-power machine.

Different processes of finishing balbriggan, worsted, merino and fleeced cloth into underwear ready for market.

294. Knitting

The aim of this work is to give to the student an insight into the class of work for which a large part of the yarn in a yarn mill is made.

The different types of knitting machines are studied, and in each case the effect upon the machine and fabric of imperfect yarn is gone into carefully.

295. Testing

This course is a study of the methods used in the testing of cotton yarns and fabrics throughout the mill. It includes atmospheric conditions and their effect on testing, determining moisture regain, tensile strength, twist, evenness, cleanliness, cloth analysis and identification of textile fibres.

296. Rayon Processing

Instruction in the winding of skeins and cones on to spools and quills. The soaking and the throwing of the yarn. Warping on the silk system and slashing.

297. Rayon Testing

The analysis of rayon yarns and fabrics. Identification of mixed fibres. Methods of finding the percentages of fibres in yarns and fabrics.

298. Microscopic Work

The use of the microscope, mounting of samples, cross sectioning and photography.

300. Picking, Carding and Roving

Cotton yarn mill machinery. Machines required for making different numbers of counts of yarn.

PICKING ROOM.—Bale breakers or openers, their use and how operated.

Automatic feeders, their construction, methods of setting and adjusting; eveners motions, calculations.

Openers, their use and object. The different kinds used and the class of cotton for which they are best adapted. The different kinds of beaters used, and the speeds at which they should run.

Cleaning trunks, their uses and operation.

Breaker, intermediate and finisher lappers. Different styles and makes of machines. The construction and operation of the different parts, setting and adjusting the different parts, and arranging the speeds to give the best results. Calculations for speeds, drafts, weights and production on the different machines.

CARDS.—The different kinds of cards used; their construction and operation.

The revolving flat card. Its principal parts. Different methods of setting, different settings for different classes of work. The speeds of the different parts, and their effect on the quality of the work produced. Construction of card clothing. Clothing cylinder doffer and top flats. Stripping and grinding cards. Grinding and testing top flats. Covering grinding rolls. Splicing driving ropes and belts.

Calculations for speeds, drafts, production, per cent of waste, etc.

ROVING FRAMES.—The different processes used. The construction and use of the roving or fly frame.

Speeds of the different size frames and the different parts of the frame.

The different styles of differentials used and their object.

Cone drums. The effect of the shape of the cones on the running of the frames. Levelling and adjusting roving frames. Balancing flyers, and the effect of unbalanced flyers on the running of the frame.

The effect of draft and twist on the quality and quantity of the work produced. Roller setting. Calculations for speeds, drafts, twist, tension and lay. Calculations for differentials, cone drums and productions.

301. Special Knitting

Operations preliminary to knitting. Winding, cone winding, bobbin winding. Development of knitting. Knitting needles. Construction and operation of latch and spring needles. Knitting on circular and flat machines. Study of the results of uneven, mixed and otherwise imperfect yarns in the knitting process, and the effect upon the machine and fabric.

302. Drawing Rolls and Drawing Frames. Ring Spinning. Doubling and Drafting

DRAWING ROLLS.—The different kinds of rolls used, their construction, methods of covering, setting and adjusting for different kinds of work. Clearers for drawing rolls.

DRAWING FRAMES.—The railway head and evener draw frame. The construction and arrangement of drawing frames. Different methods of gearing, weighting and stop-motions for draw frames. Calculations for speeds, drafts, dividing drafts, production, etc.

THE RING SPINNING FRAME.—Its construction and use. The construction and adjustment of the different parts, such as spindles, rings, travelers, rollers, builder motions, etc. Making bands. Comparing different drives for spindles. Twist in yarn, its effect on strength and production. Calculations for speeds, drafts, twist and production.

DOUBLING AND DRAFTING.—Laying out drafts and weights at the different machines from picker to spinning frame for making different numbers of yarn.

Calculating the number of machines required at the different processes to produce a required amount of yarn of different numbers.

Calculating the labor cost of making roving or yarn, using different methods.

Calculating the effect of draft at the different machines on the production and cost of the yarn made.

303. Combing and Mule Spinning

Sliver and ribbon lap machines. Construction of the different machines. Methods of setting and operating same.

COMBERS.—The different kinds of combers used; their speeds and productions. Comber setting and adjusting and methods of operating.

ROLL VARNISHING. The percentage scale and its use. Practice work in setting and operating the different combers.

Calculations for speeds, drafts, productions, etc., on the lap machines and combers.

MULES.—The spinning mule and its uses. The special features of the mule. Description of the construction and operation of the different parts of the mule. Calculations for speeds, drafts, etc., and all calculations required in making changes.

Practice work in laying out and carrying through the work for making different counts of yarn from the raw stock to the finished thread.

304. Twisting and Cotton Classing

THE OBJECT OF TWISTING.—Different styles of twist used. Wet and dry twisting. Direction of twist. Effect of twist on the strength, weight or counts.

Preparing yarn for twisting.

Making ply threads, cords, cordonnet and sewing threads.

Sizes of rings and spindle speeds for different threads. Calculations for speeds, twists and productions.

COTTON CLASSING.—Different species of cotton plants.

Cultivation of cotton. The different varieties of cotton and the class of goods for which they are best adapted.

Cotton picking, ginning, baling and marketing. The selection of cotton for different classes of goods.

Cotton grading and stapling.

Practice work in running work from raw stock to spinning and twisting.

305. Test Work and Roller Covering

TEST WORK.—Testing different classes of cotton and comparing results for waste removed and strength of yarn made. Testing different methods of handling cotton, using different speeds; drafts and numbers of processes used and comparing results.

ROLLER COVERING.—Covering top roll and under clearers.

Cutting, piecing, drawing on, burning down and burnishing.

306. Yarn Testing and Comber RENEEDLING

YARN TESTING.—Testing yarns for weight or counts, breaking weight (skein or single). Inspecting yarn, testing for moisture, amount of twist in single or ply yarn. Testing for contraction in single yarn; for contraction or expansion in ply threads. Testing for elasticity.

COMBER RENEEDLING.—Cleaning off, setting needles, soldering on, building half laps, polishing and finishing same.

Practical work in running tests through the machines.

TEXTBOOKS AND LECTURE SHEETS USED IN THE SCHOOL

Chemistry Department

Smith's "Elementary Chemistry," Noyes' "Qualitative Analysis," Talbot's "Quantitative Analysis," Remsen & Orndorff's "Organic Chemistry," Blanchard's "Synthetic Inorganic Chemistry," Smith's "College Chemistry," Gill's "Power Plant Chemistry."

Mechanical Department

"Practical Mechanics," Hale; W. H. Timbie's "Essentials of Electricity."

"Industrial Mathematics," Farnsworth.

Other Departments

No textbooks are used in the departments other than those named above. Lectures are prepared by the heads of the departments covering the work in detail, multigraphed, and sold to the students at cost. These, with design books, design pads, color supplies and notebooks, constitute the working material to be provided by students.

EVENING CLASSES

Evening instruction, similar to the day, on the same machinery and by the heads of the day departments assisted by practical skilled men from the mills, is given for the benefit of workers in local mills and machine shops. The instruction in the evening classes is divided into sections so as to give the greatest possible facilities to the students in these classes.

Certificates are granted to all students in the evening classes who have successfully completed the equivalent of two years' work, two evenings a week. The certificate states the subjects that the student has passed in, and the length of time he has devoted to the work.

Evening students are enrolled at the commencement of both the fall and spring terms. The subjects taken up in the different evening courses follow the detailed topics as specified on page 27.

The school is in session four evenings a week for twenty-three weeks,—Monday, Tuesday, Thursday and Friday, from 7.30 to 9.15, for all classes except those in the Chemistry Department. Those classes are held three nights a week,—Monday and Tuesday, from 7 to 9.30, and Thursday, from 7.15 to 9.15.

For terms of admission and fees, see page 30 of this catalogue.

COURSES OF INSTRUCTION, EVENING CLASSES

Carding and Spinning Department

Mill Calculations and Picking: one term, two evenings a week.

Carding and Drawing: one term, two evenings a week.

Combing: one term, two evenings a week.

Roving Frames: one term, two evenings a week.

Ring Spinning and Twisting: one term, two evenings a week.
 Mule Spinning: one year, two evenings a week.
 Cotton Classing: one term, one evening a week.
 Advanced Calculations in Carding and Spinning: one year, one evening a week.
 Women's Textile Preparation Course: one term, one evening a week.

Weaving and Warp Preparation Departments

Spooling, Warping and Slashing: one term, two evenings a week.
 Automatic Loom Fixing: one term, two evenings a week.
 Plain Loom Fixing: one term, two evenings a week.
 Fancy Loom Fixing: one term, two evenings a week.
 Jacquard Loom Fixing: one term, two evenings a week.
 Advanced Calculations in Weaving: one term, two evenings a week.
 Warp Drawing for Women: one term, two evenings a week.

Designing Department

Elementary Designing: one term, two evenings a week.
 Advanced Designing: one term, two evenings a week.
 Elementary Analysis: one term, two evenings a week.
 Advanced Analysis: one term, two evenings a week.
 Jacquard Designing: one term, two evenings a week.

Knitting Department

Special Knitting: two evenings a week each term.

Rayon Department

Rayon Processing.—Winding, Warping and Slashing: one year, two evenings a week.
 Microscopy: one year, two evenings a week.

Engineering Department

Mechanical Drawing: one year, two evenings a week.
 Advanced Drawing: one year, two evenings a week.
 Machine Drawing: one year, two evenings a week.
 Mechanical Designing: one year, two evenings a week.
 Machine-shop Practice: one year, two evenings a week.
 Advanced Shop Work: one year, two evenings a week.
 Steam Engineering: one year, one evening a week.

Chemistry Department

General Chemistry: one year, two evenings a week.
 Qualitative Analysis: one year, two evenings a week.
 Quantitative Analysis: one year, two evenings a week.
 Organic Chemistry: one year, two evenings a week.
 Textile Chemistry I: one year, two evenings a week.
 Textile Chemistry II: one year, two evenings a week.
 Dyeing I: one year, two evenings a week.
 Dyeing II: one year, two evenings a week.
 Dyeing III: one year, two evenings a week.

Mathematics

Cost Finding: one term, two evenings a week.

Evening Diploma Courses

The school diploma will be granted to those students of the evening classes who successfully complete the work specified under the following courses:—

I. CARDING AND SPINNING.—Picking, Carding and Drawing, Roving Frames, Combing, Ring Spinning and Twisting, Mule Spinning (or some other subject) Cotton Sampling, Advanced Calculations in Carding and Spinning, Mechanical Drawing, Advanced Drawing.

II. WEAVING AND DESIGNING.—Spooling, Warping and Slashing, Plain Loom Fixing, Fancy Loom Fixing, Elementary Designing and Cloth Analysis, Advanced Designing and Cloth Analysis, Jacquard Designing, Cotton Sampling, Mechanical Drawing, Advanced Drawing, Cost Finding.

III. CHEMISTRY AND DYEING.—General Chemistry, Qualitative Analysis, Quantitative Analysis, Organic Chemistry, Textile Chemistry I, Textile Chemistry II, Dyeing I, Dyeing II, Dyeing III, Mechanical Drawing, Advanced Drawing.

Courses for Women

Several courses are open for women in both the day and evening classes and a number have pursued them successfully. They are as follows:—

Textile Designing.

Chemistry and Dyeing.

Cost Finding.

Secretarial.

Cotton Sampling.

Warp Drawing.

Rayon Winding and Warping

Textile Preparation.

GENERAL INFORMATION

CONDITIONS OF ADMISSION TO DAY CLASSES

Candidates for admission to the day courses must be at least sixteen years of age. Those who have been students of other technical institutions, colleges or universities are required to furnish a certificate of honorable dismissal from those institutions. Candidates having a graduate's certificate from a high school or other educational institution of equal standing are admitted without examination. Other applicants for admission are required to undergo examinations in arithmetic, English, and commercial geography.

A candidate, whether desiring to be enrolled on certificate or by passing the entrance examination, must fill out an application blank, which should be delivered at the school as early as possible before the opening of the year.

Applicants desiring to take up special studies in the school may be admitted provided their applications are approved by the Principal. Such students shall be known as specials, and, upon satisfactory completion of their work in the school, shall be given certificates stating the work they have covered and the time they have been in attendance.

No applicant is admitted to the regular courses of the school after the first four weeks unless he has already covered the work of the school for the time preceding the date of his application; nor shall any change in any student's course be made after the first four weeks of admission except by permission of the Principal.

ENTRANCE EXAMINATION FOR DAY STUDENTS

The examinations for those desiring to enter the school at the opening of the fall term of 1936 will be held at the school only, on Wednesday, June 3, and on Wednesday, September 9, at 9 A.M.

The detailed topics dealt with in the entrance examinations are as follows:—

Arithmetic

Definitions, addition, subtraction, multiplication, division, factors, multiples, cancellation, fractions, decimals, percentage, interest, ratio and proportion, square root, compound quantities, mensuration, metric system.

English

The candidate will be required to show his ability to spell, capitalize and punctuate correctly; to show a practical knowledge of the essentials of English grammar, a good training in the construction of the sentence, and familiarity with the simple principles of paragraph division and structure.

He will be required to write a business letter, and one or more short articles on subjects assigned from which he may select. Ability to express himself clearly and accurately will be considered of prime importance.

Commercial Geography

Farm products of the United States, where raised; our mines, and where located; our manufactures, and where established; our exports, and to what countries; our imports and from what countries; our transportation facilities.

CONDITIONS OF ADMISSION TO EVENING CLASSES

Candidates for admission to evening classes must be at least *fourteen* years of age.

Those desiring to enter any of the courses in the various departments must satisfy the head of the department which they desire to enter that they have sufficient knowledge to be benefited by the instruction offered.

FEES

Day Students.—A tuition fee of \$20 a year is charged day students who are residents of Massachusetts. For non-resident students the fee is \$150 a year, and for students from foreign countries \$300 a year. All tuition fees are payable in advance in two equal installments, at the opening of each semester. No student shall be admitted to the classes until his tuition is paid. No fees are refunded except by special action of the Board of Trustees.

The above fee includes admission to any of the evening classes in which there is accommodation, and which the day students may desire to attend.

A deposit of \$10 is required of all day students taking the regular Chemistry and Dyeing Course. A deposit of \$5 is required of students taking chemistry in connection with any other course. A deposit of \$2.50 is required of students taking converting. These deposits are to cover the cost of any breakage that may occur, but in case the actual breakage exceeds this amount an additional charge is made. Any unexpended balance in excess of 25 cents is returned at the end of the year.

To non-resident and foreign students a further charge of \$10 for chemicals is made.

A fee of \$5 is charged each day student, to be used for assisting in the maintenance of athletics in the school and provides admission to all athletic activities.

All fees are due at the beginning of each semester.

Students are required to supply themselves with such books, tools and materials as are recommended by the school, and pay for any breakage or damage that they may cause in addition to the above-named fee.

Evening Students.—No tuition fee is charged evening students who are residents of Massachusetts. For non-resident students the tuition fees are as follows:

For courses, except those in the chemistry department:

\$6 per twelve week term, 2 evenings a week.

\$3 per twelve week term, 1 evening a week.

For courses in the chemistry department:

3 evenings a week for 12 week term: \$11 for tuition and \$1 for chemicals.

2 evenings a week for 12 week term: \$7 for tuition and \$1 for chemicals.

All students, whether resident or non-resident, who enroll in the chemistry department courses, are required to make a deposit of \$5 for breakage. In case the breakage caused by any student does not equal the amount of his deposit, the balance in excess of 25 cents is returned to him at the close of the school year, but if the breakage is in excess of this deposit, the student is charged the additional amount. Evening students are required to supply themselves with such books and materials as are recommended by the school, but this charge is small.

Non-resident students and students from foreign countries, if attending the day classes, are charged no additional tuition fee if they desire to attend evening classes.

SCHOOL HOURS

The school hours for the day classes are from 8.30 to 12 each morning except Saturdays, with afternoon sessions from 1.00 to 4.00 except Saturdays. For sessions of evening classes see page 27.

EXAMINATIONS, CERTIFICATES AND DIPLOMAS

Written examinations are held twice a year, and other tests from time to time to determine the standing of students in their work.

The final examination is held at the end of the spring term. Results of these examinations, together with the student's marks recorded from recitations, practical demonstrations and student's books are taken into account in ranking students at the end of each year and for graduation. Unsatisfactory progress necessitates the student repeating his studies.

Diplomas are given on the satisfactory completion of a course of study extending over a period of three years in connection with each course, if the student's record is otherwise satisfactory.

Students taking special courses in most cases are entitled to a certificate if they honorably and satisfactorily complete the course of instruction scheduled.

Day students are required to spend as much time daily out of school hours in study, such as recording lectures and other notes, as may be necessary to maintain proper standing. The students' books are examined by the instructors periodically, and the care and accuracy with which they are kept is considered in ranking students.

CONDUCT

Students are required to conduct themselves in an orderly and gentlemanly manner while in attendance at the school. When the conduct of any student is considered by the Principal of the school detrimental to its best interests, he will be suspended by him and the case reported to the Board of Trustees for action.

Any student who presents at any time work as his own which he has not performed, or tries to pass an examination by dishonorable means, shall be regarded as having committed a serious offence.

Students shall exercise due care in the use of the school apparatus and machinery. All breakages and accidents must be reported at once to the instructor in charge and the student will be held liable for any wilful damage or the result of gross carelessness.

ATTENDANCE

Day students taking the regular courses are required to attend every exercise of the school; special students, every exercise called for by their schedules. For every case of absence or tardiness students must present an excuse to the Principal. A certain number of unsatisfactory excuses will render the student liable to suspension and further action if cause is sufficient.

When the attendance of an evening student is unsatisfactory he will render himself liable to be dropped from the school.

BOARD AND ROOMS

New Bedford is unusually desirable as a residential city, and students will find numerous houses of private families and boarding houses where they may obtain room and board.

No requirements are made as to residence of out-of-town students, although facilities are given by having addresses of suitable houses on file at the school.

No definite estimate can be made of the cost, as this depends entirely on the tastes of the student, but board and room may be obtained for from \$10 per week upwards.

TOOLS AND MATERIALS

Students are required to purchase such materials, textbooks, tools and apparatus as may be required from time to time by the school authorities, or make deposits on such as are loaned to them. The supplies required vary with the courses for which the students enter, the cost being from \$20 to \$50 per year.

LIBRARY

The school maintains a library that contains all the best works on carding and spinning, weaving, designing, knitting, dyeing and mechanics; also a consulting encyclopedia and an international dictionary. Catalogues and pamphlets dealing with machinery or processes related to textile work are also on file, as are all the leading textile journals and trade papers. The students have access to the library during school hours and books may be loaned to students for a specified time.

ATHLETICS

The school has an athletic association, and the students participate actively in various sports and games. The school is equipped with a gymnasium, locker room and shower baths. There are several athletic fields open to the students for their outdoor sports. The management of the school will give all reasonable encouragement and support to the furtherance of healthful recreation and manly sports for its students.

For fee for same see page 30 of this catalogue.

THE WILLIAM FIRTH SCHOLARSHIPS AT THE NEW BEDFORD TEXTILE SCHOOL

The donation of William Firth, Esq., has established a sum of money at the New Bedford Textile School, primarily for the benefit of sons of members or of deceased members of the National Association of Cotton Manufacturers, furnishing to the recipients of such scholarships tuition fees as approved by the Board of Trustees of the school. Candidates for these scholarships must apply by letter only. The candidates must be at least sixteen years of age and furnish certificates of good moral character, and those who have been students of other technical institutions, colleges or other universities are required to furnish certificates of honorable dismissal from such institutions. Every candidate must file an application at the school for admission, agreeing to observe the rules and regulations of the school. Candidates are eligible for any of the courses included in the curriculum of the school.

In case the sons of members or of deceased members of the National Association of Cotton Manufacturers do not apply for the scholarship, any person eligible for entrance to the school may make application.

These scholarships will be available in the fall of 1936.

THE MANNING EMERY, JR., SCHOLARSHIPS AT THE NEW BEDFORD TEXTILE SCHOOL

The donation by the Passaic Cotton Mills Corporation and its employees of the sum of \$3,000 has established scholarships at the New Bedford Textile School, primarily for the benefit of the employees of the Passaic Cotton Mills Corporation and in accordance with an indenture entered into between the above-named Passaic Cotton Mills Corporation and its employees and the Trustees of the New Bedford Textile School.

In default of any application from an employee of the Passaic Cotton Mills Corporation who is deemed by the Trustees of the New Bedford Textile School as qualified to enter that institution, the Trustees of the New Bedford Textile School may, at their discretion, nominate, with the approval of the Passaic Cotton Mills Corporation, other persons to be the beneficiaries of this scholarship. Such applicants must comply with such reasonable regulations and conditions as said New Bedford Textile School may from time to time adopt in relation thereto.

From said applicants students shall be selected by the Trustees of the New Bedford Textile School as beneficiaries of said scholarships.

These scholarships will be available in the fall of 1936.

THE NATIONAL ASSOCIATION OF COTTON MANUFACTURERS MEDAL

The National Association of Cotton Manufacturers offers a medal to be awarded each year to the student in the graduating class who shows the greatest proficiency in scholarship. This is determined by an examination of the records of the students' progress throughout their studies, which are recorded and reported upon by the instructors and kept permanently on file.

The competition for this medal is open to all day students who graduate in the Complete Cotton Manufacturing Course, or to evening students who have com-

pleted studies comprised in that course and graduated therein. The association offering the medal has made it a condition of the award that at least four members of the graduating class be eligible to the competition.

THE WILLIAM E. HATCH MEDAL

This medal is awarded to the member of the freshman class taking the General Cotton Manufacturing Course who ranks the highest in scholarship for the year. It is presented by the Alumni Association, to commemorate the day of Mr. William E. Hatch's retirement from the presidency of the school.

THE PETER SLATER MEDAL

This medal is presented by Mr. Victor O. B. Slater, a graduate of the evening classes of the school, in memory of his father, Peter Slater, who was a loyal friend of the school. It is awarded to the student graduating from the evening classes in Textile Design, who has attained the highest standing for the two-year course.

EQUIPMENT

COTTON CARDING AND SPINNING DEPARTMENT

This department occupies nearly the entire first floor of the machinery building, and has approximately 9,000 square feet of floor surface. The equipment is large and diversified, enabling the students to become acquainted with practically all the leading makes of machines found in the carding or spinning departments of cotton mills.

A special feature of the equipment is the large number of models of the principal parts of the different machines in this department. These models are so mounted that the different settings and adjustments can be made equally as well as on the machine itself, and thus enable the student to grasp more readily the essential points, since the parts are much more readily accessible.

The department is humidified by the system of the American Moistening Company, Bahnson humidifiers, the Parks-Cramer Company's Turbo System and the American Air Purifying Company's portable humidifiers, automatic control.

Carver Cotton Gin Co.: 1 18 saw cotton gin.

Saco-Lowell Shops: 1 roving waste machine; 1 automatic feeder; 1 opener and breaker lapper; 1 finisher lapper; 1 card; 1 evener draw frame; 1 two-head draw frame; 1 fine roving frame; 2 spinning frames; 1 Perham & Davis evener motion complete with feed rolls and cones.

H. & B. American Machine Co.: 1 finisher lapper; 2 cards; 1 drawing frame; 2 roving frames; 2 spinning frames; 1 section of arch with bend; 1 spinning builder motion; 1 roving builder motion; 2 differentials.

Mason Machine Works: 1 card; 1 railway head.

John Hetherington & Sons, Ltd.: 1 card; 1 sliver lap machine; 2 combers; 1 mule; 1 camless winder; 1 nipper model.

Potter & Johnson: 1 card.

Whitin Machine Works: 2 cards; 1 sliver lap machine; 1 ribbon lap machine; 3 combers; 1 drawing frame; 2 roving frames; 2 spinning frames; 1 model spinning builder.

Woonsocket Machine & Press Co.: 1 card; 2 drawing frames; 2 roving frames; 1 differential; 1 roving builder motion; 1 gassing machine; 1 combination bale breaker, Crighton opener and horizontal cleaner; 1 section card arch with bend.

Dobson & Barlow: 1 fine roving frame; 1 roller and clearer card; 1 mule.

Asa Lees: 1 roving differential motion.

Fales & Jenks Machine Co.: 3 spinning frames; 1 twister.

Draper Corporation: 2 twistors; 1 banding machine.

Collins Brothers: 1 twister.

Universal Winding Company: 1 No. 50 combination winder; 1 No. 90 bobbin winder; 1 G. F. 60 winder.

Foster Machine Co.: 2 doubling winders.

Miscellaneous Equipment: Roller covering machinery; apparatus for comber re-needling; card clothing machine; ball and spool winding machines.

Testing Apparatus: 3 single thread testers; skein and cloth tester; conditioning and testing machine; inspecting machine; yarn and roving reels; yarn balances; percentage scale; micro-photographic machine; twist counters; thread splicers; electric oven recording thermometer, recording hygrothermograph and roto-stat; 1 fibre tester; 1 Aldrich regain indicator.

WEAVING AND WARP PREPARATION DEPARTMENT

This department occupies all of the second floor of the machinery building and contains about 15,000 square feet of floor area. The equipment is very complete and includes sufficient machinery to enable each student to obtain all the practical experience required in connection with his studies. All of the latest machinery is represented in this equipment, and, as the machinery is made especially for use in the school, it fully meets the needs of the students. Besides the machinery listed below there are models for demonstrating leno motions, box motions, warp-stop motions, etc.

Draper Corporation: 4 automatic looms, plain, 2-harness; 1 automatic 5-harness cam loom; 1 automatic 20-harness dobby loom; 1 spooler; 2 warpers.

Crompton & Knowles Loom Works: 5 plain 3-harness, 4 plain 4-harness, 5 plain 5-harness looms; 1 6 x 1 gingham loom; 1 2 x 1 automatic bobbin changing gingham loom; 1 4 x 1 gingham loom; 1 3 x 1 12-harness towel loom; 1 4 x 1 20-harness No. 13 multiplier loom; 1 20-harness double cylinder loom; 2 20-harness dobby looms; 2 2-bar lappet looms; 3 25-harness 2 x 1 box and leno motion looms; 8 16-harness 2 x 1 box and leno motion looms; 3 25-harness leno motion looms; 10 20-harness leno motion looms; 1 double-lift Jacquard, 600 hook loom; 1 double-lift Jacquard, 208 hook loom; 1 double-lift Jacquard, 300 hook loom; 1 double-lift Jacquard, 400 hook loom; 2 4 x 1 20-harness leno motion looms; 2 4 x 1 20-harness dobby, double cylinder automatic bobbin changing looms; 2 4 x 4 20-harness dobby looms; 2 25-harness Cotton King 4 x 1 Automatic and leno motion looms.

Whitin Machine Works: 2 plain, 3-harness looms; 2 plain, 4-harness looms; 9 plain, 5-harness looms; 1 25-harness 2 x 1 box motion loom; 1 25-harness 2 x 1 box motion and leno motion loom; 3 25-harness leno motion looms.

Stafford Co.: 1 20-harness automatic shuttle changing loom; 1 plain automatic shuttle changing loom; 1 silk or rayon automatic shuttle changing loom, changeable from plain to 3 or 4-harness twill; 1 20-harness automatic bobbin changing loom.

Hopedale Mfg. Co.: 1 Nordray plain, 2-harness, automatic loom.

Easton & Burnham Machine Co.: 1 spooler.

T. C. Entwistle Co.: 1 warper; 1 ball warper; 1 beamer.

Howard & Bullough Machine Co.: 1 slasher.

Warp Compressing Machine Co.: 1 600-end rayon creel and dresser.

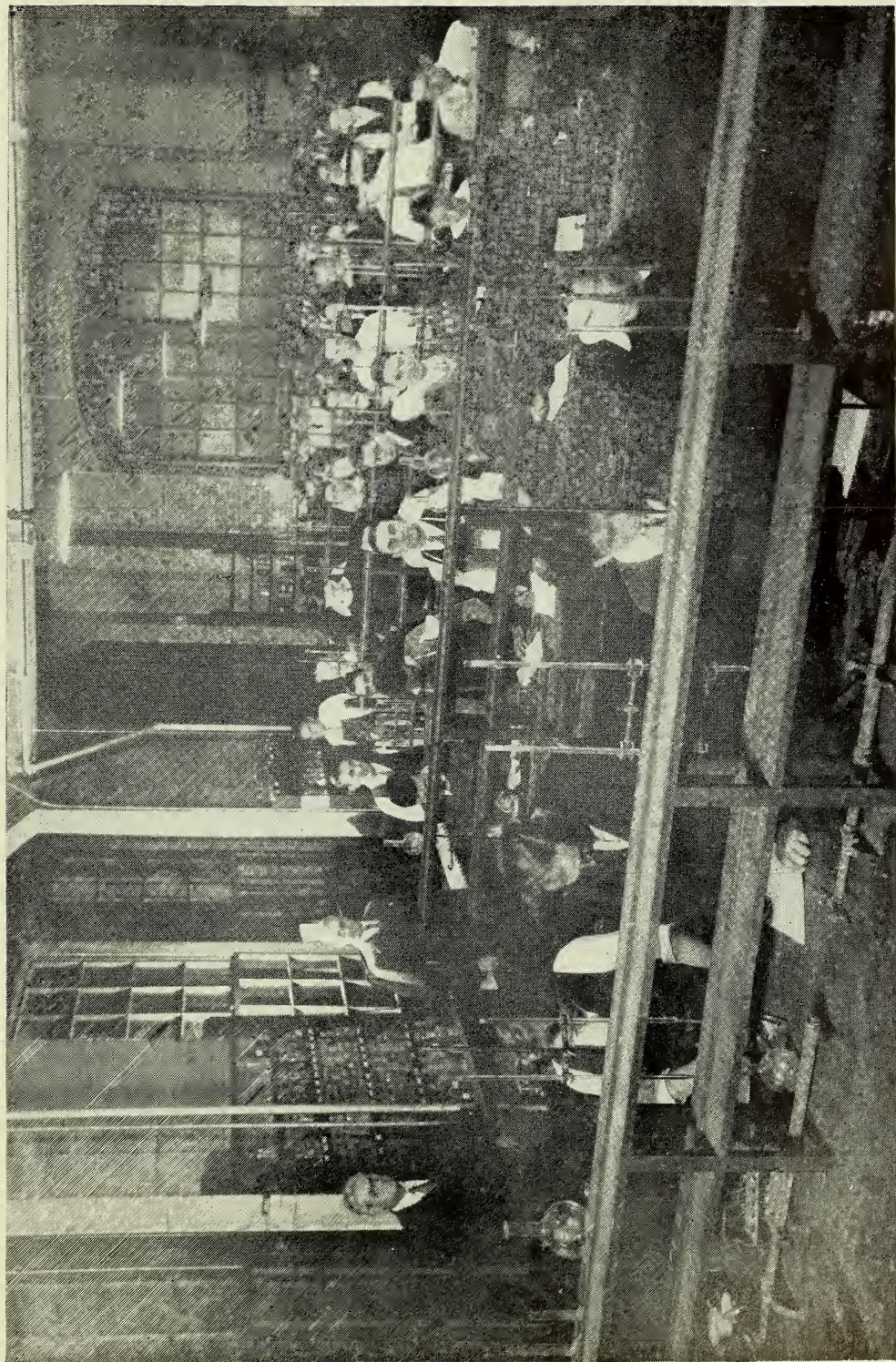
22 drawing-in frames.

DESIGNING DEPARTMENT

The design classroom is located on the third floor of the recitation building, and is a large, well-lighted room containing all the appliances necessary for instruction in this important subject. Special attention has been given to the method of lighting this room to give the best results, and the desks are made with special reference to the needs of the student of designing.

The hand loom work is located in a large room on the third floor of the machinery building. This room contains twenty-seven hand looms adapted to the use of students in experimental work, and in putting into practice the theory of designing, and also to enable them to produce certain of the designs that they are taught in the designing class. There is also a 20 spindle bobbin winder and one hand winder. The room is well lighted by a saw tooth roof.

The card cutting room contains two Royle card cutting machines and three card lacing frames, thus enabling the students working Jacquard designs to cut their own cards.



EVENING CLASS—CHEMISTRY DEPARTMENT

MECHANICAL DEPARTMENT

Instruction in the mechanical department is carried on in five different rooms located in various parts of the recitation building. These rooms are arranged and fitted out with apparatus to meet the needs of the students following this course. The department is subdivided into the following sections: mechanical drawing, textile engineering and machine-shop work.

Mechanical Drawing.—The drafting room is located on the second floor of the recitation building and is well lighted by northern and western exposures. It is equipped with independent drawing tables and lockers for the drawing boards and materials. For the students' use in connection with their drafting instruction there is a collection of models, mechanical apparatus and machine parts. On the third floor there is a swinging blueprint frame mounted on a track, and a large dark room fitted with a Wagenhorst Electric Blue Printer and modern conveniences for blueprinting.

Steam Engineering and Elementary Electricity.—Instruction in steam engineering and elementary electricity is given both in theory and practice. The theoretical part of the course is carried on in a large recitation room on the second floor, while the practical side is studied in the engineering laboratory in the basement of the recitation building. The laboratory is supplied with steam direct from the boiler room and also has gas and water connections. 1 12" x 24" Wetherell Corliss Engine; one 5-horsepower Sturtevant Vertical Steam Engine, and models of boilers, engines and pumps.

For the study of electricity there is provided a source of alternating current at 110 volts and 220 volts pressure.

1 2KW Holtzer-Cabot direct-current Generator; 1 5-horsepower Holtzer-Cabot Induction Motor; 1 2½KW Holtzer-Cabot compound wound Converter; an assortment of voltmeters, ammeters, wattmeters, galvanometer, foot candle meter, transformers, etc.

Machine Shop.—This department occupies about 2,800 square feet of floor surface on the first floor of the recitation building. The machinery is electrically driven and the equipment modern.

7 12" x 5 ft. Reed Prentice Engine lathes; 3 12" x 6 ft. Reed Prentice engine lathes; 1 18" x 8 ft. Reed Prentice engine lathe; 1 14" x 6 ft. Reed Prentice quick change gear engine lathe; 1 14" x 6 ft. Whitcomb-Blaisdell quick change gear engine lathe; 1 14" x 6 ft. Hendey quick change gear engine lathe; 2 14" x 6 ft. Flather engine lathes; 1 7" x 5 ft. Reed Prentice speed lathe; 1 10" x 5 ft. speed lathe; 1 20" Prentice drill; 2 Bench drills; 1 No. 4 Reed "Barr" single sensitive spindle drill; 1 No. 1½ Brown & Sharpe universal milling machine; 1 No. 2 Brown & Sharpe universal milling machine; 1 16" Potter & Johnson universal shaper; 2 16" Ohio shapers; 1 24" x 6 ft. Woodward & Powell planer; 1 Morse plain grinder; 1 Greenfield universal grinder, complete; 1 2½" x 20" Diamond water tool grinder; 1 2" x 12" Builders bench grinder; 1 4" x 28" Douglas grindstone; 1 Millers Falls power hack saw; 1 Peerless electric tool post grinder; 1 Cincinnati electric hand drill; 1 Westmacott gas forge; 1 Wallace circular saw; 1 4" Wallace planer; 1 Cabinet containing milling machine attachments, small tools and minor apparatus; 1 Brown & Sharpe No. 2 wire feed screw machine; 1 Oxweld welding equipment; 1 Black & Decker electric drill.

CHEMISTRY DYEING AND FINISHING DEPARTMENT

This department occupies about 13,600 square feet, situated in the basement and on the first and third floors of the recitation building. This space is divided into four laboratories, a lecture and recitation room, a reading room and office for the Principal of the department, and two store-rooms. The general chemistry and dyeing laboratory is a large, well-lighted room, 63 feet 6 inches by 20 feet, on the first floor, and is especially designed to meet the needs of the students in the general courses. This laboratory is equipped with forty-two double desks in rows of three desks each. At the end of each row is situated the sink and dye bath. Along the wall, on the opposite side are the hoods. In the main special laboratory each student has desk space, 2 feet by 8 feet, and his own desk, dye bath and draught hood. Conveniently located are a large drying oven, four 10-gallon dye kettles,

and one 20-gallon dye kettle. This laboratory is equipped at each desk with gas, water and suction in order that the student's work may be carried on with the utmost celerity conducive to the best results. This laboratory is also equipped for analytical work and has 10 balances, a polariscope, 1 Spencer microscope No. 5, triple nose piece, objectives 16, 4, and 1.8 oil immersion, mechanical stage; 1 Spencer rotary microtome, 2 other microscopes, an Emerson calorimeter, a Westphal balance, a Saybolt universal viscosimeter, and other special apparatus. The laboratory for converting cotton textiles is located in the basement. It contains the machines necessary to demonstrate in practical proportions the operations involved, such as a single-burner Butterworth gas singer complete with air pump and spark extinguisher, a 100 lb. Jefferson kier, an experimental piece mercerizing machine, a 3 roll padding machine, a 6 cylinder horizontal drying machine, equipped with the Files exhausting system, 2 40" jigs, a steam heated calender, and a 30 foot automatic tentering machine with Butterworth patent automatic clips. In this laboratory there is also a small Hussong dyeing machine and a Franklin dyeing machine for yarn dyeing. On the Hussong machine there is a Tagliabue temperature controller. A high top cloth folder and a Dinsmore portable sewing machine are part of the equipment although situated in another room. There is also one laboratory printing machine from the Textile-Finishing Machinery Company and one fade-ometer.

KNITTING AND RAYON DEPARTMENT

The knitting department occupies two large connecting rooms on the top floor of the machinery building, and contains about 6,600 square feet of floor area. The equipment is very complete, there being a greater number of machines and a larger variety than can be found in any similar school in the world. The work that has been produced by the students of this department has received high praise from some of the leading experts in the knitting trade, the hosiery and underwear taking especially high rank.

Crane Mfg. Co.: 1 36-gauge spring needle table, 18" and 21" cylinders; 1 15" 8 cut rib body machine; 1 19" 14 cut rib body machine with Crawford stop motion.

Hemphill Co.: 1 "Banner" 3 $\frac{3}{4}$ " 176 needle automatic footer; 1 "Banner" 3 $\frac{1}{2}$ " 220 needle automatic footer; 1 "Banner" 3 $\frac{1}{2}$ " 240 needle automatic striper; 1 "Banner" 3 $\frac{1}{2}$ " 240 needle split footer.

Jenckes Knitting Machine Co.: 1 "Invincible" 4" 108 needle automatic footer; 1 "Invincible" 3 $\frac{3}{4}$ " 188 needle automatic footer; 1 "Invincible" 3" 120 needle automatic footer; 1 "Invincible" 3 $\frac{3}{4}$ " 240 needle automatic footer; 1 "Invincible" 3 $\frac{3}{4}$ " 176 needle automatic footer; 1 "Invincible" 3 $\frac{3}{4}$ " 160 needle automatic footer.

Fidelity Machine Co.: 1 3 $\frac{1}{2}$ " 220 needle automatic ribber; 1 3 $\frac{1}{2}$ " 240 needle automatic ribber; 1 3" 180 needle automatic ribber.

H. Brinton Company: 1 3 $\frac{3}{4}$ " 108 and 188 needle automatic ribber; 1 4" 84 and 160 needle automatic ribber; 1 3 $\frac{1}{2}$ " 240 needle automatic ribber; 1 6" 480 needle ribber; 1 4 $\frac{1}{2}$ " 90 needle scarf machine.

Lamb Knitting Machine Co.: 1 6-cut scarf machine; 1 flat 8-cut glove machine.

Mayo Machine Co.: 1 3 $\frac{3}{4}$ " 176 needle automatic footer; 1 3 $\frac{1}{2}$ " 188 needle automatic footer; 1 3 $\frac{1}{2}$ " 200 needle automatic footer; 1 3 $\frac{1}{2}$ " 220 needle automatic footer.

Scott & Williams: 1 3 $\frac{3}{4}$ " 176 and 200 needle automatic ribber; 1 3 $\frac{3}{4}$ " 176 and 180 needle automatic ribber; 1 4 $\frac{1}{4}$ " 180 needle automatic ribber; 1 4 $\frac{1}{4}$ " 216 needle automatic ribber; 1 4 $\frac{1}{4}$ " 276 needle automatic ribber; 1 4 $\frac{1}{4}$ " 300 needle automatic ribber; 1 3 $\frac{1}{4}$ " 160 needle automatic sleever; 1 3 $\frac{3}{4}$ " 264 needle automatic ribber; 1 10" 8 and 10-cut automatic rib-body machine; 1 13" 10-cut automatic rib-body machine; 1 20" 12-cut plain and 2-2 body machine; 1 18" 26-cut Balbriggan body machine; 1 20" 16-cut Balbriggan body machine; 1 20" 14-cut rib-cuff machine; 1 3 $\frac{1}{2}$ " 240 needle Model K machine; 1 3 $\frac{1}{2}$ " 200 needle Model HH machine; 1 3 $\frac{3}{4}$ " 160 needle Model RI machine; 1 3 $\frac{1}{4}$ " 140 needle Model RI machine; 1 finishing machine; 1 bar-stitch machine; 1 chain machine; 1 12-point looper; 1 3 $\frac{1}{2}$ " 280 needle Model K machine; 1 220 needle Model HH Spiral float machine.

Wildman Mfg. Co.: 1 3 $\frac{3}{4}$ " 200 needle fancy pattern automatic ribber; 1 2 $\frac{3}{4}$ " 120 needle necktie machine; 1 3 $\frac{1}{2}$ " 188 and 200 needle automatic ribber; 1 3 $\frac{1}{2}$ " 220 and 240 needle automatic ribber; 1 4 $\frac{1}{2}$ " 180 needle automatic sleeve; 1 4 $\frac{1}{2}$ " 216 needle automatic ribber; 1 4 $\frac{1}{4}$ " 272 needle automatic ribber; 1 13" 8 and 12-cut automatic rib-body machine; 1 18" 14-cut plain and 2-2 rib-body machine; 1 Ballard electric cloth cutter.

Marrow Machine Co.: 1 60D overseaming machine; 1 60S hemming machine; 1 60AD overedging machine; 1 60UD cloc stitch machine; 1 35FJ schell machine; 1 60Q schell machine; 1 60JDC overseaming machine.

Metropolitan Sewing Machine Co.: 1 150CD lace neck machine; 1 50CH-10 taper collarette machine; 1 30TC seaming machine; 1 251 cover-seaming machine; 1 192BX facing machine; 1 28GC-1 stay machine; 1 192 W-5 elastic machine.

Singer Sewing Machine Co.: 1 44 lock stitch machine; 1 24 chain stitch machine; 1 24-8 drawer finishing machine; 1 32-29 eyelet machine; 1 68-7 button sewing machine; 1 79-6 buttonhole machine; 1 79-1 tacking machine.

Standard Sewing Machine Co.: 1 buttonhole machine.

Union Special Sewing Machine Co.: 1 class 3,000 lace machine; 1 class 5,800 collarette machine; 1 class 16,100 facing machine; 1 class 6,000 chain stitch machine; 1 class 2,300 chain stitch machine with Dewee's trimmer; 1 class 11,900 12 gauge cover seaming machine; 1 class 11,900 16-gauge cover seaming machine; 1 class 15,400 seaming machine; 1 grinder.

Wilcox & Gibbs Sewing Machine Co.: 1 lock-stitch machine; 1 flatlock machine; 3 over-lock machines; 1 feld-lock machine.

Stafford & Holt: 1 14" 6-cut sweater machine.

Tompkins Bros. Co.: 1 spring needle table, 22 gauge 20" and 36 gauge 18".

United Shoe Machinery Co.: 1 metal eyelet machine.

The Beattie Mfg. Co.: 1 16-point looper; 1 22-point looper.

Grosser Knitting Machine Co.: 1 Koehler 20-point looper; 1 Koehler 24-point looper.

Southern Textile Machinery Co.: 1 Wright steady dial 22-point looper; 1 Wright steady dial 28-point looper.

John W. Hepworth & Co.: 1 16-point C. R. D. looper.

Saco-Lowell Shops: 1 24-end camless winder.

W. D. Huse & Sons: 2 bottle bobbin winders.

George W. Payne & Co.: 1 bottle bobbin winder.

Universal Winding Co.: 1 No. 50 cone winder; 1 No. 90 bobbin winder; 1 No. 60 cone winder.

Henry H. Skevington & Co.: 1 floating thread cutter.

Excelsior Cloth Dryer: 1 Excelsior cloth dryer.

Philadelphia Drying Machine Co.: 1 Hurricane steam press; 1 Hurricane hosiery and underwear dryer; 1 Electric hosiery dryer.

Lewis Jones: 1 hosiery and underwear brushing machine.

Paramount Hosiery Form Drying Co.: 1 set metal hosiery forms, men's, ladies' and children's.

Joseph T. Pearson: 120 hosiery boards, men's, ladies' and children's.

Stampagraph Co.: Dry transfers for hosiery.

Harding Brook Co.: 1 Acme Hosiery Binder.

Oswald Lever Co.: 1 18 end bobbin winder; 1 20 spindle quill winder.

Atwood Machine Co.: 1 16 end bobbin winder; 1 silk warper with creel.

Kumagraph Co.: Dry transfers for hosiery.

Allentown Bobbin Works: 500 silk bobbins.

Rayon Equipment: 1 soaking and extracting machine; 1 rayon spinner (twister).

Microscopy Laboratory Equipment: Bausch & Lomb Optical Co.: 2 textile microscopes; 1 camera lucida; 1 Filar micrometer; 1 complete photomicrographic camera; 1 counting and 1 micrometer disc.

Spencer Lens Co.: 1 binocular wide field microscope.

6 work boxes; 9 lamps and apparatus for cross sectioning.

Testing Apparatus: 3 twist testers; 1 Casartelli balance; 2 chemical balances; 1 set of stapling machines; 1 yarn reel; 1 cotton and 1 rayon yarn quadrant; 1 tensometer.

POWER, HEAT AND LIGHT PLANT

For some years the school manufactured its power and light, but owing to the growth of the school plant it became necessary either to make a large expenditure for a new power plant or to purchase power and light, and the latter plan was determined upon.

The equipment in this department consists of 1 Cahall 60 H.P. vertical boiler; 1 Stirling 105 H.P. water tubular boiler; 1 B. & W. 155 H.P. water tubular boiler; 1 Deane $4\frac{1}{2}$ " x $2\frac{3}{4}$ " x 4" duplex double outside packed plunger steam pump connected to a receiver tank; 1 Worthington $5\frac{1}{4}$ " x $3\frac{1}{2}$ " x 5" single steam pump; 1 Riley 100 H.P. feed water heater; 1 Atwood and Morrill damper regulator; 1 Sturtevant 75 H.P. horizontal center crank engine; 1 Westinghouse 50 K.W., 220 volt, 3 phase, alternating current generator, direct connected; 1 Westinghouse 4 K.W., 125 volt, direct current generator; 1 General Electric recording wattmeter; 1 W. S. Hill 4 panel switchboard equipped with 9 Wagner indicating ammeters, 2 Wagner indicating voltmeters, 1 Thomson 50 K.W. 3 phase integrating wattmeter, 2 direct reading K.W. meters, 14 Wagner current transformers, 1 Westinghouse combination rheostat, 1 General Electric combination rheostat, 2 Condit Electrical Manufacturing Company's 250 volt circuit breakers, all necessary switches, bus bars, etc.; 2 wing turbine fans for forced draft; 1 Cochrane oil separator; 1 Sturtevant heating and ventilating outfit; 1 American Moistening Co.'s humidifying outfit; also 1 Parks-Cramer Company's, 1 Bahnson Company's and 1 American Portable humidifying outfit; and 43 electric motors ranging from $\frac{1}{8}$ H.P. to 15 H.P.

GRADUATION EXERCISES

PROGRAMME

March (Ironclad)	TEXTILE SCHOOL ORCHESTRA	<i>Will Huff</i>
Prayer	REV. LINDEN H. WHITE	
Opening Address	JOHN T. KIRK <i>President of the Board of Trustees</i>	
Overture (Urbana)	TEXTILE SCHOOL ORCHESTRA	<i>C. J. Roberts</i>
Address	HON. JOSEPH L. HURLEY Lieutenant Governor, Commonwealth of Massachusetts	
Presentation of The National Association of Cotton Manufacturers' Medal	HAROLD G. CONNOLLY Member of the National Association of Cotton Manufacturers	
Presentation of The William E. Hatch Medal	BENJAMIN F. PROUD, <i>Trustee</i>	
Presentation of The Peter H. Slater Medal	JOHN N. O'BRIEN, <i>Trustee</i>	
Presentation of Diplomas and Certificates to Graduates of Day and Evening Classes	JOHN A. SHEA, <i>Trustee</i>	
Presentation of Class Picture	FRANK J. SZYNAL President of the Class of 1935	
Remarks	JOSEPH H. HANDFORD Principal of the School	
March (Fort Royal)	TEXTILE SCHOOL ORCHESTRA	<i>Will Huff</i>

GRADUATES—1935

Day Classes—Diploma Courses

GENERAL COTTON MANUFACTURING

Thomas Gillett	Milton Walter Herstoff
William Bosworth Hathaway, Jr.	Frank Joseph Szyal
Albert Henry Tetrault, Jr.	

CHEMISTRY, DYEING AND FINISHING

Anne Allen	Alfred William Heinser, Jr.
Winthrop Everett Banks	Stewart Mandell Howland
Mason Ellis Chace	John Earle Johnson
Ralph Horton Clark	Richard Hugh Lewis
Morris Henry Cohen	Henry Joseph Perry, Jr.
James Craig, Jr.	Henry Fisher Sherman
Joseph James Crowley	Orsman Alvah Shumway
Christopher Leo Donnelly	Edgar Duncan Stowell
John Greaves, Jr.	Benjamin Philip Wishnietsky

DESIGNING

May Violet Rocheleau

KNIT UNDERWEAR MANUFACTURING

Joseph Worden Normile

Day Classes—Certificate Courses

George L. Barron	<i>Textile Research</i>	One Year
Ruth M. Dutton	<i>Secretarial</i>	Two Years
Frank Jasioneck	<i>Mechanical</i>	Three Years
Robert Howarth	<i>Mechanical</i>	Two Years
Wendell T. Keith	<i>Mechanical</i>	Two Years
Marcel J. Languirand	<i>Mechanical</i>	Two Years
Charles F. Lovejoy	<i>Mechanical</i>	Two Years
Charles E. Sherman	<i>General</i>	Two Years

POST GRADUATE

Charles Boehler	<i>Mechanical</i>	One Year
-----------------	-------------------	----------

Evening Classes—Certificate Courses

NINE YEARS

Romeo Goddu

EIGHT YEARS

Ernest A. DesMarais	Osborne W. Redfield	Samuel Woodruff
---------------------	---------------------	-----------------

SEVEN YEARS

Francisco D'O. Abreu	Antonio Barreiro	Albert Mailhot
	Elmer H. Jamieson	

SIX YEARS

Adjutor Caron	Harrison Francis	Percy N. Nightingale
William Chapdelaine	Raymond D. Illingworth	Alan S. Wrigley
	John P. Koczara	

FIVE YEARS

Louis E. Boudreau
Henry Davis

John Drinkwater
Raymond G. Furness
Robert W. Gardner

Walter S. MacPhail
Louis Rossi

FOUR YEARS

Everett J. Ashworth
Milton W. Barrett
Albert J. Bastarache
Albert Cottam
Wilfred A. Farland
Amedee Goulet
Albert J. Hawkes

Jacob Joanides
Robert C. Lambalot
Maurice Margerison
Harry Masheter
William A. McGuffie
George A. Muggleton
Joseph Niznik

Rosario Potvin
Ernest Roberts
Alfred Simmons
Stanislaw Wojtonik
Milo Zelinka
Joseph P. Ziemba

THREE YEARS

Aquila W. Adams
Ernest Bernier
Albert Brown
Richard C. Carrera
Harding Carrier
Allan Clegg
Herbert Cockshoot
Rosario Constant
Manuel Correia
Charles F. Crooks
George Ferriera
William H. H. Fishback
Kazmierz Gesiak

Charles Glosel
Allan Grimshaw
John Kaczorowski
Edward Kowalczyki
Alphege A. Landreville
Albert Leach
John Leach
James M. Leadbetter
Louis Maranhao
Arthur S. Marshall
Harold J. O'Brien
Hervey H. Pelletier
Stephen Pfaffensteller

William H. Potter
Leo Roy
Manuel F. Santos
George W. Scherf
Edwina E. Secour
Gordon M. Shepley
Howard H. Shumway, Jr.
Josph Silva
Albert Theriault
Elizabeth T. Thomas
Joseph Walmsley

TWO YEARS

Joseph Almeida
Edward O. Audet
Joseph H. Bergeron
Roger Bissonnette
Arthur Briggs
Charles O. Broadland
Manuel Camara
Ellsworth E. Chase
Leon J. Cierpial
Wilfred H. Constant
Edwin S. Cook
Arthur Counsell
James Crowell
Norman DeBlois
Marie R. I. Desautels
Tillie Drew
Henry A. Dunham
Augustine Faria
Antone E. Francis
John Germain
Harold Gibson
Jennie Graham

George G. Griffiths
Jerome J. Grossman
William B. Hallett
Horace E. Handford
Reginald L. Hargreaves
William Heyworth
Thomas Hindle
Ricordo R. Holt
Wilfred G. Hopwood
Arthur Howard
Ernest M. Huckins
William Isherwood
Walter K. Koczera
Loretta M. Lavigne
John G. Leva
Thornton P. Lynam
Frederick A. Martin
William Martens
Martin A. McCartney
Daniel Mendonca
Gerald D. Metthe
Oscar F. Morency

Edward Motta
Wilfred Ostiguy
Lucien G. Pelletier
Alphonse Piekut
Estelle Pintow
Justin B. Poole
John M. Rex
Philip E. Reynolds
Joseph S. Simmons
Mitchell Szwaja
George E. Taber
Dennis C. Tavares
Leo Telesmanick
Arthur Thivierge
Victoria Thomas
Herbert Thompson
Vincent Traca
Henry G. Turcotte
Domingos Vera
Edward A. Wagner
Alfred Wilson
John Zaretto

ALPHABETICAL LIST OF GRADUATES

The following list has been corrected in accordance with information received previous to March 1st, 1936. Any information regarding incorrect or missing addresses is earnestly solicited.

D indicates a diploma; C indicates a certificate (covering a partial course only); S indicates special course.

- Achorn, Robert E., Jr., I, '15 (D). Designer, Wauregan Co., Wauregan, Conn.
 Adamowicz, Charles S., '30 (C). New Bedford, Mass.
 Adams, Elbert V., I, '22 (D). In Auto Tire Dept., Montgomery, Ward & Co., Chicago, Ill.
 Adams, James H., I, '29 (D). With Nottingham Neckwear Co., New Bedford, Mass.
 Adelson, Arthur A., III, '28 (D). New Bedford, Mass.
 Agrella, Charles J., II, '30 (D). With Dutchess Bleachery, Wappinger's Falls, New York.
 Akin, Francis T., III, '32 (D). New Bedford, Mass.
 Albakri, Mathew S., I, '25 (C). Foreman of Dye House, Societe Syrienne, Amin Dial & Co., Damascus, Syria.
 Allan, William W., I, '15 (D). Superintendent, Baltic Mills Co., Baltic, Conn.
 Allen, Anne, III, '35 (D). Post Graduate Work, New Bedford Textile School, New Bedford, Mass.
 Allen, Glawyer G., I, '25 (C). With Graniteville Mfg. Co., Graniteville, S. C.
 Allen, John T., III, '30 (D). With Farr Alpaca Co., Holyoke, Mass.
 Allen, Stanley I., III, '30 (D). With Grasselli Chemical Co., Grasselli, N. J.
 Amaral, Roy, I, '33 (D). With Nonquitt Mills, New Bedford, Mass.
 Amarantes, Jerry O., VI, '19 (C). Clerk, Amarantes' Garage, New Bedford, Mass.
 Ambler, Harry, III, '17 (D).
 Amona, Cheng Q., I, '17 (D). Professor of Electrical Engineering, Canton Technical College, Canton, China.
 Anderson, Elliot F., S, '32 (C). Student, North Carolina State College, Raleigh, N. C.
 Anderson, Hilmer H., S, '22 (C). Superintendent, Brookdale Mills, Franklin, Mass.
 Armitage, Stanley W., I, '25 (D). Superintendent, Meritas Mills, McComb, Mississippi.
 Ashley, Milton I., III, '34 (D). With Glenlyon Print Works, Phillipsdale, R. I.
 Austin, Harold S., VI, '24 (C). Asst. Routing Board Manager, Lewis Mfg. Co., Walpole, Mass.
 Axtell, G. Moody, III, '34 (D). Chemist, Revere Copper & Brass Co., New Bedford, Mass.
 Babcock, Howard L., VI, '21 (C). With Durr Packing Company, Utica, N. Y.
 Baldwin, Fred L., S, '05 (C).
 Balloch, Roger T., IV, '21 (D). John Street, New Bedford, Mass.
 Banks, Winthrop E., III, '35 (D). Taunton, Mass.
 Barber, Ernest L., S, '31 (C). Steam Fireman, New Bedford Textile School, New Bedford, Mass.
 Barrett, Edward W., I, '21 (C).
 Barron, George L., S., '35 (C). Sales Agent, Rayon-Melliand.
 Barrows, John T., III, '23 (C). Dentist, 96 Thompson St., New Bedford, Mass.
 Barrows, Murray F., S, '05 (C). Asst. Treasurer, Bristol County Mortgage Co., New Bedford, Mass.
 Bartlett, William, S, '30 (C). Newport Torpedo Station, Newport, R. I.
 Bates, Howard S., IX, '33 (C). With Morse Twist Drill & Machine Co., New Bedford, Mass.
 Bates, Merton H., II, '20 (D). Painter, Osterville, Mass.
 Bearcovitch, Alfred J., I, '15 (D). Dyer, Mansfield Bleachery, Mansfield, Mass.

- Beaumont, William, I, '25 (D). Superintendent, Aiken Mill, Bath, S. C.
 Beauvais, Raymond F., II, '34 (D).
 Beetham, William, Jr., S, '32 (C). 6 Belgrave Ave., Penwortham, Preston, Lancashire, England.
 Bentley, Milton J., I, '11 (D). With Whitin Machine Works, Whitinsville, Mass.
 Bergeron, William, S, '33 (C). Acushnet, Mass.
 Berkman, Philip, III, '32 (D). New Bedford, Mass.
 Besse, Allen D., I, '22 (D). Assistant Designer, Wamsutta Mills, New Bedford, Mass.
 Besse, Edward L., Jr., I, '22 (D). Overseer, Worcester Tire Fabric Co., Worcester, Mass.
 Bessette, Leo A., I, '15 (D). Captain of Infantry, U. S. A. Army, Fort Meade, Md.
 Bisbee, Robert T., I, '26 (C). Designing Dept., Beacon Mfg. Company, Swannanoa, N. C.
 Bister, Frederick J., I, '09 (D). With John Bister, Cotton Umbrella Cloth, 920 Broadway, New York City, N. Y.
 Biswas, Khitish C., I, '28 (D). India.
 Bjorngren, Victor J., S, '29 (C). With Hathaway Machinery Co., New Bedford, Mass.
 Blair, William G., Jr., I, '08 (D).
 Blake, John J., I, '15 (D).
 Blake, Wendell C., I, '25 (D). Taunton, Mass.
 Blauvelt, John J., I, '22 (D). Assistant Superintendent, Belmont Silk Co., Kingston, Pa.
 Blossom, Carlton S., I, '16 (D). With S. Slater & Sons, Inc., Webster, Mass.
 Blossom, James W., I, '17 (D). With Blossom Bros., New Bedford, Mass.
 Boardman, Ellen G., VII, '26 (C). Mrs. John T. Lund, Swansea, Mass.
 Boehler, Charles, IX, '34 (C). With Continental Wood Screw Co., New Bedford, Mass.
 Boomer, Thomas M., Jr., I, '27 (D). With Westport Manufacturing Co., Westport, Mass.
 Booth, William, VI, '08 (D).
 Borden, Eliot F., III, '28 (D). With New Bedford Rayon Co., New Bedford, Mass.
 Bosse, Lillian B., S, '34 (C). New Bedford, Mass.
 Bottomley, Fred, S, '23 (C). New Bedford, Mass.
 Boutin, Leon A., IX, '28 (C). Machinist, South Middleboro, Mass.
 Boyd, W. MacPherson, I, '22 (D). Superintendent, Canadian Cottons, Ltd., Hamilton, Ontario, Canada.
 Brand, Warren E., III, '34 (D). With The Gardiner Hall, Jr. Co., So. Wellington, Conn.
 Braun, Leon A., I, '23 (D). Registered Druggist, Leominster, Mass.
 Brend, Albert, II, '15 (C).
 Broadmeadow, John C., III, '32 (D). With National Aniline & Chemical Co., Buffalo, N. Y.
 Brody, Louis, II, '33 (D). With Brody Furniture Co., New Bedford, Mass.
 Brookes, Clifford, II, '29 (D). Designer, Page Mfg. Company, New Bedford, Mass.
 Brooks, Ruby E., II, '22 (C). Mrs. Bradford A. Luce, 103 Maple Street, New Bedford, Mass.
 Brotherson, Curtis S., I, '28 (D). Farmer, Acushnet, Mass.
 Brown, James P., VI, '11 (C). Secretary, Glencairn Manufacturing Co., Pawtucket, R. I.
 Brown, Walter A., I, '17 (C). Overseer of Spinning, S. Slater & Sons, Inc., Webster, Mass.
 Brownell, Ulysses G., Jr., I, '21 (D). Colonial Drug Store, Hyannis, Mass.
 Bruce, William, I, '27 (D). Efficiency Man, Bigelow Carpet Co., Thompsonville, Conn.
 Bruneau, V. Herbert, I, '23 (D). Manager, Canadian Cottons, Ltd., St. Croix Mill, Milltown, New Brunswick, Canada.

- Brunelle, Laurier O., I, '19 (D).** New Bedford, Mass.
- Brunette, Romeo, VI, '23 (C).** Tester, The Fisk Rubber Co., Ninigret Division, New Bedford, Mass.
- Buckley, Charles E., II, '01 (D).** With Warwick Mills, Warwick, R. I.
- Burt, Raymond A., III, '14 (D).**
- Burt, Stuart W., IV, '26 (C).** Dyer on Celanese Fabric, U. S. Finishing Co., Sterling, Conn.
- Cairns, James J., S, '19 (C).** Designer, Hood Rubber Co., Watertown, Mass.
- Campbell, Malcolm E., I, '22 (D).** Cotton Specialist, U. S. Dept. of Agriculture, Clemson College, S. C.
- Carlów, Charles L., II, '26 (D).** Overseer of Weaving, Berkshire Cotton Mills, Adams, Mass.
- Carlson, Sigfred A., III, '26 (D).** Consulting Chemist, Boston Elevated Railways, 536 Harrison Ave., Boston; Mass.
- Carlson, Theodore E., I, '28 (D).** With United Rayon Mills, Fall River, Mass.
- Carvalho, Joao B. deM., I, '20 (D).** 207 7 de Setembro, Sala 1, Sobrado, Rio de Janeiro, Brazil, S. A.
- Cassidy, Elizabeth B., III, '22 (D).** School Teacher, 69 Tremont St., New Bedford, Mass.
- Cazenove, James O'H., I, '05 (D).**
- Chace, Mason E., III, '35 (D).** New Bedford, Mass.
- Chan, Annie C., IV, '23 (C).** The Foot Ease Hosiery Mfg. Co., 2612 E. Yuhang Road, Shanghai, China.
- Chang, Chih Y., I, '08 (D).**
- Chang, Fa-Kien, I, '23 (C).** Shantung, China.
- Chang, Mu W., S, '21 (C).**
- Chase, Alton W., II, '09 (D).** Overseer of Carding, Gosnold Mills Co., New Bedford, Mass.
- Chase, Raymond H., I, '10 (D).** Superintendent, Potter Fine Spinners, Inc., Pawtucket, R. I.
- Checkman, Frank E., I, '23 (D).** West Wareham, Mass.
- Chen, Ting F., I, '12 (D).**
- Chesebro, Robert E., IV, '24 (C).** Secretary and Treasurer, Hand Knit Hosiery Co., Sheboygan, Wis.
- Childs, Raymond C., III, '32 (D).** Chemist, National Aniline & Chemical Co., Buffalo, N. Y.
- Chow, Frank L. H., S, '14 (C).** Superintendent, Loo Fong Cotton Mills, Shantung, China.
- Church, Morton LeB., S, '04 (C).** Southern Representative of Catlin & Co., 1017 Commercial Bank Bldg., Charlotte, N. C.
- Ciborowski, Mitchell S., S, '34 (C).** New Bedford, Mass.
- Cierpial, Leon J., IX, '33 (C).** With Morse Twist Drill & Machine Co., New Bedford, Mass.
- Clancy, Martin F., I, '25 (D).** Comber Man, Queen City Cotton Mill, Burlington, Vt.
- Clark, Kenyon H., V, '11 (D).**
- Clark, Ralph H., III, '35 (D).** With Nashua Finishing Co., Nashua, N. H.
- Clarke, Edward W., I, '13 (D).**
- Clarke, William T., III, '33 (D).** With Arkwright Co., Fall River, Mass.
- Cleveland, Frank H., III, '34 (D).** New Bedford, Mass.
- Coates, James E., Jr., I, '22 (D).** Cost Department, Utica Steam & Mohawk Valley Cotton Mill, Utica, N. Y.
- Cody, Edmond, I, '23 (C).** Overseer in Card Room, Whitin Brothers, Linwood, Mass.
- Cohen, Barney, I, '33 (D).** With Nathan Cohen (Meats), 1029 Acushnet Ave., New Bedford, Mass.
- Cohen, Morris H., III, '35 (D).** New Bedford, Mass.
- Collins, Henry, I, '24 (D).** With Collins Bros., Pawtucket, R. I.
- Cook, Preston W., III, '31 (D).** With Glenlyon Print Works, Phillipsdale, R. I.
- Cook, Seabury, S, '25 (C).** With Morse Twist Drill and Machine Co., New Bedford, Mass.

- Cookson, Albert, I, '23 (D). Kannapolis, N. C.
- Cooper, John J. W., I, '05 (D). With E. P. Sheldon & Sons, 1008-1010 Hospital Trust Bldg., Providence, R. I.
- Cornell, Harold C., I, '11 (D). Custom Service, U. S. A., (89 Lincoln St.), Dedham, Mass.
- Cornell, Maurice A., I, '21 (D). Master Mariner, South Dartmouth, Mass.
- Cornish, Ruth C., II, '22 (C).
- Corson, Sidney W., I, '05 (D). Overseer of Carding, Oneita Knitting Mills, Utica, N. Y.
- Craig, James, Jr., III, '35 (D). With Pontiac Finishing Co., Pontiac, R. I.
- Crawford, Fred E., II, '22 (D). Salesman, John S. Cheever Co., Boston, Mass.
- Crossley, Lawton, III, '16 (C). Chemist, Borne, Scrymser Co., Elizabeth, N. J.
- Crowley, Joseph J., III, '35 (D). With Taber Mill, New Bedford, Mass.
- Cumming, Robert W., Jr., II, '26 (C). With J. & P. Coates Co., Pawtucket, R. I.
- Currie, Andrew, Jr., I, '02 (D). Oil Operator, 1800 Highland Ave., Shreveport, La.
- Curry, Walter F., III, '24 (D). With the Apponaug Co., Apponaug, R. I.
- Cygan, Henry F., IX, '32 (C). With Morse Twist Drill & Machine Co., New Bedford, Mass.
- Czehowski, Henry, S, '29 (C). 112 County Street, New Bedford, Mass.
- Dalrymple, George S., III, '22 (D).
- Damon, A. Durfee, III, '31 (D). With Dutchess Bleachery, Wappinger's Falls, N. Y.
- Darling, Elton R., III, '13 (D). Director of Research, Cornstalk Products Co., Danville, Ill.
- Davies, James A., III, '34 (D). With Apponaug Company, Apponaug, R. I.
- Davis, Albert H., I, '16 (C). Commission Merchant and Broker of cotton yarns and fabrics, 79 Verndale Ave., Providence, R. I.
- Davis, Francis J., I, '26 (D). In garage in Fitchburg, Mass.
- Davis, Russell O., VI, '27 (C). With Wauregan Mills, Wauregan, Conn.
- Deane, Robert J., III, '17 (D). Superintendent, Hartsville Bleachery, Hartsville, S. C.
- Delano, Lloyd S., I, '07 (D). Superintendent of Weaving, Amoskeag Manufacturing Co., Manchester, N. H.
- Delano, Stephen C. L., IX, '33 (C). With New Bedford Rayon Co., New Bedford, Mass.
- Delay, John T., III, '17 (D). Chemist, Merrimac Chemical Company, Everett, Mass.
- DeMarco, Henry J., S, '30 (C). With Shelton Mills, Shelton, Conn.
- DeMarest, R. Alfred, III, '33 (D). With Lawton Mills, Plainfield, Conn.
- DeMartin, Richard S., VI, '06 (D).
- Dennis, Charles W., III, '32 (D). Apponaug Co., Apponaug, R. I.
- Deptula, Walter J., I, '31 (D). With Nottingham Neckwear Co., New Bedford, Mass.
- Deu, Yee B., I and IV, '08 (D).
- DeVine, Richard, I, '26 (D). Salesman, North American Rayon Corp. Elizabethtown, Tenn.
- Devoll, Milton C., II, '09 (D). Cotton Salesman, 384 Acushnet Ave., New Bedford, Mass.
- Dewey, Edward W., V, '11 (D). Superintendent and Buyer, Bennington Hosiery Company, Bennington, Vt.
- Dick, Rudolph C., I, '13 (D). Vice-president and Treasurer, Louisville Textiles, Inc., Louisville, Kentucky.
- Dixon, Fred M., Jr., S, '17 (C).
- Doherty, Edward P., II, '04 (D). Doherty's Protective Agency, New Bedford, Mass.
- Dolan, Edward F., S, '14 (C). Proprietor of Ohio Threading and Supply Co., Burkburnett, Texas.

- Donaghy, Paul A., III, '22 (D).** Salesman, Corn Products Refining Co., 47 Farnsworth St., Boston, Mass.
- Donnelly, Christopher L., III, '35 (D).**
- Dow, James B., I, '30 (D).** Assistant to Mr. Conrad, The Conrad Manufacturing Co., Pawtucket, R. I.
- Dowd, Owen J., Jr., S, '31 (C).** With Devon Mill, New Bedford, Mass.
- Drozek, M. Peter, I, '29 (D).** With Devon Mill, New Bedford, Mass.
- Dubiel, Mark T., III, '32 (D).** Chiropodist, New Bedford, Mass.
- Duckworth, George H., S, '23 (C).** Federal Prohibition Agent, Baltimore, Md.
- Duflot, John, I, '24 (C).** Asst. Mgr., W. C. Jones, 19 Rue d'Avesnes, Lille, (Nord) France.
- Duncan, Donald T., II, '21 (C).** With H. R. Mallinson, 509 Madison Ave., New York City, N. Y.
- Dunmore, Earl W., V, '11 (D).** Superintendent, Utica Knitting Company, Mill No. 2, Utica, N. Y.
- Dunn, Edward F., I, '24 (D).** Building Wrecker, 144 Wayland Ave., Apt. 8, Providence, R. I.
- Dupont, Emey, Jr., I, '25 (D).**
- Dupre, Edmund J., III, '34 (D).** With New Bedford Print & Dye Co., New Bedford, Mass.
- Dutton, Howard O., III, '32 (D).** With Crompton Company, West Warwick, R. I.
- Dutton, Ruth M., VII, '35 (C).** With National Silk Spinning Co., New Bedford, Mass.
- Edmondson, Norman V., III, '34 (D).** Student, North Carolina State College, Raleigh, N. C.
- Edmundson, Christopher, Jr., IX, '34 (C).** Bench Assembler, Brown & Sharpe, Providence, R. I.
- Edwards, Harold G., I, '19 (D).** Treasurer, Bush & Company, New Bedford, Mass.
- Espriella, Antonio J. de la, II, '15 (D).** Manager Weaving and Designing Department, Espriella & Co., Cartagena, Colombia, S. A.
- Espriella, Justo de la, S, '13 (C).** Manager of Cotton Yarn Department, Espriella & Co., Cartagena, Colombia, S. A.
- Espriella, Luis C. de la, I, '16 (C).** With Espriella & Co., Cartagena, Colombia, S. A.
- Ewing, James H., III, '23 (D).** With North American Rayon Corp., Elizabethton, Tenn.
- Fagan, Francis J., V, '12 (D).** With Veterans' Relief Bureau, Utica, N. Y.
- Farr, William, Jr., S, '29 (C).** With Naval Torpedo Station, Newport, R. I.
- Farrar, Hersey W., I, '17 (D).** Designer, Hathaway Manufacturing Co., New Bedford, Mass.
- Farrow, Edward S., I, '29 (D).** With Devon Mills, New Bedford, Mass.
- Fawcett, John L., I, '28 (D).** Head of Knitting and Rayon Dept., New Bedford, Textile School, New Bedford, Mass.
- Fead, Charles L., IV, '27 (C).** Manufacturer of Heavy Wool Hosiery, John L. Fead & Sons, Port Huron, Michigan.
- Feen, Edward F., I, '21 (D).** Textile Engineer, Corning Glass Works, Corning, N. Y.
- Fell, Cecil, I, '30 (D).** With Goodyear Tire Co., Akron, Ohio.
- Fenton, Miriam A. F., S, '34 (C).** New Bedford, Mass.
- Fessenden, Charles E., II, '14 (D).** With Associated Sales Co., Inc., 1350 Broadway, New York City, N. Y.
- Few, George P., VI, '17 (C).** Superintendent Profile Cotton Mills, Jacksonville, Ala.
- Finnell, Everett G., III, '24 (D).** New Bedford, Mass.
- Fish, Myron C., VI, '02 (D).** Secretary, American Supply Company, and Treasurer, Rhode Island Yarn Company, Providence, R. I.
- Flaherty, Matthew W., III, '22 (D).** Clerk, Post Office, New Bedford, Mass.

- Forbes, Esley H., I, '02 (D).**
Foster, Edward J., I, '24 (D). U. S. Bureau of Standards, Philadelphia, Pa.
Foster, James E., S, '22 (C). Instructor, Junior High School, New Bedford, Mass.
Foster, John E., S, '29 (C). Instructor, New Bedford Textile School, New Bedford, Mass.
Francis, George F., IV, '24 (C). Stationary Fireman, N. Y., N. H. & Hartford Railroad, New Bedford, Mass.
Freeman, Elmer L., V, '06 (D). President and Manager, Freeman Manufacturing Company, Detroit, Mich.
Freeman, Leo, III, '20 (C). Chemical Engineer, Room 42, Reymond Bldg., Baton Rouge, La.
French, Dean A., VI, '19 (C). Salesman, Gastonia Roller Flyer & Spindle Co., Gastonia, N. C.
French, Morton T., IV, '12 (D). With Scott & Williams, Inc., 366 Broadway, New York City, N. Y.
Freschl, Max A., IV, '09 (D). Vice-President Holeproof Hosiery Company, Milwaukee, Wis.
Friedberg, Edward A., III, '30 (D). Assistant Dyer, Harodite Finishing Company, North Dighton, Mass.
Frodyma, John, I., '33 (D). With Hathaway Mfg. Company, New Bedford, Mass.
Frost, Irving B., III, '34 (D). With Fibro Products Co., New Bedford, Mass.
Fuller, Everett H., III, '17 (D). Assistant Superintendent, Hampton Company, Easthampton, Mass.
- Gallagher, John V., IV, '08 (D).**
Galligan, Francis B., IV, '31 (D). Fabric Development Dept., Goodyear Tire Company, Akron, Ohio.
Gammons, Molly Nye, II, '18 (C). Mrs. Warren Tobey, Barrington, R. I.
Gardner, George O., Jr., I, '31 (D). With J. S. Fallow & Company, New Bedford, Mass.
Gast, Paul R., III, '16 (C).
Gatonska, Henry, IX, '33 (C). With Continental Wood Screw Co., New Bedford, Mass.
Gay, Paul F., I, '10 (D). Overseer of Carding, Kendall Mills, New Bedford, Mass.
Gentilhomme, Roger C. J., I, '33 (D). U. S. Bureau of Standards, Philadelphia, Pa.
Geyer, Fred N., IX, '33 (C). With New Bedford Rayon Co., New Bedford, Mass.
Giante, Antone J., I, '34 (D).
Gifford, Thomas T., I, '01 (D). With Pierce Manufacturing Company, New Bedford, Mass.
Gillett, Thomas, I, '35 (D). With Nottingham Neckwear Co., New Bedford, Mass.
Gillingham, Dana H., III, '10 (D). Cotton Merchant, 91 Union St., New Bedford, Mass., and New England Sales Manager, Delaware Rayon Co.
Gilmore, Daniel R., I, '22 (D). Farmer, Acushnet, Mass.
Gobeil, Norman B., III, '33 (D). With American Printing Co., Fall River, Mass.
Goff, Russell E., VI, '15 (C). Cotton Broker, Boston, Mass.
Goldberg, Bertram, IV, '13 (D). Treasurer, Bertram Goldberg, Inc., Silk Dyers, Johnstown, N. Y.
Gonsalves, John P., IX, '32 (C). A. Gonsalves & Sons, Fairhaven, Mass.
Goodwin, Albert W., II, '11 (D). New York City, N. Y.
Gordon, Beirne, Jr., I, '04 (D). Vice-president and General Manager, Skenandoa Rayon Company, Utica, N. Y.
Gosselin, Henry J., S, '25 (C). Machinist, The New Departure Co., Bristol, Conn.
Goulet, Henry J. O., I, '04 (D).
Goward, Niles W., I, '15 (D).

- Grady, John H., III, '07 (D).** With John Campbell & Co., 99 Bedford St., Boston, Mass.
- Gray, Ralph B., III, '27 (C).** In Laboratory, Vacuum Oil Company, Paulsboro, N. J.
- Greaves, John, Jr., III, '35 (D).** With Revere Copper & Brass, Inc., New Bedford, Mass.
- Green, Charles H., S, '22 (C).** Jersey Shore, Pa.
- Greene, Dan E., S, '18 (C).** Electrician, Woonsocket Rubber Company, Millville, Mass.
- Grimshaw, Albert H., III, '16 (C).** Associate Professor of Dyeing, North Carolina State College, Raleigh, N. C.
- Haarla, Rauno A. V., I, '26 (D).** Assistant Technical Director, o/y Suomen Trikootehdas, Tampere, Finland.
- Hadley, Wade H., VI, '00 (D).** Secretary and Treasurer, Gregson & Dorsett, Siler City, N. C.
- Hahn, Louis H., II, '18 (D).** Proprietor, Novelty Fabric Co., 1244 Acushnet Ave., New Bedford, Mass.
- Hale, Charles E., Jr., I, '22 (D).** 24 Jason Street, Arlington, Mass.
- Hall, Ernest H., Jr., I, '34 (D)** With Dartmouth Mfg. Corp., New Bedford, Mass.
- Hall, Gordon K., IX, '33 (C).** With Union Street Railway Co., New Bedford, Mass.
- Hall, Lincoln, S, '14 (C).**
- Hall, Walton, Jr., VI, '06 (D).** Judge of Probate, District of East Haddam, Moodus, Conn.
- Hamasaki, Shunkichi, S, '30 (C).**
- Hamer, Allan K., S, '15 (C).** Boston, Mass.
- Hamlen, Carleton LeB., III, '11 (D).** With Hood Milk Co., Boston, Mass.
- Hamlen, Walter G., Jr., III, '17 (D).** Demonstrating Salesman, E. I. Dupont de Nemours & Co., 128 So. Front St., Philadelphia, Pa.
- Hamrick, Lyman A., VI, '20 (C).** Superintendent and General Manager, Musgrove Mills, Gaffney, S. C.
- Hanson, Charles F., III, '33 (D).** With Farwell Bleachery, Lawrence, Mass.
- Hardy, Hudson E., I, '24 (D).** Designer, Soule Mill, New Bedford, Mass.
- Harney, Joseph J., I, '22 (D).** Foreign Representative, Firestone Tire and Rubber Co., New Bedford, Mass.
- Harper, Powhatan F., VI, '23 (C).** Foreman of Yard Force, Receiving and Shipping Clerk, Cotton Classer, Spray Cotton Mills, Spray, N. C.
- Haskins, Ernest T., IX, '27 (C).** Chauffeur, 57 St. Germain Street, Boston, Mass.
- Hathaway, Russell, I, III, '16 (D) (C).** Manager Hathaway Laundry, New Bedford, Mass.
- Hathaway, William B., Jr., I, '35 (D).** With Kendall Co., New Bedford, Mass.
- Hayden, Paul A., I, '25 (D).** St. Thomas Hospital, Akron, Ohio.
- Hayward, Caleb A., Jr., V, '11 (D).** Salesman, C. A. Hayward & Son, Confectionery Agents, Brokers and Jobbers, New Bedford, Mass.
- Hayward, Harold W., I, '16 (D).** With D. E. H. Chemical Co., 277 Highland Ave., Somerville, Mass.
- Heap, Harold, II, '23 (C).** With Berkshire Fine Spinning Co., 40 Worth St., New York City, N. Y.
- Heath, Roger A., III, '23 (D).** Assistant Colorist, Passaic Print Works, Passaic, N. J.
- Heinser, Alfred W., Jr., III, '35 (D).** Dedham, Mass.
- Herstoff, Milton W., I, '35 (D).** With Nonquitt Mill, New Bedford, Mass.
- Herzog, Emil, IX, '34 (C).** United Shoe Machinery, New Bedford, Mass.
- Hiller, Raymond N., III, '34 (D).** With Goodyear Tire Co., Akron, Ohio.
- Hinckley, Frank E., III, '12 (D).** Chief Pharmacist's Mate, United States Navy, c/o Bureau of Navigation, Washington, D. C.
- Hoffman, Frank A., VI, '24 (C).** Designer, Gosnold Mills, New Bedford, Mass.

- Holden, Stuart, IX, '34 (C). With Morse Twist Drill & Machine Co., New Bedford, Mass.
- Holland, Warren E., II, VI, '11 (D). Treasurer, Darlington Warehouse Company, Box 96, Pawtucket, R. I.
- Hollas, James B., I, '25 (D). With S. Slater & Sons, Inc., Webster, Mass.
- Holmes, Leander, I, '27 (C). Assistant Supt., Tabardrey Mfg. Co., Haw River, N. C.
- Holmstrom, Arthur C., IX, '34 (C). With Morse Twist Drill & Machine Co., New Bedford, Mass.
- Hood, John H., I, '25 (C). Assistant Treasurer, Bowling Green Spinning Mills, Blacksburg Spinning Mills, Globe Manufacturing Company, Clover, S. C.
- Horton, Harold W., I, '19 (D). Dealer in New and Used Textile Machinery, Room 438, 49 Westminster St., Providence, R. I.
- Horvik, Sigurd, IV, '22 (D). Superintendent, a/s Salhus Tricotage-fabrik, Salhus, near Bergen, Norway.
- Hotte, George H., III, '32 (D). Firestone Tire and Rubber Co., Akron, Ohio.
- Houth, Joseph, Jr., III, '24 (D). Superintendent, Clearwater Mfg. Co., Clearwater, S. C.
- Howard, Arthur F., Jr., I, '25 (D). With Nonquitt Mills, New Bedford, Mass.
- Howarth, Robert, IX, '35 (D). With John I. Paulding, Inc., New Bedford, Mass.
- Howell, H. Comer, VI, '23 (C). With Bibb Mfg. Co., Macon, Ga.
- Howland, Kempton S., III, '32 (D). With New Bedford Rayon Co., New Bedford, Mass.
- Howland, Ralph S., I, '13 (D). Purchasing Agent, Kendall Company, Walpole, Mass.
- Howland, Stewart M., III, '35 (D). New Bedford, Mass.
- Hoxie, Mildred, S, '32 (C). With Kilburn Mill, New Bedford, Mass.
- Hsaio, Chen H., VI, '22, I, '25 (C). Hunan First Cotton Mill, Changsha, Hunan, China.
- Hsu, Yeisham, I, '25 (D).
- Hung, Shao-Yu, III, '16 (C).
- Hunt, Russell W., III, '21 (C). Dyer, Franklin Process Co., Philadelphia, Pa.
- Hurley, James K., I, '24 (D). With Southeastern Cottons, Inc., 58 Worth St., New York City, N. Y.
- Hutchinson, John J., I, '02 (D). Laundry Proprietor, Los Angeles, Cal.
- Hynes, Thomas, S, '33 (C). With Morse Twist Drill & Machine Co., New Bedford, Mass.
- Ing, David P. E., III, '24 (D). With Shantung Silk & Lace Co., Ltd., 865 Sui-pacha, Buenos Aires, Argentine, S. A.
- Jackson, S. Eugene, VI, '07 (D). Assistant Treasurer, Crown Manufacturing Company, Pawtucket, R. I.
- Jasioneck, Frank, IX, '35 (C). With Revere Copper & Brass Co., New Bedford, Mass.
- Jay, A. Sidney, S, '21 (C). Assistant to the Agent, The W. A. Handley Mfg. Co., Roanoke, Ala.
- Jenks, Raymond M., I, '15 (D). Cost Clerk, West Boylston Manufacturing Company, Easthampton, Mass.
- Jenks, Robert R., VI, '11 (C). President Fales & Jenks Machine Company, and Treasurer Woonsocket Machine & Press Company, Woonsocket, R. I.
- Jennings, Everett C., III, '26 (D). With Arkwright Co., Fall River, Mass.
- Jennings, Harold W., S, '21 (C). 55 Court Street, New Bedford, Mass.
- Jewell, Robert H., III, '20 (C). Treasurer, Crystal Springs Bleachery Company, Chicamauga, Ga.
- Johnson, Horace E., III, '16 (C). Chemist, Bell Telephone Laboratories, 463 West Street, New York City, N. Y.
- Johnson, J. Earle, III, '35 (D). Student, North Carolina State College, Raleigh, N. C.
- Jones, Louis, S, '23 (C). 35 Elm Street, New Bedford, Mass.

- Jourdain, Henry M., I, '18 (D). Letter Carrier, Post Office, New Bedford, Mass.
- Joy, Walter, III, '25 (C). Factory Manager, Bristol Mfg. Co., Bristol, R. I.
- Judge, Edward E., I, '12 (D). Overseer, Gosnold Mills Company, New Bedford, Mass.
- Judson, David H., IV, '34 (D). With United Rayon Mills, Fall River, Mass.
- Kagan, Peter M., VI, '24 (C). With Walter Simpson, Inc., 42 South Water St., Providence, R. I.
- Kallish, Frank, I, '11 (D). Designer, Utica Steam & Mohawk Valley Cotton Mill, Utica, N. Y.
- Kanter, Harry, I, '23 (D). Designer, Toepher & Myers, 4 and 6 White St., New York City, N. Y.
- Karl, Roger T., I, '30 (D). With Firestone Cotton Mills, New Bedford, Mass.
- Karl, William A., I, '19 (D). Purchasing Agent, Firestone Tire & Rubber Company, Akron, Ohio.
- Kean, George P., II, '04 (D). Superintendent, Nyanza Mills, Woonsocket, R. I.
- Keith, Wendell T., IX, '35 (C). With Baker Machine Co., New Bedford, Mass.
- Kelty, Pharus T., I, '20 (C). Third Hand on Roving Frames, Page Mfg. Co., New Bedford, Mass.
- Kershaw, James E., IX, '34 (C). New Bedford, Mass.
- Ketcham, Melville K., S, '21 (C). General Manager, Wellington Sears Co., 258 So. 18th St., Philadelphia, Pa.
- Kiluk, Kasimierz, IX, '33 (C). With Morse Twist Drill & Machine Co., New Bedford, Mass.
- Kinney, C. Stanley, I, '15 (D). Manager, Troy Laundry Company, 183 Exchange St., Pawtucket, R. I.
- Kirschbaum, Erwin P., III, '26 (C). With New Bedford Gas & Edison Light Co., New Bedford, Mass.
- Ko, Thomas S., S, '20 (C). Engineer, Textile Department, Anderson, Meyer & Co., Ltd., Shanghai, China.
- Kolodny, Meyer Z., S, '21 (C). Machine Fixer, Allen & Co., Black Cat Hosiery Mills, Kenosha, Wis.
- Kolodziey, Joseph, I, '24 (D). With Hathaway Manufacturing Co., New Bedford, Mass.
- Kravetz, Joseph, VI, '25 (C). With Fix-Rite Shoe Stores, H. Kravetz & Son, 343½ Cedar & 54 Mt. Vernon Sts., New Bedford, Mass.
- Kroudvird, William, III, '32 (D). Kroudvird's Bakery, New Bedford, Mass.
- Kuczewski, Eugene J., II, '33 (D). Asst. Designer, Slater Mills, Inc., Webster, Mass.
- Kuwaski, Francis A., I, '34 (D). New Bedford, Mass.
- Kwan, Sze Keen, I, '24 (D). Sales Manager, Full-Moon Knitting Factory, Shanghai, China.
- Kwok, Taai W., I, '26 (D). With Wing On Textile Mfg. Co., Nanking Road, Shanghai, China.
- Labrode, Henry C., I, '11 (D). Foreman Finishing Room and Overseer of Warping Room, 90 Bayley St., Pawtucket, R. I.
- Lachance, Edgar, I, '32 (D). Designer, Powdrell & Alexander Co., Danielson, Conn.
- LaCosta, Joaquim, III, '30 (D). Student, Boston University, Boston, Mass.
- Ladino, John M., III, '29 (D). Chemist, Diamond Aklali Co., Fairport Harbor, Ohio.
- Lafferty, Edward C., III, '32 (D). With Pacific Mills, Lawrence, Mass.
- Lague, James C., III, '33 (D). With Taunton Oil Cloth Co., Taunton, Mass.
- Lane, Daniel A., S, '23 (C). New Bedford, Mass.
- Languirand, Marcel J., IX, '35 (D). New Bedford, Mass.
- Lassow, Samuel, II, '29 (D). Inspector of Textiles in Quartermasters' Corps, U. S. Army, Philadelphia, Pa.
- Law, Kwok L., I, '24 (D). Hong Kong, China.
- LeBeau, Emil C., III, '30 (D). With National Aniline & Chemical Co., Buffalo, N. Y.

- Lee, J. K. Theodore, VI, '23 (C). Supply Department, Peking-Mukden Railway Line, Tientsin, China.
- Lee, Sik C., I, '25 (D). With Wing On Textile Manufacturing Co., Ltd., Shanghai, China.
- Lee, Tung H., VI, '24 (C). Vocational School, Wuhu, China, or 29 S Sing Shung Li. Dela Tour, Shanghai, China.
- Lee, William A., I, '07 (D). Clerk, Mills Manufacturing Company, Greenville, S. C.
- Lenhart, Edmund, III, '16 (C). Proprietor, Lenhart's Pharmacy, New Bedford, Mass.
- Levovsky, George A., III, '27 (D). New Bedford, Mass.
- Levy, Henry M., S, '21 (C). With the Everwear Hosiery Company, Milwaukee, Wis.
- Lewis, Don C. C., S, '17 (C). Automobile Salesman, Westport, Mass.
- Lewis, Maurice A., III, '13 (D). With Doe & Ingalls, 198 Milk St., Boston, Mass.
- Lewis, Richard H., III, '35 (D). Student, North Carolina State College, Raleigh, N. C.
- Lewis, William C. T., I, '22 (D). Assistant Superintendent, Westport Manufacturing Co., Westport Factory, Mass.
- Li Kung, I, '07 (D). Professor of the National Institute of Technology, Peiping, China.
- Liebmann, Robert E., Jr., II, '25 (C). With A. Steinam Co., Inc., 114 Bleecker St., New York City, N. Y.
- Lincoln, Edward A., S, '30 (C). New Bedford, Mass.
- Lindberg, Herbert A., I, '32 (D). With Kendall Co., New Bedford, Mass.
- Linderson, Carl A., I, '21 (D). Overseer, Card Room, Devon Mills, New Bedford, Mass.
- Lipson, Edward, S, '21 (C).
- Livesey, Benjamin, Jr., III, '11 (D).
- Livesley, Howard P., IX, '34 (C). With Morse Twist Drill & Machine Co., New Bedford, Mass.
- Livingstone, Joseph A., S, '14 (C). Clerk, Wamsutta Mills, New Bedford, Mass.
- Lo, Ting Y., I, '07 (D). Dean and Professor of Textile Dept. of Technical College (Sect. I) of Peking University; Managing Director of Kai Yuen Woolen & Carpet Factory, Peking, China.
- Lobley, Fay G., I, '24 (D). New Bedford, Mass.
- Lock, Robert F. K., I, '20 (D). Erecting Engineer, Wah Chang Trading Corp., (Sole Agents for Woonsocket Textile Machinery), P. O. Box 1178, Shanghai, China.
- Loneragan, David J., II, '16 (C). With Federated Textiles, Inc., 30 Varick St., New York City, N. Y.
- Lopes, Joseph, S, '31 (C). 87 Acushnet Avenue, New Bedford, Mass.
- Loring, Andrew C., I, '26 (D). With Devon Mills, Inc., New Bedford, Mass.
- Loud, Everett C., I, '27 (D). Utility Man, Lorraine Mfg. Company, Pawtucket, R. I.
- Lovejoy, Charles F., IX, '35 (C). Student, New Bedford Textile School, New Bedford, Mass.
- Lowther, John M., I, '24 (D). Representative of Chas. A. Schieren Co., 146 Smith St., New Bedford, Mass.
- Luce, Bradford A., I, '22 (D). With Fiske Rubber Co., Chicopee Falls, Mass.
- Lynam, Ralph L., IX, '32 (C). With Fibro Products Co., New Bedford, Mass.
- MacColl, William B., II, '05 (D). President, Lorraine Manufacturing Co., Pawtucket, R. I.
- Macia, William F., I, '28 (D). With United States Testing Company, 1415 Park Ave., Hoboken, N. J.
- MacKenzie, John A., II, '07 (D). Alcohol Unit of Internal Revenue, U. S. Government.
- Macy, Andrew W., I, '07 (D). Converter, New York City, N. Y.

- Macy, Edwin H., I, '23 (D). President, Macy Manufacturing Co., 95 Court St., New Bedford, Mass.
- Madero, Alberto, S, '02 (C).
- Mainville, Alfred J., II, '22 (D). Supt. of Weaving, Brupbacker Silk Mills, Ltd., Valleyfield, P. Q., Canada.
- Malick, Albert, III, '33 (D). With Colloids, Inc., 16 Delaney St., Newark, N. J.
- Manning, Lewis G., V, '10 (D). Technologist in Textile Division, Corn Products Refining Co., New York City, N. Y.
- Marriott, Frederick A., I, '26 (D). With Thermord Rubber Co., Trenton, N. J.
- Martel, Henri, S, '29 (C). Ave La Paz 699, Guadalajara, Mexico.
- Martins, Antonio R., S, '20 (C). New Bedford, Mass.
- Mason, Joseph E., II, '23 (C).
- Matthews, Irving F., I, '25 (C). Salesman, 227 Union St., Room 510, New Bedford, Mass.
- Maxfield, Linden H., I, '26 (D). Designer, Lorraine Manufacturing Co., Pawtucket, R. I.
- McArdle, William F., III, '33 (D). With Norschner Dye Works, Newton, Mass.
- McCann, William M., III, '26 (D). With S. Slater & Sons, Inc., Webster, Mass.
- McCraw, French Z., S, '26 (C). With The Irene Mills, Gaffney, S. C.
- McDevitt, Francis O., I, '22 (C). Salesman, Heinman and Seidman, New York, N. Y.
- McDonald, Thomas J., III, '27 (D). With Arkwright Finishing Co., United Merchants Laboratory, Fall River, Mass.
- McEvoy, Leo A., S, '22 (C). With Knitted Padding Co., 105 Chapman St., Canton, Mass.
- McEvoy, Raymond R., I, '19 (C). Assistant Superintendent, The Knitted Padding Co., Canton, Mass.
- McEwen, Ellsworth S., S, '18 (C). With Eastern Exchange Bank, 37 Broadway, New York City, N. Y.
- McGaughey, Arthur E., IX, '32 (C). With Continental Wood Screw Co., New Bedford, Mass.
- McGinn, Walter E., III, '17 (D). Sales Engineer, 29 Shawmut Ave., Mansfield, Mass.
- McIsaac, Harold J., I, '19 (D). 213 Court St., New Bedford, Mass.
- McKnight, John D., I, '22 (C). Converter, Nuess, Hesslein & Co., Inc., 53 White St., New York City, N. Y.
- McNeely, Thomas J., II, '01 (C). Supt., Rhodes-Rhyne Mfg. Co., Lincolnton, N. C.
- Meagher, Gregory F., V, '29 (D). 40 Mayflower Rd., Chestnut Hill, Mass.
- Mello, Frank, IX, '34 (C). With Morse Twist Drill & Machine Co., New Bedford, Mass.
- Mendrala, Aloysius, I, '31 (D). With Lorraine Mfg. Company, Pawtucket, R. I.
- Mercer, George C., Jr., III, '22 (C). With Milbank Bleachery, Lodi, N. J.
- Mikus, Frank J., III, '33 (D). With American Printing Co., Fall River, Mass.
- Miller, Wallace J., I, '22 (D). Assistant Superintendent and Cotton Classer, Crown Manufacturing Co., Pawtucket, R. I.
- Mills, Clayton W., I, '26 (C). With Machinery Liquidating Co., 33 West 42nd St., New York City, N. Y.
- Mills, Otis P., Jr., I, '05 (D). Automobile Distributor and Real Estate, Augusta St., Greenville, S. C.
- Molins, Andres, II, '28 (C). Designer, 1 Calle Poniente No. 41, San Salvador, Central America.
- Moore, Carroll C., I, '27 (D). New Bedford, Mass.
- Moore, Stephen R., II, '13 (D). With Philadelphia Steel Heddle Manufacturing Co., Philadelphia, Pa.
- Moore, William H., S, '22 (C). Twister Section Hand, A. M. Smyre Mfg. Co., Gastonia, N. C.
- Morris, David H., S, '31 (C). 571 East 140 Street, New York City, N. Y.
- Morris, Edith A., S, '33 (C). With Nonquitt Mills, New Bedford, Mass.

- Morris, Theodore P., VI, '19 (C). Superintendent, Ridge Mills, Inc., Gastonia, N. C.
- Morrison, Julian K., VI, '20 (C). President, Brighton Mills, Passaic, N. J.
- Morse, Alice L., II, '22 (C).
- Morton, Phillips T., III, '32 (D). With Glenlyon Print Works, Phillipsdale, R. I.
- Morton, Walter E., VI, '23 (C). Cotton Classer and Overseer of Carding, Lafayette Cotton Mills, Inc., Lafayette, Ala.
- Moss, Milo L., VI, '01 (D). New Bedford, Mass.
- Muggleton, A. Lincoln, IX, '34 (C). With Morse Twist Drill & Machine Co., New Bedford, Mass.
- Mullarkey, Joseph F., Jr., I, '26 (D). With New Bedford Print & Dye Co., New Bedford, Mass.
- Mung, Theodore C., S, VI, '22 (C).
- Munroe, John F., Jr., III, '33 (D). With Bates Mfg. Company, Lewiston Maine.
- Murley, John A., S, '34 (C). Fairhaven, Mass.
- Murphy, Edward L., Jr., IV, '26 (C). Assistant Instructor, New Bedford Textile School, New Bedford, Mass.
- Murphy, Edward M., Jr., III, '34 (D). With Clearwater Mfg. Co., Clearwater, S. C.
- Myers, Frederick H., III, '26 (D). With Windsor Print Works, No. Adams, Mass.
- Nash, Howard P., Jr., III, '25 (C).
- Neel, Albert G., V, '09 (D). Assistant Manager, Nazareth Waist Company, Nazareth, Pa.
- Nelme, Bennett D., II, '03 (D). Lumber and Farming, Wadesboro, North Carolina, Rt. No. 2.
- Nelson, James A., II, '22 (C). With Wabasso Cotton Co., Trois Rivieres, Quebec, Canada.
- Nichols, Henry W., II, '00 (D). Principal, Bradford Durfee Textile School, Fall River, Mass.
- Normile, Joseph W., V, '35 (D). Student, Kinyon's Commercial School, New Bedford, Mass.
- Norris, Thomas L., III, '28 (D). With New Bedford Rayon Co., New Bedford, Mass.
- Northrop, William F., I, '16 (C). Salesman, Hopedale Manufacturing Company, Milford, Mass.
- Northway, Ralph L., III, '31 (D). 167 Center Ave., Middleboro, Mass.
- Novick, Joseph B., III, '25 (D). With John Hancock Insurance Co., New Bedford, Mass.
- O'Brien, John N., Jr., S, '21 (C). Mattress Manufacturer, Comfortress Co., New Bedford, Mass.
- O'Brien, Thomas B., VI, '11 (C). O'Brien Padawer, Inc., Cotton Waste and Linters, 202 W. 40th St., New York City, N. Y.
- O'Brien, William L., S, '15 (C). Retail Liquor Store, New Bedford, Mass.
- O'Donnell, Thomas J., I, '26 (D). Fitchburg, Mass.
- Ogden, William H., III, '18 (D). With Watson-Park Co., 470 Atlantic Ave., Boston, Mass.
- O'Neil, John J., V, '06 (D). Optician, 389 Main St., Springfield, Mass.
- Orr, Charles F., Jr., I, '25 (C). Product Development Dept., Mansfield Tire and Rubber Company, Mansfield, Ohio.
- Osborn, John W., I, '02 (D).
- Oscar, Jack P., S, '25 (C).
- Othote, Gilbert A., II, '30 (D). Designing Dept., Haywood Mackey & Valentine, 281 Adelphie St., New York City, N. Y.
- Owers, Mary M., VII, '34 (C). 50 Bedford St., New Bedford, Mass.
- Paine, Howard N., S, '21 (C). Mason, 33 High School Road, Hyannis, Mass.
- Pakula, Frank, I, '29 (D). With Butler Mill, New Bedford, Mass.

- Pallatroni, Paul J., I, '25 (D). New Bedford, Mass.
- Palmer, Myrtland F., I, '13 (D). With Irving Trust Co., (Receivership Division), 233 Broadway, New York City, N. Y.
- Pan, Chen C., III, '16 (C).
- Papademetrius, Demetrius, S, '21 (C). Textile Designer, Hathaway Mfg. Co., New Bedford, Mass.
- Papageorge, George, IV, '23 (D). With Scott & Williams, Laconia, N. H.
- Papkin, Nathan, IV, '26 (D). New Bedford, Mass.
- Paradis, Joseph L., III, '25 (D). Sales Manager, Ohio Fuel Gas Co., Elyria, Ohio.
- Patt, Lester D., II, '08 (D). Claim Agent, United States Finishing Company, 40 Worth St., New York City, N. Y.
- Payne, James E., II, '30 (D). New Bedford, Mass.
- Pease, Bryden, S, '14 (C). With Hazlip, Hood Cotton Company, Greenville, Miss.
- Peavey, Robert F., IX, '28 (C).
- Peirce, Everett S., III, '31 (D). With Dutchess Bleachery, Wappingers' Falls, N. Y.
- Peitavino, Americo, I, '29 (D). With Milan Silk Mills, Inc., New Bedford, Mass.
- Perez, Alfonso, S, '23 (C). Owner, St. Pedro Cotton Mill, Octavalo, Ecuador, S. A.
- Perez, Gonzalo B., I, '30 (D). Manager of a Mill, P. O. Box 431, Quito, Ecuador, S. A.
- Pernelet, Gerard L., S, '30 (C). With Hathaway Machinery Company, New Bedford, Mass.
- Perrier, Gustave D., IV, '30 (D). With The National Silk Co., South Coventry, Conn.
- Perry, Allan M., I, '25 (D).
- Perry, Dorothea S., S, '30 (C). With Roxbury Carpet Co., Roxbury, Mass.
- Perry, Henry J., Jr., III, '35 (D). With American Insurance Co., 316 Huntington Ave., Boston, Mass.
- Peters, Aubrey R., S, '30 (C). Overseer of Carding, Stormont Mill, Canadian Cottons, Ltd., Cornwall, Ontario, Canada.
- Peterson, Henry F., III, '22 (D). With Amoskeag Mfg. Co., Manchester, N. H.
- Phinney, Richard B., IX, '32 (C). With Atlas Tack Co., Fairhaven, Mass.
- Pickard, Walter D., I, '17 (D).
- Pickering, William A., IX, '34 (C).
- Pien, Ting K., I, '22 (C).
- Pieraccini, Frank, Jr., II, '07 (D). Superintendent, Tire Fabric Corp., Salmon Falls, N. H.
- Pierce, Clifton S., I, '29 (D). Director of Testing Laboratory, Abraham & Straus, Inc., Brooklyn, N. Y.
- Pilkington, James, III, '29 (D). With Clearwater Mfg. Co., Clearwater, S. C.
- Pinault, Robert W., III, '24 (D). Dyer on Celanese Fabrics, U. S. Finishing Company, Sterling, Conn.
- Pittle, Charles, IV, '09 (D). Importer, 1817 Acushnet Ave., (Chas. Pittle & Co.), New Bedford, Mass.
- Ponte, John V., IX, '33 (C). Attending Wentworth Institute, Boston, Mass.
- Poremba, Alfred, II, '31 (D). Designer, Scheuer & Company, 72 Leonard St., New York City, N. Y.
- Potel, Jacques M. L., I, '31 (D). Cotton and Cotton Waste Dealer, 9 rue de Sotteville, Rouen, France.
- Potter, Benjamin R., II, '28 (D). Jacquard Designer, Dartmouth Mill, New Bedford, Mass.
- Pressman, Jacob L., I, '24 (D). General Manager, Orkin Exterminating Co., Inc., 1128 Elizabeth Ave., Charlotte, N. C.
- Prokuski, Stanley A., I, '30 (D). Head Designer, Slater Mills, Inc., Webster, Mass.
- Quinn, Francis J., IX, '27 (C). New Bedford, Mass.
- Radway, Charles A., III, '28 (D). 103 Commonwealth Ave., Chestnut Hill, Mass.

- Ragan, Caldwell, VI, '19 (C). Secretary and Assistant Treasurer, Ragan Spinning Company, Gastonia, N. C.
- Ramos, Edwin C., III, '25 (D). Student, New Bedford, Mass.
- Ramsbottom, Archie, IV, '24 (D).
- Rankin, William T., VI, '19 (C). Gastonia, N. C.
- Rawcliffe, George A., III, '29 (D). Insurance, Reed Road, No. Dartmouth, Mass.
- Reed, Francis B., III, '21 (D). Wareham, Mass.
- Regan, Carlton E., III, '28 (C). New Bedford, Mass.
- Remington, Allen K., I, '20 (D). With J. & P. Coats (R. I.), Inc., Pawtucket, R. I.
- Reynolds, Philip E., III, '34 (D). New Bedford, Mass.
- Richards, Benjamin, VI, '02 (D). Manager, Underwriters' Service Association, 175 West Jackson Blvd., Chicago, Ill.
- Richardson, Malcolm H., I, '26 (D). Assistant Instructor, New Bedford Textile School, New Bedford, Mass.
- Riding, Richard, S, '01 (C).
- Rigby, Christopher E., Jr., I, '23 (C). With Dupont Rayon Co., Richmond, Va.
- Rigby, James H., VI, '25 (D). Technical Sales Service Dept., DuPont Rayon Company, Empire State Bldg., New York City, N. Y.
- Riley, George V., III, '16 (C).
- Ripley, Raymond, IX, '34 (C). New Bedford, Mass.
- Rivero, Ricardo J., VI, '04 (D). Monterey, Mexico.
- Robbins, Lloyd B., III, '20 (D). Onset, Mass.
- Robenolt, Edward A., II, '11 (D). 23 Sycamore St., New Bedford, Mass.
- Robinson, Arthur J., III, '17 (D). In Charge of Sulphuric Acid Plant, Rumford Company, Rumford, R. I.
- Robinson, Chester A., I, '22 (D). Principal, Belmont, Mass.
- Robinson, Joseph L., S, '23 (C). New Bedford, Mass.
- Robinson, Raymond W., I, '26 (D). With L. G. Balfour Company, Ithaca, N. Y.
- Rocheleau, M. Violet, II, '35 (D). With Pairpoint Corp., New Bedford, Mass.
- Rodalewicz, Henry F., IX, '28 (C). Die Maker, John I. Paulding, Inc., New Bedford, Mass.
- Roessle, Alfons U., IX, '33 (C). United States Navy, Norfolk, Va.
- Ronne, Arthur H., I, '17 (D). Accountant in Yarn Department, Celanese Corp. of America, 180 Madison Ave., New York City, N. Y.
- Rooney, Harold E., I, '26 (D). Foreman, Berkshire Manufacturing Company, Depot St., Adams, Mass.
- Ross, Edward J., I, '23 (D). 230 St. James Place, Brooklyn, N. Y.
- Rossiter, Laurence E., I, '34 (D). With United Rayon Mills, Fall River, Mass.
- Rothkop, Max, III, '32 (D). New Bedford, Mass.
- Rowan, Peyton, VI, '20 (C). Cotton Buyer, J. G. Boswell, 524 Roberts Building, Los Angeles, Cal.
- Royster, David W., IV, '16 (C). Manager Royster Oil Co., Inc., Shelby, N. C.
- Rubin, Juan D., I, '24 (D). Textile Engineer, Parks-Cramer Co., Fitchburg, Mass. (Territory for Supervision Mexico and South America.)
- Rubinstein, Isaac, III, '27 (D). 410 Ocean Parkway, Brooklyn, N. Y.
- Ruggles, John W., I, '20 (D). Owner and Manager of Yarn Dept., N. E. Nickerson & Co., New Bedford, Mass.
- Said, Antonio, I, '31 (D). Said & Yarur, La Paz, Bolivia.
- St. Louis, Adrian, S, '31 (C). 17 Jouvette Street, New Bedford, Mass.
- Salter, Milton B., III, '19 (C).
- Salvati, Salvato, I, '20 (D). With Milan Silk Co., New Bedford, Mass.
- Sanders, Stanley G., III, '31 (D). Assistant Chemist, Dutchess Bleachery, Wappinger's Falls, N. Y.
- Sayers, William J., I, '23 (D), III, '25 (D). Manchester, N. H.
- Scaccia, Albert N., III, '30 (D). With Arkansas Co., 233 Broadway, New York City, N. Y.
- Scharf, Elmer, III, '22 (D). Chemist and Dyer, Holeproof Hosiery Company, Milwaukee, Wisconsin.

- Scheid, Alfred, VI, '11 (C).** Bond Salesman, Clarence Hodson & Co., New York City, N. Y. (Clinton, Mass.).
- Schiller, Wesley L., I, '23 (D).** Assistant to Superintendent, Lebanon Mill Co., Pawtucket, R. I.
- Schofield, George L., III, '28 (D).** With Grasselli Chemical Co., Grasselli, N. J.
- Scholze, Ernest A., II, '12 (D).** 520 Allen St., New Bedford, Mass.
- Schoop, Hans, S, '22 (C).** With Rose Manufacturing Co., Philadelphia, Pa.
- Schulman, Otto, II, '26 (C).** Assistant Weaving Manager, Finlayson & Co., Tammerfors, Finland.
- Searell, George W., III, '22 (D).** Sales Service, Jacques Wolf & Co., Passaic, N. J.
- Searls, Albion K., I, '27 (C).** Overseer of Carding, Berkshire Fine Spinning Associates, Inc., Adams, Mass.
- Service, Louis B., S, '20 (C).** Superintendent, The Gardiner Hall Jr. Co., South Willington, Conn.
- Shanks, James, Jr., III, '19 (D).** Service Man, Morningstar Nicol, Inc., 630 West 51st St., New York City, N. Y.
- Shaw, Adam J., I, '30 (D).** Budget Manager, Cape Tire Co., Inc., New Bedford, Mass.
- Sherman, Henry F., III, '35 (D).** With Apponaug Co., Apponaug, R. I.
- Shill, Alexander, I, '15 (D).** Shill Brothers, 463 7th St., New York City, N. Y.
- Shoczolek, Walter P., I, '34 (D).** New Bedford, Mass.
- Shumway, Orsman A., III, '35 (D).** Atlas Tack Corp., Fairhaven, Mass.
- Silva, Albert D'A., II, '34 (D).** With Gosnold Mills Co., New Bedford, Mass.
- Silva, Americo O., I, '24 (D).** Assistant Manager, 11118 Merchandise Mart, Chicago, Ill.
- Simmons, Charles G., S, '22 (C).** Woodworking Teacher, Public Schools, New Bedford, Mass.
- Singer, Meyer K., I, '21 (D).** With John Campbell Co., Newark, N. J.
- Siu, Poy N., I, '23 (C).** 5 Lower Castle Road, Hong Kong, China.
- Smith, Carlton W., III, '11 (D).** Clerk, Drift Road, South Westport, Mass.
- Smith, George F., III, '32 (C).** With Swift & Co., 1 Bridge Square, New Bedford, Mass.
- Smith, James C., VI, '23 (C).**
- Snedden, George A., VI, '20 (C).** Cotton Salesman, William Almy & Co., New Bedford, Mass.
- Snell, Elliott A., I, '27 (C).** With United Rayon Co., Fall River, Mass.
- Snyder, Arthur E., V, '09 (D).** President Berkshire Moccasin Co., Holliston, Mass., and Worsted Yarn Salesman, Percy A. Legge, 185 Summer St., Boston, Mass.
- Soler, Julius A., I, '28 (D).** Sub-Director of Carding and Spinning, Fabrica de Rio Blanco, Rio Blanco, Ver, Republica Mexicana.
- Sotnick, George, IV, '22 (D).** Machinery Fixer, Pawtucket Hosiery Company, Pawtucket, R. I.
- Spare, Arthur F., I, '09 (D).** With J. V. Spare & Co., New Bedford, Mass.
- Spencer, William A., VI, '04 (D).** Superintendent, Trainer Mills of Martel Mills, Inc., Chester, Pa.
- Stasiun, Henry F., S, '29 (C).** New York City, N. Y.
- Stevens, Bradford T., III, '31 (D).** Chemist, Wilson Company, Providence, R. I.
- Stowell, Edgar D., III, '35 (D).** With Edwards Mfg. Co., Augusta, Maine.
- Strahoska, Statia, S, '33 (C).** With Nottingham Neckwear Co., New Bedford, Mass.
- Stubbs, Guy P., '01 (C).** Manager of an estate, Monroe, La.
- Sturtevant, Harold B., III, '15 (D).** Supt. of Bleachery, American Printing Co., Fall River, Mass.
- Sullivan, Charles J., III, '28 (D).** With Pacific Mills, Lawrence, Mass.
- Sullivan, Daniel F., Jr., I, '29 (D).** With Firestone Cotton Mills, New Bedford, Mass.
- Sullivan, Edward H., IX, '33 (C).** New Bedford, Mass.
- Sun, Chiating, I, '25 (D).** Textile Engineer, Lu Foong Cotton Mill, Ching-chow, Ho-Nan, China.

Sweeney, Eugene F., I, '22 (D). Head of Quality and Production, Firestone Tire & Rubber Co., Fall River and New Bedford, Mass.
Swenson, Hilary S., III, '19 (C). Chemist, Morse Twist Drill & Machine Co., New Bedford, Mass.
Sylvester, Burton C., III, '18 (D). With Farwell Bleachery, Lawrence, Mass.
Sylvia, Frederick W., I, '34 (D). With Neild Mfg. Corp., New Bedford, Mass.
Szynal, Frank J., I, '35 (D). With Sidney Blumenthal & Co., Shelton, Conn.

Taber, Dorothy C., S, '32 (C). New Bedford, Mass.

Taylor, Charles K., VI, '04 (D). Textile Engineering, P. O. Box 187, Magnolia, Miss.

Taylor, Fred, I, '04 (D). American Commissioner of Agriculture, Shanghai, China.

Terry, Clifford B., VI, '04 (D). Salesman, Foster Machine Co., Westfield, Mass.

Tetrault, Albert H., Jr., I, '35 (D). With National Silk Spinning Co., New Bedford, Mass.

Thayer, Ellis H., V, '07 (D).

Thornley, Clifton L., I, '22 (D). Shoe Retailer, Walk-Over Shoe Store, 342 Westminster St., Providence, R. I.

Tom, George K. Y., I, '25 (D). With Honolulu Advertiser, Honolulu, Hawaii.

Tomasik, A. Theodore, III, '32 (D). With Revere Copper and Brass, Inc., New Bedford, Mass.

Tourtellot, Pierce D., VI, '13 (C). Agent for Brown & Bigelow, New Bedford, Mass.

Tripp, Clifford H., I, '05 (D). Inspector of Textiles, Q. M. C., Boston General Intermediate Depot, Boston, Mass.

Tripp, Francis, III, '28 (D). With E. L. Patch Company, Stoneham, Mass.

Tripp, Fred R., III, '28 (D). With Mount Hope Finishing Co., North Dighton, Mass.

Tripp, Kenneth S., IX, '28 (C). 464 Mill St., New Bedford, Mass.

Trott, George R., I, '24 (C). Clerk, J. & P. Coats (R. I.), Inc., Pawtucket, R. I.

Truesdale, William P., III, '24 (D). U. S. Finishing Co., Providence, R. I., Silver Springs Branch.

Tsang, Yiu S., I, '07 (D). Chief Engineer, Consolidated Tax Administration, Ministry of Finance, Shanghai, China.

Tsao, Walter Chih C., I, '25 (D).

Tsu, Chee L., I, '08 (D).

Tu, Chung T., I, '22 (D).

Turbak, Stanley, IX, '34 (C). With Firestone Cotton Mills, New Bedford, Mass.

Turcotte, Telesphore W., IX, '34 (C). Reaming Dept., Morse Twist Drill & Machine Co., New Bedford, Mass.

Turgeon, Roger E., S, '29 (C). With Colonial Silk Mills, New York City, N. Y.

Turnbull, Walter, I, '03 (D). General Agent, Life Insurance Company of Virginia, Lawrenceville, Va.

Turner, Gordon R., I, '28 (D). In testing laboratory, United States Testing Co., 1415 Park Ave., Hoboken, N. J.

Turner, James H., 3rd, III, '22 (D). Chemist, Chemical Co. of America, 46 Murray St., New York City, N. Y.

Turner, Oswald P., III, '29 (D). With American Celluloid Company, New York City, N. Y.

Twadowski, Adolphe J., III, '29 (D).

Tyler, James B., III, '32 (C).

Urquhart, George C., III, '09 (D). Shanghai, China, representative of a Boston dye Manufacturing Company.

Van Dyk, Francis R., II, '21 (C). Vice-president, James Van Dyk Company, 50 Barclay St., New York City, N. Y.

Varnum, Albert H., Jr., IX, '34 (C).

Vera, Frederick J., I, '07 (D).

- Vieira Nicholas R., III, '18 (D).** With E. I. duPont de Nemours & Co., 300 W. First St., Charlotte, N. C.
- Viera, A. Ruth, S, '33 (C).** With Candy Mart, New Bedford, Mass.
- Visbal, Luis C., IV, '12 (D).** Manager Knitting Department, Espriella & Co., Cartagena, Colombia, S. A.
- Waldstein, Benjamin, I, '15 (D).** Salesman, S. H. Waldstein, 10 High St., Boston, Mass.
- Walker, Stuart B., I, '26 (D).** Textile Testing and Analyzing, U. S. Testing Co., 1415 Park Ave., Hoboken, N. J.
- Wallner, Siegfried, IV, '19 (C).** Hosiery Plant, Arrow, Virginia.
- Wallner, Waldemar, IV, '23 (C).** Superintendent, Paul Knitting Mills, Inc., Pulaski, Virginia.
- Walne, James A., I, '26 (D).** Designer, Taylor Clapp & Beall, 109 Worth St., New York City, N. Y.
- Walters, Harold J., IV, '07 (D).** Assistant Superintendent, Thomas Develon, Jr., A Street and Indiana Ave., Philadelphia, Pa.
- Warburton, Peter, I, '31 (D).** Manchester, N. H.
- Wareing, Clifford S., I, '30 (D).** With Booth Mill, New Bedford, Mass.
- Wareing, Eli W. T., III, '27 (D).** With United Merchants and Manufacturers, Fall River, Mass.
- Waring, Edmund A., III, '28 (D).** With National Spun Silk Co., New Bedford, Mass.
- Waring, Joseph A., Jr., III, '25 (D).** With Van Raalte Hosiery Co., Paterson, N. J.
- Waring, Leo J., III, '25 (D).** With S. Slater & Sons, Inc., Webster, Mass.
- Warner, Raymond C., III, '33 (D).** Chemist, Farwell Bleachery, Lawrence, Mass.
- Watson, James, Jr., III, '22 (D).** Marion, Mass.
- Watkins, Charles F., Jr., III, '21 (D).** Superintendent, Norwich Plant of U. S. Finishing Co., Norwich, Conn.
- Waxler, Jacob H., I, '21 (D).** Insurance and Real Estate, New Bedford, Mass.
- Weller, George W., Jr., S, '18 (C).** Merchant, Ponemah Building, P. O. Box 539, Taftville, Conn.
- Wentworth, Howland, VI, '15 (C).** New Bedford, Mass.
- Wheeler, William J., S, '22 (C).** Salesman, Tide Water Oil Sales Corp., East Providence, R. I.
- White, Clifford L., II, '09 (D).** New Bedford, Mass.
- White, Elliott H., III, '26 (D).** Assistant Chemist, Boston Elevated Railways, Dept. of Power, 538 Harrison Ave., Boston, Mass.
- Whitehead, George E., I, '23 (D).** Filling Station Manager, New Bedford, Mass.
- Whitlow, Samuel A., Jr., III, '22 (D).** Electrical Engineering, New York Edison Company, 130 East 15th St., New York City, N. Y.
- Whitman, L. Clay, II, '22 (D).** Washington, R. I.
- Whitney, Howard B., I, '16 (D).** George L. Whitney Market, Pawtucket, R. I.
- Wilcox, Roger M. H., S, '10 (C).** Life, Accident and Health Insurance, 49 Federal St., Boston, Mass.
- Wilkinson, Robert A. J., II, '34 (D).** Assistant Designer, Gosnold Mill, New Bedford, Mass.
- Wiley, Eugene L., I, '24 (D).** Hope, R. I.
- Williams, Raymond H., III, '33 (D).** With U. S. Finishing Co., Providence, R. I.
- Williamson, Thomas G., VI, '00 (D).**
- Williamson, Thomas W., I, '06 (D).** New Bedford, Mass.
- Winnell, Lloyd H., III, '20 (D).** With National Aniline & Chemical Company, 40 Rector St., New York City, N. Y.
- Winsper, Samuel F., Jr., S, '29 (C).** South Dartmouth, Mass.
- Wishnietsky Benjamin P., III, '35 (D).** New Bedford, Mass.
- Witherbee, Rex G., I, '05 (D).** Engineer, Utica, N. Y.
- Wojcicki, Edward, IX, '32 (C).**

- Wong, Fook W., I, '18 (D).** Superintendent, Jen Li Woolen Spinning and Weaving Mill, Tientsin (British Concession), China.
- Wong, James H. Y., I, '25 (D).** Sales Manager and Superintendent, A. B. C. Underwear Mill, Office at 193A Nanking Road, Factory at 231 Connaught Road, Shanghai, China.
- Wong, Ka L., I, '07 (D).** Secretary, Salt Gabbell, Shanghai, China.
- Wong, Thomas G., I, '15 (D).** General Manager, China A. B. C. Underwear Mill and Superintendent, Tung Yih Cotton Mill, Shanghai, China.
- Wood, Theodore, I, '03 (D).** Wood, Vanderpyle Co., Inc., 52 Vanderbilt Avenue, New York City, N. Y.
- Woodward, Chester M., I, '24 (D).**
- Worden, George, II, '07 (D).** Overseer of Weaving, Potomska Mills Corp., New Bedford, Mass.
- Wright, Wilbur A., III, '32 (C).** With United States Finishing Co., Norwich, Conn.
- Ybarra, Andrew C., VI, '04 (D).**
- Yen, Yuan S., I, '20 (D).** c/o Dah Sun Cotton Mill, Nantung Chow, Kiangsu, China.
- York David E., III, '33 (D).** With United States Finishing Co., Providence, R. I.
- Young, Edward L., I, '31 (D).**
- Young, Frederick J., VI, '04 (D).** Manager, Bemis Cotton Mill, Bemis, Tenn.
- Young, James D., I, '26 (D).**
- Young, Jun L., I, '25 (D).** 233 N. Kuakini St., Honolulu, Hawaii.
- Young, Thomas, II, '21 (C).** New Bedford, Mass.
- Young, Tsun S., I, '17 (D).** Engineer, Dah Foong Cotton Spinning and Weaving Mill, Shanghai, China.
- Young, Yolay, I, '21 (C).** Shanghai, China.
- Yozefek, Stanislaw, IX, '33 (C).** Machinist, Continental Wood Screw Co., New Bedford, Mass.
- Yu, Chao-Ming, I, '29 (D).**
- Yu, Victor H., I, '20 (D).** Director of the Dah Lung Cotton Mills, Changchow, China, and with the Wei Kee & Co., 455 Tientsin Road, Shanghai, China.
- Yuan, Harold H. H., I, '23 (C).** Textile Engineer, Nichols Woolen Spinning Mill, Tientsin, China.
- Zung, King K., III, '20 (C).**

- Acomb, William, II, '07.** Head of Weaving Department, New Bedford Textile School, New Bedford, Mass.
- Baldwin, John M., III, '14.** With Nashawena Mills, New Bedford, Mass.
- Bavoux, Roger E., II, '27.**
- Bolton, James, VI, '17.** Superintendent, Gosnold Mills Co., New Bedford, Mass.
- Bolton, Wright, Jr., III, '14.** In charge of Rayon Division, Pacific Mills, Lawrence, Mass.
- Bowen, Evan A., VI, '21.** Holmes Manufacturing Co., New Bedford, Mass.
- Burton, James L., II, '22.** With Nashawena Mills, New Bedford, Mass.
- Carr, Ernest, II, '29.** Designer, Booth Manufacturing Co., New Bedford, Mass.
- Carse, Henry G., VI, '21.** Overseer of Silk Department, Lawton Mills, Plainfield, Conn.
- Day, Andrew F., VI, '19.** Insurance Agent, First National Bank Building, New Bedford, Mass.
- Driesen, Frank, VI, '26.** Second Hand, Nashawena Mills, New Bedford, Mass.
- Dumas, Leon F., II & VI, '31.** Overseer, Soule Mills, New Bedford, Mass.

Flanders, Kenneth A., VI, '20. Agent, Dunn and Bradshaw, Providence, R. I.

Green, Jim, II, '06. Farmer, R. F. D. No. 4, Box 75, So. Dartmouth, Mass.

Gurney, Preston S., VI, '19. Overseer, Berkshire Fine Spinning Associates, Inc., North Adams, Mass.

Hagen, John F., VI & II, '16. Manager, Executive Offices, Cotton Mill Division, Standard Textile Products Company, 320 Broadway, New York City, N. Y.

Hammond, Amos E., I, '04.

Harrop, William H., VI, '30. With New York Mills, Utica, N. Y.

Holden, Frank, VI, '18. In Charge of Card Room, Reading Cotton Mill, Joseph Bancroft & Sons, Reading, Pa.

Holmes, Philip C., I, '08. Clerk, Grinnell Mfg. Corporation, New Bedford, Mass.

Kelty, Pharus T., VI, '23. Third Hand on Roving Frames, Page Manufacturing Company, New Bedford, Mass.

Kovar, Paul, II, '29. Draftsman, National Spun Silk Co., New Bedford, Mass.

LaChapelle, Adelard J., II, '07. Designer, Neild Mill, New Bedford, Mass.

Lauzon, Wilfrid P., VI, '34. Spindle Setter, Fiske Rubber Co., New Bedford, Mass.

MacPhail, Walter S., VI, '30. Assistant Cotton Classer, Wamsutta Mills, New Bedford, Mass.

Mellor, John A., II, '16. Designer, Soule Mills, New Bedford, Mass.

Michaud, Honore, Jr., VI, '34. Third hand on Spoolers, Pierce Bros., Ltd., New Bedford, Mass.

Palmer, John M., III, '14. Salesman, Borne, Scrymser Co., New York City, N. Y.

Parker, William E., VI & II, '17. Wefer & Parker, Insurance, Merchants National Bank Building, New Bedford, Mass.

Paull, Norman M., III, '16. Civil Mechanical Engineer, 508 Bookstore Bldg., New Bedford, Mass.

Peterson, E. Gilbert, III, '16. Assistant Chemist, Morse Twist Drill & Machine Company, New Bedford, Mass.

Resendes, Manuel A., VI, '23. Third Hand, Kilburn Mill, New Bedford, Mass.

Riley, William, VI, '25. Superintendent, Esmond Mills, Esmond, R. I.

Sharples, William, Jr., II, '17. With Pacific Mills, Lawrence, Mass.

Siever, Hughes L., III, '12. Southern Representative, Borne, Scrymser Company, 17 Battery Place, New York City, N. Y.

Slater, Edward, VI, '23. Mechanic, Ancona Mill, Fall River, Mass.

Slater, Victor O. B., II, '07. Designer, Pierce Mill, New Bedford, Mass.

Smith, Clifford, II, '34. Warp Changer, Gosnold Mills Co., New Bedford, Mass.

Sylvia, Anthony R., II, '17. Overseer, Gosnold Mill Co., New Bedford, Mass.

Townson, Thomas, III, '29. Merchant, 1513 Acushnet Ave., New Bedford, Mass.

Tripp, Joseph A., VI, '23. Cotton Classer, Kilburn Mill, New Bedford, Mass.

Trojan, Frank, II, '24. Second Hand, National Spun Silk Co., New Bedford, Mass.

Walker, George, VI, '23. Overseer, Nashawena Mills, New Bedford, Mass.

Winterbottom, George, VI, '06.

NEW BEDFORD TEXTILE SCHOOL

New Bedford, Mass.

APPLICATION BLANK FOR ENROLLMENT IN DAY CLASSES

I hereby make application for admission to the day classes of the New Bedford Textile School.

Date..... 193..

Name in full

Age last birthday

Home residence

Name of parent or guardian.....

Name of school last graduated from.....

If not a graduate, school last attended

State in what way you first learned of the school

.....

Mark X Against Course Desired

General Cotton Manufacturing Course
Designing Course
Chemistry Dyeing and Finishing Course
Knit Goods Manufacturing Course
Carding and Spinning Course
Secretarial Course
Mechanical Course
Rayon Preparation Course
Special Course in

The above application should be filled out and mailed or delivered to —

THE NEW BEDFORD TEXTILE SCHOOL

New Bedford, Mass.



SMU
ARCHIVES

COPIES

