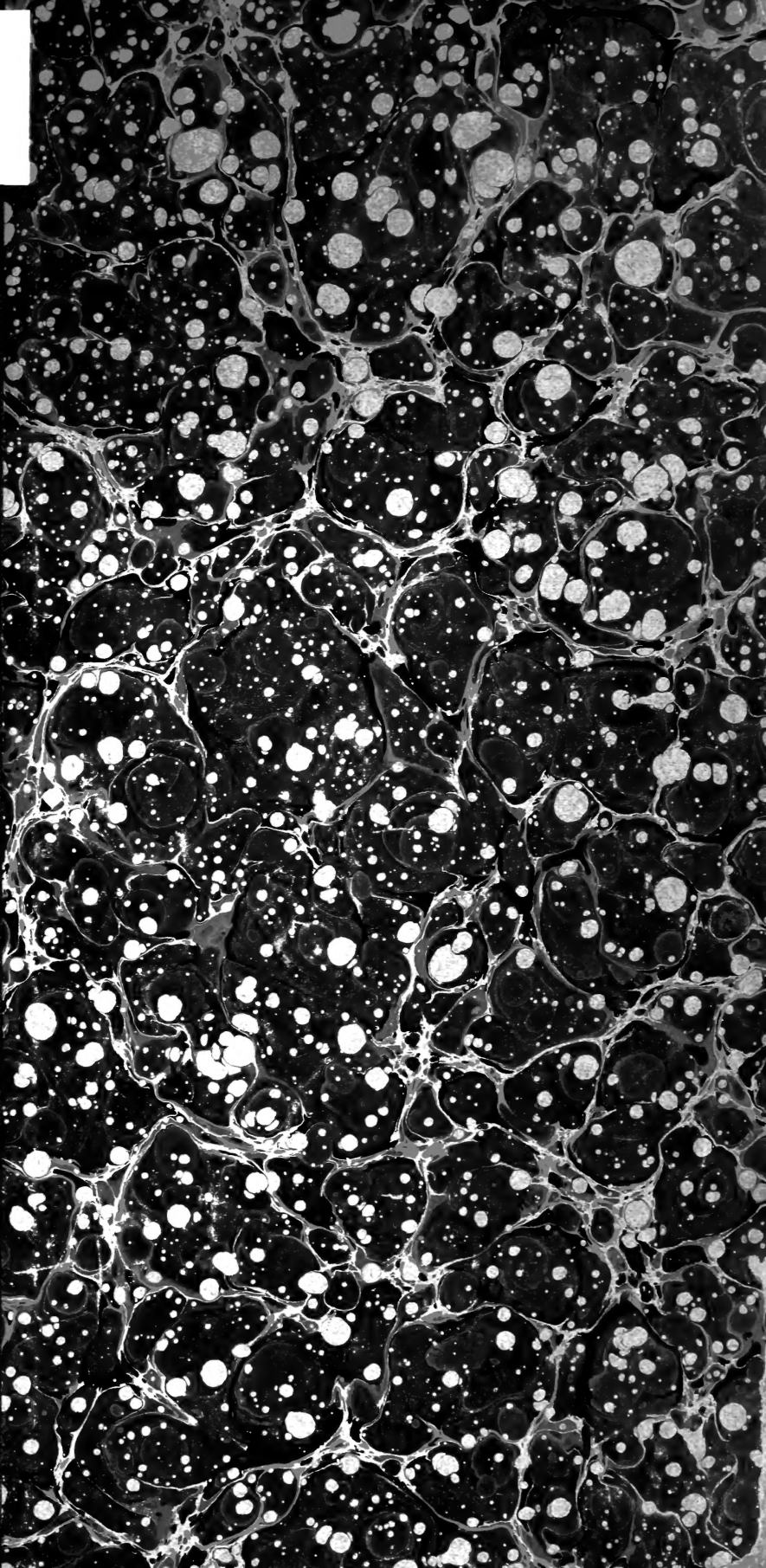
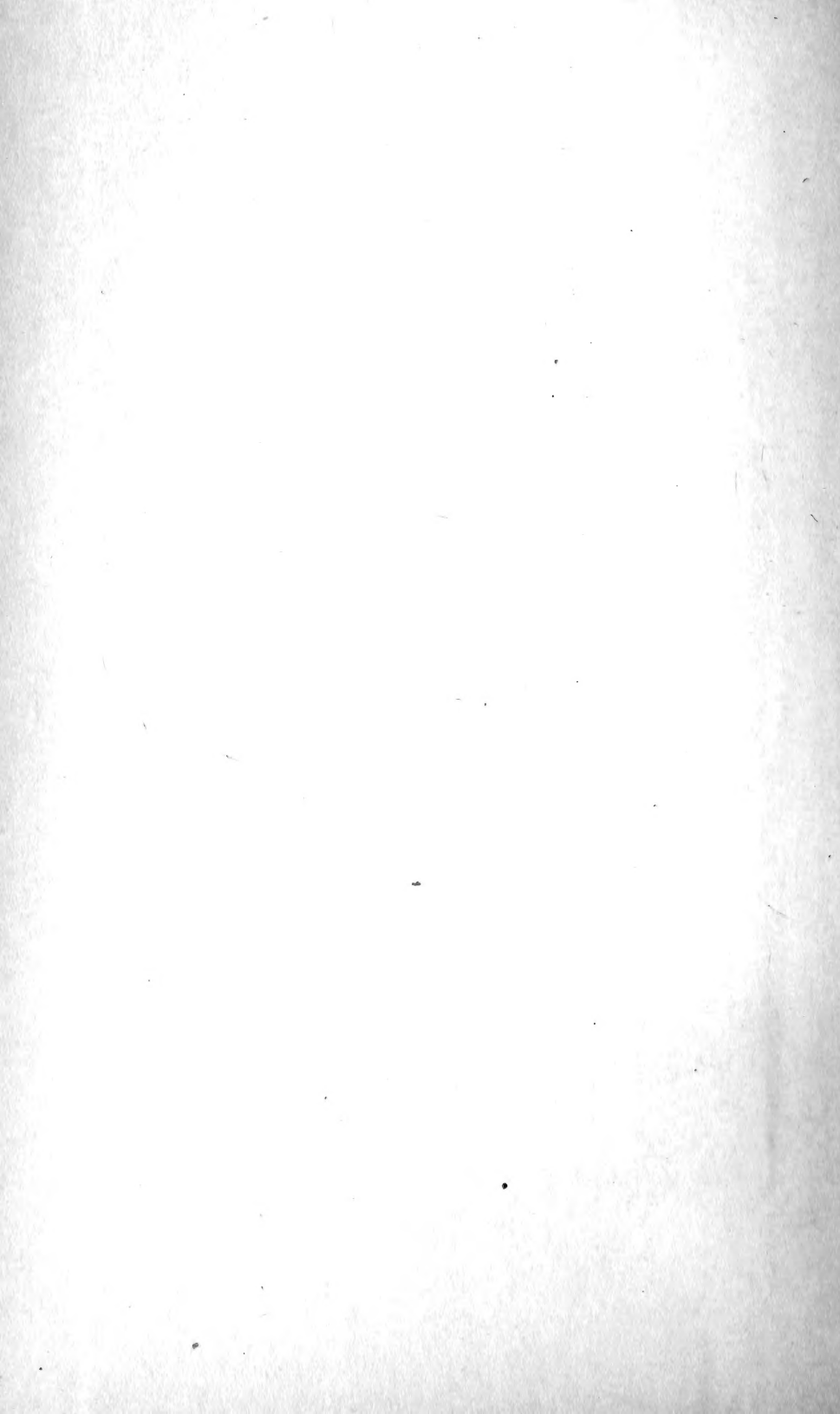


OK
125
.H39





36
A

CATALOGUE

OF THE

Plants Found in New Bedford

AND ITS VICINITY;

ARRANGED ACCORDING TO THE SEASON OF THEIR FLOWERING.

BY

E. W. HERVEY.

NEW BEDFORD, MASS.:
PRESS OF E. ANTHONY, 67 UNION STREET.
1860.

New Bedford, Nov. 16, 1908

Dear Mr. Floyd,

I am writing to you to day
a copy of my fish catalogue which I
found after a considerable hunt -

I presume you have seen my paper
on Colors of Flowers, if not I can also furnish
you one.

Truly yours

E. Williams Hervey

A

C A T A L O G U E

OF THE

Plants Found in New Bedford

AND ITS VICINITY;

ARRANGED ACCORDING TO THE SEASON OF THEIR FLOWERING.

BY

E. W. HERVEY.



NEW BEDFORD:

PRESS OF E. ANTHONY, 67 UNION STREET, (THORNTON BLOCK.)

1860.

1139

CATALOGUE

581,97448.

H 44

10781

The LuEsther T. Mertz Library
The New York Botanical Garden

CATALOGUE

P R E F A C E .

These plants are arranged in the order of the periods of their flowering; the dates indicating the time of the FIRST appearing of the flowers of the several species. The duration of their flowering will be readily ascertained by reference to any works on descriptive botany. The "Manual of Botany" of Prof. Asa Gray has been followed in determining the species. A few ornamental trees and shrubs commonly cultivated in the city are included, and are distinguished by being printed in italics. All other species are indigenous or naturalized, and with a few exceptions, which are noticed, have been found within the limits of New Bedford. I am indebted to Thomas A. Greene, Esq., an excellent botanist of this city, for valuable assistance in determining many doubtful species. It is not claimed that this is a complete catalogue of all the plants which can be found in this neighborhood, for many additions will doubtless be made, particularly in the natural orders Gramineæ, Musci, &c., but is simply a list of such as have been brought to my notice during the last four years.

ELIPHALET WMS. HERVEY.

NEW BEDFORD, March 1, 1860.

10100
From Soc 1844 10155044

PLANTS OF NEW FLORIDA

Faint, illegible text, likely bleed-through from the reverse side of the page, containing botanical descriptions and lists of species.

PLANTS OF NEW BEDFORD.

From March 15th to April 1st.

<i>Genera.</i>	<i>Common Names.</i>	<i>Natural Orders.</i>
* <i>Stellaria media</i> ,	Common chickweed.	Caryophyllaceæ.
* <i>Senecio vulgaris</i> ,	Common groundsel.	Compositæ.
<i>Epigæa repens</i> ,	Mayflower.	Ericaceæ.
<i>Draba verna</i> ,	Whitlow-grass.	Cruciferae.
<i>Alnus serrulata</i> ,	Smooth alder.	Betulaceæ.
<i>Corylus Americana</i> ,	Wild hazel nut.	Cupuliferæ.
<i>rostrata</i> ,	Beaked hazel nut.	
<i>Populus tremuloides</i> ,	American aspen.	Salicaceæ.
<i>grandidentata</i> ,	Large-toothed aspen.	

From April 1st to 15th.

<i>Salix discolor</i> ,	Glaucous willow.	Salicaceæ.
<i>Juniperus Virginiana</i> ,	Red cedar.	Coniferæ.
<i>communis</i> ,	<i>Common juniper.</i>	
<i>Daphne mezereum</i> ,	<i>Mezereon.</i>	Thymeleaceæ.
<i>Lamium amplexicaule</i> ,	Dead-nettle.	Labiatae.

From April 15th to May 1st.

<i>Populus balsamifera</i> ,		
<i>var. candicans</i> ,	<i>Balm of Gilead.</i>	Salicaceæ.
<i>alba</i> ,	<i>White poplar.</i>	
<i>Chrysosplenium Americanum</i> ,	Golden saxifrage.	Saxifragaceæ.
<i>Equisetum arvense</i> ,	Horsetail.	Equisetaceæ.
<i>sylvaticum</i> ,	“	
<i>Capsella bursa-pastoris</i> ,	Shepherd's purse.	Cruciferae.
<i>Symplocarpus fœtidus</i> ,	Skunk cabbage.	Araceæ.
<i>Carex Pennsylvanica</i> ,	Sedge.	Cyperaceæ.
<i>Novæ-Angliæ</i> ,	“	

* These plants bloom through the year.

From April 15th to May 1st.

<i>Genera.</i>	<i>Common Names.</i>	<i>Natural Orders.</i>
<i>Cupressus thyoides</i> ,	White Cedar.	Coniferae.
<i>Thuja occidentalis</i> ,	<i>American arbor-vitæ.</i>	"
<i>Larix Americana</i> ,	<i>American larch.</i>	"
<i>Ulmus Americana</i> ,	American elm.	Urticaceæ.
<i>fulva</i> ,	<i>Slippery elm.</i>	
<i>racemosa</i> ,	<i>Corky white elm.</i>	
<i>campestris</i> ,	<i>English elm.</i>	
<i>Shepherdia argentea</i> ,	<i>Buffalo-berry.</i>	Elæagnaceæ.
<i>Cornus mas</i> ,	<i>Cornelian cherry tree.</i>	Cornaceæ.
<i>Acer rubrum</i> ,	Red maple.	Sapindaceæ.
<i>saccharinum</i> ,	<i>Sugar maple.</i>	
<i>spicatum</i> ,	<i>Mountain maple.</i>	
<i>Pennsylvanicum</i> ,	<i>Striped maple.</i>	
<i>pseudo-platanus</i> ,	<i>Sycamore maple.</i>	
<i>Anemone nemorosa</i> ,	Wind flower.	Ranunculaceæ.
<i>Caltha palustris</i> ,	Marsh marigold.	"
<i>Benzoin odoriferum</i> ,	Spice bush.	Lauraceæ.
<i>Poa annua</i> ,	Low spear-grass.	Gramineæ.
<i>Antennaria plantaginifolia</i> ,	Plantain-leaved everlasting.	Compositæ.
<i>Taraxacum Dens-leonis</i> ,	Common dandelion.	"
<i>Potentilla Canadensis</i> ,	Cinque-foil.	Rosaceæ.
* var. <i>simplex</i> .		
† <i>Arctostaphylos Uva-ursi</i> ,	Bearberry.	Ericaceæ.
<i>Chiogenes hispidula</i> ,	Creeping snowberry.	"
‡ <i>Rhodora Canadensis</i> ,	Rhodora.	"
§ <i>Cassandra calyculata</i> ,	Leather leaf.	"

From May 1st to 10th.

<i>Carex vulgaris</i> ,	Sedge.	Cyperaceæ.
<i>stricta</i> ,	"	
<i>filiformis</i> ,	"	
<i>vestita</i> ,	"	
<i>sparganioides</i> ,	"	
<i>pallescens</i> ,	"	
var. <i>undulata</i> ,	"	
<i>conoidea</i> ,	"	
<i>grisea</i> ,	"	
<i>canescens</i> ,	"	

*A month later. †Wareham. ‡T. A. Greene. §Dartmouth, (Smith's Mills.)

|| These *Carexes* do not *all* flower at this time, but all may be found during the month of May and the early part of June.

From May 1st to 10th.

<i>Genera.</i>	<i>Common Names.</i>	<i>Natural Orders.</i>
<i>Carex stellulata</i> ,	Sedge.	Cyperaceæ.
varieties,	“	
<i>tenuiflora</i> ,	“	
<i>lupulina</i> ,	“	
<i>crinita</i> ,	“	
<i>debilis</i> ,	“	
<i>polytrichoides</i> ,	“	
<i>intumescens</i> ,	“	
<i>tentaculata</i> ,	“	
<i>hystericina</i> ,	“	
<i>Muhlenbergii</i> ,	“	
<i>triceps</i> ,	“	
<i>gracillima</i> ,	“	
<i>scoparia</i> ,	“	
<i>vulpinoidea</i> ,	“	
<i>ampullacea</i> ,		
var. <i>utriculata</i> ,	“	
<i>bullata</i> ,	“	
<i>tenella</i> ,	“	
<i>comosa</i> ,	“	
<i>folliculata</i> ,	“	
<i>fœnea</i> ,	“	
<i>festucacea</i> ,		
var. <i>tenera</i> ,	“	
<i>lagopodioides</i> ,	“	
<i>aurea</i> ,	“	
<i>Æderi</i> ,	“	
<i>Eleocharis tenuis</i> ,	Spike rush.	“
<i>palustris</i> ,	“	
<i>Luzula campestris</i> ,	Wood-rush.	Juncaceæ.
<i>Anthoxanthum odoratum</i> ,	Sweet-scented vernal grass.	Gramineæ.
<i>Andromeda floribunda</i> ,	<i>Andromeda</i> .	Ericaceæ.
<i>Buxus sempervirens</i> ,	<i>Box tree</i> .	Euphorbiaceæ.
<i>Viola primulæfolia</i> ,	Primrose-leaved violet.	Violaceæ.
<i>blanda</i> ,	Sweet white violet.	
<i>sagittata</i> ,	Arrow-leaved violet.	
<i>lanceolata</i> ,	Lance-leaved violet.	
<i>cucullata</i> ,	Common blue violet.	
<i>pedata</i> ,	Bird-foot violet.	
<i>Muhlenbergii</i> ,	American dog violet.	
<i>Fragaria Virginiana</i> ,	Strawberry.	Rosaceæ.
<i>Amelanchier Canadensis</i> ,	Shad bush.	“

From May 1st to 10th.

<i>Genera.</i>	<i>Common Names.</i>	<i>Natural Orders.</i>
Erythronium Americanum,	Dog's-tooth violet.	Liliaceæ.
Plantago lanceolata,	Ripplegrass.	Plantaginaceæ.
Betula alba,		
var. populifolia,	White birch.	Betulaceæ.
excelsa,	Yellow birch.	
Coptis trifolia,	Goldthread.	Ranunculaceæ.
Comptonia asplenifolia,	Sweet fern.	Myricaceæ.
Veronica serpyllifolia,	Thyme-leaved speedwell.	Scrophulariaceæ.
peregrina,	Purslane speedwell.	
arvensis,	Corn speedwell.	
Salix Babylonica,	Weeping willow.	Salicaceæ.
alba,	White willow.	
lucida,	Shining willow.	
* tristis,	Willow.	
Aralia trifolia,	Dwarf ginseng.	Araliaceæ.
Ostrya Virginica,	Hop hornbeam, or Lever wood.	Cupuliferæ.
Carpinus Americana,	Hornbeam, or Iron wood.	"
Abies Canadensis,	Hemlock spruce.	Coniferæ.
balsamea,	Balsam fir.	
nigra,	Black spruce.	
excelsa,	Norway spruce.	
Fraxinus Americana,	White ash.	Oleaceæ.
Forsythia viridissima,	Forsythia.	"
Pyrus Japonica.		Rosaceæ.
Magnolia purpurea,	Magnolia.	Magnoliaceæ.
Mahonia aquifolium,	Holly-leaved mahonia.	Berberidaceæ.
Ribes sanguinea,	Currant.	Grossulaceæ.
aureum,	Missouri currant.	
rubrum,	Red currant.	
floridum,	Black currant.	
hirtellum,	Smooth wild gooseberry.	
Prunus,	Cherry trees of the various cultivated kinds.	
Vaccinium Pennsylvanicum,	Dwarf blueberry.	Ericaceæ.

From May 10th to 20th.

Aquilegia Canadensis,	Columbine.	Ranunculaceæ.
Ranunculus abortivus,	Small-flowered crowfoot.	"
recurvatus,	Hooked crowfoot.	

From May 10th to 20th.

<i>Genera.</i>	<i>Common Names.</i>	<i>Natural Orders.</i>
<i>Ranunculus bulbosus</i> ,	Bulbous buttercup.	Ranunculaceæ.
<i>acris</i> ,	Tall buttercup.	
<i>repens</i> ,	Creeping crowfoot.	
<i>Saxifraga Virginiensis</i> ,	Early saxifrage.	Saxifragaceæ.
<i>Castilleia coccinea</i> ,	Scarlet painted-cup.	Scrophulariaceæ.
<i>Pedicularis Canadensis</i> ,	Wood betony.	“
<i>Uvularia sessilifolia</i> ,	Sessile-leaved bellwort.	Uvulariæ.
<i>Oldenlandia cœrulea</i> ,	Bluets.	Rubiaceæ.
<i>Hierochloa borealis</i> ,	Holy grass, or Vanilla grass.	Gramineæ.
<i>Spergularia rubra</i> ,	Spurrey sandwort.	Caryophyllaceæ.
<i>Cerastium vulgatum</i> ,	Mouse-ear chickweed.	“
<i>Sagina procumbens</i> ,	Pearlwort.	“
<i>Nepeta glechoma</i> ,	Ground ivy, or Gill.	Labiatae.
<i>Callitriche verna</i> ,	Water starwort.	Callitrichaceæ.
<i>autumnalis</i> ,		
var. <i>linearis</i> ?		
<i>Cardamine hirsuta</i> ,	Common bitter cress.	Cruciferæ.
<i>Sinapis nigra</i> ,	Black mustard.	“
<i>Sisymbrium officinale</i> ,	Hedge mustard.	“
<i>Turritis glabra</i> ,	Tower mustard.	“
<i>Raphanus Raphanistrum</i> ,	Wild radish.	“
<i>Nasturtium Armoracia</i> ,	<i>Horseradish.</i>	“
<i>Malva rotundifolia</i> ,	Common mallow.	Malvaceæ.
<i>Chelidonium majus</i> ,	Celandine.	Papaveraceæ.
<i>Amygdalus nana</i> ,	<i>Common dwarf almond.</i>	Rosaceæ.
	<i>The various varieties of the</i> <i>Pear,</i> <i>Apple,</i> <i>Peach,</i> <i>Plum, &c.</i>	

From May 20th to June 1st.

* <i>Gaylussacia resinosa</i> ,	Black huckleberry.	Ericaceæ.
<i>frondosa</i> ,	Dangleberry.	
<i>Vaccinium vacillans</i> ,	Low blueberry.	“
<i>corymbosum</i> ,	Swamp blueberry.	
varieties,	“	
<i>Leucothoe racemosa</i> ,	Leucothoe.	“
<i>Osmunda cinnamomea</i> ,	Cinnamon-fern.	Filices.

* I have seen this with *white* fruit.

From May 20th to June 1st.

<i>Genera.</i>	<i>Common Names.</i>	<i>Natural Orders.</i>
<i>Osmunda Claytoniana</i> ,	Flowering fern.	Filices.
<i>Hypoxis erecta</i> ,	Star-grass.	Amaryllidaceæ.
<i>Pyrus arbutifolia</i> ,		
var. <i>erythrocarpa</i> ,	Choke-berry.	Rosaceæ.
<i>melanocarpa</i> ,	“	
<i>Americana</i> ,	<i>American mountain ash.</i>	
<i>Prunus maritima</i> ,	Beach plum.	“
<i>Medicago lupulina</i> ,	Black medick.	Leguminosæ.
<i>Lupinus perennis</i> ,	Wild lupine,	
	var. white.	“
	blue.	
<i>Trientalis Americana</i> ,	Star-flower.	Primulaceæ.
<i>Smilacina bifolia</i> ,	False Solomon's seal.	Liliaceæ.
<i>stellata</i> ,	“	
<i>Polygonatum biflorum</i> ,	Smaller Solomon's seal.	“
<i>Geranium maculatum</i> ,	Wild crane's-bill.	Geraniaceæ.
<i>Carolinianum</i> ,	Carolina crane's-bill.	
<i>Erigeron bellidifolium</i> ,	Robin's plantain.	Compositæ.
<i>Senecio aureus</i> ,	Golden ragwort.	“
<i>Krigia Virginica</i> ,	Dwarf dandelion.	“
* var. <i>dichotoma</i> .		
<i>Silene antirrhina</i> ,	Sleepy catchfly.	Caryophyllaceæ.
<i>Arenaria serpyllifolia</i> ,	Thyme-leaved sandwort.	“
<i>Mœhringia laterifolia</i> ,	Mœhringia.	“
<i>Rumex acetosella</i> ,	Field sorrel.	Polygonaceæ.
<i>Cypripedium acaule</i> ,	Lady's slipper.	Orchidaceæ.
<i>Aphyllon uniflorum</i> ,	One-flowered cancer-root.	Orobanchaceæ.
<i>Myosotis verna</i> ,	Scorpion grass.	Borraginaceæ.
<i>Arisæma triphyllum</i> ,	Indian turnip.	Araceæ.
<i>Thalictrum dioicum</i> ,	Early meadow-rue.	Ranunculaceæ.
<i>Æsculus hippocastanum</i> ,	<i>Common horse-chestnut.</i>	Sapindaceæ.
<i>pavia</i> ,	<i>Red buckeye.</i>	
<i>Sassafras officinale</i> ,	Sassafras.	Lauraceæ.
<i>Cornus florida</i> ,	Flowering dogwood.	Cornaceæ.
† <i>Berberis vulgaris</i> ,	<i>Common barberry.</i>	Berberidaceæ.
<i>Quercus alba</i> ,	White oak.	Cupuliferæ.
<i>prinus</i> ,		
var. <i>discolor</i> ,	Swamp white oak.	
<i>ilicifolia</i> ,	Black scrub oak.	
<i>tinctoria</i> ,	Yellow-barked oak.	
<i>rubra</i> ,	Red oak.	

*A month later.

† Grows wild in Fall River.

From May 20th to June 1st.

<i>Genera.</i>	<i>Common Names.</i>	<i>Natural Orders.</i>
<i>Quercus coccinea,</i>	Scarlet oak.	Cupuliferæ.
<i>Fagus ferruginea,</i>	American beech.	"
<i>Morus alba,</i>	White mulberry.	Urticacææ.
<i>Pinus rigida,</i>	Pitch pine.	Coniferæ.
<i>Strobus,</i>	White pine.	
<i>Juglans cinerea,</i>	Butternut.	Juglandacææ.
<i>nigra,</i>	Black walnut.	
<i>Carya glabra,</i>	Pig-nut.	"
<i>Platanus occidentalis,</i>	Buttonwood.	Platanacææ.
<i>Nemopanthes Canadensis,</i>	Mountain holly.	Aquifoliacææ.
<i>Nuphar advena,</i>	Yellow pond lily.	Nymphæacææ.
* <i>Myrica Gale,</i>	Sweet gale.	Myricacææ.
<i>cerifera,</i>	Bayberry.	
<i>Syringa vulgaris,</i>		
<i>var. violacea,</i>	Common lilac.	Oleacææ.
<i>alba,</i>	"	
<i>Persica,</i>	Persian lilac.	
<i>Halesia tetraptera,</i>	Snow-drop tree.	Styracacææ.
<i>Lonicera Tartarica,</i>	Tartarian honeysuckle.	Caprifoliacææ.
<i>xylosteum,</i>	Fly lonicera.	
<i>Viburnum opulus,</i>		
<i>variety,</i>	Guelder rose, or Snow-ball.	"
<i>Weigela rosea.</i>		"
<i>Lycium barbarum,</i>	Matrimony vine.	Solanacææ.
<i>Podophyllum peltatum,</i>	Mandrake.	Berberidacææ.
<i>Kerria Japonica.</i>		Rosacææ.
<i>Magnolia umbrella,</i>	Umbrella tree.	Magnoliacææ.
<i>acuminata,</i>	Cucumber tree.	
<i>Calycanthus floridus,</i>	Carolina allspice.	Calycanthacææ.
<i>lævigatus,</i>	"	
<i>Euonymus atropurpureus,</i>	Burning bush.	Celastracææ.
<i>Cratægus oxycantha,</i>	English hawthorn.	Rosacææ.
<i>Rhododendron maximum,</i>	Rhododendron.	Ericacææ.
<i>Catawbiense,</i>	"	

From June 1st to 10th.

<i>Trifolium pratense,</i>	Red clover.	Leguminosææ.
<i>repens,</i>	White clover.	
<i>procumbens,</i>	Low hop-clover.	
<i>Lathyrus maritimus,</i>	Beach pea.	"

From June 1st to 10th.

<i>Genera.</i>	<i>Common Names.</i>	<i>Natural Orders.</i>
<i>Marchantia polymorpha</i> ,	Brook liverwort.	Hepaticæ.
<i>Sarracenia purpurea</i> ,	Side-saddle flower.	Sarraceniaceæ.
<i>Comandra umbellata</i> ,	Bastard toad-flax.	Santalaceæ.
<i>Aralia nudicaulis</i> ,	Wild sarsaparilla.	Araliaceæ.
<i>Arethusa bulbosa</i> ,	<i>Arethusa</i> .	Orchidaceæ.
<i>Pogonia verticillata</i> ,	<i>Pogonia</i> .	"
<i>Microstylis monophyllos</i> ,	Adder's-mouth.	"
<i>Liparis Loeselii</i> ,	Twayblade.	"
* <i>liliifolia</i> ,	"	"
<i>Sisyrinchium Bermudiana</i> ,	Blue-eyed grass.	Iridaceæ.
<i>Iris versicolor</i> ,	Larger blue flag.	"
<i>Virginica</i> ,	Slender blue flag.	"
<i>Acorus calamus</i> ,	Sweet flag.	Araceæ.
<i>Cratægus coccinea</i> ,	Scarlet-fruited thorn.	Rosaceæ.
<i>Rubus Canadensis</i> ,	Low blackberry.	"
<i>villosus</i> ,	High blackberry.	"
<i>hispidus</i> ,	Running swamp blackberry.	"
<i>occidentalis</i> ,	Thimbleberry.	"
† <i>Potentilla Anserina</i> ,	Silver-weed.	"
<i>Galium Aparine</i> ,	Cleavers.	Rubiaceæ.
<i>Smilax rotundifolia</i> ,	Common greenbrier.	Smilacæ.
† <i>Equisetum limosum</i> ,	<i>Equisetum</i> .	Equisetaceæ.
<i>Linaria Canadensis</i> ,	Wild toad-flax.	Scrophulariaceæ.
<i>Melampyrum Americanum</i> ,	Cow wheat.	"
<i>Oxalis stricta</i> ,	Yellow wood-sorrel.	Oxalidaceæ.
<i>Leucanthemum vulgare</i> ,	Ox-eye daisy.	Compositæ.
<i>Cirsium horridulum</i> ,	Yellow thistle.	"
<i>Hieracium venosum</i> ,	Rattlesnake-weed.	"
<i>Triglochin maritimum</i> ,	Arrow grass.	Alismaceæ.
† <i>Hudsonia ericoides</i> ,	<i>Hudsonia</i> .	Cistaceæ.
<i>Helianthemum Canadense</i> ,	Frost-weed.	"
<i>Scirpus planifolius</i> ,	Club rush.	Cyperaceæ.
<i>Eleocharis obtusa</i> ,	Spike rush.	"
<i>tuberculosa</i> ,	"	"
<i>Poa pratensis</i> ,	Common meadow-grass.	Gramineæ.
<i>Glyceria distans</i> ,	Sea spear-grass.	"
<i>maritima</i> ,	"	"
<i>Heracleum lanatum</i> ,	Cow parsnip.	Umbelliferæ.
<i>Smilacina racemosa</i> ,	False spikenard.	Liliaceæ.
<i>Allium Canadense</i> ,	Wild meadow garlic.	"

* T. A. Greene.

† Wareham.

‡ Rochester. Perhaps will be found earlier.

From June 1st to 10th.

<i>Genera.</i>	<i>Common Names.</i>	<i>Natural Orders.</i>
<i>Oenothera pumila</i> ,	Evening primrose.	Onagraceæ.
<i>Rhamnus catharticus</i> ,	Common buckthorn.	Rhamnaceæ.
<i>Ranunculus sceleratus</i> ,	Cursed crowfoot.	Ranunculaceæ.
<i>Barbarea vulgaris</i> ,	Winter cress.	Cruciferae.

From June 10th to 20th.

<i>Prunus serotina</i> ,	Wild black cherry.	Rosaceæ.
<i>Potentilla argentea</i> ,	Silvery cinque-foil.	“
<i>Norvegica</i> ,	Tall cinque-foil.	
<i>Viburnum lentago</i> ,	Sweet viburnum.	Caprifoliaceæ.
<i>nudum</i> ,	Withe-rod.	
<i>Mediola Virginica</i> ,	Indian cucumber-root.	Smilacææ.
<i>Smilax herbacea</i> ,	Carrion flower.	“
<i>Cornus alternifolia</i> ,	Panicled cornel.	Cornaceæ.
<i>Festuca elatior</i> ,	Fescue-grass.	Gramineæ.
<i>ovina</i> ,		
<i>var. duriuscula</i> .		
<i>Danthonia spicata</i> ,	Wild oat-grass.	“
<i>Holcus lanatus</i> ,	Velvet-grass.	“
<i>Stipa avenacea</i> ,	Black oat-grass.	“
<i>Triticum repens</i> ,	Couch-grass.	“
<i>Glyceria aquatica</i> ,	Reed meadow-grass.	“
<i>nervata</i> ,	<i>Glyceria</i> .	
<i>Canadensis</i> ,	Rattlesnake-grass.	
<i>elongata</i> ,	<i>Glyceria</i> .	
<i>fluitans</i> ,	“	
<i>acutiflora</i> ,	“	
<i>pallida</i> ,	“	
<i>Dactylis glomerata</i> ,	Orchard grass.	“
<i>Scirpus pungens</i> ,	Club rush.	Cyperaceæ.
* <i>lacustris</i> ,	Bulrush.	
<i>maritimus</i> ,	Sea club rush.	
<i>sylvaticus</i> .		
<i>Juncus effusus</i> ,	Common soft rush.	Juncaceæ.
<i>scirpoides</i> ,	<i>Juncus</i> .	
<i>articulatus</i> ,	“	
<i>bulbosus</i> ,	Black grass.	
<i>tenuis</i> ,	<i>Juncus</i> .	
<i>bufonius</i> ,	“	
<i>Greenii</i> ,	“	

* Rather later.

From June 10th to 20th.

<i>Genera.</i>	<i>Common Names.</i>	<i>Natural Orders.</i>
<i>Juncus marginatus</i> ,	Juncus.	Juncaceæ.
<i>Kalmia augustifolia</i> ,	Sheep laurel.	Ericaceæ.
<i>latifolia</i> ,	Mountain laurel.	
<i>Rumex obtusifolius</i> ,	Bitter dock.	Polygonaceæ.
<i>crispus</i> ,	Curled dock.	
<i>sanguineus</i> ?	Bloody-veined dock.	
<i>Spergula arvensis</i> ,	Corn spurrey.	Caryophyllaceæ.
* <i>Agrostemma githago</i> ,	Corn cockle.	“
<i>Asparagus officinalis</i> ,	<i>Garden asparagus.</i>	Liliaceæ.
<i>Brunella vulgaris</i> ,	Self-heal.	Labiatae.
<i>Sanicula Marilandica</i> ,	Black snakeroot.	Umbelliferæ.
<i>Lepidium Virginicum</i> ,	Wild peppergrass.	Cruciferæ.
<i>Osmunda regalis</i> ,	Flowering fern.	Filices.
var. <i>spectabilis</i> ,	“	
<i>Magnolia glauca</i> ,	<i>Small magnolia.</i>	Magnoliaceæ.
<i>Symphoricarpus racemosus</i> ,	<i>Snowberry.</i>	Caprifoliaceæ.
<i>Lonicera sempervirens</i> ,	<i>Trumpet honeysuckle.</i>	“
<i>grata</i> ,	<i>American woodbine.</i>	
<i>Philadelphus grandiflorus</i> ,	<i>Mock orange.</i>	Saxifragaceæ.
<i>coronarius</i> ,	“	
<i>Chionanthus Virginica</i> ,	<i>Fringe tree.</i>	Oleaceæ.
<i>Rhus cotinus</i> ,	<i>Smoke plant.</i>	Anacardiaceæ.
<i>Rosa</i> ,		
<i>many varieties</i> ,	<i>Rose.</i>	Rosaceæ.

Forest trees are now in full foliage, (20th June.)

From June 20th to July 1st.

<i>Mitchella repens</i> ,	Partridge berry.	Rubiaceæ.
<i>Galium trifidum</i> ,	Small bedstraw.	“
<i>circæzans</i> ,	Wild licorice.	
<i>Calystegia sepium</i> ,	Hedge bindweed.	Convolvulaceæ.
<i>Trifolium arvense</i> ,	Rabbit-foot clover.	Leguminosæ.
<i>agrarium</i> ,	Hop-clover.	
<i>Nyssa multiflora</i> ,	Tupelo.	Cornaceæ.
<i>Viburnum dentatum</i> ,	Arrow-wood.	Caprifoliaceæ.
<i>Solanum dulcamara</i> ,	Bittersweet.	Solanaceæ.
<i>Azalea viscosa</i> ,	White swamp-honeysuckle.	Ericaceæ.
<i>Pogonia ophioglossoides</i> ,	<i>Pogonia.</i>	Orchidaceæ.
<i>Calopogon pulchellus</i> ,	<i>Calopogon.</i>	“
<i>Panicum latifolium</i> ,	<i>Panic-grass.</i>	Gramineæ.

*An introduced species, *rare*.

From June 20th to July 1st.

<i>Genera.</i>	<i>Common Names.</i>	<i>Natural Orders.</i>
<i>Panicum dichotomum</i> , 2 or 3 varieties,	Panic-grass.	Gramineæ.
<i>depauperatum</i> ,	“	
<i>Trisetum palustre</i> ,	Trisetum.	“
<i>Bromus secalinus</i> ,	Cheat.	“
<i>mollis</i> ,	“	
<i>Phalaris arundinacea</i> ,	Reed Canary-grass.	“
<i>variety</i> ,	<i>Ribbon grass.</i>	
<i>Canariensis</i> ,	Canary-grass.	
<i>Poa compressa</i> ,	Wire grass.	“
<i>Agrostis vulgaris</i> ,	Red-top.	“
<i>alba</i> ,	White bent-grass.	
<i>scabra</i> ,	Hair grass.	
<i>perennans</i> ,	Thin grass.	
<i>Phleum pratense</i> ,	Herds-grass.	“
<i>Aira flexuosa</i> ,	Common hair grass.	“
<i>Alopecurus geniculatus</i> ,	Floating foxtail.	“
* <i>Sedum acre</i> ,	Mossy stone-crop.	Crassulaceæ.
<i>Polygala polygama</i> ,	Polygala.	Polygalaceæ.
<i>Lysimachia quadrifolia</i> ,	Loosestrife.	Primulaceæ.
<i>stricta</i> ,	“	
† <i>Hottonia inflata</i> ,	Featherfoil.	“
<i>Achillea millefolium</i> ,	Yarrow.	Compositæ.
<i>Sonchus oleraceus</i> ,	Sow thistle.	“
<i>asper</i> ,	Spiny-leaved sow thistle.	
<i>Thalictrum cornuti</i> ,	Meadow-rue.	Ranunculaceæ.
<i>Rosa Carolina</i> ,	Swamp rose.	Rosaceæ.
<i>rubiginosa</i> ,	<i>True sweet-brier.</i>	
<i>Lathyrus palustris</i> ,	Marsh vetchling.	Leguminosæ.
<i>Vicia sativa</i> ,	Tare.	“
<i>Myosotis palustris</i> ,	True forget-me-not.	Borraginaceæ.
<i>Rhus toxicodendron</i> ,	Poison ivy.	Anacardiaceæ.
<i>venenata</i> ,	Poison dogwood.	
<i>typhina</i> ,	Staghorn sumach.	
<i>glabra</i> ,	Smooth sumach.	
<i>Specularia perfoliata</i> ,	Venus's looking-glass.	Campanulaceæ.
<i>Limnanthemum lacunosum</i> ,	Floating heart.	Gentianaceæ.
<i>Nymphæa odorata</i> ,	White water-lily.	Nymphæaceæ.
<i>Potamogeton hybridus</i> ,	Pondweed.	Naiadaceæ.
<i>pusillus</i> ,	“	

From June 20th to July 1st.

<i>Genera.</i>	<i>Common Names.</i>	<i>Natural Orders.</i>
Potamogeton heterophyllus,	Pondweed.	Naiadaceæ.
fluitans,	“	
Zostera marina,	Eel-grass.	“
Ruppia maritima,	Ditch-grass.	“
Ilex lævigata,	Smooth winterberry.	Aquifoliaceæ.
opaca,	American holly.	
verticillata,	Black alder.	
glabra,	Inkberry.	
Silene inflata,	Bladder campion.	Caryophyllaceæ.
noctiflora,	Night-flowering catchfly.	
Dicksonia punctilobula,	Dicksonia.	Filices.
Aspidium spinulosum,	Wood-fern.	“
var. dilatatum,	“	
thelypteris,	“	
noveboracense,	“	
marginale,	“	
cristatum,	“	
acrostichoides,	“	
Woodsia obtusa,	Woodsia.	“
Asplenium ebeneum,	Spleenwort.	“
thelypteroides,	“	
filix-fœmina,	“	
trichomanes,	“	
Pteris aquilina,	Common brake.	“
Adiantum pedatum,	Maidenhair.	“
Onoclea sensibilis,	Sensitive fern.	“
Woodwardia angustifolia,	Woodwardia.	“
Virginica,	“	
Polypodium vulgare,	Polypody.	“
Robinia viscosa,	Clammy locust.	Leguminosæ.
pseudacacia,	Common locust.	
Gleditschia triacanthos,	Honey locust.	“
Tilia Americana,	Basswood, or Linden.	Tiliaceæ.
<i>Europæa</i> ,	<i>European linden.</i>	
Liriodendron tulipifera,	<i>Tulip tree.</i>	Magnoliaceæ.
Deutsia scabra.		Philadelphææ.

From July 1st to 10th.

<i>Genera.</i>	<i>Common Names.</i>	<i>Natural Orders.</i>
<i>Aralia racemosa</i> ,	Spikenard.	Araliaceæ.
* <i>Symphytum officinale</i> ,	Common comfrey.	Borraginacææ.
<i>Onosmodium Virginianum</i> ,	False gromwell.	"
<i>Erigeron strigosus</i> ,	Daisy fleabane.	Compositæ.
<i>annuum</i> ,	"	
<i>Maruta Cotula</i> ,	May-weed.	"
<i>Rudbeckia hirta</i> ,	Cone-flower.	"
<i>laciniata</i> ,	"	
<i>Pyrola rotundifolia</i> ,	Round-leaved pyrola.	Ericacææ.
<i>elliptica</i> ,	Shin leaf.	
<i>Vaccinium macrocarpon</i> ,	Cranberry.	"
<i>Andromeda ligustrina</i> ,	Andromeda.	"
<i>Vitis Labrusca</i> ,	Northern fox-grape.	Vitacææ.
<i>cordifolia</i> ,	Frost-grape.	
<i>Spiræa salicifolia</i> ,	Meadow-sweet.	Rosacææ.
<i>Apocynum cannabinum</i> ,	Indian hemp.	Apocynacææ.
<i>Pastinaca sativa</i> ,	Wild parsnip.	Umbelliferæ.
<i>Daucus Carota</i> ,	Wild carrot.	"
<i>Hydrocotyle Americana</i> ,	Marsh pennywort.	"
† <i>interrupta</i> ,	"	
<i>Cicuta maculata</i> ,	Water hemlock.	"
‡ <i>bulbifera</i> ,	"	
<i>Conium maculatum</i> ,	Poison hemlock.	"
<i>Sambucus Canadensis</i> ,	Elder.	Caprifoliacææ.
<i>Leonurus Cardiaca</i> ,	Motherwort.	Labiataæ.
<i>Nepeta Cataria</i> ,	Catnip.	"
<i>Hypericum perforatum</i> ,	St. John's wort.	Hypericacææ.
<i>Platanthera flava</i> ,	Yellowish orchis.	Orchidacææ.
<i>Hemerocallis fulva</i> ,	Day lily.	Liliacææ.
<i>Verbascum Thapsus</i> ,	Mullein.	Scrophulariacææ.
<i>Lychnitis</i> ?	White mullein.	
<i>Linaria vulgaris</i> ,	Butter and eggs.	"
§ <i>Veronica scutellata</i> ,	Marsh speedwell.	"
<i>Eleocharis acicularis</i> ?	Spike rush.	Cyperacææ.
<i>pygmea</i> ,	"	
<i>Rhynchospora alba</i> ,	Beak rush.	"
<i>glomerata</i> ,	"	
<i>Cladium mariscoides</i> ,	Twig rush.	"
<i>Eriophorum Virginicum</i> ,	Cotton grass.	"
<i>polystachyon</i> ,	"	

* Dartmouth.

† T. A. Greene.

‡ Acushnet.

§ Perhaps will be found earlier.

From July 1st to 10th.

<i>Genera.</i>	<i>Common Names.</i>	<i>Natural Orders.</i>
Dulichium spathaceum,	Dulichium.	Cyperaceæ.
Poa serotina,	Fowl meadow-grass.	Gramineæ.
trivialis,	Rough meadow-grass.	
Brachyelytrum aristatum,	Brachyelytrum.	“
Calamagrostis Canadensis,	Blue joint-grass.	“
Typha latifolia,	Cat-tail flag.	Typhaceæ.
angustifolia,	Small cat-tail flag.	
Sparganium ramosum,	Bur-reed.	“
Scleranthus annuus,	Knawel.	Caryophyllaceæ.
Melilotus alba,	White melilot.	Leguminosæ.
officinalis,	Yellow melilot.	
Oenothera biennis,	Evening primrose.	Onagraceæ.
Epilobium angustifolium,	Great willow-herb.	“
coloratum,	Epilobium.	
* hirsutum,	Codlins and cream.	
Ludwigia palustris,	Water purslane.	“
alternifolia,	Seed box.	
Asclepias Cornuti,	Milkweed.	Asclepiadaceæ.
Isoetes lacustris,	Quillwort.	Hydropterides.
Cirsium arvense,	Canada thistle.	Compositæ.
Anemone Virginiana,	Tall anemone.	Ranunculaceæ.
Aletris farinosa,	Star-grass.	Hæmodoraceæ.
Plantago major,	Common plantain.	Plantaginaceæ.
Ailanthus glandulosus,	<i>Tree-of-Heaven.</i>	Rutaceæ.
Castanea vesca,	<i>Chestnut.</i>	Cupuliferæ.
Ligustrum vulgare,	<i>Privet.</i>	Oleaceæ.

From July 10th to 20th.

Baptisia tinctoria,	Wild indigo.	Leguminosæ.
Tephrosia Virginiana,	Goat's-rue.	“
Drosera rotundifolia,	Sundew.	Droseraceæ.
longifolia,	“	
Gaultheria procumbens,	Boxberry.	Ericaceæ.
Chimaphila umbellata,	Pipsissewa, or	“
maculata,	Wintergreen.	
Spotted wintergreen.		
Monotropa uniflora,	Indian pipe.	“
† Hypopitys,	False beech-drops.	
Linum Virginianum,	Wild flax.	Linaceæ.
Impatiens fulva,	Spotted touch-me-not.	Balsaminaceæ.

* This introduced species, not described in “Gray's Manual,” is quite common in waste places in the city.
 † Great Hill, Marion.

From July 10th to 20th.

<i>Genera.</i>	<i>Common Names.</i>	<i>Natural Orders.</i>
<i>Lobelia spicata</i> ,	Lobelia.	Lobeliaceæ.
<i>Dortmanna</i> ,	Water lobelia.	
<i>Cannabis sativa</i> ,	Hemp.	Cannabineæ.
<i>Humulus lupulus</i> ,	<i>Hop.</i>	“
<i>Geum album</i> ,	Avens.	Rosaceæ.
<i>Gnaphalium uliginosum</i> ,	Low cudweed.	Compositæ.
<i>Sericocarpus conyzoides</i> ,	White-topped aster.	“
<i>Cirsium lanceolatum</i> ,	Common thistle.	“
<i>Hieracium Gronovii</i> ,	Hairy hawkweed.	“
<i>Lactuca elongata</i> ,		
var. <i>integrifolia</i> ,	Wild lettuce.	“
<i>sanguinea</i> ,	“	“
<i>Tanacetum vulgare</i> ,	Tansy.	“
<i>Phytolacca decandra</i> ,	Pokeweed.	Phytolaccaceæ.
<i>Asclepias phytolaccoides</i> ,	Poke-milkweed.	Asclepiadaceæ.
<i>incarnata</i> ,		
var. <i>pulchra</i> ,	Swamp milkweed.	
<i>tuberosa</i> ,	Butterfly-weed.	
<i>Pontederia cordata</i> ,	Pickerel-weed.	Pontederiaceæ.
* <i>Gratiola aurea</i> ,	<i>Gratiola</i> .	Scrophulariaceæ.
<i>Ilysanthes gratiolides</i> ,	False pimpernel.	“
<i>Ranunculus aquatilis</i> ,		
var. <i>divaricatus</i> ,	White water crowfoot.	Ranunculaceæ.
<i>alismæfolius</i> ,	Spearwort.	
<i>Cymbalaria</i> ,	Sea-side crowfoot.	
<i>Galium asprellum</i> ,	Rough bedstraw.	Rubiaceæ.
<i>triflorum</i> ,	Sweet-scented bedstraw.	
<i>pilosum</i> ,	Bedstraw.	
<i>Dianthus Armeria</i> ,	Deptford pink.	Caryophyllaceæ.
<i>Circæa Lutetiana</i> ,	Enchanters' nightshade.	Onagraceæ.
<i>Lilium Philadelphicum</i> ,	Wild orange-red lily.	Liliaceæ.
† <i>Canadense</i> ,	Wild yellow lily.	
<i>superbum</i> ,	Turk's-cap lily.	
<i>Campanula aparinoides</i> ,	Marsh bellflower.	Campanulaceæ.
<i>Sium lineare</i> ,	Water parsnip.	Umbelliferæ.
<i>Ceanothus Americanus</i> ,	New Jersey tea.	Rhamnaceæ.
<i>Cornus sericea</i> ,	Kinnikinnik.	Cornaceæ.
<i>Eriocaulon septangulare</i> ,	Pipewort.	Eriocaulonaceæ.
‡ <i>Lemna</i> .		
<i>Catalpa bignonioides</i> ,	<i>Catalpa</i> .	Bignoniaceæ.
<i>Polygonum Persicaria</i> ,	Lady's thumb.	Polygonaceæ.

*Acushnet.

‡ Fairhaven. Rare.

‡ Probably will be found here.

From July 10th to 20th.

<i>Genera.</i>	<i>Common Names.</i>	<i>Natural Orders.</i>
<i>Polygonum hydropiper,</i>	Smart-weed.	Polygonaceæ.
<i>acre,</i>	Wild smartweed.	
<i>hydropiperoides,</i>	Mild water pepper.	
<i>aviculare,</i>	Knotgrass.	
<i>arifolium,</i>	Halberd-leaved tear-thumb.	
<i>sagittatum,</i>	Arrow-leaved tear-thumb.	
<i>dumetorum,</i>	Climbing false buckwheat.	

From July 20th to August 1st.

<i>Lechea major,</i>	Pinweed.	Cistaceæ.
<i>minor,</i>	“	
<i>Hypericum corymbosum,</i>	St. John's wort.	Hypericaceæ.
<i>mutilum,</i>	“	
<i>Canadense,</i>	“	
<i>Sarothra,</i>	Orange grass.	
<i>Elodea Virginica,</i>	Marsh St. John's wort.	“
* <i>Pycnanthemum incanum,</i>	Basil.	Labiatae.
* <i>muticum,</i>	“	
<i>Lycopus Europæus,</i>	Water hoarhound.	“
<i>Stachys palustris,</i>		
<i>var. aspera,</i>	Hedge nettle.	“
<i>Ballota nigra,</i>	Black hoarhound.	“
<i>Scutellaria galericulata,</i>	Skullcap.	“
<i>lateriflora,</i>	“	
<i>Lysimachia lanceolata,</i>	Loosestrife.	Primulaceæ.
<i>Anagallis arvensis,</i>	Common pimpernel.	“
<i>Agrimonia Eupatoria,</i>	Common agrimony.	Rosaceæ.
<i>Spiræa tomentosa,</i>	Hardhack.	“
<i>Proserpinaca palustris,</i>	Mermaid weed.	Onagraceæ.
<i>pectinacea,</i>	“	
<i>Epilobium palustre,</i>		
<i>var. lineare,</i>	Willow herb.	“
<i>Cakile Americana,</i>	American sea-rocket.	Cruciferae.
<i>Polygala sanguinea,</i>	Polygala.	Polygalaceæ.
<i>cruciata,</i>	“	
<i>verticillata,</i>	“	
<i>Urtica gracilis,</i>	Tall wild nettle.	Urticaceæ.
<i>Bœhmeria cylindrica,</i>	False nettle.	“
<i>Lobelia inflata,</i>	Indian tobacco.	Lobeliaceæ.
* <i>Platanthera cristata,</i>	Crested orchis.	Orchidaceæ.

From July 20th to August 1st.

<i>Genera.</i>	<i>Common Names.</i>	<i>Natural Orders.</i>
<i>Platanthera blephariglottis</i> ,	White fringed orchis.	Orchidaceæ.
<i>lacera</i> ,	Ragged orchis.	
* <i>psycodes</i> ,	Small purple fringed orchis.	
<i>Gymnadenia tridentata</i> ,	Naked-gland orchis.	“
<i>Verbena hastata</i> ,	Blue vervain.	Verbenaceæ.
<i>urticifolia</i> ,	White vervain.	
<i>Cirsium pumilum</i> ,	Pasture thistle.	Compositæ.
<i>Léontodon autumnale</i> ,	Fall dandelion.	“
<i>Æsculus glabra</i> ,	<i>Ohio buckeye.</i>	Sapindaceæ.
<i>Saponaria officinalis</i> ,	Common soapwort.	Caryophyllaceæ.
<i>Mollugó verticillata</i> ,	Carpet-weed.	“
<i>Apocynum androsæmifolium</i> ,	Spreading dogbane.	Apocynaceæ.
<i>Scirpus eriophorum</i> ,	Wool-grass.	Cyperaceæ.
<i>Glyceria obtusa</i> ,	Glyceria.	Gramineæ.
<i>Utricularia vulgare</i> ,	Greater bladderwort.	Lentibulaceæ.
<i>clandestina</i> ,	Bladderwort.	
<i>purpurea</i> ,	Purple bladderwort.	
<i>cornuta</i> ,	Horned bladderwort.	
<i>Gerardia flava</i> ,	Downy false foxglove.	Scrophulariaceæ.
<i>Mimulus ringens</i> ,	Monkey flower.	“
<i>Sagittaria variabilis</i> ,	Arrow-head.	Alismaceæ.
<i>Alisma plantago</i> ,		
var. <i>Americanum</i> ,	Water plantain.	“
<i>Ampelopsis quinquefolia</i> ,	Virginia creeper.	Vitaceæ.
<i>Rhexia Virginica</i> ,	Meadow beauty.	Melastomaceæ.
<i>Nesæa verticillata</i> ,	Swamp loosestrife.	Lythraceæ.
<i>Sabbatia chloroides</i> ,	American centaury.	Gentianaceæ.
<i>Bartonia tenella</i> ,	Bartonia.	“
<i>Solanum nigrum</i> ,	Common nightshade.	Solanaceæ.

From August 1st to 10th.

<i>Lobelia cardinalis</i> ,	Cardinal-flower.	Lobeliaceæ.
<i>Clematis Virginiana</i> ,	Virgin's-bower.	Ranunculaceæ.
<i>Lespedeza violacea</i> ,	Bush-clover.	Leguminosæ.
<i>procumbens</i> ,	“	
<i>hirta</i> ,	“	
<i>capitata</i> ,	“	
var. <i>angustifolia</i> ,	“	
<i>Cassia nictitans</i> ,	Wild sensitive plant.	“
† <i>Chamæcrista</i> ,	Partridge pea.	

From August 1st to 10th.

<i>Genera.</i>	<i>Common Names.</i>	<i>Natural Orders.</i>
* <i>Cassia Marilandica</i> ,	Wild senna.	Leguminosæ.
<i>Apios tuberosa</i> ,	Ground-nut.	"
<i>Phaseolus diversifolius</i> ,	Wild bean.	"
<i>Cephalanthus occidentalis</i> ,	Button bush.	Rubiaceæ.
<i>Helianthus strumosus</i> ,	Sunflower.	Compositæ.
<i>divaricatus</i> ,	"	
<i>annuus</i> ,	<i>Common sunflower.</i>	
<i>Antennaria margaritacea</i> ,	Pearly everlasting.	"
<i>Gnaphalium polycephalum</i> ,	Common everlasting.	"
<i>purpureum</i> ,	Purplish cudweed.	
<i>Erechtites hieracifolia</i> ,	Fire-weed.	"
<i>Lappa major</i> ,	Common burdock.	"
<i>Cichorium intybus</i> ,	Succory.	"
<i>Inula Helenium</i> ,	Elecampane.	"
† <i>Chrysopsis falcata</i> ,	Golden aster.	"
<i>Erigeron Canadense</i> ,	Horse-weed.	"
<i>Panicum sanguinale</i> ,	Finger-grass.	Gramineæ.
<i>agrostoides</i> ,	Panic-grass.	
<i>virgatum</i> ,	Tall panic-grass.	
<i>clandestinum</i> ,	Panic-grass.	
<i>Crus-Galli</i> ,	Barnyard grass.	
<i>Setaria glauca</i> ,	Bristly foxtail grass.	"
<i>viridis</i> ,	Green foxtail grass.	
<i>Italica</i> ,	<i>Foxtail grass.</i>	
<i>Paspalum setaceum</i> ,	Paspalum.	"
<i>Elymus Virginicus</i> ,	Wild rye.	"
<i>Canadensis</i> ,	"	
<i>Spartina juncea</i> ,	Rush salt grass.	"
<i>stricta</i> ,		
var. <i>glabra</i> ,	Salt-marsh grass.	
<i>Muhlenbergia Mexicana</i> ,	Muhlenbergia.	"
<i>Chenopodium hybridum</i> ,	Maple-leaved goosefoot.	Chenopodiaceæ.
<i>murale</i> ,	Pigweed.	
<i>album</i> ,	"	
<i>Botrys</i> ,	<i>Jerusalem oak.</i>	
<i>Atriplex hastata</i> ,	Orache.	"
<i>Obione arenaria</i> ,	Sand orache.	"
<i>Salicornia herbacea</i> ,	Glasswort.	"
<i>mucronata</i> ,	"	
<i>ambigua</i> ,	"	

From August 1st to 10th.

<i>Genera.</i>	<i>Common Names.</i>	<i>Natural Orders.</i>
<i>Chenopodina maritima</i> ,	Sea goosefoot.	Chenopodiaceæ.
<i>Goodyera pubescens</i> ,	Rattlesnake plantain.	Orchidaceæ.
<i>Spiranthes gracilis</i> ,	Lady's tresses.	"
<i>Lycopodium inundatum</i> ,	Club moss.	Lycopodiaceæ.
<i>dendroideum</i> ,	Ground pine.	
<i>clavatum</i> ,	Common club moss.	
<i>complanatum</i> ,	Creeping lycopodium.	
<i>lucidulum</i> ,	Lycopodium.	
<i>Selaginella rupestris</i> ,	Selaginella.	"
<i>Botrychium lunarioides</i> ,	Moonwort.	Ophioglosseæ.
<i>Discopleura capillacea</i> ,	Mock bishop-weed.	Umbelliferæ.
<i>Clethra alnifolia</i> ,	Sweet pepperbush.	Ericaceæ.
<i>Physostegia Virginiana</i> ,	False dragon-head.	Labiataæ.
<i>Teucrium Canadense</i> ,	Wood sage.	"
<i>Mentha piperita</i> ,	Peppermint.	"
<i>Canadensis</i> ,	Wild mint.	
<i>viridis</i> ,	<i>Spearmint</i> .	
<i>Hedeoma pulegioides</i> ,	American pennyroyal.	"
<i>Statice Limonium</i> ,	Marsh-rosemary.	Plumbaginaceæ.
<i>Plantago maritima</i> ,	Seaside plantain.	Plantaginaceæ.
<i>Penthorum sedoides</i> ,	Ditch stone-crop.	Crassulaceæ.
* <i>Sedum telephium</i> ,	Live-forever.	"
<i>Datura stramonium</i> ,	Common stramonium,	Solanaceæ.
<i>Chelone glabra</i> ,	Snake-head.	Scrophulariaceæ.
<i>Lythrum salicaria</i> ,	Spiked loosestrife.	Lythraceæ.
<i>Tecoma radicans</i> ,	<i>Trumpet creeper</i> .	Bignoniaceæ.
<i>Juncus Conradi</i> ,	Bog rush.	Juncaceæ.
<i>Euphorbia polygonifolia</i> ,	Shore spurge.	Euphorbiaceæ.
<i>maculata</i> ,	Spotted spurge.	
† <i>Cyparissias</i> ,	<i>Cypress spurge</i> .	
<i>Xyris Caroliniana</i> ,	Yellow-eyed grass.	Xyridaceæ.
‡ <i>Polygonum Virginianum</i> ,	Polygonum.	Polygonaceæ.
<i>orientale</i> ,	<i>Prince's feather</i> .	
<i>tenue</i> .		
<i>Pennsylvanicum</i> ,	Polygonum.	
<i>Careyi</i> ,	"	
<i>Portulaca oleracea</i> ,	Common purslane.	Portulacaceæ.
<i>Hibiscus Syriacus</i> ,	<i>Shrubby althæa</i> .	Malvaceæ.
<i>Dioscorea villosa</i> ,	Wild yam-root.	Dioscoreaceæ.

* Dartmouth. Escaped from gardens.

† A month earlier.

‡ T. A. Greene.

From August 10th to 20th.

<i>Genera.</i>	<i>Common Names.</i>	<i>Natural Orders.</i>
Hieracium Canadense, scabrum,	Canada hawkweed. Rough hawkweed.	Compositæ.
Nabalus albus,	Rattlesnake-root.	"
Cirsium discolor,	Thistle.	"
Iva frutescens,	High water shrub, or Marsh elder.	"
Ambrosia artemisiæfolia,	Roman wormwood.	"
* Pluchea camphorata,	Salt-marsh fleabane.	"
Diplopappus umbellatus,	Double-bristled aster.	"
Aster corymbosus, spectabilis,	Aster. "	"
Eupatorium purpureum, teucrifolium, perfoliatum, † hyssopifolium,	Trumpet-weed. Eupatorium. Thoroughwort. Eupatorium.	"
Bidens frondosa, cernua, chrysanthemoides,	Common beggar-tick. Bur-marigold. "	"
Amphicarpæa monoica,	Hog peanut.	Leguminosæ.
Desmodium nudiflorum, rotundifolium, acuminatum, paniculatum, Canadense, rigidum, Marilandicum,	Tick-trefoil. " " " " "	"
Cuscuta Gronovii,	Dodder.	Convolvulacææ.
Gerardia purpurea, maritima,	Purple gerardia. Sea-side gerardia.	Scrophulariacææ.
Rhus copallina,	Dwarf sumach.	Anacardiaceææ.
Cyperus strigosus, ‡ filiculmus, diandrus, Nuttallii, § dentatus,	Galingale. " " " "	Cyperaceææ.
Fimbristylis autumnalis, § capillaris,	Fimbristylis. "	"
Bryzopyrum spicatum,	Spike grass.	Gramineææ.
Cinna arundinacea,	Wood reed-grass.	"
Eragrostis pectinacea,	Eragrostis.	"

* Fairhaven.

† Naushon.

‡ May be found a month earlier.

§ T. A. Greene.

|| Dartmouth.

From August 10th to 20th.

<i>Genera.</i>	<i>Common Names.</i>	<i>Natural Orders.</i>
<i>Eragrostis capillaris?</i>	Eragrostis.	Gramineæ.
<i>Hibiscus Moscheutos,</i>	Swamp rose-mallow.	Malvaceæ.
<i>Malva crispa,</i>	Curled mallow.	"

From August 20th to September 1st.

<i>Andropogon furcatus,</i>	Beard grass.	Gramineæ.
<i>scoparius,</i>	"	
<i>Panicum proliferum,</i>	Panic grass.	"
<i>capillare,</i>	"	
<i>Spartina cynosuroides,</i>	Fresh-water cord grass.	"
<i>Calamagrostis coarctata,</i>	Reed bent-grass.	"
<i>arenaria,</i>	Sea sand-reed.	
<i>Muhlenbergia sobolifera,</i>	Drop-seed grass.	"
<i>Sporobolus serotinus,</i>	"	"
<i>Leersia oryzoides,</i>	Rice cut-grass.	"
<i>Trichostema dichotomum,</i>	Blue curls.	Labiatae.
<i>Spiranthes cernua,</i>	Ladies' tresses.	Orchidaceæ.
<i>Cirsium muticum,</i>	Swamp thistle.	Compositæ.
<i>Xanthium strumarium,</i>	Common cocklebur.	"
<i>Diplopappus linariifolius,</i>	Double-bristled aster.	"
<i>Eupatorium aromaticum,</i>	Eupatorium.	"
<i>Mikania scandens,</i>	Climbing hemp-weed.	"
<i>Vernonia Noveboracensis,</i>	Iron weed.	"
<i>Liatris scariosa,</i>	Blazing star.	"
<i>Aster patens,</i>	Aster.	"
<i>acuminatus,</i>	"	
<i>lævis,</i>	"	
<i>undulatus,</i>	"	
<i>dumosus,</i>	"	
<i>Tradescanti,</i>	"	
<i>miser,</i>	"	
<i>tenuifolius,</i>	"	
<i>longifolius,</i>	"	
<i>Novæ-Angliæ,</i>	"	
<i>flexuosus,</i>	"	
<i>linifolius,</i>	"	
<i>multiflorus,</i>	"	
<i>Solidago bicolor,</i>	White golden-rod.	"
<i>sempervirens,</i>	Salt marsh golden-rod.	
<i>altissima.</i>		
<i>ulmifolia.</i>		
<i>odora,</i>	Sweet golden-rod.	

From August 20th to September 1st.

<i>Genera.</i>	<i>Common Names.</i>	<i>Natural Orders.</i>
<i>Solidago nemoralis</i> ,	Gray golden-rod.	Compositæ.
<i>elliptica</i> ,	Golden-rod.	
<i>serotina</i> ,	“	
<i>gigantea</i> ,	“	
<i>lanceolata</i> ,	“	
<i>tenuifolia</i> ,	“	
<i>puberula</i> ,	“	
<i>cæsia</i> ,	“	
<i>Salsola Kali</i> ,	Common saltwort.	Chenopodiaceæ.
<i>Pilea pumila</i> ,	Clearweed.	Urticaceæ.
<i>Gerardia tenuifolia</i> ,	Slender gerardia.	Scrophulariaceæ.
<i>pedicularia</i> ,	Gerardia.	
<i>quercifolia</i> ,	Smooth false foxglove.	
<i>Polygonum aviculare</i> ,		
var. <i>erectum</i> ,	Knotgrass.	Polygonaceæ.
* <i>articulatum</i> ,	Jointweed.	
<i>Amarantus hybridus</i> ,	Green amaranth.	Amarantaceæ.
<i>retroflexus</i> ,	Pigweed.	
<i>albus</i> ,	“	
<i>Epiphegus Virginiana</i> ,	Beech-drops.	Orobanchaceæ.

From September 1st to 10th.

<i>Aristida dichotoma</i> ,	Poverty grass.	Gramineæ.
<i>gracilis</i> ,	Triple-awned grass.	
<i>purpurascens</i> ,	“	
<i>Tricuspis purpurea</i> ,	Sand grass.	“
<i>Sorghum nutans</i> ,	Indian grass.	“
<i>Panicum filiforme</i> ,	Panic grass.	“
<i>Vilfa aspera</i> ,	Rush grass.	“
<i>vaginæflora</i> ,	“	
<i>Acalypha Virginica</i> ,	Three-seeded mercury.	Euphorbiaceæ.

September 10th.

<i>Gentiana crinita</i> ,	Fringed gentian.	Gentianaceæ.
<i>Andrewsii</i> ,	Closed gentian.	

October.

<i>Hamamelis Virginica</i> ,	Witch hazel.	Hamamelaceæ.
------------------------------	--------------	--------------

NOTE. — Through the politeness of a friend, I am enabled to add the following valuable list of Mosses and Liverworts :

Musci (Mosses.)

Spangnum cymbifolium, Dill.
acutifolium, Ehrh.
Phascum Sullivantii ?
Dicranum scoparium, L.
Leucobryum glaucum, Hampe.
Fissidens ?
Trichostomum pallidum, Hedw.
Barbula cæspitosa, Schwægr.
Tetraphis pellucida, Hedw.
Orthotrichum affine, Schrad.
Hutchinsiae, Smith.
Ludwigii, Schwægr.
strangulatum, Beauv.
Hedwigia ciliata, Ehrh.
Diphyscium foliosum, Web.
Atrichum angustatum, Beauv.

Pogonatum brevicaule, Brid.
Polytrichum commune, Linn.
gracile, Menzies.
piliferum, Schreb.
Bryum roseum, Schreb.
argenteum, Linn.
Timmia megapolitana, Hedw.
Bartramia pomiformis, Hedw.
Funaria hygrometrica, Hedw.
Fontinalis antipyretica, L.
Dichelyma ?
Leucodon julaceus, Sulliv.
Neckera pennata, Hedw.
Climacium Americanum, Brid.
Hypnum splendens, Hedw.
 6 or 8 undetermined species.

Hepaticæ (Liverworts.)

Anthoceros lævis, L.
Marchantia polymorpha, L.
Fegatella conica, Corda.
Metzgeria furcata, Nees.
Aneura palmata, Nees.
Steetzia Lyellii, Lehm.
Pellia epiphylla, Nees.
Blasia pusilla, L.
Fossombronia pusilla, Nees.
Geocalyx graveolens, Nees.
Lophocolea heterophylla, Nees.
Sphagnocetis communis, Nees.
Jungermannia trichophylla, L.
connivens, Dickson.

Jungermannia curvifolia, Dickson.
intermedia, Lindenberg ?
crenulata, Smith.
Plagiochila porelloides, Lindenberg ?
Frullania Grayana, Montagne.
Eboracensis, Lehm.
saxatilis, Lindenberg.
Madotheca platyphylla, Dumort.
Radula complanata, Dumortier.
obconica, Sulliv.
Ptilidium ciliare, Nees.
Mastigobryum trilobatum, Nees.
Calyptogeia Trichomanis, Corda.
Sarcoscyphus Ehrharti, Corda.

THE INDEX TO THE PUBLISHED
VOLUMES OF THE
PROCEEDINGS OF THE
ROYAL SOCIETY OF LONDON
AND THE
TRANSACTIONS OF THE
ROYAL SOCIETY OF LONDON
AND THE
ROYAL SOCIETY OF MEDICINE
AND THE
ROYAL SOCIETY OF ARTS
AND THE
ROYAL SOCIETY OF LITERATURE
AND THE
ROYAL SOCIETY OF SCIENCE
AND THE
ROYAL SOCIETY OF HISTORY
AND THE
ROYAL SOCIETY OF AGRICULTURE
AND THE
ROYAL SOCIETY OF COMMERCE
AND THE
ROYAL SOCIETY OF MANUFACTURES
AND THE
ROYAL SOCIETY OF MINING
AND THE
ROYAL SOCIETY OF MECHANICS
AND THE
ROYAL SOCIETY OF ENGINEERS
AND THE
ROYAL SOCIETY OF ARCHITECTS
AND THE
ROYAL SOCIETY OF PAINTERS
AND THE
ROYAL SOCIETY OF SCULPTORS
AND THE
ROYAL SOCIETY OF MUSICIANS
AND THE
ROYAL SOCIETY OF DANCERS
AND THE
ROYAL SOCIETY OF ACTORS
AND THE
ROYAL SOCIETY OF PLAYERS
AND THE
ROYAL SOCIETY OF SINGERS
AND THE
ROYAL SOCIETY OF COMPOSERS
AND THE
ROYAL SOCIETY OF INSTRUMENTALISTS
AND THE
ROYAL SOCIETY OF PERFORMERS
AND THE
ROYAL SOCIETY OF ENTERTAINERS
AND THE
ROYAL SOCIETY OF AMBASSADORS
AND THE
ROYAL SOCIETY OF DIPLOMATS
AND THE
ROYAL SOCIETY OF STATESMEN
AND THE
ROYAL SOCIETY OF LAWYERS
AND THE
ROYAL SOCIETY OF JUDGES
AND THE
ROYAL SOCIETY OF CLERGYMEN
AND THE
ROYAL SOCIETY OF BISHOPS
AND THE
ROYAL SOCIETY OF PRIORS
AND THE
ROYAL SOCIETY OF ABBOTS
AND THE
ROYAL SOCIETY OF MONKS
AND THE
ROYAL SOCIETY OF NUNS
AND THE
ROYAL SOCIETY OF PRIESTS
AND THE
ROYAL SOCIETY OF DEACONS
AND THE
ROYAL SOCIETY OF CHURCHMEN
AND THE
ROYAL SOCIETY OF PARISHES
AND THE
ROYAL SOCIETY OF VILLAGES
AND THE
ROYAL SOCIETY OF TOWNS
AND THE
ROYAL SOCIETY OF CITIES
AND THE
ROYAL SOCIETY OF KINGDOMS
AND THE
ROYAL SOCIETY OF EMPIRES
AND THE
ROYAL SOCIETY OF WORLDS
AND THE
ROYAL SOCIETY OF UNIVERSES
AND THE
ROYAL SOCIETY OF GALAXIES
AND THE
ROYAL SOCIETY OF COSMOS
AND THE
ROYAL SOCIETY OF UNIVERSES
AND THE
ROYAL SOCIETY OF GALAXIES
AND THE
ROYAL SOCIETY OF COSMOS

INDEX TO THE PUBLISHED

AND THE
ROYAL SOCIETY OF HISTORY
AND THE
ROYAL SOCIETY OF AGRICULTURE
AND THE
ROYAL SOCIETY OF COMMERCE
AND THE
ROYAL SOCIETY OF MANUFACTURES
AND THE
ROYAL SOCIETY OF MINING
AND THE
ROYAL SOCIETY OF MECHANICS
AND THE
ROYAL SOCIETY OF ENGINEERS
AND THE
ROYAL SOCIETY OF ARCHITECTS
AND THE
ROYAL SOCIETY OF PAINTERS
AND THE
ROYAL SOCIETY OF SCULPTORS
AND THE
ROYAL SOCIETY OF MUSICIANS
AND THE
ROYAL SOCIETY OF DANCERS
AND THE
ROYAL SOCIETY OF ACTORS
AND THE
ROYAL SOCIETY OF PLAYERS
AND THE
ROYAL SOCIETY OF SINGERS
AND THE
ROYAL SOCIETY OF COMPOSERS
AND THE
ROYAL SOCIETY OF INSTRUMENTALISTS
AND THE
ROYAL SOCIETY OF PERFORMERS
AND THE
ROYAL SOCIETY OF ENTERTAINERS
AND THE
ROYAL SOCIETY OF AMBASSADORS
AND THE
ROYAL SOCIETY OF DIPLOMATS
AND THE
ROYAL SOCIETY OF STATESMEN
AND THE
ROYAL SOCIETY OF LAWYERS
AND THE
ROYAL SOCIETY OF JUDGES
AND THE
ROYAL SOCIETY OF CLERGYMEN
AND THE
ROYAL SOCIETY OF BISHOPS
AND THE
ROYAL SOCIETY OF PRIORS
AND THE
ROYAL SOCIETY OF ABBOTS
AND THE
ROYAL SOCIETY OF MONKS
AND THE
ROYAL SOCIETY OF NUNS
AND THE
ROYAL SOCIETY OF PRIESTS
AND THE
ROYAL SOCIETY OF DEACONS
AND THE
ROYAL SOCIETY OF CHURCHMEN
AND THE
ROYAL SOCIETY OF PARISHES
AND THE
ROYAL SOCIETY OF VILLAGES
AND THE
ROYAL SOCIETY OF TOWNS
AND THE
ROYAL SOCIETY OF CITIES
AND THE
ROYAL SOCIETY OF KINGDOMS
AND THE
ROYAL SOCIETY OF EMPIRES
AND THE
ROYAL SOCIETY OF UNIVERSES
AND THE
ROYAL SOCIETY OF GALAXIES
AND THE
ROYAL SOCIETY OF COSMOS

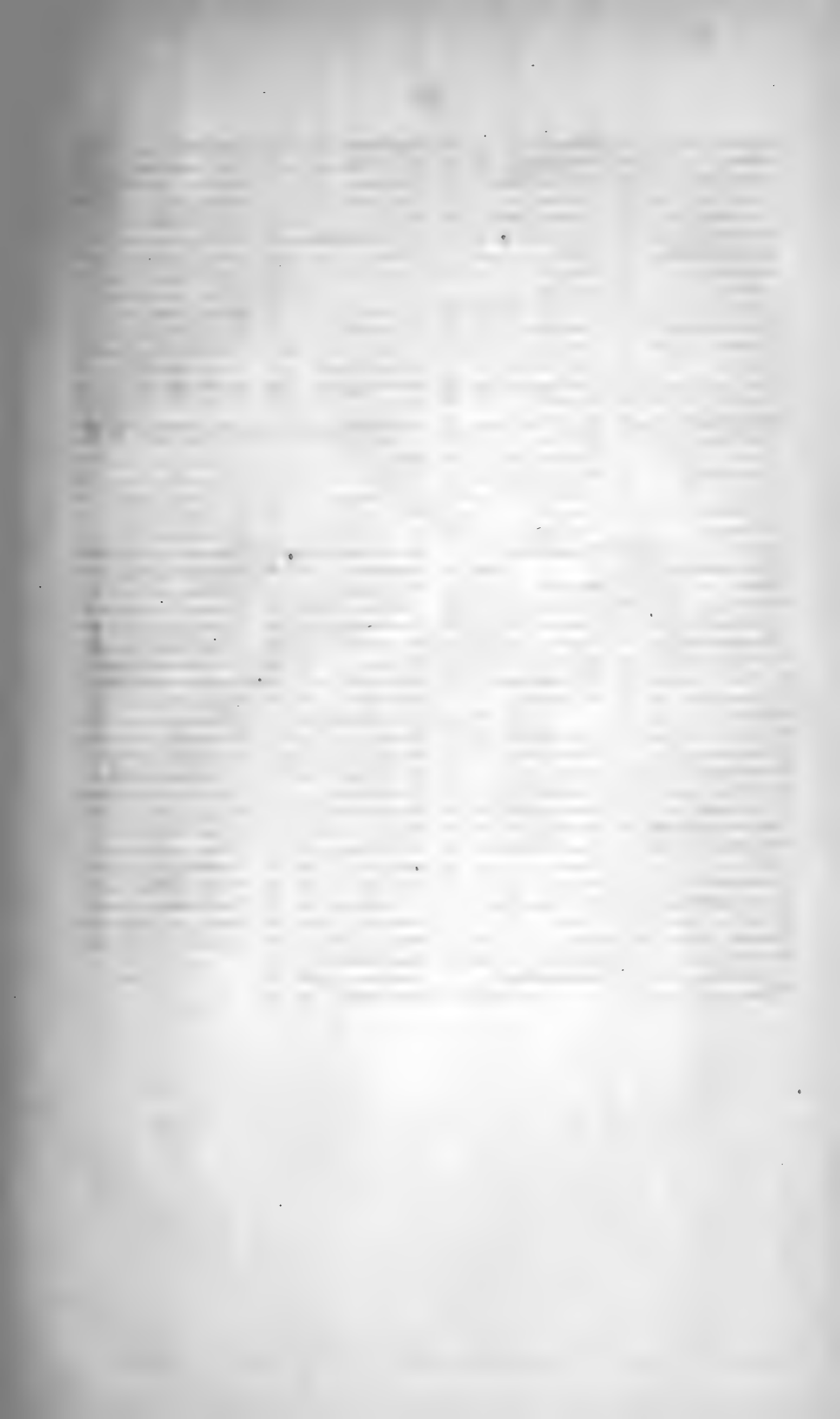
Table with multiple columns listing names and page numbers. The text is extremely faint and largely illegible due to low contrast and blurring. The layout appears to be a standard index with entries on the left and corresponding page numbers on the right.

INDEX TO THE GENERA,

Not including the Cultivated Plants, or the Mosses and Liverworts
(page 27.)

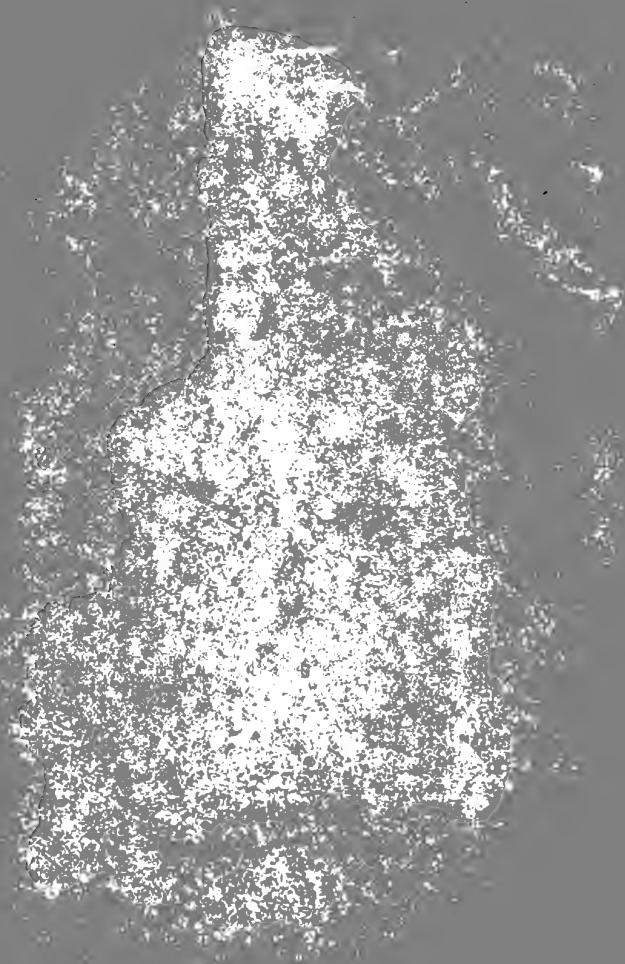
<p>Abies, 8 Acalypha, 26 Acer, 6 Achillea, 15 Acorus, 12 Adiantum, 16 Agrimonia, 20 Agrostemma, 14 Agrostis, 15 Aira, 15 Aletris, 18 Alisma, 21 Allium, 12 Alnus, 5 Alopecurus, 15 Amarantus, 26 Ambrosia, 24 Amelanchier, 7 Ampelopsis, 21 Amphicarpæa, . . 24 Anagallis, 20 Andromeda, 17 Andropogon, 25 Anemone, 6, 18 Antennaria, 6, 22 Anthoxanthum, ... 7 Aphyllon, 10 Apios, 22 Apocynum, . . 17, 21 Aquilegia, 8 Aralia, . . . 8, 12, 17 Arctostaphylos, . 6 Arenaria, 10 Arethusa, 12 Arisæma, 10 Aristida, 26 Asclepias, 18, 19 Aspidium, 16 Asplenium, 16 Aster, 24, 25 Atriplex, 22 Azalea, 14 Ballota, 20 Baptisia, 18 Barbarea, 13</p>	<p>Bartonia, 21 Benzoin, 6 Berberis, 10 Betula, 8 Bidens, 24 Bœhmeria, 20 Botrychium, 23 Brachelytrum, . 18 Bryzopyrum, ... 24 Bromus, 15 Brunella, 14 Cakile, 20 Calamagrostis, 18, 25 Callitriche, 9 Calopogon, 14 Caltha, 6 Calystegia, 14 Campanula, 19 Cannabis, 19 Capsella, 5 Cardamine, 9 Carex 5, 6, 7 Carpinus, 8 Carya 11 Cassandra, 6 Cassia, 21, 22 Castilleja, 9 Ceanothus, 19 Cephalanthus, .. 22 Cerastium, 9 Chelidonium, . . . 9 Chelone, 23 Chenopodina, ... 23 Chenopodium, ... 22 Chimaphila, 18 Chiogenes, 6 Chrysopsis, 22 Chrysosplenium, . 5 Cichorium, 22 Cicuta, 17 Cinna, 24 Circæa, 19 Cirsium, 12, 18, 19, 21, 24, 25</p>	<p>Cladium, 17 Clematis, 21 Clethra, 23 Comandra, 12 Comptonia, 8 Conium, 17 Coptis, 8 Cornus, . . 10, 13, 19 Corylus, 5 Cratægus, 12 Cupressus, 6 Cuscuta, 24 Cyperus, 24 Cypripedium, ... 10 Dactylis, 13 Danthonia, 13 Datura, 23 Daucus, 17 Desmodium, 24 Dianthus, 19 Dicksonia, 16 Dioscorea, 23 Diplopappus, . 24, 25 Discopleura, ... 23 Draba, 5 Drosera, 18 Dulichium, 18 Eleocharis, . 7, 12, 17 Elodea, 20 Elymus, 22 Epigæa, 5 Epilobium, ... 18, 20 EPIPHEGUS, 26 Equisetum, ... 5, 12 Eragrostis, ... 24, 25 Erecthites, 22 Erigeron, 10, 17, 22 Eriocaulon, 19 Eriophorum, ... 17 Erythronium, ... 8 Eupatorium, . 24, 25 Euphorbia, 23 Fagus, 11 Festuca, 13 Fimbristylis, ... 24</p>	<p>Fragaria, 7 Fraxinus, 8 Galium, . . 12, 14, 19 Gaultheria, 18 Gaylussacia, 9 Gentiana, 26 Geranium, 10 Gerardia, . 21, 24, 26 Geum, 19 Glyceria, . 12, 13, 21 Gnaphalium, . 19, 22 Goodyera, 23 Gratiola, 19 Gymnadenia, ... 21 Hamamelis, 26 Hedeoma, 23 Helianthemum, .. 12 Helianthus, 22 Hemerocallis, ... 17 Heracleum, 12 Hibiscus, 25 Hieracium, 12, 19, 24 Hierochloa, 9 Holcus, 13 Hottonia, 15 Hydrocotyle, ... 17 Hypericum, . . 17, 20 Hypoxys, 10 Hudsonia, 12 Ilex, 16 Ilysanthes, 19 Impatiens, 18 Inula, 22 Iris, 12 Isoetes, 18 Iva, 24 Juncus, . . 13, 14, 23 Juniperus, 5 Kalmia, 14 Krigia, 10 Lactuca, 19 Lamium, 5 Lappa, 22 Lathyrus, 11, 15 Lechea, 20</p>
---	--	---	---

Leersia, 25	Obione, 22	Raphanus, 9	Spergula, 14
Lemna, 19	Oenothera, . . . 13, 18	Rhamnus, 13	Spergularia, 9
Leontodon, 21	Oldenlandia, 9	Rhexia, 21	Spiræa, 17, 20
Leonurus, 17	Onclea, 16	Rhodora, 6	Spiranthes, . . . 23, 25
Lepidium, 14	Onosmodium, . . . 17	Rhus, 15, 24	Sporobolus, 25
Lespedeza, 21	Osmunda, . . . 9, 10, 14	Rhynchospora, . . 17	Stachys, 20
Leucanthemum, . . 12	Ostrya, 8	Ribes, 8	Statice, 23
Leucothoe, 9	Oxalis, 12	Robinia, 16	Stellaria, 5
Liatris, 25	Panicum,	Rosa, 15	Stipa, 13
Lilium, 19	14, 15, 22, 25, 26	Rubus, 12	Symphytum, . . . 17
Limnanthemum, . . 15	Paspalum, 22	Rudbeckia, 17	Symplocarpus, . . . 5
Linaria, 12, 17	Pastinaca, 17	Rumex, 10, 14	Tanacetum, 19
Linum, 18	Pedicularis, 9	Ruppia, 16	Taraxacum, 6
Liparis, 12	Penthorum, 23	Sabbatia, 21	Teucrium, 18
Lobelia, . . 19, 20, 21	Phalaris, 15	Sagina, 9	Teucrium, 23
Ludwigia, 18	Phaseolus, 22	Sagittaria, 21	Thalictrum, . . . 10, 15
Lupinus, 10	Phleum, 25	Salicornia, 22	Trichostema, . . . 25
Luzula, 7	Physostegia, . . . 23	Salix, 5	Tricuspis, 26
Lycopodium, . . . 23	Phytolacca, 19	Salsola, 26	Trientalis, 10
Lycopus, 20	Pilea, 26	Sambucus, 17	Trifolium, 11, 14
Lysimachia, . . 15, 20	Pinus, 11	Sanicula, 14	Triglochin, 12
Lythrum, 23	Plantago, . . 8, 18, 23	Saponaria, 21	Trisetum, 15
Malva, 9, 25	Platanthera,	Sarracenia, 12	Triticum, 13
Marchantia, 12	17, 20, 21	Sassafras, 10	Turritis, 9
Maruta, 17	Platanus, 11	Saxifraga, 9	Typha, 18
Medeola, 13	Pluchea, 24	Scirpus, . . 12, 13, 21	Ulmus, 6
Medicago, 10	Poa, . . 6, 12, 15, 18	Scleranthus, 18	Urtica, 20
Melampyrum, . . . 12	Pogonia, 12, 14	Scutellaria, 20	Utricularia, 21
Melilotus, 18	Polygala, . . . 15, 20	Sedum, 15, 23	Uvularia, 9
Mentha, 23	Polygonatum, . . . 10	Selaginella, 23	Vaccinium, . . 8, 9, 17
Microstylis, 12	Polygonum,	Senecio, 5, 10	Verbascum, 17
Mikania, 25	19, 20, 23, 26	Sericocarpus, . . . 19	Verbena, 21
Mimulus, 21	Polypodium, 16	Setaria, 22	Vernonia, 25
Mitchella, 14	Pontederia, 19	Silene, 10, 16	Veronica, 8, 17
Mœhringia, 10	Populus, 5	Sinapis, 9	Viburnum, . . 13, 14
Mollugo, 21	Portulaca, 23	Sisymbrium, 9	Vicia, 15
Monotropa, 18	Potamogeton, . 15, 16	Sisyrinchium, . . 12	Vilfa, 26
Muhlenbergia, 22, 25	Potentilla, . . 6, 12, 13	Sium, 19	Viola, 7
Myosotis, . . . 10, 15	Proserpinaca, . . . 20	Smilacina, . . . 10, 12	Vitis, 17
Myrica, 11	Prunus, 10	Smilax, 12, 13	Woodsia, 16
Nabalus, 24	Pteris, 16	Solanum, 14, 21	Woodwardia, . . . 16
Nemopantes, . . . 11	Pycnanthemum, . . 20	Solidago, . . . 25, 26	Xanthium, 25
Nepeta, 9, 17	Pyrola, 17	Sonchus, 15	Xyris, 23
Nesaea, 21	Pyrus, 10, 13	Sorghum, 26	Zostera, 16
Nuphar, 11	Quercus, 10, 11	Sparganium, 18	
Nymphæa, 15	Ranunculus,	Spartina, . . . 22, 25	
Nyssa, 14	8, 9, 13, 19	Specularia, 15	













3 5185 00287 7395

MACKENZIE

10781

WITHDRAWN
FROM HSNY LIBRARY

LIBRARY OF THE
HORTICULTURAL SOCIETY OF N. Y.
598 MADISON AVENUE
NEW YORK

1'45

