

ACME KITCHEN  
FURNITURE CO.



1911

CHATTANOOGA TENN.


Acme

Acme

ACME KITCHEN  
FURNITURE CO.

1234 Main Street  
New York, N.Y.

ESTABLISHED 1920



Digitized by the Internet Archive  
in 2010 with funding from  
Lyrasis Members and Sloan Foundation

<http://www.archive.org/details/cataloguenumbers00acme>

# ACME KITCHEN FURNITURE COMPANY

Chattanooga, Tennessee

}	Wardrobes	No. 200 Panel doors . . . \$ 6.50
		201 " " . . . 7.50
		202 12 x 40 Mirrors . 13.50
		203 Panel doors . . . 9.00
		204 12 x 40 Mirrors . 15.00
		205 Panel doors . . . 12.00
		206 14 x 50 Mirrors . 21.00
		208 12 x 50 " . . . 17.00

}	Chifforobes	No. 209 Panel doors . . . 12.00
---	-------------	---------------------------------

}	Glass Cupboards	No. 7 . . . . . 4.75
		8 . . . . . 6.50
		9 . . . . . 6.00
		40 . . . . . 4.00
		60 . . . . . 4.75

}	Bookcases	No. 410 . . . . . 6.00
		411 . . . . . 7.50
		411 1/2 . . . . . 8.50

}	Safes . . . . .	No 4 Safe, tin or wire, no drawer 2.25
		4 " " with drawer 2.50
		6 " " . . . . . 3.00
		4 Cupboard . . . . . 3.50
		6 " . . . . . 4.00

}	Kitchen Cabinets	No. 19 Complete { No. 16 Base \$3.00 / \$ 6.50 22 Top 3.50 }
		20 " { No. 17 Base 3.50 } 7.50 23 Top 4.00 }
		20 1/2 " { No. 18 Base 4.00 } 8.00 23 Top 4.00 }
		21 " { No. 18 Base 4.00 } 8.50 24 Top 4.50 }
		38 " { No. 14 Base 5.50 } 10.00 24 Top 4.50 }
		42 " { No. 15 Base 5.00 } 11.00 25 Top 6.00 }

}	Tables	Zinc Top for any Cabinet . . . . . 1.00
		42-inch Table . . . . . 1.40
		48-inch Table . . . . . 1.50
		60-inch Table . . . . . 1.75
		72-inch Table . . . . . 2.00

TERMS: 2 PER CENT. 15 DAYS; NET 60 DAYS  
 F. O. B. CHATTANOOGA, TENNESSEE  
 JANUARY 1st, 1911

*THE HENRY FRANCIS du PONT  
WINTERTHUR MUSEUM  
LIBRARIES*

8



Catalogue Number Sixty - Six



# Acme Kitchen Furniture Company

Chattanooga, Tennessee

## *A Fact:*

*“There is a point where cheapness in construction ceases to be economy!”*



*WE guarantee our goods to be satisfactory. If they are not right in finish, quality of workmanship or material, send them back at our expense.*

---

ACME KITCHEN FURNITURE COMPANY  
CHATTANOOGA, TENNESSEE





**No. 206 Wardrobe**

American Quartered Oak front. Gloss Finish.  
Height, 7 ft. 8 in. Width, 4 ft. 6 in. over all. Weight, 275 lbs.  
French bevel plates, 14 x 50. Partition and shelves on one side.  
K. D. portable bolted construction.  
Finished on inside. Grip neck casters.



**No. 208 Wardrobe**

American Quartered Oak front. Gloss finish.  
Height, 7 ft. 5 in. Width, 4 ft. 2 in. over all. Weight, 250 lbs.  
French bevel plates, 12 x 50. Partition and shelves on one side.  
K. D. portable bolted construction.  
Finished on inside. Grip neck casters.



**No. 204 Wardrobe**

American Quartered Oak front. Gloss finish.  
Height, 7 ft. 5 in. Width, 4 ft. 2 in. over all. Weight 250 lbs.  
French bevel plates, 12 x 40. Partition and shelves on one side  
K. D. portable bolted construction.  
Finished on inside. Grip neck casters.



**No. 202 Wardrobe**

American Quartered Oak front. Gloss finish.  
Height, 7 ft. 4 in. Width, 3 ft. 7 in. over all. Weight, 205 lbs.  
French bevel plates, 12 x 40.  
K. D. portable bolted construction.  
Finished on inside. Grip neck casters.



**No. 205 Wardrobe**

American Quartered Oak front. Gloss finish.  
Height, 7 ft. 8 in. Width, 4 ft. 6 in. over all. Weight, 240 lbs.  
3-ply Oak panel doors. Partition and shelves on one side.  
K. D. portable bolted construction.  
Finished on inside. Grip neck casters.



**No. 203 Wardrobe**

American Quartered Oak front. Gloss finish.  
Height, 7 ft. 5 in. Width, 4 ft. 2 in. over all. Weight, 225 lbs.  
3-ply Oak panel doors. Partition and shelves on one side.  
K. D. portable bolted construction.  
Finished on inside. Grip neck casters.



**No. 201 Wardrobe**

American Quartered Oak front. Gloss finish  
Height, 7 ft. 4 in. Width, 3 ft. 7 in. over all. Weight, 180 lbs.  
K. D. portable bolted construction.  
Finished on inside. Grip neck casters.



**No. 200 Wardrobe**

American Quartered Oak front. Gloss finish.  
Height, 7 ft. 2 in. Width, 3 ft. 7 in. over all. Weight, 165 lbs.  
K. D. portable bolted construction.  
Grip neck casters.



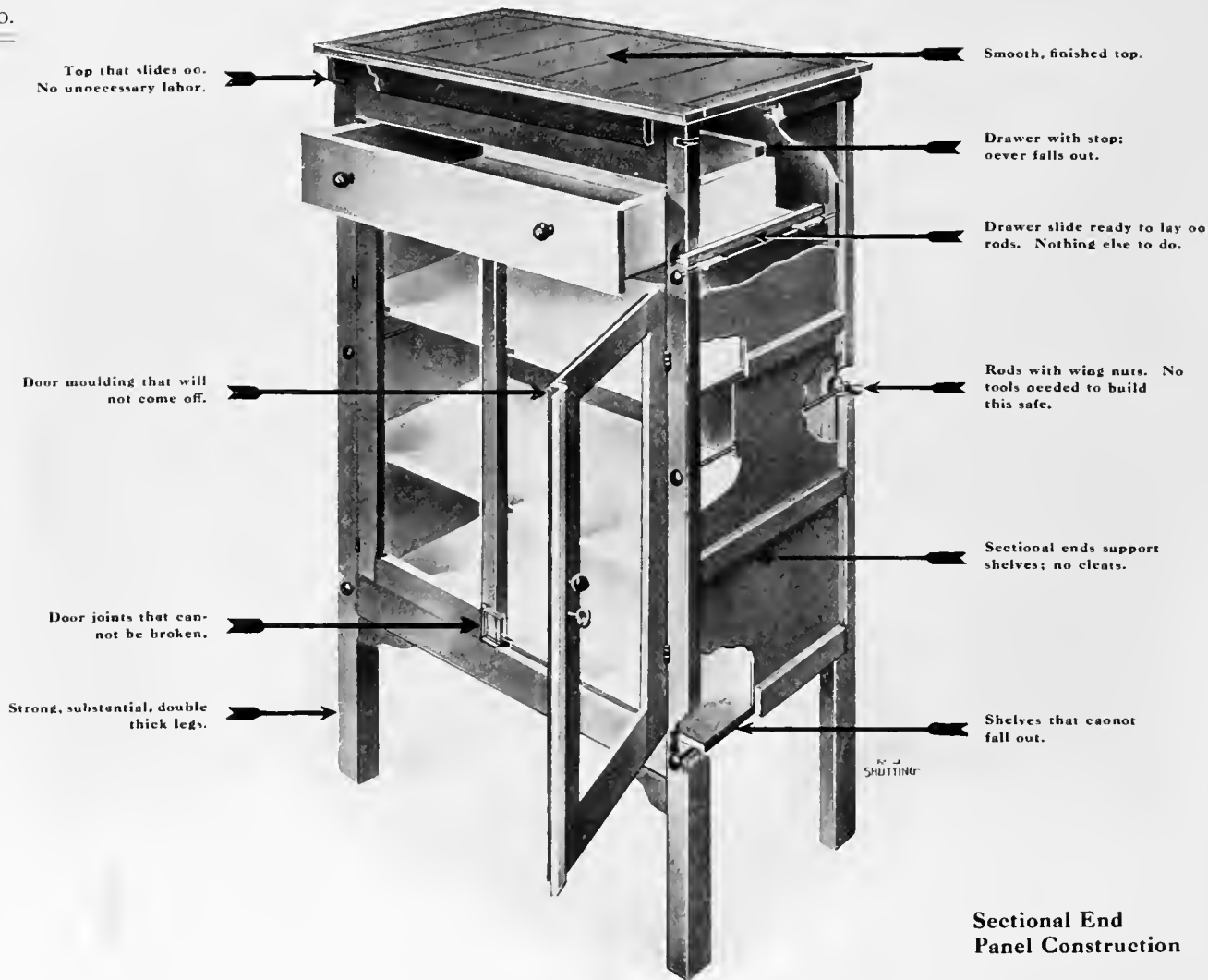
**No. 209 Chifforobe—Open**



**No. 209 Chifforobe—Closed**

American Quartered Oak front. Gloss finish.  
Height, 5 ft. 6 in. Width 3 ft. 10 in. over all.  
Depth, 21 in. inside. Weight, 225 lbs. Finished inside.  
K. D. portable bolted construction. Grip neck casters.

### EXCLUSIVE FEATURES



Top that slides on.  
No unnecessary labor.

Smooth, finished top.

Drawer with stop;  
never falls out.

Drawer slide ready to lay on  
rods. Nothing else to do.

Door moulding that will  
not come off.

Rods with wing nuts. No  
tools needed to build  
this safe.

Sectional ends support  
shelves; no cleats.

Door joints that can-  
not be broken.

Shelves that cannot  
fall out.

Strong, substantial, double  
thick legs.

No  
SHUTTING

Sectional End  
Panel Construction



**No. 411 Bookcase**

American Quartered Oak front. Gloss finish.  
Height, 5 ft. 10 in. Width, 3 ft. 5 in. over all. Weight, 100 lbs.  
Glass, 14 x 40. French plate, 6 x 36. Sectional panel ends.  
Portable bolted construction. Shipped K. D. flat.



**No. 410 Bookcase**

American Quartered Oak front. Gloss finish.  
Height, 5 ft. 4 in. Width, 3 ft. 5 in. over all. Weight, 95 lbs.  
Glass, 14 x 40. Sectional panel ends.  
Portable bolted construction. Shipped K. D. flat.



**No. 411½ Bookcase**

American Quartered Oak front. Gloss finish.  
Height, 6 ft. 10 in. Width, 3 ft. 7 in. over all. Weight, 130 lbs.  
Two glass doors, 12 x 28 and 12 x 18. Sectional panel ends.  
Portable bolted construction. Grip neck casters.  
Shipped K. D. flat. Finished inside.



**No. 8 Cupboard**

American Quartered Oak front. Gloss finish.  
Height, 6 ft. 10 in. Width, 3 ft. 5 in. over all. Weight, 130 lbs.  
Glass, 14 x 30. Extension front. Sectional panel ends.  
Portable bolted construction.  
Grip neck casters. K. D. flat.





**No. 9 Cupboard**

American Quartered Oak front. Gloss finish.  
Height, 6 ft. 10 in. Width, 3 ft. 5 in. over all. Weight, 125 lbs.  
Glass, 14 x 30. Sectional panel ends.  
Portable bolted construction.  
Grip neck casters. K. D. flat.



**No. 7 Cupboard**

American Quartered Oak front. Gloss finish.  
Height, 6 ft. 7 in. Width, 2 ft. 10 in. over all. Weight, 100 lbs.  
Glass, 10 x 28. Sectional panel ends.  
Portable bolted construction.  
Grip neck casters. K. D. flat.



**No. 60 Cupboard—Glass**

American Quartered Oak front. Gloss finish.  
Height, 6 ft. Width, 3 ft. 5 in. over all. Weight, 115 lbs.  
Glass, 14 x 30. Sectional panel ends.  
Portable bolted construction.  
Grip neck casters. K. D. flat.



**No. 40 Cupboard—Glass**

American Quartered Oak front. Gloss finish.  
Height, 6 ft. Width, 2 ft. 10 in. over all. Weight, 95 lbs.  
Glass, 10 x 28. Sectional panel ends.  
Portable bolted construction.  
Grip neck casters. K. D. flat.



**No. 6 Cupboard—Wire**

American Quartered Oak front.  
Height, 6 ft. Width, 3 ft. 5 in. over all. Weight, 105 lbs.  
Sectional panel ends. Portable bolted construction.  
Finished top. K. D. flat.



**No. 6 Cupboard—Tin**

American Quartered Oak front.  
Height, 6 ft. Width, 3 ft. 5 in. over all. Weight, 105 lbs.  
Sectional panel ends. Portable bolted construction.  
Finished top. K. D. flat.



**No. 6 Safe—Wire**

American Quartered Oak front.  
Height, 5 ft. Width, 3 ft. 5 in. over all. Weight, 75 lbs.  
Sectional panel ends. Portable bolted construction.  
Finished top. K. D. flat.



**No. 6 Safe—Tin**

American Quartered Oak front.  
Height, 5 ft. Width, 3 ft. 5 in. over all. Weight, 75 lbs.  
Sectional panel ends. Portable bolted construction.  
Finished top. K. D. flat.



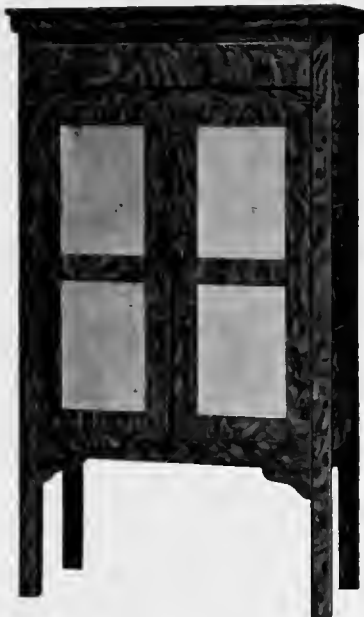
**No. 4 Cupboard—Wire**

American Quartered Oak front.  
Height, 6 ft. Width, 2 ft. 10 in. over all. Weight, 85 lbs.  
Sectional panel ends. Portable bolted construction.  
Finished top. K. D. flat.



**No. 4 Cupboard—Tin**

American Quartered Oak front.  
Height, 6 ft. Width, 2 ft. 10 in. over all. Weight, 85 lbs.  
Sectional panel ends. Portable bolted construction.  
Finished top. K. D. flat.



**No. 4 Tin Safe with Drawer**

American Quartered Oak front.  
Height, 5 ft. Width, 2 ft. 10 in. over all. Weight, 65 lbs.  
Sectional panel ends. Portable bolted construction.  
Finished top. K. D. flat.



**Acme Kitchen Tables**

Well made table. Frame cannot spread.	Made in four sizes.
No wrench of any kind required.	32 x 42 in. Wt. 40 lbs.
Clean white top.	32 x 48 " " 45 "
Legs and rails stained.	32 x 60 " " 50 "
Carefully note construction.	32 x 72 " " 60 "

# ACME KITCHEN CABINETS

- 1—**REAL** Style and Originality to our Designs.
- 2—**SOLID** Legs, Bolted on with Wing Nuts.
- 3—**CASTERS** of Lignum Vitae.
- 4—**CABINET** Tops FINISHED Inside.
- 5—**LOCKS** on Bins for 1911.
- 6—**CONSTRUCTION** has been tested one year—  
No Complaints.



**No. 42 Kitchen Cabinet**

Height, 6 ft. Top, 27 x 60. Weight, 225 lbs.

Bin capacity, 100 lbs.

The base of this cabinet is No. 15. Weight, 100 lbs.

The top is No. 25. Weight, 125 lbs.

Cabinet top is shipped K. D. flat. Locks on bins.

Best value is obtained by adding zinc top to cabinet base.



**No. 38 Kitchen Cabinet**

Height, 6 ft. 6 in. Top, 27 x 46½. Weight, 210 lbs.

Bin capacity, 50 lbs.

The base of this cabinet is No. 14. Weight, 100 lbs.

The top is No. 24. Weight, 110 lbs.

Cabinet top is shipped K. D. flat. Lock on bin.





**No. 21**

Height, 6 ft. 6 in. Top, 27 x 46½. Weight, 200 lbs.

Bin capacity, 100 lbs.

The base of this cabinet is No. 18. Weight, 90 lbs.

The top is No. 24. Weight, 110 lbs.

Cabinet top is shipped K. D. flat. Locks on bins.

Best value is obtained by  
adding zinc top to  
cabinet base.



**No. 20½**

Height, 6 ft. Top, 27 x 46½. Weight, 170 lbs.

Bin capacity, 100 lbs.

The base of this cabinet is No. 18. Weight, 90 lbs.

The top is No. 23. Weight, 80 lbs.

Cabinet top is shipped K. D. flat. Locks on bins.



**No. 20**

Height, 6 ft. Top, 27 x 46 $\frac{1}{2}$ . Weight, 160 lbs.

Bin capacity, 50 lbs.

The base of this cabinet is No. 17. Weight, 80 lbs.

The top is No. 23. Weight, 80 lbs.

Cabinet top is shipped K. D. flat. Lock on bin.

Best value is obtained by  
adding zinc top to  
cabinet base.



**No. 19**

Height, 6 ft. Top, 27 x 46 $\frac{1}{2}$ . Weight, 140 lbs.

Bin capacity, 50 lbs.

The base of this cabinet is No. 16. Weight, 70 lbs.

The top is No. 22. Weight, 70 lbs.

Cabinet top is shipped K. D. flat. Lock on bin.



