

UC-NRLF



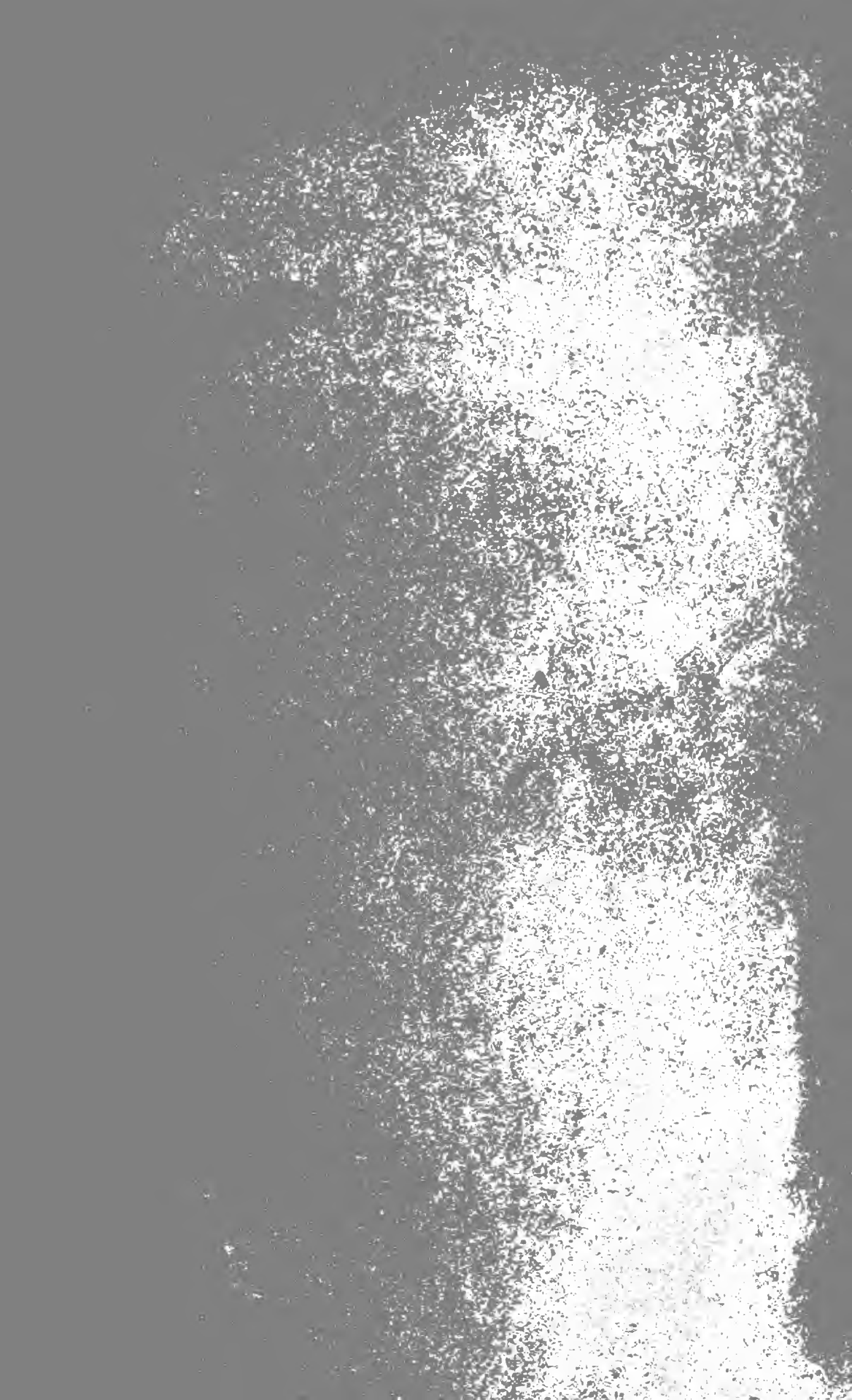
SC 105 602

LIBRARY  
OF THE  
UNIVERSITY OF CALIFORNIA.

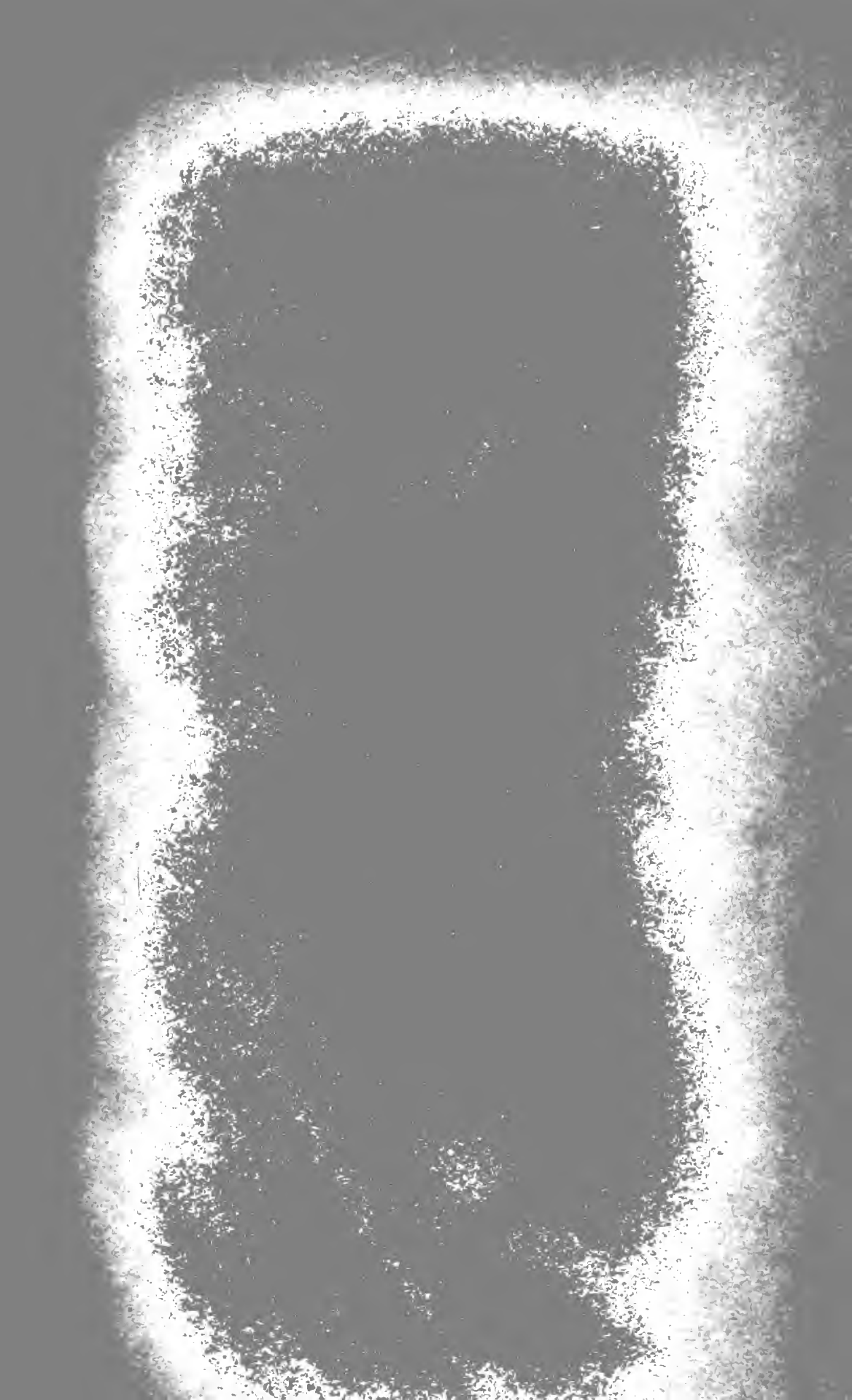
GIFT OF

*Boston Public Library,*

*Class*







Digitized by the Internet Archive  
in 2008 with funding from  
Microsoft Corporation

14 1903

BOSTON PUBLIC LIBRARY

---

BIBLIOGRAPHIES OF SPECIAL SUBJECTS

ORIGINALLY PUBLISHED IN THE BULLETINS  
OF THE LIBRARY

No. 7

CATALOGUE

OF

FAMILY HISTORIES

WITH MANY WORKS CONTAINING GENEALOGICAL INFORMATION,  
IN THE BOSTON PUBLIC LIBRARY

BY

ARTHUR MASON KNAPP

*of the Boston Public Library*

BOSTON

PRINTED BY ORDER OF THE TRUSTEES

1891

21009  
B6  
no. 7

ROCKWELL AND CHURCHILL  
CITY PRINTERS  
BOSTON





# GENEALOGY.

The volume of *Bulletins* covering the years 1878 to 1881 [vol. 4] contains three articles upon genealogy, one giving a list of genealogies by families [No. 49, April, 1879], one by localities [No. 50, July, 1879], and one filled with miscellaneous information. The latter, contained in the *Bulletin* for October, 1879, is of especial value to persons investigating family history.

## Bibliographies, Dictionaries, etc.

Below is a selection of important works of reference. The numerous heraldic and genealogical works of Burke and other reference books of that character have been omitted. In the imprint of the works given hereafter L. stands for London, B. for Boston.

- Anderson, W.** Genealogy and surnames. Edinb., 1865. 8°. \*6237.19
- Austin, J. O.** Genealogical dictionary of Rhode Island. Albany, 1887. 4°. \*\*4330.53
- Bridger, C.** Index to printed pedigrees. L., 1867. 8°. \*2435.21
- Coleman, J.** General index to printed pedigrees. L., 1866. 8°. \*4535.17
- Dexter, O. P.** Genealogical cross index to the Genealogical dictionary of Savage. N. Y., 1884. 8°. \*2331.13
- Durrie, D. S.** Bibliographia genealogica Americana. [Also Supplement.] Albany, 1886, 88. 8°. \*\*4432.70  
The latest and best guide for American genealogists.
- Egle, W. H.** Penna. genealogies. Harrisburg, 1886. 8°. \*4430a.17
- Farmer, J.** Genealogical register of the first settlers of New England. Lancaster, Mass., 1829. \*2335.2
- Foster, J.** Collectanea genealogica. Vol. 1, 3, 4. L., 1882-85. 4°. \*\*2500a.61  
— The royal lineage of our noble and gentle families. L., 1883, 84. 4°. \*2433.55
- Goodwin, N.** Genealogical notes on some of the first settlers of Mass. and Conn. Hartford, 1856. 8°. 2332.8
- Green, T. M.** Historic families of Kentucky. Cincinnati, 1889. 8°. \*4333.100
- Grimaldi, S.** Origines genealogicæ: the sources whence English genealogies may be traced. L., 1828. 4°. \*4532.103
- Guppy, H. B.** Homes of family names in Great Britain. L., 1890. 8°. 4536.104
- Hotten, J. C.** Original lists of persons who went to the American plantations 1600-1700. L., 1874. 8°. \*\*2332.51
- Hughes, T. P.** American ancestry. Albany, 1887-. 8°. \*\*4435.57
- Le Neve, P. N.,** called. Pedigrees of the knights made by Charles II.-Anne. L., 1873. 8°. \*2410a.58; \*\*K.143.8
- Marshall, G. W.** Catalogue of pedigrees hitherto unindexed. L., 1867. 8°. \*4536.11  
— Genealogist's guide to printed pedigrees. L., 1885. 8°. \*\*2433.57  
— Parish registers. A list of those printed, or of which ms. copies exist in public collections. 1891. 8°. \*2152.41
- Morse, A.** Genealogical register of several Puritans. B., 1859. 8°. 2333.23
- Nichols, J. G.** Topographer and genealogist. L., 1846-58. 3 v. 8°. \*\*2486.1
- Nicolas, Sir N. H.** Catalogue of the Heralds' visitations. L., 1825. 8°. \*6150a.15
- Peirce, E. W.** Contributions. B., 1874. 8°. \*2337.61
- Phillimore, W. P. W.** How to write the history of a family. L., 1887. 8°. 2439.18
- Potts, W. J.** Books and manuscripts. Helps for Pennsylvania genealogists. (In N. Y. geneal. and biog. record. Jan., 1873. p. 27.) \*2337.55.4
- Rye, W.** Records and record searching. A guide to the genealogist. L., 1888. 8°. \*2434.64
- Savage, J.** Genealogical dictionary of the first settlers of New England. B., 1861. 8°. \*\*2331.12
- Shattuck, L.** Complete system of family registration. B., 1841. 4°. \*4433.17
- Sims, R.** Manual for the genealogist. L., 1888. 8°. \*2434.63
- Talcott, S. V.** Genealogical notes of N. Y. and N. E. families. Albany, 1883. 8°. \*2338.71
- Tanguay, C.** Dictionnaire généalogique des familles canadiennes. Montreal, 1871-88. 8°. \*\*4430a.20
- Waters, H. F. G.** Genealogical gleanings. B., 1885-. 8°. 4339a.66
- Welles, A.** American family antiquity. N. Y., 1880, 81. 4°. \*\*4330.50
- Whitmore, W. H.** American genealogist. Albany, 1875. 8°. 2337.13  
— Ancestral tablets. B., 1885. 4°. \*4431.63

## FAMILY HISTORIES.

### Serials.

The most valuable serials containing genealogical matter are the following. As a rule the publications of historical societies have been omitted, unless indexed by Durrie. A manuscript catalogue of the genealogies in the most important of these serials, brought down to date, can be seen on application to the Librarian of Bates Hall.

- |  |   |
|--|---|
| <b>American genealogical queries.</b> Newport, R. I. 1887, 1889. *4336.101   | <b>Miscellanea genealogica et heraldica.</b> L., 1870-91. *2434.51              |
| <b>Bangor historical magazine.</b> 1885-1891. *4437-65   | <b>Narragansett historical register.</b> Hamilton, R. I., 1882-91. *4437.50     |
| <b>Essex institute.</b> Historical collections. Salem, 1859-91. *2358.20   | <b>New England historical and genealogical register.</b> B., 1847-91. *2335.1   |
| <b>Genealogist, The.</b> L., 1877-91. *6238.50   | <b>New England notes and queries.</b> Newport, 1890. *4357.100                  |
| <b>Granite monthly.</b> Concord, N. H., 1877-1889. *4435.54  | <b>New York genealogical and biographical record.</b> N. Y., 1870-91. *2337.55  |
| <b>Herald and genealogist.</b> L., 1863-74. *2436.54   | <b>Newport historical magazine.</b> 1880-84. *4436.58                           |
| <b>Heraldic journal.</b> B., 1865-67. *6226.10   | After 1884 called Rhode Island historical magazine.                             |
| <b>Historical journal.</b> Devoted principally to North-western Penna. By J. F. Meginnis. Williamsport, Pa., 1888. *4371.103 | <b>Old times.</b> Yarmouth, Me., 1877-84. *4435.60                              |
| <b>Historical record.</b> Ed. by F. C. Johnson. Wilkes-Barre, Pa., 1887-90. *4374.115  | Succeeded by the Westeustogo chronicle, *4435.61.                               |
| <b>Historical register: notes and queries relating to interior Pennsylvania.</b> Harrisburg, Pa., 1883-4. *4470.75           | <b>Our ancestors.</b> Phila., 1882. *4437.55                                    |
| <b>Kings county genealogical club.</b> Collections. 1882-. *4374.40  | <b>Pennsylvania magazine of history and biography.</b> Phila., 1877-91. *5335.1 |
| <b>Maine genealogist and biographer.</b> Augusta, 1875-78. *4435.52  | <b>Rhode Island historical magazine.</b> Newport, 1884-87. *4436.58             |
| <b>Maine historical and genealogical recorder.</b> Portland, 1884-89. *4437.60   | Vols. 1-4 are called the Newport historical magazine.                           |
|  | <b>Salem Press hist. and geneal. record,</b> 1890-. *4457.104                   |
|  | <b>Winchester [Mass.] record,</b> 1885-. *4350a.151                             |

### Places.

The following list of local histories, containing more or less genealogical information, includes nearly all of the works mentioned in Durrie's Index to American Genealogies, besides many which do not appear in that work. It does not include English local history, in which the library is especially strong. Marshall's Genealogist's Guide (2433.57) will indicate to the student who cares to extend his investigations, where all the known English printed pedigrees may be found. The towns named below are in Massachusetts unless otherwise specified.

Place.	Author.	Date.	Shelf-no.	Place.	Author.	Date.	Shelf-no.
Abington . . . . .	Hobart,	1866	2356.42	Brimfield . . . . .	Hyde,	1879	2353.68
Acworth, N. H. . . . .	Merrill,	1860	G.203.2	Bristol, Me. . . . .	Johnston,	1873	2335.60
Albany, N. Y. . . . .	Hughes,	1887	4435.57	Bristol Parish, Va. . . . .	Flaughter,	1879	2378.57
Albany, N. Y. . . . .	Mausell,	1850	4378.1	Brunswick, Me. . . . .	Wheeler,	1878	4333.54
Albany, N. Y. . . . .	"	1859	4373.16	Bucks Co., Pa. . . . .	Davis,	1876	2377.15
Amherst . . . . .	Judd,	1863	2356.33	Buffalo, N. Y. . . . .	Ketchum,	1865	4371.15
Amherst, N. H. . . . .	Secomb,	1883	4339.60	Buxton, Me. . . . .	Marshall,	1874	2337.58
Andover . . . . .	Abbott,	1829	2357.11	Byfield. See Newbury.			
Antrim, N. H. . . . .	Cochrane,	1880	4435.30	Calais, Me. . . . .	Knowlton,	1875	4339.29
Arlington . . . . .	Cutter,	1880	2353.70	Cambridge . . . . .	Paige,	1877	2354.52
Ashburnham . . . . .	Stearns,	1887	4352.77	Canada . . . . .	Tanguay,	1871-88	4430a.20
Attleborough . . . . .	Daggett,		2357.31	Candia, N. H. . . . .	Eaton,	1852	4339.14
Augusta, Me. . . . .	North,	1870	2336.52	Canton, Conn. . . . .	Brown,	1856	4335.85
Avon, N. Y. . . . .		1871	4337.141	Cecil Co., Md. . . . .	Johnston,	1881	2379.43
Barnstable . . . . .	Otis,	1888	4337.104	Charlestown . . . . .	Wyman,	1879	2331.57 & 68
Barnstable Co. . . . .	Freeman,	1858, 62	2350.9	Charlestown, N. H. . . . .	Saunderson,	1876	2338.23
Belchertown . . . . .	Doolittle,	1852	3544.23	Chautauque Co., N. Y. . . . .	Young,	1875	4473.55
Belfast, Me. . . . .	Williamson,	1877	2334.54	Chester, N. H. . . . .	Chase,	1869	4431.2
Bennington, Vt. . . . .	Jennings,	1869	3548.77	Chester Co., Pa. . . . .	{ Futhey and } Cope,	1881	2370.57
Beverly . . . . .	Stone,	1843	2357.1	Colchester Co., N. S. . . . .	Miller,	1873	4432.66
Billerica . . . . .	Hazen,	1883	2352.81	Columbus Co., N. Y. . . . .	Jughes,	1887	4435.57.2
Blue Hill, Me. . . . .	Dodge,	1889	4435.116	Concord . . . . .	Shattuck,	1835	2357.45
Boscawen, N. H. . . . .	Coffin,	1878	4331.53	Concord, N. H. . . . .	Bouton,	1856	4355.66
Boston . . . . .	Bridgman,	1856	{ 6042.60	Conesus, N. Y. . . . .	Boyd,	1887	4374.108
Boston . . . . .	Winsor,	1880, 81	4451.51	Connecticut . . . . .	Hinman,	1846	2337.53
Boxford . . . . .	Perley,	1880	2334.65	Connecticut . . . . .	Porter,	1842	4435.25
Bradford . . . . .	McKeen,	1875	2338.51	Connecticut . . . . .	Goodwin,	1856	2332.8
Braintree, Vt. . . . .	Bass,	1883	4436.4	Cornwall, Conn. . . . .	Gold,	1877	4438.55
Bremen, Me. . . . .	Johnston,	1873	2335.60	Cornwall, Vt. . . . .	Matthews,	1862	2337.7
Bridgeport, Conn. . . . .	Orcutt,	1886	4450n.72	Danby, Vt. . . . .	Williams,	1869	4335.89
Bridgewater . . . . .	Cary,	1824	3 in 2337.54	Dauphin Co., Pa. . . . .	Egle,	1883	4461.21
Bridgewater . . . . .	Mitchell,	1840	2356.7				

## FAMILY HISTORIES.

Place.	Author.	Date.	Shelf-no.	Place.	Author.	Date.	Shelf-no.
Deerfield, N. H. . . . .	Cogswell,	1878	4434.50	Long Island, N. Y. . . . .	Wood,	1865	2370.54
Delaware Co., Pa. . . . .	Smith,	1862	4372.12	Longmeadow . . . . .		1884	4352.09
Dennysville, Me. . . . .		1886	4438.28	Lynn . . . . .	{ Lewis and Newhall, }	1865	4354.26
Derby, Conn. . . . .	{ Orcutt and Beardsley, }	1880	4431.58	Machias, Me. . . . .		1863	4438.25
Douglas . . . . .	Emerson,	1879	2354.00	Malden . . . . .		1850	4450.10
Dunbarton, N. H. . . . .	Stark,	1860	2338.11	Marlboro', N. H. . . . .	Bemis,	1881	2354.70
Dunstable . . . . .		1878	4332.52	Marlborough . . . . .	Hudson,	1862	2356.29
Dunstable, N. H. . . . .	Fox,	1846	2357.3	Maryland . . . . .	Hanson,	1876	2373.72
Durham, Conn. . . . .	Fowler,	1866	4336.32	Medfield . . . . .	Tildeu,	1887	4332.100
Dutchess Co., N. Y. . . . .	Smith,	1877	4374.54	Medford . . . . .	Brooks,	1886	2353.78
East Boston . . . . .	Sumner,	1858	2353.29	Medford . . . . .	Whitmore,	1855	{ 2333.13 4397.13 }
East Haven . . . . .	Dawson,	1874	2337.23	Medway . . . . .	Jamson,	1886	4450.68
East Haven, Conn. . . . .	Dod-I,	1824	2336.25	Medway . . . . .	Morse,	1855	4352.54
Eastham . . . . .	Pratt,	1844	4355.1	Merrimac Valley . . . . .	Poor,	1857-8	2350.8
Easthampton . . . . .	Lyman,	1866	4458.13	Middlebury, Vt. . . . .	Friable,	1867	4331.10
Eliot, Me. . . . .	Fogg,	1851	6 in 4333.59	Milford . . . . .	Ballon,	1882	{ 2355.81 2350.71 }
Essex . . . . .	Crowell,	1868	4459.6	Minisink Region, N. Y. Stickney,		1867	4437.25
Ewing, N. J. . . . .	Cooley,	1883	4339.75	Narragansett, R. I. . . . .	Stickney,	1847	5543.43
Exeter, N. H. . . . .	Bell,	1888	4438.32	New Bedford . . . . .	Ricketson,	1858	2357.14
Fair Haven, Vt. . . . .	Adams,	1870	4338.52	New Boston, N. H. . . . .	Cogswell,	1878	4434.56
Fairfield, Conn. . . . .	Schenck,	1889	4336.126	New Britain, Conn. . . . .	Andrews,	1867	5541.77
Fairfield Co., Conn. . . . .	Hurd,	1881	4330.52	New England . . . . .	Dudley,	1861	4330.105
Fall River . . . . .	Fowler,	1862	4451.11	New England . . . . .	{ Emmetton & Waters, }	1880	4433.56
Fall River . . . . .	Peck and Earll,	1878	4450.31	New England . . . . .	Farmer,	1829	{ 4332.101 2335.2 }
Farmington, Me. . . . .	Butler,	1885	4438.90	New England . . . . .	Pelree,	1874	2337.61
Fenwick's colony, N. J. Shourds,		1876	4335.135	New England . . . . .	Savage,	1861	2331.12
Fitzwilliam, N. H. . . . .	Norton,	1888	4336.118	New England . . . . .	Talcott,	1883	2338.71
Framingham . . . . .	Temple,	1887	4352.79	New England . . . . .	Titcomb,	1882	23300.53
Framingham . . . . .	Barry,	1847	2357.58	New London, Conn. . . . .	Caulkins,	1852	4336.35
Franklin . . . . .	Blake,	1879	2354.62	New Milford, Conn. . . . .	Orcutt,	1882	2352.83
Freetown . . . . .	Fowler,	1862	4451.11	New York . . . . .	Talcott,	1883	2338.71
Gardiner, Me. . . . .	Hanson,	1852	2339.1	New York . . . . .	Jones,	1879	23700.70
Gilmanton, N. H. . . . .	Lanester,	1845	2338.17	Newbury, etc. . . . .	Codlu,	1845	2336.1
Gilsum, N. H. . . . .	Hayward,	1881	4431.61	Newbury . . . . .	Emery,	1879	2349.7
Glastonbury, Conn. . . . .	Chapin,	1853	4336.27	Newbury (Byfield) . . . . .	Cleveland,	1865	2335.50
Gloucester . . . . .	Babson,	1860	2356.26	Newcastle, Me. . . . .	Cushman,	1882	4338.72
Gloucester . . . . .	Babson,	1876	2356.57	Newfane, Vt. . . . .		1877	4434.21
Gorham, Me. . . . .	Pierce,	1862	4438.20	Newport, N. H. . . . .	Wheeler,	1879	2333.72
Goshen . . . . .	Barrus,	1881	2353.79	Newton . . . . .	Jackson,	1854	4357.7
Grafton . . . . .	Pierce,	1879	2355.73	Newtown, N. Y. . . . .	Riker,	1832	4371.13
Great Barrington . . . . .	Taylor,	1882	2359.79	North Bridgewater . . . . .	Kingman,	1890	2397.34
Greenwich, Conn. . . . .	Mead,	1857	4339.26	Northampton Co., Pa. Clyde,		1879	2379.71
Groton . . . . .	Butler,	1848	2357.42	Northfield . . . . .	{ Temple and Sheldon, }	1875	2363.33
Groton . . . . .	Green,	1878	2351.68	Northwood, N. H. . . . .	Cogswell,	1878	4434.56
Guilddhall, Vt. . . . .	Benton,	1886	4438.82	Norton . . . . .	Clark,	1859	2357.9
Guilford, Conn. . . . .	Smith,	1877	4332.51	Norwalk, Conn. . . . .	Hall,	1847	4438.3
Hadley, etc. . . . .	Judd,	1863	2356.33	Norwich, Me. . . . .	Lapham,	1886	4438.30
Hancock, N. H. . . . .	Hayward,	1889	4436.119	Norwich, Conn. . . . .	Caulkins,	1867	4336.24
Hanover . . . . .	Barry,	1853	2357.40	Norwich, Conn. . . . .	Stedman,	1850	2336.22
Hanover, Pa. . . . .	Plumb,	1885	4374.110	Nottingham, N. H. . . . .	Cogswell,	1878	4434.56
Hardwick . . . . .	Palge,	1883	2354.73	Orange, N. Y. . . . .	Ruttenber,	1875	23700.59
Harlem, N. Y. . . . .	Riker,	1881	4372.83	Orange Co., N. Y. . . . .	Eger,	1846, 7	4371.18
Harpwell, Me. . . . .	Wheeler,	1878	4335.54	Orford, N. H. . . . .		1865	2338.21
Harrison, Me. . . . .	Ridlon,	1877	2338.53	Orleans . . . . .	Pratt,	1844	4355.1
Hartford, Vt. . . . .	Tucker,	1863	4437.104	Orleans Co., N. Y. . . . .	Thomas,	1871	43700.116
Hatfield . . . . .	Judd,	1863	2356.93	Palmer . . . . .	Gates,	1889	2 in 4332.106
Haverhill . . . . .	Chase,	1861	2356.28	Paris, Me. . . . .	{ Lapham and Maxim, }	1884	4436.23
Henniker, N. H. . . . .	Cogswell,	1880	4336.64	Passaic Valley, N. J. . . . .	Littell,	1851	4434.6
Herkimer Co., N. Y. . . . .	Benton,	1856	4371.23	Pennsylvania . . . . .	Egle,	1886	44300.17
Hillsdale, N. Y. . . . .	Collin,	1883	4374.76	Pennsylvania . . . . .	Keith,	1883	2349.72
Hollis, N. H. . . . .	Worcester,	1879	4434.58	Pennsylvania . . . . .	Balch,	1876	2372.5
Holliston . . . . .	Morse,	1855	4352.94	Peterborough, N. H. . . . .	Smith,	1876	2337.25
Hubbardston . . . . .	Stone,	1881	2353.90	Phoenixville, Pa. . . . .	Pennypacker,	1872	2373.74
Hudson Co., N. J. . . . .	Winfield,	1874	23700.52	Piscataquis Co., Me. . . . .	Loring,	1880	4336.63
Ipswich . . . . .	{ Hammett papers, }	1880-1	4354.33	Pittsford, Vt. . . . .	Caverly,	1872	2336.56
Jaffrey, N. H. . . . .	Cutter,		4435.31	Pittston, Me. . . . .	Hanson,	1852	2330.1
Kennebunkport, Me. . . . .	Bradbury,	1837	4438.7	Plymouth . . . . .	Bayles,	1866	2350.7
Kent, Md. . . . .	Hanson,	1876	2373.72	Plymouth . . . . .	Davis,	1883	23500.50
Kings Co., N. Y. . . . .	Bergen,	1881	2376.69	Plymouth . . . . .	Thacher,	1835	2357.7
Lake Co., Ind. . . . .	Ball,	1884	4378.83	Plymouth Co. . . . .	Briggs,	1889	4552.105
Lancaster . . . . .	Nourse,	1890	23500.103	Pompey, N. Y. . . . .		1875	2370.62
Lancaster Co., Pa. . . . .	Harris,	1872	2344.59	Portland, Me. . . . .	Willis,	1849	2339.25
Lebanon, Conn. . . . .	Hue,	1880	4339.53	Portsmouth, N. H. . . . .	Brewster,	1869, 71	2338.14
Lebanon Co., Pa. . . . .	Egle,	1883	4461.21	Poultney, Vt. . . . .	Joslin,	1875	4434.20
Leicester . . . . .	Washburn,	1860	2356.38	Providence, R. I. . . . .	Snow,	1879	4331.59
Lewis Co., N. Y. . . . .	Hough,	1880	4371.17	Queens Co., N. Y. . . . .		1882	6470.20
Lexington . . . . .	Hudson,	1868	{ 4454.2 6042.52 }	Raymond, N. H. . . . .	Fullerton,	1875	4335.72
Litchfield, Conn. . . . .	Killbourne,	1851	2345.7	Reading . . . . .	Enton,	1874	2355.51
Livermore, Me. . . . .	Washburne,	1874	2337.60	Reading, Vt. . . . .	Davis,	1874	2325.79
Londonderry, N. H. . . . .	Parker,	1851	2338.9	Reading, Conn. . . . .	Todd,	1880	2353.71
Long Island, N. Y. . . . .	Riker,	1852	4371.13				
Long Island, N. Y. . . . .	Thompson,	1843	4371.12				

## FAMILY HISTORIES.

Place.	Author.	Date.	Shelf-no.	Place.	Author.	Date.	Shelf-no.
Rehoboth, etc.	Billis,	1836	2356.4	Troy, N. Y.	Weise,	1876	4373.24
Rhinebeck, N. Y.	Smith,	1881	4475.68	Truro . . . . .	Rich,	1884	2350a.52
Rhode Island	Austin,	1887	4330.53	Tyngsboro . . . . .			4352.12
Rhode Island	Austin,	1889	4330.54	Union, Me.	Sibley,	1851	2339.7
Hindge, N. H.	Stearns,	1875	2337.18	Uxbridge . . . . .	Chapin,	1881	2354.09
Rockingham Co., N. H.	Hurd,	1882	2330a.57	Wallingford, Conn.	Davis,	1870	4335.16
Rockland, Me.	Eaton,	1865	2339.15	Walpole, N. H.	Aldrich,	1880	4336.66
Ross Co., O.	Phinley and Putnam,	1871	2375.67	Waltham . . . . .	Bond,	1860	2357.35
Rowley . . . . .	Blodgett,	1887	4350a.179	Warren, Me.	Eaton,	1877	2339.68
Rowley . . . . .	Gage,	1840	2357.2	Warren, N. H.	Little,	1870	4345.15
Rumford, Me.	Lapham,	1890	4435.107	Warsaw, N. Y.	Young,	1860	2379.16
Rutland . . . . .	Keed,	1836	2359.66	Waterbury, Conn.	Bronson,	1858	4336.28
Rye, N. Y.	Baird,	1871	4474.15	Waterford, Me.	Warren,	1879	4434.57
Saco, Me.	Folsom,	1839	4339.3	Watertown . . . . .	Bond,	1860	2357.35
St. Mary's Parish, Va.	Slaughter,	1877	4379.53	Watertown . . . . .	Harris,	1869	4333.12
Salem . . . . .	Salem Press,	1860	4457.104	Wayne Co., Ia.	Young,	1872	2371.51
Salisbury, Vt.	Weeks,	1890	2357.6	Webster, N. H.	Coffin,	1878	4331.53
Sanbornton, N. H.	Runnels,	1881	4435.33.2	Wellfleet . . . . .	Pratt,	1844	4355.1
Sangamon Co., Ill.	Powers,	1876	2370a.50	Wells, Vt.	Paul,	1869	4439a.20
Schenectady, N. Y.	Pearson,	1873	2339.58	West Springfield . . . . .		1874	2353.23
Seymour, Conn.	Sharpe,	1879	4338.57	Westchester Co., N. Y.	Bolton,	1843	2371.16
Sheepscoot, Me.	Cushman,	1882	4338.72	Weston . . . . .	Bond,	1860	2357.35
Sherborn . . . . .	Morse,	1855	4532.54	Whately . . . . .	Temple,	1849	5546.2
Shirley . . . . .	Chandler,	1883	2350a.54	Whately . . . . .	Temple,	1872	2452.55
Shrewsbury . . . . .	Ward,	1847	2357.43	Wilbraham . . . . .	Siebbins,	1861	2356.31
Southampton, L. I.	Howell,	1887	6472.64	Wilton, N. H.	Livermore,	1888	4439a.45
Southbridge . . . . .	Amundown,	1877	4435.27	Winchendon . . . . .	Marvin,	1868	4451.10
Southington, Conn.	Timlow,	1875	2347.16	Winchester . . . . .	Winchester record,	1885	4350a.151
Spencer . . . . .	Draper,		2357.31	Winchester, Conn.	Boyd,	1873	4335.56
Staten Island, N. Y.	Chite,	1877	2370a.61	Windham, Conn.	Weaver,	1864	4333.102
Stockbridge . . . . .	Jones,	1854	2357.12	Windham Co., Conn.	Larned,	1874	4473.29
Stonington, Conn.	Wheeler,	1875	3542.70	Windham, N. H.	Morrison,	1883	4434.60
Stratford Co., N. H.	Hurd,	1882	2390a.57	Windsor, Conn.	Stiles,	1859	2336.20
Stratford, Conn.	Oreutt,	1886	4450a.72	Windsor Farms, Conn.	Stoughton,	1883	2330a.56
Sudbury . . . . .	Barry,	1847	2457.38	Winthrop, Me.	Thurston,	1855	2339.9
Sutton . . . . .	Benedict and Tracy,	1876	2354.59	Woburn . . . . .	Sewall,	1868	4454.11
Sutton, N. H.	Worthen,	1890	4436.138.2	Wolcott, Conn.	Orent,	1874	2333.61
Taunton . . . . .	Emery,	1853	2345.10	Woodbury, Conn.	Crothen,	1854, 72	4336.31
Temple, N. H.	Blood,	1890	2338.13	Woodstock, Me.	Lapham,	1882	4338.73
Thomaston, Me.	Eaton,	1865	2339.15	Woonsocket, N. I.	Richardson,	1876	2338.54
Tolland, Conn.	Waldo,	1861	4336.29	Worcester . . . . .	Wall,	1877	2354.56
Topsham, Me.	Wheeler,	1878	4333.54	Wyoming Valley, Pa.	Kulp,	1888-90	4434.69
Torrington, Conn.	Oreutt,	1878	4335.79	Yarmouth Co., N. S.	Brown,	1888	4313.107
Townsend . . . . .	Sawtelle,	1878	2354.57	Yates Co., N. Y.	Cleveland,	1873	4375.66
Trenton, N. J.	Cooley,	1883	4339.75	York Co., Me.	Jordan,	1885	4434.72

## Families.

This list is founded upon that in the Bulletin for April, 1879, but has been greatly enlarged by inserting the family histories added to the library since that date. As a rule they are separate publications, no attempt having been made to extend the list by taking from town histories or serials of any kind. Durrie's Index (4432.70) will be found a very satisfactory guide to the students in investigating publications of that character. It may save time and trouble to know that when the shelf number begins with 24, 25, or 45, the work indicated is the history of an English or Scotch, not of an American family. In many instances the books are restricted to hall use.

Name.	Author.	Date.	Shelf-no.	Name.	Author.	Date.	Shelf-no.
Abbot . . . . .	Abbot,	1847	2343.21	Amundown . . . . .	Amundown,	1877	4435.27
Adam . . . . .	Adam,	1848	2 in 4332.8	Andrews . . . . .	Andrews,	1867	5541.77
Adams . . . . .	Adams,	1861	4432.8	Angell . . . . .	Angell,	1872	2337.57
Adams . . . . .	Thayer,	1835	4338.66	Appleton . . . . .	Jewett,	1887	4336.111
Adams . . . . .	Appleton,	1881	2332.2	Angell . . . . .	Angell,	1872	4335.66
Adams . . . . .	Whiton,	1858	1 in 4334.55	Anthon . . . . .	Anthon,	1872	2336.35
Ainslie . . . . .	Ainslie,	1883	2332.3	Appleton . . . . .	Jewett,	1850	2331.1
Alden . . . . .	Alden,	1867	4547.58	Appleton . . . . .	Appleton,	1864? Cab. 23. A. 4	
Alden . . . . .	Alden,	1889	4333.27	Archer . . . . .	Cooke,	1867	4333.29
Alden . . . . .	Thayer,	1835	4336.127	Argyll . . . . .		1874	2335.64
Alden . . . . .	Whiton,	1858	2333.2	Arms . . . . .	Arms,	1877	4337.132
Alger . . . . .	Alger,	1876	2332.3	Arms . . . . .	Thayer,	1877	4337.142
Allan . . . . .	Allan,	1867	4333.52	Arnold . . . . .	Denn, et als.,	1835	2333.2
Allan . . . . .	Longstaffe,	1850	4345.33	Arnold . . . . .	Yentman,	1879	4338.121
Allen . . . . .	Allen, J.	1869	2431.55	Arnundel . . . . .		1882	4520a.7
Allen . . . . .	Allen, A. W.	1872	4435.14	Ashburner . . . . .		1872	2430.54
Allen . . . . .	Allen, W. S.	1876	2339.53	Astry . . . . .	Waters,	1881	2430a.59
Allen . . . . .	Allen, W.	1882	4434.7	Atlee . . . . .	Barber,	1884	4335.124
Allen . . . . .	Allen, J. K.	1883	4334.64	Atwater . . . . .	Atwater, D.	1851	4335.86
Allen . . . . .	Price,	1888	4333.160	Atwater . . . . .	Atwater, E. E.	1873	4338.145
Allen . . . . .	Thompson,	1890	4337.159	Atwood . . . . .	Atwood,	1888	4337.117
Allen . . . . .	Vinton,	1858	4335.145	Aylsworth . . . . .	Aylsworth,	1887	4337.114
Allerton . . . . .	Allerton,	1888	2332.3	Ayres . . . . .	Whitmore,	1870	4435.16
Alling. See Allen.			4337.146	Babbage . . . . .	Cooke,	1889	4337.132
Alstedt . . . . .	Leuckfeld,	1721	4210.9	Babcock . . . . .	Babcock,	1844	3 in 4335.55
Alvord . . . . .	Boutelle,	1864	4335.6				

# FAMILY HISTORIES.

Name.	Author.	Date.	Shelf-no.	Name.	Author.	Date.	Shelf-no.
Bachus	Bachus,	1890	4338.114	Bontecou	Morris,	1887	4337.110
Bacon	Bacon,	1845	3 in 4435.10	Bonython		1885	4339a.81
Bacook	Appleton,	1881	2 in 4334.55	Booth	Smith,	1882	2503.00.1
Baird	Baird,	1870	2430.50	Booth	Heerick,	1860	6 in 4335.76
Baker	Baker,	1867	4432.4	Booth	Peirck,	1871	2 in 4435.53
Baker	Appleton,	1870	4338.13	Booth	Peirck,	1874	2337.61
Baldwin	Baldwin,	1871	6 in 2337.54	Booth	Smith,	1868	1 in 4435.76
		1872	4432.52	Bordley	Glendon,	1865	4335.4
		1881, 89	3 in 4334.55	Borlase	Borlase,	1888	4335.115
Baldwin	Chester,	1884	1 in 4330a.33	Borlunt	Kervyn de Volkaersbeke,	1851	3780.5.8
Baldwin	Vinton,	1858	2332.3	Botville (Botfield)		1858	2521.18
Ball	Hall,	1801	4338.164	Boughton	Smith,	1870	8 in 4331.55
Ballou	Ballou,	1888	4336.136	Boughton	Boughton,	1890	4338.104
Bancroft		1872	4 in 4335.76	Bourbon		1870	7 in 4335.76
Bancroft	Allen,	1883	4338.160	Bourbon	Dunning,	1825	4634.5
Barber	Barber,	1890	4338.103	Bourbon	Lehee,	1880	4633.8
Barnaby	Pelcer,	1874	2337.61	Bouton	Boughton,	1890	4338.104
Barrett	Barrett, J. H.	1888	4337.160	Bowdoin	Whitmore,	1865	4347.10
Barrett	Barrett, W.	1888	4336.113	Bowdoin	Prime,	1887	4336.135
Barrett	Potter,	1887	4430.12	Bowen	Bowen,	1884	4330.82
Barrow			4330.50.1	Bower	Baldwin,	1870	5 in 4334.55
Bartholomew	Bartholomew, A. J.	1882	1 in 4434.66	Bowles	Bowles,	1851	4332.8
Bartholomew	Bartholomew, G. W.	1885	4434.68	Boyd	Boyd,	1884	4339.101
Bartlett	Bartlett,	1876	4435.28	Boylston	Vinton,	1858	2322.3
Bartlett	Lawrence,	1888	4333.104	Boynnton	Botham,	1824	1 in 4335.113
Bartlett	Pelcer,	1874	2337.61	Boynnton	Boynnton,	1884	4334.70
Bartow	Bartow, E. P.	1886	2435.76	Bradbury	Lapham,	1890	4338.112
Bartow	Bartow, E.	1875-8	4435.29	Bradford	Fessenden,	1850	2327.7
Bascom	Harris,	1870	4335.14	Bradford (Reprint)	Purple,	1873	2331.54
Bass	Thayer,	1835	2332.2	Bradlee	Doggett,	1878	4432.55
Bassett	Leeds,	1886	4334.66	Bradley	Lloyd,	1879	2322.57
Bate	Rylands,	1877	2430a.58	Bradstreet	Knapp,	1890	4334.109
Baux	Barthélemy,	1882	2632.53	Brainerd	Field,	1857	4433.3
Baxter	Baxter,	1879	4336.63	Brakenridge	Gould,	1887	4338.100
Beal	Shuntleff,	1865	5 in 4335.76	Brattle	Harris,	1867	2335.67
		1864	2337.56	Bray	Cooke,	1889	4337.132
Bearse	Newcomb,	1871	2337.54 & 56	Breck	Breck,	1889	4338.108
Beatson	Beatson,	1860	6531.4	Breckenridge	See Brakenridge.		
Beckford	Cooke,	1889	4337.132	Bretz	Parthemore,	1890	4338.106
Beichlingen	Leuchfeld,	1721	1 in 4210.9	Brewster			4335.20
Beke (n), Van der	Heyden, Van der	1853	3389.5.10	Bridge	Bridge,	1884	4335.127
Belcher	Whitmore,	1873	4335.60	Bridges	Bridges,	[17952] 4 in 7700.10	
Bell	Bell,	1855	2430.100	Briggs	Briggs, S.,	1878	4331.56
Bellows	Bellows,	1855	4438.13	Briggs	Briggs, M. B.,	1887	4335.136
Bellows	Barnes,	1888	4334.104	Briggs	Briggs, S.,	1890	4334.52
			2500a.112	Brigham	Morse,		2333.23.2
Bence	Hill,	1884	2501.73	Bright	Bright,	1858	2372.1
Benedict	Benedict,	1870	4432.10	Brimmer	Sigourney,	1857	4335.28
Bennet	Bradbury,	1875	4335.36	Brinkerhoff	Brinkerhoff,	1887	4331.107
Benson	Garrison,	1872	2335.58	Brinton	Brinton,	[1879] 4332.55	
		1876	2337.64	Brocas	Burrows,	1886	2435.72
Bergen	Bergen,	1866	4435.1	Brockway	Brockway,	1888	4338.102
Berghé, Van den	Heyden, Van der	1857	3380.5.14	Brodie	Brodie,	1862	Cab. G. 2.34
Berkeley	Smyth,	1883-5	2540.31	Bromfield	Slade,	1872	4335.58
Besbedge. See Blabee.				Brooks	Brooks,	1884	1 in 4350a.157
Bethune	Welsch,	1884	2330.54	Brooks	Whitmore,	1855	2333.13
Bex, de	Heyden, Van der	1858	3389.5.15	Broughton	Waite,	1890	3640b.80
		1880	4336.68	Brown	Beckwith,	1851	4336.114
		1883	4334.55	Brown	Bulkley,	1888	4330.114
Bicknell	Bicknell,	1884	1 in 4335.120	Brown	Fisher,	1866	4335.76
		1884	4339.78	Brown	Smith,	1868	3 in 4433.53
Bidwell	Bidwell,	1843	3389.5.1			1869	9 in 4335.76
Bie, de		1877	4337.105	Brownell	Pelcer,	1874	2337.61
Bigelow	Bigelow,	1880	4338.133	Brubacher	Brubacher,	1884	4339a.103
Bill	Hill,	1867	4335.7	Bruce	Vinton,	1874	2335.63
Billings	Thayer,	1835	2332.2	Bruce	Bruce,	1870	6530.1
Binnay	Binnay,	1886	4339a.92	Bryan	Baldwin,	1889	4335.142
Bird	Trask,	1871	4433.15	Bryant	Baetjer,	1887	4339.120
Birnie	Birnie,	1888	2431.51	Buck	Buck,	1857	4337.120
Blabee	Lapham,	1876	4339.16	Buck	Harvey,	1880	4331.108
Biscoe	Smith,	1887	4531.112	Buckingham	Chapman,	1872	4335.54
Bispham	Bispham,	1890	4332.111	Bueken, Van der	Heyden, Van der	1857	3389.5.14
Blackstone	Sargent,	1857	4336.133	Buell			4330.50.1
		1887	2333.4	Bukenham	Maudsley,	1884	4335.104
		1887	4337.120	Bulkeley	Chapman,	1875	2337.66
Bliss	Bliss,	1881	4338.58	Bullard	Barton,	1878	4432.55
Bliss	Stebbins,	1886	4330.112	Burbank	Ridlon,	1880	1 in 4339a.69
Bloss	Bloss,	1887	4335.129	Burgess	Burgess,	1865	4332.5
Blount	Croke,	1823	2431.59	Burke	Bontelle,	1864	4332.6
Bogardus	Gale,	1866	4339.28	Burleigh	Burleigh,	1880	4336.65
Bogman	Warren,	1860	3 in 4332.110	Burnett	Burnett,	1880	4332.6
Bolle	Hillingworth,	1810	2492.12				4335.10
Bolling	Bolling,	1869	2330.51	Burnham	Burnham,	{ 1869 } 2 in 4335.125	
		1889	4337.156			{ 1884 } 1 in 4335.125	
Bolton	Bolton,	1889	4336.112	Burr	Todd,	1878	4332.54
		1870	7 in 4335.76	Burrage	Burrage,	1877	4335.77
		1885	6641.19	Butler	Sigourney,	1857	4335.28
Bonaparte	Kleinschmidt,	1878	2640a.72	Butler	Butler, G. H.,	1886	4339a.85
Bonaparte	Sigourney,	1857	4335.28	Butler	Butler, J. D.,	1888	4339.132
Bond	Bond,	1858	24.M.2				

## FAMILY HISTORIES.

Name.	Author.	Date.	Shelf-no.	Name.	Author.	Date.	Shelf-no.
Butler . . . . .	Butler, M.,	[1881?]	4339a.62	Coffin . . . . .	Worron,	1881	4339.100
Butler . . . . .	Butler, W.,	1845	2437.23	Coghill . . . . .	Coghill,	1879	4332.62
Butler . . . . .		1887	{ 4336.124 and 137	Cogswell . . . . .	Jameson,	1884	4434.64
Butterfield . . . . .	Gordon,	1890	4338.150	Cogswell . . . . .	Kelly,	1831	{ 10 in Pph. v. 265.2
Button . . . . .	Button,	1888	4530.110	Coit . . . . .	Chapman,	1874	2336.70
Cadenhead . . . . .	Cadenhead,	1887	4537.107	Colden (Reprint) . . . . .	Purple,	1873	2331.53
Caldwell . . . . .	Caldwell,	1873	2335.62	Cole . . . . .	Cole, J. E.,	1867	2437.9
Cameron . . . . .	Mackenzie,	1884	2436.04	Cole . . . . .	Cole, D.,	1876	4335.119
Campbell . . . . .		1871	4535.102	Cole . . . . .	Cole, F. T.,	1887	4336.102
Campbell . . . . .	Maclachan,	1883	4537.106	Cole . . . . .	{ Segar and Penson, }	1870	2 in 2430.54
Candage . . . . .	Candage,	1889	4337.139	Coleman . . . . .		1867	1 in 4331.55
Candee . . . . .	Baldwin,	1882	2338.*2	Collins . . . . .	Smith,	1865	5 in 4435.53
Candish. See Candage.				Colquhoun . . . . .	Fraser,	1869	4534.104
Capen . . . . .	Thayer,	1835	2333.2	Colt . . . . .	Colt,	1887	4535.117
Capron . . . . .	Holden,	1859	4335.3	Colt . . . . .	Rogers,	1879	2436.00
Carlovingians . . . . .		1880	4220.1.25	Comberbach . . . . .	Marshall,	1866	4434.14
Carnegie . . . . .	Fraser,	1867	4534.106	Conable . . . . .	Connable,	1888	4431.18
Carpenter . . . . .	Roberts,	1877	4336.54	Conable . . . . .	{ Connable and Newcomb, }	1886	2333.59
Carpenter . . . . .	{ Smith, C., and Herrick, }	1871	4 in 4435.53	Conant . . . . .	Conant,	1887	4334.103
Carpenter . . . . .	Smith, C. P.,	1870	4330.12	Conant . . . . .	{ [1884?] Warren,	1890	2 in 4332.110
Carpenter . . . . .	Usher,	1883	4339.72	Condit . . . . .	Coudit,	1885	4335.126
Carpenter . . . . .	Vinton,	1858	2332.3	Connable. See Conable.			
Cartaret . . . . .	Baetjer,	1887	4339.120	Connor . . . . .			4330.50.2
Carter . . . . .	Carter,	1887	4435.62	Conover . . . . .			4339.50.3
Carter . . . . .	Potts,	1883	4339.74	Conatable . . . . .	Rogers,	1887	4536.112
Cary . . . . .	Cary,	1874	4339.100	Convers[e] . . . . .	Hill,	1887	4335.105
Cary . . . . .			4330.50.1	Conyers. See Convers.			
Cash . . . . .	Cooke,	1889	4337.132	Cook . . . . .	Cook, H.,	1870	2344.71
Castro . . . . .	Stroobant,	1853	3389.5.10	Cook[-e] . . . . .	Cook, J.,	1882	4339.86
Cavendish. See Candage.				Cook[-e] . . . . .	Hill,	1887	4335.105
Caverly . . . . .	Caverly,	1879, 80	4435.55	Cooldge . . . . .	Hill,	1886	4 in 4330a.93
Caverno . . . . .	Caverno,	1874	2339.61	Cooper . . . . .	Cooper,	1890	4337.152
Chamberlain . . . . .	Chamberlain,	1877	4332.61	Cooper . . . . .	Tuckerman,	1835	2333.2
Champion . . . . .	Trowbridge,	1891	4336.138	Copeland . . . . .	Thayer,	1884	4535.124
Championney . . . . .	Whitney,	1855	{ 4547.6 4337.111	Copinger . . . . .	Copinger,	1875	4335.121
Chandler . . . . .	Chandler,	1883	2338.75	Corlies or Corliss . . . . .	Corliss,	1875	4335.121
Chapin . . . . .	Chapin,	1889	4337.135	Cornwallis . . . . .	Cornwallis,	[1850?]	2430a.61
Chapin . . . . .		1862	{ 4438.22 1 in 4334.57	Corte Real . . . . .	Canto,	1883	5063.27
Chapman . . . . .	Chapman, F. W.,	1864	2332.50	Corwin . . . . .	Corwin,	1872	4335.52
Chapman . . . . .	{ Chapman, J., and Lapham, }	1878	2 in 4334.57	Corwin . . . . .	Waters,	1881	5 in 4339a.79
Chapman . . . . .	Gerard,	1876	2337.28	Cotton . . . . .	Somerby,	1868	{ 6 in 4435.10 3 in 4334.54 4 in 4335.68
Charlé . . . . .		1843	3389.5.1	Cotton . . . . .			2468.57
Chase . . . . .	Chase, G. B.,	1869	{ 17 in 4339.18 7 in 4435.10	Courtenay . . . . .		[1867?]	4335.57
Chase . . . . .	Chase, N.,	1878	4431.56	Coutts . . . . .	Rogers,	1879	2436.60
Chase . . . . .	Lapham,	1871	4431.56	Cox . . . . .		1871	4434.52
Chase . . . . .		1886	4337.109	Craddock . . . . .	Whitmore,	1856	4333.33
Chase . . . . .	Hill,	1888	4336.122	Craggs . . . . .	Woods,	1868	4531.107
Chase . . . . .	Usher,	1883	4338.79	Craighead . . . . .	Craighead,	1876	2339.63
Chastain . . . . .	Brock,	1886	4476.22.5	Crandall . . . . .	Crandall,	1888	4339.126
Chauncy . . . . .	Fowler,	1838	4335.23	Crane . . . . .	Appleton,	1868	2435.22
Chauncy . . . . .	Tueker,	1884	2430a.56	Crehore . . . . .	Crehore,	1887	4335.143
Cheever . . . . .		1882	2 in 4434.06	Cresson . . . . .	Cresson,	1888	4331.112
Cheever. Part I. . . . .		1879	{ 3 in 4334.57 3 in 4336.72	Croke . . . . .	Croke,	1823	2431.59
Cheever. Part II. . . . .	Hassam,	1884	3 in 4339a.93	Croker . . . . .	Fox,	1864	2432.7
Cheever. Add. . . . .		1887	4334.108	Croker . . . . .	Foster,	1872	{ 2431.53 4531.106
Cheever . . . . .	Trask,	1878	4331.57	Cromwell . . . . .	Waylen,	1890	2451.63
Chester . . . . .	Waters,	1831	2430a.59	Crosby . . . . .	Crosby,	1877	4335.73
Chew . . . . .	Thomas,	1883	2330a.55	Crowninshield . . . . .	Cooke,	1889	4337.132
Chichell . . . . .	Buekler,	1765, 75	4531.10	Cumming . . . . .	Bruce,	1870	6530.1
Child[-e, -es] . . . . .	Child,	1881	4338.74	Cunnabell. See Conable.			
Chipman . . . . .	Chipman,	{ 1872 } 5 in 4333.53		Curtis . . . . .	Clarke,	1869	{ 4433.7 4333.59
Chisholm . . . . .	Mackenzie,	1891	4536.125	Cushing . . . . .	Cushing,	1865	4360.10
Clapp . . . . .	Clapp,	1876	2334.52	Cushing . . . . .	Turner,	1852	2333.12
Clark[-e] . . . . .	Clark, L. H.,	1857	4339.44	Cushman . . . . .	Cushman,	1855	2331.10
Clark[-e] . . . . .	Clark, S. S.,	[1880?]	4338.163	Cushman . . . . .		1855	2331.6
Clark[-e] . . . . .	Clark, J.,	1866	4335.20	Cutler . . . . .	Cushing,	1865	4350.10
Clark[-e] . . . . .	Clark, G. K.,	{ 1883 } 4333.4		Cutler . . . . .	Morse,	1867	4335.24
Clark[-e] . . . . .		1885	4339a.68	Cutler . . . . .	Cutler,	1889	4337.130
Clark[-e] . . . . .	Clarke, S. C.,	1869	{ 4433.7 4333.59	Cutsem, Van . . . . .	Goethals,	1860	3389.5.17
Clark[-e] . . . . .	Gay,	1882	4339.65	Cutter . . . . .	Cutter,	1871	2335.54
Clark[-e] . . . . .	Johnson,	1884	4339.53	Dabney . . . . .	Dabney,	1888	4330a.106
Clark[-e] . . . . .	Waters,	1880	2 in 4334.53	Dade . . . . .		1888	4532.102
Clervaux . . . . .	Longstaffe,	1850	2431.55	Daland . . . . .	Cooke,	1889	4337.132
Cleveland . . . . .	Cleveland,	{ 1879 } 4337.143		Damon . . . . .	Damon,	1882	4335.108
Cleveland . . . . .		1885	4441.119	Dana . . . . .	Dana,	1865	4 in 4334.54
Clinton . . . . .	Clinton,	1859	5548.70	Dane . . . . .	Dane,	1854	4 in 4332.8
Cobréville . . . . .	Namur,	1852	3389.5.9	Danforth . . . . .	Curtis,	1881	1 in 4434.67
Cooke . . . . .	Brock,	1886	4476.22.5	Danforth . . . . .		1886	4339a.89
Coeckelberghe, Van . . . . .		1843	3389.5.1	Daniell . . . . .	Daniell,	1874	2335.65
Coffin . . . . .	Brown,	1881	1 in 4334.54	D'Annville . . . . .	Button,	1888	4530.110
Coffin . . . . .	Coffin,	1881	2 in 4334.54	Darc, Jeanne . . . . .	{ Boutellier and Braub,	1878	4648.61
Coffin . . . . .	Macy,	1870	5 in 2337.54	Darling . . . . .	Darling,	1888	4341.110
				Darling . . . . .		1851	2334.5
				Davenport . . . . .	Davenport,	{ 1876 } 4339.31	



FAMILY HISTORIES.

Name	Author.	Date.	Shelf-no.	Name.	Author.	Date.	Shelf-no.
Davis	Davis,	1884	4339.71	Egerton	Holme,		1 in 2439a.63
Dawes	Holland,	1878	4335.88	Elera			2 in 2439a.63
Dawson	Dawson,	1874	{ 2336.68 2337.23 2333.10	Eliot	Ellot, W. H.,	1854	4435.11
Day	Duy,	{ 1879 1879	{ 4334.54 5 in 4334.54	Eliot	Ellot, W. G.,	1887	4339.103
DeAinslie	DeAinslie,	1883	4547.58	Eliot	Woods,	1868	4531.107
Dean	Dean, G.	1883	4249a.69	Ellery	Ellery,	1881	4431.8
Dean	Dean, J. W.,	1883	2 in 4431.67	Ellicott	Evans,	1882	4331.101
Deane	Deane, W. R.,	1849	4347.26	Elliott	Whitmore,	1869	4435.10
Deane	Deane, L.,	1887	4344.107	Elliot		1885	4339a.74
Dearborn	Dearborn,	1848	4335.57	Ellis	Ellis, E. R.,	1888	4336.119
De Braose	Elwes,	1883	4535.116	Ellis	Ellis, W. S.,	1853-68	2437.10
Delamater	Delamater,	1882	4339a.72	Ely	Mayo,	1882	2431.5
De Libertat	Liberty,	1888	4633.12	Ely	Ely,	1885	4339.101
Dennison	{ Baldwin and Clift,	1881	4334.51	Ely	Hill,	1851	4335.31
Denny	Denny,	1886	4335.101	Emery		1878	4434.61
De Peyster	De Peyster,	1881	4337.123	Emery	Emery, R.,	[1890?]	4333.109
Derby	Cooke,	1889	4337.132	Emmerton	Emmerton,	1881	4338.149
Dering	Hastwood,	1876	2431.8	Epes	Appleton,	1879	4338.13
Descartes	Ropartz,	1877	2635.56	Erdeswick		1873	4532.101
De Veaux	De Voe,	1885	4339a.70	Erskine	Scott,	1890	4536.124
De Wastineys.	See Wastney.			Erving	Prime,	1887	4339.135
Dexter	Newman,	1859	2339.51	Este	Este,	1 in 4543.64	
Dexter.	See Padelford.			Evans	Evans,	1882	4331.101
Dickinson	Dickinson,	1865	4338.140	Everett	Everett,	1860	4435.6
Dickson	Dixon,	1889	4537.115	Fabens	Perkins,	1881	3 in 4334.56
Dike	Noyes,	{ 1861 1869	{ 9 in 4332.8 4 in 2337.54	Fairfax	Nell,	1868	4432.5
Dinsmore	Dinsmore,	1867	4335.22	Fairfax			7700.13
Dinsmore	Morrison,	1891	4339.111	Faneuil	Weisse,	1884	2339.54
Diodate	Sallsbury,	1876	{ 2339.16 4330.105	Farmer	Farmer,	1828	2 in 4339a.69
Dodd	{ Dodd and Burnet,	1864	2334.55	Farnham	Farnham,	1886	4339a.9
Dodd	Dodd,	[188?]	4336.108	Farnham		1890	4530.101
Dodge	Dodge, R.,	1886	4339a.87	Farnsworth	Farnsworth,	1891	4335.146
Dodge	Dodge, R. R.,	1879	4339a.94	Farrington		1880	3 in 4339a.69
Dodge	Dodge, T. II.,	1880	4431.59	Farwell	Farwell,	1888	4339a.104
Douthett	Douthett,	1889	4339a.104	Farwell	Holton,	1879	4334.61
Dow	Stranahan,	1868	4435.12	Faxon	Faxon,	1880	2339.72
Dowd	Dowd,	1885	4434.65	Faxon	Vinton,	1858	2332.3
Dows	Dows,	1890	4338.109	Feather	Marshall,	1887	4535.106
Dowsing	Dowsing,	1885	2503.35	Felch	Felch,	1881	4337.155
D'Oyly	Bayley,	1845	2437.22	Felton	Felton,	{ 1877 1886	{ 4 in 4334.56 2333.58
		{ 1845 1867	{ 2334.2 2 in 4338.16	Fenner	Root,	1886	4339a.86
Drake	Drake,	1871	4434.50	Fenton	Weaver,	1867	4332.8
Draper		1889	4337.132	Fermor	Lawson,	1887	4539.102
Driver	Cooke,	1735	2431.57	Field	Field,	1863	1 in 4335.81
Druce	Druce,	1831	4531.111	Fierlant, De		1844	3989.5.2
Drummond	Drummond,	1880	4534.101	Fillmore	Phillimore,	1886	2435.77
Drury	Fraser,	1880	4330.107	Fillow	Van Hooscar,	1888	4337.112
Drury	Drury,	1852	2333.12	Filmer.	See Fillmore.		
Du Chastel	Turner,	1859	3389.5.16	Finnimore.	See Fillmore.		
	Goethals,	{ 1848 1886	{ 4307.12 2333.20 4435.56	Fish			4339.50.3
Dudley	Dudley,	1862	4322.7	Fiske	Fiske, T.,	1843	7435.71
Dudley	Adlard,	1863	4348.10	Fiske	Fiske, A. A.,	1867	4438.5
Dumaresq	Perkins,	1843	3 in 4435.6	Fitch	Stranahan,	1868	4435.12
Dumont	Dumont,	1887	3389.5.1	Fitts or Fitz	Fitts,	1869	4432.9
Dunbar		1881	4330.50.1	Fletcher	Fletcher,	1871	2335.53
Dundas	Omond,	1887	4542.102	Fletcher		1875	{ 3 in 4434.66 5 in 4334.56
Dundore	Dundore,	1881	4338.132	Flint	Cooke,	1889	4337.132
Dunnel	Dunnel,	1862	4433.6	Flower			4339.50.2
Dunster	Dunster,	1876	{ 2339.65 2339.71	Folger	Folger,	1862	2 in 4335.81
Dunster	Chaplin,	1872	4349.55	Follansbee	Smith,	1865	6 in 4435.5
Dupuy	Brock,	1886	4476.22.5	Folsom	Chapman,	1882	4338.75
Dutton	Cope,	1871	4335.67	Folsom	Folsom,	1876	{ 2 in 4331.55 3 in 4434.67
Dwight	Dwight,	1874	2336.67	Fontaine	Brock,	1886	4476.22.5
Dwinelle.	See Dunnel.			Foot	Foot,	1867	4447.127
Earle	Earle,	1888	4332.102	Foote	Goodwin,	1849	4335.17
Eastman	Eastman,	1867	4 in 4435.6	Foote	Brainard,	1886	4335.40
Eaton	Eaton, A. W.,	1885	4430a.18	Forbes	Ferguson,	1888	4543.116
Eaton	Eaton, D. C.,	1884	4332.107	Forbes	Lumsden,	1819	1 in 2456.62
Eaton	Eaton,	1888	4337.1.4	Ford	Ford,	1871	4 in 4391.19
Echyngham	Hall,	1850	1 in 2435.63	Forster.	See Forster.		
Eddy	Eddy,	1881	4339a.56	Forste			4 in 4335.113
Eddy	Porter,	1877	{ 2 in 4334.56 4336.58	Fortescue	Fortescue,	1880	4540.24
Eddy		1881	4338.68	Forster and Forster	Derby,	1872	5 in 4434.67
Edgar		1873	2432.8	Forster and Forster	Forster, E. J.,	{ 1876 1870	{ 4 in 4434.67 8 in 4335.55 2339.56
Edmands, Edmonds,	{ Hill,	1887	4335.105	Forster and Forster	{ Forster and Appleton,	1871	6 in 4334.56
Edmunds		1881	4335.105	Forster and Forster	Forster, J.,	{ 1871 1862 1885	{ 2410.53 2439.67 6 in 4339a.93
Edson	Noyes,	{ 1881 1869	{ 9 in 4332.8 4 in 2337.54	Fowler	Fowler, J. and O.,	1857	2337.51
Edwards	Gifford,	1887	4330.106	Fowler	Fowler, W. C.,	1867	4435.10
Edwards	Woodbridge,	1871	2336.50	Fowler	Stickney,	1883	4338.78
				Fox	Fox,	1864	2432.7
				Fox	Evans,	1882	4331.101
				Fox	Forster,	1872	{ 4531.106 2431.53

## FAMILY HISTORIES.

Name.	Author.	Date.	Shelf-no.	Name.	Author.	Date.	Shelf-no.
Fray	Morse,	1859	2332.53	Griffitts	Griffitts,	1887	4338.144
Fraser	Anderson,	1825	2431.10	Griswold	Salisbury,	1884	4337.140
Fraser	Fraser, A.,	1879	4534.105	Guelph		1881	4210.2.13
Fraser	Fraser, A. C.,	1795	4535.109	Guild	Burleigh,	1887	4334.102
Freeman	Freeman,	1875	4531.50	Guild	Guild, C.,	1867	4339.11
French	French, A.,		6536.8	Guild	Guild, H. R.,	1891	4338.135
French	Thayer,	1835	2333.2	Guild	Guild, L. A.,	1896	2 in 4439.51
French	D'Alton,	1847	6536.7	Guild	and G. S.,		
French	French, A. D. W.,	1885	4339.85	Guild	Guild, L. A.,	1878	1 in 4439.51
French	Vinton,	1858	2332.3	Guile	and T.,		
Frost	Parsons,		13 in Med. pph. vol. 133.	Gunnison	Burleigh,	1890	4339a.101
Frost			4330.50.1	Guthrie	Gunnison,	1889	4330a.103
Fry	Slaughter,	1887	4335.122	Gwyder	Wynne,	1878	2430a.62
Fuller	Clarke,	1869	4433.7	Hadley	Hadley,	1887	4337.128
Fuller	Fuller,	1859	3 in 4333.53	Haines	Cregar,	1887	4335.133
Fuller	Noyes,	1861	9 in 4332.8	Haines	Haines,	1869	4435.19
Furneaux	Furneaux,	1869	4 in 2337.54	Hakes	Hakes,	1886	4335.103
Fynmore. See Fillmore.		1876	4531.103	Halcro	Scott,	1890	4536.124
				Haldane	Rogers,	1887	4536.112
Gage		[1833?]	4339.121	Hale	Hale,	1877	4431.55
Gale	Gale,	1866	4539.28	Hale	Hale,	1889	4337.154
Gale			7 in 4332.8	Hales	Hales,	1870	5 in 2430a.63
Gallaudet	Hayden,	1888	4332.108	Haliburton	Rogers,	1877	2435.52
Gardiner	Gardiner,	1890	4331.105	Hall	Whitmore,	1855	4333.10
Gardiner	Peirce,	1874	2337.61	Hall	Hall, D. B.,	1883	4330.70
Gardner	Dean,	1883	4240a.09	Hall	Hall, T. P.,	1886	4339a.88
Gardner	Phillimore,	1883	7 in 4434.67	Hall	Marshall,		4535.107
Garfield	Porter,	1881	4 in 4440.19	Hambleton	Hambleton,	[1867?]	7 in 2430a.63
Gay	Gay,	1879	1 in 4234.53	Hamilton	Alton,	1887	4335.131
Gayer	Gayer,	1870	2435.67	Hamilton	Anderson,	1827	2 in 2436.62
Gedney	Waters,	1890	2 in 4334.53	Hamilton	Blirie,	1838	2431.54
Gerould	Gerould,	1885	4434.73	Handerson	Handerson,	1885	4339a.84
Gerrish	Gerrish,	1880	4339a.106	Hapgood	Morse,	1859	2332.53
Gibbs	Gibbs, W.,	1845	4335.47	Harbaugh	Harbaugh,	1886	4339a.105
Gibbs	Gibbs, J. W.,	1870	4432.64	Harbounier	Namur,	1862	3389.5.9
Gibbs	Smith,	1848	7 in 4435.53	Haren, Van		1849	3389.5.6
Gibson	Smith,	1867	4335.70	Haring	Burge,	1878	4 in 4240a.56
Gibson		1869	9 in 4435.53	Harlakenden	Walworth,	1864	4333.2
Gibson	Herrick,		4335.76	Harlow	Peirce,	1874	2337.61
Giddings	Giddings,	1882	4339.76	Harris	Harris, L. M.,	1901	4338.20
Gilbert	Thornton,	1850	4355.48	Harris	Harris, W. S.,	1893	2333.56
Gile	Burleigh,	1887	4334.102	Harris	Morgan,	1878	4335.141
Giles	Vinton,	1864	4332.3	Harrison	Earwaker,	1887	4337.123
Gillson and Jilison	Jilison,	1876	4333.71	Hart	Andrews,	1875	4338.64
			1864	Hartwell	Densmore,	1887	4336.104
			1869	Harwood	Harwood,	1879	4 in 4339a.69
			1869	Haskell	Derby,	1872	4335.59
Gilpin	Gilpin,	1879	2415.71	Haskins	Peirce,	1874	2337.61
Glanville	Riehards,	1882	2430a.54	Hasklewood	Hasklewood,	1875	4531.104
Glover	Glover,	1867	4332.9				
Gobert	Hoorebeke,	1853	3389.5.10	Hassam	Hassam,	{ 1870 } 1 in 4336.72	
Goddard	Goddard,	1833	4339.4			{ 1880 } 4 in 4334.53	
Goddard	Jefferies,	[187?]	4539.102	Hastings	Buckminster,	1866	4432.2
Godfrey	Peirce,	1874	2337.61	Hatch	Fletcher,	1879	4339.65
Goode	Goode,	1887	4532.100			{ 1843 } 4337.106	
Goodrich	Case,	1889	4333.101	Haven	Adams,	{ 1840 } 2333.16	
Goodrich	Hubbard,	1883	4338.159	Haven	Haven,	1849	1 in 4339a.83
Goodricke	Goodricke,	1885	4531.101	Haven		1849	3 in 4340a.83
Gordon	Gordon,	1890	4536.123	Haven	Park,	1844	{ 4347.37
Gore	Whitmore,	1875	4315.7			{ 1884 } 4339a.83	
Goss	Lawrence,	1881	4432.63	Haveskercke		1846	3389.5.3
Gould	Boddington,	1880	4531.105	Hawes		1880	3 in 4339a.69
Gould	Vinton,	1864	4332.3	Hawkes	Hawkes,	1887	4337.161
Gould	Gould,	1872	4331.59	Hawkins	Hawkins,	1888	4534.107
Gournay	Anderson,	1742	2435.69	Hawley	Hawley,	[1884?]	4338.124
Gournay	Hannay,	1807	2439.8	Hay or Hayes	Hay,	1835	2436.63
Graf		1866	4332.8	Hayden	Hayden,	1885	2 in 4335.120
Grace	Grace,	1823	2521.17	Hayden	Vinton,	1858	2332.3
Grace			4330.50.1	Haydock	Gillow,	1888	4537.113
Graham	Fraser,	1880	4534.101	Hayes	Hayes,	1884	4339.80
Grant	Fraser,	1883	4533.100				
Grant	Marshall,	1869	4432.14	Hayward	Hayward,	1879	{ 5 in 4334.53
Grant	Robinson,	1885	4439a.35			{ 1879 } 4339a.69	
Gray	Raymond,	1887	4334.100	Hazard	Hazard,	1879	4335.112
				Hazen	Hazen,	1879	6 in 4334.53
Green	Green,	{ 1861 } 4432.6		Heacock	Paluter,	1869	4335.55
		{ 1876 } 4335.63		Heald	Drury,	1880	4330.108
Green	Vernon,	1881	4438.15.13	Heard	Edwards,	1880	4338.138
Green	Vinton,	1858	2332.3	Heinecke	Heinecke,	1881	4339.107
Greene	Greene, R.,	1885	11 in 4339a.100	Helsby	Helsby,	1869	2435.73
Greene	Greene, S. S.,	1858	3 in 4331.55			{ 1868 } 4531.108	
Greene	Greene, G. S.,	1881	4438.15.13	Herrick	Howard,	{ 1846 } 4332.53	
Greene	Turner,	1877	4432.62			{ 1885 } 4339a.67	
Greenleaf	Greenleaf,	1854	4432.11	Herrick	Cooke,	1889	4337.132
Greenough	Sheppard,	1863	4445.201	Hesketh or Heskaythe,		1889	{ 3 in 2430.54
		{ 1869 } 4339.20					
Greville	Edmondson,	1766	2435.64				
Griffin	Griffin, A.,	1857	4378.127				
Griffin	Griffin, C.,	1888	4337.108				
Griffing	Stone,	1881	4331.104				



# FAMILY HISTORIES.

Name.	Author.	Date.	Shelf-no.	Name.	Author.	Date.	Shelf-no.
Hewins . . . . .	Morse,	1850	2332.53	Johnson . . . . .	Watson,	1872	{ 4331.55 4335.76
Hext . . . . .		[1867]	9 in 2450a.03	Johnston . . . . .	Johnston,	1832	4335.118
Hoyden, Van der . . . . .		1843	3380.5.1	Joinville . . . . .	Shim net,	1875	2636.52
Heydon . . . . .	Heydon,	1877	4339.115	Jones . . . . .	Jones,	1840	4348.169
Hill . . . . .	Hill, M.,	1879	7 in 4334.53	Jones . . . . .	Trank,	1878	2338.56
Hill . . . . .	Hill, W. H.,	1851	4335.31	Jordan . . . . .	Jordan,	1882	4339.69
Hill . . . . .	Lapham,	1889	4338.127	Josselyn . . . . .	Stranahan,	1868	4435.12
Hill . . . . .	Parsons,	1858	{ 14 in Med. pph. v. 133	Judd . . . . .	Judd,	1850	4338.22
Hilton . . . . .	Hassam,	{ 1877 2 in 4336.72 1880 5 in 4336.72 1882 5 in 4436.17		Kearney . . . . .	[Legal brief.]	1875	5680.2
Hinds . . . . .	Dean,	1881	4240a.09	Keith . . . . .	Buchan,	1820	2435.23
Hinman . . . . .	Hluman,	1846	2337.53	Kelker . . . . .	Heas,	1883	2332.61
Hinnisdael . . . . .	Heylen,	1852-56	2337.09	Kellogg . . . . .	Kellogg,	1860	2332.10
Hinsdale . . . . .	Hinsdale,	1883	2 in 4339a.100	Kelly . . . . .	Kelly,	1886	4335.138
Hoare . . . . .	Hoare,	1883	2439 a.57	Kemble . . . . .	Fitzgerald,	1871	{ 6543.15 K 34.5
Hobart . . . . .	Thayer,	1835	{ 2333.2; 6a in 4434.67	Kendall . . . . .			4330.50.2
Hodges . . . . .	Hodges,	1853	2333.6	Kent . . . . .	Tenney,	1875	4335.74
Hodsoll . . . . .	Geenstreet,	1881	2439.11	Kent . . . . .		1856	2332.8
Holbrook . . . . .	Vinton,	1858	2332.3	Keppel . . . . .	Keppel,	1876	{ 4542.51 2546.54
Hollingsworth . . . . .	Hollingsworth,	1884	4339a.03	Keyes . . . . .	Keyes,	1880	4336.70
Hollister . . . . .	Case,	1886	4435.58	Keyser . . . . .	Keyser,	1880	4336.104
Holmes . . . . .	Patterson,	1865	4433.16	Kidder . . . . .	Kidder,	1886	4434.70
Holmes . . . . .	Vinton,	1864	4432.3	Kilbourne . . . . .	Kilbourne,	1856	2332.5
Holt . . . . .	Durrie,	1864	4332.19	Kimball . . . . .	Cooke,	1880	4337.132
Holte . . . . .	Davidson,	1854	4430.7	Kimball . . . . .	Kimball,	1885	4339a.75
Holton . . . . .	Holton,	1866	4432.67	Kimball . . . . .	Rantoul,	1882	{ 9 in 4350a.152
Homer . . . . .	Dixon,	1889	{ 4338.111 4337.113	King . . . . .	King,	{ 1891 4339.112 1887 4337.102	
Hooper . . . . .	Sheppard,	1868	4433.4	King . . . . .	Waters,	1880	9 in 4334.53
Hopkins . . . . .	Holbrook,	1881	4339a.04	Kingsbury . . . . .	Dean,	1850	2 in 4435.6
Hore. See Hoare.				Kinschot, De . . . . .	Herckenrode,	1847	3780.5.4
Hornblower . . . . .	Nelson,	1883	4020.31	Kinsman . . . . .	Stickney,	1876	2337.05
Horton . . . . .	Horton,	1876	4434.4	Kip . . . . .	Kip,	1871	4335.51
Hosmer . . . . .	Hosmer,	1861	4 in 4434.66	Kip . . . . .			4330.50.2
Houghton . . . . .	Smith,	1869	3 in 4435.53	Kirk . . . . .	Stubbs,	1872	2339.52
Howard . . . . .	Howard, C.,	1817	2433.9	Kirkland . . . . .	Rylands,	1877	2430a.58
Howard . . . . .	Howard, J. C.,	1884	4332.104	Knollys . . . . .		{ 1809 7 in 7090.21 1810 6 in 7090.21	
Howe . . . . .	Nason,	1871	2336.61	Knowles . . . . .	Schotes,	1886	2438.55
Howland . . . . .	Howland,	1885	4335.130	Knox . . . . .	Logan,	1856	2432.9
Howland . . . . .	Peirce,	1874	2337.61	Knox . . . . .	Lapham,	1890	4338.152
Hoyt . . . . .	Hoyt,	{ 1837 2333.22 1871 2335.51		Knox . . . . .	Rogers,	1879	2436.52
Hubbard . . . . .	Hubbard,	1872	4433.52	La Kethulle . . . . .	Hoorebeke,	1851	3280.5.8
Hubbell . . . . .	Hubbell,	1881	2332.59	Landis . . . . .	Landis,	1888	4339.108
Hughes . . . . .	Hughes,	1879	4339a.109	Lane . . . . .	[Hampton family]	1885	3 in 4339a.100
Hull . . . . .	Hull,	1863	6 in 4339a.69	Lane . . . . .	Lane,	1888	4334.107
Humphrey . . . . .	Barbour,	1885	4339.127	Lane . . . . .	Whitmore,	1857	2333.9
Humphreys . . . . .	Humphreys,	1883-6	4230.50	Lapham . . . . .	Lapham,	1873	4335.25
Hunloke . . . . .	Lawson,	1887	4530.102	Lathrop . . . . .	Huntington,	1884	4434.62
Hunt . . . . .	Wyman,	1863	4332.1	Lathrop . . . . .	Lathrop,	[1867?]	4432.68
Hunting . . . . .	Hunting,	1888	4337.121	Lathrop . . . . .			4338.101
Huntingdon . . . . .	Bell,	1-20	4531.7	Lawrence . . . . .	Hale,	1856	4332.4
Huntington . . . . .	Huntington, D.,	1857	2333.5	Lawrence . . . . .	Hill,	1888	4336.122
Huntington . . . . .	Huntington, E.B.,	1863	4332.2	Lawrence . . . . .	Lawrence, H. B.,	1888	4333.104
Huntoon . . . . .	Huntoon,	1881	4334.60	Lawrence . . . . .	Lawrence, T.,	1853	5 in 4331.55
Hurlbut . . . . .	Hurlbut,	1888	4336.131	Lawrence . . . . .	Lawrence, J.,	{ 1847 2331.4 1857 2331.5 1869, 76 6530a.1	
Hutchins . . . . .	Hutchins,	{ 1865 4349.50 1885 4339.124		Lawrence . . . . .		{ 1881 4432.63 1883 4336.115	
Hutchinson . . . . .	Barbour,	1888	4339a.7	Lawrence . . . . .	Lawrence, K. M.,	1858	4334.3
Hutchinson . . . . .	Chester,	1868	4433.13	Lawrence . . . . .	Lawrence, T. B.,	1883	2339a.55
Hutchinson . . . . .	Derby,	1870	4336.51	Lawrence . . . . .	Pense,	1853	4331.55
Hutchinson . . . . .	Hutchinson,	1874	2339.60	Lawrence . . . . .	Usher,	1883	4338.79
Hutchinson . . . . .	Thompson,	1890	4335.145	Learned . . . . .	Learned,	1882	4338.76
Hutchinson . . . . .	Whitmore,	1865	4432.51	Leavenworth . . . . .	Leavenworth,	1873	2336.74
Hyde . . . . .	Walworth,	1864	4333.2	Le Bidart de Thu- maide . . . . .	Glatigny,	1859	3380.5.16
Hylton . . . . .	Longstaffe,	1850	2431.55	Le Blount . . . . .	Croke,	1823	2431.59
Hyslop . . . . .	Sumner,	1857	4335.28	Leconte . . . . .	Scudder,	1884	5 in 4344.106
Inches . . . . .	Sigourney,	1857	4335.28	Lee . . . . .	Hill,	1851	4335.31
Ingraham . . . . .	Kip,	1871	4335.51	Lee . . . . .	Lee, A.,	[1875?]	4440.104
Innes . . . . .	Forbes,	1864	2435.56	Lee . . . . .	Lee, S. M.,	1878	2332.58
Innis . . . . .	Smith,	1866	10 in 4435.53	Lee . . . . .	Lee, W.,	1888	4336.130
Ireland . . . . .	Ireland,	1880	{ 6 in 4434.66 4339a.71	Lee . . . . .	Lee, W. W.,	1885	4434.78
Ives . . . . .	Cooke,	1889	4337.132	Lee . . . . .	Mead,	1868	4432.15
Jackson . . . . .	Jackson,	1878	2332.52	Lee . . . . .	Bridger,	1881	2435.68
Jackson . . . . .	Thayer,	1835	2333.2	Leete . . . . .	Bergcn,	1878	2334.57
Janes . . . . .	Janes,	1868	4433.9	Legh . . . . .	Beamont,	1876	2494.63
Jarvis . . . . .	Jarvis,	1879	4338.143	Le Grand . . . . .	Button,	1888	4530.110
Jennens . . . . .	Coleman,	1869	4335.55	Leighton . . . . .	Jordan,	1885	4434.72
Jennings . . . . .	Smith,	{ 1863 11 in 4435.53 1866 12 in 4435.53		Leland . . . . .	Leland,	1850	4435.2
Jepson . . . . .	Sigourney,	1857	4335.28	Lennox . . . . .	Fraser,	1874	4334.102
Jessup . . . . .	Jessup,	1887	4336.105	Leonard . . . . .	Deane,	1851	{ 2333.11 4335.34
Jewell . . . . .	Jewell,	1860	4338.126	Leonard . . . . .			4335.76
Jillson. See Gillson.				Leverett . . . . .	Leverett,	1856	2331.9
Johnson . . . . .	Johnson,	1876	4434.16				

## FAMILY HISTORIES.

Name.	Author.	Date.	Shelf-no.	Name.	Author.	Date.	Shelf-no.
Leverett	Shurtleff,	1850	{ 2333.14 4334.58	Mather			6 in 4335.68
Leverett		1858	3 in 4335.68	Matheson	Mackenzie,	1882	4335.110
Lewis	Sheppard,	1863	4394.20	Maury	Brock,	1886	4476.22.5
Leyden	Stroobant,	1850	3399.5.7	Maxwell	Fraser,	{ 1873 1863	4530a.100 4530a.101
Libby	Libby,	1882	4338.67	May		1878	4434.12
Ligne, De		1846	3389.5.3	Mayo	Mayo,	1882	2431.5
Lincoln	Lincoln,	1865	6 in 4331.55	Melick	Melick,	1880	4370a.112
Lincoln	Shackford,	1887	4235.116	Menteith	Fraser,	1889	4534.101
Lindsay	Lindsay, A.,	1849	2443.8	Meriam	Meriam,	1888	4452.53.7
Lindsay	Lindsay, M. I.,	1889	4337.126	Merrick	Merrick,	1860	4330a.51
Littell	Littell,	1831	4434.6	Merrill	Barbour,	1885	4339.127
Little	Little,	{ 1877 1882	{ 2338.65 2338.68	Messenger	Messenger,	1863	4332.5
Littlehale	Littlehale,	1889	{ K.136.3 4337.138	Metcalf	Cooke,	1889	4337.132
Littleton	Robins,	1887	4337.115	Metcalf	Harris,	1861	4338.20
Lloyd	Smith,	1870	4330.12	Mildmay		1871	4 in 2430.54
Locke	Locke,	1853	2331.2	Miles	Miles,	1840	4333.30
Lookwood	{ Holden and Lockwood, }	1889	4332.105	Millais	Payne,	1865	4530.1
Loquenghien	Stroobant,	1854-58	{ 3389.5, 11, 12, 14	Mills	Vinton,	1858	2332.3
Lombard	Lombard,	1883	4339a.15	Minshull	Painter,	1867	4335.55
Long	Chitty,	1889	4536.117	Mix	Mix,	1886	4345.140
Longley	Chandler,	1884	4335.115	Montague	Montague,	1886	4339a.80
Longueuil	{ Jodoin and Vincent, }	1889	4313.130	Montfoort	Stroobant,	1851	3389.5.9
Loomis	Loomis,	{ 1870 1875	{ 4335.9 2336.75	Montgomerie	Fullartou,	1864	2439.5
Lothrop	Huntington,	1884	4339a.95	Montgomerie	Montgomery,	1863	4335.56
Low	Barbour,	1890	4339a.102	Montgomery	Reilly,	1842	2431.60
Lowe	Lowe,	1880	2439.10	Montgomery	Montmorency,	1828	2631.51
Lowndes	Chase,	1876	2334.51	Montresor	Seull,	1882	4472.19.14
Ludington	Patrick,	1886	4335.109	Moody	Moody,	1847	2334.16
Ludlow	Bruges,	[1887]	4533.103	Moody	Fogg,	1851	4333.59
Ludlow		1866	4491.2	Morey	Harris,	1861	4338.20
Ludwig	Ludwig,	1866	4435.12	Morey	Warren,	1890	4 in 4339.110
Luscomb	Cooke,	1889	4337.132	Morgan	Morgan,	1869	4432.10
Luvell	Anderson,	1742	2435.69	Morrill		1886	4339.43
Lyman	Coleman,	1872	4433.51	Morris	Hart and Street,	1853	4336.52
Lyman	DeKlinen,	1865	4338.140	Morris	Morris,	1887	4334.101
Lyman		1871	4434.51	Morrison	Morrison,	1880	4336.67
Lynde	Prime,	1887	4336.135	Morse	Lord,	1889	{ 4337.134 4337.163
Lyon			4330.50.2	Morse	Morse,	1850	4335.32
McCrislis	MacCrillis,	1882	8 in 4339a.69	Mortimer			4330.50.2
Macdonald	Macdonald, A.,	1885	4337.114	Moses	Cooke,	1880	4337.132
Macdonald	{ Macdonald, F. V., }	{ 1870 1881	{ 4331.60 4330a.34 2340.54	Moulton	Moulton,	1873	4339a.110
Macdonald	Mackenzie,	1881	{ 2436.65 2435.70 2437.21	Mowry	Mowry,	1878	{ 4333.57 2334.68
Macdonnell	Hill,	1873	2435.54	Mudge	Mudge,	{ 1865 1868	2 in 4334.58 4433.1
MacKean	Buchanan,	1890	4338.117	Munroe	Locke,	1853	4431.52
Mackenzie	Fraser,	1876	2534.6	Munsell	Howell,	1880	9 in 4440.73
Mackenzie	Mackenzie,	1870	4531.8	Munsell	Munsell,	1884	{ 4339.84 and 104
Mackinnon	Mackinnon,	1882	4536.111	Mygatt	Mygatt,	1853	4432.58
MacKinstry	Willis,	{ 1858 1866	{ 4335.87 10 in 4435.10	Naef or Neff	Neff,	1886	2338.78
Maclachlan	Maclachlan,	1883	4537.106	Narbonne	Stroobant,	1852	3389.5.9
MacLaughlin	Brown,	1870	2439a.53	Nash	Nash,	1853	4335.19
MacLean	Maclean,	1889	4532.104	Neal	Cooke,	1889	4337.132
MacLeod	Mackenzie,	1889	4536.113	Neal	Neal,	1856	2333.8
Macomber	Peirce,	1874	2337.61	Nealley	Nealley,	1878	6330.10
Macy	Macy,	1858	4433.8	Neff	See Naef.		
Mahieu	Decourt,	1865	3389.5.21	Neill	Neill,	1886	4338.157
Makepeace	Makepeace,	1858	4338.26	Nelson	Prime,	1886	4535.106
Mann	Mann,	1884	4339.81	Nevill	Swallow,	1885	2435.66
Mansfield	Mansfield,	1885	4335.123	Newcomb	Newcomb,	1874	2336.72
Markley	Dotter,	1884	4338.151	Nevill	Hall,	1878	4339a.54
Marmion or Marmyun	Palmer,	1875	2437.12	Newgate	Prime,	1887	4336.135
Marmion	Banks,	1817	2431.7	Newhall	Waters,	1882	4334.63
Marsh	Marsh, E. J.,	1887	4335.107	Niles	Vinton,	1858	2332.3
Marsh	Marsh, D. W.,	1886	4335.102	Noble	Boltwood,	1878	4434.15
Marsh	Marsh, L. B.,	1888	4336.117	Northend	Northend,	1874	1 in 4339a.75
Marshall	Marshall,	1884	4337.168	Noyes	Noyes, H. N.,	1889	4337.170
Marshall	Paxton,	1885	4339a.76	Noyes	Noyes, J.,	{ 1861 1869	9 in 4332.8 4 in 2337.54
Marshall	Vinton,	1864	4332.3	Odiorne	Odiorne,	1875	2337.63
Marston	Marston,	1888	4338.120	Oloott	Goodwin,	1874	2337.59
Marston	Watson,	1873	{ 4331.51 8 in 4339a.93	Oliphant	Anderson,	1879	6531.3
Martin		1871	4330.50.3	Oliver	Appleton,	1867	4333.28
Martin	Martin,	1880	4332.60	Oliver	Whitmore,	1865	4432.51
Martin	Marvin,	1848	4339.12	Oliver	Hayden,	1888	4332.106
Marvin	Brook,	1886	4476.22.5	Oliver	Oliver,	1888	4337.151
Marve	Deard,	1887	4315.58	Oliver	Sigourney,	1857	4335.28
Mason	Peirce,	1878	2364.63	Olmstead	Thomas,	1869	4439a.6
Massasoit		1890	4338.147	Olney	Olney,	1880	4337.137
Mather	Mather, N. E.,	1848	4339a.55	O'Meagher	O'Meagher,	1887	2431.63
Mather	Mather, J.,	1848	4339a.55	Opdyke	Opdyke,	1880	4331.102
				Orleans		1870	7 in 4335.76
				Otis	Otis,	1851	2333.18
				Otis	Sigourney,	1857	4335.28
				Padelford	Newman,	1859	4340.50
				Page			4330.50.1
				Paine	Paine, H. D.,	1880, 83	4434.53

## FAMILY HISTORIES.

Name.	Author.	Date.	Shelf-no.	Name.	Author.	Date.	Shelf-no.
Paine . . . . .	Paine, A. W.,	1881	4338.61	Powell . . . . .			2330.1.7
Paine . . . . .	Paine, N.,	1878	4331.63	Powers . . . . .	Powers,	1884	4338.133
Paine . . . . .	Thayer,	1835	2333.2	Pratt . . . . .	Chapman,	1864	2336.66
Palmer . . . . .	Cooke,	1880	4337.132	Pratt . . . . .	Pfalt, S.,	[1867]	12 in 4332.8
Palmer . . . . .	Palmer, J.,	1886	4335.137	Pratt . . . . .	Pratt, Z.,	[1857]	13 in 4444.28
Palmer . . . . .	Palmer, L.,	1875	4339.123	Preble . . . . .	Preble, W. P.,	1880	4338.107
Palmer . . . . .	Palmer, N. F.,	1881	4339.61	Preble . . . . .	Preble, G. H.,	1850	4338.123
Palmer . . . . .		1867	2430.57			1808	4435.21
Park . . . . .	Whitney,	1855	{ 4337.111	Prentice or Prentiss .	Blinney,	{ 1852	{ 2332.7
Parker . . . . .	Parker,	1888	{ 4347.6			{ 1883	{ 4507.11
Parthemore . . . . .	Parthemore,	1885	4337.109	Prescott . . . . .	Prescott,	1870	2332.60
Partridge . . . . .	Dickinson,	1865	4339.87			1870	4335.11
Patin . . . . .	Hoorebeke,	1853	4338.140	Preston . . . . .	Brown,	{ 1842	4332.11
Patterson . . . . .	Cooke,	1889	3389.5.10			{ 1864	4332.11
Payne . . . . .	Whitmore,	1875	4337.132	Preston . . . . .		1871	4434.50
Payne . . . . .	Endicott,	1867	4315.7	Price . . . . .	Price,	1861	2 in 4339.113
Peabody . . . . .	Robinson,	1859	4335.18	Prime . . . . .	Drake,	1873	4240a.82
Pearce . . . . .	Pearce,	1888	4446.5	Prince . . . . .	Prince,	1867	4428.2
Pearce . . . . .	Pearce,	1874	4336.121	Prince . . . . .	Prince,	1888	4410.151
Pearce . . . . .	Pearce,	1874	2337.61	Procter . . . . .		1865	4358.141
Pease . . . . .	Peaso,	1869	2335.50	Procter . . . . .	Proctor,	1873	4339.125
Peck . . . . .	Peck,	1868	4337.0	Proct . . . . .	Herckenrode,	1843	3380.5.3
Peirce . . . . .	Peirce, E. W.,	1868	5 in 4435.6	Puffer . . . . .	Appleton,	1882	10 in 4134.67
Peirce . . . . .	Peirce, F. C.,	1870	2337.61	Punchard . . . . .	Worcester,	1857	18 in 4442.100
Peirce . . . . .	Peirce, F. C.,	1880	2333.54	Putnam . . . . .	Putnam,	1887	4452.53.7
Pelham . . . . .	Lower,	1873	4530.108	Putnam . . . . .	Vinton,	{ 1858	2332.3
Penaranda . . . . .	Heyden,	1833	3389.5.10			{ 1874	2333.63
Penn . . . . .			2437.16	Quincy . . . . .	Whitmore,	1857	4333.9
Penn . . . . .	Smith,		7 in 4339a.99	Rainborough . . . . .	Waters,	1886	4337.136
Penneman . . . . .	Hoorebeke,	1852	4372.2.9	Raleigh . . . . .		1866	2468.57
Penniman . . . . .	Vinton,	1858	3389.5.9	Raleigh . . . . .		[1867 ?]	5 in 2439.54
Pennington . . . . .	Foster,	1878	2332.3	Randall . . . . .	Randall,	1879	4433.54
Pennyacker . . . . .	Pennyacker,	1877	4530.100	Ransom . . . . .	Sears,	1882	4339a.65
Pepperell . . . . .	Whitmore,		9 in 4434.67	Rantoul . . . . .	Rantoul,	1885	4339a.91
Pepys . . . . .	Pepys,	1887	4333.13	Rawlins . . . . .	Rollins,	{ 1870	4435.18
Perceval . . . . .	Anderson,	1742	2335.99	Rawson . . . . .	Crane,	{ 1874	2337.12
Percy . . . . .	Fonblanque,	1887	4535.111	Rawson . . . . .	Rawson,	1875	4335.64
Perkins . . . . .	Perkins, G. A.,	1882	4434.76	Ray . . . . .	Prime,	1849	2333.15
Perkins . . . . .	Perkins, A. T.,	1872	6 in 4339a.79	Raymond . . . . .	Raymond,	1886	4339a.90
Perkins . . . . .	Perkins, A. T.,		4335.26	Recham, Van . . . . .		1849	3389.5.6
Perley . . . . .	Perley,	1877	4336.129	Redfield . . . . .	Redfield,	1860	{ 2332.9
Perrin . . . . .	Perrin,	1885	4339a.82			{ 4337.147	
Perry . . . . .	Perry,	1884	9 in 4339a.93	Reed . . . . .	Reed,	1861	4335.5
Perth . . . . .	Drummond,	1831	4531.111	Resseguie . . . . .	Morris,	1888	4326.109
Peter . . . . .	Macdonald,	1880	4331.61	Reyn . . . . .	Whitmore,	1867	2333.9
Petermann . . . . .	Petermann,	1888	4837.11	Reynolds . . . . .	Runnels,	1873	2335.61
Petre . . . . .	Lawson,	1887	4530.102	Rice . . . . .	Ward,	1858	2332.2
Pettee . . . . .	Morse,	1859	2332.53	Rich . . . . .	Rich,	1877	4333.59
Phelps . . . . .	Lawson,	1887	4530.102	Richards . . . . .	Morse,	1861	2333.23.3
Phelps . . . . .	Phelps,	1862	4336.62	Richardson . . . . .	Boyce,	1889	4532.107
Philbrick . . . . .	Chapman,	{ 1886	4335.111	Richardson . . . . .	Kimball,	1880	4 in 4339a.79
Philbrook . . . . .	Chapman,	1886	10 in 4339a.93	Richardson . . . . .	Vinton,	1876	4434.59
Phillimore . . . . .	See Fillmore.		4335.111	Richmond . . . . .	Peirce,	1874	2337.61
Phillips . . . . .	Phillips,	1885	4339a.73	Ricker . . . . .	Lapham,	1877	4339.53
Phoenix . . . . .	Phoenix,	1867	2331.51	Riddle . . . . .	Ridlon,	1884	4335.134
Picard . . . . .		1878	4531.102	Ridley . . . . .	Ridlon,	1884	4335.134
Pickering . . . . .	Bowditch,	1887	{ 4331.100	Ridlon . . . . .	Ridlon,	1884	4335.134
Pickering . . . . .	Eddy,	1884	{ 4334.4	Rinuocini . . . . .			4740.4
Pierce . . . . .	Pierce,	1889	{ 4339.73	Ripley . . . . .	Ripley,	1867	13 in 4332.8
Pierce . . . . .	Pierce,	1888	{ 4338.105	Roberdeau . . . . .	Buchanan,	1876	2337.67
Pierce . . . . .	Whitcomb,	1888	{ 4338.101	Roberts . . . . .	Roberts,	1888	4337.119
Pierce . . . . .	See also Peirce.		4336.128	Robinson . . . . .	Hazard,	1879	4335.112
Pierson . . . . .	Pierson,	1878	4338.30	Robinson . . . . .	Robinson,	1859	4446.5
Pierson . . . . .		1871	4337.141	Robinson . . . . .	Vinton,	1864	4332.3
Piper . . . . .	Piper,	1829	3 in 4334.58	Rockwell . . . . .	Rockwell,	1873	2336.57
Pitkin . . . . .	Pitkin,	1887	4435.34	Rockwood . . . . .	Rockwood,	1856	2334.1
Pitts . . . . .	Goodwin,	1882	{ 4334.59	Rodman . . . . .	Jones,	1880	4332.109
			{ 4344.105	Rodman . . . . .	Rodman,	1887	4337.149
			{ 4530.112	Roger . . . . .	Rogers,	1887	4536.112
Playfair . . . . .	Rogers,	{ 1887	4535.28	Rogers . . . . .	Chester,	1861	2543.1
Plimpton . . . . .	Chase,	{ 1872	4337.145	Rogers . . . . .	Peirce,	1874	2337.61
Plumb . . . . .	Plumb,	1884	4337.145	Rogers . . . . .	Rogers,	1872	4535.28
Plumstead . . . . .	Devereux,	1887	4430.13	Rogers of Dowdeswell		1869	6520.5
Pollock . . . . .	Hayden,	1883	7 in 4339a.93	Rokeby . . . . .	Rokeby,	1887	2433.58
Pomroy . . . . .	Lawrence,	1881	4432.63	Rolle . . . . .		[1867 ?]	2468.57
Pond . . . . .	Harris,	1873	4335.61	Rollins . . . . .	See Rawlins.		
Pond . . . . .	Pond,	1875	4339.21	Roome . . . . .	Warner,	1883	4339.88
Poore . . . . .	Poore,	1881	2330.19	Root or Roots . . . . .	Root,	1870	2336.71
Pope . . . . .	Pope,	1888	4334.106	Ross . . . . .	Sims,	1870	4335.55
Pope . . . . .	Wheatland,		2 in 4435.28	Royall . . . . .	Harris,	1885	4434.75
Pope . . . . .		1862	4338.63	Rounsevell . . . . .	Peirce,	1874	2337.61
Portage . . . . .	Prime,	1887	4336.135	Runnels . . . . .	See Reynolds.		
Porter . . . . .	Porter,	1878	2334.59	Russell . . . . .	Kimball,	1880	4 in 4339a.79
Porter . . . . .	Andrews,	1882	4331.113	Russell . . . . .	Wiffen,	1833	2547.2
Potter . . . . .	Potter,	{ 1887	4430.12	Rutgers . . . . .	Crosby,	1886	4336.110
		{ 1888	4330.102	Rye . . . . .	Rye,	1876	2436.66
Potts . . . . .	James,	1874	{ 2337.11	Ryedale . . . . .	Ridlon,	1884	4335.134
			{ 2333.53	Sabin . . . . .	Titus,	1882	11 in 4434.67
				Sackville . . . . .	Bridgman,	1817	2496.4

# FAMILY HISTORIES.

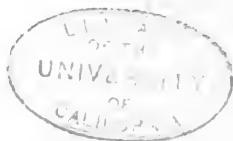
Name.	Author.	Date.	Shelf-no.	Name.	Author.	Date.	Shelf-no.
Safford	Vinton,	1858	2332.3	Starin		1871	4330.50.2
Sage	Sage,	1878	4333.60	Stebbins	Reprint of	1771	2339.69
Sainthill	Troup,	1899	4537.117	Stebbins	Stebbins,	1886	4330.112
Salisbury	Sallsbury,	1885	4330.5	Steele	Durrie,	1862	4333.3
			4430.10	Steen de Jehay	Herckenrode,	1848	3399.5.5
Salter	Stillwell,	[186?]	4335.140; 2	Steiner		1880	5 in 4334.58
Sampson	Vinton,	1864	4332.3	Stetson	Barry,	1847	2333.19
Sanborn	Sanborn,	1856	2 in 4431.52	Stewart	Fraser,	1868	4534.103
Sands	Prime,	1886	4339a.90	Stewart	Stuart,	1798	2430a.53
Sankey	Gardner,	1880	4535.112	Stickney	Stickney,	1860	4431.4
Sargent	Sargent,	1858	4339.108	Stickney			4338.155
Sargent	Sheppard,	1871	4344.121	Stiles	Stiles,	1859	4435.10
Saunders	Cooke,	1889	4337.132	Stiles		1863	4336.61
Savage	Armstrong,	1888	4530.107	Stillwell	Stillwell,	1883	4433.59
Savary or Savery	Savary,	1887	4337.127	Stirling	Riddell,	1860	4532.109
Sawin	Sawin,	1866	4438.8	Stoddard	Patterson,	3 in 2336.62	
			4 in 4334.58	Stoddard	Stoddard, C.,	1849	4338.19
Sawyer	Appleton,	1891	4338.122	Stoddard	Stoddard, C.,	1865	4332.6
Scarlett	Scarlett,	1877	2462.55	Stoddard	and E. W.,	1 in 2336.62	
Schenck	Schenck,	1885	3 in 4335.120	Stoddard	Stoddard, E.,	1873	2 in 2336.62
			1883	4339.63	Stoddard	W.,	1872
Schureman	Wynkoop,	1889	4333.106	Stokes	Stokes,		4330.50.1
Schuyler	Munsell,	1874	2336.69	Stokes	Stone,	1888	4336.107
Schuyler	Schuyler,	1885	2375.78	Stone	Vinton,	1874	2335.63
Schwenkfelder	Kriebel,	1879	4338.156	Storrs	Storrs,	1886	4434.77
Scott	Frazer,	1878	4534.100	Stoughton	Prime,	1886	4535.105
Scott	Rogers,	1877	2435.52	Stranahan	Stranahan,	1868	4435.12
Scott	Scott, J. R.,	1876	2410.52	Strong	Dwight,	1871	2335.52
Scott	Scott, M. B.,	1868	6 in 4435.6	Stuart	Noble,	1795	4530a.5
Scott	Scott, W.,	1852	1 in 4586.20.2	Stuart	Stuart,	1798	2430a.53
Soranton	Seranton,	1855	7 in 4331.55	Stuart	See Stewart.		
Seagrave	Seagrave,	1881	4338.62	Stubbs	Sharpe,	1875	6520.34
Seamans	Seaman,		6330.3	Stukeley	Stukeley,	1882-7	2427.64
Sears	May,	1890	4338.113	Sullivan	O'Sullivan,	6 in 4334.58	
			1886	4331.64	Sumner	Appleton,	1879-80
Selby		1825	2439.7	Sumner	Sumner,	1854	4347.107
Seton	Seton,	1890	4539.109	Sumner	Trask,	1854	4347.107
Sewall	Sewall,		1 in 4335.68	Sutton	Twamley,	1867	2339.21
Sharp	Cudworth,	1889	4541.110	Swett	Thornton,	1851	2331.3
Sharpe	Sharpe, T. E.,	1875	6520.34	Swift	Swift,	1890	4340.105
Sharpe	Sharpe, W. C.,	1880	2339.70	Swynnerton	Bridgeman,	1886	2492.52.7
Sharpless	Copo,	1887	4330a.100	Sykes	Sykes,		4335.22
Shattuck	Shattuck,	1855	2332.6	Symmes	Vinton,	1873	2335.59
Sheffield	Peirce,	1874	2337.61	Symonds	Appleton,	1870	4338.13
Shelley	Peirce,	1874	2337.61	Taft		1874	2337.14
Shepard	Shepard,	1886	4335.100	Taller	Prime,	1886	4535.105
Sheppard	Boddington,	1883	2431.62	Tainter	Tainter,	1859	4336.106
Sheppard	Dean,	1873	4443.56	Taintor	Taintor,	1847	4439a.3
Sherburne	Lapham,	1890	4338.152	Talcott	Talcott,	1876	2338.50
Sherman	Sherman,	1887	4337.150	Talcott		1854	13 in 4434.67
Shippen	Buchanan,	1877	4435.26	Tappan	Good,	1884	4430a.52
Shrimpton	Sumner,	1854	4347.107	Tappan	Tappan,	1890	4338.118
Shuey	Shuey,	1876	4339.54	Taylor	Taylor, A.,	1861	4434.80
Shurtleff	Shurtleff,	1850	2234.8	Taylor	Taylor, I.,	1867	4566.3
Sigourney	Sigourney,	1857	4335.28	Temple	Prime,	1887	4335.117
Sill	Sill,	1859	4439a.5	Temple	Whitmore,	1856	4347.10
Silabee	Cooke,	1889	4337.132	Tenney	Atwood,	1888	4337.117
Silabee	Emmertson,	1880	4438.71	Tenney	Tenney,	1875	4335.74
Sinclair	Henderson,	1884	2435.71	Terry	Terry,	1887	4335.104
Sinclair		1887	4539.101	Terry	Allen,	1872	4338.31
Slafter	Slafter,	1839	4432.12	Thacher	Pitkin,	1890	4332.109
Slingsby	Coghlin,	1879	4332.62	Thayer	Thayer, E.,	1835	2333.2
Sloan	Sigourney,	1857	4335.28	Thayer	Thayer, B.,	1874	4335.78
Slocum	Slocum,	1882	4338.70	Thayer	Vinton,	1858	2332.3
Smith	Leonard and Smith, S. A.,	1852	4435.20	Thomas	Prime,	1886	4339a.90
			8 in 4434.66	Thomas	Thomas,	1877, 8	2330.17
Smith	Martin,	1890	4338.134	Thomas		1883	2330a.55
Smith	Smith, H. A.,	1889	4337.167	Thomas			4339.50
Smith	Smith, M. B.,	1870	8 in 4331.55	Thompson or Thom-			
Smith	Smith, R. M.,	1877	4331.58	Thompson or Thom-	Thompson, L.,	1887	4336.103
Snively	Snively,	1883	4339a.78	Thompson or Thom-	Tbompson, C. H.,	1890	4335.145
Snow			4330.50.7	Thompson or Thom-	Thompson, M. P.,	1886	4245.72
Sohier	Sigourney,	1857	4335.23	Thornnton	Thornton,	1875	2427.54
Somervilles		1815	2443.9	Thurston		1885	4 in 4335.120
Spalding	Spalding,	1872	2335.56	Thurston		1890	2332.54
Spare	Epare,	1884	4339.77	Thwing	Thwing,	1883	4339.105
Sparhawk	Appleton,	1865	12 in 4434.87	Tilley		1878	4339.59
Spofford	Spofford,	1851	4335.21	Tinker	Tinker,	1889	2338.64
			1888	4333.107	Titus	Titus,	1879
Spooner	Spooner,	1871	2335.55	Todd	Greene,	1867	4435.10
Spotswood	Campbell,	1868	4432.1	Tomlinson	Orcutt,	1891	4339a.105
Sprague	Sprague,	1828	4339a.51	Torrey	Torrey,	1880	4338.119
Sprague	Soule,	1847	2334.12	Tottingham	Gale,	1866	4339.28
Stafford	Benedict,	1870	4431.5	Towne	Hubbard,	1880	4335.118
Stafford	Vinton,	1858	2332.3	Townley	Hill,	1888	4336.122
Stanley	Seacome,	1793	4538.101	Townley	Usher,	1883	4338.79
			1783	2472.8	Townsend	Rich,	1877
Stanley	Warren,	1887	4336.134	Townsend	Townsend,	1879	5 in 4335.120
Stansfield	Stansfield,	1885	2430a.60	Townsend	Waters,	1883	7 in 4339a.75
Staples	Staples,	1880	10 in 4455.69				

## FAMILY HISTORIES.

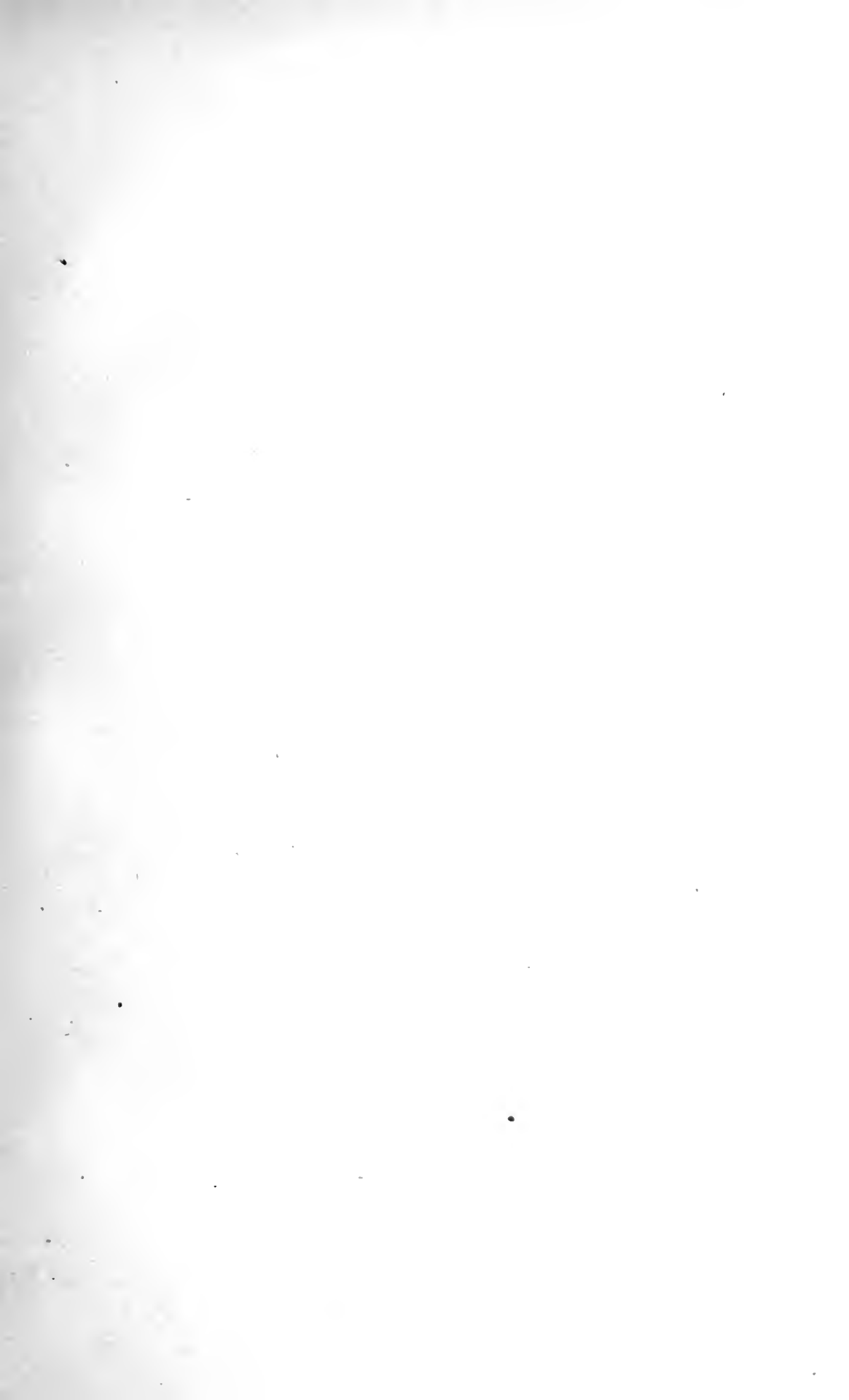
Name.	Author.	Date.	Shelf-no.	Name.	Author.	Date.	Shelf-no.
Townshend . . . . .	Townshend,	1882	4334.62	Wastney . . . . .	Glover,	1883	2492.52.3
Trabue . . . . .	Brook,	1880	4476.22.5	Waterbury . . . . .	Watkins,	1888	4330.50.3
Tracy . . . . .	Abbey,	1880	4333.142	Watkins . . . . .	Deane,	1864	4337.105
Tracy . . . . .	Britton,	1840	4501.9	Watson . . . . .	Deane,	1864	4445.190
Tracy . . . . .	Walworth,	1864	4333.2	Watson . . . . .	De Peyster,	1863	2337.27
Travers . . . . .	Travers,	1884	4431.6	Watts . . . . .	Way,	1881	4337.123
Trego . . . . .	Shertzer,	1884	4339.106	Way . . . . .	Way,	1887	4337.101
Trimble . . . . .	Palmer,	1875	4339.123	Weaver . . . . .	Peirce,	1874	2337.61
Trott . . . . .	Harris,	1849	4332.106	Webb . . . . .	Cooke,	1889	4337.132
Trowbridge . . . . .	Chapman,	1872	4434.2	Webb . . . . .	Waters,	1880	3 in 4339a.75
True . . . . .	Nealley,	1878	6530.10	Weber . . . . .	Whitmore,	1865	2333.13
Trumbull . . . . .	Lea,	1886	4339a.54	Webster . . . . .	Lapham,	1884	7 in 4335.120
Tuck . . . . .	Dow,	1877	4335.75	Webster . . . . .	Webster,	1876	4339.11.1
Tufton . . . . .	Pocock,	1800	4438.12	Webster . . . . .	Goodwin,	1856	2 432.8
Turner . . . . .	Turner,	1852	2333.12	Weeks or Weekes . . . . .	Chapman,	1889	4337.118
Turner . . . . .	Turner,	1868	4431.51	Weeks or Weekes . . . . .	Weeks,	1885	4434.74
Tuttle . . . . .	Tutthill,	1867	14 in 4332.8	Weitzel . . . . .	Hayden,	1883	4339a.53
Tuttle . . . . .	Tuttle, G. F.,	1873	4335.76	Wellis . . . . .	Wellis,	1876	4434.5
Tweed . . . . .	Walker,	1883	4339.62	Wellman . . . . .	Cooke,	1889	4337.132
Twining . . . . .	Twining,	1887	4339a.13	Wells . . . . .	Hayes,	1878	4332.90
		1890	4337.166	Wells . . . . .	Wells,	1874	3 in 4435.28
				Wentworth . . . . .	Rutton,	1891	4532.113
				Wentworth . . . . .	Wentworth (?),	1850	4435.24
				Wentworth . . . . .	Wentworth, J.,	1878	4434.11
				Werbrouck . . . . .		1847	3389.5.4
				Wesley . . . . .	Clarke,	1823	4543.19
				Wesley . . . . .	Stevenson,	1876	2437.11
				Westcote . . . . .	Dullock,	1886	4334.110
				Weston . . . . .	Weston,	1887	4339.102
				Wetmore . . . . .	Wetmore,	1861	4333.1
				Whalley . . . . .	Fetherston,	1872	4331.109
				Wharton . . . . .	Wharton,	1880	4432.59
				Wheaton . . . . .	Hill,	1887	4335.105
				Wheeler . . . . .			4339.50.3
				Whipple . . . . .	Boutelle,	1857	10 in 4339a.69
				Whipple . . . . .	Macdonald,	1881	4331.62
				Whipple . . . . .	Whitmore,	1857	2333.9
				Whipple . . . . .	Whipple,	1873	4338.129
				Whitcomb . . . . .	Whitcomb,	1888	4336.128
				White . . . . .		1879	4339.109
				White . . . . .	Kellogg,	1860	2332.10
				White . . . . .	Rice,	1886	2439.13
				White . . . . .	Thayer,	1835	2332.2
				White . . . . .	White, D. A.,	1889	4338.110
				White . . . . .	White, J. B.,	1878	11 in 4339a.69
				White . . . . .	White, S.,	1886	4335.39
				White . . . . .	Derby,	1872	4335.69
				White . . . . .	Vinton,	1858	2332.3
				Whitegift . . . . .	Bradbury,	1869	20 in 4435.10
				Whiting . . . . .	Goodwin,	1856	2332.8
				Whiting . . . . .	Whiting,	1872	4433.50
				Whiting . . . . .		1873	4433.53
				Whitman . . . . .	Farnham,	1889	4331.103
				Whitman . . . . .	Whitman,	1832	4339.6.7
				Whitmore . . . . .	Whitmore,	1856	4332.5
				Whitmore . . . . .		1855	4335.35
				Whitmore . . . . .		1880	4337.13
				Whitmore . . . . .		1889	4535.119
				Whitmore . . . . .		1878	4339a.50
				Whitmore . . . . .		1880	4338.116
				Whitmore . . . . .		1880	4337.124
				Whitmore . . . . .		1890	4338.139
				Whittier . . . . .	Whittier,	1873	2336.65
				Whittlesey . . . . .		1882	M. S. 26
				Whittlesey . . . . .		1855	4335.70
				Whittlesey . . . . .		1888	4349a.117
				Wiggin . . . . .	Wiggin,	1871	4503.2
				Wigglesworth . . . . .	Denn,	1848	2334.7
				Wight . . . . .	Wight, D. P.,	1890	4339.103
				Wight . . . . .	Wight, W. F.,	1871	4339.110
				Wilbur . . . . .	Wilbur,	1875	21 in 4335.76
				Wilcox . . . . .	Whitmore,	1887	4338.130
				Wilcox . . . . .	Whitmore,	1855	2333.13
				Wild . . . . .	Sheppard,	1867	4435.4
				Wild . . . . .	Wild,	1878	4338.154
				Wild . . . . .	Wild,	1869	4435.9
				Wilkinson . . . . .	Wilkinson,	1858	4332.50
				Willard . . . . .	Willard, J.,	1879	10 in 4334.58
				Willard . . . . .	Willard, D. II.,	1888	4336.125
				Willard . . . . .	Willard,	1889	4339.54
				Williams . . . . .	Austin,	1886	4339a.78
				Williams . . . . .	French,	1874	2337.61
				Williams . . . . .	Peirce,	1889	4337.133
				Williams . . . . .	Williams, J. F.,	1847	2334.6
				Williams . . . . .	Williams, S. W.,	1887	4335.132
				Williams . . . . .	Wright,	1855	2332.53
				Willis . . . . .	Morse,	1855	2333.13
				Willis . . . . .	Whitmore,	1888	13 in 4435.53
				Willoughby . . . . .		1885	4533.104
				Willmer . . . . .	Foster,	1866	4335.76
				Wilson . . . . .	Smith,		

## FAMILY HISTORIES.

Name.	Author.	Date.	Shelf-no.	Name.	Author.	Date.	Shelf-no.
Winchell . . . . .	Winchell,	1869	{ 4337.148	<b>Woodward</b> . . . . .	Woodward,	1887	4337.100
Wing . . . . .	Wing,	1881	{ 4335.53	<b>Worden</b> . . . . .	Worden,	1868	4339a.52
Wingate . . . . .	Wingate,	1886	4339.119	<b>Worthington</b> . . . . .	Goodwin,	1856	2332.8
Winslow . . . . .	Hoitou,	1877, 88	4339a.96	<b>Wray</b> . . . . .	Dalton,	1880	2435.65
Winslow . . . . .	Hoitou,	1877, 88	2333.50	<b>Wyman</b> . . . . .	Whitmore,	1855	2333.13
Winslow . . . . .	Sheppard,	1863	4445.201	<b>Wynkoop</b> . . . . .	Wynkoop,	{ 1866 10 in 4331.55	
Winslow . . . . .			3 in 4394.20			{ 1878	{ 4353.58
Winslow . . . . .			14 in 4434.67				{ 4333.61
Winthrop . . . . .	Whitmore,	1864	4435.10	<b>Yardley</b> . . . . .	Yardley,	1881	2332.56
Winthrop . . . . .	Winthrop,	{ 1887	4335.114	<b>Yarker</b> . . . . .	Yarker,	1882	2431.4
Wiswall . . . . .	Robinson,	{ 1867	2347.40	<b>Yates</b> . . . . .	Terrill,	1887	4336.123
Witter . . . . .	Allen,	1859	4446.5	<b>Yeamans</b> . . . . .	Sumner,	1854	4347.107
Wolcott . . . . .	Allen,	1872	2339.53	<b>Young</b> . . . . .	Gale,	1866	4339.28
Wood . . . . .	Wolcott,	1881	2330.21	<b>Young</b> . . . . .	J., A.,	1861	2431.56
Wood . . . . .	Wood,	1885	4337.144	<b>Youngman</b> . . . . .	Youngman,	1882	9 in 4434.66
Woodbridge . . . . .	Mitchell,	1883	4431.62	<b>Yvery</b> . . . . .	Anderson,	1742	2435.69
Woodbury . . . . .	Rantoul,	1887	4337.164				
Woodman . . . . .	Coffin,	1855	18 in 4435.10	<b>Zaehringen</b> . . . . .		1881	4210.2.13
Woodman . . . . .	Woodman, J. H.,	1856	9 in 4331.55	<b>Zane</b> . . . . .	Smucker,	1873 10 in 4373.51	
Woodman . . . . .	Woodman, C.,	1874	2336.73	<b>Zelande</b> . . . . .	Stroobant,	1853, 54	3389.5.10
Woodrooffe . . . . .	Woodrooffe,	1878	4532.106				



*ded*































































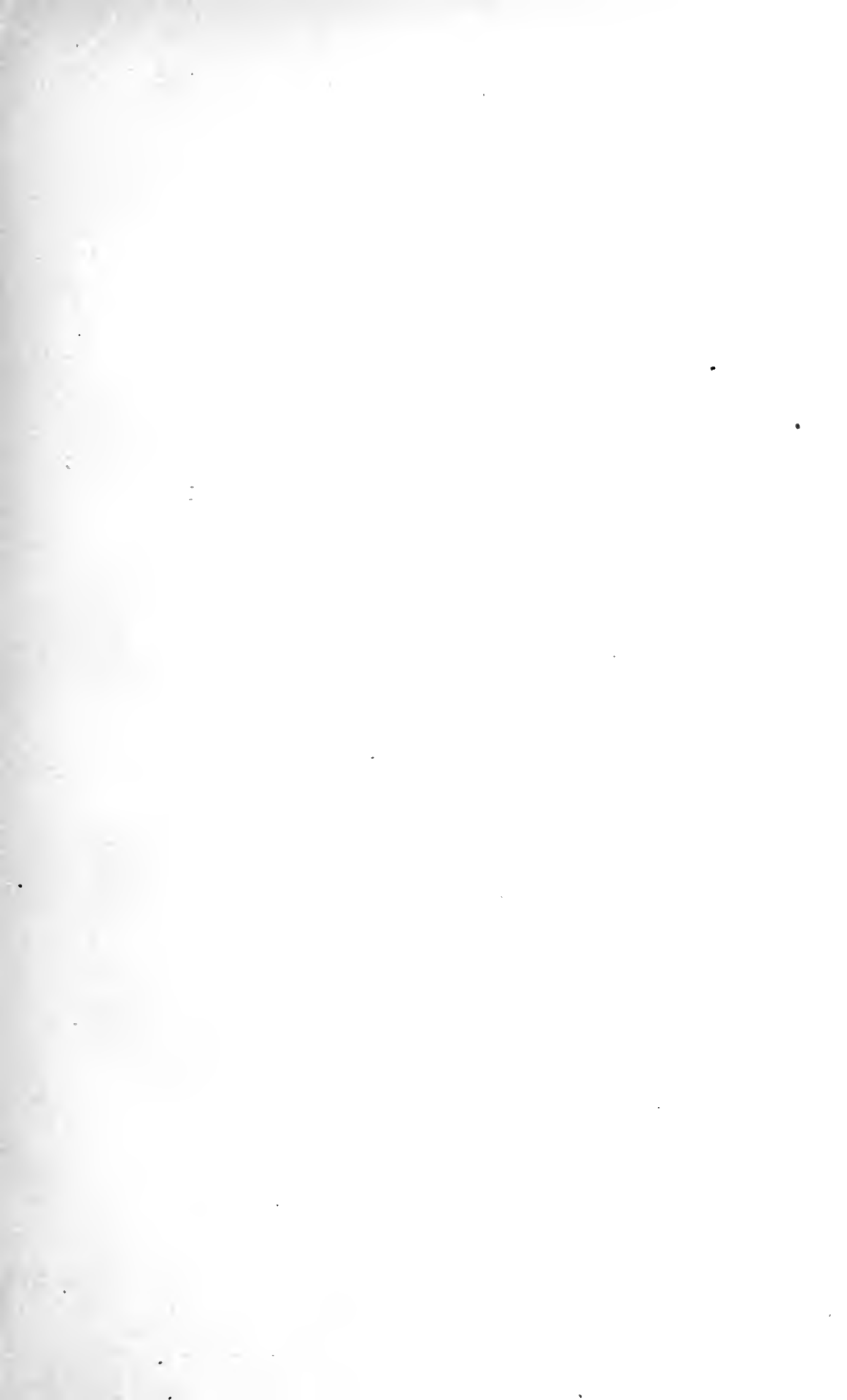
















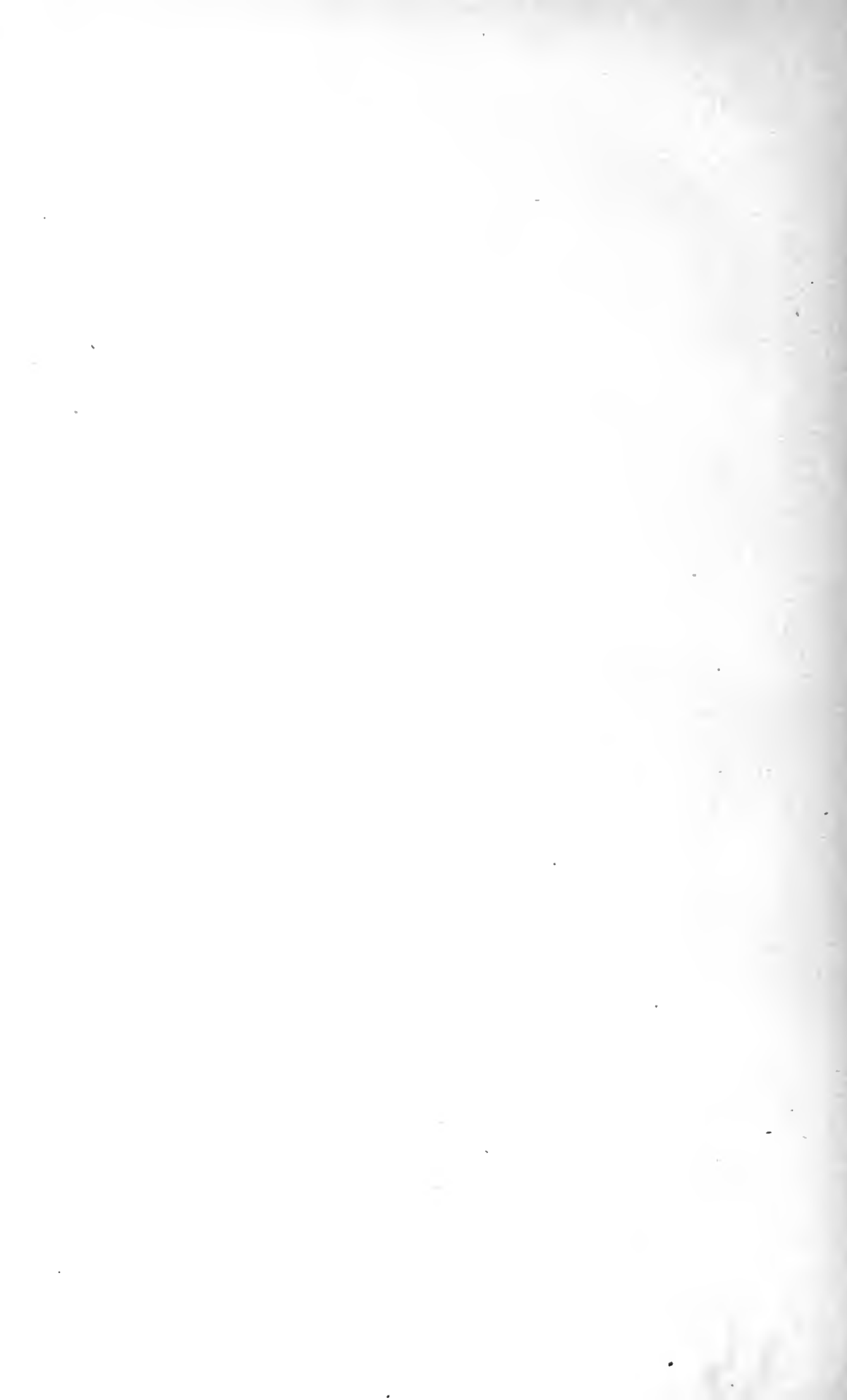


























































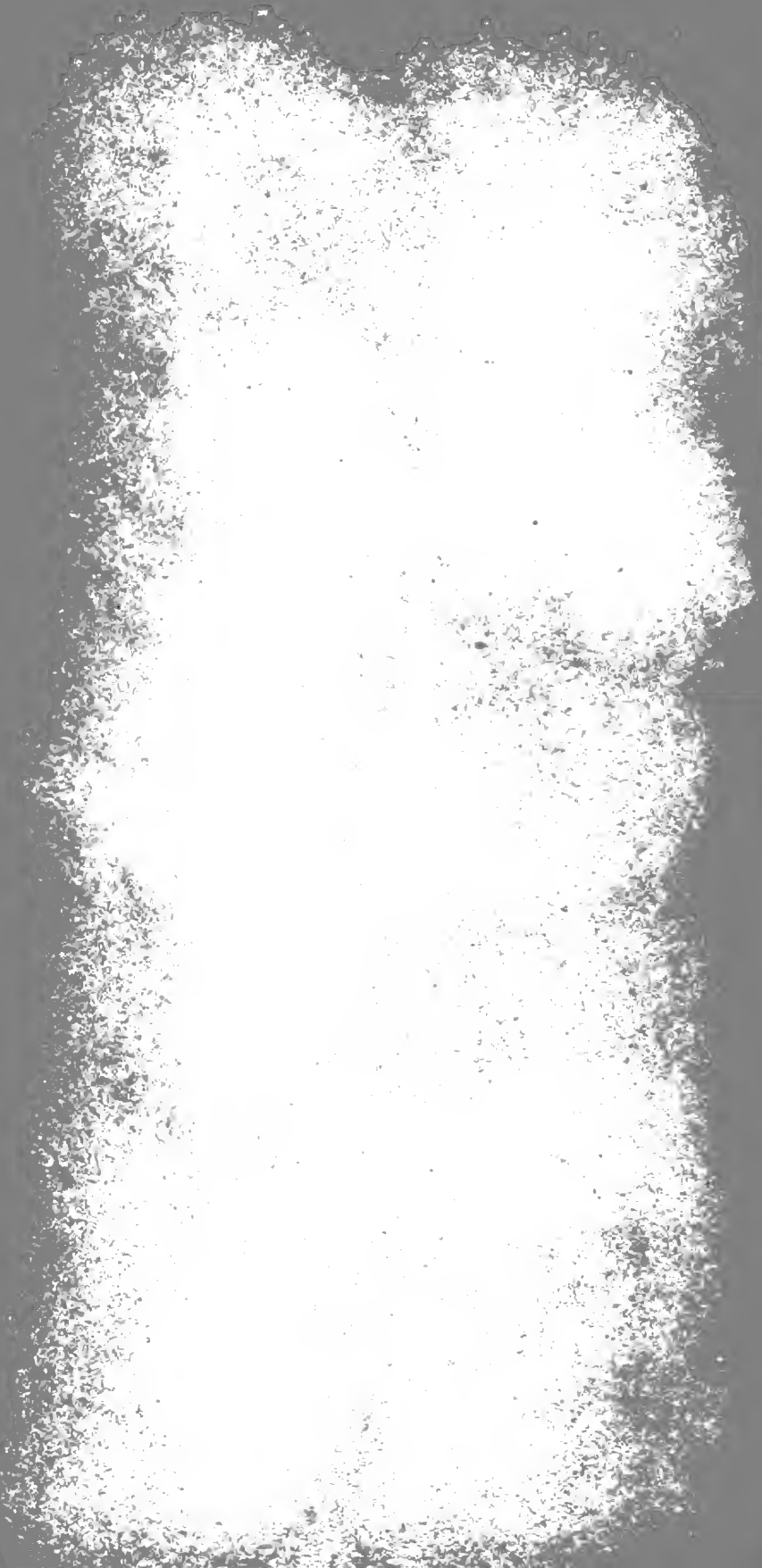


















Z1009  
B6  
115435 No. 7

