

JAMES T. MURFEE,
PRESIDENT.

Digitized by the Internet Archive
in 2010 with funding from
Lyrasis Members and Sloan Foundation

Howard College.

1872-73.



CATALOGUE

OF

HOWARD COLLEGE,

MARION, ALA.,

FOR THE

Year Ending June, 1873.



SELMA, ALA.:

J. P. ARMSTRONG, BOOK AND JOB PRINTER, STATIONER AND BINDER.
1873.



ORGANIZATION.

1. A SYSTEM OF GOVERNMENT which preserves order, secures good morals, stimulates all to diligent study, and trains to those habits of promptness, punctuality, and industry which are essential in business and professional life.

2. A SYSTEM OF REWARDS for the encouragement of *scholarship*.

3. NO DEGREES, HONORS, or PROMOTIONS, except those based upon attainments.

4. A COURSE OF STUDY divided into ten distinct schools.

5. A MODE OF INSTRUCTION which makes the student self-reliant, giving him power to master and appropriate the facts and philosophy of books, and to make original investigations in any subject of thought.

Board of Trustees.

DR. W. W. WILKERSON, PRESIDENT.

W. B. MODAWELL, of Marion.
J. B. LOVELACE, of Marion.
J. W. CRENSHAW, of Marion.
REV. M. T. SUMNER, D. D., of Marion.
REV. S. HENDERSON, D. D., of Jacksonville.
GEN. L. W. LAWLER, of Mobile.
REV. A. B. WOODFIN, of Mobile.
J. H. LEE, of Marion.
JUDGE PORTER KING, of Marion.
REV. W. N. REEVES, of Eufaula.
JON. HARALSON, Esq., of Selma.
L. M. STONE, of Pickensville.
J. G. APSEY, of Marion.
REV. W. C. CLEVELAND, of Dallas Co.
JOHN GAMBLE, of Greenville.
M. W. HAND, of Marion.
C. C. HUCKABEE, of Marion.
J. F. BAILEY, of Marion.
REV. E. B. TEAGUE, D. D., of Selma.
REV. E. T. WINKLER, D. D., of Marion.
S. H. FOWLKES, of Marion.

Secretary and Treasurer:

J. B. LOVELACE, Marion, Ala.

FACULTY AND OFFICERS.

COL. J. T. MURFEE, PRESIDENT,

Professor of Mental Science, Architecture, and Engineering.

E. Q. THORNTON, A. M.,

Professor of Chemistry, Natural History, and Modern Languages.

THOS. J. DILL, A. M.,

Professor of Greek and Latin.

GEORGE D. BANCROFT, A. M.,

Professor of Mathematics.

I. B. VAIDEN, A. M.,

Principal of Preparatory Department.

JOS. McK. HARRELL, A. B.,

Assistant Professor of English Literature.

THOS. J. DILL, A. M.,

Secretary and Treasurer of Faculty.

WILLIAM FARRIOR,

Librarian.

A. P. SMITH,

Adjutant.

Medical Staff:

W. W. WILKERSON, M. D.

W. T. McALLISTER, M. D.

Catalogue of Students,

ABBREVIATIONS.

Th.—Theology.	N. H.—Natural History.	B. K.—Book Keeping.
M. P.—Moral Philosophy.	N. P.—Natural Philosophy.	H.—History.
I. P.—Intellectual Philosophy.	F.—French.	E. G.—English Grammar.
Rh.—Rhetoric.	L.—Latin.	GE.—Geography.
P. E.—Political Economy.	G.—Greek.	R.—Reading.
Lo.—Logic.	M.—Mathematics.	S.—Spelling.
C.—Chemistry.	Eng.—Engineering.	Ger.—German.

NAMES.	RESIDENCE.	STUDIES.
Alford, Wm. T.	Camden, Wilcox Co., Ala.,	M., E. G.
Aldridge, Moses W.	Jefferson, Marengo, "	L., M., RH., F.
Allen, F. L.	Macon, Mississippi,	M., RH.
Anderson, W. H.	Marion, Perry Co., Ala.,	M., E. G., H., RH.
Andrews, T.	Greensboro, "	M., E. G., GE.
Ball, A. A.	Pickensville, "	L., M., RH.
Baltzell, R. H.	Forkland, Green Co. "	L., M., E. G., RH.
Berry, R. D.	Mobile, "	M., RH.
Billingslea, R. B.	Marion, Perry Co. "	L., M., E. G., RH.
Bondurant, C. C.	" " "	L., M., E. G., RH.
Bonner, F. A.	Isney, Choctaw Co. "	M, GER., NH., NP., MP.
Brock, Geo. K.	Aberdeen, Mississippi,	M., GE., E. G., RH.
Brooks, G. R.	Marion, Perry Co., Ala.,	L., M., E. G., RH.
Brown, H. P.	" " "	L., G., M., RH.
Brown, W. R.	" " "	L., M., E. G., H., RH.
Burns, E. D.	Selma, "	L., M., RH.
Bush, John C.	Brooksville, Miss.,	M., RH., H.
Bush, R. C.	Demopolis, Alabama.	M., E. G., H., RH., GE.
Bussey, W. W.	Columbus, Georgia,	M., N. H., N. P., M. P.
Caffey, Jno. P.	Benton, Lowndes Co., Ala.,	M., E. G., GE., RH.
Carpenter, V. M.	Artesia, Mississippi,	L., M., E. G., RH.
Chandler, Leo.	Mayhew, "	L., M., RH.
Clay, Matt.	Brooksville, "	L., M., RH.
Clement, L. A.	Marion, Perry Co., Ala.,	M., E. G., GE., R., S.
Cocke, Frank E.	" " "	M., E. G., RH.
Connella, Levin A.	" " "	M., L., GR., RH.
Cook, D. J.	Camden, "	L., G., M.
Cooper, Watts W.	West Point, Georgia,	L., G., M., F., RH.
Craighead, P. A.	Marion, Perry Co., Ala.,	M., RH.
✓ Craighead, Thos.	" " "	L., M., RH.
Crenshaw, W. A.	Fort Deposit, "	G., M., RH.
Crenshaw, W. T.	Marion, Perry Co., Ala.,	L., M., F., RH.
✓ Davis, B. F. J.	Cowikee, Barbour Co., "	L., G., M.
Davis, I. J.	Marion, Perry, " "	M., E. G., RH.
Davis, N. J.	" " " "	L., M., RH., F.
✓ Dewitt, W. H.	Clarke County, "	M., RH.

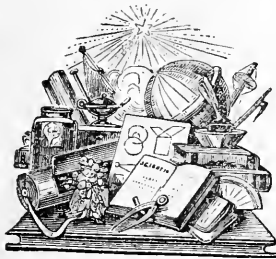
NAMES.	RESIDENCE.	STUDIES.
✓ Dill, J. S	Marion, Perry Co., Ala.,	L., G., M., RH., F.
Dill, T. A.	“ “ “	L., M., E. G., H., S.
Dill, W. Y.	“ “ “	M., E.G., H., GE., R., S.
Edmonds, M. C.	“ “ “	M., E.G., GE., H., RH.
Elston, O. A.	Munford, Talladega, “	L., M., RH.
Estes, E. C. ✓	Columbus, Georgia,	L., M., RH.
Estes, J. L. M. } <i>1885</i>	Columbus, Georgia,	L., M., RH. <i>Columbia, Ga.</i>
Estes, J. T. <i>Deat</i>	“ “ “	L., M., RH.
✓ Farrior, Wm.	Clayton, Barbour Co., Ala.,	L., G., M.
Florence, P. E.	Glennville, “	L., M., RH.
Fonville, W. D.	Letohatchie, Lown's, “	M., N. H., N. P.
Forwood, F. P.	Gosport, Clarke Co., “	L., M., RH.
Foster, S. B.	Tuskaloosa “ “	L., G., M., RH.
Foster, Thomas J.	“ “ “	M., E. G., L., RH.
Fowlkes, E. O.	Marion, Perry Co., “	L., M., RH., H.
Fowlkes, S. P.	“ “ “	L., G., M., F., RH.
Garrott, Richard F.	“ “ “	L., M., H., RH.
✓ Hanks, R. T.	Pickensville, “	_____
Haralson, Jon. A.	Benton, Lowndes Co., “	L., G., M.
Harris, R. D.	Marion, Perry Co., “	M., E.G., H., GE., R., S.
Huckabee, C. B.	“ “ “	M., E. G., GE., R., S.
Huckabee, R. C.	“ “ “	M., RH., L., G.
✓ Huckabee, W. G.	“ “ “	L., M., RH.
Hudson, C. C.	“ “ “	RH., M., H.
Hudson, G. W.	“ “ “	L., M., E. G., RH.
Hudson, W. O.	“ “ “	L., M., RH.
Hunsaker, Jno.	St. James Parish, La.,	L., H., E. G., M., GE.
Ivy, J. C.	Macon, Mississippi,	M., E. G., RH., L.
Jones, A. T.	Marion, Perry Co., Ala.,	M., RH., F., C.
King, J. H.	“ “ “	GER., C., N. H.
King, Porter,	“ “ “	GER., C., N. H.
Lee, J. C.	“ “ “	L., M., G.
Lee, L. L.	“ “ “	L., M., H. RH.
Lide, B. A.	Minter, S. & G. R. R., “	L., G., M., RH.
Lide, B. M.	Marion, Perry Co., “	L., M., RH.
Lockett, S. E.	“ “ “	L., M., H., RH.
Lockhart, E. J.	“ “ “	L., M., E. G., H., R.
Lockhart, H. N.	“ “ “	D., M., RH.
✓ Lyon, D. G.	Benton, Lown's Co., Ala.,	L., G., M., RH.
Mabry, Seth,	Clayton, Barbour “ “	L., M., RH.
Martin, Abner G.	Uniontown, “	M., E. G., RH.
McCombs, W. E.	Marion, Perry Co., “	L., M., RH.
McFaddin, R. H.	Selma, Dallas “ “	M., E. G., GE. RH.
✓ McGill, F. H.	Clarke “ “	M., E. G., RH.
McMillan, A. G.	McMillan's Landing, “	L., M., RH.
McMillan, L. R.	“ “ “	M., E.G., GE., L., RH.
McMillan, C.	Clinton, Green Co., “	L., M., RH.
✓ Moore, T. A.	Selma, Dallas “ “	L., G., M., F.

NAMES.	RESIDENCE.	STUDIES.
Moore, Wooten,	Marion, Perry Co., Ala.,	M., RH.
Morrow, W. C.	Greenville,	" M., RH., ENG.
Mosely, W. L.	Marion, Perry Co.,	" L., G., M., RH.
Nelson, Goree,	" "	" L., M., E. G., RH.
Nunn, J. N.	Autauga, "	" M., E. G., RH.
Ogletree, G. W.	West Point, Georgia,	M., RH., C., GE.
Parham, P. P.	Mount Hebron, Ala.	M., E. G., L., RH.
Perry, A. J.	Marion, Perry Co., Ala.,	M., N. H., M. P.
Perry, H. W.	" "	" L., G., M., RH., F.
Perry, W. O.	Summerfield,	" M., C., RH.
Phillips, A.	Mooreville, Lee Co., Miss.	L., M., RH., GE., L.
Pinkard, W. P.	West Point, Georgia,	M., F., N. H., GER., C., GE.
Pointer, R. B.	Hempstead, Texas,	L., M., RH., H.
Prestridge, J. N.	Selma, Dallas Co., Ala.,	L., G., M.
Quin, W. E.	Palo Alto, Mississippi,	L., M., G.
Rambo, L. H.	Montgomery, Ala.,	L., M., E. G., RH.
Raymond, H. R.	Marion, Perry Co., Ala.,	M., B. K.
Redding, W.	" " "	L., M., E. G., RH.
Richard, E. B.	Mobile, Alabama,	L., M., E. G., RH.
Richardson, Geo.	Marion, Perry Co., Ala.,	M., E. G., H., GE., R., S.
Reidel, W. A.	New York City,	M., E. G., H., GE., R., S.
Riley, J. A. A.	Cokerville, Monroe Co., Ala.,	M., E. G., RH.
Sanders, H. C.	Dadeville, Tallapoosa "	M., RH., E. G.
Sanders, J. W.	Cokerville, Monroe, Co., "	M., E. G., RH.
Sanders, W. W.	Dadeville, Tallapoosa "	M., F., C., N. H.
Sholars, O. R.	Texas,	M., C., L.
Smith, A. P.	Union, Green Co., Ala.,	M., N. H., N. P., M. P.
Smith, Elam,	Eutaw, " "	M., RH.
Speed, E. W.	Marion, Perry Co., "	L., M., RH.
Sprott, J. M.	" " "	M., E. G., H., GE., R., S.
Sprott, T. W.	" " "	L., G., M., C.
Sumner, L. R.	" " "	L., M., E. G., RH.
Sumner, R. L.	" " "	M., E. G., H., GE., R., S.
Thames, C. E.	Mobile, "	M., RH., GE.
Thames, T. B.	" "	M., RH., F., C.
Traylor, Thos. J.	Benton, Lowdnes Co., Ala.,	M., E. G., RH., H., R., S.
Vary, Jno.	Marion, Perry Co., "	L., M., RH.
Waldron, J. P.	Uniontown, "	L., M., E. G., RH.
Watts, T. J.	Marion, "	L., M., RH.
Wellborn, S. R.	" "	M., E. G., H., GE., R., S.
West, J. L.	Pickensville, "	L., G., M., C.
Westbrook, W. F.	Jefferson, Marengo Co., "	M., D., RH.
Wilkerson, C. A.	Tuskaloosa, "	M., L., C., RH.
Wilkerson, P. H.	Marion, Perry Co. "	M., E. G., GE., R., S.
Wilkerson, W. M.	" " "	L., M., RH.
Wilkerson, W. W.	" " "	L., M., RH.

NAMES.	RESIDENCE.	STUDIES.
Williams, L. H.	Washington Co.,	" L., M., E. G., RH.
Windham, J. E.	Gainsville,	"
Winkler, C. L.	Marion, Perry Co.,	" L., M., E. G., RH., II.
Winkler, E.	" "	" M., E. G., H., GE., R., S.
Woodfin, Jas.	" "	" L., G., M., RH.
Woodruff, Chas.	" "	" L., M., RH.

TOTAL NUMBER.....136

4 7 27
62
15 10 21



List of Distinguished Proficients

IN THE SEVERAL SCHOOLS, 1872-3.

SCHOOL OF GREEK.

SPROTT, T. W.		COOPER, W. W.
---------------	--	---------------

SCHOOL OF LATIN.

WEST, J. L.		LIDE, B. A.
SPROTT, T. W.		

SCHOOL OF MODERN LANGUAGES.

KING, P.		COOPER, W. W.
BONNER, F. A.		SANDERS, W. W.
KING, J. H.		PINKARD, W. P.

SCHOOL OF MENTAL AND MORAL SCIENCE.

SANDERS, W. W.		PERRY, A. J.
FONVILLE, W. D.		BONNER, F. A.
BUSSEY, W. W.		

SCHOOL OF NATURAL HISTORY.

BUSSEY, W. W.		KING, P.
FONVILLE, W. D.		PERRY, A. J.
KING, J. H.		BONNER, F. A.

SCHOOL OF CHEMISTRY.

SANDERS, W. W.		KING, P.
LYON, D. G.		KING, J. H.
SPROTT, T. W.		OGLETREE, G. W.
WEST, J. L.		

SCHOOL OF MIXED MATHEMATICS.

SANDERS, W. W.		FONVILLE, W. D.
SPROTT, T. W.		SMITH, A. P.

List of Students Entitled to Certificates of Distinction

SCHOOL OF GREEK.

LYON, D. G.	LIDE, B. A.
WEST, J. I.	DAVIS, B. F. J.
BROWN, H. P.	FARRIOR, WM.
MOORE, T. A.	HARALSON, J. A.
DILL, J. S.	PRESTRIDGE, J. N.
FOWLKES, S. P.	CRENSHAW, W. A.

SCHOOL OF LATIN.

LYON, D. G.	HARALSON, J. A.
FOWLKES, S. P.	CRENSHAW, W. T.
DILL, J. S.	FARRIOR, WM.
MOORE, T. A.	MABRY, SETH.
ALDRIDGE, M. W.	HUCKABEE, W. G.
BROWN, H. P.	SPEED, W. E.
ELSTON, O. A.	FLORENCE, P. E.
PERRY, H. W.	HUDSON, W. O.

SCHOOL OF MODERN LANGUAGES.

FOWLKES, S. P.	DILL, J. S.
CRENSHAW, W. T.	PERRY, H. W.
ALDRIDGE, M. W.	

SCHOOL OF ENGLISH LANGUAGE.

LYON, D. G.	ELSTON, O. A.
ALDRIDGE, M. W.	FOSTER, S. B.
DILL, J. S.	CRENSHAW, W. T.
PHILLIPS, A.	MORROW, W. C.
OGLETREE, G. W.	CHANDLER, LEO.
BROWN, H. P.	CRENSHAW, W. A.
FOWLKES, S. P.	CLAY, M.
ESTES, J. T.	MCGILL, F. H.

SCHOOL OF MATHEMATICS.

LYON, D. G.	PHILLIPS, A.
DILL, J. S.	MORROW, W. C.
COOPER, W. W.	DAVIS, B. F. J.
FOWLKES, S. P.	CRENSHAW, W. T.
PERRY, H. W.	

SCHOOL OF HISTORY AND GEOGRAPHY.

PHILLIPS, A.	THAMES, C. E.
--------------	---------------

List of Distinguished Undergraduates.

LYON, D. G.
 DILL, J. S.
 FOWLKES, S. P.
 SPROTT, T. W.
 CRENSHAW, W. T.
 KING, P.
 KING, J. H.

WEST, J. L.
 ALDRIDGE, M. W.
 BROWN, H. P.
 PHILLIPS, A.
 COOPER, W. W.
 PERRY, H. W.

The College Prize Medal

For the Session of 1872-3 was awarded to

J. S. DILL.....Marion, Ala.

Valedictory Oration.

W. D. FONVILLE.....Crenshaw Co., Ala.

Prize Oration.

W. W. SANDERS.....Tallapoosa Co., Ala.

Salutatory.

A. P. SMITH.....Greene Co., Ala.

Graduates •• 1872 •• 3.

BACHELORS OF ARTS.

W. D. FONVILLE.....Alabama.
 A. P. SMITH.....“

BACHELORS OF SCIENCES.

W. W. SANDERS.....Alabama.
 F. A. BONNER.....“
 W. W. BUSSEY.....Georgia.
 A. J. PERRY.....Alabama.

ORGANIZATION.

The Course of Study is divided into the following distinct Schools:—

I—School of Latin.

II—School of Greek.

III—School of Modern Languages.

IV—School of English.

V—School of Moral Science and Theology.

VI—School of Mathematics.

VII—School of Chemistry, Geology, and Mineralogy.

VIII—School of Natural Philosophy and Applied Mathematics

IX—School of Civil Engineering.

X—Business School.

The School of English is required. The other Schools are elective.

Course of Study for Degree of Bachelor of Arts.

SUB-FRESHMAN CLASS.

FIRST TERM.

Elementary Algebra, as far as Evolution; Latin, Cicero's Oration; Latin, Harkness' Introduction to Latin Prose; Greek, McClintock and Crook's First Book; English Grammar; First Lessons in English Composition.

SECOND TERM.

Elementary Algebra Completed (Robinson's); Geometry, Davies' Legendre, three books; Latin, Æneid of Virgil; Latin, Harkness' Introduction to Latin Prose; Greek, McClintock and Crook's First Book; English Grammar and Composition; Declamation throughout the year.

FRESHMAN CLASS.

FIRST TERM.

Algebra Completed, Robinson's University; Latin, Odes of Horace; Latin, Arnold's Latin Prose; Greek, Xenophon's Anabasis; Ancient Geography; English Composition and Rhetoric, Quackenbos.

SECOND TERM.

Geometry Completed, Davies' Legendre; Latin, Epistles and Satires of Horace; Latin, Arnold's Latin Prose; Greek, Herodotus and Cyropedia; Grecian and Roman Antiquities; English Composition and Rhetoric, Quackenbos; Declamation throughout the year.

SOPHOMORE CLASS.

FIRST TERM.

Trigonometry and Mensuration, Davies' Legendre; Latin, Livy; Greek, Thucydides; History; French, Knapp's French Grammar; French Reader, Telemaque.

SECOND TERM.

Surveying and Navigation, Davies; Analytical Geometry, Loomis; Latin, Tacitus; Greek, Homer's Iliad; History; French, Selections from Racine, Moliere, Corneille, and DeStael; Declamation throughout the year.

JUNIOR CLASS.

FIRST TERM.

Calculus, Differential and Integral—Loomis'; Latin, Terence; Greek, Euripides—Medea; Rhetoric; Natural Philosophy; Chemistry, Inorganic.

SECOND TERM.

Mechanics, Peck's or Snell's Olmsted; Latin, Juvenal; Greek, Sophocles' Oedipus Tyrannus; Logic; Chemistry, Organic; Zoology, Agassiz; Original Speeches throughout the year.

SENIOR CLASS.

FIRST TERM.

Astronomy Commenced, Kiddle's; Philosophy of Rhetoric; Botany; Mineralogy; Moral Science.

SECOND TERM.

Astronomy Completed, Kiddle's; Political Economy; Outlines of English Literature, Lectures; Geology; Mental Philosophy, Haven's; Original Speeches throughout the year.

EXAMINATIONS.

Intermediate Examinations are held during the progress of the session; and the Final Examinations, near the close of the session. A Committee of the Trustees attend the Final Examinations. Students are not allowed to absent themselves from any of their Examinations.

CERTIFICATES.

1—*Certificates of Distinction* are given for *distinguished attainments* in any Class within any of the Schools.

2—*Certificates of Proficiency* are conferred as evidences of *satisfactory attainments* in any of the Schools.

3—*Certificates of Distinguished Proficiency* are conferred as evidences of *distinguished attainments* in any of the Schools.

4—A Certificate, with title of *Distinguished Undergraduate*, is conferred upon any student who makes distinguished attainments in any *three Schools* within one session.

DEGREES.

I. BACHELOR OF SCIENCE (B. S.) *Required*: Certificates of *Proficiency* in Mathematics; Applied Mathematics and Astronomy; Physics, including Rational Mechanics; Chemistry; Mental Philosophy; Ethics and Evidences of Christianity; History; Mineralogy; Geology; French or German; English; Natural History; and Political Economy. Latin or Greek may take the place of either of the Modern Languages.

II. BACHELOR OF ARTS (A. B.) *Required*: Certificates of *Proficiency* in Latin; Greek; Mathematics; Mental Philosophy; Ethics and Evidences of Christianity; English; History; Literature; one Modern Language; Chemistry; Physics; Mechanics; Astronomy; Mineralogy; Geology; Natural History; and Political Economy.

III. MASTER OF ARTS (M. A.) To attain this Degree the student must have received Certificates of *Proficiency* in Latin; Greek; English; Mental and Moral Philosophy; History; Mathematics; Chemistry; Mineralogy; Geology; Natural History; Natural Philosophy; two Modern Languages; English Literature; and Applied Mathematics; and Certificates of *Distinguished Proficiency* in at least SEVEN ENTIRE SCHOOLS; and have passed a satisfactory Review Examination on all the subjects included.

IV. CIVIL ENGINEER (C. E.) The requirements for this degree are Certificates of *Proficiency* in Mathematics; Applied Mathematics, including Astronomy; Chemistry; Mineralogy and Geology; Natural Philosophy, including Analytical Mechanics; French; English; and Plans and Reports upon assigned subjects.

For each of the above degrees, a suitable Essay or Oration must be furnished, which may be read on Commencement Day, if required.

COLLEGE HONORS.

I. PRIZE MEDAL.

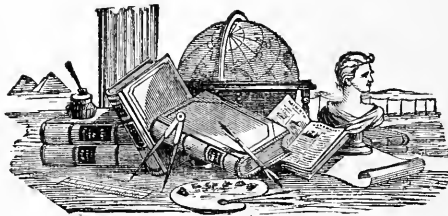
The College Faculty have instituted a prize for excellence in Elocution, consisting of a gold medal. For this prize the members of the Sophomore Class compete; and the award is made by disinterested judges.

II. COMMENCEMENT ORATIONS.

1. *The Valedictory Oration* is awarded to that graduate who shall be judged to have attained the highest degree of general scholarship.

2. The College Prize Oration is awarded to that student who may have submitted the best essay or oration. No student to have more than one of the above orations.

III. GRADATIONS.—In every Class and School, and in every list of Proficients or Distinctions, the names are announced in the order of relative standing.



GENERAL INFORMATION.

ADMISSION.

1. Applicants for admission must furnish evidence of good moral character, and produce a certificate of honorable dismissal from the institution of which they were last members.

2. A student may enter at any time and be assigned to proper classes.

3. All candidates for admission are examined, and assigned to such classes in the schools of their choice as they are prepared to enter.

4. Students are required to report to the President within twenty-four hours after their arrival in town.

5. The following Text-books are recommended for use by those who purpose to enter this Institution, viz: Robinson's Higher Arithmetic and Elementary Algebra; Harkness', or Andrews and Stoddard's, Latin Grammar; Hadley's Greek Grammar.

COURSE OF STUDY.

Special attention is paid to English Composition and Declamation; and all students are required to take the School of English. They may select such other studies as their parents or guardians desire; but every one is required to have at least fifteen recitations a week.

The time required to complete the course of study for any degree will depend upon the previous preparation and upon the diligence of the student.

Preparatory courses of instruction are arranged for the accommodation of those who are not prepared for College classes.

PLAN OF INSTRUCTION.

In every department, the instruction is practical.

In all sciences, the students are required to use the apparatus and instruments.

Original problems are solved; and much attention is paid to original essays.

Lectures are occasionally given by the professors when thought serviceable to students; but the rule is that students themselves perform in the class room, the object being to make them proficient in demonstration and explanation.

Professors and teachers are occupied as many hours as are necessary to examine thoroughly each day all the members of every class, and thus allow no neglect of any study.

The classes are divided into small sections, so that each student may receive special attention. The sections are arranged according to merit in each branch, and the students are kept constantly stimulated to attain and preserve good positions.

The progress of each class and the relative merits of the members are recorded. At the end of each week the results are reported to the President, and afterwards posted upon the "bulletin board" for encouragement or warning.

There are weekly reviews in every study, and no student is allowed to pass any portion of the text without understanding the subject.

GOVERNMENT.

The government is administered by the President and Professors in accordance with the regulations adopted by the Board of Trustees. A copy of the laws is kept in each student's room.

The laws inculcate manly virtues, preserve order, require sobriety and morality, protect and encourage good students, and do not allow the persistently idle and immoral to remain where they can injure others.

The personal influence of the President and Faculty is exercised to encourage the young men in the discharge of their duty, and the co-operation of parents is solicited.

REPORTS TO PARENTS & GUARDIANS.

Daily reports of conduct and weekly reports of studies are made to the President. From these, semi-quarterly reports are made to parents and guardians. The reports to parents show the absolute and relative standing in each class, the number of absences from classes, and other facts that may be thought of interest.

RELIGIOUS AND MORAL CULTURE.

Prayers are held every morning in the chapel, and the faculty and students attend.

Students are required to attend the church of their choice every Sabbath morning; and they do, of their own accord, generally attend Sabbath-school in the morning and church service at night.

LITERARY SOCIETIES.

There are in connection with the College and in successful operation, two Literary Societies—the Philomathic and the Franklin. These Societies are provided with well-selected libraries; and they must be regarded as valuable aids to the student in the formation of a literary taste, and in affording opportunities for exercises in debate, and for obtaining a knowledge of parliamentary rules.

ALUMNI ASSOCIATION.

The object of this Society is to keep alive among the Alumni the sentiment of affection for their Alma Mater, and to unite the graduates by a common tie of fellowship.

The Annual Meeting is held during Commencement week, and the Oration is delivered by an Alumnus selected by the Society.

PRESENT ORGANIZATION.

JNO. C. WILLIAMS, President.

COL. W. T. HENDON, 1st Vice-President.

M. T. SUMNER, Secretary and Treasurer.

Alumni Orator, 1873, Hon. J. B. Cox, Macon, Miss.

LOCATION.

The location of Howard College is all that could be desired. Marion is situated on the Selma, Marion, and Memphis railroad. This road has been completed some distance beyond Marion, and places this town in direct and daily communication with Selma and the great lines of travel running through the latter place. Howard College is thus quite accessible by railroad from all quarters of this State and from the adjoining States. In addition to Howard College, there are located here two large and prosperous Female Seminaries. The town also contains five Churches—the Baptist, Methodist, Presbyterian, Episcopal, and Christian. With these surroundings, and with a population of three or four thousand inhabitants, it is evident that Marion affords the wholesome restraint of a moral and intelligent community, without presenting those extraordinary temptations to young men incident to great centres of trade.

BUILDINGS.

The main College edifice contains a large Chapel, Library, Apparatus Rooms, Laboratory, Halls, Offices, &c. The Dormitory Buildings, comprising the North Hall and the South Hall, contain forty-four Dormitories, eighteen feet square, together with Recitation Rooms.

The Dining Hall is a new and beautiful Italian Cottage, conveniently located, and handsomely furnished.

LIBRARY.

The Library Room has been much improved during the session; and valuable contributions have been made by Smithsonian Institute and by Henry Cary Baird.

Other contributions by the friends of Education are solicited.

Students have free access to the Library.

CABINETS.

The Geological and Mineralogical Cabinets contain a large variety of specimens. A handsome series of Maps, Charts, and Engravings, has been procured to illustrate Lectures on Geology.

Mr. L. L. Sledge has, during the session, presented an interesting California specimen.

APPARATUS.

The Institution is in possession of an excellent Chemical and Philosophical Apparatus. More than three thousand dollars have been already expended on these departments alone; and the College is now supplied with better and more expensive means of furnishing experimental instruction in the several branches of Natural Science than ever heretofore. Much of the Chemical Apparatus has been imported directly from Europe for the use of the College; and no pains or expense has been spared to supply the most abundant and valuable means for illustrating this important branch. Not only is the illustrative apparatus complete, but all ordinary appliances for original research and practical investigation are now in the hands of the Professor of Chemistry.

The Philosophical apparatus is inferior in quality to none in the country. Considerable additions are making in order that this department may vie with the other in the completeness of its equipments.

The Mathematical Department is supplied with a superior Theodolite, a Compass, and the other usual appliances.

The Astronomical Apparatus consists of such instruments as are ordinarily employed by instructors in this branch. The Telescope is a refractor of six inches aperture, and eight feet five and a half inches in length. It is mounted equatorially with finely graduated right ascension and declination circles, and has a highly finished driving clock.

EXPENSES.

Payable October 1st and February 1st—strictly in advance.

FOR FIRST TERM OF FOUR MONTHS.

Tuition and board.....	\$95 00
Furnished room, fuel, and servants' hire.....	22 00
Washing.....	6 00
	Total for first term.....\$123 00

FOR SECOND TERM OF FOUR AND A HALF MONTHS.

Tuition and board.....	\$95 00
Furnished room, fuel, and servants' hire.....	22 00
Washing.....	6 00
	Total for second term....\$123 00
Total expenses in College dep't for one scholastic year.....\$246 00	

EXPENSES IN PREPARATORY DEPARTMENT

Are \$40.00 per session less, or for the year \$206.00.

All students who are not well prepared in English Grammar, Arithmetic, and Geography are classed in Preparatory.

To cover any damages, \$5.00 additional must be deposited at the beginning of each term; but this will be refunded if there are no damages.

Students are not required to board in the College dining-hall; and, if preferred, board in private families can be had for fifteen dollars per month.

THEOLOGICAL STUDENTS.

Theological students who come with licenses from their churches do not pay any tuition fee.

UNIFORM.

On ordinary occasions, the students wear such clothing as they prefer; but on dress occasions, they are required to wear the College uniform, consisting of grey cloth pants, coatee, and cap, which cost twenty-nine dollars.

MEDICAL ATTENTION.

In order that students whose parents live at a distance may have medical attention whenever desired, the Board of Trustees have secured the services of two good physicians; one or the other of whom will visit the College daily, or as often as necessary. For this service, all these students from abroad are required, on matriculation, to pay a fee of five dollars. This fee secures medical attention for the *entire* scholastic year.

COMMENCEMENT AND DEGREES.

1. The Annual Commencement is held on the **THIRD WEDNESDAY IN JUNE.**

2. No student is admitted to a Degree or permitted to take any part in the Commencement Exercises, unless he has creditably sustained all his examinations, performed such other exercises as may have been assigned him, and settled all College dues, including a graduating fee of five dollars.

Calendar.

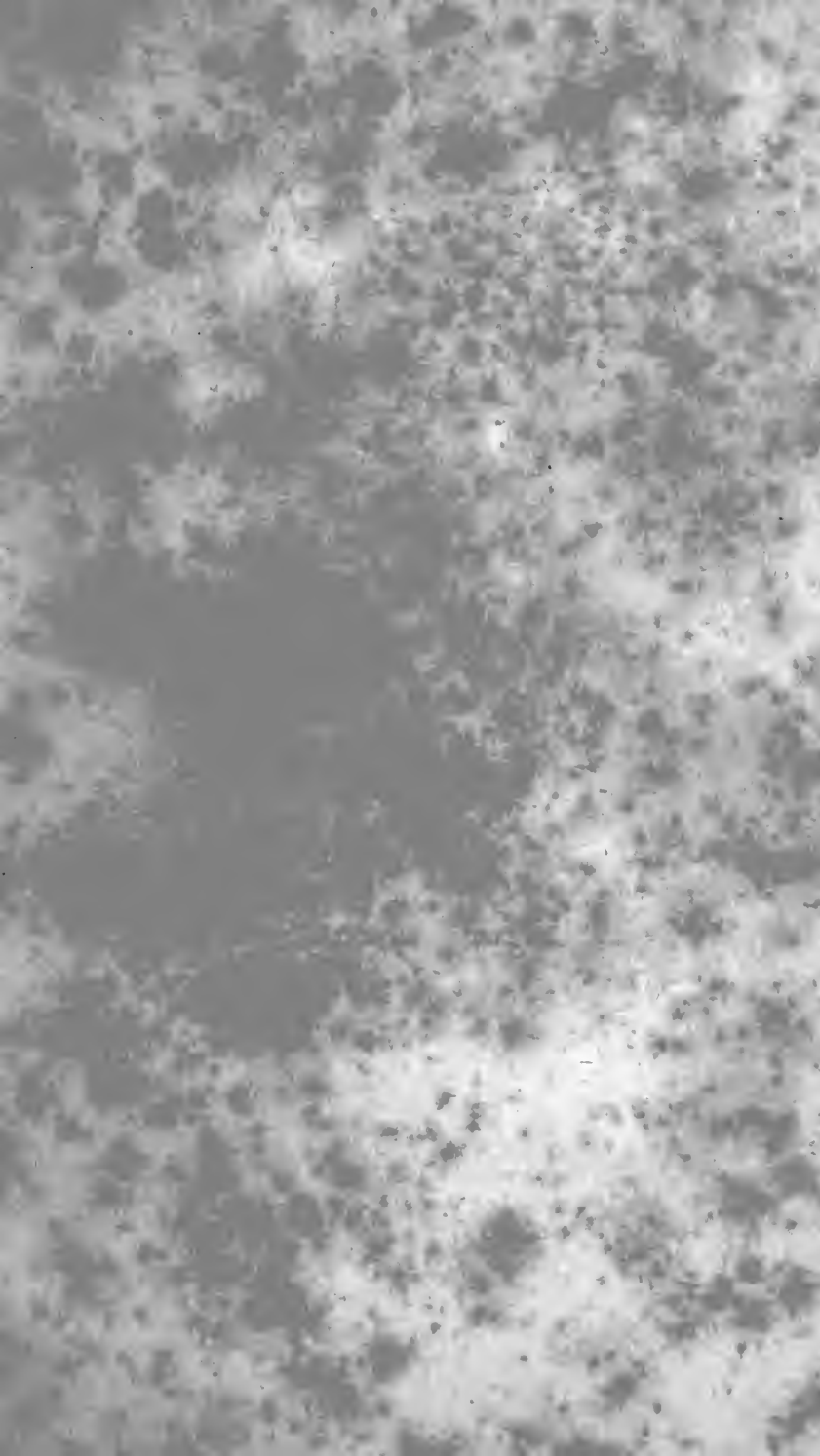
Session 1872-73.

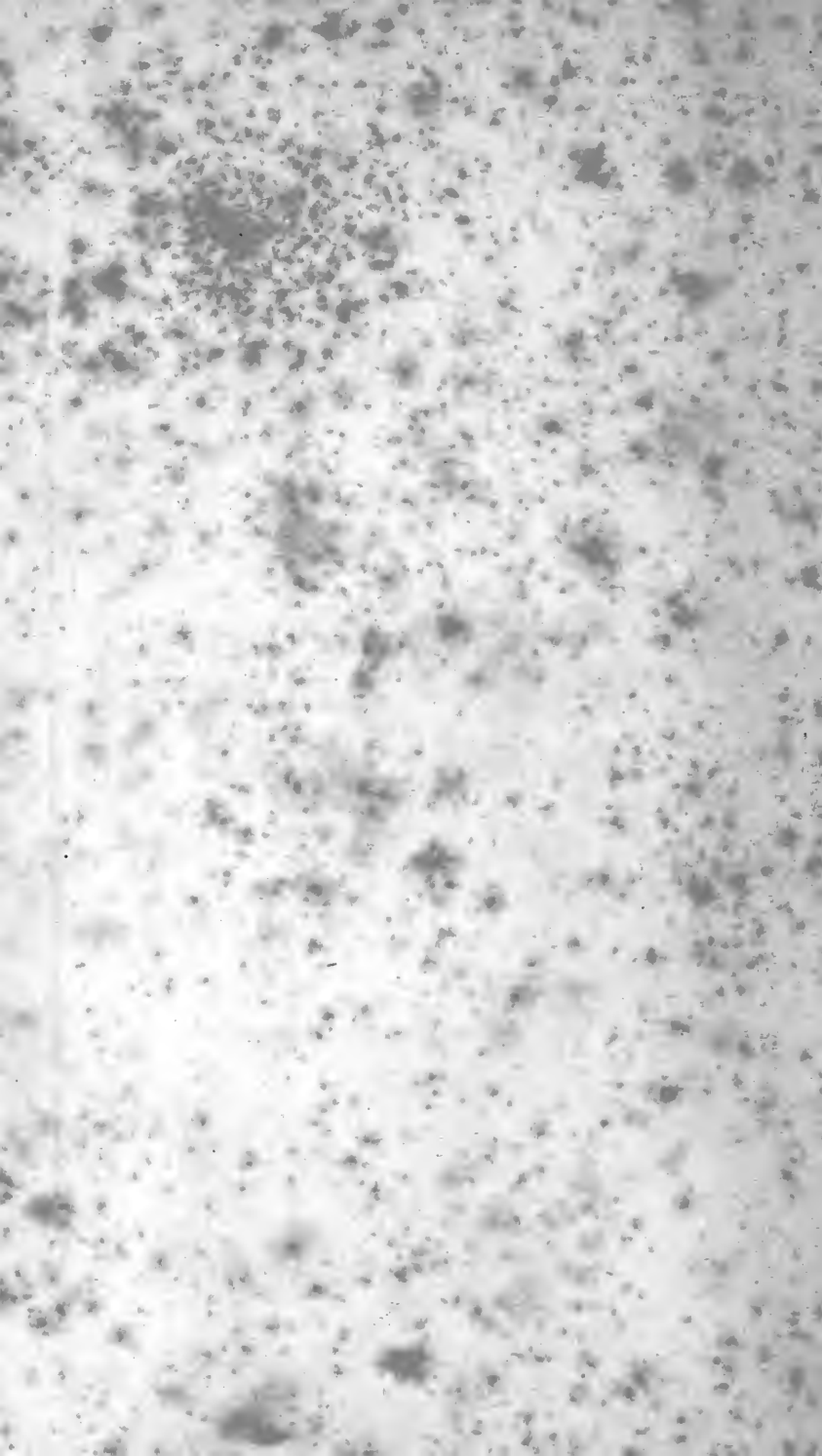
Closing Examinations.....	June 9-13, 1873
Baccalaureate Sermon.....	June 15, 1873
Declamation of Extracts and Prize Medal awarded	
	A. M., June 16, 1873
Oration before the Alumni Society	P. M., June 17, 1873
Commencement Exercises.....	A. M., June 18, 1873

Session 1873-74.

First Term begins.....	Oct. 1, 1873
Anniversary of Franklin Society.....	Jan. 16, 1874
Intermediate Examinations.....	Jan. 20-30, 1874
First Term ends.....	Jan. 31, 1874
Second Term begins.....	Feb. 1, 1874
Anniversary of Philomathic Society.....	Feb. 22, 1874







SAMFORD UNIVERSITY LIBRARY



,
ary

1 1 00151465

AL

Special Collections

LD 1869/70-
4881.2 1886/87
.C3

Howard College (Marion,
Ala.)

Catalogue of the officers
and students of Howard

ROOM USE ONLY

