

Q1
425
G7D16
Moll.

Vespa

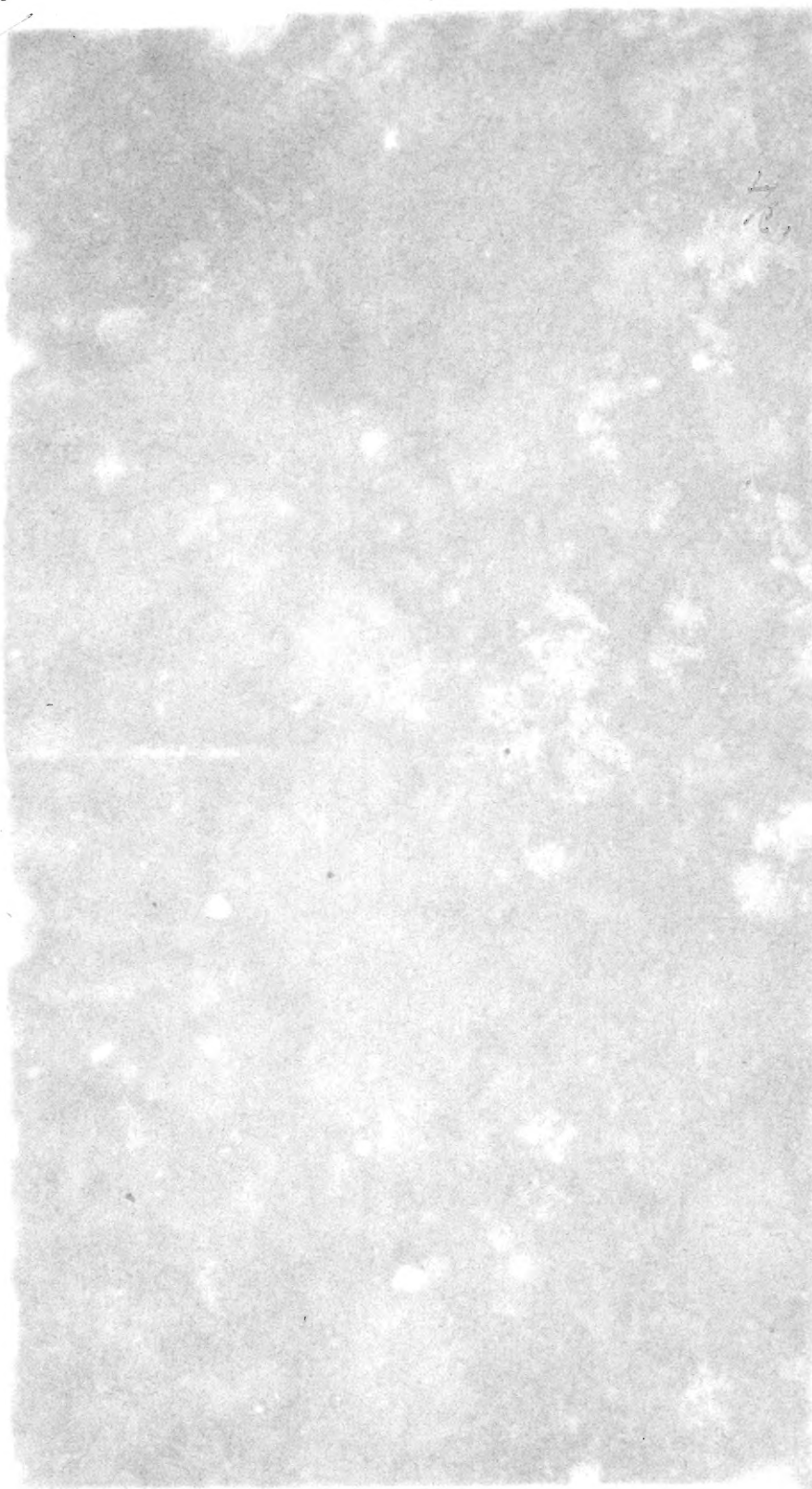
Division of Mollusks
Sectional Library

Damon
1857

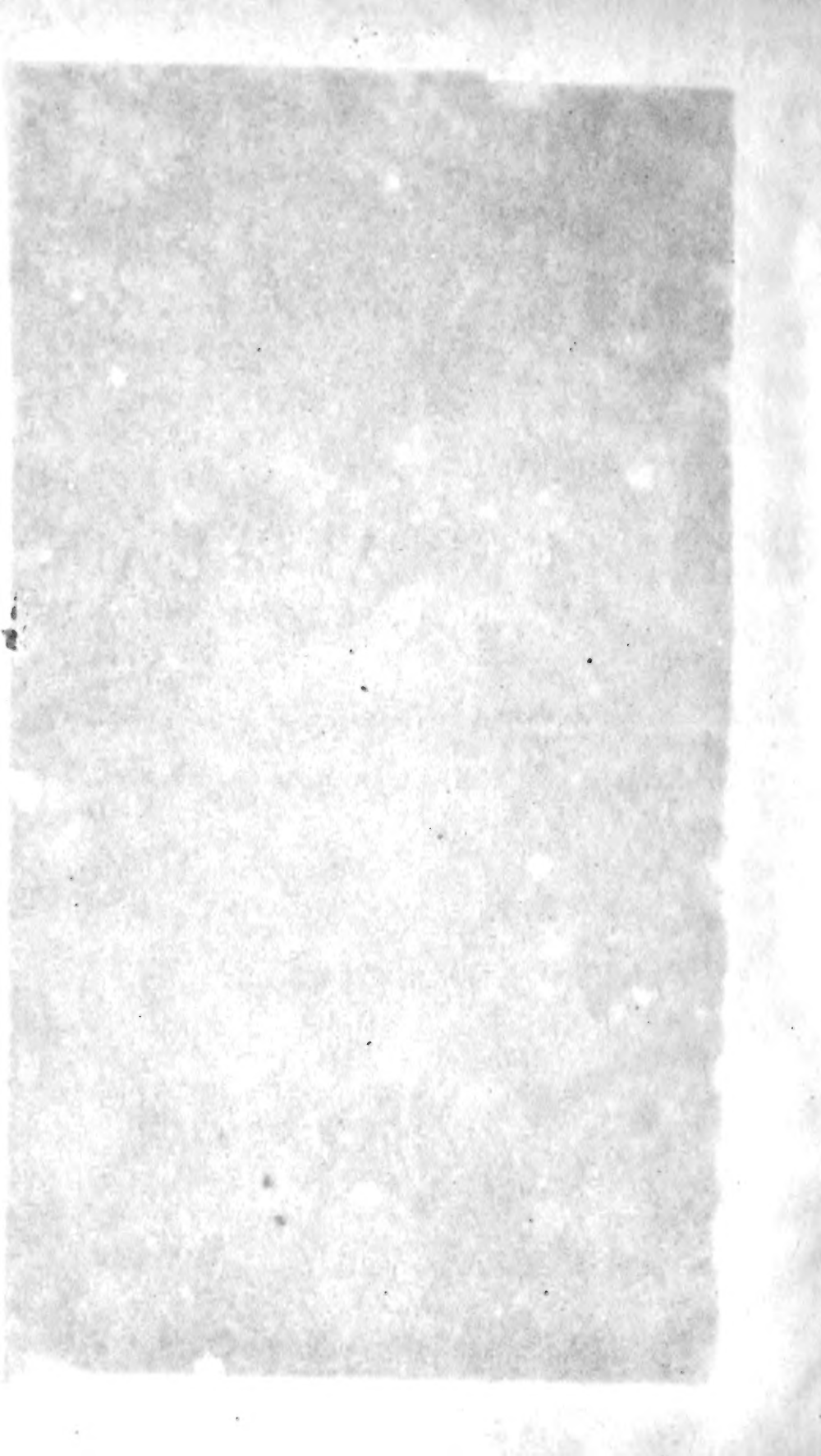
4 1985

Div. Hall.

~~B. 256~~



2
187



Shells found at Scilly Islands

QL

425

G 7D 16

Moll.

A CATALOGUE

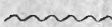
OF THE

SHELLS OF GREAT BRITAIN

AND IRELAND.

WITH THEIR

SYNONYMS AND AUTHORITIES.



PRINTED FOR AND PUBLISHED BY R. DAMON, WEYMOUTH.

MDCCCLVII.



CONCHOLOGY & GEOLOGY.

MR. R. DAMON, OF WEYMOUTH,

Invites the attention of Collectors, Natural History Societies, Museums, &c., to his extensive Stock of Shells and Fossils, as indicated by the following List.

RECENT SHELLS.*

	£	s.
A Collection of 1000 named species, comprising several hundred genera and sub-genera, collected from all parts of the world	50	0
<i>This Collection would comprise nearly 3000 Shells, perfect, and in good condition.</i>		
Ditto of Generic and Typical Forms, suited to Public Museums		
Ditto Land and Freshwater Shells of Europe, 300 species.....	12	12
Marine Shells of the Mediterranean and Adriatic Seas, 250 species		
Ditto Northern and Arctic Seas.....		
Ditto Land Shells of the Island of Jamaica, 250 species.....		
A Suite of 30 species of Land & Freshwater Shells from W. Africa	2	0
<i>Containing the following uncommon genera, Iridina, Streptaxis, Galathea, Amnicola, Iphigenia, &c.</i>		
50 species of the Genus Conus, £5 5s..... Ditto, ditto, Cyprea, £3 3s.		
	<i>&c., &c., &c.</i>	

BRITISH SHELLS.*

Collections of the Shells of the British Isles, named according to the "British Mollusca," by Forbes and Hanley, at the following prices:—

100 species, containing 300 Shells,	£2	12s.	6d.
200 species, £6 6s. 0d. ... 300 species, £12 12s. ... 400 species, £25.			

IMPROVED DREDGE FOR COLLECTING SHELLS.

FOSSIL REMAINS.

From the Secondary Formation, including Saurians, Pentacrinite, Fish, Ophiuræ, Sepia, Echinidæ, Ammonites, Shells, &c.

200 species of the beautiful Tertiary fossils of the Paris Basin, named after Deshayes, 5 gs.

100 species from the London Clay formation, £1 11s. 6d.

Collections to facilitate the study of Geology, illustrative of the recent works on that science, 1, 2, 5, 10 Guineas, and upwards.

ELEMENTARY COLLECTIONS.

Foreign Shells, 100 species,	30s.
British ditto, 50 ,,	15s.
Fossils and Rocks, illustrative of the Oolite and Lias Beds,	20s.

CATALOGUE OF BRITISH SHELLS WITH THEIR SYNONYMS & AUTHORITIES, 1s.

Set of neatly-printed Labels for British Shells, 2s. 6d.

[Specimen

Thracia convexa.

Lists of Foreign Shells for Labelling, 2s. per 1000 names.

Ditto British Fossil Shells, ,, 2s. per 1000 names.

GENERIC CARDS, FOR A SYSTEMATIC ARRANGEMENT OF COLLECTIONS, COMPRISING ALL THE GENERA OF RECENT SHELLS.

Specimen

TEREDO.

Card.

Adanson.

Shells marked & sent from me

Silly Islands.

"C" additional species from Courtenay's list

A CATALOGUE

OF THE

SHELLS OF GREAT BRITAIN & IRELAND,

NAMED AFTER

"*British Mollusca*,"* by Messrs. Forbes and Hanley.

SUB-KINGDOM II.—MOLLUSCA.

CLASS I.—ACEPHALA.

LAMELLIBRANCHIATA.

FAM. I, PHOLADIDÆ. VOL. I, 57.

- Teredo Norvagica. *Spengler.*
- Teredo navalis. *Linneus.*
- Teredo megotara. *Hanley.*
- Teredo bipennata. *Turton.*
- Teredo malleolus. *Turton.*
- Teredo palmulata. *Lamarck.*
- Xylophaga dorsalis. *Turton.*
- Pholas dactylus. *Linneus.*
- Pholas parva. *Pennant.*
- Pholas crispata. *Linneus.*
- Pholas candida. *Linneus.*
- Pholadidea papyracea.
Pholas papyracea. *Solander.*
- Var. lamellata. *Turton.*

FAM. II, GASTROCHÆNIDÆ. VOL. I, 129.

- Gastrochæna modiolina. *Lam.*
Mya dubia. *Pennant.*
- Saxicava Arctica.
Mya Arctica. *Linneus.*
- Saxicava rugosa.
Mytilus rugosus. *Linneus.*
- Petricola lithophaga.
Venus lithophaga. *Retzius.*
- Venerupis Irus.
Donax Irus. *Linneus.*

FAM. III, MYADÆ. VOL. I, 160.

- Mya truncata. *Linneus.*
- Mya arenaria. *Linneus.*
- Panopæa Norvegica.
Mya Norvegica. *Spengler.*

FAM. IV, CORBULIDÆ. VOL. I, 179.

- Corbula nucleus. *Lamarck.*
- Corbula rosea. *Brown.*
- Corbula ovata. *Forbes.*
- Sphænia Binghami. *Turton.*
- Næera cuspidata.
Tellina cuspidata. *Olivi.*
- Næera costellata.
Corbula costellata. *Deshayes.*
- Næera abbreviata. *Forbes.*
- Poromya granulata.
Corbula granulata. *Nyst.*

FAM. V, PANDORIDÆ. VOL. I, 206.

- Pandora rostrata. *Lamarck.*
Tellina inæquivalvis. *Linneus.*
- Pandora obtusa. *Leach.*
- Lyonsia Norvegica.
Mya Norvegica. *Chemnitz.*

FAM. VI, ANATINIDÆ. VOL. I, 219.

- Thracia phaseolina. *Lamarck.*

* Published by Van Voorst in 4 vols., price £13 coloured, £6 10s. plain.

Thracia villosiuscula.
Anatina villosiuscula. *Macgillivray.*

Thracia pubescens.
Mya pubescens. *Pulteney.*

Thracia convexa.
Mya convexa, *Wood.*

Thracia distorta.
Mya distorta. *Montagu.*

Cochlodesma prætenue.
Mya prætenuis. *Pulteney.*

FAM. VII, SOLENIDÆ. VOL. I, 239.

Solen marginatus. *Pulteney.*

Solen siliqua. *Linneus.*

Solen ensis. *Linneus.*

Var. magna.

Solen pellucidus. *Pennant.*

FAM. VIII, SOLECURTIDÆ. VOL. I, 255.

Ceratisolen legumen.
Solen legumen, *Linneus.*

Solecurtus coarctatus. *rare*
Solen coarctatus, *Gmelin.*

Solecurtus candidus.
Solen candidus, *Renieri.*

FAM. IX, TELLINIDÆ. VOL. I, 269.

Psammobia vespertina.
Lux vespertina, *Chemnitz.*

Psammobia Ferroensis.
Tellina Ferroensis, *Chemnitz.*

Psammobia tellinella. *Lam.*

Psammobia costulata. *Turton.*

Diodonta fragilis.
Tellina fragilis, *Linneus.*

Tellina crassa. *Pennant.*

Tellina balaustina. *Linneus.*

Tellina donacina. *Linneus.*

Tellina pygmæa. *Philippi.*

Tellina incarnata. *Linneus.*

Tellina tenuis. *Da Costa.*

Tellina fabula. *Gronovius.*

Tellina solidula. *Pulteney.*

Tellina proxima. *Brown.*

Var. calcarea. *Han.*

Syndosmya alba.

Maetra alba, *Wood.*

Syndosmya intermedia.

Amphidesma intermedia, *Thompson.*

Syndosmya prismatica.

Ligula prismatica, *Montagu.*

Syndosmya tenuis.

Maetra tenuis, *Montagu.*

Scrobicularia piperata.

Maetra piperata, *Gmelin.*

FAM. X, DONACIDÆ. VOL. I, 331

Donax anatinus. *Lamarck.*
Var. magna.

Donax politus.
Tellina polita, *Poli.*

Donax trunculus. *Linneus.*

Ervilia castanea.
Donax castanea, *Montagu.*

FAM. XI, MACTRIDÆ. VOL. I, 349.

Maetra solida. *Linneus.*

Maetra truncata. *Montagu.*

Maetra elliptica. *Brown.*

Maetra subtruncata. *Da Cos.*
Var. subtruncata.

Maetra stultorum. *Linneus.*
Var. cinerea. *Montagu.*

Maetra Helvacea. *Chemnitz.*

Lutraria elliptica.
Maetra lutraria, *Linneus.*

Lutraria oblonga.
Mya oblonga, *Chemnitz.*

FAM. XII, VENERIDÆ. VOL. I, 377.

Tapes decussata.
Venus decussata, *Linneus.*

Tapes pullastra.
Venus pullastra, *Wood.*

Var. perforans. *Montagu.*

Tapes virginea.
Venus virginea, *Linneus.*

Var. Sarniensis. *Turton.*

Tapes aurea.
Venus aurea, *Gmelin.*

Cytherea Chione.
Venus Chione, *Linneus.*

Venus verrucosa. *Linneus.*

Venus casina. *Linneus.*

Var. reflexa. *Montagu.*

Venus striatula. *Donovan.*

Var. gallina. *Mat. & Rack.*

Venus fasciata. *Donovan.*

Venus ovata. *Pennant.*

Artemis exoleta.
Venus exoleta, *Linneus.*

*Artemis lineta.*Venus lineta, *Pulteney.**Lucinopsis undata.*Venus undata, *Pennant.*

FAM. XIII, CYPRINIDÆ. VOL. I, 439.

*Cyprina Islandica.*Venus Islandica, *Linneus.**Circe minima.*Venus minima, *Montagu.**Astarte sulcata.*Pectunculus sulcatus, *Da Costa.**Astarte Scotica, Da Cos.**Astarte crebricostata. Forbes.**Astarte elliptica.*Crassina elliptica, *Brown.**Astarte Arctica.*Crassina Arctica, *Gray.**Astarte compressa.*Venus compressa, *Montagu.**Astarte triangularis.*Mactra triangularis, *Montagu.**Isocardia cor.*Chama cor, *Linneus.*

FAM. XIV, CARDIADÆ. VOL. II, 1.

*Cardium aculeatum. Linneus.**Cardium echinatum. Linneus.**Cardium rusticum. Linneus.**Cardium edule. Linneus.**Cardium nodosum. Turton.**Cardium fasciatum. Montagu.**Cardium pygmæum. Donovan.**Cardium suecicum. Reeve.**Cardium Norvegicum. Spengl.*

FAM. XV, LUCINIDÆ. VOL. II, 41.

*Lucina borealis.*Venus borealis, *Linneus.**Lucina spinifera.*Venus spinifera, *Montagu.**Lucina divaricata.*Tellina divaricata, *Linneus.**Lucina flexuosa.*Tellina flexuosa, *Montagu.**Lucina leucoma. Turton.**Lucina ferruginosa. Forbes.**Diplodonta rotundata.*Tellina rotundata, *Montagu.*

FAM. XVI, KELLIADÆ. VOL. II, 69.

*Montacuta ferruginosa.*Mya ferruginosa, *Montagu.**Montacuta bidentata.*Mya bidentata, *Montagu.**Montacuta substriata.*Mya substriata, *Montagu.**Turtonia minuta.*Venus minuta, *O. Fabricius.**Kellia suborbicularis.*Mya suborbicularis, *Montagu.**Kellia nitida.*Lepton nitidum, *Turton.**Kellia rubra.*Cardium rubrum, *Montagu.**Lepton squamosum.*Solen squamosus, *Montagu.**Lepton convexum. Alder.**Lepton Clarkiæ. Clarke.**Galeomma Turtoni. Sowerby.*

FAM. XVII, CYCLADIDÆ. VOL. II, 110.

*Cyclas rivicola. Leach.**Cyclas cornea.*Tellina cornea, *Draparn.**Cyclas caliculata. Draparn.**Cyclas lacustris. Draparn.**Cyclas pallidum. Gray.**Cyclas pisidioides. Gray.**Pisidium obtusale. Pfeiffer.**Pisidium pusillum. Jenyns.**Pisidium cinereum. Alder.**Pisidium nitidum. Jenyns.**Pisidium Henslowianum. Jen.**Pisidium pulchellum. Jenyns.**Pisidium amnicum. Müller.*

FAM. XVIII, UNIONIDÆ. VOL. II, 136.

*Unio tumidus. Retzius.**Unio pictorum.*Mya pictorum, *Linneus.**Unio margaritifera.*Mya margaritifera, *Linneus.**Anodonta cygnea.*Mytilus cygneus, *Linneus.*

FAM. XIX, MYTILIDÆ. VOL. II, 162.

*Dreissina polymorpha. Pallas.**Mytilus edulis. Linneus.**Var. pellucidus.**Modiola modiolus.*Mytilus modiolus, *Linneus.**Modiola phaseolina. Philippi.*

Modiola tulipa. *Lamarck*.

Var. *magna*.

Modiola barbata.

Mytilus barbatus, *Linneus*.

Crenella discors.

Mytilus discors, *Linneus*.

Crenella marmorata. *Forbes*.

Crenella nigra.

Modiola nigra, *Gray*.

Crenella costulata.

Modiola costulata, *Risso*.

Crenella rhombea.

Modiola rhombea, *Berkeley*.

Crenella decussata.

Mytilus decussatus, *Montagu*.

FAM. XX, ARCADÆ. VOL. II, 214.

Nucula nucleus.

Arca nucleus, *Linneus*.

Var. *margaritacea*.

Nucula nitida. *Sowerby*.

Nucula radiata. *Hanley*.

Nucula decussata. *Sowerby*.

Nucula tenuis.

Arca tenuis, *Montagu*.

Leda caudata

Arca caudata, *Donovan*.

Var. *minuta*.

Leda pygmæa.

Nucula pygmæa, *Munster*.

Arca tetragona. *Poli*.

Arca lactea. *Linneus*.

Var. *Gaimardii*. *Payr*.

Arca raridentata. *S. Wood*.

Pectunculus glycimeris.

Arca glycimeris, *Linneus*.

FAM. XXI, AVICULACEÆ. VOL. II, 250.

Avicula tarentina. *Lamarck*.

Pinna pectinata. *Linneus*.

Var. *papyracea*.

Var. *ingens*.

FAM. XXII, OSTREADÆ. VOL. II, 261.

Lima subauriculata.

Pecten subauriculatus, *Montagu*.

Lima Loscombii. *Sowerby*.

Lima hians.

Ostrea hians, *Gmelin*.

Var. *inflata*. *Forbes*.

✓ *Pecten varius*.

Ostrea varia, *Linneus*.

Pecten niveus. *Macgillivray*.

✓ *Pecten pusio*. *Pennant*.

Pecten striatus. *Müller*.

Pecten furtivus. *Lovèn*.

✓ *Pecten tigrinus*. *Müller*.

✓ Var. *obsoletus*.

Pecten Danicus. *Chemnitz*.

Var. *Dumasii*. *Payr*.

Var. *Audouinii*. *Payr*.

✓ *Pecten similis*. *Laskey*.

✓ *Pecten maximus*.

Ostrea maxima, *Linneus*.

✓ *Pecten opercularis*.

Ostrea opercularis, *Linneus*.

Var. *lineatus*. *Da Costa*.

✓ *Ostrea edulis*. *Linneus*.

✓ *Anomia ephippium*. *Linneus*.

✓ Var. *squamula*. *Linneus*.

Var. *cylindrica*. *Gmelin*.

Var. *punctata*. *Chemnitz*.

Var. *coronata*. *Bean*.

Var. *cepa*. *Linneus*.

Var. *electrica*. *Linneus*.

Var. *fornicata*. *Lamarck*.

✓ *Anomia aculeata*. *Müller*.

Var. *striolata*. *Turton*.

✓ *Anomia patelliformis*. *Linn*.

Anomia striata. *Lovèn*.

CLASS II.—BRACHIOPODA.

FAM. XXIII, TEREBRATULIDÆ. VOL. II, 343.

Hypothyris psittacea.

Anomia rostrum-psittaci, *Chemnitz*.

Terebratula caput serpentis.

Anomia caput serpentis, *Linneus*.

Terebratula cranium. *Müller*.

Argiope cistellula.

Terebratula cistellula, *S. Wood*.

FAM. XXIV, CRANIADÆ. VOL. II, 364.

Crania anomala.

Patella anomala, *Müller*.

CLASS III.—PTEROPODA.

FAM. XXV, HYALEADÆ. VOL. II, 379.

Hyalea trispinosa. *Leseuer.*

FAM. XXVI, LIMACINADÆ. VOL. II, 382.

Spirialis Flemingii. *Forbes.*
Fusus retroversus, *Fleming.*Spirialis Mac Andrei. *Forbes.*Spirialis Jeffreysii. *Forbes.*

CLASS IV.—PROSOBRANCHIATA.

FAM. XXVII, CHITONIDÆ. VOL. II, 389.

Chiton fascicularis. *Linneus.*Chiton discrepans. *Brown.*Chiton Hanleyi. *Bean.*Chiton ruber. *Linneus.*✓ Chiton cinereus. *Linneus.*Chiton albus. *Linneus.*✓ Chiton asellus. *Chemnitz.*Chiton cancellatus. *Sowerby.*Chiton lævis. *Pennant.*Chiton marmoreus. *O. Fabric.*

FAM. XXVIII, PATELLIDÆ. VOL. II, 418.

✓ Patella vulgata. *Linneus.*Patella athletica. *Bean.*✓ Patella pellucida. *Linneus.*Var. lævis. *Pennant.*

✓ Acmea virginea.

Patella virginea, *Müller.*

Acmea testudinalis.

Patella testudinalis, *Müller.*

Pilidium fulvum.

Patella fulva, *Müller.*Propilidium ancyloide. *Forbes.*

FAM. XXIX, DENTALIADÆ. VOL. II, 446.

✓ Dentalium entalis. *Linneus.*Dentalium Tarentinum. *Lam.*

FAM. XXX, CALYPTRÆIDÆ. VOL. II, 457.

Pileopsis Hungaricus.

Patella Hungarica, *Linneus.*

Calyptra Sinensis.

Patella Chinensis, *Linneus.*

FAM. XXXI, FISSURELLIDÆ. VOL. II, 467.

✓ Fissurella reticulata.

Patella reticulata, *Donovan.*

Puncturella Noachina.

Patella Noachina, *Linneus.*✓ Emarginula reticulata. *J. Sow.*✓ Emarginula rosea. *Bell.*Emarginula crassa. *J. Sower.*

FAM. XXXII, HALIOTIDÆ. VOL. II, 484.

Haliotis tuberculata. *Linneus.*

FAM. XXXIII, TROCHIDÆ. VOL. II, 489.

✓ Trochus ziziphinus. *Linneus.*

Var. lævis.

✓ Var. Lyonsii. *Leach.*Var. albidus. *Wood.*Trochus conulus. *Linneus.*

Trochus alabastrum.

Margarita alabastrum, *Beck.*Trochus granulatus. *Born.*Trochus millegranus. *Philip.*✓ Trochus exiguus. *Pulteney.*✓ Trochus striatus. *Linneus.*✓ Trochus Montagui. *Gray.*✓ Trochus tumidus. *Montagu.*Var. trochiformis. *Forbes.*✓ Trochus cinerarius. *Linneus.*✓ Trochus umbilicatus. *Mont.*✓ Trochus Magus. *Linneus.*✓ Trochus lineatus. *Da Costa.*

Trochus undulatus.

Margarita undulata, *Sowerby.*

Trochus helicinus.

Turbo helicinus, *O. Fabricius.*

Var. depressa.

Var. globularis.

Trochus pusillus.

Margarita pusilla, *Jeffreys.*

✓ Phasianella pullus.

Turbo pullus, *Linneus.*

✓ Adeorbis subcarinata.

Helix subcarinatus, *Montagu.*Scissurella crispata. *Fleming.*

FAM. XXXIV, IANTHINIDÆ. VOL. II, 547.

✓ Ianthina communis. *Lamarck.*Ianthina pallida. *Harvey.*

Ianthina exigua. *Lamarch.*

FAM. XXXV, NERITIDÆ. VOL. III, 1.

Neritina fluviatilis. *Linneus.*

FAM. XXXVI, PALUDINIDÆ. VOL. III, 7.

Paludina Listeri. *For. & Han.*

Paludina vivipara. *Linneus.*

Bithinia tentaculata. *Gray.*

Bithinia Leachii. *Sheppard.*

Valvata piscinalis. *Müller.*

Valvata cristata. *Müller.*

FAM. XXXVII, LITTORINIDÆ. VOL. III, 31.

Littorina neritoides.

Turbo neritoides, Linneus.

Littorina littorea.

Turbo littoreus, Linneus.

Littorina rudis.

Turbo rudis, Donovan.

Var. *nigrolineata.* *Philip.*

Var. *zonaria.* *Bean.*

Littorina patula. *Jeffreys.*

Littorina tenebrosa.

Turbo tenebrosus, Montagu.

Var. *intermedia.*

Var. *jugosa.*

Littorina saxatilis. *Johnston.*

Littorina littoralis.

Nerita littoralis, Linneus.

Littorina fabalis.

Turbo fabalis, Turton.

Littorina palliata.

Turbo palliatus, Say.

Lacuna pallidula.

Nerita pallidula, Da Costa.

Var. *patula.* *Hanley.*

Lacuna puteolus.

Turbo puteolus, Turton.

Lacuna vincta.

Turbo vinctus, Montagu.

Var. *quadrifasciata.* *Mont.*

Var. *canalis.* *Montagu.*

Var. *labiosa.* *Lovèn.*

Var. *bifasciata.* *Brown.*

Lacuna crassior.

Turbo crassior, Montagu.

Assiminea Grayana.

Linneus Grayanus, Jeffreys.

Rissoa striatula.

Turbo striatulus, Montagu.

Rissoa lactea. *Michaud.*

Rissoa Zetlandica.

Turbo Zetlandicus, Montagu.

Rissoa crenulata. *Michaud.*

Rissoa calathus. *Forbes.*

Rissoa Beanii. *Hanley.*

Rissoa abyssicola. *Forbes.*

Rissoa sculpta. *Philippi.*

Rissoa punctura.

Turbo puncturus, Montagu.

Rissoa costata.

Turbo costatus, Adams.

Rissoa striata.

Turbo striatus, Montagu.

Rissoa parva.

Turbo parvus, Da Costa.

Var. *interrupta.* *Adams.*

Rissoa costulata. *Risso.*

Rissoa rufilabrum. *Alder.*

Rissoa labiosa.

Helix labiosus, Montagu.

Rissoa inconspicua. *Alder.*

Rissoa vittata.

Var. *albula.* *Adams.*

Var. *tenuis.* *For. & Han.*

Var. *similis.* *Brown.*

Rissoa semistriata.

Turbo semistriatus, Montagu.

Rissoa rubra.

Turbo ruber, Adams.

Var. *unifasciata.* *Montagu.*

Rissoa cingillus.

Turbo cingillus, Montagu.

Var. *graphica.* *Turton.*

Var. *rupestris.* *Forbes.*

Rissoa vitrea.

Turbo vitreus, Montagu.

Rissoa proxima. *Alder.*

Rissoa fulgida.

Helix fulgida, Adams.

Rissoa pulcherrima. *Jeffreys.*

Rissoa soluta. *Philippi.*

Rissoa littorea.

Rissoa globularis, Metcalf.

Rissoa anatina.

Cyclostoma anatinum, Draparnaud.

Rissoa ventrosa.
Turbo ventrosus, *Montagu*.
Var. muriatica. *Deshayes*.

Rissoa ulvæ.
Turbo ulvæ, *Pennant*.
Var. stagnalis. *Brown*.
Var. Barleei. *Jeffreys*.

Jeffreysia diaphana. *Alder*.
Jeffreysia opalina.
Rissoa opalina, *Jeffreys*.
Jeffreysia globularis. *Jeffreys*.
Skenea planorbis.
Turbo planorbis, *O. Fabricius*.

Skenea nitidissima.
Helix nitidissima, *Adams*.
Skenea rota. *Forbes*.

Skenea divisa. *Fleming*.
Skenea Cutleriana. *Clark*.
Skenea lævis.

Delphinula lævis, *Philippi*.
Skenea costulata.
Margarita costulata, *Müller*.

FAM. XXXVIII, TURRITELLIDÆ. VOL. III, 171.

Turritella communis. *Risso*.
Var. nivea. *Jeffreys*.

Cœcum trachea.
Dentalium trachea, *Montagu*.

Cœcum glabrum.
Dentalium glabrum, *Montagu*.

FAM. XXXIX, CERITHIADÆ. VOL. III, 184.

Aporrhais pes-carbonis.
Brongniart.

Aporrhais pes-pellicani.
Strombus pes-pellicani. *Linneus*.

Cerithium reticulatum.
Strombiformis reticulatus. *Da Costa*.

Cerithium adversum.
Murex adversus, *Montagu*.

Cerithium metula. *Lovèn*.

FAM. XL, SCALARIADÆ. VOL. III, 203.

Scalaria Turtonis.
Turbo Turtonis. *Turton*.

Scalaria communis. *Lamarck*.

Scalaria clathratula.
Turbo clathratulus, *Montagu*.

Scalaria Groenlandica.
Turbo Groenlandicus, *Chemnitz*.

Scalaria Trevelyana. *Leach*. *rare*

FAM. XLI, PYRAMIDELLIDÆ. VOL. III, 217.

Acelis ascaris.
Turbo ascaris, *Turton*.

Acelis supranitida.
Alvania supranitida, *S. Wood*.

Acelis unica.
Turbo unicus, *Montagu*.

Acelis nitidissima.
Turbo nitidissimus, *Montagu*.

Stylifer Turtoni. *Broderip*.
Phasianella stylifera, *Turton*.

Eulima polita.
Helix polita, *Linneus*.

Var. nitida.

Eulima distorta. *Deshayes*.
Var. gracilis.

Eulima subulata.
Turbo subulatus, *Donovan*.

Eulima bilineata. *Alder*.

Chemnitzia elegantissima.
Turbo elegantissimus, *Montagu*.

Var. gracilis. *Philippi*.

Var. pusilla. *Philippi*.

Chemnitzia rufa. *Philippi*.
Turritella fulvocincta, *Thompson*.

Chemnitzia formosa.
Odostomia formosa, *Jeffreys*.

Chemnitzia fenestrata.
Odostomia fenestrata, *Jeffreys*.

Chemnitzia scalaris.
Melania scalaris, *Philippi*.

Chemnitzia rufescens. *Forbes*.

Chemnitzia eximia.
Rissoa eximia, *Jeffreys*.

Chemnitzia indistincta.
Turbo indistinctus, *Montagu*.

Chemnitzia clathrata.
Odostomia clathrata, *Jeffreys*.

Odostomia conoidea.
Turbo conoideus, *Brocchi*.

Odostomia conspicua. *Alder*.

Odostomia unidentata.
Turbo unidentatus, *Montagu*.

Var. turrata. *Hanley*.

Odostomia striolata. *Alder*.

Odostomia acuta. *Jeffreys*.

Odostomia plicata.
Turbo plicatus, *Montagu*.

Odostomia eulimoides. *Han*.

Odostomia dubia. *Jeffreys*.

Odostomia alba. *Jeffreys*.
 Odostomia nitida. *Alder*.
 Odostomia glabrata.
 Helix glabrata, Mühlfeldt.
 Odostomia rissoides. *Hanley*.
 Var. albella. *Alder*.
 Odostomia cylindrica. *Alder*.
 Odostomia insculpta.
 Turbo insculpta, Montagu.
 Odostomia obliqua. *Alder*.
 Odostomia Warrenii.
 Rissoa Warrenii, Thompson.
 Odostomia truncatula. *Jeff*.
 Odostomia interstincta.
 Turbo interstinctus, Montagu.
 Odostomia spiralis.
 Turbo spiralis, Montagu.
 Odostomia dolioliformis. *Jeff*.
 Odostomia decussata.
 Turbo decussatus, Montagu.
 Odostomia excavata.
 Rissoa excavata, Phillippi.
 Odostomia pallida.
 Turbo pallidus, Montagu.
 Odostomia Gulsonæ. *Clark*.
 Eulimella Scillæ. *Scacchi*.
 Eulimella acicula.
 Eulima acicula, Phillippi.
 Eulimella affinis.
 Eulima affinis, Phillippi.
 Eulimella clavula.
 Turbonilla clavula, Lovén.
 Truncatella Montagui. *Lowe*.
 Otina otis.
 Helix otis, Turton.
 FAM. XLII, NATICIDÆ. VOL. III, 324.
 Natica monilifera. *Lamarck*.
 Natica nitida.
 Nerita nitida, Donovan.
 Natica sordida. *Phillippi*.
 Natica Montagui. *Forbes*.
 Natica helicoides. *Johnston*.
 Natica pusilla. *Say*.
 Natica Kingii. *Forbes*.
 FAM. XLIII, VELUTINIDÆ. VOL. III, 348.
 Velutina lævigata.
 Helix lævigata, Linneus.

Velutina flexilis
 Bulla flexilis, Montagu.
 Lamellaria perspicua.
 Helix perspicua, Linneus.
 Lamellaria tentaculata. *Mont*.
 FAM. XLIV, CANCELLARIADÆ. VOL. III, 360.
 Trichotropis Borealis. *Brod*.
 Cerithiopsis tuberculare.
 Murex tubercularis, Montagu.
 FAM. XLV, MURICIDÆ. VOL. III, 369.
 Murex erinaceus. *Linneus*.
 Murex corallinus. *Scacchi*.
 Lachesis minima.
 Buccinum minimum, Montagu.
 Purpura lapillus.
 Buccinum lapillus, Linneus.
 Nassa reticulata.
 Buccinum reticulatum, Linneus.
 Nassa pygmea.
 Ranella pygmea, Lamarck.
 Nassa incrassata
 Buccinum undatum. *Linneus*.
 Var. littorale. *King*.
 Var. crassum. *King*.
 Var. magnum. *King*.
 Var. striatum. *Pennant*.
 Var. pelagicum. *King*.
 Var. forma elatior. *Middendorf*.
 Var. acuminatum. *Broderip*.
 Buccinum Dalei. *J. Sowerby*.
 Buccinum Humphresianum
 Bennett.
 Buccinum fusiforme. *Broderip*.
 Fusus Islandicus. *Chemnitz*.
 Var. gracilis. *Alder*.
 Fusus propinquus. *Alder*.
 Fusus Berniciensis. *King*.
 Fusus antiquus.
 Murex antiquus, Linneus.
 Var. carinatus.
 Fusus Norvegicus.
 Strombus Norvegicus, Chemnitz.
 Fusus Turtoni. *Bean*.
 Trophon clathratus.
 Murex clathratus, Linneus.
 Trophon muricatus.
 Murex muricatus, Montagu.

Trophon Barvicensis.

Fusus Barvicensis, *Johnston.*

FAM. XLVI, CONIDÆ. VOL. III, 448.

Mangelia turricula.

Murex turriculus, *Montagu.*

Mangelia Trevelliana.

Pleurotoma Trevelliana, *Turton.*

Mangelia rufa.

Murex rufus, *Montagu.*Var. Ulideana. *Thompson.*

Mangelia nana.

Tritonium nanum, *Lovèn.*Mangelia teres. *Forbes.*Mangelia purpurea. *rare*Murex purpureus, *Montagu.*Var. asperrima. *Brown.*Mangelia Leufroyi. *Michaud.*

Mangelia linearis.

Murex linearis, *Montagu.*

Var. scabra.

Var. intermedia.

Var. pallida.

Mangelia gracilis.

Murex gracilis, *Montagu.*

Mangelia nebula.

Murex nebula, *Montagu.*

Var. pyramidata.

Var. lævigata.

Mangelia brachystoma. *Phil.*Mangelia striolata. *Scacchi.*

Mangelia costata.

Murex costatus, *Pennant.*Var. coarctata. *Forbes.*Var. Metcalfei. *Hanley.*

Mangelia attenuata.

Murex attenuatus, *Montagu.*

Mangelia septangularis

FAM. XLVII, CYPREADÆ. VOL. III, 493.

Cypreæ Europæa. *Montagu.*

Ovula patula.

Bulla patula, *Pennant.*

Ovula acuminata.

Bulla acuminata, *Bruguère.*

Marginella lævis.

Voluta lævis, *Donovan.*

FAM. XLVIII, BULLIDÆ. VOL. III, 508.

Cylichna cylindracea.

Bulla cylindracea, *Pennant.*

Cylichna truncata.

Bulla truncata, *Adams.*

Cylichna obtusa.

Bulla obtusa, *Montagu.*

Cylichna mammillata.

Bulla mammillata, *Phillippi.*Cylichna nitidula. *Lovèn.*

Cylichna conulus.

Bulla conulus, *Deshayes.*Cylichna strigella. *Lovèn.*

Cylichna umblicata.

Bulla umblicata, *Montagu.*

Amphisphyra hyalina.

Bulla hyalina, *Turton.*

Tornatella fasciata.

Voluta tornatilis, *Linneus.*

Akeria bullata.

Bulla akeria, *Linneus.*Akeria hydatidis. *Linneus.*Akeria Cranchii. *Leach.*

Scaphander lignarius.

Bulla lignaria, *Linneus.*

Philine aperta.

Bulla aperta, *Linneus.*

Philine quadrata.

Bulla quadrata, *S. Wood.*

Philine scabra.

Bulla scabra, *Müller.*

Philine catena.

Bulla catena, *Montagu.*

Philine punctata.

Bulla punctata, *Clark.*

Philine pruinosa.

Bulla pruinosa, *Clark.*

FAM. XLIX, APLYSIADÆ. VOL. III, 552.

Aplysia hybrida. *Sowerby.*

FAM. L, PLEUROBRANCHIDÆ. VOL. III, 557.

Pleurobranchus membra-

[naceus.

Lamellaria membranacea, *Montagu.*

Pleurobranchus plumula.

Bulla plumula, *Montagu.*

Spirula Peronii.

Nautilus spirula, *Linneus.*

FAM. LI, LIMACIDÆ. VOL. IV, 6.

Arion empiricorum. *Ferussac.*Arion flavus. *Müller.*Arion hortensis. *Ferussac.*

Limax agrestis. Müller.
Limax cinereus. Müller.
Limax arborum. Chantreaux.
Limax flavus. Linneus.
Limax brunneus. Draparn.
Limax tenellus. Müller.
Limax Sowerbii. Ferussac.
Limax gagates. Draparnaud.

FAM. LII, TESTACELLIDÆ. VOL. IV, 26.

Testacella haliotoidea. Drap.

FAM. LIII, HELICIDÆ. VOL. IV, 29.

Vitrina pellucida. Müller.
Vitrina Draparnaldi.
Zonites cellarius. Müller.
Zonites alliarius. Müller.
Zonites nitidulus. Draparn.
Zonites purus. Alder.
Zonites radiatulus. Alder.
Zonites nitidus. Müller.
Zonites excavatus. Bean.
Zonites crystallinus. Müller.
Helix aperta. Born.
Helix aspersa. Müller.
Helix pomatia. Linneus.
Helix arbustorum. Linneus.
Helix Cantiana. Montagu.
Helix Carthusiana. Müller.
Helix nemoralis. Linneus.
 Var. *hortensis*. Müller.
 Var. *hybrida*. Poiret.
Helix pisana. Müller.
Helix virgata. Da Costa.
 Var. *alba*.
Helix caperata. Montagu.
Helix ericetorum. Müller.
 Var. *obliterata*.
Helix obvoluta. Müller.
Helix lapicida. Linneus.
Helix rufescens. Pennant.

Helix hispida. Linneus.
 Var. *depilata*. Alder.
 Var. *concinna*. Jeffreys.
Helix revelata. Ferussac.
Helix sericea. Draparnaud.
Helix lamellata. Jeffreys.
Helix aculeata. Müller.
Helix fulva. Müller.
Helix fusca. Montagu.
Helix pulchella. Müller.
Helix rotundata. Müller.
Helix umbilicata. Montagu.
Helix pygmæa. Draparnaud.
Bulimus acutus. Müller.
Bulimus Lackhamensis. Mont.
Bulimus obscurus. Müller.
Bulimus Goodalli. Miller.
Pupa umbilicata. Draparnaud.
Pupa muscorum. Linneus.
 Pupa *marginata*, Draparnaud.
Pupa Anglica. Ferussac.
Pupa secale. Draparnaud.
 Pupa *juniperi*, Fleming.
Pupa edentula. Draparnaud.
Pupa minutissima. Hartmann.
 Vertigo *cylindrica*, Ferussac.
Pupa pygmea. Draparnaud.
 Var. *alpestris*. Alder.
Pupa substriata. Jeffreys.
Pupa antivertigo. Draparn.
 Vertigo *palustris*, Turton.
Pupa pusilla. Müller.
Pupa Venetzi. Charpentier.
 Vertigo *angustior*, Jeffreys.
Balea fragilis. Draparnaud.
Clausilia laminata. Montagu.
 Clausilia *bidens*, Draparnaud.
Clausilia biplicata. Montagu.
Clausilia plicatula. Draparn.
 Clausilia *Rolphii*, Gray.
 Var. *Mortiletti*.
Clausilia nigricans. Maton.
 Var. *virisconti-alba*.
Zua lubrica. Müller.

- Azeca tridens.* *Pulteney.*
Achatina acicula. *Müller.*
Succinea putris. *Linneus.*
 Var. *gracilis.* *Alder.*
Succinea Pfeifferi, *Rossm.*
 Var. *intermedia.*
Succinea oblonga. *Draparn.*
 FAM. LIV, LIMNÆADÆ. VOL. IV, 139.
Physa fontinalis. *Linneus.*
Physa hypnorum. *Linneus.*
Planorbis corneus. *Linneus.*
Planorbis albus. *Müller.*
Planorbis glaber. *Jeffreys.*
Planorbis lævis, *Alder.*
Planorbis nautilus. *Linneus.*
Planorbis imbricatus, *Müller.*
Planorbis carinatus. *Müller.*
Planorbis marginatus. *Drap.*
 Var. *rhombus.*
Planorbis vortex. *Linneus.*
Planorbis spirorbis. *Linneus.*
Planorbis contortus. *Linneus.*
Planorbis nitidus. *Müller.*
Planorbis lacustris. *Lightfoot.*
Segmentina lineata, *Fleming.*
Limneus pereger. *Müller.*
 Var. *ovata.*
 Var. *lineata.* *Bean.*
- Limneus Burnetti.* *Alder.*
Limneus auricularius. *Linn.*
 Var. *acutus.* *Jeffreys.*
Limneus stagnalis. *Linneus.*
 Var. *fragilis.*
Limneus truncatulus. *Müller.*
Limneus glaber. *Müller.*
Limneus palustris. *Linneus.*
Limneus glutinosus. *Müller.*
Amphipeplea glutinosa, *Gray's Manual.*
Limneus involutus. *Harvey.*
Amphipeplea involuta, *Gray's Manual.*
Ancylus fluviatilis. *Müller.*
Ancylus oblongus. *Lightfoot.*
Ancylus lacustris, *Müller.*
- FAM. LV, AURICULIDÆ. VOL. IV, 190.
Conovulus bidentatus. *Mont.*
Conovulus albus. *Gray's M.*
Conovulus denticulatus.
Montagu.
 Var. *myosotis.* *Draparnaud.*
 Var. *ringens.*
Carychium minimum. *Müller.*
- FAM. LVI, CYCLOSTOMIDÆ. VOL. IV, 200.
Cyclostoma elegans. *Müller.*
Acme lineata. *Draparnaud.*
Acme fusca, *Gray's Manual.*



Omitted.

P. 8—Nassa incrassata. Müller. P. 9—Mangelia septangularis. Mont.

Additional Species described by J. G. Jeffreys, Esq., in "Annals of Natural History," January, 1858.

Poromya subtrigona, n. sp. Jeffreys.

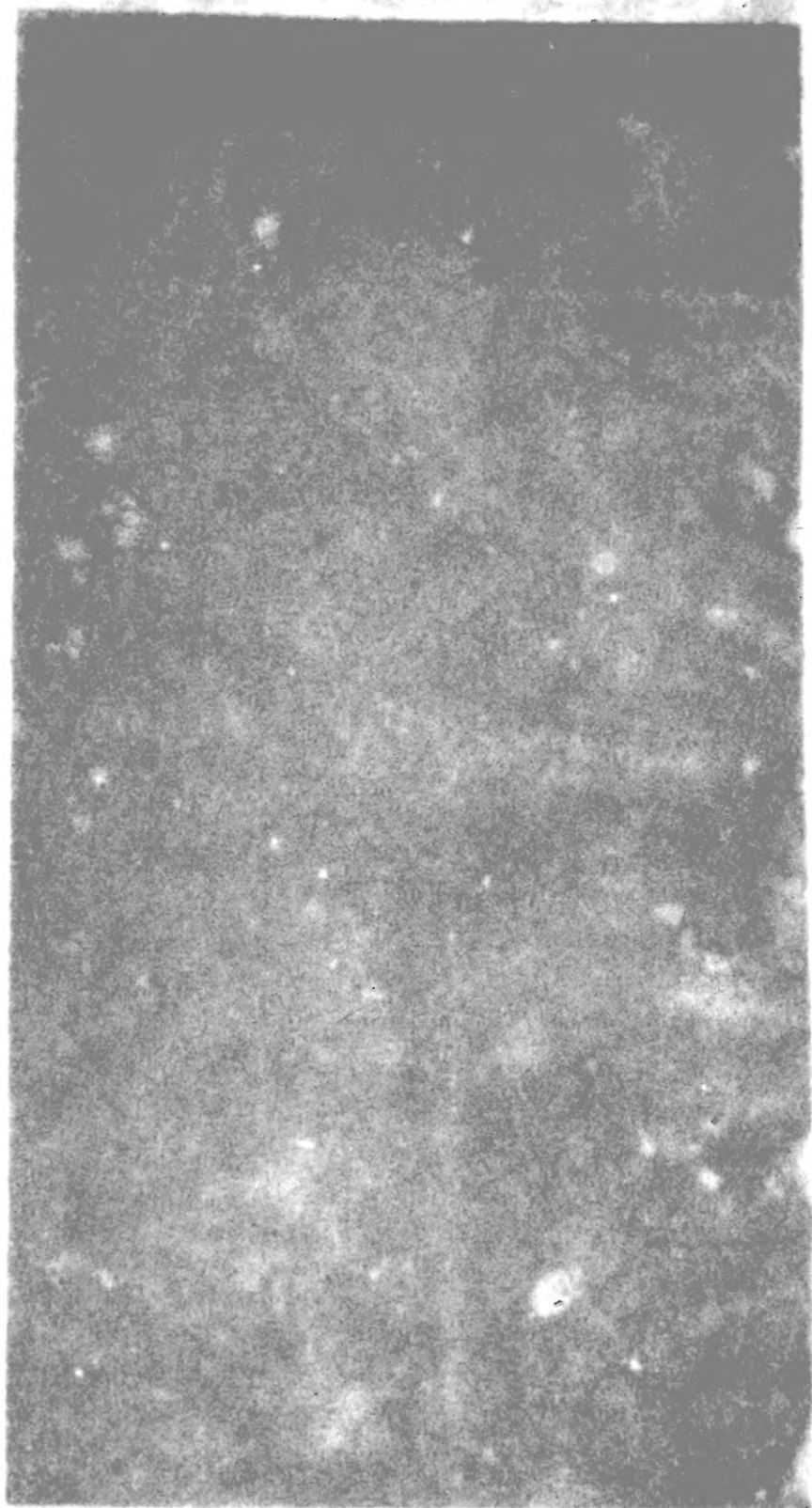
Eulimella obeliscus. Jeffreys.

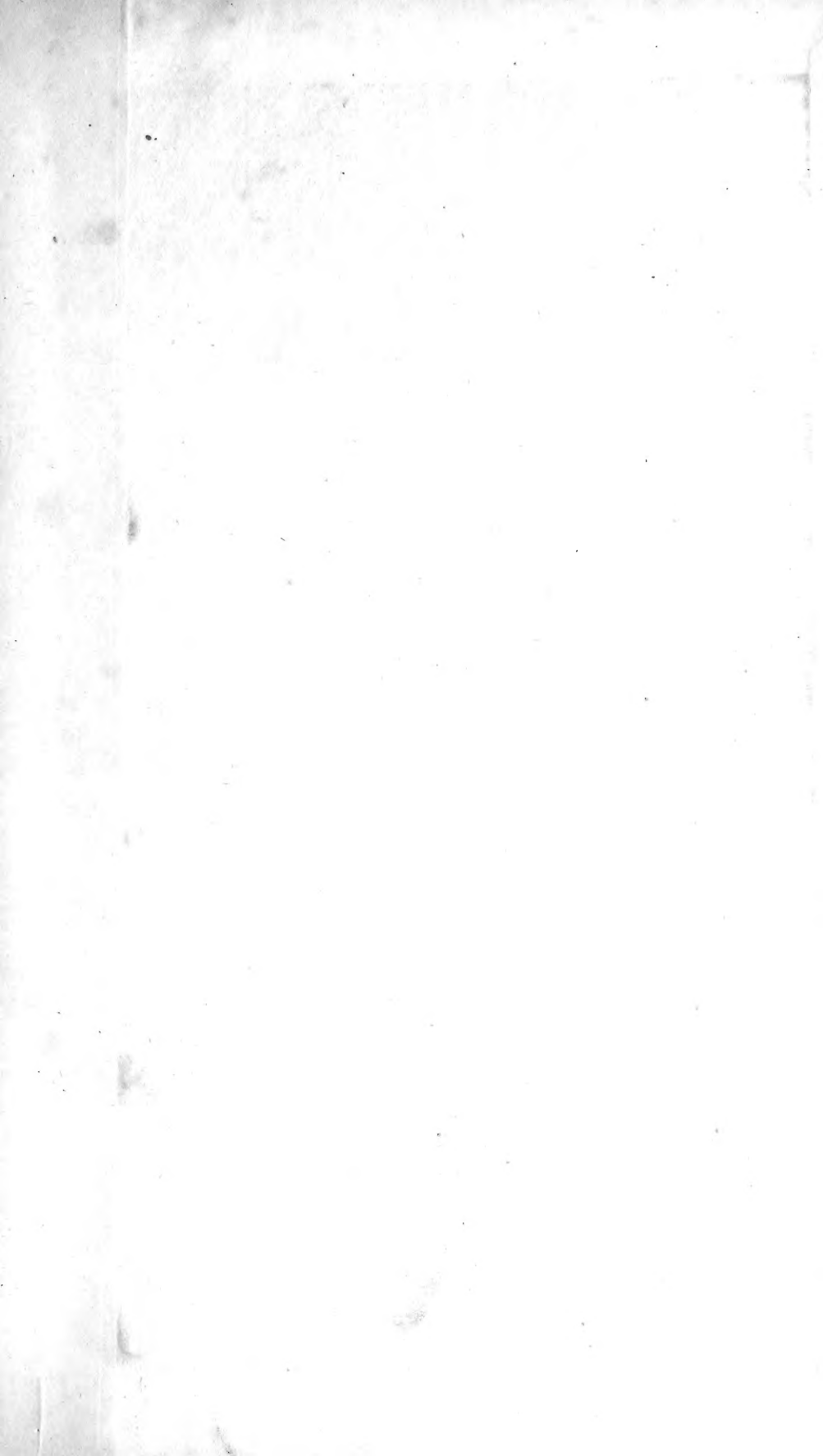
Diodonta Barleei, n. sp. Jeffreys.

Amphisphyra globosa. Müller.

Odostomia minima, n. sp. Jeffreys.

Buccinum Holbollii. Müller.





SMITHSONIAN INSTITUTION LIBRARIES



3 9088 00316581 8

nhmoll QL425 G7D16

A catalogue of the shells of Great Brita