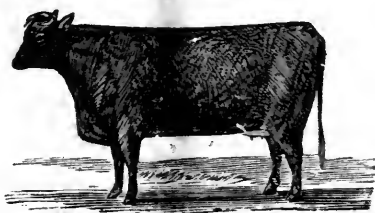


1891

KINELLAR LODGE, MARKHAM, ONT.

CATALOGUE — *

— OF —



Short-Horn Cattle AND Clydesdale Horses

THE PROPERTY OF

JOHN ISAAC

— TO BE SOLD BY —

PUBLIC AUCTION,

WITHOUT RESERVE,

At Kinellar Lodge Farm, Markham, Ontario,

— ON —

WEDNESDAY, FEBRUARY 25, 1891

At 1 O'clock p. m.

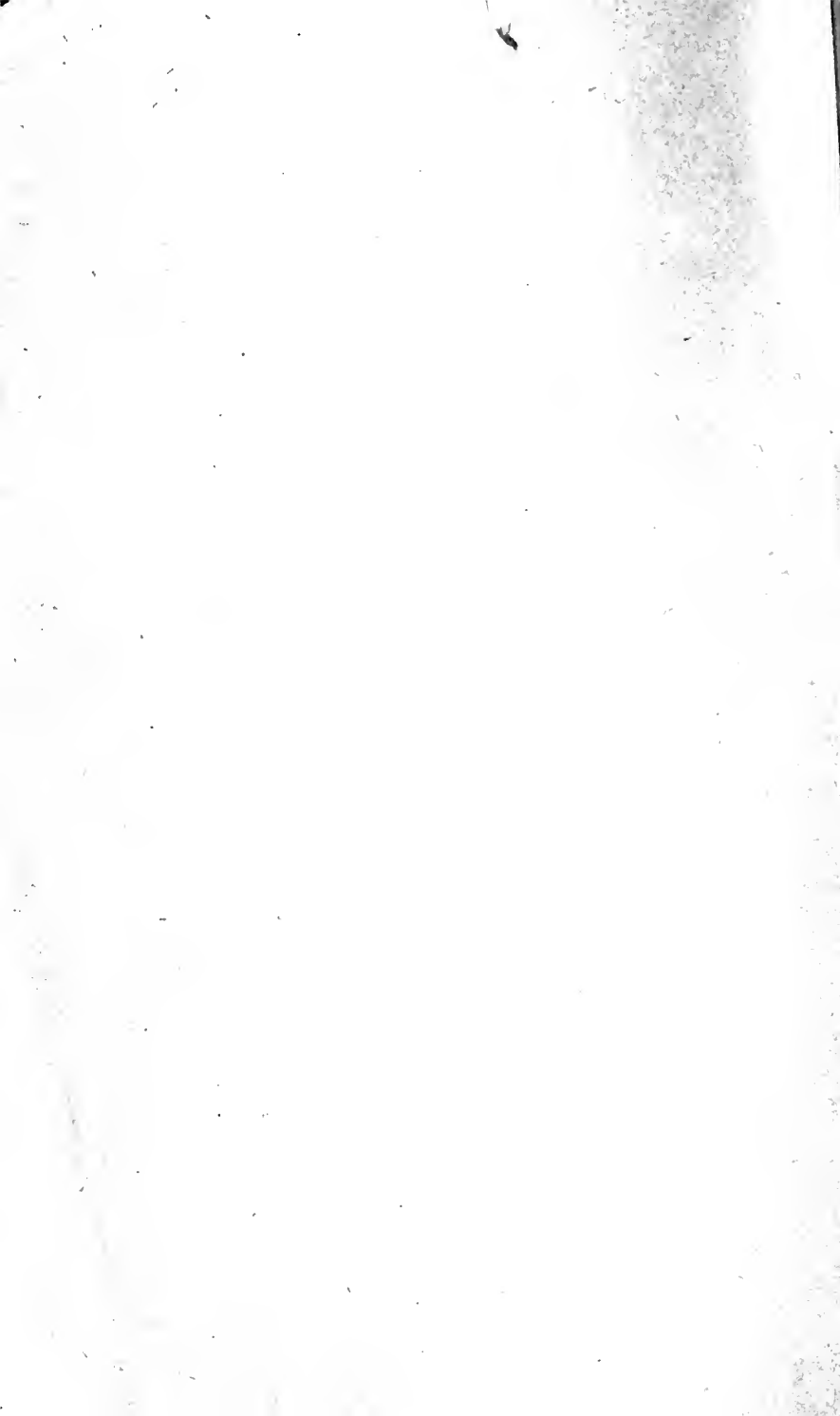
TERMS OF SALE FOR CATTLE.—Nine Months' Credit on Approved Notes, payable at the Standard Bank, Markham, or discount of 7 per cent. per annum for cash.

Kinellar Lodge is $1\frac{1}{2}$ miles from Markham Station on the Grand Trunk Railway, and $2\frac{1}{2}$ miles from Locust Hill Station Canadian Pacific Railway (20 miles from Toronto). Trains arrive at Locust Hill, from Toronto, at 9.57 a. m., from the East, 8.47. Grand Trunk trains, from Toronto, 8.45 a. m., from the North, 8.45 and 11.15 a. m.

Luncheon will be provided, and Sales to commence at 1 o'clock.

JOHN SMITH, Auctioneer,
Brampton Ont.

ECONOMIST BOOK AND JOB PRINTING OFFICE, MARKHAM, ONT.

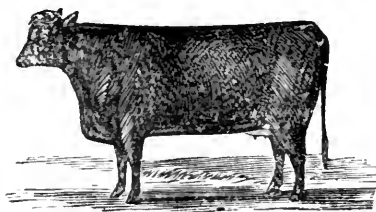


1891

KINELLAR LODGE, MARKHAM, ONT.

CATALOGUE — *

— OF —



Short-Horn Cattle AND Clydesdale Horses

THE PROPERTY OF

JOHN ISAAC

— TO BE SOLD BY —

PUBLIC AUCTION,

WITHOUT RESERVE,

At Kinellar Lodge Farm, Markham, Ontario,

— ON —

WEDNESDAY, FEBRUARY 25, 1891

At 1 O'clock p. m.

TERMS OF SALE FOR CATTLE.—Nine Months' Credit on Approved Notes, payable at the Standard Bank, Markham, or discount of 7 per cent. per annum for cash.

Kinellar Lodge is $1\frac{1}{2}$ miles from Markham Station on the Grand Trunk Railway, and $2\frac{1}{2}$ miles from Locust Hill Station Canadian Pacific Railway (20 miles from Toronto). Trains arrive at Locust Hill, from Toronto, at 9.57 a. m., from the East, 8.47. Grand Trunk trains, from Toronto, 8.45 a. m., from the North, 8.45 and 11.15 a. m.

Luncheon will be provided, and Sale to commence at 1 o'clock.

JOHN SMITH, Auctioneer,
Brampton, Ont.

THERE are 12 imported cows, from the herd of S. Campbell Kinellar, whose herd has probably furnished more of the prize animals of this country in the last twenty-five years than any other. They are all of the short legged, thick fleshed early maturing sort, which has made for Aberdeen Short-Horns such a reputation.

The list of Bulls includes a lot of really good ones, and will be found well worthy the attention of buyers.



ALSO

Six Imported Clydesdales.

3 STALLIONS AND 3 MARES.



TERMS ON HORSES :

One-half cash, balance nine months' credit on Approved Joint Notes. Seven per cent. per annum discount for cash.



Pedigrees of Horses Furnished on Day of Sale.

COWS AND HEIFERS.

The figures enclosed in Parenthesis, thus (464), refer to the English Herd Book; those in dashes, thus =464= to the Dominion Herd Book.

No. 1--CHARLOTTE, (*Imported.*)

Roan, calved 17th February, 1887; bred by S. Campbell, Kinellar, Aberdeen.

	Sire Gravesend,	(46461)
Dam, Cecilia 1st,	by Borough Member,	(33186)
“ Cecilia,	by Cæsar Augustus,	(25704)
“ Columbine,	by Sir Walter Scott,	(22922)
“ Camilia,	by Lancaster Comet,	(11663)
“ Cactus,	by Lord Sackville,	(13249)
“ Sharon Rose,	by Plantagenet,	(11906)
“ Fancy,	by Billy,	(3151)
“ Jessie,	by Sovereign,	(7539)
“ Rose,	by Satillite,	(1420)
“	by Baronet,	(60)
“	by Cleveland,	(144)
“	by Cemetery,	(641)

Charlotte has a Roan Bull Calf, calved October 15th, 1890; will be sold with her. Gravesend, (46461) was sired by Royal Victor, (43792), and out of Gentian by Barmpton, (37763); g.-d. Golden Lady, by Champion of England, (17526).

No. 2--CLAUDIA, (*Imported.*)

Roan, calved June 20th, 1882; bred by S. Campbell, Kinellar, Aberdeen.

	Sire Gladstone,	(43286)
Dam, Clarissa,	by Luminary,	(34715)
“ Claret 2nd,	by Novelist,	(34929)
“ Claret 1st,	by Duke,	(28342)
“ Claret,	by Scarlet Velvet,	(16916)
“ Barbara,	by Unrivalled,	(13926)
“ Isabella,	by The Pasha,	(7612)
“ Crocus,	by Second Duke of Northumberland,	(3646)
“ Nora,	by Sillery,	(5131)
“ Emily,	by Sillery,	(5131)
“ Elza,	by Young Western Comet,	(1575)
“ Lady Betsy,	by Diamond,	(205)
“ Betty,	by Favorite,	(256)
“	by Charge's Red Bull,	(1810)

Clandia has a Roan Bull Calf, sired by Baron Lenton, calved December 21st, 1890.

No. 3--MINA LASS, (Imported.)

Roan, calved March 19th, 1887; bred by S. Campbell, Kincliar,
Aberdeenshire, Scotland.

	Sire Gravesend,	(46461)
Dam, Mina of Deyston, Vol. 31, page 314, E. H. B.,	by Gladstone,	(43286)
" Mina 4th,	by Luminary,	(34715)
" Mina 5th,	by Diphthong 3rd,	(21547)
" Mina 2nd,	by Beeswing,	(12456)
" Crocus,	by Sir Arthur,	(12072)
" Bashful,	by Young Ury,	(10984)
" Likely,	by The Pasha,	(7612)
" Helen,	by 2nd Duke of Northumberland	(3646)
" Norah,	by Sillery,	(5131)
"	by Carleton,	(843)
"	by Diamond,	(205)
"	by Diamond,	(205)

Mina Lass has a Roan Bull Calf, calved January 14th, 1891; will be sold with her, sired by Stanley =7949=. Stanley was awarded first for bull, two-years-old, at Kingston Provincial in 1888; first prize for bull, three-years-old and over, at London Provincial Show in 1889; first in Toronto, and sweepstakes for best bull of any age in 1889; also first prize in Toronto in 1890.

No. 4--MINA LASS 2nd.

Red, calved April 12th, 1889.

	Sire Tofthill's Imported,	(56656)
Dam, Mina Lass, (imp.),	by Gravesend,	(46461)
" Mina of Deyston,	by Gladstone,	(43286)
" Mina 4th,	by Luminary,	(34715)
" Mina 5th,	by Diphthong 3rd,	(21547)
" Mina 2nd,	by Beeswing,	(12456)
" Crocus,	by Sir Arthur,	(12072)
" Bashful,	by Young Ury,	(10984)
" Likely,	by The Pasha,	(7612)
" Helen,	by 2nd Duke of Northumberland	(3646)
" Norah,	by Sillery,	(5131)
"	by Carleton,	(843)
"	by Diamond,	(205)
"	by Diamond,	(205)

195
No. 5--URGENT, (Imported.)

Red, calved October 10th, 1885; bred by S. Campbell, Kinellar, Aberdeen.

	Sire Vermont,	(47193)
Dam, Ury 6th,	by Foljambe,	(33956)
" Ury 4th,	by Duke,	(28342)
" Ury 1st,	by Scarlet Velvet,	(16916)
" Ury Lass,	by Beeswing,	(12456)
" Miss Isabella,	by Mosstrooper,	(11827)
" Donside Lassie,	by Vice-President,	(11002)
" Isabella,	by The Pasha,	(7612)
" Crocus,	by the 2nd Duke of Northumberland,	(3646)
" Nora,	by Sillery,	(5181)
" Emily,	by Sillery,	(5131)
" Eliza,	by Young Western Comet,	(1575)
" Lady Betsy,	by Diamond,	(205)
" Betty,	by Favourite,	(256)
"	by Charge's Red Bull,	(1810)

Urgent, bred to Baron Lenton December 2nd, 1890. Vermont, (47193), was sired by Lord of the Isles, (40218), and out of Victoria 54th, by Royal Duke of Gloster, (29864); g.-d. Victoria 39th, by Champion of England.

75
No. 6--FRASERVILLE QUEEN.

Dark Roan, calved February 27th, 1888.

	Sire Wellington,	=12769=
Dam, Forest Queen,	by Statesman 2nd,	=1306=
" Fair Queen 4th,	by Statesman 1st,	(44096)
" Fair Queen 2nd,	by Inkerman,	(31414)
" Fair Queen, (imp.),	by Sir Christopher,	(22895)
" Fair Queen 3rd,	by Dipthong,	(17681)
" Fair Queen,	by Master Gunner,	(22316)
" Lovely,	by Frolic,	(16086)
" Lovely,	by Sir Arthur,	(12072)
" Nancy,	by Dannaker,	(7949)
" Likely,	by The Pasha,	(7612)
" Helen,	by The 2nd Duke of Northumberland	(3646)
" Mary Ann,	by Sillery,	(5131)
" Miss Gibson,	by Carleton,	(843)
" Dorah,	by Diamond,	(205)
" Kitty,	by Diamond,	(205)

Fraserville Queen, due to calve 4th March, 1891, to Baron Booth,
=18144.=

No. 7--CLEODORA.

Red, calved April 5th, 1890.

	Sire Baron Lenton,	(49081)
Dam, Carman, (imp.)	by Gladstone,	(43286)
" Clorrina,	by British Prince,	(33226)
" Clementina 3rd,	by Sir Christopher,	(22895)
" Clementina 2nd,	by Dipthong 3rd,	(21547)
" Clementina,	by Lord Yathan,	(14858)
" Empress Eugenia,	by Guy Fawkes,	(12981)
" Bridesmaid,	by Sir Arthur,	(12072)
" Crescent,	by The Pasha,	(7612)
"	by The 2nd Duke of Northumberland,	(3646)
"	by Emperor,	(3716)
"	by Invalid,	(4076)
"	by Magnet,	(392)
"	by Palmflower,	(480)

No. 8--CLARA.

Roan, calved 7th April, 1890.

	Sire Baron Lenton,	(49081)
Dam, Claretta, (imp.)	by Gladstone,	(43286)
" Claret 2nd,	by Novelist,	(34929)
" Claret 1st,	by Duke,	(28342)
" Claret,	by Scarlet Velvet,	(16916)
" Barbara,	by Urwalled,	(13926)
" Isabella,	by The Pasha,	(7612)
" Crocus,	by The 2nd Duke of Northumberland	(3646)
" Nora,	by Sillery,	(5131)
" Emily,	by Sillery,	(5131)
" Eliza,	by Young Western Comet,	(1575)
" Lady Betsy,	by Diamond,	(205)
" Betty,	by Favourite,	(256)
"	Charge's Red Bull,	(1810)

No. 9--*MERMAID*, (*Imported.*)

Red and White, calved April —, 1895; bred by S. Campbell, Kinellar, Aberdeen.

	Sire Vermont,	(47193)
	by Duke,	(28842)
Dam, Mina 3rd,	by Diphthong 3rd,	(21547)
" Mina 1st,	by Beeswing,	(12456)
" Mina.	by Sir Arthur,	(12072)
" Crocus,	by Young Ury,	(10984)
" Bashful,	by The Pasha.	(7612)
" Likely,	by 2nd Duke of Northumberland,	(3646)
" Helen,	by Sillery,	(5131)
"	by Carleton,	(843)
"	by Diamond,	(205)
"	by Diamond,	(205)

Mermaid, due to calve May 3rd, 1891; bred to Baron Lenton.

No. 10--*CLEOPATRA* 1st, (*Imported.*)

Red and White, calved March 15th, 1887; bred by S. Campbell, Kinellar, Aberdeen.

	Sire Gravesend,	(46461)
	by British Flag,	(46009)
Dam, Cleopatra,	by Duke,	(28342)
" Claret 1st,	by Scarlet Velvet,	(16916)
" Claret,	by Unrivalled,	(13926)
" Barbara,	by The Pasha.	(7612)
" Isabella,	by The 2nd Duke of Northumberland,	(3646)
" Crocus,	by Sillery,	(5131)
" Nora,	by Sillery,	(5131)
" Emily,	by Young Western Comet,	(1575)
" Eliza,	by Diamond,	(205)
" Lady Betsy,	by Favourite,	(256)
" Betty,	by Charge's Red Bull,	(1810)
"		

Cleopatra 1st is due to calve before the Sale, to Baron Lenton.

No. 11--GIPSY QUEEN 3rd.

Roan, calved February 3rd, 1889.

	Sire Tofthills, (imp.)	(56656)
Dam, Gipsy Queen (imp.)	by Gladstone,	(43286)
" Mina 5th, (imp.)	by Luminary,	(34715)
" Mina 1st,	by Diphthong 3rd,	(21547)
" Mina,	by Beeswing,	(12456)
" Crocus,	by Sir Arthur,	(12072)
" Bashful,	by Young Ury,	(10984)
" Likely,	by The Pasha,	(7612)
" Helen,	by 2nd Duke of Northumberland	(3646)
" Mary Anne,	by Sillery,	(5131)
" Miss Gibson,	by Carleton,	(843)
" Dora,	by Diamond,	(205)
" Kitty,	by Diamond,	(205)

Mina 5th was one of Mr. Campbell's show cows.

No. 12 - GIPSY LADY.

Roan, calved December 10th, 1889.

	Sire Windsor, (imp.)	(56771)
Dam, Gipsy Queen, (imp.)	by Gladstone,	(43286)
" Mina 5th,	by Luminary,	(34715)
" Mina 1st,	by Diphthong 3rd,	(21547)
" Mina,	by Beeswing,	(12456)
" Crocus,	by Sir Arthur,	(12072)
" Bashful,	by Young Ury,	(10984)
" Likely,	by the Pasha,	(7612)
" Helen,	by 2nd Duke of Northumberland	(3646)
" Mary Ann,	by Sillery,	(5131)
" Miss Gibson,	by Carleton,	(834)
" Dora,	by Diamond,	(205)
" Kitty,	by Diamond,	(205)

976 No. 13—NONPAREIL 35th, (Imported.)

Roan, calved March 20th, 1882; bred by S. Campbell, Kinellar, Aberdeen.

	Sire Gladstone,	(43286)
Dam, Nonpareil 30th,	by Royal Duke,	(35356)
“ Nonpareil 28th,	by Sir Christopher,	(22895)
“ Nonpareil 24th,	by Lord Sackville,	(13249)
“ Nonpareil 23rd,	by The Baron,	(13833)
“ Nonpareil 17th,	by Matadore,	(11800)
“ Nonpareil 10th,	by Prince Edward Fairfax,	(9506)
“ Countess of Lincoln,	by Diamond,	(5918)
“ Nonpareil 3rd,	by Young Frederick,	(3836)
“	by Commodore,	(1858)
“	by Tathwell Studley,	(5401)
“	by Blyth Comet,	(85)

490 No. 14—CLAUDIA 2nd.

White, calved December 15th, 1889.

	Sire Baron Lenton,	(49081)
Dam, Claudia, (imp.)	by Gladstone,	(43286)
“ Clarissa,	by Luminary,	(34715)
“ Claret 2nd,	by Novelist,	(34929)
“ Claret 1st,	by Duke,	(28342)
“ Claret,	by Scarlet Velvet,	(16916)
“ Barbara,	by Unrivalled,	(13926)
“ Isabella,	by The Pasha,	(7612)
“ Crocus,	by The 2nd Duke of Northumberland	(3646)
“ Nora,	by Sillery,	(5131)
“ Emily,	by Sillery,	(5131)
“ Eliza,	by Young Western Comet,	(1575)
“ Lady Betsy,	by Diamond,	(205)
“ Betty,	by Favourite,	(256)
“	Charge's Red Bull,	(1810)

No. 15—ROSE OF AUTUMN 11th.

Roan, calved May 19th, 1890.

	Sire Stanley,	=7949=
Dam, Rose of Autumn 8,	by Royal Booth 2nd,	=3818=
" Rose of Autumn 7,	by Sir Richard Booth,	=2454=
" Rose of Autumn 4,	by High Sheriff 2nd,	=702=
" Rose of Autumn, (imp.)	by Under Sheriff,	(32745)
" Prudence,	by Boanerges,	(25647)
" Mary Anne,	by Blair Athol,	(25638)
" Tibby,	by Garibaldi,	(26218)
" Queen,	by Young Von Dunck,	(19044)
" Mary,	by Albert,	(17286)
" Julia,	by Albert,	(17286)
" Madonna,	by Wonderful,	(700)
"	by Cardinal,	(841)
"	by Butterfly,	(104)

Rose of Autumn 4 was a first prize winner in Toronto and London Provincial as a three-year-old cow in 1881. She was dam of Prowler, =2297=, sire of the noted Bow Park prize winner Sir Arthur Ingram.

No. 16—ROSE OF AUTUMN 10th.

Red, calved December 8, 1889.

	Sire Tofthills,	(56656)
Dam, Rose of Autumn 7,	by Sir Richard Booth,	=2454=
" Rose of Autumn 4,	by High Sheriff 2nd,	=702=
" Rose of Autumn, (imp.)	by Under Sheriff,	(32745)
" Prudence,	by Boanerges,	(25647)
" Mary Anne,	by Blair Athol,	(25638)
" Tibby,	by Geribaldi,	(26218)
" Queen,	by Young Von Dunck,	(19044)
" Mary,	by Albert,	(17286)
" Julia,	by Albert,	(17286)
" Madonna,	by Wonderful,	(700)
"	by Cardinal,	(841)
"	by Butterfly,	(104)

dw No. 17--*ROSALIND*, (*Imported.*)

Red, calved March 21th, 1884; bred by S. Campbell, Kinellar, Aberdeen.

	Sire Vermont,	(47193)
Dam, Red Rose,	by Gladstone,	(43286)
" Roan Rosebud,	by Borough Member,	(33186)
" Rosebud,	by Sir Christopher,	(22895)
" Rosebud 1st,	by Diphthong,	(17681)
" Rosebud,	by Scarlet Velvet,	(16916)
" Thixlia,	by Earl of Aberdeen.	(12800)
" Myrtle,	by Balmoral,	(9920)
" Fortuneteller,	by Dannecker,	(7949)
"	by Ury,	(17157)
"	by Heriot,	(4017)
"	by Grey Diamond,	(2076)
"	by Jupiter,	(1144)

Rosalind, due to calve May 2nd, 1891; bred to Baron Lenton.

d7 No. 18--*FOREST QUEEN 2nd.*

Light Roan, calved January 1st, 1887.

	Sire Comet,	(49303)
Dam, Forest Queen.	by Statesman 2nd,	=1306=
" Fair Queen 4th,	by Statesman 1st,	(44096)
" Fair Queen 2nd,	by Inkerman,	(31414)
" Fair Queen (imp.),	by Sir Christopher,	(22895)
" Fair Queen 3rd,	by Diphthong,	(17681)
" Fair Queen,	by Master Gunner,	(22316)
" Lovely,	by Frolic,	(16086)
" Lovely,	by Sir Arthur,	(12072)
" Nancy,	by Dannecker,	(7949)
" Likely,	by The Pasha,	(7612)
" Helen,	by 2nd Duke of Northumberland,	(3646)
" Mary Ann,	by Sillery,	(5131)
" Miss Gibson,	by Carleton,	(843)
" Dorah,	by Diamond,	(205)
" Kitty,	by Diamond,	(205)

Forest Queen 2nd, due to calve March 2nd, 1891; bred to Baron Booth, =13144=.

No. 19--ROAN BETTY, (Imported.)

Roan, calved, Nov. 4th, 1884 ; bred by S. Campbell, Kinellar, Aberdeen.

	Sire Champion,	(47566)
Dam, Betty,	by Golden Prince,	(38363)
" Betsy,	by Prince of Worcester,	(20597)
" Betsy,	by Scarlet Velvet,	(16916)
" Buchan Lassic,	by Narcissus,	(9430)
" Whitehead,	by Sir Arthur,	(12072)
" Miss Grant Duff,	by Prince Alfred,	(8421)
" Maraschino,	by Duplicate Duke,	(6952)
" Christy,	by Bachelor,	(1666)
" Peggy,	by Emperor,	(1974)
"	by Houndiler,	(2139)
"	by Togston,	(5487)
"	The Fat Heifer.	

Roan Betty, bred to Baron Lenton, December 22nd, 1890.

No. 20--BELLA 3rd, (Imported.)

Red, calved February 28th, 1881 ; bred by George Bruce, Hetherwick, Aberdeen.

	Sire Statesman,	(45659)
Dam, Bella 2nd,	by Heir Apparent,	(31352)
" Bella,	by John Bright,	(31441)
" Mary,	by British Prince,	(23470)
" Flora 2nd,	by The Challenge Cup,	(23022)
" Flora,	by Sam Johnston,	(15334)
" Victoria,	by Principal Fairfax,	(10656)
" Beauty 2nd,	by Enterprise,	(10202)
" Beauty,	by Chancellor,	(5850)

Bella 3rd has a Roan Bull Calf, calved November 25th, 1890 ; sired by Baron Lenton.

No. 21 - *MINERVA*.

Red, calved June 9th, 1890.

	Sire Baron Lenton,	(49081)
Dam, Mermaid (imp.)	by Vermont,	(47193)
" Mina 3rd,	by Duke,	(28342)
" Mina 1st,	by Diphong 3rd,	(21547)
" Mina,	by Beeswing,	(12456)
" Crocus,	by Sir Arthur,	(12072)
" Bashful,	by Young Ury,	(10984)
" Likely,	by The Pasha,	(7612)
" Helen,	by The 2nd Duke of Northumberland,	(3646)
"	by Sillery,	(5131)
"	by Carleton,	(843)
"	by Diamond,	(205)
"	by Diamond,	(205)

No. 22 - *ROAN BESS*.

Roan, calved May 11th, 1890.

	Sire Baron Lenton,	(49081)
Dam, Roan Betty (imp.),	by Champion,	(47566)
" Betty,	by Golden Prince,	(38363)
" Betsy,	by Prince of Worcester,	(20597)
" Betsy,	by Scarlet Velvet,	(16916)
" Buchan Lassic,	by Narcissus,	(9430)
" Whitehead,	by Sir Arthur,	(12072)
" Miss Grant Duff,	by Prince Alfred,	(8421)
" Maraschino,	by Duplicate Duke,	(6952)
" Christy,	by Bachelor,	(1666)
" Peggy,	by Emperor,	(1974)
"	by Houndilee,	(2139)
"	by Togston,	(4587)
"	The Fat Heifer.	

No. 23--NONPAREIL 48th

Red, calved January 10th, 1890; sire, Windsor (56771), imported.

	Sire Windsor (imp.),	(56771)
Dam, Nonpareil 45,	by Royal Booth 2nd,	= 3818 =
" Nonpareil 34,	by High Sheriff,	(34162)
" Nonpareil 33,	by Inkerman,	(31414)
" Nonpareil 31 (imp.),	by Sir Christopher,	(22895)
" Nonpareil 26,	by Scarlet Velvet,	(16916)
" Nonpareil 24,	by Lord Sackville,	(13249)
" Nonpareil 23,	by The Baron,	(13833)
" Nonpareil 17,	by Matadore,	(11800)
" Nonpareil 10,	by Prince Edward Fairfax,	(9506)
" Countess of Lincoln,	by Diamond,	(5918)
" Nonpareil 3,	by Young Frederick,	(3836)
"	by Commodore,	(1858)
"	by Tathwell Studley,	(5401)
"	by Blythe Comet,	(85)

Royal Booth 2nd = 3818 =, was sold to Messrs. Beatty & Rowland, Penn., U. S. His sire and dam both bred by Mr. Booth, of Warlaby, England. High Sheriff (34162) was shown at the head of the herd that received highest award in Philadelphia in 1876.

No. 24--NONPAREIL 47.

Red and White, calved March 21st, 1889.

	Sire Tofthills (imp.),	(56656)
Dam, Nonpareil 45,	by Royal Booth 2nd,	= 3818 =
" Nonpareil 34,	by High Sheriff,	(34162)
" Nonpareil 33,	by Inkerman,	(31414)
" Nonpareil 31,	by Sir Christopher,	(22895)
" Nonpareil 26,	by Scarlet Velvet,	(16916)
" Nonpareil 24,	by Lord Sackville,	(13249)
" Nonpareil 23,	by The Baron,	(13833)
" Nonpareil 17,	by Matadore,	(11800)
" Nonpareil 10,	by Prince Edward Fairfax,	(9506)
" Countess of Lincoln,	by Diamond,	(5918)
" Nonpareil 3,	by Young Frederick,	(3836)
"	by Commodore,	(1858)
"	by Tathwell Studley,	(5401)
"	by Blythe Comet,	(85)

No. 25--LADY BOOTH 5th.

Red, calved January 18th, 1890.

	Sire Windsor (imp.),	(56771)
Dam, Lady Booth,	by Aurora Lad (imp.),	(49025)
" Rachael (imp.),	by Lord Rose,	(34659)
" Ruth,	by Sergeant Major,	(29957)
" Laurel.	by Earl Marcus.	(23819)
" White Rose.	by Magnus Troil,	(14880)
" Miss Henderson,	by Magnus Troil,	(14880)
" Miss Eliza,	by Bates.	(12451)
" Duchess,	by Lord Warden,	(20233)
"	by Snyders,	(7525)
"	by Duke of York,	(9049)

No. 26--LADY BOOTH 4th.

Red and White, calved December 28th, 1889.

	Sire Killerby (imp.),	(55951)
Dam, Lady Booth,	by Aurora Lad,	(49025)
" Rachael (imp.),	by Lord Rose,	(34659)
" Ruth,	by Sergeant Major,	(29957)
" Laurel.	by Earl Marcus.	(23819)
" White Rose,	by Magnus Troil,	(14880)
" Miss Henderson,	by Magnus Troil,	(14880)
" Eliza,	by Bates.	(12451)
" Duchess,	by Lord Warden,	(20233)
"	by Snyders,	(7525)
"	by Duke of York,	(9049)

No. 27--CARMAN, (Imported.)

Red, calved June 5th, 1882; bred by S. Campbell, Kinellar, Aberdeen.

	Sire Gladstone,	(43286)
Dam, Clorinne,	by British Prince,	(33226)
" Clementina 3rd,	by Sir Christopher,	(22895)
" Clementina 2nd,	by Diphong 3rd,	(21547)
" Clementina,	by Lord Yethan,	(14858)
" Empress Eugene,	by Guy Fawkes,	(12981)
" Bridesmaid,	by Sir Arthur,	(12072)
" Crescent,	by The Pasha,	(7612)
"	by the 2nd Duke of Northumberland,	(3646)
"	by Emperor,	(3716)
"	by Invalid,	(4076)
"	by Magnet,	(392)
"	by Palmflower,	(480)

No. 28--CLARETTA, (Imported.)

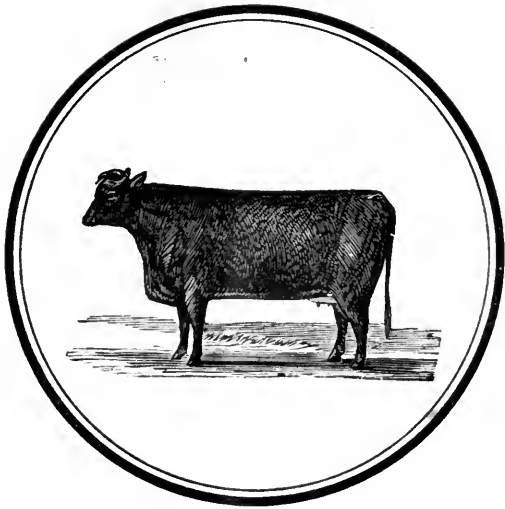
Roan, calved March 8th, 1883; bred by S. Campbell, Kinellar, Aberdeen.

	Sire Gladstone,	(43286)
Dam, Claret 2nd,	by Novelist,	(34929)
" Claret 1st,	by Duke,	(28342)
" Claret,	by Scarlet Velvet,	(16916)
" Barbara,	by Unrivalled,	(13926)
" Isabella,	by The Pasha,	(7612)
" Crocus,	by The 2nd Duke of Northumberland,	(3646)
" Nora,	by Sillery,	(5131)
" Emily,	by Sillery,	(5131)
" Eliza,	by Young Western Comet,	(1575)
" Lady Betsy,	by Diamond,	(205)
" Betty,	by Favourite,	(256)
"	Charge's Red Bull,	(1810)

No. 29--*QUEEN ANN.*

Red, calved April 26th, 1889.

	Sire, Wellington,	=8847=
Dam, Fair Queen 4th,	by Statesman 1st,	(44096)
" Fair Queen 2nd,	by Inkerman,	(31414)
" Fair Queen (imp.),	by Sir Christopher,	(22895)
" Fair Queen 3rd,	by Diphong,	(17681)
" Fair Queen,	by Master Gunner,	(22316)
" Lovely.	by Frolic,	(16086)
" Lovely,	by Sir Arthur,	(12072)
" Nancy,	by Dannecker,	(7949)
" Likely,	by The Pasha,	(7612)
" Helen,	by 2nd Duke of Northumberland,	(3646)
" Mary Ann,	by Sillery,	(5131)
" Miss Gibson,	by Carlton,	(843)
" Dorah,	by Diamond,	(205)
" Kitty,	by Diamond,	(205)



BULLS.

No. 1.—BARON LENTON (49081).

Dark Roan, calved December 12th, 1882; bred by Amos Cruickshank, Sittyton, Aberdeenshire.

	Sire Cumberland,	(46144)
Dam, Lavender 16th,	by Lord Lansdowne,	(29128)
" Lavender 11th,	by Count Bickerstaff 2nd,	(25838)
" Lavender 9th,	by Brian Born,	(17440)
" Lavender 7th,	by Friar Tuck,	(14578)
" Lavender 3rd,	by Eclipse,	(10186)
" Lavender 2nd,	by Queen's Roan,	(7389)
" Lavender,	by Will Honey Comb,	(5660)
"	by Spectator,	(2688)
"	by Albion,	(1619)
"	by Lancaster,	(360)
"	by Son of Windsor,	(698)
"	by Comet,	(155)

Baron Lenton (49081) is from Mr. Cruickshank's Lavender family, from which came the great show bull Baron Booth of Lancaster. He is the sire of a number of first-class show animals. He is perfectly gentle and sure.

No. 2.—WINDSOR (56771).

Red, calved January 30th, 1887; bred by S. Campbell, Kinellar, Aberdeenshire, Scotland.

	Sired by Gravesend,	(46461)
Dam, Red Bess,	by Gladstone,	(43286)
" Bessie 6th,	by Foljambe,	(33950)
" Bessie 3rd,	by British Prince,	(23468)
" Bessie 2nd,	by Rory O'More,	(24991)
" Bessie,	by Frolic,	(16086)
" Matilda,	by Red Rover,	(20651)
" Matilda,	by Robin Hood,	(8494)
" Ruby,	by Mahomet Second,	(10492)
" Daisy,	by Billy,	(3151)
" Maria,	by Belshazzar,	(1703)
"	by Abraham,	(2905)
"	by Simon,	(5184)

Windsor (56771) was awarded first prize at the London Provincial Show; also first at the Toronto Industrial as a two-year-old bull in 1889; first prize in Toronto as a three-year-old in 1890; also first in the class three-year-old and over at Ottawa, and was shown in the herd awarded GOLD MEDAL, TWENTY DOLLARS and DIPLOMA at Ottawa, 1890.

No. 3--DOCTOR LENTON.

Red, calved January 23rd, 1890.

	Sire Baron Lenton,	(49081)
Dam, Rosalind (imp.),	by Vermont,	(47193)
" Red Rose,	by Gladstone,	(43286)
" Roan Rosebud,	by Borough Member,	(33186)
" Rosebud,	by Sir Christopher,	(22895)
" Rosebud 1st,	by Diphong,	(17681)
" Rosebud,	by Scarlet Velvet,	(16916)
" Thilia,	by Earl of Aberdeen,	(12800)
" Myrtle,	by Balmoral,	(9920)
" Fortuneteller,	by Dannecker,	(7949)
"	by Ury,	(17557)
"	by Herriot,	(4017)
"	by Grey Diamond,	(2076)
"	by Juniper,	(1144)

No. 4--LORD GEORGE.

Red, calved March 6th, 1890.

	Sire General Booth,	(54353)
Dam, Merry Maiden (imp.),	by Chamberlain,	(50970)
" Sunflower 2nd,	by Statesman,	(45659)
" Sunflower,	by Socrates,	(39144)
" Spotty,	by John Bright,	(31441)
" Mayflower 10th,	by British Prince,	(23470)
" Moss Rose,	by Challenge Cup,	(23022)
" Mary,	by Earl of Windsor,	(15968)
" Mary Ann,	by Sam Johnston,	(15234)
" Mayflower 8th,	by Duke of Kent,	(21590)
" Mayflower 7th,	by Filbert,	(14548)
" Mayflower 5th,	by Jemmy,	(11611)
" Mayflower,	by Speculation,	(7544)
" Libby,	by Monarch,	(4495)
" Hairy,	by Invalid,	(4070)

No. 5--ROYAL SCOTT.

Red, calved March 18th, 1890.

	Sire Baron Lenton,	(49081)
Dam, Urgent (imp.),	by Vermont,	(47198)
" Ury 6th,	by Foljambe,	(33956)
" Ury 4th,	by Duke,	(28342)
" Ury 1st,	by Scarlet Velvet,	(16916)
" Ury Lass,	by Beeswing,	(12456)
" Miss Isabella,	by Mosstrooper,	(11827)
" Donside Lassie,	by Vice-President,	(11002)
" Isabella,	by The Pasha,	(7612)
" Crocus,	by 2nd Duke of Northumberland,	(3646)
" Nora,	by Sillery,	(5131)
" Emily,	by Sillery,	(5131)
" Eliza,	by Young Western Comet,	(1575)
" Lady Betsy,	by Diamond,	(205)
" Betty,	by Favourite,	(256)
"	by Charge's Red Bull,	(1810)

$\frac{72850}{100} = 728.50$
 $\frac{72850}{100} = 728.50$
 Total 76350 - 72850 = 3500

No. 6--SIR WALTER.

Red, calved 27th February, 1890.

	Sire Baron Lenton,	(49081)
Dam, Red Queen,	by Prince,	=3666=
" Georgina Mayflower,	by Lord Strathellan 2nd,	=3466=
" Miss Ramsden 8th,	by Royal Duke,	(35356)
" Miss Ramsden 7th,	by Breadalbane,	(28073)
" Miss Ramsden 6th,	by Nobleman,	(26967)
" Miss Ramsden 5th,	by Dipthong,	(17681)
" Miss Ramsden 3rd,	by Scarlet Velvet,	(16916)
" Miss Ramsden 2nd,	by Bushranger,	(12516)
" Leda,	by Donside Fairfax,	(11665)
" Miss Ramsden,	by Duke,	(3680)
"	by Reveller,	(2528)
"	by Grazier,	(1085)
"	by Cato,	(857)
"	by Atlas,	(42)
"	by Favourite,	(257)
"	by Robinson's Bull,	(4974)
"	by Badsworth,	(47)

490
No. 7--NONPAREIL'S DUKE.

Red and White, calved November 15th, 1889.

	Sire Tofthills,	(56656)
Dam, Nonpareil 46,	by Royal Booth 2nd,	=3818=
" Nonpareil 34,	by High Sheriff,	(34162)
" Nonpareil 33,	by Inkerman,	(31414)
" Nonpareil 31 (imp.),	by Sir Christopher,	(22895)
" Nonpareil 26,	by Scarlet Velvet,	(16916)
" Nonpareil 24,	by Lord Sackville,	(13249)
" Nonpareil 23,	by The Baron,	(13833)
" Nonpareil 17,	by Matadore,	(11800)
" Nonpareil 10,	by Prince Edward Fairfax,	(9506)
" Countess of Lincoln,	by Diamond,	(5918)
" Nonpareil 3,	by Young Frederick,	(3836)
"	by Commodore,	(1858)
"	by Tathwell Studley,	(5401)
"	by Blythe Comet,	(85)

No. 8--BARON BOOTH.

Red, calved December 22nd, 1889.

	Sire Tofthills (imp.),	(56656)
Dam, Lady Booth 2nd,	by Royal Booth 2nd,	=3818=
" Lady Booth,	by Aurora Lad (imp.),	(49025)
" Rachael (imp.),	by Lord Rose,	(34659)
" Ruth,	by Sergeant Major,	(29957)
" Laurel,	by Earl Marcus,	(23819)
" White Rose,	by Magnus Troil,	(14880)
" Miss Henderson,	by Magnus Troil,	(14880)
" Eliza,	by Bates,	(12451)
" Duchess,	by Lord Warden,	(20233)
"	by Snyders,	(7525)
"	by Duke of York,	(9049)

9135
No. 9--BARON HOPE.

Red and White, calved November 25th, 1889.

Dam, Cleopatra 1st (imp.),	Sire Baron Lenton,	(49081)
" Cleopatra,	by Gravesend,	(46461)
" Claret 1st,	by British Flag,	(46009)
" Claret,	by Duke,	(28342)
" Barbara,	by Scarlet Velvet,	(16016)
" Isabella,	by Unrivalled,	(13926)
" Crocus,	by The Pasha,	(7612)
" Nora,	by 2nd Duke of Northumberland,	(3646)
" Emily,	by Sillery,	(5131)
" Eliza,	by Sillery,	(5131)
" Lady Betsy,	by Young Western Comet,	(1575)
" Betty,	by Diamond,	(205)
"	by Favourite,	(256)
	Charge's Red Bull,	(1810)

9160
No. 10--HONEST TOM.

Red, calved April 15th, 1890.

Dam, Lady 2nd (imp.),	Sire General Booth,	(54353)
" Lady Matilda,	by Carberry,	(44494)
" Lady Medora,	by General Windsor,	(28701)
" Lady Marion,	by Champion of England,	(17526)
" Lady Milton,	by Bridegroom,	(11203)
" Zuleika,	by Milton,	(7328)
" Medora,	by Norfolk,	(2377)
" Blossom,	by Ambo,	(1636)
" Sister to Isabella,	by Memnon,	(2295)
" White Cow,	by Pilot,	(496)
	by Agamemnon,	(9)

No. 11--RICHMOND.

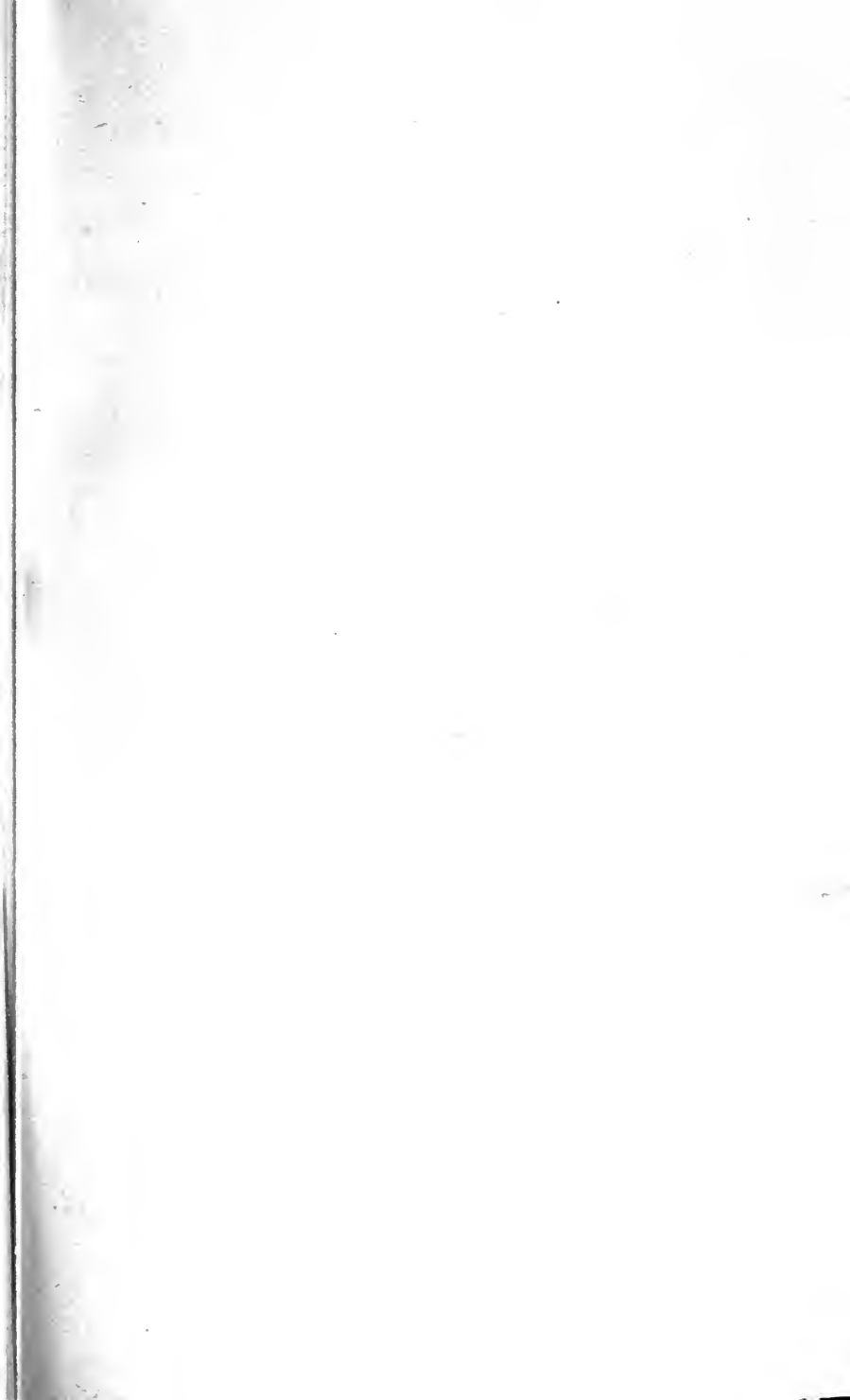
Red and White, calved November 26th, 1889.

	Sire Stanley,	=7949=
Dam, Isabella 9,	by Royal Magister (imp.),	(45538)
" Isabella 6,	by British Statesman,	(42847)
" Isabella,	by Wellington,	(32828)
" Louisa (imp.),	by Nobleman,	(26967)
" Mary 1st,	by Diphthong,	(17681)
" Mary,	by Coeur de Lion,	(12611)
" Alma,	by Mosstrooper,	(11827)
" Leda,	by Donside Fairfax,	(11865)
" Miss Ramsden,	by Duke,	(8630)
"	by Reveller,	(252)
"	by Grazier,	(10)
"	by Cato,	(8)
"	by Atlas,	(4)
"	by Favourite,	(8)
"	by Mr. Robinson's Bull,	(4974)
"	by Badsworth,	(47)

No. 12--WARDEN.

Roan, calved January 2nd, 1890.

	Sire Wellington,	=8847=
Dam, Prudence,	by Comet,	(149303)
" Fair Queen 4th,	by Statesman 1st,	(44096)
" Fair Queen 2nd,	by Inkerman,	(31414)
" Fair Queen (imp.),	by Sir Christopher,	(22895)
" Fair Queen 3rd,	by Diphthong,	(17681)
" Fair Queen,	by Master Gunner,	(22316)
" Lovely,	by Frolic,	(16086)
" Lovely,	by Sir Arthur,	(12072)
" Nancy,	by Dannecker,	(7949)
" Likely,	by The Pasha,	(7612)
" Helen,	by 2nd Duke of Northumberland,	(8616)
" Mary Ann,	by Sillery,	(5131)
" Miss Gibson,	by Carleton,	(848)
" Dora,	by Diamond,	(205)
" Kitty,	by Diamond,	(205)



1000
370
370
736
480
280
675
500

4380 Total Cattle
1510 Horses

6490



11585
700
3080