

WEST CHESTER

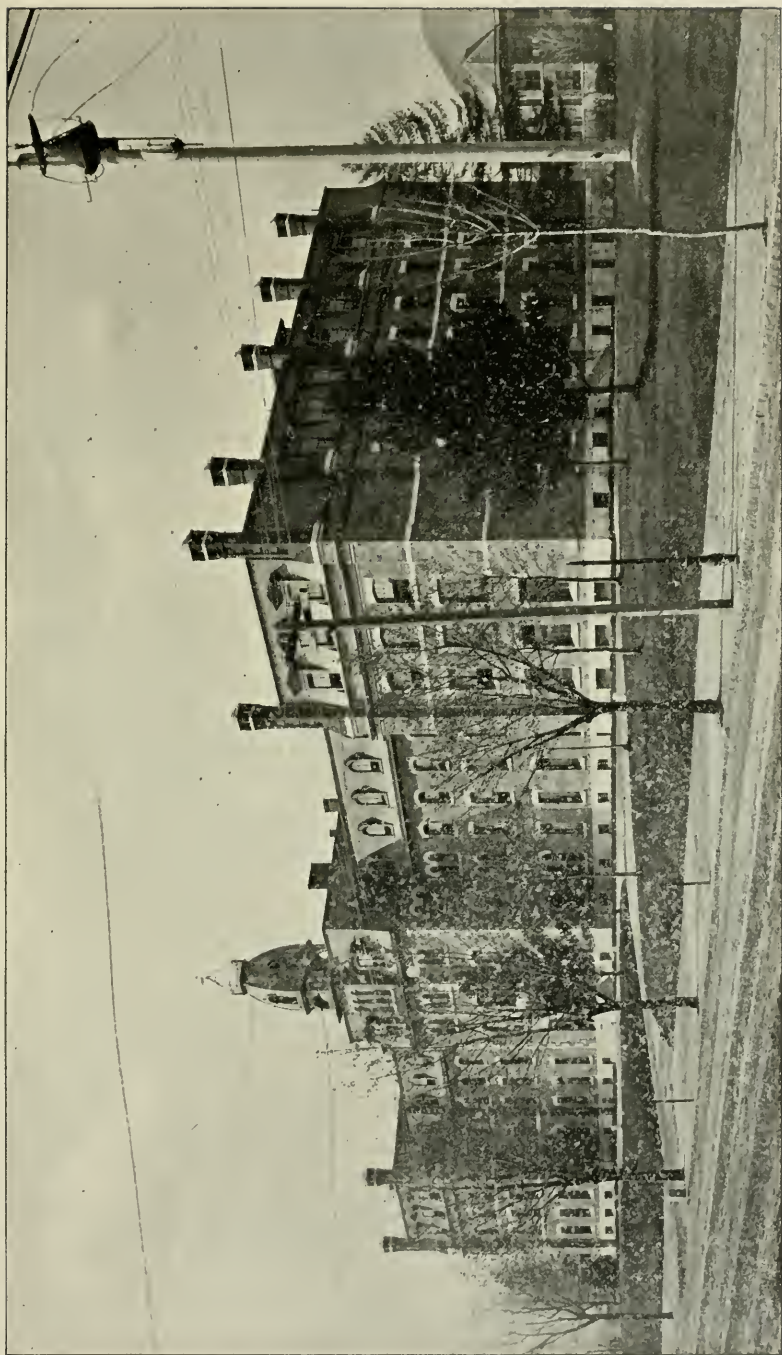
State Normal School.

FIRST DISTRICT.

...1896...







MAIN BUILDING.



TWENTY-FIFTH  
ANNUAL CATALOGUE  
OF THE  
WEST CHESTER  
**State Normal School,**  
OF THE  
***FIRST DISTRICT,***  
AT  
WEST CHESTER, CHESTER COUNTY, PA.  
**1896.**

---

WEST CHESTER, PA.:  
THE VILLAGE RECORD PRINT.  
1896.

# Board of Trustees.

## *Trustees Representing the Stockholders.*

R. T. CORNWELL, SAMUEL MARSHALL, EVANS ROGERS, JOSEPH H. BALDWIN,	}	Term of office expires in 1897.
--	---	------------------------------------

ALBERT P. HALL, ALFRED P. REID, MARSHALL S. WAY, JOHN S. MULLIN,	}	Term of office expires in 1898.
---	---	------------------------------------

H. B. BUCKWALTER, PLUMMER E. JEFFERIS, MARSHALL H. MATLACK, HERBERT P. WORTH,	}	Term of office expires in 1899.
--	---	------------------------------------

## *Trustees Representing the State.*

R. E. M. EVANS, LEVI G. McCAULEY,	}	Term of office expires in 1897.
--------------------------------------	---	------------------------------------

JOHN J. PINKERTON, WM. S. WINDLE,	}	Term of office expires 1898.
--------------------------------------	---	---------------------------------

ISAAC JOHNSON, W. PENROSE MOORE,	}	Term of office expires in 1899.
-------------------------------------	---	------------------------------------

# Officers of the Board.



*President,*

JOHN J. PINKERTON.

*Secretary,*

HERBERT P. WORTH.

*Committee on Household.*

ALBERT P. HALL, PLUMMER E. JEFFERIS, LEVI G. MCCAULEY, JOHN S. MULLIN, JOSEPH H. BALDWIN.

*Committee on Finance.*

H. B. BUCKWALTER, EVANS ROGERS, W. PENROSE MOORE, MARSHALL S. WAY, MARSHALL H. MATLACK.

*Committee on Instruction.*

W. S. WINDLE, EVANS ROGERS, H. B. BUCKWALTER, R. T. CORNWELL, A. P. REID.

*Committee on Cabinet.*

L. G. MCCAULEY, HERBERT P. WORTH, ISAAC JOHNSON, SAMUEL MARSHALL, R. E. M. EVANS.

---

*Treasurer,*

J. HOWARD MERCER.

*Steward,*

HARRY S. JOHNSON.

*Matron.*

SUSAN W. SEAL.

---

The regular Meetings of the Board are held on the *last Monday* in each month.

# The Faculty.

---

GEO. MORRIS PHILIPS, A. M. PH. D.,  
Principal.

DAVID M. SENSENIG, M. S.,  
Higher Mathematics.

C. B. COCHRAN, A. M.,  
Physics and Chemistry.

ELVIRA Y. SPEAKMAN,  
Geography and History.

A. THOMAS SMITH, PH. D.,  
Pedagogy.

FRANCIS H. GREEN, A. M.,  
English.

EVA J. BLANCHARD,  
Principal of the Model School.

C. E. EHINGER, M. D.,  
Director of Gymnasium.

J. R. FLICKINGER, A. M.,  
History and Latin.

CHARLOTTE N. HARDEE, MUs. B.,  
Music.

ESTHER M. GROOME,  
Drawing and Writing.

S. C. SCHMUCKER, A. M., PH. D.,  
Biological Sciences.

FRANK L. WHIPPLE, A. M., M. D.,  
Languages.

MARY E. REDINGTON,  
Reading.



- JOSEPH J. BAILEY,  
Manual Training.
- LYDIA A. MARTIN, M. E.,  
English Branches.
- Mrs. A. M. SENSENIG, M. E.,  
Mathematics.
- SARA S. KIRK, M. E.,  
English Grammar.
- Mrs. C. E. EHINGER,  
Physical Culture.
- HELEN H. ELY, M. E.  
Model School.
- ROBERT ANDERSON, M. E.,  
Mathematics.
- WILLIAM S. DELP, M. E.,  
Book-keeping and Mathematics.
- ANNA M. ESLER, M. E.,  
Reading and Grammar.
- LINDA K. HOOPES, B. E.,  
Assistant.
- ELIZABETH F. CRILEY, M. E.,  
English Branches.
- ELIZABETH M. PERRY,  
Music.
- ANNE M. GOSHEN, M. E.,  
Assistant.
- FRAU ANNA M. MULLER,  
German.
- HUMPHREY M. CARPENTER,  
Violin, Flute and Violincello.
- \* \* \* \* \*
- JAMES S. HEBERLING, B. E.,  
Secretary.
- ALICE COCHRAN,  
Librarian.
- W. HENRY GARGES,  
GEORGE S. HOFFMAN,  
Book-keepers.
- IRWIN B. BAUER, B. E.,  
Study Hall.

# The Calendar.

## *SPRING TERM, 1896.*

Monday,	. - -	June 8th,	-	State Examinations.
Tuesday,	- - -	June 9th,	-	“ “
Sunday,	- - -	June 28th,	-	Baccalaureate Sermon.
Wednesday,	- -	July 1st,	-	Commencement.
Thursday,	- - -	July 2d,	-	25th Anniversary.
“	- - -	“		Meeting of Alumni,
Friday,	- - -	July 3d,	-	Spring Term Closes.

## *FALL TERM, 1896-7.*

Monday,	- - -	Aug. 31st,	-	Fall Term begins.
Thursday,	- - -	Nov. 26th,		Thanksgiving.
Thursday	- - -	Dec. 24th,		Christmas Holidays begin.
Monday,	- - -	Jan. 4th,	-	Students Return.
Friday,	- - -	Mar. 19th,		Winter Term ends.

## *SPRING TERM, 1897.*

Monday,	- - -	Mar. 29th,		Spring Term begins.
Sunday,	- - -	June 27th,		Baccalaureate Sermon.
Wednesday,	- -	June 30th,		Class-Day Exercises.
Thursday,	- -	July 1st,	-	Commencement.
“	- - -	“		Meeting of Alumni.
Friday,	- - -	July 2d,	-	Term ends.

# Catalogue of Students.



## POST-GRADUATES.

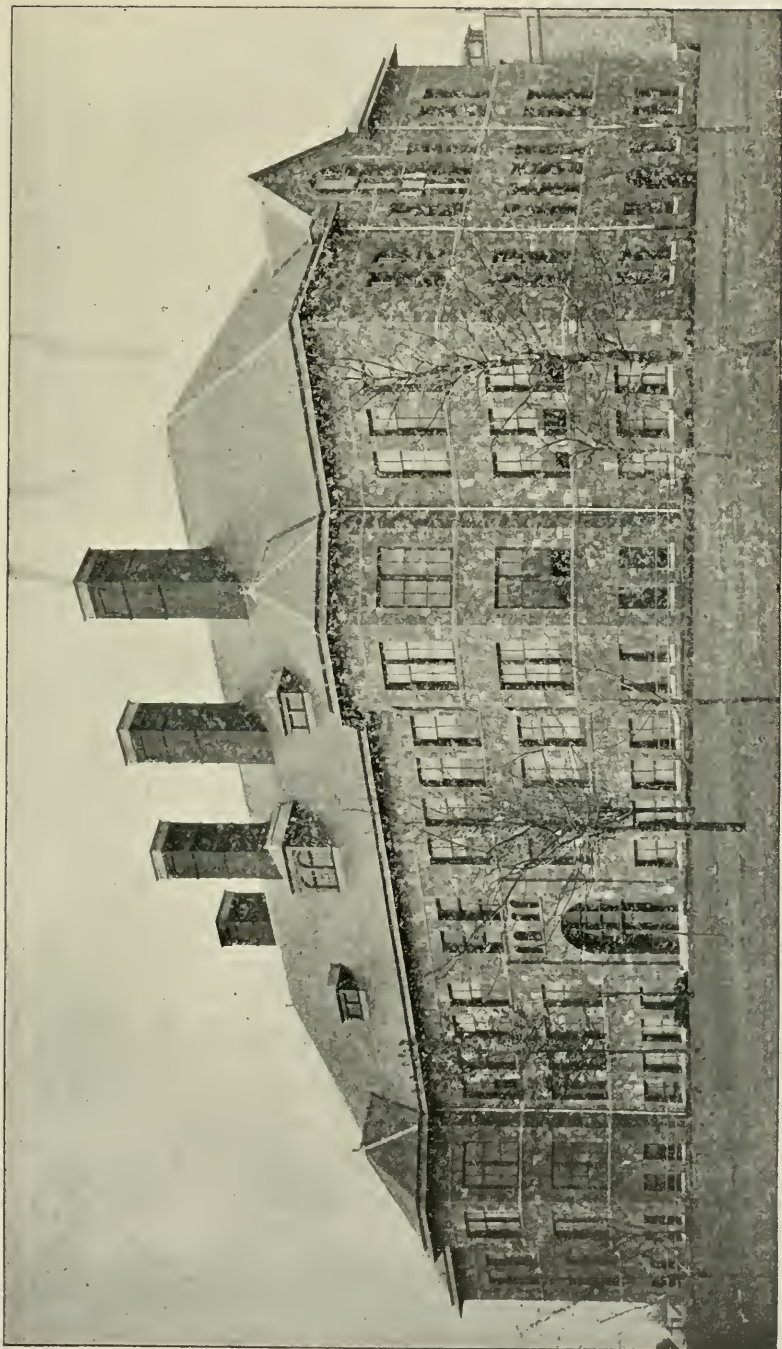
NAME.	POST OFFICE.	COUNTY AND STATE.
Anderson, Robert, <i>B. S.</i> ,	Bethesda,	Lancaster, Pa.
Bauer, Irvin B., <i>B. E.</i> ,	Bally,	Berks, Pa.
Bevan, James J., <i>B. S.</i> ,	Mauch Chunk,	Carbon, Pa.
Bye, Frank P., <i>M. E.</i> ,	Kennett Square,	Chester, Pa.
Criley, Elizabeth F., <i>M. E.</i> ,	Downingtoun,	" "
Darlington, Alice, <i>M. E.</i> ,	West Chester,	" "
Darlington, Evalina, <i>B. E.</i> ,	" "	" "
Darlington, Henry, <i>B. E.</i> ,	" "	" "
Delp, William S., <i>B. S.</i> ,	Telford,	Montgomery, Pa.
Ely, Henry N., <i>M. E.</i> ,	Newtown,	Bucks, Pa.
Esler, Anna P., <i>M. E.</i> ,	New Centreville,	Chester, Pa.
Fetters, Anna E., <i>M. E.</i> ,	Glen Lock,	" "
Heberling, James S., <i>B. E.</i> ,	Mauch Chnuk,	Carbon, Pa.
Heilman, Eugene A., <i>B. E.</i> ,	Somerton,	Philadelphia, Pa.
Hockenberry, J. C., <i>B. S.</i> ,	South Chester,	Delaware, Pa.
Hoopes, Linda K., <i>M. E.</i> ,	West Chester,	Chester, Pa.
Hulme, Emily., <i>B. E.</i> ,	" "	" "
Keech, Jessie R., <i>M. E.</i> ,	" "	" "
Kirk, Sara S., <i>M. E.</i> ,	Pennsdale,	Lycoming, Pa.
Kirkpatrick, Bessie, <i>M. E.</i> ,	Dilworthtown,	Chester, Pa.
Martin, Lydia, <i>M. E.</i> ,	West Chester,	" "
Seal, Iva, <i>B. E.</i> ,	Doe Run,	" "
Sterner, Ira S., <i>B. E.</i> ,	Keller's Church,	Bucks, Pa.
Sterner, C. S., <i>B. E.</i> ,	" "	" "
Walter, Frank K., <i>M. E.</i> ,	Pt. Pleasant,	" "
Woodman, Agnes, <i>M. E.</i> ,	Newtown,	" "
Woodward, Charles S., <i>M. E.</i> ,	Longwood,	Chester, Pa.

## UNDER-GRADUATES.

### LADIES.

NAME.	POST OFFICE.	COUNTY AND STATE.
Albright, Ella S.,	Pottstown,	Montgomery, Pa.
Allen, E. Miriam,	Doylestown,	Bucks, Pa.
Anders, Ella Z.,	Worcester,	Montgomery, Pa.
Anders, Mary Z.,	"	" "
Anderson, Lizzie,	Clifton Heights,	Delaware, Pa.

NAME.	POST OFFICE.	COUNTY AND STATE.
Anderson, Anna C.,	Lausdowne,	" "
Anderson, Ethel,	Medford,	New Jersey.
Arnwine, Sue B.,	Hatboro,	Montgomery, Pa.
Bailey, Lillian H.,	West Chester,	Chester, Pa.
Baker, Margaretta H.,	Chadd's Ford,	Delaware, Pa.
Baker, Gertrude,	Hummelstown,	Dauphin, Pa.
Baker, Maude,	"	" "
Baker, Mary H.,	Northbrook,	Chester, Pa.
Baker, Emma F.,	Tanguy,	" "
Baker, Hanna J.,	Lima,	Delaware, Pa.
Baldwin, Rae F.,	West Chester,	Chester, Pa.
Baldwin, Harriet H.,	Mauch Chunk,	Carbon, Pa.
Bauer, Bessie,	Feasterville,	Bucks, Pa.
Baptist, Mary L.,	West Chester,	Chester, Pa.
Barber, Linda H.,	West Chester,	" "
Barnard, Ida M.,	Lenape,	" "
Barr, Bertha,	Pine Grove,	Schuylkill, Pa.
Bartholomew, Lillian M.,	West Chester,	Chester, Pa.
Barton, Lillian M.,	Corinne,	" "
Bassett, Katie,	West Chester,	" "
Bateman, Edith J.,	Llewellyn,	Schuylkill, Pa.
Bean, Verda L.,	Delphi,	Montgomery, Pa.
Beans, Alice M.,	Mechanicsville,	Bucks, Pa.
Bell, Jane,	Marysville,	Perry, Pa.
Bell, Katharine,	"	" "
Bensingler, Sadie,	Auburn,	Schuylkill, Pa.
Bevan, Ethel M.,	Catasauqua,	Lehigh, Pa.
Bevan, Mabel,	"	" "
Biggins, May K.,	Eldred,	McKean, Pa.
Blackburn, Ida V.,	Ailston,	York, Pa.
Blackwood, Margaret,	New Castle,	Lawrence, Pa.
Blair, Elizabeth G.,	Villa Nova,	Delaware, Pa.
Blanck, Jeannette,	Vinemont,	Berks, Pa.
Bland, Rachel,	Monocacy,	" "
Boehmler, Marie L.,	Stuttgart,	Germany.
Boice, Mabel G.,	Glen Hall,	Chester, Pa.
Bolger, Emma,	Norwood,	Delaware, Pa.
Bone, Alice M.,	Thorndale,	Chester, Pa.
Bradford, Frances M.,	West Chester,	" "
Branson, Carrie E.,	Guthrieville,	" "
Brinton, Z. May,	Media,	Delaware, Pa.
Brooke, Corn,	Plymouth Meeting,	Montgomery, Pa.
Brown, Geneva E.,	Chadd's Ford,	Delaware, Pa.
Brown, Lilley M.,	West Chester,	Chester, Pa.
Brown, Alma H.,	Calvert,	Maryland.
Brown, Anna H.,	King of Prussia,	Montgomery, Pa.



RECITATION HALL.



NAME.	POST OFFICE.	COUNTY AND STATE.
Buchanan, Lucy A.,	Honeybrook,	Chester, Pa.
Buchanan, Cora C.,	"	" "
Bunn, Harriet E.,	Cochranville,	" "
Burd, Ida C.,	Gardenville,	Bucks, Pa.
Burk, Jessie,	Media,	Delaware, Pa.
Burke, Mary,	Shenandoah,	Schuylkill, Pa.
Busch, Ella M.,	Valley Forge,	Chester, Pa.
Butler, Lidie H.,	Bala,	Montgomery, Pa.
Byers, Mary W.,	Darling,	Delaware, Pa.
Byerts, Edith H.,	Londonderry,	Chester, Pa.
Byler, Susan C.,	Barneston,	" "
Campbell, Florence,	West Chester,	" "
Campbell, Harriet Z.,	Sisterville,	West Virginia.
Carey, Anna P.,	Glen Loch,	Chester, Pa.
Carlin, Nellie C.,	818 S. Twentieth St.,	Philadelphia.
Carpenter, Harriet L.,	Mauch Chunk,	Carbon, Pa.
Carter, L. Virginia,	Greensboro,	Maryland.
Case, Emma W.,	Lansdale,	Montgomery, Pa.
Chandler, May E.,	Kennett Square,	Chester, Pa.
Chandler, Ida,	6019 Adams St.,	Philadelphia, Pa.
Chrisman, Jessie L.,	Coventryville,	Chester, Pa.
Clark, Elizabeth V.,	Wyoming,	Delaware.
Clark, Emma E.,	West Chester,	Chester, Pa.
Cloud, Jane T.,	Rennett Square,	" "
Cochran, F. Grace.,	West Chester,	" "
Comly, Emma T.,	Flourtown,	Montgomery, Pa.
Cook, Ida M.,	Pughtown,	Chester, Pa.
Cooper, Alice L.,	Green Park,	Perry, Pa.
Cooper, Lizzie,	Point Pleasant,	Bucks, Pa.
Cope, Verda L.,	Durham,	" "
Cox, Ada M.,	Booth's Corner,	Delaware, Pa.
Cox, Lizzie H.,	Wawaset,	Chester, Pa.
Coyle, Lucy G.,	Rushland,	Bucks, Pa.
Craig, Jennie B.,	Twin Oaks,	Delaware, Pa.
Crawford, Isabel,	Freeland,	Luzerne, Pa.
Criswell, L. Ada,	Cochranville,	Chester, Pa.
Cronin, Mary F.,	Glen Mills,	Delaware, Pa.
Crowe, Hanna D.,	Branchdale,	Schuylkill, Pa.
Culyer, Eliza,	211 52nd St.,	Brooklyn, N. Y.
Currey, Blanche L.,	West Chester,	Chester, Pa.
Currie, Ellene,	Glen Roy,	" "
Darlington, Sara G.,	West Chester,	" "
Davis, S. Flora,	Brandamore,	" "
Davis, Ruth Y.,	West Chester,	" "
Deakyne, Sallie L.,	Rockledge,	Montgomery, Pa.
Dean, Marion G.,	West Chester,	Chester, Pa.

NAME.	POST OFFICE.	COUNTY AND STATE.
DeWire, Annie V.,	Kennett Square,	" "
Dickson, Luna H.,	Media,	Delaware, Pa.
Donaldson, Emma,	Reading,	Berks, Pa.
Douglas, Adele,	Aguascalientes,	Mexico.
Dowlin, Sara E.,	West Chester,	Chester, Pa.
Drennen, Lillian,	Ward,	Delaware, Pa.
Duer, Lettie W.,	1716 Warnock St.,	Philadelphia, Pa.
Dungan, Anna May,	Doylestown,	Bucks, Pa.
Dunn, Mary E.,	Bryn Mawr,	Montgomery, Pa.
Dutton, Bertha M.,	West Chester,	Chester, Pa.
Dysart, Iona B.,	Spruce Creek,	Huntingdon, Pa.
Eachus, Margaret R.,	Malvern,	Chester, Pa.
Eachus, Lulu M.,	West Chester,	" "
Elliot, Mary R.,	Modena,	" "
England, Iona R.,	Zion,	Maryland.
Esrey, Hanna D.,	1642 Pine St.,	Philadelphia, Pa.
Etschman, Augusta,	Nazareth,	Northampton, Pa.
Evans, Charlotte B.,	Phoenixville,	Chester, Pa.
Everitt, Lettie A.,	Hulmeville,	Bucks, Pa.
Ewing, Martha H.,	Greenwich,	New Jersey.
Faddis, Maude P.,	West Chester,	Chester, Pa.
Fenton, Sue R.,	Churchville,	Bucks, Pa.
Ferguson, Leta C.,	Coleraine,	Lancaster, Pa.
Finley, May,	813 So. 48th St.,	Philadelphia, Pa.
Flickinger, Anna B.,	Sheridan,	Lebanon, Pa.
Forrest, Mattie,	Freeland,	Luzerne, Pa.
Forrester, Anna,	Tower City,	Schuylkill, Pa.
Forshey, Grace E.,	Philipsburg,	Centre, Pa.
Forsythe, Bertha M.,	Avondale,	Chester, Pa.
Frame, Helen,	West Chester,	" "
Francis, Amy E.,	Boyertown,	Berks, Pa.
Fredd, Phoebe N.,	Pottstown,	Montgomery, Pa.
Fretz, Rosa,	Pipersville,	Bucks, Pa.
Funk, Emma,	Kenilworth,	Chester, Pa.
Gayman, Bertha,	Fountainville,	Bucks, Pa.
Garrison, M. Jennie,	Tuckerton,	New Jersey.
Geisdorf, Louisa,	Livingston,	Montana.
Gentry, E. Blanche,	Stony Fork,	Tioga, Pa.
Gibson, Clara W.,	Coplay,	Lehigh, Pa.
Gill, Annie,	West Chester,	Chester, Pa.
Godfrey, Bessie B.,	Fort Washington,	Montgomery, Pa.
Goepfert, Annie M.,	Freeland,	Luzerne, Pa.
Goldstein, Gertrude,	157 Locust St.,	Allegheny City, Pa.
Graham, Charlotte,	Burnham,	Mifflin, Pa.
Grater, Bertha I.,	Eagleville,	Montgomery, Pa.
Gray, Bethel,	West Chester,	Chester, Pa.



NAME.	POST OFFICE.	COUNTY AND STATE.
Green, Cora F.,	Green Hill,	Chester, Pa.
Green, Anna M.,	Horslam,	Montgomery, Pa.
Criffith, Margaret H.,	West Chester,	Chester, Pa.
Griffith, Florence I.,	" " "	" "
Groff, Annie L.,	Hensel,	Lancaster, Pa.
Grove, Mabel,	Jenkintown,	Montgomery, Pa.
Grubb, Blanche,	Royersford,	" "
Guest, Etta F.,	Nantmeal Village,	Chester, Pa.
Guss, Elizabeth,	West Chester,	" "
Gyger, Julia D.,	Kimberton,	" "
Haines, Mary L.,	West Chester,	" "
Haley, Julia A.,	Rosenvick,	" "
Hall, Margaret W.,	Wrightstown,	Bucks, Pa.
Hallman, Jennie K.,	Neiffer,	Montgomery, Pa.
Hambleton, M. Elsie,	Goshen,	Lancaster, Pa.
Hamilton, Ella J.,	Booth's Corner,	Delaware, Pa.
Hamilton, Bessie D.,	" "	" "
Mamilton, Maud,	Kelton,	Chester, Pa.
Hamilton, W. Gertrude,	Easton,	Northampton, Pa.
Hamilton, Sara M.,	Ward,	Delaware, Pa.
Hammond, Frances,	West Chester,	Chester, Pa.
Hance, Eleanor W.,	Washington,	D. C.
Hannum, Anna L.,	4127 Ogden St.,	Philadelphia, Pa.
Happersett, R. Ella,	3226 Woodland Ave.	" "
Harkinson, Katharine,	5333 Germantown Ave.	" "
Harlan, Christine S.,	West Chester,	Chester, Pa.
Harry, Elizabeth,	Willow Grove,	" "
Hartzell, Katie,	Bean,	Montgomery, Pa.
Harvey, Eva P.,	Unionville,	Chester, Pa.
Harvey, Mary A.,	Cheltenham,	Montgomery, Pa.
Haws, Emma L. V.,	Joanna,	Berks, Pa.
Hawkins, Bessie J.,	623 Delaware Ave.,	Wilmington, Del.
Hays, Mary C.,	White Rock,	Lancaster, Pa.
Hays, Katharine E.,	" "	" "
Hayes, Emilie E.,	Upland,	Delaware, Pa.
Heald, Abbie,	West Chester,	Chester, Pa.
Heaton, Carrie,	Terwood,	Montgomery, Pa.
Hemphill, Mary S.,	West Chester,	Chester, Pa.
Hemphill, Dorothy,	" "	" "
Henderson, Mary B.,	Nandua,	Virginia.
Heppler, Katie,	Haas,	Schuylkill, Pa.
Hibberd, Maud,	Malvern,	Chester, Pa.
Hibbs, Olive M.,	Hulmeville,	Bucks, Pa.
Hiddleston, Cilla E.,	Downingtown,	Chester, Pa.
Hilton, Margaret L.,	Palmyra,	New Jersey.
Hipple, Ray M.,	Media,	Delaware, Pa.

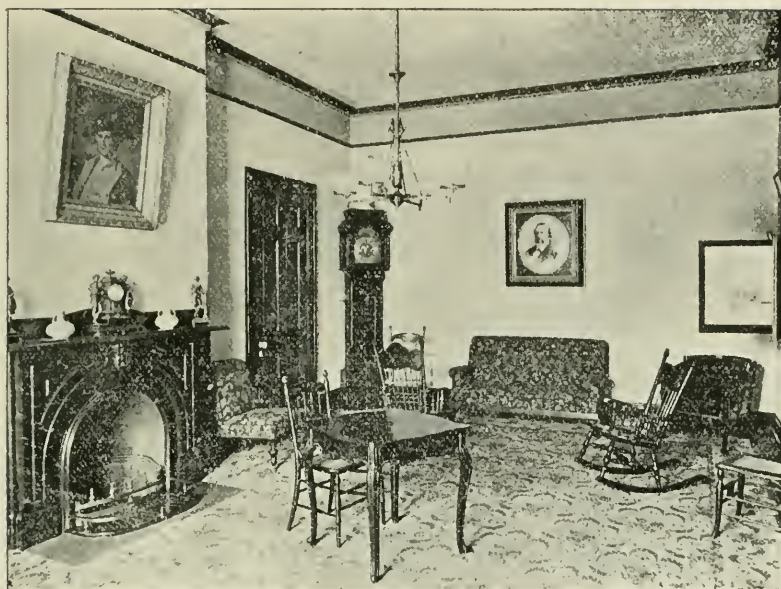
NAME.	POST OFFICE.	COUNTY AND STATE.
Holden, Bessie,	Lyndell,	Chester, Pa.
Holland, Mary S.,	Holicong,	Bucks, Pa.
Hoopes, Alice,	West Chester,	Chester, Pa.
Hoopes, Emma,	Columbia,	Lancaster, Pa.
Hoover, Bertha,	Blue Bell,	Montgomery, Pa.
Houck, Daisy,	Bangor,	Northampton, Pa.
Houseal, Mabel,	Maytown,	Lancaster, Pa.
Houston, Adelaide L.,	Millsboro,	Delaware.
Huddell, Elizabeth,	Linwood,	Delaware, Pa.
Hughes, Annie P.,	Cape May City,	New Jersey.
Illick, Mary B.,	Dauphin,	Dauphin, Pa.
Ingram, Mary C.,	West Ghester,	Chester, Pa.
Ingram, Sallie R.,	" "	" "
Isett, Mary B.,	Spruce Creek,	Huntingdon, Pa.
Jackson, May,	West Chester,	Chester, Pa.
James Mary N.,	Summit Hill,	Carbon, Pa.
Jarden, Blanche C.,	Maple Glen,	Montgomery, Pa.
Johnson, Hanna H.,	Broomall,	Delaware, Pa.
Johnson, Madge,	" "	" "
Johnson, Gertrude,	" "	" "
Johnson, Leta H.,	Fairmount,	Lancaster, Pa.
Johnson, Elvira S.,	West Chester,	Chester, Pa.
Johnson, Ray,	" "	" "
Jones, Martha,	Doe Run,	" "
Jones, Matilda,	" "	" "
Jones, Della R.,	Coleraine,	Lancaster, Pa.
Jones, Marion Bertron,	West Chester,	Chester, Pa.
Jones, Mattie,	" "	" "
Keavy, Mary,	Lenape,	" "
Keech, Margaret,	Tweedale,	" "
Keech, Linda G.,	Spruce Grove,	Lancaster, Pa.
Keighley, Laura,	Landenberg,	Chester, Pa.
Keighley, Clara,	" "	" "
Kepner, Katie D.,	Royersford,	Montgomery, Pa.
Keppel, Leah L.,	Honeybrook,	Chester, Pa.
Kerr, Mary J.,	Jersey Shore,	Lycoming, Pa.
Kerr, Sara,	West Chester,	Chester, Pa.
Knapp, Frances C.,	Dover,	Delaware.
Koons, Laura E.,	Freeland,	Luzerne, Pa.
Kulp, M. Ella,	Gwynedd,	Montgomery, Pa.
Kulp, Lydia M.,	Creamery,	" "
Kuschke, Maud L.,	Plymouth,	Luzerne, Pa.
Lacy, Annie M.,	Geiger's Mills,	Berks, Pa.
Landis, Fannie E.,	Dublin,	Bucks, Pa.
Lapp, Emma,	Chalfont,	" "
Latshaw, Bessie,	Anselma,	Chester, Pa.

NAME.	POST OFFICE.	COUNTY AND STATE.
Leatherman, Anna,	Line Lexington,	Bucks, Pa.
LeCarpentier, Nellie M.,	Rockland,	Delaware.
Lemmon, Edith,	Honeybrook,	Chester, Pa.
Lewis, Alice A.,	Uwchlan,	" "
Lindberg, Mary E.,	Parkesburg,	" "
Liggett, Rebecca P. R.,	Nantmeal Village,	" "
Lindsay, Mary B.	Freeland,	Luzerne, Pa.
Loeffler, Ella,	Swarthmore,	Delaware, Pa.
Loeffler, Ernestine A.,	" "	" "
Longshore, Elsie,	West Chester,	Chester, Pa.
MacElree, Mary,	West Chester,	Chester, Pa.,
Mack, Frances M.,	3534 Sunnyside Ave.	Philadelphia, Pa.
Mackelduff, Blanche L.,	West Chester,	Chester, Pa.
Madeira, Sallie S.,	Fleetwood,	Berks, Pa.
Makiver, Lillian,	Russellville,	Chester, Pa.
Malin, Hanna H.,	Radford,	Virginia.
Manning, Mary A.,	West Chester,	Chester, Pa.
Manning, Katie,	" "	" "
Markley, Jennie A.,	Jeffersonville,	Montgomery, Pa.
Marshall, Mary A.,	Northbrook,	Chester, Pa.
Marshall, Carrie S.,	Norway,	" "
Martin, Maude,	Octoraro,	Lancaster, Pa.
Martin, Lillian,	Lyndell,	Chester, Pa.
Martin, Viola M.,	Chadd's Ford,	Delaware, Pa.
Mast, Bessie M.,	Mast,	Lancaster, Pa.
Mathias, Lydia S.,	Penlyn,	Montgomery, Pa.
Mattern, Bessie T.,	West Point,	" "
Mauger, Kathryn H.,	Sanatoga,	" "
Maule, Mabel E.,	West Chester,	Chester, Pa.
McCausland, Emma,	Lyndell,	" "
McClellan, Mary,	Londonderry,	" "
McCoy, Clara,	Goshenville,	" "
McCoy, Alice H.,	" "	" "
McDowell, Emma J.,	Huntingdon Valley,	Montgomery, Pa.
McElhaney, Bertha,	Manayunk,	Philadelphia, Pa.
McKee, Margaretta,	New Bloomfield,	Perry, Pa.
McKinstry, Gertrude,	Neshaminy,	Bucks, Pa.
McMichael, Ruth,	West Chester,	Chester, Pa.
McNeill, Effa M.,	Collamer,	" "
Mearns, Iva C.,	Oak Hill,	Lancaster, Pa.
Mengel, Minnie,	Auburn,	Schuylkill, Pa.
Menough, Violette,	Oxford,	Chester, Pa.
Mettler, Elizabeth J.,	Rushtown,	N'humberland, Pa.
Miller, Anna,	Wayne,	Delaware, Pa.
Moor, Sara,	Lima,	" "
Moore, Elizabeth,	Conshohocken,	Montgomery, Pa.

NAME.	POST OFFICE.	COUNTY AND STATE.
Moore, Alice C.,	1405 W. Fayette St.	Baltimore, Md.
Moore, A. Johnetta,	" "	" "
Moore, Eleanor Lucile,	McKeesport,	Allegheny, Pa.
Moore, Maranda C.,	Delta,	York, Pa.
Morton, Maggie B.,	Lewisville,	Chester, Pa.
Moyer, Annie O.,	Bechtelsville,	Berks, Pa.
Moyer, B. Adele,	Cedars,	Montgomery, Pa.
Myres, Lizzie D.,	Linwood,	Delaware, Pa.
Neidig, Ida E.,	Milford Sq.	Bucks, Pa.
Newberry, Mary Wheeler,	Coatesville,	Chester, Pa.
Nyce, Mabel,	Schwenksville,	Montgomery, Pa.
O'Connell, Emma B.,	304 W. 7th St.	Wilmington, Del.
Oliphant, Lavina,	Salem,	Ohio.
Osborne, Mattie,	DuBois,	Clearfield, Pa.
Pattison, Anna R.,	White Rock,	Lancaster, Pa.
Patton, Mabel C.,	Media,	Delaware, Pa.
Pearson, Olive B.,	Birchrunville,	Chester, Pa.
Pearson, Anna R.,	Lionville,	" "
Pennypacker, Alice W.,	West Chester,	" "
Pepper, Minerva W.,	Georgetown,	Delaware.
Philips, Elsie,	Font,	Chester, Pa.
Philips, Sara,	West Chester,	" "
Philips, Lulu A.,	Tower City,	Schuylkill, Pa.
Porter, Lida,	Burrsville,	Maryland.
Porter, Nettie M.,	" "	" "
Potter, Margaret P.,	New Bloomfield,	New Jersey.
Powell, Charlotte B.,	Newtown Square,	Delaware, Pa.
Pownall, May,	Christiana,	Lancaster, Pa.
Pratt, Ida M.,	West Chester,	Chester, Pa.
Preston, Lucille E.,	Spruce Grove,	Lancaster, Pa.
Pretty, Nellie E.,	Upland,	Delaware, Pa.
Price, Mabel,	Moore,	" "
Pross, M. Emma,	Carversville,	Bucks, Pa.
Pyle, Bertha M.,	Cossart,	Chester, Pa.
Ramsey, Edith,	West Chester,	" "
Ramsey, Eleanor B.,	" "	" "
Ranck, Florence M.,	Joanna,	Berks, Pa.
Raysor, Esther W.,	Frazer,	Chester, Pa.
Reagan, Irene,	West Whiteland,	" "
Reagan, Minnie,	" "	" "
Rees, Grace L.,	Aldham,	" "
Reid, Nona,	Parkesburg,	" "
Remaly, Emily,	Shickshinny,	Luzerne, Pa.
Rickard, May V.,	Plymouth,	" "
Ridpath, Florence,	Jenkintown,	Montgomery, Pa.
Riegel, Gertrude M.,	Lebanon,	Lebanon, Pa.

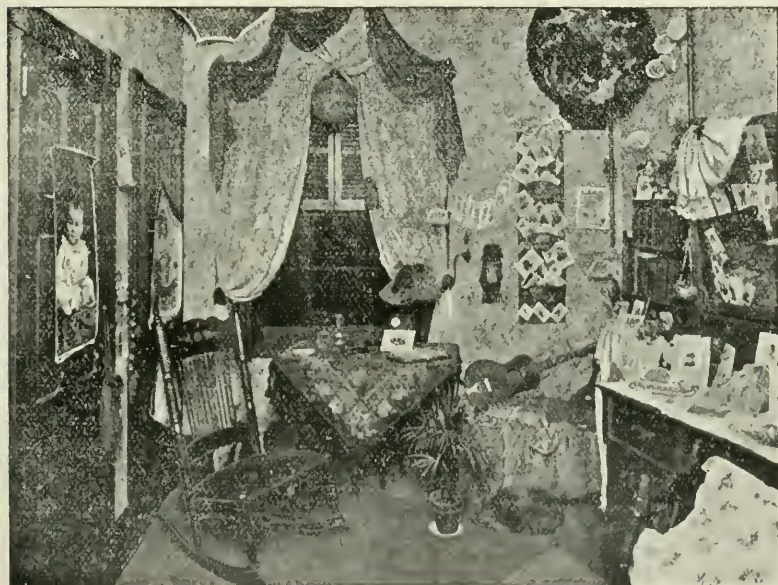
NAME.	POST OFFICE.	COUNTY AND STATE.
Rile, Frances E.,	Blue Bell,	Montgomery, Pa.
Ringleman, Abbie,	Plumsteadville,	Bucks, Pa.
Rippman, Bertha V.,	Millerstown,	Perry, Pa.
Ritter, Bella M.,	Jeffersonville,	Montgomery, Pa.
Roberts, Ellen H.,	Londongrove,	Chester, Pa.
Roberts, Elizabeth,	Andalusia,	Bucks, Pa.
Robertson, Nellie V.,	Sisseton Agency,	South Dakota.
Rochotte, Florence,	Milford,	Pike, Pa.
Rochotte, Elizabeth,	"	" "
Rogers, Maud,	Warrington,	Bucks, Pa.
Rogers, Minetta L.,	"	" "
Rogers, Lydia L.,	Jeffersonville,	Montgomery, Pa.
Roper, Jennie B.,	Slatington,	Lehigh, Pa.
Rorer, Caroline R.,	Glenside,	Montgomery, Pa.
Rouse, Elizabeth L.,	Ogontz,	" "
Rowland, Mary R.,	Vincent,	Chester, Pa.
Rutherford, Isabella R.,	Harrisburg,	Dauphin, Pa.
Sample, Jeanette E.,	Intercourse,	Lancaster, Pa.
Sanderson, Minnie E.,	Saxton,	Bedford, Pa.
Scarborough, Elizabeth B.,	Aquetong,	Bucks, Pa.
Schaeffer, Minnie D.,	Fleetwood,	Berks, Pa.
Scott, Jennie,	Thomson,	Susquehanna, Pa.
Scudder, Helen M.,	Norway,	Chester, Pa.
Seal, Edith M.,	West Chester,	" "
Search, Susanna L.,	Lizette,	Bucks, Pa.
Sellers, Kathryn B.,	Lansdale,	Montgomery, Pa.
Sensenig, Mary E.,	Goodville,	Lancaster, Pa.
Sensenig, Elizabeth F.,	"	" "
Seward, Ethel,	Felton,	Delaware.
Shapley, Mary A.,	319 Woodbine Ave.,	Philadelphia, Pa.
Shapley, Charlotte F.,	" " "	" "
Sharples, Mary A.,	West Chester,	Chester, Pa.
Sharples, R. Ellen,	" "	" "
Shaw, Ada T.,	Norwood,	Delaware, Pa.
Shearer, Tessie,	West Chester,	Chester, Pa.
Shee, Catharine,	" "	" "
Sheibley, Blanche,	Landisburg,	Perry, Pa.
Sheneman, Naomi,	Lionville,	Chester, Pa.
Shenton, Dora D.,	Slatington,	Lehigh, Pa.
Shepherd, Clara J.,	West Chester,	Chester, Pa.
Sheppard, Mabel W.,	Southampton,	Bucks, Pa.
Shiffert, Elizabeth M.,	Slatington,	Lehigh, Pa.
Shrawder, Laura K.,	Norristown,	Montgomery, Pa.
Simmons, Sadie,	Tower City,	Schuylkill, Pa.
Sinclair, Edith M.,	Norristown,	Montgomery, Pa.
Singmaster, Elsie,	Allentown,	Lehigh, Pa.

NAME.	POST OFFICE.	COUNTY AND STATE.
Sittler, Lulu M.,	Andreas,	Schuylkill, Pa.
Skelton, Annabelle,	Doe Run,	Chester, Pa.
Smedley, Susanna,	Lima,	Delaware, Pa.
Smedley, Emily C.,	West Chester,	Chester, Pa.
Smedley, Nellie,	" "	" "
Smith, Minnie H.,	Mifflintown,	Juniata, Pa.
Smith, Florence A.,	Lykens,	Dauphin, Pa.
Smith, Mabel E.,	Chester Springs,	Chester, Pa.
Smith, Rebecca E.,	Point Pleasant,	Bucks, Pa.
Snyder, A. Lulu,	Chester Springs,	Chester, Pa.
Speakman, Nellie C.,	West Chester,	" "
Sproat, Mildred,	Westtown,	" "
Sproat, E. Adele,	" "	" "
Steckel, Ursula,	Slatington,	Lehigh, Pa.
Stevens, Mabel,	Elkdalde,	Susquehanna, Pa.
Stewart, Helen M.,	Cedar Knoll,	Chester, Pa.
Stiteler, M. Regina,	Gulf Mills,	Montgomery, Pa.
Stiteler, Eva R.,	" "	" "
Stout, Gertrude,	Maple Glen,	" "
Stubblebine, Kate M.,	Pughtown,	Chester, Pa.
Supplee, Ladora,	Honey Brook,	" "
Suplee, Alice E.	Brandywine Manor,	" "
Swartz, Laura E.,	Park Place,	Schuylkill, Pa.
Talley, Florence,	Brandywine,	Delaware.
Taylor, Mary,	Goshenville,	Chester, Pa.
Taylor, Mary Hanes,	Woodstown,	New Jersey.
Taylor, Margaret H.,	" "	" "
Taylor, Ada R.,	Kennett Square,	Chester, Pa.
Thomas, Anita M.,	West Chester,	" "
Thompson, Lidie,	" "	" "
Thompson, Martha B.,	" "	" "
Thompson, Rae,	" "	" "
Todd, Edith M.,	401 N. 32nd St.,	Philadelphia, Pa.
Trappe, Harriet,	West Chester,	Chester, Pa.
Trauger, Anna,	Pipersville,	Bucks, Pa.
Troub, Grace E.,	Honey Brook,	Chester, Pa.
Turner, Mary L.,	Derbydown,	" "
Vance, Eleanor,	West Chester,	" "
VanHouten, Cora B.,	Duffryn Mawr,	" "
Voorhees, Bertha,	Kennett Square,	" "
Wack, Clara E.,	Wayne,	Delaware, Pa.
Waddell, Eleanor,	Upland,	" "
Wagner, Katharine,	Mahanoy City,	Schuylkill, Pa.
Wallace, Jean C.,	Dorrancton,	Luzerne, Pa.
Wallace, Emma B.,	Woodstown,	New Jersey.
Walter, Tillie C.,	Frankford,	Delaware.



THE RECEPTION ROOM.

Peale's Washington on Left and Franklin's Clock in Corner.



A STUDENT'S ROOM.





NAME.	POST OFFICE.	COUNTY AND STATE.
Walter, Emilie B.,	Thornbury,	Chester, Pa.
Walter, Alice M.,	Doylestown,	Bucks, Pa.
Walton, Emma E.,	Pomeroy,	Chester, Pa.
Wanbold, Mary J.,	Telford,	Montgomery, Pa.
Webster, Edith,	3504 N. 16th St.,	Philadelphia, Pa.
Webster, Rae E.,	Hulmeville,	Bucks, Pa.
Weir, Mary J.,	Tradesville,	" "
Weygandt, Beryl,	Slatington,	Lehigh, Pa.
Whelan, Nellie,	1608 Diamond St.,	Philadelphia, Pa.
Wherry, Jessie E.,	Chatham,	Chester, Pa.
Widdicombe, Josephine,	West Chester,	" "
Wilbur, Claudia C.,	Whitford,	" "
Williams, Mary E.,	Lansford,	Carbon, Pa.
Williams, Margaret,	"	" "
Williams, Etta M.,	Markes,	Franklin, Pa.
Williams, Gwen,	Peckville,	Lackawanna, Pa.
Williams, Della H.,	Berwyn,	Chester, Pa.
Williams, Elizabeth,	West Chester,	" "
Wilson, Margaret B.,	Homestead,	Allegheny, Pa.
Wilson, Anita L.,	Townsend,	Delaware.
Wilson, C. Mabel,	Downingtown,	Chester, Pa.
Windle, Mary S.,	Fairville,	" "
Wingard, Marie L.,	Coatesville,	" "
Wintzer, Antoinette L.,	West Grove,	" "
Wismer, Ella M.,	Wismer,	Bucks, Pa.
Wismer, Amanda M.,	"	" "
Wolfe, Bessie A.,	Geiger's Mills,	" "
Wood, Rebecca A.,	Norristown,	Montgomery, Pa.
Wood, Mary E.,	Doe Run.	Chester, Pa.
Woodward, Mabel F.,	West Chester,	" "
Woodward, Jennie G.,	" "	" "
Woodward, Anna,	Chatham,	" "
Worrall, Margaretta B.,	Sadsburyville,	" "
Worrell, Minnie,	Clearfield,	Clearfield, Pa.
Worstall, Emilie,	West Chester,	Chester, Pa.
Worthington, Meta,	Bristol,	Bucks, Pa.
Worthington, Sophie R.,	Neshaminy,	" "
Yardley, Anna W.,	Yardley,	" "
Yarnall, Marie L.,	Upper Providence,	Delaware, Pa.
Yeakel, Georgie K.,	Norristown,	Montgomery, Pa.
Yerger, Rachel A.,	Linfield,	" "
Yocon, Laura C.,	728 N. 10th St.,	Reading, Pa.
Zoller, Carrie,	Line Lexington,	Montgomery, Pa.

## GENTLEMEN.

NAME.	POST OFFICE.	COUNTY AND STATE.
Alderfer, George C.,	Harleysville,	Montgomery, Pa.
Anders, Eugene A.,	Worcester,	" "
Anders, Warren B.,	Kulpville,	" "
Anderson, Timothy T.,	338 Wharton St.	Philadelphia, Pa.
Babb, Charlton H.,	Marshallton,	Chester, Pa.
Baker, Edward V.,	Selbyville,	Delaware.
Barr, Oscar O.,	Pine Grove,	Schuylkill, Pa.
Barron, Oscar L.,	Bursonville,	Bucks, Pa.
Bartholomew, Wallace E.,	Richlandtown,	" "
Beaver, George E.,	412 N. 10th St.,	Reading, Pa.
Bechtel, Henry M.,	Clayton,	Berks, Pa.
Bishop, George C.,	Roxana,	Delaware.
Black, H. Leslie,	Point Pleasant.	Bucks, Pa.
Bleistein, George S.,	Myerstown,	Lebanon, Pa.
Boose, Norman T.,	Rockwood,	Somerset, Pa.
Bower, Abram,	Boyertown,	Berks, Pa.
Boyer, C. A.,	Cleona,	Lebanon, Pa.
Bradford, J. Sydney,	West Chester,	Chester, Pa.
Brinton, Clement S.,	" "	" "
Britton, John A.,	Pottstown,	Montgomery, Pa.
Brodhead, L. Wills, Jr.,	Delaware Water Gap,	Monroe, Pa.
Brough, E. Ambrose,	Biglerville,	Adams, Pa.
Brownback, L. Marvin,	Slonaker,	Chester, Pa.
Burke, Herbert,	Media,	Delaware, Pa.
Burke, Albert J.,	Florence,	New Jersey.
Campbell, Elmer S.,	Bursonville,	Bucks, Pa.
Carey, Alfred Lee,	Glen Loch,	Chester, Pa.
Carl, Elmer H.,	Hoppenville,	Montgomery, Pa.
Cassell, Emanuel N.,	Hatfield,	" "
Cassell, Jesse U.,	1950 VanPelt St.,	Philadelphia, Pa.
Catherman, Charles S.,	Chester Springs,	Chester, Pa.
Chandler, A. D.,	Kennett Square,	" "
Channell, Ralph F.,	Parkesburg,	" "
Cope, Thomas D.,	West Chester,	" "
Cornwell, William D.,	" "	" "
Craighead, Jas. Barrett, Jr.,	4225 Regent Sq.,	Philadelphia, Pa.
Cram, William C., Jr.,	Raleigh,	North Carolina.
Cristo, Manuel,	Sagua la Grande,	Cuba.
Cross, Frank,	Joanna,	Berks, Pa.
Curry, R. Hayes,	West Chester,	Chester, Pa.
Curry, T. Smith,	" "	" "
Curry, Wilfred C.,	" "	" "
Curry, Warren,	" "	" "
Darlington, Homer T.,	" "	" "

NAME.	POST OFFICE.	COUNTY AND STATE
Daubert, Irwin E.,	Berlinsville,	Northampton, Pa.
Davis, Penrose M.,	Guthrieville,	Chester, Pa.
Davis, Donald W.,	Frazer,	" "
Davis, Wm. H.,	"	" "
Davis, Edward N. G.,	Newtown Square,	Delaware, Pa.
DeLong, A. A.,	New Jerusalem,	Berks, Pa.
Dengler, Walter E.,	Blue Rock,	Chester, Pa.
Derr, Harry H.,	Sanatoga,	Montgomery, Pa.
Dolby, John W.,	Coatesville,	Chester, Pa.
Dougherty, P. J.,	Plainsville,	Luzerne, Pa.
Dougherty, W. Walter,	Guthrieville,	Chester, Pa.
Douglas, John,	Agnascalientes,	Mexico.
Douglas, Holme,	"	"
Drissel, Roger S.,	Tohickon,	Bucks, Pa.
Emrey, Miles L.,	Honeybrook,	Chester, Pa.
Emrey, J. Thornton,	"	" "
Emrey, G. Carroll,	"	" "
England, William P.,	Glen Mills,	Delaware, Pa.
England, Walter C.,	" "	" "
Esrey, Joseph L.,	1642 Pine St.,	Philadelphia, Pa.
Evans, Charles V. R.,	Cacoosing,	Berks, Pa.
Evans, Jacob V. R.,	"	" "
Fegan, William G.,	Campbellston,	Lebanon, Pa.
Fenstermacher, Frank H.,	Telford,	Montgomery, Pa.
Fetters, George E.,	Glen Loch,	Chester, Pa.
Few, Walter J.,	West Chester,	" "
Field, James H.,	Chelsea,	Delaware, Pa.
Fox, Oscar E.,	Mt. Zion,	Lebanon, Pa.
Fretz, Amos J., Jr.,	Pipersville,	Bucks, Pa.
Gallagher, Jos. V.,	Drifton,	Luzerne, Pa.
Garrett, H. Clifford,	Malvern,	Chester, Pa.
Garrett, John S.,	Everhart,	" "
Gottschalk, Frank S.,	Perkiomenville,	Montgomery, Pa.
Green, Sharpless D.,	Booth's Corner,	Delaware, Pa.
Greenwood, Walter E.,	Coatesville,	Chester, Pa.
Grimm, Calvin L.,	Malta,	N'humberland, Pa.
Croff, Henry C.,	Harleysville,	Montgomery, Pa.
Grubb, Norman T.,	West Chester,	Chester, Pa.
Guie, George R.,	Downingtown,	" "
Haines, H. B.,	Holtz,	York, Pa.
Halback, Ernest K.,	Wayne,	Delaware, Pa.
Hall, Thomas J.,	Lansford,	Carbon, Pa.
Hallman, Francis,	Font,	Chester, Pa.
Hannum, John P.,	Christiana,	Lancaster, Pa.
Harley, Bertron G.,	West Chester,	Chester, Pa.
Harris, W. Clyde,	" "	" "

NAME.	POST OFFICE.	COUNTY AND STATE.
Hart, C. Vincent,	Horsham,	Montgomery, Pa.
Haws, William H.,	Joanna,	Berks, Pa.
Haws, George H.,	Cedarville,	Chester, Pa.
Hayes, Park,	West Chester,	" "
Heatou, Wallace D.,	Terwood,	Montgomery, Pa.
Heckler, William,	Mainland,	" "
Heckler, Melvin M.,	Fricks,	Bucks, Pa.
Heller, Robert A.,	Standard,	Lehigh, Pa.
Herron, James V.,	Coal Dale,	Luzerne, Pa.
Hoffman, George L.,	Churchtown,	Lancaster, Pa.
Hornberger, Frank A.,	Adamstown,	" "
Horstick, S. M.,	Palmyra,	Lebanon, Pa.
Hottle, Howard P.,	Quakertown,	Bucks, Pa.
Hutchinson, Raymond T.,	Warrior's Mark,	Huntingdon, Pa.
Jefferis, Paul M.,	West Grove,	Chester, Pa.
Johnson, Thomas W., Jr.,	Elam,	Delaware, Pa.
Johnson, Ashmore C.,	Exton,	Chester, Pa.
Johnson, Ralph A.,	West Chester,	Chester, Pa.
Jones, Walter L. W.,	Beach Haven,	New Jersey.
Jones, Clarence,	Doe Run,	Chester, Pa.
Jones, Sampson L.,	Treskow,	Carbon, Pa.
Jones, Harry M.,	Pine Grove,	Schuylkill, Pa.
Keller, Hiram H.,	Bedminster,	Bucks, Pa.
Kirkpatrick, Joseph F.,	Dilworthtown,	Chester, Pa.
Kline, Charles M.,	Cisna's Run,	Perry, Pa.
Kohler, Wilbur J.,	Jacobus,	York, Pa.
Kratz, A. Wesley,	Lansdale,	Montgomery, Pa.
Kuntz, William A.,	Walnutport,	Northampton, Pa.
Landis, Leidy M.,	Wisner,	Bucks, Pa.
Lapp, C. Leon,	Warren Tavern,	Chester, Pa.
Laubach, Joseph A.,	Bursonville,	Bucks, Pa.
Lefferts, Horace H.,	Southampton,	" "
Leffler, A. E.,	Fountain Springs,	Schuylkill, Pa.
Leister, John R.,	Woxall,	Chester, Pa.
Lewis, F. Warren,	West Chester,	" "
Lewis, Oscar E.,	Anselma,	" "
Lewis, Edgar A.,	West Chester,	" "
Light, John H.,	Mt. Zion,	Lebanon, Pa.
Light, Dawson W.,	" "	" "
Livingston, A. Rutgers,	Galatia,	Kansas.
Long, Charles,	New Hope,	Bucks, Pa.
Long, Spalding K.,	West Chester,	Chester, Pa.
Long, Leon L.,	" "	" "
Longacre, J. Alfred,	Pottstown,	Montgomery, Pa.
Longshore, Rudolf P.,	West Chester,	Chester, Pa.
Lucas, Harrison S.,	Wigton,	Clearfield, Pa.

NAME.	POST OFFICE.	COUNTY AND STATE
Lutz, G. Wellington,	Steinsville,	Lehigh, Pa.
MacElree, J. Paul,	West Chester,	Chester, Pa.
Mackenzie, William F.,	Conshohocken,	Montgomery, Pa.
Madeira, Charles,	Fleetwood,	Berks, Pa.
Mancill, Stanley B.,	115 N. 34th St.,	Philadelphia, Pa.
Manley, S. Reed,	715 S. 23rd St.,	" "
Manley, William,	" " " "	" "
Martin, Nelson,	Lansdale,	Montgomery, Pa.
Maule, William M.,	Collins,	Lancaster, Pa.
McClure, Ellis R.,	Westtown,	Chester, Pa.
McCord, Ira D.,	Marsh,	" "
McDowell, R. L.,	Woodland,	Clearfield, Pa.
McGowan, Evan S.,	Geiger's Mills,	Berks, Pa.
McLaughlin, Wm. G.,	Summit Hill,	Carbon, Pa.
Mercer, Mifflin W.,	Downingtown,	Chester, Pa.
Meredith, Richard J.,	Exton,	" "
Miller, David B.,	Rockwood,	Somerset, Pa.
Milns, B. Frank,	St. Peters,	Chester, Pa.
Mitchell, H. Arthur,	Elkton,	Maryland.
Mood, William H.,	Keller's Church,	Bucks, Pa.
Newberry, Trusten,	Coatesville,	Chester, Pa.
Nieweg, Frank C.,	Oxford,	" "
Noble, Herman L.,	Seal,	" "
Parvin, George Brooke,	Leesport,	Berks, Pa.
Paschall, John,	Wyola,	Delaware, Pa.
Pepper, Clarence H.,	Georgetown,	Delaware.
Philips, Owen L.,	Font,	Chester, Pa.
Philips, William P.,	West Chester,	" "
Phipps, Thomas,	Lionville,	" "
Pollock, Howard,	Chadd's Ford,	Delaware, Pa.
Potts, Robert H.,	Pughtown,	Chester, Pa.
Prettyman, W. Poole,	Smith,	Delaware.
Pusey, Charles J.,	Avondale,	Chester, Pa.
Quinn, George H.,	Modena,	" "
Rahn, Norman H.,	Perkiomenville,	Montgomery, Pa.
Rambo, George J.,	South Hermitage,	Lancaster, Pa.
Reagan, Irwin G.,	West Chester,	Chester, Pa.
Regester, Clifford C.,	Hamorton,	" "
Reifsnnyder, Milton E.,	Cedarville,	" "
Reiff, Henry J.,	Eagleville,	Montgomery, Pa.
Richards, William E.,	Lansford,	Carbon, Pa.
Ring, N. Stanton,	Chadd's Ford,	Delaware, Pa.
Roberts, Isaac G.,	West Chester,	Chester, Pa.
Rodriguez, Jose,	Cienfuegos,	Cuba.
Romagosa, S. Benigno,	"	"
Romagosa, Alberto,	"	"

NAME.	POST OFFICE.	COUNTY AND STATE.
Romagosa, Emilio,	Cienfuegos,	Cuba.
Rorke, William T.,	Northumberland,	N'humberland, Pa.
Rosenberger, Seward M.,	Milford Square,	Bucks, Pa.
Rosenberger, Oliver S.,	Kulpsville,	Montgomery, Pa.
Saylor, Harry,	Eaglesville,	" "
Schaeffer, Llewellyn D.,	Fleetwood,	Berks, Pa.
Schrack, Howard,	Compassville,	Chester, Pa.
Schnucker, Beale M.,	West Chester,	" "
Secrist, Irwin B.,	Liverpool,	Perry, Pa.
Seipt, Horace S.,	Worcester,	Montgomery, Pa.
Seipt, Howard A.,	"	" "
Seitz Seth G.,	Potosi,	York, Pa.
Sensenich, Edgar H.,	Goodville,	Lancaster, Pa.
Sensenig, Wayne,	"	" "
Shaddinger, J. Walter,	Gardenville,	Bucks, Pa.
Sharpless, Casper P.,	Ward,	Delaware, Pa.
Sharpless, Albert W.,	"	" "
Sharples, A. Roberts,	West Chester,	Chester, Pa.
Sharples, William P.,	" "	" "
Sheibley, Ralph,	Landisburg,	Perry, Pa.
Shelly, Harvey,	Telford,	Montgomery, Pa.
Shrawder, Joseph,	Norristown,	" "
Sinclair, William T.,	Kennett Square,	Chester, Pa.
Simpson, Robert G.,	Font,	" "
Singles, Walter,	Colwyn,	Delaware, Pa.
Sittler, George C.,	Andreas,	Schynkill, Pa.
Smith, Oscar W.,	Rainsburg,	Bedford, Pa.
Smith, J. Monroe,	Irvona,	Clearfield, Pa.
Smith, Jesse L.,	West Vincent,	Chester, Pa.
Smith, Frank,	Silverdale,	Bucks, Pa.
Sproat, H. Lindsay,	Westtown,	Chester, Pa.
Sproat, Elric S.,	"	" "
Stahl, L. S.,	Fruitville,	Montgomery, Pa.
Stein, D. W.,	Holtz,	York, Pa.
Sterner, Leidy B.,	Richlandtown,	Bucks, Pa.
Stettler, Irving I.	Mertztown,	Berks, Pa.
Stettler, John S.,	"	" "
Stettler, Isaac B.,	New Hanover,	Montgomery, Pa.
Stever, Francis,	Springtown,	Bucks, Pa.
Stiteler, C. Irvin,	Anselma,	Chester, Pa.
Stover, Warren H.,	Carversville,	Bucks, Pa.
Strode, Charles,	West Chester,	Chester, Pa.
Suarez, Felipe,	Havana,	Cuba.
Swayne, J. Bancroft,	Kennett Square,	Chester, Pa.
Swope, R. O.,	Silverdale,	Bucks, Pa.
Thomas, Edward J.,	Lansford,	Carbon, Pa.

NAME.	POST OFFICE.	COUNTY AND STATE.
Thompson, Alexander P.,	West Chester,	Chester, Pa.
Thompson, William,	" "	" "
Updegrave, Curtin G.,	Sacramento,	Schuylkill, Pa.
Vincent, Oscar A.,	Ashley,	Luzerne, Pa.
Wagner, Herbert B.,	Fagleysville,	Montgomery, Pa.
Waldron, Charles,	Glen Loch,	Chester, Pa.
Walsh, Frank,	Parkerville,	" "
Walleigh, Robert M.,	Pughtown,	" "
Wampole, Harry Z.,	Telford,	Montgomery, Pa.
Ward, George E.,	South Chester,	Delaware, Pa.
Weaver, Jacob S.,	Churchtown,	Lancaster, Pa.
Welch, Ashbel R.,	275 Harvey St.,	Philadelphia, Pa.
Wendel, George J.,	Hazelton,	Luzerne, Pa.
White, Harry,	Drawbridge,	Delaware.
Whitney, Donald F.,	3851 Aspen St.,	Philadelphia, Pa.
Wile, Norvin S.,	Fairview Village,	Montgomery, Pa.
Williamson, George S.,	Brandywine Summit,	Chester, Pa.
Wilson, D. R.,	Woodland,	Clearfield, Pa.
Wily, J. Hunter,	Pughtown,	Chester, Pa.
Windle, Charles T.,	West Chester,	" "
Windle, Fred. T.,	" "	" "
Wismer, William,	Silverdale,	Bucks, Pa.
Wolfe, Lawrence A.,	Centre,	Perry, Pa.
Worthington, A. L.,	Jamison,	Bucks, Pa.
Worthington, T. Powell,	,	" "
Woy, William J.,	Berlin,	Somerset, Pa.
Wright, J. Harry,	Blandon,	Berks, Pa.
Yeatts, Stewart M.,	Heidlersburg,	Adams, Pa.
Yost, Ralph E.,	Bethesda,	Lancaster, Pa.

## TOO LATE FOR CLASSIFICATION.

Knight, Carrie,	Hulmeville,	Bucks, Pa.
-----------------	-------------	------------

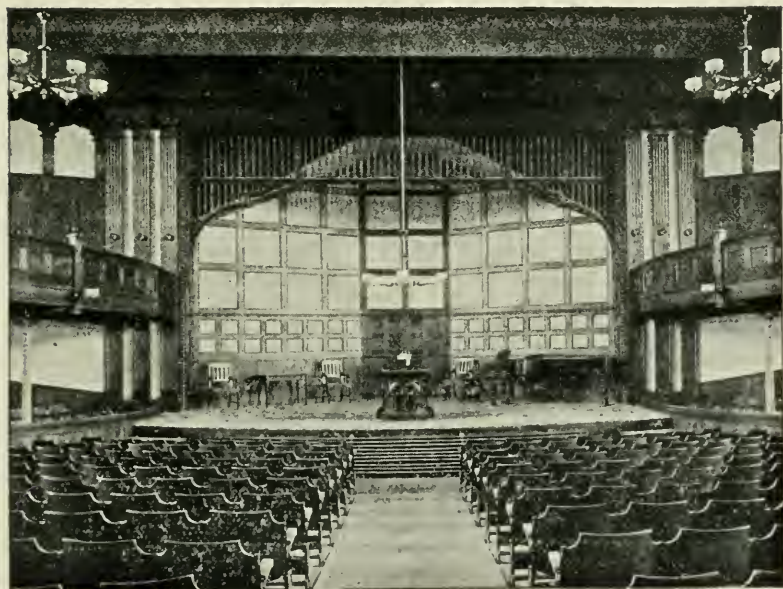
## RECAPITULATION OF STUDENTS.

Number during first term, . . . . .	585
"    "    second term, . . . . .	665
	<hr style="width: 100%;"/>
Total number of students, . . . . .	1250
Number in attendance both terms, . . . . .	480
	<hr style="width: 100%;"/>
Number of different students during year, . . . . .	770
Number of ladies, . . . . .	481
"    gentlemen, . . . . .	273
Special Students (not catalogued), . . . . .	16
	<hr style="width: 10%; margin: 10px auto;"/>
Pennsylvania (representing 32 counties), . . . . .	749
Delaware, . . . . . 14	South Dakota, . . . . . 1
Kansas, . . . . . 1	Virginia, . . . . . 2
Maryland, . . . . . 6	West Virginia, . . . . . 1
Montana, . . . . . 1	
New Jersey, . . . . . 12	Cuba, . . . . . 6
New York, . . . . . 3	Germany, . . . . . 1
North Carolina, . . . . . 1	Mexico, . . . . . 3





A CORNER OF THE LIBRARY.



THE CHAPEL.



# Course of Instruction,

AS REVISED DECEMBER 11, 1894.

Four Courses of Instruction are provided for, as follows :

Elementary Course.

Regular Normal Course

Scientific Course.

Advanced Normal Course.

## ELEMENTARY COURSE.

### PREPARATORY STUDIES.

*Language* :—Orthography, Reading.

*Natural Science* :—Physiology and Hygiene.

*Historical Sciences* :—Geography, Political and Physical; History of the United States.

*The Arts* :—Penmanship, sufficient to be able to explain some approved system ; writing to be submitted to the Board of Examiners.

Other studies, as Arithmetic, English Grammar, Algebra, etc., shall be added to the Preparatory year, said studies to be selected by each Normal School, but the "final" examination in these branches shall be deferred till the Junior year.

### JUNIOR YEAR.

*Pedagogics* :—School Management ; Methods of Teaching the Common Branches.

*Language* :—English Grammar ; Latin, sufficient for the introduction of Cæsar.

*Mathematics* :—Arithmetic ; Elementary Algebra.

*Natural Science* :—Botany.

*Historical Science* :—Civil Government.

*The Arts* :—Drawing, a daily exercise for at least twenty-four weeks, work to be submitted to the Board of Examiners ; Book-keeping, single entry, including a knowledge of common business papers, and a daily exercise for at least seven weeks ; Vocal Music, elementary principles, and attendance upon daily exercises for at least twelve weeks.

*Physical Culture*.

### SENIOR YEAR.

*Pedagogics* :—Psychology ; Methods of Teaching the Common Branches ; History of Education ; Model School Work, at least twenty weeks of actual teaching daily during one period of not less than forty-five minutes ; a Thesis on a professional subject.

*Language*:—Rhetoric and Composition; English Literature, at least twelve weeks' work, including the thorough study of four English classics; Latin, Cæsar, through the Helvetian War.

*Mathematics*:—Plane Geometry.

*Natural Science*:—Elementary Natural Philosophy.

*Historical Science*:—General History.

*The Arts*:—Elocutionary exercises in connection with the study of English Literature; Manual Training.

*Physical Culture*.

#### REGULAR NORMAL COURSE—THREE YEARS.

(This Course includes the studies of the Elementary Course, and the following branches: A full equivalent will be accepted for any of the text-books named in this Course.)

*Pedagogy*:—Advanced Psychology; Moral Science; Philosophy of Education; Methods of Teaching; Practice of Teaching; Pedagogical Works; Froebel, Education of Man; Quick, Educational Reformers; Fitch, Lectures on Teaching; School Supervision, School Apparatus; Discussion on Manual Training, Physical Culture, etc.

*Mathematics*:—Solid Geometry; Plane and Analytical Trigonometry; Surveying.

*Language*:—Latin; Cæsar, 3 books; Vergil's *Æneid*, 3 books; Cicero, 3 Orations.

*Natural Science*:—Chemistry, including Chemistry of Soils; Zoology, including Entomology; and Geology.

*Literature*:—Higher Literature, English and American, including a study of at least four classics.

#### SCIENTIFIC COURSE—FOUR YEARS.

(This Course includes the studies of the Regular Normal Course and the following branches:)

*Pedagogy*:—Logic; Course of Professional Reading selected from Regular or Advanced Normal Course; a Thesis on a professional subject.

*Language*:—Latin 3 Books of Vergil's *Æneid*, 3 Orations of Cicero, or a full equivalent; (an equivalent of Greek, German or French will be accepted for any of the following studies: Vergil, Cicero, Higher Algebra, Spherical Trigonometry, Surveying, Analytical Geometry, Calculus, Mathematical Natural Philosophy and Mathematical Astronomy, and an equivalent of Latin and advanced work in Natural Science for any of the foregoing mathematical studies.)

*Mathematics*:—Higher Algebra; Spherical Trigonometry and Surveying, with the use of instruments; Analytical Geometry; Differential and Integral Calculus.

*Natural Science*.—Higher Natural Philosophy; Astronomy, Descriptive and Mathematical.

*Historical Science*.—English History; Grecian History; Roman History.

## ADVANCED NORMAL COURSE—FIVE YEARS.

(This course includes the studies of the Scientific Course, and one year's additional work in Pedagogics, as follows: A full equivalent will be accepted for any of the text-books in the Course.)

*Psychology*:—James, Advanced Course.

Laurie's Institutes of Education; Rein's Outline of Pedagogy; Herbart's Science of Education; Spencer's Education; Rosmini's Method in Education; Davidson's Education of the Greek People.

Discussion of Methods and Objects of Leading Educators: Frebel, Pestalozzi, Dr. Arnold, Horace Mann and others.

Discussion of Educational Theories.

Education in the United States; Education in Pennsylvania (Wickersham); General Survey of History of Public Education in Germany, France and England.

Advanced work in Language, Mathematics, Natural Science, etc., may be taken at the option of the student.



## Rules for Final Examination

### AND ADMISSION TO THE JUNIOR AND SENIOR CLASSES IN THE ELEMENTARY COURSE.

1. Admission to the Senior and Junior classes as well as graduation, shall be determined by the State Board of Examiners at the annual examination of the Board. The Board is appointed by the State Superintendent of Public Instruction from the following classes: The State Superintendent or Deputy Superintendent, who is President of the Board; the Principal of another Normal School; six county, city or borough superintendents of Pennsylvania; and the Principal of this Normal School. Each student must receive eight votes out of the nine in order to pass the examinations.\* Students must be examined and recommended by the Faculty before taking the State examination.

2. In order to be admitted to the Junior class at any State Normal School, persons must be examined in the six prepara-

\*These examinations come early in June, the date being fixed each year by the State Superintendent. The examinations are in writing and last two or three days.

tory branches named and no others; and the examination in these branches shall be final. Those who for any reason were unable to complete the preparatory examination, may be admitted to both the preparatory and the Junior examinations at the end of the Junior year. But they must be classed as preparatory students till the final examination in the preparatory branches has been completed. No substitutions or conditions shall be allowed for any of the studies required for admission to the Junior class.

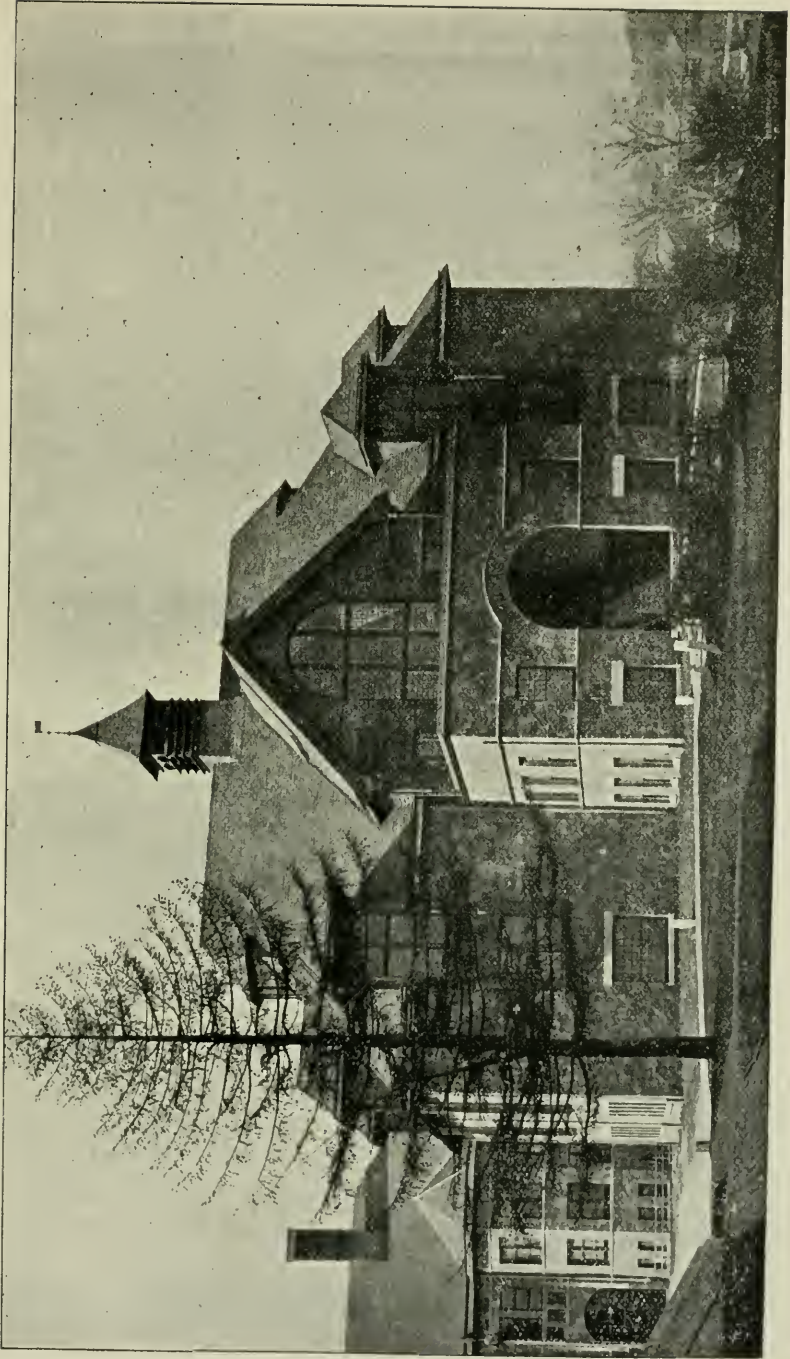
3. In order to be admitted to the Senior class, persons must be examined in all the Junior studies, except Methods and Latin, and the examination in these branches shall be final. No substitutions or conditions shall be allowed for any of the studies required for admission to the Senior class.

4. If the faculty of any State Normal School, or the State Board of Examiners, decide that a person is not prepared to pass an examination by the State Board, he shall not be admitted to the same examination at any other State Normal School during the same year.

5. If a person who has completed the Preparatory or the Junior studies at any State Normal School, desires to enter another State Normal School, the Principal of the School at which the examination was held shall send the proper certificate to the Principal of the School which the person desires to attend. Except for the reason here stated, no certificate setting forth the fact of the passing of the Preparatory or the Junior studies shall be issued.

6. Candidates for graduation shall be examined in all the branches of the Senior year. They shall have the opportunity of being examined in any of the higher branches, including vocal and instrumental music and double entry book-keeping; and all studies completed by them shall be named in their certificate.

8. A certificate setting forth the proficiency of all the applicants in all the studies in which they desire to be examined by the State Board of Examiners shall be prepared and signed by the faculty and presented to the Board.



GYMNASIUM.





## CERTIFICATES AND DIPLOMAS.

A student graduating in the Elementary Course will receive a certificate in which will be named the branches he has studied, and by which he will be constituted *Bachelor of the Elements*; these certificates entitle their holders to teach in the public schools of Pennsylvania for any two subsequent years without further examination. The diplomas of those graduating in the Scientific course will enumerate the distinctive branches of this course, and constitute their holders, *Bachelors of the Sciences*.

Graduates who have continued their studies for *two years*, and have practiced their profession for *two annual terms*, in the Common Schools of the State, and who have presented to the Faculty and Board of Examiners a certificate of good moral character and skill in the art of Teaching from the Board or Boards of Directors in whose employ they have taught, countersigned by the proper County Superintendent, may receive diplomas, constituting them *Masters* in the several studies embraced in the Course in which they graduated, and conferring upon them corresponding professional degrees, as follows :

*Master of the Elements.*

*Master of the Sciences.*

These diplomas are permanent certificates of the highest grade. *They confer upon their holders the right to teach the branches named therein in the public schools of Pennsylvania, without further examination.*

Applications for diplomas must be presented to the Board of Examiners at their regular session.

The Normal School law makes it the duty of the authorities of the Normal Schools to grant diplomas or State Certificates to *actual teachers in Common Schools*, without their having attended the Normal Schools as students. The following are the conditions upon which these diplomas will be granted :

1. Each applicant must be twenty-one years of age, and of good moral character, and he must have taught successfully during three successive annual terms in Common Schools in this State, the proof of age to be the declaration on honor of the applicant ; and of moral character and a satisfactory discharge of the requisite terms of teaching, a certificate from the proper

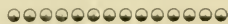
Board or Boards of Directors, signed by the President and Secretary, and countersigned by the proper County Superintendent or Superintendents.

2. The examination to be in the Elementary or Scientific Course, as the applicant may select, according to the list of studies as printed in the circulars of the State Normal School, and approved by the Superintendent of Public Instruction, or in such other studies as may by the Board of Examiners be deemed equivalent.

3. Any person obtaining a certificate in the Elementary Course may, at the next or any succeeding annual examination, be examined for the higher course, and obtain the proper certificate.

4. Each applicant to prepare and present to the Board of Examiners an original thesis of not less than six folio pages of manuscript, on some professional subject, to be retained at the school where the examinations take place.

3. The examination and certificate to be without expense to the applicant, and the certificate to be full evidence of qualifications to teach the branches therein named, in any part of the State, without further examination.



## Location, Buildings, &c.

The West Chester State Normal School was founded in the year 1871, by the joint efforts of the Trustees and contributors of the West Chester Academy, and the citizens of West Chester and vicinity.

West Chester is a beautiful town of 10,000 inhabitants, the county seat of Chester county, and is pre-eminent for its healthfulness, morality and intelligence. It is about twenty-five miles west of Philadelphia, with which it is connected by two railroads, over which trains run at all hours of the day. Both of these are controlled by the Pennsylvania Railroad, and all trains for West Chester leave the new Broad Street Station. A short

branch road connects West Chester with the main line of the Pennsylvania Railroad at Frazer, where close connections are made with the trains on the main line, and by an Electric Road it is also connected with the Wilmington and Northern R. R. at Lenape.

### THE BUILDINGS

Are situated in the southern part of the borough, half a mile from the Court House. The main building is new, built of greenstone and marble, 256 by 234 feet, four stories high, with basement. It is one of the finest and handsomest school buildings in the country. The buildings are surrounded by forty-two acres of beautiful ground.

A new building, containing a chapel and a dining-room, has lately been completed; both are most completely and handsomely fitted up. They are not excelled in any school in this country. Two new additions for sanitary purposes have also been erected, and each story, on both the girls' and boys' wings, is fitted up with bath-rooms (hot and cold water), water-closets, slop-hoppers, &c., of the best pattern. The drainage is perfect. These sanitary improvements alone cost \$10,000, and are believed to be the best and most healthful to be found anywhere. The whole building has lately been improved, the students' rooms have all been papered, refitted and refurnished, a fine library and reading-room provided for the free use of students, and many other improvements made to add to the efficiency of the school, and the comfort of the students.

**THE GYMNASIUM.**—A first class gymnasium, 104 by 64 feet, with an administration building attached, 29 by 36 feet, has recently been completed. It is of stone, two stories high, is fitted up with every modern improvement, including a full supply of the best apparatus, running track, bath-rooms, large swimming-pool, bowling-alleys, ball-cage, &c. With the single exception of the new Yale gymnasium, it is believed to be the best and most complete gymnasium connected with any school or college in the United States. A thoroughly trained physician and his wife are in charge of the gymnasium, and all exercise is taken under their supervision. All students are given a complete physical examination, and proper exercises prescribed for them. This gymnasium marks a great and important advance in Nor-

mal School work, and its advantages will be enjoyed by all students without extra cost.

RECITATION HALL.—Two years ago the Board of Trustees erected a new building, 185 by 80 feet, with two stories above a high basement, which is used wholly for school purposes. It has been planned with great care, and is unusually well adapted to its purpose. It is heated and ventilated by the Smead-Wills system. The total cost of the building and heating-plant has been over \$60,000.

NEW GROUNDS.—The erection of so many buildings has so taken up the main campus that recently the Trustees purchased an adjacent plat of five acres; a part of this has been leveled up at much expense and made into a fine play-ground and ball-field, and during the past year the grounds and buildings of the Chester County Agricultural Society, embracing 23 acres, have also been purchased, a most important and valuable acquisition.

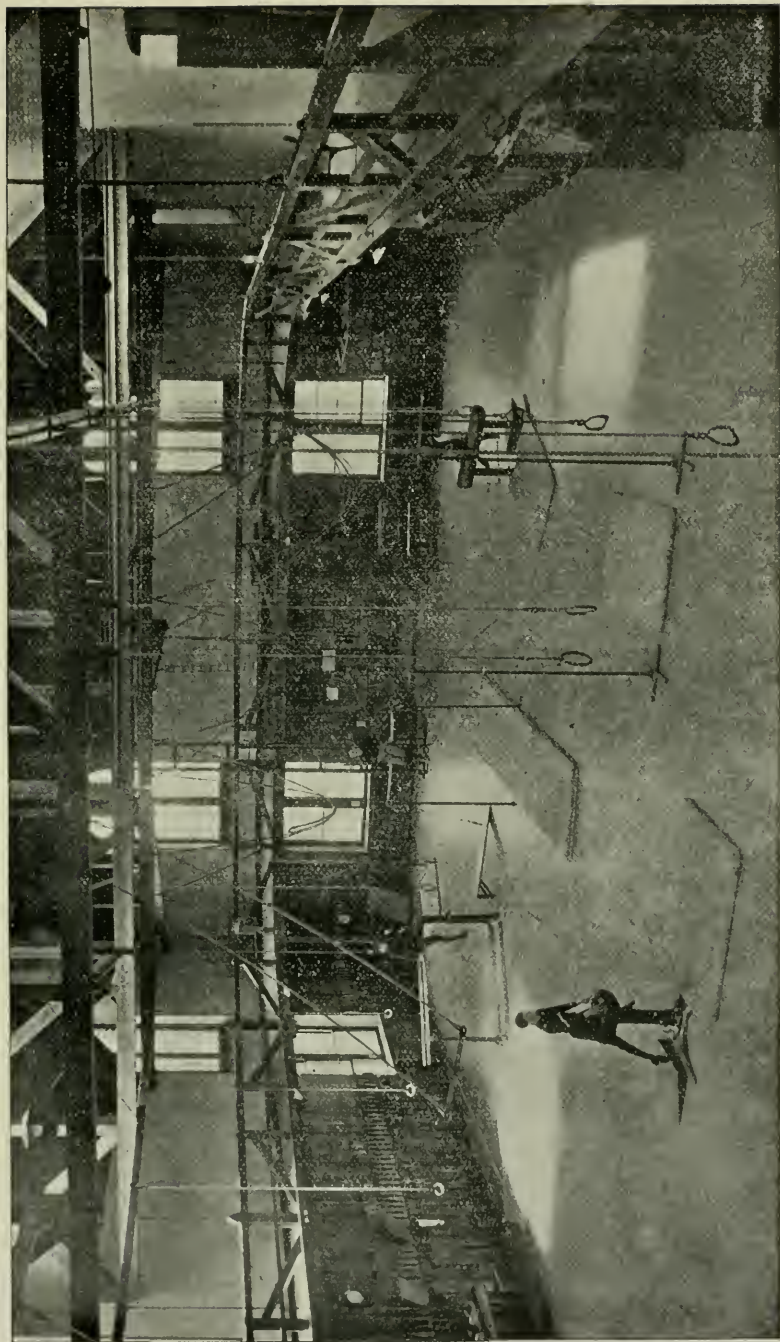
The school grounds now embrace 42 acres.

INFIRMARY.—A complete and well appointed school infirmary, at considerable distance from the other school buildings, has just been erected. This has been planned by skillful physicians and architects, and will not only promote the comfort and the recovery of any who may be ill, but will also prevent the spread of any contagion in the school. It is believed that this is the first school of its class to take this important step.

*The school property has now cost upwards of \$400,000, and is the best and most complete possessed by any Normal School in this country.*

#### STUDENTS' ROOMS.

The rooms are generally arranged for two students each. All are good sized, have high ceilings, are well ventilated, and are all thoroughly heated by direct steam radiation. The rooms are newly and comfortably furnished, have closets, single beds, wash stands, bowls and pitchers, and are furnished with woven wire mattresses. The ladies' rooms are all partly carpeted. The whole building is lighted with gas, every student's room being fitted with an Argand burner.



MAIN HALL OF GYMNASIUM.  
100 x 60 feet.



## ELEVATOR.

A new passenger elevator of the largest size has been contracted for and will be ready for use by the Fall of 1896. It will make the upper stories quite as desirable as the lower ones.



## Admission, Government, &c.

### CONDITIONS OF ADMISSION.

Pupils will be allowed to enter the regular course at any point for which they are actually fitted. They may enter at any time during the Session, and will be charged only from date of entrance.

A prompt attendance at the commencement of the Session is of the utmost importance, both to the progress of the pupil and proper organization of the School.

Students desiring to enter the Institution should make application to the Principal at as early a date as possible. All new students must submit satisfactory testimonials of good character from their last teacher.

### OUTFIT.

Pupils boarding in the Institution will be furnished with single beds and bedding, and are expected to furnish two pairs of blankets, or an equivalent, towels, and table napkins; also an umbrella and a pair of rubber over-shoes. All students will need gymnasium shoes, which can be got in West Chester at small expense, and all young ladies will need loose blouse waists for use in the gymnasium, which should be of dark blue flannel. Many of the students provide carpet for their rooms, thus giving them a very neat and home-like appearance.

Keys, lamps, wash-bowls, pitchers and looking-glasses, are furnished by the School, but their cost must be deposited when they are obtained, which deposit will be refunded when they are returned uninjured.

### GOVERNMENT.

*Self-Government* is regarded as the only true government and

nothing will be required except that which is a *true sense of honor and self-respect* would naturally demand from the individual.

The right is reserved to remove any pupil whose influence is found to be vitiating, from the school.

#### MORAL AND RELIGIOUS CULTURE.

All students are required to attend the opening exercises of the School in the chapel each day, and all must attend religious services each Sabbath morning in the town, at the churches preferred by their parents or guardians.

#### LABORATORY.

The new Laboratory renders the facilities for Chemistry even more complete than ever; the department is under the charge of a practical chemist, who has devoted years to this important branch, and who is State Chemist of Pennsylvania. Students receive instruction without extra charge, but are required to pay for chemicals used, breakage, etc. The removal of the laboratory out of the main school building has removed all the danger often apprehended from such departments.

#### APPARATUS.

The institution is supplied with Philosophical and Chemical Apparatus of the most approved kind, large additions having been made recently. Students in General Chemistry will be charged at the rate of two dollars per term for materials used in experiments before the class.

#### MODEL SCHOOL.

The Model School is a most important adjunct to the Normal School. If a Normal School fails to inculcate good methods or teaching, it fails to accomplish the great end for which it was established. The Model School should, therefore, be what the name implies, a school in which teacher-students may witness the best methods of instruction, and learn to practice them.

Miss Eva J. Blanchard, so long associated with Miss Spear here, is Principal of this department. Miss Blanchard is well known as one of the foremost teachers in this line in the country, and the advantages which the Model School offers cannot be overestimated.

This school is connected with a view to produce the best re-



sults, both in the progress of the pupils, and the attainment of correct methods by the student-teachers. Before students are allowed to teach classes in this department, they are required to witness the plans adopted by the Principal and her assistants. They are then required to teach under the constant supervision of the Principal of the Model School. Weekly meetings are held for the purpose of correcting errors in teaching and suggesting new methods.

The following course of study is pursued in this department:

*Primary Department.*—Reading, Number, Form, Language, Elementary Geography and History, Writing, Spelling, Drawing, Vocal Music, Observations of Plants, Animals, Minerals and Metals.

*Intermediate Department.*—Reading, Arithmetic, Form, Language, Grammar, Physiology, Geography, History, Writing, Spelling, Drawing, Vocal Music, Manual Training, Elementary Botany, Zoology, Mineralogy and Physics.

*Advanced Department.*—Reading, Arithmetic, Form, Language, Grammar, Physiology, Scientific Geography, History, Writing, Spelling, Drawing, Vocal Music, Manual Training, Elementary Botany, Zoology, Mineralogy, Physics, Geometry and Geology.

#### LIBRARY AND READING ROOM.

A large library room has lately been fitted up in the best manner. It now contains libraries aggregating nearly 7,000 volumes. A modern card catalogue adds greatly to their value. The library is open at all hours out of school time, with a competent librarian constantly in charge.

Connected with the library is a reading-room supplied with about a hundred magazines and papers, also for the constant and free use of the school.

#### LITERARY SOCIETIES.

There are connected with the school two flourishing Literary Societies—The Moore Literary Society, and the Aryan Society—composed of students and members of the Faculty.

The value of these societies as adjuncts of education is so great that students cannot afford to neglect the opportunities they furnish for literary and oratorical culture.

## MUSEUM.

The museum contains a large and valuable collection of specimens, illustrating every department of Natural Science. It was begun in the year 1826, and has been annually enriched with contributions from every portion of the world. The justly celebrated "Herbariums" of the late Dr. William Darlington, and David Townsend, now in this Museum, are conceded to be two of the most accurate and extensive private collections ever formed in this country.

## TEXT BOOKS.

Text Books are sold to students at wholesale prices; but all books used in the Elementary Course are furnished on rent to those preferring it.

## MUSIC.

This department is unexcelled outside of the large cities. The teachers in charge are fine musicians, and have had long and successful experience in their profession. The following is the course arranged for the piano:

## COURSE IN INSTRUMENTAL MUSIC.

*First Grade.*

Emery's Foundation Studies, and the N. E. Conservatory Method, or Urbach's Instruction Book.

## PIECES.

Very easy selections from modern composers.

*Second Grade.*

## ETUDES.

Loeschorn, op. 52; Heller, op. 47; Czerny, op. 849; Kohler, op. 50; Gurlitt, op. 50.

## PIECES.

Sonatinas and other easy works, by Lichner, Spindler, Gurlitt, Kullak, Reinecke, Schumann, and others.

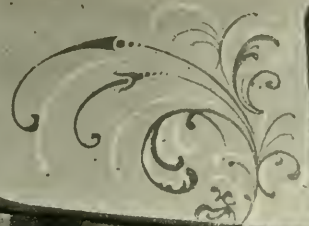
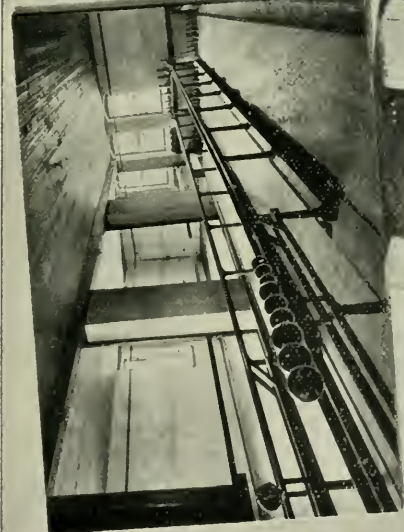
*Third Grade.*

## ETUDES.

Bertini, op. 29; Heller, ops. 46 and 45; Loeschorn, op. 66; Berens, op. 61; Bach, Little Preludes; Turner, Damper Pedal Studies, op. 15; Technics, Emery and Mason.

## PIECES.

Selections from Heller, Reinberger, Schwarvenka, Mendelssohn,



Ball Cage and Bowling Alleys.

A Corner of the Locker Room.

Swimming Pool (40 x 20 feet).

Gymnasium Reception Room.



Haydn, Schumann, Schubert, Bach, and others.

*Fourth Grade.*

ETUDES.

Turner, Elements of Modern Octave Playing ; selections from 50 Selected Studies, Cramer ; Bach, Two Part Inventions ; Clementi, Gradus ad Parnassum ; Moscheles, op. 70 ; Selections from Chopin, ops. 10 and 24, and Bach's Preludes and Fugues.

PIECES.

Selections from classical and modern composers.

Pupils completing this course in a satisfactory manner will be awarded a diploma. The time required to complete the course cannot be specified, depending, as it does, upon the talent, previous acquirements, and industry of the pupil.

The pianos used for practice are all new and of first-class makes.

VOCAL MUSIC.

This department is also in charge of a first-class teacher. The best modern methods of instruction are used both in class work and in individual instruction, and the success and popularity of the department have been very marked. Private pupils in vocal music pay the same rates as in instrumental music, and have the use of a piano to aid their practice. Class instruction in vocal music is given without extra cost.

SYNOPSIS OF VOCAL STUDIES.

*Methods and Vocalizes Used.*

Lablache's exercises for forming the voice. Vocalizes by Panofka, Concone, and Marchesi.

*First Grade.*

Lessons in physiology of voice and organs of respiration. Exercises in combining different registers or tones. Exercises for developing chest ; medium and head tones. Vocalizes by Panofka. Easy ballads.

*Second Grade,*

Exercises for flexibility continued. Study of scales. Major and Chromatic. Vocalizes by Panofka and Concone.

*Third Grade.*

Practice of Major, Minor, and Chromatic scales continued. Study of embellishments, trills, &c. Vocalizes by Panofka, Concone, and Marchesi. Selections from Operas and Oratorios.

### MUSIC RECITALS

Are held every four weeks in the chapel, for the purpose of giving the pupils ease and self-control in playing and singing before an audience. For these recitals a new Steinway Concert Grand Piano is used.

A course of reading in musical literature is recommended to cultivate the style, and enrich the pupil's knowledge of the great masters,

*Terms*:—Winter Sessions, two lessons per week, including two practice periods daily, \$34.00. For Spring Session, \$16.00. For a part of a term, \$1.25 per week.

For lessons on other instruments than the piano and cabinet organ, special arrangement must be made.

### APPLICATIONS FOR TEACHERS.

Frequent applications are made to the Principal for well trained teachers, and it will be our aim to supply the demand as far as possible. Every year demand is made for more teachers than can be supplied.

### CALENDAR.

The school year is divided into two sessions. The Winter Session will begin *Monday, August 31*, and continue *twenty-eight weeks*. The Spring Session will begin *Monday, March 29th*, and continue *fourteen weeks*. There will be a vacation of one week at Christmas, and one of the same length between the sessions in March.

### TERMS.

Tuition and board, including heat, light, and washing, for the Winter Session, \$140; *one-half payable in advance*, the remainder on the second of December; for a period less than the session, per week, \$5.25. For the Spring Session, \$65, *payable in advance*; for a period less than the session, per week, \$5.00.

For tuition alone, for Winter Session, \$45, *one-half payable in advance*, the remainder on the first of December; for a period less than a session, per week, \$1.65. For Spring Session, *in advance*, \$20; for period less than a session, per week, \$1.50. For tuition in Model School, Winter Session, \$20; Summer Session, \$10. For a time less than a session, per week, 80 cents.

The "State Aid" of fifty cents a week is deducted from the bills of those who comply with the conditions stated *below*, making the total cost to teachers \$184 per year.

*Teachers* whose schools do not end until after the beginning of the session, are charged by the week, at *term rates*, if they enter as soon as their schools close, and finish the term.

*There are no extra charges except for private lessons in music, and the costs of the chemicals to those studying chemistry.*

#### DEDUCTIONS.

Students absent two consecutive weeks, or longer, on account of personal sickness, are entitled to full reduction for the time lost.

Those leaving for any other cause will be required to pay for the time spent at the school at the rate for a period less than a session as specified above.

*All bills must be settled with the Principal, who acts in behalf of the Trustees.* Bills for one term must be settled before a student will be permitted to enter upon the next term, unless by special arrangement.

#### STATE APPROPRIATIONS TO STUDENTS AND GRADUATES.

By a recent Act of the Legislature, the following appropriations are made by the State to Normal Students and Graduates :

1. Each student over *seventeen years* of age, who shall *sign a paper* declaring *his intention* to teach in the Common Schools of the State, shall receive the sum of FIFTY CENTS *per week* towards defraying the expenses of tuition and boarding.

2. Each student, who, *upon graduating*, shall sign an agreement to teach in the Common Schools of the State *two full school years*, shall receive the sum of FIFTY DOLLARS.

3. Any student to secure the benefits, must attend the School at least *twelve consecutive weeks*, and must join a class in Methods of Instruction or School Management. These benefits will be deducted from the regular expenses of board and tuition.

#### VISITORS AND VISITING.

Calls on pupils at other times than during the hours of recreation, seriously interfere with the object they have in view,

and therefore, will not be allowed except in case of necessity. Persons desiring to visit the school are cordially invited to do so at any time.

Every absence from a school duty is a loss which cannot be wholly made up. *Parents are earnestly requested not to take their children away from a single school duty, unless it is absolutely necessary. It will interfere with important school duties if a student leaves school earlier than Saturday morning or returns later than Sunday evening.* Students are not permitted to visit home or away from the town without special permission from their parents or guardians.

#### THE TEXT BOOKS USED.

*Readers*—Curry, Monroe, Sheldon; *Arithmetic*—Brooks, Wentworth & Hill, Heath's; *Geography*—Rand & McNally, Eclectic, Frye; *Grammar*—J. P. Welsh; *Geometry*—Wells; *Algebra*—Sensenig; *Physiology*—Martin; *Natural Philosophy*—Sharpless & Philips; *Botany*—Gray, Flora Cestrica; *Chemistry*—Eliot and Storer, Douglass and Prescott; *Zoology*—Holden; *Geology*—LeConte; *Rhetoric*—D. J. Hill; *History U. S.*—Johnson, Montgomery; *Constitution U. S.*—Mowry, Philips; *Drawing*—White; *Vocal Music*—American; *School Management*—White; *Methods of Instruction*—Brooks; *Mental Philosophy*—Dewey; *Trigonometry and Surveying*—Wentworth; *Analytical Geometry and Calculus*—Wentworth; *Astronomy*—Snell's Olmstead, Sharpless & Philips; *Latin*—Collar & Daniel, Harper's Caesar; *Greek*—Goodwin's Grammar, Goodwin's and White's Anabasis; *German*—Joynes-Meissner, German Texts; *French*—Otto's Grammar; *English Literature*—Trimble, Trimble's Chart, Dana's, Whittier's, Bryant's and Hudson's Selections; *Orthography*—Harrington.

#### REGULATIONS.

1. Every student is requested on entering to give the Principal information in regard to the following particulars: Whether he designs fitting himself for a teacher; what length of time he designs remaining in the Institution, and whether he desires to pursue the regular course for graduation.

2. Students are considered members of the school until the Principal is duly notified of their withdrawal.





THE ATHLETIC FIELD.



PRINCIPAL'S RESIDENCE.



3. The hours regularly assigned to study are to be faithfully devoted to the preparation of the exercises required.

4. Students are allowed to walk for exercise in the vicinity of the school, but no one is permitted to visit the town or otherwise absent himself, without permission from the Principal. Absence from the premises after dusk is not permitted. New acquaintances outside of the school must not be cultivated.

5. Permission to be absent from a recitation must always be obtained from the teacher in charge of the class, *before* the absence occurs; and students desiring to be absent from town must obtain written permission from the Principal.

6. Boarding students who are not present at the beginning of the term, must send to the Principal a written explanation of their absence, or their rooms will be forfeited.

7. Every student must be present at the daily opening exercises of the school, and at all general exercises in the Chapel unless excused.

8. All objectionable books, papers and cards, found in the possession of students, will be taken and destroyed.

9. Disorderly conduct in the building is prohibited. Each student will be held accountable for any disturbance or damage in his room.

10. No nails must be driven in the walls or ceilings, or alterations be made in the windows, doors, or any appendage of the rooms, without permission from the *Steward*.

11. Students are not allowed to visit one another's rooms during the regular hours of study, without permission of those in charge of the halls. No change of rooms must take place without permission from the Principal.

12. Each student of instrumental music will have regular hours assigned for practice, during which time no spectator must be present to interrupt the exercises or divert the attention.

13. All students who are tardy, unnecessarily, at meals, must forfeit them, and no one must leave before the rest without good reason, and permission from the person sitting at the head of the table. Any student sick or indisposed, and requiring attention, must have himself reported at once to the Matron.

14. It is expected that the ladies and gentlemen of the Institution will treat one another with politeness, but they will not be allowed to be together or to carry on conversation or other communication except in the performance of school exercises, unless by special permission. Neither sex will be permitted to trespass upon that portion of the building assigned to the other.

15. No lady or gentleman attending this Institution will meet, walk, or ride with a person of the opposite sex, except in cases of necessity, and then only with the permission of the Principal.

16. Students will not visit the dining room at any other time than meal time, nor the domestic departments, boiler room, or music rooms, without permission.

17. The use of tobacco in any form is strictly prohibited in the building or on the grounds.

18. Students must not enter any saloon, bar-room, billiard or pool-room. They are absolutely forbidden to use as a beverage alcoholic liquors of any kind whatever during their connection with the school.

19. Students will be required to attend public worship each Sabbath morning at such places as their parents or guardians designate.

20. Students are required to take up enough studies to keep them, in the judgment of the Principal, sufficiently employed, but must not take up more than they can study with profit.

21. Students must furnish towels, napkins, and two pairs of blankets (or an equivalent), and have all articles of clothing *distinctly marked*. Each student is permitted to have twelve pieces washed each week without extra charge.

# Directory of the Alumni.

PLEASE NOTIFY US OF ANY ERRORS OR CHANGES.

## OFFICERS FOR 1894-95.

*President*—HENRY S. BORNEMAN, ESQ., Class of '89.

*Vice-President*—WALTER L. PHILIPS, Class of '90.

*Secretary*—SUSAN C. LODGE, Class of '77.

## CLASS OF 1874. ELEMENTARY COURSE.

<i>Name.</i>	<i>Address.</i>	<i>Profession.</i>	<i>Time taught since graduation.</i>
Margaret Crosby,	Chester, Pa.	Teaching,	22 yrs.
Anna P. Esler,	West Chester, Pa.	Teacher Nor. School,	21 "
Ruth E. Griffith,	Chrome, Pa.	Teaching,	17 "
George G. Groff,	Lewisburg, Pa.	College Professor,	20 "
Anna S. Hibbs (Washburn)	Chappaqua, N. Y.		8 "
Ella M. Hunsicker,	Spring City, Pa.	Teaching,	11 "
E. Anna Large (Thorne),	Thorndale, Pa.		10 "
Margaretta B. Longshore,	Swarthmore, Pa.		8 "
Emma J. Longstreth,	2103 Park Ave., Phila.,	Teach. Girls' High Sch.,	21 "
Mary H. Lynch (John),	Sunbury, Pa.		19 "

## CLASS OF 1875. ELEMENTARY COURSE.

Mary J. Bates (Miller),	Glen Moore, Pa.,		3 "
Dora E. Brosius (Walton),	Ercildoun, Pa.,		8 "
Richard T. Chandlee,	New York City,		2½ "
M. Lizzie Conway,	Mount Hermon, Mass.,	Teaching,	16 "
Emily Corson,	Plymouth Meeting, Pa.,		
Martha Corson (Poley),	6519 Germantown Ave., Phila.,		
Carrie J. Dummig,	507 W. 3d St., Wilmington, Del.,	Teaching,	20 "
William T. Gordon,	Coatesville, Pa.,	Prin. of Schools,	21 "
Mary J. Hare,	Deceased, 1888,		13 "
Anna Jackson,	George School, Newtown,	Librarian,	12½ "
Emma Irej (Philips),	Kennett Square, Pa.,		7 "
Ida M. John (Taylor),	Phoenixville, Pa.,		14 "
Lydia A. Martin,	West Chester, Pa.,	Teacher Nor. Sch.,	20 "
Arthur W. Potter,	13th St. and Fifth Ave., N. Y.,	Publisher,	16 "
Annie J. Price (Paxson),	331 Saunders Ave., Phila.,		2 "
Amos L. Spencer,	Oxford Valley, Pa.,	Teaching,	16 "
Zerna Wollerton (Liggett),	West Chester, Pa.,		
Sara Z. Woolley (Maddock),	Elwyn, Pa.,		4 "

## CLASS OF 1876. ELEMENTARY COURSE.

J. Roberts Acker,	Deceased, 1880,		2 "
Phebe A. Baker,	Media, Pa.,	Florist,	10 "
Lizzie Brown (Thomas),	Media, Pa.,	Teaching,	13 "

<i>Name.</i>	<i>Address.</i>	<i>Profession.</i>	<i>Time taught since graduation.</i>
Sallie M. Boyd (Snow),	Wakefield, R. I.,		
William Butler,	1220 S. 4th Ave., Wichita, Kan.,	Civil Engineer.	
Thomazine T. Clark (Fairlamb),	Exton, Pa.,		8½ yrs.
Ada A. Coffman,	Torrington, Conn.,	Teaching,	6 "
Clara A. Davis,	Chester, Pa.,	"	20 "
Abbie A. Fyre,	Williamson Sch., Elwyn, Pa.,	"	17 "
George P. Gabeka,	318 W. 117th St., N. Y. City,	"	18 "
Jennie Knight (Atkinson),	Penn's Park, Pa.,		4 "
Wilhelmina B. Linton (Ivins),	121 Penn St., Camden, N. J.,		3 "
Rachel S. Martin,	West Chester, Pa.,		16 "
Lucy C. Parsons (Tyson),	20th & Hyatt Sts., Chester, Pa.,		3 "
Ida C. Pyle,	Avondale, Pa.,	"	20 "
Kate A. Stephens (Williams),	Minneapolis, Minn.,		5 "
Florence E. Sickel,	Davis Grove, Pa.,	"	18 "
Sue P. Stackhouse,	Deceased, 1888,		4 "
William D. Thomas,	Deceased, 1891,		2 "
Anna M. Thompson,	Newtown, Pa.,		1 "

## CLASS OF 1877. SCIENTIFIC COURSE.

George G. Groff,	Lewisburg, Pa.,	College Professor,	17 "
------------------	-----------------	--------------------	------

## STATE CERTIFICATE.

Wm. H. Snyder,	Oxford, Pa.,	Prin. High School,	17 "
----------------	--------------	--------------------	------

## ELEMENTARY COURSE.

Ella L. Baldwin,	2005 Chestnut St., Phila.,	Teaching,	14 "
B. Anna Black (Johnson),	Peacoyd, Pa.,		6 "
Lizzie F. Criley,	West Chester, Pa.,	Teach. Nor. School,	19 "
Zelda H. Daniel (Baldwin),	" " "	Teaching,	7 "
M. Elouise Davis (Wells),	Deceased, 1893,		2 "
Anna P. Flinn (Matlack),	Bryn Mawr, Pa.,	"	15 "
Addie C. Graves,	Glen Mills, Pa.,	"	19 "
H. Emilie Groce,	Lausdowne, Pa.,	Prin. High School,	19 "
Virginia Green (Huey),	Lenape, Pa.,		6 "
Hanna M. Johnson (Knickerbocker),	Fairfax, Iowa,		½ "
Susan C. Lodge,	West Chester, Pa.,	Teacher High Sch.,	15 "
Margaret J. Moffat,	Riegelsville, Pa.,	Teaching,	19 "
Annie V. Murray,	19th and Brown Sts., Phila.,	Stenographer,	12 "
Fannie A. Pyle (Pronefield),	Media, Pa.,		10 "
L. Emma Pyle,	West Chester, Pa.,	Companion,	14 "
Laura C. Sorber (Diemer),	Spring City, Pa.,		11 "
Arthur H. Tomlinson,	Swarthmore, Pa.,	Prin. Gram. School,	19 "
Lydia Turner,	Audubon, Iowa,	Prin. High School,	17 "
Elizabeth Turner,	Lausdowne, Pa.,		17 "
John P. Vanderslicq,	Deceased, 1879,		

## CLASS OF 1878. ELEMENTARY COURSE.

Ella T. Brooke (Bateman),	West Chester, Pa.,		2 "
Hannah R. Caley (Garwood),	Newtown Square, Pa.,		10 "
Hannah Castle,	Upland, Pa.,	Teaching,	6 "
Harriet A. Castle,	" " "	"	18 "
Evalena A. Darlington,	" " "		
Mary Edmunds,	Deceased, 1889,		12 "
Kate R. Moulder,	Phoenixville, Pa.,	"	18 "
Eleanor M. Phillips (Pennoek),	Deceased, 1888,		1 "
Marian Preston (Lewis),	West Chester, Pa.,		3 "
Frances M. Stiteler,	Anselma, Pa.,	"	17 "
Jane J. Wetherell (Bartlett)	218 Logan Square, Phila.,		6 "

<i>Name.</i>	<i>Address.</i>	<i>Profession.</i>	<i>Time taught since graduation.</i>
<b>CLASS OF 1879. ELEMENTARY COURSE.</b>			
Emma K. Bossert,	Phoenixville, Pa.,	Teaching,	16 yrs.
Maggie R. Caley,	Media, Pa.,	"	15 "
J. Howard Dugan,	Hazleton, Pa.,	Mining Engineer,	4 "
D. Tucker Hoffman,	Phoenixville, Pa.,	Draughtsman,	2 "
Joseph E. Myers,	West Branch, Iowa,	Teaching,	8 "
Hartman Naylor,	St. George's Hall, Summit, N. J.,	Head-master,	16 "
Emma P. Nields (Dugan),	Chatham, Pa.,		3 "
Annie J. Passmore (Swayne),	Fairville, Pa.,		2½ "
Sue V. Peters (Thatcher),	Village Green, Pa.,		4 "
Emma T. Pyle (Tomlinson),	Swarthmore, Pa.,		15 "
Rachel A. Pyle (Cloud),	Marlborough, Pa.,		2 "
David J. Reese,	Deceased, 1882,		2 "
Mary F. Whitehead (Durnall),	West Chester, Pa.,		6 "
Caroline C. Woodward (Cummings),	3106 Hamilton St., Phila.,	Teaching,	15 "

#### CLASS OF 1880. ELEMENTARY COURSE.

Mary H. Baldwin (Prickett),	Medford, N. J.,		11 "
Carrie E. Bemus,	Atlanta, Ga.,	Teaching,	15 "
Mary M. Brinton,	Deceased, 1894,		
Chas. H. Bushong,	49 W. 19th St., N. Y. City,	Physician,	5 "
Willis Cheyney,	Wilmington, Del.,		2 "
Margaretta S. Crumley,	Wayne, Pa.,	Stenographer,	8 "
Harry G. Kidd,	Lombard, Md.,	Prin. of Schools,	13 "
Lizzie F. Kugler (Losey),	Sinnemahoning, Pa.,		5 "
Mary E. Nelson (Shoch),	Kelton, Pa.,		1 "
Alfred Paxson,	Deceased, 1894,		3 "
Fannie J. Simpson,	Durham, Pa.,	Teaching,	13 "
Belle Vansant,	George Sch., Newtown, Pa.,	"	15 "
Laura C. Yerkes,	Phoenixville, Pa.,	"	16 "

#### STATE CERTIFICATE.

Milton E. McLinn,	Bloomsburg, Pa.,	Clergyman,	4 "
-------------------	------------------	------------	-----

#### CLASS OF 1881. ELEMENTARY COURSE.

Martha J. Acker,	Deceased, 1888,		7 "
Lizzie L. Buchanan (Parker),	N. Denver, Colorado,	Supt. of Schools,	11 "
Alice F. Claffin,	Berlin, N. J.,	Stenographer,	2 "
Leonore E. Davis,	1824 N. 11th S., Phila.,	Physician,	2 "
Ellen M. Green,	Green Hill, Pa.,	Teaching,	15 "
Mary E. Green,	Phoenixville, Pa.,	"	14 "
Daniel Hartney,	Langhorne, Pa.,	Prin. of Schools,	14 "
Addison L. Jones,	West Chester, Pa.,	Supt. of Schools,	14 "
Madge J. Kerns,	Devon, Pa.,	Book-keeper,	12 "
Elizabeth J. Lewis,	Gaithersburg, Md.,	Teaching,	15 "
Ella W. Lynch (Thomas),	Oxford, Pa.,		4 "
Alice H. March (Martin),	2320 St. Alban's Place, Phila.,		5 "
Joseph L. Markley,	University of Mich.,	Prof. of Mathematics,	10 "
Mary P. McFarlan,	Linwood, Pa.,	Teaching,	15 "
G. Winfield Moore,	Ercildoum, Pa.,	Prin. Academy,	15 "
Fannie Potts (Crouse),	Cupola, Pa.,		3½ "
Emma Schofield (Godon),	Chester, Pa.,		4 "
Ella M. Turner (Fenn),	800 West St., Wilmington,		6 "
Mary D. Walton (Swayne),	Kennett Square, Pa.,		2½ "
Williamanna Webb (Jefferis),	Deceased, 1893,		2½ "

#### CLASS OF 1882. SCIENTIFIC COURSE.

Arthur W. Potter,	13th St., & Fifth Ave., N. Y.,	Publisher,	9 "
-------------------	--------------------------------	------------	-----

## ELEMENTARY COURSE.

<i>Name.</i>	<i>Address.</i>	<i>Profession.</i>	<i>Time taught since graduation.</i>
Lewis B. Ambler,	Jenkintown, Pa.,	Prin. Friends' Acad.	11 yrs.
Walter J. Baldwin,	Romansville, Pa.,	Mining Engineer,	5 "
Florence Brinton,	Media, Pa.,	Teaching,	13 "
Maggie Ferron,	Londonderry, Pa.,	"	11 "
Francis H. Green,	West Chester, Pa.,	Teacher Nor. Sch.,	11 "
Lily C. Groff,	Deceased, 1891,		2 "
R. Addie Kauffman,	Berwyn, Pa.,	Teaching,	12 "
Jesse E. Phillips, Jr.,	20½ St. James St., Boston, Mass.,	"	8 "
Warren R. Rahn,	Ambler, Pa.,	Prin. of Schools,	12 "
Warner P. Roberts,	Warrington, Pa.,	Teaching,	10 "
William H. Slotter,	Doylestown, Pa.,	Co. Superintendent,	9 "
H. Bertha Sorber (McLeod),	363 Emma St., Buffalo, N. Y.,		5 "
Flora L. White,	West Chester, Pa.,	Teacher High Sch.,	11 "
Samuel F. Wolfe,	South Bethlehem, Pa.,	Bookkeeper,	2 "
Sara S. Kirk,	West Chester, Pa.,	Teacher Nor. Sch.,	11 "

## CLASS OF 1883. SCIENTIFIC COURSE.

Joseph L. Markley,	University of Mich.,	Prof. of Mathematics,	7 "
Arthur H. Tomlinson,	Swarthmore, Pa.,	Prin. Grammar Sch.,	11 "

## ELEMENTARY COURSE.

Fannie J. Bailey (Brown),	9c2 Swede St., Norristown, Pa.,		1 "
Joseph H. Baldwin,	West Chester, Pa.,	Lawyer,	3 "
Katie W. Bean (Cressman),	Sellersville, Pa.,		10 "
William H. Beyer,	Vincent, Pa.,	Clergyman,	3 "
Mattie Dauman (Miller),	313 Pearl St., Camden, N. J.,		5 "
W. Roger Froncfield,	Media, Pa.,	Lawyer,	2 "
Ella D. Gallagher,	726 E. Marshall St., Norristown, Pa.,	Teaching,	12 "
E. Bella Griest,	Guernsey, Pa.,	Teaching,	12 "
Mary E. Griest,	" "	Student,	9 "
Leila C. Hecht (Byers),	343 Madison St., Milwaukee, Wis.,		8 "
Mary W. Hawkhurst (Tyson),	Flora Dale, Pa.,		4 "
Samuel L. Jones,	109 Spring St., Trenton, N. J.,	Teach. Bus. Col.,	12 "
Annie Lafferty (Wallace),	Chadd's Ford, Pa.,		4 "
Addie L. Lybrand,	Deceased, 1889.,		3 "
Rettie Moore,	Coatesville, Pa.,		4 "
Edwin R. Musselman,	Line Lexington, Pa.,	Teacher,	12 "
Nellie Nevegold,	Bogota, S. A.,	Missionary,	7 "
W. Edwin Priest,	Washington, D. C.,	Teacher High Sch.,	11 "
Mary C. Russel (Echus),	Deceased, 1893.,		5 "
A. Thomas Smith,	West Chester, Pa.,	Teacher Nor. Sch.,	11 "
Mary H. Walter,	Tradesville, Pa.,	Teaching,	11 "

## STATE CERTIFICATE.

John V. Ommeron,	Quakertown, Pa.,	Attorney-at-Law,	8 "
------------------	------------------	------------------	-----

## CLASS OF 1884. ELEMENTARY COURSE.

Sara P. Bedford,	West Chester, Pa.,	Clerk,	1 "
A. Lincoln Beerbower,	Cripple Creek, Col.,	Broker,	1 "
Charles B. Cloud,	Millersburg, Pa.,	Prin. of Schools,	12 "
Ambrose L. Custer,	Lehighton, Pa.,	" "	12 "
Lydia E. Eisenhower,	Sheuandoah, Pa.,	Teaching,	12 "
Amelia Evans (Hague),	Deceased, 1892.,		6 "
Oliver D. Frederick,	West Chester, Pa.,	Teacher Nor. Sch.,	12 "
Sara S. Hoopes (Taube),	714 N. 6th St., Harrisburg, Pa.,		8 "
William H. Johnson,	915 N. 43rd St., Phila.,	Clerk,	2 "



<i>Name.</i>	<i>Address.</i>	<i>Profession.</i>	<i>Time taught since graduation.</i>
Annie W. Keene (Bushong),	Deceased, 1894,		4 "
Clara E. Knerr,	Birchrunville, Pa.,	Teaching,	11 "
Florence A. McAfee (Moore),	West Vincent, Pa.,		5 "
Eloise Mayham (Hulley),	Lewisburg, Pa.,		3½ "
Francis H. Nunemaker,	Deceased, 1888,		4 "
M. Lizzie Poole,	" 1883,		7 "
Richard W. Rcelofs,	Chicago, Ill.,	Clerk,	2 "
Jesse H. Snyder, Jr.,	Lansdale, Pa.,	Teaching,	12 "
Annie C. Sullivan,	Jenkintown, Pa.,		12 "
Agnes G. Walsh (Bartram),	Canaan, Conn.,		6 "
Hannah Yonkers (Allen),	Pasadena, Cal.,	Teaching,	7 "

## CLASS OF 1885. SCIENTIFIC COURSE.

Martha J. Acker,	Deceased, 1888,		3 "
Henry Benner,	Chicago, Man. Tr. Sch., Ill.,	Teaching,	7 "
William H. Leyer,	Vincent, Pa.,	Clergyman,	1 "
E. G. Jones,	Deceased, 1886,		1 "

## ELEMENTARY COURSE.

John M. Carr,	Wilkesbarre, Pa.,	Lawyer,	7 "
Lizzie C. Crumley,	Wayne, Pa.,	Teaching,	10 "
Alice M. Gibson (Shepherd),	22 Dana Place, Wilkesbarre, Pa.,		5 "
Florence Griest (Michener),	Guernsey, Pa.,		
Mary A. Hall (Ambler),	Jenkintown, Pa.,		3 "
Jacob Hillegas,	413 Swede St., Norristown, Pa.,	Lawyer,	1 "
Clara E. Hough,	Erazil, S. A.,	Teaching,	9 "
J. R. Johns,	Denver, Pa.,	Physician,	2 "
David M. Lichty,	University of Michigan,	Instructor,	7 "
Anne Mathias,	Chalfont, Pa.,	Teaching,	11 "
Phebe Passmore (Taylor),	Malvern, Pa.,		5 "
Irene Roberts,	Ardmore, Pa.,	Sten. & book-keeper,	4 "
Emma M. Smedley,	Deceased, 1887,		2 "
Myra W. Storey,	New London, Pa.,		4 "
Edith Trapp,	Towanda, Pa.,		11 "
Mary E. Worrall,	Deceased, 1886,		½ "
Mabel E. Way,	15th and Race Sts., Phila.,	Teaching,	10 "
Elmer P. Weisel,	Philadelphia,	Book-keeper,	4 "
Alice White,	15th and Race Sts., Phila.,	Teaching,	11 "
Frank B. Wonselter,	58 W. Baker St., Atlanta, Ga.,	Cashier Ins. Co.,	6 "

## STATE CERTIFICATE.

James J. Bevan,	Mauch Chunk,	Prin. High Sch.,	10 "
-----------------	--------------	------------------	------

## CLASS OF 1886. SCIENTIFIC COURSE.

Susan C. Lodge,	West Chester, Pa.,	Teacher High Sch.,	10 "
-----------------	--------------------	--------------------	------

## ELEMENTARY COURSE.

Lizzie A. Boorse,	Sorrento, Cal.,	Teaching,	10 "
Sara A. Conard,	Ogontz, Pa.,	"	10 "
Laura Eshleman,	Fagg's Manor, Pa.,	"	5 "
Sara C. Evans,	West Chester, Pa.,		6 "
Mary E. Fox,	Deceased, 1890,		4 "
Eleanor S. King (Wheeler),	2157 N. 29th St., Phila.,		3 "
William V. Kulp,	Brooklyn, N. Y.,	Civil Engineer.	
Helen L. ug,	Girard College Phila.,	Teaching,	10 "
Lizzie F. Ogden (Smith),	West Chester, Pa.,		6½ "
Mary E. Reed,	Jeffersonville, Pa.,		4 "
Laura E. Roberts,	Deceased, 1887.		

<i>Name.</i>	<i>Address.</i>	<i>Profession.</i>	<i>Time taught since graduation.</i>
Annie C. Scarborough,	Wrightstown, Pa.,	Teaching,	7 "
Isaiah M. Stover,	Cedars Pa.,	"	10 "
George Wheeler,	2157 N. 29th St., Phila.,	Prin. Blaine Sch.,	10 "
Hannah M. Worth,	Monte Vista, Cal.,	Teaching,	7 "

## CLASS OF 1887. SCIENTIFIC COURSE.

Wm. H. Johnson,	95 N. 43rd St., W. Phila.,	Clerk,	1 "
David M. Lichty,	University of Michigan,	Instructor,	7 "

## ELEMENTARY COURSE.

Mary E. Cornwell,	Pittsburg, Pa.,	Teaching,	6 "
W. H. Detwiler,	Bloomsburg, Pa.,	Teacher Nor. Sch.,	6 "
Jennie T. Eachus (Jackson),	Philadelphia,		3 "
J. Morris Ehl,	Philadelphia,	Business,	2 "
Eleanor T. Good,	West Grove, Pa.,	Teaching,	9 "
Lizzie Harley (Williams),	Port Providence, Pa.,		7 "
Regina M. S. Mahoney,	1330 Spruce St., Phila.,	"	6 "
Robert W. Mearns,	Ft. Leavenworth Kansas	Lieut. U. S. A.,	
Adele M. Moloney,	Manoa, Pa.,	Teaching,	8 "
Ethel A. Newlin,	Port Carbon, Pa.,	Prin. of School,	9 "
Cora R. Perry,	205 Washington Ave., Scranton, Pa.,	Sec. Y. M. C. A.,	1 "
Jennie V. Potts (Gatchell),	Coatesville, Pa.		2 "
Laura Pyle (Nicholas),	Huntingdon Ind.,	Teaching,	7 "
Annie M. Riehl (Arnold),	04 C St., S. E. Washington, D. C.,		2 "
Elsie V. Smith,	Lambertville, N. J.,	Teaching,	7½ "
Mary Sweeney (Elliott),	Wilmington, Del.,		7 "
Hattie Thomson,	Media, Pa.,	"	9 "
Willa M. Way,	Penna. Dental College,	Student	7 "
Mary F. Weikel (Hawthorn),	Norristown, Pa.,		3 "
Mary H. Welsh (Adler),	122 W. Wayne St., South Bend,		3 "

## CLASS OF 1888. ELEMENTARY COURSE.

Angie C. Barnard,	Cheltenham, Pa.,	Teaching,	6 "
Lizzie Castle,	Upland, Pa.,	"	7 "
Hattie Ely,	Yardley, Pa.,	"	4 "
Annie M. Goshen,	Ann Harbor, Mich.,	"	6 "
Rosa Ganster,	113 S. Grosvenor Ave., Dayton, O.,	"	6 "
Meta Hale,	West Chester, Pa.,	Dentist,	3 "
Annie V. Hurst (Harzler),	Sunbury, Pa.,		4 "
Alice Jacobs (Canizares),	Wayne, Pa.,		5 "
Anne Jadwin (McMillan),	Carbondale, Pa.,		4 "
Lillie Knoche (Marlatt),	391 Franklin St., Buffalo, N. Y.,		5 "
Minnie L. Morgan,	Franklin & Marshall Col., Pa.,	Teaching,	4 "
Ettie Person (Pennock)	Chestnut Level, Pa.,		2 "
Mary A. Pyle (Davoll),	Ann Arbor, Mich.,	Teacher High Sch.,	7 "
Minnie R. Reynolds (Pancoast),	Manoa, Pa.,		4 "
Annie L. Smith (Vernon),	Lima, Pa.,		2 "
Adella A. Smith,	71st & Woodland Ave., Phila.,	Teaching,	8 "
Itasca Valentine,	Deceased, 1893,		4 "
Ella Weinberger,	Steinsburg, Pa.,		6 "
Milton Kistler,	Edinboro, Pa.,		6 "
Frank C. Rex,	Waterford Pa.,	Prin. Academy,	3 "

## CLASS OF 1889. ELEMENTARY COURSE.

Samuel J. Bierly	Newton Hamilton, Pa.,	Teaching,	6 "
Henry S. Borneman,	708 Harrison Bldg., Phila.	Lawyer,	2 "
G. K. Brecht,	Norristown, Pa.,	Law Student,	7 "
Ilda M. Christmas,	Scranton, Pa.,	Teaching,	7 "

<i>Name.</i>	<i>Address.</i>	<i>Profession.</i>	<i>Time taught since graduation.</i>
Alice Darlington,	West Chester, Pa.,	Teaching,	2½ yrs'
Laura L. Ehl (Fluck),	Exton Pa.,	"	2 "
Clara Eisenhart,	Fort Washington, Pa.,	"	7 "
Helen H. Ely,	West Chester, Pa.,	Teacher Nor. Sch.,	6 "
A. J. Emery,	West Conshohocken, Pa.,	Prin. of Schools,	6 "
Matilda Fulton (Minshall),	Strafford, Pa.,	"	3 "
Clara Hagerty,	Plumsteadville, Pa.,	Teaching,	5 "
Annie E. Hambleton,	Goshen, Pa.,	"	7 "
Linda K. Hoopes,	West Chester, Pa.,	Teacher Nor. Sch.,	2½ "
Esther G. Jones (Widdicombe),	Phoenixville, Pa.,	"	2 "
Marion Lewis (Auson)	Norritouville, Pa.,	"	½ "
M Lydia Mendendall (Loller),	Wye Mills, Md.,	Teaching,	5 "
Henrietta Mood,	Richland Center, Pa.,	Physician,	2 "
Mary Morris,	Line Lexington, Pa.,	Teaching,	6 "
Sallie A. Neitz (Chubb),	2716 Mervine St., Phila.,	"	0 "
Carrie J. Ozias,	Quakertown, Pa.,	"	8 "
E. Daisy Prendergast,	Scranton, Pa.,	"	7 "
Williard R. Pyle,	Shortlidge's Acad., Media Pa.	Instructor,	3 "
Lillian Rich	Edgewood, Pa.,	Teaching,	7 "
Barton Sensenig,	Mt. Airy, Phila.,	"	2 "
Frances J. Teucate,	Phoenixville, Pa.,	"	7 "
Laura S. Weinberger,	Steinsburg, Pa.,	Student,	5 "
Anna L. Whitehead,	20½ St. James St., Boston, Mass.,	Student,	4 "
Agnes W. Woodman,	George Sch., Newtown, Pa.,	Teacher,	6 "

## CLASS OF 1890. ELEMENTARY COURSE.

Robert Anderson,	West Chester, Pa.,	Teacher Nor. Sch.,	6 "
Jennie E. Brown,	Pleasant Grove, Pa.,	"	3 "
Anna M. Conly,	Maple Glen, Pa.,	Teaching,	0 "
Fred. M. Clough,	Ulster, Pa.,	Clergyman.	"
Annie J. Davis,	West Conshohocken, Pa.,	Teaching,	6 "
William S. Delp,	West Chester, Pa.,	Teacher Nor. Sch.,	6 "
William L. Farrell,	Plains, Pa.,	Teaching,	3 "
Bertha M. Foulk,	Collamer, Pa.,	"	4 "
Daniel S. Hartline,	Lafayette College, Pa.,	Student,	4 "
Annie F. Hayden,	Deceased, 1882,	"	2 "
Katie Kemery,	Mahoney City, Pa.,	Teaching,	6 "
Effie Kemp,	Templeton, Cal.,	"	6 "
U. S. Koons,	Harrison Bldg., Phila.,	Lawyer,	1½ "
J. Kirk Leatherman,	Doyestown Pa.,	Law Student,	2 "
E. L. McKinstry,	West Chester, Pa.,	Reporting,	"
Clara Mendenhall (Wilson),	Avondale, Pa.,	"	3 "
A. B. Mensch	Skippack, Pa.,	Teaching,	6 "
Ada B. Miller	2057 Oxford St., Phila.,	"	6 "
Walter L. Philips,	Lafayette College, Pa.,	Student,	3 "
Elizabeth S. Rath,	Deceased, 1895	"	4 "
Helen V. Ritchie (Fetters),	Hatboro' Pa.,	Teaching,	6 "
Clara Rippman,	Coshocton, Ohio.,	Prin. of Schools,	5 "
Harry W. Scarborough,	522 Walnut St., Phila.,	Student,	"
Daniel G. Snyder,	West Chester Pa.,	Dentist,	2 "
Lizzie D. Steele,	1920 Bouvier Ave., Phila.,	Teaching,	5 "
Loraine Stone (McKinstry),	West Chester, Pa.,	Reporting,	3 "
Anna B. Smith (Eshleman),	Parkesburg, Pa.,	"	2 "
Jennie Taylor,	1235 New York Ave. Washington, D. C.,	Teaching,	6 "
Howard R. Teany,	1047 Cherry St., Norristown, Pa.,	Letter-Carrier,	2 "
Sallie Tyson,	Reading, Pa.,	Teaching,	3 "
Frank E. Yerkes,	Hatboro', Pa.,	Physician.	"

<i>Name.</i>	<i>Address.</i>	<i>Profession.</i>	<i>Time taught since graduation.</i>
<b>CLASS OF 1891. ELEMENTARY COURSE.</b>			
J. Charles Aiken,	Berwyn, Pa.,	Instructor Temple Col.,	4 yrs.
Maurice J. Habb,	Downingtown, Pa.,	Teacher High Sch.,	2 "
George A. Beyerle,	Berndville, Pa.,	Business, Phila.	
Mary E. Bloxham,	Verona, N. J.,	Teaching,	5 "
Laura Booth,	Booth's Corner, Pa.,	"	5 "
S. K. Brecht,	Haverford College, Pa.,	"	4 "
Laura B. Broomall,	University of Michigan,	"	4 "
Elizabeth R. Butler,	Uwchlan, Pa.,	"	4 "
Nellie A. Campbell,	West Chester, Pa.,	"	5 "
H. Minnie Casselberry,	Lower Providence, Pa.,	"	5 "
Martha D. Conley,	Landsdale, Pa.,	"	5 "
Frances Coulston,	Chestnut Hill, Pa.,	"	
Harry A. Davis,	1325 11th ave., Altoona, Pa.,	Attorney-at-Law,	2 "
Sarah C. Ely,	Newtown, Pa.,	Teaching,	5 "
Tacie C. Embree,	Marshallton, Pa.,		2½ "
Clara E. Grove,	Coatesville, Pa.,	Teacher High Sch.,	5 "
Mary Z. Hecht,	Reading, Pa.,	Teaching,	5 "
Emily May Hulme,	West Chester, Pa.,	"	4 "
Bessie Kline,	Conshohocken, Pa.,	"	5 "
Philip S. Knauer,	Swarthmore College, Pa.,	Student,	3 "
Bertha V. Kratz (Williams),	186 Chestnut st., Phila. Pa.	Teaching,	5 "
Carrie L. B. Larkin,	Chester, Pa.,	"	5 "
Laura Z. LaRue,	Glenolden, Pa.,	"	5 "
Estalena H. Mercer,	West Chester, Pa.,	"	4 "
Susan L. Moore, (Dixon),	East Stroudsburg, Pa.,	"	5 "
Ruth E. Moore,	Cochranville, Pa.,	"	5 "
Allena M. Ogden,	Cape May City, N. J.,	"	3½ "
Gertrude Rakestraw (Brinton)	Christiana, Pa.,	"	4 "
Chas. C. Roberts,	West Chester, Pa.,	"	3 "
Mary W. Rorer,	Glenside, Pa.,	"	"
Bessie Sharpless,	West Chester, Pa.,	"	5 "
W. C. Slough,	Franklin and Marshall Col.,	Student,	2 "
S. Irene Snyder,	Lykens, Pa.,	Teaching,	5 "
Amy Strode,	Coatesville, Pa.,	"	5 "
Mary E. Watson,	Fallsington, Pa.,	"	5 "
Florence B. Way,	New London, Pa.,	Student,	4 "
J. Howard Weinert, Jr.,	University of Penna., Phila.,	Instructor,	1 "

### CLASS OF 1892. SCIENTIFIC COURSE.

George A. Beyerle,	Berndville, Pa.,	Business, Phila.
Frank C. Rex,	Waterford, Pa.,	Prim. Academy.

#### ELEMENTARY COURSE.

Cora B. Battin,	Colorado Springs, Col.,	Teaching,	4 "
Anna B. Criver, (Wind'e)	West Chester, Pa.,	"	1 "
Bessie Chancel,	" " "	"	2 "
Estella Daniels,	Modena, Pa.,	"	4 "
Sarah E. Ermold,	Norristown, Pa.,	"	4 "
Mary Faulkner,	" " "	"	1 "
Mary L. Fetters,	Glen Loch, Pa.,	"	4 "
Minerva Hayden,	Bryn Mawr, Pa.,	"	4 "
Alberta Johnson,	Berwyn, Pa.,	"	4 "
Mattie Johnson,	Elam, Pa.,	"	4 "
Mary H. Kerns,	Caln, Pa.,	"	4 "
Rosalie Kendall,	Harrisburg, Pa.,	"	4 "
Mary R. Lewis, (Paschall)	Woola,	"	2 "

<i>Name.</i>	<i>Address.</i>	<i>Profession.</i>	<i>Time taught since graduation.</i>
Alice B. Moore,	Media, Pa.,	Teaching,	4 yrs.
Anna McCullough,	Broomall, Pa.,	"	4 "
Lillian Pierce,	West Chester, Pa.,	"	4 "
Sue V. Slack,	Richboro', Pa.,	"	4 "
Emma Smutz,	Tidioute, Pa.,	"	4 "
Caroline Wollaston,,	Kennett Square, Pa.,	"	4 "
Sherman S. Barr,	Jenkintown, Pa.,	"	4 "
George W. Brindle,	West Grove, Pa.,	"	3 "
Howard F. Brinton,	New Haven, Conn.,	Student,	1 "
A. Dempsey Hartley,	Haverford College, Pa.,	Teaching,	2 "
Owen B. Huntsman,	Harvard University,	"	1 "
Benjamin W. Jones,	Doe Run, Pa.,	"	"
Robert B. Ludy,	Rush Med. Col., Chicago, Ill.,	Student,	3 "
Charles K. Meschter,	U. of Pa.,	"	"
Mark F. Sullivan,	Phoenixville, Pa.,	Editor.	"
M. Warren Way,	Haverford College, Pa.,	Student.	"

## CLASS OF 1893. SCIENTIFIC COURSE.

Charles C. Roberts,	West Chester, Pa.,	Teaching,	3 "
---------------------	--------------------	-----------	-----

## ELEMENTARY COURSE.

Mrs. C. Anna Adams,	West Chester, Pa.,	"	3 "
Leila O. Beitler,	Anselma, Pa.	"	3 "
Anne V. Bertollette,	Reading, Pa.,	"	3 "
Mary E. Bradley,	Harrisburg, Pa.,	"	3 "
Ralph Butler,	1516 Mt. Vernon St., Phila.,	Teacher DeLancey's	3 "
Frank P. Bye,	Kennett Square, Pa.,	Prin. High Sch.,	3 "
Alice B. Carn,	Fort Washington, Pa.,	Teaching,	3 "
Maud R. Clark,	1900 N. 21st St., Phila.,	"	3 "
Roberta Sharp Clark,	Wayne, Pa.,	"	3 "
Harvey M. Clymer,	Line Lexington, Pa.,	"	"
Florence M. Detwiler,	Norristown, Pa.,	"	3 "
Angusta Dillman,	Mahanoy City, Pa.,	"	2 "
John G. Embree,	Haverford College, Pa.,	Student,	3 "
Elizabeth M. Foulk,	Rosemont, Pa.,	Teaching,	2 "
M. Elizabeth Frederick,	Catasauqua, Pa.,	"	2 "
Martha M. Futhy,	Atglen, Pa.,	"	2 "
Bessie Grater,	Eagleville, Pa.,	"	3 "
Frank Hankinson,	Reading, Pa.,	Teacher High Sch.,	3 "
Anna Harshberger,	McAllisterville, Pa.,	Teaching,	3 "
Norman L. Heaton,	Royersford, Pa.,	"	3 "
James S. Heberling,	West Chester, Pa.,	Private Secretary.	"
Bessie L. Hughes,	Honeybrook, Pa.,	Teaching,	3 "
Alice I. Irwin (Shaffer),	Essex, Conn.,	"	2 "
Anna R. Jackson,	Kelton, Pa.,	"	2 "
Electra Jackson,	Coatesville, Pa.,	"	3 "
William C. Kauffman,	New Hope, Pa.,	"	3 "
Jessie R. Keech,	West Chester, Pa.,	"	3 "
Eva L. Kemp,	Lansdale, Pa.,	"	3 "
Emma T. Knight,	Lansdowne, Pa.,	"	3 "
Lizzie M. Leigh,	Fallsington, Pa.,	"	3 "
Emeline I. Lewis,	Yeagertown, Pa.,	"	3 "
Amelia Leymel,	307 Northampton St., Wilkes-Barre, Pa.,	Teaching,	3 "
Anna B. Lilly,	2525 N. 12th St., Phila.,	Teaching,	3 "
D. Brower Longaker,	Ogontz, Pa.,	"	3 "
Cornelia MacMullau,	So. Orange, N. J.,	Teacher High Sch.,	2 "
Sara F. Martin,	Berwyn, Pa.,	Teaching,	3 "
Ella J. Mather,	Bryn Mawr, Pa.,	"	3 "

<i>Name.</i>	<i>Address.</i>	<i>Profession.</i>	<i>Time taught since graduation.</i>
Edith L. McDonald,	Collamer, Pa.,	Teaching	3 yrs.
Sophie R. Miller,	Rosemont, Pa.,	"	3 "
Minnie E. Morse,	Morrisville, Pa.,	"	3 "
J. Ambrose Moyer,	74 Sacramento St., Cambridge, Mass.,	Student,	1 "
Menno S. Moyer,	1712 N. 27th St., Phila.,	Student.	2 "
Matilda M. Murken,	241 Roebling St., Brooklyn, N. Y.,	Teaching.	3 "
Katharine E. Murphey	Doylestown, Pa.,	Teaching,	3 "
M. Ella Ruth,	22 N. Charlotte St., Pottstown, Pa.,	Teaching,	3 "
Mary A. Scott (Rothrock),	Mifflinville, Pa.,	"	3 "
Ella Scully (Slack),	Penn's Park, Pa.,	Teaching,	3 "
Lucy Irene Smedley,	West Chester, Pa.,	"	3 "
Hanna K. Smith,	631 N. Seventh St. Phila.,	"	3 "
Louisa Strading,	West Chester, Pa.,	"	3 "
John P. Taylor,	Goshenville Pa.,	"	3 "
Sara L. Tomlinson,	Wilmington, Del.,	Teacher Girls' Hige Sch	3 "
Bessie E. Trapp,	Braddock, Pa.,	Teaching,	3 "
Abigail C. Wager,	Norristown, Pa.,	"	3 "
George W. Walter, Jr.,	Hamburg, Pa.,	"	3 "
Charlotte Wetterau,	Hazleton, Pa.	"	3 "
Florence Windle,	West Chester Pa.,	"	3 "
Charles S. Woodward,	Longwood, Pa.,	Student,	3 "
Laura E. Woodward,	281 Poplar St., Phila.,	Teaching,	3 "
Virginia Worstall,	West Chester, Pa.,	"	3 "
Lauretta J. Yerkes (Hill),	Markham, Pa.,	"	1 "

## STATE CERTIFICATE.

Leon H. Watters,	Media, Pa.	Prim. Schools,	3 "
------------------	------------	----------------	-----

## CLASS OF 1894. ELEMENTARY COURSE.

Warren Z. Anders,	Medico Chirurgial Col., Phila.,	Student,	1 "
Lucy H. Ashbridge,	West Chester, Pa.,	Teaching,	2 "
Mary Atkinson,	Three Tuns, Pa.,	"	2 "
M. Adele Bailey,	Coriune, Pa.,	"	2 "
Irwin B. Bauer,	West Chester, Pa.,	Ass't Nor. Sch.,	1 "
H. Horace Beidler,	Lansdale, Pa.,	Prim. of Schools,	2 "
Matilda Baker,	Morrisville Pa.,	Teaching,	2 "
Lillie C. Brower,	Spring City, Pa.,	"	2 "
Emmarene Bullock,	Coriune Pa.,	"	2 "
Florence V. Burke,	Coatesville, Pa.,	"	2 "
George Burlew,	Juniata, Pa.,	"	2 "
Margaret Carr,	Drifton, Pa.,	"	2 "
Mariclma Carter,	Lansdowne, Pa.,	"	2 "
Florence Chalfant,	65 Chestnut St., Lancaster, Pa.,	"	2 "
Ada W. Cornwell,	West Chester, Pa.,	"	2 "
Lulu M. Cowan,	Coatesville, Pa.	Student.	
Ella C. Darlington,	West Chester, Pa.,	Teaching,	2 "
Henry T. Darlington,	"	Student,	1 "
George S. Dewees,	University of Pennsylvania,	"	
Elsie F. Dewitt,	11 S. River St. Wilkesbarre, Pa.,	Teaching,	2 "
Ella S. Eisenberg,	Parker's Ford, Pa.,	Teaching,	2 "
Emma L. Ellwanger,	Phoenixville, Pa.	"	2 "
Mabel C. Felty,	Glenn Mills, Pa.,	"	2 "
Anna C. Frederick,	East Coventry, Pa.,	"	2 "
Elmira Frederick,	Kulpsville, Pa.,	"	2 "
Lidie Gilch,	Atlantic City, N. J.,	"	2 "
Sara A. Hazelton,	Mullica Hill, N. J.,	"	2 "
Grace E. Hellyer,	Penn's Park, Pa.,	"	2 "
Anna R. Hughes,	Manor Pa.,	"	

<i>Name.</i>	<i>Address.</i>	<i>Profession.</i>	<i>Time taught since graduation.</i>
Martha P. Jackson,	Kelton Pa.,	Teaching,	2 yrs.
M. Edna Johnson,	Guthrieville, Pa.,	"	2 "
Elinore B. Kervey,	West Chester, Pa.,	"	1 "
H. Emma Kirkbride,	Fallsington, Pa.,	"	2 "
Bessie Kirkpatrick,	Dilworthtown, Pa.,	"	2 "
Florence Knapp,	Elwyn Training School,	"	2 "
Irene A. Lawrence,	Adele, Pa.	"	2 "
Lizzie Linton,	434 S. 4th St. Phila.	"	2 "
Anne Linton,	" " " "	"	2 "
Cora C. Ludy,	Boyertown Pa.,	"	2 "
George C. Luft,	Beruville Pa.,	"	2 "
Gertrude K. McKanna	Atg en, Pa.,	"	2 "
Lulu McCartney,	Boothwyn, Pa.,	"	2 "
Mary McCracken,	Twin Oaks Pa.,	"	2 "
George McCracken,	Upland Pa.,	Prin. of Schools,	2 "
Nora Meschter	Worcester Pa.,	Teaching,	2 "
Edith M. Miller,	Bethlehem, Pa.,	"	2 "
L. Adelaide Moffitt,	Doylestown, Pa.,	"	2 "
Carrie Moore,	Milford Mills Pa.,	"	2 "
Anna R. Morgan,	Fairview Village Ia.,	"	2 "
John D. Neitz,	Swarthmore, Pa.	"	2 "
Marion Rakestraw,	Christiana, Pa.	Book-keeper,	2 "
Maud Rice,	Reedsville. Pa.,	"	2 "
Allen A. Seipt,	University of Penna.,	Student,	1 "
Anna Sensensig,	Wayne, Pa.,	Teacher High Sch.,	2 "
Bessie M. Smedley,	West Chester, Pa.	Teaching,	2 "
Elizabeth Suplee,	Coatesville, Pa.,	"	2 "
Frank K. Water,	Point Pleasant Pa.	"	2 "
Fannie S. Way,	Kennett Square, Pa.,	"	2 "
Conrad Wendel,	St. George's Hall, Summitt, N. J.,	Teacher Math.,	2 "
M. Charlotte White,	Fethlehem Pa.,	Teaching,	2 "
Catharine Wildman,	Langhorne, Pa.,	"	2 "
Esther L. Wildman,	" " "	"	2 "
Esther J. Wynn,	West Chester, Pa.,	"	2 "

## STATE CERTIFICATE.

Samuel I. Kreemer,	West Chester, Pa.,	Teacher High Sch.,	1 "
Mary F. Power,	Hopkinton, Mass.,	Teaching,	1 "

## CLASS OF 1895. SCIENTIFIC COURSE.

Oliver D. Frederick,	Ann Arbor Mich.,	Law Student,	12 "
Frank Hankinson,	Reading Pa.,	Teacher High Sch.,	3 "

## ELEMENTARY COURSE.

R. Ella Bennett,	Breadysville, Pa.,	Teaching,	1 "
Peulah P. Bitter,	Bridgeton, N. J.,	"	1 "
Martha Blair,	Villa Nova, Pa.,	"	1 "
Hanna G. Jency,	Willow Grove, Pa.,	"	1 "
Florence R. Brasius,	Chatham, Pa.,	"	1 "
S. Elizabeth Brough,	Biglerville Pa.,	"	1 "
Jacob Bushong	West Grove, Pa.,	"	1 "
J. Edgar Butler	Haverford, College Pa.,	Student.	1 "
Willard S. Campbell,	West Chester, Pa.,	Teaching,	1 "
Mabel R. Cheyney,	Cheyney, Pa.,	"	1 "
Anna C. Clauder,	Bethlehem, Pa.,	"	1 "
Eli P. Conley,	Parkesburg, Pa.,	Prin. of Schools,	1 "
Unity Dannaker,	King-of-Prussia, Pa.,	Teaching,	1 "

<i>Name.</i>	<i>Address.</i>	<i>Profession.</i>	<i>Time taught since graduation.</i>
Evalina Darlington,	West Chester, Pa.,	Teaching	1 yr.
Ethel M. Davie,	Dubois, Pa.,	"	1 "
Carrie M. Davis,	Octoraro, Pa.,	"	1 "
Laura B. Eisenbrey,	Terwood, Pa.,	"	1 "
Anna E. Fetters,	Glen Loch, Pa.,	"	1 "
Liela M. Fronefield,	Wayne Pa.	"	1 "
Daniel R. Gettel,	Rehrersburg, Pa.,	"	1 "
Mary E. Griffith,	West Chester Pa.,	"	1 "
Jessie V. Gunkle,	Frazer, Pa.,	"	1 "
Joseph M. Hartman,	West Chester, Pa.	Manufacturer.	
Rebecca M. Heaton,	Terwood Pa.,	Teaching.	1 "
Howard E. Heckler,	Ann Arbor, Mich.	Student.	
Eugene A. Heilman,	Somerton, Phila.,	Teaching,	1 "
M. Ella Heller,	Tobyhanna, Pa.,	"	1 "
Bessie A. Hemphill,	Unionville, Pa.,	"	1 "
Simon G. Huber,	2324 N. 8th St., Phila.,	"	1 "
Gertrude S. Johnson,	Hulmeville Pa.,	"	1 "
Harry A. Kotz,	Sandt's Eddy, Pa.,	"	1 "
Henry G. Landis,	Chalfont, Pa.	"	1 "
Etta N. Lapp,	Warren Tavern Pa.,	"	1 "
Mary E. Leahy,	Edge Hill, Pa.,	"	1 "
Sallie G. Liggett,	Nantmeal Village, Pa.,	"	1 "
Anne D. Lloyd,	Bryn Mawr, Pa.,	"	1 "
Sara R. Loomis,	West Chester, Pa.,	"	1 "
Jennie L. McDonald,	Oxford, Pa.,	"	1 "
Jennie L. Markley,	Millersburg, Pa.,	"	1 "
Nan L. Mildren,	1900 N. 11th St., Phila.,	"	1 "
Cannie R. Miller,	DuBois, Pa.	"	1 "
Alice Moore,	West Chester, Pa.,	"	1 "
Maude V. Moses	" " "	"	1 "
Mabel D. Pearson,	Lionville Pa.,	"	1 "
Ann W. Pechin,	King-of-Prussia, Pa.	"	1 "
William S. Pike,	Locust Valley L. I.,	"	1 "
Mary A. Powell,	Hazleton, Pa.,	"	1 "
Anna W. Pusey,	Unionville, Pa.,	"	1 "
B. Catharine Pyfer,	Lancaster, Pa.,	"	1 "
Bertha H. Ramsey,	West Chester, Pa.	"	1 "
Warren D. Renninger,	Zieglersville, Pa.,	"	1 "
Edith Robotham	3233 Sansom St., Phila.,	"	1 "
Anna D. Rogers,	Spring City, Pa.,	"	1 "
Leonard M. Ruth,	Wernersville, Pa.,	"	1 "
Julia Schroeder,	Norristown, Pa.,	"	1 "
Iva A. Seal,	West Chester, Pa.,	"	1 "
Carrie A. Seibert,	Slatington, Pa.,	"	1 "
Heber Sensesig,	Lausford, Pa.,	"	1 "
Mattie Smedley,	Fulton House Pa.,	"	1 "
Susan Smedley,	West Chesler, Pa.,	"	1 "
Mary E. Snyder,	Ridley Park, Pa.,	"	1 "
Ira I. Sterner,	Keller's Church, Pa.,	Student.	
Christopher C. Sterner,	" " "	Teaching,	1 "
Carrie Sweeney,	West Chester, Pa.,	"	1 "
Nellie Turner,	Chester, Pa.,	"	1 "
Flora B. Turner,	Johnstown, Pa.,	"	1 "
Jean B. Urner,	Pughtown, Pa.,	"	1 "
Maude Wetherill,	Doylestown, Pa.,	"	1 "
Nellie Williams,	Yerkes, Pa.,	"	1 "
Emma Wilson,	Tweedale, Pa.,	"	1 "



<i>Name.</i>	<i>Address.</i>	<i>Profession.</i>	<i>Time taught since graduation.</i>
<b>CLASS OF 1896. SCIENTIFIC COURSE.</b>			
Robert Anderson,	West Chester, Pa.,	Teacher Nor. Sch.	6 yrs.
James J. Bevan,	Mauch Chunk, Pa.,	Prin. of Schools.	12 "
Wm. S. Delp,	West Chester Pa.,	Teacher Nor. Sch.	6 "
J. C. Hockenberry	South Chester, Pa.,	Supt. of Schools.	

<i>Name.</i>	<i>Address.</i>	<i>Will teach.</i>
<b>ELEMENTARY COURSE.</b>		
Anna Anderson,	Lansdowne, Pa.,	"
Sue B. Arnwine,	Hathoro, Pa.,	"
Margaretta H. Baker,	Chadd's Ford,	"
Mary H. Baker,	Northbrook, Pa.,	"
Wallace E. Bartholomew,	Richlandtown, Pa	"
Ethel M. Bevan,	Catasauqua, Pa.,	"
Elizabeth Blair,	Villa Nova, Pa.,	"
Mary K. Biggins,	Eldred, Pa.,	"
Anna H. Brown,	King-of-Prussia, Pa.,	"
Abram Bowers,	Boyertown, Pa.,	"
Lidie H. Butler,	Bala, Pa.,	"
Edith M. Byerts	Londonderry, Pa.,	"
Florence M. Campbell,	West Chester, Pa.,	"
Emma Clark,	" " "	"
Nellie Carlin,	818 S. 20th St. Philadelphia,	"
Emma T. Comly,	Flourtown, Pa.,	"
Ada Criswell,	Cochranville, Pa.,	"
Sallie Deakyne,	Rockledge, Pa.,	"
Walter E. Dengler	Blue Rock, Pa.,	"
Lettie Duer,	1716 Warnock St., Philadelphia,	"
Sara Dowlin,	West Chester, Pa.,	"
Mae Finlev,	813 S. 48th St., Philadelphia,	"
Bertha Forsythe,	Avondale, Pa.,	"
Joseph V. Gallagher,	Drifton, Pa.,	"
H. Clifford Garrett,	Malvern, Pa.,	"
Gertrude Goldstein,	Allegheny City, Pa.,	"
Bessie Godfrey,	Fort Washington, Pa.,	"
Cora Green,	Green Hill, Pa.,	"
Anna Green,	Horsham, Pa.,	"
Walter E. Greenwood,	Coatesville, Pa.,	"
Maggie Griffith,	West Chester, Pa.,	"
Henry C. Groff,	Harleysville, Pa.,	"
Julia Dyger,	Kimberton, Pa.,	"
Francis Hallman,	Milford Mills, Pa.,	"
Elsie Hambleton,	Goshen, Pa.,	"
C. Vincent Hart,	Horsham, Pa.,	"
Eva Harvey,	Unionville, Pa.,	"
Olive M. Hibbs	Hulmeville, Pa.,	"
Cilla Hiddleson,	Downingtown, Pa.,	"
Howard P. Hottle,	Quakertown, Pa.,	"
Daisy Houck,	Bangor, Pa.,	"
Ella Hamilton,	Booth's Corner, Pa.,	"
Anna P. Hughes,	Cape May, N. J.,	"
Mary B. Illick,	Dauphin, Pa.,	"
Mary Ingram,	West Chester, Pa.,	"
Sallie Ingram,	" " "	"
Hanna Johnson,	Broomall, Pa.,	"
Thomas W. Johnson, Jr.,	Elam, Pa.,	"
Martha Jones,	Doerun, Pa.,	"

<i>Name.</i>	<i>Address.</i>	<i>Will teach.</i>
Mary Keavey	West Chester, Pa.	"
Clara Keighley	Landenberg, Pa.,	"
Laura Keighley,	" "	"
Frances Knapp,	Dover, Del.,	"
Ella Kulp,	Gwynedd, Pa.,	"
C. Leon Lapp,	Warren Tavern, Pa.,	"
Anna Leatherman	Line Lexington, Pa.,	"
Frances M. Mack,	353 Sunnyside Ave., Phila.,	"
Bessie Mattern,	West Point, Pa.,	"
Bertha McElhaney,	Manayunk, Phila.	"
Wm. G. McLaughlin,	Summit Hill, Pa.,	"
Iva C. Mearns	Oak Hill, Pa.,	"
Adele Moyer,	Cedars Pa.,	"
Ida Neidig,	Milford Square Pa.,	"
Charlotte B. Powell,	Newtown Square, Pa.,	"
Lucille Preston	Spruce Grove, Pa.,	"
Mabel Price,	Moores, Pa.,	"
Norman H. Rahu,	Perkiomenville, Pa.,	"
Grace L. Rees	Aldham, Pa.	"
Nona Reid,	Parkesburg, Pa.,	"
Nellie V. Robertson,	Sisseton Agency S. D.	"
Jennie Roper,	Slatington, Pa.,	"
Seward M. Rosenberger,	Milford Square, Pa.	"
Susanna Search	Lizette, Pa.,	"
Mary Sharples,	West Chester, Pa.	"
Tessie Shearer	" "	"
Blanche N. Sheibley	Landisburg, Pa.,	"
Laura K. Shrawder,	Norristown, Pa.,	"
Elsie Singmaster,	Allentown, Pa.,	"
Harry Saylor,	Eagleville, Pa.,	"
Edgar H. Sensenich,	Goodville, Pa.,	"
Minnie H. Smith,	Mifflintown, Pa.,	"
Nellie Speakman,	West Chester, Pa.,	"
Laura E. Swartz,	Park Place, Pa.,	"
J. Monroe Smith,	Irvona, Pa.,	"
John S. Stettler,	Mertztown, Pa.,	"
Oscar A. Vincent,	Ashley, Pa.,	"
Katharine Wagner,	Mahanoy City, Pa.,	"
Tillie Waller,	Frankford, Del.,	"
George S. Wendel	Hazelton, Pa.,	"
Josephine Widdicombe,	West Chester, Pa.,	"
Etta Williams,	Markes, Pa.,	"
Mabel C. Wilson,	Downingtown Pa.,	"
Charles T. Windle,	West Chester, Pa.,	"
Antoinette L. Wintzer	West Grove, Pa.	"
Mabel Woodward,	West Chester, Pa.,	"
Emilie Worstall,	" " "	"
Wm. J. Woy,	Berlin, Pa.,	"
George K. Yeakel	Norristown, Pa.,	"

## STATE CERTIFICATE.

Miles L. Emrey,	Honeybrook, Pa.,	"
-----------------	------------------	---



