

Library copy.



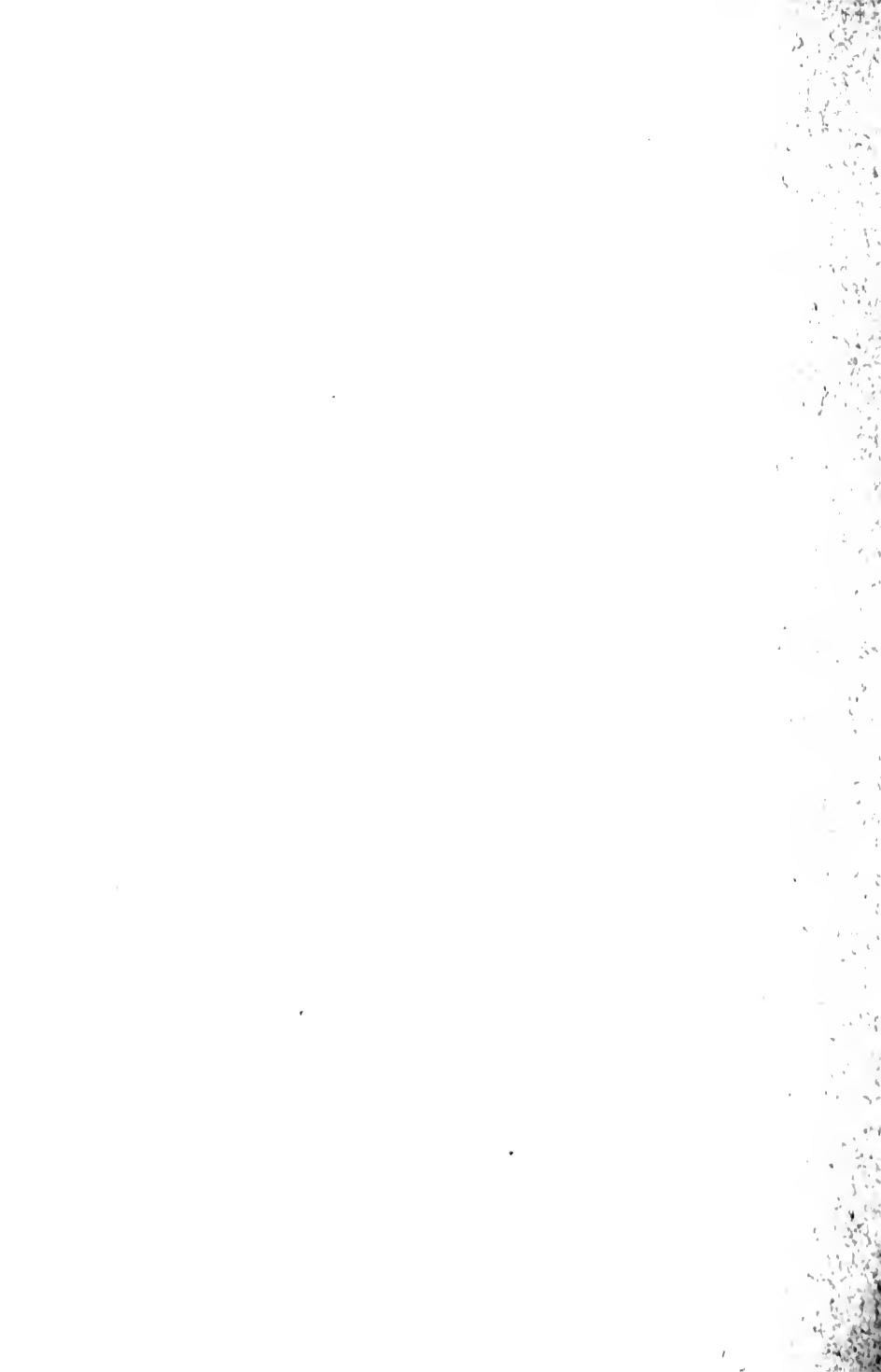
WEST CHESTER
STATE NORMAL SCHOOL,

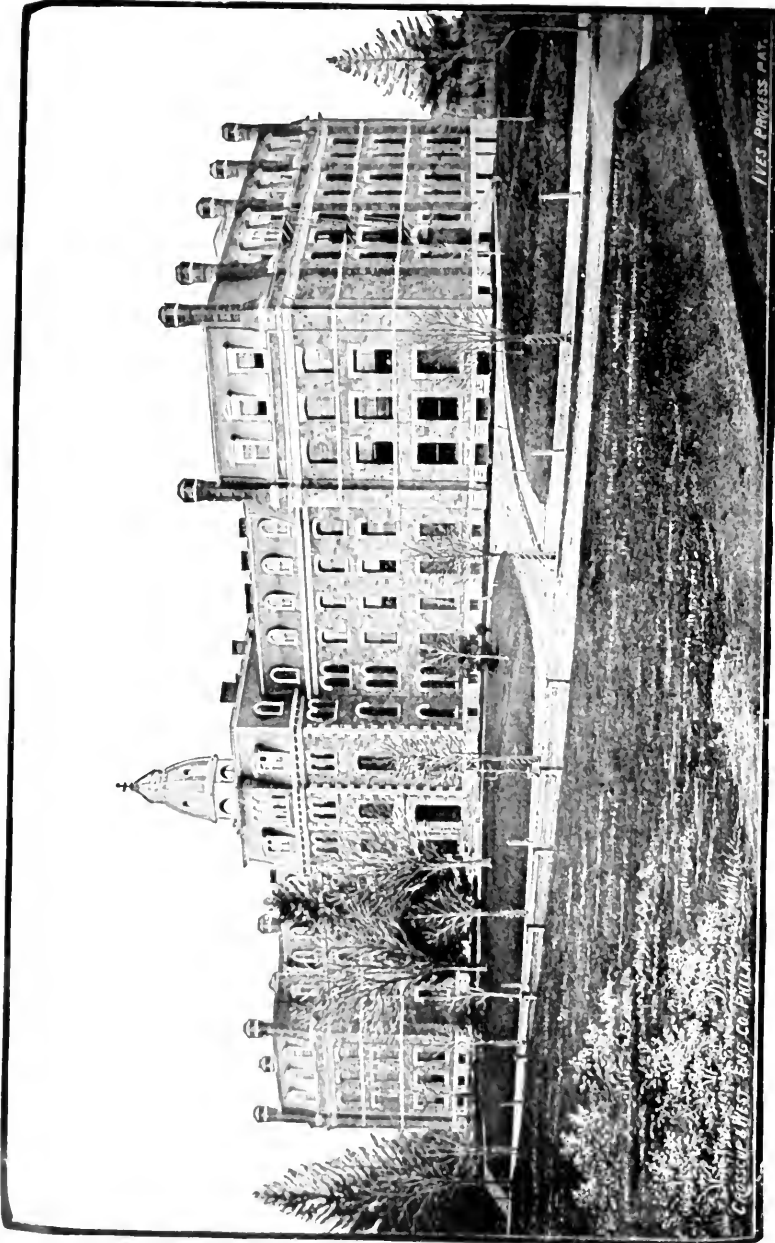


FIRST DISTRICT,

1888.







STATE NORMAL SCHOOL, WEST CHESTER, PA.

IVES PROCESS PAT.

Copyright 1909 by Ives Process Co. Philadelphia, Pa.

SEVENTEENTH

ANNUAL CATALOGUE

OF THE

WEST CHESTER

STATE NORMAL SCHOOL,

OF THE

FIRST DISTRICT,

AT

WEST CHESTER, CHESTER COUNTY, PA.,

1888.



WEST CHESTER, PA. :
F. S. HICKMAN, STEAM-POWER PRINTER AND PUBLISHER,
1888.

Board of Trustees.

Trustees Representing the Stockholders.

WILLIAM J. HALL, JOHN LENT, J. PRESTON THOMAS, BENTLEY WORTH,	}	Term of Office expires in 1889.
--	---	------------------------------------

HENRY BUCKWALTER, ALFRED P. REID, HERBERT P. WORTH, MARSHALL H. MATLACK,	}	Term of office expires in 1890.
---	---	------------------------------------

JOSEPH W. BARNARD, R. T. CORNWELL, JOHN S. MULLIN, EVANS ROGERS,	}	Term of Office expires in 1891.
---	---	------------------------------------

Trustees Representing the State.

THOS. S. BUTLER, JOHN J. PINKERTON,	}	Term of Office expires in 1889.
--	---	------------------------------------

HORACE A. BEALE, ISAAC JOHNSON,	}	Term of Office expires in 1889.
------------------------------------	---	------------------------------------

NICHOLAS LARZELERE, LEVI G. McCAULEY,	}	Term of Office expires in 1891.
--	---	------------------------------------

Officers of the Board.



President,

ALFRED P. REID.

Secretary,

HERBERT P. WORTH.

Committee on Household,

BENTLEY WORTH, EVANS ROGERS, WM. J. HALL, J. PRESTON
THOMAS, JOHN S. MULLIN.

Committee on Finance,

HENRY BUCKWALTER, J. W. BARNARD, MARSHALL H. MATLACK,
HORACE A. BEALE, LEVI G. MCCAULEY.

Committee on Instruction,

J. PRESTON THOMAS, R. T. CORNWELL, JNO. J. PINKERTON,
HENRY BUCKWALTER, ISAAC JOHNSON.

Committee on Cabinet,

THOS. S. BUTLER, HERBERT P. WORTH, JOHN LENT,
JOS. W. BARNARD, NICHOLAS LARZELERE.



Treasurer,

J. HOWARD MERCER.

Steward,

HARRY S. JOHNSON.

Matron,

MARY E. MCGOWAN.



The Regular Meetings of the Board are held at the office of
A. P. REID, Esq., on the *last Monday* in
each month.

The Faculty.

—◆—
GEO. MORRIS PHILIPS, Ph.D.,
Principal.

—
DAVID M. SENSENIG, M. S.,
Higher Mathematics.

—
C. B. COCHRAN, A. B.,
Natural Sciences and Chemistry.

—
JUDSON P. WELSH, A. M.,
Grammar and Rhetoric.

—
ELVIRA V. SPEAKMAN,
Geography and History.

—
MRS. ALMA SAGER WELSH,
Reading and English Literature.

—
MARY A. CUMMINGS,
Penmanship, Drawing and Book-keeping.

—
A. THOMAS SMITH, M. E.,
Pedagogy.

—
CALVIN U. GANTENBEIN, A. B.,
Ancient and Modern Languages.

—
MARY A. SPEAR,
Principal of the Model School

—
MAUD A. DAVIS,
Vocal and Instrumental Music

—
MRS. A. M. SENSENIG, M. E.,
Mathematics and Grammar.

MRS. LIZZIE M. PHILIPS,
Piano.

LYDIA A. MARTIN, M. E.,
Model School.

CARRIE E. BEMUS, M. E.,
Reading and Grammar.

ADDISON JONES, M. E.,
English Branches.

EVA J. BLANCHARD,
Model School.

GERTRUDE SHUGERT,
Piano and Organ.

WARREN H. DETWILER, B. E.,
Mathematics and Grammar.

LOUIS B. AMBLER, B. E.,
Mathematics and Spelling.

HUMPHREY M. CARPENTER,
Violin, Flute, and Violoncello.

H. H. McGRANAHAN,
Vocal Music.

SUE P. STACKHOUSE,* M. D.,
Lecturer on Hygiene.

*Died May 21, 1888.

The Calendar.

SUMMER TERM—1888.

- Tuesday, - - - June 5th, - State Examinations.
Wednesday, - - June 6th, - " " "
Sunday, - - - June 24th, - Baccalaureate Sermon.
Wednesday, - - June 27th, - Meeting of Alumni.
Thursday, - - - June 28th, - Commencement.
" - - - " - Class-Day Exercises.
Friday, - - - June 29th, - Summer Term Closes.

FALL TERM—1888 9.

- Monday, - - - Aug. 27th, Fall Term begins.
Thursday, - - - Nov. 29th, - Thanksgiving.
Saturday, - - - Dec. 12th, - Anniversary Moore Lit. Soc'y.
Saturday, - - - Dec. 22d, - Christmas Holidays begin.
Wednesday, - Jan. 2d, - Students return.
Friday, - - - March 15th, - Winter Term ends.

SPRING TERM—1889.

- Monday, - - - Mar. 25th, Spring Term begins.
Saturday, - - - May 18th, - Re-Union Aryan Lit. Society.
Sunday, - - - June 23d, - Baccalaureate Sermon.
Wednesday, - - June 26th, - Meeting of Alumni.
Thursday, - - - June 27th, - Commencement.
Friday, - - - June 28th, - Terms ends.

* Catalogue of Students. *



POST-GRADUATES.

NAME.	POST OFFICE.	COUNTY AND STATE.
Detwiler, Warren H.	Ironbridge,	Montgomery, Pa.
Embree, E. D.	West Chester,	Chester, Pa.
Eyre, Abbie A.	“	“ “
Jones, Addison L.	“	“ “
Reed, Mary E.	Jeffersonville,	Montgomery, Pa.
Roberts, Irene S.	West Chester,	Chester, Pa.
Smith, A. Thomas	“	“ “
Welsh, Mary H.	Orangeville,	Columbia, Pa.



UNDERGRADUATES.

LADIES.

NAME.	POST OFFICE.	COUNTY AND STATE.
Allison, LaRue B.	Coatesville,	Chester, Pa.
Angell, Mabel	Philadelphia,	Philadelphia, Pa.
Armstrong, Josephine M.	Oxford,	Chester, Pa.
Arner, E. Lillie	New Mahoning,	Carbon, Pa.
Ash, Ethel	West Chester,	Chester, Pa.
Ashbridge, M. Ella	“	“ “
Barnes, Mabel E.	Buffalo,	New York.
Beam, Katie A.	Cupola,	Chester, Pa.
Bean, Ella W.	Schwenksville,	Montgomery, Pa.
Beitler, Florence S.	Chester Valley,	Chester, Pa.
Bernard, Angie C.	Cheltenham,	Montgomery, Pa.
Beyer, Emma C.	Norritonville,	“ “
Binkley, Mary M.	Ephrata,	Lancaster, Pa.

NAME.	POST OFFICE.	COUNTY AND STATE.
Bishop, Charlotte M.	West Chester,	Chester, Pa.
Bitler, Annie A.	Warwick,	" "
Blackburn, Carrie R.	Pleasant Grove,	Lancaster, Pa.
Blaker, Tillie	Penn's Park,	Bucks, Pa.
Blanc, Amanda E.	Sumneytown,	Montgomery, Pa.
Boice, Carrie L.	Modena,	Chester, Pa.
Booth, Lizzie	Ward,	Delaware, Pa.
Bossert, Manerva F.	Phoenixville,	Chester, Pa.
Bowers, Jennie	Doylestown,	Bucks, Pa.
Brinton, Laura S.	Devault,	Chester, Pa.
Brooke, Harrie Edna	611 Brooklin St.,	Philadelphia, Pa.
Brooke, Lillie	Conshohocken,	Montgomery, Pa.
Brown, Jennie E.	Pleasant Grove,	Lancaster, Pa.
Brownback, Emma E.	Vincent,	Chester, Pa.
Burger, Gussie C.	Wieshample,	Schuylkill, Pa.
Butler, Jessie	Uwchlan,	Chester, Pa.
Butler, Lizzie R.	"	" "
Bye, Jessie A.	Lewisville,	" "
Campbell, Lucy	West Chester,	" "
Cannon, Della	Frankford,	Delaware.
Carver, Allina C.	West Chester,	Chester, Pa.
Casselberry, H. Minnie	Lower Providence,	Montgomery, Pa.
Castle, Elizabeth	Upland,	Delaware, Pa.
Channel, Bessie	West Chester,	Chester, Pa.
Christmas, Ida May	Scranton,	Lackawanna, Pa.
Clayton, Anna D.	West Chester,	Chester, Pa.
Comly, Maude E.	Three Tuns,	Montgomery, Pa.
Cook, Rosetta M.	Orbisonia,	Huntingdon, Pa.
Cox, Lizzie	Malvern,	Chester, Pa.
Crumley, Rebecca R.	Gen. Wayne,	Delaware, Pa.
Crumley Margaretta S.	"	" "
Custer, Kate L.	Fairview Village,	Montgomery, Pa.
Daland, Florence A.	1732 Girard Ave.,	Philadelphia, Pa.
Daller, Gertrude B.	Thorndale,	Chester, Pa.
Darlington, Alice	West Chester,	" "
Darlington, Annie	"	" "
Darlington, Bertha M.	"	" "
Darlington, Ethel	Westtown,	" "
Darlington, Fannie B.	"	" "

NAME.	POST OFFICE.	COUNTY AND STATE.
Darlington, Mary P.	West Chester,	Chester, Pa.
Davies, Nellie	LeRaysville,	Bradford, Pa.
Davis, Annie	Conshohocken,	Montgomery, Pa.
Davis, Mary R.	Penn's Park,	Bucks, Pa.
Davis, Sara J.	West Chester,	Chester, Pa.
Dickinson, Alice M.	Wallace,	" "
Diesem, N. E.	West Chester,	" "
Ditty, Minnie L.	Millersburg,	Dauphin, Pa.
Deebert, Eva May	Cressona,	Schuylkill, Pa.
Dillinger, Sena E.	Dillingersville,	Lehigh, Pa.
Dreher, Jennie	Mt. Carmel,	Northumberland.
Drury, Eva R.	Bristol,	Bucks, Pa.
Dunlap, Hattie E.	Martin's Corner,	Chester, Pa.
Eachus, Jennie B.	Wagontown,	" "
Eisenhart, Clara S.	Kulpsville,	Montgomery, Pa.
Elliott, Lorena S.	West Chester,	Chester, Pa.
Ely, Hattie	Yardley,	Bucks, Pa.
Ely, Helen H.	Newtown,	" "
Evans, Dora E.	Linfield,	Montgomery, Pa.
Evans, Mamie H.	Summit Hill,	Carbon, Pa.
Faucett, Laura M.	Lenape,	Chester, Pa.
Fell, Anna M.	304 W. State St.,	Trenton, N. J.
Fell, Anna S.	New London,	Chester, Pa.
Fish, Sadie E.	Westbury Sta.,	Queens, N. Y.
Fisher, Annie W.	Denton,	Caroline, Md.
Fisher, Cora H.	Fleming,	Centre, Pa.
Fisher, Susan W.	Worcester,	Montgomery, Pa.
Fitery, Maggie	West Chester,	Chester, Pa.
Flowers, Bessie	"	" "
Foran, Mary	"	" "
Foulk, Bertha M.	Collamer,	" "
Foulk, May	Milford,	Delaware.
Frantz, May	Centre Square,	Montgomery, Pa.
Freeman, Lulu B.	West Chester,	Chester, Pa.
Fulton, Tillie	Romansville,	" "
Gallagher, Florence V.	West Chester,	" "
Ganster, Rose M.	Phoenixville,	" "
Garner, Mary	Berwyn,	" "
Gephart, Mary	Linfield,	Montgomery, Pa.

NAME.	POST OFFICE.	COUNTY AND STATE.
Gerbron, Emily D.	Shelly,	Bucks, Pa.
Gitt, Margie S.	New Oxford,	Adams, Pa.
Glenn, Mary	West Chester,	Chester, Pa.
Glosser, Annie M.	"	" "
Glosser, Carrie H.	"	" "
Goodwin, Amanda	Phoenixville,	" "
Goodwin, Sallie E.	West Chester,	" "
Goshen, Annie M.	Lafayette Hill,	Montgomery, Pa.
Gottshall, Mary	Worcester,	" "
Green, Lillie C.	Chester,	Delaware, Pa.
Guss, Arlien P.	Chadd's Ford,	" "
Guthrie, Bertha	Wallace,	Chester, Pa.
Hackett, Alice C.	Tablet,	" "
Hagerty, Clara	Plumsteadville,	Bucks, Pa.
Haley, Mittie	Lincoln,	Loudon, Va.
Hall, E. Minerva	Malvern,	Chester, Pa.
Hambleton, Annie E.	Goshen,	Lancaster, Pa.
Hamilton, Grace H.	Lower Merion,	Montgomery, Pa.
Hannum, Georgetta S.	Dugdale,	Chester, Pa.
Harley, Jennie S.	Harleysville,	Montgomery, Pa.
Harper, Debbie S.	Glen Mills,	Delaware, Pa.
Harrison, Stella B.	Chester,	" "
Hatten, Ella R.	Carbondale,	Lackawanna, Pa.
Hatton, Mary	Dingman's Ferry,	Pike, Pa.
Haupt, Lydia L.	Frackville,	Schuylkill, Pa.
Hayden, Annie F.	Wawa,	Delaware, Pa.
Hayes, Martha W.	Unionville,	Chester, Pa.
Henderson, Eunice	Parkesburg,	" "
Henderson, Nellie	"	" "
Hibberd, Lidie M.	Bridgeport,	Montgomery, Pa.
High, Ida D.	Oley,	Berks, Pa.
Hobbs, Minnie J.	Hulmeville,	Bucks, Pa.
Hoopes, Alice W.	West Chester,	Chester, Pa.
Hoopes, Ida E.	Milltown,	" "
Hoopes, Lidie	Northbrook,	" "
Hoopes, Linda K.	West Chester,	" "
Hoopes, Minnie V.	Cheyney,	Delaware, Pa.
Hughes, Mary D.	Cornwall,	Lebanon, Pa.
Hulme, Emily M.	West Chester,	Chester, Pa.

NAME.	POST OFFICE.	COUNTY AND STATE.
Hurst, Annie V.	West Earl,	Lancaster, Pa.
Irwin, Roberta M.	Coatesville,	Chester, Pa.
Ivins, Clara	Morrisville,	Bucks, Pa.
Ivins, Nellie M.	"	" "
Jack, Lizzie R.	West Chester,	Chester, Pa.
Jackson, Hanna B.	Christiana,	Lancaster, Pa.
Jacobs, Alice	Kennett Square,	Chester, Pa.
Jadwin, Anne L.	Carbondale,	Lackawanna, Pa.
James, Rachel	Eckley,	Luzerne, Pa.
Jamison, Sara A.	Hartsville,	Bucks, Pa.
Jefferis, Sadie L.	Coatesville,	Chester, Pa.
Jones, Esther G.	Phoenixville,	" "
Keller, Laura M.	620 Duke St.,	Lancaster, Pa.
Kemble, Florence A.	Kemblesville,	Chester, Pa.
Kemp, Effie J.	Lansdale,	Montgomery, Pa.
Kemp, Nellie G.	"	" "
Kennedy, Lydia G.	Cochranville,	Chester, Pa.
King, Lelah M.	Pughtown,	" "
Kinser, Maggie R.	East Salem,	Juniata, Pa.
Knoche, Lille B.	Harrisburg,	Dauphin, Pa.
Koons, Emma	Lehighon,	Carbon, Pa.
Kratz, Bertha V.	New Britain,	Bucks, Pa.
Krauser, Fannie M.	Glen Moore,	Chester, Pa.
Leatherman, Lizzie	Plumsteadville,	Bucks, Pa.
Leaw, Alda D.	Langhorne,	" "
Leaw, Annie H.	"	" "
Lewis, Marion,	New Vienna,	Clinton, Ohio.
Long, Mary V.	Middletown,	Dauphin, Pa.
Loomis, Sallie R.	West Chester,	Chester, Pa.
Lysle, H. Effie	Chesterville,	" "
McClure, Bertie	Westtown,	" "
McClure, Florence	Glen Moore,	" "
McCoy, Katie T.	West Chester,	" "
McDonald, Margaret	Avondale,	" "
McFarland, Mary J.	Unionville,	" "
McKee, Mary E.	New Bloomfield,	Perry, Pa.
Major, Annie E.	Erwinna,	Bucks, Pa.
Maris, Jennie B.	West Chester,	Chester, Pa.
Marshall, Mary	Northbrook,	" "

NAME.	POST OFFICE.	COUNTY AND STATE.
Martin, Ida B.	Lansdale,	Montgomery, Pa.
Mast, Sallie F.	Mast,	Lancaster, Pa.
Mathias, Ella	Chalfant,	Bucks, Pa.
Matlack, Mabel S.	West Chester,	Chester, Pa.
Maurer, Ida D.	Stonchsburg,	Berks, Pa.
Maynard, Edna L.	1405 F St., N. W.	Washington, D.C.
Mendenhall, Clara M.	West Grove,	Chester, Pa.
Mendenhall, M. Lydia	Dugdale,	" "
Mercer, Estalena H.	West Chester,	" "
Meredith, Clara	Glen Mills,	Delaware, Pa.
Miller, Gertrude T.	Limerick,	Montgomery, Pa.
Miller, Ada B.	Russelville,	Chester, Pa.
Mills, Belle	Point Pleasant,	Bucks, Pa.
Mood, Henrietta	Richland Centre,	" "
Moore, Annie	Phoenixville,	Chester, Pa.
Moran, Mary	West Chester,	" "
Morgan, Adele C.	Fairview Village,	Montgomery, Pa.
Morgan, Minnie L.	Oxford,	Chester, Pa.
Morris, Mary	Line Lexington,	Montgomery, Pa.
Morrison, Sallie L.	Cochranville,	Chester, Pa.
Mosteller, Maggie	West Vincent,	" "
Murdaugh, Letitia W.	Oxford,	" "
Neitz, Sallie A.	Millersburg,	Dauphin, Pa.
Newhouse, Laura B.	Wilkes-Barre,	Luzerne, Pa.
Ozias, Carrie J.	Richland Centre,	Bucks, Pa.
Palmer, E. Ethel	Doc Run,	Chester, Pa.
Parker, Abbie	West Chester,	" "
Parker, Carrie	"	" "
Patterson, May W.	Newportville,	Bucks, Pa.
Person, Ettie	Chestnut Level,	Lancaster, Pa.
Phillips, Mary E.	Uwelman,	Chester, Pa.
Phipps, Ellgarda T.	Lionville,	" "
Pierce, Bertha,	West Chester,	" "
Pierce, Lillian W.	"	" "
Plankinton, Sallie R.	Ashland,	Delaware.
Potts, Debbie S.	Pughtown,	Chester, Pa.
Pownall, Lillie C.	Christiana,	Lancaster, Pa.
Pratt, Florence	Goshenville,	Chester, Pa.
Prendergast, E. Daisy	Scranton,	Lackawanna, Pa.

NAME.	POST OFFICE.	COUNTY AND STATE.
Price, Bessie	West Chester,	Chester, Pa.
Price, Emma J.	Richlandtown,	Bucks, Pa.
Pugh, Leona I.	Hickory Hill,	Chester, Pa.
Pyle, Irma V.	Jersey City,	New Jersey.
Pyle, Mary A.	West Chester,	Chester, Pa.
Pyle, Sallie D.	Cheyney,	Delaware, Pa.
Quinn, Bella	Darling,	" "
Ramsay, M. Emma	Mortonville,	Chester, Pa.
Ramsey, Madalene K.	West Chester,	" "
Rapp, E. May	"	" "
Reichard, Lillie M.	Lehighton,	Carbon, Pa.
Reynolds, Mimmie R.	52 Springer St.,	Germantown, Pa.
Reynolds, Rosie M.	Townsend,	Delaware.
Rice, Lucretia A.	2838 Girard Ave.,	Philadelphia, Pa.
Rice, Margie	Hilltown,	Bucks, Pa.
Rich, Lillian	Woodbourne,	" "
Rippman, Clara	Millerstown,	Perry, Pa.
Ritchie, Helen V.	Hatboro',	Montgomery, Pa.
Roberts, Frances L.	Norristown,	" "
Roberts, Mary E.	Dreshertown,	" "
Rodrock, Minnie L.	Doylestown,	Bucks, Pa.
Rohr, Allie M.	Dolington,	" "
Rosenberger, Blanche	Colman,	Montgomery, Pa.
Rosenstock, Dora B.	Weatherby,	Carbon, Pa.
Ross, Mary D.	Collamer,	Chester, Pa.
Rouse, Carrie F.	Shoemakertown,	Montgomery, Pa.
Rowe, Mabel E.	West Chester,	Chester, Pa.
Sandrock, Carrie	623 S. Charles St.,	Baltimore, Md.
Savery, Mary H.	West Chester,	Chester, Pa.
Scott, Alice R.	New Britain,	Bucks, Pa.
Scott, Mabel B.	Chadd's Ford,	Delaware, Pa.
Scott, Mary	722 Elder St.,	Harrisburg, Pa.
Scully, Ella	Newtown,	Bucks, Pa.
Seiders, Mattie A.	1413 Perkiomen Ave.	Reading, Pa.
Sharpless, Bessie	West Chester,	Chester, Pa.
Sharpless, Marian	Darling,	Delaware, Pa.
Shee, Catharine	West Chester,	Chester, Pa.
Sheldon, Jessie D.	Lenni Mills,	Delaware, Pa.
Shepherd, Clara J.	West Chester,	Chester, Pa.

NAME.	POST OFFICE.	COUNTY AND STATE.
Simms, Bertha E.	West Chester,	Chester, Pa.
Slough, Sadie C.	Worcester,	Montgomery, Pa.
Smedley, Anna B.	West Chester,	Chester, Pa.
Smedley, Bertha M.	Goshenville,	" "
Smith, Anna B.	Russellville,	" "
Smith, Anna L.	Howellville,	Delaware, Pa.
Smith, Della A.	Darby,	" "
Smith, Edith F.	Philadelphia,	Pennsylvania.
Smith, Lillian R.	Hulmeville,	Bucks, Pa.
Sproat, Mildred	Westtown,	Chester, Pa.
Stanton, Maggie R.	Manoa,	Delaware, Pa.
Staudler, Maggie A.	21st & Fitzwater Sts.,	Philadelphia, Pa.
Steele, Lizzie D.	West Chester,	Chester, Pa.
Stephen, Sallie B.	Lanark,	Lehigh, Pa.
Stoner, Bessie	West Chester,	Chester, Pa.
Stott, Mary	"	" "
Taylor, Jennie	Round Hill,	London, Va.
Tempest, Mattie	Beaver Valley,	Delaware.
Tencate, Frances J.	Phoenixville,	Chester, Pa.
Thomas, Annie R.	Lansford,	Carbon, Pa.
Thomas, Lizzie D.	"	" "
Thomson, Lizzie	West Chester,	Chester, Pa.
Thornbury, Narcissa W.	Marshallton,	" "
Twining, Leona	Wrightstown,	Bucks, Pa.
Tyson, Letitia J.	Chester Valley,	Chester, Pa.
Valentine, Itasca E.	Chester,	Delaware, Pa.
Valentine, Sue. C.	Romansville,	Chester, Pa.
Van Ormer, N. Emma	McAllisterville,	Juniata, Pa.
Van Ormer, S. Lizzie	"	" "
Vasey, Eva M.	863 N. Broad St.,	Philadelphia, Pa.
Van Skite, Anna M.	West Whiteland,	Chester, Pa.
Walker, Emma	Mermaid,	Delaware.
Wanner, Ernie	Providence Square,	Montgomery, Pa.
Wanner, Lillian	" "	" "
Wasserman, Blanche V.	Wilkes Barre,	Lancaster, Pa.
Way, Florence B.	New London,	Chester, Pa.
Weinberger, Ella S.	Milford Square,	Bucks, Pa.
Weinberger, Laura	" "	" "
Weidemyer, Mary E.	Pipersville,	" "

NAME.	POST OFFICE.	COUNTY AND STATE.
Whitehead, Anna L.	West Chester,	Chester, Pa.
Willits, Laura E.	Middletown,	Delaware.
Wilson, Nellie G.	Williams Corner,	Chester, Pa.
Wood, Bessie R.	West Chester,	" "
Woodman, Agnes W.	Mozart,	Bucks, Pa.
Woodward, Adelaide H.	West Chester,	Chester, Pa.
Woodward, Mabel	"	" "
Worman, Lizzie	Point Pleasant,	Bucks, Pa.
Worth, Helen	Oxford,	Chester, Pa.
Yarnall, Mary W.	White Horse,	" "
Yeakel, Hanna B.	Bally,	Bucks, Pa.
Yeatman, Laura R.	Londongrove,	Chester, Pa.
Yeatman, Mary S.	Kennett Square,	" "
Yerkes, Lauretta J.	West Chester,	" "
Young, Lydia M.	Marshallton,	" "

GENTLEMEN.

NAME.	POST OFFICE.	COUNTY AND STATE.
Alderfer, Alvin C.	Harleysville,	Montgomery, Pa.
Alexander, William C.	Cloud,	Chester, Pa.
Anderson, Robert	Bethesda,	Lancaster, Pa.
Andrew, William M.	Cambridge,	" "
Anson, A. L.	Norritonville,	Montgomery, Pa.
Babb, Maurice J.	Marshallton,	Chester, Pa.
Bachman, Monroe E.	Farmersville,	Lancaster, Pa.
Bailey, Joseph L.	Jeffries,	Clearfield, Pa.
Baker, Lewis	Octoraro,	Lancaster, Pa.
Baldwin, Hadley	Doe Run,	Chester, Pa.
Baldwin, Harry D.	"	" "
Barnard, William D.	Collamer,	" "
Barnett, Philip P.	Dudley,	Huntingdon, Pa.
Bartman, John H.	Yerkes,	Montgomery, Pa.
Beck, H. E.	Loveville	Centre, Pa.
Becker, William H.	Doe Run,	Chester, Pa.
Benson, J. H. K.	Martinsburg,	Blair, Pa.
Beidler, H. Horace	Milford Square,	Bucks, Pa.
Bertolett, Henry H.	Oley,	Berks, Pa.

NAME.	POST OFFICE.	COUNTY AND STATE.
Bierly, Samuel J.	Newton Hamilton,	Huntingdon, Pa.
Bishop, George C.	West Chester,	Chester, Pa.
Bishop, Gilbert	"	" "
Bishop, Hamilton	"	" "
Blackfan, Edward	New Hope,	Bucks, Pa.
Bolton, Edward C.	West Chester,	Chester, Pa.
Borneman, Henry S.	Boyertown,	Berks, Pa.
Botts, M. L.	Colebrookdale,	" "
Bowen, Willie	West Chester,	Chester, Pa.
Boyer, Peter L.	Line Lexington,	Montgomery, Pa.
Brant, Frank S.	Crooked Hill,	" "
Brecht, S. K.	Worcester,	" "
Brinton, Howard F.	West Chester,	Chester, Pa.
Broomall, J. Horace	Cheyney,	Delaware, Pa.
Brownback, George C.	Vincent,	Chester, Pa.
Brownback, Clinton S.	St. Peters,	" "
Buckwalter, J. Brinton	West Chester,	" "
Bunting, Josiah T.	Glen Mills,	Delaware, Pa.
Campbell, Joseph L.	Doe Run,	Chester, Pa.
Campbell, William C.	Hazleton,	Lucerne, Pa.
Cardwell, Robert H.	West Chester,	Chester, Pa.
Carter, Jr., John T.	Greensboro,	Maryland.
Cassel, Walter S.	Kulpsville,	Montgomery, Pa.
Cohen, Benjamin	West Chester,	Chester, Pa.
Crosby, James J.	Oxford,	" "
Cope, S. Vaughn	3816 Market St.,	Philadelphia, Pa.
Davis, Josiah W.	Lansford,	Carbon, Pa.
Davis, Walter	West Chester,	Chester, Pa.
Delp, William S.	Salfordville,	Montgomery, Pa.
Derr, Miles J.	Turbotville,	Northumberland.
Deweese, William H.	Denton,	Maryland.
Diller, Eli R.	Intercourse,	Lancaster, Pa.
Dimm, C. M.	Dimmsville,	Juniata, Pa.
Dimm, L. D.	"	" "
Dougherty, Wilmer	West Chester,	Chester, Pa.
Dowlin, Homer	Dorlan's Mills,	" "
Dutton, T. Elmer	Sugartown,	" "
Eaby, Willard G.	Intercourse,	Lancaster, Pa.
Eavenson, Thomas B.	West Chester,	Chester, Pa.

NAME.	POST OFFICE.	COUNTY AND STATE.
Ebersole, H. W.	Progress,	Dauphin, Pa.
Ehst, Warren T.	Bechtelsville,	Berks, Pa.
Emrey, Alvah J.	Honeybrook,	Chester, Pa.
Emrey, William W.	"	" "
Enriken, Samuel L.	West Chester,	" "
Erdman, Wilson	Pipersville,	Bucks, Pa.
Evans, David	Linfield,	Montgomery, Pa.
Evans, James	"	" "
Eyre, Frank	West Chester,	Chester, Pa.
Farrell, E. B.	"	" "
Farrell, Francis J.	"	" "
Farrell, William L.	Plains,	Luzerne, Pa.
Fetter, Eugene C.	Breadysville,	Bucks, Pa.
Finney, William H.	Richboro,	Bucks, Pa.
Fisher, H. L.	Stouchsburg,	Berks, Pa.
Fulton, Kirk	Oxford,	Chester, Pa.
Funk, Oswin C.	Clayton,	Berks, Pa.
Garges, W. H.	New Britain,	Bucks, Pa.
Garrett, J. Harvey	Cheyney,	Delaware, Pa.
Gerges, Isaiah F.	Mainland,	Montgomery, Pa.
Gerhart, E. H.	Lincoln,	Lancaster, Pa.
Gillespie, William T.	Principio,	Cecil, Md.
Gottshalk, J. W.	Perkiomenville,	Montgomery, Pa.
Graff, Jr., Frank	Chadd's Ford,	Delaware, Pa.
Green, Cecil H.	Middletown,	Delaware.
Gruver, Robert M.	Flicksville,	Northumberland.
Gruver, W. S.	"	"
Hackett, U. G.	Coleraine,	Lancaster, Pa.
Haines, Edgar S.	West Chester,	Chester, Pa.
Hance, W. J. W.	Booth's Corner,	Delaware, Pa.
Harlan, Herbert M.	West Chester,	Chester, Pa.
Harper, R. Frank	Glen Mills,	Delaware, Pa.
Harris, Walter	Cochranville,	Chester, Pa.
Hartline, Daniel S.	Kenilworth,	" "
Hartman, Franklin H.	Milford Square,	Bucks, Pa.
Harvey, William H.	Leesport,	Berks, Pa.
Hayden, Thomas F.	Wawa,	Delaware, Pa.
Henry, William A.	Bechtelsville,	Berks, Pa.
Hess, Emmett L.	Quarryville,	Lancaster, Pa.

NAME.	POST OFFICE.	COUNTY AND STATE.
Hibshman, W. H.	Lincoln,	Lancaster, Pa.
Hodgson, Walter D.	West Chester,	Chester, Pa.
Hoff, Harry O.	Richboro,	Bucks, Pa.
Hoffman, B. F.	Font,	Chester, Pa.
Hoopes, Harry R.	West Chester,	" "
Huber, Simon G.	Lawndale,	Bucks, Pa.
Hughes, E. Justice	Taylorville,	" "
Hurst, John O.	West Earl,	Lancaster, Pa.
Huy, Fred. H.	East Berkley,	Berks, Pa.
Irvin, Alvin G.	Washington,	Lancaster, Pa.
Ivins, Byron R.	Morrisville,	Bucks, Pa.
Jamison, Henry	Hartsville,	" "
Jeffers, Albert W.	Romansville,	Chester, Pa.
Johnson, John M.	Loag,	" "
Johnson, Robert F.	"	" "
Jones, William D.	Londonderry,	" "
Jones, Jr., William D.	Garrettford,	Delaware, Pa.
Keech, Harry B.	Tweeddale,	Chester, Pa.
Keim, William P.	St. Peters,	" "
Keller, John W.	Tuckerton,	Bucks, Pa.
King, J. De Angeli	West Pikeland,	Chester, Pa.
Kistler, Milton S.	Blain,	Perry, Pa.
Klopp, George J.	Stouchsburg,	Berks, Pa.
Knauer, P. Sheridan	Warwick,	Chester, Pa.
Koons, Ulysses S.	Weissport,	Carbon, Pa.
Kugel, Harry C.	West Chester,	Chester, Pa.
Kulp, Philip M.	Creamery,	Montgomery, Pa.
Kuntz, John M.	Audenried,	Carbon, Pa.
Latshaw, Daniel S.	Hitner,	Chester, Pa.
Leatherman, J. Kirk	Gardenville,	Bucks, Pa.
Lock, Warren L.	West Chester,	Chester, Pa.
Lockwood, Schee M.	Middletown,	Delaware.
Long, Spalding	West Chester,	Chester, Pa.
Long, Leon	"	" "
Lukens, Charles P.	Atglen,	" "
McClure, W. Irvin	Bethesda,	Lancaster, Pa.
McClure, J. B. Rutherford	Glen Moore,	Chester, Pa.
McClure, Lee L.	Westtown,	" "
McFarland, George K.	West Chester,	" "

NAME.	POST OFFICE.	COUNTY AND STATE.
McGoey, Frank	Clearfield,	Clearfield, Pa.
McKinley, G. Harry	Frazer,	Chester, Pa.
McMichael, H. Clarence	Uwehlan,	" "
Madeira, Wilson K.	Tuckertown,	Berks, Pa.
Maguire, Philip	West Chester,	Chester, Pa.
Mahon, John	Wawa,	Delaware, Pa.
Makiver, Harry J.	Russellville,	Chester, Pa.
Maris, Willard L.	West Chester,	" "
Marshall, Charles G.	Northbrook,	" "
Martindale, Chester P.	Oxford,	" "
Matlack, Joseph E.	Milltown,	" "
Meals, W. D.	Blain,	Perry, Pa.
Mensch, A. B.	Skippack,	Montgomery, Pa.
Mercer, Norman	West Chester,	Chester, Pa.
Meredith, Samuel W.	Glen Mills,	Delaware, Pa.
Miller, John H.	West Vincent,	Chester, Pa.
Monaghan, Frazer S.	West Chester,	" "
Mood, Edwin N.	Keller's Church,	Bucks, Pa.
Moore, Franklin J.	West Chester,	Chester, Pa.
Morrison, Howard S.	Octoraro,	Lancaster, Pa.
Moyer, Abraham M.	Dublin,	Bucks, Pa.
Nace, Leidy K.	"	" "
Noble, Morton		
Oat, Charles F.	West Chester,	Chester, Pa.
Oat, George R.	"	" "
Oat, Joseph H.	"	" "
O'Neill, Thomas	"	" "
Osmond, J. Ross	Langhorne,	Bucks, Pa.
Palmer, Charles R.	West Chester,	Chester, Pa.
Palmer, Fred. J.	Londongrove,	" "
Palmer, Harry K.	3512 Market St.,	Philadelphia, Pa.
Passmore, Benj. F.	West Chester,	Chester, Pa.
Passmore, J. Pusey	"	" "
Perkins, Claude F.	Middletown,	Delaware.
Philips, Walter L.	Hitner,	Chester, Pa.
Phipps, Joseph B.	Lionville,	Chester, Pa.
Pool, Frank R.	McDonough,	Delaware.
Potts, John D. S.	St. Peters,	Chester, Pa.
Powell, Albert V.	Exton,	" "

NAME.	POST OFFICE.	COUNTY AND STATE.
Pownall, Vincent S.	Christiana,	Lancaster, Pa.
Price, Nathan S.	West Chester,	Chester, Pa.
Priest, W. Edgar	Goshenville,	" "
Pugh, Charles E.	Oxford,	" "
Pusey, George W.	Londongrove,	" "
Pyle, James A.	Glen Mills,	Delaware, Pa.
Pyle, Willard R.	Willowdale,	Chester, Pa.
Raessler, R. Rufus	Mt. Carmel,	Northumberland.
Rea, Charles A.	Mill Green,	Harford, Md.
Reid, Arthur P.	West Chester,	Chester, Pa.
Rex, Frank C.	East Nantmeal,	" "
Richards, John J.	Lansford,	Carbon, Pa.
Richards, Llewellyn	St. Peters,	Chester, Pa.
Roberts, Charles C.	West Chester,	" "
Roberts, Isaac G.	"	" "
Robson, Walter S.	Londongrove,	" "
Roush, B. F.	Oakland Mills,	Juniata, Pa.
Sailer, Milton R.	Tuckerton,	Berks, Pa.
Scarborough, Harry W.	Lumberville,	Bucks, Pa.
Schmoyer, Charles W.	Trexlerstown,	Lehigh, Pa.
Schmoyer, Elmer J.	"	" "
Schultz, Amos H.	Worcester,	Montgomery, Pa.
Schultz, Elmer K.	Niantic,	" "
Sensenig, Barton	Goodville,	Lancaster, Pa.
Seyfried, W. D.	Nazareth,	Northampton, Pa.
Shade, C. W.	Reading,	Berks, Pa.
Sharpless, Henry R.	West Chester,	Chester, Pa.
Sharpless, Herman H.	"	" "
Sheehan, John C.	New Garden,	" "
Shelley, Oswin W.	Milford Square,	Bucks, Pa.
Simpson, James W.	West Vincent,	Chester, Pa.
Sittler, Calvin E.	Andreas,	Schmylkill, Pa.
Slough, W. C.	Worcester,	Montgomery, Pa.
Smedley, Harry	Elwyn,	Delaware, Pa.
Smedley, T. Jules	Lisle's,	Lancaster, Pa.
Smith, E. A.	Turbotville,	Northumberland.
Smith, Paul D.	West Chester,	Chester, Pa.
Snyder, Daniel G.	Oakbourne,	" "
Snyder, Paul E.	"	" "

NAME.	POST OFFICE.	COUNTY AND STATE.
Souders, Edward E.	Phoenixville,	Chester, Pa.
Spatz, Irwin D. B.	Tuckerton,	Berks, Pa.
Sproat, H. Lindsay	Westtown,	Chester, Pa.
Stamm, Howard E.	East Coventry,	" "
Stauffer, Albert C.	Limerick,	Montgomery, Pa.
Stetler, Howard W.	Frederick,	" "
Stott, Clarence	West Chester,	Chester, Pa.
Stouffer, Adam L.	McConnellstown,	Huntingdon, Pa.
Sullivan, Benton J.	Avondale,	Chester, Pa.
Taylor, William	Lansdale,	Montgomery, Pa.
Taylor, Wilson J.	West Chester,	Chester, Pa.
Texter, Pierson L.	Hagersville,	Bucks, Pa.
Thornbury, John W.	Marshallton,	Chester, Pa.
Todd, Charles W.	Uwchlan,	" "
Trimble, William M.	Marshallton,	" "
Underkuffler, Franklin M.	Norritonville,	Montgomery, Pa.
Ungler, Franklin	Emaus,	Lehigh, Pa.
Wagenseller, Alvin	Thorndale,	Chester, Pa.
Walter, J. Willis	Point Pleasant,	Bucks, Pa.
Way, W. Warren	West Chester,	Chester, Pa.
Way, Walter I.	New Garden,	" "
Webb, L. Pownall	Unionville,	" "
Weinberger, Howard S.	Milford Square,	Bucks, Pa.
Weisel, Oscar W.	Doylestown,	" "
Wentzel, John F.	Tuckerton,	Berks, Pa.
Whiteley, Joseph	New Hope,	Bucks, Pa.
Willier, H. W.	Pillow,	Dauphin, Pa.
Willits, Horatio N.	Middletown,	Delaware.
Wilson, James B.	Chase,	Allegheny, Pa.
Woodward, Roskell	West Chester,	Chester, Pa.
Worman, Oscar G.	Point Pleasant,	Bucks, Pa.
Worthington, George C.	Neshaminy,	" "
Wright, Alfred C.	Maidencreek,	Berks, Pa.
Yeatman, Arthur P.	London Grove,	Chester, Pa.
Yerkes, Frank E.	Hatboro,	Montgomery, Pa.
Yoder, E. Stanton	Dublin,	Bucks, Pa.
Young, George	Marshallton,	Chester, Pa.
Yundt, Horace A.	Downingtown,	" "
Yearsley, Pascal W.	West Chester,	" "

SUMMARY.

Number during 1st term	422
" " 2d " 	432
	<hr/>
Number in attendance both terms,	854
	<hr/>
Number of different students during year,	566
	<hr/>
Ladies,	308
Gentlemen,	258

Courses of Study.



The Course of Instruction for the State Normal Schools of Pennsylvania, embraces two distinct courses of study: *The Elementary Course* and the *Scientific Course*. These courses as fixed by law, and as arranged for this school, are as follows:

THE ELEMENTARY COURSE.

PREPARATORY CLASSES.

School Economy, Orthography and Reading; English Grammar and Composition; Arithmetic; Algebra; Geography and History of the United States; Writing and Drawing.

Orthography, Political Geography and Penmanship (practice and principles) must be thoroughly finished, and a very good knowledge of the remainder of these branches must be shown, also as much drawing submitted as can be

done in fourteen weeks of daily exercises—before students will be admitted to the Junior Class.

JUNIOR YEAR.

First Term.—Methods of Instruction ; Reading ; English Grammar and Composition ; Latin Grammar and Reader ; Arithmetic ; Algebra ; Physiology, Physical and Mathematical Geography ; Drawing and Vocal Music.

Second Term.—Methods of Instruction and Reading ; English Grammar, Latin Grammar and Reader ; Arithmetic (except Mensuration) and Algebra ; History of the United States ; Civil Government ; Drawing and Vocal Music ; Single-Entry Book-keeping, seven weeks.

☞ An examination by the State Board of Examiners in all of the above branches, except in School Economy and Methods of Instruction, must be passed before entering the Senior class. See page 24.

SENIOR YEAR.

First Term.—Psychology, embracing the Intellect, Sensibilities and Will, Methods of Teaching and School Management, a prescribed course of Professional Reading, Teaching in the Model School and semi-weekly meetings with the Principal of the Model School to discuss Practice of Teaching ; Outlines of Rhetoric, with at least a fourteen-weeks' course in English Literature, including the thorough study of one selection from each of four English Classics, and elocutionary exercises, also a prescribed course of reading ; Latin, Cæsar ; Plane Geometry ; Natural Philosophy.

Second Term.—Methods, History of Education and the reading of General History, the completion of 21 weeks of teaching in the Model School for 45 minutes per day, and semi-weekly meetings in connection therewith, a Thesis on a Professional subject ; Rhetoric or English Literature with reading ; Cæsar, through the Helvetian War ; Geometry and Mensuration ; Botany.

☞ For examinations in this year's work, see page 24.

THE SCIENTIFIC COURSE.


Pedagogics.—Moral Philosophy; Logic; Philosophy of Education; Course of Professional Reading, with abstracts, notes, and criticisms, to be submitted to Board of Examiners; a Thesis on a Professional Subject.

Language.—Latin, six books of Virgil, four orations of Cicero, the Germania of Tacitus, or a full equivalent; an equivalent of Greek, French or German, will be accepted for Spherical Trigonometry, Analytical Geometry, Calculus, Mathematical Natural Philosophy, and Mathematical Astronomy; Literature.

Mathematics.—Higher Algebra; Solid Geometry; Plane and Spherical Trigonometry and Surveying, with the use of instruments; Analytical Geometry; Differential and Integral Calculus.

Natural Science.—Natural Philosophy, as much as in Snell's Olmstead; Astronomy, Descriptive and Mathematical; Chemistry; Geology or Mineralogy; Zoology.

History.—General History.

 This course requires two full years of hard study. The examinations in it are conducted by the State Board of Examiners, at their annual examination. *But graduates in the elementary course can be examined upon any of the studies of the Scientific Course at any State Examination, and can have these branches put upon their diplomas.*

FINAL EXAMINATION.

To graduate at a Pennsylvania State Normal School students must attend at least twenty-one weeks. The Faculty first examine the candidates in all the branches of study; if they find them qualified they recommend them to the State Board of Examiners, certifying that they have completed the course of study as required by law, and have taught the required time in the Model School.

The final examinations are conducted by a State Board of Examiners, who are appointed by the State Superintendent of Public Instruction, from the following classes: the State Superintendent, or Deputy Superintendent, who is President of the Board; the Principal of another Normal School; two

County or Borough Superintendents from the First District ; and the Principal of this Normal School. Each student must receive four votes out of the five in order to pass the examination and to graduate.

The final examination occurs about two weeks before Commencement, the date being fixed by the State Superintendent. The examination is almost wholly in writing and lasts two or three days.

The following important changes in the examinations were made at a recent meeting of the State Superintendent and Normal School Principals, and have been introduced into this school.

1. Admission to the Senior Class shall be determined by the State Board of Examiners at the annual examination by the Board.

2. In order to be admitted to the Senior Class, students must be qualified in the Junior and Preparatory studies, but the examination in Pedagogics shall be deferred to the Senior year—the examination in the remaining Junior and Preparatory studies to be final.

3. Any person or persons not in actual attendance during the previous Spring session, if recommended by the Faculty may be examined in the Junior and Preparatory studies at the opening of the Fall term, by the Principal and two Superintendents who are members of the State Board, and the examination papers, if approved by these three examiners, shall be submitted to the Superintendent of Public Instruction for approval ; and if he approve them, such person or persons shall be admitted to the Senior Class.

4. A certificate setting forth the fact of the passing of the Junior and Preparatory course of study shall be prepared by the Department of Public Instruction, and signed by the Board of Examiners, and shall entitle the holder thereof to admission into the Senior Class of any State Normal School of Pennsylvania at the beginning of any Senior year.

The date of the Fall examination for admission to the Senior Class will be sent upon application to the Principal.

CERTIFICATES AND DIPLOMAS.

A student graduating in the Elementary Course will receive a certificate in which will be named the branches he has studied, and by which he will be constituted *Bachelor of the Elements*; the diplomas of those graduating in the Scientific course will enumerate the distinctive branches of this course, and constitute their holders, *Bachelors of the Sciences*.

Regular graduates who have continued their studies for *two years*, and who have practiced their profession for *two annual terms*, in the Common Schools of the State, and who have presented to the Faculty and Board of Examiners a certificate of good moral character and skill in the art of Teaching from the Board or Boards of Directors in whose employ they have taught, countersigned by the proper County Superintendent, may receive diplomas, constituting them *Masters* in the several studies embraced in the Course in which they graduated, and conferring upon them corresponding professional degrees, as follows:

Master of the Elements.

Master of the Sciences.

These diplomas are permanent certificates of the highest grade. *They confer upon their holders the right to teach the branches named therein in the public schools of Pennsylvania, without further examination.*

Applications for diplomas must be presented to the Board of Examiners at their regular session.

The Normal School law makes it the duty of the authorities of the Normal Schools to grant diplomas or State Certificates to *actual teachers in Common Schools*, without their having attended the Normal Schools as students. The following are the conditions upon which these diplomas will be granted:

1. Each applicant must be twenty-one years of age, and of good moral character, and he must have taught successfully during three successive annual terms in Common Schools in this state, the proof of age to be the declaration on honor of the applicant; and of moral character and a satisfactory discharge of the requisite terms of teaching, a certificate from the proper Board or Boards of Directors, signed by the

President and Secretary, and countersigned by the proper County Superintendent or Superintendents.

2. The examination to be in the Elementary or Scientific Course, as the applicant may select, according to the list of studies as printed in the circulars of the State Normal Schools, and approved by the Superintendent of Public Instruction, or in such other studies as may by the Board of Examiners be deemed equivalent.

3. Any person obtaining a certificate in the Elementary Course may, at the next or any succeeding annual examination, be examined for the higher course, and obtain the proper certificate.

4. Each applicant to prepare and present to the Board of Examiners an original thesis of not less than six folio pages of manuscript, on some professional subject, to be retained at the school where the examinations take place.

5. The examination and certificate to be without expense to the applicant, and the certificate to be full evidence of qualifications to teach the branches therein named, in any part of the state, without further examination.

Location, Building, &c.

The West Chester State Normal School was founded in the year 1871, by the joint efforts of the Trustees and contributors of the West Chester Academy, and the citizens of West Chester and vicinity.

West Chester is a beautiful town of nearly 8,000 inhabitants, the county seat of Chester county, and is pre-eminent for its healthfulness, morality and intelligence. It is about twenty-five miles west of Philadelphia, with which it is connected by two railroads, over which trains run at all hours of the day. Both of these are controlled by the Pennsylva-

nia Railroad, and all trains for West Chester leave the new Broad Street Station. A short branch road connects West Chester with the main line of the Pennsylvania Railroad at Frazer, where close connections are made with the trains on the main line.

THE BUILDINGS

Are situated in the southern part of the borough, half a mile from the Court House. The main building is new, built of greenstone and marble, 256 by 234 feet, four stories high, with basement. It is one of the finest and handsomest school buildings in the country. The buildings are surrounded by ten acres of beautiful grounds.

A new building containing a chapel and a dining-room, has been completed during the past year; both are most completely and handsomely fitted up. They are not excelled in any school in this country. Two new additions for sanitary purposes have also been erected, and each story, on both the girls' and boys' wings, is fitted up with bath-rooms (hot and cold water), water-closets, slop-hoppers, &c., of the best patterns. The drainage is perfect. These sanitary improvements alone cost \$10,000, and are believed to be the best and most healthful to be found anywhere. The improvements just finished here have cost upwards of \$40,000, and *the school property now represents a cost of a quarter of a million of dollars.* Many thousands more will be spent in improvements during the present summer (1888); the whole building will be improved, the recitation rooms refitted and refurnished, a fine library and reading-room provided for the free use of students, additional furniture put into the students' rooms, and many other improvements made to add to the efficiency of the school, and the comfort of the students.

STUDENTS' ROOMS.

The rooms are generally arranged for two students each. All are good sized, have high ceilings, are well ventilated and are all thoroughly heated by direct steam radiation. The rooms are comfortably furnished, have single beds, wash stands, bowls and pitchers, and are furnished with woven wire mattresses. The ladies' rooms are all partly carpeted.

Admission, Government, &c.

CONDITIONS OF ADMISSION.

Pupils will be allowed to enter the regular course at any point for which they are actually fitted. They may enter at any time during the Session, and will be charged only from date of entrance.

A prompt attendance at the commencement of the Session is of the utmost importance, both to the progress of the pupil and proper organization of the School.

Students desiring to enter the Institution should make application to the Principal at as early a date as possible.

OUTFIT.

Pupils boarding in the Institution will be furnished with single beds, bedding and wardrobe, and are expected to furnish two pairs of blankets, or an equivalent, towels, and table napkins; also an umbrella and a pair of rubber overshoes. Many of the students provide carpet for their rooms, thus giving them a very neat and home-like appearance.

Keys, lamps, wash bowls, pitchers, and looking-glasses, are furnished by the School, but their cost must be deposited when they are obtained, which deposit will be refunded when they are returned uninjured.

GOVERNMENT.

Self-government is regarded as the only true government and nothing will be required except that which a *true sense of honor and self-respect* would naturally demand from the individual.

The right is reserved to remove any pupil whose influence is found to be vitiating, from the school.

MORAL AND RELIGIOUS CULTURE.

All students are required to attend the opening exercises of the School in the chapel each day, and all must attend religious services each Sabbath morning in the town, at the churches preferred by their parents or guardians.

LABORATORY.

The new laboratory (see page 28), renders the facilities for Analytical Chemistry even more complete than ever; the department is under the charge of a practical chemist, who has devoted years to this important branch, and who is State Inspector of Foods of Pennsylvania. A full course in qualitative analysis, blowpipe analysis of minerals, &c., is given each term. Students receive instruction without extra charge, but are required to pay for chemicals used, breakage, &c. The removal of the laboratory out of the main school building has removed all the danger often apprehended from such departments.

APPARATUS.

The Institution is supplied with Philosophical and Chemical Apparatus of the most approved kind, a large addition having been made recently. Students in General Chemistry will be charged at the rate of two dollars per term for materials used in experiments before the class.

MODEL SCHOOL.

The Model school is a most important adjunct to the Normal School. If a Normal School fails to inculcate good methods of teaching, it fails to accomplish the great end for which it was established. The Model School should, therefore, be what the name implies, a school in which teacher-students may witness the best methods of instruction, and learn to practice them.

Miss Mary A. Spear, formerly of Quincy, Mass., and Normal Park, Ill., is Principal of this department. As Miss Spear is ranked first among the primary teachers of this country,

the advantages which the Model School offers cannot be over-estimated. Arrangements have been made by which all who are preparing to teach, share the benefits of Miss Spear's work.

This school is conducted with a view to produce the best results, both in the progress of the pupils, and the attainment of correct methods by the student teachers. Before students are allowed to teach classes in this department, they are required to witness the plans adopted by the Principal and her Assistants. They are then required to teach under the constant supervision of the Principal of the Model School. Two meetings each week are held for the purpose of correcting errors in teaching and suggesting new methods.

The following course of study is pursued in this department:

D Class.—Language Lessons, Reading, Spelling, Fundamental Rules of Arithmetic, Geography, Natural History.

C Class.—Language, Reading, Spelling, Arithmetic, Geography, Map Drawing, Oral Lessons in U. S. History, Natural History.

B Class.—Language, (including the elements of Grammar and Rhetoric,) Arithmetic, Geography, Map Drawing, U. S. History, Lessons in Literature and Composition, Reading.

A Class.—Grammar, Arithmetic, Algebra, Physiology, Latin, Botany, Literature and Composition.

Writing, Drawing, Spelling, and Vocal Music, are continued throughout the course.

LIBRARY AND READING ROOM.

The libraries contain about 3,000 volumes, to which the students have access for several hours each day, for consultation or taking out books.

The reading tables are supplied with the leading periodicals of the country, together with the city daily papers, and the local county newspapers, to which students have free access when not on duty required by the school.

LITERARY SOCIETIES.

There are connected with the school two flourishing Literary Societies. The Moore Literary Society, and The

Aryan Society, composed of students and members of the Faculty.

The value of these societies as adjuncts of education is so great that students cannot afford to neglect the opportunities they furnish for literary and oratorical culture.

In addition to the school Library, each society has an excellent, and good-sized library for the use of its members.

MUSEUM.

The museum contains a large and valuable collection of specimens, illustrating every department of Natural Science. It was commenced in the year 1826, and has been annually enriched with contributions from every portion of the world. The justly celebrated "Herbariums" of the late Dr. Wm. Darlington, and David Townsend, now in this Museum, are conceded to be two of the most accurate and extensive private collections ever formed in this country.

TEXT BOOKS.

Text Books are sold to students at Philadelphia retail prices; but all books used in the Elementary Course are furnished on rent to those preferring it.

MUSIC.

This department is unexcelled outside of the large cities. The teacher in charge is a graduate of the New England Conservatory of Music, and has for several years been the pianist at the great Chautauqua Summer gatherings. The following is the course arranged for the piano:

GRADED SYNOPSIS OF MUSICAL STUDY.

First Grade.

Emery's Foundation Studies, and the N. E. Conservatory Method, or Urbach's Instruction Book.

PIECES.

Very easy selections from modern composers.

Second Grade.

ETUDES.

Loeschorn, op. 52; Heller, op. 47; Czerny, op. 849; Kohler, op. 50; Gurlitt, op. 50.

PIECES.

Sonatinas and other easy works, by Lichner, Spindler, Gurlitt, Kullak, Reinecke, Schumann, and others.

Third Grade.

ETUDES.

Bertini, op. 29 ; Heller, ops. 46 and 45 ; Loeschorn, op. 66 ; Berens, op. 61 ; Bach, Little Preludes ; Turner, Damp-er Pedal Studies, op. 15 ; Technics, Emery and Mason.

PIECES.

Selections from Heller, Rheinberger, Schwarvenka, Mendelssohn, Haydn, Schumann, Schubert, Bach, and others.

Fourth Grade.

ETUDES.

Turner, Elements of Modern Octave Playing ; selections from 50 Selected Studies, Cramer ; Bach, Two Part Inven-tions ; Clementi, Gradus ad Parnassum ; Moscheles, op. 70 ; Selections from Chopin, ops. 10 and 25, and Bach's Preludes and Fugues.

PIECES.

Selections from classical and modern composers.

Pupils completing this course in a satisfactory manner will be awarded a diploma. The time required to complete the course cannot be specified, depending, as it does, upon the talent, previous acquirements, and industry of the pupil.

PIANO RECITALS

Are held every two weeks in the chapel, for the purpose of giving the pupils ease and self-control in playing before an audience.

For these recitals a Steinway Concert Grand Piano is used. This instrument is the largest and best made, and has just been bought at the Steinway's ware-rooms in New York, being the best to be found in their establishment.

A course of reading in musical literature is recommended to cultivate the style, and enrich the pupil's knowledge of the great masters.

Terms.—Winter Session, two lessons per week, including two practice periods daily, \$34.00. For Spring Session, \$16. Class instruction in Vocal Music is free.

For lessons on other instruments than the piano and cabinet organ, special arrangements must be made.

APPLICATIONS FOR TEACHERS.

Frequent applications are made to the Principal for well trained teachers, and it will be our aim to supply the demand as far as possible. Every year demand is made for more teachers than can be supplied.

CALENDAR.

The school year is divided into two sessions. The Winter Session will begin *Monday, August 27th*, and continue *twenty-eight weeks*. The Spring Session will begin *Monday, March 25th*, and continue *fourteen weeks*. There will be a vacation of one week at Christmas, and one of the same length between the sessions in March.

TERMS.

Tuition and board, including heat, light, and washing, for the Winter Session, \$140; *one-half payable in advance*, the remainder on the sixth of December; for a period less than the session, per week, \$5.25. For the Spring Session, \$65 *payable in advance*; for a period less than the session, per week, \$5.00.

For tuition alone, for Winter Session, \$45. *one-half payable in advance*, the remainder on the third of December; for a period less than a session, per week, \$1.65. For Spring Session, *in advance*, \$20; for a period less than a session, per week, \$1.50. For tuition in Model School, Winter Session, \$20; Summer Session, \$10. For a time less than a session, per week, 80 cents.

The "State Aid" of fifty cents a week is deducted from the bills of those who comply with the conditions stated *below*, making the total cost to teachers \$184 per year.

Teachers whose schools do not end until after the beginning of the session, are charged by the week at *term rates*, if they enter as soon as their schools close, and finish the term.

EXTRA CHARGES.

For instruction on the Piano or Organ, or private lessons in vocal music with use of instrument, for Winter Session, \$34; for Spring Session, \$16. For lessons on other instruments, special arrangements must be made with the Professor of that department.

There are no other extra charges except the cost of the chemicals used by those studying chemistry, before referred to.

DEDUCTIONS.

Students absent two consecutive weeks, or longer, on account of personal sickness, are entitled to full reduction for the time lost.

Those leaving for any other cause will be required to pay for the time spent at the school, at the rate for a period less than a session as specified above.

All bills must be settled with the Principal, who acts in behalf of the Trustees. Bills for one term must be settled before a student will be permitted to enter upon the next term, unless by special arrangement.

STATE APPROPRIATIONS TO STUDENTS AND GRADUATES.

By a recent Act of the Legislature, the following appropriations are made by the State to Normal Students and Graduates.

1. Each student over *seventeen years* of age who shall *sign a paper* declaring *his intention* to teach in the Common Schools of the State, shall receive the sum of **FIFTY CENTS** *per week* toward defraying the expenses of tuition and boarding.
2. Each student over *seventeen years* of age, who was *disabled in the military or naval service* of the United States, or of Pennsylvania, or whose *father lost his life* in said service, and who shall sign an agreement as above, shall receive the sum of **ONE DOLLAR** per week.
3. Each student, who, *upon graduating*, shall sign an agreement to teach in the Common Schools of the State *two full school years*, shall receive the sum of **FIFTY DOLLARS**.
4. Any student to secure these benefits, must attend the

School at least *twelve consecutive weeks*, and must join a class in Methods of Instruction or School Management. These benefits will be deducted from the regular expenses of board and tuition.

For several years past the appropriation for this purpose by the Legislature has been insufficient to pay the State aid in full during the Spring Session. But for the past five years the West Chester State Normal School has allowed its students the full amounts set forth above, and we expect to do the same next year.

VISITORS AND VISITING.

Calls on the pupils at other times than during the hours of recreation, seriously interfere with the object they have in view, and therefore, will not be allowed except in case of necessity. Persons desiring to visit the school are cordially invited to do so at any time.

Every absence from a school duty is a loss which cannot be wholly made up. *Parents are earnestly requested not to take their children away from a single school duty, unless it is absolutely necessary. It will interfere with important school duties if a student leaves school earlier than Saturday morning or returns later than Sunday evening.* Students are not permitted to visit home or away from the town without special permission from their parents or guardians.

TEXT BOOKS USED.

Readers—Monroe, American Educational, Franklin, Lippincott, Sheldon; *Penmanship*—Barnes; *Arithmetic*—Brooks, Appleton; *Geography*—Harpers, Appleton, Barnes; *Grammar*—Reed & Kellog; *Geometry*—Chauvenet; *Algebra*—Sensenig, Robinson; *Book-keeping*—Lyte; *Physiology*—Walker; *Natural Philosophy*—Sharpless & Philips; *Botany*—Wood, Gray, Flora Cestrica; *Chemistry*—Eliot & Storer, Douglass & Prescott; *Zoology*—Nicholson, Orton; *Geology*—Dana's Text Book; *Rhetoric*—D. J. Hill; *History, U. S.*—Johnston, Taylor; *Constitution, U. S.*—Andrews; *Drawing*—Walter Smith; *Vocal Music*—L. W. Mason; *School Economy*—Wickersham; *Methods of Instruction*—Brooks; *Mental Philosophy*—Hill; *Trigonometry and Surveying*—Wentworth; *Analytical Geometry and Calculus*—Went-

worth ; *Astronomy*—Snell's Olmstead, Sharpless & Philips ; *Latin*—Jones's First Lessons, Harkness's Grammar, Allen & Greenough's Cæsar ; *Greek*—Harkness's First Book, Hadley's Grammar, Boise's Anabasis, Homer ; *German*—Bacon's Leitfaden, Sheldon's Grammar, German Texts ; *French*—Otto's Grammar and Reader ; *English Literature*—Trimble, Trimble's Chart, Swinton's Studies, Dana's, Whittier's, Bryant's and Hudson's Selections, Chamber's Cyclopaedia ; *Orthography*—Raub.

REGULATIONS.

1. Every student is requested on entering, to give the Principal information in regard to the following particulars : Whether he designs fitting himself for a teacher ; what length of time he designs remaining in the Institution, and whether he desires to pursue the regular course for graduation.

2. Students are considered members of the school until the Principal is duly notified of their withdrawal.

3. The hours regularly assigned to study are to be faithfully devoted to the preparation of the exercises required.

4. Students are allowed to walk for exercise in the vicinity of the school, but no one is permitted to visit the town or otherwise absent himself, without permission from the Principal. Absence from the premises after dusk is not permitted. New acquaintances outside of the school must not be cultivated.

5. Permission to be absent from a recitation must always be obtained from the teacher in charge of the class, *before* the absence occurs ; and students desiring to be absent from town must obtain written permission from the Principal.

6. Boarding students who are not present at the beginning of the term, must send to the Principal a written explanation of their absence, or their rooms will be forfeited.

7. Every student must be present at the daily opening exercises of the school, and at all general exercises in the Chapel unless excused.

8. All objectionable books, papers and cards, found in the possession of students, will be taken and destroyed.

9. Disorderly conduct in the building is prohibited. Each student will be held accountable for any disturbance or damage in his room.

10. No nails must be driven in the walls or ceilings, or alterations be made in the windows, doors, or any appendage of the rooms, without permission from the *Steward*.

11. Students are not allowed to visit one another's room during the regular hours of study, without permission of those in charge of the halls. No change of rooms must take place without permission from the Principal.

12. Each student of instrumental music will have regular hours assigned for practice, during which time no spectator must be present to interrupt the exercises or divert the attention.

13. All students who are tardy, unnecessarily, at meals, must forfeit them, and no one must leave before the rest without good reason, and permission from the person sitting at the head of the table. Any student sick or indisposed, and requiring attention, must have himself reported at once to the Matron.

14. It is expected that the ladies and gentlemen of the Institution will treat one another with politeness, but they will not be allowed to be together or to carry on conversation or other communication except in the performance of school exercises, unless by special permission. Neither sex will be permitted to trespass upon that portion of the building assigned to the other.

15. No lady or gentleman attending this institution will meet, walk, or ride with a person of the opposite sex, except in cases of necessity, and then only with the permission of the Principal.

16. Students will not visit the dining room at any other time than meal-time; and neither the domestic departments, boiler room, nor the music rooms, without permission.

17. The use of tobacco in any form is strictly prohibited in the building or on the grounds.

18. Students must not enter any saloon, bar-room, billiard or pool room. They are absolutely forbidden to use as a beverage alcoholic liquors of any kind whatever during their connection with the school.

19. Students will be required to attend public worship each Sabbath morning, at such places as their parents or guardians designate.

20. Students are required to take up enough studies to

keep them, in the judgment of the Principal, sufficiently employed, but must not take up more than they can study with profit.

21. Students must furnish towels, napkins, looking glass, and two pairs of blankets, and have all articles of clothing *distinctly marked*. Each student is permitted to have twelve pieces washed each week without extra charge.

Directory of the Alumni.

PLEASE NOTIFY US OF ANY ERRORS OR CHANGES.

OFFICERS FOR 1887-8.

President—ADDISON JONES, Class of '81.

Vice-President—DAVID M. LICHTY, Class of '85.

Secretary—CARRIE E. BEMUS, Class of '80.

Managers—CARRIE E. BEMUS, SUSIE C. LODGE,
ANNIE C. SCARBOROUGH.

CLASS OF 1874. ELEMENTARY COURSE.

<i>Name.</i>	<i>Address.</i>	<i>Profession.</i>	<i>Time taught since graduation.</i>
Margaret Crosby,	Chester, Pa.,	Teaching,	14 YRS.
Anna P. Esler,	Malvern, Pa.,	"	14 "
Ruth E. Griffith,	Chrome, Pa.,	"	9 "
George G. Groff,	Lewisburg, Pa.,	College Professor,	12 "
Anna S. Hibbs (Washburn),	Chappaqua, N. Y.,	"	7 "
Ella M. Hunsicker,	2921 N. 17th St., Phila.,	"	6 "
E. Anna Large, (Thorne),	Gum Tree, Pa.,	"	9 "
Maggie B. Longshore,	Dolington, Pa.,	"	9 "
Emma J. Longstreth,	2410 N. 16th St., Phila.,	Teaching,	13 "
Mary H. Lynch,	West Chester, Pa.,	"	14 "

CLASS OF 1875. ELEMENTARY COURSE.

<i>Name.</i>	<i>Address.</i>	<i>Profession.</i>	<i>Time taught since graduation.</i>
Mary E. Bates (Miller),	Glen Moore, Pa.,		3 YRS.
Dora E. Brosius (Walton),	Ericldonn, Pa.,		8 "
Richard T. Chandler,	Eureka Springs, Ark.,	Teaching,	2½ "
M. Lizzie Conway,	Morgan Park, Ill.,	"	10 "
Emily Corson,	Plymouth Meeting, Pa.,		
Martha Corson (Polev),	5301 Germantown Ave., Phila.		
Carrie I. Dummig,	Dutton Mawr, Pa.,	Teaching,	12 "
William T. Gordon,	Coatesville, Pa.,	"	13 "
Mary J. Hare,	2045 N. 13th St., Phila.,	"	13 "
Anna Jackson,	15th and Race Sts., Phila.,	"	11 "
Emma Irey (Philips),	Kennett Square, Pa.,		7 "
Ida M. John,	Phoenixville, Pa.,	"	13 "
Lydia A. Martin,	West Chester, Pa.,	Teacher Nor. Sch.	13 "
Arthur W. Potter,	Wilkesbarre, Pa.,	Prim. of Schools,	13 "
Annie J. Price (Paxson),	371 Saunders Ave., Phila.,		2 "
Amos L. Spence,	Oxford Valley, Pa.,	Teaching,	13 "
Zenna Wollerton (Laggett),	West Chester, Pa.,		
Sara Z. Woolley (Maddlock),	Elwyn, Pa.,		4 "

CLASS OF 1876. ELEMENTARY COURSE.

F. Roberts Acker,	Deceased, 1880,		2 "
Phoebe A. Baker,	West Chester, Pa.,	Teaching,	10 "
Lizzie Brown (Thomas),	Media, Pa.,		8 "
Sallie M. Boyd (Snow),	Wakefield, R. I.,		
William Butler,	Leonia, Pa.,	Civil Engineer,	
Tamazim T. Clark (Fairlamb),	Media, Pa.,		8½ "
Ada A. Colman,	Phoenixville, Pa.,	Medical Student,	4 "
Clara A. Davis,	Chester, Pa.,	Teaching,	12 "
Albie A. Eyre,	West Chester, Pa.,	Student,	11 "
George P. Gabeka,	244 W. 4th St., N. Y. City,	Teaching,	11 "
Jennie Knight (Atkinson),	Penn's Park, Pa.,		4 "
Wilhelmina B. Linton,	Newtown, Pa.,		3 "
Rachel S. Martin,	1617 Green St., Phila.,	"	10 "
Lucy C. Parsons (Tyson),	Knowlton, Pa.,		3 "
Ida C. Pyle,	Avondale, Pa.,		12 "
Kate A. Stephens (Williams),			5 "
Florence E. Suckel,	Davis Grove, Pa.,		11 "
Sue P. Stackhouse,	Deceased, 1888,		4 "
William D. Thomas,	Media, Pa.,	Lawyer,	2 "
Anna M. Thompson,	Newtown, Pa.,		1 "

CLASS OF 1877. SCIENTIFIC COURSE.

George G. Groff,	Lewisburg, Pa.,	College Professor,	11 "
------------------	-----------------	--------------------	------

ELEMENTARY COURSE.

<i>Name.</i>	<i>Address.</i>	<i>Profession.</i>	<i>Time taught since graduation</i>
Ella L. Baldwin,	2005 Chestnut St., Phila.,	Teaching,	7 YRS
B. Anna Black (Johnson),	Cynwyd, Pa.,	"	6 "
Lizzie F. Criley,	Aiken, S. C.,	"	11 "
Zelda H. Daniel,	West Chester, Pa.,	"	3 "
M. Eloene Davis (Wells),	Ardmore, Pa.,	"	2 "
Anna P. Flinn,	Radnor, Pa.,	"	11 "
Addie C. Graves,	Media, Pa.,	"	11 "
H. Emmie Groce,	Burmout, Pa.,	"	11 "
Virginia Green (Huey),	Lenape, Pa.,	"	6 YRS
Hanna M. Johnson (Knickerbocker),	Fairfax, Iowa,	"	½ YR.
Susie C. Lodge,	Bowling Green, Mo.,	Teaching,	10 YRS
Margaret J. Moffat,	Riegelsville, Pa.,	"	11 "
Annie V. Murray,	Phoenixville, Pa.,	"	11 "
Fannie A. Pyle (Fronefield),	Media, Pa.,	"	10 "
L. Emma Pyle,	Toughkenamon, Pa.,	Teaching,	9 "
Laura C. Sorber,	Spring City, Pa.,	"	10 "
Arthur H. Tomlinson,	Jenkintown, Pa.,	"	10 "
Lydia Turner,	Humboldt, Iowa,	"	10 "
Elizabeth Turner,	" "	"	10 "
John P. Vanderslice,	Deceased, 1879,	"	"

CLASS OF 1878. ELEMENTARY COURSE.

Ella T. Brooke (Bateman),	West Chester, Pa.,	"	2 "
Hannah R. Caley,	Newtown Square, Pa.,	"	10 "
Hannah Castle,	Upland, Pa.,	"	9 "
Harriet A. Castle,	"	"	10 "
Evalena A. Darlington,	"	"	"
Mary Edmunds,	2761 Lawrence St., Denver, Col.,	"	10 "
Kate R. Moulder,	Phoenixville, Pa.,	"	10 "
Eleanor M. Phillips (Pennock),	Kennett Square, Pa.,	"	1 YR.
Marian Preston (Lewis),	West Chester, Pa.,	"	3 YRS
Fannie M. Stiteler,	Anselma, Pa.,	"	10 "
Jane J. Wetherell,	3435 Lancaster Ave., Phila.,	"	2 "

STATE CERTIFICATE.

William H. Snyder,	Oxford, Pa.,	Prin. High School	1 "
--------------------	--------------	-------------------	-----

CLASS OF 1879. ELEMENTARY COURSE.

Emma K. Bossert,	Phoenixville, Pa.,	Teaching,	8 "
Maggie R. Caley,	Media, Pa.,	"	4 "
Howard Dugan,	Audenried, Pa.,	Mining Engineer.	1 "
D. Tucker Hoffman,	Phoenixville, Pa.,	Draughtsman.	2 "
Joseph E. Myers,	West Branch, Iowa,	Farming,	1 YR.
Hartman Naylor,	Newark, N. J.,	Teaching,	8 YRS
Emma P. Nields (Dugan),	Chatham, Pa.,	"	1 "
Annie J. Passmore (Swayne),	Fairville, Pa.,	"	24 "

<i>Name.</i>	<i>Address.</i>	<i>Profession.</i>	<i>Time taught since Graduation.</i>
Sue V. Peters (Thatcher).	Village Green, Pa.,		4 yrs.
Emma T. Pyle (Tomlinson).	Jenkintown, Pa.,	Teaching,	7 "
Kachel A. Pyle (Cloud).	Unionville, Pa.,	"	2 "
David J. Reese.	Deceased, 1882,		2 "
Mary F. Whitehead (Durnall).	Ward, Pa.,		6 "
Caroline C. Woodward (Cummings).	4702 Girard Ave., Phila.,		6 "

CLASS OF 1880. ELEMENTARY COURSE.

Mary H. Baldwin,	College of Commerce, Phila.,	Teaching,	6½ yrs.
Carrie E. Bemus.	West Chester, Pa.,	Teacher Nor. Sch.	8 "
Mary M. Brinton.	1515 Poplar St., Phila.,		
Chas. H. Bushong, M. D.,	600 Hudson St., N. Y. City,	Physician,	5 "
Willis Cheyney,	Wilmington, Del.,		2 "
Margaretta S. Crumley.	General Wayne, Pa.,	Teaching,	8 "
Harry G. Kidd,	Howellville, Pa.,	"	8 "
Lizzie F. Kugler (Losey).	Sinnemahoning, Pa.,		5 "
Mary E. Nelson (Shoeb).	Kelton, Pa.,		1 yr.
Alfred Paxson,	West Chester, Pa.	Dentist.	3 yrs.
Fannie J. Simpson,	South Bethlehem, Pa.,	Teaching,	8 "
Felle Vansant,	Cinnaminson, N. J.	"	8 "
Laura C. Verkes.	Phoenixville, Pa.,	"	8 "

STATE CERTIFICATE.

Milton E. McClim,	Hazleton, Pa.,	Clergyman,	2 "
-------------------	----------------	------------	-----

CLASS OF 1881. ELEMENTARY COURSE.

Martha J. Acker,	Atglen, Pa.,	Teaching,	7 "
Lizzie E. Buchanan.	N. Denver, Colorado,	"	6 "
Alice E. Clatlin.	1160 Columbia Ave., Phila.,	Stenography,	2 "
Leonore E. Davis.	1824 N. 11th St., Phila.,	Physician,	2 "
Ellen M. Green.	West Chester, Pa.,	Teaching,	7 "
Mary E. Green.	" " "	"	6 "
Daniel Hartney,	Jenkintown, Pa.,	"	7 "
Abdison L. Jones,	West Chester, Pa.,	Teacher Nor. Sch.	7 "
Madge J. Kerns.	Bryn Mawr, Pa.,	Teaching,	7 "
Lizzie J. Lewis,	Lincoln, Va.,	"	7 "
Ella W. Lynch (Thomas).	King-of-Prussia, Pa.,		4 "
Alice H. March (Martin).	2330 St. Alban's Place, Phila.,		5 "
Joseph L. Markley,	Harvard University,	Student.	3 "
Mary P. McFarland,	Linwood, Pa.,	Teaching,	7 "
G. Winfield Moore,	Ercildoun, Pa.,	"	7 "
Fannie Potts (Crouse).	Cupola, Pa.,		3½ "
Emma Schofield (Godon).	Chester, Pa.,		4 "
Ella M. Turner (Fenn).	711 W. 10th St., Wilmington,	"	6 "
Mary D. Walton (Swayne).	Kennett Square, Pa.		2½ "
Williamanna Webb (Jefferis).	Rosenvick, Pa.,		2½ "

CLASS OF 1882. SCIENTIFIC COURSE.

<i>Name.</i>	<i>Address</i>	<i>Profession.</i>	<i>Time taught since graduation.</i>
Arthur W. Potter,	Wilkesbarre, Pa.,	Prin. Schools,	6 yrs.

ELEMENTARY COURSE.

Louis B. Ambler,	Kennett Square, Pa.,	Teaching,	4 "
Walter J. Baldwin,	Ann Arbor, Mich.,	Student,	4 "
Florence Brinton,	Elwyn, Pa.,	Teaching,	6 yrs.
Maggie Ferron,	Londonderry, Pa.,	"	6 "
Frank B. H. Green	Huntingdon, Pa.,	Teacher Nor. Sch.,	6 "
Lily F. Groff,	Chester Valley, Pa.,	Nurse,	2 "
R. Addie Kauffman,	Berwyn, Pa.,	Teaching,	6 "
Jesse E. Philips, Jr.,	West Chester, Pa.,	"	2 "
Warren R. Rahn,	Fairview Village, Pa.,	"	5 "
Warner P. Roberts,	Warrington, Pa.,	"	4 "
William H. Slotter,	Yardley, Pa.	Co. Superintendent,	5 "
H. Bertha Sorber,	McEwensville, Pa.,	"	5 "
Flora L. White,	Edge Hill, Pa.,	Teaching,	4 "
Samuel F. Wolf,	Riegelsville, Pa.,	Builder,	1 "
Sallie S. Kirk,	Muncy, Pa.	Teaching,	4½ "

CLASS OF 1883. SCIENTIFIC COURSE.

Joseph L. Markley,	Harvard University,	Student,	1 yr
Arthur H. Tomlinson,	Jenkintown,	Teaching,	4 yrs.

ELEMENTARY COURSE.

Fannie J. Bailey,	692 Swede St., Norristown, Pa.,	"	1 yr
Joseph H. Baldwin,	West Chester, Pa.,	Law Student,	3 yrs.
Katie W. Bean,	Schwenksville, Pa.,	Teaching,	5 "
William H. Beyer,	Drew Seminary, Madison,	Clergyman,	3 "
Mattie I. Dauman,	Lionville, Pa.,	Teaching,	5 "
W. Roger Fronefield,	Media, Pa.,	Lawyer,	2 "
Ella D. Gallagher,	Norristown, Pa.,	Teaching,	5 "
E. Belle Griest,	Guernsey, Pa.,	"	5 "
Mary E. Griest,	"	"	5 "
Lelia C. Hecht,	524 Spruce St., Reading, Pa.,	"	5 "
Mary W. Hawxhurst (Tyson)	Flora Dale, Pa.,	"	4 "
Samuel L. Jones,	Trenton,	"	5 "
Annie Laferty (Wallace),	Chadd's Ford, Pa.,	"	4 "
Addie L. Lybrand,	2017 Morris St., Phila.,	Stenography,	3 "
Rettie Moore,	Guthrieville, Pa.,	"	3 "
Edwin R. Musselman,	Trenton, N. J.,	Teaching,	5 "
Nellie Nevegold,	Bristol, Pa.,	"	5 "
W. Edwin Priest,	Phoenixville, Pa.,	"	5 "
Mary C. Russell,	"	"	5 "
A. Thomas Smith,	West Chester, Pa.,	Teacher Nor. Sch.,	5 "
Mary H. Walter	Warrington, Pa.,	Teaching,	5 "

STATE CERTIFICATE.

<i>Name.</i>	<i>Address.</i>	<i>Profession.</i>	<i>Time taught since graduation.</i>
Geo. V. Ommeren.	Quakertown, Pa.,	Teaching.	5 yrs

CLASS OF 1884. ELEMENTARY COURSE.

Sallie P. Bedford,	West Chester, Pa.,	Teaching,	3 "
A. Lincoln Beerbower,	Frazer, Pa.,	Merchant,	1 yr.
Charles B. Cloud,	Unionville, Pa.,	"	3 "
Ambrose L. Custer,	Huntingdon Valley, Pa.,	Teaching.	4 "
Lydia E. Eisenhower,	Shenandoah, Pa.,	"	4 "
Amelia Evans,	Cambria Station,	"	3 "
Oliver D. Frederick,	Kulpsville, Pa.,	"	4 "
Sallie S. Hoopes,	West Chester, Pa.,	"	4 "
William H. Johnson,	Loag, Pa.,	"	2 "
Annie W. Keene,	Kirkwood, Pa.,	"	4 "
Clara E. Knerr,	Birchrunville, Pa.,	"	4 "
Florence A. McAtee.	West Vincent, Pa.,	"	4 "
Eloise Mayham,	Swarthmore College.	Student,	2 "
Francis H. Nunemaker.	Deceased, 1888,	"	4 "
M. Lizzie Poole,	Chelsea, Pa.,	Teaching.	3 "
Richard W. Roelofs.	1015 Chestnut St., Phila.,	Clerk,	2 "
Jesse H. Snyder, Jr.,	Kulpsville, Pa.,	Teaching.	1 "
Annie C. Sullivan,	Jenkintown, Pa.,	"	1 "
Agnes G. Walsh,	Malvern, Pa.,	"	4 "
Hannah Vonker,	Coatesville, Pa.,	"	1 "

CLASS OF 1885. SCIENTIFIC COURSE.

Martha J. Acker,	Atglen, Pa.,	Teaching.	3 "
Henry Benner,	University of Michigan,	"	2 "
William H. Beyer	Madison, N. J.,	Clergyman,	1 yr.
E. G. Jones,	"	Deceased, 1886,	1 "

ELEMENTARY COURSE.

John M. Carr,	Difton, Pa.,	Teaching.	3 yrs.
Lizzie C. Crumley,	General Wayne, Pa.,	"	3 "
Alice M. Gibson,	Wilkesbarre, Pa.,	"	3 "
Florence Griest,	Guernsey, Pa.,	"	3 "
Mary A. Hall,	Sugartown, Pa.,	"	3 "
Jacob Hillegas,	Princeton College,	Student,	1 yr.
Clara E. Hough,	Media, Pa.,	Teaching.	3 yrs.
J. K. Johns,	Jefferson College,	"	2 "
David M. Lichty,	University of Michigan,	Student,	"
Annie Mathias,	Chalfont, Pa.,	Teaching.	3 "
Phebe Passmore,	Malvern, Pa.,	"	3 "
Irene Roberts,	West Chester, Pa.,	Student,	2 "
Emma M. Smedley,	"	Deceased, 1887,	2 "
Myra W. Story,	New London, Pa.,	Teaching.	3 "

<i>Name.</i>	<i>Address.</i>	<i>Profession.</i>	<i>Time taught since Graduation.</i>
Edith Trapp,	Towanda, Pa.,	Teaching,	3 yrs.
Mary E. Worrell,	Kennett Square, Pa.,	Deceased, 1886,	½ yr.
Mabel E. Way,	West Chester, Pa.,	Teaching,	3 yrs.
Elmer P. Weisel,	Doylestown, Pa.,	"	3 "
Alice White,	Lahaska, Pa.,	"	3 "
Frank B. Wonsetter,	Pierce's Business College,	"	3 "

STATE CERTIFICATE.

James J. Bevan,	Mauch Chunk,	Teaching,	3 yrs.
-----------------	--------------	-----------	--------

CLASS OF 1886. SCIENTIFIC COURSE.

Susie C. Lodge,	Bowling Green, Mo.,	Teaching,	2 "
-----------------	---------------------	-----------	-----

ELEMENTARY COURSE.

Lizzie A. Boorse,	Phoenixville, Pa.,	Teaching,	2 "
Sallie A. Conard,	Shoemakertown, Pa.,	"	2 "
Laura Eshleman,	Cochranville, Pa.,	"	2 "
Sallie C. Evans,	West Chester, Pa.,	"	1 yr.
Mary E. Fox,	Norristown, Pa.,	"	2 yrs.
Nellie S. King,	Haverford College, Pa.,	"	2 "
William V. Kulp,	Lehigh University, Pa.,	Student,	
Helen Long,	Breadysville, Pa.,	Teaching,	2 "
Lizzie F. Ogden,	Cape May Court House, N. J.,	"	2 "
Mary E. Reed,	Jeffersonville, Pa.,	"	2 "
Laura E. Roberts,	Huntingdon Valley, Pa.,	Deceased, 1887	
Annie C. Scarborough,	Wrightstown, Pa.,	Teaching,	2 "
Isaiah M. Stover,	Kulpsville, Pa.,	"	2 "
George Wheeler,	Pine Grove, Pa.,	"	2 "
Hannah M. Worth,	Lamar, Missouri,	"	2 "

CLASS OF 1887. SCIENTIFIC COURSE.

Wm. H. Johnson,	Loag, Pa.,	Teaching,	1 yr.
David M. Lichty,	Goodville, Pa.,	Student,	

ELEMENTARY COURSE.

Mary E. Cornwell,	West Chester, Pa.,	Teaching,	1 "
W. H. Detwiler,	Ironbridge, Pa.,	"	1 "
Jennie T. Eachus,	Broomall, Pa.,	"	1 "
J. Morris Ehl,	Catasauqua, Pa.,	"	1 "
Eleanor T. Good,	West Grove, Pa.,	"	1 "
Lizzie Harley,	Port Providence, Pa.,	"	1 "
Regina M. S. Mahoney,	New Castle, Del.,		
Robert W. Mearns,	West Point, N. Y.,	U. S. Cadet.	
Adele M. Moloney,	Manoa, Pa.,	Teaching,	1 "
Esther A. Newlin,	Edgmont, Pa.,	"	1 "

<i>Name.</i>	<i>Address</i>	<i>Profession</i>	<i>Time taught since Graduation.</i>
Cora R. Perry,	Eagleville, Pa.,	Teaching,	1 yr.
Jennie V. Potts,	Guthrieville, Pa.,	"	1 "
Laura M. Pyle,	Three Tuns, Pa.,	"	1 "
Annie M. Riehl,	Bethlehem, Pa.,	"	1 "
Elsie V. Smith,	Lambertville, N. J.,	"	1 "
Mary Sweeney,	Media, Pa.,	"	1 "
Hattie Thompson,	" "	"	1 "
Willa M. Way,	Romansville, Pa.,	"	1 "
Mary F. Weikel,	Landcasterville, Pa.,	"	1 "
Mary H. Welsh,	Orangeville, Pa.,	"	1 "

CLASS OF 1888. ELEMENTARY COURSE.

Angie C. Bernard,	Cheltenham, Pa.,	Will Teach
Lizzie Castle,	Upland, Pa.,	"
Hattie Ely,	Yardley, Pa.,	"
Annie M. Goshen,	Lafayette Hill, Pa.,	"
Rosa Gauster,	Phoenixville, Pa.,	"
Mittie Haley,	Lincoln, Va.,	"
Annie A. Hurst,	West Earl, Pa.,	"
Alice Jacobs,	Kennett Square, Pa.,	"
Anne Jadwin,	Carbondale, Pa.,	"
Lillie Knoche,	Harrisburg, Pa.,	"
Minnie L. Morgan,	Oxford, Pa.,	"
Ettie Person,	Chestnut Level, Pa.,	"
Mary A. Pyle,	West Chester, Pa.,	"
Minnie R. Reynolds,	Linwood, Pa.,	"
Anna L. Smith,	Howellville, Pa.,	"
Della A. Smith,	Darby, Pa.,	"
Itasca Valentine,	Chester, Pa.,	"
Ella Wenberger,	Milford Square, Pa.,	"
Milton Kistler,	Blair, Pa.,	"
Frank C. Rex,	Pottstown, Pa.,	"

