

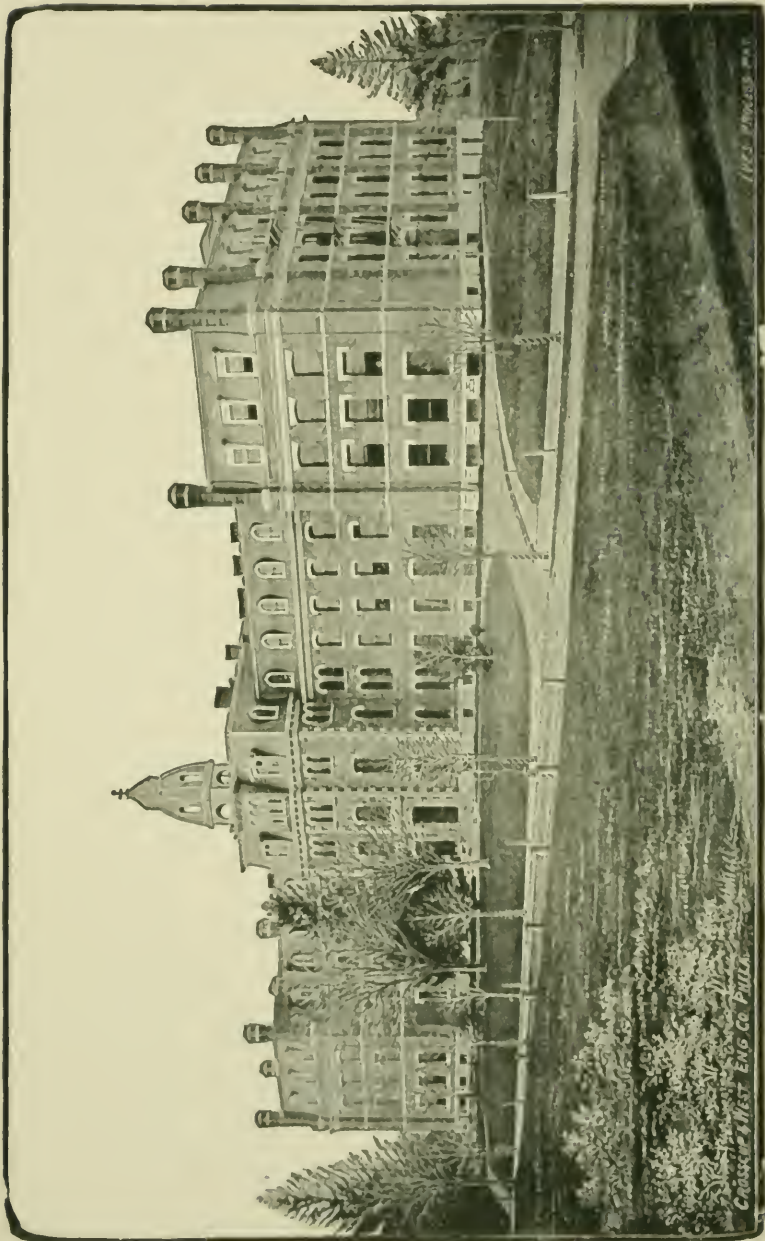


WEST CHESTER
STATE NORMAL SCHOOL,



FIRST DISTRICT,
1890.





STATE NORMAL SCHOOL, WEST CHESTER, PA.

1885. Photo. P. A.

CLASSIC WEST ENG. CO. PHILA.

NINETEENTH
ANNUAL CATALOGUE
OF THE
WEST CHESTER
State Normal School

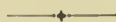
OF THE
FIRST DISTRICT,
AT
WEST CHESTER, CHESTER COUNTY, PA.,

1890.

WEST CHESTER, PA. :
F. S. HICKMAN, STEAM-POWER PRINTER AND PUBLISHER.

1890.

Board of Trustees.



Trustees Representing the Stockholders.

R. T. CORNWELL, CHARLES M. CROWELL, JOHN S. MULLIN, EVANS ROGERS,	} Term of Office expires in 1891.
--	--------------------------------------

WILLIAM J. HALL, JOHN LENT, J. PRESTON THOMAS, BENTLEY WORTH,	} Term of Office expires in 1892.
--	--------------------------------------

H. B. BUCKWALTER, MARSHALL H. MATLACK, ALFRED P. REID, HERBERT P. WORTH,	} Term of Office expires in 1893.
---	--------------------------------------

Trustees Representing the State.

NICHOLAS LARZELERE, LEVI G. McCAULEY,	} Term of Office expires in 1891.
--	--------------------------------------

JOHN J. PINKERTON, CHAS. W. ROBERTS,	} Term of Office expires in 1892.
---	--------------------------------------

ISAAC JOHNSON, ALFRED PASCHALL,	} Term of Office expires in 1893.
------------------------------------	--------------------------------------

Officers of the Board.

President,

ALFRED P. REID.

Secretary,

HERBERT P. WORTH.

Committee on Household,

BENTLEY WORTH, EVANS ROGERS, J. PRESTON THOMAS, JOHN
S. MULLIN, CHAS. W. ROBERTS.

Committee on Finance,

H. B. BUCKWALTER, MARSHALL H. MATLACK, EVANS ROGERS,
CHAS. M. CROWELL, LEVI G. MCCAULEY.

Committee on Instruction,

J. PRESTON THOMAS, R. T. CORNWELL, JNO. J. PINKERTON,
WM. J. HALL, ALFRED PASCHALL.

Committee on Cabinet,

LEVI G. MCCAULEY, HERBERT P. WORTH, JOHN LENT,
NICHOLAS LARZELERE, ISAAC JOHNSON.

Treasurer.

J. HOWARD MERCER.

Steward,

HARRY S. JOHNSON.

Matron,

SUSAN W. SEAL.

The Regular Meetings of the Board are held at the office
of A. P. REID, Esq., on the *last Monday*
in each month.

The Faculty.



GEO. MORRIS PHILIPS, A. M., PH. D.,
Principal.

DAVID M. SENSENIG, M. S.,
Higher Mathematics.

C. B. COCHIRAN, A. M.,
Natural Sciences and Chemistry.

JUDSON P. WELSH, A. M.,
Grammar and Rhetoric.

ELVIRA Y. SPEAKMAN,
Geography and History.

Mrs. ALMA SAGER WELSH,
Reading and English Literature.

MARY A. CUMMINGS,
Penmanship, Drawing and Book-keeping.

A. THOMAS SMITH, M. E.,
Pedagogy.

MARY A. SPEAR,
Principal of the Model School.

HENRY F. CUTLER, A. M.,
Languages.

M. AMELIA HEMPERLY, A. B.,
Instrumental Music.

ELIZABETH B. BIRCHARD,
Vocal Music.

Mrs. A. M. SENSENIG, M. E.,
Mathematics and Grammar.

MRS. ELIZABETH M. PHILIPS,

Piano.

LYDIA A. MARTIN, M. E.,

English Branches.

CAROLINE E. BEMUS, M. E.,

Reading and Grammar.

EVA J. BLANCHARD,

Model School.

FRANK H. GREEN, M. E.,

English Grammar.

MRS. ELIZABETH F. SMITH, M. E.,

English Branches.

OLIVER D. FREDERICK, M. E.,

Mathematics and Grammar.

JOSEPH J. BAILEY,

Manual Training.

ANNA W. GEORGE,

Mathematics and Grammar.

ALVA J. EMREY, B. E.,

English Branches.

AGNES W. WOODMAN, B. E.,

Model School.

HUMPHREY M. CARPENTER,

Violin, Flute, and Violoncello.

MARY A. ALLEN, M. D.,

Lecturer on Hygiene.

* * * * *

EUGENE C. LEWIS,

Librarian.

ALVA J. EMREY, B. E.,

Study-Room.

The Calendar.

SUMMER TERM—1890.

Tuesday, - - -	June 10th, -	State Examinations.
Wednesday, - -	June 11th, -	“ “
Sunday, - - -	June 29th, -	Baccalaureate Sermon.
Wednesday, - -	July 2d, -	Meeting of Alumni.
Thursday, - - -	July 3d, -	Commencement.
“ - - -	“ -	Class-Day Exercises.
Friday, - - -	July 4th, -	Spring Term Closes.

FALL TERM—1890-91.

Monday, - - -	Sept. 1st, -	Fall Term begins.
Thursday, - - -	Nov. 27th, -	Thanksgiving.
Saturday, - - -	Dec. 13th, -	Anniversary Moore Lit. Soc'y.
Wednesday, - -	Dec. 24th, -	Christmas Holidays begin.
Monday, - - -	Jan. 5th, -	Students return.
Friday, - - -	March 20th,	Winter Term ends.

SPRING TERM—1891.

Monday, - - -	Mar. 30th,	Spring Term begins.
Saturday, - - -	May 23d, -	Re-Union Aryan Lit. Society.
Sunday, - - -	June 28th, -	Baccalaureate Sermon.
Wednesday, - -	July 1st, -	Meeting of Alumni.
Thursday, - - -	July 2d, - -	Commencement.
Friday, - - -	July 3d, - -	Term ends.

Catalogue of Students.

POST-GRADUATES.

NAME.	POST OFFICE.	COUNTY AND STATE.
Borneman, Henry S.	Boyertown,	Berks, Pa.
Emrey, A. J.	West Chester,	Chester, Pa.
Frederick, O. D.	"	" "
Pyle, Mary A.	"	" "
Reynolds, Minnie R.	Manoa,	Delaware, Pa.
Smith, A. T.	West Chester,	Chester, Pa.
Taggart, William	Gordonville,	Lancaster, Pa.
Way, Willa M.	West Chester,	Chester, Pa.

UNDERGRADUATES.

LADIES.

NAME.	POST OFFICE.	COUNTY AND STATE.
Adams, Annie C.	Tweedale,	Chester, Pa.
Angell, Mabel	Philadelphia,	Philadelphia, Pa.
Arnold, Helen	West Chester,	Chester, Pa.
Atkinson, Eva B.	Chestnut Hill,	Philadelphia, Pa.
Baker, Mattie A.	Marshallton,	Chester, Pa.
Baker, Asenath R.	Cheyney,	Delaware, Pa.
Barber, Bessie	West Chester,	Chester, Pa.
Barker, Bessie R.	McPherson,	Kans.
Battin, Cora L.	Wawaset,	Chester, Pa.
Beam, Sadie J.	Cupola,	" "
Bean, Mary C.	Royersford,	Montgomery, Pa.
Beates, Anne	Pine Glen,	Centre, Pa.
Beates, Maggie	"	" "
Beaumont, Margaret	Devon,	Chester, Pa.

NAME.	POST OFFICE.	COUNTY AND STATE.
Bell, Carrie K.	Granite Hill,	Adams, Pa.
Bennett, Ella E.	Breadysville,	Bucks, Pa.
Bixler, Lucy M.	Kimberton,	Chester, Pa.
Blair, Lizzie A.	Scranton,	Lackawanna, Pa.
Boice, Laura	102 N. 19th St.,	Philadelphia, Pa.
Booth, Anna S.	Londonderry,	Chester, Pa.
Booth, Laura E.	Booth's Corner,	Delaware, Pa.
Bowers, Maggie I.	Doylstown,	Bucks, Pa.
Bowman, Vida	West Chester,	Chester, Pa.
Bradford, Frances M.	"	" "
Bradford, J. Sydney	"	" "
Brecht, Miriam	Skippack,	Montgomery, Pa.
Brooke, Lillian	Conshohocken,	" "
Brooks, M. Ella	Newtown,	Bucks, Pa.
Broomall, Laura B.	Cheyney,	Delaware, Pa.
Brown, Jennie E.	Pleasant Grove,	Lancaster, Pa.
Brown, Minnie B.	Morrisville,	Bucks, Pa.
Buckwalter, Ella	Royersford,	Montgomery, Pa.
Budd, Lillian M.	Middletown,	Delaware.
Bulette, Elma L.	Constitution,	York, Pa.
Bullock, Emmarene	Corinne,	Chester, Pa.
Bunting, Sadie E.	Hopewell,	" "
Burnett, Mary L.	Glen Mills,	Delaware, Pa.
Burns, Sara S.	Marple,	" "
Butler, Elizabeth R.	Uwchlan,	Chester, Pa.
Bye, Jessie A.	Lewisville,	" "
Campbell, Lucy P.	West Chester,	" "
Campbell, Nellie A.	Uwchlan,	" "
Cannon, Nettie	Wilkesbarre,	Luzerne, Pa.
Cannon, Stella	"	" "
Cannon, Emma V.	Steelton,	Dauphin, Pa.
Carn, Alice B.	Ft. Washington,	Montgomery, Pa.
Carter, Marielma	Ardmore,	" "
Carver, Anna B.	Fallsington,	Bucks, Pa.
Chambers, Mary E.	West Chester,	Chester, Pa.
Channell, Bessie	"	" "
Charsky, Jennie	Rosenhayn,	New Jersey.
Clark, Lizzie V.	Slaughter's Station,	Delaware.
Clark, Maggie A.	North East,	Cecil, Md.

NAME.	POST OFFICE.	COUNTY AND STATE.
Clark, Roberta S.	Chambersburg,	Franklin, Pa.
Clover, Lillie M.	Downingtown,	Chester, Pa.
Clymer, Hannah	Tradesville,	Bucks, Pa.
Coe, Mary B.	Upland,	Delaware, Pa.
Comly, Anna	Three Tuns,	Montgomery, Pa.
Comly, Emlie C.	3214 Chestnut St.,	Philadelphia, Pa.
Conley, Martha D.	Lansdale,	Montgomery, Pa.
Cook, Ella M.	Royersford,	" "
Cornell, Ida L.	Cornell,	Bucks, Pa.
Cornwall, Nellie M.	Lionville,	Chester, Pa.
Coulston, Frances C.	Chestnut Hill,	Philadelphia, Pa.
Cowan, Lulu M.	Coatesville,	Chester, Pa.
Craig, Emma	Chadd's Ford,	Delaware, Pa.
Cummings, Cora E.	Enfield,	Grafton, N. H.
Cunningham, Valeria	Marshallton,	Chester, Pa.
Daniels, Essie M.	Modena,	" "
Darlington, Ethel	Westtown,	" "
Darlington, Ella C.	West Chester,	" "
Darlington, Mary P.	"	" "
Darlington, Katie F.	"	" "
Darlington, Fannie	"	" "
Darlington, Sarah G.	"	" "
Davis, Annie	West Conshohocken,	Montgomery, Pa.
Davis, Sue B.	Lyndell,	Chester, Pa.
Davis, H. Blanche	Martin's Corner,	" "
DeHaven, Alma M.	Furlong,	Bucks, Pa.
Dern, Bertha C.	Jenkintown,	Montgomery, Pa.
Detwiler, Florence M.	Norristown,	" "
Detwiler, Mary A.	Ironbridge,	" "
Devine Sarah L.	Scranton,	Lackawanna, Pa.
Dittrich, Clara O.	Ardmore,	Montgomery, Pa.
Dowlin, Mattie	Downingtown,	Chester, Pa.
Drury, Eva R.	Bristol,	Bucks, Pa.
Dunbar, Irene M.	Phoenixville,	Chester, Pa.
Dunn, Katie C.	Rockville,	" "
Durham, Lydia J.	Yorklyn,	New Castle, Del.
Eaby, Mary S.	Honeybrook,	Chester, Pa.
Eisenberg, Ella S.	Kenilworth,	" "
Elliott, Clara M.	Malvern,	" "

NAME.	POST OFFICE.	COUNTY AND STATE.
Elliott, Mary R.	West Chester,	Chester, Pa.
Ely, Sallie C.	Newtown,	Bucks, Pa.
Embree, Tacie C.	Marshallton,	Chester, Pa.
Ermold, Sara E.	Norristown,	Montgomery, Pa.
Esler, Anna P.	New Centreville,	Chester, Pa.
Espenshade, Annie M.	Gordonville,	Lancaster, Pa.
Espenship, Ellen S.	Grater's Ford,	Montgomery, Pa.
Evans, M. Letta	Steelville,	Chester, Pa.
Ewing, Amy C.	Media,	Delaware, Pa.
Ewing, Carrie	Landenberg,	Chester, Pa.
Fairlamb, Nellie	Hopewell C. W.,	" "
Fairlamb, Stella	Fairmount,	Lancaster, Pa.
Farwell, Tabby	North Bend,	Clinton, Pa.
Faulkner, Mary	Norristown,	Montgomery, Pa.
Fenstermacher, Irene D.	Lehighton,	Carbon, Pa.
Fetters, Mary L.	Glen Loch,	Chester, Pa.
Foulk, Bertha M.	Collamer,	" "
Fox, Annie S.	Sumneytown,	Montgomery, Pa.
Fox, Sallie E.	"	" "
Frame, Clara R.	Russellville,	Chester, Pa.
Frederick, Ida E.	East Coventry,	" "
Frederick, Annie C.	"	" "
Frederick, Elmira	Kulpsville,	Montgomery, Pa.
Freeman, Lulu M.	West Chester,	Chester, Pa.
Friday, Mabel	Phoenixville,	" "
Fritz, Katharine	Birdsboro,	Berks, Pa.
Fronefield, Liela M.	Sugartown,	Chester, Pa.
Garner, Mary	Berwyn,	" "
Garrett, Helen	West Chester,	" "
Garrett, Phebe S.	Cheyney,	Delaware, Pa.
Gerbron, Emily D.	Shelly,	Bucks, Pa.
Gerhart, Lizzie F.	Stouchsburg,	Berks, Pa.
Gitt, Bessie	New Oxford,	Adams, Pa.
Glosser, Anna M.	West Chester,	Chester, Pa.
Goodwin, Emma	Everhart,	" "
Goodwin, Laura	Devault,	" "
Goodwin, Sallie E.	Everhart,	" "
Grater, Bessie	Fairview Village,	Montgomery, Pa.
Green, L. Belle	Kenilworth,	Chester, Pa.

NAME.	POST OFFICE.	COUNTY AND STATE.
Griffith, Florence I.	Ft. Eliot,	Texas.
Griffith, Mary E.	"	"
Grimeson, Mabel C.	West Chester,	Chester, Pa.
Grove, Clara E.	Stroudsburg,	Monroc, Pa.
Grubb, Hattie	Hitner,	Chester, Pa.
Gunter, May	Mattawana,	Mifflin, Pa.
Guss, Arlien P.	Chadd's Ford,	Delaware, Pa.
Guthrie, F. Bertha	Font,	Chester, Pa.
Hackett, Alice C.	Tablet,	" "
Haldeman, Arilla	Danborough,	Bucks, Pa.
Hallman, Maggie	Providence Square,	Montgomery, Pa.
Hamill, Bessie H.	Ardmore,	" "
Hampson, E. Lillian	712 Calwell St.,	Chester, Delaware, Pa.
Hannum, Carrie	West Chester,	Chester, Pa.
Harley, Martha S.	Harleysville,	Montgomery, Pa.
Harper, Lena M.	Marshallton,	Chester, Pa.
Harrison, Stella B.	Chester,	Delaware, Pa.
Harshberger, Anna	McAlisterville,	Juniata, Pa.
Hathaway, I. Estella	Norristown,	Montgomery, Pa.
Haupt, Minnie L.	Hartleton,	Union, Pa.
Haycock, Bertie E.	West Chester,	Chester, Pa.
Hayden, Annie F.	Wawa,	Delaware, Pa.
Hayden, Minnie E.	Bryn Mawr,	Montgomery, Pa.
Hayes, Ida L.	Moore's,	Delaware, Pa.
Hecht, Mary Z.	212 Douglass St.,	Reading, Berks, Pa.
Heyburn, Clara S.	Chadd's Ford,	Delaware, Pa.
Hickman, Lillie M.	West Chester,	Chester, Pa.
Hoffman, Mary	Mifflinburg,	Union, Pa.
Hoge, Gracetta	Hughesville,	Loudon, Va.
Hoopes, Fannie P.	Landenburg,	Chester, Pa.
Horn, Gertrude	Weissport,	Carbon, Pa.
Hough, Jean S.	Media,	Delaware, Pa.
Hoy, Justia C.	Bellefonte,	Center, Pa.
Huber, Sallie A.	Skippack,	Montgomery, Pa.
Hulme, Emily M.	West Chester,	Chester, Pa.
Huntsman, Anna M.	Richboro,	Bucks, Pa.
Hyde, Florence	Pottsville,	Schuylkill, Pa.
Ingram, Ida L.	Glen Hall,	Chester, Pa.
Irvin, Bessie	Burnside,	Clearfield, Pa.

NAME.	POST OFFICE.	COUNTY AND STATE.
Irwin, Alice I.	Parkesburg,	Chester, Pa.
Irwin, Roberta M.	Coatesville,	" "
Ivins, Clara	Morrisville,	Bucks, Pa.
Jackson, Anna R.	Kelton,	Chester, Pa.
Jackson, Electra	Coatesville,	" "
Jacobs, Kate M.	Wyoming,	Luzerne, Pa.
James, Rachel	Eckley,	" "
Johnson, Mattie W.	Elam,	Delaware, Pa.
Johnson, Alberta M.	Guthrieville,	Chester, Pa.
Jones, Marion B.	West Chester,	" "
Keller, Hallie F.	1513 Walnut St.,	Philadelphia, Pa.
Kelly, Mary	Scranton,	Lackawanna, Pa.
Kemery, Katie	Mahanoy City,	Schuylkill, Pa.
Kemery, Sara J.	"	" "
Kemp, Effie	Lansdale,	Montgomery, Pa.
Kendall, Rosalie	Wiconisco,	Dauphin, Pa.
Kerns, Mary B.	Caln,	Chester, Pa.
Kime, Maud B.	Ridgway,	Elk, Pa.
King, Mabel L.	1528 Columbia Ave.,	Philadelphia, Pa.
Kistler, Minnie M.	Germansville,	Lehigh, Pa.
Kline, Bessie	Conshohocken,	Montgomery, Pa.
Kline, Hannah K.	Limerick,	" "
Klose, Isadore	Van Dyke,	Juniata, Pa.
Knapp, Florence	Montgomery Square,	Montgomery, Pa.
Knapp, Emily	"	" "
Knauer, Cora M.	Warwick,	Chester, Pa.
Kratz, Bertha V.	New Britain,	Bucks, Pa.
Kuhlman, Tillie S.	Birchrunville,	Chester, Pa.
Lamborn, Lucretia M.	Liberty Square,	Lancaster, Pa.
Lapp, Etta N.	Warren Tavern,	Chester, Pa.
Larkin, A. Carrie	Chelsea,	Delaware, Pa.
Larkin, Carrie L. B.	Chester,	" "
LaRue, Laura Z.	Kennett Square,	Chester, Pa.
LaRue, Jennie M.	Churchville,	Bucks, Pa.
Lawrence, Myrtie E.	Broomall,	Delaware, Pa.
Leatherman, Anna	Line Lexington,	Montgomery, Pa.
Lewis, Emma I.	Lewistown,	Mifflin, Pa.
Lewis, Ellen M.	West Chester,	Chester, Pa.
Lewis, Miranda B.	Cloud,	" "

NAME.	POST OFFICE.	COUNTY AND STATE.
Lewis, Ellen B.	West Chester,	Chester, Pa.
Lewis, Alice F.	Glen Moore,	" "
Lewis, Mary	Glen Loch,	" "
Liggett, Sallie G.	Nantmeal Village,	" "
Lloyd, Annie D.	Bryn Mawr,	Montgomery, Pa.
Long, Alice	Norristown,	" "
Loomis, Sallie R.	West Chester,	Chester, Pa.
Lowber, Anna	Dover,	Delaware.
Lucas, Laura B.	Snow Shoe,	Chester, Pa.
Macbride, Anna M.	Bellefonte,	Center, Pa.
March, Maud	Phœnixville,	Chester, Pa.
Maris, Lucy	West Chester,	" "
Maris, Jennie	"	" "
Martindell, Emma J.	Pineville,	Bucks, Pa.
Martin, Sallie E.	Norway,	Chester, Pa.
Massey, Frances	West Chester,	" "
Matlack, Mabel S.	"	" "
Mathews, Anna	Pittsburg,	Allegheny, Pa.
McCay, Evelyne F.	Concordville,	Delaware, Pa.
McClure, Maggie	Media,	" "
McCoy, Katie F.	West Chester,	Chester, Pa.
McFarlan, Anna M.	Unionville,	" "
McIlhenny, May R.	Hunterstown,	Adams, Pa.
McKee, Jessie	New Bloomfield,	Perry, Pa.
McKee, Bertie	"	" "
McLean, Elizabeth	Norritonville,	Montgomery, Pa.
McLear, Emma L.	West Chester,	Chester, Pa.
McMeen, Mary E.	Oakland Mills,	Juniata, Pa.
McVaugh, Linie	Hockessin,	Delaware.
Mendenhall, Clara M.	West Grove,	Chester, Pa.
Mercer, Estalena H.	West Chester,	" "
Meredith, Clara	Glen Mills,	Delaware, Pa.
Miller, Ada B.	Russellville,	Chester, Pa.
Miller, Lizzie C.	"	" "
Miller, Sophie R.	Saegersville,	Lehigh, Pa.
Miller, Blanche	Grampian Hills,	Clearfield, Pa.
Miller, Lydia E.	Mattawana,	Mifflin, Pa.
Mitchell, Jessie M.	Woodland,	Clearfield, Pa.
Mitchell, Lelia J.	"	" "

NAME.	POST OFFICE.	COUNTY AND STATE.
Monaghan, Frances	West Chester,	Chester, Pa.
Moor, Emma	Lima,	Delaware, Pa.
Moore, Carrie	Milford Mills,	Chester, Pa.
Moore, Ruth E.	Cochranville,	" "
Moore, Susie L.	Moore's,	Delaware, Pa.
Moore, Maggie L.	Paoli,	Chester, Pa.
Moore, Clara	Grampian Hills,	Clearfield, Pa.
Morris, Jennie	Point Pleasant,	Bucks, Pa.
Morse, Minnie E.	Federalsburg,	Caroline, Md.
Moser, Ella	Norritonville,	Montgomery, Pa.
Murken, Tillie	244 Roebing St.,	Brooklyn, N. Y.
Niblock, Reba	Oxford,	Chester, Pa.
Nields, Fannie H.	Marshallton,	" "
Nowland, Arrie M.	North East,	Cecil, Md.
Ogden, Allena M.	Cape May City,	New Jersey.
Ott, Ida K.	Ridge,	Bucks, Pa.
Owen, Elva E.	Toughkenamon,	Chester, Pa.
Palmer, Rachel L.	London Grove,	" "
Palmer, Lidie D.	West Chester,	" "
Pancoast, Malachi S.	Marple,	Delaware, Pa.
Parmalee, Adelaide	3447 N. 15th St.,	Philadelphia, Pa.
Paseball, Nan D.	171 S. Carolina Ave.,	Atlantic City, N.J.
Peacock, Goldie D.	Carversville,	Bucks, Pa.
Peoples, Lila	New Providence,	Lancaster, Pa.
Peoples, Anna Charlotta	"	" "
Phipps, Mary L.	Lionville,	Chester, Pa.
Pierce, Lillian U.	West Chester,	" "
Piersol, Bethshaba	St. Davids,	Delaware, Pa.
Pinkerton, Clara M.	Milford Mills,	Chester, Pa.
Plank, Allie G.	Trappe,	Montgomery, Pa.
Potter, Gertrude	1717 Fairmount Ave.,	Philadelphia, Pa.
Powell, Mary A.	Upper Lehigh,	Luzerne, Pa.
Pugh, Leona I.	Hickory Hill,	Chester, Pa.
Pyle, Mary	Landenberg,	" "
Pyle, Mary W.	Leonard,	" "
Pyle, Alice W.	Willowdale,	" "
Rakestraw, Gertrude	Christiana,	Lancaster, Pa.
Ramsay, Eleanor	West Chester,	Chester, Pa.
Rath, Bessie S.	Bethlehem,	Northampton, Pa.

NAME.	POST OFFICE.	COUNTY AND STATE.
Reading, Martha E.	Lumberville,	Bucks, Pa.
Rees, Grace L.	Aldham,	Chester, Pa.
Register, Aneta M.	West Chester,	" "
Register, Mary M.	Frazer,	" "
Reid, Edith C.	West Chester,	" "
Reiner, Lizzie	Eagleville,	Montgomery, Pa.
Rice, Margaret	Hilltown,	Bucks, Pa.
Rinker, Florence C.	Leesburg,	Loudon, Va.
Rippman, Clara P.	Millerstown,	Perry, Pa.
Ritchie, Helen V.	Hatboro,	Montgomery, Pa.
Ritchie, Edna	Chadd's Ford,	Delaware, Pa.
Roat, Mrs. Emma	Frederica,	Delaware.
Roat, Etta	"	"
Roberts, Elma	West Chester,	Chester, Pa.
Rorer, Mary W.	Weldon,	Montgomery, Pa.
Roseboro, Phebe H.	Wagontown,	Chester, Pa.
Rosenberger, Lizzie	Colmar,	Montgomery, Pa.
Rosenboro, Olive	Wagontown,	Chester, Pa.
Roth, Ellen W.	New Bloomfield,	Perry, Pa.
Rowland, Carrie V.	Cheltenham,	Montgomery, Pa.
Rude, Leonore M.	Farno,	Wayne, Pa.
Schrack, Annie E.	Wagontown,	Chester, Pa.
Schell, Anna B.	Compassville,	" "
Schwenk, Mary L.	Grater's Ford,	Montgomery, Pa.
Scott, Annie M.	Little Britain,	Lancaster, Pa.
Scott, Laura A.	Coatesville,	Chester, Pa.
Scott, Martha	Harrisburg,	Dauphin, Pa.
Scott, Mary	"	" "
Scotten, Addie	Kemblesville,	Chester, Pa.
Seiple, Minnie A.	Centre Square,	Montgomery, Pa.
Sensenig, Anna	Goodville,	Lancaster, Pa.
Shadinger, Addie G.	Lahaska,	Bucks, Pa.
Sharpless, Bessie R.	West Chester,	Chester, Pa.
Shee, Catharine	"	" "
Sheidy, Carrie E.	Pine Grove,	Schuylkill, Pa.
Shoemaker, Mary G.	Davis Grove,	Montgomery, Pa.
Simpers, Clara E.	Kennett Square,	Chester, Pa.
Sidwell, M. Eva	Macton,	Maryland.
Slack, Sue V.	Richboro,	Bucks, Pa.

NAME.	POST OFFICE.	COUNTY AND STATE.
Smedley, Ettie	West Chester,	Chester, Pa.
Smedley, Sue	"	" "
Smedley, Lucy Irene	"	" "
Smedley, Esther	Media,	Delaware, Pa.
Smeltzer, Alice R.	Cross Kill Mills,	Berks, Pa.
Smith, Hannah K.	631 North 7th St.,	Philadelphia, Pa.
Smith, Sadie H.	West Chester,	Chester, Pa.
Smith, Anna B.	Townsend,	" "
Smith, Alta M.	Philipsburg,	Centre, Pa.
Smutz, Emma A.	Tidioute,	Warren, Pa.
Smyth, Maggie A.	Holicong,	Bucks, Pa.
Snyder, S. Irene	Lykens,	Dauphin, Pa.
Snyder, Alfie	West Pikeland,	Chester, Pa.
Speakman, Lillie M.	Glen Hall,	" "
Spiese, Lottie E.	Mill Creek,	Huntingdon, Pa.
Springer, Ellanora	West Whiteland,	Chester, Pa.
Sproat, Mildred	Westtown,	" "
Sproat, Dellie	"	" "
Stanton, Maggie R.	Manoa,	Delaware, Pa.
Stearns, Julia A.	West Rupert,	Vermont.
Steele, Lizzie D.	4011 Haverford St.,	Philadelphia, Pa.
Stone, Loraine	Embreeville,	Chester, Pa.
Strode, Amy	Coatesville,	" "
Swayne, Anna M.	Leonard,	" "
Syfit, Cora D.	Linwood,	Delaware, Pa.
Taggart, Anna G.	Gordonville,	Lancaster, Pa.
Talbot, Mary B.	West Chester,	Chester, Pa.
Taylor, Jennie	Round Hill,	Loudon, Va.
Thomson, Lizzie	West Chester,	Chester, Pa.
Thornbury, Narcissa W.	Marshallton,	" "
Thornbury, Zaidee	"	" "
Truitt, Kate	Red Lion,	Delaware.
Tyson, Sallie	Reading,	Berks, Pa.
Urner, Jennie B.	Pughtown,	Chester, Pa.
Valentine, Sue C.	Romansville,	" "
Vincent, Ida W.	Morton,	Delaware, Pa.
Vinyard, Clara	Houston,	Delaware.
Wager, Abigail	Norristown,	Montgomery, Pa.
Walton Bertha J.	Pomeroy,	Chester, Pa.

NAME.	POST OFFICE.	COUNTY AND STATE.
Ward, Hannah	Upland,	Delaware, Pa.
Watson, Mary E.	Fallsington,	Bucks, Pa.
Watson, Elizabeth R.	Fitzwatertown,	Montgomery, Pa.
Way, Florence B.	New London,	Chester, Pa.
Weikel, Bessie J.	Fairview Village,	Montgomery, Pa.
Wilbur, Claudia C.	Whitford,	Chester, Pa.
Wills, Anna G.	Norristown,	Montgomery, Pa.
Wilson, C. Alma	Factoryville,	Wyoming, Pa.
Wilson, Cora D.	Hartleton,	Union, Pa.
Wilson, Fannie	Denton,	Maryland.
Windle, Jennie	West Chester,	Chester, Pa.
Windle, Florence M.	"	" "
Wolfe, Emma L.	Annville,	Lebanon, Pa.
Wollaston, Carrie M.	Kennett Square,	Chester, Pa.
Wood, Eva A.	Cheyney,	Delaware, Pa.
Woodward, Laura E.	West Chester,	Chester, Pa.
Woodward, Adelaide	"	Chester, Pa.
Wooster, Eunice	Westover,	Maryland.
Wynn, Essie J.	West Chester,	Chester, Pa.
Yarnall, Anna	Media,	Delaware, Pa.
Yerger, Ella K.	Schwenksville,	Montgomery, Pa.
Yerkes, Lauretta J.	Chester,	Delaware, Pa.
Zollers, Laura M.	Trappe,	Montgomery, Pa.
Boggs, H. M.	West Chester,	Chester, Pa.
Cassidy, E.	1329 Race St.,	Philadelphia, Pa.
Thomson, Rachael P.	West Chester,	Chester, Pa.
Tomlinson, Sara L.	Southampton,	Bucks, Pa.

GENTLEMEN.

NAME.	POST OFFICE.	COUNTY AND STATE.
Aiken, J. Charles	Berwyn,	Chester, Pa.
Albright, Oliver H.	Dublin,	Bucks, Pa.
Allen, Joseph H.	Falls Church,	Fairfax, Pa.
Anderson, Robert	Bethesda,	Lancaster, Pa.
Babble, S. C.	Carlisle Springs,	Cumberland, Pa.
Bachman, Stephen J.	Bismark,	Lebanon, Pa.
Baldwin, C. Summer	Doe Run,	Chester, Pa.

NAME.	POST OFFICE.	COUNTY AND STATE.
Barcenas, Camillo	Managuto,	Central America.
Barron, Oscar S.	Bursonville,	Bucks, Pa.
Bartholomew, Robert J.	Bath,	Northampton, Pa.
Bartman, John H.	Phoenixville,	Chester, Pa.
Bean, Frank H.	Brick Tavern,	Bucks, Pa.
Beatty, James	West Chester,	Chester, Pa.
Beaver, M. S.	Aitch,	Huntingdon, Pa.
Beidler, Horace H.	Milford Square,	Bucks, Pa.
Bemus, Alton	Ripley,	New York.
Benner, Samuel K.	Van Dyke,	Juniata,
Beshore, J. S.	Newberrytown,	York, Pa.
Beyerle, Geo. Albert	Bernville,	Berks, Pa.
Biles, Wilmer K.	New London,	Chester, Pa.
Blair, Thomas A.	Scranton,	Lackawanna, Pa.
Boorem, M. S.	Paradise Valley,	Monroe, Pa.
Botts, M. L.	Athol,	Berks, Pa.
Bowen, Wm.	West Chester,	Chester, Pa.
Boyer, P. L.	Line Lexington,	Montgomery, Pa.
Brady, Fred	Middletown,	Delaware.
Brecht, S. K.	Worcester,	Montgomery, Pa.
Brinton, John W.	West Chester,	Chester, Pa.
Brinton, Howard F.	"	" "
Broadbelt, Leon W.	Manoa,	Delaware, Pa.
Broomell, Howard F.	Russellville,	Chester, Pa.
Brower, H. W.	Warwick,	" "
Brower, Frank C.	"	" "
Brower, P. H.	Downingtown,	" "
Brower, Abram	Shannonville,	Montgomery, Pa.
Buchert, John K.	Obelisk,	" "
Buckman, S. W.	Penn Valley,	Bucks, Pa.
Buckman, Edwin H.	Fallsington,	" "
Buckman, Spencer	Penn Valley,	" "
Buckwalter, Brinton	West Chester,	Chester, Pa.
Buckwalter, Abram S.	Royersford,	Montgomery, Pa.
Butler, Ralph	Uwchlan,	Chester, Pa.
Carpenter, A. Beaumont	Avondale,	" "
Carter, Herbert	West Chester,	" "
Carter, J. Clarence	Chatham,	" "
Case, William G.	Felton,	Delaware.

NAME.	POST OFFICE.	COUNTY AND STATE.
Cheyney, Jr., Edward L.	Cheyney,	Delaware, Pa.
Christman, C. Warren	Norristown,	Montgomery, Pa.
Clapp, Edmund L.	Limestoneville,	Montour, Pa.
Clapp, Allen M.	Milton,	Northumb'l'd, Pa.
Clough, Fred M.	Canton,	Bradford, Pa.
Coates, Fred J.	Lenover,	Chester, Pa.
Conley, E. P.	Etters,	York, Pa.
Creadick, William H.	Felton,	Delaware.
Cunningham, Robert	Zermatt,	Chester, Pa.
Curry, Joseph L.	Glen Loch,	" "
Darlington, Lionel C.	Westtown,	" "
Darlington, Maurice R.	Pomeroy,	" "
Darlington, Henry F.	West Chester,	" "
Darlington, Edward B.	"	" "
Darlington, Philip S.	"	" "
Darlington, Alfred	"	" "
Dauman, J. Bert	Honeybrook,	" "
Davis, J. Lynwood	Kimberton,	" "
Davis, Walter W.	West Chester,	" "
Davis, Robert S.	Frazer,	" "
Davis, R. J.	West Grove,	" "
Deery, Lewis C.	Chester Springs,	" "
Delp, William S.	Salfordville,	Montgomery, Pa.
Dermond, Chas. E.	Upper Darby.	Delaware, Pa.
Detwiler, Harvey	Pickering,	Chester, Pa.
Detwiler, David C.	Ironbridge,	Montgomery, Pa.
Detwiler, George A.	Tablet,	Chester, Pa.
Diehl, Harvey M.	Richland Centre,	Bucks, Pa.
Dougherty, Amos	Lewisville,	Chester, Pa.
Dougherty, Albert	"	" "
DuBree, Walter	Warrington,	Bucks, Pa.
Dunbar, Philip S.	New Bloomfield,	Perry, Pa.
Dutton, Lewis R.	Milltown,	Chester, Pa.
Edel, Harry	Baltimore,	Maryland,
Embree, John G.	Marshallton,	Chester, Pa.
Emrey, Clarence K.	Chester Springs,	" "
Emrey, M. L.	Honeybrook,	" "
Emrey, W. W.	"	" "
Entriken, Samuel L.	West Chester,	" "

NAME.	POST OFFICE.	COUNTY AND STATE.
Evans, Harry	Kaolin,	Chester, Pa.
Evans, James	Linfield,	Montgomery, Pa.
Farra, John P.	Kembleville,	Chester, Pa.
Farrell, Edward J.	West Chester,	" "
Farrell, William L.	Plains,	Luzerne, Pa.
Farrell, John A.	West Chester,	Chester, Pa.
Farrell, Francis J.	"	" "
Farwell, F. L.	North Bend,	Clinton, Pa.
Foster, Levi M.	West Chester,	Chester, Pa.
Frame, Barclay	"	" "
Funk, Ambrose C.	Clayton,	Berks, Pa.
Garges, W. H.	Chalfont,	Bucks, Pa.
Garrett, Charles D.	Everhart,	Chester, Pa.
Garrett, Penrose W.	Cloud,	" "
Garrett, William P.	"	" "
Gelman, Ulysses S.	Morwood,	Pa.
Gerges, I. F.	Mainland,	Montgomery, Pa.
Gheen, B. Wilmor	701 4th St., N. W.,	Washington, D. C.
Gheen, Milton	110 Carrollton Ave.,	Baltimore, Md.
Gibson, J. Chester	Odessa,	Delaware.
Gilpin, C. Monteith	Atlantic City,	New Jersey.
Gish, Benjamin H.	Elizabethtown,	Lancaster, Pa.
Glosser, John F.	West Chester,	Chester, Pa.
Godshall, Harry B.	Souderton,	Montgomery, Pa.
Good, George	Kembleville,	Chester, Pa.
Gottshalk, J. Warren	Perkiomenville,	Montgomery, Pa.
Green, L. K.	Booth's Corner,	Delaware, Pa.
Greene, Edward M.	Saltillo,	Huntingdon, Pa.
Guic, Walter S.	Downingtown,	Chester, Pa.
Guss, George C.	Chadd's Ford,	Delaware, Pa.
Haines, Fred F.	Elkton,	Cecil, Md.
Hall, John J.	West Chester,	Chester, Pa.
Hall, J. Hibberd	Malvern,	" "
Hallman, Abram D.	North Wales,	Montgomery, Pa.
Hallman, William H.	508 Franklin St.,	Philadelphia, Pa.
Harper, Charles E.	Enders,	Dauphin, Pa.
Hartley, A. Dempsey	641 Clinton St.,	Camden, N. J.
Hartline, Daniel S.	Pottstown,	Montgomery, Pa.
Hartman, Franklin H.	Milford Square,	Bucks, Pa.

NAME.	POST OFFICE.	COUNTY AND STATE.
Hazlett, Silas M.	Allensville,	Mifflin, Pa.
Heald, Harry	West Chester,	Chester, Pa.
Heebner, John K.	Worcester,	Montgomery, Pa.
Heckler, Howard E.	Mainland,	" "
Hendricks, Augustus U.	Schwenksville,	" "
Henry, A. L.	Sudley Springs,	Virginia.
Hoffman, B. F.	Font,	Chester, Pa.
Hughes, Stephen J.	Beaver Meadow,	Carbon, Pa.
Hunsicker, J. D.	Schwenksville,	Montgomery, Pa.
Huntsman, Owen B.	Stroudsburg,	Monroe, Pa.
Huss, D. Deaver	Bethesda,	Lancaster, Pa.
Irwin, Harry	Irwin,	Goochland, Va.
Irwin, Fred W.	"	" "
Ivins, Byron	Morrisville,	Bucks, Pa.
James, Henry	Germantown,	Philadelphia, Pa.
Jefferis, Jay H.	West Chester,	Chester, Pa.
Jones, Benjamin W.	Doe Run,	" "
Jones, William C.	"	" "
Keller, Horace N.	Gallows,	Bucks, Pa.
Kennady, John W.	Kemblesville,	Chester, Pa.
King, J. Peirce	Kimberton,	" "
Kinzer, Amos S.	Terre Hill,	Lancaster, Pa.
Kline, Charles S.	Maxatawny,	Berks, Pa.
Knauer, P. S.	Warwick,	Chester, Pa.
Kneile, Thomas L.	Fishersville,	Dauphin, Pa.
Koons, U. S.	Weissport,	Carbon, Pa.
Kriebel, Alvin C.	Lansdale,	Montgomery, Pa.
Kugel, Harry C.	West Chester,	Chester, Pa.
Lancaster, Harry M.	Chadd's Ford,	Delaware, Pa.
Landy, Harry	Camp Ground,	" "
Leatherman, J. Kirk	Gardenville,	Bucks, Pa.
Leiby, J. E.	Newport,	Perry, Pa.
Leuschner, E. P.	Lower City,	Schuylkill, Pa.
Lewis, J. G. C.	Swarthmore,	Delaware, Pa.
Lichtenwalner, Oliver C.	Chatham,	Chester, Pa.
Lockwood, Florance A.	Fogelsville,	Lehigh, Pa.
Long, Leon L.	Leopard,	Chester, Pa.
Long, Spalding K.	West Chester,	" "
	"	" "

NAME.	POST OFFICE.	COUNTY AND STATE.
Longacre, John S.	Shelly,	Bucks, Pa.
Longaker, George F.	Chester Springs,	Chester, Pa.
Longaker, D. Brower	Lansdale,	Montgomery, Pa.
Longaker, Henry A.	Jeffersonville,	" "
Ludy, Robert W. B.	Boyertown,	Berks, Pa.
Lukens, Ralston R.	Atglen,	Chester, Pa.
Mahon, John F.	Lenni,	Delaware, Pa.
Marshall, Charles G.	Northbrook,	Chester, Pa.
Martin, William E.	State Line,	Franklin, Pa.
Martin, Jr., Joseph J.	1543 Diamond St.,	Philadelphia, Pa.
Martin, George H.	Marshallton,	Chester, Pa.
Mendenhall, Wayne	Mendenhall,	" "
Mendenhall, Horace J.	"	" "
Mensch, A. B.	Skippack,	Montgomery, Pa.
Mentzer, Edwin E.	Athens,	Bradford, Pa.
Mercer, Dorcas W.	West Chester,	Chester, Pa.
Mercer, Warren C.	Kembleville,	" "
Mercer, Norman D.	West Chester,	" "
Meschter, Charles K.	Worcester,	Montgomery, Pa.
McDonald, Peter J.	Avondale,	Chester, Pa.
McFadden, Harry	West Grove,	" "
McFarland, George K.	West Chester,	" "
McGown, J. Bentley	Phoenixville,	" "
McKinley Charles	Frazer,	" "
McKinley, Robert G.	"	" "
McKinley, Harry G.	"	" "
McKinstry, Edwin L.	Newtown,	Bucks, Pa.
McNair, C. Edwin	Hatboro,	Montgomery, Pa.
Miller, Clarence	Russellville,	Chester, Pa.
Mood, Edwin N.	Keller's Church,	Bucks, Pa.
Moore, Franklin J.	Downingtown,	Chester, Pa.
Morris, John S.	New Britain,	Bucks, Pa.
Morris, Paul	1759 I Street,	Washington, D. C.
Moyer, Menno S.	Chalfont,	Bucks, Pa.
Moyer, Sylvanus	Hatfield,	Montgomery, Pa.
Nields, John L.	West Chester,	Chester, Pa.
Noble, Morton	"	" "
Oat, Joseph H.	"	" "
Oat, George R.	"	" "

NAME.	POST OFFICE.	COUNTY AND STATE.
Ort, John C.	Newberrytown,	York, Pa.
Paschall, Jr., George	St. Davids,	Delaware, Pa.
Passmore, J. Pusey	West Chester,	Chester, Pa.
Passmore, Benjamin F.	"	" "
Patterson, Harvey	Marron,	Clearfield, Pa.
Philips, Walter L.	Downingtown,	Chester, Pa.
Philips, William P.	West Chester,	" "
Philips, Paul	"	" "
Pike, Irwin R.	East Nantmeal,	" "
Plum, William S.	Hahnstown,	Lancaster, Pa.
Pool, Frank R.	McDonough,	Delaware.
Powell, A. Victor	Exton,	Chester, Pa.
Pusey, Philip C.	London Grove,	" "
Rank, Monroe R.	Lebanon,	Lebanon, Pa.
Reeder, Curtis H. H.	West Chester,	Chester, Pa.
Regester, Clifford	Hamorton,	" "
Reid, Arthur P.	West Chester,	" "
Reidenbach, Geo. P.	Hinkletown,	Lancaster, Pa.
Reiff, Henry J.	Creamery,	Montgomery, Pa.
Reiff, J. J.	"	" "
Reinhart, Charles A.	East Stroudsburg,	Monroe, Pa.
Reiter, Franklin B.	Cressman,	Bucks, Pa.
Reynolds, Herman W.	Chelsea,	Delaware, Pa.
Reynolds, William L.	Germantown,	Philadelphia, Pa.
Richards, Llewellyn	St Peters,	Chester, Pa.
Roberts, Charles C.	West Chester,	" "
Roberts, Isaac G.	"	" "
Rochester, J. Earl	Denton,	Maryland.
Roedel, Edward	West Chester,	Chester, Pa.
Roedel, Rudolph	"	" "
Rogers, Fred M.	Forksville,	Sullivan, Pa.
Romberger, Penroe C.	Elizabethville,	Dauphin, Pa.
Romberger, Edward W.	Pillow,	" "
Romberger, Charles M.	Wiconisco,	" "
Rousenberger, Edwin M.	Cressman,	Bucks, Pa.
Rosenberger, Grant	Colmar,	Montgomery, Pa.
Rothermel, Wilson S.	Fleetwood,	Berks, Pa.
Rox, James F.	West Chester,	Chester, Pa.
Roxby, W. A.	1238 S. 10th St.,	Philadelphia, Pa.

NAME.	POST OFFICE.	COUNTY AND STATE.
Rupert, George H.	West Chester,	Chester, Pa.
Ruth, George F.	Voganville,	Lancaster, Pa.
Saylor, Harry	Eagleville,	Montgomery, Pa.
Scarborough, H. W.	Lumberville,	Bucks, Pa.
Schaffer, Webster D.	Fleetwood,	Berks, Pa.
Schultz, Samuel H.	Worcester,	Montgomery, Pa.
Scott, Samuel	Toughkenamon,	Chester, Pa.
Seiple, L. Hortense	Centre Square,	Montgomery, Pa.
Sellers, Jr., James	West Chester,	Chester, Pa.
Seltzer, Harry K.	Ephrata,	Lancaster, Pa.
Sensenig, Heber	Spring Grove,	" "
Sharpless, Albert W.	Concord,	Delaware, Pa.
Sharpless, Percy Y.	"	" "
Sharpless, Henry	West Chester,	Chester, Pa.
Shaw, William S.	921 Spring Garden St.,	Philadelphia, Pa.
Shutt, Alonzo K.	Harleysville,	Montgomery, Pa.
Slough, W. C.	Worcester,	" "
Smith, G. L.	West Chester,	Chester, Pa.
Smith, H. W.	"	" "
Smith, Paul D.	"	" "
Snyder, Daniel G.	"	" "
Sproat, Harris L.	Westtown,	" "
Stamm, Howard E.	East Coventry,	" "
Steinbright, F. W.	Blue Bell,	Montgomery, Pa.
Stetler, Howard W.	Frederick,	" "
Stofflet, Robert	Easton,	Northhampt'n, Pa.
Sullivan, C. N.	Norristown,	Montgomery, Pa.
Sullivan, Mark F.	Avondale,*	Chester, Pa.
Supplee, Charles	Honeybrook,	" "
Supplee, Morton	"	" "
Swan, Wallie	Ansonville,	Clearfield, Pa.
Taylor, James I.	Goshenville,	Chester, Pa.
Taylor, John P.	"	" "
Teany, Howard R.	Norristown,	Montgomery, Pa.
Thomas, R. W.	Exton,	Chester, Pa.
Thomas, David R.	West Chester,	" "
Thomas, Charles A.	Millintown,	Juniata, Pa.
Thomson, Willie H.	West Chester,	Chester, Pa.
Thornbury, S. W.	Marshallton,	" "

NAME.	POST OFFICE.	COUNTY AND STATE.
VanBurkalow, John D.	Camden,	Delaware.
Vargas, Stephen F.	Granada,	Nicaraugua.
Walsh, John G.	West Chester,	Chester, Pa.
Wagner, A. E.	Grater's Ford,	Montgomery, Pa.
Wagner, Elmer D.	Limestoneville,	" "
Wagner, George O.	"	" "
Walters, George W. Jr.,	Hamburg,	Berks, Pa.
Way, M. Warren	West Chester,	Chester, Pa.
Webster, Walter C.	West Grove,	" "
Weikel, Jacob G.	Trappe,	Montgomery, Pa.
Weinberger, J. Howard	Spinnerstown,	Bucks, Pa.
Wells, Charles F.	Whitford,	Chester, Pa.
Welty, Howard	941 N. 8th St.,	Philadelphia, Pa.
Wheeler, Lewis C.	Exton,	Chester, Pa.
Whitson, Henry	Atglen,	" "
Wiley, Charles A.	Avoy,	Wayne, Pa.
Wiant, William F.	Milford Square,	Bucks, Pa.
Woodland, B. D.	Everhart,	Chester, Pa.
Woodward, Roskell E.	West Chester,	" "
Woodward, Wellington	"	" "
Wollaston, Fred.	Kennett Square,	" "
Wright, Charles R.	Bristol,	Bucks, Pa.
Wright, Fred.	Maiden Creek,	Berks, Pa.
Wynn, J. Maurice	West Chester,	Chester, Pa.
Yeaman, M. C.	Mattawana,	Mifflin, Pa.
Yeakel, Frederick	Bally,	Berks, Pa.
Yerkes, Frank	Hatboro,	Montgomery, Pa.
Yerkes, Milton	Terwood,	" "
Yoder, E. S.	Dublin,	Bucks, Pa.
Yundt, Horace A. Jr.,	Reading,	Berks, Pa.
Ziegler, Elmer B.	Limerick,	Montgomery, Pa.

SUMMARY.

Number during first term,	528
“ “ second term,	535
	<hr/>
Number in attendance both terms,	1063
	<hr/>
Number of different students during year,	709
	<hr/>
Ladies,	395
Gentlemen,	314

Courses of Study.



The Course of Instruction for the State Normal Schools of Pennsylvania, embraces two distinct courses of study: *The Elementary Course* and the *Scientific Course*. These courses as fixed by law, and as arranged for this school, are as follows:

THE ELEMENTARY COURSE.

PREPARATORY CLASSES.

School Economy, Orthography and Reading; English Grammar and Composition; Arithmetic; Algebra; Geography and History of the United States; Writing and Drawing.

Orthography, Political Geography and Penmanship (practice and principles) must be thoroughly finished, and a very good knowledge of the remainder of these branches must be shown, also as much drawing submitted as can be done in fourteen weeks of daily exercises—before students will be admitted to the Junior Class.

JUNIOR YEAR.

First Term.—Methods of Instruction ; Reading ; English Grammar and Composition ; Latin Grammar and Reader ; Arithmetic ; Algebra ; Physiology, Physical and Mathematical Geography ; Drawing and Vocal Music.

Second Term.—Methods of Instruction and Reading ; English Grammar, Latin Grammar and Reader ; Arithmetic (except Mensuration) and Algebra ; History of the United States ; Civil Government ; Drawing and Vocal Music ; Single-Entry Book-keeping, seven weeks.

☞ An examination by the State Board of Examiners in all of the above branches, except in School Economy and Methods of Instruction, must be passed before entering the Senior class. See page 29.

SENIOR YEAR.

First Term.—Psychology, embracing the Intellect, Sensibilities and Will, Methods of Teaching and School Management, a prescribed course of Professional Reading, Teaching in the Model School and semi-weekly meetings with the Principal of the Model School to discuss Practice of Teaching ; Outlines of Rhetoric, with at least a fourteen-weeks' course in English Literature, including the thorough study of one selection from each of four English Classics, and elocutionary exercises, also a prescribed course of Reading ; Latin, Cæsar ; Plane Geometry ; Natural Philosophy.

Second Term.—Methods, History of Education and the reading of General History, the completion of 21 weeks of teaching in the Model School for 45 minutes per day, and semi-weekly meetings in connection therewith, a Thesis on a Professional subject ; Rhetoric or English Literature with reading ; Geometry and Mensuration ; Botany.

☞ For examinations in this year's work, see page 28.

THE SCIENTIFIC COURSE.

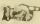
Pedagogics.—Moral Philosophy ; Logic ; Philosophy of Education ; Course of Professional Reading, with abstracts, notes, and criticisms, to be submitted to Board of Examiners ; a Thesis on a Professional Subject.

Language.—Latin, six books of Virgil, four orations of Cicero, the Germania of Tacitus, or a full equivalent; an equivalent of Greek, French or German, will be accepted for Spherical Trigonometry, Analytical Geometry, Calculus, Mathematical Natural Philosophy, and Mathematical Astronomy; Literature.

Mathematics.—Higher Algebra; Solid Geometry; Plane and Spherical Trigonometry and Surveying, with the use of instruments; Analytical Geometry; Differential and Integral Calculus.

Natural Science.—Natural Philosophy, as much as in Snell's Olmstead; Astronomy, Descriptive and Mathematical; Chemistry; Geology or Mineralogy; Zoology.

History.—General History.

 This course requires two full years of hard study. The examinations in it are conducted by the State Board of Examiners, at their annual examination. *But graduates in the elementary course can be examined upon any of the studies of the Scientific Course at any State Examination, and can have these branches put upon their diplomas.*

FINAL EXAMINATION.

To graduate at a Pennsylvania State Normal School students must attend at least twenty-one weeks. The Faculty first examine the candidates in all the branches of study; if they find them qualified they recommend them to the State Board of Examiners, certifying that they have completed the course of study as required by law, and have taught the required time in the Model School.

The final examinations are conducted by a State Board of Examiners, who are appointed by the State Superintendent of Public Instruction, from the following classes: The State Superintendent, or Deputy Superintendent, who is President of the Board; the Principal of another Normal School; two County or Borough Superintendents from the First District; and the Principal of this Normal School. Each student must receive four votes out of the five in order to pass the examination and to graduate.

The final examination occurs about two weeks before Commencement, the date being fixed by the Superintendent. The examination is almost wholly in writing and lasts two or three days.

The following important changes in the examinations were made at a recent meeting of the State Superintendent and Normal School Principals, and have been introduced into this school.

1. Admission to the Senior Class shall be determined by the State Board of Examiners at the annual examination by the Board.

2. In order to be admitted to the Senior Class, students must be qualified in the Junior and Preparatory studies, but the examination in Pedagogics shall be deferred to the Senior year—the examination in the remaining Junior and Preparatory studies to be final.

3. Any person or persons not in actual attendance during the previous Spring session, if recommended by the Faculty may be examined in the Junior and Preparatory studies at the opening at the Fall Term, by the Principal and two Superintendents who are members of the State Board, and the examination papers, if approved by these three examiners, shall be submitted to the Superintendent of Public Instruction for approval; and if he approve them, such person or persons shall be admitted to the Senior Class.

4. A certificate setting forth the fact of the passing of the Junior and Preparatory course of study shall be prepared by the Department of Public Instruction, and signed by the Board of Examiners, and shall entitle the holder thereof to admission into the Senior Class of any State Normal School of Pennsylvania at the beginning of any Senior year.

The date of the Fall examination for admission to the Senior Class will be sent upon application to the Principal.

CERTIFICATES AND DIPLOMAS.

A student graduating in the Elementary Course will receive a certificate in which will be named the branches

he has studied, and by which he will be constituted *Bachelor of the Elements*; these certificates entitle their holders to teach in the public schools of Pennsylvania for any two subsequent years without further examination. The diplomas of those graduating in the Scientific course will enumerate the distinctive branches of this course, and constitute their holders, *Bachelors of the Sciences*.

Regular graduates who have continued their studies for *two years*, and who have practiced their profession for *two annual terms*, in the Common Schools of the State, and who have presented to the Faculty and Board of Examiners a certificate of good moral character and skill in the art of Teaching from the Board or Boards of Directors in whose employ they have taught, countersigned by the proper County Superintendent, may receive diplomas, constituting them *Masters* in the several studies embraced in the Course in which they graduated, and conferring upon them corresponding professional degrees, as follows :

Master of the Elements.
Master of the Sciences.

These diplomas are permanent certificates of the highest grade. *They confer upon their holders the right to teach the branches named therein in the public schools of Pennsylvania, without further examination.*

Applications for diplomas must be presented to the Board of Examiners at their regular session.

The Normal School law makes it the duty of the authorities of the Normal Schools to grant diplomas or State Certificates to *actual teachers in Common Schools*, without their having attended the Normal Schools as students. The following are the conditions upon which these diplomas will be granted :

1. Each applicant must be twenty-one years of age, and of good moral character, and he must have taught successfully during three successive annual terms in Common Schools in this state, the proof of age to be the declaration on honor of the applicant; and of moral character and a satisfactory discharge of the requisite

terms of teaching, a certificate from the proper Board or Boards of Directors, signed by the President and Secretary, and countersigned by the proper County Superintendent or Superintendents.

2. The examination to be in the Elementary or Scientific Course, as the applicant may select, according to the list of studies as printed in the circulars of the State Normal Schools, and approved by the Superintendent of Public Instruction, or in such other studies as may be by the Board of Examiners be deemed equivalent.

3. Any person obtaining a certificate in the Elementary Course may, at the next or any succeeding annual examination, be examined for the higher course, and obtain the proper certificate.

4. Each applicant to prepare and present to the Board of Examiners an original thesis of not less than six folio pages of manuscript, on some professional subject, to be retained at the school where the examinations take place.

5. The examination and certificate to be without expense to the applicant, and the certificate to be full evidence of qualifications to teach the branches therein named, in any part of the state, without further examination.

Location, Building, &c.

The West Chester State Normal School was founded in the year 1871, by the joint efforts of the Trustees and contributors of the West Chester Academy, and the citizens of West Chester and vicinity.

West Chester is a beautiful town of 8,000 inhabitants, the county seat of Chester county, and is pre-eminent

for its healthfulness, morality and intelligence. It is about twenty-five miles west of Philadelphia, with which it is connected by two railroads, over which trains run at all hours of the day. Both of these are controlled by the Pennsylvania Railroad, and all trains for West Chester leave the new Broad Street Station. A short branch road connects West Chester with the main line of the Pennsylvania Railroad at Frazer, where close connections are made with the trains on the main line.

THE BUILDINGS

Are situated in the southern part of the borough, half a mile from the Court House. The main building is new, built of greenstone and marble, 256 by 234 feet, four stories high, with basement. It is one of the finest and handsomest school buildings in the country. The buildings are surrounded by fourteen acres of beautiful grounds.

A new building, containing a chapel and a dining-room, have just been completed; both are most completely and handsomely fitted up. They are not excelled in any school in this country. Two new additions for sanitary purposes have also been erected, and each story, on both the girls' and boys' wings, is fitted up with bath-rooms (hot and cold water), water-closets, slop-hoppers, &c., of the best patterns. The drainage is perfect. These sanitary improvements alone cost \$10,000, and are believed to be the best and most healthful to be found anywhere. The whole building has lately been improved, the recitation rooms refitted and refurnished, a fine library and reading-room provided for the free use of students, additional furniture put into the students' rooms, and many other improvements made to add to the efficiency of the school, and the comfort of the students.

THE GYMNASIUM.—A first-class gymnasium, 104 by 64 feet, with an administration building attached, 29 by 36 feet, is just being finished. It is of stone, two stories high, is fitted up with every modern improvement, including a full supply of the best apparatus, running-track, bath-rooms, large swimming-pool, bowling-alleys, ball-cage, &c. With the single exception of Harvard's,

it is the largest gymnasium in America, and is believed to be without any exception the best and most complete gymnasium connected with any school or college in the United States. Dr. C. E. Ehinger and wife, of Brooklyn, N. Y., have been engaged as Directors of the gymnasium. They are thoroughly prepared for their work. This gymnasium marks a great and important advance in Normal School work, and its advantages will be enjoyed by all students without extra cost.

The school property has now cost upwards of a third of a million of dollars, and is the best and most complete possessed by any Normal School in this country.

STUDENTS' ROOMS.

The rooms are generally arranged for two students each. All are good sized, have high ceilings, are well ventilated, and are all thoroughly heated by direct steam radiation. The rooms are newly and comfortably furnished, have closets, single beds, wash stands, bowls and pitchers, and are furnished with woven wire mattresses. The ladies' rooms are all partly carpeted.

Admission, Government, &c.

CONDITIONS OF ADMISSION.

Pupils will be allowed to enter the regular course at any point for which they are actually fitted. They may enter at any time during the Session, and will be charged only from date of entrance.

A prompt attendance at the commencement of the Session is of the utmost importance, both to the progress of the pupil and proper organization of the School.

Students desiring to enter the Institution should make application to the Principal at as early a date as possible.

OUTFIT.

Pupils boarding in the Institution will be furnished with single beds and bedding, and are expected to furnish two pairs of blankets, or an equivalent, towels, and table napkins; also an umbrella and a pair of rubber over-shoes. Many of the students provide carpet for their rooms, thus giving them a very neat and home-like appearance.

Keys, lamps, wash bowls, pitchers, and looking-glasses, are furnished by the School, but their cost must be deposited when they are obtained, which deposit will be refunded when they are returned uninjured.

GOVERNMENT.

Self-government is regarded as the only true government and nothing will be required except that which a *true sense of honor and self-respect* would naturally demand from the individual.

The right is reserved to remove any pupil whose influence is found to be vitiating, from the school.

MORAL AND RELIGIOUS CULTURE.

All students are required to attend the opening exercises of the School in the chapel each day, and all must attend religious services each Sabbath morning in the town, at the churches preferred by their parents or guardians.

LABORATORY.

The new laboratory renders the facilities for Chemistry even more complete than ever; the department is under the charge of a practical chemist, who has devoted years to this important branch, and who is State Inspector of Foods of Pennsylvania. A full course in qualitative analysis, blowpipe analysis of minerals, &c., is given each term. Students receive instruction without extra charge, but are required to pay for chemicals used, breakage, &c. The removal of the laboratory out of the main school building has removed all the danger often apprehended from such departments.

APPARATUS.

The Institution is supplied with Philosophical and Chemical Apparatus of the most approved kind, large additions having been made recently. Students in General Chemistry will be charged at the rate of two dollars per term for materials used in experiments before the class.

MODEL SCHOOL.

The Model School is a most important adjunct to the Normal School. If a Normal School fails to inculcate good methods of teaching, it fails to accomplish the great end for which it was established. The Model School should, therefore, be what the name implies, a school in which teacher-students may witness the best methods of instruction, and learn to practice them.

Miss Mary A. Spear, formerly of Quincy, Mass., and Normal Park, Ill., is Principal of this department. As Miss Spear is ranked first among the primary teachers of this country, the advantages which the Model School offers cannot be overestimated. Arrangements have been made by which all who are preparing to teach, share the benefits of Miss Spear's work.

This school is conducted with a view to produce the best results, both in the progress of the pupils, and the attainment of correct methods by the student teachers. Before students are allowed to teach classes in this department, they are required to witness the plans adopted by the principal and her Assistants. They are then required to teach under the constant supervision of the Principal of the Model School. Two meetings each week are held for the purpose of correcting errors in teaching and suggesting new methods.

The following course of study is pursued in this department :

D Class—Language Lessons, Reading, Spelling, Fundamental Rules of Arithmetic, Geography, Natural History.

C Class.—Language, Reading, Spelling, Arithmetic, Geography, Map Drawing, Oral Lessons in U. S. History, Natural History.

B Class.—Language, (including the elements of Grammar and Rhetoric,) Arithmetic, Geography, Map Drawing, U. S. History, Lessons in Literature and Composition, Reading.

A Class.—Grammar, Arithmetic, Algebra, Physiology, Latin, Botany, Literature and Composition.

Writing, Drawing, Spelling, and Vocal Music, are continued throughout the course.

LIBRARY AND READING ROOM.

A large library room has lately been fitted up in the best manner. It now contains libraries aggregating almost 5,000 volumes. A modern card catalogue adds greatly to their value. The library is open at all hours out of school time, with a competent librarian constantly in charge.

Connected with the library is a reading-room supplied with seventy-five magazines and papers, also for the constant and free use of the school.

LITERARY SOCIETIES.

There are connected with the school two flourishing Literary Societies. The Moore Literary Society, and The Aryan Society, composed of students and members of the Faculty.

The value of these societies as adjuncts of education is so great that students cannot afford to neglect the opportunities they furnish for literary and oratorical culture.

In addition to the school Library, each society has an excellent and good-sized library, for the use of its members.

MUSEUM.

The museum contains a large and valuable collection of specimens, illustrating every department of Natural Science. It was begun in the year 1826, and has been annually enriched with contributions from every portion of the world. The justly celebrated "Herbariums" of the late Dr. Wm. Darlington, and David Townsend, now in this Museum, are conceded to be two of the most

accurate and extensive private collections ever formed in this country.

TEXT BOOKS.

Text Books are sold to students at Philadelphia prices ; but all books used in the Elementary Course are furnished on rent to those preferring it.

MUSIC.

This department is unexcelled outside of the large cities. The teacher in charge of the piano is a fine musician, and has had long and successful experience in her profession. The following is the course arranged for the piano :

GRADED SYNOPSIS OF MUSICAL STUDY.

First Grade.

Emery's Foundation Studies, and the N. E. Conservatory Method, or Urbach's Instruction Book.

PIECES.

Very easy selections from modern composers.

Second Grade.

ETUDES.

Loeschorn, op. 52 ; Heller, op. 47 ; Czerny, op. 849 ; Kohler, op. 50 ; Gurlitt, op. 50.

PIECES.

Sonatas and other easy works, by Lichner, Spindler, Gurlitt, Kullak, Reinecke, Schumann, and others.

Third Grade.

ETUDES.

Bertini, op. 29 ; Heller, ops. 46 and 45 ; Loeschorn, op. 66 ; Berens, op. 61 ; Bach, Little Preludes ; Turner, Damper Pedal Studies, op. 15 ; Technics, Emery and Mason.

PIECES.

Selections from Heller, Reinberger, Schwarvenka, Mendelssohn, Haydn, Schumann, Schubert, Bach, and others.

Fourth Grade.

ETUDES.

Turner, Elements of Modern Octave Playing ; selections from 50 Selected Studies, Cramer ; Bach, Two Part Inventions ; Cle-

menti, Gradus ad Parnassum; Moscheles, op. 70; Selections from Chopin, ops. 10 and 25, and Bach's Preludes and Fugues.

PIECES.

Selections from classical and modern composers.

Pupils completing this course in a satisfactory manner will be awarded a diploma. The time required to complete the course cannot be specified, depending, as it does, upon the talent, previous acquirements, and industry of the pupil.

Four first-class pianos (Henry F. Miller make) have just been bought for this department, and these with Steinway and Weber pianos, are the only practice pianos in the school.

VOCAL MUSIC.

This department has been separated from the instrumental music, and put in charge of a first-class teacher. The best modern methods of instruction are used both in class work and in individual instruction, and the success and popularity of the department have been very marked. Private pupils in vocal music pay the same rates as in instrumental music, and have the use of a piano to aid their practice. Class instruction in vocal music is given without extra cost.

PIANO RECITALS

Are held every four weeks in the chapel, for the purpose of giving the pupils ease and self-control in playing before an audience.

For these recitals a Steinway Concert Grand Piano is used. This instrument is the largest and best made, and has just been bought at the Steinway's ware-rooms in New York, being the best to be found in their establishment.

A course of reading in musical literature is recommended to cultivate the style, and enrich the pupil's knowledge of the great masters.

Terms :—Winter Session, two lessons per week, including two practice periods daily, \$34.00. For Spring Session, \$16.00.

For lessons on other instruments than the piano and cabinet organ, special arrangements must be made.

APPLICATIONS FOR TEACHERS.

Frequent applications are made to the Principal for well trained teachers, and it will be our aim to supply the demand as far as possible. Every year demand is made for more teachers than can be supplied.

CALENDAR.

The school year is divided into two sessions. The Winter Session will begin *Monday, September 1st*, and continue *twenty-eight weeks*. The Spring Session will begin *Monday, March 30th*, and continue *fourteen weeks*. There will be a vacation of one week at Christmas, and one of the same length between the sessions in March.

TERMS.

Tuition and board, including heat, light, and washing, for the Winter Session, \$1.40; *one-half payable in advance*, the remainder on the eighth of December; for a period less than the session, per week, \$5.25. For the Spring Session \$65, *payable in advance*; for a period less than the session, per week, \$5.00.

For tuition alone, for Winter Session, \$45, *one-half payable in advance*, the remainder on the eighth of December; for a period less than a session, per week, \$1.65. For Spring Session, *in advance*, \$20; for period less than a session, per week, \$1.50. For tuition in Model School, Winter Session, \$20; Summer Session, \$10. For a time less than a session, per week, 80 cents.

The "State Aid" of fifty cents a week is deducted from the bills of those who comply with the conditions stated *below*, making the total cost to teachers \$184 per year.

Teachers whose schools do not end until after the beginning of the session, are charged by the week at *term rates*, if they enter as soon as their schools close, and finish the term.

There are no extra charges except for private lessons in music, and the cost of the chemicals to those studying chemistry.

DEDUCTIONS.

Students absent two consecutive weeks, or longer, on account of personal sickness, are entitled to full reduction for the time lost.

Those leaving for any other cause will be required to pay for the time spent at the school, at the rate for a period less than a session as specified above.

All bills must be settled with the Principal, who acts in behalf of the Trustees. Bills for one term must be settled before a student will be permitted to enter upon the next term, unless by special arrangement.

STATE APPROPRIATIONS TO STUDENTS AND GRADUATES.

By a recent Act of the Legislature, the following appropriations are made by the State to Normal Students and Graduates.

1. Each student over *seventeen years* of age who shall *sign a paper* declaring *his intention* to teach in the Common Schools of the State, shall receive the sum of FIFTY CENTS *per week* toward defraying the expenses of tuition and boarding.

2. Each student, who, *upon graduating*, shall sign an agreement to teach in the Common Schools of the State *two full school years*, shall receive the sum of FIFTY DOLLARS.

3. Any student to secure these benefits, must attend the School at least *twelve consecutive weeks*, and must join a class in Methods of Instruction or School Management. These benefits will be deducted from the regular expenses of board and tuition.

In several past years the appropriation for this purpose by the Legislature has been insufficient to pay the State aid in full during the Spring Session. But for the past seven years the West Chester State Normal School has allowed its students the full amounts set forth above, and we expect to do the same next year.

VISITORS AND VISITING.

Calls on the pupils at other times than during the hours of recreation, seriously interfere with the object they have in view, and therefore, will not be allowed except in case of necessity. Persons desiring to visit the school are cordially invited to do so at any time.

Every absence from a school duty is a loss which cannot be wholly made up. *Parents are earnestly requested not to take their children away from a single school duty, unless it is absolutely necessary. It will interfere with important school duties if a student leaves school earlier than Saturday morning or returns later than Sunday evening.* Students are not permitted to visit home or away from the town without special permission from their parents or guardians.

TEXT BOOKS USED.

Readers—Monroe, Harper, Lippincott, Sheldon; *Pennmanship*—Wells; *Arithmetic*—Brooks, Appleton, Wentworth, Hill; *Geography*—Harpers, Appleton, Barnes; *Grammar*—J. P. Welsh; *Geometry*—Chauvenet; *Algebra*—Sensenig; *Book-keeping*—Lyte; *Physiology*—Walker; *Natural Philosophy*—Sharpless & Philips; *Botany*—Wood, Gray, Flora Cestrica; *Chemistry*—Eliot & Storer, Douglass & Prescott; *Zoology*—Nicholson, Orton; *Geology*—Dana's Text Book; *Rhetoric*—D. J. Hill; *History U. S.*—Johnston, Eggleston; *Constitution, U. S.*—Andrews; *Drawing*—Walter Smith; *Vocal Music*—L. W. Mason; *School Economy*—Wickersham; *Methods of Instruction*—Brooks; *Mental Philosophy*—Hill; *Trigonometry and Surveying*—Wentworth; *Analytical Geometry and Calculus*—Wentworth; *Astronomy*—Snell's Olmstead, Sharpless & Philips; *Latin*—Collar, Daniell, Goodwin's, Allen & Greenough's Cæsar; *Greek*—Harper & Water's Grammar, Boise's Anabasis, Homer; *German*—Joynes, Meissner, Super's Reader, German Texts; *French*—Otto's Grammar; *English Literature*—Trimble, Trimble's Chart, Swinton's Studies, Dana's, Whittier's, Bryant's and Hudson's Selections; *Orthography*—Raub.

REGULATIONS.

1. Every student is requested on entering to give the Principal information in regard to the following particulars : Whether he designs fitting himself for a teacher ; what length of time he designs remaining in the Institution, and whether he desires to pursue the regular course for graduation.

2. Students are considered members of the school until the Principal is duly notified of their withdrawal.

3. The hours regularly assigned to study are to be faithfully devoted to the preparation of the exercises required.

4. Students are allowed to walk for exercise in the vicinity of the school, but no one is permitted to visit the town or otherwise absent himself, without permission from the Principal. Absence from the premises after dusk is not permitted. New acquaintances outside of the school must not be cultivated.

5. Permission to be absent from a recitation must always be obtained from the teacher in charge of the class, *before* the absence occurs ; and students desiring to be absent from town must obtain written permission from the Principal.

6. Boarding students who are not present at the beginning of the term, must send to the Principal a written explanation of their absence, or their rooms will be forfeited.

7. Every student must be present at the daily opening exercises of the school, and at all general exercises in the Chapel unless excused.

8. All objectionable books, papers and cards, found in the possession of students, will be taken and destroyed.

9. Disorderly conduct in the building is prohibited. Each student will be held accountable for any disturbance or damage in his room.

10. No nails must be driven in the walls or ceilings, or alterations be made in the windows, doors, or any appendage of the rooms, without permission from the *Steward*.

11. Students are not allowed to visit one another's

room during the regular hours of study, without permission of those in charge of the halls. No change of rooms must take place without permission from the Principal.

12. Each student of instrumental music will have regular hours assigned for practice, during which time no spectator must be present to interrupt the exercises or divert the attention.

13. All students who are tardy, unnecessarily, at meals, must forfeit them, and no one must leave before the rest without good reason, and permission from the person sitting at the head of the table. Any student sick or indisposed, and requiring attention, must have himself reported at once to the Matron.

14. It is expected that the ladies and gentlemen of the Institution will treat one another with politeness, but they will not be allowed to be together or to carry on conversation or other communication except in the performance of school exercises, unless by special permission. Neither sex will be permitted to trespass upon that portion of the building assigned to the other.

15. No lady or gentleman attending this Institution will meet, walk, or ride with a person of the opposite sex, except in cases of necessity, and then only with the permission of the Principal.

16. Students will not visit the dining room at any other time than meal-time, nor the domestic departments, boiler room, or music rooms, without permission.

17. The use of tobacco in any form is strictly prohibited in the building or on the grounds.

18. Students must not enter any saloon, bar-room, billiard or pool room. They are absolutely forbidden to use as a beverage alcoholic liquors of any kind whatever during their connection with the school.

19. Students will be required to attend public worship each Sabbath morning at such places as their parents or guardians designate.

20. Students are required to take up enough studies to keep them, in the judgment of the Principal, sufficiently

employed, but must not take up more than they can study with profit.

21. Students must furnish towels, napkins, and two pairs of blankets (or an equivalent), and have all articles of clothing *distinctly marked*. Each student is permitted to have twelve pieces washed each week without extra charge.

Directory of the Alumni.

PLEASE NOTIFY US OF ANY ERRORS OR CHANGES.

OFFICERS FOR 1889-90.

President—D. TUCKER HOFFMAN, Class of '79.

Vice-President—JESSE E. PHILIPS, Class of '82.

Secretary—CARRIE E. BEMUS, Class of '80.

Managers—A. THOS. SMITH, MARY A. PYLE,
MARY H. BALDWIN.

CLASS OF 1874. ELEMENTARY COURSE.

<i>Name.</i>	<i>Address.</i>	<i>Profession.</i>	<i>Time taught since graduation.</i>
Margaret Crosby,	Chester, Pa.,	Teaching,	16 yrs.
Anna P. Esler,	Jamestown, N. Da.,	College Professor,	16 "
Ruth E. Griffith,	Chrome, Pa.,		11 "
George G. Groff,	Lewisburg, Pa.,	College Professor,	14 "
Anna S. Hibbs (Washburn),	Chappaqua, N. V.,		7 "
Ella M. Hunsicker,	1715 Sydenham St., Phila.,	Teaching,	7 "
E. Anna Large, (Thorne),	Gum Tree, Pa.,		9 "
Maggie B. Longshore,	Dolington, Pa.,		9 "
Emma J. Longstreth,	2110 N. 16th St., Phila.,	Teaching,	15 "
Mary H. Lynch,	West Chester, Pa.,	"	16 "

CLASS OF 1875. ELEMENTARY COURSE.

Mary J. Bates (Miller),	Glen Moore, Pa.,		3 "
Dora E. Brosius (Walton),	Ercildoum, Pa.,		8 "

<i>Name.</i>	<i>Address.</i>	<i>Profession.</i>	<i>Time taught since graduation.</i>
Richard T. Chandlee,	Austin, Texas,		2½ yrs.
M. Lizzie Conway,	Germany,	Student,	10 "
Emily Corson,	Plymouth Meeting, Pa.,		
Martha Corson (Poley),	5361 Germantown Ave., Phila.,		
Carrie J. Dummig,	507 W. 3d St., Wilmington, Del.,	Teaching,	14 "
William T. Gordon,	Coatesville, Pa.,	Prin. of Schools,	15 "
Mary J. Hare,	Deceased, 1888,		13 "
Anna Jackson,	Three Tuns, Pa.,		12½ "
Emma Irej (Phillips),	Kennett Square, Pa.,		7 "
Ida M. John (Taylor),	Phoenixville, Pa.		14 "
Lydia A. Martin,	West Chester, Pa.,	Teacher, Nor. Sch.	14 "
Arthur W. Potter,	Wilkesbarre, Pa.,	Prin. of Schools,	15 "
Annie J. Price (Paxson),	331 Saunders Ave., Phila.,		2 "
Amos L. Spencer,	Oxford Valley, Pa.,	Teaching,	15 "
Zerua Wollerton (Liggett),	West Chester, Pa.,		
Sara Z. Woolley (Maddock),	Elwyn, Pa.,		4 "

CLASS OF 1876. ELEMENTARY COURSE.

J. Roberts Acker,	Deceased, 1880.		2 "
Phebe A. Baker,	Media, Pa.,	Florist,	10 "
Lizzie Brown (Thomas),	Media, Pa.,		8 "
Sallie M. Boyd (Snow),	Wakefield, R. I.,		
William Butler,	1220 S. 4th Ave., Wichita, Kan.,	Civil Engineer.	
Tamazine T. Clark (Fairlamb),	Exton, Pa.,		8½ "
Ada A. Coffman,	Phoenixville, Pa.,	Medical Student,	4 "
Clara A. Davis,	Chester, Pa.,	Teaching,	14 "
Abbie A. Eyre,	Kennett Square, Pa.,	"	13 "
George P. Gabeka,	244 W. 4th St., N. Y. City,	"	13 "
Jemie Knight (Atkinson),	Penn's Park, Pa.,		4 "
Wilhelmina B. Linton,	Newtown, Pa.		3 "
Rachel S. Martin,	15th & Race Sts., Phila.,	Teaching,	12 "
Lucy C. Parsons (Tyson)	Knowlton, Pa.,		3 "
Ida C. Pyle,	Avondale, Pa.,	Teaching,	14 "
Kate A. Stephens (Williams),			5 "
Florence E. Sickel,	Davis Grove, Pa.,	"	13 "
Sue P. Stackhouse,	Deceased, 1888.		4 "
William D. Thomas,	Media, Pa.,	Lawyer,	2 "
Anna M. Thompson,	Newtown, Pa.,		1 "

CLASS OF 1877. SCIENTIFIC COURSE.

George G. Groff,	Lewisburg, Pa.,	College Professor,	13 "
STATE CERTIFICATE.			
Wm. H. Snyder,	Oxford, Pa.,	Prin. High School,	12 "

ELEMENTARY COURSE.

Ella L. Baldwin,	2025 Chestnut St., Phila.,	Teaching,	9 "
B. Anna Black (Johnson),	Pencoyd, Pa.,		6 "
Lizzie F. Criley,	Aiken, S. C.,	Teaching,	13 "

<i>Name.</i>	<i>Address.</i>	<i>Profession.</i>	<i>Time taught since graduation.</i>
Zelda H. Daniel (Baldwin),	West Chester, Pa.,		3 yrs.
M. Eloene Davis (Wells),	Ardmore, Pa.,		2 "
Anna P. Flinn,	Radnor, Pa.,	Teaching,	13 "
Addie C. Graves,	Media, Pa.,	"	13 "
H. Emma Groce,	Burmout, Pa.,	"	13 "
Virginia Green (Huey),	Lenape, Pa.,		6 "
Hanna M. Johnson (Knickerbocker),	Fairfax, Iowa,		½ yr.
Susie C. Lodge,	Bowling Green, Mo.,	Teaching,	12 yrs.
Margaret J. Moffat,	Riegelsville, Pa.,	"	13 "
Annie V. Murray,	Lancaster, Pa.,	Stenographer,	12 "
Fannie A. Pyle (Fronckfield),	Media, Pa.,		10 "
L. Emma Pyle,	Toughkenamon, Pa.,	Teaching,	11 "
Laura C. Sorber (Diemer),	Spring City, Pa.,		11 "
Arthur H. Tomlinson,	Jenkintown, Pa.,	"	12 "
Lydia Turner,	Humboldt, Iowa,	"	12 "
Elizabeth Turner,	" "	"	12 "
John P. Vanderslice,	Deceased, 1879.		

CLASS OF 1878. ELEMENTARY COURSE.

Ella T. Brooke (Bateman),	West Chester, Pa.,		2 "
Hannah R. Caley, (Garwood),	Newtown Square, Pa.,		10 "
Hannah Castle,	Upland, Pa.,	Teaching,	8 "
Harriet A. Castle,	"	"	12 "
Evelena A. Darlington,			
Mary Edmunds,	Deceased, 1889.		11 "
Kate R. Moulder,	Phoenixville, Pa.,	"	12 "
Eleanor M. Phillips (Pemock),	Deceased, 1888.		1 yr.
Marian Preston (Lewis),	West Chester, Pa.,		3 yrs.
Fannie M. Stiteler,	Anselma, Pa.,	"	12 "
Jane J. Wetherell,	3435 Lancaster Ave., Phila.	"	4 "

CLASS OF 1879. ELEMENTARY COURSE.

Emma K. Bossert,	Phoenixville, Pa.,	Teaching,	10 "
Maggie R. Caley,	Media, Pa.,	"	9 "
Howard Dugan,	Audenried, Pa.,	Mining Engineer,	4 "
D. Tucker Hoffman,	Phoenixville, Pa.,	Draughtsman,	2 "
Joseph E. Myers,	West Branch, Iowa,	Teaching,	5 "
Hartman Naylor,	606 High St., Newark, N. J.	"	10 "
Emma P. Nields (Dugan),	Chatham, Pa.,		3 "
Annie J. Passmore (Swayne)	Fairville, Pa.,		2½ "
Sue V. Peters (Thatcher),	Village Green, Pa.,		4 "
Emma T. Pyle (Tomlinson)	Jenkintown, Pa.,	Teaching,	8 "
Rachel A. Pyle (Cloud),	Unionville, Pa.,		2 "
David J. Reese,	Deceased, 1882.		2 "
Mary F. Whitehead (Durnall),	Ward, Pa.,		6 "
Caroline C. Woodward (Cummings),	4702 Girard Ave., Phila.,	Teaching,	8 "

CLASS OF 1880. ELEMENTARY COURSE.

<i>Name.</i>	<i>Address.</i>	<i>Profession.</i>	<i>Time, taught since graduation.</i>
Mary H. Baldwin,	College of Commerce, Phila.,	Teaching,	8 yrs.
Carrie E. Bemus,	West Chester, Pa.,	Teacher, Nor. Sch.	10 "
Mary M. Brinton,	1515 Poplar St., Phila.,		
Chas. H. Bushong, M. D.,	355 W. 14th St., N. Y. City,	Physician,	5 "
Willis Cheyney,	Wilmington Del.,		2 "
Margaretta S. Crumley,	General Wayne, Pa.,	Teaching,	9 "
Harry G. Kidd,	Weissport, Pa.,	Prin. of Schools,	10 "
Lizzie F. Kugler (Losey),	Sinnemahoning, Pa.,		5 "
Mary E. Nelson (Shoch),	Kelton, Pa.,		1 yr.
Alfred Paxson,	West Chester, Pa.,	Dentist,	3 yrs.
Fannie J. Simpson,	South Bethlehem, Pa.,	Teaching,	10 "
Belle Vansant,	Jenkintown, Pa.,	"	10 "
Laura C. Yerkes,	Phoenixville, Pa.,	"	10 "

STATE CERTIFICATE.

Milton E. McLinn,	Hazleton, Pa.,	Clergyman,	2 "
-------------------	----------------	------------	-----

CLASS OF 1881. ELEMENTARY COURSE.

Martha J. Acker.	Deceased, 1888.		7 "
Lizzie L. Buchanan, (Parker),	N. Denver, Colorado,	Supt. of Schools,	7 "
Alice E. Claffin,	1100 Columbia Ave., Phila.,	Stenography,	2 "
Leonore E. Davis,	1824 N. 11th St., Phila.,	Physician,	2 "
Ellen M. Green,	West Chester, Pa.,	Teaching,	9 "
Mary E. Green,	" "	"	8 "
Daniel Hartney,	Jenkintown, Pa.,	"	9 "
Addison L. Jones,	West Chester, Pa.,	Supt. of Schools,	9 "
Madge J. Kerns,	Bryn Mawr, Pa.,	Teaching,	9 "
Lizzie J. Lewis,	Lincoln, Va.,	"	9 "
Ella W. Lynch (Thomas),	King-of-Prussia, Pa.,		4 "
Alice H. March (Martin),	2339 St. Alban's Place, Phila.,		5 "
Joseph L. Markley,	Harvard University,	Instructor,	4 "
Mary P. McFarland,	Linwood, Pa.,	Teaching,	9 "
G. Winfield Moore,	Ercildoun, Pa.,	"	9 "
Fannie Potts (Crouse),	Cupola, Pa.,		3½ "
Emma Schofield (Godon),	Chester, Pa.,		4 "
Ella M. Turner (Fenn),	711 W. 10th St., Wilmington,		6 "
Mary D. Walton (Swayne),	Kennett Square, Pa.,		2½ "
Williamanna Webb (Jefferis),	Rosenvick, Pa.,		2½ "

CLASS OF 1882. SCIENTIFIC COURSE.

Arthur W. Potter,	Wilkesbarre, Pa.,	Prin. Schools,	8 "
-------------------	-------------------	----------------	-----

ELEMENTARY COURSE.

Lewis B. Ambler,	1735 N. 20th St., Phila.,	Teaching,	6 "
Walter J. Baldwin,	Ann Arbor, Mich.,	Student,	4 "
Florence Brinton,	Elwyn, Pa.,	Teaching,	8 "

<i>Name.</i>	<i>Address.</i>	<i>Profession.</i>	<i>Time taught since graduation.</i>
Maggie Ferron,	Londonderry, Pa.,	Teaching,	7 yrs.
Frank H. Green,	West Chester, Pa.,	Teacher Nor. Sch.,	7 "
Lily F. Groff,	259 W. 7th St., Cincinnati,	Ohio, Nurse,	2 "
R. Addie Kauffman,	Berwyn, Pa.,	Teaching,	8 "
Jesse E. Philips, Jr.,	West Chester, Pa.,	"	4 "
Warren R. Rahn,	Ursinus College, Pa.,	Instructor,	7 "
Warner P. Roberts,	Warrington, Pa.,	Teaching,	6 "
William H. Slotter,	Yardley, Pa.,	Co. Superintendent,	5 "
H. Bertha Sorber,	McEwensville, Pa.,	"	5 "
Flora L. White,	Edge Hill, Pa.,	Teaching,	6 "
Samuel F. Wolf,	Riegelsville, Pa.,	Builder,	1 "
Sallie S. Kirk,	Huntingdon, Pa.,	Teaching,	6 "

CLASS OF 1883. SCIENTIFIC COURSE.

Joseph L. Markley,	Harvard University,	Instructor,	2 yrs.
Arthur H. Tomlinson,	Jenkintown, Pa.,	Teaching,	6 "

ELEMENTARY COURSE.

Fannie J. Bailey,	902 Swede St., Norristown, Pa.,	"	1 yr.
Joseph H. Baldwin,	West Chester, Pa.,	Lawyer,	3 yrs.
Katie W. Bean,	Schwenksville, Pa.,	Teaching,	7 "
William H. Beyer,	North Wales, Pa.,	Clergyman,	3 "
Mattie Dauman (Miller),	562 Carman St., Camden, N. J.,	"	5 "
W. Roger Fronchfield,	Media, Pa.,	Lawyer,	2 "
Ella D. Gallagher,	Norristown, Pa.,	Teaching,	7 "
E. Belle Griest,	Guernsey, Pa.,	"	7 "
Mary E. Griest,	"	"	7 "
Leila C. Hecht,	524 Spruce St., Reading,	"	7 "
Mary W. Hawxhurst (Tyson)	Flora Dale, Pa.,	"	4 "
Samuel L. Jones,	109 Spring St., Trenton, N. J.,	"	7 "
Annie Laferty (Wallace),	Chadd's Ford, Pa.,	"	4 "
Addie L. Lybrand,	Deceased, 1889.	"	3 "
Rettie Moore,	Guthrieville, Pa.,	"	3 "
Edwin R. Musselman,	98 Spring St., Trenton, N. J.	Teaching,	7 "
Nellie Nevegold,	Rome, Ga.,	Student,	6 "
W. Edwin Priest,	Washington, D. C.,	Teacher High Sch.,	7 "
Mary C. Russell,	Phoenixville, Pa.,	Teaching,	7 "
A. Thomas Smith,	West Chester, Pa.,	Teacher Nor. Sch.,	7 "
Mary H. Walter,	Jenkintown Pa.,	Teaching,	7 "

STATE CERTIFICATE.

Jno. V. Ommeren,	Quakertown, Pa.,	Teaching,	6 "
------------------	------------------	-----------	-----

CLASS OF 1884. ELEMENTARY COURSE.

Sallie P. Bedford,	West Chester, Pa.,	Teaching,	5 "
A. Lincoln Beerbower,	26 South 18th St., Phila.,	Clerk,	1 yr.
Charles B. Cloud,	Parkesburg, Pa.,	Teaching,	6 yrs.

<i>Name.</i>	<i>Address.</i>	<i>Profession.</i>	<i>Time taught since graduation.</i>
Ambrose L. Custer,	Huntingdon Valley, Pa.,	Teaching,	6 yrs.
Lydia E. Eisenhower,	Shenandoah, Pa.,	"	6 "
Amelia Evans,	Freedland, Pa.,	"	5 "
Oliver D. Frederick,	West Chester, Pa.,	Teacher Nor. Sch.,	6 "
Sallie S. Hoopes,	"	Teaching,	6 "
William H. Johnson,	915 N. 43d St., W. Phila.,	Clerk,	2 "
Annie W. Keene, (Bushong)	355 W. 14th St., N. Y.,		4 "
Clara E. Knerr,	Birchrunville, Pa.,	Teaching,	5 "
Florence A. McAfee,	West Vincent, Pa.,	"	5 "
Eloise Mayham,	University of Mich.,	Student,	2 "
Francis H. Nunemaker,	Deceased, 1888.		4 "
M. Lizzie Poole,	Chelsea, Pa.,	Teaching,	5 "
Richard W. Roelofs,	26 S. 18th St., Phila.,	Clerk,	2 "
Jesse H. Snyder, Jr.,	Kulpsville, Pa.,	Teaching,	5 "
Annie C. Sullivan,	Jenkintown, Pa.,	"	5 "
Agnes G. Walsh,	Malvern, Pa.,	"	5 "
Hannah Youker,	Coatesville, Pa.,	"	5 "

CLASS OF 1885. SCIENTIFIC COURSE.

Martha J. Acker,	Deceased, 1888.		3 "
Henry Benner,	Clark University, Mass.,	Fellow,	2 "
William H. Beyer,	North Wales, Pa.,	Clergyman,	1 yr.
E. G. Jones,	Deceased, 1886.		1 "

ELEMENTARY COURSE.

John M. Carr,	Drifton, Pa.,	Teaching,	5 yrs.
Lizzie C. Crumley,	General Wayne, Pa.,	"	5 "
Alice M. Gibson, 185 S. Wash'n St.,	Wilkesbarre, Pa.,	"	5 "
Florence Griest,	Guernsey, Pa.,	"	5 "
Mary A. Hall, (Ambler),	1735 N. 20th St., Phila.,		3 "
Jacob Hillegas,	Princeton College,	Student,	1 yr.
Clara E. Hough,	Media, Pa.,	Teaching,	5 yrs.
J. R. Johns,	Reading, Pa.,	Physician,	2 "
David M. Lichty,	University of Michigan,	Instructor,	1 "
Annie Mathias,	Ridley Park, Pa.,	Teaching,	5 "
Phebe Passmore (Taylor),	Malvern, Pa.,	"	5 "
Irene Roberts,	West Chester, Pa.,	Student,	2 "
Emma M. Smedley,	Deceased, 1887.		2 "
Myra W. Story,	New London, Pa.,	Teaching,	5 "
Edith Trapp,	Towanda, Pa.,	"	5 "
Mary E. Worrell,	Deceased, 1886.		½ yr.
Mabel E. Way,	West Chester, Pa.,	"	5 yrs.
Elmer P. Weisel,	Philadelphia, Pa.,	Book-keeper,	4 "
Alice White,	15th & Race Sts., Phila.,	Teaching,	5 "
Frank B. Wonsetler,	Pierce's Business College,	"	5 "

STATE CERTIFICATE.

James J. Bevan,	Mauch Chunk,	Prin. High School,	4 "
-----------------	--------------	--------------------	-----

CLASS OF 1886. SCIENTIFIC COURSE.

<i>Name.</i>	<i>Address.</i>	<i>Profession.</i>	<i>Time taught since graduation.</i>
Susie C. Lodge,	Bowling Green, Mo.,	Teaching,	4 yrs.

ELEMENTARY COURSE.

Lizzie A. Boorse,	San Diego, Cal.,	Teaching	4 "
Sallie A. Conard,	Ogontz, Pa.,	"	4 "
Laura Eshleman,	Cochranville, Pa.,	"	4 "
Sallie C. Evans,	West Chester, Pa.,	"	2 "
Mary E. Fox,	Norristown, Pa.,	"	4 "
Nellie S. King (Wheeler),	Doylestown, Pa.,	"	3 "
William V. Kulp,	Lehigh University, Pa.,	Student.	
Helen Long,	Breadysville, Pa.,	Teaching,	4 "
Lizzie F. Ogden (Smith),	West Chester, Pa.,	Teacher, Nor. Sch.,	4 "
Mary E. Reed,	330 Cherry St., Norristown, Pa.,	Teaching,	4 "
Laura E. Roberts,	Deceased, 1887.		
Annie C. Scarborough,	Wrightstown, Pa.,	Teaching,	4 "
Isaiah M. Stover,	Kulpville, Pa.,	"	4 "
George Wheeler,	Doylestown, Pa.,	Prin. Seminary,	4 "
Hannah M. Worth,	Lamar, Missouri,	Teaching,	2 "

CLASS OF 1887. SCIENTIFIC COURSE.

Wm. H. Johnson,	915 N. 43d St., W. Phila.,	Clerk,	1 yr.
David M. Lichty,	University of Mich.,	Instructor,	1 "

ELEMENTARY COURSE.

Mary E. Cornwell,	West Chester, Pa.,	Teaching,	3 yrs.
W. H. Detwiler,	Haverford College,	Student,	2 "
Jennie T. Eachus,	West Chester, Pa.,	Teaching,	3 "
J. Morris Ehl,	Philadelphia, Pa.,	Medical Student,	2 "
Eleanor T. Good,	West Grove, Pa.,	Teaching,	3 "
Lizzie Harley,	Port Providence, Pa.,	"	3 "
Regina M. S. Mahoney,	2132 Carmac Place, Phila.,	Student.	
Robert W. Mearns,	West Point, N. Y.,	U. S. Cadet.	
Adele M. Moloney,	Manoa, Pa.,	Teaching,	3 "
Esther A. Newlin,	Lansdale, Pa.,	"	3 "
Cora K. Perry,	Eagleville, Pa.,	"	3 "
Jennie V. Potts (Gatchell),	Coatesville, Pa.,	"	2 "
Laura M. Pyle,	2042 Mt. Vernon St., Phila.,	Teaching	2 "
Annie M. Riehl,	Bethlehem, Pa.,	"	2 "
Elsie V. Smith,	Lambertville, N. J.,	"	3 "
Mary Sweeney,	Media, Pa.,	"	3 "
Hattie Thompson,	" "	"	3 "
Willa M. Way,	Romansville, Pa.,	"	3 "
Mary F. Weikel,	Shannonville, Pa.,	"	3 "
Mary H. Welsh,	Ridley Park, Pa.,	"	3 "

CLASS OF 1888. ELEMENTARY COURSE.

<i>Name.</i>	<i>Address.</i>	<i>Profession.</i>	<i>Time taught since graduation.</i>
Angie C. Bernard,	Cheltenham, Pa.,	Teaching,	1 yr.
Lizzie Castle,	Upland, Pa.,	"	2 yrs.
Hattie Ely,	Yardley, Pa.,	"	2 "
Annie M. Goshen,	Lafayette Hill, Pa.,	"	2 "
Rosa Ganster,	Manoa, Pa.,	"	2 "
Mittie Haley,	Media, Pa.,	"	2 "
Annie V. Hurst,	West Earl, Pa.,	"	2 "
Alice Jacobs,	Kennett Square, Pa.,	"	2 "
Anne Jadwin,	Carbondale, Pa.,	"	2 "
Lillie Knoche,	Harrisburg, Pa.,	"	2 "
Minnie L. Morgan,	Oxford, Pa.,	"	2 "
Ettie Person (Pennock),	Chestnut Level, Pa.,	"	2 "
Mary A. Pyle,	West Chester, Pa.,	"	2 "
Minnie R. Reynolds,	Manoa, Pa.,	"	2 "
Anna L. Smith,	Howellville, Pa.,	"	2 "
Della A. Smith,	Media, Pa.,	"	2 "
Itasca Valentine,	Russellville, Pa.,	"	2 "
Ella Weinberger,	Milford Square, Pa.,	"	2 "
Milton Kistler,	Blair, Pa.,	"	2 "
Frank C. Rex,	East Nantmeal, Pa.,	"	2 "

CLASS OF 1889. ELEMENTARY COURSE.

Samuel J. Bierley,	Orbisonia, Pa.,	Teaching,	1 yr.
Henry S. Borneman,	Boycertown, Pa.,	"	1 "
G. K. Brecht,	Hatboro', Pa.,	"	1 "
A. J. Emrey,	Honeybrook, Pa.,	"	1 "
Willard R. Pyle,	University of Mich.,	Student.	
Barton Sensenig,	Haverford College,	"	
Ida M. Christmas,	Scranton, Pa.,	Teaching,	1 "
Alice Darlington,	West Chester, Pa.,	"	1 "
Laura L. Ehl,	Tylersport, Pa.,	"	1 "
Clara Eisenhart,	Kulpsville, Pa.,	"	1 "
Helen H. Ely,	Newtown, Pa.,	"	1 "
Tillie Fulton,	Embreeville, Pa.,	"	1 "
Clara Hagerty,	Norway, Pa.,	"	1 "
Annie E. Hambleton,	Goshen, Pa.,	"	1 "
Linda K. Hoopes,	West Chester, Pa.,	Student.	
Esther G. Jones,	Phoenixville, Pa.,	Teaching,	1 "
Marion Lewis,	New Vienna, Ohio,	"	½ "
M. Lydia Mendenhall,	Dugdale, Pa.,	"	1 "
Henrietta Mood,	Quakertown, Pa.,	"	1 "
Mary Morris,	Line Lexington, Pa.,	"	1 "
Sallie A. Neitz,	Millersburg, Pa.,	"	1 "
Carrie J. Ozias,	Quakertown, Pa.,	"	1 "
Lillian Rich,	Woodbourne, Pa.,	"	1 "
E. Daisy Prendergast,	Scranton, Pa.,	"	1 "

<i>Name.</i>	<i>Address.</i>	<i>Profession.</i>	<i>Time taught since graduation.</i>
Frances J. Tencate,	Phoenixville, Pa.,	Teaching,	1 yr.
Laura S. Weinberger,	Millford Square, Pa.,	"	1 "
Anna L. Whitehead,	West Chester, Pa.,	"	1 "
Agnes W. Woodman,	Jenkintown,	"	1 "

CLASS OF 1890. ELEMENTARY COURSE.

Robert Anderson,	Bethesda, Pa.,	Will Teach.
Jennie E. Brown,	Pleasant Grove, Pa.,	"
Anna M. Comly,	Three Tuns, Pa.,	"
Fred. M. Clough,	Canton, Pa.,	"
Annie J. Davis,	West Conshohocken, Pa.,	"
William S. Delp,	Salfordville, Pa.,	"
William L. Farrell,	Plains, Pa.,	"
Bertha M. Foulk,	Collamer, Pa.,	"
Daniel L. Hartline,	Pottstown, Pa.,	"
Annie F. Hayden,	Wawa, Pa.,	"
Katie Kemery,	Mahanoy City, Pa.,	"
Effie Kemp,	Lansdale, Pa.,	"
U. S. Koons,	Weissport, Pa.,	"
J. Kirk Leatherman,	Gardenville, Pa.,	"
E. L. McKinstry,	Newtown, Pa.,	"
Clara Mendenhall,	West Grove, Pa.,	"
A. B. Mensch,	Skippack, Pa.,	"
Ada B. Miller,	Russellville, Pa.,	"
Walter L. Philips,	Downingtown, Pa.,	"
Elizabeth R. Rath,	Bethlehem, Pa.,	"
Helen V. Ritchie,	Hatboro', Pa.,	"
Clara Rippman,	Millerstown, Pa.,	"
Harry W. Scarborough,	Lumberville, Pa.,	"
Daniel G. Snyder,	West Chester, Pa.,	"
Lizzie D. Steele,	4011 Haverford Ave., Phila.,	"
Loraine Stone,	Embreeville, Pa.,	"
Anna B. Smith,	Townsend, Pa.,	"
Jennie Taylor,	Round Hill, Pa.,	"
Howard R. Teany,	Norristown, Pa.,	"
Sallie Tyson,	Reading, Pa.,	"
Frank E. Yerkes,	Hatboro', Pa.,	"

