

98
99

WEST

MINNESOTA

STATE

NORMAL

SCHOOL



"A PAINTING OF GEORGE WASHINGTON,
Painted at Valley Forge, 1778, by Charles Willson Peale, now the property
of the West Chester State Normal School."

TWENTY-EIGHTH

ANNUAL CATALOGUE

OF THE

WEST CHESTER

STATE NORMAL SCHOOL

OF THE

FIRST DISTRICT

WEST CHESTER, CHESTER COUNTY, PA.

...1899...

PRESS OF THE VILLAGE RECORD,
WEST CHESTER, PA.

Board of Trustees.

Trustees Representing the Stockholders.

R. T. CORNWELL, SAMUEL MARSHALL, EVANS ROGERS, JOSEPH H. BALDWIN.	}	Term of office expires in 1900.
----------------------------------------------------------------------------	---	------------------------------------

ALBERT P. HALL, ALFRED P. REID, MARSHALL S. WAY, JOHN S. MULLIN.	}	Term of office expires in 1901.
---------------------------------------------------------------------------	---	------------------------------------

THOMAS W. BALDWIN, PLUMMER E. JEFFERIS, MARSHALL H. MATLACK, HERBERT P. WORTH.	}	Term of office expires in 1902.
-----------------------------------------------------------------------------------------	---	------------------------------------

Trustees Representing the State.

LEVI G. MCCAULEY, J. PRESTON THOMAS.	}	Term of office expires in 1900.
-----------------------------------------	---	------------------------------------

JOHN J. PINKERTON, WM. S. WINDLE.	}	Term of office expires in 1901.
--------------------------------------	---	------------------------------------

T. L. EYRE, ISAAC JOHNSON.	}	Term of office expires in 1902.
-------------------------------	---	------------------------------------

Officers of the Board.

President,

JOHN J. PINKERTON.

Secretary,

HERBERT P. WORTH.

Committee on Household,

ALBERT P. HALL, PLUMMER E. JEFFERIS, LEVI G. MCCAULEY, JOHN
S. MULLIN, JOSEPH H. BALDWIN.

Committee on Finance,

EVANS ROGERS, MARSHALL S. WAY, MARSHALL H. MATLACK,
THOMAS W. BALDWIN, T. L. EYRE.

Committee on Instruction,

W. S. WINDLE, EVANS ROGERS, R. T. CORNWELL, A. P. REID,
THOMAS W. BALDWIN.

Committee on Cabinet,

L. G. MCCAULEY, HERBERT P. WORTH, ISAAC JOHNSON, SAMUEL
MARSHALL, J. PRESTON THOMAS.

Treasurer,

J. HOWARD MERCER.

Steward,

HARRY S. JOHNSON.

Matron,

SUSAN W. SEAL.

The regular Meetings of the Board are held on the *last Monday*
in each month.

THE FACULTY.

GEO. MORRIS PHILIPS, A. M. PH. D.,
Principal.

DAVID M. SENSENIG, M S.,
Higher Mathematics.

C. B. COCHRAN, A. M.,
Physics and Chemistry.

ELVIRA Y. SPEAKMAN,
Geography and Spelling.

A. THOMAS SMITH, PD. D.,
Pedagogy.

EVA J. BLANCHARD,
Principal of the Model School.

FRANCIS H. GREEN, A. M.,
English.

C. E. EHINGER, M. D.,
Director of Gymnasium.

CHARLOTTE N. HARDEE, MUS. B.,
Music.

ESTHER M. GROOME,
Drawing and Writing.

S. C. SCHMUCKER, A. M., PH. D.,
Biological Sciences.

CORA E. EVERETT,
Reading.

FOSTER H. STARKEY, A. M.,
Languages.

WALLACE P. DICK, A. M.,
Greek and Pedagogy.

SMITH BURNHAM, A. M.,
History.

JOSEPH J. BAILEY,
Manual Training.

LYDIA A. MARTIN, M. E.,
Mathematics.

MRS. A. M. SENSENIG, M. E.,

Mathematics.

SARA S. KIRK, M. E.,

English Grammar.

MRS. C. E. EHINGER.,

Physical Culture.

HELEN H. ELY, M. E.,

Model School.

ROBERT ANDERSON, A. B.,

Mathematics.

WILLIAM S. DELP, M. S.,

Book-keeping and Mathematics.

ANNA P. ESLER, M. E.

Reading and Grammar.

ELIZABETH F. CRILEY, M. E.,

English Branches.

PAULINE LARRABEE,

Music.

ELEANOR VANCE,

Assistant in Music.

CARL L. SCHRADER,

Assistant in Gymnasium.

A. ELIZABETH SUPPLEE, M. E.,

Assistant in Model School.

HARRIET BALDWIN,

English.

ADA W. CORNWELL, M. E.,

Assistant in Gymnasium.

HUMPHREY M. CARPENTER,

Violin, Flute, Violincello.

*

*

*

*

*

*

*

*

ALICE COCHRAN,

Librarian,

OSCAR O. BARR, B. E.,

Secretary.

GEORGE L. HOFFMAN,

Book-keeper.

ISAAC W. SWINEHART,

Study-Hall.

The Calendar.

SPRING TERM, 1899.

Tuesday, - - -	June 6th, -	State Examinations.
Wednesday, - -	June 7th, -	“ “
Sunday, - - -	June 18th, -	Baccalaureate Sermon.
Wednesday, - -	June 21st, -	Class-Day Exercises.
Thursday, - - -	June 22d, -	Commencement.
“ - - -	“ -	Meeting of Alumni.
Friday, - - -	June 23d, -	Spring Term Closes.

FALL TERM, 1899-1900.

Monday, - - -	Sept. 4th, -	Fall Term Begins.
Thursday, - - -	Nov. 30th -	Thanksgiving.
Saturday, - - -	Dec. 23d, -	Christmas Holidays Begin.
Tuesday, - - -	Jan. 2d, -	Students Return.
Friday, - - -	Mar. 16th, -	Winter Term Ends.

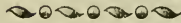
SPRING TERM, 1900.

Monday, - - -	Mar. 26th, -	Spring Term Begins.
Sunday, - - -	June 17th, -	Baccalaureate Sermon.
Wednesday, - -	June 20th, -	Class-Day Exercises.
Thursday, - - -	June 21st, -	Commencement.
“ - - -	“ -	Meeting of Alumni.
Friday, - - -	June 22d, -	Term Ends.

Catalogue of Students.

POST GRADUATES.

<i>Name.</i>	<i>Post Office.</i>	<i>County and State.</i>
Bailey, Lorin H.,	Beloit,	Ohio.
Barr, S. S.,	Jenkintown,	Montgomery, Pa.
Cassel, Jesse U.,	1950 Van Pelt St.	Philadelphia, Pa.
Clymer, Harvey M.,	Line Lexington,	Bucks, Pa.
Darlington, Sarah G.,	West Chester,	Chester, Pa.
Darlington, Homer T.,	" "	" "
Davis, Wm. H.,	Embreeville,	" "
Dengler, Walter E.,	Blue Rock,	" "
Derr, H. H.,	Weldon,	Montgomery, Pa.
Fetters, George E.	Warren Tavern,	Chester, Pa.
Fetters, Anna E.,	" "	" "
Griffith, Margaret H.,	West Chester,	" "
Huber, Simon G.,	Blooming Glen,	" "
Ingram, Mary C.,	West Chester,	" "
Kervey, Elinore B.,	" "	" "
Lewis, Edgar A.,	" "	" "
Manning, Katharine,	" "	" "
McCracken, Geo. L.,	Twin Oaks,	Delaware, Pa.
McMichael, Ruth,	West Chester,	Chester, Pa.
Philips, M. Elsie,	Font,	Chester, Pa.
Pike, Perry C.,	Media,	Delaware, Pa.
Shee, Catherine,	West Chester,	Chester, Pa.
Rees, Grace,	Aldham,	" "
Smedley, Bessie M.,	West Chester,	" "
Stettler, John S.	Mertztown,	Berks, Pa.
Swaney, Carrie M.,	West Chester,	Chester, Pa.
Wagner, Charles A.,	Ashbourne,	Montgomery, Pa.
Wagner, A. E.,	Ironbridge,	Montgomery, Pa.
Windle, Charles T.,	Southampton,	Bucks, Pa.
Woodward, Laura H.	West Chester,	Chester, Pa.

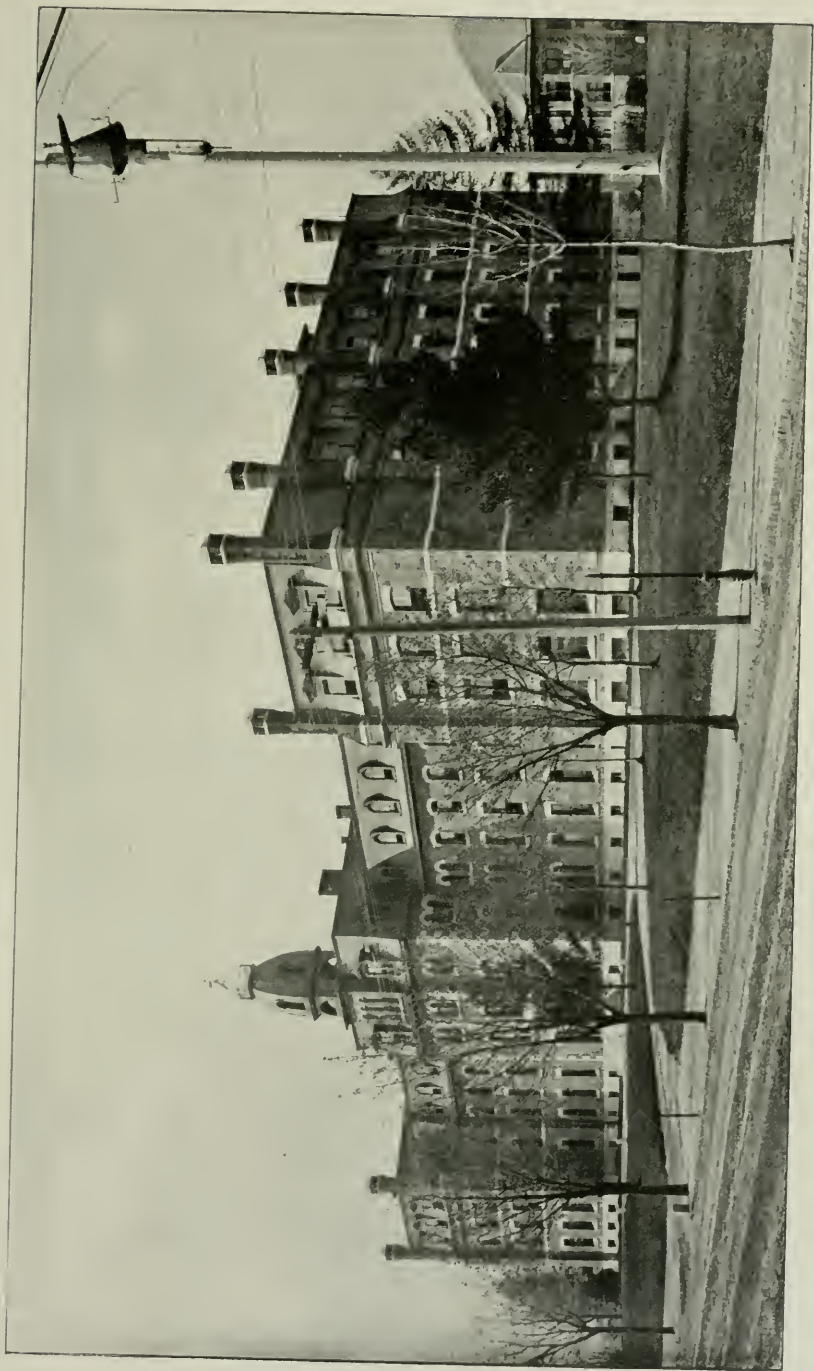


UNDER-GRADUATES.

LADIES.

<i>Name.</i>	<i>Post Office.</i>	<i>County and State.</i>
Aldred, Laura,	West Chester,	Chester, Pa.
Anderson, Lavina,	Morton,	Delaware, Pa.
Anderson, Lizzie,	Clifton Heights,	" "

<i>Name.</i>	<i>Post Office.</i>	<i>County and State.</i>
Armstrong, Genevieve C.,	West Chester,	Chester, Pa.
Armstrong, Gertrude P.,	" "	" "
Arnold, Mary J.,	Hatboro,	Montgomery, Pa.
Ash, Ethel,	West Chester,	Chester, Pa.
Atherton, Frederica,	Wyoming,	Luzerne, Pa.
Babb, Catherine,	Kennett Square,	Chester, Pa.
Babb, Edith L.,	Bryn Mawr,	Montgomery, Pa.
Bailey, Clara E.,	West Chester,	Chester, Pa.
Bair, Mary C.,	Sadsburyville,	" "
Balderston, Laura,	Dolington,	Bucks, Pa.
Baldwin, Anna R.,	West Chester,	Chester, Pa.
Balthaser, Sallie,	Hamburg,	Berks, Pa.
Barber, Jennie,	1813 N. 15th St.,	Philadelphia, Pa.
Barnard, Ida,	Lenape,	Chester, Pa.
Bartholomew, Lillian,	West Chester,	" "
Bash, Eurie I.,	Johnstown,	Cambria, Pa.
Bealer, Abbie A.,	Wynnwood,	Montgomery, Pa.
Beatty, Daisy,	West Chester,	Chester, Pa.
Beaumont, Mabel F.,	Dyerstown,	Bucks Pa.
Bechdolt, Mary H.,	Meda,	Delaware, Pa.
Bechtel, Mary D.,	Royersford,	Montgomery, Pa.
Bell, Agnes,	Marysville,	Perry Pa.
Bell, Isabella,	" "	" "
Bentley, Florence,	19th & Prov. Ave.,	Chester, Pa.
Bernard, Irene M.,	Royersford,	Montgomery, Pa.
Bickel, Minnie M.,	Rehersburg,	Berks, Pa.
Bicksler, Kate,	Fredericksburg,	Lebanon, Pa.
Bishop, L. Cora,	Blooming Glen,	Bucks, Pa.
Bitting, Carrie V.,	Quakertown,	" "
Blackburn, Ida,	Ailston,	York, Pa.
Bockius, Ada B.,	Fairmount.	Lancaster, Pa.
Bowers, Susan E.,	4006 Girard Ave.,	Philadelphia, Pa.
Bolton, L. Stella,	Collegeville,	Montgomery, Pa.
Bradigan, May M.,	Shenandoah,	Schuylkill, Pa.
Bressler, Katherine M.,	Tower City,	" "
Brisbois, Josephine,	Berkley,	Virginia.
Broomall, Helen,	Gordonville,	Lancaster, Pa.
Brown, Geneva E.,	Malvern,	Chester, Pa.
Bruce, E. Olive,	Christiana,	Lancaster, Pa.
Bruton, Susie T.,	Penn Valley,	Bucks, Pa.
Buchanan, Ella M.,	Cambridge,	Lancaster, Pa.
Buckingham, Margt. D.,	1929 Columbia Ave.,	Philadelphia, Pa.
Bull, Elsie O ,	Delta,	York, Pa.
Bull, Margaret F.,	West Chester,	Chester, Pa.
Burke, Marie V.,	Carbondale,	Lackawanna, Pa.



MAIN BUILDING.

<i>Name.</i>	<i>Post Office.</i>	<i>County and State.</i>
Burt, Nellie K.,	Coudersport,	Potter, Pa.
Burton, Lillian T.,	Cupola,	Chester, Pa.
Burton, Winifred K.,	West Chester,	" "
Byler, Sue C.,	Barnestown,	" "
Campbell, Annie I.,	Silver Creek,	Schuylkill, Pa.
Campbell, Marian,	Slatington,	Lehigh, Pa.
Cann, Grace,	Kirkwood,	Delaware.
Cannon, Nellie,	Frankford,	"
Carman, Ellen L.,	Dover,	"
Carpenter, Sue M.,	Mauch Chunk,	Carbon, Pa.
Carrel, Mary P.,	West Chester,	Chester, Pa.
Carthew, Helen F.,	Johnstown,	Cambria, Pa.
Case, Jennie P.,	Trenton,	New Jersey.
Caul, Margaret R.,	Edge Hill,	Montgomery, Pa.
Caulfield, Rose A.,	Enon Valley,	Lawrence, Pa.
Chambers, Evelyn H.,	West Chester,	Chester, Pa.
Chrisman, Anna S.,	" "	" "
Chrisman, Ethel M.,	Coventryville,	" "
Clark, Ellen S.,	Riegelsville,	Bucks, Pa.
Cloud, Eva V.,	Cloud,	Chester, Pa.
Clymer, Emma,	Tradesville,	Bucks, Pa.
Cochran, T. Grace.	West Chester,	Chester, Pa.
Colwell, Florence,	Carbondale,	Lackawanna, Pa.
Conaton, Mary B.,	" "	" "
Conley, Emma,	Rosemont,	Montgomery, Pa.
Cook, Ida M.,	Pughtown,	" "
Cook, May D.,	Dillsburg,	York, Pa.
Coolbaugh, Maude L.,	Forty Fort,	Luzerne, Pa.
Cooper, Ethel M.,	Wilmington,	Delaware.
Cornogg, May,	Cheyney,	Chester, Pa.
Crater, Alice M.,	Narcissa,	Montgomery, Pa.
Criswell, Reba E.,	West Grove,	Chester, Pa.
Curry, Blanche,	West Chester,	" "
Darlington, Francis R.,	" "	" "
Daverin, Elizabeth B.,	Barnsley,	" "
Davis, Ada,	Pughtown,	" "
Davis, R. Beula,	West Chester,	" "
Davis, Elizabeth B.,	Brandamore,	" "
Davis, Elsie T.,	Phoenixville,	" "
Davis, Mabel E.,	Woodstown,	New Jersey.
Dawson, Janet,	West Chester,	Chester, Pa.
Dawson, Elizabeth E.	Montandon,	Northumber'd Pa.
DeBoey, Ada,	Marshallton,	Chester, Pa.
DeNeen, Sophia M.,	Cumberland,	Maryland.
Denning, Mrs. Jennie M.,	Chadd's Ford,	Delaware, Pa.

<i>Name.</i>	<i>Post Office.</i>	<i>County and State.</i>
Depeltquestangue, E. M.	Lyons,	France.
Detlefsen, B. Louise,	Bristol,	Bucks, Pa.
Detterline, H. Ada,	Strafford,	Chester, Pa.
DeTurck, Katie S.,	Esterly,	Berks, Pa.
DeWire, Annie V.,	Kennett Square.	Chester, Pa.
Dixon, Frances L.,	Freeport,	Armstrong, Pa.
Doak, Nannie I.,	Wallingford,	Delaware, Pa.
Dolby, Harriett E.,	Coatesville,	Chester, Pa.,
Donnelly, Mary,	4400 Baltimore Ave.,	Philadelphia.
Dormer, Mary A.,	Wayne Av.&Brunner St.,	"
Dougherty, Elizabeth N.	Guthrieville,	Chester, Pa.
Downie, Alice G.,	Nellore,	India.
Downing, Retta,	Bridge Valley,	Bucks, Pa.,
Draper, Hanna,	Upland,	Delaware, Pa.
Drennen, Lulu B.,	Chatham,	Chester, Pa.
Dubree, Carrie F.,	East Las Vegas.	New Mexico.
Dudley, Helen M.,	Morrow,	Ohio.
Durnall, Mary B.,	West Chester,	Chester, Pa.
Eachus, Marion F.,	West Chester,	Chester, Pa.
Eagle, R. Anna,	Newton,	Bucks, Pa.
Eastburn, Mary O.,	Pineville,	" "
Edwards, S. Elizabeth,	Oxford,	Chester, Pa.
Edwards, Mabel,	Carbondale,	Lackawanna, Pa.
Egan, Kate T.,	Media,	Delaware, Pa.
Ely, Emma,	Chalfont,	Bucks, Pa.
Endicott, Anna W.,	Shanghai,	China.
Endicott, Lily,	"	China.
Esrey, Hanna,	1642 Pine St.,	Philadelphia.
Ettle, Mary R.,	Middletown,	Dauphin. Pa.
Eyrich, Maggie M.,	Reading,	Berks, Pa.
Fageley, Bertha V.,	Norristown,	Montgomery, Pa.
Fahey, Margaret E.,	Kennett Square,	Chester, Pa.
Faust, Olivin,	Chalfont,	Bucks, Pa.
Fearnside, Annabell L.,	W. Conshohocken,	Montgomery, Pa.
Ferree, Marie,	Reading,	Berks, Pa.
Fillinger, Mary,	Vintondale.	Cambria, Pa.
Fish, Annie B.,	Fallsington,	Bucks, Pa.
Flannery, May M.,	Douglasville,	Berks, Pa.
Fleck, Josephine W.	Spring House,	Montgomery, Pa.
Fletcher, Anna J.,	844 North Broad St.,	Philadelphia.
Fletcher, Charlotte,	" " " "	"
Fletcher, M. Victoria C.,	" " " "	"
Flowers, Bertha C.,	Hammorton,	Chester, Pa.
Forbes, Mary C.,	Carbondale,	Lackawanna, Pa.
Force, Eleanor H.,	Yardley,	Bucks, Pa.

<i>Name.</i>	<i>Post Office.</i>	<i>County and State.</i>
Forrest, Mattie C.,	Freeland,	Luzerne, Pa.
Forrest, Sara E.,	Brandywine Manor,	Chester, Pa.
Foster, S. Amy.,	Norristown,	Montgomery, Pa.
Foulke, Jean R.,	West Chester,	Chester, Pa.
Freeman, Anna M.,	Wayne,	Delaware, Pa.
Fretz, Kate A.,	Pipersville,	Bucks, Pa.
Fries, Cora M.,	Coventryville,	Chester, Pa.
Gallaher, Winona,	Blairsville,	Indiana, Pa.
Gallery, Mary C.,	Fairville,	Chester, Pa.
Gardner, Mary A.,	York Springs,	Adams, Pa.
Garrett, Lizzie S.,	West Chester,	Chester, Pa.
George, Dahney E.,	Cherokec,	N. C.
Gerbron, Bertha M.,	Shelly,	Bucks, Pa.
Gervin, Gertrude L.,	Northumberland,	North'd Pa.
Gibson, Clair W.	Allentown,	Lehigh, Pa.
Gill, Annie A.,	West Chester,	Chester, Pa.
Gladman, Mabel L.,	" "	" "
Godshall, Mary,	Royersford,	Montgomery, Pa.
Gordon, Mabel B.,	West Chester,	Chester, Pa.
Gore, Rebecca N.,	Upland,	Delaware, Pa.
Gormley, Katherine T.,	New Castle,	Delaware.
Grater, Ella M.,	Worcester,	Montgomery, Pa.
Graves, Florence A.,	Elam,	Delaware, Pa.
Gray, Elizabeth,	Avondale,	Chester, Pa.
Gray, Bethel,	West Chester,	" "
Green, Lena H.,	" "	" "
Griffith, Annis F.,	" "	" "
Grosch, Helen A.,	Wernersville,	Berks, Pa.
Gross, S. Ella.,	Doylestown,	Bucks, Pa.
Guy, Margaret C.,	Honeybrook,	Chester, Pa.
Hagaman, Helen M.,	Wrightstown,	Bucks, Pa.
Haines, Emily I.,	Yardley,	" "
Haines, Jennie M.,	" "	" "
Halberstadt, Lillian I.,	Gladwyne,	Montgomery, Pa.
Hall, Hanna H.,	Wrightstown,	Bucks, Pa.
Hall, Sara D.,	West Chester,	Chester, Pa.
Hallman, Lida,	Neiffer,	Montgomery, Pa.
Hamilton, Maude G.,	West Chester,	Chester, Pa.
Hamilton, Sara M.,	Brandywine Summit,	" "
Hannis, Lidie R.,	4525 Regent St.,	Philadelphia.
Harbold, Cora M.,	Dillsburg,	York, Pa.
Harlan, Christine S.,	West Chester,	Chester, Pa.
Harrigan, Mary,	Oxford,	" "
Harvey, Ethel,	West Chester,	" "
Harvey, Helen,	" "	" "

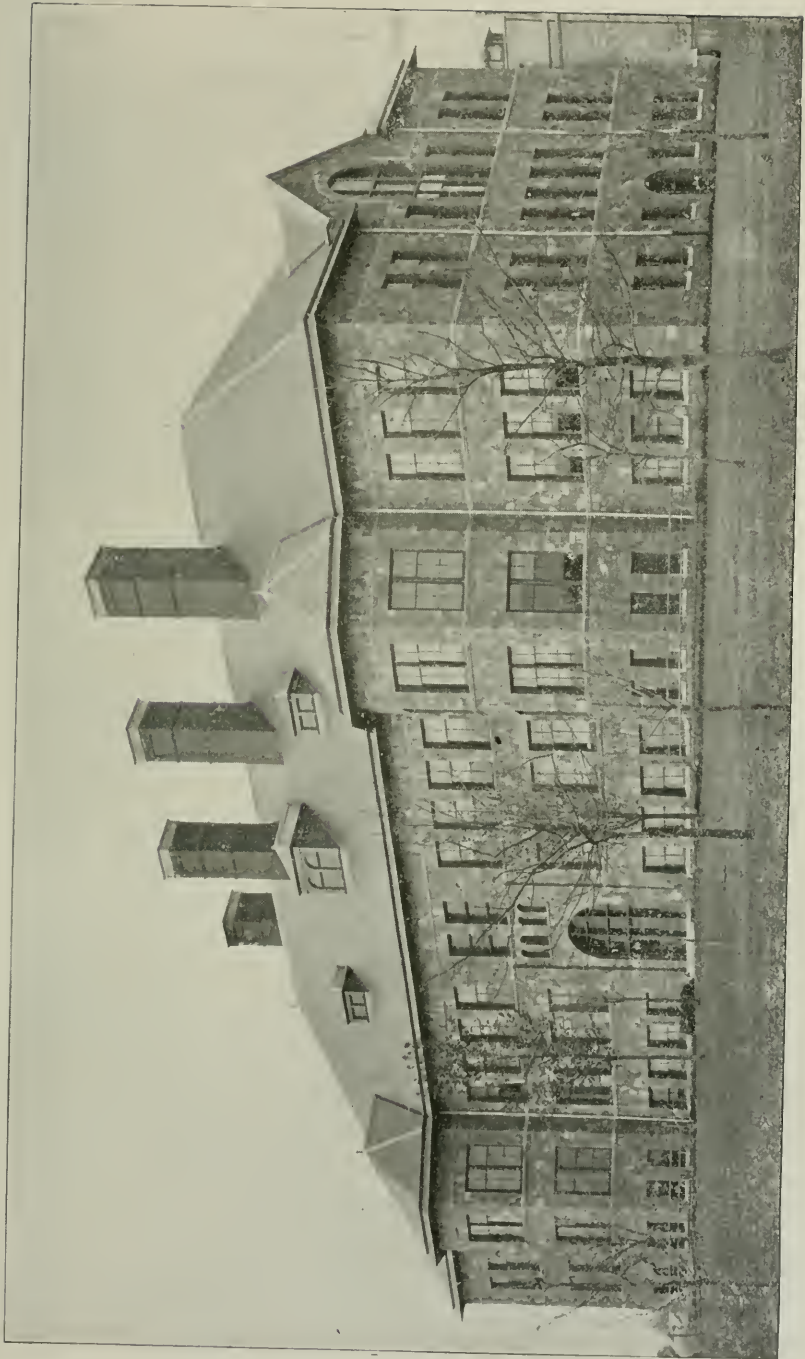
<i>Name.</i>	<i>Post Office.</i>	<i>County and State.</i>
Hawley, Virginia C.,	West Chester,	Chester, Pa.
Hayes, S. Emma,	" "	" "
Hayes, Emilie E.,	Upland,	Delaware, Pa.
Hayes, Sara E.,	West Chester,	Chester, Pa.
Heacock, Elizabeth R.,	Lima,	Delaware, Pa.
Heckler, Mary E.,	Frick's,	Bucks, Pa.
Heed, Mary L.,	West Chester,	Chester, Pa.
Hefft, Kathryn H.,	Trucksville,	Luzerne, Pa.
Heger, Barbara G.,	Jenkintown,	Montgomery, Pa.
Hellings, Elizabeth L.,	Wilmington,	Delaware.
Hemphill, Dorothy,	West Chester,	Chester, Pa.
Hershey, Lynn,	1110 North 3rd St.;	Harrisburg, Pa.
Hill, Annie,	Curwensville,	Clearfield, Pa.
Hill, Mary,	West Chester,	Chester, Pa.
Hobba, Bessie E.,	Osceola Mills,	Clearfield, Pa.
Hoagland, Zellah M.,	Unionville.	Chester, Pa.
Hodgson, Frances B.,	74 Grace St.,	Norfolk, Va.
Hoffman, Iva B.,	West Whiteland,	Chester, Pa.
Hoffman, Mary B.,	" "	" "
Hoffman, Sara E.,	" "	" "
Hoopes, Linda,	Chatham,	" "
Hoopes, M. B.,	Cheyney,	" "
Hoover, Della A.,	Grafton,	Huntingdon, Pa.
Horstick, Mary D.,	Palmyra,	Lebanon, Pa.
Hostetter, Viola M.,	Williamsport,	Lycoming, Pa.
Hough, Eleanor D.,	Peoria,	Illinois.
Howard, Emma,	Frankford,	Delaware.
Howe, Mildred K.,	Scranton,	Lackawanna, Pa.
Hudson, Alice,	Leonard,	Chester, Pa.
Hughes, Bessie,	Honeybrook,	" "
Hunsicker, Maria R.,	Ironbridge,	Montgomery, Pa.
Hunt, Cornelia W.,	Altoona,	Blair, Pa.
Hunt, Grace H.,	" "	" "
Hunter, Mabel R.,	Spring City,	Chester, Pa.
Hurlock, Eugenia D.,	Snow Hill,	Maryland.
Hurst, Edna,	West Chester,	Chester, Pa.
Husted, E. Louise,	" "	" "
Husted, Helen F.,	" "	" "
Hutton, Eunice,	Osceola Mills,	Clearfield, Pa.
Immell, Ruth,	Chambersburg,	Franklin, Pa.
Issett, Emma B.,	Limerick Square,	Montgomery, Pa.
Jackson, Iva L.,	Caln,	Chester, Pa.
Jardine, Mary H.,	Exton,	" "
Jarrett, Irene,	Jeffersonville,	Montgomery, Pa.
Jefferis, Lillian H.,	West Grove,	Chester, Pa.

<i>Name.</i>	<i>Post Office.</i>	<i>County and State.</i>
Jefferis, Laura M.,	West Chester,	Chester, Pa.
Johnson, Elvira Speakman,	" "	" "
Johnson, Ray May.	" "	" "
Johnson, Rosa M.,	Mechanics Valley,	Bucks, Pa.
Johnston, Mary H.,	Molino,	Schuylkill, Pa.
Jones, Jessie,	Ridgely,	Maryland.
Kane, Katharine P.,	West Chester,	Chester, Pa.
Kauffman, Bessie S.,	Berwyn,	" "
Keech, Katharine R.,	Tweeddale,	" "
Keeler, Mrs. Arilla H.,	Newtown,	Bucks, Pa.
Keppel, Leah L.,	Sinking Springs,	Berks, Pa.,
Kerns, Ida M.,	Mortonville,	Chester, Pa.
Kerns, Nettie M.,	Caln,	" "
Kervey, Mrs. H. R.	"	" "
Killeen, Nellie M.,	Carbondale,	Lackawanna, Pa.
Klein, Florence,	Shenandoah,	Schuylkill, Pa.
Knabb, Annie E.,	Birdsboro,	Berks, Pa.
Kuabb, Mary L.,	Limekiln,	" "
Knapp, Annie,	Montgomery Square,	Montgomery, Pa.
Knauer, Ella,	St. Peter's,	Chester, Pa.
Knight, Edith V.,	Germantown,	Philadelphia, Pa.
Knight, Mamie P.,	"	" "
Kochel, Mary A.,	Pottstown,	Montgomery, Pa.
Kriebel, Lizzie S.,	Lansdale,	" "
Kruger, Bessie P.,	Mendenhall,	Chester, Pa.
Kulp, Lydia M.,	Creamery,	Montgomery, Pa.
Kunkel, L. Alotta,	Lewisberry,	York, Pa.
Laing, Louise S.,	Bristol,	Bucks, Pa.
Larrabee, Florence F.,	Port Alleghany,	McKean, Pa.
Latimer, Anna A.,	Bristol,	Bucks, Pa.
Levan, Carrie,	Jacksonwald,	Berks, Pa.
Lewis, Mary Edna,	Glen Loch,	Chester, Pa.
Lewis, Elva R.,	Glenmore,	" "
Lewis, Ella B.,	West Chester,	" "
Liggett, Maude A.,	Marsh,	" "
Lloyd, Mary E.,	Nantmeal Village,	" "
Longacre, Emma S.,	Eagleville,	Montgomery, Pa.
Longacre, May S.,	"	" "
Longshore, H. Elsie,	West Chester,	Chester, Pa.
Loose, Sallie F.,	Hamburg,	Berks, Pa.
Loughry, Cora D.,	Latrobe,	Westmoreland, Pa.
Ludwick, Blanche M.,	West Chester,	Chester, Pa.
Lumis, Ruth E.,	" "	" "
MacDonald, Regina,	Peely,	Luzerne, Pa.
MacElree, Mary E.,	West Chester,	Chester, Pa.

<i>Name.</i>	<i>Post Office.</i>	<i>County and State.</i>
MacMinn, Caroline,	Williamsport,	Lycoming, Pa.
Maderia, Sallie M.,	Fleetwood,	Berks, Pa.
Maily, Ethel L.,	Odessa,	Delaware.
Makiver, Lillian,	Russellville,	Chester, Pa.
Manifold, Blanche M.,	Delta,	York, Pa.
March, Lucy B.,	Pottstown,	Montgomery, Pa.
Markley, Mary A.,	Jeffersonville,	" "
Marrett, Mabel T.,	Leeds,	Maryland.
Marshall, R. Mary,	Northbrook,	Chester, Pa.
Martin, Rachel T.,	West Chester,	" "
Masters, Anna Gertrude,	4020 Fairmount avenue,	Philadelphia, Pa.
Mathias, Lydia S.,	Penllyn,	Montgomery, Pa.
Mathues, Sara J.,	Westtown,	Chester, Pa.
McAfee, Rebecca, P. R.,	West Vincent,	" "
McCahan, Anna R.,	1607 South Broad street,	Philadelphia, Pa.
McCarthy, Bertha K.,	Royersford,	Montgomery, Pa.
McCormick, Clara C.,	West Chester,	Chester, Pa.
McCoy, Alice H.,	Goshenville,	" "
McCracken, Jennie L.,	Twin Oaks,	Delaware, Pa.
McCurdy, Mary F.,	Gladwyne,	Montgomery, Pa.
McDowell, Elizabeth M.,	Media,	Delaware, Pa.
McDowell, Sara H.,	"	" "
McFeely, Lenora,	142 Sumac street,	Philadelphia, Pa.
McGowan, Mary,	Gladwyne,	Montgomery, Pa.
McHenry, Helen,	3705 Aspen street,	Philadelphia, Pa.
McHenry, Sadie M.,	" " "	" "
McKinley, Esther, A.,	Mifflintown,	Juniata, Pa.
McKuen, Mabel C.,	Glen Loch,	Chester, Pa.
McMahan, Mary,	Lenni,	Delaware, Pa.
McMichael, Maggie,	Black Horse,	Chester, Pa.
Mearns, Mabel E.,	Oak Hill,	Lancaster, Pa.
Mendenhall, Mae,	Northbrook,	Chester, Pa.
Mercer, M. Mildred,	Ercildoun,	" "
Meredith, Marietta,	Towanda,	Bradford, Pa.
Meredith, M. Lizzie,	Exton,	Chester, Pa.
Merrick, Florence, E.,	Phoenixville,	" "
Miller, Lillian, B.,	Glen Moore,	" "
Moore, Elizabeth D.,	Radnor,	Delaware, Pa.
Moore, Mary A.,	Coatesville,	Chester, Pa.
Moore, Eva G.,	East Downingtown,	" "
Morgan, Louisa H.,	Furlong,	Bucks, Pa.
Morse, Mary A.,	Cambridge,	Maryland.
Morton, Margaret B.,	Lewisville,	Chester, Pa.
Moyer, Sallie N.,	Harleysville,	Montgomery, Pa.
Murray, Annie V.,	Bethlehem,	Northampton, Pa.

<i>Name.</i>	<i>Post Office.</i>	<i>County and State.</i>
Newbold, Mary A.,	Morrisville,	Bucks, Pa.
Nice, Blanche,	1720 Diamond street,	Philadelphia, Pa.
Nichols, Lydia P.,	Chatham,	Chester, Pa.
Noyes, Daisy E.,	Westport,	Clinton, Pa.
Nyce, Mabel M.,	Schwenksville,	Montgomery, Pa.
Oberholtzer, Ellen L.,	Fredericksburg,	Lebanon, Pa.
Osmand, May,	Cochranville,	Chester, Pa.
Ott, Mattie L.,	Buckingham,	Bucks, Pa.
Palmer, Bessie F.,	Wayne,	Delaware, Pa.
Parr, Louisa,	Andalusia,	Bucks, Pa.
Paschall, Edith S.,	West Chester,	Chester, Pa.
Paschall, Beulah W.,	" "	" "
Paschall, Mary R.,	" "	" "
Paul, Elizabeth,	William Penn,	Montgomery, Pa.
Pedrick, Mabel L.,	Paulsboro,	New Jersey.
Pierce, Ella M.,	Caln,	Chester, Pa.
Peirce, M. Viola,	West Chester,	" "
Peirce, Marion V.,	" "	" "
Peirce, Mary B.,	Edgemont,	Delaware, Pa.
Pepper, R. Clemmie,	Georgetown,	Delaware.
Pepper, W. Annie,	"	"
Philips, Elma M.,	Font,	Chester, Pa.
Philips, Bessie G.,	Licksdale,	Lebanon, Pa.
Philips, Lulu A.,	Tower City,	Schuylkill, Pa.
Philips, Maud A.,	" "	" "
Philips, Sara J.,	Atglen,	Chester, Pa.
Platt, Hannah C.,	Pineville,	Bucks, Pa.
Powell, Sue W.,	Marple,	Delaware, Pa.
Powers, Jean,	Northwest,	Virginia.
Pownall, Helen E.,	Newtown,	Bucks, Pa.
Prizer, Bessie K.,	Lionville,	Chester, Pa.
Pursell, Ethel B.,	Bristol,	Bucks, Pa.
Quay, Etta M.,	Lionville,	Chester, Pa.
Raab, Emma B.,	Willow Grove,	Montgomery, Pa.
Rabert, Katie S.,	Schnecksville,	Lehigh, Pa.
Raby, Elizabeth J.,	London Grove,	Chester, Pa.
Rambo, Mary L.,	West Chester,	" "
Rambo, Myrtle V.,	" "	" "
Raymond, J. Mina,	Condersport,	Potter, Pa.
Raysor, Elizabeth,	Warren Tavern,	Chester, Pa.
Reagan, Irene,	West Whiteland,	" "
Reid, Laura,	West Chester,	" "
Reynolds, Bertha,	Wagontown,	" "
Rhoads, Gertrude,	Westtown,	" "
Ridgway, Bessie T.,	Swedesboro,	New Jersey.

<i>Name.</i>	<i>Post Office.</i>	<i>County and State.</i>
Riegner, Ella M.,	Collegesville,	Montgomery, Pa.
Ritter, Anna B.,	Jeffersonville,	" "
Ritter, Carrie,	1026 Stricker St.,	Baltimore, Md.
Rivruider, Elizabeth S.,	Pughtown,	Chester, Pa.
Roberts, Elizabeth,	Andalusia,	Bucks, Pa.
Robinson, Cora A.,	Wagontown,	Chester, Pa.
Rogers, Harriette S.,	Warren,	Warren, Pa.
Rogers, Maude H.,	Mountain Gap,	Gap, Va.
Rogers, Maude M.,	Warrington,	Bucks, Pa.
Roper, Minnie M.,	Slatington,	Lehigh, Pa.
Rorer, Elizabeth U.,	Glenside,	Montgomery, Pa.
Rorer, Florence M.,	Lahaska,	Bucks, Pa.
Rosenfelt, Lillian,	1401 McCullough St.,	Baltimore, Md.
Rosenkrance, R. Dena,	Pittston,	Luzerne, Pa.
Ross, Margaret M.,	Mauch Chunk,	Carbon, Pa.
Rowland, Mary R.,	Vincent,	Chester, Pa.
Rudewick, Josephine A.,	Freeland,	Luzerne, Pa.
Ruth, Bessie E.,	Reading,	Berks, Pa.
Rutherford, Isabella P.,	Harrisburg,	Dauphin, Pa.
Rynear, Mary M.,	Ambler,	Montgomery, Pa.
Sanderson, Grace M.,	West Chester,	Chester, Pa.
Satterthwaite, Edith E.,	Edgewood,	Bucks, Pa.
Shaffer, Edith E.,	Derry Church,	Dauphin, Pa.
Schnucker, Dorothy M.,	West Chester,	Chester, Pa.
Scholl, Lottie M.,	Spring Mount,	Montgomery, Pa.
Scott, Elizabeth S.,	Newton,	Bucks, Pa.
Scott, Maude E.,	Ursina,	Somerset, Pa.
Seal, Edith M.,	West Chester,	Chester, Pa.
Seipt, Emma J.,	Worcester,	Montgomery, Pa.
Selner, Edna M.,	Davis Grove,	" "
Sensenig, Bessie,	Goodville,	Lancaster, Pa.
Shaeffer, Florence E.,	Jenkintown,	Montgomery, Pa.
Sharples, R. Ellen,	West Chester,	Chester, Pa.
Sheppard, Mabel W.,	Southampton,	Bucks, Pa.
Shields, Frances E.,	West Chester,	Chester, Pa.
Shoemaker, Irene D.,	Jeffersonville,	Montgomery, Pa.
Simmons, Edna,	Phenixville,	Chester, Pa.
Sinclair, Katharine,	Norristown,	Montgomery, Pa.
Sipple, Mary Gertrude,	Frederica,	Delaware.
Skinner, Rhea C.,	Glasgow,	"
Slack, Susan D.,	Pineville,	Bucks, Pa.
Sloop, Margaret,	Keystone,	Perry, Pa.
Slonaker, Elizabeth,	West Chester,	Chester, Pa.
Smedley, Nellie,	" "	" "
Smith, Bertha J.,	Henry Clay,	Delaware.



RECITATION HALL.

<i>Name.</i>	<i>Post Office.</i>	<i>County and State.</i>
Smith, Edith M.,	Sanborn,	New York.
Smith, Ida M.,	West Chester,	Chester, Pa.
Smith, Nettie G.,	Kemblesville,	" "
Smith, Mary A.,	Chester Springs,	" "
Snavely, Sara A.,	Lebanon,	Lebanon, Pa.
Snyder, Mary R.,	Lykens,	Dauphin, Pa.
Snyder, May V.,	Pottsville,	Schuylkill, Pa.
Spare, L. Edith,	Mont Clare,	Montgomery, Pa.
Speakman, Annie D.,	West Chester,	Chester, Pa.
Speakman, Ethel B.,	" "	" "
Spencer, Martha E.,	Oxford Valley,	Bucks, Pa.
Sproat, E. Adele,	Westtown,	Chester, Pa.
Sproat, Caroline D.,	" "	" "
Stackhouse, Laura N.,	Darby,	Delaware, Pa.
Stackhouse, Emma P.,	Lima,	" "
Steele, Marie H.,	Allegheny,	Allegheny, Pa.
Stellwagon, J. Evaline,	Markham,	Delaware, Pa.
Stetson, Elsie A.,	Duffryn Mawr,	Chester, Pa.
Stevens, Ruie M.,	Stevensville,	Bradford, Pa.
Stever, Ada M.,	Doylestown,	Bucks, Pa.
Stewart, Anna M.,	New Castle,	Delaware.
Stewart, Mary K.,	Cedar Knoll,	Chester, Pa.
Stradling, Ellizabeth,	Oakford,	Bucks, Pa.
Stradling, Benita L.,	" "	" "
Strode, Elizabeth,	West Chester,	Chester, Pa.
Stubblebine, Kate M.,	Pughtown,	" "
Styer, Anna L.,	Vincent,	" "
Surver, Bertha,	Montandon,	Northumber'd, Pa.
Swartley, Minerva,	Colmar,	Montgomery, Pa.
Swayne, Margaret B.,	Kennett Square,	Chester, Pa.
Swope, Sadie A.,	Rehlersburg,	Berks, Pa.
Taggart, Helen,	Fort Washington,	Montgomery, Pa.
Taylor, Adella,	Kennett Square,	Chester, Pa.
Taylor, Anna V.,	West Chester,	" "
Thatcher, Helen M.,	" "	" "
Thomas, Grace C.,	Farmington,	Delaware.
Thomas, Rebecca B.,	Warren Tavern,	Chester, Pa.
Thompson, Martha B.,	West Chester,	" "
Thompson, Rachel P.,	" "	" "
Tinker, Dorcas M.,	Altoona,	Blair, Pa.
Trainer, Anna B.,	Chelsea,	Delaware, Pa.
Troutman, Nettie,	West Chester,	Chester, Pa.
Travilla, Florence,	" "	" "
Trimmer, Jean U.,	Wilkesbarre,	Luzerne, Pa.
Triol, Jessie D.,	Jenkintown,	Montgomery, Pa.

<i>Name.</i>	<i>Post Office.</i>	<i>County and State.</i>
Trucksess, Mazie D.,	Providence Square,	Montgomery, Pa.
Tucker, Anna B.,	Honeybrook,	Chester, Pa.
Tull, Feronia C.,	Seaford,	Delaware.
Tuohey, Dorothy Z.,	Kennett Square,	Chester, Pa.
Twigg, Napler,	Town Creek,	Maryland.
Twining, Emma H.,	Richboro,	Bucks, Pa.
VanGunten, Jessie B.,	Somerton,	Philadelphia, Pa.
Vanuxem, Mary,	Moorestown,	New Jersey.
Vinyard, Eva M.,	Houston,	Delaware.
Voris, Anna G.,	Pottsgrove,	Northumber'd, Pa.
Wagner, E. Irene,	Mont Clare,	Montgomery, Pa.
Waldron, Jessie M.,	Glen Loch,	Chester, Pa.
Walter, Nellie,	Point Pleasant,	Bucks, Pa.
Wanzel, Carrie E.,	Marietta,	Lancaster, Pa.
Webb, Bertha H.,	Unionville,	Chester, Pa.
Webster, Rachel E.,	Hulmeville,	Bucks, Pa.
Weir, Maggie,	Ridley Park,	Delaware, Pa.
Weisel, Deborah D.,	Doylestown,	Bucks, Pa.
Weisel, Augusta,	"	" "
Welsh, Elizabeth M.,	West Whiteland,	Chester, Pa.
Wenger, Lillian G.,	Akron,	Lancaster, Pa.
Wetherill, Sara R.,	Chester,	Delaware, Pa.
Wherry, Jessie E.,	Chatham,	Chester, Pa.
Whitcraft, Pauline V.	West Chester,	" "
White, Alice,	Jeffersonville,	Montgomery, Pa.
White, Florence E.,	Honeybrook,	Chester, Pa.
Wickersham, Annie R.,	Unionville,	" "
Wickersham, Jennie H.,	"	" "
Williams, Candace A.,	Lansford,	Carbon, Pa.
Williams, Helen G.,	Oakbourne,	Chester, Pa.
Williams, Lucina A.,	Peckville,	Lackawana, Pa.
Willis, M. Emma,	Manoa,	Delaware, Pa.
Wilson, Elizabeth U.,	New Castle,	Delaware.
Wilson, Nellie S.,	Belfry,	Montgomery, Pa.
Wilson, Mabel I.,	McVeytown,	Mifflin, Pa.
Wollaston, Mary A.	Kennett Square,	Chester, Pa.
Worrall, Laura M.,	West Chester,	Chester, Pa.
Worthington, Helen R.,	Mechanics Valley,	Bucks, Pa.
Wright, Meta M.,	Trenton,	New Jersey.
Wright, Sara E.,	West Chester,	Chester, Pa.
Wrighter, Ethel C.,	Pleasant Mount,	Wayne, Pa.
Yerger, Bertha,	Grater's Ford,	Montgomery, Pa.
Young, Cidney,	West Chester,	Chester, Pa.

GENTLEMEN.

<i>Name.</i>	<i>Post Office.</i>	<i>County and State.</i>
Alderfer, Harry C.,	Harleysville,	Montgomery, Pa.
Althouse, Walter M.	Jacksonwald,	Bucks, Pa.
Arnold, Andrew B.,	Quakertown,	Bucks, Pa.
Baker, Wm. J.,	Glen Loch,	Chester, Pa.
Baker, H. Lawrence,	Northbrook,	" "
Barnard, Charles D.,	Lenape,	" "
Barnd, S. H.,	Potosi,	York, Pa.
Barrett, W. A. S.,	Abingdon,	Virginia.
Barth, Harry W.,	Denglers,	Berks, Pa.
Bartman, Daniel H.,	Collegeville,	Montgomery, Pa.
Barton, Clarence F.,	Corinne,	Chester, Pa.
Beatty, Fulton,	West Chester,	" "
Beaver, J. Lynford,	Kimberton,	" "
Bernard, Franklin,	Kennett Square,	" "
Bishop, Elliott A.,	Conyngham,	Luzerne, Pa.
Bixler, Wm. H.,	Fisherville,	Dauphin, Pa.
Black, John M.,	Hulmeville,	Bucks, Pa.
Boeshore, Miller H.,	Fredericksburg,	Lebanon, Pa.
Bower, Samuel L.,	Boyertown,	Berks, Pa.
Boyd, Joseph L.,	Pocopson,	Chester, Pa.
Brinton, Clement,	West Chester,	" "
Brinton, Willard C.,	" "	" "
Brinton, Howard H.,	" "	" "
Brown, Robert W.,	Malvern,	" "
Bull, Wilfred D.,	West Chester,	" "
Burke, Albert J.,	Fox Chase,	Philadelphia, Pa.
Burkhardt, Charles,	Blooming Glen,	Bucks, Pa.
Bye, Frank P., Jr.,	West Chester,	Chester, Pa.
Byers, J. Taylor,	West Whiteland,	" "
Canning, Charles H.,	West Chester,	" "
Carr, Lewis A.,	West Vincent,	" "
Carroll, Martin L.,	Tower City,	Schuylkill, Pa.
Carulla, Rafael,	Santiago de Cuba,	Cuba.
Cawley, W. A.,	Springtown,	Bucks, Pa.
Cawley, John, Jr.,	" "	" "
Channell, Ralph F.,	Parkesburg,	Chester, Pa.
Clark, Joseph W.,	West Chester,	" "
Cochran, C. Marshall,	" "	" "
Cook, Ralph B.,	Dillsburg,	York, Pa.
Coover, H. C.,	Lewisberry,	" "
Cope, Edge T.,	West Chester,	Chester, Pa.

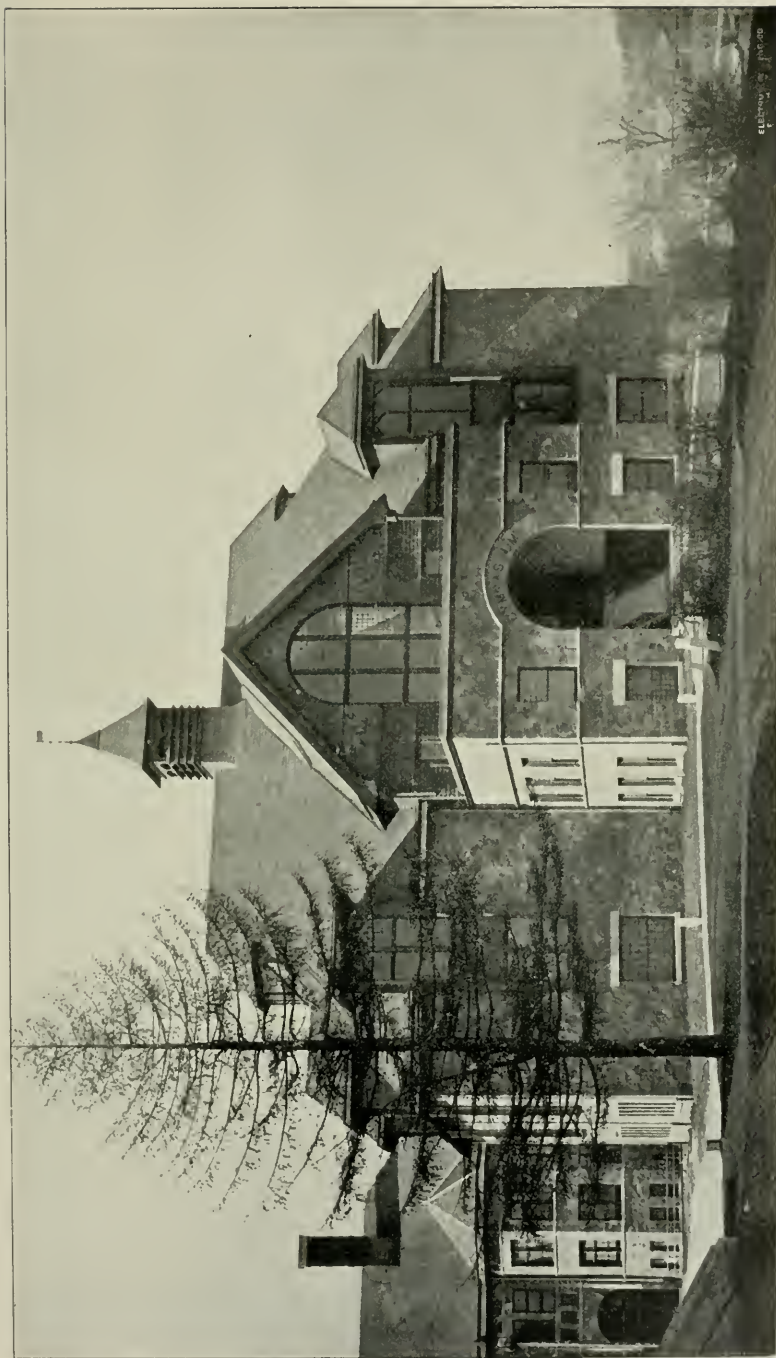
<i>Name.</i>	<i>Post Office.</i>	<i>County and State.</i>
Cran, W. C.,	Raleigh,	North Carolina,
Cronin, James R.,	Glen Mills,	Chester, Pa.
Currey, Warren,	West Chester,	" "
Davis, Donald W.,	Embreeville,	Chester, Pa.
Davis, Joseph S.,	"	" "
Davis, Lee H.,	Denton,	Maryland.
Deitrick, H. P.,	Maple Hill,	Lycoming, Pa.
Detweiler, John A.,	Palmyra,	Lebanon, Pa.
Diehl, J. Watson,	Bedminster,	Bucks, Pa.
Dittenheffer, J. W.,	Tilden,	York, Pa.
Doane, Joseph A.,	West Chester,	Chester, Pa.
Dolby, J. W.,	Coatesville,	" "
Ecker, Roscoe,	St. George,	Delaware.
Ehret, Robert F.,	Middagh's,	Northumber'd Pa.
Emrey, G. Carroll,	Honeybrook,	Chester, Pa.
Endicott, Henry,	Shanghai,	China.
England, Walter C.,	Glen Mills,	Delaware, Pa.
Enriken, J. Carroll,	Malvern,	Chester, Pa.
Esrey, Joseph G.,	1642 Pine St.,	Philadelphia, Pa.
Evans, Reuben E.,	102 E. Mt. Airy Ave.	" "
Fagley, Reuben,	Shamokin,	Northumb'land Pa.
Farrar, H. M.,	857 President St.,	Brooklyn, N. Y.
Farrar, John A.,	" " "	" "
Fleming, Andrew,	Tremont,	Schuylkill, Pa.
Fletcher, Samuel,	844 N. Broad St.,	Philadelphia, Pa.
Forrest, T. Kenny,	Brandywine Manor,	Chester, Pa.
Fowler, Arthur G.,	Jernyn,	Lackawanna, Pa.
Foulke, George R.,	West Chester,	Chester, Pa.
Frank, Kelly R.,	Montandon,	Northum'land, Pa.
Garcia, Calixto R.,	Havana,	Cuba.
Gates, Harry J.,	York,	York, Pa.
Gettel, Jacob M.,	Rehrersburg,	Berks, Pa.,
Gill, H. Walter,	Coalport,	Clearfield, Pa.
Godshall, Alvin M.,	Morwood,	Montgomery, Pa.
Godshall, Vincent,	Telford,	" "
Gohn, M. S.,	Wrightsville,	York, Pa.
Goodley, Samuel,	Booth's Corner,	Delaware.
Goodwin, Cecil C.,	West Chester,	Chester, Pa.
Gordon, Clarence,	Newark,	New Jersey.
Graeff, Peter B.,	Robesonia,	Berks, Pa.
Green, N. Clayton,	Booth's Corner,	Delaware, Pa.
Greiner, Albert H.,	Neiffer,	Montgomery, Pa.
Griffith, William C.,	Towanda,	Bradford, Pa.
Groff, Wilmer K.,	Limerick,	Montgomery, Pa.
Guyer, Allen W.,	East Salem,	Juniata, Pa.

<i>Name.</i>	<i>Post Office.</i>	<i>County and State.</i>
Guyer, J. J.	East Salem,	Juniata, Pa.
Hagenbuch, Frank E. L.,	Elinsport,	Lycoming, Pa.
Haines, H. B.,	Freysville,	York, Pa.
Halbach, Ernest K.,	Wayne,	Delaware, Pa.
Halloway, Thomas C.,	Nicholsville,	Kentucky.
Hanby, James G.,	Elam,	Delaware, Pa.
Harvey, Thorndyke,	West Chester,	Chester, Pa.
Heffner, James D.,	Pottstown,	Montgomery, Pa.
Heiges, W. C.,	Dillsburg,	York, Pa.
Hellyer, H. Arthur,	Penn's Park,	Bucks, Pa.
Hellyer, Harold,	" "	" "
Hennen, Chalmers,	Manor Hill,	Huntingdon, Pa.
Heyburn, W. Allen,	Brandywine Summit,	Delaware, Pa.
Hibberd, Josiah H.,	Everhart,	Chester, Pa.
Hiddleson, George H.,	Downingtown,	" "
Hoffman, George L.,	Churchtown,	Lancaster, Pa.
Hoffman, Sellers,	Chadd's Ford,	Delaware, Pa.
Hornberger, Frank A.,	824 N. 11th St.,	Reading, Berks, Pa.
Horstick, G. M.,	Palmyra,	Lebanon, Pa.
Hoskins, John R.,	" "	" "
Hoskins, Thomas L.,	" "	" "
Howerter, E. E.,	Stony Run,	Berks, Pa.
Ingram, Charles,	West Chester,	Chester, Pa.
Ingram, Edward,	" "	" "
Irwin, William M.,	Honeybrook,	" "
Jackson, Halliday R.,	West Chester,	" "
Jamison, John J.,	Hartsville,	Bucks, Pa.
Jefferis, Jonathan H.,	West Chester,	Chester, Pa.
Jefferis, H. Walter.	Romansville,	" "
Jenks, George B.,	Prospect & Summit Sts.,	Philadelphia, Pa.
Johnson, Ashmore C.,	Exton,	Chester, Pa.
Johnson, Ralph A.,	West Chester,	" "
Jones, Alphonso,	La Motte,	Montgomery, Pa.
Jones, Hayes,	Doe Run,	Chester, Pa.
Keller, C. G.,	East Prospect,	York, Pa.
Keller, Erwin H.,	Bedminster,	Bucks, Pa.
Kelley, Edward F.,	Minersville,	Schuylkill, Pa.
King, John F.,	Edgely,	Bucks, Pa.
Kintzer, R. W.,	Wernersville,	Berks, Pa.
Kline, Harvey M.,	Gratersford,	Montgomery, Pa.
Klink, Stauffer,	Kenilworth,	Chester, Pa.
Kriebel, Alton,	Cedars,	Montgomery, Pa.
Landis, Samuel,	Reading,	Berks, Pa.
Lane, Elmer A.,	Trainer,	Delaware, Pa.
Law, Charles H.,	Pottstown,	Montgomery, Pa.

<i>Name.</i>	<i>Post Office.</i>	<i>County and State.</i>
Lewis, F. Warren,	West Chester,	Chester, Pa.
Licking, Roy,	Delta,	York, Pa.
Longacre, Aaron S.,	Rich Hill,	Bucks, Pa.
Longshore, Rudolf,	West Chester,	Chester, Pa.
Lorenz, Louis.	Tremont,	Schuylkill, Pa.
Lumis, Oscar M.,	Mathews,	Chester, Pa.
Lutz, J. W.,	Middletown,	Dauphin, Pa.
MacElree, J. Paul,	West Chester,	Chester, Pa.
Machado, Gabriel R.,	Kingston,	Jamacia,
Machado, Guillermo J.,	"	"
Machado, Horacia L.,	"	"
Mackie, Amos,	Fair Hill,	Maryland.
MacMillan, W. L. T.,	Mahanoy City,	Schuylkill, Pa.
Manley, S. Reed,	715 S. 23rd St.	Philadelphia, Pa.
Manley, William W.,	" "	" "
Markley, J. Preston,	Schwenksville,	Montgomery, Pa.
Martin, C. Leon,	West Chester,	Chester, Pa.
Martin, Roscoe C.,	" "	" "
Matthew, I. E.,	Coalport,	Clearfield, Pa.
McCauley, Louis G.,	Susquehanna,	Susquehanna, Pa.
McCleish, Robert,	Coatesville,	Chester, Pa.
McCord, Clinton P.,	Blue Rock,	" "
McCormick, William,	West Chester,	" "
McCreary, C. T.,	Cessna,	Bedford, Pa.
McCullough, Milton L.,	Broomall,	Delaware, Pa.
McFadden, John V.,	West Chester,	Chester, Pa.
McMullin, John,	St. George's,	Delaware, Pa.
Mease, Harry M.,	Lickdale,	Lebanon, Pa.
Merkel, William A.,	Hamburg,	Berks, Pa.
Miller, D. Blaine,	Rockwood,	Somerset, Pa.
Miller, Ralph E.	New Tripoli,	Lehigh, Pa.
Miller, W. M.,	Etters,	York, Pa.
Mitchell, Millard F.,	Newport,	Perry, Pa.
Monahan, Thomas A.,	Tower City,	Schuylkill, Pa.
Monholland, Oliver,	Mortonville,	Chester, Pa.
Mood, Wm. H.,	Keller's Church,	Bucks, Pa.
Moyer, Samuel W.,	Silverdale,	" "
Moyer, Jacob M.,	"	" "
Mora, Charles,	Porto Plata,	San Domingo.
Neidlinger, George D.,	Muncy Valley,	Sullivan, Pa.
Oberholtzer, Milton M.,	Fredericksburg,	Lebanon, Pa.
Ott, Herman S.,	Tohickon,	Bucks, Pa.
Parke, Richard Jr.,	West Chester,	Chester, Pa.
Parsons, H. B.,	Upland,	Delaware, Pa.
Payne, John B.,	Girardville,	Schuylkill, Pa.

<i>Name.</i>	<i>Post Office.</i>	<i>County and State.</i>
Phillips, Samuel H.,	Chelsea,	Delaware, Pa.
Pierce, Thomas W. Jr.,	West Chester,	Chester, Pa.
Plank, Herbert,	Green Hill,	" "
Poorman, W. S.,	Palmyra,	Lebanon, Pa.
Pratt, Randolph,	Clayton,	Delaware.
Prizer, Roscoe J.,	Schwenksville,	Montgomery, Pa.
Raubenhold, Frank M.,	Hamburg,	Berks, Pa.
Reber, Adam,	Harrity,	Carbon, Pa.
Reed, Warren H.,	Dudley,	Huntingdon, Pa.
Reiff, Henry J.,	Eagleville,	Montgomery, Pa.
Rigby, Arthur V.,	611 Market Street,	Philadelphia, Pa.
Ritter, Monroe H.,	Jacksonwald,	Berks, Pa.
Rochester, James A.,	Denton,	Maryland.
Rodriguez, Ricardo,	Saltillo,	Mexico.
Rodriguez, Roberto,	"	"
Roman, Juan R.,	Paris,	France.
Ros, Eduardo,	Cienfuegos,	Cuba.
Rosenberger, James A.,	Milford Square,	Bucks, Pa.
Rosenberger, Reno B.,	" "	" "
Rutherford, Matthew R.,	Harrisburg,	Dauphin, Pa.
Rutherford, Norman P.,	"	" "
Sabold, Irwin,	Neiffer,	Montgomery, Pa.
Sancedo, Vicente,	Saltillo,	Mexico.
Sanderson, Christie C.,	Point Providence,	Montgomery, Pa.
Sanjenis, Antonio,	Merida,	Yucatan.
Saxon, Gordon J.,	Bernice,	Sullivan, Pa.
Schenck, Walter B.,	Dyberry,	Wayne, Pa.
Schlosser, Wellington,	Berwyn,	Chester, Pa.
Schmucker, Beale, M.,	West Chester,	" "
Schoonover, Frank B.,	Carbondale,	Lackawanna, Pa.
Schreiner, Watson C.,	1849 North 12th St.,	Philadelphia, Pa.
Schrope, William D.,	Hegins,	Schuylkill, Pa.
Schwenk, Frank,	Schwenksville,	Montgomery, Pa.
Scal, Clarence B.,	West Chester,	Chester, Pa.
Seltzer, Jacob C.,	Pottsville,	Schuylkill, Pa.
Sharples, Lawrence P.,	West Chester,	Chester, Pa.
Sharples, Philip T.,	" "	" "
Sharples, A. Roberts,	" "	" "
Sheridan, Michael,	Kaolin,	" "
Shingle, F. Raymond,	East Nantmeal,	" "
Shoffner, Jones T.,	West Pikeland,	" "
Sigman, James G.,	Warwick,	" "
Simrell, H. Eugene,	Clark's Summit,	Lackawanna, Pa.
Sinclair, Samuel, Jr.,	Kennett Square,	Chester, Pa.
Singles, Walter,	Colwyn,	Delaware, Pa.

<i>Name.</i>	<i>Post Office.</i>	<i>County and State.</i>
Slotter, Theodore,	Bedminster,	Bucks, Pa.
Smith, Norman D.,	Media,	Delaware, Pa.
Smith, Thomas H.,	Red Lion,	York, Pa.
Smith, Ralph G.,	West Chester,	Chester, Pa.
Smith, Horace E.,	" "	" "
Snell, Perry F.,	York,	York, Pa.
Sollenberger, George L.,	Greencastle,	Franklin, Pa.
Sones, John E.,	Hegins,	Schuylkill, Pa.
Souder, Edmund O.,	Souderton,	Montgomery, Pa.
Sproat, Elric S.,	Westtown,	Chester, Pa.
Sproat, Ronald S.,	" "	" "
Stauffer, Willis W.,	Weiglestown,	York, Pa.
Stauffer, David S.,	Annville,	Lebanon, Pa.
Stettler, Irving I.,	Mertztown,	Berks, Pa.
Stein, D. W.,	Freysville,	York, Pa.
Stevens, M. L.,	Elkdale,	Susquehanna, Pa.
Strauss, Percy,	Reading,	Berks, Pa.
Stricker, Oscar J.,	Portage	Cambria, Pa.
Strode, Marshall D.,	West Chester,	Chester, Pa.
Strohl, James M.,	Aquashicola,	Carbon, Pa.
Stutzman, Harry A.,	Fountain,	Schuylkill, Pa.
Sunday, George W.,	Hamburg,	Berks, Pa.
Sutton, Orlando A.,	St. George's,	Delaware.
Swinehart, I. W.,	Brandywine Manor,	Chester, Pa.
Swope, Ruben O.,	Wisner,	Bucks, Pa.
Tabares, Jose A.,	121 Maiden Lane,	New York, N. Y.
Taylor, George D.,	Goshenville,	Chester, Pa.
Taylor, C. Marshall,	West Chester,	" "
Thomas, Ralph R.,	Warren Tavern,	" "
Thorne, H. J.,	Freysville,	York, Pa.
Ulrich, Elmer B.,	Brickerville,	Lancaster, Pa.
Vance, Herbert, P.,	West Chester,	Chester, Pa.
Wack, Isaac O.,	Lansdale,	Montgomery, Pa.
Walters, George L.,	Phoenixville,	Chester, Pa.
Webster, Horace,	Ercildoun,	" "
Weigel, C. F.,	Taxville,	York, Pa.
Weinberger, O. N.,	Steinsburg,	Bucks, Pa.
Werner, Clement H.,	Bandanna,	York, Pa.
West, Harry B.,	3042 Market St.,	Philadelphia, Pa.
Whisler, Clarence W.,	York Haven,	York, Pa.
Whisler, Edgar,	Newberrytown,	" "
Wieand, Harry S.,	Mauch Chunk,	Carbon, Pa.
Williams, Reese S.,	Lansford,	" "
Wilson, J. Parke,	Burnside,	Clearfield, Pa.
Windle, Ernest G.,	West Chester,	Chester, Pa.



GYMNASIUM.

<i>Name.</i>	<i>Post Office.</i>	<i>County and State.</i>
Windle, W. Butler,	West Chester,	Chester, Pa.
Witherspoon, John W.,	Guilford Springs,	Franklin, Pa.
Wolford, Warren L.,	Souderton,	Montgomery, Pa.
Wood, Valentine,	West Chester,	Chester, Pa.
Worrall, Elwood M.,	" "	" "
Wynn, Maurice S.,	Nantmeal Village,	" "
Yiengst, Harry,	Mt. Zion,	Lebanon, Pa.
Yiengst, H. S.,	Myerstown,	" "
Yoder, William F.,	Hegins,	Schuylkill, Pa.
Zimmerman, Harvey G.,	Standard,	Lehigh, Pa.



RECAPITULATION OF STUDENTS.

Number during first term,	- - - - -	649
" " second term,	- - - - -	685
<hr/>		
Total number of students,	- - - - -	1334
Number in attendance both terms,	- - - - -	504
<hr/>		
Number of different students during year,	- - - - -	830
Number of ladies,	- - - - -	520
" gentlemen,	- - - - -	310
Special students (not catalogued),	- - - - -	31
Pennsylvania (representing 42 counties),	- - - - -	761

Delaware,	- - - - - 22	China,	- - - - - 3
Illinois,	- - - - - 1	Cuba,	- - - - - 3
Maryland,	- - - - - 11	France,	- - - - - 2
New Jersey,	- - - - - 7	India,	- - - - - 1
New York,	- - - - - 3	Jamaica,	- - - - - 3
North Carolina,	- - - - - 2	Mexico,	- - - - - 3
New Mexico,	- - - - - 1	Yucatan,	- - - - - 1
Ohio,	- - - - - 1		
Virginia,	- - - - - 5		

Course of Instruction

AS REVISED DECEMBER 11, 1894.

Four courses of Instruction are provided for, as follows :

Elementary Course.

Regular Normal Course.

Scientific Course.

Advanced Normal Course.

ELEMENTARY COURSE.

PREPARATORY YEAR.

Language :—English Grammar, Orthography, Reading.

Mathematics :—Arithmetic, Algebra.

Natural Science :—Physiology and Hygiene.

Historical Science :—Geography, Political and Physical; History of United States.

The Arts :—Penmanship, sufficient to be able to explain some approved system; writing to be submitted to the Board of Examiners.

JUNIOR YEAR.

Pedagogics :—School Management; Methods of Teaching the Common Branches.

Language :—English Grammar; Latin, sufficient for the introduction of Cæsar.

Mathematics :—Arithmetic; Elementary Algebra.

Natural Science :—Botany.

Historical Science :—Civil Government.

The Arts :—Drawing, a daily exercise for at least twenty-one weeks, work to be submitted to the Board of Examiners; Book-keeping, single entry, including a knowledge of common business papers, and a daily exercise for at least seven weeks; Vocal music, elementary principles, and attendance upon daily exercises for at least twelve weeks.

Physical Training.

SENIOR YEAR.

Pedagogics:—Psychology; Methods of teaching the Common Branches; History of Education; Model School Work, at least twenty weeks of actual teaching daily during one period of not less than forty-five minutes; a Thesis on a professional subject.

Language:—Rhetoric and Composition; English Literature, at least twelve weeks' work, including the thorough study of four English classics; Latin, Cæsar, through the Helvetian War.

Mathematics:—Plane Geometry.

National Science:—Elementary Natural Philosophy.

Historical Science:—General History.

The Arts:—Elocutionary exercises in connection with the study of English Literature; Manual Training.

Physical Training.

REGULAR NORMAL COURSE—ONE ADDITIONAL YEAR.

(This Course includes the studies of the Elementary Course, and the following branches: A full equivalent will be accepted for any of the text-books named in this Course.)

Pedagogics:—Advanced Psychology; Moral Science; Philosophy of Education; Methods of Teaching; Practice of Teaching; Pedagogical Works; Fröbel, Education of Man; Quick, Educational Reformers; Fitch, Lectures on Teaching; School Supervision; School Apparatus; Discussion on Manual Training, Physical Culture, etc.

Mathematics:—Solid Geometry. Plane and Analytical Trigonometry; Surveying.

Language:—Latin; Cæsar, 3 books; Vergil's *Æneid*, 3 books; Cicero, 3 Orations.

Natural Science:—Chemistry, including Chemistry of Soils; Zoology, including Entomology; Geology.

Literature:—Higher Literature, English and American, including a study of at least four classics.

SCIENTIFIC COURSE—ONE ADDITIONAL YEAR.

(This course includes the studies of the Regular Normal Course and the following branches:)

Pedagogics: Logic; Course of Professional Reading selected from Regular or Advanced Normal Course; a Thesis on a professional subject.

Language:—Latin 3 Books of Vergil's *Æneid*, 3 Orations of Cicero, or a full equivalent; (an equivalent of Greek, German or French will be accepted for any of the following studies: Vergil, Cicero, Higher Algebra, Spherical Trigonometry, Surveying, Analytical Geometry, Calculus, Mathematical Natural Philosophy and Mathematical Astronomy, and an equivalent of Latin and advanced work in Natural Science for any of the foregoing mathematical studies.)

Mathematics:—Higher Algebra; Spherical Trigonometry and Surveying, with the use of instruments; Analytical Geometry; Differential and Integral Calculus.

Natural Science:—Higher Natural Philosophy; Astronomy; Descriptive and Mathematical.

Historical Science:—English History; Grecian History; Roman History.

ADVANCED NORMAL COURSE.

(This course includes the studies of the Scientific Course, and one year's additional work in Pedagogics, as follows: A full equivalent will be accepted for any of the text-books in the Course.)

Psychology:—James, Advanced Course.

Laurie's Institutes of Education; Rein's Outline of Pedagogy; Herbart's Science of Education; Spencer's Education; Rosmini's Method in Education; Davidson's Education of the Greek people.

Discussion of Methods and Objects of Leading Educators; Fröbel, Pestalozzi, Dr. Arnold, Horace Mann and others.

Discussion of Educational Theories.

Education in the United States; Education in Pennsylvania (Wickersham); General Survey of History of Public Education in Germany, France and England.

Advanced work in Language, Mathematics, Natural Science, etc., may be taken at the option of the student.



Rules for Final Examinations

*AND ADMISSION TO THE JUNIOR AND SENIOR
CLASSES IN THE ELEMENTARY COURSE.*

1. Admission to the Senior class as well as graduation shall be determined by the State Board of Examiners at the annual examination of the Board. The Board is appointed by the State Superintendent of Public Instruction from the following classes: The State Superintendent or Deputy Superintendent, who is President of the Board; the Principal of another Normal School; six county, city or borough super-

intendents of Pennsylvania; and the Principal of this Normal School. Each student must receive eight votes out of the nine in order to pass the examination.* Students must be examined and recommended by the Faculty before taking the State examination.

2. In order to be admitted to the Senior class, persons must be examined in all the Junior studies, except Methods of teaching and school management, and the examination in these branches shall be final. No substitutions or conditions shall be allowed for any of the studies required for admission to the Senior class.

3. If the faculty of any State Normal School, or the State Board of Examiners, decide that a person is not prepared to pass an examination by the State Board, he shall not be admitted to the same examination at any other State Normal School during the same year.

4. If a person who has completed the Junior studies at any State Normal School, desires to enter another State Normal School, the Principal of the School at which the examination was held shall send the proper certificate to the Principal of the School which the person desires to attend. Except for the reason here stated, no certificate setting forth the fact of the passing of the Junior studies shall be issued.

5. Candidates for graduation shall be examined in all the branches of the Senior year. They shall have the opportunity of being examined in any of the higher branches, including vocal and instrumental music and double entry book-keeping; and all studies completed by them shall be named in their certificate.

6. A certificate setting forth the proficiency of all the applicants in all the studies in which they desire to be examined by the State Board of Examiners shall be prepared and signed by the faculty and presented to the Board.

*These examinations come early in June, the date being fixed each year by the State Superintendent. The examinations are in writing and last two or three days. The Sub-Junior examination has been abandoned, and students will hereafter be examined in Preparatory and Junior branches at the end of the Senior year.

CERTIFICATES AND DIPLOMAS.

A student graduating in either Course will receive a certificate in which will be named the branches he has studied, which will entitle him to teach in the public schools of Pennsylvania for any two subsequent years without further examinations. Students completing the Regular Normal Course receive diplomas constituting their holders *Bachelors of Pedagogics*. The diplomas of those graduating in the Scientific course will enumerate the distinctive branches of this course.

Graduates who have continued their studies for *two years*, and have practiced their profession for *two annual terms*, in the Common Schools of the State, and who have presented to the Faculty and Board of Examiners a certificate of good moral character and skill in the art of Teaching from the Board or Boards of Directors in whose employ they have taught, countersigned by the proper County Superintendent, may receive diplomas, which are permanent certificates of the highest grade. *They confer upon their holders the right to teach the branches named therein in the public schools of Pennsylvania, without further examinations.* These diplomas in the Regular Normal Course constitute their holders *Master of Pedagogics*.

Applications for diplomas must be presented to the Board of Examiners at their regular session.

The Normal School law makes it the duty of the authorities of the Normal Schools to grant diplomas or State Certificates to *actual teachers in Common Schools*, without their having attended the Normal Schools as students. The following are the conditions upon which these diplomas will be granted:

1. Each applicant must be twenty-one years of age, and of good moral character, and must have taught successfully during three successive annual terms in Common Schools in this State, the proof of age to be the declaration on honor of the applicant; and of moral character and a satisfactory discharge of the requisite terms of teaching, a certificate from the proper Board or Boards of Directors, signed by the President and Secretary, and countersigned by the proper County Superintendent or Superintendents.

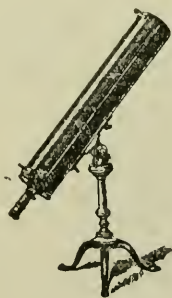
2. The examinations to be in the Elementary, Regular

Normal or Scientific Course, as the applicant may select, according to the list of studies as printed in the circulars of the State Normal School, and approved by the Superintendent of Public Instruction, or in such other studies as may by the Board of Examiners be deemed equivalent.

3. Any person obtaining a certificate in the Elementary Course may, at the next or any succeeding annual examination, be examined for the higher course, and obtain the proper certificate.

4. Each applicant to prepare and present to the Board of Examiners an original thesis of not less than six folio pages of manuscript, on some professional subject, to be retained at the school where the examinations take place.

5. The examinations and certificate to be without expense to the applicant, and the certificate to be full evidence of qualifications to teach the branches therein named, in any part of the State, without further examination.



GENERAL ANTHONY WAYNE'S TELESCOPE.

Presented by Isaac Wayne to the Chester County Cabinet of Natural Science in 1831.
Now the property of the West Chester State Normal School.

Location, Buildings, &c.

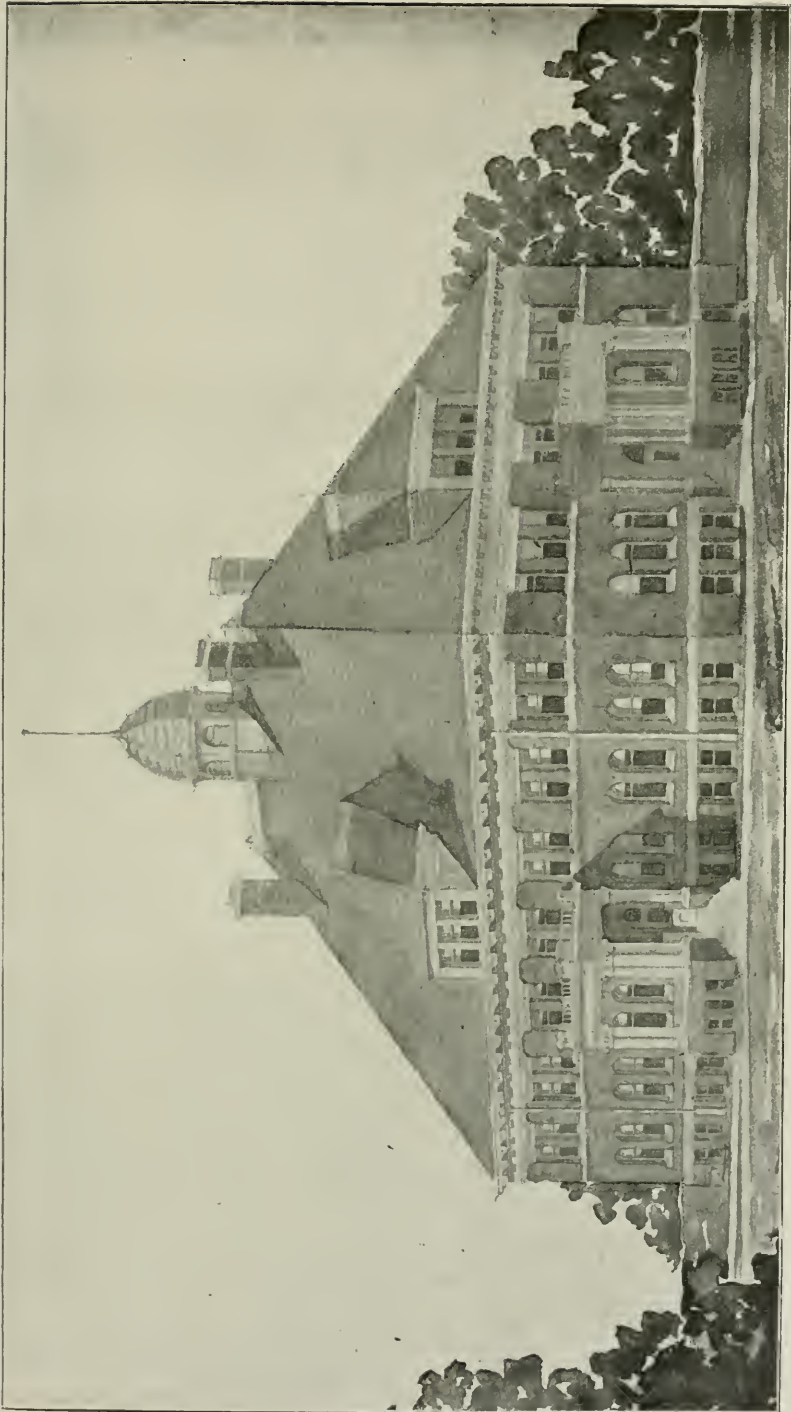
The West Chester State Normal School was founded in the year 1871, by the joint efforts of the Trustees and contributors of the West Chester Academy, and the citizens of West Chester and vicinity.

West Chester is a beautiful town of 10,000 inhabitants, the county seat of Chester county, and is pre-eminent for its healthfulness, morality and intelligence. It is about twenty-five miles west of Philadelphia, with which it is connected by two lines of the Pennsylvania R. R. It is also connected with Philadelphia by a trolley line, over which cars run every twenty minutes each way. A short branch road connects West Chester with the main line of the Pennsylvania Railroad at Frazer, where close connections are made with the trains on the main line, and by an Electric Road it is also connected with the Wilmington and Northern R. R. at Lenape.

THE BUILDINGS

Are situated in the southern part of the borough, half a mile from the Court House. The main building is built of greenstone and marble, 256 by 234 feet, four stories high, with basement. It is one of the finest and handsomest school buildings in the country. The buildings are surrounded by forty-six acres of beautiful grounds.

A new building, containing a chapel and a dining-room has lately been completed ; both are most completely and handsomely fitted up. Two new additions for sanitary purposes have also been erected, and each story, on both the girls and boys' wings, is fitted up with bath-rooms (hot and cold water),



THE NEW MODEL SCHOOL BUILDING.

water-closets, slop-hoppers, &c., of the best pattern. The drainage is first-class. These sanitary improvements alone cost \$10,000, and are believed to be among the best and most healthful to be found anywhere. The whole building has lately been improved, the students' rooms have all been papered, refitted and refurnished, a fine library and reading room provided for the free use of students, and many other improvements made to add to the efficiency of the school, and the comfort of the students.

A first-class large passenger elevator has recently been put in and makes all the floors equally desirable. A new electric light plant supplies every part of the building with the best and safest of lights.

THE GYMNASIUM.—A first-class gymnasium, 104 by 64 feet, with an administration building attached, 29 by 36 feet, has recently been completed. It is of stone, two stories high, is fitted up with every modern improvement, including a full supply of the best apparatus, running track, bath rooms, large swimming pool, bowling alleys, ball cage, &c. A thoroughly trained physician and his wife are in charge of the gymnasium, and all exercise is taken under their supervision. All students are given a complete physical examination, and proper exercises prescribed for them. This gymnasium marks a great and important advance in Normal School work, and its advantages are enjoyed by all students without extra cost.

RECITATION HALL.—Recently the Board of Trustees erected a new building, 185 by 80 feet, with two stories above a high basement, which is used wholly for school purposes. It has been planned with great care, and is unusually well adapted to its purpose. It is heated and ventilated by the Smead-Wills system. The total cost of the building and heating-plant has been over \$60,000.

NEW GROUNDS.—The erection of so many buildings has so taken up the main campus that the Trustees have purchased adjacent grounds at various times, including the fine grounds of the Chester County Agricultural Society, until they now embrace forty-six acres, embracing enclosed grounds suitably fitted up for all outdoor games.

INFIRMARY.—A complete and well appointed school infirmary, at considerable distance from the other school buildings, has just been erected. This has been planned by skilful physicians and architects, and will not only promote the comfort and the recovery of any who may be ill, but will also prevent the spread of any contagion in the school. It is believed that this was the first school of its class to take this important step.

The school property has now cost about half a million dollars, and is the best and most complete possessed by any Normal School in this country.

STUDENTS' ROOMS.

The rooms are generally arranged for two students each. All are good sized, have high ceilings, are well ventilated, and are all thoroughly heated by direct steam radiation. The rooms are newly and comfortably furnished, have closets, single-beds, wash stands, bowls and pitchers, and are furnished with woven wire mattresses. The ladies' rooms are all partly carpeted. The buildings and grounds are lighted by the school's own electric lighting plant.



Admission, Government, &c.

CONDITIONS OF ADMISSION.

Pupils will be allowed to enter the regular course at any point for which they are actually fitted. They may enter at any time during the Session, and will be charged only from date of entrance.

A prompt attendance at the commencement of the Session is of the utmost importance, both to the progress of the pupil and proper organization of the School.

Students desiring to enter the Institution should make application to the Principal at as early a date as possible. All

new students must submit satisfactory testimonials of good character from their last teacher.

OUTFIT.

Pupils boarding in the Institution will be furnished with single beds and bedding, and are expected to furnish a pair of blankets, or an equivalent, towels, and table napkins; also an umbrella and a pair of rubber over-shoes. All students will need gymnasium shoes, which can be got in West Chester at small expense. The young ladies of the senior and junior classes invariably provide themselves with gymnasium suits of navy blue flannel, the blouse waist of which may be made from Butterick pattern No. 9867, and the divided skirt from Butterick pattern No. 1799, and it is highly desirable that all others should have this satisfactory and inexpensive dress. Many of the boys provide carpet for their rooms, thus giving them a very neat and homelike appearance.

Keys, wash-bowls, pitcher and looking glasses, are furnished by the School, but their cost must be deposited when they are obtained, which deposit will be refunded when they are returned uninjured.

MORAL AND RELIGIOUS CULTURE.

All students are required to attend the opening exercises of the School in the chapel each day, and all must attend religious services each Sabbath morning in the town, at the churches preferred by their parents or guardians.

LABORATORIES.

The new Chemical Laboratory renders the facilities for Chemistry even more complete than ever; the department is under the charge of a practical chemist, who has devoted years to this important branch, and who is a State Chemist of Pennsylvania. Students receive instructions without extra charge, but are required to pay for chemicals used, breakage, etc. The removal of the laboratory out of the main school building has removed all the danger often apprehended from such departments. Laboratories have also been equipped with apparatus,

microscopes, &c., for individual work in Physics, Botany, Physiology and Zoology.

APPARATUS.

The institution is supplied with Philosophical and Chemical Apparatus of the most approved kind, large additions having been made recently.

MODEL SCHOOL.

A new Model School building, 114 by 62 feet, is now being erected at a cost of \$40,000. It has been carefully planned and will be one of our finest buildings. Arrangements have been made by which this will become one of the public schools of West Chester, in which the members of the senior class will have opportunity to observe and teach. It is believed that this will be a great advantage to the future graduates of the school.

LIBRARY AND READING ROOM.

A large library room has lately been fitted up in the best manner. It now contains libraries aggregating more than 7,000 volumes. A modern card catalogue adds greatly to their value. The library is open at all hours out of school time, with a competent librarian constantly in charge.

Connected with the library is a reading-room supplied with a hundred magazines and papers, also for the constant and free use of the school.

LITERARY SOCIETIES.

There are connected with the school two flourishing Literary Societies—the Moore Literary Society, and the Aryan Society—composed of students and members of the Faculty.

The value of these societies as adjuncts of education is so great that the students cannot afford to neglect the opportunities they furnish for literary and oratorical culture.

MUSEUM.

The Museum contains a large and valuable collection of specimens, illustrating every department of Natural Science. It was begun in the year 1826, and has been annually enriched with contributions from every portion of the world. The justly celebrated "Herbariums" of the late Dr. William Darlington,

and David Townsend, now in this Museum, are conceded to be two of the most accurate and extensive private collections ever formed in this country.

TEXT BOOKS.

Text Books are sold to students at wholesale prices; but all books used in the Elementary Course are furnished on rent to those preferring it.

MUSIC.

This department is unexcelled outside of the large cities. The teachers in charge are fine musicians, and have had long and successful experience in their profession. The following is the course arranged for the piano :

COURSE IN INSTRUMENTAL MUSIC.

First Grade.

Emery's Foundation Studies, and the N. E. Conservatory Method, or Urback's Instruction Book.

PIECES.

Very easy selections from modern composers.

Second Grade.

ÉTUDES.

Loeschorn, op. 52 ; Heller, op. 47 ; Czerny, op. 849 ; Kohler, op. 50 ; Gurlitt, op. 50.

PIECES.

Sonatinas and other easy works, by Lichner, Spindler, Gurlitt, Kulak, Reinecke, Schumann, and others.

Third Grade.

ÉTUDES.

Bertini, op. 29 ; Heller, ops. 46 and 45 ; Loeschorn, op. 66 ; Berens, op. 61 ; Bach, Little Preludes ; Turner, Damper Pedal Studies, op. 15 ; Technics, Emery and Mason.

PIECES.

Selections from Heller, Reinberger, Schwarvenka, Mendelssohn, Haydn, Schumann, Schubert, Bach and others.

Fourth Grade.

ÉTUDES.

Turner, Elements of Modern Octave Playing ; selections from 50 Selected Studies, Cramer ; Bach, Two Part Inventions ; Clementi, Gradus and Parnassum ; Moscheles, op. 70 ; Selections from Chopin, ops. 10 and 24, and Bach's Preludes and Fugues.

PIECES.

Selections from classical and modern composers.

Pupils completing this course in a satisfactory manner will be awarded a diploma. The time required to complete the

course cannot be specified, depending, as it does upon the talent, previous acquirements, and industry of the pupil.

VOCAL MUSIC.

This department is also in charge of a first-class teacher. The best modern methods of instruction are used both in class work and in individual instruction, and the success and popularity of the department have been very marked. Private pupils in vocal music, pay the same rates as in instrumental music, and have the use of a piano to aid their practice. Class instruction in vocal music is given without extra cost.

SYNOPSIS OF VOCAL STUDIES.

Methods and Vocalizes Used.

Lablache's exercises for forming the voice. Vocalizes by Panofka, Concone, and Marchesi.

First Grade.

Lessons in physiology of voice and organs of respiration. Exercises in combining different registers or tones. Exercises for developing chest; medium and head tones. Vocalizes by Panofka. Easy ballads.

Second Grade.

Exercises for flexibility, continued. Study of scales. Major and Chromatic. Vocalizes by Panofka and Concone.

Third Grade.

Practice of Major, Minor and Chromatic scales continued. Study of embellishments, trills, &c. Vocalizes by Panofka, Concone, and Marchesi. Selections from Operas and Oratorios.

MUSIC RECITALS

Are held every four weeks in the chapel, for the purpose of giving the pupils ease and self control in playing and singing before an audience. For these recitals a new Steinway Concert Grand Piano is used.

A course of reading in musical literature is commended to cultivate the style, and enrich the pupils knowledge of the great masters.

Term :—Winter Session, two lessons per week, including two practice periods daily, \$34.00. For Spring Session, \$16.00. For a part of a term, \$1.30 per week.

For lessons on other instruments than the piano, special arrangements must be made.

APPLICATIONS FOR TEACHERS.

Frequent applications are made to the Principal for well trained teachers, and it will be our aim to supply the demand as far as possible.

CALENDAR.

The school year is divided into two sessions. The Winter Session will begin *Monday, September 4th*, and continue *twenty-seven weeks*. The Spring Session will begin *Monday, March 26th*, and continue *thirteen weeks*. There will be a vacation of one week at Christmas, and one of the same length between the sessions in March.

TERMS.

Tuition and board, including heat, light, and washing, for the Winter Session, \$135; *one-half payable in advance*, the remainder on December 4th; for a period less than the session, per week, \$5.25. For the Spring Session, \$65, *payable in advance*; for a period less than the session, per week, \$5.25.

For tuition alone, for Winter Session, \$45, *one-half payable in advance*, the remainder on December 4th; for a period less than a session, per week, \$1.70. For Spring Session, *in advance*, \$20; for period less than a session, per week, \$1.60.

The "State aid" of fifty cents a week is deducted from the bills of those who comply with the conditions stated *below*, making the total cost to teachers \$180 per year. But this State aid for the year 1899-1900 is likely to be paid for the Fall and Winter term only.

Teachers whose schools do not end until after the beginning of the session, are charged by the week, at *term rates*, if they enter as soon as their schools close, and finish the term.

There are no extra charges except for private lessons in music and the costs of the chemicals to those studying chemistry.

DEDUCTIONS.

Students absent two consecutive weeks, or longer, on account of personal sickness, are entitled to full reduction for the time lost.

Those leaving for any other cause will be required to pay, for the time spent at the school at the rate for a period less than a session as specified above.

All bills must be settled with the Principal, who acts in behalf of the Trustees. Bills for one term must be settled before a student will be permitted to enter upon the next term, unless by special arrangement.

STATE APPROPRIATIONS TO STUDENTS AND GRADUATES.

By a recent act of the Legislature, the following appropriations are made by the State to Normal Students and Graduates:

1. Each student *over seventeen years of age*, who shall sign a paper, declaring *his intention* to teach in the Common Schools of the State, shall receive the sum of FIFTY CENTS *per week* towards defraying the expenses of tuition and board.

2. Each student, who *upon graduating*, shall sign an agreement to teach in the Common Schools of the State *two full school years*, shall receive the sum of FIFTY DOLLARS.

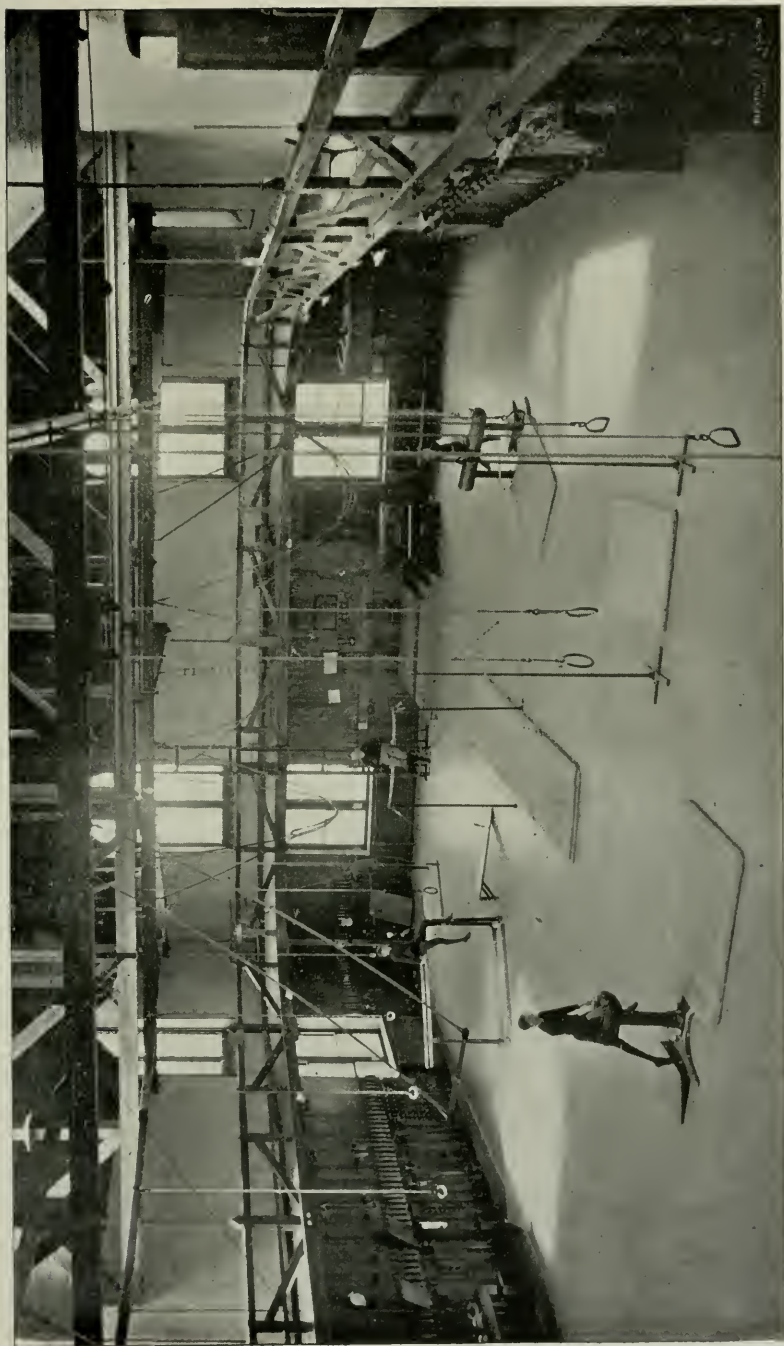
3. Any student to secure these benefits, must attend the school at least *twelve consecutive weeks*, and must join a class in Methods of Instruction or School Management. These benefits will be deducted from the regular expenses of board and tuition.

On account of a deficiency in the State appropriation the \$50 cannot be paid to graduates in 1900, and it is probable that the weekly State aid will not be paid for the Spring term of 1900.

VISITORS AND VISITING.

Calls on pupils at other times than during the hours of recreation, seriously interfere with the objects they have in view, and therefore will not be allowed except in case of necessity. Persons desiring to visit the school are cordially invited to do so at any time.

Every absence from school duty is a loss which cannot be wholly made up. *Parents are earnestly requested not to take their children away from a single school duty, unless it is absolutely necessary. It will interfere with important school duties if a student leaves school earlier than Saturday morning or returns later than Sunday evening.* Students are not permitted to visit home or away from the town without special permission from their parents or guardians.



MAIN HALL OF GYMNASIUM. 100 x 60 feet.

THE TEXT BOOKS USED.

Readers—Curry, Arnold and Gilbert; *Arithmetic*—Brooks, Wentworth & Hill, Lock & Scott; *Geography*—Rand & McNally, Eclectic; *Grammar*—J. P. Welsh; *Geometry*—Wells; *Algebra*—Sensenig; *Physiology*—Martin; *Natural Philosophy*—Sharpless & Philips; *Botany*—Gray, Bergen; *Chemistry*—Hart, Douglass and Prescott; *Zoology*—Holder; *Geology*—Leconte; *Rhetoric*—D. J. Hill; *History U. S.*—McMaster, Thomas; *Constitution U. S.*—Mowry, Philips; *Drawing*—National; *Vocal Music*—American; *School Management*—White; *Methods of Instruction*—Brooks; *Psychology*—Halleck; *Trigonometry and Surveying*—Wells; *Analytical Geometry and Calculus*—Wentworth; *Astronomy*—Snell's Olmstead, Sharpless & Philips; *Latin*—Collar & Daniel, Harper's Cæsar; *Greek*—Goodwin's Grammar, Goodwin's and White's Anabasis; *German*—Joynes-Meissner, German Texts; *French*—Otto's Grammar; *English Literature*—Mathews, Emery, English Texts; *Orthography*—Harrington, Rice; *Physical Training*—Enebuski's Day's Orders.

REGULATIONS.

1. Every student is requested on entering to give the Principal information in regard to the following particulars: Whether he designs fitting himself for a teacher; what length of time he designs remaining in the institution, and whether he desires to pursue the regular course for graduation.

2. Students are considered members of the school until the Principal is duly notified of their withdrawal.

3. The hours regularly assigned to study are to be faithfully devoted to the preparation of the exercises required.

4. Students are allowed to walk for exercise in the vicinity of the school, but no one is permitted to visit the town or otherwise absent himself, without permission from the Principal. Absence from the premises after dusk is not permitted. New acquaintances outside the school must not be cultivated.

5. Permission to be absent from a recitation must always be obtained from the teacher in charge of the class, *before* the absence occurs; and students desiring to be absent from town must obtain written permission from the Principal.

6. Boarding students who are not present at the beginning of the term, must send to the Principal written explanations of their absence, or their rooms will be forfeited.

7. Every student must be present at the daily opening exercises of the school, and at all general exercises in the Chapel, unless excused.

8. All objectionable books, papers and cards, found in the possession of students, will be taken and destroyed.

9. Disorderly conduct in the building is prohibited. Each student will be held accountable for any disturbance or damage in his room.

10. No nails must be driven in the walls or ceilings, or alterations be made in the windows, doors, or any appendage of the rooms, without permission from the *Steward*.

11. Students are not allowed to visit one another's rooms during the regular hours of study, without permission of those in charge of the halls. No change of rooms must take place without permission from the Principal.

12. Each student of instrumental music will have regular hours assigned for practice, during which time no spectator must be present to interrupt the exercises or divert the attention.

13. All students who are tardy, unnecessarily, at meals, must forfeit them, and no one must leave before the rest at the table without good reason, and permission from the person sitting at the head of the table. Any student sick or indisposed, and requiring attention, must have himself reported at once to the Nurse.

14. It is expected that the ladies and gentlemen of the Institution will treat one another with politeness, but they will not be allowed to be together or to carry on conversation or other communication except in the performance of school exercises, unless by special permission. Neither sex will be permitted to trespass upon that portion of the building assigned to the other.

15. No lady or gentleman attending this Institution will meet, walk, or ride with a person of the opposite sex, except in case of necessity, and then only with the permission of the Principal.

16. Students will not visit the dining room at any other time than meal time, nor the domestic departments, boiler room, or music rooms, without permission.

17. The use of tobacco in any form is strictly prohibited in the building or on the grounds.

18. Students must not enter any saloon, bar-room, billiard or pool-room. They are absolutely forbidden to use as a beverage alcoholic liquors of any kind whatever during their connection with the school.

19. Students will be required to attend public worship each Sabbath morning at such places as their parents or guardians designate.

20. Students are required to take up enough studies to keep them, in the judgment of the Principal, sufficiently employed, but not take up more than they can study with profit.

21. Students must furnish towels, napkins, and two pairs of blankets (or an equivalent), and have all articles of clothing *distinctly marked*. Each student is permitted to have twelve pieces washed each week without extra charge.

The right is reserved to remove from the school any pupil whose influence is found to be vitiating.

Directory of the Alumni.

PLEASE NOTIFY US OF ANY ERRORS OR CHANGES.

OFFICERS FOR 1898-'99.

President—ANDREW THOMAS SMITH, Class of '83.

Vice-President—WARREN R. RAHN, Class of '82.

Secretary—SUSAN C. LODGE, Class of '77.

CLASS OF 1874. ELEMENTARY COURSE.

<i>Name.</i>	<i>Address,</i>	<i>Profession.</i>	<i>Time taught since graduation.</i>
Margaret Crosby,	Chester, Pa.,	Teaching,	25 yrs.
Anna P. Esler,	West Chester, Pa.,	Teacher Nor. School	24 "
Ruth E. Griffith,	Spellman Sem., Atlanta, Ga.,	Teaching,	20 "
George G. Groff,	Lewisburg, Pa.,	Major U. S. A.	22 "
Anna Hibbs (Washburn)	Chappaqua, N. Y.,	Teaching	13 "
Ella M. Hunsicker,	Spring City, Pa.,	"	15 "
E. Anna Large (Thorne)	Thorndale, Pa.,		10 "
Margaretta B. Longshore,	Swarthmore, Pa.,	Assistant Matron,	8 "
Emma J. Longstreth,	2158 Camac St., Phila.,	Teach. Girls' High Sch.,	24 "
Mary H. Lynch (John)	Sunbury, Pa.,		19 "

CLASS OF 1875. ELEMENTARY COURSE.

Mary J. Bates (Miller),	Glen Moore, Pa.,		4 "
Dora E. Brosius (Walton)	320 S. 44th St., Phila.,		8 "
Richard T. Chandlee,	Deceased, 1898,		2½ "
M. Lizzie Conway,	Mt. Hermon, Mass.	Teach- Mt. Hermon Sch.	16 "
Emily Corson,	Plymouth Meeting, Pa.,		
Martha Corson (Poley)	6519 Germantown Ave., Phila.,		
Carrie J. Dunning,	85th St & 3d Ave., Brooklyn, L. I.,	Teaching,	21 "
William T. Gordon,	Coatesville, Pa.,	Prin. of Schools,	24 "
Mary J. Hare,	Deceased, 1888,		13 "
Anna Jackson,	George School, Newtown,	Librarian,	12½ "
Emma Erey (Phillips).	Kennett Square, Pa.,		7 "
Ida M. John (Taylor),	Phoenixville, Pa.,		14 "
Lydia A. Martin,	West Chester, Pa.,	Teacher Nor. Sch.,	23 "
Arthur W. Potter,	63 5th Ave., N. Y.,	Publisher,	16 "
Annie J. Price (Faxon),	331 Saunders Ave., Phila.,		2 "
Amos L. Spencer,	Oxford Valley, Pa.,	Teaching,	22 "
Zerna Wollerton (Liggett)	West Chester, Pa.,		
Sara Z. Woolley (Maddock)	Elwyn, Pa.,		4 "

<i>Name.</i>	<i>Address.</i>	<i>Profession.</i>	<i>Time taught since graduation.</i>
CLASS OF 1876. ELEMENTARY COURSE.			
J. Roberts Acker,	Deceased, 1880,		2 yrs.
Phebe A. Baker,	Media, Pa.,	Florist,	10 "
Eliz. Brown (Thomas),	" "	Teaching,	16 "
Sallie M. Boyd (Snow),	Wakefield, R. I.,		
William Butler,	Snowshoe, Pa.,	Civil Engineer,	
Thomazine T. Clark (Fairlamb),	Exton, Pa.,		8 "
Ada A. Coffman,	1532 Columbia Ave., Phila.,	Teaching,	12 "
Clara A. Davis,	Chester, Pa.,	"	22 "
Abbie A. Eyre,	Williamson School, Pa.,	"	21 "
George P. Gabeka,	347 Manhattan Ave., N. Y. City,	1st Asst. Prin.,	22 "
Jennie Knight (Atkinson),	Penn's Park, Pa.,		4 "
Wilhelmina B. Linton (Ivins),	121 Penn St., Camden, N. J.,		3 "
Rachel S. Martin,	Jenkintown, Pa.,	Teaching,	18 "
Lucy C. Parsons (Tyson),	20th & Hyatt Sts., Chester, Pa.,		3 "
Ida C. Pyle,	New Garden, Pa.,	Teaching,	22 "
Kate A. Stevens (William),	Minneapolis, Minn.,	"	15 "
Florence E. Sickel,	Davis Grove, Pa.,	"	23 "
Sue P. Stackhouse,	Deceased, 1888,		4 "
William D. Thomas,	Deceased, 1891,		2 "
Anna M. Thompson,	Newtown, Pa.	Trained nurse	1 "

CLASS OF 1877. SCIENTIFIC COURSE.

George G. Groff,	Lewisburg, Pa.,	Major U. S. A.	22 "
------------------	-----------------	----------------	------

STATE CERTIFICATE.

Wm. H. Snyder,	Oxford, Pa.,	Prin. High School,	22 "
----------------	--------------	--------------------	------

ELEMENTARY COURSE.

Ella L. Baldwin,	77 W. Ave., Bridgeport, Conn.,	Teacher of Latin,	16 "
B. Anna Black (Johnson),	Pencoyd, Pa.,		7 "
Elizabeth F. Criley,	West Chester, Pa.,	Teach. Nor. School,	21 "
Zelda H. Daniel (Habbersett),	Lenni,		13 "
M. Eloene Davis (Wells),	Deceased, 1895,		2 "
Anna P. Flinn (Matlack),	Bryn Mawr, Pa.,		16 "
Addie C. Graves,	Glen Mills, Pa.,	Teaching,	19 "
H. Emilie Groce,	Lansdowne, Pa.,	Principal High School,	22 "
Virginia Green (Huey),	Lenape, Pa.,		7 "
Hanna M. Johnson (Knickerbocker),	Fairfax, Iowa,		1 "
Susan C. Lodge,	1720 Arch St., Phila., Pa.,	Prin. Collegiate Institute,	18 "
Margaret J. Moffat,	Reigelsville, Pa.,	Teaching,	21 "
Annie V. Murray,	1619 Wallace St., Phila.,	Foreign corresp't,	11 "
Frances A. Pyle (Fronefield),	Media, Pa.,		10 "
I. Emma Pyle,	West Chester, Pa.,	Companion,	14 "
Laura C. Sorber (Dlemer),	Spring City, Pa.,		11 "
Arthur H. Tomlinson,	Swarthmore, Pa.,	Prin. Gram. School,	21 "
Lydia E. Turner,	Audubon, Iowa,	Prin. High School,	21 "
Elizabeth D. Turner,	Lansdowne, Pa.,	Teaching,	21 "
John P. Vanderslice,	Deceased, 1879,		

CLASS OF 1878. ELEMENTARY COURSE.

Ella T. Brooke (Bateman),	West Chester, Pa.,		2 "
Hannah R. Caley (Garwood),	Media, Pa.,		10 "

<i>Name.</i>	<i>Address.</i>	<i>Profession.</i>	<i>Time taught since graduation.</i>
Hannah Castle,	Upland, Pa.,	Teaching	9 yrs.
Harriet A. Castle,	" "	"	21 "
Evalena A. Darlington,	Unknown,		
Mary Edmunds,	Deceased, 1889.		12 "
Kate R. Moulder,	Phoenixville, Pa.,	"	20 "
Eleanor M. Philips (Pennock),	Deceased, 1888,		1 "
Marion Preston (Lewis),	West Chester, Pa.,		3 "
Frances M. Stiteler,	Anselma, Pa.,		20 "
Jane J. Wetherell (Bartlett),	247 N. 20th., St., Phila., Pa.	"	6 "

CLASS OF 1879. ELEMENTARY COURSE.

Emma K. Bossert,	Phoenixville, Pa.,	Teaching,	19 "
Margaret R. Caley,	Media, Pa.,	"	18 "
J. Howard Dugan,	Hazelton, Pa.,	Mining Engineer,	4 "
D. Tucker Hoffman,	Phoenixville, Pa.,	Draftsmen,	2 "
Joseph E. Myers,	West Branch, Iowa,	Teaching,	10 "
Hartman Naylor,	St. George's Hall, Summit, N. J.,	Head master,	19 "
Emma P. Nields (Dugan),	Absecon, N. J.,		4 "
Annie J. Passmore (Swayne),	Fairville, Pa.,		23 "
Sue V. Peters (Thatcher),	Village Green, Pa.,		4 "
Emma T. Pyle (Tomlinson),	Swarthmore, Pa.,		15 "
Rachel A. Pyle (Cloud),	Marlborough, Pa.,		2 "
David J. Reese,	Deceased, 1882,		2 "
Mary F. Whitehead (Durnall),	West Chester, Pa.,	Asst. Matron Nor. Sch.	6 "
Caroline C. Woodward (Cummings),	West Chester, Pa.,	Teaching.	17 "

CLASS OF 1880. ELEMENTARY COURSE.

Mary H. Baldwin (Prickett),	Palmyra, N. J.,		11 "
Carrie E. Bemus,	Atlanta, Ga.,	Baptist College, Teaching,	18 "
Mary M. Brinton,	Deceased, 1894,		
Charles H. Bushong,	49 W. 19th St., N. Y. City,	Physician	4 "
Willis Cheyney,	New York City,	Civil Engineer,	2 "
Margaretta S. Crumley,	Wayne, Pa.,	Stenographer,	8 "
Harry G. Kidd,	Loubar, Md.,	Prin. of Schools,	16 "
Lizzie F. Kugler (Losey),	Sinnamahoning, Pa.,		5 "
Mary E. Nelson (Shoch)	Kelton, Pa.,		1 "
Alfred Paxson,	Deceased, 1894,		3 "
Fannie J. Simpson,	Durham, Pa.,	Teaching,	16 "
Belle Vansant,	George School, Newtown, Pa.,	"	16 "
Laura Verkes (Lewis),	Frederick, Md.		13 "

STATE CERTIFICATE.

Milton E. McClinn.	Bloomsburg, Pa.,	Clergyman,	3 "
--------------------	------------------	------------	-----

CLASS OF 1881. ELEMENTARY COURSE.

Martha J. Acker,	Deceased, 1888,		7 "
Lizzie I. Buchanan (Parker),	Fort Collins, Colorado,		7 "
Alice E. Claffin,	Berlin, N. J.,	Stenographer,	2 "
Leonore E. Davis,	1824 N. 11th. St., Phila., Pa.,	Physician,	2 "
Ellen M. Greene,	Green Hill, Pa.,	Teaching,	18 "
Mary E. Greene,	Green Hill, Pa.,	"	18 "
Daniel Hartney,	Laughorne, Pa.,	Prin. of Schools,	18 "
Addison L. Jones,	West Chester, Pa.,	Supt. of Schools,	18 "
Madge J. Kerns,	Bryn Mawr Col., Pa.,	Ass't. Bursar,	12 "
Elizabeth J. Lewis,	1013 Trenton P'ce, Wilm'gt'n, Del.	Teach. Pedagogy,	18 "

<i>Name.</i>	<i>Address.</i>	<i>Profession.</i>	<i>Time taught since graduation.</i>
Ella W. Lynch (Thomas),	Oxford, Pa.,		4 yrs.
Alice H. March (Martin),	2322 St. Alban's Place, Phila.,		5 "
Joseph Markley,	University of Michigan,	Prof. of Mathematics,	11 "
Mary P. McFarlan,	Marshallton,	Teaching,	18 "
G. Winfield Moore,	Ercildoun, Pa.,	County Supt.	18 "
Fannie Potts (Crouse),	Cupola, Pa.,		4 "
Emma Schofield (Godøen),	Chester, Pa.,		4 "
Ella M. Turner (Penn.)	800 W. St., Wilmington, Del.,		6 "
Mary D. Walton (Swayne),	Kennett Square, Pa.,		2½ "
Williamanna Webb (Jefferis),	Deceased, 1893,		2½ "

CLASS OF 1882. SCIENTIFIC COURSE.

Arthur W. Potter,	63 Fifth Ave., N. Y.,	Publisher,	9 "
-------------------	-----------------------	------------	-----

ELEMENTARY COURSE.

Lewis B. Ambler,	Jenkintown, Pa.,	Prin. Friends' Acad.,	15 "
Walter J. Baldwin,	Brooklyn, N. Y.,	Teacher High School,	8 "
Florence Brinton,	Media, Pa.,	Teaching,	16 "
Maggie Ferron,	Londonderry, Pa.,	"	14 "
Francis H. Green,	West Chester, Pa.,	Teaching Nor. School,	14 "
Lily C. Groff,	Deceased, 1891,		2 "
R. Addie Kauffman,	Berwyn, Pa.,	Teaching,	15 "
Jesse E. Philips, Jr.,	Worcester, Mass.,	"	12 "
Warren R. Rahn,	Ambler, Pa.	Prin. of Schools,	16 "
Warner P. Roberts,	Yardley, Pa.,	Merchant,	9 "
William H. Slotter,	Doylestown,	Co. Superintendent,	10 "
H. Bertha Sorber (McLeod),	402 Tremont, St.,	N. Tonawanda, (N. Y.)	5 "
Flora L. White,	Ann Arbor, Mich.,	Student,	13 "
Samuel F. Wolf,	South Bethlehem, Pa.,	Bookkeeper,	2 "
Sara S. Kirk,	West Chester, Pa.,	Teacher Nor. School,	14 "

CLASS OF 1883. SCIENTIFIC COURSE.

Joseph L. Markley,	University of Mich.,	Prof. of Mathematics,	10 "
Arthur H. Tomlinson,	Swarthmore, Pa.,	Prin. Grammar Sch.,	16 "

ELEMENTARY COURSE.

Frances J. Bailly (Brown),	1213 Dekalb St., Norristown,		1 "
Joseph H. Baldwin,	West Chester, Pa.,	Lawyer,	3 "
Kate W. Bean (Cressman),	Unknown.		10 "
William H. Beyer,	Fort Hunter, Pa.,	Clergyman,	3 "
Martha Dauman (Miller),	313 Pearl St., Camden, N. J.,		5 "
W. Roger Fronefield,	Media, Pa.,	Lawyer,	2 "
Ella D. Gallagher,	43 Jacoby St., Norristown, Pa.,	Teaching,	16 "
E. Belle Griest,	Guernsey, Pa.,	Merchant,	10 "
Mary E. Griest,	"	Teaching,	10 "
Lelia C. Hecht (Byers),	378 First Av., Milwaukee, Wis.,		8 "
Mary W. Hawxhurst (Tyson)	Flora Dale, Pa.,		4 "
Samuel L. Jones,	109 Spring St., Trenton, N. J.,	Teach. Bus. Col.,	16 "
Annie Lafferty (Wallace),	Chadd's Ford, Pa.,		4 "
Addie L. Lybrand,	Deceased, 1889.		3 "
Rettie Moore,	Coatesville, Pa.,		4 "
Edwin R. Musselman,	Lansdale, Pa.	Bank Clerk,	11 "
Nellie Nevegold (Graham),	Bogota, Columbia, S. A.,	Missionary,	7 "

<i>Name.</i>	<i>Address.</i>	<i>Profession.</i>	<i>Time taught since graduation.</i>
W. Edwin Priest,	901 French St., Washington, D.C.,	Teacher High Sch.,	14 yrs.
Mary C. Russell (Teaches),	Deceased, 1893,		5 "
A. Thomas Smith,	Mansfield, Pa.,	Prin. Nor. School	15 "
Mary H. Walter,	Tradesville, Pa.,	Teaching,	14 "

STATE CERTIFICATE.

John V. Onmeren,	Quakertown, Pa.,	Attorney-at-law,	8 "
------------------	------------------	------------------	-----

CLASS OF 1884. ELEMENTARY COURSE.

Sarah P. Bedford,	West Chester, Pa.,	Librarian,	1 "
A. Lincoln Beerbower,	Cripple Creek, Col.,	Broker,	1 "
Charles B. Clond,	216 Hamilton St., Harrisburg, Pa.,	Teacher in High Sch.,	15 "
Ambrose L. Custer,	Lehighton, Pa.,	"	15 "
Lydia E. Risenhower,	176 Broad St., Newark, N. J.,	Teaching,	15 "
Amelia Evans (Hague),	Deceased 1892,		6 "
Oliver D. Frederick,	Ann Arbor, Mich.,	Student,	10 "
Sara S. Hoopes (Taube),	712 N. 6th St., Harrisburg, Pa.,		8 "
William H. Johnson,	721 N. 36th St., Phila., Pa.,	P. R. R. office,	2 "
Annie W. Keene (Bushong),	Deceased, 1894,		4 "
Clara E. Knerr,	Birchrunville, Pa.,	Teaching,	13 "
Florence A. McAfee (Moore),	West Vincent, Pa.,		5 "
Eloise Mayham (Hulley),	Lewisburg, Pa.,		3½ "
Francis H. Nunemaker,	Deceased, 1888,		4 "
M. Lizzie Poole,	" 1893,		7 "
Richard W. Roelofs,	Prescott, Arizona.	Mining,	2 "
Jesse H. Snyder, Jr.,	Lausdale, Pa.,	Teaching,	15 "
Annie C. Sullivan,	Jenkintown, Pa.,		11 "
Agnes G. Walsh (Bartram),	Canaan, Conn.,		6 "
Hannah Youker (Allen),	Pasadena, Cal.,		8 "

CLASS OF 1885. SCIENTIFIC COURSE.

Martha J. Acker,	Deceased, 1883,		3 "
Henry Benner,	Albion, Mich.,	Prof. of Mathematics,	9 "
William H. Beyer,	Fort Hunter, Pa.,	Clergyman,	3 "
E. G. Jones,	Deceased, 1885,		1 "

ELEMENTARY COURSE.

John M. Carr,	Freeland, Pa.,	Lawyer,	8 "
Elizabeth C. Crumley (Neal),	Media, Pa.,		10 "
Alice M. Gibson (Shepherd),	South River St., Wilkesbarre Pa.,		5 "
Florence Griest (Michener),	Guernsey, Pa.,		2 "
Mary A. Hall (Ambler),	Jenkintown, Pa.,		3 "
Jacob B. Hillegas,	413 Swede St., Norristown, Pa.,	Lawyer,	1 "
Clara E. Hough,	Larangeiras, Brazil, S. A.,	Teaching,	12 "
J. R. Johns,	1938 S. 12th, Phila., Pa.,	Physician,	2 "
David M. Lichty,	Univ. of Mich., Ann Arbor,	Instructor,	10 "
Annie Mathias,	Chalfont, Pa.,	Teaching,	14 "
Phebe Passmore (Taylor)	Malvern, Pa.,		5 "
Irene Roberts,	Ardmore, Pa.,	Sten. & Bookkeeper,	4 "
Emma M. Smedley,	Deceased, 1887,		2 "
Myra W. Storey,	New London, Pa.,		4 "
Edith Trapp,	Bethlehem, Pa.,	Teaching,	12 "
Mary E. Worrall,	Deceased, 1886,		½ "
Mabel E. Way,	110 Woodstock St., Phila. Pa.,		9 "



THE ATHLETIC FIELD.



PRINCIPAL'S RESIDENCE.

<i>Name.</i>	<i>Address.</i>	<i>Profession.</i>	<i>Time taught since graduation.</i>
Elmer P. Weisel,	Philadelphia,	Bookkeeper,	4 yrs.
Alice White,	15th & Race Sts., Phila., Pa.,	Teaching,	14 "
Frank B. Wonssetler,	Norristown, Pa.,	Insurance Manager,	6 "

STATE CERTIFICATE.

James J. Bevan,	Mauch Chunk, Pa.,	Prin. High School	14 "
-----------------	-------------------	-------------------	------

CLASS OF 1886. SCIENTIFIC COURSE.

Susan C. Lodge.	1720 Arch St., Phila., Pa.,	Prin. Collegiate Institute	13 "
-----------------	-----------------------------	----------------------------	------

ELEMENTARY COURSE.

Elizabeth A. Boorse,	Norristown, Pa.		9 "
Sarah A. Conrad,	Ogontz, Pa.,	Teaching.	12 "
Laura Eshleman,	Fagg's Manor Pa.,	"	12 "
Sara C. Evans,	West Chester, Pa.,		5 "
Mary E. Fox,	Deceased, 1890,		4 "
Eleanor S. King (Wheeler),	2516 Diamond St., Phila., Pa.,		3 "
William V. Kulp,	Brooklyn, N. Y.,	Civil Engineer,	
Helen Long,	Girard College, Phila., Pa.,	Teaching.	13 "
Lizzie F. Ogden (Smith),	Mansfield, Pa.,		6½ "
Mary E. Reed,	Jeffersonville, Pa.,		7½ "
Laura E. Roberts,	Deceased, 1887.		
Annie C. Scarborough,	Wrightstown, Pa.,	Teaching,	11 "
Isaiah M. Stover,	Cedars, Pa.,	Farming,	13 "
George Wheeler,	2516 Diamond St., Phila., Pa.,	Prin. Blaine School,	13 "
Hannah M. Worth,	Monte Vista, Colo.,		13 "

CLASS OF 1887. SCIENTIFIC COURSE.

William H. Johnson,	711 N. 36th St., Phila., Pa.,	P. R. R. Office,	1 "
David M. Lichty,	Univ. of Mich., Ann Harbor,	Instructor	10 "

ELEMENTARY COURSE.

Mary E. Cornwell,	548 Neville, St., Pittsburg, Pa.,	Secy. Alinda Col. Pre. Sch	8 "
W. H. Detwiler,	Bloomsbnrg, Pa.,	Teacher Nor. Sch.,	9 "
Jennie T. Eaches (Jackson),	Lansdowne, Pa.,		3 "
J. Morris Ehl,	Philadelphia., Pa.,	Business,	2 "
Eleanor T. Good.	West Grove, Pa.,	Teaching,	12 "
Lizzie Harley (Williams),	5153 Columbia Ave., Phila. Pa.,		6 "
Regina M. S. Mahoney,	401 S. Broad St., Phila., Pa.,	"	11 "
Robert W. Mearus,	Fort Leavenworth, Kansas,	Lient. U. S. A.,	
Adele M. Moloney,	Norristown, Pa.,	Teaching.	11 "
Esther A. Newlin,	Trinidad, Colorado,	Head bookkeeper,	9 "
Cora R. Perry,	Eagleville, Pa.,		1 "
Jennie V. Potts (Gatchell),	Coatesville, Pa.,		2 "
Laura Pyle (Nichols),	Ackley, Ia.,		8 "
Annie M. Riehl (Arnold),	24 2nd St., N. E., Washington, D. C.,		2 "
Elsie V. Smith,	Lambertville, N. J.,	Teaching,	10½ "
Mary Sweeney (Elliott),	Wilmington, Del.,		5 "
Hattie Thomson,	213 N. Olive St., Media, Pa.,	"	12 "
Willa M. Way,	West Chester, Pa.,	Teaching,	12 "
Mary F. Welkel (Hawthorn),	Norristown, Pa.,	"	6½ "
Mary H. Welsh (Adler),	411 W. Wayne St., South Bend, Ind.,		3 "

<i>Name,</i>	<i>Address,</i>	<i>Profession,</i>	<i>Time taught since graduation.</i>
CLASS OF 1888. ELEMENTARY COURSE.			
Angie C. Barnard,	Cheltenham, Pa.,	Teaching,	9 yrs.
Elizabeth Castle,	Upland, Pa.,	"	11 "
Hattie Ely,	Yardley, Pa.,	"	7 "
Annie M. Goshen,	Edinboro, Pa.,	Prin. Model School,	8½ "
Rosa M. Ganster,	115 S. Grosvenor Ave., Dayton, O.,	Teaching,	10 "
Meta T. Haley,	West Chester, Pa.,	Dentist,	2 "
Annie Hurst (Hartzler),	Myerstown, Pa.,		4 "
Alice Jacobs (Canizares),	Wayne, Pa.,		5 "
Annie Jadwin (McMillan),	Carbondale, Pa.,		4 "
Lillie Knoche (Marlatt),	358 Richmond Ave., Buffalo, N.Y.		5 "
Mary L. Morgan,	133 N. Shippen St., Lancaster,	Teaching,	8 "
Ettie Person (Pennock),	Chestnut Level, Pa.,		1 "
Mary A. Pyle (Davoli),	Ellis Ave. & 36th St., Chicago,		8 "
Minnie R. Reynolds (Pancoast),	Marple Pa.,		4 "
Annie L. Smith (Vernon),	Media, Pa.,		2 "
Adella A. Smith,	71st & Woodland Ave., Phila.,		11 "
Itasca Valentine,	Deceased, 1893,		4 "
Ella S. Weinberger,	Clark University,		11 "
Milton Kistler,	Teacher New York City High School		6 "
Frank C. Rex,	927 Penn St., Reading, Pa.,	Inst. Boy's High School	8 "

CLASS OF 1889. ELEMENTARY COURSE.

Samuel J. Bierley,	Newton Hamilton, Pa.,		5 "
Henry S. Borneman,	1220 Ste. Girard Bldg., Phila.,	Lawyer,	2 "
G. K. Brecht,	Norristown, Pa.,	"	6 "
Ida M. Christmas,	1999 Edna Ave., Scranton, Pa.,	Teaching,	10 "
Alice Darlington,	3017 Osceola St., Denver, Col.,	"	5½ "
Laura L. Ehl (Fluck),	Myerstown, Pa.,		2 "
Clara Eisenhart,	Fort Washington, Pa.,		9 "
Helen H. Ely,	Park Ave. Friends' School, Baltimore, Md.,	Teaching	9 "
A. J. Emrey,	Somerton, Phila.,	Prin. of Schools,	10 "
Matilda Fulton (Minshall),	Strafford, Pa.,		3 "
Clara Hagerty,	Plumsteadville, Pa.,		4 "
Annie E. Hambleton,	Goshen, Pa.,		7 "
Linda K. Hoopes (Haines),	West Chester Pa.,		4½ "
Esther G. Jones (Widdicombe),	Phoenixville, Pa.,		2 "
Marion Lewis (Anson),	Norritonville, Pa.,		½ "
M. Lydia Mendenhall (Loller),	Charlestown, Md.,		7 "
Henrietta Mood,	Deceased, 1897.	Physician,	2 "
Mary Morris,	Line Lexington, Pa.,	Student,	8 "
Sarah Neitz (Chubb),	6214 Paynton St., Germant'n Pa.,		5 "
Carrie J. Ozias,	Quakertown, Pa.,	Teaching,	11 "
E. Daisy Prendergast,	Scranton, Pa.,	"	10 "
Willard R. Pyle,	Mont Clair, N. J.,	Instructor,	6 "
Lillian Rich (Flowers),	Cleveland, Minn.,		8 "
Barton Sensenig,	213 W. Mt. Pleasant Ave., Mt. Airy, Phila.	Teaching	4 "
Frances J. Tencate,	Nellore, India,	Teaching,	8 "
Laura S. Weinberger,	Steinsburg, Pa.,		5 "
Anna L. Whitehead,	Stoughton, Mass.,	Teaching,	7 "
Agnes W. Woodman (Gregg),	Purcellville, Loudoun Co., Va.,		8 "

<i>Name.</i>	<i>Address.</i>	<i>Profession</i>	<i>Time taught since graduation.</i>
--------------	-----------------	-------------------	----------------------------------------------

CLASS OF 1890. ELEMENTARY COURSE.

Robert Anderson,	West Chester, Pa.,	Teacher Nor. School,	8 yrs.
Jennie E. Brown,	Pleasant Grove, Pa.,		2 "
Anna M. Comly,	Maple Glen, Pa.,	Teaching,	9 "
Fred M. Clough,	Leona, Pa.,	Clergyman,	
Annie J. Davis,	West Coushohocken, Pa.,	Teaching,	7½"
William S. Delp,	West Chester, Pa.,	Teacher Nor. School,	8 "
William L. Farrell,	51 Welles B'ld'g, Wilkesbarre, Pa.,	Real Estate Broker,	4 "
Bertha M. Foulk (Martindale),	West Chester, Pa.,		4 "
Daniel S. Hartline,	Bloomsburg, Pa.,	Teacher Nor. School,	5 "
Annie F. Hayden,	Deceased. 1892,		2 "
Kate Kemery,	Mahanoy City, Pa.,	Teaching,	9 "
Effie Kemp (Hudson),	Templeton, Cal.,		7 "
U. S. Koons,	707 Harrison Building, Phila.,	Lawyer,	1½"
J. Kirk Leatherman,	Doylestown, Pa.,	Attorney-at-Law,	2 "
E. L. McKinstry,	West Chester, Pa.,	Reporter,	
Clara Mendenhall (Wilson),	Tonghkenamon, Pa.,		3 "
A. B. Mensch,	Skippack, Pa.,	Teaching,	9 "
Ada B. Miller,	2057 Oxford St., Phila.,	"	9 "
Walter L. Philips,	West Chester, Pa.,	Teacher High School,	5 "
Elizabeth S. Rath,	Deceased, 1895		4 "
Helen V. Ritche (Fetters),	Bustleton, Phila.,		5 "
Clara Rippinan (Thompson),	Thompsontown, Pa.,		4 "
Harry W. Scarborough,	522 Walnut St., Phila.,	Lawyer,	
Daniel G. Snyder,	West Chester, Pa.,	Dentist,	2 "
Elizabeth D. Steele,	Swarthmore, Pa.,	Teaching,	7 "
Loraine Stone (McKinstry),	West Chester, Pa.,	Reporter,	3 "
Anna B. Smith (Eshleman),	Parkesburg, Pa.,		2 "
Virginia Taylor,	S. N. S., Clarion, Pa.,	Teacher reading,	8 "
Howard R. Teany,	Deceased, 1899,		2 "
Sara Tyson,	Lansdale, Pa.,	Teaching,	8 "
Frank E. Yerkes,	Ambler, Pa.,	Physician,	

CLASS OF 1891. ELEMENTARY COURSE.

J. Charles Aiken,	Berwyn, Pa.,	Inst. DeLancey School, Phila.,	6 "
Maurice J. Babb,	Dickinson Sem., Wil'm'sp't., Pa.,	Prof. Mathematics,	5 "
George F. Beyerle,	1 Austin Bld'g, Buffalo, N. Y.,	Real Estate,	
Mary E. Bloxham,	Verona, N. J.,	Teaching,	8 "
Laura E. Booth,	Booth's Corner, Pa.,	"	7 "
S. K. Brecht,	Pottstown, Pa.,	Teacher High School,	5 "
Laura B. Broomall,	Cheyney, Pa.,		3 "
Elizabeth R. Butler,	Philadelphia, Pa.,	Teaching,	7 "
Nellie R. Campbell,	West Chester, Pa.,	"	8 "
H. Minnie Casselberry,	Lower Providence, Pa.,	"	8 "
Martha D. Conley (Bright),	Lansdale, Pa.,		4 "
Frances C. Coulston,	Chestnut Hill, Pa.,	"	8 "
Harry A. Davis,	1321 11th Ave., Altoona, Pa.,	Attorney-at-Law,	2 "
Sarah C. Ely,	Newtown, Pa.,	Teaching,	8 "
Tacie C. Embree,	Marshallton, Pa.,	"	4½"
Clara C. Grove,	Coatesville, Pa.,	Teacher High School	5 "
Mary Z. Hecht,	Reading, Pa.,	Teaching,	8 "
Emily Hulme (Cooke),	Herington, Kansas,		5 "

<i>Name,</i>	<i>Address,</i>	<i>Profession,</i>	<i>Time taught since graduation.</i>
Bessie Kline (Swan),	Conshohocken, Pa.,		2 yrs.
Philip S. Knauer,	Box 818, Providence, R. I.,	Civil Engineer,	2 "
Bertha V. Kratz (Williams),	1816 Chestnut St., Phila., Pa.,		4½ "
Caroline L. B. Larkin,	Chester, Pa.,	Teaching,	8 "
Laura Z. LaRue,	Glenolden, Pa.,	Book-keeper,	5 "
Estelena H. Mercer,	West Chester, Pa.	Teaching,	8 "
Susan L. Moore (Dixon)	East Stroudsburg, Pa.,		4 "
Ruth E. Moore,	Cochranville, Pa.,	"	6 "
Allena M. Ogden,	West Chester, Pa.,	"	6 "
Gertrude Rakestraw (Brinton)	Christiana, Pa.,		3 "
Charles C. Roberts,	West Chesler, Pa.,	Chemist,	3 "
Mary W. Rorer,	Glenside, Pa.,	Teaching,	8 "
Elizabeth R. Sharples,	West Chester, Pa.,	Student,	6 "
W. C. Slough,	Lancaster,	Teaching,	5 "
S. Irene Snyder,	Lykens, Pa.,	"	8 "
Amy Stode,	Coatesville, Pa.,	"	7 "
Mary K. Watson,	Bristol, Pa.,	Prin. High School,	7 "
Florence B. Way,	Lew Loudou, Pa.,		4 "
J. Howard Weinberger,	36 W. 116th St., N. Y.	Civil Engineer,	1 "

CLASS OF 1892. SCIENTIFIC COURSE.

George A. Beyerle,	1 Austin Bldg., Buffalo, N. Y.,	Real Estate,	
Frank C. Rex,	Reading, Pa.,	Inst. Boys' High School	7 "

ELEMENTARY COURSE.

Sherman S. Barr,	Jenkintown, Pa.,	Prin. of Schools,	6 "
George W. Brindle,	Lemasters, Pa.,	" "	7 "
Howard F. Brinton,	New Haven, Conn.,	Student,	1½ "
Cora B. Battin,	Colorado Springs, Col.,	Teaching,	5 "
Anna B. Carver (Windle),	Southampton, Pa.,	"	4 "
Bessie Channel,	West Chester, Pa.,	"	4 "
Estella Daniels,	Modena, Pa.,	"	3 "
Sarah E. Ernold,	Norristown, Pa.,	"	6 "
Mary Faulkner,	Norristown, Pa.,	"	7 "
Mary L. Fetters,	Warren Tavern,	"	6 "
A. Dempsey Hartley,	Juniata College, Huntingdon, Pa.,	Teaching,	2 "
Minerva Hayden,	Bryn Mawr, Pa.,	Teaching,	7 "
Owen B. Huntsman,	Columbia Univ., N. Y.,	Student,	2 "
Alberta Johnson,	Berwyn, Pa.,	Teaching,	7 "
Mattie Johnson (Ely),	Guyencourt, Del.,	"	4 "
Benjamin W. Jones,	Doe Run, Pa.,	"	
Mary B. Kerns,	Calu, Pa.,	"	7 "
Rosalie Kendall,	1507 Market St., Harrisburg, Pa.	"	6½ "
Mary R. Lewis (Paschall),	Marple, Pa.,	"	2 "
Robert W. Ludy,	Hotel Elberon, Atlantic City,	Physician,	3 "
Charles K. Meschter,	Perkiomen Sem., Pennsburg,	Teaching,	3 "
Alice B. Moore,	Media, Pa.,	"	7 "
Anna McCullough,	Broomall, Pa.,	"	7 "
Lillian Pierce,	West Chester, Pa.,	"	7 "
Sue V. Slack,	Breadysville,	"	7 "
Emma A. Smutz,	Tidioute, Pa.,	"	4½ "
Mark F. Sullivan,	Phoenixville, Pa.,	Editor,	
M. Caroline Wollaston,	Kennett Square, Pa.,	Teacher,	7 "
M. Warren Way,	Haverford, Pa.,	Student,	



RECEPTION ROOM.

Peale's Washington on the left and Franklin's clock in corner.



A STUDENT'S ROOM.

<i>Name.</i>	<i>Address.</i>	<i>Profession.</i>	<i>Time taught since graduation.</i>
CLASS OF 1893. SCIENTIFIC COURSE.			
Charles C. Roberts,	West Chester, Pa.,	Chemist.	3 yrs.
ELEMENTARY COURSE.			
Mrs. C. Anna Adams,	West Chester, Pa.,	Teaching,	6 "
Lelia O. Beitler,	Anselma, Pa.,	"	6 "
Anne V. Bertolette,	Deceased, 1898,		3 "
Mary E. Bradley,	423 Boas St., Harrisburg, Pa.,		6 "
Ralph Butler,	2127 Green St., Phila., Pa.,	Student, U. P.,	3 "
Frank P. Bye,	West Chester, Pa.,	Teaching,	5 "
Alice B. Carn,	Fort Washington, Pa.,	"	6 "
Maud R. Clark,	2416 Grant Ave., Phila., Pa.,	"	6 "
Roberto Sharp Clark (Davis),	Altoona, Pa.,	"	4 "
Harvey M. Clymer,	Line Lexington, Pa.,		
Florence Detwiler (Edwards),	Norristown, Pa.,	"	3½ "
Augusta Dillman,	Mahanoy City, Pa.,	"	6 "
John G. Embree,	Marshallton, Pa.,	"	3 "
Elizabeth M. Foulke,	Collamer, Pa.,	"	5 "
M. Elizabeth Frederick,	Catasauqua, Pa.,	"	3 "
Martha M. Futhey,	Fallsington, Pa.,	"	5 "
Bessie Grater,	Ambler Pa.,	"	6 "
Frank Hankinson,	Reading, Pa.,	Teacher High School,	6 "
Anna Harshberger,	McAllisterville, Pa.,	Teaching,	6 "
Norman L. Heaten,	Terwood, Pa.,	"	6 "
James S. Heberling,	36 S. College, Easton, Pa.,	Student,	
Bessie L. Hughes,	Honeybrook, Pa.,		5 "
Alice I. Irwin (Shaffer),	Essex, Conn.,		2 "
Anna R. Jackson,	Kelton, Pa.,	Teaching,	5 "
Electra Jackson,	Deceased,		3 "
William C. Kauffman,	New Hope, Pa.,	"	6 "
Jessie R. Keech (Rogers),	Philadelphia, Pa.,		4 "
Eva L. Kemp,	Croton N. J.,	"	6 "
Emma T. Knight,	Lansdowne, Pa.,	"	6 "
Elizabeth M. Leigh,	Fallsington, Pa.,	"	6 "
Emma I. Lewis,	Yeagertown, Pa.,	"	6 "
Amelie Leymel,	307 Northampton St., Wilkes Barre, Pa.,	Teaching,	6 "
Anna B. Lilly,	Lansdowne, Pa.,	Teaching,	6 "
D. Brower, Longaker,	Ogontz, Pa.,	" Cheltenham Acad	6 "
Cornelia MacMullan,	S. Orange N. J.,	Teacher High School	5 "
Sara E. Martin,	Berwyn, Pa.,	Teaching,	6 "
Ella J. Mather,	Bryn Mawr, Pa.,	"	6 "
Edith L. McDonald,	Oxford Pa.,	"	6 "
Sophie R. Miller,	Saegersville, Pa.,		5 "
Minnie E. Morse,	Morrisville, Pa.,	"	5 "
J. Ambrose Moyer,	Divinity Hall, Cambridge, Mass.,	Student,	1 "
Menno S. Moyer,	114 Stanbridge St., Norristown, Pa.,	Student,	5 "
Matilda M. Murken,	187 Wavemeyer St., Brooklyn, N. Y.,	Teaching,	5 "
Katharine E. Murphy,	1816 N. 26th St. Phila., Pa.,	Ass't. Director of Music	6 "
M. Ella Ruth,	Ambler, Pa.,	Teaching,	6 "
Mary A. Scott (Rothrock),	Mifflinville, Pa.,		3 "
Ella Scully (Slack),	Penn's Park, Pa.,	"	2 "
Lucy Irene Smedley,	West Chester, Pa.,	"	6 "
Hanua K. Smith (Heller),	Lansdale, Pa.,	"	3 "

<i>Name.</i>	<i>Address.</i>	<i>Profession.</i>	<i>Time taught since graduation.</i>
Louisa Stradling,	West Chester, Pa.,	Teaching,	6 yrs.
John P. Taylor,	Goshenville, Pa.,	"	5 "
Sara L. Tomlinson,	Wilmington, Del.,	Teacher Girl's High Sch.	6 "
Bessie E. Trapp,	Butler, Pa.,	"	4 "
Abigail C. Wager,	609 Haws Ave., Norristown, Pa.,	Teaching,	5 "
George W. Walters, Jr.,	150 E. 60th St., N. Y.,	Banker,	3 "
Charlotte A. Wetterau,	89 S. Wyoming St., Hazelton, Pa.,	Teaching,	6 "
Florence Windle,	West Chester, Pa.,	Teaching,	6 "
Charles S. Woodward,	Longwood, Pa.,	"	5 "
Laura E. Woodward,	West Chester Pa.,	Student,	3 "
Virginia Worstall,	West Chester, Pa.,	Teaching,	5 "
Lauretta J. Yerkes (Hill),	Markham, Pa.,	"	2 "

STATE CERTIFICATE.

Leon H. Watters,	Media, Pa.,	Prin. School,	6 "
------------------	-------------	---------------	-----

CLASS OF 1894. ELEMENTARY COURSE.

Warren Z. Anders,	Medico Chirurgical Col., Phila.,	Student,	1 "
Lucy H. Ashbridge,	West Chester, Pa.,	Teaching,	5 "
Mary Atkinson,	Three Tuns, Pa.,	"	5 "
M. Adele Bailey,	Corinne, Pa.,	"	5 "
Irwin B. Bauer,	Bally Pa.,	"	2 "
H. Horace Beidler,	Lansdale Pa.,	Supervisor of Schools,	4 "
Matilda Blaker (Woodman),	Morrisville, Pa.,	Teaching,	4 "
Lillie C. Brower (Wagoner),	Spring City, Pa.,	"	3 "
Emmarene Bullock,	Corinne, Pa.,	"	5 "
Florence V. Burke,	Coatesville, Pa.,	"	5 "
George Burlew,	Newton Hamilton, Pa.,	"	4 "
M. Margaret Carr,	Drifton, Pa.,	"	4 "
Marielma Carter (Worrell),	Lansdowne, Pa.,	"	3 "
Florence Chalfant,	665 W. Chestnut St., Lancaster Pa.,	"	4 "
Ada W. Cornwell,	West Chester, Pa.,	Teacher Nor. School,	3 "
Lulu M. Cowan (Weaver),	Coatesville, Pa.,	"	"
Ella C. Darlington,	West Chester, Pa.,	Teaching,	4½ "
Henry T. Darlington,	" "	"	2 "
George S. Dewees,	" "	Lawyer,	"
Elsie F. Dewitt,	11 S. River St., Wilkes Barre, Pa.,	Teaching,	5 "
Ella Eisenberg (Hartley),	Juniata Col., Huntingdon, Pa.,	"	5 "
Emma L. Ellwanger,	Phoenixville, Pa.,	Teaching,	4½ "
Mabel Felty (Channell),	Tower City, Pa.,	"	3 "
Anna C. Frederick,	Berwyn, Pa.,	"	5 "
Elmira Frederick,	Kulpsville, Pa.,	"	5 "
Lidie Gilch,	Atlantic City, N. J.,	"	5 "
Sarah A. Hazelton,	Mullica Hill, N. J.,	"	5 "
Grace E. Hellyer,	Penn's Park, Pa.,	"	1 "
Anna R. Hughes,	Ardmore, Pa.,	"	3 "
Martha P. Jackson,	Kelton, Pa.,	"	4 "
M. Edna Johnson,	Guthrieville, Pa.,	"	5 "
Elinore B. Kervey,	West Chester, Pa.,	Student,	3 "
H. Emma Kirkbride,	Morrisville, Pa.,	Teaching,	5 "
Bessie Kirkpatrick,	Dilworthtown, Pa.,	"	5 "
Florence Knapp,	Elwyn Training School, Pa.,	"	5 "

<i>Name,</i>	<i>Address,</i>	<i>Profession,</i>	<i>Time taught since graduation.</i>
Irene A. Lawrence,	Adele, Pa.,	Teaching,	5 yrs.
Lizzie Linton,	434 S. 40th St., Phila., Pa.,	"	5 "
Anne Linton.	" " " "	"	5 "
Cora B. Ludy,	Boyerstown, Pa.,	"	5 "
George C. Luft.	Bernville Pa.,	"	5 "
Gertrude K. McKanna,	Deceased, 1898.	"	4 "
Lulu McCartney,	Boothwyn, Pa.,	"	5 "
Mary McCracken,	Twin Oaks, Pa.,	"	5 "
George McCracken,	" " "	Prin. of Schools,	4 "
Nora Meschter (Kriebel)	Worcester, Pa.,		2 "
Edith M. Miller,	135 North St., Bethlehem, Pa.,	Student	3 "
L. Adelaide Moffit,	Richland Centre, Pa.,	Teaching,	5 "
Carrie Moore,	Milford Mills, Pa.,	"	5 "
Anna Morgan, (Shaeffer)	2535 Garnet St., Phila.,		3 "
John D. Neitz.,	Columbia, Pa.,	"	4 "
Marion Rakestraw (Jones)	1416 North 53th St., Phila.,		1 "
Maude Rice,	Reedsville, Pa.,		2 "
Allen A. Scipt.	Worcester, Pa.,	Student,	1 "
Anna Senseuig,	Berwyn, Pa.,	Teacher High School	5 "
Bessie M. Smedley,	West Chester, Pa.,	Teaching,	5 "
A. Elizabeth Suplec,	Coatesville, Pa.,	"	5 "
Frank K. Walter,	Haverford, Pa.,	Student,	2 "
Fannie S. Way,	Hammorton, Pa.,	Teaching,	5 "
Conrad Wendel,	St. George's Hall, Summit, N. J.,	Teacher Mat.	5 "
M. Charlotte White,	Bethlehem, Pa.,	Teaching,	5 "
Catharine Wildman,	Langhorne, Pa.,	"	5 "
Esther L. Wildman,	" "	"	5 "
Esther J. Wynn,	West Chester, Pa.	"	3 "

STATE CERTIFICATE.

Samuel I. Kreemer	West Chester, Pa.,	Teacher High School,	4 "
Mary F. Power,	Hopkinton, Mass.,	Teaching,	5 "

CLASS OF 1895. SCIENTIFIC COURSE.

Oliver D. Frederick,	Ann Arbor, Mich.,	Law Student,	10 "
Frank Hankinson,	Reading, Pa.,	Teacher High School,	4 "

ELEMENTARY COURSE.

E. Ella Bennett,	Breadyville, Pa.,	Teaching,	4 "
Beulah P. Bitters,	230 Rockland St., Phila.,	"	4 "
Martha Blair (Heilman),	1446 N. 53d. St., Phila.,	"	4 "
Hannah G. Bready,	Willow Grove, Pa.,	"	3 "
Florence R. Brosius,	Avondale, Pa.,	"	1½ "
S. Elizabeth Brough,	Richland Center,	"	4 "
Jacob Bushong,	Ithaca, N. Y.,	"	2 "
J. Edgar Butler,	Uwchlan, Pa.,	Student,	
Willard S. Campbell,	West Chester, Pa.,	Teaching,	4 "
Mabel R. Cheyney,	Cheyney, Pa.,	"	4 "
Anna C. Clauder,	Bethlehem, Pa.,	"	4 "
Eli P. Conly,	New Cumberland, Pa.,	Hardware Business,	2 "
Unity R. Dannaker,	Wayne, Pa.,	Teaching,	4 "
Evalina H. Darlington,	West Chester, Pa.,	"	4 "
Ethel M. Davie,	Atlantic City, N. J.,	"	4 "
Carrie M. Davis (Lewis),	Atglen, Pa.,	"	3 "
Laura B. Eisenbrey (Meschter),	Pennsburg, Pa.,	"	2 "
Anna E. Fetters,	Warren Tavern, Pa.,	"	2 "

<i>Name.</i>	<i>Address.</i>	<i>Profession.</i>	<i>Time taught since graduation.</i>
Lielia M. Pronefield,	Wayne, Pa.,	Teaching,	4 yrs.
Daniel R. Gettel,	Deceased, 1897,		3 "
Mary E. Griffith,	West Chester, Pa.,		4 "
Jessie V. Guinkle,	Frazer, Pa.,	"	4 "
Joseph M. Hartman,	West Pikeland, Pa.,	Prin. Avondale School,	2 "
Rebecca M. Heaton,	Terwood, Pa.,	Teaching,	4 "
Howard E. Heckler,	University of Pa.,	Student,	
Eugene A. Heilmann,	1446 N. 53rd St., Phila., Pa.,	Sup., Prin., Heston Sch.,	4 "
M. Ella Heller,	Tohyhanna, Pa.,	Teaching,	4 "
Bessie A. Hemphill,	Unionville, Pa.,		3 "
Simon G. Huber,	Ursinns Col., Collegeville, Pa.,	Student,	3 "
Gertrude S. Johnson,	Hulmeville, Pa.,	"	3 "
Harry A. Kotz,	Sandt's Eddy, Pa.,	Student, Lafayette Col.,	2 "
Henry G. Landis,	New Hope, Pa.,	Teacher,	4 "
Etta M. Lapp,	Warren Tavern, Pa.,	"	2 "
Mary E. Leahy,	Edge Hill, Pa.,	"	2 "
Sallie G. Liggett,	Nantmeal Village, Pa.,	Teaching,	4 "
Anna D. Loyd,	Bryn Mawr, Pa.,	"	4 "
Sarah R. Loomis,	Spring City, Pa.,	"	4 "
Jennie L. McDonald,	Oxford, Pa.,	"	4 "
Jennie L. Markley,	Millersburg, Pa.,	"	3 "
Nan L. Mildren,	Phoenixville, Pa.,	"	4 "
Cannie R. Miller,	DuBois, Pa.,	"	4 "
Alice Moore,	Chester, Pa.,	"	4 "
Maud V. Moses,	West Chester, Pa.,	"	2 "
Mabel D. Pearson,	Lionville, Pa.,	"	4 "
Ann W. Pechin,	King-of-Prussia, Pa.	"	4 "
William S. Pike,	Park Ave., Friends' Sch., Balto., Md.,	Teaching,	2 "
Mary A. Powell,	Hazleton, Pa.,	Teaching,	2 "
Anna W. Pusey,	Unionville, Pa.,	"	3 "
B. Catharine Pyfer,	Sharon Hill, Pa.,	"	4 "
Bertha H. Ramsey (Webb),	West Chester, Pa.,	"	2 "
Warren D. Renuinger,	Zieglersville, Pa.,	Student,	2 "
Edith Robotham,	3233 Sansom St., Phila., Pa.,	Teaching,	4 "
Anna D. Rogers,	Spring City, Pa.,	"	3 "
Leonard M. Ruth,	Wernersville, Pa.,	"	4 "
Julia Schroeder,	Norristown, Pa.,	"	4 "
Iva A. Seal (Thompson),	Grubb's, Del.,	"	3 "
Carrie A. Seibert,	West Chester, Pa.,	"	4 "
Heber Sensenig,	Haverford, Pa.,	Student,	1 "
Mattie Smedley,	Oxford, Pa.,	Teaching,	3 "
Susan Smedley,	West Chester, Pa.,	"	3 "
Mary E. Snyder,	Ridley Park, Pa.,	"	4 "
Ira I. Sterner,	Haverford, Pa.,	Student,	
Christopher C. Sterner,	Wood Hill, Pa.,	Teaching,	4 "
Carrie M. Sweney,	West Chester, Pa.,	"	4 "
Nellie Turner,	Chester, Pa.,	"	4 "
Flora B. Turner,	Berlin, Pa.,	"	4 "
Jean B. Urner,	Spring City, Pa.,	"	4 "
Maud Wetherill,	Coatesville, Pa.,	"	4 "
Nellie Williams,	Yerkes, Pa.,	"	4 "
M. Emma Wilson,	Oxford, Pa.,	"	4 "

CLASS OF 1896. SCIENTIFIC COURSE.

Robert Anderson,	West Chester, Pa.,	Teacher of Nor. Sch.,	3 "
------------------	--------------------	-----------------------	-----



A CORNER OF THE LIBRARY.



THE CHAPEL.

<i>Name.</i>	<i>Address.</i>	<i>Profession.</i>	<i>Time taught since graduation.</i>
James J. Bevan,	Mauch Chunk, Pa.,	Prin. of Schools,	3 yrs.
William S. Delp,	West Chester, Pa.,	Teacher Nor. School,	3 "
J. C. Hockenberry,	Thurlow, Pa.,	Supt. of Schools,	2 "
ELEMENTARY COURSE.			
Anna Auderson,	Lansdowne, Pa.,	Teaching,	3 "
Sue B. Arnwine,	Hathoro. Pa.,	"	3 "
Margaretta H. Baker,	Chadd's Ford, Pa.,	"	1 "
Mary H. Baker,	Northbrook, Pa.,	"	3 "
Wallace E. Bartholomew,	4516 Hoopes St., Phila., Pa.,	"	1 "
Ethel Bevan (Sharpless),	Ward, Pa.,	"	1 "
Elizabeth G. Blair,	Villa Nova, Pa.,	"	3 "
Mary K. Biggins,	Atlantic City, N. J.,	"	3 "
Anna H. Brown,	King-of-Prussia, Pa.,	"	3 "
Abram L. Bower,	Boyertown, Pa.,	Student,	2 "
Lidie H. Butler,	Bala, Pa.,	Teaching,	3 "
Edith M. Byerts.	Londonderry, Pa.,	"	3 "
Florence M. Campbell,	West Chester, Pa.,	"	3 "
Emma Clark,	" "	"	3 "
Nellie Carlin.	818 S. 20th St. Phila.,	"	3 "
Emma T. Comly,	Flourtown, Pa.,	"	3 "
Ada Criswell,	Cochranville, Pa.,	"	2½ "
Sallie Deakyne,	Fox Chase, Pa.,	"	3 "
Walter E. Dengler,	Blue Rock, Pa.,	Student,	2 "
Lettie Duer,	1610 N. 13th St., Phila.,	Cashier,	1 "
Sara Dowlin, (Guernsey)	Long Hill, Conn.,	"	3 "
James H. Field,	Ward, Pa.,	Teaching,	3 "
May Finley,	813 S. 48th St., Phila.,	"	3 "
Bertha Forsythe,	Avondale, Pa.,	"	3 "
Joseph V. Gallagher,	Drifton, Pa.,	"	2 "
H. Clifford Garrett,	Malvern, Pa.,	"	2 "
Gertrude Goldstein,	157 Locust St., Allegheny City,	"	2 "
Bessie Godfrey,	Fort Washington, Pa.,	"	3 "
Cora Green,	Green Hill, Pa.,	"	3 "
Anna M Green,	Horsham, Pa.,	"	3 "
Walter E. Greenwood.	Coatesville, Pa.,	Law Student,	
Margaret H. Griffith,	West Chester, Pa.,	Student,	2 "
Henry C. Groff,	Harleysville, Pa.,	"	2 "
Julia Gyger,	Kimberton, Pa.,	Teaching,	3 "
Francis H. Hallman,	Milford Mills, Pa.,	"	2 "
Elsie Hambleton,	Goshen, Pa.,	"	3 "
C. Vincent Hart,	Dartmouth Col., Hanover, N. H.,	Student,	1 "
Eva Harvey,	Unionville, Pa.,	Teaching,	3 "
Olive M. Hibbs,	Hulmeville, Pa.,	"	3 "
Cilla E. Hiddleston,	Downingtown, Pa.,	"	2½ "
Howard C. Hottle,	1828 Tioga St., Phila.,	Teacher Episc. Acad.	3 "
Daisy Houck,	Bangor, Pa.,	Teaching	3 "
Ella J. Hamilton,	Booth's Corner, Pa.,	"	3 "
Anna P. Hughes,	Beach Haven, N. J.,	"	3 "
Mary B. Illick,	Dauphin, Pa.,	"	3 "
Mary C. Ingram,	West Chester, Pa.,	Student,	2 "
Sallie R. Ingram,	" "	Teaching	2 "
Hanna Johnson,	Broomall, Pa.,	"	3 "
Thomas W. Johnson, Jr.,	Elam Pa.,	"	3 "
Martha Jones,	Doe Run, Pa.,	"	2 "

<i>Name.</i>	<i>Address.</i>	<i>Profession.</i>	<i>Time taught since graduation.</i>
Mary E. Keavey	West Chester, Pa.,	Teaching,	3 yrs.
Clara Keighley,	Landenburg, Pa.,	"	3 "
Laura Keighley,	" " "	"	3 "
Frances C. Knapp,	Berwyn, Pa.,	"	3 "
M. Ella Kulp,	Gwynedd, Pa.,	"	3 "
C. Leon Lapp,	Malvern, Pa.,	Student,	1 "
Anna Leatherman,	Liue Lexington, Pa.,	Teaching,	3 "
Harrison S. Lucas,	Klondike, Alaska,	Gold Prospector,	1 "
Frances M. Mack,	Falls of Schuylkill, Pa.,	Teaching,	3 "
Bessie Mattern,	West Point, Pa.,	"	3 "
Bertha McElhany,	Manayunk, Pa.,	"	3 "
Wm. G. McLaughlin,	Summit Hill, Pa.,	"	3 "
Iva C. Mearns,	Oak Hill, Pa.,	"	3 "
Adele Moyer,	Cedars, Pa.,	"	3 "
Ida E. Neidig,	Milford Square, Pa.,	"	3 "
Charlotte B. Powell,	Newtown Square, Pa.,	"	3 "
Lucille Preston,	Spruce Grove, Pa.,	"	3 "
Mabel Price,	Moore, Pa.,	"	3 "
Norman H. Rahn,	Jeff. Med. Col., Phila.,	Student,	1 "
Grace L. Reese,	Aldham, Pa.,	Teaching,	3 "
Nona Reid,	Parkesburg, Pa.,	"	3 "
Nellie V. Robertson,	Carlisle, Pa.,	"	3 "
Jennie B. Roper,	Slatington, Pa.,	"	2 "
Seward M. Rosenberger,	Quakertown, Pa.,	Principal of Schools,	3 "
Susanna L. Search,	Lizette, Pa.,	Teaching,	3 "
Mary Sharples,	West Chester, Pa.,	"	3 "
Tessie Shearer,	" "	"	3 "
Blanche N. Sheibley,	241 W. A St., Carlisle,	"	2 "
Laura K. Shrawder,	Ambler, Pa.,	"	3 "
Elsie Singmaster,	Cornell Univ., Ithaca, N. Y.,	Student,	
Harry D. Saylor,	Bryn Mawr, Pa.,	Prin. of Schools,	3 "
Edgar H. Sausenich,	4th & Chestnut Sts., Phila.,	Merch. Nat. Bank,	
Minnie H. Smith,	Mifflintown, Pa.,	Teaching,	3 "
Nellie C. Speakman,	West Chester, Pa.,	"	3 "
Laura E. Swartz,	" "	"	3 "
J. Mouroe Smith,	Summit, N. J.,	"	3 "
John S. Stettler,	Mertztown, Pa.,	"	
Ada R. Taylor,	Keunett Square, Pa.,	"	2 "
Oscar A. Vincent,	Sunrise City, Alaska,	Gold Prospector,	1 "
Katharine Wagner,	Mahanoy City, Pa.,		
Matilda C. Walter,	Moore's, Pa.,	Teaching,	2½ "
George J. Wendel,	201 E. Hemlock, Hazeltou, Pa.,	"	2 "
Josephine Widdicombe	West Chester, Pa.,		
Etta Williams,	Markes, Pa.,	"	3 "
C. Mabel Wilson,	Downingtoun, Pa.,	"	3 "
Charles T. Windle,	Southampton, Pa.,	"	3 "
Antoinette L. Wintzer,	West Grove, Pa.,		2 "
Mabel Woodward,	West Chester, Pa.,	Student,	
Emilie Worstall,	" "		
Wm. J. Woy,	Chadwick, Ill.,	Teaching,	3 "
Georgie K. Yeakel,	215 Frauklin Ave., Norristown	"	3 "

STATE CERTIFICATE.

Miles L. Emery,	Honeybrook, Pa.,	Teaching,	2 "
-----------------	------------------	-----------	-----

<i>Name.</i>	<i>Address.</i>	<i>Profession.</i>	<i>Time taught since graduation.</i>
CLASS OF 1897. ELEMENTARY COURSE.			
Linda Barber,	West Chester, Pa.,	Teaching,	2 yrs.
Bertha Barr,	Three Tuns, Pa.,	"	2 "
Oscar O. Barr,	West Grove, Pa.,	"	2 "
Oscar Barron,	Tullytown, Pa.,	"	2 "
Henry M. Bechtel,	140 N. 12th St., Phila.,	Clerk,	
Jeannette M. Blanck,	Vinemont, Pa.,	Teaching,	2 "
Margaret Blackwood,	Newcastle, Pa.,	"	2 "
Zelda May Brinton,	Media, Pa.,	"	2 "
John A. Britton,	Pottstown, Pa.,	"	2 "
Cora Brooke,	Plymouth Meeting, Pa.,	"	2 "
Ambrose E. Brough,	4th & West Sts., Wilmington, Del.,	"	2 "
Alma H. Brown,	Narberth, Pa.,	"	2 "
Jesse A. Burke,	Media, Pa.,	"	
Elmer S. Campbell,	Bursonville, Pa.,	"	2 "
Harriet L. Carpenter,	Mauch Chunk, Pa.,	"	2 "
Aquila D. Chandler,	Easton, Pa.,	Student,	
Jessie T. Chrisman,	Coventryville, Pa.,	"	2 "
Alice L. Cooper,	Linwood, Pa.,	Teaching,	2 "
Lucy G. Coyle,	Rushland, Pa.,	"	2 "
Thomas D. Cope,	West Chester, Pa.,	"	2 "
Mary F. Cronin,	Glen Mills, Pa.,	"	2 "
Wm. H. Davis,	Embreeville, Pa.,	"	2 "
Harry H. Derr,	Weldon, Pa.,	"	2 "
Patrick J. Dougherty,	Plainsville, Pa.,	"	2 "
Mary E. Dunn,	Bryn Mawr, Pa.,	"	2 "
J. Thornton Emery,	163 N. 15th St., Phila., Pa.,	"	2 "
George E. Fetters,	Warren Tavern, Pa.,	Student,	1 "
M. Jennie Garrison,	Lansdowne, Pa.,	Teaching,	2 "
Bertha I. Grater,	Ambler, Pa.,	"	2 "
Florence Griffith,	West Chester, Pa.,	"	2 "
Calvin L. Grimm,	Middletown, Del.,	"	2 "
W. Gertrude Hamilton,	Easton, Pa.,	"	2 "
Bessie D. Hamilton,	Booth's Corner, Pa.,	"	2 "
Elizabeth Harry,	Willow Grove, Pa.,	"	2 "
Katherine E. Hays,	White Rock, Pa.,	"	2 "
Mary C. Hays,	" "	"	1 "
Maud Hayman,	Dushore, Pa.,	"	1 "
Wallace D. Heaton,	Terwood, Pa.,	"	2 "
Mary S. Holland,	Holicong, Pa.,	"	2 "
Simon W. Horstick,	Honeybrook, Pa.,	"	2 "
Mabel E. Houseal,	Maytown, Pa.,	"	2 "
Abbie Jackson,	Nine Points, Pa.,	"	2 "
Linda G. Keech,	Spruce Grove, Pa.,	"	2 "
Laura Koons,	Freeland, Pa.,	"	2 "
Maude L. Kuschke,	Plymouth, Pa.,	"	2 "
Bessie Latshaw,	Anselma, Pa.,	"	2 "
Horace H. Lefferts,	Southampton, Pa.,	"	2 "
A. E. Leffler,	Fountain Springs, Pa.,	"	1 "
Maude Martin,	Octoraro, Pa.,	"	2 "
Bessie Mast,	Mast, Pa.,	"	2 "
Mary McClellan,	Londonderry, Pa.,	"	2 "
Ira McCord,	Marsh, Pa.,	"	2 "
Emma J. McDowell,	Huntingdon Valley, Pa.,	"	2 "

<i>Name.</i>	<i>Address.</i>	<i>Profession.</i>	<i>Time taught since graduation.</i>
Margaret McKee,	New Bloomfield, Pa.,	Teaching,	2 yrs.
William F. Mackenzie,	Conshohocken, Pa.,	"	2 "
S. Ruth McMichael,	West Chester, Pa.,	"	2 "
Alice C. Moore,	Sta. E., Baltimore, Md.,	Student,	
John L. Morgan,	Nanticoke, Pa.,	Teaching,	2 "
Wilson R. Moyer,	Dublin, Pa.,	"	
Frank Nieweg,	322 N. 32nd St., Phila.,	"	2 "
Mattie Osborne, (Smith),	Sabula, Pa.,	"	2 "
John Paschall,	Newtown Square, Pa.,	"	1 "
Mabel C. Patton,	Media, Pa.,	"	2 "
Olive B. Pearson,	Birchrunville, Pa.,	"	2 "
Elsie Philips,	Pont, Pa.,	Student,	1 "
Margaret Potter,	Bloomfield, N. J.,	Teaching,	2 "
May E. Pownall,	Christiana, Pa.,	"	2 "
Nellie E. Prettv,	Upland, Pa.,	"	2 "
M. Emma Pross,	Carversville, Pa.,	"	2 "
Florence M. Ranck,	Frazer, Pa.,	"	2 "
Esther W. Raysor,	Warren Tavern, Pa.,	"	1 "
Florence M. Ridpath,	Jenkintown, Pa.,	"	2 "
May V. Rickard,	Plymouth, Pa.,	"	1 "
Belle M. Ritter,	Jeffersonville, Pa.,	"	2 "
Caroline R. Rorer,	Glenside, Pa.,	"	2 "
Elizabeth B. Scarborough,	Aquetong, Pa.,	"	2 "
Wayne Sensesnig,	Goodville, Pa.,	Student,	½ "
Dora D. Shenton,	Slatington, Pa.,	"	1 "
Mabel E. Smith,	Chester Springs, Pa.,	Teaching,	2 "
Mabel Stevens,	Elkdale, Pa.,	"	2 "
C. Irwin Stiteler,	Anselma, Pa.,	Student,	2 "
M. Regina Stiteler,	Gulf Mills, Pa.,	Teaching,	2 "
Gertrude Stout,	Johnsville, Pa.,	"	2 "
Margaret H. Taylor,	Swarthmore, Pa.,	Student,	1 "
Mary Taylor,	Goshenville, Pa.,	Teaching,	2 "
Lidie M. Thompson,	West Chester, Pa.,	"	2 "
Grace E. Troub,	Honeybrook, Pa.,	"	2 "
Clara E. Wack,	Wayne, Pa.,	"	2 "
Emille B. Walter,	Wawaset, Pa.,	"	2 "
Charles A. Wagner,	Ashbourne, Pa.,	"	2 "
Herbert B. Wagner,	Jarrettown, Pa.,	"	2 "
Della H. Williams,	Berwyn, Pa.,	"	2 "
Gwen Williams,	Peckville, Pa.,	"	1 "
Mary E. Williams,	Lansford, Pa.,	"	2 "
Margaret B. Wilson,	Homestead, Pa.,	"	1 "
Amanda Wismer,	Wismer, Pa.,	"	2 "
Anna E. Woodward,	Avondale, Pa.,	"	1½ "
Anna W. Yardley,	Yardley, Pa.,	"	2 "
Marie L. Yarnall,	Upper Providence, Pa.,	"	2 "
Carrie Zoller,	Line Lexington, Pa.,	"	2 "

STATE CERTIFICATE.

Harriet Baldwin,	West Chester, Pa.,	Teacher Nor. Sch.	2 "
------------------	--------------------	-------------------	-----

CLASS OF 1898. REGULAR NORMAL COURSE.

Francis Hallman,	Milford Mills, Pa.,	Teaching,	1 yr.
Anne Linton,	434 S. 40th St., Phila., Pa.,	"	1 "
Lizzie Linton,	" "	"	1 "

<i>Name.</i>	<i>Address.</i>	<i>Profession.</i>	<i>Time taught since graduation.</i>
ELEMENTARY COURSE.			
Della R. Aaron,	Lansdale, Pa.,	Teaching.	1 yr.
Marie Akers,	Johnstown, Pa.,	"	1 "
George Alderfer,	Harleysville, Pa.,	"	1 "
Eugene A. Anders,	Worcester, Pa.,	"	1 "
Charlton H. Babb,	Marshallton, Pa.,	"	1 "
Lorin H. Bailey,	Beloit, Ohio,	"	1 "
Gertrude C. Baker,	Hummelstown, Pa.,	"	1 "
Jennie W. Bassett,	Pottstown, Pa.,	"	1 "
Edith J. Bateman,	Llewellyn, Pa.,	"	1 "
Katharine Bell,	Marysville, Pa.,	"	1 "
Alice M. Bone,	Thorndale, Pa.,	"	1 "
Carrie E. Branson,	Coatesville, Pa.,	"	1 "
Cora C. Buchanan,	Honeybrook, Pa.,	"	1 "
Harriet E. Bunn,	Cochranville, Pa.,	"	1 "
Edna E. Burhouse,	West Conshohocken, Pa.,	"	1 "
J. C. Burroughs,	Fort Hill, Pa.,	"	1 "
Elmer H. Carl,	Hoppenville, Pa.,	"	1 "
Anna Cartmell,	Wilkesbarre, Pa.,	"	1 "
Jesse U. Cassel,	Media, Pa.,	"	1 "
Helen F. Castle,	Upland, Pa.,	"	1 "
Charles S. Catherman,	Chester Springs, Pa.,	"	1 "
Flora M. Clymer,	Tradesville, Pa.,	"	1 "
Ada M. Cox,	Booth's Corner, Pa.,	"	1 "
Lizzie H. Cox,	Lenape, Pa.,	"	1 "
Isabel Crawford,	Freeland, Pa.,	"	
Homer T. Darlington,	West Chester, Pa.,	"	
Sara G. Darlington,	West Chester, Pa.,	"	1/2 "
John R. Davis,	Oaks, Pa.,	"	1 "
Ruth Y. Davis,	West Chester, Pa.,	"	1 "
Luna H. Dickson,	Media, Pa.,	"	
Ione B. Dysart,	Tipton, Pa.,	"	1 "
Augusta Etschman,	Nazareth, Pa.,	"	1 "
Gertrude M. Fairlamb,	Media, Pa.,	"	1 "
Wm. G. Fegan,	Campbellstown, Pa.,	"	1 "
Leta C. Ferguson,	Coleraine, Pa.,	"	1 "
Helen E. Foulke,	West Chester, Pa.,	"	1 "
G. Arthur Fowler,	Jermyn, Pa.,	"	1 "
Emma L. Funk,	Kenilworth, Pa.,	"	1 "
Edith M. Furry,	Lionville, Pa.,	"	1 "
Ellen Fussell,	Media, Pa.,	"	1 "
Grace G. Gates,	Kittanning, Pa.,	"	1 "
Mary I. Gates,	Wilkinsburg, Pa.,	"	
Louisa Geisdorff,	Red Lodge, Mont.,	"	1 "
Sharpless D. Green,	Booth's Corner, Pa.,	"	1 "
Margaret H. Griffith,	Garrettsford, Pa.,	"	1 "
Anna L. Hannum,	32 N. 51st St., Phila.,	"	1 "
Mary A. Harvey,	Cheltenham, Pa.,	"	1 "
Carrie F. Heaton,	Terwood, Pa.,	"	1 "
Melvin M. Heckler,	Buckingham, Pa.,	"	1 "
Rachel M. Hipple,	Media, Pa.,	"	1 "
Elizabeth B. Huddell,	Linwood, Pa.,	"	1 "
Mary N. James,	Summit Hill Pa.,	"	1 "
Virginia R. Jamison,	Jamison, Pa.,	"	1 "

<i>Name.</i>	<i>Address.</i>	<i>Profession.</i>	<i>Time taught since graduation.</i>
Gertrude Johnson,	Broomall, Pa.,	"	1 yr.
Minnie M. Jones,	Smedley, Pa.,	"	1 "
Mary J. Kerr,	Jersey Shore,	Clerk,	
S. Elizabeth Kirk,	Elwyn,	Teaching,	1 "
A. Wesley Kratz,	Lansdale, Pa.,	"	1 "
Alice A. Lewis,	Uwchland, Pa.,	"	1 "
Edgar A. Lewis,	West Chester, Pa.,	"	
Rebecca P. R. Liggett,	Nantmeal Village, Pa.,	"	1 "
Dawson W. Light,	Avon, Pa.,	"	1 "
John H. Light,	"	"	1 "
Ernestine Loeffler (Keech)	Lansdowne, Pa.,	"	1 "
Joseph T. Lyons,	Ashland, Pa.,	"	1 "
Kathryn E. Manning,	West Chester, Pa.,	"	1 "
William S. Markley,	Frederick, Pa.,	"	1 "
C. Nelson Martin,	Lansdale, Pa.,	"	1 "
Orin R. Miller,	West Chester, Pa.,	Business,	
B. Frank Milus,	St. Peter's Pa.,	Teaching,	1 "
Lelia I. Mitchell,	Clearfield, Pa.,	"	1 "
Elizabeth H. Monks,	Norway, Pa.,	"	
Lillian M. Owen,	Toughkenamon, Pa.,	"	1 "
J. Fred Parsons,	Upland, Pa.,	"	1 "
Alice W. Pennypacker,	West Chester, Pa.,	"	1 "
William P. Philips,	"	Student,	
Perry C. Pike,	Media, Pa.,	"	
Frances E. Rile,	Blue Bell, Pa.,	Teaching,	1 "
Elizabeth L. Rouse,	Ogontz, Pa.,	"	1 "
Horace S. Seipt,	Worcester, Pa.,	"	1 "
Howard A. Seipt,	"	"	1 "
Katharine B. Sellers,	Lansdale, Pa.,	"	1 "
Catharine Shee,	West Chester, Pa.,	"	
Elizabeth M. Shiffert,	Slatington, Pa.,	"	1 "
Anna R. Sidwell,	Wallingford Pa.,	"	1 "
George A. Sigman,	Blue Rock, Pa.,	"	1 "
Edith M. Sinclair,	Conshohocken, Pa.,	"	1 "
Annabelle Skelton,	Doe Run, Pa.,	"	1 "
A. Lulu Snyder,	West Pikeland, Pa.,	"	1 "
Isaac E. Stetler,	New Hanover, Pa.,	"	1 "
Eva Stiteler,	Gulf Mills, Pa.,	"	1 "
Ida J. Stout,	Three Tuns, Pa.,	"	1 "
Warren H. Stover,	Carversville,	"	1 "
Elizabeth Thompson,	Carbondale, Pa.,	"	1 "
Jennie R. Trout,	Orwigsburg, Pa.,	"	
Mary L. Turner,	Derbydown, Pa.,	Teaching,	1 "
Robert M. Walleigh,	Pughtown, Pa.,	"	
Mary J. Weir,	Tradesville, Pa.,	"	1 "
Beryl I. Weygandt,	Slatington, Pa.,	"	1 "
Claudia C. Wilbur,	Whitford, Pa.,	"	1 "
S. Norman Wilson,	Oxford, Pa.,	"	1 "
J. Hunter Wiley,	Pughtown, Pa.,	"	1 "
Fred F. Windle,	West Chester, Pa.,	"	1 "
Marie E. Wingard,	Cotesville, Pa.,	"	1 "
Bessie A. Wolf,	Geiger's Mills, Pa.,	"	1 "
Samuel S. Wolford,	Woxall, Pa.,	"	1 "
Jennie G. Woodward,	West Chester, Pa.,	Student,	
Parke L. Woodward,	"	"	1 "

<i>Name.</i>	<i>Address,</i>	<i>Profession.</i>	<i>Time taught since graduation.</i>
Meta A. Worthington.	Bristol, Pa.,	Teaching,	1 yr.
Sophie R. Worthington	Neshaminy, Pa.,	"	1 "
Ralph E. Yost,	Bethesda, Pa.,	"	1 "
Elmer C. Ziegler,	Limerick, Pa.,	"	1 "

CLASS OF 1899. SCIENTIFIC COURSE.

Laura E. Woodward,	West Chester, Pa.,	<i>Will Teach.</i>
--------------------	--------------------	--------------------

REGULAR NORMAL COURSE.

<i>Name.</i>	<i>Address.</i>	<i>Will Teach.</i>
George L. McCracken,	Twin Oaks, Pa.,	"
M. Elsie Philips,	Fout, Pa.,	"
Perry C. Pike,	Media, Pa.,	"
John S. Stettler,	Mertztown, Pa.,	"
Charles A. Wagner,	Ashbourne, Pa.,	"
Charles T. Windle,	Southampton, Pa.,	"

ELEMENTARY COURSE.

Anderson, Elizabeth D.,	Clifton Heights, Pa.,	"
Balthaser, Sallie,	Hamburg, Pa.,	"
Bartholomew, Lillian M.,	West Chester, Pa.,	"
Bash, Eurie Isabel,	Johnstown, Pa.,	"
Bechtel, Mary,	Royersford, Pa.,	"
Bernard, Irene M.,	Royersford, Pa.,	"
Bickel, Minnie M.,	Rehlersburg Pa.,	"
Brown, Geneva,	Malvers, Pa.,	"
Bull, Elsie Oleita,	Delta, Pa.,	"
Byler, Sue C.,	Barnestown, Pa.,	"
Carman, Ellen L.,	Dover, Del.,	"
Carpenter, Sue M.,	Ambler, Pa.,	"
Case, Jennie Perrine,	Trenton, N. J.,	"
Cooper, Ethel,	Wilmington, Del.,	"
Crater, Alice M.,	Narcissa, Pa.,	"
Caulfield, Rose A.,	Enon Valley, Pa.,	"
Dawson, Janet,	Upland, Pa.,	"
Detterline, A. Ada,	Strafford, Pa.,	"
De Wire, Annie V.,	Kennett Square, Pa.,	"
Dudley, Helen Margaret,	Morrow, Ohio,	"
Eachus, Marion Fleming,	West Chester, Pa.,	"
Eagan, Kate T.,	Media, Pa.,	"
Fish, Annie B.,	Fallsington Pa.,	"
Forbes Mary C.,	Carbondale, Pa.,	"
Forrest, Mattie C.,	Freeland, Pa.,	"
Gallery, Mary C.,	Fairville, Pa.,	"
Gervin, Gertrude Lindsay,	Northumberland, Pa.,	"
Gibson, Clair W.,	Allentown, Pa.,	"
Gill, Annie A.,	West Chester, Pa.,	"
Godshall, Mary,	Royersford, Pa.,	"
Gore, Rebecca N.,	Upland, Pa.,	"
Gormley, Katherine T.,	New Castle, Del.,	"
Gray, Elizabeth,	Avondale, Pa.,	"
Hamilton, Maud G.,	Kelton, Pa.,	"
Hamilton, Sara M.,	Brandywine Summit, Pa.,	"
Harbold, Cora M.,	Dillsburg, Pa.,	"

<i>Name.</i>	<i>Address.</i>	<i>Will Teach.</i>
Heger, Barbara G.,	Jenkintown, Pa.,	"
Hellings, Elizabeth L.,	Wilmington, Del.,	"
Hill, Annie,	Curwensville, Pa.,	"
Hoffman, Sara E.,	West Whiteland, Pa.,	"
Hostetter, Viola M.,	Williamsport, Pa.,	"
Kauffman, Bessie S.,	Berwyn, Pa.,	"
Keppel, Leah Lerch,	Sinking Springs, Pa.,	"
Kochel, Mary A.,	Pottstown, Pa.,	"
Kriebel, Elizabeth S.,	Lansdale, Pa.,	"
Latimer, Anna A.,	Bristol, Pa.,	"
Lewis, Elva Riggs,	Glenmore, Pa.,	"
McDonald, Regina,	Warrior Run,	"
MacMinn, Coroline,	Williamsport,	"
Makiver, Lillian,	Russellville, Pa.,	"
March, Lucy B.,	Pottstown, Pa.,	"
Marshall, R. Mary,	Northbrook, Pa.,	"
McHenry, Sara M.,	3705 Aspen St., Phila., Pa.	"
Mearns, Mabel E.,	Oak Hill, Pa.,	"
Morton, Margaret B.,	Lewisville, Pa.,	"
Murry, Annie V.,	Bethlehem, Pa.,	"
Nyce, Mabel M.,	Schwenksville, Pa.,	"
Palmer, Elizabeth F.,	Wayne, Pa.,	"
Pepper, W. Annie,	Georgetown, Del.,	"
Philips, Lulu A.,	Tower City, Pa.,	"
Philips, Maud A.,	Tower City, Pa.,	"
Rogers, Harriette S.,	Warren, Pa.,	"
Rogers, Maud H.,	Mountain Gap, Va.,	"
Ruth, Bessie E.,	Reading, Pa.,	"
Scholl, Lottie M.,	Spring Mount, Pa.,	"
Scott, Elizabeth,	Newtown, Pa.,	"
Seipt, Emma J.,	Worcester, Pa.,	"
Shaeffer, Florence E.,	Jenkintown, Pa.,	"
Simmers, Edna,	Phoenixville, Pa.,	"
Sinclair, Katharine,	Norristown, Pa.,	"
Snyder, Mary R.,	Lukeus, Pa.,	"
Snyder, Mary V.,	Pottsville, Pa.,	"
Sheppard Mabel W.,	Southampton, Pa.,	"
Spare, L. Edith,	Mont Clare, Pa.,	"
Stackhouse, Laura N.,	Darby, Pa.,	"
Stewart, Mary K.,	Cedar Knoll, Pa.,	"
Stradling, Benita,	Oakford, Pa.,	"
Stradling, Elizabeth,	Oakford, Pa.,	"
Swayne, Margaret B.,	Kennett Square, Pa.,	"
Swope, Sadie A.,	Rehrersburg, Pa.,	"
Taylor, Adella A.,	Kennett Square, Pa.,	"
Tinker, Dorcas M.,	Altoona, Pa.,	"
Trimmer, Jean U.,	Wilkesbarre, Pa.,	"
Van Gunten, Jessie B.,	Somerton, Phila., Pa.,	"
Webster, Rachel E.,	Hulmeville, Pa.,	"
Welsh, Elizabeth M.,	West Whiteland, Pa.,	"
Wherry, Jessie E.,	Chatham, Pa.,	"
White Alice,	Jeffersonville, Pa.,	"
Wickersham, Annie R.,	Unionville, Pa.,	"
Wickersham, Jennie H.,	Unionville, Pa.,	"
Williams Lucina A.,	Pecksville, Pa.,	"
Wilson, Elizabeth U.,	New Castle, Pa.,	"

<i>Name.</i>	<i>Address.</i>	<i>Will Teach.</i>
Wright, Sara E.,	West Chester, Pa.,	"
Bartman, Daniel H.,	Collegeville, Pa.,	"
Burke, Albert J.,	Fox Chase, Phila., Pa.,	"
Chanuell, Ralph F.,	Parkesburg, Pa.,	"
Cram, Wm. C.,	Raleigh, N. C.,	"
Forrest, Keuney T.,	Brandywine Manor, Pa.,	"
Goodley, Samuel,	Booth's Corner, Pa.,	"
Gordon, Clarence,	Newark, N. J.,	"
Griffith, William C.,	Towanda, Pa.,	"
Groff, W. K.,	Limerick, Pa.,	"
Haines, Horace B.,	Freysville, Pa.,	"
Halbach, Ernest,	Wayne, Pa.,	"
Heffner, James,	Pottstown, Pa.,	"
Hornberger, Frank A.,	Reading, Pa.,	"
Irwin, William Madison,	South Hermitage, Pa.,	"
Kelley, Edward,	Minersville, Pa.,	"
Lane, Elmer A.,	Trainer, Pa.,	"
Mease, Harry M.,	Lickdale, Pa.,	"
Parsons, Harvey B.,	Upland, Pa.,	"
Schrope, Wm. D.,	Hegins, Pa.,	"
Shoffner, Jones T.,	West Pikeland, Pa.,	"
Singles, Walter,	Colwyn, Pa.,	"
Sollenberger, George L.,	Greencastle, Pa.,	"
Stettler, Irving I.,	Mertztown, Pa.,	"
Swinehart, I. W.,	Brandywine Manor, Pa.,	"
Swope, Reuben, O.,	Wismar, Pa.,	"
Ulrich, Elmer B.,	Brickerville, Pa.,	"

STATE CERTIFICATE.

Irey, Will S.,	Marsh, Pa.,	"
----------------	-------------	---



FRANKLIN'S CLOCK.

Bought by Benjamin Price, of West Chester, at a sale of Benjamin Franklin's effects.
Now the property of the West Chester State Normal School.

