



WEST
CHESTER
STATE
NORMAL SCHOOL





"A PAINTING OF GEORGE WASHINGTON,
PAINTED AT VALLEY FORGE, 1778, BY CHARLES WILLSON PEALE, NOW THE PROPERTY
OF THE WEST CHESTER STATE NORMAL SCHOOL."

THIRTY-FIRST
ANNUAL CATALOGUE
OF THE
WEST CHESTER
State Normal School
FOR THE
FIRST DISTRICT.

WEST CHESTER, CHESTER COUNTY, PA.

...1902...

PRESS OF THE VILLAGE RECORD,
WEST CHESTER, PA.

Board of Trustees.



TRUSTEES REPRESENTING THE STOCKHOLDERS.

R. T. CORNWELL, SAMUEL MARSHALL, EVANS ROGERS, JOSEPH H. BALDWIN.	}	Term of office expires in 1903.
--	---	------------------------------------

ALBERT P. HALL, ALFRED P. REID, MARSHALL S. WAY, JOHN S. MULLIN.	}	Term of office expires in 1904.
---	---	------------------------------------

THOMAS W. BALDWIN, PLUMMER E. JEFFERIS, MARSHALL H. MATLACK, HERBERT P. WORTH.	}	Term of office expires in 1905.
---	---	------------------------------------

TRUSTEES REPRESENTING THE STATE.

LEVI G. MCCAULEY, J. PRESTON THOMAS.	}	Term of office expires in 1903.
---	---	------------------------------------

JOHN J. PINKERTON, WM. S. WINDLE.	}	Term of office expires in 1904.
--------------------------------------	---	------------------------------------

T. L. EYRE, WILLIAM CHALFANT.	}	Term of office expires in 1905.
----------------------------------	---	------------------------------------

Officers of the Board.



President,

LEVI G. MCCAULEY.

Secretary,

HERBERT P. WORTH.

Committee on Household,

ALBERT P. HALL, T. L. EYRE, JOSEPH H. BALDWIN,
JOHN S. MULLIN, J. PRESTON THOMAS.

Committee on Finance,

THOMAS W. BALDWIN, EVANS ROGERS, MARSHALL S. WAY,
MARSHALL H. MATLACK, PLUMMER E. JEFFERIS.

Committee on Instruction,

JOHN J. PINKERTON, EVANS ROGERS, R. T. CORNWELL, A. P. REID,
THOMAS W. BALDWIN.

Committee on Cabinet,

W. S. WINDLE, HERBERT P. WORTH, SAMUEL MARSHALL,
J. PRESTON THOMAS, WILLIAM CHALFANT.

Committee on Athletic Grounds,

JOSEPH H. BALDWIN, M. H. MATLACK, A. P. HALL, T. L. EYRE,
A. P. REID, WILLIAM CHALFANT.

The President is a member (*ex-officio*) of all standing
committees.

Treasurer,

J. HOWARD MERCER.

Steward,

HARRY S. JOHNSON.

Matron,

MARY C. DAVIS.

The regular Meetings of the Board are held on the *last Monday*
in each month.

The Faculty.



GEO. MORRIS PHILIPS, A. M., PH. D.,
Principal.

DAVID M. SENSENIG, M. S.,
Higher Mathematics.

C. B. COCHRAN, A. M.,
Physics and Chemistry.

ELVIRA Y. SPEAKMAN,
Geography and Spelling.

FRANCIS H. GREEN, A. M.,
English.

C. E. EHINGER, M. D.,
Director of Gymnasium.

CHARLOTTE M. HARDEE, Mus. B.,
Music.

ESTHER M. GROOME,
Drawing and Writing.

S. C. SCHMUCKER, A. M., PH. D.,
Biological Sciences.

CORA E. EVERETT,
Reading.

FOSTER H. STARKEY, A. M.,
Latin.

WALLACE P. DICK, A. M.,
Greek and Latin.

SMITH BURNHAM, A. M.,
History.

ADDISON L. JONES, A. M.,
Principal of Model School.

HENRY H. GODDARD, A. M., PH. D.,
Pedagogy.

LYDIA A. MARTIN, M. E.,
Mathematics.

MRS. A. M. SENSENIG, M. E.,
Mathematics.

MRS. C. E. EHINGER,
Physical Culture.

ROBERT F. ANDERSON, A. M.,
Mathematics.

WILLIAM S. DELP, M. S.,
Book-keeping and Mathematics.

ANNA P. ESLER, M. E.,
Reading and Grammar.

ELIZABETH F. CRILEY, M. E.,
English Branches.

HARRIET H. BALDWIN, M. E.,
English.

ADA W. CORNWELL, M. E.,
ELIZABETH G. HOLMES,
Assistants in Gymnasium.

ELEANOR VANCE,
Assistant in Music.

HELEN FARQUHAR,
English Grammar.

JOHN F. LOYD, A. B.,
Manual Training.

CHARLES B. LEWIS,
Assistant in Gymnasium.

MRS. C. B. COCHRAN,
Assistant in Laboratory.

HUMPHREY M. CARPENTER,
Violin, Flute, Violincello.

* * * * *

ALICE COCHRAN,
Librarian.

JOHN A. BRITTON, M. E.,
Secretary.

FRANCIS H. HALLMAN, B. E.,
Book-keeper.

HARVEY M. COOPER,
Study-Hall.

The Calendar.

SPRING TERM, 1902.

Tuesday, - - -	June 3rd, -	State Examinations.
Wednesday, - -	June 4th, -	“ “
Sunday, - - -	June 15th, -	Baccalaureate Sermon.
Wednesday, - -	June 18th, -	Class-Day Exercises.
Thursday, - - -	June 19th, -	Commencement.
“ - - -	“ -	Meeting of Alumni.
Friday, - - -	June 20th, -	Spring Term Closes.

FALL TERM, 1902-1903.

Monday, - - -	Sept. 1st, -	Fall Term Begins.
Thursday, - - -	Nov. 27th -	Thanksgiving.
Wednesday, - -	Dec. 24th, -	Christmas Holidays Begin.
Monday, - - -	Jan. 5th, -	Students Return.
Friday, - - -	Mar. 13th, -	Winter Term Ends.

SPRING TERM, 1903.

Monday, - - -	Mar. 23rd, -	Spring Term Begins.
Sunday, - - -	June 14th, -	Baccalaureate Sermon.
Wednesday, - -	June 17th, -	Class-Day Exercises.
Thursday, - - -	June 18th, -	Commencement.
“ - - -	“ -	Meeting of Alumni.
Friday, - - -	June 19th, -	Term Ends.

Catalogue of Students



POST GRADUATES.

<i>Name.</i>	<i>Post Office.</i>	<i>County and State.</i>
Ash, Ethel V.,	West Chester,	Chester, Pa.
Babb, Edith L.,	Bryn Mawr,	Montgomery, Pa.
Bechdolt, Mary H.,	Media,	Delaware, Pa.
Carl, Elmer B.,	Ironbridge,	Montgomery, Pa.
De Neen, Sophia M.,	53 Decatur st.,	Cumberland, Md.
Green, Anna M.,	Horsham,	Montgomery, Pa.
Griffith, Florence I.,	West Chester,	Chester, Pa.
Hoagland, Zillah M.,	Unionville,	" "
Immell, Ruth,	West Chester,	" "
Kerr, Mary,	Jersey Shore,	Lycoming, Pa.
Knapp, Samuel K.,	Matawan,	N. J.
Marple, Viola Z.,	Horsham,	Montgomery, Pa.
Marshall, R. Mary,	Northbrook,	Chester, Pa.
McCord, Clinton P.,	Elverson,	" "
Pepper, R. Clemmie,	Georgetown,	Delaware.
Shee, Catharine,	West Chester,	Chester, Pa.
Stetler, Isaac E.,	New Hanover,	Montgomery, Pa.
Trexler, Kate L.,	Trexler,	Berks, Pa.
Ulrich, Elmer B.,	Jonesville,	Lebanon, Pa.
Wolford, Samuel S.,	Spring Mount,	Montgomery, Pa.
Woodward, H. Willard,	West Chester,	Chester, Pa.
Ziegler, Elmer B.,	Hatboro,	Montgomery, Pa.

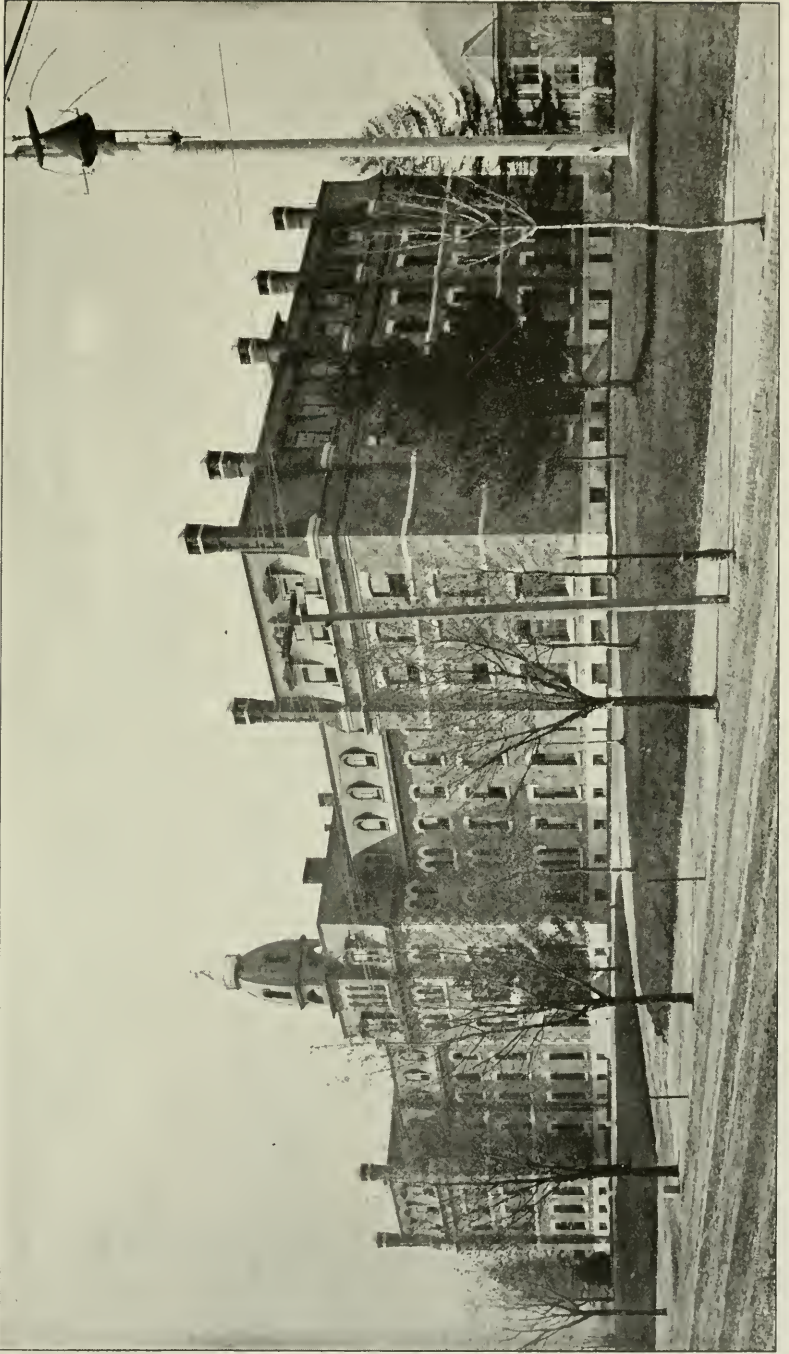


UNDER-GRADUATES.

LADIES.

<i>Name.</i>	<i>Post Office.</i>	<i>County and State.</i>
Achey, Ida J.,	Milford Square,	Bucks, Pa.
Adams, Della M.,	Tweedale,	Chester, Pa.
Allchin, Mary H.,	Bryn Mawr,	Montgomery, Pa.
Alden, Gertrude W.,	Lansdowne,	Delaware, Pa.
Alderfer, Anna A.,	Mainland,	Montgomery, Pa.
Allebach, Lydia M.,	Schwenkville,	" "
Allen, Laura F.,	Ambler,	" "

<i>Name.</i>	<i>Post Office.</i>	<i>County and State.</i>
Allison, Anna C.,	Ridgway,	Elk, Pa.
Andrews, Mildred M.,	1 Ophelia st., Pittsburg,	Allegheny, Pa.
Arbogast, Elsie B.,	132 S. Fifth st., Allentown,	Lehigh, Pa.
Arnold, Ida M.,	Burlington,	West Virginia.
Ashenfelder, Mabel,	Oaks,	Montgomery, Pa.
Aspril, Frances,	Odessa,	Delaware.
Atkinson, Mary B.,	Doylestown,	Bucks, Pa.
Badger, Ethel W.,	West Chester,	Chester, Pa.
Baily, Helen J.,	Derbydown,	" "
Baker, Florence V.,	Malvern,	" "
Baker, Hanna J.,	Lima,	Delaware, Pa.
Baldwin, Anna R.,	West Chester,	Chester, Pa.
Baldwin, Elsie,	" "	" "
Baldwin, Ida,	Delaware Water Gap,	Monroe, Pa.
Barndt, Sallie H.,	Souderton,	Montgomery, Pa.
Barnes, Edith M.,	1112 G'd View ave., Scranton,	Lack'a, Pa.
Barnes, Katherine,	West Chester,	Chester, Pa.
Baum, Mary A.,	Willow Grove,	Montgomery, Pa.
Bell, Agnes,	Marysville,	Perry, Pa.
Bell, Lillian,	Keermoor,	Clearfield, Pa.
Bell, Susan,	Marysville,	Perry, Pa.
Bennett, Emma A.,	West Chester,	Chester, Pa.
Bentley, Florence J.,	Chester,	Delaware, Pa.
Bernheisel, Edith E.,	Green Park,	Perry, Pa.
Bertolet, Emma Y.,	Pughtown,	Chester, Pa.
Beyerle, Ida E.,	Bernville,	Berks, Pa.
Bicking, Lillie L.,	Russellville,	Chester, Pa.
Bicking, Tillie L.,	"	" "
Bingaman, Elizabeth B.,	Coventryville,	" "
Bishop, Dorothy R.,	Snow Hill,	Maryland.
Black, Caroline,	Hatboro,	Montgomery, Pa.
Black, M. Roberta,	Glasgow,	Delaware.
Blackburn, Carrie J.,	Ailston,	York, Pa.
Blair, Jeannette E.,	S. River st., Wilkesbarre,	Luzerne, Pa.
Bock, Elizabeth R.,	New Ringgold,	Schuylkill, Pa.
Boileau, Ada Q.,	Southampton,	Bucks, Pa.
Bordner, Dora,	Lickdale,	Lebanon, Pa.
Bowers, Myra,	Hopewell,	Bedford, Pa.
Bowman, Mary E.,	Downingtown,	Chester, "
Brendell, Jane T.,	Ridgway,	Elk, "
Brook, Martha A.,	Pottstown,	Montgomery, Pa.
Brosius, Estella S.,	Ranchtown,	Clinton, Pa.
Brubaker, Mary S.,	Lexington,	Lancaster, Pa.
Brunnabend, Elsie,	Phoenixville,	Chester, Pa.
Brunner, Lillian,	Reinholds,	Lancaster, Pa.



MAIN BUILDING.

<i>Name.</i>	<i>Post Office.</i>	<i>County and State.</i>
Buchanan, Margaret W.,	Millerstown,	Perry, Pa.
Bullock, Lillian M.,	Kemblesville,	Chester, Pa.
Bullock, Rachel G.,	"	" "
Burg, Daisy E.,	Wrightsville,	York, "
Burke, Mary V.,	Carbondale,	Lackawanna, Pa.
Burnley, Elsie,	Garrettford,	Delaware, Pa.
Buzby, Ella H.,	Moorestown,	New Jersey.
Byers, Bessie,	Edgmont,	Delaware, Pa.
Calwell, Bessie G.,	New Hope,	Clearfield, Pa.
Cappeau, Sara D.,	Brandywine Summit,	Delaware, Pa.
Carey, M. Lela,	Lumberville,	Bucks, Pa.
Carr, Q. Ethel,	N. Y. City, 159 W. 80th,	New York.
Carskadon, Rebecca,	Headsville,	West Virginia.
Cassell, Effie,	Lafayette Hill,	Montgomery, Pa.
Caulfield, Grace,	Enon Valley,	Lawrence, Pa.
Chambers, Elsie M.,	West Chester,	Chester, Pa.
Chandler, Carrie C.,	Unionville,	" "
Chandler, Ethel,	159 Meehan avenue,	Philadelphia, Pa.
Chandler, Florence S.,	Unionville,	Chester, Pa.
Chandler, Gertrude H.,	"	" "
Chase, Florence J.,	New Castle,	Delaware.
Christ, Laura C.,	Cressona,	Schuylkill, Pa.
Chrisman, Ethel M.,	Coventryville,	Chester, Pa.
Church, Retta,	Moosic,	Lackawanna, Pa.
Clarke, Rachel,	Newtown,	Bucks, Pa.
Clayton, Mary H.,	Southampton,	" "
Cleary, Rose M.,	Mahanoy City,	Schuylkill, Pa.
Cloud, Mary R.,	Kennett Square,	Chester, Pa.
Cloud, Hanna M.,	Leonard,	" "
Cochran, F. Grace,	West Chester,	" "
Conley, Emma G.,	Rosemont,	Montgomery, Pa.
Cooper, Florence E.,	Green Park,	Perry, Pa.
Cope, Elizabeth D.,	West Chester,	Chester, Pa.
Cornish, Amelia H.,	Tobyhanna,	Monroe, Pa.
Cramer, Ruth A.,	Warren,	Warren, Pa.
Crawford, Hilda C.,	Clifton Heights,	Delaware, Pa.
Cressman, Alma,	Richland Centre,	Bucks, Pa.
Cressman, Anna S.,	Sumneytown,	Montgomery, Pa.
Cronin, Anna P.,	Locksley,	Delaware, Pa.
Crouse, Anna M.,	Cupola,	Chester, Pa.
Custer, Rebecca T.,	Colwyn,	Delaware, Pa.
Curtin, Margaret A.,	Dunmore,	Lycoming, Pa.
Cuthbert, Anna H.,	Ridgway,	Elk, Pa.
Davis, Clara E.,	Sadsburyville,	Chester, Pa.
Davis, Elizabeth S.,	Chadd's Ford,	Delaware, Pa.

<i>Name.</i>	<i>Post Office.</i>	<i>County and State.</i>
Davis, Elsie T.,	Phoenixville,	Chester, Pa.
Davis, Florence S.,	West Chester,	" "
Davis, Iva E.,	" "	" "
Davis, Jessie K.,	Narcissa,	Montgomery, Pa.
Davis, Louisa,	Drifton,	Luzerne, Pa.
DeCoursey, Etta L.,	Hartsville,	Bucks, Pa.
DeLaney, Margaret E.,	Williamsport, 836 High St.,	Lycoming, Pa.
Diven, May J.,	Norristown,	Montgomery, Pa.
Doak, Caroline F.,	Wallingford,	Delaware, Pa.
Doane, Frances M.,	Coatesville,	Chester, Pa.
DuBois, A. Edith,	Paulsboro,	New Jersey.
DuBois, May,	Southampton,	Bucks, Pa.
Dugan, Blanche,	Collingdale,	Delaware, Pa.
Dunne, Helen A.,	Wilkesbarre,	Luzerne, Pa.
Dunn, Lillian M.,	Valley Forge,	Chester, Pa.
Dunn, Mabel G.,	Bryn Mawr,	Montgomery, Pa.
Durboraw, Margaret,	Elwyn,	Delaware, Pa.
Dutton, M. Augusta,	Willow Grove,	Montgomery, Pa.
Dutton, Grace E.,	Newtown Square,	Delaware, Pa.
Eachus, Marian F.,	West Chester,	Chester, Pa.
Edris, Carrie E.,	Fredericksburg,	Lebanon, Pa.
Edwards, Gertrude E.,	Faggs Manor,	Chester, Pa.
Elliott, Florence,	Modena,	" "
Ely, Alice V.,	3435 N. 21st st.,	Philadelphia, Pa.
Emhardt, May,	32 Harvey st., Germ'tn,	" "
Endicott, Anna W.,	Paoli,	Chester, Pa.
Endicott, Minnie B.,	"	" "
Endicott, Lily C.,	"	" "
Enfield, Helen,	Delta,	York, Pa.
England, Mary C.,	Paulsboro,	New Jersey.
Entrekin, Greta M.,	West Chester,	Chester, Pa.
Evans, Elizabeth M.,	Carlisle,	Cumberland, Pa.
Eves, Anna H.,	New London,	Chester, Pa.
Eves, Margaret A.,	Paoli,	" "
Faddis, Grace,	West Chester,	" "
Fairlamb, Florence H.,	Blair,	New Jersey.
Feaster, Agnes M.,	3427 N. 19th st.,	Philadelphia, Pa.
Feaster, Beatrice,	" "	" "
Fegley, Sadie J.,	Providence Square,	Montgomery, Pa.
Fell, Ruth I.,	Carversville,	Bucks, Pa.
Ferman, Esther R.,	Media,	Delaware, Pa.
Ferron, Gertrude,	West Chester,	Chester, Pa.
Few, Anna L.,	" "	" "
Fleck, Margaret B.,	Springhouse,	Montgomery, Pa.
Fleming, Katherine D.	New London,	Chester, Pa.

<i>Name.</i>	<i>Post Office.</i>	<i>County and State.</i>
Fletcher, Charlotte,	1507 Poplar st.,	Philadelphia, Pa.
Fletcher, M. Victoria,	" "	" "
Fogg, Elizabeth W.,	Salem,	New Jersey.
Fosnacht, Sadie A.,	Lickdale,	Lebanon, Pa.
Freas, Lillian E.,	Plymouth Meeting,	Montgomery, Pa.
Frederick, Edith G.,	815 Monroe st.,	Wilmington, Delaware.
Fretz, Ida E.,	Plumsteadville,	Bucks, Pa.
Fries, Cora M.,	St. Peters,	Chester, Pa.
Furness, Mabel,	West Chester,	" "
Gallagher, Elizabeth H.,	Johnsville,	Bucks, Pa.
Gardner, Mary A.,	York Springs,	Adams, Pa.
Gares, Nellie Z.,	West Conshohocken,	Montgomery, Pa.
Garrett, Maude F.,	West Chester,	Chester, Pa.
Garrett, Priscilla W.,	White Horse,	" "
Gates, Mabel G.,	Coalport,	Clearfield, Pa.
Gause, A. Leah,	New Providence,	Lancaster, Pa.
George, Dahney E.,	Cherokee,	North Carolina.
Gifford, Alice M.,	Farmington,	Maryland.
Gilfether, Cora,	Wyoming,	Luzerne, Pa.
Goebel, Laura M.,	Glen Mills,	Delaware, Pa.
Good, Maude E.,	Bartville,	Lancaster, Pa.
Gordon, Nellie I.,	2021 Sylvan ave.,	McKeesport, Alleg'y, Pa.
Gotwals, Mary G.,	Phoenixville,	Chester, Pa.
Gray, Bertha P.,	Linwood,	Delaware, Pa.
Greenlee, Cecelia M.,	Penn's Manor,	Bucks, Pa.
Griffith, Alice F.,	Wyalusing.	Bradford, Pa.
Griffith, Eliza H.,	" "	" "
Grosch, Helen A.,	Wernersville,	Berks, Pa.
Gross, Esther F.,	Doylestown,	Bucks, Pa.
Grove, Mary B.,	Muddy Creek Forks,	York, Pa.
Guthrie, Florence M.,	Downingtown,	Chester, Pa.
Gyger, Helen,	Kimberton,	" "
Gyger, Elsie H.,	" "	" "
Haegele, Jennie T.,	2222 Mt. Vernon st.,	Philadelphia, Pa.
Haines, Emily I.,	Yardley,	Bucks, Pa.
Hall, Anna L.,	Pomeroy,	Chester, Pa.
Haley, Elizabeth B.,	West Chester,	" "
Halsey, Caroline O.,	Boothwyn,	Delaware, Pa.
Hammond, Jennie L.,	Upland,	" "
Haring, Beula E.,	Frenchtown,	New Jersey.
Hanna, Alice,	West Chester,	Chester, Pa.
Harding, Grace B.,	Duffryn Mawr,	" "
Harr, Emma W.,	Sellersville,	Bucks, Pa.
Harrison, Olive A.,	Hulmeville,	" "
Harvey, Ethel,	West Chester,	Chester, Pa.

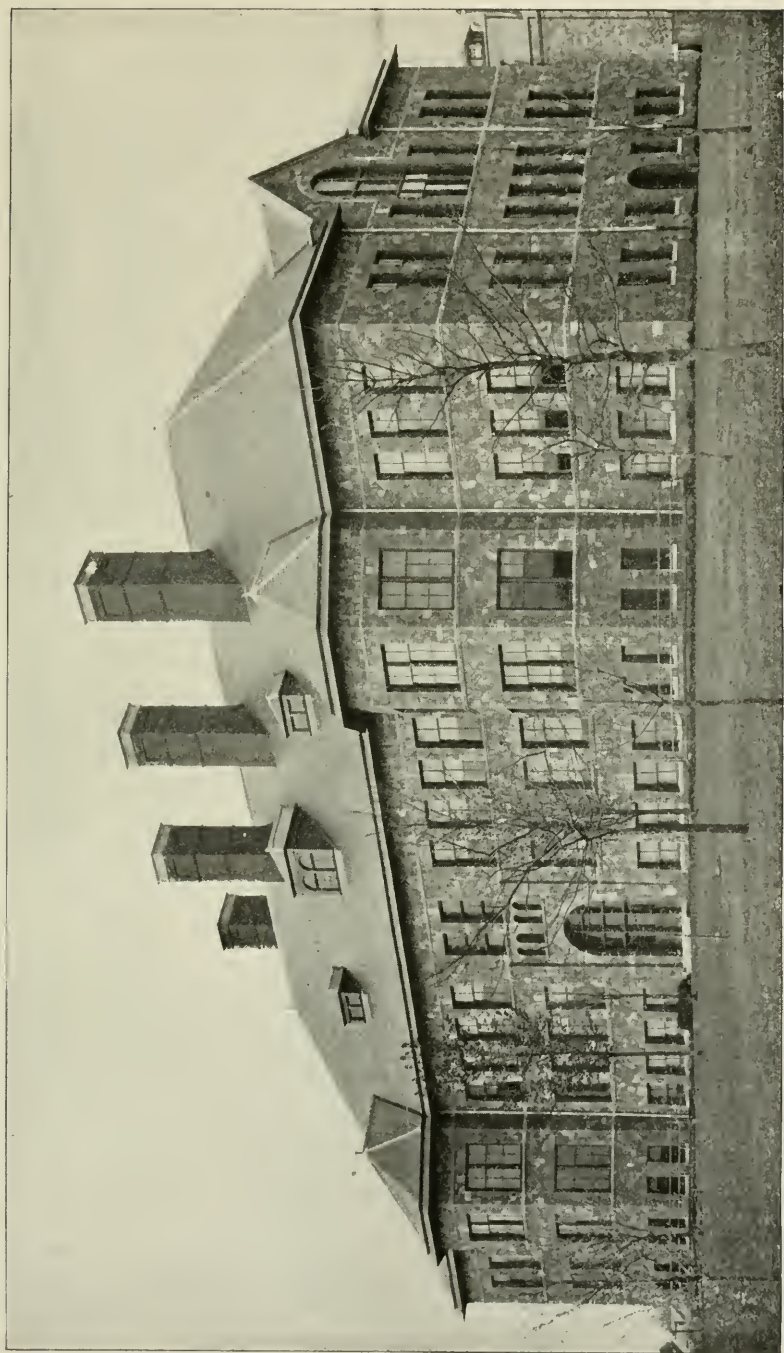
<i>Name.</i>	<i>Post Office.</i>	<i>County and State.</i>
Harvey, Helen,	West Chester,	Chester, Pa.
Harvey, Mary J.,	Ambler,	Montgomery, Pa.
Hatton, G. Mabel,	Cochranville,	Chester, Pa.
Hause, Elizabeth,	West Chester,	" "
Heacock, Sidney H.,	Lima,	Delaware, Pa.
Heberling, Jean,	Lehighton,	Carbon, Pa.
Heck, Elizabeth,	Coatesville,	Chester, Pa.
Heckman, Elsie M.,	Allentown,	Lehigh, Pa.
Heller, Mary E.,	Elimspport,	Lycoming, Pa.
Henry, Margaretta A.,	Oaks,	Montgomery, Pa.
Henry May A.,	Paulina,	Oregon,
Heyburn, Jennie T.,	Ward,	Delaware, Pa.
Hindenach, Gertrude,	Three Tuns,	Montgomery, Pa.
Hoffman, Iva B.,	West Whiteland,	Chester, Pa.
Hohl, Bertha R.,	Brockport,	Elk, Pa.
Hohlstein, Alice T.,	Caln,	Chester, Pa.
Hollingsworth, Mary K.,	Fallston,	Maryland.
Holman, Sara A.,	Parkerford,	Chester, Pa.
Hoopes, Adele,	Sycamore Mills,	Delaware, Pa.
Hopkins, Mary E.,	Upland,	" "
Horn, Anna E.,	Doylestown,	Bucks, Pa.
Horn, Helen M.,	Allentown,	Lehigh, Pa.
Howe, Mildred K.,	Scranton, 1102 Mulberry St.,	Lackawanna, Pa.
Hudson, Alice,	Leonard,	Chester, Pa.
Hughes, Bessie R.,	Elkview,	" "
Hughes, Cora E.,	Willistown Inn,	" "
Hunsinger, Maude L.,	Colley,	Sullivan, Pa.
Hutton, Margaret W.,	Wilson,	Allegheny, Pa.
Ifill, Mary M.,	72 Washington Lane,	Philad'a, Pa.
Ingram, Emily W.,	729 N. 16th St.,	Philad'a, Pa.
Ingram, Harriet G.,	Ward,	Delaware, Pa.
Irey, Helen C.,	West Chester,	Chester, Pa.
Isett, Emma B.,	Pottstown,	Montgomery, Pa.
Jackson, Edith M.,	West Chester,	Chester, Pa.
Jackson, Florence L.,	Unionville,	" "
Jackson, Iva L.,	Caln,	" "
Jacob, Elizabeth,	West Grove,	" "
James, Anna P.,	Glen Mills,	Delaware, Pa.
Jamison, Abbie K.,	Jamison,	Bucks, Pa.
Jarrett, Ada F.,	Oaks,	Montgomery, Pa.
Johnson, Elvira S.,	West Chester,	Chester, Pa.
Jones, Charlotte F.,	" "	" "
Kaisinger, Elsie M.,	927 N. 12th St.,	Philad'a, Pa.
Keenan, Mabel L.,	Wyebrooke,	Chester, Pa.
Keller, Kathryn J.,	Muddy Creek Fork,	York, Pa.

<i>Name.</i>	<i>Post Office.</i>	<i>County and State.</i>
Kelly, Anna C.,	New Hope,	Bucks, Pa.
Kelly, Mary C.,	Concordville,	Delaware, Pa.
Kepler, Agnes,	Carversville,	Bucks, Pa.
Kerrigan, Barbara C.,	7110 Germantown Ave.,	Philad'a, Pa.
Ketterer, Irene M.,	Revere,	Bucks, Pa.
Keylor, Rena F.,	Uwchlan,	Chester, Pa.
King, Elizabeth M.,	2114 Ontario St.,	Philad'a, Pa.
Kunkle, Lotta,	Lewisberry,	York, Pa.
Laird, Roberta,	West Chester,	Chester, Pa.
Lambert, Bessie,	Bethlehem,	Northampton, Pa.
La Rue, Jennie R.,	Hulmeville,	Bucks, Pa.
Laubach, Lillie M.,	Durham,	" "
Leichliter, Clara,	Kintnersville,	" "
Lentz, Naomi,	Mauch Chunk,	Carbon, Pa.
Lesser, Mary,	Upper Lehigh,	Luzerne, Pa.
Lewis, Mary B.,	Gwynedd,	Montgomery, Pa.
Lenhardt, Viola,	Allport,	Clearfield, Pa.
Liggett, Katherine M.,	West Chester,	Chester, Pa.
Light, Elizabeth M.,	Chester,	Delaware, Pa.
Lilley, Edna J.,	Newark,	Delaware.
Lord, Jennie L.,	Garrettford,	Delaware, Pa.
Loughridge, Mary J.,	Catasauqua,	Lehigh, Pa.
Loughry, Cora D.,	Uniontown,	Fayette, Pa.
Love, Blanche,	New Castle,	Lawrence, Pa.
Love, Lydia,	Downingtown,	Chester, Pa.
Lovett, Violet,	Tullytown,	Bucks, Pa.
Loy, Bella M.,	Loysville,	Perry, Pa.
Loy, Sara,	" "	" "
Lucas, Anabel C.,	1611 N. 12th St.,	Philadelphia, Pa.
Lukens, Nellie R.,	Cynwyd,	Montgomery, Pa.
Lynch, Nora,	West Chester,	Chester, Pa.
MacElree, Mary E.,	" "	" "
MarFarlan, Mary E.,	Valley Forge,	" "
Manley, May,	West Chester,	" "
Mansel, Anna,	Shenandoah,	Schuylkill, Pa.
March, Alma L.,	West Chester, R. D. 1,	Chester, Pa.
Markley, Mary A.,	Norristown,	Montgomery, Pa.
Marshall, Elizabeth A.,	Newtown,	Bucks, Pa.
Marshall, Gertrude E.,	Linwood Station,	Delaware, Pa.
Martin, A. Leila,	West Grove,	Chester, Pa.
Martin, Mary A.,	Lyndell,	" "
Mason, Ethel V.,	Chrome,	" "
Matchette, Sophia S.,	Catasauqua,	Lehigh, Pa.
Mathues, Sara S.,	West Chester,	Chester, Pa.
Matson, Nellie C.,	Brookville,	Jefferson, Pa.

<i>Name.</i>	<i>Post Office.</i>	<i>County and State.</i>
Mauger, S. Iola,	Marsh,	Chester, Pa.
Maule, Ada E.,	Lenover,	" "
Maule, Sara,	Bristol,	Bucks, Pa.
McCahan, Anna R.,	1534 S. Broad street,	Philadelphia, Pa.
McCandless, Margaret P.,	Moylan,	Delaware, Pa.
McCarthy, Bertha K.,	Phoenixville,	Chester, Pa.
McCaughan, Hetty S.,	Philadelphia,	Pennsylvania.
McCausland, Bertha L.,	Lyndell,	Chester, Pa.
McClees, Mary M.,	612 N. 37th street,	Philadelphia, Pa.
McClellan, Isabel C.,	Coatesville,	Chester, Pa.
McCollum, Olive M.,	West Conshohocken,	Montgomery, Pa.
McCurdy, Rachel A.,	Gladwyne,	" "
McDonald, Anna H.,	Avondale,	Chester, Pa.
McFarland, Florence S.,	" "	" "
McFarland, Gertrude F.,	West Chester,	" "
McFarland, S. Agnes,	" "	" "
McGinn, Bertha M.,	Aston Mills,	Delaware, Pa.
McGonigle, Mary B.,	New Castle,	Delaware.
McGovern, Margaret E.,	Brockport,	Elk, Pa.
McIlbenny, Sara,	Oak Lane,	Philadelphia, Pa.
McKeon, Essie A.,	Newark,	Delaware.
McMullin, Mabel,	Glasgow,	"
Mecredy, Mary F.,	Camden,	New Jersey.
Mensch, Ethel T.,	Magnolia,	Delaware.
Meredith, Emma L.,	Glenloch,	Chester, Pa.
Meredith, May E.,	Doylestown,	Bucks, Pa.
Meredith, R. Emma,	Exton,	Chester, Pa.
Mershon, Leola A.,	Penn's Manor,	Bucks, Pa.
Metcalf, Ethel M.,	West Chester,	Chester, Pa.
Metlar, Mary J.,	Doylestown,	" "
Meyers, Florence L.,	Marshallton,	" "
Meyers, Edith K.,	Danboro,	Bucks, Pa.
Middleton, May A.,	Penn's Manor,	" "
Miller, Bertha E.,	Coal Valley,	Allegheny, Pa.
Miller, Letitia G.,	Upland,	Delaware, Pa.
Miller, Lillian B.,	Glen Moore,	Chester, Pa.
Miller, Lillian S.,	Rockwood,	Somerset, Pa.
Miller, M. Iva,	Lionville,	Chester, Pa.
Miller, R. Grace,	Coal Valley,	Allegheny, Pa.
Miller, Sara C.,	Line Lexington,	Bucks, Pa.
Mock, Carrie E.,	Jeddo,	Luzerne, Pa.
Mohr, Carrie E.,	Quakertown,	Bucks, Pa.
Monahan, Margaret F.,	Tower City,	Schuylkill, Pa.
Moore, Alice T.,	Pittsburg,	Allegheny, Pa.
Moore, Elizabeth D.,	Radnor,	Delaware, Pa.

<i>Name.</i>	<i>Post Office.</i>	<i>County and State.</i>
Moore, Sylvia L.,	Middletown,	Delaware.
Moran, Mary A.,	Plains,	Luzerne, Pa.
Morgans, Agnes M.,	Wilkesbarre,	" "
Morris, Lillian P.,	Scranton,	Lackawanna, Pa.
Morrison, Jane C.,	Carbondale,	" "
Mowery, Pearl E.,	1521 Emily St.,	Philadelphia, Pa.
Murray, Armine N.,	King of Prussia,	Montgomery, Pa.
Needham, Lillian M.,	Coatesville,	Chester, Pa.
Neeman, Clara C.,	Ambler,	Montgomery, Pa.
Nichols, Carrie A.,	West Chester,	Chester, Pa.
Nields, Josephine O.,	" "	" "
Nyce, Mary A.,	Schwenkville,	Montgomery, Pa.
Osborne, Elizabeth,	Media,	Delaware, Pa.
Osmond, A. May,	Cochranville,	Chester, Pa.
Painter, Emma H.,	Northbrooke,	" "
Patterson, May,	Wilkesbarre,	Luzerne, Pa.
Parke, Elizabeth M.,	Parkesburg,	Chester, Pa.
Peirce, Ella M.,	Caln,	" "
Peirce, Mary B.,	Edgmont,	Delaware, Pa.
Phalen, Cecilia A.,	Brandy Camp,	Elk, Pa.
Phalen, Mary E.,	" "	" "
Philips, Elma M.,	Font,	Chester, Pa.
Philips, Sara E.,	West Chaster,	" "
Pinkerton, Mary A.,	Atglen,	" "
Plank, Rachael A.,	Morgantown,	Berks, Pa.
Plank, Ethel B.,	Christiana,	Lancaster, Pa.
Poley, Helen C.,	Norristown,	Montgomery, Pa.
Pross, Bertha M.,	Warrington,	Bucks, Pa.
Pyle, Stella,	West Chester,	Chester, Pa.
Raezer, Helen I.,	Cheyney,	Delaware, Pa.
Rambo, Della W.,	Phoenixville,	Chester, Pa.
Ranck, Martha L.,	Supplee,	" "
Rapp, Idella,	Durham,	Bucks, Pa.
Raysor, Elizabeth F.,	Malvern,	Chester, Pa.
Read, Lowerry M.,	Clearfield,	Clearfield, Pa.
Reazer, Mabel E.,	Sayre,	Bradford, Pa.
Reese, Bessie M.,	Burnt Cabins,	Fulton, Pa.
Reeves, Gertrude H.,	Clarksboro,	New Jersey.
Reynolds, Mary L.,	Fremont,	Chester, Pa.
Richards, Keturah,	Plymouth,	Luzerne, Pa.
Ridgway, Bessie T.,	Swedesboro,	New Jersey.
Riggs, Emma L.,	600 S. 48th St.,	Philadelphia, Pa.
Robbins, Anna T.,	Morrisville,	Bucks, Pa.
Roberts, Katie A.,	Blue Bell,	Montgomery, Pa.
Rogers, Mary L.,	Trooper,	" "

<i>Name.</i>	<i>Post Office.</i>	<i>County and State.</i>
Rosenberger, Annette,	Deprun,	Bucks, Pa.
Rosser, Ceridwen,	Kingston,	Luzerne, Pa.
Roth, Addie Z.,	Quakertown,	Bucks, Pa.
Rushong, Frances D.,	Trappe,	Montgomery, Pa.
Sankey, Bessie,	Belleville,	Mifflin, Pa.
Saunders, Grace,	West Chester,	Chester, Pa.
Saunders, Florence E.,	Cumberland, 104 Bedford St.,	Maryland.
Savage, Anna E.,	Manoa,	Delaware, Pa.
Schaffer, Sallie J.,	Washington. 664 E St., N.E.,	Dist. Columbia.
Schmucker, Winifred,	Altoona,	Blair, Pa.
Scull, Mary N.,	Olyphant,	Lackawanna, Pa.
Seltzer, Anna M.,	Orwigsburg,	Schuylkill, Pa.
Sensenig, Elizabeth F.,	Goodville,	Lancaster, Pa.
Seyler, L. Felicia,	Luthersburg,	Clearfield, Pa.
Shaeffer, Sue B.,	Norristown,	Montgomery, Pa.
Sharp, Mary L.,	West Chester,	Chester, Pa.
Sharp, Jessie W.,	" "	" "
Sheehy, Anna G.,	Whitford,	" "
Shelling, Ruth E.,	Allentown, 374 Union St.,	Lehigh, Pa.
Sheneman, M. Erma,	Anselma,	Chester, Pa.
Short, Lena S.,	Milford,	Delaware.
Simmers, Ella P.,	Phoenixville,	Chester, Pa.
Simons, Abigail D.,	Aldan,	Delaware, Pa.
Sipes, Stella,	McConnellsburg,	Fulton, Pa.
Skinner, Nan,	Glasgow,	Delaware.
Smedley, Anna,	Fulton House,	Lancaster, Pa.
Smedley, Bessie,	West Chester,	Chester, Pa.
Smedley, Nellie,	" "	" "
Smith, Alpha F.,	New Castle,	Delaware.
Smith, Cecil E.,	West Chester,	Chester, Pa.
Smith, Flora J.,	Collamer,	" "
Smith, A. Letitia,	Kemblesville,	" "
Smith, Mattie M.,	Hoyt,	Montgomery, Pa.
Snavelly, Sara C.,	Lebanon,	Lebanon, Pa.
Speakman, Elsie H.,	Westtown,	Chester, Pa.
Speakman, Ethel B.,	West Chester,	" "
Speakman, Florence,	" "	" "
Speakman, Mary L.,	Embreeville,	" "
Speakman, Maude,	West Chester,	" "
Spiese, Laura M.,	Pottstown,	Montgomery, Pa.
Stauffer, Florence E.,	Boyertown,	Berks, Pa.
Stecker, Mabel E.,	Mt. Carmel,	Northumberland, Pa.
Stephens, Carrie B.,	Seelyville,	Wayne, Pa.
Stratton, Rose M.,	Paulsboro,	New Jersey.
Strauss, Eva C.,	Sayre,	Bradford, Pa.



RECITATION HALL.

<i>Name.</i>	<i>Post Office.</i>	<i>County and State.</i>
Strieby, Clara,	Dushore,	Sullivan, Pa.
Strong, Elnora,	Jenningsville,	Wyoming, Pa.
Struthers, Rachel P.,	Easton,	Northampton, Pa.
Surver, Bertha,	Montandon,	" "
Swartley, Minerva,	Colmar,	Montgomery, Pa.
Swift, B. Muriel,	411 N. 32d St.,	Philadelphia, Pa.
Tanner, N. Roberta,	Edgwood,	Montgomery, Pa.
Taylor, Lidie I.,	Kennett Square,	Chester, Pa.
Taylor, Martha,	2214 S. Broad St.,	Philadelphia, Pa.
Taylor, Nettie,	"	" "
Taylor, May B.,	Lansdowne,	Delaware, Pa.
Thompson, Helen R.,	Schuylkill Haven,	Schuylkill, Pa.
Thompson, Elizabeth S.,	Rising Sun,	Maryland.
Thompson, Lulu A.,	Towanda,	Bradford, Pa.
Thomas, Rebecca B.,	Malvern,	Chester, Pa.
Toman, Bessie M.,	New Castle,	Delaware.
Tomlinson, Bertha M.,	Hallowell,	Montgomery, Pa.
Tonkin, Vivian S.,	Grant,	Indiana, Pa.
Tricker, Adele,	Media,	Delaware, Pa.
Truax, Katherine M.,	Renova,	Clinton, Pa.
Truax, Katherine R.,	Middletown,	Delaware.
Truax, Mary E.,	"	"
Tumlin, Elizabeth F.,	Farmington,	"
Tustin, Dora M.,	Chester Springs,	Chester, Pa.
Vandegrift, Kathryn A.,	Dolington,	Bucks, Pa.
Vandegrift, Lidie L.,	Ambler,	Montgomery, Pa.
Vandegrift, Zenaide,	Bridgewater,	Bucks, Pa.
Vandling, Nellie M.,	Wilkesbarre,	Luzerne, Pa.
Walker, Bertha,	West Chester,	Chester, Pa.
Walker, Emma C.,	Phoenixville,	" "
Walker, Mary K.,	Ivyland,	Bucks, Pa.
Walton, Mary Y.,	Woodsmont,	Montgomery, Pa.
Warner, Iva B.,	Malvern,	" "
Watkins, Elizabeth T.,	Johnstown,	Cambria, Pa.
Weaver, Lillian M.,	Hartsville,	Bucks, Pa.
Weand, Agnes H.,	New Hanover,	Montgomery, Pa.
Weand, Mabel N.,	Sumneytown,	" "
Webb, Mary B.,	Delta,	York, Pa.
Webb, V. Clare,	Reedsville,	Mifflin, Pa.
Weber, Alice R.,	Lower Providence,	Montgomery, Pa.
Weber, Emma W.,	Norristown,	" "
Webster, C. Evalyn,	Glen Riddle,	Delaware, Pa.
Wells, Amy S.,	Exton,	Chester, Pa.
Weylman, Elizabeth C.,	Kittanning,	Armstrong, Pa.
Wier, Mary E.,	Wilmington,	Delaware.

<i>Name.</i>	<i>Post Office.</i>	<i>County and State.</i>
White, Josie P.,	Bellefonte,	Centre, Pa.
White, Lucy A.,	Tom's River,	New Jersey.
Whitely, Anna H.,	New Hope,	Bucks, Pa.
Whitson, Olive L.,	Ithaca,	New York.
Wildman, Jennie D.,	Oxford Valley,	Bucks, Pa.
Wile, May S.,	Telford,	Montgomery, Pa.
Willard, Josephine W.,	Lewes,	Delaware.
Williams, Anna,	Malvern,	Chester, Pa.
Williams, Vallee L.,	Abington,	Montgomery, Pa.
Williamson, Mary E.,	Marple,	Delaware, Pa.
Wilson, Alice M.,	Wilson,	Allegheny, Pa.
Wilson, Anna,	"	" "
Wilson, Bertha L.,	West Chester,	Chester, Pa.
Wilson, Ella L.,	Oxford,	" "
Wilson, Gertrude C.,	West Chester,	" "
Wilson, Nellie V.,	Flora Dale,	Adams, Pa.
Wilson, Nettie,	Toby,	Clarion, Pa.
Wood, Elizabeth H.,	Doe Run,	Chester, Pa.
Wood, Leila M.,	"	" "
Woodbury, Jennie T.,	Philad'a, 2605 N. 33d St.,	Philad'a, Pa.
Wright, Anna,	Paintersville,	Mifflin, Pa.
Yarnall, Alice M.,	Lima,	Delaware, Pa.
Yarnall, Sadie B.,	Lenni,	" "
Yeatts, Stella T.,	Glen Mills,	" "
Yerger, Bertha,	Phoenixville,	Chester, Pa.
Yerkes, Amy B.,	Hatboro,	Montgomery, Pa.
Yerkes, Ella R.,	Southampton,	Bucks, Pa.
Yerkes, Gertrude,	"	" "
Yerkes, Martha E.,	Berwyn,	Chester, Pa.
Young, Cidney A.,	Glen Hall,	" "
Ziegler, Helen D.,	Glenolden,	Delaware, Pa.



UNDER - GRADUATES. GENTLEMEN.

<i>Name.</i>	<i>Post Office.</i>	<i>County and State.</i>
Alderfer, Harry C.,	Harleysville,	Montgomery, Pa.
Alger, Hugh W.,	North Orwell,	Bradford, Pa.
Allen, David O.,	Ottsville,	Bucks, Pa.
Allison, David B.,	Belleville,	Mifflin, Pa.
Allison, Irvin S.,	Menno,	" "
Alvarez, Benito A.,	Havana,	Cuba.
Araoz, Benjamin,	"	"

<i>Name.</i>	<i>Post Office.</i>	<i>County and State.</i>
Atwell, D. Edward,	Townsend,	Delaware.
Aungst, Milton H.,	Reinholds,	Lancaster, Pa.
Bachman, Clayton W.,	Palmyra,	Lebanon, Pa.
Bair, Lewis H.,	Sadsburyville,	Chester, Pa.
Baldwin, Herbert,	Berkley,	California.
Balthaser, Charles F.,	Hamburg,	Berks, Pa.
Bean, Harry G.,	Telford,	Montgomery, Pa.
Bechtel, Albert R.,	Yerkes,	" "
Bechtel, John C.,	Clayton,	Berks, Pa.
Bechtel, John C.,	Bechtelville,	Montgomery, Pa.
Beckley, Allen G.,	Prescott,	Lebanon, Pa.
Benson, J. Fred,	Austin,	Potter, Pa.
Black, Matthew B.,	Avon,	Lebanon, Pa.
Bone, Robert C.,	Thorndale,	Chester, Pa.
Booz, George V.,	Roelofs,	Bucks, Pa.
Bressler, Calder B.,	21 Penna. Av., Atlantic City,	N. J.
Broomall, Aubrey L.,	Cheyney,	Delaware, Pa.
Brown, Norris L.,	West Chester,	Chester, Pa.
Brown, Robert W.,	2561 N. 18th St.,	Philadelphia.
Buchanan, Edgar W.,	Thorndale,	Chester, Pa.
Caminero, Enrique H.,	Santiago,	Cuba.
Caminero, Jose M.,	"	"
Campbell, James,	Freeland,	Luzerne, Pa.
Cardenas, Antonio,	Jimulco (Coah),	Mexico.
Cardenas, Carlos,	" "	"
Cardenas, Gonzalo,	Havana,	Cuba.
Carey, Alfred L.,	Glenloch,	Chester, Pa.
Castaneda, Enrique S.,	Bejucal,	Cuba.
Castaneda, Mario,	"	"
Cawley, John,	Springtown,	Bucks, Pa.
Chandler, Allen G.,	Bethlehem,	Northampton, Pa.
Chalfont, George S.,	Sadsburyville,	Chester, Pa.
Cherry, T. C.,	Bowling Green,	Kentucky.
Cope, Jesse K., Jr.,	West Chester,	Chester, Pa.
Craven, Frank R.,	" "	" "
Cressman, John A.,	Reading,	Berks, Pa.
Cronin, James R.,	Locksley,	Delaware, Pa.
Cogan, Harry H.,	New Britain,	Bucks, Pa.
Darlington, H. Fontaine,	West Chester,	Chester, Pa.
Davis, Horace N.,	Clark's Green,	Lackawanna, Pa.
Davis, Joseph S.,	West Chester,	Chester, Pa.
Davis, Milton Y.,	" "	" "
Dengler, R. LeRoy,	Mt. Pocono,	Monroe, Pa.
Dennis, Fred J.,	Boyd's Mills,	Wayne, Pa.
Diehm, Carl B.,	Honeybrook,	Chester, Pa.

<i>Name.</i>	<i>Post Office.</i>	<i>County and State.</i>
Dimock, Paul E.,	Le Raysville,	Bradford, Pa.
Doane, Joseph A.,	West Chester,	Chester, Pa.
Donnelly, Frank A.,	1734 N. 15th St.,	Philadelphia.
Eachus, Norman T.,	West Chester,	Chester, Pa.
Edwards, Edward E.,	Edwardsdale,	Luzerne, Pa.
Farr, Eri M.,	Muncy,	Lycoming, Pa.
Fenstermacher, Horace B.	Gratersford,	Montgomery, Pa.
Fernandez, Juan,	Santiago,	Cuba.
Flores, Gregorio,	Saltillo,	Mexico.
Forcey, Thomas H.,	Williams' Grove,	Clearfield, Pa.
Garvine, Andrew E.,	Nantmeal Village,	Chester, Pa.
Gaston, Enrique,	Havana,	Cuba.
Gaston, Louis,	"	"
Gayman, Paul S.,	Doylestown,	Bucks, Pa.
Geist, J. Lawrence,	Fagleysville,	Montgomery, Pa.
Gerhardt, Howard L.,	Fountainville,	" "
Gifford, G. Belvin,	Tuckerton,	New Jersey.
Glenn, Harvey R.,	Cochranville,	Chester, Pa.
Gonzales, Jose,	Guayama,	Porto Rico.
Gotwals, J. Elmer,	Yerkes,	Montgomery, Pa.
Graybill, Guy M.,	E. Petersburg,	Lancaster, Pa.
Green, Rulon J.,	West Chester,	Chester, Pa.
Green, John H.,	Mt. Alton,	McKean, Pa.
Greiner, Albert H.,	Zieglersville,	Montgomery, Pa.
Guie, Robert M.,	Downingtown,	Chester, Pa.
Gunkle, Robinson K.,	Port Kennedy,	Montgomery, Pa.
Gutierrez, Robert,	Lerdo Durango,	Mexico.
Gyger, John T.,	Kimberton,	Chester, Pa.
Hagenbuch, Frank E.,	Elimsport,	Lycoming, Pa.
Hagenbuch, William S.,	"	" "
Harris, Garfield,	Carverton,	Luzerne, Pa.
Heiges, Walter C.,	Dillsburg,	York, Pa.
Hellyer, George W.,	Penn's Park,	Bucks, Pa.
Henshaw, Irvin J.,	Honesdale,	Wayne, Pa.
Herzog, Kurt G.,	Mickleton,	New Jersey.
Hodgson, Erwin H.,	Coatesville,	Chester, Pa.
Hoff, William H.,	Perkasie,	Bucks, Pa.
Hoffman, J. Harry,	Frederick,	Montgomery, Pa.
Hoffman, Vernon,	West Whiteland,	Chester, Pa.
Hoopes, Norman H.,	West Chester,	" "
Howell, Edgar C.,	Westtown,	" "
James J. Evans,	Berwyn,	" "
Johnson, Ashmore,	Exton,	" "
Johnson, Ralph A.,	West Chester,	" "
Johnson, Monroe M.,	Doylestown,	Bucks, Pa.

<i>Name.</i>	<i>Post Office.</i>	<i>County and State.</i>
Jones, J. Ralston,	West Chester,	Chester, Pa.
Kantz, Paul S.,	Patchinsville,	Clearfield, Pa.
Kaufman, Jay S.,	N. Y. City, 244 W. 112th St.,	New York.
Kelso, H. Le Virt,	Bell's Landing,	Clearfield, Pa.
Kirk, Russell H.,	Phoenixville,	Chester, Pa.
Kline, Harvey W.,	Gratersford,	Montgomery, Pa.
Kranich, Jacob,	Norristown,	" "
Kratz, Irvin D.,	Elroy,	" "
Kimble, John W.,	Mahanoy City,	Schuylkill, Pa.
Lahr, J. Banks,	Millerstown,	Perry, Pa.
Le Crone, Charles A.,	Weigelstown,	York, Pa.
Lewis, Paul L.,	New Millport,	Clearfield, Pa.
Lichtenberger, Geo. W.,	Red Lion,	York, Pa.
Llewellyn, John C.,	Chester Springs,	Chester, Pa.
Long, B. James,	King-of-Prussia,	Montgomery, Pa.
Long, Clarence D.,	Traymore,	Bucks, Pa.
Le Van, Herbert M.,	Penbrooke,	Dauphin, Pa.
MacElree, J. Paul,	West Chester,	Chester, Pa.
March, Chester S.,	Uwchlan,	" "
Markley, Raymond M.,	Mainland,	Montgomery, Pa.
Martin, Alvin M.,	Northbrook,	Chester, Pa.
Mauger, W. Stanley,	Marsh,	" "
McCrone, Rossiter M.,	Middletown,	Delaware.
McCullough, Milton L.,	Broomall,	Delaware, Pa.
McDonald, James M.,	Avondale,	Chester, Pa.
McGray, John H.,	West Leesport,	Berks, Pa.
McGuinness, John,	West Chester,	Chester, Pa.
Mendenhall, Henderson M.,	Mendenhall.	" "
Metz, Roy,	Allensville,	Mifflin, Pa.
Michener, Theodore,	Gardeuville,	Bucks, Pa.
Molyneaux, John T.,	Millview,	Sullivan, Pa.
Molyneaux, D. Silas,	Millview,	" "
Monahan, T. V.,	Zerbe,	Schuylkill, Pa.
Moore, Franklin C.,	Malvern,	Chester, Pa.
Moser, Archie A.,	Artz,	Schuylkill, Pa.
Moser, J. Franklin.	"	" "
Moyer, A. Albert,	15th & Erie Av.,	Philadelphia, Pa.
Moyer, Samuel W.,	Blooming Glen,	Bucks, Pa.
Myers, Clifford,	Williamsport, 331 Louisa St.,	Lycoming, Pa.
Myles, Walter C.,	Edwardsdale,	Luzerne, Pa.
Naylor, J. Hyatt,	Summit,	New Jersey.
Penabaz, Jose,	Santiago,	Cuba.
Pennypacker, John Y.,	Chester Springs,	Chester, Pa.
Pike, Isaac S.,	Media,	Delaware, Pa.
Pina, Raul,	Matanzas,	Cuba.

<i>Name.</i>	<i>Post Office.</i>	<i>County and State.</i>
Pina, Florentino,	Matanzas,	Cuba.
Pownall, Joseph D.,	Christiana,	Lancaster, Pa.
Reading, Claude P.,	Pineville,	Chester, Pa.
Reyes, Cecilio T.,	San Sabastian,	Porto Rico.
Ruth, Wm. F.,	Kulpsville,	Montgomery, Pa.
Rufe, Edgar J.,	Revere,	Bucks, Pa.
Ryan, Watson A.,	West Chester,	Chester, Pa.
Ryan, Howard M.,	" "	" "
Schlotterer, George K.,	Allentown,	Lehigh, Pa.
Scholl, J. Morris,	Telford,	Montgomery, Pa.
Sharpless, Willard,	Darling	Delaware, Pa.
Shortlidge, Ernest L.,	Kennett Square,	Chester, Pa.
Shortlidge, Raphael J.,	Kennett Square,	" "
Shortlidge, E. Wharton,	Landenburg,	" "
Shoener, Bird C.,	Orwigsburg,	Schuylkill, Pa.
Smith, DeLeon F.,	Towanda,	Bradford, Pa.
Smith, H. Ross,	Media,	Delaware, Pa.
Smith, Ralph A.,	Windsor,	York, Pa.
Smulling, A. Morgan,	Quakertown,	Bucks, Pa.
Sones, John E.,	Hegins,	Schuylkill, Pa.
Spangler, John J.,	Tusseyville,	Centre, Pa.
Sproat, Elric S.,	Westtown,	Chester, Pa.
Stauffer, Willis W.,	Weigelstown,	York, Pa.
Stellwagon, George H.,	Markham,	Delaware, Pa.
Stever, Francis,	Springtown,	Bucks, Pa.
Stine, John F.,	Lionville,	Chester, Pa.
Stiteler, Chester A.,	Uwchlan,	" "
Strohl, James M.,	Aquashicola,	Carbon, Pa.
Suarez, Sergio,	Havana,	Cuba.
Supplee, Samuel W.,	West Chester,	Chester, Pa.
Supplee, Walter K.,	" "	" "
Taylor, Thomas L.,	Westtown,	" "
Tressler, Ray E.,	Malta,	Northumberl'd, Pa.
Troxel, Elwin R.,	Jonestown,	Lebanon, Pa.
Tyson, Howard P.,	Collegeville,	Montgomery, Pa.
Valiente, Jose M.,	Santiago,	Cuba.
Velar, Ventura,	Havana,	Cuba.
Wack, Francis W.,	Mainland,	Montgomery, Pa.
Walter, Eugene,	West Chester,	Chester, Pa.
Walters, William H.,	Richland Centre,	Bucks, Pa.
Wanner, Abram I.,	Arcola,	Montgomery, Pa.
Webster, Warren,	Ercildown,	Chester, Pa.
Weber, J. Stroude,	Lower Providence,	Montgomery, Pa.
Williams, Edgar J.,	Edwardsdale,	Luzerne, Pa.
Williams, R. Lloyd,	Ansonville,	Clearfield, Pa.

<i>Name.</i>	<i>Post Office.</i>	<i>County and State.</i>
Willis, Mark,	Wilmington,	Delaware.
Wilson, Charles W.,	West Chester,	Chester, Pa.
Wilson, Glenn,	“ “	“ “
Windle, W. Butler,	“ “	“ “
Whitehead, Mortimer C.,	Lincoln City,	Delaware.
Yoder, William, F.,	Hegins,	Schuylkill, Pa.
Young, William A.,	N. Y. City, 177 St. James	Place, New York.
Young, S. Rolls,	Coatesville,	Chester, Pa.
Zarfos, John H.,	Red Lion,	York, Pa.
Zarfos, L. Norman,	“	“
Ziegler, Samuel H.,	Reading,	Berks, Pa.
Zulich, J. Don,	Orwigsburg,	Schuylkill, Pa.



RECAPITULATION OF STUDENTS.

Number during first term,	- - - - -	604	
“ “ second term,	- - - - -	636	
Total number of students,	- - - - -	1240	
Number in attendance both terms,	- - - - -	549	
Number of different students during the year,	- - - - -	731	
“ “ ladies during the year,	- - - - -	517	
“ “ gentlemen during the year,	- - - - -	214	
Special students, not catalogued,	- - - - -	15	
Pennsylvania (representing 45 counties),	- - - - -	670	
California, - - - - -	1	China, - - - - -	3
Delaware, - - - - -	23	Cuba, - - - - -	16
Kentucky, - - - - -	1	Mexico, - - - - -	4
Maryland, - - - - -	6	Porto Rico, - - - - -	2
New Jersey, - - - - -	15		
North Carolina, - - - - -	1		
New York, - - - - -	4		
Oregon, - - - - -	1		
Washington, - - - - -	1		
West Virginia, - - - - -	2		

Courses of Study for Pennsylvania State Normal Schools.

ADOPTED NOV. 8, 1900.

REGULAR COURSE.

(Studies marked with an (*) are to be reviewed in Senior Year.)

PREPARATORY AND SUB-JUNIOR STUDIES.

Physiology, Political Geography, Spelling and Writing completed; Algebra through radicals; Drawing (one term), Arithmetic, English Grammar and Reading as in ordinary text books.

JUNIOR YEAR.

Pedagogics:—School Management.

Language:—English Grammar,* Reading and Orthography, Latin to Cæsar.

Mathematics:—Arithmetic,* Algebra.

Natural Science:—Physiology, Botany.

Historical Science:—Geography,* United States History,* Civil Government of the United States and Pennsylvania.

Arts:—Penmanship (an approved system, with a fair handwriting), Drawing (daily lessons for at least twenty weeks), Vocal Music (elementary principles and daily exercises for at least ten weeks), Bookkeeping, (single entry, with a knowledge of common business papers).

Physical Culture.

MIDDLE YEAR.

Pedagogics:—Psychology, Methods of Teaching.

Language:—Rhetoric and Composition, with elocutionary exercises, three books of Cæsar.

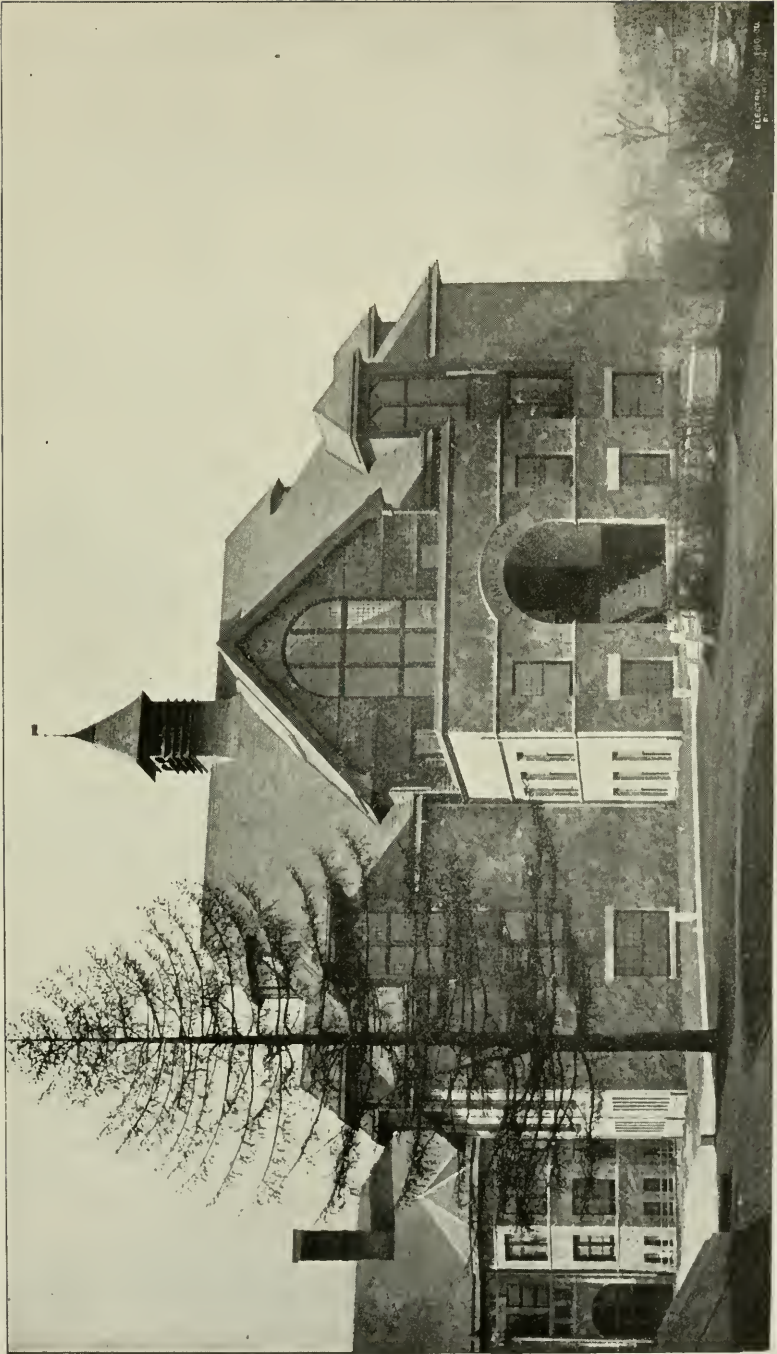
Mathematics:—Plane Geometry.

Natural Science:—Elements of Chemistry, Elements of Zoology, Elements of Geology.

Historical Science:—General History.

Arts:—Manual Training.

Physical Culture.



GYMNASIUM.

SENIOR YEAR.

Pedagogics:—History of Education, Methods of Teaching, Practice of Teaching in Model School (at least twenty weeks, forty-five minutes daily), Thesis.

Language:—Literature and Classics, three Orations of Cicero, three Books of Virgil, Review of English Grammar.

Mathematics:—Solid Geometry, Plane Trigonometry and Surveying, Review of Arithmetic.

Natural Science:—Physics, Review of Geography.

Historical Science:—Review of United States History.

Physical Culture.

SUBSTITUTIONS.

The following substitutions may be made :

Middle Year.—Chemistry and Astronomy for Latin ; Greek, German or French for Chemistry and Solid Geometry.

Senior Year.—English History, Ethics and Logic for Latin ; Greek, German or French for Trigonometry and Surveying.

SUPPLEMENTARY COURSE.

(In addition to the Regular Course.)

Leading to the Degree of Bachelor of Pedagogics.

Philosophy of Education, Advanced Psychology.

Discussion of Educational Questions ; School Supervision, including School Law ; Devices for Teaching ; Educational Theories, etc.

School Apparatus and Appliances ; Description, Use, Preparation.

Leading to the Degree of Master of Pedagogics.

Two years' teaching after graduation in the Regular Course.

Professional Reading, with abstracts : History of Education in the United States (Boone), European Schools (Klemm), Systems of Education (Parsons).

Sanitary Science, School Architecture, etc.

Thesis.

A full equivalent will be accepted for any of the text books named above. The courses in reading and classics for all the courses shall be determined by the Board of Principals at their annual meeting, and shall be the same for all Normal Schools.

N. B.—Students are admitted to the Junior or lower classes upon examination by the Faculty. These examinations are held at the beginning of each term and just preceding the time of the annual examination. Arrangements may be made to hold special examinations on the first Saturday of each month of the school year.

Rules for Final Examination

AND ADMISSION TO THE MIDDLE AND SENIOR CLASSES, ETC.



(For all the Normal Schools of Pennsylvania.)

1. Admission to the Senior and Middle classes shall be determined by the State Board of Examiners at the annual examination* by the Board.

2. In order to be admitted to the Middle class at any State Normal School, students must be examined by the State Board in all the Junior studies (except English Grammar, Arithmetic, Geography and United States History), and this examination shall be final. Persons who desire to be admitted to the Middle class without having previously attended a State Normal School, must pass an examination by the Faculty and State Board of Examiners in the academic studies of the Junior year (except the Senior review studies), and Plane Geometry or the first book of Cæsar, and must complete School Management in the Middle year. No conditions or substitutions other than those named shall be allowed for any of the studies required for admission to the Middle class.

3. In order to be admitted to the Senior class, students must be examined by the State Board in all the Middle year studies (except Methods), and this examination shall be final. Persons who desire to be admitted to the Senior class without having previously attended a State Normal School, must pass an examination by the Faculty and State Board in the academic

*These examinations come early in June, the date being fixed each year by the State Superintendent. The examinations are in writing and last two or three days. The Sub-Junior examination has been abandoned, and students hereafter will be examined in Preparatory and Junior branches at the end of the Junior year.

studies of the entire course, except the review studies of the Senior year, and must devote their time during the Senior year to the professional studies of the course and the review studies. No conditions or substitutions other than those named shall be allowed for any of the studies required for admission to the Senior class.

4. If the Faculty of any State Normal School or the State Board of Examiners decide that a person is not prepared to pass an examination by the State Board, he shall not be admitted to the same examinations at any other State Normal School during the same school year.

5. If a person who has completed the examinations required for admission to the Middle or Senior class at any State Normal School desires to enter another Normal School, the principal of the school at which the examination was held shall send the proper certificate to the principal of the school which the person desires to attend. Except for the reason here stated, no certificate setting forth the passing of the junior or middle year studies shall be issued.

6. Candidates for graduation shall be examined by the State Board in all the branches of the Senior year, including English Grammar, Arithmetic, Geography and United States History. They shall have the opportunity of being examined in any higher branches, including vocal and instrumental music and double-entry bookkeeping; and all studies completed by them shall be named in their certificates.

7. Persons who have been graduated may be examined at any State examination in any higher branches, and the Secretary of the Board of Examiners shall certify on the back of their diplomas to the passing of the branches completed at said examination.

8. A certificate setting forth the proficiency of all applicants in all the studies in which they desire to be examined by the Board of Examiners shall be prepared and signed by the Faculty and presented to the Board. The certificate for the studies of the Junior year shall also include the standing of applicants in the review studies of the Senior year.

9. Graduates of State Normal Schools in the regular course and graduates of accredited colleges may become candidates for the degrees of Bachelor of Pedagogics and Master of Pedagogics. To obtain these degrees, candidates must be examined by the Faculty and State Board upon the studies of the supplementary course. Three years successful teaching in the public schools of the State since graduation (or two years in the case of candidates who taught in the Model School) will be required of all candidates for the degree of Master of Pedagogics, in addition to the branches of study indicated above.

10. Attendance at a State Normal School during the entire Senior year will be required of all candidates for graduation; but candidates for the pedagogical degrees may prepare the required work in absentia.

CERTIFICATES AND DIPLOMAS.

A graduate receives a certificate in which are named the branches he has studied, which entitles him to teach in the public schools of Pennsylvania for any two subsequent years without further examinations.

Graduates who have continued their studies for *two years* and have practiced their profession for *two annual terms*, in the Common Schools of the State, and who have presented to the Faculty and Board of Examiners a certificate of good moral character and skill in the art of Teaching from the Board or Boards of Directors in whose employ they have taught, countersigned by the proper Superintendent, may receive diplomas, which are permanent certificates of the highest grade. *They confer upon their holder the right to teach the branches named therein in the public schools of Pennsylvania, without further examinations.*

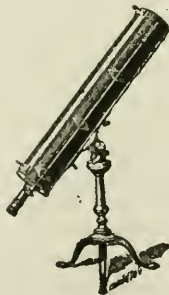
Applications for diplomas must be presented to the Board of Examiners at their regular session.

The Normal School law makes it the duty of the authorities of the Normal Schools to grant diplomas or State Certificates to *actual teachers in Common Schools*, without their having attended the Normal School as students. The following are the conditions upon which these diplomas will be granted :

1. Each applicant must be twenty-one years of age, and of good moral character, and must have taught successfully during three successive annual terms in Common Schools in this State, the proof of age to be the declaration on honor of the applicant; and of moral character and a satisfactory discharge of the requisite terms of teaching, a certificate from the proper Board or Boards of Directors, signed by the President and Secretary, and countersigned by the proper County Superintendent or Superintendents.

2. Each applicant to prepare and present to the Board of Examiners an original thesis of not less than six folio pages of manuscript, on some professional subject, to be retained at the school where the examinations take place.

3. The examinations and certificates to be without expense to the applicant, and the certificate to be full evidence of qualifications to teach the branches therein named, in any part of the State, without further examination.



GENERAL ANTHONY WAYNE'S TELESCOPE.

Presented by Isaac Wayne to Chester County Cabinet of Natural Science in 1831.
Now the property of the West Chester State Normal School.

Departments of Study.

PEDAGOGY AND PSYCHOLOGY.

Modern pedagogy recognizes three essential elements in the teacher who is to succeed, not for the time being but for all time; that is to say, who will not only complete a term or a year with apparent success, but who will instil into children such facts, thoughts and purposes as shall always be a help and never a hindrance. These elements have been defined by Prof. Earl Barnes as a knowledge of (1) the Stuff, (2) the Tools, (3) an Ideal. The Stuff is the person to be educated. The Tools include everything that is or can be used to bring the child to perfection; such as courses of study, school houses, apparatus, teachers, textbooks, etc. The Idea is what we wish to make out of the child—the purpose for which we use the Tools on the Stuff. A Normal School must have for its purpose nothing less than the equipment of the teachers it sends out in these three lines. The work of the Pedagogical Department of the West Chester State Normal School is planned in accordance with this principle.

Junior Year:—This begins with the study of Methods of Teaching the common branches and School Management—some of the "Tools."

Middle Year:—This begins the study of the "Stuff"—the child—on the two sides of the mental and the physical. The former consists of a course of a half year in Genetic Psychology, beginning with adult Psychology and constantly developed on genetic lines. Titchener's Primer of Psychology is the basis. The second half year is devoted to (1) the physical nature and needs of the child, and the relation of school appliances (the Tools) to these needs. Shaw's or Kotelmann's School Hygiene will indicate the ground covered. (2) A further study of Methods in their relation to the "Ideal"—what is, or ought to be, the end or object in teaching each particular branch, and by what method of teaching this end can be best attained.

Senior Year:—The Senior year takes up the direct study of the "Ideal;" first historically, the development of the educational ideal as seen in the History of Education. This occupies the first half year. The second half year is devoted to a further study of the "Ideal" in relation to Methods; to a study of special cases, such as arise from observation of children and from the work in the Model School and to some consideration of the philosophy of education.

Ethics and Logic:—These subjects (in connection with English History) may be substituted for Latin in the Senior year.

THE MODEL SCHOOL.

The Model School is housed in a new stone building, 114 by 62 feet, which has been recently erected at a cost of forty-two thousand dollars, and which is a most complete and suitable building for its purpose. This building is used by the Public Schools of West Chester and the Superintendent of the West Chester Schools is Principal of the Model School. The members of the Senior Class observe and teach daily in the different schools of this building. They meet the Principal of the Model School collectively once each week for general instruction in methods and school management, and individually meet him daily for special instruction adapted to their needs. This experience in public schools of high reputation and efficiency is an excellent preparation for the practical side of teaching, and gives the graduates of the school an advantage which cannot well be over-estimated.

LANGUAGE.

English Grammar.—Our teachers aim to make the work in grammar distinctly practical. While they present the technical side of the subject and emphasize the importance of a thorough understanding of the inflections and relations of the various parts of speech, their main purpose is to train the student in the use of his mother tongue by having him use it. Carefully criticized oral and written work is conducted and personal interviews with the students are held in order to point out their mistakes and lead to a remedy. The new course continues the study of grammar in the Senior year where, aside from a general review there taken, an opportunity is given for the presentation of pedagogical suggestions to the persons about to teach. To our students grammar is made not merely a science—knowledge systematized—but an *art*—knowledge applied.

Rhetoric.—The work in rhetoric embraces a careful study of style in its various phases and a continuation of the written exercises carried on in grammar. Effectiveness of speech is thus made to supplement fluency and accuracy. The preparation of more comprehensive theses is added to the writing of one-page themes, and more formal and extended orations take the place of brief speeches.

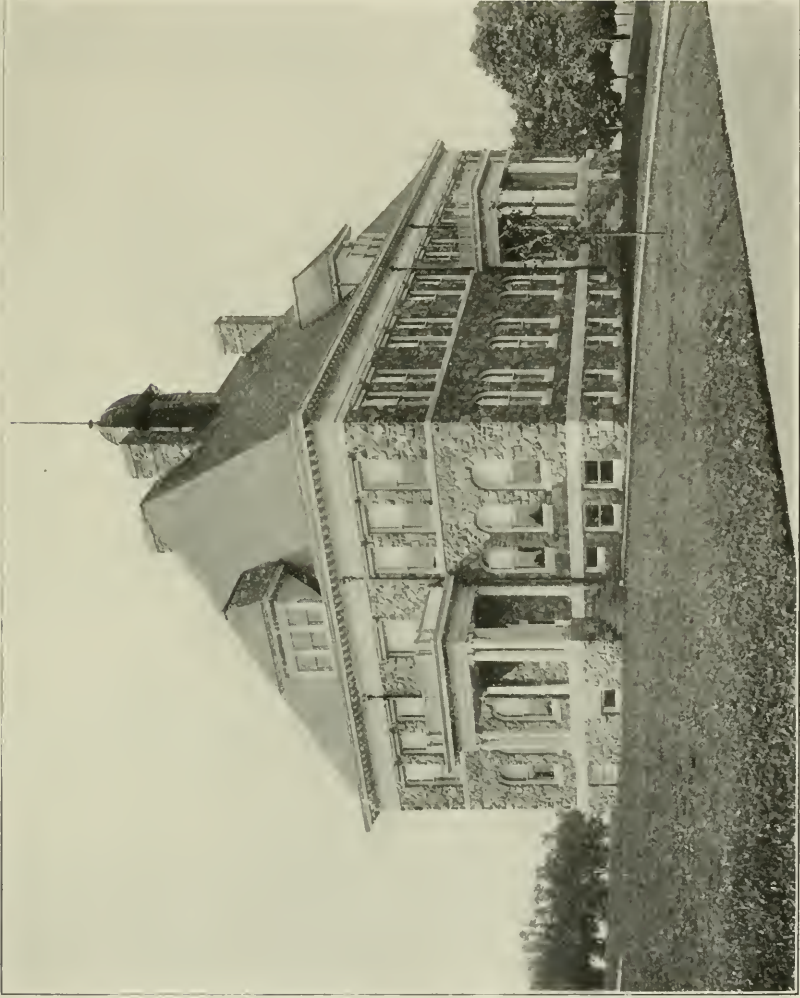
Literature.—The study of literature includes a general survey of English and American literature, a thorough discussion of plans for the consideration of an author's life and writings, and a careful, critical examination and appreciation of certain great classics. The aim is not merely to familiarize the student with dates and facts, figures and philology, but to guide him to the real essence of literature and lead him to get at the heart of the thought of the author and get that thought into his heart.

The requirements in English for admission to American colleges receive special attention.

Latin.—In the Junior year the aim is to master the declensions of nouns, pronouns and adjectives, the comparison of adjectives, the formation and comparison of adverbs, and the conjugation of regular and irregular verbs. Daily exercises in the translation from Latin into English and from English into Latin are required in such a way as to give the student an ordinary working vocabulary and understanding of the common rules of syntax. In the middle year three books of Cæsar's Commentaries are read. A critical study is made in view of thoroughly grounding the rules of syntax, special attention being given to subjunctives. Translations into the best English idiom is rigidly required. Translations at sight and hearing are practiced. A knowledge of the subject matter, such as the tracing of Cæsar's marches, the geography of Gaul, the Roman art of war, and the life of Cæsar are topics for supplementary reading. In the Senior year three of Cicero's orations are read. Attention is given to the logical outlines, to the style of Roman oratory and to Cicero's life and the times in which he lived. Three books of Virgil's Aeneid are read. Attention is given to the general style, Epic poetry, poetic constructions, figures of speech, prosody, peculiarities in the forms, mythological references, and to Virgil's life and times. Additional Latin as needed for admission to college or for other purposes may be taken.

Greek.—Greek may be substituted for Chemistry and Solid Geometry in the middle year, and for Trigonometry and Surveying in the Senior year, and additional time may be given to this language if desired. The work in Greek begins with White's First Greek Book, which is completed, and a good beginning made in Xenophon's Anabasis during the first year. During the second year four books of the Anabasis may be read and Greek composition and sight reading will receive attention. After the Anabasis three books of Homer's Iliad may also be read. Attention is given to the scanning of Homeric verse and the main peculiarities of Homeric dialect.

German and French.—German or French may be substituted for Chemistry and Solid Geometry in the Middle Year and for Trigonometry and Surveying in the Senior year. Additional work may also be taken in these languages. The instructor in this department is a native German, who has a careful and accurate knowledge of French and English, and has had large experience in teaching these languages both in Europe and America. The students, during the first year, are carefully drilled in correct pronunciation and are made familiar with the elements of the Grammar. Idiomatic expressions, proverbs, short poems and prose selections are memorized and frequently repeated, and a considerable amount of German and French is read. Conversation and free reproduction based on selections read are found to be useful in fixing the principles of the language, and the sight reading and dictation exercises are valuable aids in the same direction. German or French is



THE NEW MODEL SCHOOL BUILDING.

freely used in the class room to enable pupils to acquire as much as possible during the year. This is followed by a more exhaustive study of the grammar, by much reading of standard literature and further practice in conversation, composition and drill in letter writing. Sight reading and dictation exercises are continued throughout the course.

Reading.—The work of the preparatory classes is practice reading for facility in dealing with ideas presented in words; recitations in the auditorium from American poets; and foundation work in phonics. In the sub-Junior classes the aim is to cultivate the power of thought and imagination in relation to expression, both by theory and in practice, and to train the voice and body to be useful means of expression. Especial attention is paid to correct speech with a review of phonics. A lyric poem and a prose selection are required from each student as recitation practice in the auditorium. Advanced reading may be taken by anyone who has passed the sub-Junior reading. This gives further opportunity for practice in speaking and interpretative reading of standard literature. Public recitals are given from time to time, which afford some opportunity for public work. Special arrangements may be made for private lessons in elocution.

Orthography.—Students, upon entrance to the school, are given an opportunity to pass Orthography in a special examination. Those who are found to be deficient will be expected to take up the subject in class at once. Constant drill in spelling and definition is given from a good spelling book. The work is usually written, and much attention is paid to a correct understanding of the words spelled, as shown by their use in sentences. The school believes in the importance of correct spelling, and that persistent drill will make good spellers.

MATHEMATICS.

The methods employed in teaching mathematics are based on the pedagogical law, that the nature of the subject to be taught conditions the method of teaching it. The nature of every subject in mathematics is found in its fundamental concepts, its principles, and in their applications.

Accordingly, students preparing to teach are required to study thoroughly the science of each subject. In arithmetic and elementary algebra they are led inductively to a comprehension of the fundamental concepts and to an interpretation of the definitions of them.

The fundamental principles are also developed inductively through solutions of characteristic problems, and are formulated and expressed in clear and concise language, and learned.

In the light of these definitions and principles problems are worked out, the solutions being put in statements expressing each logical step involved. In order to accomplish the work in this thorough manner, students must have a preliminary knowledge of arithmetic through percentage and proportion and some of their applications; and in

algebra through radicals and quadratic equations before they are allowed to enter the Junior class, their knowledge being tested by an entrance examination. In the Junior class the subjects of these branches are thoroughly reviewed and studied in the light of the theory evolved, requiring about twenty-six weeks in arithmetic, and from thirty to thirty-six weeks in algebra. Algebra is completed in the Junior year, while arithmetic is again reviewed in the Senior year. After completing our course in these branches, we feel that we can recommend our students with confidence as teachers of them.

Students failing to pass the entrance examinations to the Junior Class are promoted into that class as soon as they are found qualified to enter it. Students are admitted to the Middle Year Classes in plane geometry after completing the Junior mathematics, without any previous knowledge of the subject. They are required in this branch of mathematics to learn and illustrate all definitions and axioms; to commit to memory and thoroughly demonstrate all proportions and corollaries, giving full authority for every statement made; to solve all geometrical problems by accurate constructions, and to demonstrate and solve original theorems and problems.

In the Senior Classes, solid geometry and plane trigonometry and surveying are studied with equal thoroughness, and practical field work in surveying with a first-class surveyor's transit, with stadia attachment, is done during the spring term.

Classes in higher algebra, spherical trigonometry, analytical geometry and calculus are formed whenever a sufficient number of students apply to warrant it.

PHYSICAL SCIENCES.

Physics.—In Physics the topics regarded as of practical value to the greatest number are mechanics, including the mechanics of liquids and gases; heat as a motive power, and in its applications to atmospheric phenomena; and such portions of electricity as are necessary to an elementary knowledge of its more common practical applications. Individual laboratory work is required of all students with special attention to the making of simple apparatus.

Chemistry.—In Chemistry the work is almost entirely experimental in character. Each day's lesson is learned by the student in the laboratory, and embodies the result of his own observations and experimental work. As soon as the student is sufficiently advanced, his attention is turned to such portions of the subject as find practical application in the home, in the dairy, and on the farm.

Geology.—In geology the student is expected to become familiar with the common minerals and rocks, and the changes undergone by rocks in weathering and in the processes of soil formation. Stress is placed upon the ability to recognize different rock formations, and the influence of such formations upon the general character of the country.

He is also called upon to observe the action and effects of rain and streams in producing the present relief forms shown in our own neighborhood. In short, while an attempt is made to cover the ground of the text-book, such portions of the subject are given prominence as furnish the best fields for investigation in our locality and serve best to stimulate observation and thought.

BIOLOGICAL SCIENCES.

Physiology.—The work of this department begins in the sub-Junior year with Physiology. A reasonable acquaintance with the bare facts is pre-supposed. The effort is here made to teach thoroughly the principles which underlie all life. The microscope, with abundant preparations, an Azoux manikin, and fresh material, are freely used. With the Junior year we take up

Botany.—Enough systematic Botany is taught to enable pupils to use the analytical tables. But the stress of the work is laid on the life activities of the plant and on its relation to its surroundings. A well equipped laboratory, with a rich supply of materials and charts, is used for this purpose. In the Middle year we take up

Zoology.—Here an abundance of material, both living and prepared, is furnished. There are microscopes enough to familiarize all pupils with their use. The great types are studied. But the emphasis of the work is again laid on the life history of the animal and his relation to his surroundings. During the Senior year we offer an elective in

Nature Study.—Here selection is made from the animal and plant world, of the materials which can be best presented to children, and attention is paid to the method of adapting their subjects to the lower grades. A consistent plan runs through the entire course of Biological Sciences. A pupil who goes carefully through this course gets a good general view of modern biology.

HISTORICAL SCIENCES.

History of the United States.—During the first twenty-seven weeks of the preparatory year an elementary course is given. The work is based upon a text-book supplemented by required reading in the standard histories, exercises in historical geography and the preparation of written topics, with frequent reviews and examinations. During the remaining thirteen weeks of the year this course is repeated more rapidly for those who failed to complete it and for others who may desire to review it. In the Junior year there is a twenty-seven weeks' course in this subject. Special attention is paid to the political and industrial development of the United States. Much topical work, designed to train students in the use of the more important secondary histories and illustrative source material, is given. In the Senior year there is a twelve weeks' review of the History of the United States with special reference to teaching it in the common schools.

General History.—A twenty-seven weeks' course in the Middle year embraces a rapid survey of the entire subject, in which the origin and growth of institutions are briefly traced and the meaning of the more important movements and epochs pointed out and emphasized.

English History.—This (with Logic and Ethics) may be substituted for the Latin of the Senior year. After a rapid survey of the origin and development of English institutions the class will make a more detailed study of the Protestant Reformation, the political revolutions of the Seventeenth Century, the growth of the British Empire and the industrial and political tendencies and movements of the Nineteenth Century.

Geography.—Political Geography is taught in the Preparatory or sub-Junior Class, and students who expect to enter the Junior Class are urged to prepare thoroughly and pass a final examination upon this subject upon entrance. The subject is carefully taught as found in the modern text-books, with abundant illustration of maps and globes. Physical Geography is taught in the Senior year as a part of the department of science, in the light of the student's knowledge of geology, physics, chemistry and the other sciences.

Civil Government.—A careful study of the Civil Government of the United States and of the State of Pennsylvania is made in the winter term of the Junior year. The facts of the constitution and the comments as found in the text-book are carefully learned and supplemented with much additional practical information and application. The course is designed not only to prepare its students to teach this important subject, now required in all the public schools of the State, but also to better prepare them for their duties as citizens. Mowry's Studies in Civil Government and Phillips' Civil Government of Pennsylvania are the text-books used.

THE ARTS.

Drawing.—The aim of the course of instruction in this department is not only to teach the students Drawing, Form Study and Color, but also to furnish a means of mental development which shall lead to a knowledge and appreciation of the beautiful. The three general divisions of the work are: Representation, or the drawing of the appearance of objects; Decoration, or the producing of beauty in ornament; and Construction, which deals with the facts of form.

Writing.—The essential requisites for good business writing are legibility and speed. To get the best results in this department we use one of the approved systems of Vertical Writing and in addition give students time exercises for practice in speed.

Book-keeping.—Book-keeping is taught from the practical standpoint. The course requires a knowledge of single entry book-keeping

only, and especial attention is paid to the important business forms, the object being not only to enable students to understand and teach the subject, but also to illustrate many of the practical phases of arithmetic. A course in double entry book-keeping is also provided for those desiring it.

PHYSICAL TRAINING.

This department provides instruction and means for the betterment and preservation of health and the harmonious development of the body. It prepares graduates to introduce free gymnastics into their schools and to exercise intelligent oversight of the physical needs of school children. These objects are accomplished by

1. Regular class exercises in the gymnasium during the fall and winter and upon the field in the spring, and by periods for optional work after school hours, alternating with class days.

2. By physical measurements and strength tests of all students upon entrance, at the close of the school year, and at such intervals as seems necessary. This forms the basis of comparison of the student's condition and needs, and determines the character and amount of exercise necessary to overcome marked deficiencies, irregular development, or such deformities as are amenable to physical exercises.

3. By personal advice in reference to habits of life, exercise, study, and recreation; by lectures and class-room instruction pertaining to hygiene, the physiology of exercise, etc.

4. By instruction concerning the history, systems, methods and educational value of gymnastics, and its co-relation with other branches.

5. By practice teaching of school-room gymnastics, instruction and practice of plays and games involving physical activity, and a consideration of the principles which lie at the bases of the universal play instincts.

All students are required to take the prescribed light gymnastics, which are of such a character as to meet the average needs and not over-tax the strength of any student who is in a physical condition to undertake normal school work.

Location, Buildings, &c.



The West Chester State Normal School was founded in the year 1871, by the joint efforts of the Trustees and contributors of the West Chester Academy, and the citizens of West Chester and vicinity.

West Chester is a beautiful town of 10,000 inhabitants, the county seat of Chester county, and is pre-eminent for its healthfulness, morality and intelligence. It is about twenty-five miles west of Philadelphia, with which it is connected by two lines of the Pennsylvania R. R. It is also connected with Philadelphia by a trolley line, over which cars run every half hour each way. A short branch road connects West Chester with the main line of the Pennsylvania Railroad at Frazer, where close connections are made with the trains on the main line; and by an electric road it is also connected with the Philadelphia and Reading R. R. at Lenape.

THE BUILDINGS

Are situated in the southern part of the borough, half a mile from the Court House. The main building is built of greenstone and marble, 256 by 234 feet, four stories high, with basement. It is one of the finest and handsomest school buildings in the country. The buildings are surrounded by forty-eight acres of beautiful grounds.

The chapel and a dining-room adjoin the main building and are completely and handsomely fitted up. Two new additions for sanitary purposes have also been erected, and each story, on both the girls and boys' wing, is fitted up with bath-rooms (hot and cold water), water-closets, slop-hoppers, &c., of the best pattern. The drainage is first-class. These sanitary improvements alone cost \$10,000, and are believed to be among the best and most healthful to be found anywhere. The

whole building has lately been improved ; the students' rooms have all been papered, refitted and refurnished ; a fine library and reading room provided for the free use of students, and many other improvements made to add to the efficiency of the school and the comfort of the students.

A first-class large passenger elevator has recently been put in and makes all the floors equally desirable. A new electric light plant supplies every part of the building with the best and safest of lights.

THE GYMNASIUM.—A first-class gymnasium, 104 by 64 feet, with an administration building attached, 29 by 36 feet, has recently been completed. It is of stone, two stories high, fitted up with every modern improvement, including a full supply of the best apparatus, running track, bath rooms, large swimming pool, bowling alleys, ball cage, &c. A thoroughly trained physician and his wife are in charge of the gymnasium, and all exercise is taken under their supervision. All students are given a complete physical examination, and proper exercises prescribed for them. This gymnasium marks a great and important advance in Normal School work, and its advantages are enjoyed by all students without extra cost.

RECITATION HALL.—Recently the Board of Trustees erected a new building, 185 by 80 feet, with two stories above a high basement, which is used wholly for school purposes. It has been planned with great care, and is unusually well adapted for its purpose. It is heated and ventilated by the Smead-Wills system. The total cost of the building and heating plant has been over \$60,000.

NEW GROUNDS.—The erection of so many buildings has so taken up the main campus that the Trustees have purchased adjacent grounds at various times, including the fine grounds of the Chester County Agricultural Society, until they now embrace forty-eight acres, embracing enclosed grounds suitably fitted up for all outdoor games.

INFIRMARY.—A complete and well appointed school infirmary, at considerable distance from the other school buildings, has just been erected. This has been planned by skillful physicians and architects, and will not only promote the com-

fort and recovery of any who may be ill, but will also tend to prevent the spread of contagion in the school. It is believed that this was the first school of its class to take this important step. A trained nurse is employed by the school, who gives her whole time to the care of the health of the school.

The school property has now cost half a million dollars, and is the best and most complete possessed by any Normal School in this country.

STUDENTS' ROOMS.

The rooms are generally arranged for two students each. All are good sized, have high ceilings, are well ventilated, and are all thoroughly heated by direct steam radiation. The rooms are newly and comfortably furnished, have closets, single-beds, wash stands, bowls and pitchers, and are furnished with woven wire mattresses. The ladies' rooms are all partly carpeted. The buildings and grounds are lighted by the school's own electric lighting plant.



Admission, Government, &c.

CONDITIONS OF ADMISSION.

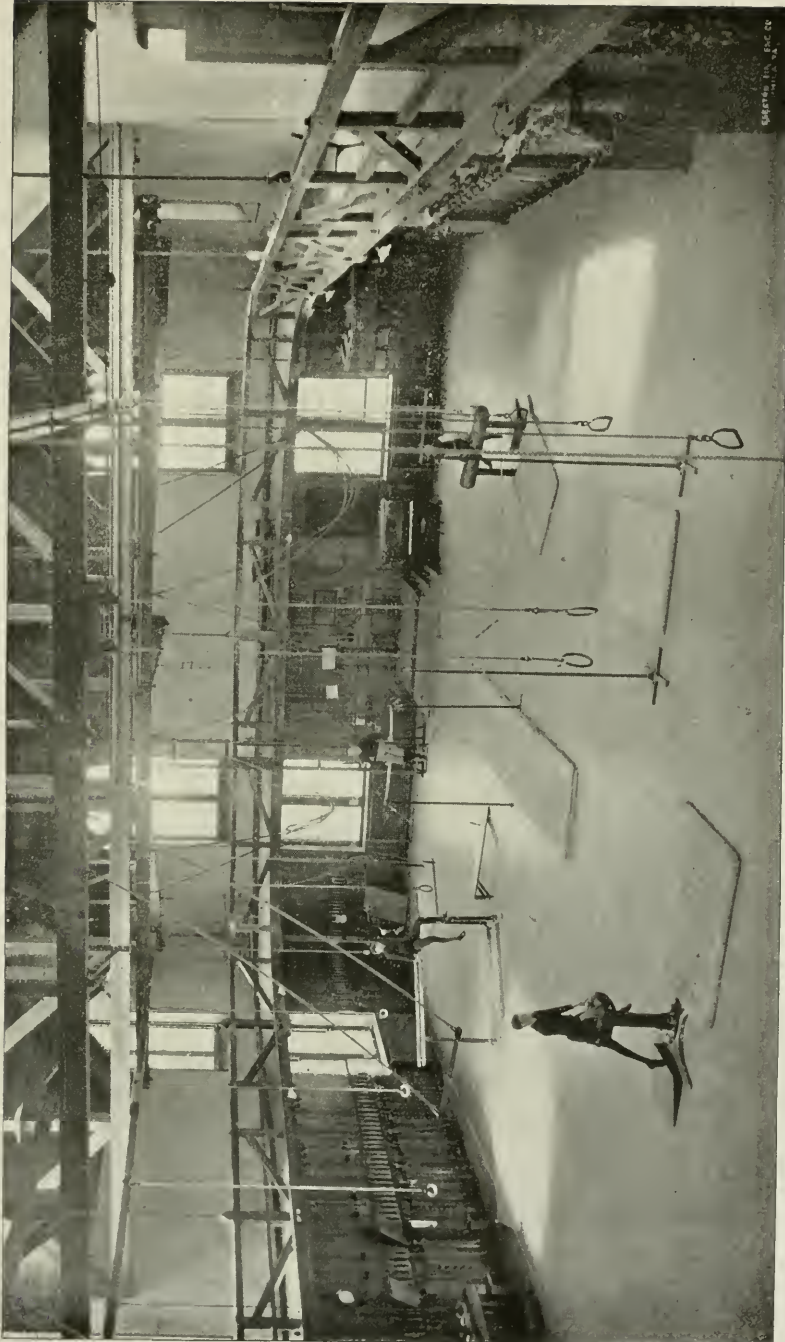
Pupils will be allowed to enter the regular course at any point for which they are actually filled, subject to the regulations before mentioned. They may enter at any time during the Session, and will be charged only from date of entrance.

A prompt attendance at the commencement of the Session is of the utmost importance, both to the progress of the pupil and proper organization of the School.

Students desiring to enter the institution should make application to the Principal at as early a date as possible. All new students must submit satisfactory testimonials of good character from their last teacher.

OUTFIT.

Pupils boarding in the institution will be furnished with single beds and bedding, and are expected to furnish a pair of



CHAPMAN, B. & C. CO.
PHOTOGRAPHERS
NEW YORK, N. Y.

MAIN HALL OF GYMNASIUM, 100 X 60 FEET.

blankets, or an equivalent, towels, and table napkins ; also an umbrella and a pair of rubber over-shoes. All students will need gymnasium shoes, which can be got in West Chester at small expense. The young ladies of the Senior, Middle and Junior classes provide themselves with gymnasium suits of navy blue serge, the blouse waist of which may be made from Butterick pattern No. 4509, and it is highly desirable that all the young ladies should have this satisfactory and inexpensive dress. Many of the boys provide carpet for their rooms, thus giving them a very neat and homelike appearance.

Keys, wash-bowls, pitchers and looking-glasses are furnished by the school, but their cost must be deposited when they are obtained, which deposit will be refunded when they are returned uninjured.

MORAL AND RELIGIOUS CULTURE.

All students are required to attend the opening exercises of the school in the chapel each day, and all must attend religious services each Sabbath morning in the town, at the churches preferred by their parents or guardians.

LABORATORIES.

The new Chemical Laboratory renders the facilities for Chemistry even more complete than ever ; the department is under the charge of a practical chemist, who has devoted years to this important branch, and who is a State Chemist of Pennsylvania. Students receive instructions without extra charge, but are required to pay for chemicals used, breakage, etc. The removal of the laboratory out of the main school building has removed all the danger often apprehended from such departments. Laboratories have also been equipped with apparatus, microscopes, &c., for individual work in Physics, Botany, Physiology and Zoology.

APPARATUS.

The institution is supplied with Philosophical and Chemical Apparatus of the most approved kind, large additions having been made recently.

LIBRARY AND READING ROOM.

A large library room has lately been fitted up in the best manner. It now contains libraries aggregating 10,000 volumes. A modern card catalogue adds greatly to their value. The library is open at all hours out of school time, with a competent librarian constantly in charge.

Connected with the library is a reading-room supplied with a hundred magazines and papers, also for the constant and free use of the school.

LITERARY SOCIETIES.

There are connected with the school two flourishing Literary Societies—the Moore Literary Society and the Aryan Society—composed of students and members of the Faculty.

The value of these societies as adjuncts of education is so great that the students cannot afford to neglect the opportunities they furnish for literary and oratorical culture.

MUSEUM.

The Museum contains a large and valuable collection of specimens, illustrating every department of Natural Science. It was begun in the year 1826, and has been annually enriched with contributions from every portion of the world. The justly celebrated "Herbariums" of the late Dr. William Darlington and David Townsend, now in this Museum, are conceded to be two of the most accurate and extensive private collections ever formed in this country.

TEXT BOOKS.

Text Books are sold to students at wholesale prices; but all books used in the Elementary Course are furnished on rent to those preferring it.

MUSIC.

This department is unexcelled outside of the large cities. The teachers in charge are fine musicians, and have had long and successful experience in their profession. The following is the course arranged for the piano :

COURSE IN INSTRUMENTAL MUSIC.

First Grade.

Emery's Foundation Studies, and the N. E. Conservatory Method, or Urbach's Instruction Book.

PIECES.

Very easy selections from modern composers.

Second Grade.

ETUDES.

Loeschorn, op. 52 ; Heller, op. 47 ; Czerny, op. 849 ; Kohler, op. 50 ; Gurlitt, op. 50.

PIECES.

Sonatinas and other easy works by Lichner, Spindler, Gurlitt, Kulak, Reinecke, Schumann and others.

Third Grade.

ETUDES.

Bertini, op. 29 ; Heller, ops. 46 and 45 ; Loeschorn, op. 66 ; Berens, op. 61 ; Bach, Little Preludes ; Turner, Damper, Pedal Studies, op. 15 ; Technics, Emery and Mason.

PIECES.

Selections from Heller, Reinberger, Schwarvenka, Mendelssohn, Haydn, Schumann, Schubert, Bach and others.

Fourth Grade.

ETUDES.

Turner, Elements of Modern Octave Playing ; selections from fifty Selected Studies, Cramer ; Bach, Two Part Inventions ; Clementi, Gradus and Parnassum ; Moscheles, op. 70 ; Selections from Chopin, ops. 10 and 24, and Bach's Preludes and Fugues.

PIECES.

Selections from classical and modern composers.

Pupils completing this course in a satisfactory manner will be awarded a diploma. The time required to complete the course cannot be specified, depending, as it does, upon the talent, previous acquirements and industry of the pupil.

VOCAL MUSIC.

This department is also in charge of a first-class teacher. The best modern methods of instruction are used both in class work and individual instruction, and the success and popularity of the department have been very marked. Private pupils in vocal music pay the same rates as in instrumental music and have the use of a piano to aid their practice. Class instruction in vocal music is given without extra cost.

SYNOPSIS OF VOCAL STUDIES.

Methods and Vocalizes Used.

Lablache's exercises for forming the voice. Vocalizes by Panofka, Concone and Marchesi.

First Grade.

Lessons in physiology of voice and organs of respiration. Exercises in combining different registers or tone. Exercises for developing chest; medium and head tones. Vocalizes by Panofka. Easy ballads.

Second Grade.

Exercises for flexibility, continued. Study of scales. Major and Chromatic. Vocalizes by Panofka and Concone.

Third Grade.

Practice of Major, Minor and Chromatic scales continued. Study of embellishments, trills, &c. Vocalizes by Panofka, Concone and Marchesi. Selections from Operas and Oratorios.

MUSIC RECITALS

Are held every few weeks in the chapel for the purpose of giving the pupils ease and self-control in playing and singing before an audience. For these recitals a Steinway Concert Grand Piano is used.

A course of reading in musical literature is commended to cultivate the style and enrich the pupil's knowledge of the great masters.

Term:—Winter Session, two lessons per week, including two practice periods daily, \$34.00. For Spring Session, \$16.00. For a part of a term, \$1.30 per week.

For lessons on other instruments than the piano, special arrangements must be made.

APPLICATIONS FOR TEACHERS.

Frequent applications are made to the Principal for well-trained teachers, and it will be our aim to supply the demand as far as possible.

CALENDAR.

The school year is divided into two sessions. The Winter Session will begin *Monday, September 1st*, and continue *twenty-seven weeks*. The Spring Session will begin *Monday, March 23d*, and continue *thirteen weeks*. There will be a vacation of one week at Christmas, and one of the same length between the sessions in March.

TERMS.

Tuition and board, including heat, light and washing, for the Winter Session, \$135; *one-half payable in advance*, the remainder on December 2nd; for a period less than the session, per week, \$5.25. For the Spring Session, \$65, *payable in advance*; for a period less than a session, per week, \$5.25.

For tuition alone, for Winter Session, \$40.50, *one-half payable in advance*, the remainder on December 4th; for a period less than a session, per week, \$1.50. For Spring Session, *in advance*, \$19.50; for a period less than a session, per week, \$1.50.

Teachers whose schools do not end until after the beginning of the session, are charged by the week, at *term rates*, if they enter as soon as their schools close, and finish the term.

There are no extra charges except for private lessons in music and the cost of the materials to those using the laboratories.

DEDUCTIONS.

Students absent two consecutive weeks, or longer, on account of personal sickness, are entitled to full reduction for the time lost.

Those leaving for any other cause will be required to pay, for the time spent at the school at the rate for a period less than a session as specified above.

All bills must be settled with the Principal, who acts in behalf of the Trustees. Bills for one term must be settled before a student will be permitted to enter upon the next term, unless by special arrangement.

STATE APPROPRIATIONS TO STUDENTS.

The Legislature of Pennsylvania in 1901 made an appropriation to aid the students at the State Normal Schools who are preparing to teach in the public schools of the State. This appropriation is available under the following conditions:

1. Each student over seventeen years of age who signs an agreement to teach in the common schools of the State for two full annual terms is entitled to receive \$1.50 per week in order to pay his tuition.

2. In order to secure this he must during the whole time for which he receives the State aid, receive regular instruction in the science or art of teaching in a special class devoted to that purpose.

This appropriation makes tuition free in the Normal Schools to those who comply with the above conditions. Should there be any deficit in the State appropriation, the students at the different Normal Schools will receive the same *pro rata* share of the appropriation.

VISITORS AND VISITING.

Calls on pupils at other times than during the hours of recreation seriously interfere with the object they have in view, and therefore will not be allowed except in case of necessity. Persons desiring to visit the school are cordially invited to do so at any time.

Every absence from school duty is a loss which cannot be wholly made up. *Parents are earnestly requested not to take their children away from a single school duty, unless it is absolutely necessary. It will interfere with important school duties if a student leaves school earlier than Saturday morning or returns later than Sunday evening.* Students are not permitted to visit home or away from the town without special permission from their parents or guardians.

THE TEXT BOOKS USED.

Readers—Curry, Arnold and Gilbert; *Arithmetic*—Sensenig & Anderson; *Geography*—Natural, Eclectic; *Grammar*—J. P. Welsh; *Geometry*—Wells; *Algebra*—Sensenig; *Physiology*—Martin; *Natural Philosophy*—Sharpless & Philips; *Botany*—Bergen; *Chemistry*—Remsen, Williams; *Zoology*—Jordan and Kellogg; *Geology*—Leconte; *Rhetoric*—Damon and Herrick; *History, U. S.*—McMaster, Thomas; *Constitution, U. S.*—Mowry, Philips; *Drawing*—Prang; *Vocal Music*—American; *School Management*—White; *Methods of Instruction*—Brooks; *Psychology*—Titchener; *Trigonometry and Surveying*—Wells; *Astronomy*—Sharpless & Philips; *Latin*—Allen & Greenough, Bennett, Harper's Cæsar, Allen & Greenough's Texts; *Greek*—Goodwin's Grammar, Goodwin's and White's Anabasis;

German—Joynes-Meissner, German Texts; *English Literature*—Pancoast, English Texts; *Orthography*—Rice; *Physical Training*—Enebuski's Day's Orders.

REGULATIONS.

1. Every student is requested on entering to give the Principal information in regard to the following particulars: Whether he designs fitting himself for a teacher; what length of time he designs remaining in the institution, and whether he desires to pursue the regular course for graduation.

2. Students are considered members of the school until the Principal is duly notified of their withdrawal.

3. The hours regularly assigned to duty are to be faithfully devoted to the preparation of the exercises required.

4. Students are allowed to walk for exercise in the vicinity of the school, but no one is permitted to visit the town or otherwise absent himself without permission from the Principal. Absence from the building after dusk is not permitted. New acquaintances outside the school must not be cultivated.

5. Permission to be absent from a recitation must always be obtained from the teacher in charge of the class, *before* the absence occurs; and students desiring to be absent from town must obtain written permission from the Principal.

6. Boarding students who are not present at the beginning of the term must send to the Principal written explanations of their absence, or their rooms will be forfeited.

7. Every student must be present at the daily opening exercises of the school, and at all general exercises in the Chapel, unless excused.

8. All objectionable books, papers and cards found in the possession of students will be taken and destroyed.

9. Disorderly conduct in the building is prohibited. Each student will be held accountable for any disturbance or damage in his room.

10. No nails must be driven in the walls or ceilings, or alterations be made in the windows, doors, or any appendage of the rooms, without permission from the *Steward*.

11. Students are not allowed to visit one another's rooms during the regular hours of study without permission of those in charge of the halls. No change of rooms must take place without permission of the Principal.

12. Each student of instrumental music will have regular hours assigned for practice, during which time no spectator must be present to interrupt the exercises or divert the attention.

13. All students who are tardy, unnecessarily, at meals, must forfeit them, and no one must leave before the rest at the table without good reason, and permission from the person sitting at the head of the table. Any student sick or indisposed, and requiring attention, must have himself reported at once to the Nurse.

14. It is expected that the ladies and gentlemen of the Institution will treat one another with politeness, but they will not be allowed to be together or to carry on conversation or other communication except in the performance of school exercises, unless by special permission. Neither sex will be permitted to trespass upon that portion of the building assigned to the other.

15. No lady or gentleman attending this Institution will meet, walk or ride with a person of the opposite sex, except in case of necessity, and then only with the permission of the Principal.

16. Students will not visit the dining room at any other time than meal time, nor the domestic departments, boiler room or music rooms, without permission.

17. The use of tobacco in any form is strictly prohibited in the building or on the grounds.

18. Students must not enter any saloon, bar-room, billiard or pool-room. They are absolutely forbidden to use as a beverage alcoholic liquors of any kind whatever during their connection with the school.

19. Students will be required to attend public worship each Sabbath morning at such places as their parents or guardians designate.



THE INFIRMARY.



PRINCIPAL'S RESIDENCE.

20. Students are required to take up enough studies to keep them, in the judgment of the Principal, sufficiently employed, but not take up more than they can study with profit.

21. Students must furnish towels, napkins and two pairs of blankets (or an equivalent), and have all articles of clothing *distinctly marked*. Each student is permitted to have twelve pieces washed each week without extra charge.

The right is reserved to remove from the school any pupil whose influence is found to be vitiating.



Directory of the Alumni.



PLEASE NOTIFY US OF ANY ERRORS OR CHANGES.



OFFICERS FOR 1901-1902.

President—J. KIRK LEATHERMAN, Class of '90.

Vice-President—GEORGE DEWEES, Class of '94.

Secretary—SUSAN C. LODGE, Class of '77.

CLASS OF 1874. ELEMENTARY COURSE.

<i>Name.</i>	<i>Address.</i>	<i>Profession.</i>	<i>Taught since graduation.</i>
Crosby, Margaret,	Chester, Pa.,	Teaching,	28 yrs.
Esler, Anna P.,	West Chester, Pa.,	Teacher Nor. School,	27 "
Griffith, Ruth E.,	Spelman Sem., Atlanta, Ga.,	Teaching,	23 "
Hibbs, Anna (Washburn),	Chappaqua, N. Y.,	"	14 "
Hunsicker, Ella M.,	Aiken, S. C.,	Schofield School,	18 "
Large, F. Anna (Thorne),	1714 Christian St., Phila.,		10 "
Longshore, Margaretta B.,	Swarthmore, Pa.,	Asst. Matron,	17 "
Longstreth, Emma J.,	2158 N. Camac St., Phila.,	Teaching,	27 "
Lynch, Mary H. (John),	Sunbury, Pa.,		19 "
Groff, George G.,	Lewisburg, Pa.,	Professor of Sciences,	26 "

CLASS OF 1875. ELEMENTARY COURSE.

Bates, Mary J. (Miller),	Glen Moore, Pa.,		4 "
Brosius, Dora E. (Walton),	George School, Pa.,		8 "
Conway, M. Lizzie,	Mount Hermon, Mass.,	Librarian,	16 "
Corson, Emily,	Plymouth Meeting, Pa.,		
Corson, Martha, (Poley),	6519 Germantown Ave., Phila.,		1 "
Dummig, Carrie J.,	Redlands, Cal.,	Teaching,	27 "
Hare, Mary J.,	Deceased, 1888.		13 "
Jackson, Anna,	George School, Pa.,	Librarian,	12½ "
Irey, Emma (Phillips),	Keunett Square, Pa.,		7 "
John, Ida M. (Taylor),	Phoenixville, Pa.,		14 "
Martin, Lydia A.,	West Chester, Pa.,	Teacher Nor. School,	26 "

<i>Name.</i>	<i>Address.</i>	<i>Profession.</i>	<i>Taught since graduation.</i>
Price, Annie J. (Paxson),	331 Saunders Ave., Phila.,		2 yrs.
Wollerton, Zerua (Liggett),	West Chester, Pa.		
Woolley, Sara Z. (Maddock),	Elwyn, Pa.,		4 "
Chandlee, Richard T.,	Deceased, 1898,		
Gordon, Wm. T.,	Coatesville, Pa.	Supt. of schools,	26 "
Potter, Arthur W.,	74 Fifth Av., N. Y.,	Publisher,	16 "
Spencer, Amos L.,	Oxford Valley, Pa.,		22 "

CLASS OF 1876. ELEMENTARY COURSE.

Baker, Phoebe A.,	Media, Pa.,	Florist,	2 "
Brown, Elizabeth (Thomas),	Media, Pa.,	Teaching, Froebel Inst.	19 "
Boyd, Sallie (Snow),	Wakefield, R. I.,		
Clark, Thomazine (Fairlamb),	Exton, Pa.,		8 "
Coffman, Ada A.,	1532 Columbia Ave., Phila.,	Teaching,	16 "
Davis, Clara A.,	Frazer, Pa.,		24 "
Eyre, Abbie A.,	Williamson School, Pa.,	"	23 "
Knight, Jennie (Atkinson),	Penn's Park, Pa.,		4 "
Linton, Wilhelmina (Ivins),	121 Penn St., Camden, N. J.,		3 "
Martin, Rachel S.,	Jenkintown, Pa.,	Teaching,	21 "
Parsons, Lucy C. (Tyson),	20th & Hyatt Sts., Chester, Pa.,		3 "
Pyle, Ida C.,	New Garden, Pa.,	"	24 "
Stevens, Kate (Williams),	2910 14th Ave., Minneapolis, Minn.,	Teaching,	18 "
Sickel, Florence E.,	Davis Grove, Pa.,	Teaching,	25 "
Stackhouse, Sue P.,	Deceased, 1888,		
Thompson, Anna M.,	Newtown, Pa.,	Trained Nurse,	1 "
Acker, J. Roberts,	Deceased, 1880,		
Butler, William,	Burlington, N. J.,	Civil Engineer	
Gabeka, George P.,	347 Manhattan Ave., N. Y.,	1st Asst. Principal,	26 "
Thomas, William D.,	Deceased, 1891.		

CLASS OF 1877. SCIENTIFIC COURSE.

Groff, George G.,	Lewisburg, Pa.,	Teaching,	26 "
-------------------	-----------------	-----------	------

ELEMENTARY COURSE.

Baldwin, Ella L.,	134 Washington Ave., Bridgeport, Conn.,	Teaching,	19 "
Black, B. Anna (Johnson),	Pencoyd, Pa.,		7 "
Criley, Elizabeth F.,	West Chester, Pa.,	Teacher Nor. School,	25 "
Daniel, Zelda (Habbersett),	Lenni, Pa.,		13 "
Davis, M. Eloene (Wells),	Deceased, 1895,		
Flinn, Anna P. (Matlack),	Bryn Mawr, Pa.,		16 "
Graves, Addie C.,	Glen Mills, Pa.,	Teaching,	23 "
Groce, H. Emilie,	Lansdowne, Pa.,	Principal,	25 "
Green, Virginia (Huey),	Lewape, Pa.,		7 "
Johnson, Hanna M., (Knickerbocker),	Fairfax, Iowa,		1 "
Lodge, Susan C.,	1720 Arch street, Phila.,	Prin. Collegiate Inst.,	23 "
Moffat, Margaret J.,	Riegelsville, Pa.,	Teaching,	24 "
Murray, Annie V.,	1619 Wallace street, Phila.,	Foreign correspondent,	11 "
Pyle, Frances A. (Fronefield),	Media, Pa.,		10 "
Pyle, L. Emma,	140 N. 15th St., Phila.,	Matron,	14 "
Sorber, Laura C. (Diemer),	108 Franklin Av., Norristown, Pa.,		11 "
Turner, Lydia E.,	Upper Darby, Pa.,	Teaching,	25 "
Turner, Elizabeth D.,	Lansdowne, Pa.,	"	24 "
Tomlinson, Arthur H.,	Swarthmore, Pa.,	Prin. Preparatory Sch.,	24 "
Vanderslice, John P.,	Deceased, 1879,		

<i>Name.</i>	<i>Address.</i>	<i>Profession.</i>	<i>Taught since graduation.</i>
STATE CERTIFICATE.			
Snyder, William H.,	Oxford, Pa.,	Principal High Sch.,	25 yrs.

CLASS OF 1878. ELEMENTARY COURSE.

Brooke, Ella T. (Bateman),	West Chester, Pa.,		2 "
Caley, Hannah R. (Garwood),	Media, Pa.,		10 "
Castle, Hannah,	Upland, Pa.,	Teaching,	12 "
Castle, Harriet A.,	Upland, Pa.,	"	24 "
Darlington, Evalena A.,	Idaho Springs, Col.,	"	22 "
Edmunds, Mary,	Deceased, 1889.		
Moulder, Kate R.,	Phoenixville, Pa.,	Teaching,	23 "
Philips, Eleanor M. (Pennock),	Deceased, 1888.		
Preston, Marion (Lewis),	West Chester, Pa.,		3 "
Stiteler, Frances M.,	Anselma, Pa.,	Teaching,	20 "
Wetherell, Jane J. (Bartlett),	247 N. 20th St., Phila.,		6½ "

CLASS OF 1879. ELEMENTARY COURSE.

Bossert, Emma K.,	Phoenixville, Pa.,	Teaching,	22 "
Caley, Margaret R.,	Media, Pa.,	"	21 "
Nields, Emma P. (Dugan),	Bridgeport, N. J.,		5 "
Passmore, Annie J. (Swayne),	Fairville, Pa.,		2½ "
Peters, Sue V. (Thatcher),	Village Green, Pa.,		4 "
Pyle, Emma T. (Tomlinson),	Swarthmore, Pa.,		15 "
Pyle, Rachel A. (Cloud),	Kennett Square, Pa.,		2 "
Whitehead, Mary P. (Durnall),	West Chester, Pa.,		6 "
Woodward, Caroline C. (Cummings),	West Chester, Pa.,	Teaching,	19 "
Dugan, J. Howard,	Hazelton, Pa.,	Eng. and contractor,	3 "
Hoffman, D. Tucker,	Phoenixville, Pa.,	Draughtsman,	2 "
Meyers, Joseph E.,	West Branch, Pa.,	Farming,	9 "
Naylor, Hartman,	St. George's Hall, Summit, N. J.,	Head Master,	21 "
Reese, David J.,	Deceased, 1882.		

CLASS OF 1880. ELEMENTARY COURSE.

Baldwin, Mary H. (Prickett),	Palmyra, N. J.,		11 "
Bemus, Carrie E.,	Atlanta, Ga.,	Teacher Bapt. Col.,	21 "
Brinton, Mary H.,	Deceased, 1894.		
Crumley, Margaretta S.,	Wayne, Pa.,	Stenographer,	8 "
Kugler, Lizzie F. (Losey),	Sinnamahoning, Pa.,		5 "
Nelson, Mary E. (Shoch),	Kelton, Pa.,		1 "
Simpson, Fannie J. (Bachman),	Durham, Pa.,		18 "
Vansant, Belle,	George School, Pa.,	Teaching,	19 "
Yerkes, Laura (Lewis),	Frederick, Md.,		13 "
Bushong, Charles H.,	124 W. 94th St., New York,	Physician,	4 "
Cheyney, Willis,	28 W. 14th St., New York,	Optical business,	2 "
Kidd, Harry G.,	Lombard, Md.,	Prin. of Schools,	19 "
Paxson, Alfred,	Deceased, 1894.		

STATE CERTIFICATE.

McLinn, Milton, E.,	Bloomsburg, Pa.,	Clergyman,	2 "
---------------------	------------------	------------	-----



RECEPTION ROOM.

PEALE'S WASHINGTON ON THE LEFT AND FRANKLIN'S CLOCK IN CORNER.



A STUDENT'S ROOM.

<i>Name.</i>	<i>Address.</i>	<i>Profession.</i>	<i>Taught since graduation.</i>
CLASS OF 1881. ELEMENTARY COURSE.			
Acker, Martha J.,	Deceased, 1888.		
Buchanan, Elizabeth (Parker),	601 Baca St., Trinidad, Colo.,		7 "
Clafin, Alice E.,	Oak Lane, Phila.,	Stenographer,	2 "
Davis, Leonore E., M. D.,	1747 N. Park Ave., Phila.,	Physician,	4 "
Greene, Ellen M.,	West Chester, Pa.,	Teaching,	21 "
Greene, Mary E.,	" "	"	21 "
Kerns, Madge J.,	Devon, Pa.,	Asst. Bursar Bryn Mawr,	12 "
Lewis, Elizabeth J.,	Deceased, 1902,		21 "
Lynch, Ella W. (Thomas),	Oxford, Pa.,		4 "
March, Alice H. (Martin),	2322 St. Albans Place, Pa.,		5 "
McFarlan, Mary P.,	Marshallton, Pa.,	Teaching,	21 "
Potts, Fannie (Crouse),	Cupola, Pa.,		4½ "
Schofield, Emma (Godon),	Chester, Pa., 1021 Edgemont Ave.,		4 "
Turner, Ella M. (Fenn),	800 West St., Wil., Del.,		6 "
Walton, Mary D. (Swayne),	West Chester, Pa., R. D. 7.,		2½ "
Webb, Williamanna (Jefferis),	Deceased, 1893.		
Hartney, Daniel G.,	Langhorne, Pa.,	Prin. Schools,	21 "
Jones, Addison L.,	West Chester, Pa.,	Supt. Schools,	21 "
Markley, Joseph S.,	Ann Arbor, Mich.,	Professor U. of M.,	13 "
Moore, G. Winfield,	Ercildoun, Pa.,	County Supt.,	20 "

CLASS OF 1882. SCIENTIFIC COURSE.

Potter, Arthur W.,	63 Fifth Ave., New York,	Publisher,	9 "
--------------------	--------------------------	------------	-----

ELEMENTARY COURSE.

Brinton, Floreuce E.,	Media, Pa.,	Teaching,	20 "
Ferron, Maggie,	Londonderry, Pa.,	"	16 "
Groff, Lily C.,	Deceased, 1891,		2 "
Kauffman, R. Addie,	Berwyn, Pa.,	Teaching,	17 "
Sorber, E. Bertha (McLeod),	26 Taylor St., Holyoke, Mass.,		
White, Flora L.,	Honeybrook, Pa.,	Teacher Friends' C. Sch.	16 "
Kirk, Sara S.,	384 Jackson St., Milwaukee, Wis.,	Educ. Sec. Y. W. C. A.	18 "
Ambler, Lewis B.,	140 N. 15th St., Philada.,	Superintendent,	17 "
Baldwin, Walter J.,	201 DeKalb Av., Brooklyn, N. Y.,	Man. Training H. S.,	11 "
Green, Francis H.,	West Chester, Pa.,	Teaching Nor. Sch.,	19 "
Phillips, Jesse E., Jr.,	Worcester, Mass.,	Teaching,	16 "
Rahn, Warren R.,	Ambler, Pa.,	Sup. Prin. of Schools,	19 "
Roberts, Warner P.,	Yardley, Pa.,	Business,	9 "
Slotter, William H.,	Doylestown, Pa.,	County Supt.,	20 "
Wolf, Samuel F.,	South Bethlehem, Pa.,	Book-keeper,	2 "

CLASS OF 1883. SCIENTIFIC COURSE.

Markley, Joseph L.,	University of Michigan,	Prof. of Mathematics,	11 "
Tomlinson, Arthur H.,	Swarthmore, Pa.,	Prin. of Prep. Sch.,	18 "

ELEMENTARY COURSE.

Baily, Frances J. (Brown),	1213 DeKalb St., Norristown, Pa.,		1 "
Bean, Kate W. (Cresman),	Sellersville, Pa.,		10 "

<i>Name.</i>	<i>Address.</i>	<i>Profession.</i>	<i>Taught since graduation.</i>
Danman, Martha (Miller),	313 Pearl St., Camden, N. J.		5 yrs.
Gallagher, Ella D.,	43 Jacoby St., Norristown, Pa.,	Teaching,	19 "
Griest, E. Belle,	Guernsey, Pa.,		11 "
Griest, Mary E.,	" "		9 "
Hecht, Lelia C. (Byers),	378 First Ave., Milwaukee, Wis.,		9 "
Hawxhurst, Mary W. (Tyson),	Flora Dale, Pa.,		4 "
Lafferty, Annie (Wallace),	Chadd's Ford, Pa.,		4 "
Lybrand, Addie L.,	Deceased, 1889.		
Moore, Rettie (Branson),	Coatesville, Pa.,		2 "
Nevegold, Nellie (Graham),	Bogota, Colombia, S. A.,	Missionary,	7 "
Russell, Mary C. (Eachus),	Deceased, 1893.		
Walter, Mary H.,	Tradesville, Pa.,		16 "
Baldwin, Joseph H.,	West Chester, Pa.,	Attorney at Law,	3 "
Beyer, William H.,	Halifax, Pa.,	Clergyman,	3 "
Froncfield, W. Roger,	Media, Pa.,	Attorney at Law,	2 "
Jones, Samuel L.,	Easton, Pa.,	Teacher Bus. Col.,	19 "
Musselman, Edwin R.,	Lansdale, Pa.,	Banking,	13 "
Priest, W. Edwin,	901 French St., Washington, D. C.,	Teacher High Sch.,	17 "
Smith, A. Thomas,	Mansfield, Pa.,	Principal Nor. Sch.,	18 "

STATE CERTIFICATE.

Ommeren, John V.,	Quakertown, Pa.,	Attorney at Law,	8 "
-------------------	------------------	------------------	-----

CLASS OF 1884. ELEMENTARY COURSE.

Bedford, Sara P.,	West Chester, Pa.,	Asst. Librarian,	1 "
Eisenhower, Lydia E.,	876 Broad St., Newark, N. J.,	Teaching,	18 "
Evans, Amelia (Hague),	Deceased, 1892.		
Hoopes, Sara S. (Taube),	Deceased, 1899.		8 "
Keene, Annie W. (Bushong),	Deceased, 1894.		
Knerf, Clara E.,	Birchrunville, Pa.,	Teaching,	16 "
McAfee, Florence A. (Moore),	West Vincent, Pa.,		5 "
Mayham, Eloise (Hulley),	Lewisburg, Pa.,		3½ "
Poole, M. Lizzie,	Deceased, 1893.		
Sullivan, Annie C.,	Jenkintown, Pa.,		11 "
Walsh, Agnes G. (Bartram),	Caanan, Conn.,		6 "
Yonker, Hannah (Allen),	4932 Pasadena Ave., Los Angeles, Cal.,		9 "
Beerbower, A. Lincoln,	Cripple Creek, Col.,	Broker,	1 "
Cloud, Charles B.,	202 Kelker St., Harrisburg,	Teaching,	18 "
Custer, Ambrose L.,	Lehighton, Pa.,	Superv. Principal,	18 "
Frederick, Oliver D.,	7 E. Monroe St., Chicago,	Teaching,	15 "
Johnson, William H.,	711 N. 36th St., Phila.,	P. R. R. Office,	2 "
Nunemaker, Francis H.,	Deceased, 1888.		
Roclofs, Richard W.,	Cripple Creek, Col.,	Mining,	
Snyder, Jessie H., Jr.,	Lansdale, Pa.,	Teaching,	18 "

CLASS OF 1885. SCIENTIFIC COURSE.

Acker, Martha J.,	Deceased, 1888.		
Benuer, Henry,	Deceased, 1901.		11 "
Beyer, William H.,	Halifax, Pa.,	Clergyman,	3 "
Jones, E. G.,	Deceased, 1885.		

<i>Name.</i>	<i>Address.</i>	<i>Profession.</i>	<i>Taught since graduation.</i>
--------------	-----------------	--------------------	---------------------------------

ELEMENTARY COURSE.

Crumley, Elizabeth C. (Neal),	Riverside, N. J.,		10 yrs.
Gibson, Alice M. (Shepherd),	S. River St., Wilkesbarre,		5 "
Griest, Florence (Michener),	Guerusey, Pa.,		2 "
Hall, Mary A. (Ambler),	Cheyney, Pa.,		3 "
Hough, Clara E.,	Larangeiras, Brazil, S. A.,	Teaching,	14 "
Mathias, Anne,	Chalfont, Pa.,		13½"
Passmore, Phœbe, (Taylor),	Malvern, Pa.,		2 "
Roberts, Irene,	Ardmore, Pa.,	Sten. and Bookkeeper,	4 "
Smedley, Emma M.,	Deceased, 1887,		2 "
Storey, Myra W.,	New London, Pa.,		4½"
Trapp, Edith M.,	Bethlehem, Pa.,	Teaching,	17 "
Worrall, Mary E.,	Deceased, 1886.		
Way, Mabel E. (Darlington),	3134 Clifford St., Phila.,		9 "
White, Alice,	15th and Race Sts., Phila.,	Teaching,	17 "
Carr, John M.,	Freeland, Pa.,	Attorney at Law,	8 "
Hillegas, Jacob B.,	413 Swede St., Norristown, Pa.,	" "	1 "
Johns, J. R.,	1938 S. 12th St. Phila.,	Physician,	2 "
Lichty, David M.,	Ann Arbor, Mich.,	Instr. U. of M.,	13 "
Weisel, Elmer P.,	700 Walnut St., Phila.,	Bank Clerk,	3 "
Wonsetler, Frank B.,	Norristown, Pa.,	Insurance Manager,	6 "

STATE CERTIFICATE.

Bevan, James J.,	Mauch Chunk,	Co'y Superintendent,	17 "
------------------	--------------	----------------------	------

CLASS OF 1886. SCIENTIFIC COURSE.

Lodge, Susan C.,	1720 Arch St., Phila.,	Prin. Collegiate Inst.,	17 "
------------------	------------------------	-------------------------	------

ELEMENTARY COURSE.

Boorse, Elizabeth A.,	Norristown, Pa.,		9 "
Conard, Sara A.,	Ogontz, Pa.,	Teaching,	16 "
Eshleman, Laura,	Fagg's Manor, Pa.,	"	13 "
Evans, Sara C.,	West Chester, Pa.,		5 "
Fox, Mary E.,	Deceased, 1890.		4 "
King, Eleanor S. (Wheeler),	3206 Columbia Ave., Phila.,		3 "
Long, Helen,	Girard College, Phila.,	Teaching,	16 "
Ogden, Lizzie F. (Smith),	Mansfield, Pa.,		6½"
Reed, Mary E.,	Jeffersonville, Pa.,		7½"
Roberts, Laura E.,	Deceased, 1887.		
Scarborough, Annie C.,	Wrightstown, Pa.,	Teaching,	14 "
Worth, Hannah M.,	Monte Vista, Col.,		1 "
Kulp, William V.,	Milliken Bros., 11 Broadway,	N. Y. Civil Engineer.	
Stover, Isaiah M.,	Cedars, Pa.,	Farming,	13 "
Wheeler, George,	2306 Columbia Ave., Phila.,	Prin. Blaine School,	16 "

CLASS OF 1887. SCIENTIFIC COURSE.

Johnson, William H.,	711 N. 36th St., Phila.,	P. R. R. Office,	1 "
Lichty, David M.,	U. of M., Ann Arbor,	Instructor,	13 "

<i>Name.</i>	<i>Address.</i>	<i>Profession.</i>	<i>Taught since graduation.</i>
ELEMENTARY COURSE.			
Cornwell, Mary E.,	548 Neville St., Pittsburg, Pa.,	Sec. Alinda Col. P. Sch.,	8 yrs.
Eachus, Jennie T. (Jackson),	Lansdowne, Pa.,		3 "
Good, Eleanor T.,	West Grove, Pa.,	Teaching,	15 "
Harley, Lizzie (Williams),	Royersford, Pa.,		6 "
Mahoney, Regina M. S.,	404 S. Broad St., Phila., Pa.,	Teaching,	14 "
Molony, Adele M.,	Deceased, 1891,		14 "
Newlin, Esther A.,	408 S. Hill St., Los Angeles, Cal.,	Bookkeeper,	9 "
Perry, Cora R.,	Eagleville, Pa.,		1 "
Potts, Jennie V. (Gatchell),	Coatesville, Pa.,		2 "
Pyle, Laura (Nichols),	Ackley, Ia.,		8 "
Riehl, Annie M. (Arnold),	24 2nd St., N. E., Wash., D.C.,		2 "
Smith, Elsie V.,	Lambertville, N. J.,	Teaching,	9½ "
Sweeney, Mary (Elliott),	Wilmington, Del.,		5 "
Thomson, Hattie,	213 N. Olive St., Media, Pa.,	Teaching,	15 "
Way, Willa M.,	West Chester, Pa.,	"	15 "
Weikel, Mary F. (Hawthorn),	Norristown, Pa.,	"	6½ "
Welsh, Mary H. (Adler),	149 Manhattan Ave., N. Y.,		3 "
Detwiler, Warren H.,	Hatboro, Prof. of Hist. & Eco. in N.E.M. Tr.Sch. Phila.		12 "
Ehl, J. Morris,	Philadelphia, Pa.,	In Post Office.	
Mearns, Robert W.,	Fort Sheridan, Ill.,	Captain U. S. Army.	

CLASS OF 1888. ELEMENTARY COURSE.

Bernard, Angie C. (Morrison),	Andalusia, Pa.,		8½ "
Castle, Elizabeth (Coc),	6082 Reinhart St., Phila., Pa.,		11 "
Ely, Hattie,	Yardley, Pa.,	Stu. M.S. Col. Tr't'n, N. J.	8 "
Goshen, Anne M.,	Peru, Neb.,	Prin. Model Sch.,	9½ "
Ganster, Rosa M.,	107 S. Grosvenor Av., Dayton, O.,	Teaching,	13 "
Haley, Meta T.,	Birmingham, Ala.,	Dentist,	2 "
Hurst, Annie (Hartzler),	48 Garrison St., Bethlehem, Pa.,		3 "
Jacobs, Alice (Canzares),	Wayne, Pa.,		5 "
Jadwin, Anne (McMillan),	110 Salem Av., Carbondale, Pa.,		4 "
Knoche, Lillie (Martlatt),	358 Richmond Av., Buffalo, N. Y.,		5 "
Morgau, Mary L. (Heister),	Lancaster, Pa.,		9 "
Person, Ettie (Pennock),	Chestnut Level, Pa.,		1 "
Pyle, Mary A. (Davoll),	Caro, Mich.,		8 "
Reynolds, Minnie R. (Pancoast),	Marple, Pa.,		4 "
Smith, Annie L. (Vernon),	Media, Pa.,		4 "
Smith, Adela A.,	71st St. & Woodland Av., Phila.,	Teaching,	14 "
Valentine, Itasca,	Deceased, 1893,		4 "
Weinberger, Ella S.,	Doylestown, Pa.,	Teaching,	8 "
Kistler, Milton,	6 W. 22nd St., New York,	DeWitt Clinton H. Sch.,	7 "
Rex, Frank C.,	N. Y., care of Austin, Nichols & Co.,	Business,	9 "

CLASS OF 1889. ELEMENTARY COURSE.

Christmas, Ida M.,	1999 Edna Av., Scranton, Pa.,	Teaching,	13 "
Darlington, Alice T.,	3017 Osceola St., Denver, Colo.,	"	8½ "
Ehl, Laura L. (Pluck),	Myerstown, Pa.,		2 "
Eisenhart, Clara,	Fort Washington, Pa.,	Teaching,	11 "
Ely, Helen H.,	Park Av. Friends' Sch., Balt., Md.,	Teaching,	13 "
Fulton, Matilda (Minshall),	Strafford, Pa.,		3 "



A CORNER OF THE LIBRARY.



THE CHAPEL.

<i>Name.</i>	<i>Address.</i>	<i>Profession.</i>	<i>Taught since graduation.</i>
Hagerty, Clara,	Plumsteadville, Pa.,		4 yrs.
Hambleton, Annie E.,	Goshen, Pa.,		7 "
Hoopes, Linda K. (Haines),	West Chester, Pa.,		4½ "
Jones, Esther G. (Widdicombe),	Phoenixville, Pa.,		2 "
Lewis, Marion (Anson),	Norristown, Pa., R. D. 2,		1 "
Mendenhall, M. Lydia (Loller),	New Albany, Pa.,		7 "
Mood, Henrietta,	Deceased, 1897,		2 "
Morris, Mary,	Line Lexington, Pa.,	Student,	8 "
Neitz, Sara (Chubb),	6214 Paynton St., Germant'n, Phila.,		5 "
Ozias, Carrie J.,	Richland Centre, Pa.,	Teaching,	7 "
Prendergast, E. Daisy,	Scranton, Pa.,	"	13 "
Rich, Lillian (Flowers),	Edgewood, Pa.,	"	7 "
Tencate, Frances J.,	Nellore, India,	"	9 "
Weinberger, Laura S.,	Doylestown, Pa.,	"	9 "
Whitehead, Anna L.,	Stoughton, Mass.,	"	10 "
Woodmau, Agnes W. (Gregg),	Baltimore, Md.,	Park Ave. Friends Sch.	8 "
Bierley, Samuel J.,	Newton Hamilton, Pa.,		5 "
Borneman, Harry S.,	1220 Ste. Girard Bldg., Phila.,	Attorney at Law,	2 "
Brecht, G. K.,	Norristown, Pa.,	" "	6 "
Emrey, A. J.,	163 N. 15th St., Phila.,	Prin. Campbell Sch.,	12 "
Pyle, Willard R.,	Bedford Park, New York,	Teaching,	9 "
Senseuig, Barton,	Mt. Airy, Phila.,	Deaf and Dumb Inst.,	6 "

CLASS OF 1890. ELEMENTARY COURSE.

Brown, Jennie E.,	Pleasant Grove, Pa.,		2 "
Comly, Anna M.,	Maple Glen, Pa.,	Teaching,	11 "
Davis, Annie J.,	W. Conshohocken, Pa.,	"	9½ "
Foulke, Bertha M. (Martindale),	West Chester, Pa.,		4 "
Hayden, Annie F.,	Deceased, 1892.		2 "
Kemery, Kate,	Mahanoy City, Pa.,	Teaching,	12 "
Kemp, Effie (Hudson),	Templeton, Cal.,		7 "
Mendenhall, Clara (Wilson),	Toughkenamon, Pa.,		3 "
Miller, Ada B. (Myers),	1299 Franklin Ave., New York City,		8 "
Rath, Elizabeth S.,	Deceased, 1895.		
Ritchie, Helen V. (Fetter),	2429 Broad Ave., Altoona, Pa.		5 "
Rippman, Clara (Thompson),	2523 W. 3d St., Chester, Pa.,		4 "
Steele, Elizabeth D.,	Swarthmore, Pa.,	Teaching,	10 "
Stone, Loraine (McKinstry),	West Chester, Pa.,	Reporter,	3 "
Smith, Anna B., (Eshleman),	Parkesburg, Pa.,		2 "
Taylor, Virginia,	Round Hill, Va.,	Teaching,	12 "
Tyson, Sara,	Lansdale, Pa.,	"	9 "
Anderson, Robert,	West Chester, Pa.,	Teacher Nor. School,	12 "
Clough, Fred M.,	New Albany, Pa.,	Clergyman.	
Delp, William S.,	Moorestown, N. J.,	Prin. Friends' School,	11 "
Farrell, William L.,	49-51 Wells Bldg., Wilkesbarre, Pa.,	Real Estate,	4 "
Hartline, Daniel S.,	Bloomsburg, Pa.,	Teacher, S. N. S.,	7 "
Koons, Ulysses S.,	416 Harrison Bldg., Phila.,	Attorney at Law,	1½ "
Leatherman, J. Kirk,	Doylestown, Pa.,	" "	2 "
McKinstry, E. L.,	West Chester, Pa.,	Reporter.	
Mensch, A. B.,	Skippack, Pa.,	Teaching,	12 "
Philips, Walter L.,	West Chester, Pa.,	"	8 "
Scarborough, Henry W.,	522 Walnut St., Phila.,	Attorney at Law,	5 "
Snyder, Daniel G.,	West Chester, Pa.,	Dentist,	2 "

<i>Name.</i>	<i>Address.</i>	<i>Profession.</i>	<i>Taught since graduation.</i>
Tenny, Howard R.,	Deceased, 1899.		
Yerkes, Frank H.,	Ambler, Pa.,	Physician,	1 yr.

CLASS OF 1891. ELEMENTARY COURSE.

Bloxham, Mary E.,	Verona, N. J.,	Teaching,	11 yrs.
Booth, Laura E.,	Booth's Corner, Pa.,	"	10 "
Broomall, Laura B.,	Cheyney, Pa.,	"	7 "
Butler Elizabeth R.,	2127 Green St., Phila.,		4 "
Campbell, Nellie R.,	West Chester, Pa.,	Teaching,	11 "
Casselberry, H. Minnie,	Doylestown, Pa.,	"	11 "
Conley, Martha D. (Bright),	Lansdale, Pa.,	"	4 "
Conlston, Frances C.,	Conshohocken, Pa.,	"	11 "
Ely, Sarah C.,	Newtown, Pa.,	"	11 "
Embree, Tacie C.,	Marshallton, Pa.,	"	7½ "
Grove, Clara C.,	Coatesville, Pa.,	"	8 "
Hecat, Mary Z.,	212 Douglas St., Reading, Pa.,	"	11 "
Hulme, Emily (Cooke),	Herington, Kan.,		5 "
Kline, Bessie (Swan),	Conshohocken, Pa.,		4 "
Kratz, Bertha V. (Williams),	Riverton, N. J.,		4½ "
Larkin, Caroline (Osborne),	231 E. 5th St., Chester, Pa.,		9 "
LaRue, Laura Z. (Brooks),	Glenolden, Pa.,		5 "
Mercer, Estelena H.,	West Chester, Pa.,	Teaching,	11 "
Moore, Susan L. (Dixon),	Lehighton, Pa.,		4 "
Moore, Ruth E.,	Cochranville, Pa.,	Teaching,	9 "
Ogden, Alena M. (Philips),	West Chester, Pa.,		7 "
Rakestraw, Gertrude (Brinton),	Christiana, Pa.,		3 "
Rorer, Mary W.,	43 W. Logan St., Germantown, Pa.,	Teaching,	11 "
Sharpless, Elizabeth R.,	West Chester, Pa.,	Student,	9 "
Snyder, S. Irene,	Lykens, Pa.,	Teaching,	11 "
Strode, Amy,	Coatesville, Pa.,	"	10 "
Watson, Mary E.,	Bristol, Pa.,	"	10 "
Way, Florence B.,	26 Rue Cambou, Paris,	Student,	4 "
Aiken, J. Charles,	Berwyn, Pa.,	Instr. DeLauncey Sch.,	9 "
Babb, Maurice J.,	State College, Pa.,	Teaching,	8 "
Beyerle, George F.,	80 Erie Co. Bank Bldg., Buffalo, N. Y.,	Real Estate.	
Brecht, S. K.,	647 Haws Ave., Norristown, Pa.,	Teaching,	8 "
Davis, Harry A.,	1321 11th Ave., Altoona, Pa.,	Att'y at Law,	2 "
Knauer, Phillip S.,	49 Westminster St., Providence, R. I.,	Civil Engineer,	2 "
Roberts, Charles C.,	West Chester, Pa.,	Chemist,	3 "
Slough, W. C.,	Worcester, Pa.,	Student,	6 "
Weinberger, J. Howard,	36 W. 116th St., N. Y.,	Civil Engineer,	1 "

CLASS OF 1892. SCIENTIFIC COURSE.

Beyerle George A.,	80 Erie Co. Bank Bldg., Buffalo, N. Y.,	Real Estate.	
Rex, Frank A.,	New York,	Business,	7 "

ELEMENTARY COURSE.

Battin, Cora B.,	Colorado Springs, Colo.,	Teaching,	8 "
Carver, Anna B. (Windle)	Southampton, Pa.,		4 "
Channel, Bessie,	West Chester, Pa.,	Teaching,	6 "
Daniels, Estella,	Modena, Pa.,		3 "
Ermold, Sarah E.,	Norristown, Pa.,	Teaching,	9 "

<i>Name.</i>	<i>Address.</i>	<i>Profession.</i>	<i>Taught since graduation.</i>
Faulkner, Mary,	324 Cherry St., Norristown, Pa.,	Teaching.	10 yrs.
Fetters, Mary L.,	Malvern, Pa., R. D. 2,	Teaching,	10 "
Hayden, Minerva,	Bryn Mawr, Pa.,	"	10 "
Jolinson, Alberta,	Berwyn. Pa.,	"	10 "
Johnson, Mattie (Fly),	Guyencourt, Del.,		4 "
Kerns, Mary B.,	Caln, Pa.,		8 "
Kendall, Rosalie (Sheesley),	1507 Market St., Harrisburg, Pa.,		8 "
Lewis, Mary R. (Paschall),	Newtown Square, Pa.,		2 "
Moore, Alice B. (Wood),	Linwood, Pa.,	Teaching,	6 "
McCullough, Anna,	Broomall, Pa.,	"	10 "
Pierce, Lillian,	West Chester, Pa.,	"	10 "
Slack, Sue V. (Malone),	3315 W. 31st Ave., Denver, Colo.,		7 "
Smutz, Emma A.,	Tidioute, Pa.,		7 $\frac{1}{2}$ "
Wollaston, Caroline M.,	770 Euclid Ave., Cleveland, O.,	Teacher, Gymnasium,	8 "
Barr, Sherman S.,	Pine Grove, Pa.,	Law Student,	9 "
Briudle, George W.,	Chambersburg, Pa ,	Teaching,	8 "
Brinton, Howard F.,	West Chester, Pa.,	Law Student,	3 $\frac{1}{2}$ "
Hartley, A. Dempsey,	Pottstown, Pa., R. D. 3,	Teaching,	5 "
Huntsman, Owen B.,	Lakewood, N. J.,	Tutor,	4 "
Jones, Benjamin W.,	Doe Run, Pa.,		
Ludy, Robert W.,	Hotel Elberon, Atlantic City. N. J.,	Physician,	3 "
Meschter, Charles K.,	Pennsburg, Pa.,	Teacher Perkiomen Sch.,	5 "
Sullivan, Mark F.,	Boston, Mass.,	Journalist.	
Way, M. Warren,	Haverford, Pa.,	Student.	

CLASS OF 1893. SCIENTIFIC COURSE.

Roberts, Charles C.,	West Chester, Pa.	Chemist,	3 "
----------------------	-------------------	----------	-----

ELEMENTARY COURSE.

Adams, Mrs. C. Anna,	West Chester, Pa.,	Teaching,	9 "
Beitler, Lelia O.,	707 Marshall St., Phila.,	"	9 "
Bertolette, Anna V.,	Deceased, 1898.		3 "
Bradley, Mary E.,	423 Boas St., Harrisburg, Pa.,		7 "
Carn, Alice B.,	Fort Washington, Pa.,	Teaching,	9 "
Clark, Maud R.,	2416 Girard Ave, Phila.,	"	9 "
Clark, Roberta S. (Davis),	Altoona, Pa.,		4 "
Detwiler, Florence (Edwards),	Norristown, Pa.,		3 $\frac{1}{2}$ "
Dillman, Augusta Thomas,	Mahanoy City, Pa.,	Teaching,	9 "
Foulke, Elizabeth M.,	Collamer, Pa.,		4 "
Frederick, M. Elizabeth,	Catasauqua, Pa.,	Teaching,	4 "
Futhey, Martha M.,	Friends' School, Phila.,	"	7 "
Grater, Bessie,	Hoyt, Pa.,	"	9 "
Harshberger, Anna,	McAllisterville, Pa.,	"	9 "
Hughes, Bessie L.,	Honeybrook, Pa.,		5 "
Irwil, Alice I. (Shaffer),	Essex, Conn.,		2 "
Jackson, Anna R.,	Kelton, Pa.,		5 "
Jackson, Electra,	Deceased, 1898.		3 "
Keech, Jessie R. (Rogers),	3142 Euclid Ave., Phila.,		4 "
Keinp, Eva L.,	Croton, N. J.,	Teaching,	9 "
Knight, Emma T.,	Bryn Mawr, Pa.,	Student,	8 "
Leigh, Elizabeth M.,	Atlantic City, N. J.,	Teaching,	9 "
Lewis, Emma I.,	Yeagertown, Pa.,	"	9 "

<i>Name.</i>	<i>Address.</i>	<i>Profession.</i>	<i>Taught since graduation.</i>
Leymel, Amelia,	307 Northampton St., Wilkesbarre, Pa.,	Teaching,	9 yrs.
Lilly, Anna B.,	Lausdowne, Pa.,	Teaching,	9 "
MacMullan, Cornelia,	South Orange, N. J.,	Teacher High School,	8 "
Martin, Sara E.,	Berwyn, Pa.,	Teaching,	9 "
Mather, Ella J.,	Bryn Mawr, Pa.,	"	9 "
MacDonald, Edith L.,	Oxford, Pa.,	"	9 "
Miller, Sophie R.,	Saegersville, Pa.,	"	7 "
Morse, Minnie E.,	Doylestown, Pa.,	Teaching,	9 "
Murken, Mathilde M. (MacDonald),	678 Decatur St., Brooklyn, N. Y.,	"	5
Murphy, Katharine R.,	Ashbourne, Pa.,	Director of Music,	"
Ruth, M. Ella,	Ambler, Pa.,	Teaching,	"
Scott, Mary A. (Rothrock),	Harveyville, Pa.	"	2 "
Scully, Ella (Slack),	Penn's Park, Pa.,	"	2 "
Smedley, Lucy Irene,	West Chester, Pa.,	Teaching,	9 "
Smith, Hanna K. (Heller),	Lausdale, Pa.,	"	3 "
Stradling, Louisa (Kreemer),	West Chester, Pa.,	"	6 "
Tomlinson, Sara L.,	Wilmingon, Del.,	Teacher Girls' H. Sch.,	9 "
Trapp, Bessie E.,	Toms River, N. J.,	Teaching,	7 "
Wager, Abigail C.,	609 Haws Av., Norristown, Pa.,	"	8 "
Watterau, Charlotte A.,	89 S. Wyoming St., Hazelton, Pa.,	"	9 "
Windle, Florence,	West Chester, Pa.,	"	8 "
Woodward, Laura E.,	" "	Student, U. of P.,	4 "
Worstall, Virginia,	" "	"	4 "
Yerkes, Laurette J. (Hill),	Markham, Pa.,	"	2 "
Butler, Ralph,	1829 Chestnut St., Phila., Pa.,	Physician,	3 "
Bye, Frank P.,	West Chester, Pa.,	Prin. Darlington Sem.,	7 "
Clymer, Harvey M.,	Phoenixville, Pa.,	"	8 "
Embree, John G.,	San Jacinto, Masbate, Philippine Islands,	Teaching,	6 "
Hankinson, Frank,	Reading, Pa.,	Teacher High Sch.,	9 "
Heaton, Norman L.,	92 W. 2d Ave., Columbus, O.,	Business,	3 "
Heberling, James S.,	Redington, Pa.,	Supt. Carter Jr. Rep.	"
Kauffman, William C.,	New Hope, Pa.,	Teaching	9 "
Longaker, D. Brower,	Ogontz, Pa.,	Cheltenham Academy,	9 "
Moyer, J. Ambrose,	Perkins Hall, Cambridge, Mass.,	Asst. Harv. Univ.,	3 "
Moyer, Menno S.,	114 Stanbridge St., Norristown, Pa.,	Student,	5 "
Taylor, John P.,	Goshenville, Pa.,	Teaching,	8 "
Walters, George W., Jr.,	Deceased, 1902,	"	3 "
Woodward, Charles S.,	507 N. Tioga St., Ithaca, N. Y.,	Teaching,	5 "

STATE CERTIFICATE.

Watters, Leon H.,	Media, Pa.,	Principal of Schools,	9 "
-------------------	-------------	-----------------------	-----

CLASS OF 1894. ELEMENTARY COURSE.

Ashbridge, Lucy H.,	West Chester, Pa.,	Teaching,	8 "
Atkinson, Mary (Pyle),	Unionville, Pa.,	"	6 "
Baily, M. Adele (Dallett),	Cheyney, Pa.,	"	6 "
Blaker, Matilda (Woodman),	Morrisville, Pa.,	"	2 "
Brower, Lillie C., (Wagoner),	Spring City, Pa.,	"	3 "
Bullock, Emmarene,	Corinne, Pa.,	Teaching,	8 "
Burke, Florence V.,	Coatesville, Pa.,	"	8 "
Carr, M. Margaret,	Drifton, Pa.,	"	6 "
Carter, Marielma (Worrell),	Lausdowne, Pa.,	"	3 "

<i>Name.</i>	<i>Address.</i>	<i>Profession.</i>	<i>Taught since graduation.</i>
Chalfant, Florence,	665 W. Chestnut St., Lancaster, Pa.,		4 yrs.
Cornwell, Ada W.,	West Chester, Pa.,	Teacher Nor. School,	6 "
Cowan, Lulu M. (Weaver),	Coatesville, Pa.,		
Darlington, Ella C.,	West Chester, Pa.,	Teaching,	7 "
Dewitt, Elsie F.,	11 S. River St., Wilkesbarre, Pa.,	"	7 "
Eisenberg, Ella (Hartley),	Pottstown, Pa., R. D. 3,	Teaching,	8 "
Ellwanger, Emma L.,	Phoenixville, Pa.,	"	7½ "
Felty, Mabel (Channell),	Tower City, Pa.,		3 "
Frederick, Anna C.,	Pottstown, Pa.,	"	8 "
Frederick, Elmira,	Kulpville, Pa.,	"	7 "
Gilch, Lidle,	Atlantic City, N. J.,	"	7 "
Hazleton, Sarah A.,	Mullica Hill, N. J.,	"	8 "
Hellyer, Grace E.,	Peun's Park, Pa.,		1 "
Hughes, Anna R.,	Ardmore, Pa.,	Teacher Phys. Training,	6 "
Jackson, Martha P.,	Kelton, Pa.,		7 "
Johnson, M. Edna,	Guthrieville, Pa.,	Teaching,	8 "
Kervey, Elinore B.,	West Chester, Pa.,	Student,	3 "
Kirkbride, H. Emma,	Morrisville, Pa.,	Teaching,	8 "
Kirkpatrick, Bessie,	Dilworthville, Pa.,	"	8 "
Knapp, Florence,	Montgomery Square, Pa.,	Elwyn Training Sch.,	8 "
Lawrence, Irene A.,	Manoa, Pa.,		2 "
Linton, Lizzie,	434 S. 40th St., Phila.,	Teaching,	8 "
Linton, Anne,	" " "	"	8 "
Ludy, Cora B.,	Boyertown, Pa.,	"	8 "
McCanna, Gertrude K.,	Deceased, 1898,		4 "
McCartney, Lulu,	Boothwyn, Pa.,	Teaching,	8 "
McCracken, Mary,	Twin Oaks, Pa.,	Student, Cornell,	6 "
Meschter, Nora (Kriebel),	Worcester, Pa.,		2 "
Miller, Edith M.,	135 North St., Bethlehem, Pa.,		4 "
Moffit, L. Adelaide,	Richland Centre, Pa.,	Teaching,	8 "
Moore, Carrie (Dague),	Parquesburg, Pa.,		6 "
Morgan, Anna (Shaeffer),	652 Haws Ave., Norristown, Pa.,		3 "
Rakestraw, Marion (Jones),	5301 Master St., Phila., Pa.,		1 "
Rice, Maude (Longaker),	Ogontz, Pa.,		3 "
Sensenig, Anna,	Wayne, Pa.,	Teacher High School,	8 "
Smedley, Bessie M.,	West Chester, Pa.,	Teaching,	8 "
Suplee, A. Elizabeth,	Coatesville, Pa.,	"	8 "
Way, Fannie S.,	Hamorton, Pa.,	"	8 "
White, M. Charlotte,	Bethlehem, Pa.,	"	8 "
Wildman, Catharine,	1509 Girard Ave., Phila., Pa.,	Friends' Sch., Germ't'n,	8 "
Wildman, Esther L.,	1607 Race St., Phila.,	Trained Nurse,	3 "
Wynn, Esther J.,	West Chester, Pa.,		5 "
Anders, Warren Z.,	Trappe, Pa.,	Physician,	1 "
Bauer, Irwin B.,	Bally, Pa.,	Teaching,	5 "
Beidler, H. Horace,	Lansdale, Pa.,	"	8 "
Burlew, George,	1424 13th Ave., Altoona, Pa.,		4 "
Darlington, Henry,	Moscow, Idaho,	Univ. of Idaho,	2 "
Deweese, George S.,	West Chester, Pa.,	Attorney at Law.	
Luft, George C.,	Bernville, Pa.,	Teaching,	8 "
McCracken, George,	114 Summit St., Ithaca, N. Y.,	Student, Cornell,	6 "
Neitz, John D.,	Columbia, Pa.,		4 "
Seipt, Allen A.,	Worcester, Pa.,	Student,	1 "
Walter, Frank K.,	Poout Pleasant, Pa.,	Teaching,	5 "
Wendel, Conrad,	201 E. Hemlock St., Hazleton, Pa.,		5 "

<i>Name.</i>	<i>Address.</i>	<i>Profession.</i>	<i>Taught since graduation.</i>
STATE CERTIFICATE.			
Power, Mary F.,	Hopkinton, Mass.,	Teaching,	8 yrs.
Kreemer, Samuel I.,	West Chester, Pa.,	Teacher High School,	6 "

CLASS OF 1895. SCIENTIFIC COURSE.

Frederick, Oliver D.,	7 E. Monroe St., Chicago, Ill.,		15 "
Hankinson, Frank,	Reading, Pa.,	Teacher High Sch.,	9 "

ELEMENTARY COURSE.

Bennett, F. Ella,	Breadysville, Pa.,	Teaching,	7 "
Bitters, Beulah P. (Doan),	Buckingham Valley, Pa.,		4 "
Blair, Martha (Heilman),	876 Highland Ave., Overbrook, Phila.,		4 "
Bready, Hannah J.,	Willow Grove, Pa.,	Teaching,	7 "
Brosius, Florence R.,	West Grove, Pa.,		2 "
Brough, S. Elizabeth (Hartman),	Richland Centre, Pa.,		6 "
Cheyney, Mabel R.,	Cheyney, Pa.,	Teaching,	7 "
Clauder, Anna C.,	Bethlehem, Pa.,	"	7 "
Dannaker, Unity R.,	Wayne, Pa.,	"	7 "
Darlington, Evalina H.,	West Chester, Pa.,	"	5 "
Davis, Ethel M.,	131 St. James Place, Atlantic City, N. J.,	Teaching,	7 "
Davis, Caroline M. (Lewis),	Atglen, Pa.,		3 "
Eisenbrey, Laura B. (Meschter),	Perkiomen Sem., Pennsburg, Pa.,		2 "
Fetters, Anna B. (Slack),	Richboro, Pa.,		2 "
Fronfield, Lella M.,	Wayne, Pa.,	Teaching,	7 "
Griffith, Mary E.,	West Chester, Pa.,	Student,	2 "
Gunkle, Jessie V. (McLaughlin),	Lansford, Pa.,		5 "
Ifeaton, Rebecca M. (Irwin),	Willow Grove, Pa.,		7 "
Heller, M. Ella,	Tobyhanna, Pa.,	Teaching,	7 "
Hemphill, Elizabeth A.,	720 Harvey Av., Wellington, Kan.,	"	4 "
Johnson, Gertrude S.,	Hulmeville, Pa.,	"	4 "
Lapp, Etta N.,	Malvern, Pa.,		2 "
Leahy, Mary E.,	Edge Hill, Pa.,	Teaching,	3 "
Liggett, Sara G.,	West Chester, Pa.,	"	7 "
Lloyd, Anne D. (Dayton),	Dunellen, N. J.,		5 "
Loomis, Sarah R.,	Spring City, Pa.,	"	6 "
MacDonald, E. Jennie,	Oxford, Pa.,	"	7 "
Markley, Jennie L.,	Millersburg, Pa.,	"	5 "
Mildren, Nan L.,	Atlantic City, N. J.,	"	6 "
Miller, Cannie R.,	DuHois, Pa.,	"	7 "
Moore, Alice (Hottle),	442 Queen Lane, Germ't'n, Phila.,		5 "
Moses, Maude V.,	West Chester, Pa.,		2 "
Pearson, Mabel D.,	Lionville, Pa.,		6 "
Pechin, Ann W.,	King-of-Prussia, Pa.,	"	7 "
Powell, Mary A.,	231 Diamond Av., Hazleton, Pa.,	"	5 "
Pusey, Anna W.,	Unionville, Pa.,		3 "
Pyfer, I. Catharine,	1800 Arch St., Phila.,	Teaching,	6 "
Ramsey, Bertha H. (Webb),	West Chester, Pa.,		3 "
Robotham, Edith,	120 S. 33rd St., Phila., Pa.,	Teaching,	7 "
Rogers, Anna D. (Huzzard),	1101 Summerfield Av., Asbury Park, N. J.,		3 "
Schroeder, Julia,	Norristown, Pa.,	Teaching,	6 "
Seal, Iva A. (Thompson),	Woman's Med. Col., Phila.,	Student,	3 "

<i>Name.</i>	<i>Address.</i>	<i>Profession.</i>	<i>Taught since graduation.</i>
Seibert, Carrie A. (Gillingham),	West Chester, Pa.,		6 yrs
Smedley, Martha,	Oxford, Pa.,	Teaching,	6 "
Smedley, Susan,	West Chester, Pa.,	"	5 "
Snyder, Mary E. (Miller),	Hoagland, Ind.,		6 "
Sweney, Carrie M.,	West Chester, Pa.,	"	7 "
Turner, Nellie (Randle),	22d and Providence Ave.,	Chester, Pa.,	2 "
Turner, Flora B.,	Berlin, Pa.,	Teaching,	7 "
Urner, Jean B.,	Spring City, Pa.,	"	7 "
Wetherill, Maude E.,	Narberth, Pa.,	"	7 "
Williams, Nellie L.,	Yerkes, Pa.,	"	7 "
Wilson, M. Emma,	Linwood, Pa.,	"	7 "
Bushong, Jacob,	Kelton, Pa.,	Student,	2 "
Butler, J. Edgar,	720 Witherspoon Building,	Phila., Attorney at Law.	
Campbell, Willard S.,	Jenkintown, Pa.,	Teaching,	7 "
Conley, Eli P.,	Coatesville, Pa.,	Business,	3 "
Gettel, Daniel R.,	Deceased, 1897.		
Hartman, Joseph M.,	Newtown, Pa.,	Supervising Principal,	5 "
Heckler, Howard E.,	46 N. 12th St.,	Phila.,	
Heilman, Eugene A.,	876 High'd Ave.,	Overbrook, Phila.,	Sup. Prin. Heston Sch.,
Huber, Simon G.,	Coatesville, Pa.,		Prin. High School,
Kotz, Harry A.,	48 Chalfont St.,	Pittsburg, Pa.,	Civil Engineer,
Laudis, Henry G.,	Lansdale, Pa.,		Prin. of Schools,
Pike, William S.,	Park Ave. Friends' School,	Baltimore, Md.,	
Renninger, Warren D.,	Zieglersville, Pa.,		Student, Colum. Univ.,
Ruth, Leonard M.,	Wernersville, Pa.,		Teaching,
Sensenig, Heber,	W. 72nd St.,	N. Y., Columbia,	
Serner, Ira I.,	Keller's Church,	Pa.,	Computer and Compiler.
Serner, Christopher C.,	" "		Teaching,

CLASS OF 1896. SCIENTIFIC COURSE.

Anderson, Robert,	West Chester, Pa.,	Teacher Normal School,	6 "
Bevan, James J.,	Mauch Chunk, Pa.,	County Supt.,	5 "
Delp, William S.,	Moorestown, N. J.,	Prin. Friends' School,	5 "
Hockenberry, J. C.,	Haddonfield, N. J.,	Supt. Schools,	4 "

ELEMENTARY COURSE.

Anderson, Anna, F.,	Lansdowne, Pa.,	Teaching,	6 "
Arnwine, Sue B.,	Hatboro, Pa.,	"	6 "
Baker, Margaret H.,	Chadd's Ford, Pa.,	"	4 "
Baker, Mary H.,	Northbrook, Pa.,	"	6 "
Bevan, Ethel (Sharpless),	Ward, Pa.,		1 "
Blair, Elizabeth G.,	Villa Nova, Pa.,	Teaching,	6 "
Biggins, Mary K.,	Atlantic City, N. J.,	"	6 "
Brown, Anna H. (Henry),	Wayne, Pa.,		5 "
Butler, Lâdie H. (Clear),	Bala, Pa.,		2 "
Byerts, Edith M.,	Ambler, Pa.,	"	6 "
Campbell, Florence M.,	West Chester, Pa.,	"	6 "
Clark, Emma E. (Field),	" "		5 "
Carlin, Nellie,	828 S. 20th St.,	Phila.,	
Comly, Emma T.,	Flourtown, Pa.,	"	6 "
Criswell, L. Ada,	Cochranville, Pa.,	"	6 "
Deakayne, Sallie (McArthur),	Fox Chase, Pa.,		5 "

<i>Name.</i>	<i>Address.</i>	<i>Profession.</i>	<i>Taught since graduation.</i>
Duer, Lettie,	1924 Morris St., Phila.,	Business,	1 yr.
Dowlin, Sara (Guernsey),	Darien, Conn.,		3 yrs.
Finley, May,	813 S. 45th St., Phila.,	Teaching,	6 "
Forsythe, Bertha,	Avondale, Pa.,	"	6 "
Goldstein, Gertrude,	1333 Locust St., Allegheny, Pa.,	"	5 "
Godfrey, Bessie,	Fort Washington, Pa.,		6 "
Green, Cora F.,	West Chester, Pa., R. 6,	Teaching,	6 "
Green, Anna M.,	Horsham, Pa.,	"	6 "
Griffith, Margaret H.,	West Chester, Pa.,	Teaching Music,	2 "
Gyger, Julia,	Kimberton, Pa.,	Teaching,	6 "
Hambleton, M. Elsie,	Goshen, Pa.,		4 "
Harvey, Eva (Baldwin)	West Chester, Pa.,		4 "
Hibbs, Olive M.,	Hulmeville, Pa.,	Teaching,	6 "
Hiddleston, Cilla E.,	Deceased, 1899,		3 "
Houck, Daisy,	Bangor, Pa.,	Teaching,	6 "
Hamilton, Ella J.,	Booth's Corner, Pa.,	"	6 "
Hughes, Anna P.,	Paulsboro, N. J.,	"	6 "
Illick, Mary B.,	Dauphin, Pa.,	"	6 "
Ingram, Mary C. (Walter),	Point Pleasant, Pa.,		2 "
Ingram, Sallie R.,	West Chester, Pa.,	Teaching,	4 "
Johnson, Hannah,	Broomall, Pa.,	"	6 "
Jones, Martha,	Doe Run, Pa.,	"	4 "
Keavy, Mary E.,	West Chester, Pa.,	"	6 "
Keighley, Clara,	Landenberg, Pa.,	"	3 "
Keighley, Laura,	" "	"	3 "
Knapp, Frances C.,	Dover, Del.,	"	6 "
Kulp, M. Ella.,	Gwynedd, Pa.,	"	6 "
Leatherman, Anna,	Line Lexington, Pa.,	"	6 "
Mack, Frances M.,	Falls of Schuylkill, Pa.,	"	6 "
Matern, Bessie T.,	West Point, Pa.,	"	5½ "
McElhanev, Bertha,	Pencoyd, Pa.,	"	6 "
Mearns, Iva C.,	Calvert, Md.,	"	4½ "
Moyer, Adele,	Cedars, Pa.,	"	6 "
Neidig, Ida E.,	Milford Square, Pa.,		5 "
Powell, Charlotte B.,	Newtown Square, Pa.,		2 "
Preston, Lucille,	Tayloria, Pa.,	Student Univ. of Mich.,	4 "
Price, Mabel,	Moore, Pa.,	Teaching,	6 "
Rees, Grace L.,	Aldham, Pa.,	"	6 "
Reid, Nona,	Parkeburg, Pa.,	"	6 "
Robertson, Nellie V.,	Carlisle, Pa.,	Indian School,	6 "
Roper, Jennie B.,	Slatington, Pa.,	Teaching,	5 "
Search, Susanna L. (Hartman),	Newtown, Pa.,		5 "
Sharples, Mary,	West Chester, Pa.,	"	6 "
Shearer, Tessie,	" "	"	5 "
Sheibley, Blanche N. (Stonesifer),	1332 Main St., Steelton, Pa.,		5 "
Shrawder, Laura K.,	1821 N. Park Ave., Phila.,	Teaching,	5 "
Singmaster, Elsie,	Gettysburg, Pa.,		
Smith, Minnie H.,	College Hall, U. of P.,	Asst. Librarian,	5 "
Speakman, Nellie C.,	West Chester, Pa.,	Teaching,	6 "
Swartz, Laura E.,	" "	"	6 "
Taylor, Ada R.,	Kennett Square, Pa.,	"	4 "
Wagner, Katherine,	Mahanoy City, Pa.,		
Walter, Matilda C.,	Moore's, Pa.,	Teaching,	6 "
Widdicombe, Josephine,	West Chester, Pa.,	"	6 "

<i>Name.</i>	<i>Address.</i>	<i>Profession.</i>	<i>Taught since graduation.</i>
Williams, Etta.,	Markes, Pa.,	Teaching,	6 yrs.
Wilson, C. Mabel,	Downingtown, Pz.,	"	6 "
Wutzer, Autoinette L.,	West Grove, Pa.,		2 "
Woodward, Mabel,	West Chester, Pa.,		
Worstell, Emilie,	" "		
Yeakel, Georgie K.,	Norristown, Pa.,	Teaching,	6 "
Bartholomew, Wallace E.	New Orleans, La.,		4 "
Bower, Abram L.,	Boyetown, Pa.,	Dentist,	2 "
Dengler, Walter E.,	Kennett Square, Pa.,	Prin. of Schools,	6 "
Field, James H.,	Deceased, 1901,		3 "
Gallagher, Joseph V.,	Drifton, Pa.,	Student, U. of P.,	4 "
Garrett, H. Clifford,	Coatesville, Pa.,		4 "
Greenwood, Walter E.,	Coatesville, Pa.,	Attorney at Law.	
Groff, Henry C.,	Harleysville, Pa.,	Med. Dept., U. of P.,	2 "
Hallman, Francis H.,	Milford Mills, Pa.,	Bookkeeper, Nor. Sch.,	2 "
Hart, C. Vincent,	Philadelphia, Pa.,	Student, Jeff. Med. Col.,	1 "
Hottle, Howard,	1324 Locust St., Phila.,	Teacher, Episc. Acad.,	6 "
Johnson, Thos. W., Jr.,	Elam, Pa.,	Teaching,	6 "
Lapp, C. Leon,	Lebanon, Pa.,	Engineer,	1 "
Lucas, Harrison S.,	Allegheny City, Pa.,		1 "
McLaughlin, William G.,	Lansford, Pa.,	Mining,	3 "
Rahn, Norman H.,	Perkiomenville, Pa.,	Physician,	1 "
Rosenberger, Seward M.,	Quakertown, Pa.,	Prin. of Schools,	6 "
Saylor, Harry D.,	723 N. 20th St., Phila.,	Student, U. of P.,	5 "
Sensenich, Edgar H.,	Merch. Nat. Bank, Phila.,		
Smith, J. Monroe,	25 Concord Square, Boston,	State Inst. Technology,	3 "
Stettler, John S.,	Mertztown, Pa.,	Teaching,	6 "
Vincent, Oscar A.,	Ashley, Pa.,	"	2 "
Wendel, George J.,	201 E. Hemlock St., Hazleton, Pa.,	Teaching,	4 "
Windle, Charles T.,	Southampton, Pa.,	Teaching,	6 "
Woy, William J.,	Chadwick, Ill.,	Prin. of Schools,	6 "

STATE CERTIFICATE.

Emrey, Miles L.,	Honeybrook, Pa.,	Teaching,	4 "
------------------	------------------	-----------	-----

CLASS OF 1897. ELEMENTARY COURSE.

Barber, Linda H. (McFarland),	West Chester, Pa.,		2 "
Barr, Bertha B.,	Three Tuns, Pa.,	Teaching,	3½ "
Blanck, Jeannette M.,	Vinemouth, Pa.,	"	5 "
Blackwood, Margaret,	60 Pitts St., New Castle, Pa.,	"	5 "
Brinton, Zelda May (Flounders),	2439 Chadwick St., Phila.,		4 "
Brooke, Cora,	Plymouth Meeting, Pa.,	Teaching,	5 "
Brown, Alma H.,	Narberth, Pa.,	"	5 "
Burke, Jessie A.,	Seattle, Washington,	"	2 "
Carpenter, Harriet L. (Church),	Mauch Chunk, Pa.,		4 "
Chrisman, Jessie T.,	Coventryville, Pa.,	"	5 "
Cooper, Alice L.,	Linwood, Pa.,	"	5 "
Coyle, Lucy G.,	Rushland, Pa.,	"	5 "
Croun, Mary F.,	Glen Mills, Pa.,	"	5 "
Dunn, Mary E.,	Bryn Mawr, Pa.,	"	5 "
Garrison, M. Jennie,	Hampton Institute, Va.,	"	5 "

<i>Name.</i>	<i>Address.</i>	<i>Profession.</i>	<i>Taught since graduation.</i>
Grater, Bertha I.,	Ambler, Pa.,	Teaching,	5 "
Griffith, Florence I.,	West Chester, Pa.,	"	5 "
Hamilton, W. Gertrude,	Foston, Pa.,	"	5 "
Hamilton, Bessie D. (Moor),	Booth's Corner, Pa.,	"	3 "
Harry, Elizabeth,	Willow Grove, Pa.,	"	5 "
Hays, Katherine E.,	White Rock, Pa.,	"	5 "
Hays, Mary C.,	" "	"	3 "
Hayman, Maud,	Ocean Grove, N. J.,	"	4 "
Holland, Mary S.,	Holicong, Pa.,	"	5 "
Houseal, Mabel M.,	Maytown, Pa.,	"	5 "
Jackson, Abigail,	117 E. Wash. St., West Chester,	"	5 "
Keech, Linda G.,	Spruce Grove, Pa.,	"	5 "
Koons, Laura,	Freeland, Pa.,	"	5 "
Kuschke, Maude L.,	Plymouth, Pa.,	Student (Cornell),	4 "
Latshaw, A. Bessie,	Anselma, Pa.,	Teaching,	5 "
Martin, Maude,	Octoraro, Pa.,	"	5 "
Mast, Bessie,	Mast, Pa.,	"	2 "
McClellan, Mary,	Londonderry, Pa.,	"	4 "
McDowell, Emma J.,	Huntingdon Valley, Pa.,	"	5 "
McKee, Margaret,	New Bloomfield, Pa.,	"	5 "
McMichael, S. Ruth,	West Chester, Pa.,	"	5 "
Moore, Alice C.,	W. Arlington, Balto., Md.,	"	3 "
Osborne, Mattie (Smith),	Sabula, Pa.,	"	2 "
Patton, Mabel C.,	Media, Pa.,	Teaching,	5 "
Pearson, Olive B.,	Birchrunville, Pa.,	"	2 "
Phillips, M. Elsie,	Font, Pa.,	"	4 "
Potter, Margaret P. (Frost),	1295 Amsterdam Ave., N. Y.,	"	1½ "
Pownall, May E.,	Christiana, Pa.,	Teaching,	5 "
Pretty, Nellie E.,	Upland, Pa.,	"	5 "
Pross, M. Emma,	Gardenville, Pa.,	"	5 "
Ranck, Florence M.,	Joanna, Pa.,	"	5 "
Raysor, Esther W.,	Malvern, Pa.,	"	4 "
Ridpath, Florence M.,	Jenkintown, Pa.,	"	4½ "
Rickard, May V.,	Plymouth, Pa.,	"	4 "
Ritter, Belle M.,	Jeffersonville, Pa.,	"	5 "
Rorer, Caroline R.,	43 W. Logan St., Germantown,	"	5 "
Scarborough, Elizabeth B.,	1536 Willington St., Phila.,	"	5 "
Shenton, Dora D.,	Slatington, Pa.,	"	2 "
Smith, Mabel E. (Voorhees),	Kennett Square, Pa.,	"	4 "
Stevens, Mabel,	Elkdale, Pa.,	Teaching,	4 "
Stiteler, M. Regina,	Gulf Mills, Pa.,	"	5 "
Stout, Gertrude,	Johnsville, Pa.,	"	5 "
Taylor, Margaret H.,	Woodstown, N. J.,	Student Swarthmore Col.	1 "
Taylor, Mary	Goshenville, Pa.,	Teaching,	5 "
Thompson, Lidie M.,	West Chester, Pa.,	"	5 "
Troub, Grace E.,	Honeybrook, Pa.,	"	5 "
Wack, Clara E.,	Wayne, Pa.,	"	5 "
Walter, Emilie B.,	Glen Riddle, Pa.,	"	5 "
Williams Delia H.,	Berwyn, Pa.,	"	5 "
Williams, Gwen,	Peckville, Pa.,	"	4 "
Williams, Mary E.,	Lansford, Pa.,	"	5 "
Wilson, Margaret B.,	Marion, Ind.,	Teacher Nor. College,	1 "
Wismer, Amanda M.,	Wismer Pa.,	Teaching	4 "

<i>Name.</i>	<i>Address.</i>	<i>Profession.</i>	<i>Taught since graduation.</i>
Woodward, Anna E.,	West Chester, Pa.,	Teaching,	5 yrs.
Yardley, Anna W.,	Yardley, Pa.,	"	5 "
Yarnall, Marie L. (Sensenich).	1729 Aberdeen St., Phila.,	"	3 "
Zoller, Carrie,	Line Lexington, Pa.,	Teaching,	5 "
Barr, Oscar O.,	Lafayette College,	Student,	5 "
Barron, Oscar,	Deceased, 1899.		
Bechtel, Henry M.,	3430 N. 18th St., Phila.,	Busiuess.	
Britton, John A.,	Pottstown, Pa.,	Sec'y Normal School,	3 "
Brough, Ambrose E.,	4th & West Sts., Wilm., Del.,	Business,	2 "
Campbell, Elmer S.	Boursouville, Pa.,	Teaching,	5 "
Chandler, Aquila D.,	Minneapolis, Minn.,	Business,	
Cope, Thomas D.,	West Chester, Pa.,	Student, U. of P.,	1 "
Davis, William H.,	" "	Student, Harvard,	4 "
Derr, Harry H.,	Jenkintown, Pa.,	Teaching,	5 "
Dougherty, Patrick J.,	Plainsville, Pa.,	"	5 "
Emrey, J. Thornton,	Bustleton, Phila.,	"	5 "
Feters, George E.,	Malvern, R. D. 2,	Student, Lafayette,	1 "
Grimm, Calvin L.,	Pillow, Pa.,	"	4 "
Heaton, Wallace D.,	Southampton, Pa.,	Solicitor, Banks' B. Col.,	4 "
Horstick, Simon W.,	Palmyra, Pa.,	"	3 "
Lefferts, Horace H.,	Southampton, Pa.,	Bookkeeper,	3 "
Leffler, A. F.,	Pountain Springs, Pa.,	Teaching,	2 "
McCord, Ira D.,	Marsh, Pa.,	Principal of Schools,	5 "
Mackenzie, William F.,	1043 Cherry St., Norristown, Pa.,	Business,	3 "
Morgan, John L.,	Nanticoke, Pa.,	Teaching,	5 "
Moyer, Wilson R.,	Dublin, Pa.,	"	5 "
Niewig, Frank C.,	322 N. 32d St., Phila.,	"	5 "
Paschall, John,	Newtown Square, Pa.,	Farming,	1 "
Sensenig, Wayne,	Goodville, Pa.,	"	½ "
Stiteler, C. Irwin,	Anselma, Pa.,	Med. Dept., U. of P.,	1 "
Wagner, Charles A.,	Ashbourne, Pa.,	Supt. of Schools,	5 "
Wagner, Herbert B.,	Lafayette Hill, Pa.,	Teaching,	5 "

STATE CERTIFICATE.

Baldwin, Harriet H.,	West Chester, Pa.,	Teacher Nor. Sch.,	5 "
----------------------	--------------------	--------------------	-----

CLASS OF 1898. REGULAR NORMAL COURSE.

Linton, Annie,	434 S. 40th St., Phila.,	Teaching,	3 "
Linton, Lizzie,	434 S. 40th St., Phila.,	"	3 "
Hallman, Francis H.,	Milford Mills, Pa.,	Bookkeeper Nor. Sch.,	2 "

ELEMENTARY COURSE.

Aaron, Della R.,	Lansdale, Pa.,	Teaching,	4 "
Akers, Marie,	42 Akers St., Johnstown, Pa.,	"	4 "
Baker, Gertrude C.,	Hummelstown, Pa.,	"	4 "
Bassett, Jeannie W.,	26 High St., Pottstown, Pa.,	"	3½ "
Bateman, Edith J.,	Reiuerton, Pa.,	"	4 "
Bell, Katherine,	Marysville, Pa.,	"	4 "
Boue, Alice M.,	Thorndale, Pa.,	"	4 "
Braunson, Carrie E.,	Coatesville, Pa.,	"	4 "

<i>Name.</i>	<i>Address.</i>	<i>Profession.</i>	<i>Taught since graduation.</i>
Buchanan, Cora C.,	Honeybrook, Pa.,	Teaching.	4 yrs.
Bunn, Harriet F.,	Cochranville, Pa.,	"	4 "
Burhouse, Edna E.,	West Conshohocken, Pa.,	"	4 "
Cartmell, Anna,	476 N. Main St., Wilkesbarre,	"	3 "
Castle, Helen F.,	Upland, Pa.,	"	4 "
Clymer, Flora M.,	Tradeville, Pa.,	"	4 "
Cox, Ada M.,	Boothwyn, R. D. 2.	"	4 "
Cox, Elizabeth H.,	Lenape, Pa.,	"	4 "
Crawford, Isabel,	Freeland, Pa.,	"	3 "
Darlington, Sara G.,	Sharon, Pa.,	"	3½ "
Davis, Ruth Y.,	West Chester, Pa.,	"	4 "
Dickson, Luna H.,	Media, Pa.,	Music.	
Dysart, Ione B.,	Tipton, Pa.,	Teaching.	3 "
Etschman, August A.,	Nazareth, Pa.,	"	4 "
Fairlamb, Gertrude M.,	Media, Pa.,	"	3½ "
Ferguson, Leta C. (Montgomery),	Coleraine, Pa.,	"	3 "
Foulke, Helen E.,	West Chester, Pa.,	"	4 "
Funk, Emma L. (Rinehart),	E. Coventry, Pa.,	"	3 "
Furry, Edith M.,	Lionville, Pa.,	Teaching.	4 "
Fussell, Ellen,	Media, Pa.,	"	4 "
Gates, Grace (Watt),	Kittanning, Pa.,	"	1 "
Gates, Mary I.,	Deceased, 1900.	"	
Geisdorff, Louisa,	Red Lodge, Carbon Co., Mon.,	"	4 "
Griffith, Margaret H.,	Garrettsford, Pa.,	"	4 "
Hannum, Anna L.,	Colwyn, Pa.,	"	4 "
Harvey, Mary A.,	Cheltenham, Pa.,	"	4 "
Heaton, Carrie F.,	Southampton, Pa.,	"	4 "
Hipple, Rachel M.,	Media, Pa.,	"	4 "
Huddell, Elizabeth B. (Barnard),	1617 S. 15th St., Phila.	"	3 "
James, Mary N.,	Ocean Grove, N. J.,	"	4 "
Jamison, Virginia R.,	Jamison, Pa.,	"	4 "
Johnson, Gertrude,	Broomall, Pa.,	"	4 "
Jones, Minnie M.,	St. Peter's R. D. 1.	"	2 "
Kerr, Mary J.,	Collegeville, Pa.,	"	1 "
Kirk, S. Elizabeth,	Upper Darby, Pa.,	"	4 "
Lewis, Alice A.,	Uwchlan, Pa.,	"	4 "
Liggett, Rebecca R.,	Malvern, Pa.,	"	4 "
Loeffler, Ernestine (Keech),	Lansdowne, Pa.,	"	1 "
Manning, Katherine E.,	West Chester, Pa.,	"	2½ "
Mitchell, Lelia I.,	Clearfield, Pa.,	"	4 "
Monks, Elizabeth H.,	Kennett Square, Pa., R. D. 3.	"	2 "
Owen, Lillian M.,	Toughkenamon, Pa.,	"	4 "
Pennacker, Alice W.,	West Chester, Pa.,	"	3 "
Rile, Frances E.,	Blue Bell, Pa.,	"	3 "
Rouse, Elizabeth L.,	Ogoutz, Pa.,	"	4 "
Sellers, Katharine B.,	Lansdale, Pa.,	"	4 "
Shoe, Catherine,	West Chester, Pa.,	"	1½ "
Shiffert, Elizabeth (Richards),	Slatington, Pa.,	"	3 "
Sidwell, Anna R.,	Wilmington, Del.,	Teaching,	4 "
Sinclair, Edith M.,	Conshohocken, Pa.,	"	4 "
Skelton, Annabelle,	Doe Run, Pa.,	"	4 "
Snyder, A. Lulu,	Grand Junction, Colo.,	"	4 "
Stiteler, Eva,	Conshohocken, Pa., R. D. 1.	"	4 "

<i>Name.</i>	<i>Address.</i>	<i>Profession.</i>	<i>Taught since graduation.</i>
Stout, Ida J.,	Three Tuns, Pa.,	Teaching,	4 yrs.
Thompson, Elizabeth,	45 Spring St., Carbondale, Pa.,		3 "
Trout, Jennie R.,	Orwigsburg, Pa.,	"	4 "
Turner, Mary L.,	Derbydown, Pa.,	"	4 "
Weir, Mary J.,	Tradesville, Pa.,	"	4 "
Weygandt, Beryl I.,	Slatington, Pa.,	"	4 "
Wilbur, Claudia C.,	Atlantic City, N. J.,	"	4 "
Wingard, Marie E.,	Coatesville, Pa.,	"	4 "
Wolf, Bessie A.,	Geiger's Mills, Pa.,	"	4 "
Woodward, Jennie G. (Noble),	West Chester, Pa., R. D. 6,		2 "
Worthington, Meta A. (Myers),	Bristol, Pa.,		2 "
Worthington, Sophie R.,	Neshaminy, Pa.,	Teaching,	4 "
Alderfer, George C.,	Harleyville, Pa.,	Student, Princeton,	1 "
Anders, Eugene A.,	Worcester, Pa.,	Teaching,	4 "
Babb, Charlton H.,	Torresdale, Phila.,	"	4 "
Bailey, Lorin H.,	George School, Pa.,	"	3 "
Burroughs, J. C.,	104 Lacock St., Allegheny, Pa.,	"	4 "
Carl, Elmer H.,	Pennsburg, Pa.,	"	4 "
Cassel, Jesse U.,	Eddystone, Pa.,	"	4 "
Catherman, Charles S.,	716 Park Ave., Baltimore, Md.,	"	4 "
Darlington, Homer T.,	West Chester, Pa.,	"	3 "
Davis, John R.,	Oaks, Pa.,	"	4 "
Fegan, William G.,	Campbelltown, Pa.,	"	4 "
Fowler, G. Arthur,	Jermyn, Pa.,	Book-keeping,	4 "
Green, Sharpless D.,	Wayne, Pa.,	Prin. Gram. School,	3 "
Heckler, Melvin M.,	Richland Centre, Pa.,		4 "
Kratz, A. Wesley,	Lansdale, Pa.,	Student, Haverford,	2 "
Lewis, Edgar A.,	West Chester, Pa.,		
Light, Dawson W.,	Lebanon, Pa.,	Law Student,	2 "
Light, John H.,	Avon, Pa.,	Teaching,	4 "
Lyons, Joseph T.,	Ashland, Pa.,		1 "
Markley, William S.,	Pottstown, Pa.,	Business,	2 "
Martin, C. Nelson,	Lansdale, Pa.,	Teaching,	4 "
Miller, Orin R.,	77 S. Union St., Phila.,	Clerk Broad St. Station.	
Milns, B. Frank,	St. Peter's, Pa.,	Teaching,	4 "
Parsons, J. Fred,	Upland, Pa.,	Student, Lafayette,	3 "
Philips, William P.,	West Chester, Pa.,	Student, Haverford.	
Pike, Perry C.,	Media, Pa.,	Teaching,	
Seipt, Horace S.,	Worcester, Pa.,	Student, Lehigh,	3 "
Seipt, Howard A.,	Norristown, Pa.,	Student, Lafayette Col.,	2 "
Sigman, George A.,	Easton, Pa.,	Student, Lafayette Col.,	3 "
Stetler, Isaac E.,	West Grove, Pa.,	Teaching,	3 "
Stover, Warren H.,	39 W. State St., Trenton, N. J.,	Dentist,	1 "
Walleigh, Robert M.,	1306 Brown St., Phila.,	U.S. Navy Yd., League Id.	1 1/4 "
Wilson, S. Norman,	Oxford, Pa.,	Student, Haverford,	1 "
Wily, J. Hunter,	S. Bethlehem, Pa.,	Student Lehigh Univ.,	3 "
Windle, Fred F.,	522 Walnut St., Phila.,	Law Student,	3 "
Wolford, Samuel S.,	Spring Mount, Pa.,	Teaching,	4 "
Woodward, Parke L.,	West Chester, Pa.,	Student Haverford Col.	
Yost, Ralph E.,	Bethesda, Pa.,	Teaching,	4 "
Ziegler, Elmer B.,	Hathboro, Pa.,	"	4 "

<i>Name.</i>	<i>Address.</i>	<i>Profession.</i>	<i>Taught since graduation.</i>
CLASS OF 1899. SCIENTIFIC COURSE.			
Woodward, Laura E.,	West Chester, Pa.,	Teaching,	1 yr.
REGULAR NORMAL COURSE.			
Philips, M. Elsie,	Font, Pa.,	Teaching,	3 yrs.
McCracken, George L.,	Ithaca, N. Y.,	Student, Cornell,	2 "
Pike, Perry C.,	Media, Pa.,	Teaching,	2 "
Steffler, John S.,	Mertztown, Pa.,	"	2 "
Wagner, Charles A.,	Ashbourne, Pa.,	Supt. Schools,	3 "
Windle, Charles T.,	Southampton, Pa.,	" "	3 "
ELEMENTARY COURSE.			
Anderson, Elizabeth D.,	Clifton Heights, Pa.,	Teaching,	3 yrs.
Balthaser, Sallie,	Hamburg, Pa.,	"	3 "
Bartholomew, Lillian M.,	West Chester, Pa.,	"	3 "
Bash, Furie (Humbach)	Johnstown, Pa.,	"	2 "
Bechtel, Mary D.,	Jenkintown, Pa.,	Teaching,	3 "
Bernard, Irene M.,	Royersford, Pa.,	"	3 "
Bickel Minnie M.,	Rehrersburg, Pa.,	"	3 "
Brown Geneva,	2561 N. 18 St., Phila., Pa.	"	3 "
Hull, Elsie Oleita,	Delta, Pa.,	"	2 "
Byler, Sue C.,	East Downingtown, Pa.,	"	3 "
Carmen, Ellen L.,	Clifton Heights, Pa.,	Business,	1 "
Carpenter, Sue M. (Yerkes)	Ambler, Pa.,	"	2 "
Case, Jennie Perriue,	Berwyn, Pa.,	Teaching,	3 "
Cooper, Ethel M.,	1305 W. 8th St., Wilmington, Del.,	"	3 "
Carter, Alice M.,	Narcissa, Pa.,	"	3 "
Caulfield, Rose A.,	Enon Valley, Pa.,	"	3 "
Dawson, Janet,	Upland, Pa.,	"	3 "
Detterline, H. Ada,	Strafford, Pa.,	"	3 "
De Wire, Anna V.,	Kennett Square, Pa.,	"	3 "
Dudley, Helen Margaret,	Media, Pa.,	"	3 "
Echus, Marion (Greenwood),	Coatesville, Pa.,	"	2 "
Egan, Kate T.,	Media, Pa.,	Teaching,	3 "
Fish, Annie B.,	Pineville, Pa.,	"	3 "
Forbes, Mary C.,	124 E. 102d St., N. Y.	"	3 "
Forrest, Mattie C.,	Freeland, Pa.,	"	3 "
Gallery, Mary C.,	Fairville, Pa.,	"	3 "
Gerwin, Gertrude Lindsay,	Escanaba, Mich.,	"	3 "
Gibson, Clair W.,	4 W. Cen. Ave., Moorestown, N. J.,	Teaching,	3 "
Gill, Annie A.,	West Chester, Pa.,	Teaching,	2 "
Godshall, Mary,	Royersford, Pa.,	"	2 "
Gore, Rebecca N.,	Upland, Pa.,	"	3 "
Gormerly, Katharine T.,	New Castle, Del.,	"	2 "
Gray, Elizabeth,	Avondale, Pa.,	"	2 "
Hamilton, Maud G. (Guthrie),	Downingtown, Pa.,	"	3 "
Hamilton, Sara M.,	Concordville, Pa.,	"	3 "
Harbold, Cora M.,	Dillsburg, Pa.,	"	3 "
Heger, Barbara G.,	Jenkintown, Pa.,	"	2½ "
Hellings, Elizabeth L.,	Edgely, Pa.,	"	3 "

<i>Name.</i>	<i>Address.</i>	<i>Profession.</i>	<i>Taught since graduation.</i>
Hill, Annie,	Lebanon, Pa.,	Teaching,	3 yrs.
Hoffman, Sara E. (Wilson),	Paoli, Pa.,		
Hostetter, Viola M.,	Williamsport, Pa.,	"	1½"
Kauffman, Bessie S.,	Berwyn, Pa.,	"	2 "
Keppel, Leah Lerch,	Sinking Springs, Pa.,		1 "
Kochel, Mary A.,	Pottstown, Pa.,	"	3 "
Kriebel, Elizabeth S.,	Lansdale, Pa.,	"	3 "
Latimer, Anna A.,	Bristol, Pa.,	"	3 "
Lewis, Elva Riggs,	Glenmore, Pa.,	"	3 "
McDonald, Regiua,	Deceased, 1901.		
MacMiun, Caroline,	425 Locust St., W'mnsport, Pa.,	"	1 "
Makiver, Lillian,	Russellville, Pa.,	"	3 "
March, Lucy B.,	Pottstown, Pa.,	"	3 "
Marshall, R. Mary,	Northbrook, Pa.,	Student, S. N. S.,	2 "
McHenry, Sara M.,	Ridley Park, Pa.,	Teaching,	3 "
Mearns, Mabel E.,	Oak Hill, Pa.,	"	1 "
Morton, Margaret B.,	Lewisville, Pa.,	"	3 "
Murray, Annie V.,	Bethlehem, Pa.,	"	3 "
Nyce, Mabel M.,	Schwenksville, Pa.,	"	3 "
Palmer, Elizabeth F.,	King-of-Prussia, Pa.,	"	2 "
Pepper, W. Annie,	Georgetown, Del.,	"	3 "
Philips, Lulu A.,	Tower City, Pa.,	"	2 "
Philips, Maud A.,	Toms River, N. J.,	"	3 "
Rogers, Harriette S.,	Colorado Springs, Col.,	Student.	
Rogers, Maud H.,	Mountain Gap, Va.,	Teaching,	3 "
Ruth, Bessie E.,	1109 Franklin St., Reading, Pa.,	Teaching,	3 "
Scholl, Lottie M.,	East Greenville, Pa.,	Teaching,	3 "
Scott, Elizabeth,	Newtown, Pa.,	"	3 "
Seipt, Emma J.,	Worcester, Pa.,	"	2 "
Shaeffer, Florence E.,	652 Haws Ave., Norristown, Pa.,	Teaching,	3 "
Simmers, Edna,	Phoenixville, Pa.,	Teaching,	3 "
Sinclair, Katharine,	Norristown, Pa.,	"	3 "
Snyder, Mary R.,	Lykens, Pa.,	"	3 "
Snyder, May V.,	Pottsville, Pa.,		
Sheppard, Mabel W.,	Warwick, N. Y.,	Teaching,	3 "
Spare, L. Edith,	Mont Clare, Pa.,	"	3 "
Stackhouse, Laura N.,	Lansdowne, Pa.,		3 "
Stewart, Mary K.,	Cedar Knoll, Pa.,	Teaching,	3 "
Stradling, Benita,	Oakford, Pa.,	"	3 "
Stradling, Elizabeth,	" "	"	3 "
Swayne, Margaret B.,	Kennett Square, Pa.,	"	2½"
Swope, Sadie A.,	Robesonia, Pa.,	"	3 "
Taylor, Adella A.,	Kennett Square, Pa.,	"	3 "
Tinker, Dorcas M.,	662 N. 33d St., Phila, Pa.,	"	3 "
Trimmer, Jean U.,	Wilkesbarre, Pa.,	"	3 "
Van Gunten, Jessie B.,	Escanaba, Mich.,	"	3 "
Webster, Rachel E.,	Hulmeville, Pa.,	"	3 "
Welsh, Elizabeth M.,	West Whiteland, Pa.,	"	3 "
Wherry, Jessie E.,	Chatham, Pa.,	"	3 "
White, Alice,	Jeffersonville, Pa.,	"	3 "
Wickersham, Annie R.,	Unionville, Pa.,	"	2 "
Wickersham, Jennie H.,	" "	"	3 "
Williams, Lucina A.,	Peckville, Pa.,	"	3 "
Wilson, Elizabeth U.,	Newcastle, Del.,	"	3 "

<i>Name.</i>	<i>Address.</i>	<i>Profession.</i>	<i>Taught since graduation.</i>
Wright, Sara E.,	West Chester, Pa.,	Teaching,	2 yrs.
Bartman, Daniel H.,	Collegeville, Pa.,	"	2 "
Burke, Albert J.,	3700 Powelton Ave., Phila.,	Student,	
Channel, Ralph F.,	Coatesville, Pa.,	Teaching,	2 "
Cram, Wm. C.,	Raleigh, N. C.,	Student, Lehigh Univ.	
Forrest, T. Kenney,	Braudywine Manor, Pa.,	Teaching,	3 "
Goodley, Samuel,	Ferndale, Ind.,	"	2 "
Gordon, Clarence,	Carlisle, Pa.,	Stud. Dickinson Col.,	2 "
Griffith, William C.,	Wyalusing, Pa.,	Teaching,	3 "
Groff, W. K.,	Jarretstown, Pa.,	Prin. Schools,	3 "
Haines, Horace B.,	Freysville, Pa.,	Government Clerk,	1 "
Halbach, Ernest K.,	Wayne, Pa.,	Business.	
Heffner, James,	Pottstown, Pa.,		2 "
Hornberger, Frank A.,	Shillington, Pa.,	Teaching,	1 "
Irwin, William Madison,	Aston Mills, Pa.,	"	3 "
Kelley, Edward F.,	Minersville, Pa.,	"	3 "
Lane, Elmer A.,	Trainer, Pa.,		
Mease, Harry M.,	Lickdale, Pa.,	Teaching,	3 "
Parsons, Harvey B.,	Upland, Pa.,	Prin. of Schools,	2½ "
Schrope, Wm. D.,	5214 Thompson St., Phila., Pa.,	Teaching,	3 "
Shoffner, Jones T.,	West Pikeland, Pa.,	"	3 "
Singles, Walter,	West Point, N. Y.,	U. S. Cadet.	
Sollenberger, George L.,	Greencastle, Pa.,	Rensselaer Polytec. Inst.	
Stettler, Irving I.,	Mertztown, Pa.,	Teaching,	3 "
Swinehart, I. W.,	Manayunk, Phila.,	"	2 "
Swope, Reuben O.,	Wismer, Pa.,	"	3 "
Ulrich, Elmer B.,	Jonestown, Pa.,	"	3 "

STATE CERTIFICATE.

Irey, Will S.,	Angeles, Pampanga, P. I.,	Teaching,	3 "
----------------	---------------------------	-----------	-----

CLASS OF 1900. REGULAR NORMAL COURSE.

Wickersham, Jennie H.,	Unionville, Pa.,	Teaching,	2 "
Wagner, Alvin E.,	Ironbridge, Pa.,		2 "

ELEMENTARY COURSE.

Anderson, Lavinia,	Morton, Pa.,	Teaching,	2 "
Arnold, Mary J.,	Hatboro, Pa.,	"	2 "
Ash, Ethel V.,	West Chester, Pa.,	"	1 "
Bair, Mary C.,	Sadsburyville, Pa.,	"	2 "
Bealer, Abbie A.,	Wynnewood, Pa.,	"	2 "
Berkey, Dorinda M.,	Bolivar, Pa.,	"	1½ "
Blackburn, Ida V.,	Ailston, Pa.,	"	2 "
Bolton, Stella L.,	Collegeville, Pa.,	"	2 "
Bowers, Susanna E.,	4006 Girard Ave., Phila.,	"	2 "
Bressler, Katharine M.,	21 S. Penn. Av., Atlantic City, N. J.,	"	2 "
Bruce, E. Olive,	Christiana, Pa.,	"	2 "
Bruton, Susie T.,	Penn Valley, Pa.,	"	2 "

<i>Name.</i>	<i>Address.</i>	<i>Profession.</i>	<i>Taught since graduation.</i>
Carrell, Mary F.,	West Chester, Pa.,	Teaching,	2 yrs.
Carthew, Helen F.,	Johnstown, Pa.,	"	2 "
Caul, Margaret,	Edge Hill, Pa.,	"	2 "
Clark, Ellen S.,	Riegelsville, Pa.,	"	2 "
Clymer, Emma,	Tradesville, Pa.,	"	2 "
Colwell, Florence S.,	Carbondale, Pa.,	"	2 "
Cook, Ida M.,	Spring City, Pa., R. D. 1.	"	2 "
Davis, Jane D.,	Williamsport, Pa.,	"	2 "
Denning, Jennie M.,	Rising Sun, Md.,	"	2 "
Dyson, Lena M.,	Trooper, Pa.,	"	2 "
Eastburn, Mary O.,	Pineville, Pa.,	"	2 "
Edwards, Mabel,	Carbondale, Pa.,	"	1 "
Eyrich, Margaret M.,	West Reading, Pa.,	"	1 "
Fahey, Margaret E.,	Kennett Square, Pa.,	"	2 "
Faust, Olivia T.,	Chalfont, Pa.,	"	2 "
Fearnside, Annabell L.,	West Conshohocken, Pa.,	"	2 "
Foster, S. Amy,	Norristown, Pa.,	"	2 "
Gordon, Edythe S.,	McKeesport, Pa.,	"	2 "
Griffith, Annis F.,	West Chester, Pa., R. D. 6,	"	2 "
Haines, Jennie M.,	Churchville, Pa.,	"	2 "
Heed, Mary L.,	West Chester, Pa.,	"	2 "
Hershey, Lynn,	110 N. 3d St., Harrisb'g, Pa.,	"	2 "
Hoagland, Zilla M.,	Unionville, Pa.,	"	1 "
Hoopes, Linda M.,	West Grove, Pa.,	Student, Cushing Acad,	1 "
Hough, Eleanor D.,	Nurses' Home, Penna. Hosp., Phila.,		
Hunsicker, Maria R.,	Ironbridge, Pa.,	Teaching,	2 "
Hunt, Cornelia W.,	1413 10th St., Altoona, Pa.,	"	2 "
Hunter, Mabel R.,	Spring City, Pa.,	"	2 "
Immell, Ruth,	West Chester, Pa.,	"	2 "
Jefferis, Laura M.,	" "	"	2 "
Jefferis, Lillian H.,	West Grove, Pa.,	"	2 "
Keech, Margaret W.,	Oxford, Pa.,	"	2 "
Kennedy, Maude,	New Castle, Pa.,	"	2 "
Killeen, Nellie M.,	Liuwood, Pa.,	"	2 "
Kruger, Bessie P.,	13 N. Dewey St., Phila., Pa.,	"	2 "
Lewis, Mary E.,	Exton, Pa.,	"	2 "
Longacre, Emma S.,	Norristown, Pa.,	"	2 "
Marrett, Mabel T.,	Leeds, Md.,	"	2 "
Mathias, Lydia S.,	Pennlyn, Pa.,	"	2 "
McCurdy, Mary F.,	Gladwyne, Pa.,	"	2 "
McDowell, Elizabeth M.,	Media, Pa.,	"	2 "
McDowell, Sara H.,	" "	"	2 "
McFeeley, Lenora,	142 Sumac St., Wissahickon, Phila.,	Teaching,	2 "
McKinley, Esther A., (Good),	622 N. 48th St., Phila.,		2 "
Mendenhall, May,	West Chester, Pa.,	Teaching,	2 "
Meredith Marietta,	Towanda, Pa.,	"	2 "
Moore, Mary A.,	Kennett Square, Pa.,	"	2 "
Newbold, Mary A.,	Morrisville, Pa.,	"	2 "
Nice, Blanche,	1720 Diamond St., Phila., Pa.,	"	2 "
Peck, Martha D.,	Brandt, Pa.,	"	2 "
Pedrick, Mabel L.,	Paulsboro, N. J.,	"	1 "
Pepper, R. Clemmie,	Georgetown, Del.,	"	1 "
Philips, Sarah J.,	Atglen, Pa.,	"	2 "
Reagan, Irene,	West Chester, Pa., R. D. 10,	"	2 "
Rex, Florence M.,	Passaic, N. J.,	"	2 "

<i>Name.</i>	<i>Address.</i>	<i>Profession.</i>	<i>Taught since graduation.</i>
Reynolds, Bertha,	Coatesville, Pa.,	Teaching,	2 yrs.
Rhoads, Gertrude,	West Chester, Pa.,	"	2 "
Ritter, Anna B.,	Jeffersonville, Pa.,	"	2 "
Roberts, M. Elizabeth,	Bristol, Pa.,	"	2 "
Robinson, Mary,	Emporium, Pa.,	"	2 "
Rogers, Maud M.,	Warrington, Pa.,	"	2 "
Ror r, Elizabeth U.,	43 W. Logan St., Germ't'u, Pa.,	"	2 "
Ross, Margaret M.,	Mauch Chunk, Pa.,	"	2 "
Rutherford, Isabella P.,	Harrisburg, Pa., Box 129,	"	2 "
Slack, Susan D.,	Stockton, N. J.,	"	2 "
Smith, Edith M.,	Board'g Sch., Pine Ridge, S. D.,	"	2 "
Speakman, Annie D.,	West Chester, Pa.,	Teaching,	2 "
Steele, Marie H.,	1395 Locust St., Allegheny, Pa.,	Stud. Wom. Col., Balt., Md.	
Stellwagon, J. Evaline,	Markham, Pa.,	Teaching,	2 "
Stewart, Anna M.,	New Castle, Del.,	"	2 "
Taggart, M. Helen,	Fort Washington, Pa.,	"	2 "
Thompson, Edith M.,	Sayre, Pa.,	"	2 "
Trainer, Anna M.,	Chelsea, Pa.,	"	2 "
Tuohy, Dorothy Z.,	Kennett Square, Pa.,	"	2 "
Twining, Emma H.,	Richboro, Pa.,	"	2 "
Vanuxem, Mary,	Merchantville, Pa.,	"	2 "
Wagner, E. Irene,	Mont Clare, Pa.,	"	2 "
Wanzel, Carrie E.,	Paoli, Pa.,	"	2 "
Warner, Susan E.,	Montrose, Pa.,	Student.	
Webb, Bertha H.,	Unionville, Pa.,	Teaching,	2 "
Weir, Margaret M.,	Ridley Park, Pa.,	"	1½ "
Wetherill, Sara R.,	Chester, Pa.,	"	
Willis, M. Emma,	Broomall, Pa.,	"	2 "
Wollaston, Mary A.,	Kennett Square, Pa.,	Student, New Haven.	
Wright, Meta M.,	590 Chestnut Av., Treuton, N. J.,	Teaching,	2 "
Althouse, Walter M.,	Jacksonwald, Pa.,	Stud. Frank. & Mar. Col.	
Beaver, J. Lynford,	Kimberton, Pa.,	Student, Lehigh.	
Brinton, Willard C.,	330 Spruce St., Phila., Pa.,	Business.	
Burlingame, Elmer,	Johnsonburg, Pa.,	Teaching,	2 "
Cawley, W. A.,	Dunbar, Pa.,	Principal Schools,	2 "
Daubert, Irwin E.,	Berlinsville, Pa.,	Teaching,	2 "
Davis, Donald W.,	Buckingham, Pa.,	"	1 "
Detweiler, John A.,	Palmyra, Pa.,	"	2 "
Fleming, Andrew J.,	Fallsington, Pa.,	"	2 "
Hoffman, George L.,	Jefferson Med. Col., Phila.,	Student,	
Jackson, Halliday R.,	West Chester, Pa.,	Student, Swarthmore.	
Jones, Alphonso,	DeLand, Fla.,	Teaching,	1 "
Keller, Clayton G.,	East Prospect, Pa.,	"	½ "
Krause, Arthur K.,	Lansdale, Pa.,	"	2 "
Licking, Roy S.,	Baltimore, Md.,	Student, Johns Hopkins.	
McCauley, Louis G.,	Susquehanna, Pa.,	Student, Lehigh.	
McCreary, Charles T.,	1013 Green St., Phila.,	Inst. Eastburn Acad.,	" 2
Poorman, Wm. S.,	Palmyra, Pa.,	Prin. of Schools,	" 2
Pratt, Raudolph,	Georgetown, Del.,	Teaching,	" 1
Reber, Adam,	3258 Walnut St., Phila., Pa.,	Student of U. of P.,	" 1
Reiff, Henry J.,	Eagleville, Pa.,	Teaching,	" 2
Rosenberg, James A.,	Milford Square, Pa.,	"	" 2
Saxon, Gordon J.,	4401 Wisconsin Av., Wash., D. C.,	Teaching,	" 2
Schoonover, Frank B.,	Carbondale, Pa.,	Student, Drew Sem.	
Sigman, James G.,	West Chester, Pa.,	Student Lafayette Col.	

<i>Name.</i>	<i>Address.</i>	<i>Profession.</i>	<i>Taught since graduation.</i>
Smith, Norman D.,	Media, Pa.,	Teaching,	2 yrs.
Stein, Daniel W.,	Deceased, 1901		1 "
Strauss, Percy,	Williamson School, Pa.,	Teaching,	2 "
Wack, Isaac O.,	Lansdale, Pa.,	"	2 "
Webster, Horace,	Ercildou, Pa.,	"	2 "
Weinberger, O. Nelson,	Pennsburg, Pa.,	"	2 "
Wieand, Harry S.,	Mauch Chunk, Pa.,	"	2 "
Windle, Ernest G.,	West Chester, Pa.,	"	2 "
Yiengst, Harry,	Mt. Zion, Pa.,	"	2 "
Yiengst, H. S.,	Myerstown, Pa.,	"	2 "
Zulick, Howell S.,	Orwigsburg, Pa.,	"	2 "

CLASS OF 1901. REGULAR NORMAL COURSE.

Irey, William S.,	Manila, Philippine Islands,	Teaching,	1 yr.
Pedrick, Mabel L.,	Paulsboro, N. J.,	"	1 "
Seipt, Howard A.,	Norristown, Pa.,	Student, Lafayette College,	
Steele, Marie H.,	Baltimore, Md.,	Student, Woman's College,	

ELEMENTARY COURSE.

Allem, E. Miriam,	Pennsburg, Pa.,	Teaching,	1 yr.
Babb, Edith L.,	Bryn Mawr, Pa.,	"	1 "
Baird, Bessie W.,	Reedsville, Pa.,	"	1 "
Barnett, Anna A.,	West Chester, Pa.,	"	1 "
Beaumont, Mabel F.,	Dyerstown, Pa.,	"	1 "
Bechdolt, Mary H.,	Media, Pa.,	Student, S. N. S.	
Bell, Agnes,	Marysville, Pa.,	Teaching,	1 "
Bell, Isabella,	" "	"	1 "
Berkey, Rebecca A.,	Bolliver, Pa.,	"	1 "
Bitting, Carrie V.,	Quakertown, Pa.,	"	1 "
Bradigan, May M.,	Shenandoah, Pa.,	"	1 "
Brenckman, Dorothea C.,	Hudsondale, Pa.,	"	1 "
Brooks, Adda B.,	Williamsport, Pa.,	"	1 "
Broomall, Helen B.,	Lima, Pa.	"	1 "
Buchanan, Ella M.,	Cambridge, Pa.,	"	1 "
Bullock, Alice,	West Chester, Pa.,	"	1 "
Bunting, Ethelyn,	Spruce Grove, Pa.,	"	1 "
Campbell, Anna I.,	Silver Creek, Pa.,	"	1 "
Carey, Anna R.,	Glen-Loch, Pa.,	"	1 "
Cashman, Nita M.,	New Oxford, Pa.,	"	1 "
Clarke, Edna A.,	Williamsport, Pa.,	"	1 "
Cloud, Eva V.,	Terwood, Pa.,	"	1 "
Coleman, Mary F.,	Honesdale, Pa.,	"	1 "
CConnell, Mary,	Ebensburg, Pa.,	"	1 "
Craven, Amy W.,	Newtown, Pa.,	"	1 "
Criswell, Reba E.,	West Grove, Pa.,	"	1 "
Dailey Georgia A.,	Carverton, Pa.,	"	1 "
Darlington, Edith M.,	Phoenixville, Pa.,	"	1 "
Darlington, Katherine F.,	West Chester, Pa.,	"	1 "
Daverin, Elizabeth B.,	Barnsley, Pa.,	"	1 "
Davis, R. Beulah,	West Chester, Pa.,	"	1 "
DeNeen, Sophia M.,	Cumberland, Md.,	"	1 "

<i>Name.</i>	<i>Address.</i>	<i>Profession.</i>	<i>Taught since graduation.</i>
Dixon, Frances L.,	Freeport, Pa.,	Teaching,	1 yr.
Doak, Nannie I.,	Wallingford, Pa.,	"	1 "
Donnelly, Dorothy H.,	West Conshohocken, Pa.,	"	1 "
Dougherty, Elizabeth N.,	Guthrieville, Pa.,	"	1 "
Dowlin, Alice C.,	West Chester, Pa.,	"	1 "
Downie, Alice G.,	Nellore, India,	"	1 "
Drennen, Lulu D.,	Chatham, Pa.,	"	1 "
DuBree, S. Malvina,	Ogontz, Pa.,	"	1 "
Engle, Zula Zay,	Watsontown, Pa.,	"	1 "
Ettele, Mary R.,	Middletown, Pa.,	"	1 "
Fageley, Bertha V.,	Norristown, Pa.,	"	1 "
Faddis, Frances M.,	Ercildoun, Pa.,	"	1 "
Flannery, May M.,	Monocacy, Pa.,	"	1 "
Ford, Blanche M.,	Smyrna, Del.,	"	1 "
Forshey, Grace E.,	104 Court St., Newark, N. J.,	"	1 "
Frye, Bessie,	Pottstown, Pa.,	"	1 "
Gallaher, M. Winona,	Blairsville, Pa.,	"	1 "
Garrett, Lizzie S.,	Embreeville, Pa.,	"	1 "
Gayman, Bertha,	Fountainville, Pa.,	"	1 "
Geller, Mary M.,	Lansdale, Pa.,	"	1 "
Gradwohl, Mary F.,	Easton, Pa.,	"	1 "
Grater, Ella M.,	Norristown, Pa.,	"	1 "
Groff, S. Eleanor,	Doylestown, Pa.,	"	1 "
Halberstadt, Lillian I.,	Gladwyne, Pa.,	"	1 "
Hamilton, Ida E.,	Booth's Corner, Pa.,	"	1 "
Hannis, Lizzie K.,	Philadelphia, Pa.,	"	1 "
Heft, Katherine H.,	Trucksville, Pa.,	"	1 "
High, Ada M.,	Pottstown, Pa.,	"	1 "
Himelright, Margaret E.,	West Chester, Pa.,	"	1 "
Hood, Grace,	"	"	1 "
Horn, Mary C.,	Allentown, Pa.,	"	1 "
Hughes, Lillian A.,	Ardmore, Pa.,	"	1 "
Hunt, Grace H.,	Altoona, Pa.,	"	1 "
Hurlock, Eugenia D.,	Snow Hill, Md.,	"	1 "
Irwin, N. Marion,	Honeybrook, Pa.,	"	1 "
Jones, Mary F.,	Upper Darby, Pa.,	"	1 "
Keech, Catherine R.,	Tweedale, Pa.,	"	1 "
Kirk, Mary J.,	Lock Haven, Pa.,	"	1 "
Kuabb, Mary L.,	Line Kiln, Pa.,	"	1 "
Laing, Louise S.,	Bristol, Pa.,	"	1 "
Larned, Anna M.,	Altoona, Pa.,	"	1 "
Leatherman, S. Pearl,	Doylestown, Pa.,	"	1 "
Leonard, Katherine G.,	Washington, Pa.,	"	1 "
Lienhardt, Linda B.,	Allport, Pa.,	"	1 "
Liggett, Mande A.,	Marsh, Pa.,	"	1 "
Longacre, May S.,	Norristown, Pa.,	"	1 "
Longshore, H. Elsie,	West Chester, Pa.,	"	1 "
Mallon, Zita E.,	Lansdowne, Pa.,	"	1 "
Marple, Viola Z.,	Horsham, Pa.,	"	1 "
Mayo, C. Alberta,	Eldred, Pa.,	"	1 "
McGowan, Mary A.,	4211 Ridge Ave., Phila., Pa.,	"	1 "
McHenry, M. Helen,	Philadelphia, Pa.,	"	1 "
Merrick, Florence E.,	Phoenixville, Pa.,	"	1 "
Nichols, Jeannie W.,	Lansdowne, Pa.,	"	1 "
Parker, E. Christine,	Clarks Green, Pa.,	"	1 "

<i>Name.</i>	<i>Address.</i>	<i>Profession.</i>	<i>Taught since graduation.</i>
Paschall, Edith S.,	West Chester, Pa.,	Teaching,	1 "
Paul, Elizabeth,	Conshohocken, Pa.,	"	1 "
Peters, Anna H.,	Norristown, Pa.,	"	1 "
Pownall, Helen E.,	Newtown, Pa.,	"	1 "
Prizer, Bessie K.,	Lionville, Pa.,	"	1 "
Prothero, Sarah,	Atlantic City, N. J.,	"	1 "
Raeder, Emily E.,	Wilkesbarre, Pa.,	"	1 "
Raika, Miriam B.,	Doylestown, Pa.,	"	1 "
Reel, Nellie B.,	Downingtown, Pa.,	"	1 "
Reilly, Mary A.,	Shenandoah, Pa.,	"	1 "
Roper, Minnie M.,	Slatington, Pa.,	"	1 "
Rorer, Floreuce M.,	Lahaska, Pa.,	"	1 "
Rowe, Miltanna,	Atglen, Pa.,	"	1 "
Ryan, Alice,	Harrisburg, Pa.,	"	1 "
Rynear, Mary M.,	Ambler, Pa.,	"	1 "
Satterthwaite, Edith,	Edgewood, Pa.,	"	1 "
Schantz, Hattie A.,	Allentown, Pa.,	"	1 "
Scott, Maud E.,	Ursina, Pa.,	"	1 "
Sipple, M. Gertrude,	Collegeville, Pa.,	"	1 "
Skinner, Rhea C.,	Glasgow, Del.,	"	1 "
Smith, Elsie M.,	West Chester, Pa.,	"	1 "
Smith, Ida M.,	" " "	"	1 "
Smith, C. Marian,	Lafayette Hill, Pa.,	"	1 "
Smith, Mary A.,	Chester Springs, Pa.,	"	1 "
Spencer, Martha E.,	Chaversville, Pa.,	"	1 "
Stahlnecker, Eva E.,	Hamburg, Pa.,	"	1 "
Stephens, Frances L.,	St. David's, Pa.,	"	1 "
Stetson, Elsie A.,	Malvern, Pa.,	"	1 "
Stewart, Rebecca,	Three Tuus, Pa.,	"	1 "
Styer, Ardella G.,	Ambler, Pa.,	"	1 "
Taylor, Alice M.,	Norwood, Pa.,	"	1 "
Taylor, Anna V.,	West Chester, Pa.	"	1 "
Thomas, Grace C.,	Farmington, Del.,	"	1 "
Tull, Feronia C.,	Delaware City, Del.,	"	1 "
Waldron, Jessie M.,	Glen-Loch, Pa.,	"	1 "
Walter, Nellie,	Point Pleasant, Pa.,	"	1 "
Warner, Ethel S.,	Atglen, Pa.,	"	1 "
Weisel, F. Augusta,	Doylestown, Pa.,	"	1 "
Wells, Laura S.,	Royersford, Pa.,	"	1 "
Wentz, Alleta M.,	Kirkwood, Pa.,	"	1 "
Williams, Helen G.,	Oakbourne, Pa.,	"	1 "
Wilson, Mabel I.,	West Chester, Pa.,	"	1 "
Wrighter, Ethelle C.,	Pleasant Mt., Pa.,	"	1 "
Zane, Caroline F.,	Lansdale, Pa.,	"	1 "
Bickett, William J.,	Parkesburg, Pa.,	"	1 "
Binner, Alvin,	Shaefferstown, Pa.,	"	1 "
Booze, E. Glenn,	Luthersburg, Pa.,	"	1 "
Burkhardt, Charles N.,	Bloomiug Glen, Pa.,	Stud. Med. Chi., Phila., Pa.	1 "
Cope, Edge T.,	West Chester, Pa.,	Teaching,	1 "
Dengler, Harry M.,	Mt. Pocono, Pa.,	"	1 "
Dolby, John W.,	Guagua, P. I.,	"	1 "
Emery, G. Carroll,	Honeybrook, Pa.,	"	1 "
Godshall, Alvin M.,	Morwood, Pa.,	"	1 "
Godshall, Viucent B.,	Telford Pa.,	U.S. Ex. Clerk, Phila., Pa.	1 "
Hellyer, H. Arthur,	Penn's Park, Pa.,	Teaching,	1 "

<i>Name.</i>	<i>Address.</i>	<i>Profession.</i>	<i>Taught since graduation.</i>
Hellyer, Harold,	Penn's Park, Pa.,	Teaching,	1 yr.
Keenan, Edward W.,	Barnsley, Pa.,	"	1 "
Keylor, John M.,	Uwchlan, Pa.,	"	1 "
Kirkland, W. Reid,	Girard, Pa.,	"	1 "
Kriebel, Alton B.,	Worcester, Pa.,	"	1 "
Longshore, Rudolph P.,	West Chester, Pa.,	Student,	
Loomis, Esau H.,	Wilmington, Del.,	Teaching,	1 "
McCord, Clinton P.,	Elverson, Pa.,	"	1 "
Rockey, Waverly J.,	Warren, Pa.,	"	1 "
Rosenberger, Reno B.,	Quakertown, Pa.,	"	1 "
Sanderson, Christian C.,	Port Providence, Pa.,	"	1 "
Shingle, F. Raymond,	East Nantmeal, Pa.,	"	1 "
Shortlidge, Raphael J.,	Kennett Square, Pa.,	Student.	
Simrell, H. Eugene,	Clarke's Summit,	Student, Medico Chi.	
Vanderslice, Harvey R.,	East Coventry, Pa.,	Teaching,	1 "
Woodward, H. Willard,	West Chester, Pa.,	Student.	

STATE CERTIFICATE.

Crossman, Laura,	Phoenixville, Pa.,	Teaching,	1 yr.
Dunbar, Irene,	Phoenixville, Pa.,	"	1 "
Heilman, W. M.,	Annville, Pa.,	"	1 "
Martin, Ida M.,	Annville, Pa.,	"	1 "

*Name.**Address.**Profession.*

CLASS OF 1902. REGULAR NORMAL COURSE.

Ash, Ethel V.,	West Chester, Pa.,	Will Teach.
Hoagland, Zillah M.,	Unionville, Pa.,	"
Marshall, R. Mary,	Northbrook, Pa.,	"
Stetler, Isaac E.,	New Hanover, Pa.,	"
Ulrich, Elmer B.,	Jonestown, Pa.,	"
Woodward, H. Willard,	West Chester, Pa.,	"

ELEMENTARY COURSE.

Alderfer, Anna A.,	Mainland, Pa.,	Will Teach.
Allen, Laura F.,	Ambler, Pa.,	"
Allebach, Lydia M.,	Schwenksville, Pa.,	"
Arnold, Ida M.,	Burlington, W. Va.,	"
Ashenfelter, Mabel,	Oaks, Pa.,	"
Atkinson, Mary B.,	Doylestown, Pa.,	"
Bentley, Florence B.,	Chester, Pa.,	"
Bishop, Dorothy R.,	Snow Hill, Md.,	"
Blackburn, Carrie J.,	Ailston, Pa.,	"
Bowers, Myra L.,	Hopewell, Pa.,	"
Brendell, Jane T.,	Ridgway, Pa.,	"
Brosius, Stella S.,	Ranchtown, Pa.,	"
Buchanan, Margaret W.,	Millerstown, Pa.,	"
Bullock, Rachel G.,	Kemblesville, Pa.,	"
Burke, Mary V.,	Carbondale, Pa.,	"
Chambers, Elsie M.,	West Chester, Pa.,	"
Chandler, Ethel E.,	159 Mehan Ave., Phila., Pa.,	"
Chandler, Florence S.,	Unionville, Pa.,	"
Chandler, Carrie C.,	Unionville, Pa.,	"
Christ, Laura E.,	Cressona, Pa.,	"

<i>Name.</i>	<i>Address.</i>	<i>Profession.</i>
Clayton Mary H.,	Southampton, Pa.,	Will Teach.
Cooper, Florence E.,	Green Parke, Pa.,	"
Cramer, Ruth A.,	Warren, Pa.,	"
Cressman, Anna S.,	Sumneytown, Pa.,	"
Cloud, Mary R.,	Kennett Square, Pa.,	"
Crouse, Anna M.,	Cupola, Pa.,	"
Curtin, Margaret A.,	Dunmore, Pa.,	"
Davis, Jessie K.,	Narcissa, Pa.,	"
DeCoursey, Etta L.,	Hartsville, Pa.,	"
DeLaney, Margaret E.,	Williamsport, Pa.,	"
Diven, Mary J.,	Norristown, Pa.,	"
Doane, Frances M.,	Coatesville, Pa.,	"
DuBois, A. Edith,	Paulsboro, N. J.,	"
DuBois, May,	Southampton, Pa.,	"
Dugan, Blanche,	Collingdale, Pa.,	"
Dunue, Helen A.,	Wilkesbarre, Pa.,	"
Dunn, Lillian M.,	Valley Forge, Pa.,	"
Edris, Carrie E.,	Fredericksburg, Pa.,	"
Ely, Alice V.,	3435 N. 21st St., Phila., Pa.,	"
Emhardt, May,	32 Harvey St., Germantown, Phila., Pa.	"
Edwards, Gertrude,	Fagg's Manor, Pa.,	"
Eves, Margaret A.,	Paoli, Pa.,	"
Fairlamb, Florence H.,	Wilkesbarre, Pa.,	"
Feaster, Agnes M.,	3427 N. 16th St., Phila., Pa.,	"
Freas, Lillian E.,	Plymouth Meeting, Pa.,	"
Frederick, Edith G.,	Wilmington, Del.,	"
Furness, Mabel A.,	West Chester, Pa.,	"
Gardner, Mary A.,	York Springs, Pa.,	"
Gause, A. Leah,	New Providence, Pa.,	"
George, Dahnney A.,	Cherokee, N. C.,	"
Gilfether, Cora F.,	Wyoming, Pa.,	"
Gordon, Nellie I.,	McKeesport, Pa.,	"
Gotwals, Mary G.,	Phoenixville, Pa.,	"
Gray, Bertha P.,	Linwood, Pa.,	"
Gross, Esther F.,	Doylestown, Pa.,	"
Greenlee, Cecelia M.,	Penn's Manor, Pa.,	"
Griffith, Eliza H.,	Wyalusing, Pa.,	"
Gyger, Helen B.,	Kimberton, Pa.,	"
Haley, Elizabeth B.,	West Chester, Pa.,	"
Hall, Auna L.,	Pomeroy, Pa.,	"
Hammond, Jenie L.,	Upland, Pa.,	"
Harvey Helen,	West Chester, Pa.,	"
Harvey, Mary J.,	Ambler, Pa.,	"
Hatton, G. Mabel,	Cochranville, Pa.,	"
Heberling, Jean,	Leighton, Pa.,	"
Heck, M. Elizabeth,	Coatesville, Pa.,	"
Heckman, Elsie M.,	Allentown, Pa.,	"
Henry, A. May,	Paulina, Oregon,	"
Hoffman, Iva B.,	West Whiteland, Pa.,	"
Hopkins, Mary E.,	Upland, Pa.,	"
Howe, Mildred K.,	Scranton, Pa.,	"
Hudson, Alice,	Leonard, Pa.,	"
Hughes, Bessie R.,	Elkview, Pa.,	"
Hunsinger, Maud L.,	Colley, Pa.,	"
Isett, Emma B.,	Pottstown, Pa.,	"

<i>Name.</i>	<i>Address.</i>	<i>Profession.</i>
Jackson, Edith M.,	West Chester, Pa.,	Will Teach.
Jackson, Florence L., *	Unionville, Pa.,	"
Jacob, Elizabeth,	Malvern, Pa.,	"
Jamison, Abbie K.,	Jamison, Pa.,	"
Jarrett, Ada F.,	Oaks, Pa.,	"
Kaisinger, Elsie M.,	927 N. 12th St., Phila., Pa.,	"
Kelly, Annie C.,	New Hope, Pa.,	"
Laird, Roberta,	West Chester, Pa.,	"
LaRue, Jennie R.,	Hulmeville, Pa.,	"
Light, Elizabeth M.,	Chester, Pa.,	"
Lienhardt, Viola,	Allport, Pa.,	"
Lord, Jennie L.,	Garrettsford, Pa.,	"
Loughry, Cora D.,	Uniontown, Pa.,	"
Love, Blanche,	New Castle, Pa.,	"
MacElrec, Mary E.,	West Chester, Pa.,	"
MacFarland, S. Agnes,	" " R. D. 9,	"
Markley, Mary A.,	Norristown, Pa., R. D. 1,	"
Marshall, Elizabeth A.,	Newtown, Pa.,	"
Martin, A. Leila,	West Grove, Pa.,	"
Martin, Mary A.,	Lyndell, Pa.,	"
Mathues, Sara S.,	West Chester, Pa., R. D. 5,	"
McCarthy, Bertha K.,	Phoenixville, Pa.,	"
McClellan, Isabel C.,	Coatesville, Pa.,	"
McCanghan, Hetty S.,	311 N. 42d St., Phila., Pa.,	"
McCurdy, Rachel,	Gladwyne, Pa.,	"
McIlhenny, Sara J.,	1314 Fracker St., Oak Lane, Phila., Pa.,	"
Mensch, Ethel T.,	Magnolia, Del.,	"
Metlar, Mary J.,	Doylestown, Pa.,	"
Middleton, May A.,	Penn's Manor, Pa.,	"
Miller, Letitia G.,	Upland, Pa.,	"
Miller, Sara C.,	Line Lexington, Pa.,	"
Mohr, Carrie E.,	Quakertown, Pa.,	"
Morgans, Agnes,	Wilkesbarre, Pa.,	"
Morrison, Jane C.,	Carbondale, Pa.,	"
Moore, Elizabeth D.,	Radnor, Pa.,	"
Nields, Josephine O. H.,	West Chester, Pa.,	"
Nyce, Mary A.,	Schwenksville, Pa.,	"
Parke, M. Elizabeth,	Parkeshurg, Pa.,	"
Patterson, May,	Wilkesbarre, Pa.,	"
Philips, Elma M.,	Font, Pa.,	"
Peirce, Ella M.,	Caln, Pa.,	"
Pinkerton, Mary A.,	Atglen, Pa.,	"
Plank, Ethel B.,	Christianna, Pa.,	"
Raezor, Helen I.,	Cheyney, Pa.,	"
Ranck, Martha L.,	Supplee, Pa.,	"
Richards, Keturah,	Plymouth, Pa.,	"
Ridgway, Elizabeth T.,	Swedesboro, N. J.,	"
Robblus, Anna T.,	Morrisville, Pa.,	"
Roberts, Katie A.,	Blue Bell, Pa.,	"
Roth, Addie Z.,	Quakertown, Pa.,	"
Saunders, Florence E.,	Cumberland, Md.,	"
Savage, Anna E.,	Manoa, Pa.,	"
Seltzer, Anna E.,	Orwigshurg, Pa.,	"
Sensenig, Elizabeth F.,	Goodville, Pa.,	"
Sheehy, Anna G.,	Whitford, Pa.,	"

<i>Name.</i>	<i>Address.</i>	<i>Profession.</i>
Smedley, Anna M.,	Fulton House, Pa.,	Will Teach.
Smith, Cecil E.,	West Chester, Pa.,	"
Speakman Ethel B.,	" "	"
Stephens, Carrie B.,	Seeleysville, Pa.,	"
Surver, Bertha,	Montaudou, Pa.,	"
Strong, Elnora,	Jeuingsville, Pa.,	"
Struthers, Rachael P.,	Easton, Pa.,	"
Swartley, Minerva,	Colmar, Pa.,	"
Swift, B. Muriel,	411 N. 32d St., Phila, Pa.,	"
Thompson, Helen R.,	Norristown, Pa.,	"
Truax, Katherine M.,	Reuova, Pa.,	"
Tustin, Dora M.,	Chester Springs, Pa.,	"
Vandegrift, Lizzie L.,	Ambler, Pa.,	"
Walker, Emma C.,	Phoenixville, Pa.,	"
Watkins, Elizabeth T.,	Johntown, Pa.,	"
Weber, Emma W.,	Norristown, Pa., R. D. 1,	"
Weylman, Elizabeth C.,	Kittanning, Pa.,	"
White, Lucy A.,	Toms River, N. J.,	"
Whiteley, Anna H.,	New Hope, Pa.,	"
Whitson, Olive L.,	Ithaca, N. Y.,	"
Williams, Vallee L.,	Abington, Pa.,	"
Wilson, Nettie N.,	Toby, Pa.,	"
Wood, Elizabeth H.,	Doe Run, Pa.,	"
Wood, Leila M.,	Doe Run, Pa.,	"
Woodbury, Jennie T.,	2605 N. 33d St., Philada., Pa.,	"
Wright, Anna,	Paintersville, Pa.,	"
Yarnall, Alice M.,	Lima, Pa.,	"
Yerger, Bertha,	Grater's Ford, Pa.,	"
Yerkes, Amy B.,	Hatboro, Pa.,	"
Yerkes, Ella R.,	Southampton, Pa.,	"
Alderfer, Harry C.,	Harleysville, Pa.,	"
Allem, David O.,	Pennsbury, Pa.,	"
Bechtel, Albert R.,	Yerkes, Pa.,	"
Bechtel, John C.,	Clayton, Pa.,	"
Bressler, Calder B.,	21 Penna. Ave., Atlantic City, N. J.,	"
Carey, Alfred L.,	Glen-Loch, Pa.,	"
Cawley, John C.,	Springtown, Pa.,	"
Cronin, James R.,	Glen Mills, Pa.,	"
Davis, Joseph S.,	West Chester, Pa.,	"
Fenstermacher, H. B.,	Graters Ford, Pa.,	"
Gotwals, J. Elmer,	Yerkes, Pa.,	"
Graybill, Guy M.,	E. Petersburg, Pa.,	"
Greiner, Albert H.,	Zieglersville, Pa.,	"
Hagenbach, Frank F. L.,	Elinsport, Pa.,	"
Heiges, Walter C.,	Dillsburg, Pa.,	"
Hoffman, J. Harry,	Frederick, Pa.,	"
Kline, Harvey W.,	Graters' Ford, Pa.,	"
Kratz, Irvin D.,	Elroy, Pa.,	"
Lewis, Paul L.,	West Chester, Pa.,	"
Long, Clarence D.,	Traymore, Pa.,	"
MacElree, J. Paul,	West Chester, Pa.,	"
Micheuer, Theodore,	Gardeville, Pa.,	"
Molyneaux, D. Silas,	Millview, Pa.,	"
Moyer, Samuel W.,	Blooming Glen, Pa.,	"
Peunypacker, John Y.,	Chester Springs, Pa.,	"
Pike, Isaac S.,	Media, Pa.	"

<i>Name.</i>	<i>Address.</i>	<i>Profession.</i>
Ruth, William F.,	Kulpsville, Pa.,	Will Teach.
Shortlidge, E. Wharton,	Landenburg, Pa.,	"
Smith, H. Ross,	Media, Pa.,	"
Smulling, A. Morgan,	Quakertown, Pa.,	"
Stauffer, Willis W.,	Weigelstown, Pa.,	"
Strohl, James M.,	Aquashicola, Pa.,	"
Sones, John E.,	Hegins, Pa.,	"
Wack, Francis W.,	Mainland, Pa.,	"
Wanner, Abram I.,	Arcola, Pa.,	"
Weber, J. Strode,	Lower Providence, Pa.,	"
Windle, W. Butler,	West Chester, Pa.,	"
Yoder, William F.,	Hegins, Pa.,	"
Zarfos, L. Norman,	Red Lion, Pa.,	"
Ziegler, Samuel H.,	531 Robinson St., Reading, Pa.,	"
Zulich, J. Donald,	Orwigsburg, Pa.,	"

