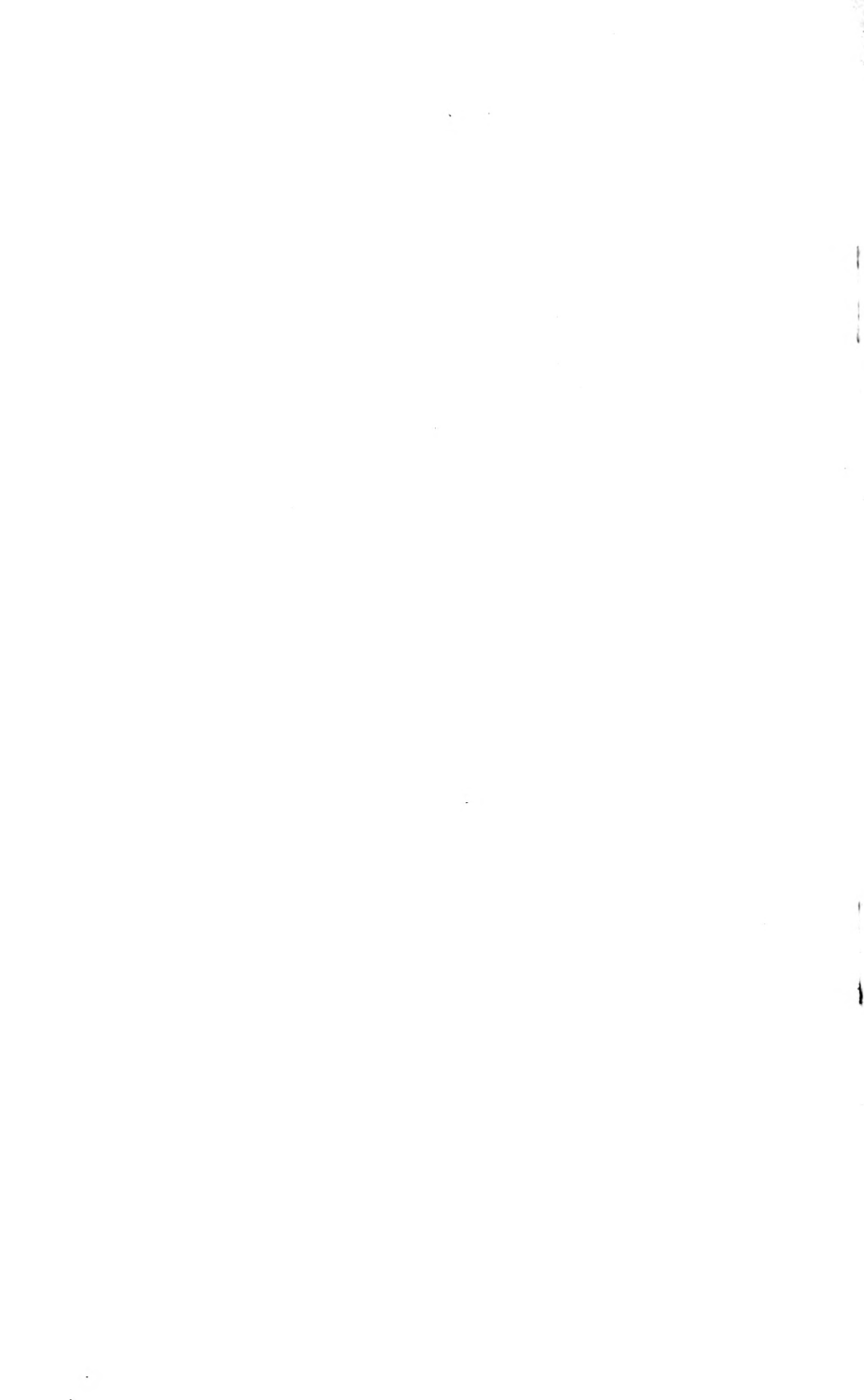
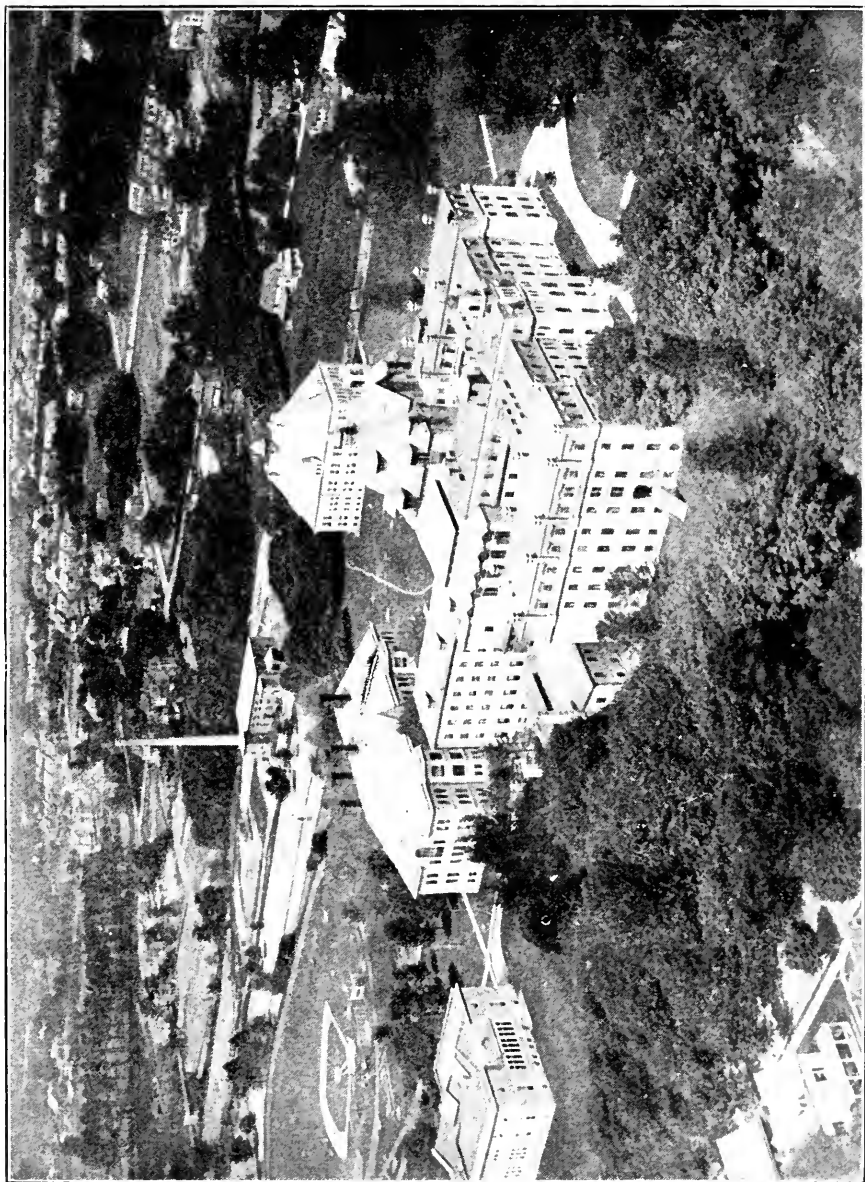




*West Chester
State Normal School
1924*





State Normal School

BIRD'S EYE VIEW OF CAMPUS

West Chester, Pa.

FIFTY-THIRD
ANNUAL CATLOG

OF THE

Pennsylvania State Normal School

FOR THE

FIRST DISTRICT
West Chester, Pa.

1924

1924
Horace F. Temple, Printer
West Chester, Pa.

Board of Trustees

J. HOWARD LUMIS HERBERT P. WORTH DR. HARRY D. SAYLOR	}	Term of office expires in 1924
MISS ISABEL DARLINGTON COL. A. M. HOLDING S. JONES PHILIPS	}	Term of office expires in 1925
MRS. RICHARD J. HAMILTON DORAN GREEN MRS. HOWARD MELLOR	}	Term of office expires in 1925

Officers of the Board

A. M. HOLDING
President

ISABEL DARLINGTON
Secretary

HERBERT P. WORTH
Treasurer

Committees

Instruction MISS ISABEL DARLINGTON DR. HARRY D. SAYLOR MRS. RICHARD J. HAMILTON	Household J. HOWARD LUMIS MRS. RICHARD J. HAMILTON MRS. HOWARD MELLOR
Finance HERBERT P. WORTH DORAN GREEN MRS. HOWARD MELLOR	Athletics MRS. HOWARD MELLOR DR. HARRY D SAYLOR DORAN GREEN

The regular meetings of the Board are held on the first Monday of each month at 4.00 P. M.

The Faculty

ANDREW THOMAS SMITH, A.M. Pd.D.

Principal

S. C. SCHMUCKER, A.M., Ph.D.

Emeritus Professor of Biological Sciences

WILLARD A. BALLOU, B.S., B.A., A.M.

Dean

CORA E. EVERETT, B.S.

Spoken English and Children's Literature

FOSTER H. STARKEY, A.B., A.M.

Languages and Education

WALLACE P. DICK, A.B., A.M.

Modern Languages

ROBERT F. ANDERSON, A.M., Sc.D.

Mathematics

ADDISON L. JONES, A.M.

Principal Model School

ARTHUR D. CROMWELL, M.Ph.

Agriculture and Director Rural Group

ANNE M. GOSHEN, B.L., A.M.

Psychology

ISADORE E. CROUSEY, Mus.B.

Piano

ELSIE OLEITA BULL, A.B., A.M.

Mathematics

GRACE DIETRICH McCARTHY, A.M.

Dean of Women; English

MARY C. POWERS

Handwriting

CHARLES B. LEWIS, A.M., M.D.

Health Education

CLAUDE E. HAUSKNECHT

Music Director

MRS. NAOMI E. GEORGE

Health Education

JOHN KINNEMAN, A.B., A.M.

Assistant in Social Studies

GERTRUDE K. SCHMIDT

Graduate New York Institute of Musical Art
Music

LOU E. HOSMER

Primary Methods

M. GERTRUDE SIPPLE

Director Junior High School Group

MRS. MAUD B. NEWMAN
English

HARRIET A. ELLIOTT
Geography

S. ELIZABETH TYSON
Speech and Story Telling

ALICE A. COCHRAN
Librarian

LUELLA M. ERION, R.N.
Nurse

ROBERT T. KERLIN, A.M., Ph.D.
English

CHARLES W. HEATHCOTE, A.M., Ph.D.
Social Studies

CHARLOTTE R. PEOPLES, A.B.
Education

MARGARET M. BURNET
Director Primary Group

FLORENCE W. RAGUSE, B.S.
Director Intermediate Group

LIDA J. LOWE
Music

MARIE MARGARET HEINEMANN
Music

FLORENCE A. LEE
Music

EDWARD ZIMMER, JR., B.S.
Music

CLARA LOUISE CURTISS, B.A.
Associate Librarian

HAZEL L. LAMBORN
Graduate Philadelphia School of Industrial Art
Art

MRS. IDA PALMER STABLER, B.S. in Education
Director Primary Group

MIRA WALLACE
Health Education

ALICE C. SCHRIVER
Health Education

DOROTHY M. SCHMUCKER, B.A.
Science

THELMA J. GREENWOOD
Assistant in Science

MARION E. MACK
Assistant Dean of Women

MARY E. MELCHIOR, A.B.
Assistant in Social Studies

MARION FARNHAM, A.B., A.M.
Art

MRS. ROBERT T. KERLIN
Piano

*HERSCHEL L. MOSIER, B.S.
Health and Athletics

MRS. FLORENCE JESTER
Art

MRS. ALICE COMEGYS CHAMBERLAIN
Kindergarten

JOHN R. HOLLINGER
Business Manager

ANDREW W. WOLFANGLE
Assistant Business Manager

GEORGE S. ROBERTS
Registrar

MRS. ANNA S. RAYMOND
Matron

REBECCA DISSINGER
Matron

JESSICA M. DYER
Dietitian

IDA M. ROSSITER
Secretary to Business Manager

HELEN M. BROOMALL
Secretary to Principal

LENORE LEVER
Secretary to Dean

ANNA M. McCAULEY
DOROTHY M. CURRY
ANNA SCOTT
Stenographers

AGNES R. FINEGAN
Bookroom

HELEN K. ROBERTS
Bookroom

*Mr. Mosier resigned in April and Mr. Wm. J. Murphy, was selected for the unexpired term.

School Motto—We Serve
School Colors—Purple and Gold
School Flower—The Pansy

UNIVERSITY OF PENNSYLVANIA COURSES

GEORGE HERVEY HALLETT, Ph.D.
Mathematics

ARTHUR CHARLES HOWLAND, Ph.D.
History

GEORGE WILLIAM McCLELLAN, Ph.D.
English

PERCY VAN DYKE SHELLY, Ph.D.
English

THE CALENDAR

1924-1925

First Semester begins	September 16
Christmas Recess	December 21 to January 2
First Semester ends	January 31
Second Semester begins	February 2
Spring Recess	April 3 to April 14
Regular School Year ends	June 2
Summer Term begins	June 22

ENTERTAINMENTS OF 36th YEAR (1923-1924)

MOORE ANNIVERSARY—DR. RUSSELL H. CONWELL

THE ONLY CONCERT COMPANY

BURNS OF THE MOUNTAINS

DR. FRANCIS H. GREEN

DR. FREDERICK D. LOSEY

MRS. RUTH BRYAN OWEN

THE MUSICAL AND DRAMATIC ART CLUB OF PHILADELPHIA

RECITAL—DR. THADDEUS RICH WITH MILDRED FAAS

EDWARD T. DIVINE

RUSSIAN CATHEDRAL SEXTETTE

PENNSYLVANIA STATE COLLEGE GLEE CLUB

RECITAL—HANS KINDLER WITH MISS SCHMIDT

OPERETTA—"THE COTTER'S SATURDAY NIGHT"

FACULTY PLAY

CONCERT BY MARY COMERFORD MacCARTER

ARYAN REUNION—"THE BARBER OF SEVILLE"

FOUNDATION

The West Chester State Normal School was founded in the year 1871 by the joint efforts of the Trustees and contributors of the West Chester Academy, and the citizens of West Chester and vicinity.

On December 30, 1913, all the property of the school was transferred to the State, as provided in the new School Code, and it is no longer owned and controlled by a private corporation, but is strictly a State Normal School, being the first Normal School in Pennsylvania to be thus transferred. It is managed by a board of nine trustees, who are appointed for three year terms by the Superintendent of Public Instruction.

LOCATION

West Chester is a beautiful town of 13,000 inhabitants, the county seat of Chester county, and is preëminent for its healthfulness, morality and intelligence. It is about twenty-five miles west of Philadelphia, with which it is connected by two lines of the Pennsylvania R. R. It is also connected with Philadelphia by a trolley line, over which cars run every half hour each way, starting from the 69th and Market streets terminal of the Market street subway and elevated railway. A short branch road connects West Chester with the main line of the Pennsylvania Railroad at Frazer, where connections are made with the trains on the main line; and by electric roads it is also connected with the Philadelphia & Reading R. R. at Lenape, and with the Pennsylvania R. R. at Coatesville, Downingtown and Kennett Square.

THE BUILDINGS

Are situated in the southern part of the borough, half a mile from the Court House. The main building is built of green stone with white marble, 256 by 275 feet, four stories high, with basement.

The chapel and the dining-room are in the main building and are completely fitted up. Each story has bath rooms with up-to-date toilet facilities of the best pattern. The drainage is first-class. The whole building has lately been improved; the students' rooms have all been papered, refitted and refurnished and many other improvements made to add to the efficiency of the school and the comfort of the students. In 1910-11 there was added to this building an extension of the dining room and a three-story annex enabling it to accommodate over 500 girls; a large household building, with complete kitchen, bakery, store room and other conveniences, and connected by a covered way, was also added. Two passenger elevators make all the floors equally desirable.

The Gymnasium.—There is a first-class gymnasium, 104 by 64 feet, with an administration building attached, 29 by 36 feet. It is of stone two stories

high, fitted up with every modern improvement, including a full supply of the best apparatus, running track, bath rooms, large swimming pool, bowling alleys, etc. A thoroughly trained physician and his staff are in charge of the gymnasium, and all exercise is taken under their supervision.

Recitation Hall.—This is a stone building 185 by 80 feet, with two stories above a high basement, which is used wholly for school purposes. It has been planned with great care, and is unusually well adapted for its purpose. It is heated and ventilated by the fan system. The total cost of the building and its equipment has been over \$100,000.

Library.—A new library building has been built at a cost of \$60,000. It is 90 by 72 feet, will hold 50,000 books, and affords fine reading and reference rooms. In its second story are the school's museum and art gallery, and the collection of the Chester County Historical Society. The library now contains 20,000 well selected volumes, including the libraries of the late Dr. William Darlington and of the Chester County Cabinet of Nature Sciences, the Evans Rogers collection of historical books, for which \$1,000 was given by the late Evans Rogers; the Horace Howard Furness collection of books on Shakespeare, the gift of Dr. Furness; the Brinton collection given by Howard Futhey Brinton in memory of his parents, Dr. William B. and Ida Futhey Brinton; and the collection of Chester county bibliography made by the late H. Rush Kervey. A modern card catalogue and a trained librarian add much to the value of the library. About a hundred leading magazines and papers come regularly to the library for the use of the school.

Museum.—The Museum contains a large and valuable collection of specimens illustrating every department of Natural Science. It was begun in the year 1826, and has been annually enriched with contributions from every portion of the world. The justly celebrated "Herbariums" of the late Dr. William Darlington, David Townsend and Josiah Hoopes, now in the Museum, are conceded to be among the most accurate and extensive private collections ever formed in this country. The mineral collections of the late Alfred Sharples have been deposited by his son, F. F. Sharples. The J. Preston Thomas collection of heads and horns, a valuable zoological collection from all parts of the world, and of Indian relics, including thousands of arrow heads, axes, pipes, etc., were collected by the late J. Peston Thomas and given to the school by his family. A fine collection of birds, made by the late Frank Darlington, has recently been added to the museum.

Wayne Hall.—This is a dormitory for boys, built of green stone, three stories high, and will accommodate 175 boys.

New Grounds.—The Trustees have added to the original ten acres required by law, until the school now has about sixty acres of fine grounds, suitably fitted up for all out-door games, a large and safe skating pond and a small, well equipped farm for practice and observation in agriculture.

Heat and Power Plant.—This plant supplies the best and safest type of lights to all parts of the buildings. It also furnishes direct steam radiation



State Normal School

PRINCIPAL'S RESIDENCE

West Chester, Pa.

to heat the various buildings and power for the school's laundry, which is housed therein.

Infirmary.—A complete and well-appointed school infirmary, at considerable distance from the other school buildings, has been erected. This has been planned by skillful physicians and architects, and will not only promote the comfort and recovery of any who may be ill, but will also tend to prevent the spread of contagion in the school. It is believed that this was the first school of its class to take this important step. A trained nurse is employed by the school, who gives her whole time to the care of the health of the school.

The school property has now cost about \$1,000,000, and is believed to be one of the best and most complete of any State Normal School in this country.

STUDENTS' ROOMS

The rooms are generally arranged for two students each. All are good sized, and are thoroughly heated by direct steam radiation. The rooms are comfortably furnished, having been recently re-wired to give abundance of light, repapered and revarnished. They have closets, single beds, and are furnished with woven wire mattresses. All rooms are carpeted. Boarding students furnish blankets or their equivalent, towels, and table napkins.

MORAL AND RELIGIOUS CULTURE

All students are required to attend the opening exercises of the school Chapel each day, and all must attend religious services each Sabbath morning in the town, at the churches preferred by their parents or guardians. The Young Men's and Young Women's Christian Associations are large and efficient, and maintain regular non-sectarian religious meetings.

LITERARY SOCIETIES

There are connected with the school two flourishing Literary Societies—The Moore Literary Society and the Aryan Society—composed of students and members of the Faculty.

The value of these societies as adjuncts of education is so great that the student cannot afford to neglect the opportunities they afford for literary culture. In addition, great encouragement is given to training in debating, to the production and distribution of a superior school paper "The Greentone," to the study of current events and pressing problems of the day—all designed to prepare students to serve ably in the communities where they may teach.

TEACHERS' BUREAU

The school maintains a Teachers' Bureau for its graduates and the public. Superintendents, school boards and graduates of the Normal School are invited to use this bureau without charge.

ALUMNI FUNDS

A loan fund has been established by the Alumni, which now amounts to more than \$12,000. This is loaned without interest to worthy students. For details concerning this, application should be made to the Principal.

EXPENSES

Normal or Secondary Departments

	School Year 36 wks.	First Semester 18 wks.	Second Semester 18 wks.	Summer School 9 wks.	Less than semester or term per wk.
Board, room and laundry (12 pieces per week).....	\$252.00	\$126.00	\$126.00		\$7.50
Tuition (paid by secondary pupils) ..	72.00	36.00	36.00	18.00	2.50
Day Students' service charge.....	14.00	7.00	7.00		1.00
Enrollment fees		10.00	10.00	10.00	
Athletic fee and subscription to school paper		3.00	3.00		
Laboratory fees—					
Chemistry, Drawing, Industrial Arts, or Biology		5.00	5.00	5.00	
Physics, Botany, Zoology, Agriculture Nature Study or Geography....		2.50	2.50	2.50	

Private Music Lessons

One lesson per week (30 minutes)....	70.00				2.00
(This includes weekly class lessons)					
Practice Piano one period per day....	15.00	7.50	7.50		
Music Supervisors' Fee	120.00	60.00	60.00		

This pays for such private lessons as they would otherwise have to take and pay for at a higher rate.

The Progressive Series of Piano Lessons has been adopted in this department. This is a modern method which presents the material in an intelligible and systematic way, and students who come from certified teachers are given full credit for the work they have accomplished.

MISCELLANEOUS ITEMS

When the Health Certificate and the Certificate of Vaccination are being secured for entrance to the Normal School, each candidate should request the physician to give a thorough heart examination to insure against error in exercise.

A gymnasium uniform is required of all. This should be purchased here in the supply room, so as to insure uniformity, and where they are sold at the lowest possible cost.

The School Book Store carries in addition to books, a complete line of students' necessities—laundry bags, parcel post cases, etc., which can be purchased cheaper than they can be made by the individual. Athletic goods, stationery, etc., can all be purchased in the School Book Store at reasonable prices.

All students will need gymnasium shoes, which can be secured in West Chester at small expense.

Keys are furnished by the school, but their cost must be deposited when they are obtained, which deposit is refunded when they are returned.

All articles for the laundry must be distinctly marked. Each student is permitted to have twelve plain pieces washed each week without extra charge. While great care is taken with all articles sent to the laundry, the school will not be responsible for their loss or damage.

Meal tickets for visitors, secured at the office, 50 cents each.

Rooms are rented to visitors at 50 cents a night when such are available.

Rooms will be ready for occupancy on the opening day of the session. Rooms should be vacated not later than the day following the close of school. After the breakfast following the closing day of school those who remain will be charged regular vacation rates.

Rooms engaged and not occupied the first evening of the term will be forfeited unless special arrangements are made with the Business Office to hold the same, and in that event, the individual hoping to occupy the same will have to pay for the room from the beginning of the term.

Damage to rooms and furnishings (such as driving tacks or nails into walls or wood work, pasting articles upon walls, breakage, etc.) will be charged against occupants of the room upon estimates made by the Business Manager.

Bills may be paid by cash, check, or post office money order.

The Business Manager, or his representative, acts for the Trustees and receipts all bills.

Bills are due when rendered and must be settled each semester before students will be permitted to enter or continue the work, unless by special arrangement.

Diplomas will not be issued to those whose bills are unpaid.

Students entering should bring with them, in check or otherwise, the first payment for the year, \$131.00, and the enrollment fee of \$10.00, if that has not been paid. The initial enrollment fee of \$10.00 must be paid when application for entrance is made, otherwise no place will be held for the candidate. (In case a candidate decides to withdraw, such fee will be refunded, provided the withdrawal is made at least one week before the opening of the school term.) The full year's account for board, room, laundry, athletic fee and the semester's enrollment is paid in two installments—one at the beginning of each semester.

Boarding students absent for two or more consecutive weeks on account of personal illness but not for any other absence, will receive a refund of fifty per cent. of the amount charged for the period of such absence. (The Enrollment Fee for the semester under consideration is not refunded for any cause.)

A Trained Nurse is maintained by the school and gives her expert service to pupils without charge, but a charge of 25 cents is made for every meal tray sent from the nurse's department.

Persons entering school within the first two weeks of the opening of a semester, or leaving school within the last two weeks of the close of the semester, will be charged boarding rates, or tuition where that is a legitimate charge, for the full semester.

Those who are in attendance for a period less than the above, in any semester, will be charged the weekly rate for that semester.

Those who are in full standing as Normal School pupils do not pay tuition. Secondary pupils pay tuition, at the rate of two dollars per week, until they have advanced to full standing as Normal School pupils.

Boarding students may employ a caretaker for their rooms by entering into a contract with the Business Manager and each paying at the rate of 50 cents per week for the period of the contract. Any student not voluntarily entering into such contract, but whose room is not kept in such order as to receive approval of the Housekeeper, will be charged for room care and have the caretaker sent to do it by order of the school. All girls boarding in the school are charged a fee of \$2.00 per semester for the privilege of using the laundry for such special work as they may wish to do.

Regular classroom activities will run through six days of the week. This is made necessary by the fact that there are many three hour per week subjects in the course. Week-end absences from school cannot be taken for granted, therefore, and will not be permitted longer than from Saturday noon to Sunday evening. Even such absences will be limited, since the practice of regular week-end absence from school prevents one's getting the real spirit of the institution and interest in it.

Normal School Course of Study

REQUIREMENTS FOR ADMISSION

(Effective September 1, 1924)

1. Graduates of approved secondary schools who can present evidence of having completed fifteen units of high school work will be admitted as regular students to the state normal schools.

A unit shall consist of not less than one hundred twenty hours of work. Subjects not requiring out-of-class preparation or study shall require double time in estimating the units. (Until September 1, 1927, high school work completed prior to July 1, 1924, will be accepted on the ninety-six hour basis.)

2. Required units for admission:

English	3 units
Mathematics	1 unit
Science	1 unit
Social Studies*	2 units
Elective	8 units

—
Total 15 units

3. Credentials of all students entering the state normal schools shall be received and evaluated by the normal schools and kept on file for inspection by the State Department of Public Instruction.

4. Credit will be given for equivalent courses in approved teacher training institutions, but no such student may obtain a normal school certificate without a minimum residence of one year.

No credit toward graduation from the normal school will be given for any work completed in high school.

5. For the present the normal schools shall, when necessary, conduct a secondary department of first class high school grade for those students for whom their home communities do not provide the required fifteen units, and who desire to become teachers.

Mature adult students who desire to become teachers will be admitted to the secondary department.

*Social Studies include history, civics, economics, sociology, problems of democracy, etc.

Curricula of all the Pennsylvania State Normal Schools

STUDENTS MUST SELECT ONE OF FOUR CURRICULA

The four curricula that are offered to students who are preparing to be regular teachers in the public schools have been organized upon the principle that teaching in the elementary schools can be classified into sufficiently definite types to require specialization. Each curriculum prepares for a specific type of teaching position.

The two year's work of the normal school is divided into four semesters. The work of the first semester is the same for all students. A large purpose of the work of the first semester is to acquaint students with the requirements for successful teaching in the different grades so that they may be able to decide intelligently in what grade or grades they prefer to teach. The course entitled "Introduction to Teaching" which includes observation and participation in the training school is especially designed to aid students in a wise selection of a curriculum.

At the end of the first semester students are asked to select one of the four curricula for the purpose of specializing in a specific field of teaching. The work of each curriculum must be completed in its entirety. Students may be granted the privilege of changing from one curriculum to another only on condition that the prescribed courses of any curriculum so selected must be completed before a certificate of graduation is granted.

The Four Curricula

Group 1. Kindergarten—Primary—for teachers of kindergarten and grades 1, 2 and 3.

Group 2. Intermediate grades—for teachers of grades 4, 5 and 6.

Group 3. Grammar grades and Junior High School—for teachers of grades 7, 8 and 9.

Group 4. Rural—for teachers of rural schools.

Electives

All electives are taught from the professional point of view and are of college grade of work.

All electives are to be chosen with special reference to the group in which the teacher is preparing to teach and with the approval of the principal of the school.

Each normal school is required to offer at least one elective in each of the six groups of electives. Additional electives of similar grade may be offered at the discretion of the principal of the school.

	Semester Hours	Credit		Semester Hours	Credit
Education					
Educational Measurements	3		Botany	3	3
Educational Psychology	3		Zoology	3	3
Kindergarten—Primary Methods...	3		Chemistry	6	6
School Administration	3		Geography	3	3
Psychology of Adolescence	3		Geology	3	3
Physiological Psychology	3		Physics	6	6
English and Foreign Language			The Teaching of General Science...	3	3
English Literature	3		Social Studies		
Latin	6		Economics	3	3
Modern Language	6		History	3	3
Mathematics			Sociology	3	3
Solid Geometry	3		Arts		
Plane and Spherical Trigonometry	3		Cookery	2	2
Plane Trigonometry and Surveying	3		Art	2	2
Intermediate Algebra	3		Music	2	2
Advanced Algebra	3		Mechanical Drawing	2	2
Science			Sewing	2	2
Agriculture	3		Woodwork	2	2
Biology	6				

SPECIAL CURRICULA

This school offers special opportunities for preparation to those who would become teachers or supervisors in the special fields of Health Education or Music.

The requirements for admission are the same as to the regular courses, and the length of each course is three years.

(See details under Group V and Group VI.)

GROUP I

First Semester

	Periods	Cr. Hrs.
Introduction to Teaching	3	3
English Fundamentals	3	3
English Composition	2	2
Oral Expression	2	2
Nature Study	2	2
Freehand Drawing	3	3
Music	3	3
Personal and School Hygiene	2	2
Physical Education	3	1
	<hr/>	<hr/>
	23	21

Second Semester

Psychology and Child Study	3	3
English Composition	2	2
Nature Study	1	1
Teaching of Primary Reading	3	3
Constructive Handwork	2	2
Handwriting	2	1
Music	2	2
Physical Education	3	1
*Elective	5	5
	<hr/>	<hr/>
	20	17

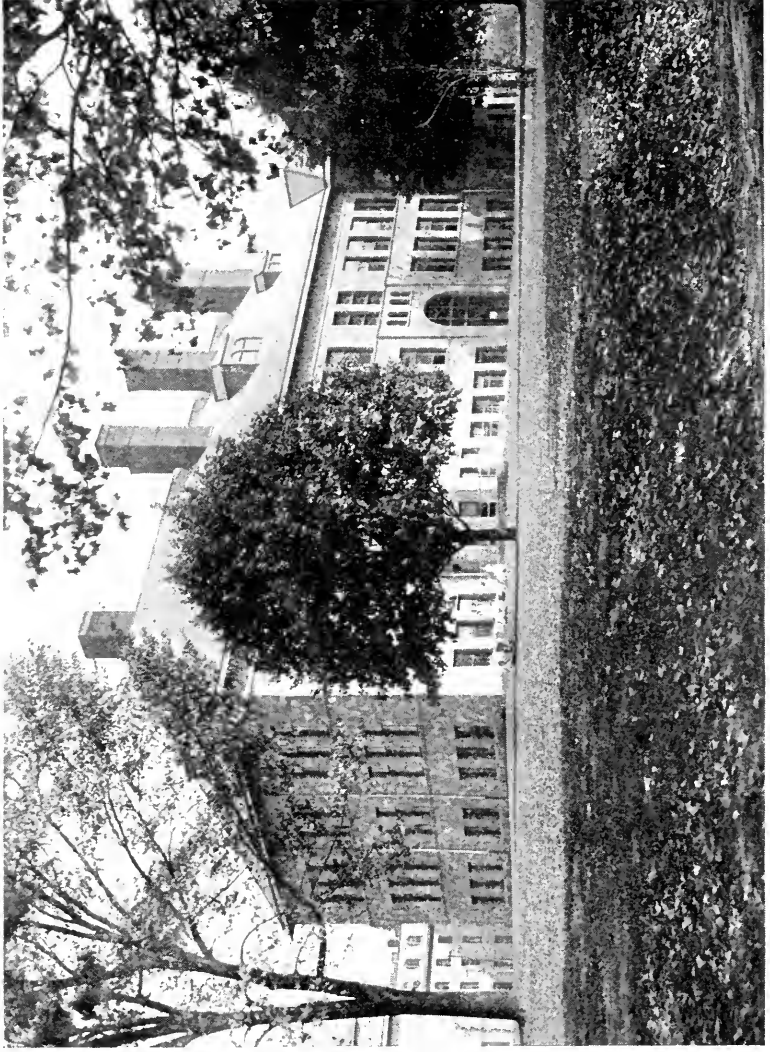
*This elective is provided so that those desiring to emphasize the sub-primary field may be able to take Kindergarten Theory, Kindergarten Materials and Methods, and may later teach largely in the Kindergarten.

Third Semester

Student Teaching, School Efficiency and Conferences	15	15
Teaching of Primary Subjects	3	3
Physical Education	3	1
	<hr/>	<hr/>
	21	19

Fourth Semester

History and Principles of Education	3	3
Children's Literature and Story Telling	3	3
Educational Sociology	3	3
Art Appreciation	2	2
Music	2	2
Elementary School Hygiene	3	3
Physical Education	3	1
Elective	3	3
	<hr/>	<hr/>
	22	20



State Normal School

RECITATION HALL

West Chester, Pa.

GROUP II

Intermediate

First Semester

	Periods	Cr. Hrs.
Introduction to Teaching	3	3
English Fundamentals	3	3
English Composition	2	2
Oral Expression	2	2
Nature Study	2	2
Freehand Drawing	3	3
Music	3	3
Personal and School Hygiene	2	2
Physical Education	3	1
	<u>23</u>	<u>21</u>

Second Semester

Psychology and Child Study	3	3
English Composition	2	2
Teaching of Arithmetic	3	3
Teaching of Geography	3	3
Teaching of History	3	3
Music	2	2
Constructive Handwork	2	2
Handwriting	2	1
Nature Study	1	1
Physical Education	3	1
	<u>24</u>	<u>21</u>

Third Semester

Student Teaching, School Efficiency and Conferences.....	15	15
Teaching of English.....	3	3
Physical Education	3	1
	<u>21</u>	<u>19</u>

Fourth Semester

History and Principle of Education	3	3
Juvenile Literature	3	3
Educational Sociology	3	3
Art Appreciation	2	2
Music	2	2
Physical Education	3	1
Elementary School Hygiene	3	3
Elective	2	2
	<u>21</u>	<u>19</u>

GROUP III
Junior High School
First Semester

	Periods	Cr. Hrs.
Introduction to Teaching	3	3
English Fundamentals	3	3
English Composition	2	2
Oral Expression	2	2
Nature Study	2	2
Personal and School Hygiene	2	2
Freehand Drawing	3	3
Music	3	3
Physical Education	2	1
	26	24

Second Semester

Psychology A	3	3
English Composition	2	2
Oral Expression	2	2
Art Appreciation	3	3
Music	3	3
Social and Industrial History of United States	3	3
Economic Geography of United States	3	3
Physical Education	3	1
	22	20

Third Semester

Psychology B	3	3
World Problems in Geography	3	3
Physical Education	3	1
Elective	12	12
English	3-3 or 6-6	
Science I	3-3 or 6-6	
Social Studies I	3-3 or 6-6	
*Mathematics I	6-6	
**Foreign Language	6-6	
	21	19

Fourth Semester

Purpose, Organization and Development of Junior High School	3	3
Physical Education	3	1
Elective	15	15
English	3-3 or 6-6	
Science II	3-3 or 6-6	
Social Studies II	3-3 or 6-6	
Mathematics II	6-6	
Foreign Language II	6-6	
	21	19

These elective courses are open only to those who have taken the corresponding courses in the third semester.

Fifth Semester

Student Teaching, School Efficiency and Conferences	15	15
Guidance	3	3
Physical Education	3	1
Free Elective	2	2
	23	21

Sixth Semester

Educational Sociology	3	3
History and Principles of Education	3	3
Educational Measurements	3	3
Physical Education	3	1
Junior High School Hygiene	3	3
Free Elective	7	7
	22	20

*One year of Algebra and one of Plane Geometry are required in order to specialize in Mathematics.

**Three years of Latin, including Cicero, or two years of a modern foreign language, are required in order to specialize in a given foreign language.

GROUP IV

Rural

First Semester

	Periods	Cr. Hrs.
Introduction to Teaching	3	3
English Fundamentals	3	3
English Composition	2	2
Nature Study	2	2
Personal and School Hygiene	2	2
Freehand Drawing	3	3
Music	3	3
Physical Education	3	1
Oral Expression	2	2
	<u>23</u>	<u>21</u>

Second Semester

Psychology and Child Study	3	3
English Composition	2	2
Teaching of Arithmetic	3	3
Teaching of Geography	3	3
Teaching of Social Studies	3	3
Music	2	2
Constructive Handwork	2	2
Handwriting	2	1
Physical Education	3	1
	<u>23</u>	<u>20</u>

Third Semester

Student Teaching, School Efficiency and Conferences	15	15
Teaching of Reading	3	3
Physical Education	3	1
	<u>21</u>	<u>19</u>

Fourth Semester

History and Principles of Education	3	3
Children's Literature	3	3
Agriculture	3	3
Rural Sociology	2	2
Art Appreciation	2	2
Music	2	2
Physical Education	3	1
Rural School Hygiene	3	3
Elective	3	3
	<u>24</u>	<u>22</u>

GROUP V
Health Supervision

First Semester

Anatomy I	5	5
English Fundamentals	3	3
Sociology	3	3
Hygiene I	1	1
Voice	2	2
Gymnastics I	5	2½
Athletics I	3	1½
Dancing I	3	1
Music	2	1
	26	20

Second Semester

Physiology I	5	5
English Composition	2	2
Psychology	3	3
History of Physical Education	2	2
Oral Expression	2	2
Gymnastics I	5	2½
Athletics I	3	1½
Dancing I	2	1
	24	19

Third Semester

Anatomy II	2	2
Physiological Chemistry	2	2
Physiology of Exercise	2	2
Play and Playgrounds	3	3
Hygiene II	2	2
Mass Games and Athletics	1	1
Construction and Equipment	1	1
Gymnastics II	5	2½
Athletics II	3	1½
Dancing II	2	1
Playground Practice	2	1
	25	19

Fourth Semester

Corrective Gymnastics	4	4
Chemistry of Nutrition	3	3
Play and Playgrounds	3	3
Hygiene II	2	2
Diseases of Children	2	2
First Aid	1	1
Gymnastics II	5	2½
Athletics II	3	1½
Dancing II	2	1
Playground Practice	2	1
	27	21

Fifth Semester

Hygiene III	4	4
Theory and Methods of Physical Education	3	3
Physical Education in Elementary and Secondary Schools	4	4
Physical Diagnosis and Anthropometry	2	2
Elective	2	2
Gymnastics III	5	2½
Athletics III	3	1½
Dancing III	2	1
Antagonistic Exercises	2	1
	27	21

Sixth Semester

Hygiene IV	4	4
Theory and Methods of Physical Education	3	3
Physical Education and Recreation in Rural Communities	2	2
Festivals and Pageants	1	1
School Gardens	1	1
History and Principles of Education	3	3
Gymnastics III	5	2½
Athletics III	3	1½
Dancing III	2	1
Antagonistic Exercises	2	1
	26	20

GROUP VI
Music Supervision
First Semester

	Periods	Cr. Hrs.
Elementary Theory	3	3
Sight Reading	5	5
English Fundamentals	3	3
English Composition	2	2
Dictation	5	5
Chorus	2	1
Physical Education	3	1½
	23	29½

Second Semester

Elementary Harmony	3	3
Dictation	5	5
Sight Reading	3	3
English Composition	2	2
Oral Expression	2	2
Child Voice and Rote Songs	3	3
Chorus	2	1
Physical Education	3	1½
	23	29½

Third Semester

Harmony and Melody	3	3
Melodic Dictation	3	4
Sight Reading	3	3
Material and Methods (Grades 1-6)	3	3
Violin Classes	3	3
Chorus	2	1
Physical Education	3	1½
Introduction to Teaching	4	4
	24	29½

Fourth Semester

Harmony and Melody	3	3
Harmonic Dictation	3	3
Sight Reading	3	3
Material and Methods (Junior High)	3	3
Violin Classes	3	3
Psychology and Child Study	3	3
Chorus	2	1
Physical Education	3	1½
	23	29½

Fifth Semester

Advanced Harmony	3	3
History of Music and Appreciation	3	3
Practice Teaching	5	5
Music Appreciation (Grades)	1	1
Material and Methods (High School)	3	3
Orchestra and Band	4	4
Material and Methods	2	1
Chorus	3	1½
Physical Education	3	1½
	24	29½

Sixth Semester

History of Music and Appreciation	3	3
Community Music	1	1
Orchestral and Choral Conducting	3	3
Care and Classifications of Voices in the High School	2	2
Practice Teaching	5	5
Games, Pageantry and Folk Dances	3	2
Chorus	2	1
Physical Education	3	1½
Organization and Administration	1	1
	23	19½

Brief Description of the Courses of Study

THE STATE COURSE OF STUDY

The state course of study is used as the basis for the courses in the teaching of elementary school subjects.

This description is purposely so brief as to merely suggestive. It should always be remembered that the work is of college grade, no matter what may be the title given to the course, and that since this is a Normal School each subject treated will be regarded in the large from the point of view of those who must use it in the teaching art.

CLASSIFICATION AND NUMBERING OF COURSES

All courses are classified in seven departments. All courses numbered below 10 are common to all groups. A decimal indicates that two or more courses of the same department occur in the same semester. A single digit or the last of two digits indicates the semester in which the course occurs. The first of two digits indicates the group in which the course occurs.

EDUCATION

Education 1—Introduction to Teaching

All groups, 1st semester. 3 periods, 3 hrs. credit

The primary purpose of this course is to aid students in selecting a specific curriculum at the end of the first semester, and to imbue them with a strong professional spirit and high standards of professional ethics. It includes consideration of the different types of teaching service, the general aims of the public schools and, more specifically, the work to be accomplished by the primary, intermediate, junior high and rural schools respectively, a brief sketch of the characteristics of children in these different types of schools and the qualifications required of teachers to meet the needs of children at the different age levels in these different types of schools. The broad social aims of each type of school and its relation to the state are emphasized.

The instruction in this course is closely correlated with frequent visits of observation and participation in the training school.

Education 2—Psychology and Child Study

All groups, 2nd semester. 3 periods, 3 hrs. credit

This is an elementary course in psychology combining the important topics of both general and educational psychology, and forming the basis of the specific courses in educational theory and practice. The chief topics considered are: (a) instinctive tendencies; (b) habit-formation; (c) memory, association (including localization of functions), and economy of learning; (d) the affective life; (e) the thought processes; (f) the extent and causes of individual differences among children and the use of intelligence tests in determining them; (g) the treatment of exceptional children. About one-third of the course is given to the study of the characteristics of children

at the different levels of growth. One laboratory period each week is given to the observation of children. While this course is practically identical in all curricula, there is differentiation in the observaton of children and in the laboratory experiments, each group emphasizing the characteristics of children at the age level of its particular curriculum.

Education 12—Kindergarten Theory

Group 1, 2nd semester. 2 periods, 2 hrs. credit

This course deals primarily with kindergarten aims, purposes, technique, and equipment. Special attention is given to modern tendencies in kindergarten practice, and particularly to the relation of the kindergarten to the primary grades. Observation and participation in the training school is a prominent feature of the course.

Education 13—The Teaching of Primary Subjects

Group 1, 3rd semester. 3 periods, 3 hrs. credit

This course is designed to develop the underlying principles and the details of practice in the teaching of all types of subjects to children of the primary school. It will discriminate between learning which anticipates the use of books and learning through books.

Education 13—School Efficiency

Group 1, 3rd semester. 3 periods, 3 hrs. credit

This course correlates closely with the student teaching, deriving a large part of its meaning from the teaching experience of the student. The instruction is shaped by the aim and purposes of the kindergarten and grades one, two and three, and includes such topics as class-room routine, the organization of the daily study and recitation program; hygienic standards for and care of class-rooms; the making and keeping of records; and is followed by the analysis and study of such class-room technique as the significance of the play spirit in the primary grades; the management of primary grades; the use of seat work; the value of dramatic expression; types of class-room exercises applicable in the primary grades; and the project and problem method as applicable to children of this age; and the practical application of educational tests and scales.

Education 23—School Efficiency

Group 2, 3rd semester. 3 periods, 3 hrs. credit

This course correlates closely with the student teaching, deriving a large part of its meaning from the teaching experience of the student. The instruction is colored and shaped by the purposes and nature of the work in the intermediate grades and includes class-room routine, the daily study and recitation program, hygienic standards for and care of class-rooms, the making and keeping of records, and is followed by the analysis and study of such class-room technique as methods of lesson assignment; types of class-room exercises; efficient methods of study; types of questioning; the value and uses of intelligence and educational tests; and the project and problem

method as applicable to the fourth, fifth and sixth grades. The problem of discipline in these grades receives attention.

Education 33—School Efficiency

Group 3, 3rd semester. 3 periods, 3hrs. credit

This course deals with the principles of instruction common to the teaching of all subjects in the seventh, eighth and ninth grades and is closely correlated with student teaching. Consideration will be given to such topics as types of lessons, the recitation, the assignment, the question, the project and problem method, the socialized recitation, lesson plans, supervised and independent study, the use of educational tests and scales, problems in discipline, economy in class-room management. A considerable part of the time of this course is devoted to a discussion of educational guidance problems. The course analyses the processes and problems of the important types of human occupations, the aptitudes and training required for each, the financial rewards, the hazards, the opportunities and avenues for advancement in each field. As far as possible typical occupations are studied at first hand including occupations of agriculture, manufacture, transportation, exchange, public service, professional service, domestic and personal service, and clerical occupations. The pertinent printed matter in books, pamphlets and magazines is examined and organized.

Education 43—School Efficiency

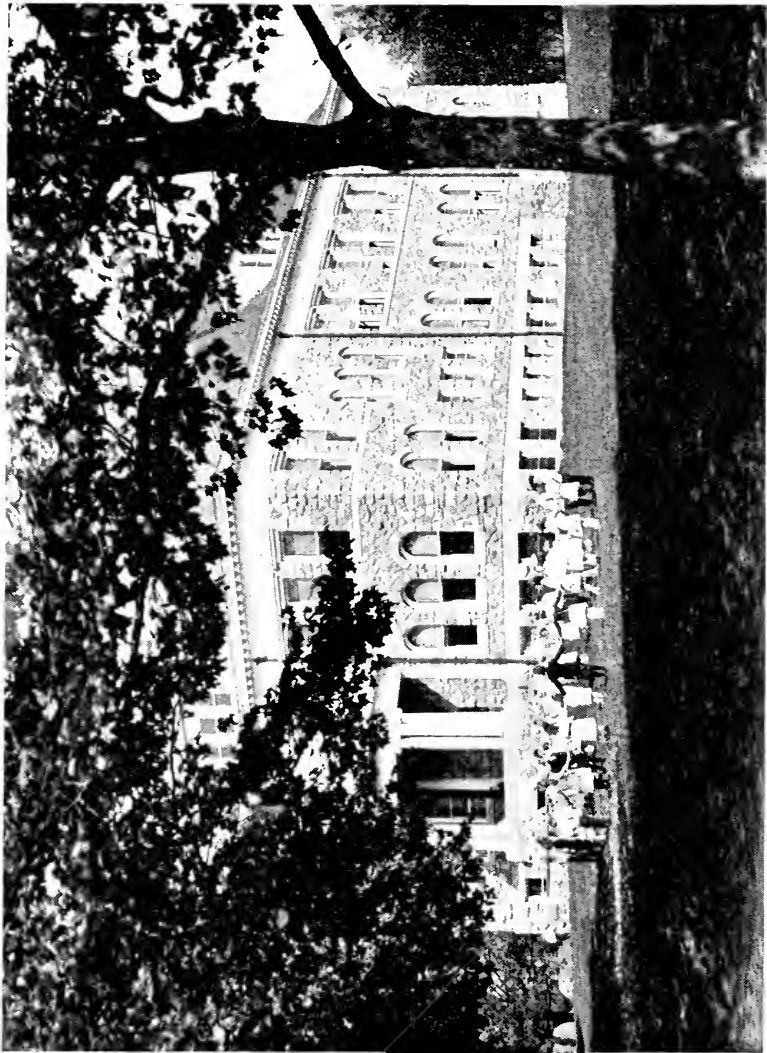
Group 4, 3rd semester. 3 periods, 3 hrs. credit

This course correlates closely with the student teaching, and gets its distinctive quality from the fact that it is made to apply to rural schools. All that has been given under it for the other groups may be taken a suggestive for this also and in this will be treated the problems peculiar to the rural school.

Education 4—History and Principles of Education

All groups, 4th semester. 4 periods 4 hrs credit

This is an intergrating course and aims to bring together and interpret the details of educational theory and practice represented by the preliminary courses, and to leave with the student a unified body of educational doctrine. The course begins with a brief review of the origin and development of present day practices and tendencies in public school education, the large emphasis being placed on these movements that have originated, or at least have come into prominence, since the time of Rousseau. The discussion of such topics as the aims and purposes of education; the development of various conceptions of educational values, and the history and present status of such educational movements as vocational education, the treatment of backward children, scientific measurements, the junior high school, the doctrine of interest, formal discipline, the transfer of learning; project and problem teaching and the socialized recitation.



State Normal School

MODEL SCHOOL

West Chester, Pa.

Education 44—Rural School Problems

Group 4, 4th semester. 3 periods, 3 hrs. credit

The aim of this course is similar to that of the course in School Efficiency in Groups 1, 2 and 3, and includes in addition the defects of the one-room rural school treated constructively, not destructively; the advantages of consolidation, the organization of the rural school, the daily study and recitation program reducing the number of classes by combining grades, alternating grades, correlation, etc.; vitalizing the course of study, club work, community center work, heating and ventilation, play and recreation and beautifying the school grounds. The discipline of the rural school is discussed.

Education 3—Student Teaching

(Including School Efficiency and Conferences)

Groups 1, 2, 4, 3rd semester, and Groups 3, 5, 6, 5th semester. 15 periods, 15 hrs. credit.

THE TRAINING SCHOOL. The training school is the pivotal point of all the work of the normal school. It functions as a laboratory for every department of the school and articulates with peculiar intimacy with the department of education.

OBSERVATION AND PARTICIPATION. Although student teaching is confined to the senior year, junior students are given frequent opportunities for participation in the work of the training school and observation of expert teaching in the training school is a feature of all the courses in education and of many other courses throughout the curricula. One critic teacher is assigned to each class-room and demonstration lessons are taught from time to time in exemplification of the various phases of good educational practice. Group Directors, who are experts in their several lines, keep the work of the Normal School and that of the Practice School very closely linked together.

DISTRIBUTION OF TIME. A minimum of two consecutive sixty-minute periods per day for one semester is given to student teaching. Where two student teachers are assigned to the same class in the training school the assignments are so adjusted that each student teacher has a definite problem. The distribution of teaching time is designed to progressively give to the student an increasing class responsibility.

LESSON PLANS. Plan forms are used upon which all lessons taught by student teachers are planned. Critic teachers hold daily conferences with the student teachers under their charge and approve all lesson plans of student teachers before the lessons are taught.

STUDENT TEACHERS. Every student teacher confines his teaching to the grades of the group which he has elected. Student teachers electing group 1 and group 2 have practice experience in all the subjects of the curriculum and, if possible, in all the grades of the group. Student teachers electing group 3 confine their practice teaching largely to the subjects in which the student has elected to specialize and, if possible, have practice teaching in all the grades of the group. Student teachers electing group 4 confine their practice teaching largely to the rural one-room ungraded school and have

opportunity for contact with the community problems. All assignments for student teachers contemplate the completion of a unit problem.

TRAINING CLASSES. Training classes aim to have not less than twenty nor more than thirty pupils; that is, enough pupils to set up a normal social situation and yet not so many as to unduly tax the limited skill of the teacher.

THE PUPILS. The pupils in the training school by reason of the careful planning of each lesson and the close supervision of expert teachers, as well as through the use of abundant and elaborate equipment of the normal school, are most favorably situated to secure the best possible education.

ENGLISH AND FOREIGN LANGUAGE ENGLISH

English 1—English Fundamentals

All groups, 1st semester. 3 periods, 3 hrs. credit

The purpose of this course is to acquaint the student with the source of material in English and the forms of correct expression.

A definite standard of written and spoken English must be acquired and maintained by all students. Further work in English without extra credit will be required of all who fail to reach and maintain this standard.

A few periods of instruction are given in the method of classifying and cataloging books and in the use of reference books, readers' guides, etc.

About a third of the time of the course is devoted to a thorough review in the basic principles of English grammar and special attention is paid to the structure of sentences and the syntax of their various parts. The course includes a brief history of the language and the principles underlying its development.

About a sixth of the time of the course is devoted to a study of words including pronunciation, diacritical marking based on a generally recognized system of phonetics and attention is paid to basic principles in etymology.

English 1, 2—English Composition

All groups, 1st and 2nd semesters. 2 periods, 2 hrs. credit each semester

This course includes a thorough study of the forms of English prose composition together with much practice in writing. The four types of English prose—narration, description, exposition and argumentation—are carefully studied and analyzed with reference to form, content and technique. Special attention is given to the essay and the short story as media of prose expression and students are required to write frequent themes illustrative of the various prose forms discussed. These are made the subject of class criticism and discussion. The teacher in charge of the class meets the students from time to time for personal consultation.

English 2—Oral Expression**All groups, 2nd semester. 2 periods 2 hrs. credit**

This course is designed primarily to insure (1) a good teaching voice and (2) effective address with facility and ease in oral expression.

English 12—The Teaching of Primary Reading**Group 1, 2nd semester. 3 periods, 3 hrs. credit**

The primary aim of this course is to enable the student to acquire skill in the teaching of reading to beginners including the development of skill in the use of phonics. The course includes a comparison of the principal methods of teaching reading, and the historical development of various methods of teaching reading is traced. Consideration is given to the psychological processes involved in reading. The student acquires familiarity with the means of measuring efficiency in reading. This course is accompanied with observations of primary reading classes as well as the actual teaching of reading.

English 43—The Teaching of Reading**Group 4, 3rd semester**

The aim of this course is to prepare the student to teach Reading to the children of all grades so that adequate attention may be given to the pupils of the one-room rural school. Oral and silent reading are both treated as are also modern tests and measurements in Reading.

English 14, 44—Children's Literature and Story Telling**Groups 1, 4, 4th semester. 3 periods, 3 hrs. credit —**

This course involves the collection and study of literature in verse and prose suited to children of this age. The selections are studied for the purpose of finding the elements contained therein that are likely to appeal strongly to children. The study of folk tales and fairy stories is included in this course.

The course in story telling covers the principles involved in telling stories to children. It involves also the application of the principles of child psychology and voice training to the telling of stories.

English 23—The Teaching of English**Group 2, 3rd semester. 3 periods, 3 hrs. credit**

The aim in this is to emphasize English in the intermediate grades so that at this impressionable period teachers may know how to fix proper language habits and to fortify them with enough of the theory to render the learner secure.

English 24—Juvenile Literature**Group 2, 4th semester. 3 periods, 3 hrs. credit**

This course is planned to give a foundation for teaching literature and silent reading to pupils of the intermediate grades.

It aims to give an adequate knowledge of those literary types that are most suitable for children of this age.

Magazines and current literature are studied and selections made from these sources as well as from standard authors.

A study is made of the difficulties that children meet in their effort to comprehend thought from the printed page. Students are made familiar with the scientific measurements of silent reading.

MATHEMATICS

Mathematics 22—The Teaching of Arithmetic

Group 2, 2nd semester. 3 periods, 3 hrs. credit

This course aims to develop a systematic presentation of the facts and principles of arithmetic with special emphasis upon the topics that are most significant in the work of the intermediate grades. The treatment illustrates at every step the most effective methods of teaching arithmetic. Attention is given to the results of the recent experiments in the psychological processes involved in the teaching of arithmetic and to the measurement of efficiency in this subject by the standard tests and scales. Observation of the teaching of arithmetic in the intermediate grades is an essential part of the course.

Mathematics 42—The Teaching of Arithmetic

Group 4, 2nd semester. 3 periods, 3 hrs. credit

This course aims to present a systematic study of the topics in arithmetic that are found in the course of study of the rural school. A special effort is made to have students understand how to use the resources of the country in supplying opportunities for the application of arithmetic. Attention is given to the psychology of arithmetic and to the standard measurements in this subject. Observation is an essential part of the course.

SCIENCE

Science 1—Nature Study

All groups, 1st semester. 3 periods, 2 hrs. credit

The term "nature study" is used in a broad sense to cover all phases of elementary science adapted to all groups. This course aims to give the student a definite body of knowledge of common forms of environmental materials and to supply the principles that will guide him in selecting and using environmental materials wherever he may be located. The course includes as wide a range of observation as possible of materials which the prospective teacher may be called upon to use in his work. Field trips are supplemented by laboratory study. For teachers of the upper grades a differentiation is made in favor of materials that supply the basis for further scientific study, especially in the field of biology.

Science 22—The Teaching of Geography**Group 2, 2nd semester. 3 periods, 3 hrs. credit**

The emphasis in this course is upon the use of environmental materials for the purpose of developing in the minds of the children correct geographical concepts as to direction, location and geographical forms. Students have practice in choosing materials for study, as well as demonstrations of the materials and methods employed by others. An attempt is made to furnish instruction that will enable the student later to adapt his knowledge to the environment in which he is teaching. A part of the time is devoted to laboratory and field work.

Science 42—The Teaching of Geography**Group 4, 2nd semester. 3 periods, 3 credits**

This is a general course in geography given from the standpoint of man's reaction to his environment and aims to co-ordinate fundamental principles of geography. The course is developed from the viewpoint of causal relations rather than the mere enumeration of facts and principles. As far as time permits some study is made of regional geography as a type of further application. Students get training in the organization and the presentation of geographical data through the use of the project and problem method; in the preparation and the use of maps, graphs, diagrams, and other illustrative material and in the problems and methods involved in teaching field geography. Students are made familiar with the use of standard educational measurements in geography. The observation of classes in the teaching of geography is a necessary part of the course. Such differentiation in the application of the above principles and methods is made for the different groups as the course of study in geography requires.

Science 44—Agriculture**Group 4, 4th semester. 3 periods, 3 credits**

A large purpose of this course is to give to the teachers of rural schools an insight into and a sympathy with the basic industry of the rural population and to appreciate the larger aspects of this industry as related to our national welfare. The rural teacher is instructed how to relate a knowledge of agriculture to the experiences of rural children with a view to motivating the teaching of common branches. Opportunity is offered for participation in agricultural projects so that teachers can initiate and supervise projects with their pupils. Through this course teachers come in touch with the leaders of agricultural improvement and learn of the available sources of information on agricultural subjects.

SOCIAL STUDIES**Social Studies 22—The Teaching of History****Group 2, 2nd semester. 3 periods, 3 hrs. credit**

This course includes a study of such history as will equip students to teach the history of the intermediate grades as recommended by the state course of study. Observation in these grades is a feature of the course.

Attention is given to teaching civics in the intermediate grades. The course for fourth and fifth grades centers around the idea of community co-operation, emphasizing those who furnish us food, clothing, shelter, medical aid, light, transportation, protection, etc. The work for the sixth grade centers around the idea of industrial co-operation with emphasis upon vocational opportunities, study of community service through occupations, and the qualifications required for each occupation.

Social Studies 42—The Teaching of History

Group 4, 2nd semester. 3 periods, 3 hrs. credit

This is a composite course in the teaching of history and civics using as a basis the report of the committee of eight of the American Historical Association and Bulletin No. 23, 1915, of the United States Bureau of Education, entitled "The Teaching of Community Civics." Special emphasis is laid upon the opportunities for citizenship in rural communities and upon the ultimate dependence which all civilization has upon the products of the soil. This course aims to develop resourcefulness in the student in the use of available text and reference books.

Social Studies 14, 24, 34—Educational Sociology

First three groups, 4th semester. 3 periods, 3 hrs. credit

This course aims to clearly define the meaning of democracy and to discuss the fundamental problems in a democratic social system; to point out the community relationships as expressed in family, church, school, industry and state to the development of democracy; to emphasize the responsibilities of the individual citizen in his vocation, in his political activities, in his use of leisure, and in the many aspects of social intercourse to the life of democracy; and to all the phases of democracy to make clear the responsibilities of teachers and of public education.

Social Studies 44—Rural Sociology

Group 4, 4th semester. 3 periods, 3 hrs. credit

The primary aim of this course is the inculcation in the minds of the students of a love for and just appreciation of the importance of a healthy country life, and includes consideration of such topics as defects of present day country life, treated constructively; the lack of rural pride and rural co-operation; land tenantry, migration from the country to the city and its causes, co-operative buying and selling, the need for scientific agriculture, the country home, the country church, good roads, and the country school as an agent in intellectualizing, socializing and spiritualizing country life.

ARTS

Arts 1—Drawing

All groups, 1st semester. 3 periods, 1½ hrs. credit

The aim of this course is to enable students to teach the public school course of study in drawing, including the representation of common objects, the elementary principles of design, lettering, composition and color harmony

in their application to dress, home, school and community interests; to give students facility and confidence in their ability to draw and illustrate on the blackboard a wide range of school subjects; to develop appreciation of art and ability to teach pupils the appreciation of art, including the study of pictures. Such differentiation is made in this course for the different groups as the course of study requires including the teaching of the elements of mechanical drawing for the upper grades.

Arts 12, 22, 42—Handwriting

First, second and fourth groups, 2nd semester. 2 periods, 1 hr. credit

At the beginning of this course the handwriting of students is measured by one of the handwriting scales and if they fall below the standard set for teachers they are put in special classes for practice. The time of this course is devoted largely to methods of teaching writing and to developing skill in blackboard writing. Students are instructed in the results of the recent investigations in the psychology of writing. Through measuring their own handwriting and the handwriting of children, students become acquainted with the use of handwriting scales.

Arts 12—Constructive Handwork

Group 1, 2nd semester. 4 periods, 2 hrs. credit

This course aims to instruct students in the use of various materials that will enable them to work out simple problems as they arise out of the daily necessities of food, clothing and shelter. Students learn to appreciate the problems that are within the interests of children and how such problems may be graded according to the child's control of technique. The course includes clay modeling, paper and cardboard construction and simple problems in wood and textiles. Students observe demonstrations of this work in the training school and participate in such work.

Arts 14, 24, 44—Art Education

Groups 1, 2, 4th semester. 4 periods, 3 hrs. credit

Arts 1—Music

All groups, 1st semester. 3 periods, 3 hrs. credit

This course presupposes a knowledge of the elements of music. The purpose of this course is to fit students to teach music in the public schools. The salient features of this course are: a treatment of the child voice, a study of the tonal and rhythmic problems of each grade, ear training, melody writing, sight reading, and part singing, a study of the song material adapted to each grade, the use of the phonograph to develop musical appreciation and the development of musical programs. Students are taught how to apply the standard musical tests to discover musical talent. Observation and practice teaching are a requirement of the course.

Arts 12, 22, 42, 14, 24, 44—Music**Groups 1, 2, 4, 2nd and 4th semesters. 2 periods, 2 hrs. credit**

This is a continuation of the above course in music and places emphasis upon the distinctive character of the work in music best suited to the group chosen. It is designed to make each teacher in the schools capable of teaching music under the leadership of a music supervisor; or, in the absence of such a leader, of teaching the children of her grade worthily.

HEALTH EDUCATION**Health 1,1—Personal and School Hygiene****All groups, 1st semester. 2 periods, 1½ hrs. credit**

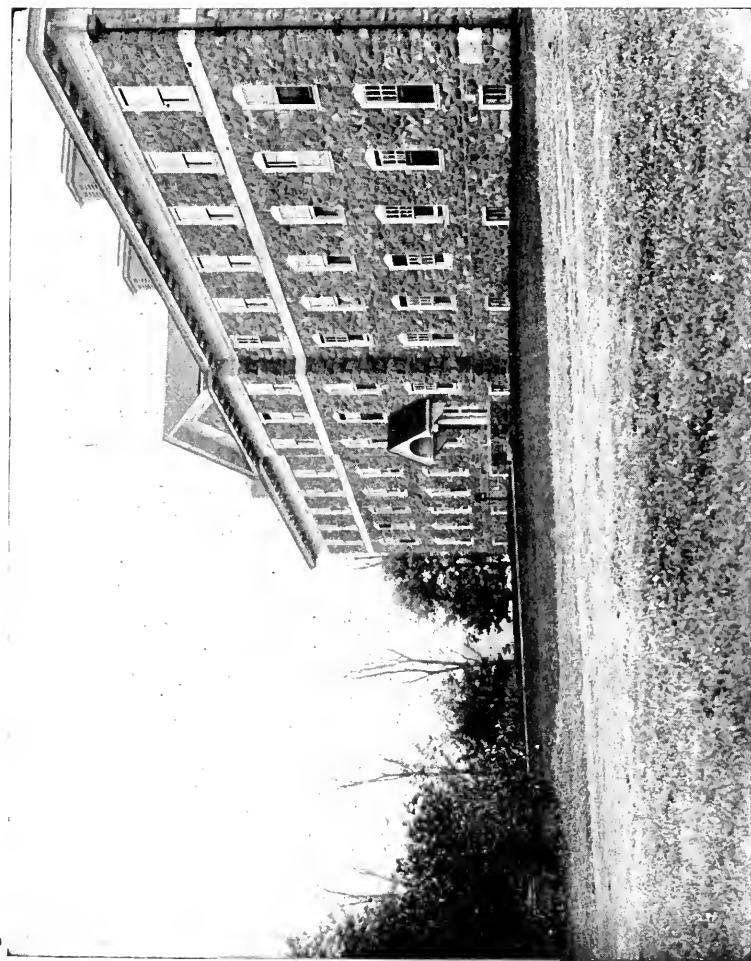
Personal Hygiene—The aim of this course is to secure in the students settled habits in the care of the body which will lead to stronger, healthier and more efficient lives. The course aims to have students understand the hygiene of posture, nutrition, clothing, exercise, fatigue, rest and sleep; the causes of ill health and disease together with their control and prevention. Only those facts of physiology and anatomy which have special significance for hygiene are considered. The instructor will hold personal conferences with students as a part of the course. The aim of this course is to equip the student with the knowledge of school and child hygiene necessary for a teacher.

School Hygiene—The following topics are included: normal growth and its standards; the ill effects of malnutrition, bad air, lack of exercise, excessive exercise, lack of proper rest, defective vision, defective hearing, adenoids, diseased tonsils; remedies for various defects and the best methods of treating them from the school standpoint; hygiene of program making; school sanitation including school furniture, ventilation, heating, lighting, water supply, toilets, etc.; regulations of state and local boards of health; the problem of nutrition as applied to school children, with laboratory exercises in food values and food preparation. Observation of good hygienic school conditions and of good hygiene teaching is an important feature of this course.

One hour each semester—a graded course in health education including physical exercises and games arranged to meet the needs of children at various stages of development through the grades. Discussion of the different theories of play, and the management and equipment of playgrounds. First aid in emergencies is included.

Health 1, 2, 3, 4—Health Education**All groups 1st, 2nd, 3rd, 4th semesters. 3 periods, 1½ hrs. credit each semester**

This course deals with the best methods of inculcating in the child proper habits of health, and includes methods of teaching cleanliness, value of bathing, care of the teeth, proper diet, tooth brush drills, proper clothing, protection of the eyes, importance of fresh air and sunlight, protection against contagious diseases, causes of fatigue, and the value of rest and recreation.



State Normal School

MEN'S DORMITORY

West Chester, Pa.

Two hours each semester—Physical Education—floor work, apparatus, marching, rhythmic work, including clubs, wands and folk dancing, games, athletics, including track and field events, tennis, hockey, hiking, skating, etc. Corrective work including proper exercises for students unable to take regular gymnasium work.

One hour each semester—the graded course in health education for children continued. Demonstration lessons and student teaching. Athletic activities for use on playground. Physical examination of school children.

Social Hygiene—a part of the time of this course is devoted to a discussion of problems of heredity, environment, sex hygiene and eugenics.

Post Graduates

<i>Name</i>	<i>Post Office</i>	<i>County and State</i>
Beaver, George P.,	125 W. 3rd Ave.,	Conshohocken, Montgomery, Pa.
Criswell, L. Ada,	Cochranville,	Chester, Pa.
Darlington, Evalina,	425 Dean St.,	West Chester, Chester, Pa.
Davis, Dorothy S.,	327 S. High St.,	West Chester, Chester, Pa.
Fentem, Beth,	220 Nields St.,	West Chester, Pa., Chester, Pa.
Graul, Florence H.,	200 Barker Ave.,	Sharon Hill, Delaware, Pa.
Lane, Rachel A.,	Oaklands,	West Chester, Chester, Pa.
MacDonald, Willa Way,	126 E. Chestnut St.,	West Chester, Chester, Pa.
Palmer, Mary,	227 W. Miner St.,	West Chester, Chester, Pa.
Sanders, A. Ruth,	Cochranville,	Chester, Pa.
Smith, Mereda M.,	510 S. Walnut St.,	West Chester, Chester, Pa.
Stetler, Margaret E.,	Weatherly,	Carbon, Pa.

Seniors - Women

<i>Name</i>	<i>Post Office</i>	<i>County and State</i>
Abrams, Blanche B.,	1704 Wood Ave.,	Honesdale, Wayne, Pa.
Adams, Mary C.,	Hyde Park,	Bernharts, Reading, Berks, Pa.
Ahrens, Anna M.,	841 Schuykill Ave.,	Reading, Berks, Pa.
Allen, Sara E.,	New Egypt,	New Jersey
Andrews, Marian T.,	609 Locust St.,	Williamsport, Lycoming, Pa.
Armstrong, Margaret S.,	123 Penn Ave.,	Oxford, Chester, Pa.
Arment, Elizabeth J.,	Chadds Ford,	Delaware, Pa.
Avery, Dorothy A.,	804 E. 16th St.,	Chester, Delaware, Pa.
Bachman, Alma M.,	112 W. Coal St.,	Shenandoah, Schuylkill, Pa.
Balderson, May W.,	Newtown,	Bucks, Pa.
Ball, Edyth A.,	54 N. Wycombe Ave.,	Lansdowne, Delaware, Pa.
Barrett, Ursula,	532 Maplewood Ave.,	Ambridge, Beaver, Pa.
Baxter, Anna J.,	1016 Kerlin St.,	Chester, Delaware, Pa.
Baxter, Edna M.,	25 W. Chestnut Ave.,	Merchantville, New Jersey
Bearman, Edna M.,	3186 S. Atlanta Road,	Camden, New Jersey
Beatty, Eugenia G.,	316 E. Broad St.,	Chester, Delaware, Pa.
Bennett, Miriam,	320 W. Farnance St.,	Norristown, Montgomery, Pa.
Benson, Anna P.,	901 Clifton Ave.,	Collingdale, Delaware, Pa.
Biery, Catherine M.,	1311 Chew St.,	Allentown, Lehigh, Pa.
Bishop, Florence E.,	631 N. Center St.,	Bethlehem, Northampton, Pa.
Rittner, Emilie L.,	223 South St.,	E. Mauch Chunk, Carbon, Pa.
Blackburn, Blanche,	New Paris,	Bedford, Pa.
Blackburn, Celeste E.,	Kemblesville,	Chester, Pa.
Bogert, Naomi E.,	404 N. 12th St.,	Allentown, Lehigh, Pa.
Boggs, Myrtle E.,	Chatwood,	West Chester, Chester, Pa.
Bone, Evelyn A.,	301 W. Main St.,	Coatesville, Chester, Pa.
Bonsall, Margaret J.,	Christiana,	Lancaster, Pa.
Botz, Marguerite E.,	247 S. 8th St.,	Lebanon, Lebanon, Pa.
Bowers, Madeline W.,	Yardley,	Bucks, Pa.
Boyd, Ruth E.,	Nottingham,	Chester, Pa.
Boynton, Mary E.,	1048 N. 5th St.,	Reading, Berks, Pa.
Bray, Margaret M.,	Whitford,	Chester, Pa.
Breakley, M. Theresa,	137 E. Miner St.,	West Chester, Chester, Pa.
Breslin, Anna C.,	235 East Ave.,	Mt. Carmel, Northumberland, Pa.
Bross, Lillie L.,	Jonestown,	Lebanon, Pa.
Brown, Catherine I.,	912 Central Ave.,	Chester, Delaware, Pa.
Brown, Katherine A.,	31 W. Oak St.,	Shenandoah, Schuylkill, Pa.
Brusch, Ruth H.,	Norristown, R. D. 3,	Montgomery, Pa.

<i>Name</i>	<i>Post Office</i>	<i>County and State</i>
Burke, Aldona V.,	Gilberton,	Schuylkill, Pa.
Burke, Jean A.,	164 S. Wyoming St., Hazleton,	Luzerne, Pa.
Burns, Irma,	Millersburg,	Dauphin, Pa.
Calland, Frances S.,	5930 Walton Ave.,	Philadelphia, Pa.
Calligan, Muriel N.,	15 E. Felton St., Ridley Park,	Delaware, Pa.
Campbell, E. Clare,	Phoenixville, R. D.,	Chester, Pa.
Carr, Hanna M.,	Gradyville,	Delaware, Pa.
Caskey, Eleanor M., 918	Delaware Ave., Bethlehem,	Northampton, Pa.
Castor, Dorothy R.,	7th and Broad Sts., Emaus,	Lehigh, Pa.
Chattaway, Margaret R.,	Monongahela,	Washington, Pa.
Chaxelle, Kathryn T.,	Brandywine Summit,	Delaware, Pa.
Chertok, Elizabeth,	124 S. 5th Ave., Coatesville,	Chester, Pa.
Cheyney, A. Ethel,	Brandywine Summit,	Delaware, Pa.
Clark, Beatrice M.,	1212 Tatnall St., Wilmington,	Delaware
Clarke, Eleanor K., 232	E. Mauch Chunk St., Tamaqua,	Schuylkill, Pa.
Clark, Mildred M.,	657 Ferry St., Easton,	Northampton, Pa.
Coleman, Olwen, 119	Susquehanna Ave., Olyphant,	Lackawanna, Pa.
Collins, Jessie E.,	107 Park St., Ridley Park,	Delaware, Pa.
Cope, Mary A.,	423 Race St., Perkasie,	Bucks, Pa.
Cotterel, Mary E.,	171 W. Oley St., Reading,	Berks, Pa.
Cox, Anna C.,	Lost Creek,	Schuylkill, Pa.
Coxe, Helen E.,	246 Robert St., Alden,	Luzerne, Pa.
Cox, M. Louise,	Crum Lynne,	Delaware, Pa.
Craig, Margaret G.,	214 E. Broad St., Chester,	Delaware, Pa.
Cruman, S. Elvera,	238 Iona Ave., Narberth,	Montgomery, Pa.
Cruse, Elva C.,	Picture Rocks,	Lycoming, Pa.
Curley, Nora R.,	42 Main St., Lost Creek,	Schuylkill, Pa.
Curtiss, Evelyn,	920 14th Ave., Moore,	Delaware, Pa.
Daniels, Audrey B.,	Pennsgrove, R. D. 1,	New Jersey
Davis, Alice B.,	106 Palm St., Olyphant,	Lackawanna, Pa.
Davis, Frances K., 24	S. Washington St., Wilkes-Barre,	Luzerne, Pa.
Davis, Margaret H.,	715 Monroe St., Scranton,	Lackawanna, Pa.
Deem, Mary F.,	1046 N. 11th St., Reading,	Berks, Pa.
Dennis, Irene E.,	218 Broadway, Bangor,	Northampton, Pa.
Dickinson, Ethel G.,	427 S. 16th St., Reading,	Berks, Pa.
Dinkelacker, Katherine	M., 227 N. Farson St.,	Philadelphia, Pa.
Dinkelacker, S. Ethelwyn,	227 N. Farson St.,	Philadelphia, Pa.
Divine, Mildred C.,	121 Magnolia St., West Chester,	Chester, Pa.
Dowlin, Doris, 122½	E. Gay St., West Chester,	Chester, Pa.
Doyle, Anna M.,	Mt. Carmel,	Northumberland, Pa.
Doyle, Margaret V., 1466	Boothwyn Road, Marcus Hook,	Delaware, Pa.
Durborrow, Marion C.,	18 N. 20th St., Harrisburg,	Dauphin, Pa.
Earnest, Grace E.,	Jonestown,	Lebanon, Pa.
Eavenson, Ruth S.,	29 Estaugh Ave., Haddonfield,	New Jersey
Edris, Margaret A.,	Jonestown,	Lebanon
Eldridge, Hazel B.,	604 S. Walnut St., West Chester,	Chester, Pa.
Ellis, Ethel E.,	Oswayo,	Potter, Pa.
Epphimer, Esther M.,	21 Chestnut St., E. Downingtown,	Chester, Pa.
Evans, Dorothy V., 331	N. Hyde Park Ave., Scranton,	Lackawanna, Pa.
Evans, Mary Edgerton,	Glen Mills,	Delaware, Pa.
Evans, Mary E., 306	Susquehanna Ave., Scranton,	Lackawanna, Pa.
Facciollia, Luey E.,	124 E. Gay St., West Chester,	Chester, Pa.
Farrell, Mary E.,	203 W. Chestnut St., West Chester,	Chester, Pa.
Faust, Helen N.,	Summeytown,	Montgomery, Pa.
Finley, Mae Anna C.,	30 Main St., Tremont,	Schuylkill, Pa.
Firth, Mary C.,	Yeagertown,	Mifflin, Pa.
Fisher, Gertrude, 232	E. Center St., Mahanoy City,	Schuylkill, Pa.
Fitzpatrick, Nelle E.,	21 Sullivan St., Cressona,	Schuylkill, Pa.
Fleming, Florence A.,	1026 E. Main St., Coatesville,	Chester, Pa.

<i>Name</i>	<i>Post Office</i>	<i>County and State</i>
Fontaine, Viola O.,	219 Tilghman St.,	Chester, Delaware, Pa.
Ford, Sara P.,	121 E. Gay St.,	West Chester, Chester, Pa.
Forgeng, Helen E.,	232 N. Lincoln Ave.,	Scranton, Lackawanna, Pa.
Foster, Edith T.,	Belvoir Ave.,	Norristown, Montgomery, Pa.
Fowler, Florence H.,	Birchrunville,	Chester, Pa.
Francis, Jeannette H.,	125 Howard Ave.,	Jersey Shore, Lycoming, Pa.
Freudenberger, Elizabeth,	428 4th Ave.,	Bethlehem, Lehigh, Pa.
Furness, Ethel,	Erwinna,	Bucks, Pa.
Gallagher, Grace M.,	347 Locust St.,	Ambridge, Beaver, Pa.
Gaughan, Anna E.,	107 Richard St.,	Girardville, Schuylkill, Pa.
Gaughan, Mary E.,	Mahanoy Plane,	Schuylkill, Pa.
Gibbs, Elizabeth M.,	1120 Wyoming Ave.,	Forty-Fort, Luzerne, Pa.
Gibson, Dorothy M.,	315 N. West St.,	Allentown, Lehigh, Pa.
Gilbert, Rosa F.,	Bechtelsville,	Berks, Pa.
Glahn, Charlotte F.,	29 Bidlack St.,	Forty-Fort, Luzerne, Pa.
Glazer, Beatrice B.,	211 Lackawanna St.,	Olyphant, Lackawanna, Pa.
Glover, Pamela V.,	Millsboro,	Delaware
Gorman, Violet C.,	St. Clair,	Schuylkill, Pa.
Grady, Irene C.,	Montgomery,	Lycoming, Pa.
Graeff, Dorothy E.,	936 Spring St.,	Reading, Berks, Pa.
Greene, Anna M.,	509 N. Olive St.,	Media, Delaware, Pa.
Green, Jessie M.,	1200 E. Centre St.,	Mahanoy City, Schuylkill, Pa.
Grey, Emily P.,	643 Edwards Ave.,	Pottsville, Schuylkill, Pa.
Griffith, Anna E.,	100 Catawissa St.,	Nesquehoning, Carbon, Pa.
Griscom, Verna,	Medford,	New Jersey
Grover, Carrie V.,	West Chester, R. D. 7,	Chester, Pa.
Haldeman, Abigail B.,	Springville,	Susquehanna, Pa.
Hall, Hilda H.,	Robesonia,	Berks, Pa.
Hall, Mazie B.,	Henry Ave.,	Wayne, Chester, Pa.
Hallock, Ruth A.,	18 N. Pine St.,	York, Pa.
Harakewicz, Estelle B.,	20 W. Poplar St.,	Shenandoah, Schuylkill, Pa.
Harper, Winifred M.,	West Chester, R. D. 6,	Chester, Pa.
Harris, Helen E.,	600 S. Walnut St.,	West Chester, Chester, Pa.
Hartenstein, Marian A.,	Glen Moore,	Chester, Pa.
Hartman, Esther L.,	108 High St.,	Hellertown, Northampton, Pa.
Hauer, Grace R.,	445 E. King St.,	York, Pa.
Hemphill, Marian B.,	25 Mt. Vernon Ave.,	Pitman, New Jersey
Heritage, Alberta M.,	306 3rd Ave.,	Haddon Heights, New Jersey
Hermann, Mildred I.,	714 N. 3rd St.,	Pottsville, Schuylkill, Pa.
Hess, Beulah L.,	Riegelsville,	Bucks, Pa.
Hibbsman, Leonora,	Riegelsville,	Bucks, Pa.
Hiegley, Grace M.,	1330 W. Market St.,	Bethlehem, Lehigh, Pa.
Hiestand, Frances M.,	351 W. King St.,	York, Pa.
Hobbs, Ruth C.,	320 N. Law St.,	Allentown, Lehigh, Pa.
Hoffman, Elizabeth,	Chadds Ford,	Delaware, Pa.
Holahan, Elizabeth M.,	114 N. Centre St.,	Pottsville, Schuylkill, Pa.
Hoopes, Constance T.,	416 W. Union St.,	West Chester, Chester, Pa.
Hoopes, Frances O.,	Avondale,	Chester, Pa.
Hoopes, Ruth E.,	Avondale,	Chester, Pa.
Hoshour, Rebekah E.,	Roaring Spring,	Blair, Pa.
Hottenstein, Anna M.,	1809 Fairview Ave.,	Easton, Northampton, Pa.
Hottenstein, M. Dorothy,	403 Union St.,	Millersburg, Dauphin, Pa.
Hoyt, Elizabeth M.,	Trucksville, R. D.,	Luzerne, Pa.
Huber, Olive L.,	1011 Upland Ave.,	Chester, Delaware, Pa.
Hughes, Beatrice M.,	1421 W. 3rd St.,	Chester, Delaware, Pa.
Humphreys, Erna M.,	Fullerton,	Lehigh, Pa.
Hunsberger, Mabel S.,	East Greenville,	Montgomery, Pa.
Hunsberger, Mildred L.,	Richlandtown,	Bucks, Pa.

<i>Name</i>	<i>Post Office</i>	<i>County and State</i>
Hunter, Marguerite A.	Lansdale,	Montgomery, Pa.
Huntsinger, Irene,	Hegins,	Schuylkill, Pa.
Huyett, Violet M.,	Wernersville,	Berks, Pa.
Jacks, Elizabeth,	1346 Turner St., Allentown,	Lehigh, Pa.
Jacobs, Esther M.,	Burnham,	Mifflin, Pa.
Johnson, Mary E.,	325 N. Darlington St.,	West Chester, Chester, Pa.
Johnston, Edna B.,	17 W. Lancaster Ave.,	Ardmore, Montgomery, Pa.
Jones, Amy R.,	411 S. Matlack St.,	West Chester, Chester, Pa.
Jones, Anna D.,	Bridgewater,	Bucks, Pa.
Jones, Anna W.,	125 Gaylord Ave.,	Plymouth, Luzerne, Pa.
Jones, Edythe S.,	58 Howard St.,	Wilkes-Barre, Luzerne, Pa.
Jones, Ruth B.,	917 S. 9th St.,	Scranton, Lackawanna, Pa.
Jordan, Rose M.,	Stewartstown,	York, Pa.
Joyce, Frances B.,	128 W. Biddle St.,	West Chester, Chester, Pa.
Judt, Ella E.,	207 N. 2nd St.,	Allentown, Lehigh, Pa.
Kachel, Irma C.,	Chester Springs,	Chester, Pa.
Kaplan, Sylvia,	914 Pine St.,	Scranton, Lackawanna, Pa.
Kauterman, Viola C.,	126 St. John St.,	Schuylkill Haven, Schuylkill, Pa.
Keisen, Margaret E.,	1418 Pine St.,	Norristown, Montgomery, Pa.
Kelly, Josephine G.,	West Grove,	Chester, Pa.
Kelly, Marguerite R.,	West Grove,	Chester, Pa.
Kelly, Rose I.,	739 Lincoln St.,	Dickson City, Lackawanna, Pa.
Kennedy, Margaret J.,	30 Pine St.,	Wilkes-Barre, Luzerne, Pa.
Kenney, Anna T.,	Connerton,	Schuylkill, Pa.
Kern, Ella K.,	Coopersburg,	Lehigh, Pa.
Kerr, Bertha V.,	404 S. Union St.,	Kennett Square, Chester, Pa.
Kiehl, Marion E.,	415 N. Market St.,	Millersburg, Dauphin, Pa.
King, S. Janette,	Longwood,	Kennett Square, Chester, Pa.
Kinkaid, Mildred B.,	Moore,	Delaware, Pa.
Klees, Kathryn T.,	351 W. 4th St.,	Mt. Carmel, Northumberland, Pa.
Kline, Lovina,	Berks,	Berks, Pa.
Knoll, Margaret S.,	Emaus,	Lehigh, Pa.
Knuckey, Mildred A.,	60 Bedford St.,	Forty Fort, Luzerne, Pa.
Kreider, Dorothy E.,	Jonestown,	Lebanon, Pa.
Krimmel, Josephine N.,	120 Pike St.,	Port Carbon, Schuylkill, Pa.
Krise, Margaret J.,	49 Bedford St.,	Forty Fort, Luzerne, Pa.
Krueger, Estelle W.,	Quakertown, R. D. 3,	Bucks, Pa.
Landis, Florence R.,	Perkasie,	Bucks, Pa.
Landis, Sally H.,	Perkasie,	Bucks, Pa.
Lane, Marguerite D.,	9 Penna. Ave.,	Tunkhannock, Wyoming, Pa.
Larkin, Helen R.,	429 W. Miner St.,	West Chester, Chester, Pa.
Latshaw, Lola C.,	Bechtelsville,	Berks, Pa.
Lauer, Mary W.,	Ambler,	Montgomery, Pa.
Laughlin, Anna T.,	376 W. Main St.,	Girardville, Schuylkill, Pa.
Leacock, Emmeline,	507 N. New York Ave.,	Atlantic City, New Jersey
Leinbach, A. Magdalene,	Esterly,	Berks, Pa.
Lewis, Jeanette V.,	1006 Kerlin St.,	Chester, Delaware, Pa.
Liggett, Keturah D.,	25 Price St.,	West Chester, Chester, Pa.
Litzenberg, Ella H.,	1019 County Line,	Bryn Mawr, Montgomery, Pa.
Loftain, L. Grace,	Ivyland,	Bucks, Pa.
Long, I. Mae,	116 E. Penna. St.,	Muncy, Lycoming, Pa.
Loos, H. Marguerite,	178 N. Main St.,	Manheim, Lancaster, Pa.
Lumms, Mabel A.,	207 E. Commerce St.,	Bridgeton, New Jersey
McAllister, Florence E.,	West Chester, R. D. 6,	Chester, Pa.
McClain, Virginia R.,	218 W. Biddle St.,	West Chester, Chester, Pa.
McClellan, Elizabeth L.,	411 W. Market St.,	York, York, Pa.
McCloskev, Helen M.,	140 F St.,	Johnstown, Cambria, Pa.
McDonald, Ruth M.,	240 Canaan St.,	Carbondale, Lackawanna, Pa.
McGuire, Margaret,	323 Pine St.,	Mahanoy City, Schuylkill, Pa.

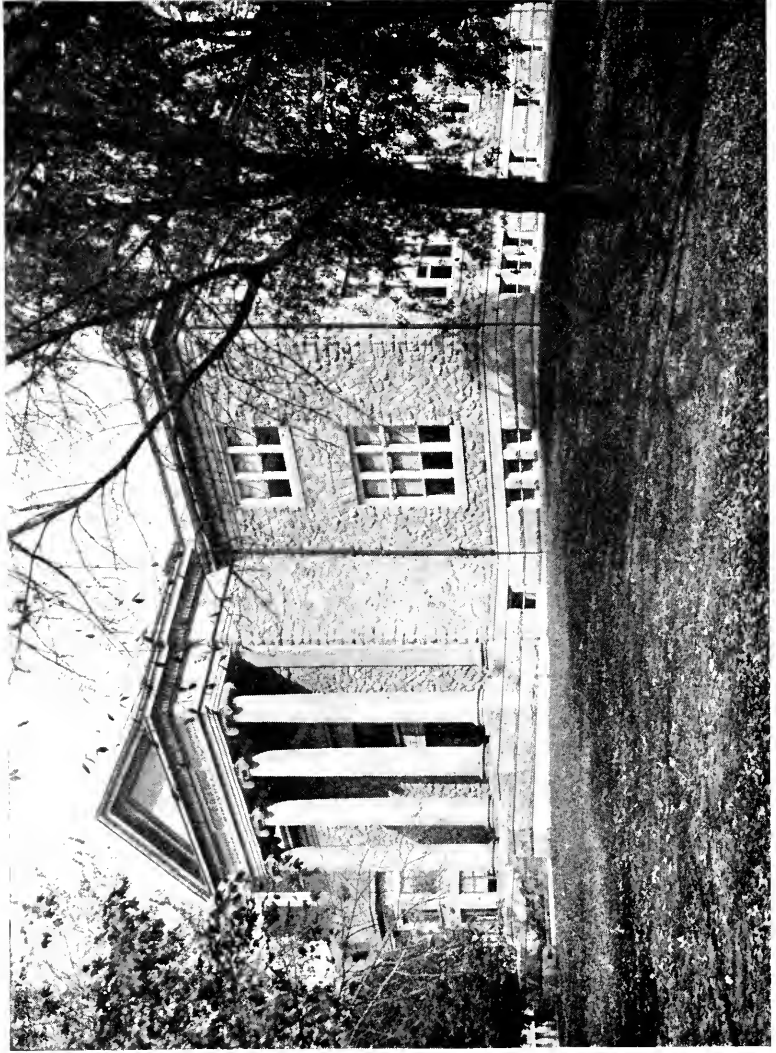
<i>Name</i>	<i>Post Office</i>	<i>County and State</i>
McManamon, Alice E.,	135 Lincoln St., Wilkes-Barre,	Luzerne, Pa.
McNeil, Sara V.,	Chatwood, West Chester,	Chester, Pa.
Mack, Eleanor D.,	417 Hazle St., Wilkes-Barre,	Luzerne, Pa.
Mahon, Mary R.,	516 S. River St., Wilkes-Barre,	Luzerne, Pa.
Mahoney, Kathryn L.,	136 A St., Girardville,	Schuylkill, Pa.
Main, Nellie E.,	Hulmeville,	Bucks, Pa.
Mainwaring, Martha,	1242 Academy St., Scranton,	Lackawanna, Pa.
Maley, Julia E.,	Heckscherville,	Schuylkill, Pa.
Malin, Isabel S.,	118 Sibley Ave., Ardmore,	Montgomery, Pa.
Mann, Lurissa M.,	931 Madison Ave., Scranton,	Lackawanna, Pa.
Markley, L. Mac,	Zieglersville,	Montgomery, Pa.
Marshall, Hilda E.,	28 S. 8th Ave., Coatesville,	Chester, Pa.
Martayak, Anne M.,	553 E. Arthur St., Hazleton,	Luzerne, Pa.
Masterson, Margaret M.,	65 Race St., Wilkes-Barre,	Luzerne, Pa.
Maule, Marian E.,	Cochranville,	Chester, Pa.
Maurer, Emily M.,	Tremont,	Schuylkill, Pa.
Messick, Mabel,	Millsboro,	Delaware
Messinger, Lena M.,	444 S. Main St., Bangor,	Northampton, Pa.
Meyer, Josie M.,	320 State St., Camden,	New Jersey
Milburn, Elizabeth,	Malvern,	Chester, Pa.
Milkman, Idah S.,	1321 N. Main St., Scranton,	Lackawanna, Pa.
Millard, Ellen,	Tidioute,	Warren, Pa.
Miller, Alice R.,	1 Murray Place, Ardmore,	Montgomery, Pa.
Miller, Charlotte A.,	367 Washington St., Phoenixville,	Chester, Pa.
Miller, Christine H.,	1319 Lincoln Ave., Moore,	Delaware, Pa.
Miller, Julia,	105 S. 2nd St., North Wales,	Montgomery, Pa.
Mitch, Cora,	Sellersville,	Bucks, Pa.
Mitchell, Margaret E.,	Ridley Park,	Delaware, Pa.
Mitchell, Mary C.,	911 Linden St., Bethlehem,	Northampton, Pa.
Moore, Ethel B.,	139 Rosehill Ave., West Grove,	Chester, Pa.
Moran, Kathryn H.,	136 John St., Kingston,	Luzerne, Pa.
Morris, Anita M.,	506 4th St., Towanda,	Bradford, Pa.
Morris, Claire G.,	North East,	Maryland
Morton, Esther,	Oxford, R. D. 4,	Chester, Pa.
Mullin, Sarah C.,	Maple Glen,	Montgomery, Pa.
Mummy, Pearl,	Ringtown,	Schuylkill, Pa.
Myers, Laura M.,	521 W. Center St., Mahanoy City,	Schuylkill, Pa.
Myers, Mary G.,	Phoenixville, R. D. 1,	Chester, Pa.
Nagle, Helen L.,	204 N. 3rd St., Pottsville,	Schuylkill, Pa.
Neely, Helen E.,	Muddy Creek Forks,	York, Pa.
Newhart, Beatrice M.,	Stockertown,	Northampton, Pa.
Nolte, Naomi A.,	251 N. 3rd St., Columbia,	Lancaster, Pa.
Noon, Aresta M.,	218 Center St., Ashland,	Schuylkill, Pa.
Note, Marian L.,	Yeadon,	Delaware, Pa.
Oakes, Kathryn A.,	Brandywine Summit,	Delaware, Pa.
Oakey, Edith E.,	405 Bowman St., Dickson City,	Lackawanna, Pa.
O'Connor, Mary M.,	40 Oregon St., Wilkes-Barre,	Luzerne, Pa.
Oswald, Pauline A.,	109 Fuller St., W. Catasaqua,	Lehigh, Pa.
Paige, Mary E.,	930 Central Ave., Chester,	Delaware, Pa.
Parry, Ruth A.,	Rushland,	Bucks, Pa.
Pawling, Alice E.,	228 Charles St., Coatesville,	Chester, Pa.
Pecket, Mildred A.,	116 Webster Ave., Downingtown,	Chester, Pa.
Pennington, Edna M.,	708 Merchant St., Coatesville,	Chester, Pa.
Phillips, Anna E.,	417 Broad St., Jersey Shore,	Lycoming, Pa.
Pierce, Margaret A.,	110 Market St., Brownsville,	Fayette, Pa.
Pilgrim, Doris E.,	1407 Wabash Ave., Atlantic City,	New Jersey
Pomraning, Esther	Delta,	York, Pa.
Quinn, Helen C.,	Connerton,	Schuylkill, Pa.

<i>Name</i>	<i>Post Office</i>	<i>County and State</i>
Ralston, Naomi,	93 Moffett St., Plains,	Luzerne, Pa.
Reed, Janet F.,	High Rock,	York, Pa.
Reese, Beatrice J.,	424 E. Miner St., West Chester,	Chester, Pa.
Reever, Mildred D.,	320 S. Duke St., York,	York, Pa.
Reider, Marion E.,	326 N. 2nd St., Reading,	Berks, Pa.
Reilly, Alice M.,	244 Tioga St., Johnstown,	Cambria, Pa.
Reing, Katherine B.,	320 W. Mahanoy Ave., Mahanoy City,	Schuylkill, Pa.
Rhoads, Edith A.,	411 S. Hickory St., Mt. Carmel,	Northumberland, Pa.
Rhodes, Florence E.,	Pottstown, R. D. 2,	Chester, Pa.
Riegert, Marion E.,	Myerstown, R. D. 4,	Lebanon, Pa.
Ritter, Clarissa D.,	433 E. Phila. Ave., Boyertown,	Berks, Pa.
Ritter, Dorothy E.,	Palmerton,	Luzerne, Pa.
Roland, Lydia M.,	409 Printz St., Reading,	Berks, Pa.
Ross, Dorothy B.,	Oxford,	Chester, Pa.
Ross, M. Olive,	2201 N. 2nd St., Harrisburg,	Dauphin, Pa.
Roth, Elisabeth C.,	Highland Park,	Delaware, Pa.
Ryan, Anna M.,	227 W. Centre St., Shenandoah,	Schuylkill, Pa.
Ryan, Gertrude M.,	305 W. Mahanoy Ave., Mahanoy City,	Schuylkill, Pa.
Ryan, Mary C.,	Connerton,	Schuylkill, Pa.
Salter, Adele,	2016 Mt. Vernon St.,	Philadelphia, Pa.
Saxon, Evelyn E.,	4717 Cedar Ave.,	Philadelphia, Pa.
Schappert, Dorothy M.,	Andenreid,	Carbon, Pa.
Schick, Mary M.,	Birdsboro,	Berks, Pa.
Schlecter, Anna,	6009 Oxford St.,	Philadelphia, Pa.
Schmeck, Esther K.,	730 N. 4th St., Catasauqua,	Lehigh, Pa.
Schrack, Helen L.,	Wagontown,	Chester, Pa.
Seltzer, Verna M.,	622 Leonard St., Schuylkill Haven,	Schuylkill, Pa.
Sener, Mary E.,	217 Broadwaywine St., E. Downingtown,	Chester, Pa.
Shauer, Ruth E.,	227 Bridge St., Spring City,	Chester, Pa.
Sheffield, Ruth C.,	27 W. 8th St., Chester,	Delaware, Pa.
Shenk, Dorothy C.,	820 Broadway, Bethlehem,	Northampton, Pa.
Shingle, Evelyn H.,	Honey Brook,	Chester, Pa.
Shollenberger, Marian I.,	118 High St., Schuylkill Haven,	Schuylkill, Pa.
Shope, Mary E.,	Saltito,	Huntingdon, Pa.
Shuoberger, Euphemia S.,	818 N. 7th St., Allentown,	Lehigh, Pa.
Smith, Beatrice E.,	682 Wolf Ave., Easton,	Northampton, Pa.
Smith, Marian G.,	Kennett Square,	Chester, Pa.
Smith, Ruth A.,	911 2nd St., Williamsport,	Lycoming, Pa.
Sonie, Gladys G.,	Newport,	Perry, Pa.
Sprague, Bessie N.,	Allentown, R. D. 2,	Lehigh, Pa.
Sprout, Bessie C.,	115 E. Penn St., Muncy,	Lycoming, Pa.
Stank, Katherine H.,	203 Pine St., Mahanoy City,	Schuylkill, Pa.
Stanton, Alice E.,	327 W. Oak St., Shenandoah,	Schuylkill, Pa.
Stanton, Florence V.,	206 Main St., Schuylkill Haven,	Schuylkill, Pa.
Statler, Mary K.,	309 Carr St., Johnstown,	Cambria, Pa.
Stauffer, Helen M.,	935 Tilghman St., Allentown,	Lehigh, Pa.
Stetson, Isabelle D.,	Essington,	Delaware, Pa.
Still, Helen M.,	Mortonville,	Chester, Pa.
Stoffregen, S. Margaret	Spangler,	Cambria, Pa.
Stoll, Helen G.,	Florin,	Lancaster, Pa.
Stoudt, Ellen C.,	647 Franklin Ave., Palmerton,	Carbon, Pa.
Stout, Helen J.,	307 W. Penn St., Muncy,	Lycoming, Pa.
Strobel, Evelyn M.,	Vandergrift,	Westmoreland, Pa.
Strolis, Regina M.,	242 E. Lloyd St., Shenandoah,	Schuylkill, Pa.
Sweeney, Nora J.,	2829 Poplar St.,	Philadelphia, Pa.
Swope, Cordelia,	18 Southmont Ave., Johnstown,	Cambria, Pa.
Tanguy, Florence J.,	Pocopson,	Chester, Pa.
Teasdale, Elsie M.,	1525 W. Market St., Pottsville,	Schuylkill, Pa.
Templin, Lillian I.,	Honey Brook,	Chester, Pa.

<i>Name</i>	<i>Post Office</i>	<i>County and State</i>
Thalmer, Ethel R.,	555 Center Ave., Reading,	Berks, Pa.
Thomas, Margaret M.,	Emaus,	Lehigh, Pa.
Thompson, Marjorie L.,	42 Mill St., Plains,	Luzerne, Pa.
Thompson, Sara E.,	117 Walnut St., Reedsville,	Mifflin, Pa.
Treby, Huda K.,	Emaus,	Lehigh, Pa.
Trifletti, Josephine W.,	1308 McClellan St.,	Philadelphia, Pa.
Troutman, Mary L.,	Arcola,	Montgomery, Pa.
Troxell, Ruth N.,	5th and Arch Sts., Catasauqua,	Lehigh, Pa.
Valentine, Helen E.,	Ivyland,	Bucks, Pa.
Van Bushkirk, Thelma,	119 Reynolds St., Plymouth,	Luzerne, Pa.
Van Horn, Helen D.,	203 N. Main St., Towanda,	Bradford, Pa.
Wagner, Leila M.,	Table Rock,	Adams, Pa.
Wagoner, Florence C.,	Phoenixville, R. D. 4,	Chester, Pa.
Walker, Anna M.,	Front and Bridge Sts., Catasauqua,	Lehigh, Pa.
Waltz, Dorothy G.,	Parke Ave., Coatesville,	Chester, Pa.
Warncke, Charlotte W.,	542 4th Ave., Bethlehem,	Lehigh, Pa.
Weaver, Kathryn L.,	128 Pear St., Reading,	Berks, Pa.
Weber, Catherine E.,	Mendenhall,	Chester, Pa.
Webster, Amy,	Willow Grove,	Montgomery, Pa.
Weiland, Lillian T.,	627 Main St., Dickson City,	Lackawanna, Pa.
Weller, Maude H.,	712 Glenwood Ave., Johnstown,	Cambria, Pa.
Wentzel, Grace J.,	304 Reading Ave., W. Reading,	Berks, Pa.
Wetherhold, Katherine,	918 N. Front St., Reading,	Berks, Pa.
White, Juliet A.,	225 5th Ave., McKeesport,	Allegheny, Pa.
White, Margaret E.,	16 N. 2nd St., Reading,	Berks, Pa.
Wickersham, Adelaide,	Russellville,	Chester, Pa.
Wilkinson, Isabel S.,	4720 Hazel Ave.,	Philadelphia, Pa.
Williams, Blanche P.,	412 Hodgson St., Oxford,	Chester, Pa.
Williams, Edith K.,	221 N. 9th St., Darby,	Delaware, Pa.
Williams, Grace E.,	2024 N. 16th St.,	Philadelphia, Pa.
Williams, Mary G.,	Malvern,	Chester, Pa.
Wilson, M. Romaine,	Red Lion,	York, Pa.
Woodworth, Mildred H.,	280 Redington Ave., Troy,	Bradford, Pa.
Wright, Mary K.,	236 Fayette St., Johnstown,	Cambria, Pa.
Yarowsky, Anne R.,	233 W. Center St., Shenandoah,	Schuylkill, Pa.
Yerkes, Lydia E.,	606 S. Walnut St., West Chester,	Chester, Pa.
Yohe, Irene,	130 Dorrance St., Kingston,	Luzerne, Pa.
Yost, Elizabeth N.,	Jacobus,	York, Pa.
Yost, Helen R.,	911 S. Cecil St.,	Philadelphia, Pa.
Zapp, Loretta D.,	311 Miller St., Luzerne,	Luzerne, Pa.
Zerbey, Anna,	Port Carbon,	Schuylkill, Pa.
Zenfle, Helen B.,	Media, R. D. 3,	Delaware, Pa.

Seniors—Men

<i>Name</i>	<i>Post Office</i>	<i>County and State</i>
Beaver, Daniel S.,	125 W. 3rd Ave., Conshohocken,	Montgomery, Pa.
Brackin, Walter H.,	Coatesville, R. D. 4,	Chester, Pa.
Burke, Emmett,	Lattimer Mines,	Luzerne, Pa.
Burton, Warren H.,	415 E. Barnard St., West Chester,	Chester, Pa.
Curran, Edward P.,	Morton,	Delaware, Pa.
Deisenroth, Jairus J.,	205 E. Evergreen St.,	Philadelphia, Pa.
Dorsey, Leonard E.,	587 Coates St., Coatesville,	Chester, Pa.
Doyle, Hugh M.,	415 Broad St., Oxford,	Chester, Pa.
Freed, John H.,	Richlandtown,	Bucks, Pa.
Garver, Roy W.,	Orrville, R. D. 3,	Ohio
Heatley, William,	10 W. Gay St., West Chester,	Chester, Pa.
Klippel, Earl F.,	24 Grammercy Park, New York,	New York



State Normal School

LIBRARY

West Chester, Pa.

<i>Name</i>	<i>Post Office</i>	<i>County and State</i>
McFarland, James W.,	Downingtown,	Chester, Pa.
McHugh, James F.,	1219 W. Center St.,	Shenandoah, Schuylkill, Pa.
McKelvie, Clarence L.,	Longwood, Kennett Square,	Chester, Pa.
Miller, Charles E.,	Coatesville, R. D. 4,	Chester, Pa.
Nancarrow, William,	33 Lee Park Ave.,	Wilkes-Barre, Luzerne, Pa.
Patrick, Robert J.,	1026 2nd St.,	Catasauqua, Lehigh, Pa.
Prizer, Howard,	Pottstown, R. D. 2,	Chester, Pa.
Stambaugh, John L.,	Rehrsburg,	Berks, Pa.
Strickland, Edgar L.,	Glen Moore, R. D.,	Chester, Pa.
Terry, Edwin F., 575	Black Horse Road,	Coatesville, Chester, Pa.
Townsend, Kenneth L.,	1247 N. 53rd St.,	Philadelphia, Pa.

Underclass—Women

<i>Name</i>	<i>Post Office</i>	<i>County and State</i>
Abel, Catherine F.,	Bath,	Northampton, Pa.
Adam, Marion M.,	94 S. Main St.,	Mahanoy City, Schuylkill, Pa.
Agnew, Clara E.,	Media,	Delaware, Pa.
Ahern, Kathryn D., 232	N. Darlington St.,	West Chester, Chester, Pa.
Albert, Jessie L.,	67 Ashley St.,	Ashley, Luzerne, Pa.
Albert, Leila P.,	18 Heller Ave.,	Pen Argyle, Northampton, Pa.
Albert, Mabel J.,	326 4th Ave.,	Phoenixville, Chester, Pa.
Allgor, Marguerite E.,	Belmar, R. D. 2,	New Jersey
Althouse, Olive G.,	Parkesburg,	Chester, Pa.
Ammon, Anna M.,	Honey Brook,	Chester, Pa.
Amy, Mildred C.,	480 Broad St.,	Pen Argyle, Northampton, Pa.
Anderson, Ella D.,	43 N. 18th St.,	Easton, Northampton, Pa.
Anderson, Mary,	Rosedale Ave.,	West Chester, Chester, Pa.
Angerth, Anna May,	804 Pembroke Ave.,	E. Lansdowne, Delaware, Pa.
Angstadt, Helen D.,	1340 Kennedy St.,	Reading, Berks, Pa.
Anthony, Elizabeth M.,	30 Prince St.,	Alden Station, Luzerne, Pa.
Arters, Marguerite F.,	934 Madison Ave.,	Reading, Berks, Pa.
Ashton, Viola M.,	McKinley,	Montgomery, Pa.
Aumiller, Esther M.,	1715 Market St.,	Harrisburg, Dauphin, Pa.
Austin, Marjorie D.,	42 Meyers St.,	Forty Fort, Luzerne, Pa.
Bache, Louise E.,	64 W. Broad St.,	Nanticoke, Luzerne, Pa.
Baer, Alberta M.,	94 Virginia Ave.,	Coatesville, Chester, Pa.
Bahr, Verna I.,	611 S. Irving Ave.,	Scranton, Lackawanna, Pa.
Baldwin, Emmarene,	West Grove,	Chester, Pa.
Barber, Mabel,	Nottingham,	Chester, Pa.
Barnard, Laura H.,	330 W. Main St.,	Coatesville, Chester, Pa.
Barnard, Mary H.,	Coatesville R. D. 4,	Chester, Pa.
Barnes, Helen F.,	307 N. Adams St.,	Wilmington, Delaware
Barnett, Dorothy B.,	226 Price St.,	West Chester, Chester, Pa.
Bartman, Lois D.,	Riegelsville,	Bucks, Pa.
Barrow, Elizabeth G.,	247 Enola Road,	Enola, Cumberland, Pa.
Barr, Regina A., 371	Jefferson Ave.,	East Downingtown, Chester, Pa.
Batchelor, Martha A.,	342 E. Miner St.,	West Chester, Chester, Pa.
Bates, Margaret,	5020 Walton Ave.,	Philadelphia, Pa.
Beadling, Ann G.,	Cheltenham,	Montgomery, Pa.
Beale, Martha J.,	1901 Ferry St.,	Easton, Northampton, Pa.
Beam, Mary T.,	Kintnersville,	Bucks, Pa.
Bean, Edith M.,	Upper Black Eddy,	Bucks, Pa.
Bean, Mary E.,	324 N. Olive St.,	Media, Delaware, Pa.
Beck, Katherine,	Bristol,	Bucks, Pa.
Beck, Leona,	Bristol,	Bucks, Pa.
Beckman, Philippina,	1737 Clauser St.,	Hellertown, Northampton, Pa.
Renner, Martha M.,	Glen Moore,	Chester, Pa.
Bergen, Alice B.,	237 Nichols St.,	Pottsville, Schuylkill, Pa.

<i>Name</i>	<i>Post Office</i>	<i>County and State</i>
Berger, Florence I.,	246 Grand Ave., Tower City,	Schuylkill, Pa.
Bernhard, Mildred R.,	Centre Square,	Montgomery, Pa.
Bernstein, Elizabeth,	1743 South St.,	Philadelphia, Pa.
Berry, Cora O.,	202 E. 10th St.,	Wilmington, Delaware
Betts, Lettie K.,	New Hope, R. D. 1,	Bucks, Pa.
Betty, Vera E.,	Montchanin,	Delaware
Bier, Frances J.,	30 W. South St.,	Mahanoy City, Schuylkill, Pa.
Biggard, Harriet W.,	Glenside,	Montgomery, Pa.
Biggard, Sara T.,	Glenside,	Montgomery, Pa.
Bischoff, Charlotte,	825 W. Locust St.,	York, York, Pa.
Bishop, Aline A.,	836 Diamond St.,	Williamsport, Lyoming, Pa.
Bishop, Katherine L.,	631 N. Centre St.,	Bethlehem, Northampton, Pa.
Bissey, Evelyn,	Pipersville,	Bucks, Pa.
Bixler, Sara L.,	Honey Brook,	Chester, Pa.
Blair, Eleanor J.,	1114 W. Airy St.,	Norristown, Montgomery, Pa.
Bottoms, Dorothy M.,	420 Rockland Ave,	Narberth, Montgomery, Pa.
Bowermaster, Fannie,	Christiana,	Lancaster, Pa.
Bowers, Lola V.,	Woodside,	Delaware
Bowman, Blanche M.,	3712 Faust St.,	Philadelphia, Pa.
Bowman, Marian N.,	Sheridan,	Lebanon, Pa.
Boyd, Harriette E.,	106 S. Jardin St.,	Shenandoah, Schuylkill, Pa.
Boyer, Florence I.,	Gladwyn,	Delaware, Pa.
Boyer, E. Mildred,	Clayton,	Delaware
Boyle, Rose R.,	13 E. High St.,	Coaldale, Schuylkill, Pa.
Bray, Ruth B.,	154 Ridge St.,	Freeland, Luzerne, Pa.
Breckenridge, Janet,	Spencertort,	New York
Brelsford, Florence J.,	17 W. Jackson St.,	Wilkes-Barre, Luzerne, Pa.
Brennan, Mary E.,	627 S. 52nd St.,	Philadelphia, Pa.
Breslin, Margaret L.,	333 S. Jardin St.,	Shenandoah, Schuylkill, Pa.
Brigel, Esther E.,	Robesonia,	Berks, Pa.
Brinton, Elizabeth L.,	322 Locust St.,	Oxford, Chester, Pa.
Brosius, Edna M.,	403 Main St.,	Gilberton, Schuylkill, Pa.
Brown, Dorothy H.,	309 N. Franklin St.,	West Chester, Chester, Pa.
Browne, Effie L.,	West Grove,	Chester, Pa.
Brown, Eliza J.,	Nottingham,	Chester, Pa.
Brown, Ethel M.,	Parkerford,	Chester, Pa.
Brown, Ethel M.,	West Chester, R. D. A,	Chester, Pa.
Brown, Madeline,	Rowlandsville,	Maryland
Brown, Mary P.,	Lumberville,	Bucks, Pa.
Brown, Virginia M.,	303 Park St.,	Honesdale, Wayne, Pa.
Bryson, Beulah,	Owings,	S. Carolina
Bulick, Hazel M.,	Reedsville,	Mifflin, Pa.
Burke, Matilda E.,	Kennett Square,	Chester, Pa.
Burkhart, Margaret L.,	Shillington,	Berks, Pa.
Burns, Mary V.,	249 Chapel St.,	Luzerne, Pa.
Caley, Cora T.,	Norristown, R. D. 1,	Montgomery, Pa.
Carlin, Sara E.,	Bridgeport,	Montgomery, Pa.
Carroll, Harriet,	1717 N. 21st St.,	Philadelphia, Pa.
Carroll, Lillian T.,	Oxford,	Chester, Pa.
Cassel, Gertrude,	West Point,	Montgomery, Pa.
Caswell, Marjorie L.,	Phoenixville, R. D. 2,	Chester, Pa.
Cawley, Eleanor M.,	Jefferson Ave.,	Jermyn, Lackawanna, Pa.
Challis, Jane W.,	374 E. Market St.,	Wilkes-Barre, Luzerne, Pa.
Chandlee, Goldie M.,	Woodbine,	York, Pa.
Chandlee, Margaret R.,	Woodbine,	York, Pa.
Chapman, Barbara M.,	705 Chestnut Ave.,	Barnesboro, Cambria, Pa.
Chapman, Frances,	Dalton,	Lackawanna, Pa.
Chard, Helen C.,	38 N. Main St.,	Spring City, Chester, Pa.
Charlton, Susie W.,	S. Langhorne,	Bucks, Pa.

<i>Name</i>	<i>Post Office</i>	<i>County and State</i>
Chaxelle, Amelia,	Brandywine Summit,	Delaware, Pa.
Chertok, Sophie,	124 S. 5th St.,	Chester, Pa.
Chippey, Florence E.,	2223 Ellsworth St.,	Philadelphia, Pa.
Christman, Alice H.,	Zieglerville,	Montgomery, Pa.
Clampitt, Amelia,	38 Market St.,	Salem, New Jersey
Clark, Elizabeth R.,	Penus Park,	Bucks, Pa.
Clark, Hazel E.,	1345 Lehigh St.,	Easton, Northampton, Pa.
Clemens, Frances B.,	Morwood,	Montgomery, Pa.
Cleveland, Jeannette,	149 S. Bennett St.,	Kingston, Luzerne, Pa.
Clouse, Earnestine,	Landisburg,	Parry, Pa.
Clouser, Helen G.,	Freeport,	Armstrong, Pa.
Cobb, Marion E.,	Deerfield Street,	New Jersey
Coble, Elizabeth J.,	5106 Willows Ave.,	Philadelphia, Pa.
Cochran, Nellie S.,	Kennett Square,	Chester, Pa.
Connolly, Margaret Y.,	9 Pleasant St.,	Waverly, New York
Conover, Elva M.,	Parkesburg,	Chester, Pa.
Conard, Euphemia E.,	Jamison,	Bucks, Pa.
Conrad, Florence Z.,	1113 Hamilton St.,	Allentown, Lehigh, Pa.
Cooley, Elva M.,	North Wales,	Montgomery, Pa.
Corbin, Dorothy L.,	304 E. 11th St.,	Wilmington, Delaware
Corbin, Ruth G.,	Ebensburg,	Cambria, Pa.
Cornish, Mildred M.,	128 Main St.,	Phoenixville, Chester, Pa.
Costello, Agnes M.,	227 Wheeler St.,	Scranton, Lackawanna, Pa.
Courtney, Grace E.,	Parkesburg,	Chester, Pa.
Courtney, Rose,	603 W. Centre St.,	Mahanoy City, Schuylkill, Pa.
Cox, Bessie M.,	Wilmington,	R. D. 2, Delaware
Cox, Janet T.,	200 Ambler St.,	Quakertown, Bucks, Pa.
Crawford, Amelia A.,	105 S. High St.,	West Chester, Chester, Pa.
Crawford, Grace D.,	West Grove,	R. D. 1, Chester, Pa.
Crawley, Mary M.,	56 Maxwell St.,	Wilkes-Barre, Luzerne, Pa.
Criswell, Joyce R.,	Lewisburg,	R. D. 2, Union, Pa.
Crouthamel, Florence,	Pipersville,	Bucks, Pa.
Crowl, Louise E.,	Oxford,	Chester, Pa.
Cunningham, Teresa M.,	Weatherly,	Carbon, Pa.
Custer, Pearl M.,	Spring City,	Chester, Pa.
Daitz, Ruth V.,	183 Hall Ave.,	Perth Amboy, New Jersey
Dannehower, Estelle H.,	Sunnytown,	Montgomery, Pa.
Daughy, Mabel,	Devon,	Chester, Pa.
Davies, Rhoda E.,	62 Pierce St.,	Kingston, Luzerne, Pa.
Davis, Frances A.,	Coatesville,	R. D. 3, Chester, Pa.
Davis, Josephine E.,	Coatesville,	R. D. 3, Chester, Pa.
Davis, Margaret W.,	42 East Ave.,	Mt. Carmel, Northumberland, Pa.
Davis, Thora B.,	115 Nields St.,	West Chester, Chester, Pa.
Deakyne, R. Elizabeth,	Landenberg,	R. D. 1, Chester, Pa.
Dean, Katherine D.,	1244 W. Coal St.,	Shenandoah, Schuylkill, Pa.
Decker, Verda M.,	Johnsonburg,	Elk, Pa.
Deem, Catherine E.,	931½ Washington St.,	Reading, Berks, Pa.
Derry, Lottie M.,	Chester Springs,	Chester, Pa.
DeFrancesco, Rosemarie	C., 1403 W. Gibson St.,	Scranton, Lackawanna, Pa.
De Hoff, Edith C.,	485 W. Market St.,	York, Pa.
Deibert, Sara M.,	514 E. Mahanoy St.,	Mahanoy City, Schuylkill, Pa.
Delluva, Angelina M.,	E. 4th St.,	Bethlehem, Northampton, Pa.
Denny, Helen M.,	118 E. Union St.,	West Chester, Chester, Pa.
Derr, Margaret C.,	136 E. Green St.,	Hazleton, Luzerne, Pa.
Detthof, Evelyn R.,	1428 Cotton St.,	Reading, Berks, Pa.
Dickey, Helen A.,	East Greenville,	Montgomery, Pa.
Diehl, Edna M.,	405 Delaware Ave.,	Palmerton, Carbon, Pa.
Diehl, Ella J.,	405 W. Main St.,	Norristown, Montgomery, Pa.
Diehr, Ruth M.,	319 Locust St.,	Clearfield, Clearfield, Pa.

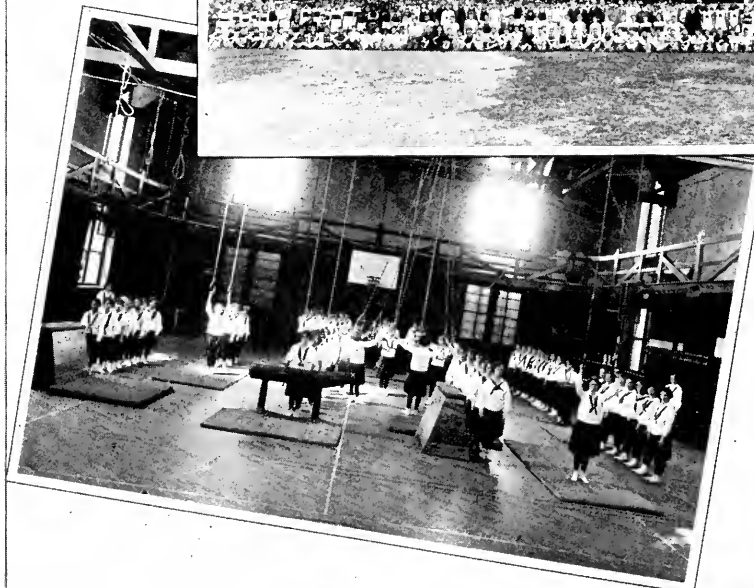
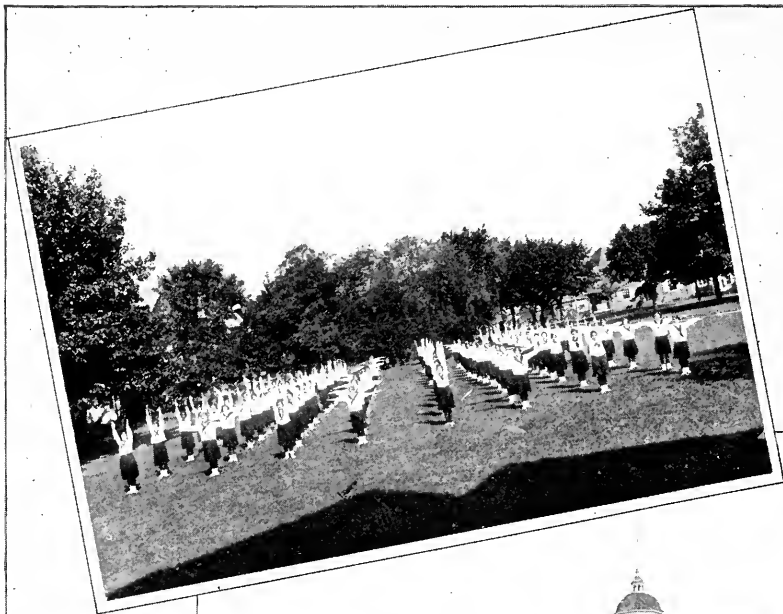
<i>Name</i>	<i>Post Office</i>	<i>County and State</i>
Dilks, Alice,	3739 Walnut St.,	Philadelphia, Pa.
Donahue, Mary A.,	21 W. Grant St., McAdoo,	Schuylkill, Pa.
Donecker, Helen L.,	2020 Forest St., Easton,	Northampton, Pa.
Donevan, Rose V.,	33 W. Coal St., Shenandoah,	Schuylkill, Pa.
Donlevy, Margaret E.,	Lost Creek,	Schuylkill, Pa.
Doutrich, Kathryn A.,	350 1st Ave., Parkesburg,	Chester, Pa.
Dowie, Mildred L.,	Kersey,	Lik, Pa.
Dowlin, Mary J.,	Lyndell,	Chester, Pa.
Dubson, Dorothy V.,	249 Broad St., Spring City,	Chester, Pa.
Dunn, Frances W.,	211 Front St., Minersville,	Schuylkill, Pa.
Dykens, Jessie M.,	315 Hanover St., Nanticoke,	Luzerne, Pa.
Eagen, Gertrude H.,	515 Main St., Forest City,	Susquehanna, Pa.
Early, Jane V.,	618 E. Bertsch St., Lansford,	Carbon, Pa.
Eckhart, Mabel M.,	151 4th St., Coaldale,	Schuylkill, Pa.
Edmunds, Ida,	Cape May,	New Jersey
Edwards, May D.,	Gayley Terrace, Media,	Delaware, Pa.
Egly, May V.,	Bristol, R. D. 2,	Bucks, Pa.
Elder, Mary E.,	Abbotstown,	Adams, Pa.
Elko, Louise M.,	446 W. 3rd St., Mt. Carmel,	Northumberland, Pa.
Elston, Anna W.,	429 S. Church St., West Chester,	Chester, Pa.
Elston, Ella K.,	Downingtoun,	Chester, Pa.
Ely, Dorothy H.,	257 N. Wyoming St., Hazleton,	Luzerne, Pa.
Ely, Hannah G.,	214 Lehigh St., Allentown,	Lehigh, Pa.
Emery, Mary E.,	117 E. Penn St., Norristown,	Montgomery, Pa.
Engel, Leah I.,	1 N. Grant St., Shamokin,	Northumberland, Pa.
Engle, Ruth H.,	1418, Perkiomen Ave., Reading,	Berks, Pa.
Eppehimer, Mary E.,	Downingtoun,	Chester, Pa.
Eppehimer, Ruth E.,	Downingtoun,	Chester, Pa.
Eppihimer, Mary M.,	Barneston,	Chester, Pa.
Epstein, Evelyn S.,	1366 Penn Ave., Scranton,	Lackawanna, Pa.
Eshin, Helen E.,	West Chester, R. D. 3,	Chester, Pa.
Ettinger, Elsie,	Bristol,	Bucks, Pa.
Evans, Ruth E.,	Linfield,	Montgomery, Pa.
Fackler, Sarah E.,	228 W. Barnard St., West Chester,	Chester, Pa.
Farley, Adrienne R.,	Milnesville,	Luzerne, Pa.
Farner, Sarah V.,	234 S. 14th St., Harrisburg,	Dauphin, Pa.
Fath, Helen R.,	337 E. 2nd St., Coudersport,	Potter, Pa.
Faust, Edna V.,	20 N. New St., West Chester,	Chester, Pa.
Favinger, Ruth V.,	Pottstown, R. D. 2,	Montgomery, Pa.
Fern, Alvernia M.,	Riegelsville,	Bucks, Pa.
Ferry, Rose S.,	13 N. White St., Shenandoah,	Schuylkill, Pa.
Ferry, Sallie L.,	219 S. Tamaqua St., McAdoo,	Schuylkill, Pa.
Ferry, Violet R.,	711 Highland Ave., Chester,	Delaware, Pa.
Fetterman, Margaret C.,	201 N. 9th St., Ashland,	Schuylkill, Pa.
Fina, Amelia,	331 Penn St., Reading,	Berks, Pa.
Finkbiner, Emma D.,	180 Chestnut St., Spring City,	Chester, Pa.
Fisher, Margaret R.,	Glen Moore,	Chester, Pa.
Fishkoff, Minerva,	107 Brighton Ave., Perth Amboy,	New Jersey
Fleming, Millicent C.,	848 Madison St., Wilmington,	Delaware
Flynn, Mary C.,	La Porte,	Sullivan, Pa.
Follweiler, Dorothy G.,	Slatington,	Lehigh, Pa.
Ford, Elizabeth C.,	125 S. Darlington St., West Chester,	Chester, Pa.
Ford, Genevieve V.,	125 S. Darlington St., West Chester,	Chester, Pa.
Foreman, Margaret M.,	327 Lloyd St., Chester,	Delaware, Pa.
Foster, P. Geraldine,	State College,	Center, Pa.
Fox, Mary M.,	229 Canaan St., Carbondale,	Lackawanna, Pa.
Frain, Esther H.,	Warrior's Mark,	Huntingdon, Pa.
Frank, Helen C.,	27 Main St., Wanamie,	Luzerne, Pa.
Frankenfield, Margaret,	Ottsville,	Bucks, Pa.

<i>Name</i>	<i>Post Office</i>	<i>County and State</i>
Frazier, Catherine R.,	709 W. 22nd St.,	Wilmington, Delaware.
Frick, Grace E.,	1030 Queen St.,	Pottstown, Montgomery, Pa.
Fullagar, Ruth C.,	1049 4th St.,	Catasauqua, Northampton, Pa.
Gackenbach, Ruth C.,	1451 Main St.,	Northampton, Northampton, Pa.
Gager, Muriel E.,	311 13th St.,	Honesdale, Wayne, Pa.
Gagliardi, Anna M.,	620 Bainbridge St.,	Philadelphia, Pa.
Gallagher, Betty K.,	1321 Turner St.,	Allentown, Lehigh, Pa.
Gallagher, Catherine A.,	262 E. Northampton St.,	Wilkes-Barre, Luzerne, Pa.
Gallagher, Pearl D.,	Newtown,	Bucks, Pa.
Gallup, Edna	206 Broad St.,	Chester, Delaware, Pa.
Gamble, Mary I.,	Huntingdon Valley,	Montgomery, Pa.
Gannon, Helen A.,	1312 Roosevelt Boulevard,	Philadelphia, Pa.
Gannon, Mary C.,	70 Main St.,	Inkerman, Luzerne, Pa.
Garman, Glenna M.,	115 Main St.,	Pennsburg, Montgomery, Pa.
Garvine, Martha E.,	Glen Moore,	Chester, Pa.
Geesey, Miriam E.,	Dallastown,	York, Pa.
Gehris, Wilhelmina,	130 Penn St.,	Reading, Bucks, Pa.
Geisel, Melda M.,	715 Sherman St.,	Johnstown, Cambria, Pa.
Gillespie, Mary T.,	13 N. Warner Ave.,	Bryn Mawr, Montgomery, Pa.
Gladman, Beulah E.,	410 N. Church St.,	West Chester, Chester, Pa.
Gleason, Margaret M.,	St. Mary's St.,	Phoenixville, Chester, Pa.
Glennay, V. T. Louise,	256 King St.,	Pottstown, Montgomery, Pa.
Godfrey, Charity J.,	Ogontz,	Montgomery, Pa.
Gommer, M. Ruth,	316 E. Broad St.,	Nanticoke, Luzerne, Pa.
Good, Hazel E.,	Honey Brook,	Chester, Pa.
Gordon, Gula G.,	Imperial,	Allegheny, Pa.
Gordon, Lenore B.,	341 W. Main St.,	Hummelstown, Dauphin, Pa.
Grace, Ethyl E.,	201 New Jersey Ave.,	Anglesea, New Jersey
Graham, Emily W.,	1502 Carroll St.,	Chester, Delaware, Pa.
Graham, Ethel M.,	Wawa,	Delaware, Pa.
Graham, Sadie E.,	218 W. Oak St.,	Shenandoah, Schuylkill, Pa.
Grasse, Blanche,	Chalfont,	Bucks, Pa.
Gray, Jean M.,	603 Harrison St.,	Pottsville, Schuylkill, Pa.
Green, Bertha A.,	1505 W. 7th St.,	Chester, Delaware, Pa.
Green, Charlotte H.,	413 Bickley Place,	Chester, Delaware, Pa.
Green, Lydia B.,	904 Market St.,	Marcus Hook, Delaware, Pa.
Gregart, Minnie,	77 Barney St.,	Plymouth, Luzerne, Pa.
Grelis, Marie C.,	2702 W. Sterner St.,	Philadelphia, Pa.
Griffith, Georgene L.,	30½ East Ave.,	Mt. Carmel, Schuylkill, Pa.
Griffiths, Lois G.,	1302 Mulberry St.,	Scranton, Lackawanna, Pa.
Grill, Marie E.,	307 Lancaster Ave.,	Shillington, Berks, Pa.
Groff, Anna M.,	Honey Brook,	Chester, Pa.
Groff, Irma P.,	Spring City, R. D. 7,	Chester, Pa.
Gronka, Helen M.,	380 Arch St.,	Glen Lyon, Luzerne, Pa.
Grubb, Helen M.,	1533 Providence Ave.,	Chester, Delaware, Pa.
Gulick, Helen M.,	Perkasie,	Bucks, Pa.
Gunkel, Ruth E.,	553 N. 11th St.,	Reading, Berks, Pa.
Guss, Dorothy L.,	518 S. Walnut St.,	West Chester, Pa.
Guyer, Alice A.,	240 S. 14th St.,	Allentown, Lehigh, Pa.
Haag, Beryl M.,	Crescent St.,	Tremont, Schuylkill, Pa.
Hafer, Helen M.,	West Milton,	Union, Pa.
Hahn, Minnie M.,	110 Prospect St.,	Wilkes-Barre, Luzerne, Pa.
Haines, Elinore E.,	411 S. High St.,	West Chester, Chester, Pa.
Haines, Marian W.,	918 Lafayette Ave.,	Moore, Delaware, Pa.
Hale, Margaret N.,	Harrow,	Bucks, Pa.
Hale, Marion E.,	114 Charles St.,	Wilkes-Barre, Luzerne, Pa.
Haley, Anna C.,	19 Julia St.,	Girardville, Schuylkill, Pa.
Hallman, Elizabeth,	Collegeville,	Montgomery, Pa.
Harding, Ruth M.,	129 N. Walnut St.,	Lewistown, Mifflin, Pa.
Harley, Katherine M.,	605 E. 13th St.,	Chester, Delaware, Pa.

<i>Name</i>	<i>Post Office</i>	<i>County and State</i>
Harley, Martha E.,	1026 Olive St., Coatesville,	Chester, Pa.
Harner, Frances,	Mont Clare,	Montgomery, Pa.
Harman, Vida C.,	1002 N. 18th St., Harrisburg,	Dauphin, Pa.
Harper, Hester E., 425	George St., Pen Argyle,	Northampton, Pa.
Haupt, Hattie D.,	Freemansburg Ave., Easton,	Northampton, Pa.
Hausman, Alice D.,	313 N. 8th St., Allentown,	Lehigh, Pa.
Hawk, Clara F.,	Elverson,	Chester, Pa.
Hayes, Frances G.,	Brandamore,	Chester, Pa.
Haynes, Bernice O.,	619 W. 7th St., Wilmington,	Delaware
Hays, Elizabeth K.,	Duncannon,	Perry, Pa.
Heath, Jean E.,	105 S. Main St., Duryea,	Luzerne, Pa.
Heavy, Dorothy L., 231	S. Jardin St., Shenandoah,	Schuylkill, Pa.
Heebner, Marian I.,	Norristown, R. D. 2,	Montgomery, Pa.
Heed, Ada E.,	104 E. Washington St., West Chester,	Chester, Pa.
Hefferon, Mary K.,	11 Center St., Pittston,	Luzerne, Pa.
Heffner, Rebecca,	Coatesville, R. D.,	Chester, Pa.
Hellings, Marion H.,	211 Wood St., Bristol,	Bucks, Pa.
Helms, Ruth N.,	Honey Brook,	Chester, Pa.
Herb, May E.,	Main St., Wernersville,	Berks, Pa.
Herron, Martha F.,	28 W. Phillips St., Coaldale,	Schuylkill, Pa.
Hibberd, Mildred,	Malvern,	Chester, Pa.
Higgins, Edith R.,	New Hope,	Bucks, Pa.
Highland, Olivia,	446 Pond St., Bristol,	Bucks, Pa.
Hile, Ruth W.,	117 N. Franklin St., Allentown,	Lehigh, Pa.
Hill, Margaret J.,	316 Union St., Monongahela,	Washington, Pa.
Hoffman, Anna M.,	717 Stanbridge St., Norristown,	Montgomery, Pa.
Hoffman, Elizabeth D.,	Chadds Ford,	Delaware, Pa.
Hoffman, Mary N.,	1542 Washington St., Johnstown,	Cambria, Pa.
Hoffman, Nora A.,	32 Remington Ave., Coatesville,	Chester, Pa.
Hogeland, Ethel M.,	Andalusia,	Bucks, Pa.
Hohen, Berna M.,	Ridge and 2nd Sts., Coaldale,	Schuylkill, Pa.
Holcombe, Maude E.,	Solebury,	Bucks, Pa.
Holmes, Sallie H.,	69 1st St., Coaldale,	Schuylkill, Pa.
Hoopes, Anna C.,	106 E. Biddle St., West Chester,	Chester, Pa.
Hope, Elma V. S.,	Coatesville,	Chester, Pa.
Hopwood, Mildred,	Yerkes,	Montgomery, Pa.
Horstick, M. Dorothy,	457 W. Main St., Palmyra,	Lebanon, Pa.
Hostetter, Audrey E.,	137 1st Ave., Parkesburg,	Chester, Pa.
Houlahan, Margaret, 32	W. Mahanoy Ave., Mahanoy City,	Schuylkill, Pa.
Howell, Bloodwyn E.,	Snow Shoe,	Schuylkill, Pa.
Howells, Edna M.,	238 N. Jefferson St., Allentown,	Lehigh, Pa.
Huber, Philomena M.,	146 W. Barnard St., West Chester,	Chester, Pa.
Hughes, Marion,	811 Columbia Ave., Cape May,	New Jersey
Hunter, Elizabeth R.,	602 E. 14th St., Chester,	Delaware, Pa.
Huntzinger, Hazel,	94 W. State St., Dovlestown,	Bucks, Pa.
Ingram, Anne V.,	1213 S. Market St., Nanticoke,	Luzerne, Pa.
Ingram, Marion J.,	225 N. Church St., West Chester,	Chester, Pa.
Ingram, Mary W.,	52 Hirst Ave., Lansdowne,	Delaware, Pa.
Ingram, Sue C.,	52 Hirst Ave., Lansdowne,	Delaware, Pa.
Jackson, Lucy D.,	1614 Penna. Ave., Wilmington,	Delaware
Janney, Elizabeth,	Newtown,	Bucks, Pa.
Jayne, Leona A.,	229 Church St., Nanticoke,	Luzerne, Pa.
Jefferies, Ruth D.,	4226 Girard Ave.,	Philadelphia, Pa.
Jenkins, Ruth D.,	35 Sullivan St., Wilkes-Barre,	Luzerne, Pa.
Jeness, Mabelle R.,	Delta,	York, Pa.
Jennings, Anne E.,	229 Carlisle St., Wilkes-Barre,	Luzerne, Pa.
Johns, Mary J.,	833 W. Diamond St., Hazleton,	Luzerne, Pa.
Johnson, Beatrice A.,	Johnsonburg,	Elk, Pa.
Johnson, Helen L.,	Powell, R. D. 1,	Bradford, Pa.

<i>Name</i>	<i>Post Office</i>	<i>County and State</i>
Johnson, Louise P.,	Goldsboro,	North Carolina
Johnson, Katie B.,	Creamery,	Montgomery, Pa.
Johnson, Margaret C.,	McVeytown,	Millin, Pa.
Johnson, Mary A.,	12 Ashiley St., Ashley,	Luzerne, Pa.
Jonassen, Gunhild,	Rockledge,	Montgomery, Pa.
Jones, Catherine M.,	130 S. Hancock St.,	Wilkes-Barre, Luzerne, Pa.
Jones, Elizabeth M.,	103 Narberth Ave.,	Narberth, Montgomery, Pa.
Jones, Elva N.,	Shaft,	Schuylkill, Pa.
Jones, I. Elizabeth,	Jamison,	Bucks, Pa.
Jones, Virginia M.,	126 W. Bertsch St.,	Lansford, Carbon, Pa.
Joseph, Catherine R.,	337 Oak Lane Ave.,	Collingdale, Delaware, Pa.
Kaltreider, Helen K.,	Red Lion,	York, Pa.
Keeney, Mildred E.,	117 S. Pine St.,	York, Pa.
Keller, Garnet A.,	1313 4th Ave.,	Ford City, Armstrong, Pa.
Kelly, M. Louise,	415 Flower St.,	Chester, Delaware, Pa.
Kenna, Rose C.,	Cumbola,	Schuylkill, Pa.
Kennedy, Jane E.,	841 Walnut St.,	Columbia, Lancaster, Pa.
Kenney, S. Helen,	West Chester, R. D. 2,	Chester, Pa.
Kernan, Mary H.,	406 W. Center St.,	Mahanoy City, Schuylkill, Pa.
Kethel, Jessie A.,	1740 Monsey Ave.,	Scranon, Lackawanna, Pa.
Kirkpatrick, Mabel E.,	221 Essex Ave.,	Narberth, Montgomery, Pa.
Kishbach, Charlotte,	Linfield,	Montgomery, Pa.
Klemis, Natalie E.,	327 S. Poplar St.,	Mt. Carmel, Northampton, Pa.
Kline, Esther M.,	Joanna,	Berks, Pa.
Kline, Evelyn K.,	279 S. Main St.,	Doylestown, Bucks, Pa.
Kline, Louise W.,	3 Mix Ave.,	Towanda, Bradford, Pa.
Knox, Katharine R.,	West Chester,	Chester, Pa.
Knutzen, Solveig,	202 Forest Ave.,	Narberth, Montgomery, Pa.
Kohl, LaRue A.,	Reading, R. D. 1,	Berks, Pa.
Krolier, Isabel L.,	84 E. Baltimore Ave.,	Lansdowne, Delaware, Pa.
Kready, Mary E.,	64 N. Main St.,	Manheim, Lancaster, Pa.
Krout, Elva,	29 W. State St.,	Doylestown, Bucks, Pa.
Krushuski, Helen C.,	Wanamie,	Luzerne, Pa.
Kulp, Florence R.,	Southampton,	Bucks, Pa.
Kunkel, Carrie D.,	576 Franklin Ave.,	Palmerton, Carbon, Pa.
Kunkel, Dora J.,	665 W. Prince St.,	York, York, Pa.
Lamborn, Edna L.,	Avondale,	Chester, Pa.
Lane, Elizabeth C.,	West Chester,	Chester, Pa.
Lane, Evelyn H.,	Williamson School,	Delaware, Pa.
Latschar, Minerva D.,	Spring City, R. D. 2,	Chester, Pa.
Laverty, Rosemary W.,	521 W. Center St.,	Shenandoah, Schuylkill, Pa.
Lawlor, Catharine C.,	32 E. Lloyd St.,	Shenandoah, Schuylkill, Pa.
Lawrence, Lillian L.,	Quakertown, R. D. 2,	Bucks, Pa.
Lawson, Frances J.,	Norwood,	Delaware, Pa.
Leaf, Natalie A.,	26 W. Union St.,	West Chester, Chester, Pa.
Lehengood, Beatrice I.,	Orwigsburg,	Schuylkill, Pa.
Lebo, Charlotte E.,	Halifax, R. D. 3,	Dauphin, Pa.
Lee, Rosa R.,	E. Baltimore Ave.,	Lansdowne, Delaware, Pa.
Leidich, E. Dora,	412 W. North St.,	Bethlehem, Lehigh, Pa.
Leidich, Esther K.,	412 W. North St.,	Bethlehem, Lehigh, Pa.
Leonard, M. Olive,	West Chester,	Chester, Pa.
Lerch, Helen L.,	Tinicum,	Bucks, Pa.
Lerch, Mildred M.,	Tinicum,	Bucks, Pa.
Lewis, Evelyn M.,	Drums,	Luzerne, Pa.
Lewis, Helena V.,	114 E. Miner St.,	West Chester, Chester, Pa.
Light, Esther M.,	2322 Chestnut St.,	Chester, Delaware, Pa.
Lightner, Erma R.,	Loysville,	Perry, Pa.
Lignian, Frances E.,	503 Ross St.,	Coudersport, Potter, Pa.
Lind, Hilda T.,	226 N. State St.,	Newtown, Bucks, Pa.

<i>Name</i>	<i>Post Office</i>	<i>County and State</i>
Link, Christine E.,	20 W. Race St., Cacasauqua,	Lehigh, Pa.
Livezey, Helen D.,	Ivyland,	Bucks, Pa.
Long, Ruth E.,	144 Bridge St., Spring City,	Chester, Pa.
Loomis, Dorothy S.,	255 Dean St., West Chester,	Chester, Pa.
Loper, Elisabeth L.,	712 Corgie St., Cape May,	New Jersey
Loreman, Miriam L.,	239 Mahoning St., Milton,	Northumbreland, Pa.
Lowman, Mary H.,	Quakertown,	Bucks, Pa.
Ludwig, Catherine R.,	Athol,	Berks, Pa.
Luebert, Florence E.,	338 E. Lincoln Highway,	Coatesville, Chester, Pa.
Lukens, Alice A.,	Woodlyn,	Delaware, Pa.
Lummis, Sara P.,	816 Kearney Ave., Cape May,	New Jersey
Lutz, Mabel E.,	641 Haws Ave., Norristown,	Montgomery, Pa.
Lynch, Margaret M.,	605 Sanderson St., Olyphant,	Lackawanna, Pa.
McAndrew, Margaret M.,	121 Sax St., Moosic,	Lackawanna, Pa.
McBride, Mary D.,	218 N. 4th St., Allentown,	Lehigh, Pa.
McCafferty, Elva I.,	Linwood Heights,	Delaware, Pa.
McCall, Mary K.,	321 W. Pine St., Mahanoy City,	Schuylkill, Pa.
McCallin, Catherine P.,	5 Hinckley Ave., Ridley Park,	Delaware, Pa.
McChune, Margaret L.,	Ebensburg,	Cambria, Pa.
McComsey, Elma M.,	213 Chapel Ave., Parkersburg,	Chester, Pa.
McCormack, Helen V.,	Thorndale,	Chester, Pa.
McCormack, Mary F.,	Thorndale,	Chester, Pa.
McCracken, Ruby L.,	103 W. 3rd St., Lewistown,	Mifflin, Pa.
McCurdy, Helen W.,	Oaks,	Montgomery, Pa.
McDonald, Margaret A.,	238 E. Lloyd St., Shenandoah,	Schuylkill, Pa.
McDonald, Mary F.,	433 E. Mahoney Av., Girardville,	Schuylkill, Pa.
McDonald, Ruth M.,	240 Canaan St., Carbondale,	Lackawanna, Pa.
McDowell, Elizabeth,	624 Broad St., Oxford,	Chester, Pa.
McElhenney, Hannah E.,	221 2nd St., Coaldale,	Schuylkill, Pa.
McElhenney, Marion,	221 2nd St., Coaldale,	Schuylkill, Pa.
McEntee, Amelia,	Erwinna,	Bucks, Pa.
McGee, Mamie,	224 Chestnut Ave., Ardmore,	Montgomery, Pa.
McGovern, Anna R.,	New Philadelphia,	Schuylkill, Pa.
McGraw, Mary,	68 7th Ave., Carbondale,	Lackawanna, Pa.
McHenry, Mildred,	3532 Longshire St.,	Philadelphia, Pa.
McHugh, Catherine L.,	723 N. Front St., Allentown,	Lehigh, Pa.
McKee, Gertrude O.,	408 Lexington Ave., Altoona,	Blair, Pa.
McKernan, Elizabeth,	211 E. Ridley Ave., Ridley Park,	Delaware, Pa.
McKillop, Anna W.,	103 Penn St., Ridley Park,	Delaware, Pa.
McLaughlin, Clara E.,	519 E. Mahanoy Ave., Girardville,	Schuylkill, Pa.
McLimans, Helen M.,	159 W. Evergreen St., West Grove,	Chester, Pa.
McMahon, Josephine R.,	5430 Market St.,	Philadelphia, Pa.
McNicholas, Nellie A.,	Ned,	Greene, Pa.
McVeigh, Lillian N.,	Spring City,	Chester, Pa.
MacCollum, M. Ella,	Roxanna,	Delaware
Mace, Margaret L.,	223 Robinson Av., Pen Argyle,	Northampton, Pa.
MacGugan, Marthe J.,	107 N. Chester Ave., Glenolden,	Delaware, Pa.
MacMurray, Ida S.,	Newark,	Delaware
Manifold, Grace M.,	High Rock,	York, Pa.
Markley, Nellie M.,	Yeagertown,	Mifflin, Pa.
Maroney, Nellie E.,	1027 Madison St., Wilmington,	Delaware
Marsden, Esther C.,	124 Butler St., Forty Fort,	Luzerne, Pa.
Marsells, Helen M.,	702 E. Main St., Nanticoke,	Luzerne, Pa.
Martin, Marie,	North Wales,	Montgomery, Pa.
Mason, Edith M.,	Toughkenamon,	Chester, Pa.
Mattson, Grace B.,	602 S. Walnut St., West Chester,	Chester, Pa.
Maule, Mary A.,	Coatesville, R. D. 5,	Chester, Pa.
Maurer, Iolanthe D.,	Hathoro,	Montgomery, Pa.
Mayne, Iva,	Brandywine Summit,	Delaware, Pa.
Mayne, Iva H.,	Brandywine Summit,	Delaware, Pa.

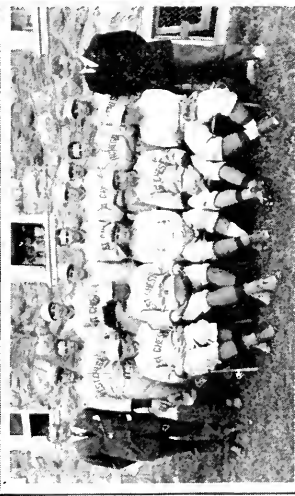
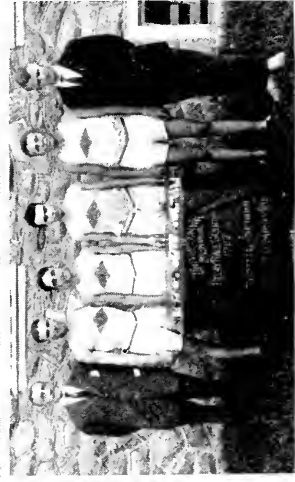


<i>Name</i>	<i>Post Office</i>	<i>County and State</i>
Meduskey, Claire E.,	383 State St., Perth Amboy,	New Jersey
Mendenhall, Viola K.,	Downingtown,	R. D. 1, Chester, Pa.
Menna, Carolyn L.,	625 Hasca St., Bethlehem,	Northampton, Pa.
Mercer, Marion I.,	109 S. 6th St., Coatesville,	Chester, Pa.
Merion, Ida W.,	Claymont,	Delaware
Merithew, Florence,	29 Dorrance St., Kingston,	Luzerne, Pa.
Meyers, Venie C.,	Nottingham,	Chester, Pa.
Michener, A. Myrle,	Doylestown,	Bucks, Pa.
Michener, Esther M.,	Carversville,	Bucks, Pa.
Michener, Mary L.,	1417 W. Dauphin St.,	Philadelphia, Pa.
Milburne, Marie T.,	West Chester,	Chester, Pa.
Miller, Edith H.,	Toughkenamon,	Chester, Pa.
Miller, Grace E.,	Weatherly,	Carbon, Pa.
Miller, Marion D.,	118 Essex Ave., Narberth,	Montgomery, Pa.
Miller, Mary E.,	Barneston,	Chester, Pa.
Miller, Ruth N.,	Windsor,	York, Pa.
Miller, Verna V.,	Donaldson,	Schuylkill, Pa.
Millichap, Ruth A.,	101 E. Coal St., Shenandoah,	Schuylkill, Pa.
Minnich, Melba M.,	Red Lion,	York, Pa.
Mitchell, Jessie R.,	White Haven,	Towanda, Pa.
Moerschbacher, Catherine C.,	39 W. Coal St., Shandaoah,	Schuylkill, Pa.
Mohr, Susan J.,	318 Juniper St., Quakertown,	Bucks, Pa.
Monaghan, Mary M.,	24 S. Walnut St., West Chester,	Chester, Pa.
Monahan, Agnes C.,	2305 Maple Ave., Altoona,	Blair, Pa.
Montague, Sara E.,	929 Forrester Ave., Darby,	Delaware, Pa.
Moore, Beatrice A.,	Sayre,	Bradford, Pa.
Moore, Bernice M.,	316 9th Ave., Juniata,	Blair, Pa.
Moore, Helen,	Chatham,	Chester, Pa.
Moore, Marietta,	316 9th Ave., Juniata,	Blair, Pa.
Moore, Miriam T.,	Chad's Ford,	Chester, Pa.
Moore, Velma M.,	316 9th Ave., Juniata,	Blair, Pa.
Morgan, Edna M.,	262 E. Grand St., Nanticoke,	Luzerne, Pa.
Morris, Edith E.,	Coatesville, R. D. 2,	Chester, Pa.
Morris, Kathryn M.,	136 W. Walnut St., North Wales,	Montgomery, Pa.
Morris, Mary,	1608 N. Fawn St.,	Philadelphia, Pa.
Morris, Mildred E.,	Pangor, R. D. 4,	Northampton, Pa.
Morton, Helen A.,	Woodbine,	York, Pa.
Muchitz, Alice L.,	601 Main St., Forest City,	Susquehanna, Pa.
Mulford, Elizabeth,	Gladwyn,	Montgomery, Pa.
Munshower, Elnora S.,	73 Walnut St., Poyersford,	Montgomery, Pa.
Munshower, Rosalie C.,	1219 Markley St., Norrisstown,	Montgomery, Pa.
Murray, Dorothy K.,	Landisburg,	Perry, Pa.
Murray, Grace,	Downingtown,	Chester, Pa.
Murvin, Edith L.,	Mortonville,	Chester, Pa.
Musselman, Alice E.,	107 S. Miller St., Shillington,	Berks, Pa.
Myers, Anna M.,	18 Cottage St., Carbondale,	Lackawanna, Pa.
Myers, Gladys A.,	119 Main St., Lewistown,	Mifflin, Pa.
Myers, Viola M.,	Main St., Nanticoke,	Luzerne, Pa.
Nagle, Mary,	Brookline,	Delaware, Pa.
Nash, Mary E.,	Edison,	Bucks, Pa.
Naysmith, Sarah R.,	215 S. Jefferson St., Millersburg,	Armstrong, Pa.
Nebzdoski, Charlotte V.,	429 Susquehanna St., Forest City,	Susquehanna, Pa.
Neeld, Emma M.,	1635 Orthodox St., Frankford,	Philadelphia, Pa.
Neff, Phyllis V.,	Halifax,	Dauphin, Pa.
Neuman, Lillian S.,	518 Dawson St., Bethlehem,	Northampton, Pa.
Nevins, Elizabeth,	Wisner,	Bucks, Pa.
Newcombe, Helen C.,	999 Mill St., Pittston,	Luzerne, Pa.
Newsome, Lydia J.,	917 Penn St., Chester,	Delaware, Pa.
Nichols, Jewel J.,	1010 Hummock Ave., Atlantic City,	New Jersey

<i>Name</i>	<i>Post Office</i>	<i>County and State</i>
Nichols, Margaret C.,	LeCato Ave., Audubon,	New Jersey
Norconk, Lenora M.,	New Albany, R. D. 44,	Bradford, Pa.
Oberholser, Pearl L.,	Coatesville, R. D. "C",	Chester, Pa.
Oberholtzer, Esther M.,	Ironbridge,	Montgomery, Pa.
O'Brien, Mary R., 204	W. Atlantic St., Shenandoah,	Schuylkill, Pa.
O'Donnell, Anna M.,	5 W. High St., Coaldale,	Schuylkill, Pa.
O'Donnell, Katherine E.,	165 S. Pine St., Hazleton,	Luzerne, Pa.
O'Donnell, Kathryn M.,	629 W. Center St., Mahanoy City,	Schuylkill, Pa.
O'Donnell, Loretta M.,	159 Main St., Eckley,	Luzerne, Pa.
Ogden, Eliza A.,	7th and Jackson St., Media,	Delaware, Pa.
Ogden, Elsie S.,	Secane,	Delaware, Pa.
Olweiler, Lillian S.,	Florin,	Lancaster, Pa.
O'Malley, Margaret,	309 W. Oak St., Shenandoah,	Schuylkill, Pa.
Orrs, Helen V.,	Elverson, R. D. 2,	Chester, Pa.
Palmer, Esther W., 112	E. Greenwood Ave., Lansdowne,	Delaware, Pa.
Palmer, Mary E.,	Jamison,	Bucks, Pa.
Parry, Clara J.,	720 N. 16th St.,	Philadelphia, Pa.
Passmore, Estella M.,	Rosedale Ave., West Chester,	Chester, Pa.
Patterson, Elsie M.,	Honey Brook, R. D. 2,	Chester, Pa.
Patterson, Marjorie, 97	N. Morgantown St., Fairchance,	Fayette, Pa.
Patterson, Martha A.,	706 2nd St., Williamsburg,	Blair, Pa.
Pearson, Ruby C.,	1005 Franklin St., Reading,	Berks, Pa.
Pennington, Beulah M.,	Brandywine Summit,	Delaware, Pa.
Pennington, Dora Y.,	Lima,	Delaware, Pa.
Perrong, Leona T.,	203 Centre St., Ashland,	Schuylkill, Pa.
Perry, Lillian, 248 E.	Lancaster Ave., E. Downingtown,	Chester, Pa.
Perseo, Mary A., 307 E.	Lafayette St., Norristown,	Montgomery, Pa.
Pfiefly, Edna M.,	508 Dock St., Schuylkill Haven,	Schuylkill, Pa.
Phillips, Irene M.,	Glenlyon,	Luzerne, Pa.
Pierce, Mary J.,	St. Davids,	Delaware, Pa.
Pierson, Edna B.,	1007 Jefferson St., Wilmington,	Delaware
Pilkington, Mary E.,	Chester, R. D. 1, Box 98,	Delaware, Pa.
Pines, Gladys H.,	Duncannon,	Perry, Pa.
Pitt, Daisy B.,	Rowlandville,	Maryland
Pollock, Natalie B.,	Downingtown,	Chester, Pa.
Polmounter, Mildred,	67 W. Broadway, Mauch Chunk,	Carbon, Pa.
Ponting, Gwennie F.,	33 E. Phillips St., Coaldale,	Schuylkill, Pa.
Powell, Sara O.,	West Whiteland,	Chester, Pa.
Priestley, Olive,	Glen Riddle,	Delaware, Pa.
Probert, Clara B.,	334 E. Elm St., Hazleton,	Luzerne, Pa.
Quinn, Mary R.,	2609 W. Allegheny Ave.,	Philadelphia, Pa.
Raab, Vivian M.,	Monahan Apts., Johnstown,	Cambria, Pa.
Rabenstine, Anna C.,	433 W. Main St., Palmyra,	Lebanon, Pa.
Race, Ophelia G.,	Center Moreland,	Wyoming, Pa.
Rafferty, Angela M.,	1015 Butler St., Easton,	Northampton, Pa.
Ramsay, Adele V.,	Coatesville, R. D. 1,	Chester, Pa.
Ramsay, Virginia M.,	Hotel Hoffman, Gettysburg,	Adams, Pa.
Reading, Myrtle M.,	Lumberville, R. D. 1,	Bucks, Pa.
Reardon, Florence M.,	214 E. Ave., Mt. Carmel,	Northumberland, Pa.
Reb, Rosina M., 115 E.	Mahanoy Ave., Mahanoy City,	Schuylkill, Pa.
Redmond, Anna,	5144 N. 15th St.,	Philadelphia, Pa.
Reeder, Mildred L.,	622 Prospect Ave., Bethlehem,	Lehigh, Pa.
Reefer, Rosa M., 630 E.	Market St., Mahanoy City,	Schuylkill, Pa.
Rees, Gertrude O.,	179 Prospect St., Wilkes-Barre,	Luzerne, Pa.
Rees, Margaret A.,	1501 Washburn St., Scranton,	Lackawanna, Pa.
Retz, Helen A.,	Hulmeville,	Bucks, Pa.
Reeves, Rebecca E.,	Windsor Ave., Cape May,	New Jersey
Renneberg, Josephine C.,	2533 W. 7th St., Chester,	Delaware, Pa.
Reynolds, Lottie V.,	606 Hodgson St., Oxford,	Chester, Pa.

<i>Name</i>	<i>Post Office</i>	<i>County and State</i>
Reynolds, Rachel B.,	606 Hodgson St., Oxford,	Chester, Pa.
Rhoads, Frances A.,	Gilbertsville,	Montgomery, Pa.
Rice, Anna G.,	Chester Springs,	Chester, Pa.
Rice, Beatrice E.,	2310 Central Ave., Wildwood,	New Jersey
Richards, Mildred A.,	296 Barney St., Wilkes-Barre,	Luzerne, Pa.
Richards, Nellie M.,	90 Virginia Ave., Coatesville,	Chester, Pa.
Richards, Ruth A.,	119 Center St., Freeland,	Luzerne, Pa.
Richardson, Merion E.,	5434 Arch St.,	Philadelphia, Pa.
Riden, B. Frances,	Kecausville,	Mifflin, Pa.
Riggall, Ruth E.,	Norwood Station,	Delaware, Pa.
Righter, L. Wilhelmina,	32 Fairview Ave., Lansdowne,	Delaware, Pa.
Riley, Rose M.,	W. Coal St., Shenandoah,	Schuylkill, Pa.
Ringheiser, Margaret,	105 S. Grant St., Shenandoah,	Schuylkill, Pa.
Rinehart, Marian,	Pottstown,	Chester, Pa.
Ritchie, Helen G.,	Highland Park,	Delaware, Pa.
Rittenhouse, Annie,	Lansdale, R. D. 1,	Montgomery, Pa.
Roberts, Elizabeth T.,	371 E. South St., Wilkes-Barre,	Luzerne, Pa.
Roberts, Jennie L.,	120 Frederick St., Athens,	Bradford, Pa.
Robinson, M. Ruth,	Honey Brook,	Chester, Pa.
Rodeback, Sara A.,	West Chester,	Chester, Pa.
Roderick, Ellen F.,	741 W. Diamond Ave., Hazleton,	Luzerne, Pa.
Rodgers, Margaret C.,	Quarryville,	Lancaster, Pa.
Ropp, Frances M.,	383 Fulton St., Waverly,	Bradford, Pa.
Rouselle, Bonita,	717 W. 7th St., Wilmington,	Delaware
Rovner, Esther,	West Grove,	Chester, Pa.
Royahn, Helen A.,	New Britain,	Bucks, Pa.
Royer, M. Elizabeth,	Center Hall,	Center, Pa.
Rutter, Isabel,	60 Union St., Uniontown,	Fayette, Pa.
Ryan, Mary M.,	113 W. Pine St., Mahanoy City,	Schuylkill, Pa.
Samuel, Naomi M.,	360 E. Church St., Nanticoke,	Luzerne, Pa.
Sauer, Louise E.,	955 S. Franklin St., Wilkes-Barre,	Luzerne, Pa.
Savage, Vanita S.,	204 E. Hinckley St., Ridley Park,	Delaware, Pa.
Saxton, Sarah M.,	112 W. 4th St., Lewistown,	Mifflin, Pa.
Scarborough, Mary M.,	Delta,	York, Pa.
Scavo, Theresa M.,	37 Plum St., Carbondele,	Lackawanna, Pa.
Scheetz, Sara W.,	Jeffersonville,	Montgomery, Pa.
Scheifley, Mildred E.,	1011 Bellevue Ave., Pottstown,	Montgomery, Pa.
Schmeltzer, Doris K.,	219 N. 2nd St., Pottsville,	Schuylkill, Pa.
Schropp, J. Gladys,	39 N. 10th St., Lebanon,	Lebanon, Pa.
Scott, Emma T.,	Coatesville, R. D. 4,	Chester, Pa.
Sharbaugh, Marion,	Ebensburg,	Cambria, Pa.
Sharpe, Alice V.,	29 E. High St., Coaldale,	Schuylkill, Pa.
Shaver, Lillian S.,	Newton Hamilton,	Mifflin, Pa.
Shaw, Etta E.,	44 N. James St., Hazleton,	Luzerne, Pa.
Shemanski, Dorothy I.,	52 W. Main St., Nanticoke,	Luzerne, Pa.
Sheppard, Margaret V.,	309 E. Maple Ave., Wildwood,	New Jersey
Sherk, Lydia M.,	603 E. Main St., Palmira,	Lebanon, Pa.
Sherm, Sylvia,	Chalfont,	Bucks, Pa.
Shevlin, Honorah E.,	4468 Germantown Ave., Philadelphia,	Pa.
Shoemaker, Elizabeth,	206 Rosedale Drive, Pottstown,	Montgomery, Pa.
Shollenberger, Arlenek,	1302 N. 10th St., Reading,	Berks, Pa.
Sholler, Dorothy M.,	26 E. 6th St., Lansdale,	Montgomery, Pa.
Shurter, Edith,	26 W. Ridley Ave., Ridley Park,	Delaware, Pa.
Shurter, Virginia C.,	36 W. Ridley Ave., Ridley Park,	Delaware, Pa.
Sidle, Emma R.,	Rushland,	Bucks, Pa.
Silknetter, Helen,	713 2nd Ave., Parkesburg,	Chester, Pa.
Sill, Mary A.,	101 Monroe St., Media,	Delaware, Pa.
Singer, Kathleen,	327 N. Fulton St., Allentown,	Lehigh, Pa.
Slack, Mildred A.,	Newtown,	Bucks, Pa.

<i>Name</i>	<i>Post Office</i>	<i>County and State</i>
Baughner, Margaret,	109 W. 11th St.,	Wilmington, Delaware
Smith, Edna H.,	209 E. Market St.,	West Chester, Chester, Pa.
Smith, Susie,	Delaware City,	Delaware
Smith, Sylvia L.,	Leagertown,	Mifflin, Pa.
Snycer, Anna M.,	219 E. Centre St.,	Shenandoah, Schuylkill, Pa.
Snycer, Anna D.,	92 Carlisle St.,	Wilkes-Barre, Luzerne, Pa.
Souder, Eugene H.,	93 Green St.,	Souderton, Montgomery, Pa.
South, Laura M.,	504 N. 59th St.,	Philadelphia, Pa.
Sowers, Stella K.,	Green Lane,	Montgomery, Pa.
Specht, Helen M.,	591 Park Ave.,	Milton, Northumberland, Pa.
Spencer, Alice M.,	Keiton,	Chester, Pa.
Steeley, Pearl E.,	Easton, R. D. 6,	Northampton, Pa.
Stepp, Enza M.,	LaForte,	Sullivan, Pa.
Sterling, Lillian J.,	Crisheld,	Maryland
Stetler, Gertrude V.,	Weatherly,	Carbon, Pa.
Steward, Kathryn M.,	West Chester, R. D.,	Chester, Pa.
Stewart, Elizabeth,	Lansdale, R. D. 2,	Montgomery, Pa.
Stewart, Helen F.,	120 Chester Pike,	Ridley Park, Delaware, Pa.
Stewart, Lucinda V.,	1033 Green St.,	Norristown, Montgomery, Pa.
Stoil, Evelyn A.,	20 W. Main St.,	Newark, Delaware
Stout, Ethyl A.,	448 S. 6th St.,	Reading, Berks, Pa.
Strickland, Catherine,	Glen Moore, R. D. 1,	Chester, Pa.
Strock, Elizabeth,	Joanna,	Berks, Pa.
Stromberg, Emily C.,	19 W. Roland Road,	Parkside, Delaware, Pa.
Sweeney, Mary B.,	27 Pratt Ave.,	Towanda, Bradford, Pa.
Swenson, Gwen V.,	37 E. Ridge Av.,	Lansford, Carbon, Pa.
Tagert, Dorothy G.,	780 Queen St.,	Pottstown, Montgomery, Pa.
Taggart, Elizabeth,	542 Hamilton St.,	Norristown, Montgomery, Pa.
Tarr, Ruth E.,	250 Franklin St.,	Wilmington, Delaware
Taylor, Elsie L.,	Media,	Delaware, Pa.
Taylor, Helen F.,	Oxford,	Chester, Pa.
Teel, Margaret,	2200 Northampton St.,	Easton, Northampton, Pa.
Thatcher, Gertrude E.,	422 Juniper St.,	Quakertown, Bucks, Pa.
Thatcher, L. Belle,	Lumberville,	Bucks, Pa.
Thomas, Mary G.,	Phoenixville, R. D. 2,	Chester, Pa.
Thompson, Helen V.,	1236 S. 46th St.,	Philadelphia, Pa.
Thompson, Juanita L.,	200 E. 9th St.,	Wilmington, Delaware
Thompson, Mary L.,	Horsham,	Montgomery, Pa.
Thompson, M. Elizabeth,	Yardley,	Bucks, Pa.
Timberman, Alma M.,	Alloway,	New Jersey
Tinney, Susie M.,	19 N. 4th Ave.,	Coatesville, Chester, Pa.
Tomlinson, Marjorie,	903 W. 29th St.,	Wilmington, Delaware
Tong, Esther E.,	Park Place,	Chester, Delaware, Pa.
Topping, Ethel M.,	Huntington Valley,	Montgomery, Pa.
Townsley, Anna S.,	117 E. Lancaster Ave.,	Downingtown, Chester, Pa.
Townsley, Reba M.,	412 3rd Ave.,	Parkesburg, Chester, Pa.
Trauch, Elsie S.,	Weisel,	Bucks, Pa.
Trauch, Ildah M.,	Weisel,	Bucks, Pa.
Trout, Bernice A.,	Stewartstown,	York, Pa.
Valentine, Catherine M.,	Duncannon,	Perry, Pa.
Van Luvanee, Rachel L.,	New Albany, R. D. 44,	Bradford, Pa.
Vannort, Marion C.,	Federal Park,	Maryland
Vasey, Marion S.,	Mechanicsville,	Bucks, Pa.
Wade, Mary M.,	116 N. Union St.,	Shenandoah, Schuylkill, Pa.
Wagner, Honore B.,	Bellevue,	Mifflin, Pa.
Wagner, Lenore T.,	Schwenksville,	Montgomery, Pa.
Walker, Hazel C.,	713 N. Adams St.,	Wilmington, Delaware
Walker, Margaret E.,	11 E. 18th St.,	Chester, Delaware, Pa.
Walp, Marie,	326 Hanover St.,	Nanticoke, Luzerne, Pa.



<i>Name</i>	<i>Post Office</i>	<i>County and State</i>
Walter, Anna R.,	Doylestown,	Bucks, Pa.
waiton, Clara S.,	Doylestown, R. D. 2,	Bucks, Pa.
waiton, L. Eda,	Norristown, R. D. 3,	Montgomery, Pa.
warner, Hazel L.,	477 N. Charlotte St.,	Pottstown, Montgomery, Pa.
Warren, Eleanor A.,	Modena,	Chester, Pa.
Washington, Margaret,	121 Ems St.,	Haddonfield, New Jersey
Waterman, Alice,	New Hope,	Bucks, Pa.
Watson, Dorothy,	258 Catawassa St.,	Nesquehoning, Carbon, Pa.
Watson, Romain C.,	Landenberg,	Chester, Pa.
Weaver, Marjorie D.,	431 Penn St.,	Huntingdon, Pa.
Webster, Mabel H.,	Conshohocken, R. D. 2,	Montgomery, Pa.
Weiland, Louise G.,	540 Morgan St.,	Dickson City, Lackawanna, Pa.
Weiler, Verna A.,	642 N. 16th St.,	Allentown, Lehigh, Pa.
Weiner, Olga Y.,	1403 Dorothy St.,	Scranton, Lackawanna, Pa.
Wenger, Mary H.,	Egypt,	Lehigh, Pa.
Wennis, Sarah R.,	138 E. Pomona Terrace, Gmt.,	Philadelphia, Pa.
West, Irene T.,	55 Roper St.,	Mobile, Alabama
Whalen, Catherine,	Lost Creek,	Schuylkill, Pa.
Whalen, Elizabeth M.,	208 W. Spruce St.,	Mahanoy City, Schuylkill, Pa.
Wherry, Jessie V.,	1106 2nd St.,	Juniata, Pa.
Whitsett, Dorothy,	119 S. Felton Ave.,	Sharon Hill, Delaware, Pa.
Wiley, Elizabeth K.,	307 Washington St.,	Huntingdon, Pa.
Wiley, Ruth E.,	Doylestown,	Bucks, Pa.
Wilkinson, Eleanor B.,	Rushland,	Bucks, Pa.
Williams, Arline S.,	372 Jones St.,	Peely, Luzerne, Pa.
Williams, Bessie L.,	21 Spring St.,	Nanticoke, Luzerne, Pa.
Williams, Doris F.,	Tunkhannock,	Wyoming, Pa.
Williams, Margaret G.,	Barney St.,	Wilkes-Barre, Luzerne, Pa.
Williams, Martha F.,	109 Park Ave.,	Frostburg, Maryland
Williamson, Mary S.,	Hancock's Bridge,	New Jersey
Wilson, Laura M.,	Westwood, Coatesville,	Chester, Pa.
Wilson, Jewel A.,	956 Maple St.,	Allentown, Lehigh, Pa.
Witt, Ethel M.,	165 Chestnut St.,	Spring City, Chester, Pa.
Wolfe, Helen A.,	43 Market St.,	Tamaqua, Schuylkill, Pa.
Workinger, Lena S.,	Dallastown,	York, Pa.
Worth, Mary L.,	Landenburg,	Chester, Pa.
Worthington, Alice S.,	Doylestown, R. D. 1,	Bucks, Pa.
Worthington, Alma,	31 Hillside Ave.,	Doylestown, Bucks, Pa.
Wright, Anna M.,	Atglen,	Chester, Pa.
Wright, Elizabeth,	Rising Sun,	Maryland
Wright, Rachel M.,	137 Woodland Ave.,	Coatesville, Chester, Pa.
Wynn, Clara F.,	Pottstown, R. D.,	Chester, Pa.
Yeager, Anna,	Ridge Road,	Spring City, Chester, Pa.
Yearick, Mary M.,	Kratzerville,	Snyder, Pa.
Young, Marian H.,	West Chester, R. D. 7,	Chester, Pa.
Zelley, Clara H.,	123 Walnut Ave.,	Ardmore, Montgomery, Pa.
Zern, Violet E.,	Gilbertsville,	Montgomery, Pa.

Underclass—Men

<i>Name</i>	<i>Post Office</i>	<i>County and State</i>
Anderson, Erroll P.,	701 Monroe St.,	Wilmington, Delaware
Bannan, Stanley W.,	Sassamansville,	Bucks, Pa.
Brennan, John C.,	532 W. Sunburg St.,	Mirersville, Schuylkill, Pa.
Brinton, Henry L.,	322 W. Locust St.,	Oxford, Chester, Pa.
Brown, Charles L.,	152 Woodland Ave.,	Coatesville, Chester, Pa.
Purns, Joseph,	Ranshaw,	Northumberland, Pa.

<i>Name</i>	<i>Post Office</i>	<i>County and State</i>
Burrell, Matthew,	Spring Mills,	Centre, Pa.
Caswell, George M.,	Rhoenixville, R. D. 2,	Chester, Pa.
Cuff, John T.,	Coatesville, R. D. 2,	Chester, Pa.
Daly, James A.,	West Whiteland,	Chester, Pa.
Diamond, John T.,	Pottstown, R. D. 2,	Chester, Pa.
Enders, Lester A.,	Enders,	Dauphin, Pa.
Elinisky, Stephen C.,	19 Loveland St.,	Kingston, Luzerne, Pa.
Fankhauser, Robert W.,	West Chester, R. D.,	Chester, Pa.
Fulmer, W. Paul,	315 Main St.,	Parkesburg, Chester, Pa.
Funk, Ezra M.,	Glen Moore,	Chester, Pa.
Gibble, Wallace R.,	196 Horton St.,	Wilkes-Barre, Luzerne, Pa.
Gibbs, Edward B.,	Camden,	Delaware
Gill, Franklin P.,	West Chester, R. D. 1,	Chester, Pa.
Good, Cecil H.,	Chalfont, R. D. 1,	Bucks, Pa.
Grasse, John M.,	Chalfont,	Bucks, Pa.
Grubb, William H.,	Gilbertsville,	Montgomery, Pa.
Haxton, William J.,	1318 Vine St.,	Scranton, Lackawanna, Pa.
Hetherington, Benjamin A.,	543 S. Matlack St.,	West Chester, Chester, Pa.
Hockenberry, J. Loudon,	New Germantown,	Perry, Pa.
Howell, Chauncey D.,	138 Wayne Ave.,	Easton, Northampton, Pa.
Huntzinger, John H.,	Doylestown,	Bucks, Pa.
Jenkins, Thomas D.,	1146 Egnon St.,	Scranton, Lackawanna, Pa.
Jones, Arthur H.,	76 Hartford Ave.,	Ashley, Luzerne, Pa.
Kauffman, J. Benjamin,	608 Market St.,	Lewisburg, Union, Pa.
Kendall, Charles H.,	102 Powelton Ave.,	Lansdowne, Delaware, Pa.
Kotanchick, Michael,	425 Webster St.,	Ranshaw, Northumberland, Pa.
Langhammer, Howard,	Lehighton,	Carbon, Pa.
Leuckel, Groman K.,	Lehighton, R. D. 4,	Carbon, Pa.
McAfee, Robert B.,	Quakertown, R. D. 2,	Bucks, Pa.
McCausland, John C.,	Downingtown,	Chester, Pa.
McElroy, William W.,	Pottstown, R. D. 2,	Chester, Pa.
Mack, James C.,	417 Hazle St.,	Wilkes-Parre, Luzerne, Pa.
Matcer, Kenneth H.,	111 Walnut St.,	Coatesville, Chester, Pa.
Matthews, Willard B.,	West Chester, R. D. 1,	Chester, Pa.
Mink, Gordon B.,	1109 Lawrence Ave.,	Darby, Delaware, Pa.
Moyer, James W.,	471 2nd St.,	Enhaut, Dauphin, Pa.
Murphy, Edward S.,	517 Harrison Ave.,	Scranton, Lackawanna, Pa.
Norris, Clifford C.,	Three Springs,	Huntingdon, Pa.
O'Brien, Michael A.,	Forest City,	Susquehanna, Pa.
Piccone, Victor H.,	69 Vaughn St.,	Kingston, Luzerne, Pa.
Reddy, Francis X.,	Connerton,	Schuylkill, Pa.
Shellenberger, Samuel,	Millintown,	Juniata, Pa.
Shoop, Charles,	Dauphin,	Dauphin, Pa.
Singleton, Fred R.,	1639 Fulton St.,	Harrisburg, Dauphin, Pa.
Smith, Harry D.,	St. Peters	Chester, Pa.
Sotak, A. John,	401 16th St.,	Windber, Somerset, Pa.
Stellwagon, Ernest M.,	Jr., Markham,	Delaware, Pa.
Stratton, J. Maurice,	Llewellyn,	Schuylkill, Pa.
Supplee, Ensigne,	Honey Brook,	Chester, Pa.
Tompson, G. Baker,	New London,	Chester, Pa.
Tollinger, James A.,	Laurel,	York, Pa.
Truebler, Charles W.,	128 W. Market St.,	Norristown, Montgomery, Pa.
VanBushkirk, Kenneth,	119 Reynolds St.,	Plymouth, Luzerne, Pa.
Webb, William T.,	17 Price St.,	West Chester, Chester, Pa.
Woycik, Chester F.,	126 Anderson St.,	Wilkes-Barre, Luzerne, Pa.
Woodroffe, Paul A.,	120 Front St.,	Catasauqua, Lehigh, Pa.
Wismer, Samuel A.,	Plumsteadville,	Bucks, Pa.

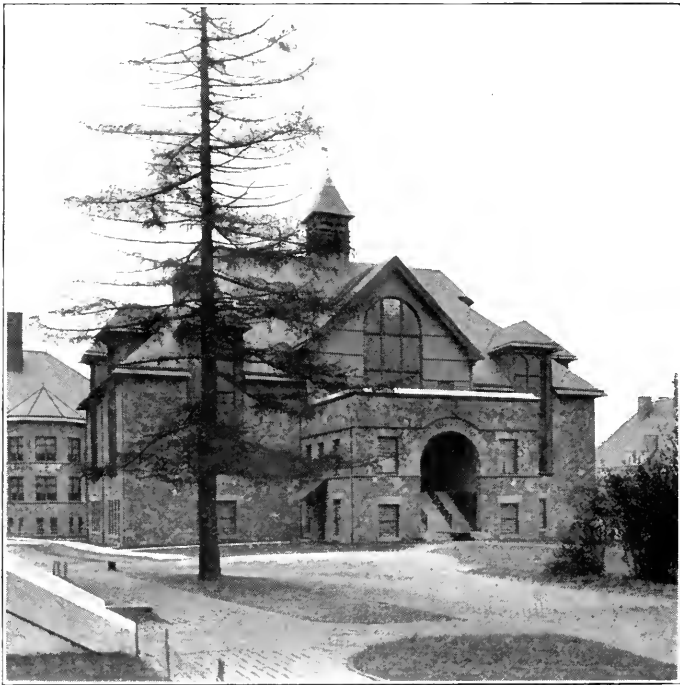
Music Supervisor's Course

<i>Name</i>	<i>Post Office</i>	<i>County and State</i>
Alexander, Thomas F.	210 N. Penn St.	West Chester, Chester, Pa.
Anderson, Hildegard A.	916 2nd Ave.	William sport, Lycoming, Pa.
Bear, Dorothy I.	1620 Chew St.	Allentown, Lehigh, Pa.
Bortner, Lena E.	20 W. King St.	York, York, Pa.
Brinser, Marlin H.	153 N. Catherine St.	Middletown, Dauphin, Pa.
Buffington, Florence M.	27 W. Church St.	Shamokin, Northumberland, Pa.
Carnahan, Lenore H.	144 Farragut Ave.	Vandergrift, Westmoreland, Pa.
Cook, Gertrude I.	25 School St.	Washington, New Jersey
Cramer, Clara	108 Terrace St.	Carbondale, Lackawanna, Pa.
Denison, A. Louise	2629 Market St.	Camp Hill, Cumberland, Pa.
Dowlin, Minerva S.	125 Nields St.	West Chester, Chester, Pa.
Durham, Lillian B.	Whitaker Ave.	Mont Clare, Montgomery, Pa.
Egan, Katherine R.	422 N. Front St.	Allentown, Lehigh, Pa.
Ernest, Beryl N.	112 8th Ave.	Juniata, Blair, Pa.
Evans, Dora A.	Muir.	Schuylkill, Pa.
Fix, Marion E.	33 State St.	Vineland, New Jersey
Fugler, Frances	521 S. Main St.	DuBois, Clearfield, Pa.
Gilbert, Jessie M.	38 S. 5th Ave.	Coatesville, Chester, Pa.
Ginter, Lawrence R.	142 Orchard St.	Nanticoke, Luzerne, Pa.
Goode, Emily D.	109 W. Cypress St.	Kennett Square, Chester, Pa.
Hassinger, Ruth A.	356 S. Main St.	Lewistown, Mifflin, Pa.
Heindl, Armella T.	545 Center St.	St. Marys, Elk, Pa.
Hostetter, Elizabeth H.	437 1st Ave.	Parkesburg, Chester, Pa.
Johnson, Bernice E.	Johnsonburg.	Elk, Pa.
Landes, Miriam R.	Yerkes.	Montgomery, Pa.
Leine, Bertha A.	Church St.	Honesdale, Wayne, Pa.
Letson, Sarah E.	Roslyn.	New York
Lewis, Winifred J.	509 S. 7th St.	Cambridge, Ohio
McCoy, Emily D.	408 Union St.	Smethport, McKean, Pa.
McLaughlin, Mae R.	Good Spring.	Schuylkill, Pa.
Maley, Mary M.	Mt. Carmel.	Northumberland, Pa.
Maze, Avanelle H.	4 Cardotte St.	Elk, Pa.
Mover, Luella G.	23 N. Front St.	Souderton, Montgomery, Pa.
Noll, Kathryn E.	Cornwall.	Lebanon, Pa.
Noll, Margaret M.	Cornwall.	Lebanon, Pa.
Parthmore, Mildred E.	441 N. Union St.	Middletown, Dauphin, Pa.
Payer, Ida E.	35 S. Tamaqua St.	McAdoo, Schuylkill, Pa.
Pearlberg, Ruth C.	64 Washington St.	Carbondale, Schuylkill, Pa.
Pollock, Zella L.	245 S. Otter St.	Mercer, Mercer, Pa.
Ready, Agnes J.	822 McKean Ave.	Dorara, Washington, Pa.
Rodes, Edna M.	Manchester.	York, Pa.
Ross, Miriam E.	Kennett Square.	Chester, Pa.
Sause, Kathleen	131 Woodbine St.	Youngstown, Ohio
Schoffstall, Marion P.	Orwin.	Schuylkill, Pa.
Sertell, Bonita	625 Wood St.	Vineland, New Jersey
Seybert, Geraldine E.	460 Lafayette St.	Palmerton, Carbon, Pa.
Simons, Anna G.	380 Brussels St.	St. Marys, Elk, Pa.
Smith, Helen L.	Newfoundland.	Wayne, Pa.
Snyder, Dorothy M.	137 Lacey St.	West Chester, Chester, Pa.
Soltys, Henry A.	241 Winder St.	Reading, Berks, Pa.
Stanaitis, Antonia	654 E. Northampton St.	Wilkes-Barre, Luzerne, Pa.
Starkey, Maurice R.	Mansfield, R. D. 2.	Tioga, Pa.
Strohl, Miriam R.	832 Seneca St.	Bethlehem, Northampton, Pa.
Thomas, Blanche M.	Williamsport, R. D. 1.	Lycoming, Pa.
Thomas, Mabelle	Tidioute.	Warren, Pa.

<i>Name</i>	<i>Post Office</i>	<i>County and State</i>
Weiser, Ruth M.,	158 N. Hanover St.,	Pottstown, Montgomery, Pa.
Williams, Mary A.,	98 N. Main St.,	Eldred, McKean, Pa.
Yoder, Emily K.,	105 E. Main St.,	Palmyra, Lebanon, Pa.
Zellner, Amelia A.,	34 2nd St.,	Slatington, Lehigh, Pa.

Health Education Course

<i>Name</i>	<i>Post Office</i>	<i>County and State</i>
Abernethy, Charlotte M.,	732 2nd St.,	Catasauqua, Lehigh, Pa.
Anderson, H. Mildred,	163 W. Windsor St.,	Reading, Berks, Pa.
Bennett, Frank M.,	218 W. Barnard St.,	West Chester, Chester, Pa.
Callahan, Thomas C.,	41 John St.,	Kingston, Luzerne, Pa.
Cantwell, Edward,	19 Bridge St.,	Monson, Mass.
Catron, James M.,	148 Poplar St.,	Kingston, Luzerne, Pa.
Chambers, John H.,	388 Nields St.,	West Chester, Chester, Pa.
Corb, Israel, 3 R 29	Mississippi Ave.,	Atlantic City, New Jersey
Doyle, Judl M.,	Cumbola,	Schuylkill, Pa.
Eldridge, Elizabeth W.,	601 S. Walnut St.,	West Chester, Chester, Pa.
Evans, Howard V.,	240 E. Lincoln Highway,	Coatesville, Chester, Pa.
Fleming, James C.,	350 S. 4th St.,	Reading, Berks, Pa.
Forliamo, Peter R.,	25 E. 1st St.,	Hazleton, Luzerne, Pa.
Garland, Alice A.,	2000 N. 5th St.,	Harrisburg, Dauphin, Pa.
Goetz, Nadine,	1024 Franklin Ave.,	Woodlawn, Beaver, Pa.
Gordon, Morris,	594 Coates St.,	Coatesville, Chester, Pa.
Griesing, John J.,	107 E. Diamond Ave.,	Hazleton, Luzerne, Pa.
Holton, Emily,	41 Dorrance St.,	Kingston, Luzerne, Pa.
Hoopes, Herman M.,	200 Price St.,	West Chester, Chester, Pa.
Humpton, L. Evelyn,	103 Sibley Ave.,	Ardmore, Montgomery, Pa.
James, Abby S.,	330 Columbia Ave.,	Palmerton, Carbon, Pa.
Jones, London B.,	411 S. Matlack St.,	West Chester, Chester, Pa.
King, Bertha A., 217 S.	Darlington St.,	West Chester, Chester, Pa.
Martin, Eugene M.,	West Chester, R. D. 5,	Chester, Pa.
Mevers, Charles E.,	New London,	Chester, Pa.
Nider, James E.,	246 E. Gay St.,	West Chester, Chester, Pa.
Pitts, E. Joseph,	3202 E. 11th St.,	Chester, Delaware, Pa.
Robinold, George,	5138 Larchwood Ave.,	Philadelphia, Pa.
Royer, J. Paul,	24 E. Orange St.,	Lititz, Lancaster, Pa.
Ryan, Anna K.,	Forest Grove,	Bucks, Pa.
Sharpless, Harlan A.,	123 S. Church St.,	West Chester, Pa.
Sill, Dorothy L.,	101 Monroe St.,	Media, Delaware, Pa.
Smith, Dorothy G.,	158 S. Washington St.,	Wilkes-Barre, Luzerne, Pa.
Smith, Priscilla D.,	Parkview Apts.,	West Chester, Chester, Pa.
Staiger, Richard P.,	Coatesville, R. D. 3,	Chester, Pa.
Townsend, Ruth,	West Chester, Box 123,	Chester, Pa.
Wells, Dorothy,	Bradford Hills,	Downingtown, Chester, Pa.



State Normal School

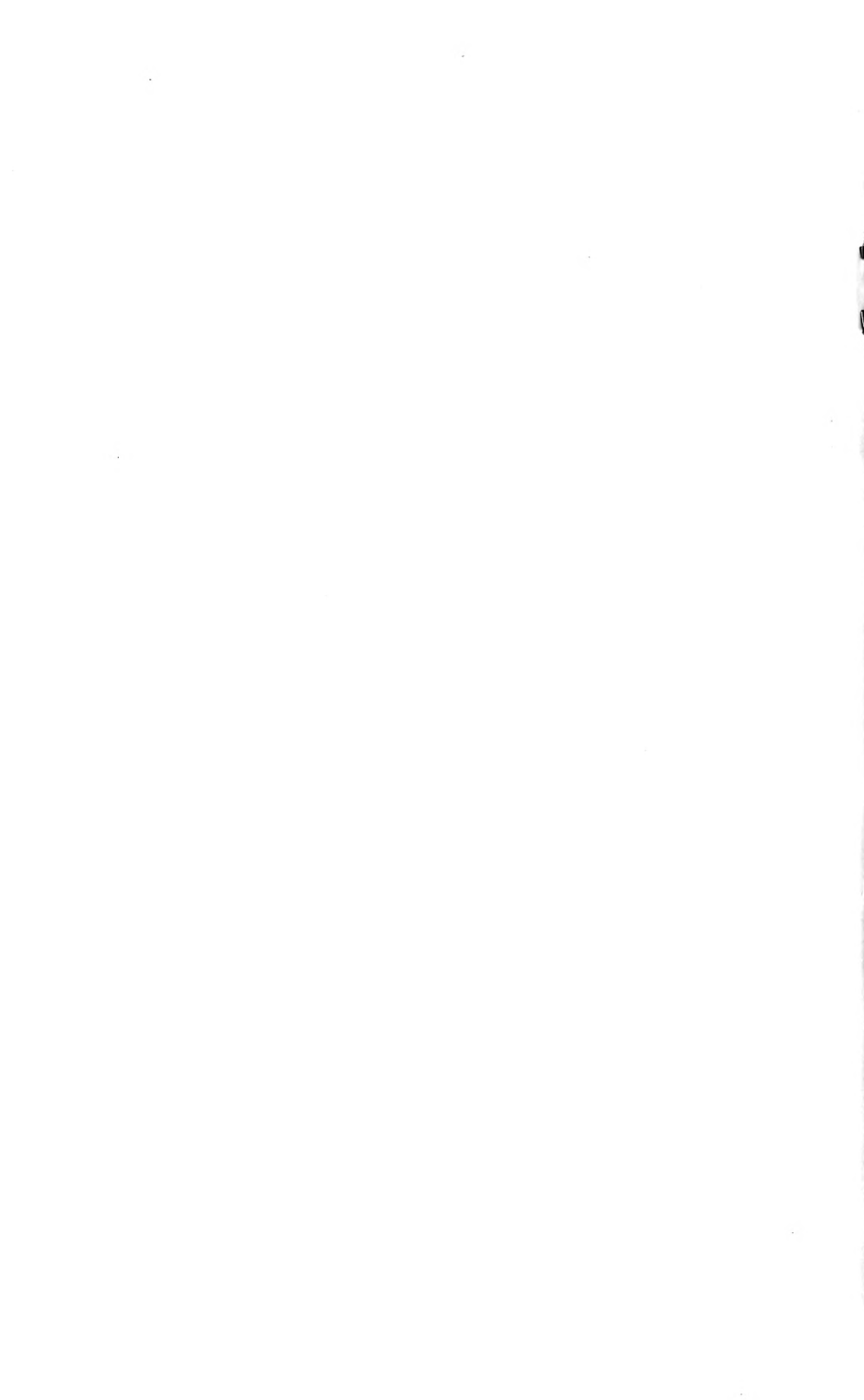
GYMNASIUM

West Chester, Pa.

Recapitulation of Students

Number of different resident students during the year.....	1285
Number of young men.....	113
Number of young women.....	1172

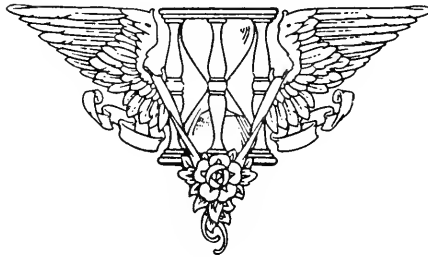




SUMMER SESSION

1925

June 15 to August 15



State Normal School

WEST CHESTER, PA.

THE SUMMER SCHOOL will be conducted in the regular Normal School buildings, and students can secure board and rooms in the dormitory by making application in time to the Principal and by paying the enrollment fee of \$10.00 in advance.

(This note is made at the outset, and is emphasized, because for the past three years the Pennsylvania Summer School of Music has occupied the Normal School plant and we have operated the Summer School for Grade Teachers in the West Chester High School building. Now this School of Music has ceased to exist and we are returning with the Grade Teachers to our own plant.)

The members of the Summer School will classify in two groups:—

CLASS I. Graduates of approved secondary schools who can present evidence of having completed at least fifteen units of high school work, who have had no teaching experience, and who now wish to earn at least eight semester hours of credit in normal school to enable them to teach next fall.

CLASS II. Teachers in service who have made varying degrees of progress toward a Standard Certificate or toward normal school graduation; and normal school students pursuing work during the summer.

(New entrants into the teaching field, must now be able to present evidence of having completed at least fifteen units of high school work, or its equivalent, before they can be admitted here.)

Program For Members of Class I

	Monday	Tuesday	Wednesday	Thursday	Friday	Other possibilities at the designated hour
7.45	MUSIC (I)					Drawing Writing Art Appreciation School Efficiency
8.45	CHAPEL					
9.15	TEACHING OF ARITHMETIC					Introduction to Teaching Teaching of History Teaching of Geography Teaching of English Childrens' Literature Rural School Management
10.15	SCHOOL EFFICIENCY					Drawing Teaching of Primary Reading Personal Hygiene
11.15						Art Appreciation Child Psychology

CLASS I candidates must take either Rural School Management or School Efficiency, and may select the other subjects for a full program by approval of the Dean of Instruction.

Program For Members of Class II

	Monday	Tuesday	Wednesday	Thursday	Friday	Other possibilities at the designated hour
7.45	ENGLISH FUNDAMENTALS					Arithmetic Oral Expression Principles of Geography History (American) Educational Sociology English (Elective)
8.45	CHAPEL					
9.15	NATURE STUDY					Drawing Music (III) Writing Teaching of Primary Reading Junior H'h Sch'l Mathematics Constructive Handwork School Hygiene English Composition Educational Psychology School Efficiency Educational Sociology Teaching of Mathematics
10.15	INTRODUCTION TO TEACHING					History (Economic) Nature Study Rural Sociology Educational Measurements Child Psychology History of Education Constructive Handwork Teaching of Arithmetic Teaching of History (IV)
11.15	CONSTRUCTIVE HANDWORK					English Fundamentals Children's Literature History of Education Music (II) Intermediate Grade English Educational Measurements Guidance Nature Study School Hygiene Teaching of Primary Subjects Teaching of Geography Handwriting

It is recommended that teachers in service get their desired program of work for the Summer Session approved by their Superintendent beforehand. This will often avoid errors, and enable candidates to strengthen in their weakest places—an eminently desirable goal.

Miscellaneous

An enrollment fee of ten dollars is paid by each student. No tuition fee is charged. Books can be secured at the Book Store of the School.

Board, room in the dormitory, and laundry may be secured for seven dollars per week. Those entering later than the opening, may pay at the same weekly rate if they come as soon as their schools are closed.

Students will not be admitted later than June 29.

Excursions to Valley Forge, the Brandywine Battle Field, historical places in Philadelphia, etc., will be arranged as may be desired.

A one-room rural school will be in operation, under the management of an expert, and will be available for purposes of observation by those desiring it.

When the Health Certificate and the Certificate of Vaccination are being secured for entrance to the Normal School, each candidate should request the physician to give a thorough heart examination to insure against error in exercise.

Without entering into any detailed description of the courses offered in the Summer Session, it is worthy of mention that they will be given with a view to preparing the student to use them in teaching. Even when the "content" of the subject seems to be the matter of prime concern, the pedagogical bearing and significance of it will remain in the mind of the teacher and be repeatedly brought to the notice of the learner. The teaching will be done by regular members of the Normal School Faculty—unless in some unknown instance a substitute teacher needs to be secured.

Not more than twelve semester hours of Normal School credits may be accumulated in any one Summer Session.

