



*West Chester
State Normal School
1926*





STATE NORMAL SCHOOL

MAIN BUILDING

WEST CHESTER, PA.

Fifty-fifth
ANNUAL CATALOGUE

OF THE

Pennsylvania
State Normal School

FOR THE

FIRST DISTRICT

West Chester, Pa.

1 9 2 6

Board of Trustees

J. HOWARD LUMIS	}	Term of office expires in 1927
HERBERT P. WORTH		
DR. HARRY D. SAYLOR		
MISS ISABEL DARLINGTON	}	Term of office expires in 1928.
COL. A. M. HOLDING		
S. JONES PHILIPS		
MRS. RICHARD J. HAMILTON	}	Term of office expires in 1929.
DORAN GREEN		
MRS. HOWARD MELLOR		

Officers of the Board

A. M. HOLDING
President
J. HOWARD LUMIS
Vice-President
ISABEL DARLINGTON
Secretary
HERBERT P. WORTH
Treasurer

Committees

Instruction	Household
MISS ISABEL DARLINGTON	J. HOWARD LUMIS
DR. HARRY D. SAYLOR	MRS. RICHARD J. HAMILTON
MRS. RICHARD J. HAMILTON	S. JONES PHILIPS
Finance	Athletics
HERBERT P. WORTH	MRS. HOWARD MELLOR
DORAN GREEN	DR. HARRY D. SAYLOR
MRS. HOWARD MELLOR	DORAN GREEN

The regular meetings of the Board are held on the first Monday of each month at 4:00 P. M.

The Faculty

(With the exception of the Principal and Dean, names are arranged in the order of seniority of service)

ANDREW THOMAS SMITH, A.M., Pd.D.
Principal

WILLARD A. BALLOU, B.S., A. B., A.M.
Dean

WALLACE P. DICK, A.B., A.M.
Modern Languages

ROBERT F. ANDERSON, A.M., Sc.D.
Mathematics

S. C. SCHMUCKER, A.M., Ph.D.
Emeritus Professor of Biological Sciences

ALICE A. COCHRAN
Librarian

FOSTER H. STARKEY, A.B., A.M.
Ancient Languages, Education

ISADORE E. CROPSEY, MUS. B.
Piano

ELSIE OLEITA BULL, A.B., A.M.
Mathematics

GRACE DEITRICH MCCARTHY, A.B., A.M.
Dean of Women; English

ANNE M. GOHEN, B.L., A.M.
Psychology

ARTHUR D. CROMWELL, M. Ph.
Agriculture: Director Rural Group

MRS. NAOMI E. GEORGE
Health Education

JOHN A. KINNEMAN, A.B., A.M.
Social Studies

M. GERTRUDE, SIPPLE, B.S.
Director Junior High School Group

CHARLES B. LEWIS, A.M., M.D.
Health Education

MRS. MAUDE B. NEWMAN, B.S.
English

CLAUDE EDWARD HAUSKNECHT
Music, Cornell University
Music Director

GERTRUDE K. SCHMIDT

Institute of Musical Art
Public School Music

S. ELIZABETH TYSON

Speech; Story Telling

HARRIET A. ELLIOTT, B.S.

Geography

LOU E. HOSMER

Primary Methods

DELPHIA R. MARTIN, B.A.

Primary Subjects

CHARLES W. HEATHCOTE, A.M., Ph.D.

Social Studies

ROBERT T. KERLIN, A.M., Ph.D.

English

FLO GEYER, A.B.

English

HAZEL LAMBORN

School of Industrial Art
Art

MARGARET M. BURNET, B.S.

Director Primary Group

FLORENCE W. RAGUSE, B.S.

Director Intermediate Group

EDWARD ZIMMER, JR., B.S.

Orchestra and Band

MARIE MARGARET HEINEMAN

Public School Music

ALICE C. SCHRIVER

Health Education

THELMA J. GREENWOOD

Assistant in Science

MRS. IDA P. STABLER, B.S.

Director Primary Group

MARION FARNHAM, A.B., A.M.

Art

DOROTHY M. SCHMUCKER, A. B.

Science

LIDA J. LOW

Voice

FLORENCE A. LEE

Harmony

MARY E. MELCHOIR, A.B.

Social Sciences

MRS. ROBERT T. KERLIN, B.S.

Piano

CLARENCE L. McKELVIE

Handwriting

MARY CONNELL, B.S.

Director Intermediate Group

JOHN ARTHUR LEWIS, B.S., A.M.

Science

HELENE LUTYEN, Ph.B.

Education

ALICE MAUDE BAKER, B.S., A.M.

Education

JOSEPHINE E. WILSON, A.B.

Education

A. CATHARINE SMITH, A.B.

Education

MABEL AUGUSTA SQUIRE

Music Cornell University and Institute of Music Pedagogy

Public School Music

KATHERINE H. SCOTT

Graduate Chicago Art Institute

Art

A. IRENE HORNER, B.S.

Health Education

LULU V. WALKER, B.S., M.A.

Nutrition

Health Education

MILDRED HOLLOBAUGH, A.B.

Health Education

GERTRUDE HERZOG, B.S.

Health Education

J. F. McGOVERN, Ph.B.

Health Education; Athletics

L. FORREST FREE, A.B.

Voice

S. CONSTANCE RICE
Kindergarten

DOROTHY McCLAREN, A.B.
Assistant Dean of Women

MARGARET HAYES, A. B.
Assistant Librarian

EVA DISSINGER, R.N.
Nurse

MARY M. GLANCE, R.N.
Nurse

LILLIAN CRANE, A. B.
Spoken English; Dramatics

WALTER S. PHILIPS, B.S., M.S.
Supt. of Schools; Practice Teaching Department

JOHN R. HOLLINGER
Business Manager

ANDREW W. WOLFANGLE
Assistant Business Manager

GEORGE S. ROBERTS
Registrar

REBECCA DISSINGER
Matron

JESSICA M. DYER
Dietitian

IDA M. ROSSITER
Secretary to Business Manager

HELEN BROOMELL
Secretary to Principal

E. LENORE LEVER
Secretary to Dean

ANNA M. McCAULEY
DOROTHY E. CURRY
MILDRED M. SCOTT
Stenographers

AGNES R. FINEGAN
Bookroom

School Motto*We Serve*
School Colors*Purple and Gold*
School Flower*The Pansy*

UNIVERSITY COURSES

GEORGE HERVEY HALLETT, Ph.D.

Mathematics

ALBERT C. BAUGH, Ph.D.

English

F. E. WILLIAMS, Ph.D.

Geography

T. L. BOLTON, Ph.D.

Psychology

THE CALANDAR

1926-1927

First Semester Students Enter	September 20
Christmas Recess	December 23 January 4
First Semester ends	January 29
Second Semester begins	January 31
Regular School Year ends	June 7
Summer Term begins	June 21

FOUNDATION

The West Chester State Normal School was founded in the year 1871 by the joint efforts of the Trustees and contributors of the West Chester Academy, and the citizens of West Chester and vicinity.

On December 30, 1913, all the property of the school was transferred to the State, as provided in the new School Code, and it is no longer owned and controlled by a private corporation, but is strictly a State Normal School, being the first Normal School in Pennsylvania to be thus transferred. It is managed by a board of nine trustees, who are appointed for three year terms by the Superintendent of Public Instruction.

LOCATION

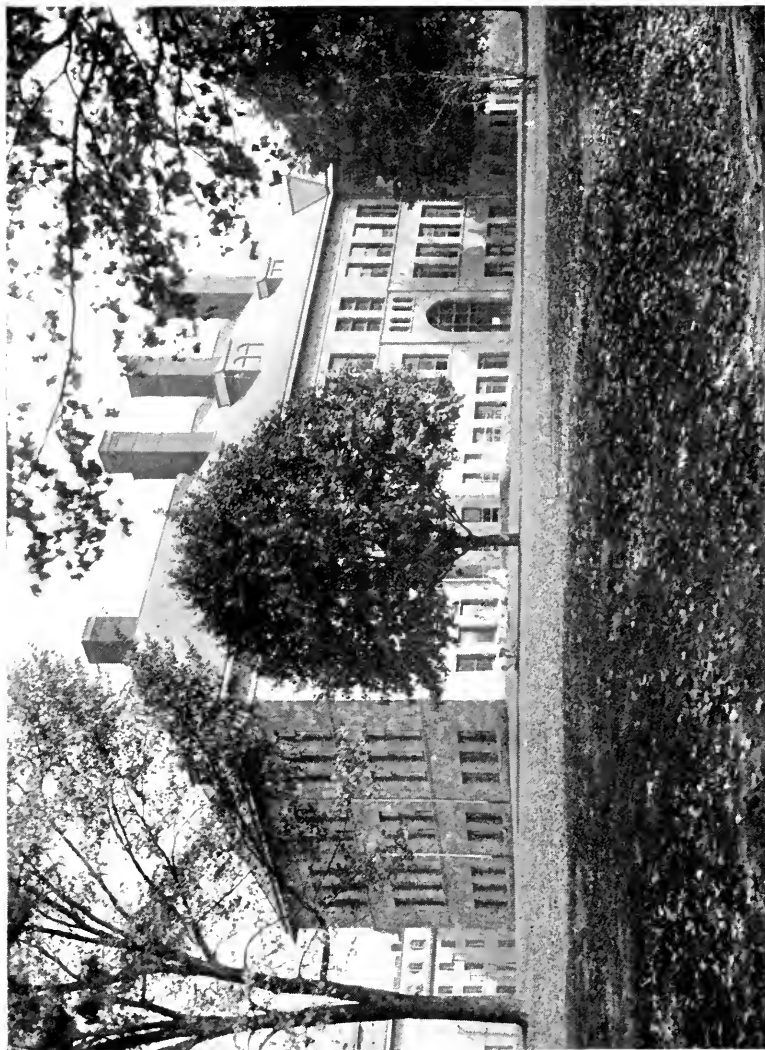
West Chester is a beautiful town of 13,000 inhabitants, the county seat of Chester County, and is preeminent for its healthfulness, morality and intelligence. It is about twenty-five miles west of Philadelphia, with which it is connected by two lines of the Pennsylvania R. R. It is also connected with Philadelphia by a trolley line, over which cars run every half hour each way, starting from 69th and Market streets terminal of the Market street subway and elevated railway. A short branch road connects West Chester with the main line of the Pennsylvania Railroad at Frazer, where connections are made with the trains on the main line; and by electric roads it is also connected with the Philadelphia & Reading R. R. at Lenape, and with the Pennsylvania R. R. at Downingtown and Kennett Square.

THE BUILDINGS

Are situated in the southern part of the borough, half a mile from the Court House. The main building is built of green stone with white marble, 256 by 275 feet, four stories high, with basement.

The chapel and the dining-room are in the main building and are completely equipped, the latter now being in charge of a trained dietitian. Each story of this main building has bath rooms with up-to-date toilet facilities of the best pattern. The drainage is first-class. The whole building has lately been improved; the students' rooms have all been papered, refitted and refurnished and many other improvements made to add to the efficiency of the school and the comfort of the students. In 1910-11 there was added to this building an extension of the dining room and a three-story annex enabling it to accommodate 500 girls; a large household building, with complete kitchen, bakery, store room and other conveniences, and connected by a covered way, was also added. Two passenger elevators make all the floors equally desirable.

The Gymnasium.—There is a first class gymnasium, 104 by 64 feet, with an administration building attached, 29 by 36 feet. It is of stone two stories high, fitted up with every modern improvement, including a full supply of the best apparatus, running track, bath rooms, swimming pool, bowling alleys, etc. A thoroughly trained physician and his staff are in charge of the gymnasium, and all exercise is taken under their supervision.



STATE NORMAL SCHOOL

RECITATION HALL

WEST CHESTER, PA.

Recitation Hall.—This is a stone building 185 by 80 feet, with two stories above a high basement, which is used wholly for school purposes. It has been planned with great care, and is unusually well adapted for its purpose. The total cost of the building and its equipment has been over \$100,000.

Library.—A new library building has been built at a cost of \$60,000. It is 90 by 72 feet, will hold 50,000 books, and affords fine reading and reference rooms. In its second story are the school's museum and art gallery, and the collection of the Chester County Historical Society. The library now contains 20,000 well selected volumes, including the libraries of the late Dr. William Darlington and of the Chester County Cabinet of Nature Sciences, the Evans Rogers collection of historical books for which \$1,000 was given by the late Evans Rogers; the Horace Howard Furness collection of books on Shakespeare, the gift of Dr. Furness; the Brinton collection given by Howard Futhy Brinton in memory of his parents, Dr. William B. and Ida Futhy Brinton; and the collection of Chester County bibliography made by the late H. Rush Kervey. A modern card catalogue system is in use, and the building is in charge of two trained librarians. About a hundred leading magazines and papers come regularly to the library for the use of the school.

Museum.—The museum contains a large and valuable collection of specimens illustrating every department of Natural Science. It was begun in the year 1862, and has been annually enriched with contributions from every portion of the world. The justly celebrated "Herbariums" of the late Dr. William Darlington, David Townsend and Josiah Hoopes, now in the Museum, are conceded to be among the most accurate and extensive private collections ever formed in this country. The mineral collections of the late Alfred Sharples have been donated by his son, F. F. Sharples. The J. Preston Thomas collection of heads and horns, a valuable zoological collection from all parts of the world, and of Indian relics, including thousands of arrow heads, axes, pipes, etc., were collected by the late J. Preston Thomas and given to the school by his family. A fine collection of birds, made by the late Frank Darlington, has recently been added to the museum.

Wayne Hall.—This is a modern, well equipped dormitory for boys, built of green stone, three stories high, and will accommodate 175 boys.

New Grounds.—The Trustees have added to the original ten acres required by law, until the school now has about sixty acres of fine grounds, suitably fitted up for all out-door games, a large and safe skating pond and a small, well equipped farm for practice and observation in agriculture.

Heat and Power Plant.—This plant supplies the best and safest type of lights to all parts of the buildings. It also furnishes direct steam radiation to heat the various buildings and power for the school's laundry, which is housed therein.

Infirmary.—A complete and well-appointed school infirmary, at considerable distance from the other school buildings, has been erected. This has been planned by skillful physicians and architects, and will not only promote

the comfort and recovery of any who may be ill, but will also tend to prevent the spread of contagion in the school. It is believed that this was the first school of its class to take this important step. A trained nurse and assistant are employed by the school.

The school property is now over \$1,000,000, and is believed to be one of the best and most complete of the State Normal Schools in this country.

STUDENTS' ROOMS

The rooms are generally arranged for two students each. All are good sized, and are thoroughly heated by direct steam radiation. The rooms are comfortably furnished, having been recently re-wired to give abundance of light, re-papered and re-varnished. They have closets and single beds that are furnished with woven wire springs and mattresses. All rooms are carpeted. Boarding students furnish blankets or their equivalent, towels, and table napkins.

MORAL AND RELIGIOUS CULTURE

All students are required to attend the opening exercises of the school Chapel each day, and all must attend religious services each Sabbath morning in the town, at the churches preferred by their parents or guardians. The Young Men's and Young Women's Christian Associations are large and efficient, and maintain regular non-sectarian religious meetings.

LITERARY SOCIETIES, ETC.

There are connected with the school two flourishing Literary Societies—The Moore Literary Society and the Aryan Society—composed of students and members of the Faculty. The value of these societies as adjuncts of education is so great that the student cannot afford to neglect the opportunities they afford for literary culture.

In addition, great encouragement is given to training in debating to the production and distribution of a superior student paper "THE GREEN TONE." to the study of current events and pressing problems of the day—all designed to prepare students to serve ably in the communities where they may teach. Dramatic and musical clubs, glee clubs, and clubs for open discussion of any topic that may appear—all functions here and are fostered by students and faculty alike.

TEACHERS' BUREAU

The school maintains a Teachers' Bureau for its graduates and the public. Superintendents, school boards and graduates of the Normal School are invited to use this bureau without charge.

ALUMNI FUNDS

A loan fund has been established by the Alumni, which now amounts to more than \$12,000. This is loaned to worthy students, and interest is charged upon it only from the date when its return should begin. For details concerning this, application should be made to the Principal.

EXPENSES
Normal or Secondary Departments

	School Year 36 wks.	First Semester 18 wks.	Second Semester 18 wks.	Summer School 9 wks.	Less than semester or term per wk.
Board, room and laundry (12 pieces per week)	\$288.00	\$144.00	\$144.00	\$9.00
Day Students' service charge	20.00
Enrollment fees		10.00	10.00	10.00
Athletic fee and subscription to school paper	9.00
Laboratory fees—Chemistry, Zoology, Botony, or Biol- ogy		5.00	5.00	5.00
Drawing or Industrial Art (Electives in these are charged for according to require- ments)		10.00	10.00	10.00
Physics, Nature Study or Geog- raphy		2.50	2.50	2.50

Private Music Lessons

One lesson per week (30 minutes)	\$70.00	\$2.00
(This includes weekly class lessons) Piano practice one period per day	15.00	7.50	7.50	4.00
Music Supervisors' fee	120.00	60.00	60.00

The Progressive Series of Piano lessons has been adopted in this department. This is a modern method which presents the material in an intelligible and systematic way, and students who come from certified teachers are given full credit for the work they have accomplished.

Bills may be paid by cash, check or post office money order.

The business Manager, or his representative, acts for the Trustees and receipts all bills.

Bills are due when rendered and must be settled promptly; otherwise students will not be permitted to continue their work, unless by special arrangement.

Diplomas will not be issued to those whose bills are unpaid.

Students entering should bring with them in check, or otherwise, the first payment for the year, \$157.00, and the enrollment fee of \$10.00, if that has not been paid. If students are entering as Day Students, they should bring

with them \$29.00, and the enrollment fee of \$10.00, if that has not been paid. The initial enrollment fee of \$10.00 must be made when application for entrance is made; otherwise, no place will be held for the candidate. (In case a candidate decides to withdraw, such fee will be refunded, provided the withdrawal is made at least two weeks before the opening of the school term.) The full year's account for board, room, laundry, and the semester's enrollment is paid in two installments—one at the beginning of each semester. Service Charge, Athletic Fee, and School Paper subscription are paid in full at the beginning.

Persons in the Music Supervisor's Course must add to the above amount, \$67.50, which is their additional fee for the semester.

Persons assigned to Student Teaching at places which necessitate the payment of transportation charges, will have to meet such charges personally.

MISCELLANEOUS ITEMS

When the Health Certificate and the Certificate of Vaccination are being secured for entrance to the Normal School, each candidate should request the physician to give a thorough examination to insure against error in exercise.

A gymnasium uniform is required of all. This is purchased here in the supply room, so as to insure uniformity. Here they are sold at the lowest possible cost.

The School Book Store carries in addition to books, a complete line of students' necessities—laundry bags, parcel post cases, etc., which can be purchased cheaper than they can be made by the individual. Athletic goods, stationary, etc., can all be purchased in the School Book Store at reasonable prices.

All students will need gymnasium shoes, which can be secured at the school at small expense.

Keys are furnished by the school, but \$1.00 must be deposited when they are obtained, which deposit is refunded when they are returned.

All articles for the laundry must be distinctly marked. Each student is permitted to have twelve pieces washed each week without extra charge. While great care is taken with all articles sent to the laundry, the school will not be responsible for their loss or damage.

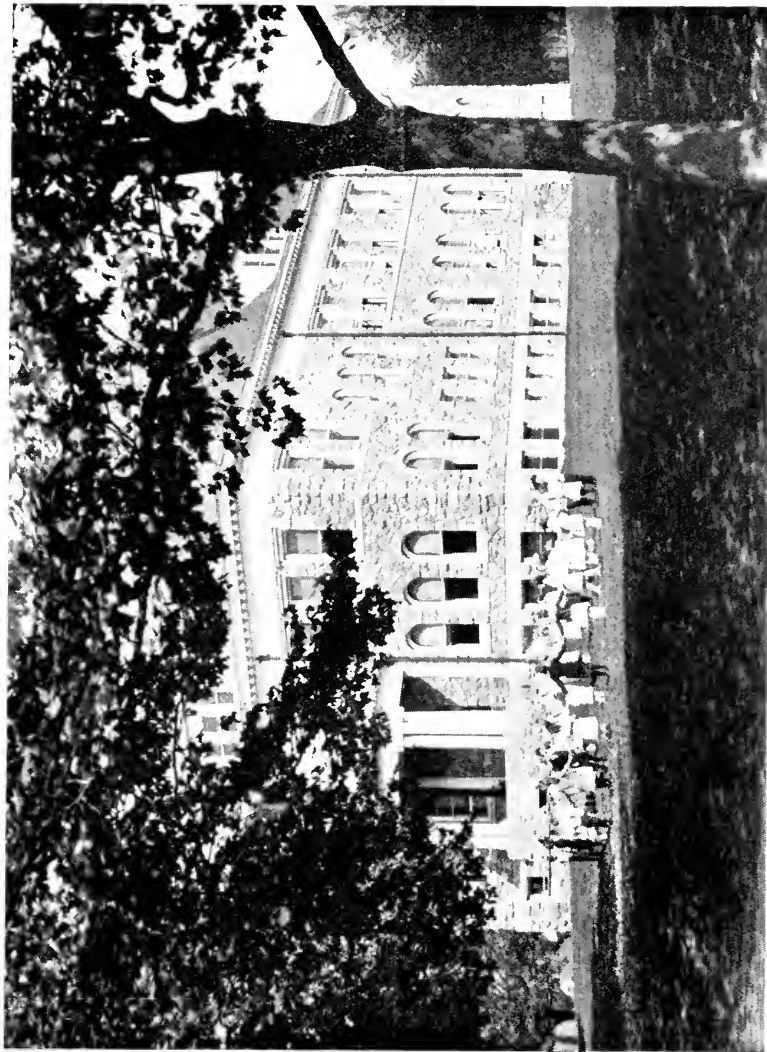
Meal tickets for visitors may be secured at the office, 50 cents each.

Rooms are rented to visitors at 50 cents a night when such are available.

Rooms will be ready for occupancy on the opening day of the session

Organizations within the student body must not enter into contracts with business firms until after they have submitted such contracts to the Business Manager of the school and have received his approval of the same.

Rooms should be vacated not later than the day following the close of school. After the breakfast following the closing day of school those who remain will be charged regular vacation rates.



STATE NORMAL SCHOOL

MODEL SCHOOL

WEST CHESTER, PA.

Rooms engaged and not occupied the first evening of the term will be forfeited unless special arrangements are made with the Business Office to hold the same, and in that event, the individual hoping to occupy the same will have to pay for the room from the beginning of the term.

Damage to rooms and furnishings (such as driving tacks or nails into walls, or wood work, pasting articles upon the walls, breakage etc.,) will be charged against occupants of the room upon estimates made by the Business Manager.

Because of the danger to life and property and because of the rigid fire regulations of the state, there must be absolutely no tampering with lights or light fixtures in the buildings. Candles or other open-flame means of lighting or heating, are absolutely forbidden.

Trained Nurses are maintained by the school and give their expert service to pupils. A charge of 25 cents is made for every meal tray sent from the nurse's department.

Because of the pressure for membership in the school and for rooms in the dormitory, all entrants should make sure that teaching is the life work in which they wish to engage and for which they wish to prepare. When you are admitted here, there is someone else denied entrance. Our overhead expenses are just as great if you go as they are if you remain. Accordingly anyone who comes here and then withdraws because of homesickness, etc., will forfeit the payment that has been made on the semester's account.

Boarding students absent for two or more consecutive weeks on account of personal illness, but not for any other absence, will receive a refund of fifty per cent of the amount charged for the period of such absence, provided the Business Office is notified promptly, but no refund will be made of the above if delayed one week after absence begins. (The enrollment Fee for the semester under consideration is not refunded for any cause.)

Persons entering school within the first two weeks of the opening of a semester, or leaving school within the last two weeks of the close of the semester will be charged boarding rates, or tuition where that is a legitimate charge, for the full semester.

Those who are in attendance for a period less than the above, in any semester, will be charged the weekly rate for that semester.

Boarding students may employ a caretaker for their rooms by entering into a contract with the Business Manager, and each paying at the rate of 50 cents per week for the period of the contract. Any student not voluntarily entering into such a contract, but whose room is not kept in such order as to receive approval of the Housekeeper, will be charged for room care and have the caretaker sent to do it by order of the school. All girls taking meals in the school are charged a fee of \$4.00 for the privilege of using the laundry for such special work as they may wish to do.

Regular classroom activities will run through six days of the week. This is made necessary by the fact that there are many three hour per week

subjects in the course. Week-end absences from school cannot be taken for granted, therefore, and will not be permitted longer than from Saturday noon to Sunday evening. Even such absences will be limited, since the practice of regular week-end absence from school prevents one's getting the real spirit of the institution, and lessons interest in it.

REQUIREMENTS FOR ADMISSION TO A STATE NORMAL SCHOOL

Adopted by Board of Principals
January 16, 1925—January 15, 1926.

Admission to a State Normal School shall be on the basis of graduation from an approved four-year high school, or an equivalent training in a private school.

Graduates of senior high schools in a school system with approved junior high schools will be accepted on evidence of twelve Carnegie units of training.

Though no specific division of subjects is required, the following high school curriculum is offered as a suggestive guide for students who are planning their work for entrance into a State normal school:

English	3 units
Foreign Language	2 units
Mathematics	1 unit
Science	1 unit
Social Studies	2 units
Electives	6 units
Total	15 units

Graduates of classified two-year high schools shall be given not more than eight units of credit and graduates of classified three-year high schools provided however, that such students, or other students having irregular entrance qualifications, may take examinations in county superintendents' offices in all counties having such students, at the close of the school year. These examinations will be given under the direction of the Credentials Bureau of the Department of Public Instruction, under a cooperative plan adopted by the Board of Normal School Principals, January 15, 1926. In case of failure in a subject, the student, by additional study during the summer, may take a second examination in August at one of the normal schools or at any one of the centers where State examinations are regularly conducted, namely, Philadelphia, Harrisburg, Pittsburgh and Scranton.

The Normal School has nothing whatever to do with this examination, which is conducted entirely by the Credentials Bureau, Department of Public Instruction, Harrisburg, Pennsylvania, to whom all inquiries should be addressed.

Under this arrangement students who complete the work of a four-year high school with a three-year rating may take examinations in fourth-year

subjects and thereby receive credit equivalent to that of a four-year high school; graduates of three-year high schools with a two-year rating may take examinations in third-year subjects for credit in three years of approved high school work.

Credentials of all students entering the State Normal schools on the basis of an approved four-year high school shall be received and evaluated by the normal school; students having less than an approved four-year high school training or students whose preparation is irregular, shall have their credentials evaluated through the Credentials Bureau of the Department of Public Instruction.

A unit represents a year of work in a high school subject, or not less than 120 clock hours of work requiring preparation.

Until September 1, 1927, high school work completed prior to July 1, 1924, will be accepted on a ninety-six hour basis.

Graduates of approved four-year high schools or of equivalent private schools who desire admission to a State normal school without examination must present a detailed statement of all studies pursued, including the time devoted to such studies, and the grade received. Blanks for such purpose may be secured from the principal of the State normal schools. These blanks should be filled out by the school in which the student attended, or where this is impossible, by the local superintendent of schools.

Students will be registered in the regular first semester courses in English, conditionally. Those found to be noticeably deficient as a result of practical tests in the writing of simple English, including, weakness in spelling, punctuation, grammar and paragraphing, will be required to take special work in this field.

Until September, 1927, the holders of permanent and professional certificates will be given one credit toward admission as regular students in the normal schools for each subject of high school grade written on the certificate.

Advanced credit will be given for equivalent courses in approved teacher training institutions but no student may obtain a normal school certificate without a minimum residence of one year. Teachers who have been granted credit for experience may finish a minimum residence of one-half year.

NORMAL SCHOOL CERTIFICATE FOR TEACHERS IN SERVICE

The following conditions apply only to those persons who have taught in Pennsylvania public schools prior to July 1, 1922. (No credit will be given toward the completion of high school work or of the regular normal school course for teaching done after July 1, 1922.)

The fifteen units of high school work required for entrance to the State normal schools may be earned in approved high schools, summer schools, extension classes, correspondence study in institutions approved by the Department of Public Instruction and tutoring under approved conditions.

Credit for entrance may also be secured by teaching experience in Pennsylvania public schools at the rate of three standard high school units for each year of successful teaching experience.

Whenever a teacher has earned the credits necessary for entrance to a State normal school in any of the above ways or by combination of them, four semester hours of credit on a regular State normal school curriculum may be granted for each year of teaching experience in Pennsylvania with a rating of "middle or better" subsequent to meeting the entrance conditions up to a maximum of thirty-two semester hours, provided however, that all credits thus given shall be conditional until the teacher shall have proved his ability to do the work of the State normal school curriculum in a creditable manner.

In all cases in which normal school credit is given for teaching experience, the work remaining to be done shall be selected by the authorities of the normal school to secure the best development of the student in teaching power.

A minimum of one-half year of resident study shall be required of all candidates for graduation who are credited for teaching experience as outlined above.

Entrance and normal school credits based on teaching experience as outlined above will not be granted after September 1, 1927.

Credit for student teaching other than done under the direction of the normal school will not be approved.

TWO-YEAR CURRICULUM FOR GROUP I

KINDERGARTEN AND PRIMARY GRADES, 1, 2, 3.

Note: The first figure following a subject indicates the number of 50 minute class periods per week. The second figure indicates the number of semester hours of credit allowed for the successful completion of the course. Figures in parentheses indicate sequential courses in a given subject.

First Semester

Educational Biology	3	3
Introduction to Teaching	3	3
English I	3	3
Music I	4	2
Art I	4	2
Oral Expression	2	2
Handwriting	2	1
Physical Education	3	1
	24	17

Second Semester

Psychology and Child Study	3	3
English II	3	3
Music II	3	1½
Art II	3	1½
Nature Study	2	2
Teaching Primary Reading	3	3
Teaching of Number	2	2
Physical Education II	3	1
	22	17

Third Semester

Educational Sociology	3	3
Children's Literature and Story Telling	3	3
Kindergarten-Primary Theory	2	2
Educational Measurements	2	2
Health and Hygiene in Primary Grades	3	3
Elective	3	3
Physical Education III	3	1
	19	17

Fourth Semester

Student Teaching and Conferences	13	10
Teaching of Primary Subjects	4	4
Geography	1	1
Social Studies	1	1
Spelling and Language	2	2
	—	—
Technique of Teaching	2	2
Physical Education IV	3	1
	22	17

TWO-YEAR CURRICULUM FOR GROUP II INTERMEDIATE GRADES—4, 5, 6.

First Semester

Educational Biology	3	3
Introduction to Teaching	3	3
English I	3	3
Music I	4	2
Art I	4	2
Oral Expression	2	2
Handwriting	2	1
Physical Education I	3	1
	24	17

Second Semester

Psychology and Child Study	3	3
English II	3	3
Nature Study	2	2
Teaching of Arithmetic	3	3
Teaching of Geography	3	3
Music II	3	1½
Art II	3	1½
Physical Education II	3	1
	23	18

Third Semester

Educational Sociology	3	3
Teaching of Social Studies	3	3
Juvenile Literature and Silent Reading	2	2
Educational Measurements	2	2
Hygiene and Health in Intermediate Grades	3	3
Elective	3	3
Physical Education III	3	1
	19	17

Fourth Semester

Student Teaching and Conferences	13	10
Technique of Teaching	2	2
Teaching of English	3	3
Physical Education IV	3	1
	21	16

TWO-YEAR CURRICULUM FOR GROUP III (RURAL)
First Semester

Educational Biology	3	3
Introduction to Teaching	3	3
English I	3	3
Music I	4	2
Art I	4	2
Oral Expression	2	2
Handwriting	2	1
Physical Education I	3	1
	<hr/>	<hr/>
	24	17

Second Semester

Psychology and Child Study	3	3
English II	3	3
Nature Study and Agriculture	2	2
Teaching of Arithmetic	3	3
Teaching of Geography	3	3
Music II	3	1½
Art II	3	1½
Physical Education II	3	1
	<hr/>	<hr/>
	23	18

Third Semester

Rural Sociology	3	3
Teaching of Social Studies	3	3
Juvenile Literature and Silent Reading	2	2
Educational Measurements	2	2
Health and Hygiene in Rural Schools	3	3
Primary Methods for Rural Schools	3	3
Physical Education III	3	1
	<hr/>	<hr/>
	19	17

Fourth Semester

Student Teaching and Conferences	13	10
Technique of Teaching	2	2
Teaching of Reading	3	3
Physical Education IV	3	1
	<hr/>	<hr/>
	21	16

THREE-YEAR CURRICULUM FOR THE PREPARATION OF JUNIOR HIGH SCHOOL TEACHERS

First Semester

Educational Biology	3	3
English I	3	3
Oral Expression	2	2
Social and Industrial U. S. History	3	3
Human Geography	3	3
Application and Appreciation of Art	4	2
Physical Education I	3	1
	21	17

Second Semester

Introduction to Teaching	3	3
English II	3	3
Everyday Science	3	3
Economics	3	3
Handwriting	2	1
World Problems in Geography	3	3
Physical Education II	3	1
	20	17

Third Semester

Psychology and Adolescence	3	3
English Literature	2	2
First Elective Field	3	3
Second Elective Field	3	3
American Government	3	3
Physical Education III	3	1
Purpose, Organization and Development of Junior High School	3	3
	20	18

Fourth Semester

Educational Measurements	3	3
American Literature	2	2
First Elective Field	3	3
Second Elective Field	3	3
Educational Sociology	3	3
Physical Education IV	3	1
History and Appreciation of Music	4	2
	21	17

Fifth Semester

Student Teaching, Conferences and School Contacts	13	10
Technique of Teaching	2	2
Guidance	3	3
	—	—
	18	15

Sixth Semester

Principles of Education	3	3
Health and Hygiene in Junior High School	3	3
First Elective Field	6	6
Second Elective Field	6	6
	—	—
	18	18

Totals	118	102
--------------	-----	-----

GROUP V HEALTH EDUCATION

First Semester

Biology	4	3
Hygiene I	3	3
English I	3	3
Oral Expression	2	2
Music (Rythmics)	4	2
Gymnasium I	3	1½
Athletics I	3	1½
	<hr/> 22	<hr/> 16

Second Semester

Chemistry I	4	3
Anatomy I	3	3
English II	3	3
Psychology and Child Study	3	3
History of Phys. Education	2	2
Gymnasium II	3	1½
Athletics II	3	1½
	<hr/> 21	<hr/> 17

Third Semester

Physiological Chemistry	4	3
Physiology	3	3
Hygiene II	2	2
Plays and Playgrounds	3	3
Playground Practice	2	1
First Aid	1	1
Swimming	2	1
Gymnasium III	3	1½
Athletics III	3	1½
Dancing I	2	1
	<hr/> 25	<hr/> 18

Fourth Semester

Phys. Ed. in Elem. and Sec. Schools	2	2
Chemistry of Nutrition	4	3
Anatomy II	2	2
Physiology of Exercise	2	2
Educational Sociology	3	3
Scouting	2	1
Gymnasium IV	3	1½
Athletics IV	3	1½
Dancing II	2	1
	<hr/> 23	<hr/> 17

Fifth Semester

Theory and Methods of Phys. Ed.	4	4
Guidance	3	3
Diseases of Children	2	2
Student Teaching and Conferences	6	3
Gymnasium V	3	1½
Athletics V	3	1½
Dancing III	2	1
Festivals and Pageants	1	1
	<hr/> 24	<hr/> 17

Sixth Semester

Theory and Methods of Coaching	2	2
Individual Gymnastics	3	3
Principles of Education	3	3
Student Teach. and Conferences	6	3
Gymnasium VI	3	1½
Athletics VI	3	1½
Dancing IV	2	1
Physical Diagnosis and Anthropometry	2	2
	<hr/> 24	<hr/> 17

GROUP VI. THREE YEAR CURRICULUM IN MUSIC

First Semester

Elementary Theory	3	3
Sight Reading (1).....	5	2½
Diction (1) (Ear Training)	5	2½
Voice, Piano, Organ, Violin, Chorus, Orchestral and Band Instruments	4	2
Educational Biology	3	3
English (1)	3	3
Physical Education (1)	3	1
	26	17

Second Semester

Harmony & Melody (1)	3	3
Sight Reading (2)	3	1½
Diction (2) (Ear Training)	3	1½
Voice, Piano, Organ, Violin, Chorus, Orchestral and Band Instruments	4	2
Introduction to Teaching	3	3
English (2)	3	3
Physical Education (2)	3	1
Oral Expression	2	2
	24	17

Third Semester

Harmony & Melody (3)	3	3
Sight Reading (3)	3	1½
Diction (3)	3	1½
Violin Class (1)	2	2
Voice, Piano, Organ, Violin, Chorus, Orchestral and Band Instruments	4	2
Psychology and Child Study	3	3
Elective	3	3
Physical Education (3)	3	1
	24	17

Fourth Semester

Harmony & Melody (3)	3	3
Sight Reading (4)	3	1½
Diction (3) (Harmonic)	3	1½
Violin Class (2)	2	2
Voice, Piano, Organ, Violin, Chorus, Orchestral and Band Instruments	4	2
Educational Psychology	3	3
Elective	3	3
Physical Education (3)	3	1
	24	17

Fifth Semester

History of Music & Appreciation (1).....	3	3
Child Voice & Rote Songs with materials and methods for grades 1-2-3	3	3
Harmony (4) (Keyboard)	3	3
Voice, Piano, Organ, Violin, Chorus, Orchestral and Band Instruments	4	2
Student Teaching	7	5
Community Music	1	1
	<hr/> 21	<hr/> 17

Sixth Semester

History of Music & Appreciation (2)	3	3
Materials & Methods for grades 4-5-6	3	3
Voice, Piano, Organ, Violin, Chorus, Orchestral and Band Instruments	4	2
Educational Sociology	3	3
Student Teaching	6	5
Technique of Teaching	2	2
	<hr/> 21	<hr/> 18

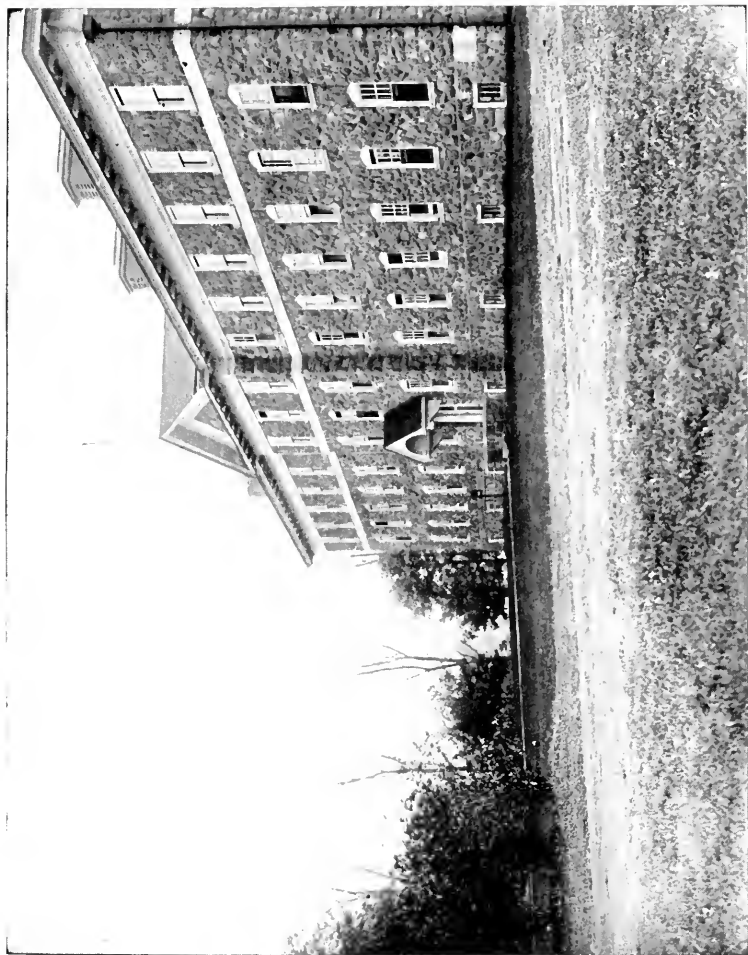
POST GRADUATES

<i>Name</i>	<i>Post office</i>	<i>County and State</i>
Brackin, Walter H., Jr.	Coatesville	Chester, Pa.
Divine, Helen M.	121 Magnolia St., West Chester	Chester, Pa.
Fenthem, Beth	635 S. Matlack St., West Chester	Chester, Pa.
Goodwin, Deborah L.	135 Magnolia St., West Chester	Chester, Pa.
Hobbs, Edith M.	122 S. Darlington St., West Chester, Chester, Pa.	
McFarland, James W.	Downington	Chester, Pa.
Mack, Leonard D.	1214 McKinley Ave., Pleasantville ...	New Jersey
Smith, Edna H.	235 E. Market St., West Chester	Chester, Pa.

NORMAL SCHOOL COURSE

Seniors—Women

<i>Name</i>	<i>Post office</i>	<i>County and State</i>
Allen, Dorothy A.	1525 Germantown Ave.,	Philadelphia, Pa.
Allen, Rebecca R.	Washington Boul, Sea Girt	New Jersey
Alphonso, Marguerite V.	539 N. 65th St.,	Philadelphia, Pa.
Amorosa, Vera	553 N. 63rd St.,	Philadelphia, Pa.
Anderson, Helen M.	Dallas	Luzerne, Pa.
Aregood, Esther	Pinedale, Orwigsburg	Schuylkill, Pa.
Armstrong, Grace B.	222 1st St., Olyphant	Lackawanna, Pa.
Ash, Dorothy M.	410 E. Lancaster Ave., E. Downingtown,	Chester, Pa.
Aumiller, Esther M.	1715 Market St., Harrisburg	Dauphin, Pa.
Baer, Alberta M.	94 Virginia Ave., Coatesville	Chester, Pa.
Baily, Alta J.	West Chester, R. D. 6	Chester, Pa.
Baker, Cecilia Z.	Woodland	Clearfield, Pa.
Baker, Helen M.	284 E. Broadway, Salem	New Jersey
Ballard, Violet L.	329 S. 13th St.,	Philadelphia, Pa.
Balog, Mayme G.	301 Rebecca St., Throop	Lackawanna, Pa.
Barney, Pearl M.	Pond Hill	Luzerne, Pa.
Bartman, Lois D.	Riegelsville	Bucks, Pa.
Bayer, Alma	Loysburg	Bedford, Pa.
Bell, Jean K.	318 Columbia Ave., Palmerton	Carbon, Pa.
Bender, Alice M.	Paper Mill Rd., Chestnut Hill ...	Philadelphia, Pa.
Benner, Edith F.	91 Virginia Ave., Coatesville	Chester, Pa.
Bennett, Dorothy S.	718 N. 3rd St., Pottsville	Schuylkill, Pa.
Bennett, Hannah B.	Wyeombe	Bucks, Pa.
Bernstein, Elizabeth	1743 South St.,	Philadelphia, Pa.
Billings, Olive M.	Dalton	Lackawanna, Pa.
Blessing, Amanda C.	25 N. Franklin St., Waynesboro, ...	Franklin, Pa.
Branker, Ida E.	963 Richmond St., Scranton	Lackawanna, Pa.
Breakley, Marie V.	137 E. Miner St., West Chester	Chester, Pa.
Brennan, Florence	414 S. 3rd St., Minersville	Schuylkill, Pa.
Breslin, Mary M.	100 N. Market St., Mt. Carmel,	Northumberland, Pa.
Briel, Phyllis M.	625 N. 5th Ave., Williamsport	Lycoming, Pa.
Brigel, Grace R.	Newmanstown	Lebanon, Pa.
Brinton, Elizabeth L.	Oxford	Chester, Pa.
Brittain, Gladys M.	Gauff's Hill, Bethlehem	Lehigh, Pa.
Brown, Kathryn E.	2151 Delaware Ave., Renovo	Clinton, Pa.
Burgesser, Elizabeth C.	438 Lincoln Ave., York	York, Pa.
Burton, C. Mildred	402 E. Bernard St., West Chester	Chester, Pa.
Bustin, Louise J.	Athens	Bradford, Pa.



STATE NORMAL SCHOOL

MEN'S DORMITORY

WEST CHESTER, PA.

<i>Name</i>	<i>Post office</i>	<i>County and State</i>
Butz, Dorothy L.	415 Olive St., McKeesport	Allegheny, Pa.
Buzby, Cornelia W.	Woodstown	New Jersey
Byerly, Elizabeth E.	825 Elmira St., Williamsport	Lyeming, Pa.
Caldwell, Elizabeth E.	614 E. Patterson St., Lansford	Carbon, Pa.
Calpin, Mary V.	818 River St., Seranton	Lackawanna, Pa.
Campbell, Eleanor M.	105 N. Market St., Mt. Carmel,	
	Northumberland, Pa.	
Campbell, Margaret	604 W. Garrison St., Bethlehem	Lehigh, P.
Carey, Dorothy G.	29 E. Harrison St., Tunkhannock ..	Wyoming, Pa.
Carr, Elsie S.	Gradyville	Delaware, Pa.
Carter, Cordelia E.	Bridgeville	Delaware, Pa.
Cassidy, Eleanor P.	204 N. Adams St., West Chester	Chester, Pa.
Cater, Elizabeth M.	115 Cliff St., Sayre	Bradford, Pa.
Cawley, Clara M.	Asbury	New Jersey
Chapman, Barbara M.	705 Chestnut St., Barnsboro	Cambria, Pa.
Christman, Catherine L.	9th and Iron Sts., Leighton	Carbon, Pa.
Clampffer, Sara S.	Pottstown, R. D. 3	Chester, Pa.
Cobb, Marion E.	Deerfield St.,	New Jersey
Coleman, Geneva	225 N. 10th St., Darby	Delaware, Pa.
Conahey, Frances E.	23 Cedar St., Bridgeton	New Jersey
Condren, Katherine M.	511 S. Franklin St., Wilkes-Barre,	Luzerne, Pa.
Contestabile, Irene	512 Stanbridge St., Norristown,	Montgomery, Pa.
Cook, Eleanor M.	212 Edgley Ave., Glenside	Montgomery, Pa.
Cooke, Erma W.	53 Walnut St. Bridgeton	New Jersey
Copenhaver, Clara E.	366 N. 11th St., Lebanon	Lebanon, Pa.
Copley, Helen F.	311 W. Mahanoy Ave., Mahanoy City	
	Schuylkill, Pa.	
Coreoran, Catherine L.	531 N. 39th St.,	Philadelphia, Pa.
Cramasta, Mary G.	715 S. 9th St.	Philadelphia, Pa.
Cunningham, Florence J.	85 Bowman St., Wilkes-Barre	Luzerne, Pa.
Cunningham, Laura M.	527 E. Centre St., Mahanoy City,	Schuylkill, Pa.
Daub, Violet P.	202 Spruce St., Mahanoy City	Schuylkill, Pa.
Davies, Ann B.	1419 Lafayette St., Seranton	Lackawanna, Pa.
Davis, Edythe M.	86 Dorrance St., Kingston	Luzerne, Pa.
Davis, Ethel F.	79 S. Laurel St., Hazleton	Luzerne, Pa.
Davis, Jessie B.	738 N. Bromley Ave., Seranton,	Lackawanna, Pa.
Davis, Pauline J.	Laketon	Luzerne, Pa.
Davison, Florence V.	Centre Bridge	Montgomery, Pa.
Davison, Marjorie	707 Halstead Ave., Dickson	Lackawanna, Pa.
Decker, Thelma M.	526 1st Ave., Johnsonburg	Elk, Pa.
Dennis, Anna E.	618 E. Patterson St., Lansford	Carbon, Pa.
Detwiler, Ruth N.	Phoenixville, R. D. 1	Montgomery, Pa.
Dietz, Edna W.	41 Knight Ave., Collingswood	New Jersey
Dietz, Frances M.	Wrightsville	York, Pa.
Dolton, Marion G.	Feasterville	Bucks, Pa.
Driesbach, Ethel M.	Robesonia	Berks, Pa.
Dryer, Bessie D.	204 Layayette St., Kennett Sq.,	Chester, Pa.
Edmunds, Christine E.	134 Crotzer Ave., Folecroft	Delaware, Pa.
Edwards, Ruth H.	931 Green St., Norristown	Montgomery, Pa.
Eilenberger, Marjorie	Gouldsboro	Wayne, Pa.
Eldredge, Bertha E. (Lear)	Lionville	Chester, Pa.
Elgart, Paula	319 S. 58th St.,	Philadelphia, Pa.
Elliott, Helen R.	911 N. 3rd St., Reading	Berks, Pa.
Elterich, Caroline B.	207 York Ave., W. Pittston	Luzerne, Pa.
Ely, Dorothy H.	257 N. Wyoming St., Hazleton	Luzerne, Pa.
Emery, Thelma M.	419 New St., Spring City	Chester, Pa.
Engel, Sara A.	1418 Jackson St., Seranton	Lackawanna, Pa.
Evans, Charlotte T.	Woodston	New Jersey

<i>Name</i>	<i>Post office</i>	<i>County and State</i>
Evaul, Kathryn G.	422 Richey Ave., W. Collingswood	New Jersey
Fahey, Kathleen	5 S. Bower St., Shenandoah	Schuylkill, Pa.
Falkowski, Irene J.	468 Market St., Kingston	Luzerne, Pa.
Favinger, Nellie M.	Royersford, R. D.	Montgomery, Pa.
Fees, Ida M.	201 Colliery Ave., Tower City	Schuylkill, Pa.
Feinswog, Dorothy	1577 Spring St., Elizabeth	New Jersey
Fell, Emma W.	504 Sharpless St., West Chester	Chester, Pa.
Fennese, Mary M.	826 Hemlock St., Scranton	Lackawanna, Pa.
Fetrow, Florence E.	602 S. Albermarle St., York	York, Pa.
Filigno, Rose E.	103 Franklin Ave., Morton	Delaware, Pa.
Fisher, Ida M.	416 E. Main St., Schuylkill Haven, Schuylkill, Pa.	Schuylkill, Pa.
FitzGerald, Marie F.	Yardley	Bucks, Pa.
Flanagan, Adele F.	N. Main St., Wilkes-Barre	Luzerne, Pa.
Flannery, Helen C.	211 N. Chestnut St., Shenandoah, Schuylkill, Pa.	Schuylkill, Pa.
Fluegel, Elizabeth A.	189 S. Hancock St., Wilkes-Barre	Luzerne, Pa.
Flynn, Mary C.	LaPorte	Sullivan, Pa.
Foley, Catherine M.	521 Quincy Ave., Scranton	Lackawanna, Pa.
Foley, Honora D.	1732 Madison Ave., Scranton	Lackawanna, Pa.
Foley, Margaret E.	112 E. Pine St., Mahanoy City	Schuylkill, Pa.
Fountas, Helen R.	824 Pine St., Scranton	Lackawanna, Pa.
Freeman, Margaret L.	349 N. 16th St., Allentown	Lehigh, Pa.
Freid, Celia	534 Center St., Mahanoy City	Schuylkill, Pa.
Frey, Verna M.	848 N. 7th St., Allentown	Lehigh, Pa.
Gallagher, Betty	1321 Turner St., Allentown	Lehigh, Pa.
Galt, Margaret E.	Leaman Place	Lancaster, Pa.
Gangewere, Anna A.	Hellertown	Northampton, Pa.
Gannon, Mary E.	61 Prospect St., Wilkes-Barre	Luzerne, Pa.
Garver, Vera G.	37 Mountwell Ave., Haddonfield	New Jersey
Gay, Margaret A.	Deceased	
Gildea, Sara R.	362 Scott St., Wilkes-Barre	Luzerne, Pa.
Giles, Juanita	2019 Silver St., Jacksonville	Florida
Gillian, V. C. Jean	83 Franklin Ave., Ocean City	New Jersey
Girvin, Miriam S.	Lititz	Lancaster, Pa.
Glaser, Elizabeth L.	745½ E. Norwegian St., Wilkes-Barre, Luzerne, Pa.	Luzerne, Pa.
Glenn, M. Agnes	Rome	Bradford, Pa.
Goetz, Helen E.	505 Alexander Ave., Drexel Hill	Delaware, Pa.
Goll, Ruth S.	Stony Creek Mills, Reading	Berks, Pa.
Golonsky, Valeria	404 Delaware St., Forest City	Susquehanna, Pa.
Gordon, Bessie	594 Coates St., Coatesville	Chester, Pa.
Green, Kathryn A.	1200 Center St., Mahanoy City	Schuylkill, Pa.
Griffiths, Myrtle M.	231 W. Mahanoy Ave., Mahanoy City, Schuylkill, Pa.	Schuylkill, Pa.
Gulick, Helen M.	517 Chestnut St., Perkasie	Bucks, Pa.
Guss, Dorothy L.	518 S. Walnut St., West Chester	Chester, Pa.
Haas, Letitia M.	Willow Grove	Montgomery, Pa.
Haas, Margaret I.	115 South St., Harrisburg	Dauphin, Pa.
Haines, Marian W.	918 Lafayette Ave., Moore	Delaware, Pa.
Haller, Margaret L.	Lewistown, R. D. 4	Mifflin, Pa.
Hannum, Elizabeth E.	406 Gay St., Phoenixville	Chester, Pa.
Harp, Beatrice R.	311 S. Darlington St., West Chester, Chester, Pa.	Chester, Pa.
Harris, Eleanor V.	185 Pershing Ave., Cartaret	New Jersey
Hart, Mary C.	438 S. Hancock St., Wilkes-Barre	Luzerne, Pa.
Hart, M. Virginia	2056 Fairview St., Mt. Penn	Berks, Pa.
Hartman, Caroline S.	525 W. 4th St., Williamsport	Lycoming, Pa.
Hartman, Dorothy P.	644 N. 10th St., Allentown	Lehigh, Pa.
Hawk, Esther R.	30 Cherry St., Collingdale	Delaware, Pa.

<i>Name</i>	<i>Post office</i>	<i>County and State</i>
Hayes, Mary G.	919 S. Irving Ave., Scranton	Lackawanna, Pa.
Hayes, Myrtle E.	Windber	Somerset, Pa.
Heffley, Ruth R.	715 Napoleon St., Johnstown	Cambria, Pa.
Hemstreet, Mary M.	24 S. 11th Ave., Mountainville	Lehigh, Pa.
Herriek, Elizabeth A.	Northfield	New Jersey
Hess, Ruth I.	Star Route, Dallas	Luzerne, Pa.
Higgins, Florence G.	207 N. Jackson St., Landsdowne	Delaware, Pa.
High, Hazel M.	331 N. Main St., Doylestown	Bucks, Pa.
Hilgendorf, Violet W.	Edgely Ave., Bristol	Bucks, Pa.
Hintz, Ruth E.	1325 Spruce St., Reading	Berks, Pa.
Hobaugh, Ella	Lewisberry	York, Pa.
Hodge, M. Elizabeth	Nutts Ave., Phoenixville	Chester, Pa.
Holahan, Agnes M.	114 N. Centre St., Pottsville	Schuylkill, Pa.
Holley, Beatrice F.	28 S. 21st St.,	Philadelphia, Pa.
Hollingsworth, Sara H.	206 Lafayette St., Kennett Square	Chester, Pa.
Horger, Grace M.	104 Storrs St., Taylor	Lackawanna, Pa.
Hottenstein, May S.	1809 Fairview Ave., Easton	Northampton, Pa.
Hughes, Gertrude K.	1283 N. W. 27th St., Miami	Florida
Hughes, Mary M.	722 Wheeler Ave., Scranton	Lackawanna, Pa.
Hunsberger, Anne M.	340 W. Miner St., West Chester	Chester, Pa.
Hunsberger, Kathryn S.	935 Court St., Reading	Berks, Pa.
Huntsman, Dorothy H.	309 N. Matlack St., West Chester	Chester, Pa.
Ivins, Marjorie P.	225 W. Miner St., West Chester	Chester, Pa.
Jackson, F. Emily	Cochranville	Chester, Pa.
Jackson, Helen A.	Pennsburg	Montgomery, Pa.
James, Esther E.	919 Poplar St., Wilmington	Delaware
James, Margaret E.	919 Poplar St., Wilmington	Delaware
Jeha, Bertha I.	2106 Wayne Ave., Scranton	Lackawanna, Pa.
John, Mildred B.	915 South St., Pottstown	Montgomery, Pa.
Johnson, Sara E.	1139 Washington St., Cape May	New Jersey
Johnston, Dorothy E.	Coatesville, R. D. 4	Chester, Pa.
Jones, Mabel E.	623 Main St., Freeland	Luzerne, Pa.
Jones, Nellie W.	125 Gaylord Ave., Plymouth	Luzerne, Pa.
Jones, Sara I.	Delta	York, Pa.
Kadlak, Catherine M.	1428 Filbert St., York	York, Pa.
Kalbach, Elizabeth	Dresher	Montgomery, Pa.
Katzman, Sarah E.	417 W. Pine St., Clearfield	Clearfield, Pa.
Kay, Beatrice E.	410 3rd St., W. Easton	Northampton, Pa.
Keisen, Anna M.	1333 Pine St., Norristown	Montgomery, Pa.
Keller, Ethel J.	336 Penn St., Reading	Berks, Pa.
Kelley, Anna S.	126 N. 18th St., Allentown	Lehigh, Pa.
Kelley, Elizabeth M.	Woodside	Bucks, Pa.
Kelly, Mary E.	Avondale	Chester, Pa.
Kennedy, Eleanor D.	226 Pittston Ave., Scranton	Lackawanna, Pa.
King, Bertha A.	214 N. Chestnut St., West Chester	Chester, Pa.
Kirby, Eleanor W.	1702 Monroe Ave., Scranton	Lackawanna, Pa.
Klein, Emily A.	357 S. Main St., Wilkes-Barre	Luzerne, Pa.
Knepper, Kathryn E.	509 Holcomb Ave., Clairton	Allegheny, Pa.
Kook, Anna L.	135 President Ave., Rutledge	Delaware, Pa.
Kuntz, Kathryn D.	122 N. 13th St., Allentown	Lehigh, Pa.
Lachette, Elizabeth M.	Mitchell Ave., Morton	Delaware, Pa.
Lady, Margaret M.	Biglerville	Adams, Pa.
Landenberger, Marian C.	5th and Walnut Sts., Perkasie	Bucks, Pa.
Lanshe, Genevieve H.	33 N. 17th St., Allentown	Lehigh, Pa.
Latsha, Naomi E.	Millersburg, R. D. 1	Dauphin, Pa.
Latshaw, Christine	Spring City	Chester, Pa.
Lavelle, Jane I.	Fairview St., Carbondale	Lackawanna, Pa.
Layton, Elizabeth M.	Forest Grove	Bucks, Pa.

<i>Name</i>	<i>Post office</i>	<i>County and State</i>
LeCron, Helen L.	3113 Huey Ave., Drexel Hill	Delaware, Pa.
Leh, S. Pauline	159 Main St., Pennsburg	Montgomery, Pa.
Leibson, Harriet G.	2 Terrace St., Wilkes-Barre	Luzerne, Pa.
Lereb, Helen L.	Tinicum	Bucks, Pa.
Lewis, Clara E.	416 S. Main St., North Wales	Bucks, Pa.
Lewis, Ethel C.	138a N. 10th St., Reading	Berks, Pa.
Lex, Evelyn	1508 N. 19th St.,	Philadelphia, Pa.
Lloyd, Gladys J.	325 N. Rebecca Ave., Seranton, Lackawanna, Pa.	
Locklin, Marian H.	708 Main St., Peckville	Lackawanna, Pa.
Lochner, Hilda M.	101 N. 2nd St., Darby	Delaware, Pa.
Long, Marion F.	120 W. Mahanoy St., Danville	Montour, Pa.
Long, Mildred K.	New Bloomfield	Perry, Pa.
Longacre, Esther M.	Quakertown, R. D. 3	Bucks, Pa.
Longacre, Ethel M.	318 Milligan St., Phoenixville	Chester, Pa.
Longaker, Elizabeth B.	15 Montrose Ave., Kirklyn	Delaware, Pa.
Luken, Norma R.	432 W. Walnut St., North Wales,	
	Montgomery, Pa.	
Ludwig, Catherine	Athol	Berks, Pa.
Lundahl, Louise A.	Ringtown	Schuylkill, Pa.
Lytel, Cecile M.	211 E. 3rd St., Lewistown	Mifflin, Pa.
McAndrew, Mary A.	332 New Grant St., Wilkes-Barre	Luzerne, Pa.
McBride, Mary D.	218 N. 4th St., Allentown	Lehigh, Pa.
McCabe, Marium M.	83 Wyoming St., Carbondale	Lackawanna, Pa.
McClellan, Dorothy L.	519 Market St., Perkasic	Bucks, Pa.
McConnell, Edith J.	Bristol, R. D. 2	Bucks, Pa.
McCormick, Dorothy F.	615 Mner St., West Chester	Chester, Pa.
McCreary, Helen A.	451 Chestnut St., Milton	Northumberland, Pa.
McCue, Elizabeth M.	Highland Dairy, West Chester	Chester, Pa.
McCullion, Helen M.	106 E. Railroad St., Summit Hill	Carbon, Pa.
McDemott, Elizabeth G.	817 Jenny Lind St., McKeesport, Allegheny, Pa.	
McDonough, Bessie C.	22 Poplar Ave., Carbondale	Lackawanna, Pa.
McGonigle, Elizabeth J.	7619 Parkview Rd., Highland Park,	
	Delaware, Pa.	
McGovern, Helen A.	131 Butler Ave., Wyoming	Luzerne, Pa.
McGuire, Mary E.	316 S. Irving St., Seranton	Lackawanna, Pa.
McHugh, Catherine L.	723 N. Front St., Allentown	Lehigh, Pa.
McMyne, Wilma	156 Dundaff St., Carbondale	Lackawanna, Pa.
McNair, Frances A.	Enreka	Bucks, Pa.
McNelis, Grace D.	410 Linden St., Glenside	Montgomery, Pa.
McNitt, Eleanor E.	Milroy	Mifflin, Pa.
McNitt, Kathryn E.	Milroy	Mifflin, Pa.
McPherson, Katherine R.	West Cape May	New Jersey
McQuaide, Hester M.	5th and Rutledge Sts., Folsom	Delaware, Pa.
McDonald, Marie	Cheswold	Delaware
Mackevrican, Cornelia	62 Virginia Terrace, Forty Fort	Luzerne, Pa.
MacLaren, Ruth K.	207 Spruce St., Mahanoy City	Schuylkill, Pa.
Marcus, Edith V.	2340 N. 3rd St., Harrisburg	Dauphin, Pa.
Marcy, Mildred M.	Monroeton	Bradford, Pa.
Marsden, Esther C.	124 Butler St., Forty Fort	Luzerne, Pa.
Martha, Mathilde J.	729 W. Montgomery Ave.,	Philadelphia, Pa.
Martin, Geraldine P.	10 Park Terrace, Paxtang	Dauphin, Pa.
Mason, Helen	Magnolia	Delaware
Maurer, Iolanthe D.	York Road, Hatboro	Montgomery, Pa.
Meads, Orpha L.	Red Lion	York, Pa.
Meeds, Lucy F.	20 Walnut St., Marcus Hook	Delaware, Pa.
Meehan, Margaret M.	87 S. Catawissa St., Mahanoy City, Schuylkill, Pa.	
Meighan, Margaret M.	917 Dewey St., Northampton	Northampton, Pa.
Melley, Winifred T.	Coaldale	Schuylkill, Pa.

<i>Name</i>	<i>Post office</i>	<i>County and State</i>
Mellon, Evelyn E.	Williamstown	Dauphin, Pa.
Metzgar, Elizabeth W.	526 S. Orange St., Media	Delaware, Pa.
Milander, Julia	Vincemont	Berks, Pa.
Miles, Hazel P.	Bradford Ave., West Chester	Chester, Pa.
Miller, Edna R.	303 1st St., Red Lion	York, Pa.
Miller, Lillian B.	1512 3rd Ave., York	York, Pa.
Monahan, Agnes C.	2305 Maple Ave., Altoona	Blair, Pa.
Montayne, Louise	308 Main St. Towanda	Bradford, Pa.
Moore, Beatrice A.	Sayre	Bradford, Pa.
Moore, Blanche O.	Haddon Ave., Gibbsboro	New Percy
Moore, Caroline L.	Belmont and Monument Aves., Philadelphia, Pa.	
Moore, Irene	123 N. 4th St., Coatesville	Chester, Pa.
Moore, Josephine	15 Prospect Ave., Scranton	Lackawanna, Pa.
Moran, Grace T.	Broad and Lincoln Sts., Hazleton	Luzerne, Pa.
Moran, Margaret R.	136 John St., Kingston	Luzerne, Pa.
Morgan, Dorothy B.	26 E. Catawissa St., Nesquehoning, Carbon, Pa.	
Morris, Mary R.	1335 N. 10th St.,	Philadelphia, Pa.
Morris, Vera E.	Parkesburg	Chester, Pa.
Murphey, Annis L.	106 3rd Ave., Altoona	Blair, Pa.
Murray, Eva L.	1335 Shaleross Ave., Wilmington	Delaware
Murray, Helen L.	Willow St., Plymouth	Luzerne, Pa.
Murray, Julia C.	Girardville	Schuylkill, Pa.
Nagle, Elizabeth	329 Laurel St., Pottsville	Schuylkill, Pa.
Naylor, Clara M.	36 Price St., West Chester	Chester, Pa.
Neff, Frances R.	506 Rodman St., Jenkintown	Montgomery, Pa.
Nelson, Florence M.	1342 W. Main St., Norristown	Montgomery, Pa.
Nicholas, Lucy T.	West Grove	Chester, Pa.
Noon, Annette K.	218 Centre St., Ashland	Schuylkill, Pa.
Norris, Virginia A.	301 Spruce St., Clearfield	Clearfield, Pa.
O'Donnell, Winifred H.	119 E. Centre St., Mahanoy City, Schuylkill, Pa.	
O'Hara, Margaret M.	19 S. Irving Ave., Scranton	Lackawanna, Pa.
Orndorff, Gertrude M.	Hanover, R. D. 2	York, Pa.
O'Rourke, E. Veronica	818 W. 3rd St., Chester	Delaware, Pa.
Orrell, Evelyn	1838 W. Venango Ave.,	Philadelphia, Pa.
Osolin, Albina J.	136 Grand Ave., Forest City	Susquehanna, Pa.
Oswald, Frances E.	Mickleys Rd., Allentown	Lehigh, Pa.
Park, Kathryn S.	1531 N. Alden St.,	Philadelphia, Pa.
Perry, Marian L.	1614 Gibson St., Scranton	Lackawanna, Pa.
Peters, Ethel G.	Mohnton	Berks, Pa.
Peterson, Florence M.	240 E. Mauch Chunk St., Tamaqua, Schuylkill, Pa.	
Powell, Sara O.	Whitford	Chester, Pa.
Price, Caroline C.	50 Bennett Court, Hazleton	Luzerne, Pa.
Price, Helen L.	Barnham	Mifflin, Pa.
Fryal, Anna L.	439 Salem St., Archbald	Lackawanna, Pa.
Pusey, Eleanor W.	Coatesville, R. D. 4	Chester, Pa.
Pyle, Margaret F.	Brandywine Summit	Delaware, Pa.
Ramsey, M. Virginia	1627 N. 2nd St., Harrisburg	Dauphin, Pa.
Ranek, Mary B.	Barneston	Chester, Pa.
Rarick, Dorothy E.	121 Chester Pike, Norwood	Delaware, Pa.
Readinger, Sara	417 Spring St., Reading	Berks, Pa.
Redington, E. Nora	86 E. North St., Wilkes-Barre	Luzerne, Pa.
Reeves, I. Virginia	West Chester, R. D. 6	Chester, Pa.
Reichard, Anne R.	612 Chestnut St., Reading	Berks, Pa.
Reinard, Alma L.	333 S. Market St., Mt. Carmel Northumberland, Pa.	
Rennard, Edith F.	Anselma	Chester, Pa.

<i>Name</i>	<i>Post office</i>	<i>County and State</i>
Rhoads, Eva E.	515 W. Chestnut St., Shamokin,	Northumberland, Pa.
Rhoads, H. Lynette	419 Bingaman St., Reading	Berks, Pa.
Rhodes, Dorothy M.	Kittanning	Armstrong, Pa.
Rice, Hazel M.	725 Milton Ave., Easton	Northampton, Pa.
Rinehart, Evelyn F.	Pottstown, R. D. 3	Montgomery, Pa.
Risser, Anna I.	94 Front St., Lititz	Lancaster, Pa.
Rodeback, Sara A.	513 S. Walnut St., West Chester	Chester, Pa.
Rogers, Catherine M.	183 Academy St., Wilkes-Barre	Luzerne, Pa.
Rosborough, Gertrude K.	114 Broadway, Ocean Grove	New Jersey
Rowe, Dorothy F.	S East Market St., York	York, Pa.
Rubikam, Sara S.	Jamison	Bucks, Pa.
Ruch, Wilma H.	257 Water St., Northumberland,	Northumberland, Pa.
Russell, M. Marion	Gibbsboro	New Jersey
Rustin, Ruth M.	316 W. Gay St., West Chester	Chester, Pa.
Santee, Ruth E.	245 N. 12th St., Allentown	Lehigh, Pa.
Saylor, Eleanor H.	234 N. Penn St., Allentown	Lehigh, Pa.
Scheetz, Sara W.	Jeffersonville	Montgomery, Pa.
Schenkemeyer, Marie	210 State St., Johnstown	Cambria, Pa.
Schilling, Emma M.	1839 Centre St., Ashland	Schuylkill, Pa.
Schnieker, Margaret E.	416 Spring St., Reading	Berks, Pa.
Schropp, J. Gladys	39 N. 10th St., Lebanon	Lebanon, Pa.
Schuler, Florence R.	223 Horton St., Wilkes-Barre	Luzerne, Pa.
Scott, Dora F.	229 Church St., Salem	New Jersey
Shaner, Florence	531 Windsor St., Reading	Berks, Pa.
Sharpe, Cleo	335 George Ave., Parsons	Luzerne, Pa.
Shaver, S. Lillian	Newton Hamilton	Mifflin, Pa.
Sheneman, Dorothe C.	111 Chestnut St., Narbeth	Montgomery, Pa.
Sher, Sara E.	800 N. Front St., Allentown	Lehigh, Pa.
Shields, Clare E.	255 N. Washington St., Wilkes-Barre,	Luzerne, Pa.
Shillady, Dorothy C.	321 Green St., Downingtown	Chester, Pa.
Shoemaker, Helen E.	519 Locust Ave.	Philadelphia, Pa.
Sidle, Emma R.	Rushland	Bucks, Pa.
Singer, Kathleen	1521 Turner St., Allentown	Lehigh, Pa.
Skolnick, Lillian A.	402 W. Washington St., Media	Delaware, Pa.
Small, S. Elizabeth	28 Timson St., Ashley	Luzerne, Pa.
Smink, Sara I.	664 N. 2nd St., Lykens	Dauphin, Pa.
Smith, Cornelia L.	616 Walnut St., Holidaysburg	Blair, Pa.
Smith, Dorothy E.	1046 N. 5th St., Reading	Berks, Pa.
Smith, Dorothy G.	156 S. Washington St., Wilkes-Barre,	Luzerne, Pa.
Smith, Ethel M.	211 Leon Ave., Norwood	Delaware, Pa.
Smith, Helen E.	131 S. Franklin St., Red Lion	York, Pa.
Smith, Minnie I.	Wapwallopen	Luzerne, Pa.
Smith, Sylvia L.	Yeagertown	Mifflin, Pa.
Smith, Verna I.	Dalton	Lackawanna, Pa.
Snyder, Katherine M.	241 4th St., St. Marys	Elk, Pa.
Snyder, Naomi A.	215 Columbia Ave., Palmertown	Carbon, Pa.
Soule, Gertrude M.	Newport	Perry, Pa.
Spann, Florence V.	17 W. Barnard, West Chester	Chester, Pa.
Specht, Helen M.	357 Park Ave., Milton	Northumberland, Pa.
Spector, Mildred H.	5608 Catherine St.,	Philadelphia, Pa.
Spiese, Esther V.	Pottstown, R. D. 3	Chester, Pa.
Sprague, Grace M.	Allentown, R. D. 2	Lehigh, Pa.
Stark, Helen E.	772 W. Tioga St., Tunkhannock	Wyoming, Pa.
Stauffer, Caroline E.	1426 Walnut St., Harrisburg	Dauphin, Pa.



STATE NORMAL SCHOOL

LIBRARY

WEST CHESTER, PA

<i>Name</i>	<i>Post office</i>	<i>County and State</i>
Stevenson, Eunice M.	44 Corbet St., Newark	Delaware
Stiles, Esther R.	231 E. Springdale Ave., York	York, Pa.
Stoudt, Louise M.	23 S. Church St., West Chester	Chester, Pa.
Strayer, Mabel T.	642 Linden Ave., York	York, Pa.
Sullivan, Harriet D.	2524 W. 18th St., Wilmington	Delaware
Sullivan, Margaret M.	Daguseahounda	Schuylkill, Pa.
Sutterly, Minnie S.	15 Morris Ave., Manasquan	New Jersey
Sweeney, Edith M.	304 W. Fayette St., West Chester	Chester, Pa.
Telban, Sylvia J.	826 N. Main St. Forest City	Susquehanna, Pa.
Thomas, M. Grace	Phoenixville, R. D. 2	Chester, Pa.
Thompson, Anna P.	New London	Chester, Pa.
Throne, Kathryn I.	York, R. D. 3	York, Pa.
Tole, Elizabeth E.	1129 Chestnut St., Darby	Delaware, Pa.
Trone, Dorothy C.	238 Baltimore St., Hanover	York, Pa.
Trout, Bernice A.	Stewartstown	York, Pa.
Utz, Mildred R.	227 W. Market St., Wilkes-Barre	Luzerne, Pa.
Vanderpool, Marian B.	700 Penfield Ave., Penfield	Delaware, Pa.
VanZant, Carrie G.	33 E. Main St., Bellefield	Mifflin, Pa.
Wagner, Lenore I.	665 Peace St., Hazleton	Luzerne, Pa.
Wagner, Martha M.	24 S. Shamokin St., Millville	New Jersey
Waldman, Josephine E.	501 E. Main St., Millville	New Jersey
Wales, Edith H.	828 Kearney St., Cape May	New Jersey
Wale, Marjorie A.	Curwensville	Clearfield, Pa.
Walter, Anna S.	309 N. Walnut St., West Chester	Chester, Pa.
Walter, Thelma	Livingston	New Jersey
Walters, Elizabeth E.	322 S. 13th St., Reading	Berks, Pa.
Warfel, Grace E.	Lima	Delaware, Pa.
Warner, Mary J.	165 St. Josephs St., Easton	Northampton, Pa.
Waters, Emma M.	413 Laurel St., Pocomoke	Maryland
Waughtel, Mildred S.	56 S. Main St., Red Lion	York, Pa.
Weidner, Inez	144 E. Main St., Lansdale	Montgomery, Pa.
Weinstein, Esther	500 George St., Throop	Lackawanna, Pa.
Wengert, Anna E.	433 S. 13th St., Harrisburg	Dauphin, Pa.
Wetzel, Mary E.	415 Hazel St., Tamaqua	Schuylkill, Pa.
Whalen, Anna A.	29 W. Coal St., Shenandoah	Schuylkill, Pa.
Wheeler, G. Aliee	Delta	York, Pa.
Wherry, Jessie V.	1106 2nd St., Juniata	Blair, Pa.
Whitaker, Anna F.	827 Weiser St., Reading	Berks Pa.
White, Wilhelmina C.	142 Penn Boulevard, E. Lansdowne, Delaware, Pa.	
Wicks, Mary H.	1419 Schlager St., Scranton	Lackawanna, Pa.
Williams, Elizabeth M.	Hazle Brook	Luzerne, Pa.
Williams, Margaret A.	Ridgway	Elk, Pa.
Wilson, Adele E.	2724 N. 29th St.	Philadelphia, Pa.
Wilson, Jewel A.	Overbrook Terrace, Allentown	Lehigh, Pa.
Winters, Marian I.	212 W. 4th St., Hazleton	Luzerne, Pa.
Wise, Earline L.	Newmanstown	Lebanon, Pa.
Withrow, Alida	Manasquan	New Jersey
Wolfe, Anna M.	204 W. Court St., Doylestown	Bucks, Pa.
Wood, Margaret R.	Coatesville, R. D. 4	Chester, Pa.
Woodward, Laura T.	Laafayette Apts, West Chester	Chester, Pa.
Wright, Elizabeth L.	327 Washington St., Morrisville	Bucks, Pa.
Wunderlich, C. Evelyn	Star Route, Pottstown	Chester, Pa.
Young, Ella F.	24 Poulston Rd., Boothwyn	Delaware, Pa.
Zelinsky, Ella E.	315 Centre St., Shenandoah	Schuylkill, Pa.
Zimmerman, Viola I.	Newmanstown	Lebanon, Pa.

<i>Name</i>	<i>Post office</i>	<i>County and State</i>
Nider, James E.	246 E. Gay St., West Chester	Chester, Pa.
Royer, J. Paul	34 E. Orange St., Lititz	Lancaster, Pa.
Sharpless, Harlan A.	108 Price St., West Chester	Chester, Pa.

MUSIC SUPERVISORS COURSE

Seniors

<i>Name</i>	<i>Post office</i>	<i>County and State</i>
Anderson, Hildegard A.	916 2nd Ave., Williamsport	Lyeoming, Pa.
Bear, Dorothy I.	1620 Chew St., Allentown	Lehigh, Pa.
Bortner, Lena E.	20 W. King St., York	York, Pa.
Cook, Gertrude I.	25 School St., Washington	New Jersey
Denison, A. Louise	2607 Market St., Camp Hill	Cumberland, Pa.
Durham, Lillian B.	Mont Clare	Montgomery, Pa.
Egan, Katherine R.	422 N. Front St., Allentown	Lehigh, Pa.
Ernest, Beryl N.	112 8th Ave., Juniata	Blair, Pa.
Evans, Dora A.	Muir	Schuylkill, Pa.
Feinswog, Frances	15 N. Spring St., Elizabeth	New Jersey
Fix, Marion E.	33 State St., Vineland	New Jersey
Gilbert, Esther A.	507 Lehman St., Lebanon	Lebanon, Pa.
Gilbert, Jessie M.	38 S. 5th St., Coatesville	Chester, Pa.
Hostetter, Elizabeth H.	437 1st Ave., Parkesburg	Chester, Pa.
Johnson, E. Bernice	Wilcox	Elk, Pa.
Landes, Marion R.	Yerkes	Montgomery, Pa.
McLaughlin, Mae R.	Good Spring	Schuylkill, Pa.
Maley, Mary M.	106 S. Chestnut St., Mt. Carmel,	
	Northumberland, Pa.	
Maze, Avanelle H.	4 Cardott St., Ridgway	Elk, Pa.
Moyer, Louella G.	23 N. Front St., Souderton	Montgomery, Pa.
Noll, Kathryn E.	Cornwall	Lebanon, Pa.
Noll, Margaret M.	Cornwall	Lebanon, Pa.
Payer, Ida E. L.	35 S. Tamaqua St., McAddoo	Schuylkill, Pa.
Ready, Agnes J.	822 McKean St., Donora	Washington, Pa.
Rodes, Edna M.	7 S. Main St., Manchester	York, Pa.
Shoffstall, Marion	Orwin	Schuylkill, Pa.
Seybert, Geraldine O.	460 Lafayette Ave., Palmertin	Carbon, Pa.
Smith, Helen L.	Newfoundland	Wayne, Pa.
Thomas, Blanche M.	Williamsport, R. D. 1	Lycoming, Pa.
Williams, Mary A.	125 2nd Ave., Kingston	Luzerne, Pa.
Alexander, Thomas F.	210 N. Penn St., West Chester	Chester, Pa.
Ginter, Lawrence R.	142 Orchard St., Nanticoke	Luzerne, Pa.
Soltys, Henry A.	241 Winder St., Reading	Berks, Pa.

NORMAL SCHOOL COURSE

Undergraduates — Women

<i>Name</i>	<i>Post office</i>	<i>County and State</i>
Abel, Rebecca F.	Bath	Northampton, Pa.
Abels, Gertrude A.	438 Windsor St., Reading	Berks, Pa.
Abshaus, Mollie C.	129 S. Main St., Shenandoah	Schuylkill, Pa.
Adleman, Sara	223 N. 1st St., Lehighton	Carbon, Pa.
Adler, Theresa R.	134 E. Market St., Lewistown	Mifflin, Pa.
Alexander, Laura M.	Cochranville	Chester, Pa.
Alexander, Sara E.	Milroy	Mifflin, Pa.

Seniors—Men

<i>Name</i>	<i>Post office</i>	<i>County and State</i>
Anderson, Erroll J.	701 Monroe St., Wilmington	Delaware
Andrews, Harold K.	1134 Queen St., Pottstown	Montgomery, Pa.
Arbuckle, S. Leonard	Coatesville	Chester, Pa.
Baily, James W.	West Chester, R. D. 6	Chester, Pa.
Bracken, John C.	409 Wibur St., South Fork	Cambria, Pa.
Brennan, Thomas J.	120 Hill St., Jessup	Lackawanna, Pa.
Brislin, Emmett M.	54 Graham Ave., Lee Park, Wilkes Barre,	Luzerne, Pa.
Brown, Charles L.	152 Woodland Ave., Coatesville	Chester, Pa.
Brumbaugh, Harold K.	2431 S. 3rd St. Steelton	Dauphin, Pa.
Davies, Amos R.	112 Lincoln Ave., Catasauqua	Lehigh, Pa.
Elinsky, Stephen E.	87 Atherton St., Kingston	Luzerne, Pa.
Evans, Samuel M.	416 West St., Parkesburg	Chester, Pa.
Frey, Alton W.	Cementon	Lehigh, Pa.
Gibble, Wallace R.	196 Horton St., Wilkes-Barre	Luzerne, Pa.
Haxton, William J.	45 Prescott Ave., Scranton	Lackawanna, Pa.
Hetherington, Benjamin A.	543 S. Matlack St., West Chester	Chester, Pa.
Hoekenberry, J. Loudon	New Germantown	Perry, Pa.
Jarman, Burnice H.	Phoenixville	Chester, Pa.
Jones, Arthur H.	76 Hartford St., Ashley	Luzerne, Pa.
Jones, John J.	209 W. Drinker St., Dunmore	Lackawanna, Pa.
Kleckner, Joseph R.	403 Chestnut St., Berwick	Columbia, Pa.
Leickel, Groman K.	Lehighton, R. D. 3	Carbon, Pa.
McCord, William J.	Unionville	Chester, Pa.
Mack, James C.	417 Hazel St., Wilkes-Barre	Luzerne, Pa.
Matthews, Willard B.	West Chester, R. D. 4	Chester, Pa.
Mood, Luther	Perkasie	Bucks, Pa.
Murphy, Edward S.	227 Wheeler Ave., Scranton	Lackawanna, Pa.
Parbinski, Leo F.	616 Dundaff St., Dickson City, Lackawanna, Pa.	
Pearson, Herbert C.	580 Orchard St., Warrior Run	Luzerne, Pa.
Rice, C. Norman	Royersford	Montgomery, Pa.
Riley, John	Sugar Notch	Luzerne, Pa.
Saffin, John G.	2220 E. Boston Ave.,	Philadelphia, Pa.
Stratton, J. Maurice	1215 W. Market St., Pottsville, Schuylkill, Pa.	

HEALTH EDUCATION COURSE**Seniors**

<i>Name</i>	<i>Post office</i>	<i>County and State</i>
Abernathy, Charlotte M.	732 2nd St., Catasauqua	Lehigh, Pa.
Corb, Elizabeth E.	Cambola	Schuylkill, Pa.
Doyle, Juel M.	516 S. New St., West Chester	Chester, Pa.
Garland, Alice A.	2000 N. 5th St., Harrisburg	Dauphin, Pa.
Humpton, L. Evelyn	103 Sibley Ave., Ardmore	Montgomery, Pa.
James, Abby S.	330 Columbia Ave., Palmerton	Carbon, Pa.
Rhoades, Charlotte R.	Phoenixville	Chester, Pa.
Ryan, Anna K.	Forest Grove	Bucks, Pa.
Sill, Dorothy L.	101 Monroe St., Media	Delaware, Pa.
Bennett, Frank M.	Kennett Square, R. D. 1	Chester, Pa.
Corb, Israel	516 S. New St., West Chester	Chester, Pa.
Gordon, Morris	594 Coates St., Coatesville	Chester, Pa.
Hopes, Herman M.	706 Brighton Ave., Toledo	Ohio
Jones, London B.	411 S. Matlack St., West Chester	Chester, Pa.
Martin, Eugene	West Chester, R. D. 3	Chester, Pa.

<i>Name</i>	<i>Post office</i>	<i>County and State</i>
Alfano, Anna M.	819 McKean St.,	Philadelphia, Pa.
Alimena, Lucy M.	446 Chestnut Ave., Scranton	Lackawanna, Pa.
Allison, Dorothy M.	311 Vassar Ave., Swarthmore	Delaware, Pa.
Allison, Hazel K.	McVeytown	Mifflin, Pa.
Althouse, Margaret G.	S. 2nd St., Womelsdorf	Berks, Pa.
Atkin, Anna	426 W. Diamond St.,	Philadelphia, Pa.
Bair, Margaret R.	Honey Brook	Chester, Pa.
Baldwin, Jane L.	Pottsville, R. D. 3	Schuylkill, Pa.
Ballou, A. Louise	525 S. Walnut St., West Chester	Chester, Pa.
Barber, Alice A.	637 High St., Easton	Northampton, Pa.
Barnard, Dorothy L.	330 W. Lincoln Hgy., Coatesville	Chester, Pa.
Barnes, Helen F.	307 N. Adams St., Wilmington	Delaware
Bar, Sue M.	24 N. Charlotte St., Pottstown, Montgomery, Pa.	
Barrett, E. Mildred	129 W. Lincoln Hgy., Downingtown	Chester, Pa.
Bartsch, Ruth E.	627 4th Ave., Bethlehem	Lehigh, Pa.
Bastrass, Frances L.	490 Linden Ave., York	York, Pa.
Bauer, Charlotte H.	450 E. Market St., York	York, Pa.
Beam, Mary T.	Kintersville	Bucks, Pa.
Bean, Edith N.	Upper Black Eddy	Bucks, Pa.
Bearde, Pearl S.	122 Chestnut St., Spring City	Chester, Pa.
Becker, Ruth M.	Fritztown	Berks, Pa.
Beggs, Bessie M.	130 N. 23rd St., Reading	Berks, Pa.
Bell, R. Eleanor,	427 Logan St., Lewistown	Mifflin, Pa.
Bellezza, Helen R.	505 Washington St., Freeland	Luzerne, Pa.
Benner, Grace A.	111 S. 6th St., Coatesville	Chester, Pa.
Benner, Ethel M.	91 Virginia Ave., Coatesville	Chester, Pa.
Benninger, Lola E.	St. Johns	Luzerne, Pa.
Benston, Myrtle W.	209 N. 10th St., Darby	Delaware, Pa.
Bertolet, Ethel M.	Spring City	Chester, Pa.
Bickerton, Ruth J.	634 Marne Ave., Monongahela ...	Washington, Pa.
Bickling, Valeria	534 S. High St., West Chester	Chester, Pa.
Biddisan, Margaret E.	114 Broad St., Malvern	Chester, Pa.
Bissey, Evelyn	Pipersville	Bucks, Pa.
Blechman, Marion	26 S. 5th Ave., Coatesville	Chester, Pa.
Blunden, Lena	2216 Wharton St.,	Philadelphia, Pa.
Boeckowski, Adelaide	313 W. Mahanoy Ave., Mahanoy City,	
	Schuylkill, Pa.	
Boehm, Beatrice M.	Bethlehem, R. D. 4	Lehigh, Pa.
Bonsall, Edith H.	34 N. Wycombe Ave., Lansdowne, Delaware, Pa.	
Bott, Lucy I.	1110 W. Market St., York	York, Pa.
Bott, Margaret I.	318 Garfield St., York	York, Pa.
Bowers, Margaret A.	1134 Queen St., Pottstown	Montgomery, Pa.
Boyd, Geneva C.	531 2nd Ave., Parkesburg	Chester, Pa.
Boyer, Mary C.	1008 Wilson St., Wilmington	Delaware
Boyer, Mildred E.	310 Catawissa Ave., Sunbury,	
	Northumberland, Pa.	
Brennan, Frances M.	532 Sunbury St., Minersville	Schuylkill, Pa.
Bright, Catherine A.	622 N. 2nd St., Reading	Berks, Pa.
Brinkerhoff, Dorothy	213 N. Ruby St.,	Philadelphia, Pa.
Brinkman, Mildred R.	321 Iron St., Leighton	Carbon, Pa.
Brinton, Lydia M.	20 W. Chestnut St., West Chester	Chester, Pa.
Broderick, Kathryn	12 S. Jardin St., Shenandoah	Schuylkill, Pa.
Brown, Dorothea H.	312 Spring Garden St., Ambler, Montgomery, Pa.	
Browne, Effie L.	West Grove	Chester, Pa.
Brusch, Hannah E.	Norristown, R. D. 3	Montgomery, Pa.
Buchanan, Velma C.	Nottingham	Chester, Pa.
Buckman, Ruth M.	Buckingham	Bucks, Pa.
Bulette, Helen A.	Delta	York, Pa.

<i>Name</i>	<i>Post office</i>	<i>County and State</i>
Bullock, J. Marie	453 Earle St., Elyria	Ohio
Burgstresser, Marian	Norristown, R. D. 1	Montgomery, Pa.
Burns, Alice R.	249 Chapel St., Luzerne	Luzerne, Pa.
Buss, Verna M.	Allentown, R. D. 4	Lehigh, Pa.
Cain, Emily A.	Connecticut Ave., Alden	Delaware, Pa.
Campbell, Alice B.	Whitford	Chester, Pa.
Cantwell, Julia V.	208 W. Coal St., Shenandoah	Schuylkill, Pa.
Carlin, Sara E.	Bridgeport	Montgomery, Pa.
Carpenter, A. Leone	Cornwall	Lebanon, Pa.
Carver, Urcilla A.	133 W. Ashland St., Doylestown	Bucks, Pa.
Casey, Frances E.	Newtown Square	Chester, Pa.
Cassel, Mabel E.	406 N. 5th St., Lebanon	Lebanon, Pa.
Cavenas, Mary R.	487 W. Coal St., Shenandoah	Schuylkill, Pa.
Chalfant, Ida B.	339 W. Miner St., West Chester	Chester, Pa.
Christine, Ruth	149 Lexington Ave., E. Lansdowne, Delaware, Pa.	
Christy, Edna G.	West Grove	Chester, Pa.
Chubbs, Elizabeth D.	West Chester, R. D. 2	Chester, Pa.
Claney, Dorothy I.	334½ State St., Clark's Summit, Lackawanna, Pa.	
Clark, Elsie M.	226 Highland Ave., Downingtown,	Chester, Pa.
Coan, Eleanor M.	Larchmont	Delaware, Pa.
Cochran, Etta N.	West Grove	Chester, Pa.
Coleman, Elizabeth W.	Norristown, R. D. 4	Montgomery, Pa.
Coleman, Grace B.	526 New St., Oxford	Chester, Pa.
Conard, E. Euphemia	Jamison	Bucks, Pa.
Conley, Rose M.	28 Stanton St., Schuylkill Haven, Schuylkill, Pa.	
Connell, Cecelia M.	Lilly	Cambria, Pa.
Connell, Martha Q.	Cresson	Cambria, Pa.
Conner, Anne C.	72 Penna. Ave., Coatesville	Chester, Pa.
Conner, Margaret E.	72 Penna. Ave., Coatesville	Chester, Pa.
Conner, Rose T.	209 Poplar St., Archbald	Lackawanna, Pa.
Conover, Elva M.	724 2nd Ave., Parkesburg	Chester, Pa.
Cope, Isabelle S.	Wyeombe	Bucks, Pa.
Corcoran, Marie L.	245 Mifflin St.	Philadelphia, Pa.
Cossman, Catherine B.	228 W. Blain St., McAddoo	Schuylkill, Pa.
Cottingham, Edith A.	4526 Regent St.,	Philadelphia, Pa.
Courtney, Helen J.	Newtown, R. D. 1	Bucks, Pa.
Cox, Bessie M.	Wilmington, R. D. 2	Delaware
Craven, Rachel	139 S. Grant St., Wilkes-Barre,	Luzerne, Pa.
Cresswell, Lois S.	370 Spruce St., Pottstown	Montgomery, Pa.
Cromarty, Violet S.	2433 Freemansburg Ave., Easton,	Northampton, Pa.
Crossin, Elizabeth A.	130 E. Catawissa St., Nesquehoning, Carbon, Pa.	
Crowl, Lois W.	Oxford	Chester, Pa.
Cruse, Ethel M.	Picture Rocks	Lycoming, Pa.
Culbertson, Carrie L.	Quakertown	Bucks, Pa.
Culkin, Agnes B.	403 Phelps St., Scranton	Lackawanna, Pa.
Culton, Gladys B.	300 Pine St., Shamokin	Northumberland, Pa.
Cunningham, Elizabeth G.,	375 Bellevue Ave., Langhorne	Bucks, Pa.
Custer, Pearl M.	18 N. Main St., Spring City	Chester, Pa.
Dague, Marian	Whitford	Chester, Pa.
Dalton, May H.	36 Dock St., Schuylkill Haven, Schuylkill, Pa.	
Darlington, A. Violet	Glen Lock	Chester, Pa.
Dannehower, Estella H.	Summeytown	Montgomery, Pa.
Darrab, Katherine	Hartsville	Bucks, Pa.
Davis, Alma I.	West Chester, R. D. 4	Chester, Pa.
Davis, Katherine O.	10 E. Mine St., Hazleton	Luzerne, Pa.
Davis, M. Margaret	Sadsburyville	Chester, Pa.
Davis, Thora B.	114 Nields St., West Chester	Chester, Pa.

<i>Name</i>	<i>Post office</i>	<i>County and State</i>
Davis, Violet A.	1168 Church St., Reading	Berks, Pa.
Decker, Alta L.	124 N. State St., Clark's Summit, Lackawanna, Pa.	
DeHoff, Gladys J.	Littlestown	Adams, Pa.
Deily, Verna E.	217 Bridge St., Catasauqua	Lehigh, Pa.
Denny, Rachel D.	118 E. Union St., West Chester	Chester, Pa.
DeTullio, Dena	413 W. Gay St., West Chester	Chester, Pa.
Detwiler, Alice E.	Pottstown, R. D. 2	Chester, Pa.
Defenderfer, Margaret	Fullerton	Lehigh, Pa.
Diehl, Martha M.	77 W. Court St., Doylestown	Bucks, Pa.
Diehm, Katherine E.	305 Chestnut St., Spring City	Chester, Pa.
Diener, Esther B.	254 Walnut St., Pottstown	Montgomery, Pa.
Dieterly, Myrtle N.	Springtown	Bucks, Pa.
Dillon, Margaret	1516 Lehigh St., Easton	Northampton, Pa.
Ditchfield, B. Esther	1316 W. Walnut St., Shamokin, Northumberland, Pa.	
Dobbs, Florence P.	118 Forman Ave., Point Pleasant	New Jersey
Douglass, Edith	746 Lincoln St., McKeesport	Allegheny, Pa.
Downing, Harriett E.	284 Main St., Tidioute	Warren, Pa.
Drumheller, Leah E.	4th & Iron St., Lehighton	Carbon, Pa.
Edgar, Marguerite E.	Delta	York, Pa.
Edleston, Ruth	1603 Butler St., Easton	Northampton, Pa.
Ekin, Emma J.	184 Franklin Ave., Vandergrift, Westmorland, Pa.	
Ellinger, Jessie	413 Boas St., Harrisburg	Dauphin, Pa.
Endy, Florence G.	708 E. Lincoln Hg., Coatesville	Chester, Pa.
Enfield, M. Margaret	Delta	York, Pa.
English, Grace R.	277 S. Main St., Pittstown	Luzerne, Pa.
Eppheimer, Ruth E.	Downingtown, R. D. 1	Chester, Pa.
Epstein, Evelyn S.	1366 Penn Ave., Scranton	Lackawanna, Pa.
Esterline, Dorothy E.	309 Fifth Ave., Altoona	Blair, Pa.
Ettenger, Sara E.	Bristol	Bucks, Pa.
Evans, Anna S.	433 S. Walnut St., Coatesville	Chester, Pa.
Evans, Edna F.	562 Walnut St., Coatesville	Chester, Pa.
Eward, Florence P.	Burnham	Mifflin, Pa.
Favinger, Ruth V.	Pottstown, R. D. 2	Chester, Pa.
Fern, Alverna M.	Riegelsville,	Bucks, Pa.
Ferris, Suzanne A.	Ridley Park	Delaware, Pa.
Fessler, Margaret V.	321 Hollenbach St., Reading	Berks, Pa.
Fickes, Bessie K.	229 E. Philadelphia St.	York, Pa.
Figlin, Lena	217 W. Elm St., Hazleton	Luzerne, Pa.
Filman, Miriam H.	Elverson	Chester, Pa.
Fina, Julia F.	33 Penn St., Reading	Berks, Pa.
Findley, Elizabeth E.	Atglen	Chester, Pa.
Finney, Gertrude A.	Richboro	Bucks, Pa.
Fisher, Caroline	25 E. Centre St., Nesquehoning	Carbon, Pa.
Fisher, Helen S.	Downingtown, R. D.	Chester, Pa.
Flemming, A. Elizabeth	1138 Madison Ave., Moore	Delaware, Pa.
Flickinger, Rebecca G.	Stowe	Montgomery, Pa.
Focht, Ernestine L.	778 Queen St., Pottstown	Montgomery, Pa.
Foley, Mary D.	Pomeroy	Chester, Pa.
Forbes, Hazel V.	Mountain Top, R. D. 1	Luzerne, Pa.
Ford, Elizabeth C.	125 S. Darlington St., West Chester, Chester, Pa.	
Foreman, Ethel M.	Glen Moore	Chester, Pa.
Frantz, Mary	235 Chestnut St., Kingston	Luzerne, Pa.
Frederick, Ruth M.	334 S. 2nd St., Bangor	Northampton, Pa.
Freeman, Anna F.	231 N. 10th St., Reading	Berks, Pa.
Frey, Katie M.	28 S. Front St., Quakertown	Bucks, Pa.

<i>Name</i>	<i>Post office</i>	<i>County and State</i>
Fulmer, Lillian R.	315 Main St., Parkesburg	Chester, Pa.
Furry, Luella	Loysburg	Bedford, Pa.
Gabrielis, Alma M.	125 S. Laurel St., Hazleton	Luzerne, Pa.
Gagliardi, Theresa M.	1523 S. Broad St.,	Philadelphia, Pa.
Gailey, Helen J.	Douglasville	Berks, Pa.
Gainer, Henrietta	67 Union St., Uniontown	Fayette, Pa.
Gallagher, Margaret L.	39 W. 7th St., Hazleton	Luzerne, Pa.
Gallagher, Mary T.	238 E. Mauch Chunk St., Tamaqua,	Schuylkill, Pa.
Gallery, Regina R.	1029 Kerlin St., Chester	Delaware, Pa.
Gallup, Dorothy M.	116 Yale St., Swarthmore	Delaware, Pa.
Gannon, Mary C.	70 Main St., Inkerman	Luzerne, Pa.
Geisel, Jennie E.	220 Woodbine St., Harrisburg	Dauphin, Pa.
Geisking, Reba M.	372 N. 1st St., Lehighton	Carbon, Pa.
Gerard, Helen K.	93 2nd St., Hokendauqua	Lehigh, Pa.
Gibbs, Sara B.	417 S. Matlack St., West Chester	Chester, Pa.
Gies, Anita C.	2 S. 11th St., Easton	Northampton, Pa.
Gilbert, Frances R.	Cochranville	Chester, Pa.
Gilbert, Olive P.	Cochranville	Chester, Pa.
Ginther, Verna M.	13 S. 10th St., Catasauqua	Lehigh, Pa.
Gissin, Sophia R.	208 Orwigsburg St., Tamaqua	Schuylkill, Pa.
Githens, Helen M.	Ateo	New Jersey
Glenn, May A.	Rome	Bradford, Pa.
Good, Eva P.	Chalfont	Bucks, Pa.
Gordon, Eleanor K.	1327 Arch St., Norristown	Montgomery, Pa.
Gragg, Mary E.	1413 Muhlenberg St., Reading	Berks, Pa.
Graham, Ethel M.	Wawa	Delaware, Pa.
Graunt, Amey V.	Oxford	Chester, Pa.
Gray, Alma R.	2 Chestnut St., Cressona	Schuylkill, Pa.
Gray, Dorothy C.	119 Division St., Kingston	Luzerne, Pa.
Green, Adelia K.	413 Walnut St., Harrisburg	Dauphin, Pa.
Griel, Virginia	Kennett Square	Chester, Pa.
Griffiths, Ruth A.	516 N. Rebecca St., Scranton	Lackawanna, Pa.
Grim, Viola R.	67 E. Main, Dallastown	York, Pa.
Groft, Bernice	Bovertown	Berks, Pa.
Groft, Mary	Bovertown	Berks, Pa.
Grubb, Helen M.	1513 Providence Ave., Chester	Delaware, Pa.
Haar, Nora M.	Abbottstown	Adams, Pa.
Haederle, Dorothy I.	120 5th St., West Reading	Berks, Pa.
Haeseler, Sibylla L.	Orwigsburg	Schuylkill, Pa.
Hagan, Mary A.	Prince St., Nanticoke	Luzerne, Pa.
Hagans, Marjorie W.	204 Lafayette Place, Kennett Square,	Chester, Pa.
Haldeman, Emma C.	Southampton	Bucks, Pa.
Hall, Edna M.	303 S. Church St., West Chester	Chester, Pa.
Hall, Hilda H.	Robesonia	Berks, Pa.
Hall, Mae M.	303 S. Church St., West Chester	Chester, Pa.
Hallman, Sara F.	735 George St., Norristown	Montgomery, Pa.
Hamaker, Eleanor M.	Womelsdorf	Berks, Pa.
Hamlet, Alice M.	569 Barret Ave., Bryn Mawr	Montgomery, Pa.
Harding, Helen M.	129 N. Walnut St., Lewistown	Mifflin Pa.
Harrar, Mary C.	Frazer	Chester, Pa.
Harris, Arline	302 Main St, Taylor	Lackawanna, Pa.
Harris Edythe	258 E. Market St., Wilkes-Barre	Luzerne, Pa.
Harrison, Elizabeth	Nesquehoning	Carbon, Pa.
Hartman, Madaline S.	Yardley	Bucks, Pa.
Harvey, Mary E.	1525 Ligomer St., Latrobe	Westmoreland, Pa.
Haslam, Mary E.	404 N. Main St., Wilkes-Barre	Luzerne, Pa.

<i>Name</i>	<i>Post office</i>	<i>County and State</i>
Hawk, Mabel M.	516 Strasburg Ave., Parkesburg	Chester, Pa.
Hay, Eleanor D.	29 Breese St., Wyoming	Luzerne, Pa.
Hayes, Elizabeth M.	203 W. Miner St., West Chester	Chester, Pa.
Hayes, Ruth A.	Mercersburg	Franklin, Pa.
Hays, Grace M.	Langhorne	Bucks, Pa.
Heaney, Mary E.	35 4th St., Perkasie	Bucks, Pa.
Heekler, Esther B.	Skippack	Montgomery, Pa.
Heebner, Marian I.	Norristown, R. D. 2	Montgomery, Pa.
Hefferman, Edith M.	421 N. 16th St., Allentown	Lehigh, Pa.
Helms, Frances K.	Riegelsville	Bucks, Pa.
Hellyer, Dorothy M.	Buckingham	Bucks, Pa.
Henne, Edith L.	414 Penn Ave., West Reading	Berks, Pa.
Henry, Blanche K.	129 President Ave., Rutledge	Delaware, Pa.
Henry, Martha W.	Croton Road, Wayne	Chester, Pa.
Hertzler, Helen E.	Bristol, R. D. 1	Bucks, Pa.
Hill, Mary A.	124 E. Madison Ave., Vandergrift	Westmoreland, Pa.
Hitner, Ruth L.	473 Cherokee St., Bethlehem	Northampton, Pa.
Hoffman, Dorothy M.	234 Chestnut St., Lebanon	Lebanon, Pa.
Hoffman, Katherine E.	Sadsburyville	Chester, Pa.
Hoffman, N. Alfretta	33 Remington Ave., Coatesville	Chester, Pa.
Hoffman, Sarah L.	Valley View	Schuylkill, Pa.
Hogg, Joanna E.	Oxford	Chester, Pa.
Holcombe, Maude E.	Carversville	Bucks, Pa.
Holdren, Martha P.	Picture Rocks	Lycoming, Pa.
Holter, Marian A.	716 Penn St., Johnsonburg	Elk, Pa.
Homyak, Anna	Box 36, Patton	Cambria, Pa.
Hooley, Pauline Z.	Ivyland	Bucks, Pa.
Hooper, Ruth M.	Nesquehoning	Carbon, Pa.
Hoopes, Grace L.	586 W. Market St., York	York, Pa.
Hopwood, Mildred H.	Yerkes	Montgomery, Pa.
Hougen, Maxine O.	1027 Madison St., Wilmington	Delaware
Houser, Emily T.	101 Delaware Ave., W. Pittston	Luzerne, Pa.
Hughes, Ethel J.	607 Jansen Ave., Essington	Delaware, Pa.
Hunsberger, Anne M.	340 W. Miner St., West Chester	Chester, Pa.
Hunsberger, E. Marie	Green Lane	Montgomery, Pa.
Hunt, Margaret F.	42 Stratford Ave., Aldan	Delaware, Pa.
Hunter, Alice A.	New Centerville	Chester, Pa.
Hunter, Elizabeth R.	602 E. 14th St., Chester	Delaware, Pa.
Hurley, Regina H.	209 Spruce St., Kingston	Luzerne, Pa.
Hurt, Laura H.	2 Sellers Ave., Ridley Park	Delaware, Pa.
Irwin, Dorothy	130 Linwood Ave., Ardmore	Montgomery, Pa.
Ivanoski, Irene V.	1033 Main St., Dickson	Lackawanna, Pa.
Jackson, Miriam F.	Christiana	Lancaster, Pa.
Jackson, Mrs. Mirvin C.	24 Parkway, Coatesville	Chester, Pa.
Jackson, Thelma L.	224 Sharpless St., West Chester	Chester, Pa.
James, Margaret S.	West Chester	Chester, Pa.
Jamison, Leonora G.	210 N. Adams St., West Chester	Chester, Pa.
Jarden, Mildred B.	315 Kent Road, Cynwyd	Montgomery, Pa.
Jenkins, Elizabeth	008 Belleview Ave., Pottstown, Montgomery, Pa.	
Johnsek, Helen	62 Hughes St., Forty Fort	Luzerne, Pa.
Johnson, Bernice F.	10 E. Ridge St., Lansford	Carbon, Pa.
Johnson, Frances	Southampton	Bucks, Pa.
Johnson, Helen E.	400 Shearer St., North Wales	Montgomery, Pa.
Johnson, Katie B.	Creamery	Montgomery, Pa.
Johnson, Mary E.	127 E. Washington St., West Chester, Chester, Pa.	
Johnson, S. Elizabeth	Avondale	Chester, Pa.
Johnson, Winifred M.	98 S. Poplar St., Hazleton	Luzerne, Pa.

<i>Name</i>	<i>Post office</i>	<i>County and State</i>
Jonassen, Ingrid O.	27 Penn St., Fox Chase, Rockledge	Montgomery, Pa.
Jones, Amy H.	209 W. Drinker St., DunmoreLuzerne, Pa.
Jones, Elizabeth S.	45 Myers St., Forty FortLuzerne, Pa.
Jones, Ethel J.	121 N. Main St., ShenandoahSchuylkill, Pa.
Joseph, Christine R.	337 Oaklane, CollingdaleDelaware, Pa.
Jump, Ruth L.	616 W. 7th St., ChesterDelaware, Pa.
Kalmanson, Florence B.	545 Livingston St., ElizabethNew Jersey
Kane, RoselleFullertonLehigh, Pa.
Kavanaugh, Dorothy	21 Thomas Ave., Bryn MawrMontgomery, Pa.
Kealy, Anna M.	Mt. CarmelNorthumberland, Pa.
Keidel, Mae W.	HockessinDelaware
Keller, Esther M.	1800 Perkomin Ave., ReadingBerks, Pa.
Kelly, Helen E.	1605 Pittston Ave., SerantonLackawanna, Pa.
Kendrick, Olwen A.	707 2nd St., CatasauquaLehigh, Pa.
Kenna, Rose C.	CumbolaSchuylkill, Pa.
Kern, Edna G.	710 Reading Ave., West ReadingBerks, Pa.
Kerr, Alice F.	404 Colwyn Ave., ColwynDelaware, Pa.
Kerstetter, Elda L.	144 S. 2nd St., ShamokinNorthumberland, Pa.
Kerstetter, Mary M.	144 S. 2nd St., ShamokinNorthumberland, Pa.
Keidel, Florence A.	415 Market St., MillersburgDauphin, Pa.
Kiley, Rosalie C.	215 S. Chestnut St., Mt. Carmel,Northumberland, Pa.
Kline, Estella H.	Royersford, R. D. 1Montgomery, Pa.
Kline, Evelyn K.	279 S. Main St., DoylestownBucks, Pa.
Kniffen, Marjorie E.	777 S. Main St., Wilkes-BarreLuzerne, Pa.
Knutzen, Solveig	202 Forest Ave., NarberthMontgomery, Pa.
Knox, Elizabeth L.	234 Main St., TidiouteWarren, Pa.
Koller, Isabelle L.	192 N. Lansdowne Ave., Lansdowne,Delaware, Pa.
Komenarsky, Rae	2619 S. Sartain St.,Philadelphia, Pa.
Erakusin, Besse S.	101 S. Pine St., HazletonLuzerne, Pa.
Krauss, Mildred C.	Centre ValleyLehigh, Pa.
Kraut, Elva	312 Butler Ave., AmblerMontgomery, Pa.
Kreischer, Ruth E.	202 E. 13th St., BerwickColumbia, Pa.
Krewson, Alice R.	40 S. Clinton St., DoylestownBucks, Pa.
Krewson, Blanche E.	40 S. Clinton St., DoylestownBucks, Pa.
Krom, Elizabeth E.	306 W. Centre St., ShenandoahSchuylkill, Pa.
Kubicki, Veroneia L.	360 E. Northampton St., Wilkes-Barre,Luzerne, Pa.
Kuder, Johanna	ErdenheimMontgomery, Pa.
Kuebler, Edith M.	42 N. 8th St., EastonNorthampton, Pa.
Kulp, Marion B.	Green LaneMontgomery, Pa.
Kuns, Margaret E.	Pottstown, R. D. 3Chester, Pa.
Kurtz, Sara A.	Pottstown, R. D. 5Montgomery, Pa.
Laehman, Frances M.	316 N. Charlotte St., Pottstown, Montgomery,Pa.
Lady, Maybelle V.	BiglervilleAdams, Pa.
Lamb, Margaret A.	448 Brookhurst Ave., Narberth, Montgomery,Pa.
Lambert, Elizabeth H.	415 Howertown Rd., CatasauquaLehigh, Pa.
Landis, Mildred B.	32 Ridge Ave., EverettBedford, Pa.
Lang, Florence V.	Glen MooreChester, Pa.
Larkin, Martha R.	Chestnut St., DowningtownChester, Pa.
Lereh, M. Mildred	TinicumBucks, Pa.
Leslie, Anna L.	238 Columbia St., PalmertonCarbon, Pa.
Lewis, Gertrude E.	3rd St., MinersvilleSchuylkill, Pa.
Lewis, Louella F.	Glen MooreChester, Pa.
Lilley, Anna H.	MarshalltonChester, Pa.
Lingonsky, Estella L.	ShepptonSchuylkill, Pa.

<i>Name</i>	<i>Post office</i>	<i>County and State</i>
Michener, A. Myrl	Box 3037, Doylestown	Bucks, Pa.
Michener, Esther M.	Carversville	Bucks, Pa.
Michener, Ruth C.	Carversville	Bucks, Pa.
Michlewicz, Stella	18 Hanover St., Nanticoke	Luzerne, Pa.
Miesen, Elizabeth T.	158 Merion Ave., Narberth	Montgomery, Pa.
Miley, Esther E.	241 Washington St., E. Downingtown,	Chester, Pa.
Miller, Bertha C.	120 Gay St., Phoenixville	Chester, Pa.
Miller, Florence A.	1203 Washington St., Easton	Northampton, Pa.
Milligan, Elizabeth	765 E. Main St., Coatesville	Chester, Pa.
Mills, Lydia M.	38 Prince St., Nanticoke	Luzerne, Pa.
Minter, Helen E.	452 Spruce St., Pottstown	Montgomery, Pa.
Mitchell, Emma H.	906 Dorey St., Clearfield	Clearfield, Pa.
Moll, Grace M.	East Greenville	Montgomery, Pa.
Monahan, Mary E.	116 N. 2nd St., St. Clair	Schuylkill, Pa.
Monahan, Virginia M.	1705 Union St., McKeesport	Allegheny, Pa.
Montieth, Mildred E.	1105 Maple Ave., Barnesboro	Cambria, Pa.
Moore, Helen	Chatham	Chester, Pa.
Moore, Velma	316 9th Ave., Juniata	Blair, Pa.
Morris, Edith E.	Coatesville, R. D. 2	Chester, Pa.
Morris, Kathryn M.	Coatesville, R. D. 2	Chester, Pa.
Morris, Margaret E.	213 N. Mill St., St. Claire	Schuylkill, Pa.
Morris, Mary R.	1335 N. 10th St.,	Philadelphia, Pa.
Morton, Josephine F.	Honey Brook	Chester, Pa.
Morton, Marian L.	Woodbine	York, Pa.
Moser, Arlene M.	239 E. Bertsch St., Lansford	Carbon, Pa.
Moyer, Florence M.	1052 Mulberry St., Reading	Berks, Pa.
Moyer, Mildred H.	51 Chestnut St., Souderton	Montgomery, Pa.
Mumey, Ruth S.	18 E. 3rd St., E. Manch Chunk	Carbon, Pa.
Mundorf, Frances E.	822 S. George St., York	York, Pa.
Murdock, Elizabeth J.	1110 St. Ann St., Seranton	Lackawanna, Pa.
Murray, Grace D.	217 Stuart Ave., Downingtown	Chester, Pa.
Murray, Katherine A.	625 W. Lafayette St., Norristown,	Montgomery, Pa.
Murvin, Edith L.	Mortonville	Chester, Pa.
Musi, Marie T.	233 Melrose Ave., E. Lansdowne	Delaware, Pa.
Mutton, Freida R.	404 Robinson Ave., Pen Argyle,	Northampton, Pa.
Myers, Amanda M.	Chalfont	Bucks, Pa.
Myers, Emma F.	2233 S. 15th St.	Philadelphia, Pa.
Neal, Grace T.	Newtown Square	Delaware, Pa.
Neal, Marguerite H.	Stewartstown	York, Pa.
Neal, Mildred E.	Stewartstown	York, Pa.
Nelson, Adelle R.	417 E. Market St., York	York, Pa.
Nerwood, Caroline A.	Kratzerville	Snyder, Pa.
Niece, Charlotte A.	315 N. 3rd St., Pottsville	Schuylkill, Pa.
Noel, Mae C.	Cresson	Cambria, Pa.
Northeimer, Catherine S.	17 Parkway, Coatesville	Chester, Pa.
Notaker, Lillian D.	802 Philo St., Reading	Berks, Pa.
Oakes, Millicent M.	1018 Douglass St., Reading	Berks, Pa.
Oberholser, Louisa P.	Coatesville	Chester, Pa.
Oelschlager, Carrie S.	Salfordville	Montgomery, Pa.
O'Harrow, Beatrice E.	328 S. Darlington St., West Chester,	Chester, Pa.
O'Malley, Mary E.	309 W. Oak St., Shenandoah	Schuylkill, Pa.
Osum, Grace T.	121 S. 15th St., Allentown	Lehigh, Pa.
Ottinger, Beatrice F.	452 Penn St., Spring City	Chester, Pa.
Ottinger, Helen P.	452 Penn St., Spring City	Chester, Pa.
Owen, Dilys M.	205 W. Shawnee St., Plymouth	Luzerne, Pa.

<i>Name</i>	<i>Post office</i>	<i>County and State</i>
Livezey, Helen D.	Ivyland	Bucks, Pa.
Lloyd, Mary A.	655 Orange St., Northumberland,	Northumberland, Pa.
Locklin, H. Elizabeth	Lakeville	Wayne, Pa.
Logan, A. Mildred	Mont Clare	Montgomery, Pa.
Lonzer, Mabel M.	406 W. Broad St., Hazleton	Luzerne, Pa.
Lord, Mary E.	384 S. Franklin St., Wilkes-Barre, Luzerne, Pa.	
Lucas, Ann A.	45 Schuylkill Ave., Shenandoah,	Schuylkill, Pa.
Lukens, Florence E.	North Wales	Montgomery, Pa.
Lynch, Mary E.	920 N. 17th St.	Philadelphia, Pa.
McAfee, Margaret I.	Pottstown, R. D. 2	Montgomery, Pa.
McCallen, Catherine	5 Hinckley Ave., Ridley Park	Delaware, Pa.
McChain, S. Jessie	Finleyville	Washington, Pa.
McComsey, Elma M.	213 Chapel Ave., Parkesburg	Chester, Pa.
McCord, Clara W.	Coatesville, R. D. 5	Chester, Pa.
McCormack, Mary F.	Thorndale, R. D. 1.	Chester, Pa.
McCreary, Marie A.	1200 Atlantic Ave., Monaca	Beaver, Pa.
McDowell, Elizabeth	624 Broad Street, Oxford	Chester, Pa.
McFadden, Dorothy E.	Chadds Ford	Delaware, Pa.
McFaden, Frances M.	Glenn Moore	Chester, Pa.
McGill, Rose D.	17 Hyland St., Jeddo	Luzerne, Pa.
McKernan, Elizabeth E.	211 E. Ridley Ave., Ridley Park, Delaware, Pa.	
McKillop, Anna W.	103 E. Penn St., Ridley Park	Delaware, Pa.
McLimans, Katherine L.	159 W. Evergreen St., West Grove....	Chester, Pa.
McMullan, Mary W.	Pocopson	Chester, Pa.
McNamara, Mary E.	Lewisville	Chester, Pa.
McVeigh, L. Nadean	568 Cedar St., Spring City	Chester, Pa.
MacConnell, Gladys C.	Nicholson	Wayne, Pa.
Maek, Mary E.	417 Hazel St., Wikes-Barre	Luzerne, Pa.
MacIntire, Mabel J.	Spring City	Chester, Pa.
MacLennan, Marguerite	329 S. High St., West Chester	Chester, Pa.
Magee, Margaret M.	West Chester, R. D. 3	Chester, Pa.
Malarkey, Mary L.	Lost Creek	Schuylkill, Pa.
Maloney, Evelyn V.	Wallingford	Delaware, Pa.
Mann, Marion H.	168 College Ave., Easton	Northampton, Pa.
Marcinowski, Helen N.	312 Elm St., Scranton	Lackawanna, Pa.
Margolis, Fannie.	58 S. 6th St., Coatesville	Chester, Pa.
Marino, Kathryn A.	10 W. Coal St., Nesquehoning	Carbon, Pa.
Maroney, Nellie E.	1027 Madison St., Wilmington	Delaware, Pa.
Marshall, Helen H.	28 S. 8th Ave., Coatesville	Chester, Pa.
Martin, Anna G.	Downingtown, R. D. 1	Chester, Pa.
Martin, Irene M.	508 W. Magnolia St., Kennett Square,	Chester, Pa.
Mason, Edith M.	Toughkenamon	Chester, Pa.
Matey, Eleanor L.	1451 S. 28th St.	Philadelphia, Pa.
Matlack, Jane C.	406 W. Fornance St., Norristown,	Montgomery, Pa.
Matthews, Margaret M.	838 Madison Ave., Reading	Berks, Pa.
Maugle, Elsie S.	Perkasie	Bucks, Pa.
Mayne, Iva H.	Brandywine Summit	Delaware, Pa.
Mayne, M. Gwyneth	Brandywine Summit	Delaware, Pa.
Meador, Lettie M.	212 E. 9th Street, Chester	Chester, Pa.
Mehaffey, Hilda J.	2020 Bridge St., McKeesport	Allegheny, Pa.
Meredith, Catherine G.	149 Sylvan Terrace, Harrisburg, Dauphin, Pa.	
Merusi, Elda L.	New Eagle	Washington, Pa.
Messenger, Muriel A.	22 N. 9th St., Easton	Northampton, Pa.
Messner, Anna S.	37 Willow Ave., Slatington	Lehigh, Pa.

<i>Name</i>	<i>Post office</i>	<i>County and State</i>
Paddon, Evelyn E.	1232 Main St., Dickson City ...	Lackawanna, Pa.
Page, Anna E.	147 N. 5th St., Hamburg	Berks, Pa.
Palmer, Alice B.	Bristol	Bucks, Pa.
Palmer, Loveday B.	West Brook Ave., Pen Argyle, Northampton, Pa.	
Parry, Clara I.	1433 N. 17th St.	Philadelphia, Pa.
Patterson, Elsie M.	Honey Brook, R. D. 2	Chester, Pa.
Patterson, Marjorie L.	97 N. Morgantown St., Fairchance	Fayette, Pa.
Paul, Verna M.	808 W. Pine St., Shamokin, Northumberland, Pa.	
Pearce, A. Marion	659 Astor St., Norristown	Montgomery, Pa.
Peck, Marion E.	Hulmeville	Bucks, Pa.
Peel, M. Mary	12 Charles St., Pittston	Luzerne, Pa.
Peeler, Armeda M.	Dallastown	York, Pa.
Pence, Anna M.	Gilbertsville	Montgomery, Pa.
Pennypacker, Edna M.	Coatesville, R. D. 1	Chester, Pa.
Pennick, Marion G.	Birchrunville	Chester, Pa.
Pennington, Beulah M.	Brandywine Summit	Delaware, Pa.
Peters, Mary C.	3555 Main St., Lewistown	Mifflin, Pa.
Peters, Rachel L.	74 Mary St., Ashley	Luzerne, Pa.
Petty, Nora	West Chester	Chester, Pa.
Piz, Esther B.	41 W. Pine St., Sheppton	Schuylkill, Pa.
Poetzl, Hildegard M.	310 Cornell Ave., Swarthmore	Delaware, Pa.
Postles, Grace V.	1728 N. 21st St.	Philadelphia, Pa.
Potteiger, Mary L.	13 N. 4th St., Hamburg	Berks, Pa.
Powell, Dorothy	314 Church St., Taylor	Lackawanna, Pa.
Powell, Lillian M.	5000 Locust St.	Philadelphia, Pa.
Pratt, Elizabeth K.	Coatesville, R. D. 3	Chester, Pa.
Pugh, Mary B.	Norristown, R. D. 1	Montgomery, Pa.
Puller, Elizabeth G.	220 W. 7th St. Chester	Delaware, Pa.
Pusey, S. Elizabeth	Unionville	Chester, Pa.
Quillen, Marian E.	Modena	Chester, Pa.
Rahn, Catherine P.	200 High St., Hanover	York, Pa.
Raudenbush, Lillian I.	1006 Sterling St., Coatesville	Chester, Pa.
Reagan, Esther M.	122 W. Chestnut St., West Chester, Chester, Pa.	
Reese, Elizabeth G.	103 Chambers St., Taylor	Lackawanna, Pa.
Reetz, Helen A.	Hulmeville	Bucks, Pa.
Regner, Mary E.	1821 W. Ontario St.	Philadelphia, Pa.
Reichard, Isabel V.	714 Green St., Allentown	Lehigh, Pa.
Reichard, Ruth E.	1127 W. Market St., Pottsville ...	Schuylkill, Pa.
Reilly, Bessie A.	324 W. Oak St., Shenandoah	Schuylkill, Pa.
Reimer, Mildred E.	Bangor, R. D. 2	Northampton, Pa.
Renninger, Margaret E.	Sinking Spring, R. D. 2	Berks, Pa.
Rhodes, Ethel M.	28 Remington Ave., Coatesville	Chester, Pa.
Rice, Mary M.	Hatboro	Bucks, Pa.
Richards, Mary L.	515 2nd St., W. Pittston	Luzerne, Pa.
Richards, Nellie M.	90 Virginia Ave., Coatesville	Chester, Pa.
Rider, Martha E.	200 E. Front St., Berwick	Columbia, Pa.
Rieder, Pearl R.	315 Grove St., Taylor	Lackawanna, Pa.
Riley, Kathryn D.	25 Hatford St., Ashley	Luzerne, Pa.
Riner, Bessie M.	88 Allen St., Nanticoke	Luzerne, Pa.
Ritchie, Eleanor M.	233 Madison Ave., Highland Park, Delaware, Pa.	
Rittenhouse, Annie M.	Lansdale	Montgomery, Pa.
Robinson, Vera R.	Honey Brook	Chester, Pa.
Roderick, Elizabeth J.	741 W. Diamond St., Hazleton	Luzerne, Pa.
Roehm, Mabel P.	133 W. College Ave., York	York, Pa.
Rome, Freda F.	84 Price St., Kingston	Luzerne, Pa.
Rosboro, Mary F.	32 Shady Lane, Uniontown	Fayette, Pa.
Rosenbluth, Fannie L.	627 Main St., Simpson	Lackawanna, Pa.
Rosenfeld, Sydel	387 Main St., Luzerne	Luzerne, Pa.

<i>Name</i>	<i>Post office</i>	<i>County and State</i>
Ross, Wilda A.	Red Hill	Montgomery, Pa.
Roth, Helen E.	417 Seminary St., Pennsburg	Montgomery, Pa.
Rowe, Jennie D.	72 Academy St., Plymouth	Luzerne, Pa.
Russell, Eileen	214 Penn Ave., Oxford	Chester, Pa.
Russell, Eleanor G.	Kennett Square	Chester, Pa.
Sattenstein, Nellie C.	415 N. 9th St., Reading	Berks, Pa.
Saylor, Beta V.	327 Main St., Pennsburg	Montgomery, Pa.
Schad, Emma M.	213 W. Spruce St., Mahanoy City, Schuylkill, Pa.	
Schaffer, Marian E.	Oakland Ave., Doylestown	Bucks, Pa.
Schiefer, Hannah	Richboro	Bucks, Pa.
Schjerup, Ethel E.	Lenape	Chester, Pa.
Schjerup, Louise A.	Lenape	Chester, Pa.
Schnieder, Clara I.	3511 N. Mervine St.,	Philadelphia, Pa.
Scholl, Anna C.	Pottstown, R. D. 2	Chester, Pa.
Schug, Rena E.	400 3rd St., West Easton	Northumberland, Pa.
Schuler, Helen M.	Sunneytown	Montgomery, Pa.
Schultz, Ellen B.	Quakertown, R. D. 5	Bucks, Pa.
Schultz, Marie H.	6 Eagle Ave., Shamokin	Northumberland, Pa.
Scott, Dorcas R.	329 Miner St., West Chester	Chester, Pa.
Seringeour, Frances I.	240 Atlantic St., W. Pittston	Luzerne, Pa.
Seibert, Lorraine E.	520 2nd St., Catasauqua	Lehigh, Pa.
Seidman, Beatrice	1646 Capouse Ave. Scranton,	Lackawanna, Pa.
Seidman, Lila	1646 Capouse Ave. Scranton,	Lackawanna, Pa.
Seifert, Alma V.	5741 N. Lawrence St.,	Philadelphia, Pa.
Seiple, Holly L.	530 Walnut St., Freeland	Luzerne, Pa.
Selgrath, Blanche E.	134 W. Spruce St., Mahanoy City, Schuylkill, Pa.	
Sellers, Marguerite V.	1617 W. Broad St., Bethlehem, Northampton, Pa.	
Shaffer, Mary E.	Norristown, R. D. 1	Montgomery, Pa.
Shane, Grace L.	440 Ridge Ave., Spring City	Chester, Pa.
Shaw, Emilie H.	510 W. Norwegian St., Pottsville, Schuylkill, Pa.	
Shelly, Helen	400 W. Oak St., Hazleton	Luzerne, Pa.
Shields, Florence W.	Media	Delaware, Pa.
Shifren, Sophia	1639 N. 7th St.,	Philadelphia, Pa.
Schoemaker, Helen E.	27 St. Peters St., Schuylkill Haven, Schuylkill, Pa.	
Shoobridge, Ruth	122 Lee Ave., Tottenville	New Jersey
Shores, Thelma A.	756 Coates St., Coatesville	Chester, Pa.
Shovlin, Loretta	246 E. Northampton St., Wilkes-Barre, Luzerne, Pa.	
Shumaker, Helen C.	1145 Frieda St., Dickson City	Lackawanna, Pa.
Shupp, Susan R.	563 Franklin Ave., Palmerton	Carbon, Pa.
Shurter, Virginia C.	36 W. Ridley Ave., Ridley Park, Delaware, Pa.	
Sinkler, Alta	Southampton	Bucks, Pa.
Skolnick, Violet F.	402 W. Washington St., Media	Delaware, Pa.
Slack, Mary A.	127 S. 6th St., Coatesville	Chester, Pa.
Slotter, Elizabeth	Mechanicsville	Bucks, Pa.
Smith, Margaret B.	202 E. Gay St., West Chester	Chester, Pa.
Smith, Marie A.	682 Wolfe St., Easton	Northampton, Pa.
Smith, Sylvia L.	Yeagertown	Mifflin, Pa.
Soulliard, Ruth E.	1041 1st Ave., Coatesville	Chester, Pa.
Sowers, Stella K.	Green Lane	Montgomery, Pa.
Spangler, Sara C.	Honey Brook	Chester, Pa.
Spann, Margaret A.	Brandywine Summit	Delaware, Pa.
Spann, Susie	17 W. Barnard St., West Chester	Chester, Pa.
Staats, Lola R.	Central Ave., Paoli	Chester, Pa.
Stalder, Rena A.	Ivyland	Bucks, Pa.
Stanton, Catherine A.	323 W. Oak St., Shenandoah	Schuylkill, Pa.
Starkey, Myrtle H.	333 E. 7th St., Wilmington	Delaware

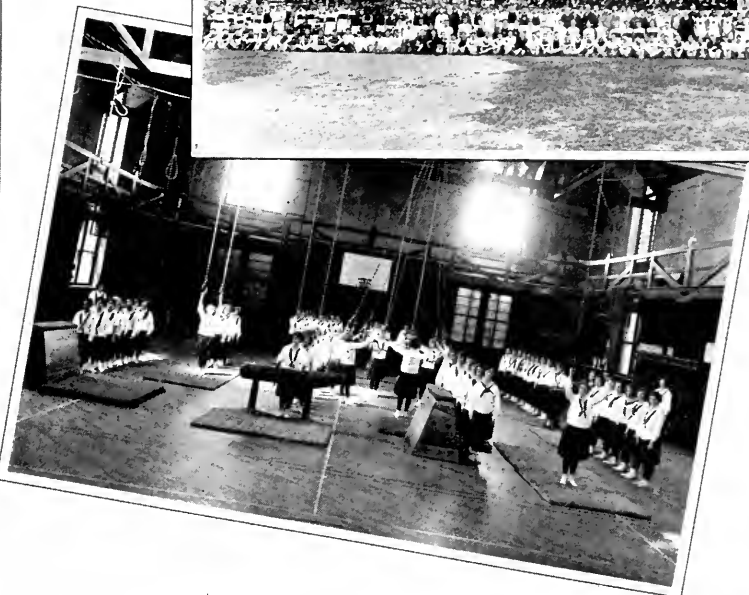
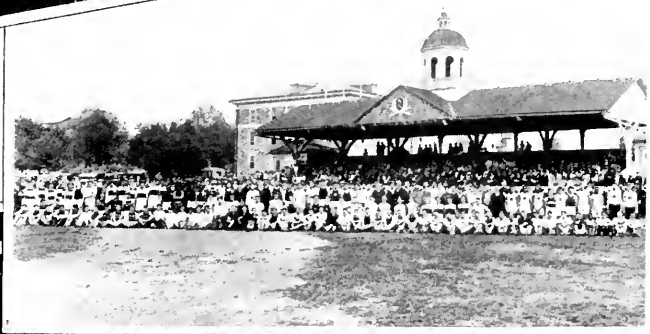
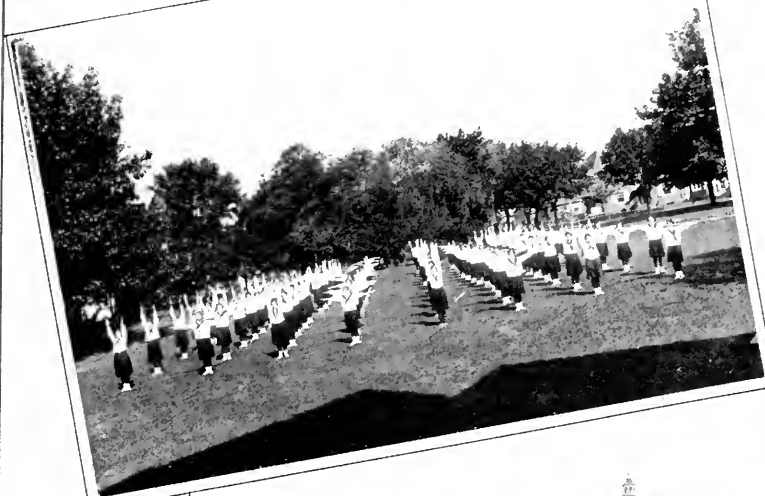
<i>Name</i>	<i>Post office</i>	<i>County and State</i>
Stauffer, Mary E.	Bechtelsville	Berks, Pa.
Steeley, Pearle E.	Easton, R. D. 6	Northampton, Pa.
Steen, Mabel L.	136 Chestnut St., Coatesville	Chester, Pa.
Steinbuhler, Carolyn A.	502 N. Kerr St., Titusville	Crawford, Pa.
Steltz, Florence E.	New Hanover	Montgomery, Pa.
Stewart, Margaret L.	333 E. Patterson St., Lansford	Carbon, Pa.
Stibich, Magdalen M.	432 Central Ave., Johnston	Cambria, Pa.
Stiles, Sylvia C.	Bangor, R. D. 4	Northampton, Pa.
Stolboff, Rose M.	114 N. Cedar St., Hazleton	Luzerne, Pa.
Stoopes, Elma L.	203 Jefferson St., Wilmington	Delaware
Strimmel, Bessie J.	355 E. Marshall St., Norristown	Montgomery, Pa.
Strock, Elizabeth G.	Joanna	Berks, Pa.
Strock, Esther F.	Springtown	Bucks, Pa.
Styer, Harriet M.	Norristown, R. D. 4	Montgomery, Pa.
Supowitz, Florence	133 W. Centre St., Mahanoy City, Schuylkill	Pa.
Swartz, Elizabeth P.	415 South St., Mauch Chunk	Carbon, Pa.
Sweeney, Mary B.	27 Pratt St., Towanda	Bradford, Pa.
Taggart, Martha L.	542 Hamilton St., Norristown	Montgomery, Pa.
Tallis, Ruth F.	Schwenksville	Montgomery, Pa.
Taylor, A. Violet	Oxford	Chester, Pa.
Taylor, Helen F.	Oxford	Chester, Pa.
Taylor, M. Virginia	718 Chess St., Monongahela	Washington, Pa.
Thatford, Margaret C.	Village Green	Delaware, Pa.
Thomas, Gwendolen A.	508 E. North St., Bethlehem	Northampton, Pa.
Thomas, Julia	500 W. Gay St., West Chester	Chester, Pa.
Thomas, Marguerite C.	Tidioute	Warren, Pa.
Thomson, Marian L.	321 Dean St., West Chester	Chester, Pa.
Tiger, Beatrice H.	Trappe	Montgomery, Pa.
Tigue, Marie M.	739 S. Matlack St., West Chester	Chester, Pa.
Toolan, Vera L.	123 Monroe St., Archbald	Luzerne, Pa.
Tormay, Elizabeth A.	151 S. Pine St., Hazleton	Luzerne, Pa.
Torricellas, Dagmar C.	Sunset Valley Farm, West Chester	Chester, Pa.
Townsley, S. Anne	141 Lancaster Ave., Downingtown	Chester, Pa.
Towson, Hilda E.	435 Lincoln St., York	York, Pa.
Trainer, Mildred B.	390 S. 3rd St., Lehighton	Carbon, Pa.
Travis, Helen	638 S. 62nd St.	Philadelphia, Pa.
Tupper, Marian	Wyalusing	Bradford, Pa.
Tyson, Marian K.	Schwenksville	Montgomery, Pa.
Uhler, Louise E.	1221 Bushkill St., Easton	Northampton, Pa.
Urfer, Marian K.	202 4th St., East Greenville	Montgomery, Pa.
Van Fossen, Edith	Green Lane	Montgomery, Pa.
Viti, Catherine	823 S. 9th St.	Philadelphia, Pa.
Wagner, Dorothy G.	New Hanover	Montgomery, Pa.
Walker, Mary E.	Chatham	Chester, Pa.
Wall, Altha	461 Main St., Monongahela	Washington, Pa.
Wallace, Mazie M.	Oxford	Chester, Pa.
Walsh, Harriett A.	333 E. Lehigh Ave.	Philadelphia, Pa.
Walsh, Kathryn C.	46 Division St., Kingston	Luzerne, Pa.
Walters, Jean E.	93 Manhattan St., Ashley	Luzerne, Pa.
Wamsher, Jeanette G.	505 9th St., Perkasie	Bucks, Pa.
Ward, Anna M.	929 Pleasant St., Wyndmoor	Montgomery, Pa.
Ward, Eleanor A.	225 N. Main St., Wilkes-Barre	Luzerne, Pa.
Warfield, Agnes H.	Kennett Square	Chester, Pa.
Warren, Eleanor A.	Modena	Chester, Pa.
Waterman, Alice	New Hope	Bucks, Pa.
Watkins, Grace E.	Royersford	Montgomery, Pa.
Watson, Rosa L.	1110 Poplar St., Wilmington	Delaware
Watters, Helen C.	138 Spring St., Wilkes-Barre	Luzerne, Pa.

<i>Name</i>	<i>Post office</i>	<i>County and State</i>
Webster, Lida J.	Coatesville, R. D. 5	Chester, Pa.
Weller, Florence M.	123 Queen St., Pottstown	Montgomery, Pa.
Wengert, Anna E.	433 S. 13th St., Harrisburg	Dauphin, Pa.
West, Ethel V.	5630 Malcolm St.	Philadelphia, Pa.
Wharton, Laura B.	Kennett Square	Chester, Pa.
White, Anna A.	337 Charles St., Coatesville	Chester, Pa.
Wiley, Esther M.	Doylestown	Bucks, Pa.
Will, Charlotte C.	Millersburg, R. D. 1	Dauphin, Pa.
Williams, Mary A.	125 2nd St., Kingston	Luzerne, Pa.
Wilsbach, Ann M.	2218 N. 3rd St., Harrisburg	Dauphin, Pa.
Wilson, Marian R.	111 W. Windsor St., Reading	Berks, Pa.
Windle, C. Marian	Star Ronte, Parkesburg	Chester, Pa.
Witt, Florence B.	165 Chestnut St., Spring City	Chester, Pa.
Wittmer, Marie E.	1310 E. Centre St., Mahanoy City, Schuylkill, Pa.	Schuylkill, Pa.
Wolfe, Helen A.	43 Market St., Tamaqua	Schuylkill, Pa.
Wolfgang, Katie V.	Liverpool	Perry, Pa.
Worstell, Eleanor M.	New Hope	Bucks, Pa.
Worthington, Aliee S.	Doylestown, R. D. 1	Bucks, Pa.
Worthington, Hazel R.	3 Hillside Ave., Doylestown	Bucks, Pa.
Wotring, Perma E.	318 Church St., Catasauqua	Lehigh, Pa.
Wricks, Lucy A.	823 Central Ave., Chester	Delaware, Pa.
Wright, Anna M.	Brandamore	Chester, Pa.
Wright, Beatrice E.	204 E. 13th St., Wilmington	Delaware
Wright, Elizabeth S.	Rising Sun	Maryland
Wright, Viola S.	1117 Terrill St., Chester	Delaware, Pa.
Wunderlich, Della A.	Elverson, R. D. 2	Chester, Pa.
Wurster, M. Virginia	1807 Market St., Harrisburg	Dauphin, Pa.
Wynn, Clara F.	Pottstown	Montgomery, Pa.
Wynn, Ruth A.	207 Cricket Ave., Ardmore	Montgomery, Pa.
Yake, Catherine C.	933 Chestnut St., Lebanon	Lebanon, Pa.
Yeager, Anne	Ridge Road, Spring City	Chester, Pa.
Yerger, Sylvania M.	505 Palmer St., Patton	Cambria, Pa.
Young, May S.	55 S. Madison St., Allentown	Lehigh, Pa.
Zern, C. Marie	Gilbertsville	Montgomery, Pa.
Zern, V. Evelyn	Gilbertsville	Montgomery, Pa.
Ziegler, Kathryn A.	149 Linden Ave., Red Lion	York, Pa.
Ziff, Charlotte L.	1 S. 9th St., Reading	Berks, Pa.

Underclass—Men

<i>Name</i>	<i>Post office</i>	<i>County and State</i>
Alman, Morris	1459 S. 52nd St.	Philadelphia, Pa.
Althouse, Paul C.	Cochranville	Chester, Pa.
Anderson, Herman B.	221 Pennsylvania Ave., Avondale	Chester, Pa.
Best, William H.	Unionville	Chester, Pa.
Bradley, Raymond J.	Athens	Bradford, Pa.
Brennan, James M.	Pottsville, R. D. 1	Schuylkill, Pa.
Brinser, John R.	324 N. Union St., Middletown	Dauphin, Pa.
Brown, Frederick W.	101 Ferry St., Athens	Bradford, Pa.
Browne, W. Russell	2252 N. 13th St.	Philadelphia, Pa.
Bruee, William B.	5614 Haverford Ave.	Philadelphia, Pa.
Butler, C. Clifford	West Chester, R. D. 4	Chester, Pa.
Butler, Chester C.	910 Centre St., Easton	Northampton, Pa.
Caswell, George M.	Phoenixville, R. D. 2	Chester, Pa.
Chaffee, Quentin R.	Rome	Bradford, Pa.
Covalt, W. B.	5105 Chester Ave.	Philadelphia, Pa.
Cressman, Howard A.	Salfordville	Montgomery, Pa.

<i>Name</i>	<i>Post office</i>	<i>County and State</i>
Davis, Edwin M.	Willow Grove	Montgomery, Pa.
Dunkle, George H.	Beech Creek	Clinton, Pa.
Fetters, Top V.	6 Boulder Place, Yonkers	New York
Gilbert, Leon B.	West Grove	Chester, Pa.
Gill, F. Paul	West Chester	Chester, Pa.
Good, Cecil H.	Chalfont	Bucks, Pa.
Grason, Walter L.	306 S. Union St., Kennett Square	Chester, Pa.
Griesing, John J.	107 E. Diamond St., Hazleton	Luzerne, Pa.
Gurskey, John B.	Sadsburyville	Chester, Pa.
Hamel, W. Ramon	Coopersburg	Lehigh, Pa.
Heacock, Harold J.	Collegeville, R. D. 1	Montgomery, Pa.
Henderson, George P.	208 W. Bernard St., West Chester	Chester, Pa.
Henry, Arthur P.	Leighton, R. D. 3	Carbon, Pa.
Hopwood, Albert E.	Yerkes	Montgomery, Pa.
Hughes, Donald G.	1004 Stirling St., Coatesville	Chester, Pa.
Irwin, William I. Jr.	707 Lafayette St., Moore	Delaware, Pa.
Jackson, W. Vernon	Christiana	Lancaster, Pa.
Johnson, Oscar	Creamery	Montgomery, Pa.
Johnson, Ralph W.	Creamery	Montgomery, Pa.
Jones, Norman C.	Doylestown, R. D. 1	Bucks, Pa.
Kehs, Ralph	Schwenksville	Montgomery, Pa.
Kendall, Charles H.	Vernon Mills	Virginia
Kucharski, Anthony K.	21 Sobieski St., Askam	Luzerne, Pa.
Lang, Martin E.	Glen Moore	Chester, Pa.
Liggett, Walter S.	25 Price St., West Chester	Chester, Pa.
McElroy, William W.	Pottstown, R. D. 2	Chester, Pa.
McGonigle, Edward J.	7619 Parkview Rd., Highland Park, Delaware, Pa.	
McGough, Thomas P.	377 Pringle St., Kingston	Luzerne, Pa.
McGowan, James J.	264 Popular St., Wilkes-Barre	Luzerne, Pa.
McNamara, William C.	Lewisville	Chester, Pa.
Martz, Willard E.	236 Main St., Olyphant	Lackawanna, Pa.
Mazur, Frank C.	203 Windsor Rd., Waban	Mass.
Monaghan, Joseph C.	24 S. Walnut St., West Chester	Chester, Pa.
Montgomery, Stanley A.	Coatesville, R. D. 1	Chester, Pa.
Philbrook, Harold E.	Kennett Square	Chester, Pa.
Rambo, Daniel F.	552 Merchant St., Coatesville	Chester, Pa.
Ranck, Clarence M.	Bird-in-Hand	Lancaster, Pa.
Rashbridge, Charles T.	109 4th St., Slatington	Lehigh, Pa.
Reese, John C.	Six Mile Run	Bedford, Pa.
Reigle, Fred E.	115 W. 4th St., Lewistown	Mifflin, Pa.
Reist, John H.	Downingtown	Chester, Pa.
Rheiner, C. Alexander	Yardley	Bucks, Pa.
Sautter, Russell K.	Zieglersville	Montgomery, Pa.
Shank, Russell A.	Modena	Chester, Pa.
Simpson, John R.	Uwehland	Chester, Pa.
Snively, I. Newton	322 Bryn Maur Ave., Cynwyd, Montgomery, Pa.	
Smedley, Ernest R.	Downingtown	Chester, Pa.
Spector, Herman	2414 S. Marshall St.	Philadelphia, Pa.
Staiger, Richard P.	Coatesville	Chester, Pa.
Trott, Walter	89 S. 5th Ave., Coatesville	Chester, Pa.
Ware, Walter W.	State & Radnor Sts., Media	Delaware, Pa.
Watson, Donald O.	St. Johns	Luzerne, Pa.
Weir, John B.	Moosie	Lackawanna, Pa.
Wolfe, Lester R.	1144 High St., Oberlin	Dauphin, Pa.
Woodland, C. Ray	Glen Moore, R. D.	Chester, Pa.
Zekas, Joseph A.	71 Simon Block, Wilkes-Barre	Luzerne, Pa.



STATE NORMAL SCHOOL

MASS ATHLETICS

WEST CHESTER, PA.

HEALTH EDUCATION COURSE

Underclass

<i>Name</i>	<i>Post office</i>	<i>County and State</i>
Beery, N. Eloise	Monessen	Westmoreland, Pa.
Belfield, Elizabeth L.	262 Mather Rd., Jenkintown	Montgomery, Pa.
Breswitz, Freda R.	1130 Loomis St., Scranton	Lackawanna, Pa.
Calderhead, Margaret E.	1609 N. 13th St.	Philadelphia, Pa.
Cawley, Mae E.	219 S. 14th St., Allentown	Lehigh, Pa.
Chattaway, Mary B.	1013 Try St., Monongahela	Washington, Pa.
Coxen, Olive G.	114 Broad Mt. Ave., Fraekville	Schuylkill, Pa.
Davitt, Helen	61 Evelyn Ave., Phillipsburg	New Jersey
Emerick, Sara J.	613 Washington St., Mifflintown	Juniata, Pa.
Fasnacht, Kathryn E.	227 S. Spruce St., Lititz	Lancaster, Pa.
Ganges, Dorothy M.	30 E. Market St., West Chester	Chester, Pa.
Graeff, Helen J.	2007 N. 6th St., Harrisburg	Dauphin, Pa.
Henning, Margaret A.	328 Washington St., E. Downingtown	Chester, Pa.
Hursh, Margaret E.	1021 Mulberry St., Scranton	Lackawanna, Pa.
Johnson, Frances B.	North Brook	Chester, Pa.
Jones, Helen E.	Coatesville, R. D. 5	Chester, Pa.
Kulp, Anna M.	507 Race St., Perkasie	Bucks, Pa.
Mayers, Elizabeth W.	269 N. Grant Ave., Kittanning	Armstrong, Pa.
Miller, Margaret G.	43 E. Market St., Mt. Union	Huntingdon, Pa.
Morrison, Jean W.	321 Beaver St., Sewickley	Allegheny, Pa.
Musser, Ethel M.	Spring Mills	Centre, Pa.
Ord, Katherine S.	63 E. Louthier St., Carlisle	Cumberland, Pa.
Oyler, Pauline G.	Gettysburg, R. D. 5	Adams, Pa.
Peterson, Sigrid	623 Pine St., Scranton	Lackawanna, Pa.
Pursell, Beatrice E.	151 S. 12th St., Easton	Lackawanna, Pa.
Rhods, Catherine E.	132 N. 10th St., Reading	Berks, Pa.
Roth, Mary E.	Phillipsburg, R. D. 2	New Jersey
Schoonover, Ruth E.	Dallas	Luzerne, Pa.
Seip, Ada F.	Shoemakersville	Berks, Pa.
Worthington, Mary	Warrington	Bucks, Pa.
Adams, Paul G.	1223 4th Ave., Juniata	Blair, Pa.
Angley, Anthony A.	474 Pringle St., Kingston	Luzerne, Pa.
Bales, Michael S.	126 W. Columbus Ave., Nesquehoning,	Schuylkill, Pa.
Bowdle, Fred	228 S. Broad St.	Philadelphia, Pa.
Christopher, Joseph A.	650 Coates St., Coatesville	Chester, Pa.
Crawford, John P.	West Grove	Chester, Pa.
Dalton, John J.	66 Westfield Ave., Roselle Park	New Jersey
Dissinger, James L.	Schaefferstown	Lebanon, Pa.
Ellis, R. Merle	1152½ Market St., Harrisburg	Dauphin, Pa.
Estworthy, John A.	N. Madison St., Frederick	Maryland
Gerdes, John L.	25 W. Highland Ave., Chestnut Hill,	Philadelphia, Pa.
Herman, Leroy	29 W. Donegal St., Mt. Joy	Lancaster, Pa.
Hickey, James C.	22 W. Miner St., West Chester	Chester, Pa.
Hopkins, Edward	42 Grant Ave., Roselle Park	New Jersey
Lewis, David C.	514 Main St., Sugar Notch	Luzerne, Pa.
McCorkle, Ralph N.	Newtown Square	Delaware, Pa.
Rathey, Herbert E.	419 Pine St., Darby	Delaware, Pa.
Roscoe, George	23 High St., Nesquehoning	Schuylkill, Pa.
Stott, John E.	117 Woodland Ave., Coatesville	Chester, Pa.
Stringer, Charles J.	563 Olive St., Coatesville	Chester, Pa.
Teti, Frances A.	611 Coates St., Coatesville	Chester, Pa.

<i>Name</i>	<i>Post office</i>	<i>County and State</i>
Troxell, Paul S.	619 Williams St., Easton	Northampton, Pa.
Warneke, Winfield A.	308 South St., Mauch Cunk	Carbon, Pa.
Weidner, Charles E.	259 Ann St., Middletown	Dauphin, Pa.

MUSIC SUPERVISORS COURSE

Underclass

<i>Name</i>	<i>Post office</i>	<i>County and State</i>
Barelare, Rose V.	154 S. Hyde St., Scranton	Lackawanna, Pa.
Bensing, Dorothy H.	422 Weidman St., Lebanon	Lebanon, Pa.
Brenker, Elsie M.	435 Chestnut St., Greensburg, Westmoreland, Pa.	
Butler, Frances L.	730 Broadway, Bethlehem	Northampton, Pa.
Byerly, Aldora M.	827 Adams Ave., Wilmington	Delaware
Canning, Helen E.	New Salem	Fayette, Pa.
Carpenter, Muriel H.	129 Lentz Ave., Lehighton	Carbon, Pa.
Dowling, Blanche C.	128 E. Church St., Connellsville	Fayette Pa.
Foreman, Marion K.	Orwin	Schuylkill, Pa.
Garratt, Helen M.	220 Lansdowne Ave., Wayne	Delaware, Pa.
Gifford, Mary E.	Smith's Neck Rd., Dartmouth	Mass.
Gordon, Jennie	5814 Delancey St.	Philadelphia, Pa.
Hart, Ruth H.	2056 Fairview St., Mt. Penn	Berks, Pa.
Hunt, Sybil G.	Fayetteville	New York
Hunter, Elsie S.	7708 Bennett St., Pittsburg	Allegheny, Pa.
Johnston, Ruth	108 Tyson Ave., Glenside	Montgomery, Pa.
Kessel, Emilie M.	Bryn Athyn	Montgomery, Pa.
Klinger, Ruth E.	Tower City	Schuylkill, Pa.
Knoll, Verna M.	5th and Broad Sts., Emaus	Lehigh, Pa.
Laros, Lillian B.	1266 Main St., Northampton	Northampton, Pa.
Laubach, Marjorie T.	Riegelsville	Bucks, Pa.
Lewis, Laura M.	114 E. Main St., Ephrata	Lancaster, Pa.
Linthicum, Roberta F.	Mt. Airy	Maryland
McMichael, Anna C.	312 W. Bridge St., Spring City	Chester, Pa.
MacHenry, Mildred P.	6004 Torresdale Ave.	Philadelphia, Pa.
Manlove, Ruth C.	340 State St., Media	Delaware, Pa.
Moyer, Frances J.	21 W. 3rd St., Lansdale	Montgomery, Pa.
Muller, Louise G.	106 E. Marthart Ave., S. Ardmore,	Montgomery, Pa.
Musselman, Thelma M.	Lemoyne	Cumberland, Pa.
Oswald, Velma L.	862 Main St., Slatington	Lehigh, Pa.
Paxon, Sarah L.	425 Main St., Parkesburg	Chester, Pa.
Peterson, Gillette	623 Pine St., Scranton	Lackawanna, Pa.
Radcliffe, Margaret B.	216 Mulberry St., Millville	New Jersey
Rosenberg, Lillian	149 Main St., Ridgeway	Elk, Pa.
Schimpf, Alice A.	529 James St., Hazleton	Luzerne, Pa.
Sellen, Mary W.	51 S. Broad St., Woodbury	New Jersey
Shearer, Rachel E.	29 Grand Ave., Tower City	Schuylkill, Pa.
Shuster, Dorothy H.	910 Franklin St., Wilmington	Delaware
Shute, Eleanor M.	5938 Latona Ave.	Philadelphia, Pa.
Smith, Catherine B.	117 Iron St., Lehighton	Carbon, Pa.
Smith, E. Lillian	N. High St., Millville	New Jersey
Snyder, Helen E.	359 3rd St., Northumberland,	Northumberland, Pa.
Stiger, Mary E.	513 Glenwood Ave., Williamsport, Lycoming, Pa.	
Sweely, Maxine R.	1107 Court St., Honesdale	Wayne, Pa.
Tatnall, Helen P.	1500 Rodney St., Wilmington	Delaware

<i>Name</i>	<i>Post office</i>	<i>County and State</i>
Treloar, Cordelia R.	234 S. 2nd St., Lehighton	Carbon, Pa.
Wanner, Adelaide W.	87 Nutts Ave., Phoenixville	Chester, Pa.
Ward, Mary C.	409 Ridge Ave., Allentown	Lehigh, Pa.
Whelan, Martha H.	117 Metoxet St., Ridgeway	Elk, Pa.
Yost, Helen R.	400 W. Market St., Orwigsburg, Schuylkill, Pa.	
Young, Beulah	15 S. Bartram Ave., Atlantic City	New Jersey
Evans, Amos E.	608 Franklin Ave., Slatington	Lehigh, Pa.
Foulke, Maurice W.	Slatedale	Lehigh, Pa.
Garman, H. Lester	135 N. Catherine St., Middletown..	Dauphin, Pa.
Hanselman, Joseph L.	West Chester, R. D. 2	Chester, Pa.
Heintzelman, Norman H.	48 North St., Slatington	Lehigh, Pa.
Henninger, William G.	Mayville	New York
Seltzer, Lindley H.	51 E. Emaus St., Middletown	Dauphin, Pa.
Smith, John M.	763 Front St., Catasauqua	Lehigh, Pa.

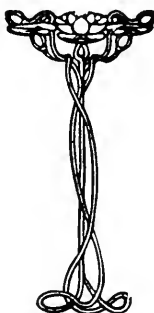
RECAPITULATION OF STUDENTS

Number of different students during the year	1365
Number of young men	150
Number of young women	1215

PENNSYLVANIA
STATE NORMAL SCHOOL

West Chester, Pa.

The following courses are to be substituted, for
all newcomers, for the courses as presented on
pp. 17 to 21 inclusive



*Insert for 1926 Catalog of West Chester
State Normal School*

KINDERGARTEN-PRIMARY CURRICULUM

Leading to the Degree of B.S. in Education

FIRST SEMESTER	Hrs.	Cr.	Grade
Educational Biology	3	3	
Introduction to Teaching	3	3	
English (1)	3	3	
Music (1)	4	2	
Art (1)	4	2	
Oral Expression	2	2	
Handwriting	2	1	
Physical Education (1)	3	1	
SECOND SEMESTER			
Psychology and Child Study	3	3	
English (2)	3	3	
Music (2)	3	1 ½	
Art (2)	3	1 ½	
Nature Study	2	2	
Teaching Primary Reading	3	3	
Teaching of Number	2	2	
Physical Education (2)	3	1	
THIRD SEMESTER			
Educational Sociology	3	3	
Children's Literature and Story Telling	3	3	
Kindergarten-Primary Theory	2	2	
Educational Measurements	2	2	
Health and Hygiene in Primary Grades	3	3	
Elective	3	3	
Physical Education (3)	3	1	
FOURTH SEMESTER			
Student Teaching and Conferences	13	10	
Technique of Teaching	2	2	
Teaching of Primary Subjects	4	4	
Physical Education (4)	3	1	

A=Excellent.

B=Good.

C=Fair.

D+=Pass.

D=Fail.

KINGERGARTEN-PRIMARY CURRICULUM

Leading to the Degree of B.S. in Education

FIFTH SEMESTER	Hrs.	Cr.	Grade
Teaching of Arithmetic	3	3	
Teaching of Geography	3	3	
Teaching of English	3	3	
Teaching of Social Studies	3	3	
Economic Biology	4	3	
Educational Psychology	3	3	
SIXTH SEMESTER			
History of Education	3	3	
English Literature	2	2	
Descriptive Astronomy	3	3	
Economics	3	3	
Physiography	4	3	
Teaching and Supervision of Arithmetic	3	3	
SEVENTH SEMESTER			
Principles of Education	3	3	
American Literature	2	2	
American Government	3	3	
Principles of Human Geography	3	3	
Nutrition	4	3	
Civic Education in Elementary School	3	3	
EIGHTH SEMESTER			
Advanced Composition	3	3	
History and Appreciation of Art	4	2	
History and Appreciation of Music	4	2	
History and Organization of Edn. in Pa.	2	2	
Practical School Contacts	5	5	
Supervision and Administration	3	3	
Elective			
Elective			
Elective			

A=Excellent. B=Good. C=Fair. D+=Pass. D=Fail.

INTERMEDIATE CURRICULUM
Leading to the Degree of B.S. in Education

FIRST SEMESTER	Hrs.	Cr.	Grade
Educational Biology	3	3	
Introduction to Teaching	3	3	
English (1)	3	3	
Music (1)	4	2	
Art (1)	4	2	
Oral Expression	2	2	
Handwriting	2	1	
Physical Education (1)	3	1	
SECOND SEMESTER			
Psychology and Child Study	3	3	
English (2)	3	3	
Nature Study	2	2	
Teaching of Arithmetic	3	3	
Teaching of Geography	3	3	
Music (2)	3	1½	
Art (2)	3	1½	
Physical Education (2)	3	1	
THIRD SEMESTER			
Educational Sociology	3	3	
Teaching of Social Studies	3	3	
Juvenile Literature and Silent Reading	2	2	
Educational Measurements	2	2	
Health and Hygiene in Intermediate Grades	3	3	
Elective	3	3	
Physical Education (3)	3	1	
FOURTH SEMESTER			
Student Teaching and Conferences	13	10	
Technique of Teaching	2	2	
Teaching of English	3	3	
Physical Education (4)	3	1	

A=Excellent. B=Good. C=Fair. D=Pass. D=Fail.

INTERMEDIATE CURRICULUM
Leading to the Degree of B.S. in Education

FIFTH SEMESTER	Hrs.	Cr.	Grade
Teaching of Primary Reading	3	3	
Teaching of Number	2	2	
Teaching of Primary Subjects	4	4	
Kindergarten-Primary Theory	2	2	
Educational Psychology	3	3	
Economic Biology	4	3	
SIXTH SEMESTER			
History of Education	3	3	
English Literature	2	2	
Descriptive Astronomy	3	3	
Economics	3	3	
Physiography	4	3	
Teaching and Supervision of Arithmetic	3	3	
SEVENTH SEMESTER			
Principles of Education	3	3	
American Literature	2	2	
American Government	3	3	
Principles of Human Geography	3	3	
Nutrition	4	3	
Civic Education in Elementary School	3	3	
EIGHTH SEMESTER			
Advanced Composition	3	3	
History and Appreciation of Art	4	2	
History and Appreciation of Music	4	2	
History and Organization of Edn. in Pa.	2	2	
Practical School Contacts	5	5	
Supervision and Administration	3	3	
Elective			
Elective			
Elective			

A=Excellent. B=Good. C=Fair. D+=Pass. D=Fail.

RURAL CURRICULUM

Leading to the Degree of B.S. in Education

FIRST SEMESTER	Hrs.	Cr.	Grade
Educational Biology	3	3	
Introduction to Teaching	3	3	
English (1)	3	3	
Music (1)	4	2	
Art (1)	4	2	
Oral Expression	2	2	
Handwriting	2	1	
Physical Education (1)	3	1	
SECOND SEMESTER			
Psychology and Child Study	3	3	
English (2)	3	3	
Nature Study and Agriculture	2	2	
Teaching of Arithmetic	3	3	
Teaching of Geography	3	3	
Music (2)	3	1½	
Art (2)	3	1½	
Physical Education (2)	3	1	
THIRD SEMESTER			
Rural Sociology	3	3	
Teachnig of Social Studies	3	3	
Juvenile Literature and Silent Reading	2	2	
Educational Measurements	2	2	
Health and Hygiene in Rural Schools	3	3	
Primary Methods for Rural Schools	3	3	
Physical Education (3)	3	1	
FOURTH SEMESTER			
Student Teaching and Conferences	13	10	
Technique of Teaching	2	2	
Teaching of Reading	3	3	
Physical Education (4)	3	1	

A=Excellent. B=Good. C=Fair. D+=Pass. D=Fail.

RURAL CURRICULUM

Leading to the Degree of B.S. in Education

FIFTH SEMESTER	Hrs.	Cr.	Grade
Teaching of English	3	3	
Teaching of Number	2	2	
Kindergarten-Primary Theory	2	2	
Teaching Primary Subjects	4	4	
Educational Psychology	3	3	
Economic Biology	4	3	
SIXTH SEMESTER			
History of Education	3	3	
English Literature	2	2	
Descriptive Astronomy	3	3	
Economics	3	3	
Physiography	4	3	
Teaching and Supervision of Arithmetic	3	3	
SEVENTH SEMESTER			
Principles of Education	3	3	
American Literature	2	2	
American Government	3	3	
Principles of Human Geography	3	3	
Nutrition	4	3	
Civic Education in Elementary School	3	3	
EIGHTH SEMESTER			
Advanced Composition	3	3	
History and Appreciation of Art	4	2	
History and Appreciation of Music	4	2	
History and Organization of Edn. in Pa.	2	2	
Practical School Contacts	5	5	
Supervision and Admin. Elem. School	3	3	
Elective			
Elective			
Elective			

A=Excellent. B=Good. C=Fair. D+=Pass. D=Fail.

JUNIOR HIGH SCHOOL CURRICULUM

Leading to Degree of B.S. in Education

FIRST SEMESTER	Hrs.	Cr.	Grade
Educational Biology	3	3	
English (1)	3	3	
Oral Expression	2	2	
Social and Industrial U. S. History	3	3	
Human Geography	3	3	
Appreciation and Application of Art	4	2	
Physical Education (1)	3	1	
SECOND SEMESTER			
Introduction to Teaching	3	3	
English (2)	3	3	
Everday Science	3	3	
Economics	3	3	
Handwriting	2	1	
World Problems in Geography	3	3	
Physical Education (2)	3	1	
THIRD SEMESTER			
Psychology and Adolescence	3	3	
English Literature	2	2	
First Elective Field	3	3	
Second Elective Field	3	3	
American Government	3	3	
Physical Education (3)	3	1	
Free Elective	2	2	
FOURTH SEMESTER			
Educational Psychology	3	3	
American Literature	2	2	
First Elective Field	3	3	
Second Elective Field	3	3	
Educational Sociology	3	3	
Physical Education (4)	3	1	
History and Appreciation of Music	4	2	

A=Excellent. B=Good. C=Fair. D+=Pass. D=Fail.

JUNIOR HIGH SCHOOL CURRICULUM

Leading to the Degree of B.S. in Education

FIFTH SEMESTER	Hrs.	Cr.	Grade
Purpose, Organization and Development of Junior High School	3	3	
Advanced Composition	3	3	
Guidance	3	3	
First Elective Field	3	3	
Second Elective Field	3	3	
Free Elective	2	2	
SIXTH SEMESTER			
History of Education	3	3	
Educational Measurements	3	3	
First Elective Field	3	3	
Second Elective Field	3	3	
Dramatic English	3	3	
History and Organization of Edn. in Pa.	2	2	
SEVENTH SEMESTER			
Student Teaching, Conferences and School Contacts	18	14	
Technique of Teaching	2	2	
EIGHTH SEMESTER			
Principles of Education	3	3	
Health and Hygiene in Junior High School	3	3	
First Elective Field	6	6	
Second Elective Field	6	6	
Elective			
Elective			
Elective			

A=Excellent. B=Good. C=Fair. D+=Pass. D=Fail.

West Chester State Teachers College

Summer Session



1927

Catalogue

of the

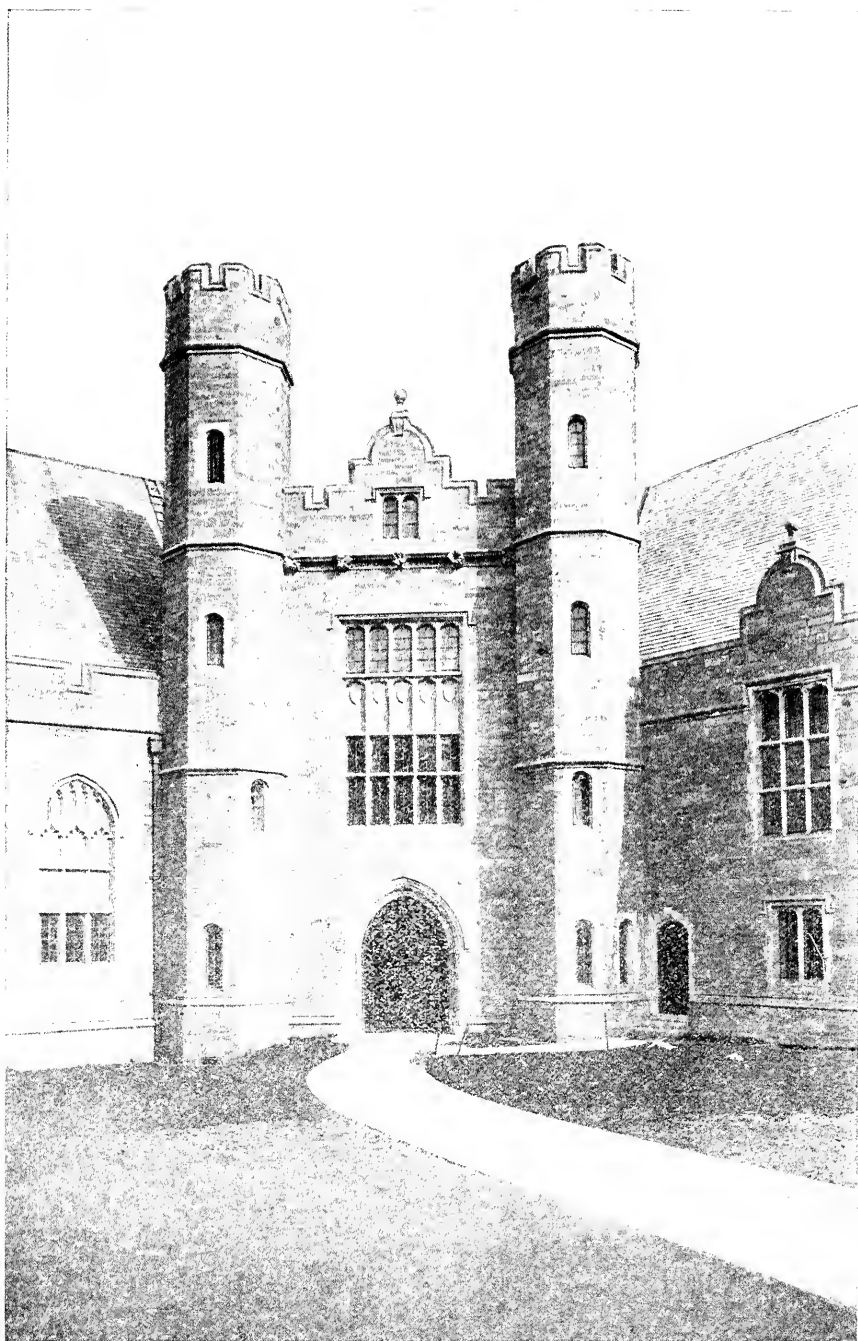
Seventeenth Summer Session

of the

West Chester

State Teachers College

1927



CAMPUS ENTRANCE—NEW AUDITORIUM.

Board of Trustees

J. HOWARD LUMIS	}	Term of office expires in 1927
HERBERT P. WORTH		
DR. HARRY D. SAYLOR		
MISS ISABEL DARLINGTON	}	Term of office expires in 1928.
COL. A. M. HOLDING		
S. JONES PHILIPS		
MRS. RICHARD J. HAMILTON	}	Term of office expires in 1929.
DORAN GREEN		
MRS. HOWARD MELLOR		

Officers of the Board

A. M. HOLDING
President

J. HOWARD LUMIS
Vice-President

ISABEL DARLINGTON
Secretary

HERBERT P. WORTH
Treasurer

Committees

Instruction

MISS ISABEL DARLINGTON
DR. HARRY D. SAYLOR
MRS. RICHARD J. HAMILTON

Household

J. HOWARD LUMIS
MRS. RICHARD J. HAMILTON
S. JONES PHILIPS

Finance

HERBERT P. WORTH
DORAN GREEN
MRS. HOWARD MELLOR

Athletics

MRS. HOWARD MELLOR
DR. HARRY D. SAYLOR
DORAN GREEN

The regular meetings of the Board are held on the first Monday of each month at 4:00 P. M.

Faculty

ANDREW THOMAS SMITH, A.M., Pd.D.

Principal

WILLARD A. BALLOU, B.S., A.B., A.M.

Dean

WALLACE P. DICK, A.B., A.M.

Modern Languages

ROBERT F. ANDERSON, A.M., Sc.D.

Mathematics

S. C. SCHMUCKER, A.M., Ph.D.

Emeritus Professor of Biological Sciences

ALICE A. COCHRAN

Librarian

FOSTER H. STARKEY, A.B., A.M.

Ancient Languages, Education

ISADORE E. CROPSEY, Mus.B.

Piano

ELSIE OLETIA BULL, A.B., A.M.

Mathematics and Education

GRACE DIETRICH McCARTHY, A.B., A.M.

Dean of Women; English

ARTHUR D. CROMWELL, M.Ph.

Agriculture; Director Rural Group

ANNE M. GOSHEN, B.L., A.M.

Education

JOHN A. KINNEMAN, A.B., A.M.

Social Studies

M. GERTRUDE SIPPLE, B.S.

Director Junior High School Group

MRS. MAUDE B. NEWMAN, B.S.

English

CLAUDE EDWARD HAUSKNECHT

Music Director

*GERTRUDE K. SCHMIDT

Public School Music

*S. ELIZABETH TYSON

Speech; Story Telling

*These teachers are away on leave of absence, 1926-1927.

HARRIET A. ELLIOTT, B.S.
Geography

LOU E. HOSMER, B.S.
Primary Methods

CHARLES W. HEATHCOTE, A.M., Ph.D.
Social Studies

ROBERT T. KERLIN, A.M., Ph.D.
English

HAZEL LAMBORN
Art

MARGARET M. BURNET, B.S.
Director Primary Group

FLORENCE W. RAGUSE, B.S.
Director Intermediate Group

EDWARD ZIMMER, Jr., B.S.
Instrumental Director

MARIE MARGARET HEINEMAN
Public School Music

*FLORENCE A. LEE
Harmony

MRS. IDA P. STABLER, B.S.
Director Primary Group

MARION FARNHAM, A.B., A.M.
Art

DOROTHY M. SCHMUCKER, A.B.
Science

*ALICE C. SCHRIVER
Health Education

*THELMA J. GREENWOOD
Science

LIDA J. LOW
Voice

MARY E. MELCHIOR, A.B.
Social Sciences

MRS. ROBERT T. KERLIN, B.S.
Piano

MARY CONNELL, B.S.
Director of Intermediate Group

*These teachers are away on leave of absence, 1926-1927.

JOHN ARTHUR LEWIS, B.S., A.M.
Science

JAMES F. McGOVERN, Ph.B.
Health Education, Athletics

ALICE MAUDE BAKER, B.S., A.M.
Education

KATHERINE H. SCOTT
Art

A. IRENE HORNER, B.S.
Health Education

*CLARENCE L. McKELVIE
Handwriting

WALTER L. PHILIPS, B.S., M.S.
Practice Teachers Department

LILLIAN CRANE, A.B.
Spoken English and Dramatics

JOSEPHINE E. WILSON, A.B.
Juvenile Literature

FLO GEYER, A.B.
English

MILDRED HOLLOBAUGH, A.B.
Health Education

GERTRUDE HERZOG, B.S.
Health Education

L. FORREST FREE, A.B.
Voice

S. CONSTANCE RICE
Kindergarten

JAMES G. BLISS, A.M., Ph.D.
Health Education Director

MRS. ELIZABETH DEBOW THOMPSON, A.B.
Public School Music

MARGARET RUTH SMITH, A.B.
Assistant Dean of Women

MIRIAM STIRL, B.S.
Nature Study

MRS. IOLA P. MORGAN
Harmony

*These teachers are away on leave of absence, 1926-1927.

LEONE E. BROADHEAD, B.S.
Geography

JESSIE H. LUDGATE, B.S.
Assistant Librarian

MRS. ROHOASE B. COOK, B.S.
Handwriting

EDITH M. JONES, A.B., A.M.
Social Studies

ANNA E. SMITH, B.S.
Education

JOHN R. HOLLINGER
Business Manager

ANDREW WOLFANGEL
Assistant Business Manager

GEORGE S. ROBERTS
Registrar

JESSICA M. DYER
Dietitian

REBECCA DISSINGER
Matron

MARY M. GLANCE, R.N.
Nurse

MARY REESE, R.N.
Assistant Nurse

IDA M. ROSSITER
Institutional Secretary

HELEN BROOMELL
Secretary to Principal

B. LEONORE LEVER
Secretary to Dean

DOROTHY E. CURRY

ANNA M. McCaULEY

MILDRED M. SCOTT
Stenographers

MILDRED B. CLAYTON
Bookkeeper

AGNES R. FINEGAN
Bookroom

The Summer School faculty will be selected from the regular winter school faculty, with such additions as may seem desirable. A number of specialists from the State Department are scheduled to give courses of varying length, on a credit basis, in their respective fields.

Calendar

Monday, June 20th—Registration Day

Tuesday, June 21st—Classes begin in all departments

Thursday, June 23rd—Reception—7:00 to 9:00 P. M.

Thursday, June 30th—Trip to Valley Forge—1:30 P. M.

Monday, July 4th—Celebration—Wayne Field—7:00 P. M.

Friday, July 15th—Atlantic City Trip—Return Sunday, July 17th.

Thursday, July 21st—Local Historical Hike

Thursday, July 28th—Trip to Longwood Gardens and Brandywine Battle-field, 1:30 P.M.

Friday, August 5th—Historic Pilgrimage to Philadelphia, 1:00 P. M.

Wednesday, August 10th—Exhibition of Students' Work—Art Department

Thursday, August 11th—Student Play

Friday, August 19th—Session Closes.

Dancing every Friday evening in the Gymnasium.

The College will provide two entertainments, dates to be fixed later.

GENERAL STATEMENT

The seventeenth session of the Summer School of the West Chester Normal will open Monday, June 20, 1927 and continue until Friday, August 19. Classes will be held on all week days except Saturday. Students will not be admitted later than June 28. Not more than twelve semester hours of Normal School credits may be accumulated in any one Summer Session.

Prospective students are advised to enroll and make dormitory reservations as early as possible, as rooms are given out in the order of application. Use blank in the back of this catalogue for application, and enclose \$10.00 enrollment fee.

Location.

West Chester, located among the beautiful hills of Chester County, is a town of about 13,000 inhabitants and is preëminent for its healthfulness, culture and intelligence. It is about twenty five miles from Philadelphia, being connected with that city by electric cars that run every half hour, and by two branches of the Pennsylvania Railroad, one route being by way of Media, the other via the Main line to Frazer. Electric railways make Lenape and Kennett accessible, as well as Downingtown and Coatesville. The Chester Valley Bus Company connects West Chester with Reading, Pottstown, Paoli, Valley Forge, Phoenixville, Media, Chester, Wilmington, Atlantic City and many other points. Concrete highways in all directions make it possible to reach West Chester easily and comfortably by automobile.



ALONG THE BRANDYWINE

Grounds, Buildings, Equipment.

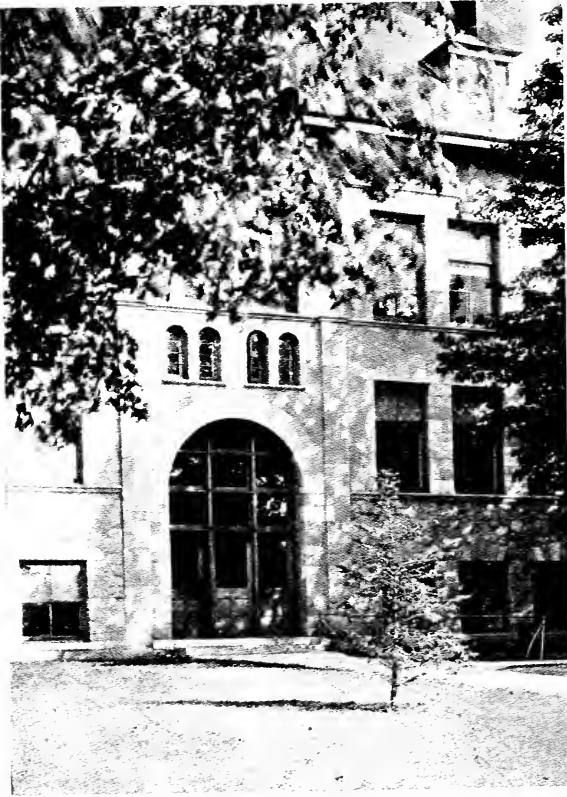
The sixty acres of ground that form the campus of the Normal School are located in the southern part of the borough. This acreage is suitably fitted with tennis courts for both men and women, a baseball diamond, hockey field, and running courses.

Among immense old shade trees stand the eight buildings which enable West Chester to care adequately for the great number of students who come within its doors. These buildings are continually being remodeled to meet the

demands of changing needs. Within the past year the electric plant has been renewed and improvements have been made in all the buildings to make them more commodious and attractive.

Recitation Hall.—

In this building are centered practically all the classroom activities. Fireproof metal ceilings have replaced the old plaster ones and all the walls have been freshened by re-tinting. Such essential equipment as a bal-optican, adjustable tables, demonstration tables, desk and wall maps from all publishing companies, imported views, Johnson land charts, and cabinets filled with commercial exhibits make the geography laboratory a profitable center of study. The science



ENTRANCE—RECITATION HALL.

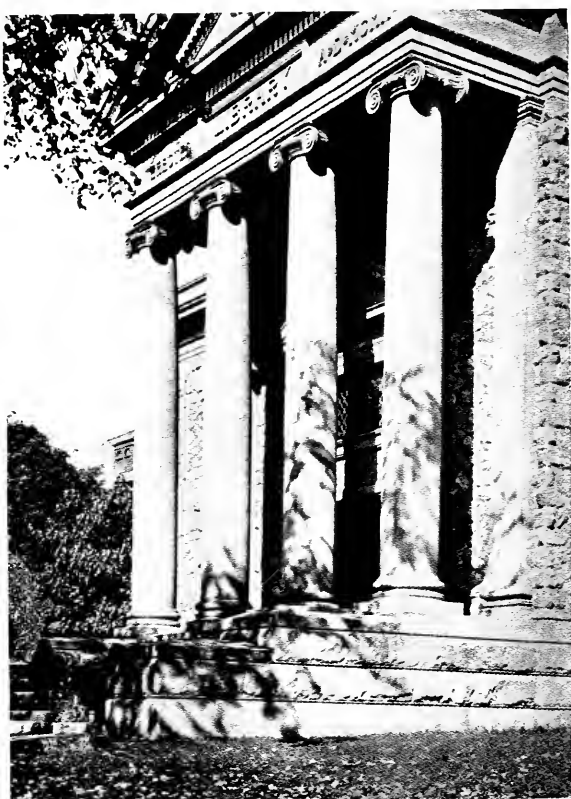
rooms have just been completely remodeled and newly equipped with modern furniture and apparatus. The chemistry laboratory is now most pleasantly and efficiently arranged, and has been completely stocked. The combination laboratory and classroom for general science and physical geography is also well equipped and up-to-date in every respect.

The Library.—The library building with its large reading and reference rooms has been built at a cost of \$60,000. In its second story are the school's museum, art gallery, and the collection of the Chester County Historical Society. The library now contains 20,000 well selected volumes. About a hundred leading magazines and papers come regularly to the library for the use of the school. A modern card catalogue system is in use, and the building is in charge of trained librarians.

The Gymnasium.—The large gymnasium with its own administration building adjoining is built of the prevailing green stone and is fitted up with every modern improvement, including a full supply of the best apparatus, running track, bathrooms, swimming pool, and bowling alleys.

The Model School.—This is a substantial, well arranged, well equipped building on the school campus, which houses an elementary school, the first six grades being represented.

The New Auditorium, a memorial to the late Dr. George Morris Philips, former Principal of the school, will be used for the first time by the students in attendance at the Summer Session. This magnificent building erected at a cost of more than \$500,000 contains a spacious auditorium with a seating capacity of approximately 2000. Installed therein is a Skinner pipe organ, one of the finest in the state. This building



PORTICO—LIBRARY

contains modern executive offices, recreation rooms for faculty and students, and also houses the well known Philips private library—a collection of autographed books appraised at \$60,000. The building is ventilated by an artificial cooling system and in addition is equipped in every other way to insure comfort to those in attendance at any of the exercises held therein.

ADMISSION

The members of the Summer School will classify in four groups:—

Class I.—Graduates of four year High Schools or the equivalent (and recognized as such by the state) who desire to qualify for the Initial Partial Elementary Certificate.

The candidate in this class must send or bring to the Normal School an admission blank properly filled out by her county Superintendent. This blank, if not found in detached form in this catalogue, can be secured from the County Superintendent, or by writing to the Normal School.

Class II.—Teachers in service who are candidates for a temporary or a standard certificate.

Class III.—Persons who have partially completed Normal Courses and are planning to finish these. Also graduates of four year High Schools or the equivalent who wish to begin regular Normal School courses.

Class IV.—Candidates for the Bachelor of Science degree in Education.



THE BRANDYWINE

Normal School graduates who have to their credit a four year high school preliminary education can now matriculate here with the aim of completing a college course leading to the degree of Bachelor of Science in Education.

Courses in both elective and additional required subjects for degree are listed elsewhere in this catalogue. Most candidates constitute individual cases, hence it is desirable that requests for general or specific information be made as early as possible.

ROOM AND BOARD

Long distance commuting or any commuting that involves the strain of early rising or of tedious travel is discouraged, because it has been found to interfere with the best progress of the student.

Comfortable rooms with board and laundry can be secured at reasonable rates in the Normal School Dormitories. Residence at the school is recommended not only for the physical comforts afforded and the convenience to classes and other school activities but because the social contacts on campus, in halls, in dining rooms, and especially in the spacious lobby are truly delightful and in a sense, educative. While rooms are generally arranged for two students, persons desiring to room alone can be accommodated. Rooms are good sized and attractive, having recently been re-papered and re-varnished. All rooms are carpeted and have individual closets. The beds are single and are provided with wire woven mattresses. Boarding students furnish blankets or their equivalent, towels, and table napkins.



CORNER OF LOBBY

During the Summer Session the dormitory will be open until ten o'clock at night. Students desiring to return to the dormitory after that hour must secure permission from the Dean of Women.

EXPENSES

Board, room and laundry (12 pieces) per week.....	\$ 8.00
Day Student's Service Charge.....	5.00
Enrollment fees, paid by all students.....	10.00
Laboratory Fees:—	
Educational Biology.....	5.00
Every Day Science, Teaching of Science, Nature Study, Geography or Physiography.....	2.50
Drawing or Industrial Art:—	
Electives in these are charged for according to requirements.....	10.00
Bills may be paid by cash, check or post office money order.	

The initial enrollment fee of \$10.00 must be paid when application for entrance is made. In case of withdrawal, such fee will be refunded, provided this withdrawal is made at least two weeks before opening of the Summer School.

Day Students pay the \$5.00 Service fee in addition to the enrollment fee upon entrance.



WASHINGTON'S HEADQUARTERS, CHADD'S FORD.

RECREATION

Probably no school town in Pennsylvania is as favorably located as West Chester in affording students the opportunity to visit interesting places. There is daily bus service to those famous scenes of the Revolutionary War—Valley Forge, the Brandywine Battlefield, and Chadd's Ford. A bus running to Atlantic City offers opportunity for a splendid week-end to those who wish to

avail themselves of the pleasures of this renowned resort (see Calendar for special trip.) Likewise, West Chester's proximity to Philadelphia, allows easy access to its many shops, theatres, and places of historic interest.

There are frequent summer excursions to Washington, D. C. (eighty miles from West Chester) which can be reached both by train or by bus, for those who wish to spend a week-end in our national capitol.

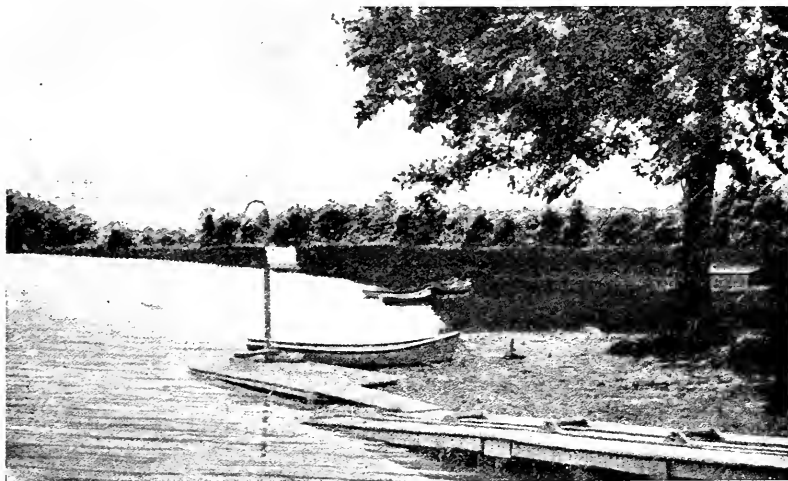
A well equipped gymnasium with bowling alleys and swimming pool affords excellent opportunity for indoor exercise. An athletic field with a base-ball diamond, running track, and grand-stand seating 600, eight tennis courts, and a beautiful campus unite to make outdoor recreation attractive.

Hiking parties, picnics, and private automobile trips to places of scenic, literary, or historic interest are other popular recreations during Summer School.

MISCELLANEOUS

Each student upon entrance to the Normal School must present a Health Certificate and Certificate of Vaccination. Upon securing these certificates, each candidate should request the physician to give a thorough examination to insure against error of exercise.

The school maintains a branch post office. The Book Store carries in addition to books, a complete line of student's necessities—stationery, laundry bags, parcel post cases, athletic goods, etc.



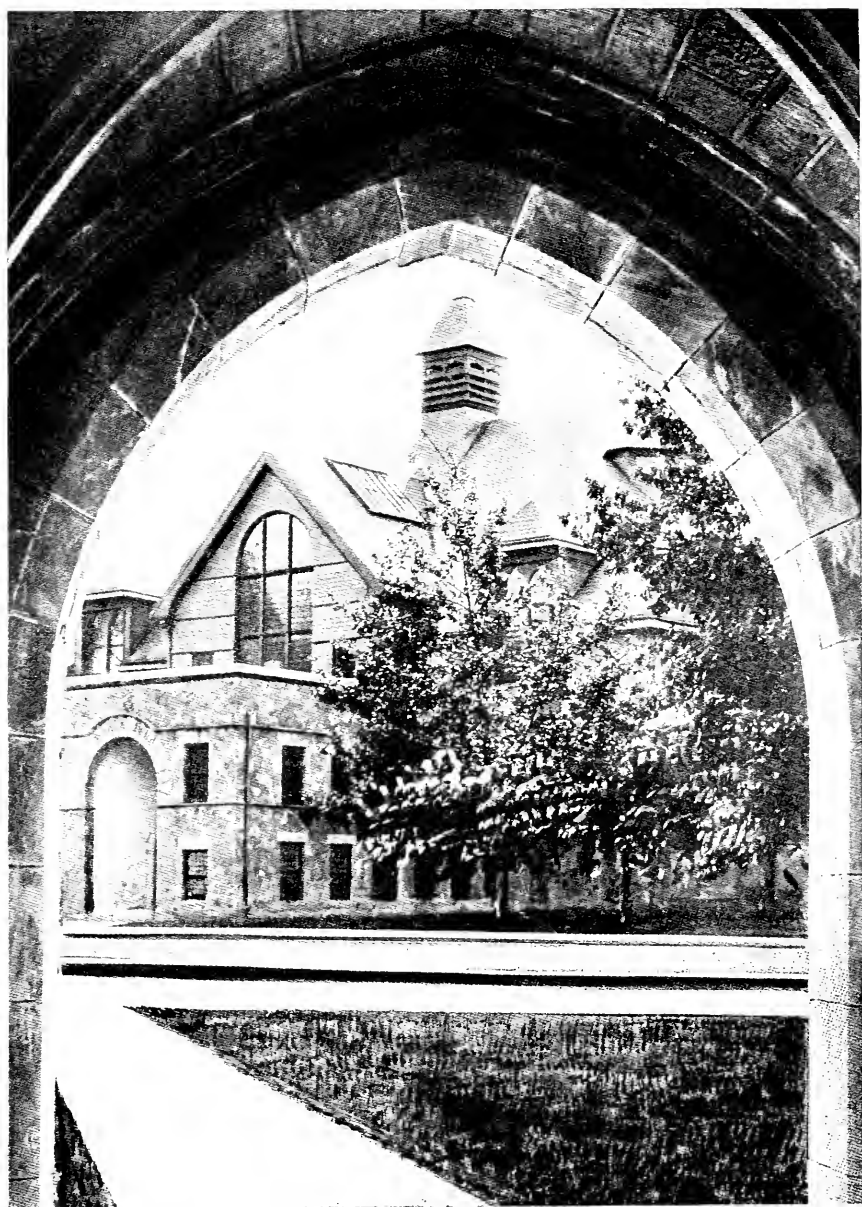
THE BRANDYWINE AT LENAPE.

Keys are furnished by the school, but \$1.00 must be deposited when they are obtained, which deposit is refunded when they are returned.

All articles of laundry must be distinctly marked.

Excellent Tea Rooms, near the school, cater to the needs of commuters.

A Placement Service will be maintained during the summer school. Officials and students are invited to use this bureau free of charge.



GYMNASIUM

REVISED CURRICULA
FOR
PENNSYLVANIA STATE NORMAL SCHOOLS
AND COLLEGES

TWO-YEAR CURRICULA FOR ELEMENTARY SCHOOL TEACHING

TWO-YEAR CURRICULUM FOR GROUP I KINDERGARTEN AND PRIMARY GRADES, 1, 2, 3.

Note: The first figure following a subject indicates the number of 55 minute class periods per week. The second figure indicates the number of semester hours credit allowed for the successful completion of the course. Figures in parentheses indicate sequential courses in a given subject.

First Semester

Educational Biology.....	3	3
Introduction to Teaching.....	3	3
English I.....	3	3
Music I.....	4	2
Art I.....	4	2
Oral Expression.....	2	2
Handwriting.....	2	1
Physical Education I	3	1
	<u>24</u>	<u>17</u>

Second Semester

Psychology and Child Study.....	3	3
English II.....	3	3
Music II.....	3	1½
Art II.....	3	1½
Nature Study.....	2	2
Teaching Primary Reading.....	3	3
Teaching of Number	2	2
Physical Education II	3	1
	<u>22</u>	<u>17</u>

Third Semester

Educational Sociology.....	3	3
Children's Literature and Story Telling.....	3	3
Kindergarten-Primary Theory.....	2	2
Educational Measurements.....	2	2
Health and Hygiene in Primary Grades.....	3	3
Elective.....	3	3
Physical Education III.....	3	1
	<u>19</u>	<u>17</u>

Fourth Semester

Student Teaching and Conferences.....	13	10
Teaching of Primary Subjects.....	4	4
Geography.....	1	1
Social Studies.....	1	1
Spelling and Language.....	2	2
	<u>—</u>	<u>—</u>
Technique of Teaching.....	2	2
Physical Education IV.....	3	1
	<u>22</u>	<u>17</u>

TWO-YEAR CURRICULUM FOR GROUP II

INTERMEDIATE GRADES—4, 5, 6.

First Semester

Educational Biology.....	3	3
Introduction to Teaching.....	3	3
English I.....	3	3
Music I.....	4	2
Art I.....	4	2
Oral Expression.....	2	2
Handwriting.....	2	1
Physical Education I.....	3	1
	<hr/>	<hr/>
	24	17

Second Semester

Psychology and Child Study.....	3	3
English II.....	3	3
Nature Study.....	2	2
Teaching of Arithmetic.....	3	3
Teaching of Geography.....	3	3
Music II.....	3	1½
Art II.....	3	1½
Physical Education II.....	3	1
	<hr/>	<hr/>
	23	18

Third Semester

Educational Sociology.....	3	3
Teaching of Social Studies.....	3	3
Juvenile Literature and Silent Reading.....	2	2
Educational Measurements.....	2	2
Hygiene and Health in Intermediate Grades.....	3	3
Elective.....	3	3
Physical Education III.....	3	1
	<hr/>	<hr/>
	19	17

Fourth Semester

Student Teaching and Conferences.....	13	10
Technique of Teaching.....	2	2
Teaching of English.....	3	3
Physical Education IV.....	3	1
	<hr/>	<hr/>
	21	16

TWO-YEAR CURRICULUM FOR GROUP III (RURAL)

First Semester

Educational Biology.....	3	3
Introduction to Teaching.....	3	3
English I.....	3	3
Music I.....	4	2
Art I.....	4	2
Oral Expression.....	2	2
Handwriting.....	2	1
Physical Education I.....	3	1
	<hr/>	<hr/>
	24	17

Second Semester

Psychology and Child Study.....	3	3
English II.....	3	3
Nature Study and Agriculture.....	2	2
Teaching of Arithmetic.....	3	3
Teaching of Geography.....	3	3
Music II.....	3	1½
Art II.....	3	1½
Physical Education II.....	3	1
	<hr/>	<hr/>
	23	18

Third Semester

Rural Sociology.....	3	3
Teaching of Social Studies.....	3	3
Juvenile Literature and Silent Reading.....	2	2
Educational Measurements.....	2	2
Health and Hygiene in Rural Schools.....	3	3
Primary Methods for Rural Schools.....	3	3
Physical Education III.....	3	1
	<hr/>	<hr/>
	19	17

Fourth Semester

Student Teaching and Conferences.....	13	10
Technique of Teaching.....	2	2
Teaching of Reading.....	3	3
Physical Education IV.....	3	1
	<hr/>	<hr/>
	21	16

ADVANCED TWO-YEAR CURRICULUM (Leading to the degree of B.S. in Education)

All persons who have completed the work of Groups I, II, or III (Rural, formerly IV) are admitted to third year standing provided they have previously completed the work of a four-year high school, and all such persons must complete 68 hours of work beyond graduation from Groups I, II or III (Rural, formerly IV) as these were prior to September 1, 1926 organized and administered.

Fifth Semester

Opportunity is provided so that a student may complete in this semester the work of the first two years in the curricula which he did not pursue, as follows:

1. Graduates of Group I will take:

Teaching of Arithmetic.....	3	3
Teaching of Geography.....	3	3
Teaching of English.....	3	3
Teaching of Social Studies.....	3	3
	—	—
	12	12

2. Graduates of Group II will take:

Teaching of Primary Reading.....	3	3
Teaching of Number.....	2	2
Teaching Primary Subjects.....	4	4
Kindergarten-Primary Theory.....	2	2
	—	—
	11	11

3. Graduates of Group III will take:

Teaching of English.....	3	3
Teaching of Number.....	2	2
Kindergarten-Primary Theory.....	2	2
Teaching Primary Subjects.....	4	4
	—	—
	11	11

All Groups:

Total taken by a Student as above.....	11	11 or 12	12
Educational Psychology.....	3	3	3
Economic Biology.....	4	3	4
	—	—	—
	18	17 or 19	18

Sixth Semester

History of Education.....	3	3
English Literature.....	2	2
Descriptive Astronomy.....	3	3
Economics.....	3	3
Physiography.....	4	3
Teaching and Supervision of Arithmetic in Elementary School.....	3	3
	<hr/>	<hr/>
	18	17

Seventh Semester

Principles of Education.....	3	3
American Literature.....	2	2
American Government.....	3	3
Principles of Human Geography.....	3	3
Nutrition.....	4	3
Civic Education in the Elementary School.....	3	3
	<hr/>	<hr/>
	18	17

Eighth Semester

Advanced Composition.....	3	3
History and Appreciation of Art.....	4	2
History and Appreciation of Music.....	4	2
History and Organization of Education in Pa.....	2	2
Practical School Contacts.....	5	5
Supervision and Administration of Elementary School.....	3	3
	<hr/>	<hr/>
	21	17

FOUR YEAR JUNIOR HIGH SCHOOL CURRICULUM (Leading to the degree of B.S. in Education)

First Semester

Educational Biology.....	3	3
English (1).....	3	3
Oral Expression.....	2	2
Social and Industrial U. S. History.....	3	3
Human Geography.....	3	3
Application and Appreciation of Art.	4	2
Physical Education (1).....	3	1
	<hr/>	<hr/>
	21	17

Second Semester

Introduction to Teaching.....	3	3
English (2).....	3	3
Everyday Science.....	3	3
Economics.....	3	3
Handwriting.....	2	1
World Problems in Geography.....	3	3
Physical Education (2).....	3	1
	<hr/>	<hr/>
	20	17

Third Semester

Psychology and Adolescence.....	3	3
English Literature.....	2	2
First Elective Field.....	3	3
Second Elective Field.....	3	3
American Government.....	3	3
Physical Education (3).....	3	1
Free Elective.....	2	2
	<hr/>	<hr/>
	19	17

Fourth Semester

Educational Psychology.....	3	3
American Literature.....	2	2
First Elective Field.....	3	3
Second Elective Field.....	3	3
Educational Sociology.....	3	3
Physical Education (4).....	3	1
History and Appreciation of Music.....	4	2
	<hr/>	<hr/>
	21	17

Fifth Semester

Purpose, Organization, and Development of Junior High School.....	3	3
Advanced Composition.....	3	3
Guidance.....	3	3
First Elective Field.....	3	3
Second Elective Field.....	3	3
Free Elective.....	2	2
	<hr/>	<hr/>
	17	17

Sixth Semester

History of Education.....	3	3
Educational Measurements.....	3	3
First Elective Field.....	3	3
Second Elective Field.....	3	3
Dramatic English.....	3	3
History and Organization of Education in Pennsylvania.....	2	2
	<hr/>	<hr/>
	17	17

Seventh Semester

Student Teaching, Conferences, and School Contacts .	18	14
Technique of Teaching.....	2	2
	<hr/>	<hr/>
	20	16

Eighth Semester

Principles of Education.....	3	3
Health and Hygiene in Junior High School.....	3	3
First Elective Field.....	6	6
Second Elective Field.....	6	6
	<hr/>	<hr/>
	18	18

DESCRIPTION OF COURSES

Art

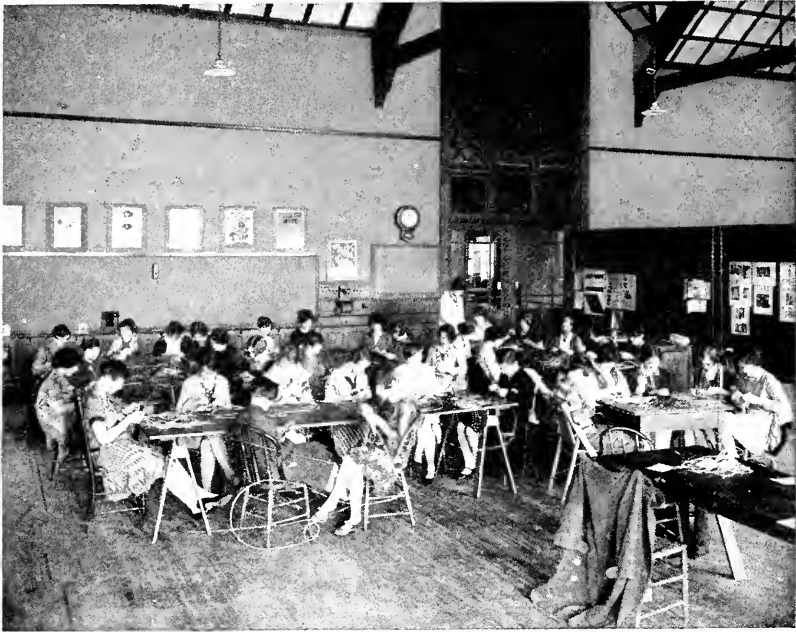
ART APPRECIATION—

The object of this course is two-fold:- to increase the understanding and enjoyment of art and also to furnish an outline of the development of art as a foundation for more detailed study.

A study is made of (1) costume design, exterior and interior planning, furniture, civic planning, architecture, and sculpture; (2) the great masterpieces, an analysis of the same and how they may be taught as picture study subjects in the proper grades.

Text:- "Art Throughout the Ages"—Gardner.

2 Credits:-



ART DEPARTMENT.

ART APPRECIATION AND APPLICATION—

This course is intended for Junior High School groups and includes the study of art appreciation and drawing, giving the student a study of costume, exterior and interior planning, furniture design, civic planning, architecture, sculpture, and a study of the old masterpieces. Illustrations are made to develop the course, and a general appreciation of everything that is artistic is the aim.

2 Credits.

FREEHAND DRAWING—

The aim of this course is the development of drawing for the first six grades, giving one that thorough training of the eye and hand which is so necessary in all work requiring accuracy in observation and general appreciation. A detailed study is made of materials, pencil, crayon, water color, cut paper, and how they may be used. This course will develop within the student a familiarity

with mediums and how they may be successfully used.

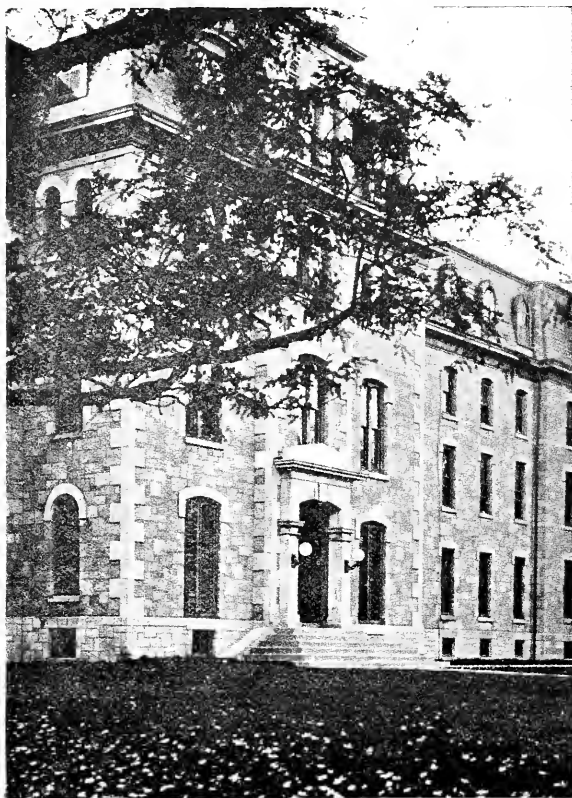
3 Credits.

ADVANCED FREE-HAND DRAWING—

This is an elective in drawing; the mediums used are pencil rendering, charcoal, water color, tempera and pastels. The subjects developed are design, posters, costume design, interior decoration and decorative and naturalistic landscape. This course is of particular interest to those who really enjoy art work.

3 Credits.

CONSTRUCTIVE HANDWORK— This course affords an opportunity of combining drawing and the actual construction of things. The problems are of such a character they may be used in any school room.



ENTRANCE—MAIN BUILDING.

The problems offered are paper folding, doll houses (exteriors and interiors) with furniture, book binding, weaving, basketry, cuddle toys, wooden toys, dowel dolls, elementary use of clay, sand table projects and stage craft. All of the work of this course tends to make one original and resourceful and is applicable to grade classes.

3 Credits.

ADVANCED CONSTRUCTIVE HANDWORK—

This course carries on the Junior Problems and develops into very worthwhile problems, such as lamp shades, desk sets, writing pads, trays, clay work,

beads, tied and dyed work and batik work. This is of particular value to those who are interested in hand-work.

3 Credits.

HANDWRITING—

Emphasis is placed on learning how to write. The Palmer method of muscular movement is taught and the Palmer Teachers' Certificate is required for credit.

1 Credit.

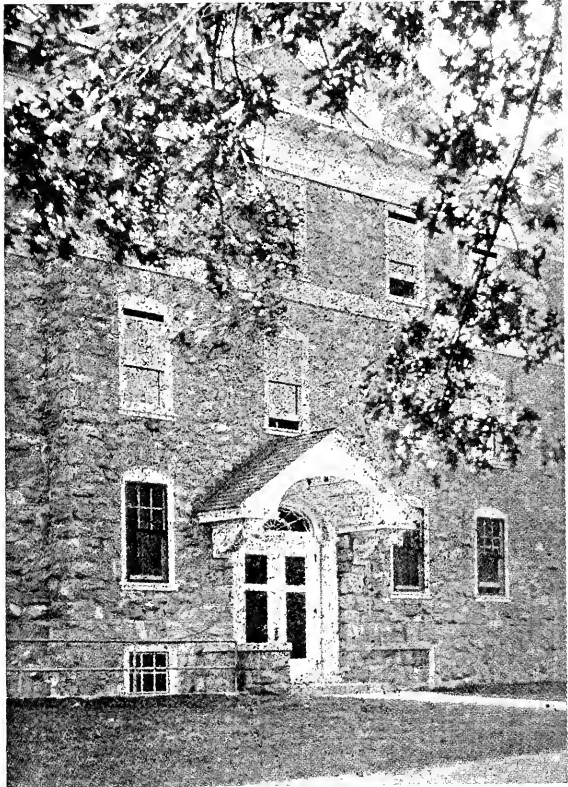
**TEACHING OF
HANDWRITING—**

This is a course for supervisors and teachers of handwriting. The problems and methods of teaching handwriting throughout all the grades are considered. All outstanding methods are studied, such as Palmer, Zaner, Peterson, Economy, etc., and as many certificates earned as possible. Blackboard writing is stressed; lesson plans and practice teaching are required. Some work is done in broad pen lettering for diplomas etc., and also in the principles of ornamental writing. (Handwriting I is prerequisite.)

3 Credits.

MANUSCRIPT WRITING—

This course may be given.



DOORWAY—WAYNE HALL.

Education

INTRODUCTION TO TEACHING—

This basic course in Education has as its purpose the orientation of the prospective teacher so that he may make an intelligent group choice. It includes a survey of the organization and aims of the public school and a consideration

of the different types of teaching service. It carefully analyses the curricular demands of each group, the age level characteristics of children and the specific qualifications of teachers for these groups. Such topics as school management, types of lessons and the technique of presentation are also stressed. The instruction of this course is correlated with observation in the Model School.

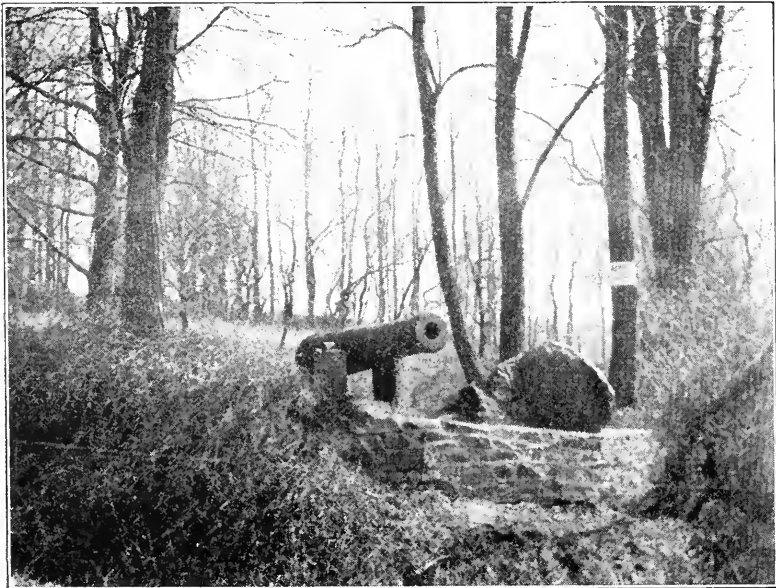
3 Credits.

PSYCHOLOGY AND CHILD STUDY—

This is an elementary course in general psychology required in all groups. It aims to acquaint students with scientific methods of observing and evaluating human reactions, and stresses those facts and principles that are basic to an understanding of educational theory and practice. Especial attention is paid to the study of the characteristics of children at different levels of growth.

Text—Elementary Psychology—Gates.

3 Credits



CANNON MOUNTED NEAR BIRMINGHAM MEETING HOUSE.

EDUCATIONAL PSYCHOLOGY—

This is an advanced course, its prerequisite being Elementary Psychology. Educational problems and teaching practice will be viewed in accordance with the findings of experimental psychology. Such topics as sources and types of motivation, habit formation, perceptual and associative learning, memory, problem solving, transfer of training and measurement of results will be investigated through simple laboratory tests, supplemented by class lectures and discussions, and collateral reading.

3 Credits

TESTS AND MEASUREMENTS—

The purpose of the course is to orient the prospective teacher also the "in service" teacher in the general field of psychological and achievement testing; and to acquaint him with the elementary statistics needed to tabulate, classify, and interpret results obtained through scientific testing. Special attention is given to studying the contributions that "Measurement" has made both to materials and methods in the field of education.

This is a required course for a Normal School certificate and for the Bachelor of Science Degree.

3 Credits.

HISTORY AND PRINCIPLES OF EDUCATION—

This course consists of a brief survey of the history of Education in Ancient and Mediaeval times, with discussion of principles of education as they appear



HOME OF HUMPHREY MARSHALL NEAR WEST CHESTER.

in the great educational movements in European countries, and later how they have affected the educational methods in America.

The second half of the course deals with the establishment of the American educational system in its colonial organization and its growth and development in the successive American periods of public education.

Collateral reading and reports are required.

Text:- A Student's History of Education—F. P. Graves.

3 Credits.

TEACHING OF PRIMARY READING—

This course will present the basic principles underlying the teaching of reading—those made significant by recent investigations in this field. The objectives of reading and ways of attaining them, will be stressed. Observation of demonstration lessons in the Model School will be a feature of the course.
3 Credits.

TEACHING OF PRIMARY SUBJECTS—

The teaching of spelling, language and community life will be considered in this course. These subjects will be treated in the light of present educational ideals—those which identify the child with social situations.
4 Credits.

TECHNIQUE OF TEACHING—

This course is intended primarily to accompany student teaching. During the summer session, however, it is open to both student teachers and to teachers of experience.

It considers directly the work and the problems of teaching. Lesson planning, based upon the laws of learning and of teaching; adjustment to new and changing school room conditions; utilization and improvement of equipment; management of individual pupils and of classes; questioning, assigning, studying and allied subjects, claim attention in discussion and in assigned readings.
2 Credits.

STUDENT TEACHING—

The Training School for student teachers attending summer session is located on the Normal School Campus, and is conducted jointly by the Normal School and the West Chester Public School.

This school functions as a laboratory for every department of the summer session. It gives an opportunity to those who elect student teaching to teach under the guidance of experienced teachers. It makes possible the observation of teaching in the different elementary grades of the public schools. Conferences with the room teachers and with the director for the discussion of work observed and of work planned for constitutes an important part of the work.

12 Credits.

SCHOOL EFFICIENCY FOR JUNIOR HIGH SCHOOLS—

This course is planned to teach pupils through subject matter so as to develop the teacher's initiative, leadership and cooperation. The present practices in representative junior high schools feature this course, class organization, lesson planning, supervised study in school and at home, project teaching, socialized recitation, art of questioning, and assignments. The class will attempt to practice the theory of this course in the training school and many training school problems will be discussed in the course.

2 Credits.

GUIDANCE—

This course is designed to assist teachers in understanding the problems which adolescent boys and girls meet in school, in industry, and in life. Particular topics considered will be application of psychology to the study of adolescence, the development of personality through conscious social adjustment, the social needs of young people, guidance in the matter of vocations, choice of courses in school, and the ways in which the school, the home and industry may be coordinated for the purpose of guidance. Programs of guidance will be worked out. Some case studies will be taken up in this course.

3 Credits.

ORGANIZATION AND ADMINISTRATION OF JUNIOR HIGH SCHOOLS.

This course will discuss the causes of dissatisfaction with the eight-four plan, the definition and history of the Junior High School, the teaching staff, provisions for individual differences, articulation with the lower and higher schools, curricula and courses of study, try outs and differentiated courses, buildings and equipment, social administration and results achieved.

3 Credits.

Rural Education

RURAL SCHOOL DEPARTMENT—

The West Chester State Normal School is located in the midst of one of the richest farming sections in the United States. Near and around West Chester, we find a number of the finest phases of rural life to be observed in America. Our farmers' social organizations are strong and helpful. Nearly every rural school has its Home and School League or its Parent Teachers Association. Near West Chester, are running the oldest Farmers' Clubs in America. Grange meetings are held in a number of nearby grange halls. There is a good Farm Bureau and a splendid Fruit Growers Cooperative plant and organization. Many summer school pupils avail themselves of the opportunity to visit a number of these.

A RURAL SCHOOL FOR OBSERVATION—

For observation, the West Chester Normal School conducts a one-roomed rural school. We aim to select a school where we may help to make the community more appreciative of a good school and where we may help to make some rural school better. We try to select a typical plant and then see that it is furnished with first class equipment. Here may be observed improved organization, management, combination of classes, enrichment of courses, types of teaching, and the efficient use of improved devices and equipment.

RURAL SCHOOL MANAGEMENT—

This course is organized especially for those who are going directly from high schools to teaching in rural schools. It covers such topics as program making, management, order, discipline, types of teaching, combining grades,

following the course of study, making records and reports. There is a tendency to neglect the fact that efficient rural school management is relatively rare and difficult. This entitles the beginner to all possible help before she opens her school. This course aims to tell the beginner where she may find helpful guidance and supervision.

3 Credits.



BIRMINGHAM MEETING HOUSE NEAR BRANDYWINE BATTLEFIELD.

RURAL SOCIOLOGY—

This course deals with rural life as we find it in our open country and in our villages. Since our people were rural before they were urban, rural sociology makes a natural introduction to sociology. Rural teachers and supervisors need to know much of rural social psychology. This course covers such topics as the farmer's standard of living, our rural life problem, tenantry and ownership, the farmer's income, his markets and his marketing, how to estimate and improve the efficiency of his social organizations such as marketing organizations, church, home, school, government, Grange, Clubs, Farm Products Shows, and Festivals. The trend of the course is toward a standard for an efficient school to educate for rural life in America.

3 Credits.

NATURE STUDY AND AGRICULTURE—

This is a new and combined course for teachers of ungraded schools. It aims to give content and method for teaching Nature Study and Agriculture in rural schools. Type studies are made of birds, trees, soils, landscapes,

weather, and plants and animals common to the farm. An aim is to set up reasonable standards for the different classes and to learn how we may attain to these standards. Another aim is to show how Nature Study and Agriculture may be correlated with other subjects such as Drawing, English, Geography, and History. From this course, rural teachers should learn how to make nature interesting to rural children and how to make rural children interested in scientific agriculture.



BIRTHPLACE OF T. BUCHANAN READ NEAR DOWNINGTOWN.

English

ENGLISH FUNDAMENTALS—ENGLISH COMPOSITION—

The English courses offered in the summer term are similar to those offered in the Fall and Spring terms. They are designed to meet the professional and cultural needs of teachers in the elementary and junior high schools. English I and II—These courses provide an opportunity for a review of Grammar and Composition, respectively.

Text—Buchler's—A Modern English Grammar.

Ball's—Constructive English.

3 Credits—each course.

TEACHING OF ENGLISH—

Methods of teaching the various branches of English—composition, grammar, spelling, memorization, dictation, and the like—receive the main attention in this course. Text books commonly used in the grades are critically reviewed

and the methods and devices of successful teachers of English are reported upon. Text—Klapper's—The Teaching of English in Elementary and Junior High schools.

Bulletin—Games and Other Devices for Improving Pupil's English.
3 Credits.

TEACHING OF READING—

The aim of this course is to prepare the students to teach Reading to the children of all grades. Special attention is given to the materials for the one-room rural school. Oral and silent reading are both treated as are also modern tests and measurements in reading.

2 Credits.

JUVENILE LITERATURE AND STORY-TELLING—

This course is intended to familiarize the student with the most acceptable books, stories and poetry for children in the kindergarten and the elementary grades. Each class member is given the opportunity to collect her own library of stories and poems suitable to her grade. Differentiation is made in methods and literature between the intermediate and the primary grades. In addition to a study of the history of story-telling and a study of its technique and methods, practice in telling stories is given to each student and criticism of the work is made by the class.



CEDARCROFT, HOME OF BAYARD TAYLOR, NEAR KENNETT SQUARE.

Besides reference material in the library, the following texts are used:—
Cross and Statler—Story-telling for the Grade Teacher.

Shedlock—The Art of the Story-Teller.

Cather—Educating by Story-telling.

Bryant—How to tell Stories to Children.

3 Credits.

ORAL EXPRESSION—

Alfred Ayres states "The manner in which one speaks his mother tongue is looked upon as showing more clearly than any other one thing what his culture is, and what his associations have been." Therefore, this course aims to train the teacher in the correct use of her voice for informal speaking. Much time and emphasis are given to proper articulation, enunciation, and pronunciation of words. An effort is made to correct mannerisms in speech that identify a student with a locality of the state. The results are accomplished through short talks on current problems of interest, formal and informal speeches, and declamations.

Text—Robert McLean Cummock's—Choice Readings

Winans'—Public Speaking.

2 Credits.



SCHOOLHOUSE BUILT BY LETITIA PENN, VALLEY FORGE.

CONTEMPORARY POETRY—

Both British and American poetry of the present day—condensing what is given in two separate courses in the Fall and Spring—is here offered.

Text—Untermeyer's—Modern British and American Poets.

3 Credits.

LITERARY APPRECIATION—

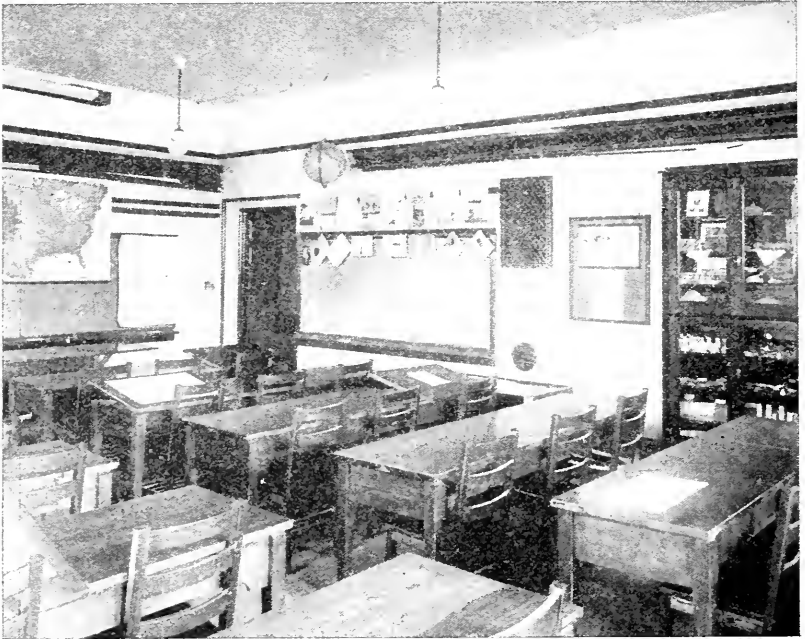
In this course, the various types of literatures, such as the short story, the essay, and poetry will be studied. Students should bring with them whatever collections of such types they may have. Methods of interpretation and criticism will be developed.

3 Credits.

Geography

PRINCIPLES OF GEOGRAPHY—

This course deals with the development of a working knowledge of the geographic principles necessary to an understanding of the relationship between



GEOGRAPHY LABORATORY

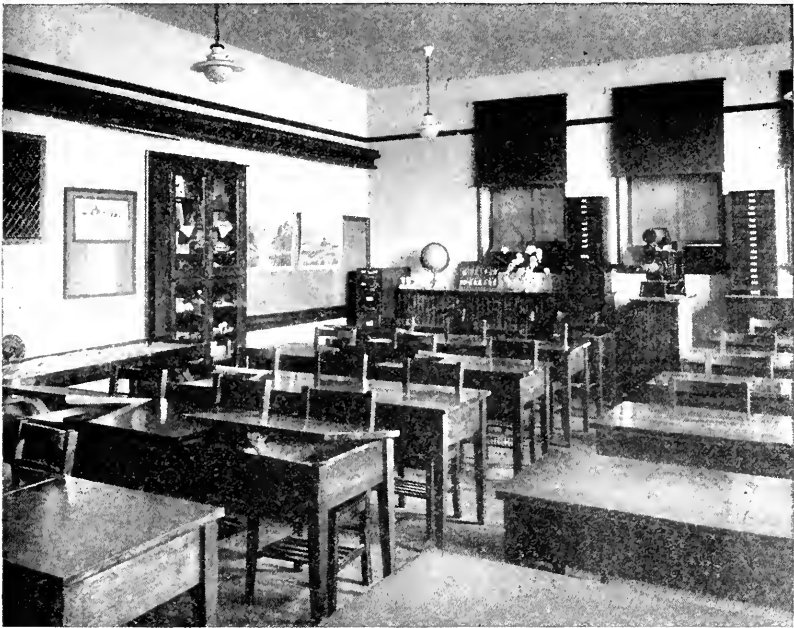
life activities (plant, animal, and man) and the factors of a given natural environment. The elements of natural environment such as climate, land forms, bodies of water, etc., are considered in relation to man's adjustment to them and principles for the solution of problems of adjustments are developed. This is a fundamental course and serves as a good basis for all later courses in geography.

3 Credits.

TEACHING OF GEOGRAPHY—

This is a professionalized subject matter course for the purpose of preparing students for the teaching of Geography in the intermediate grades. Selected units, the choice of which is determined by the needs of the group interested, are developed. In each unit, students select the essential fact and the geographic principles involved; note the method used and the successive stages of development; formulate the principles of the technique of teaching followed; and organize the unit for presentation. Demonstration lessons are observed. Standard equipment for geography teaching is used. Field trips are taken. Throughout the course, the aim is not merely the acquisition of geographic information and an understanding of approved methods of presentation, but also the development of those habits, skills, and attitudes of mind necessary to worthy world citizenship.

3 Credits.



GEOGRAPHY LABORATORY

WORLD PROBLEMS—

This course includes a study of some of the large international problems claiming attention and the direct bearing which geography has upon them. Acquaintance with other people and other lands through interpretation of adjustments to natural conditions. Interdependence of nations and regions. Geography and the problems of restoring a state of friendship in the world.

3 Credits.

Hygiene

PERSONAL HYGIENE—

This course deals with the hygienic principles of living necessary to maintain a healthy body. It includes a study of anatomy and physiology as a basis for the formation of health habits.

Text—How to Live—Fisher and Fisk.

3 Credits.

SCHOOL HYGIENE—

This course deals with the environment of the child while at school, the correction and prevention of physical defects, physical and medical examinations of children and methods of guiding children in the formation of good health habits.

Text—School Hygiene—Dresslar.

3 Credits.

Mathematics

TEACHING OF NUMBER IN INTERMEDIATE GRADES—

The course consists of a survey of the work outlined for grades one to three inclusive, followed by a thorough study of:—

The topics of arithmetic for grades four to six inclusive.

The proper distribution of these topics in a course of study.

Approved methods of teaching the processes of arithmetic with integers, fractions, and decimals.

The standards to be reached in the processes as taught in the different grades.

Sources of problem material together with the characteristics of problems suitable for these grades.

Different modern arithmetics written for these grades and modern literature on the subject of teaching arithmetic.

3 Credits.

TEACHING OF ARITHMETIC FOR RURAL GROUP—

The course includes the following:—

Survey of the topics to be taught, with special consideration of those which should receive emphasis in various grades from one to eight.

Study of approved methods of teaching the processes with integers, fractions, and decimals, together with such tests as are commonly used in different grades to attain general standards in these processes.

Investigation of sources of problem material, and selection of lists of current problems embodying such phases of arithmetical work as are closely associated with rural activities.

Such review of subject-matter as is necessary to qualify students to work correctly the problems found in modern texts written for the grades.

Reading of literature on the history and teaching of arithmetic especially such portions of the latter as have a bearing on rural programs.

3 Credits.

THE TEACHING OF JUNIOR HIGH SCHOOL MATHEMATICS—

Considerable of the time devoted to this course is given to an intensive review of such subject matter as is generally considered vital for grades seven, eight, and nine. In addition, a careful study is made of the following: "Material for Grades Seven, Eight, and Nine, and Suggested Arrangement of Material" as given in "Reorganization of Mathematics in Secondary Education;" current series of textbooks; suggested courses of study and some of those in use. Finally the aim is to select for these years such topics of mathematics as may be safely assumed will take in the near future and hold a permanent place in courses of study.

3 Credits.

PLANE TRIGONOMETRY—

This course is, in the main, a subject-matter course embodying a comprehensive presentation of the following: Trigonometric functions of an acute angle of a right triangle; the significance of positive and negative angles and of trigonometric angles in general; functions of $(\pm A \pm N \times 360^\circ)$; functions of the sum of two angles, the difference of two angles, double angles and half angles; theory of logarithms; trigonometric identities; inverse trigonometric functions; solutions and areas of triangles by natural functions and by logarithmic functions; solutions of practical problems throughout the course.

In practical work the transit and level are employed to such extent as time permits.

3 Credits.

Music

MUSIC I—

The matching of tones and elimination of monotones constitute the first steps in this course. This is followed by the singing of rote songs, the facile use of sequentials, oral tonal dictation and flash work on blackboard. This last named activity paves the way for sight reading of which there is both individual and class work.

Text:—Dann's First, Second and Third Year Music, and Manual.

2 Credits.

MUSIC II—

This course follows closely on Music I, and preparation for teaching the subject is stressed. Routine activities are carefully taught and explained, and these activities are then made use of by each student in the class room.

Text:—Dann's Fourth Year Music.

1½ Credits.

MUSIC HISTORY AND APPRECIATION—

This course is designed to supply a historical background of the art of music; the causes underlying the various directions that the art has taken; and with it, certain principles of evaluation. Examples by means of phonograph records will be used to emphasize the various points taken up during the course. This course should prove especially interesting to grade teachers who expect to teach music.

2 Credits.

PRIVATE LESSONS IN PIANO—

Miss Cropsey.

Nine Lessons (30 minutes)	\$18.00
Eighteen lessons	30.00

PRIVATE LESSONS IN VOICE—

Mr. Free.

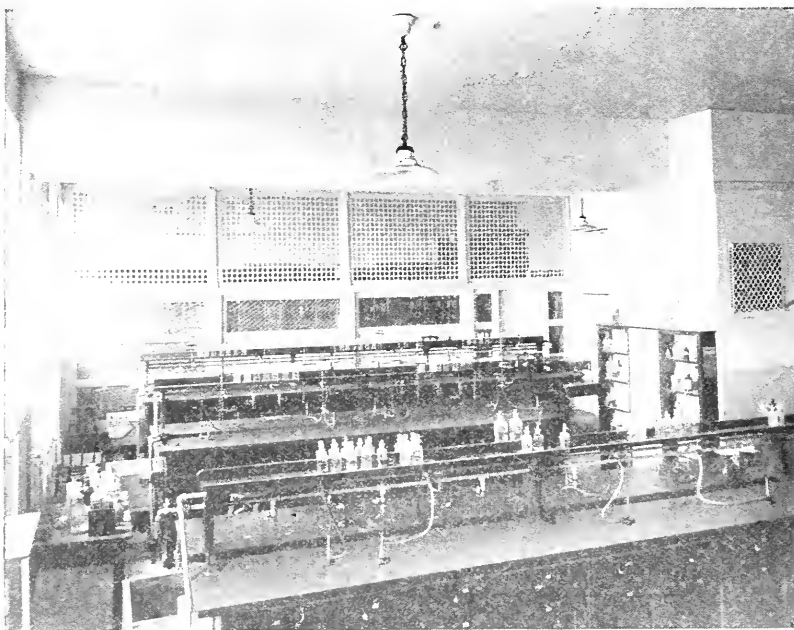
Nine lessons (30 minutes)	\$18.00
Eighteen lessons	30.00

Science

EDUCATIONAL BIOLOGY—

This is a general course in the fundamental biological principles, with emphasis on those topics which particularly concern the teacher. It provides a good foundation for a more complete understanding of psychology, sociology, nature study and other allied sciences.

3 Credits.



CHEMISTRY LABORATORY

EVERYDAY SCIENCE—

This course is of particular value to geography and science teachers. It contains much that is worth while to others also. Topics treated are:—air pressure, water, weather, food and vitamins, solar system, clothing, engines, electricity and radio.

Text:—Science of Everyday Life—VanBuskirk and Smith.

3 Credits.

NATURE STUDY—

This includes the content and method of Nature Study in the first six grades, with emphasis on the common material to be found around the school and the methods by which this material would be used in the different grades. Suggestions, also, of sources of material available for teachers.

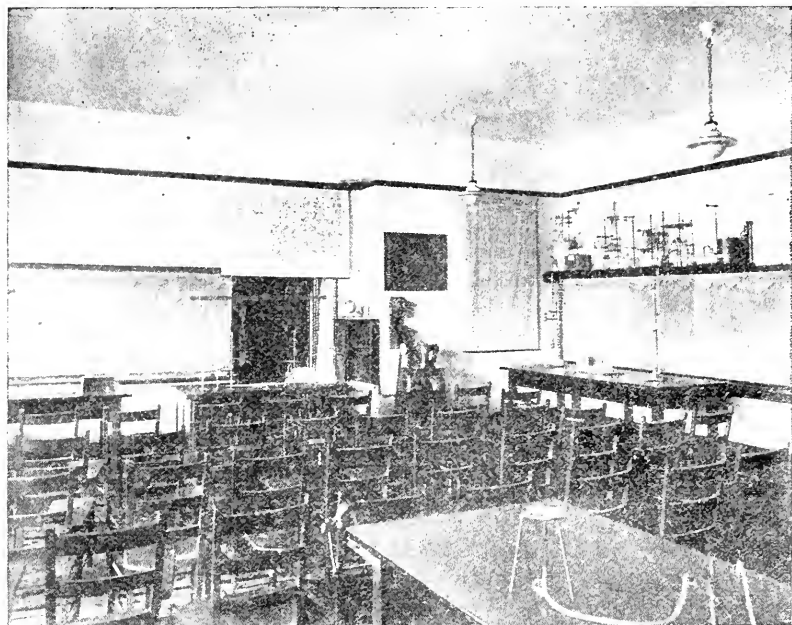
2 Credits.

PHYSIOGRAPHY—

This course supplies knowledge vital to all geography and science teaching. Winds, weather, erosion and map reading are stressed. Considerable experimental and illustrative material is included.

Text—New Physical Geography—Tarr and VonEnglin.

3 Credits.



PHYSICAL SCIENCE LABORATORY

TEACHING OF SCIENCE—

Emphasis is placed on the teaching of general science, although other sciences are included. The course includes practical suggestions for the improvement of science teaching; means of maintaining interest, such as clubs, toys, magazines and other visual aids; practice in construction of apparatus, and where individual schedules permit, actual supervised practice in conducting the demonstration and laboratory work of the class in Everyday Science.

Text—How to teach General Science—Frank.

3 Credits.

Social Studies

ECONOMICS—

This course is a development of the fundamental factors which are involved with the business of making a living, and understanding and appreciating how those factors may be used in developing general prosperity, responsible citizenship and a vision of service in a democracy. The course is essential to appreciate fully and to teach American history, community civics, vocational civics and economic civics as outlined in the new Pennsylvania course of study for Junior High Schools.

3 Credits.

EDUCATIONAL SOCIOLOGY—

This work is required of all students. It aims to present the principles of social organization as they apply to elementary education. Constant emphasis is placed upon the necessity for the school adapting its work to meet the demands of society.

Text—Social Science for Teachers—Martz and Kinneman.

3 Credits.

EUROPEAN HISTORY—

The work of European History will be offered to meet the needs of the largest number of students. One of two courses will be offered—the one consists of a survey covering the large movements in Europe from the beginning of the Christian era to the middle of the eighteenth century; the second course traces the development of democracy and nationalism beginning with the period of the Industrial Revolution and of the French Revolution and continues to the present time.

Text—European History—Scheville.

3 Credits.

HISTORY OF THE U. S. SINCE 1850—

This course develops intensively social and political conditions which resulted in the Civil War and which furnish the background for many of the contemporary problems which have arisen since the Civil War. In the discussion of the social, political, industrial and cultural problems since the Civil

War, it is the aim of the course to show that higher and better ethical standards are being striven for and to have our pupils visualize their obligation as citizens and the need of unselfish cooperation and service.

3 Credits.

SOCIAL AND INDUSTRIAL HISTORY OF THE U. S.—

In this course, the social changes in the United States are emphasized which were brought about by the industrial revolution. The agricultural, manufacturing and labor problems are traced and discussed. The service rendered to commerce by steam, the telegraph and electricity are likewise considered.

3 Credits.

TEACHING OF SOCIAL STUDIES—

This course is required of all students in the intermediate and rural groups. The material consists of the biographical approach to history as presented in grades four and five, of the European background to American history as presented in grade six, and some attention is paid to the more formal presentation of grade seven. The material of the field of civics is also covered. The various methods of approach to this material together with the various devices which might be employed are discussed.

3 Credits.

DEMONSTRATION SCHOOL

The Training School on the Campus furnishes an opportunity for the Summer School students to observe and to study the activities of the school room in the actual process of daily experiences. The room teachers in the school cooperate through the Director of Practice with the academic teachers in the Normal School in the preparation and the teaching of type lessons according to the best practices. Discussions and readings accompany the observation and enable the students to formulate principles and methods useful to them later in their own teaching.

Application for Admission

Date.....

Name.....

.....
Last name first.

Address.....

Number and street

Town

County

State.

{ Please reserve me a room at the dormitory }
{ I shall be a day student. }

Cross out the one
that does *not* apply.

a.) Preparation:

High School.....Attended.....yr. Graduated 19.....

Name of

Normal School.....Attended....yr. Graduated 19.....

Name of

Other Secondary

or higher schools Attended....yr. Graduated 19.....

Name of

b.) Teaching Experience:

Grades { Place { Years {

c.) **Classification in Summer School:** (Check the one that applies).

- ☐ I. Candidate for Partial Elementary Certificate
- ☐ II. Candidate for permanent Certificate
- ☐ III. $\left\{ \begin{array}{c} \text{Beginning} \\ \text{or} \\ \text{Completing} \end{array} \right\}$ Normal Course (Check the one that applies).
- ☐ IV. Candidate for B. S. degree.

d.) List subjects desired: $\begin{cases} 1- \\ 2- \\ 3- \\ 4- \end{cases}$

e.) State plans for next year:.....

Enclosed find \$10.00 enrollment fee for Summer Session, 1927

Return this blank properly filled in to Dr. Andrew Thomas Smith, Prin.

