

NYPL RESEARCH LIBRARIES



3 3433 05878743 7

IRH
N.Y.C.
1st

CATALOGUE
OF THE
WORKS OF ART
BELONGING TO
THE CITY OF NEW YORK
—
MCMXX



Digitized by the Internet Archive
in 2008 with funding from
Microsoft Corporation

CATALOGUE OF THE WORKS OF ART
BELONGING TO
THE CITY OF NEW YORK

—

VOLUME II
SEPTEMBER, 1908, TO JANUARY, 1920

THE NEW YORK
PUBLIC LIBRARY
ASTOR LENOX
TILDEN FOUNDATION



CATALOGUE
OF THE
WORKS OF ART
BELONGING TO
THE CITY OF NEW YORK
VOLUME II

—
PREPARED AND ISSUED BY
THE ART COMMISSION
OF THE CITY OF
NEW YORK



NEW YORK
M C M X X

THE NEW YORK
PUBLIC LIBRARY
528942A
ASMP, LENOX
TILDEN FOUNDATION
R 1931 L

NEW YORK
PUBLIC LIBRARY
TILDEN FOUNDATION

ART COMMISSION OF THE
CITY OF NEW YORK

AS CONSTITUTED IN

1920

ROBERT W. DE FOREST,
PRESIDENT
President of Metropolitan Museum of
Art

A. AUGUSTUS HEALY,
VICE-PRESIDENT
To May 13, 1920

FRANK L. BABBOTT,
VICE-PRESIDENT
From June 14, 1920
Presidents of the Brooklyn Institute of
Arts and Sciences

LUKE VINCENT LOCKWOOD,
SECRETARY

JOHN F. HYLAN,
Mayor of The City of New York

MORGAN J. O'BRIEN
To April 30, 1920

WILLIAM BARCLAY PARSONS
From May 1, 1920
Trustees of New York Public Library

HARRY W. WATROUS,
Painter

LUCIEN OUDIN,

ROBERT AITKEN,
Sculptor

WELLES BOSWORTH,
Architect

R. T. H. HALSEY,

FORMER MEMBERS OF THE ART COMMISSION
SINCE ITS ESTABLISHMENT UNDER THE
CHARTER OF 1898

ROBERT A. VAN WYCK,
January 1, 1898, to December 31, 1901.

HENRY G. MARQUAND,
January 1, 1898, to February 26, 1902.

JOHN LA FARGE
February 14, 1898, to December 31,
1900.

SAMUEL P. AVERY,
January 1, 1898, to December 31, 1902.

JOHN BIGELOW,
January 1, 1898, to May 2, 1910.

CHARLES T. BARNEY,
February 14, 1898, to December 31,
1901.

MEMBERS OF THE ART COMMISSION SINCE ITS ESTABLISHMENT

CHARLES F. MCKIM,
February 14, 1898, to December 31,
1901.

DANIEL C. FRENCH,
February 14, 1898, to December 31,
1902.

SETH LOW,
January 1, 1902, to December 31, 1903.

HENRY RUTGERS MARSHALL,
January 1, 1902, to December 31, 1904.

FREDERIC W. RHINELANDER,
February 26, 1902, to September 25,
1904.

LOYALL FARRAGUT,
January 1, 1903, to December 31, 1905.

J. CARROLL BECKWITH,
January 1, 1904, to December 31, 1906.

J. PIERPONT MORGAN,
November 21, 1904, to December 31,
1907.

JOHN J. BOYLE,
January 1, 1906, to December 31, 1908.

FRANK D. MILLET,
January 2, 1907, to December 31, 1909.

ARNOLD W. BRUNNER,
July 18, 1907, to December 31, 1910.

FREDERIC B. PRATT,
January 1, 1909, to December 31, 1911.

WILLIAM J. GAYNOR,
January 1, 1910, to September 10, 1913.

GEORGE L. RIVES,
May 3, 1910, to December 31, 1911;
February 28, 1913, to May 11, 1916.

I. N. PHELPS STOKES,
January 11, 1911, to December 31, 1913.
May 12, 1916, to February 24, 1918.

HENRY E. HOWLAND,
February 14, 1898, to December 31,
1900.

FREDERICK DIELMAN,
January 1, 1901, to December 31, 1903.

JOHN DE WITT WARNER,
January 1, 1902, to December 31, 1904.

WILLIAM J. COOMBS,
February 24, 1902, to December 31,
1903.

A. PHIMISTER PROCTOR,
January 1, 1903, to December 31, 1905.

GEORGE B. MCCLELLAN,
January 1, 1904, to December 31, 1909.

JOHN D. CRIMMINS,
January 1, 1904, to December 31, 1906.

WALTER COOK,
January 1, 1905, to June 28, 1907.

HOWARD MANSFIELD,
January 1, 1906, to December 31, 1908.

JOHN B. PINE,
January 2, 1907, to December 31, 1909.

CHARLES HOWLAND RUSSELL,
January 1, 1908, to February 27, 1913.

HERBERT ADAMS,
January 1, 1909, to December 31, 1911.

FRANCIS C. JONES,
January 7, 1910, to December 31, 1912.

JOHN BOGART,
January 1, 1911, to December 31, 1913.

KARL BITTER,
January 4, 1912, to December 31, 1914.

MEMBERS OF THE ART COMMISSION SINCE ITS ESTABLISHMENT

JOHN A. MITCHELL,
January 7, 1913, to December 31, 1915.

ARDOLPH L. KLINE,
September 11, 1913, to December 31,
1913.

WILLIAM A. BORING,
February 20, 1914, to December 31,
1916.

WALTER H. CRITTENDEN,
January 20, 1915, to December 31, 1917.

JULES GUERIN,
January 19, 1916, to December 31, 1918.

CHARLES H. SHERRILL,
May 18, 1916, to December 31, 1916;
January 29, 1917, to December 31,
1919.

EDMOND T. QUINN,
February 14, 1918, to December 31,
1919.

GEORGE W. BRECK,
January 7, 1913, to December 31, 1915.

JOHN PURROY MITCHEL,
January 1, 1914, to December 31, 1917.

FRANK R. LAWRENCE,
February 20, 1914, to March 18, 1916.

HERMON A. MACNEIL,
January 29, 1915, to December 31, 1917.

JAMES R. WHEELER,
January 21, 1916, to February 9, 1918.

HENRY BACON,
February 2, 1917, to December 31, 1919.

HENRY C. LAWRENCE,
February 14, 1918, to September 13,
1919.

INTRODUCTION

INTRODUCTION

IN THE year 1909 the City printed a "Catalogue of the Works of Art belonging to The City of New York," including the works of art acquired by the City previous to September 1, 1908. The present volume carries this work forward to the 31st of December, 1919, at the same time including the description of a few works of art acquired by the City before September, 1908, but inadvertently omitted in the first volume. With the exception of these few, all the objects thus catalogued have received the approval of the Art Commission, in accordance with the terms of the Charter of the City.

The jurisdiction of the Art Commission, as defined by the Charter as it now exists, covers very broad ground, including within its scope buildings and various structures erected by the City or by private parties on City property. No attempt has been made, however, to cover the whole of its activities, it having been thought best to limit the enumeration to such objects as are currently known as "Works of Art," in this following the general method adopted in Volume I. Tablets that consist solely of inscriptions are not included.

The Commission has felt it necessary, in the interest of economy, to limit strictly the number of illustrative reproductions. It has been guided in its choice not only by the excellence of the work shown but also partly by the prominence of the subject of portrait or statue. In a number of cases it has been compelled to forego the illustration of special works because it has been found impossible to obtain satisfactory photographs for reproduction.

ERRATA IN VOLUME I

- Page ix *read* Ceracchi's *for* Cerrachi's.
- Pages 9, 10, 11 and 12 for death of John Wesley Jarvis *read* 1834 *for* 1840.
- Page 28 *read* Tompkins *for* Thompkins.
- Page 34 *read* Venezuelan *for* Venezuela.
- Page 36 *read* Jacob Morton, 1762-1836. Major-General, 1st Division Artillery, N. Y. S. M. *for* James St. Clair Morton, 1829-1864. A United States General.
- Page 44 after Miner K. Kellogg *read* 1814-1889 *for* 1839-.
- Page 46 *read* Kalbfleisch *for* Kalbefleisch.
- Page 77, Charles Patrick Daly, *read* 1816-1900 *for* 1816, and *read* Charles Loring Elliott, N. A., 1812-1868 *for* Artist Unknown; and *add* in 1850 *after* Court on last line.
- Page 81 after Michael Ulshoeffter, *read* Daniel Huntington, N. A., 1816-1906 *for* Artist Unknown; and after description of portrait *read* Signed: D. Huntington 1867.
- Page 86 *read* east wall *for* north wall.
- Page 108, last line, *read* 1871 *for* 1872.
- Page 112 after signature of bronze bust of George Washington *read* Given to the City in 1906.
- Page 120 *read* Cadwallader Colden, 1688-1776. Lieutenant Governor of New York, 1761-76 *for* Cadwallader David Colden, 1769-1834. Mayor of New York, 1818-1821.
- Page 128, Foster Memorial. *After* Given to the City in, *read* 1904 *for* 1903.
- Page 183, *under* Carl Conrads, *read* 1839-.
- Page 201 after description of Whitlock plaque *read* Signed: "C. Calverley, Sc."
- Page 205 after John H. Duncan *read* 1854-.
- Page 231 *read* Flushing *for* Flushing Park.
- Opposite page 70 *read* Henry Inman, N. A. and Daniel Huntington, N. A. *for* Henry Inman, N. A.
- Opposite page 102 *read* Henry Mosler *for* B. Kramer Scheiro.
- Opposite page 130 *read* Jonathan Scott Hartley, N. A. and F. E. Wallis *for* Jonathan Scott Hartley, N. A.
- Opposite page 154 *read* Henry Kirke Brown, N. A. and John Quincy Adams Ward, N. A. *for* John Quincy Adams Ward, N. A.
- Opposite page 158 *read* Augustus Saint Gaudens, N. A. and Stanford White *for* Augustus Saint Gaudens, N. A.
- Opposite page 218 *read* 218 *for* 217.
- Opposite page 222 *read* 222 *for* 223.
- Index page 237 *read* C.O. *for* C.H. after Green, and Bolivar *for* Boliver.
- Index page 238 *read* F. H. *for* C. H. after Howard, and Jacob *for* James St. Clair *after* Morton.
- Index page 239 *read* (Martiny) *after* second Force.
- Index page 241 at end of page *read* Stained Glass. 102.
- Index under Abbreviations *read* F. H. Fire Headquarters.

CONTENTS

	PAGE
MEMBERS OF THE ART COMMISSION.	v
INTRODUCTION	xi
LIST OF ILLUSTRATIONS	xv

CATALOGUE

FOUNTAINS:	Borough of The Bronx.	2
	" " Brooklyn	4
	" " Manhattan	5
	" " Richmond	12
GLASS:	Borough of The Bronx.	17
	" " Brooklyn	18
	" " Manhattan	21
MONUMENTS:	Borough of The Bronx.	25
	" " Brooklyn	27
	" " Manhattan	29
	" " Richmond	32
MURAL PAINTINGS, ETC.:	Borough of Brooklyn	35
	" " Manhattan	38
PORTRAITS:	Borough of Brooklyn	43
	" " Manhattan	44
	" " Queens	54
SCULPTURE:	Borough of The Bronx.	57
	" " Brooklyn	59
	" " Manhattan	72
TABLETS:	Borough of The Bronx.	91
	" " Brooklyn	92
	" " Manhattan	96
	" " Queens	108

LIST OF ILLUSTRATIONS

FOUNTAINS

SUBJECT	ARTIST	FACING PAGE
City Hall—Cupola Restored.	John McComb, Jr.	iii
Baby and Duck Fountain	Frederick W. MacMonnies, N.A.	4
Barrett Memorial Fountain	Sherry E. Fry, A.N.A.	12
Lowell Memorial Fountain	Charles A. Platt, N.A.	6
Queensboro Bridge Fountain.	Edwin H. Blashfield, N.A.	8
	Eli Harvey	
	Charles W. Stoughton	
Van Cortlandt Park Fountain	Allen and Collens	1
Wireless Operators Fountain.	Hewitt and Bottomley.	10

GLASS

Erasmus High School Window	Church Glass & Decorating Co.	18
Girls' High School Window	M. T. Lamb.	20
Story Memorial Window	Frederick Stymetz Lamb	22

MONUMENTS

Prison Ship Martyr's	Stanford White	26
--------------------------------	--------------------------	----

MURAL PAINTINGS

Ancient Commerce	A. Bogdanove	36
Birth and Development of Edu- cation	Frederick Lincoln Stoddard	34
Military Engineering	Ralph T. Willis	38

PORTRAITS

Stephen Grover Cleveland	Eastman Johnson, N.A.	44
Robert Ogden Doremus	George R. Boynton.	46
William J. Gaynor	J. Campbell Phillips	48
John McComb, Jr.	Samuel L. Waldo, A.N.A.	50
Alexander Seward Webb	George R. Boynton.	52
Solomon Woolf.	Samuel Johnson Woolf	54

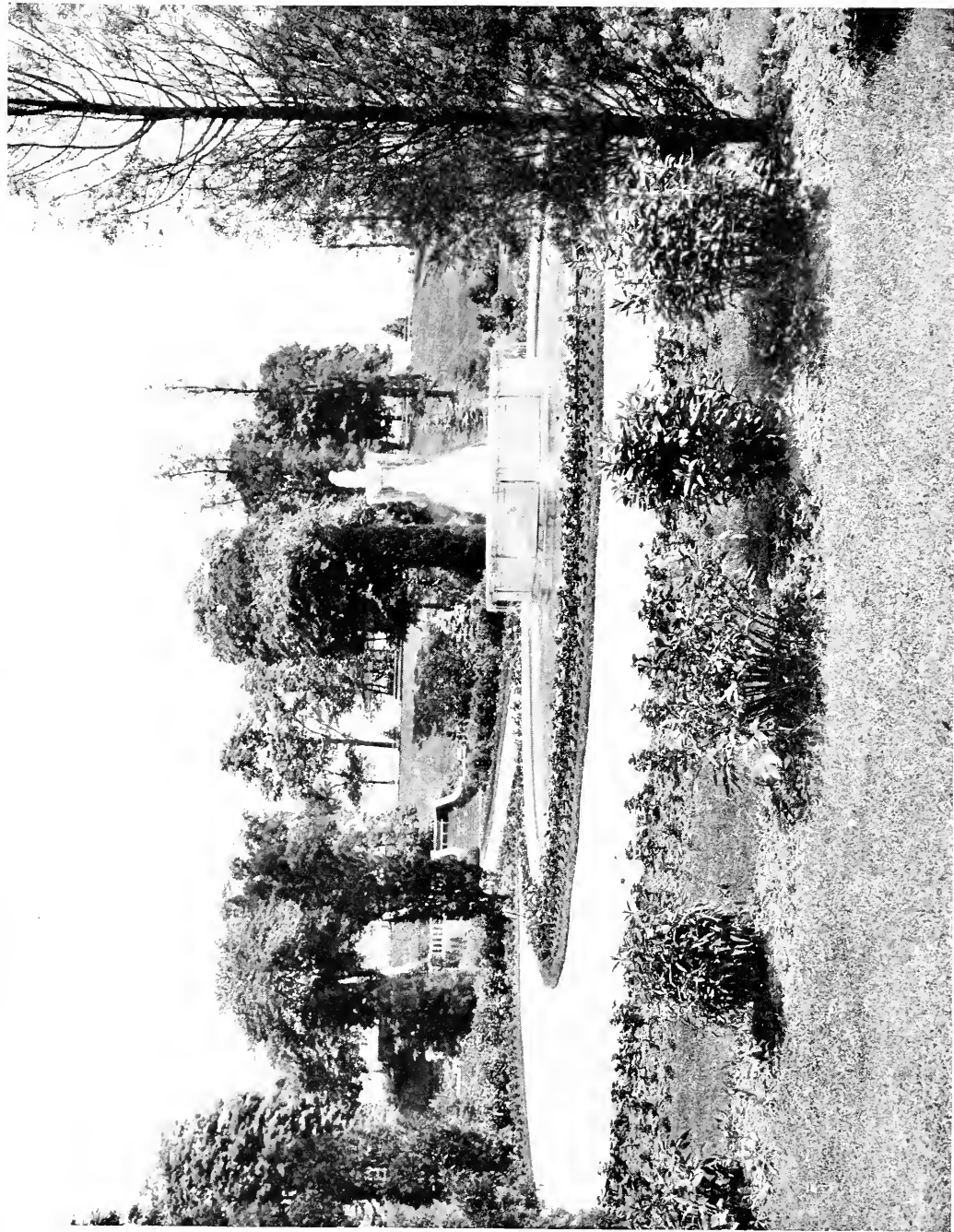
LIST OF ILLUSTRATIONS

SCULPTURE

SUBJECT	ARTIST	FACING PAGE
Bryant Memorial	Herbert Adams, N.A.	72
	Carrère & Hastings.	
Bryant Statue	Herbert Adams, N.A.	74
Entrance to Municipal Building.	McKim, Mead & White	78
	Adolph A. Weinman, N.A..	
Greek Sculpture	Herbert Adams, N.A.	64
Hebrew Psalmist	H. Augustus Lukeman, A.N.A..	62
History	Paul W. Bartlett, N.A..	82
Indian Law Giver	Attilio Piccirilli, A.N.A.	66
Joan of Arc.	Anna Vaughn Hyatt, A.N.A.	76
	John V. Van Pelt	
Lafayette	Henry Bacon, N.A..	68
	Daniel C. French, N.A.	
Mohammed	Charles Keck	60
Panels on Entrance to Municipal Building	Adolph A. Weinman, N.A.	80
Poe Bust	Edmond T. Quinn, A.N.A.	58
Schurz Memorial	Henry Bacon, N.A..	84
	Karl Bitter, N.A.	
Schurz Statue	Karl Bitter, N.A.	86
Sleepy Hollow Panel	Frances Grimes	96
Washington as Commander-in- Chief	Hermon A. MacNeil, N.A.	88
Washington as President	A. Stirling Calder, N.A.	88

TABLETS

Blow	B. Lillian Link	92
Japanese	Tokyo Fine Art School	100
Nicolai	Victor D. Brenner	104
Willett	Henry Bacon, N.A..	106
	Piccirilli Brothers	



VAN CORTLAND PARK FOUNTAIN

FOUNTAINS

FOUNTAINS—BOROUGH OF THE BRONX

MACOMB'S DAM PARK

JEROME AVENUE AND I62ND STREET

ARTISTS

MARTIN SCHENCK

ARTHUR G. WALDREAON

1866—

A FOUNTAIN of limestone about 16 feet long and 4 feet high, set on a granite base. On the north side is a large granite basin supplied with water from the mouths of a central grotesque human face in low relief, and two dolphins in high relief one at each end. On the south side is a smaller granite basin.

Purchased by the City in 1908.

VAN CORTLANDT PARK

COLONIAL GARDEN

ARTISTS

ALLEN & COLLENS, ARCHITECTS

A FOUNTAIN of pinkish white granite, consisting of a richly carved octagonal central basin 12 ft. 6 in. in diameter, and a central shaft about 11 ft. high, set in a circular basin 42 ft. in diameter. The central shaft is decorated with the seals of the original thirteen colonies. The seal of New York, held by a beaver, forms the finial. On the square block below are the seals of Delaware (south); South Carolina (west); Georgia (north); North Carolina (east). On the

FOUNTAINS—BOROUGH OF THE BRONX

face of the octagonal basin are the seals of the remaining colonies, arranged in the following order, beginning on the south and moving to the left: Virginia, New Hampshire, Massachusetts, New Jersey, Rhode Island, Pennsylvania, Connecticut, Maryland.

Around the base of the higher fountain is the following

INSCRIPTION

THIS FOUNTAIN IS GIVEN TO THE
CITY OF NEW YORK

BY THE

COLONIAL DAMES OF THE STATE OF NEW YORK

Given to the City in 1913.

See illustration facing page 1.

FOUNTAINS—BOROUGH OF BROOKLYN

BABY AND DUCK

PROSPECT PARK, VALE OF CASHMERE

ARTIST

FREDERICK WILLIAM MACMONNIES, N.A.
1863—

A SMALL bronze fountain placed in a water lily pool. On a richly sculptured circular base stands a nude baby holding in its arms a struggling duck, from whose bill rises a spray of water. From the mouths of six bronze turtles, placed among the lilies, sprays of water rise in arch form over the main fountain.

Given to the City in 1896.
See illustration facing page 4.

BETSY HEAD PLAYGROUND

DUMONT AND HOPKINSON AVENUES

ARTISTS

H. B. HERTS, ARCHITECT
1871—

LOUIS ST. LANNE, SCULPTOR
1861—

A BRICK stele, in the centre of which is an arched niche in which, on a rock base, stands the bronze figure of a nude man represented as throwing a dart into a half circle basin at his feet in which are two bronze seals. Above the water on each side is a babe riding on the back of a struggling seal. On the back on a bronze tablet is the following

INSCRIPTION

THIS FOUNTAIN IS ERECTED
IN LOVING MEMORY
OF
ISAAC L. RICE
1850—1915

Given to the City in 1916.



BABY AND DUCK FOUNTAIN

BY

FREDERICK W. MAC MONNIES, N.C.A.

FOR DESCRIPTION SEE PAGE 4

FOUNTAINS—BOROUGH OF MANHATTAN

—

BEAR AND FAWN

MORNINGSIDE PARK AT 114TH STREET

ARTIST

EDGAR WALTER

A SCULPTURAL group in bronze 8 ft. high, representing a fawn hiding under a rock above which a bear is crouched. In a hollow in the rock is a small pool of running water.

INSCRIPTION

TO THE CHILDREN OF NEW YORK CITY
GIVEN BY
ALFRED LINCOLN SELIGMAN
VICE-PRESIDENT OF THE
NATIONAL HIGHWAYS PROTECTIVE SOCIETY
AND ERECTED UNDER THEIR AUSPICES
1914

—

BOWNE MEMORIAL

ROOSEVELT AND SOUTH STREETS

ARTIST

W. L. COTTRELL
1869—

A DRINKING fountain of polished red porphyry, consisting of a shaft about 7 feet high, and averaging 2 feet 6 inches wide and 1 foot 3 inches thick, set on a single step. On each end of the shaft is a half round basin.

INSCRIPTION

IN MEMORY OF
SAMUEL W. BOWNE

Given to the City in 1912.

FOUNTAINS—BOROUGH OF MANHATTAN

FIREMEN'S MEMORIAL

RIVERSIDE DRIVE AND 100TH STREET

ARTISTS

H. VAN BUREN MAGONIGLE, ARCHITECT
1867—

ATTILIO PICCIRILLI, A.N.A., SCULPTOR
1866—

IT CONSISTS of a votive tablet 26 feet at base and about 22 feet high, flanked by two sculptured figures. It stands on a plaza with stone balustrade, approached from Riverside Drive by a flight of steps, and steps to level of upper roadway.

Facing the Drive is a large water basin fed from a mask face in low relief. The plinth of balustrade and coping of basin are of Milford granite. The remainder of the monument is of Knoxville marble. The figures are of heroic size. The one on south designated DUTY is of a seated woman holding a fireman's cap, and embracing a child. The one on north designated COURAGE is of a seated woman holding in her arms a dead fireman. On the west face of the tablet is represented in low relief a fire engine drawn by horses driving furiously; below which is the inscription

TO THE HEROIC DEAD OF THE FIRE DEPARTMENT

On the rear is the following

INSCRIPTION

TO THE MEN OF THE FIRE DEPARTMENT
OF THE CITY OF NEW YORK
WHO DIED AT THE CALL OF DUTY
SOLDIERS IN A WAR THAT NEVER ENDS
THIS MEMORIAL IS DEDICATED
BY THE PEOPLE OF A GRATEFUL CITY
ERECTED MCMXII

Given to the City in 1913.



LOWELL MEMORIAL FOUNTAIN

BY

CHARLES A. PLATT, N.A.

FOR DESCRIPTION SEE PAGE 7

FOUNTAINS—BOROUGH OF MANHATTAN

LOWELL MEMORIAL

BRYANT PARK

ARTIST

CHARLES A. PLATT, N.A.

1861—

A FOUNTAIN of granite, with low basin 32 feet in diameter, above which rises an upper basin 13 feet in diameter. On the platform east of fountain is set a granite block on which in bronze letters is the following

INSCRIPTION

THIS FOUNTAIN COMMEMORATES
THE STRONG AND BEAUTIFUL CHARACTER OF
JOSEPHINE SHAW LOWELL
1843—1905
WIFE FOR A YEAR OF A PATRIOT SOLDIER
WIDOW AT TWENTY-ONE
SERVANT OF NEW YORK STATE AND CITY
IN THEIR PUBLIC CHARITIES
SINCERE CANDID COURAGEOUS AND TENDER
BRINGING HELP AND HOPE TO THE FAINTING
AND INSPIRING OTHERS TO CONSECRATED LABORS

Given to the City in 1912. See illustration facing page 6.

ONE HUNDRED AND TENTH STREET AND FIFTH
AVENUE FOUNTAIN

ARTISTS

CROSS AND CROSS

IT CONSISTS of a half circle basin 8 feet in diameter on street side, and a smaller basin on sidewalk side. Back of the large basin the centre is raised, and on it, on the street side, is carved a horse's head, and on the opposite side a human face, from the mouth of each of which water flows to the basins. It is executed in Tennessee marble.

Given to the City in 1908.

FOUNTAINS—BOROUGH OF MANHATTAN

PULITZER MEMORIAL

ARTISTS

CARRÈRE AND HASTINGS, ARCHITECTS

KARL BITTER, N.A., SCULPTOR, 1868-1915

A MONUMENTAL fountain richly sculptured, erected from funds left by will of Joseph Pulitzer. It stands on the plaza at the southwest corner of Fifty-ninth Street and Fifth Avenue. It is constructed of limestone and consists of six basins of varying diameters rising in pyramidal form to a height of 20 feet 6 inches above the ground level, the lowest basin being 68 feet and the highest 12 feet in diameter. In the centre of the top basin is a pedestal 3 feet 6 inches high, decorated with garlands, on which stands a bronze statue about 8 feet high, of a nude female figure holding a basket of fruits. The fountain is sometimes called the Fountain of Abundance. Given to the City in 1916.

—

QUEENSBORO BRIDGE

IN MARKET UNDER MANHATTAN APPROACH

ARTISTS

EDWIN H. BLASHFIELD, N.A., PAINTER, 1848-

ELI HARVEY, SCULPTOR, 1860-

CHARLES W. STOUGHTON, ARCHITECT

A GRANITE stele, with basin into which water flows from the mouth of a sculptured ox head. Above basin is a panel in mosaic representing a seated female figure with left arm resting on a horn of plenty.

INSCRIPTION

GIVEN TO THE MARKET

BY THE

MUNICIPAL ART SOCIETY

IN MEMORY OF

EVANGELINE WILBOUR BLASHFIELD

Given to the City in 1919. See illustration facing page 8.



QUEENSBORO BRIDGE FOUNTAIN

BY

EDWIN H. BLASHFIELD, N.A.

ELI HARVEY AND CHARLES W. STOUGHTON

FOR DESCRIPTION SEE PAGE 8

FOUNTAINS—BOROUGH OF MANHATTAN

STRAUS MEMORIAL

BROADWAY AND 106TH STREET

ARTISTS

H. AUGUSTUS LUKEMAN, A.N.A., SCULPTOR
1872—

EVARTS TRACY, ARCHITECT
1868—

THIS monument consists of an exedra approached on the east and west sides by steps, in front of which is a long low pedestal on which is a reclining female figure of heroic size, designated MEMORY, gazing into a large pool filled by a stream flowing from a lion's mouth. The figure is in bronze; all else in light granite. On the high back of the seat is the following

INSCRIPTION

IN MEMORY OF ISIDOR AND IDA STRAUS
WHO WERE LOST AT SEA IN THE TITANIC DISASTER APRIL 15, 1912
LOVELY AND PLEASANT WERE THEY IN THEIR LIVES AND IN
THEIR DEATH THEY WERE NOT DIVIDED

On a bronze tablet set in the pavement north of the exedra:

ERECTED
BY VOLUNTARY CONTRIBUTIONS
FROM MANY FELLOW CITIZENS
AND ACCEPTED FOR THE
CITY OF NEW YORK BY
MAYOR
JOHN PURROY MITCHEL
AND
CABOT WARD
COMMISSIONER OF PARKS
A. D. MCMXV

Given to the City in 1914.

FOUNTAINS—BOROUGH OF MANHATTAN

SULLIVAN MEMORIAL

BOWERY AND DELANCEY STREET

ARTIST
THOMAS LAMB

A SHAFT of granite 10 feet 8 inches high and about 3 feet square, with large ball at top. Against the shaft are placed four small basins. On west face is a bronze shield on which is the following

INSCRIPTION

IN MEMORY OF
MY FRIEND
TIMOTHY P. SULLIVAN
JOHN J. WHITE
HE WHO LIVES IN
THE HEARTS
OF
HIS FRIENDS
IS NOT
DEAD

Given to the City in 1911.

WIRELESS OPERATORS' FOUNTAIN

BATTERY PARK NEAR BARGE OFFICE

ARTISTS
HEWITT AND BOTTOMLEY

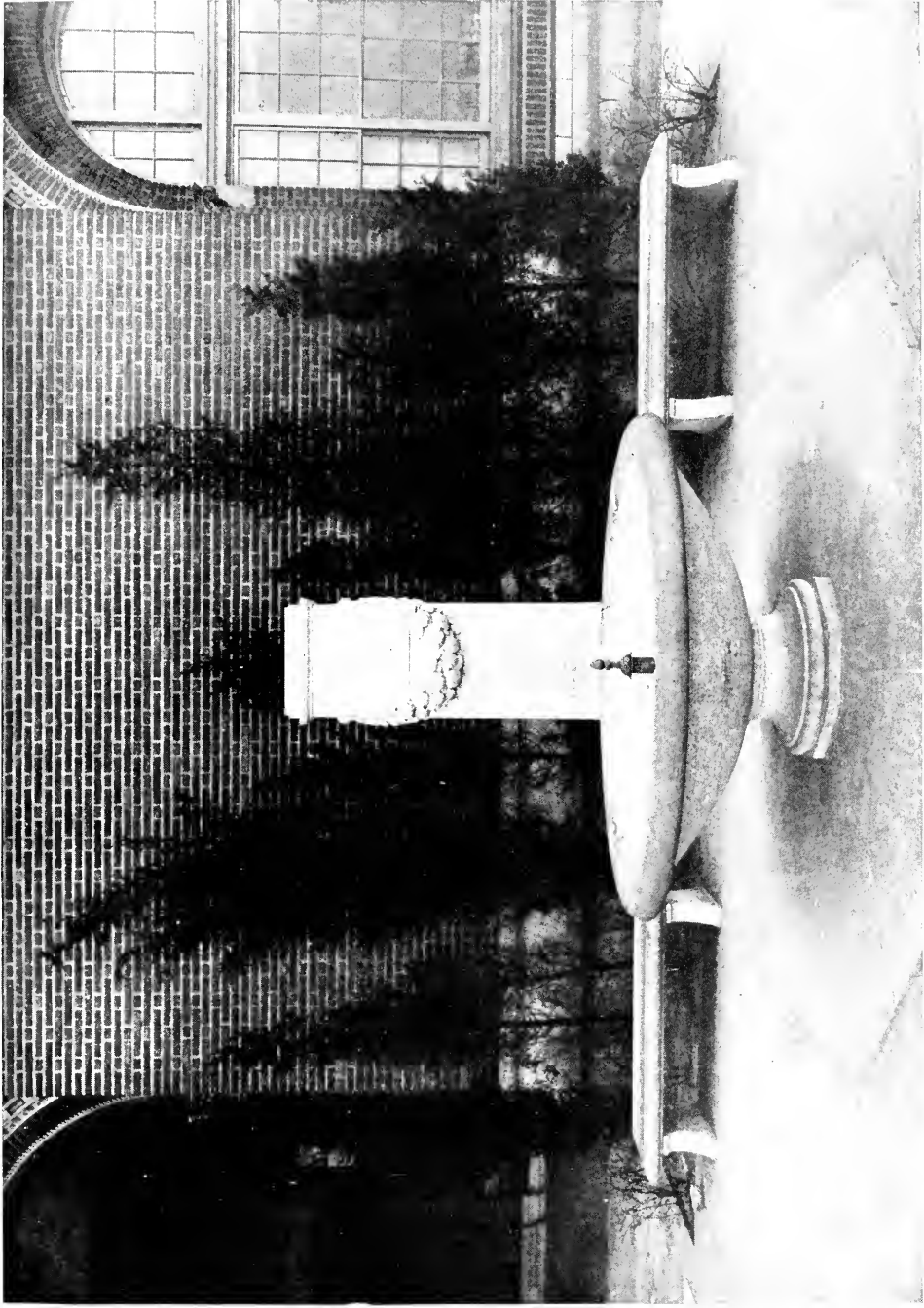
IT CONSISTS of a low broad basin behind which is a cenotaph decorated with a garland at the top. It is flanked by two stone seats. All constructed of granite.

SIGNED: HEWITT AND BOTTOMLEY, ARCHITECTS

INSCRIPTIONS

(on west face)

ERECTED IN MEMORY OF
WIRELESS OPERATORS
LOST AT SEA AT THE POST OF DUTY



WIRELESS OPERATORS FOUNTAIN

BY

HEWITT AND BOTTOMLEY

FOR DESCRIPTION SEE PAGE 10

FOUNTAINS—BOROUGH OF MANHATTAN

Below this, and on the north, east and south faces, are inscribed the names of a number of wireless operators, with dates and places of death.

Given to the City in 1915. See illustration facing page 10.

—

WOMAN'S HEALTH PROTECTIVE ASSOCIATION

RIVERSIDE DRIVE AND 116TH STREET

ARTIST

BRUNO LOUIS ZIMM

1875—

A SMALL basin with band ornament, mounted on three steps, and resting against a stone stele on which is carved in high relief two female figures holding a lamp. On each side are stone seats.

Executed in pink Tennessee marble.

On central panel is the following

INSCRIPTION

ERECTED
BY THE
WOMAN'S HEALTH
PROTECTIVE
ASSOCIATION
OF NEW YORK CITY
TO COMMEMORATE
ITS TWENTY-FIFTH
YEAR OF ACTIVITY
ON BEHALF OF
THE PUBLIC HEALTH
1884 1909

MARY E. TRAUTMANN, PRESIDENT
ESTHER HERRMAN FRANCIS STIEBEL
HELENE S. BELL ANNA C. HOLT

Over the seats are inscribed the names of the Directors of the Association.

Given to the City in 1910.

FOUNTAINS—BOROUGH OF RICHMOND

—

BARRETT MEMORIAL

SOUTHEAST OF BOROUGH HALL

ARTIST

SHERRY E. FRY, A.N.A

1879-

IT CONSISTS of an ideal male figure of heroic size in bronze, partly draped, with outstretched right arm, and left hand holding a shield and spear, mounted on a base of Tennessee marble of triangular form. In front is a large oval basin with a jet fountain, and in the rear a small drinking fountain. The lower part of the front of the basin is ornamented with low reliefs suggestive of war, on each side of a central circular panel in which is a mask-like face.

INSCRIPTIONS

MEMORIAL TO MAJOR
CLARENCE T. BARRETT

ERECTED IN LOVING MEMORY OF
1840—MAJOR CLARENCE T. BARRETT—1906
A FAITHFUL ACTIVE CITIZEN OF
RICHMOND BOROUGH,
WHO SERVED WITH DISTINCTION
THROUGH THE CIVIL WAR.
A DESCENDANT OF
COLONEL JAMES BARRETT,
COMMANDER AT BATTLE OF CONCORD,
APRIL 1775.
LOYAL, HONEST, BRAVE AND TRUE

Given to the City in 1915.
See illustration facing page 12.



BARRETT MEMORIAL FOUNTAIN

BY

SHERRY E. FRY, A.N.A.

FOR DESCRIPTION SEE PAGE 12

FOUNTAINS—BOROUGH OF RICHMOND

PUTNAM MEMORIAL

PORT RICHMOND PARK

ARTIST

VIRGIL W. FULLER

1869—

A DRINKING fountain of Roman stone, with half round bowl, 3 feet in diameter, with carved border, placed against a low stele. On a bronze tablet is the following

INSCRIPTION

1865-1913

IN MEMORY OF

EUGENE G. PUTNAM

PRINCIPAL FOR 17 YEARS

OF PUBLIC SCHOOL 20.

PRESENTED BY HIS FRIENDS

IN SCHOOL AND COMMUNITY.

Given to the City in 1915.

GLASS

GLASS—BOROUGH OF THE BRONX

—

YOUNG MEMORIAL

PUBLIC SCHOOL 52 AUDITORIUM

ARTISTS

J. AND R. LAMB

A STAINED glass window in two panels representing the Acropolis at Athens and landscape. A memorial to Dr. Young (1865-1918), Principal of School from 1914 to 1918.

INSCRIPTIONS

TO LIVE IN THE HEARTS OF THOSE WE LEAVE BEHIND
IS NOT TO DIE

IN MEMORIAM

DR. FRANK ALFRED YOUNG
1919

A TRIBUTE FROM

HIS TEACHERS, PUPILS AND
FRIENDS

Given to the City in 1919.

GLASS—BOROUGH OF BROOKLYN

ERASMUS HALL HIGH SCHOOL AUDITORIUM

ERASMUS WINDOW

ARTISTS

CHURCH GLASS AND DECORATING COMPANY

A WINDOW about 15 feet by 15 feet in painted glass, consisting of 39 panels, 21 of which are figure pieces representing scenes in the life of Erasmus, as follows:

Left-hand side	Centre	Right-hand side
ERASMUS A PUPIL IN THE SCHOOL OF THE BROTHERS OF THE COMMON LIFE AT DEVENTER, 1478	ERASMUS PREPARING HIS TRANSLATION OF THE NEW TESTA- MENT INTO GREEK 1513	ADMITTED BACHELOR AND DOCTOR AT CAMBRIDGE AND OXFORD 1506
ERASMUS AT PARIS INSTRUCTING SEV- ERAL ENGLISHMEN, 1492	TEACHING YOUNG ENGLISHMEN AND WOMEN GREEK 1513	VISITING ITALY AND BEING MADE DOCTOR OF THEOL- OGY AT PADUA 1506
PRESENTATION TO KING HENRY VII BY SIR THOMAS MOORE AND LORD MOUNTJOY	PERSONIFICATION OF THE ARTS AND SCIENCES	MAKING THE ACQUAINTANCE OF COLET, DEAN OF ST. PAUL'S 1497

Given to the City in 1912.
See illustration facing page 18.



ERASMUS HIGH SCHOOL WINDOW

BY

CHURCH GLASS AND DECORATING CO.

FOR DESCRIPTION SEE PAGE 18

GLASS—BOROUGH OF BROOKLYN

ERASMUS HALL—CONTINUED

LIBRARY

MEMORIAL TO WALTER B. GUNNISON
1864-1916

ARTISTS

THE TIFFANY STUDIOS

A GROUP of 10 panels in opalescent, plated and painted glass. The central panel shows a female figure crowned, holding an open book, and standing before a throne. On the two sides are representations of an exedra and landscape. Over the central figure is the following

INSCRIPTION

IN MEMORIAM

WALTER BALFOUR GUNNISON, PH.D.
FIRST PRINCIPAL OF ERASMUS HALL HIGH SCHOOL
(1896-1916)

Given to the City in 1919.

GIRLS' HIGH SCHOOL

LIBRARY

KNOWLEDGE AND WISDOM

ARTIST

M. T. LAMB

TWO stained glass windows forming one group. In left window a robed angel is represented holding a torch in right hand and an open book in left. In right window a similar figure is shown, carrying a palm branch in right hand, and a sphere in left.

INSCRIPTIONS

KNOWLEDGE

WISDOM

GIVEN BY
THE ALUMNAE TO THE SCHOOL

IN COMMEMORATION OF THE
TWENTY-FIFTH ANNIVERSARY
OF ITS OPENING

Given to the City in 1914. See illustration facing page 20.

GLASS—BOROUGH OF BROOKLYN

GIRLS' HIGH SCHOOL—CONTINUED

HALL

MEMORIAL TO CALVIN PATTERSON

1847-1902

ARTIST

THE TIFFANY STUDIOS

A WINDOW erected at end of first story hall. It consists of two figures representing ALCUIN, the great teacher of the ninth century, demonstrating to CHARLEMAGNE, the great ruler, the correct method of ascertaining the date of Easter.

INSCRIPTION

CALVIN PATTERSON

PRINCIPAL GIRLS' HIGH SCHOOL

1887-1902

Given to the City in 1902.

PUBLIC SCHOOL No. 85, AUDITORIUM

STORY MEMORIAL

ARTIST

FREDERICK STYMETZ LAMB

1863-

A WINDOW consisting of three panels, representing a rural scene, and intended to exemplify the words of the Twenty-third Psalm: "He maketh me to lie down in green pastures, He leadeth me beside the still waters."

A memorial to Alice H. Story (1867-1912), Principal of Primary Department, 1894-1912. On plate below is the

INSCRIPTION

IN MEMORY OF

ALICE H. STORY

Given to the City in 1913. See illustration facing page 22.



GIRLS' HIGH SCHOOL WINDOWS

BY

M. T. LAMB

FOR DESCRIPTION SEE PAGE 19

GLASS—BOROUGH OF MANHATTAN

—

WADLEIGH HIGH SCHOOL

MAIN CORRIDOR, FIRST STORY, WEST END

FORD MEMORIAL

ARTISTS

D'ASCENZO STUDIOS

AN OPALESCENT glass window designated KNOWLEDGE. It represents a young girl carrying a book, behind whom stands an angel holding a torch. In a panel is the following

INSCRIPTION

THE LIGHT THAT SHINETH MORE AND MORE UNTO THE
PERFECT DAY

IN LOVING MEMORY OF
JESSIE FRANCES FORD

CHAIRMAN OF THE DEPARTMENT OF ENGLISH 1897-1916

Given to the City in 1918.

—

MAIN CORRIDOR, FIRST STORY, EAST END

BOURNE AND WADLEIGH MEMORIAL

ARTISTS

SPIERO-LEDERLE CO.

AN OPALESCENT glass window designated FAITH. It represents a draped female figure holding in her right hand a sword, and in her left a lamp. In a panel, is the following

INSCRIPTION

IN HONOR OF

LYDIA F. WADLEIGH AND SUSAN BOURNE
THIS WINDOW WAS PRESENTED TO THE
WADLEIGH HIGH SCHOOL

LYDIA F. WADLEIGH ASSO. AND THE CLASSES OF 1909

Given to the City in 1909.

GLASS—BOROUGH OF MANHATTAN

WADLEIGH HIGH SCHOOL—CONTINUED

SECOND STORY

VICTOR HUGO

ARTIST

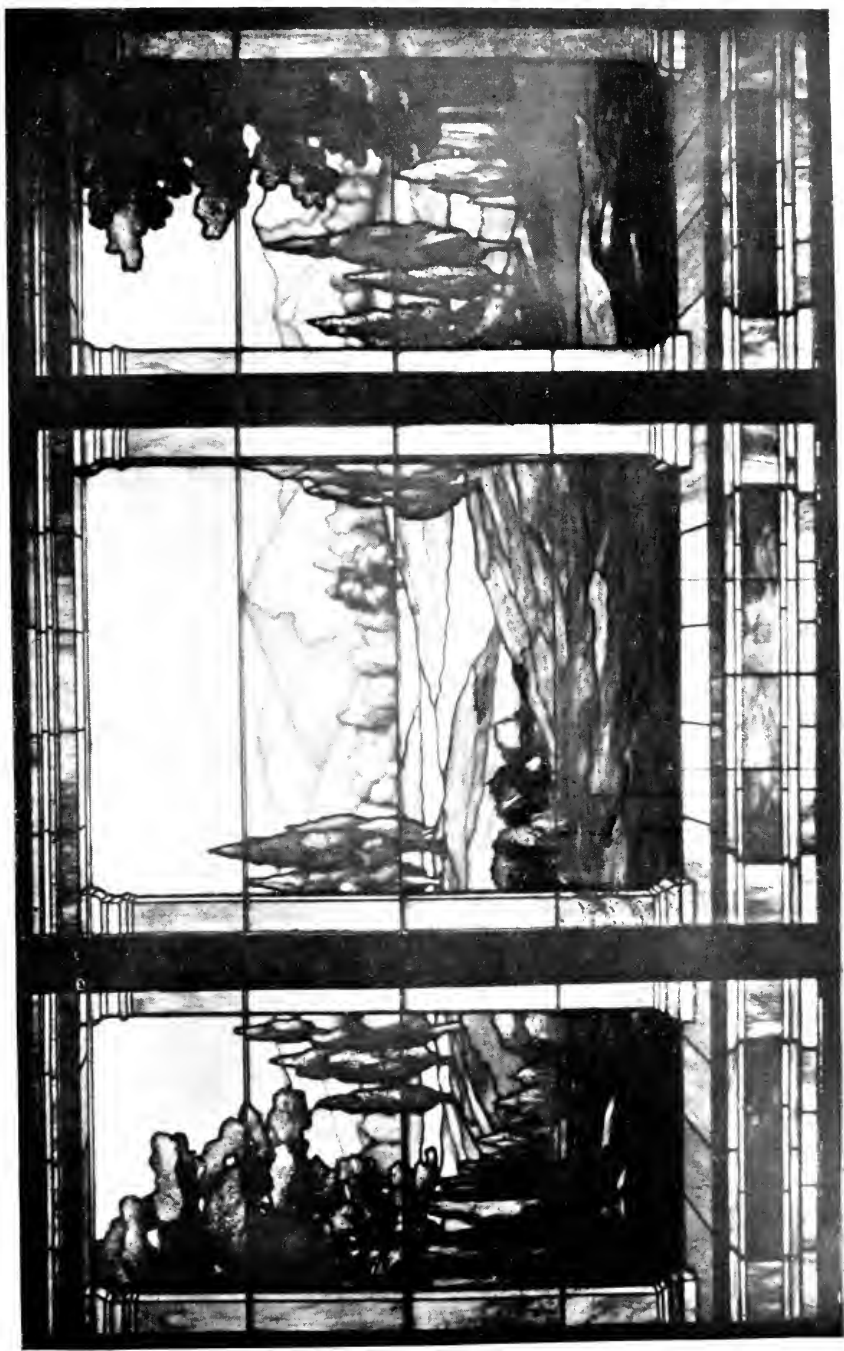
THE GORHAM COMPANY

THE GOETHE window originally placed in first story (described page 102 of Volume I of the Catalogue of Works of Art belonging to the City of New York) has been placed at the west end of the second story corridor and now forms the left division of a double window. In the right division is placed a corresponding window in the center of which is a full face portrait. At the top of the window are inscribed the words VICTOR HUGO.

INSCRIPTION

PRESENTED TO
THE
WADLEIGH HIGH SCHOOL
BY
THE CLASSES OF 1908

Given to the City in 1908.



STORY MEMORIAL WINDOW

BY

FREDERICK STYMETZ LAMB

FOR DESCRIPTION SEE PAGE 20

MONUMENTS

MONUMENTS—BOROUGH OF THE BRONX

HUDSON MEMORIAL COLUMN WEST 227TH STREET—SPUYTEN DUYVIL

ARTISTS
BABB, COOK AND WELCH

A ROMAN DORIC COLUMN, 80 feet high, of Milford granite, set on a rectangular pedestal 20 feet high. On the capital of column is a high pedestal on which it was intended to erect a bronze statue of Henry Hudson for which a model was made by Karl Bitter, N.A.; and on the north and south faces of the pedestal are incised panels intended for bronze reliefs to be executed by H. M. Shrady, A.N.A. None of this bronze work had been installed on 31st of December, 1919.

Given to the City in 1909.

SPANISH WAR MONUMENT 137TH STREET AND THIRD AVENUE

ARTIST
ALBERT E. DAVIS

A ROMAN DORIC COLUMN of polished granite, 19 feet high; mounted on an 8 foot plinth, and surmounted by a rectangular block supporting a sphere. On base is a replica of the McKinley Square Tablet described later; below which is the following

INSCRIPTION
TO THE BRAVE MEN
OF BRONX BOROUGH
WHO GAVE THEIR LIVES
FOR THEIR COUNTRY
IN THE WAR WITH SPAIN
THIS MEMORIAL
IS DEDICATED
A. D. 1919

Given to the City in 1919.

MONUMENTS—BOROUGH OF THE BRONX

WORLD WAR MONUMENT

139TH STREET AND THIRD AVENUE

ARTISTS

HAROLD M. BOWDOIN, ARCHITECT

1876—

MENCONI BROTHERS, SCULPTORS

A COLUMN of the Doric Greek order, in granite, 22 feet high, raised on a 6 foot plinth and step, and surmounted by a block on which is an eagle.

INSCRIPTIONS

(south side)

TO THE HONORED DEAD
WHO MADE

THE SUPREME SACRIFICE
FOR THEIR COUNTRY IN
THE GREAT WAR

MCMXVII—MCMXIX

ERECTED IN LOVING MEMORY
OF THEM AND THEIR PATRIOTISM
BY THEIR FRIENDS AND NEIGHBORS
OF LOCAL BOARD NUMBER TWO
NEW YORK CITY

On the other sides are inscribed 58 names.

Given to the City in 1919.



PRISON SHIP MARTYRS MONUMENT

BY

STANFORD WHITE

FOR DESCRIPTION SEE PAGE 27

MONUMENTS—BOROUGH OF BROOKLYN

PRISON SHIP MARTYRS MONUMENT

FORT GREENE PARK

ARTIST

STANFORD WHITE

1853-1906

APPROACHED from Myrtle Avenue by an impressive flight of one hundred granite steps, 80 feet wide, broken by two wide platforms, is a paved terrace about 250 feet square on each corner of which is part of a shaft of a Doric Greek column in granite, against which is a bronze eagle designed by Adolph A. Weinman, N.A.

The monument is of granite and consists of two low platforms on which stands a colossal Doric Greek column 114 feet high and 17 feet 6 inches in diameter at its base; with abacus decorated on faces with a Greek fret. On this is an octagonal base, 6 feet high, on which stands a bronze tripod, 18 feet 9 inches high. The top of the column is reached by stairs approached through a simple bronze door in the base of the column.

On its face is the following

INSCRIPTION

1776
THE
PRISON
SHIP
MARTYRS
MONUMENT
1908

PRISON SHIP MARTYRS MONUMENT—CONTINUED

On the lower platform of the grand stairway is the entrance to a vault over which is inserted a slab of brown sandstone on which is the following

INSCRIPTION

IN THE NAME OF THE SPIRITS OF
THE DEPARTED FREE
SACRED TO THE MEMORY OF THAT POR-
TION OF AMERICAN SEAMEN, SOLDIERS &
CITIZENS WHO PERISHED IN THE CAUSE OF
LIBERTY & THEIR COUNTRY ON BOARD THE
PRISON SHIPS OF THE BRITISH (DURING THE
REVOLUTIONARY WAR) AT THE WALL-ABOUT.
THIS IS THE CORNER STONE OF THE VAULT
WHICH CONTAINS THEIR RELICS. ERECTED BY
THE TAMMANY SOCIETY OR COLUMBIAN
ORDER OF THE CITY OF NEW YORK. THE GROUND
FOR WHICH WAS BESTOWED BY JOHN JACKSON
NASSAU ISLAND, SEASON OF BLOSSOMS
YEAR OF DISCOVERY, THE 31⁶TH
OF THE INSTITUTION THE 19TH AND OF
AMERICAN INDEPENDENCE THE 32ND
APRIL THE 6TH, 1808.

JACOB VANDERVOORT	}	WALL-ABOUT COMMITTEE
JOHN JACKSON		
BURDET STRYKER		
ISSACHAR COZZENS		
ROBERT TOWNSEND		
BENJAMIN WATSON		
SAMUEL COWDRY		

WILLIAM AND DAVID CAMPBELL, BUILDERS.

Completed in 1908 and erected at the expense of the Governments of the United States, of the State of New York, of the City of New York, and of private citizens and patriotic societies.

See illustration facing page 26.

MONUMENTS—BOROUGH OF MANHATTAN

MAINE MONUMENT

COLUMBUS CIRCLE

ARTISTS

H. VAN BUREN MAGONIGLE, ARCHITECT

1867—

ATTILIO PICCIRILLI, A.N.A., SCULPTOR

1866—

THIS memorial takes the form of a monumental entrance to Central Park. Constructed of marble unless otherwise stated. In the centre is a pylon of marble, with granite base, 43 feet 6 inches high, and about 12 feet square at the base. On a plinth above this stands a group in bronze, about 15 feet high. This central pylon is placed between two broad roadways, on the sides of which are entrances for foot passengers flanked by smaller pylons about 12 feet in height and 9 feet square at the base, with stone seats.

The small pylons are decorated with maritime symbols in low relief. On the south side of the central pylon is a large basin in which is placed the representation of the prow of a wooden battle ship on which stands a sculptured group of heroic size consisting of a central robed female figure with outstretched arms representing PEACE. On her right, seated at her feet, is a nude female embracing a weeping boy, representing FORTITUDE.

On the north side is a group of heroic size consisting of a robed female with uplifted hands and closed eyes representing JUSTICE. On her right, seated at her feet, is a nude male holding a bronze sword in his uplifted right hand. On her left is a half nude female reading from a tablet, representing HISTORY.

On the east side is a colossal nude figure of a reclining youth symbolizing THE ATLANTIC; and on the west side, a corresponding colossal nude figure of a reclining elderly man with flowing beard symbolizing THE PACIFIC.

MAINE MONUMENT—CONTINUED

On the top of the central pylon is a colossal group in bronze representing a robed female standing in a shell drawn by three sea-horses, symbolizing COLUMBIA TRIUMPHANT. On the central pylon are the following

INSCRIPTIONS

On the east and west sides are inscribed the names of those who lost their lives in the sinking of the battleship Maine in the harbor of Havana, February 15, 1898.

On the south side

TO
VALIANT SEAMEN
WHO PERISHED IN THE
MAINE
BY FATE UNWARNED
IN DEATH UNAFRAID
MDCCCXCVIII
MCMXII

On the north side

TO
THE FREEMEN
WHO DIED IN THE
WAR WITH SPAIN
THAT OTHERS
MIGHT BE FREE
MDCCCXCVIII
MCMXII

On the pedestal of the north sculptured group is inscribed

ERECTED THROUGH PUBLIC SUBSCRIPTION
BY
NATIONAL MAINE MONUMENT COMMITTEE
JAMES GRANT WILSON, CHAIRMAN
WILLIAM R. HEARST GEORGE F. SHRADY
JOHN W. KELLER J. EDWARD SIMMONS

Given to the City in 1913.

MONUMENTS—BOROUGH OF MANHATTAN

REVOLUTIONARY CANNON

BATTERY PARK, NEAR BARGE OFFICE

A REVOLUTIONARY iron cannon 50 inches long with bore $2\frac{1}{2}$ inches; mounted on a granite base. On the face of the base, on a bronze tablet, is the following

INSCRIPTION

THIS ANCIENT CANNON
WAS EXHUMED IN 1892 ON THE SITE OF
NO. 55 BROADWAY ON THE CORNER OF EXCHANGE ALLEY
OR "THE HIGHWAY LEADING TO THE
FORTIFICATION CALLED OYSTER PASTY" 1695-1783
PRESENTED TO THE CITY OF NEW YORK BY
WILLIAM HENRY MAIRS
PLACED HERE BY THE CHILDREN OF
THE CITY HISTORY CLUB
1914

Given to the City in 1914.

MONUMENTS—BOROUGH OF RICHMOND

SPANISH WAR MONUMENT

ST. GEORGE

ARTIST

ALLEN G. NEWMAN

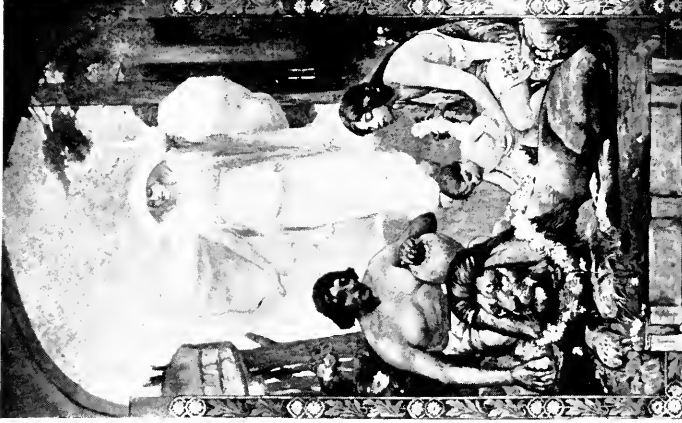
1875-

A BRONZE figure of heroic size, representing a soldier marching at ease; hence commonly called THE HIKER. It is erected on the esplanade northeast of the Borough Hall, and stands on a granite pedestal about 8 feet high. This stone was part of an old gun foundation which accounts for the hole in the back.

Given to the City in 1916.

MURAL PAINTINGS, ETC.





BIRTH AND DEVELOPMENT OF EDUCATION

BY

FREDERICK LINCOLN STODDARD

FOR DESCRIPTION SEE PAGE 35

MURAL PAINTINGS—BOROUGH OF BROOKLYN

BIRTH AND DEVELOPMENT OF EDUCATION

EASTERN DISTRICT HIGH SCHOOL

ARTIST

FREDERICK LINCOLN STODDARD

1861—

THREE allegorical paintings in oil, 8 feet by 12 feet, placed in adjacent panels on walls of Keap Street entrance.

Left panel

THE GIFT OF FIRE

On cliffs in background is shown Prometheus bound to a rock. In foreground are depicted the nude figures of a man and woman reaching forward to enlightenment represented by a flame, the animal world being represented by a snarling tiger.

Central panel

THE DAWN OF CIVILIZATION

In foreground a peaceful lion is shown wreathed with flowers by a babe held by its half clothed mother on the right, while the father on the left holds a piece of rough pottery. In the centre background the spirit of light approaches in the form of a female figure draped in white, carrying a lighted lamp.

Right panel

THE BIRTH OF THE ALPHABET

Two warriors in background. In foreground a half draped man cutting with a spearhead the Greek letter DELTA on surface of a rock.

Given to the City in 1915.

See illustration facing page 34.

MURAL PAINTINGS—BOROUGH OF BROOKLYN
COMMERCE, ANCIENT AND MODERN
COMMERCIAL HIGH SCHOOL AUDITORIUM

ARTIST
A. BOGDANOVE
1887-

Two allegorical paintings in oil, 14 feet by 17 feet.

ANCIENT COMMERCE

In foreground slaves are shown displaying merchandise to prospective purchasers. In background ancient ships are indicated on the shore of the sea, with fishing vessels in the far distance, and a camel caravan on the beach.

See illustration facing page 36.

MODERN COMMERCE

In foreground laborers are shown on the sea-shore handling a bale of goods. In the near distance modern ocean steamers are depicted. The background represents the harbour of New York City, with a battleship in the middle distance, and the Brooklyn Bridge in the far distance.

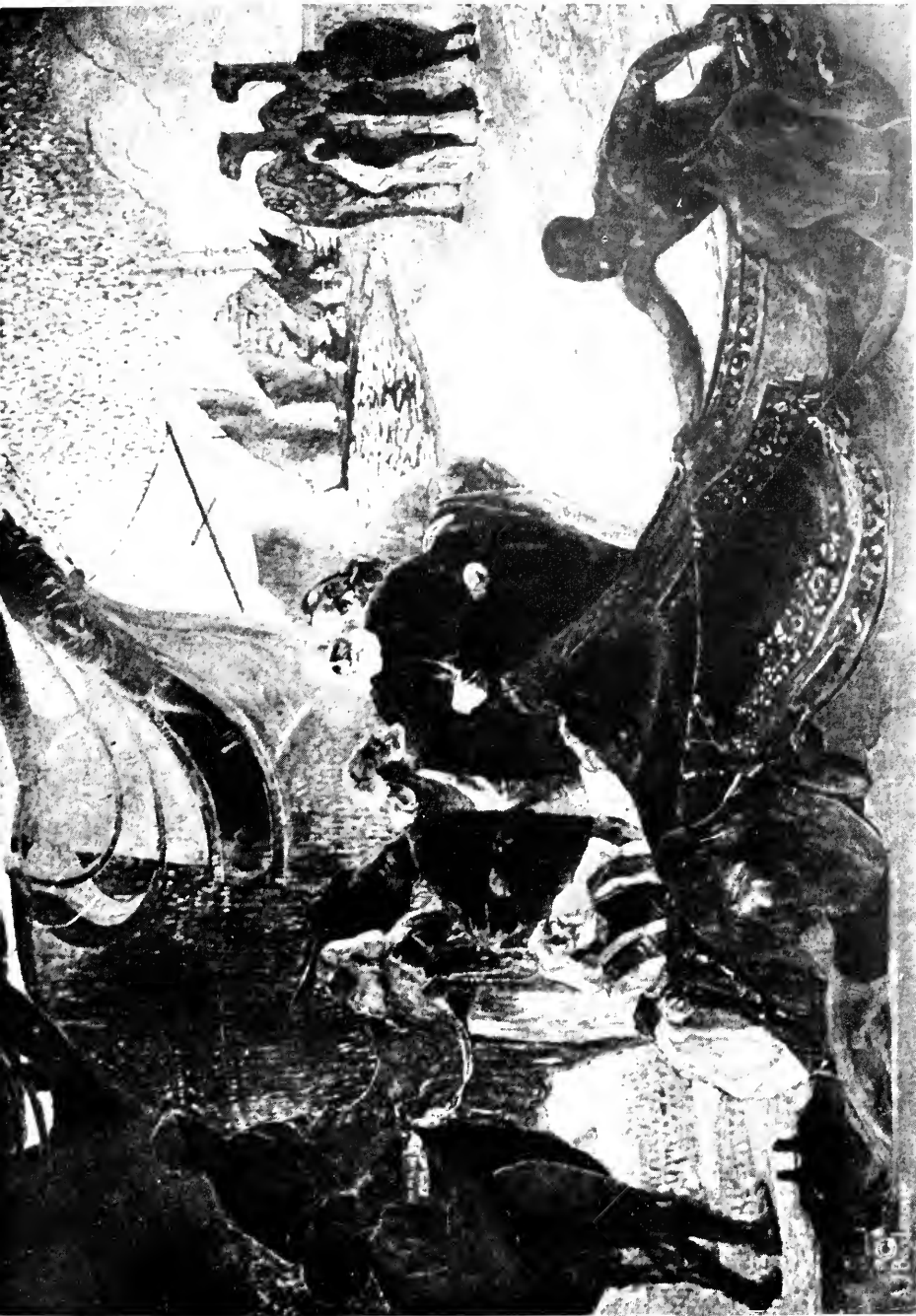
Given to the City in 1919.

WASHINGTON BEFORE THE BATTLE OF LONG
ISLAND

PUBLIC SCHOOL NO. 5

ARTIST
FREDERICK STYMETZ LAMB
1863-

THREE panels, 8 feet 8 inches high, painted in oil, representing Washington and his officers in the intrenchments before the Battle of Long Island. The centre panel, 16 feet wide, represents Washington examining a map, with six



ANCIENT COMMERCE

BY

A. BOGDANOVÉ

FOR DESCRIPTION SEE PAGE 30

MURAL PAINTINGS—BOROUGH OF BROOKLYN

officers surrounding him; to the right a sentry stands at attention by a cannon. The left panel, 7 feet wide, represents three soldiers and an officer standing by a cannon. The right panel of same width represents three soldiers, an officer and a drummer boy. On adjacent wall panels are the following

INSCRIPTIONS

(left panel)

THE
CONFERENCE
BETWEEN
WASHINGTON
AND HIS
OFFICERS
IN

Given to the City in 1911.

(right panel)

THE
FORTIFICATION
ON THE HEIGHT
BEFORE
THE BATTLE
OF
LONG ISLAND

MURAL PAINTINGS, ETC.—BOROUGH OF MANHATTAN

“AM I MY BROTHER’S KEEPER?”

BOARD OF EDUCATION BUILDING

ARTIST

J. C. DOLLMAN

A PAINTING in oil depicting the misery of the unemployed. It represents a bench on the Thames embankment on which are sleeping, under the glare of an electric light, five men and a woman with her babe. Intended by the donor to illustrate the necessity of industrial education.

Height 48 in.; width 72 in.

Given to the City in 1911.

DE WITT CLINTON HIGH SCHOOL

MURAL PAINTING IN ENTRANCE HALL

ARTIST

JAY VAN EVEREN

THREE lunettes painted in oil. The artist intended, through the morning sky and flowers, to typify the Spring time or morning of youth. The central lunette shows in centre a youth holding a roll on which is the word VERITAS. On each side of him is a seated youth. The smaller lunettes show birds and woodland.

Given to the City in 1916.



MILITARY ENGINEERING

BY

RALPH T. WILLIS

FOR DESCRIPTION SEE PAGE 39

MURAL PAINTINGS—BOROUGH OF MANHATTAN
DUTCH AND INDIANS TRADING
WASHINGTON IRVING HIGH SCHOOL AUDITORIUM

ARTIST
ROBERT K. RYLAND
1873-

A MURAL decoration in oil depicting two Dutch traders, who have landed from a boat, bargaining with two Indian braves for pelts and corn. In front of them are two Indian women, and a young girl, examining cloth and jewelry.

Given to the City in 1917.

MILITARY ENGINEERING
TWENTY-SECOND REGIMENT ARMORY STAIRWAY

ARTIST
RALPH T. WILLIS

THREE panels, each 28 feet by 5 feet 6 inches, representing work of army engineering in course of construction; and eight small panels of conventional design, displaying shields, on which are engineering symbols.

Purchased by the City in 1913.
See illustration facing page 38.

PORTRAITS

PORTRAITS—BOROUGH OF BROOKLYN

FREDERIC A. WARD

JUSTICE OF SUPREME COURT, NOVEMBER 1898—JANUARY 1899

JUSTICES' CHAMBERS, COUNTY COURT HOUSE

ARTIST

JOHN W. ALEXANDER, N.A.

1856-1915

A HALF-LENGTH portrait in oil. Subject is shown seated with left side towards observer, left arm resting on arm of chair, holding a closed book in hand.

Given to the City in 1914.

PORTRAITS—BOROUGH OF MANHATTAN

STEPHEN GROVER CLEVELAND

1837-1908

PRESIDENT OF THE UNITED STATES, 1885-89; 1893-97

CITY HALL

ARTIST

EASTMAN JOHNSON, N.A.

1824-1906

A THREE-QUARTER length portrait in oil. Subject is shown seated close to a table with right hand resting on a document, and left hand on arm of chair.

Height, 60 in.; width, 42 in.

Signed E. J.

Given to City in 1912.

See illustration facing page 44.

ALFRED GEORGE COMPTON

1835-1913

PROFESSOR IN COLLEGE OF CITY OF NEW YORK 1853-1911

CITY COLLEGE, TOWER ROOM

ARTIST

GEORGE RUFUS BOYNTON

1861-

A FULL-LENGTH portrait in oil. Subject is represented seated with legs crossed, left hand on left knee, right arm resting on back of chair; with eye-glasses in hand.

Height, 55 in.; width, 35 in.

Painted in 1905.



STEPHEN GROVER CLEVELAND

BY

EASTMAN JOHNSON, N.A.

FOR DESCRIPTION SEE PAGE 44

PORTRAITS—BOROUGH OF MANHATTAN

ROBERT OGDEN DOREMUS

1824-1906

PROFESSOR IN COLLEGE OF CITY OF NEW YORK, 1852-1902

CITY COLLEGE, TOWER ROOM

ARTIST

GEORGE RUFUS BOYNTON

1861-

A THREE-QUARTER length portrait in oil. Subject is represented in academic cap and gown seated in high-backed chair with right arm resting on its arm.

Height, 55 in.; width, 39½ in.

Painted in 1903.

See illustration facing page 46.

—

PHILIP WANTON ENGS

FIRE ALARM HEADQUARTERS

ARTIST

UNKNOWN

A THREE-QUARTER length portrait in oil.

INSCRIPTIONS

BLESSED BE HEAVEN THERE IS HERE AND THERE A MAN BORN WHO LOVES TRUTH AS TRUTH SHOULD BE LOVED, WITH ALL HIS HEART AND ALL HIS SOUL, AND HATES UNTRUTH WITH A CORRESPONDING HATRED.

CARLYLE

PHILIP WANTON ENGS

ASSISTANT ENGINEER 1824-1833

COMMISSIONER 1865-1867

PRESENTED TO THE NEW YORK FIRE DEPARTMENT

BY HIS GRANDSON

EDWARD LAWTON SNYDER

Given to the City in 1911.

PORTRAITS—BOROUGH OF MANHATTAN

JOHN HUSTON FINLEY

1863—

PRESIDENT OF THE COLLEGE OF CITY OF NEW YORK,
1903—1913

CITY COLLEGE, TOWER ROOM

ARTIST

SAMUEL JOHNSON WOOLF

1880—

A THREE-QUARTER length portrait in oil. Subject, in academic robe without cap, is shown standing, with extended right hand holding a small book, and left hand in pocket of coat.

Height, 63 in.; width, 42½ in.

Painted in 1905.

FRANK T. FITZGERALD

1857—1907

SURROGATE, NEW YORK COUNTY 1893—1907

HALL OF RECORDS

ARTIST

JOHN W. ALEXANDER, N.A.

1856—1915

A HALF-LENGTH portrait in oil, representing subject in full official robes seated by a table on which he rests left arm.

Height, 36 in.; width, 54 in.

Given to the City in 1909.



ROBERT OGDEN DOREMUS

BY

GEORGE RUFUS BOYNTON

FOR DESCRIPTION SEE PAGE 45

WILLIAM J. GAYNOR

1851-1913

MAYOR OF GREATER NEW YORK, 1910-1913

CITY HALL

ARTIST

J. CAMPBELL PHILLIPS

1873-

A THREE-QUARTER portrait in oil. The subject is shown standing with thumbs of hands in trousers' pockets.

Height, 39 in.; width, 29 in. Purchased by the City in 1913.

See illustration facing page 48.

—

CHARLES GEORGE HERBERMANN

1840-1916

PROFESSOR IN THE COLLEGE OF THE CITY OF NEW YORK,

1869-1916

CITY COLLEGE, TOWER ROOM

ARTIST

VICTOR DAVID HECHT

1873-

A THREE-QUARTER length portrait in oil. Subject is shown wearing white waistcoat and white tie, seated with hands folded in front.

Height, 49 in.; width, 35 in.

Painted in 1911.

PORTRAITS—BOROUGH OF MANHATTAN

HENRY PHELPS JOHNSTON

1842—

PROFESSOR IN THE COLLEGE OF THE CITY OF NEW YORK,
1879—1916

CITY COLLEGE, TOWER ROOM

ARTIST

EDWIN B. CHILD

1868—

A HALF-LENGTH portrait in oil. Subject shown seated, wearing spectacles; only upper half of left hand shown.

Height, 30 in.; width, 25 in.

—

HENRY M. LEIPZIGER

1854—1917

SUPERVISOR OF FREE LECTURES, NEW YORK CITY

CITY COLLEGE, TOWER ROOM

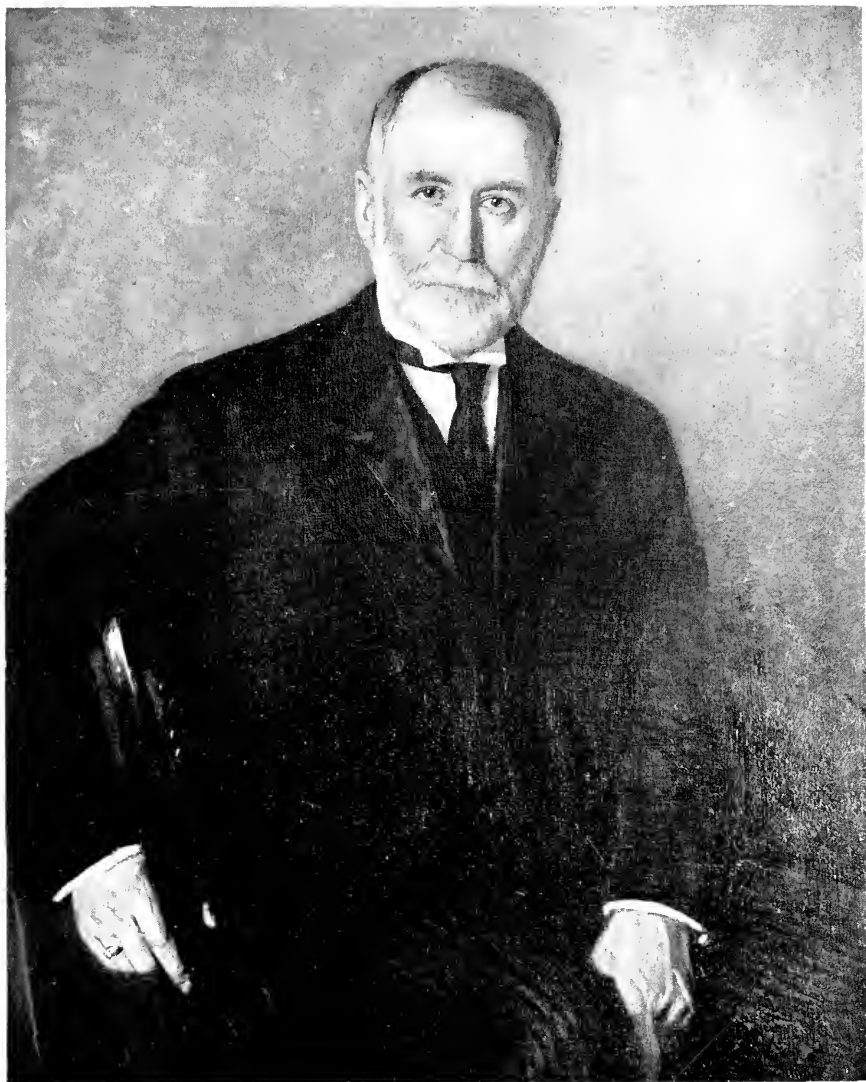
ARTIST

A. ROMÉS

A FULL-LENGTH portrait in oil. Subject, with heavy beard and wearing white cravat, is shown seated with both arms resting on arms of chair, left hand holding a roll of paper.

Height, 47 in.; width, 33½ in.

Painted in 1908.



WILLIAM J. GAYNOR

BY

J. CAMPBELL PHILLIPS

FOR DESCRIPTION SEE PAGE 47

JOHN McCOMB, JR.

1763-1853

ARCHITECT OF THE NEW YORK CITY HALL

CITY HALL

ARTIST

SAMUEL L. WALDO, A.N.A.

1783-1867

A HALF-LENGTH portrait in oil. Subject wearing black coat and white stock, is seated in a chair upholstered in crimson. He holds in right hand a plan of the City Hall, and in background is shown a view of east wing of the building.

Height, 31 in.; width, 26 in. Purchased by the City in 1916.

See illustration facing page 50.

DANIEL GUSTAVUS ROLLINS

1842-1897

SURROGATE, NEW YORK COUNTY, 1882-1887

HALL OF RECORDS, SURROGATE'S COURT

ARTIST

JOHN W. ALEXANDER, N.A.

1856-1915

A HALF-LENGTH portrait in oil. Subject is seated, and is represented in judicial robes, showing left side of face in profile. Right hand is extended resting on arm of chair; lower part of left hand is hidden by table.

Height, 36 in.; width, 54 in. Given to the City in 1909.

PORTRAITS—BOROUGH OF MANHATTAN

EDWARD MORSE SHEPARD

1850-1911

CHAIRMAN OF BOARD OF TRUSTEES OF COLLEGE OF CITY OF
NEW YORK, 1904-1911

CITY COLLEGE, TOWER ROOM

ARTIST

J. REDDING KELLY

1873-

COPY OF PAINTING BY FERRARIS

A THREE-QUARTER length portrait in oil. Subject is represented seated in arm chair facing to right, but with head turned towards observer, and with arms folded across breast.

Height, 41 in.; width, 33 in.

Given to the City in 1912.

—

ABNER C. THOMAS

1844-1911

SURROGATE, NEW YORK COUNTY, 1900-1911

HALL OF RECORDS, SURROGATE'S COURT

ARTIST

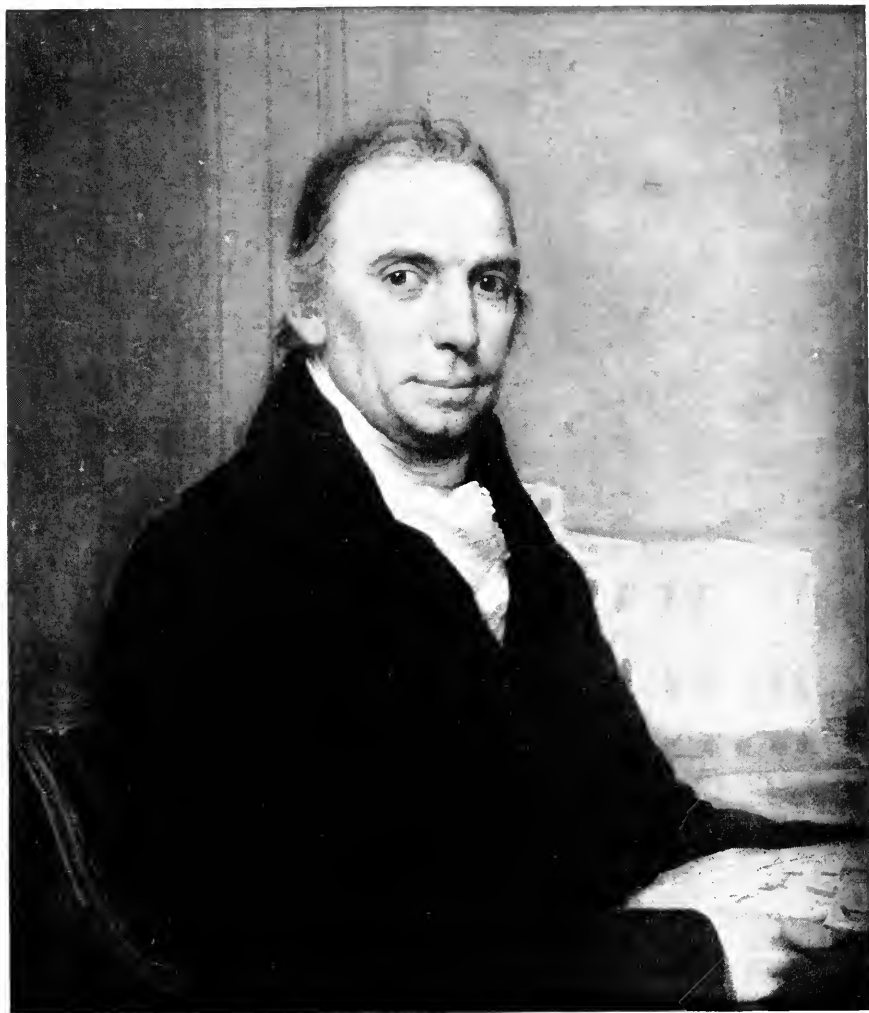
S. SEYMOUR THOMAS

1868-

A THREE-QUARTER length portrait in oil. Subject is represented in judicial robes, seated in leather-backed chair, with right hand holding a paper, left elbow resting on table covered with books and papers, left hand held against face.

Height, 40 in.; width, 49 in.

Given to City in 1913.



JOHN McCOMB, JR.

BY

SAMUEL L. WALDO, A.N.A.

FOR DESCRIPTION SEE PAGE 49

PORTRAITS—BOROUGH OF MANHATTAN

FITZ GERALD TISDALL

1839-1915

PROFESSOR IN THE COLLEGE OF THE CITY OF NEW YORK,
1879-1915

CITY COLLEGE, TOWER ROOM

ARTIST

GEORGE RUFUS BOYNTON

1861-

A THREE-QUARTER length portrait in oil. Subject, with white side-whiskers and mustache, is represented in academic cap and gown, over evening dress, with white waistcoat and tie, standing by table on which he rests right hand, left hand being held to side.

Height, 55 in.; width, 39 in.

Painted in 1910.

ALEXANDER SEWARD WEBB

1836-1911

PRESIDENT OF THE COLLEGE OF THE CITY OF NEW YORK,
1870-1902

CITY COLLEGE, TOWER ROOM

ARTIST

GEORGE RUFUS BOYNTON

1861-

A THREE-QUARTER length portrait in oil. Subject, with flowing white beard, is represented in academic robe seated by table on which he rests left hand. In right hand he holds a pen.

Height, 55½ in.; width, 45½ in.

Painted in 1902.

See illustration facing page 52.

PORTRAITS—BOROUGH OF MANHATTAN

ADOLPH WERNER

1838-1919

PROFESSOR IN THE COLLEGE OF THE CITY OF NEW YORK,

1861-1915

CITY COLLEGE, TOWER ROOM

ARTIST

LOUIS LOEB, N.A.

1866-1909

A THREE-QUARTER length portrait in oil. Subject is represented standing by a table on which he rests his right hand grasping a book.

Height, 50 in.; width, 37 in.

Painted in 1907.

GENERAL GEORGE W. WINGATE

1840-

PUBLIC SCHOOL NO. 40

ARTIST

DAVID ANTHONY TANSZKY

1878-

A THREE-QUARTER length portrait. Subject, with bald head and pointed grey beard, is represented seated with left hand and right elbow resting on chair arms, and holding spectacles in right hand.

Height, 50 in.; width, 36 in.

Given to the City in 1915.



ALEXANDER SEWARD WEBB

BY

GEORGE RUFUS BOYNTON

FOR DESCRIPTION SEE PAGE 51

PORTRAITS—BOROUGH OF MANHATTAN

SOLOMON WOOLF

1840-1911

PROFESSOR IN THE COLLEGE OF THE CITY OF NEW YORK,

1877-1903

CITY COLLEGE, TOWER ROOM

ARTIST

SAMUEL JOHNSON WOOLF

1880-

A THREE-QUARTER length portrait in oil. Subject is seated in a wicker chair with hands folded, and overcoat thrown over left arm and right knee.

Height, 42 in.; width, 32 in.

Painted in 1909.

See illustration facing page 54.

PORTRAITS—BOROUGH OF QUEENS

—
RUPERT B. THOMAS

1867—

MEMBER OF BOARD OF EDUCATION, 1907—1917

FLUSHING HIGH SCHOOL AUDITORIUM

ARTIST

EDWIN B. CHILD

1868—

A THREE-QUARTER length portrait in oil. Subject is shown seated in heavy chair on each arm of which he rests an extended hand. On a tablet on frame is the following

INSCRIPTION

RUPERT B. THOMAS

MEMBER OF THE BOARD OF EDUCATION

1907—19—

WHOSE ZEALOUS, ENERGETIC AND DEVOTED LABORS
WERE LARGELY INSTRUMENTAL IN SECURING THIS
BUILDING

PRESENTED TO THE SCHOOL BY THE
CITIZENS OF FLUSHING AND VICINITY

Height, 50 in.; width, 40 in.

Given to the City in 1915.



SOLOMON WOOLF
BY
SAMUEL JOHNSON WOOLF
FOR DESCRIPTION SEE PAGE 53

SCULPTURE

SCULPTURE—BOROUGH OF THE BRONX

—
LOUIS J. HEINTZ
1861-1893

GRAND CONCOURSE BETWEEN 162ND AND 163RD STREETS

ARTISTS

PIERRE FIETU, SCULPTOR

WILLIAM WELLES BOSWORTH, A.N.A., ARCHITECT
1869-

A **PORTRAIT** statue in bronze, of heroic size, placed on a granite pedestal, in front of which is standing a draped female in bronze designated **FAME**, represented as drawing the inscription on the pedestal, and holding a palm branch in left hand.

INSCRIPTION

LOUIS J. HEINTZ
TO COMMEMORATE
THE FOUNDING OF
THE PROGRESS AND
PROSPERITY OF THE
BRONX

Given to the City in 1909.

—
JUSTICE

BRONX BOROUGH COURT HOUSE

ARTIST

G. E. ROINE, SCULPTOR

A **STATUE** in Tennessee marble placed over main entrance on south facade. It consists of a draped seated female figure, of heroic size, with a crown of leaves in hair, supporting with right hand a large sword, and holding with left hand a book which rests on seat.

Purchased by the City in 1910.

SCULPTURE—BOROUGH OF THE BRONX

EDGAR ALLAN POE

1809-1849

POE PARK, KINGSBRIDGE ROAD

ARTIST

EDMOND T. QUINN, A.N.A.

1868-

A BRONZE bust of heroic size on a pedestal of marble 5 feet high.

(Bust temporarily placed for safekeeping in Poe Memorial Cottage.)

INSCRIPTION

EDGAR ALLAN POE

1809-1849

IN A COTTAGE OPPOSITE THIS SITE

THE POET AND AUTHOR LIVED

1846-1849

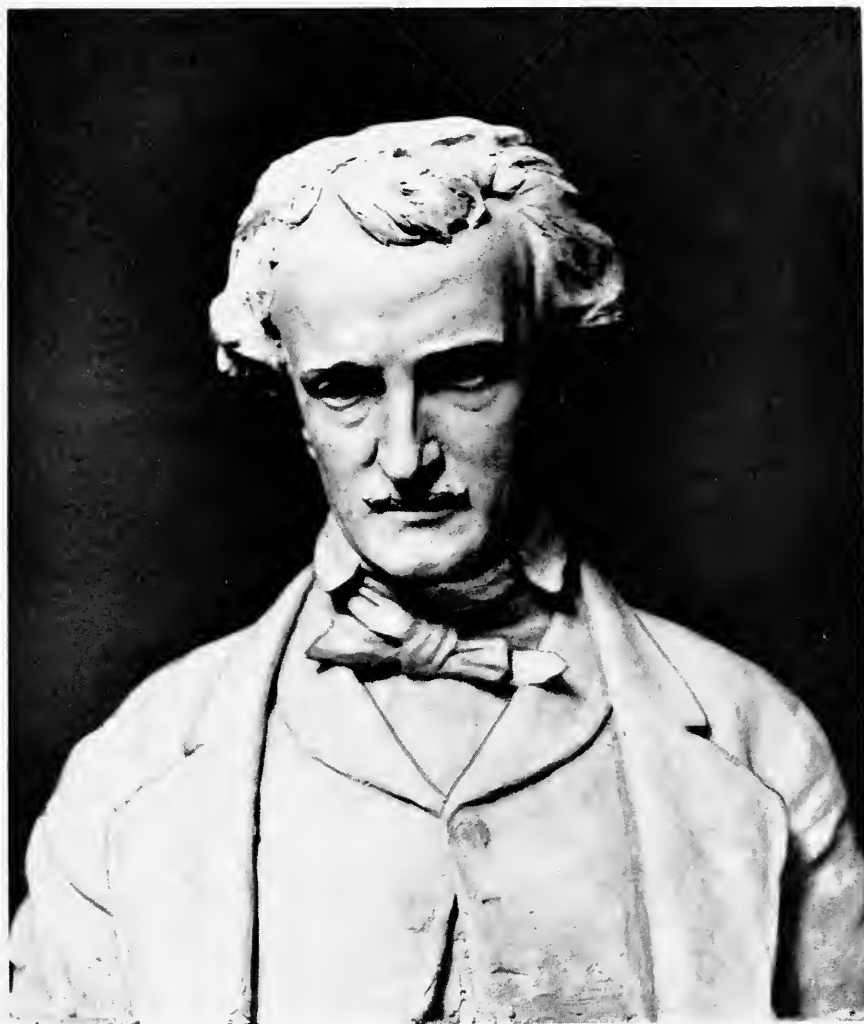
ERECTED BY THE BRONX

SOCIETY OF ARTS & SCIENCES

JANUARY 19, 1909

Given to the City in 1909.

See illustration facing page 58.



POE BUST

BY

EDMOND T. QUINN, A.N.A.

FOR DESCRIPTION SEE PAGE 58

SCULPTURE—BOROUGH OF BROOKLYN

BEDFORD PARK WAR MEMORIAL

ARTIST

EDWIN H. DENBY

1873—

A MONUMENT in limestone, 9 feet 3 inches high by 4 feet 6 inches wide, mounted on two granite steps. The upper part consists of a panel framed with a Greek fret, below which is a shallow shelf supported by brackets enclosing a second panel. On the upper panel are inscribed six names. On the lower panel is the following

INSCRIPTION

IN LOVING MEMORY
TO THOSE BRAVE MEN OF THIS
VICINITY WHO IN 1917 AND 1918
TOOK UP ARMS IN WAR AND
DIED THAT FREEDOM MIGHT LIVE
THEIR NEIGHBORS THROUGH
THE ALBANY HEIGHTS PATRIOTIC
LEAGUE ERECT THIS MONUMENT
ANNO DOMINI MDCCCCXIX

Given to the City in 1919.

BROOKLYN INSTITUTE OF ARTS AND SCIENCES

MUSEUM BUILDING, EASTERN PARKWAY

CENTRAL PEDIMENT

ARTISTS

DANIEL C. FRENCH, N.A.

1850—

ADOLPH A. WEINMAN, N.A.

1870—

A GROUP of eight figures of heroic size in Indiana limestone; two in the centre representing ARTS AND SCIENCES;

BROOKLYN INSTITUTE—CONTINUED

those on the left of the central group representing SCULPTURE, PAINTING and ARCHITECTURE; those on the right representing GEOLOGY, ASTRONOMY and BIOLOGY. A peacock is at the extreme left, and a sphinx at the extreme right.

Purchased by the City in 1913.

—

STATUES ON ATTIC

All erected in Indiana limestone in colossal size.

Purchased by the City in 1909.

FRONT

On left of pediment, from right to left.

—

ARTIST

CHARLES KECK

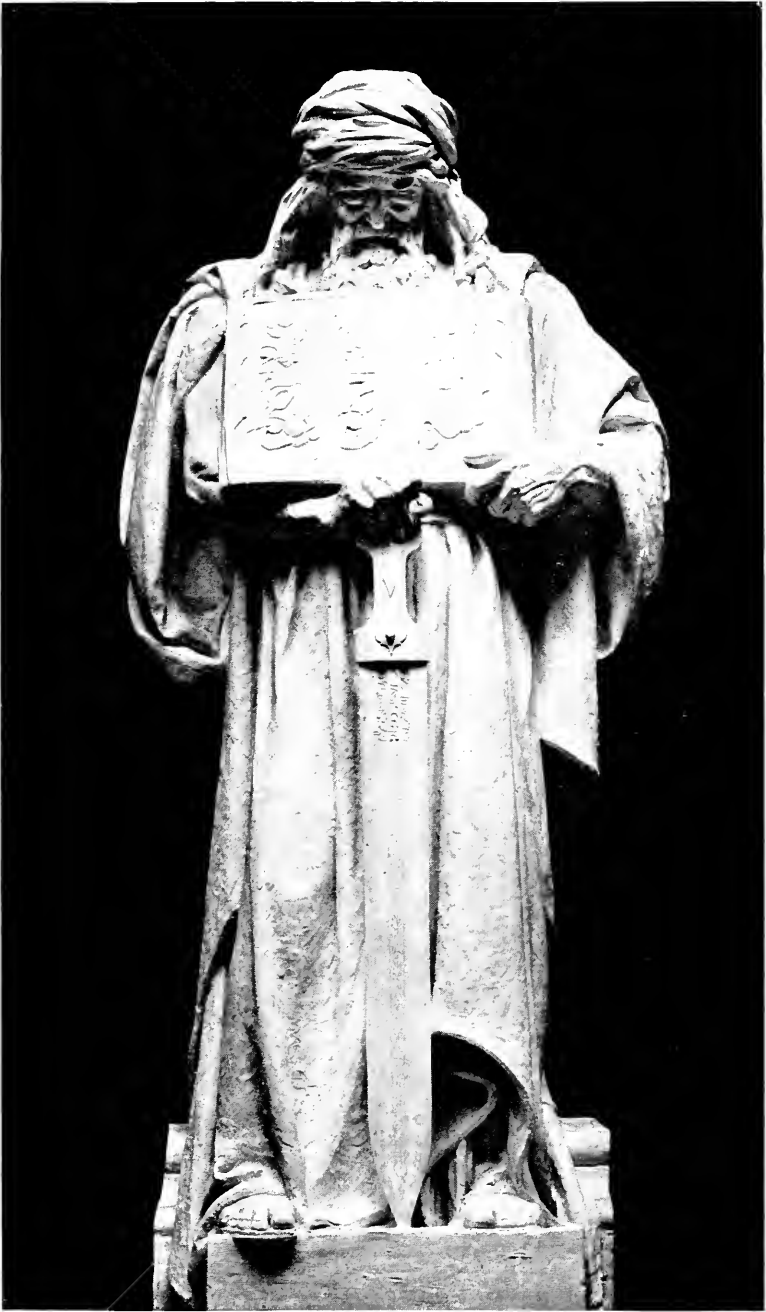
1875-

MOHAMMED

A MALE figure heavily robed and wearing turban, resting right hand on hilt of great sword, and holding large tablet against breast, on which is an Arabic inscription which translated reads:

ALLAH IS GOD, MOHAMMED IS HIS PROPHET

See illustration facing page 60.



MOHAMMED

BY

CHARLES KECK

FOR DESCRIPTION SEE PAGE 60

BROOKLYN INSTITUTE

STATUES ON ATTIC—CONTINUED

—

ARTIST

H. AUGUSTUS LUKEMAN, A.N.A.
1872—

HEBREW APOSTLE

A HEAVILY draped male figure, holding in right hand an enormous sword, and in left hand a heavy bound book.

HEBREW PROPHET

A HEAVILY draped male figure, with long hair and beard, bald head uncovered, right hand held to the mouth, left arm entirely covered by robe.

HEBREW PSALMIST

A HEAVILY draped figure of a youth, with robe thrown over head, and with mouth open as in singing. In right hand he holds a lyre, and in left carries a shepherd's crook with a sling at top.

See illustration facing page 62.

HEBREW LAW

A FULLY draped female figure with robe thrown over head. Her right hand is extended, and in left she holds a tablet.

—

ARTIST

JANET SCUDDER, A.N.A.
1873—

JAPANESE ART

A FEMALE figure in Japanese costume with elaborate head dress, carrying a mirror in uplifted right hand; left hand resting on a large sword.

BROOKLYN INSTITUTE

STATUES ON ATTIC—CONTINUED

ARTIST

KARL BITTER, N.A.

1868-1915

CHINESE LAW

A FULLY robed male figure representing a Chinese sage, wearing cap, and with braid of hair falling over right shoulder, and holding a gem in right hand.

CHINESE ART

A FULLY robed female figure, crowned, holding in right hand a chrysanthemum flower, and in left a small vase.

CHINESE RELIGION

A PRIEST, elaborately robed, with long beard and bare head, and hands outstretched as in blessing.

CHINESE PHILOSOPHY

A MALE figure in heavy simple robe, with uncovered bald head, holding a string of beads in right hand, left hand being extended in the gesture of a lecturer.

FRONT

On right of pediment, left to right.

ARTIST

DANIEL C. FRENCH, N.A.

1850-

GREEK EPIC POETRY

A MALE figure robed, wearing a skull cap, with breast and arm exposed, and holding a thick mass of manuscript in left hand, right hand extended.



HEBREW PSALMIST

BY

H. AUGUSTUS LUKEMAN, A.N.A.

FOR DESCRIPTION SEE PAGE 61

BROOKLYN INSTITUTE

STATUES ON ATTIC—CONTINUED

GREEK LYRIC POETRY

A DRAPED female figure with chaplet of laurel in hair. Left shoulder and breast exposed, holding in right hand a lamp, and in left a harp.

ARTIST

GEORGE T. BREWSTER

1862—

GREEK DRAMATIC ART

A FULLY draped female figure holding a large mask in each hand.

GREEK LAW GIVER

A MALE figure, bald and of serious mien, draped in a heavy robe, with right arm and breast bare and hands clasped, left hand holding a half-open scroll.

ARTIST

KENYON COX, N.A.

1856-1919

GREEK SCIENCE

A DRAPED female figure, holding in left hand a globe which she is marking with a stylus held in right hand.

ARTIST

DANIEL C. FRENCH, N.A.

1850—

GREEK RELIGION

A FULLY draped female figure wearing a helmet, and with breastplate of armor, carrying a shield on left arm, and holding in right hand a small winged sphinx.

BROOKLYN INSTITUTE

STATUES ON ATTIC—CONTINUED

—
ARTIST

HERBERT ADAMS, N.A.

1858—

GREEK PHILOSOPHY

A HEAVILY robed male figure, with right arm and shoulder bare, and head bent forward in an attitude of contemplation.

GREEK ARCHITECTURE

A DRAPED female figure, holding in extended right hand a craftsman's square, and in raised left hand the upper part of an Ionic column.

GREEK SCULPTURE

A DRAPED female figure with laurel wreath in hair, holding in raised right hand a small torso, and in extended left hand a hammer and cutting tools.

See illustration facing page 64.

GREEK ORATORY

A DRAPED male figure, with laurel wreath in hair, holding a scroll in left hand, and right hand extended in the gesture of a speaker.

—
STATUES ON EAST ELEVATION

From left to right

—
ARTIST

EDMOND T. QUINN, A.N.A.

1868—

PERSIAN PHILOSOPHY

A MALE figure of thoughtful mien, dressed in archaic robe, with Persian beard, and holding in left hand a flaming lamp.



GREEK SCULPTURE

BY

HERBERT ADAMS, N.A.

FOR DESCRIPTION SEE PAGE 64

BROOKLYN INSTITUTE

STATUES ON ATTIC—CONTINUED

ARTIST

EDWARD C. POTTER, N.A.
1857-

INDIAN PHILOSOPHY

A HALF-NUDE male figure, with bald head, carrying a scroll in right hand and a long staff in left.

ARTIST

ATTILIO PICCIRILLI, A.N.A.
1866-

INDIAN LITERATURE

A HALF-NUDE female figure, with closed eyes, richly garbed and jewelled, clasping left breast with left hand, and holding in right hand a long stemmed lotus flower.

INDIAN LAW GIVER

A MALE figure swathed in heavy robe, and wearing a turban, with hands drawn together on breast, and holding a scroll tightly in left hand.

See illustration facing page 66.

ARTIST

EDWARD C. POTTER, N.A.
1857-

INDIAN RELIGION

A MALE figure in heavy robe, wearing turban-like head band, with right arm and shoulder nude, carrying in right hand a disk, and in left two closed lotus blossoms.

BROOKLYN INSTITUTE

STATUES ON ATTIC—CONTINUED

—

STATUES ON WEST ELEVATION

From left to right

—

ARTIST

JOHN GELERT

1852—

ROMAN LAW GIVER

A MALE figure in Roman toga, holding in both hands an open scroll on which is inscribed

P. P.

SVVM

CVIQVE

ROMAN STATESMAN

A MALE figure, in Roman toga, holding a closed scroll in left hand, and in right hand an open scroll from which he is reading.

ROMAN EMPEROR

A MALE figure in highly decorated armor, with wreath on head, and Imperial Staff in left hand.

ROMAN ORATOR

A FIGURE of a young man, in Roman toga, holding a scroll in left hand, and extending right hand in gesture.

—

ARTIST

C. A. HEBER

1874—

ROMAN LYRIC POETRY

A FEMALE figure, partly nude, with laurel wreath on head, and holding an unfolded scroll in right hand, left hand grasping robe at shoulder.



INDIAN LAW GIVER

BY

ATTILIO PICCIRILLI, A.N.A.

FOR DESCRIPTION SEE PAGE 65

SCULPTURE—BOROUGH OF BROOKLYN

EAGLES

SHORE ROAD BRIDGE

ARTIST

FRANK J. HELMLE, ARCHITECT

1870—

ROCHETTE AND PARZINI, SCULPTORS

EAGLES of heroic size in granite; placed on top of each of eight piers of bridge at crossing of First Avenue over Shore Road.

Purchased by the City in 1912.

—

EDWARD GRIEG

1843—1907

NORWEGIAN COMPOSER

PROSPECT PARK, FLOWER GARDEN

ARTIST

SIGVALD ASBJORNSEN

1867—

A BRONZE bust 3 feet high, placed on a granite pedestal 9 feet high.

INSCRIPTION

GRIEG

PRESENTED TO

THE BOROUGH OF BROOKLYN

BY THE NORWEGIAN SOCIETIES

1914

Given to the City in 1914.

SCULPTURE—BOROUGH OF BROOKLYN

MARQUIS DE LAFAYETTE

1757-1834

MAJOR GENERAL IN COLONIAL ARMY, 1777-1781

PROSPECT PARK, NINTH STREET ENTRANCE

ARTISTS

HENRY BACON, N.A., ARCHITECT

1866-

DANIEL C. FRENCH, N.A., SCULPTOR

1850-

A BRONZE tablet 9 feet by 11 feet, showing Lafayette in heroic size in high relief, in Colonial uniform, standing with sword in hand against his charger whose bridle is held by a negro. This is mounted on an architectural background and is set in a broad exedra, all of granite. On each side of the stone base is carved a double laurel leaf. Cut on the stone beneath the tablet is the following

INSCRIPTION

THE MARQUIS DE LAFAYETTE

THIS MONUMENT WAS ERECTED AND PRESENTED BY
HENRY HARTEAU

A DISTINGUISHED CITIZEN OF BROOKLYN TO BE AN ENDURING
TRIBUTE TO THE MEMORY OF ONE WHO AS FRIEND AND
COMPANION OF THE IMMORTAL WASHINGTON FOUGHT
TO ESTABLISH IN OUR COUNTRY THOSE VITAL
PRINCIPLES OF LIBERTY AND HUMAN BROTHER-
HOOD WHICH HE AFTERWARD LABORED
TO ESTABLISH IN HIS OWN

On upper part of back is inscribed

THIS MEMORIAL WAS UNVEILED AND DEDICATED
BY MARSHAL JOFFRE AND M. VIVIANI
, OF THE FRENCH WAR COMMISSION
MAY 10, 1917

Given to the City in 1917.
See illustration facing page 68.



LAFAYETTE MONUMENT

BY

HENRY BACON, N.A. AND DANIEL C. FRENCH, N.A.

FOR DESCRIPTION SEE PAGE 68

SCULPTURE—BOROUGH OF BROOKLYN
MANHATTAN BRIDGE APPROACH
TWO SCULPTURAL GROUPS

ARTIST
DANIEL C. FRENCH, N.A.
1850—

NORTH PYLON

BROOKLYN

A COLOSSAL draped female figure in granite, seated, wearing a civic crown, and holding in left hand a Roman book. At her feet on right are a tree and a nude child reading a book, on left a model of a church and other emblems of art.

SOUTH PYLON

MANHATTAN

A COLOSSAL draped female figure in granite, seated, wearing a castellated crown, with breast plate indicative of defense, and holding in her right hand a winged globe suggestive of DOMINION and PROGRESS, her right foot resting on a treasure box. At her right are emblems of art and material prosperity, and on her left the prows of three ships representing COMMERCE, and a peacock as a symbol of PRIDE.

Purchased by the City in 1916.

SCULPTURE—BOROUGH OF BROOKLYN

KARL MARIA FRIEDRICH ERNST VON WEBER

1786-1826

GERMAN COMPOSER

PROSPECT PARK, FLOWER GARDEN

ARTIST

CHESTER BEACH, A.N.A.

1881-

A BRONZE bust of heroic size, mounted on granite pedestal about 8 feet high.

INSCRIPTION

KARL MARIA VON WEBER
PRESENTED TO THE
BOROUGH OF BROOKLYN
BY THE
UNITED GERMAN SINGERS

—

1ST PRIZE AT THE
22ND NATIONAL SAENGERFEST
HELD AT NEW YORK
JUNE 22ND 1907

Given to the City in 1909.

SCULPTURE—BOROUGH OF MANHATTAN

SCULPTURE—BOROUGH OF MANHATTAN
ORESTES AUGUSTUS BROWNSON
1803-1876
RIVERSIDE PARK, OPPOSITE 104TH STREET

ARTIST
SAMUEL J. KITSON
1848-1906

A COLOSSAL bronze bust mounted on a pedestal of polished granite.

INSCRIPTION

BROWNSON
1803-1876
PUBLICIST—PHILOSOPHER—PATRIOT
HE LOVED
GOD, COUNTRY AND TRUTH

Given to the City in 1910.

—

WILLIAM CULLEN BRYANT
1794-1878
AMERICAN POET AND JOURNALIST
WEST SIDE OF NEW YORK PUBLIC LIBRARY

ARTISTS
HERBERT ADAMS, N.A., SCULPTOR
1858-
CARRÈRE AND HASTINGS, ARCHITECTS

A SEATED statue in bronze of heroic size, on a marble pedestal of rich design, under an architectural canopy of monumental form in marble, which is approached by six steps from the level of Bryant Park.

SIGNED: HERBERT ADAMS, SCULPTOR, MCMXI



BRYANT MEMORIAL

BY

HERBERT ADAMS, N.A. AND CARRÈRE & HASTINGS

FOR DESCRIPTION SEE PAGE 72

SCULPTURE—BOROUGH OF MANHATTAN

INSCRIPTION

WILLIAM CULLEN BRYANT

1794-1878

YET LET NO EMPTY GUST

OF PASSION FIND AN UTTERANCE IN THY LAY

A BLAST THAT WHIRLS THE DUST

ALONG THE HOWLING STREET AND DIES AWAY

BUT FEELINGS OF CALM POWER AND MIGHTY SWEEP

LIKE CURRENTS JOURNEYING THROUGH THE WINDLESS DEEP

Given to the City in 1911.

See illustrations facing pages 72 and 74.

—

JOHN BURROUGHS

1837-1921

PUBLIC SCHOOL 188 AUDITORIUM

ARTIST

SCIARRINO CARAINO PIETRO

A BRONZE bust of heroic size, placed on a wooden bracket on which is carved

JOHN BURROUGHS

On the wall below is a small bronze tablet on which is the following

INSCRIPTION

JOHN BURROUGHS

APRIL 3RD, 1837-

PRESENTED BY THE

BURROUGHS NATURE CLUB

1914

“TO UNDERSTAND NATURE

IS TO GAIN ONE OF THE

GREATEST RESOURCES

OF LIFE”

Given to the City in 1914.

SCULPTURE—BOROUGH OF MANHATTAN

GENERAL DANIEL BUTTERFIELD
1831-1901

CLAREMONT AVENUE, NORTH OF 122ND STREET

ARTIST

GUTZON BORGLUM, SCULPTOR
1867-

LUDLOW AND PEABODY, ARCHITECTS

A COLOSSAL portrait statue in bronze, showing subject in military uniform, with arms folded across breast. Erected in a small parkway on a plaza approached from Riverside Drive. It stands on a pedestal of granite 7 feet high, on each side of which is a wall of granite against which are seats.

INSCRIPTION

BUTTERFIELD
1831-1901

Given to the City in 1918.

—

CARRÈRE MEMORIAL

RIVERSIDE DRIVE AND 99TH STREET

ARTIST

THOMAS HASTINGS, N.A.
1860-

A MEMORIAL to John Merven Carrère, architect, who was killed in an automobile accident. A terrace, two steps above



BRYANT STATUE
BY
HERBERT ADAMS, N.A.
FOR DESCRIPTION SEE PAGE 72

SCULPTURE—BOROUGH OF MANHATTAN

the sidewalk and approached by a flight of steps from Riverside Park, is enclosed by a balustrade of pink Milford granite, in the centre of which is a sculptured panel depicting a drapery on which is the following

INSCRIPTION

TO THE MEMORY OF
JOHN MERVEN CARRÈRE
1858-1911

Given to the City in 1916.

HORACE GREELEY
1811-1872

CITY HALL PARK

ARTIST

JOHN QUINCY ADAMS WARD, N.A.
1830-1910

A SEATED statue of heroic size in bronze, placed on a simple pedestal about 5 feet high, of polished dark granite, on the front of which in raised letters is the

INSCRIPTION

HORACE GREELEY
FOUNDER OF
THE NEW YORK TRIBUNE

SIGNED: J. Q. A. WARD, SCULPTOR, 1890,

Given to the City in 1916.

SCULPTURE—BOROUGH OF MANHATTAN

JOAN OF ARC

1411-1431

RIVERSIDE DRIVE AND 93RD STREET

ARTISTS

ANNA VAUGHN HYATT, A.N.A., SCULPTOR
1876-

JOHN V. VAN PELT, ARCHITECT
1874-

EQUESTRIAN statue in bronze, about 9 feet high, representing the "Maid of Orleans" in full armor, mounted on a large and heavy charger, and standing in her stirrups with uplifted sword. This is mounted on a granite pedestal 10 feet high decorated with Gothic arches. It stands on a small plaza on two levels, with granite balustrade, and steps between the levels, the plaza being approached from the east by a flight of granite steps.

SIGNED: ANNA VAUGHN HYATT, SCULPTOR
JOHN V. VAN PELT, ARCHITECT

In gothic letters are the following

INSCRIPTION

JOAN OF ARC
BORN AT
DOMREMY, FRANCE
JANUARY 6TH, 1411
BURNED AT THE
STAKE AT
ROUEN, FRANCE
MAY 30TH, 1431
ERECTED BY

THE JOAN OF ARC STATUE COMMITTEE
IN THE CITY OF NEW YORK 1915

Given to the City in 1915.
See illustration facing page 76.



JOAN OF ARC

BY

ANNA VAUGHN HYATT, A.N.A. AND JOHN V. VAN PELT

FOR DESCRIPTION SEE PAGE 76

MANHATTAN BRIDGE APPROACH

BUFFALO HUNT

ARTIST

CHARLES CARY RUMSEY

1879—

A BROAD frieze, 6 feet high and about 40 feet long, over western entrance arch; representing in high relief four mounted Indians attacking buffalo in full chase.

Purchased by the City in 1916.

—

SPIRITS OF COMMERCE AND INDUSTRIES

ARTIST

C. A. HEBER

1874—

HEROIC groups in granite placed over doorways in large piers on each side of great entrance arch, in each case surmounted by ornamental decorative composition rising from prow of antique ship.

Purchased by the City in 1916.

SPIRIT OF COMMERCE

On north pier. A standing draped female winged figure with uplifted left arm. Kneeling on her left is a nude female, and on her right a nude male holding in his right hand a hammer, and resting his left hand on a half-covered cogged wheel.

SPIRIT OF INDUSTRIES

On south pier. A standing nude male winged figure. Kneeling on his right is a half nude female holding a basket containing corn and fruits, and on his left a nude male figure holding a small bale of goods.

MUNICIPAL BUILDING

CIVIC FAME

ARTIST

ADOLPH A. WEINMAN, N.A.

1870—

A COLOSSAL bronze draped female figure standing on a sphere, with shield on her right arm. In her uplifted right hand she holds a branch of laurel, with which she is also crowned, and in extended left hand a crown. Placed as the finial of the great central tower.

Purchased by the City in 1913.

—

DECORATION OF WEST ARCHWAY AND SECOND
STORY PANELS

ARTIST

ADOLPH A. WEINMAN, N.A.

1870—

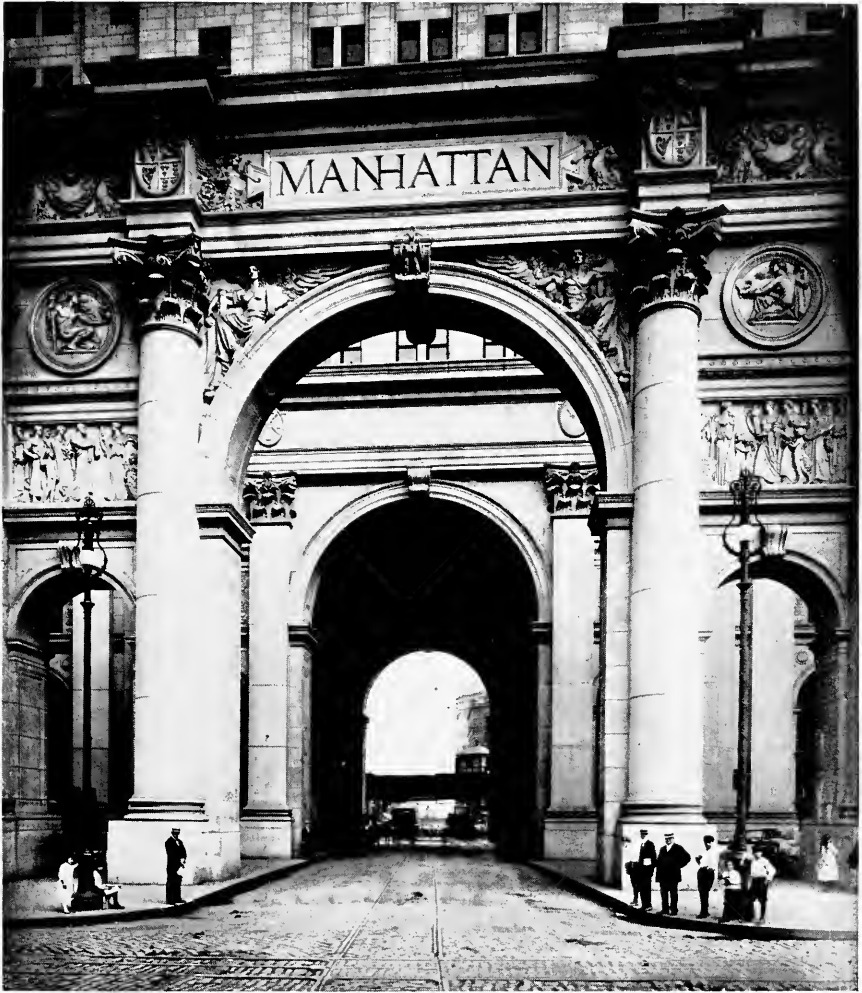
CHAMBERS STREET ARCHWAY

WINGED figures in heroic size fill the spandrels above the great arch; that on the left a female representing GUIDANCE; that on the right a male representing EXECUTIVE POWER.

Over the northerly smaller arch is a broad panel representing CIVIC DUTY, consisting of a life size female figure holding a scroll. On her left stands a child behind a shield on which are the symbols of the seal of the City. She is approached from her right by a group of four men, and a woman holding a babe and leading a small boy, all in attitudes of attention.

Above this is a medallion representing PROGRESS; in the form of a kneeling nude man of heroic size, holding a torch in right hand and a winged sphere in left.

Over the southerly smaller arch is a broad panel representing CIVIC PRIDE, consisting of a life size female figure



ENTRANCE TO MUNICIPAL OFFICE BUILDING

BY

MCKIM, MEAD & WHITE, AND ADOLPH A. WEINMAN, N.A.

FOR DESCRIPTION SEE PAGE 78

MUNICIPAL BUILDING—CONTINUED

on the left, resting against a decorated seat, with her left hand on a horn of plenty held by a small boy. She is approached from the left by a group of three men, two women and one small girl, who carry emblems indicative of the accomplishments of the citizens.

Above this is a medallion representing PRUDENCE in the form of a kneeling half nude woman of heroic size, holding in right hand a mirror, with a serpent coiled around her extended right arm.

All executed in granite.

See illustrations facing pages 78 and 80.

—

SECOND STORY PANELS

REPRESENTING THE VARIED ACTIVITIES OF
THE CITY GOVERNMENT

ALL ARE of life size in granite in low relief.

On the south pavilion, on the right of the great archway, they are as follows, reading from left to right.

THE COMPTROLLER

A HALF nude elderly man holding a book.

WATER SUPPLY

A HALF nude female holding an inverted water jar on right shoulder.

ELECTIONS

A DRAPED female figure holding a ballot box.

LICENSES

A DRAPED female figure holding a closed scroll.

CIVIL SERVICE

A DRAPED female figure holding an open scroll at the top of which appears the symbols of the City seal.

MUNICIPAL BUILDING—CONTINUED

SHERIFF

A DRAPED male figure holding a closed scroll.

RECORDS

A HALF nude male figure holding a number of sheets from which he is reading.

ACCOUNTS

A HALF nude female figure reading from a book on a reading desk.

CORRECTION

A DRAPED male figure holding a sword and ring of keys.

BUILDING INSPECTION

A DRAPED female figure holding an open scroll and resting against a Corinthian column.

PUBLIC SERVICE COMMISSION

A DRAPED female figure holding symbols of Commerce and Transportation in right and left hands respectively.

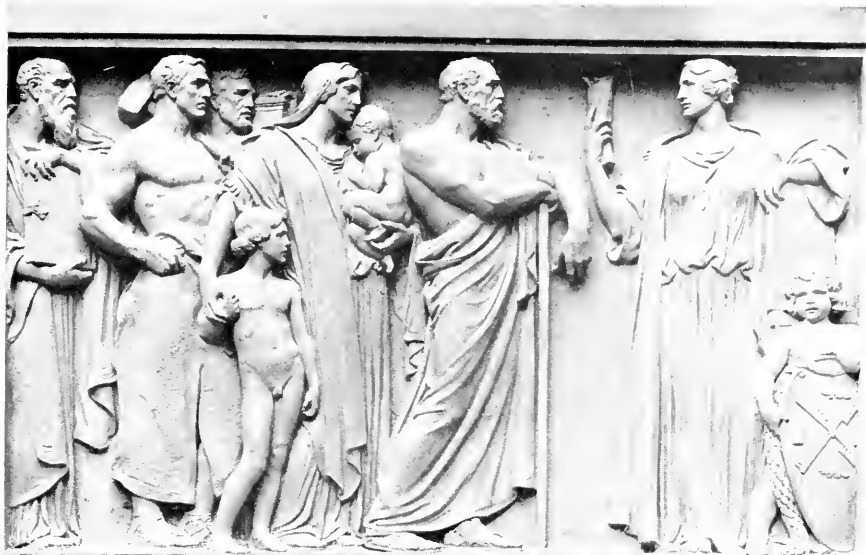
BOARD OF ESTIMATE

A DRAPED male figure holding a bridle in left hand.

On the north pavilion on the left of the great archway duplicate panels are represented in the following order, reading from right to left.

BOARD OF ESTIMATE
PUBLIC SERVICE COMMISSION
BUILDING INSPECTION
CORRECTION
ACCOUNTS
RECORDS
SHERIFF
CIVIL SERVICE
WATER SUPPLY
ELECTIONS
LICENSES
COMPTROLLER

Purchased by the City in 1912.



PANELS ON ENTRANCE TO MUNICIPAL OFFICE BUILDING
BY
ADOLPH A. WEINMAN, N.A.
FOR DESCRIPTION SEE PAGE 78

SCULPTURE—BOROUGH OF MANHATTAN
NEW YORK PUBLIC LIBRARY
FIFTH AVENUE AND 40TH TO 42ND STREETS

ATTIC STORY ABOVE MAIN ENTRANCE

ARTIST

PAUL W. BARTLETT, N.A.
1865—

SIX FIGURES of heroic size in full relief in marble.

In order from south to north they are:

PHILOSOPHY

A DRAPED figure of an old man with left hand clasping a flowing beard.

ROMANCE

A DRAPED female figure, with garland in hair, holding a book in right hand, and a bunch of flowers in left.

RELIGION

A DRAPED female figure looking heavenward with hands folded over breast.

POETRY

A DRAPED female figure with laurel leaf garland in hair.

DRAMA

A DRAPED female figure with veiled head, carrying a mask in extended right hand and grasping another under left arm.

HISTORY

A DRAPED figure of an old man with arms extended and hands folded, holding a closed book under left arm. See illustration facing page 82.

Purchased by the City in 1915.

NEW YORK PUBLIC LIBRARY—CONTINUED

LIONS

ARTIST

EDWARD C. POTTER, N.A.

1857—

TWO COLOSSAL lions executed in Tennessee marble; erected on granite pedestals on each side of the main entrance on Fifth Avenue.

Purchased by the City in 1911.

—

PEDIMENTS ON FIFTH AVENUE FACADE

ARTIST

GEORGE GREY BARNARD

1863—

—

SOUTH PAVILION

THE ARTS

IN CENTRE is a sphere beside which two nude heroic figures recline, and on which each rests an arm. The figure on right is a male holding a chisel in right hand and a hammer in left. The figure on left is a female resting right arm on two large books on her raised knee. Executed in marble.

Purchased by the City in 1914.



HISTORY

BY

PAUL W. BARTLETT, N.A.

FOR DESCRIPTION SEE PAGE 81

NEW YORK PUBLIC LIBRARY—CONTINUED

NORTH PAVILION

HISTORY

IN CENTRE is an open book on left of which a reclining half nude female figure is inscribing the word LIFE. On right, and resting against and on the book, is a sleeping man in full armor. Both figures are of heroic size, executed in marble.

Purchased by the City in 1915.

—
PYLON

COLUMBIA UNIVERSITY

ARTISTS

MC KIM, MEAD AND WHITE, ARCHITECTS

CHARLES KECK, SCULPTOR

1875—

A DECORATIVE pylon of granite, 21 feet 9 inches high, surmounted by large vase 6 feet high. Erected on City property at the southeast corner of 116th Street and Broadway. Standing against west face is a female figure in Knoxville marble 11 feet high, fully robed, holding on right arm an open book on which are inscribed the words:

(Left-hand page)

HIC
LABOR

(Right-hand page)

HAEC
QUIES

On the back is the following

INSCRIPTION

PRESENTED BY THE
CLASS OF 1890
ARTS AND MINES

CARL SCHURZ

1829-1906

MORNINGSIDE AVENUE AND 116TH STREET

ARTIST

KARL BITTER, N.A., SCULPTOR

1868-1915

HENRY BACON, N.A., ARCHITECT

1866-

A BRONZE portrait statue 9 feet high, erected in a plaza from which a broad flight of steps leads to Morningside Park below. It represents the subject dressed in a long overcoat open in front, holding a soft hat in right hand. It is placed on a pedestal of dark gray granite about 7 feet high with a back rising from the base of the statue about 4 feet 6 inches. On the pedestal below the statue is a low relief showing two figures, one male and one female, lightly draped, on each side of an altar, on which the man rests his right hand, his left hand holding an upright dagger. Above the altar is the following

INSCRIPTION

CARL SCHURZ

MDCCCXXIX

MDCCCCVI

A DEFENDER OF LIBERTY

AND A FRIEND OF

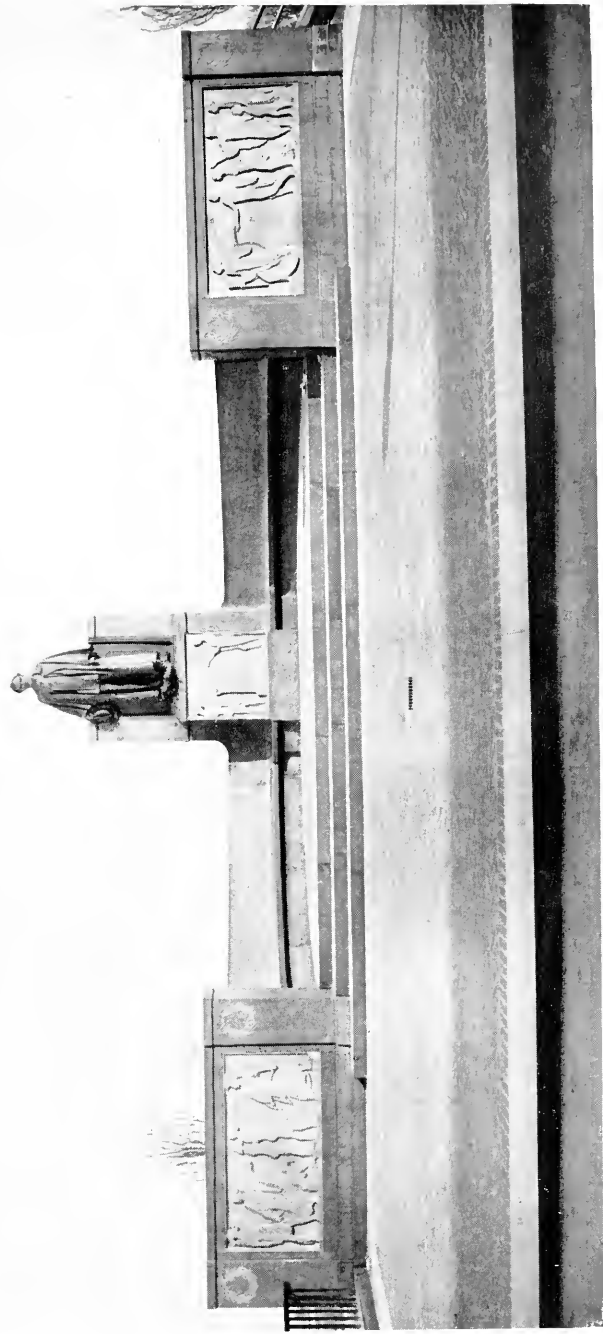
HUMAN RIGHTS

On each side of the pedestal are seats of granite extending towards west in elliptical form. The steps to plaza are flanked by two low walls which are decorated with panels in low relief.

The left panel shows on the right a male, in the attire of a warrior of the olden time, breaking a chain, on the left of whom is a group of five figures, a negro man and woman, a crouching Asiatic woman, and an Anglo-Saxon woman leading forward an American Indian warrior.

The right panel shows an ideal female figure lightly draped, carrying a torch, followed by a group of two men, two women and a young boy.

Given to City in 1913. See illustrations facing pages 84 and 86.



SCHURZ MEMORIAL
BY
HENRY BACON, N.A. AND KARL BITER, N.A.
FOR DESCRIPTION SEE PAGE 84

SCULPTURE—BOROUGH OF MANHATTAN

SLEEPY HOLLOW PANEL

WASHINGTON IRVING HIGH SCHOOL

ARTIST

FRANCES GRIMES

1869—

A PLASTER panel about 10 feet by 4 feet; placed over fireplace in foyer. It represents three female figures seated on a low bench, the two outer figures in attitude of listeners, the central figure reading from a wide-spread book held on her knees. On the upper part of the panel between the heads of the figures is the following

INSCRIPTION

THERE WAS ENCHANTMENT IN THE VERY AIR THAT BLEW FROM THAT HAUNTED PLACE BREATHING AN ATMOSPHERE OF DREAMS AND FANCIES.

THE LEGEND OF SLEEPY HOLLOW

Given to the City in 1915. See illustration facing page 96.

GIOVANNI DA VERRAZZANO

1480-1527

AN ITALIAN NAVIGATOR

BATTERY PARK

ARTIST

ETTORE XIMENES

A COLOSSAL bust placed on a granite pedestal 15 feet high, in front of which is a female figure in bronze of heroic size carrying a sword in right hand, and a torch in left. At her feet is a bronze book; on the left leaf of which is inscribed MDXXIV, and on the right leaf MCMIX. On bust and right hand leaf of book appears the name of the artist XIMENES. Below this figure, cut in the granite, are the words

(on the left)

GIOVANNI DA

(on the right)

VERRAZZANO

VERRAZZANO STATUE—CONTINUED

On the upper part of the granite pedestal are the following

INSCRIPTIONS

THERE CAN BE NO
DOUBT WHATEVER
AS TO VERRAZZANO'S
ENTERING
NEW YORK HARBOR
IN 1524

JOHN FISKE

ANNO 1909
AMERICA E ITALIA RICORDONO
GIOVANNI DA VERRAZZANO
FLORENTINO
CHE PRIMO EUROPEO
PRECORRENDO ALTRO PIU FORTUNATO
DAL QUALE EBBERO IL NOME
NAVIGO QUESTE ACQUE
LE CUI TERRE ERANO DESTINATE
PER UNA DELLE CITTA CAPITALI DEL MONDO

PER LA VERITA
SECOLATE, PER LA
GIUSTIZIA DELLA
STORIA QUESTO
MONUMENTO
RIVENDICATORE
ERESSE IL PROGRESSO
ITALO AMERICANO
CARLO BARSOTTI
EDITORE, LA COLONIA
ITALIANA CONCORDE
IL VI OTTOBRE MCMIX

Given to the City in 1909.



SCHURZ MONUMENT

BY

KARL BITTER, N.A.

FOR DESCRIPTION SEE PAGE 84

SCULPTURE—BOROUGH OF MANHATTAN

WASHINGTON ARCH

NORTH SIDE OF MAIN PIERS

GEORGE WASHINGTON

1732-1799

EAST PIER, WASHINGTON AS COMMANDER-IN-CHIEF

ARTIST

HERMON A. MACNEIL, N.A.

1866-

A GROUP of heroic size in marble, with main figure in high relief. Washington is represented in full military uniform under a long and heavy cloak, holding in front of him an unsheathed sword. His figure is supported by allegorical figures in low relief; that on left a fully robed female carrying a torch and wand, representing FAME; that on right a warrior with helmet, but without armor, and holding two spears, representing VALOR.

Given to the City in 1916. See illustration facing page 88.

—

WEST PIER, WASHINGTON AS PRESIDENT

ARTIST

A. STIRLING CALDER, N.A.

1870-

A GROUP of heroic size in marble, with main figure in high relief. Washington is represented in civilian dress with left hand resting on a book stand. His figure is supported by allegorical figures in low relief; that on the left a fully robed female, representing WISDOM, who holds back of Washington's head an open book on which is the inscription EXITVS ACTA PROBAT; that on the right a half nude male in the armor of a crusader, carrying a sword and scales, representing JUSTICE.

Given to the City in 1918. See illustration facing page 88.

SCULPTURE—BOROUGH OF MANHATTAN

GENERAL ALEXANDER SEWARD WEBB
1836-1911

CITY COLLEGE NEAR 138TH STREET ENTRANCE

ARTIST

J. MASSEY RHIND
1860-

A HEROIC statue 8 feet high in bronze, representing the subject in military uniform. Placed on a granite pedestal of gothic design.

SIGNED: MASSEY RHIND, SCULP.

INSCRIPTION

ALEXANDER S. WEBB
PRESIDENT OF THE
COLLEGE 1869-1902
BREV. MAJ. GENERAL, U. S. A.
COMMANDER
PHILADELPHIA BRIGADE
GETTYSBURG, JULY 1-3, 1863

1836-1911

ERECTED
BY THE ALUMNI 1917

Given to the City in 1917.



GROUPS ON WASHINGTON ARCH

RIGHT GROUP BY A. STIRLING CALDER, N.A.

LEFT GROUP BY HERMON A. MACNEIL, N.A.

FOR DESCRIPTION SEE PAGE 87

TABLETS

TABLETS—BOROUGH OF THE BRONX

—

MAINE MARTYRS MEMORIAL

MC KINLEY SQUARE

ARTIST

CHARLES KECK

1875-

A SMALL bronze tablet, placed on concrete plinth at base of flag pole. On right is shown a female figure representing a mourning Liberty carrying a shield, on which is modeled the shield of the United States with the words PATRIOTISM and DEVOTION.

INSCRIPTION

IN MEMORIAM

U. S. S. MAINE

DESTROYED IN HAVANA HARBOR

FEBRUARY 15TH, 1898

THIS TABLET IS CAST FROM METAL RECOVERED FROM THE
U. S. S. MAINE

Given to the City in 1914.

TABLETS—BOROUGH OF BROOKLYN

—

SUSAN E. BLOW

BROOKLYN TRAINING SCHOOL FOR TEACHERS; AUDITORIUM

ARTIST

B. LILLIAN LINK

1880—

A BRONZE tablet 2 feet wide by 3 feet 7 inches high, in upper part of which is shown a ring of dancing children.

INSCRIPTION

BY PLAYING ALL THE IDEALS
WHICH INTERPRET
NATURE AND HUMAN LIFE
THE KINDERGARTEN
FLINGS ITS RAINBOW BRIDGE
BETWEEN THE HEART
OF CHILDHOOD
AND THE VISION OF MANHOOD
1843—SUSAN E. BLOW—1916

Given to the City in 1918.
See illustration facing page 92.



BLOW TABLET

BY

B. LILLIAN LINK

FOR DESCRIPTION SEE PAGE 92

TABLETS—BOROUGH OF BROOKLYN

LIBERTY POLE TABLET

WILLIAMSBURG BRIDGE PLAZA

ARTIST

JOHN WILLIAMS

A BRONZE tablet about 3 feet 6 inches high, curved to fit the form of the Liberty Pole. At the top is a medallion of Washington and below the following:

INSCRIPTION

LIBERTY POLE
PRESENTED TO
THE CITY OF NEW YORK
BOROUGH OF BROOKLYN
FEBRUARY 22, 1916
BY THE WASHINGTON BIRTHDAY
CELEBRATION COMMITTEE
COMPRISING THE FOLLOWING
ORGANIZATIONS

— — —

COMPANY B, 47TH INFANTRY, N. G. N. Y.
GRAND ARMY REPUBLIC
UNITED SPANISH WAR VETERANS
COMMANDERY GENERAL OF THE
PATRIOTIC ORDER SONS OF AMERICA
UNITED STATES LIFE SAVING CORPS
PATRIOTIC ORDER SONS OF AMERICA
SONS OF VETERANS
PATRIOTIC ORDER OF AMERICANS
WOMEN'S RELIEF CORPS
SONS AND DAUGHTERS OF LIBERTY
DAUGHTERS OF AMERICA
HANOVER CLUB
WILLIAMSBURG CITIZENS COMMITTEE
FIRST REGIMENT BAND OF
UNITED BOYS BRIGADE OF AMERICA
SUPERINTENDENT AND FOREMAN'S
ASSOCIATION

TABLETS—BOROUGH OF BROOKLYN

ABRAHAM LINCOLN
1809-1865
PRESIDENT OF UNITED STATES 1861-65
FACADE OF BOROUGH HALL

ARTIST
VICTOR D. BRENNER
1871-

A BRONZE tablet 22 inches by 28 inches, mounted on a marble slab. In upper left corner is a medallion of Lincoln with dates 1809-1909; and on body of same is transcribed Lincoln's Gettysburg address.

MEDALLION SIGNED: V. D. BRENNER

Purchased by the City in 1909.

WILLIAM WESLEY SMITH
PUBLIC SCHOOL 102 AUDITORIUM

ARTIST
THE GORHAM COMPANY

A BRONZE tablet 24 inches by 36 inches, on which is represented a broad border of ivy leaves surrounding an inner panel on which is the

INSCRIPTION

THIS TRIBUTE OF HIS LOVING FRIENDS
COMMEMORATES
THE WORK AND CHARACTER
OF
WILLIAM WESLEY SMITH
FIRST PRINCIPAL OF
PUBLIC SCHOOL 102, BROOKLYN
1893-1909

“TO LIVE IN HEARTS WE LEAVE BEHIND IS NOT TO DIE”

Given to the City in 1910.

TABLETS—BOROUGH OF BROOKLYN

J. EDWARD SWANSTROM

1855-1910

PRESIDENT OF THE BOROUGH OF BROOKLYN, 1902-1903

BOROUGH HALL ROTUNDA

ARTISTS

EDMOND T. QUINN, A.N.A., SCULPTOR

1868-

FRANK J. HELME, ARCHITECT

1870-

A BRONZE tablet, $57\frac{1}{2}$ inches by $38\frac{1}{2}$ inches, on the right of which is represented a kneeling female figure whose left arm grasps a fasces, her right arm reaching out to a medallion portrait enclosed in a wreath. Beneath the portrait is the following:

INSCRIPTION

J. EDWARD SWANSTROM

PRESIDENT OF THE

BOROUGH OF

BROOKLYN

MCMII-MCMIII

Given to the City in 1912.

TABLETS—BOROUGH OF MANHATTAN

SIMON BARUCH

RIVINGTON STREET PUBLIC BATH

ARTISTS

WERNER AND WINDOLPH, ARCHITECTS

A BRONZE tablet showing a portrait of Dr. Baruch in centre; on left of which are the words HEALTH IS WEALTH; on right the words FREQUENT BATHS PROMOTE HEALTH.

Below portrait is the

INSCRIPTION

SIMON BARUCH, M.D.

PIONEER OF FREE MUNICIPAL BATH HOUSES

Given to the City in 1917.

HENRY BISCHOFF

1859-1913

COUNTY COURT HOUSE, ROOM 216

ARTISTS

GEORGE T. BREWSTER, SCULPTOR

1862-

WILLIAM WELLES BOSWORTH, A.N.A., ARCHITECT

1869-

A PORTRAIT memorial tablet in bronze 4 feet by 6 feet, in upper right hand corner of which is shown the Seal of the City enclosed in a wreath, below which is the signature of the subject.

INSCRIPTION

HENRY BISCHOFF

BORN AUG. 16, 1852—DIED MARCH 28, 1913

WHILE IN THE ACTIVE DISCHARGE OF HIS JUDICIAL DUTIES

JUDGE OF THE COURT OF COMMON PLEAS 1890-1893

JUDGE OF THE SUPREME COURT 1893-1913

PRESENTED BY THE BENCH AND THE

BAR OF THE CITY OF NEW YORK

Given to the City in 1915.



SLEEPY HOLLOW PANEL

BY

FRANCES GRIMES

FOR DESCRIPTION SEE PAGE 85

CHINESE TABLET

IN PARK NORTH OF GRANT'S TOMB

A BRONZE tablet 29 inches by 26 inches, on a granite block 18 inches high. It has a border of ivy leaves, the space within which is divided in two parts. On the left part is an inscription in Chinese of which record is made on photograph on file with the Art Commission. On the right part is the following English

INSCRIPTION

THIS TREE IS PLANTED
AT THE SIDE OF THE TOMB OF
GENERAL U. S. GRANT,
EX-PRESIDENT OF THE
UNITED STATES OF AMERICA
FOR THE PURPOSE
OF COMMEMORATING HIS
GREATNESS BY
LI HUNG CHANG,
GUARDIAN OF THE PRINCE
GRAND SECRETARY OF STATE
EARL OF THE FIRST ORDER.
YANG YU
ENVOY EXTRAORDINARY
AND MINISTER
PLENIPOTENTIARY OF CHINA,
VICE-PRESIDENT
OF THE BOARD OF CENSORS
KWANG HSU 23RD YEAR,
4TH MOON, MAY 1897

CYRUS CLARK

1830-1909

RIVERSIDE PARK OPPOSITE 82ND STREET

ARTIST

HENRY KIRKE BUSH-BROWN

1857-

BRONZE tablet placed on west side of a rock which is approached by rough steps and a winding path. On upper part is a portrait in low relief surrounded by a wreath. In upper left corner is the date 1830, and on the corresponding right corner the date 1909.

SIGNED: H. K. BUSH-BROWN 1911

INSCRIPTION

CYRUS CLARK

A MEMORIAL

OF HIS MANY YEARS DEVOTION

TO THE INTERESTS

OF THE WEST SIDE

FROM

THE WEST END ASSOCIATION

HIS FRIENDS AND NEIGHBORS

Given to the City in 1911.

TABLETS—BOROUGH OF MANHATTAN

LOUIS FITZGERALD

1838-1908

SEVENTY-FIRST REGIMENT ARMORY

ARTISTS

HENRY BACON, N.A., ARCHITECT

1866-

HENRY HERING, SCULPTOR

1874-

A BRONZE tablet 4 feet 3 inches high by 4 feet wide, in upper part of which is a portrait in low relief below which is the following

INSCRIPTION

IN AFFECTIONATE MEMORY OF

LOUIS FITZGERALD

BORN MAY 31, 1838—DIED OCTOBER 6, 1908

ENLISTED AS PRIVATE IN 7TH REGIMENT DECEMBER 30, 1857.

SERVED IN THE CIVIL WAR AS LIEUTENANT AND CAPTAIN OF VOLUNTEERS, 1861-1865. PROMOTED FOR GALLANTRY AT

BULL RUN 1861 AND AT FAIR OAKS 1862. ADJUTANT AND

LIEUTENANT COLONEL IN 7TH REGIMENT 1867-1882.

BRIGADIER GENERAL N. G. N. Y. 1882-1897.

GALLANT SOLDIER MAN OF AFFAIRS LOYAL FRIEND

THIS TABLET IS PLACED IN THE HEADQUARTERS OF THE BRIGADE

WHICH HE COMMANDED BY THOSE WHO HAD THE PRIVILEGE OF

SERVING AS MEMBERS OF HIS STAFF

Given to the City in 1910.

—

DAVID GRAHAM

COUNTY COURT HOUSE, ROOM 216

ARTIST

UNKNOWN

AN OVAL marble plaque, with portrait in low relief.

WASHINGTON IRVING

1783-1859

AMERICAN HISTORIAN, ESSAYIST AND NOVELIST

WASHINGTON IRVING HIGH SCHOOL, MAIN ENTRANCE

ARTIST

VICTOR D. BRENNER

1871-

A BRONZE tablet, about 3 feet square, in upper centre of which is a medallion portrait in high relief, on the left of which is the date 1783 and on the right 1859.

SIGNED: V. D. BRENNER, SC., MCMXII

INSCRIPTION

ERECTED BY

THE SAINT NICHOLAS SOCIETY OF THE CITY
OF NEW YORK

IN APPRECIATION OF
WASHINGTON IRVING

HIS CHARACTER—HIS GENIUS—AND HIS SERVICES
AS A FOUNDER OF THE SOCIETY

Given to the City in 1912.

September 26, 1904.

Central School of
Arts and Crafts, Japan

Dear Sir:

Your honorable commission and the government of your country are highly gratified to see the interest and commendation of Japanese residents in learning as to the way to the industrial and domestic education by acquiring our art and our handicrafts from Japan. It is pleased along your beautiful and genuine Japanese art, we highly honor to know that you in the future will receive attention, training and goods.

That the things here in Japan we would wish to introduce to you in the coming year of the industrial and domestic education, we would like to know. Along the line of the way, we would like to know the things you would like to know. Along the line of the way, we would like to know the things you would like to know. Along the line of the way, we would like to know the things you would like to know.

Yours truly,
The Director of the School of Arts and Crafts, Japan

Handwritten signature and name

Director of the School of Arts and Crafts, Japan

JAPANESE TABLET

BY

TOKYO FINE ART SCHOOL

FOR DESCRIPTION SEE PAGE 101

TABLETS—BOROUGH OF MANHATTAN

JAPANESE TABLET

ARTISTS

TOKYO FINE ART SCHOOL

A BRONZE tablet, 4 feet by 5 feet, representing in low relief a branch of a cherry tree in blossom on which is placed a panel about 3 feet by 4 feet, on the upper part of which is shown a garden with Grant's Tomb in the background.

INSCRIPTION

SEPTEMBER 25, 1909

TO GENERAL STEWART L. WOODFORD,
PRESIDENT,
HUDSON-FULTON CELEBRATION COMMISSION

DEAR SIR:

YOUR HONORABLE COMMISSION AND THE GOVERNMENT OF YOUR GREAT CITY HAVING GRACIOUSLY SIGNIFIED TO THE UNDERSIGNED COMMITTEE OF JAPANESE RESIDENTS THEIR PLEASURE IN PERMITTING US TO TAKE PART IN THE MOMENTOUS HUDSON-FULTON CELEBRATION BY ACCEPTING OUR OFFERING OF TWENTY-ONE HUNDRED CHERRY TREES FROM JAPAN TO BE PLANTED ALONG YOUR BEAUTIFUL AND UNIQUE RIVERSIDE DRIVE, WE BEG HEREBY TO TENDER THEM TO YOU IN THE FULLEST AND WARMEST SPIRIT OF AFFECTION, GRATITUDE AND GOOD-WILL.

WHAT THE CHERRY TREE IS TO JAPAN WE WOULD WISH IT TO SYMBOLIZE TO YOU, THE EVER-LIVING SPIRIT OF THE LAND BRINGING WITH EVERY SPRING A WORLD OF BLOSSOM AND JOY. ALONG THE BANKS OF THE MIGHTY STREAM WHOSE DISCOVERER AND FIRST STEAM NAVIGATOR WE CELEBRATE TO-DAY, AND AROUND THE TOMB OF GENERAL GRANT, WHOSE MEMORY WE OF JAPAN HOLD DEAR, MAY THE RIVER OF JAPANESE BLOOMS FLOW YEAR AFTER YEAR A FLOWERING WITNESS TO ALL TIME OF OUR AFFECTION FOR NEW YORK AND THE UNITED STATES.

WE THANK YOU AND THE MUNICIPAL AUTHORITIES FOR THE PRECIOUS PRIVILEGE OF TAKING THIS HUMBLE PART IN THE GREAT AND HISTORIC CELEBRATION, AND FEELINGLY SUBSCRIBE OURSELVES.

KOKICHI MIDZUNO
JOKICHI TAKAMINE
RIOICHIRO ARAI
DAIJIRO USHIKUBO
KIKUSABURO FUKUI

COMMITTEE OF JAPANESE RESIDENTS OF NEW YORK

Given to the City in 1912.
See illustration facing page 100.

TABLETS—BOROUGH OF MANHATTAN

JOHN JASPER

BOARD OF EDUCATION BUILDING, VESTIBULE

ARTIST

CHARLES R. LAMB

A BRONZE tablet 3 feet by 4 feet 9 inches on the upper portion of which is a portrait of the subject in high relief; below which is the following

INSCRIPTION

IN HONOR OF

JOHN JASPER

CITY SUPERINTENDENT OF SCHOOLS 1879-1896
A PUPIL OF THE PUBLIC SCHOOLS. A GRADUATE
OF THE COLLEGE OF THE CITY OF NEW YORK
WHO GAVE FORTY-FIVE YEARS OF SERVICE
TO THE SCHOOLS OF THE CITY AS TEACHER
PRINCIPAL AND SUPERINTENDENT
MCMXVII

Given to the City in 1917.

—
ABRAHAM LINCOLN

1809-1865

PRESIDENT OF THE UNITED STATES 1861-65

WASHINGTON IRVING HIGH SCHOOL, ENTRANCE HALL

—
ARTIST

VICTOR D. BRENNER

1871-

A PORTRAIT tablet 33 inches square. On small plate below is the

INSCRIPTION

A NEIGHBORHOOD GIFT

FROM

MRS. AUGUST LEWIS

Given to the City in 1915.

TABLETS—BOROUGH OF MANHATTAN

IDA B. LINDHEIMER

PUBLIC SCHOOL 38 ENTRANCE

ARTISTS

J. AND R. LAMB

A MARBLE tablet on which branches of laurel in low relief surround the following

INSCRIPTION

IN

LOVING MEMORY

OF

IDA B. LINDHEIMER

1900—PRINCIPAL—1914

A TRIBUTE FROM THE TEACHERS

OF PUBLIC SCHOOL 38

A. D. 1917

Given to the City in 1917.

—

SOPHIE J. NICOLAI

NEW YORK TRAINING SCHOOL FOR TEACHERS

ARTIST

VICTOR D. BRENNER

1871—

A BRONZE tablet 23 inches by 34 inches on which is depicted in high relief the figure of a young girl dancing.

INSCRIPTION

FOR THEY HEAR THE

WIND LAUGH AND MURMUR

AND SING OF A LAND

WHERE EVEN THE OLD ARE

FAIR AND EVEN THE WISE

ARE MERRY OF TONGUE

IN HONOR OF SOPHIE J. NICOLAI, DIRECTOR OF PHYSICAL
TRAINING FROM 1900 TO 1913

Given to the City in 1918. See illustration facing page 104.

JAMES J. SHEPPARD
1868-1914

HIGH SCHOOL OF COMMERCE AUDITORIUM

ARTIST

ALLEN G. NEWMAN
1875-

A BRONZE tablet, 33 inches wide, 51 inches high. Within a border of oak leaves is a portrait of the subject in low relief, below which is the following:

INSCRIPTION

JAMES J. SHEPPARD
BORN JANUARY 1ST, 1868
DIED MARCH 13TH, 1914
FIRST PRINCIPAL OF THE
HIGH SCHOOL OF COMMERCE
1902-1914

THIS TABLET IS ERECTED BY THE ALUMNI
AND FACULTY IN RECOGNITION OF HIS ABILITY
AS A TEACHER, HIS BROAD HUMANITY AND
HIS DEVOTED SERVICE TO THIS SCHOOL

Given to the City in 1918.



FOR THEY HEAR THE
WIND LAUGH AND MVR/MVR
AND SING OF A LAND ~ ~
WHERE EVEN ~ THE OLD ARE
FAIR AND EVEN ~ THE WISE
~ ARE MERRY OF TONGVE ~ ~

In Honor of Sophie G. Nicolai, Director of Physical Training from 1900 to 1913

NICOLAI TABLET

BY

VICTOR D. BRENNER

FOR DESCRIPTION SEE PAGE 103

BENJAMIN D. SOUTHERLAND
1829-1905

PUBLIC SCHOOL 3, AUDITORIUM

ARTIST
CHARLES KECK
1875-

A BRONZE tablet, 52 inches wide by 64 inches high, having a border of ivy leaves within which the background represents, in very low relief, the school building, over which is placed a portrait in high relief within a wreath of laurel and the words BENJAMIN DELAMATER SOUTHERLAND, 1829-1905.

INSCRIPTIONS

THE PASSING YEARS DO NOW REVEAL
HIS PEERLESS WORK WAS FOR OUR WEAL

HE ENTERED GRAMMAR SCHOOL NO. 3 AS
A PUPIL IN 1838, LATER BECAME A TEACHER
APPOINTED PRINCIPAL 1867—RETIRED 1902
ERECTED BY THE
B. D. L. SOUTHERLAND ASSOCIATION
A. D. 1917

Given to the City in 1917.

CHARLES HENRY TRUAX
1846-1910

COUNTY COURT HOUSE, ROOM 201

ARTIST

JOHN J. BOYLE
1851-1917

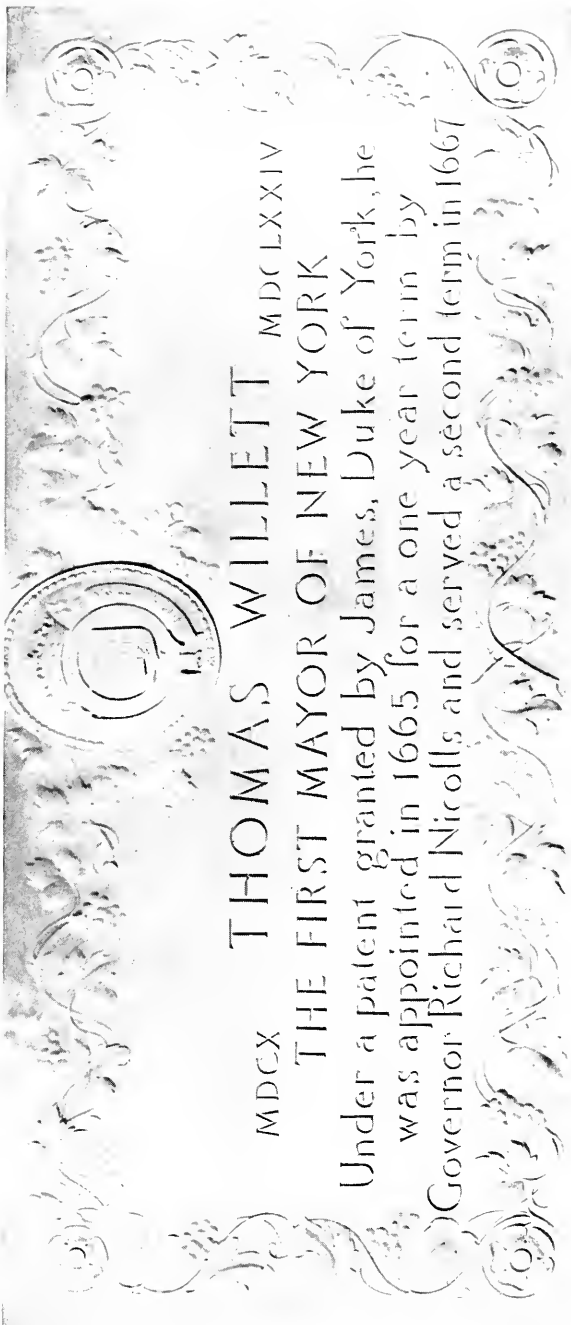
A BRONZE tablet, in high relief, showing half figure of subject, life size, and representing him in judicial gown seated behind table with gavel in right hand. Placed in arched recess above fireplace.

INSCRIPTION

CHARLES HENRY TRUAX

JUDGE SUPREME COURT	BORN DURHAMVILLE, NEW YORK
JAN. 1, 1881—JAN. 1, 1895	OCT. 31, 1846
JUSTICE SUPREME COURT	DIED, NEW YORK, N. Y.
JAN. 1, 1896—JAN. 1, 1910	JAN. 14, 1910

Given to the City in 1910.



MDCX THOMAS WILLETT MDC LXXIV

THE FIRST MAYOR OF NEW YORK

Under a patent granted by James, Duke of York, he was appointed in 1665 for a one year term by Governor Richard Nicolls and served a second term in 1667

WILLETT TABLET

BY

HENRY BACON, N.A. AND PICCIRILLI BROTHERS

FOR DESCRIPTION SEE PAGE 107

THOMAS WILLETT
1610-1674
FIRST MAYOR OF NEW YORK
CITY HALL

ARTISTS
HENRY BACON, N.A., ARCHITECT
1866
PICCIRILLI BROTHERS, SCULPTORS

A MARBLE tablet, 34 inches wide by 15½ inches high, at the top of which, in the centre, is the seal used on the Dongan Charter, spreading from which a grape vine border in very low relief surrounds the whole tablet, on which is the following

INSCRIPTION

THOMAS WILLETT
MDCX MDCLXXIV
THE FIRST MAYOR OF NEW YORK
UNDER A PATENT GRANTED BY JAMES, DUKE OF YORK, HE
WAS APPOINTED IN 1665 FOR A ONE YEAR TERM BY
GOVERNOR RICHARD NICOLLS AND SERVED A SECOND TERM IN
1667

Given to the City in 1914.
See illustration facing page 106.

TABLETS—BOROUGH OF QUEENS

—
GENERAL NATHANIEL WOODHULL

PUBLIC SCHOOL 35

ARTIST

ALBERT WEINERT

1863—

BRONZE tablet, $4\frac{1}{2}$ feet by 5 feet, on which the subject is shown in high relief in centre, close to a tethered horse which history tells he was about to mount when mortally wounded. In the background, in very low relief, is represented the old "Carpenter's Inn" still in existence in 1911 near the school building. Below the modeled figures, in a panel, is the following:

INSCRIPTION

IN MEMORY OF GENERAL NATHANIEL WOODHULL,
PRESIDENT OF THE PROVINCIAL CONGRESS
OF NEW YORK IN 1775,
WHO ON AUGUST 28 1776 WAS CRUELLY WOUNDED
BY THE ENEMY AT JAMAICA WHILE COOPERATING
WITH WASHINGTON ON LONG ISLAND.
HE DIED A PRISONER AT NEW UTRECHT, SEPTEMBER 20 1776.
CITIZEN—SOLDIER—PATRIOT OF THE REVOLUTION
Given to the City in 1911.

INDEX

INDEX

FOUNTAINS

SUBJECT	PAGE	SUBJECT	PAGE
Baby and Duck.....	4	Pulitzer Memorial.....	8
Barrett Memorial.....	12	Putnam Memorial.....	13
Bear and Fawn.....	5	Queensboro Bridge.....	8
Betsy Head Playground.....	4	Seligman Memorial.....	5
Bowne Memorial.....	5	Straus Memorial.....	9
Firemen's Memorial.....	6	Sullivan Memorial.....	10
Lowell Memorial.....	7	Van Cortlandt Park.....	2
Macomb's Dam Park.....	2	Wireless Operators.....	10
One Hundred and Tenth Street and Fifth Avenue.....	7	Woman's Health Protective Associa- tion.....	11

GLASS

Bourne Memorial.....	21	Patterson Memorial.....	20
Erasmus Hall High School.....	18	Public School No. 85, Brooklyn.....	20
Ford Memorial.....	21	Story Memorial.....	20
Girls' High School.....	19	Wadleigh High School.....	21
Gunnison Memorial.....	19	Wadleigh Memorial.....	21
Hugo Window.....	22	Wisdom.....	19
Knowledge.....	19	Young Memorial.....	17

MONUMENTS

Hudson Memorial Column.....	25	Spanish War Monument—Borough of The Bronx.....	25
Maine Monument.....	29	Spanish War Monument—Borough of Richmond.....	32
Prison Ship Martyrs' Monument....	27	World War Monument—Borough of The Bronx.....	26
Revolutionary Cannon.....	31		

MURAL PAINTINGS, ETC.

Am I My Brother's Keeper.....	38	Modern Commerce.....	36
Ancient Commerce.....	36	Public School No. 5.....	36
Birth and Development of Education	35	Public School No. 52, The Bronx....	17
Board of Education Building.....	38	The Birth of the Alphabet.....	35
Commerce, Ancient and Modern....	36	The Dawn of Civilization.....	35
Commercial High School.....	36	The Gift of Fire.....	35
De Witt Clinton High School.....	38	Twenty-second Regiment Armory...	39
Dutch and Indians Trading.....	39	Washington Before the Battle of Long Island.....	36
Eastern District High School.....	35	Washington Irving High School....	39
Military Engineering.....	39		

INDEX

PORTRAITS

SUBJECT	PAGE	SUBJECT	PAGE
Cleveland, Stephen Grover.....	44	Rollins, Daniel Gustavus.....	49
Compton, Alfred George.....	44	Shepard, Edward Morse.....	50
Doremus, Robert Ogden.....	45	Thomas, Abner C.....	50
Engs, Philip Wanton.....	45	Thomas, Rupert B.....	54
Finley, John Huston.....	46	Tisdall, Fitz Gerald.....	51
Fitzgerald, Frank T.....	46	Ward, Frederic A.....	43
Gaynor, William J.....	47	Webb, Alexander Seward.....	51
Herbermann, Charles George.....	47	Werner, Adolph.....	52
Johnston, Henry Phelps.....	48	Wingate, George W.....	52
Leipziger, Henry M.....	48	Woolf, Solomon.....	53
McComb, John, Jr.....	49		

SCULPTURE

Accounts.....	80	Greek Law Giver.....	63
Arts.....	82	Greek Lyric Poetry.....	63
Bedford Park War Memorial.....	59	Greek Oratory.....	64
Board of Estimate.....	80	Greek Philosophy.....	64
Brooklyn.....	69	Greek Religion.....	63
Brooklyn Institute of Arts and Sciences.....	59	Greek Science.....	63
Brownson, Orestes Augustus.....	72	Greek Sculpture.....	64
Buffalo Hunt.....	77	Greeley, Horace.....	75
Building Inspection.....	80	Grieg, Edward.....	67
Bryant, William Cullen.....	72	Guidance.....	78
Burroughs, John.....	73	Hebrew Apostle.....	61
Butterfield, Daniel.....	74	Hebrew Law.....	61
Carrère Memorial.....	74	Hebrew Prophet.....	61
Chinese Art.....	62	Hebrew Psalmist.....	61
Chinese Law.....	62	Heintz, Louis J.....	57
Chinese Philosophy.....	62	History (Barnard).....	83
Chinese Religion.....	62	History (Bartlett).....	81
Civic Duty.....	78	Indian Law Giver.....	65
Civic Fame.....	78	Indian Literature.....	65
Civic Pride.....	78	Indian Philosophy.....	65
Civil Service.....	79	Indian Religion.....	65
Columbia University Pylon.....	83	Japanese Art.....	61
Comptroller.....	79	Joan of Arc.....	76
Correction.....	80	Justice.....	57
Drama.....	81	Lafayette.....	68
Eagles.....	67	Licenses.....	79
Elections.....	79	Lions.....	82
Executive Power.....	78	Manhattan.....	69
Greek Architecture.....	64	Manhattan Bridge Approach—Bor- ough of Brooklyn.....	69
Greek Dramatic Art.....	63	Manhattan Bridge Approach—Bor- ough of Manhattan.....	77
Greek Epic Poetry.....	62		

INDEX

SCULPTURE—CONTINUED

SUBJECT	PAGE	SUBJECT	PAGE
Mohammed.....	60	Roman Orator.....	66
Municipal Building.....	78	Roman Statesman.....	66
New York Public Library.....	81	Romance.....	81
Persian Philosophy.....	64	Schurz, Carl.....	84
Philosophy.....	81	Sheriff.....	80
Poe, Edgar Allan.....	58	Shore Road Bridge Eagles.....	67
Poetry.....	81	Sleepy Hollow Panel.....	85
Progress.....	78	Spirit of Commerce.....	77
Prudence.....	79	Spirit of Industries.....	77
Public Service Commission.....	80	Verrazzano, Giovanni da.....	85
Pylon.....	83	Von Weber, Karl M. F. E.....	70
Records.....	80	Washington as Commander-in-Chief.....	87
Religion.....	81	Washington as President.....	87
Roman Emperor.....	66	Washington Irving High School Panel.....	85
Roman Law Giver.....	66	Water Supply.....	79
Roman Lyric Poetry.....	66	Webb, Alexander Seward.....	88

TABLETS

Baruch, Simon.....	96	Lincoln, Abraham—Washington Irving High School.....	102
Bischoff, Henry.....	96	Lindheimer, Ida B.....	103
Blow, Susan E.....	92	Maine Martyrs Memorial.....	91
Chinese.....	97	Nicolai, Sophie J.....	103
Clark, Cyrus.....	98	Sheppard, James J.....	104
Fitzgerald, Louis.....	99	Smith, William Wesley.....	94
Graham, David.....	99	Southerland, Benjamin Delamater... ..	105
Irving, Washington.....	100	Swanstrom, J. Edward.....	95
Japanese.....	101	Truax, Charles Henry.....	106
Jasper, John.....	102	Willett, Thomas.....	107
Liberty Pole.....	93	Woodhull, Nathaniel.....	108
Lincoln, Abraham—Brooklyn Borough Hall.....	94		

PRESS OF
CLARENCE S. NATHAN, INC.,
NEW YORK.



THE CITY OF NEW YORK
DEPARTMENT OF PARKS

*You and your friends are invited to attend
the Dedication of*

THE NILES MEMORIAL

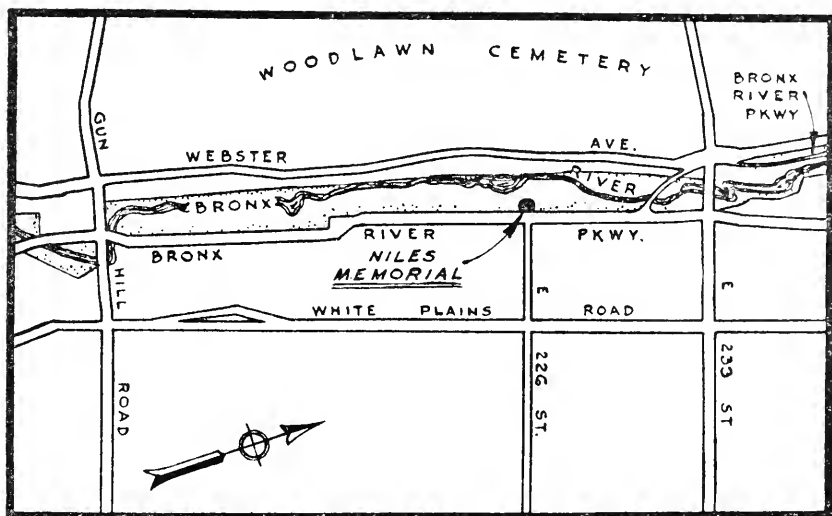
Bronx River Parkway & 226th Street

ON SATURDAY, OCTOBER 15, 1938

at 10:30 a. m.



The exercises will begin promptly at 10:30 A. M.



Bring invitation for parking.







